

CHO 6 Employment Report: September 2021

Employment by Staff Group

Sep 2021 (Dec 2020 figure: 3,465)	WTE Aug 2021	WTE Sep 2021	WTE change since Aug 21	% change since Aug 21	WTE change since Dec 20	WTE change since Sep 20
Overall	3,548	3,539	-10	-0.3%	+73	+137
Consultants	51	50	-1	-1.5%	-2	+0
Registrars	60	54	-6	-9.2%	+10	+10
SHO/ Interns	18	18	-1	-3.8%	-2	-4
Medical/ Dental, other	45	45	+0	+0.1%	+0	-4
Medical & Dental	173	166	-7	-4.0%	+7	+3
Nurse/ Midwife Manager	205	203	-3	-1.4%	-3	-8
Nurse/ Midwife Specialist & AN/MP	29	29	+0	+1.6%	+5	+6
Staff Nurse/ Staff Midwife	549	546	-3	-0.6%	-8	+5
Public Health Nurse	115	116	+1	+1.3%	+5	+0
<i>Pre-registration Nurse/ Midwife Intern</i>	4	3	-0	-0.9%	+3	-0
<i>Post-registration Nurse/ Midwife Student</i>	2	3	+1	+31.0%	-12	+1
<i>Nursing/ Midwifery awaiting registration</i>	1	1				
Nursing/ Midwifery Student	7	7	+1	+9.1%	-9	+5
Nursing/ Midwifery other	3	2	-1	-28.6%	-1	-2
Nursing & Midwifery	908	903	-4	-0.5%	-11	+6
Therapy Professions	249	246	-3	-1.1%	+8	+6
Health Science/ Diagnostics	18	18	-1	-3.6%	-2	-1
Social Care	407	411	+4	+1.1%	+19	+39
Social Workers	56	58	+2	+3.3%	+4	+4
Psychologists	66	68	+2	+3.5%	+2	+4
Pharmacy	7	7	+1	+11.6%	+4	+4
H&SC, Other	11	11	-1	-8.0%	+0	+2
Health & Social Care Professionals	814	819	+5	+0.6%	+35	+57
Management (VIII & above)	76	75	-1	-1.0%	+6	+6
Administrative/ Supervisory (V to VII)	185	188	+3	+1.7%	+22	+18
Clerical (III & IV)	256	253	-3	-1.2%	-7	-4
Management & Administrative	517	516	-1	-0.1%	+21	+20
Support	191	194	+4	+1.9%	+2	-1
Maintenance/ Technical	22	23	+1	+4.5%	+1	+0
General Support	213	217	+5	+2.2%	+3	-1
Health Care Assistants	591	582	-9	-1.5%	+16	+37
Care, other	332	334	+2	+0.5%	+4	+16
Patient & Client Care	923	916	-7	-0.8%	+20	+52

CHO 6 Employment Report: September 2021

Community Health & Wellbeing

Sep 2021 (Dec 2020 figure: 8)	WTE Aug 2021	WTE Sep 2021	WTE change since Aug 21	% change since Aug 21	WTE change since Dec 20	WTE change since Sep 20
Total Community Health & Wellbeing	9	8	-1	-11.8%	+0	-1
Public Health Nurse				-100.0%		-0
Nursing & Midwifery				-100.0%		-0
Management (VIII & above)		1	+1	-100.0%	-0	-0
Administrative/ Supervisory (V to VII)	6	5	-1	-11.4%	+2	+1
Clerical (III & IV)	1	0	-0	-41.9%	-0	-0
Management & Administrative	7	7	-0	-0.3%	+2	+1
Care, other	2	1	-1	-51.0%	-1	-2
Patient & Client Care	2	1	-1	-51.0%	-1	-2

Mental Health

Sep 2021 (Dec 2020 figure: 626)	WTE Aug 2021	WTE Sep 2021	WTE change since Aug 21	% change since Aug 21	WTE change since Dec 20	WTE change since Sep 20
Total Mental Health	633	639	+6	+0.9%	+12	+29
Consultants	39	38	-1	-1.9%	-2	+0
Registrars	26	25	-0	-1.6%	+6	+6
SHO/ Interns	11	10	-1	-7.0%	-3	-5
Medical & Dental	76	74	-2	-2.5%	+2	+2
Nurse/ Midwife Manager	74	74	+0	+0.1%	-3	-5
Nurse/ Midwife Specialist & AN/MP	22	22	+1	+2.5%	+3	+6
Staff Nurse/ Staff Midwife	156	151	-5	-3.1%	-0	+6
Pre-registration Nurse/ Midwife Intern	4	3	-0	-0.9%	+3	-0
Nursing/ Midwifery awaiting registration	1	1				
Nursing/ Midwifery Student	5	4	-0	-0.7%	+3	+3
Nursing/ Midwifery other	2	2				-1
Nursing & Midwifery	258	254	-4	-1.6%	+3	+10
Therapy Professions	41	44	+3	+6.4%	+5	+7
Social Care	26	27	+1	+4.1%	-1	-1
Social Workers	31	33	+3	+8.7%	+4	+2
Psychologists	32	34	+2	+5.9%	+2	+6
H&SC, Other	5	5	-1	-16.2%	-1	+0
Health & Social Care Professionals	135	142	+7	+5.4%	+9	+15
Management (VIII & above)	3	3	-0	-0.3%	-0	-0
Administrative/ Supervisory (V to VII)	23	26	+3	+12.1%	+2	-1
Clerical (III & IV)	36	37	+1	+3.0%	-5	-4
Management & Administrative	62	66	+4	+6.2%	-4	-5
Support	37	37	+0	+1.1%	-2	+1
Maintenance/ Technical	6	6				+0
General Support	43	43	+0	+0.9%	-2	+1
Health Care Assistants	53	53	+0	+0.1%	+5	+6
Care, other	6	6	-0	-0.7%	-0	+0
Patient & Client Care	59	59	+0	+0.1%	+5	+6

Primary Care

Sep 2021 (Dec 2020 figure: 811)	WTE Aug 2021	WTE Sep 2021	WTE change since Aug 21	% change since Aug 21	WTE change since Dec 20	WTE change since Sep 20
Total Primary Care	871	849	-22	-2.5%	+38	+74
Consultants	8	8				
Registrars	32	28	-4	-12.8%	+4	+4
SHO/ Interns	7	7				
Medical/ Dental, other	42	42	+0	+0.1%	+1	-2
Medical & Dental	89	85	-4	-4.6%	+5	+2
Nurse/ Midwife Manager	21	21	+1	+3.6%	-1	-2
Nurse/ Midwife Specialist & AN/MP	5	5	-0	-2.0%	+1	-1
Staff Nurse/ Staff Midwife	61	54	-6	-10.5%	-1	+4
Public Health Nurse	115	116	+1	+1.3%	+5	+1
Post-registration Nurse/ Midwife Student	2	3	+1	+31.0%	-12	+1
Nursing/ Midwifery Student	2	3	+1	+31.0%	-12	+1
Nursing/ Midwifery other	1		-1	-100.0%	-1	-1
Nursing & Midwifery	204	199	-4	-2.2%	-9	+2
Therapy Professions	114	113	-1	-0.7%	+2	-6
Health Science/ Diagnostics	18	18	-1	-3.6%	-2	-1
Social Care	3	3			+0	+0
Social Workers	9	9	-0	-1.8%	+5	+4
Psychologists	21	20	-1	-3.1%	+0	+1
Pharmacy	2	3	+1	+25.2%	+2	+2
H&SC, Other	5	5			+1	+1
Health & Social Care Professionals	172	170	-2	-1.0%	+8	+2
Management (VIII & above)	33	33	+0	+0.9%	+3	+4
Administrative/ Supervisory (V to VII)	76	76	+0	+0.3%	+11	+11
Clerical (III & IV)	136	131	-5	-3.8%	+3	+7
Management & Administrative	245	240	-5	-1.9%	+17	+22
Support	25	25	-0	-1.4%	-1	-1
Maintenance/ Technical	2	2				
General Support	27	27	-0	-1.3%	-1	-1
Health Care Assistants	53	45	-7	-14.0%	+7	+34
Care, other	81	82	+1	+0.7%	+10	+12
Patient & Client Care	134	127	-7	-5.1%	+17	+47

Social Care

Sep 2021 (Dec 2020 figure: 2,020)	WTE Aug 2021	WTE Sep 2021	WTE change since Aug 21	% change since Aug 21	WTE change since Dec 20	WTE change since Sep 20
Total Social Care	2,036	2,044	+8	+0.4%	+23	+35
Consultants	3	3				
Registrars	2	1	-1	-50.0%		
Senior House Officer	1	1	+0	+5.3%	+1	+0
SHO/ Interns	1	1	+0	+5.3%	+1	+1
Medical/ Dental, other	3	3			-1	-2
Medical & Dental	9	8	-1	-10.9%	-0	-1
Nurse/ Midwife Manager	110	107	-4	-3.4%	+1	-2
Nurse/ Midwife Specialist & AN/MP	2	2			+1	+1
Staff Nurse/ Staff Midwife	333	341	+8	+2.4%	-7	-5
Nursing & Midwifery	446	450	+4	+1.0%	-5	-5
Therapy Professions	94	89	-5	-4.9%	+1	+4
Social Care	378	382	+3	+0.9%	+21	+40
Social Workers	17	16	-1	-3.7%	-4	-2
Psychologists	13	14	+1	+8.1%	-0	-4
Pharmacy	4	4	+0	+4.0%	+2	+2
H&SC, Other	1	1	-0	-1.9%	-0	-0
Health & Social Care Professionals	507	507	-1	-0.1%	+18	+39
Management (VIII & above)	40	38	-2	-5.2%	+3	+1
Administrative/ Supervisory (V to VII)	80	81	+1	+1.0%	+8	+7
Clerical (III & IV)	83	84	+1	+1.7%	-4	-7
Management & Administrative	203	203	+0	+0.1%	+6	+2
Support	129	132	+4	+2.8%	+5	-1
Maintenance/ Technical	14	15	+1	+7.1%	+1	
General Support	143	147	+5	+3.2%	+6	-1
Health Care Assistants	485	483	-2	-0.4%	+4	-3
Care, other	244	246	+2	+0.9%	-5	+5
Patient & Client Care	728	729	+0	+0.0%	-1	+2

CHO 6 Employment Report: September 2021

Disabilities

Sep 2021 (Dec 2020 figure: 1,217)	WTE Aug 2021	WTE Sep 2021	WTE change since Aug 21	% change since Aug 21	WTE change since Dec 20	WTE change since Sep 20
Total Disabilities	1,227	1,230	+3	+0.2%	+13	+41
Consultants	3	3				
SHO/ Interns	1	1	+0	+5.3%	+1	+1
Medical/ Dental, other	1	1				
Medical & Dental	5	5	+0	+1.0%	+1	+1
Nurse/ Midwife Manager	45	43	-2	-4.1%	+0	+1
Staff Nurse/ Staff Midwife	138	142	+3	+2.5%	-1	+1
Nursing & Midwifery	184	185	+2	+0.8%	-1	+2
Therapy Professions	44	40	-4	-9.9%	-3	-1
Social Care	378	382	+3	+0.9%	+21	+40
Social Workers	10	10	-1	-6.0%	-0	+1
Psychologists	13	14	+1	+8.5%	+0	-2
H&SC, Other	1	1	-0	-1.9%	-0	-0
Health & Social Care Professionals	446	446	-1	-0.1%	+18	+37
Management (VIII & above)	33	31	-2	-6.2%	+1	-0
Administrative/ Supervisory (V to VII)	55	56	+1	+1.4%	+2	+2
Clerical (III & IV)	52	53	+1	+2.0%	-3	-5
Management & Administrative	140	140	-0	-0.2%	+0	-3
Support	22	22	-0	-0.9%	-4	-7
Maintenance/ Technical	6	7	+1	+16.7%	+2	+1
General Support	28	29	+1	+2.8%	-2	-6
Health Care Assistants	185	184	-1	-0.6%	+0	+4
Care, other	239	241	+2	+0.9%	-4	+6
Patient & Client Care	424	425	+1	+0.3%	-3	+10

Older People

Sep 2021 (Dec 2020 figure: 804)	WTE Aug 2021	WTE Sep 2021	WTE change since Aug 21	% change since Aug 21	WTE change since Dec 20	WTE change since Sep 20
Total Older People	809	814	+5	+0.6%	+10	-6
Registrars	2	1	-1	-50.0%		
Medical/ Dental, other	2	2			-1	-2
Medical & Dental	4	3	-1	-26.6%	-1	-2
Nurse/ Midwife Manager	65	63	-2	-2.9%	+1	-2
Nurse/ Midwife Specialist & AN/MP	2	2			+1	+1
Staff Nurse/ Staff Midwife	195	199	+5	+2.4%	-6	-6
Nursing & Midwifery	262	265	+3	+1.0%	-5	-7
Health & Social Care Professionals	61	61	-0	-0.0%	+0	+2
Management (VIII & above)	7	7	-0	-0.1%	+2	+2
Administrative/ Supervisory (V to VII)	25	25	+0	+0.1%	+6	+5
Clerical (III & IV)	31	31	+0	+1.1%	-2	-2
Management & Administrative	63	63	+0	+0.5%	+6	+5
Support	106	110	+4	+3.6%	+8	+6
Maintenance/ Technical	8	8			-1	-1
General Support	114	118	+4	+3.3%	+7	+5
Health Care Assistants	300	299	-1	-0.2%	+3	-7
Care, other	4	4	-0	-0.9%	-1	-1
Patient & Client Care	304	304	-1	-0.3%	+2	-9

CHO 6 Employment by Administration (HSE / S38): September 2021

Sep 2021 (Dec 2020 figure: 3,465)	WTE Aug 2021	WTE Sep 2021	WTE change since Aug 21	% change since Aug 21	WTE change since Dec 20	WTE change since Sep 20
Overall	3,548	3,539	-10	-0.3%	+73	+137
HSE	1,758	1,734	-24	-1.4%	+45	+94
Section 38 Voluntary Agencies	1,790	1,805	+15	+0.8%	+28	+43

HSE

Sep 2021 (Dec 2020 figure: 1,689)	WTE Aug 2021	WTE Sep 2021	WTE change since Aug 21	% change since Aug 21	WTE change since Dec 20	WTE change since Sep 20
Overall	1,758	1,734	-24	-1.4%	+45	+94
Consultants	25	25	-0	-0.0%	-1	+0
Registrars	36	32	-4	-0.1%	+5	+5
SHO/ Interns	8	7	-1	-0.1%	+2	+0
Medical/ Dental, other	44	44	+0	+0.0%	+1	-3
Medical & Dental	113	108	-5	-4.2%	+7	+2
Nurse/ Midwife Manager	131	129	-2	-0.0%	-7	-9
Nurse/ Midwife Specialist & AN/MP	21	21	-0	-0.0%	+4	+5
Staff Nurse/ Staff Midwife	305	299	-6	-0.0%	-6	+7
Public Health Nurse	115	116	+1	+0.0%	+5	+0
<i>Pre-registration Nurse/ Midwife Intern</i>	4	3	-0	-0.0%	+3	+3
<i>Post-registration Nurse/ Midwife Student</i>	2	3	+1	+0.3%	-11	+1
<i>Nursing/ Midwifery awaiting registration</i>	1	1		+0.0%	+1	
Nursing/ Midwifery Student	7	7	+1	+0.1%	-9	+5
Nursing/ Midwifery other	3	2	-1	-0.3%	-1	-2
Nursing & Midwifery	581	574	-7	-1.2%	-14	+5
Therapy Professions	167	163	-4	-0.0%	+3	-7
Health Science/ Diagnostics	17	16	-1	-0.0%	-2	-1
Social Care	10	11	+1	+0.1%	+1	+2
Social Workers	29	29	+1	+0.0%	+4	+3
Psychologists	44	44	-1	-0.0%	+3	+6
Pharmacy	4	5	+1	+0.1%	+3	+3
H&SC, Other	9	9	-0	-0.0%	+1	+2
Health & Social Care Professionals	280	277	-3	-1.0%	+11	+7
Management (VIII & above)	38	40	+1	+0.0%	+3	+4
Administrative/ Supervisory (V to VII)	105	107	+1	+0.0%	+17	+18
Clerical (III & IV)	157	151	-6	-0.0%	-5	+1
Management & Administrative	301	297	-4	-1.2%	+15	+22
Support	83	86	+3	+0.0%	+4	+7
Maintenance/ Technical	2	2		+0.0%		
General Support	85	88	+3	+3.4%	+4	+7
Health Care Assistants	326	317	-9	-0.0%	+10	+33
Care, other	72	71	-0	-0.0%	+11	+17
Patient & Client Care	398	388	-9	-2.4%	+21	+50

Section 38 Voluntary Agencies

Sep 2021 (Dec 2020 figure: 1,776)	WTE Aug 2021	WTE Sep 2021	WTE change since Aug 21	% change since Aug 21	WTE change since Dec 20	WTE change since Sep 20
Overall	1,790	1,805	+15	+0.8%	+28	+43
Consultants	26	25	-1	-0.0%	-1	+0
Registrars	23	22	-1	-0.1%	+6	+6
SHO/ Interns	11	11		+0.0%	-4	-4
Medical/ Dental, other	1	1		+0.0%	-1	-1
Medical & Dental	60	58	-2	-3.5%	-0	+1
Nurse/ Midwife Manager	74	73	-1	-0.0%	+4	+1
Nurse/ Midwife Specialist & AN/MP	8	8	+1	+0.1%	+1	+2
Staff Nurse/ Staff Midwife	245	248	+3	+0.0%	-2	-2
Nursing & Midwifery	327	329	+2	+0.7%	+2	+1
Therapy Professions	82	83	+1	+0.0%	+6	+13
Health Science/ Diagnostics	2	2		+0.0%		
Social Care	397	400	+3	+0.0%	+19	+37
Social Workers	28	29	+1	+0.0%	+0	+1
Psychologists	22	25	+3	+0.1%	-1	-2
Pharmacy	2	2	+0	+0.1%	+1	+1
H&SC, Other	2	1	-1	-0.4%	-0	-0
Health & Social Care Professionals	534	542	+8	+1.5%	+23	+50
Management (VIII & above)	37	35	-2	-0.1%	+3	+2
Administrative/ Supervisory (V to VII)	80	82	+2	+0.0%	+5	+0
Clerical (III & IV)	99	102	+3	+0.0%	-2	-5
Management & Administrative	216	219	+3	+1.3%	+6	-3
Support	107	108	+1	+0.0%	-2	-8
Maintenance/ Technical	20	21	+1	+0.1%	+1	+0
General Support	127	129	+2	+1.4%	-1	-8
Health Care Assistants	265	265	-0	-0.0%	+6	+3
Care, other	261	263	+2	+0.0%	-8	-1
Patient & Client Care	526	528	+2	+0.4%	-2	+2

CHO 6 Employment by S38 Agency: September 2021

Children's Sunshine Home

Sep 2021 (Dec 2020 figure: 56)	WTE Aug 2021	WTE Sep 2021	WTE change since Aug 21	% change since Aug 21	WTE change since Dec 20	WTE change since Sep 20
Overall	58	60	+2	+4.2%	+4	+3
Nurse/ Midwife Manager	8	8	+0	+0.0%	+0	+0
Staff Nurse/ Staff Midwife	18	21	+3	+0.2%	+3	+3
Nursing & Midwifery	26	29	+3	+12.2%	+3	+3
Therapy Professions	2	1	-1	-0.5%	-0	-1
Social Workers				-1.0%	-1	-1
Health & Social Care Professionals	2	1	-1	-52.6%	-1	-1
Management (VIII & above)	3	3		+0.0%	+1	
Administrative/ Supervisory (V to VII)	4	4		+0.0%		
Clerical (III & IV)	1	1		+0.0%		
Management & Administrative	8	8			+1	
Support	3	3		+0.0%		
General Support	3	3				
Health Care Assistants	14	14		+0.0%	+1	+1
Care, other	5	5		+0.0%		
Patient & Client Care	19	19			+1	+1

Dublin Dental Hospital

Sep 2021 (Dec 2020 figure: 93)	WTE Aug 2021	WTE Sep 2021	WTE change since Aug 21	% change since Aug 21	WTE change since Dec 20	WTE change since Sep 20
Overall	93	93	+0	+0.0%	+0	+0
Consultants	5	5		+0.0%		
Registrars	1	1		+0.0%		
SHO/ Interns	7	7		+0.0%		
Medical & Dental	12	12				
Nurse/ Midwife Manager	2	2		+0.0%		
Staff Nurse/ Staff Midwife	4	4		+0.0%		
Nursing & Midwifery	6	6				
Health Science/ Diagnostics	2	2		+0.0%		
H&SC, Other	1	1		+0.0%		
Health & Social Care Professionals	2	2				
Management (VIII & above)	4	4		+0.0%		
Administrative/ Supervisory (V to VII)	11	11		+0.0%		
Clerical (III & IV)	15	15		+0.0%		
Management & Administrative	30	30				
Support	13	13		+0.0%		
Maintenance/ Technical	2	2		+0.0%		
General Support	15	15				
Health Care Assistants	1	1		+0.0%		
Care, other	27	27		+0.0%		
Patient & Client Care	27	27				

Leopardstown Park Hospital

Sep 2021 (Dec 2020 figure: 207)	WTE Aug 2021	WTE Sep 2021	WTE change since Aug 21	% change since Aug 21	WTE change since Dec 20	WTE change since Sep 20
Overall	211	209	-3	-1.4%	+2	-1
Medical/ Dental, other				-1.0%	-1	-1
Medical & Dental				-100.0%	-1	-1
Nurse/ Midwife Manager	16	15	-1	-0.0%	+2	-1
Staff Nurse/ Staff Midwife	41	40	-0	-0.0%	-2	-1
Nursing & Midwifery	57	56	-1	-1.7%	-0	-1
Therapy Professions	10	9	-1	-0.1%	-1	+0
Social Workers	1	1		+0.0%		
Pharmacy	2	2	+0	+0.1%	+1	+1
Health & Social Care Professionals	13	12	-1	-7.2%	-0	+1
Management (VIII & above)	1	1		+0.0%		
Administrative/ Supervisory (V to VII)	6	6	+0	+0.0%	-1	-1
Clerical (III & IV)	12	12		+0.0%		
Management & Administrative	19	19	+0	+0.1%	-1	-1
Support	36	36	+0	+0.0%	+2	+1
Maintenance/ Technical	4	4		+0.0%		
General Support	40	40	+0	+1.0%	+2	+1
Health Care Assistants	81	80	-1	-0.0%	+3	+2
Care, other	2	2	-0	-0.0%	-1	-1
Patient & Client Care	84	82	-1	-1.6%	+3	+1

Sep 2021 (Dec 2020 figure: 268)	WTE Aug 2021	WTE Sep 2021	WTE change since Aug 21	% change since Aug 21	WTE change since Dec 20	WTE change since Sep 20
Overall	268	269	+1	+0.4%	+1	-4
Registrars	2	1	-1	-0.5%		
Medical/ Dental, other	1	1		+0.0%		
Medical & Dental	3	2	-1	-33.3%		
Nurse/ Midwife Manager	19	19		+0.0%	+1	+0
Staff Nurse/ Staff Midwife	70	72	+2	+0.0%	-2	-4
Nursing & Midwifery	89	91	+2	+2.3%	-0	-3
Therapy Professions	34	35	+1	+0.0%	+6	+8
Social Workers	6	6		+0.0%		+1
Psychologists	1	1		+0.0%		
Health & Social Care Professionals	40	41	+1	+2.5%	+6	+9
Management (VIII & above)	1	1		+0.0%		
Administrative/ Supervisory (V to VII)	8	8		+0.0%	+3	+2
Clerical (III & IV)	9	9	+0	+0.0%	-0	-0
Management & Administrative	18	18	+0	+0.3%	+3	+2
Support	33	33	+0	+0.0%	-0	-0
Maintenance/ Technical	4	4		+0.0%	-1	-1
General Support	37	37	+0	+0.1%	-1	-1
Health Care Assistants	81	80	-1	-0.0%	-5	-9
Care, other	1	1		+0.0%	-1	-1
Patient & Client Care	82	81	-1	-1.2%	-6	-9

St. John of God (IDS)

Sep 2021 (Dec 2020 figure: 468)	WTE Aug 2021	WTE Sep 2021	WTE change since Aug 21	% change since Aug 21	WTE change since Dec 20	WTE change since Sep 20
Overall	447	453	+6	+1.4%	-15	-4
Consultants	1	1		+0.0%		
Medical & Dental	1	1				
Nurse/ Midwife Manager	9	8	-1	-0.1%	-0	+0
Staff Nurse/ Staff Midwife	46	48	+2	+0.0%	-1	-0
Nursing & Midwifery	55	56	+1	+1.9%	-1	+0
Therapy Professions	11	11	+1	+0.1%	-2	+0
Social Care	156	154	-2	-0.0%	-5	+1
Social Workers	3	3		+0.0%		
Psychologists	5	6	+1	+0.2%	+0	-0
Health & Social Care Professionals	175	175	+0	+0.0%	-7	+1
Management (VIII & above)	16	16	-0	-0.0%	+2	+2
Administrative/ Supervisory (V to VII)	27	28	+1	+0.0%	+1	+2
Clerical (III & IV)	18	18	+0	+0.0%	-0	-0
Management & Administrative	61	62	+1	+1.9%	+3	+3
Support	12	12	+0	+0.0%	-0	-0
Maintenance/ Technical	5	5		+0.0%		
General Support	17	17	+0	+0.7%	-0	-0
Health Care Assistants	16	18	+2	+0.1%	+0	+2
Care, other	122	124	+2	+0.0%	-10	-10
Patient & Client Care	138	142	+4	+2.8%	-9	-8

St. John of God (MHS)

Sep 2021 (Dec 2020 figure: 236)	WTE Aug 2021	WTE Sep 2021	WTE change since Aug 21	% change since Aug 21	WTE change since Dec 20	WTE change since Sep 20
Overall	231	235	+4	+1.9%	-1	+1
Consultants	20	19	-1	-0.0%	-1	+0
Registrars	20	20	-0	-0.0%	+6	+6
SHO/ Interns	4	4		+0.0%	-4	-4
Medical & Dental	44	43	-1	-2.6%	+1	+2
Nurse/ Midwife Manager	16	16	+0	+0.0%	+0	-1
Nurse/ Midwife Specialist & AN/MP	8	8	+1	+0.1%	+1	+2
Staff Nurse/ Staff Midwife	33	31	-2	-0.1%	+1	+2
Nursing & Midwifery	57	56	-1	-2.6%	+1	+2
Therapy Professions	23	24	+2	+0.1%	+2	+3
Social Care	26	27	+1	+0.0%	-1	-1
Social Workers	15	16	+1	+0.1%	-0	-1
Psychologists	16	18	+2	+0.1%	-1	+1
H&SC, Other	1	1	-1	-0.6%	-0	-0
Health & Social Care Professionals	81	86	+5	+6.3%	-1	+2
Management (VIII & above)	2	2		+0.0%		
Administrative/ Supervisory (V to VII)	14	14	+1	+0.1%	-0	-2
Clerical (III & IV)	21	22	+0	+0.0%	-2	-2
Management & Administrative	37	38	+1	+3.5%	-2	-4
Support	5	5	-0	-0.0%	-1	-2
Maintenance/ Technical	4	4		+0.0%		+0
General Support	9	9			-1	-1
HCA, Nurse's Aide, etc.		1	+1	-1.0%	+1	+1
Health Care Assistants		1	+1	-1.0%	+1	+1
Care, other	2	2	-0	-0.0%	-0	-0
Patient & Client Care	2	3	+1	+25.5%	+1	+1

Sunbeam House Services

Sep 2021 (Dec 2020 figure: 450)	WTE Aug 2021	WTE Sep 2021	WTE change since Aug 21	% change since Aug 21	WTE change since Dec 20	WTE change since Sep 20
Overall	483	487	+4	+0.7%	+37	+47
Nurse/ Midwife Manager	5	5		+0.0%	+1	+2
Staff Nurse/ Staff Midwife	32	31	-1	-0.0%	-2	-2
Nursing & Midwifery	37	36	-1	-3.8%	-1	-0
Therapy Professions	3	3		+0.0%	+1	+2
Social Care	216	219	+3	+0.0%	+24	+36
Social Workers	3	3		+0.0%	+1	+2
Psychologists				-1.0%		-2
H&SC, Other				-1.0%		
Health & Social Care Professionals	222	225	+3	+1.6%	+26	+39
Management (VIII & above)	11	9	-2	-0.2%		
Administrative/ Supervisory (V to VII)	11	11		+0.0%	+2	+0
Clerical (III & IV)	23	25	+2	+0.1%	+0	-2
Management & Administrative	44	45	+0	+0.9%	+3	-2
Support	5	6	+0	+0.0%	-2	-7
Maintenance/ Technical	1	2	+1	+1.0%	+2	+1
General Support	6	8	+1	+18.4%	-0	-6
Health Care Assistants	71	71	-1	-0.0%	+6	+6
Care, other	102	102	+0	+0.0%	+3	+10
Patient & Client Care	173	173	-0	-0.0%	+9	+16

CHO 6 Employment by Grade Group & Staff Category: September 2021

Sep 2021 (Dec 2020 figure: 3,465)	WTE Aug 2021	WTE Sep 2021	WTE change since Aug 21	% change since Aug 21	WTE change since Dec 20	WTE change since Sep 20
Overall	3,548	3,539	-10	-0.3%	+73	+137
Consultant Dentistry	6	6	+0	+0.0%		
Consultant Medicine	1	1				
Consultant Psychiatry	42	41	-1	-1.8%	-2	+0
Consultant Radiology	1	1				
Consultants	51	50	-1	-1.5%	-2	+0
Registrar	48	43	-5	-10.6%	+9	+8
Senior Registrar	11	10	-0	-3.9%	+2	+3
Specialist Registrar	1	1				
Registrars	60	54	-6	-9.2%	+10	+10
Senior House Officer	18	18	-1	-3.8%	-2	-4
SHO/ Interns	18	18	-1	-3.8%	-2	-4
Dentists	27	27	+0	+1.4%	+3	+3
Other Medical	18	18	-0	-1.9%	-2	-7
Medical/ Dental, other	45	45	+0	+0.1%	+0	-4
Medical & Dental	173	166	-7	-4.0%	+3	+3
Clinical Nurse/ Midwife Manager	163	160	-3	-1.7%	+1	-2
Director Nursing/Midwifery, Assistant	28	27	-1	-2.7%	-6	-7
Director of Nursing/Midwifery	15	15	+1	+4.1%	+2	+1
Nurse/ Midwife Manager	205	203	-3	-1.4%	-3	-8
Advanced Nurse/ Midwife Practitioner	6	6	+0	+0.3%	+1	+4
Clinical Nurse/ Midwife Specialist	22	23	+0	+1.9%	+4	+2
Nurse/ Midwife Specialist & AN/MP	29	29	+0	+1.6%	+5	+6
Staff Nurse [Intellectual Disability]	93	92	-1	-1.2%	+38	+38
Staff Nurse [Psychiatric]	126	122	-4	-3.1%	-3	+4
Staff Nurses [General/ Children's]	331	333	+2	+0.6%	-43	-37
Staff Nurse/ Staff Midwife	549	546	-3	-0.6%	-8	+5
Public Health Nurse	115	116	+1	+1.3%	+5	+0
Nursing/ Midwifery awaiting registration	1	1				
Post-registration Nurse/ Midwife Student	2	3	+1	+31.0%	-12	+1
Pre-registration Nurse/ Midwife Intern	4	3	-0	-0.9%	+3	+3
Nursing/ Midwifery Student	7	7	+1	+9.1%	-9	+5
Nursing Education/Clinical	3	2	-1	-28.6%	-1	-2
Nursing/ Midwifery other	3	2	-1	-28.6%	-1	-2
Nursing & Midwifery	908	903	-4	-0.5%	-2	+6
Dietitians	15	15	-0	-1.6%	-2	+1
Occupational Therapists	97	98	+1	+1.0%	+5	+7
Physiotherapists	63	65	+1	+2.3%	+6	+3
Podiatrists & Chiropodists	3	2	-1	-31.3%	-2	-1
Speech & Language Therapists	68	65	-4	-5.8%	-0	-5
Orthoptists	1	1			+1	+1
Therapy Professions	249	246	-3	-1.1%	+8	+6
Medical Science	17	16	-1	-3.9%	-2	+0
Radiographers	2	2			-1	-1
Health Science/ Diagnostics	18	18	-1	-3.6%	-2	-1
Social Care	407	411	+4	+1.1%	+19	+39
Social Workers	56	58	+2	+3.3%	+4	+4
Psychologists	66	68	+2	+3.5%	+2	+4

Sep 2021 (Dec 2020 figure: 3,465)	WTE Aug 2021	WTE Sep 2021	WTE change since Aug 21	% change since Aug 21	WTE change since Dec 20	WTE change since Sep 20
Overall	3,548	3,539	-10	-0.3%	+73	+137
Pharmacy	7	7	+1	+11.6%	+4	+4
Counsellor Therapists	4	4	-0	-0.8%	-0	+1
Dental Hygienists	4	4			-0	+0
Other Health & Social Care	3	2	-1	-33.6%	+0	+1
Play Therapists/ Specialists	0	1	+0	+29.2%	+0	+0
H&SC, Other	11	11	-1	-8.0%	+0	+2
Health & Social Care Professionals	814	819	+5	+0.6%	+67	+57
Executive Management	27	25	-2	-7.1%	+2	+3
Senior Management (VIII & GM)	48	50	+1	+2.4%	+4	+3
Management (VIII & above)	76	75	-1	-1.0%	+6	+6
Middle Management (V-VII)	185	188	+3	+1.7%	+22	+18
Other Administrative				-100.0%		
Administrative/ Supervisory (V to VII)	185	188	+3	+1.7%	+22	+18
Clerical (III & IV)	256	253	-3	-1.2%	-7	-4
Management & Administrative	517	516	-1	-0.1%	+41	+20
Support	191	194	+4	+1.9%	+2	-1
Maintenance	18	18			-4	-5
Technical Services	4	5	+1	+25.0%	+5	+5
Maintenance/ Technical	22	23	+1	+4.5%	+1	+0
General Support	213	217	+5	+2.2%	+3	-1
HCA, Nurse's Aide, etc.	537	535	-1	-0.2%	+11	+15
HCA (Student Nurse/Midwife COVID-19)				-100.0%		-9
Health & Social Care Assistants	13	12	-2	-12.8%	-3	-4
Swabber (COVID-19)	41	35	-6	-14.9%	+8	+35
Health Care Assistants	591	582	-9	-1.5%	+16	+37
Care, other	332	334	+2	+0.5%	+4	+16
Patient & Client Care	923	916	-7	-0.8%	+47	+52

CHO 6 HSE Employment by Grade Group & Staff Category: September 2021

Sep 2021 (Dec 2020 figure: 1,689)	WTE Aug 2021	WTE Sep 2021	WTE change since Aug 21	% change since Aug 21	WTE change since Dec 20	WTE change since Sep 20
Overall	1,758	1,734	-24	-1.4%	+45	+94
Consultant Dentistry	3	3				
Consultant Medicine	1	1				
Consultant Psychiatry	21	21	-0	-0.0%	-1	+0
Consultants	25	25	-0	-0.0%	-1	+0
Registrar	34	30	-4	-11.9%	+4	+4
Senior Registrar	2	2	-0	-0.5%	+1	+1
Registrars	36	32	-4	-11.3%	+5	+5
SHO/ Interns	8	7	-1	-9.1%	+2	+0
Dentists	27	27	+0	+1.4%	+2	+3
Other Medical	17	17	-0	-2.0%	-1	-6
Medical/ Dental, other	44	44	+0	+0.1%	+1	-3
Medical & Dental	113	108	-5	-4.2%	+2	+2
Clinical Nurse/ Midwife Manager	101	99	-2	-2.4%	-2	-4
Director Nursing/Midwifery, Assistant	21	21	+1	+2.9%	-5	-6
Director of Nursing/Midwifery	9	9	+0	+0.5%	+0	+0
Nurse/ Midwife Manager	131	129	-2	-1.4%	-7	-9
Advanced Nurse/ Midwife Practitioner	5	4	-0	-1.6%	+1	+3
Clinical Nurse/ Midwife Specialist	17	17	-0	-0.2%	+3	+2
Nurse/ Midwife Specialist & AN/MP	21	21	-0	-0.5%	+4	+5
Staff Nurse [Intellectual Disability]	9	9	+0	+0.9%	-3	-3
Staff Nurse [Psychiatric]	92	90	-2	-2.0%	-4	+2
Staff Nurses [General/ Children's]	204	199	-4	-2.1%	+1	+8
Staff Nurse/ Staff Midwife	305	299	-6	-2.0%	-6	+7
Public Health Nurse	115	116	+1	+1.3%	+5	+0
Nursing/ Midwifery awaiting registration	1	1				
Post-registration Nurse/ Midwife Student	2	3	+1	+31.0%	-12	+1
Pre-registration Nurse/ Midwife Intern	4	3	-0	-0.9%	+3	+3
Nursing/ Midwifery Student	7	7	+1	+9.1%	-9	+5
Nursing/ Midwifery other	3	2	-1	-28.6%	-1	-2
Nursing & Midwifery	581	574	-7	-1.2%	+4	+5
Dietitians	12	12	-0	-0.1%	-2	+1
Occupational Therapists	62	62	-0	-0.2%	+2	+0
Physiotherapists	39	40	+1	+2.4%	+2	-2
Podiatrists & Chiropodists	3	2	-1	-40.0%	-2	-2
Speech & Language Therapists	49	45	-4	-8.0%	+1	-6
Orthoptists	1	1			+1	+1
Therapy Professions	167	163	-4	-2.5%	+3	-7
Medical Science	17	16	-1	-3.9%	-2	+0
Radiographers				-100.0%	-1	-1
Health Science/ Diagnostics	17	16	-1	-3.9%	-2	-1
Social Care	10	11	+1	+14.1%	+1	+2
Social Workers	29	29	+1	+2.4%	+4	+3
Psychologists	44	44	-1	-1.4%	+3	+6
Pharmacy	4	5	+1	+13.7%	+3	+3
Counsellor Therapists	4	4	-0	-0.8%	-0	+1
Dental Hygienists	3	3				+0
Other Health & Social Care	2	2	-0	-1.0%	+1	+1
H&SC, Other	9	9	-0	-0.5%	+1	+2
Health & Social Care Professionals	280	277	-3	-1.0%	+17	+7

Sep 2021 (Dec 2020 figure: 1,689)	WTE Aug 2021	WTE Sep 2021	WTE change since Aug 21	% change since Aug 21	WTE change since Dec 20	WTE change since Sep 20
Overall	1,758	1,734	-24	-1.4%	+45	+94
Executive Management	9	9	+0	+0.8%	+2	+3
Senior Management (VIII & GM)	30	31	+1	+3.9%	+1	+1
Management (VIII & above)	38	40	+1	+3.2%	+3	+4
Administrative/ Supervisory (V to VII)	105	107	+1	+1.3%	+17	+18
Clerical (III & IV)	157	151	-6	-3.9%	-5	+1
Management & Administrative	301	297	-4	-1.2%	+37	+22
Catering	16	17	+1	+4.6%	+3	+3
Household Services	53	55	+1	+2.7%	-1	+2
Other Labs & Associated	1	1	-0	-3.3%	-0	-0
Other Support	1	2	+1	+100.0%	+1	+1
Portering	12	12	-0	-2.0%	+1	+1
Support	83	86	+3	+3.5%	+4	+7
Maintenance/ Technical	2	2				
General Support	85	88	+3	+3.4%	+0	+7
HCA, Nurse's Aide, etc.	278	277	-1	-0.4%	+4	+11
HCA (Student Nurse/Midwife COVID-19)				-100.0%		-9
Health & Social Care Assistants	7	5	-2	-25.9%	-2	-3
Swabber (COVID-19)	41	35	-6	-14.9%	+8	+35
Health Care Assistants	326	317	-9	-2.8%	+10	+33
Care, other	72	71	-0	-0.6%	+11	+17
Patient & Client Care	398	388	-9	-2.4%	+67	+50

Employment by WTE, Headcount, Gender, Full-Time /Part-Time etc.: Sep 2021

CHO 6	WTE	Headcount	WTE: no.	% Male	% female	Male WTE: no.	Female WTE: no.	% Total Perm	% Male Perm	% Female Perm	% Total Full Time	% Total Part Time	% Male FT	% Female FT
Overall	3,539	4,097	1.16	21.9%	78.1%	1.10	1.18	87.2%	85.5%	87.7%	73.5%	26.5%	87.4%	69.6%
Consultant Dentistry	6	8	1.27	50.0%	50.0%	1.25	1.29	100.0%	100.0%	100.0%	62.5%	37.5%	75.0%	50.0%
Consultant Medicine	1	1	1.00		100.0%		1.00	100.0%	100.0%	100.0%	100.0%	0.0%		100.0%
Consultant Psychiatry	41	46	1.11	45.7%	54.3%	1.06	1.15	71.7%	71.7%	68.0%	84.8%	15.2%	90.5%	80.0%
Consultant Radiology	1	1	1.00	100.0%		1.00		100.0%	100.0%		100.0%	0.0%	100.0%	
Consultants	50	56	1.13	46.4%	53.6%	1.08	1.17	76.8%	80.8%	73.3%	82.1%	17.9%	88.5%	76.7%
Registrar	43	44	1.02	22.7%	77.3%	1.00	1.03	0.0%	0.0%	0.0%	97.7%	2.3%	100.0%	97.1%
Senior Registrar	10	11	1.09	27.3%	72.7%	1.14	1.07	9.1%	9.1%	12.5%	100.0%	0.0%	100.0%	100.0%
Specialist Registrar	1	1	1.00		100.0%		1.00	100.0%	100.0%	100.0%	100.0%	0.0%		100.0%
Registrars	54	56	1.04	23.2%	76.8%	1.03	1.04	3.6%	0.0%	4.7%	98.2%	1.8%	100.0%	97.7%
SHO/ Interns	18	24	1.37	33.3%	66.7%	1.45	1.33	0.0%	0.0%	0.0%	100.0%	0.0%	100.0%	100.0%
Dentists	27	38	1.39	23.7%	76.3%	1.43	1.38	94.7%	94.7%	93.1%	44.7%	55.3%	44.4%	44.8%
Other Medical	18	27	1.52	11.1%	88.9%	1.89	1.48	74.1%	74.1%	79.2%	40.7%	59.3%	33.3%	41.7%
Medical/ Dental, other	45	65	1.44	18.5%	81.5%	1.52	1.42	86.2%	83.3%	86.8%	43.1%	56.9%	41.7%	43.4%
Medical & Dental	166	201	1.21	29.4%	70.6%	1.18	1.22	50.2%	52.5%	49.3%	76.1%	23.9%	83.1%	73.2%
Clinical Nurse/ Midwife Manager	160	170	1.06	21.8%	78.2%	1.01	1.08	92.9%	92.9%	91.7%	91.2%	8.8%	100.0%	88.7%
Director Nursing/Midwifery, Assistant	27	31	1.13	29.0%	71.0%	1.27	1.08	96.8%	96.8%	95.5%	83.9%	16.1%	100.0%	77.3%
Director of Nursing/Midwifery	15	17	1.11	23.5%	76.5%	1.13	1.11	94.1%	94.1%	92.3%	94.1%	5.9%	100.0%	92.3%
Nurse/ Midwife Manager	203	218	1.08	22.9%	77.1%	1.05	1.08	93.6%	98.0%	92.3%	90.4%	9.6%	100.0%	87.5%
Advanced Nurse/ Midwife Practitioner	6	7	1.10		100.0%		1.10	100.0%	100.0%	100.0%	85.7%	14.3%		85.7%
Clinical Nurse/ Midwife Specialist	23	25	1.10	24.0%	76.0%	1.01	1.13	92.0%	92.0%	89.5%	96.0%	4.0%	100.0%	94.7%
Nurse/ Midwife Specialist & AN/MP	29	32	1.10	18.8%	81.3%	1.01	1.12	93.8%	100.0%	92.3%	93.8%	6.3%	100.0%	92.3%
Staff Nurse [Intellectual Disability]	92	102	1.11	15.7%	84.3%	1.11	1.11	98.0%	98.0%	97.7%	71.6%	28.4%	68.8%	72.1%
Staff Nurse [Psychiatric]	122	131	1.08	23.7%	76.3%	1.11	1.07	93.1%	93.1%	93.0%	90.8%	9.2%	90.3%	91.0%
Staff Nurses [General/ Children's]	333	378	1.13	13.8%	86.2%	1.06	1.15	87.8%	87.8%	87.7%	75.1%	24.9%	88.5%	73.0%
Staff Nurse/ Staff Midwife	546	611	1.12	16.2%	83.8%	1.08	1.13	90.7%	91.9%	90.4%	77.9%	22.1%	85.9%	76.4%
Public Health Nurse	116	139	1.19	0.7%	99.3%	1.08	1.20	91.4%	100.0%	91.3%	71.2%	28.8%	100.0%	71.0%
Nursing/ Midwifery awaiting registration	1	1	1.00		100.0%		1.00	100.0%	100.0%	100.0%	100.0%	0.0%		100.0%
Post-registration Nurse/ Midwife Student	3	3	1.15		100.0%		1.15	0.0%	0.0%	0.0%	100.0%	0.0%		100.0%

Pre-registration Nurse/ Midwife Intern	3	7	2.02		100.0%		2.02	0.0%	0.0%	0.0%	100.0%	0.0%		100.0%
Nursing/ Midwifery Student	7	11	1.55		100.0%		1.55	9.1%		9.1%	100.0%	0.0%		100.0%
Nursing/ Midwifery other	2	2	1.00	50.0%	50.0%	1.00	1.00	100.0%	100.0%	100.0%	100.0%	0.0%	100.0%	100.0%
Nursing & Midwifery	903	1,013	1.12	15.5%	84.5%	1.07	1.13	90.6%	94.3%	90.0%	80.5%	19.5%	91.1%	78.5%
Dietitians	15	20	1.35		100.0%		1.35	95.0%	95.0%	95.0%	60.0%	40.0%		60.0%
Occupational Therapists	98	118	1.20	10.2%	89.8%	1.29	1.19	86.4%	86.4%	84.9%	75.4%	24.6%	83.3%	74.5%
Physiotherapists	65	80	1.23	16.3%	83.8%	1.09	1.27	85.0%	85.0%	88.1%	61.3%	38.8%	84.6%	56.7%
Podiatrists & Chiropodists	2	4	1.83	25.0%	75.0%	2.00	1.78	100.0%	100.0%	100.0%	25.0%	75.0%	0.0%	33.3%
Speech & Language Therapists	65	81	1.26	1.2%	98.8%	1.00	1.26	96.3%	96.3%	96.3%	67.9%	32.1%	100.0%	67.5%
Orthoptists	1	1	1.00		100.0%		1.00	100.0%	100.0%	100.0%	100.0%	0.0%		100.0%
Therapy Professions	246	304	1.24	8.9%	91.1%	1.19	1.24	89.5%	85.2%	89.9%	68.1%	31.9%	81.5%	66.8%
Medical Science	16	17	1.05	29.4%	70.6%	1.10	1.04	88.2%	88.2%	91.7%	88.2%	11.8%	80.0%	91.7%
Radiographers	2	3	2.00	33.3%	66.7%	2.00	2.00	100.0%	100.0%	100.0%	100.0%	0.0%	100.0%	100.0%
Health Science/ Diagnostics	18	20	1.14	30.0%	70.0%	1.19	1.11	90.0%	83.3%	92.9%	90.0%	10.0%	83.3%	92.9%
Social Care	411	460	1.12	22.6%	77.4%	1.08	1.13	92.4%	91.3%	92.7%	64.8%	35.2%	76.0%	61.5%
Social Workers	58	64	1.10	12.5%	87.5%	1.03	1.11	96.9%	100.0%	96.4%	82.8%	17.2%	87.5%	82.1%
Psychologists	68	84	1.23	21.4%	78.6%	1.14	1.26	86.9%	72.2%	90.9%	66.7%	33.3%	94.4%	59.1%
Pharmacy	7	9	1.21	11.1%	88.9%	1.01	1.24	88.9%	100.0%	87.5%	77.8%	22.2%	100.0%	75.0%
Counsellor Therapists	4	4	1.01	25.0%	75.0%	1.02	1.00	100.0%	100.0%	100.0%	100.0%	0.0%	100.0%	100.0%
Dental Hygienists	4	5	1.28		100.0%		1.28	100.0%	100.0%	100.0%	40.0%	60.0%		40.0%
Other Health & Social Care	2	3	1.49	33.3%	66.7%	1.00	1.96	100.0%	100.0%	100.0%	33.3%	66.7%	100.0%	0.0%
Play Therapists/ Specialists	1	1	1.61		100.0%		1.61	100.0%	100.0%	100.0%	0.0%	100.0%		0.0%
H&SC, Other	11	13	1.24	15.4%	84.6%	1.01	1.29	100.0%	100.0%	100.0%	53.8%	46.2%	100.0%	45.5%
Health & Social Care	819	954	1.16	17.4%	82.6%	1.10	1.18	91.3%	88.6%	91.9%	67.7%	32.3%	80.1%	65.1%
Executive Management	25	26	1.02	42.3%	57.7%	1.05	1.01	96.2%	96.2%	93.3%	100.0%	0.0%	100.0%	100.0%
Senior Management (VIII & GM)	50	53	1.07	30.2%	69.8%	1.15	1.04	94.3%	94.3%	94.6%	100.0%	0.0%	100.0%	100.0%
Management (VIII & above)	75	79	1.05	34.2%	65.8%	1.11	1.03	94.9%	96.3%	94.2%	100.0%	0.0%	100.0%	100.0%
Administrative/ Supervisory (V to VII)	188	214	1.14	26.6%	73.4%	1.15	1.13	94.9%	93.0%	95.5%	86.9%	13.1%	94.7%	84.1%
Clerical (III & IV)	253	302	1.19	13.9%	86.1%	1.10	1.21	74.5%	71.4%	75.0%	68.2%	31.8%	88.1%	65.0%
Management & Administrative	516	595	1.15	21.2%	78.8%	1.12	1.16	84.5%	86.5%	84.0%	79.2%	20.8%	93.7%	75.3%
Catering	27	29	1.08	44.8%	55.2%	1.00	1.15	82.8%	82.8%	93.8%	79.3%	20.7%	100.0%	62.5%
Household Services	121	142	1.17	31.0%	69.0%	1.07	1.22	82.4%	82.4%	84.7%	66.2%	33.8%	86.4%	57.1%
Other Labs & Associated	1	1	1.15		100.0%		1.15	100.0%	100.0%	100.0%	100.0%	0.0%		100.0%
Other Support	22	31	1.40	54.8%	45.2%	1.37	1.43	93.5%	93.5%	100.0%	77.4%	22.6%	88.2%	64.3%
Portering	23	26	1.12	100.0%		1.12		88.5%	88.5%		92.3%	7.7%	92.3%	

Support	194	229	1.18	43.7%	56.3%	1.12	1.23	84.7%	81.0%	87.6%	72.5%	27.5%	90.0%	58.9%
Maintenance/ Technical	23	25	1.09	100.0%		1.09		100.0%	100.0%	#DIV/0	100.0%	0.0%	100.0%	
General Support	217	254	1.17	49.2%	50.8%	1.11	1.23	86.2%	84.8%	87.6%	75.2%	24.8%	92.0%	58.9%
HCA, Nurse's Aide, etc.	535	597	1.12	27.5%	72.5%	1.05	1.14	91.1%	91.1%	91.0%	68.7%	31.3%	90.2%	60.5%
Health & Social Care Assistants	12	13	1.11	30.8%	69.2%	1.20	1.08	61.5%	61.5%	55.6%	76.9%	23.1%	75.0%	77.8%
Swabber (COVID-19)	35	43	1.23	37.2%	62.8%	1.14	1.29	0.0%	0.0%	0.0%	72.1%	27.9%	87.5%	63.0%
Health Care Assistants	582	653	1.12	28.2%	71.8%	1.06	1.15	84.5%	83.2%	85.1%	69.1%	30.9%	89.7%	61.0%
Care, other	334	427	1.28	18.7%	81.3%	1.15	1.31	95.6%	91.3%	96.5%	66.5%	33.5%	76.3%	64.3%
Patient & Client Care	916	1,080	1.18	24.4%	75.6%	1.08	1.21	88.9%	85.6%	90.0%	68.1%	31.9%	85.6%	62.4%

Employment by WTE, Headcount, Gender, Full-Time /Part-Time etc.: Sep 2021

CHO 6	WTE	Headcount	WTE: no.	% Male	% female	Male WTE: no.	Female WTE: no.	% Total Perm	% Male Perm	% Female Perm	% Total Full Time	% Total Part Time	% Male FT	% Female FT
Overall	3,539	4,097	1.16	21.9%	78.1%	1.10	1.18	87.2%	85.5%	87.7%	73.5%	26.5%	87.4%	69.6%
Community Health & Wellbeing	8	9	1.16	11.1%	88.9%	1.00	1.18	100.0%	100.0%	100.0%	77.8%	22.2%	100.0%	100.0%
Mental Health	639	707	1.11	31.0%	69.0%	1.10	1.11	82.3%	82.3%	83.2%	86.8%	13.2%	91.8%	91.8%
Primary Care	849	1,089	1.28	13.9%	86.1%	1.23	1.29	79.0%	79.0%	80.1%	69.0%	31.0%	90.7%	90.7%
Social Care	2,044	2,292	1.12	22.9%	77.1%	1.07	1.14	92.5%	92.5%	92.9%	71.5%	28.5%	84.6%	84.6%

CHO 6 Skills Mix by Staff Grouping: September 2021

Sep 2021 (Dec 2019 figure: 3,378)	WTE Dec 2016	WTE Dec 2017	WTE Dec 2018	WTE Dec 2019	WTE Dec 2020	WTE Aug 2021	WTE Sep 2021
Overall	3,940	3,357	3,368	3,378	3,465	3,548	3,539
Consultant Dentistry	4.2%	4.7%	4.6%	4.4%	3.9%	3.6%	3.8%
Consultant Medicine	0.6%	0.6%	0.6%	0.6%	0.6%	0.6%	0.6%
Consultant, Other	0.6%						
Consultant Paediatrics	0.1%	0.1%					
Consultant Psychiatry	18.5%	18.8%	20.0%	23.8%	27.0%	24.3%	24.9%
Consultant Radiology	0.6%	0.6%	0.6%	0.6%	0.6%	0.6%	0.6%
Consultants	24.7%	24.7%	25.8%	29.5%	32.2%	29.1%	29.9%
Registrars	30.2%	29.1%	28.0%	29.8%	27.4%	34.4%	32.5%
SHO/ Interns	12.3%	12.9%	13.5%	9.5%	12.2%	10.5%	10.5%
Medical/ Dental, other	32.8%	33.3%	32.7%	31.3%	28.2%	26.0%	27.1%
Medical & Dental	4.0%	4.9%	4.9%	4.8%	4.7%	100.0%	4.7%
Clinical Nurse/ Midwife Manager	18.4%	17.2%	17.7%	17.8%	17.3%	17.9%	17.7%
Director Nursing/Midwifery, Assistant	2.9%	3.2%	3.9%	3.9%	3.7%	3.1%	3.0%
Director of Nursing/Midwifery	2.0%	1.7%	1.5%	1.6%	1.5%	1.6%	1.7%
Nurse/ Midwife Manager	23.3%	22.0%	23.1%	23.3%	22.5%	22.6%	22.4%
Advanced Nurse/ Midwife Practitioner	0.0%	0.1%	0.1%	0.1%	0.6%	0.7%	0.7%
Clinical Nurse/ Midwife Specialist	1.9%	2.3%	2.1%	2.2%	2.0%	2.5%	2.5%
Nurse/ Midwife Specialist & AN/MP	2.0%	2.3%	2.1%	2.3%	2.6%	3.2%	3.2%
Staff Nurse [Intellectual Disability]	6.7%	6.7%	6.4%	5.5%	5.8%	10.2%	10.1%
Staff Nurse [Psychiatric]	12.2%	12.8%	12.2%	14.7%	13.6%	13.8%	13.5%
Staff Nurses [General/ Children's]	42.7%	40.4%	41.6%	39.7%	41.1%	36.5%	36.9%
Staff Nurse/ Staff Midwife	61.7%	60.0%	60.2%	59.9%	60.6%	60.5%	60.5%
Public Health Nurse	11.4%	13.4%	13.1%	12.9%	12.2%	12.7%	12.9%
Nursing/ Midwifery awaiting registration					0.1%	0.1%	0.1%
Post-registration Nurse/ Midwife Student	1.4%	2.1%	1.2%	1.5%	1.6%	0.2%	0.3%
Pre-registration Nurse/ Midwife Intern						0.4%	0.4%
Nursing/ Midwifery Student	1.4%	2.1%	1.2%	1.5%	1.7%	0.7%	0.8%
Nursing/ Midwifery other	0.2%	0.2%	0.3%	0.2%	0.3%	0.3%	0.2%
Nursing & Midwifery	26.3%	27.3%	26.9%	26.8%	26.1%	100.0%	25.5%
Dietitians	1.2%	2.1%	2.1%	1.9%	2.1%	1.9%	1.8%
Occupational Therapists	9.6%	11.9%	12.4%	12.2%	11.9%	12.0%	12.0%
Physiotherapists	6.7%	7.9%	8.4%	8.0%	7.5%	7.8%	7.9%
Podiatrists & Chiropodists	0.2%	0.5%	0.3%	0.2%	0.5%	0.4%	0.3%
Speech & Language Therapists	7.6%	8.9%	10.2%	9.3%	8.3%	8.4%	7.9%
Orthoptists						0.1%	0.1%
Therapy Professions	25.3%	31.3%	33.5%	31.7%	30.3%	30.5%	30.0%
Medical Science	1.9%	2.7%	2.8%	2.1%	2.2%	2.1%	2.0%
Radiographers	0.4%	0.5%	0.5%	0.3%	0.3%	0.2%	0.2%
Health Science/ Diagnostics	2.3%	3.1%	3.2%	2.4%	2.6%	2.2%	2.2%
Social Care	57.6%	47.9%	46.3%	48.4%	50.0%	50.0%	50.2%
Social Workers	6.6%	7.6%	7.7%	7.6%	6.9%	6.9%	7.1%
Psychologists	6.6%	8.0%	7.6%	7.5%	8.5%	8.1%	8.3%
Pharmacy	0.3%	0.5%	0.5%	0.5%	0.5%	0.8%	0.9%
Counsellor Therapists	0.6%	0.9%	0.5%	0.6%	0.5%	0.5%	0.5%
Dental Hygienists	0.4%	0.5%	0.5%	0.5%	0.5%	0.5%	0.5%
Other Health & Social Care	0.1%	0.2%	0.1%	0.8%	0.2%	0.4%	0.2%
Play Therapists/ Specialists	0.2%	0.1%	0.1%	0.1%	0.1%	0.1%	0.1%
H&SC, Other	1.3%	1.7%	1.2%	1.9%	1.3%	1.4%	1.3%
Health & Social Care Professionals	23.8%	22.0%	22.0%	22.3%	21.7%	100.0%	23.2%
Executive Management	4.4%	6.1%	5.1%	4.9%	4.8%	5.3%	4.9%

Sep 2021 (Dec 2019 figure: 3,378)	WTE Dec 2016	WTE Dec 2017	WTE Dec 2018	WTE Dec 2019	WTE Dec 2020	WTE Aug 2021	WTE Sep 2021
Overall	3,940	3,357	3,368	3,378	3,465	3,548	3,539
Senior Management (VIII & GM)	9.7%	9.1%	10.3%	9.3%	9.2%	9.4%	9.6%
Management (VIII & above)	14.1%	15.2%	15.4%	14.3%	14.0%	14.7%	14.5%
Middle Management (V-VII)	29.7%	32.8%	35.8%	35.6%	33.5%	35.8%	36.5%
Other Administrative	0.2%	0.2%	0.2%	0.2%			
Administrative/ Supervisory (V to VII)	29.9%	33.0%	36.0%	35.8%	33.5%	35.8%	36.5%
Clerical (III & IV)	56.0%	51.8%	48.6%	49.9%	52.5%	49.5%	49.0%
Management & Administrative	11.7%	13.5%	14.1%	14.1%	13.7%	100.0%	14.6%
Catering	13.1%	11.6%	12.7%	12.1%	11.9%	12.8%	12.4%
Household Services	57.1%	58.8%	59.3%	56.7%	57.2%	55.4%	55.7%
Other Labs & Associated	0.3%	0.4%	0.4%	0.5%	0.5%	0.4%	0.4%
Other Support	9.7%	9.1%	8.3%	9.1%	9.6%	9.9%	10.2%
Portering	8.7%	11.2%	10.8%	11.0%	10.6%	11.2%	10.7%
Support	89.0%	91.2%	91.5%	89.4%	89.7%	89.6%	89.4%
Maintenance/ Technical	11.0%	8.8%	8.5%	10.6%	10.3%	10.4%	10.6%
General Support	7.4%	7.1%	6.6%	6.3%	6.2%	100.0%	6.1%
HCA, Nurse's Aide, etc.	58.9%	61.3%	60.3%	60.7%	58.5%	58.1%	58.4%
Health & Social Care Assistants	1.0%	1.2%	1.8%	1.3%	1.6%	1.5%	1.3%
Swabber (COVID-19)					3.0%	4.4%	3.8%
Health Care Assistants	59.9%	62.4%	62.1%	62.0%	63.1%	64.0%	63.5%
Care, other	40.1%	37.6%	37.9%	38.0%	36.9%	36.0%	36.5%
Patient & Client Care	26.7%	25.2%	25.4%	25.7%	25.1%	100.0%	25.9%
Total	100 %	100 %	100 %	100 %	100%	100 %	100 %

CHO 6 Skills Mix by Care Group: September 2021

Sep 2021 (Dec 2019 figure: 593)	WTE Dec 2016	WTE Dec 2017	WTE Dec 2018	WTE Dec 2019	WTE Dec 2020	WTE Aug 2021	WTE Sep 2021
Mental Health	559	564	573	593	626	633	639
Consultants	47.3%	45.1%	49.0%	53.9%	55.6%	51.9%	52.2%
Registrar	21.2%	24.9%	13.4%	22.9%	15.9%	21.3%	21.9%
Senior Registrar	10.4%	6.0%	11.8%	9.7%	10.5%	12.6%	12.4%
Registrars	31.6%	30.9%	25.2%	32.6%	26.4%	33.9%	34.3%
SHO/ Interns	21.1%	23.4%	25.1%	13.5%	18.0%	14.2%	13.6%
Medical/ Dental, other		0.6%	0.6%				
Medical & Dental	10.1%	11.1%	11.1%	11.3%	10.7%	11.5%	11.5%
Clinical Nurse/ Midwife Manager	26.1%	23.6%	26.8%	25.8%	23.8%	22.7%	23.5%
Director Nursing/Midwifery, Assistant	5.4%	5.6%	5.9%	6.0%	5.8%	4.9%	4.4%
Director of Nursing/Midwifery	1.7%	1.7%	1.3%	1.3%	1.2%	1.2%	1.4%
Nurse/ Midwife Manager	33.1%	31.0%	33.9%	33.1%	30.8%	28.8%	29.3%
Advanced Nurse/ Midwife Practitioner	0.2%	0.2%	0.2%	0.3%	1.8%	1.7%	1.7%
Clinical Nurse/ Midwife Specialist	5.9%	6.4%	5.0%	5.6%	6.0%	6.7%	7.0%
Nurse/ Midwife Specialist & AN/MP	6.1%	6.6%	5.2%	5.9%	7.8%	8.4%	8.7%
Staff Nurse [Intellectual Disability]			0.4%	0.4%	0.8%		
Staff Nurse [Psychiatric]	50.1%	49.3%	44.6%	49.2%	48.0%	47.8%	47.1%
Staff Nurses [General/ Children's]	9.9%	12.2%	14.7%	10.5%	11.4%	12.5%	12.4%
Staff Nurse/ Staff Midwife	59.9%	61.5%	59.7%	60.2%	60.3%	60.3%	59.4%
Nursing/ Midwifery awaiting registration					0.4%	0.4%	0.4%
Pre-registration Nurse/ Midwife Intern						1.4%	1.4%
Nursing/ Midwifery Student					0.4%	1.7%	1.8%
Nursing Education/Clinical	0.9%	0.9%	1.2%	0.9%	0.8%	0.8%	0.8%
Nursing/ Midwifery other	0.9%	0.9%	1.2%	0.9%	0.8%	0.8%	0.8%
Nursing & Midwifery	43.3%	40.8%	41.5%	39.0%	36.9%	39.8%	39.8%
Dietitians		1.1%	1.7%	1.5%	1.1%	0.6%	0.8%
Occupational Therapists	16.3%	17.7%	17.0%	19.5%	18.8%	21.2%	21.6%
Physiotherapists	0.5%	0.4%	0.4%	0.9%	1.0%	1.0%	1.0%
Podiatrists & Chiropodists	1.0%	0.5%	0.4%				
Speech & Language Therapists	7.6%	9.0%	11.7%	11.3%	8.1%	7.7%	7.4%
Therapy Professions	25.4%	28.7%	31.2%	33.2%	28.8%	30.5%	30.8%
Social Care	28.3%	26.8%	26.0%	20.0%	21.1%	19.1%	18.9%
Social Workers	25.6%	22.8%	25.5%	23.0%	22.2%	22.7%	23.4%
Psychologists	14.4%	17.8%	13.6%	17.0%	24.0%	23.6%	23.7%
Counsellor Therapists	4.5%	3.5%	3.2%	3.0%	3.1%	3.0%	2.8%
Other Health & Social Care	0.5%			3.4%	0.4%	0.7%	
Play Therapists/ Specialists	1.4%	0.4%	0.4%	0.4%	0.4%	0.4%	0.4%
H&SC, Other	6.4%	3.9%	3.6%	6.7%	3.9%	4.1%	3.2%
Health & Social Care Professionals	19.7%	20.3%	20.0%	21.9%	20.7%	22.3%	22.3%
Management (VIII & above)	4.6%	6.0%	3.4%	4.2%	4.3%	4.8%	4.5%
Administrative/ Supervisory (V to VII)	31.3%	36.6%	44.8%	37.2%	34.7%	37.2%	39.3%
Clerical (III & IV)	64.0%	57.5%	51.8%	58.6%	61.0%	58.0%	56.2%
Management & Administrative	10.0%	10.5%	10.2%	12.1%	11.5%	10.4%	10.4%
Support	89.2%	90.6%	90.1%	86.0%	86.6%	85.9%	86.0%
Maintenance/ Technical	10.8%	9.4%	9.9%	14.0%	13.4%	14.1%	14.0%
General Support	8.9%	9.4%	8.6%	7.1%	6.8%	6.7%	6.7%
HCA, Nurse's Aide, etc.	90.2%	92.1%	89.2%	89.5%	89.2%	90.1%	90.1%
Health Care Assistants	90.2%	92.1%	89.2%	89.5%	89.2%	90.1%	90.1%
Care, other	9.8%	7.9%	10.8%	10.5%	10.8%	9.9%	9.9%
Patient & Client Care	8.0%	7.8%	8.7%	8.6%	8.1%	9.3%	9.3%
Total	100 %	100 %	100 %	100 %	100 %	100 %	100 %

Sep 2021 (Dec 2019 figure: 765)	WTE Dec 2016	WTE Dec 2017	WTE Dec 2018	WTE Dec 2019	WTE Dec 2020	WTE Aug 2021	WTE Sep 2021
Primary Care	768	795	833	765	811	871	849
Consultant Dentistry	7.4%	8.6%	8.3%	8.2%	7.9%	7.1%	7.4%
Consultant Medicine	1.1%	1.1%	1.1%	1.1%	1.3%	1.1%	1.2%
Consultant, Other	1.1%						
Consultant Radiology	1.1%	1.1%	1.1%	1.1%	1.3%	1.1%	1.2%
Consultants	10.7%	10.8%	10.5%	10.5%	10.4%	9.3%	9.8%
Registrars	31.0%	28.3%	30.8%	29.6%	29.8%	35.9%	32.8%
SHO/ Interns	7.2%	7.2%	7.0%	7.4%	8.2%	7.3%	7.6%
Dentists	31.7%	32.3%	29.2%	30.1%	31.1%	30.2%	32.1%
Other Medical	19.3%	21.4%	22.5%	22.4%	20.5%	17.3%	17.7%
Medical/ Dental, other	51.0%	53.7%	51.7%	52.5%	51.6%	47.5%	49.8%
Medical & Dental	11.7%	11.3%	11.1%	11.5%	10.8%	10.0%	10.0%
Clinical Nurse/ Midwife Manager	1.8%	2.5%	2.6%	3.0%	2.6%	3.2%	3.3%
Director Nursing/Midwifery, Assistant	5.0%	4.8%	6.4%	6.0%	5.6%	4.7%	5.2%
Director of Nursing/Midwifery	2.3%	2.1%	1.7%	1.6%	2.6%	2.2%	2.3%
Nurse/ Midwife Manager	9.1%	9.4%	10.7%	10.6%	10.8%	10.1%	10.7%
Nurse/ Midwife Specialist & AN/MP	2.0%	2.9%	2.9%	2.8%	1.7%	2.5%	2.5%
Staff Nurse/ Staff Midwife	22.3%	19.8%	24.2%	24.6%	26.3%	29.7%	27.2%
Public Health Nurse	59.0%	58.6%	57.0%	55.5%	53.6%	56.3%	58.3%
Nursing/ Midwifery Student	7.6%	9.2%	5.3%	6.4%	7.1%	1.0%	1.3%
Nursing/ Midwifery other					0.5%	0.4%	
Nursing & Midwifery	25.8%	26.4%	24.9%	27.5%	25.9%	23.5%	23.5%
Dietitians	5.0%	6.3%	5.8%	6.4%	7.5%	6.5%	6.4%
Occupational Therapists	20.5%	20.3%	21.4%	21.3%	19.7%	19.4%	19.7%
Physiotherapists	20.0%	19.1%	19.0%	20.8%	20.7%	20.0%	20.7%
Podiatrists & Chiropodists		0.5%	0.5%	0.7%	1.9%	1.5%	0.9%
Speech & Language Therapists	21.3%	19.5%	19.2%	18.4%	18.4%	18.1%	17.9%
Orthoptists						0.6%	0.6%
Therapy Professions	66.9%	65.8%	65.9%	67.5%	68.1%	66.1%	66.2%
Medical Science	10.5%	10.7%	10.6%	10.2%	10.9%	9.7%	9.5%
Radiographers	2.0%	1.9%	1.8%	1.6%	1.5%	0.9%	0.9%
Health Science/ Diagnostics	12.5%	12.6%	12.5%	11.8%	12.3%	10.6%	10.3%
Social Care	0.8%	0.8%	1.6%	2.4%	1.7%	1.7%	1.7%
Social Workers	3.7%	4.1%	3.4%	3.1%	2.7%	5.3%	5.2%
Psychologists	13.1%	13.4%	14.1%	12.2%	12.2%	12.1%	11.9%
Pharmacy		0.5%	0.5%	0.5%	0.6%	1.4%	1.7%
Counsellor Therapists	0.6%	0.5%					
Dental Hygienists	2.4%	2.1%	2.0%	2.5%	2.4%	2.3%	2.3%
Other Health & Social Care						0.6%	0.6%
H&SC, Other	3.0%	2.7%	2.0%	2.5%	2.4%	2.8%	2.9%
Health & Social Care Professionals	22.4%	23.1%	23.0%	20.1%	18.9%	20.1%	20.1%
Executive Management	4.3%	4.2%	3.7%	3.6%	3.4%	3.8%	3.9%
Senior Management (VIII & GM)	7.4%	10.7%	12.5%	10.8%	10.1%	9.7%	10.0%
Management (VIII & above)	11.7%	14.9%	16.2%	14.3%	13.5%	13.5%	13.9%
Administrative/ Supervisory (V to VII)	25.4%	28.6%	32.9%	32.4%	29.2%	30.9%	31.6%
Clerical (III & IV)	62.9%	56.5%	50.9%	53.3%	57.3%	55.6%	54.6%
Management & Administrative	25.6%	25.5%	27.3%	27.4%	25.9%	28.3%	28.3%
Support	93.6%	93.6%	92.7%	92.2%	92.8%	92.7%	92.6%
Maintenance/ Technical	6.4%	6.4%	7.3%	7.8%	7.2%	7.3%	7.4%
General Support	4.1%	3.9%	3.3%	3.4%	3.2%	3.2%	3.2%
HCA, Nurse's Aide, etc.	2.5%	2.6%	2.3%	4.3%	4.0%	3.8%	4.4%
Health & Social Care Assistants			8.1%	3.9%	6.4%	4.9%	3.9%
Swabber (COVID-19)					24.2%	30.7%	27.5%
Health Care Assistants	2.5%	2.6%	10.5%	8.1%	34.5%	39.4%	35.7%
Care, other	97.5%	97.4%	89.5%	91.9%	65.5%	60.6%	64.3%
Patient & Client Care	10.4%	9.8%	10.3%	10.1%	9.6%	14.9%	14.9%

Sep 2021 (Dec 2019 figure: 765)	WTE Dec 2016	WTE Dec 2017	WTE Dec 2018	WTE Dec 2019	WTE Dec 2020	WTE Aug 2021	WTE Sep 2021
Primary Care	768	795	833	765	811	871	849
Total	100 %	100 %	100 %	100 %	100 %	100 %	100 %

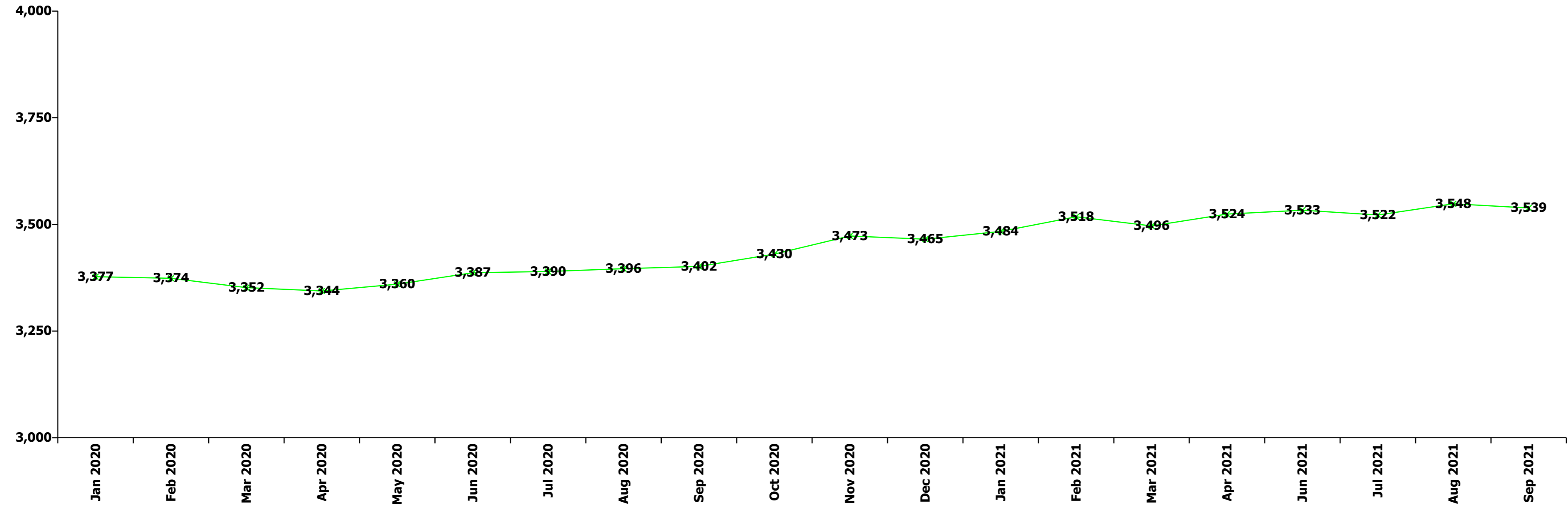
Sep 2021 (Dec 2019 figure: 1,198)	WTE Dec 2016	WTE Dec 2017	WTE Dec 2018	WTE Dec 2019	WTE Dec 2020	WTE Aug 2021	WTE Sep 2021
Disabilities	1,816	1,170	1,155	1,198	1,217	1,227	1,230
Consultant Paediatrics	1.3%	1.3%					
Consultant Psychiatry	38.9%	38.9%	50.0%	75.0%	75.0%	60.6%	60.0%
Consultants	40.2%	40.2%	50.0%	75.0%	75.0%	60.6%	60.0%
Registrar	14.9%						
Senior Registrar		29.9%					
Registrars	14.9%	29.9%					
SHO/ Interns	14.9%					19.2%	20.0%
Medical/ Dental, other	29.9%	29.9%	50.0%	25.0%	25.0%	20.2%	20.0%
Medical & Dental	0.4%	0.6%	0.3%	0.3%	0.3%	0.4%	0.4%
Clinical Nurse/ Midwife Manager	21.4%	20.7%	18.7%	20.7%	21.7%	23.5%	22.3%
Director Nursing/Midwifery, Assistant	0.6%	0.5%	0.5%	0.5%	0.5%		
Director of Nursing/Midwifery	1.8%	1.0%	1.0%	1.6%	1.1%	1.2%	1.2%
Nurse/ Midwife Manager	23.9%	22.1%	20.2%	22.8%	23.4%	24.7%	23.5%
Clinical Nurse/ Midwife Specialist	0.6%						
Nurse/ Midwife Specialist & AN/MP	0.6%						
Staff Nurse [Intellectual Disability]	21.5%	29.7%	29.5%	25.5%	27.6%	50.5%	49.5%
Staff Nurse [Psychiatric]	1.7%	1.7%	2.3%	9.4%	1.6%	1.1%	1.1%
Staff Nurses [General/ Children's]	52.1%	46.5%	48.0%	42.3%	47.4%	23.7%	26.0%
Staff Nurse/ Staff Midwife	75.3%	77.9%	79.8%	77.2%	76.6%	75.3%	76.5%
Public Health Nurse	0.3%						
Nursing & Midwifery	17.9%	17.7%	16.8%	15.9%	15.7%	15.1%	15.1%
Dietitians			0.1%	0.1%	0.1%	0.1%	0.1%
Occupational Therapists	3.4%	3.7%	4.1%	3.7%	4.2%	3.7%	3.6%
Physiotherapists	1.7%	1.5%	1.4%	1.4%	1.3%	1.4%	1.3%
Speech & Language Therapists	3.6%	3.7%	5.2%	5.1%	4.3%	4.8%	4.0%
Therapy Professions	8.7%	9.0%	10.8%	10.3%	9.9%	9.9%	8.9%
Social Care	84.7%	83.7%	82.4%	83.1%	84.3%	84.7%	85.6%
Social Workers	2.6%	2.8%	3.2%	2.8%	2.3%	2.3%	2.1%
Psychologists	3.9%	3.7%	3.5%	3.4%	3.2%	2.9%	3.1%
Counsellor Therapists		0.4%		0.1%			
Other Health & Social Care	0.1%	0.4%	0.2%	0.3%	0.3%	0.2%	0.2%
H&SC, Other	0.1%	0.8%	0.2%	0.5%	0.3%	0.2%	0.2%
Health & Social Care Professionals	33.0%	32.9%	32.5%	33.6%	33.1%	36.2%	36.2%
Executive Management	5.6%	12.4%	9.2%	10.2%	9.3%	10.7%	9.3%
Senior Management (VIII & GM)	17.2%	12.2%	14.3%	12.2%	12.3%	12.8%	12.8%
Management (VIII & above)	22.8%	24.6%	23.5%	22.3%	21.6%	23.5%	22.1%
Administrative/ Supervisory (V to VII)	31.5%	35.2%	35.8%	38.6%	38.6%	39.5%	40.1%
Clerical (III & IV)	45.7%	40.2%	40.7%	39.0%	39.8%	37.0%	37.9%
Management & Administrative	8.8%	11.7%	12.0%	11.5%	11.3%	11.4%	11.4%
Support	84.2%	87.3%	87.7%	77.0%	83.6%	78.7%	75.8%
Maintenance/ Technical	15.8%	12.7%	12.3%	23.0%	16.4%	21.3%	24.2%
General Support	5.2%	2.7%	2.8%	2.5%	2.4%	2.4%	2.4%
HCA, Nurse's Aide, etc.	47.2%	42.6%	42.6%	43.1%	42.8%	43.6%	43.2%
Health Care Assistants	47.2%	42.6%	42.6%	43.1%	42.8%	43.6%	43.2%
Care, other	52.8%	57.4%	57.4%	56.9%	57.2%	56.4%	56.8%
Patient & Client Care	34.7%	34.5%	35.4%	36.2%	35.6%	34.6%	34.6%
Total	100 %	100 %	100 %	100 %	100 %	100 %	100 %

Sep 2021 (Dec 2019 figure: 823)	WTE Dec 2016	WTE Dec 2017	WTE Dec 2018	WTE Dec 2019	WTE Dec 2020	WTE Aug 2021	WTE Sep 2021
Older People	797	828	808	823	804	809	814
Registrar						26.6%	
Senior Registrar	20.0%	20.0%	33.3%	20.0%	26.1%	26.6%	36.2%
Registrars	20.0%	20.0%	33.3%	20.0%	26.1%	53.2%	36.2%
Medical/ Dental, other	80.0%	80.0%	66.7%	80.0%	73.9%	46.8%	63.8%
Medical & Dental	0.6%	0.6%	0.7%	0.6%	0.6%	0.3%	0.3%
Clinical Nurse/ Midwife Manager	20.1%	20.4%	20.8%	20.3%	19.6%	20.7%	19.8%
Director Nursing/Midwifery, Assistant	1.8%	1.8%	2.6%	2.8%	2.5%	2.2%	2.2%
Director of Nursing/Midwifery	2.2%	1.8%	1.9%	1.8%	1.1%	1.9%	1.9%
Nurse/ Midwife Manager	24.2%	24.1%	25.3%	25.0%	23.2%	24.9%	23.9%
Advanced Nurse/ Midwife Practitioner						0.4%	0.4%
Clinical Nurse/ Midwife Specialist			0.4%	0.4%	0.4%	0.4%	0.4%
Nurse/ Midwife Specialist & AN/MP			0.4%	0.4%	0.4%	0.8%	0.8%
Staff Nurses [General/ Children's]	75.8%	75.9%	74.4%	74.6%	76.4%	74.4%	75.3%
Staff Nurse/ Staff Midwife	75.8%	75.9%	74.4%	74.6%	76.4%	74.4%	75.3%
Nursing & Midwifery	34.0%	32.7%	33.0%	33.2%	34.0%	32.5%	32.5%
Dietitians	4.6%	4.5%	4.5%	3.9%	4.3%	4.6%	4.2%
Occupational Therapists	28.3%	28.1%	28.0%	28.3%	29.7%	31.2%	29.7%
Physiotherapists	31.4%	30.1%	34.7%	32.4%	30.4%	35.4%	36.9%
Podiatrists & Chiropodists	2.1%	3.1%	1.6%	1.0%	2.0%	1.1%	1.1%
Speech & Language Therapists	7.7%	9.4%	9.3%	9.7%	9.9%	9.2%	9.2%
Therapy Professions	74.1%	75.2%	78.0%	75.4%	76.3%	81.5%	81.2%
Social Workers	20.1%	20.0%	16.4%	17.1%	17.1%	10.7%	10.7%
Psychologists	0.9%		0.9%	3.2%	1.8%	0.8%	0.8%
Pharmacy	5.0%	4.8%	4.8%	4.3%	4.8%	7.0%	7.3%
Health & Social Care Professionals	7.1%	6.9%	7.2%	8.0%	8.2%	7.5%	7.5%
Executive Management	4.1%	1.9%	3.9%	1.8%	3.5%	3.2%	3.2%
Senior Management (VIII & GM)	2.1%			5.4%	5.2%	7.8%	7.7%
Management (VIII & above)	6.2%	1.9%	3.9%	7.2%	8.7%	10.9%	10.9%
Administrative/ Supervisory (V to VII)	41.5%	40.3%	40.2%	39.9%	33.8%	39.9%	39.7%
Clerical (III & IV)	52.3%	57.8%	55.9%	52.9%	57.5%	49.2%	49.5%
Management & Administrative	6.1%	6.3%	6.4%	6.8%	6.9%	7.8%	7.8%
Support	91.5%	91.8%	92.8%	93.1%	91.9%	93.0%	93.2%
Maintenance/ Technical	8.5%	8.2%	7.2%	6.9%	8.1%	7.0%	6.8%
General Support	14.7%	14.7%	14.1%	14.1%	14.5%	14.5%	14.5%
HCA, Nurse's Aide, etc.	94.0%	94.6%	94.9%	94.9%	95.6%	96.3%	96.3%
Health & Social Care Assistants	3.5%	3.1%	2.7%	2.7%	2.6%	2.2%	2.2%
Health Care Assistants	97.5%	97.7%	97.6%	97.6%	98.2%	98.5%	98.6%
Other Care Grades	2.5%	2.3%	2.4%	2.4%	1.8%	1.5%	1.4%
Care, other	2.5%	2.3%	2.4%	2.4%	1.8%	1.5%	1.4%
Patient & Client Care	37.4%	38.8%	38.6%	37.3%	38.2%	37.3%	37.3%
Total	100 %	100 %	100 %	100 %	100 %	100 %	100 %

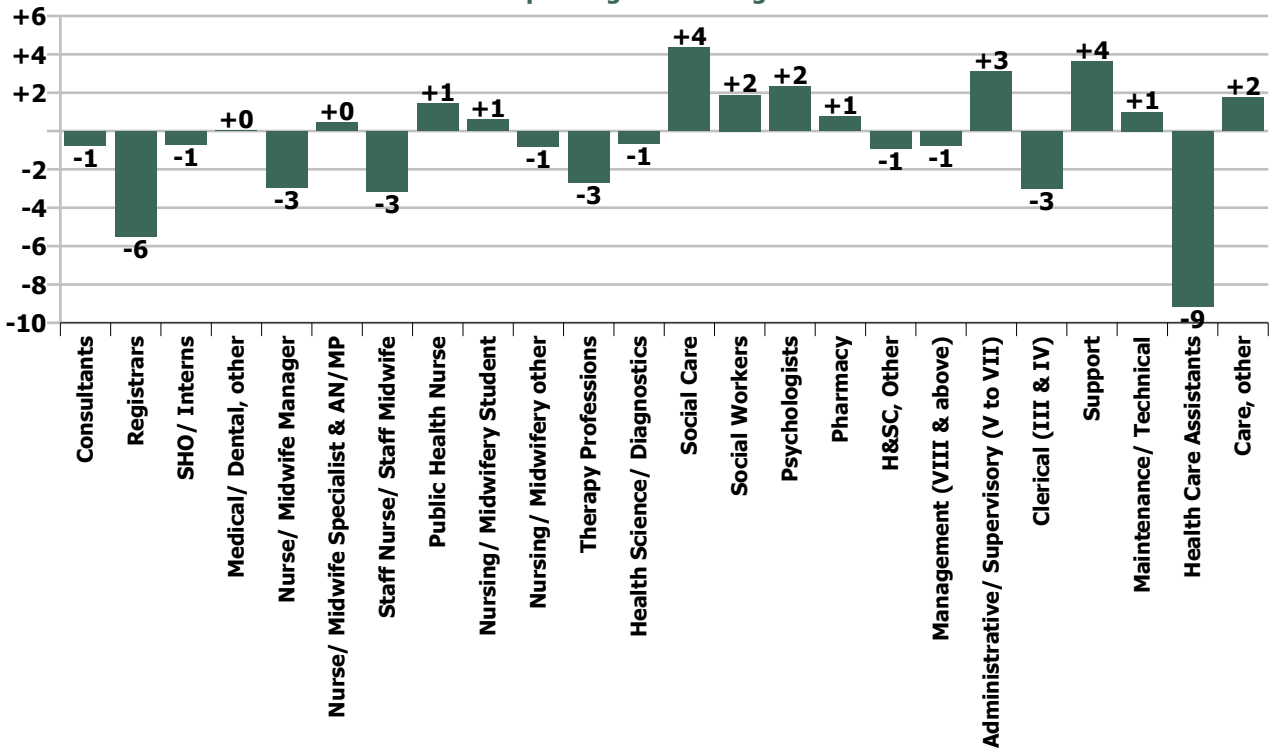
Summary Staff Movement: September 2021

Month-on-month Summary																												
WTE change since Aug 21	% change since Aug 21	overall	Consultants	Registrars	SHO/ Interns	Medical/ Dental, other	Medical & Dental	Nurse/ Midwife Manager	Nurse/ Midwife Specialist & AN/MP	Staff Nurse/ Staff Midwife	Public Health Nurse	Nursing/ Midwifery Student	Nursing/ Midwifery other	Nursing & Midwifery	Therapy Professions	Health Science/ Diagnostics	Social Care	Social Workers	Psychologists	Pharmacy	H&SC, Other	Health & Social Care Professionals	Management (VIII & above)	Administrativ e/ Supervisory (V to VII)	Clerical (III & IV)	Management & Administrative	General Support	Patient & Client Care
Overall	-0.3%	-10	-0.7	-5.5	-0.7	+0.0	-6.9	-2.9	+0.4	-3.1	+1.4	+0.6	-0.8	-4.4	-2.7	-0.6	+4.4	+1.9	+2.3	+0.8	-0.9	+5.1	-0.8	+3.1	-3.0	-0.6	+4.6	-7.4
Community Health & Wellbeing	-11.8%	-1																					+1.0	-0.7	-0.3	-0.0		-1.0
Mental Health	+0.9%	+6	-0.7	-0.4	-0.8		-1.9	+0.1	+0.6	-4.8		-0.0	0.0	-4.2	+2.6		+1.1	+2.7	+1.9		-0.9	+7.3	-0.0	+2.8	+1.1	+3.9	+0.4	+0.0
Primary Care	-2.5%	-22	0.0	-4.1	0.0	+0.0	-4.1	+0.8	-0.1	-6.4	+1.4	+0.6	-0.8	-4.4	-0.8	-0.6	0.0	-0.2	-0.6	+0.6	0.0	-1.7	+0.3	+0.2	-5.1	-4.6	-0.4	-6.8
Disabilities	+0.2%	+3	0.0		+0.0	0.0	+0.0	-1.9		+3.4				+1.5	-4.4		+3.3	-0.6	+1.1		-0.0	-0.6	-2.0	+0.8	+1.1	-0.2	+0.8	+1.1
Older People	+0.6%	+5		-1.0		0.0	-1.0	-1.9	0.0	+4.6				+2.7	-0.2			0.0	0.0	+0.2		-0.0	-0.0	+0.0	+0.3	+0.1	+3.8	-0.8
Social Care	+0.4%	+8	0.0	-1.0	+0.0	0.0	-1.0	-3.8	0.0	+8.0				+4.2	-4.5		+3.3	-0.6	+1.1	+0.2	-0.0	-0.6	-2.0	+0.8	+1.4	+0.1	+4.6	+0.4
Change	-9.7	-0.3%	-1.5%	-9.2%	-3.8%	+0.1%	-4.0%	-1.4%	+1.6%	-0.6%	+1.3%	+9.1%	-28.6%	-0.5%	-1.1%	-3.6%	+1.1%	+3.3%	+3.5%	+11.6%	-8.0%	+0.6%	-1.0%	+1.7%	-1.2%	-0.1%	+2.2%	-0.8%

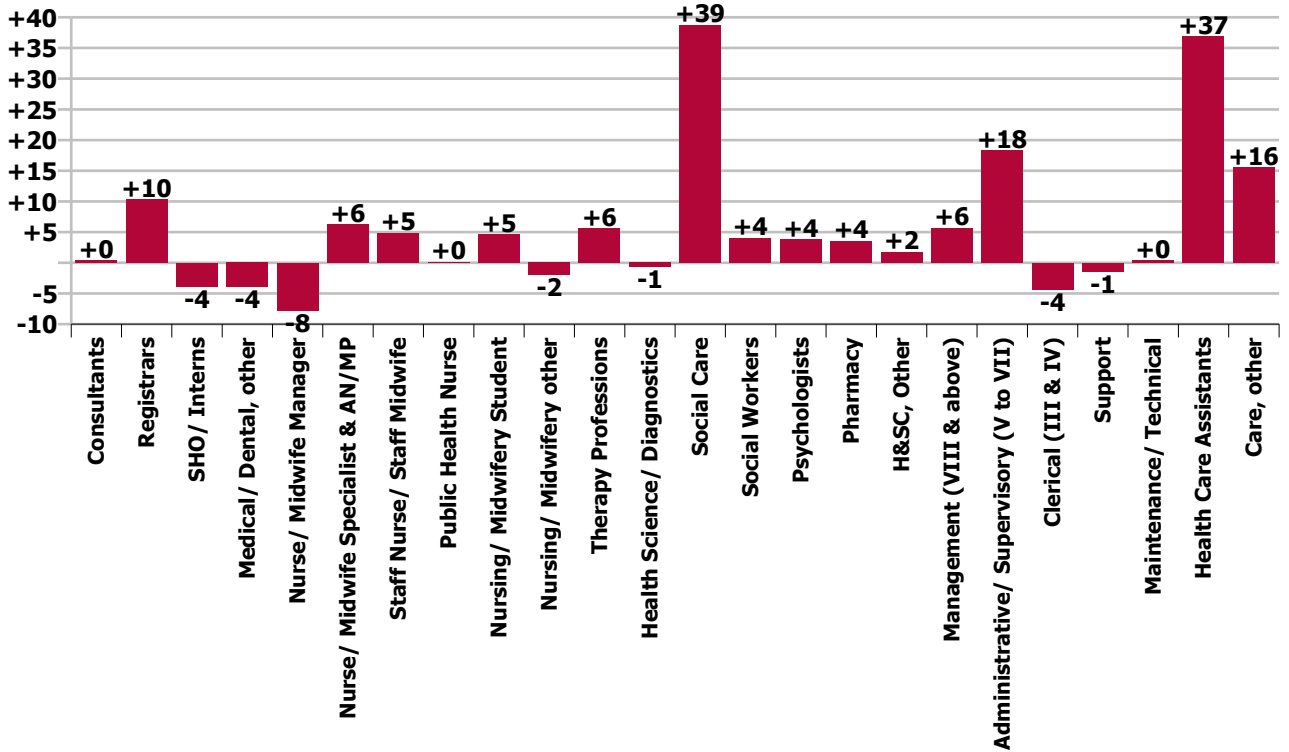
Year-on-year Summary																												
WTE change since Sep 20	% change since Sep 20	overall	Consultants	Registrars	SHO/ Interns	Medical/ Dental, other	Medical & Dental	Nurse/ Midwife Manager	Nurse/ Midwife Specialist & AN/MP	Staff Nurse/ Staff Midwife	Public Health Nurse	Nursing/ Midwifery Student	Nursing/ Midwifery other	Nursing & Midwifery	Therapy Professions	Health Science/ Diagnostics	Social Care	Social Workers	Psychologists	Pharmacy	H&SC, Other	Health & Social Care Professionals	Management (VIII & above)	Administrative/ Supervisory (V to VII)	Clerical (III & IV)	Management & Administrative	General Support	Patient & Client Care
Overall	+4.0%	+137	+0.4	+10.3	-3.9	-3.9	+2.9	-7.8	+6.3	+4.9	+0.1	+4.6	-2.0	+6.1	+5.6	-0.7	+38.8	+4.0	+3.8	+3.6	+1.8	+56.9	+5.6	+18.3	-4.3	+19.6	-1.0	+52.5
Community Health & Wellbeing	-11.8%	-1									-0.4			-0.4									-0.0	+1.4	-0.3	+1.0		-1.7
Mental Health	+0.9%	+6	+0.4	+6.3	-4.9		+1.8	-4.6	+6.3	+5.6		+3.5	-1.0	+9.8	+7.3		-0.8	+2.1	+6.2		+0.3	+15.2	-0.0	-1.2	-4.0	-5.2	+1.2	+5.9
Primary Care	-2.5%	-22	0.0	+4.1	0.0	-1.7	+2.4	-1.6	-1.0	+4.0	+0.6	+1.1	-1.0	+2.0	-6.1	-0.7	+0.0	+4.3	+1.3	+2.0	+1.5	+2.3	+4.2	+11.4	+6.5	+22.2	-1.0	+46.5
Disabilities	+3.4%	+41.0	0.0		+1.0	0.0	+1.0	+0.9		+0.8				+1.8	-1.1		+39.6	+0.6	-2.2		-0.0	+36.9	-0.4	+2.0	-4.8	-3.2	-5.9	+10.4
Older People	-0.7%	-6.0		0.0		-2.2	-2.2	-2.5	+1.0	-5.6				-7.0	+5.5			-3.0	-1.6	+1.6		+2.5	+1.9	+4.7	-1.7	+4.9	+4.6	-8.7
Social Care	+0.4%	+8	0.0	0.0	+1.0	-2.2	-1.2	-1.5	+1.0	-4.7				-5.3	+4.4		+39.5	-2.4	-3.7	+1.6	-0.0	+39.3	+1.5	+6.7	-6.6	+1.6	-1.2	+1.7
Change	+136.9	+4.0%	+0.8%	+23.6%	-18.1%	-8.0%	+1.8%	-3.7%	+27.4%	+0.9%	+0.1%	+183.6%	-50.0%	+0.7%	+2.3%	-3.6%	+10.4%	+7.5%	+5.8%	+92.7%	+20.5%	+7.5%	+8.1%	+10.8%	-1.7%	+3.9%	-0.5%	+6.1%

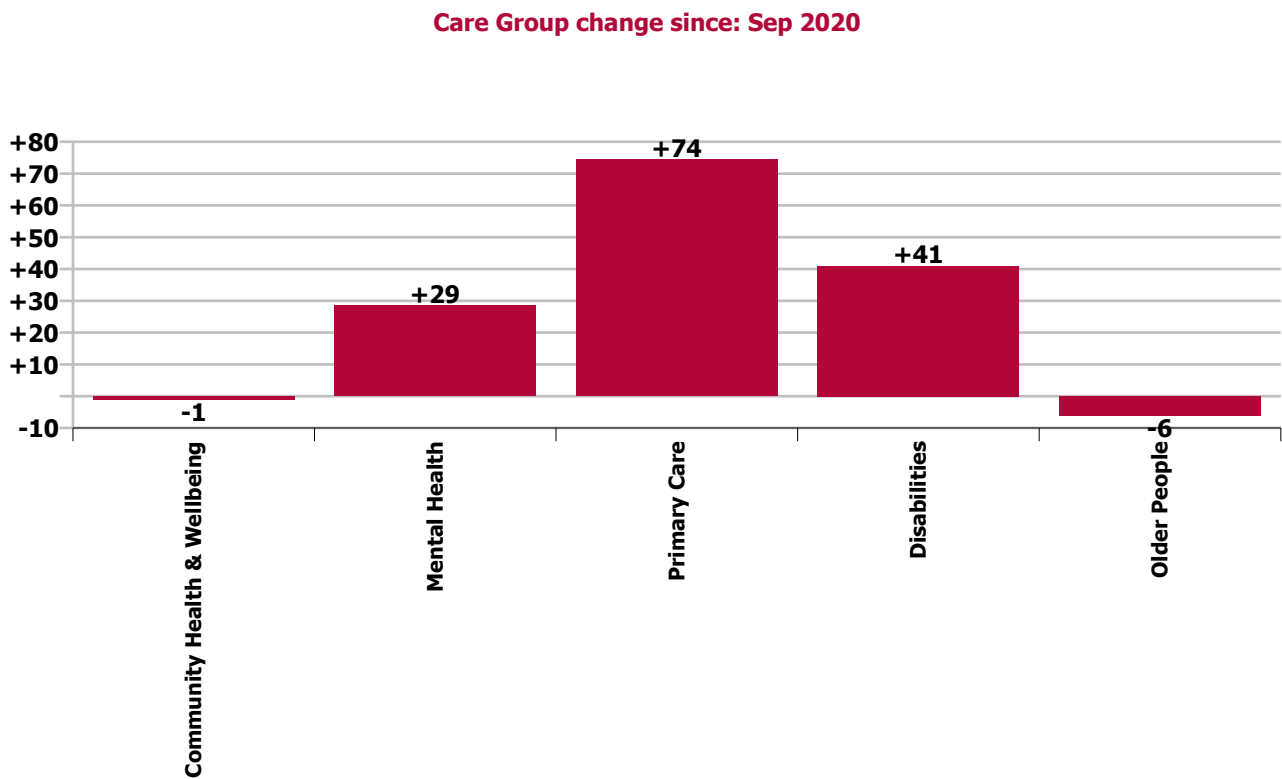
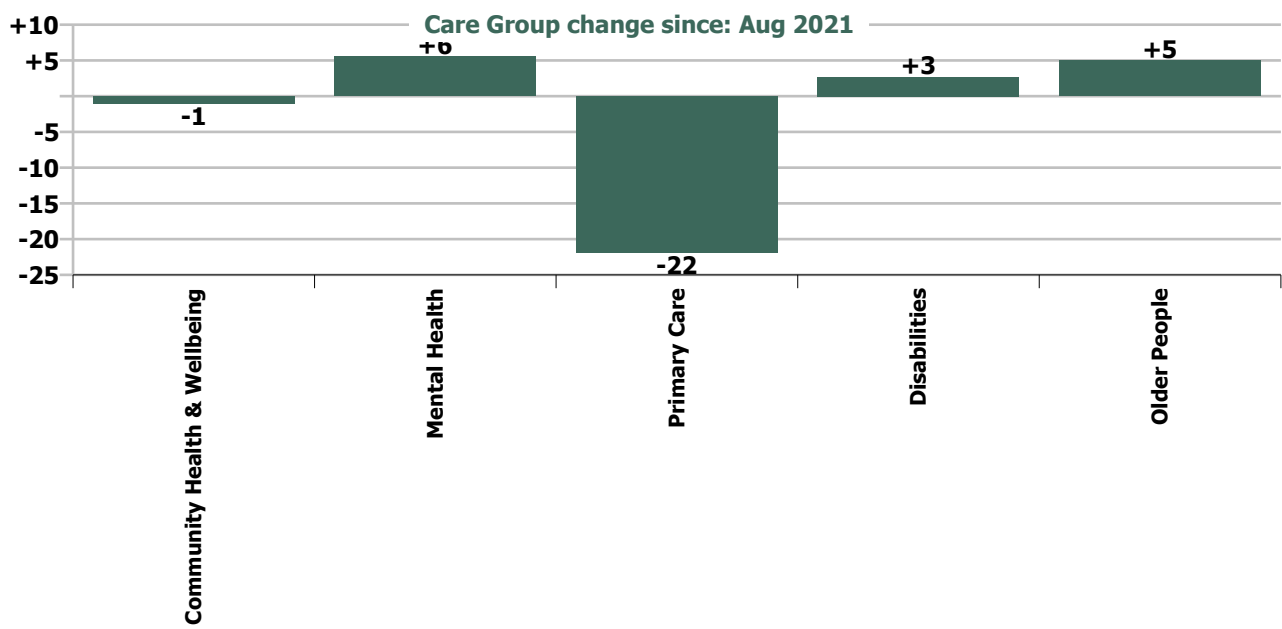


Staff Group change since: Aug 2021



Staff Group change since: Sep 2020





Longitudinal Employment Levels by Grade Group - Dec 2016 to Sep 2021

Sep 2021 (Dec 2016 figure: 3,940)	WTE Sep 2021	WTE change since Dec 16	WTE change since Dec 17	WTE change since Dec 18	WTE change since Dec 19	WTE change since Dec 20	WTE change since Aug 21	% change since Dec 16	% change since Dec 17	% change since Dec 18	% change since Dec 19	% change since Dec 20	% change since Aug 21
Overall	3,539	-402	+182	+170	+160	+73	-10	-10.2%	+5.4%	+5.1%	+4.8%	+2.1%	-0.3%
Consultant Dentistry	6	-0	-1	-1	-1			-6.0%	-18.2%	-18.2%	-13.0%		
Consultant Medicine	1												
Consultant, Other		-1						-100.0%	-100.0%	-100.0%	-100.0%	-100.0%	-100.0%
Consultant Paediatrics		-0	-0					-100.0%	-100.0%	-100.0%	-100.0%	-100.0%	-100.0%
Consultant Psychiatry	41	+12	+11	+8	+2	-2	-1	+41.1%	+34.4%	+25.0%	+6.3%	-3.8%	-1.8%
Consultant Radiology	1												
Consultants	50	+11	+9	+7	+2	-2	-1	+27.0%	+22.5%	+16.1%	+3.2%	-3.2%	-1.5%
Registrar	43	+3	+3	+7	+3	+9	-5	+7.4%	+7.3%	+19.3%	+6.7%	+25.5%	-10.6%
Senior Registrar	10	+3	+3	+1	+3	+2	-0	+46.8%	+49.9%	+6.5%	+35.2%	+18.3%	-3.9%
Specialist Registrar	1												
Registrars	54	+6	+6	+8	+5	+10	-6	+12.9%	+13.1%	+16.2%	+10.9%	+23.5%	-9.2%
SHO/ Interns	18	-2	-4	-5	+2	-2	-1	-9.9%	-17.2%	-22.0%	+12.9%	-10.3%	-3.8%
Dentists	27	-1	-2	+0	+1	+3	+0	-4.5%	-6.1%	+1.2%	+3.1%	+10.1%	+1.4%
Other Medical	18	-6	-8	-9	-7	-2	-0	-24.2%	-30.7%	-34.7%	-28.0%	-11.9%	-1.9%
Medical/ Dental, other	45	-7	-10	-9	-6	+0	+0	-13.4%	-17.6%	-16.9%	-11.9%	+0.2%	+0.1%
Medical & Dental	166	+8	+2	+0	+3	+7	-7	+5.0%	+1.3%	+0.2%	+1.7%	+4.2%	-4.0%
Clinical Nurse/ Midwife Manager	160	-31	+2	-1	-1	+1	-3	-16.2%	+1.6%	-0.6%	-0.7%	+0.9%	-1.7%
Director Nursing/Midwifery, Assistant	27	-2	-1	-8	-8	-6	-1	-8.3%	-5.2%	-22.4%	-22.0%	-19.1%	-2.7%
Director of Nursing/Midwifery	15	-5	-0	+2	+1	+2	+1	-25.5%	-1.2%	+13.0%	+5.7%	+13.7%	+4.1%
Nurse/ Midwife Manager	203	-39	+1	-7	-8	-3	-3	-16.0%	+0.4%	-3.4%	-3.8%	-1.6%	-1.4%
Advanced Nurse/ Midwife Practitioner	6	+6	+6	+6	+6	+1	+0	+1168.0%	+1168.0%	+1168.0%	+832.4%	+15.3%	+0.3%
Clinical Nurse/ Midwife Specialist	23	+3	+2	+4	+3	+4	+0	+13.7%	+10.0%	+21.1%	+14.2%	+22.8%	+1.9%
Nurse/ Midwife Specialist & AN/MP	29	+9	+8	+10	+8	+5	+0	+41.9%	+37.3%	+50.9%	+41.2%	+21.0%	+1.6%
Staff Nurse [Intellectual Disability]	92	+22	+30	+33	+42	+38	-1	+31.4%	+49.3%	+56.9%	+84.8%	+71.9%	-1.2%
Staff Nurse [Psychiatric]	122	-5	+4	+11	-11	-3	-4	-4.1%	+3.2%	+10.1%	-8.4%	-2.5%	-3.1%
Staff Nurses [General/ Children's]	333	-110	-37	-44	-26	-43	+2	-24.8%	-10.1%	-11.6%	-7.3%	-11.5%	+0.6%
Staff Nurse/ Staff Midwife	546	-93	-3	+1	+5	-8	-3	-14.5%	-0.6%	+0.1%	+0.8%	-1.4%	-0.6%
Public Health Nurse	116	-2	-6	-2	-0	+5	+1	-1.5%	-5.3%	-1.8%	-0.4%	+4.0%	+1.3%
Nursing/ Midwifery awaiting registration	1	+1	+1	+1	+1			-100.0%	-100.0%	-100.0%	-100.0%		
Post-registration Nurse/ Midwife Student	3	-12	-17	-8	-11	-12	+1	-82.5%	-86.5%	-76.2%	-80.6%	-82.4%	+31.0%
Pre-registration Nurse/ Midwife Intern	3	+3	+3	+3	+3	+3	-0	-100.0%	-100.0%	-100.0%	-100.0%	-100.0%	-0.9%
Nursing/ Midwifery Student	7	-8	-12	-4	-6	-9	+1	-52.7%	-63.4%	-35.5%	-47.5%	-55.4%	+9.1%
Nursing Education/Clinical	2	-0		-1		-1	-1	-10.7%		-30.1%		-33.3%	-28.6%
Nursing/ Midwifery other	2	-0		-1		-1	-1	-10.7%		-30.1%		-33.3%	-28.6%

Sep 2021 (Dec 2016 figure: 3,940)	WTE Sep 2021	WTE change since Dec 16	WTE change since Dec 17	WTE change since Dec 18	WTE change since Dec 19	WTE change since Dec 20	WTE change since Aug 21	% change since Dec 16	% change since Dec 17	% change since Dec 18	% change since Dec 19	% change since Dec 20	% change since Aug 21
Overall	3,539	-402	+182	+170	+160	+73	-10	-10.2%	+5.4%	+5.1%	+4.8%	+2.1%	-0.3%
Nursing & Midwifery	903	-133	-13	-4	-2	-11	-4	-12.8%	-1.4%	-0.4%	-0.2%	-1.3%	-0.5%
Dietitians	15	+4	-1	-1	+0	-2	-0	+31.9%	-4.0%	-6.3%	+2.1%	-9.4%	-1.6%
Occupational Therapists	98	+9	+10	+6	+7	+5	+1	+9.5%	+11.8%	+6.9%	+7.4%	+5.7%	+1.0%
Physiotherapists	65	+2	+6	+3	+5	+6	+1	+3.3%	+10.9%	+4.1%	+7.7%	+10.3%	+2.3%
Podiatrists & Chiropodists	2	-0	-1	-0	+1	-2	-1	-3.5%	-35.2%	-6.4%	+29.6%	-47.7%	-31.3%
Speech & Language Therapists	65	-6	-1	-11	-5	-0	-4	-9.1%	-2.0%	-14.0%	-7.7%	-0.7%	-5.8%
Orthoptists	1	+1	+1	+1	+1	+1		-100.0%	-100.0%	-100.0%	-100.0%	-100.0%	
Therapy Professions	246	+9	+15	-2	+8	+8	-3	+3.7%	+6.4%	-0.7%	+3.3%	+3.5%	-1.1%
Medical Science	16	-2	-3	-4	+0	-2	-1	-11.1%	-17.8%	-20.9%	+3.1%	-8.7%	-3.9%
Radiographers	2	-2	-2	-2	-1	-1		-55.9%	-57.1%	-57.0%	-38.5%	-36.7%	
Health Science/ Diagnostics	18	-4	-5	-6	-0	-2	-1	-18.2%	-23.8%	-26.2%	-2.5%	-12.0%	-3.6%
Social Care	411	-129	+57	+69	+47	+19	+4	-23.9%	+16.1%	+20.2%	+12.9%	+4.9%	+1.1%
Social Workers	58	-3	+2	+1	+1	+4	+2	-5.6%	+3.9%	+1.9%	+1.9%	+7.2%	+3.3%
Psychologists	68	+6	+9	+12	+12	+2	+2	+10.0%	+15.6%	+21.4%	+21.0%	+2.7%	+3.5%
Pharmacy	7	+5	+4	+4	+4	+4	+1	+161.3%	+96.3%	+96.3%	+102.7%	+90.3%	+11.6%
Counsellor Therapists	4	-2	-2	+0	-0	-0	-0	-33.8%	-38.4%	+9.4%	-10.2%	-5.5%	-0.8%
Dental Hygienists	4	-0	+0		+0	-0	-0	-4.9%	+0.3%		+3.2%	-0.0%	-0.0%
Other Health & Social Care	2	+1	+0	+1	-4	+0	-1	+98.0%	+18.8%	+122.0%	-64.3%	+13.5%	-33.6%
Play Therapists/ Specialists	1	-1	+0	+0	+0	+0	+0	-58.7%	+21.6%	+29.2%	+34.8%	+29.2%	+29.2%
H&SC, Other	11	-2	-2	+2	-4	+0	-1	-16.7%	-16.2%	+17.8%	-26.6%	+1.4%	-8.0%
Health & Social Care Professionals	819	-119	+79	+80	+67	+35	+5	-12.7%	+10.7%	+10.8%	+9.0%	+4.4%	+0.6%
Executive Management	25	+5	-2	+1	+2	+2	-2	+23.9%	-7.7%	+4.5%	+8.0%	+7.3%	-7.1%
Senior Management (VIII & GM)	50	+5	+9	+0	+5	+4	+1	+11.1%	+20.9%	+0.7%	+12.0%	+8.6%	+2.4%
Management (VIII & above)	75	+10	+6	+1	+7	+6	-1	+15.1%	+9.5%	+2.0%	+10.6%	+8.2%	-1.0%
Middle Management (V-VII)	188	+51	+40	+18	+19	+22	+3	+37.3%	+27.2%	+10.6%	+11.4%	+13.3%	+1.7%
Other Administrative		-1	-1	-1	-1			-100.0%	-100.0%	-100.0%	-100.0%	-100.0%	-100.0%
Administrative/ Supervisory (V to VII)	188	+50	+39	+17	+18	+22	+3	+36.3%	+26.3%	+10.0%	+10.7%	+13.3%	+1.7%
Clerical (III & IV)	253	-5	+19	+22	+16	-7	-3	-2.1%	+8.1%	+9.4%	+6.7%	-2.7%	-1.2%
Management & Administrative	516	+55	+65	+40	+41	+21	-1	+11.8%	+14.3%	+8.5%	+8.7%	+4.2%	-0.1%
Catering	27	-11	-1	-1	+1	+1	-0	-29.7%	-2.3%	-4.5%	+4.2%	+5.8%	-0.8%
Household Services	121	-46	-19	-11	-0	-1	+3	-27.6%	-13.3%	-8.4%	-0.1%	-1.2%	+2.9%
Other Labs & Associated	1	-0	-0	-0	-0	-0	-0	-13.0%	-13.0%	-13.0%	-13.0%	-13.0%	-3.3%
Other Support	22	-6	+0	+4	+3	+2	+1	-22.3%	+2.1%	+20.3%	+13.7%	+8.2%	+5.4%
Portering	23	-2	-3	-1	-0	+0	-1	-9.5%	-12.8%	-3.7%	-1.5%	+1.6%	-2.7%
Support	194	-66	-22	-10	+3	+2	+4	-25.5%	-10.3%	-4.8%	+1.6%	+1.0%	+1.9%

Sep 2021 (Dec 2016 figure: 3,940)	WTE Sep 2021	WTE change since Dec 16	WTE change since Dec 17	WTE change since Dec 18	WTE change since Dec 19	WTE change since Dec 20	WTE change since Aug 21	% change since Dec 16	% change since Dec 17	% change since Dec 18	% change since Dec 19	% change since Dec 20	% change since Aug 21
Overall	3,539	-402	+182	+170	+160	+73	-10	-10.2%	+5.4%	+5.1%	+4.8%	+2.1%	-0.3%
Maintenance/ Technical	23	-9	+2	+4	+0	+1	+1	-28.7%	+9.5%	+20.9%	+1.5%	+4.5%	+4.5%
General Support	217	-76	-20	-6	+3	+3	+5	-25.9%	-8.5%	-2.6%	+1.6%	+1.4%	+2.2%
HCA, Nurse's Aide, etc.	535	-85	+17	+19	+8	+11	-1	-13.7%	+3.2%	+3.7%	+1.6%	+2.0%	-0.2%
Health & Social Care Assistants	12	+1	+2	-4	+0	-3	-2	+12.2%	+18.2%	-24.5%	+3.3%	-21.0%	-12.8%
Swabber (COVID-19)	35	+35	+35	+35	+35	+8	-6	-100.0%	-100.0%	-100.0%	-100.0%	+31.6%	-14.9%
Health Care Assistants	582	-48	+53	+50	+43	+16	-9	-7.7%	+10.1%	+9.5%	+8.1%	+2.8%	-1.5%
Care, other	334	-88	+16	+9	+4	+4	+2	-20.9%	+5.0%	+2.8%	+1.2%	+1.1%	+0.5%
Patient & Client Care	916	-137	+69	+59	+47	+20	-7	-13.0%	+8.2%	+6.9%	+5.5%	+2.2%	-0.8%

Source: Health Service Personnel Census

Longitudinal Employment Levels by Care Group - Dec 2016 to Sep 2021

Community Health & Wellbeing

Sep 2021 (figure:)	WTE Sep 2021	WTE change since	WTE change since	WTE change since	WTE change since	WTE change since Dec 20	WTE change since Aug 21	% change since	% change since	% change since	% change since	% change since Dec 20	% change since Aug 21
Overall	8	+8	+8	+8	+8	+0	-1	-100.0%	-100.0%	-100.0%	-100.0%	+0.3%	-11.8%
Management & Administrative	7	+7	+7	+7	+7	+2	-0	-1.0%	-1.0%	-1.0%	-1.0%	+0.3%	-0.0%
Management (VIII & above)	1	+1	+1	+1	+1	-0	+1	-1.0%	-1.0%	-1.0%	-1.0%	-0.0%	-1.0%
Administrative/ Supervisory (V to VII)	5	+5	+5	+5	+5	+2	-1	-1.0%	-1.0%	-1.0%	-1.0%	+0.5%	-0.1%
Clerical (III & IV)	0	+0	+0	+0	+0	-0	-0	-1.0%	-1.0%	-1.0%	-1.0%	-0.4%	-0.4%
Patient & Client Care	1	+1	+1	+1	+1	-1	-1	-1.0%	-1.0%	-1.0%	-1.0%	-0.6%	-0.5%
Care, other	1	+1	+1	+1	+1	-1	-1	-1.0%	-1.0%	-1.0%	-1.0%	-0.6%	-0.5%

Source: Health Service Personnel Census

Mental Health

Sep 2021 (Dec 2016 figure: 559)	WTE Sep 2021	WTE change since Dec 16	WTE change since Dec 17	WTE change since Dec 18	WTE change since Dec 19	WTE change since Dec 20	WTE change since Aug 21	% change since Dec 16	% change since Dec 17	% change since Dec 18	% change since Dec 19	% change since Dec 20	% change since Aug 21
Overall	639	+79	+75	+66	+46	+12	+6	+14.1%	+13.3%	+11.5%	+7.8%	+2.0%	+0.9%
Medical & Dental	74	+17	+11	+10	+7	+2	-2	+0.3%	+0.2%	+0.2%	+0.1%	+0.0%	-0.0%
Consultants	38	+12	+10	+7	+2	-2	-1	+0.4%	+0.4%	+0.2%	+0.1%	-0.0%	-0.0%
Registrars	25	+7	+6	+9	+3	+6	-0	+0.4%	+0.3%	+0.6%	+0.2%	+0.3%	-0.0%
SHO/ Interns	10	-2	-5	-6	+1	-3	-1	-0.2%	-0.3%	-0.4%	+0.1%	-0.2%	-0.1%
Medical/ Dental, other			-0	-0				-1.0%	-1.0%	-1.0%	-1.0%	-1.0%	-1.0%
Nursing & Midwifery	254	+12	+24	+16	+23	+3	-4	+0.0%	+0.1%	+0.1%	+0.1%	+0.0%	-0.0%
Nurse/ Midwife Manager	74	-6	+3	-6	-2	-3	+0	-0.1%	+0.0%	-0.1%	-0.0%	-0.0%	+0.0%
Nurse/ Midwife Specialist & AN/MP	22	+8	+7	+10	+9	+3	+1	+0.5%	+0.5%	+0.8%	+0.6%	+0.1%	+0.0%
Staff Nurse/ Staff Midwife	151	+6	+10	+9	+12	-0	-5	+0.0%	+0.1%	+0.1%	+0.1%	-0.0%	-0.0%
Nursing/ Midwifery Student	4	+4	+4	+4	+4	+3	-0	-1.0%	-1.0%	-1.0%	-1.0%	+3.5%	-0.0%
Nursing/ Midwifery other	2	-0		-1				-0.1%	+0.0%	-0.3%	+0.0%	+0.0%	+0.0%
Health & Social Care Professionals	142	+32	+28	+28	+13	+9	+7	+0.3%	+0.2%	+0.2%	+0.1%	+0.1%	+0.1%
Therapy Professions	44	+16	+11	+8	+1	+5	+3	+0.6%	+0.3%	+0.2%	+0.0%	+0.1%	+0.1%
Social Care	27	-4	-4	-3	+1	-1	+1	-0.1%	-0.1%	-0.1%	+0.0%	-0.1%	+0.0%
Social Workers	33	+5	+7	+4	+3	+4	+3	+0.2%	+0.3%	+0.1%	+0.1%	+0.1%	+0.1%
Psychologists	34	+18	+13	+18	+12	+2	+2	+1.1%	+0.7%	+1.2%	+0.5%	+0.1%	+0.1%
H&SC, Other	5	-2	+0	+0	-4	-1	-1	-0.3%	+0.0%	+0.1%	-0.5%	-0.1%	-0.2%
Management & Administrative	66	+10	+7	+8	-5	-4	+4	+0.2%	+0.1%	+0.1%	-0.1%	-0.1%	+0.1%
Management (VIII & above)	3	+0	-1	+1	-0	-0	-0	+0.2%	-0.2%	+0.5%	-0.0%	-0.0%	-0.0%
Administrative/ Supervisory (V to VII)	26	+8	+4	-0	-1	+2	+3	+0.5%	+0.2%	-0.0%	-0.0%	+0.1%	+0.1%
Clerical (III & IV)	37	+1	+3	+7	-5	-5	+1	+0.0%	+0.1%	+0.2%	-0.1%	-0.1%	+0.0%
General Support	43	-7	-10	-6	+1	-2	+0	-0.1%	-0.2%	-0.1%	+0.0%	-0.0%	+0.0%
Support	37	-8	-11	-7	+0	-2	+0	-0.2%	-0.2%	-0.2%	+0.0%	-0.0%	+0.0%
Maintenance/ Technical	6	+1	+1	+1	+0			+0.1%	+0.2%	+0.2%	+0.0%	+0.0%	+0.0%
Patient & Client Care	59	+15	+15	+10	+8	+5	+0	+0.3%	+0.3%	+0.2%	+0.2%	+0.1%	+0.0%
Health Care Assistants	53	+13	+13	+9	+8	+5	+0	+0.3%	+0.3%	+0.2%	+0.2%	+0.1%	+0.0%
Care, other	6	+2	+2	+0	+1	-0	-0	+0.3%	+0.7%	+0.1%	+0.1%	-0.0%	-0.0%

Source: Health Service Personnel Census

Primary Care

Sep 2021 (Dec 2016 figure: 768)	WTE Sep 2021	WTE change since Dec 16	WTE change since Dec 17	WTE change since Dec 18	WTE change since Dec 19	WTE change since Dec 20	WTE change since Aug 21	% change since Dec 16	% change since Dec 17	% change since Dec 18	% change since Dec 19	% change since Dec 20	% change since Aug 21
Overall	849	+80	+54	+16	+84	+38	-22	+10.4%	+6.8%	+1.9%	+11.0%	+4.7%	-2.5%
Medical & Dental	85	-5	-5	-8	-3	+5	-4	-0.1%	-0.1%	-0.1%	-0.0%	+0.1%	-0.0%
Consultants	8	-1	-1	-1	-1			-0.1%	-0.1%	-0.1%	-0.1%	+0.0%	+0.0%
Registrars	28	-0	+2	-1	+2	+4	-4	-0.0%	+0.1%	-0.0%	+0.1%	+0.2%	-0.1%
SHO/ Interns	7							+0.0%	+0.0%	+0.0%	+0.0%	+0.0%	+0.0%
Medical/ Dental, other	42	-4	-6	-5	-4	+1	+0	-0.1%	-0.1%	-0.1%	-0.1%	+0.0%	+0.0%
Nursing & Midwifery	199	+1	-10	-8	-11	-9	-4	+0.0%	-0.0%	-0.0%	-0.1%	-0.0%	-0.0%
Nurse/ Midwife Manager	21	+3	+2	-1	-1	-1	+1	+0.2%	+0.1%	-0.0%	-0.0%	-0.0%	+0.0%
Nurse/ Midwife Specialist & AN/MP	5	+1	-1	-1	-1	+1	-0	+0.2%	-0.2%	-0.2%	-0.2%	+0.4%	-0.0%
Staff Nurse/ Staff Midwife	54	+10	+13	+4	+3	-1	-6	+0.2%	+0.3%	+0.1%	+0.0%	-0.0%	-0.1%
Public Health Nurse	116	-1	-6	-2	-0	+5	+1	-0.0%	-0.1%	-0.0%	-0.0%	+0.0%	+0.0%
Nursing/ Midwifery Student	3	-12	-17	-8	-11	-12	+1	-0.8%	-0.9%	-0.8%	-0.8%	-0.8%	+0.3%
Nursing/ Midwifery other						-1	-1	-1.0%	-1.0%	-1.0%	-1.0%	-1.0%	-1.0%
Health & Social Care Professionals	170	-2	-13	-21	+17	+8	-2	-0.0%	-0.1%	-0.1%	+0.1%	+0.1%	-0.0%
Therapy Professions	113	-2	-8	-13	+9	+2	-1	-0.0%	-0.1%	-0.1%	+0.1%	+0.0%	-0.0%
Health Science/ Diagnostics	18	-4	-5	-6	-0	-2	-1	-0.2%	-0.2%	-0.3%	-0.0%	-0.1%	-0.0%
Social Care	3	+1	+1	-0	-1	+0		+1.0%	+1.0%	-0.0%	-0.2%	+0.1%	+0.0%
Social Workers	9	+3	+1	+2	+4	+5	-0	+0.4%	+0.2%	+0.4%	+0.9%	+1.0%	-0.0%
Psychologists	20	-2	-4	-7	+2	+0	-1	-0.1%	-0.2%	-0.3%	+0.1%	+0.0%	-0.0%
Pharmacy	3	+3	+2	+2	+2	+2	+1	-1.0%	+2.0%	+2.0%	+2.7%	+2.0%	+0.3%
H&SC, Other	5	-0	+0	+1	+1	+1		-0.0%	+0.0%	+0.3%	+0.3%	+0.3%	+0.0%
Management & Administrative	240	+43	+37	+12	+30	+17	-5	+0.2%	+0.2%	+0.1%	+0.1%	+0.1%	-0.0%
Management (VIII & above)	33	+10	+3	-4	+3	+3	+0	+0.4%	+0.1%	-0.1%	+0.1%	+0.1%	+0.0%
Administrative/ Supervisory (V to VII)	76	+26	+18	+1	+8	+11	+0	+0.5%	+0.3%	+0.0%	+0.1%	+0.2%	+0.0%
Clerical (III & IV)	131	+7	+16	+15	+19	+3	-5	+0.1%	+0.1%	+0.1%	+0.2%	+0.0%	-0.0%
General Support	27	-4	-4	-0	+1	-1	-0	-0.1%	-0.1%	-0.0%	+0.0%	-0.0%	-0.0%
Support	25	-4	-4	-0	+1	-1	-0	-0.1%	-0.1%	-0.0%	+0.1%	-0.0%	-0.0%
Maintenance/ Technical	2							+0.0%	+0.0%	+0.0%	+0.0%	+0.0%	+0.0%
Patient & Client Care	127	+47	+49	+41	+49	+17	-7	+0.6%	+0.6%	+0.5%	+0.6%	+0.2%	-0.1%
Health Care Assistants	45	+43	+43	+36	+39	+7	-7	+21.5%	+21.5%	+4.0%	+6.2%	+0.2%	-0.1%
Care, other	82	+4	+6	+4	+10	+10	+1	+0.0%	+0.1%	+0.1%	+0.1%	+0.1%	+0.0%

Source: Health Service Personnel Census

Disabilities

Sep 2021 (Dec 2016 figure: 1,816)	WTE Sep 2021	WTE change since Dec 16	WTE change since Dec 17	WTE change since Dec 18	WTE change since Dec 19	WTE change since Dec 20	WTE change since Aug 21	% change since Dec 16	% change since Dec 17	% change since Dec 18	% change since Dec 19	% change since Dec 20	% change since Aug 21
Overall	1,230	-586	+60	+75	+32	+13	+3	-32.3%	+5.1%	+6.5%	+2.7%	+1.1%	+0.2%
Medical & Dental	5	-2	-2	+1	+1	+1	+0	-0.3%	-0.3%	+0.3%	+0.3%	+0.3%	+0.0%
Consultants	3	+0	+0	+1				+0.1%	+0.1%	+0.5%	+0.0%	+0.0%	+0.0%
Registrars		-1	-2					-1.0%	-1.0%	-1.0%	-1.0%	-1.0%	-1.0%
SHO/ Interns	1		+1	+1	+1	+1	+0	+0.0%	-1.0%	-1.0%	-1.0%	-1.0%	+0.1%
Medical/ Dental, other	1	-1	-1	-1				-0.5%	-0.5%	-0.5%	+0.0%	+0.0%	+0.0%
Nursing & Midwifery	185	-140	-22	-9	-6	-1	+2	-0.4%	-0.1%	-0.0%	-0.0%	-0.0%	+0.0%
Nurse/ Midwife Manager	43	-34	-2	+4	-0	+0	-2	-0.4%	-0.0%	+0.1%	-0.0%	+0.0%	-0.0%
Nurse/ Midwife Specialist & AN/MP		-2						-1.0%	-1.0%	-1.0%	-1.0%	-1.0%	-1.0%
Staff Nurse/ Staff Midwife	142	-103	-19	-13	-6	-1	+3	-0.4%	-0.1%	-0.1%	-0.0%	-0.0%	+0.0%
Public Health Nurse		-1						-1.0%	-1.0%	-1.0%	-1.0%	-1.0%	-1.0%
Health & Social Care Professionals	446	-154	+61	+70	+43	+18	-1	-0.3%	+0.2%	+0.2%	+0.1%	+0.0%	-0.0%
Therapy Professions	40	-12	+5	-1	-2	-3	-4	-0.2%	+0.2%	+0.2%	-0.0%	-0.0%	-0.1%
Social Care	382	-126	+60	+72	+47	+21	+3	-0.2%	+0.2%	+0.2%	+0.1%	+0.1%	+0.0%
Social Workers	10	-6	-1	-2	-2	-0	-1	-0.4%	-0.1%	-0.2%	-0.2%	-0.0%	-0.1%
Psychologists	14	-9	-0	+1	+0	+0	+1	-0.4%	-0.0%	+0.1%	+0.0%	+0.0%	+0.1%
H&SC, Other	1	+1	-2	+0	-1	-0	-0	+1.0%	-0.7%	+0.1%	-0.4%	-0.2%	-0.0%
Management & Administrative	140	-21	+3	+1	+2	+0	-0	-0.1%	+0.0%	+0.0%	+0.0%	+0.0%	-0.0%
Management (VIII & above)	31	-6	-3	-2	+0	+1	-2	-0.2%	-0.1%	-0.1%	+0.0%	+0.0%	-0.1%
Administrative/ Supervisory (V to VII)	56	+5	+8	+7	+3	+2	+1	+0.1%	+0.2%	+0.1%	+0.1%	+0.0%	+0.0%
Clerical (III & IV)	53	-20	-2	-4	-1	-3	+1	-0.3%	-0.0%	-0.1%	-0.0%	-0.0%	+0.0%
General Support	29	-65	-2	-4	-0	-2	+1	-0.7%	-0.1%	-0.1%	-0.0%	-0.1%	+0.0%
Support	22	-57	-5	-7	-1	-4	-0	-0.7%	-0.2%	-0.2%	-0.0%	-0.1%	-0.0%
Maintenance/ Technical	7	-8	+3	+3	+0	+2	+1	-0.5%	+0.8%	+0.8%	+0.0%	+0.4%	+0.2%
Patient & Client Care	425	-205	+22	+16	-8	-3	+1	-0.3%	+0.1%	+0.0%	-0.0%	-0.0%	+0.0%
Health Care Assistants	184	-113	+12	+9	-3	+0	-1	-0.4%	+0.1%	+0.1%	-0.0%	+0.0%	-0.0%
Care, other	241	-92	+10	+7	-5	-4	+2	-0.3%	+0.0%	+0.0%	-0.0%	-0.0%	+0.0%

Source: Health Service Personnel Census

Older People

Sep 2021 (Dec 2016 figure: 797)	WTE Sep 2021	WTE change since Dec 16	WTE change since Dec 17	WTE change since Dec 18	WTE change since Dec 19	WTE change since Dec 20	WTE change since Aug 21	% change since Dec 16	% change since Dec 17	% change since Dec 18	% change since Dec 19	% change since Dec 20	% change since Aug 21
Overall	814	+17	-15	+6	-10	+10	+5	+2.1%	-1.8%	+0.7%	-1.2%	+1.2%	+0.6%
Medical & Dental	3	-2	-2	-3	-2	-1	-1	-0.4%	-0.4%	-0.5%	-0.4%	-0.3%	-0.3%
Registrars	1			-1			-1	+0.0%	+0.0%	-0.5%	+0.0%	+0.0%	-0.5%
Medical/ Dental, other	2	-2	-2	-2	-2	-1	+0	-0.6%	-0.6%	-0.6%	-0.6%	-0.4%	+0.0%
Nursing & Midwifery	265	-6	-6	-2	-8	-5	+3	-0.0%	-0.0%	-0.0%	-0.0%	-0.0%	+0.0%
Nurse/ Midwife Manager	63	-2	-2	-4	-5	+1	-2	-0.0%	-0.0%	-0.1%	-0.1%	+0.0%	-0.0%
Nurse/ Midwife Specialist & AN/MP	2	+2	+2	+1	+1	+1		-1.0%	-1.0%	+1.0%	+1.0%	+1.0%	+0.0%
Staff Nurse/ Staff Midwife	199	-6	-6	+1	-4	-6	+5	-0.0%	-0.0%	+0.0%	-0.0%	-0.0%	+0.0%
Health & Social Care Professionals	61	+4	+4	+3	-5	+0	-0	+0.1%	+0.1%	+0.1%	-0.1%	+0.0%	-0.0%
Therapy Professions	50	+7	+6	+4	-0	+3	-0	+0.2%	+0.1%	+0.1%	-0.0%	+0.1%	-0.0%
Social Workers	7	-5	-5	-3	-5	-4		-0.4%	-0.4%	-0.3%	-0.4%	-0.4%	+0.0%
Psychologists	1		+1		-2	-1		+0.0%	-1.0%	+0.0%	-0.8%	-0.5%	+0.0%
Pharmacy	4	+2	+2	+2	+2	+2	+0	+0.6%	+0.6%	+0.6%	+0.6%	+0.5%	+0.0%
Management & Administrative	63	+15	+11	+12	+8	+6	+0	+0.3%	+0.2%	+0.2%	+0.1%	+0.1%	+0.0%
Management (VIII & above)	7	+4	+6	+5	+3	+2	-0	+1.3%	+5.9%	+2.4%	+0.7%	+0.4%	-0.0%
Administrative/ Supervisory (V to VII)	25	+5	+4	+4	+3	+6	+0	+0.3%	+0.2%	+0.2%	+0.1%	+0.3%	+0.0%
Clerical (III & IV)	31	+6	+1	+3	+2	-2	+0	+0.2%	+0.0%	+0.1%	+0.1%	-0.1%	+0.0%
General Support	118	+1	-3	+5	+2	+7	+4	+0.0%	-0.0%	+0.0%	+0.0%	+0.1%	+0.0%
Support	110	+3	-1	+5	+2	+8	+4	+0.0%	-0.0%	+0.0%	+0.0%	+0.1%	+0.0%
Maintenance/ Technical	8	-2	-2	-0		-1		-0.2%	-0.2%	-0.0%	+0.0%	-0.1%	+0.0%
Patient & Client Care	304	+5	-18	-8	-4	+2	-1	+0.0%	-0.1%	-0.0%	-0.0%	+0.0%	-0.0%
Health Care Assistants	299	+8	-15	-5	-1	+3	-1	+0.0%	-0.0%	-0.0%	-0.0%	+0.0%	-0.0%
Care, other	4	-3	-3	-3	-3	-1	-0	-0.4%	-0.4%	-0.4%	-0.4%	-0.2%	-0.0%

Source: Health Service Personnel Census