

CHO 7 Employment Report: August 2020

Employment by Staff Group

Aug 2020 (Dec 2019 figure: 6,515)	WTE Jul 2020	WTE Aug 2020	WTE change since Jul 20	% change since Jul 20	WTE change since Dec 19	WTE change since Aug 19
Overall	6,619	6,668	+49	+0.7%	+154	+189
Consultants	67	69	+2	+3.5%	+10	+12
Registrars	90	104	+14	+16.1%	+10	+9
SHO/ Interns	33	41	+8	+23.5%	+5	+4
Medical/ Dental, other	83	82	-1	-0.7%	+2	+0
Medical & Dental	272	296	+24	+8.8%	+25	+25
Nurse/ Midwife Manager	407	404	-3	-0.7%	+8	+3
Nurse/ Midwife Specialist & AN/MP	103	105	+2	+2.0%	+11	+15
Staff Nurse/ Staff Midwife	1,024	1,028	+4	+0.4%	+35	+24
Public Health Nurse	163	163	-0	-0.1%	-13	+4
<i>Pre-registration Nurse/ Midwife Intern</i>				-100.0%	-1	
<i>Pre-registration Nurse Intern (COVID-19)</i>	32	39	+7	+22.8%	+39	+7
<i>Post-registration Nurse/ Midwife Student</i>	10	1	-10	-95.0%	-21	-10
<i>Nursing/ Midwifery awaiting registration</i>	7	6	-0	-5.8%	-4	-0
Nursing/ Midwifery Student	48	45	-3	-5.6%	+13	+24
Nursing/ Midwifery other	10	11	+1	+10.0%	+1	+2
Nursing & Midwifery	1,755	1,757	+1	+0.1%	+56	+71
Therapy Professions	471	471	-0	-0.0%	+21	+20
Health Science/ Diagnostics	3	3	+0	+0.3%	+0	
Social Care	373	378	+5	+1.3%	+7	+19
Social Workers	110	109	-1	-0.7%	+4	+8
Psychologists	86	86	+1	+0.7%	+6	+5
Pharmacy	42	41	-1	-1.7%	+1	+3
H&SC, Other	42	41	-1	-2.5%	-4	-2
Health & Social Care Professionals	1,127	1,130	+3	+0.3%	+36	+54
Management (VIII & above)	78	79	+1	+1.1%	+6	+8
Administrative/ Supervisory (V to VII)	198	200	+1	+0.7%	+17	+13
Clerical (III & IV)	369	378	+9	+2.5%	+27	+21
Management & Administrative	645	657	+11	+1.8%	+51	+42
Support	399	397	-2	-0.5%	-14	-24
Maintenance/ Technical	43	46	+3	+7.1%	+5	+4
General Support	442	443	+1	+0.3%	-8	-20
Health Care Assistants	1,644	1,649	+5	+0.3%	-5	-10
Care, other	599	603	+4	+0.7%	-7	+16
Home Help	134	133	-1	-0.4%	+6	+11
Patient & Client Care	2,377	2,386	+9	+0.4%	-6	+17

CHO 7 Employment Report: August 2020

Community Health & Wellbeing

Aug 2020 (figure:)	WTE Jul 2020	WTE Aug 2020	WTE change since Jul 20	% change since Jul 20	WTE change since	WTE change since
Total Community Health & Wellbeing	8	8	+0	+2.1%	+8	+8
Management (VIII & above)	1	1	0	0	+1	+1
Administrative/ Supervisory (V to VII)	2	2	+0	+13%	+2	+2
Clerical (III & IV)	1	1	0	0	+1	+1
Management & Administrative	4	4	+0	+7.0%	+4	+4
Care, other	5	4	-0	-2%	+4	+4
Patient & Client Care	5	4	-0	-1.8%	+4	+4

Mental Health

Aug 2020 (Dec 2019 figure: 835)	WTE Jul 2020	WTE Aug 2020	WTE change since Jul 20	% change since Jul 20	WTE change since Dec 19	WTE change since Aug 19
Total Mental Health	851	876	+25	+2.9%	+41	+39
Consultants	51	54	+3	+6%	+7	+9
Registrars	44	55	+12	+27%	+9	+9
SHO/ Interns	16	22	+5	+33%	+1	+1
Medical & Dental	111	131	+20	+18.0%	+17	+19
Nurse/ Midwife Manager	117	116	-1	-1%	-0	+2
Nurse/ Midwife Specialist & AN/MP	45	46	+2	+4%	+6	+9
Staff Nurse/ Staff Midwife	198	193	-4	-2%	-1	-15
<i>Pre-registration Nurse/ Midwife Intern</i>				-100.0%	-1	
<i>Pre-registration Nurse Intern (COVID-19)</i>	17	24	+7	+43.5%	+24	+7
<i>Nursing/ Midwifery awaiting registration</i>	4	4	-0	-8.3%	-6	-0
Nursing/ Midwifery Student	21	27	+7	+33%	+16	+13
Nursing/ Midwifery other	8	8	+0	+1%	+0	+1
Nursing & Midwifery	388	391	+3	+0.8%	+22	+11
Therapy Professions	45	43	-2	-4%	-5	-2
Social Care	8	8	-0	-1%	-0	+1
Social Workers	38	37	-1	-3%	+2	+6
Psychologists	30	32	+1	+4%	+0	+2
Pharmacy	1	1	0	0		
H&SC, Other	18	19	+1	+3%	+1	+2
Health & Social Care Professionals	139	138	-1	-0.9%	-2	+9
Management (VIII & above)	3	4	+1	+35%	+1	+1
Administrative/ Supervisory (V to VII)	17	17	0	0	+1	+3
Clerical (III & IV)	51	52	+1	+1%	+5	+3
Management & Administrative	71	72	+2	+2.2%	+7	+8
Support	16	16	+0	+2%	-2	-4
Maintenance/ Technical	2	2	-0	-5%	+0	-0
General Support	18	18	+0	+0.8%	-2	-4
Health Care Assistants	34	35	+1	+2%	+2	-2
Care, other	89	89	+1	+1%	-3	-1
Patient & Client Care	123	124	+1	+1.1%	-1	-3

Primary Care

Aug 2020 (Dec 2019 figure: 1,702)	WTE Jul 2020	WTE Aug 2020	WTE change since Jul 20	% change since Jul 20	WTE change since Dec 19	WTE change since Aug 19
Total Primary Care	1,718	1,720	+3	+0.2%	+18	+12
Consultants	15	14	-1	-3%	+3	+3
Registrars	43	46	+3	+6%	+0	-0
SHO/ Interns	7	10	+3	+41%	+4	+3
Medical/ Dental, other	78	77	-1	-1%	+2	+1
Medical & Dental	143	147	+5	+3.2%	+9	+7
Nurse/ Midwife Manager	85	83	-3	-3%	+2	-1
Nurse/ Midwife Specialist & AN/MP	51	50	-1	-2%	+4	+6
Staff Nurse/ Staff Midwife	207	217	+10	+5%	+12	-1
Public Health Nurse	163	163	-0	-0%	-13	+4
<i>Post-registration Nurse/ Midwife Student</i>	10	1	-10	-95.0%	-21	-10
Nursing/ Midwifery Student	10	1	-10	-95%	-21	+1
Nursing/ Midwifery other	2	2	0	0		
Nursing & Midwifery	518	515	-3	-0.6%	-15	+9
Therapy Professions	271	268	-2	-1%	+2	-4
Health Science/ Diagnostics	0	0	+0	+5%	+0	
Social Care	4	4	-0	-1%	+1	-0
Social Workers	25	26	+1	+3%	-0	+1
Psychologists	25	25	+0	+0%	+4	+3
Pharmacy	32	33	+1	+3%	+1	+3
H&SC, Other	21	20	-2	-8%	-4	-4
Health & Social Care Professionals	379	376	-2	-0.7%	+3	-1
Management (VIII & above)	31	30	-1	-3%	-4	-2
Administrative/ Supervisory (V to VII)	82	81	-1	-1%	+5	+0
Clerical (III & IV)	184	189	+5	+3%	+11	+1
Management & Administrative	296	299	+3	+1.0%	+12	-0
Support	111	113	+1	+1%	-3	-7
Maintenance/ Technical	9	10	+1	+7%	+1	+1
General Support	121	123	+2	+1.6%	-2	-6
Health Care Assistants	134	132	-2	-1%	+11	+2
Care, other	127	127	+1	+0%	-0	+1
Patient & Client Care	261	260	-1	-0.4%	+11	+3

Social Care

Aug 2020 (Dec 2019 figure: 3,978)	WTE Jul 2020	WTE Aug 2020	WTE change since Jul 20	% change since Jul 20	WTE change since Dec 19	WTE change since Aug 19
Total Social Care	4,042	4,064	+22	+0.5%	+86	+130
Consultants	1	1	0	0		
Registrars	3	3	0	0		+0
SHO/ Interns	9	9	-1	-6%	-0	-0
Medical/ Dental, other	5	5	0	0		-1
Medical & Dental	18	17	-1	-2.9%	-0	-1
Nurse/ Midwife Manager	205	205	+1	+0%	+6	+1
Nurse/ Midwife Specialist & AN/MP	7	8	+1	+17%	+1	-1
Staff Nurse/ Staff Midwife	619	618	-2	-0%	+24	+39
Pre-registration Nurse/ Midwife Intern				-100.0%		
Pre-registration Nurse Intern (COVID-19)	15	15			+15	
Nursing/ Midwifery awaiting registration	3	3	-0	-2.0%	+3	-0
Nursing/ Midwifery Student	18	18	-0	-0%	+18	+11
Nursing/ Midwifery other	1	2	+1	+200%	+1	+1
Nursing & Midwifery	849	850	+1	+0.2%	+50	+51
Therapy Professions	156	160	+4	+3%	+25	+27
Health Science/ Diagnostics	3	3	0	0		
Social Care	362	367	+5	+1%	+7	+18
Social Workers	47	47	-0	-1%	+2	+1
Psychologists	30	29	-1	-2%	+1	+0
Pharmacy	9	7	-2	-19%	-0	-0
H&SC, Other	3	3	0	0		
Health & Social Care Professionals	609	615	+7	+1.1%	+35	+46
Management (VIII & above)	44	45	+1	+2%	+8	+8
Administrative/ Supervisory (V to VII)	98	100	+2	+2%	+10	+7
Clerical (III & IV)	133	136	+4	+3%	+11	+16
Management & Administrative	274	281	+7	+2.4%	+28	+30
Support	272	268	-3	-1%	-9	-13
Maintenance/ Technical	32	34	+3	+8%	+4	+3
General Support	303	303	-1	-0.3%	-5	-9
Health Care Assistants	1,476	1,482	+6	+0%	-18	-10
Care, other	379	382	+3	+1%	-8	+12
Home Help	134	133	-1	-0%	+6	+11
Patient & Client Care	1,989	1,997	+8	+0.4%	-21	+13

CHO 7 Employment Report: August 2020

Disabilities

Aug 2020 (Dec 2019 figure: 2,982)	WTE Jul 2020	WTE Aug 2020	WTE change since Jul 20	% change since Jul 20	WTE change since Dec 19	WTE change since Aug 19
Total Disabilities	3,009	3,028	+19	+0.6%	+46	+100
Consultants	1	1				
Registrars	3	3				+0
SHO/ Interns	7	7	-1	-7.0%	-0	-0
Medical/ Dental, other	1	1				
Medical & Dental	12	11	-1	-4.3%	-0	+0
Nurse/ Midwife Manager	125	123	-2	-1.3%	+1	-5
Nurse/ Midwife Specialist & AN/MP	3	4	+1	+30.8%	-1	-1
Staff Nurse/ Staff Midwife	379	377	-1	-0.3%	+3	+17
<i>Pre-registration Nurse/ Midwife Intern</i>				-100.0%		
<i>Pre-registration Nurse Intern (COVID-19)</i>	15	15			+15	
Nursing/ Midwifery Student	15	15			+15	+8
Nursing/ Midwifery other	1	2	+1	+200.0%	+1	+1
Nursing & Midwifery	522	521	-1	-0.2%	+19	+20
Therapy Professions	143	147	+4	+2.7%	+25	+28
Health Science/ Diagnostics	3	3				
Social Care	362	367	+5	+1.4%	+7	+18
Social Workers	33	33	-0	-0.5%	-0	+2
Psychologists	30	29	-1	-2.3%	+1	+0
Pharmacy	6	4	-2	-28.7%	-1	-0
H&SC, Other	2	2				
Health & Social Care Professionals	578	584	+6	+1.1%	+32	+49
Management (VIII & above)	38	38	+0	+0.0%	+6	+4
Administrative/ Supervisory (V to VII)	84	87	+2	+2.6%	+8	+6
Clerical (III & IV)	99	98	-1	-1.3%	+6	+7
Management & Administrative	221	222	+1	+0.4%	+19	+17
Support	162	158	-4	-2.4%	-8	-10
Maintenance/ Technical	30	32	+3	+8.5%	+4	+4
General Support	192	191	-1	-0.7%	-4	-6
Health Care Assistants	1,091	1,101	+10	+1.0%	-11	+8
Care, other	374	378	+4	+1.0%	-8	+12
Home Help	18	18	+0	+0.4%	-1	-1
Patient & Client Care	1,483	1,498	+14	+1.0%	-20	+19

Older People

Aug 2020 (Dec 2019 figure: 996)	WTE Jul 2020	WTE Aug 2020	WTE change since Jul 20	% change since Jul 20	WTE change since Dec 19	WTE change since Aug 19
Total Older People	1,034	1,036	+3	+0.3%	+41	+30
SHO/ Interns	2	2				
Medical/ Dental, other	4	4				-1
Medical & Dental	6	6				-1
Nurse/ Midwife Manager	80	82	+2	+2.9%	+5	+6
Nurse/ Midwife Specialist & AN/MP	4	4	+0	+7.1%	+2	+0
Staff Nurse/ Staff Midwife	241	240	-0	-0.1%	+21	+22
Nursing/ Midwifery Student	3	3	-0	-2.0%	+3	+3
Nursing & Midwifery	327	329	+2	+0.7%	+30	+31
Health & Social Care Professionals	31	31	+0	+0.6%	+3	-3
Management (VIII & above)	6	7	+1	+15.1%	+2	+4
Administrative/ Supervisory (V to VII)	14	14	-0	-0.1%	+2	+1
Clerical (III & IV)	34	39	+5	+14.4%	+5	+8
Management & Administrative	53	59	+6	+10.8%	+8	+13
Support	109	110	+0	+0.4%	-0	-3
Maintenance/ Technical	2	2				-1
General Support	111	112	+0	+0.4%	-0	-3
Health Care Assistants	386	381	-5	-1.2%	-7	-18
Care, other	5	4	-1	-12.5%	-1	
Home Help	115	115	-1	-0.5%	+7	+12
Patient & Client Care	505	499	-6	-1.2%	-1	-6

CHO 7 Employment by Administration (HSE / S38): August 2020

Aug 2020 (Dec 2019 figure: 6,515)	WTE Jul 2020	WTE Aug 2020	WTE change since Jul 20	% change since Jul 20	WTE change since Dec 19	WTE change since Aug 19
Overall	6,619	6,668	+49	+0.7%	+154	+189
HSE	3,244	3,272	+28	+0.9%	+120	+116
Section 38 Voluntary Agencies	3,375	3,396	+21	+0.6%	+33	+73

HSE

Aug 2020 (Dec 2019 figure: 3,151)	WTE Jul 2020	WTE Aug 2020	WTE change since Jul 20	% change since Jul 20	WTE change since Dec 19	WTE change since Aug 19
Overall	3,244	3,272	+28	+0.9%	+120	+116
Consultants	57	60	+3	+0.1%	+7	+9
Registrars	83	96	+13	+0.2%	+9	+8
SHO/ Interns	20	27	+6	+0.3%	+3	+2
Medical/ Dental, other	80	80	-1	-0.0%	+1	+0
Medical & Dental	241	262	+21	+8.8%	+20	+20
Nurse/ Midwife Manager	241	239	-2	-0.0%	+8	+12
Nurse/ Midwife Specialist & AN/MP	68	71	+2	+0.0%	+10	+13
Staff Nurse/ Staff Midwife	547	552	+5	+0.0%	+32	+6
Public Health Nurse	163	163	-0	-0.0%	-13	+4
<i>Pre-registration Nurse/ Midwife Intern</i>				-1.0%	-6	-13
<i>Pre-registration Nurse Intern (COVID-19)</i>	17	24	+7	+0.4%	+24	+24
<i>Post-registration Nurse/ Midwife Student</i>	10	1	-10	-1.0%	-7	+1
<i>Nursing/ Midwifery awaiting registration</i>	7	6	-0	-0.1%	+2	+5
Nursing/ Midwifery Student	33	30	-3	-0.1%	-2	+16
Nursing/ Midwifery other	8	8	+0	+0.0%	+0	+1
Nursing & Midwifery	1,060	1,063	+2	+0.2%	+36	+52
Therapy Professions	338	337	-1	-0.0%	+12	+10
Social Care	11	11	-0	-0.0%	+0	+1
Social Workers	73	71	-1	-0.0%	+4	+8
Psychologists	64	65	+0	+0.0%	+3	+2
Pharmacy	27	28	+1	+0.0%	+2	+3
H&SC, Other	40	39	-1	-0.0%	-4	-2
Health & Social Care Professionals	553	551	-2	-0.4%	+18	+22
Management (VIII & above)	46	46	-0	-0.0%	+6	+10
Administrative/ Supervisory (V to VII)	107	109	+1	+0.0%	+13	+10
Clerical (III & IV)	254	263	+9	+0.0%	+22	+16
Management & Administrative	408	418	+10	+2.5%	+41	+36
Support	167	167	+1	+0.0%	-3	-10
Maintenance/ Technical	5	6	+1	+0.1%	+0	-0
General Support	172	173	+1	+0.6%	-3	-11
Health Care Assistants	449	444	-5	-0.0%	+3	-17
Care, other	227	227	+1	+0.0%	-0	+3
Home Help	134	133	-1	-0.0%	+6	+11
Patient & Client Care	809	805	-5	-0.6%	+9	-3

Section 38 Voluntary Agencies

Aug 2020 (Dec 2019 figure: 3,363)	WTE Jul 2020	WTE Aug 2020	WTE change since Jul 20	% change since Jul 20	WTE change since Dec 19	WTE change since Aug 19
Overall	3,375	3,396	+21	+0.6%	+33	+73
Consultants	10	9	-1	-0.1%	+3	+3
Registrars	7	9	+2	+0.3%	+1	+1
SHO/ Interns	12	14	+1	+0.1%	+2	+2
Medical/ Dental, other	2	2	+0	+0.0%	+0	-0
Medical & Dental	32	34	+3	+9.1%	+6	+6
Nurse/ Midwife Manager	166	165	-1	-0.0%	+1	-9
Nurse/ Midwife Specialist & AN/MP	34	34	-0	-0.0%	+1	+2
Staff Nurse/ Staff Midwife	477	476	-1	-0.0%	+3	+17
<i>Pre-registration Nurse/ Midwife Intern</i>				-1.0%		-7
<i>Pre-registration Nurse Intern (COVID-19)</i>	15	15		+0.0%	+15	+15
Nursing/ Midwifery Student	15	15		+0.0%	+15	+8
Nursing/ Midwifery other	3	4	+1	+0.4%	+1	+1
Nursing & Midwifery	695	694	-1	-0.1%	+21	+19
Therapy Professions	134	135	+1	+0.0%	+10	+11
Health Science/ Diagnostics	3	3	+0	+0.0%	+0	
Social Care	362	367	+5	+0.0%	+7	+18
Social Workers	37	38	+0	+0.0%	+0	+0
Psychologists	21	22	+0	+0.0%	+3	+4
Pharmacy	15	13	-2	-0.1%	-1	-0
H&SC, Other	2	2		+0.0%		
Health & Social Care Professionals	574	579	+5	+0.9%	+18	+32
Management (VIII & above)	32	33	+1	+0.0%	-0	-2
Administrative/ Supervisory (V to VII)	91	91	+0	+0.0%	+4	+3
Clerical (III & IV)	115	115	+0	+0.0%	+5	+5
Management & Administrative	237	238	+1	+0.5%	+10	+5
Support	232	230	-2	-0.0%	-10	-14
Maintenance/ Technical	38	40	+2	+0.1%	+5	+5
General Support	270	270	+0	+0.0%	-5	-9
Health Care Assistants	1,195	1,205	+9	+0.0%	-9	+7
Care, other	372	376	+4	+0.0%	-7	+13
Patient & Client Care	1,568	1,581	+13	+0.8%	-15	+20

CHO 7 Employment by S38 Agency: August 2020

Cheeverstown House

Aug 2020 (Dec 2019 figure: 396)	WTE Jul 2020	WTE Aug 2020	WTE change since Jul 20	% change since Jul 20	WTE change since Dec 19	WTE change since Aug 19
Overall	395	393	-2	-0.5%	-4	-4
Consultants	0	0		+0.0%		
Medical/ Dental, other	1	1		+0.0%		
Medical & Dental	1	1				
Nurse/ Midwife Manager	30	29	-1	-0.0%	+3	+0
Nurse/ Midwife Specialist & AN/MP	2	2		+0.0%		
Staff Nurse/ Staff Midwife	104	102	-2	-0.0%	-5	+1
Nursing & Midwifery	135	133	-2	-1.5%	-2	+1
Therapy Professions	11	12	+1	+0.1%	-1	-3
Social Care	33	33		+0.0%	-2	-4
Social Workers	5	5		+0.0%	-1	-1
Psychologists	5	5		+0.0%	+1	+2
Pharmacy	0	0		+0.0%	-0	-0
H&SC, Other	2	2		+0.0%		
Health & Social Care Professionals	56	57	+1	+2.2%	-3	-6
Management (VIII & above)	2	2		+0.0%		-1
Administrative/ Supervisory (V to VII)	15	15		+0.0%		+0
Clerical (III & IV)	12	12		+0.0%	+1	+1
Management & Administrative	29	29			+1	-0
Support	27	27		+0.0%		+1
Maintenance/ Technical	4	4		+0.0%		
General Support	30	30				+1
Health Care Assistants	132	130	-1	-0.0%	+0	+1
Care, other	12	12		+0.0%	-0	-1
Patient & Client Care	143	142	-1	-0.9%		-1

Kare, Newbridge, Co Kildare

Aug 2020 (Dec 2019 figure: 360)	WTE Jul 2020	WTE Aug 2020	WTE change since Jul 20	% change since Jul 20	WTE change since Dec 19	WTE change since Aug 19
Overall	335	347	+12	+3.6%	-13	+4
Nurse/ Midwife Manager	8	7	-1	-0.1%	-5	-5
Staff Nurse/ Staff Midwife	22	23	+1	+0.0%	+0	+1
Nursing & Midwifery	30	30	-0	-0.7%	-4	-4
Therapy Professions	13	13		+0.0%	-2	-1
Social Care	59	61	+2	+0.0%	+0	+2
Social Workers	4	4		+0.0%		-0
Psychologists	5	6	+0	+0.0%	+1	+2
Health & Social Care Professionals	81	83	+2	+2.5%	-1	+3
Management (VIII & above)	5	5		+0.0%	-1	-1
Administrative/ Supervisory (V to VII)	13	13	+0	+0.0%	+1	+1
Clerical (III & IV)	14	14		+0.0%	+2	+3
Management & Administrative	31	32	+0	+0.6%	+2	+3
Support	1	1		+0.0%	-0	+0
General Support	1	1			-0	+0
Health Care Assistants	84	94	+9	+0.1%	-7	-8
Care, other	106	106	+1	+0.0%	-3	+11
Patient & Client Care	190	200	+10	+5.3%	-10	+2

Our Lady's Hospice & Care Services

Aug 2020 (Dec 2019 figure: 482)	WTE Jul 2020	WTE Aug 2020	WTE change since Jul 20	% change since Jul 20	WTE change since Dec 19	WTE change since Aug 19
Overall	490	494	+5	+1.0%	+12	+10
Consultants	9	9	-1	-0.1%	+3	+3
Registrars	4	6	+2	+0.5%	+1	+0
SHO/ Interns	5	7	+2	+0.4%	+2	+2
Medical/ Dental, other	1	1	+0	+0.0%	+0	-0
Medical & Dental	20	23	+3	+17.3%	+6	+6
Nurse/ Midwife Manager	43	44	+1	+0.0%	-1	-2
Nurse/ Midwife Specialist & AN/MP	32	30	-1	-0.0%	+2	+3
Staff Nurse/ Staff Midwife	99	99	+1	+0.0%	+0	-0
Nursing/ Midwifery other	2	2		+0.0%		
Nursing & Midwifery	175	175	-0	-0.0%	+1	+1
Therapy Professions	39	40	+1	+0.0%	+3	+3
Health Science/ Diagnostics	0	0	+0	+0.0%	+0	
Social Workers	11	11	+0	+0.0%	+0	+0
Psychologists	1	1	+0	+0.1%	+0	-0
Pharmacy	9	9	+0	+0.0%	-1	-0
Health & Social Care Professionals	60	61	+1	+1.9%	+2	+3
Management (VIII & above)	4	4		+0.0%		
Administrative/ Supervisory (V to VII)	19	18	-1	-0.0%	-2	-1
Clerical (III & IV)	29	30	+0	+0.0%	+4	+6
Management & Administrative	52	52	-0	-0.3%	+2	+5
Support	70	71	+1	+0.0%	-2	-4
Maintenance/ Technical	8	8	-0	-0.0%	+1	+1
General Support	78	79	+1	+1.8%	-1	-3
Health Care Assistants	105	104	-1	-0.0%	+2	-2
Care, other	1	1		+0.0%		
Patient & Client Care	105	104	-1	-0.9%	+2	-2

Peamount Hospital (Newcastle)

Aug 2020 (Dec 2019 figure: 486)	WTE Jul 2020	WTE Aug 2020	WTE change since Jul 20	% change since Jul 20	WTE change since Dec 19	WTE change since Aug 19
Overall	526	531	+5	+0.9%	+44	+38
Registrars	2	2		+0.0%		+0
SHO/ Interns	7	7	-1	-0.1%	-0	-0
Medical & Dental	9	9	-1	-5.5%	-0	+0
Nurse/ Midwife Manager	30	30	-0	-0.0%	+4	+3
Nurse/ Midwife Specialist & AN/MP		1	+1	-1.0%	-1	-1
Staff Nurse/ Staff Midwife	90	91	+1	+0.0%	+9	+6
Nursing Education/Clinical		1	+1	-1.0%	+1	+1
Nursing/ Midwifery other		1	+1	-1.0%	+1	+1
Nursing & Midwifery	120	123	+3	+2.2%	+13	+9
Therapy Professions	39	39	-0	-0.0%	+10	+11
Health Science/ Diagnostics	3	3		+0.0%		
Social Care	5	4	-0	-0.1%	+3	+2
Social Workers	6	6		+0.0%	+1	+1
Pharmacy	5	4	-2	-0.3%	-1	-0
Health & Social Care Professionals	59	56	-3	-4.4%	+13	+14
Management (VIII & above)	4	4		+0.0%		
Administrative/ Supervisory (V to VII)	18	18	+0	+0.0%	+4	+3
Clerical (III & IV)	18	19	+1	+0.0%	-1	-2
Management & Administrative	40	41	+1	+2.9%	+3	+1
Support	47	46	-2	-0.0%	-1	-3
Maintenance/ Technical	9	10	+1	+0.1%	+2	+2
General Support	56	55	-1	-2.0%	+1	-1
Health Care Assistants	238	243	+5	+0.0%	+15	+16
Care, other	3	3		+0.0%	-0	+0
Patient & Client Care	241	247	+5	+2.2%	+15	+16

Stewart's Hospital, (Palmerstown)

Aug 2020 (Dec 2019 figure: 852)	WTE Jul 2020	WTE Aug 2020	WTE change since Jul 20	% change since Jul 20	WTE change since Dec 19	WTE change since Aug 19
Overall	863	866	+3	+0.4%	+14	-6
Consultants	0	0		+0.0%		
Registrars				-1.0%		
Medical & Dental	0	0				
Nurse/ Midwife Manager	32	32		+0.0%	-4	-6
Staff Nurse/ Staff Midwife	74	74	-0	-0.0%	+1	+2
Pre-registration Nurse/ Midwife Intern				-1.0%		-7
Pre-registration Nurse Intern (COVID-19)	15	15		+0.0%	+15	+15
Nursing/ Midwifery Student	15	15		+0.0%	+15	+8
Nursing/ Midwifery other	1	1		+0.0%		
Nursing & Midwifery	121	121	-0	-0.2%	+12	+4
Therapy Professions	14	14	-1	-0.0%	-2	-1
Social Care	13	13		+0.0%	+3	+3
Social Workers	6	6		+0.0%	+1	+1
Psychologists	4	4		+0.0%	-1	-1
Health & Social Care Professionals	37	36	-1	-1.4%	+1	+2
Management (VIII & above)	11	12	+1	+0.1%	+1	
Administrative/ Supervisory (V to VII)	17	17		+0.0%	+3	-1
Clerical (III & IV)	22	22	-0	-0.0%	-2	-2
Management & Administrative	50	51	+1	+1.1%	+2	-3
Support	57	57	-0	-0.0%	-0	-2
Maintenance/ Technical	4	6	+2	+0.5%	+1	+1
General Support	61	63	+2	+2.5%	+1	-1
Health Care Assistants	479	480	+0	+0.0%	-1	-4
Care, other	114	115	+1	+0.0%	-1	-4
Patient & Client Care	593	595	+2	+0.3%	-2	-8

St. John of God Liffey Services

Aug 2020 (Dec 2019 figure: 787)	WTE Jul 2020	WTE Aug 2020	WTE change since Jul 20	% change since Jul 20	WTE change since Dec 19	WTE change since Aug 19
Overall	768	766	-1	-0.2%	-21	+31
Registrars	1	1		+0.0%		
Medical & Dental	1	1				
Nurse/ Midwife Manager	23	23	-0	-0.0%	+3	+0
Nurse/ Midwife Specialist & AN/MP	1	1		+0.0%		
Staff Nurse/ Staff Midwife	89	87	-1	-0.0%	-3	+8
Nursing & Midwifery	112	111	-1	-1.0%	+1	+8
Therapy Professions	17	17	-0	-0.0%	+2	+2
Social Care	252	255	+4	+0.0%	+3	+16
Social Workers	6	6		+0.0%	-1	-1
Psychologists	7	7	+0	+0.0%	+1	+1
Health & Social Care Professionals	282	285	+4	+1.3%	+5	+17
Management (VIII & above)	6	6		+0.0%	-0	-0
Administrative/ Supervisory (V to VII)	10	10		+0.0%	-1	+1
Clerical (III & IV)	19	18	-1	-0.0%	+0	-1
Management & Administrative	35	34	-1	-1.9%	-1	-0
Support	30	28	-2	-0.1%	-7	-6
Maintenance/ Technical	13	13	+0	+0.0%	+1	+1
General Support	43	41	-2	-4.0%	-6	-5
Health Care Assistants	158	154	-3	-0.0%	-18	+4
Care, other	137	139	+2	+0.0%	-3	+8
Patient & Client Care	295	293	-1	-0.5%	-20	+12

CHO 7 Employment by Grade Group & Staff Category: August 2020

Aug 2020 (Dec 2019 figure: 6,515)	WTE Jul 2020	WTE Aug 2020	WTE change since Jul 20	% change since Jul 20	WTE change since Dec 19	WTE change since Aug 19
Overall	6,619	6,668	+49	+0.7%	+154	+189
Consultant Medicine	10	10	-1	-5.2%	+3	+3
Consultant Paediatrics	0	0				
Consultant Psychiatry	56	59	+3	+5.2%	+7	+9
Consultant Surgery	1	1				
Consultants	67	69	+2	+3.5%	+10	+12
Registrar	71	81	+10	+14.1%	+9	+9
Senior Registrar	17	19	+3	+16.5%	+0	+0
Specialist Registrar	3	4	+2	+67.8%	+0	+0
Registrars	90	104	+14	+16.1%	+10	+9
Interns	0	2	+2	+488.2%		
Senior House Officer	32	39	+6	+18.7%	+5	+4
SHO/ Interns	33	41	+8	+23.5%	+5	+4
Dentists	35	35	+1	+1.5%	+1	+0
Other Medical	48	47	-1	-2.3%	+0	-0
Medical/ Dental, other	83	82	-1	-0.7%	+2	+0
Medical & Dental	272	296	+24	+8.8%	+32	+25
Clinical Nurse/ Midwife Manager	331	330	-1	-0.4%	+1	+3
Director Nursing/Midwifery, Assistant	58	56	-2	-2.6%	+4	-0
Director of Nursing/Midwifery	19	19	-0	-0.2%	+3	+0
Nurse/ Midwife Manager	407	404	-3	-0.7%	+8	+3
Advanced Nurse/ Midwife Practitioner	10	11	+1	+10.0%	+7	+7
Clinical Nurse/ Midwife Specialist	93	94	+1	+1.1%	+4	+8
Nurse/ Midwife Specialist & AN/MP	103	105	+2	+2.0%	+11	+15
Staff Nurse [Intellectual Disability]	181	168	-14	-7.5%	-26	-33
Staff Nurse [Psychiatric]	189	185	-4	-2.3%	-7	-20
Staff Nurses [General/ Children's]	654	676	+22	+3.3%	+68	+77
Staff Nurse/ Staff Midwife	1,024	1,028	+4	+0.4%	+35	+24
Public Health Nurse	163	163	-0	-0.1%	-13	+4
Pre-registration Nurse/ Midwife Intern				-100.0%	-1	-20
Pre-registration Nurse Intern (COVID-19)	32	39	+7	+22.8%	+39	+39
Post-registration Nurse/ Midwife Student	10	1	-10	-95.0%	-21	+1
Nursing/ Midwifery awaiting registration	7	6	-0	-5.8%	-4	+5
Nursing/ Midwifery Student	48	45	-3	-5.6%	+13	+24
Nursing Education/Clinical	10	11	+1	+10.0%	+1	+2
Nursing/ Midwifery other	10	11	+1	+10.0%	+1	+2
Nursing & Midwifery	1,755	1,757	+1	+0.1%	+56	+71
Dietitians	27	27	+0	+0.1%	+1	+1
Occupational Therapists	193	193	+0	+0.2%	+9	+16
Orthoptists		1	+1	-100.0%	+1	+1
Physiotherapists	125	126	+0	+0.3%	+11	+7
Podiatrists & Chiropractors	2	2			+1	+1
Speech & Language Therapists	125	123	-1	-1.2%	-3	-5
Therapy Professions	471	471	-0	-0.0%	+21	+20
Clinical Measurement	2	2			+1	+1
Phlebotomists	0	0	+0	+4.5%	-1	-1
Radiographers	1	1				
Health Science/ Diagnostics	3	3	+0	+0.3%	+0	

Aug 2020 (Dec 2019 figure: 6,515)	WTE Jul 2020	WTE Aug 2020	WTE change since Jul 20	% change since Jul 20	WTE change since Dec 19	WTE change since Aug 19
Overall	6,619	6,668	+49	+0.7%	+154	+189
Social Care	373	378	+5	+1.3%	+7	+19
Social Workers	110	109	-1	-0.7%	+4	+8
Psychologists	86	86	+1	+0.7%	+6	+5
Pharmacy	42	41	-1	-1.7%	+1	+3
Counsellor Therapists	36	35	-1	-1.6%	-1	+0
Dental Hygienists	5	4	-1	-22.7%	-2	-1
Other Health & Social Care	0	1	+1	+150.0%	-1	-1
Play Therapists/ Specialists	1	1				
H&SC, Other	42	41	-1	-2.5%	-4	-2
Health & Social Care Professionals	1,127	1,130	+3	+0.3%	+34	+54
Executive Management	15	16	+1	+6.6%	+3	+2
Senior Management (VIII & GM)	63	63	-0	-0.2%	+3	+6
Management (VIII & above)	78	79	+1	+1.1%	+6	+8
Middle Management (V-VII)	197	199	+1	+0.7%	+17	+13
Other Administrative	1	1			-0	-0
Administrative/ Supervisory (V to VII)	198	200	+1	+0.7%	+17	+13
Clerical (III & IV)	369	378	+9	+2.5%	+27	+21
Management & Administrative	645	657	+11	+1.8%	+39	+42
Catering	57	56	-1	-1.8%	-3	-3
Household Services	264	263	-1	-0.3%	-6	-15
Other Labs & Associated	1	1	+0	+27.0%	+0	+0
Other Support	14	14	-0	-1.2%	-0	-1
Portering	63	63	-0	-0.4%	-4	-6
Support	399	397	-2	-0.5%	-14	-24
Maintenance	40	41	+1	+2.7%	+4	+2
Technical Services	3	5	+2	+66.7%	+1	+2
Maintenance/ Technical	43	46	+3	+7.1%	+5	+4
General Support	442	443	+1	+0.3%	-43	-20
HCA, Nurse's Aide, etc.	1,619	1,626	+7	+0.4%	-16	-16
Health & Social Care Assistants	25	23	-2	-8.4%	+11	+6
Health Care Assistants	1,644	1,649	+5	+0.3%	-5	-10
Community Welfare Officers	1	1				
Other Care Grades	598	602	+4	+0.7%	-7	+16
Care, other	599	603	+4	+0.7%	-7	+16
Home Help	134	133	-1	-0.4%	+6	+11
Patient & Client Care	2,377	2,386	+9	+0.4%	-7	+17

CHO 7 HSE Employment by Grade Group & Staff Category: August 2020

Aug 2020 (Dec 2019 figure: 3,151)	WTE Jul 2020	WTE Aug 2020	WTE change since Jul 20	% change since Jul 20	WTE change since Dec 19	WTE change since Aug 19
Overall	3,244	3,272	+28	+0.9%	+120	+116
Consultant Medicine	1	1				
Consultant Psychiatry	55	58	+3	+5.2%	+7	+9
Consultant Surgery	1	1				
Consultants	57	60	+3	+5.0%	+7	+9
Registrar	66	76	+9	+14.1%	+9	+8
Senior Registrar	17	19	+3	+16.5%	+0	+0
Specialist Registrar		1	+1	-100.0%	-1	-0
Registrars	83	96	+13	+15.2%	+9	+8
SHO/ Interns	20	27	+6	+30.6%	+3	+2
Dentists	35	35	+1	+1.5%	+1	+0
Other Medical	46	44	-1	-2.4%	+0	-0
Medical/ Dental, other	80	80	-1	-0.7%	+1	+0
Medical & Dental	241	262	+21	+8.8%	+27	+20
Clinical Nurse/ Midwife Manager	177	177	-1	-0.3%	+1	+12
Director Nursing/Midwifery, Assistant	49	48	-2	-3.1%	+3	-2
Director of Nursing/Midwifery	15	15	-0	-0.3%	+4	+1
Nurse/ Midwife Manager	241	239	-2	-0.9%	+8	+12
Advanced Nurse/ Midwife Practitioner	7	7			+5	+5
Clinical Nurse/ Midwife Specialist	61	63	+2	+4.1%	+5	+8
Nurse/ Midwife Specialist & AN/MP	68	71	+2	+3.6%	+10	+13
Staff Nurse [Intellectual Disability]	1	1			+1	+1
Staff Nurse [Psychiatric]	189	185	-4	-2.3%	-7	-20
Staff Nurses [General/ Children's]	357	366	+9	+2.6%	+38	+25
Staff Nurse/ Staff Midwife	547	552	+5	+0.9%	+32	+6
Public Health Nurse	163	163	-0	-0.1%	-13	+4
Pre-registration Nurse/ Midwife Intern				-100.0%	-1	-13
Pre-registration Nurse Intern (COVID-19)	17	24	+7	+43.5%	+24	+24
Post-registration Nurse/ Midwife Student	10	1	-10	-95.0%	-21	+1
Nursing/ Midwifery awaiting registration	7	6	-0	-5.8%	-4	+5
Nursing/ Midwifery Student	33	30	-3	-8.1%	-2	+16
Nursing Education/Clinical	8	8	+0	+0.5%	+0	+1
Nursing/ Midwifery other	8	8	+0	+0.5%	+0	+1
Nursing & Midwifery	1,060	1,063	+2	+0.2%	+43	+52
Dietitians	18	17	-0	-1.1%	+1	-0
Occupational Therapists	144	144	-0	-0.3%	+6	+12
Orthoptists		1	+1	-100.0%	+1	+1
Physiotherapists	77	76	-0	-0.4%	+6	+2
Podiatrists & Chiropodists	2	2			+1	+1
Speech & Language Therapists	97	96	-1	-0.7%	-2	-5
Therapy Professions	338	337	-1	-0.3%	+12	+10
Social Care	11	11	-0	-1.4%	+0	+1
Social Workers	73	71	-1	-1.5%	+4	+8
Psychologists	64	65	+0	+0.5%	+3	+2
Pharmacy	27	28	+1	+3.3%	+2	+3
Counsellor Therapists	34	34	-1	-1.6%	-1	+0
Dental Hygienists	5	4	-1	-22.7%	-2	-1
Other Health & Social Care	0	1	+1	+150.0%	-1	-1
Play Therapists/ Specialists	1	1				
H&SC, Other	40	39	-1	-2.6%	-4	-2

Aug 2020 (Dec 2019 figure: 3,151)	WTE Jul 2020	WTE Aug 2020	WTE change since Jul 20	% change since Jul 20	WTE change since Dec 19	WTE change since Aug 19
Overall	3,244	3,272	+28	+0.9%	+120	+116
Health & Social Care Professionals	553	551	-2	-0.4%	+2	+22
Executive Management	8	9	+1	+12.4%	+2	+1
Senior Management (VIII & GM)	38	37	-1	-2.9%	+4	+9
Management (VIII & above)	46	46	-0	-0.3%	+6	+10
Administrative/ Supervisory (V to VII)	107	109	+1	+1.1%	+13	+10
Clerical (III & IV)	254	263	+9	+3.6%	+22	+16
Management & Administrative	408	418	+10	+2.5%	+26	+36
Catering	27	25	-2	-5.8%	-2	-2
Household Services	89	92	+2	+2.5%	+1	-3
Other Support	5	5	-0	-3.3%	-0	-1
Portering	46	46	-0	-0.0%	-3	-4
Support	167	167	+1	+0.3%	-3	-10
Maintenance/ Technical	5	6	+1	+11.3%	+0	-0
General Support	172	173	+1	+0.6%	-22	-11
HCA, Nurse's Aide, etc.	432	428	-4	-0.9%	-5	-20
Health & Social Care Assistants	17	16	-1	-3.2%	+8	+3
Health Care Assistants	449	444	-5	-1.0%	+3	-17
Care, other	227	227	+1	+0.2%	-0	+3
Home Help	134	133	-1	-0.4%	+6	+11
Patient & Client Care	809	805	-5	-0.6%	-56	-3

Employment by WTE, Headcount, Gender, Full-Time /Part-Time etc.: Aug 2020

CHO 7	WTE	Headcount	WTE: no.	% Male	% female	Male WTE: no.	Female WTE: no.	% Total Perm	% Male Perm	% Female Perm	% Total Full Time	% Total Part Time	% Male FT	% Female FT
Overall	6,668	7,833	1.17	19.8%	80.2%	1.09	1.20	87.0%	84.1%	87.7%	69.2%	30.8%	83.3%	65.8%
Consultant Medicine	10	12	1.25	25.0%	75.0%	1.12	1.30	58.3%	58.3%	55.6%	66.7%	33.3%	33.3%	77.8%
Consultant Paediatrics	0	1	2.94		100.0%		2.94	100.0%	100.0%	100.0%	0.0%	100.0%		0.0%
Consultant Psychiatry	59	66	1.13	33.3%	66.7%	1.12	1.13	56.1%	56.1%	47.7%	84.8%	15.2%	95.5%	79.5%
Consultant Surgery	1	1	1.25		100.0%		1.25	0.0%	0.0%	0.0%	0.0%	100.0%		0.0%
Consultants	69	80	1.15	31.3%	68.8%	1.12	1.17	56.3%	72.0%	49.1%	80.0%	20.0%	88.0%	76.4%
Registrar	81	83	1.03	31.3%	68.7%	1.02	1.03	1.2%	1.2%	0.0%	100.0%	0.0%	100.0%	100.0%
Senior Registrar	19	21	1.09	42.9%	57.1%	1.01	1.16	0.0%	0.0%	0.0%	100.0%	0.0%	100.0%	100.0%
Specialist Registrar	4	5	1.14	20.0%	80.0%	2.00	1.03	0.0%	0.0%	0.0%	100.0%	0.0%	100.0%	100.0%
Registrars	104	109	1.04	33.0%	67.0%	1.03	1.05	0.9%	2.8%	0.0%	100.0%	0.0%	100.0%	100.0%
SHO/ Interns	41	42	1.04	28.6%	71.4%	1.05	1.03	0.0%	0.0%	0.0%	100.0%	0.0%	100.0%	100.0%
Dentists	35	41	1.17	14.6%	85.4%	1.11	1.18	100.0%	100.0%	100.0%	61.0%	39.0%	83.3%	57.1%
Other Medical	47	66	1.41	40.9%	59.1%	1.38	1.43	36.4%	36.4%	51.3%	22.7%	77.3%	18.5%	25.6%
Medical/ Dental, other	82	107	1.31	30.8%	69.2%	1.32	1.30	60.7%	30.3%	74.3%	37.4%	62.6%	30.3%	40.5%
Medical & Dental	296	338	1.14	31.4%	68.6%	1.13	1.14	32.8%	27.4%	35.3%	75.4%	24.6%	75.5%	75.4%
Clinical Nurse/ Midwife Manager	330	353	1.07	14.7%	85.3%	1.03	1.08	97.7%	97.7%	98.3%	85.3%	14.7%	96.2%	83.4%
Director Nursing/Midwifery, Assistant	56	62	1.10	17.7%	82.3%	1.05	1.12	93.5%	93.5%	92.2%	87.1%	12.9%	100.0%	84.3%
Director of Nursing/Midwifery	19	19	1.02	5.3%	94.7%	1.00	1.02	100.0%	100.0%	100.0%	89.5%	10.5%	100.0%	88.9%
Nurse/ Midwife Manager	404	434	1.07	14.7%	85.3%	1.03	1.08	97.2%	95.3%	97.6%	85.7%	14.3%	96.9%	83.8%
Advanced Nurse/ Midwife Practitioner	11	12	1.09	8.3%	91.7%	1.04	1.09	100.0%	100.0%	100.0%	83.3%	16.7%	100.0%	81.8%
Clinical Nurse/ Midwife Specialist	94	110	1.18	9.1%	90.9%	1.02	1.19	98.2%	98.2%	98.0%	72.7%	27.3%	100.0%	70.0%
Nurse/ Midwife Specialist & AN/MP	105	122	1.17	9.0%	91.0%	1.02	1.18	98.4%	100.0%	98.2%	73.8%	26.2%	100.0%	71.2%
Staff Nurse [Intellectual Disability]	168	211	1.26	8.5%	91.5%	1.08	1.28	95.3%	95.3%	95.3%	57.8%	42.2%	88.9%	54.9%
Staff Nurse [Psychiatric]	185	208	1.13	23.6%	76.4%	1.06	1.15	96.2%	96.2%	96.9%	83.7%	16.3%	91.8%	81.1%
Staff Nurses [General/ Children's]	676	784	1.16	9.7%	90.3%	1.08	1.17	92.9%	92.9%	92.8%	72.4%	27.6%	90.8%	70.5%
Staff Nurse/ Staff Midwife	1,028	1,203	1.17	11.9%	88.1%	1.07	1.18	93.8%	93.7%	93.9%	71.8%	28.2%	90.9%	69.2%
Public Health Nurse	163	205	1.26	0.5%	99.5%	1.00	1.26	94.1%	100.0%	94.1%	61.5%	38.5%	100.0%	61.3%
Pre-registration Nurse Intern (COVID-19)	39	44	1.14	15.9%	84.1%	1.14	1.14	2.3%	2.3%	2.7%	100.0%	0.0%	100.0%	100.0%
Post-registration Nurse/ Midwife Student	1	1	2.00		100.0%		2.00	0.0%	0.0%	0.0%	100.0%	0.0%		100.0%

Nursing/ Midwifery awaiting registration	6	7	1.13	14.3%	85.7%	1.00	1.16	71.4%	71.4%	83.3%	85.7%	14.3%	100.0%	83.3%
Nursing/ Midwifery Student	45	52	1.15	15.4%	84.6%	1.12	1.15	11.5%	0.0%	13.6%	98.1%	1.9%	100.0%	97.7%
Nursing Education/Clinical	11	12	1.04		100.0%		1.04	100.0%	100.0%	100.0%	75.0%	25.0%		75.0%
Nursing/ Midwifery other	11	12	1.04		100.0%		1.04	100.0%		100.0%	75.0%	25.0%		75.0%
Nursing & Midwifery	1,757	2,028	1.15	11.2%	88.8%	1.06	1.17	92.8%	91.2%	93.0%	74.6%	25.4%	93.4%	72.2%
Dietitians	27	32	1.20	6.3%	93.8%	1.00	1.22	90.6%	90.6%	90.0%	65.6%	34.4%	100.0%	63.3%
Occupational Therapists	193	220	1.14	9.1%	90.9%	1.07	1.15	85.9%	85.9%	85.5%	79.1%	20.9%	90.0%	78.0%
Orthoptists	1	1	2.00	100.0%		2.00		0.0%	0.0%		100.0%	0.0%	100.0%	
Physiotherapists	126	144	1.14	21.5%	78.5%	1.04	1.18	90.3%	90.3%	88.5%	77.8%	22.2%	93.5%	73.5%
Podiatrists & Chiropodists	2	2	1.00		100.0%		1.00	100.0%	100.0%	100.0%	100.0%	0.0%		100.0%
Speech & Language Therapists	123	135	1.10		100.0%		1.10	87.4%	87.4%	87.4%	86.7%	13.3%		86.7%
Therapy Professions	471	534	1.13	10.1%	89.9%	1.06	1.14	87.6%	92.6%	87.1%	80.0%	20.0%	92.6%	78.5%
Clinical Measurement	2	2	1.00	100.0%		1.00		50.0%	50.0%		100.0%	0.0%	100.0%	
Phlebotomists	0	1	4.35		100.0%		4.35	100.0%	100.0%	100.0%	0.0%	100.0%		0.0%
Radiographers	1	1	1.00		100.0%		1.00	100.0%	100.0%	100.0%	100.0%	0.0%		100.0%
Health Science/ Diagnostics	3	4	1.24	50.0%	50.0%	1.00	1.63	75.0%	50.0%	100.0%	75.0%	25.0%	100.0%	50.0%
Social Care	378	423	1.12	25.5%	74.5%	1.09	1.13	96.5%	98.1%	95.9%	74.5%	25.5%	82.4%	71.7%
Social Workers	109	121	1.11	16.5%	83.5%	1.06	1.12	95.0%	85.0%	97.0%	81.8%	18.2%	90.0%	80.2%
Psychologists	86	98	1.14	19.4%	80.6%	1.07	1.16	98.0%	100.0%	97.5%	85.7%	14.3%	94.7%	83.5%
Pharmacy	41	48	1.17	22.9%	77.1%	1.06	1.21	60.4%	45.5%	64.9%	47.9%	52.1%	45.5%	48.6%
Counsellor Therapists	35	39	1.11	30.8%	69.2%	1.06	1.13	89.7%	89.7%	88.9%	66.7%	33.3%	75.0%	63.0%
Dental Hygienists	4	6	1.67		100.0%		1.67	100.0%	100.0%	100.0%	16.7%	83.3%		16.7%
Other Health & Social Care	1	1	1.05		100.0%		1.05	100.0%	100.0%	100.0%	0.0%	100.0%		0.0%
Play Therapists/ Specialists	1	1	1.00	100.0%		1.00		100.0%	100.0%		100.0%	0.0%	100.0%	
H&SC, Other	41	47	1.15	27.7%	72.3%	1.06	1.19	91.5%	92.3%	91.2%	59.6%	40.4%	76.9%	52.9%
Health & Social Care	1,130	1,275	1.13	17.8%	82.2%	1.07	1.14	91.1%	92.5%	90.8%	76.8%	23.2%	84.6%	75.1%
Executive Management	16	16	1.01	31.3%	68.8%	1.00	1.01	87.5%	87.5%	90.9%	100.0%	0.0%	100.0%	100.0%
Senior Management (VIII & GM)	63	64	1.01	25.0%	75.0%	1.00	1.02	98.4%	98.4%	97.9%	96.9%	3.1%	100.0%	95.8%
Management (VIII & above)	79	80	1.01	26.3%	73.8%	1.00	1.02	96.3%	95.2%	96.6%	97.5%	2.5%	100.0%	96.6%
Administrative/ Supervisory (V to VII)	200	214	1.07	23.8%	76.2%	1.02	1.09	89.3%	78.4%	92.6%	86.4%	13.6%	98.0%	82.8%
Clerical (III & IV)	378	444	1.17	10.8%	89.2%	1.09	1.19	84.0%	77.1%	84.8%	69.6%	30.4%	87.5%	67.4%
Management & Administrative	657	738	1.12	16.3%	83.7%	1.04	1.14	86.9%	80.8%	88.0%	77.5%	22.5%	94.2%	74.3%
Catering	56	60	1.08	28.3%	71.7%	1.05	1.09	98.3%	98.3%	100.0%	75.0%	25.0%	100.0%	65.1%
Household Services	263	349	1.33	13.8%	86.2%	1.18	1.35	87.1%	87.1%	87.4%	39.3%	60.7%	66.7%	34.9%
Other Labs & Associated	1	2	1.57		100.0%		1.57	50.0%	50.0%	50.0%	50.0%	50.0%		50.0%

Other Support	14	18	1.29	72.2%	27.8%	1.18	1.71	77.8%	77.8%	100.0%	61.1%	38.9%	69.2%	40.0%
Portering	63	66	1.05	92.4%	7.6%	1.03	1.31	84.8%	84.8%	80.0%	84.8%	15.2%	90.2%	20.0%
Support	397	495	1.25	28.1%	71.9%	1.09	1.32	87.7%	84.9%	88.8%	50.5%	49.5%	81.3%	38.5%
Maintenance/ Technical	46	51	1.10	88.2%	11.8%	1.07	1.40	90.2%	88.9%	100.0%	82.4%	17.6%	86.7%	50.0%
General Support	443	546	1.23	33.7%	66.3%	1.09	1.32	87.9%	85.9%	89.0%	53.5%	46.5%	82.6%	38.7%
HCA, Nurse's Aide, etc.	1,626	1,906	1.17	24.4%	75.6%	1.09	1.20	85.9%	85.9%	85.6%	65.1%	34.9%	77.7%	61.0%
Health & Social Care Assistants	23	26	1.13	19.2%	80.8%	1.12	1.13	34.6%	34.6%	33.3%	80.8%	19.2%	100.0%	76.2%
Health Care Assistants	1,649	1,932	1.17	24.4%	75.6%	1.09	1.20	85.2%	86.2%	84.9%	65.3%	34.7%	77.9%	61.2%
Care, other	603	702	1.16	28.1%	71.9%	1.08	1.20	94.4%	94.9%	94.3%	72.4%	27.6%	88.3%	66.1%
Home Help	133	274	2.06	6.9%	93.1%	4.48	1.98	82.5%	52.6%	84.7%	16.1%	83.9%	10.5%	16.5%
Patient & Client Care	2,386	2,908	1.22	23.6%	76.4%	1.11	1.26	87.2%	87.8%	87.0%	62.3%	37.7%	79.0%	57.2%

Employment by WTE, Headcount, Gender, Full-Time /Part-Time etc.: Aug 2020

CHO 7	WTE	Headcount	WTE: no.	% Male	% female	Male WTE: no.	Female WTE: no.	% Total Perm	% Male Perm	% Female Perm	% Total Full Time	% Total Part Time	% Male FT	% Female FT
Overall	6,668	7,833	1.17	19.8%	80.2%	1.09	1.20	87.0%	84.1%	87.7%	69.2%	30.8%	83.3%	65.8%
Community Health & Wellbeing	8	10	1.21	10.0%	90.0%	1.00	1.23	100.0%	100.0%	100.0%	70.0%	30.0%	100.0%	100.0%
Mental Health	876	963	1.10	22.9%	77.1%	1.05	1.11	80.8%	80.8%	81.1%	87.3%	12.7%	95.9%	95.9%
Primary Care	1,720	2,024	1.18	16.0%	84.0%	1.08	1.20	86.9%	86.9%	88.8%	67.2%	32.8%	81.1%	81.1%
Social Care	4,064	4,836	1.19	20.8%	79.2%	1.11	1.21	88.2%	88.2%	88.4%	66.5%	33.5%	81.2%	81.2%

CHO 7 Skills Mix by Staff Grouping: August 2020

Aug 2020 (Dec 2018 figure: 6,557)	WTE Dec 2015	WTE Dec 2016	WTE Dec 2017	WTE Dec 2018	WTE Dec 2019	WTE Jul 2020	WTE Aug 2020
Overall	5,479	5,579	6,406	6,557	6,515	6,619	6,668
Consultant Medicine	2.9%	3.2%	3.5%	2.7%	2.5%	3.7%	3.2%
Consultant Paediatrics	0.2%	0.1%	0.1%	0.1%	0.1%	0.1%	0.1%
Consultant Psychiatry	23.8%	19.2%	18.2%	18.1%	19.2%	20.4%	19.8%
Consultant Surgery	0.3%	0.3%	0.2%	0.5%	0.3%	0.3%	0.3%
Consultants	27.2%	22.8%	22.0%	21.3%	22.1%	24.6%	23.4%
Registrar	10.4%	22.2%	20.7%	24.9%	26.5%	26.0%	27.3%
Senior Registrar	3.0%	4.1%	3.7%	5.3%	7.0%	6.1%	6.5%
Specialist Registrar	2.3%	1.5%	2.2%	1.8%	1.5%	1.0%	1.5%
Registrars	15.7%	27.8%	26.6%	31.9%	35.0%	33.0%	35.2%
Interns	0.9%	0.8%	0.8%	0.8%	0.7%	0.1%	0.7%
Senior House Officer	18.1%	15.3%	16.0%	12.6%	12.5%	11.9%	13.0%
SHO/ Interns	19.0%	16.1%	16.8%	13.3%	13.2%	12.1%	13.7%
Dentists	18.4%	15.6%	13.9%	13.8%	12.5%	12.7%	11.9%
Other Medical	19.8%	17.7%	20.8%	19.6%	17.2%	17.6%	15.8%
Medical/ Dental, other	38.2%	33.3%	34.7%	33.4%	29.7%	30.3%	27.7%
Medical & Dental	3.9%	4.6%	4.0%	4.0%	4.1%	100.0%	4.4%
Clinical Nurse/ Midwife Manager	17.4%	18.8%	19.0%	18.9%	19.3%	18.8%	18.8%
Director Nursing/Midwifery, Assistant	2.9%	3.3%	2.9%	3.3%	3.1%	3.3%	3.2%
Director of Nursing/Midwifery	1.1%	1.0%	1.3%	1.1%	0.9%	1.1%	1.1%
Nurse/ Midwife Manager	21.4%	23.2%	23.2%	23.3%	23.3%	23.2%	23.0%
Advanced Nurse/ Midwife Practitioner	0.1%	0.1%	0.1%	0.1%	0.3%	0.6%	0.6%
Clinical Nurse/ Midwife Specialist	4.0%	4.1%	4.5%	5.0%	5.3%	5.3%	5.3%
Nurse/ Midwife Specialist & AN/MP	4.1%	4.2%	4.6%	5.1%	5.5%	5.8%	6.0%
Staff Nurse [Intellectual Disability]	14.4%	14.2%	13.4%	12.9%	11.4%	10.3%	9.5%
Staff Nurse [Psychiatric]	14.7%	13.3%	13.2%	11.7%	11.2%	10.8%	10.5%
Staff Nurses [General/ Children's]	32.5%	31.5%	32.9%	33.9%	35.7%	37.3%	38.5%
Staff Nurse/ Staff Midwife	61.6%	59.1%	59.4%	58.6%	58.4%	58.3%	58.5%
Public Health Nurse	10.9%	11.2%	10.8%	11.5%	10.3%	9.3%	9.3%
Pre-registration Nurse/ Midwife Intern	0.1%	0.1%		0.4%	0.1%		
Pre-registration Nurse Intern (COVID-19)						1.8%	2.2%
Post-registration Nurse/ Midwife Student	1.5%	1.4%	0.9%	0.4%	1.2%	0.6%	0.0%
Nursing/ Midwifery awaiting registration			0.5%	0.2%	0.6%	0.4%	0.4%
Nursing/ Midwifery Student	1.6%	1.5%	1.4%	1.0%	1.9%	2.7%	2.6%
Nursing/ Midwifery other	0.6%	0.8%	0.5%	0.5%	0.6%	0.6%	0.7%
Nursing & Midwifery	29.8%	28.8%	26.9%	25.9%	26.1%	100.0%	26.3%
Dietitians	2.3%	2.4%	1.8%	2.3%	2.3%	2.4%	2.4%
Occupational Therapists	21.3%	21.3%	16.1%	16.9%	16.8%	17.1%	17.1%
Orthoptists	0.0%	0.0%					0.0%
Physiotherapists	15.3%	15.4%	11.8%	11.5%	10.4%	11.1%	11.1%
Podiatrists & Chiropodists	0.1%	0.1%	0.1%	0.1%	0.1%	0.2%	0.2%
Speech & Language Therapists	11.9%	13.5%	12.1%	11.2%	11.5%	11.1%	10.9%
Therapy Professions	50.8%	52.8%	41.9%	41.9%	41.1%	41.8%	41.7%
Audiology	0.0%	0.1%					
Clinical Measurement	0.1%	0.1%	0.1%	0.1%	0.1%	0.2%	0.2%
Medical Laboratory		0.1%					
Phlebotomists	0.1%	0.1%	0.1%	0.1%	0.1%	0.0%	0.0%
Radiographers	0.2%	0.1%	0.1%	0.1%	0.1%	0.1%	0.1%
Health Science/ Diagnostics	0.4%	0.5%	0.3%	0.3%	0.3%	0.3%	0.3%
Social Care	15.7%	14.2%	31.3%	32.8%	33.9%	33.1%	33.5%
Social Workers	12.9%	13.9%	10.7%	10.1%	9.6%	9.7%	9.7%
Psychologists	9.4%	8.7%	8.1%	7.7%	7.4%	7.6%	7.6%

Aug 2020 (Dec 2018 figure: 6,557)	WTE Dec 2015	WTE Dec 2016	WTE Dec 2017	WTE Dec 2018	WTE Dec 2019	WTE Jul 2020	WTE Aug 2020
Overall	5,479	5,579	6,406	6,557	6,515	6,619	6,668
Pharmacy	5.5%	4.8%	3.7%	3.5%	3.7%	3.7%	3.6%
Counsellor Therapists	4.2%	3.9%	3.1%	2.8%	3.3%	3.2%	3.1%
Dental Hygienists	0.5%	0.4%	0.3%	0.4%	0.5%	0.4%	0.3%
Other Health & Social Care	0.5%	0.6%	0.5%	0.4%	0.2%	0.0%	0.1%
Play Therapists/ Specialists	0.1%	0.1%	0.1%	0.1%	0.1%	0.1%	0.1%
H&SC, Other	5.2%	5.1%	4.1%	3.7%	4.1%	3.7%	3.6%
Health & Social Care Professionals	13.8%	14.2%	16.4%	16.7%	16.8%	100.0%	16.9%
Executive Management	2.2%	2.9%	2.5%	1.9%	2.1%	2.3%	2.4%
Senior Management (VIII & GM)	9.4%	8.7%	8.5%	9.2%	9.9%	9.8%	9.6%
Management (VIII & above)	11.7%	11.6%	11.0%	11.1%	12.0%	12.1%	12.0%
Middle Management (V-VII)	24.1%	23.7%	26.0%	27.2%	29.9%	30.6%	30.3%
Other Administrative	0.2%	0.1%	0.2%	0.1%	0.2%	0.1%	0.1%
Administrative/ Supervisory (V to VII)	24.3%	23.8%	26.1%	27.3%	30.1%	30.7%	30.4%
Clerical (III & IV)	64.0%	64.6%	62.9%	61.6%	57.9%	57.2%	57.6%
Management & Administrative	9.8%	10.0%	9.5%	9.4%	9.5%	100.0%	9.8%
Catering	12.1%	12.0%	13.0%	12.8%	13.1%	12.8%	12.6%
Household Services	59.6%	59.9%	59.9%	60.4%	59.5%	59.7%	59.4%
Other Labs & Associated	0.3%	0.2%	0.2%	0.2%	0.2%	0.2%	0.3%
Other Support	3.9%	3.7%	3.0%	3.2%	3.1%	3.2%	3.1%
Portering	17.3%	16.7%	14.5%	14.6%	14.9%	14.3%	14.2%
Support	93.2%	92.6%	90.6%	91.2%	90.9%	90.2%	89.5%
Maintenance/ Technical	6.8%	7.4%	9.4%	8.8%	9.1%	9.8%	10.5%
General Support	8.2%	7.9%	7.7%	7.4%	7.5%	100.0%	6.6%
HCA, Nurse's Aide, etc.	66.5%	66.9%	66.4%	67.6%	68.7%	68.1%	68.2%
Health & Social Care Assistants	0.5%	0.4%	0.3%	0.9%	0.5%	1.1%	1.0%
Health Care Assistants	66.9%	67.4%	66.7%	68.5%	69.2%	69.2%	69.1%
Community Welfare Officers	0.1%	0.1%	0.1%	0.0%	0.0%	0.0%	0.0%
Other Care Grades	25.0%	24.3%	26.5%	25.7%	25.5%	25.2%	25.3%
Care, other	25.1%	24.4%	26.6%	25.8%	25.5%	25.2%	25.3%
Home Help	8.0%	8.2%	6.7%	5.7%	5.3%	5.6%	5.6%
Patient & Client Care	34.5%	34.6%	35.5%	36.5%	36.7%	100.0%	35.8%
Total	100 %	100 %	100 %	100 %	100%	100 %	100 %

CHO 7 Skills Mix by Care Group: August 2020

Aug 2020 (Dec 2018 figure: 835)	WTE Dec 2015	WTE Dec 2016	WTE Dec 2017	WTE Dec 2018	WTE Dec 2019	WTE Jul 2020	WTE Aug 2020
Mental Health	837	828	859	835	834.98	850.58	875.62
Consultants	47.0%	44.2%	43.0%	43.6%	41.6%	46.2%	41.3%
Registrar	17.2%	19.7%	17.8%	25.1%	22.9%	24.3%	27.1%
Senior Registrar	6.8%	9.4%	9.8%	12.7%	16.5%	14.9%	14.7%
Specialist Registrar			1.0%		0.9%		0.4%
Registrars	24.0%	29.1%	28.7%	37.8%	40.3%	39.2%	42.2%
Interns	2.1%	2.0%	2.1%	2.0%	1.7%	0.3%	1.5%
Senior House Officer	27.0%	24.7%	26.2%	16.6%	16.4%	14.3%	15.0%
SHO/ Interns	29.1%	26.7%	28.3%	18.6%	18.2%	14.6%	16.5%
Medical & Dental	11.5%	12.2%	11.1%	12.3%	12.3%	15.0%	15.0%
Clinical Nurse/ Midwife Manager	22.3%	25.7%	24.5%	27.0%	26.5%	25.2%	24.8%
Director Nursing/Midwifery, Assistant	3.5%	4.1%	4.5%	5.0%	4.3%	4.3%	4.2%
Director of Nursing/Midwifery	0.8%	0.8%	0.8%	0.8%	0.8%	0.8%	0.7%
Nurse/ Midwife Manager	26.6%	30.6%	29.8%	32.8%	31.5%	30.3%	29.8%
Advanced Nurse/ Midwife Practitioner			0.3%	0.3%	0.8%	1.4%	1.4%
Clinical Nurse/ Midwife Specialist	6.5%	7.2%	6.7%	7.0%	10.0%	10.1%	10.4%
Nurse/ Midwife Specialist & AN/MP	6.5%	7.2%	7.0%	7.3%	10.8%	11.5%	11.8%
Staff Nurse [Intellectual Disability]						0.3%	0.3%
Staff Nurse [Psychiatric]	63.5%	58.1%	58.4%	54.3%	51.1%	48.2%	46.7%
Staff Nurses [General/ Children's]	1.9%	1.9%	1.1%	1.2%	1.5%	2.4%	2.4%
Staff Nurse/ Staff Midwife	65.4%	60.1%	59.5%	55.5%	52.6%	50.9%	49.4%
Pre-registration Nurse/ Midwife Intern	0.4%	0.5%		1.6%	0.4%		
Pre-registration Nurse Intern (COVID-19)						4.3%	6.1%
Nursing/ Midwifery awaiting registration			2.1%	1.1%	2.7%	1.0%	0.9%
Nursing/ Midwifery Student	0.4%	0.5%	2.1%	2.8%	3.0%	5.3%	7.0%
Nursing Education/Clinical	1.1%	1.7%	1.6%	1.7%	2.0%	2.0%	2.0%
Nursing/ Midwifery other	1.1%	1.7%	1.6%	1.7%	2.0%	2.0%	2.0%
Nursing & Midwifery	44.8%	43.7%	44.9%	43.3%	43.3%	44.7%	44.7%
Dietitians	0.7%			1.4%	2.1%	2.2%	2.2%
Occupational Therapists	29.9%	30.6%	28.0%	29.8%	27.3%	27.1%	26.0%
Speech & Language Therapists	4.2%	5.0%	4.7%	3.5%	4.8%	2.8%	2.8%
Therapy Professions	34.9%	35.5%	32.7%	34.6%	34.2%	32.0%	31.0%
Social Care	8.0%	7.9%	7.4%	5.8%	5.4%	5.5%	5.4%
Social Workers	28.9%	30.2%	29.0%	26.2%	24.4%	27.1%	26.5%
Psychologists	21.0%	18.3%	20.7%	23.9%	22.4%	21.8%	22.9%
Pharmacy					0.7%	0.7%	0.7%
Counsellor Therapists	6.2%	6.6%	8.4%	7.6%	11.4%	12.6%	12.8%
Other Health & Social Care	1.1%	1.5%	1.8%	1.8%	1.4%	0.3%	0.7%
H&SC, Other	7.3%	8.1%	10.2%	9.4%	12.9%	12.9%	13.5%
Health & Social Care Professionals	16.0%	16.4%	16.9%	16.8%	16.8%	15.8%	15.8%
Management (VIII & above)	3.3%	4.3%	4.1%	3.9%	4.3%	4.0%	5.3%
Administrative/ Supervisory (V to VII)	14.9%	18.8%	23.2%	25.3%	24.1%	23.6%	23.1%
Clerical (III & IV)	81.7%	76.9%	72.7%	70.8%	71.6%	72.4%	71.6%
Management & Administrative	7.2%	8.0%	8.0%	8.8%	8.8%	8.3%	8.3%
Support	93.2%	92.3%	92.1%	91.7%	90.5%	88.8%	89.4%
Maintenance/ Technical	6.8%	7.7%	7.9%	8.3%	9.5%	11.2%	10.6%
General Support	3.4%	3.2%	3.0%	2.9%	2.9%	2.1%	2.1%
HCA, Nurse's Aide, etc.	33.1%	33.7%	32.2%	31.0%	26.6%	27.9%	28.2%

Aug 2020 (Dec 2018 figure: 835)	WTE Dec 2015	WTE Dec 2016	WTE Dec 2017	WTE Dec 2018	WTE Dec 2019	WTE Jul 2020	WTE Aug 2020
Mental Health	837	828	859	835	834.98	850.58	875.62
Health Care Assistants	33.1%	33.7%	32.2%	31.0%	26.6%	27.9%	28.2%
Care, other	66.9%	66.3%	67.8%	69.0%	73.4%	72.1%	71.8%
Patient & Client Care	17.1%	16.4%	16.1%	16.0%	16.0%	14.2%	14.2%
Total	100 %	100 %	100 %	100 %	100 %	100 %	

Aug 2020 (Dec 2018 figure: 1,776)	WTE Dec 2015	WTE Dec 2016	WTE Dec 2017	WTE Dec 2018	WTE Dec 2019	WTE Jul 2020	WTE Aug 2020
Primary Care	1,647	1,687	1,691	1,776	1,702.01	1,717.52	1,720.24
Consultant Medicine	6.3%	6.1%	6.4%	4.9%	4.8%	7.1%	6.5%
Consultant Psychiatry	3.0%	1.5%	2.2%	2.1%	2.9%	2.8%	2.7%
Consultant Surgery	0.8%	0.6%	0.3%	0.8%	0.6%	0.6%	0.5%
Consultants	10.1%	8.2%	8.9%	7.8%	8.3%	10.4%	9.8%
Registrars	8.9%	28.9%	27.1%	30.1%	33.0%	30.3%	31.2%
SHO/ Interns	5.1%	4.5%	4.2%	5.1%	4.3%	5.0%	6.8%
Dentists	39.9%	29.9%	25.7%	25.3%	24.4%	24.2%	23.8%
Other Medical	36.0%	28.5%	34.1%	31.7%	30.1%	30.1%	28.4%
Medical/ Dental, other	75.9%	58.4%	59.8%	57.0%	54.5%	54.3%	52.2%
Medical & Dental	5.9%	7.9%	8.1%	8.1%	8.5%	8.6%	8.6%
Clinical Nurse/ Midwife Manager	11.0%	10.2%	10.1%	10.2%	10.7%	10.7%	10.6%
Director Nursing/Midwifery, Assistant	3.6%	3.9%	3.7%	3.8%	3.4%	4.4%	4.1%
Director of Nursing/Midwifery	1.0%	1.1%	1.1%	1.2%	1.1%	1.3%	1.3%
Nurse/ Midwife Manager	15.5%	15.2%	14.9%	15.2%	15.2%	16.5%	16.0%
Nurse/ Midwife Specialist & AN/MP	6.5%	6.6%	8.4%	8.8%	8.7%	9.8%	9.7%
Staff Nurse/ Staff Midwife	37.5%	37.5%	36.3%	37.5%	38.7%	40.0%	42.2%
Public Health Nurse	35.0%	35.5%	36.7%	36.9%	33.1%	31.4%	31.6%
Nursing/ Midwifery Student	4.8%	4.5%	3.1%	1.3%	4.0%	1.9%	0.1%
Nursing Education/Clinical	0.6%	0.5%	0.5%	0.4%	0.4%	0.4%	0.4%
Other Nursing/ Midwifery		0.2%					
Nursing/ Midwifery other	0.6%	0.7%	0.5%	0.4%	0.4%	0.4%	0.4%
Nursing & Midwifery	30.5%	30.1%	30.1%	29.8%	31.1%	29.9%	29.9%
Dietitians	3.6%	3.8%	4.0%	4.8%	3.8%	4.1%	4.0%
Occupational Therapists	25.9%	24.9%	23.4%	26.8%	26.6%	26.0%	26.0%
Orthoptists	0.1%	0.1%					0.1%
Physiotherapists	22.5%	23.1%	22.5%	21.4%	20.1%	21.7%	21.6%
Podiatrists & Chiropodists				0.1%	0.3%	0.5%	0.5%
Speech & Language Therapists	16.4%	18.2%	20.3%	19.2%	20.5%	19.2%	19.1%
Therapy Professions	68.5%	70.1%	70.3%	72.4%	71.4%	71.5%	71.3%
Phlebotomists	0.1%	0.2%	0.2%	0.1%	0.1%	0.1%	0.1%
Health Science/ Diagnostics	0.1%	0.2%	0.2%	0.1%	0.1%	0.1%	0.1%
Social Care	1.1%	1.1%	1.1%	1.1%	0.9%	1.0%	1.0%
Social Workers	7.6%	7.7%	7.4%	6.4%	7.0%	6.7%	6.9%
Psychologists	5.9%	5.7%	6.1%	6.2%	5.8%	6.7%	6.8%
Pharmacy	9.4%	8.2%	8.5%	7.6%	8.5%	8.4%	8.7%
Counsellor Therapists	6.1%	5.7%	5.2%	4.8%	5.0%	4.4%	4.3%
Dental Hygienists	1.0%	1.0%	0.9%	1.3%	1.4%	1.2%	1.0%
Other Health & Social Care	0.3%	0.3%	0.3%	0.3%			
H&SC, Other	7.4%	7.0%	6.4%	6.4%	6.4%	5.6%	5.2%
Health & Social Care Professionals	21.5%	21.5%	21.4%	21.4%	22.3%	21.9%	21.9%
Executive Management	1.7%	2.6%	2.3%	1.9%	2.4%	2.3%	2.6%
Senior Management (VIII & GM)	6.9%	6.5%	6.8%	8.0%	9.1%	8.0%	7.3%

Aug 2020 (Dec 2018 figure: 1,776)	WTE Dec 2015	WTE Dec 2016	WTE Dec 2017	WTE Dec 2018	WTE Dec 2019	WTE Jul 2020	WTE Aug 2020
Primary Care	1,647	1,687	1,691	1,776	1,702.01	1,717.52	1,720.24
Management (VIII & above)	8.5%	9.1%	9.1%	9.9%	11.6%	10.3%	9.9%
Administrative/ Supervisory (V to VII)	22.1%	20.8%	23.0%	22.7%	26.5%	27.6%	26.9%
Clerical (III & IV)	69.4%	70.1%	67.9%	67.4%	62.0%	62.1%	63.2%
Management & Administrative	18.4%	18.0%	18.4%	17.5%	18.3%	17.4%	17.4%
Support	94.4%	93.2%	94.6%	93.8%	93.0%	92.3%	91.9%
Maintenance	5.6%	6.1%	4.6%	5.5%	6.2%	6.9%	7.3%
Technical Services		0.7%	0.8%	0.7%	0.8%	0.8%	0.8%
Maintenance/ Technical	5.6%	6.8%	5.4%	6.2%	7.0%	7.7%	8.1%
General Support	8.4%	8.0%	7.7%	7.5%	7.8%	7.1%	7.1%
HCA, Nurse's Aide, etc.	46.0%	47.0%	48.3%	44.1%	45.9%	45.3%	45.1%
Health & Social Care Assistants	1.6%	1.0%	0.9%	6.4%	2.8%	6.1%	5.9%
Health Care Assistants	47.6%	48.0%	49.2%	50.6%	48.7%	51.4%	51.0%
Community Welfare Officers	0.8%	0.8%	0.8%	0.3%	0.4%	0.3%	0.3%
Other Care Grades	51.6%	51.2%	50.0%	49.1%	50.9%	48.3%	48.7%
Care, other	52.4%	52.0%	50.8%	49.4%	51.3%	48.6%	49.0%
Patient & Client Care	15.2%	14.5%	14.3%	15.7%	16.3%	15.1%	15.1%
Total	100 %	100 %	100 %	100 %	100 %	100 %	

Aug 2020 (Dec 2018 figure: 2,903)	WTE Dec 2015	WTE Dec 2016	WTE Dec 2017	WTE Dec 2018	WTE Dec 2019	WTE Jul 2020	WTE Aug 2020
Disabilities	1,867	1,943	2,792	2,903	2,981.59	3,008.60	3,027.52
Consultant Paediatrics	2.8%	2.9%	2.5%	3.1%	3.0%	2.8%	3.0%
Consultant Psychiatry	26.5%	19.1%	16.2%	1.9%	1.7%	1.7%	1.7%
Consultants	29.3%	22.0%	18.8%	5.0%	4.7%	4.5%	4.7%
Registrars	16.6%	26.0%	22.2%	21.5%	26.1%	25.1%	26.2%
SHO/ Interns	41.4%	43.3%	51.7%	64.3%	60.5%	62.0%	60.3%
Medical/ Dental, other	12.7%	8.7%	7.4%	9.3%	8.7%	8.4%	8.7%
Medical & Dental	0.6%	0.6%	0.5%	0.4%	0.4%	0.4%	0.4%
Clinical Nurse/ Midwife Manager	21.5%	23.2%	23.9%	22.4%	22.4%	22.1%	21.9%
Director Nursing/Midwifery, Assistant	1.2%	1.5%	1.1%	1.1%	1.1%	1.2%	1.2%
Director of Nursing/Midwifery	0.7%	0.5%	1.4%	1.0%	0.8%	0.6%	0.6%
Nurse/ Midwife Manager	23.5%	25.2%	26.4%	24.4%	24.3%	23.9%	23.7%
Advanced Nurse/ Midwife Practitioner							0.2%
Clinical Nurse/ Midwife Specialist	1.4%	1.3%	1.3%	2.0%	1.0%	0.6%	0.6%
Nurse/ Midwife Specialist & AN/MP	1.4%	1.3%	1.3%	2.0%	1.0%	0.6%	0.8%
Staff Nurse [Intellectual Disability]	58.7%	57.6%	45.5%	43.3%	38.7%	34.5%	32.0%
Staff Nurses [General/ Children's]	15.8%	15.2%	26.7%	30.2%	35.9%	38.0%	40.4%
Staff Nurse/ Staff Midwife	74.4%	72.8%	72.2%	73.5%	74.6%	72.5%	72.4%
Pre-registration Nurse Intern (COVID-19)						2.9%	2.9%
Nursing/ Midwifery Student						2.9%	2.9%
Nursing/ Midwifery other	0.6%	0.8%	0.1%	0.1%	0.1%	0.1%	0.3%
Nursing & Midwifery	21.5%	20.4%	18.1%	17.5%	17.0%	17.2%	17.2%
Dietitians	1.7%	1.6%	0.8%	0.8%	1.3%	1.3%	1.3%
Occupational Therapists	10.6%	13.0%	7.8%	7.0%	7.6%	8.9%	9.3%
Physiotherapists	11.0%	11.0%	6.3%	6.1%	5.5%	6.3%	6.4%
Speech & Language Therapists	10.7%	13.5%	9.1%	8.2%	7.6%	8.3%	8.1%
Therapy Professions	34.1%	39.1%	24.0%	22.1%	22.0%	24.7%	25.1%
Audiology	0.1%	0.2%					
Clinical Measurement	0.4%	0.4%	0.2%	0.2%	0.2%	0.3%	0.3%
Phlebotomists				0.2%	0.2%		

Aug 2020 (Dec 2018 figure: 2,903)	WTE Dec 2015	WTE Dec 2016	WTE Dec 2017	WTE Dec 2018	WTE Dec 2019	WTE Jul 2020	WTE Aug 2020
Disabilities	1,867	1,943	2,792	2,903	2,981.59	3,008.60	3,027.52
Radiographers	0.4%	0.4%	0.2%	0.2%	0.2%	0.2%	0.2%
Health Science/ Diagnostics	0.9%	1.0%	0.4%	0.6%	0.5%	0.5%	0.5%
Social Care	45.2%	38.3%	62.1%	64.8%	65.2%	62.6%	62.8%
Social Workers	7.9%	10.1%	5.8%	6.3%	6.0%	5.8%	5.7%
Psychologists	9.6%	9.1%	6.4%	5.1%	5.0%	5.2%	5.0%
Pharmacy	1.7%	1.6%	0.8%	0.9%	0.9%	1.0%	0.7%
Counsellor Therapists	0.7%	0.6%	0.3%	0.3%	0.3%	0.3%	0.3%
Other Health & Social Care	0.0%	0.4%	0.2%				
H&SC, Other	0.7%	1.0%	0.5%	0.3%	0.3%	0.3%	0.3%
Health & Social Care Professionals	12.3%	13.1%	18.1%	18.5%	18.0%	19.3%	19.3%
Executive Management	4.9%	5.3%	3.9%	2.6%	2.5%	3.2%	3.2%
Senior Management (VIII & GM)	17.2%	14.3%	13.3%	13.7%	13.3%	13.9%	13.9%
Management (VIII & above)	22.1%	19.5%	17.2%	16.3%	15.8%	17.1%	17.0%
Administrative/ Supervisory (V to VII)	34.6%	35.3%	34.0%	37.0%	39.0%	38.2%	39.0%
Clerical (III & IV)	43.3%	45.1%	48.7%	46.7%	45.3%	44.7%	44.0%
Management & Administrative	6.6%	6.8%	6.4%	6.5%	6.3%	7.3%	7.3%
Support	89.0%	88.2%	84.1%	85.7%	85.4%	84.4%	83.0%
Maintenance	9.7%	11.1%	15.5%	13.8%	13.0%	14.5%	14.9%
Technical Services	1.3%	0.6%	0.5%	0.5%	1.5%	1.0%	2.1%
Maintenance/ Technical	11.0%	11.8%	15.9%	14.3%	14.6%	15.6%	17.0%
General Support	8.5%	8.1%	7.7%	7.1%	7.0%	6.3%	6.3%
HCA, Nurse's Aide, etc.	71.3%	72.1%	70.6%	71.9%	72.9%	73.0%	73.1%
Health & Social Care Assistants	0.5%	0.6%	0.3%	0.2%	0.4%	0.6%	0.4%
Health Care Assistants	71.8%	72.7%	70.8%	72.1%	73.3%	73.5%	73.5%
Care, other	24.8%	24.0%	27.2%	26.2%	25.4%	25.2%	25.3%
Home Help	3.4%	3.3%	1.9%	1.6%	1.3%	1.2%	1.2%
Patient & Client Care	50.4%	50.9%	49.1%	50.0%	48.7%	49.5%	49.5%
Total	100 %	100 %	100 %	100 %	100 %	100 %	

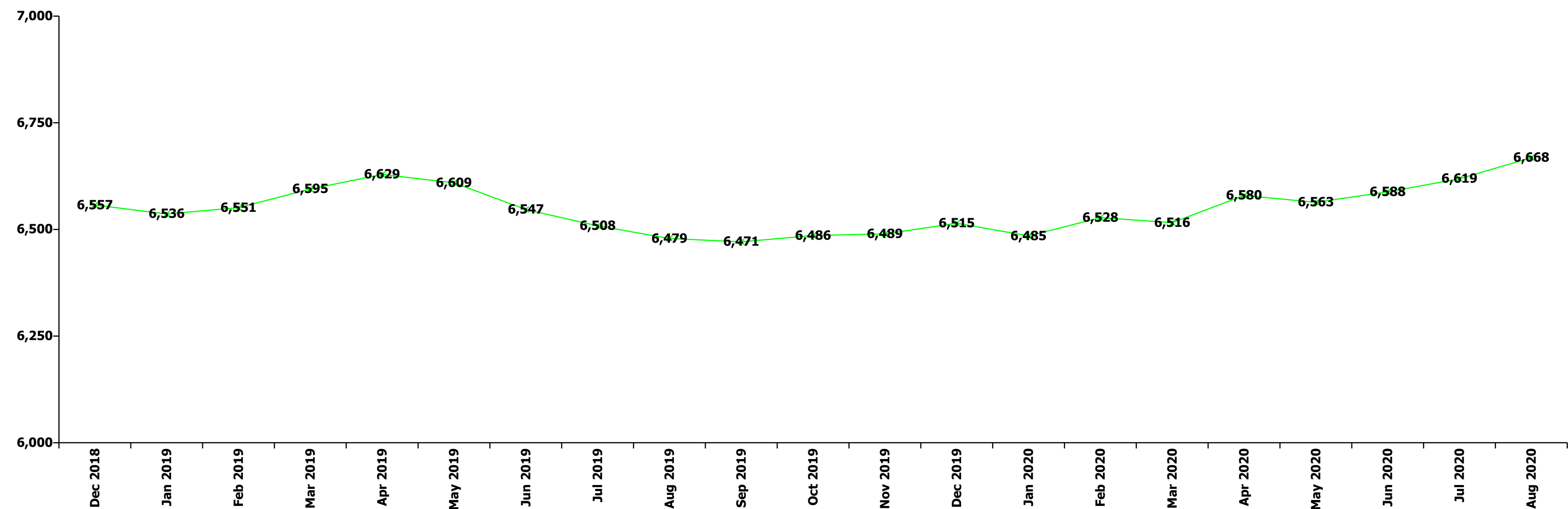
Aug 2020 (Dec 2018 figure: 1,044)	WTE Dec 2015	WTE Dec 2016	WTE Dec 2017	WTE Dec 2018	WTE Dec 2019	WTE Jul 2020	WTE Aug 2020
Older People	1,128	1,121	1,064	1,044	995.93	1,033.79	1,036.43
Senior House Officer	31.6%	33.3%	37.5%	28.6%	33.3%	33.3%	33.3%
SHO/ Interns	31.6%	33.3%	37.5%	28.6%	33.3%	33.3%	33.3%
Medical/ Dental, other	68.4%	66.7%	62.5%	71.4%	66.7%	66.7%	66.7%
Medical & Dental	0.8%	0.8%	0.8%	0.7%	0.7%	0.6%	0.6%
Clinical Nurse/ Midwife Manager	16.4%	19.1%	18.6%	18.8%	20.3%	18.9%	19.4%
Director Nursing/Midwifery, Assistant	3.3%	3.8%	2.5%	4.0%	4.3%	3.6%	3.7%
Director of Nursing/Midwifery	2.0%	1.8%	2.2%	1.7%	1.1%	1.8%	1.8%
Nurse/ Midwife Manager	21.6%	24.7%	23.2%	24.4%	25.8%	24.3%	24.9%
Nurse/ Midwife Specialist & AN/MP	1.0%	1.0%	1.1%	1.4%	0.9%	1.2%	1.3%
Staff Nurse [Psychiatric]		0.2%	0.2%				
Staff Nurses [General/ Children's]	76.9%	74.1%	75.4%	74.1%	73.3%	73.6%	73.0%
Staff Nurse/ Staff Midwife	76.9%	74.3%	75.6%	74.1%	73.3%	73.6%	73.0%
Public Health Nurse	0.4%	0.1%					
Nursing/ Midwifery awaiting registration						0.8%	0.8%
Nursing/ Midwifery Student						0.8%	0.8%
Nursing & Midwifery	31.5%	30.4%	30.4%	28.9%	30.3%	31.7%	31.7%
Dietitians		2.6%	2.7%		3.6%	3.2%	3.2%

Aug 2020 (Dec 2018 figure: 1,044)	WTE Dec 2015	WTE Dec 2016	WTE Dec 2017	WTE Dec 2018	WTE Dec 2019	WTE Jul 2020	WTE Aug 2020
Older People	1,128	1,121	1,064	1,044	995.93	1,033.79	1,036.43
Occupational Therapists	11.3%	10.8%	10.7%	9.6%	14.9%	17.1%	16.9%
Physiotherapists	27.8%	27.3%	28.3%	29.5%	30.5%	22.7%	23.0%
Podiatrists & Chiropodists	1.8%	1.9%	1.8%	2.0%			
Speech & Language Therapists	2.7%		2.7%	2.6%			0.7%
Therapy Professions	43.6%	42.5%	46.1%	43.6%	49.0%	43.0%	43.9%
Medical Laboratory		2.6%					
Radiographers	2.1%						
Health Science/ Diagnostics	2.1%	2.6%					
Social Workers	37.5%	39.2%	37.7%	41.0%	38.6%	44.0%	43.2%
Pharmacy	11.1%	10.5%	10.8%	10.3%	8.9%	9.7%	9.7%
Other Health & Social Care	2.8%	2.6%	2.7%	2.6%			
Play Therapists/ Specialists	2.8%	2.6%	2.7%	2.6%	3.6%	3.2%	3.2%
H&SC, Other	5.6%	5.2%	5.4%	5.1%	3.6%	3.2%	3.2%
Health & Social Care Professionals	3.2%	3.4%	3.5%	3.7%	3.9%	3.0%	3.0%
Senior Management (VIII & GM)	14.9%	15.2%	10.0%	9.0%	9.9%	10.9%	11.3%
Management (VIII & above)	14.9%	15.2%	10.0%	9.0%	9.9%	10.9%	11.3%
Administrative/ Supervisory (V to VII)	23.9%	18.5%	21.1%	21.7%	22.7%	25.3%	22.9%
Clerical (III & IV)	61.1%	66.3%	68.9%	69.3%	67.4%	63.8%	65.8%
Management & Administrative	4.8%	4.7%	4.7%	4.2%	4.4%	5.7%	5.7%
Support	97.5%	97.5%	97.6%	97.5%	98.2%	98.2%	98.2%
Maintenance/ Technical	2.5%	2.5%	2.4%	2.5%	1.8%	1.8%	1.8%
General Support	10.7%	10.8%	11.6%	11.7%	12.2%	10.8%	10.8%
HCA, Nurse's Aide, etc.	76.2%	74.5%	73.0%	77.4%	77.5%	76.1%	76.1%
Health & Social Care Assistants						0.2%	0.2%
Health Care Assistants	76.2%	74.5%	73.0%	77.4%	77.5%	76.3%	76.3%
Care, other	2.4%	2.9%	2.9%	1.3%	1.0%	0.9%	0.8%
Home Help	21.4%	22.6%	24.1%	21.3%	21.5%	22.8%	22.9%
Patient & Client Care	49.0%	49.9%	49.1%	50.8%	53.3%	48.2%	48.2%
Total	100 %	100 %	100 %	100 %	100 %	100 %	

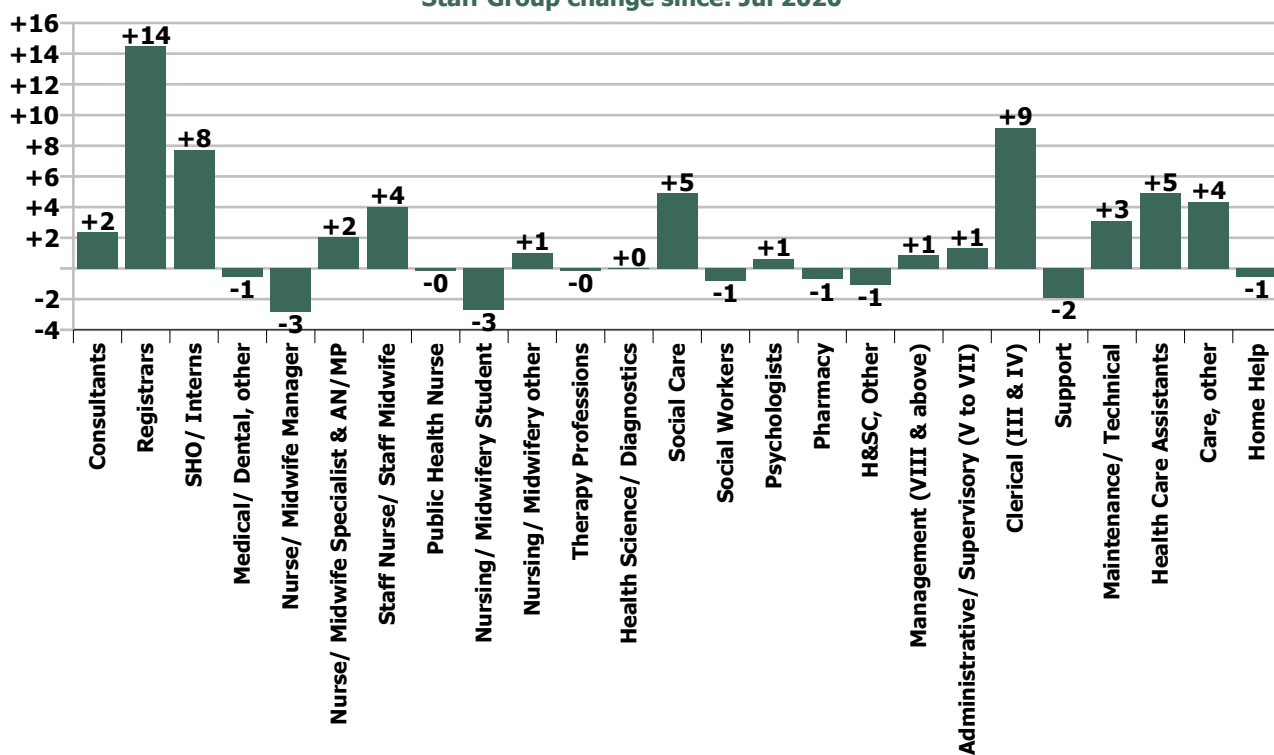
Summary Staff Movement: August 2020

Month-on-month Summary																												
WTE change since Jul 20	% change since Jul 20	overall	Consultants	Registrars	SHO/ Interns	Medical/ Dental, other	Medical & Dental	Nurse/ Midwife Manager	Nurse/ Midwife Specialist & AN/MP	Staff Nurse/ Staff Midwife	Public Health Nurse	Nursing/ Midwifery Student	Nursing/ Midwifery other	Nursing & Midwifery	Therapy Professions	Health Science/ Diagnostics	Social Care	Social Workers	Psychologists	Pharmacy	H&SC, Other	Health & Social Care Professionals	Management (VIII & above)	Administrativ e/ Supervisory (V to VII)	Clerical (III & IV)	Management & Administrativ e	General Support	Patient & Client Care
Overall	+0.7%	+49	+2.3	+14.5	+7.7	-0.5	+24.0	-2.8	+2.0	+4.0	-0.1	-2.7	+1.0	+1.5	-0.1	+0.0	+4.9	-0.8	+0.6	-0.7	-1.1	+2.8	+0.9	+1.3	+9.2	+11.3	+1.2	+8.7
Community Health & Wellbeing	+2.1%	+0																					0.0	+0.3	0.0	+0.3		-0.1
Mental Health	+2.9%	+25	+2.9	+11.8	+5.4		+20.0	-0.9	+1.6	-4.3		+6.9	+0.0	+3.3	-1.9		-0.1	-1.2	+1.3	0.0	+0.6	-1.3	+1.0	0.0	+0.5	+1.5	+0.2	+1.4
Primary Care	+0.2%	+3	-0.5	+2.7	+2.9	-0.5	+4.5	-2.6	-0.8	+9.9	-0.1	-9.5	0.0	-3.1	-2.5	+0.0	-0.0	+0.6	+0.1	+1.0	-1.7	-2.5	-1.0	-1.1	+5.0	+2.9	+1.9	-1.0
Disabilities	+0.6%	+19	0.0	0.0	-0.5	0.0	-0.5	-1.6	+1.0	-1.3		0.0	+1.0	-0.9	+3.9	0.0	+5.1	-0.2	-0.7	-1.7	0.0	+6.4	0.0	+2.2	-1.3	+0.8	-1.3	+14.4
Older People	+0.3%	+3			0.0	0.0	0.0	+2.3	+0.3	-0.3		-0.0		+2.2	+0.4			-0.2		0.0	0.0	+0.2	+0.9	-0.0	+4.9	+5.8	+0.4	-5.9
Social Care	+0.5%	+22	0.0	0.0	-0.5	0.0	-0.5	+0.7	+1.3	-1.6		-0.0	+1.0	+1.3	+4.2	0.0	+5.1	-0.3	-0.7	-1.7	0.0	+6.6	+0.9	+2.2	+3.6	+6.6	-0.9	+8.4
Change	+49.5	+0.7%	+3.5%	+16.1%	+23.5%	-0.7%	+8.8%	-0.7%	+2.0%	+0.4%	-0.1%	-5.6%	+10.0%	+0.1%	-0.0%	+0.3%	+1.3%	-0.7%	+0.7%	-1.7%	-2.5%	+0.3%	+1.1%	+0.7%	+2.5%	+1.8%	+0.3%	+0.4%

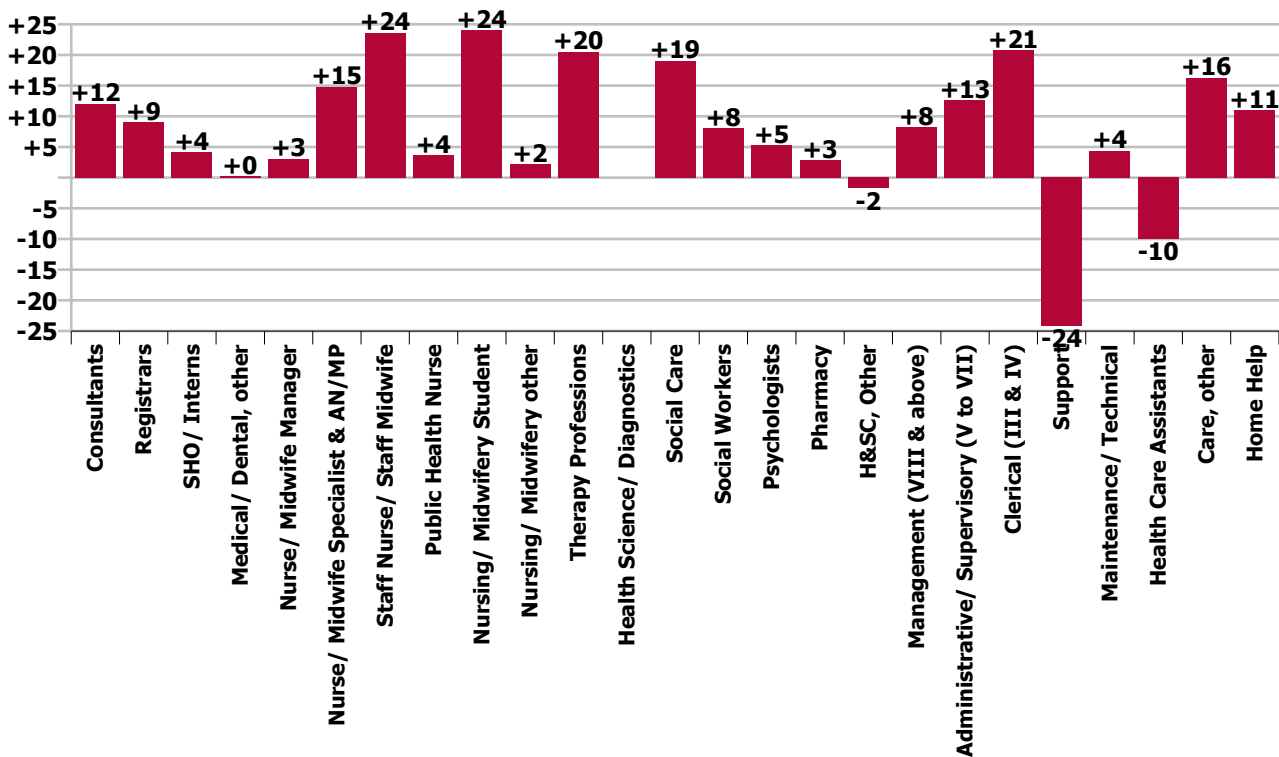
Year-on-year Summary																												
WTE change since Aug 19	% change since Aug 19	overall	Consultants	Registrars	SHO/ Interns	Medical/ Dental, other	Medical & Dental	Nurse/ Midwife Manager	Nurse/ Midwife Specialist & AN/MP	Staff Nurse/ Staff Midwife	Public Health Nurse	Nursing/ Midwifery Student	Nursing/ Midwifery other	Nursing & Midwifery	Therapy Professions	Health Science/ Diagnostics	Social Care	Social Workers	Psychologists	Pharmacy	H&SC, Other	Health & Social Care Professionals	Management (VIII & above)	Administrativ e/ Supervisory (V to VII)	Clerical (III & IV)	Management & Administrative	General Support	Patient & Client Care
Overall	+2.9%	+189	+12.0	+9.0	+4.1	+0.2	+25.3	+3.0	+14.8	+23.6	+3.6	+24.0	+2.2	+71.2	+20.5	0.0	+19.0	+8.0	+5.3	+2.9	-1.7	+54.0	+8.2	+12.6	+20.7	+41.5	-19.8	+17.2
Community Health & Wellbeing	+2.1%	+0																					+1.0	+2.3	+0.6	+3.8		+4.5
Mental Health	+2.9%	+25	+9.0	+8.9	+1.0		+18.9	+2.1	+9.2	-15.0		+13.0	+1.2	+10.6	-1.8		+0.6	+5.7	+2.5	0.0	+2.1	+9.1	+1.0	+3.3	+3.4	+7.8	-4.4	-3.2
Primary Care	+0.2%	+3	+3.0	-0.2	+3.2	+1.2	+7.2	-0.6	+6.4	-0.6	+3.6	+0.5	0.0	+9.2	-4.2	0.0	-0.0	+1.4	+2.8	+3.1	-3.8	-0.8	-1.6	+0.3	+1.1	-0.2	-6.0	+3.0
Disabilities	+3.4%	+99.6	0.0	+0.3	-0.1	0.0	+0.2	-4.8	-1.0	+17.2		+8.0	+1.0	+20.3	+28.4	0.0	+18.4	+2.4	+0.0	-0.2	0.0	+49.0	+3.9	+5.8	+7.5	+17.1	-6.1	+19.1
Older People	+3.0%	+30.5			0.0	-1.0	-1.0	+6.3	+0.3	+22.0		+2.5		+31.1	-1.9			-1.4		0.0	0.0	-3.3	+3.9	+0.9	+8.2	+13.0	-3.2	-6.2
Social Care	+0.5%	+22	0.0	+0.3	-0.1	-1.0	-0.8	+1.5	-0.7	+39.2		+10.5	+1.0	+51.5	+26.5	0.0	+18.4	+1.0	+0.0	-0.2	0.0	+45.7	+7.8	+6.7	+15.7	+30.1	-9.4	+12.9
Change	+189.4	+2.9%	+20.9%	+9.4%	+11.3%	+0.2%	+9.3%	+0.8%	+16.5%	+2.3%	+2.3%	+112.4%	+23.7%	+4.2%	+4.5%		+5.3%	+8.0%	+6.5%	+7.5%	-4.0%	+5.0%	+11.6%	+6.7%	+5.8%	+6.7%	-4.3%	+0.7%

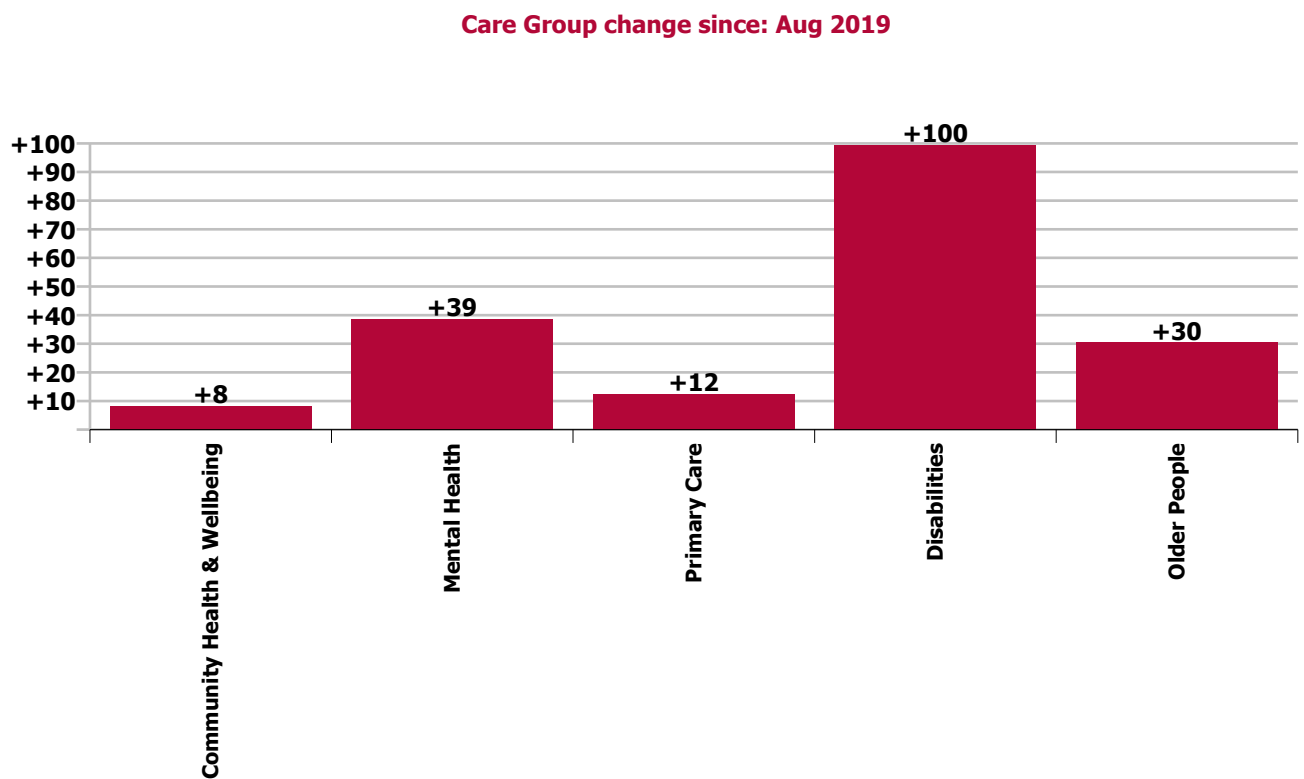
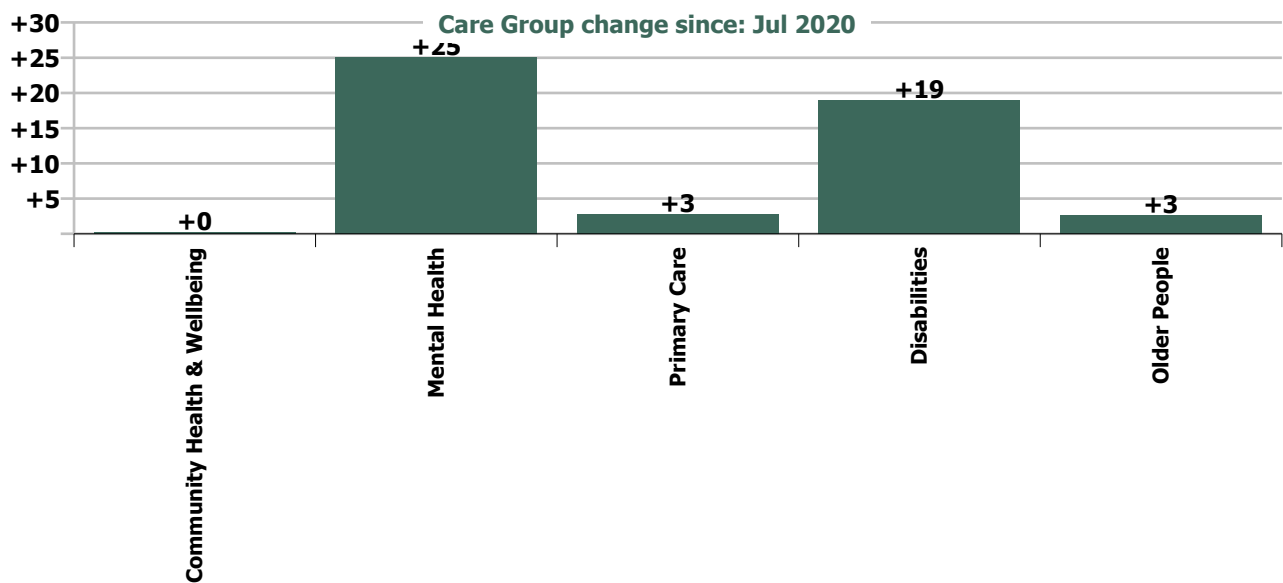


Staff Group change since: Jul 2020



Staff Group change since: Aug 2019





Longitudinal Employment Levels by Grade Group - Oct 2013 to Aug 2020

Aug 2020 (Dec 2015 figure: 5,479)	WTE Aug 2020	WTE change since Dec 15	WTE change since Dec 16	WTE change since Dec 17	WTE change since Dec 18	WTE change since Dec 19	WTE change since Jul 20	% change since Dec 15	% change since Dec 16	% change since Dec 17	% change since Dec 18	% change since Dec 19	% change since Jul 20
Overall	6,668	+1,189	+1,090	+262	+111	+154	+49	+21.7%	+19.5%	+4.1%	+1.7%	+2.4%	+0.7%
Consultant Medicine	10	+3	+1	+1	+3	+3	-1	+56.4%	+18.0%	+8.9%	+35.1%	+44.7%	-5.2%
Consultant Paediatrics	0												
Consultant Psychiatry	59	+7	+10	+12	+11	+7	+3	+14.0%	+19.7%	+26.5%	+22.3%	+12.6%	+5.2%
Consultant Surgery	1	+0	+0	+0	-0			+6.7%	+6.7%	+66.7%	-33.3%		
Consultants	69	+11	+11	+13	+13	+10	+2	+18.3%	+19.2%	+23.9%	+22.6%	+16.0%	+3.5%
Registrar	81	+58	+24	+28	+15	+9	+10	+261.3%	+43.0%	+53.3%	+22.7%	+12.3%	+14.1%
Senior Registrar	19	+13	+9	+10	+5	+0	+3	+196.8%	+83.7%	+106.5%	+37.8%	+1.6%	+16.5%
Specialist Registrar	4	-1	+0	-1	-0	+0	+2	-11.0%	+12.6%	-22.9%	-6.8%	+9.5%	+67.8%
Registrars	104	+71	+34	+37	+20	+10	+14	+209.2%	+47.4%	+54.3%	+23.6%	+10.1%	+16.1%
Interns	2						+2						+488.2%
Senior House Officer	39	-0	-0	-2	+5	+5	+6	-1.1%	-1.1%	-5.4%	+16.0%	+14.1%	+18.7%
SHO/ Interns	41	-0	-0	-2	+5	+5	+8	-1.1%	-1.1%	-5.1%	+15.1%	+13.3%	+23.5%
Dentists	35	-4	-5	-0	-1	+1	+1	-11.3%	-11.6%	-0.7%	-4.0%	+4.0%	+1.5%
Other Medical	47	+4	+2	-6	-5	+0	-1	+9.8%	+4.2%	-11.6%	-9.6%	+0.5%	-2.3%
Medical/ Dental, other	82	-0	-3	-6	-6	+2	-1	-0.4%	-3.2%	-7.3%	-7.3%	+1.9%	-0.7%
Medical & Dental	296	+81	+42	+42	+32	+25	+24	+37.4%	+16.3%	+16.3%	+11.9%	+9.4%	+8.8%
Clinical Nurse/ Midwife Manager	330	+46	+27	+3	+8	+1	-1	+16.2%	+9.1%	+0.8%	+2.4%	+0.4%	-0.4%
Director Nursing/Midwifery, Assistant	56	+9	+2	+6	+1	+4	-2	+18.2%	+4.4%	+12.1%	+1.2%	+8.3%	-2.6%
Director of Nursing/Midwifery	19	+1	+2	-4	-1	+3	-0	+4.4%	+11.9%	-17.7%	-4.0%	+16.7%	-0.2%
Nurse/ Midwife Manager	404	+55	+32	+5	+8	+8	-3	+15.8%	+8.6%	+1.2%	+1.9%	+2.1%	-0.7%
Advanced Nurse/ Midwife Practitioner	11	+10	+9	+9	+8	+7	+1	+1001.0%	+515.1%	+380.8%	+335.2%	+153.7%	+10.0%
Clinical Nurse/ Midwife Specialist	94	+28	+27	+16	+9	+4	+1	+42.6%	+41.6%	+20.3%	+10.5%	+4.6%	+1.1%
Nurse/ Midwife Specialist & AN/MP	105	+38	+37	+24	+17	+11	+2	+57.0%	+54.1%	+30.6%	+19.9%	+11.5%	+2.0%
Staff Nurse [Intellectual Disability]	168	-68	-61	-63	-52	-26	-14	-28.7%	-26.6%	-27.3%	-23.8%	-13.5%	-7.5%
Staff Nurse [Psychiatric]	185	-56	-30	-43	-15	-7	-4	-23.2%	-13.9%	-18.7%	-7.3%	-3.5%	-2.3%
Staff Nurses [General/ Children's]	676	+145	+169	+109	+99	+68	+22	+27.4%	+33.3%	+19.2%	+17.2%	+11.2%	+3.3%
Staff Nurse/ Staff Midwife	1,028	+22	+78	+3	+32	+35	+4	+2.2%	+8.3%	+0.3%	+3.2%	+3.6%	+0.4%
Public Health Nurse	163	-15	-18	-24	-33	-13	-0	-8.4%	-10.0%	-12.9%	-16.6%	-7.2%	-0.1%
Pre-registration Nurse/ Midwife Intern		-2	-2		-6	-1		-100.0%	-100.0%	-100.0%	-100.0%	-100.0%	-100.0%
Pre-registration Nurse Intern (COVID-19)	39	+39	+39	+39	+39	+39	+7	-100.0%	-100.0%	-100.0%	-100.0%	-100.0%	+22.8%
Post-registration Nurse/ Midwife Student	1	-24	-23	-16	-7	-21	-10	-97.9%	-97.8%	-96.9%	-92.9%	-97.6%	-95.0%
Nursing/ Midwifery awaiting registration	6	+6	+6	-2	+2	-4	-0	-100.0%	-100.0%	-23.9%	+54.3%	-37.4%	-5.8%
Nursing/ Midwifery Student	45	+20	+21	+21	+28	+13	-3	+76.9%	+84.0%	+88.2%	+167.6%	+40.8%	-5.6%
Nursing Education/Clinical	11	+2	-0	+3	+3	+1	+1	+26.8%	-0.1%	+27.8%	+35.2%	+14.4%	+10.0%

Aug 2020 (Dec 2015 figure: 5,479)	WTE Aug 2020	WTE change since Dec 15	WTE change since Dec 16	WTE change since Dec 17	WTE change since Dec 18	WTE change since Dec 19	WTE change since Jul 20	% change since Dec 15	% change since Dec 16	% change since Dec 17	% change since Dec 18	% change since Dec 19	% change since Jul 20
Overall	6,668	+1,189	+1,090	+262	+111	+154	+49	+21.7%	+19.5%	+4.1%	+1.7%	+2.4%	+0.7%
Other Nursing/ Midwifery		-1	-1					-100.0%	-100.0%	-100.0%	-100.0%	-100.0%	-100.0%
Nursing/ Midwifery other	11	+2	-1	+3	+3	+1	+1	+20.1%	-8.1%	+27.8%	+35.2%	+14.4%	+10.0%
Nursing & Midwifery	1,757	+122	+149	+32	+56	+56	+1	+7.4%	+9.2%	+1.9%	+3.3%	+3.3%	+0.1%
Dietitians	27	+9	+8	+7	+2	+1	+0	+51.5%	+41.3%	+38.2%	+8.1%	+5.6%	+0.1%
Occupational Therapists	193	+33	+24	+24	+8	+9	+0	+20.6%	+14.3%	+14.3%	+4.6%	+5.1%	+0.2%
Orthoptists	1	+0	+0	+1	+1	+1	+1	+100.0%	+100.0%	-100.0%	-100.0%	-100.0%	-100.0%
Physiotherapists	126	+11	+3	+2	+0	+11	+0	+9.4%	+2.8%	+1.6%	+0.1%	+10.0%	+0.3%
Podiatrists & Chiropodists	2	+1	+1	+1	+1	+1		+207.7%	+181.7%	+207.7%	+56.3%	+100.0%	
Speech & Language Therapists	123	+34	+16	-4	+0	-3	-1	+37.8%	+15.0%	-3.4%	+0.4%	-2.0%	-1.2%
Therapy Professions	471	+88	+53	+31	+12	+21	-0	+23.0%	+12.7%	+7.0%	+2.7%	+4.7%	-0.0%
Audiology		-0	-0					-100.0%	-100.0%	-100.0%	-100.0%	-100.0%	-100.0%
Clinical Measurement	2	+1	+1	+1	+1	+1		+100.0%	+100.0%	+100.0%	+100.0%	+100.0%	
Medical Laboratory			-1					-100.0%	-100.0%	-100.0%	-100.0%	-100.0%	-100.0%
Phlebotomists	0	-0	-0	-0	-1	-1	+0	-46.5%	-64.6%	-63.5%	-81.1%	-81.1%	+4.5%
Radiographers	1	-1						-43.5%					
Health Science/ Diagnostics	3	-0	-1	+1	+0	+0	+0	-4.2%	-20.8%	+22.8%	+0.3%	+0.3%	+0.3%
Social Care	378	+260	+266	+49	+18	+7	+5	+218.8%	+236.4%	+15.0%	+5.1%	+1.9%	+1.3%
Social Care	378	+260	+266	+49	+18	+7	+5	+218.8%	+236.4%	+15.0%	+5.1%	+1.9%	+1.3%
Social Workers	109	+12	-1	-3	-2	+4	-1	+12.4%	-0.6%	-2.8%	-1.6%	+4.3%	-0.7%
Psychologists	86	+15	+18	+1	+2	+6	+1	+21.7%	+25.5%	+1.7%	+2.4%	+6.9%	+0.7%
Pharmacy	41	-0	+3	+2	+3	+1	-1	-0.4%	+8.1%	+5.9%	+7.9%	+2.3%	-1.7%
Counsellor Therapists	35	+4	+4	+3	+5	-1	-1	+12.3%	+13.0%	+7.8%	+15.6%	-2.9%	-1.6%
Dental Hygienists	4	+0	+0	+0	-1	-2	-1	+1.4%	+1.4%	+7.5%	-25.8%	-29.5%	-22.7%
Other Health & Social Care	1	-3	-4	-5	-4	-1	+1	-72.9%	-81.0%	-83.1%	-78.9%	-52.5%	+150.0%
Play Therapists/ Specialists	1												
H&SC, Other	41	+1	+0	-2	-0	-4	-1	+3.4%	+0.2%	-4.4%	-0.1%	-8.2%	-2.5%
Health & Social Care Professionals	1,130	+376	+338	+80	+34	+36	+3	+49.9%	+42.7%	+7.6%	+3.1%	+3.3%	+0.3%
Executive Management	16	+4	-0	+1	+4	+3	+1	+32.5%	-0.6%	+6.0%	+32.5%	+22.3%	+6.6%
Senior Management (VIII & GM)	63	+12	+15	+11	+7	+3	-0	+24.1%	+30.4%	+21.3%	+11.6%	+5.3%	-0.2%
Management (VIII & above)	79	+16	+15	+12	+10	+6	+1	+25.7%	+22.7%	+17.9%	+15.2%	+8.3%	+1.1%
Middle Management (V-VII)	199	+69	+67	+40	+31	+17	+1	+52.8%	+51.2%	+25.5%	+18.4%	+9.6%	+0.7%
Other Administrative	1			-0		-0				-14.6%		-14.6%	
Administrative/ Supervisory (V to VII)	200	+69	+67	+40	+31	+17	+1	+52.4%	+50.9%	+25.2%	+18.3%	+9.5%	+0.7%
Clerical (III & IV)	378	+33	+20	-5	-2	+27	+9	+9.6%	+5.4%	-1.4%	-0.6%	+7.8%	+2.5%
Management & Administrative	657	+118	+101	+47	+39	+51	+11	+21.9%	+18.3%	+7.7%	+6.3%	+8.4%	+1.8%

Aug 2020 (Dec 2015 figure: 5,479)	WTE Aug 2020	WTE change since Dec 15	WTE change since Dec 16	WTE change since Dec 17	WTE change since Dec 18	WTE change since Dec 19	WTE change since Jul 20	% change since Dec 15	% change since Dec 16	% change since Dec 17	% change since Dec 18	% change since Dec 19	% change since Jul 20
Overall	6,668	+1,189	+1,090	+262	+111	+154	+49	+21.7%	+19.5%	+4.1%	+1.7%	+2.4%	+0.7%
Catering	56	+2	+3	-8	-6	-3	-1	+3.0%	+5.3%	-13.1%	-10.3%	-5.8%	-1.8%
Household Services	263	-4	-1	-33	-30	-6	-1	-1.3%	-0.2%	-11.0%	-10.4%	-2.2%	-0.3%
Other Labs & Associated	1	+0	+0	+0	+0	+0	+0	+5.8%	+18.7%	+27.0%	+22.1%	+27.0%	+27.0%
Other Support	14	-3	-2	-1	-2	-0	-0	-20.0%	-15.1%	-7.1%	-10.8%	-1.2%	-1.2%
Portering	63	-15	-11	-8	-8	-4	-0	-18.8%	-14.4%	-11.8%	-11.0%	-6.6%	-0.4%
Support	397	-20	-11	-50	-46	-14	-2	-4.8%	-2.6%	-11.2%	-10.4%	-3.3%	-0.5%
Maintenance	41	+13	+11	-3	+0	+4	+1	+46.1%	+34.5%	-6.4%	+1.2%	+11.5%	+2.7%
Technical Services	5	+3	+3	+3	+3	+1	+2	+150.0%	+150.0%	+150.0%	+163.2%	+25.0%	+66.7%
Maintenance/ Technical	46	+16	+14	+0	+4	+5	+3	+53.0%	+41.5%	+0.4%	+8.4%	+12.8%	+7.1%
General Support	443	-4	+3	-50	-43	-8	+1	-0.9%	+0.7%	-10.1%	-8.8%	-1.9%	+0.3%
HCA, Nurse's Aide, etc.	1,626	+370	+335	+116	+9	-16	+7	+29.5%	+26.0%	+7.7%	+0.5%	-1.0%	+0.4%
Health & Social Care Assistants	23	+14	+15	+17	+2	+11	-2	+168.7%	+175.7%	+283.4%	+7.7%	+85.4%	-8.4%
Health Care Assistants	1,649	+385	+350	+133	+10	-5	+5	+30.4%	+27.0%	+8.8%	+0.6%	-0.3%	+0.3%
Care, other	603	+130	+132	-2	-13	-7	+4	+27.3%	+28.1%	-0.4%	-2.2%	-1.1%	+0.7%
Home Help	133	-18	-26	-19	-3	+6	-1	-11.8%	-16.1%	-12.7%	-2.5%	+4.8%	-0.4%
Patient & Client Care	2,386	+497	+457	+112	-7	-6	+9	+26.3%	+23.7%	+4.9%	-0.3%	-0.3%	+0.4%

Source: Health Service Personnel Census

Longitudinal Employment Levels by Care Group - Oct 2013 to Aug 2020

Community Health & Wellbeing

Aug 2020 (figure:)	WTE Aug 2020	WTE change since	WTE change since	WTE change since	WTE change since	WTE change since	WTE change since Jul 20	% change since	% change since	% change since	% change since	% change since	% change since Jul 20
Overall	8	+8	+8	+8	+8	+8	+0	-100.0%	-100.0%	-100.0%	-100.0%	-100.0%	+2.1%
Management & Administrative	4	+4	+4	+4	+4	+4	+0	-1.0%	-1.0%	-1.0%	-1.0%	-1.0%	+0.1%
Management (VIII & above)	1	+1	+1	+1	+1	+1		-1.0%	-1.0%	-1.0%	-1.0%	-1.0%	+0.0%
Administrative/ Supervisory (V to VII)	2	+2	+2	+2	+2	+2	+0	-1.0%	-1.0%	-1.0%	-1.0%	-1.0%	+0.1%
Clerical (III & IV)	1	+1	+1	+1	+1	+1		-1.0%	-1.0%	-1.0%	-1.0%	-1.0%	+0.0%
Patient & Client Care	4	+4	+4	+4	+4	+4	-0	-1.0%	-1.0%	-1.0%	-1.0%	-1.0%	-0.0%
Care, other	4	+4	+4	+4	+4	+4	-0	-1.0%	-1.0%	-1.0%	-1.0%	-1.0%	-0.0%

Source: Health Service Personnel Census

Mental Health

Aug 2020 (Dec 2015 figure: 837)	WTE Aug 2020	WTE change since Dec 15	WTE change since Dec 16	WTE change since Dec 17	WTE change since Dec 18	WTE change since Dec 19	WTE change since Jul 20	% change since Dec 15	% change since Dec 16	% change since Dec 17	% change since Dec 18	% change since Dec 19	% change since Jul 20
Overall	876	+39	+48	+16	+41	+41	+25	+4.7%	+5.8%	+1.9%	+4.9%	+4.9%	+2.9%
Medical & Dental	131	+35	+30	+36	+29	+17	+20	+0.4%	+0.3%	+0.4%	+0.3%	+0.1%	+0.2%
Consultants	54	+9	+10	+13	+10	+7	+3	+0.2%	+0.2%	+0.3%	+0.2%	+0.1%	+0.1%
Registrars	55	+32	+26	+28	+17	+9	+12	+1.4%	+0.9%	+1.0%	+0.4%	+0.2%	+0.3%
SHO/ Interns	22	-6	-5	-5	+3	+1	+5	-0.2%	-0.2%	-0.2%	+0.1%	+0.0%	+0.3%
Nursing & Midwifery	391	+16	+29	+6	+30	+22	+3	+0.0%	+0.1%	+0.0%	+0.1%	+0.1%	+0.0%
Nurse/ Midwife Manager	116	+17	+5	+1	-2	-0	-1	+0.2%	+0.0%	+0.0%	-0.0%	-0.0%	-0.0%
Nurse/ Midwife Specialist & AN/MP	46	+22	+20	+19	+20	+6	+2	+0.9%	+0.8%	+0.7%	+0.8%	+0.2%	+0.0%
Staff Nurse/ Staff Midwife	193	-52	-24	-36	-7	-1	-4	-0.2%	-0.1%	-0.2%	-0.0%	-0.0%	-0.0%
Nursing/ Midwifery Student	27	+26	+26	+19	+17	+16	+7	+15.5%	+15.5%	+2.4%	+1.7%	+1.4%	+0.3%
Nursing/ Midwifery other	8	+4	+2	+2	+2	+0	+0	+1.0%	+0.3%	+0.3%	+0.3%	+0.1%	+0.0%
Health & Social Care Professionals	138	+5	+2	-7	-2	-2	-1	+0.0%	+0.0%	-0.1%	-0.0%	-0.0%	-0.0%
Therapy Professions	43	-4	-5	-5	-6	-5	-2	-0.1%	-0.1%	-0.1%	-0.1%	-0.1%	-0.0%
Social Care	8	-3	-3	-3	-1	-0	-0	-0.3%	-0.3%	-0.3%	-0.1%	-0.0%	-0.0%
Social Workers	37	-2	-4	-6	-0	+2	-1	-0.1%	-0.1%	-0.1%	-0.0%	+0.1%	-0.0%
Psychologists	32	+4	+7	+2	-2	+0	+1	+0.1%	+0.3%	+0.1%	-0.1%	+0.0%	+0.0%
Pharmacy	1	+1	+1	+1	+1			-1.0%	-1.0%	-1.0%	-1.0%	+0.0%	+0.0%
H&SC, Other	19	+9	+8	+4	+5	+1	+1	+0.9%	+0.7%	+0.3%	+0.4%	+0.0%	+0.0%
Management & Administrative	72	+12	+6	+3	-1	+7	+2	+0.2%	+0.1%	+0.0%	-0.0%	+0.1%	+0.0%
Management (VIII & above)	4	+2	+1	+1	+1	+1	+1	+0.9%	+0.4%	+0.4%	+0.4%	+0.4%	+0.4%
Administrative/ Supervisory (V to VII)	17	+8	+4	+1	-2	+1		+0.9%	+0.3%	+0.0%	-0.1%	+0.1%	+0.0%
Clerical (III & IV)	52	+3	+1	+2	+0	+5	+1	+0.1%	+0.0%	+0.0%	+0.0%	+0.1%	+0.0%
General Support	18	-11	-8	-7	-6	-2	+0	-0.4%	-0.3%	-0.3%	-0.3%	-0.1%	+0.0%
Support	16	-11	-8	-7	-6	-2	+0	-0.4%	-0.3%	-0.3%	-0.3%	-0.1%	+0.0%
Maintenance/ Technical	2	-0	-0	-0	-0	+0	-0	-0.0%	-0.0%	-0.0%	-0.0%	+0.0%	-0.0%
Patient & Client Care	124	-19	-12	-14	-9	-1	+1	-0.1%	-0.1%	-0.1%	-0.1%	-0.0%	+0.0%
Health Care Assistants	35	-12	-11	-9	-6	+2	+1	-0.3%	-0.2%	-0.2%	-0.2%	+0.0%	+0.0%
Care, other	89	-6	-1	-4	-3	-3	+1	-0.1%	-0.0%	-0.0%	-0.0%	-0.0%	+0.0%

Source: Health Service Personnel Census

Primary Care

Aug 2020 (Dec 2015 figure: 1,647)	WTE Aug 2020	WTE change since Dec 15	WTE change since Dec 16	WTE change since Dec 17	WTE change since Dec 18	WTE change since Dec 19	WTE change since Jul 20	% change since Dec 15	% change since Dec 16	% change since Dec 17	% change since Dec 18	% change since Dec 19	% change since Jul 20
Overall	1,720	+73	+33	+29	-55	+18	+3	+4.4%	+2.0%	+1.7%	-3.1%	+1.1%	+0.2%
Medical & Dental	147	+50	+14	+10	+3	+9	+5	+0.5%	+0.1%	+0.1%	+0.0%	+0.1%	+0.0%
Consultants	14	+5	+4	+2	+3	+3	-1	+0.5%	+0.3%	+0.2%	+0.3%	+0.3%	-0.0%
Registrars	46	+37	+8	+9	+3	+0	+3	+4.3%	+0.2%	+0.2%	+0.1%	+0.0%	+0.1%
SHO/ Interns	10	+5	+4	+4	+3	+4	+3	+1.0%	+0.7%	+0.7%	+0.4%	+0.7%	+0.4%
Medical/ Dental, other	77	+3	-1	-5	-5	+2	-1	+0.0%	-0.0%	-0.1%	-0.1%	+0.0%	-0.0%
Nursing & Midwifery	515	+12	+7	+6	-15	-15	-3	+0.0%	+0.0%	+0.0%	-0.0%	-0.0%	-0.0%
Nurse/ Midwife Manager	83	+5	+5	+7	+2	+2	-3	+0.1%	+0.1%	+0.1%	+0.0%	+0.0%	-0.0%
Nurse/ Midwife Specialist & AN/MP	50	+17	+17	+7	+4	+4	-1	+0.5%	+0.5%	+0.2%	+0.1%	+0.1%	-0.0%
Staff Nurse/ Staff Midwife	217	+28	+27	+32	+19	+12	+10	+0.1%	+0.1%	+0.2%	+0.1%	+0.1%	+0.0%
Public Health Nurse	163	-13	-18	-24	-33	-13	-0	-0.1%	-0.1%	-0.1%	-0.2%	-0.1%	-0.0%
Nursing/ Midwifery Student	1	-24	-23	-16	-7	-21	-10	-1.0%	-1.0%	-1.0%	-0.9%	-1.0%	-1.0%
Nursing/ Midwifery other	2	-1	-2	-1				-0.3%	-0.4%	-0.2%	+0.0%	+0.0%	+0.0%
Health & Social Care Professionals	376	+22	+13	+14	-4	+3	-2	+0.1%	+0.0%	+0.0%	-0.0%	+0.0%	-0.0%
Therapy Professions	268	+26	+14	+14	-7	+2	-2	+0.1%	+0.1%	+0.1%	-0.0%	+0.0%	-0.0%
Health Science/ Diagnostics	0	-0	-0	-0	+0	+0	+0	-0.5%	-0.6%	-0.6%	+0.0%	+0.0%	+0.0%
Social Care	4	-0	-0	-0	-0	+1	-0	-0.1%	-0.1%	-0.1%	-0.1%	+0.2%	-0.0%
Social Workers	26	-1	-2	-1	+2	-0	+1	-0.0%	-0.1%	-0.0%	+0.1%	-0.0%	+0.0%
Psychologists	25	+5	+5	+3	+2	+4	+0	+0.2%	+0.2%	+0.2%	+0.1%	+0.2%	+0.0%
Pharmacy	33	-0	+3	+2	+4	+1	+1	-0.0%	+0.1%	+0.1%	+0.1%	+0.0%	+0.0%
H&SC, Other	20	-6	-6	-4	-4	-4	-2	-0.2%	-0.2%	-0.2%	-0.2%	-0.2%	-0.1%
Management & Administrative	299	-3	-4	-11	-12	+12	+3	-0.0%	-0.0%	-0.0%	-0.0%	+0.0%	+0.0%
Management (VIII & above)	30	+4	+2	+1	-1	-4	-1	+0.1%	+0.1%	+0.1%	-0.0%	-0.1%	-0.0%
Administrative/ Supervisory (V to VII)	81	+14	+18	+9	+10	+5	-1	+0.2%	+0.3%	+0.1%	+0.1%	+0.1%	-0.0%
Clerical (III & IV)	189	-21	-23	-22	-21	+11	+5	-0.1%	-0.1%	-0.1%	-0.1%	+0.1%	+0.0%
General Support	123	-16	-13	-8	-10	-2	+2	-0.1%	-0.1%	-0.1%	-0.1%	-0.0%	+0.0%
Support	113	-18	-14	-11	-11	-3	+1	-0.1%	-0.1%	-0.1%	-0.1%	-0.0%	+0.0%
Maintenance/ Technical	10	+2	+1	+3	+2	+1	+1	+0.3%	+0.1%	+0.4%	+0.2%	+0.1%	+0.1%
Patient & Client Care	260	+9	+16	+18	-18	+11	-1	+0.0%	+0.1%	+0.1%	-0.1%	+0.0%	-0.0%
Health Care Assistants	132	+13	+15	+14	-8	+11	-2	+0.1%	+0.1%	+0.1%	-0.1%	+0.1%	-0.0%
Care, other	127	-4	+0	+5	-10	-0	+1	-0.0%	+0.0%	+0.0%	-0.1%	-0.0%	+0.0%

Source: Health Service Personnel Census

Disabilities

Aug 2020 (Dec 2015 figure: 1,867)	WTE Aug 2020	WTE change since Dec 15	WTE change since Dec 16	WTE change since Dec 17	WTE change since Dec 18	WTE change since Dec 19	WTE change since Jul 20	% change since Dec 15	% change since Dec 16	% change since Dec 17	% change since Dec 18	% change since Dec 19	% change since Jul 20
Overall	3,028	+1,161	+1,085	+236	+125	+46	+19	+62.2%	+55.8%	+8.4%	+4.3%	+1.5%	+0.6%
Medical & Dental	11	-1	-0	-2	+1	-0	-1	-0.1%	-0.0%	-0.2%	+0.1%	-0.0%	-0.0%
Consultants	1	-3	-2	-2				-0.8%	-0.8%	-0.8%	+0.0%	+0.0%	+0.0%
Registrars	3	+1			+1			+0.5%	+0.0%	+0.0%	+0.3%	+0.0%	+0.0%
SHO/ Interns	7	+2	+2	-0	-0	-0	-1	+0.4%	+0.4%	-0.0%	-0.0%	-0.0%	-0.1%
Medical/ Dental, other	1	-1						-0.3%	+0.0%	+0.0%	+0.0%	+0.0%	+0.0%
Nursing & Midwifery	521	+120	+125	+15	+13	+19	-1	+0.3%	+0.3%	+0.0%	+0.0%	+0.0%	-0.0%
Nurse/ Midwife Manager	123	+29	+23	-10	-1	+1	-2	+0.3%	+0.2%	-0.1%	-0.0%	+0.0%	-0.0%
Nurse/ Midwife Specialist & AN/MP	4	-2	-1	-3	-6	-1	+1	-0.3%	-0.2%	-0.4%	-0.6%	-0.2%	+0.3%
Staff Nurse/ Staff Midwife	377	+79	+89	+12	+4	+3	-1	+0.3%	+0.3%	+0.0%	+0.0%	+0.0%	-0.0%
Nursing/ Midwifery Student	15	+15	+15	+15	+15	+15		-1.0%	-1.0%	-1.0%	-1.0%	-1.0%	+0.0%
Nursing/ Midwifery other	2	-1	-2	+1	+1	+1	+1	-0.4%	-0.5%	+2.0%	+2.0%	+2.0%	+2.0%
Health & Social Care Professionals	584	+354	+329	+79	+48	+32	+6	+1.5%	+1.3%	+0.2%	+0.1%	+0.1%	+0.0%
Therapy Professions	147	+68	+47	+25	+28	+25	+4	+0.9%	+0.5%	+0.2%	+0.2%	+0.2%	+0.0%
Health Science/ Diagnostics	3	+1	+1	+1				+0.4%	+0.2%	+0.5%	+0.0%	+0.0%	+0.0%
Social Care	367	+263	+269	+53	+19	+7	+5	+2.5%	+2.8%	+0.2%	+0.1%	+0.0%	+0.0%
Social Workers	33	+15	+7	+4	-1	-0	-0	+0.8%	+0.3%	+0.1%	-0.0%	-0.0%	-0.0%
Psychologists	29	+7	+6	-3	+2	+1	-1	+0.3%	+0.3%	-0.1%	+0.1%	+0.0%	-0.0%
Pharmacy	4	+0	+0	+0	-1	-1	-2	+0.0%	+0.0%	+0.0%	-0.2%	-0.1%	-0.3%
H&SC, Other	2		-1	-1				+0.0%	-0.4%	-0.4%	+0.0%	+0.0%	+0.0%
Management & Administrative	222	+100	+89	+42	+33	+19	+1	+0.8%	+0.7%	+0.2%	+0.2%	+0.1%	+0.0%
Management (VIII & above)	38	+11	+12	+7	+7	+6		+0.4%	+0.5%	+0.2%	+0.2%	+0.2%	+0.0%
Administrative/ Supervisory (V to VII)	87	+44	+40	+25	+17	+8	+2	+1.0%	+0.8%	+0.4%	+0.2%	+0.1%	+0.0%
Clerical (III & IV)	98	+45	+38	+10	+9	+6	-1	+0.8%	+0.6%	+0.1%	+0.1%	+0.1%	-0.0%
General Support	191	+31	+33	-23	-17	-4	-1	+0.2%	+0.2%	-0.1%	-0.1%	-0.0%	-0.0%
Support	158	+16	+19	-22	-19	-8	-4	+0.1%	+0.1%	-0.1%	-0.1%	-0.1%	-0.0%
Maintenance/ Technical	32	+15	+14	-2	+3	+4	+3	+0.9%	+0.8%	-0.0%	+0.1%	+0.1%	+0.1%
Patient & Client Care	1,498	+556	+509	+126	+47	-20	+14	+0.6%	+0.5%	+0.1%	+0.0%	-0.0%	+0.0%
Health Care Assistants	1,101	+425	+382	+129	+54	-11	+10	+0.6%	+0.5%	+0.1%	+0.1%	-0.0%	+0.0%
Care, other	378	+145	+141	+5	-2	-8	+4	+0.6%	+0.6%	+0.0%	-0.0%	-0.0%	+0.0%
Home Help	18	-14	-14	-8	-5	-1	+0	-0.4%	-0.4%	-0.3%	-0.2%	-0.1%	+0.0%

Source: Health Service Personnel Census

Older People

Aug 2020 (Dec 2015 figure: 1,128)	WTE Aug 2020	WTE change since Dec 15	WTE change since Dec 16	WTE change since Dec 17	WTE change since Dec 18	WTE change since Dec 19	WTE change since Jul 20	% change since Dec 15	% change since Dec 16	% change since Dec 17	% change since Dec 18	% change since Dec 19	% change since Jul 20
Overall	1,036	-92	-85	-27	-8	+40	+3	-8.1%	-7.5%	-2.6%	-0.7%	+4.1%	+0.3%
Medical & Dental	6	-4	-3	-2	-1			-0.4%	-0.3%	-0.3%	-0.1%	+0.0%	+0.0%
SHO/ Interns	2	-1	-1	-1				-0.3%	-0.3%	-0.3%	+0.0%	+0.0%	+0.0%
Medical/ Dental, other	4	-3	-2	-1	-1			-0.4%	-0.3%	-0.2%	-0.2%	+0.0%	+0.0%
Nursing & Midwifery	329	-27	-12	+6	+27	+30	+2	-0.1%	-0.0%	+0.0%	+0.1%	+0.1%	+0.0%
Nurse/ Midwife Manager	82	+5	-2	+7	+8	+5	+2	+0.1%	-0.0%	+0.1%	+0.1%	+0.1%	+0.0%
Nurse/ Midwife Specialist & AN/MP	4	+1	+1	+1	-0	+2	+0	+0.2%	+0.2%	+0.2%	-0.0%	+0.6%	+0.1%
Staff Nurse/ Staff Midwife	240	-33	-13	-4	+17	+21	-0	-0.1%	-0.1%	-0.0%	+0.1%	+0.1%	-0.0%
Public Health Nurse		-2	-0					-1.0%	-1.0%	-1.0%	-1.0%	-1.0%	-1.0%
Nursing/ Midwifery Student	3	+3	+3	+3	+3	+3	-0	-1.0%	-1.0%	-1.0%	-1.0%	-1.0%	-0.0%
Health & Social Care Professionals	31	-5	-7	-6	-8	+3	+0	-0.1%	-0.2%	-0.2%	-0.2%	+0.1%	+0.0%
Therapy Professions	14	-2	-3	-4	-3	-0	+0	-0.1%	-0.2%	-0.2%	-0.2%	-0.0%	+0.0%
Health Science/ Diagnostics		-1	-1					-1.0%	-1.0%	-1.0%	-1.0%	-1.0%	-1.0%
Social Workers	13	-0	-2	-1	-3	+3	-0	-0.0%	-0.1%	-0.0%	-0.2%	+0.2%	-0.0%
Pharmacy	3	-1	-1	-1	-1	+1		-0.3%	-0.3%	-0.3%	-0.3%	+0.2%	+0.0%
H&SC, Other	1	-1	-1	-1	-1			-0.5%	-0.5%	-0.5%	-0.5%	+0.0%	+0.0%
Management & Administrative	59	+6	+7	+9	+15	+8	+6	+0.1%	+0.1%	+0.2%	+0.3%	+0.2%	+0.1%
Management (VIII & above)	7	-1	-1	+2	+3	+2	+1	-0.2%	-0.2%	+0.3%	+0.7%	+0.3%	+0.2%
Administrative/ Supervisory (V to VII)	14	+1	+4	+3	+4	+2	-0	+0.1%	+0.4%	+0.3%	+0.4%	+0.2%	-0.0%
Clerical (III & IV)	39	+6	+4	+4	+8	+5	+5	+0.2%	+0.1%	+0.1%	+0.3%	+0.1%	+0.1%
General Support	112	-8	-9	-11	-10	-0	+0	-0.1%	-0.1%	-0.1%	-0.1%	-0.0%	+0.0%
Support	110	-7	-8	-10	-9	-0	+0	-0.1%	-0.1%	-0.1%	-0.1%	-0.0%	+0.0%
Maintenance/ Technical	2	-1	-1	-1	-1			-0.3%	-0.3%	-0.3%	-0.3%	+0.0%	+0.0%
Patient & Client Care	499	-54	-60	-22	-31	-1	-6	-0.1%	-0.1%	-0.0%	-0.1%	-0.0%	-0.0%
Health Care Assistants	381	-41	-36	+0	-30	-7	-5	-0.1%	-0.1%	+0.0%	-0.1%	-0.0%	-0.0%
Care, other	4	-9	-12	-11	-3	-1	-1	-0.7%	-0.8%	-0.7%	-0.4%	-0.2%	-0.1%
Home Help	115	-4	-12	-11	+2	+7	-1	-0.0%	-0.1%	-0.1%	+0.0%	+0.1%	-0.0%

Source: Health Service Personnel Census