

CHO 7 Employment Report: February 2021

Employment by Staff Group

Feb 2021 (Dec 2020 figure: 6,783)	WTE Jan 2021	WTE Feb 2021	WTE change since Jan 21	% change since Jan 21	WTE change since Dec 20	WTE change since Feb 20
Overall	6,778	6,776	-2	-0.0%	-7	+248
Consultants	67	68	+1	+1.6%	+2	+8
Registrars	102	104	+2	+1.6%	+4	+14
SHO/ Interns	37	36	-1	-3.3%	-3	-1
Medical/ Dental, other	72	78	+6	+8.2%	-2	-3
Medical & Dental	278	285	+7	+2.7%	+1	+19
Nurse/ Midwife Manager	409	416	+6	+1.5%	+8	+27
Nurse/ Midwife Specialist & AN/MP	108	110	+2	+1.6%	+0	+14
Staff Nurse/ Staff Midwife	1,031	1,023	-9	-0.8%	+2	+26
Public Health Nurse	173	172	-1	-0.6%	-4	+3
<i>Pre-registration Nurse/ Midwife Intern</i>	8	15	+8	+94.0%	+15	+8
<i>Pre-registration Nurse Intern (COVID-19)</i>	2	1	-1	-48.5%	-2	-1
<i>Post-registration Nurse/ Midwife Student</i>	24	24				
<i>Nursing/ Midwifery awaiting registration</i>	3	2	-1	-30.5%	-2	-1
Nursing/ Midwifery Student	37	43	+6	+15.0%	+11	-5
Nursing/ Midwifery other	8	8			-1	-1
Nursing & Midwifery	1,767	1,771	+4	+0.2%	+15	+63
Therapy Professions	463	450	-13	-2.7%	-12	-2
Health Science/ Diagnostics	4	4	-0	-10.4%	-0	+0
Social Care	397	396	-0	-0.1%	-3	+23
Social Workers	110	112	+3	+2.4%	+4	+8
Psychologists	84	81	-3	-3.2%	-5	-1
Pharmacy	32	40	+8	+24.2%	+2	-3
H&SC, Other	41	41	-1	-1.4%	-1	-3
Health & Social Care Professionals	1,131	1,125	-6	-0.6%	-16	+23
Management (VIII & above)	85	87	+2	+2.7%	+3	+12
Administrative/ Supervisory (V to VII)	217	219	+2	+1.2%	+5	+37
Clerical (III & IV)	379	379	-1	-0.2%	-2	+19
Management & Administrative	681	685	+4	+0.6%	+6	+67
Support	398	395	-3	-0.7%	-7	-13
Maintenance/ Technical	45	45	+0	+0.3%	-1	+3
General Support	443	440	-3	-0.6%	-8	-10
Health Care Assistants	1,731	1,716	-16	-0.9%	-7	+81
Care, other	619	624	+5	+0.8%	+3	+12
Home Help	127	130	+2	+1.9%	-2	-6
Patient & Client Care	2,478	2,469	-8	-0.3%	-6	+87

CHO 7 Employment Report: February 2021

Community Health & Wellbeing

Feb 2021 (Dec 2020 figure: 8)	WTE Jan 2021	WTE Feb 2021	WTE change since Jan 21	% change since Jan 21	WTE change since Dec 20	WTE change since Feb 20
Total Community Health & Wellbeing	7	7	-0	-0.1%	-1	-1
Management (VIII & above)	1	1	0	0		
Administrative/ Supervisory (V to VII)	3	3	-0	-0%	-0	+1
Clerical (III & IV)	1	1	0	0	-0	
Management & Administrative	5	5	-0	-0.2%	-0	+1
Care, other	2	2	0	0	-1	-2
Patient & Client Care	2	2	0	0	-1	-2

Mental Health

Feb 2021 (Dec 2020 figure: 861)	WTE Jan 2021	WTE Feb 2021	WTE change since Jan 21	% change since Jan 21	WTE change since Dec 20	WTE change since Feb 20
Total Mental Health	863	865	+2	+0.3%	+4	+25
Consultants	53	54	+0	+1%	+1	+6
Registrars	54	56	+3	+5%	+3	+14
SHO/ Interns	19	18	-1	-6%	-2	-3
Medical & Dental	126	128	+2	+1.5%	+1	+17
Nurse/ Midwife Manager	118	120	+2	+2%	+3	+7
Nurse/ Midwife Specialist & AN/MP	46	47	+1	+2%	+0	+7
Staff Nurse/ Staff Midwife	207	201	-6	-3%	-1	+1
Pre-registration Nurse/ Midwife Intern	1	8	+8	+765.3%	+8	+8
Pre-registration Nurse Intern (COVID-19)	2	1	-1	-48.5%	-2	-1
Post-registration Nurse/ Midwife Student	1	1				
Nursing/ Midwifery awaiting registration	2	1	-1	-43.4%	-2	-1
Nursing/ Midwifery Student	6	11	+6	+102%	+4	-8
Nursing/ Midwifery other	5	5	0	0	-1	-2
Nursing & Midwifery	381	384	+3	+0.7%	+5	+5
Therapy Professions	53	52	-1	-2%	-1	+2
Social Care	7	7	-0	-1%	+0	-0
Social Workers	38	39	+1	+3%	+1	+7
Psychologists	27	27	-0	-0%	-2	-4
Pharmacy	1	1	0	0		
H&SC, Other	18	17	-1	-5%	-1	-1
Health & Social Care Professionals	144	143	-1	-0.8%	-3	+5
Management (VIII & above)	4	4	-0	-1%	-0	+1
Administrative/ Supervisory (V to VII)	18	17	-0	-2%	+0	+2
Clerical (III & IV)	49	49	+0	+0%	+0	+2
Management & Administrative	71	70	-0	-0.4%	+0	+5
Support	17	18	+0	+2%	+0	-1
Maintenance/ Technical	2	2	0	0		+0
General Support	19	20	+0	+2.1%	+0	-1
Health Care Assistants	35	35	+0	+0%	+0	+2
Care, other	86	84	-1	-1%	+0	-7
Patient & Client Care	120	119	-1	-0.9%	+0	-5

Primary Care

Feb 2021 (Dec 2020 figure: 1,789)	WTE Jan 2021	WTE Feb 2021	WTE change since Jan 21	% change since Jan 21	WTE change since Dec 20	WTE change since Feb 20
Total Primary Care	1,785	1,815	+30	+1.7%	+26	+130
Consultants	13	14	+1	+5%	+1	+2
Registrars	46	44	-1	-2%	+1	+0
SHO/ Interns	9	9	-0	-3%	-0	+3
Medical/ Dental, other	69	75	+6	+9%	-2	-1
Medical & Dental	137	142	+5	+3.8%	+0	+4
Nurse/ Midwife Manager	84	88	+3	+4%	+2	+7
Nurse/ Midwife Specialist & AN/MP	54	55	+1	+1%	-0	+8
Staff Nurse/ Staff Midwife	200	202	+2	+1%	+2	-3
Public Health Nurse	173	172	-1	-1%	-4	+3
<i>Post-registration Nurse/ Midwife Student</i>	23	23				
Nursing/ Midwifery Student	23	23	0	0		+2
Nursing/ Midwifery other	2	2	0	0		
Nursing & Midwifery	537	542	+5	+0.9%	-0	+18
Therapy Professions	254	252	-2	-1%	-5	-8
Health Science/ Diagnostics	1	1	-0	-35%	-0	+0
Social Care	4	4	+0	+1%	+0	+0
Social Workers	26	27	+2	+7%	+1	+1
Psychologists	27	26	-1	-4%	+0	+3
Pharmacy	25	32	+7	+28%	+2	-1
H&SC, Other	21	21	+0	+2%	+0	-3
Health & Social Care Professionals	357	363	+6	+1.6%	-2	-7
Management (VIII & above)	30	31	+1	+3%	+0	+1
Administrative/ Supervisory (V to VII)	90	93	+3	+3%	+5	+19
Clerical (III & IV)	191	192	+1	+0%	-1	+15
Management & Administrative	311	315	+5	+1.5%	+5	+34
Support	110	110	-0	-0%	-0	-7
Maintenance/ Technical	9	9	0	0	-0	+1
General Support	120	120	-0	-0.1%	-0	-7
Health Care Assistants	197	208	+10	+5%	+23	+87
Care, other	127	126	-1	-0%	+0	+1
Patient & Client Care	324	334	+10	+3.1%	+24	+88

Social Care

Feb 2021 (Dec 2020 figure: 4,125)	WTE Jan 2021	WTE Feb 2021	WTE change since Jan 21	% change since Jan 21	WTE change since Dec 20	WTE change since Feb 20
Total Social Care	4,124	4,089	-35	-0.8%	-36	+94
Consultants	1	1	0	0		
Registrars	3	3	+0	+7%		
SHO/ Interns	9	9	+0	+2%		
Medical/ Dental, other	3	3	0	0		-2
Medical & Dental	15	16	+0	+2.4%	-0	-2
Nurse/ Midwife Manager	207	208	+1	+0%	+3	+12
Nurse/ Midwife Specialist & AN/MP	7	7	+0	+0%	+0	-1
Staff Nurse/ Staff Midwife	625	620	-4	-1%	+1	+28
Pre-registration Nurse/ Midwife Intern	7	7			+7	
Nursing/ Midwifery awaiting registration	2	1	-0	-15.3%	-0	-0
Nursing/ Midwifery Student	9	8	-0	-3%	+7	+1
Nursing/ Midwifery other	2	2	0	0		+1
Nursing & Midwifery	849	845	-4	-0.4%	+11	+41
Therapy Professions	155	146	-9	-6%	-6	+4
Health Science/ Diagnostics	3	3	0	0		
Social Care	386	385	-0	-0%	-4	+23
Social Workers	47	46	-0	-1%	+2	+1
Psychologists	31	29	-1	-5%	-3	-0
Pharmacy	6	6	+1	+11%	+0	-2
H&SC, Other	3	3	0	0		
Health & Social Care Professionals	629	618	-11	-1.7%	-10	+25
Management (VIII & above)	51	52	+2	+3%	+2	+9
Administrative/ Supervisory (V to VII)	106	106	+0	+0%	-0	+15
Clerical (III & IV)	139	137	-2	-1%	-1	+2
Management & Administrative	295	295	-0	-0.1%	+1	+27
Support	270	267	-3	-1%	-7	-4
Maintenance/ Technical	33	34	+0	+0%	-1	+2
General Support	304	301	-3	-1.0%	-8	-2
Health Care Assistants	1,499	1,473	-26	-2%	-31	-8
Care, other	405	411	+6	+2%	+3	+21
Home Help	127	130	+2	+2%	-2	-6
Patient & Client Care	2,031	2,014	-17	-0.8%	-29	+6

CHO 7 Employment Report: February 2021

Disabilities

Feb 2021 (Dec 2020 figure: 3,103)	WTE Jan 2021	WTE Feb 2021	WTE change since Jan 21	% change since Jan 21	WTE change since Dec 20	WTE change since Feb 20
Total Disabilities	3,102	3,075	-26	-0.9%	-28	+79
Consultants	1	1				
Registrars	3	3	+0	+6.8%		
SHO/ Interns	7	7	+0	+2.5%		
Medical/ Dental, other	1	1				
Medical & Dental	11	12	+0	+3.2%		
Nurse/ Midwife Manager	121	120	-1	-0.6%	+2	+2
Nurse/ Midwife Specialist & AN/MP	4	4				-1
Staff Nurse/ Staff Midwife	383	378	-5	-1.4%	-0	+1
<i>Pre-registration Nurse/ Midwife Intern</i>	7	7			+7	
Nursing/ Midwifery Student	7	7			+7	-1
Nursing/ Midwifery other	2	2				+1
Nursing & Midwifery	517	511	-6	-1.1%	+8	+3
Therapy Professions	140	130	-10	-7.0%	-8	+2
Health Science/ Diagnostics	3	3				
Social Care	386	385	-0	-0.1%	-4	+23
Social Workers	33	33	+0	+0.5%	+1	-1
Psychologists	31	29	-1	-4.9%	-3	-0
Pharmacy	4	4	+1	+17.3%	+0	-1
H&SC, Other	2	2				
Health & Social Care Professionals	597	587	-11	-1.8%	-13	+22
Management (VIII & above)	43	45	+1	+3.4%	+2	+7
Administrative/ Supervisory (V to VII)	91	91	-0	-0.0%	-1	+11
Clerical (III & IV)	101	100	-1	-1.0%	-1	+1
Management & Administrative	235	236	+0	+0.2%	+0	+19
Support	153	150	-3	-1.8%	-6	-14
Maintenance/ Technical	31	32	+0	+0.4%	-1	+2
General Support	184	181	-3	-1.4%	-7	-12
Health Care Assistants	1,142	1,126	-15	-1.4%	-20	+28
Care, other	400	406	+7	+1.6%	+3	+20
Home Help	16	17	+1	+6.7%	+0	-2
Patient & Client Care	1,557	1,550	-8	-0.5%	-17	+46

Older People

Feb 2021 (Dec 2020 figure: 1,021)	WTE Jan 2021	WTE Feb 2021	WTE change since Jan 21	% change since Jan 21	WTE change since Dec 20	WTE change since Feb 20
Total Older People	1,022	1,014	-8	-0.8%	-8	+16
SHO/ Interns	2	2				
Medical/ Dental, other	2	2				-2
Medical & Dental	4	4				-2
Nurse/ Midwife Manager	86	88	+2	+1.9%	+2	+10
Nurse/ Midwife Specialist & AN/MP	3	3	+0	+1.0%	+0	-0
Staff Nurse/ Staff Midwife	242	242	+1	+0.4%	+1	+27
Nursing/ Midwifery Student	2	1	-0	-15.3%	-0	+1
Nursing & Midwifery	332	334	+2	+0.7%	+2	+38
Health & Social Care Professionals	32	31	-0	-0.2%	+3	+3
Management (VIII & above)	7	7	+0	+0.7%	+0	+2
Administrative/ Supervisory (V to VII)	15	16	+0	+0.3%	+1	+4
Clerical (III & IV)	37	36	-1	-1.8%	-0	+1
Management & Administrative	60	59	-1	-0.9%	+1	+8
Support	118	118	-0	-0.3%	-1	+10
Maintenance/ Technical	2	2				
General Support	120	120	-0	-0.3%	-1	+10
Health Care Assistants	358	347	-11	-3.0%	-10	-36
Care, other	5	5	-0	-1.4%	-0	+0
Home Help	111	113	+1	+1.2%	-2	-4
Patient & Client Care	474	465	-9	-2.0%	-13	-40

CHO 7 Employment by Administration (HSE / S38): February 2021

Feb 2021 (Dec 2020 figure: 6,783)	WTE Jan 2021	WTE Feb 2021	WTE change since Jan 21	% change since Jan 21	WTE change since Dec 20	WTE change since Feb 20
Overall	6,778	6,776	-2	-0.0%	-7	+248
HSE	3,316	3,327	+11	+0.3%	+8	+168
Section 38 Voluntary Agencies	3,462	3,449	-13	-0.4%	-15	+81

HSE

Feb 2021 (Dec 2020 figure: 3,319)	WTE Jan 2021	WTE Feb 2021	WTE change since Jan 21	% change since Jan 21	WTE change since Dec 20	WTE change since Feb 20
Overall	3,316	3,327	+11	+0.3%	+8	+168
Consultants	58	59	+0	+0.0%	+1	+6
Registrars	93	95	+2	+0.0%	+4	+13
SHO/ Interns	24	23	-1	-0.0%	-2	-1
Medical/ Dental, other	70	76	+6	+0.1%	-2	-3
Medical & Dental	245	252	+7	+2.8%	+1	+14
Nurse/ Midwife Manager	248	254	+6	+0.0%	+6	+24
Nurse/ Midwife Specialist & AN/MP	67	68	+2	+0.0%	+0	+6
Staff Nurse/ Staff Midwife	549	543	-6	-0.0%	-2	+22
Public Health Nurse	173	172	-1	-0.0%	-4	+3
Pre-registration Nurse/ Midwife Intern	1	8	+8	+7.7%	+7	-6
Pre-registration Nurse Intern (COVID-19)	2	1	-1	-0.5%	+1	+1
Post-registration Nurse/ Midwife Student	24	24		+0.0%	+3	+3
Nursing/ Midwifery awaiting registration	3	2	-1	-0.3%	-8	-3
Nursing/ Midwifery Student	30	36	+6	+0.2%	+4	-5
Nursing/ Midwifery other	5	5		+0.0%	-1	-2
Nursing & Midwifery	1,072	1,078	+6	+0.6%	+2	+48
Therapy Professions	341	333	-8	-0.0%	-7	+9
Social Care	11	11	+0	+0.0%	+0	-0
Social Workers	74	74	+1	+0.0%	+1	+8
Psychologists	62	61	-2	-0.0%	-3	-1
Pharmacy	19	25	+6	+0.3%	+1	-3
H&SC, Other	40	39	-1	-0.0%	-1	-3
Health & Social Care Professionals	547	543	-4	-0.7%	-8	+10
Management (VIII & above)	47	48	+1	+0.0%	+1	+5
Administrative/ Supervisory (V to VII)	125	126	+2	+0.0%	+4	+32
Clerical (III & IV)	261	260	-1	-0.0%	-2	+13
Management & Administrative	433	434	+2	+0.4%	+2	+50
Support	176	178	+2	+0.0%	+0	+8
Maintenance/ Technical	5	5		+0.0%		-0
General Support	182	183	+2	+0.8%	+0	+8
Health Care Assistants	485	483	-2	-0.0%	+13	+48
Care, other	225	223	-2	-0.0%	-0	-5
Home Help	127	130	+2	+0.0%	-2	-6
Patient & Client Care	838	836	-2	-0.2%	+11	+37

Section 38 Voluntary Agencies

Feb 2021 (Dec 2020 figure: 3,464)	WTE Jan 2021	WTE Feb 2021	WTE change since Jan 21	% change since Jan 21	WTE change since Dec 20	WTE change since Feb 20
Overall	3,462	3,449	-13	-0.4%	-15	+81
Consultants	9	9	+1	+0.1%	+1	+3
Registrars	9	9	+0	+0.0%	-0	+1
SHO/ Interns	13	13	-0	-0.0%	-0	+1
Medical/ Dental, other	2	2	-0	-0.0%		-0
Medical & Dental	33	33	+0	+1.5%	+1	+4
Nurse/ Midwife Manager	161	162	+0	+0.0%	+2	+3
Nurse/ Midwife Specialist & AN/MP	41	41	+0	+0.0%	-0	+8
Staff Nurse/ Staff Midwife	482	480	-3	-0.0%	+4	+4
<i>Pre-registration Nurse/ Midwife Intern</i>	7	7		+0.0%	+7	-1
Nursing/ Midwifery Student	7	7		+0.0%	+7	-1
Nursing/ Midwifery other	4	4		+0.0%		+1
Nursing & Midwifery	695	693	-2	-0.3%	+13	+15
Therapy Professions	122	117	-4	-0.0%	-5	-10
Health Science/ Diagnostics	4	4	-0	-0.1%	-0	+0
Social Care	386	385	-0	-0.0%	-4	+23
Social Workers	36	38	+2	+0.1%	+3	-0
Psychologists	22	21	-1	-0.0%	-2	-0
Pharmacy	13	15	+2	+0.1%	+1	+0
H&SC, Other	2	2		+0.0%		
Health & Social Care Professionals	584	582	-2	-0.4%	-7	+12
Management (VIII & above)	38	40	+2	+0.0%	+2	+7
Administrative/ Supervisory (V to VII)	92	93	+1	+0.0%	+1	+4
Clerical (III & IV)	118	118	+0	+0.0%	+1	+6
Management & Administrative	248	251	+2	+1.0%	+4	+17
Support	222	217	-4	-0.0%	-7	-21
Maintenance/ Technical	39	40	+0	+0.0%	-1	+3
General Support	261	257	-4	-1.6%	-8	-18
Health Care Assistants	1,246	1,233	-13	-0.0%	-20	+33
Care, other	394	400	+7	+0.0%	+3	+17
Patient & Client Care	1,640	1,633	-7	-0.4%	-17	+49

CHO 7 Employment by S38 Agency: February 2021

Cheeverstown House

Feb 2021 (Dec 2020 figure: 395)	WTE Jan 2021	WTE Feb 2021	WTE change since Jan 21	% change since Jan 21	WTE change since Dec 20	WTE change since Feb 20
Overall	400	395	-6	-1.4%	+0	-3
Consultants	0	0		+0.0%		
Medical/ Dental, other	1	1		+0.0%		
Medical & Dental	1	1				
Nurse/ Midwife Manager	26	25	-1	-0.0%	-2	-1
Nurse/ Midwife Specialist & AN/MP	2	2		+0.0%		
Staff Nurse/ Staff Midwife	111	107	-4	-0.0%	+2	+1
Nursing & Midwifery	138	134	-5	-3.2%	-1	+0
Therapy Professions	13	13		+0.0%		+1
Social Care	35	37	+3	+0.1%	+3	+2
Social Workers	5	5		+0.0%	+1	-1
Psychologists	4	3	-1	-0.3%	-2	-2
Pharmacy	0	0		+0.0%		-0
H&SC, Other	2	2		+0.0%		
Health & Social Care Professionals	59	60	+2	+2.5%	+2	+1
Management (VIII & above)	3	3		+0.0%		+1
Administrative/ Supervisory (V to VII)	15	14	-2	-0.1%	-1	-1
Clerical (III & IV)	12	12		+0.0%		+1
Management & Administrative	31	29	-2	-4.9%	-1	+1
Support	27	27		+0.0%	-0	-0
Maintenance/ Technical	4	4		+0.0%		
General Support	30	30			-0	-0
Health Care Assistants	129	128	-1	-0.0%	-1	-5
Care, other	12	12		+0.0%	+2	+0
Patient & Client Care	141	140	-1	-0.7%	+1	-5

Kare, Newbridge, Co Kildare

Feb 2021 (Dec 2020 figure: 377)	WTE Jan 2021	WTE Feb 2021	WTE change since Jan 21	% change since Jan 21	WTE change since Dec 20	WTE change since Feb 20
Overall	376	380	+3	+0.9%	+3	+16
Nurse/ Midwife Manager	7	7		+0.0%		-3
Staff Nurse/ Staff Midwife	24	24	-0	-0.0%	-1	+1
Nursing & Midwifery	31	31	-0	-1.0%	-1	-2
Therapy Professions	13	13	-0	-0.0%	-0	-3
Social Care	68	68	+0	+0.0%	+0	+6
Social Workers	4	4		+0.0%		-0
Psychologists	7	7	-0	-0.0%	-1	+1
Health & Social Care Professionals	92	91	-0	-0.1%	-0	+4
Management (VIII & above)	6	6		+0.0%		
Administrative/ Supervisory (V to VII)	13	13	-0	-0.0%	+0	+0
Clerical (III & IV)	13	13		+0.0%	-1	+1
Management & Administrative	33	33	-0	-0.5%	-1	+1
Support	1	1		+0.0%	-0	-0
General Support	1	1			-0	-0
Health Care Assistants	108	108	+0	+0.0%	+3	+6
Care, other	111	115	+3	+0.0%	+3	+6
Patient & Client Care	219	223	+4	+1.7%	+5	+13

Our Lady's Hospice & Care Services

Feb 2021 (Dec 2020 figure: 496)	WTE Jan 2021	WTE Feb 2021	WTE change since Jan 21	% change since Jan 21	WTE change since Dec 20	WTE change since Feb 20
Overall	496	503	+7	+1.3%	+7	+20
Consultants	8	9	+1	+0.1%	+1	+3
Registrars	6	6	-0	-0.0%	-0	+1
SHO/ Interns	6	6	-0	-0.0%	-0	+1
Medical/ Dental, other	1	1	-0	-0.0%		-0
Medical & Dental	21	22	+0	+0.6%	+1	+4
Nurse/ Midwife Manager	44	45	+1	+0.0%	+1	+1
Nurse/ Midwife Specialist & AN/MP	37	37	+0	+0.0%	-0	+8
Staff Nurse/ Staff Midwife	99	102	+3	+0.0%	+4	+3
Nursing/ Midwifery other	2	2		+0.0%		
Nursing & Midwifery	182	186	+4	+2.0%	+5	+12
Therapy Professions	34	34	-0	-0.0%	-1	-3
Health Science/ Diagnostics	1	1	-0	-0.4%	-0	+0
Social Workers	10	11	+1	+0.1%	+1	+0
Psychologists	1	1	-0	-0.1%		
Pharmacy	10	10	+1	+0.1%	+1	+1
Health & Social Care Professionals	56	57	+1	+1.9%	+0	-1
Management (VIII & above)	4	4		+0.0%		+1
Administrative/ Supervisory (V to VII)	20	20	+1	+0.0%	+2	-1
Clerical (III & IV)	29	30	+1	+0.0%	+1	+4
Management & Administrative	53	54	+1	+2.7%	+3	+5
Support	69	68	-2	-0.0%	-1	-7
Maintenance/ Technical	8	8		+0.0%		+1
General Support	77	76	-2	-2.1%	-1	-6
Health Care Assistants	106	108	+2	+0.0%	+0	+5
Care, other	1	1		+0.0%	+0	+0
Patient & Client Care	107	109	+2	+1.8%	+0	+5

Peamount Hospital (Newcastle)

Feb 2021 (Dec 2020 figure: 483)	WTE Jan 2021	WTE Feb 2021	WTE change since Jan 21	% change since Jan 21	WTE change since Dec 20	WTE change since Feb 20
Overall	482	475	-6	-1.3%	-7	-24
Registrars	2	2	+0	+0.1%		
SHO/ Interns	7	7	+0	+0.0%		
Medical & Dental	9	9	+0	+4.9%		
Nurse/ Midwife Manager	29	31	+1	+0.0%	+3	+4
Nurse/ Midwife Specialist & AN/MP	2	2		+0.0%		
Staff Nurse/ Staff Midwife	74	73	-1	-0.0%	-3	-13
Nursing Education/Clinical	1	1		+0.0%	+1	+1
Nursing/ Midwifery other	1	1		+0.0%		+1
Nursing & Midwifery	106	106	+0	+0.1%	+0	-8
Therapy Professions	32	29	-3	-0.1%	+1	-3
Health Science/ Diagnostics	3	3		+0.0%		
Social Care	3	3	-0	-0.1%	-1	+1
Social Workers	5	6	+1	+0.1%	+1	+1
Pharmacy	3	4	+1	+0.2%	+0	-1
Health & Social Care Professionals	47	45	-2	-3.3%	+1	-2
Management (VIII & above)	4	4		+0.0%		
Administrative/ Supervisory (V to VII)	16	17	+1	+0.1%	+1	+3
Clerical (III & IV)	18	19	+0	+0.0%	-1	-3
Management & Administrative	39	40	+1	+3.8%	-0	-0
Support	44	42	-2	-0.0%	-2	-5
Maintenance/ Technical	8	8	+0	+0.0%	-1	-0
General Support	52	50	-2	-3.3%	-3	-5
Health Care Assistants	226	221	-5	-0.0%	-5	-9
Care, other	3	3	+0	+0.1%	+0	+0
Patient & Client Care	229	224	-5	-2.1%	-5	-9

Stewart's Hospital, (Palmerstown)

Feb 2021 (Dec 2020 figure: 914)	WTE Jan 2021	WTE Feb 2021	WTE change since Jan 21	% change since Jan 21	WTE change since Dec 20	WTE change since Feb 20
Overall	916	915	-1	-0.2%	+1	+58
Consultants	0	0		+0.0%		
Medical & Dental	0	0				
Nurse/ Midwife Manager	34	34		+0.0%	+3	+2
Staff Nurse/ Staff Midwife	83	84	+1	+0.0%	+3	+12
Pre-registration Nurse/ Midwife Intern	7	7		+0.0%	+7	-1
Nursing/ Midwifery Student	7	7		+0.0%	+7	-1
Nursing/ Midwifery other	1	1		+0.0%		
Nursing & Midwifery	125	125	+1	+0.4%	+13	+13
Therapy Professions	18	18	-1	-0.0%	-2	+2
Social Care	13	13		+0.0%		+1
Social Workers	6	6		+0.0%		-1
Psychologists	4	4		+0.0%		-1
Health & Social Care Professionals	41	40	-1	-1.2%	-2	+2
Management (VIII & above)	16	17	+1	+0.1%	+1	+5
Administrative/ Supervisory (V to VII)	17	18	+1	+0.1%	+1	+4
Clerical (III & IV)	25	24	-1	-0.0%		+1
Management & Administrative	58	59	+1	+1.7%	+2	+9
Support	53	53	-0	-0.0%	-1	-3
Maintenance/ Technical	6	6		+0.0%		+1
General Support	59	59	-0	-0.4%	-1	-2
Health Care Assistants	512	509	-2	-0.0%	-10	+32
Care, other	122	122	+0	+0.0%	-0	+4
Patient & Client Care	633	631	-2	-0.3%	-11	+36

St. John of God Liffey Services

Feb 2021 (Dec 2020 figure: 801)	WTE Jan 2021	WTE Feb 2021	WTE change since Jan 21	% change since Jan 21	WTE change since Dec 20	WTE change since Feb 20
Overall	792	782	-10	-1.2%	-19	+14
Registrars	1	1	-0	-0.1%		
Medical & Dental	1	1	-0	-5.7%		
Nurse/ Midwife Manager	21	20	-1	-0.0%	-2	-0
Nurse/ Midwife Specialist & AN/MP	1	1		+0.0%		
Staff Nurse/ Staff Midwife	91	90	-1	-0.0%	-1	-0
Nursing & Midwifery	113	111	-2	-1.5%	-2	-1
Therapy Professions	11	10	-1	-0.1%	-3	-5
Social Care	267	264	-3	-0.0%	-5	+12
Social Workers	5	6	+0	+0.1%	-0	-1
Psychologists	6	7	+0	+0.1%	+0	+1
Health & Social Care Professionals	290	287	-3	-1.0%	-8	+8
Management (VIII & above)	5	6	+1	+0.1%	+1	
Administrative/ Supervisory (V to VII)	11	10	-1	-0.1%	-1	-1
Clerical (III & IV)	19	20	+0	+0.0%	+2	+2
Management & Administrative	36	36	+0	+0.5%	+2	+1
Support	27	26	-1	-0.0%	-2	-5
Maintenance/ Technical	14	14	+0	+0.0%	-0	+1
General Support	41	41	-1	-1.5%	-2	-4
Health Care Assistants	167	159	-8	-0.0%	-6	+4
Care, other	144	147	+3	+0.0%	-2	+6
Patient & Client Care	311	307	-5	-1.5%	-8	+10

CHO 7 Employment by Grade Group & Staff Category: February 2021

Feb 2021 (Dec 2020 figure: 6,783)	WTE Jan 2021	WTE Feb 2021	WTE change since Jan 21	% change since Jan 21	WTE change since Dec 20	WTE change since Feb 20
Overall	6,778	6,776	-2	-0.0%	-7	+248
Consultant Medicine	9	10	+1	+6.5%	+1	+3
Consultant Paediatrics	0	0				
Consultant Psychiatry	57	58	+0	+0.8%	+1	+6
Consultant Surgery				-100.0%		-1
Consultants	67	68	+1	+1.6%	+2	+8
Registrar	78	79	+1	+1.4%	+5	+8
Senior Registrar	18	19	+1	+3.4%	-1	+4
Specialist Registrar	6	6	-0	-2.2%	-0	+2
Registrars	102	104	+2	+1.6%	+4	+14
Interns	2	2				
Senior House Officer	35	34	-1	-3.5%	-3	-1
SHO/ Interns	37	36	-1	-3.3%	-3	-1
Dentists	34	33	-1	-3.3%	-2	-1
Other Medical	38	45	+7	+18.7%	+0	-2
Medical/ Dental, other	72	78	+6	+8.2%	-2	-3
Medical & Dental	278	285	+7	+2.7%	+15	+19
Clinical Nurse/ Midwife Manager	329	331	+3	+0.9%	+3	+12
Director Nursing/Midwifery, Assistant	61	63	+3	+4.1%	+5	+13
Director of Nursing/Midwifery	20	21	+1	+4.7%	-0	+1
Nurse/ Midwife Manager	409	416	+6	+1.5%	+8	+27
Advanced Nurse/ Midwife Practitioner	13	13	+0	+2.8%	+1	+8
Clinical Nurse/ Midwife Specialist	95	96	+1	+1.5%	-1	+6
Nurse/ Midwife Specialist & AN/MP	108	110	+2	+1.6%	+0	+14
Staff Nurse [Intellectual Disability]	194	193	-2	-0.8%	+1	+1
Staff Nurse [Psychiatric]	203	198	-5	-2.6%	+0	+5
Staff Nurses [General/ Children's]	634	632	-2	-0.3%	+1	+20
Staff Nurse/ Staff Midwife	1,031	1,023	-9	-0.8%	+2	+26
Public Health Nurse	173	172	-1	-0.6%	-4	+3
Pre-registration Nurse/ Midwife Intern	8	15	+8	+94.0%	+15	-6
Pre-registration Nurse Intern (COVID-19)	2	1	-1	-48.5%	-2	+1
Post-registration Nurse/ Midwife Student	24	24				+3
Nursing/ Midwifery awaiting registration	3	2	-1	-30.5%	-2	-3
Nursing/ Midwifery Student	37	43	+6	+15.0%	+11	-5
Nursing Education/Clinical	8	8			-1	-1
Nursing/ Midwifery other	8	8			-1	-1
Nursing & Midwifery	1,767	1,771	+4	+0.2%	+71	+63
Dietitians	24	23	-2	-7.9%	-4	-1
Occupational Therapists	183	180	-3	-1.9%	-4	-8
Orthoptists	3	3	-1	-16.7%		+3
Physiotherapists	121	117	-4	-3.2%	-4	+1
Podiatrists & Chiropodists	1	1				+0
Speech & Language Therapists	131	128	-3	-2.1%	-1	+4
Therapy Professions	463	450	-13	-2.7%	-12	-2
Clinical Measurement	2	2				+1
Phlebotomists	1	1	-0	-35.2%	-0	-1
Radiographers	1	1				
Health Science/ Diagnostics	4	4	-0	-10.4%	-0	+0

Feb 2021 (Dec 2020 figure: 6,783)	WTE Jan 2021	WTE Feb 2021	WTE change since Jan 21	% change since Jan 21	WTE change since Dec 20	WTE change since Feb 20
Overall	6,778	6,776	-2	-0.0%	-7	+248
Social Care	397	396	-0	-0.1%	-3	+23
Social Workers	110	112	+3	+2.4%	+4	+8
Psychologists	84	81	-3	-3.2%	-5	-1
Pharmacy	32	40	+8	+24.2%	+2	-3
Counsellor Therapists	35	35	-1	-1.5%	-0	-1
Dental Hygienists	4	4	+0	+9.3%	+0	-1
Other Health & Social Care	1	1	-0	-31.2%	-0	-1
Play Therapists/ Specialists	1	1				
H&SC, Other	41	41	-1	-1.4%	-1	-3
Health & Social Care Professionals	1,131	1,125	-6	-0.6%	+31	+23
Executive Management	16	16	-0	-0.6%	-0	+1
Senior Management (VIII & GM)	69	72	+2	+3.5%	+3	+11
Management (VIII & above)	85	87	+2	+2.7%	+3	+12
Middle Management (V-VII)	216	218	+2	+1.2%	+5	+37
Other Administrative	1	1				-0
Administrative/ Supervisory (V to VII)	217	219	+2	+1.2%	+5	+37
Clerical (III & IV)	379	379	-1	-0.2%	-2	+19
Management & Administrative	681	685	+4	+0.6%	+79	+67
Catering	55	56	+0	+0.3%	-1	-4
Household Services	265	263	-2	-0.9%	-2	-3
Other Labs & Associated	1	1	-0	-5.7%		
Other Support	15	15	+0	+0.3%	+0	+0
Portering	62	61	-1	-1.1%	-4	-6
Support	398	395	-3	-0.7%	-7	-13
Maintenance	40	40	+0	+0.3%	-1	+2
Technical Services	5	5				+1
Maintenance/ Technical	45	45	+0	+0.3%	-1	+3
General Support	443	440	-3	-0.6%	-12	-10
HCA, Nurse's Aide, etc.	1,645	1,622	-23	-1.4%	-29	-0
HCA (Student Nurse/Midwife COVID-19)	4	2	-2	-49.7%	-2	+2
Health & Social Care Assistants	18	20	+2	+8.6%	+2	+7
Swabber (COVID-19)	65	72	+8	+11.8%	+22	+72
Health Care Assistants	1,731	1,716	-16	-0.9%	-7	+81
Other Care Grades	619	624	+5	+0.8%	+3	+12
Care, other	619	624	+5	+0.8%	+3	+12
Home Help	127	130	+2	+1.9%	-2	-6
Patient & Client Care	2,478	2,469	-8	-0.3%	+77	+87

CHO 7 HSE Employment by Grade Group & Staff Category: February 2021

Feb 2021 (Dec 2020 figure: 3,319)	WTE Jan 2021	WTE Feb 2021	WTE change since Jan 21	% change since Jan 21	WTE change since Dec 20	WTE change since Feb 20
Overall	3,316	3,327	+11	+0.3%	+8	+168
Consultant Medicine	1	1				
Consultant Psychiatry	57	58	+0	+0.8%	+1	+6
Consultant Surgery				-100.0%		-1
Consultants	58	59	+0	+0.8%	+1	+6
Registrar	74	75	+1	+1.3%	+5	+9
Senior Registrar	18	19	+1	+3.4%	-1	+4
Specialist Registrar	1	1				
Registrars	93	95	+2	+1.7%	+4	+13
SHO/ Interns	24	23	-1	-4.7%	-2	-1
Dentists	34	33	-1	-3.3%	-2	-1
Other Medical	35	42	+7	+20.1%	+0	-2
Medical/ Dental, other	70	76	+6	+8.6%	-2	-3
Medical & Dental	245	252	+7	+2.8%	+10	+14
Clinical Nurse/ Midwife Manager	182	185	+3	+1.7%	+3	+12
Director Nursing/Midwifery, Assistant	51	53	+2	+4.3%	+4	+11
Director of Nursing/Midwifery	15	16	+1	+6.4%	-0	+1
Nurse/ Midwife Manager	248	254	+6	+2.5%	+6	+24
Advanced Nurse/ Midwife Practitioner	8	9	+0	+4.4%	+1	+6
Clinical Nurse/ Midwife Specialist	58	59	+1	+2.1%	-1	+0
Nurse/ Midwife Specialist & AN/MP	67	68	+2	+2.4%	+0	+6
Staff Nurse [Intellectual Disability]	1	1	+0	+2.0%		+1
Staff Nurse [Psychiatric]	203	198	-5	-2.6%	+0	+5
Staff Nurses [General/ Children's]	345	344	-1	-0.3%	-2	+16
Staff Nurse/ Staff Midwife	549	543	-6	-1.1%	-2	+22
Public Health Nurse	173	172	-1	-0.6%	-4	+3
Pre-registration Nurse/ Midwife Intern	1	8	+8	+765.3%	+8	-6
Pre-registration Nurse Intern (COVID-19)	2	1	-1	-48.5%	-2	+1
Post-registration Nurse/ Midwife Student	24	24				+3
Nursing/ Midwifery awaiting registration	3	2	-1	-30.5%	-2	-3
Nursing/ Midwifery Student	30	36	+6	+18.5%	+4	-5
Nursing Education/Clinical	5	5			-1	-2
Nursing/ Midwifery other	5	5			-1	-2
Nursing & Midwifery	1,072	1,078	+6	+0.6%	+51	+48
Dietitians	17	16	-1	-6.2%	-1	+1
Occupational Therapists	143	140	-4	-2.7%	-6	-2
Orthoptists	3	3	-1	-16.7%		+3
Physiotherapists	79	76	-3	-3.5%	-1	+6
Podiatrists & Chiropodists	1	1				+0
Speech & Language Therapists	98	98	-0	-0.1%	+1	+1
Therapy Professions	341	333	-8	-2.4%	-7	+9
Social Care	11	11	+0	+0.1%	+0	-0
Social Workers	74	74	+1	+0.7%	+1	+8
Psychologists	62	61	-2	-2.8%	-3	-1
Pharmacy	19	25	+6	+33.1%	+1	-3
Counsellor Therapists	34	33	-1	-1.6%	-0	-1
Dental Hygienists	4	4	+0	+9.3%	+0	-1
Other Health & Social Care	1	1	-0	-31.2%	-0	-1
Play Therapists/ Specialists	1	1				
H&SC, Other	40	39	-1	-1.4%	-1	-3

Feb 2021 (Dec 2020 figure: 3,319)	WTE Jan 2021	WTE Feb 2021	WTE change since Jan 21	% change since Jan 21	WTE change since Dec 20	WTE change since Feb 20
Overall	3,316	3,327	+11	+0.3%	+8	+168
Health & Social Care Professionals	547	543	-4	-0.7%	+10	+10
Executive Management	9	9	-0	-1.0%	-0	+1
Senior Management (VIII & GM)	38	39	+1	+2.3%	+1	+4
Management (VIII & above)	47	48	+1	+1.7%	+1	+5
Administrative/ Supervisory (V to VII)	125	126	+2	+1.4%	+4	+32
Clerical (III & IV)	261	260	-1	-0.3%	-2	+13
Management & Administrative	433	434	+2	+0.4%	+57	+50
Catering	27	28	+1	+3.2%	+1	-0
Household Services	99	100	+1	+1.0%	+2	+12
Other Support	6	6	+0	+0.8%	+0	+0
Portering	44	44	-0	-0.9%	-3	-4
Support	176	178	+2	+0.9%	+0	+8
Maintenance/ Technical	5	5				-0
General Support	182	183	+2	+0.8%	+7	+8
HCA, Nurse's Aide, etc.	401	393	-9	-2.1%	-8	-34
HCA (Student Nurse/Midwife COVID-19)	4	2	-2	-49.7%	-2	+2
Health & Social Care Assistants	15	16	+1	+5.5%	+1	+8
Swabber (COVID-19)	65	72	+8	+11.8%	+22	+72
Health Care Assistants	485	483	-2	-0.4%	+13	+48
Care, other	225	223	-2	-0.8%	-0	-5
Home Help	127	130	+2	+1.9%	-2	-6
Patient & Client Care	838	836	-2	-0.2%	+40	+37

Employment by WTE, Headcount, Gender, Full-Time /Part-Time etc.: Feb 2021

CHO 7	WTE	Headcount	WTE: no.	% Male	% female	Male WTE: no.	Female WTE: no.	% Total Perm	% Male Perm	% Female Perm	% Total Full Time	% Total Part Time	% Male FT	% Female FT
Overall	6,776	7,910	1.17	20.1%	79.9%	1.08	1.19	87.0%	83.9%	87.7%	69.5%	30.5%	83.2%	66.0%
Consultant Medicine	10	11	1.15	27.3%	72.7%	1.13	1.15	63.6%	63.6%	62.5%	63.6%	36.4%	66.7%	62.5%
Consultant Paediatrics	0	1	2.94		100.0%		2.94	100.0%	100.0%	100.0%	0.0%	100.0%		0.0%
Consultant Psychiatry	58	63	1.09	33.3%	66.7%	1.04	1.11	57.1%	57.1%	52.4%	82.5%	17.5%	95.2%	76.2%
Consultants	68	75	1.11	32.0%	68.0%	1.05	1.13	58.7%	66.7%	54.9%	78.7%	21.3%	91.7%	72.5%
Registrar	79	81	1.03	35.8%	64.2%	1.00	1.04	2.5%	2.5%	0.0%	100.0%	0.0%	100.0%	100.0%
Senior Registrar	19	19	1.00	47.4%	52.6%	1.00	1.00	0.0%	0.0%	0.0%	100.0%	0.0%	100.0%	100.0%
Specialist Registrar	6	6	1.03	16.7%	83.3%	1.00	1.03	0.0%	0.0%	0.0%	100.0%	0.0%	100.0%	100.0%
Registrars	104	106	1.02	36.8%	63.2%	1.00	1.03	1.9%	5.1%	0.0%	100.0%	0.0%	100.0%	100.0%
SHO/ Interns	36	36	1.01	27.8%	72.2%	1.00	1.01	8.3%	20.0%	3.8%	100.0%	0.0%	100.0%	100.0%
Dentists	33	39	1.18	15.4%	84.6%	1.07	1.20	100.0%	100.0%	100.0%	64.1%	35.9%	83.3%	60.6%
Other Medical	45	66	1.47	42.4%	57.6%	1.44	1.49	63.6%	63.6%	65.8%	22.7%	77.3%	17.9%	26.3%
Medical/ Dental, other	78	105	1.35	32.4%	67.6%	1.36	1.34	77.1%	67.6%	81.7%	38.1%	61.9%	29.4%	42.3%
Medical & Dental	285	322	1.13	33.2%	66.8%	1.11	1.14	40.4%	40.2%	40.5%	74.8%	25.2%	75.7%	74.4%
Clinical Nurse/ Midwife Manager	331	352	1.06	14.2%	85.8%	1.02	1.07	96.6%	96.6%	97.4%	86.4%	13.6%	98.0%	84.4%
Director Nursing/Midwifery, Assistant	63	67	1.06	17.9%	82.1%	1.00	1.07	94.0%	94.0%	92.7%	91.0%	9.0%	100.0%	89.1%
Director of Nursing/Midwifery	21	21	1.01	9.5%	90.5%	1.00	1.01	100.0%	100.0%	100.0%	95.2%	4.8%	100.0%	94.7%
Nurse/ Midwife Manager	416	440	1.06	14.5%	85.5%	1.01	1.07	96.4%	93.8%	96.8%	87.5%	12.5%	98.4%	85.6%
Advanced Nurse/ Midwife Practitioner	13	15	1.12	6.7%	93.3%	1.00	1.13	100.0%	100.0%	100.0%	86.7%	13.3%	100.0%	85.7%
Clinical Nurse/ Midwife Specialist	96	110	1.14	9.1%	90.9%	1.06	1.15	99.1%	99.1%	99.0%	71.8%	28.2%	100.0%	69.0%
Nurse/ Midwife Specialist & AN/MP	110	125	1.14	8.8%	91.2%	1.05	1.15	99.2%	100.0%	99.1%	73.6%	26.4%	100.0%	71.1%
Staff Nurse [Intellectual Disability]	193	238	1.24	9.2%	90.8%	1.05	1.26	95.8%	95.8%	95.4%	57.6%	42.4%	90.9%	54.2%
Staff Nurse [Psychiatric]	198	221	1.12	23.5%	76.5%	1.06	1.14	95.0%	95.0%	95.3%	85.1%	14.9%	92.3%	82.8%
Staff Nurses [General/ Children's]	632	731	1.16	10.4%	89.6%	1.05	1.17	92.7%	92.7%	92.8%	70.5%	29.5%	90.8%	68.1%
Staff Nurse/ Staff Midwife	1,023	1,190	1.16	12.6%	87.4%	1.05	1.18	93.8%	94.0%	93.8%	70.6%	29.4%	91.3%	67.6%
Public Health Nurse	172	207	1.20	0.5%	99.5%	1.11	1.20	95.2%	100.0%	95.1%	66.2%	33.8%	100.0%	66.0%
Pre-registration Nurse/ Midwife Intern	15	34	2.20	23.5%	76.5%	2.21	2.19	0.0%	0.0%	0.0%	58.8%	41.2%	87.5%	50.0%
Pre-registration Nurse Intern (COVID-19)	1	1	1.00		100.0%		1.00	0.0%	0.0%	0.0%	100.0%	0.0%		100.0%
Post-registration Nurse/ Midwife Student	24	24	1.00		100.0%		1.00	8.3%	8.3%	8.3%	100.0%	0.0%		100.0%

Nursing/ Midwifery awaiting registration	2	3	1.33		100.0%		1.33	66.7%	66.7%	66.7%	66.7%	33.3%		66.7%
Nursing/ Midwifery Student	43	62	1.45	12.9%	87.1%	2.21	1.38	6.5%	0.0%	7.4%	75.8%	24.2%	87.5%	74.1%
Nursing Education/Clinical	8	10	1.20		100.0%		1.20	100.0%	100.0%	100.0%	70.0%	30.0%		70.0%
Nursing/ Midwifery other	8	10	1.20		100.0%		1.20	100.0%		100.0%	70.0%	30.0%		70.0%
Nursing & Midwifery	1,771	2,034	1.15	11.5%	88.5%	1.06	1.16	92.2%	91.0%	92.3%	74.1%	25.9%	93.6%	71.6%
Dietitians	23	28	1.24	7.1%	92.9%	1.00	1.27	85.7%	85.7%	84.6%	64.3%	35.7%	100.0%	61.5%
Occupational Therapists	180	207	1.15	8.7%	91.3%	1.02	1.17	89.4%	89.4%	89.4%	79.2%	20.8%	94.4%	77.8%
Orthoptists	3	3	1.20	66.7%	33.3%	1.00	2.00	33.3%	33.3%	100.0%	100.0%	0.0%	100.0%	100.0%
Physiotherapists	117	138	1.18	21.7%	78.3%	1.04	1.23	95.7%	95.7%	95.4%	72.5%	27.5%	93.3%	66.7%
Podiatrists & Chiropodists	1	1	1.00		100.0%		1.00	100.0%	100.0%	100.0%	100.0%	0.0%		100.0%
Speech & Language Therapists	128	140	1.10		100.0%		1.10	94.3%	94.3%	94.3%	91.4%	8.6%		91.4%
Therapy Professions	450	517	1.15	10.1%	89.9%	1.03	1.16	91.9%	90.4%	92.0%	80.1%	19.9%	94.2%	78.5%
Clinical Measurement	2	2	1.00	100.0%		1.00		100.0%	100.0%		100.0%	0.0%	100.0%	
Phlebotomists	1	2	2.47		100.0%		2.47	100.0%	100.0%	100.0%	0.0%	100.0%		0.0%
Radiographers	1	1	1.00		100.0%		1.00	100.0%	100.0%	100.0%	100.0%	0.0%		100.0%
Health Science/ Diagnostics	4	5	1.31	40.0%	60.0%	1.00	1.66	100.0%	100.0%	100.0%	60.0%	40.0%	100.0%	33.3%
Social Care	396	439	1.11	26.4%	73.6%	1.08	1.12	97.3%	98.3%	96.9%	75.2%	24.8%	85.3%	71.5%
Social Workers	112	126	1.12	16.7%	83.3%	1.05	1.14	95.2%	90.5%	96.2%	83.3%	16.7%	90.5%	81.9%
Psychologists	81	93	1.14	24.7%	75.3%	1.10	1.16	97.8%	100.0%	97.1%	82.8%	17.2%	82.6%	82.9%
Pharmacy	40	45	1.13	22.2%	77.8%	1.07	1.15	62.2%	40.0%	68.6%	48.9%	51.1%	40.0%	51.4%
Counsellor Therapists	35	39	1.12	30.8%	69.2%	1.12	1.12	92.3%	92.3%	88.9%	66.7%	33.3%	75.0%	63.0%
Dental Hygienists	4	7	1.70		100.0%		1.70	100.0%	100.0%	100.0%	14.3%	85.7%		14.3%
Other Health & Social Care	1	2	2.33	50.0%	50.0%	1.25	16.67	100.0%	100.0%	100.0%	0.0%	100.0%	0.0%	0.0%
Play Therapists/ Specialists	1	1	1.00	100.0%		1.00		100.0%	100.0%		100.0%	0.0%	100.0%	
H&SC, Other	41	49	1.20	28.6%	71.4%	1.12	1.24	93.9%	100.0%	91.4%	57.1%	42.9%	71.4%	51.4%
Health & Social Care	1,125	1,274	1.13	18.7%	81.3%	1.07	1.15	93.6%	93.7%	93.5%	76.8%	23.2%	84.9%	75.0%
Executive Management	16	16	1.01	37.5%	62.5%	1.00	1.01	81.3%	81.3%	90.0%	100.0%	0.0%	100.0%	100.0%
Senior Management (VIII & GM)	72	73	1.02	28.8%	71.2%	1.02	1.02	94.5%	94.5%	94.2%	94.5%	5.5%	95.2%	94.2%
Management (VIII & above)	87	89	1.02	30.3%	69.7%	1.02	1.02	92.1%	88.9%	93.5%	95.5%	4.5%	96.3%	95.2%
Administrative/ Supervisory (V to VII)	219	234	1.07	23.9%	76.1%	1.03	1.08	89.7%	82.1%	92.1%	88.9%	11.1%	96.4%	86.5%
Clerical (III & IV)	379	439	1.16	11.6%	88.4%	1.07	1.17	84.5%	82.4%	84.8%	71.5%	28.5%	88.2%	69.3%
Management & Administrative	685	762	1.11	17.6%	82.4%	1.04	1.13	87.0%	83.6%	87.7%	79.7%	20.3%	93.3%	76.8%
Catering	56	60	1.08	30.0%	70.0%	1.02	1.11	96.7%	96.7%	100.0%	75.0%	25.0%	94.4%	66.7%
Household Services	263	343	1.31	16.3%	83.7%	1.14	1.34	85.1%	85.1%	86.8%	39.7%	60.3%	66.1%	34.5%
Other Labs & Associated	1	1	1.00		100.0%		1.00	100.0%	100.0%	100.0%	100.0%	0.0%		100.0%

Other Support	15	18	1.20	72.2%	27.8%	1.18	1.28	77.8%	77.8%	100.0%	61.1%	38.9%	69.2%	40.0%
Portering	61	64	1.05	92.2%	7.8%	1.03	1.32	89.1%	89.1%	80.0%	85.9%	14.1%	91.5%	20.0%
Support	395	486	1.23	30.0%	70.0%	1.08	1.31	86.8%	82.9%	88.5%	51.0%	49.0%	80.1%	38.5%
Maintenance/ Technical	45	49	1.09	87.8%	12.2%	1.08	1.22	89.8%	88.4%	100.0%	81.6%	18.4%	86.0%	50.0%
General Support	440	535	1.22	35.3%	64.7%	1.08	1.30	87.1%	84.1%	88.7%	53.8%	46.2%	81.5%	38.7%
HCA, Nurse's Aide, etc.	1,622	1,893	1.17	23.7%	76.3%	1.09	1.19	87.4%	87.4%	87.4%	63.8%	36.2%	77.0%	59.7%
HCA (Student Nurse/Midwife COVID-19)	2	2	1.00		100.0%		1.00	0.0%	0.0%	0.0%	100.0%	0.0%		100.0%
Health & Social Care Assistants	20	22	1.13		100.0%		1.13	18.2%	18.2%	18.2%	86.4%	13.6%		86.4%
Swabber (COVID-19)	72	86	1.19	31.4%	68.6%	1.04	1.27	0.0%	0.0%	0.0%	73.3%	26.7%	92.6%	64.4%
Health Care Assistants	1,716	2,003	1.17	23.7%	76.3%	1.09	1.20	82.8%	82.5%	82.9%	64.5%	35.5%	77.9%	60.3%
Care, other	624	720	1.15	27.6%	72.4%	1.08	1.19	94.2%	93.5%	94.4%	74.3%	25.7%	86.4%	69.7%
Home Help	130	260	2.00	6.5%	93.5%	4.27	1.93	82.7%	52.9%	84.8%	16.9%	83.1%	11.8%	17.3%
Patient & Client Care	2,469	2,983	1.21	23.2%	76.8%	1.10	1.24	85.6%	84.9%	85.7%	62.7%	37.3%	78.7%	57.9%

Employment by WTE, Headcount, Gender, Full-Time /Part-Time etc.: Feb 2021

CHO 7	WTE	Headcount	WTE: no.	% Male	% female	Male WTE: no.	Female WTE: no.	% Total Perm	% Male Perm	% Female Perm	% Total Full Time	% Total Part Time	% Male FT	% Female FT
Overall	6,776	7,910	1.17	20.1%	79.9%	1.08	1.19	87.0%	83.9%	87.7%	69.5%	30.5%	83.2%	66.0%
Community Health & Wellbeing	7	8	1.19	12.5%	87.5%	1.00	1.22	100.0%	100.0%	100.0%	62.5%	37.5%	100.0%	100.0%
Mental Health	865	955	1.10	23.6%	76.4%	1.06	1.12	81.8%	81.8%	82.7%	87.4%	12.6%	95.6%	95.6%
Primary Care	1,815	2,117	1.17	16.6%	83.4%	1.07	1.19	84.7%	84.7%	86.5%	68.4%	31.6%	83.0%	83.0%
Social Care	4,089	4,830	1.18	21.0%	79.0%	1.10	1.21	88.9%	88.9%	89.2%	66.4%	33.6%	80.5%	80.5%

CHO 7 Skills Mix by Staff Grouping: February 2021

Feb 2021 (Dec 2019 figure: 6,515)	WTE Dec 2016	WTE Dec 2017	WTE Dec 2018	WTE Dec 2019	WTE Dec 2020	WTE Jan 2021	WTE Feb 2021
Overall	5,579	6,406	6,557	6,515	6,783	6,778	6,776
Consultant Medicine	3.2%	3.5%	2.7%	2.5%	3.0%	3.2%	3.4%
Consultant Paediatrics	0.1%	0.1%	0.1%	0.1%	0.1%	0.1%	0.1%
Consultant Psychiatry	19.2%	18.2%	18.1%	19.2%	20.1%	20.7%	20.3%
Consultant Surgery	0.3%	0.2%	0.5%	0.3%			
Consultants	22.8%	22.0%	21.3%	22.1%	23.3%	24.0%	23.8%
Registrar	22.2%	20.7%	24.9%	26.5%	26.1%	28.0%	27.7%
Senior Registrar	4.1%	3.7%	5.3%	7.0%	7.0%	6.6%	6.7%
Specialist Registrar	1.5%	2.2%	1.8%	1.5%	2.1%	2.1%	2.0%
Registrars	27.8%	26.6%	31.9%	35.0%	35.2%	36.8%	36.4%
Interns	0.8%	0.8%	0.8%	0.7%	0.7%	0.7%	0.7%
Senior House Officer	15.3%	16.0%	12.6%	12.5%	12.8%	12.6%	11.8%
SHO/ Interns	16.1%	16.8%	13.3%	13.2%	13.5%	13.3%	12.5%
Dentists	15.6%	13.9%	13.8%	12.5%	12.4%	12.3%	11.6%
Other Medical	17.7%	20.8%	19.6%	17.2%	15.7%	13.6%	15.7%
Medical/ Dental, other	33.3%	34.7%	33.4%	29.7%	28.0%	25.9%	27.3%
Medical & Dental	4.6%	4.0%	4.0%	4.2%	4.0%	100.0%	4.2%
Clinical Nurse/ Midwife Manager	18.8%	19.0%	18.9%	19.3%	18.7%	18.6%	18.7%
Director Nursing/Midwifery, Assistant	3.3%	2.9%	3.3%	3.1%	3.3%	3.4%	3.6%
Director of Nursing/Midwifery	1.0%	1.3%	1.1%	0.9%	1.2%	1.1%	1.2%
Nurse/ Midwife Manager	23.2%	23.2%	23.3%	23.3%	23.2%	23.2%	23.5%
Advanced Nurse/ Midwife Practitioner	0.1%	0.1%	0.1%	0.3%	0.7%	0.7%	0.8%
Clinical Nurse/ Midwife Specialist	4.1%	4.5%	5.0%	5.3%	5.6%	5.4%	5.4%
Nurse/ Midwife Specialist & AN/MP	4.2%	4.6%	5.1%	5.5%	6.2%	6.1%	6.2%
Staff Nurse [Intellectual Disability]	14.2%	13.4%	12.9%	11.4%	10.9%	11.0%	10.9%
Staff Nurse [Psychiatric]	13.3%	13.2%	11.7%	11.2%	11.2%	11.5%	11.2%
Staff Nurses [General/ Children's]	31.5%	32.9%	33.9%	35.7%	36.0%	35.9%	35.7%
Staff Nurse/ Staff Midwife	59.1%	59.4%	58.6%	58.4%	58.1%	58.4%	57.7%
Public Health Nurse	11.2%	10.8%	11.5%	10.3%	10.1%	9.8%	9.7%
Pre-registration Nurse/ Midwife Intern	0.1%		0.4%	0.1%	0.0%	0.5%	0.9%
Pre-registration Nurse Intern (COVID-19)					0.2%	0.1%	0.1%
Post-registration Nurse/ Midwife Student	1.4%	0.9%	0.4%	1.2%	1.4%	1.4%	1.4%
Nursing/ Midwifery awaiting registration		0.5%	0.2%	0.6%	0.2%	0.2%	0.1%
Nursing/ Midwifery Student	1.5%	1.4%	1.0%	1.9%	1.8%	2.1%	2.4%
Nursing/ Midwifery other	0.8%	0.5%	0.5%	0.6%	0.5%	0.5%	0.5%
Nursing & Midwifery	28.8%	26.9%	25.9%	26.1%	25.1%	100.0%	26.1%
Dietitians	2.4%	1.8%	2.3%	2.3%	2.3%	2.2%	2.0%
Occupational Therapists	21.3%	16.1%	16.9%	16.8%	16.1%	16.2%	16.0%
Orthoptists	0.0%				0.2%	0.3%	0.2%
Physiotherapists	15.4%	11.8%	11.5%	10.4%	10.6%	10.7%	10.4%
Podiatrists & Chiropodists	0.1%	0.1%	0.1%	0.1%	0.1%	0.1%	0.1%
Speech & Language Therapists	13.5%	12.1%	11.2%	11.5%	11.3%	11.6%	11.4%
Therapy Professions	52.8%	41.9%	41.9%	41.1%	40.6%	40.9%	40.0%
Audiology	0.1%						
Clinical Measurement	0.1%	0.1%	0.1%	0.1%	0.2%	0.2%	0.2%
Medical Science	0.1%						
Phlebotomists	0.1%	0.1%	0.1%	0.1%	0.1%	0.1%	0.1%
Radiographers	0.1%	0.1%	0.1%	0.1%	0.1%	0.1%	0.1%
Health Science/ Diagnostics	0.5%	0.3%	0.3%	0.3%	0.4%	0.4%	0.3%
Social Care	14.2%	31.3%	32.8%	33.9%	35.1%	35.1%	35.3%
Social Workers	13.9%	10.7%	10.1%	9.6%	9.5%	9.7%	10.0%
Psychologists	8.7%	8.1%	7.7%	7.4%	7.6%	7.4%	7.2%

Feb 2021 (Dec 2019 figure: 6,515)	WTE Dec 2016	WTE Dec 2017	WTE Dec 2018	WTE Dec 2019	WTE Dec 2020	WTE Jan 2021	WTE Feb 2021
Overall	5,579	6,406	6,557	6,515	6,783	6,778	6,776
Pharmacy	4.8%	3.7%	3.5%	3.7%	3.3%	2.8%	3.5%
Counsellor Therapists	3.9%	3.1%	2.8%	3.3%	3.1%	3.1%	3.1%
Dental Hygienists	0.4%	0.3%	0.4%	0.5%	0.4%	0.3%	0.4%
Other Health & Social Care	0.6%	0.5%	0.4%	0.2%	0.1%	0.1%	0.1%
Play Therapists/ Specialists	0.1%	0.1%	0.1%	0.1%	0.1%	0.1%	0.1%
H&SC, Other	5.1%	4.1%	3.7%	4.1%	3.6%	3.7%	3.6%
Health & Social Care Professionals	14.2%	16.4%	16.7%	16.8%	16.1%	100.0%	16.6%
Executive Management	2.9%	2.5%	1.9%	2.1%	2.3%	2.3%	2.3%
Senior Management (VIII & GM)	8.7%	8.5%	9.2%	9.9%	10.1%	10.1%	10.4%
Management (VIII & above)	11.6%	11.0%	11.1%	12.0%	12.5%	12.5%	12.8%
Middle Management (V-VII)	23.7%	26.0%	27.2%	29.9%	31.4%	31.7%	31.9%
Other Administrative	0.1%	0.2%	0.1%	0.2%	0.1%	0.1%	0.1%
Administrative/ Supervisory (V to VII)	23.8%	26.1%	27.3%	30.1%	31.5%	31.8%	32.0%
Clerical (III & IV)	64.6%	62.9%	61.6%	57.9%	56.0%	55.7%	55.3%
Management & Administrative	10.0%	9.5%	9.4%	9.3%	8.9%	100.0%	10.1%
Catering	12.0%	13.0%	12.8%	13.1%	12.5%	12.5%	12.6%
Household Services	59.9%	59.9%	60.4%	59.5%	59.2%	59.9%	59.7%
Other Labs & Associated	0.2%	0.2%	0.2%	0.2%	0.2%	0.2%	0.2%
Other Support	3.7%	3.0%	3.2%	3.1%	3.3%	3.4%	3.4%
Portering	16.7%	14.5%	14.6%	14.9%	14.4%	13.9%	13.9%
Support	92.6%	90.6%	91.2%	90.9%	89.7%	89.9%	89.8%
Maintenance/ Technical	7.4%	9.4%	8.8%	9.1%	10.3%	10.1%	10.2%
General Support	7.9%	7.7%	7.4%	6.9%	6.7%	100.0%	6.5%
HCA, Nurse's Aide, etc.	66.9%	66.4%	67.6%	68.7%	66.7%	66.4%	65.7%
HCA (Student Nurse/Midwife COVID-19)					0.2%	0.2%	0.1%
Health & Social Care Assistants	0.4%	0.3%	0.9%	0.5%	0.7%	0.7%	0.8%
Swabber (COVID-19)					2.0%	2.6%	2.9%
Health Care Assistants	67.4%	66.7%	68.5%	69.2%	69.6%	69.9%	69.5%
Other Care Grades	24.4%	26.6%	25.8%	25.5%	25.1%	25.0%	25.3%
Care, other	24.4%	26.6%	25.8%	25.5%	25.1%	25.0%	25.3%
Home Help	8.2%	6.7%	5.7%	5.3%	5.3%	5.1%	5.3%
Patient & Client Care	34.6%	35.5%	36.5%	36.7%	35.3%	100.0%	36.4%
Total	100 %	100 %	100 %	100 %	100%	100 %	100 %

CHO 7 Skills Mix by Care Group: February 2021

Feb 2021 (Dec 2019 figure: 835)	WTE Dec 2016	WTE Dec 2017	WTE Dec 2018	WTE Dec 2019	WTE Dec 2020	WTE Jan 2021	WTE Feb 2021
Mental Health	828	859	835	835	861.41	862.63	865.09
Consultants	44.2%	43.0%	43.6%	41.6%	41.8%	42.2%	41.9%
Registrar	19.7%	17.8%	25.1%	22.9%	25.6%	27.3%	28.4%
Senior Registrar	9.4%	9.8%	12.7%	16.5%	15.8%	14.5%	14.8%
Specialist Registrar		1.0%		0.9%	0.8%	0.8%	0.8%
Registrars	29.1%	28.7%	37.8%	40.3%	42.2%	42.7%	44.0%
Interns	2.0%	2.1%	2.0%	1.7%	1.6%	1.6%	1.6%
Senior House Officer	24.7%	26.2%	16.6%	16.4%	14.4%	13.6%	12.5%
SHO/ Interns	26.7%	28.3%	18.6%	18.2%	16.0%	15.1%	14.0%
Medical & Dental	12.2%	11.1%	12.3%	13.8%	13.3%	14.8%	14.8%
Clinical Nurse/ Midwife Manager	25.7%	24.5%	27.0%	26.5%	25.3%	25.3%	25.8%
Director Nursing/Midwifery, Assistant	4.1%	4.5%	5.0%	4.3%	4.6%	4.6%	4.5%
Director of Nursing/Midwifery	0.8%	0.8%	0.8%	0.8%	1.0%	1.0%	1.0%
Nurse/ Midwife Manager	30.6%	29.8%	32.8%	31.5%	31.0%	30.9%	31.3%
Advanced Nurse/ Midwife Practitioner		0.3%	0.3%	0.8%	1.4%	1.5%	1.5%
Clinical Nurse/ Midwife Specialist	7.2%	6.7%	7.0%	10.0%	10.9%	10.6%	10.7%
Nurse/ Midwife Specialist & AN/MP	7.2%	7.0%	7.3%	10.8%	12.3%	12.0%	12.2%
Staff Nurse [Intellectual Disability]					0.3%	0.3%	0.3%
Staff Nurse [Psychiatric]	58.1%	58.4%	54.3%	51.1%	51.2%	52.3%	50.6%
Staff Nurses [General/ Children's]	1.9%	1.1%	1.2%	1.5%	1.7%	1.7%	1.4%
Staff Nurse/ Staff Midwife	60.1%	59.5%	55.5%	52.6%	53.2%	54.3%	52.2%
Pre-registration Nurse/ Midwife Intern	0.5%		1.6%	0.4%	0.1%	0.3%	2.2%
Pre-registration Nurse Intern (COVID-19)					0.9%	0.5%	0.3%
Post-registration Nurse/ Midwife Student					0.3%	0.3%	0.3%
Nursing/ Midwifery awaiting registration		2.1%	1.1%	2.7%	0.8%	0.5%	0.3%
Nursing/ Midwifery Student	0.5%	2.1%	2.8%	3.0%	2.0%	1.5%	3.0%
Nursing Education/Clinical	1.7%	1.6%	1.7%	2.0%	1.5%	1.3%	1.3%
Nursing/ Midwifery other	1.7%	1.6%	1.7%	2.0%	1.5%	1.3%	1.3%
Nursing & Midwifery	43.7%	44.9%	43.3%	44.3%	42.9%	44.4%	44.4%
Dietitians			1.4%	2.1%	2.5%	2.7%	2.1%
Occupational Therapists	30.6%	28.0%	29.8%	27.3%	29.3%	28.8%	28.8%
Speech & Language Therapists	5.0%	4.7%	3.5%	4.8%	4.7%	5.4%	5.5%
Therapy Professions	35.5%	32.7%	34.6%	34.2%	36.5%	37.0%	36.4%
Social Care	7.9%	7.4%	5.8%	5.4%	5.0%	5.2%	5.2%
Social Workers	30.2%	29.0%	26.2%	24.4%	25.7%	26.0%	27.1%
Psychologists	18.3%	20.7%	23.9%	22.4%	20.0%	18.6%	18.7%
Pharmacy				0.7%	0.7%	0.7%	0.7%
Counsellor Therapists	6.6%	8.4%	7.6%	11.4%	12.0%	12.2%	11.9%
Other Health & Social Care	1.5%	1.8%	1.8%	1.4%	0.3%	0.3%	0.0%
H&SC, Other	8.1%	10.2%	9.4%	12.9%	12.3%	12.5%	11.9%
Health & Social Care Professionals	16.4%	16.9%	16.8%	16.8%	16.3%	16.6%	16.6%
Management (VIII & above)	4.3%	4.1%	3.9%	4.3%	5.4%	5.4%	5.4%
Administrative/ Supervisory (V to VII)	18.8%	23.2%	25.3%	24.1%	24.7%	25.0%	24.7%
Clerical (III & IV)	76.9%	72.7%	70.8%	71.6%	69.9%	69.6%	69.9%
Management & Administrative	8.0%	8.0%	8.8%	7.8%	7.6%	8.1%	8.1%
Support	92.3%	92.1%	91.7%	90.5%	89.7%	89.6%	89.8%
Maintenance/ Technical	7.7%	7.9%	8.3%	9.5%	10.3%	10.4%	10.2%
General Support	3.2%	3.0%	2.9%	2.3%	2.3%	2.3%	2.3%

Feb 2021 (Dec 2019 figure: 835)	WTE Dec 2016	WTE Dec 2017	WTE Dec 2018	WTE Dec 2019	WTE Dec 2020	WTE Jan 2021	WTE Feb 2021
Mental Health	828	859	835	835	861.41	862.63	865.09
HCA, Nurse's Aide, etc.	33.7%	32.2%	31.0%	26.6%	29.0%	28.9%	29.3%
Health Care Assistants	33.7%	32.2%	31.0%	26.6%	29.0%	28.9%	29.3%
Care, other	66.3%	67.8%	69.0%	73.4%	71.0%	71.1%	70.7%
Patient & Client Care	16.4%	16.1%	16.0%	15.0%	14.6%	13.8%	13.8%
Total	100 %	100 %	100 %	100 %	100 %	100 %	

Feb 2021 (Dec 2019 figure: 1,702)	WTE Dec 2016	WTE Dec 2017	WTE Dec 2018	WTE Dec 2019	WTE Dec 2020	WTE Jan 2021	WTE Feb 2021
Primary Care	1,687	1,691	1,776	1,702	1,788.84	1,785.23	1,815.25
Consultant Medicine	6.1%	6.4%	4.9%	4.8%	6.0%	6.6%	6.8%
Consultant Psychiatry	1.5%	2.2%	2.1%	2.9%	2.8%	2.9%	2.8%
Consultant Surgery	0.6%	0.3%	0.8%	0.6%			
Consultants	8.2%	8.9%	7.8%	8.3%	8.9%	9.5%	9.6%
Registrars	28.9%	27.1%	30.1%	33.0%	30.7%	33.3%	31.3%
SHO/ Interns	4.5%	4.2%	5.1%	4.3%	6.4%	6.6%	6.2%
Dentists	29.9%	25.7%	25.3%	24.4%	24.8%	25.1%	23.4%
Other Medical	28.5%	34.1%	31.7%	30.1%	29.3%	25.5%	29.5%
Medical/ Dental, other	58.4%	59.8%	57.0%	54.5%	54.1%	50.6%	52.9%
Medical & Dental	7.9%	8.1%	8.1%	8.1%	7.7%	7.8%	7.8%
Clinical Nurse/ Midwife Manager	10.2%	10.1%	10.2%	10.7%	10.5%	10.4%	10.4%
Director Nursing/Midwifery, Assistant	3.9%	3.7%	3.8%	3.4%	4.0%	4.3%	4.5%
Director of Nursing/Midwifery	1.1%	1.1%	1.2%	1.1%	1.3%	1.1%	1.3%
Nurse/ Midwife Manager	15.2%	14.9%	15.2%	15.2%	15.8%	15.7%	16.2%
Nurse/ Midwife Specialist & AN/MP	6.6%	8.4%	8.8%	8.7%	10.2%	10.1%	10.2%
Staff Nurse/ Staff Midwife	37.5%	36.3%	37.5%	38.7%	36.8%	37.2%	37.2%
Public Health Nurse	35.5%	36.7%	36.9%	33.1%	32.6%	32.3%	31.8%
Nursing/ Midwifery Student	4.5%	3.1%	1.3%	4.0%	4.2%	4.3%	4.2%
Nursing Education/Clinical	0.5%	0.5%	0.4%	0.4%	0.4%	0.4%	0.4%
Other Nursing/ Midwifery	0.2%						
Nursing/ Midwifery other	0.7%	0.5%	0.4%	0.4%	0.4%	0.4%	0.4%
Nursing & Midwifery	30.1%	30.1%	29.8%	31.1%	29.6%	29.9%	29.9%
Dietitians	3.8%	4.0%	4.8%	3.8%	4.2%	4.1%	3.8%
Occupational Therapists	24.9%	23.4%	26.8%	26.6%	24.8%	25.5%	25.4%
Orthoptists	0.1%				0.7%	0.8%	0.7%
Physiotherapists	23.1%	22.5%	21.4%	20.1%	22.4%	22.5%	21.5%
Podiatrists & Chiropodists			0.1%	0.3%	0.3%	0.3%	0.3%
Speech & Language Therapists	18.2%	20.3%	19.2%	20.5%	18.1%	18.0%	17.8%
Therapy Professions	70.1%	70.3%	72.4%	71.4%	70.5%	71.1%	69.4%
Phlebotomists	0.2%	0.2%	0.1%	0.1%	0.3%	0.3%	0.2%
Health Science/ Diagnostics	0.2%	0.2%	0.1%	0.1%	0.3%	0.3%	0.2%
Social Care	1.1%	1.1%	1.1%	0.9%	1.0%	1.0%	1.0%
Social Workers	7.7%	7.4%	6.4%	7.0%	7.1%	7.2%	7.5%
Psychologists	5.7%	6.1%	6.2%	5.8%	6.9%	7.5%	7.0%
Pharmacy	8.2%	8.5%	7.6%	8.5%	8.4%	7.1%	8.9%
Counsellor Therapists	5.7%	5.2%	4.8%	5.0%	4.4%	4.5%	4.5%
Dental Hygienists	1.0%	0.9%	1.3%	1.4%	1.1%	1.1%	1.1%
Other Health & Social Care	0.3%	0.3%	0.3%		0.2%	0.2%	0.2%
H&SC, Other	7.0%	6.4%	6.4%	6.4%	5.7%	5.8%	5.8%
Health & Social Care Professionals	21.5%	21.4%	21.4%	21.9%	20.9%	20.0%	20.0%
Executive Management	2.6%	2.3%	1.9%	2.4%	2.6%	2.6%	2.5%

Feb 2021 (Dec 2019 figure: 1,702)	WTE Dec 2016	WTE Dec 2017	WTE Dec 2018	WTE Dec 2019	WTE Dec 2020	WTE Jan 2021	WTE Feb 2021
Primary Care	1,687	1,691	1,776	1,702	1,788.84	1,785.23	1,815.25
Senior Management (VIII & GM)	6.5%	6.8%	8.0%	9.1%	7.2%	7.0%	7.2%
Management (VIII & above)	9.1%	9.1%	9.9%	11.6%	9.7%	9.6%	9.7%
Administrative/ Supervisory (V to VII)	20.8%	23.0%	22.7%	26.5%	28.2%	28.9%	29.4%
Clerical (III & IV)	70.1%	67.9%	67.4%	62.0%	62.1%	61.5%	60.9%
Management & Administrative	18.0%	18.4%	17.5%	16.9%	16.0%	17.4%	17.4%
Support	93.2%	94.6%	93.8%	93.0%	92.2%	92.2%	92.2%
Maintenance	6.1%	4.6%	5.5%	6.2%	7.0%	7.0%	7.0%
Technical Services	0.7%	0.8%	0.7%	0.8%	0.8%	0.8%	0.8%
Maintenance/ Technical	6.8%	5.4%	6.2%	7.0%	7.8%	7.8%	7.8%
General Support	8.0%	7.7%	7.5%	7.3%	7.0%	6.6%	6.6%
HCA, Nurse's Aide, etc.	47.0%	48.3%	44.1%	45.9%	39.1%	36.9%	36.4%
Health & Social Care Assistants	1.0%	0.9%	6.4%	2.8%	4.2%	4.0%	4.1%
Swabber (COVID-19)					16.1%	20.0%	21.7%
Health Care Assistants	48.0%	49.2%	50.6%	48.7%	59.4%	60.9%	62.2%
Other Care Grades	52.0%	50.8%	49.4%	51.3%	40.6%	39.1%	37.8%
Care, other	52.0%	50.8%	49.4%	51.3%	40.6%	39.1%	37.8%
Patient & Client Care	14.5%	14.3%	15.7%	14.6%	13.9%	18.4%	18.4%
Total	100 %	100 %	100 %	100 %	100 %	100 %	

Feb 2021 (Dec 2019 figure: 2,982)	WTE Dec 2016	WTE Dec 2017	WTE Dec 2018	WTE Dec 2019	WTE Dec 2020	WTE Jan 2021	WTE Feb 2021
Disabilities	1,943	2,792	2,903	2,982	3,103.35	3,101.81	3,075.36
Consultant Paediatrics	2.9%	2.5%	3.1%	3.0%	2.9%	3.0%	2.9%
Consultant Psychiatry	19.1%	16.2%	1.9%	1.7%	1.7%	1.8%	1.7%
Consultants	22.0%	18.8%	5.0%	4.7%	4.7%	4.8%	4.7%
Registrars	26.0%	22.2%	21.5%	26.1%	26.0%	25.1%	26.0%
SHO/ Interns	43.3%	51.7%	64.3%	60.5%	60.7%	61.1%	60.7%
Medical/ Dental, other	8.7%	7.4%	9.3%	8.7%	8.7%	8.9%	8.7%
Medical & Dental	0.6%	0.5%	0.4%	0.4%	0.4%	0.4%	0.4%
Clinical Nurse/ Midwife Manager	23.2%	23.9%	22.4%	22.4%	21.5%	21.1%	21.2%
Director Nursing/Midwifery, Assistant	1.5%	1.1%	1.1%	1.1%	1.3%	1.5%	1.6%
Director of Nursing/Midwifery	0.5%	1.4%	1.0%	0.8%	0.8%	0.8%	0.8%
Nurse/ Midwife Manager	25.2%	26.4%	24.4%	24.3%	23.6%	23.4%	23.5%
Advanced Nurse/ Midwife Practitioner					0.4%	0.4%	0.4%
Clinical Nurse/ Midwife Specialist	1.3%	1.3%	2.0%	1.0%	0.5%	0.4%	0.5%
Nurse/ Midwife Specialist & AN/MP	1.3%	1.3%	2.0%	1.0%	0.9%	0.8%	0.8%
Staff Nurse [Intellectual Disability]	57.6%	45.5%	43.3%	38.7%	38.0%	37.4%	37.5%
Staff Nurses [General/ Children's]	15.2%	26.7%	30.2%	35.9%	37.2%	36.7%	36.5%
Staff Nurse/ Staff Midwife	72.8%	72.2%	73.5%	74.6%	75.3%	74.1%	74.0%
Pre-registration Nurse/ Midwife Intern						1.4%	1.4%
Nursing/ Midwifery Student						1.4%	1.4%
Nursing/ Midwifery other	0.8%	0.1%	0.1%	0.1%	0.3%	0.3%	0.3%
Nursing & Midwifery	20.4%	18.1%	17.5%	16.8%	16.2%	16.6%	16.6%
Dietitians	1.6%	0.8%	0.8%	1.3%	1.0%	0.8%	0.8%
Occupational Therapists	13.0%	7.8%	7.0%	7.6%	7.6%	7.7%	7.1%
Physiotherapists	11.0%	6.3%	6.1%	5.5%	5.4%	5.6%	5.4%
Speech & Language Therapists	13.5%	9.1%	8.2%	7.6%	9.1%	9.4%	8.9%
Therapy Professions	39.1%	24.0%	22.1%	22.0%	23.1%	23.5%	22.2%
Audiology	0.2%						
Clinical Measurement	0.4%	0.2%	0.2%	0.2%	0.3%	0.3%	0.3%

Feb 2021 (Dec 2019 figure: 2,982)	WTE Dec 2016	WTE Dec 2017	WTE Dec 2018	WTE Dec 2019	WTE Dec 2020	WTE Jan 2021	WTE Feb 2021
Disabilities	1,943	2,792	2,903	2,982	3,103.35	3,101.81	3,075.36
Phlebotomists			0.2%	0.2%			
Radiographers	0.4%	0.2%	0.2%	0.2%	0.2%	0.2%	0.2%
Health Science/ Diagnostics	1.0%	0.4%	0.6%	0.5%	0.5%	0.5%	0.5%
Social Care	38.3%	62.1%	64.8%	65.2%	64.9%	64.6%	65.7%
Social Workers	10.1%	5.8%	6.3%	6.0%	5.3%	5.5%	5.6%
Psychologists	9.1%	6.4%	5.1%	5.0%	5.3%	5.1%	4.9%
Pharmacy	1.6%	0.8%	0.9%	0.9%	0.7%	0.6%	0.7%
Counsellor Therapists	0.6%	0.3%	0.3%	0.3%	0.3%	0.3%	0.3%
Other Health & Social Care	0.4%	0.2%					
H&SC, Other	1.0%	0.5%	0.3%	0.3%	0.3%	0.3%	0.3%
Health & Social Care Professionals	13.1%	18.1%	18.5%	18.5%	17.8%	19.1%	19.1%
Executive Management	5.3%	3.9%	2.6%	2.5%	3.0%	3.0%	3.0%
Senior Management (VIII & GM)	14.3%	13.3%	13.7%	13.3%	15.1%	15.4%	16.0%
Management (VIII & above)	19.5%	17.2%	16.3%	15.8%	18.1%	18.4%	19.0%
Administrative/ Supervisory (V to VII)	35.3%	34.0%	37.0%	39.0%	39.0%	38.6%	38.5%
Clerical (III & IV)	45.1%	48.7%	46.7%	45.3%	42.9%	43.1%	42.6%
Management & Administrative	6.8%	6.4%	6.5%	6.8%	6.5%	7.7%	7.7%
Support	88.2%	84.1%	85.7%	85.4%	82.6%	82.9%	82.6%
Maintenance	11.1%	15.5%	13.8%	13.0%	15.3%	14.9%	15.2%
Technical Services	0.6%	0.5%	0.5%	1.5%	2.1%	2.2%	2.2%
Maintenance/ Technical	11.8%	15.9%	14.3%	14.6%	17.4%	17.1%	17.4%
General Support	8.1%	7.7%	7.1%	6.5%	6.3%	5.9%	5.9%
HCA, Nurse's Aide, etc.	72.1%	70.6%	71.9%	72.9%	72.9%	73.0%	72.4%
Health & Social Care Assistants	0.6%	0.3%	0.2%	0.4%	0.3%	0.3%	0.3%
Health Care Assistants	72.7%	70.8%	72.1%	73.3%	73.2%	73.3%	72.7%
Care, other	24.0%	27.2%	26.2%	25.4%	25.7%	25.7%	26.2%
Home Help	3.3%	1.9%	1.6%	1.3%	1.1%	1.0%	1.1%
Patient & Client Care	50.9%	49.1%	50.0%	50.9%	48.9%	50.4%	50.4%
Total	100 %	100 %	100 %	100 %	100 %	100 %	

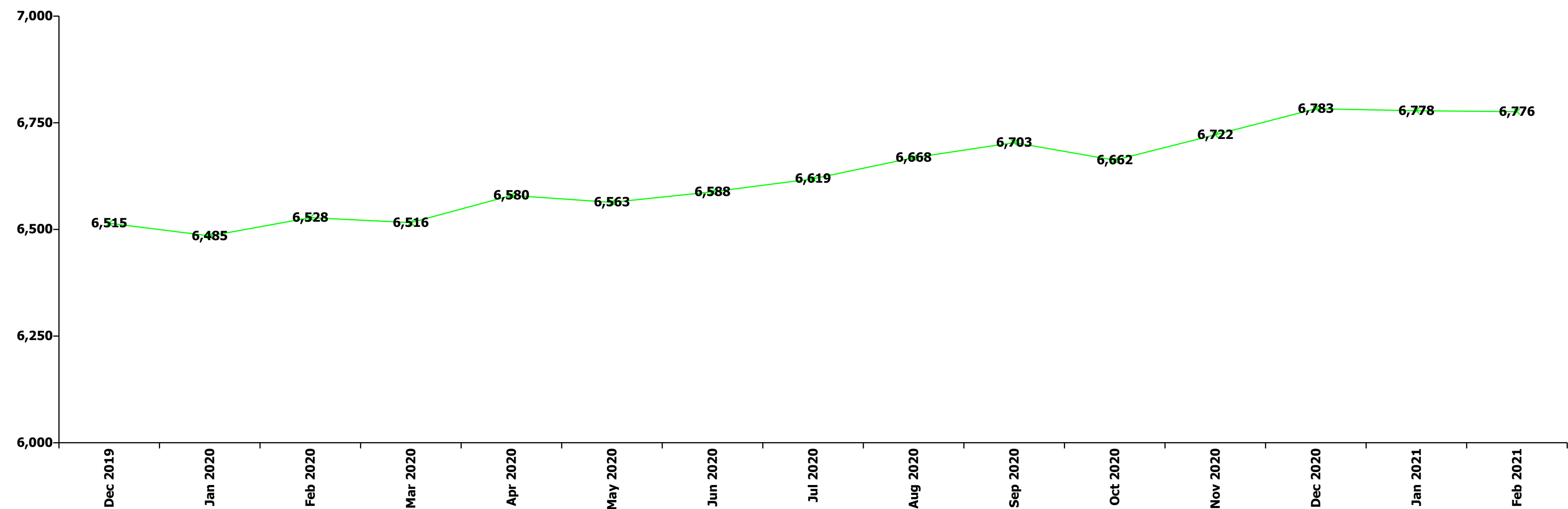
Feb 2021 (Dec 2019 figure: 996)	WTE Dec 2016	WTE Dec 2017	WTE Dec 2018	WTE Dec 2019	WTE Dec 2020	WTE Jan 2021	WTE Feb 2021
Older People	1,121	1,064	1,044	996	1,021.48	1,021.71	1,013.60
Senior House Officer	33.3%	37.5%	28.6%	33.3%	49.5%	49.5%	49.5%
SHO/ Interns	33.3%	37.5%	28.6%	33.3%	49.5%	49.5%	49.5%
Medical/ Dental, other	66.7%	62.5%	71.4%	66.7%	50.5%	50.5%	50.5%
Medical & Dental	0.8%	0.8%	0.7%	0.6%	0.6%	0.4%	0.4%
Clinical Nurse/ Midwife Manager	19.1%	18.6%	18.8%	20.3%	20.2%	20.3%	20.3%
Director Nursing/Midwifery, Assistant	3.8%	2.5%	4.0%	4.3%	3.8%	3.8%	4.1%
Director of Nursing/Midwifery	1.8%	2.2%	1.7%	1.1%	1.8%	1.8%	1.8%
Nurse/ Midwife Manager	24.7%	23.2%	24.4%	25.8%	25.9%	25.9%	26.2%
Nurse/ Midwife Specialist & AN/MP	1.0%	1.1%	1.4%	0.9%	0.9%	0.9%	0.9%
Staff Nurse [Psychiatric]	0.2%	0.2%			0.3%	0.3%	0.3%
Staff Nurses [General/ Children's]	74.1%	75.4%	74.1%	73.3%	72.5%	72.4%	72.2%
Staff Nurse/ Staff Midwife	74.3%	75.6%	74.1%	73.3%	72.8%	72.7%	72.5%
Public Health Nurse	0.1%						
Nursing/ Midwifery awaiting registration					0.4%	0.5%	0.4%
Nursing/ Midwifery Student					0.4%	0.5%	0.4%
Nursing & Midwifery	30.4%	30.4%	28.9%	30.0%	29.3%	33.0%	33.0%

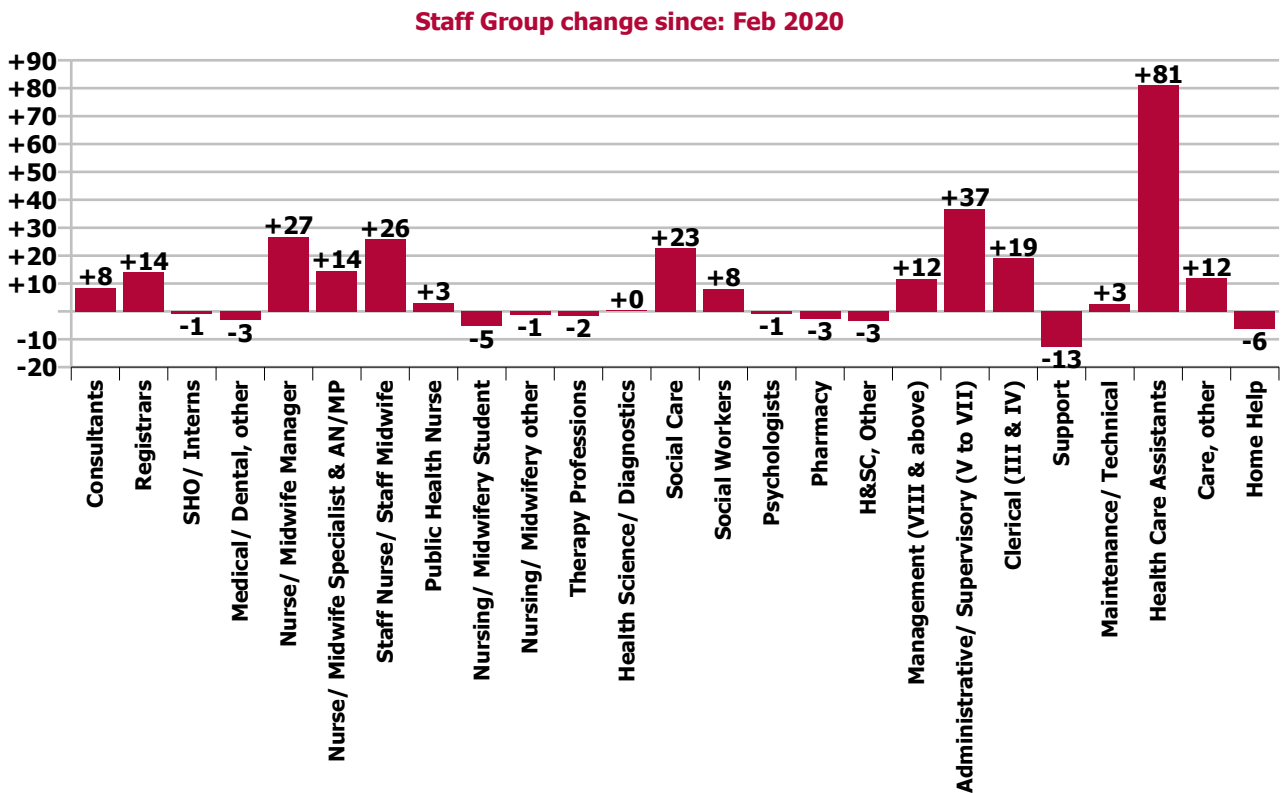
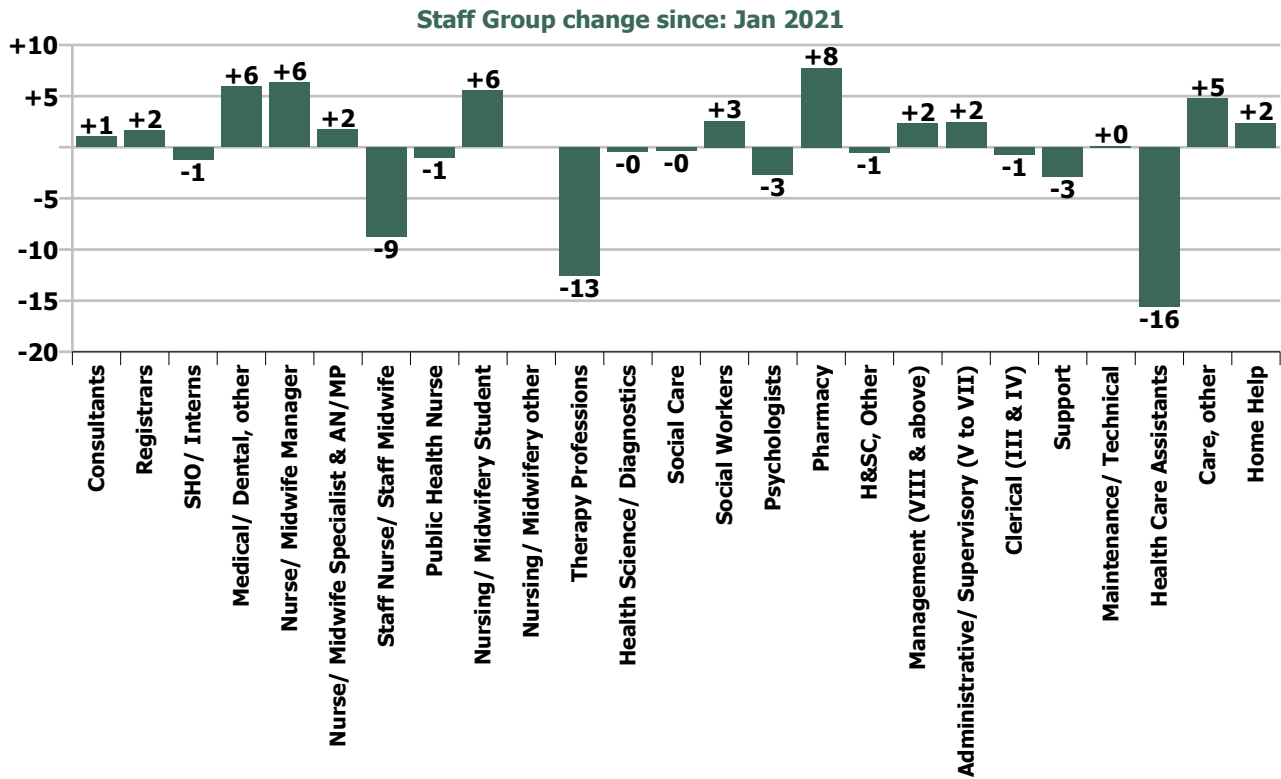
Feb 2021 (Dec 2019 figure: 996)	WTE Dec 2016	WTE Dec 2017	WTE Dec 2018	WTE Dec 2019	WTE Dec 2020	WTE Jan 2021	WTE Feb 2021
Older People	1,121	1,064	1,044	996	1,021.48	1,021.71	1,013.60
Dietitians	2.6%	2.7%		3.6%	3.5%	3.2%	3.2%
Occupational Therapists	10.8%	10.7%	9.6%	14.9%	15.7%	14.2%	14.3%
Physiotherapists	27.3%	28.3%	29.5%	30.5%	23.7%	22.6%	22.0%
Podiatrists & Chiropodists	1.9%	1.8%	2.0%				
Speech & Language Therapists		2.7%	2.6%		3.5%	7.1%	9.5%
Therapy Professions	42.5%	46.1%	43.6%	49.0%	46.4%	47.2%	49.0%
Medical Science	2.6%						
Health Science/ Diagnostics	2.6%						
Social Workers	39.2%	37.7%	41.0%	38.6%	43.2%	43.3%	41.5%
Pharmacy	10.5%	10.8%	10.3%	8.9%	7.0%	6.3%	6.4%
Other Health & Social Care	2.6%	2.7%	2.6%				
Play Therapists/ Specialists	2.6%	2.7%	2.6%	3.6%	3.5%	3.2%	3.2%
H&SC, Other	5.2%	5.4%	5.1%	3.6%	3.5%	3.2%	3.2%
Health & Social Care Professionals	3.4%	3.5%	3.7%	2.8%	2.8%	3.1%	3.1%
Senior Management (VIII & GM)	15.2%	10.0%	9.0%	9.9%	12.3%	12.3%	12.5%
Management (VIII & above)	15.2%	10.0%	9.0%	9.9%	12.3%	12.3%	12.5%
Administrative/ Supervisory (V to VII)	18.5%	21.1%	21.7%	22.7%	24.8%	25.8%	26.1%
Clerical (III & IV)	66.3%	68.9%	69.3%	67.4%	63.0%	62.0%	61.4%
Management & Administrative	4.7%	4.7%	4.2%	5.1%	5.0%	5.9%	5.9%
Support	97.5%	97.6%	97.5%	98.2%	98.3%	98.3%	98.3%
Maintenance/ Technical	2.5%	2.4%	2.5%	1.8%	1.7%	1.7%	1.7%
General Support	10.8%	11.6%	11.7%	11.3%	11.0%	11.8%	11.8%
HCA, Nurse's Aide, etc.	74.5%	73.0%	77.4%	77.5%	73.9%	74.4%	74.1%
HCA (Student Nurse/Midwife COVID-19)					0.8%	0.8%	0.4%
Health & Social Care Assistants					0.2%	0.2%	0.2%
Health Care Assistants	74.5%	73.0%	77.4%	77.5%	74.9%	75.5%	74.7%
Care, other	2.9%	2.9%	1.3%	1.0%	1.0%	1.1%	1.1%
Home Help	22.6%	24.1%	21.3%	21.5%	24.0%	23.5%	24.2%
Patient & Client Care	49.9%	49.1%	50.8%	50.2%	49.0%	45.8%	45.8%
Total	100 %	100 %	100 %	100 %	100 %	100 %	

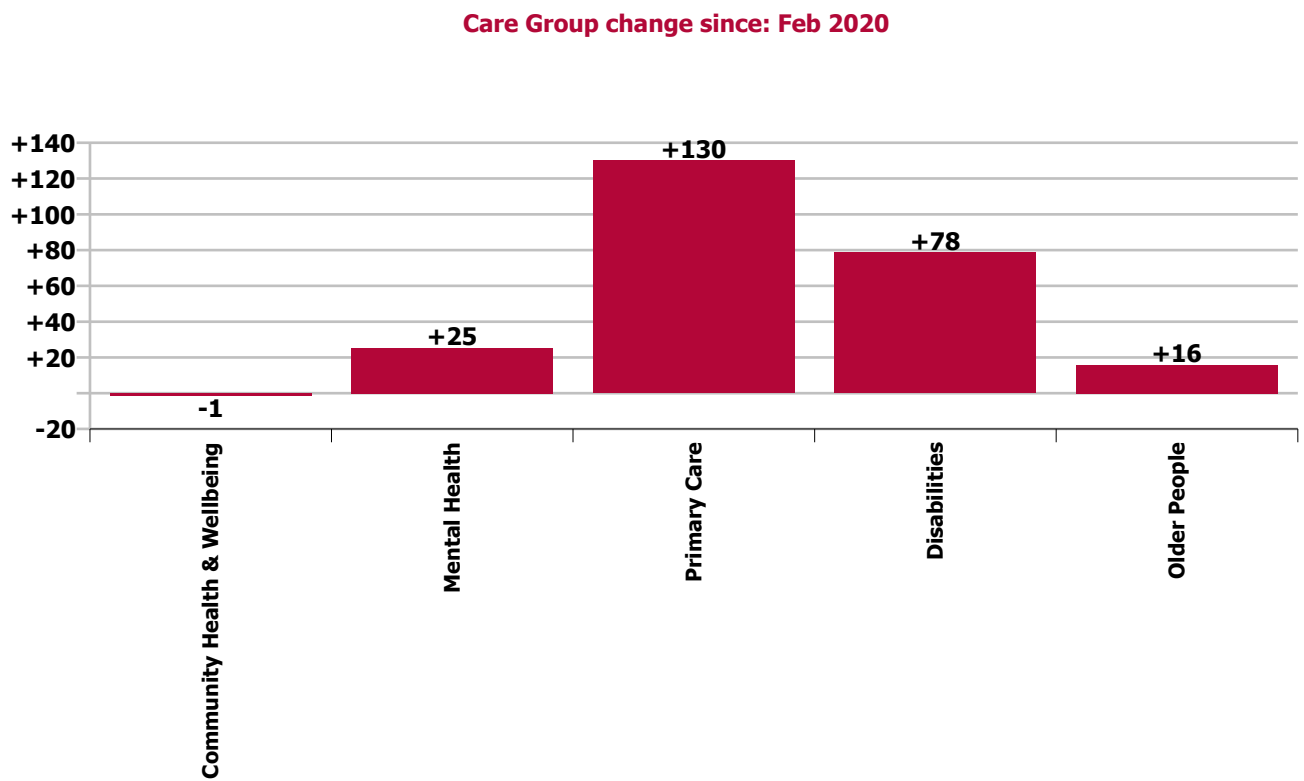
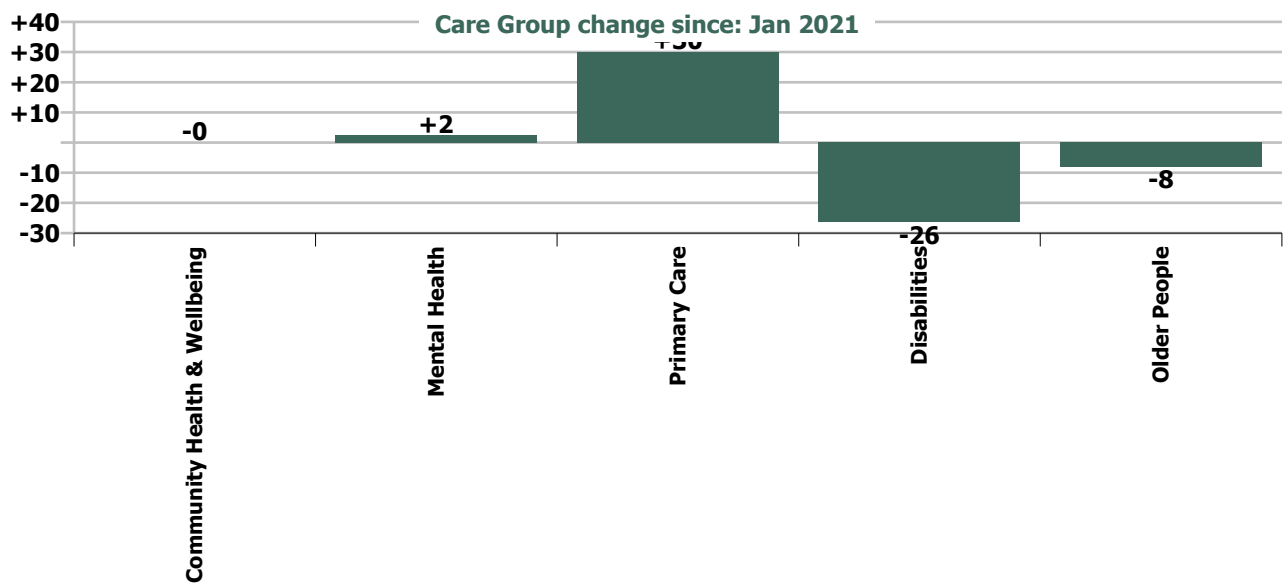
Summary Staff Movement: February 2021

Month-on-month Summary																												
WTE change since Jan 21	% change since Jan 21	overall	Consultants	Registrars	SHO/ Interns	Medical/ Dental, other	Medical & Dental	Nurse/ Midwife Manager	Nurse/ Midwife Specialist & AN/MP	Staff Nurse/ Staff Midwife	Public Health Nurse	Nursing/ Midwifery Student	Nursing/ Midwifery other	Nursing & Midwifery	Therapy Professions	Health Science/ Diagnostics	Social Care	Social Workers	Psychologists	Pharmacy	H&SC, Other	Health & Social Care Professionals	Management (VIII & above)	Administrativ e/ Supervisory (V to VII)	Clerical (III & IV)	Management & Administrativ e	General Support	Patient & Client Care
Overall	-0.0%	-2	+1.0	+1.6	-1.2	+5.9	+7.4	+6.3	+1.8	-8.7	-1.0	+5.6	0.0	+3.9	-12.5	-0.4	-0.4	+2.6	-2.7	+7.8	-0.6	-6.3	+2.3	+2.5	-0.7	+4.1	-2.8	-8.5
Community Health & Wellbeing	-0.1%	-0																				0.0	-0.0	0.0	-0.0		0.0	
Mental Health	+0.3%	+2	+0.4	+2.5	-1.1		+1.8	+2.3	+0.9	-6.4		+5.8	0.0	+2.7	-1.3		-0.0	+1.2	-0.1	0.0	-0.9	-1.1	-0.0	-0.3	+0.1	-0.3	+0.4	-1.1
Primary Care	+1.7%	+30	+0.6	-1.1	-0.3	+5.9	+5.2	+3.1	+0.8	+2.0	-1.0	0.0	0.0	+4.9	-2.0	-0.4	+0.1	+1.8	-1.2	+7.1	+0.4	+5.7	+0.8	+2.8	+0.9	+4.5	-0.2	+9.9
Disabilities	-0.9%	-26	0.0	+0.2	+0.2	0.0	+0.4	-0.8	0.0	-5.2		0.0	0.0	-5.9	-9.8	0.0	-0.4	+0.2	-1.5	+0.6	0.0	-10.8	+1.5	-0.0	-1.0	+0.4	-2.6	-7.8
Older People	-0.8%	-8			0.0	0.0	0.0	+1.6	+0.0	+0.9		-0.2		+2.3	+0.5			-0.6		0.0	0.0	-0.0	+0.0	+0.0	-0.7	-0.6	-0.4	-9.4
Social Care	-0.8%	-35	0.0	+0.2	+0.2	0.0	+0.4	+0.9	+0.0	-4.3		-0.2	0.0	-3.7	-9.2	0.0	-0.4	-0.4	-1.5	+0.6	0.0	-10.9	+1.5	+0.0	-1.7	-0.1	-3.0	-17.2
Change	-2.1	-0.0%	+1.6%	+1.6%	-3.3%	+8.2%	+2.7%	+1.5%	+1.6%	-0.8%	-0.6%	+15.0%		+0.2%	-2.7%	-10.4%	-0.1%	+2.4%	-3.2%	+24.2%	-1.4%	-0.6%	+2.7%	+1.2%	-0.2%	+0.6%	-0.6%	-0.3%

Year-on-year Summary																												
WTE change since Feb 20	% change since Feb 20	overall	Consultants	Registrars	SHO/ Interns	Medical/ Dental, other	Medical & Dental	Nurse/ Midwife Manager	Nurse/ Midwife Specialist & AN/MP	Staff Nurse/ Staff Midwife	Public Health Nurse	Nursing/ Midwifery Student	Nursing/ Midwifery other	Nursing & Midwifery	Therapy Professions	Health Science/ Diagnostics	Social Care	Social Workers	Psychologists	Pharmacy	H&SC, Other	Health & Social Care Professionals	Management (VIII & above)	Administrativ e/ Supervisory (V to VII)	Clerical (III & IV)	Management & Administrative	General Support	Patient & Client Care
Overall	+3.8%	+248	+8.5	+14.0	-0.7	-3.2	+18.6	+26.7	+14.5	+25.9	+3.0	-5.4	-1.2	+63.5	-1.6	+0.3	+22.6	+8.1	-1.0	-2.6	-3.4	+22.5	+11.6	+36.7	+19.1	+67.3	-10.0	+86.6
Community Health & Wellbeing	-0.1%	-0																					0.0	+1.0	0.0	+1.0		-2.4
Mental Health	+0.3%	+2	+6.3	+13.8	-3.5		+16.6	+7.1	+7.3	+0.9		-8.1	-2.2	+4.9	+2.3		-0.2	+6.9	-3.9	0.0	-0.6	+4.6	+1.0	+2.1	+2.2	+5.3	-0.9	-5.1
Primary Care	+1.7%	+30	+2.2	+0.3	+2.7	-1.2	+3.9	+7.2	+8.2	-2.7	+3.0	+2.0	0.0	+17.6	-7.6	+0.3	+0.1	+0.6	+3.4	-0.8	-2.9	-6.9	+1.1	+18.7	+14.5	+34.4	-6.7	+87.7
Disabilities	+2.6%	+78.5	0.0	0.0	0.0	0.0	0.0	+2.3	-0.8	+1.0		-0.5	+1.0	+2.9	+2.0	0.0	+22.7	-1.3	-0.4	-0.8	0.0	+22.2	+7.0	+10.9	+1.2	+19.0	-12.0	+46.4
Older People	+1.6%	+15.8			0.0	-2.0	-2.0	+10.2	-0.1	+26.7		+1.3		+38.0	+1.6		+2.0		-1.0	0.0	+2.6	+2.5	+4.0	+1.2	+7.6	+9.6	-40.1	
Social Care	-0.8%	-35	0.0	0.0	0.0	-2.0	-2.0	+12.4	-1.0	+27.7		+0.8	+1.0	+40.9	+3.7	0.0	+22.7	+0.6	-0.4	-1.8	0.0	+24.8	+9.5	+14.9	+2.3	+26.6	-2.4	+6.3
Change	+248.5	+3.8%	+14.2%	+15.7%	-2.0%	-3.9%	+7.0%	+6.9%	+15.2%	+2.6%	+1.8%	-11.2%	-12.1%	+3.7%	-0.3%	+9.8%	+6.1%	+7.8%	-1.2%	-6.1%	-7.7%	+2.0%	+15.3%	+20.1%	+5.3%	+10.9%	-2.2%	+3.6%







Longitudinal Employment Levels by Grade Group - Dec 2015 to Feb 2021

Feb 2021 (Dec 2016 figure: 5,579)	WTE Feb 2021	WTE change since Dec 15	WTE change since Dec 16	WTE change since Dec 17	WTE change since Dec 18	WTE change since Dec 19	WTE change since Dec 20	WTE change since Jan 21	% change since Dec 15	% change since Dec 16	% change since Dec 17	% change since Dec 18	% change since Dec 19	% change since Dec 20	% change since Jan 21
Overall	6,776	+1,297	+1,197	+370	+219	+262	-7	-2	+23.7%	+21.5%	+5.8%	+3.3%	+4.0%	-0.1%	-0.0%
Consultant Medicine	10	+3	+1	+1	+2	+3	+1	+1	+56.1%	+17.8%	+8.7%	+34.8%	+44.4%	+12.3%	+6.5%
Consultant Paediatrics	0														
Consultant Psychiatry	58	+7	+9	+12	+10	+6	+1	+0	+12.9%	+18.5%	+25.2%	+21.0%	+11.5%	+1.2%	+0.8%
Consultant Surgery		-1	-1	-0	-1	-1			-100.0%	-100.0%	-100.0%	-100.0%	-100.0%	-100.0%	-100.0%
Consultants	68	+9	+10	+12	+11	+8	+2	+1	+15.9%	+16.8%	+21.4%	+20.1%	+13.6%	+2.6%	+1.6%
Registrar	79	+57	+22	+26	+13	+7	+5	+1	+253.3%	+39.8%	+49.9%	+20.0%	+9.8%	+6.6%	+1.4%
Senior Registrar	19	+13	+9	+10	+5	+0	-1	+1	+192.3%	+81.0%	+103.4%	+35.7%	+0.1%	-5.0%	+3.4%
Specialist Registrar	6	+1	+2	+0	+1	+2	-0	-0	+18.7%	+50.1%	+2.8%	+24.3%	+46.0%	-2.7%	-2.2%
Registrars	104	+70	+33	+36	+19	+9	+4	+2	+207.4%	+46.5%	+53.4%	+22.8%	+9.4%	+3.7%	+1.6%
Interns	2														
Senior House Officer	34	-5	-5	-7	+0	-0	-3	-1	-13.6%	-13.6%	-17.3%	+1.4%	-0.3%	-7.2%	-3.5%
SHO/ Interns	36	-5	-5	-7	+0	-0	-3	-1	-12.9%	-12.9%	-16.5%	+1.3%	-0.3%	-6.8%	-3.3%
Dentists	33	-6	-7	-2	-3	-1	-2	-1	-16.2%	-16.5%	-6.2%	-9.4%	-1.8%	-5.6%	-3.3%
Other Medical	45	+2	-0	-8	-7	-2	+0	+7	+5.1%	-0.2%	-15.4%	-13.4%	-3.8%	+0.7%	+18.7%
Medical/ Dental, other	78	-4	-7	-10	-10	-2	-2	+6	-5.1%	-7.8%	-11.7%	-11.7%	-3.0%	-2.0%	+8.2%
Medical & Dental	285	+70	+31	+31	+21	+15	+1	+7	+32.4%	+12.1%	+12.0%	+7.8%	+5.4%	+0.4%	+2.7%
Clinical Nurse/ Midwife Manager	331	+48	+29	+4	+10	+3	+3	+3	+16.8%	+9.7%	+1.4%	+3.0%	+1.0%	+0.9%	+0.9%
Director Nursing/Midwifery, Assistant	63	+16	+10	+13	+8	+11	+5	+3	+33.3%	+17.8%	+26.5%	+14.2%	+22.1%	+8.7%	+4.1%
Director of Nursing/Midwifery	21	+3	+4	-2	+1	+5	-0	+1	+15.9%	+24.3%	-8.6%	+6.6%	+29.6%	-0.4%	+4.7%
Nurse/ Midwife Manager	416	+66	+43	+16	+19	+20	+8	+6	+19.0%	+11.5%	+3.9%	+4.7%	+4.9%	+2.0%	+1.5%
Advanced Nurse/ Midwife Practitioner	13	+12	+12	+11	+11	+9	+1	+0	+1237.0%	+646.9%	+483.8%	+428.5%	+208.1%	+11.6%	+2.8%
Clinical Nurse/ Midwife Specialist	96	+31	+30	+18	+12	+7	-1	+1	+46.6%	+45.6%	+23.7%	+13.6%	+7.6%	-1.4%	+1.5%
Nurse/ Midwife Specialist & AN/MP	110	+43	+42	+29	+22	+16	+0	+2	+64.5%	+61.4%	+36.8%	+25.7%	+16.8%	+0.0%	+1.6%
Staff Nurse [Intellectual Disability]	193	-43	-36	-38	-28	-1	+1	-2	-18.2%	-15.7%	-16.5%	-12.5%	-0.7%	+0.3%	-0.8%
Staff Nurse [Psychiatric]	198	-43	-17	-29	-2	+6	+0	-5	-17.7%	-7.7%	-13.0%	-0.8%	+3.3%	+0.1%	-2.6%
Staff Nurses [General/ Children's]	632	+102	+125	+65	+56	+25	+1	-2	+19.2%	+24.7%	+11.5%	+9.6%	+4.1%	+0.2%	-0.3%
Staff Nurse/ Staff Midwife	1,023	+16	+73	-2	+27	+30	+2	-9	+1.6%	+7.7%	-0.2%	+2.7%	+3.0%	+0.2%	-0.8%
Public Health Nurse	172	-5	-8	-14	-23	-3	-4	-1	-3.0%	-4.7%	-7.7%	-11.7%	-1.7%	-2.4%	-0.6%
Pre-registration Nurse/ Midwife Intern	15	+14	+14	+15	+10	+14	+15	+8	+832.5%	+832.5%	-100.0%	+159.7%	+1029.9%	+2996.0%	+94.0%
Pre-registration Nurse Intern (COVID-19)	1	+1	+1	+1	+1	+1	-2	-1	-100.0%	-100.0%	-100.0%	-100.0%	-100.0%	-70.5%	-48.5%
Post-registration Nurse/ Midwife Student	24		+1	+8	+17	+3				+4.3%	+50.0%	+242.9%	+14.3%		
Nursing/ Midwifery awaiting registration	2	+2	+2	-6	-2	-8	-2	-1	-100.0%	-100.0%	-72.1%	-43.5%	-77.1%	-46.2%	-30.5%
Nursing/ Midwifery Student	43	+17	+18	+19	+26	+11	+11	+6	+66.6%	+73.3%	+77.3%	+152.0%	+32.6%	+33.2%	+15.0%
Nursing Education/Clinical	8	-1	-3	-1	-0	-2	-1		-7.8%	-27.4%	-7.1%	-1.8%	-16.8%	-10.7%	
Other Nursing/ Midwifery		-1	-1						-100.0%	-100.0%	-100.0%	-100.0%	-100.0%	-100.0%	-100.0%
Nursing/ Midwifery other	8	-1	-4	-1	-0	-2	-1		-12.7%	-33.2%	-7.1%	-1.8%	-16.8%	-10.7%	
Nursing & Midwifery	1,771	+136	+163	+47	+70	+71	+15	+4	+8.3%	+10.1%	+2.7%	+4.1%	+4.2%	+0.9%	+0.2%
Dietitians	23	+5	+4	+3	-2	-3	-4	-2	+27.8%	+19.2%	+16.6%	-8.8%	-10.9%	-13.6%	-7.9%
Occupational Therapists	180	+19	+11	+11	-5	-4	-4	-3	+12.1%	+6.3%	+6.3%	-2.8%	-2.2%	-2.1%	-1.9%

Feb 2021 (Dec 2016 figure: 5,579)	WTE Feb 2021	WTE change since Dec 15	WTE change since Dec 16	WTE change since Dec 17	WTE change since Dec 18	WTE change since Dec 19	WTE change since Dec 20	WTE change since Jan 21	% change since Dec 15	% change since Dec 16	% change since Dec 17	% change since Dec 18	% change since Dec 19	% change since Dec 20	% change since Jan 21
Overall	6,776	+1,297	+1,197	+370	+219	+262	-7	-2	+23.7%	+21.5%	+5.8%	+3.3%	+4.0%	-0.1%	-0.0%
Orthoptists	3	+2	+2	+3	+3	+3		-1	+900.0%	+900.0%	-100.0%	-100.0%	-100.0%		-16.7%
Physiotherapists	117	+2	-6	-7	-9	+2	-4	-4	+1.6%	-4.6%	-5.7%	-7.1%	+2.1%	-3.4%	-3.2%
Podiatrists & Chiropodists	1	+0	+0	+0	-0				+53.8%	+40.8%	+53.8%	-21.9%			
Speech & Language Therapists	128	+38	+21	+0	+5	+2	-1	-3	+43.0%	+19.3%	+0.3%	+4.2%	+1.7%	-0.7%	-2.1%
Therapy Professions	450	+67	+32	+10	-9	+0	-12	-13	+17.5%	+7.6%	+2.3%	-1.9%	+0.0%	-2.7%	-2.7%
Audiology		-0	-0						-100.0%	-100.0%	-100.0%	-100.0%	-100.0%	-100.0%	-100.0%
Clinical Measurement	2	+1	+1	+1	+1	+1			+100.0%	+100.0%	+100.0%	+100.0%	+100.0%		
Medical Science			-1						-100.0%	-100.0%	-100.0%	-100.0%	-100.0%	-100.0%	-100.0%
Phlebotomists	1	+0	+0	+0	-0	-0	-0	-0	+88.4%	+24.6%	+28.6%	-33.6%	-33.6%	-33.6%	-35.2%
Radiographers	1	-1							-43.5%						
Health Science/ Diagnostics	4	+0	-0	+1	+1	+1	-0	-0	+13.1%	-6.6%	+44.9%	+18.3%	+18.3%	-9.7%	-10.4%
Social Care	396	+278	+284	+68	+37	+25	-3	-0	+234.2%	+252.6%	+20.5%	+10.2%	+6.8%	-0.8%	-0.1%
Social Care	396	+278	+284	+68	+37	+25	-3	-0	+234.2%	+252.6%	+20.5%	+10.2%	+6.8%	-0.8%	-0.1%
Social Workers	112	+15	+3	+0	+2	+8	+4	+3	+15.8%	+2.4%	+0.1%	+1.4%	+7.4%	+4.0%	+2.4%
Psychologists	81	+11	+13	-3	-3	+1	-5	-3	+14.8%	+18.4%	-4.0%	-3.4%	+0.9%	-6.1%	-3.2%
Pharmacy	40	-1	+2	+1	+2	-0	+2	+8	-3.1%	+5.1%	+3.0%	+4.9%	-0.5%	+5.9%	+24.2%
Counsellor Therapists	35	+3	+4	+2	+4	-2	-0	-1	+10.6%	+11.4%	+6.2%	+13.9%	-4.4%	-1.2%	-1.5%
Dental Hygienists	4	+1	+1	+1	-1	-1	+0	+0	+16.1%	+16.1%	+23.0%	-15.1%	-19.4%	+0.5%	+9.3%
Other Health & Social Care	1	-3	-4	-5	-4	-1	-0	-0	-75.4%	-82.8%	-84.7%	-80.9%	-57.0%	-28.3%	-31.2%
Play Therapists/ Specialists	1														
H&SC, Other	41	+1	-0	-2	-0	-4	-1	-1	+3.2%	-0.0%	-4.6%	-0.3%	-8.4%	-1.8%	-1.4%
Health & Social Care Professionals	1,125	+371	+333	+75	+29	+31	-16	-6	+49.3%	+42.0%	+7.1%	+2.6%	+2.8%	-1.4%	-0.6%
Executive Management	16	+4	-0	+1	+4	+3	-0	-0	+32.3%	-0.8%	+5.8%	+32.3%	+22.1%	-0.3%	-0.6%
Senior Management (VIII & GM)	72	+21	+23	+20	+15	+12	+3	+2	+40.7%	+47.8%	+37.5%	+26.5%	+19.4%	+4.0%	+3.5%
Management (VIII & above)	87	+25	+23	+20	+19	+14	+3	+2	+39.1%	+35.7%	+30.4%	+27.5%	+19.9%	+3.2%	+2.7%
Middle Management (V-VII)	218	+88	+87	+60	+50	+37	+5	+2	+67.8%	+66.1%	+37.8%	+30.1%	+20.4%	+2.4%	+1.2%
Other Administrative	1			-0		-0					-14.6%		-14.6%		
Administrative/ Supervisory (V to VII)	219	+88	+87	+60	+50	+37	+5	+2	+67.4%	+65.7%	+37.5%	+29.9%	+20.2%	+2.4%	+1.2%
Clerical (III & IV)	379	+34	+20	-5	-2	+28	-2	-1	+9.7%	+5.6%	-1.2%	-0.5%	+8.0%	-0.4%	-0.2%
Management & Administrative	685	+146	+130	+75	+67	+79	+6	+4	+27.2%	+23.4%	+12.4%	+10.9%	+13.1%	+0.9%	+0.6%
Catering	56	+2	+3	-9	-7	-4	-1	+0	+2.8%	+5.1%	-13.3%	-10.5%	-6.0%	-1.2%	+0.3%
Household Services	263	-4	-1	-33	-31	-6	-2	-2	-1.5%	-0.4%	-11.2%	-10.5%	-2.3%	-0.9%	-0.9%
Other Labs & Associated	1	-0	-0		-0			-0	-16.7%	-6.5%		-3.8%			-5.7%
Other Support	15	-2	-1	-0	-1	+1	+0	+0	-14.2%	-9.0%	-0.3%	-4.3%	+6.0%	+0.3%	+0.3%
Portering	61	-17	-13	-10	-10	-6	-4	-1	-21.3%	-17.1%	-14.6%	-13.8%	-9.6%	-5.7%	-1.1%
Support	395	-22	-12	-52	-48	-15	-7	-3	-5.2%	-3.0%	-11.6%	-10.8%	-3.7%	-1.7%	-0.7%
Maintenance	40	+12	+9	-4	-1	+3	-1	+0	+41.1%	+29.9%	-9.6%	-2.3%	+7.7%	-3.0%	+0.3%
Technical Services	5	+3	+3	+3	+3	+1			+150.0%	+150.0%	+150.0%	+163.2%	+25.0%		
Maintenance/ Technical	45	+15	+12	-1	+2	+4	-1	+0	+48.3%	+37.2%	-2.6%	+5.1%	+9.3%	-2.7%	+0.3%
General Support	440	-7	-0	-53	-46	-12	-8	-3	-1.6%	-0.0%	-10.8%	-9.4%	-2.5%	-1.8%	-0.6%

Feb 2021 (Dec 2016 figure: 5,579)	WTE Feb 2021	WTE change since Dec 15	WTE change since Dec 16	WTE change since Dec 17	WTE change since Dec 18	WTE change since Dec 19	WTE change since Dec 20	WTE change since Jan 21	% change since Dec 15	% change since Dec 16	% change since Dec 17	% change since Dec 18	% change since Dec 19	% change since Dec 20	% change since Jan 21
Overall	6,776	+1,297	+1,197	+370	+219	+262	-7	-2	+23.7%	+21.5%	+5.8%	+3.3%	+4.0%	-0.1%	-0.0%
HCA, Nurse's Aide, etc.	1,622	+366	+331	+112	+4	-20	-29	-23	+29.1%	+25.7%	+7.4%	+0.3%	-1.2%	-1.8%	-1.4%
HCA (Student Nurse/Midwife COVID-19)	2	+2	+2	+2	+2	+2	-2	-2	-100.0%	-100.0%	-100.0%	-100.0%	-100.0%	-49.7%	-49.7%
Health & Social Care Assistants	20	+11	+11	+13	-2	+7	+2	+2	+127.0%	+133.0%	+223.9%	-9.0%	+56.6%	+8.4%	+8.6%
Swabber (COVID-19)	72	+72	+72	+72	+72	+72	+22	+8	-100.0%	-100.0%	-100.0%	-100.0%	-100.0%	+45.1%	+11.8%
Health Care Assistants	1,716	+451	+417	+200	+77	+61	-7	-16	+35.7%	+32.1%	+13.2%	+4.7%	+3.7%	-0.4%	-0.9%
Care, other	624	+150	+153	+18	+7	+13	+3	+5	+31.7%	+32.5%	+3.0%	+1.1%	+2.2%	+0.4%	+0.8%
Home Help	130	-21	-29	-23	-7	+3	-2	+2	-13.9%	-18.1%	-14.8%	-4.9%	+2.2%	-1.5%	+1.9%
Patient & Client Care	2,469	+580	+541	+196	+77	+77	-6	-8	+30.7%	+28.0%	+8.6%	+3.2%	+3.2%	-0.2%	-0.3%

Source: Health Service Personnel Census

Longitudinal Employment Levels by Care Group - Dec 2015 to Feb 2021

Community Health & Wellbeing

Feb 2021 (figure:)	WTE Feb 2021	WTE change since	WTE change since	WTE change since	WTE change since	WTE change since	WTE change since Dec 20	WTE change since Jan 21	% change since	% change since	% change since	% change since	% change since	% change since Dec 20	% change since Jan 21
Overall	7	+7	+7	+7	+7	+7	-1	-0	-100.0%	-100.0%	-100.0%	-100.0%	-100.0%	-13.5%	-0.1%
Management & Administrative	5	+5	+5	+5	+5	+5	-0	-0	-1.0%	-1.0%	-1.0%	-1.0%	-1.0%	-0.0%	-0.0%
Management (VIII & above)	1	+1	+1	+1	+1	+1			-1.0%	-1.0%	-1.0%	-1.0%	-1.0%	+0.0%	+0.0%
Administrative/ Supervisory (V to VII)	3	+3	+3	+3	+3	+3	-0	-0	-1.0%	-1.0%	-1.0%	-1.0%	-1.0%	-0.1%	-0.0%
Clerical (III & IV)	1	+1	+1	+1	+1	+1	+1	-0	-1.0%	-1.0%	-1.0%	-1.0%	-1.0%	-0.0%	+0.0%
Patient & Client Care	2	+2	+2	+2	+2	+2	-1		-1.0%	-1.0%	-1.0%	-1.0%	-1.0%	-0.3%	+0.0%
Care, other	2	+2	+2	+2	+2	+2	+2	-1	-1.0%	-1.0%	-1.0%	-1.0%	-1.0%	-0.3%	+0.0%

Source: Health Service Personnel Census

Mental Health

Feb 2021 (Dec 2016 figure: 828)	WTE Feb 2021	WTE change since Dec 15	WTE change since Dec 16	WTE change since Dec 17	WTE change since Dec 18	WTE change since Dec 19	WTE change since Dec 20	WTE change since Jan 21	% change since Dec 15	% change since Dec 16	% change since Dec 17	% change since Dec 18	% change since Dec 19	% change since Dec 20	% change since Jan 21
Overall	865	+29	+37	+6	+31	+30	+4	+2	+3.4%	+4.5%	+0.7%	+3.7%	+3.6%	+0.4%	+0.3%
Medical & Dental	128	+32	+27	+33	+26	+13	+1	+2	+0.3%	+0.3%	+0.3%	+0.3%	+0.1%	+0.0%	+0.0%
Consultants	54	+9	+9	+13	+9	+6	+1	+0	+0.2%	+0.2%	+0.3%	+0.2%	+0.1%	+0.0%	+0.0%
Registrars	56	+33	+27	+29	+18	+10	+3	+3	+1.4%	+0.9%	+1.1%	+0.5%	+0.2%	+0.1%	+0.0%
SHO/ Interns	18	-10	-9	-9	-1	-3	-2	-1	-0.4%	-0.3%	-0.3%	-0.1%	-0.1%	-0.1%	-0.1%
Nursing & Midwifery	384	+9	+22	-2	+23	+15	+5	+3	+0.0%	+0.1%	-0.0%	+0.1%	+0.0%	+0.0%	+0.0%
Nurse/ Midwife Manager	120	+21	+9	+5	+2	+4	+3	+2	+0.2%	+0.1%	+0.0%	+0.0%	+0.0%	+0.0%	+0.0%
Nurse/ Midwife Specialist & AN/MP	47	+23	+21	+20	+21	+7	+0	+1	+0.9%	+0.8%	+0.7%	+0.8%	+0.2%	+0.0%	+0.0%
Staff Nurse/ Staff Midwife	201	-45	-17	-29	-0	+6	-1	-6	-0.2%	-0.1%	-0.1%	-0.0%	+0.0%	-0.0%	-0.0%
Nursing/ Midwifery Student	11	+10	+10	+3	+2	+0	+4	+6	+5.9%	+5.9%	+0.4%	+0.2%	+0.0%	+0.5%	+1.0%
Nursing/ Midwifery other	5	+1	-1	-1	-1	-3	-1		+0.2%	-0.2%	-0.2%	-0.2%	-0.4%	-0.2%	+0.0%
Health & Social Care Professionals	143	+10	+8	-2	+3	+3	-3	-1	+0.1%	+0.1%	-0.0%	+0.0%	+0.0%	-0.0%	-0.0%
Therapy Professions	52	+6	+4	+5	+4	+4	-1	-1	+0.1%	+0.1%	+0.1%	+0.1%	+0.1%	-0.0%	-0.0%
Social Care	7	-3	-3	-3	-1	-0	+0	-0	-0.3%	-0.3%	-0.3%	-0.1%	-0.0%	+0.0%	-0.0%
Social Workers	39	+0	-2	-3	+2	+5	+1	+1	+0.0%	-0.1%	-0.1%	+0.1%	+0.1%	+0.0%	+0.0%
Psychologists	27	-1	+2	-3	-7	-5	-2	-0	-0.0%	+0.1%	-0.1%	-0.2%	-0.1%	-0.1%	-0.0%
Pharmacy	1	+1	+1	+1	+1				-1.0%	-1.0%	-1.0%	-1.0%	+0.0%	+0.0%	+0.0%
H&SC, Other	17	+7	+6	+2	+4	-1	-1	-1	+0.8%	+0.6%	+0.2%	+0.3%	-0.0%	-0.0%	-0.1%
Management & Administrative	70	+10	+4	+1	-3	+5	+0	-0	+0.2%	+0.1%	+0.0%	-0.0%	+0.1%	+0.0%	-0.0%
Management (VIII & above)	4	+2	+1	+1	+1	+1	-0	-0	+0.9%	+0.3%	+0.3%	+0.3%	+0.3%	-0.0%	-0.0%
Administrative/ Supervisory (V to VII)	17	+8	+5	+1	-1	+2	+0	-0	+0.9%	+0.4%	+0.1%	-0.1%	+0.1%	+0.0%	-0.0%
Clerical (III & IV)	49	+0	-2	-1	-3	+2	+0	+0	+0.0%	-0.0%	-0.0%	-0.1%	+0.1%	+0.0%	+0.0%
General Support	20	-9	-6	-6	-4	+0	+0	+0	-0.3%	-0.2%	-0.2%	-0.2%	+0.0%	+0.0%	+0.0%
Support	18	-9	-6	-6	-4	-0	+0	+0	-0.3%	-0.3%	-0.2%	-0.2%	-0.0%	+0.0%	+0.0%
Maintenance/ Technical	2	+0				+0			+0.0%	+0.0%	+0.0%	+0.0%	+0.1%	+0.0%	+0.0%
Patient & Client Care	119	-24	-17	-19	-14	-6	+0	-1	-0.2%	-0.1%	-0.1%	-0.1%	-0.0%	+0.0%	-0.0%
Health Care Assistants	35	-12	-11	-10	-6	+2	+0	+0	-0.3%	-0.2%	-0.2%	-0.2%	+0.0%	+0.0%	+0.0%
Care, other	84	-11	-6	-9	-8	-8	+0	-1	-0.1%	-0.1%	-0.1%	-0.1%	-0.1%	+0.0%	-0.0%

Source: Health Service Personnel Census

Primary Care

Feb 2021 (Dec 2016 figure: 1,687)	WTE Feb 2021	WTE change since Dec 15	WTE change since Dec 16	WTE change since Dec 17	WTE change since Dec 18	WTE change since Dec 19	WTE change since Dec 20	WTE change since Jan 21	% change since Dec 15	% change since Dec 16	% change since Dec 17	% change since Dec 18	% change since Dec 19	% change since Dec 20	% change since Jan 21
Overall	1,815	+168	+128	+124	+40	+113	+26	+30	+10.2%	+7.6%	+7.3%	+2.2%	+6.7%	+1.5%	+1.7%
Medical & Dental	142	+44	+9	+4	-3	+3	+0	+5	+0.4%	+0.1%	+0.0%	-0.0%	+0.0%	+0.0%	+0.0%
Consultants	14	+4	+3	+1	+2	+2	+1	+1	+0.4%	+0.2%	+0.1%	+0.2%	+0.2%	+0.1%	+0.0%
Registrars	44	+36	+6	+7	+1	-1	+1	-1	+4.1%	+0.2%	+0.2%	+0.0%	-0.0%	+0.0%	-0.0%
SHO/ Interns	9	+4	+3	+3	+1	+3	-0	-0	+0.7%	+0.5%	+0.5%	+0.2%	+0.5%	-0.0%	-0.0%
Medical/ Dental, other	75	+1	-3	-7	-7	-0	-2	+6	+0.0%	-0.0%	-0.1%	-0.1%	-0.0%	-0.0%	+0.1%
Nursing & Midwifery	542	+39	+33	+33	+12	+12	-0	+5	+0.1%	+0.1%	+0.1%	+0.0%	+0.0%	-0.0%	+0.0%
Nurse/ Midwife Manager	88	+10	+10	+12	+7	+7	+2	+3	+0.1%	+0.1%	+0.2%	+0.1%	+0.1%	+0.0%	+0.0%
Nurse/ Midwife Specialist & AN/MP	55	+22	+22	+13	+9	+9	-0	+1	+0.7%	+0.7%	+0.3%	+0.2%	+0.2%	-0.0%	+0.0%
Staff Nurse/ Staff Midwife	202	+13	+11	+17	+3	-3	+2	+2	+0.1%	+0.1%	+0.1%	+0.0%	+0.0%	+0.0%	+0.0%
Public Health Nurse	172	-4	-8	-14	-23	-3	-4	-1	-0.0%	-0.0%	-0.1%	-0.1%	-0.0%	-0.0%	-0.0%
Nursing/ Midwifery Student	23	-1		+7	+16	+2			-0.0%	+0.0%	+0.4%	+2.3%	+0.1%	+0.0%	+0.0%
Nursing/ Midwifery other	2	-1	-2	-1					-0.3%	-0.4%	-0.2%	+0.0%	+0.0%	+0.0%	+0.0%
Health & Social Care Professionals	363	+9	+1	+1	-17	-10	-2	+6	+0.0%	+0.0%	+0.0%	-0.0%	-0.0%	-0.0%	+0.0%
Therapy Professions	252	+10	-2	-2	-23	-14	-5	-2	+0.0%	-0.0%	-0.0%	-0.1%	-0.1%	-0.0%	-0.0%
Health Science/ Diagnostics	1	+0	+0	+0	+1	+1	-0	-0	+0.9%	+0.2%	+0.3%	+2.7%	+2.7%	-0.3%	-0.4%
Social Care	4	-0	-0	-0	-0	+0	+0	+0	-0.1%	-0.1%	-0.1%	-0.1%	+0.1%	+0.0%	+0.0%
Social Workers	27	+0	-1	+1	+3	+1	+1	+2	+0.0%	-0.0%	+0.0%	+0.1%	+0.0%	+0.0%	+0.1%
Psychologists	26	+5	+5	+3	+2	+4	+0	-1	+0.2%	+0.2%	+0.2%	+0.1%	+0.2%	+0.0%	-0.0%
Pharmacy	32	-1	+3	+2	+3	+1	+2	+7	-0.0%	+0.1%	+0.1%	+0.1%	+0.0%	+0.1%	+0.3%
H&SC, Other	21	-5	-4	-2	-3	-3	+0	+0	-0.2%	-0.2%	-0.1%	-0.1%	-0.1%	+0.0%	+0.0%
Management & Administrative	315	+12	+12	+5	+4	+28	+5	+5	+0.0%	+0.0%	+0.0%	+0.0%	+0.1%	+0.0%	+0.0%
Management (VIII & above)	31	+5	+3	+2	-0	-3	+0	+1	+0.2%	+0.1%	+0.1%	-0.0%	-0.1%	+0.0%	+0.0%
Administrative/ Supervisory (V to VII)	93	+26	+30	+21	+22	+17	+5	+3	+0.4%	+0.5%	+0.3%	+0.3%	+0.2%	+0.1%	+0.0%
Clerical (III & IV)	192	-18	-21	-19	-18	+14	-1	+1	-0.1%	-0.1%	-0.1%	-0.1%	+0.1%	-0.0%	+0.0%
General Support	120	-19	-16	-11	-13	-5	-0	-0	-0.1%	-0.1%	-0.1%	-0.1%	-0.0%	-0.0%	-0.0%
Support	110	-21	-16	-13	-14	-6	-0	-0	-0.2%	-0.1%	-0.1%	-0.1%	-0.0%	-0.0%	-0.0%
Maintenance/ Technical	9	+2	+0	+2	+1	+1	+0	+0	+0.2%	+0.0%	+0.3%	+0.2%	+0.1%	+0.0%	+0.0%
Patient & Client Care	334	+83	+90	+92	+56	+85	+24	+10	+0.3%	+0.4%	+0.4%	+0.2%	+0.3%	+0.1%	+0.0%
Health Care Assistants	208	+88	+91	+89	+67	+87	+23	+10	+0.7%	+0.8%	+0.7%	+0.5%	+0.7%	+0.1%	+0.1%
Care, other	126	-6	-1	+3	-11	-1	+0	-1	-0.0%	-0.0%	+0.0%	-0.1%	-0.0%	+0.0%	-0.0%

Source: Health Service Personnel Census

Disabilities

Feb 2021 (Dec 2016 figure: 1,943)	WTE Feb 2021	WTE change since Dec 15	WTE change since Dec 16	WTE change since Dec 17	WTE change since Dec 18	WTE change since Dec 19	WTE change since Dec 20	WTE change since Jan 21	% change since Dec 15	% change since Dec 16	% change since Dec 17	% change since Dec 18	% change since Dec 19	% change since Dec 20	% change since Jan 21
Overall	3,075	+1,208	+1,133	+284	+173	+94	-28	-26	+64.7%	+58.3%	+10.2%	+5.9%	+3.1%	-0.9%	-0.9%
Medical & Dental	12	-1		-2	+1	+0		+0	-0.0%	+0.0%	-0.1%	+0.1%	+0.0%	+0.0%	+0.0%
Consultants	1	-3	-2	-2					-0.8%	-0.8%	-0.8%	+0.0%	+0.0%	+0.0%	+0.0%
Registrars	3	+1			+1			+0	+0.5%	+0.0%	+0.0%	+0.3%	+0.0%	+0.0%	+0.1%
SHO/ Interns	7	+2	+2		+0	+0		+0	+0.4%	+0.4%	+0.0%	+0.0%	+0.0%	+0.0%	+0.0%
Medical/ Dental, other	1	-1							-0.3%	+0.0%	+0.0%	+0.0%	+0.0%	+0.0%	+0.0%
Nursing & Midwifery	511	+109	+114	+4	+3	+9	+8	-6	+0.3%	+0.3%	+0.0%	+0.0%	+0.0%	+0.0%	-0.0%
Nurse/ Midwife Manager	120	+26	+20	-14	-4	-2	+2	-1	+0.3%	+0.2%	-0.1%	-0.0%	-0.0%	+0.0%	-0.0%
Nurse/ Midwife Specialist & AN/MP	4	-1	-1	-3	-6	-1			-0.3%	-0.1%	-0.4%	-0.6%	-0.2%	+0.0%	+0.0%
Staff Nurse/ Staff Midwife	378	+79	+89	+12	+5	+4	-0	-5	+0.3%	+0.3%	+0.0%	+0.0%	+0.0%	-0.0%	-0.0%
Nursing/ Midwifery Student	7	+7	+7	+7	+7	+7	+7		-1.0%	-1.0%	-1.0%	-1.0%	-1.0%	-1.0%	+0.0%
Nursing/ Midwifery other	2	-1	-2	+1	+1	+1			-0.4%	-0.5%	+2.0%	+2.0%	+2.0%	+0.0%	+0.0%
Health & Social Care Professionals	587	+357	+332	+81	+50	+34	-13	-11	+1.5%	+1.3%	+0.2%	+0.1%	+0.1%	-0.0%	-0.0%
Therapy Professions	130	+52	+31	+9	+12	+9	-8	-10	+0.7%	+0.3%	+0.1%	+0.1%	+0.1%	-0.1%	-0.1%
Health Science/ Diagnostics	3	+1	+1	+1					+0.4%	+0.2%	+0.5%	+0.0%	+0.0%	+0.0%	+0.0%
Social Care	385	+281	+288	+71	+38	+25	-4	-0	+2.7%	+2.9%	+0.2%	+0.1%	+0.1%	-0.0%	-0.0%
Social Workers	33	+15	+7	+4	-1	-0	+1	+0	+0.8%	+0.3%	+0.1%	-0.0%	-0.0%	+0.0%	+0.0%
Psychologists	29	+7	+6	-4	+2	+1	-3	-1	+0.3%	+0.3%	-0.1%	+0.1%	+0.0%	-0.1%	-0.0%
Pharmacy	4	+0	+0	+0	-1	-0	+0	+1	+0.1%	+0.1%	+0.1%	-0.1%	-0.1%	+0.1%	+0.2%
H&SC, Other	2		-1	-1					+0.0%	-0.4%	-0.4%	+0.0%	+0.0%	+0.0%	+0.0%
Management & Administrative	236	+113	+103	+56	+46	+33	+0	+0	+0.9%	+0.8%	+0.3%	+0.2%	+0.2%	+0.0%	+0.0%
Management (VIII & above)	45	+18	+19	+14	+14	+13	+2	+1	+0.7%	+0.7%	+0.4%	+0.4%	+0.4%	+0.0%	+0.0%
Administrative/ Supervisory (V to VII)	91	+48	+44	+29	+21	+12	-1	-0	+1.1%	+0.9%	+0.5%	+0.3%	+0.1%	-0.0%	-0.0%
Clerical (III & IV)	100	+47	+40	+13	+12	+9	-1	-1	+0.9%	+0.7%	+0.1%	+0.1%	+0.1%	-0.0%	-0.0%
General Support	181	+22	+24	-33	-26	-14	-7	-3	+0.1%	+0.2%	-0.2%	-0.1%	-0.1%	-0.0%	-0.0%
Support	150	+8	+11	-30	-28	-17	-6	-3	+0.1%	+0.1%	-0.2%	-0.2%	-0.1%	-0.0%	-0.0%
Maintenance/ Technical	32	+14	+13	-3	+2	+3	-1	+0	+0.8%	+0.7%	-0.1%	+0.1%	+0.1%	-0.0%	+0.0%
Patient & Client Care	1,550	+608	+560	+178	+99	+32	-17	-8	+0.6%	+0.6%	+0.1%	+0.1%	+0.0%	-0.0%	-0.0%
Health Care Assistants	1,126	+450	+407	+154	+79	+14	-20	-15	+0.7%	+0.6%	+0.2%	+0.1%	+0.0%	-0.0%	-0.0%
Care, other	406	+173	+169	+33	+26	+20	+3	+7	+0.7%	+0.7%	+0.1%	+0.1%	+0.1%	+0.0%	+0.0%
Home Help	17	-15	-15	-9	-6	-2	+0	+1	-0.5%	-0.5%	-0.3%	-0.3%	-0.1%	+0.0%	+0.1%

Source: Health Service Personnel Census

Older People

Feb 2021 (Dec 2016 figure: 1,121)	WTE Feb 2021	WTE change since Dec 15	WTE change since Dec 16	WTE change since Dec 17	WTE change since Dec 18	WTE change since Dec 19	WTE change since Dec 20	WTE change since Jan 21	% change since Dec 15	% change since Dec 16	% change since Dec 17	% change since Dec 18	% change since Dec 19	% change since Dec 20	% change since Jan 21
Overall	1,014	-115	-107	-50	-31	+18	-8	-8	-10.2%	-9.6%	-4.7%	-2.9%	+1.8%	-0.8%	-0.8%
Medical & Dental	4	-5	-5	-4	-3	-2			-0.6%	-0.6%	-0.5%	-0.4%	-0.3%	+0.0%	+0.0%
SHO/ Interns	2	-1	-1	-1					-0.3%	-0.3%	-0.3%	+0.0%	+0.0%	+0.0%	+0.0%
Medical/ Dental, other	2	-4	-4	-3	-3	-2			-0.7%	-0.7%	-0.6%	-0.6%	-0.5%	+0.0%	+0.0%
Nursing & Midwifery	334	-21	-7	+11	+33	+36	+2	+2	-0.1%	-0.0%	+0.0%	+0.1%	+0.1%	+0.0%	+0.0%
Nurse/ Midwife Manager	88	+11	+3	+12	+14	+11	+2	+2	+0.1%	+0.0%	+0.2%	+0.2%	+0.1%	+0.0%	+0.0%
Nurse/ Midwife Specialist & AN/MP	3	-1	-0	-1	-1	+0	+0	+0	-0.2%	-0.1%	-0.1%	-0.3%	+0.1%	+0.0%	+0.0%
Staff Nurse/ Staff Midwife	242	-31	-11	-2	+19	+23	+1	+1	-0.1%	-0.0%	-0.0%	+0.1%	+0.1%	+0.0%	+0.0%
Public Health Nurse		-2	-0						-1.0%	-1.0%	-1.0%	-1.0%	-1.0%	-1.0%	-1.0%
Nursing/ Midwifery Student	1	+1	+1	+1	+1	+1	-0	-0	-1.0%	-1.0%	-1.0%	-1.0%	-1.0%	-0.1%	-0.2%
Health & Social Care Professionals	31	-4	-7	-6	-8	+3	+3	-0	-0.1%	-0.2%	-0.2%	-0.2%	+0.1%	+0.1%	-0.0%
Therapy Professions	15	-0	-1	-2	-2	+2	+2	+1	-0.0%	-0.1%	-0.1%	-0.1%	+0.1%	+0.2%	+0.0%
Health Science/ Diagnostics		-1	-1						-1.0%	-1.0%	-1.0%	-1.0%	-1.0%	-1.0%	-1.0%
Social Workers	13	-0	-2	-1	-3	+2	+1	-1	-0.0%	-0.1%	-0.1%	-0.2%	+0.2%	+0.1%	-0.0%
Pharmacy	2	-2	-2	-2	-2	-1			-0.5%	-0.5%	-0.5%	-0.5%	-0.2%	+0.0%	+0.0%
H&SC, Other	1	-1	-1	-1	-1				-0.5%	-0.5%	-0.5%	-0.5%	+0.0%	+0.0%	+0.0%
Management & Administrative	59	+6	+7	+9	+15	+9	+1	-1	+0.1%	+0.1%	+0.2%	+0.3%	+0.2%	+0.0%	-0.0%
Management (VIII & above)	7	-1	-1	+2	+3	+2	+0	+0	-0.1%	-0.1%	+0.5%	+0.9%	+0.5%	+0.0%	+0.0%
Administrative/ Supervisory (V to VII)	16	+3	+6	+5	+6	+4	+1	+0	+0.2%	+0.6%	+0.5%	+0.6%	+0.3%	+0.1%	+0.0%
Clerical (III & IV)	36	+4	+2	+2	+6	+2	-0	-1	+0.1%	+0.0%	+0.1%	+0.2%	+0.1%	-0.0%	-0.0%
General Support	120	-1	-1	-4	-2	+7	-1	-0	-0.0%	-0.0%	-0.0%	-0.0%	+0.1%	-0.0%	-0.0%
Support	118	+0	-0	-3	-1	+7	-1	-0	+0.0%	-0.0%	-0.0%	-0.0%	+0.1%	-0.0%	-0.0%
Maintenance/ Technical	2	-1	-1	-1	-1				-0.3%	-0.3%	-0.3%	-0.3%	+0.0%	+0.0%	+0.0%
Patient & Client Care	465	-89	-95	-57	-66	-35	-13	-9	-0.2%	-0.2%	-0.1%	-0.1%	-0.1%	-0.0%	-0.0%
Health Care Assistants	347	-74	-70	-34	-63	-41	-10	-11	-0.2%	-0.2%	-0.1%	-0.2%	-0.1%	-0.0%	-0.0%
Care, other	5	-8	-11	-10	-2	+0	-0	-0	-0.6%	-0.7%	-0.7%	-0.3%	+0.0%	-0.0%	-0.0%
Home Help	113	-6	-14	-13	-0	+5	-2	+1	-0.1%	-0.1%	-0.1%	-0.0%	+0.0%	-0.0%	+0.0%

Source: Health Service Personnel Census