

## CHO 7 Employment Report: January 2021

### Employment by Staff Group

Jan 2021 (Dec 2019 figure: 6,515)	WTE Dec 2020	WTE Jan 2021	WTE change since Dec 20	% change since Dec 20	WTE change since Dec 19	WTE change since Jan 20
<b>Overall</b>	<b>6,783</b>	<b>6,778</b>	<b>-5</b>	<b>-0.1%</b>	<b>+264</b>	<b>+293</b>
Consultants	66	67	+1	+1.0%	+7	+9
Registrars	100	102	+2	+2.1%	+7	+9
SHO/ Interns	38	37	-1	-3.6%	+1	+3
Medical/ Dental, other	80	72	-8	-9.5%	-8	-4
<b>Medical &amp; Dental</b>	<b>284</b>	<b>278</b>	<b>-6</b>	<b>-2.2%</b>	<b>+7</b>	<b>+17</b>
Nurse/ Midwife Manager	407	409	+2	+0.4%	+13	+23
Nurse/ Midwife Specialist & AN/MP	110	108	-2	-1.6%	+14	+12
Staff Nurse/ Staff Midwife	1,021	1,031	+11	+1.0%	+39	+40
Public Health Nurse	177	173	-3	-1.8%	-2	-1
<i>Pre-registration Nurse/ Midwife Intern</i>	1	8	+7	+1496.0%	+7	+7
<i>Pre-registration Nurse Intern (COVID-19)</i>	3	2	-1	-42.8%	+2	-1
<i>Post-registration Nurse/ Midwife Student</i>	24	24			+3	
<i>Nursing/ Midwifery awaiting registration</i>	4	3	-1	-22.6%	-7	-1
Nursing/ Midwifery Student	32	37	+5	+15.8%	+5	-3
Nursing/ Midwifery other	9	8	-1	-10.7%	-2	-1
<b>Nursing &amp; Midwifery</b>	<b>1,756</b>	<b>1,767</b>	<b>+12</b>	<b>+0.7%</b>	<b>+67</b>	<b>+70</b>
Therapy Professions	463	463	+0	+0.0%	+13	+13
Health Science/ Diagnostics	4	4	+0	+0.7%	+1	+1
Social Care	400	397	-3	-0.7%	+26	+34
Social Workers	108	110	+2	+1.7%	+5	+6
Psychologists	87	84	-3	-3.0%	+3	+1
Pharmacy	38	32	-6	-14.7%	-8	-9
H&SC, Other	41	41	-0	-0.4%	-3	-3
<b>Health &amp; Social Care Professionals</b>	<b>1,140</b>	<b>1,131</b>	<b>-9</b>	<b>-0.8%</b>	<b>+37</b>	<b>+43</b>
Management (VIII & above)	85	85	+0	+0.4%	+12	+10
Administrative/ Supervisory (V to VII)	214	217	+3	+1.2%	+34	+36
Clerical (III & IV)	380	379	-1	-0.3%	+29	+27
<b>Management &amp; Administrative</b>	<b>679</b>	<b>681</b>	<b>+2</b>	<b>+0.3%</b>	<b>+75</b>	<b>+73</b>
Support	402	398	-4	-0.9%	-12	-10
Maintenance/ Technical	46	45	-1	-3.0%	+4	+4
<b>General Support</b>	<b>448</b>	<b>443</b>	<b>-5</b>	<b>-1.1%</b>	<b>-9</b>	<b>-6</b>
Health Care Assistants	1,723	1,731	+9	+0.5%	+77	+94
Care, other	621	619	-2	-0.3%	+9	+9
Home Help	132	127	-4	-3.3%	+0	-7
<b>Patient &amp; Client Care</b>	<b>2,476</b>	<b>2,478</b>	<b>+2</b>	<b>+0.1%</b>	<b>+86</b>	<b>+97</b>

## CHO 7 Employment Report: January 2021

### Community Health & Wellbeing

Jan 2021 ( figure: )	WTE Dec 2020	WTE Jan 2021	WTE change since Dec 20	% change since Dec 20	WTE change since	WTE change since Jan 20
<b>Total Community Health &amp; Wellbeing</b>	<b>8</b>	<b>7</b>	<b>-1</b>	<b>-13.4%</b>	<b>+7</b>	<b>-1</b>
Management (VIII & above)	1	1	0	0	+1	
Administrative/ Supervisory (V to VII)	3	3	-0	-5%	+3	+1
Clerical (III & IV)	1	1	-0	-3%	+1	
<b>Management &amp; Administrative</b>	<b>5</b>	<b>5</b>	<b>-0</b>	<b>-3.6%</b>	<b>+5</b>	<b>+1</b>
Care, other	3	2	-1	-28%	+2	-2
<b>Patient &amp; Client Care</b>	<b>3</b>	<b>2</b>	<b>-1</b>	<b>-28.4%</b>	<b>+2</b>	<b>-2</b>

### Mental Health

Jan 2021 (Dec 2019 figure: 835)	WTE Dec 2020	WTE Jan 2021	WTE change since Dec 20	% change since Dec 20	WTE change since Dec 19	WTE change since Jan 20
<b>Total Mental Health</b>	<b>861</b>	<b>863</b>	<b>+1</b>	<b>+0.1%</b>	<b>+28</b>	<b>+37</b>
Consultants	53	53	+0	+0%	+6	+7
Registrars	54	54	+0	+1%	+8	+9
SHO/ Interns	20	19	-1	-6%	-2	+0
<b>Medical &amp; Dental</b>	<b>127</b>	<b>126</b>	<b>-1</b>	<b>-0.5%</b>	<b>+11</b>	<b>+16</b>
Nurse/ Midwife Manager	117	118	+1	+0%	+1	+7
Nurse/ Midwife Specialist & AN/MP	47	46	-1	-1%	+6	+6
Staff Nurse/ Staff Midwife	202	207	+5	+3%	+13	+11
Pre-registration Nurse/ Midwife Intern	1	1	+0	+96.0%	-0	+0
Pre-registration Nurse Intern (COVID-19)	3	2	-1	-42.8%	+2	-1
Post-registration Nurse/ Midwife Student	1	1			+1	
Nursing/ Midwifery awaiting registration	3	2	-1	-38.6%	-8	-1
Nursing/ Midwifery Student	8	6	-2	-27%	-6	-6
Nursing/ Midwifery other	6	5	-1	-17%	-3	-2
<b>Nursing &amp; Midwifery</b>	<b>379</b>	<b>381</b>	<b>+2</b>	<b>+0.6%</b>	<b>+12</b>	<b>+16</b>
Therapy Professions	53	53	-0	-0%	+6	+5
Social Care	7	7	+0	+3%	-0	-0
Social Workers	38	38	-0	-0%	+3	+5
Psychologists	29	27	-2	-8%	-4	-5
Pharmacy	1	1	0	0		
H&SC, Other	18	18	+0	+0%	+0	+0
<b>Health &amp; Social Care Professionals</b>	<b>147</b>	<b>144</b>	<b>-2</b>	<b>-1.5%</b>	<b>+4</b>	<b>+5</b>
Management (VIII & above)	4	4	+0	+1%	+1	+1
Administrative/ Supervisory (V to VII)	17	18	+0	+2%	+2	+3
Clerical (III & IV)	49	49	+0	+0%	+2	+2
<b>Management &amp; Administrative</b>	<b>70</b>	<b>71</b>	<b>+0</b>	<b>+0.7%</b>	<b>+5</b>	<b>+6</b>
Support	17	17	-0	-1%	-1	-1
Maintenance/ Technical	2	2	0	0	+0	+0
<b>General Support</b>	<b>19</b>	<b>19</b>	<b>-0</b>	<b>-0.6%</b>	<b>-0</b>	<b>-1</b>
Health Care Assistants	34	35	+0	+1%	+1	+1
Care, other	84	86	+1	+1%	-6	-7
<b>Patient &amp; Client Care</b>	<b>119</b>	<b>120</b>	<b>+2</b>	<b>+1.3%</b>	<b>-5</b>	<b>-5</b>

## Primary Care

Jan 2021 (Dec 2019 figure: 1,702)	WTE Dec 2020	WTE Jan 2021	WTE change since Dec 20	% change since Dec 20	WTE change since Dec 19	WTE change since Jan 20
<b>Total Primary Care</b>	<b>1,789</b>	<b>1,785</b>	<b>-4</b>	<b>-0.2%</b>	<b>+83</b>	<b>+97</b>
Consultants	13	13	+0	+4%	+2	+2
Registrars	44	46	+2	+5%	-0	+1
SHO/ Interns	9	9	-0	-0%	+3	+3
Medical/ Dental, other	77	69	-8	-10%	-6	-2
<b>Medical &amp; Dental</b>	<b>142</b>	<b>137</b>	<b>-5</b>	<b>-3.6%</b>	<b>-2</b>	<b>+4</b>
Nurse/ Midwife Manager	86	84	-1	-1%	+4	+5
Nurse/ Midwife Specialist & AN/MP	56	54	-1	-2%	+9	+7
Staff Nurse/ Staff Midwife	199	200	+0	+0%	-5	-6
Public Health Nurse	177	173	-3	-2%	-2	-1
<i>Post-registration Nurse/ Midwife Student</i>	23	23			+2	
Nursing/ Midwifery Student	23	23	0	0	+2	+2
Nursing/ Midwifery other	2	2	0	0		
<b>Nursing &amp; Midwifery</b>	<b>542</b>	<b>537</b>	<b>-5</b>	<b>-0.9%</b>	<b>+7</b>	<b>+6</b>
Therapy Professions	257	254	-3	-1%	-12	-11
Health Science/ Diagnostics	1	1	+0	+2%	+1	+1
Social Care	4	4	-0	-1%	+0	+0
Social Workers	26	26	-1	-2%	-1	-1
Psychologists	25	27	+1	+5%	+5	+5
Pharmacy	31	25	-5	-17%	-6	-7
H&SC, Other	21	21	-0	-1%	-3	-3
<b>Health &amp; Social Care Professionals</b>	<b>365</b>	<b>357</b>	<b>-8</b>	<b>-2.1%</b>	<b>-16</b>	<b>-16</b>
Management (VIII & above)	30	30	-0	-1%	-3	-2
Administrative/ Supervisory (V to VII)	87	90	+2	+3%	+14	+15
Clerical (III & IV)	193	191	-2	-1%	+13	+17
<b>Management &amp; Administrative</b>	<b>310</b>	<b>311</b>	<b>+1</b>	<b>+0.2%</b>	<b>+24</b>	<b>+30</b>
Support	110	110	+0	+0%	-5	-6
Maintenance/ Technical	9	9	-0	-0%	+1	+0
<b>General Support</b>	<b>120</b>	<b>120</b>	<b>+0</b>	<b>+0.0%</b>	<b>-5</b>	<b>-5</b>
Health Care Assistants	184	197	+13	+7%	+76	+77
Care, other	126	127	+1	+1%	-1	+2
<b>Patient &amp; Client Care</b>	<b>310</b>	<b>324</b>	<b>+14</b>	<b>+4.4%</b>	<b>+75</b>	<b>+79</b>

## Social Care

Jan 2021 (Dec 2019 figure: 3,978)	WTE Dec 2020	WTE Jan 2021	WTE change since Dec 20	% change since Dec 20	WTE change since Dec 19	WTE change since Jan 20
<b>Total Social Care</b>	<b>4,125</b>	<b>4,124</b>	<b>-1</b>	<b>-0.0%</b>	<b>+146</b>	<b>+161</b>
Consultants	1	1	0	0		
Registrars	3	3	-0	-6%	-0	-1
SHO/ Interns	9	9	-0	-2%	-0	-0
Medical/ Dental, other	3	3	0	0	-2	-2
<b>Medical &amp; Dental</b>	<b>16</b>	<b>15</b>	<b>-0</b>	<b>-2.3%</b>	<b>-2</b>	<b>-3</b>
Nurse/ Midwife Manager	204	207	+2	+1%	+8	+11
Nurse/ Midwife Specialist & AN/MP	7	7	+0	+0%	-1	-1
Staff Nurse/ Staff Midwife	620	625	+5	+1%	+31	+35
Pre-registration Nurse/ Midwife Intern		7	+7	-100.0%	+7	+7
Nursing/ Midwifery awaiting registration	1	2	+0	+11.1%	+2	+0
Nursing/ Midwifery Student	1	9	+7	+530%	+9	+2
Nursing/ Midwifery other	2	2	0	0	+1	+1
<b>Nursing &amp; Midwifery</b>	<b>834</b>	<b>849</b>	<b>+14</b>	<b>+1.7%</b>	<b>+48</b>	<b>+48</b>
Therapy Professions	152	155	+3	+2%	+20	+19
Health Science/ Diagnostics	3	3	0	0		
Social Care	389	386	-3	-1%	+25	+34
Social Workers	44	47	+2	+5%	+2	+2
Psychologists	32	31	-2	-5%	+3	+1
Pharmacy	6	6	-0	-5%	-2	-2
H&SC, Other	3	3	0	0		
<b>Health &amp; Social Care Professionals</b>	<b>628</b>	<b>629</b>	<b>+1</b>	<b>+0.1%</b>	<b>+48</b>	<b>+54</b>
Management (VIII & above)	50	51	+1	+2%	+14	+11
Administrative/ Supervisory (V to VII)	106	106	-0	-0%	+16	+17
Clerical (III & IV)	138	139	+1	+0%	+13	+7
<b>Management &amp; Administrative</b>	<b>294</b>	<b>295</b>	<b>+1</b>	<b>+0.4%</b>	<b>+42</b>	<b>+36</b>
Support	274	270	-4	-1%	-6	-3
Maintenance/ Technical	35	33	-1	-4%	+3	+3
<b>General Support</b>	<b>309</b>	<b>304</b>	<b>-5</b>	<b>-1.6%</b>	<b>-3</b>	<b>+0</b>
Health Care Assistants	1,504	1,499	-5	-0%	-1	+16
Care, other	408	405	-3	-1%	+14	+16
Home Help	132	127	-4	-3%	+0	-7
<b>Patient &amp; Client Care</b>	<b>2,043</b>	<b>2,031</b>	<b>-12</b>	<b>-0.6%</b>	<b>+13</b>	<b>+26</b>

## CHO 7 Employment Report: January 2021

### Disabilities

Jan 2021 (Dec 2019 figure: 2,982)	WTE Dec 2020	WTE Jan 2021	WTE change since Dec 20	% change since Dec 20	WTE change since Dec 19	WTE change since Jan 20
<b>Total Disabilities</b>	<b>3,103</b>	<b>3,102</b>	<b>-2</b>	<b>-0.0%</b>	<b>+120</b>	<b>+134</b>
Consultants	1	1				
Registrars	3	3	-0	-6.3%	-0	-1
SHO/ Interns	7	7	-0	-2.4%	-0	-0
Medical/ Dental, other	1	1				
<b>Medical &amp; Dental</b>	<b>12</b>	<b>11</b>	<b>-0</b>	<b>-3.1%</b>	<b>-0</b>	<b>-1</b>
Nurse/ Midwife Manager	118	121	+2	+1.9%	-1	+3
Nurse/ Midwife Specialist & AN/MP	4	4			-1	-1
Staff Nurse/ Staff Midwife	378	383	+5	+1.4%	+9	+10
<i>Pre-registration Nurse/ Midwife Intern</i>		7	+7	-100.0%	+7	+7
Nursing/ Midwifery Student		7	+7	-100.0%	+7	
Nursing/ Midwifery other	2	2			+1	+1
<b>Nursing &amp; Midwifery</b>	<b>502</b>	<b>517</b>	<b>+14</b>	<b>+2.9%</b>	<b>+15</b>	<b>+13</b>
Therapy Professions	138	140	+2	+1.3%	+18	+18
Health Science/ Diagnostics	3	3				
Social Care	389	386	-3	-0.8%	+25	+34
Social Workers	32	33	+1	+3.6%	-0	-1
Psychologists	32	31	-2	-4.8%	+3	+1
Pharmacy	4	4	-0	-7.7%	-1	-1
H&SC, Other	2	2				
<b>Health &amp; Social Care Professionals</b>	<b>600</b>	<b>597</b>	<b>-2</b>	<b>-0.4%</b>	<b>+45</b>	<b>+51</b>
Management (VIII & above)	43	43	+1	+1.4%	+11	+9
Administrative/ Supervisory (V to VII)	92	91	-1	-1.2%	+12	+14
Clerical (III & IV)	101	101	+0	+0.2%	+10	+5
<b>Management &amp; Administrative</b>	<b>236</b>	<b>235</b>	<b>-0</b>	<b>-0.1%</b>	<b>+33</b>	<b>+27</b>
Support	155	153	-3	-1.8%	-14	-14
Maintenance/ Technical	33	31	-1	-4.2%	+3	+3
<b>General Support</b>	<b>188</b>	<b>184</b>	<b>-4</b>	<b>-2.2%</b>	<b>-11</b>	<b>-11</b>
Health Care Assistants	1,146	1,142	-5	-0.4%	+29	+41
Care, other	403	400	-3	-0.8%	+14	+16
Home Help	17	16	-1	-6.0%	-3	-2
<b>Patient &amp; Client Care</b>	<b>1,566</b>	<b>1,557</b>	<b>-9</b>	<b>-0.6%</b>	<b>+40</b>	<b>+55</b>

## Older People

Jan 2021 (Dec 2019 figure: 996)	WTE Dec 2020	WTE Jan 2021	WTE change since Dec 20	% change since Dec 20	WTE change since Dec 19	WTE change since Jan 20
<b>Total Older People</b>	<b>1,021</b>	<b>1,022</b>	<b>+0</b>	<b>+0.0%</b>	<b>+26</b>	<b>+26</b>
SHO/ Interns	2	2				
Medical/ Dental, other	2	2			-2	-2
<b>Medical &amp; Dental</b>	<b>4</b>	<b>4</b>			<b>-2</b>	<b>-2</b>
Nurse/ Midwife Manager	86	86	+0	+0.2%	+9	+9
Nurse/ Midwife Specialist & AN/MP	3	3	+0	+0.7%	+0	-0
Staff Nurse/ Staff Midwife	242	242	-0	-0.1%	+23	+26
Nursing/ Midwifery Student	1	2	+0	+11.1%	+2	+2
<b>Nursing &amp; Midwifery</b>	<b>332</b>	<b>332</b>	<b>+0</b>	<b>+0.0%</b>	<b>+33</b>	<b>+36</b>
<b>Health &amp; Social Care Professionals</b>	<b>29</b>	<b>32</b>	<b>+3</b>	<b>+9.7%</b>	<b>+3</b>	<b>+3</b>
Management (VIII & above)	7	7	+0	+2.5%	+2	+2
Administrative/ Supervisory (V to VII)	15	15	+1	+6.5%	+4	+4
Clerical (III & IV)	37	37	+0	+0.8%	+3	+3
<b>Management &amp; Administrative</b>	<b>59</b>	<b>60</b>	<b>+1</b>	<b>+2.4%</b>	<b>+9</b>	<b>+8</b>
Support	119	118	-1	-0.8%	+8	+11
Maintenance/ Technical	2	2				
<b>General Support</b>	<b>121</b>	<b>120</b>	<b>-1</b>	<b>-0.7%</b>	<b>+8</b>	<b>+11</b>
Health Care Assistants	358	358	+0	+0.0%	-30	-25
Care, other	5	5			+0	+1
Home Help	115	111	-3	-2.9%	+4	-5
<b>Patient &amp; Client Care</b>	<b>477</b>	<b>474</b>	<b>-3</b>	<b>-0.7%</b>	<b>-26</b>	<b>-29</b>

## CHO 7 Employment by Administration (HSE / S38): January 2021

Jan 2021 (Dec 2019 figure: 6,515)	WTE Dec 2020	WTE Jan 2021	WTE change since Dec 20	% change since Dec 20	WTE change since Dec 19	WTE change since Jan 20
<b>Overall</b>	<b>6,783</b>	<b>6,778</b>	<b>-5</b>	<b>-0.1%</b>	<b>+264</b>	<b>+293</b>
<b>HSE</b>	<b>3,319</b>	<b>3,316</b>	<b>-3</b>	<b>-0.1%</b>	<b>+165</b>	<b>+180</b>
<b>Section 38 Voluntary Agencies</b>	<b>3,464</b>	<b>3,462</b>	<b>-2</b>	<b>-0.1%</b>	<b>+99</b>	<b>+113</b>

## HSE

Jan 2021 (Dec 2019 figure: 3,151)	WTE Dec 2020	WTE Jan 2021	WTE change since Dec 20	% change since Dec 20	WTE change since Dec 19	WTE change since Jan 20
<b>Overall</b>	<b>3,319</b>	<b>3,316</b>	<b>-3</b>	<b>-0.1%</b>	<b>+165</b>	<b>+180</b>
Consultants	58	58	+0	+0.0%	+5	+6
Registrars	91	93	+2	+0.0%	+7	+9
SHO/ Interns	25	24	-1	-0.0%	+0	+2
Medical/ Dental, other	77	70	-8	-0.1%	-8	-4
<b>Medical &amp; Dental</b>	<b>252</b>	<b>245</b>	<b>-6</b>	<b>-2.5%</b>	<b>+3</b>	<b>+13</b>
Nurse/ Midwife Manager	248	248	-0	-0.0%	+16	+21
Nurse/ Midwife Specialist & AN/MP	68	67	-1	-0.0%	+6	+5
Staff Nurse/ Staff Midwife	545	549	+4	+0.0%	+30	+30
Public Health Nurse	177	173	-3	-0.0%	-2	-1
Pre-registration Nurse/ Midwife Intern	1	1	+0	+1.0%	-5	-3
Pre-registration Nurse Intern (COVID-19)	3	2	-1	-0.4%	+2	+2
Post-registration Nurse/ Midwife Student	24	24		+0.0%	+17	+3
Nursing/ Midwifery awaiting registration	4	3	-1	-0.2%	-1	-5
Nursing/ Midwifery Student	32	30	-2	-0.1%	-2	-3
Nursing/ Midwifery other	6	5	-1	-0.2%	-3	-2
<b>Nursing &amp; Midwifery</b>	<b>1,076</b>	<b>1,072</b>	<b>-4</b>	<b>-0.3%</b>	<b>+45</b>	<b>+51</b>
Therapy Professions	340	341	+1	+0.0%	+16	+18
Social Care	11	11	+0	+0.0%	+0	-0
Social Workers	73	74	+1	+0.0%	+7	+8
Psychologists	64	62	-1	-0.0%	+1	-1
Pharmacy	24	19	-5	-0.2%	-7	-8
H&SC, Other	40	40	-0	-0.0%	-3	-3
<b>Health &amp; Social Care Professionals</b>	<b>551</b>	<b>547</b>	<b>-5</b>	<b>-0.8%</b>	<b>+14</b>	<b>+14</b>
Management (VIII & above)	47	47	-0	-0.0%	+7	+3
Administrative/ Supervisory (V to VII)	123	125	+2	+0.0%	+29	+31
Clerical (III & IV)	263	261	-2	-0.0%	+20	+20
<b>Management &amp; Administrative</b>	<b>432</b>	<b>433</b>	<b>+0</b>	<b>+0.1%</b>	<b>+56</b>	<b>+53</b>
Support	177	176	-1	-0.0%	+6	+8
Maintenance/ Technical	5	5		+0.0%	-0	-0
<b>General Support</b>	<b>183</b>	<b>182</b>	<b>-1</b>	<b>-0.6%</b>	<b>+6</b>	<b>+8</b>
Health Care Assistants	470	485	+15	+0.0%	+44	+50
Care, other	223	225	+2	+0.0%	-2	-3
Home Help	132	127	-4	-0.0%	+0	-7
<b>Patient &amp; Client Care</b>	<b>825</b>	<b>838</b>	<b>+13</b>	<b>+1.5%</b>	<b>+42</b>	<b>+41</b>

## Section 38 Voluntary Agencies

Jan 2021 (Dec 2019 figure: 3,363)	WTE Dec 2020	WTE Jan 2021	WTE change since Dec 20	% change since Dec 20	WTE change since Dec 19	WTE change since Jan 20
<b>Overall</b>	<b>3,464</b>	<b>3,462</b>	<b>-2</b>	<b>-0.1%</b>	<b>+99</b>	<b>+113</b>
Consultants	8	9	+0	+0.1%	+2	+2
Registrars	9	9	-0	-0.0%	+1	+0
SHO/ Interns	13	13	-0	-0.0%	+1	+1
Medical/ Dental, other	2	2	+0	+0.0%	+0	+0
<b>Medical &amp; Dental</b>	<b>33</b>	<b>33</b>	<b>+0</b>	<b>+0.4%</b>	<b>+4</b>	<b>+3</b>
Nurse/ Midwife Manager	160	161	+2	+0.0%	-3	+2
Nurse/ Midwife Specialist & AN/MP	42	41	-0	-0.0%	+8	+7
Staff Nurse/ Staff Midwife	476	482	+7	+0.0%	+9	+10
<i>Pre-registration Nurse/ Midwife Intern</i>		7	+7	-1.0%	+7	
Nursing/ Midwifery Student		7	+7	-1.0%	+7	
Nursing/ Midwifery other	4	4		+0.0%	+1	+1
<b>Nursing &amp; Midwifery</b>	<b>680</b>	<b>695</b>	<b>+15</b>	<b>+2.2%</b>	<b>+22</b>	<b>+19</b>
Therapy Professions	123	122	-1	-0.0%	-3	-4
Health Science/ Diagnostics	4	4	+0	+0.0%	+1	+1
Social Care	389	386	-3	-0.0%	+25	+34
Social Workers	35	36	+1	+0.0%	-1	-2
Psychologists	23	22	-1	-0.1%	+3	+2
Pharmacy	14	13	-0	-0.0%	-1	-2
H&SC, Other	2	2		+0.0%		
<b>Health &amp; Social Care Professionals</b>	<b>589</b>	<b>584</b>	<b>-5</b>	<b>-0.8%</b>	<b>+23</b>	<b>+29</b>
Management (VIII & above)	38	38	+0	+0.0%	+5	+7
Administrative/ Supervisory (V to VII)	91	92	+1	+0.0%	+6	+5
Clerical (III & IV)	117	118	+1	+0.0%	+9	+7
<b>Management &amp; Administrative</b>	<b>247</b>	<b>248</b>	<b>+2</b>	<b>+0.7%</b>	<b>+20</b>	<b>+20</b>
Support	224	222	-3	-0.0%	-18	-18
Maintenance/ Technical	41	39	-1	-0.0%	+4	+4
<b>General Support</b>	<b>265</b>	<b>261</b>	<b>-4</b>	<b>-1.5%</b>	<b>-14</b>	<b>-14</b>
Health Care Assistants	1,253	1,246	-7	-0.0%	+33	+44
Care, other	398	394	-4	-0.0%	+11	+12
<b>Patient &amp; Client Care</b>	<b>1,651</b>	<b>1,640</b>	<b>-10</b>	<b>-0.6%</b>	<b>+44</b>	<b>+56</b>



## CHO 7 Employment by S38 Agency: January 2021

### Cheeverstown House

Jan 2021 (Dec 2019 figure: 396)	WTE Dec 2020	WTE Jan 2021	WTE change since Dec 20	% change since Dec 20	WTE change since Dec 19	WTE change since Jan 20
<b>Overall</b>	<b>395</b>	<b>400</b>	<b>+6</b>	<b>+1.4%</b>	<b>+4</b>	<b>+4</b>
Consultants	0	0		+0.0%		
Medical/ Dental, other	1	1		+0.0%		
<b>Medical &amp; Dental</b>	<b>1</b>	<b>1</b>				
Nurse/ Midwife Manager	27	26	-1	-0.0%		
Nurse/ Midwife Specialist & AN/MP	2	2		+0.0%		
Staff Nurse/ Staff Midwife	106	111	+5	+0.0%	+4	+4
<b>Nursing &amp; Midwifery</b>	<b>134</b>	<b>138</b>	<b>+4</b>	<b>+3.0%</b>	<b>+4</b>	<b>+4</b>
Therapy Professions	13	13		+0.0%	-0	+2
Social Care	35	35		+0.0%	-0	-1
Social Workers	4	5	+1	+0.3%	-1	-1
Psychologists	5	4	-1	-0.2%		
Pharmacy	0	0		+0.0%	-0	-0
H&SC, Other	2	2		+0.0%		
<b>Health &amp; Social Care Professionals</b>	<b>59</b>	<b>59</b>			<b>-1</b>	<b>+1</b>
Management (VIII & above)	3	3		+0.0%	+1	+1
Administrative/ Supervisory (V to VII)	15	15	+0	+0.0%	+0	+0
Clerical (III & IV)	12	12		+0.0%	+1	+1
<b>Management &amp; Administrative</b>	<b>30</b>	<b>31</b>	<b>+0</b>	<b>+1.1%</b>	<b>+3</b>	<b>+3</b>
Support	27	27	-0	-0.0%	-0	-0
Maintenance/ Technical	4	4		+0.0%		
<b>General Support</b>	<b>30</b>	<b>30</b>	<b>-0</b>	<b>-1.1%</b>	<b>-0</b>	<b>-0</b>
Health Care Assistants	129	129	-0	-0.0%	-1	-3
Care, other	11	12	+2	+0.2%	+0	+0
<b>Patient &amp; Client Care</b>	<b>139</b>	<b>141</b>	<b>+2</b>	<b>+1.1%</b>	<b>-1</b>	<b>-3</b>

# Kare, Newbridge, Co Kildare

Jan 2021 (Dec 2019 figure: 360)	WTE Dec 2020	WTE Jan 2021	WTE change since Dec 20	% change since Dec 20	WTE change since Dec 19	WTE change since Jan 20
<b>Overall</b>	<b>377</b>	<b>376</b>	<b>-1</b>	<b>-0.2%</b>	<b>+17</b>	<b>+14</b>
Nurse/ Midwife Manager	7	7		+0.0%	-5	-4
Staff Nurse/ Staff Midwife	25	24	-1	-0.0%	+2	+1
<b>Nursing &amp; Midwifery</b>	<b>33</b>	<b>31</b>	<b>-1</b>	<b>-3.4%</b>	<b>-3</b>	<b>-2</b>
Therapy Professions	13	13	+0	+0.0%	-2	-3
Social Care	68	68	+0	+0.0%	+7	+8
Social Workers	4	4		+0.0%		-0
Psychologists	7	7	-0	-0.0%	+3	+2
<b>Health &amp; Social Care Professionals</b>	<b>92</b>	<b>92</b>	<b>-0</b>	<b>-0.2%</b>	<b>+8</b>	<b>+7</b>
Management (VIII & above)	6	6		+0.0%		
Administrative/ Supervisory (V to VII)	13	13	+0	+0.0%	+1	+1
Clerical (III & IV)	14	13	-1	-0.1%	+2	+1
<b>Management &amp; Administrative</b>	<b>34</b>	<b>33</b>	<b>-1</b>	<b>-2.3%</b>	<b>+3</b>	<b>+3</b>
Support	1	1	-0	-0.0%	-0	-0
<b>General Support</b>	<b>1</b>	<b>1</b>	<b>-0</b>	<b>-0.7%</b>	<b>-0</b>	<b>-0</b>
Health Care Assistants	106	108	+2	+0.0%	+7	+6
Care, other	112	111	-1	-0.0%	+2	+1
<b>Patient &amp; Client Care</b>	<b>218</b>	<b>219</b>	<b>+1</b>	<b>+0.7%</b>	<b>+9</b>	<b>+7</b>

**Our Lady's Hospice & Care Services**

Jan 2021 (Dec 2019 figure: 482)	WTE Dec 2020	WTE Jan 2021	WTE change since Dec 20	% change since Dec 20	WTE change since Dec 19	WTE change since Jan 20
<b>Overall</b>	<b>496</b>	<b>496</b>	<b>+1</b>	<b>+0.1%</b>	<b>+14</b>	<b>+12</b>
Consultants	8	8	+0	+0.1%	+2	+2
Registrars	6	6		+0.0%	+1	+1
SHO/ Interns	6	6	-0	-0.0%	+1	+1
Medical/ Dental, other	1	1	+0	+0.0%	+0	+0
<b>Medical &amp; Dental</b>	<b>21</b>	<b>21</b>	<b>+1</b>	<b>+2.4%</b>	<b>+4</b>	<b>+4</b>
Nurse/ Midwife Manager	44	44	-0	-0.0%	-1	+0
Nurse/ Midwife Specialist & AN/MP	37	37	-0	-0.0%	+8	+7
Staff Nurse/ Staff Midwife	98	99	+2	+0.0%	+0	-0
Nursing/ Midwifery other	2	2		+0.0%		
<b>Nursing &amp; Midwifery</b>	<b>181</b>	<b>182</b>	<b>+1</b>	<b>+0.5%</b>	<b>+8</b>	<b>+7</b>
Therapy Professions	36	34	-1	-0.0%	-3	-3
Health Science/ Diagnostics	1	1	+0	+0.0%	+1	+1
Social Workers	10	10	+0	+0.0%	-1	-1
Psychologists	1	1	+0	+0.2%	+0	+0
Pharmacy	9	10	+0	+0.0%	-0	-0
<b>Health &amp; Social Care Professionals</b>	<b>57</b>	<b>56</b>	<b>-1</b>	<b>-1.6%</b>	<b>-2</b>	<b>-3</b>
Management (VIII & above)	4	4		+0.0%		+1
Administrative/ Supervisory (V to VII)	19	20	+1	+0.1%	-1	-2
Clerical (III & IV)	29	29	+0	+0.0%	+4	+4
<b>Management &amp; Administrative</b>	<b>51</b>	<b>53</b>	<b>+2</b>	<b>+3.0%</b>	<b>+3</b>	<b>+3</b>
Support	69	69	+0	+0.0%	-4	-4
Maintenance/ Technical	8	8		+0.0%	+1	+1
<b>General Support</b>	<b>77</b>	<b>77</b>	<b>+0</b>	<b>+0.2%</b>	<b>-3</b>	<b>-3</b>
Health Care Assistants	108	106	-2	-0.0%	+4	+3
Care, other	1	1	+0	+0.1%	+0	+0
<b>Patient &amp; Client Care</b>	<b>108</b>	<b>107</b>	<b>-2</b>	<b>-1.5%</b>	<b>+4</b>	<b>+3</b>

## Peamount Hospital (Newcastle)

Jan 2021 (Dec 2019 figure: 486)	WTE Dec 2020	WTE Jan 2021	WTE change since Dec 20	% change since Dec 20	WTE change since Dec 19	WTE change since Jan 20
<b>Overall</b>	<b>483</b>	<b>482</b>	<b>-1</b>	<b>-0.2%</b>	<b>-5</b>	<b>-11</b>
Registrars	2	2	-0	-0.1%	-0	-0
SHO/ Interns	7	7	-0	-0.0%	-0	-0
<b>Medical &amp; Dental</b>	<b>9</b>	<b>9</b>	<b>-0</b>	<b>-4.7%</b>	<b>-0</b>	<b>-1</b>
Nurse/ Midwife Manager	28	29	+2	+0.1%	+3	+3
Nurse/ Midwife Specialist & AN/MP	2	2		+0.0%		
Staff Nurse/ Staff Midwife	75	74	-1	-0.0%	-8	-8
Nursing Education/Clinical	1	1		+0.0%	+1	+1
Nursing/ Midwifery other	1	1		+0.0%	+1	+1
<b>Nursing &amp; Midwifery</b>	<b>106</b>	<b>106</b>	<b>+0</b>	<b>+0.2%</b>	<b>-4</b>	<b>-4</b>
Therapy Professions	29	32	+4	+0.1%	+3	+0
Health Science/ Diagnostics	3	3		+0.0%		
Social Care	4	3	-1	-0.2%	+2	+2
Social Workers	5	5	+0	+0.0%	+0	+0
Pharmacy	4	3	-0	-0.1%	-1	-1
<b>Health &amp; Social Care Professionals</b>	<b>44</b>	<b>47</b>	<b>+3</b>	<b>+5.7%</b>	<b>+4</b>	<b>+1</b>
Management (VIII & above)	4	4		+0.0%		
Administrative/ Supervisory (V to VII)	17	16	-1	-0.0%	+2	+2
Clerical (III & IV)	19	18	-1	-0.1%	-2	-2
<b>Management &amp; Administrative</b>	<b>40</b>	<b>39</b>	<b>-2</b>	<b>-4.4%</b>	<b>+1</b>	
Support	44	44	-0	-0.0%	-3	-4
Maintenance/ Technical	9	8	-1	-0.1%	+0	-0
<b>General Support</b>	<b>53</b>	<b>52</b>	<b>-1</b>	<b>-2.4%</b>	<b>-2</b>	<b>-4</b>
Health Care Assistants	226	226	-0	-0.0%	-2	-3
Care, other	3	3	-0	-0.0%	-0	-0
<b>Patient &amp; Client Care</b>	<b>230</b>	<b>229</b>	<b>-0</b>	<b>-0.2%</b>	<b>-2</b>	<b>-3</b>

Stewart's Hospital, (Palmerstown)

Jan 2021 (Dec 2019 figure: 852)	WTE Dec 2020	WTE Jan 2021	WTE change since Dec 20	% change since Dec 20	WTE change since Dec 19	WTE change since Jan 20
<b>Overall</b>	<b>914</b>	<b>916</b>	<b>+3</b>	<b>+0.3%</b>	<b>+65</b>	<b>+61</b>
Consultants	0	0		+0.0%		
Registrars				-1.0%		
<b>Medical &amp; Dental</b>	<b>0</b>	<b>0</b>				
Nurse/ Midwife Manager	32	34	+3	+0.1%	-2	+2
Staff Nurse/ Staff Midwife	81	83	+3	+0.0%	+10	+9
Pre-registration Nurse/ Midwife Intern		7	+7	-1.0%	+7	
Nursing/ Midwifery Student		7	+7	-1.0%	+7	
Nursing/ Midwifery other	1	1		+0.0%		
<b>Nursing &amp; Midwifery</b>	<b>113</b>	<b>125</b>	<b>+12</b>	<b>+10.6%</b>	<b>+16</b>	<b>+11</b>
Therapy Professions	19	18	-1	-0.1%	+2	+3
Social Care	13	13		+0.0%	+3	+2
Social Workers	6	6		+0.0%	+1	+1
Psychologists	4	4		+0.0%	-1	-1
<b>Health &amp; Social Care Professionals</b>	<b>42</b>	<b>41</b>	<b>-1</b>	<b>-2.4%</b>	<b>+5</b>	<b>+5</b>
Management (VIII & above)	16	16		+0.0%	+5	+6
Administrative/ Supervisory (V to VII)	17	17		+0.0%	+3	+3
Clerical (III & IV)	24	25	+1	+0.0%	+2	+1
<b>Management &amp; Administrative</b>	<b>57</b>	<b>58</b>	<b>+1</b>	<b>+1.8%</b>	<b>+10</b>	<b>+9</b>
Support	54	53	-1	-0.0%	-4	-3
Maintenance/ Technical	6	6		+0.0%	+1	+1
<b>General Support</b>	<b>60</b>	<b>59</b>	<b>-1</b>	<b>-1.7%</b>	<b>-3</b>	<b>-2</b>
Health Care Assistants	520	512	-8	-0.0%	+31	+32
Care, other	122	122	-0	-0.0%	+6	+5
<b>Patient &amp; Client Care</b>	<b>642</b>	<b>633</b>	<b>-8</b>	<b>-1.3%</b>	<b>+36</b>	<b>+37</b>

## St. John of God Liffey Services

Jan 2021 (Dec 2019 figure: 787)	WTE Dec 2020	WTE Jan 2021	WTE change since Dec 20	% change since Dec 20	WTE change since Dec 19	WTE change since Jan 20
<b>Overall</b>	<b>801</b>	<b>792</b>	<b>-9</b>	<b>-1.1%</b>	<b>+4</b>	<b>+35</b>
Registrars	1	1	+0	+0.1%	+0	-1
<b>Medical &amp; Dental</b>	<b>1</b>	<b>1</b>	<b>+0</b>	<b>+6.0%</b>	<b>+0</b>	<b>-1</b>
Nurse/ Midwife Manager	22	21	-1	-0.0%	+1	+1
Nurse/ Midwife Specialist & AN/MP	1	1		+0.0%		
Staff Nurse/ Staff Midwife	91	91	+0	+0.0%	+1	+3
<b>Nursing &amp; Midwifery</b>	<b>113</b>	<b>113</b>	<b>-1</b>	<b>-0.6%</b>	<b>+2</b>	<b>+5</b>
Therapy Professions	13	11	-2	-0.2%	-4	-4
Social Care	269	267	-2	-0.0%	+14	+23
Social Workers	6	5	-0	-0.1%	-1	-1
Psychologists	6	6	-0	-0.0%	+0	+0
<b>Health &amp; Social Care Professionals</b>	<b>295</b>	<b>290</b>	<b>-5</b>	<b>-1.7%</b>	<b>+10</b>	<b>+19</b>
Management (VIII & above)	5	5	+0	+0.1%	-1	-1
Administrative/ Supervisory (V to VII)	11	11	-0	-0.0%	+0	+0
Clerical (III & IV)	18	19	+1	+0.1%	+1	+2
<b>Management &amp; Administrative</b>	<b>34</b>	<b>36</b>	<b>+1</b>	<b>+3.8%</b>	<b>+1</b>	<b>+2</b>
Support	29	27	-1	-0.0%	-7	-7
Maintenance/ Technical	14	14	-0	-0.0%	+2	+2
<b>General Support</b>	<b>43</b>	<b>41</b>	<b>-2</b>	<b>-3.6%</b>	<b>-6</b>	<b>-4</b>
Health Care Assistants	165	167	+1	+0.0%	-5	+9
Care, other	149	144	-4	-0.0%	+3	+5
<b>Patient &amp; Client Care</b>	<b>314</b>	<b>311</b>	<b>-3</b>	<b>-1.0%</b>	<b>-2</b>	<b>+14</b>

**CHO 7 Employment by Grade Group & Staff Category: January 2021**

Jan 2021 (Dec 2019 figure: 6,515)	WTE Dec 2020	WTE Jan 2021	WTE change since Dec 20	% change since Dec 20	WTE change since Dec 19	WTE change since Jan 20
<b>Overall</b>	<b>6,783</b>	<b>6,778</b>	<b>-5</b>	<b>-0.1%</b>	<b>+264</b>	<b>+293</b>
Consultant Medicine	9	9	+0	+5.4%	+2	+2
Consultant Paediatrics	0	0				
Consultant Psychiatry	57	57	+0	+0.4%	+6	+7
Consultant Surgery				-100.0%	-1	-1
<b>Consultants</b>	<b>66</b>	<b>67</b>	<b>+1</b>	<b>+1.0%</b>	<b>+7</b>	<b>+9</b>
Registrar	74	78	+4	+5.1%	+6	+6
Senior Registrar	20	18	-2	-8.1%	-1	+1
Specialist Registrar	6	6	-0	-0.5%	+2	+2
<b>Registrars</b>	<b>100</b>	<b>102</b>	<b>+2</b>	<b>+2.1%</b>	<b>+7</b>	<b>+9</b>
Interns	2	2				+0
Senior House Officer	36	35	-1	-3.8%	+1	+3
<b>SHO/ Interns</b>	<b>38</b>	<b>37</b>	<b>-1</b>	<b>-3.6%</b>	<b>+1</b>	<b>+3</b>
Dentists	35	34	-1	-2.4%	+1	+1
Other Medical	45	38	-7	-15.1%	-9	-5
<b>Medical/ Dental, other</b>	<b>80</b>	<b>72</b>	<b>-8</b>	<b>-9.5%</b>	<b>-8</b>	<b>-4</b>
<b>Medical &amp; Dental</b>	<b>284</b>	<b>278</b>	<b>-6</b>	<b>-2.2%</b>	<b>+13</b>	<b>+17</b>
Clinical Nurse/ Midwife Manager	328	329	+0	+0.0%	+0	+10
Director Nursing/Midwifery, Assistant	58	61	+3	+4.4%	+9	+10
Director of Nursing/Midwifery	21	20	-1	-4.9%	+4	+2
<b>Nurse/ Midwife Manager</b>	<b>407</b>	<b>409</b>	<b>+2</b>	<b>+0.4%</b>	<b>+13</b>	<b>+23</b>
Advanced Nurse/ Midwife Practitioner	12	13	+1	+8.5%	+9	+8
Clinical Nurse/ Midwife Specialist	98	95	-3	-2.8%	+5	+4
<b>Nurse/ Midwife Specialist &amp; AN/MP</b>	<b>110</b>	<b>108</b>	<b>-2</b>	<b>-1.6%</b>	<b>+14</b>	<b>+12</b>
Staff Nurse [Intellectual Disability]	192	194	+2	+1.2%	+0	-2
Staff Nurse [Psychiatric]	198	203	+5	+2.7%	+12	+10
Staff Nurses [General/ Children's]	631	634	+3	+0.5%	+27	+32
<b>Staff Nurse/ Staff Midwife</b>	<b>1,021</b>	<b>1,031</b>	<b>+11</b>	<b>+1.0%</b>	<b>+39</b>	<b>+40</b>
<b>Public Health Nurse</b>	<b>177</b>	<b>173</b>	<b>-3</b>	<b>-1.8%</b>	<b>-2</b>	<b>-1</b>
Pre-registration Nurse/ Midwife Intern	1	8	+7	+1496.0%	+7	-3
Pre-registration Nurse Intern (COVID-19)	3	2	-1	-42.8%	+2	+2
Post-registration Nurse/ Midwife Student	24	24			+3	+3
Nursing/ Midwifery awaiting registration	4	3	-1	-22.6%	-7	-5
<b>Nursing/ Midwifery Student</b>	<b>32</b>	<b>37</b>	<b>+5</b>	<b>+15.8%</b>	<b>+5</b>	<b>-3</b>
Nursing Education/Clinical	9	8	-1	-10.7%	-2	-1
<b>Nursing/ Midwifery other</b>	<b>9</b>	<b>8</b>	<b>-1</b>	<b>-10.7%</b>	<b>-2</b>	<b>-1</b>
<b>Nursing &amp; Midwifery</b>	<b>1,756</b>	<b>1,767</b>	<b>+12</b>	<b>+0.7%</b>	<b>+67</b>	<b>+70</b>
Dietitians	26	24	-2	-6.3%	-1	-0
Occupational Therapists	183	183	-0	-0.2%	-1	-0
Orthoptists	3	3	+1	+20.0%	+3	+3
Physiotherapists	121	121	-0	-0.2%	+6	+5
Podiatrists & Chiropractors	1	1				+0
Speech & Language Therapists	129	131	+2	+1.5%	+5	+6
<b>Therapy Professions</b>	<b>463</b>	<b>463</b>	<b>+0</b>	<b>+0.0%</b>	<b>+13</b>	<b>+13</b>
Clinical Measurement	2	2			+1	+1
Phlebotomists	1	1	+0	+2.5%	+0	
Radiographers	1	1				
<b>Health Science/ Diagnostics</b>	<b>4</b>	<b>4</b>	<b>+0</b>	<b>+0.7%</b>	<b>+1</b>	<b>+1</b>

Jan 2021 (Dec 2019 figure: 6,515)	WTE Dec 2020	WTE Jan 2021	WTE change since Dec 20	% change since Dec 20	WTE change since Dec 19	WTE change since Jan 20
<b>Overall</b>	<b>6,783</b>	<b>6,778</b>	<b>-5</b>	<b>-0.1%</b>	<b>+264</b>	<b>+293</b>
<b>Social Care</b>	<b>400</b>	<b>397</b>	<b>-3</b>	<b>-0.7%</b>	<b>+26</b>	<b>+34</b>
<b>Social Workers</b>	<b>108</b>	<b>110</b>	<b>+2</b>	<b>+1.7%</b>	<b>+5</b>	<b>+6</b>
<b>Psychologists</b>	<b>87</b>	<b>84</b>	<b>-3</b>	<b>-3.0%</b>	<b>+3</b>	<b>+1</b>
<b>Pharmacy</b>	<b>38</b>	<b>32</b>	<b>-6</b>	<b>-14.7%</b>	<b>-8</b>	<b>-9</b>
Counsellor Therapists	35	35	+0	+0.3%	-1	-1
Dental Hygienists	4	4	-0	-8.0%	-1	-1
Other Health & Social Care	1	1	+0	+4.2%	-1	-1
Play Therapists/ Specialists	1	1				
<b>H&amp;SC, Other</b>	<b>41</b>	<b>41</b>	<b>-0</b>	<b>-0.4%</b>	<b>-3</b>	<b>-3</b>
<b>Health &amp; Social Care Professionals</b>	<b>1,140</b>	<b>1,131</b>	<b>-9</b>	<b>-0.8%</b>	<b>+35</b>	<b>+43</b>
Executive Management	16	16	+0	+0.3%	+3	+2
Senior Management (VIII & GM)	69	69	+0	+0.5%	+9	+8
<b>Management (VIII &amp; above)</b>	<b>85</b>	<b>85</b>	<b>+0</b>	<b>+0.4%</b>	<b>+12</b>	<b>+10</b>
Middle Management (V-VII)	213	216	+3	+1.2%	+34	+36
Other Administrative	1	1			-0	
<b>Administrative/ Supervisory (V to VII)</b>	<b>214</b>	<b>217</b>	<b>+3</b>	<b>+1.2%</b>	<b>+34</b>	<b>+36</b>
<b>Clerical (III &amp; IV)</b>	<b>380</b>	<b>379</b>	<b>-1</b>	<b>-0.3%</b>	<b>+29</b>	<b>+27</b>
<b>Management &amp; Administrative</b>	<b>679</b>	<b>681</b>	<b>+2</b>	<b>+0.3%</b>	<b>+63</b>	<b>+73</b>
Catering	56	55	-1	-1.5%	-4	-4
Household Services	265	265	+0	+0.0%	-4	-1
Other Labs & Associated	1	1	+0	+6.0%	+0	+0
Other Support	15	15			+1	+0
Portering	65	62	-3	-4.6%	-6	-5
<b>Support</b>	<b>402</b>	<b>398</b>	<b>-4</b>	<b>-0.9%</b>	<b>-12</b>	<b>-10</b>
Maintenance	41	40	-1	-3.3%	+3	+3
Technical Services	5	5			+1	+1
<b>Maintenance/ Technical</b>	<b>46</b>	<b>45</b>	<b>-1</b>	<b>-3.0%</b>	<b>+4</b>	<b>+4</b>
<b>General Support</b>	<b>448</b>	<b>443</b>	<b>-5</b>	<b>-1.1%</b>	<b>-43</b>	<b>-6</b>
HCA, Nurse's Aide, etc.	1,705	1,713	+9	+0.5%	+71	+88
Health & Social Care Assistants	18	18	-0	-0.2%	+6	+6
<b>Health Care Assistants</b>	<b>1,723</b>	<b>1,731</b>	<b>+9</b>	<b>+0.5%</b>	<b>+77</b>	<b>+94</b>
Community Welfare Officers	1	1	-0	-2.2%	-0	-0
Other Care Grades	620	618	-2	-0.3%	+9	+9
<b>Care, other</b>	<b>621</b>	<b>619</b>	<b>-2</b>	<b>-0.3%</b>	<b>+9</b>	<b>+9</b>
<b>Home Help</b>	<b>132</b>	<b>127</b>	<b>-4</b>	<b>-3.3%</b>	<b>+0</b>	<b>-7</b>
<b>Patient &amp; Client Care</b>	<b>2,476</b>	<b>2,478</b>	<b>+2</b>	<b>+0.1%</b>	<b>+86</b>	<b>+97</b>



## CHO 7 HSE Employment by Grade Group & Staff Category: January 2021

Jan 2021 (Dec 2019 figure: 3,151)	WTE Dec 2020	WTE Jan 2021	WTE change since Dec 20	% change since Dec 20	WTE change since Dec 19	WTE change since Jan 20
<b>Overall</b>	<b>3,319</b>	<b>3,316</b>	<b>-3</b>	<b>-0.1%</b>	<b>+165</b>	<b>+180</b>
Consultant Medicine	1	1				
Consultant Psychiatry	57	57	+0	+0.4%	+6	+7
Consultant Surgery				-100.0%	-1	-1
<b>Consultants</b>	<b>58</b>	<b>58</b>	<b>+0</b>	<b>+0.4%</b>	<b>+5</b>	<b>+6</b>
Registrar	70	74	+4	+5.6%	+7	+8
Senior Registrar	20	18	-2	-8.2%	-1	+1
Specialist Registrar	1	1				
<b>Registrars</b>	<b>91</b>	<b>93</b>	<b>+2</b>	<b>+2.5%</b>	<b>+7</b>	<b>+9</b>
<b>SHO/ Interns</b>	<b>25</b>	<b>24</b>	<b>-1</b>	<b>-4.7%</b>	<b>+0</b>	<b>+2</b>
Dentists	35	34	-1	-2.4%	+1	+1
Other Medical	42	35	-7	-16.1%	-9	-5
<b>Medical/ Dental, other</b>	<b>77</b>	<b>70</b>	<b>-8</b>	<b>-9.9%</b>	<b>-8</b>	<b>-4</b>
<b>Medical &amp; Dental</b>	<b>252</b>	<b>245</b>	<b>-6</b>	<b>-2.5%</b>	<b>+11</b>	<b>+13</b>
Clinical Nurse/ Midwife Manager	182	182	-0	-0.3%	+6	+11
Director Nursing/Midwifery, Assistant	50	51	+1	+2.8%	+7	+8
Director of Nursing/Midwifery	16	15	-1	-6.5%	+4	+2
<b>Nurse/ Midwife Manager</b>	<b>248</b>	<b>248</b>	<b>-0</b>	<b>-0.0%</b>	<b>+16</b>	<b>+21</b>
Advanced Nurse/ Midwife Practitioner	7	8	+1	+13.7%	+6	+6
Clinical Nurse/ Midwife Specialist	60	58	-2	-4.0%	+0	-1
<b>Nurse/ Midwife Specialist &amp; AN/MP</b>	<b>68</b>	<b>67</b>	<b>-1</b>	<b>-2.0%</b>	<b>+6</b>	<b>+5</b>
Staff Nurse [Intellectual Disability]	1	1	-0	-2.0%	+1	+1
Staff Nurse [Psychiatric]	198	203	+5	+2.7%	+12	+10
Staff Nurses [General/ Children's]	347	345	-1	-0.4%	+17	+19
<b>Staff Nurse/ Staff Midwife</b>	<b>545</b>	<b>549</b>	<b>+4</b>	<b>+0.7%</b>	<b>+30</b>	<b>+30</b>
<b>Public Health Nurse</b>	<b>177</b>	<b>173</b>	<b>-3</b>	<b>-1.8%</b>	<b>-2</b>	<b>-1</b>
Pre-registration Nurse/ Midwife Intern	1	1	+0	+96.0%	-0	-3
Pre-registration Nurse Intern (COVID-19)	3	2	-1	-42.8%	+2	+2
Post-registration Nurse/ Midwife Student	24	24			+3	+3
Nursing/ Midwifery awaiting registration	4	3	-1	-22.6%	-7	-5
<b>Nursing/ Midwifery Student</b>	<b>32</b>	<b>30</b>	<b>-2</b>	<b>-6.0%</b>	<b>-2</b>	<b>-3</b>
Nursing Education/Clinical	6	5	-1	-17.1%	-3	-2
<b>Nursing/ Midwifery other</b>	<b>6</b>	<b>5</b>	<b>-1</b>	<b>-17.1%</b>	<b>-3</b>	<b>-2</b>
<b>Nursing &amp; Midwifery</b>	<b>1,076</b>	<b>1,072</b>	<b>-4</b>	<b>-0.3%</b>	<b>+52</b>	<b>+51</b>
Dietitians	17	17	-0	-2.0%	+0	+1
Occupational Therapists	145	143	-2	-1.2%	+5	+4
Orthoptists	3	3	+1	+20.0%	+3	+3
Physiotherapists	77	79	+2	+2.3%	+9	+9
Podiatrists & Chiropodists	1	1				+0
Speech & Language Therapists	97	98	+1	+1.0%	-1	+1
<b>Therapy Professions</b>	<b>340</b>	<b>341</b>	<b>+1</b>	<b>+0.3%</b>	<b>+16</b>	<b>+18</b>
<b>Social Care</b>	<b>11</b>	<b>11</b>	<b>+0</b>	<b>+1.9%</b>	<b>+0</b>	<b>-0</b>
<b>Social Workers</b>	<b>73</b>	<b>74</b>	<b>+1</b>	<b>+1.3%</b>	<b>+7</b>	<b>+8</b>
<b>Psychologists</b>	<b>64</b>	<b>62</b>	<b>-1</b>	<b>-2.1%</b>	<b>+1</b>	<b>-1</b>
<b>Pharmacy</b>	<b>24</b>	<b>19</b>	<b>-5</b>	<b>-22.1%</b>	<b>-7</b>	<b>-8</b>
Counsellor Therapists	34	34	+0	+0.4%	-1	-1
Dental Hygienists	4	4	-0	-8.0%	-1	-1
Other Health & Social Care	1	1	+0	+4.2%	-1	-1
Play Therapists/ Specialists	1	1				
<b>H&amp;SC, Other</b>	<b>40</b>	<b>40</b>	<b>-0</b>	<b>-0.4%</b>	<b>-3</b>	<b>-3</b>

Jan 2021 (Dec 2019 figure: 3,151)	WTE Dec 2020	WTE Jan 2021	WTE change since Dec 20	% change since Dec 20	WTE change since Dec 19	WTE change since Jan 20
<b>Overall</b>	<b>3,319</b>	<b>3,316</b>	<b>-3</b>	<b>-0.1%</b>	<b>+165</b>	<b>+180</b>
<b>Health &amp; Social Care Professionals</b>	<b>551</b>	<b>547</b>	<b>-5</b>	<b>-0.8%</b>	<b>-2</b>	<b>+14</b>
Executive Management	9	9	+0	+0.6%	+2	+1
Senior Management (VIII & GM)	38	38	-0	-0.2%	+5	+2
<b>Management (VIII &amp; above)</b>	<b>47</b>	<b>47</b>	<b>-0</b>	<b>-0.1%</b>	<b>+7</b>	<b>+3</b>
<b>Administrative/ Supervisory (V to VII)</b>	<b>123</b>	<b>125</b>	<b>+2</b>	<b>+1.6%</b>	<b>+29</b>	<b>+31</b>
<b>Clerical (III &amp; IV)</b>	<b>263</b>	<b>261</b>	<b>-2</b>	<b>-0.6%</b>	<b>+20</b>	<b>+20</b>
<b>Management &amp; Administrative</b>	<b>432</b>	<b>433</b>	<b>+0</b>	<b>+0.1%</b>	<b>+41</b>	<b>+53</b>
Catering	27	27	+0	+0.3%	+0	-0
Household Services	98	99	+1	+1.3%	+9	+12
Other Support	6	6			+1	+0
Portering	47	44	-2	-5.3%	-4	-4
<b>Support</b>	<b>177</b>	<b>176</b>	<b>-1</b>	<b>-0.6%</b>	<b>+6</b>	<b>+8</b>
<b>Maintenance/ Technical</b>	<b>5</b>	<b>5</b>			<b>-0</b>	<b>-0</b>
<b>General Support</b>	<b>183</b>	<b>182</b>	<b>-1</b>	<b>-0.6%</b>	<b>-14</b>	<b>+8</b>
HCA, Nurse's Aide, etc.	455	470	+15	+3.4%	+37	+43
Health & Social Care Assistants	15	15	+0	+0.1%	+7	+8
<b>Health Care Assistants</b>	<b>470</b>	<b>485</b>	<b>+15</b>	<b>+3.3%</b>	<b>+44</b>	<b>+50</b>
<b>Care, other</b>	<b>223</b>	<b>225</b>	<b>+2</b>	<b>+0.8%</b>	<b>-2</b>	<b>-3</b>
<b>Home Help</b>	<b>132</b>	<b>127</b>	<b>-4</b>	<b>-3.3%</b>	<b>+0</b>	<b>-7</b>
<b>Patient &amp; Client Care</b>	<b>825</b>	<b>838</b>	<b>+13</b>	<b>+1.5%</b>	<b>-23</b>	<b>+41</b>

## Employment by WTE, Headcount, Gender, Full-Time /Part-Time etc.: Jan 2021

CHO 7	WTE	Headcount	WTE: no.	% Male	% female	Male WTE: no.	Female WTE: no.	% Total Perm	% Male Perm	% Female Perm	% Total Full Time	% Total Part Time	% Male FT	% Female FT
<b>Overall</b>	<b>6,778</b>	<b>7,958</b>	<b>1.17</b>	<b>20.3%</b>	<b>79.7%</b>	<b>1.10</b>	<b>1.20</b>	<b>86.8%</b>	<b>84.0%</b>	<b>87.5%</b>	<b>69.4%</b>	<b>30.6%</b>	<b>83.4%</b>	<b>65.9%</b>
Consultant Medicine	9	10	1.11	30.0%	70.0%	1.09	1.12	60.0%	60.0%	57.1%	60.0%	40.0%	66.7%	57.1%
Consultant Paediatrics	0	1	2.94		100.0%		2.94	100.0%	100.0%	100.0%	0.0%	100.0%		0.0%
Consultant Psychiatry	57	62	1.08	33.9%	66.1%	1.04	1.10	56.5%	56.5%	51.2%	82.3%	17.7%	95.2%	75.6%
<b>Consultants</b>	<b>67</b>	<b>73</b>	<b>1.09</b>	<b>32.9%</b>	<b>67.1%</b>	<b>1.05</b>	<b>1.12</b>	<b>57.5%</b>	<b>66.7%</b>	<b>53.1%</b>	<b>78.1%</b>	<b>21.9%</b>	<b>91.7%</b>	<b>71.4%</b>
Registrar	78	90	1.16	33.3%	66.7%	1.21	1.13	2.2%	2.2%	0.0%	100.0%	0.0%	100.0%	100.0%
Senior Registrar	18	22	1.20	40.9%	59.1%	1.02	1.37	0.0%	0.0%	0.0%	100.0%	0.0%	100.0%	100.0%
Specialist Registrar	6	7	1.17	14.3%	85.7%	1.00	1.21	0.0%	0.0%	0.0%	100.0%	0.0%	100.0%	100.0%
<b>Registrars</b>	<b>102</b>	<b>119</b>	<b>1.16</b>	<b>33.6%</b>	<b>66.4%</b>	<b>1.16</b>	<b>1.17</b>	<b>1.7%</b>	<b>5.0%</b>	<b>0.0%</b>	<b>100.0%</b>	<b>0.0%</b>	<b>100.0%</b>	<b>100.0%</b>
<b>SHO/ Interns</b>	<b>37</b>	<b>50</b>	<b>1.35</b>	<b>28.0%</b>	<b>72.0%</b>	<b>1.22</b>	<b>1.42</b>	<b>6.0%</b>	<b>14.3%</b>	<b>2.8%</b>	<b>100.0%</b>	<b>0.0%</b>	<b>100.0%</b>	<b>100.0%</b>
Dentists	34	40	1.17	17.5%	82.5%	1.10	1.18	100.0%	100.0%	100.0%	65.0%	35.0%	85.7%	60.6%
Other Medical	38	69	1.82	42.0%	58.0%	2.00	1.72	60.9%	60.9%	62.5%	21.7%	78.3%	17.2%	25.0%
<b>Medical/ Dental, other</b>	<b>72</b>	<b>109</b>	<b>1.51</b>	<b>33.0%</b>	<b>67.0%</b>	<b>1.72</b>	<b>1.43</b>	<b>75.2%</b>	<b>66.7%</b>	<b>79.5%</b>	<b>37.6%</b>	<b>62.4%</b>	<b>30.6%</b>	<b>41.1%</b>
<b>Medical &amp; Dental</b>	<b>278</b>	<b>351</b>	<b>1.26</b>	<b>32.5%</b>	<b>67.5%</b>	<b>1.27</b>	<b>1.26</b>	<b>36.8%</b>	<b>38.6%</b>	<b>35.9%</b>	<b>76.1%</b>	<b>23.9%</b>	<b>76.3%</b>	<b>75.9%</b>
Clinical Nurse/ Midwife Manager	329	350	1.07	14.0%	86.0%	1.01	1.07	96.9%	96.9%	97.7%	86.6%	13.4%	95.9%	85.0%
Director Nursing/Midwifery, Assistant	61	65	1.07	18.5%	81.5%	1.01	1.08	93.8%	93.8%	92.5%	89.2%	10.8%	100.0%	86.8%
Director of Nursing/Midwifery	20	20	1.01	10.0%	90.0%	1.00	1.01	100.0%	100.0%	100.0%	95.0%	5.0%	100.0%	94.4%
<b>Nurse/ Midwife Manager</b>	<b>409</b>	<b>435</b>	<b>1.06</b>	<b>14.5%</b>	<b>85.5%</b>	<b>1.01</b>	<b>1.07</b>	<b>96.6%</b>	<b>93.7%</b>	<b>97.0%</b>	<b>87.4%</b>	<b>12.6%</b>	<b>96.8%</b>	<b>85.8%</b>
Advanced Nurse/ Midwife Practitioner	13	14	1.08	7.1%	92.9%	1.00	1.08	100.0%	100.0%	100.0%	85.7%	14.3%	100.0%	84.6%
Clinical Nurse/ Midwife Specialist	95	109	1.15	9.2%	90.8%	1.06	1.16	99.1%	99.1%	99.0%	72.5%	27.5%	100.0%	69.7%
<b>Nurse/ Midwife Specialist &amp; AN/MP</b>	<b>108</b>	<b>123</b>	<b>1.14</b>	<b>8.9%</b>	<b>91.1%</b>	<b>1.05</b>	<b>1.15</b>	<b>99.2%</b>	<b>100.0%</b>	<b>99.1%</b>	<b>74.0%</b>	<b>26.0%</b>	<b>100.0%</b>	<b>71.4%</b>
Staff Nurse [Intellectual Disability]	194	239	1.23	9.2%	90.8%	1.04	1.25	95.4%	95.4%	94.9%	57.3%	42.7%	90.9%	53.9%
Staff Nurse [Psychiatric]	203	224	1.10	23.7%	76.3%	1.05	1.12	95.5%	95.5%	95.9%	84.8%	15.2%	92.5%	82.5%
Staff Nurses [General/ Children's]	634	737	1.16	10.4%	89.6%	1.05	1.18	92.4%	92.4%	92.4%	70.6%	29.4%	90.9%	68.2%
<b>Staff Nurse/ Staff Midwife</b>	<b>1,031</b>	<b>1,200</b>	<b>1.16</b>	<b>12.7%</b>	<b>87.3%</b>	<b>1.05</b>	<b>1.18</b>	<b>93.6%</b>	<b>94.1%</b>	<b>93.5%</b>	<b>70.6%</b>	<b>29.4%</b>	<b>91.4%</b>	<b>67.6%</b>
<b>Public Health Nurse</b>	<b>173</b>	<b>210</b>	<b>1.21</b>	<b>0.5%</b>	<b>99.5%</b>	<b>1.11</b>	<b>1.21</b>	<b>95.2%</b>	<b>100.0%</b>	<b>95.2%</b>	<b>65.7%</b>	<b>34.3%</b>	<b>100.0%</b>	<b>65.6%</b>
Pre-registration Nurse/ Midwife Intern	8	19	2.38	10.5%	89.5%	3.23	2.31	0.0%	0.0%	0.0%	26.3%	73.7%	50.0%	23.5%
Pre-registration Nurse Intern (COVID-19)	2	4	2.06		100.0%		2.06	0.0%	0.0%	0.0%	100.0%	0.0%		100.0%
Post-registration Nurse/ Midwife Student	24	24	1.00		100.0%		1.00	8.3%	8.3%	8.3%	100.0%	0.0%		100.0%



Nursing/ Midwifery awaiting registration	3	4	1.23		100.0%		1.23	75.0%	75.0%	75.0%	75.0%	25.0%		75.0%
<b>Nursing/ Midwifery Student</b>	<b>37</b>	<b>51</b>	<b>1.37</b>	<b>3.9%</b>	<b>96.1%</b>	<b>3.23</b>	<b>1.34</b>	<b>9.8%</b>	<b>0.0%</b>	<b>10.2%</b>	<b>70.6%</b>	<b>29.4%</b>	<b>50.0%</b>	<b>71.4%</b>
Nursing Education/Clinical	8	10	1.20		100.0%		1.20	100.0%	100.0%	100.0%	70.0%	30.0%		70.0%
<b>Nursing/ Midwifery other</b>	<b>8</b>	<b>10</b>	<b>1.20</b>		<b>100.0%</b>		<b>1.20</b>	<b>100.0%</b>		<b>100.0%</b>	<b>70.0%</b>	<b>30.0%</b>		<b>70.0%</b>
<b>Nursing &amp; Midwifery</b>	<b>1,767</b>	<b>2,029</b>	<b>1.15</b>	<b>11.3%</b>	<b>88.7%</b>	<b>1.05</b>	<b>1.16</b>	<b>92.7%</b>	<b>93.4%</b>	<b>92.6%</b>	<b>73.9%</b>	<b>26.1%</b>	<b>93.0%</b>	<b>71.4%</b>
Dietitians	24	29	1.19	6.9%	93.1%	1.00	1.20	86.2%	86.2%	85.2%	65.5%	34.5%	100.0%	63.0%
Occupational Therapists	183	210	1.15	8.6%	91.4%	1.02	1.16	89.0%	89.0%	89.1%	80.0%	20.0%	94.4%	78.6%
Orthoptists	3	3	1.00	66.7%	33.3%	1.00	1.00	33.3%	33.3%	100.0%	100.0%	0.0%	100.0%	100.0%
Physiotherapists	121	143	1.19	21.7%	78.3%	1.08	1.22	94.4%	94.4%	93.8%	72.7%	27.3%	93.5%	67.0%
Podiatrists & Chiropodists	1	1	1.00		100.0%		1.00	100.0%	100.0%	100.0%	100.0%	0.0%		100.0%
Speech & Language Therapists	131	142	1.09		100.0%		1.09	91.5%	91.5%	91.5%	90.8%	9.2%		90.8%
<b>Therapy Professions</b>	<b>463</b>	<b>528</b>	<b>1.14</b>	<b>10.0%</b>	<b>90.0%</b>	<b>1.05</b>	<b>1.15</b>	<b>90.7%</b>	<b>90.6%</b>	<b>90.7%</b>	<b>80.3%</b>	<b>19.7%</b>	<b>94.3%</b>	<b>78.7%</b>
Clinical Measurement	2	2	1.00	100.0%		1.00		100.0%	100.0%		100.0%	0.0%	100.0%	
Phlebotomists	1	2	1.60		100.0%		1.60	100.0%	100.0%	100.0%	0.0%	100.0%		0.0%
Radiographers	1	1	1.00		100.0%		1.00	100.0%	100.0%	100.0%	100.0%	0.0%		100.0%
<b>Health Science/ Diagnostics</b>	<b>4</b>	<b>5</b>	<b>1.18</b>	<b>40.0%</b>	<b>60.0%</b>	<b>1.00</b>	<b>1.33</b>	<b>100.0%</b>	<b>100.0%</b>	<b>100.0%</b>	<b>60.0%</b>	<b>40.0%</b>	<b>100.0%</b>	<b>33.3%</b>
<b>Social Care</b>	<b>397</b>	<b>442</b>	<b>1.11</b>	<b>26.7%</b>	<b>73.3%</b>	<b>1.08</b>	<b>1.13</b>	<b>97.7%</b>	<b>98.3%</b>	<b>97.5%</b>	<b>74.7%</b>	<b>25.3%</b>	<b>84.7%</b>	<b>71.0%</b>
<b>Social Workers</b>	<b>110</b>	<b>122</b>	<b>1.11</b>	<b>17.2%</b>	<b>82.8%</b>	<b>1.07</b>	<b>1.12</b>	<b>95.1%</b>	<b>90.5%</b>	<b>96.0%</b>	<b>82.8%</b>	<b>17.2%</b>	<b>90.5%</b>	<b>81.2%</b>
<b>Psychologists</b>	<b>84</b>	<b>94</b>	<b>1.12</b>	<b>24.5%</b>	<b>75.5%</b>	<b>1.10</b>	<b>1.13</b>	<b>97.9%</b>	<b>100.0%</b>	<b>97.2%</b>	<b>86.2%</b>	<b>13.8%</b>	<b>87.0%</b>	<b>85.9%</b>
<b>Pharmacy</b>	<b>32</b>	<b>43</b>	<b>1.34</b>	<b>23.3%</b>	<b>76.7%</b>	<b>1.42</b>	<b>1.32</b>	<b>62.8%</b>	<b>40.0%</b>	<b>69.7%</b>	<b>48.8%</b>	<b>51.2%</b>	<b>40.0%</b>	<b>51.5%</b>
Counsellor Therapists	35	39	1.11	30.8%	69.2%	1.07	1.12	92.3%	92.3%	88.9%	66.7%	33.3%	75.0%	63.0%
Dental Hygienists	4	7	1.86		100.0%		1.86	100.0%	100.0%	100.0%	14.3%	85.7%		14.3%
Other Health & Social Care	1	3	2.40	33.3%	66.7%	1.25	4.44	100.0%	100.0%	100.0%	0.0%	100.0%	0.0%	0.0%
Play Therapists/ Specialists	1	1	1.00	100.0%		1.00		100.0%	100.0%		100.0%	0.0%	100.0%	
<b>H&amp;SC, Other</b>	<b>41</b>	<b>50</b>	<b>1.21</b>	<b>28.0%</b>	<b>72.0%</b>	<b>1.08</b>	<b>1.27</b>	<b>94.0%</b>	<b>100.0%</b>	<b>91.7%</b>	<b>56.0%</b>	<b>44.0%</b>	<b>71.4%</b>	<b>50.0%</b>
<b>Health &amp; Social Care</b>	<b>1,131</b>	<b>1,284</b>	<b>1.14</b>	<b>18.8%</b>	<b>81.2%</b>	<b>1.08</b>	<b>1.15</b>	<b>93.3%</b>	<b>93.8%</b>	<b>93.2%</b>	<b>76.9%</b>	<b>23.1%</b>	<b>85.1%</b>	<b>75.1%</b>
Executive Management	16	16	1.00	37.5%	62.5%	1.00	1.00	81.3%	81.3%	90.0%	100.0%	0.0%	100.0%	100.0%
Senior Management (VIII & GM)	69	72	1.04	29.2%	70.8%	1.02	1.05	94.4%	94.4%	94.1%	94.4%	5.6%	95.2%	94.1%
<b>Management (VIII &amp; above)</b>	<b>85</b>	<b>88</b>	<b>1.03</b>	<b>30.7%</b>	<b>69.3%</b>	<b>1.02</b>	<b>1.04</b>	<b>92.0%</b>	<b>88.9%</b>	<b>93.4%</b>	<b>95.5%</b>	<b>4.5%</b>	<b>96.3%</b>	<b>95.1%</b>
<b>Administrative/ Supervisory (V to VII)</b>	<b>217</b>	<b>230</b>	<b>1.06</b>	<b>23.5%</b>	<b>76.5%</b>	<b>1.02</b>	<b>1.08</b>	<b>90.0%</b>	<b>81.5%</b>	<b>92.6%</b>	<b>88.7%</b>	<b>11.3%</b>	<b>96.3%</b>	<b>86.4%</b>
<b>Clerical (III &amp; IV)</b>	<b>379</b>	<b>437</b>	<b>1.15</b>	<b>11.2%</b>	<b>88.8%</b>	<b>1.06</b>	<b>1.16</b>	<b>84.9%</b>	<b>83.7%</b>	<b>85.1%</b>	<b>71.9%</b>	<b>28.1%</b>	<b>87.8%</b>	<b>69.8%</b>
<b>Management &amp; Administrative</b>	<b>681</b>	<b>755</b>	<b>1.11</b>	<b>17.2%</b>	<b>82.8%</b>	<b>1.04</b>	<b>1.13</b>	<b>87.3%</b>	<b>83.8%</b>	<b>88.0%</b>	<b>79.7%</b>	<b>20.3%</b>	<b>93.1%</b>	<b>77.0%</b>
Catering	55	60	1.08	30.0%	70.0%	1.01	1.12	96.7%	96.7%	100.0%	75.0%	25.0%	94.4%	66.7%
Household Services	265	349	1.32	16.0%	84.0%	1.16	1.35	85.1%	85.1%	86.7%	39.3%	60.7%	66.1%	34.1%
Other Labs & Associated	1	2	1.89	50.0%	50.0%	16.67	1.00	50.0%	50.0%	100.0%	50.0%	50.0%	0.0%	100.0%



Other Support	15	18	1.21	72.2%	27.8%	1.18	1.29	77.8%	77.8%	100.0%	61.1%	38.9%	69.2%	40.0%
Portering	62	66	1.07	92.4%	7.6%	1.05	1.32	89.4%	89.4%	80.0%	86.4%	13.6%	91.8%	20.0%
<b>Support</b>	<b>398</b>	<b>495</b>	<b>1.24</b>	<b>30.1%</b>	<b>69.9%</b>	<b>1.11</b>	<b>1.31</b>	<b>86.7%</b>	<b>82.6%</b>	<b>88.4%</b>	<b>50.7%</b>	<b>49.3%</b>	<b>79.9%</b>	<b>38.2%</b>
<b>Maintenance/ Technical</b>	<b>45</b>	<b>49</b>	<b>1.09</b>	<b>87.8%</b>	<b>12.2%</b>	<b>1.08</b>	<b>1.22</b>	<b>89.8%</b>	<b>88.4%</b>	<b>100.0%</b>	<b>81.6%</b>	<b>18.4%</b>	<b>86.0%</b>	<b>50.0%</b>
<b>General Support</b>	<b>443</b>	<b>544</b>	<b>1.23</b>	<b>35.3%</b>	<b>64.7%</b>	<b>1.10</b>	<b>1.31</b>	<b>86.9%</b>	<b>83.9%</b>	<b>88.6%</b>	<b>53.5%</b>	<b>46.5%</b>	<b>81.3%</b>	<b>38.4%</b>
HCA, Nurse's Aide, etc.	1,713	1,992	1.16	24.8%	75.2%	1.08	1.19	83.7%	83.7%	84.1%	64.5%	35.5%	78.9%	59.7%
Health & Social Care Assistants	18	20	1.11		100.0%		1.11	20.0%	20.0%	20.0%	85.0%	15.0%		85.0%
<b>Health Care Assistants</b>	<b>1,731</b>	<b>2,012</b>	<b>1.16</b>	<b>24.6%</b>	<b>75.4%</b>	<b>1.08</b>	<b>1.19</b>	<b>83.1%</b>	<b>82.6%</b>	<b>83.3%</b>	<b>64.7%</b>	<b>35.3%</b>	<b>78.9%</b>	<b>60.1%</b>
<b>Care, other</b>	<b>619</b>	<b>717</b>	<b>1.16</b>	<b>27.8%</b>	<b>72.2%</b>	<b>1.10</b>	<b>1.18</b>	<b>94.4%</b>	<b>94.0%</b>	<b>94.6%</b>	<b>74.2%</b>	<b>25.8%</b>	<b>86.9%</b>	<b>69.3%</b>
<b>Home Help</b>	<b>127</b>	<b>266</b>	<b>2.09</b>	<b>6.4%</b>	<b>93.6%</b>	<b>4.33</b>	<b>2.02</b>	<b>82.7%</b>	<b>52.9%</b>	<b>84.7%</b>	<b>16.5%</b>	<b>83.5%</b>	<b>11.8%</b>	<b>16.9%</b>
<b>Patient &amp; Client Care</b>	<b>2,478</b>	<b>2,995</b>	<b>1.21</b>	<b>23.7%</b>	<b>76.3%</b>	<b>1.11</b>	<b>1.24</b>	<b>85.8%</b>	<b>85.1%</b>	<b>86.0%</b>	<b>62.7%</b>	<b>37.3%</b>	<b>79.6%</b>	<b>57.5%</b>





## Employment by WTE, Headcount, Gender, Full-Time /Part-Time etc.: Jan 2021

CHO 7	WTE	Headcount	WTE: no.	% Male	% female	Male WTE: no.	Female WTE: no.	% Total Perm	% Male Perm	% Female Perm	% Total Full Time	% Total Part Time	% Male FT	% Female FT
<b>Overall</b>	<b>6,778</b>	<b>7,958</b>	<b>1.17</b>	<b>20.3%</b>	<b>79.7%</b>	<b>1.10</b>	<b>1.20</b>	<b>86.8%</b>	<b>84.0%</b>	<b>87.5%</b>	<b>69.4%</b>	<b>30.6%</b>	<b>83.4%</b>	<b>65.9%</b>
Community Health & Wellbeing	7	8	1.19	12.5%	87.5%	1.00	1.22	100.0%	100.0%	100.0%	62.5%	37.5%	100.0%	100.0%
Mental Health	863	959	1.11	23.0%	77.0%	1.06	1.13	81.2%	81.2%	81.6%	87.4%	12.6%	95.5%	95.5%
Primary Care	1,785	2,105	1.18	16.6%	83.4%	1.10	1.20	84.8%	84.8%	86.6%	68.4%	31.6%	82.5%	82.5%
Social Care	4,124	4,886	1.18	21.4%	78.6%	1.10	1.21	88.7%	88.7%	89.0%	66.4%	33.6%	81.1%	81.1%

## CHO 7 Skills Mix by Staff Grouping: January 2021

Jan 2021 (Dec 2018 figure: 6,557)	WTE Dec 2015	WTE Dec 2016	WTE Dec 2017	WTE Dec 2018	WTE Dec 2019	WTE Dec 2020	WTE Jan 2021
<b>Overall</b>	<b>5,479</b>	<b>5,579</b>	<b>6,406</b>	<b>6,557</b>	<b>6,515</b>	<b>6,783</b>	<b>6,778</b>
Consultant Medicine	2.9%	3.2%	3.5%	2.7%	2.5%	3.0%	3.2%
Consultant Paediatrics	0.2%	0.1%	0.1%	0.1%	0.1%	0.1%	0.1%
Consultant Psychiatry	23.8%	19.2%	18.2%	18.1%	19.2%	20.1%	20.7%
Consultant Surgery	0.3%	0.3%	0.2%	0.5%	0.3%		
<b>Consultants</b>	<b>27.2%</b>	<b>22.8%</b>	<b>22.0%</b>	<b>21.3%</b>	<b>22.1%</b>	<b>23.3%</b>	<b>24.0%</b>
Registrar	10.4%	22.2%	20.7%	24.9%	26.5%	26.1%	28.0%
Senior Registrar	3.0%	4.1%	3.7%	5.3%	7.0%	7.0%	6.6%
Specialist Registrar	2.3%	1.5%	2.2%	1.8%	1.5%	2.1%	2.1%
<b>Registrars</b>	<b>15.7%</b>	<b>27.8%</b>	<b>26.6%</b>	<b>31.9%</b>	<b>35.0%</b>	<b>35.2%</b>	<b>36.8%</b>
Interns	0.9%	0.8%	0.8%	0.8%	0.7%	0.7%	0.7%
Senior House Officer	18.1%	15.3%	16.0%	12.6%	12.5%	12.8%	12.6%
<b>SHO/ Interns</b>	<b>19.0%</b>	<b>16.1%</b>	<b>16.8%</b>	<b>13.3%</b>	<b>13.2%</b>	<b>13.5%</b>	<b>13.3%</b>
Dentists	18.4%	15.6%	13.9%	13.8%	12.5%	12.4%	12.3%
Other Medical	19.8%	17.7%	20.8%	19.6%	17.2%	15.7%	13.6%
<b>Medical/ Dental, other</b>	<b>38.2%</b>	<b>33.3%</b>	<b>34.7%</b>	<b>33.4%</b>	<b>29.7%</b>	<b>28.0%</b>	<b>25.9%</b>
<b>Medical &amp; Dental</b>	<b>3.9%</b>	<b>4.6%</b>	<b>4.0%</b>	<b>4.0%</b>	<b>4.1%</b>	<b>100.0%</b>	<b>4.1%</b>
Clinical Nurse/ Midwife Manager	17.4%	18.8%	19.0%	18.9%	19.3%	18.7%	18.6%
Director Nursing/Midwifery, Assistant	2.9%	3.3%	2.9%	3.3%	3.1%	3.3%	3.4%
Director of Nursing/Midwifery	1.1%	1.0%	1.3%	1.1%	0.9%	1.2%	1.1%
<b>Nurse/ Midwife Manager</b>	<b>21.4%</b>	<b>23.2%</b>	<b>23.2%</b>	<b>23.3%</b>	<b>23.3%</b>	<b>23.2%</b>	<b>23.2%</b>
Advanced Nurse/ Midwife Practitioner	0.1%	0.1%	0.1%	0.1%	0.3%	0.7%	0.7%
Clinical Nurse/ Midwife Specialist	4.0%	4.1%	4.5%	5.0%	5.3%	5.6%	5.4%
<b>Nurse/ Midwife Specialist &amp; AN/MP</b>	<b>4.1%</b>	<b>4.2%</b>	<b>4.6%</b>	<b>5.1%</b>	<b>5.5%</b>	<b>6.2%</b>	<b>6.1%</b>
Staff Nurse [Intellectual Disability]	14.4%	14.2%	13.4%	12.9%	11.4%	10.9%	11.0%
Staff Nurse [Psychiatric]	14.7%	13.3%	13.2%	11.7%	11.2%	11.2%	11.5%
Staff Nurses [General/ Children's]	32.5%	31.5%	32.9%	33.9%	35.7%	36.0%	35.9%
<b>Staff Nurse/ Staff Midwife</b>	<b>61.6%</b>	<b>59.1%</b>	<b>59.4%</b>	<b>58.6%</b>	<b>58.4%</b>	<b>58.1%</b>	<b>58.4%</b>
<b>Public Health Nurse</b>	<b>10.9%</b>	<b>11.2%</b>	<b>10.8%</b>	<b>11.5%</b>	<b>10.3%</b>	<b>10.1%</b>	<b>9.8%</b>
Pre-registration Nurse/ Midwife Intern	0.1%	0.1%		0.4%	0.1%	0.0%	0.5%
Pre-registration Nurse Intern (COVID-19)						0.2%	0.1%
Post-registration Nurse/ Midwife Student	1.5%	1.4%	0.9%	0.4%	1.2%	1.4%	1.4%
Nursing/ Midwifery awaiting registration			0.5%	0.2%	0.6%	0.2%	0.2%
<b>Nursing/ Midwifery Student</b>	<b>1.6%</b>	<b>1.5%</b>	<b>1.4%</b>	<b>1.0%</b>	<b>1.9%</b>	<b>1.8%</b>	<b>2.1%</b>
<b>Nursing/ Midwifery other</b>	<b>0.6%</b>	<b>0.8%</b>	<b>0.5%</b>	<b>0.5%</b>	<b>0.6%</b>	<b>0.5%</b>	<b>0.5%</b>
<b>Nursing &amp; Midwifery</b>	<b>29.8%</b>	<b>28.8%</b>	<b>26.9%</b>	<b>25.9%</b>	<b>26.1%</b>	<b>100.0%</b>	<b>26.1%</b>
Dietitians	2.3%	2.4%	1.8%	2.3%	2.3%	2.3%	2.2%
Occupational Therapists	21.3%	21.3%	16.1%	16.9%	16.8%	16.1%	16.2%
Orthoptists	0.0%	0.0%				0.2%	0.3%
Physiotherapists	15.3%	15.4%	11.8%	11.5%	10.4%	10.6%	10.7%
Podiatrists & Chiropodists	0.1%	0.1%	0.1%	0.1%	0.1%	0.1%	0.1%
Speech & Language Therapists	11.9%	13.5%	12.1%	11.2%	11.5%	11.3%	11.6%
<b>Therapy Professions</b>	<b>50.8%</b>	<b>52.8%</b>	<b>41.9%</b>	<b>41.9%</b>	<b>41.1%</b>	<b>40.6%</b>	<b>40.9%</b>
Audiology	0.0%	0.1%					
Clinical Measurement	0.1%	0.1%	0.1%	0.1%	0.1%	0.2%	0.2%
Medical Laboratory		0.1%					
Phlebotomists	0.1%	0.1%	0.1%	0.1%	0.1%	0.1%	0.1%
Radiographers	0.2%	0.1%	0.1%	0.1%	0.1%	0.1%	0.1%
<b>Health Science/ Diagnostics</b>	<b>0.4%</b>	<b>0.5%</b>	<b>0.3%</b>	<b>0.3%</b>	<b>0.3%</b>	<b>0.4%</b>	<b>0.4%</b>
<b>Social Care</b>	<b>15.7%</b>	<b>14.2%</b>	<b>31.3%</b>	<b>32.8%</b>	<b>33.9%</b>	<b>35.1%</b>	<b>35.1%</b>
<b>Social Workers</b>	<b>12.9%</b>	<b>13.9%</b>	<b>10.7%</b>	<b>10.1%</b>	<b>9.6%</b>	<b>9.5%</b>	<b>9.7%</b>
<b>Psychologists</b>	<b>9.4%</b>	<b>8.7%</b>	<b>8.1%</b>	<b>7.7%</b>	<b>7.4%</b>	<b>7.6%</b>	<b>7.4%</b>

Jan 2021 (Dec 2018 figure: 6,557)	WTE Dec 2015	WTE Dec 2016	WTE Dec 2017	WTE Dec 2018	WTE Dec 2019	WTE Dec 2020	WTE Jan 2021
<b>Overall</b>	<b>5,479</b>	<b>5,579</b>	<b>6,406</b>	<b>6,557</b>	<b>6,515</b>	<b>6,783</b>	<b>6,778</b>
<b>Pharmacy</b>	<b>5.5%</b>	<b>4.8%</b>	<b>3.7%</b>	<b>3.5%</b>	<b>3.7%</b>	<b>3.3%</b>	<b>2.8%</b>
Counsellor Therapists	4.2%	3.9%	3.1%	2.8%	3.3%	3.1%	3.1%
Dental Hygienists	0.5%	0.4%	0.3%	0.4%	0.5%	0.4%	0.3%
Other Health & Social Care	0.5%	0.6%	0.5%	0.4%	0.2%	0.1%	0.1%
Play Therapists/ Specialists	0.1%	0.1%	0.1%	0.1%	0.1%	0.1%	0.1%
<b>H&amp;SC, Other</b>	<b>5.2%</b>	<b>5.1%</b>	<b>4.1%</b>	<b>3.7%</b>	<b>4.1%</b>	<b>3.6%</b>	<b>3.7%</b>
<b>Health &amp; Social Care Professionals</b>	<b>13.8%</b>	<b>14.2%</b>	<b>16.4%</b>	<b>16.7%</b>	<b>16.8%</b>	<b>100.0%</b>	<b>16.7%</b>
Executive Management	2.2%	2.9%	2.5%	1.9%	2.1%	2.3%	2.3%
Senior Management (VIII & GM)	9.4%	8.7%	8.5%	9.2%	9.9%	10.1%	10.1%
<b>Management (VIII &amp; above)</b>	<b>11.7%</b>	<b>11.6%</b>	<b>11.0%</b>	<b>11.1%</b>	<b>12.0%</b>	<b>12.5%</b>	<b>12.5%</b>
Middle Management (V-VII)	24.1%	23.7%	26.0%	27.2%	29.9%	31.4%	31.7%
Other Administrative	0.2%	0.1%	0.2%	0.1%	0.2%	0.1%	0.1%
<b>Administrative/ Supervisory (V to VII)</b>	<b>24.3%</b>	<b>23.8%</b>	<b>26.1%</b>	<b>27.3%</b>	<b>30.1%</b>	<b>31.5%</b>	<b>31.8%</b>
<b>Clerical (III &amp; IV)</b>	<b>64.0%</b>	<b>64.6%</b>	<b>62.9%</b>	<b>61.6%</b>	<b>57.9%</b>	<b>56.0%</b>	<b>55.7%</b>
<b>Management &amp; Administrative</b>	<b>9.8%</b>	<b>10.0%</b>	<b>9.5%</b>	<b>9.4%</b>	<b>9.5%</b>	<b>100.0%</b>	<b>10.0%</b>
Catering	12.1%	12.0%	13.0%	12.8%	13.1%	12.5%	12.5%
Household Services	59.6%	59.9%	59.9%	60.4%	59.5%	59.2%	59.9%
Other Labs & Associated	0.3%	0.2%	0.2%	0.2%	0.2%	0.2%	0.2%
Other Support	3.9%	3.7%	3.0%	3.2%	3.1%	3.3%	3.4%
Portering	17.3%	16.7%	14.5%	14.6%	14.9%	14.4%	13.9%
<b>Support</b>	<b>93.2%</b>	<b>92.6%</b>	<b>90.6%</b>	<b>91.2%</b>	<b>90.9%</b>	<b>89.7%</b>	<b>89.9%</b>
<b>Maintenance/ Technical</b>	<b>6.8%</b>	<b>7.4%</b>	<b>9.4%</b>	<b>8.8%</b>	<b>9.1%</b>	<b>10.3%</b>	<b>10.1%</b>
<b>General Support</b>	<b>8.2%</b>	<b>7.9%</b>	<b>7.7%</b>	<b>7.4%</b>	<b>7.5%</b>	<b>100.0%</b>	<b>6.5%</b>
HCA, Nurse's Aide, etc.	66.5%	66.9%	66.4%	67.6%	68.7%	68.9%	69.2%
Health & Social Care Assistants	0.5%	0.4%	0.3%	0.9%	0.5%	0.7%	0.7%
<b>Health Care Assistants</b>	<b>66.9%</b>	<b>67.4%</b>	<b>66.7%</b>	<b>68.5%</b>	<b>69.2%</b>	<b>69.6%</b>	<b>69.9%</b>
Community Welfare Officers	0.1%	0.1%	0.1%	0.0%	0.0%	0.0%	0.0%
Other Care Grades	25.0%	24.3%	26.5%	25.7%	25.5%	25.1%	24.9%
<b>Care, other</b>	<b>25.1%</b>	<b>24.4%</b>	<b>26.6%</b>	<b>25.8%</b>	<b>25.5%</b>	<b>25.1%</b>	<b>25.0%</b>
<b>Home Help</b>	<b>8.0%</b>	<b>8.2%</b>	<b>6.7%</b>	<b>5.7%</b>	<b>5.3%</b>	<b>5.3%</b>	<b>5.1%</b>
<b>Patient &amp; Client Care</b>	<b>34.5%</b>	<b>34.6%</b>	<b>35.5%</b>	<b>36.5%</b>	<b>36.7%</b>	<b>100.0%</b>	<b>36.6%</b>
<b>Total</b>	<b>100 %</b>	<b>100 %</b>	<b>100 %</b>	<b>100 %</b>	<b>100%</b>	<b>100 %</b>	<b>100 %</b>

## CHO 7 Skills Mix by Care Group: January 2021

Jan 2021 (Dec 2018 figure: 835)	WTE Dec 2015	WTE Dec 2016	WTE Dec 2017	WTE Dec 2018	WTE Dec 2019	WTE Dec 2020	WTE Jan 2021
<b>Mental Health</b>	<b>837</b>	<b>828</b>	<b>859</b>	<b>835</b>	<b>834.98</b>	<b>861.41</b>	<b>862.63</b>
<b>Consultants</b>	<b>47.0%</b>	<b>44.2%</b>	<b>43.0%</b>	<b>43.6%</b>	<b>41.6%</b>	<b>41.8%</b>	<b>42.2%</b>
Registrar	17.2%	19.7%	17.8%	25.1%	22.9%	25.6%	27.3%
Senior Registrar	6.8%	9.4%	9.8%	12.7%	16.5%	15.8%	14.5%
Specialist Registrar			1.0%		0.9%	0.8%	0.8%
<b>Registrars</b>	<b>24.0%</b>	<b>29.1%</b>	<b>28.7%</b>	<b>37.8%</b>	<b>40.3%</b>	<b>42.2%</b>	<b>42.7%</b>
Interns	2.1%	2.0%	2.1%	2.0%	1.7%	1.6%	1.6%
Senior House Officer	27.0%	24.7%	26.2%	16.6%	16.4%	14.4%	13.6%
<b>SHO/ Interns</b>	<b>29.1%</b>	<b>26.7%</b>	<b>28.3%</b>	<b>18.6%</b>	<b>18.2%</b>	<b>16.0%</b>	<b>15.1%</b>
<b>Medical &amp; Dental</b>	<b>11.5%</b>	<b>12.2%</b>	<b>11.1%</b>	<b>12.3%</b>	<b>12.3%</b>	<b>14.6%</b>	<b>14.6%</b>
Clinical Nurse/ Midwife Manager	22.3%	25.7%	24.5%	27.0%	26.5%	25.3%	25.3%
Director Nursing/Midwifery, Assistant	3.5%	4.1%	4.5%	5.0%	4.3%	4.6%	4.6%
Director of Nursing/Midwifery	0.8%	0.8%	0.8%	0.8%	0.8%	1.0%	1.0%
<b>Nurse/ Midwife Manager</b>	<b>26.6%</b>	<b>30.6%</b>	<b>29.8%</b>	<b>32.8%</b>	<b>31.5%</b>	<b>31.0%</b>	<b>30.9%</b>
Advanced Nurse/ Midwife Practitioner			0.3%	0.3%	0.8%	1.4%	1.5%
Clinical Nurse/ Midwife Specialist	6.5%	7.2%	6.7%	7.0%	10.0%	10.9%	10.6%
<b>Nurse/ Midwife Specialist &amp; AN/MP</b>	<b>6.5%</b>	<b>7.2%</b>	<b>7.0%</b>	<b>7.3%</b>	<b>10.8%</b>	<b>12.3%</b>	<b>12.0%</b>
Staff Nurse [Intellectual Disability]						0.3%	0.3%
Staff Nurse [Psychiatric]	63.5%	58.1%	58.4%	54.3%	51.1%	51.2%	52.3%
Staff Nurses [General/ Children's]	1.9%	1.9%	1.1%	1.2%	1.5%	1.7%	1.7%
<b>Staff Nurse/ Staff Midwife</b>	<b>65.4%</b>	<b>60.1%</b>	<b>59.5%</b>	<b>55.5%</b>	<b>52.6%</b>	<b>53.2%</b>	<b>54.3%</b>
Pre-registration Nurse/ Midwife Intern	0.4%	0.5%		1.6%	0.4%	0.1%	0.3%
Pre-registration Nurse Intern (COVID-19)						0.9%	0.5%
Post-registration Nurse/ Midwife Student						0.3%	0.3%
Nursing/ Midwifery awaiting registration			2.1%	1.1%	2.7%	0.8%	0.5%
<b>Nursing/ Midwifery Student</b>	<b>0.4%</b>	<b>0.5%</b>	<b>2.1%</b>	<b>2.8%</b>	<b>3.0%</b>	<b>2.0%</b>	<b>1.5%</b>
Nursing Education/Clinical	1.1%	1.7%	1.6%	1.7%	2.0%	1.5%	1.3%
<b>Nursing/ Midwifery other</b>	<b>1.1%</b>	<b>1.7%</b>	<b>1.6%</b>	<b>1.7%</b>	<b>2.0%</b>	<b>1.5%</b>	<b>1.3%</b>
<b>Nursing &amp; Midwifery</b>	<b>44.8%</b>	<b>43.7%</b>	<b>44.9%</b>	<b>43.3%</b>	<b>43.3%</b>	<b>44.2%</b>	<b>44.2%</b>
Dietitians	0.7%			1.4%	2.1%	2.5%	2.7%
Occupational Therapists	29.9%	30.6%	28.0%	29.8%	27.3%	29.3%	28.8%
Speech & Language Therapists	4.2%	5.0%	4.7%	3.5%	4.8%	4.7%	5.4%
<b>Therapy Professions</b>	<b>34.9%</b>	<b>35.5%</b>	<b>32.7%</b>	<b>34.6%</b>	<b>34.2%</b>	<b>36.5%</b>	<b>37.0%</b>
<b>Social Care</b>	<b>8.0%</b>	<b>7.9%</b>	<b>7.4%</b>	<b>5.8%</b>	<b>5.4%</b>	<b>5.0%</b>	<b>5.2%</b>
<b>Social Workers</b>	<b>28.9%</b>	<b>30.2%</b>	<b>29.0%</b>	<b>26.2%</b>	<b>24.4%</b>	<b>25.7%</b>	<b>26.0%</b>
<b>Psychologists</b>	<b>21.0%</b>	<b>18.3%</b>	<b>20.7%</b>	<b>23.9%</b>	<b>22.4%</b>	<b>20.0%</b>	<b>18.6%</b>
<b>Pharmacy</b>					<b>0.7%</b>	<b>0.7%</b>	<b>0.7%</b>
Counsellor Therapists	6.2%	6.6%	8.4%	7.6%	11.4%	12.0%	12.2%
Other Health & Social Care	1.1%	1.5%	1.8%	1.8%	1.4%	0.3%	0.3%
<b>H&amp;SC, Other</b>	<b>7.3%</b>	<b>8.1%</b>	<b>10.2%</b>	<b>9.4%</b>	<b>12.9%</b>	<b>12.3%</b>	<b>12.5%</b>
<b>Health &amp; Social Care Professionals</b>	<b>16.0%</b>	<b>16.4%</b>	<b>16.9%</b>	<b>16.8%</b>	<b>16.8%</b>	<b>16.7%</b>	<b>16.7%</b>
<b>Management (VIII &amp; above)</b>	<b>3.3%</b>	<b>4.3%</b>	<b>4.1%</b>	<b>3.9%</b>	<b>4.3%</b>	<b>5.4%</b>	<b>5.4%</b>
<b>Administrative/ Supervisory (V to VII)</b>	<b>14.9%</b>	<b>18.8%</b>	<b>23.2%</b>	<b>25.3%</b>	<b>24.1%</b>	<b>24.7%</b>	<b>25.0%</b>
<b>Clerical (III &amp; IV)</b>	<b>81.7%</b>	<b>76.9%</b>	<b>72.7%</b>	<b>70.8%</b>	<b>71.6%</b>	<b>69.9%</b>	<b>69.6%</b>
<b>Management &amp; Administrative</b>	<b>7.2%</b>	<b>8.0%</b>	<b>8.0%</b>	<b>8.8%</b>	<b>8.8%</b>	<b>8.2%</b>	<b>8.2%</b>
<b>Support</b>	<b>93.2%</b>	<b>92.3%</b>	<b>92.1%</b>	<b>91.7%</b>	<b>90.5%</b>	<b>89.7%</b>	<b>89.6%</b>
<b>Maintenance/ Technical</b>	<b>6.8%</b>	<b>7.7%</b>	<b>7.9%</b>	<b>8.3%</b>	<b>9.5%</b>	<b>10.3%</b>	<b>10.4%</b>
<b>General Support</b>	<b>3.4%</b>	<b>3.2%</b>	<b>3.0%</b>	<b>2.9%</b>	<b>2.9%</b>	<b>2.2%</b>	<b>2.2%</b>

Jan 2021 (Dec 2018 figure: 835)	WTE Dec 2015	WTE Dec 2016	WTE Dec 2017	WTE Dec 2018	WTE Dec 2019	WTE Dec 2020	WTE Jan 2021
<b>Mental Health</b>	<b>837</b>	<b>828</b>	<b>859</b>	<b>835</b>	<b>834.98</b>	<b>861.41</b>	<b>862.63</b>
HCA, Nurse's Aide, etc.	33.1%	33.7%	32.2%	31.0%	26.6%	29.0%	28.9%
<b>Health Care Assistants</b>	<b>33.1%</b>	<b>33.7%</b>	<b>32.2%</b>	<b>31.0%</b>	<b>26.6%</b>	<b>29.0%</b>	<b>28.9%</b>
<b>Care, other</b>	<b>66.9%</b>	<b>66.3%</b>	<b>67.8%</b>	<b>69.0%</b>	<b>73.4%</b>	<b>71.0%</b>	<b>71.1%</b>
<b>Patient &amp; Client Care</b>	<b>17.1%</b>	<b>16.4%</b>	<b>16.1%</b>	<b>16.0%</b>	<b>16.0%</b>	<b>14.0%</b>	<b>14.0%</b>
<b>Total</b>	<b>100 %</b>	<b>100 %</b>	<b>100 %</b>	<b>100 %</b>	<b>100 %</b>	<b>100 %</b>	

Jan 2021 (Dec 2018 figure: 1,776)	WTE Dec 2015	WTE Dec 2016	WTE Dec 2017	WTE Dec 2018	WTE Dec 2019	WTE Dec 2020	WTE Jan 2021
<b>Primary Care</b>	<b>1,647</b>	<b>1,687</b>	<b>1,691</b>	<b>1,776</b>	<b>1,702.01</b>	<b>1,788.84</b>	<b>1,785.23</b>
Consultant Medicine	6.3%	6.1%	6.4%	4.9%	4.8%	6.0%	6.6%
Consultant Psychiatry	3.0%	1.5%	2.2%	2.1%	2.9%	2.8%	2.9%
Consultant Surgery	0.8%	0.6%	0.3%	0.8%	0.6%		
<b>Consultants</b>	<b>10.1%</b>	<b>8.2%</b>	<b>8.9%</b>	<b>7.8%</b>	<b>8.3%</b>	<b>8.9%</b>	<b>9.5%</b>
<b>Registrars</b>	<b>8.9%</b>	<b>28.9%</b>	<b>27.1%</b>	<b>30.1%</b>	<b>33.0%</b>	<b>30.7%</b>	<b>33.3%</b>
<b>SHO/ Interns</b>	<b>5.1%</b>	<b>4.5%</b>	<b>4.2%</b>	<b>5.1%</b>	<b>4.3%</b>	<b>6.4%</b>	<b>6.6%</b>
Dentists	39.9%	29.9%	25.7%	25.3%	24.4%	24.8%	25.1%
Other Medical	36.0%	28.5%	34.1%	31.7%	30.1%	29.3%	25.5%
<b>Medical/ Dental, other</b>	<b>75.9%</b>	<b>58.4%</b>	<b>59.8%</b>	<b>57.0%</b>	<b>54.5%</b>	<b>54.1%</b>	<b>50.6%</b>
<b>Medical &amp; Dental</b>	<b>5.9%</b>	<b>7.9%</b>	<b>8.1%</b>	<b>8.1%</b>	<b>8.5%</b>	<b>7.6%</b>	<b>7.6%</b>
Clinical Nurse/ Midwife Manager	11.0%	10.2%	10.1%	10.2%	10.7%	10.5%	10.4%
Director Nursing/Midwifery, Assistant	3.6%	3.9%	3.7%	3.8%	3.4%	4.0%	4.3%
Director of Nursing/Midwifery	1.0%	1.1%	1.1%	1.2%	1.1%	1.3%	1.1%
<b>Nurse/ Midwife Manager</b>	<b>15.5%</b>	<b>15.2%</b>	<b>14.9%</b>	<b>15.2%</b>	<b>15.2%</b>	<b>15.8%</b>	<b>15.7%</b>
<b>Nurse/ Midwife Specialist &amp; AN/MP</b>	<b>6.5%</b>	<b>6.6%</b>	<b>8.4%</b>	<b>8.8%</b>	<b>8.7%</b>	<b>10.2%</b>	<b>10.1%</b>
<b>Staff Nurse/ Staff Midwife</b>	<b>37.5%</b>	<b>37.5%</b>	<b>36.3%</b>	<b>37.5%</b>	<b>38.7%</b>	<b>36.8%</b>	<b>37.2%</b>
<b>Public Health Nurse</b>	<b>35.0%</b>	<b>35.5%</b>	<b>36.7%</b>	<b>36.9%</b>	<b>33.1%</b>	<b>32.6%</b>	<b>32.3%</b>
<b>Nursing/ Midwifery Student</b>	<b>4.8%</b>	<b>4.5%</b>	<b>3.1%</b>	<b>1.3%</b>	<b>4.0%</b>	<b>4.2%</b>	<b>4.3%</b>
Nursing Education/Clinical	0.6%	0.5%	0.5%	0.4%	0.4%	0.4%	0.4%
Other Nursing/ Midwifery		0.2%					
<b>Nursing/ Midwifery other</b>	<b>0.6%</b>	<b>0.7%</b>	<b>0.5%</b>	<b>0.4%</b>	<b>0.4%</b>	<b>0.4%</b>	<b>0.4%</b>
<b>Nursing &amp; Midwifery</b>	<b>30.5%</b>	<b>30.1%</b>	<b>30.1%</b>	<b>29.8%</b>	<b>31.1%</b>	<b>30.1%</b>	<b>30.1%</b>
Dietitians	3.6%	3.8%	4.0%	4.8%	3.8%	4.2%	4.1%
Occupational Therapists	25.9%	24.9%	23.4%	26.8%	26.6%	24.8%	25.5%
Orthoptists	0.1%	0.1%				0.7%	0.8%
Physiotherapists	22.5%	23.1%	22.5%	21.4%	20.1%	22.4%	22.5%
Podiatrists & Chiropodists				0.1%	0.3%	0.3%	0.3%
Speech & Language Therapists	16.4%	18.2%	20.3%	19.2%	20.5%	18.1%	18.0%
<b>Therapy Professions</b>	<b>68.5%</b>	<b>70.1%</b>	<b>70.3%</b>	<b>72.4%</b>	<b>71.4%</b>	<b>70.5%</b>	<b>71.1%</b>
Phlebotomists	0.1%	0.2%	0.2%	0.1%	0.1%	0.3%	0.3%
<b>Health Science/ Diagnostics</b>	<b>0.1%</b>	<b>0.2%</b>	<b>0.2%</b>	<b>0.1%</b>	<b>0.1%</b>	<b>0.3%</b>	<b>0.3%</b>
<b>Social Care</b>	<b>1.1%</b>	<b>1.1%</b>	<b>1.1%</b>	<b>1.1%</b>	<b>0.9%</b>	<b>1.0%</b>	<b>1.0%</b>
<b>Social Workers</b>	<b>7.6%</b>	<b>7.7%</b>	<b>7.4%</b>	<b>6.4%</b>	<b>7.0%</b>	<b>7.1%</b>	<b>7.2%</b>
<b>Psychologists</b>	<b>5.9%</b>	<b>5.7%</b>	<b>6.1%</b>	<b>6.2%</b>	<b>5.8%</b>	<b>6.9%</b>	<b>7.5%</b>
<b>Pharmacy</b>	<b>9.4%</b>	<b>8.2%</b>	<b>8.5%</b>	<b>7.6%</b>	<b>8.5%</b>	<b>8.4%</b>	<b>7.1%</b>
Counsellor Therapists	6.1%	5.7%	5.2%	4.8%	5.0%	4.4%	4.5%
Dental Hygienists	1.0%	1.0%	0.9%	1.3%	1.4%	1.1%	1.1%
Other Health & Social Care	0.3%	0.3%	0.3%	0.3%		0.2%	0.2%
<b>H&amp;SC, Other</b>	<b>7.4%</b>	<b>7.0%</b>	<b>6.4%</b>	<b>6.4%</b>	<b>6.4%</b>	<b>5.7%</b>	<b>5.8%</b>
<b>Health &amp; Social Care Professionals</b>	<b>21.5%</b>	<b>21.5%</b>	<b>21.4%</b>	<b>21.4%</b>	<b>22.3%</b>	<b>20.0%</b>	<b>20.0%</b>
Executive Management	1.7%	2.6%	2.3%	1.9%	2.4%	2.6%	2.6%

Jan 2021 (Dec 2018 figure: 1,776)	WTE Dec 2015	WTE Dec 2016	WTE Dec 2017	WTE Dec 2018	WTE Dec 2019	WTE Dec 2020	WTE Jan 2021
<b>Primary Care</b>	<b>1,647</b>	<b>1,687</b>	<b>1,691</b>	<b>1,776</b>	<b>1,702.01</b>	<b>1,788.84</b>	<b>1,785.23</b>
Senior Management (VIII & GM)	6.9%	6.5%	6.8%	8.0%	9.1%	7.2%	7.0%
<b>Management (VIII &amp; above)</b>	<b>8.5%</b>	<b>9.1%</b>	<b>9.1%</b>	<b>9.9%</b>	<b>11.6%</b>	<b>9.7%</b>	<b>9.6%</b>
<b>Administrative/ Supervisory (V to VII)</b>	<b>22.1%</b>	<b>20.8%</b>	<b>23.0%</b>	<b>22.7%</b>	<b>26.5%</b>	<b>28.2%</b>	<b>28.9%</b>
<b>Clerical (III &amp; IV)</b>	<b>69.4%</b>	<b>70.1%</b>	<b>67.9%</b>	<b>67.4%</b>	<b>62.0%</b>	<b>62.1%</b>	<b>61.5%</b>
<b>Management &amp; Administrative</b>	<b>18.4%</b>	<b>18.0%</b>	<b>18.4%</b>	<b>17.5%</b>	<b>18.3%</b>	<b>17.4%</b>	<b>17.4%</b>
<b>Support</b>	<b>94.4%</b>	<b>93.2%</b>	<b>94.6%</b>	<b>93.8%</b>	<b>93.0%</b>	<b>92.2%</b>	<b>92.2%</b>
Maintenance	5.6%	6.1%	4.6%	5.5%	6.2%	7.0%	7.0%
Technical Services		0.7%	0.8%	0.7%	0.8%	0.8%	0.8%
<b>Maintenance/ Technical</b>	<b>5.6%</b>	<b>6.8%</b>	<b>5.4%</b>	<b>6.2%</b>	<b>7.0%</b>	<b>7.8%</b>	<b>7.8%</b>
<b>General Support</b>	<b>8.4%</b>	<b>8.0%</b>	<b>7.7%</b>	<b>7.5%</b>	<b>7.8%</b>	<b>6.7%</b>	<b>6.7%</b>
HCA, Nurse's Aide, etc.	46.0%	47.0%	48.3%	44.1%	45.9%	55.2%	56.9%
Health & Social Care Assistants	1.6%	1.0%	0.9%	6.4%	2.8%	4.2%	4.0%
<b>Health Care Assistants</b>	<b>47.6%</b>	<b>48.0%</b>	<b>49.2%</b>	<b>50.6%</b>	<b>48.7%</b>	<b>59.4%</b>	<b>60.9%</b>
Community Welfare Officers	0.8%	0.8%	0.8%	0.3%	0.4%	0.3%	0.3%
Other Care Grades	51.6%	51.2%	50.0%	49.1%	50.9%	40.3%	38.8%
<b>Care, other</b>	<b>52.4%</b>	<b>52.0%</b>	<b>50.8%</b>	<b>49.4%</b>	<b>51.3%</b>	<b>40.6%</b>	<b>39.1%</b>
<b>Patient &amp; Client Care</b>	<b>15.2%</b>	<b>14.5%</b>	<b>14.3%</b>	<b>15.7%</b>	<b>16.3%</b>	<b>18.1%</b>	<b>18.1%</b>
<b>Total</b>	<b>100 %</b>	<b>100 %</b>	<b>100 %</b>	<b>100 %</b>	<b>100 %</b>	<b>100 %</b>	

Jan 2021 (Dec 2018 figure: 2,903)	WTE Dec 2015	WTE Dec 2016	WTE Dec 2017	WTE Dec 2018	WTE Dec 2019	WTE Dec 2020	WTE Jan 2021
<b>Disabilities</b>	<b>1,867</b>	<b>1,943</b>	<b>2,792</b>	<b>2,903</b>	<b>2,981.59</b>	<b>3,103.35</b>	<b>3,101.81</b>
Consultant Paediatrics	2.8%	2.9%	2.5%	3.1%	3.0%	2.9%	3.0%
Consultant Psychiatry	26.5%	19.1%	16.2%	1.9%	1.7%	1.7%	1.8%
<b>Consultants</b>	<b>29.3%</b>	<b>22.0%</b>	<b>18.8%</b>	<b>5.0%</b>	<b>4.7%</b>	<b>4.7%</b>	<b>4.8%</b>
<b>Registrars</b>	<b>16.6%</b>	<b>26.0%</b>	<b>22.2%</b>	<b>21.5%</b>	<b>26.1%</b>	<b>26.0%</b>	<b>25.1%</b>
<b>SHO/ Interns</b>	<b>41.4%</b>	<b>43.3%</b>	<b>51.7%</b>	<b>64.3%</b>	<b>60.5%</b>	<b>60.7%</b>	<b>61.1%</b>
<b>Medical/ Dental, other</b>	<b>12.7%</b>	<b>8.7%</b>	<b>7.4%</b>	<b>9.3%</b>	<b>8.7%</b>	<b>8.7%</b>	<b>8.9%</b>
<b>Medical &amp; Dental</b>	<b>0.6%</b>	<b>0.6%</b>	<b>0.5%</b>	<b>0.4%</b>	<b>0.4%</b>	<b>0.4%</b>	<b>0.4%</b>
Clinical Nurse/ Midwife Manager	21.5%	23.2%	23.9%	22.4%	22.4%	21.5%	21.1%
Director Nursing/Midwifery, Assistant	1.2%	1.5%	1.1%	1.1%	1.1%	1.3%	1.5%
Director of Nursing/Midwifery	0.7%	0.5%	1.4%	1.0%	0.8%	0.8%	0.8%
<b>Nurse/ Midwife Manager</b>	<b>23.5%</b>	<b>25.2%</b>	<b>26.4%</b>	<b>24.4%</b>	<b>24.3%</b>	<b>23.6%</b>	<b>23.4%</b>
Advanced Nurse/ Midwife Practitioner						0.4%	0.4%
Clinical Nurse/ Midwife Specialist	1.4%	1.3%	1.3%	2.0%	1.0%	0.5%	0.4%
<b>Nurse/ Midwife Specialist &amp; AN/MP</b>	<b>1.4%</b>	<b>1.3%</b>	<b>1.3%</b>	<b>2.0%</b>	<b>1.0%</b>	<b>0.9%</b>	<b>0.8%</b>
Staff Nurse [Intellectual Disability]	58.7%	57.6%	45.5%	43.3%	38.7%	38.0%	37.4%
Staff Nurses [General/ Children's]	15.8%	15.2%	26.7%	30.2%	35.9%	37.2%	36.7%
<b>Staff Nurse/ Staff Midwife</b>	<b>74.4%</b>	<b>72.8%</b>	<b>72.2%</b>	<b>73.5%</b>	<b>74.6%</b>	<b>75.3%</b>	<b>74.1%</b>
Pre-registration Nurse/ Midwife Intern							1.4%
<b>Nursing/ Midwifery Student</b>							<b>1.4%</b>
<b>Nursing/ Midwifery other</b>	<b>0.6%</b>	<b>0.8%</b>	<b>0.1%</b>	<b>0.1%</b>	<b>0.1%</b>	<b>0.3%</b>	<b>0.3%</b>
<b>Nursing &amp; Midwifery</b>	<b>21.5%</b>	<b>20.4%</b>	<b>18.1%</b>	<b>17.5%</b>	<b>17.0%</b>	<b>16.7%</b>	<b>16.7%</b>
Dietitians	1.7%	1.6%	0.8%	0.8%	1.3%	1.0%	0.8%
Occupational Therapists	10.6%	13.0%	7.8%	7.0%	7.6%	7.6%	7.7%
Physiotherapists	11.0%	11.0%	6.3%	6.1%	5.5%	5.4%	5.6%
Speech & Language Therapists	10.7%	13.5%	9.1%	8.2%	7.6%	9.1%	9.4%
<b>Therapy Professions</b>	<b>34.1%</b>	<b>39.1%</b>	<b>24.0%</b>	<b>22.1%</b>	<b>22.0%</b>	<b>23.1%</b>	<b>23.5%</b>
Audiology	0.1%	0.2%					
Clinical Measurement	0.4%	0.4%	0.2%	0.2%	0.2%	0.3%	0.3%



Jan 2021 (Dec 2018 figure: 2,903)	WTE Dec 2015	WTE Dec 2016	WTE Dec 2017	WTE Dec 2018	WTE Dec 2019	WTE Dec 2020	WTE Jan 2021
<b>Disabilities</b>	<b>1,867</b>	<b>1,943</b>	<b>2,792</b>	<b>2,903</b>	<b>2,981.59</b>	<b>3,103.35</b>	<b>3,101.81</b>
Phlebotomists				0.2%	0.2%		
Radiographers	0.4%	0.4%	0.2%	0.2%	0.2%	0.2%	0.2%
<b>Health Science/ Diagnostics</b>	<b>0.9%</b>	<b>1.0%</b>	<b>0.4%</b>	<b>0.6%</b>	<b>0.5%</b>	<b>0.5%</b>	<b>0.5%</b>
<b>Social Care</b>	<b>45.2%</b>	<b>38.3%</b>	<b>62.1%</b>	<b>64.8%</b>	<b>65.2%</b>	<b>64.9%</b>	<b>64.6%</b>
<b>Social Workers</b>	<b>7.9%</b>	<b>10.1%</b>	<b>5.8%</b>	<b>6.3%</b>	<b>6.0%</b>	<b>5.3%</b>	<b>5.5%</b>
<b>Psychologists</b>	<b>9.6%</b>	<b>9.1%</b>	<b>6.4%</b>	<b>5.1%</b>	<b>5.0%</b>	<b>5.3%</b>	<b>5.1%</b>
<b>Pharmacy</b>	<b>1.7%</b>	<b>1.6%</b>	<b>0.8%</b>	<b>0.9%</b>	<b>0.9%</b>	<b>0.7%</b>	<b>0.6%</b>
Counsellor Therapists	0.7%	0.6%	0.3%	0.3%	0.3%	0.3%	0.3%
Other Health & Social Care	0.0%	0.4%	0.2%				
<b>H&amp;SC, Other</b>	<b>0.7%</b>	<b>1.0%</b>	<b>0.5%</b>	<b>0.3%</b>	<b>0.3%</b>	<b>0.3%</b>	<b>0.3%</b>
<b>Health &amp; Social Care Professionals</b>	<b>12.3%</b>	<b>13.1%</b>	<b>18.1%</b>	<b>18.5%</b>	<b>18.0%</b>	<b>19.3%</b>	<b>19.3%</b>
Executive Management	4.9%	5.3%	3.9%	2.6%	2.5%	3.0%	3.0%
Senior Management (VIII & GM)	17.2%	14.3%	13.3%	13.7%	13.3%	15.1%	15.4%
<b>Management (VIII &amp; above)</b>	<b>22.1%</b>	<b>19.5%</b>	<b>17.2%</b>	<b>16.3%</b>	<b>15.8%</b>	<b>18.1%</b>	<b>18.4%</b>
<b>Administrative/ Supervisory (V to VII)</b>	<b>34.6%</b>	<b>35.3%</b>	<b>34.0%</b>	<b>37.0%</b>	<b>39.0%</b>	<b>39.0%</b>	<b>38.6%</b>
<b>Clerical (III &amp; IV)</b>	<b>43.3%</b>	<b>45.1%</b>	<b>48.7%</b>	<b>46.7%</b>	<b>45.3%</b>	<b>42.9%</b>	<b>43.1%</b>
<b>Management &amp; Administrative</b>	<b>6.6%</b>	<b>6.8%</b>	<b>6.4%</b>	<b>6.5%</b>	<b>6.3%</b>	<b>7.6%</b>	<b>7.6%</b>
<b>Support</b>	<b>89.0%</b>	<b>88.2%</b>	<b>84.1%</b>	<b>85.7%</b>	<b>85.4%</b>	<b>82.6%</b>	<b>82.9%</b>
Maintenance	9.7%	11.1%	15.5%	13.8%	13.0%	15.3%	14.9%
Technical Services	1.3%	0.6%	0.5%	0.5%	1.5%	2.1%	2.2%
<b>Maintenance/ Technical</b>	<b>11.0%</b>	<b>11.8%</b>	<b>15.9%</b>	<b>14.3%</b>	<b>14.6%</b>	<b>17.4%</b>	<b>17.1%</b>
<b>General Support</b>	<b>8.5%</b>	<b>8.1%</b>	<b>7.7%</b>	<b>7.1%</b>	<b>7.0%</b>	<b>5.9%</b>	<b>5.9%</b>
HCA, Nurse's Aide, etc.	71.3%	72.1%	70.6%	71.9%	72.9%	72.9%	73.0%
Health & Social Care Assistants	0.5%	0.6%	0.3%	0.2%	0.4%	0.3%	0.3%
<b>Health Care Assistants</b>	<b>71.8%</b>	<b>72.7%</b>	<b>70.8%</b>	<b>72.1%</b>	<b>73.3%</b>	<b>73.2%</b>	<b>73.3%</b>
<b>Care, other</b>	<b>24.8%</b>	<b>24.0%</b>	<b>27.2%</b>	<b>26.2%</b>	<b>25.4%</b>	<b>25.7%</b>	<b>25.7%</b>
<b>Home Help</b>	<b>3.4%</b>	<b>3.3%</b>	<b>1.9%</b>	<b>1.6%</b>	<b>1.3%</b>	<b>1.1%</b>	<b>1.0%</b>
<b>Patient &amp; Client Care</b>	<b>50.4%</b>	<b>50.9%</b>	<b>49.1%</b>	<b>50.0%</b>	<b>48.7%</b>	<b>50.2%</b>	<b>50.2%</b>
<b>Total</b>	<b>100 %</b>	<b>100 %</b>	<b>100 %</b>	<b>100 %</b>	<b>100 %</b>	<b>100 %</b>	

Jan 2021 (Dec 2018 figure: 1,044)	WTE Dec 2015	WTE Dec 2016	WTE Dec 2017	WTE Dec 2018	WTE Dec 2019	WTE Dec 2020	WTE Jan 2021
<b>Older People</b>	<b>1,128</b>	<b>1,121</b>	<b>1,064</b>	<b>1,044</b>	<b>995.93</b>	<b>1,021.48</b>	<b>1,021.71</b>
Senior House Officer	31.6%	33.3%	37.5%	28.6%	33.3%	49.5%	49.5%
<b>SHO/ Interns</b>	<b>31.6%</b>	<b>33.3%</b>	<b>37.5%</b>	<b>28.6%</b>	<b>33.3%</b>	<b>49.5%</b>	<b>49.5%</b>
<b>Medical/ Dental, other</b>	<b>68.4%</b>	<b>66.7%</b>	<b>62.5%</b>	<b>71.4%</b>	<b>66.7%</b>	<b>50.5%</b>	<b>50.5%</b>
<b>Medical &amp; Dental</b>	<b>0.8%</b>	<b>0.8%</b>	<b>0.8%</b>	<b>0.7%</b>	<b>0.7%</b>	<b>0.4%</b>	<b>0.4%</b>
Clinical Nurse/ Midwife Manager	16.4%	19.1%	18.6%	18.8%	20.3%	20.2%	20.3%
Director Nursing/Midwifery, Assistant	3.3%	3.8%	2.5%	4.0%	4.3%	3.8%	3.8%
Director of Nursing/Midwifery	2.0%	1.8%	2.2%	1.7%	1.1%	1.8%	1.8%
<b>Nurse/ Midwife Manager</b>	<b>21.6%</b>	<b>24.7%</b>	<b>23.2%</b>	<b>24.4%</b>	<b>25.8%</b>	<b>25.9%</b>	<b>25.9%</b>
<b>Nurse/ Midwife Specialist &amp; AN/MP</b>	<b>1.0%</b>	<b>1.0%</b>	<b>1.1%</b>	<b>1.4%</b>	<b>0.9%</b>	<b>0.9%</b>	<b>0.9%</b>
Staff Nurse [Psychiatric]		0.2%	0.2%			0.3%	0.3%
Staff Nurses [General/ Children's]	76.9%	74.1%	75.4%	74.1%	73.3%	72.5%	72.4%
<b>Staff Nurse/ Staff Midwife</b>	<b>76.9%</b>	<b>74.3%</b>	<b>75.6%</b>	<b>74.1%</b>	<b>73.3%</b>	<b>72.8%</b>	<b>72.7%</b>
<b>Public Health Nurse</b>	<b>0.4%</b>	<b>0.1%</b>					
Nursing/ Midwifery awaiting registration						0.4%	0.5%
<b>Nursing/ Midwifery Student</b>						<b>0.4%</b>	<b>0.5%</b>
<b>Nursing &amp; Midwifery</b>	<b>31.5%</b>	<b>30.4%</b>	<b>30.4%</b>	<b>28.9%</b>	<b>30.3%</b>	<b>32.5%</b>	<b>32.5%</b>

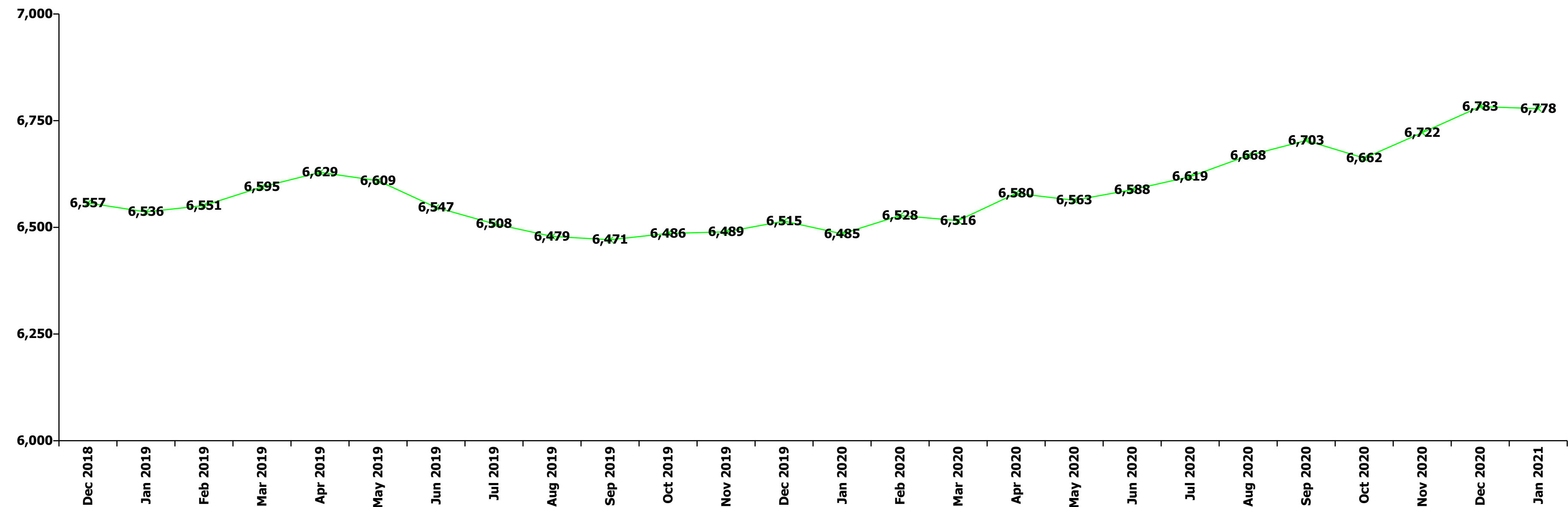
Jan 2021 (Dec 2018 figure: 1,044)	WTE Dec 2015	WTE Dec 2016	WTE Dec 2017	WTE Dec 2018	WTE Dec 2019	WTE Dec 2020	WTE Jan 2021
<b>Older People</b>	<b>1,128</b>	<b>1,121</b>	<b>1,064</b>	<b>1,044</b>	<b>995.93</b>	<b>1,021.48</b>	<b>1,021.71</b>
Dietitians		2.6%	2.7%		3.6%	3.5%	3.2%
Occupational Therapists	11.3%	10.8%	10.7%	9.6%	14.9%	15.7%	14.2%
Physiotherapists	27.8%	27.3%	28.3%	29.5%	30.5%	23.7%	22.6%
Podiatrists & Chiropodists	1.8%	1.9%	1.8%	2.0%			
Speech & Language Therapists	2.7%		2.7%	2.6%		3.5%	7.1%
<b>Therapy Professions</b>	<b>43.6%</b>	<b>42.5%</b>	<b>46.1%</b>	<b>43.6%</b>	<b>49.0%</b>	<b>46.4%</b>	<b>47.2%</b>
Medical Laboratory		2.6%					
Radiographers	2.1%						
<b>Health Science/ Diagnostics</b>	<b>2.1%</b>	<b>2.6%</b>					
<b>Social Workers</b>	<b>37.5%</b>	<b>39.2%</b>	<b>37.7%</b>	<b>41.0%</b>	<b>38.6%</b>	<b>43.2%</b>	<b>43.3%</b>
<b>Pharmacy</b>	<b>11.1%</b>	<b>10.5%</b>	<b>10.8%</b>	<b>10.3%</b>	<b>8.9%</b>	<b>7.0%</b>	<b>6.3%</b>
Other Health & Social Care	2.8%	2.6%	2.7%	2.6%			
Play Therapists/ Specialists	2.8%	2.6%	2.7%	2.6%	3.6%	3.5%	3.2%
<b>H&amp;SC, Other</b>	<b>5.6%</b>	<b>5.2%</b>	<b>5.4%</b>	<b>5.1%</b>	<b>3.6%</b>	<b>3.5%</b>	<b>3.2%</b>
<b>Health &amp; Social Care Professionals</b>	<b>3.2%</b>	<b>3.4%</b>	<b>3.5%</b>	<b>3.7%</b>	<b>3.9%</b>	<b>3.1%</b>	<b>3.1%</b>
Senior Management (VIII & GM)	14.9%	15.2%	10.0%	9.0%	9.9%	12.3%	12.3%
<b>Management (VIII &amp; above)</b>	<b>14.9%</b>	<b>15.2%</b>	<b>10.0%</b>	<b>9.0%</b>	<b>9.9%</b>	<b>12.3%</b>	<b>12.3%</b>
<b>Administrative/ Supervisory (V to VII)</b>	<b>23.9%</b>	<b>18.5%</b>	<b>21.1%</b>	<b>21.7%</b>	<b>22.7%</b>	<b>24.8%</b>	<b>25.8%</b>
<b>Clerical (III &amp; IV)</b>	<b>61.1%</b>	<b>66.3%</b>	<b>68.9%</b>	<b>69.3%</b>	<b>67.4%</b>	<b>63.0%</b>	<b>62.0%</b>
<b>Management &amp; Administrative</b>	<b>4.8%</b>	<b>4.7%</b>	<b>4.7%</b>	<b>4.2%</b>	<b>4.4%</b>	<b>5.9%</b>	<b>5.9%</b>
<b>Support</b>	<b>97.5%</b>	<b>97.5%</b>	<b>97.6%</b>	<b>97.5%</b>	<b>98.2%</b>	<b>98.3%</b>	<b>98.3%</b>
<b>Maintenance/ Technical</b>	<b>2.5%</b>	<b>2.5%</b>	<b>2.4%</b>	<b>2.5%</b>	<b>1.8%</b>	<b>1.7%</b>	<b>1.7%</b>
<b>General Support</b>	<b>10.7%</b>	<b>10.8%</b>	<b>11.6%</b>	<b>11.7%</b>	<b>12.2%</b>	<b>11.7%</b>	<b>11.7%</b>
HCA, Nurse's Aide, etc.	76.2%	74.5%	73.0%	77.4%	77.5%	74.8%	75.3%
Health & Social Care Assistants						0.2%	0.2%
<b>Health Care Assistants</b>	<b>76.2%</b>	<b>74.5%</b>	<b>73.0%</b>	<b>77.4%</b>	<b>77.5%</b>	<b>74.9%</b>	<b>75.5%</b>
<b>Care, other</b>	<b>2.4%</b>	<b>2.9%</b>	<b>2.9%</b>	<b>1.3%</b>	<b>1.0%</b>	<b>1.0%</b>	<b>1.1%</b>
<b>Home Help</b>	<b>21.4%</b>	<b>22.6%</b>	<b>24.1%</b>	<b>21.3%</b>	<b>21.5%</b>	<b>24.0%</b>	<b>23.5%</b>
<b>Patient &amp; Client Care</b>	<b>49.0%</b>	<b>49.9%</b>	<b>49.1%</b>	<b>50.8%</b>	<b>53.3%</b>	<b>46.4%</b>	<b>46.4%</b>
<b>Total</b>	<b>100 %</b>	<b>100 %</b>	<b>100 %</b>	<b>100 %</b>	<b>100 %</b>	<b>100 %</b>	



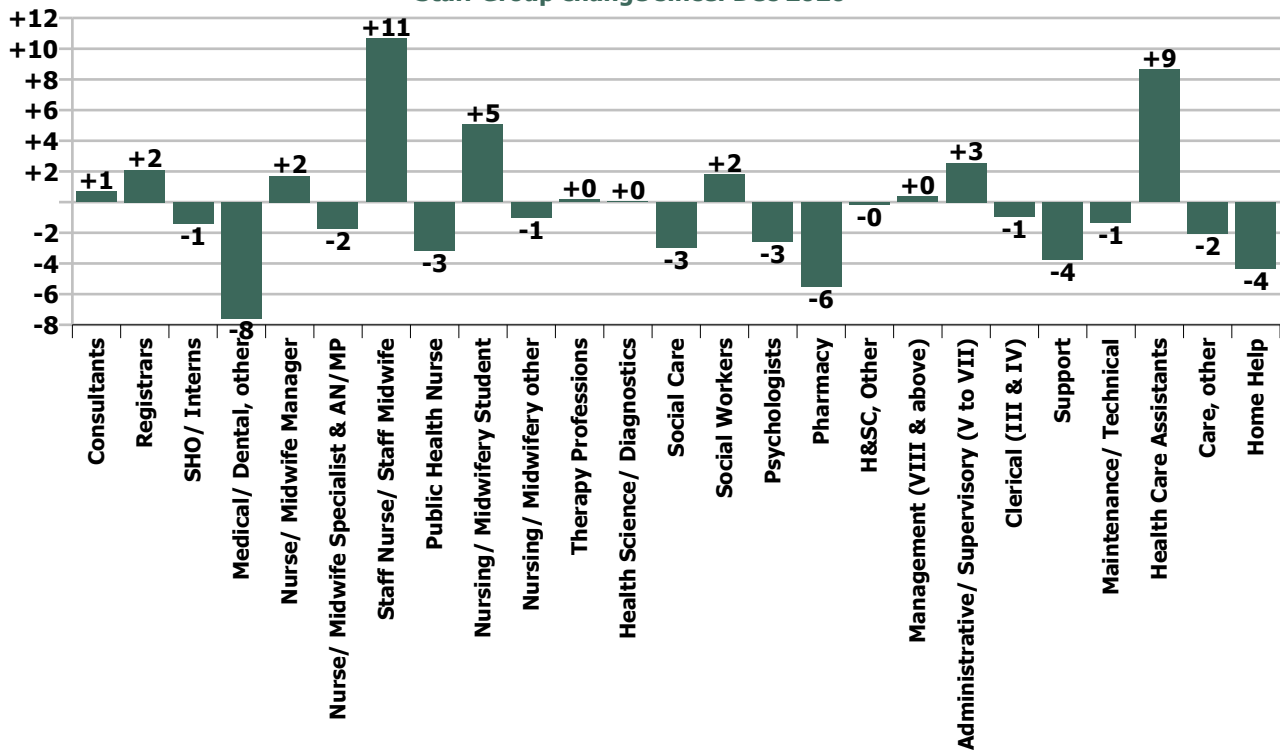
Summary Staff Movement: January 2021

Month-on-month Summary																												
WTE change since Dec 20	% change since Dec 20	overall	Consultants	Registrars	SHO/ Interns	Medical/ Dental, other	Medical & Dental	Nurse/ Midwife Manager	Nurse/ Midwife Specialist & AN/MP	Staff Nurse/ Staff Midwife	Public Health Nurse	Nursing/ Midwifery Student	Nursing/ Midwifery other	Nursing & Midwifery	Therapy Professions	Health Science/ Diagnostics	Social Care	Social Workers	Psychologists	Pharmacy	H&SC, Other	Health & Social Care Professionals	Management (VIII & above)	Administrativ e/ Supervisory (V to VII)	Clerical (III & IV)	Management & Administrativ e	General Support	Patient & Client Care
Overall	-0.1%	-5	+0.7	+2.1	-1.4	-7.6	-6.2	+1.7	-1.7	+10.7	-3.2	+5.1	-1.0	+11.6	+0.2	+0.0	-3.0	+1.8	-2.6	-5.5	-0.2	-9.3	+0.4	+2.5	-1.0	+2.0	-5.1	+2.3
Community Health & Wellbeing	-13.4%	-1																					0.0	-0.1	-0.0	-0.2		-0.9
Mental Health	+0.1%	+1	+0.2	+0.3	-1.2		-0.7	+0.5	-0.7	+5.3		-2.1	-1.0	+2.1	-0.0		+0.2	-0.1	-2.4	0.0	+0.1	-2.2	+0.0	+0.3	+0.1	+0.5	-0.1	+1.6
Primary Care	-0.2%	-4	+0.5	+2.0	-0.0	-7.6	-5.1	-1.2	-1.1	+0.4	-3.2	0.0	0.0	-5.0	-3.1	+0.0	-0.0	-0.5	+1.4	-5.2	-0.2	-7.8	-0.4	+2.5	-1.5	+0.5	+0.1	+13.7
Disabilities	-0.0%	-2	0.0	-0.2	-0.2	0.0	-0.4	+2.3	0.0	+5.1		+7.0	0.0	+14.4	+1.8	0.0	-3.2	+1.1	-1.6	-0.3	0.0	-2.1	+0.6	-1.1	+0.2	-0.3	-4.2	-9.0
Older People	+0.0%	+0			0.0	0.0	0.0	+0.1	+0.0	-0.2		+0.1		+0.1	+1.5			+1.3		0.0	0.0	+2.8	+0.2	+0.9	+0.3	+1.4	-0.9	-3.2
Social Care	-0.0%	-1	0.0	-0.2	-0.2	0.0	-0.4	+2.4	+0.0	+4.9		+7.2	0.0	+14.5	+3.3	0.0	-3.2	+2.4	-1.6	-0.3	0.0	+0.7	+0.8	-0.1	+0.5	+1.1	-5.1	-12.2
Change	-4.7	-0.1%	+1.0%	+2.1%	-3.6%	-9.5%	-2.2%	+0.4%	-1.6%	+1.0%	-1.8%	+15.8%	-10.7%	+0.7%	+0.0%	+0.7%	-0.7%	+1.7%	-3.0%	-14.7%	-0.4%	-0.8%	+0.4%	+1.2%	-0.3%	+0.3%	-1.1%	+0.1%

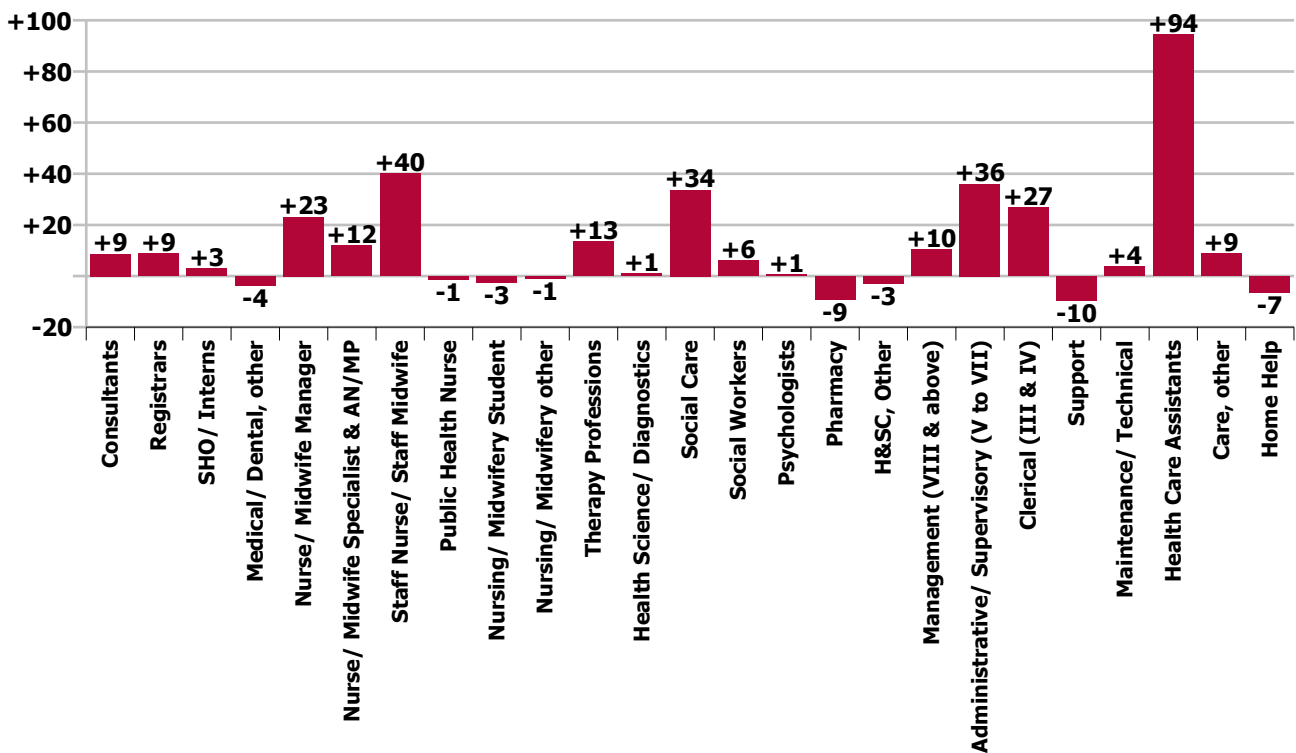
Year-on-year Summary																												
WTE change since Jan 20	% change since Jan 20	overall	Consultants	Registrars	SHO/ Interns	Medical/ Dental, other	Medical & Dental	Nurse/ Midwife Manager	Nurse/ Midwife Specialist & AN/MP	Staff Nurse/ Staff Midwife	Public Health Nurse	Nursing/ Midwifery Student	Nursing/ Midwifery other	Nursing & Midwifery	Therapy Professions	Health Science/ Diagnostics	Social Care	Social Workers	Psychologists	Pharmacy	H&SC, Other	Health & Social Care Professionals	Management (VIII & above)	Administrativ e/ Supervisory (V to VII)	Clerical (III & IV)	Management & Administrative	General Support	Patient & Client Care
Overall	+4.5%	+293	+8.6	+8.7	+3.0	-3.7	+16.7	+23.1	+12.0	+40.0	-1.3	-2.5	-1.2	+70.2	+13.4	+1.0	+33.6	+6.0	+0.8	-9.3	-2.9	+42.6	+10.5	+36.0	+26.8	+73.3	-5.9	+96.5
Community Health & Wellbeing	-13.4%	-1																					0.0	+1.0	0.0	+1.0		-2.4
Mental Health	+0.1%	+1	+7.1	+9.1	+0.2		+16.3	+6.5	+6.5	+11.0		-6.0	-2.2	+15.8	+5.4		-0.2	+5.0	-5.4	0.0	+0.3	+5.1	+1.0	+2.9	+2.3	+6.2	-0.6	-5.5
Primary Care	-0.2%	-4	+1.6	+0.6	+3.1	-1.7	+3.5	+5.3	+6.6	-6.4	-1.3	+2.0	0.0	+6.2	-10.9	+1.0	+0.0	-1.3	+4.7	-6.9	-3.2	-16.5	-1.6	+14.7	+17.2	+30.3	-5.5	+78.6
Disabilities	+4.5%	+134.2	0.0	-1.0	-0.3	0.0	-1.2	+2.7	-0.8	+9.6		0.0	+1.0	+12.6	+18.1	0.0	+33.8	-0.6	+1.5	-1.4	0.0	+51.3	+9.4	+13.5	+4.5	+27.5	-11.0	+55.0
Older People	+2.7%	+26.4			0.0	-2.0	-2.0	+8.6	-0.2	+25.8		+1.5		+35.7	+0.8			+2.9		-1.0	0.0	+2.7	+1.6	+3.9	+2.7	+8.3	+11.0	-29.3
Social Care	-0.0%	-1	0.0	-1.0	-0.3	-2.0	-3.2	+11.3	-1.0	+35.4		+1.5	+1.0	+48.2	+18.9	0.0	+33.8	+2.3	+1.5	-2.4	0.0	+54.0	+11.1	+17.5	+7.3	+35.8	+0.1	+25.7
Change	+293.4	+4.5%	+14.8%	+9.4%	+8.9%	-4.9%	+6.4%	+6.0%	+12.6%	+4.0%	-0.7%	-6.4%	-12.1%	+4.1%	+3.0%	+30.8%	+9.3%	+5.8%	+0.9%	-22.5%	-6.5%	+3.9%	+14.0%	+19.9%	+7.6%	+12.1%	-1.3%	+4.1%

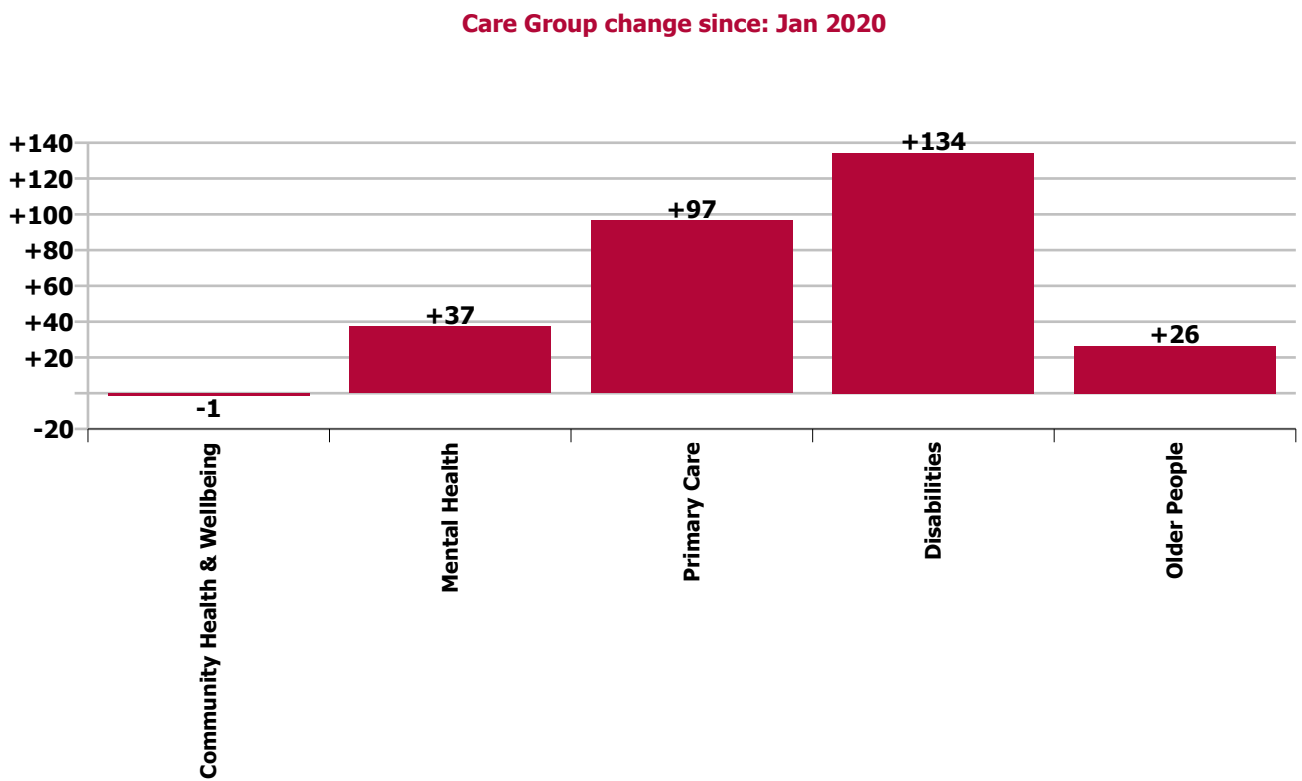
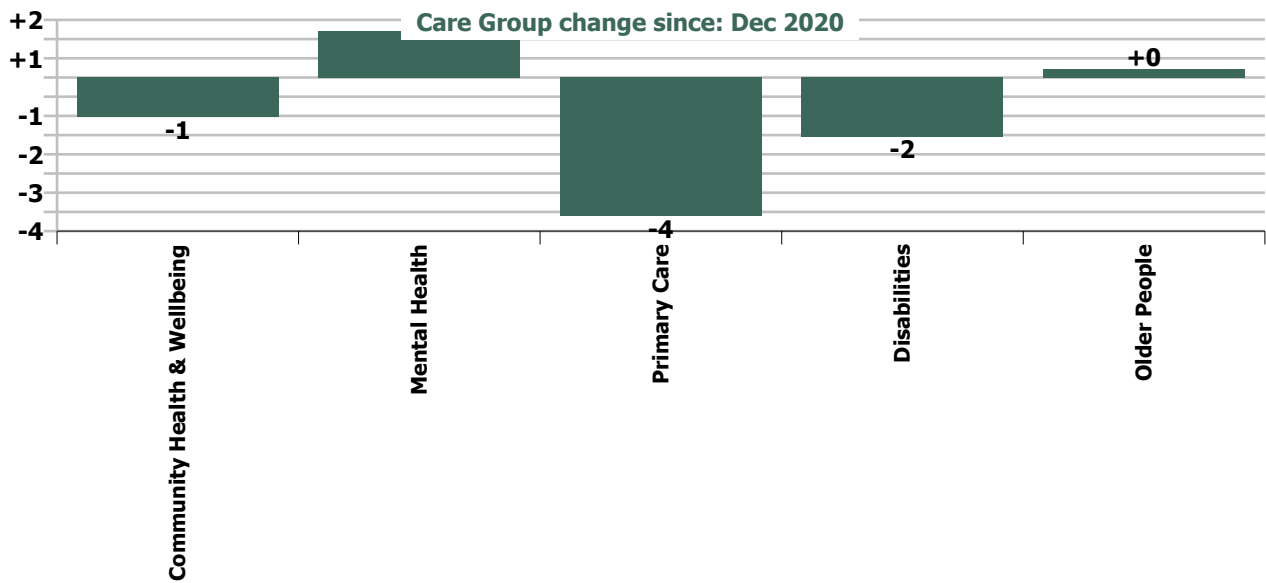


Staff Group change since: Dec 2020



Staff Group change since: Jan 2020





## Longitudinal Employment Levels by Grade Group - Oct 2013 to Jan 2021

Jan 2021 (Dec 2015 figure: 5,479)	WTE Jan 2021	WTE change since Dec 15	WTE change since Dec 16	WTE change since Dec 17	WTE change since Dec 18	WTE change since Dec 19	WTE change since Dec 20	% change since Dec 15	% change since Dec 16	% change since Dec 17	% change since Dec 18	% change since Dec 19	% change since Dec 20
<b>Overall</b>	<b>6,778</b>	<b>+1,299</b>	<b>+1,200</b>	<b>+372</b>	<b>+221</b>	<b>+264</b>	<b>-5</b>	<b>+23.7%</b>	<b>+21.5%</b>	<b>+5.8%</b>	<b>+3.4%</b>	<b>+4.0%</b>	<b>-0.1%</b>
Consultant Medicine	9	+3	+1	+0	+2	+2	+0	+46.5%	+10.6%	+2.0%	+26.5%	+35.5%	+5.4%
Consultant Paediatrics	0												
Consultant Psychiatry	57	+6	+9	+11	+10	+6	+0	+12.0%	+17.6%	+24.2%	+20.1%	+10.6%	+0.4%
Consultant Surgery		-1	-1	-0	-1	-1		-100.0%	-100.0%	-100.0%	-100.0%	-100.0%	-100.0%
<b>Consultants</b>	<b>67</b>	<b>+8</b>	<b>+9</b>	<b>+11</b>	<b>+10</b>	<b>+7</b>	<b>+1</b>	<b>+14.1%</b>	<b>+15.0%</b>	<b>+19.5%</b>	<b>+18.2%</b>	<b>+11.9%</b>	<b>+1.0%</b>
Registrar	78	+55	+21	+25	+12	+6	+4	+248.3%	+37.8%	+47.8%	+18.3%	+8.3%	+5.1%
Senior Registrar	18	+12	+8	+9	+4	-1	-2	+182.6%	+75.0%	+96.7%	+31.2%	-3.2%	-8.1%
Specialist Registrar	6	+1	+2	+0	+1	+2	-0	+21.3%	+53.5%	+5.1%	+27.0%	+49.2%	-0.5%
<b>Registrars</b>	<b>102</b>	<b>+68</b>	<b>+31</b>	<b>+35</b>	<b>+18</b>	<b>+7</b>	<b>+2</b>	<b>+202.6%</b>	<b>+44.2%</b>	<b>+51.0%</b>	<b>+20.9%</b>	<b>+7.7%</b>	<b>+2.1%</b>
Interns	2												
Senior House Officer	35	-4	-4	-6	+2	+1	-1	-10.5%	-10.5%	-14.3%	+5.0%	+3.3%	-3.8%
<b>SHO/ Interns</b>	<b>37</b>	<b>-4</b>	<b>-4</b>	<b>-6</b>	<b>+2</b>	<b>+1</b>	<b>-1</b>	<b>-10.0%</b>	<b>-10.0%</b>	<b>-13.6%</b>	<b>+4.7%</b>	<b>+3.2%</b>	<b>-3.6%</b>
Dentists	34	-5	-5	-1	-2	+1	-1	-13.4%	-13.7%	-3.1%	-6.3%	+1.5%	-2.4%
Other Medical	38	-5	-7	-15	-14	-9	-7	-11.4%	-15.9%	-28.7%	-27.0%	-18.9%	-15.1%
<b>Medical/ Dental, other</b>	<b>72</b>	<b>-10</b>	<b>-13</b>	<b>-16</b>	<b>-16</b>	<b>-8</b>	<b>-8</b>	<b>-12.3%</b>	<b>-14.8%</b>	<b>-18.4%</b>	<b>-18.5%</b>	<b>-10.3%</b>	<b>-9.5%</b>
<b>Medical &amp; Dental</b>	<b>278</b>	<b>+62</b>	<b>+23</b>	<b>+23</b>	<b>+13</b>	<b>+7</b>	<b>-6</b>	<b>+29.0%</b>	<b>+9.2%</b>	<b>+9.1%</b>	<b>+5.0%</b>	<b>+2.7%</b>	<b>-2.2%</b>
Clinical Nurse/ Midwife Manager	329	+45	+26	+2	+7	+0	+0	+15.8%	+8.8%	+0.5%	+2.1%	+0.1%	+0.0%
Director Nursing/Midwifery, Assistant	61	+13	+7	+11	+5	+9	+3	+28.0%	+13.2%	+21.5%	+9.7%	+17.3%	+4.4%
Director of Nursing/Midwifery	20	+2	+3	-3	+0	+4	-1	+10.7%	+18.6%	-12.7%	+1.7%	+23.7%	-4.9%
<b>Nurse/ Midwife Manager</b>	<b>409</b>	<b>+60</b>	<b>+37</b>	<b>+9</b>	<b>+12</b>	<b>+13</b>	<b>+2</b>	<b>+17.2%</b>	<b>+9.8%</b>	<b>+2.4%</b>	<b>+3.1%</b>	<b>+3.3%</b>	<b>+0.4%</b>
Advanced Nurse/ Midwife Practitioner	13	+12	+11	+11	+10	+9	+1	+1200.0%	+626.3%	+467.7%	+413.8%	+199.5%	+8.5%
Clinical Nurse/ Midwife Specialist	95	+29	+29	+17	+10	+5	-3	+44.5%	+43.5%	+21.9%	+12.0%	+6.0%	-2.8%
<b>Nurse/ Midwife Specialist &amp; AN/MP</b>	<b>108</b>	<b>+41</b>	<b>+40</b>	<b>+28</b>	<b>+21</b>	<b>+14</b>	<b>-2</b>	<b>+61.9%</b>	<b>+58.9%</b>	<b>+34.6%</b>	<b>+23.7%</b>	<b>+15.0%</b>	<b>-1.6%</b>
Staff Nurse [Intellectual Disability]	194	-41	-34	-36	-26	+0	+2	-17.5%	-14.9%	-15.8%	-11.7%	+0.1%	+1.2%
Staff Nurse [Psychiatric]	203	-37	-11	-24	+4	+12	+5	-15.5%	-5.3%	-10.6%	+1.9%	+6.1%	+2.7%
Staff Nurses [General/ Children's]	634	+104	+127	+67	+57	+27	+3	+19.5%	+25.1%	+11.8%	+9.9%	+4.4%	+0.5%
<b>Staff Nurse/ Staff Midwife</b>	<b>1,031</b>	<b>+25</b>	<b>+82</b>	<b>+7</b>	<b>+35</b>	<b>+39</b>	<b>+11</b>	<b>+2.5%</b>	<b>+8.6%</b>	<b>+0.6%</b>	<b>+3.5%</b>	<b>+3.9%</b>	<b>+1.0%</b>
<b>Public Health Nurse</b>	<b>173</b>	<b>-4</b>	<b>-7</b>	<b>-13</b>	<b>-22</b>	<b>-2</b>	<b>-3</b>	<b>-2.4%</b>	<b>-4.1%</b>	<b>-7.2%</b>	<b>-11.2%</b>	<b>-1.1%</b>	<b>-1.8%</b>
Pre-registration Nurse/ Midwife Intern	8	+6	+6	+8	+2	+7	+7	+380.7%	+380.7%	-100.0%	+33.9%	+482.5%	+1496.0%
Pre-registration Nurse Intern (COVID-19)	2	+2	+2	+2	+2	+2	-1	-100.0%	-100.0%	-100.0%	-100.0%	-100.0%	-42.8%
Post-registration Nurse/ Midwife Student	24		+1	+8	+17	+3			+4.3%	+50.0%	+242.9%	+14.3%	
Nursing/ Midwifery awaiting registration	3	+3	+3	-5	-1	-7	-1	-100.0%	-100.0%	-59.9%	-18.8%	-67.0%	-22.6%
<b>Nursing/ Midwifery Student</b>	<b>37</b>	<b>+12</b>	<b>+13</b>	<b>+13</b>	<b>+20</b>	<b>+5</b>	<b>+5</b>	<b>+44.9%</b>	<b>+50.7%</b>	<b>+54.2%</b>	<b>+119.2%</b>	<b>+15.3%</b>	<b>+15.8%</b>
Nursing Education/Clinical	8	-1	-3	-1	-0	-2	-1	-7.8%	-27.4%	-7.1%	-1.8%	-16.8%	-10.7%

Jan 2021 (Dec 2015 figure: 5,479)	WTE Jan 2021	WTE change since Dec 15	WTE change since Dec 16	WTE change since Dec 17	WTE change since Dec 18	WTE change since Dec 19	WTE change since Dec 20	% change since Dec 15	% change since Dec 16	% change since Dec 17	% change since Dec 18	% change since Dec 19	% change since Dec 20
<b>Overall</b>	<b>6,778</b>	<b>+1,299</b>	<b>+1,200</b>	<b>+372</b>	<b>+221</b>	<b>+264</b>	<b>-5</b>	<b>+23.7%</b>	<b>+21.5%</b>	<b>+5.8%</b>	<b>+3.4%</b>	<b>+4.0%</b>	<b>-0.1%</b>
Other Nursing/ Midwifery		-1	-1					-100.0%	-100.0%	-100.0%	-100.0%	-100.0%	-100.0%
<b>Nursing/ Midwifery other</b>	<b>8</b>	<b>-1</b>	<b>-4</b>	<b>-1</b>	<b>-0</b>	<b>-2</b>	<b>-1</b>	<b>-12.7%</b>	<b>-33.2%</b>	<b>-7.1%</b>	<b>-1.8%</b>	<b>-16.8%</b>	<b>-10.7%</b>
<b>Nursing &amp; Midwifery</b>	<b>1,767</b>	<b>+132</b>	<b>+159</b>	<b>+43</b>	<b>+67</b>	<b>+67</b>	<b>+12</b>	<b>+8.1%</b>	<b>+9.9%</b>	<b>+2.5%</b>	<b>+3.9%</b>	<b>+3.9%</b>	<b>+0.7%</b>
Dietitians	24	+7	+6	+5	-0	-1	-2	+38.7%	+29.3%	+26.5%	-1.1%	-3.3%	-6.3%
Occupational Therapists	183	+23	+14	+14	-2	-1	-0	+14.3%	+8.3%	+8.3%	-0.9%	-0.4%	-0.2%
Orthoptists	3	+3	+3	+3	+3	+3	+1	+1100.0%	+1100.0%	-100.0%	-100.0%	-100.0%	+20.0%
Physiotherapists	121	+6	-2	-3	-5	+6	-0	+5.0%	-1.4%	-2.6%	-4.0%	+5.6%	-0.2%
Podiatrists & Chiropodists	1	+0	+0	+0	-0			+53.8%	+40.8%	+53.8%	-21.9%		
Speech & Language Therapists	131	+41	+23	+3	+8	+5	+2	+46.1%	+21.9%	+2.5%	+6.4%	+3.9%	+1.5%
<b>Therapy Professions</b>	<b>463</b>	<b>+80</b>	<b>+44</b>	<b>+22</b>	<b>+4</b>	<b>+13</b>	<b>+0</b>	<b>+20.8%</b>	<b>+10.6%</b>	<b>+5.1%</b>	<b>+0.8%</b>	<b>+2.8%</b>	<b>+0.0%</b>
Audiology		-0	-0					-100.0%	-100.0%	-100.0%	-100.0%	-100.0%	-100.0%
Clinical Measurement	2	+1	+1	+1	+1	+1		+100.0%	+100.0%	+100.0%	+100.0%	+100.0%	
Medical Laboratory			-1					-100.0%	-100.0%	-100.0%	-100.0%	-100.0%	-100.0%
Phlebotomists	1	+1	+1	+1	+0	+0	+0	+190.7%	+92.3%	+98.4%	+2.5%	+2.5%	+2.5%
Radiographers	1	-1						-43.5%					
<b>Health Science/ Diagnostics</b>	<b>4</b>	<b>+1</b>	<b>+0</b>	<b>+2</b>	<b>+1</b>	<b>+1</b>	<b>+0</b>	<b>+26.1%</b>	<b>+4.2%</b>	<b>+61.6%</b>	<b>+32.0%</b>	<b>+32.0%</b>	<b>+0.7%</b>
Social Care	397	+278	+284	+68	+37	+26	-3	+234.5%	+253.0%	+20.7%	+10.3%	+6.9%	-0.7%
<b>Social Care</b>	<b>397</b>	<b>+278</b>	<b>+284</b>	<b>+68</b>	<b>+37</b>	<b>+26</b>	<b>-3</b>	<b>+234.5%</b>	<b>+253.0%</b>	<b>+20.7%</b>	<b>+10.3%</b>	<b>+6.9%</b>	<b>-0.7%</b>
<b>Social Workers</b>	<b>110</b>	<b>+13</b>	<b>-0</b>	<b>-2</b>	<b>-1</b>	<b>+5</b>	<b>+2</b>	<b>+13.2%</b>	<b>-0.0%</b>	<b>-2.2%</b>	<b>-0.9%</b>	<b>+5.0%</b>	<b>+1.7%</b>
<b>Psychologists</b>	<b>84</b>	<b>+13</b>	<b>+15</b>	<b>-1</b>	<b>-0</b>	<b>+3</b>	<b>-3</b>	<b>+18.6%</b>	<b>+22.3%</b>	<b>-0.8%</b>	<b>-0.2%</b>	<b>+4.2%</b>	<b>-3.0%</b>
<b>Pharmacy</b>	<b>32</b>	<b>-9</b>	<b>-6</b>	<b>-7</b>	<b>-6</b>	<b>-8</b>	<b>-6</b>	<b>-22.0%</b>	<b>-15.3%</b>	<b>-17.1%</b>	<b>-15.5%</b>	<b>-19.9%</b>	<b>-14.7%</b>
Counsellor Therapists	35	+4	+4	+3	+5	-1	+0	+12.3%	+13.1%	+7.9%	+15.6%	-2.9%	+0.3%
Dental Hygienists	4	+0	+0	+0	-1	-1	-0	+6.2%	+6.2%	+12.5%	-22.3%	-26.2%	-8.0%
Other Health & Social Care	1	-2	-4	-4	-3	-1	+0	-64.3%	-75.0%	-77.8%	-72.2%	-37.5%	+4.2%
Play Therapists/ Specialists	1												
<b>H&amp;SC, Other</b>	<b>41</b>	<b>+2</b>	<b>+1</b>	<b>-1</b>	<b>+0</b>	<b>-3</b>	<b>-0</b>	<b>+4.7%</b>	<b>+1.4%</b>	<b>-3.2%</b>	<b>+1.1%</b>	<b>-7.1%</b>	<b>-0.4%</b>
<b>Health &amp; Social Care Professionals</b>	<b>1,131</b>	<b>+378</b>	<b>+339</b>	<b>+81</b>	<b>+35</b>	<b>+37</b>	<b>-9</b>	<b>+50.1%</b>	<b>+42.8%</b>	<b>+7.7%</b>	<b>+3.2%</b>	<b>+3.4%</b>	<b>-0.8%</b>
Executive Management	16	+4	-0	+1	+4	+3	+0	+33.0%	-0.2%	+6.4%	+33.0%	+22.8%	+0.3%
Senior Management (VIII & GM)	69	+18	+21	+17	+13	+9	+0	+35.9%	+42.8%	+32.8%	+22.2%	+15.3%	+0.5%
<b>Management (VIII &amp; above)</b>	<b>85</b>	<b>+22</b>	<b>+21</b>	<b>+18</b>	<b>+17</b>	<b>+12</b>	<b>+0</b>	<b>+35.4%</b>	<b>+32.1%</b>	<b>+26.9%</b>	<b>+24.1%</b>	<b>+16.7%</b>	<b>+0.4%</b>
Middle Management (V-VII)	216	+86	+84	+57	+48	+34	+3	+65.9%	+64.2%	+36.2%	+28.6%	+19.0%	+1.2%
Other Administrative	1			-0		-0				-14.6%		-14.6%	
<b>Administrative/ Supervisory (V to VII)</b>	<b>217</b>	<b>+86</b>	<b>+84</b>	<b>+57</b>	<b>+48</b>	<b>+34</b>	<b>+3</b>	<b>+65.5%</b>	<b>+63.8%</b>	<b>+35.9%</b>	<b>+28.4%</b>	<b>+18.8%</b>	<b>+1.2%</b>
<b>Clerical (III &amp; IV)</b>	<b>379</b>	<b>+34</b>	<b>+21</b>	<b>-4</b>	<b>-1</b>	<b>+29</b>	<b>-1</b>	<b>+9.9%</b>	<b>+5.8%</b>	<b>-1.0%</b>	<b>-0.3%</b>	<b>+8.2%</b>	<b>-0.3%</b>
<b>Management &amp; Administrative</b>	<b>681</b>	<b>+142</b>	<b>+126</b>	<b>+71</b>	<b>+63</b>	<b>+75</b>	<b>+2</b>	<b>+26.4%</b>	<b>+22.7%</b>	<b>+11.7%</b>	<b>+10.2%</b>	<b>+12.4%</b>	<b>+0.3%</b>

Jan 2021 (Dec 2015 figure: 5,479)	WTE Jan 2021	WTE change since Dec 15	WTE change since Dec 16	WTE change since Dec 17	WTE change since Dec 18	WTE change since Dec 19	WTE change since Dec 20	% change since Dec 15	% change since Dec 16	% change since Dec 17	% change since Dec 18	% change since Dec 19	% change since Dec 20
<b>Overall</b>	<b>6,778</b>	<b>+1,299</b>	<b>+1,200</b>	<b>+372</b>	<b>+221</b>	<b>+264</b>	<b>-5</b>	<b>+23.7%</b>	<b>+21.5%</b>	<b>+5.8%</b>	<b>+3.4%</b>	<b>+4.0%</b>	<b>-0.1%</b>
Catering	55	+1	+3	-9	-7	-4	-1	+2.4%	+4.7%	-13.6%	-10.8%	-6.3%	-1.5%
Household Services	265	-1	+1	-31	-28	-4	+0	-0.6%	+0.5%	-10.3%	-9.7%	-1.4%	+0.0%
Other Labs & Associated	1	-0	-0	+0	+0	+0	+0	-11.7%	-0.9%	+6.0%	+1.9%	+6.0%	+6.0%
Other Support	15	-3	-2	-0	-1	+1		-14.5%	-9.3%	-0.7%	-4.6%	+5.6%	
Portering	62	-16	-12	-10	-9	-6	-3	-20.5%	-16.2%	-13.6%	-12.9%	-8.6%	-4.6%
<b>Support</b>	<b>398</b>	<b>-19</b>	<b>-9</b>	<b>-49</b>	<b>-45</b>	<b>-12</b>	<b>-4</b>	<b>-4.5%</b>	<b>-2.3%</b>	<b>-11.0%</b>	<b>-10.1%</b>	<b>-3.0%</b>	<b>-0.9%</b>
Maintenance	40	+12	+9	-4	-1	+3	-1	+40.7%	+29.5%	-9.9%	-2.6%	+7.3%	-3.3%
Technical Services	5	+3	+3	+3	+3	+1		+150.0%	+150.0%	+150.0%	+163.2%	+25.0%	
<b>Maintenance/ Technical</b>	<b>45</b>	<b>+15</b>	<b>+12</b>	<b>-1</b>	<b>+2</b>	<b>+4</b>	<b>-1</b>	<b>+47.9%</b>	<b>+36.8%</b>	<b>-2.9%</b>	<b>+4.8%</b>	<b>+9.0%</b>	<b>-3.0%</b>
<b>General Support</b>	<b>443</b>	<b>-4</b>	<b>+3</b>	<b>-50</b>	<b>-43</b>	<b>-9</b>	<b>-5</b>	<b>-0.9%</b>	<b>+0.6%</b>	<b>-10.2%</b>	<b>-8.8%</b>	<b>-1.9%</b>	<b>-1.1%</b>
HCA, Nurse's Aide, etc.	1,713	+458	+423	+204	+96	+71	+9	+36.4%	+32.8%	+13.5%	+5.9%	+4.3%	+0.5%
Health & Social Care Assistants	18	+9	+10	+12	-3	+6	-0	+109.1%	+114.6%	+198.3%	-16.2%	+44.3%	-0.2%
<b>Health Care Assistants</b>	<b>1,731</b>	<b>+467</b>	<b>+432</b>	<b>+216</b>	<b>+92</b>	<b>+77</b>	<b>+9</b>	<b>+36.9%</b>	<b>+33.3%</b>	<b>+14.2%</b>	<b>+5.6%</b>	<b>+4.6%</b>	<b>+0.5%</b>
<b>Care, other</b>	<b>619</b>	<b>+145</b>	<b>+148</b>	<b>+14</b>	<b>+2</b>	<b>+9</b>	<b>-2</b>	<b>+30.6%</b>	<b>+31.5%</b>	<b>+2.2%</b>	<b>+0.4%</b>	<b>+1.4%</b>	<b>-0.3%</b>
<b>Home Help</b>	<b>127</b>	<b>-23</b>	<b>-31</b>	<b>-25</b>	<b>-9</b>	<b>+0</b>	<b>-4</b>	<b>-15.5%</b>	<b>-19.6%</b>	<b>-16.3%</b>	<b>-6.7%</b>	<b>+0.4%</b>	<b>-3.3%</b>
<b>Patient &amp; Client Care</b>	<b>2,478</b>	<b>+589</b>	<b>+549</b>	<b>+204</b>	<b>+86</b>	<b>+86</b>	<b>+2</b>	<b>+31.2%</b>	<b>+28.5%</b>	<b>+9.0%</b>	<b>+3.6%</b>	<b>+3.6%</b>	<b>+0.1%</b>

Source: Health Service Personnel Census



Longitudinal Employment Levels by Care Group - Oct 2013 to Jan 2021

Community Health & Wellbeing

Jan 2021 ( figure: )	WTE Jan 2021	WTE change since	WTE change since	WTE change since	WTE change since	WTE change since	WTE change since Dec 20	% change since	% change since	% change since	% change since	% change since	% change since Dec 20
Overall	7	+7	+7	+7	+7	+7	-1	-100.0%	-100.0%	-100.0%	-100.0%	-100.0%	-13.4%
Management & Administrative	5	+5	+5	+5	+5	+5	-0	-1.0%	-1.0%	-1.0%	-1.0%	-1.0%	-0.0%
Management (VIII & above)	1	+1	+1	+1	+1	+1		-1.0%	-1.0%	-1.0%	-1.0%	-1.0%	+0.0%
Administrative/ Supervisory (V to VII)	3	+3	+3	+3	+3	+3	-0	-1.0%	-1.0%	-1.0%	-1.0%	-1.0%	-0.0%
Clerical (III & IV)	1	+1	+1	+1	+1	+1	-0	-1.0%	-1.0%	-1.0%	-1.0%	-1.0%	-0.0%
Patient & Client Care	2	+2	+2	+2	+2	+2	-1	-1.0%	-1.0%	-1.0%	-1.0%	-1.0%	-0.3%
Care, other	2	+2	+2	+2	+2	+2	-1	-1.0%	-1.0%	-1.0%	-1.0%	-1.0%	-0.3%

Source: Health Service Personnel Census

Mental Health

Jan 2021 (Dec 2015 figure: 837)	WTE Jan 2021	WTE change since Dec 15	WTE change since Dec 16	WTE change since Dec 17	WTE change since Dec 18	WTE change since Dec 19	WTE change since Dec 20	% change since Dec 15	% change since Dec 16	% change since Dec 17	% change since Dec 18	% change since Dec 19	% change since Dec 20
Overall	863	+26	+35	+3	+28	+28	+1	+3.1%	+4.2%	+0.4%	+3.4%	+3.3%	+0.1%
Medical & Dental	126	+30	+25	+31	+24	+11	-1	+0.3%	+0.2%	+0.3%	+0.2%	+0.1%	-0.0%
Consultants	53	+8	+9	+12	+9	+6	+0	+0.2%	+0.2%	+0.3%	+0.2%	+0.1%	+0.0%
Registrars	54	+31	+24	+27	+15	+8	+0	+1.3%	+0.8%	+1.0%	+0.4%	+0.2%	+0.0%
SHO/ Interns	19	-9	-8	-8	+0	-2	-1	-0.3%	-0.3%	-0.3%	+0.0%	-0.1%	-0.1%
Nursing & Midwifery	381	+7	+19	-4	+20	+12	+2	+0.0%	+0.1%	-0.0%	+0.1%	+0.0%	+0.0%
Nurse/ Midwife Manager	118	+18	+7	+3	-1	+1	+1	+0.2%	+0.1%	+0.0%	-0.0%	+0.0%	+0.0%
Nurse/ Midwife Specialist & AN/MP	46	+22	+20	+19	+20	+6	-1	+0.9%	+0.8%	+0.7%	+0.7%	+0.2%	-0.0%
Staff Nurse/ Staff Midwife	207	-38	-10	-23	+6	+13	+5	-0.2%	-0.0%	-0.1%	+0.0%	+0.1%	+0.0%
Nursing/ Midwifery Student	6	+4	+4	-2	-4	-6	-2	+2.4%	+2.4%	-0.3%	-0.4%	-0.5%	-0.3%
Nursing/ Midwifery other	5	+1	-1	-1	-1	-3	-1	+0.2%	-0.2%	-0.2%	-0.2%	-0.4%	-0.2%
Health & Social Care Professionals	144	+11	+9	-1	+5	+4	-2	+0.1%	+0.1%	-0.0%	+0.0%	+0.0%	-0.0%
Therapy Professions	53	+7	+5	+6	+5	+6	-0	+0.1%	+0.1%	+0.1%	+0.1%	+0.1%	-0.0%
Social Care	7	-3	-3	-3	-1	-0	+0	-0.3%	-0.3%	-0.3%	-0.1%	-0.0%	+0.0%
Social Workers	38	-1	-3	-5	+1	+3	-0	-0.0%	-0.1%	-0.1%	+0.0%	+0.1%	-0.0%
Psychologists	27	-1	+2	-3	-7	-4	-2	-0.0%	+0.1%	-0.1%	-0.2%	-0.1%	-0.1%
Pharmacy	1	+1	+1	+1	+1			-1.0%	-1.0%	-1.0%	-1.0%	+0.0%	+0.0%
H&SC, Other	18	+8	+7	+3	+5	+0	+0	+0.9%	+0.6%	+0.2%	+0.4%	+0.0%	+0.0%
Management & Administrative	71	+11	+4	+2	-3	+5	+0	+0.2%	+0.1%	+0.0%	-0.0%	+0.1%	+0.0%
Management (VIII & above)	4	+2	+1	+1	+1	+1	+0	+0.9%	+0.4%	+0.4%	+0.4%	+0.4%	+0.0%
Administrative/ Supervisory (V to VII)	18	+9	+5	+2	-1	+2	+0	+1.0%	+0.4%	+0.1%	-0.0%	+0.1%	+0.0%
Clerical (III & IV)	49	+0	-2	-1	-3	+2	+0	+0.0%	-0.0%	-0.0%	-0.1%	+0.1%	+0.0%
General Support	19	-9	-7	-6	-5	-0	-0	-0.3%	-0.3%	-0.2%	-0.2%	-0.0%	-0.0%
Support	17	-9	-7	-6	-5	-1	-0	-0.4%	-0.3%	-0.3%	-0.2%	-0.0%	-0.0%
Maintenance/ Technical	2	+0				+0		+0.0%	+0.0%	+0.0%	+0.0%	+0.1%	+0.0%
Patient & Client Care	120	-23	-16	-18	-13	-5	+2	-0.2%	-0.1%	-0.1%	-0.1%	-0.0%	+0.0%
Health Care Assistants	35	-13	-11	-10	-6	+1	+0	-0.3%	-0.2%	-0.2%	-0.2%	+0.0%	+0.0%
Care, other	86	-10	-5	-8	-6	-6	+1	-0.1%	-0.1%	-0.1%	-0.1%	-0.1%	+0.0%

Source: Health Service Personnel Census

Primary Care

Jan 2021 (Dec 2015 figure: 1,647)	WTE Jan 2021	WTE change since Dec 15	WTE change since Dec 16	WTE change since Dec 17	WTE change since Dec 18	WTE change since Dec 19	WTE change since Dec 20	% change since Dec 15	% change since Dec 16	% change since Dec 17	% change since Dec 18	% change since Dec 19	% change since Dec 20
Overall	1,785	+138	+98	+94	+10	+83	-4	+8.4%	+5.8%	+5.6%	+0.5%	+4.9%	-0.2%
Medical & Dental	137	+39	+4	-1	-8	-2	-5	+0.4%	+0.0%	-0.0%	-0.1%	-0.0%	-0.0%
Consultants	13	+3	+2	+1	+2	+2	+0	+0.3%	+0.2%	+0.1%	+0.1%	+0.1%	+0.0%
Registrars	46	+37	+7	+8	+2	-0	+2	+4.2%	+0.2%	+0.2%	+0.0%	-0.0%	+0.0%
SHO/ Interns	9	+4	+3	+3	+2	+3	-0	+0.8%	+0.5%	+0.6%	+0.2%	+0.5%	-0.0%
Medical/ Dental, other	69	-5	-9	-13	-13	-6	-8	-0.1%	-0.1%	-0.2%	-0.2%	-0.1%	-0.1%
Nursing & Midwifery	537	+34	+29	+28	+8	+7	-5	+0.1%	+0.1%	+0.1%	+0.0%	+0.0%	-0.0%
Nurse/ Midwife Manager	84	+6	+7	+9	+4	+4	-1	+0.1%	+0.1%	+0.1%	+0.0%	+0.1%	-0.0%
Nurse/ Midwife Specialist & AN/MP	54	+22	+21	+12	+8	+9	-1	+0.7%	+0.6%	+0.3%	+0.2%	+0.2%	-0.0%
Staff Nurse/ Staff Midwife	200	+11	+9	+15	+1	-5	+0	+0.1%	+0.0%	+0.1%	+0.0%	-0.0%	+0.0%
Public Health Nurse	173	-3	-7	-13	-22	-2	-3	-0.0%	-0.0%	-0.1%	-0.1%	-0.0%	-0.0%
Nursing/ Midwifery Student	23	-1		+7	+16	+2		-0.0%	+0.0%	+0.4%	+2.3%	+0.1%	+0.0%
Nursing/ Midwifery other	2	-1	-2	-1				-0.3%	-0.4%	-0.2%	+0.0%	+0.0%	+0.0%
Health & Social Care Professionals	357	+4	-5	-4	-23	-16	-8	+0.0%	-0.0%	-0.0%	-0.1%	-0.0%	-0.0%
Therapy Professions	254	+12	+0	-0	-21	-12	-3	+0.0%	+0.0%	-0.0%	-0.1%	-0.0%	-0.0%
Health Science/ Diagnostics	1	+1	+1	+1	+1	+1	+0	+1.9%	+0.9%	+1.0%	+4.7%	+4.7%	+0.0%
Social Care	4	-0	-0	-0	-0	+0	-0	-0.1%	-0.1%	-0.1%	-0.1%	+0.1%	-0.0%
Social Workers	26	-1	-2	-1	+1	-1	-1	-0.0%	-0.1%	-0.0%	+0.1%	-0.0%	-0.0%
Psychologists	27	+6	+6	+5	+3	+5	+1	+0.3%	+0.3%	+0.2%	+0.1%	+0.2%	+0.1%
Pharmacy	25	-8	-5	-5	-4	-6	-5	-0.2%	-0.2%	-0.2%	-0.1%	-0.2%	-0.2%
H&SC, Other	21	-5	-5	-3	-3	-3	-0	-0.2%	-0.2%	-0.1%	-0.1%	-0.1%	-0.0%
Management & Administrative	311	+8	+7	+0	-1	+24	+1	+0.0%	+0.0%	+0.0%	-0.0%	+0.1%	+0.0%
Management (VIII & above)	30	+4	+2	+1	-1	-3	-0	+0.1%	+0.1%	+0.1%	-0.0%	-0.1%	-0.0%
Administrative/ Supervisory (V to VII)	90	+23	+27	+18	+19	+14	+2	+0.3%	+0.4%	+0.3%	+0.3%	+0.2%	+0.0%
Clerical (III & IV)	191	-19	-21	-20	-19	+13	-2	-0.1%	-0.1%	-0.1%	-0.1%	+0.1%	-0.0%
General Support	120	-19	-16	-11	-13	-5	+0	-0.1%	-0.1%	-0.1%	-0.1%	-0.0%	+0.0%
Support	110	-20	-16	-13	-14	-6	+0	-0.2%	-0.1%	-0.1%	-0.1%	-0.0%	+0.0%
Maintenance/ Technical	9	+2	+0	+2	+1	+1		+0.2%	+0.0%	+0.3%	+0.2%	+0.1%	+0.0%
Patient & Client Care	324	+73	+80	+82	+46	+75	+14	+0.3%	+0.3%	+0.3%	+0.2%	+0.3%	+0.0%
Health Care Assistants	197	+78	+80	+78	+57	+76	+13	+0.7%	+0.7%	+0.7%	+0.4%	+0.6%	+0.1%
Care, other	127	-5	-0	+4	-11	-1	+1	-0.0%	-0.0%	+0.0%	-0.1%	-0.0%	+0.0%

Source: Health Service Personnel Census



Disabilities

Jan 2021 (Dec 2015 figure: 1,867)	WTE Jan 2021	WTE change since Dec 15	WTE change since Dec 16	WTE change since Dec 17	WTE change since Dec 18	WTE change since Dec 19	WTE change since Dec 20	% change since Dec 15	% change since Dec 16	% change since Dec 17	% change since Dec 18	% change since Dec 19	% change since Dec 20
Overall	3,102	+1,235	+1,159	+310	+199	+120	-2	+66.2%	+59.7%	+11.1%	+6.9%	+4.0%	-0.0%
Medical & Dental	11	-1	-0	-2	+0	-0	-0	-0.1%	-0.0%	-0.2%	+0.0%	-0.0%	-0.0%
Consultants	1	-3	-2	-2				-0.8%	-0.8%	-0.8%	+0.0%	+0.0%	+0.0%
Registrars	3	+1	-0	-0	+0	-0	-0	+0.4%	-0.1%	-0.1%	+0.2%	-0.1%	-0.1%
SHO/ Interns	7	+2	+2	-0	-0	-0	-0	+0.4%	+0.4%	-0.0%	-0.0%	-0.0%	-0.0%
Medical/ Dental, other	1	-1						-0.3%	+0.0%	+0.0%	+0.0%	+0.0%	+0.0%
Nursing & Midwifery	517	+115	+120	+10	+9	+15	+14	+0.3%	+0.3%	+0.0%	+0.0%	+0.0%	+0.0%
Nurse/ Midwife Manager	121	+26	+21	-13	-3	-1	+2	+0.3%	+0.2%	-0.1%	-0.0%	-0.0%	+0.0%
Nurse/ Midwife Specialist & AN/MP	4	-1	-1	-3	-6	-1		-0.3%	-0.1%	-0.4%	-0.6%	-0.2%	+0.0%
Staff Nurse/ Staff Midwife	383	+84	+95	+17	+10	+9	+5	+0.3%	+0.3%	+0.0%	+0.0%	+0.0%	+0.0%
Nursing/ Midwifery Student	7	+7	+7	+7	+7	+7	+7	-1.0%	-1.0%	-1.0%	-1.0%	-1.0%	-1.0%
Nursing/ Midwifery other	2	-1	-2	+1	+1	+1		-0.4%	-0.5%	+2.0%	+2.0%	+2.0%	+0.0%
Health & Social Care Professionals	597	+367	+342	+92	+61	+45	-2	+1.6%	+1.3%	+0.2%	+0.1%	+0.1%	-0.0%
Therapy Professions	140	+62	+41	+19	+22	+18	+2	+0.8%	+0.4%	+0.2%	+0.2%	+0.2%	+0.0%
Health Science/ Diagnostics	3	+1	+1	+1				+0.4%	+0.2%	+0.5%	+0.0%	+0.0%	+0.0%
Social Care	386	+282	+288	+72	+38	+25	-3	+2.7%	+2.9%	+0.2%	+0.1%	+0.1%	-0.0%
Social Workers	33	+15	+7	+4	-1	-0	+1	+0.8%	+0.3%	+0.1%	-0.0%	-0.0%	+0.0%
Psychologists	31	+8	+7	-2	+3	+3	-2	+0.4%	+0.3%	-0.1%	+0.1%	+0.1%	-0.0%
Pharmacy	4	-0	-0	-0	-1	-1	-0	-0.1%	-0.1%	-0.1%	-0.3%	-0.2%	-0.1%
H&SC, Other	2		-1	-1				+0.0%	-0.4%	-0.4%	+0.0%	+0.0%	+0.0%
Management & Administrative	235	+113	+102	+55	+46	+33	-0	+0.9%	+0.8%	+0.3%	+0.2%	+0.2%	-0.0%
Management (VIII & above)	43	+16	+17	+12	+12	+11	+1	+0.6%	+0.7%	+0.4%	+0.4%	+0.4%	+0.0%
Administrative/ Supervisory (V to VII)	91	+48	+44	+29	+21	+12	-1	+1.1%	+0.9%	+0.5%	+0.3%	+0.1%	-0.0%
Clerical (III & IV)	101	+48	+41	+14	+13	+10	+0	+0.9%	+0.7%	+0.2%	+0.1%	+0.1%	+0.0%
General Support	184	+24	+26	-30	-23	-11	-4	+0.2%	+0.2%	-0.1%	-0.1%	-0.1%	-0.0%
Support	153	+10	+14	-28	-25	-14	-3	+0.1%	+0.1%	-0.2%	-0.1%	-0.1%	-0.0%
Maintenance/ Technical	31	+14	+13	-3	+2	+3	-1	+0.8%	+0.7%	-0.1%	+0.1%	+0.1%	-0.0%
Patient & Client Care	1,557	+616	+568	+186	+107	+40	-9	+0.7%	+0.6%	+0.1%	+0.1%	+0.0%	-0.0%
Health Care Assistants	1,142	+465	+422	+170	+95	+29	-5	+0.7%	+0.6%	+0.2%	+0.1%	+0.0%	-0.0%
Care, other	400	+166	+162	+26	+19	+14	-3	+0.7%	+0.7%	+0.1%	+0.1%	+0.0%	-0.0%
Home Help	16	-16	-16	-10	-7	-3	-1	-0.5%	-0.5%	-0.4%	-0.3%	-0.2%	-0.1%

Source: Health Service Personnel Census

Older People

Jan 2021 (Dec 2015 figure: 1,128)	WTE Jan 2021	WTE change since Dec 15	WTE change since Dec 16	WTE change since Dec 17	WTE change since Dec 18	WTE change since Dec 19	WTE change since Dec 20	% change since Dec 15	% change since Dec 16	% change since Dec 17	% change since Dec 18	% change since Dec 19	% change since Dec 20
Overall	1,022	-107	-99	-42	-23	+26	+0	-9.4%	-8.9%	-4.0%	-2.2%	+2.6%	+0.0%
Medical & Dental	4	-5	-5	-4	-3	-2		-0.6%	-0.6%	-0.5%	-0.4%	-0.3%	+0.0%
SHO/ Interns	2	-1	-1	-1				-0.3%	-0.3%	-0.3%	+0.0%	+0.0%	+0.0%
Medical/ Dental, other	2	-4	-4	-3	-3	-2		-0.7%	-0.7%	-0.6%	-0.6%	-0.5%	+0.0%
Nursing & Midwifery	332	-23	-9	+9	+30	+33	+0	-0.1%	-0.0%	+0.0%	+0.1%	+0.1%	+0.0%
Nurse/ Midwife Manager	86	+9	+2	+11	+12	+9	+0	+0.1%	+0.0%	+0.1%	+0.2%	+0.1%	+0.0%
Nurse/ Midwife Specialist & AN/MP	3	-1	-0	-1	-1	+0	+0	-0.2%	-0.1%	-0.2%	-0.3%	+0.1%	+0.0%
Staff Nurse/ Staff Midwife	242	-32	-12	-3	+18	+23	-0	-0.1%	-0.0%	-0.0%	+0.1%	+0.1%	-0.0%
Public Health Nurse		-2	-0					-1.0%	-1.0%	-1.0%	-1.0%	-1.0%	-1.0%
Nursing/ Midwifery Student	2	+2	+2	+2	+2	+2	+0	-1.0%	-1.0%	-1.0%	-1.0%	-1.0%	+0.1%
Health & Social Care Professionals	32	-4	-7	-6	-7	+3	+3	-0.1%	-0.2%	-0.2%	-0.2%	+0.1%	+0.1%
Therapy Professions	15	-1	-1	-2	-2	+1	+2	-0.1%	-0.1%	-0.1%	-0.1%	+0.1%	+0.1%
Health Science/ Diagnostics		-1	-1					-1.0%	-1.0%	-1.0%	-1.0%	-1.0%	-1.0%
Social Workers	14	+0	-1	-0	-2	+3	+1	+0.0%	-0.1%	-0.0%	-0.1%	+0.3%	+0.1%
Pharmacy	2	-2	-2	-2	-2	-1		-0.5%	-0.5%	-0.5%	-0.5%	-0.2%	+0.0%
H&SC, Other	1	-1	-1	-1	-1			-0.5%	-0.5%	-0.5%	-0.5%	+0.0%	+0.0%
Management & Administrative	60	+6	+8	+10	+16	+9	+1	+0.1%	+0.1%	+0.2%	+0.4%	+0.2%	+0.0%
Management (VIII & above)	7	-1	-1	+2	+3	+2	+0	-0.1%	-0.1%	+0.5%	+0.9%	+0.5%	+0.0%
Administrative/ Supervisory (V to VII)	15	+3	+6	+5	+6	+4	+1	+0.2%	+0.6%	+0.5%	+0.6%	+0.3%	+0.1%
Clerical (III & IV)	37	+4	+2	+3	+7	+3	+0	+0.1%	+0.1%	+0.1%	+0.2%	+0.1%	+0.0%
General Support	120	-0	-1	-3	-2	+8	-1	-0.0%	-0.0%	-0.0%	-0.0%	+0.1%	-0.0%
Support	118	+1	+0	-2	-1	+8	-1	+0.0%	+0.0%	-0.0%	-0.0%	+0.1%	-0.0%
Maintenance/ Technical	2	-1	-1	-1	-1			-0.3%	-0.3%	-0.3%	-0.3%	+0.0%	+0.0%
Patient & Client Care	474	-79	-85	-48	-56	-26	-3	-0.1%	-0.2%	-0.1%	-0.1%	-0.1%	-0.0%
Health Care Assistants	358	-64	-59	-23	-53	-30	+0	-0.2%	-0.1%	-0.1%	-0.1%	-0.1%	+0.0%
Care, other	5	-8	-11	-10	-2	+0		-0.6%	-0.7%	-0.7%	-0.3%	+0.0%	+0.0%
Home Help	111	-7	-15	-15	-2	+4	-3	-0.1%	-0.1%	-0.1%	-0.0%	+0.0%	-0.0%

Source: Health Service Personnel Census