

CHO 7 Employment Report: July 2020

Employment by Staff Group

Jul 2020 (Dec 2019 figure: 6,515)	WTE Jun 2020	WTE Jul 2020	WTE change since Jun 20	% change since Jun 20	WTE change since Dec 19	WTE change since Jul 19
Overall	6,588	6,619	+30	+0.5%	+104	+110
Consultants	64	67	+3	+4.5%	+7	+12
Registrars	85	90	+5	+5.4%	-5	+1
SHO/ Interns	37	33	-4	-10.8%	-3	+4
Medical/ Dental, other	81	83	+1	+1.4%	+2	+7
Medical & Dental	268	272	+5	+1.7%	+1	+24
Nurse/ Midwife Manager	406	407	+1	+0.3%	+11	+6
Nurse/ Midwife Specialist & AN/MP	103	103	-1	-0.6%	+9	+12
Staff Nurse/ Staff Midwife	1,016	1,024	+8	+0.8%	+31	+10
Public Health Nurse	164	163	-1	-0.7%	-13	-0
<i>Pre-registration Nurse/ Midwife Intern</i>				-100.0%	-1	
<i>Pre-registration Nurse Intern (COVID-19)</i>	44	32	-12	-27.8%	+32	-12
<i>Post-registration Nurse/ Midwife Student</i>	19	10	-9	-47.4%	-11	-9
<i>Nursing/ Midwifery awaiting registration</i>	5	7	+1	+19.5%	-3	+1
Nursing/ Midwifery Student	68	48	-20	-29.5%	+16	+27
Nursing/ Midwifery other	9	10	+1	+16.1%	+0	+1
Nursing & Midwifery	1,766	1,755	-11	-0.6%	+55	+56
Therapy Professions	474	471	-3	-0.6%	+21	+14
Health Science/ Diagnostics	3	3	-0	-0.3%		+0
Social Care	364	373	+9	+2.4%	+2	+6
Social Workers	109	110	+1	+0.8%	+5	+8
Psychologists	82	86	+4	+4.5%	+5	+3
Pharmacy	41	42	+1	+1.7%	+2	+6
H&SC, Other	45	42	-3	-7.0%	-3	-0
Health & Social Care Professionals	1,119	1,127	+8	+0.7%	+33	+36
Management (VIII & above)	78	78	+0	+0.3%	+5	+8
Administrative/ Supervisory (V to VII)	199	198	-1	-0.3%	+16	+12
Clerical (III & IV)	362	369	+7	+2.0%	+18	+7
Management & Administrative	639	645	+7	+1.1%	+40	+28
Support	399	399	+0	+0.1%	-12	-25
Maintenance/ Technical	43	43	+0	+0.7%	+2	-1
General Support	442	442	+1	+0.1%	-10	-26
Health Care Assistants	1,622	1,644	+22	+1.4%	-10	-25
Care, other	601	599	-2	-0.3%	-11	+8
Home Help	133	134	+1	+0.5%	+7	+10
Patient & Client Care	2,356	2,377	+21	+0.9%	-15	-7

CHO 7 Employment Report: July 2020

Community Health & Wellbeing

Jul 2020 (figure:)	WTE Jun 2020	WTE Jul 2020	WTE change since Jun 20	% change since Jun 20	WTE change since	WTE change since
Total Community Health & Wellbeing	8	8	0	0	+8	+8
Management (VIII & above)	1	1	0	0	+1	+1
Administrative/ Supervisory (V to VII)	2	2	0	0	+2	+2
Clerical (III & IV)	1	1	0	0	+1	+1
Management & Administrative	4	4	0	0	+4	+4
Care, other	5	5	0	0	+5	+5
Patient & Client Care	5	5	0	0	+5	+5

Mental Health

Jul 2020 (Dec 2019 figure: 835)	WTE Jun 2020	WTE Jul 2020	WTE change since Jun 20	% change since Jun 20	WTE change since Dec 19	WTE change since Jul 19
Total Mental Health	866	851	-16	-1.8%	+16	+17
Consultants	50	51	+1	+3%	+4	+8
Registrars	40	44	+4	+9%	-3	+1
SHO/ Interns	20	16	-4	-19%	-5	+3
Medical & Dental	110	111	+1	+1.1%	-3	+12
Nurse/ Midwife Manager	120	117	-3	-2%	+1	+3
Nurse/ Midwife Specialist & AN/MP	46	45	-2	-4%	+5	+7
Staff Nurse/ Staff Midwife	200	198	-3	-1%	+3	-12
Pre-registration Nurse/ Midwife Intern				-100.0%	-1	
Pre-registration Nurse Intern (COVID-19)	29	17	-12	-42.4%	+17	-12
Nursing/ Midwifery awaiting registration	4	4	+0	+0.5%	-6	+0
Nursing/ Midwifery Student	33	21	-12	-37%	+9	+6
Nursing/ Midwifery other	7	8	+1	+22%	+0	+1
Nursing & Midwifery	406	388	-18	-4.4%	+18	+5
Therapy Professions	47	45	-2	-4%	-3	-2
Social Care	8	8	+0	+0%	-0	-0
Social Workers	37	38	+1	+3%	+4	+6
Psychologists	29	30	+2	+6%	-1	+1
Pharmacy	1	1	0	0		
H&SC, Other	18	18	-0	-1%	-0	+3
Health & Social Care Professionals	139	139	+1	+0.6%	-1	+7
Management (VIII & above)	3	3	0	0		
Administrative/ Supervisory (V to VII)	18	17	-1	-6%	+1	+4
Clerical (III & IV)	48	51	+3	+7%	+5	+1
Management & Administrative	69	71	+2	+3.2%	+5	+6
Support	17	16	-1	-8%	-2	-5
Maintenance/ Technical	2	2	0	0	+0	
General Support	19	18	-1	-7.2%	-2	-5
Health Care Assistants	35	34	-1	-2%	+1	-3
Care, other	89	89	-0	-0%	-3	-5
Patient & Client Care	124	123	-1	-0.6%	-2	-8

Primary Care

Jul 2020 (Dec 2019 figure: 1,702)	WTE Jun 2020	WTE Jul 2020	WTE change since Jun 20	% change since Jun 20	WTE change since Dec 19	WTE change since Jul 19
Total Primary Care	1,719	1,718	-2	-0.1%	+16	+5
Consultants	13	15	+2	+11%	+3	+4
Registrars	42	43	+1	+2%	-2	-0
SHO/ Interns	7	7	+0	+6%	+1	+1
Medical/ Dental, other	76	78	+1	+1%	+2	+8
Medical & Dental	139	143	+4	+2.8%	+4	+12
Nurse/ Midwife Manager	88	85	-3	-3%	+5	+3
Nurse/ Midwife Specialist & AN/MP	48	51	+2	+5%	+5	+7
Staff Nurse/ Staff Midwife	199	207	+9	+4%	+2	-11
Public Health Nurse	164	163	-1	-1%	-13	-0
<i>Post-registration Nurse/ Midwife Student</i>	19	10	-9	-47.4%	-11	-9
Nursing/ Midwifery Student	19	10	-9	-47%	-11	+10
Nursing/ Midwifery other	2	2	0	0		
Nursing & Midwifery	520	518	-2	-0.4%	-12	+10
Therapy Professions	273	271	-3	-1%	+4	-6
Health Science/ Diagnostics	0	0	-0	-4%		
Social Care	4	4	0	0	+1	+0
Social Workers	26	25	-1	-2%	-1	+1
Psychologists	24	25	+1	+6%	+4	+2
Pharmacy	32	32	+0	+1%	+0	+4
H&SC, Other	22	21	-1	-4%	-3	-3
Health & Social Care Professionals	381	379	-3	-0.7%	+5	-2
Management (VIII & above)	29	31	+1	+4%	-3	+1
Administrative/ Supervisory (V to VII)	82	82	-0	-0%	+6	+1
Clerical (III & IV)	181	184	+3	+1%	+6	-8
Management & Administrative	292	296	+4	+1.3%	+9	-7
Support	116	111	-4	-4%	-4	-10
Maintenance/ Technical	9	9	+0	+3%	+1	+0
General Support	125	121	-4	-3.1%	-4	-9
Health Care Assistants	135	134	-1	-1%	+13	-0
Care, other	127	127	-0	-0%	-1	+1
Patient & Client Care	262	261	-1	-0.4%	+12	+1

Social Care

Jul 2020 (Dec 2019 figure: 3,978)	WTE Jun 2020	WTE Jul 2020	WTE change since Jun 20	% change since Jun 20	WTE change since Dec 19	WTE change since Jul 19
Total Social Care	3,994	4,042	+48	+1.2%	+65	+81
Consultants	1	1	0	0		
Registrars	3	3	0	0		+1
SHO/ Interns	10	9	-0	-5%	+0	+0
Medical/ Dental, other	5	5	0	0		-1
Medical & Dental	18	18	-0	-2.7%	+0	-0
Nurse/ Midwife Manager	198	205	+7	+4%	+5	-0
Nurse/ Midwife Specialist & AN/MP	8	7	-1	-15%	-1	-2
Staff Nurse/ Staff Midwife	617	619	+2	+0%	+26	+33
Pre-registration Nurse/ Midwife Intern				-100.0%		
Pre-registration Nurse Intern (COVID-19)	15	15			+15	
Nursing/ Midwifery awaiting registration	2	3	+1	+70.0%	+3	+1
Nursing/ Midwifery Student	17	18	+1	+6%	+18	+11
Nursing/ Midwifery other	1	1	0	0		
Nursing & Midwifery	840	849	+9	+1.1%	+48	+41
Therapy Professions	154	156	+2	+1%	+20	+23
Health Science/ Diagnostics	3	3	0	0		
Social Care	353	362	+9	+2%	+2	+6
Social Workers	47	47	+0	+1%	+3	+1
Psychologists	29	30	+0	+2%	+2	+0
Pharmacy	8	9	+0	+6%	+2	+2
H&SC, Other	4	3	-2	-44%		
Health & Social Care Professionals	599	609	+10	+1.6%	+28	+32
Management (VIII & above)	45	44	-1	-2%	+7	+7
Administrative/ Supervisory (V to VII)	97	98	+1	+1%	+7	+5
Clerical (III & IV)	132	133	+1	+1%	+7	+14
Management & Administrative	274	274	+1	+0.2%	+21	+25
Support	266	272	+6	+2%	-5	-11
Maintenance/ Technical	32	32	0	0	+1	-1
General Support	298	303	+6	+1.9%	-4	-12
Health Care Assistants	1,452	1,476	+24	+2%	-24	-21
Care, other	380	379	-1	-0%	-12	+6
Home Help	133	134	+1	+0%	+7	+10
Patient & Client Care	1,965	1,989	+23	+1.2%	-29	-5

CHO 7 Employment Report: July 2020

Disabilities

Jul 2020 (Dec 2019 figure: 2,982)	WTE Jun 2020	WTE Jul 2020	WTE change since Jun 20	% change since Jun 20	WTE change since Dec 19	WTE change since Jul 19
Total Disabilities	2,973	3,009	+36	+1.2%	+27	+61
Consultants	1	1				
Registrars	3	3				+1
SHO/ Interns	8	7	-0	-6.2%	+0	+0
Medical/ Dental, other	1	1				
Medical & Dental	12	12	-0	-3.9%	+0	+1
Nurse/ Midwife Manager	122	125	+3	+2.3%	+3	-4
Nurse/ Midwife Specialist & AN/MP	5	3	-2	-36.1%	-2	-2
Staff Nurse/ Staff Midwife	373	379	+6	+1.6%	+4	+12
<i>Pre-registration Nurse/ Midwife Intern</i>				-100.0%		
<i>Pre-registration Nurse Intern (COVID-19)</i>	15	15			+15	
Nursing/ Midwifery Student	15	15			+15	+8
Nursing/ Midwifery other	1	1				
Nursing & Midwifery	515	522	+7	+1.4%	+20	+13
Therapy Professions	141	143	+2	+1.3%	+21	+26
Health Science/ Diagnostics	3	3				
Social Care	353	362	+9	+2.5%	+2	+6
Social Workers	33	33	+0	+0.6%	-0	+2
Psychologists	29	30	+0	+1.6%	+2	+0
Pharmacy	5	6	+0	+8.9%	+1	+2
H&SC, Other	3	2	-2	-56.6%		
Health & Social Care Professionals	568	578	+10	+1.7%	+25	+36
Management (VIII & above)	39	38	-1	-2.6%	+6	+5
Administrative/ Supervisory (V to VII)	83	84	+1	+1.8%	+5	+4
Clerical (III & IV)	97	99	+2	+1.6%	+7	+9
Management & Administrative	219	221	+2	+0.9%	+18	+18
Support	161	162	+2	+0.9%	-5	-6
Maintenance/ Technical	30	30			+1	-0
General Support	191	192	+2	+0.8%	-3	-6
Health Care Assistants	1,073	1,091	+17	+1.6%	-22	-5
Care, other	376	374	-2	-0.4%	-11	+6
Home Help	18	18	+0	+0.4%	-1	-2
Patient & Client Care	1,468	1,483	+16	+1.1%	-35	-1

Older People

Jul 2020 (Dec 2019 figure: 996)	WTE Jun 2020	WTE Jul 2020	WTE change since Jun 20	% change since Jun 20	WTE change since Dec 19	WTE change since Jul 19
Total Older People	1,022	1,034	+12	+1.2%	+38	+20
SHO/ Interns	2	2				
Medical/ Dental, other	4	4				-1
Medical & Dental	6	6				-1
Nurse/ Midwife Manager	75	80	+4	+5.6%	+2	+4
Nurse/ Midwife Specialist & AN/MP	4	4	+1	+14.7%	+1	+0
Staff Nurse/ Staff Midwife	244	241	-4	-1.6%	+22	+21
Nursing/ Midwifery Student	2	3	+1	+70.0%	+3	+3
Nursing & Midwifery	325	327	+2	+0.6%	+28	+28
Health & Social Care Professionals	31	31	-0	-0.2%	+3	-4
Management (VIII & above)	6	6	-0	-1.0%	+1	+2
Administrative/ Supervisory (V to VII)	14	14	-1	-6.6%	+2	+1
Clerical (III & IV)	34	34	-0	-1.0%	-0	+5
Management & Administrative	55	53	-1	-2.5%	+3	+8
Support	105	109	+4	+4.0%	-1	-5
Maintenance/ Technical	2	2				-1
General Support	107	111	+4	+3.9%	-1	-6
Health Care Assistants	379	386	+7	+1.7%	-2	-17
Care, other	4	5	+0	+5.8%	-0	+1
Home Help	115	115	+1	+0.5%	+8	+12
Patient & Client Care	498	505	+7	+1.5%	+5	-4

CHO 7 Employment by Administration (HSE / S38): July 2020

Jul 2020 (Dec 2019 figure: 6,515)	WTE Jun 2020	WTE Jul 2020	WTE change since Jun 20	% change since Jun 20	WTE change since Dec 19	WTE change since Jul 19
Overall	6,588	6,619	+30	+0.5%	+104	+110
HSE	3,240	3,244	+4	+0.1%	+92	+80
Section 38 Voluntary Agencies	3,348	3,375	+27	+0.8%	+12	+31

HSE

Jul 2020 (Dec 2019 figure: 3,151)	WTE Jun 2020	WTE Jul 2020	WTE change since Jun 20	% change since Jun 20	WTE change since Dec 19	WTE change since Jul 19
Overall	3,240	3,244	+4	+0.1%	+92	+80
Consultants	56	57	+1	+0.0%	+4	+8
Registrars	77	83	+6	+0.1%	-4	+1
SHO/ Interns	24	20	-4	-0.2%	-3	+3
Medical/ Dental, other	79	80	+1	+0.0%	+2	+7
Medical & Dental	236	241	+4	+1.8%	-2	+20
Nurse/ Midwife Manager	242	241	-1	-0.0%	+10	+15
Nurse/ Midwife Specialist & AN/MP	68	68	+1	+0.0%	+8	+10
Staff Nurse/ Staff Midwife	545	547	+2	+0.0%	+27	-5
Public Health Nurse	164	163	-1	-0.0%	-13	-0
<i>Pre-registration Nurse/ Midwife Intern</i>				-1.0%	-6	-14
<i>Pre-registration Nurse Intern (COVID-19)</i>	29	17	-12	-0.4%	+17	+17
<i>Post-registration Nurse/ Midwife Student</i>	19	10	-9	-0.5%	+3	+10
<i>Nursing/ Midwifery awaiting registration</i>	5	7	+1	+0.2%	+3	+6
Nursing/ Midwifery Student	53	33	-20	-0.4%	+1	+19
Nursing/ Midwifery other	7	8	+1	+0.2%	+0	+1
Nursing & Midwifery	1,079	1,060	-18	-1.7%	+33	+40
Therapy Professions	342	338	-4	-0.0%	+13	+5
Social Care	11	11	+0	+0.0%	+1	-0
Social Workers	71	73	+1	+0.0%	+5	+9
Psychologists	61	64	+4	+0.1%	+3	+1
Pharmacy	26	27	+1	+0.0%	+1	+4
H&SC, Other	42	40	-1	-0.0%	-3	-0
Health & Social Care Professionals	553	553	+0	+0.1%	+20	+18
Management (VIII & above)	45	46	+1	+0.0%	+6	+10
Administrative/ Supervisory (V to VII)	107	107	+0	+0.0%	+12	+11
Clerical (III & IV)	249	254	+5	+0.0%	+13	+2
Management & Administrative	402	408	+6	+1.6%	+31	+24
Support	164	167	+3	+0.0%	-4	-13
Maintenance/ Technical	5	5	+0	+0.1%	-0	-1
General Support	169	172	+3	+1.9%	-4	-14
Health Care Assistants	442	449	+7	+0.0%	+8	-19
Care, other	227	227	+0	+0.0%	-1	+1
Home Help	133	134	+1	+0.0%	+7	+10
Patient & Client Care	801	809	+8	+1.0%	+13	-8

Section 38 Voluntary Agencies

Jul 2020 (Dec 2019 figure: 3,363)	WTE Jun 2020	WTE Jul 2020	WTE change since Jun 20	% change since Jun 20	WTE change since Dec 19	WTE change since Jul 19
Overall	3,348	3,375	+27	+0.8%	+12	+31
Consultants	8	10	+2	+0.2%	+3	+3
Registrars	8	7	-1	-0.1%	-1	-0
SHO/ Interns	13	12	-0	-0.0%	+0	+1
Medical/ Dental, other	2	2		+0.0%	+0	+0
Medical & Dental	31	32	+0	+1.0%	+3	+4
Nurse/ Midwife Manager	163	166	+2	+0.0%	+1	-9
Nurse/ Midwife Specialist & AN/MP	36	34	-1	-0.0%	+1	+2
Staff Nurse/ Staff Midwife	471	477	+6	+0.0%	+4	+14
<i>Pre-registration Nurse/ Midwife Intern</i>				-1.0%		-7
<i>Pre-registration Nurse Intern (COVID-19)</i>	15	15		+0.0%	+15	+15
Nursing/ Midwifery Student	15	15		+0.0%	+15	+8
Nursing/ Midwifery other	3	3		+0.0%		
Nursing & Midwifery	687	695	+7	+1.1%	+22	+15
Therapy Professions	132	134	+1	+0.0%	+9	+9
Health Science/ Diagnostics	3	3	-0	-0.0%		+0
Social Care	353	362	+9	+0.0%	+2	+6
Social Workers	38	37	-0	-0.0%	+0	-1
Psychologists	21	21	-0	-0.0%	+2	+2
Pharmacy	15	15	-0	-0.0%	+0	+2
H&SC, Other	3	2	-2	-0.6%		
Health & Social Care Professionals	566	574	+8	+1.4%	+13	+18
Management (VIII & above)	33	32	-1	-0.0%	-1	-2
Administrative/ Supervisory (V to VII)	92	91	-1	-0.0%	+4	+1
Clerical (III & IV)	112	115	+2	+0.0%	+5	+5
Management & Administrative	237	237	+0	+0.2%	+9	+4
Support	235	232	-3	-0.0%	-8	-12
Maintenance/ Technical	38	38		+0.0%	+2	+1
General Support	273	270	-3	-1.0%	-5	-12
Health Care Assistants	1,180	1,195	+15	+0.0%	-18	-6
Care, other	374	372	-2	-0.0%	-10	+7
Patient & Client Care	1,554	1,568	+13	+0.9%	-28	+1

CHO 7 Employment by S38 Agency: July 2020

Cheeverstown House

Jul 2020 (Dec 2019 figure: 396)	WTE Jun 2020	WTE Jul 2020	WTE change since Jun 20	% change since Jun 20	WTE change since Dec 19	WTE change since Jul 19
Overall	393	395	+1	+0.3%	-2	-6
Consultants	0	0		+0.0%		
Medical/ Dental, other	1	1		+0.0%		
Medical & Dental	1	1				
Nurse/ Midwife Manager	28	30	+2	+0.1%	+4	+1
Nurse/ Midwife Specialist & AN/MP	2	2		+0.0%		
Staff Nurse/ Staff Midwife	103	104	+1	+0.0%	-3	-3
Nursing & Midwifery	132	135	+3	+2.3%	+0	-2
Therapy Professions	12	11	-1	-0.1%	-3	-2
Social Care	35	33	-2	-0.1%	-2	-3
Social Workers	5	5		+0.0%	-1	-1
Psychologists	5	5		+0.0%	+1	+1
Pharmacy	0	0		+0.0%	-0	-0
H&SC, Other	2	2		+0.0%		
Health & Social Care Professionals	59	56	-3	-5.1%	-4	-6
Management (VIII & above)	2	2		+0.0%		
Administrative/ Supervisory (V to VII)	15	15		+0.0%		+0
Clerical (III & IV)	12	12		+0.0%	+1	+1
Management & Administrative	29	29			+1	+1
Support	27	27		+0.0%		+2
Maintenance/ Technical	4	4		+0.0%		
General Support	30	30				+2
Health Care Assistants	131	132	+1	+0.0%	+2	-1
Care, other	12	12		+0.0%	-0	-1
Patient & Client Care	142	143	+1	+0.8%	+1	-2

Kare, Newbridge, Co Kildare

Jul 2020 (Dec 2019 figure: 360)	WTE Jun 2020	WTE Jul 2020	WTE change since Jun 20	% change since Jun 20	WTE change since Dec 19	WTE change since Jul 19
Overall	345	335	-10	-3.0%	-25	-7
Nurse/ Midwife Manager	10	8	-2	-0.2%	-4	-4
Staff Nurse/ Staff Midwife	22	22	+0	+0.0%	-0	+0
Nursing & Midwifery	32	30	-2	-5.7%	-4	-4
Therapy Professions	13	13		+0.0%	-2	-1
Social Care	58	59	+1	+0.0%	-2	-1
Social Workers	4	4		+0.0%		-0
Psychologists	5	5		+0.0%	+1	+2
Health & Social Care Professionals	80	81	+1	+1.5%	-3	-1
Management (VIII & above)	6	5	-1	-0.2%	-1	-1
Administrative/ Supervisory (V to VII)	13	13	+0	+0.0%	+1	+1
Clerical (III & IV)	14	14		+0.0%	+2	+3
Management & Administrative	32	31	-1	-2.9%	+2	+3
Support	1	1		+0.0%	-0	+0
General Support	1	1			-0	+0
Health Care Assistants	90	84	-6	-0.1%	-16	-15
Care, other	109	106	-3	-0.0%	-3	+10
Patient & Client Care	199	190	-9	-4.4%	-20	-6

Our Lady's Hospice & Care Services

Jul 2020 (Dec 2019 figure: 482)	WTE Jun 2020	WTE Jul 2020	WTE change since Jun 20	% change since Jun 20	WTE change since Dec 19	WTE change since Jul 19
Overall	496	490	-6	-1.2%	+8	+4
Consultants	8	9	+2	+0.2%	+4	+4
Registrars	5	4	-1	-0.2%	-1	-1
SHO/ Interns	5	5	+0	+0.1%	+0	+1
Medical/ Dental, other	1	1		+0.0%	+0	+0
Medical & Dental	19	20	+1	+4.3%	+3	+3
Nurse/ Midwife Manager	43	43	-0	-0.0%	-2	-3
Nurse/ Midwife Specialist & AN/MP	31	32	+0	+0.0%	+3	+4
Staff Nurse/ Staff Midwife	98	99	+0	+0.0%	-0	+3
Nursing/ Midwifery other	2	2		+0.0%		
Nursing & Midwifery	175	175	+0	+0.2%	+1	+4
Therapy Professions	39	39	-0	-0.0%	+2	+1
Health Science/ Diagnostics	0	0	-0	-0.0%		
Social Workers	11	11	-0	-0.0%	+0	+0
Psychologists	1	1	-0	-0.0%		-0
Pharmacy	10	9	-1	-0.1%	-1	-0
Health & Social Care Professionals	61	60	-1	-1.8%	+1	+0
Management (VIII & above)	4	4	+0	+0.0%		+0
Administrative/ Supervisory (V to VII)	20	19	-1	-0.1%	-2	-2
Clerical (III & IV)	28	29	+1	+0.1%	+4	+6
Management & Administrative	51	52	+0	+1.0%	+2	+4
Support	74	70	-4	-0.1%	-3	-6
Maintenance/ Technical	8	8		+0.0%	+1	+1
General Support	82	78	-4	-5.1%	-2	-5
Health Care Assistants	107	105	-2	-0.0%	+3	-2
Care, other	1	1		+0.0%		
Patient & Client Care	108	105	-2	-2.2%	+3	-2

Peamount Hospital (Newcastle)

Jul 2020 (Dec 2019 figure: 486)	WTE Jun 2020	WTE Jul 2020	WTE change since Jun 20	% change since Jun 20	WTE change since Dec 19	WTE change since Jul 19
Overall	510	526	+16	+3.1%	+39	+36
Registrars	2	2		+0.0%		+1
SHO/ Interns	8	7	-0	-0.1%	+0	+0
Medical & Dental	10	9	-0	-4.9%	+0	+1
Nurse/ Midwife Manager	27	30	+4	+0.1%	+4	+4
Nurse/ Midwife Specialist & AN/MP	2		-2	-1.0%	-2	-2
Staff Nurse/ Staff Midwife	87	90	+4	+0.0%	+8	+6
Nursing & Midwifery	115	120	+6	+4.9%	+10	+8
Therapy Professions	39	39	+0	+0.0%	+10	+12
Health Science/ Diagnostics	3	3		+0.0%		
Social Care	5	5		+0.0%	+3	+2
Social Workers	6	6		+0.0%	+1	+1
Pharmacy	5	5	+0	+0.1%	+1	+2
Health & Social Care Professionals	58	59	+1	+0.9%	+15	+17
Management (VIII & above)	4	4		+0.0%		
Administrative/ Supervisory (V to VII)	18	18	+0	+0.0%	+4	+2
Clerical (III & IV)	18	18	+0	+0.0%	-2	-2
Management & Administrative	39	40	+0	+1.0%	+2	-0
Support	46	47	+1	+0.0%	+0	-1
Maintenance/ Technical	9	9		+0.0%	+2	+1
General Support	55	56	+1	+2.3%	+2	-1
Health Care Assistants	229	238	+9	+0.0%	+10	+11
Care, other	3	3		+0.0%	-0	+0
Patient & Client Care	233	241	+9	+3.7%	+10	+11

Stewart's Hospital, (Palmerstown)

Jul 2020 (Dec 2019 figure: 852)	WTE Jun 2020	WTE Jul 2020	WTE change since Jun 20	% change since Jun 20	WTE change since Dec 19	WTE change since Jul 19
Overall	866	863	-4	-0.4%	+11	-14
Consultants	0	0		+0.0%		
Registrars				-1.0%		
Medical & Dental	0	0				
Nurse/ Midwife Manager	33	32	-1	-0.0%	-4	-6
Staff Nurse/ Staff Midwife	74	74		+0.0%	+1	+0
Pre-registration Nurse/ Midwife Intern				-1.0%		-7
Pre-registration Nurse Intern (COVID-19)	15	15		+0.0%	+15	+15
Nursing/ Midwifery Student	15	15		+0.0%	+15	+8
Nursing/ Midwifery other	1	1		+0.0%		
Nursing & Midwifery	122	121	-1	-0.8%	+12	+2
Therapy Professions	15	14	-1	-0.0%	-2	-2
Social Care	13	13		+0.0%	+3	+2
Social Workers	7	6	-1	-0.1%	+1	+1
Psychologists	4	4		+0.0%	-1	-1
Health & Social Care Professionals	38	37	-1	-2.6%	+2	+0
Management (VIII & above)	11	11		+0.0%		-1
Administrative/ Supervisory (V to VII)	17	17		+0.0%	+3	-1
Clerical (III & IV)	23	22	-1	-0.0%	-1	-3
Management & Administrative	51	50	-1	-1.1%	+2	-5
Support	57	57		+0.0%	+0	-2
Maintenance/ Technical	4	4		+0.0%	-1	-2
General Support	61	61			-1	-4
Health Care Assistants	481	479	-2	-0.0%	-2	-2
Care, other	113	114	+1	+0.0%	-2	-6
Patient & Client Care	594	593	-1	-0.2%	-4	-7

St. John of God Liffey Services

Jul 2020 (Dec 2019 figure: 787)	WTE Jun 2020	WTE Jul 2020	WTE change since Jun 20	% change since Jun 20	WTE change since Dec 19	WTE change since Jul 19
Overall	738	768	+29	+4.0%	-20	+18
Registrars	1	1		+0.0%		
Medical & Dental	1	1				
Nurse/ Midwife Manager	23	23	-0	-0.0%	+3	-1
Nurse/ Midwife Specialist & AN/MP	1	1		+0.0%		
Staff Nurse/ Staff Midwife	87	89	+2	+0.0%	-2	+9
Nursing & Midwifery	111	112	+1	+1.2%	+2	+7
Therapy Professions	14	17	+3	+0.2%	+3	+1
Social Care	242	252	+10	+0.0%	-1	+6
Social Workers	6	6	+0	+0.1%	-1	-2
Psychologists	7	7	-0	-0.0%	+1	+1
H&SC, Other	2		-2	-1.0%		
Health & Social Care Professionals	270	282	+11	+4.1%	+2	+7
Management (VIII & above)	6	6		+0.0%	-0	-0
Administrative/ Supervisory (V to VII)	10	10		+0.0%	-1	+1
Clerical (III & IV)	18	19	+1	+0.1%	+1	+1
Management & Administrative	34	35	+1	+3.2%	-0	+1
Support	29	30	+0	+0.0%	-5	-5
Maintenance/ Technical	13	13		+0.0%	+1	+1
General Support	43	43	+0	+0.6%	-4	-4
Health Care Assistants	142	158	+16	+0.1%	-14	+3
Care, other	137	137		+0.0%	-5	+4
Patient & Client Care	279	295	+16	+5.6%	-19	+7

CHO 7 Employment by Grade Group & Staff Category: July 2020

Jul 2020 (Dec 2019 figure: 6,515)	WTE Jun 2020	WTE Jul 2020	WTE change since Jun 20	% change since Jun 20	WTE change since Dec 19	WTE change since Jul 19
Overall	6,588	6,619	+30	+0.5%	+104	+110
Consultant Medicine	9	10	+2	+17.7%	+4	+4
Consultant Paediatrics	0	0				
Consultant Psychiatry	54	56	+1	+2.5%	+4	+8
Consultant Surgery	1	1				
Consultants	64	67	+3	+4.5%	+7	+12
Registrar	67	71	+3	+5.0%	-1	+2
Senior Registrar	15	17	+2	+10.8%	-2	+1
Specialist Registrar	3	3	-0	-13.0%	-1	-1
Registrars	85	90	+5	+5.4%	-5	+1
Interns		0	+0	-100.0%	-2	-2
Senior House Officer	37	32	-4	-11.7%	-1	+5
SHO/ Interns	37	33	-4	-10.8%	-3	+4
Dentists	34	35	+0	+0.8%	+1	-0
Other Medical	47	48	+1	+1.8%	+1	+7
Medical/ Dental, other	81	83	+1	+1.4%	+2	+7
Medical & Dental	268	272	+5	+1.7%	+8	+24
Clinical Nurse/ Midwife Manager	330	331	+1	+0.3%	+3	+4
Director Nursing/Midwifery, Assistant	57	58	+0	+0.5%	+6	+2
Director of Nursing/Midwifery	19	19	-0	-0.5%	+3	+0
Nurse/ Midwife Manager	406	407	+1	+0.3%	+11	+6
Advanced Nurse/ Midwife Practitioner	8	10	+2	+29.3%	+6	+6
Clinical Nurse/ Midwife Specialist	95	93	-3	-3.0%	+3	+6
Nurse/ Midwife Specialist & AN/MP	103	103	-1	-0.6%	+9	+12
Staff Nurse [Intellectual Disability]	188	181	-6	-3.4%	-13	-28
Staff Nurse [Psychiatric]	192	189	-3	-1.4%	-2	-17
Staff Nurses [General/ Children's]	637	654	+17	+2.7%	+46	+54
Staff Nurse/ Staff Midwife	1,016	1,024	+8	+0.8%	+31	+10
Public Health Nurse	164	163	-1	-0.7%	-13	-0
Pre-registration Nurse/ Midwife Intern				-100.0%	-1	-21
Pre-registration Nurse Intern (COVID-19)	44	32	-12	-27.8%	+32	+32
Post-registration Nurse/ Midwife Student	19	10	-9	-47.4%	-11	+10
Nursing/ Midwifery awaiting registration	5	7	+1	+19.5%	-3	+6
Nursing/ Midwifery Student	68	48	-20	-29.5%	+16	+27
Nursing Education/Clinical	9	10	+1	+16.1%	+0	+1
Nursing/ Midwifery other	9	10	+1	+16.1%	+0	+1
Nursing & Midwifery	1,766	1,755	-11	-0.6%	+54	+56
Dietitians	25	27	+1	+5.5%	+1	+1
Occupational Therapists	195	193	-2	-1.1%	+9	+12
Physiotherapists	124	125	+2	+1.5%	+11	+7
Podiatrists & Chiropodists	2	2			+1	+1
Speech & Language Therapists	129	125	-4	-3.0%	-1	-6
Therapy Professions	474	471	-3	-0.6%	+21	+14
Clinical Measurement	1	2	+1	+100.0%	+1	+1
Phlebotomists	1	0	-1	-82.1%	-1	-1
Radiographers	1	1				
Health Science/ Diagnostics	3	3	-0	-0.3%		+0
Social Care	364	373	+9	+2.4%	+2	+6

Jul 2020 (Dec 2019 figure: 6,515)	WTE Jun 2020	WTE Jul 2020	WTE change since Jun 20	% change since Jun 20	WTE change since Dec 19	WTE change since Jul 19
Overall	6,588	6,619	+30	+0.5%	+104	+110
Social Workers	109	110	+1	+0.8%	+5	+8
Psychologists	82	86	+4	+4.5%	+5	+3
Pharmacy	41	42	+1	+1.7%	+2	+6
Counsellor Therapists	37	36	-1	-2.1%	-1	+1
Dental Hygienists	5	5	-0	-4.1%	-0	+0
Other Health & Social Care	1	0	-0	-34.5%	-2	-2
Play Therapists/ Specialists	3	1	-2	-66.2%		
H&SC, Other	45	42	-3	-7.0%	-3	-0
Health & Social Care Professionals	1,119	1,127	+8	+0.7%	+31	+36
Executive Management	15	15	-0	-0.3%	+2	+2
Senior Management (VIII & GM)	63	63	+0	+0.4%	+3	+7
Management (VIII & above)	78	78	+0	+0.3%	+5	+8
Middle Management (V-VII)	198	197	-1	-0.3%	+16	+12
Other Administrative	1	1			-0	-0
Administrative/ Supervisory (V to VII)	199	198	-1	-0.3%	+16	+12
Clerical (III & IV)	362	369	+7	+2.0%	+18	+7
Management & Administrative	639	645	+7	+1.1%	+28	+28
Catering	57	57	-1	-1.3%	-2	-2
Household Services	262	264	+2	+0.8%	-5	-18
Other Labs & Associated	1	1				
Other Support	14	14	-0	-0.2%		+0
Portering	64	63	-1	-1.6%	-4	-5
Support	399	399	+0	+0.1%	-12	-25
Maintenance	40	40	+0	+0.8%	+3	-0
Technical Services	3	3			-1	-0
Maintenance/ Technical	43	43	+0	+0.7%	+2	-1
General Support	442	442	+1	+0.1%	-44	-26
HCA, Nurse's Aide, etc.	1,601	1,619	+19	+1.2%	-23	-30
Health & Social Care Assistants	21	25	+4	+17.3%	+13	+6
Health Care Assistants	1,622	1,644	+22	+1.4%	-10	-25
Community Welfare Officers	1	1				+0
Other Care Grades	600	598	-2	-0.3%	-11	+8
Care, other	601	599	-2	-0.3%	-11	+8
Home Help	133	134	+1	+0.5%	+7	+10
Patient & Client Care	2,356	2,377	+21	+0.9%	-15	-7

CHO 7 HSE Employment by Grade Group & Staff Category: July 2020

Jul 2020 (Dec 2019 figure: 3,151)	WTE Jun 2020	WTE Jul 2020	WTE change since Jun 20	% change since Jun 20	WTE change since Dec 19	WTE change since Jul 19
Overall	3,240	3,244	+4	+0.1%	+92	+80
Consultant Medicine	1	1				
Consultant Psychiatry	54	55	+1	+2.5%	+4	+8
Consultant Surgery	1	1				
Consultants	56	57	+1	+2.4%	+4	+8
Registrar	61	66	+5	+8.2%	-0	+1
Senior Registrar	15	17	+2	+10.8%	-2	+1
Specialist Registrar	1		-1	-100.0%	-1	-1
Registrars	77	83	+6	+7.3%	-4	+1
SHO/ Interns	24	20	-4	-15.6%	-3	+3
Dentists	34	35	+0	+0.8%	+1	-0
Other Medical	45	46	+1	+1.9%	+1	+7
Medical/ Dental, other	79	80	+1	+1.4%	+2	+7
Medical & Dental	236	241	+4	+1.8%	+6	+20
Clinical Nurse/ Midwife Manager	179	177	-1	-0.8%	+1	+14
Director Nursing/Midwifery, Assistant	49	49	+0	+0.8%	+5	-0
Director of Nursing/Midwifery	15	15	-0	-0.6%	+4	+1
Nurse/ Midwife Manager	242	241	-1	-0.5%	+10	+15
Advanced Nurse/ Midwife Practitioner	5	7	+2	+43.7%	+5	+5
Clinical Nurse/ Midwife Specialist	62	61	-2	-2.4%	+3	+6
Nurse/ Midwife Specialist & AN/MP	68	68	+1	+1.1%	+8	+10
Staff Nurse [Intellectual Disability]	1	1			+1	+1
Staff Nurse [Psychiatric]	192	189	-3	-1.4%	-2	-17
Staff Nurses [General/ Children's]	353	357	+5	+1.3%	+29	+11
Staff Nurse/ Staff Midwife	545	547	+2	+0.3%	+27	-5
Public Health Nurse	164	163	-1	-0.7%	-13	-0
Pre-registration Nurse/ Midwife Intern				-100.0%	-1	-14
Pre-registration Nurse Intern (COVID-19)	29	17	-12	-42.4%	+17	+17
Post-registration Nurse/ Midwife Student	19	10	-9	-47.4%	-11	+10
Nursing/ Midwifery awaiting registration	5	7	+1	+19.5%	-3	+6
Nursing/ Midwifery Student	53	33	-20	-37.8%	+1	+19
Nursing Education/Clinical	7	8	+1	+22.3%	+0	+1
Nursing/ Midwifery other	7	8	+1	+22.3%	+0	+1
Nursing & Midwifery	1,079	1,060	-18	-1.7%	+40	+40
Dietitians	16	18	+1	+6.8%	+1	-1
Occupational Therapists	147	144	-2	-1.6%	+6	+8
Physiotherapists	77	77	-0	-0.0%	+7	+3
Podiatrists & Chiropodists	2	2			+1	+1
Speech & Language Therapists	100	97	-3	-2.9%	-2	-6
Therapy Professions	342	338	-4	-1.2%	+13	+5
Social Care	11	11	+0	+0.1%	+1	-0
Social Workers	71	73	+1	+1.6%	+5	+9
Psychologists	61	64	+4	+6.2%	+3	+1
Pharmacy	26	27	+1	+3.0%	+1	+4
Counsellor Therapists	35	34	-1	-2.2%	-1	+1
Dental Hygienists	5	5	-0	-4.1%	-0	+0
Other Health & Social Care	1	0	-0	-34.5%	-2	-2
Play Therapists/ Specialists	1	1				
H&SC, Other	42	40	-1	-2.8%	-3	-0
Health & Social Care Professionals	553	553	+0	+0.1%	+5	+18

Jul 2020 (Dec 2019 figure: 3,151)	WTE Jun 2020	WTE Jul 2020	WTE change since Jun 20	% change since Jun 20	WTE change since Dec 19	WTE change since Jul 19
Overall	3,240	3,244	+4	+0.1%	+92	+80
Executive Management	8	8	-0	-0.5%	+1	+1
Senior Management (VIII & GM)	37	38	+1	+3.3%	+5	+10
Management (VIII & above)	45	46	+1	+2.6%	+6	+10
Administrative/ Supervisory (V to VII)	107	107	+0	+0.3%	+12	+11
Clerical (III & IV)	249	254	+5	+1.9%	+13	+2
Management & Administrative	402	408	+6	+1.6%	+16	+24
Catering	27	27	-0	-1.0%	+0	-1
Household Services	86	89	+3	+4.0%	-1	-8
Other Support	5	5	-0	-0.6%		-1
Portering	46	46	-0	-0.7%	-3	-4
Support	164	167	+3	+1.7%	-4	-13
Maintenance/ Technical	5	5	+0	+6.0%	-0	-1
General Support	169	172	+3	+1.9%	-23	-14
HCA, Nurse's Aide, etc.	426	432	+6	+1.4%	-1	-21
Health & Social Care Assistants	15	17	+1	+9.7%	+9	+2
Health Care Assistants	442	449	+7	+1.7%	+8	-19
Care, other	227	227	+0	+0.0%	-1	+1
Home Help	133	134	+1	+0.5%	+7	+10
Patient & Client Care	801	809	+8	+1.0%	-52	-8

Employment by WTE, Headcount, Gender, Full-Time /Part-Time etc.: Jul 2020

CHO 7	WTE	Headcount	WTE: no.	% Male	% female	Male WTE: no.	Female WTE: no.	% Total Perm	% Male Perm	% Female Perm	% Total Full Time	% Total Part Time	% Male FT	% Female FT
Overall	6,619	7,862	1.19	19.7%	80.3%	1.11	1.21	86.6%	83.5%	87.4%	69.1%	30.9%	83.4%	65.6%
Consultant Medicine	10	11	1.08	27.3%	72.7%	1.14	1.07	63.6%	63.6%	62.5%	63.6%	36.4%	33.3%	75.0%
Consultant Paediatrics	0	1	2.94		100.0%		2.94	100.0%	100.0%	100.0%	0.0%	100.0%		0.0%
Consultant Psychiatry	56	61	1.10	36.1%	63.9%	1.06	1.12	59.0%	59.0%	51.3%	85.2%	14.8%	95.5%	79.5%
Consultant Surgery	1	1	1.25		100.0%		1.25	0.0%	0.0%	0.0%	0.0%	100.0%		0.0%
Consultants	67	74	1.11	33.8%	66.2%	1.07	1.12	59.5%	72.0%	53.1%	79.7%	20.3%	88.0%	75.5%
Registrar	71	95	1.34	32.6%	67.4%	1.46	1.29	1.1%	1.1%	0.0%	100.0%	0.0%	100.0%	100.0%
Senior Registrar	17	28	1.69	39.3%	60.7%	2.37	1.43	0.0%	0.0%	0.0%	92.9%	7.1%	100.0%	88.2%
Specialist Registrar	3	3	1.15		100.0%		1.15	0.0%	0.0%	0.0%	100.0%	0.0%		100.0%
Registrars	90	126	1.40	33.3%	66.7%	1.62	1.31	0.8%	2.4%	0.0%	98.4%	1.6%	100.0%	97.6%
SHO/ Interns	33	50	1.52	34.0%	66.0%	1.38	1.61	0.0%	0.0%	0.0%	100.0%	0.0%	100.0%	100.0%
Dentists	35	41	1.18	14.6%	85.4%	1.11	1.20	100.0%	100.0%	100.0%	61.0%	39.0%	83.3%	57.1%
Other Medical	48	66	1.38	40.9%	59.1%	1.32	1.42	36.4%	36.4%	51.3%	22.7%	77.3%	18.5%	25.6%
Medical/ Dental, other	83	107	1.30	30.8%	69.2%	1.28	1.31	60.7%	30.3%	74.3%	37.4%	62.6%	30.3%	40.5%
Medical & Dental	272	357	1.31	32.8%	67.2%	1.34	1.30	30.8%	24.8%	33.8%	76.5%	23.5%	77.8%	75.8%
Clinical Nurse/ Midwife Manager	331	356	1.08	14.6%	85.4%	1.01	1.09	97.5%	97.5%	98.0%	85.1%	14.9%	96.2%	83.2%
Director Nursing/Midwifery, Assistant	58	61	1.06	16.4%	83.6%	1.00	1.07	93.4%	93.4%	92.2%	86.9%	13.1%	100.0%	84.3%
Director of Nursing/Midwifery	19	19	1.02	5.3%	94.7%	1.00	1.02	100.0%	100.0%	100.0%	89.5%	10.5%	100.0%	88.9%
Nurse/ Midwife Manager	407	436	1.07	14.4%	85.6%	1.01	1.08	97.0%	95.2%	97.3%	85.6%	14.4%	96.8%	83.6%
Advanced Nurse/ Midwife Practitioner	10	11	1.10	9.1%	90.9%	1.04	1.10	100.0%	100.0%	100.0%	81.8%	18.2%	100.0%	80.0%
Clinical Nurse/ Midwife Specialist	93	109	1.18	10.1%	89.9%	1.02	1.20	99.1%	99.1%	99.0%	71.6%	28.4%	100.0%	68.4%
Nurse/ Midwife Specialist & AN/MP	103	120	1.17	10.0%	90.0%	1.02	1.19	99.2%	100.0%	99.1%	72.5%	27.5%	100.0%	69.4%
Staff Nurse [Intellectual Disability]	181	228	1.26	7.9%	92.1%	1.04	1.28	96.5%	96.5%	96.2%	58.8%	41.2%	94.4%	55.7%
Staff Nurse [Psychiatric]	189	210	1.11	23.8%	76.2%	1.05	1.13	95.7%	95.7%	96.3%	83.8%	16.2%	92.0%	81.3%
Staff Nurses [General/ Children's]	654	758	1.16	9.2%	90.8%	1.04	1.17	92.9%	92.9%	92.7%	71.2%	28.8%	91.4%	69.2%
Staff Nurse/ Staff Midwife	1,024	1,196	1.17	11.5%	88.5%	1.05	1.19	94.1%	94.9%	94.0%	71.1%	28.9%	92.0%	68.3%
Public Health Nurse	163	201	1.23	0.5%	99.5%	1.00	1.24	94.5%	100.0%	94.5%	62.2%	37.8%	100.0%	62.0%
Pre-registration Nurse Intern (COVID-19)	32	44	1.40	15.9%	84.1%	1.56	1.37	2.3%	2.3%	2.7%	100.0%	0.0%	100.0%	100.0%
Post-registration Nurse/ Midwife Student	10	10	1.00		100.0%		1.00	0.0%	0.0%	0.0%	100.0%	0.0%		100.0%

Nursing/ Midwifery awaiting registration	7	7	1.07	14.3%	85.7%	1.03	1.08	71.4%	71.4%	83.3%	85.7%	14.3%	100.0%	83.3%
Nursing/ Midwifery Student	48	61	1.27	13.1%	86.9%	1.47	1.24	9.8%	0.0%	11.3%	98.4%	1.6%	100.0%	98.1%
Nursing Education/Clinical	10	11	1.05		100.0%		1.05	100.0%	100.0%	100.0%	72.7%	27.3%		72.7%
Nursing/ Midwifery other	10	11	1.05		100.0%		1.05	100.0%		100.0%	72.7%	27.3%		72.7%
Nursing & Midwifery	1,755	2,025	1.15	11.0%	89.0%	1.04	1.17	92.5%	91.9%	92.6%	74.2%	25.8%	94.1%	71.8%
Dietitians	27	32	1.20	6.3%	93.8%	1.00	1.22	87.5%	87.5%	86.7%	68.8%	31.3%	100.0%	66.7%
Occupational Therapists	193	218	1.13	9.2%	90.8%	1.07	1.14	85.8%	85.8%	85.4%	79.4%	20.6%	90.0%	78.3%
Physiotherapists	125	143	1.14	18.9%	81.1%	1.04	1.17	90.2%	90.2%	88.8%	77.6%	22.4%	96.3%	73.3%
Podiatrists & Chiropodists	2	2	1.00		100.0%		1.00	100.0%	100.0%	100.0%	100.0%	0.0%		100.0%
Speech & Language Therapists	125	137	1.10		100.0%		1.10	86.9%	86.9%	86.9%	86.1%	13.9%		86.1%
Therapy Professions	471	532	1.13	9.2%	90.8%	1.05	1.14	87.4%	93.9%	86.7%	80.1%	19.9%	93.9%	78.7%
Clinical Measurement	2	2	1.00	100.0%		1.00		50.0%	50.0%		100.0%	0.0%	100.0%	
Phlebotomists	0	1	4.55		100.0%		4.55	100.0%	100.0%	100.0%	0.0%	100.0%		0.0%
Radiographers	1	1	1.00		100.0%		1.00	100.0%	100.0%	100.0%	100.0%	0.0%		100.0%
Health Science/ Diagnostics	3	4	1.24	50.0%	50.0%	1.00	1.64	75.0%	50.0%	100.0%	75.0%	25.0%	100.0%	50.0%
Social Care	373	420	1.13	25.2%	74.8%	1.12	1.13	96.7%	98.1%	96.2%	74.5%	25.5%	82.1%	72.0%
Social Workers	110	124	1.13	16.9%	83.1%	1.05	1.15	95.2%	85.7%	97.1%	82.3%	17.7%	90.5%	80.6%
Psychologists	86	98	1.15	17.3%	82.7%	1.02	1.17	99.0%	100.0%	98.8%	85.7%	14.3%	94.1%	84.0%
Pharmacy	42	49	1.18	24.5%	75.5%	1.15	1.19	59.2%	41.7%	64.9%	49.0%	51.0%	41.7%	51.4%
Counsellor Therapists	36	41	1.14	29.3%	70.7%	1.07	1.18	90.2%	90.2%	89.7%	68.3%	31.7%	75.0%	65.5%
Dental Hygienists	5	8	1.72		100.0%		1.72	100.0%	100.0%	100.0%	37.5%	62.5%		37.5%
Other Health & Social Care	0	1	2.63		100.0%		2.63	100.0%	100.0%	100.0%	0.0%	100.0%		0.0%
Play Therapists/ Specialists	1	1	1.00	100.0%		1.00		100.0%	100.0%		100.0%	0.0%	100.0%	
H&SC, Other	42	51	1.22	25.5%	74.5%	1.06	1.28	92.2%	92.3%	92.1%	62.7%	37.3%	76.9%	57.9%
Health & Social Care	1,127	1,278	1.13	17.2%	82.8%	1.08	1.15	91.2%	92.3%	90.9%	77.0%	23.0%	84.1%	75.5%
Executive Management	15	15	1.01	33.3%	66.7%	1.00	1.01	86.7%	86.7%	90.0%	100.0%	0.0%	100.0%	100.0%
Senior Management (VIII & GM)	63	64	1.01	25.0%	75.0%	1.00	1.02	98.4%	98.4%	97.9%	95.3%	4.7%	100.0%	93.8%
Management (VIII & above)	78	79	1.01	26.6%	73.4%	1.00	1.01	96.2%	95.2%	96.6%	96.2%	3.8%	100.0%	94.8%
Administrative/ Supervisory (V to VII)	198	214	1.08	23.8%	76.2%	1.03	1.10	88.8%	76.5%	92.6%	86.4%	13.6%	98.0%	82.8%
Clerical (III & IV)	369	439	1.19	10.9%	89.1%	1.09	1.20	85.0%	81.3%	85.4%	70.4%	29.6%	85.4%	68.5%
Management & Administrative	645	732	1.13	16.4%	83.6%	1.04	1.15	87.3%	81.7%	88.4%	77.9%	22.1%	93.3%	74.8%
Catering	57	62	1.09	27.4%	72.6%	1.02	1.12	98.4%	98.4%	100.0%	74.2%	25.8%	100.0%	64.4%
Household Services	264	351	1.33	13.7%	86.3%	1.18	1.36	87.7%	87.7%	88.1%	38.5%	61.5%	66.7%	34.0%
Other Labs & Associated	1	1	1.00		100.0%		1.00	100.0%	100.0%	100.0%	100.0%	0.0%		100.0%
Other Support	14	18	1.28	72.2%	27.8%	1.18	1.61	77.8%	77.8%	100.0%	61.1%	38.9%	69.2%	40.0%

Portering	63	67	1.06	92.5%	7.5%	1.04	1.31	85.1%	85.1%	80.0%	85.1%	14.9%	90.3%	20.0%
Support	399	499	1.25	28.1%	71.9%	1.09	1.33	88.4%	85.0%	89.7%	50.1%	49.9%	81.4%	37.9%
Maintenance/ Technical	43	48	1.11	87.5%	12.5%	1.08	1.40	89.6%	88.1%	100.0%	81.3%	18.8%	85.7%	50.0%
General Support	442	547	1.24	33.3%	66.7%	1.09	1.33	88.5%	85.7%	89.9%	52.8%	47.2%	82.4%	38.1%
HCA, Nurse's Aide, etc.	1,619	1,914	1.18	24.3%	75.7%	1.10	1.21	85.7%	85.7%	85.4%	64.9%	35.1%	77.9%	60.7%
Health & Social Care Assistants	25	29	1.15	17.2%	82.8%	1.00	1.19	34.5%	34.5%	33.3%	79.3%	20.7%	100.0%	75.0%
Health Care Assistants	1,644	1,943	1.18	24.2%	75.8%	1.10	1.21	85.0%	86.2%	84.6%	65.1%	34.9%	78.1%	60.9%
Care, other	599	703	1.17	28.2%	71.8%	1.08	1.21	93.7%	94.9%	93.3%	72.1%	27.9%	88.4%	65.7%
Home Help	134	277	2.07	6.9%	93.1%	4.50	1.99	82.7%	52.6%	84.9%	15.9%	84.1%	10.5%	16.3%
Patient & Client Care	2,377	2,923	1.23	23.5%	76.5%	1.12	1.27	86.9%	87.8%	86.6%	62.1%	37.9%	79.2%	56.9%

Employment by WTE, Headcount, Gender, Full-Time /Part-Time etc.: Jul 2020

CHO 7	WTE	Headcount	WTE: no.	% Male	% female	Male WTE: no.	Female WTE: no.	% Total Perm	% Male Perm	% Female Perm	% Total Full Time	% Total Part Time	% Male FT	% Female FT
Overall	6,619	7,862	1.19	19.7%	80.3%	1.11	1.21	86.6%	83.5%	87.4%	69.1%	30.9%	83.4%	65.6%
Community Health & Wellbeing	8	9	1.11	11.1%	88.9%	1.00	1.12	100.0%	100.0%	100.0%	77.8%	22.2%	100.0%	100.0%
Mental Health	851	972	1.14	23.4%	76.6%	1.10	1.16	80.7%	80.7%	81.5%	87.0%	13.0%	95.6%	95.6%
Primary Care	1,718	2,026	1.18	15.8%	84.2%	1.09	1.20	86.4%	86.4%	88.0%	67.5%	32.5%	81.6%	81.6%
Social Care	4,042	4,855	1.20	20.6%	79.4%	1.11	1.23	87.9%	87.9%	88.2%	66.2%	33.8%	81.2%	81.2%

CHO 7 Skills Mix by Staff Grouping: July 2020

Jul 2020 (Dec 2018 figure: 6,557)	WTE Dec 2015	WTE Dec 2016	WTE Dec 2017	WTE Dec 2018	WTE Dec 2019	WTE Jun 2020	WTE Jul 2020
Overall	5,479	5,579	6,406	6,557	6,515	6,588	6,619
Consultant Medicine	2.9%	3.2%	3.5%	2.7%	2.5%	3.2%	3.7%
Consultant Paediatrics	0.2%	0.1%	0.1%	0.1%	0.1%	0.1%	0.1%
Consultant Psychiatry	23.8%	19.2%	18.2%	18.1%	19.2%	20.3%	20.4%
Consultant Surgery	0.3%	0.3%	0.2%	0.5%	0.3%	0.3%	0.3%
Consultants	27.2%	22.8%	22.0%	21.3%	22.1%	23.9%	24.6%
Registrar	10.4%	22.2%	20.7%	24.9%	26.5%	25.2%	26.0%
Senior Registrar	3.0%	4.1%	3.7%	5.3%	7.0%	5.6%	6.1%
Specialist Registrar	2.3%	1.5%	2.2%	1.8%	1.5%	1.1%	1.0%
Registrars	15.7%	27.8%	26.6%	31.9%	35.0%	31.9%	33.0%
Interns	0.9%	0.8%	0.8%	0.8%	0.7%		0.1%
Senior House Officer	18.1%	15.3%	16.0%	12.6%	12.5%	13.7%	11.9%
SHO/ Interns	19.0%	16.1%	16.8%	13.3%	13.2%	13.7%	12.1%
Dentists	18.4%	15.6%	13.9%	13.8%	12.5%	12.8%	12.7%
Other Medical	19.8%	17.7%	20.8%	19.6%	17.2%	17.6%	17.6%
Medical/ Dental, other	38.2%	33.3%	34.7%	33.4%	29.7%	30.4%	30.3%
Medical & Dental	3.9%	4.6%	4.0%	4.0%	4.1%	100.0%	4.1%
Clinical Nurse/ Midwife Manager	17.4%	18.8%	19.0%	18.9%	19.3%	18.7%	18.8%
Director Nursing/Midwifery, Assistant	2.9%	3.3%	2.9%	3.3%	3.1%	3.2%	3.3%
Director of Nursing/Midwifery	1.1%	1.0%	1.3%	1.1%	0.9%	1.1%	1.1%
Nurse/ Midwife Manager	21.4%	23.2%	23.2%	23.3%	23.3%	23.0%	23.2%
Advanced Nurse/ Midwife Practitioner	0.1%	0.1%	0.1%	0.1%	0.3%	0.4%	0.6%
Clinical Nurse/ Midwife Specialist	4.0%	4.1%	4.5%	5.0%	5.3%	5.4%	5.3%
Nurse/ Midwife Specialist & AN/MP	4.1%	4.2%	4.6%	5.1%	5.5%	5.8%	5.8%
Staff Nurse [Intellectual Disability]	14.4%	14.2%	13.4%	12.9%	11.4%	10.6%	10.3%
Staff Nurse [Psychiatric]	14.7%	13.3%	13.2%	11.7%	11.2%	10.8%	10.8%
Staff Nurses [General/ Children's]	32.5%	31.5%	32.9%	33.9%	35.7%	36.1%	37.3%
Staff Nurse/ Staff Midwife	61.6%	59.1%	59.4%	58.6%	58.4%	57.5%	58.3%
Public Health Nurse	10.9%	11.2%	10.8%	11.5%	10.3%	9.3%	9.3%
Pre-registration Nurse/ Midwife Intern	0.1%	0.1%		0.4%	0.1%		
Pre-registration Nurse Intern (COVID-19)						2.5%	1.8%
Post-registration Nurse/ Midwife Student	1.5%	1.4%	0.9%	0.4%	1.2%	1.1%	0.6%
Nursing/ Midwifery awaiting registration			0.5%	0.2%	0.6%	0.3%	0.4%
Nursing/ Midwifery Student	1.6%	1.5%	1.4%	1.0%	1.9%	3.9%	2.7%
Nursing/ Midwifery other	0.6%	0.8%	0.5%	0.5%	0.6%	0.5%	0.6%
Nursing & Midwifery	29.8%	28.8%	26.9%	25.9%	26.1%	100.0%	26.5%
Dietitians	2.3%	2.4%	1.8%	2.3%	2.3%	2.3%	2.4%
Occupational Therapists	21.3%	21.3%	16.1%	16.9%	16.8%	17.4%	17.1%
Orthoptists	0.0%	0.0%					
Physiotherapists	15.3%	15.4%	11.8%	11.5%	10.4%	11.0%	11.1%
Podiatrists & Chiropodists	0.1%	0.1%	0.1%	0.1%	0.1%	0.2%	0.2%
Speech & Language Therapists	11.9%	13.5%	12.1%	11.2%	11.5%	11.5%	11.1%
Therapy Professions	50.8%	52.8%	41.9%	41.9%	41.1%	42.4%	41.8%
Audiology	0.0%	0.1%					
Clinical Measurement	0.1%	0.1%	0.1%	0.1%	0.1%	0.1%	0.2%
Medical Laboratory		0.1%					
Phlebotomists	0.1%	0.1%	0.1%	0.1%	0.1%	0.1%	0.0%
Radiographers	0.2%	0.1%	0.1%	0.1%	0.1%	0.1%	0.1%
Health Science/ Diagnostics	0.4%	0.5%	0.3%	0.3%	0.3%	0.3%	0.3%
Social Care	15.7%	14.2%	31.3%	32.8%	33.9%	32.6%	33.1%
Social Workers	12.9%	13.9%	10.7%	10.1%	9.6%	9.7%	9.7%
Psychologists	9.4%	8.7%	8.1%	7.7%	7.4%	7.3%	7.6%

Jul 2020 (Dec 2018 figure: 6,557)	WTE Dec 2015	WTE Dec 2016	WTE Dec 2017	WTE Dec 2018	WTE Dec 2019	WTE Jun 2020	WTE Jul 2020
Overall	5,479	5,579	6,406	6,557	6,515	6,588	6,619
Pharmacy	5.5%	4.8%	3.7%	3.5%	3.7%	3.7%	3.7%
Counsellor Therapists	4.2%	3.9%	3.1%	2.8%	3.3%	3.3%	3.2%
Dental Hygienists	0.5%	0.4%	0.3%	0.4%	0.5%	0.4%	0.4%
Other Health & Social Care	0.5%	0.6%	0.5%	0.4%	0.2%	0.1%	0.0%
Play Therapists/ Specialists	0.1%	0.1%	0.1%	0.1%	0.1%	0.3%	0.1%
H&SC, Other	5.2%	5.1%	4.1%	3.7%	4.1%	4.0%	3.7%
Health & Social Care Professionals	13.8%	14.2%	16.4%	16.7%	16.8%	100.0%	17.0%
Executive Management	2.2%	2.9%	2.5%	1.9%	2.1%	2.3%	2.3%
Senior Management (VIII & GM)	9.4%	8.7%	8.5%	9.2%	9.9%	9.9%	9.8%
Management (VIII & above)	11.7%	11.6%	11.0%	11.1%	12.0%	12.2%	12.1%
Middle Management (V-VII)	24.1%	23.7%	26.0%	27.2%	29.9%	31.0%	30.6%
Other Administrative	0.2%	0.1%	0.2%	0.1%	0.2%	0.1%	0.1%
Administrative/ Supervisory (V to VII)	24.3%	23.8%	26.1%	27.3%	30.1%	31.1%	30.7%
Clerical (III & IV)	64.0%	64.6%	62.9%	61.6%	57.9%	56.7%	57.2%
Management & Administrative	9.8%	10.0%	9.5%	9.4%	9.5%	100.0%	9.7%
Catering	12.1%	12.0%	13.0%	12.8%	13.1%	13.0%	12.8%
Household Services	59.6%	59.9%	59.9%	60.4%	59.5%	59.3%	59.7%
Other Labs & Associated	0.3%	0.2%	0.2%	0.2%	0.2%	0.2%	0.2%
Other Support	3.9%	3.7%	3.0%	3.2%	3.1%	3.2%	3.2%
Portering	17.3%	16.7%	14.5%	14.6%	14.9%	14.6%	14.3%
Support	93.2%	92.6%	90.6%	91.2%	90.9%	90.3%	90.2%
Maintenance/ Technical	6.8%	7.4%	9.4%	8.8%	9.1%	9.7%	9.8%
General Support	8.2%	7.9%	7.7%	7.4%	7.5%	100.0%	6.7%
HCA, Nurse's Aide, etc.	66.5%	66.9%	66.4%	67.6%	68.7%	67.9%	68.1%
Health & Social Care Assistants	0.5%	0.4%	0.3%	0.9%	0.5%	0.9%	1.1%
Health Care Assistants	66.9%	67.4%	66.7%	68.5%	69.2%	68.9%	69.2%
Community Welfare Officers	0.1%	0.1%	0.1%	0.0%	0.0%	0.0%	0.0%
Other Care Grades	25.0%	24.3%	26.5%	25.7%	25.5%	25.5%	25.2%
Care, other	25.1%	24.4%	26.6%	25.8%	25.5%	25.5%	25.2%
Home Help	8.0%	8.2%	6.7%	5.7%	5.3%	5.6%	5.6%
Patient & Client Care	34.5%	34.6%	35.5%	36.5%	36.7%	100.0%	35.9%
Total	100 %	100 %	100 %	100 %	100%	100 %	100 %

CHO 7 Skills Mix by Care Group: July 2020

Jul 2020 (Dec 2018 figure: 835)	WTE Dec 2015	WTE Dec 2016	WTE Dec 2017	WTE Dec 2018	WTE Dec 2019	WTE Jun 2020	WTE Jul 2020
Mental Health	837	828	859	835	834.98	866.28	850.58
Consultants	47.0%	44.2%	43.0%	43.6%	41.6%	45.5%	46.2%
Registrar	17.2%	19.7%	17.8%	25.1%	22.9%	21.7%	24.3%
Senior Registrar	6.8%	9.4%	9.8%	12.7%	16.5%	13.6%	14.9%
Specialist Registrar			1.0%		0.9%	0.9%	
Registrars	24.0%	29.1%	28.7%	37.8%	40.3%	36.2%	39.2%
Interns	2.1%	2.0%	2.1%	2.0%	1.7%		0.3%
Senior House Officer	27.0%	24.7%	26.2%	16.6%	16.4%	18.3%	14.3%
SHO/ Interns	29.1%	26.7%	28.3%	18.6%	18.2%	18.3%	14.6%
Medical & Dental	11.5%	12.2%	11.1%	12.3%	12.3%	13.1%	13.1%
Clinical Nurse/ Midwife Manager	22.3%	25.7%	24.5%	27.0%	26.5%	24.7%	25.2%
Director Nursing/Midwifery, Assistant	3.5%	4.1%	4.5%	5.0%	4.3%	4.2%	4.3%
Director of Nursing/Midwifery	0.8%	0.8%	0.8%	0.8%	0.8%	0.7%	0.8%
Nurse/ Midwife Manager	26.6%	30.6%	29.8%	32.8%	31.5%	29.6%	30.3%
Advanced Nurse/ Midwife Practitioner			0.3%	0.3%	0.8%	1.3%	1.4%
Clinical Nurse/ Midwife Specialist	6.5%	7.2%	6.7%	7.0%	10.0%	10.1%	10.1%
Nurse/ Midwife Specialist & AN/MP	6.5%	7.2%	7.0%	7.3%	10.8%	11.4%	11.5%
Staff Nurse [Intellectual Disability]						0.2%	0.3%
Staff Nurse [Psychiatric]	63.5%	58.1%	58.4%	54.3%	51.1%	46.8%	48.2%
Staff Nurses [General/ Children's]	1.9%	1.9%	1.1%	1.2%	1.5%	2.3%	2.4%
Staff Nurse/ Staff Midwife	65.4%	60.1%	59.5%	55.5%	52.6%	49.4%	50.9%
Pre-registration Nurse/ Midwife Intern	0.4%	0.5%		1.6%	0.4%		
Pre-registration Nurse Intern (COVID-19)						7.1%	4.3%
Nursing/ Midwifery awaiting registration			2.1%	1.1%	2.7%	1.0%	1.0%
Nursing/ Midwifery Student	0.4%	0.5%	2.1%	2.8%	3.0%	8.0%	5.3%
Nursing Education/Clinical	1.1%	1.7%	1.6%	1.7%	2.0%	1.6%	2.0%
Nursing/ Midwifery other	1.1%	1.7%	1.6%	1.7%	2.0%	1.6%	2.0%
Nursing & Midwifery	44.8%	43.7%	44.9%	43.3%	43.3%	45.6%	45.6%
Dietitians	0.7%			1.4%	2.1%	2.2%	2.2%
Occupational Therapists	29.9%	30.6%	28.0%	29.8%	27.3%	28.2%	27.1%
Speech & Language Therapists	4.2%	5.0%	4.7%	3.5%	4.8%	3.2%	2.8%
Therapy Professions	34.9%	35.5%	32.7%	34.6%	34.2%	33.6%	32.0%
Social Care	8.0%	7.9%	7.4%	5.8%	5.4%	5.5%	5.5%
Social Workers	28.9%	30.2%	29.0%	26.2%	24.4%	26.4%	27.1%
Psychologists	21.0%	18.3%	20.7%	23.9%	22.4%	20.6%	21.8%
Pharmacy					0.7%	0.7%	0.7%
Counsellor Therapists	6.2%	6.6%	8.4%	7.6%	11.4%	12.7%	12.6%
Other Health & Social Care	1.1%	1.5%	1.8%	1.8%	1.4%	0.4%	0.3%
H&SC, Other	7.3%	8.1%	10.2%	9.4%	12.9%	13.2%	12.9%
Health & Social Care Professionals	16.0%	16.4%	16.9%	16.8%	16.8%	16.4%	16.4%
Management (VIII & above)	3.3%	4.3%	4.1%	3.9%	4.3%	4.1%	4.0%
Administrative/ Supervisory (V to VII)	14.9%	18.8%	23.2%	25.3%	24.1%	25.8%	23.6%
Clerical (III & IV)	81.7%	76.9%	72.7%	70.8%	71.6%	70.0%	72.4%
Management & Administrative	7.2%	8.0%	8.0%	8.8%	8.8%	8.3%	8.3%
Support	93.2%	92.3%	92.1%	91.7%	90.5%	89.6%	88.8%
Maintenance/ Technical	6.8%	7.7%	7.9%	8.3%	9.5%	10.4%	11.2%
General Support	3.4%	3.2%	3.0%	2.9%	2.9%	2.1%	2.1%
HCA, Nurse's Aide, etc.	33.1%	33.7%	32.2%	31.0%	26.6%	28.2%	27.9%

Jul 2020 (Dec 2018 figure: 835)	WTE Dec 2015	WTE Dec 2016	WTE Dec 2017	WTE Dec 2018	WTE Dec 2019	WTE Jun 2020	WTE Jul 2020
Mental Health	837	828	859	835	834.98	866.28	850.58
Health Care Assistants	33.1%	33.7%	32.2%	31.0%	26.6%	28.2%	27.9%
Care, other	66.9%	66.3%	67.8%	69.0%	73.4%	71.8%	72.1%
Patient & Client Care	17.1%	16.4%	16.1%	16.0%	16.0%	14.5%	14.5%
Total	100 %	100 %	100 %	100 %	100 %	100 %	

Jul 2020 (Dec 2018 figure: 1,776)	WTE Dec 2015	WTE Dec 2016	WTE Dec 2017	WTE Dec 2018	WTE Dec 2019	WTE Jun 2020	WTE Jul 2020
Primary Care	1,647	1,687	1,691	1,776	1,702.01	1,719.33	1,717.52
Consultant Medicine	6.3%	6.1%	6.4%	4.9%	4.8%	6.2%	7.1%
Consultant Psychiatry	3.0%	1.5%	2.2%	2.1%	2.9%	2.9%	2.8%
Consultant Surgery	0.8%	0.6%	0.3%	0.8%	0.6%	0.6%	0.6%
Consultants	10.1%	8.2%	8.9%	7.8%	8.3%	9.7%	10.4%
Registrars	8.9%	28.9%	27.1%	30.1%	33.0%	30.5%	30.3%
SHO/ Interns	5.1%	4.5%	4.2%	5.1%	4.3%	4.8%	5.0%
Dentists	39.9%	29.9%	25.7%	25.3%	24.4%	24.7%	24.2%
Other Medical	36.0%	28.5%	34.1%	31.7%	30.1%	30.3%	30.1%
Medical/ Dental, other	75.9%	58.4%	59.8%	57.0%	54.5%	55.0%	54.3%
Medical & Dental	5.9%	7.9%	8.1%	8.1%	8.5%	8.3%	8.3%
Clinical Nurse/ Midwife Manager	11.0%	10.2%	10.1%	10.2%	10.7%	11.3%	10.7%
Director Nursing/Midwifery, Assistant	3.6%	3.9%	3.7%	3.8%	3.4%	4.3%	4.4%
Director of Nursing/Midwifery	1.0%	1.1%	1.1%	1.2%	1.1%	1.3%	1.3%
Nurse/ Midwife Manager	15.5%	15.2%	14.9%	15.2%	15.2%	17.0%	16.5%
Nurse/ Midwife Specialist & AN/MP	6.5%	6.6%	8.4%	8.8%	8.7%	9.3%	9.8%
Staff Nurse/ Staff Midwife	37.5%	37.5%	36.3%	37.5%	38.7%	38.2%	40.0%
Public Health Nurse	35.0%	35.5%	36.7%	36.9%	33.1%	31.5%	31.4%
Nursing/ Midwifery Student	4.8%	4.5%	3.1%	1.3%	4.0%	3.7%	1.9%
Nursing Education/Clinical	0.6%	0.5%	0.5%	0.4%	0.4%	0.4%	0.4%
Other Nursing/ Midwifery		0.2%					
Nursing/ Midwifery other	0.6%	0.7%	0.5%	0.4%	0.4%	0.4%	0.4%
Nursing & Midwifery	30.5%	30.1%	30.1%	29.8%	31.1%	30.2%	30.2%
Dietitians	3.6%	3.8%	4.0%	4.8%	3.8%	3.7%	4.1%
Occupational Therapists	25.9%	24.9%	23.4%	26.8%	26.6%	26.1%	26.0%
Orthoptists	0.1%	0.1%					
Physiotherapists	22.5%	23.1%	22.5%	21.4%	20.1%	21.7%	21.7%
Podiatrists & Chiropodists				0.1%	0.3%	0.5%	0.5%
Speech & Language Therapists	16.4%	18.2%	20.3%	19.2%	20.5%	19.7%	19.2%
Therapy Professions	68.5%	70.1%	70.3%	72.4%	71.4%	71.7%	71.5%
Phlebotomists	0.1%	0.2%	0.2%	0.1%	0.1%	0.1%	0.1%
Health Science/ Diagnostics	0.1%	0.2%	0.2%	0.1%	0.1%	0.1%	0.1%
Social Care	1.1%	1.1%	1.1%	1.1%	0.9%	1.0%	1.0%
Social Workers	7.6%	7.7%	7.4%	6.4%	7.0%	6.8%	6.7%
Psychologists	5.9%	5.7%	6.1%	6.2%	5.8%	6.3%	6.7%
Pharmacy	9.4%	8.2%	8.5%	7.6%	8.5%	8.3%	8.4%
Counsellor Therapists	6.1%	5.7%	5.2%	4.8%	5.0%	4.6%	4.4%
Dental Hygienists	1.0%	1.0%	0.9%	1.3%	1.4%	1.3%	1.2%
Other Health & Social Care	0.3%	0.3%	0.3%	0.3%			
H&SC, Other	7.4%	7.0%	6.4%	6.4%	6.4%	5.9%	5.6%
Health & Social Care Professionals	21.5%	21.5%	21.4%	21.4%	22.3%	22.0%	22.0%
Executive Management	1.7%	2.6%	2.3%	1.9%	2.4%	2.4%	2.3%
Senior Management (VIII & GM)	6.9%	6.5%	6.8%	8.0%	9.1%	7.7%	8.0%

Jul 2020 (Dec 2018 figure: 1,776)	WTE Dec 2015	WTE Dec 2016	WTE Dec 2017	WTE Dec 2018	WTE Dec 2019	WTE Jun 2020	WTE Jul 2020
Primary Care	1,647	1,687	1,691	1,776	1,702.01	1,719.33	1,717.52
Management (VIII & above)	8.5%	9.1%	9.1%	9.9%	11.6%	10.0%	10.3%
Administrative/ Supervisory (V to VII)	22.1%	20.8%	23.0%	22.7%	26.5%	27.9%	27.6%
Clerical (III & IV)	69.4%	70.1%	67.9%	67.4%	62.0%	62.0%	62.1%
Management & Administrative	18.4%	18.0%	18.4%	17.5%	18.3%	17.3%	17.3%
Support	94.4%	93.2%	94.6%	93.8%	93.0%	92.8%	92.3%
Maintenance	5.6%	6.1%	4.6%	5.5%	6.2%	6.4%	6.9%
Technical Services		0.7%	0.8%	0.7%	0.8%	0.8%	0.8%
Maintenance/ Technical	5.6%	6.8%	5.4%	6.2%	7.0%	7.2%	7.7%
General Support	8.4%	8.0%	7.7%	7.5%	7.8%	7.0%	7.0%
HCA, Nurse's Aide, etc.	46.0%	47.0%	48.3%	44.1%	45.9%	46.1%	45.3%
Health & Social Care Assistants	1.6%	1.0%	0.9%	6.4%	2.8%	5.5%	6.1%
Health Care Assistants	47.6%	48.0%	49.2%	50.6%	48.7%	51.6%	51.4%
Community Welfare Officers	0.8%	0.8%	0.8%	0.3%	0.4%	0.3%	0.3%
Other Care Grades	51.6%	51.2%	50.0%	49.1%	50.9%	48.1%	48.3%
Care, other	52.4%	52.0%	50.8%	49.4%	51.3%	48.4%	48.6%
Patient & Client Care	15.2%	14.5%	14.3%	15.7%	16.3%	15.2%	15.2%
Total	100 %	100 %	100 %	100 %	100 %	100 %	

Jul 2020 (Dec 2018 figure: 2,903)	WTE Dec 2015	WTE Dec 2016	WTE Dec 2017	WTE Dec 2018	WTE Dec 2019	WTE Jun 2020	WTE Jul 2020
Disabilities	1,867	1,943	2,792	2,903	2,981.59	2,972.81	3,008.60
Consultant Paediatrics	2.8%	2.9%	2.5%	3.1%	3.0%	2.7%	2.8%
Consultant Psychiatry	26.5%	19.1%	16.2%	1.9%	1.7%	1.6%	1.7%
Consultants	29.3%	22.0%	18.8%	5.0%	4.7%	4.3%	4.5%
Registrars	16.6%	26.0%	22.2%	21.5%	26.1%	24.1%	25.1%
SHO/ Interns	41.4%	43.3%	51.7%	64.3%	60.5%	63.5%	62.0%
Medical/ Dental, other	12.7%	8.7%	7.4%	9.3%	8.7%	8.0%	8.4%
Medical & Dental	0.6%	0.6%	0.5%	0.4%	0.4%	0.4%	0.4%
Clinical Nurse/ Midwife Manager	21.5%	23.2%	23.9%	22.4%	22.4%	21.9%	22.1%
Director Nursing/Midwifery, Assistant	1.2%	1.5%	1.1%	1.1%	1.1%	1.3%	1.2%
Director of Nursing/Midwifery	0.7%	0.5%	1.4%	1.0%	0.8%	0.6%	0.6%
Nurse/ Midwife Manager	23.5%	25.2%	26.4%	24.4%	24.3%	23.7%	23.9%
Clinical Nurse/ Midwife Specialist	1.4%	1.3%	1.3%	2.0%	1.0%	1.0%	0.6%
Nurse/ Midwife Specialist & AN/MP	1.4%	1.3%	1.3%	2.0%	1.0%	1.0%	0.6%
Staff Nurse [Intellectual Disability]	58.7%	57.6%	45.5%	43.3%	38.7%	36.2%	34.5%
Staff Nurses [General/ Children's]	15.8%	15.2%	26.7%	30.2%	35.9%	36.1%	38.0%
Staff Nurse/ Staff Midwife	74.4%	72.8%	72.2%	73.5%	74.6%	72.3%	72.5%
Pre-registration Nurse Intern (COVID-19)						2.9%	2.9%
Nursing/ Midwifery Student						2.9%	2.9%
Nursing/ Midwifery other	0.6%	0.8%	0.1%	0.1%	0.1%	0.1%	0.1%
Nursing & Midwifery	21.5%	20.4%	18.1%	17.5%	17.0%	17.4%	17.4%
Dietitians	1.7%	1.6%	0.8%	0.8%	1.3%	1.2%	1.3%
Occupational Therapists	10.6%	13.0%	7.8%	7.0%	7.6%	9.0%	8.9%
Physiotherapists	11.0%	11.0%	6.3%	6.1%	5.5%	5.9%	6.3%
Speech & Language Therapists	10.7%	13.5%	9.1%	8.2%	7.6%	8.6%	8.3%
Therapy Professions	34.1%	39.1%	24.0%	22.1%	22.0%	24.8%	24.7%
Audiology	0.1%	0.2%					
Clinical Measurement	0.4%	0.4%	0.2%	0.2%	0.2%	0.2%	0.3%
Phlebotomists				0.2%	0.2%	0.2%	
Radiographers	0.4%	0.4%	0.2%	0.2%	0.2%	0.2%	0.2%

Jul 2020 (Dec 2018 figure: 2,903)	WTE Dec 2015	WTE Dec 2016	WTE Dec 2017	WTE Dec 2018	WTE Dec 2019	WTE Jun 2020	WTE Jul 2020
Disabilities	1,867	1,943	2,792	2,903	2,981.59	2,972.81	3,008.60
Health Science/ Diagnostics	0.9%	1.0%	0.4%	0.6%	0.5%	0.5%	0.5%
Social Care	45.2%	38.3%	62.1%	64.8%	65.2%	62.2%	62.6%
Social Workers	7.9%	10.1%	5.8%	6.3%	6.0%	5.8%	5.8%
Psychologists	9.6%	9.1%	6.4%	5.1%	5.0%	5.2%	5.2%
Pharmacy	1.7%	1.6%	0.8%	0.9%	0.9%	0.9%	1.0%
Counsellor Therapists	0.7%	0.6%	0.3%	0.3%	0.3%	0.3%	0.3%
Other Health & Social Care	0.0%	0.4%	0.2%				
Play Therapists/ Specialists						0.3%	
H&SC, Other	0.7%	1.0%	0.5%	0.3%	0.3%	0.6%	0.3%
Health & Social Care Professionals	12.3%	13.1%	18.1%	18.5%	18.0%	19.2%	19.2%
Executive Management	4.9%	5.3%	3.9%	2.6%	2.5%	3.2%	3.2%
Senior Management (VIII & GM)	17.2%	14.3%	13.3%	13.7%	13.3%	14.5%	13.9%
Management (VIII & above)	22.1%	19.5%	17.2%	16.3%	15.8%	17.7%	17.1%
Administrative/ Supervisory (V to VII)	34.6%	35.3%	34.0%	37.0%	39.0%	37.8%	38.2%
Clerical (III & IV)	43.3%	45.1%	48.7%	46.7%	45.3%	44.4%	44.7%
Management & Administrative	6.6%	6.8%	6.4%	6.5%	6.3%	7.3%	7.3%
Support	89.0%	88.2%	84.1%	85.7%	85.4%	84.3%	84.4%
Maintenance	9.7%	11.1%	15.5%	13.8%	13.0%	14.7%	14.5%
Technical Services	1.3%	0.6%	0.5%	0.5%	1.5%	1.0%	1.0%
Maintenance/ Technical	11.0%	11.8%	15.9%	14.3%	14.6%	15.7%	15.6%
General Support	8.5%	8.1%	7.7%	7.1%	7.0%	6.4%	6.4%
HCA, Nurse's Aide, etc.	71.3%	72.1%	70.6%	71.9%	72.9%	72.7%	73.0%
Health & Social Care Assistants	0.5%	0.6%	0.3%	0.2%	0.4%	0.4%	0.6%
Health Care Assistants	71.8%	72.7%	70.8%	72.1%	73.3%	73.1%	73.5%
Care, other	24.8%	24.0%	27.2%	26.2%	25.4%	25.6%	25.2%
Home Help	3.4%	3.3%	1.9%	1.6%	1.3%	1.2%	1.2%
Patient & Client Care	50.4%	50.9%	49.1%	50.0%	48.7%	49.3%	49.3%
Total	100 %	100 %	100 %	100 %	100 %	100 %	

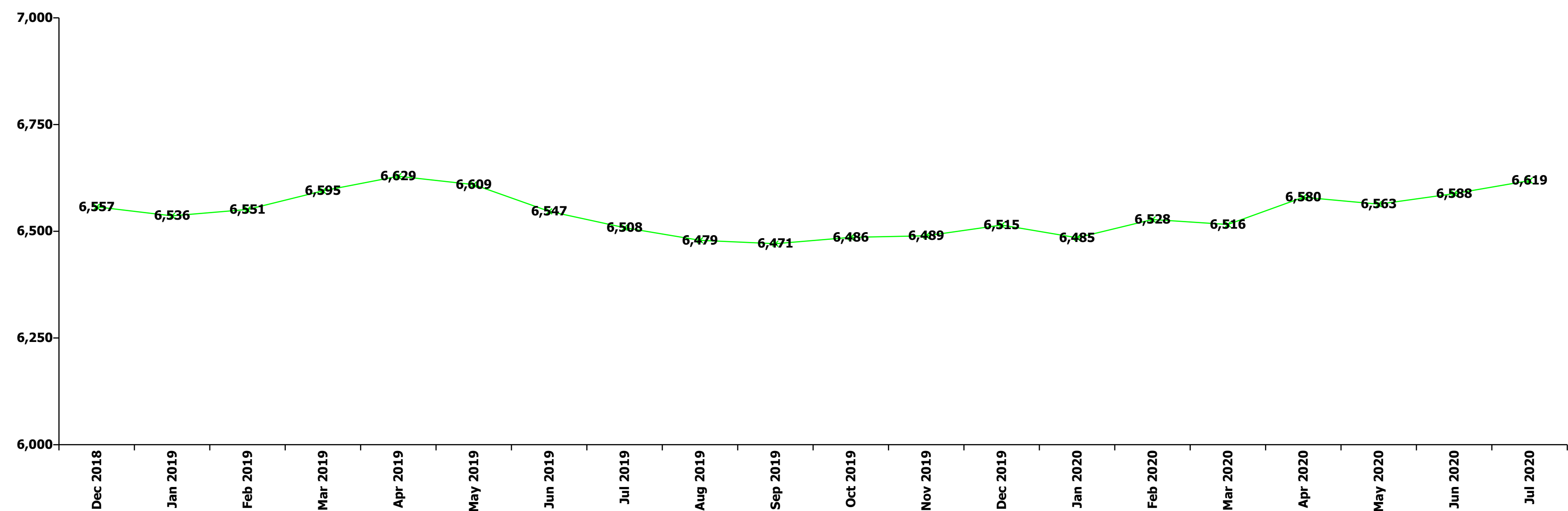
Jul 2020 (Dec 2018 figure: 1,044)	WTE Dec 2015	WTE Dec 2016	WTE Dec 2017	WTE Dec 2018	WTE Dec 2019	WTE Jun 2020	WTE Jul 2020
Older People	1,128	1,121	1,064	1,044	995.93	1,021.63	1,033.79
Senior House Officer	31.6%	33.3%	37.5%	28.6%	33.3%	33.3%	33.3%
SHO/ Interns	31.6%	33.3%	37.5%	28.6%	33.3%	33.3%	33.3%
Medical/ Dental, other	68.4%	66.7%	62.5%	71.4%	66.7%	66.7%	66.7%
Medical & Dental	0.8%	0.8%	0.8%	0.7%	0.7%	0.6%	0.6%
Clinical Nurse/ Midwife Manager	16.4%	19.1%	18.6%	18.8%	20.3%	17.8%	18.9%
Director Nursing/Midwifery, Assistant	3.3%	3.8%	2.5%	4.0%	4.3%	3.5%	3.6%
Director of Nursing/Midwifery	2.0%	1.8%	2.2%	1.7%	1.1%	1.8%	1.8%
Nurse/ Midwife Manager	21.6%	24.7%	23.2%	24.4%	25.8%	23.2%	24.3%
Nurse/ Midwife Specialist & AN/MP	1.0%	1.0%	1.1%	1.4%	0.9%	1.1%	1.2%
Staff Nurse [Psychiatric]		0.2%	0.2%				
Staff Nurses [General/ Children's]	76.9%	74.1%	75.4%	74.1%	73.3%	75.3%	73.6%
Staff Nurse/ Staff Midwife	76.9%	74.3%	75.6%	74.1%	73.3%	75.3%	73.6%
Public Health Nurse	0.4%	0.1%					
Nursing/ Midwifery awaiting registration						0.5%	0.8%
Nursing/ Midwifery Student						0.5%	0.8%
Nursing & Midwifery	31.5%	30.4%	30.4%	28.9%	30.3%	31.6%	31.6%
Dietitians		2.6%	2.7%		3.6%	3.2%	3.2%

Jul 2020 (Dec 2018 figure: 1,044)	WTE Dec 2015	WTE Dec 2016	WTE Dec 2017	WTE Dec 2018	WTE Dec 2019	WTE Jun 2020	WTE Jul 2020
Older People	1,128	1,121	1,064	1,044	995.93	1,021.63	1,033.79
Occupational Therapists	11.3%	10.8%	10.7%	9.6%	14.9%	17.3%	17.1%
Physiotherapists	27.8%	27.3%	28.3%	29.5%	30.5%	22.7%	22.7%
Podiatrists & Chiropodists	1.8%	1.9%	1.8%	2.0%			
Speech & Language Therapists	2.7%		2.7%	2.6%			
Therapy Professions	43.6%	42.5%	46.1%	43.6%	49.0%	43.3%	43.0%
Medical Laboratory		2.6%					
Radiographers	2.1%						
Health Science/ Diagnostics	2.1%	2.6%					
Social Workers	37.5%	39.2%	37.7%	41.0%	38.6%	43.8%	44.0%
Pharmacy	11.1%	10.5%	10.8%	10.3%	8.9%	9.7%	9.7%
Other Health & Social Care	2.8%	2.6%	2.7%	2.6%			
Play Therapists/ Specialists	2.8%	2.6%	2.7%	2.6%	3.6%	3.2%	3.2%
H&SC, Other	5.6%	5.2%	5.4%	5.1%	3.6%	3.2%	3.2%
Health & Social Care Professionals	3.2%	3.4%	3.5%	3.7%	3.9%	3.0%	3.0%
Senior Management (VIII & GM)	14.9%	15.2%	10.0%	9.0%	9.9%	10.7%	10.9%
Management (VIII & above)	14.9%	15.2%	10.0%	9.0%	9.9%	10.7%	10.9%
Administrative/ Supervisory (V to VII)	23.9%	18.5%	21.1%	21.7%	22.7%	26.4%	25.3%
Clerical (III & IV)	61.1%	66.3%	68.9%	69.3%	67.4%	62.8%	63.8%
Management & Administrative	4.8%	4.7%	4.7%	4.2%	4.4%	5.2%	5.2%
Support	97.5%	97.5%	97.6%	97.5%	98.2%	98.1%	98.2%
Maintenance/ Technical	2.5%	2.5%	2.4%	2.5%	1.8%	1.9%	1.8%
General Support	10.7%	10.8%	11.6%	11.7%	12.2%	10.8%	10.8%
HCA, Nurse's Aide, etc.	76.2%	74.5%	73.0%	77.4%	77.5%	75.9%	76.1%
Health & Social Care Assistants						0.2%	0.2%
Health Care Assistants	76.2%	74.5%	73.0%	77.4%	77.5%	76.1%	76.3%
Care, other	2.4%	2.9%	2.9%	1.3%	1.0%	0.9%	0.9%
Home Help	21.4%	22.6%	24.1%	21.3%	21.5%	23.0%	22.8%
Patient & Client Care	49.0%	49.9%	49.1%	50.8%	53.3%	48.9%	48.9%
Total	100 %	100 %	100 %	100 %	100 %	100 %	

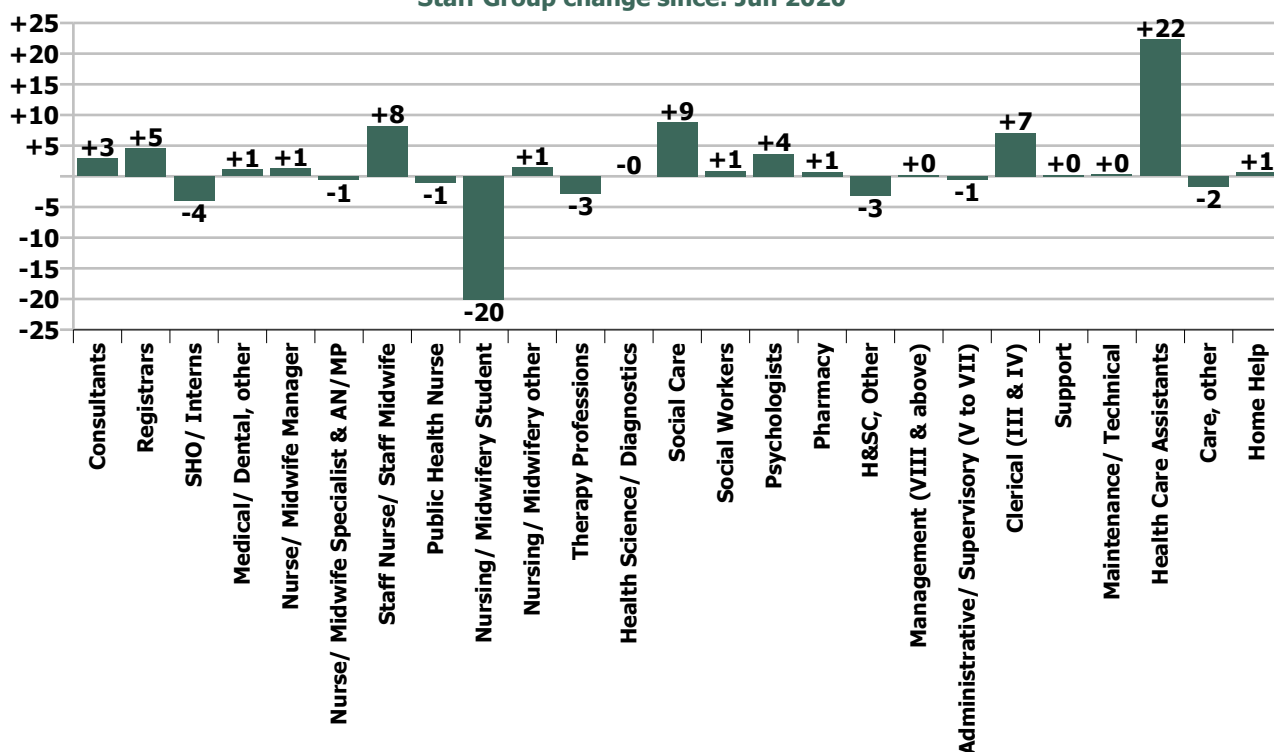
Summary Staff Movement: July 2020

Month-on-month Summary																												
WTE change since Jun 20	% change since Jun 20	overall	Consultants	Registrars	SHO/ Interns	Medical/ Dental, other	Medical & Dental	Nurse/ Midwife Manager	Nurse/ Midwife Specialist & AN/MP	Staff Nurse/ Staff Midwife	Public Health Nurse	Nursing/ Midwifery Student	Nursing/ Midwifery other	Nursing & Midwifery	Therapy Professions	Health Science/ Diagnostics	Social Care	Social Workers	Psychologists	Pharmacy	H&SC, Other	Health & Social Care Professionals	Management (VIII & above)	Administrative/ Supervisory (V to VII)	Clerical (III & IV)	Management & Administrative	General Support	Patient & Client Care
Overall	+0.5%	+30	+2.9	+4.6	-4.0	+1.1	+4.7	+1.3	-0.6	+8.2	-1.1	-20.1	+1.4	-10.9	-2.8	-0.0	+8.8	+0.9	+3.7	+0.7	-3.1	+8.1	+0.2	-0.5	+7.1	+6.8	+0.5	+21.3
Community Health & Wellbeing		0																					0.0	0.0	0.0	0.0		0.0
Mental Health	-1.8%	-16	+1.4	+3.7	-3.9		+1.2	-2.6	-1.8	-2.7		-12.1	+1.5	-17.8	-1.9		+0.0	+1.2	+1.8	0.0	-0.3	+0.8	0.0	-1.0	+3.3	+2.2	-1.4	-0.8
Primary Care	-0.1%	-2	+1.5	+0.9	+0.4	+1.1	+3.9	-3.1	+2.4	+8.6	-1.1	-9.0	0.0	-2.2	-2.7	-0.0	0.0	-0.6	+1.4	+0.2	-0.9	-2.5	+1.3	-0.0	+2.6	+3.9	-3.8	-1.1
Disabilities	+1.2%	+36	0.0	0.0	-0.5	0.0	-0.5	+2.8	-1.8	+6.1		0.0	0.0	+7.1	+1.9	0.0	+8.8	+0.2	+0.5	+0.5	-2.0	+9.9	-1.0	+1.5	+1.5	+2.0	+1.5	+15.7
Older People	+1.2%	+12			0.0	0.0	0.0	+4.2	+0.5	-3.8		+1.0		+2.0	-0.1			+0.0		0.0	0.0	-0.1	-0.1	-1.0	-0.4	-1.4	+4.2	+7.4
Social Care	+1.2%	+48	0.0	0.0	-0.5	0.0	-0.5	+7.0	-1.3	+2.3		+1.1	0.0	+9.1	+1.8	0.0	+8.8	+0.2	+0.5	+0.5	-2.0	+9.8	-1.1	+0.5	+1.2	+0.7	+5.7	+23.1
Change	+30.4	+0.5%	+4.5%	+5.4%	-10.8%	+1.4%	+1.7%	+0.3%	-0.6%	+0.8%	-0.7%	-29.5%	+16.1%	-0.6%	-0.6%	-0.3%	+2.4%	+0.8%	+4.5%	+1.7%	-7.0%	+0.7%	+0.3%	-0.3%	+2.0%	+1.1%	+0.1%	+0.9%

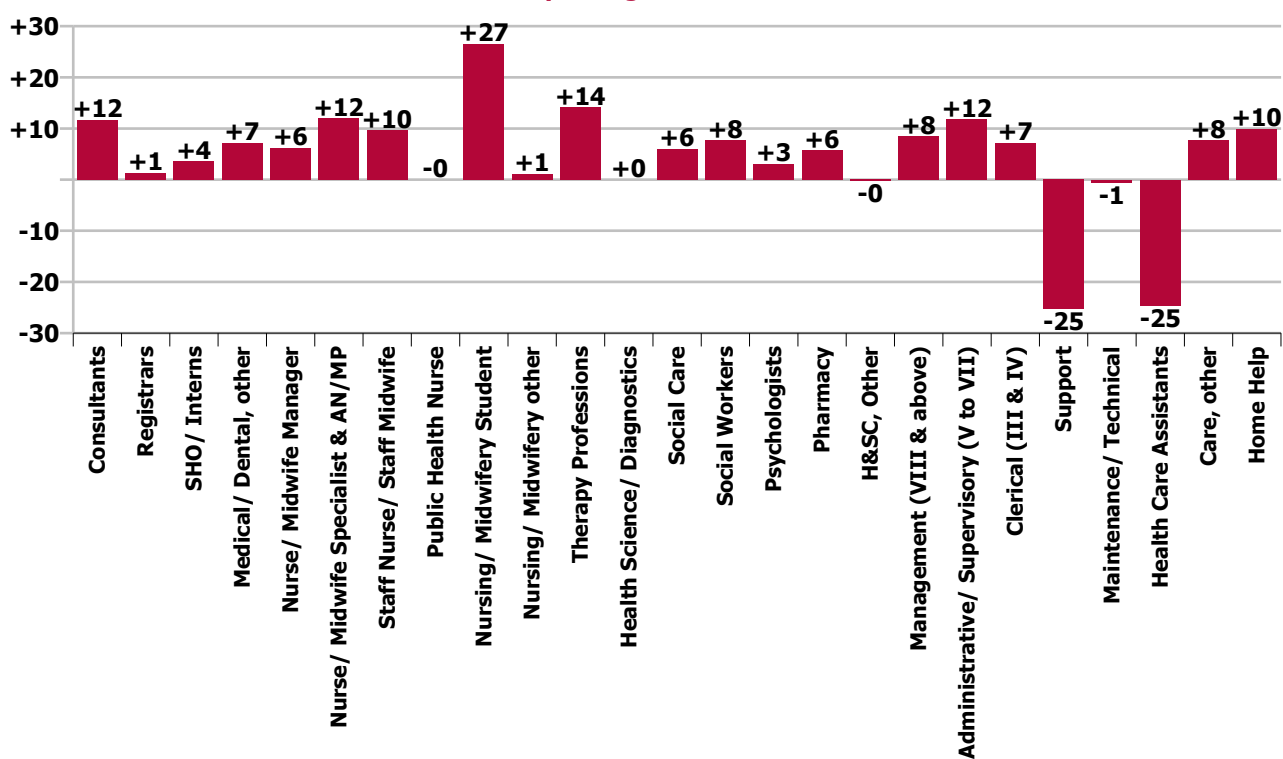
Year-on-year Summary																												
WTE change since Jul 19	% change since Jul 19	overall	Consultants	Registrars	SHO/ Interns	Medical/ Dental, other	Medical & Dental	Nurse/ Midwife Manager	Nurse/ Midwife Specialist & AN/MP	Staff Nurse/ Staff Midwife	Public Health Nurse	Nursing/ Midwifery Student	Nursing/ Midwifery other	Nursing & Midwifery	Therapy Professions	Health Science/ Diagnostics	Social Care	Social Workers	Psychologists	Pharmacy	H&SC, Other	Health & Social Care Professionals	Management (VIII & above)	Administrativ e/ Supervisory (V to VII)	Clerical (III & IV)	Management & Administrative	General Support	Patient & Client Care
Overall	+1.7%	+110	+11.7	+1.3	+3.5	+7.2	+23.8	+6.2	+12.0	+9.7	-0.0	+26.6	+1.1	+55.5	+14.1	0.0	+6.0	+7.7	+3.1	+5.7	-0.3	+36.3	+8.5	+11.8	+7.2	+27.5	-25.9	-7.0
Community Health & Wellbeing		0																					+1.0	+2.0	+0.6	+3.6		+4.6
Mental Health	-1.8%	-16	+8.2	+1.1	+2.5		+11.8	+2.9	+6.6	-11.8		+6.0	+1.1	+4.8	-2.4		-0.3	+6.2	+0.7	0.0	+2.6	+6.8	0.0	+4.1	+1.5	+5.6	-4.6	-7.7
Primary Care	-0.1%	-2	+3.6	-0.5	+0.8	+8.2	+12.1	+3.5	+7.4	-11.2	-0.0	+10.0	0.0	+9.6	-6.3	0.0	+0.3	+0.8	+2.2	+3.8	-2.9	-2.1	+0.6	+1.1	-8.4	-6.8	-9.3	+1.2
Disabilities	+2.1%	+60.7	0.0	+0.7	+0.2	0.0	+0.9	-4.2	-2.0	+11.6		+8.0	0.0	+13.4	+25.7	0.0	+6.1	+1.9	+0.1	+1.9	0.0	+35.6	+4.9	+3.7	+9.1	+17.6	-6.2	-0.7
Older People	+2.0%	+20.0			0.0	-1.0	-1.0	+4.1	+0.0	+21.1		+2.6		+27.7	-2.9			-1.2		0.0	0.0	-4.1	+2.0	+1.0	+4.5	+7.5	-5.7	-4.4
Social Care	+1.2%	+48	0.0	+0.7	+0.2	-1.0	-0.1	-0.2	-2.0	+32.7		+10.6	0.0	+41.1	+22.8	0.0	+6.1	+0.7	+0.1	+1.9	0.0	+31.5	+6.9	+4.7	+13.6	+25.1	-11.9	-5.1
Change	+110.2	+1.7%	+21.2%	+1.5%	+12.1%	+9.5%	+9.6%	+1.5%	+13.2%	+1.0%	-0.0%	+123.6%	+11.8%	+3.3%	+3.1%		+1.6%	+7.6%	+3.7%	+15.9%	-0.7%	+3.3%	+12.2%	+6.3%	+2.0%	+4.5%	-5.5%	-0.3%

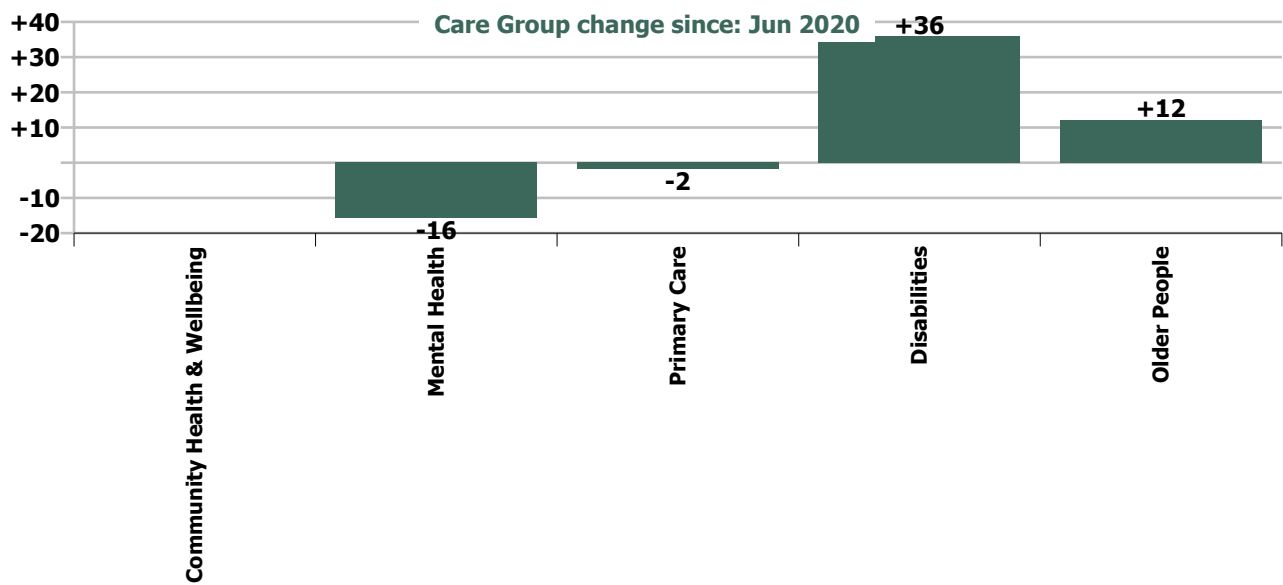


Staff Group change since: Jun 2020

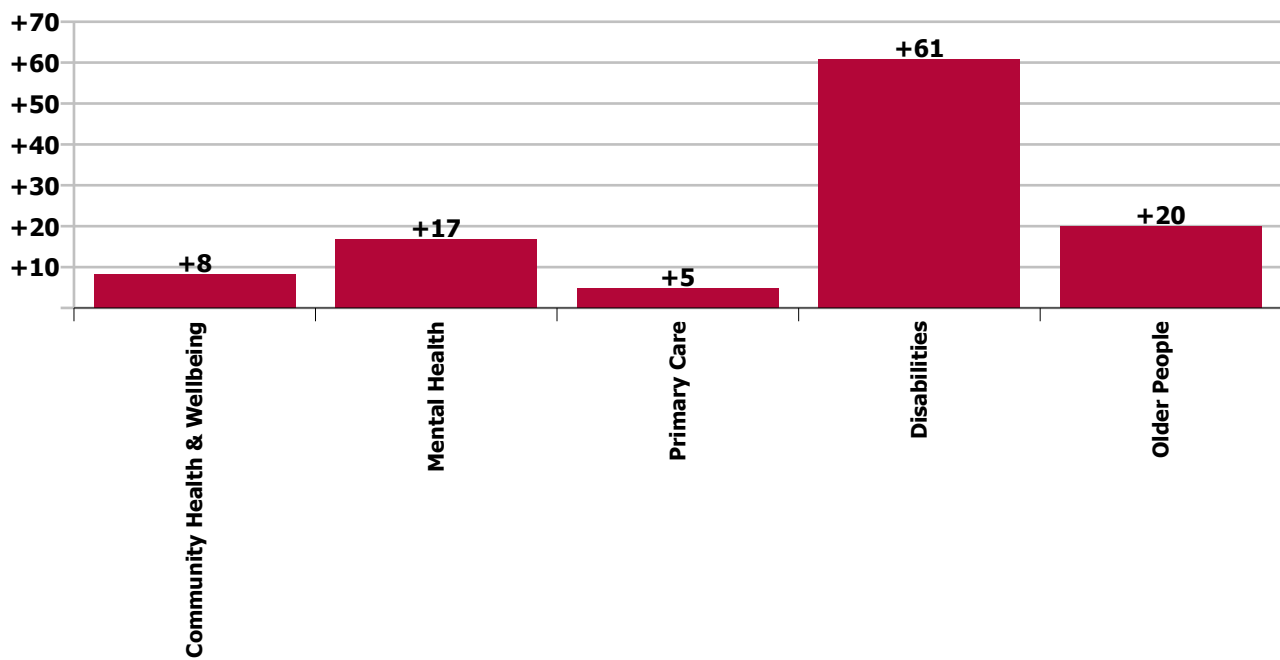


Staff Group change since: Jul 2019





Care Group change since: Jul 2019



Longitudinal Employment Levels by Grade Group - Oct 2013 to Jul 2020

Jul 2020 (Dec 2015 figure: 5,479)	WTE Jul 2020	WTE change since Dec 15	WTE change since Dec 16	WTE change since Dec 17	WTE change since Dec 18	WTE change since Dec 19	WTE change since Jun 20	% change since Dec 15	% change since Dec 16	% change since Dec 17	% change since Dec 18	% change since Dec 19	% change since Jun 20
Overall	6,619	+1,140	+1,040	+213	+61	+104	+30	+20.8%	+18.6%	+3.3%	+0.9%	+1.6%	+0.5%
Consultant Medicine	10	+4	+2	+1	+3	+4	+2	+65.0%	+24.5%	+14.9%	+42.6%	+52.6%	+17.7%
Consultant Paediatrics	0												
Consultant Psychiatry	56	+4	+7	+9	+8	+4	+1	+8.4%	+13.9%	+20.3%	+16.3%	+7.1%	+2.5%
Consultant Surgery	1	+0	+0	+0	-0			+6.7%	+6.7%	+66.7%	-33.3%		
Consultants	67	+8	+9	+11	+10	+7	+3	+14.3%	+15.2%	+19.7%	+18.4%	+12.0%	+4.5%
Registrar	71	+48	+14	+18	+5	-1	+3	+216.7%	+25.3%	+34.4%	+7.5%	-1.5%	+5.0%
Senior Registrar	17	+10	+6	+7	+3	-2	+2	+154.8%	+57.7%	+77.3%	+18.3%	-12.8%	+10.8%
Specialist Registrar	3	-2	-1	-3	-2	-1	-0	-47.0%	-32.9%	-54.0%	-44.5%	-34.8%	-13.0%
Registrars	90	+56	+19	+22	+5	-5	+5	+166.4%	+26.9%	+32.9%	+6.4%	-5.2%	+5.4%
Interns	0	-2	-2	-2	-2	-2	+0	-83.0%	-83.0%	-83.0%	-83.0%	-83.0%	-100.0%
Senior House Officer	32	-7	-7	-8	-1	-1	-4	-16.7%	-16.7%	-20.3%	-2.3%	-3.8%	-11.7%
SHO/ Interns	33	-8	-8	-10	-2	-3	-4	-19.9%	-19.9%	-23.2%	-6.9%	-8.3%	-10.8%
Dentists	35	-5	-5	-1	-2	+1	+0	-12.6%	-12.9%	-2.2%	-5.5%	+2.4%	+0.8%
Other Medical	48	+5	+3	-5	-4	+1	+1	+12.3%	+6.6%	-9.6%	-7.5%	+2.8%	+1.8%
Medical/ Dental, other	83	+0	-2	-6	-6	+2	+1	+0.3%	-2.5%	-6.6%	-6.7%	+2.6%	+1.4%
Medical & Dental	272	+57	+18	+17	+8	+1	+5	+26.3%	+6.9%	+6.9%	+2.8%	+0.5%	+1.7%
Clinical Nurse/ Midwife Manager	331	+47	+29	+4	+9	+3	+1	+16.6%	+9.5%	+1.2%	+2.8%	+0.8%	+0.3%
Director Nursing/Midwifery, Assistant	58	+10	+4	+8	+2	+6	+0	+21.3%	+7.2%	+15.1%	+3.9%	+11.1%	+0.5%
Director of Nursing/Midwifery	19	+1	+2	-4	-1	+3	-0	+4.6%	+12.2%	-17.5%	-3.8%	+16.9%	-0.5%
Nurse/ Midwife Manager	407	+58	+35	+7	+10	+11	+1	+16.6%	+9.3%	+1.9%	+2.6%	+2.8%	+0.3%
Advanced Nurse/ Midwife Practitioner	10	+9	+8	+8	+7	+6	+2	+901.0%	+459.2%	+337.1%	+295.7%	+130.6%	+29.3%
Clinical Nurse/ Midwife Specialist	93	+27	+26	+15	+8	+3	-3	+41.0%	+40.0%	+18.9%	+9.3%	+3.4%	-3.0%
Nurse/ Midwife Specialist & AN/MP	103	+36	+35	+22	+15	+9	-1	+53.9%	+51.1%	+28.0%	+17.6%	+9.3%	-0.6%
Staff Nurse [Intellectual Disability]	181	-54	-47	-49	-39	-13	-6	-23.0%	-20.6%	-21.4%	-17.6%	-6.6%	-3.4%
Staff Nurse [Psychiatric]	189	-51	-25	-38	-10	-2	-3	-21.4%	-11.8%	-16.8%	-5.2%	-1.3%	-1.4%
Staff Nurses [General/ Children's]	654	+123	+147	+87	+77	+46	+17	+23.2%	+28.9%	+15.3%	+13.4%	+7.6%	+2.7%
Staff Nurse/ Staff Midwife	1,024	+18	+74	-1	+28	+31	+8	+1.8%	+7.8%	-0.1%	+2.8%	+3.2%	+0.8%
Public Health Nurse	163	-15	-18	-24	-32	-13	-1	-8.3%	-9.9%	-12.8%	-16.6%	-7.1%	-0.7%
Pre-registration Nurse/ Midwife Intern		-2	-2		-6	-1		-100.0%	-100.0%	-100.0%	-100.0%	-100.0%	-100.0%
Pre-registration Nurse Intern (COVID-19)	32	+32	+32	+32	+32	+32	-12	-100.0%	-100.0%	-100.0%	-100.0%	-100.0%	-27.8%
Post-registration Nurse/ Midwife Student	10	-14	-13	-6	+3	-11	-9	-58.3%	-56.5%	-37.5%	+42.9%	-52.4%	-47.4%
Nursing/ Midwifery awaiting registration	7	+7	+7	-2	+3	-3	+1	-100.0%	-100.0%	-19.2%	+63.7%	-33.6%	+19.5%
Nursing/ Midwifery Student	48	+22	+23	+24	+31	+16	-20	+87.3%	+94.9%	+99.4%	+183.4%	+49.1%	-29.5%
Nursing Education/Clinical	10	+1	-1	+1	+2	+0	+1	+15.3%	-9.1%	+16.2%	+22.9%	+4.1%	+16.1%

Jul 2020 (Dec 2015 figure: 5,479)	WTE Jul 2020	WTE change since Dec 15	WTE change since Dec 16	WTE change since Dec 17	WTE change since Dec 18	WTE change since Dec 19	WTE change since Jun 20	% change since Dec 15	% change since Dec 16	% change since Dec 17	% change since Dec 18	% change since Dec 19	% change since Jun 20
Overall	6,619	+1,140	+1,040	+213	+61	+104	+30	+20.8%	+18.6%	+3.3%	+0.9%	+1.6%	+0.5%
Other Nursing/ Midwifery		-1	-1					-100.0%	-100.0%	-100.0%	-100.0%	-100.0%	-100.0%
Nursing/ Midwifery other	10	+1	-2	+1	+2	+0	+1	+9.2%	-16.4%	+16.2%	+22.9%	+4.1%	+16.1%
Nursing & Midwifery	1,755	+120	+147	+31	+54	+55	-11	+7.4%	+9.1%	+1.8%	+3.2%	+3.2%	-0.6%
Dietitians	27	+9	+8	+7	+2	+1	+1	+51.4%	+41.1%	+38.0%	+7.9%	+5.5%	+5.5%
Occupational Therapists	193	+33	+24	+24	+8	+9	-2	+20.3%	+14.0%	+14.0%	+4.3%	+4.9%	-1.1%
Orthoptists		-0	-0					-100.0%	-100.0%	-100.0%	-100.0%	-100.0%	-100.0%
Physiotherapists	125	+10	+3	+2	-0	+11	+2	+9.1%	+2.5%	+1.3%	-0.2%	+9.7%	+1.5%
Podiatrists & Chiropodists	2	+1	+1	+1	+1	+1		+207.7%	+181.7%	+207.7%	+56.3%	+100.0%	
Speech & Language Therapists	125	+35	+18	-3	+2	-1	-4	+39.4%	+16.3%	-2.2%	+1.6%	-0.8%	-3.0%
Therapy Professions	471	+88	+53	+31	+12	+21	-3	+23.1%	+12.7%	+7.1%	+2.7%	+4.8%	-0.6%
Audiology		-0	-0					-100.0%	-100.0%	-100.0%	-100.0%	-100.0%	-100.0%
Clinical Measurement	2	+1	+1	+1	+1	+1	+1	+100.0%	+100.0%	+100.0%	+100.0%	+100.0%	+100.0%
Medical Laboratory			-1					-100.0%	-100.0%	-100.0%	-100.0%	-100.0%	-100.0%
Phlebotomists	0	-0	-0	-0	-1	-1	-1	-48.8%	-66.2%	-65.1%	-82.0%	-82.0%	-82.1%
Radiographers	1	-1						-43.5%					
Health Science/ Diagnostics	3	-0	-1	+1			-0	-4.5%	-21.1%	+22.4%			-0.3%
Social Care	373	+255	+261	+44	+14	+2	+9	+214.7%	+232.0%	+13.5%	+3.8%	+0.6%	+2.4%
Social Care	373	+255	+261	+44	+14	+2	+9	+214.7%	+232.0%	+13.5%	+3.8%	+0.6%	+2.4%
Social Workers	110	+13	+0	-2	-1	+5	+1	+13.3%	+0.1%	-2.1%	-0.8%	+5.1%	+0.8%
Psychologists	86	+15	+17	+1	+1	+5	+4	+20.8%	+24.6%	+1.0%	+1.6%	+6.1%	+4.5%
Pharmacy	42	+1	+4	+3	+4	+2	+1	+1.3%	+10.0%	+7.7%	+9.7%	+4.0%	+1.7%
Counsellor Therapists	36	+4	+5	+3	+5	-1	-1	+14.1%	+14.8%	+9.5%	+17.4%	-1.4%	-2.1%
Dental Hygienists	5	+1	+1	+1	-0	-0	-0	+31.3%	+31.3%	+39.1%	-3.9%	-8.8%	-4.1%
Other Health & Social Care	0	-3	-5	-5	-4	-2	-0	-89.1%	-92.4%	-93.2%	-91.6%	-81.0%	-34.5%
Play Therapists/ Specialists	1						-2						-66.2%
H&SC, Other	42	+2	+1	-1	+1	-3	-3	+6.1%	+2.7%	-1.9%	+2.5%	-5.8%	-7.0%
Health & Social Care Professionals	1,127	+373	+335	+77	+31	+33	+8	+49.6%	+42.3%	+7.3%	+2.8%	+3.0%	+0.7%
Executive Management	15	+3	-1	-0	+3	+2	-0	+24.3%	-6.8%	-0.5%	+24.3%	+14.8%	-0.3%
Senior Management (VIII & GM)	63	+12	+15	+11	+7	+3	+0	+24.3%	+30.6%	+21.5%	+11.8%	+5.5%	+0.4%
Management (VIII & above)	78	+15	+14	+11	+10	+5	+0	+24.3%	+21.3%	+16.6%	+14.0%	+7.2%	+0.3%
Middle Management (V-VII)	197	+67	+66	+39	+30	+16	-1	+51.7%	+50.2%	+24.6%	+17.6%	+8.9%	-0.3%
Other Administrative	1			-0		-0				-14.6%		-14.6%	
Administrative/ Supervisory (V to VII)	198	+67	+66	+39	+30	+16	-1	+51.4%	+49.9%	+24.4%	+17.5%	+8.7%	-0.3%
Clerical (III & IV)	369	+24	+10	-14	-12	+18	+7	+6.9%	+2.9%	-3.7%	-3.0%	+5.2%	+2.0%
Management & Administrative	645	+106	+90	+36	+28	+40	+7	+19.8%	+16.2%	+5.8%	+4.5%	+6.5%	+1.1%

Jul 2020 (Dec 2015 figure: 5,479)	WTE Jul 2020	WTE change since Dec 15	WTE change since Dec 16	WTE change since Dec 17	WTE change since Dec 18	WTE change since Dec 19	WTE change since Jun 20	% change since Dec 15	% change since Dec 16	% change since Dec 17	% change since Dec 18	% change since Dec 19	% change since Jun 20
Overall	6,619	+1,140	+1,040	+213	+61	+104	+30	+20.8%	+18.6%	+3.3%	+0.9%	+1.6%	+0.5%
Catering	57	+3	+4	-7	-5	-2	-1	+4.9%	+7.3%	-11.5%	-8.6%	-4.0%	-1.3%
Household Services	264	-3	+0	-32	-30	-5	+2	-1.1%	+0.0%	-10.8%	-10.1%	-1.9%	+0.8%
Other Labs & Associated	1	-0	-0		-0			-16.7%	-6.5%		-3.8%		
Other Support	14	-3	-2	-1	-2		-0	-19.0%	-14.1%	-5.9%	-9.7%		-0.2%
Portering	63	-14	-10	-8	-8	-4	-1	-18.4%	-14.0%	-11.4%	-10.6%	-6.2%	-1.6%
Support	399	-18	-9	-48	-44	-12	+0	-4.3%	-2.1%	-10.8%	-10.0%	-2.9%	+0.1%
Maintenance	40	+12	+10	-4	-1	+3	+0	+42.3%	+30.9%	-8.8%	-1.5%	+8.5%	+0.8%
Technical Services	3	+1	+1	+1	+1	-1		+50.0%	+50.0%	+50.0%	+57.9%	-25.0%	
Maintenance/ Technical	43	+13	+11	-3	+0	+2	+0	+42.8%	+32.1%	-6.3%	+1.1%	+5.3%	+0.7%
General Support	442	-5	+2	-51	-44	-10	+1	-1.1%	+0.4%	-10.4%	-9.0%	-2.1%	+0.1%
HCA, Nurse's Aide, etc.	1,619	+363	+328	+109	+2	-23	+19	+28.9%	+25.4%	+7.2%	+0.1%	-1.4%	+1.2%
Health & Social Care Assistants	25	+17	+17	+19	+4	+13	+4	+193.5%	+201.2%	+318.8%	+17.7%	+102.5%	+17.3%
Health Care Assistants	1,644	+380	+345	+129	+5	-10	+22	+30.0%	+26.6%	+8.5%	+0.3%	-0.6%	+1.4%
Care, other	599	+125	+128	-6	-18	-11	-2	+26.4%	+27.2%	-1.1%	-2.9%	-1.9%	-0.3%
Home Help	134	-17	-25	-19	-3	+7	+1	-11.4%	-15.7%	-12.3%	-2.1%	+5.2%	+0.5%
Patient & Client Care	2,377	+488	+448	+103	-15	-15	+21	+25.8%	+23.3%	+4.5%	-0.6%	-0.6%	+0.9%

Source: Health Service Personnel Census

Longitudinal Employment Levels by Care Group - Oct 2013 to Jul 2020

Community Health & Wellbeing

Jul 2020 (figure:)	WTE Jul 2020	WTE change since	WTE change since	WTE change since	WTE change since	WTE change since	WTE change since Jun 20	% change since	% change since	% change since	% change since	% change since	% change since Jun 20
Overall	8	+8	+8	+8	+8	+8		-100.0%	-100.0%	-100.0%	-100.0%	-100.0%	
Management & Administrative	4	+4	+4	+4	+4	+4		-1.0%	-1.0%	-1.0%	-1.0%	-1.0%	+0.0%
Management (VIII & above)	1	+1	+1	+1	+1	+1		-1.0%	-1.0%	-1.0%	-1.0%	-1.0%	+0.0%
Administrative/ Supervisory (V to VII)	2	+2	+2	+2	+2	+2		-1.0%	-1.0%	-1.0%	-1.0%	-1.0%	+0.0%
Clerical (III & IV)	1	+1	+1	+1	+1	+1		-1.0%	-1.0%	-1.0%	-1.0%	-1.0%	+0.0%
Patient & Client Care	5	+5	+5	+5	+5	+5		-1.0%	-1.0%	-1.0%	-1.0%	-1.0%	+0.0%
Care, other	5	+5	+5	+5	+5	+5		-1.0%	-1.0%	-1.0%	-1.0%	-1.0%	+0.0%

Source: Health Service Personnel Census

Mental Health

Jul 2020 (Dec 2015 figure: 837)	WTE Jul 2020	WTE change since Dec 15	WTE change since Dec 16	WTE change since Dec 17	WTE change since Dec 18	WTE change since Dec 19	WTE change since Jun 20	% change since Dec 15	% change since Dec 16	% change since Dec 17	% change since Dec 18	% change since Dec 19	% change since Jun 20
Overall	851	+14	+23	-9	+16	+16	-16	+1.7%	+2.8%	-1.0%	+1.9%	+1.9%	-1.8%
Medical & Dental	111	+15	+10	+16	+9	-3	+1	+0.2%	+0.1%	+0.2%	+0.1%	-0.0%	+0.0%
Consultants	51	+6	+7	+10	+7	+4	+1	+0.1%	+0.2%	+0.3%	+0.2%	+0.1%	+0.0%
Registrars	44	+21	+14	+16	+5	-3	+4	+0.9%	+0.5%	+0.6%	+0.1%	-0.1%	+0.1%
SHO/ Interns	16	-12	-11	-11	-3	-5	-4	-0.4%	-0.4%	-0.4%	-0.1%	-0.2%	-0.2%
Nursing & Midwifery	388	+13	+26	+2	+26	+18	-18	+0.0%	+0.1%	+0.0%	+0.1%	+0.0%	-0.0%
Nurse/ Midwife Manager	117	+18	+6	+2	-1	+1	-3	+0.2%	+0.1%	+0.0%	-0.0%	+0.0%	-0.0%
Nurse/ Midwife Specialist & AN/MP	45	+20	+19	+18	+18	+5	-2	+0.8%	+0.7%	+0.7%	+0.1%	+0.1%	-0.0%
Staff Nurse/ Staff Midwife	198	-48	-20	-32	-3	+3	-3	-0.2%	-0.1%	-0.1%	-0.0%	+0.0%	-0.0%
Nursing/ Midwifery Student	21	+19	+19	+12	+11	+9	-12	+11.4%	+11.4%	+1.5%	+1.1%	+0.8%	-0.4%
Nursing/ Midwifery other	8	+4	+2	+2	+2	+0	+1	+1.0%	+0.3%	+0.3%	+0.3%	+0.1%	+0.2%
Health & Social Care Professionals	139	+6	+4	-6	-1	-1	+1	+0.0%	+0.0%	-0.0%	-0.0%	-0.0%	+0.0%
Therapy Professions	45	-2	-4	-3	-4	-3	-2	-0.0%	-0.1%	-0.1%	-0.1%	-0.1%	-0.0%
Social Care	8	-3	-3	-3	-1	-0	+0	-0.3%	-0.3%	-0.3%	-0.1%	-0.0%	+0.0%
Social Workers	38	-1	-3	-4	+1	+4	+1	-0.0%	-0.1%	-0.1%	+0.0%	+0.1%	+0.0%
Psychologists	30	+2	+6	+0	-3	-1	+2	+0.1%	+0.2%	+0.0%	-0.1%	-0.0%	+0.1%
Pharmacy	1	+1	+1	+1	+1			-1.0%	-1.0%	-1.0%	-1.0%	+0.0%	+0.0%
H&SC, Other	18	+8	+7	+3	+5	-0	-0	+0.8%	+0.6%	+0.2%	+0.4%	-0.0%	-0.0%
Management & Administrative	71	+11	+4	+2	-2	+5	+2	+0.2%	+0.1%	+0.0%	-0.0%	+0.1%	+0.0%
Management (VIII & above)	3	+1						+0.4%	+0.0%	+0.0%	+0.0%	+0.0%	+0.0%
Administrative/ Supervisory (V to VII)	17	+8	+4	+1	-2	+1	-1	+0.9%	+0.3%	+0.0%	-0.1%	+0.1%	-0.1%
Clerical (III & IV)	51	+2	+0	+1	-1	+5	+3	+0.0%	+0.0%	+0.0%	-0.0%	+0.1%	+0.1%
General Support	18	-11	-8	-8	-6	-2	-1	-0.4%	-0.3%	-0.3%	-0.3%	-0.1%	-0.1%
Support	16	-11	-8	-8	-6	-2	-1	-0.4%	-0.3%	-0.3%	-0.3%	-0.1%	-0.1%
Maintenance/ Technical	2	+0				+0		+0.0%	+0.0%	+0.0%	+0.0%	+0.1%	+0.0%
Patient & Client Care	123	-20	-13	-15	-10	-2	-1	-0.1%	-0.1%	-0.1%	-0.1%	-0.0%	-0.0%
Health Care Assistants	34	-13	-12	-10	-7	+1	-1	-0.3%	-0.3%	-0.2%	-0.2%	+0.0%	-0.0%
Care, other	89	-7	-2	-5	-3	-3	-0	-0.1%	-0.0%	-0.1%	-0.0%	-0.0%	-0.0%

Source: Health Service Personnel Census

Primary Care

Jul 2020 (Dec 2015 figure: 1,647)	WTE Jul 2020	WTE change since Dec 15	WTE change since Dec 16	WTE change since Dec 17	WTE change since Dec 18	WTE change since Dec 19	WTE change since Jun 20	% change since Dec 15	% change since Dec 16	% change since Dec 17	% change since Dec 18	% change since Dec 19	% change since Jun 20
Overall	1,718	+70	+30	+26	-58	+16	-2	+4.3%	+1.8%	+1.6%	-3.3%	+0.9%	-0.1%
Medical & Dental	143	+45	+10	+5	-2	+4	+4	+0.5%	+0.1%	+0.0%	-0.0%	+0.0%	+0.0%
Consultants	15	+5	+4	+3	+4	+3	+2	+0.5%	+0.4%	+0.2%	+0.3%	+0.3%	+0.1%
Registrars	43	+35	+5	+6	-0	-2	+1	+4.0%	+0.1%	+0.2%	-0.0%	-0.1%	+0.0%
SHO/ Interns	7	+2	+1	+1	-0	+1	+0	+0.4%	+0.2%	+0.2%	-0.0%	+0.2%	+0.1%
Medical/ Dental, other	78	+3	-0	-5	-5	+2	+1	+0.0%	-0.0%	-0.1%	-0.1%	+0.0%	+0.0%
Nursing & Midwifery	518	+15	+10	+9	-11	-12	-2	+0.0%	+0.0%	+0.0%	-0.0%	-0.0%	-0.0%
Nurse/ Midwife Manager	85	+7	+8	+9	+5	+5	-3	+0.1%	+0.1%	+0.1%	+0.1%	+0.1%	-0.0%
Nurse/ Midwife Specialist & AN/MP	51	+18	+17	+8	+4	+5	+2	+0.5%	+0.5%	+0.2%	+0.1%	+0.1%	+0.1%
Staff Nurse/ Staff Midwife	207	+18	+17	+22	+9	+2	+9	+0.1%	+0.1%	+0.1%	+0.0%	+0.0%	+0.0%
Public Health Nurse	163	-13	-18	-24	-32	-13	-1	-0.1%	-0.1%	-0.1%	-0.2%	-0.1%	-0.0%
Nursing/ Midwifery Student	10	-14	-13	-6	+3	-11	-9	-0.6%	-0.6%	-0.4%	+0.4%	-0.5%	-0.5%
Nursing/ Midwifery other	2	-1	-2	-1				-0.3%	-0.4%	-0.2%	+0.0%	+0.0%	+0.0%
Health & Social Care Professionals	379	+25	+16	+17	-2	+5	-3	+0.1%	+0.0%	+0.0%	-0.0%	+0.0%	-0.0%
Therapy Professions	271	+28	+17	+16	-4	+4	-3	+0.1%	+0.1%	+0.1%	-0.0%	+0.0%	-0.0%
Health Science/ Diagnostics	0	-0	-0	-0			-0	-0.5%	-0.7%	-0.7%	+0.0%	+0.0%	-0.0%
Social Care	4	-0	-0	-0	-0	+1		-0.0%	-0.0%	-0.0%	-0.0%	+0.2%	+0.0%
Social Workers	25	-2	-3	-2	+1	-1	-1	-0.1%	-0.1%	-0.1%	+0.0%	-0.0%	-0.0%
Psychologists	25	+5	+5	+3	+2	+4	+1	+0.2%	+0.2%	+0.1%	+0.1%	+0.2%	+0.1%
Pharmacy	32	-1	+2	+1	+3	+0	+0	-0.0%	+0.1%	+0.0%	+0.1%	+0.0%	+0.0%
H&SC, Other	21	-5	-4	-2	-3	-3	-1	-0.2%	-0.2%	-0.1%	-0.1%	-0.1%	-0.0%
Management & Administrative	296	-6	-7	-14	-15	+9	+4	-0.0%	-0.0%	-0.0%	-0.0%	+0.0%	+0.0%
Management (VIII & above)	31	+5	+3	+2	-0	-3	+1	+0.2%	+0.1%	+0.1%	-0.0%	-0.1%	+0.0%
Administrative/ Supervisory (V to VII)	82	+15	+19	+10	+11	+6	-0	+0.2%	+0.3%	+0.1%	+0.2%	+0.1%	-0.0%
Clerical (III & IV)	184	-26	-28	-27	-26	+6	+3	-0.1%	-0.1%	-0.1%	-0.1%	+0.0%	+0.0%
General Support	121	-18	-15	-10	-12	-4	-4	-0.1%	-0.1%	-0.1%	-0.1%	-0.0%	-0.0%
Support	111	-19	-15	-12	-13	-4	-4	-0.1%	-0.1%	-0.1%	-0.1%	-0.0%	-0.0%
Maintenance/ Technical	9	+1	+0	+2	+1	+1	+0	+0.2%	+0.0%	+0.3%	+0.1%	+0.1%	+0.0%
Patient & Client Care	261	+10	+17	+19	-17	+12	-1	+0.0%	+0.1%	+0.1%	-0.1%	+0.0%	-0.0%
Health Care Assistants	134	+15	+17	+15	-7	+13	-1	+0.1%	+0.1%	+0.1%	-0.0%	+0.1%	-0.0%
Care, other	127	-5	-0	+4	-11	-1	-0	-0.0%	-0.0%	+0.0%	-0.1%	-0.0%	-0.0%

Source: Health Service Personnel Census

Disabilities

Jul 2020 (Dec 2015 figure: 1,867)	WTE Jul 2020	WTE change since Dec 15	WTE change since Dec 16	WTE change since Dec 17	WTE change since Dec 18	WTE change since Dec 19	WTE change since Jun 20	% change since Dec 15	% change since Dec 16	% change since Dec 17	% change since Dec 18	% change since Dec 19	% change since Jun 20
Overall	3,009	+1,142	+1,066	+217	+106	+27	+36	+61.2%	+54.9%	+7.8%	+3.6%	+0.9%	+1.2%
Medical & Dental	12	-0	+0	-2	+1	+0	-0	-0.0%	+0.0%	-0.1%	+0.1%	+0.0%	-0.0%
Consultants	1	-3	-2	-2				-0.8%	-0.8%	-0.8%	+0.0%	+0.0%	+0.0%
Registrars	3	+1			+1			+0.5%	+0.0%	+0.0%	+0.3%	+0.0%	+0.0%
SHO/ Interns	7	+2	+2	+0	+0	+0	-0	+0.5%	+0.5%	+0.1%	+0.1%	+0.1%	-0.1%
Medical/ Dental, other	1	-1						-0.3%	+0.0%	+0.0%	+0.0%	+0.0%	+0.0%
Nursing & Midwifery	522	+121	+126	+16	+14	+20	+7	+0.3%	+0.3%	+0.0%	+0.0%	+0.0%	+0.0%
Nurse/ Midwife Manager	125	+31	+25	-9	+1	+3	+3	+0.3%	+0.3%	-0.1%	+0.0%	+0.0%	+0.0%
Nurse/ Midwife Specialist & AN/MP	3	-3	-2	-4	-7	-2	-2	-0.5%	-0.4%	-0.5%	-0.7%	-0.4%	-0.4%
Staff Nurse/ Staff Midwife	379	+80	+90	+13	+5	+4	+6	+0.3%	+0.3%	+0.0%	+0.0%	+0.0%	+0.0%
Nursing/ Midwifery Student	15	+15	+15	+15	+15	+15		-1.0%	-1.0%	-1.0%	-1.0%	-1.0%	+0.0%
Nursing/ Midwifery other	1	-2	-3					-0.8%	-0.8%	+0.0%	+0.0%	+0.0%	+0.0%
Health & Social Care Professionals	578	+348	+323	+72	+41	+25	+10	+1.5%	+1.3%	+0.1%	+0.1%	+0.0%	+0.0%
Therapy Professions	143	+64	+43	+22	+24	+21	+2	+0.8%	+0.4%	+0.2%	+0.2%	+0.2%	+0.0%
Health Science/ Diagnostics	3	+1	+1	+1				+0.4%	+0.2%	+0.5%	+0.0%	+0.0%	+0.0%
Social Care	362	+258	+264	+48	+14	+2	+9	+2.5%	+2.7%	+0.2%	+0.0%	+0.0%	+0.0%
Social Workers	33	+15	+8	+4	-1	-0	+0	+0.8%	+0.3%	+0.1%	-0.0%	-0.0%	+0.0%
Psychologists	30	+8	+7	-3	+3	+2	+0	+0.4%	+0.3%	-0.1%	+0.1%	+0.1%	+0.0%
Pharmacy	6	+2	+2	+2	+1	+1	+0	+0.4%	+0.4%	+0.5%	+0.2%	+0.2%	+0.1%
H&SC, Other	2		-1	-1			-2	+0.0%	-0.4%	-0.4%	+0.0%	+0.0%	-0.6%
Management & Administrative	221	+99	+88	+41	+32	+18	+2	+0.8%	+0.7%	+0.2%	+0.2%	+0.1%	+0.0%
Management (VIII & above)	38	+11	+12	+7	+7	+6	-1	+0.4%	+0.5%	+0.2%	+0.2%	+0.2%	-0.0%
Administrative/ Supervisory (V to VII)	84	+42	+37	+23	+14	+5	+1	+1.0%	+0.8%	+0.4%	+0.2%	+0.1%	+0.0%
Clerical (III & IV)	99	+46	+39	+11	+10	+7	+2	+0.9%	+0.6%	+0.1%	+0.1%	+0.1%	+0.0%
General Support	192	+33	+35	-22	-15	-3	+2	+0.2%	+0.2%	-0.1%	-0.1%	-0.0%	+0.0%
Support	162	+20	+23	-18	-16	-5	+2	+0.1%	+0.2%	-0.1%	-0.1%	-0.0%	+0.0%
Maintenance/ Technical	30	+12	+11	-4	+0	+1		+0.7%	+0.6%	-0.1%	+0.0%	+0.1%	+0.0%
Patient & Client Care	1,483	+542	+494	+111	+33	-35	+16	+0.6%	+0.5%	+0.1%	+0.0%	-0.0%	+0.0%
Health Care Assistants	1,091	+414	+371	+119	+44	-22	+17	+0.6%	+0.5%	+0.1%	+0.0%	-0.0%	+0.0%
Care, other	374	+141	+137	+1	-6	-11	-2	+0.6%	+0.6%	+0.0%	-0.0%	-0.0%	-0.0%
Home Help	18	-14	-14	-8	-5	-1	+0	-0.4%	-0.4%	-0.3%	-0.2%	-0.1%	+0.0%

Source: Health Service Personnel Census

Older People

Jul 2020 (Dec 2015 figure: 1,128)	WTE Jul 2020	WTE change since Dec 15	WTE change since Dec 16	WTE change since Dec 17	WTE change since Dec 18	WTE change since Dec 19	WTE change since Jun 20	% change since Dec 15	% change since Dec 16	% change since Dec 17	% change since Dec 18	% change since Dec 19	% change since Jun 20
Overall	1,034	-94	-87	-30	-10	+38	+12	-8.4%	-7.8%	-2.8%	-1.0%	+3.8%	+1.2%
Medical & Dental	6	-4	-3	-2	-1			-0.4%	-0.3%	-0.3%	-0.1%	+0.0%	+0.0%
SHO/ Interns	2	-1	-1	-1				-0.3%	-0.3%	-0.3%	+0.0%	+0.0%	+0.0%
Medical/ Dental, other	4	-3	-2	-1	-1			-0.4%	-0.3%	-0.2%	-0.2%	+0.0%	+0.0%
Nursing & Midwifery	327	-29	-14	+3	+25	+28	+2	-0.1%	-0.0%	+0.0%	+0.1%	+0.1%	+0.0%
Nurse/ Midwife Manager	80	+3	-5	+4	+6	+2	+4	+0.0%	-0.1%	+0.1%	+0.1%	+0.0%	+0.1%
Nurse/ Midwife Specialist & AN/MP	4	+0	+1	+0	-0	+1	+1	+0.1%	+0.2%	+0.1%	-0.1%	+0.5%	+0.1%
Staff Nurse/ Staff Midwife	241	-33	-13	-4	+17	+22	-4	-0.1%	-0.1%	-0.0%	+0.1%	+0.1%	-0.0%
Public Health Nurse		-2	-0					-1.0%	-1.0%	-1.0%	-1.0%	-1.0%	-1.0%
Nursing/ Midwifery Student	3	+3	+3	+3	+3	+3	+1	-1.0%	-1.0%	-1.0%	-1.0%	-1.0%	+0.7%
Health & Social Care Professionals	31	-5	-7	-6	-8	+3	-0	-0.1%	-0.2%	-0.2%	-0.2%	+0.1%	-0.0%
Therapy Professions	13	-2	-3	-4	-4	-0	-0	-0.2%	-0.2%	-0.2%	-0.2%	-0.0%	-0.0%
Health Science/ Diagnostics		-1	-1					-1.0%	-1.0%	-1.0%	-1.0%	-1.0%	-1.0%
Social Workers	14	+0	-1	-0	-2	+3	+0	+0.0%	-0.1%	-0.0%	-0.2%	+0.3%	+0.0%
Pharmacy	3	-1	-1	-1	-1	+1		-0.3%	-0.3%	-0.3%	-0.3%	+0.2%	+0.0%
H&SC, Other	1	-1	-1	-1	-1			-0.5%	-0.5%	-0.5%	-0.5%	+0.0%	+0.0%
Management & Administrative	53	-0	+1	+3	+9	+3	-1	-0.0%	+0.0%	+0.1%	+0.2%	+0.1%	-0.0%
Management (VIII & above)	6	-2	-2	+1	+2	+1	-0	-0.3%	-0.3%	+0.2%	+0.5%	+0.2%	-0.0%
Administrative/ Supervisory (V to VII)	14	+1	+4	+3	+4	+2	-1	+0.1%	+0.4%	+0.3%	+0.4%	+0.2%	-0.1%
Clerical (III & IV)	34	+1	-1	-1	+3	-0	-0	+0.0%	-0.0%	-0.0%	+0.1%	-0.0%	-0.0%
General Support	111	-9	-10	-12	-11	-1	+4	-0.1%	-0.1%	-0.1%	-0.1%	-0.0%	+0.0%
Support	109	-8	-9	-11	-10	-1	+4	-0.1%	-0.1%	-0.1%	-0.1%	-0.0%	+0.0%
Maintenance/ Technical	2	-1	-1	-1	-1			-0.3%	-0.3%	-0.3%	-0.3%	+0.0%	+0.0%
Patient & Client Care	505	-48	-54	-17	-25	+5	+7	-0.1%	-0.1%	-0.0%	-0.0%	+0.0%	+0.0%
Health Care Assistants	386	-36	-31	+5	-25	-2	+7	-0.1%	-0.1%	+0.0%	-0.1%	-0.0%	+0.0%
Care, other	5	-9	-12	-11	-2	-0	+0	-0.7%	-0.7%	-0.7%	-0.3%	-0.1%	+0.1%
Home Help	115	-3	-11	-11	+2	+8	+1	-0.0%	-0.1%	-0.1%	+0.0%	+0.1%	+0.0%

Source: Health Service Personnel Census