

CHO 7 Employment Report: July 2021

Employment by Staff Group

Jul 2021 (Dec 2020 figure: 6,783)	WTE Jun 2021	WTE Jul 2021	WTE change since Jun 21	% change since Jun 21	WTE change since Dec 20	WTE change since Jul 20
Overall	6,934	6,970	+36	+0.5%	+187	+351
Consultants	67	69	+2	+2.8%	+3	+2
Registrars	101	97	-4	-4.2%	-3	+7
SHO/ Interns	38	39	+1	+2.9%	+1	+6
Medical/ Dental, other	75	74	-1	-1.5%	-5	-8
Medical & Dental	282	280	-2	-0.9%	-5	+7
Nurse/ Midwife Manager	439	447	+8	+1.7%	+39	+40
Nurse/ Midwife Specialist & AN/MP	111	111	-0	-0.2%	+1	+8
Staff Nurse/ Staff Midwife	1,053	1,063	+9	+0.9%	+42	+38
Public Health Nurse	170	175	+5	+2.9%	-1	+12
Pre-registration Nurse/ Midwife Intern	22	22	+0	+2.0%	+22	+0
Pre-registration Nurse Intern (COVID-19)	1	1	-0	-38.0%	-3	-0
Post-registration Nurse/ Midwife Student	24	3	-21	-87.8%	-21	-21
Nursing/ Midwifery awaiting registration	1	1	+1	+71.6%	-3	+1
Nursing/ Midwifery Student	48	27	-20	-42.7%	-5	-21
Nursing/ Midwifery other	10	10	+0	+1.0%	+1	-0
Nursing & Midwifery	1,831	1,833	+1	+0.1%	+77	+77
Therapy Professions	455	454	-1	-0.1%	-8	-17
Health Science/ Diagnostics	4	3	-1	-20.7%	-1	-0
Social Care	404	420	+15	+3.8%	+20	+46
Social Workers	113	114	+1	+0.6%	+6	+4
Psychologists	86	90	+4	+4.2%	+3	+4
Pharmacy	38	39	+1	+1.6%	+1	-3
H&SC, Other	41	44	+3	+6.1%	+2	+2
Health & Social Care Professionals	1,141	1,163	+22	+1.9%	+23	+36
Management (VIII & above)	90	90	+0	+0.1%	+5	+12
Administrative/ Supervisory (V to VII)	227	234	+7	+2.9%	+20	+35
Clerical (III & IV)	393	387	-6	-1.6%	+7	+18
Management & Administrative	710	711	+0	+0.0%	+32	+65
Support	395	390	-5	-1.3%	-11	-8
Maintenance/ Technical	47	46	-1	-1.8%	+0	+3
General Support	443	437	-6	-1.3%	-11	-5
Health Care Assistants	1,782	1,794	+12	+0.7%	+71	+149
Care, other	618	629	+11	+1.8%	+8	+30
Home Help	126	125	-2	-1.3%	-7	-9
Patient & Client Care	2,526	2,548	+21	+0.8%	+72	+171

CHO 7 Employment Report: July 2021

Community Health & Wellbeing

Jul 2021 (Dec 2020 figure: 8)	WTE Jun 2021	WTE Jul 2021	WTE change since Jun 21	% change since Jun 21	WTE change since Dec 20	WTE change since Jul 20
Total Community Health & Wellbeing	10	11	+1	+5.3%	+3	+3
Management (VIII & above)	1	1	0	0		
Administrative/ Supervisory (V to VII)	5	6	+1	+12%	+3	+4
Clerical (III & IV)	2	2	-0	-3%	+1	+1
Management & Administrative	8	9	+1	+7.7%	+4	+5
Care, other	3	3	-0	-2%	-1	-2
Patient & Client Care	3	3	-0	-2.0%	-1	-2

Mental Health

Jul 2021 (Dec 2020 figure: 861)	WTE Jun 2021	WTE Jul 2021	WTE change since Jun 21	% change since Jun 21	WTE change since Dec 20	WTE change since Jul 20
Total Mental Health	887	884	-3	-0.3%	+22	+33
Consultants	54	55	+1	+2%	+2	+4
Registrars	55	50	-5	-10%	-4	+6
SHO/ Interns	18	18	-0	-1%	-2	+2
Medical & Dental	127	123	-5	-3.5%	-4	+11
Nurse/ Midwife Manager	117	117	-1	-1%	-1	-1
Nurse/ Midwife Specialist & AN/MP	49	50	+1	+2%	+4	+6
Staff Nurse/ Staff Midwife	215	212	-3	-1%	+10	+14
Pre-registration Nurse/ Midwife Intern	14	15	+0	+3.0%	+14	+0
Pre-registration Nurse Intern (COVID-19)	1	1	-0	-38.0%	-3	-0
Post-registration Nurse/ Midwife Student	1		-1	-100.0%	-1	-1
Nursing/ Midwifery awaiting registration				-100.0%	-3	
Nursing/ Midwifery Student	16	16	-1	-6%	+8	-5
Nursing/ Midwifery other	6	6	+0	+2%	-0	-2
Nursing & Midwifery	404	400	-4	-0.9%	+21	+12
Therapy Professions	48	49	+1	+3%	-4	+4
Social Care	7	7	-0	-1%	+0	-0
Social Workers	41	41	-0	-1%	+3	+3
Psychologists	29	31	+2	+8%	+1	+0
Pharmacy	1	1	0	0		
H&SC, Other	17	17	-0	-0%	-1	-1
Health & Social Care Professionals	143	146	+3	+2.1%	-1	+7
Management (VIII & above)	4	4	0	0	+0	+1
Administrative/ Supervisory (V to VII)	16	17	+1	+6%	+0	+1
Clerical (III & IV)	48	47	-1	-2%	-2	-5
Management & Administrative	68	68	+0	+0.4%	-2	-3
Support	18	17	-1	-3%	-0	+1
Maintenance/ Technical	2	2	-0	-1%	-0	-0
General Support	20	19	-1	-3.0%	-0	+1
Health Care Assistants	35	35	+0	+0%	+1	+1
Care, other	91	93	+2	+2%	+8	+4
Patient & Client Care	126	128	+2	+1.9%	+9	+5

Primary Care

Jul 2021 (Dec 2020 figure: 1,789)	WTE Jun 2021	WTE Jul 2021	WTE change since Jun 21	% change since Jun 21	WTE change since Dec 20	WTE change since Jul 20
Total Primary Care	1,839	1,841	+3	+0.2%	+53	+124
Consultants	13	14	+1	+8%	+1	-1
Registrars	43	44	+0	+1%	+0	+0
SHO/ Interns	10	12	+2	+18%	+3	+5
Medical/ Dental, other	72	71	-1	-2%	-5	-6
Medical & Dental	138	140	+2	+1.5%	-1	-3
Nurse/ Midwife Manager	93	98	+5	+6%	+13	+13
Nurse/ Midwife Specialist & AN/MP	55	54	-1	-2%	-2	+3
Staff Nurse/ Staff Midwife	210	216	+6	+3%	+16	+9
Public Health Nurse	170	175	+5	+3%	-1	+12
<i>Post-registration Nurse/ Midwife Student</i>	23	3	-20	-87.2%	-20	-20
Nursing/ Midwifery Student	23	3	-20	-87%	-20	-7
Nursing/ Midwifery other	2	2	0	0		
Nursing & Midwifery	553	548	-6	-1.0%	+6	+30
Therapy Professions	250	246	-4	-2%	-12	-25
Health Science/ Diagnostics	1	1	+0	+6%	-0	+1
Social Care	3	3	0	0	-1	-1
Social Workers	28	28	+0	+1%	+2	+3
Psychologists	27	27	+0	+1%	+2	+2
Pharmacy	30	30	+0	+0%	-0	-1
H&SC, Other	21	23	+2	+7%	+2	+2
Health & Social Care Professionals	361	359	-2	-0.5%	-6	-20
Management (VIII & above)	33	33	+0	+0%	+3	+2
Administrative/ Supervisory (V to VII)	97	99	+2	+2%	+12	+18
Clerical (III & IV)	197	196	-1	-0%	+4	+12
Management & Administrative	327	328	+1	+0.4%	+18	+32
Support	109	108	-0	-0%	-2	-3
Maintenance/ Technical	9	9	0	0	-0	+0
General Support	118	118	-0	-0.3%	-2	-3
Health Care Assistants	212	215	+3	+1%	+31	+81
Care, other	129	133	+4	+3%	+8	+7
Patient & Client Care	341	348	+7	+2.2%	+38	+88

Social Care

Jul 2021 (Dec 2020 figure: 4,125)	WTE Jun 2021	WTE Jul 2021	WTE change since Jun 21	% change since Jun 21	WTE change since Dec 20	WTE change since Jul 20
Total Social Care	4,198	4,234	+36	+0.9%	+109	+191
Consultants	0	0	0	0	-0	-0
Registrars	3	4	+1	+19%	+1	+1
SHO/ Interns	10	9	-1	-6%	+0	-0
Medical/ Dental, other	3	3	0	0		-2
Medical & Dental	16	16	-0	-0.2%	+1	-2
Nurse/ Midwife Manager	229	232	+3	+1%	+28	+27
Nurse/ Midwife Specialist & AN/MP	7	7	-0	-0%	-1	-1
Staff Nurse/ Staff Midwife	628	635	+6	+1%	+15	+16
Pre-registration Nurse/ Midwife Intern	8	8			+8	
Pre-registration Nurse Intern (COVID-19)				-100.0%		
Nursing/ Midwifery awaiting registration	1	1	+1	+71.6%	+0	+1
Nursing/ Midwifery Student	8	9	+1	+7%	+8	-9
Nursing/ Midwifery other	3	3	0	0	+1	+2
Nursing & Midwifery	875	885	+10	+1.2%	+51	+36
Therapy Professions	157	160	+2	+1%	+8	+4
Health Science/ Diagnostics	3	2	-1	-30%	-1	-1
Social Care	394	409	+16	+4%	+20	+47
Social Workers	44	45	+1	+2%	+1	-2
Psychologists	30	32	+1	+4%	-1	+2
Pharmacy	7	7	+0	+7%	+1	-2
H&SC, Other	3	4	+1	+40%	+1	+1
Health & Social Care Professionals	638	658	+20	+3.2%	+30	+49
Management (VIII & above)	52	52	0	0	+3	+9
Administrative/ Supervisory (V to VII)	108	111	+3	+3%	+5	+13
Clerical (III & IV)	147	142	-5	-3%	+4	+9
Management & Administrative	308	306	-2	-0.6%	+12	+31
Support	269	265	-4	-2%	-9	-7
Maintenance/ Technical	36	35	-1	-2%	+0	+3
General Support	305	300	-5	-1.6%	-9	-3
Health Care Assistants	1,535	1,544	+9	+1%	+40	+68
Care, other	396	401	+5	+1%	-7	+22
Home Help	126	125	-2	-1%	-7	-9
Patient & Client Care	2,057	2,069	+12	+0.6%	+25	+80

CHO 7 Employment Report: July 2021

Disabilities

Jul 2021 (Dec 2020 figure: 3,103)	WTE Jun 2021	WTE Jul 2021	WTE change since Jun 21	% change since Jun 21	WTE change since Dec 20	WTE change since Jul 20
Total Disabilities	3,179	3,217	+38	+1.2%	+113	+208
Consultants	0	0			-0	-0
Registrars	3	4	+1	+19.3%	+1	+1
SHO/ Interns	8	7	-1	-7.6%	+0	-0
Medical/ Dental, other	1	1				
Medical & Dental	12	12	-0	-0.2%	+1	+0
Nurse/ Midwife Manager	131	135	+3	+2.4%	+16	+10
Nurse/ Midwife Specialist & AN/MP	4	4				+1
Staff Nurse/ Staff Midwife	389	393	+4	+1.0%	+15	+14
Pre-registration Nurse/ Midwife Intern	8	8			+8	
Pre-registration Nurse Intern (COVID-19)				-100.0%		
Nursing/ Midwifery Student	8	8			+8	-8
Nursing/ Midwifery other	3	3			+1	+2
Nursing & Midwifery	535	542	+7	+1.3%	+40	+20
Therapy Professions	140	143	+3	+2.1%	+4	-0
Health Science/ Diagnostics	3	2	-1	-30.1%	-1	-1
Social Care	394	409	+16	+4.0%	+20	+47
Social Workers	33	33	-0	-0.1%	+1	-1
Psychologists	30	32	+1	+3.9%	-1	+2
Pharmacy	5	5	+0	+9.6%	+1	-1
H&SC, Other	2	3	+1	+66.7%	+1	+1
Health & Social Care Professionals	605	626	+20	+3.4%	+26	+48
Management (VIII & above)	46	46			+3	+8
Administrative/ Supervisory (V to VII)	93	96	+3	+2.7%	+4	+11
Clerical (III & IV)	110	107	-3	-2.6%	+6	+8
Management & Administrative	249	249	-0	-0.1%	+13	+28
Support	152	148	-4	-2.6%	-7	-14
Maintenance/ Technical	34	33	-1	-2.5%	+0	+3
General Support	186	181	-5	-2.6%	-7	-11
Health Care Assistants	1,183	1,195	+12	+1.1%	+49	+105
Care, other	391	395	+4	+0.9%	-8	+20
Home Help	17	17	-0	-0.8%	-1	-2
Patient & Client Care	1,590	1,606	+16	+1.0%	+40	+123

Older People

Jul 2021 (Dec 2020 figure: 1,021)	WTE Jun 2021	WTE Jul 2021	WTE change since Jun 21	% change since Jun 21	WTE change since Dec 20	WTE change since Jul 20
Total Older People	1,019	1,017	-2	-0.2%	-5	-17
SHO/ Interns	2	2				
Medical/ Dental, other	2	2				-2
Medical & Dental	4	4				-2
Nurse/ Midwife Manager	97	97	+0	+0.2%	+12	+18
Nurse/ Midwife Specialist & AN/MP	2	2	-0	-0.4%	-1	-2
Staff Nurse/ Staff Midwife	239	242	+3	+1.1%	-0	+1
Nursing/ Midwifery Student	1	1	+1	+71.6%	+0	-1
Nursing & Midwifery	340	343	+3	+1.0%	+11	+16
Health & Social Care Professionals	32	32	+0	+0.2%	+3	+1
Management (VIII & above)	6	6			-1	+1
Administrative/ Supervisory (V to VII)	15	15	+1	+3.8%	+1	+2
Clerical (III & IV)	37	35	-2	-5.4%	-2	+1
Management & Administrative	59	57	-1	-2.5%	-2	+4
Support	117	117	-0	-0.1%	-2	+7
Maintenance/ Technical	2	2				
General Support	119	119	-0	-0.1%	-2	+7
Health Care Assistants	352	348	-4	-1.0%	-9	-37
Care, other	5	6	+1	+20.0%	+1	+1
Home Help	109	108	-2	-1.4%	-7	-7
Patient & Client Care	467	462	-4	-0.9%	-15	-43

CHO 7 Employment by Administration (HSE / S38): July 2021

Jul 2021 (Dec 2020 figure: 6,783)	WTE Jun 2021	WTE Jul 2021	WTE change since Jun 21	% change since Jun 21	WTE change since Dec 20	WTE change since Jul 20
Overall	6,934	6,970	+36	+0.5%	+187	+351
HSE	3,373	3,368	-5	-0.1%	+50	+125
Section 38 Voluntary Agencies	3,561	3,602	+41	+1.1%	+138	+227

HSE

Jul 2021 (Dec 2020 figure: 3,319)	WTE Jun 2021	WTE Jul 2021	WTE change since Jun 21	% change since Jun 21	WTE change since Dec 20	WTE change since Jul 20
Overall	3,373	3,368	-5	-0.1%	+50	+125
Consultants	59	60	+1	+0.0%	+2	+3
Registrars	92	89	-4	-0.0%	-2	+6
SHO/ Interns	23	25	+2	+0.1%	-1	+4
Medical/ Dental, other	73	72	-1	-0.0%	-5	-8
Medical & Dental	248	245	-2	-1.0%	-6	+4
Nurse/ Midwife Manager	266	268	+2	+0.0%	+20	+27
Nurse/ Midwife Specialist & AN/MP	70	70	+0	+0.0%	+2	+1
Staff Nurse/ Staff Midwife	558	564	+6	+0.0%	+19	+17
Public Health Nurse	170	175	+5	+0.0%	-1	+12
Pre-registration Nurse/ Midwife Intern	14	15	+0	+0.0%	+14	+15
Pre-registration Nurse Intern (COVID-19)	1	1	-0	-0.4%	+1	-16
Post-registration Nurse/ Midwife Student	24	3	-21	-0.9%	-18	-7
Nursing/ Midwifery awaiting registration	1	1	+1	+0.7%	-8	-5
Nursing/ Midwifery Student	40	20	-20	-0.5%	-12	-13
Nursing/ Midwifery other	6	6	+0	+0.0%	-0	-2
Nursing & Midwifery	1,110	1,103	-7	-0.6%	+27	+42
Therapy Professions	325	322	-3	-0.0%	-18	-16
Social Care	10	10	-0	-0.0%	-1	-1
Social Workers	76	76	+0	+0.0%	+3	+3
Psychologists	66	68	+3	+0.0%	+5	+4
Pharmacy	25	25	+0	+0.0%	+1	-2
H&SC, Other	40	42	+3	+0.1%	+2	+2
Health & Social Care Professionals	541	544	+2	+0.4%	-8	-10
Management (VIII & above)	48	48	-0	-0.0%	+1	+2
Administrative/ Supervisory (V to VII)	130	133	+3	+0.0%	+10	+26
Clerical (III & IV)	267	264	-3	-0.0%	+1	+10
Management & Administrative	445	445	+0	+0.1%	+13	+37
Support	175	174	-1	-0.0%	-3	+7
Maintenance/ Technical	5	5	-0	-0.0%	-0	+0
General Support	180	179	-1	-0.5%	-3	+7
Health Care Assistants	489	486	-3	-0.0%	+16	+37
Care, other	234	242	+7	+0.0%	+18	+15
Home Help	126	125	-2	-0.0%	-7	-9
Patient & Client Care	849	852	+3	+0.4%	+27	+43

Section 38 Voluntary Agencies

Jul 2021 (Dec 2020 figure: 3,464)	WTE Jun 2021	WTE Jul 2021	WTE change since Jun 21	% change since Jun 21	WTE change since Dec 20	WTE change since Jul 20
Overall	3,561	3,602	+41	+1.1%	+138	+227
Consultants	8	9	+1	+0.1%	+1	-1
Registrars	9	8	-0	-0.1%	-1	+1
SHO/ Interns	15	14	-1	-0.0%	+1	+2
Medical/ Dental, other	2	2		+0.0%	+0	+0
Medical & Dental	34	34	-0	-0.1%	+2	+3
Nurse/ Midwife Manager	173	179	+5	+0.0%	+19	+13
Nurse/ Midwife Specialist & AN/MP	41	41	-0	-0.0%	-1	+7
Staff Nurse/ Staff Midwife	495	498	+3	+0.0%	+23	+21
<i>Pre-registration Nurse/ Midwife Intern</i>	8	8		+0.0%	+8	+8
<i>Pre-registration Nurse Intern (COVID-19)</i>				-1.0%		-15
Nursing/ Midwifery Student	8	8		+0.0%	+8	-8
Nursing/ Midwifery other	5	5		+0.0%	+1	+2
Nursing & Midwifery	722	730	+8	+1.1%	+50	+35
Therapy Professions	130	133	+3	+0.0%	+10	-1
Health Science/ Diagnostics	4	3	-1	-0.2%	-1	-0
Social Care	394	409	+16	+0.0%	+20	+47
Social Workers	38	38	+0	+0.0%	+3	+1
Psychologists	20	21	+1	+0.0%	-2	-0
Pharmacy	13	14	+0	+0.0%	+0	-1
H&SC, Other	2	2		+0.0%		
Health & Social Care Professionals	600	619	+19	+3.2%	+30	+46
Management (VIII & above)	41	42	+0	+0.0%	+4	+10
Administrative/ Supervisory (V to VII)	97	101	+3	+0.0%	+9	+10
Clerical (III & IV)	127	123	-4	-0.0%	+5	+8
Management & Administrative	265	265	-0	-0.0%	+19	+28
Support	221	216	-4	-0.0%	-8	-16
Maintenance/ Technical	42	41	-1	-0.0%	+0	+3
General Support	262	257	-5	-1.9%	-8	-12
Health Care Assistants	1,293	1,308	+15	+0.0%	+55	+112
Care, other	384	388	+4	+0.0%	-10	+15
Patient & Client Care	1,677	1,695	+18	+1.1%	+45	+128

CHO 7 Employment by S38 Agency: July 2021

Cheeverstown House

Jul 2021 (Dec 2020 figure: 395)	WTE Jun 2021	WTE Jul 2021	WTE change since Jun 21	% change since Jun 21	WTE change since Dec 20	WTE change since Jul 20
Overall	414	419	+4	+1.1%	+24	+24
Consultants				-1.0%	-0	-0
Medical/ Dental, other	1	1		+0.0%		
Medical & Dental	1	1			-0	-0
Nurse/ Midwife Manager	33	33		+0.0%	+6	+4
Nurse/ Midwife Specialist & AN/MP	2	2		+0.0%		
Staff Nurse/ Staff Midwife	99	100	+2	+0.0%	-6	-3
Nursing & Midwifery	134	135	+2	+1.4%	+1	+0
Therapy Professions	11	11		+0.0%	-2	+0
Social Care	42	43	+1	+0.0%	+9	+10
Social Workers	5	5		+0.0%	+1	+1
Psychologists	3	3		+0.0%	-2	-2
Pharmacy	0	0		+0.0%		
H&SC, Other	2	2		+0.0%		
Health & Social Care Professionals	63	64	+1	+1.6%	+6	+9
Management (VIII & above)	5	5		+0.0%	+2	+3
Administrative/ Supervisory (V to VII)	16	16		+0.0%	+2	+2
Clerical (III & IV)	15	15		+0.0%	+3	+3
Management & Administrative	36	36			+6	+7
Support	26	25	-1	-0.0%	-2	-2
Maintenance/ Technical	4	4		+0.0%		
General Support	30	29	-1	-2.9%	-2	-2
Health Care Assistants	138	140	+3	+0.0%	+12	+9
Care, other	12	12		+0.0%	+2	+1
Patient & Client Care	150	153	+3	+1.7%	+13	+9

Kare, Newbridge, Co Kildare

Jul 2021 (Dec 2020 figure: 377)	WTE Jun 2021	WTE Jul 2021	WTE change since Jun 21	% change since Jun 21	WTE change since Dec 20	WTE change since Jul 20
Overall	394	395	+1	+0.3%	+18	+60
Nurse/ Midwife Manager	8	8		+0.0%	+1	-0
Staff Nurse/ Staff Midwife	22	21	-1	-0.1%	-4	-1
Nursing & Midwifery	31	29	-1	-4.8%	-4	-1
Therapy Professions	15	15	-0	-0.0%	+2	+2
Social Care	74	75	+2	+0.0%	+7	+16
Social Workers	3	3	-0	-0.1%	-1	-1
Psychologists	7	8	+0	+0.1%	+0	+2
Health & Social Care Professionals	99	101	+2	+1.6%	+9	+20
Management (VIII & above)	6	6		+0.0%		+1
Administrative/ Supervisory (V to VII)	13	13	+0	+0.0%	-1	-0
Clerical (III & IV)	15	15		+0.0%	+1	+2
Management & Administrative	34	34	+0	+0.3%	+0	+2
Support	1	1		+0.0%	-0	-0
General Support	1	1			-0	-0
Health Care Assistants	115	115	-0	-0.0%	+10	+31
Care, other	113	115	+1	+0.0%	+2	+9
Patient & Client Care	229	230	+1	+0.5%	+12	+40

Our Lady's Hospice & Care Services

Jul 2021 (Dec 2020 figure: 496)	WTE Jun 2021	WTE Jul 2021	WTE change since Jun 21	% change since Jun 21	WTE change since Dec 20	WTE change since Jul 20
Overall	512	516	+4	+0.7%	+20	+26
Consultants	8	9	+1	+0.1%	+1	-0
Registrars	6	5	-1	-0.2%	-1	+1
SHO/ Interns	7	7	+0	+0.0%	+1	+2
Medical/ Dental, other	1	1		+0.0%	+0	+0
Medical & Dental	22	22			+1	+2
Nurse/ Midwife Manager	45	47	+2	+0.0%	+3	+4
Nurse/ Midwife Specialist & AN/MP	37	37	-0	-0.0%	-1	+5
Staff Nurse/ Staff Midwife	106	105	-0	-0.0%	+8	+7
Nursing/ Midwifery other	2	2		+0.0%		
Nursing & Midwifery	190	191	+1	+0.7%	+10	+16
Therapy Professions	37	36	-1	-0.0%	+1	-2
Health Science/ Diagnostics	1	1	+0	+0.1%	-0	+1
Social Workers	12	12	+0	+0.0%	+2	+1
Psychologists	1	1	-0	-0.0%		
Pharmacy	9	8	-0	-0.0%	-1	-1
Health & Social Care Professionals	59	58	-1	-1.3%	+1	-1
Management (VIII & above)	4	4	+0	+0.1%	-0	-0
Administrative/ Supervisory (V to VII)	21	22	+1	+0.0%	+3	+3
Clerical (III & IV)	29	29	-0	-0.0%	-0	-0
Management & Administrative	54	55	+1	+1.5%	+3	+3
Support	68	68	-0	-0.0%	-1	-2
Maintenance/ Technical	8	8		+0.0%		
General Support	76	76	-0	-0.1%	-1	-2
Health Care Assistants	111	113	+2	+0.0%	+5	+8
Care, other	1	1		+0.0%	+0	+0
Patient & Client Care	112	114	+2	+2.0%	+6	+8

Peamount Hospital (Newcastle)

Jul 2021 (Dec 2020 figure: 483)	WTE Jun 2021	WTE Jul 2021	WTE change since Jun 21	% change since Jun 21	WTE change since Dec 20	WTE change since Jul 20
Overall	531	535	+4	+0.8%	+53	+10
Registrars	2	2	+0	+0.0%	+0	+0
SHO/ Interns	8	7	-1	-0.1%	+0	-0
Medical & Dental	10	9	-1	-5.9%	+0	-0
Nurse/ Midwife Manager	34	35	+1	+0.0%	+7	+4
Nurse/ Midwife Specialist & AN/MP	2	2		+0.0%		+2
Staff Nurse/ Staff Midwife	93	92	-1	-0.0%	+17	+2
Nursing Education/Clinical	1	1		+0.0%	+1	+1
Nursing/ Midwifery other	1	1		+0.0%		+1
Nursing & Midwifery	130	130	+0	+0.0%	+24	+10
Therapy Professions	39	39	-0	-0.0%	+10	-1
Health Science/ Diagnostics	3	2	-1	-0.3%	-1	-1
Social Care	4	5	+1	+0.3%	+1	+0
Social Workers	5	6	+0	+0.1%	+1	-1
Psychologists		0	+0	-1.0%	+0	+0
Psychologists		0	+0	-1.0%	+0	+0
Pharmacy	4	5	+0	+0.1%	+1	-1
Health & Social Care Professionals	55	56	+1	+2.1%	+12	-2
Management (VIII & above)	4	5	+1	+0.3%	+1	+1
Administrative/ Supervisory (V to VII)	17	19	+2	+0.1%	+2	+1
Clerical (III & IV)	21	19	-2	-0.1%	-0	+1
Management & Administrative	43	43	+0	+0.7%	+3	+3
Support	44	44	-0	-0.0%	-0	-3
Maintenance/ Technical	9	8	-1	-0.1%	-1	-1
General Support	53	52	-1	-2.2%	-1	-4
Health Care Assistants	239	243	+4	+0.0%	+17	+5
Care, other	1	1		+0.0%	-2	-2
Patient & Client Care	240	244	+4	+1.8%	+14	+3

Stewart's Hospital, (Palmerstown)

Jul 2021 (Dec 2020 figure: 914)	WTE Jun 2021	WTE Jul 2021	WTE change since Jun 21	% change since Jun 21	WTE change since Dec 20	WTE change since Jul 20
Overall	934	939	+5	+0.5%	+25	+76
Consultants	0	0		+0.0%		
Medical & Dental	0	0				
Nurse/ Midwife Manager	32	33	+1	+0.0%	+2	+2
Staff Nurse/ Staff Midwife	83	82	-1	-0.0%	+1	+8
Pre-registration Nurse/ Midwife Intern	8	8		+0.0%	+8	+8
Pre-registration Nurse Intern (COVID-19)				-1.0%		-15
Nursing/ Midwifery Student	8	8		+0.0%	+8	-8
Nursing/ Midwifery other	2	2		+0.0%	+1	+1
Nursing & Midwifery	124	124	-0	-0.0%	+11	+3
Therapy Professions	16	19	+3	+0.2%	-0	+4
Social Care	12	16	+4	+0.3%	+3	+3
Social Workers	6	6		+0.0%		
Psychologists	5	5		+0.0%	+1	+1
Health & Social Care Professionals	38	45	+7	+16.9%	+3	+8
Management (VIII & above)	17	17		+0.0%	+1	+6
Administrative/ Supervisory (V to VII)	19	20	+1	+0.1%	+4	+3
Clerical (III & IV)	25	25	-1	-0.0%	+1	+3
Management & Administrative	62	62	+1	+0.8%	+5	+12
Support	53	52	-1	-0.0%	-3	-5
Maintenance/ Technical	7	7		+0.0%	+1	+3
General Support	60	59	-1	-2.4%	-2	-2
Health Care Assistants	528	528		+0.0%	+9	+49
Care, other	121	121	-1	-0.0%	-1	+7
Patient & Client Care	650	649	-1	-0.1%	+7	+56

St. John of God Liffey Services

Jul 2021 (Dec 2020 figure: 801)	WTE Jun 2021	WTE Jul 2021	WTE change since Jun 21	% change since Jun 21	WTE change since Dec 20	WTE change since Jul 20
Overall	775	798	+22	+2.9%	-3	+30
Registrars	1	2	+1	+0.6%	+1	+1
Medical & Dental	1	2	+1	+56.0%	+1	+1
Nurse/ Midwife Manager	21	22	+1	+0.1%	+0	-1
Nurse/ Midwife Specialist & AN/MP	1	1		+0.0%		
Staff Nurse/ Staff Midwife	93	98	+5	+0.1%	+7	+9
Nursing & Midwifery	114	121	+7	+5.7%	+7	+8
Therapy Professions	12	13	+1	+0.1%	-1	-5
Social Care	262	271	+8	+0.0%	+1	+19
Social Workers	6	6	+0	+0.0%	+0	+0
Psychologists	5	5		+0.0%	-1	-2
Health & Social Care Professionals	285	294	+10	+3.4%	-1	+13
Management (VIII & above)	6	5	-1	-0.2%	-0	-1
Administrative/ Supervisory (V to VII)	10	10	-0	-0.0%	-1	+0
Clerical (III & IV)	20	20	-1	-0.0%	+2	+0
Management & Administrative	36	35	-2	-4.7%	+0	-0
Support	28	26	-1	-0.0%	-2	-3
Maintenance/ Technical	14	14		+0.0%	-0	+1
General Support	42	40	-1	-3.2%	-2	-3
Health Care Assistants	162	168	+6	+0.0%	+2	+10
Care, other	135	138	+3	+0.0%	-11	+1
Patient & Client Care	297	306	+9	+2.9%	-8	+11

CHO 7 Employment by Grade Group & Staff Category: July 2021

Jul 2021 (Dec 2020 figure: 6,783)	WTE Jun 2021	WTE Jul 2021	WTE change since Jun 21	% change since Jun 21	WTE change since Dec 20	WTE change since Jul 20
Overall	6,934	6,970	+36	+0.5%	+187	+351
Consultant Medicine	9	10	+1	+11.8%	+1	-0
Consultant Paediatrics	0	0				
Consultant Psychiatry	58	59	+1	+1.5%	+2	+3
Consultant Surgery				-100.0%		-1
Consultants	67	69	+2	+2.8%	+3	+2
Registrar	74	69	-5	-7.1%	-5	-2
Senior Registrar	20	23	+3	+17.1%	+3	+7
Specialist Registrar	7	4	-2	-35.2%	-2	+2
Registrars	101	97	-4	-4.2%	-3	+7
Interns	2	2	-0	-22.0%	-0	+1
Senior House Officer	36	38	+2	+4.3%	+1	+5
SHO/ Interns	38	39	+1	+2.9%	+1	+6
Dentists	35	35	+0	+1.3%	+0	+1
Other Medical	41	39	-2	-3.9%	-5	-9
Medical/ Dental, other	75	74	-1	-1.5%	-5	-8
Medical & Dental	282	280	-2	-0.9%	+9	+7
Clinical Nurse/ Midwife Manager	355	360	+5	+1.5%	+31	+29
Director Nursing/Midwifery, Assistant	65	68	+3	+4.8%	+10	+10
Director of Nursing/Midwifery	20	19	-1	-4.5%	-2	+0
Nurse/ Midwife Manager	439	447	+8	+1.7%	+39	+40
Advanced Nurse/ Midwife Practitioner	14	14	-0	-0.3%	+2	+4
Clinical Nurse/ Midwife Specialist	97	96	-0	-0.2%	-1	+4
Nurse/ Midwife Specialist & AN/MP	111	111	-0	-0.2%	+1	+8
Staff Nurse [Intellectual Disability]	218	215	-3	-1.4%	+23	+33
Staff Nurse [Psychiatric]	206	202	-4	-1.9%	+4	+13
Staff Nurses [General/ Children's]	630	646	+16	+2.6%	+15	-8
Staff Nurse/ Staff Midwife	1,053	1,063	+9	+0.9%	+42	+38
Public Health Nurse	170	175	+5	+2.9%	-1	+12
Pre-registration Nurse/ Midwife Intern	22	22	+0	+2.0%	+22	+22
Pre-registration Nurse Intern (COVID-19)	1	1	-0	-38.0%	-3	-31
Post-registration Nurse/ Midwife Student	24	3	-21	-87.8%	-21	-7
Nursing/ Midwifery awaiting registration	1	1	+1	+71.6%	-3	-5
Nursing/ Midwifery Student	48	27	-20	-42.7%	-5	-21
Nursing Education/Clinical	9	9	+0	+1.1%	-0	-1
Other Nursing/ Midwifery	1	1			+1	+1
Nursing/ Midwifery other	10	10	+0	+1.0%	+1	-0
Nursing & Midwifery	1,831	1,833	+1	+0.1%	+132	+77
Dietitians	25	25	-0	-0.7%	-1	-2
Occupational Therapists	179	184	+5	+3.0%	+1	-9
Orthoptists	3	3			+1	+3
Physiotherapists	121	118	-3	-2.6%	-3	-7
Podiatrists & Chiropodists	2	2			+1	-1
Speech & Language Therapists	125	123	-3	-2.1%	-6	-2
Therapy Professions	455	454	-1	-0.1%	-8	-17
Clinical Measurement	2	2				
Phlebotomists	1	1	+0	+6.0%	-0	+1
Radiographers	1		-1	-100.0%	-1	-1

Jul 2021 (Dec 2020 figure: 6,783)	WTE Jun 2021	WTE Jul 2021	WTE change since Jun 21	% change since Jun 21	WTE change since Dec 20	WTE change since Jul 20
Overall	6,934	6,970	+36	+0.5%	+187	+351
Health Science/ Diagnostics	4	3	-1	-20.7%	-1	-0
Social Care	404	420	+15	+3.8%	+20	+46
Social Workers	113	114	+1	+0.6%	+6	+4
Psychologists	86	90	+4	+4.2%	+3	+4
Pharmacy	38	39	+1	+1.6%	+1	-3
Counsellor Therapists	35	37	+2	+6.8%	+2	+1
Dental Hygienists	4	5	+0	+3.4%	+0	-0
Other Health & Social Care	1	1	-0	-0.8%	+0	+1
Play Therapists/ Specialists	1	1				
H&SC, Other	41	44	+3	+6.1%	+2	+2
Health & Social Care Professionals	1,141	1,163	+22	+1.9%	+69	+36
Executive Management	18	18	+0	+0.2%	+2	+3
Senior Management (VIII & GM)	72	72	+0	+0.0%	+3	+9
Management (VIII & above)	90	90	+0	+0.1%	+5	+12
Middle Management (V-VII)	227	234	+7	+2.9%	+20	+36
Other Administrative				-100.0%	-1	-1
Administrative/ Supervisory (V to VII)	227	234	+7	+2.9%	+20	+35
Clerical (III & IV)	393	387	-6	-1.6%	+7	+18
Management & Administrative	710	711	+0	+0.0%	+105	+65
Catering	55	54	-1	-2.0%	-2	-3
Household Services	268	263	-4	-1.6%	-2	-1
Other Labs & Associated	1	1	+0	+4.0%	+0	+0
Other Support	15	15	-0	-2.6%	-0	+1
Portering	57	57	+1	+1.4%	-7	-6
Support	395	390	-5	-1.3%	-11	-8
Maintenance	41	39	-2	-4.5%	-2	-1
Technical Services	6	7	+1	+16.7%	+2	+4
Maintenance/ Technical	47	46	-1	-1.8%	+0	+3
General Support	443	437	-6	-1.3%	-15	-5
HCA, Nurse's Aide, etc.	1,687	1,699	+12	+0.7%	+48	+110
HCA (Student Nurse/Midwife COVID-19)	1		-1	-100.0%	-4	-30
Health & Social Care Assistants	24	24	-0	-1.5%	+6	-2
Swabber (COVID-19)	70	71	+2	+2.2%	+21	+71
Health Care Assistants	1,782	1,794	+12	+0.7%	+71	+149
Other Care Grades	618	629	+11	+1.8%	+8	+30
Care, other	618	629	+11	+1.8%	+8	+30
Home Help	126	125	-2	-1.3%	-7	-9
Patient & Client Care	2,526	2,548	+21	+0.8%	+156	+171

CHO 7 HSE Employment by Grade Group & Staff Category: July 2021

Jul 2021 (Dec 2020 figure: 3,319)	WTE Jun 2021	WTE Jul 2021	WTE change since Jun 21	% change since Jun 21	WTE change since Dec 20	WTE change since Jul 20
Overall	3,373	3,368	-5	-0.1%	+50	+125
Consultant Medicine	1	1				
Consultant Psychiatry	58	59	+1	+1.5%	+2	+4
Consultant Surgery				-100.0%		-1
Consultants	59	60	+1	+1.5%	+2	+3
Registrar	71	64	-7	-10.1%	-6	-2
Senior Registrar	20	23	+3	+17.1%	+3	+7
Specialist Registrar	1	1				+1
Registrars	92	89	-4	-4.1%	-2	+6
SHO/ Interns	23	25	+2	+7.3%	-1	+4
Dentists	35	35	+0	+1.3%	+0	+1
Other Medical	38	37	-2	-4.1%	-6	-9
Medical/ Dental, other	73	72	-1	-1.5%	-5	-8
Medical & Dental	248	245	-2	-1.0%	+3	+4
Clinical Nurse/ Midwife Manager	193	195	+1	+0.7%	+12	+17
Director Nursing/Midwifery, Assistant	57	59	+2	+3.3%	+9	+9
Director of Nursing/Midwifery	16	15	-1	-5.6%	-1	+0
Nurse/ Midwife Manager	266	268	+2	+0.9%	+20	+27
Advanced Nurse/ Midwife Practitioner	10	10	+0	+0.4%	+2	+2
Clinical Nurse/ Midwife Specialist	60	60	+0	+0.1%	-1	-1
Nurse/ Midwife Specialist & AN/MP	70	70	+0	+0.1%	+2	+1
Staff Nurse [Intellectual Disability]	1	1				
Staff Nurse [Psychiatric]	206	202	-4	-1.9%	+4	+13
Staff Nurses [General/ Children's]	352	361	+10	+2.7%	+15	+4
Staff Nurse/ Staff Midwife	558	564	+6	+1.0%	+19	+17
Public Health Nurse	170	175	+5	+2.9%	-1	+12
Pre-registration Nurse/ Midwife Intern	14	15	+0	+3.0%	+14	+15
Pre-registration Nurse Intern (COVID-19)	1	1	-0	-38.0%	-3	-16
Post-registration Nurse/ Midwife Student	24	3	-21	-87.8%	-21	-7
Nursing/ Midwifery awaiting registration	1	1	+1	+71.6%	-3	-5
Nursing/ Midwifery Student	40	20	-20	-50.7%	-12	-13
Nursing Education/Clinical	6	6	+0	+1.8%	-0	-2
Nursing/ Midwifery other	6	6	+0	+1.8%	-0	-2
Nursing & Midwifery	1,110	1,103	-7	-0.6%	+76	+42
Dietitians	18	17	-1	-3.4%	-0	-1
Occupational Therapists	134	136	+2	+1.8%	-9	-8
Orthoptists	3	3			+1	+3
Physiotherapists	75	72	-2	-3.1%	-5	-4
Podiatrists & Chiropodists	2	2			+1	-1
Speech & Language Therapists	94	92	-3	-3.0%	-6	-6
Therapy Professions	325	322	-3	-1.0%	-18	-16
Social Care	10	10	-0	-0.6%	-1	-1
Social Workers	76	76	+0	+0.3%	+3	+4
Psychologists	66	68	+3	+4.4%	+5	+4
Pharmacy	25	25	+0	+1.1%	+1	-2
Counsellor Therapists	33	36	+2	+7.2%	+2	+1
Dental Hygienists	4	5	+0	+3.4%	+0	-0
Other Health & Social Care	1	1	-0	-0.8%	+0	+1
Play Therapists/ Specialists	1	1				
H&SC, Other	40	42	+3	+6.3%	+2	+2

Jul 2021 (Dec 2020 figure: 3,319)	WTE Jun 2021	WTE Jul 2021	WTE change since Jun 21	% change since Jun 21	WTE change since Dec 20	WTE change since Jul 20
Overall	3,373	3,368	-5	-0.1%	+50	+125
Health & Social Care Professionals	541	544	+2	+0.4%	+11	-10
Executive Management	10	10	+0	+0.3%	+1	+2
Senior Management (VIII & GM)	38	38	-0	-0.8%	+0	-0
Management (VIII & above)	48	48	-0	-0.6%	+1	+2
Administrative/ Supervisory (V to VII)	130	133	+3	+2.4%	+10	+26
Clerical (III & IV)	267	264	-3	-0.9%	+1	+10
Management & Administrative	445	445	+0	+0.1%	+68	+37
Catering	28	27	-0	-1.4%	+1	+1
Household Services	99	98	-1	-1.0%	-0	+8
Other Support	6	6	-0	-6.4%	-0	+1
Portering	42	43	+1	+1.8%	-4	-3
Support	175	174	-1	-0.5%	-3	+7
Maintenance/ Technical	5	5	-0	-0.4%	-0	+0
General Support	180	179	-1	-0.5%	+3	+7
HCA, Nurse's Aide, etc.	399	397	-3	-0.6%	-4	-6
HCA (Student Nurse/Midwife COVID-19)	1		-1	-100.0%	-4	-29
Health & Social Care Assistants	19	18	-1	-3.1%	+3	+1
Swabber (COVID-19)	70	71	+2	+2.2%	+21	+71
Health Care Assistants	489	486	-3	-0.6%	+16	+37
Care, other	234	242	+7	+3.2%	+18	+15
Home Help	126	125	-2	-1.3%	-7	-9
Patient & Client Care	849	852	+3	+0.4%	+56	+43

Employment by WTE, Headcount, Gender, Full-Time /Part-Time etc.: Jul 2021

CHO 7	WTE	Headcount	WTE: no.	% Male	% female	Male WTE: no.	Female WTE: no.	% Total Perm	% Male Perm	% Female Perm	% Total Full Time	% Total Part Time	% Male FT	% Female FT
Overall	6,970	8,157	1.17	20.3%	79.7%	1.10	1.19	86.4%	83.0%	87.3%	70.6%	29.4%	82.9%	67.5%
Consultant Medicine	10	11	1.13	27.3%	72.7%	1.14	1.13	63.6%	63.6%	62.5%	72.7%	27.3%	66.7%	75.0%
Consultant Paediatrics	0	1	2.94		100.0%		2.94	100.0%	100.0%	100.0%	0.0%	100.0%		0.0%
Consultant Psychiatry	59	64	1.09	31.3%	68.8%	1.02	1.12	56.3%	56.3%	52.3%	87.5%	12.5%	100.0%	81.8%
Consultants	69	76	1.10	30.3%	69.7%	1.03	1.13	57.9%	65.2%	54.7%	84.2%	15.8%	95.7%	79.2%
Registrar	69	98	1.42	35.7%	64.3%	1.38	1.43	2.0%	2.0%	0.0%	99.0%	1.0%	97.1%	100.0%
Senior Registrar	23	37	1.58	37.8%	62.2%	1.49	1.64	0.0%	0.0%	0.0%	97.3%	2.7%	100.0%	95.7%
Specialist Registrar	4	6	1.35	16.7%	83.3%	1.00	1.46	0.0%	0.0%	0.0%	100.0%	0.0%	100.0%	100.0%
Registrars	97	141	1.45	35.5%	64.5%	1.40	1.48	1.4%	4.0%	0.0%	98.6%	1.4%	98.0%	98.9%
SHO/ Interns	39	59	1.51	30.5%	69.5%	1.38	1.57	6.8%	11.1%	4.9%	100.0%	0.0%	100.0%	100.0%
Dentists	35	43	1.22	16.3%	83.7%	1.24	1.21	100.0%	100.0%	100.0%	65.1%	34.9%	85.7%	61.1%
Other Medical	39	58	1.48	44.8%	55.2%	1.45	1.52	69.0%	69.0%	71.9%	25.9%	74.1%	19.2%	31.3%
Medical/ Dental, other	74	101	1.36	32.7%	67.3%	1.40	1.34	82.2%	72.7%	86.8%	42.6%	57.4%	33.3%	47.1%
Medical & Dental	280	377	1.35	32.9%	67.1%	1.31	1.37	35.3%	34.7%	35.6%	80.9%	19.1%	80.6%	81.0%
Clinical Nurse/ Midwife Manager	360	383	1.06	13.8%	86.2%	1.03	1.07	96.3%	96.3%	97.3%	85.4%	14.6%	96.2%	83.6%
Director Nursing/Midwifery, Assistant	68	71	1.04	16.9%	83.1%	1.00	1.05	97.2%	97.2%	96.6%	94.4%	5.6%	100.0%	93.2%
Director of Nursing/Midwifery	19	19	1.01	10.5%	89.5%	1.00	1.01	94.7%	94.7%	94.1%	94.7%	5.3%	100.0%	94.1%
Nurse/ Midwife Manager	447	473	1.06	14.2%	85.8%	1.02	1.06	96.4%	92.5%	97.0%	87.1%	12.9%	97.0%	85.5%
Advanced Nurse/ Midwife Practitioner	14	15	1.05	6.7%	93.3%	1.00	1.06	100.0%	100.0%	100.0%	86.7%	13.3%	100.0%	85.7%
Clinical Nurse/ Midwife Specialist	96	110	1.14	9.1%	90.9%	1.04	1.15	99.1%	99.1%	99.0%	75.5%	24.5%	100.0%	73.0%
Nurse/ Midwife Specialist & AN/MP	111	125	1.13	8.8%	91.2%	1.04	1.14	99.2%	100.0%	99.1%	76.8%	23.2%	100.0%	74.6%
Staff Nurse [Intellectual Disability]	215	247	1.15	11.7%	88.3%	1.05	1.16	95.5%	95.5%	95.9%	69.6%	30.4%	82.8%	67.9%
Staff Nurse [Psychiatric]	202	226	1.12	22.6%	77.4%	1.05	1.14	94.2%	94.2%	94.3%	84.5%	15.5%	92.2%	82.3%
Staff Nurses [General/ Children's]	646	745	1.15	9.7%	90.3%	1.03	1.17	90.2%	90.2%	90.3%	72.3%	27.7%	93.1%	70.1%
Staff Nurse/ Staff Midwife	1,063	1,218	1.15	12.5%	87.5%	1.04	1.16	92.0%	91.4%	92.1%	74.1%	25.9%	90.8%	71.7%
Public Health Nurse	175	212	1.21	0.5%	99.5%	1.12	1.21	93.4%	100.0%	93.4%	67.5%	32.5%	100.0%	67.3%
Pre-registration Nurse/ Midwife Intern	22	45	2.01	24.4%	75.6%	2.01	2.01	0.0%	0.0%	0.0%	66.7%	33.3%	90.9%	58.8%
Pre-registration Nurse Intern (COVID-19)	1	1	1.61		100.0%		1.61	0.0%	0.0%	0.0%	100.0%	0.0%		100.0%
Post-registration Nurse/ Midwife Student	3	3	1.02		100.0%		1.02	33.3%	33.3%	33.3%	100.0%	0.0%		100.0%

Nursing/ Midwifery awaiting registration	1	2	1.44		100.0%		1.44	0.0%	0.0%	0.0%	100.0%	0.0%		100.0%
Nursing/ Midwifery Student	27	51	1.86	21.6%	78.4%	2.01	1.83	2.0%	0.0%	2.5%	70.6%	29.4%	90.9%	65.0%
Nursing Education/Clinical	9	11	1.20		100.0%		1.20	100.0%	100.0%	100.0%	72.7%	27.3%		72.7%
Other Nursing/ Midwifery	1	1	1.00		100.0%		1.00	100.0%	100.0%	100.0%	100.0%	0.0%		100.0%
Nursing/ Midwifery other	10	12	1.18		100.0%		1.18	100.0%		100.0%	75.0%	25.0%		75.0%
Nursing & Midwifery	1,833	2,091	1.14	11.6%	88.4%	1.06	1.15	91.4%	88.0%	91.9%	76.4%	23.6%	93.0%	74.3%
Dietitians	25	31	1.25	6.5%	93.5%	1.01	1.28	93.5%	93.5%	93.1%	64.5%	35.5%	100.0%	62.1%
Occupational Therapists	184	211	1.15	7.1%	92.9%	1.03	1.16	91.5%	91.5%	90.8%	78.7%	21.3%	93.3%	77.6%
Orthoptists	3	3	1.00	66.7%	33.3%	1.00	1.00	33.3%	33.3%	100.0%	100.0%	0.0%	100.0%	100.0%
Physiotherapists	118	140	1.19	22.1%	77.9%	1.08	1.22	94.3%	94.3%	94.5%	75.7%	24.3%	90.3%	71.6%
Podiatrists & Chiropodists	2	2	1.33		100.0%		1.33	100.0%	100.0%	100.0%	50.0%	50.0%		50.0%
Speech & Language Therapists	123	134	1.09	1.5%	98.5%	1.02	1.09	93.3%	93.3%	94.7%	89.6%	10.4%	100.0%	89.4%
Therapy Professions	454	521	1.15	10.0%	90.0%	1.05	1.16	92.5%	88.5%	93.0%	79.8%	20.2%	92.3%	78.5%
Clinical Measurement	2	2	1.00	100.0%		1.00		100.0%	100.0%		100.0%	0.0%	100.0%	
Phlebotomists	1	2	1.89		100.0%		1.89	100.0%	100.0%	100.0%	0.0%	100.0%		0.0%
Health Science/ Diagnostics	3	4	1.31	50.0%	50.0%	1.00	1.89	100.0%	100.0%	100.0%	50.0%	50.0%	100.0%	0.0%
Social Care	420	460	1.10	27.4%	72.6%	1.08	1.10	95.9%	96.0%	95.8%	75.0%	25.0%	82.5%	72.2%
Social Workers	114	130	1.14	15.4%	84.6%	1.10	1.15	96.2%	90.0%	97.3%	81.5%	18.5%	85.0%	80.9%
Psychologists	90	102	1.14	21.6%	78.4%	1.12	1.15	98.0%	100.0%	97.5%	82.4%	17.6%	77.3%	83.8%
Pharmacy	39	47	1.21	19.1%	80.9%	1.09	1.25	61.7%	33.3%	68.4%	53.2%	46.8%	33.3%	57.9%
Counsellor Therapists	37	42	1.13	31.0%	69.0%	1.13	1.14	97.6%	97.6%	96.6%	71.4%	28.6%	76.9%	69.0%
Dental Hygienists	5	7	1.56		100.0%		1.56	100.0%	100.0%	100.0%	14.3%	85.7%		14.3%
Other Health & Social Care	1	3	2.34	33.3%	66.7%	1.25	4.17	100.0%	100.0%	100.0%	0.0%	100.0%	0.0%	0.0%
Play Therapists/ Specialists	1	1	1.00	100.0%		1.00		100.0%	100.0%		100.0%	0.0%	100.0%	
H&SC, Other	44	53	1.21	28.3%	71.7%	1.13	1.25	98.1%	100.0%	97.4%	60.4%	39.6%	73.3%	55.3%
Health & Social Care	1,163	1,317	1.13	18.7%	81.3%	1.08	1.14	93.6%	92.3%	93.9%	76.7%	23.3%	82.1%	75.4%
Executive Management	18	18	1.00	33.3%	66.7%	1.00	1.00	83.3%	83.3%	91.7%	100.0%	0.0%	100.0%	100.0%
Senior Management (VIII & GM)	72	74	1.03	28.4%	71.6%	1.03	1.03	95.9%	95.9%	98.1%	95.9%	4.1%	95.2%	96.2%
Management (VIII & above)	90	92	1.02	29.3%	70.7%	1.02	1.02	93.5%	85.2%	96.9%	96.7%	3.3%	96.3%	96.9%
Administrative/ Supervisory (V to VII)	234	248	1.06	24.2%	75.8%	1.02	1.08	93.1%	91.7%	93.6%	89.1%	10.9%	96.7%	86.7%
Clerical (III & IV)	387	450	1.16	12.9%	87.1%	1.05	1.18	83.3%	75.9%	84.4%	70.7%	29.3%	89.7%	67.9%
Management & Administrative	711	790	1.11	18.4%	81.6%	1.03	1.13	87.6%	84.1%	88.4%	79.5%	20.5%	93.8%	76.3%
Catering	54	58	1.08	31.0%	69.0%	1.02	1.10	94.8%	94.8%	97.5%	75.9%	24.1%	94.4%	67.5%
Household Services	263	346	1.31	15.3%	84.7%	1.16	1.35	85.3%	85.3%	86.3%	39.0%	61.0%	69.8%	33.4%
Other Labs & Associated	1	2	1.92	50.0%	50.0%	25.00	1.00	50.0%	50.0%	100.0%	50.0%	50.0%	0.0%	100.0%

Other Support	15	19	1.28	73.7%	26.3%	1.26	1.32	73.7%	73.7%	100.0%	57.9%	42.1%	64.3%	40.0%
Portering	57	61	1.06	91.8%	8.2%	1.04	1.32	88.5%	88.5%	80.0%	83.6%	16.4%	89.3%	20.0%
Support	390	486	1.24	29.2%	70.8%	1.11	1.31	86.2%	82.4%	87.8%	49.8%	50.2%	79.6%	37.5%
Maintenance/ Technical	46	51	1.10	88.2%	11.8%	1.09	1.22	90.2%	88.9%	100.0%	82.4%	17.6%	86.7%	50.0%
General Support	437	537	1.23	34.8%	65.2%	1.10	1.31	86.6%	84.0%	88.0%	52.9%	47.1%	81.3%	37.7%
HCA, Nurse's Aide, etc.	1,699	1,978	1.16	23.7%	76.3%	1.08	1.19	87.0%	87.0%	86.5%	63.5%	36.5%	77.1%	59.3%
Health & Social Care Assistants	24	27	1.14	11.1%	88.9%	1.01	1.16	37.0%	37.0%	33.3%	85.2%	14.8%	100.0%	83.3%
Swabber (COVID-19)	71	86	1.21	26.7%	73.3%	1.09	1.26	0.0%	0.0%	0.0%	69.8%	30.2%	82.6%	65.1%
Health Care Assistants	1,794	2,091	1.17	23.6%	76.4%	1.08	1.20	82.8%	84.4%	82.3%	64.1%	35.9%	77.5%	59.9%
Care, other	629	715	1.14	27.6%	72.4%	1.08	1.16	95.2%	92.4%	96.3%	76.8%	23.2%	86.8%	73.0%
Home Help	125	239	1.92	7.5%	92.5%	3.56	1.85	83.7%	61.1%	85.5%	18.8%	81.2%	11.1%	19.5%
Patient & Client Care	2,548	3,045	1.20	23.3%	76.7%	1.10	1.23	85.8%	86.0%	85.7%	63.5%	36.5%	78.4%	59.0%

Employment by WTE, Headcount, Gender, Full-Time /Part-Time etc.: Jul 2021

CHO 7	WTE	Headcount	WTE: no.	% Male	% female	Male WTE: no.	Female WTE: no.	% Total Perm	% Male Perm	% Female Perm	% Total Full Time	% Total Part Time	% Male FT	% Female FT
Overall	6,970	8,157	1.17	20.3%	79.7%	1.10	1.19	86.4%	83.0%	87.3%	70.6%	29.4%	82.9%	67.5%
Community Health & Wellbeing	11	12	1.09	16.7%	83.3%	1.00	1.11	100.0%	100.0%	100.0%	83.3%	16.7%	100.0%	100.0%
Mental Health	884	1,017	1.15	24.0%	76.0%	1.11	1.16	78.5%	78.5%	80.5%	88.4%	11.6%	95.9%	95.9%
Primary Care	1,841	2,166	1.18	16.5%	83.5%	1.09	1.19	84.4%	84.4%	85.9%	69.3%	30.7%	82.4%	82.4%
Social Care	4,234	4,962	1.17	21.2%	78.8%	1.10	1.19	88.9%	88.9%	89.2%	67.5%	32.5%	80.1%	80.1%

CHO 7 Skills Mix by Staff Grouping: July 2021

Jul 2021 (Dec 2019 figure: 6,515)	WTE Dec 2016	WTE Dec 2017	WTE Dec 2018	WTE Dec 2019	WTE Dec 2020	WTE Jun 2021	WTE Jul 2021
Overall	5,579	6,406	6,557	6,515	6,783	6,934	6,970
Consultant Medicine	3.2%	3.5%	2.7%	2.5%	3.0%	3.1%	3.5%
Consultant Paediatrics	0.1%	0.1%	0.1%	0.1%	0.1%	0.1%	0.1%
Consultant Psychiatry	19.2%	18.2%	18.1%	19.2%	20.1%	20.6%	21.1%
Consultant Surgery	0.3%	0.2%	0.5%	0.3%			
Consultants	22.8%	22.0%	21.3%	22.1%	23.3%	23.8%	24.7%
Registrar	22.2%	20.7%	24.9%	26.5%	26.1%	26.4%	24.8%
Senior Registrar	4.1%	3.7%	5.3%	7.0%	7.0%	7.1%	8.4%
Specialist Registrar	1.5%	2.2%	1.8%	1.5%	2.1%	2.4%	1.6%
Registrars	27.8%	26.6%	31.9%	35.0%	35.2%	35.9%	34.7%
Interns	0.8%	0.8%	0.8%	0.7%	0.7%	0.7%	0.6%
Senior House Officer	15.3%	16.0%	12.6%	12.5%	12.8%	12.8%	13.4%
SHO/ Interns	16.1%	16.8%	13.3%	13.2%	13.5%	13.5%	14.0%
Dentists	15.6%	13.9%	13.8%	12.5%	12.4%	12.4%	12.6%
Other Medical	17.7%	20.8%	19.6%	17.2%	15.7%	14.4%	14.0%
Medical/ Dental, other	33.3%	34.7%	33.4%	29.7%	28.0%	26.8%	26.6%
Medical & Dental	4.6%	4.0%	4.0%	4.2%	4.0%	100.0%	4.0%
Clinical Nurse/ Midwife Manager	18.8%	19.0%	18.9%	19.3%	18.7%	19.4%	19.6%
Director Nursing/Midwifery, Assistant	3.3%	2.9%	3.3%	3.1%	3.3%	3.5%	3.7%
Director of Nursing/Midwifery	1.0%	1.3%	1.1%	0.9%	1.2%	1.1%	1.0%
Nurse/ Midwife Manager	23.2%	23.2%	23.3%	23.3%	23.2%	24.0%	24.4%
Advanced Nurse/ Midwife Practitioner	0.1%	0.1%	0.1%	0.3%	0.7%	0.8%	0.8%
Clinical Nurse/ Midwife Specialist	4.1%	4.5%	5.0%	5.3%	5.6%	5.3%	5.3%
Nurse/ Midwife Specialist & AN/MP	4.2%	4.6%	5.1%	5.5%	6.2%	6.1%	6.0%
Staff Nurse [Intellectual Disability]	14.2%	13.4%	12.9%	11.4%	10.9%	11.9%	11.7%
Staff Nurse [Psychiatric]	13.3%	13.2%	11.7%	11.2%	11.2%	11.2%	11.0%
Staff Nurses [General/ Children's]	31.5%	32.9%	33.9%	35.7%	36.0%	34.4%	35.3%
Staff Nurse/ Staff Midwife	59.1%	59.4%	58.6%	58.4%	58.1%	57.5%	58.0%
Public Health Nurse	11.2%	10.8%	11.5%	10.3%	10.1%	9.3%	9.6%
Pre-registration Nurse/ Midwife Intern	0.1%		0.4%	0.1%	0.0%	1.2%	1.2%
Pre-registration Nurse Intern (COVID-19)					0.2%	0.1%	0.0%
Post-registration Nurse/ Midwife Student	1.4%	0.9%	0.4%	1.2%	1.4%	1.3%	0.2%
Nursing/ Midwifery awaiting registration		0.5%	0.2%	0.6%	0.2%	0.0%	0.1%
Nursing/ Midwifery Student	1.5%	1.4%	1.0%	1.9%	1.8%	2.6%	1.5%
Nursing/ Midwifery other	0.8%	0.5%	0.5%	0.6%	0.5%	0.6%	0.6%
Nursing & Midwifery	28.8%	26.9%	25.9%	26.1%	25.1%	100.0%	26.3%
Dietitians	2.4%	1.8%	2.3%	2.3%	2.3%	2.2%	2.1%
Occupational Therapists	21.3%	16.1%	16.9%	16.8%	16.1%	15.6%	15.8%
Orthoptists	0.0%				0.2%	0.3%	0.3%
Physiotherapists	15.4%	11.8%	11.5%	10.4%	10.6%	10.6%	10.2%
Podiatrists & Chiropodists	0.1%	0.1%	0.1%	0.1%	0.1%	0.1%	0.1%
Speech & Language Therapists	13.5%	12.1%	11.2%	11.5%	11.3%	11.0%	10.6%
Therapy Professions	52.8%	41.9%	41.9%	41.1%	40.6%	39.8%	39.1%
Audiology	0.1%						
Clinical Measurement	0.1%	0.1%	0.1%	0.1%	0.2%	0.2%	0.2%
Medical Science	0.1%						
Phlebotomists	0.1%	0.1%	0.1%	0.1%	0.1%	0.1%	0.1%
Radiographers	0.1%	0.1%	0.1%	0.1%	0.1%	0.1%	
Health Science/ Diagnostics	0.5%	0.3%	0.3%	0.3%	0.4%	0.3%	0.3%
Social Care	14.2%	31.3%	32.8%	33.9%	35.1%	35.4%	36.1%
Social Workers	13.9%	10.7%	10.1%	9.6%	9.5%	9.9%	9.8%
Psychologists	8.7%	8.1%	7.7%	7.4%	7.6%	7.5%	7.7%

Jul 2021 (Dec 2019 figure: 6,515)	WTE Dec 2016	WTE Dec 2017	WTE Dec 2018	WTE Dec 2019	WTE Dec 2020	WTE Jun 2021	WTE Jul 2021
Overall	5,579	6,406	6,557	6,515	6,783	6,934	6,970
Pharmacy	4.8%	3.7%	3.5%	3.7%	3.3%	3.3%	3.3%
Counsellor Therapists	3.9%	3.1%	2.8%	3.3%	3.1%	3.0%	3.2%
Dental Hygienists	0.4%	0.3%	0.4%	0.5%	0.4%	0.4%	0.4%
Other Health & Social Care	0.6%	0.5%	0.4%	0.2%	0.1%	0.1%	0.1%
Play Therapists/ Specialists	0.1%	0.1%	0.1%	0.1%	0.1%	0.1%	0.1%
H&SC, Other	5.1%	4.1%	3.7%	4.1%	3.6%	3.6%	3.8%
Health & Social Care Professionals	14.2%	16.4%	16.7%	16.8%	16.1%	100.0%	16.7%
Executive Management	2.9%	2.5%	1.9%	2.1%	2.3%	2.5%	2.5%
Senior Management (VIII & GM)	8.7%	8.5%	9.2%	9.9%	10.1%	10.1%	10.1%
Management (VIII & above)	11.6%	11.0%	11.1%	12.0%	12.5%	12.7%	12.7%
Middle Management (V-VII)	23.7%	26.0%	27.2%	29.9%	31.4%	32.0%	32.9%
Other Administrative	0.1%	0.2%	0.1%	0.2%	0.1%		
Administrative/ Supervisory (V to VII)	23.8%	26.1%	27.3%	30.1%	31.5%	32.0%	32.9%
Clerical (III & IV)	64.6%	62.9%	61.6%	57.9%	56.0%	55.4%	54.5%
Management & Administrative	10.0%	9.5%	9.4%	9.3%	8.9%	100.0%	10.2%
Catering	12.0%	13.0%	12.8%	13.1%	12.5%	12.4%	12.3%
Household Services	59.9%	59.9%	60.4%	59.5%	59.2%	60.4%	60.2%
Other Labs & Associated	0.2%	0.2%	0.2%	0.2%	0.2%	0.2%	0.2%
Other Support	3.7%	3.0%	3.2%	3.1%	3.3%	3.5%	3.4%
Portering	16.7%	14.5%	14.6%	14.9%	14.4%	12.8%	13.1%
Support	92.6%	90.6%	91.2%	90.9%	89.7%	89.3%	89.4%
Maintenance/ Technical	7.4%	9.4%	8.8%	9.1%	10.3%	10.7%	10.6%
General Support	7.9%	7.7%	7.4%	6.9%	6.7%	100.0%	6.3%
HCA, Nurse's Aide, etc.	66.9%	66.4%	67.6%	68.7%	66.7%	66.8%	66.7%
HCA (Student Nurse/Midwife COVID-19)					0.2%	0.0%	
Health & Social Care Assistants	0.4%	0.3%	0.9%	0.5%	0.7%	0.9%	0.9%
Swabber (COVID-19)					2.0%	2.8%	2.8%
Health Care Assistants	67.4%	66.7%	68.5%	69.2%	69.6%	70.5%	70.4%
Other Care Grades	24.4%	26.6%	25.8%	25.5%	25.1%	24.5%	24.7%
Care, other	24.4%	26.6%	25.8%	25.5%	25.1%	24.5%	24.7%
Home Help	8.2%	6.7%	5.7%	5.3%	5.3%	5.0%	4.9%
Patient & Client Care	34.6%	35.5%	36.5%	36.7%	35.3%	100.0%	36.6%
Total	100 %	100 %	100 %	100 %	100%	100 %	100 %

CHO 7 Skills Mix by Care Group: July 2021

Jul 2021 (Dec 2019 figure: 835)	WTE Dec 2016	WTE Dec 2017	WTE Dec 2018	WTE Dec 2019	WTE Dec 2020	WTE Jun 2021	WTE Jul 2021
Mental Health	828	859	835	835	861.41	886.99	883.89
Consultants	44.2%	43.0%	43.6%	41.6%	41.8%	42.5%	44.8%
Registrar	19.7%	17.8%	25.1%	22.9%	25.6%	26.9%	20.8%
Senior Registrar	9.4%	9.8%	12.7%	16.5%	15.8%	15.7%	19.1%
Specialist Registrar		1.0%		0.9%	0.8%	0.8%	0.8%
Registrars	29.1%	28.7%	37.8%	40.3%	42.2%	43.4%	40.6%
Interns	2.0%	2.1%	2.0%	1.7%	1.6%	1.6%	1.3%
Senior House Officer	24.7%	26.2%	16.6%	16.4%	14.4%	12.6%	13.3%
SHO/ Interns	26.7%	28.3%	18.6%	18.2%	16.0%	14.1%	14.6%
Medical & Dental	12.2%	11.1%	12.3%	13.8%	13.3%	13.9%	13.9%
Clinical Nurse/ Midwife Manager	25.7%	24.5%	27.0%	26.5%	25.3%	24.2%	24.0%
Director Nursing/Midwifery, Assistant	4.1%	4.5%	5.0%	4.3%	4.6%	3.9%	4.2%
Director of Nursing/Midwifery	0.8%	0.8%	0.8%	0.8%	1.0%	1.0%	1.0%
Nurse/ Midwife Manager	30.6%	29.8%	32.8%	31.5%	31.0%	29.1%	29.2%
Advanced Nurse/ Midwife Practitioner		0.3%	0.3%	0.8%	1.4%	1.7%	1.7%
Clinical Nurse/ Midwife Specialist	7.2%	6.7%	7.0%	10.0%	10.9%	10.5%	10.8%
Nurse/ Midwife Specialist & AN/MP	7.2%	7.0%	7.3%	10.8%	12.3%	12.2%	12.5%
Staff Nurse [Intellectual Disability]					0.3%	0.2%	0.3%
Staff Nurse [Psychiatric]	58.1%	58.4%	54.3%	51.1%	51.2%	49.9%	49.5%
Staff Nurses [General/ Children's]	1.9%	1.1%	1.2%	1.5%	1.7%	3.1%	3.2%
Staff Nurse/ Staff Midwife	60.1%	59.5%	55.5%	52.6%	53.2%	53.2%	53.0%
Pre-registration Nurse/ Midwife Intern	0.5%		1.6%	0.4%	0.1%	3.6%	3.7%
Pre-registration Nurse Intern (COVID-19)					0.9%	0.2%	0.2%
Post-registration Nurse/ Midwife Student					0.3%	0.2%	
Nursing/ Midwifery awaiting registration		2.1%	1.1%	2.7%	0.8%		
Nursing/ Midwifery Student	0.5%	2.1%	2.8%	3.0%	2.0%	4.1%	3.9%
Nursing Education/Clinical	1.7%	1.6%	1.7%	2.0%	1.5%	1.4%	1.4%
Nursing/ Midwifery other	1.7%	1.6%	1.7%	2.0%	1.5%	1.4%	1.4%
Nursing & Midwifery	43.7%	44.9%	43.3%	44.3%	42.9%	45.3%	45.3%
Dietitians			1.4%	2.1%	2.5%	2.8%	2.7%
Occupational Therapists	30.6%	28.0%	29.8%	27.3%	29.3%	26.4%	26.9%
Speech & Language Therapists	5.0%	4.7%	3.5%	4.8%	4.7%	4.1%	3.9%
Therapy Professions	35.5%	32.7%	34.6%	34.2%	36.5%	33.2%	33.5%
Social Care	7.9%	7.4%	5.8%	5.4%	5.0%	5.1%	5.0%
Social Workers	30.2%	29.0%	26.2%	24.4%	25.7%	28.9%	27.9%
Psychologists	18.3%	20.7%	23.9%	22.4%	20.0%	19.9%	21.0%
Pharmacy				0.7%	0.7%	0.7%	0.7%
Counsellor Therapists	6.6%	8.4%	7.6%	11.4%	12.0%	11.8%	11.5%
Other Health & Social Care	1.5%	1.8%	1.8%	1.4%	0.3%	0.3%	0.3%
H&SC, Other	8.1%	10.2%	9.4%	12.9%	12.3%	12.1%	11.8%
Health & Social Care Professionals	16.4%	16.9%	16.8%	16.8%	16.3%	16.5%	16.5%
Management (VIII & above)	4.3%	4.1%	3.9%	4.3%	5.4%	5.7%	5.6%
Administrative/ Supervisory (V to VII)	18.8%	23.2%	25.3%	24.1%	24.7%	24.2%	25.6%
Clerical (III & IV)	76.9%	72.7%	70.8%	71.6%	69.9%	70.1%	68.8%
Management & Administrative	8.0%	8.0%	8.8%	7.8%	7.6%	7.7%	7.7%
Support	92.3%	92.1%	91.7%	90.5%	89.7%	89.8%	89.6%
Maintenance/ Technical	7.7%	7.9%	8.3%	9.5%	10.3%	10.2%	10.4%
General Support	3.2%	3.0%	2.9%	2.3%	2.3%	2.1%	2.1%

Jul 2021 (Dec 2019 figure: 835)	WTE Dec 2016	WTE Dec 2017	WTE Dec 2018	WTE Dec 2019	WTE Dec 2020	WTE Jun 2021	WTE Jul 2021
Mental Health	828	859	835	835	861.41	886.99	883.89
HCA, Nurse's Aide, etc.	33.7%	32.2%	31.0%	26.6%	29.0%	27.9%	27.4%
Health Care Assistants	33.7%	32.2%	31.0%	26.6%	29.0%	27.9%	27.4%
Care, other	66.3%	67.8%	69.0%	73.4%	71.0%	72.1%	72.6%
Patient & Client Care	16.4%	16.1%	16.0%	15.0%	14.6%	14.5%	14.5%
Total	100 %	100 %	100 %	100 %	100 %	100 %	

Jul 2021 (Dec 2019 figure: 1,702)	WTE Dec 2016	WTE Dec 2017	WTE Dec 2018	WTE Dec 2019	WTE Dec 2020	WTE Jun 2021	WTE Jul 2021
Primary Care	1,687	1,691	1,776	1,702	1,788.84	1,838.56	1,841.42
Consultant Medicine	6.1%	6.4%	4.9%	4.8%	6.0%	6.3%	6.9%
Consultant Psychiatry	1.5%	2.2%	2.1%	2.9%	2.8%	2.9%	2.8%
Consultant Surgery	0.6%	0.3%	0.8%	0.6%			
Consultants	8.2%	8.9%	7.8%	8.3%	8.9%	9.2%	9.8%
Registrars	28.9%	27.1%	30.1%	33.0%	30.7%	31.2%	31.0%
SHO/ Interns	4.5%	4.2%	5.1%	4.3%	6.4%	7.2%	8.4%
Dentists	29.9%	25.7%	25.3%	24.4%	24.8%	25.2%	25.2%
Other Medical	28.5%	34.1%	31.7%	30.1%	29.3%	27.2%	25.7%
Medical/ Dental, other	58.4%	59.8%	57.0%	54.5%	54.1%	52.4%	50.8%
Medical & Dental	7.9%	8.1%	8.1%	8.1%	7.7%	7.6%	7.6%
Clinical Nurse/ Midwife Manager	10.2%	10.1%	10.2%	10.7%	10.5%	10.6%	11.5%
Director Nursing/Midwifery, Assistant	3.9%	3.7%	3.8%	3.4%	4.0%	5.0%	5.3%
Director of Nursing/Midwifery	1.1%	1.1%	1.2%	1.1%	1.3%	1.2%	1.1%
Nurse/ Midwife Manager	15.2%	14.9%	15.2%	15.2%	15.8%	16.8%	17.9%
Nurse/ Midwife Specialist & AN/MP	6.6%	8.4%	8.8%	8.7%	10.2%	9.9%	9.8%
Staff Nurse/ Staff Midwife	37.5%	36.3%	37.5%	38.7%	36.8%	38.0%	39.4%
Public Health Nurse	35.5%	36.7%	36.9%	33.1%	32.6%	30.8%	32.0%
Nursing/ Midwifery Student	4.5%	3.1%	1.3%	4.0%	4.2%	4.2%	0.5%
Nursing Education/Clinical	0.5%	0.5%	0.4%	0.4%	0.4%	0.4%	0.4%
Other Nursing/ Midwifery	0.2%						
Nursing/ Midwifery other	0.7%	0.5%	0.4%	0.4%	0.4%	0.4%	0.4%
Nursing & Midwifery	30.1%	30.1%	29.8%	31.1%	29.6%	29.7%	29.7%
Dietitians	3.8%	4.0%	4.8%	3.8%	4.2%	3.9%	3.7%
Occupational Therapists	24.9%	23.4%	26.8%	26.6%	24.8%	25.8%	25.7%
Orthoptists	0.1%				0.7%	0.8%	0.8%
Physiotherapists	23.1%	22.5%	21.4%	20.1%	22.4%	21.1%	20.9%
Podiatrists & Chiropodists			0.1%	0.3%	0.3%	0.4%	0.4%
Speech & Language Therapists	18.2%	20.3%	19.2%	20.5%	18.1%	17.2%	16.9%
Therapy Professions	70.1%	70.3%	72.4%	71.4%	70.5%	69.3%	68.5%
Phlebotomists	0.2%	0.2%	0.1%	0.1%	0.3%	0.3%	0.3%
Health Science/ Diagnostics	0.2%	0.2%	0.1%	0.1%	0.3%	0.3%	0.3%
Social Care	1.1%	1.1%	1.1%	0.9%	1.0%	0.8%	0.8%
Social Workers	7.7%	7.4%	6.4%	7.0%	7.1%	7.8%	7.9%
Psychologists	5.7%	6.1%	6.2%	5.8%	6.9%	7.5%	7.6%
Pharmacy	8.2%	8.5%	7.6%	8.5%	8.4%	8.4%	8.5%
Counsellor Therapists	5.7%	5.2%	4.8%	5.0%	4.4%	4.5%	4.9%
Dental Hygienists	1.0%	0.9%	1.3%	1.4%	1.1%	1.2%	1.3%
Other Health & Social Care	0.3%	0.3%	0.3%		0.2%	0.2%	0.2%
H&SC, Other	7.0%	6.4%	6.4%	6.4%	5.7%	5.9%	6.4%
Health & Social Care Professionals	21.5%	21.4%	21.4%	21.9%	20.9%	19.5%	19.5%
Executive Management	2.6%	2.3%	1.9%	2.4%	2.6%	2.7%	2.7%

Jul 2021 (Dec 2019 figure: 1,702)	WTE Dec 2016	WTE Dec 2017	WTE Dec 2018	WTE Dec 2019	WTE Dec 2020	WTE Jun 2021	WTE Jul 2021
Primary Care	1,687	1,691	1,776	1,702	1,788.84	1,838.56	1,841.42
Senior Management (VIII & GM)	6.5%	6.8%	8.0%	9.1%	7.2%	7.3%	7.2%
Management (VIII & above)	9.1%	9.1%	9.9%	11.6%	9.7%	10.0%	10.0%
Administrative/ Supervisory (V to VII)	20.8%	23.0%	22.7%	26.5%	28.2%	29.8%	30.2%
Clerical (III & IV)	70.1%	67.9%	67.4%	62.0%	62.1%	60.2%	59.8%
Management & Administrative	18.0%	18.4%	17.5%	16.9%	16.0%	17.8%	17.8%
Support	93.2%	94.6%	93.8%	93.0%	92.2%	92.1%	92.0%
Maintenance	6.1%	4.6%	5.5%	6.2%	7.0%	7.1%	7.1%
Technical Services	0.7%	0.8%	0.7%	0.8%	0.8%	0.8%	0.8%
Maintenance/ Technical	6.8%	5.4%	6.2%	7.0%	7.8%	7.9%	8.0%
General Support	8.0%	7.7%	7.5%	7.3%	7.0%	6.4%	6.4%
HCA, Nurse's Aide, etc.	47.0%	48.3%	44.1%	45.9%	39.1%	36.9%	36.7%
Health & Social Care Assistants	1.0%	0.9%	6.4%	2.8%	4.2%	4.8%	4.5%
Swabber (COVID-19)					16.1%	20.4%	20.4%
Health Care Assistants	48.0%	49.2%	50.6%	48.7%	59.4%	62.1%	61.7%
Other Care Grades	52.0%	50.8%	49.4%	51.3%	40.6%	37.9%	38.3%
Care, other	52.0%	50.8%	49.4%	51.3%	40.6%	37.9%	38.3%
Patient & Client Care	14.5%	14.3%	15.7%	14.6%	13.9%	18.9%	18.9%
Total	100 %	100 %	100 %	100 %	100 %	100 %	

Jul 2021 (Dec 2019 figure: 2,982)	WTE Dec 2016	WTE Dec 2017	WTE Dec 2018	WTE Dec 2019	WTE Dec 2020	WTE Jun 2021	WTE Jul 2021
Disabilities	1,943	2,792	2,903	2,982	3,103.35	3,178.58	3,216.70
Consultant Paediatrics	2.9%	2.5%	3.1%	3.0%	2.9%	2.8%	2.8%
Consultant Psychiatry	19.1%	16.2%	1.9%	1.7%	1.7%		
Consultants	22.0%	18.8%	5.0%	4.7%	4.7%	2.8%	2.8%
Registrars	26.0%	22.2%	21.5%	26.1%	26.0%	24.3%	29.1%
SHO/ Interns	43.3%	51.7%	64.3%	60.5%	60.7%	64.8%	60.0%
Medical/ Dental, other	8.7%	7.4%	9.3%	8.7%	8.7%	8.1%	8.1%
Medical & Dental	0.6%	0.5%	0.4%	0.4%	0.4%	0.4%	0.4%
Clinical Nurse/ Midwife Manager	23.2%	23.9%	22.4%	22.4%	21.5%	22.7%	22.9%
Director Nursing/Midwifery, Assistant	1.5%	1.1%	1.1%	1.1%	1.3%	1.3%	1.4%
Director of Nursing/Midwifery	0.5%	1.4%	1.0%	0.8%	0.8%	0.6%	0.6%
Nurse/ Midwife Manager	25.2%	26.4%	24.4%	24.3%	23.6%	24.6%	24.8%
Advanced Nurse/ Midwife Practitioner					0.4%	0.4%	0.4%
Clinical Nurse/ Midwife Specialist	1.3%	1.3%	2.0%	1.0%	0.5%	0.4%	0.4%
Nurse/ Midwife Specialist & AN/MP	1.3%	1.3%	2.0%	1.0%	0.9%	0.8%	0.8%
Staff Nurse [Intellectual Disability]	57.6%	45.5%	43.3%	38.7%	38.0%	40.5%	39.4%
Staff Nurses [General/ Children's]	15.2%	26.7%	30.2%	35.9%	37.2%	32.2%	33.1%
Staff Nurse/ Staff Midwife	72.8%	72.2%	73.5%	74.6%	75.3%	72.8%	72.5%
Pre-registration Nurse/ Midwife Intern						1.4%	1.4%
Nursing/ Midwifery Student						1.4%	1.4%
Nursing/ Midwifery other	0.8%	0.1%	0.1%	0.1%	0.3%	0.5%	0.5%
Nursing & Midwifery	20.4%	18.1%	17.5%	16.8%	16.2%	16.8%	16.8%
Dietitians	1.6%	0.8%	0.8%	1.3%	1.0%	0.9%	1.0%
Occupational Therapists	13.0%	7.8%	7.0%	7.6%	7.6%	7.2%	7.7%
Physiotherapists	11.0%	6.3%	6.1%	5.5%	5.4%	5.9%	5.5%
Speech & Language Therapists	13.5%	9.1%	8.2%	7.6%	9.1%	9.0%	8.5%
Therapy Professions	39.1%	24.0%	22.1%	22.0%	23.1%	23.1%	22.8%
Audiology	0.2%						
Clinical Measurement	0.4%	0.2%	0.2%	0.2%	0.3%	0.3%	0.3%

Jul 2021 (Dec 2019 figure: 2,982)	WTE Dec 2016	WTE Dec 2017	WTE Dec 2018	WTE Dec 2019	WTE Dec 2020	WTE Jun 2021	WTE Jul 2021
Disabilities	1,943	2,792	2,903	2,982	3,103.35	3,178.58	3,216.70
Phlebotomists			0.2%	0.2%			
Radiographers	0.4%	0.2%	0.2%	0.2%	0.2%	0.1%	
Health Science/ Diagnostics	1.0%	0.4%	0.6%	0.5%	0.5%	0.5%	0.3%
Social Care	38.3%	62.1%	64.8%	65.2%	64.9%	65.0%	65.4%
Social Workers	10.1%	5.8%	6.3%	6.0%	5.3%	5.4%	5.2%
Psychologists	9.1%	6.4%	5.1%	5.0%	5.3%	5.0%	5.0%
Pharmacy	1.6%	0.8%	0.9%	0.9%	0.7%	0.8%	0.8%
Counsellor Therapists	0.6%	0.3%	0.3%	0.3%	0.3%	0.2%	0.4%
Other Health & Social Care	0.4%	0.2%					
H&SC, Other	1.0%	0.5%	0.3%	0.3%	0.3%	0.2%	0.4%
Health & Social Care Professionals	13.1%	18.1%	18.5%	18.5%	17.8%	19.5%	19.5%
Executive Management	5.3%	3.9%	2.6%	2.5%	3.0%	3.2%	3.2%
Senior Management (VIII & GM)	14.3%	13.3%	13.7%	13.3%	15.1%	15.2%	15.2%
Management (VIII & above)	19.5%	17.2%	16.3%	15.8%	18.1%	18.4%	18.5%
Administrative/ Supervisory (V to VII)	35.3%	34.0%	37.0%	39.0%	39.0%	37.4%	38.5%
Clerical (III & IV)	45.1%	48.7%	46.7%	45.3%	42.9%	44.2%	43.1%
Management & Administrative	6.8%	6.4%	6.5%	6.8%	6.5%	7.7%	7.7%
Support	88.2%	84.1%	85.7%	85.4%	82.6%	81.8%	81.8%
Maintenance	11.1%	15.5%	13.8%	13.0%	15.3%	15.5%	14.9%
Technical Services	0.6%	0.5%	0.5%	1.5%	2.1%	2.7%	3.3%
Maintenance/ Technical	11.8%	15.9%	14.3%	14.6%	17.4%	18.2%	18.2%
General Support	8.1%	7.7%	7.1%	6.5%	6.3%	5.6%	5.6%
HCA, Nurse's Aide, etc.	72.1%	70.6%	71.9%	72.9%	72.9%	74.0%	74.0%
Health & Social Care Assistants	0.6%	0.3%	0.2%	0.4%	0.3%	0.3%	0.4%
Health Care Assistants	72.7%	70.8%	72.1%	73.3%	73.2%	74.4%	74.4%
Care, other	24.0%	27.2%	26.2%	25.4%	25.7%	24.6%	24.6%
Home Help	3.3%	1.9%	1.6%	1.3%	1.1%	1.1%	1.0%
Patient & Client Care	50.9%	49.1%	50.0%	50.9%	48.9%	49.9%	49.9%
Total	100 %	100 %	100 %	100 %	100 %	100 %	

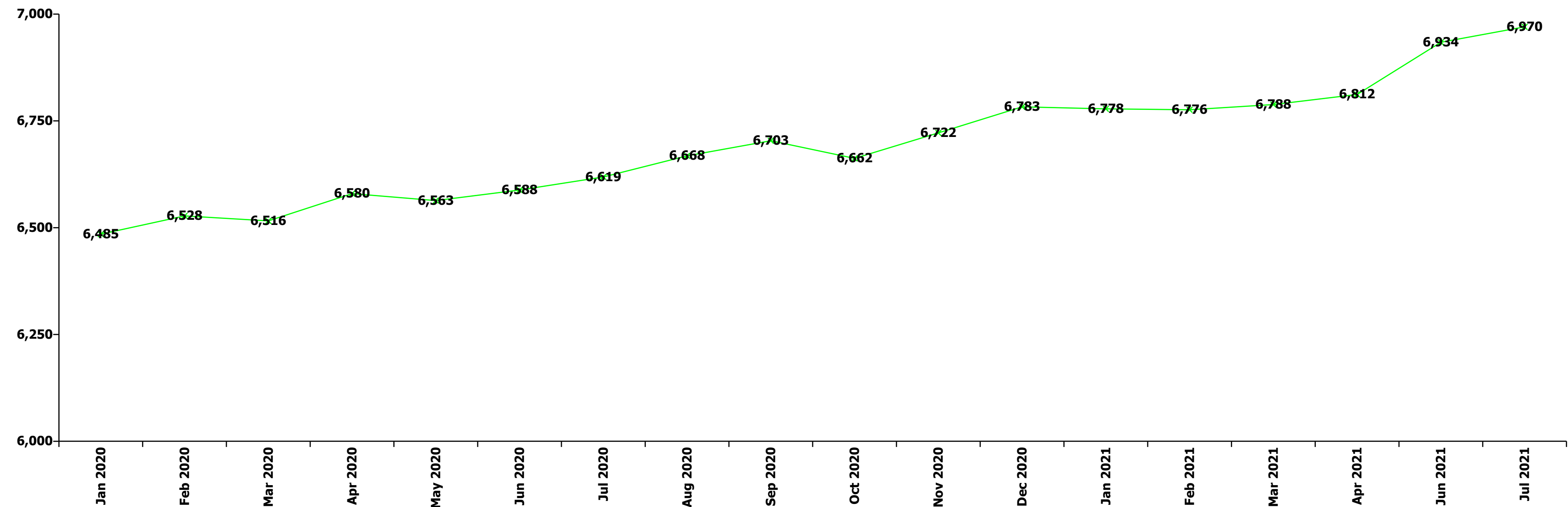
Jul 2021 (Dec 2019 figure: 996)	WTE Dec 2016	WTE Dec 2017	WTE Dec 2018	WTE Dec 2019	WTE Dec 2020	WTE Jun 2021	WTE Jul 2021
Older People	1,121	1,064	1,044	996	1,021.48	1,019.39	1,016.97
Senior House Officer	33.3%	37.5%	28.6%	33.3%	49.5%	49.5%	49.5%
SHO/ Interns	33.3%	37.5%	28.6%	33.3%	49.5%	49.5%	49.5%
Medical/ Dental, other	66.7%	62.5%	71.4%	66.7%	50.5%	50.5%	50.5%
Medical & Dental	0.8%	0.8%	0.7%	0.6%	0.6%	0.4%	0.4%
Clinical Nurse/ Midwife Manager	19.1%	18.6%	18.8%	20.3%	20.2%	22.6%	22.3%
Director Nursing/Midwifery, Assistant	3.8%	2.5%	4.0%	4.3%	3.8%	4.3%	4.3%
Director of Nursing/Midwifery	1.8%	2.2%	1.7%	1.1%	1.8%	1.8%	1.7%
Nurse/ Midwife Manager	24.7%	23.2%	24.4%	25.8%	25.9%	28.6%	28.4%
Nurse/ Midwife Specialist & AN/MP	1.0%	1.1%	1.4%	0.9%	0.9%	0.7%	0.7%
Staff Nurse [Psychiatric]	0.2%	0.2%			0.3%	0.6%	0.6%
Staff Nurses [General/ Children's]	74.1%	75.4%	74.1%	73.3%	72.5%	69.8%	69.9%
Staff Nurse/ Staff Midwife	74.3%	75.6%	74.1%	73.3%	72.8%	70.4%	70.5%
Public Health Nurse	0.1%						
Nursing/ Midwifery awaiting registration					0.4%	0.2%	0.4%
Nursing/ Midwifery Student					0.4%	0.2%	0.4%
Nursing & Midwifery	30.4%	30.4%	28.9%	30.0%	29.3%	33.7%	33.7%

Jul 2021 (Dec 2019 figure: 996)	WTE Dec 2016	WTE Dec 2017	WTE Dec 2018	WTE Dec 2019	WTE Dec 2020	WTE Jun 2021	WTE Jul 2021
Older People	1,121	1,064	1,044	996	1,021.48	1,019.39	1,016.97
Dietitians	2.6%	2.7%		3.6%	3.5%	3.1%	3.1%
Occupational Therapists	10.8%	10.7%	9.6%	14.9%	15.7%	13.9%	14.0%
Physiotherapists	27.3%	28.3%	29.5%	30.5%	23.7%	28.8%	26.1%
Podiatrists & Chiropodists	1.9%	1.8%	2.0%				
Speech & Language Therapists		2.7%	2.6%		3.5%	9.4%	9.3%
Therapy Professions	42.5%	46.1%	43.6%	49.0%	46.4%	55.2%	52.5%
Medical Science	2.6%						
Health Science/ Diagnostics	2.6%						
Social Workers	39.2%	37.7%	41.0%	38.6%	43.2%	35.5%	38.2%
Pharmacy	10.5%	10.8%	10.3%	8.9%	7.0%	6.2%	6.2%
Other Health & Social Care	2.6%	2.7%	2.6%				
Play Therapists/ Specialists	2.6%	2.7%	2.6%	3.6%	3.5%	3.1%	3.1%
H&SC, Other	5.2%	5.4%	5.1%	3.6%	3.5%	3.1%	3.1%
Health & Social Care Professionals	3.4%	3.5%	3.7%	2.8%	2.8%	3.2%	3.2%
Senior Management (VIII & GM)	15.2%	10.0%	9.0%	9.9%	12.3%	11.0%	11.3%
Management (VIII & above)	15.2%	10.0%	9.0%	9.9%	12.3%	11.0%	11.3%
Administrative/ Supervisory (V to VII)	18.5%	21.1%	21.7%	22.7%	24.8%	25.2%	26.8%
Clerical (III & IV)	66.3%	68.9%	69.3%	67.4%	63.0%	63.8%	61.9%
Management & Administrative	4.7%	4.7%	4.2%	5.1%	5.0%	5.6%	5.6%
Support	97.5%	97.6%	97.5%	98.2%	98.3%	98.3%	98.3%
Maintenance/ Technical	2.5%	2.4%	2.5%	1.8%	1.7%	1.7%	1.7%
General Support	10.8%	11.6%	11.7%	11.3%	11.0%	11.7%	11.7%
HCA, Nurse's Aide, etc.	74.5%	73.0%	77.4%	77.5%	73.9%	74.8%	74.9%
HCA (Student Nurse/Midwife COVID-19)					0.8%	0.2%	
Health & Social Care Assistants					0.2%	0.4%	0.4%
Health Care Assistants	74.5%	73.0%	77.4%	77.5%	74.9%	75.5%	75.4%
Care, other	2.9%	2.9%	1.3%	1.0%	1.0%	1.1%	1.3%
Home Help	22.6%	24.1%	21.3%	21.5%	24.0%	23.5%	23.3%
Patient & Client Care	49.9%	49.1%	50.8%	50.2%	49.0%	45.5%	45.5%
Total	100 %	100 %	100 %	100 %	100 %	100 %	

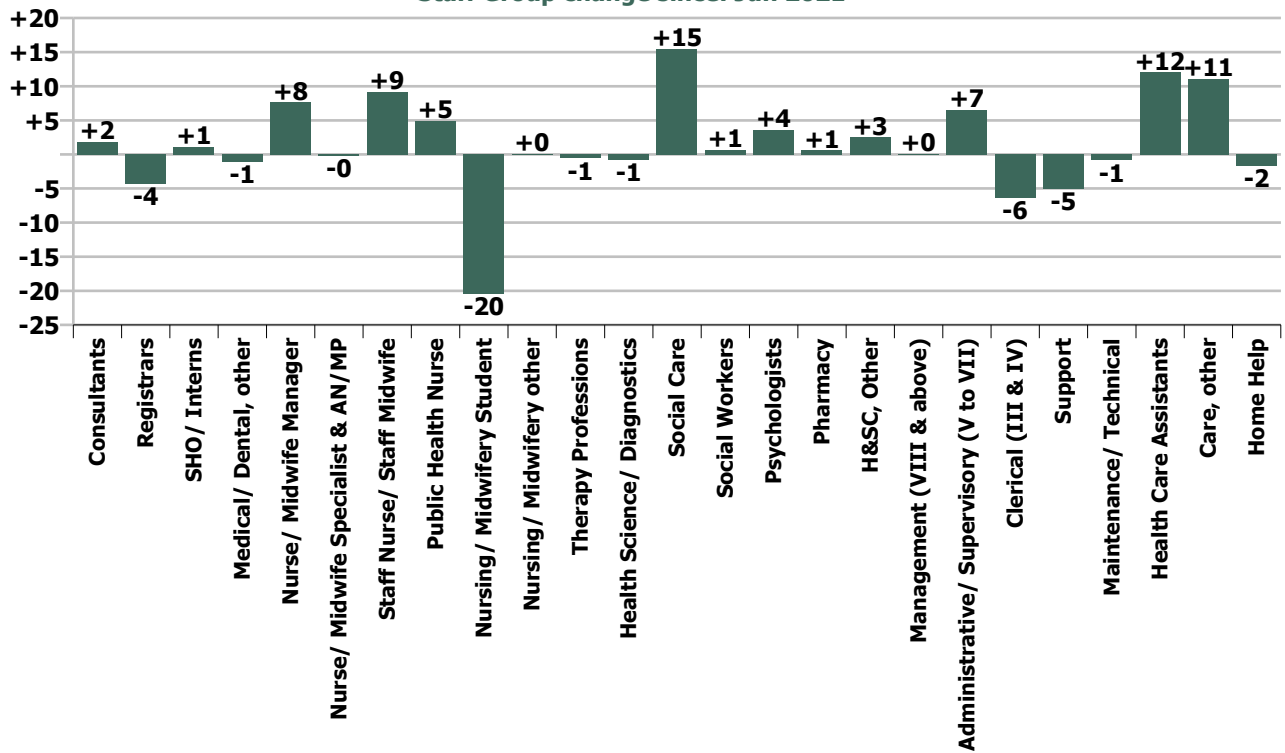
Summary Staff Movement: July 2021

Month-on-month Summary																												
WTE change since Jun 21	% change since Jun 21	overall	Consultants	Registrars	SHO/ Interns	Medical/ Dental, other	Medical & Dental	Nurse/ Midwife Manager	Nurse/ Midwife Specialist & AN/MP	Staff Nurse/ Staff Midwife	Public Health Nurse	Nursing/ Midwifery Student	Nursing/ Midwifery other	Nursing & Midwifery	Therapy Professions	Health Science/ Diagnostics	Social Care	Social Workers	Psychologists	Pharmacy	H&SC, Other	Health & Social Care Professionals	Management (VIII & above)	Administrativ e/ Supervisory (V to VII)	Clerical (III & IV)	Management & Administrativ e	General Support	Patient & Client Care
Overall	+0.5%	+36	+1.9	-4.3	+1.1	-1.1	-2.4	+7.6	-0.3	+9.2	+4.9	-20.4	+0.1	+1.1	-0.6	-0.8	+15.5	+0.7	+3.6	+0.6	+2.5	+21.5	+0.0	+6.6	-6.4	+0.2	-5.9	+21.5
Community Health & Wellbeing	+5.3%	+1																				0.0	+0.6	-0.0	+0.6			-0.1
Mental Health	-0.3%	-3	+0.9	-5.3	-0.1		-4.5	-0.8	+1.0	-2.9		-0.9	+0.1	-3.5	+1.4		-0.1	-0.5	+2.2	0.0	-0.1	+2.9	0.0	+1.0	-0.7	+0.3	-0.6	+2.3
Primary Care	+0.2%	+3	+1.0	+0.4	+1.8	-1.1	+2.1	+5.1	-1.2	+5.6	+4.9	-20.1	0.0	-5.7	-4.1	+0.1	0.0	+0.3	+0.2	+0.1	+1.6	-1.8	+0.0	+1.8	-0.7	+1.2	-0.4	+7.4
Disabilities	+1.2%	+38	0.0	+0.6	-0.6	0.0	-0.0	+3.2	0.0	+3.8		0.0	0.0	+7.0	+3.0	-0.9	+15.6	-0.0	+1.2	+0.5	+1.0	+20.3	+0.0	+2.5	-2.9	-0.3	-4.8	+16.0
Older People	-0.2%	-2			0.0	0.0	0.0	+0.2	-0.0	+2.6		+0.6		+3.3	-0.8			+0.9		0.0	0.0	+0.1	0.0	+0.6	-2.0	-1.5	-0.1	-4.2
Social Care	+0.9%	+36	0.0	+0.6	-0.6	0.0	-0.0	+3.3	-0.0	+6.4		+0.6	0.0	+10.3	+2.2	-0.9	+15.6	+0.9	+1.2	+0.5	+1.0	+20.4	+0.0	+3.1	-4.9	-1.8	-4.9	+11.8
Change	+36.0	+0.5%	+2.8%	-4.2%	+2.9%	-1.5%	-0.9%	+1.7%	-0.2%	+0.9%	+2.9%	-42.7%	+1.0%	+0.1%	-0.1%	-20.7%	+3.8%	+0.6%	+4.2%	+1.6%	+6.1%	+1.9%	+0.1%	+2.9%	-1.6%	+0.0%	-1.3%	+0.8%

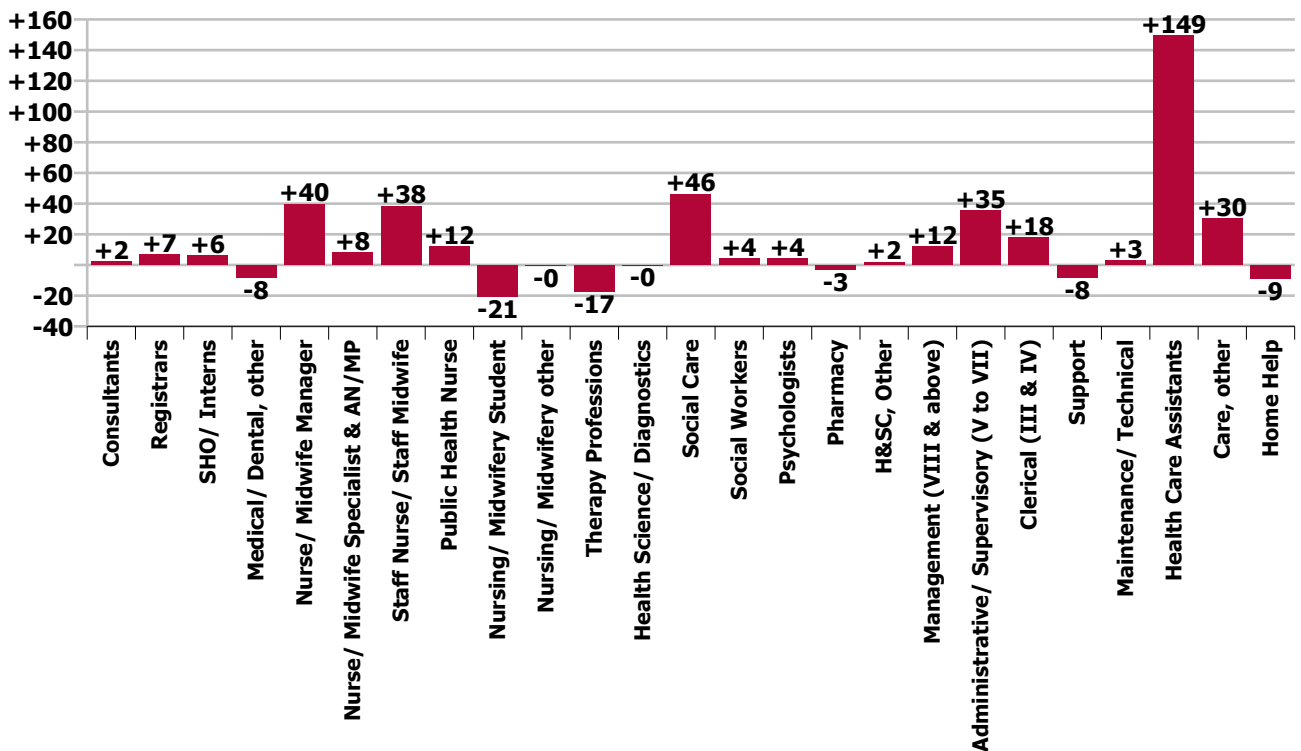
Year-on-year Summary																												
WTE change since Jul 20	% change since Jul 20	overall	Consultants	Registrars	SHO/ Interns	Medical/ Dental, other	Medical & Dental	Nurse/ Midwife Manager	Nurse/ Midwife Specialist & AN/MP	Staff Nurse/ Staff Midwife	Public Health Nurse	Nursing/ Midwifery Student	Nursing/ Midwifery other	Nursing & Midwifery	Therapy Professions	Health Science/ Diagnostics	Social Care	Social Workers	Psychologists	Pharmacy	H&SC, Other	Health & Social Care Professionals	Management (VIII & above)	Administrativ e/ Supervisory (V to VII)	Clerical (III & IV)	Management & Administrative	General Support	Patient & Client Care
Overall	+5.3%	+351	+2.1	+7.1	+6.2	-8.2	+7.3	+39.6	+8.0	+38.4	+12.2	-20.7	-0.3	+77.3	-17.2	-0.2	+46.2	+4.2	+3.9	-2.9	+1.9	+36.0	+11.8	+35.4	+18.1	+65.3	-5.2	+170.7
Community Health & Wellbeing	+5.3%	+1																				0.0	+4.0	+1.0	+5.0			-2.1
Mental Health	-0.3%	-3	+3.5	+6.3	+1.6		+11.4	-0.8	+5.6	+14.3		-5.0	-2.3	+11.9	+4.3		-0.3	+3.1	+0.3	0.0	-0.7	+6.7	+1.0	+0.7	-4.6	-2.8	+1.2	+4.9
Primary Care	+0.2%	+3	-1.2	+0.2	+4.7	-6.2	-2.5	+12.9	+2.9	+8.6	+12.2	-7.1	0.0	+29.6	-25.1	+0.8	-0.9	+3.2	+1.9	-1.4	+1.6	-19.9	+2.1	+17.5	+12.2	+31.8	-2.9	+87.7
Disabilities	+6.9%	+208.1	-0.2	+0.6	-0.0	0.0	+0.4	+9.6	+1.2	+14.5		-7.5	+2.0	+19.7	-0.1	-1.0	+47.5	-0.8	+1.7	-0.5	+1.0	+47.8	+8.1	+11.4	+8.2	+27.7	-10.6	+123.1
Older People	-1.6%	-16.8			0.0	-2.0	-2.0	+17.8	-1.7	+1.1		-1.2		+16.1	+3.6			-1.3		-1.0	0.0	+1.3	+0.6	+1.8	+1.3	+3.6	+7.1	-43.0
Social Care	+0.9%	+36	-0.2	+0.6	-0.0	-2.0	-1.6	+27.4	-0.5	+15.5		-8.7	+2.0	+35.8	+3.5	-1.0	+47.4	-2.1	+1.7	-1.5	+1.0	+49.1	+8.7	+13.2	+9.5	+31.4	-3.5	+80.1
Change	+351.4	+5.3%	+3.1%	+7.9%	+19.0%	-9.9%	+2.7%	+9.7%	+7.8%	+3.8%	+7.5%	-43.1%	-2.4%	+4.4%	-3.7%	-5.0%	+12.4%	+3.8%	+4.6%	-7.1%	+4.6%	+3.2%	+15.1%	+17.9%	+4.9%	+10.1%	-1.2%	+7.2%

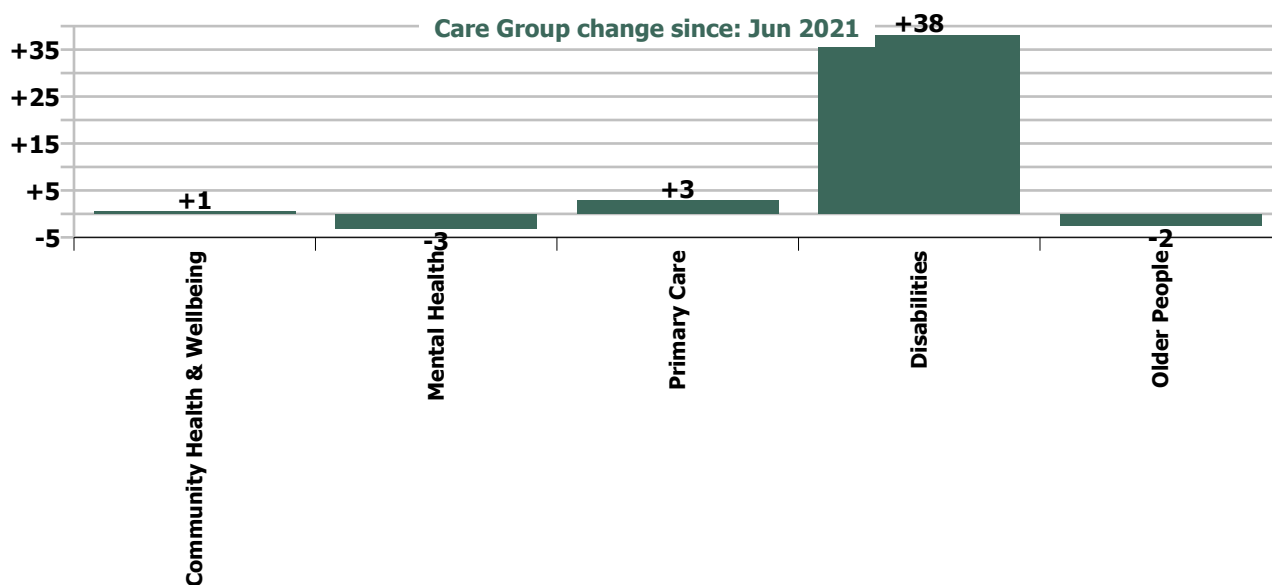


Staff Group change since: Jun 2021

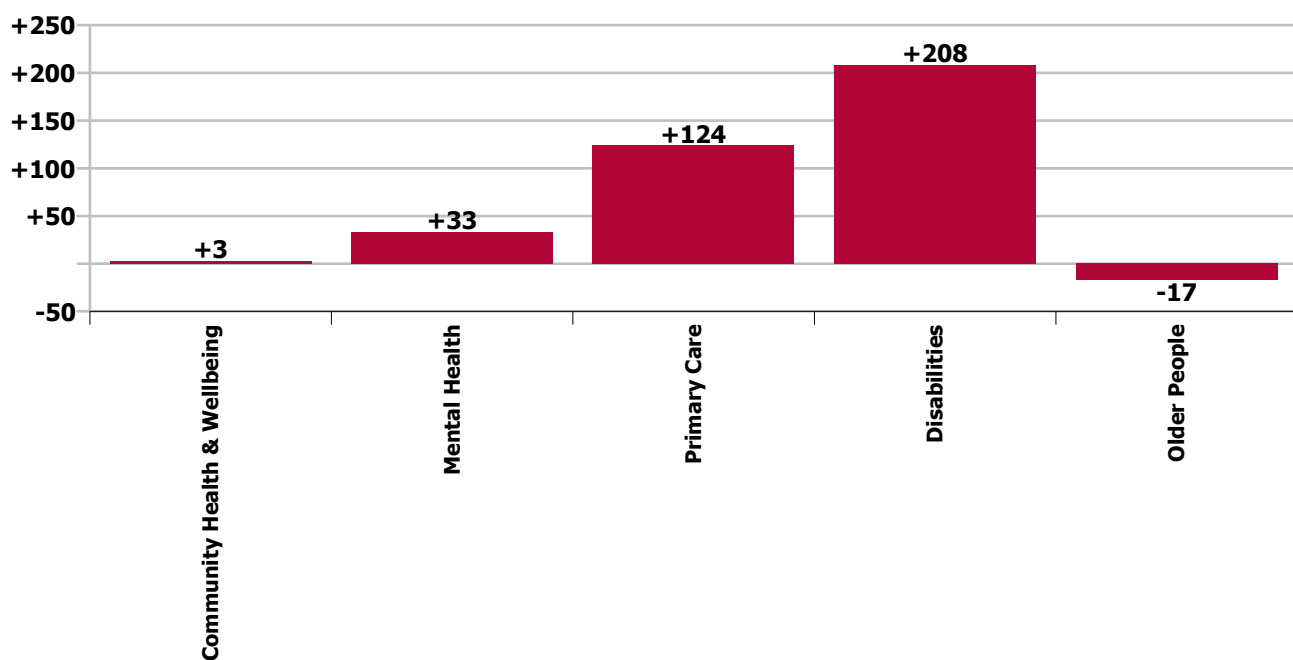


Staff Group change since: Jul 2020





Care Group change since: Jul 2020



Longitudinal Employment Levels by Grade Group - Dec 2016 to Jul 2021

Jul 2021 (Dec 2016 figure: 5,579)	WTE Jul 2021	WTE change since Dec 16	WTE change since Dec 17	WTE change since Dec 18	WTE change since Dec 19	WTE change since Dec 20	WTE change since Jun 21	% change since Dec 16	% change since Dec 17	% change since Dec 18	% change since Dec 19	% change since Dec 20	% change since Jun 21
Overall	6,970	+1,391	+564	+413	+456	+187	+36	+24.9%	+8.8%	+6.3%	+7.0%	+2.8%	+0.5%
Consultant Medicine	10	+2	+1	+3	+3	+1	+1	+19.0%	+9.9%	+36.2%	+45.9%	+13.5%	+11.8%
Consultant Paediatrics	0												
Consultant Psychiatry	59	+10	+13	+11	+7	+2	+1	+20.7%	+27.5%	+23.2%	+13.5%	+3.0%	+1.5%
Consultant Surgery		-1	-0	-1	-1			-100.0%	-100.0%	-100.0%	-100.0%	-100.0%	-100.0%
Consultants	69	+11	+13	+13	+9	+3	+2	+18.8%	+23.4%	+22.1%	+15.5%	+4.3%	+2.8%
Registrar	69	+13	+17	+3	-3	-5	-5	+22.5%	+31.4%	+5.1%	-3.7%	-6.6%	-7.1%
Senior Registrar	23	+13	+14	+9	+4	+3	+3	+123.0%	+150.7%	+67.3%	+23.4%	+17.1%	+17.1%
Specialist Registrar	4	+1	-1	-0	+0	-2	-2	+13.9%	-22.0%	-5.7%	+10.7%	-26.2%	-35.2%
Registrars	97	+26	+29	+13	+2	-3	-4	+36.9%	+43.4%	+14.8%	+2.3%	-3.0%	-4.2%
Interns	2	-0	-0	-0	-0	-0	-0	-22.0%	-22.0%	-22.0%	-22.0%	-22.0%	-22.0%
Senior House Officer	38	-1	-3	+4	+4	+1	+2	-3.8%	-8.0%	+12.8%	+11.0%	+3.3%	+4.3%
SHO/ Interns	39	-2	-4	+4	+3	+1	+1	-4.7%	-8.6%	+10.8%	+9.2%	+2.0%	+2.9%
Dentists	35	-4	-0	-1	+2	+0	+0	-11.1%	-0.2%	-3.5%	+4.5%	+0.5%	+1.3%
Other Medical	39	-6	-14	-13	-8	-5	-2	-13.1%	-26.3%	-24.7%	-16.3%	-12.3%	-3.9%
Medical/ Dental, other	74	-10	-14	-14	-6	-5	-1	-12.2%	-15.9%	-15.9%	-7.5%	-6.7%	-1.5%
Medical & Dental	280	+25	+25	+15	+9	-5	-2	+9.8%	+9.7%	+5.6%	+3.2%	-1.7%	-0.9%
Clinical Nurse/ Midwife Manager	360	+58	+33	+38	+32	+31	+5	+19.1%	+10.1%	+11.8%	+9.7%	+9.6%	+1.5%
Director Nursing/Midwifery, Assistant	68	+14	+18	+13	+16	+10	+3	+26.8%	+36.1%	+22.9%	+31.4%	+17.0%	+4.8%
Director of Nursing/Midwifery	19	+2	-4	-1	+3	-2	-1	+12.5%	-17.3%	-3.5%	+17.2%	-9.9%	-4.5%
Nurse/ Midwife Manager	447	+74	+47	+50	+51	+39	+8	+19.9%	+11.8%	+12.6%	+12.8%	+9.6%	+1.7%
Advanced Nurse/ Midwife Practitioner	14	+12	+12	+12	+10	+2	-0	+695.0%	+521.4%	+462.5%	+227.9%	+18.8%	-0.3%
Clinical Nurse/ Midwife Specialist	96	+30	+19	+12	+7	-1	-0	+45.8%	+23.8%	+13.8%	+7.7%	-1.3%	-0.2%
Nurse/ Midwife Specialist & AN/MP	111	+43	+30	+23	+17	+1	-0	+62.9%	+38.0%	+26.8%	+17.9%	+0.9%	-0.2%
Staff Nurse [Intellectual Disability]	215	-14	-16	-5	+21	+23	-3	-6.0%	-6.9%	-2.5%	+10.7%	+11.9%	-1.4%
Staff Nurse [Psychiatric]	202	-12	-25	+3	+11	+4	-4	-5.8%	-11.1%	+1.4%	+5.5%	+2.2%	-1.9%
Staff Nurses [General/ Children's]	646	+139	+79	+69	+38	+15	+16	+27.4%	+13.9%	+12.0%	+6.3%	+2.3%	+2.6%
Staff Nurse/ Staff Midwife	1,063	+113	+38	+66	+70	+42	+9	+11.9%	+3.7%	+6.7%	+7.0%	+4.1%	+0.9%
Public Health Nurse	175	-6	-12	-20	-0	-1	+5	-3.2%	-6.3%	-10.3%	-0.2%	-0.8%	+2.9%
Pre-registration Nurse/ Midwife Intern	22	+21	+22	+16	+21	+22	+0	+1249.4%	-100.0%	+275.8%	+1535.0%	+4380.0%	+2.0%
Pre-registration Nurse Intern (COVID-19)	1	+1	+1	+1	+1	-3	-0	-100.0%	-100.0%	-100.0%	-100.0%	-81.7%	-38.0%
Post-registration Nurse/ Midwife Student	3	-20	-13	-4	-18	-21	-21	-87.2%	-81.6%	-58.0%	-86.0%	-87.8%	-87.8%
Nursing/ Midwifery awaiting registration	1	+1	-7	-3	-8	-3	+1	-100.0%	-82.9%	-65.3%	-85.9%	-66.9%	+71.6%
Nursing/ Midwifery Student	27	+3	+3	+10	-5	-5	-20	+10.9%	+13.4%	+61.3%	-15.1%	-14.8%	-42.7%
Nursing Education/Clinical	9	-2	+0	+1	-1	-0	+0	-20.0%	+2.3%	+8.2%	-8.4%	-1.6%	+1.1%

Jul 2021 (Dec 2016 figure: 5,579)	WTE Jul 2021	WTE change since Dec 16	WTE change since Dec 17	WTE change since Dec 18	WTE change since Dec 19	WTE change since Dec 20	WTE change since Jun 21	% change since Dec 16	% change since Dec 17	% change since Dec 18	% change since Dec 19	% change since Dec 20	% change since Jun 21
Overall	6,970	+1,391	+564	+413	+456	+187	+36	+24.9%	+8.8%	+6.3%	+7.0%	+2.8%	+0.5%
Other Nursing/ Midwifery	1		+1	+1	+1	+1			-100.0%	-100.0%	-100.0%	-100.0%	
Nursing/ Midwifery other	10	-2	+1	+2	+0	+1	+0	-18.4%	+13.5%	+20.0%	+1.6%	+9.1%	+1.0%
Nursing & Midwifery	1,833	+224	+108	+132	+132	+77	+1	+14.0%	+6.3%	+7.7%	+7.8%	+4.4%	+0.1%
Dietitians	25	+6	+5	+0	-1	-1	-0	+31.0%	+28.1%	+0.2%	-2.1%	-5.1%	-0.7%
Occupational Therapists	184	+15	+15	-1	+0	+1	+5	+8.9%	+8.9%	-0.3%	+0.2%	+0.4%	+3.0%
Orthoptists	3	+3	+3	+3	+3	+1		+1100.0%	-100.0%	-100.0%	-100.0%	+20.0%	
Physiotherapists	118	-4	-6	-8	+4	-3	-3	-3.4%	-4.6%	-6.0%	+3.3%	-2.3%	-2.6%
Podiatrists & Chiropodists	2	+1	+1	+0	+1	+1		+111.3%	+130.8%	+17.2%	+50.0%	+50.0%	
Speech & Language Therapists	123	+16	-5	+0	-3	-6	-3	+14.6%	-3.7%	+0.0%	-2.3%	-4.6%	-2.1%
Therapy Professions	454	+36	+14	-5	+4	-8	-1	+8.6%	+3.2%	-1.1%	+0.9%	-1.8%	-0.1%
Audiology		-0						-100.0%	-100.0%	-100.0%	-100.0%	-100.0%	-100.0%
Clinical Measurement	2	+1	+1	+1	+1			+100.0%	+100.0%	+100.0%	+100.0%		
Medical Science		-1						-100.0%	-100.0%	-100.0%	-100.0%	-100.0%	-100.0%
Phlebotomists	1	+0	+0	-0	-0	-0	+0	+63.1%	+68.3%	-13.1%	-13.1%	-13.1%	+6.0%
Radiographers		-1	-1	-1	-1	-1	-1	-100.0%	-100.0%	-100.0%	-100.0%	-100.0%	-100.0%
Health Science/ Diagnostics	3	-1	+0	-0	-0	-1	-1	-25.0%	+16.3%	-5.0%	-5.0%	-27.5%	-20.7%
Social Care	420	+307	+91	+60	+48	+20	+15	+273.1%	+27.6%	+16.6%	+13.0%	+4.9%	+3.8%
Social Care	420	+307	+91	+60	+48	+20	+15	+273.1%	+27.6%	+16.6%	+13.0%	+4.9%	+3.8%
Social Workers	114	+4	+2	+3	+10	+6	+1	+4.0%	+1.7%	+3.0%	+9.1%	+5.7%	+0.6%
Psychologists	90	+21	+5	+5	+9	+3	+4	+30.3%	+5.6%	+6.3%	+11.0%	+3.3%	+4.2%
Pharmacy	39	+1	+0	+1	-1	+1	+1	+2.2%	+0.1%	+2.0%	-3.3%	+2.9%	+1.6%
Counsellor Therapists	37	+6	+4	+7	+1	+2	+2	+18.7%	+13.2%	+21.3%	+1.9%	+5.3%	+6.8%
Dental Hygienists	5	+1	+1	-0	-1	+0	+0	+26.8%	+34.3%	-7.2%	-11.9%	+9.8%	+3.4%
Other Health & Social Care	1	-4	-4	-3	-1	+0	-0	-74.4%	-77.2%	-71.6%	-36.0%	+6.7%	-0.8%
Play Therapists/ Specialists	1												
H&SC, Other	44	+3	+1	+3	-1	+2	+3	+7.5%	+2.6%	+7.2%	-1.5%	+5.6%	+6.1%
Health & Social Care Professionals	1,163	+371	+113	+67	+69	+23	+22	+46.8%	+10.7%	+6.1%	+6.3%	+2.0%	+1.9%
Executive Management	18	+2	+3	+6	+5	+2	+0	+12.3%	+19.8%	+49.7%	+38.2%	+12.9%	+0.2%
Senior Management (VIII & GM)	72	+24	+20	+15	+12	+3	+0	+48.7%	+38.3%	+27.2%	+20.1%	+4.6%	+0.0%
Management (VIII & above)	90	+26	+23	+21	+17	+5	+0	+39.6%	+34.2%	+31.2%	+23.3%	+6.2%	+0.1%
Middle Management (V-VII)	234	+102	+75	+66	+52	+20	+7	+77.8%	+47.5%	+39.2%	+28.8%	+9.6%	+2.9%
Other Administrative		-1	-1	-1	-1	-1		-100.0%	-100.0%	-100.0%	-100.0%	-100.0%	-100.0%
Administrative/ Supervisory (V to VII)	234	+101	+74	+65	+51	+20	+7	+76.7%	+46.6%	+38.5%	+28.2%	+9.1%	+2.9%
Clerical (III & IV)	387	+29	+4	+7	+36	+7	-6	+7.9%	+1.0%	+1.7%	+10.4%	+1.8%	-1.6%
Management & Administrative	711	+155	+101	+93	+105	+32	+0	+28.0%	+16.6%	+15.0%	+17.3%	+4.6%	+0.0%

Jul 2021 (Dec 2016 figure: 5,579)	WTE Jul 2021	WTE change since Dec 16	WTE change since Dec 17	WTE change since Dec 18	WTE change since Dec 19	WTE change since Dec 20	WTE change since Jun 21	% change since Dec 16	% change since Dec 17	% change since Dec 18	% change since Dec 19	% change since Dec 20	% change since Jun 21
Overall	6,970	+1,391	+564	+413	+456	+187	+36	+24.9%	+8.8%	+6.3%	+7.0%	+2.8%	+0.5%
Catering	54	+1	-10	-8	-5	-2	-1	+2.0%	-15.8%	-13.1%	-8.7%	-4.0%	-2.0%
Household Services	263	-0	-33	-30	-6	-2	-4	-0.2%	-11.0%	-10.3%	-2.1%	-0.7%	-1.6%
Other Labs & Associated	1	-0	+0		+0	+0	+0	-2.8%	+4.0%		+4.0%	+4.0%	+4.0%
Other Support	15	-2	-0	-1	+1	-0	-0	-9.3%	-0.7%	-4.7%	+5.5%	-0.1%	-2.6%
Portering	57	-16	-14	-13	-10	-7	+1	-21.9%	-19.6%	-18.9%	-14.9%	-11.2%	+1.4%
Support	390	-17	-57	-53	-20	-11	-5	-4.2%	-12.7%	-11.9%	-4.9%	-2.8%	-1.3%
Maintenance	39	+9	-5	-1	+2	-2	-2	+28.2%	-10.7%	-3.6%	+6.3%	-4.3%	-4.5%
Technical Services	7	+5	+5	+5	+3	+2	+1	+250.0%	+250.0%	+268.4%	+75.0%	+40.0%	+16.7%
Maintenance/ Technical	46	+14	+0	+4	+5	+0	-1	+41.7%	+0.6%	+8.5%	+13.0%	+0.5%	-1.8%
General Support	437	-3	-56	-49	-15	-11	-6	-0.8%	-11.4%	-10.1%	-3.3%	-2.5%	-1.3%
HCA, Nurse's Aide, etc.	1,699	+408	+189	+81	+57	+48	+12	+31.6%	+12.5%	+5.0%	+3.5%	+2.9%	+0.7%
HCA (Student Nurse/Midwife COVID-19)						-4	-1	-100.0%	-100.0%	-100.0%	-100.0%	-100.0%	-100.0%
Health & Social Care Assistants	24	+15	+18	+2	+11	+6	-0	+181.8%	+291.9%	+10.1%	+89.5%	+31.1%	-1.5%
Swabber (COVID-19)	71	+71	+71	+71	+71	+21	+2	-100.0%	-100.0%	-100.0%	-100.0%	+42.7%	+2.2%
Health Care Assistants	1,794	+495	+278	+155	+139	+71	+12	+38.1%	+18.3%	+9.4%	+8.4%	+4.1%	+0.7%
Care, other	629	+158	+24	+12	+19	+8	+11	+33.6%	+3.9%	+2.0%	+3.1%	+1.3%	+1.8%
Home Help	125	-34	-28	-12	-2	-7	-2	-21.5%	-18.3%	-8.8%	-1.9%	-5.5%	-1.3%
Patient & Client Care	2,548	+619	+274	+155	+156	+72	+21	+32.1%	+12.1%	+6.5%	+6.5%	+2.9%	+0.8%

Source: Health Service Personnel Census

Longitudinal Employment Levels by Care Group - Dec 2016 to Jul 2021

Community Health & Wellbeing

Jul 2021 (figure:)	WTE Jul 2021	WTE change since	WTE change since	WTE change since	WTE change since	WTE change since Dec 20	WTE change since Jun 21	% change since	% change since	% change since	% change since	% change since Dec 20	% change since Jun 21
Overall	11	+11	+11	+11	+11	+3	+1	-100.0%	-100.0%	-100.0%	-100.0%	+41.6%	+5.3%
Management & Administrative	9	+9	+9	+9	+9	+4	+1	-1.0%	-1.0%	-1.0%	-1.0%	+0.8%	+0.1%
Management (VIII & above)	1	+1	+1	+1	+1			-1.0%	-1.0%	-1.0%	-1.0%	+0.0%	+0.0%
Administrative/ Supervisory (V to VII)	6	+6	+6	+6	+6	+3	+1	-1.0%	-1.0%	-1.0%	-1.0%	+0.9%	+0.1%
Clerical (III & IV)	2	+2	+2	+2	+2	+1	-0	-1.0%	-1.0%	-1.0%	-1.0%	+1.6%	-0.0%
Patient & Client Care	3	+3	+3	+3	+3	-1	-0	-1.0%	-1.0%	-1.0%	-1.0%	-0.2%	-0.0%
Care, other	3	+3	+3	+3	+3	-1	-0	-1.0%	-1.0%	-1.0%	-1.0%	-0.2%	-0.0%

Source: Health Service Personnel Census

Mental Health

Jul 2021 (Dec 2016 figure: 828)	WTE Jul 2021	WTE change since Dec 16	WTE change since Dec 17	WTE change since Dec 18	WTE change since Dec 19	WTE change since Dec 20	WTE change since Jun 21	% change since Dec 16	% change since Dec 17	% change since Dec 18	% change since Dec 19	% change since Dec 20	% change since Jun 21
Overall	884	+56	+25	+49	+49	+22	-3	+6.8%	+2.9%	+5.9%	+5.9%	+2.6%	-0.3%
Medical & Dental	123	+22	+27	+20	+8	-4	-5	+0.2%	+0.3%	+0.2%	+0.1%	-0.0%	-0.0%
Consultants	55	+10	+14	+10	+7	+2	+1	+0.2%	+0.3%	+0.2%	+0.2%	+0.0%	+0.0%
Registrars	50	+21	+23	+11	+4	-4	-5	+0.7%	+0.8%	+0.3%	+0.1%	-0.1%	-0.1%
SHO/ Interns	18	-9	-9	-1	-3	-2	-0	-0.3%	-0.3%	-0.1%	-0.1%	-0.1%	-0.0%
Nursing & Midwifery	400	+38	+14	+38	+30	+21	-4	+0.1%	+0.0%	+0.1%	+0.1%	+0.1%	-0.0%
Nurse/ Midwife Manager	117	+6	+2	-2	+0	-1	-1	+0.1%	+0.0%	-0.0%	+0.0%	-0.0%	-0.0%
Nurse/ Midwife Specialist & AN/MP	50	+24	+23	+24	+10	+4	+1	+0.9%	+0.9%	+0.9%	+0.3%	+0.1%	+0.0%
Staff Nurse/ Staff Midwife	212	-6	-18	+11	+18	+10	-3	-0.0%	-0.1%	+0.1%	+0.1%	+0.1%	-0.0%
Nursing/ Midwifery Student	16	+14	+7	+6	+4	+8	-1	+8.3%	+0.9%	+0.6%	+0.4%	+1.0%	-0.1%
Nursing/ Midwifery other	6	-0	-0	-0	-2	-0	+0	-0.0%	-0.0%	-0.0%	-0.2%	-0.0%	+0.0%
Health & Social Care Professionals	146	+10	+1	+6	+6	-1	+3	+0.1%	+0.0%	+0.0%	+0.0%	-0.0%	+0.0%
Therapy Professions	49	+1	+1	+0	+1	-5	+1	+0.0%	+0.0%	+0.0%	+0.0%	-0.1%	+0.0%
Social Care	7	-3	-3	-1	-0	+0	-0	-0.3%	-0.3%	-0.1%	-0.0%	+0.0%	-0.0%
Social Workers	41	-0	-1	+4	+7	+3	-0	-0.0%	-0.0%	+0.1%	+0.2%	+0.1%	-0.0%
Psychologists	31	+6	+1	-3	-1	+1	+2	+0.2%	+0.0%	-0.1%	-0.0%	+0.0%	+0.1%
Pharmacy	1	+1	+1	+1				-1.0%	-1.0%	-1.0%	+0.0%	+0.0%	+0.0%
H&SC, Other	17	+6	+2	+4	-1	-1	-0	+0.6%	+0.2%	+0.3%	-0.0%	-0.0%	-0.0%
Management & Administrative	68	+2	-1	-5	+3	-2	+0	+0.0%	-0.0%	-0.1%	+0.0%	-0.0%	+0.0%
Management (VIII & above)	4	+1	+1	+1	+1	+0		+0.4%	+0.4%	+0.4%	+0.4%	+0.0%	+0.0%
Administrative/ Supervisory (V to VII)	17	+5	+1	-1	+2	+0	+1	+0.4%	+0.1%	-0.1%	+0.1%	+0.0%	+0.1%
Clerical (III & IV)	47	-4	-3	-5	-0	-2	-1	-0.1%	-0.1%	-0.1%	-0.0%	-0.0%	-0.0%
General Support	19	-7	-6	-5	-1	-0	-1	-0.3%	-0.3%	-0.2%	-0.0%	-0.0%	-0.0%
Support	17	-7	-6	-5	-1	-0	-1	-0.3%	-0.3%	-0.2%	-0.0%	-0.0%	-0.0%
Maintenance/ Technical	2	-0	-0	-0	+0	-0	-0	-0.0%	-0.0%	-0.0%	+0.1%	-0.0%	-0.0%
Patient & Client Care	128	-8	-10	-5	+2	+9	+2	-0.1%	-0.1%	-0.0%	+0.0%	+0.1%	+0.0%
Health Care Assistants	35	-11	-9	-6	+2	+1	+0	-0.2%	-0.2%	-0.1%	+0.1%	+0.0%	+0.0%
Care, other	93	+3	-1	+1	+1	+8	+2	+0.0%	-0.0%	+0.0%	+0.0%	+0.1%	+0.0%

Source: Health Service Personnel Census

Primary Care

Jul 2021 (Dec 2016 figure: 1,687)	WTE Jul 2021	WTE change since Dec 16	WTE change since Dec 17	WTE change since Dec 18	WTE change since Dec 19	WTE change since Dec 20	WTE change since Jun 21	% change since Dec 16	% change since Dec 17	% change since Dec 18	% change since Dec 19	% change since Dec 20	% change since Jun 21
Overall	1,841	+154	+150	+66	+139	+53	+3	+9.1%	+8.9%	+3.7%	+8.2%	+2.9%	+0.2%
Medical & Dental	140	+7	+3	-4	+2	-1	+2	+0.1%	+0.0%	-0.0%	+0.0%	-0.0%	+0.0%
Consultants	14	+3	+1	+2	+2	+1	+1	+0.3%	+0.1%	+0.2%	+0.2%	+0.1%	+0.1%
Registrars	44	+5	+6	+0	-2	+0	+0	+0.1%	+0.2%	+0.0%	-0.0%	+0.0%	+0.0%
SHO/ Interns	12	+6	+6	+4	+6	+3	+2	+1.0%	+1.0%	+0.6%	+1.0%	+0.3%	+0.2%
Medical/ Dental, other	71	-6	-11	-11	-4	-5	-1	-0.1%	-0.1%	-0.1%	-0.1%	-0.1%	-0.0%
Nursing & Midwifery	548	+39	+39	+18	+18	+6	-6	+0.1%	+0.1%	+0.0%	+0.0%	+0.0%	-0.0%
Nurse/ Midwife Manager	98	+21	+22	+18	+18	+13	+5	+0.3%	+0.3%	+0.2%	+0.2%	+0.1%	+0.1%
Nurse/ Midwife Specialist & AN/MP	54	+20	+11	+7	+8	-2	-1	+0.6%	+0.3%	+0.2%	+0.2%	-0.0%	-0.0%
Staff Nurse/ Staff Midwife	216	+25	+31	+17	+11	+16	+6	+0.1%	+0.2%	+0.1%	+0.1%	+0.1%	+0.0%
Public Health Nurse	175	-6	-12	-20	-0	-1	+5	-0.0%	-0.1%	-0.1%	-0.1%	-0.0%	+0.0%
Nursing/ Midwifery Student	3	-20	-13	-4	-18	-20	-20	-0.9%	-0.8%	-0.6%	-0.9%	-0.9%	-0.9%
Nursing/ Midwifery other	2	-2	-1					-0.4%	-0.2%	+0.0%	+0.0%	+0.0%	+0.0%
Health & Social Care Professionals	359	-4	-3	-21	-15	-6	-2	-0.0%	-0.0%	-0.1%	-0.0%	-0.0%	-0.0%
Therapy Professions	246	-8	-9	-29	-21	-12	-4	-0.0%	-0.0%	-0.1%	-0.1%	-0.0%	-0.0%
Health Science/ Diagnostics	1	+0	+0	+1	+1	-0	+0	+0.6%	+0.7%	+3.8%	+3.8%	-0.1%	+0.1%
Social Care	3	-1	-1	-1	-0	-1		-0.3%	-0.3%	-0.3%	-0.1%	-0.2%	+0.0%
Social Workers	28	+0	+2	+4	+2	+2	+0	+0.0%	+0.1%	+0.2%	+0.1%	+0.1%	+0.0%
Psychologists	27	+7	+5	+4	+6	+2	+0	+0.3%	+0.2%	+0.2%	+0.3%	+0.1%	+0.0%
Pharmacy	30	+1	-0	+1	-1	-0	+0	+0.0%	-0.0%	+0.1%	-0.0%	-0.0%	+0.0%
H&SC, Other	23	-2	-0	-1	-1	+2	+2	-0.1%	-0.0%	-0.1%	-0.0%	+0.1%	+0.1%
Management & Administrative	328	+25	+18	+17	+41	+18	+1	+0.1%	+0.1%	+0.1%	+0.1%	+0.1%	+0.0%
Management (VIII & above)	33	+5	+5	+2	-0	+3	+0	+0.2%	+0.2%	+0.1%	-0.0%	+0.1%	+0.0%
Administrative/ Supervisory (V to VII)	99	+36	+28	+29	+23	+12	+2	+0.6%	+0.4%	+0.4%	+0.3%	+0.1%	+0.0%
Clerical (III & IV)	196	-16	-14	-13	+18	+4	-1	-0.1%	-0.1%	-0.1%	+0.1%	+0.0%	-0.0%
General Support	118	-18	-13	-14	-7	-2	-0	-0.1%	-0.1%	-0.1%	-0.1%	-0.0%	-0.0%
Support	108	-18	-15	-16	-7	-2	-0	-0.1%	-0.1%	-0.1%	-0.1%	-0.0%	-0.0%
Maintenance/ Technical	9	+0	+2	+1	+1	+0	+0	+0.0%	+0.3%	+0.2%	+0.1%	+0.0%	+0.0%
Patient & Client Care	348	+105	+107	+71	+100	+38	+7	+0.4%	+0.4%	+0.3%	+0.4%	+0.1%	+0.0%
Health Care Assistants	215	+98	+96	+74	+94	+31	+3	+0.8%	+0.8%	+0.5%	+0.8%	+0.2%	+0.0%
Care, other	133	+7	+11	-4	+6	+8	+4	+0.1%	+0.1%	-0.0%	+0.0%	+0.1%	+0.0%

Source: Health Service Personnel Census

Disabilities

Jul 2021 (Dec 2016 figure: 1,943)	WTE Jul 2021	WTE change since Dec 16	WTE change since Dec 17	WTE change since Dec 18	WTE change since Dec 19	WTE change since Dec 20	WTE change since Jun 21	% change since Dec 16	% change since Dec 17	% change since Dec 18	% change since Dec 19	% change since Dec 20	% change since Jun 21
Overall	3,217	+1,274	+425	+314	+235	+113	+38	+65.6%	+15.2%	+10.8%	+7.9%	+3.7%	+1.2%
Medical & Dental	12	+1	-1	+2	+1	+1	-0	+0.1%	-0.1%	+0.1%	+0.1%	+0.1%	-0.0%
Consultants	0	-2	-2	-0	-0	-0		-0.9%	-0.9%	-0.4%	-0.4%	-0.4%	+0.0%
Registrars	4	+1	+1	+1	+1	+1	+1	+0.2%	+0.2%	+0.5%	+0.2%	+0.2%	+0.2%
SHO/ Interns	7	+2	+0	+0	+0	+0	-1	+0.5%	+0.1%	+0.1%	+0.1%	+0.1%	-0.1%
Medical/ Dental, other	1							+0.0%	+0.0%	+0.0%	+0.0%	+0.0%	+0.0%
Nursing & Midwifery	542	+146	+35	+34	+40	+40	+7	+0.4%	+0.1%	+0.1%	+0.1%	+0.1%	+0.0%
Nurse/ Midwife Manager	135	+35	+1	+10	+12	+16	+3	+0.3%	+0.0%	+0.1%	+0.1%	+0.1%	+0.0%
Nurse/ Midwife Specialist & AN/MP	4	-1	-3	-6	-1			-0.1%	-0.4%	-0.6%	-0.2%	+0.0%	+0.0%
Staff Nurse/ Staff Midwife	393	+105	+27	+20	+19	+15	+4	+0.4%	+0.1%	+0.1%	+0.1%	+0.0%	+0.0%
Nursing/ Midwifery Student	8	+8	+8	+8	+8	+8		-1.0%	-1.0%	-1.0%	-1.0%	-1.0%	+0.0%
Nursing/ Midwifery other	3	-1	+2	+2	+2	+1		-0.2%	+4.0%	+4.0%	+4.0%	+0.7%	+0.0%
Health & Social Care Professionals	626	+371	+120	+89	+73	+26	+20	+1.5%	+0.2%	+0.2%	+0.1%	+0.0%	+0.0%
Therapy Professions	143	+43	+21	+24	+21	+4	+3	+0.4%	+0.2%	+0.2%	+0.2%	+0.0%	+0.0%
Health Science/ Diagnostics	2	-0		-1	-1	-1	-1	-0.2%	+0.0%	-0.3%	-0.3%	-0.3%	-0.3%
Social Care	409	+312	+95	+62	+49	+20	+16	+3.2%	+0.3%	+0.2%	+0.1%	+0.1%	+0.0%
Social Workers	33	+7	+3	-1	-1	+1	-0	+0.3%	+0.1%	-0.0%	-0.0%	+0.0%	-0.0%
Psychologists	32	+8	-1	+4	+4	-1	+1	+0.4%	-0.0%	+0.2%	+0.1%	-0.0%	+0.0%
Pharmacy	5	+1	+1	+0	+0	+1	+0	+0.3%	+0.3%	+0.1%	+0.1%	+0.3%	+0.1%
H&SC, Other	3			+1	+1	+1	+1	+0.0%	+0.0%	+0.7%	+0.7%	+0.7%	+0.7%
Management & Administrative	249	+116	+69	+59	+46	+13	-0	+0.9%	+0.4%	+0.3%	+0.2%	+0.1%	-0.0%
Management (VIII & above)	46	+20	+15	+15	+14	+3		+0.8%	+0.5%	+0.5%	+0.4%	+0.1%	+0.0%
Administrative/ Supervisory (V to VII)	96	+49	+34	+26	+17	+4	+3	+1.0%	+0.6%	+0.4%	+0.2%	+0.0%	+0.0%
Clerical (III & IV)	107	+47	+19	+19	+15	+6	-3	+0.8%	+0.2%	+0.2%	+0.2%	+0.1%	-0.0%
General Support	181	+24	-33	-26	-14	-7	-5	+0.2%	-0.2%	-0.1%	-0.1%	-0.0%	-0.0%
Support	148	+10	-32	-29	-18	-7	-4	+0.1%	-0.2%	-0.2%	-0.1%	-0.0%	-0.0%
Maintenance/ Technical	33	+15	-1	+3	+5	+0	-1	+0.8%	-0.0%	+0.1%	+0.2%	+0.0%	-0.0%
Patient & Client Care	1,606	+617	+235	+156	+89	+40	+16	+0.6%	+0.2%	+0.1%	+0.1%	+0.0%	+0.0%
Health Care Assistants	1,195	+476	+223	+149	+83	+49	+12	+0.7%	+0.2%	+0.1%	+0.1%	+0.0%	+0.0%
Care, other	395	+157	+21	+14	+9	-8	+4	+0.7%	+0.1%	+0.0%	+0.0%	-0.0%	+0.0%
Home Help	17	-16	-10	-7	-3	-1	-0	-0.5%	-0.4%	-0.3%	-0.1%	-0.0%	-0.0%

Source: Health Service Personnel Census

Older People

Jul 2021 (Dec 2016 figure: 1,121)	WTE Jul 2021	WTE change since Dec 16	WTE change since Dec 17	WTE change since Dec 18	WTE change since Dec 19	WTE change since Dec 20	WTE change since Jun 21	% change since Dec 16	% change since Dec 17	% change since Dec 18	% change since Dec 19	% change since Dec 20	% change since Jun 21
Overall	1,017	-104	-47	-27	+21	-5	-2	-9.3%	-4.4%	-2.6%	+2.1%	-0.4%	-0.2%
Medical & Dental	4	-5	-4	-3	-2			-0.6%	-0.5%	-0.4%	-0.3%	+0.0%	+0.0%
SHO/ Interns	2	-1	-1					-0.3%	-0.3%	+0.0%	+0.0%	+0.0%	+0.0%
Medical/ Dental, other	2	-4	-3	-3	-2			-0.7%	-0.6%	-0.6%	-0.5%	+0.0%	+0.0%
Nursing & Midwifery	343	+2	+20	+41	+44	+11	+3	+0.0%	+0.1%	+0.1%	+0.1%	+0.0%	+0.0%
Nurse/ Midwife Manager	97	+13	+22	+24	+20	+12	+0	+0.2%	+0.3%	+0.3%	+0.3%	+0.1%	+0.0%
Nurse/ Midwife Specialist & AN/MP	2	-1	-1	-2	-0	-1	-0	-0.3%	-0.3%	-0.5%	-0.2%	-0.2%	-0.0%
Staff Nurse/ Staff Midwife	242	-12	-3	+18	+23	-0	+3	-0.0%	-0.0%	+0.1%	+0.1%	-0.0%	+0.0%
Public Health Nurse		-0						-1.0%	-1.0%	-1.0%	-1.0%	-1.0%	-1.0%
Nursing/ Midwifery Student	1	+1	+1	+1	+1	+0	+1	-1.0%	-1.0%	-1.0%	-1.0%	+0.0%	+0.7%
Health & Social Care Professionals	32	-6	-5	-7	+4	+3	+0	-0.2%	-0.1%	-0.2%	+0.1%	+0.1%	+0.0%
Therapy Professions	17	+1	-0	-0	+3	+4	-1	+0.0%	-0.0%	-0.0%	+0.2%	+0.3%	-0.0%
Health Science/ Diagnostics		-1						-1.0%	-1.0%	-1.0%	-1.0%	-1.0%	-1.0%
Social Workers	12	-3	-2	-4	+1	-0	+1	-0.2%	-0.1%	-0.2%	+0.1%	-0.0%	+0.1%
Pharmacy	2	-2	-2	-2	-1			-0.5%	-0.5%	-0.5%	-0.2%	+0.0%	+0.0%
H&SC, Other	1	-1	-1	-1				-0.5%	-0.5%	-0.5%	+0.0%	+0.0%	+0.0%
Management & Administrative	57	+5	+7	+13	+6	-2	-1	+0.1%	+0.1%	+0.3%	+0.1%	-0.0%	-0.0%
Management (VIII & above)	6	-2	+1	+2	+1	-1		-0.2%	+0.3%	+0.6%	+0.3%	-0.1%	+0.0%
Administrative/ Supervisory (V to VII)	15	+6	+5	+6	+4	+1	+1	+0.6%	+0.4%	+0.6%	+0.3%	+0.1%	+0.0%
Clerical (III & IV)	35	+1	+1	+5	+1	-2	-2	+0.0%	+0.0%	+0.2%	+0.0%	-0.0%	-0.1%
General Support	119	-2	-5	-3	+6	-2	-0	-0.0%	-0.0%	-0.0%	+0.1%	-0.0%	-0.0%
Support	117	-1	-4	-2	+6	-2	-0	-0.0%	-0.0%	-0.0%	+0.1%	-0.0%	-0.0%
Maintenance/ Technical	2	-1	-1	-1				-0.3%	-0.3%	-0.3%	+0.0%	+0.0%	+0.0%
Patient & Client Care	462	-97	-60	-68	-38	-15	-4	-0.2%	-0.1%	-0.1%	-0.1%	-0.0%	-0.0%
Health Care Assistants	348	-68	-32	-62	-39	-9	-4	-0.2%	-0.1%	-0.2%	-0.1%	-0.0%	-0.0%
Care, other	6	-10	-9	-1	+1	+1	+1	-0.6%	-0.6%	-0.1%	+0.2%	+0.2%	+0.2%
Home Help	108	-18	-18	-5	+0	-7	-2	-0.1%	-0.1%	-0.0%	+0.0%	-0.1%	-0.0%

Source: Health Service Personnel Census