

## CHO 7 Employment Report: June 2020

### Employment by Staff Group

Jun 2020 (Dec 2019 figure: 6,515)	WTE May 2020	WTE Jun 2020	WTE change since May 20	% change since May 20	WTE change since Dec 19	WTE change since Jun 19
<b>Overall</b>	<b>6,563</b>	<b>6,588</b>	<b>+25</b>	<b>+0.4%</b>	<b>+74</b>	<b>+41</b>
Consultants	62	64	+2	+3.0%	+4	+9
Registrars	85	85	+0	+0.2%	-10	+2
SHO/ Interns	35	37	+2	+6.2%	+1	+2
Medical/ Dental, other	82	81	-1	-1.2%	+1	+8
<b>Medical &amp; Dental</b>	<b>264</b>	<b>268</b>	<b>+3</b>	<b>+1.2%</b>	<b>-3</b>	<b>+21</b>
Nurse/ Midwife Manager	405	406	+1	+0.2%	+10	+3
Nurse/ Midwife Specialist & AN/MP	101	103	+2	+1.8%	+9	+12
Staff Nurse/ Staff Midwife	1,009	1,016	+7	+0.7%	+23	+12
Public Health Nurse	164	164	+0	+0.2%	-11	-14
<i>Pre-registration Nurse/ Midwife Intern</i>				-100.0%	-1	
<i>Pre-registration Nurse Intern (COVID-19)</i>	44	44	-0	-0.5%	+44	-0
<i>Post-registration Nurse/ Midwife Student</i>	20	19	-1	-5.0%	-2	-1
<i>Nursing/ Midwifery awaiting registration</i>	7	5	-2	-25.2%	-4	-2
Nursing/ Midwifery Student	71	68	-3	-4.3%	+36	+41
Nursing/ Midwifery other	10	9	-1	-5.3%	-1	-1
<b>Nursing &amp; Midwifery</b>	<b>1,759</b>	<b>1,766</b>	<b>+7</b>	<b>+0.4%</b>	<b>+66</b>	<b>+53</b>
Therapy Professions	472	474	+2	+0.5%	+24	+17
Health Science/ Diagnostics	3	3	-0	-3.3%	+0	
Social Care	367	364	-3	-0.7%	-7	+3
Social Workers	111	109	-2	-2.1%	+4	+4
Psychologists	81	82	+1	+0.9%	+1	-2
Pharmacy	38	41	+3	+7.5%	+1	+3
H&SC, Other	42	45	+3	+7.2%	+1	+2
<b>Health &amp; Social Care Professionals</b>	<b>1,115</b>	<b>1,119</b>	<b>+4</b>	<b>+0.3%</b>	<b>+25</b>	<b>+26</b>
Management (VIII & above)	77	78	+1	+1.2%	+5	+7
Administrative/ Supervisory (V to VII)	196	199	+3	+1.5%	+16	+12
Clerical (III & IV)	362	362	+0	+0.0%	+11	-7
<b>Management &amp; Administrative</b>	<b>635</b>	<b>639</b>	<b>+4</b>	<b>+0.6%</b>	<b>+33</b>	<b>+12</b>
Support	406	399	-7	-1.7%	-12	-30
Maintenance/ Technical	42	43	+1	+2.0%	+2	-1
<b>General Support</b>	<b>448</b>	<b>442</b>	<b>-6</b>	<b>-1.4%</b>	<b>-10</b>	<b>-31</b>
Health Care Assistants	1,608	1,622	+14	+0.9%	-33	-54
Care, other	601	601	-0	-0.1%	-10	+6
Home Help	133	133	-0	-0.3%	+6	+8
<b>Patient &amp; Client Care</b>	<b>2,343</b>	<b>2,356</b>	<b>+13</b>	<b>+0.6%</b>	<b>-36</b>	<b>-40</b>

## CHO 7 Employment Report: June 2020

### Community Health & Wellbeing

Jun 2020 ( figure: )	WTE May 2020	WTE Jun 2020	WTE change since May 20	% change since May 20	WTE change since	WTE change since
<b>Total Community Health &amp; Wellbeing</b>	<b>9</b>	<b>8</b>	<b>-1</b>	<b>-11.0%</b>	<b>+8</b>	<b>+8</b>
Management (VIII & above)	1	1	0	0	+1	+1
Administrative/ Supervisory (V to VII)	2	2	0	0	+2	+2
Clerical (III & IV)	1	1	0	0	+1	+1
<b>Management &amp; Administrative</b>	<b>4</b>	<b>4</b>	<b>0</b>	<b>0</b>	<b>+4</b>	<b>+4</b>
Health Care Assistants	1		-1	-100%		
Care, other	5	5	0	0	+5	+5
<b>Patient &amp; Client Care</b>	<b>6</b>	<b>5</b>	<b>-1</b>	<b>-18.0%</b>	<b>+5</b>	<b>+5</b>

### Mental Health

Jun 2020 (Dec 2019 figure: 835)	WTE May 2020	WTE Jun 2020	WTE change since May 20	% change since May 20	WTE change since Dec 19	WTE change since Jun 19
<b>Total Mental Health</b>	<b>866</b>	<b>866</b>	<b>+0</b>	<b>+0.0%</b>	<b>+31</b>	<b>+23</b>
Consultants	49	50	+1	+2%	+2	+6
Registrars	40	40	-0	-1%	-6	+1
SHO/ Interns	21	20	-1	-5%	-1	+0
<b>Medical &amp; Dental</b>	<b>111</b>	<b>110</b>	<b>-1</b>	<b>-0.5%</b>	<b>-5</b>	<b>+7</b>
Nurse/ Midwife Manager	119	120	+1	+1%	+3	+3
Nurse/ Midwife Specialist & AN/MP	45	46	+2	+4%	+6	+9
Staff Nurse/ Staff Midwife	202	200	-2	-1%	+6	-10
Pre-registration Nurse/ Midwife Intern				-100.0%	-1	
Pre-registration Nurse Intern (COVID-19)	29	29	-0	-0.7%	+29	-0
Nursing/ Midwifery awaiting registration	4	4	-0	-0.5%	-6	-0
Nursing/ Midwifery Student	33	33	-0	-1%	+21	+18
Nursing/ Midwifery other	7	7	-1	-7%	-1	-1
<b>Nursing &amp; Midwifery</b>	<b>406</b>	<b>406</b>	<b>+0</b>	<b>+0.0%</b>	<b>+36</b>	<b>+19</b>
Therapy Professions	49	47	-2	-4%	-1	+1
Social Care	8	8	-0	-0%	-0	-1
Social Workers	37	37	-1	-2%	+2	+3
Psychologists	28	29	+0	+1%	-3	-2
Pharmacy	1	1	0	0		
H&SC, Other	17	18	+1	+5%	+0	+3
<b>Health &amp; Social Care Professionals</b>	<b>140</b>	<b>139</b>	<b>-1</b>	<b>-1.0%</b>	<b>-1</b>	<b>+4</b>
Management (VIII & above)	3	3	0	0		+0
Administrative/ Supervisory (V to VII)	18	18	-1	-4%	+2	+5
Clerical (III & IV)	47	48	+1	+3%	+1	-2
<b>Management &amp; Administrative</b>	<b>68</b>	<b>69</b>	<b>+1</b>	<b>+0.8%</b>	<b>+3</b>	<b>+3</b>
Support	17	17	+0	+0%	-1	-4
Maintenance/ Technical	2	2	0	0	+0	
<b>General Support</b>	<b>19</b>	<b>19</b>	<b>+0</b>	<b>+0.1%</b>	<b>-0</b>	<b>-4</b>
Health Care Assistants	35	35	-0	-1%	+2	-3
Care, other	87	89	+2	+2%	-3	-4
<b>Patient &amp; Client Care</b>	<b>123</b>	<b>124</b>	<b>+1</b>	<b>+1.0%</b>	<b>-2</b>	<b>-7</b>

## Primary Care

Jun 2020 (Dec 2019 figure: 1,702)	WTE May 2020	WTE Jun 2020	WTE change since May 20	% change since May 20	WTE change since Dec 19	WTE change since Jun 19
<b>Total Primary Care</b>	<b>1,701</b>	<b>1,719</b>	<b>+18</b>	<b>+1.1%</b>	<b>+17</b>	<b>-11</b>
Consultants	12	13	+1	+8%	+2	+3
Registrars	42	42	0	0	-3	+2
SHO/ Interns	6	7	+0	+7%	+1	+0
Medical/ Dental, other	77	76	-1	-1%	+1	+8
<b>Medical &amp; Dental</b>	<b>139</b>	<b>139</b>	<b>+0</b>	<b>+0.3%</b>	<b>+0</b>	<b>+13</b>
Nurse/ Midwife Manager	89	88	-0	-0%	+8	+6
Nurse/ Midwife Specialist & AN/MP	48	48	+0	+1%	+2	+3
Staff Nurse/ Staff Midwife	199	199	-1	-0%	-7	-7
Public Health Nurse	164	164	+0	+0%	-11	-14
<i>Post-registration Nurse/ Midwife Student</i>	20	19	-1	-5.0%	-2	-1
Nursing/ Midwifery Student	20	19	-1	-5%	-2	+14
Nursing/ Midwifery other	2	2	0	0		
<b>Nursing &amp; Midwifery</b>	<b>521</b>	<b>520</b>	<b>-1</b>	<b>-0.2%</b>	<b>-10</b>	<b>+3</b>
Therapy Professions	271	273	+2	+1%	+7	-4
Health Science/ Diagnostics	0	0	-0	-32%	+0	
Social Care	4	4	0	0	+1	+0
Social Workers	26	26	-0	-2%	-0	+1
Psychologists	23	24	+1	+4%	+2	+0
Pharmacy	29	32	+2	+8%	-0	+1
H&SC, Other	22	22	+0	+1%	-2	-3
<b>Health &amp; Social Care Professionals</b>	<b>376</b>	<b>381</b>	<b>+5</b>	<b>+1.3%</b>	<b>+8</b>	<b>-4</b>
Management (VIII & above)	29	29	+1	+3%	-4	-1
Administrative/ Supervisory (V to VII)	80	82	+1	+2%	+6	+2
Clerical (III & IV)	179	181	+2	+1%	+4	-14
<b>Management &amp; Administrative</b>	<b>288</b>	<b>292</b>	<b>+4</b>	<b>+1.6%</b>	<b>+5</b>	<b>-14</b>
Support	117	116	-2	-2%	-0	-7
Maintenance/ Technical	9	9	0	0	+0	+1
<b>General Support</b>	<b>126</b>	<b>125</b>	<b>-2</b>	<b>-1.4%</b>	<b>-0</b>	<b>-6</b>
Health Care Assistants	125	135	+10	+8%	+14	-3
Care, other	125	127	+1	+1%	-1	+0
<b>Patient &amp; Client Care</b>	<b>251</b>	<b>262</b>	<b>+11</b>	<b>+4.3%</b>	<b>+13</b>	<b>-3</b>

## Social Care

Jun 2020 (Dec 2019 figure: 3,978)	WTE May 2020	WTE Jun 2020	WTE change since May 20	% change since May 20	WTE change since Dec 19	WTE change since Jun 19
<b>Total Social Care</b>	<b>3,987</b>	<b>3,994</b>	<b>+7</b>	<b>+0.2%</b>	<b>+17</b>	<b>+21</b>
Consultants	1	1	0	0		
Registrars	3	3	+0	+18%		-1
SHO/ Interns	7	10	+3	+41%	+1	+2
Medical/ Dental, other	5	5	0	0		-0
<b>Medical &amp; Dental</b>	<b>15</b>	<b>18</b>	<b>+3</b>	<b>+21.9%</b>	<b>+1</b>	<b>+1</b>
Nurse/ Midwife Manager	197	198	+0	+0%	-2	-6
Nurse/ Midwife Specialist & AN/MP	9	8	-0	-3%	+1	-1
Staff Nurse/ Staff Midwife	607	617	+10	+2%	+24	+29
<i>Pre-registration Nurse/ Midwife Intern</i>				-100.0%		
<i>Pre-registration Nurse Intern (COVID-19)</i>	15	15			+15	
<i>Nursing/ Midwifery awaiting registration</i>	3	2	-2	-55.0%	+2	-2
Nursing/ Midwifery Student	18	17	-2	-10%	+17	+9
Nursing/ Midwifery other	1	1	0	0		
<b>Nursing &amp; Midwifery</b>	<b>832</b>	<b>840</b>	<b>+8</b>	<b>+0.9%</b>	<b>+39</b>	<b>+31</b>
Therapy Professions	152	154	+2	+1%	+19	+21
Health Science/ Diagnostics	3	3	0	0		
Social Care	356	353	-3	-1%	-7	+4
Social Workers	48	47	-1	-3%	+2	-0
Psychologists	30	29	-0	-2%	+2	-1
Pharmacy	8	8	+1	+7%	+1	+1
H&SC, Other	3	4	+2	+78%	+2	+2
<b>Health &amp; Social Care Professionals</b>	<b>599</b>	<b>599</b>	<b>+0</b>	<b>+0.0%</b>	<b>+18</b>	<b>+26</b>
Management (VIII & above)	45	45	+0	+0%	+8	+7
Administrative/ Supervisory (V to VII)	95	97	+2	+2%	+7	+3
Clerical (III & IV)	135	132	-4	-3%	+6	+9
<b>Management &amp; Administrative</b>	<b>275</b>	<b>274</b>	<b>-1</b>	<b>-0.4%</b>	<b>+20</b>	<b>+19</b>
Support	271	266	-5	-2%	-11	-20
Maintenance/ Technical	31	32	+1	+3%	+1	-1
<b>General Support</b>	<b>302</b>	<b>298</b>	<b>-4</b>	<b>-1.5%</b>	<b>-10</b>	<b>-21</b>
Health Care Assistants	1,446	1,452	+6	+0%	-48	-48
Care, other	384	380	-3	-1%	-10	+5
Home Help	133	133	-0	-0%	+6	+8
<b>Patient &amp; Client Care</b>	<b>1,964</b>	<b>1,965</b>	<b>+2</b>	<b>+0.1%</b>	<b>-52</b>	<b>-35</b>

## CHO 7 Employment Report: June 2020

### Disabilities

Jun 2020 (Dec 2019 figure: 2,982)	WTE May 2020	WTE Jun 2020	WTE change since May 20	% change since May 20	WTE change since Dec 19	WTE change since Jun 19
<b>Total Disabilities</b>	<b>2,970</b>	<b>2,973</b>	<b>+3</b>	<b>+0.1%</b>	<b>-9</b>	<b>+21</b>
Consultants	1	1				
Registrars	3	3	+0	+18.1%		-1
SHO/ Interns	5	8	+3	+56.6%	+1	+2
Medical/ Dental, other	1	1				
<b>Medical &amp; Dental</b>	<b>9</b>	<b>12</b>	<b>+3</b>	<b>+36.4%</b>	<b>+1</b>	<b>+1</b>
Nurse/ Midwife Manager	121	122	+1	+0.7%	+0	-5
Nurse/ Midwife Specialist & AN/MP	5	5	-0	-3.7%	-0	-0
Staff Nurse/ Staff Midwife	370	373	+2	+0.6%	-2	+4
<i>Pre-registration Nurse/ Midwife Intern</i>				-100.0%		
<i>Pre-registration Nurse Intern (COVID-19)</i>	15	15			+15	
Nursing/ Midwifery Student	15	15			+15	+8
Nursing/ Midwifery other	1	1				
<b>Nursing &amp; Midwifery</b>	<b>512</b>	<b>515</b>	<b>+3</b>	<b>+0.6%</b>	<b>+13</b>	<b>+7</b>
Therapy Professions	139	141	+2	+1.5%	+19	+23
Health Science/ Diagnostics	3	3				
Social Care	356	353	-3	-0.7%	-7	+4
Social Workers	35	33	-2	-6.4%	-0	+1
Psychologists	30	29	-0	-1.5%	+2	-1
Pharmacy	5	5	+1	+12.0%	+1	+1
H&SC, Other	2	3	+2	+130.7%	+2	+2
<b>Health &amp; Social Care Professionals</b>	<b>569</b>	<b>568</b>	<b>-1</b>	<b>-0.1%</b>	<b>+16</b>	<b>+30</b>
Management (VIII & above)	39	39	+0	+0.3%	+7	+5
Administrative/ Supervisory (V to VII)	84	83	-1	-1.0%	+4	+1
Clerical (III & IV)	100	97	-2	-2.3%	+6	+5
<b>Management &amp; Administrative</b>	<b>222</b>	<b>219</b>	<b>-3</b>	<b>-1.4%</b>	<b>+16</b>	<b>+11</b>
Support	167	161	-6	-3.6%	-6	-8
Maintenance/ Technical	29	30	+1	+3.0%	+1	-0
<b>General Support</b>	<b>196</b>	<b>191</b>	<b>-5</b>	<b>-2.7%</b>	<b>-5</b>	<b>-9</b>
Health Care Assistants	1,064	1,073	+9	+0.9%	-39	-22
Care, other	379	376	-3	-0.9%	-10	+5
Home Help	18	18	-0	-0.6%	-1	-2
<b>Patient &amp; Client Care</b>	<b>1,462</b>	<b>1,468</b>	<b>+6</b>	<b>+0.4%</b>	<b>-50</b>	<b>-20</b>

## Older People

Jun 2020 (Dec 2019 figure: 996)	WTE May 2020	WTE Jun 2020	WTE change since May 20	% change since May 20	WTE change since Dec 19	WTE change since Jun 19
<b>Total Older People</b>	<b>1,017</b>	<b>1,022</b>	<b>+4</b>	<b>+0.4%</b>	<b>+26</b>	<b>+1</b>
SHO/ Interns	2	2				
Medical/ Dental, other	4	4				-0
<b>Medical &amp; Dental</b>	<b>6</b>	<b>6</b>				<b>-0</b>
Nurse/ Midwife Manager	76	75	-1	-1.0%	-2	-1
Nurse/ Midwife Specialist & AN/MP	4	4	-0	-2.2%	+1	-1
Staff Nurse/ Staff Midwife	237	244	+7	+3.1%	+25	+24
Nursing/ Midwifery Student	3	2	-2	-55.0%	+2	+2
<b>Nursing &amp; Midwifery</b>	<b>320</b>	<b>325</b>	<b>+5</b>	<b>+1.5%</b>	<b>+26</b>	<b>+24</b>
<b>Health &amp; Social Care Professionals</b>	<b>30</b>	<b>31</b>	<b>+1</b>	<b>+2.5%</b>	<b>+3</b>	<b>-4</b>
Management (VIII & above)	6	6	-0	-0.8%	+1	+2
Administrative/ Supervisory (V to VII)	11	14	+3	+26.9%	+3	+2
Clerical (III & IV)	36	34	-1	-3.3%	+0	+4
<b>Management &amp; Administrative</b>	<b>53</b>	<b>55</b>	<b>+2</b>	<b>+3.5%</b>	<b>+4</b>	<b>+8</b>
Support	104	105	+1	+0.7%	-5	-11
Maintenance/ Technical	2	2				-1
<b>General Support</b>	<b>106</b>	<b>107</b>	<b>+1</b>	<b>+0.7%</b>	<b>-5</b>	<b>-12</b>
Health Care Assistants	382	379	-3	-0.9%	-9	-26
Care, other	4	4			-1	+0
Home Help	115	115	-0	-0.3%	+7	+10
<b>Patient &amp; Client Care</b>	<b>502</b>	<b>498</b>	<b>-4</b>	<b>-0.8%</b>	<b>-2</b>	<b>-15</b>

## CHO 7 Employment by Administration (HSE / S38): June 2020

Jun 2020 (Dec 2019 figure: 6,515)	WTE May 2020	WTE Jun 2020	WTE change since May 20	% change since May 20	WTE change since Dec 19	WTE change since Jun 19
<b>Overall</b>	<b>6,563</b>	<b>6,588</b>	<b>+25</b>	<b>+0.4%</b>	<b>+74</b>	<b>+41</b>
<b>HSE</b>	<b>3,227</b>	<b>3,240</b>	<b>+13</b>	<b>+0.4%</b>	<b>+88</b>	<b>+45</b>
<b>Section 38 Voluntary Agencies</b>	<b>3,337</b>	<b>3,348</b>	<b>+11</b>	<b>+0.3%</b>	<b>-15</b>	<b>-3</b>

## HSE

Jun 2020 (Dec 2019 figure: 3,151)	WTE May 2020	WTE Jun 2020	WTE change since May 20	% change since May 20	WTE change since Dec 19	WTE change since Jun 19
<b>Overall</b>	<b>3,227</b>	<b>3,240</b>	<b>+13</b>	<b>+0.4%</b>	<b>+88</b>	<b>+45</b>
Consultants	55	56	+1	+0.0%	+2	+7
Registrars	79	77	-1	-0.0%	-10	+3
SHO/ Interns	25	24	-1	-0.0%	+0	+1
Medical/ Dental, other	80	79	-1	-0.0%	+1	+8
<b>Medical &amp; Dental</b>	<b>239</b>	<b>236</b>	<b>-2</b>	<b>-1.0%</b>	<b>-6</b>	<b>+19</b>
Nurse/ Midwife Manager	242	242	+1	+0.0%	+11	+13
Nurse/ Midwife Specialist & AN/MP	67	68	+0	+0.0%	+7	+9
Staff Nurse/ Staff Midwife	539	545	+6	+0.0%	+25	+3
Public Health Nurse	164	164	+0	+0.0%	-11	-14
<i>Pre-registration Nurse/ Midwife Intern</i>				-1.0%	-6	-13
<i>Pre-registration Nurse Intern (COVID-19)</i>	29	29	-0	-0.0%	+29	+29
<i>Post-registration Nurse/ Midwife Student</i>	20	19	-1	-0.1%	+12	+14
<i>Nursing/ Midwifery awaiting registration</i>	7	5	-2	-0.3%	+1	+4
Nursing/ Midwifery Student	56	53	-3	-0.1%	+21	+34
Nursing/ Midwifery other	7	7	-1	-0.1%	-1	-1
<b>Nursing &amp; Midwifery</b>	<b>1,075</b>	<b>1,079</b>	<b>+4</b>	<b>+0.4%</b>	<b>+52</b>	<b>+45</b>
Therapy Professions	340	342	+2	+0.0%	+17	+11
Social Care	11	11	-0	-0.0%	+1	-1
Social Workers	72	71	-0	-0.0%	+4	+5
Psychologists	59	61	+1	+0.0%	-1	-4
Pharmacy	25	26	+1	+0.1%	+1	+1
H&SC, Other	40	42	+1	+0.0%	-1	+0
<b>Health &amp; Social Care Professionals</b>	<b>548</b>	<b>553</b>	<b>+5</b>	<b>+1.0%</b>	<b>+20</b>	<b>+13</b>
Management (VIII & above)	45	45	-0	-0.0%	+5	+9
Administrative/ Supervisory (V to VII)	106	107	+2	+0.0%	+11	+10
Clerical (III & IV)	247	249	+3	+0.0%	+8	-7
<b>Management &amp; Administrative</b>	<b>398</b>	<b>402</b>	<b>+4</b>	<b>+1.0%</b>	<b>+24</b>	<b>+12</b>
Support	164	164	+0	+0.0%	-7	-20
Maintenance/ Technical	5	5		+0.0%	-1	-1
<b>General Support</b>	<b>169</b>	<b>169</b>	<b>+0</b>	<b>+0.2%</b>	<b>-7</b>	<b>-21</b>
Health Care Assistants	442	442	-1	-0.0%	+0	-31
Care, other	224	227	+3	+0.0%	-1	-0
Home Help	133	133	-0	-0.0%	+6	+8
<b>Patient &amp; Client Care</b>	<b>799</b>	<b>801</b>	<b>+2</b>	<b>+0.2%</b>	<b>+5</b>	<b>-23</b>

## Section 38 Voluntary Agencies

Jun 2020 (Dec 2019 figure: 3,363)	WTE May 2020	WTE Jun 2020	WTE change since May 20	% change since May 20	WTE change since Dec 19	WTE change since Jun 19
<b>Overall</b>	<b>3,337</b>	<b>3,348</b>	<b>+11</b>	<b>+0.3%</b>	<b>-15</b>	<b>-3</b>
Consultants	7	8	+1	+0.1%	+2	+2
Registrars	7	8	+1	+0.2%		-1
SHO/ Interns	9	13	+3	+0.4%	+1	+2
Medical/ Dental, other	2	2		+0.0%	+0	-0
<b>Medical &amp; Dental</b>	<b>25</b>	<b>31</b>	<b>+6</b>	<b>+22.6%</b>	<b>+3</b>	<b>+2</b>
Nurse/ Midwife Manager	163	163	+0	+0.0%	-1	-10
Nurse/ Midwife Specialist & AN/MP	34	36	+1	+0.0%	+3	+3
Staff Nurse/ Staff Midwife	469	471	+2	+0.0%	-2	+8
<i>Pre-registration Nurse/ Midwife Intern</i>				-1.0%		-8
<i>Pre-registration Nurse Intern (COVID-19)</i>	15	15		+0.0%	+15	+15
Nursing/ Midwifery Student	15	15		+0.0%	+15	+8
Nursing/ Midwifery other	3	3		+0.0%		
<b>Nursing &amp; Midwifery</b>	<b>684</b>	<b>687</b>	<b>+3</b>	<b>+0.4%</b>	<b>+14</b>	<b>+8</b>
Therapy Professions	132	132	+0	+0.0%	+7	+6
Health Science/ Diagnostics	3	3	-0	-0.0%	+0	
Social Care	356	353	-3	-0.0%	-7	+4
Social Workers	40	38	-2	-0.1%	+0	-2
Psychologists	22	21	-1	-0.0%	+2	+2
Pharmacy	13	15	+2	+0.1%	+0	+2
H&SC, Other	2	3	+2	+1.3%	+2	+2
<b>Health &amp; Social Care Professionals</b>	<b>567</b>	<b>566</b>	<b>-2</b>	<b>-0.3%</b>	<b>+5</b>	<b>+14</b>
Management (VIII & above)	32	33	+1	+0.0%	-0	-2
Administrative/ Supervisory (V to VII)	90	92	+1	+0.0%	+5	+2
Clerical (III & IV)	115	112	-3	-0.0%	+3	+0
<b>Management &amp; Administrative</b>	<b>237</b>	<b>237</b>	<b>-0</b>	<b>-0.1%</b>	<b>+8</b>	<b>+1</b>
Support	242	235	-7	-0.0%	-5	-11
Maintenance/ Technical	37	38	+1	+0.0%	+2	+1
<b>General Support</b>	<b>279</b>	<b>273</b>	<b>-7</b>	<b>-2.4%</b>	<b>-3</b>	<b>-10</b>
Health Care Assistants	1,166	1,180	+15	+0.0%	-33	-23
Care, other	377	374	-3	-0.0%	-9	+6
<b>Patient &amp; Client Care</b>	<b>1,543</b>	<b>1,554</b>	<b>+11</b>	<b>+0.7%</b>	<b>-42</b>	<b>-17</b>



## CHO 7 Employment by S38 Agency: June 2020

### Cheeverstown House

Jun 2020 (Dec 2019 figure: 396)	WTE May 2020	WTE Jun 2020	WTE change since May 20	% change since May 20	WTE change since Dec 19	WTE change since Jun 19
<b>Overall</b>	<b>395</b>	<b>393</b>	<b>-1</b>	<b>-0.3%</b>	<b>-3</b>	<b>-12</b>
Consultants	0	0		+0.0%		
Medical/ Dental, other	1	1		+0.0%		
<b>Medical &amp; Dental</b>	<b>1</b>	<b>1</b>				
Nurse/ Midwife Manager	28	28		+0.0%	+2	-1
Nurse/ Midwife Specialist & AN/MP	2	2		+0.0%		
Staff Nurse/ Staff Midwife	103	103		+0.0%	-4	-5
<b>Nursing &amp; Midwifery</b>	<b>132</b>	<b>132</b>			<b>-3</b>	<b>-6</b>
Therapy Professions	13	12	-1	-0.1%	-2	-2
Social Care	35	35		+0.0%	+0	-1
Social Workers	6	5	-1	-0.2%	-1	-1
Psychologists	5	5		+0.0%	+1	+1
Pharmacy	0	0		+0.0%	-0	-0
H&SC, Other	2	2		+0.0%		
<b>Health &amp; Social Care Professionals</b>	<b>61</b>	<b>59</b>	<b>-2</b>	<b>-3.3%</b>	<b>-1</b>	<b>-3</b>
Management (VIII & above)	2	2		+0.0%		-1
Administrative/ Supervisory (V to VII)	15	15		+0.0%		+0
Clerical (III & IV)	11	12	+1	+0.1%	+1	+1
<b>Management &amp; Administrative</b>	<b>28</b>	<b>29</b>	<b>+1</b>	<b>+3.6%</b>	<b>+1</b>	<b>+0</b>
Support	27	27		+0.0%		+1
Maintenance/ Technical	4	4		+0.0%		
<b>General Support</b>	<b>30</b>	<b>30</b>				<b>+1</b>
Health Care Assistants	131	131		+0.0%	+1	-3
Care, other	12	12	-0	-0.0%	-0	-1
<b>Patient &amp; Client Care</b>	<b>143</b>	<b>142</b>	<b>-0</b>	<b>-0.3%</b>	<b>+0</b>	<b>-4</b>

# Kare, Newbridge, Co Kildare

Jun 2020 (Dec 2019 figure: 360)	WTE May 2020	WTE Jun 2020	WTE change since May 20	% change since May 20	WTE change since Dec 19	WTE change since Jun 19
<b>Overall</b>	<b>352</b>	<b>345</b>	<b>-7</b>	<b>-1.9%</b>	<b>-15</b>	<b>+4</b>
Nurse/ Midwife Manager	10	10	-0	-0.0%	-2	-2
Staff Nurse/ Staff Midwife	22	22	-0	-0.0%	-0	-0
<b>Nursing &amp; Midwifery</b>	<b>33</b>	<b>32</b>	<b>-0</b>	<b>-0.8%</b>	<b>-2</b>	<b>-2</b>
Therapy Professions	13	13		+0.0%	-2	-1
Social Care	60	58	-1	-0.0%	-3	-1
Social Workers	4	4		+0.0%		-0
Psychologists	5	5		+0.0%	+1	+2
<b>Health &amp; Social Care Professionals</b>	<b>82</b>	<b>80</b>	<b>-1</b>	<b>-1.8%</b>	<b>-4</b>	<b>-0</b>
Management (VIII & above)	6	6		+0.0%		
Administrative/ Supervisory (V to VII)	13	13	-0	-0.0%	+1	+1
Clerical (III & IV)	14	14		+0.0%	+2	+3
<b>Management &amp; Administrative</b>	<b>33</b>	<b>32</b>	<b>-0</b>	<b>-0.6%</b>	<b>+3</b>	<b>+4</b>
Support	2	1	-0	-0.1%	-0	+0
<b>General Support</b>	<b>2</b>	<b>1</b>	<b>-0</b>	<b>-9.3%</b>	<b>-0</b>	<b>+0</b>
Health Care Assistants	94	90	-4	-0.0%	-11	-8
Care, other	109	109	-1	-0.0%	-1	+10
<b>Patient &amp; Client Care</b>	<b>203</b>	<b>199</b>	<b>-5</b>	<b>-2.3%</b>	<b>-11</b>	<b>+2</b>

## Our Lady's Hospice & Care Services

Jun 2020 (Dec 2019 figure: 482)	WTE May 2020	WTE Jun 2020	WTE change since May 20	% change since May 20	WTE change since Dec 19	WTE change since Jun 19
<b>Overall</b>	<b>487</b>	<b>496</b>	<b>+8</b>	<b>+1.7%</b>	<b>+14</b>	<b>+3</b>
Consultants	7	8	+1	+0.2%	+2	+2
Registrars	4	5	+1	+0.3%		-0
SHO/ Interns	4	5	+0	+0.1%	-0	-0
Medical/ Dental, other	1	1		+0.0%	+0	-0
<b>Medical &amp; Dental</b>	<b>16</b>	<b>19</b>	<b>+2</b>	<b>+14.9%</b>	<b>+2</b>	<b>+1</b>
Nurse/ Midwife Manager	44	43	-1	-0.0%	-1	-3
Nurse/ Midwife Specialist & AN/MP	30	31	+2	+0.1%	+3	+3
Staff Nurse/ Staff Midwife	99	98	-1	-0.0%	-1	+4
Nursing/ Midwifery other	2	2		+0.0%		
<b>Nursing &amp; Midwifery</b>	<b>175</b>	<b>175</b>	<b>+0</b>	<b>+0.1%</b>	<b>+1</b>	<b>+3</b>
Therapy Professions	39	39	+1	+0.0%	+2	-1
Health Science/ Diagnostics	0	0	-0	-0.3%	+0	
Social Workers	11	11	-0	-0.0%	+0	-0
Psychologists	1	1		+0.0%	+0	-0
Pharmacy	9	10	+1	+0.1%	-0	+0
<b>Health &amp; Social Care Professionals</b>	<b>59</b>	<b>61</b>	<b>+1</b>	<b>+2.1%</b>	<b>+2</b>	<b>-2</b>
Management (VIII & above)	3	4	+1	+0.3%	-0	-0
Administrative/ Supervisory (V to VII)	20	20	-0	-0.0%	-1	-0
Clerical (III & IV)	28	28	-0	-0.0%	+3	+4
<b>Management &amp; Administrative</b>	<b>51</b>	<b>51</b>	<b>+1</b>	<b>+1.5%</b>	<b>+2</b>	<b>+4</b>
Support	75	74	-1	-0.0%	+1	-3
Maintenance/ Technical	8	8		+0.0%	+1	+1
<b>General Support</b>	<b>83</b>	<b>82</b>	<b>-1</b>	<b>-1.7%</b>	<b>+2</b>	<b>-2</b>
Health Care Assistants	102	107	+5	+0.0%	+5	-2
Care, other	1	1		+0.0%		
<b>Patient &amp; Client Care</b>	<b>103</b>	<b>108</b>	<b>+5</b>	<b>+4.9%</b>	<b>+5</b>	<b>-2</b>

## Peamount Hospital (Newcastle)

Jun 2020 (Dec 2019 figure: 486)	WTE May 2020	WTE Jun 2020	WTE change since May 20	% change since May 20	WTE change since Dec 19	WTE change since Jun 19
<b>Overall</b>	<b>486</b>	<b>510</b>	<b>+24</b>	<b>+4.9%</b>	<b>+24</b>	<b>+25</b>
Registrars	2	2	+0	+0.3%		
SHO/ Interns	5	8	+3	+0.6%	+1	+2
<b>Medical &amp; Dental</b>	<b>7</b>	<b>10</b>	<b>+3</b>	<b>+50.4%</b>	<b>+1</b>	<b>+2</b>
Nurse/ Midwife Manager	26	27	+1	+0.0%	-0	+1
Nurse/ Midwife Specialist & AN/MP	2	2	-0	-0.1%	-0	-0
Staff Nurse/ Staff Midwife	85	87	+2	+0.0%	+5	+3
<b>Nursing &amp; Midwifery</b>	<b>112</b>	<b>115</b>	<b>+3</b>	<b>+2.3%</b>	<b>+5</b>	<b>+4</b>
Therapy Professions	36	39	+3	+0.1%	+10	+12
Health Science/ Diagnostics	3	3		+0.0%		
Social Care	4	5	+1	+0.2%	+3	+2
Social Workers	6	6		+0.0%	+1	+1
Pharmacy	4	5	+1	+0.1%	+1	+2
<b>Health &amp; Social Care Professionals</b>	<b>53</b>	<b>58</b>	<b>+5</b>	<b>+9.0%</b>	<b>+15</b>	<b>+17</b>
Management (VIII & above)	4	4		+0.0%		
Administrative/ Supervisory (V to VII)	17	18	+1	+0.0%	+4	+3
Clerical (III & IV)	19	18	-1	-0.1%	-2	-3
<b>Management &amp; Administrative</b>	<b>40</b>	<b>39</b>	<b>-1</b>	<b>-1.7%</b>	<b>+2</b>	<b>-0</b>
Support	51	46	-5	-0.1%	-1	-3
Maintenance/ Technical	8	9	+1	+0.2%	+2	+0
<b>General Support</b>	<b>59</b>	<b>55</b>	<b>-4</b>	<b>-6.7%</b>	<b>+0</b>	<b>-3</b>
Health Care Assistants	212	229	+18	+0.1%	+1	+4
Care, other	3	3		+0.0%	-0	+0
<b>Patient &amp; Client Care</b>	<b>215</b>	<b>233</b>	<b>+18</b>	<b>+8.2%</b>	<b>+1</b>	<b>+4</b>

# Stewart's Hospital, (Palmerstown)

Jun 2020 (Dec 2019 figure: 852)	WTE May 2020	WTE Jun 2020	WTE change since May 20	% change since May 20	WTE change since Dec 19	WTE change since Jun 19
<b>Overall</b>	<b>871</b>	<b>866</b>	<b>-5</b>	<b>-0.5%</b>	<b>+15</b>	<b>-17</b>
Consultants	0	0		+0.0%		
Registrars				-1.0%		-1
<b>Medical &amp; Dental</b>	<b>0</b>	<b>0</b>				<b>-1</b>
Nurse/ Midwife Manager	33	33		+0.0%	-3	-5
Staff Nurse/ Staff Midwife	74	74		+0.0%	+1	+0
Pre-registration Nurse/ Midwife Intern				-1.0%		-8
Pre-registration Nurse Intern (COVID-19)	15	15		+0.0%	+15	+15
Nursing/ Midwifery Student	15	15		+0.0%	+15	+8
Nursing/ Midwifery other	1	1		+0.0%		
<b>Nursing &amp; Midwifery</b>	<b>122</b>	<b>122</b>			<b>+13</b>	<b>+3</b>
Therapy Professions	16	15	-1	-0.1%	-1	-1
Social Care	14	13	-1	-0.1%	+3	+2
Social Workers	7	7		+0.0%	+1	
Psychologists	4	4	-1	-0.1%	-1	-1
<b>Health &amp; Social Care Professionals</b>	<b>40</b>	<b>38</b>	<b>-2</b>	<b>-6.2%</b>	<b>+3</b>	<b>+0</b>
Management (VIII & above)	11	11		+0.0%		-2
Administrative/ Supervisory (V to VII)	16	17	+1	+0.1%	+3	-1
Clerical (III & IV)	25	23	-2	-0.1%	-1	-3
<b>Management &amp; Administrative</b>	<b>52</b>	<b>51</b>	<b>-1</b>	<b>-1.9%</b>	<b>+2</b>	<b>-6</b>
Support	58	57	-1	-0.0%	+0	-2
Maintenance/ Technical	5	4	-1	-0.2%	-1	-2
<b>General Support</b>	<b>63</b>	<b>61</b>	<b>-2</b>	<b>-2.6%</b>	<b>-1</b>	<b>-4</b>
Health Care Assistants	480	481	+1	+0.0%	+0	-1
Care, other	114	113	-1	-0.0%	-3	-8
<b>Patient &amp; Client Care</b>	<b>594</b>	<b>594</b>	<b>+1</b>	<b>+0.1%</b>	<b>-3</b>	<b>-9</b>

## St. John of God Liffey Services

Jun 2020 (Dec 2019 figure: 787)	WTE May 2020	WTE Jun 2020	WTE change since May 20	% change since May 20	WTE change since Dec 19	WTE change since Jun 19
<b>Overall</b>	<b>746</b>	<b>738</b>	<b>-8</b>	<b>-1.0%</b>	<b>-49</b>	<b>-6</b>
Registrars	1	1		+0.0%		
<b>Medical &amp; Dental</b>	<b>1</b>	<b>1</b>				
Nurse/ Midwife Manager	23	23	+0	+0.0%	+3	-1
Nurse/ Midwife Specialist & AN/MP	1	1		+0.0%		
Staff Nurse/ Staff Midwife	87	87	+0	+0.0%	-3	+7
<b>Nursing &amp; Midwifery</b>	<b>111</b>	<b>111</b>	<b>+1</b>	<b>+0.5%</b>	<b>+0</b>	<b>+6</b>
Therapy Professions	16	14	-2	-0.1%	-1	-2
Social Care	243	242	-1	-0.0%	-11	+2
Social Workers	6	6	-1	-0.1%	-1	-2
Psychologists	7	7	-0	-0.0%	+1	+0
H&SC, Other		2	+2	-1.0%	+2	+2
<b>Health &amp; Social Care Professionals</b>	<b>272</b>	<b>270</b>	<b>-2</b>	<b>-0.6%</b>	<b>-10</b>	<b>+1</b>
Management (VIII & above)	6	6		+0.0%	-0	+1
Administrative/ Supervisory (V to VII)	10	10		+0.0%	-1	-0
Clerical (III & IV)	18	18	-0	-0.0%	-0	-1
<b>Management &amp; Administrative</b>	<b>34</b>	<b>34</b>	<b>-0</b>	<b>-0.4%</b>	<b>-1</b>	<b>-1</b>
Support	30	29	-0	-0.0%	-5	-5
Maintenance/ Technical	13	13	+1	+0.0%	+1	+1
<b>General Support</b>	<b>42</b>	<b>43</b>	<b>+0</b>	<b>+1.1%</b>	<b>-4</b>	<b>-4</b>
Health Care Assistants	147	142	-5	-0.0%	-30	-13
Care, other	139	137	-2	-0.0%	-5	+5
<b>Patient &amp; Client Care</b>	<b>286</b>	<b>279</b>	<b>-7</b>	<b>-2.4%</b>	<b>-35</b>	<b>-8</b>

**CHO 7 Employment by Grade Group & Staff Category: June 2020**

Jun 2020 (Dec 2019 figure: 6,515)	WTE May 2020	WTE Jun 2020	WTE change since May 20	% change since May 20	WTE change since Dec 19	WTE change since Jun 19
<b>Overall</b>	<b>6,563</b>	<b>6,588</b>	<b>+25</b>	<b>+0.4%</b>	<b>+74</b>	<b>+41</b>
Consultant Medicine	8	9	+1	+13.1%	+2	+2
Consultant Paediatrics	0	0				
Consultant Psychiatry	53	54	+1	+1.7%	+2	+7
Consultant Surgery	1	1				
<b>Consultants</b>	<b>62</b>	<b>64</b>	<b>+2</b>	<b>+3.0%</b>	<b>+4</b>	<b>+9</b>
Registrar	67	67	+1	+1.2%	-4	+3
Senior Registrar	16	15	-1	-4.8%	-4	-1
Specialist Registrar	3	3	+0	+4.9%	-1	-0
<b>Registrars</b>	<b>85</b>	<b>85</b>	<b>+0</b>	<b>+0.2%</b>	<b>-10</b>	<b>+2</b>
Interns				-100.0%	-2	-2
Senior House Officer	35	37	+2	+6.2%	+3	+4
<b>SHO/ Interns</b>	<b>35</b>	<b>37</b>	<b>+2</b>	<b>+6.2%</b>	<b>+1</b>	<b>+2</b>
Dentists	35	34	-1	-2.9%	+1	+1
Other Medical	47	47	+0	+0.1%	+0	+7
<b>Medical/ Dental, other</b>	<b>82</b>	<b>81</b>	<b>-1</b>	<b>-1.2%</b>	<b>+1</b>	<b>+8</b>
<b>Medical &amp; Dental</b>	<b>264</b>	<b>268</b>	<b>+3</b>	<b>+1.2%</b>	<b>+3</b>	<b>+21</b>
Clinical Nurse/ Midwife Manager	332	330	-2	-0.6%	+2	+2
Director Nursing/Midwifery, Assistant	54	57	+4	+6.7%	+5	+1
Director of Nursing/Midwifery	20	19	-1	-4.7%	+3	+0
<b>Nurse/ Midwife Manager</b>	<b>405</b>	<b>406</b>	<b>+1</b>	<b>+0.2%</b>	<b>+10</b>	<b>+3</b>
Advanced Nurse/ Midwife Practitioner	7	8	+1	+16.4%	+3	+3
Clinical Nurse/ Midwife Specialist	95	95	+1	+0.8%	+6	+9
<b>Nurse/ Midwife Specialist &amp; AN/MP</b>	<b>101</b>	<b>103</b>	<b>+2</b>	<b>+1.8%</b>	<b>+9</b>	<b>+12</b>
Staff Nurse [Intellectual Disability]	188	188	-0	-0.1%	-6	-24
Staff Nurse [Psychiatric]	192	192	+0	+0.0%	+0	-15
Staff Nurses [General/ Children's]	629	637	+8	+1.2%	+29	+51
<b>Staff Nurse/ Staff Midwife</b>	<b>1,009</b>	<b>1,016</b>	<b>+7</b>	<b>+0.7%</b>	<b>+23</b>	<b>+12</b>
<b>Public Health Nurse</b>	<b>164</b>	<b>164</b>	<b>+0</b>	<b>+0.2%</b>	<b>-11</b>	<b>-14</b>
Pre-registration Nurse/ Midwife Intern				-100.0%	-1	-21
Pre-registration Nurse Intern (COVID-19)	44	44	-0	-0.5%	+44	+44
Post-registration Nurse/ Midwife Student	20	19	-1	-5.0%	-2	+14
Nursing/ Midwifery awaiting registration	7	5	-2	-25.2%	-4	+4
<b>Nursing/ Midwifery Student</b>	<b>71</b>	<b>68</b>	<b>-3</b>	<b>-4.3%</b>	<b>+36</b>	<b>+41</b>
Nursing Education/Clinical	10	9	-1	-5.3%	-1	-1
<b>Nursing/ Midwifery other</b>	<b>10</b>	<b>9</b>	<b>-1</b>	<b>-5.3%</b>	<b>-1</b>	<b>-1</b>
<b>Nursing &amp; Midwifery</b>	<b>1,759</b>	<b>1,766</b>	<b>+7</b>	<b>+0.4%</b>	<b>+65</b>	<b>+53</b>
Dietitians	23	25	+2	+8.2%	-0	-1
Occupational Therapists	194	195	+1	+0.4%	+11	+14
Physiotherapists	124	124	-1	-0.7%	+9	+3
Podiatrists & Chiropractors	2	2			+1	+1
Speech & Language Therapists	128	129	+0	+0.2%	+3	-0
<b>Therapy Professions</b>	<b>472</b>	<b>474</b>	<b>+2</b>	<b>+0.5%</b>	<b>+24</b>	<b>+17</b>
Clinical Measurement	1	1				
Phlebotomists	1	1	-0	-8.2%	+0	
Radiographers	1	1				
<b>Health Science/ Diagnostics</b>	<b>3</b>	<b>3</b>	<b>-0</b>	<b>-3.3%</b>	<b>+0</b>	
<b>Social Care</b>	<b>367</b>	<b>364</b>	<b>-3</b>	<b>-0.7%</b>	<b>-7</b>	<b>+3</b>

Jun 2020 (Dec 2019 figure: 6,515)	WTE May 2020	WTE Jun 2020	WTE change since May 20	% change since May 20	WTE change since Dec 19	WTE change since Jun 19
<b>Overall</b>	<b>6,563</b>	<b>6,588</b>	<b>+25</b>	<b>+0.4%</b>	<b>+74</b>	<b>+41</b>
<b>Social Workers</b>	<b>111</b>	<b>109</b>	<b>-2</b>	<b>-2.1%</b>	<b>+4</b>	<b>+4</b>
<b>Psychologists</b>	<b>81</b>	<b>82</b>	<b>+1</b>	<b>+0.9%</b>	<b>+1</b>	<b>-2</b>
<b>Pharmacy</b>	<b>38</b>	<b>41</b>	<b>+3</b>	<b>+7.5%</b>	<b>+1</b>	<b>+3</b>
Counsellor Therapists	35	37	+1	+3.2%	+0	+2
Dental Hygienists	5	5	+0	+0.2%	-0	+0
Other Health & Social Care	1	1	-0	-10.8%	-1	-1
Play Therapists/ Specialists	1	3	+2	+196.0%	+2	+2
<b>H&amp;SC, Other</b>	<b>42</b>	<b>45</b>	<b>+3</b>	<b>+7.2%</b>	<b>+1</b>	<b>+2</b>
<b>Health &amp; Social Care Professionals</b>	<b>1,115</b>	<b>1,119</b>	<b>+4</b>	<b>+0.3%</b>	<b>+23</b>	<b>+26</b>
Executive Management	15	15	+0	+0.5%	+2	+2
Senior Management (VIII & GM)	62	63	+1	+1.4%	+3	+5
<b>Management (VIII &amp; above)</b>	<b>77</b>	<b>78</b>	<b>+1</b>	<b>+1.2%</b>	<b>+5</b>	<b>+7</b>
Middle Management (V-VII)	195	198	+3	+1.5%	+17	+12
Other Administrative	1	1			-0	-0
<b>Administrative/ Supervisory (V to VII)</b>	<b>196</b>	<b>199</b>	<b>+3</b>	<b>+1.5%</b>	<b>+16</b>	<b>+12</b>
<b>Clerical (III &amp; IV)</b>	<b>362</b>	<b>362</b>	<b>+0</b>	<b>+0.0%</b>	<b>+11</b>	<b>-7</b>
<b>Management &amp; Administrative</b>	<b>635</b>	<b>639</b>	<b>+4</b>	<b>+0.6%</b>	<b>+21</b>	<b>+12</b>
Catering	58	57	-0	-0.8%	-2	-2
Household Services	268	262	-6	-2.2%	-7	-22
Other Labs & Associated	1	1				
Other Support	14	14			+0	-1
Portering	65	64	-1	-1.1%	-3	-6
<b>Support</b>	<b>406</b>	<b>399</b>	<b>-7</b>	<b>-1.7%</b>	<b>-12</b>	<b>-30</b>
Maintenance	38	40	+2	+4.9%	+3	+0
Technical Services	4	3	-1	-25.0%	-1	-1
<b>Maintenance/ Technical</b>	<b>42</b>	<b>43</b>	<b>+1</b>	<b>+2.0%</b>	<b>+2</b>	<b>-1</b>
<b>General Support</b>	<b>448</b>	<b>442</b>	<b>-6</b>	<b>-1.4%</b>	<b>-44</b>	<b>-31</b>
HCA, Nurse's Aide, etc.	1,592	1,601	+9	+0.5%	-42	-54
Health & Social Care Assistants	16	21	+5	+32.8%	+9	+0
<b>Health Care Assistants</b>	<b>1,608</b>	<b>1,622</b>	<b>+14</b>	<b>+0.9%</b>	<b>-33</b>	<b>-54</b>
Community Welfare Officers	1	1				+0
Other Care Grades	600	600	-0	-0.1%	-10	+6
<b>Care, other</b>	<b>601</b>	<b>601</b>	<b>-0</b>	<b>-0.1%</b>	<b>-10</b>	<b>+6</b>
<b>Home Help</b>	<b>133</b>	<b>133</b>	<b>-0</b>	<b>-0.3%</b>	<b>+6</b>	<b>+8</b>
<b>Patient &amp; Client Care</b>	<b>2,343</b>	<b>2,356</b>	<b>+13</b>	<b>+0.6%</b>	<b>-37</b>	<b>-40</b>



## CHO 7 HSE Employment by Grade Group & Staff Category: June 2020

Jun 2020 (Dec 2019 figure: 3,151)	WTE May 2020	WTE Jun 2020	WTE change since May 20	% change since May 20	WTE change since Dec 19	WTE change since Jun 19
<b>Overall</b>	<b>3,227</b>	<b>3,240</b>	<b>+13</b>	<b>+0.4%</b>	<b>+88</b>	<b>+45</b>
Consultant Medicine	1	1				
Consultant Psychiatry	53	54	+1	+1.7%	+2	+7
Consultant Surgery	1	1				
<b>Consultants</b>	<b>55</b>	<b>56</b>	<b>+1</b>	<b>+1.6%</b>	<b>+2</b>	<b>+7</b>
Registrar	62	61	-1	-1.0%	-5	+2
Senior Registrar	16	15	-1	-4.8%	-4	+0
Specialist Registrar	1	1	+0	+16.3%		+1
<b>Registrars</b>	<b>79</b>	<b>77</b>	<b>-1</b>	<b>-1.6%</b>	<b>-10</b>	<b>+3</b>
<b>SHO/ Interns</b>	<b>25</b>	<b>24</b>	<b>-1</b>	<b>-4.5%</b>	<b>+0</b>	<b>+1</b>
Dentists	35	34	-1	-2.9%	+1	+1
Other Medical	45	45	+0	+0.1%	+0	+7
<b>Medical/ Dental, other</b>	<b>80</b>	<b>79</b>	<b>-1</b>	<b>-1.3%</b>	<b>+1</b>	<b>+8</b>
<b>Medical &amp; Dental</b>	<b>239</b>	<b>236</b>	<b>-2</b>	<b>-1.0%</b>	<b>+2</b>	<b>+19</b>
Clinical Nurse/ Midwife Manager	181	179	-2	-1.0%	+3	+14
Director Nursing/Midwifery, Assistant	46	49	+3	+5.6%	+4	-1
Director of Nursing/Midwifery	15	15	+0	+0.5%	+4	+1
<b>Nurse/ Midwife Manager</b>	<b>242</b>	<b>242</b>	<b>+1</b>	<b>+0.3%</b>	<b>+11</b>	<b>+13</b>
Advanced Nurse/ Midwife Practitioner	4	5	+1	+26.5%	+2	+2
Clinical Nurse/ Midwife Specialist	63	62	-1	-1.0%	+4	+7
<b>Nurse/ Midwife Specialist &amp; AN/MP</b>	<b>67</b>	<b>68</b>	<b>+0</b>	<b>+0.7%</b>	<b>+7</b>	<b>+9</b>
Staff Nurse [Intellectual Disability]	1	1	+0	+4.2%	+1	+1
Staff Nurse [Psychiatric]	192	192	+0	+0.0%	+0	-15
Staff Nurses [General/ Children's]	347	353	+6	+1.6%	+24	+18
<b>Staff Nurse/ Staff Midwife</b>	<b>539</b>	<b>545</b>	<b>+6</b>	<b>+1.1%</b>	<b>+25</b>	<b>+3</b>
<b>Public Health Nurse</b>	<b>164</b>	<b>164</b>	<b>+0</b>	<b>+0.2%</b>	<b>-11</b>	<b>-14</b>
Pre-registration Nurse/ Midwife Intern				-100.0%	-1	-13
Pre-registration Nurse Intern (COVID-19)	29	29	-0	-0.7%	+29	+29
Post-registration Nurse/ Midwife Student	20	19	-1	-5.0%	-2	+14
Nursing/ Midwifery awaiting registration	7	5	-2	-25.2%	-4	+4
<b>Nursing/ Midwifery Student</b>	<b>56</b>	<b>53</b>	<b>-3</b>	<b>-5.4%</b>	<b>+21</b>	<b>+34</b>
Nursing Education/Clinical	7	7	-1	-7.1%	-1	-1
<b>Nursing/ Midwifery other</b>	<b>7</b>	<b>7</b>	<b>-1</b>	<b>-7.1%</b>	<b>-1</b>	<b>-1</b>
<b>Nursing &amp; Midwifery</b>	<b>1,075</b>	<b>1,079</b>	<b>+4</b>	<b>+0.4%</b>	<b>+59</b>	<b>+45</b>
Dietitians	16	16	+1	+5.9%	-0	-2
Occupational Therapists	147	147	+0	+0.2%	+8	+10
Physiotherapists	76	77	+1	+0.8%	+7	+2
Podiatrists & Chiropodists	2	2			+1	+1
Speech & Language Therapists	100	100	+0	+0.2%	+1	-1
<b>Therapy Professions</b>	<b>340</b>	<b>342</b>	<b>+2</b>	<b>+0.6%</b>	<b>+17</b>	<b>+11</b>
<b>Social Care</b>	<b>11</b>	<b>11</b>	<b>-0</b>	<b>-0.2%</b>	<b>+1</b>	<b>-1</b>
<b>Social Workers</b>	<b>72</b>	<b>71</b>	<b>-0</b>	<b>-0.4%</b>	<b>+4</b>	<b>+5</b>
<b>Psychologists</b>	<b>59</b>	<b>61</b>	<b>+1</b>	<b>+2.5%</b>	<b>-1</b>	<b>-4</b>
<b>Pharmacy</b>	<b>25</b>	<b>26</b>	<b>+1</b>	<b>+5.1%</b>	<b>+1</b>	<b>+1</b>
Counsellor Therapists	34	35	+1	+3.3%	+0	+2
Dental Hygienists	5	5	+0	+0.2%	-0	+0
Other Health & Social Care	1	1	-0	-10.8%	-1	-1
Play Therapists/ Specialists	1	1				
<b>H&amp;SC, Other</b>	<b>40</b>	<b>42</b>	<b>+1</b>	<b>+2.6%</b>	<b>-1</b>	<b>+0</b>
<b>Health &amp; Social Care Professionals</b>	<b>548</b>	<b>553</b>	<b>+5</b>	<b>+1.0%</b>	<b>+4</b>	<b>+13</b>

Jun 2020 (Dec 2019 figure: 3,151)	WTE May 2020	WTE Jun 2020	WTE change since May 20	% change since May 20	WTE change since Dec 19	WTE change since Jun 19
<b>Overall</b>	<b>3,227</b>	<b>3,240</b>	<b>+13</b>	<b>+0.4%</b>	<b>+88</b>	<b>+45</b>
Executive Management	8	8	+0	+0.9%	+1	+1
Senior Management (VIII & GM)	37	37	-0	-0.3%	+4	+8
<b>Management (VIII &amp; above)</b>	<b>45</b>	<b>45</b>	<b>-0</b>	<b>-0.1%</b>	<b>+5</b>	<b>+9</b>
<b>Administrative/ Supervisory (V to VII)</b>	<b>106</b>	<b>107</b>	<b>+2</b>	<b>+1.5%</b>	<b>+11</b>	<b>+10</b>
<b>Clerical (III &amp; IV)</b>	<b>247</b>	<b>249</b>	<b>+3</b>	<b>+1.0%</b>	<b>+8</b>	<b>-7</b>
<b>Management &amp; Administrative</b>	<b>398</b>	<b>402</b>	<b>+4</b>	<b>+1.0%</b>	<b>+9</b>	<b>+12</b>
Catering	27	27	+0	+1.7%	+0	-0
Household Services	86	86	+0	+0.1%	-5	-14
Other Support	5	5			+0	-1
Portering	46	46	-0	-0.2%	-2	-5
<b>Support</b>	<b>164</b>	<b>164</b>	<b>+0</b>	<b>+0.3%</b>	<b>-7</b>	<b>-20</b>
<b>Maintenance/ Technical</b>	<b>5</b>	<b>5</b>			<b>-1</b>	<b>-1</b>
<b>General Support</b>	<b>169</b>	<b>169</b>	<b>+0</b>	<b>+0.2%</b>	<b>-26</b>	<b>-21</b>
HCA, Nurse's Aide, etc.	430	426	-4	-0.9%	-7	-30
Health & Social Care Assistants	12	15	+3	+26.2%	+7	-1
<b>Health Care Assistants</b>	<b>442</b>	<b>442</b>	<b>-1</b>	<b>-0.1%</b>	<b>+0</b>	<b>-31</b>
<b>Care, other</b>	<b>224</b>	<b>227</b>	<b>+3</b>	<b>+1.3%</b>	<b>-1</b>	<b>-0</b>
<b>Home Help</b>	<b>133</b>	<b>133</b>	<b>-0</b>	<b>-0.3%</b>	<b>+6</b>	<b>+8</b>
<b>Patient &amp; Client Care</b>	<b>799</b>	<b>801</b>	<b>+2</b>	<b>+0.2%</b>	<b>-60</b>	<b>-23</b>

## Employment by WTE, Headcount, Gender, Full-Time /Part-Time etc.: Jun 2020

CHO 7	WTE	Headcount	WTE: no.	% Male	% female	Male WTE: no.	Female WTE: no.	% Total Perm	% Male Perm	% Female Perm	% Total Full Time	% Total Part Time	% Male FT	% Female FT
<b>Overall</b>	<b>6,588</b>	<b>7,766</b>	<b>1.18</b>	<b>19.7%</b>	<b>80.3%</b>	<b>1.09</b>	<b>1.20</b>	<b>87.2%</b>	<b>84.8%</b>	<b>87.8%</b>	<b>68.8%</b>	<b>31.2%</b>	<b>83.4%</b>	<b>65.2%</b>
Consultant Medicine	9	9	1.04	33.3%	66.7%	1.12	1.01	77.8%	77.8%	83.3%	77.8%	22.2%	33.3%	100.0%
Consultant Paediatrics	0	1	2.94		100.0%		2.94	100.0%	100.0%	100.0%	0.0%	100.0%		0.0%
Consultant Psychiatry	54	59	1.09	37.3%	62.7%	1.06	1.10	59.3%	59.3%	51.4%	83.1%	16.9%	95.5%	75.7%
Consultant Surgery	1	1	1.25		100.0%		1.25	0.0%	0.0%	0.0%	0.0%	100.0%		0.0%
<b>Consultants</b>	<b>64</b>	<b>70</b>	<b>1.09</b>	<b>35.7%</b>	<b>64.3%</b>	<b>1.07</b>	<b>1.11</b>	<b>61.4%</b>	<b>72.0%</b>	<b>55.6%</b>	<b>80.0%</b>	<b>20.0%</b>	<b>88.0%</b>	<b>75.6%</b>
Registrar	67	68	1.01	33.8%	66.2%	1.00	1.01	1.5%	1.5%	0.0%	100.0%	0.0%	100.0%	100.0%
Senior Registrar	15	16	1.07	31.3%	68.8%	1.01	1.10	0.0%	0.0%	0.0%	87.5%	12.5%	100.0%	81.8%
Specialist Registrar	3	3	1.00		100.0%		1.00	0.0%	0.0%	0.0%	100.0%	0.0%		100.0%
<b>Registrars</b>	<b>85</b>	<b>87</b>	<b>1.02</b>	<b>32.2%</b>	<b>67.8%</b>	<b>1.00</b>	<b>1.03</b>	<b>1.1%</b>	<b>3.6%</b>	<b>0.0%</b>	<b>97.7%</b>	<b>2.3%</b>	<b>100.0%</b>	<b>96.6%</b>
<b>SHO/ Interns</b>	<b>37</b>	<b>38</b>	<b>1.03</b>	<b>31.6%</b>	<b>68.4%</b>	<b>1.03</b>	<b>1.04</b>	<b>0.0%</b>	<b>0.0%</b>	<b>0.0%</b>	<b>89.5%</b>	<b>10.5%</b>	<b>100.0%</b>	<b>84.6%</b>
Dentists	34	41	1.19	14.6%	85.4%	1.12	1.21	100.0%	100.0%	100.0%	61.0%	39.0%	83.3%	57.1%
Other Medical	47	66	1.40	40.9%	59.1%	1.33	1.46	34.8%	34.8%	48.7%	22.7%	77.3%	18.5%	25.6%
<b>Medical/ Dental, other</b>	<b>81</b>	<b>107</b>	<b>1.31</b>	<b>30.8%</b>	<b>69.2%</b>	<b>1.28</b>	<b>1.33</b>	<b>59.8%</b>	<b>30.3%</b>	<b>73.0%</b>	<b>37.4%</b>	<b>62.6%</b>	<b>30.3%</b>	<b>40.5%</b>
<b>Medical &amp; Dental</b>	<b>268</b>	<b>302</b>	<b>1.13</b>	<b>32.5%</b>	<b>67.5%</b>	<b>1.11</b>	<b>1.14</b>	<b>35.8%</b>	<b>29.6%</b>	<b>38.7%</b>	<b>71.2%</b>	<b>28.8%</b>	<b>73.5%</b>	<b>70.1%</b>
Clinical Nurse/ Midwife Manager	330	351	1.06	14.8%	85.2%	1.01	1.07	97.4%	97.4%	98.0%	85.2%	14.8%	96.2%	83.3%
Director Nursing/Midwifery, Assistant	57	61	1.06	16.4%	83.6%	1.01	1.07	93.4%	93.4%	92.2%	86.9%	13.1%	100.0%	84.3%
Director of Nursing/Midwifery	19	19	1.01	5.3%	94.7%	1.00	1.01	100.0%	100.0%	100.0%	89.5%	10.5%	100.0%	88.9%
<b>Nurse/ Midwife Manager</b>	<b>406</b>	<b>431</b>	<b>1.06</b>	<b>14.6%</b>	<b>85.4%</b>	<b>1.01</b>	<b>1.07</b>	<b>97.0%</b>	<b>95.2%</b>	<b>97.3%</b>	<b>85.6%</b>	<b>14.4%</b>	<b>96.8%</b>	<b>83.7%</b>
Advanced Nurse/ Midwife Practitioner	8	9	1.16	11.1%	88.9%	1.06	1.18	100.0%	100.0%	100.0%	77.8%	22.2%	100.0%	75.0%
Clinical Nurse/ Midwife Specialist	95	111	1.16	9.9%	90.1%	1.02	1.18	99.1%	99.1%	99.0%	71.2%	28.8%	100.0%	68.0%
<b>Nurse/ Midwife Specialist &amp; AN/MP</b>	<b>103</b>	<b>120</b>	<b>1.16</b>	<b>10.0%</b>	<b>90.0%</b>	<b>1.03</b>	<b>1.18</b>	<b>99.2%</b>	<b>100.0%</b>	<b>99.1%</b>	<b>71.7%</b>	<b>28.3%</b>	<b>100.0%</b>	<b>68.5%</b>
Staff Nurse [Intellectual Disability]	188	233	1.24	8.6%	91.4%	1.04	1.27	96.6%	96.6%	96.2%	59.7%	40.3%	95.0%	56.3%
Staff Nurse [Psychiatric]	192	212	1.11	23.6%	76.4%	1.05	1.13	95.3%	95.3%	95.7%	84.9%	15.1%	92.0%	82.7%
Staff Nurses [General/ Children's]	637	740	1.16	9.6%	90.4%	1.10	1.17	92.6%	92.6%	92.7%	71.2%	28.8%	90.1%	69.2%
<b>Staff Nurse/ Staff Midwife</b>	<b>1,016</b>	<b>1,185</b>	<b>1.17</b>	<b>11.9%</b>	<b>88.1%</b>	<b>1.07</b>	<b>1.18</b>	<b>93.8%</b>	<b>93.6%</b>	<b>93.9%</b>	<b>71.4%</b>	<b>28.6%</b>	<b>91.5%</b>	<b>68.7%</b>
<b>Public Health Nurse</b>	<b>164</b>	<b>201</b>	<b>1.23</b>	<b>0.5%</b>	<b>99.5%</b>	<b>1.00</b>	<b>1.23</b>	<b>95.5%</b>	<b>100.0%</b>	<b>95.5%</b>	<b>63.2%</b>	<b>36.8%</b>	<b>100.0%</b>	<b>63.0%</b>
Pre-registration Nurse Intern (COVID-19)	44	44	1.01	15.9%	84.1%	1.00	1.01	2.3%	2.3%	2.7%	100.0%	0.0%	100.0%	100.0%
Post-registration Nurse/ Midwife Student	19	19	1.00		100.0%		1.00	0.0%	0.0%	0.0%	100.0%	0.0%		100.0%



Nursing/ Midwifery awaiting registration	5	6	1.09		100.0%		1.09	83.3%	83.3%	83.3%	83.3%	16.7%		83.3%
<b>Nursing/ Midwifery Student</b>	<b>68</b>	<b>69</b>	<b>1.01</b>	<b>10.1%</b>	<b>89.9%</b>	<b>1.00</b>	<b>1.01</b>	<b>8.7%</b>	<b>0.0%</b>	<b>9.7%</b>	<b>98.6%</b>	<b>1.4%</b>	<b>100.0%</b>	<b>98.4%</b>
Nursing Education/Clinical	9	10	1.11		100.0%		1.11	100.0%	100.0%	100.0%	70.0%	30.0%		70.0%
<b>Nursing/ Midwifery other</b>	<b>9</b>	<b>10</b>	<b>1.11</b>		<b>100.0%</b>		<b>1.11</b>	<b>100.0%</b>		<b>100.0%</b>	<b>70.0%</b>	<b>30.0%</b>		<b>70.0%</b>
<b>Nursing &amp; Midwifery</b>	<b>1,766</b>	<b>2,016</b>	<b>1.14</b>	<b>11.1%</b>	<b>88.9%</b>	<b>1.05</b>	<b>1.15</b>	<b>92.1%</b>	<b>91.5%</b>	<b>92.2%</b>	<b>74.6%</b>	<b>25.4%</b>	<b>93.8%</b>	<b>72.2%</b>
Dietitians	25	31	1.23	6.5%	93.5%	1.00	1.25	87.1%	87.1%	86.2%	67.7%	32.3%	100.0%	65.5%
Occupational Therapists	195	219	1.12	9.1%	90.9%	1.06	1.13	86.8%	86.8%	85.9%	81.3%	18.7%	90.0%	80.4%
Physiotherapists	124	139	1.13	20.1%	79.9%	1.01	1.16	90.6%	90.6%	88.3%	79.1%	20.9%	96.4%	74.8%
Podiatrists & Chiropodists	2	2	1.00		100.0%		1.00	100.0%	100.0%	100.0%	100.0%	0.0%		100.0%
Speech & Language Therapists	129	141	1.10		100.0%		1.10	85.8%	85.8%	85.8%	86.5%	13.5%		86.5%
<b>Therapy Professions</b>	<b>474</b>	<b>532</b>	<b>1.12</b>	<b>9.4%</b>	<b>90.6%</b>	<b>1.03</b>	<b>1.13</b>	<b>87.6%</b>	<b>98.0%</b>	<b>86.5%</b>	<b>81.4%</b>	<b>18.6%</b>	<b>94.0%</b>	<b>80.1%</b>
Clinical Measurement	1	1	1.00	100.0%		1.00		100.0%	100.0%		100.0%	0.0%	100.0%	
Phlebotomists	1	2	1.63	50.0%	50.0%	1.00	4.35	50.0%	50.0%	100.0%	50.0%	50.0%	100.0%	0.0%
Radiographers	1	1	1.00		100.0%		1.00	100.0%	100.0%	100.0%	100.0%	0.0%		100.0%
<b>Health Science/ Diagnostics</b>	<b>3</b>	<b>4</b>	<b>1.24</b>	<b>50.0%</b>	<b>50.0%</b>	<b>1.00</b>	<b>1.63</b>	<b>75.0%</b>	<b>50.0%</b>	<b>100.0%</b>	<b>75.0%</b>	<b>25.0%</b>	<b>100.0%</b>	<b>50.0%</b>
<b>Social Care</b>	<b>365</b>	<b>417</b>	<b>1.14</b>	<b>25.2%</b>	<b>74.8%</b>	<b>1.12</b>	<b>1.15</b>	<b>96.9%</b>	<b>97.1%</b>	<b>96.8%</b>	<b>75.3%</b>	<b>24.7%</b>	<b>82.9%</b>	<b>72.8%</b>
<b>Social Workers</b>	<b>109</b>	<b>123</b>	<b>1.13</b>	<b>17.1%</b>	<b>82.9%</b>	<b>1.06</b>	<b>1.15</b>	<b>95.1%</b>	<b>85.7%</b>	<b>97.1%</b>	<b>82.9%</b>	<b>17.1%</b>	<b>95.2%</b>	<b>80.4%</b>
<b>Psychologists</b>	<b>82</b>	<b>93</b>	<b>1.14</b>	<b>18.3%</b>	<b>81.7%</b>	<b>1.02</b>	<b>1.16</b>	<b>100.0%</b>	<b>100.0%</b>	<b>100.0%</b>	<b>84.9%</b>	<b>15.1%</b>	<b>94.1%</b>	<b>82.9%</b>
<b>Pharmacy</b>	<b>41</b>	<b>47</b>	<b>1.15</b>	<b>21.3%</b>	<b>78.7%</b>	<b>1.07</b>	<b>1.17</b>	<b>57.4%</b>	<b>50.0%</b>	<b>59.5%</b>	<b>46.8%</b>	<b>53.2%</b>	<b>40.0%</b>	<b>48.6%</b>
Counsellor Therapists	37	41	1.12	29.3%	70.7%	1.06	1.15	90.2%	90.2%	89.7%	68.3%	31.7%	75.0%	65.5%
Dental Hygienists	5	8	1.65		100.0%		1.65	100.0%	100.0%	100.0%	25.0%	75.0%		25.0%
Other Health & Social Care	1	1	1.72		100.0%		1.72	100.0%	100.0%	100.0%	0.0%	100.0%		0.0%
Play Therapists/ Specialists	3	3	1.01	66.7%	33.3%	1.00	1.04	100.0%	100.0%	100.0%	100.0%	0.0%	100.0%	100.0%
<b>H&amp;SC, Other</b>	<b>45</b>	<b>53</b>	<b>1.18</b>	<b>26.4%</b>	<b>73.6%</b>	<b>1.05</b>	<b>1.23</b>	<b>92.5%</b>	<b>92.9%</b>	<b>92.3%</b>	<b>62.3%</b>	<b>37.7%</b>	<b>78.6%</b>	<b>56.4%</b>
<b>Health &amp; Social Care</b>	<b>1,119</b>	<b>1,269</b>	<b>1.13</b>	<b>17.3%</b>	<b>82.7%</b>	<b>1.08</b>	<b>1.15</b>	<b>91.3%</b>	<b>93.6%</b>	<b>90.9%</b>	<b>77.7%</b>	<b>22.3%</b>	<b>85.4%</b>	<b>76.1%</b>
Executive Management	15	15	1.00	33.3%	66.7%	1.00	1.00	86.7%	86.7%	90.0%	100.0%	0.0%	100.0%	100.0%
Senior Management (VIII & GM)	63	64	1.02	25.0%	75.0%	1.00	1.02	98.4%	98.4%	97.9%	96.9%	3.1%	100.0%	95.8%
<b>Management (VIII &amp; above)</b>	<b>78</b>	<b>79</b>	<b>1.01</b>	<b>26.6%</b>	<b>73.4%</b>	<b>1.00</b>	<b>1.02</b>	<b>96.2%</b>	<b>95.2%</b>	<b>96.6%</b>	<b>97.5%</b>	<b>2.5%</b>	<b>100.0%</b>	<b>96.6%</b>
<b>Administrative/ Supervisory (V to VII)</b>	<b>199</b>	<b>212</b>	<b>1.07</b>	<b>25.0%</b>	<b>75.0%</b>	<b>1.02</b>	<b>1.08</b>	<b>89.2%</b>	<b>75.5%</b>	<b>93.7%</b>	<b>85.8%</b>	<b>14.2%</b>	<b>98.1%</b>	<b>81.8%</b>
<b>Clerical (III &amp; IV)</b>	<b>362</b>	<b>425</b>	<b>1.17</b>	<b>11.1%</b>	<b>88.9%</b>	<b>1.09</b>	<b>1.19</b>	<b>85.4%</b>	<b>80.9%</b>	<b>86.0%</b>	<b>68.5%</b>	<b>31.5%</b>	<b>85.1%</b>	<b>66.4%</b>
<b>Management &amp; Administrative</b>	<b>639</b>	<b>716</b>	<b>1.12</b>	<b>16.9%</b>	<b>83.1%</b>	<b>1.04</b>	<b>1.14</b>	<b>87.7%</b>	<b>81.0%</b>	<b>89.1%</b>	<b>76.8%</b>	<b>23.2%</b>	<b>93.4%</b>	<b>73.4%</b>
Catering	57	62	1.08	27.4%	72.6%	1.03	1.10	98.4%	98.4%	100.0%	74.2%	25.8%	100.0%	64.4%
Household Services	262	353	1.35	13.6%	86.4%	1.19	1.38	87.5%	87.5%	87.5%	38.5%	61.5%	64.6%	34.4%
Other Labs & Associated	1	1	1.00		100.0%		1.00	100.0%	100.0%	100.0%	100.0%	0.0%		100.0%
Other Support	14	18	1.27	72.2%	27.8%	1.18	1.60	77.8%	77.8%	100.0%	61.1%	38.9%	69.2%	40.0%



Portering	64	67	1.04	92.5%	7.5%	1.03	1.31	85.1%	85.1%	80.0%	85.1%	14.9%	90.3%	20.0%
<b>Support</b>	<b>399</b>	<b>501</b>	<b>1.26</b>	<b>27.9%</b>	<b>72.1%</b>	<b>1.09</b>	<b>1.34</b>	<b>88.2%</b>	<b>85.7%</b>	<b>89.2%</b>	<b>50.1%</b>	<b>49.9%</b>	<b>80.7%</b>	<b>38.2%</b>
<b>Maintenance/ Technical</b>	<b>43</b>	<b>47</b>	<b>1.09</b>	<b>87.2%</b>	<b>12.8%</b>	<b>1.06</b>	<b>1.40</b>	<b>89.4%</b>	<b>87.8%</b>	<b>100.0%</b>	<b>80.9%</b>	<b>19.1%</b>	<b>85.4%</b>	<b>50.0%</b>
<b>General Support</b>	<b>442</b>	<b>548</b>	<b>1.24</b>	<b>33.0%</b>	<b>67.0%</b>	<b>1.09</b>	<b>1.34</b>	<b>88.3%</b>	<b>86.2%</b>	<b>89.4%</b>	<b>52.7%</b>	<b>47.3%</b>	<b>81.8%</b>	<b>38.4%</b>
HCA, Nurse's Aide, etc.	1,601	1,911	1.19	24.2%	75.8%	1.10	1.23	85.8%	85.8%	85.5%	64.5%	35.5%	78.2%	60.1%
Health & Social Care Assistants	22	25	1.16	16.0%	84.0%	1.06	1.19	36.0%	36.0%	33.3%	76.0%	24.0%	100.0%	71.4%
<b>Health Care Assistants</b>	<b>1,622</b>	<b>1,936</b>	<b>1.19</b>	<b>24.1%</b>	<b>75.9%</b>	<b>1.10</b>	<b>1.23</b>	<b>85.1%</b>	<b>86.3%</b>	<b>84.8%</b>	<b>64.6%</b>	<b>35.4%</b>	<b>78.4%</b>	<b>60.2%</b>
<b>Care, other</b>	<b>601</b>	<b>701</b>	<b>1.17</b>	<b>28.5%</b>	<b>71.5%</b>	<b>1.08</b>	<b>1.21</b>	<b>93.9%</b>	<b>95.0%</b>	<b>93.4%</b>	<b>72.2%</b>	<b>27.8%</b>	<b>88.5%</b>	<b>65.7%</b>
<b>Home Help</b>	<b>133</b>	<b>278</b>	<b>2.09</b>	<b>6.8%</b>	<b>93.2%</b>	<b>4.49</b>	<b>2.01</b>	<b>82.7%</b>	<b>52.6%</b>	<b>84.9%</b>	<b>15.8%</b>	<b>84.2%</b>	<b>10.5%</b>	<b>16.2%</b>
<b>Patient &amp; Client Care</b>	<b>2,356</b>	<b>2,915</b>	<b>1.24</b>	<b>23.5%</b>	<b>76.5%</b>	<b>1.12</b>	<b>1.28</b>	<b>87.0%</b>	<b>87.9%</b>	<b>86.7%</b>	<b>61.8%</b>	<b>38.2%</b>	<b>79.4%</b>	<b>56.3%</b>





## Employment by WTE, Headcount, Gender, Full-Time /Part-Time etc.: Jun 2020

CHO 7	WTE	Headcount	WTE: no.	% Male	% female	Male WTE: no.	Female WTE: no.	% Total Perm	% Male Perm	% Female Perm	% Total Full Time	% Total Part Time	% Male FT	% Female FT
<b>Overall</b>	<b>6,588</b>	<b>7,766</b>	<b>1.18</b>	<b>19.7%</b>	<b>80.3%</b>	<b>1.09</b>	<b>1.20</b>	<b>87.2%</b>	<b>84.8%</b>	<b>87.8%</b>	<b>68.8%</b>	<b>31.2%</b>	<b>83.4%</b>	<b>65.2%</b>
Community Health & Wellbeing	8	9	1.11	11.1%	88.9%	1.00	1.12	100.0%	100.0%	100.0%	77.8%	22.2%	100.0%	100.0%
Mental Health	866	940	1.09	23.2%	76.8%	1.03	1.10	83.0%	83.0%	83.5%	86.6%	13.4%	95.4%	95.4%
Primary Care	1,719	2,003	1.16	15.7%	84.3%	1.06	1.19	86.9%	86.9%	88.3%	67.5%	32.5%	81.2%	81.2%
Social Care	3,994	4,814	1.21	20.7%	79.3%	1.11	1.23	88.1%	88.1%	88.4%	65.8%	34.2%	81.4%	81.4%

## CHO 7 Skills Mix by Staff Grouping: June 2020

Jun 2020 (Dec 2018 figure: 6,557)	WTE Dec 2015	WTE Dec 2016	WTE Dec 2017	WTE Dec 2018	WTE Dec 2019	WTE May 2020	WTE Jun 2020
<b>Overall</b>	<b>5,479</b>	<b>5,579</b>	<b>6,406</b>	<b>6,557</b>	<b>6,515</b>	<b>6,563</b>	<b>6,588</b>
Consultant Medicine	2.9%	3.2%	3.5%	2.7%	2.5%	2.9%	3.2%
Consultant Paediatrics	0.2%	0.1%	0.1%	0.1%	0.1%	0.1%	0.1%
Consultant Psychiatry	23.8%	19.2%	18.2%	18.1%	19.2%	20.2%	20.3%
Consultant Surgery	0.3%	0.3%	0.2%	0.5%	0.3%	0.3%	0.3%
<b>Consultants</b>	<b>27.2%</b>	<b>22.8%</b>	<b>22.0%</b>	<b>21.3%</b>	<b>22.1%</b>	<b>23.5%</b>	<b>23.9%</b>
Registrar	10.4%	22.2%	20.7%	24.9%	26.5%	25.2%	25.2%
Senior Registrar	3.0%	4.1%	3.7%	5.3%	7.0%	5.9%	5.6%
Specialist Registrar	2.3%	1.5%	2.2%	1.8%	1.5%	1.1%	1.1%
<b>Registrars</b>	<b>15.7%</b>	<b>27.8%</b>	<b>26.6%</b>	<b>31.9%</b>	<b>35.0%</b>	<b>32.2%</b>	<b>31.9%</b>
Interns	0.9%	0.8%	0.8%	0.8%	0.7%		
Senior House Officer	18.1%	15.3%	16.0%	12.6%	12.5%	13.1%	13.7%
<b>SHO/ Interns</b>	<b>19.0%</b>	<b>16.1%</b>	<b>16.8%</b>	<b>13.3%</b>	<b>13.2%</b>	<b>13.1%</b>	<b>13.7%</b>
Dentists	18.4%	15.6%	13.9%	13.8%	12.5%	13.4%	12.8%
Other Medical	19.8%	17.7%	20.8%	19.6%	17.2%	17.8%	17.6%
<b>Medical/ Dental, other</b>	<b>38.2%</b>	<b>33.3%</b>	<b>34.7%</b>	<b>33.4%</b>	<b>29.7%</b>	<b>31.2%</b>	<b>30.4%</b>
<b>Medical &amp; Dental</b>	<b>3.9%</b>	<b>4.6%</b>	<b>4.0%</b>	<b>4.0%</b>	<b>4.1%</b>	<b>100.0%</b>	<b>4.1%</b>
Clinical Nurse/ Midwife Manager	17.4%	18.8%	19.0%	18.9%	19.3%	18.8%	18.7%
Director Nursing/Midwifery, Assistant	2.9%	3.3%	2.9%	3.3%	3.1%	3.1%	3.2%
Director of Nursing/Midwifery	1.1%	1.0%	1.3%	1.1%	0.9%	1.1%	1.1%
<b>Nurse/ Midwife Manager</b>	<b>21.4%</b>	<b>23.2%</b>	<b>23.2%</b>	<b>23.3%</b>	<b>23.3%</b>	<b>23.0%</b>	<b>23.0%</b>
Advanced Nurse/ Midwife Practitioner	0.1%	0.1%	0.1%	0.1%	0.3%	0.4%	0.4%
Clinical Nurse/ Midwife Specialist	4.0%	4.1%	4.5%	5.0%	5.3%	5.4%	5.4%
<b>Nurse/ Midwife Specialist &amp; AN/MP</b>	<b>4.1%</b>	<b>4.2%</b>	<b>4.6%</b>	<b>5.1%</b>	<b>5.5%</b>	<b>5.8%</b>	<b>5.8%</b>
Staff Nurse [Intellectual Disability]	14.4%	14.2%	13.4%	12.9%	11.4%	10.7%	10.6%
Staff Nurse [Psychiatric]	14.7%	13.3%	13.2%	11.7%	11.2%	10.9%	10.8%
Staff Nurses [General/ Children's]	32.5%	31.5%	32.9%	33.9%	35.7%	35.8%	36.1%
<b>Staff Nurse/ Staff Midwife</b>	<b>61.6%</b>	<b>59.1%</b>	<b>59.4%</b>	<b>58.6%</b>	<b>58.4%</b>	<b>57.3%</b>	<b>57.5%</b>
<b>Public Health Nurse</b>	<b>10.9%</b>	<b>11.2%</b>	<b>10.8%</b>	<b>11.5%</b>	<b>10.3%</b>	<b>9.3%</b>	<b>9.3%</b>
Pre-registration Nurse/ Midwife Intern	0.1%	0.1%		0.4%	0.1%		
Pre-registration Nurse Intern (COVID-19)						2.5%	2.5%
Post-registration Nurse/ Midwife Student	1.5%	1.4%	0.9%	0.4%	1.2%	1.1%	1.1%
Nursing/ Midwifery awaiting registration			0.5%	0.2%	0.6%	0.4%	0.3%
<b>Nursing/ Midwifery Student</b>	<b>1.6%</b>	<b>1.5%</b>	<b>1.4%</b>	<b>1.0%</b>	<b>1.9%</b>	<b>4.0%</b>	<b>3.9%</b>
<b>Nursing/ Midwifery other</b>	<b>0.6%</b>	<b>0.8%</b>	<b>0.5%</b>	<b>0.5%</b>	<b>0.6%</b>	<b>0.5%</b>	<b>0.5%</b>
<b>Nursing &amp; Midwifery</b>	<b>29.8%</b>	<b>28.8%</b>	<b>26.9%</b>	<b>25.9%</b>	<b>26.1%</b>	<b>100.0%</b>	<b>26.8%</b>
Dietitians	2.3%	2.4%	1.8%	2.3%	2.3%	2.1%	2.3%
Occupational Therapists	21.3%	21.3%	16.1%	16.9%	16.8%	17.4%	17.4%
Orthoptists	0.0%	0.0%					
Physiotherapists	15.3%	15.4%	11.8%	11.5%	10.4%	11.2%	11.0%
Podiatrists & Chiropodists	0.1%	0.1%	0.1%	0.1%	0.1%	0.2%	0.2%
Speech & Language Therapists	11.9%	13.5%	12.1%	11.2%	11.5%	11.5%	11.5%
<b>Therapy Professions</b>	<b>50.8%</b>	<b>52.8%</b>	<b>41.9%</b>	<b>41.9%</b>	<b>41.1%</b>	<b>42.3%</b>	<b>42.4%</b>
Audiology	0.0%	0.1%					
Clinical Measurement	0.1%	0.1%	0.1%	0.1%	0.1%	0.1%	0.1%
Medical Laboratory		0.1%					
Phlebotomists	0.1%	0.1%	0.1%	0.1%	0.1%	0.1%	0.1%
Radiographers	0.2%	0.1%	0.1%	0.1%	0.1%	0.1%	0.1%
<b>Health Science/ Diagnostics</b>	<b>0.4%</b>	<b>0.5%</b>	<b>0.3%</b>	<b>0.3%</b>	<b>0.3%</b>	<b>0.3%</b>	<b>0.3%</b>
<b>Social Care</b>	<b>15.7%</b>	<b>14.2%</b>	<b>31.3%</b>	<b>32.8%</b>	<b>33.9%</b>	<b>32.9%</b>	<b>32.6%</b>
<b>Social Workers</b>	<b>12.9%</b>	<b>13.9%</b>	<b>10.7%</b>	<b>10.1%</b>	<b>9.6%</b>	<b>10.0%</b>	<b>9.7%</b>
<b>Psychologists</b>	<b>9.4%</b>	<b>8.7%</b>	<b>8.1%</b>	<b>7.7%</b>	<b>7.4%</b>	<b>7.3%</b>	<b>7.3%</b>

Jun 2020 (Dec 2018 figure: 6,557)	WTE Dec 2015	WTE Dec 2016	WTE Dec 2017	WTE Dec 2018	WTE Dec 2019	WTE May 2020	WTE Jun 2020
<b>Overall</b>	<b>5,479</b>	<b>5,579</b>	<b>6,406</b>	<b>6,557</b>	<b>6,515</b>	<b>6,563</b>	<b>6,588</b>
<b>Pharmacy</b>	<b>5.5%</b>	<b>4.8%</b>	<b>3.7%</b>	<b>3.5%</b>	<b>3.7%</b>	<b>3.4%</b>	<b>3.7%</b>
Counsellor Therapists	4.2%	3.9%	3.1%	2.8%	3.3%	3.2%	3.3%
Dental Hygienists	0.5%	0.4%	0.3%	0.4%	0.5%	0.4%	0.4%
Other Health & Social Care	0.5%	0.6%	0.5%	0.4%	0.2%	0.1%	0.1%
Play Therapists/ Specialists	0.1%	0.1%	0.1%	0.1%	0.1%	0.1%	0.3%
<b>H&amp;SC, Other</b>	<b>5.2%</b>	<b>5.1%</b>	<b>4.1%</b>	<b>3.7%</b>	<b>4.1%</b>	<b>3.8%</b>	<b>4.0%</b>
<b>Health &amp; Social Care Professionals</b>	<b>13.8%</b>	<b>14.2%</b>	<b>16.4%</b>	<b>16.7%</b>	<b>16.8%</b>	<b>100.0%</b>	<b>17.0%</b>
Executive Management	2.2%	2.9%	2.5%	1.9%	2.1%	2.3%	2.3%
Senior Management (VIII & GM)	9.4%	8.7%	8.5%	9.2%	9.9%	9.8%	9.9%
<b>Management (VIII &amp; above)</b>	<b>11.7%</b>	<b>11.6%</b>	<b>11.0%</b>	<b>11.1%</b>	<b>12.0%</b>	<b>12.1%</b>	<b>12.2%</b>
Middle Management (V-VII)	24.1%	23.7%	26.0%	27.2%	29.9%	30.7%	31.0%
Other Administrative	0.2%	0.1%	0.2%	0.1%	0.2%	0.1%	0.1%
<b>Administrative/ Supervisory (V to VII)</b>	<b>24.3%</b>	<b>23.8%</b>	<b>26.1%</b>	<b>27.3%</b>	<b>30.1%</b>	<b>30.9%</b>	<b>31.1%</b>
<b>Clerical (III &amp; IV)</b>	<b>64.0%</b>	<b>64.6%</b>	<b>62.9%</b>	<b>61.6%</b>	<b>57.9%</b>	<b>57.0%</b>	<b>56.7%</b>
<b>Management &amp; Administrative</b>	<b>9.8%</b>	<b>10.0%</b>	<b>9.5%</b>	<b>9.4%</b>	<b>9.5%</b>	<b>100.0%</b>	<b>9.7%</b>
Catering	12.1%	12.0%	13.0%	12.8%	13.1%	12.9%	13.0%
Household Services	59.6%	59.9%	59.9%	60.4%	59.5%	59.8%	59.3%
Other Labs & Associated	0.3%	0.2%	0.2%	0.2%	0.2%	0.2%	0.2%
Other Support	3.9%	3.7%	3.0%	3.2%	3.1%	3.2%	3.2%
Portering	17.3%	16.7%	14.5%	14.6%	14.9%	14.5%	14.6%
<b>Support</b>	<b>93.2%</b>	<b>92.6%</b>	<b>90.6%</b>	<b>91.2%</b>	<b>90.9%</b>	<b>90.6%</b>	<b>90.3%</b>
<b>Maintenance/ Technical</b>	<b>6.8%</b>	<b>7.4%</b>	<b>9.4%</b>	<b>8.8%</b>	<b>9.1%</b>	<b>9.4%</b>	<b>9.7%</b>
<b>General Support</b>	<b>8.2%</b>	<b>7.9%</b>	<b>7.7%</b>	<b>7.4%</b>	<b>7.5%</b>	<b>100.0%</b>	<b>6.7%</b>
HCA, Nurse's Aide, etc.	66.5%	66.9%	66.4%	67.6%	68.7%	68.0%	67.9%
Health & Social Care Assistants	0.5%	0.4%	0.3%	0.9%	0.5%	0.7%	0.9%
<b>Health Care Assistants</b>	<b>66.9%</b>	<b>67.4%</b>	<b>66.7%</b>	<b>68.5%</b>	<b>69.2%</b>	<b>68.6%</b>	<b>68.9%</b>
Community Welfare Officers	0.1%	0.1%	0.1%	0.0%	0.0%	0.0%	0.0%
Other Care Grades	25.0%	24.3%	26.5%	25.7%	25.5%	25.6%	25.5%
<b>Care, other</b>	<b>25.1%</b>	<b>24.4%</b>	<b>26.6%</b>	<b>25.8%</b>	<b>25.5%</b>	<b>25.7%</b>	<b>25.5%</b>
<b>Home Help</b>	<b>8.0%</b>	<b>8.2%</b>	<b>6.7%</b>	<b>5.7%</b>	<b>5.3%</b>	<b>5.7%</b>	<b>5.6%</b>
<b>Patient &amp; Client Care</b>	<b>34.5%</b>	<b>34.6%</b>	<b>35.5%</b>	<b>36.5%</b>	<b>36.7%</b>	<b>100.0%</b>	<b>35.8%</b>
<b>Total</b>	<b>100 %</b>	<b>100 %</b>	<b>100 %</b>	<b>100 %</b>	<b>100%</b>	<b>100 %</b>	<b>100 %</b>

# CHO 7 Skills Mix by Care Group: June 2020

Jun 2020 (Dec 2018 figure: 835)	WTE Dec 2015	WTE Dec 2016	WTE Dec 2017	WTE Dec 2018	WTE Dec 2019	WTE May 2020	WTE Jun 2020
<b>Mental Health</b>	<b>837</b>	<b>828</b>	<b>859</b>	<b>835</b>	<b>834.98</b>	<b>866.14</b>	<b>866.28</b>
<b>Consultants</b>	<b>47.0%</b>	<b>44.2%</b>	<b>43.0%</b>	<b>43.6%</b>	<b>41.6%</b>	<b>44.5%</b>	<b>45.5%</b>
Registrar	17.2%	19.7%	17.8%	25.1%	22.9%	21.3%	21.7%
Senior Registrar	6.8%	9.4%	9.8%	12.7%	16.5%	14.2%	13.6%
Specialist Registrar			1.0%		0.9%	0.8%	0.9%
<b>Registrars</b>	<b>24.0%</b>	<b>29.1%</b>	<b>28.7%</b>	<b>37.8%</b>	<b>40.3%</b>	<b>36.3%</b>	<b>36.2%</b>
Interns	2.1%	2.0%	2.1%	2.0%	1.7%		
Senior House Officer	27.0%	24.7%	26.2%	16.6%	16.4%	19.3%	18.3%
<b>SHO/ Interns</b>	<b>29.1%</b>	<b>26.7%</b>	<b>28.3%</b>	<b>18.6%</b>	<b>18.2%</b>	<b>19.3%</b>	<b>18.3%</b>
<b>Medical &amp; Dental</b>	<b>11.5%</b>	<b>12.2%</b>	<b>11.1%</b>	<b>12.3%</b>	<b>12.3%</b>	<b>12.7%</b>	<b>12.7%</b>
Clinical Nurse/ Midwife Manager	22.3%	25.7%	24.5%	27.0%	26.5%	24.5%	24.7%
Director Nursing/Midwifery, Assistant	3.5%	4.1%	4.5%	5.0%	4.3%	4.1%	4.2%
Director of Nursing/Midwifery	0.8%	0.8%	0.8%	0.8%	0.8%	0.7%	0.7%
<b>Nurse/ Midwife Manager</b>	<b>26.6%</b>	<b>30.6%</b>	<b>29.8%</b>	<b>32.8%</b>	<b>31.5%</b>	<b>29.4%</b>	<b>29.6%</b>
Advanced Nurse/ Midwife Practitioner			0.3%	0.3%	0.8%	1.0%	1.3%
Clinical Nurse/ Midwife Specialist	6.5%	7.2%	6.7%	7.0%	10.0%	10.0%	10.1%
<b>Nurse/ Midwife Specialist &amp; AN/MP</b>	<b>6.5%</b>	<b>7.2%</b>	<b>7.0%</b>	<b>7.3%</b>	<b>10.8%</b>	<b>11.0%</b>	<b>11.4%</b>
Staff Nurse [Intellectual Disability]						0.2%	0.2%
Staff Nurse [Psychiatric]	63.5%	58.1%	58.4%	54.3%	51.1%	46.7%	46.8%
Staff Nurses [General/ Children's]	1.9%	1.9%	1.1%	1.2%	1.5%	2.8%	2.3%
<b>Staff Nurse/ Staff Midwife</b>	<b>65.4%</b>	<b>60.1%</b>	<b>59.5%</b>	<b>55.5%</b>	<b>52.6%</b>	<b>49.8%</b>	<b>49.4%</b>
Pre-registration Nurse/ Midwife Intern	0.4%	0.5%		1.6%	0.4%		
Pre-registration Nurse Intern (COVID-19)						7.1%	7.1%
Nursing/ Midwifery awaiting registration			2.1%	1.1%	2.7%	1.0%	1.0%
<b>Nursing/ Midwifery Student</b>	<b>0.4%</b>	<b>0.5%</b>	<b>2.1%</b>	<b>2.8%</b>	<b>3.0%</b>	<b>8.1%</b>	<b>8.0%</b>
Nursing Education/Clinical	1.1%	1.7%	1.6%	1.7%	2.0%	1.7%	1.6%
<b>Nursing/ Midwifery other</b>	<b>1.1%</b>	<b>1.7%</b>	<b>1.6%</b>	<b>1.7%</b>	<b>2.0%</b>	<b>1.7%</b>	<b>1.6%</b>
<b>Nursing &amp; Midwifery</b>	<b>44.8%</b>	<b>43.7%</b>	<b>44.9%</b>	<b>43.3%</b>	<b>43.3%</b>	<b>46.9%</b>	<b>46.9%</b>
Dietitians	0.7%			1.4%	2.1%	2.1%	2.2%
Occupational Therapists	29.9%	30.6%	28.0%	29.8%	27.3%	28.3%	28.2%
Speech & Language Therapists	4.2%	5.0%	4.7%	3.5%	4.8%	4.3%	3.2%
<b>Therapy Professions</b>	<b>34.9%</b>	<b>35.5%</b>	<b>32.7%</b>	<b>34.6%</b>	<b>34.2%</b>	<b>34.7%</b>	<b>33.6%</b>
<b>Social Care</b>	<b>8.0%</b>	<b>7.9%</b>	<b>7.4%</b>	<b>5.8%</b>	<b>5.4%</b>	<b>5.4%</b>	<b>5.5%</b>
<b>Social Workers</b>	<b>28.9%</b>	<b>30.2%</b>	<b>29.0%</b>	<b>26.2%</b>	<b>24.4%</b>	<b>26.6%</b>	<b>26.4%</b>
<b>Psychologists</b>	<b>21.0%</b>	<b>18.3%</b>	<b>20.7%</b>	<b>23.9%</b>	<b>22.4%</b>	<b>20.2%</b>	<b>20.6%</b>
<b>Pharmacy</b>					<b>0.7%</b>	<b>0.7%</b>	<b>0.7%</b>
Counsellor Therapists	6.2%	6.6%	8.4%	7.6%	11.4%	11.9%	12.7%
Other Health & Social Care	1.1%	1.5%	1.8%	1.8%	1.4%	0.5%	0.4%
<b>H&amp;SC, Other</b>	<b>7.3%</b>	<b>8.1%</b>	<b>10.2%</b>	<b>9.4%</b>	<b>12.9%</b>	<b>12.4%</b>	<b>13.2%</b>
<b>Health &amp; Social Care Professionals</b>	<b>16.0%</b>	<b>16.4%</b>	<b>16.9%</b>	<b>16.8%</b>	<b>16.8%</b>	<b>16.0%</b>	<b>16.0%</b>
<b>Management (VIII &amp; above)</b>	<b>3.3%</b>	<b>4.3%</b>	<b>4.1%</b>	<b>3.9%</b>	<b>4.3%</b>	<b>4.2%</b>	<b>4.1%</b>
<b>Administrative/ Supervisory (V to VII)</b>	<b>14.9%</b>	<b>18.8%</b>	<b>23.2%</b>	<b>25.3%</b>	<b>24.1%</b>	<b>27.0%</b>	<b>25.8%</b>
<b>Clerical (III &amp; IV)</b>	<b>81.7%</b>	<b>76.9%</b>	<b>72.7%</b>	<b>70.8%</b>	<b>71.6%</b>	<b>68.8%</b>	<b>70.0%</b>
<b>Management &amp; Administrative</b>	<b>7.2%</b>	<b>8.0%</b>	<b>8.0%</b>	<b>8.8%</b>	<b>8.8%</b>	<b>7.9%</b>	<b>7.9%</b>
<b>Support</b>	<b>93.2%</b>	<b>92.3%</b>	<b>92.1%</b>	<b>91.7%</b>	<b>90.5%</b>	<b>89.6%</b>	<b>89.6%</b>
<b>Maintenance/ Technical</b>	<b>6.8%</b>	<b>7.7%</b>	<b>7.9%</b>	<b>8.3%</b>	<b>9.5%</b>	<b>10.4%</b>	<b>10.4%</b>
<b>General Support</b>	<b>3.4%</b>	<b>3.2%</b>	<b>3.0%</b>	<b>2.9%</b>	<b>2.9%</b>	<b>2.2%</b>	<b>2.2%</b>
HCA, Nurse's Aide, etc.	33.1%	33.7%	32.2%	31.0%	26.6%	28.7%	28.2%

Jun 2020 (Dec 2018 figure: 835)	WTE Dec 2015	WTE Dec 2016	WTE Dec 2017	WTE Dec 2018	WTE Dec 2019	WTE May 2020	WTE Jun 2020
<b>Mental Health</b>	<b>837</b>	<b>828</b>	<b>859</b>	<b>835</b>	<b>834.98</b>	<b>866.14</b>	<b>866.28</b>
Health Care Assistants	33.1%	33.7%	32.2%	31.0%	26.6%	28.7%	28.2%
Care, other	66.9%	66.3%	67.8%	69.0%	73.4%	71.3%	71.8%
<b>Patient &amp; Client Care</b>	<b>17.1%</b>	<b>16.4%</b>	<b>16.1%</b>	<b>16.0%</b>	<b>16.0%</b>	<b>14.3%</b>	<b>14.3%</b>
<b>Total</b>	<b>100 %</b>	<b>100 %</b>	<b>100 %</b>	<b>100 %</b>	<b>100 %</b>	<b>100 %</b>	

Jun 2020 (Dec 2018 figure: 1,776)	WTE Dec 2015	WTE Dec 2016	WTE Dec 2017	WTE Dec 2018	WTE Dec 2019	WTE May 2020	WTE Jun 2020
<b>Primary Care</b>	<b>1,647</b>	<b>1,687</b>	<b>1,691</b>	<b>1,776</b>	<b>1,702.01</b>	<b>1,701.20</b>	<b>1,719.33</b>
Consultant Medicine	6.3%	6.1%	6.4%	4.9%	4.8%	5.5%	6.2%
Consultant Psychiatry	3.0%	1.5%	2.2%	2.1%	2.9%	2.9%	2.9%
Consultant Surgery	0.8%	0.6%	0.3%	0.8%	0.6%	0.6%	0.6%
<b>Consultants</b>	<b>10.1%</b>	<b>8.2%</b>	<b>8.9%</b>	<b>7.8%</b>	<b>8.3%</b>	<b>9.0%</b>	<b>9.7%</b>
<b>Registrars</b>	<b>8.9%</b>	<b>28.9%</b>	<b>27.1%</b>	<b>30.1%</b>	<b>33.0%</b>	<b>30.6%</b>	<b>30.5%</b>
<b>SHO/ Interns</b>	<b>5.1%</b>	<b>4.5%</b>	<b>4.2%</b>	<b>5.1%</b>	<b>4.3%</b>	<b>4.5%</b>	<b>4.8%</b>
Dentists	39.9%	29.9%	25.7%	25.3%	24.4%	25.5%	24.7%
Other Medical	36.0%	28.5%	34.1%	31.7%	30.1%	30.4%	30.3%
<b>Medical/ Dental, other</b>	<b>75.9%</b>	<b>58.4%</b>	<b>59.8%</b>	<b>57.0%</b>	<b>54.5%</b>	<b>55.9%</b>	<b>55.0%</b>
<b>Medical &amp; Dental</b>	<b>5.9%</b>	<b>7.9%</b>	<b>8.1%</b>	<b>8.1%</b>	<b>8.5%</b>	<b>8.1%</b>	<b>8.1%</b>
Clinical Nurse/ Midwife Manager	11.0%	10.2%	10.1%	10.2%	10.7%	11.3%	11.3%
Director Nursing/Midwifery, Assistant	3.6%	3.9%	3.7%	3.8%	3.4%	4.4%	4.3%
Director of Nursing/Midwifery	1.0%	1.1%	1.1%	1.2%	1.1%	1.3%	1.3%
<b>Nurse/ Midwife Manager</b>	<b>15.5%</b>	<b>15.2%</b>	<b>14.9%</b>	<b>15.2%</b>	<b>15.2%</b>	<b>17.0%</b>	<b>17.0%</b>
<b>Nurse/ Midwife Specialist &amp; AN/MP</b>	<b>6.5%</b>	<b>6.6%</b>	<b>8.4%</b>	<b>8.8%</b>	<b>8.7%</b>	<b>9.2%</b>	<b>9.3%</b>
<b>Staff Nurse/ Staff Midwife</b>	<b>37.5%</b>	<b>37.5%</b>	<b>36.3%</b>	<b>37.5%</b>	<b>38.7%</b>	<b>38.2%</b>	<b>38.2%</b>
<b>Public Health Nurse</b>	<b>35.0%</b>	<b>35.5%</b>	<b>36.7%</b>	<b>36.9%</b>	<b>33.1%</b>	<b>31.4%</b>	<b>31.5%</b>
<b>Nursing/ Midwifery Student</b>	<b>4.8%</b>	<b>4.5%</b>	<b>3.1%</b>	<b>1.3%</b>	<b>4.0%</b>	<b>3.8%</b>	<b>3.7%</b>
Nursing Education/Clinical	0.6%	0.5%	0.5%	0.4%	0.4%	0.4%	0.4%
Other Nursing/ Midwifery		0.2%					
<b>Nursing/ Midwifery other</b>	<b>0.6%</b>	<b>0.7%</b>	<b>0.5%</b>	<b>0.4%</b>	<b>0.4%</b>	<b>0.4%</b>	<b>0.4%</b>
<b>Nursing &amp; Midwifery</b>	<b>30.5%</b>	<b>30.1%</b>	<b>30.1%</b>	<b>29.8%</b>	<b>31.1%</b>	<b>30.3%</b>	<b>30.3%</b>
Dietitians	3.6%	3.8%	4.0%	4.8%	3.8%	3.5%	3.7%
Occupational Therapists	25.9%	24.9%	23.4%	26.8%	26.6%	26.1%	26.1%
Orthoptists	0.1%	0.1%					
Physiotherapists	22.5%	23.1%	22.5%	21.4%	20.1%	21.7%	21.7%
Podiatrists & Chiropodists				0.1%	0.3%	0.5%	0.5%
Speech & Language Therapists	16.4%	18.2%	20.3%	19.2%	20.5%	20.3%	19.7%
<b>Therapy Professions</b>	<b>68.5%</b>	<b>70.1%</b>	<b>70.3%</b>	<b>72.4%</b>	<b>71.4%</b>	<b>72.1%</b>	<b>71.7%</b>
Phlebotomists	0.1%	0.2%	0.2%	0.1%	0.1%	0.1%	0.1%
<b>Health Science/ Diagnostics</b>	<b>0.1%</b>	<b>0.2%</b>	<b>0.2%</b>	<b>0.1%</b>	<b>0.1%</b>	<b>0.1%</b>	<b>0.1%</b>
<b>Social Care</b>	<b>1.1%</b>	<b>1.1%</b>	<b>1.1%</b>	<b>1.1%</b>	<b>0.9%</b>	<b>1.0%</b>	<b>1.0%</b>
<b>Social Workers</b>	<b>7.6%</b>	<b>7.7%</b>	<b>7.4%</b>	<b>6.4%</b>	<b>7.0%</b>	<b>7.0%</b>	<b>6.8%</b>
<b>Psychologists</b>	<b>5.9%</b>	<b>5.7%</b>	<b>6.1%</b>	<b>6.2%</b>	<b>5.8%</b>	<b>6.1%</b>	<b>6.3%</b>
<b>Pharmacy</b>	<b>9.4%</b>	<b>8.2%</b>	<b>8.5%</b>	<b>7.6%</b>	<b>8.5%</b>	<b>7.8%</b>	<b>8.3%</b>
Counsellor Therapists	6.1%	5.7%	5.2%	4.8%	5.0%	4.6%	4.6%
Dental Hygienists	1.0%	1.0%	0.9%	1.3%	1.4%	1.3%	1.3%
Other Health & Social Care	0.3%	0.3%	0.3%	0.3%			
<b>H&amp;SC, Other</b>	<b>7.4%</b>	<b>7.0%</b>	<b>6.4%</b>	<b>6.4%</b>	<b>6.4%</b>	<b>5.9%</b>	<b>5.9%</b>
<b>Health &amp; Social Care Professionals</b>	<b>21.5%</b>	<b>21.5%</b>	<b>21.4%</b>	<b>21.4%</b>	<b>22.3%</b>	<b>22.2%</b>	<b>22.2%</b>
Executive Management	1.7%	2.6%	2.3%	1.9%	2.4%	2.4%	2.4%
Senior Management (VIII & GM)	6.9%	6.5%	6.8%	8.0%	9.1%	7.5%	7.7%

Jun 2020 (Dec 2018 figure: 1,776)	WTE Dec 2015	WTE Dec 2016	WTE Dec 2017	WTE Dec 2018	WTE Dec 2019	WTE May 2020	WTE Jun 2020
<b>Primary Care</b>	<b>1,647</b>	<b>1,687</b>	<b>1,691</b>	<b>1,776</b>	<b>1,702.01</b>	<b>1,701.20</b>	<b>1,719.33</b>
Management (VIII & above)	8.5%	9.1%	9.1%	9.9%	11.6%	9.9%	10.0%
Administrative/ Supervisory (V to VII)	22.1%	20.8%	23.0%	22.7%	26.5%	27.9%	27.9%
Clerical (III & IV)	69.4%	70.1%	67.9%	67.4%	62.0%	62.2%	62.0%
<b>Management &amp; Administrative</b>	<b>18.4%</b>	<b>18.0%</b>	<b>18.4%</b>	<b>17.5%</b>	<b>18.3%</b>	<b>17.0%</b>	<b>17.0%</b>
<b>Support</b>	<b>94.4%</b>	<b>93.2%</b>	<b>94.6%</b>	<b>93.8%</b>	<b>93.0%</b>	<b>92.9%</b>	<b>92.8%</b>
Maintenance	5.6%	6.1%	4.6%	5.5%	6.2%	6.3%	6.4%
Technical Services		0.7%	0.8%	0.7%	0.8%	0.8%	0.8%
<b>Maintenance/ Technical</b>	<b>5.6%</b>	<b>6.8%</b>	<b>5.4%</b>	<b>6.2%</b>	<b>7.0%</b>	<b>7.1%</b>	<b>7.2%</b>
<b>General Support</b>	<b>8.4%</b>	<b>8.0%</b>	<b>7.7%</b>	<b>7.5%</b>	<b>7.8%</b>	<b>7.2%</b>	<b>7.2%</b>
HCA, Nurse's Aide, etc.	46.0%	47.0%	48.3%	44.1%	45.9%	45.6%	46.1%
Health & Social Care Assistants	1.6%	1.0%	0.9%	6.4%	2.8%	4.4%	5.5%
<b>Health Care Assistants</b>	<b>47.6%</b>	<b>48.0%</b>	<b>49.2%</b>	<b>50.6%</b>	<b>48.7%</b>	<b>50.0%</b>	<b>51.6%</b>
Community Welfare Officers	0.8%	0.8%	0.8%	0.3%	0.4%	0.4%	0.3%
Other Care Grades	51.6%	51.2%	50.0%	49.1%	50.9%	49.6%	48.1%
<b>Care, other</b>	<b>52.4%</b>	<b>52.0%</b>	<b>50.8%</b>	<b>49.4%</b>	<b>51.3%</b>	<b>50.0%</b>	<b>48.4%</b>
<b>Patient &amp; Client Care</b>	<b>15.2%</b>	<b>14.5%</b>	<b>14.3%</b>	<b>15.7%</b>	<b>16.3%</b>	<b>15.2%</b>	<b>15.2%</b>
<b>Total</b>	<b>100 %</b>	<b>100 %</b>	<b>100 %</b>	<b>100 %</b>	<b>100 %</b>	<b>100 %</b>	

Jun 2020 (Dec 2018 figure: 2,903)	WTE Dec 2015	WTE Dec 2016	WTE Dec 2017	WTE Dec 2018	WTE Dec 2019	WTE May 2020	WTE Jun 2020
<b>Disabilities</b>	<b>1,867</b>	<b>1,943</b>	<b>2,792</b>	<b>2,903</b>	<b>2,981.59</b>	<b>2,969.70</b>	<b>2,972.81</b>
Consultant Paediatrics	2.8%	2.9%	2.5%	3.1%	3.0%	3.7%	2.7%
Consultant Psychiatry	26.5%	19.1%	16.2%	1.9%	1.7%	2.2%	1.6%
<b>Consultants</b>	<b>29.3%</b>	<b>22.0%</b>	<b>18.8%</b>	<b>5.0%</b>	<b>4.7%</b>	<b>5.9%</b>	<b>4.3%</b>
<b>Registrars</b>	<b>16.6%</b>	<b>26.0%</b>	<b>22.2%</b>	<b>21.5%</b>	<b>26.1%</b>	<b>27.8%</b>	<b>24.1%</b>
<b>SHO/ Interns</b>	<b>41.4%</b>	<b>43.3%</b>	<b>51.7%</b>	<b>64.3%</b>	<b>60.5%</b>	<b>55.3%</b>	<b>63.5%</b>
<b>Medical/ Dental, other</b>	<b>12.7%</b>	<b>8.7%</b>	<b>7.4%</b>	<b>9.3%</b>	<b>8.7%</b>	<b>11.0%</b>	<b>8.0%</b>
<b>Medical &amp; Dental</b>	<b>0.6%</b>	<b>0.6%</b>	<b>0.5%</b>	<b>0.4%</b>	<b>0.4%</b>	<b>0.4%</b>	<b>0.4%</b>
Clinical Nurse/ Midwife Manager	21.5%	23.2%	23.9%	22.4%	22.4%	21.8%	21.9%
Director Nursing/Midwifery, Assistant	1.2%	1.5%	1.1%	1.1%	1.1%	1.1%	1.3%
Director of Nursing/Midwifery	0.7%	0.5%	1.4%	1.0%	0.8%	0.8%	0.6%
<b>Nurse/ Midwife Manager</b>	<b>23.5%</b>	<b>25.2%</b>	<b>26.4%</b>	<b>24.4%</b>	<b>24.3%</b>	<b>23.7%</b>	<b>23.7%</b>
Clinical Nurse/ Midwife Specialist	1.4%	1.3%	1.3%	2.0%	1.0%	1.0%	1.0%
<b>Nurse/ Midwife Specialist &amp; AN/MP</b>	<b>1.4%</b>	<b>1.3%</b>	<b>1.3%</b>	<b>2.0%</b>	<b>1.0%</b>	<b>1.0%</b>	<b>1.0%</b>
Staff Nurse [Intellectual Disability]	58.7%	57.6%	45.5%	43.3%	38.7%	36.5%	36.2%
Staff Nurses [General/ Children's]	15.8%	15.2%	26.7%	30.2%	35.9%	35.8%	36.1%
<b>Staff Nurse/ Staff Midwife</b>	<b>74.4%</b>	<b>72.8%</b>	<b>72.2%</b>	<b>73.5%</b>	<b>74.6%</b>	<b>72.3%</b>	<b>72.3%</b>
Pre-registration Nurse Intern (COVID-19)						2.9%	2.9%
<b>Nursing/ Midwifery Student</b>						<b>2.9%</b>	<b>2.9%</b>
<b>Nursing/ Midwifery other</b>	<b>0.6%</b>	<b>0.8%</b>	<b>0.1%</b>	<b>0.1%</b>	<b>0.1%</b>	<b>0.1%</b>	<b>0.1%</b>
<b>Nursing &amp; Midwifery</b>	<b>21.5%</b>	<b>20.4%</b>	<b>18.1%</b>	<b>17.5%</b>	<b>17.0%</b>	<b>17.3%</b>	<b>17.3%</b>
Dietitians	1.7%	1.6%	0.8%	0.8%	1.3%	1.1%	1.2%
Occupational Therapists	10.6%	13.0%	7.8%	7.0%	7.6%	9.0%	9.0%
Physiotherapists	11.0%	11.0%	6.3%	6.1%	5.5%	6.3%	5.9%
Speech & Language Therapists	10.7%	13.5%	9.1%	8.2%	7.6%	8.1%	8.6%
<b>Therapy Professions</b>	<b>34.1%</b>	<b>39.1%</b>	<b>24.0%</b>	<b>22.1%</b>	<b>22.0%</b>	<b>24.4%</b>	<b>24.8%</b>
Audiology	0.1%	0.2%					
Clinical Measurement	0.4%	0.4%	0.2%	0.2%	0.2%	0.2%	0.2%
Phlebotomists				0.2%	0.2%	0.2%	0.2%
Radiographers	0.4%	0.4%	0.2%	0.2%	0.2%	0.2%	0.2%



Jun 2020 (Dec 2018 figure: 2,903)	WTE Dec 2015	WTE Dec 2016	WTE Dec 2017	WTE Dec 2018	WTE Dec 2019	WTE May 2020	WTE Jun 2020
<b>Disabilities</b>	<b>1,867</b>	<b>1,943</b>	<b>2,792</b>	<b>2,903</b>	<b>2,981.59</b>	<b>2,969.70</b>	<b>2,972.81</b>
Health Science/ Diagnostics	0.9%	1.0%	0.4%	0.6%	0.5%	0.5%	0.5%
Social Care	45.2%	38.3%	62.1%	64.8%	65.2%	62.5%	62.2%
Social Workers	7.9%	10.1%	5.8%	6.3%	6.0%	6.2%	5.8%
Psychologists	9.6%	9.1%	6.4%	5.1%	5.0%	5.2%	5.2%
Pharmacy	1.7%	1.6%	0.8%	0.9%	0.9%	0.8%	0.9%
Counsellor Therapists	0.7%	0.6%	0.3%	0.3%	0.3%	0.3%	0.3%
Other Health & Social Care	0.0%	0.4%	0.2%				
Play Therapists/ Specialists							0.3%
<b>H&amp;SC, Other</b>	<b>0.7%</b>	<b>1.0%</b>	<b>0.5%</b>	<b>0.3%</b>	<b>0.3%</b>	<b>0.3%</b>	<b>0.6%</b>
<b>Health &amp; Social Care Professionals</b>	<b>12.3%</b>	<b>13.1%</b>	<b>18.1%</b>	<b>18.5%</b>	<b>18.0%</b>	<b>19.1%</b>	<b>19.1%</b>
Executive Management	4.9%	5.3%	3.9%	2.6%	2.5%	3.1%	3.2%
Senior Management (VIII & GM)	17.2%	14.3%	13.3%	13.7%	13.3%	14.3%	14.5%
<b>Management (VIII &amp; above)</b>	<b>22.1%</b>	<b>19.5%</b>	<b>17.2%</b>	<b>16.3%</b>	<b>15.8%</b>	<b>17.4%</b>	<b>17.7%</b>
<b>Administrative/ Supervisory (V to VII)</b>	<b>34.6%</b>	<b>35.3%</b>	<b>34.0%</b>	<b>37.0%</b>	<b>39.0%</b>	<b>37.7%</b>	<b>37.8%</b>
<b>Clerical (III &amp; IV)</b>	<b>43.3%</b>	<b>45.1%</b>	<b>48.7%</b>	<b>46.7%</b>	<b>45.3%</b>	<b>44.9%</b>	<b>44.4%</b>
<b>Management &amp; Administrative</b>	<b>6.6%</b>	<b>6.8%</b>	<b>6.4%</b>	<b>6.5%</b>	<b>6.3%</b>	<b>7.4%</b>	<b>7.4%</b>
<b>Support</b>	<b>89.0%</b>	<b>88.2%</b>	<b>84.1%</b>	<b>85.7%</b>	<b>85.4%</b>	<b>85.2%</b>	<b>84.3%</b>
Maintenance	9.7%	11.1%	15.5%	13.8%	13.0%	13.3%	14.7%
Technical Services	1.3%	0.6%	0.5%	0.5%	1.5%	1.5%	1.0%
<b>Maintenance/ Technical</b>	<b>11.0%</b>	<b>11.8%</b>	<b>15.9%</b>	<b>14.3%</b>	<b>14.6%</b>	<b>14.8%</b>	<b>15.7%</b>
<b>General Support</b>	<b>8.5%</b>	<b>8.1%</b>	<b>7.7%</b>	<b>7.1%</b>	<b>7.0%</b>	<b>6.4%</b>	<b>6.4%</b>
HCA, Nurse's Aide, etc.	71.3%	72.1%	70.6%	71.9%	72.9%	72.5%	72.7%
Health & Social Care Assistants	0.5%	0.6%	0.3%	0.2%	0.4%	0.3%	0.4%
<b>Health Care Assistants</b>	<b>71.8%</b>	<b>72.7%</b>	<b>70.8%</b>	<b>72.1%</b>	<b>73.3%</b>	<b>72.8%</b>	<b>73.1%</b>
<b>Care, other</b>	<b>24.8%</b>	<b>24.0%</b>	<b>27.2%</b>	<b>26.2%</b>	<b>25.4%</b>	<b>26.0%</b>	<b>25.6%</b>
<b>Home Help</b>	<b>3.4%</b>	<b>3.3%</b>	<b>1.9%</b>	<b>1.6%</b>	<b>1.3%</b>	<b>1.3%</b>	<b>1.2%</b>
<b>Patient &amp; Client Care</b>	<b>50.4%</b>	<b>50.9%</b>	<b>49.1%</b>	<b>50.0%</b>	<b>48.7%</b>	<b>49.4%</b>	<b>49.4%</b>
<b>Total</b>	<b>100 %</b>	<b>100 %</b>	<b>100 %</b>	<b>100 %</b>	<b>100 %</b>	<b>100 %</b>	

Jun 2020 (Dec 2018 figure: 1,044)	WTE Dec 2015	WTE Dec 2016	WTE Dec 2017	WTE Dec 2018	WTE Dec 2019	WTE May 2020	WTE Jun 2020
<b>Older People</b>	<b>1,128</b>	<b>1,121</b>	<b>1,064</b>	<b>1,044</b>	<b>995.93</b>	<b>1,017.33</b>	<b>1,021.63</b>
Senior House Officer	31.6%	33.3%	37.5%	28.6%	33.3%	33.3%	33.3%
<b>SHO/ Interns</b>	<b>31.6%</b>	<b>33.3%</b>	<b>37.5%</b>	<b>28.6%</b>	<b>33.3%</b>	<b>33.3%</b>	<b>33.3%</b>
<b>Medical/ Dental, other</b>	<b>68.4%</b>	<b>66.7%</b>	<b>62.5%</b>	<b>71.4%</b>	<b>66.7%</b>	<b>66.7%</b>	<b>66.7%</b>
<b>Medical &amp; Dental</b>	<b>0.8%</b>	<b>0.8%</b>	<b>0.8%</b>	<b>0.7%</b>	<b>0.7%</b>	<b>0.6%</b>	<b>0.6%</b>
Clinical Nurse/ Midwife Manager	16.4%	19.1%	18.6%	18.8%	20.3%	19.2%	17.8%
Director Nursing/Midwifery, Assistant	3.3%	3.8%	2.5%	4.0%	4.3%	2.7%	3.5%
Director of Nursing/Midwifery	2.0%	1.8%	2.2%	1.7%	1.1%	1.9%	1.8%
<b>Nurse/ Midwife Manager</b>	<b>21.6%</b>	<b>24.7%</b>	<b>23.2%</b>	<b>24.4%</b>	<b>25.8%</b>	<b>23.8%</b>	<b>23.2%</b>
<b>Nurse/ Midwife Specialist &amp; AN/MP</b>	<b>1.0%</b>	<b>1.0%</b>	<b>1.1%</b>	<b>1.4%</b>	<b>0.9%</b>	<b>1.1%</b>	<b>1.1%</b>
Staff Nurse [Psychiatric]		0.2%	0.2%				
Staff Nurses [General/ Children's]	76.9%	74.1%	75.4%	74.1%	73.3%	74.0%	75.3%
<b>Staff Nurse/ Staff Midwife</b>	<b>76.9%</b>	<b>74.3%</b>	<b>75.6%</b>	<b>74.1%</b>	<b>73.3%</b>	<b>74.0%</b>	<b>75.3%</b>
<b>Public Health Nurse</b>	<b>0.4%</b>	<b>0.1%</b>					
Nursing/ Midwifery awaiting registration						1.0%	0.5%
<b>Nursing/ Midwifery Student</b>						<b>1.0%</b>	<b>0.5%</b>
<b>Nursing &amp; Midwifery</b>	<b>31.5%</b>	<b>30.4%</b>	<b>30.4%</b>	<b>28.9%</b>	<b>30.3%</b>	<b>31.8%</b>	<b>31.8%</b>
Dietitians		2.6%	2.7%		3.6%	3.3%	3.2%

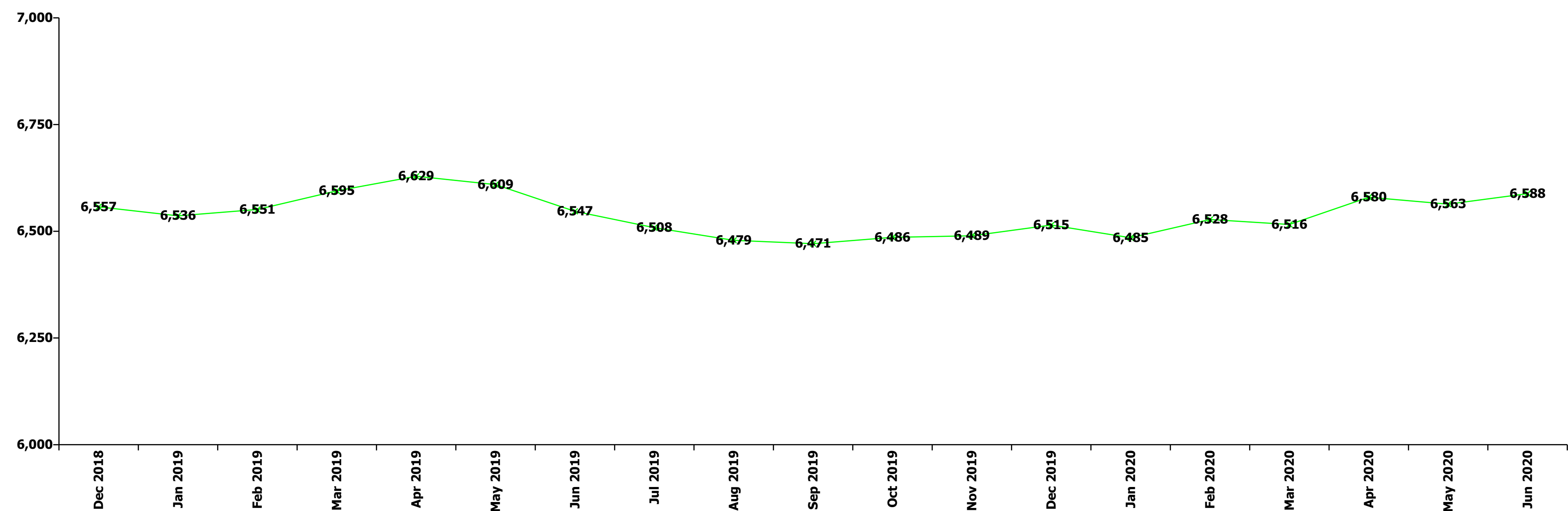
Jun 2020 (Dec 2018 figure: 1,044)	WTE Dec 2015	WTE Dec 2016	WTE Dec 2017	WTE Dec 2018	WTE Dec 2019	WTE May 2020	WTE Jun 2020
<b>Older People</b>	<b>1,128</b>	<b>1,121</b>	<b>1,064</b>	<b>1,044</b>	<b>995.93</b>	<b>1,017.33</b>	<b>1,021.63</b>
Occupational Therapists	11.3%	10.8%	10.7%	9.6%	14.9%	18.6%	17.3%
Physiotherapists	27.8%	27.3%	28.3%	29.5%	30.5%	23.3%	22.7%
Podiatrists & Chiropodists	1.8%	1.9%	1.8%	2.0%			
Speech & Language Therapists	2.7%		2.7%	2.6%			
<b>Therapy Professions</b>	<b>43.6%</b>	<b>42.5%</b>	<b>46.1%</b>	<b>43.6%</b>	<b>49.0%</b>	<b>45.2%</b>	<b>43.3%</b>
Medical Laboratory		2.6%					
Radiographers	2.1%						
<b>Health Science/ Diagnostics</b>	<b>2.1%</b>	<b>2.6%</b>					
<b>Social Workers</b>	<b>37.5%</b>	<b>39.2%</b>	<b>37.7%</b>	<b>41.0%</b>	<b>38.6%</b>	<b>41.5%</b>	<b>43.8%</b>
<b>Pharmacy</b>	<b>11.1%</b>	<b>10.5%</b>	<b>10.8%</b>	<b>10.3%</b>	<b>8.9%</b>	<b>9.9%</b>	<b>9.7%</b>
Other Health & Social Care	2.8%	2.6%	2.7%	2.6%			
Play Therapists/ Specialists	2.8%	2.6%	2.7%	2.6%	3.6%	3.3%	3.2%
<b>H&amp;SC, Other</b>	<b>5.6%</b>	<b>5.2%</b>	<b>5.4%</b>	<b>5.1%</b>	<b>3.6%</b>	<b>3.3%</b>	<b>3.2%</b>
<b>Health &amp; Social Care Professionals</b>	<b>3.2%</b>	<b>3.4%</b>	<b>3.5%</b>	<b>3.7%</b>	<b>3.9%</b>	<b>3.0%</b>	<b>3.0%</b>
Senior Management (VIII & GM)	14.9%	15.2%	10.0%	9.0%	9.9%	11.2%	10.7%
<b>Management (VIII &amp; above)</b>	<b>14.9%</b>	<b>15.2%</b>	<b>10.0%</b>	<b>9.0%</b>	<b>9.9%</b>	<b>11.2%</b>	<b>10.7%</b>
<b>Administrative/ Supervisory (V to VII)</b>	<b>23.9%</b>	<b>18.5%</b>	<b>21.1%</b>	<b>21.7%</b>	<b>22.7%</b>	<b>21.6%</b>	<b>26.4%</b>
<b>Clerical (III &amp; IV)</b>	<b>61.1%</b>	<b>66.3%</b>	<b>68.9%</b>	<b>69.3%</b>	<b>67.4%</b>	<b>67.2%</b>	<b>62.8%</b>
<b>Management &amp; Administrative</b>	<b>4.8%</b>	<b>4.7%</b>	<b>4.7%</b>	<b>4.2%</b>	<b>4.4%</b>	<b>5.4%</b>	<b>5.4%</b>
<b>Support</b>	<b>97.5%</b>	<b>97.5%</b>	<b>97.6%</b>	<b>97.5%</b>	<b>98.2%</b>	<b>98.1%</b>	<b>98.1%</b>
<b>Maintenance/ Technical</b>	<b>2.5%</b>	<b>2.5%</b>	<b>2.4%</b>	<b>2.5%</b>	<b>1.8%</b>	<b>1.9%</b>	<b>1.9%</b>
<b>General Support</b>	<b>10.7%</b>	<b>10.8%</b>	<b>11.6%</b>	<b>11.7%</b>	<b>12.2%</b>	<b>10.5%</b>	<b>10.5%</b>
HCA, Nurse's Aide, etc.	76.2%	74.5%	73.0%	77.4%	77.5%	76.0%	75.9%
Health & Social Care Assistants						0.2%	0.2%
<b>Health Care Assistants</b>	<b>76.2%</b>	<b>74.5%</b>	<b>73.0%</b>	<b>77.4%</b>	<b>77.5%</b>	<b>76.2%</b>	<b>76.1%</b>
<b>Care, other</b>	<b>2.4%</b>	<b>2.9%</b>	<b>2.9%</b>	<b>1.3%</b>	<b>1.0%</b>	<b>0.9%</b>	<b>0.9%</b>
<b>Home Help</b>	<b>21.4%</b>	<b>22.6%</b>	<b>24.1%</b>	<b>21.3%</b>	<b>21.5%</b>	<b>22.9%</b>	<b>23.0%</b>
<b>Patient &amp; Client Care</b>	<b>49.0%</b>	<b>49.9%</b>	<b>49.1%</b>	<b>50.8%</b>	<b>53.3%</b>	<b>48.7%</b>	<b>48.7%</b>
<b>Total</b>	<b>100 %</b>	<b>100 %</b>	<b>100 %</b>	<b>100 %</b>	<b>100 %</b>	<b>100 %</b>	



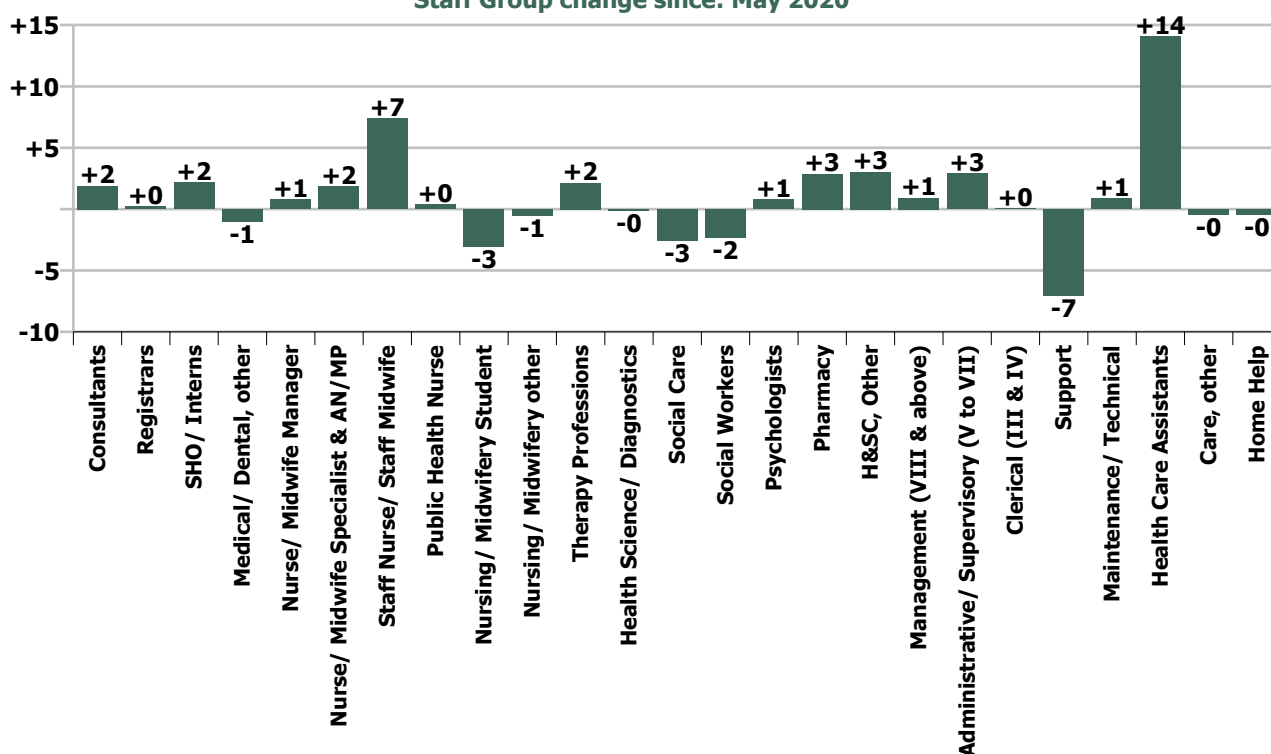
Summary Staff Movement: June 2020

Month-on-month Summary																												
WTE change since May 20	% change since May 20	overall	Consultants	Registrars	SHO/ Interns	Medical/ Dental, other	Medical & Dental	Nurse/ Midwife Manager	Nurse/ Midwife Specialist & AN/MP	Staff Nurse/ Staff Midwife	Public Health Nurse	Nursing/ Midwifery Student	Nursing/ Midwifery other	Nursing & Midwifery	Therapy Professions	Health Science/ Diagnostics	Social Care	Social Workers	Psychologists	Pharmacy	H&SC, Other	Health & Social Care Professionals	Management (VIII & above)	Administrativ e/ Supervisory (V to VII)	Clerical (III & IV)	Management & Administrativ e	General Support	Patient & Client Care
Overall	+0.4%	+25	+1.9	+0.2	+2.1	-1.0	+3.3	+0.8	+1.8	+7.4	+0.4	-3.0	-0.5	+6.8	+2.1	-0.1	-2.6	-2.3	+0.8	+2.9	+3.0	+3.8	+0.9	+2.9	+0.1	+3.9	-6.2	+13.2
Community Health & Wellbeing	-11.0%	-1																					0.0	0.0	0.0	0.0		-1.0
Mental Health	+0.0%	+0	+0.9	-0.3	-1.1		-0.5	+0.9	+1.6	-1.6		-0.2	-0.5	+0.2	-2.0		-0.0	-0.6	+0.3	0.0	+0.9	-1.4	0.0	-0.7	+1.2	+0.5	+0.0	+1.3
Primary Care	+1.1%	+18	+1.0	0.0	+0.4	-1.0	+0.4	-0.2	+0.5	-0.6	+0.4	-1.0	0.0	-0.9	+2.3	-0.1	0.0	-0.5	+0.9	+2.3	+0.2	+5.1	+0.9	+1.3	+2.3	+4.5	-1.8	+10.9
Disabilities	+0.1%	+3	0.0	+0.5	+2.9	0.0	+3.3	+0.8	-0.2	+2.2		0.0	0.0	+2.8	+2.1	0.0	-2.5	-2.3	-0.5	+0.6	+2.0	-0.6	+0.1	-0.8	-2.3	-3.0	-5.2	+5.8
Older People	+0.4%	+4			0.0	0.0	0.0	-0.8	-0.1	+7.4		-1.8		+4.7	-0.3			+1.0		0.0	0.0	+0.7	-0.0	+3.1	-1.2	+1.9	+0.8	-3.8
Social Care	+0.2%	+7	0.0	+0.5	+2.9	0.0	+3.3	+0.1	-0.3	+9.6		-1.8	0.0	+7.6	+1.8	0.0	-2.5	-1.3	-0.5	+0.6	+2.0	+0.1	+0.1	+2.3	-3.5	-1.2	-4.4	+2.0
Change	+24.7	+0.4%	+3.0%	+0.2%	+6.2%	-1.2%	+1.2%	+0.2%	+1.8%	+0.7%	+0.2%	-4.3%	-5.3%	+0.4%	+0.5%	-3.3%	-0.7%	-2.1%	+0.9%	+7.5%	+7.2%	+0.3%	+1.2%	+1.5%	+0.0%	+0.6%	-1.4%	+0.6%

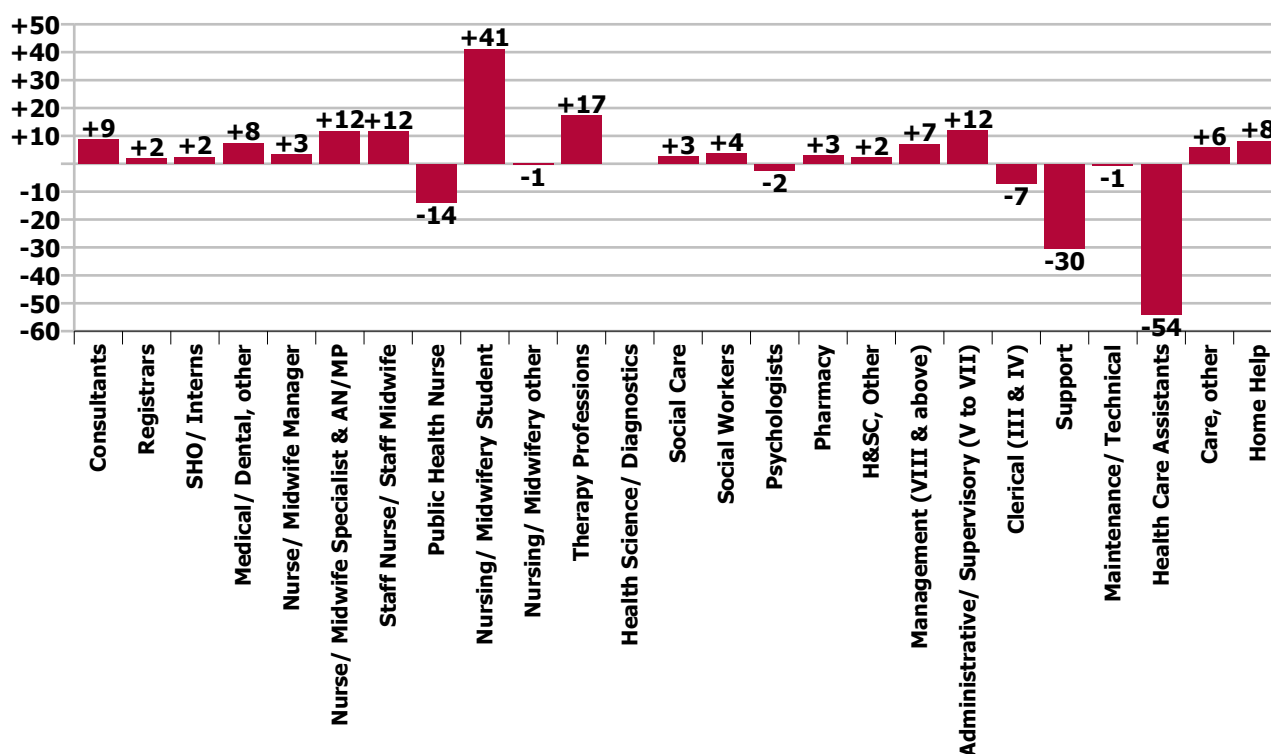
Year-on-year Summary																												
WTE change since Jun 19	% change since Jun 19	overall	Consultants	Registrars	SHO/ Interns	Medical/ Dental, other	Medical & Dental	Nurse/ Midwife Manager	Nurse/ Midwife Specialist & AN/MP	Staff Nurse/ Staff Midwife	Public Health Nurse	Nursing/ Midwifery Student	Nursing/ Midwifery other	Nursing & Midwifery	Therapy Professions	Health Science/ Diagnostics	Social Care	Social Workers	Psychologists	Pharmacy	H&SC, Other	Health & Social Care Professionals	Management (VIII & above)	Administrativ e/ Supervisory (V to VII)	Clerical (III & IV)	Management & Administrative	General Support	Patient & Client Care
Overall	+0.6%	+41	+8.8	+2.0	+2.5	+7.5	+20.8	+3.3	+11.8	+11.5	-13.9	+41.2	-0.5	+53.4	+17.2	0.0	+2.8	+3.6	-2.4	+2.9	+2.3	+26.4	+7.1	+12.0	-7.0	+12.2	-31.1	-40.1
Community Health & Wellbeing	-11.0%	-1																					+1.0	+2.0	+0.6	+3.6		+4.6
Mental Health	+0.0%	+0	+5.9	+1.1	+0.4		+7.3	+3.2	+9.1	-10.5		+18.2	-0.5	+19.5	+0.6		-1.1	+3.2	-1.8	0.0	+3.0	+3.9	+0.1	+5.1	-1.8	+3.5	-4.2	-7.0
Primary Care	+1.1%	+18	+2.9	+1.8	+0.2	+7.9	+12.8	+5.8	+3.5	-6.8	-13.9	+14.0	0.0	+2.7	-4.1	0.0	+0.0	+0.9	+0.5	+1.5	-2.7	-3.9	-1.0	+1.6	-14.5	-13.9	-6.0	-2.8
Disabilities	+0.7%	+20.8	0.0	-1.0	+1.9	0.0	+0.9	-5.0	-0.2	+4.5		+7.5	0.0	+6.8	+23.4	0.0	+3.8	+0.8	-1.1	+1.5	+2.0	+30.4	+4.9	+1.4	+4.9	+11.2	-8.9	-19.6
Older People	+0.1%	+0.7			0.0	-0.3	-0.3	-0.8	-0.6	+24.3		+1.5		+24.4	-2.7			-1.3		0.0	0.0	-4.0	+2.1	+1.9	+3.8	+7.8	-12.0	-15.3
Social Care	+0.2%	+7	0.0	-1.0	+1.9	-0.3	+0.6	-5.7	-0.8	+28.8		+9.0	0.0	+31.3	+20.7	0.0	+3.8	-0.5	-1.1	+1.5	+2.0	+26.4	+7.0	+3.4	+8.7	+19.0	-20.9	-34.9
Change	+41.5	+0.6%	+16.0%	+2.4%	+7.2%	+10.2%	+8.4%	+0.8%	+12.9%	+1.1%	-7.8%	+152.7%	-5.3%	+3.1%	+3.8%		+0.8%	+3.4%	-2.9%	+7.7%	+5.3%	+2.4%	+10.1%	+6.4%	-1.9%	+1.9%	-6.6%	-1.7%

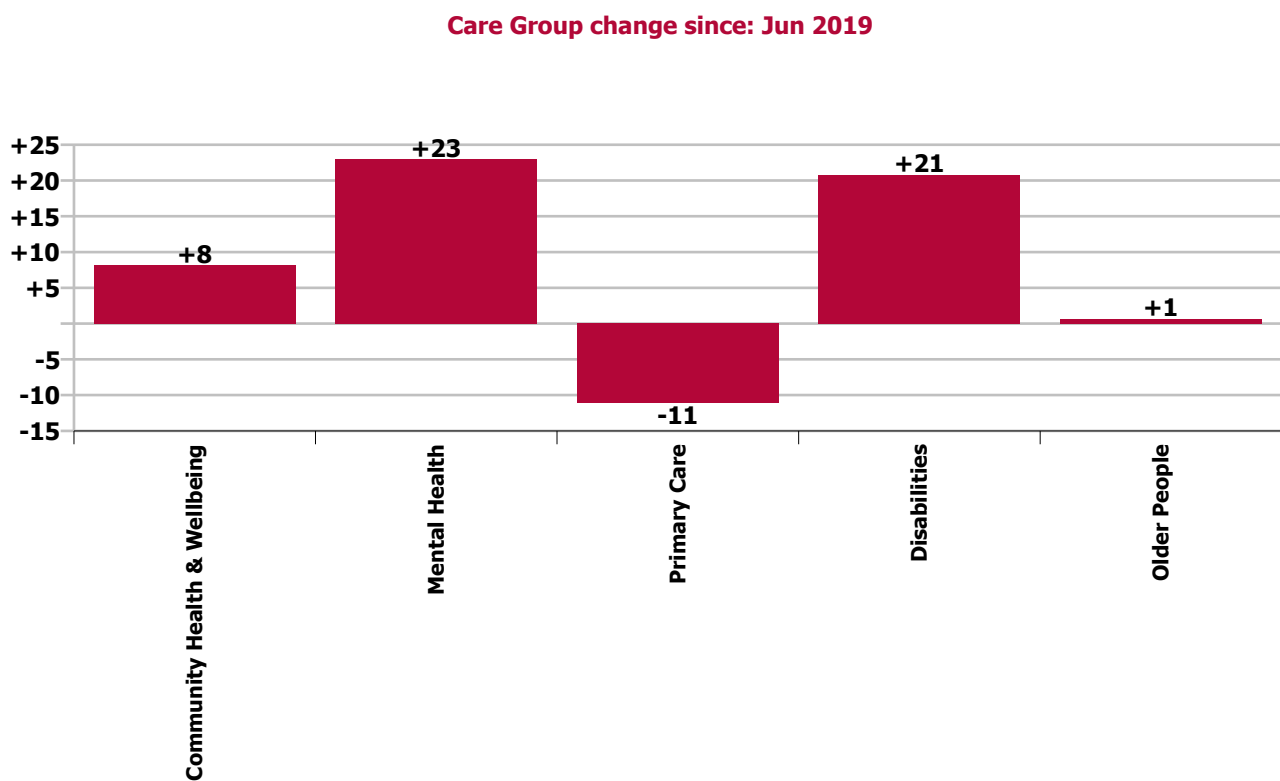
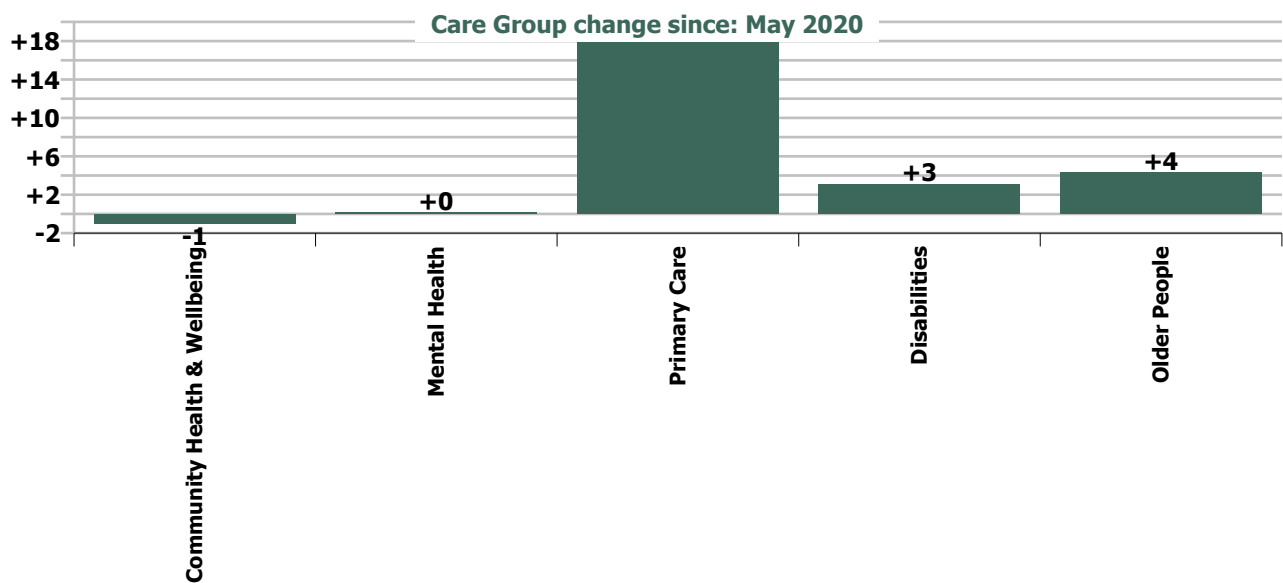


Staff Group change since: May 2020



Staff Group change since: Jun 2019





## Longitudinal Employment Levels by Grade Group - Oct 2013 to Jun 2020

Jun 2020 (Dec 2015 figure: 5,479)	WTE Jun 2020	WTE change since Dec 15	WTE change since Dec 16	WTE change since Dec 17	WTE change since Dec 18	WTE change since Dec 19	WTE change since May 20	% change since Dec 15	% change since Dec 16	% change since Dec 17	% change since Dec 18	% change since Dec 19	% change since May 20
<b>Overall</b>	<b>6,588</b>	<b>+1,109</b>	<b>+1,010</b>	<b>+182</b>	<b>+31</b>	<b>+74</b>	<b>+25</b>	<b>+20.2%</b>	<b>+18.1%</b>	<b>+2.8%</b>	<b>+0.5%</b>	<b>+1.1%</b>	<b>+0.4%</b>
Consultant Medicine	9	+2	+0	-0	+2	+2	+1	+40.2%	+5.8%	-2.4%	+21.1%	+29.6%	+13.1%
Consultant Paediatrics	0												
Consultant Psychiatry	54	+3	+5	+8	+6	+2	+1	+5.7%	+11.1%	+17.3%	+13.4%	+4.5%	+1.7%
Consultant Surgery	1	+0	+0	+0	-0			+6.7%	+6.7%	+66.7%	-33.3%		
<b>Consultants</b>	<b>64</b>	<b>+5</b>	<b>+6</b>	<b>+8</b>	<b>+8</b>	<b>+4</b>	<b>+2</b>	<b>+9.3%</b>	<b>+10.2%</b>	<b>+14.5%</b>	<b>+13.3%</b>	<b>+7.2%</b>	<b>+3.0%</b>
Registrar	67	+45	+11	+15	+2	-4	+1	+201.6%	+19.3%	+28.0%	+2.4%	-6.2%	+1.2%
Senior Registrar	15	+8	+4	+6	+1	-4	-1	+130.0%	+42.4%	+60.1%	+6.8%	-21.2%	-4.8%
Specialist Registrar	3	-2	-1	-3	-2	-1	+0	-39.0%	-22.9%	-47.2%	-36.2%	-25.0%	+4.9%
<b>Registrars</b>	<b>85</b>	<b>+52</b>	<b>+14</b>	<b>+18</b>	<b>+1</b>	<b>-10</b>	<b>+0</b>	<b>+152.7%</b>	<b>+20.4%</b>	<b>+26.1%</b>	<b>+1.0%</b>	<b>-10.0%</b>	<b>+0.2%</b>
Interns		-2	-2	-2	-2	-2		-100.0%	-100.0%	-100.0%	-100.0%	-100.0%	-100.0%
Senior House Officer	37	-2	-2	-4	+4	+3	+2	-5.7%	-5.7%	-9.7%	+10.6%	+8.9%	+6.2%
<b>SHO/ Interns</b>	<b>37</b>	<b>-4</b>	<b>-4</b>	<b>-6</b>	<b>+2</b>	<b>+1</b>	<b>+2</b>	<b>-10.3%</b>	<b>-10.3%</b>	<b>-13.9%</b>	<b>+4.4%</b>	<b>+2.8%</b>	<b>+6.2%</b>
Dentists	34	-5	-5	-1	-2	+1	-1	-13.3%	-13.6%	-3.0%	-6.3%	+1.6%	-2.9%
Other Medical	47	+4	+2	-6	-5	+0	+0	+10.3%	+4.8%	-11.2%	-9.1%	+1.0%	+0.1%
<b>Medical/ Dental, other</b>	<b>81</b>	<b>-1</b>	<b>-3</b>	<b>-7</b>	<b>-7</b>	<b>+1</b>	<b>-1</b>	<b>-1.0%</b>	<b>-3.9%</b>	<b>-7.9%</b>	<b>-7.9%</b>	<b>+1.2%</b>	<b>-1.2%</b>
<b>Medical &amp; Dental</b>	<b>268</b>	<b>+52</b>	<b>+13</b>	<b>+13</b>	<b>+3</b>	<b>-3</b>	<b>+3</b>	<b>+24.1%</b>	<b>+5.1%</b>	<b>+5.0%</b>	<b>+1.1%</b>	<b>-1.2%</b>	<b>+1.2%</b>
Clinical Nurse/ Midwife Manager	330	+46	+28	+3	+8	+2	-2	+16.2%	+9.2%	+0.8%	+2.4%	+0.5%	-0.6%
Director Nursing/Midwifery, Assistant	57	+10	+4	+7	+2	+5	+4	+20.7%	+6.7%	+14.5%	+3.4%	+10.6%	+6.7%
Director of Nursing/Midwifery	19	+1	+2	-4	-1	+3	-1	+5.1%	+12.7%	-17.1%	-3.3%	+17.5%	-4.7%
<b>Nurse/ Midwife Manager</b>	<b>406</b>	<b>+57</b>	<b>+33</b>	<b>+6</b>	<b>+9</b>	<b>+10</b>	<b>+1</b>	<b>+16.3%</b>	<b>+9.0%</b>	<b>+1.5%</b>	<b>+2.3%</b>	<b>+2.5%</b>	<b>+0.2%</b>
Advanced Nurse/ Midwife Practitioner	8	+7	+6	+5	+5	+3	+1	+674.0%	+332.4%	+238.0%	+205.9%	+78.3%	+16.4%
Clinical Nurse/ Midwife Specialist	95	+30	+29	+18	+11	+6	+1	+45.5%	+44.4%	+22.7%	+12.7%	+6.7%	+0.8%
<b>Nurse/ Midwife Specialist &amp; AN/MP</b>	<b>103</b>	<b>+37</b>	<b>+35</b>	<b>+23</b>	<b>+16</b>	<b>+9</b>	<b>+2</b>	<b>+54.9%</b>	<b>+52.0%</b>	<b>+28.8%</b>	<b>+18.3%</b>	<b>+10.0%</b>	<b>+1.8%</b>
Staff Nurse [Intellectual Disability]	188	-48	-41	-43	-33	-6	-0	-20.3%	-17.9%	-18.7%	-14.8%	-3.3%	-0.1%
Staff Nurse [Psychiatric]	192	-49	-23	-36	-8	+0	+0	-20.3%	-10.6%	-15.7%	-3.8%	+0.2%	+0.0%
Staff Nurses [General/ Children's]	637	+106	+130	+70	+60	+29	+8	+20.0%	+25.6%	+12.3%	+10.4%	+4.8%	+1.2%
<b>Staff Nurse/ Staff Midwife</b>	<b>1,016</b>	<b>+10</b>	<b>+66</b>	<b>-9</b>	<b>+20</b>	<b>+23</b>	<b>+7</b>	<b>+1.0%</b>	<b>+7.0%</b>	<b>-0.9%</b>	<b>+2.0%</b>	<b>+2.3%</b>	<b>+0.7%</b>
<b>Public Health Nurse</b>	<b>164</b>	<b>-14</b>	<b>-17</b>	<b>-23</b>	<b>-31</b>	<b>-11</b>	<b>+0</b>	<b>-7.7%</b>	<b>-9.3%</b>	<b>-12.2%</b>	<b>-16.0%</b>	<b>-6.5%</b>	<b>+0.2%</b>
Pre-registration Nurse/ Midwife Intern		-2	-2		-6	-1		-100.0%	-100.0%	-100.0%	-100.0%	-100.0%	-100.0%
Pre-registration Nurse Intern (COVID-19)	44	+44	+44	+44	+44	+44	-0	-100.0%	-100.0%	-100.0%	-100.0%	-100.0%	-0.5%
Post-registration Nurse/ Midwife Student	19	-5	-4	+3	+12	-2	-1	-20.8%	-17.4%	+18.8%	+171.4%	-9.5%	-5.0%
Nursing/ Midwifery awaiting registration	5	+5	+5	-3	+1	-4	-2	-100.0%	-100.0%	-32.4%	+37.0%	-44.4%	-25.2%
<b>Nursing/ Midwifery Student</b>	<b>68</b>	<b>+43</b>	<b>+44</b>	<b>+44</b>	<b>+51</b>	<b>+36</b>	<b>-3</b>	<b>+165.6%</b>	<b>+176.4%</b>	<b>+182.7%</b>	<b>+301.9%</b>	<b>+111.5%</b>	<b>-4.3%</b>
Nursing Education/Clinical	9	-0	-3	+0	+1	-1	-1	-0.7%	-21.7%	+0.1%	+5.9%	-10.4%	-5.3%

Jun 2020 (Dec 2015 figure: 5,479)	WTE Jun 2020	WTE change since Dec 15	WTE change since Dec 16	WTE change since Dec 17	WTE change since Dec 18	WTE change since Dec 19	WTE change since May 20	% change since Dec 15	% change since Dec 16	% change since Dec 17	% change since Dec 18	% change since Dec 19	% change since May 20
<b>Overall</b>	<b>6,588</b>	<b>+1,109</b>	<b>+1,010</b>	<b>+182</b>	<b>+31</b>	<b>+74</b>	<b>+25</b>	<b>+20.2%</b>	<b>+18.1%</b>	<b>+2.8%</b>	<b>+0.5%</b>	<b>+1.1%</b>	<b>+0.4%</b>
Other Nursing/ Midwifery		-1	-1					-100.0%	-100.0%	-100.0%	-100.0%	-100.0%	-100.0%
<b>Nursing/ Midwifery other</b>	<b>9</b>	<b>-1</b>	<b>-4</b>	<b>+0</b>	<b>+1</b>	<b>-1</b>	<b>-1</b>	<b>-6.0%</b>	<b>-28.0%</b>	<b>+0.1%</b>	<b>+5.9%</b>	<b>-10.4%</b>	<b>-5.3%</b>
<b>Nursing &amp; Midwifery</b>	<b>1,766</b>	<b>+131</b>	<b>+158</b>	<b>+42</b>	<b>+65</b>	<b>+66</b>	<b>+7</b>	<b>+8.0%</b>	<b>+9.8%</b>	<b>+2.4%</b>	<b>+3.8%</b>	<b>+3.9%</b>	<b>+0.4%</b>
Dietitians	25	+8	+6	+6	+1	-0	+2	+43.4%	+33.7%	+30.8%	+2.3%	-0.1%	+8.2%
Occupational Therapists	195	+35	+26	+26	+10	+11	+1	+21.7%	+15.3%	+15.3%	+5.5%	+6.1%	+0.4%
Orthoptists		-0	-0					-100.0%	-100.0%	-100.0%	-100.0%	-100.0%	-100.0%
Physiotherapists	124	+9	+1	-0	-2	+9	-1	+7.5%	+1.0%	-0.2%	-1.7%	+8.1%	-0.7%
Podiatrists & Chiropodists	2	+1	+1	+1	+1	+1		+207.7%	+181.7%	+207.7%	+56.3%	+100.0%	
Speech & Language Therapists	129	+39	+21	+1	+6	+3	+0	+43.8%	+20.0%	+0.8%	+4.8%	+2.3%	+0.2%
<b>Therapy Professions</b>	<b>474</b>	<b>+91</b>	<b>+56</b>	<b>+34</b>	<b>+15</b>	<b>+24</b>	<b>+2</b>	<b>+23.8%</b>	<b>+13.4%</b>	<b>+7.7%</b>	<b>+3.3%</b>	<b>+5.4%</b>	<b>+0.5%</b>
Audiology		-0	-0					-100.0%	-100.0%	-100.0%	-100.0%	-100.0%	-100.0%
Clinical Measurement	1												
Medical Laboratory			-1					-100.0%	-100.0%	-100.0%	-100.0%	-100.0%	-100.0%
Phlebotomists	1	+1	+1	+1	+0	+0	-0	+186.0%	+89.2%	+95.2%	+0.8%	+0.8%	-8.2%
Radiographers	1	-1						-43.5%					
<b>Health Science/ Diagnostics</b>	<b>3</b>	<b>-0</b>	<b>-1</b>	<b>+1</b>	<b>+0</b>	<b>+0</b>	<b>-0</b>	<b>-4.2%</b>	<b>-20.8%</b>	<b>+22.8%</b>	<b>+0.3%</b>	<b>+0.3%</b>	<b>-3.3%</b>
Social Care	364	+246	+252	+36	+5	-7	-3	+207.3%	+224.2%	+10.8%	+1.3%	-1.8%	-0.7%
<b>Social Care</b>	<b>364</b>	<b>+246</b>	<b>+252</b>	<b>+36</b>	<b>+5</b>	<b>-7</b>	<b>-3</b>	<b>+207.3%</b>	<b>+224.2%</b>	<b>+10.8%</b>	<b>+1.3%</b>	<b>-1.8%</b>	<b>-0.7%</b>
<b>Social Workers</b>	<b>109</b>	<b>+12</b>	<b>-1</b>	<b>-3</b>	<b>-2</b>	<b>+4</b>	<b>-2</b>	<b>+12.4%</b>	<b>-0.7%</b>	<b>-2.9%</b>	<b>-1.6%</b>	<b>+4.2%</b>	<b>-2.1%</b>
<b>Psychologists</b>	<b>82</b>	<b>+11</b>	<b>+13</b>	<b>-3</b>	<b>-2</b>	<b>+1</b>	<b>+1</b>	<b>+15.6%</b>	<b>+19.2%</b>	<b>-3.4%</b>	<b>-2.8%</b>	<b>+1.5%</b>	<b>+0.9%</b>
<b>Pharmacy</b>	<b>41</b>	<b>-0</b>	<b>+3</b>	<b>+2</b>	<b>+3</b>	<b>+1</b>	<b>+3</b>	<b>-0.4%</b>	<b>+8.1%</b>	<b>+5.9%</b>	<b>+7.9%</b>	<b>+2.3%</b>	<b>+7.5%</b>
Counsellor Therapists	37	+5	+5	+4	+6	+0	+1	+16.6%	+17.3%	+11.9%	+20.0%	+0.7%	+3.2%
Dental Hygienists	5	+1	+1	+2	+0	-0	+0	+36.9%	+36.9%	+45.1%	+0.2%	-4.9%	+0.2%
Other Health & Social Care	1	-3	-4	-5	-4	-1	-0	-83.4%	-88.4%	-89.7%	-87.1%	-71.0%	-10.8%
Play Therapists/ Specialists	3	+2	+2	+2	+2	+2	+2	+196.0%	+196.0%	+196.0%	+196.0%	+196.0%	+196.0%
<b>H&amp;SC, Other</b>	<b>45</b>	<b>+6</b>	<b>+4</b>	<b>+2</b>	<b>+4</b>	<b>+1</b>	<b>+3</b>	<b>+14.1%</b>	<b>+10.5%</b>	<b>+5.5%</b>	<b>+10.2%</b>	<b>+1.3%</b>	<b>+7.2%</b>
<b>Health &amp; Social Care Professionals</b>	<b>1,119</b>	<b>+365</b>	<b>+327</b>	<b>+69</b>	<b>+23</b>	<b>+25</b>	<b>+4</b>	<b>+48.5%</b>	<b>+41.3%</b>	<b>+6.5%</b>	<b>+2.1%</b>	<b>+2.3%</b>	<b>+0.3%</b>
Executive Management	15	+3	-1	-0	+3	+2	+0	+24.7%	-6.5%	-0.3%	+24.7%	+15.1%	+0.5%
Senior Management (VIII & GM)	63	+12	+15	+11	+6	+3	+1	+23.8%	+30.1%	+21.0%	+11.3%	+5.1%	+1.4%
<b>Management (VIII &amp; above)</b>	<b>78</b>	<b>+15</b>	<b>+14</b>	<b>+11</b>	<b>+9</b>	<b>+5</b>	<b>+1</b>	<b>+24.0%</b>	<b>+21.0%</b>	<b>+16.2%</b>	<b>+13.6%</b>	<b>+6.8%</b>	<b>+1.2%</b>
Middle Management (V-VII)	198	+68	+67	+40	+30	+17	+3	+52.2%	+50.6%	+25.0%	+17.9%	+9.2%	+1.5%
Other Administrative	1			-0		-0				-14.6%		-14.6%	
<b>Administrative/ Supervisory (V to VII)</b>	<b>199</b>	<b>+68</b>	<b>+67</b>	<b>+39</b>	<b>+30</b>	<b>+16</b>	<b>+3</b>	<b>+51.8%</b>	<b>+50.3%</b>	<b>+24.7%</b>	<b>+17.8%</b>	<b>+9.0%</b>	<b>+1.5%</b>
<b>Clerical (III &amp; IV)</b>	<b>362</b>	<b>+17</b>	<b>+3</b>	<b>-21</b>	<b>-19</b>	<b>+11</b>	<b>+0</b>	<b>+4.9%</b>	<b>+0.9%</b>	<b>-5.6%</b>	<b>-4.9%</b>	<b>+3.2%</b>	<b>+0.0%</b>
<b>Management &amp; Administrative</b>	<b>639</b>	<b>+100</b>	<b>+83</b>	<b>+29</b>	<b>+21</b>	<b>+33</b>	<b>+4</b>	<b>+18.5%</b>	<b>+15.0%</b>	<b>+4.7%</b>	<b>+3.4%</b>	<b>+5.4%</b>	<b>+0.6%</b>

Jun 2020 (Dec 2015 figure: 5,479)	WTE Jun 2020	WTE change since Dec 15	WTE change since Dec 16	WTE change since Dec 17	WTE change since Dec 18	WTE change since Dec 19	WTE change since May 20	% change since Dec 15	% change since Dec 16	% change since Dec 17	% change since Dec 18	% change since Dec 19	% change since May 20
<b>Overall</b>	<b>6,588</b>	<b>+1,109</b>	<b>+1,010</b>	<b>+182</b>	<b>+31</b>	<b>+74</b>	<b>+25</b>	<b>+20.2%</b>	<b>+18.1%</b>	<b>+2.8%</b>	<b>+0.5%</b>	<b>+1.1%</b>	<b>+0.4%</b>
Catering	57	+3	+5	-7	-5	-2	-0	+6.3%	+8.7%	-10.3%	-7.4%	-2.7%	-0.8%
Household Services	262	-5	-2	-34	-32	-7	-6	-1.8%	-0.7%	-11.5%	-10.8%	-2.7%	-2.2%
Other Labs & Associated	1	-0	-0		-0			-16.7%	-6.5%		-3.8%		
Other Support	14	-3	-2	-1	-1	+0		-18.8%	-13.9%	-5.7%	-9.5%	+0.2%	
Portering	64	-13	-9	-7	-6	-3	-1	-17.1%	-12.6%	-9.9%	-9.2%	-4.7%	-1.1%
<b>Support</b>	<b>399</b>	<b>-18</b>	<b>-9</b>	<b>-49</b>	<b>-44</b>	<b>-12</b>	<b>-7</b>	<b>-4.4%</b>	<b>-2.2%</b>	<b>-10.9%</b>	<b>-10.0%</b>	<b>-2.9%</b>	<b>-1.7%</b>
Maintenance	40	+12	+9	-4	-1	+3	+2	+41.2%	+29.9%	-9.5%	-2.2%	+7.7%	+4.9%
Technical Services	3	+1	+1	+1	+1	-1	-1	+50.0%	+50.0%	+50.0%	+57.9%	-25.0%	-25.0%
<b>Maintenance/ Technical</b>	<b>43</b>	<b>+13</b>	<b>+10</b>	<b>-3</b>	<b>+0</b>	<b>+2</b>	<b>+1</b>	<b>+41.8%</b>	<b>+31.2%</b>	<b>-6.9%</b>	<b>+0.4%</b>	<b>+4.5%</b>	<b>+2.0%</b>
<b>General Support</b>	<b>442</b>	<b>-6</b>	<b>+1</b>	<b>-52</b>	<b>-44</b>	<b>-10</b>	<b>-6</b>	<b>-1.2%</b>	<b>+0.3%</b>	<b>-10.5%</b>	<b>-9.1%</b>	<b>-2.2%</b>	<b>-1.4%</b>
HCA, Nurse's Aide, etc.	1,601	+345	+310	+91	-17	-42	+9	+27.4%	+24.0%	+6.0%	-1.0%	-2.5%	+0.5%
Health & Social Care Assistants	21	+13	+13	+15	+0	+9	+5	+150.3%	+156.9%	+257.1%	+0.4%	+72.7%	+32.8%
<b>Health Care Assistants</b>	<b>1,622</b>	<b>+358</b>	<b>+323</b>	<b>+106</b>	<b>-17</b>	<b>-33</b>	<b>+14</b>	<b>+28.3%</b>	<b>+24.9%</b>	<b>+7.0%</b>	<b>-1.0%</b>	<b>-2.0%</b>	<b>+0.9%</b>
Care, other	601	+127	+130	-5	-16	-10	-0	+26.8%	+27.6%	-0.8%	-2.6%	-1.6%	-0.1%
Home Help	133	-18	-26	-19	-4	+6	-0	-11.8%	-16.1%	-12.7%	-2.6%	+4.7%	-0.3%
<b>Patient &amp; Client Care</b>	<b>2,356</b>	<b>+467</b>	<b>+427</b>	<b>+82</b>	<b>-37</b>	<b>-36</b>	<b>+13</b>	<b>+24.7%</b>	<b>+22.2%</b>	<b>+3.6%</b>	<b>-1.5%</b>	<b>-1.5%</b>	<b>+0.6%</b>

Source: Health Service Personnel Census

Longitudinal Employment Levels by Care Group - Oct 2013 to Jun 2020

Community Health & Wellbeing

Jun 2020 ( figure: )	WTE Jun 2020	WTE change since	WTE change since	WTE change since	WTE change since	WTE change since	WTE change since May 20	% change since	% change since	% change since	% change since	% change since	% change since May 20
Overall	8	+8	+8	+8	+8	+8	-1	-100.0%	-100.0%	-100.0%	-100.0%	-100.0%	-11.0%
Management & Administrative	4	+4	+4	+4	+4	+4		-1.0%	-1.0%	-1.0%	-1.0%	-1.0%	+0.0%
Management (VIII & above)	1	+1	+1	+1	+1	+1		-1.0%	-1.0%	-1.0%	-1.0%	-1.0%	+0.0%
Administrative/ Supervisory (V to VII)	2	+2	+2	+2	+2	+2		-1.0%	-1.0%	-1.0%	-1.0%	-1.0%	+0.0%
Clerical (III & IV)	1	+1	+1	+1	+1	+1		-1.0%	-1.0%	-1.0%	-1.0%	-1.0%	+0.0%
Patient & Client Care	5	+5	+5	+5	+5	+5	-1	-1.0%	-1.0%	-1.0%	-1.0%	-1.0%	-0.2%
Health Care Assistants							-1	-1.0%	-1.0%	-1.0%	-1.0%	-1.0%	-1.0%
Care, other	5	+5	+5	+5	+5	+5		-1.0%	-1.0%	-1.0%	-1.0%	-1.0%	+0.0%

Source: Health Service Personnel Census

Mental Health

Jun 2020 (Dec 2015 figure: 837)	WTE Jun 2020	WTE change since Dec 15	WTE change since Dec 16	WTE change since Dec 17	WTE change since Dec 18	WTE change since Dec 19	WTE change since May 20	% change since Dec 15	% change since Dec 16	% change since Dec 17	% change since Dec 18	% change since Dec 19	% change since May 20
Overall	866	+30	+39	+7	+32	+31	+0	+3.6%	+4.7%	+0.8%	+3.8%	+3.7%	+0.0%
Medical & Dental	110	+14	+9	+15	+8	-5	-0	+0.1%	+0.1%	+0.2%	+0.1%	-0.0%	-0.0%
Consultants	50	+5	+5	+9	+5	+2	+1	+0.1%	+0.1%	+0.2%	+0.1%	+0.0%	+0.0%
Registrars	40	+17	+11	+13	+1	-6	-0	+0.7%	+0.4%	+0.5%	+0.0%	-0.1%	-0.0%
SHO/ Interns	20	-8	-7	-7	+1	-1	-1	-0.3%	-0.3%	-0.3%	+0.1%	-0.0%	-0.1%
Nursing & Midwifery	406	+31	+44	+20	+44	+36	+0	+0.1%	+0.1%	+0.1%	+0.1%	+0.1%	+0.0%
Nurse/ Midwife Manager	120	+20	+9	+5	+1	+3	+1	+0.2%	+0.1%	+0.0%	+0.0%	+0.0%	+0.0%
Nurse/ Midwife Specialist & AN/MP	46	+22	+20	+19	+20	+6	+2	+0.9%	+0.8%	+0.7%	+0.8%	+0.2%	+0.0%
Staff Nurse/ Staff Midwife	200	-45	-17	-29	-0	+6	-2	-0.2%	-0.1%	-0.1%	-0.0%	+0.0%	-0.0%
Nursing/ Midwifery Student	33	+31	+31	+25	+23	+21	-0	+18.7%	+18.7%	+3.0%	+2.3%	+1.9%	-0.0%
Nursing/ Midwifery other	7	+3	+1	+1	+1	-1	-1	+0.6%	+0.1%	+0.1%	+0.1%	-0.1%	-0.1%
Health & Social Care Professionals	139	+5	+3	-7	-1	-1	-1	+0.0%	+0.0%	-0.0%	-0.0%	-0.0%	-0.0%
Therapy Professions	47	+0	-2	-1	-2	-1	-2	+0.0%	-0.0%	-0.0%	-0.0%	-0.0%	-0.0%
Social Care	8	-3	-3	-3	-1	-0	-0	-0.3%	-0.3%	-0.3%	-0.1%	-0.0%	-0.0%
Social Workers	37	-2	-4	-6	-0	+2	-1	-0.1%	-0.1%	-0.1%	-0.0%	+0.1%	-0.0%
Psychologists	29	+1	+4	-2	-5	-3	+0	+0.0%	+0.1%	-0.1%	-0.1%	-0.1%	+0.0%
Pharmacy	1	+1	+1	+1	+1			-1.0%	-1.0%	-1.0%	-1.0%	+0.0%	+0.0%
H&SC, Other	18	+8	+7	+3	+5	+0	+1	+0.9%	+0.7%	+0.2%	+0.4%	+0.0%	+0.1%
Management & Administrative	69	+9	+2	-0	-5	+3	+1	+0.1%	+0.0%	-0.0%	-0.1%	+0.0%	+0.0%
Management (VIII & above)	3	+1						+0.4%	+0.0%	+0.0%	+0.0%	+0.0%	+0.0%
Administrative/ Supervisory (V to VII)	18	+9	+5	+2	-1	+2	-1	+1.0%	+0.4%	+0.1%	-0.0%	+0.1%	-0.0%
Clerical (III & IV)	48	-1	-3	-2	-4	+1	+1	-0.0%	-0.1%	-0.0%	-0.1%	+0.0%	+0.0%
General Support	19	-9	-7	-6	-5	-0	+0	-0.3%	-0.3%	-0.2%	-0.2%	-0.0%	+0.0%
Support	17	-9	-7	-6	-5	-1	+0	-0.4%	-0.3%	-0.3%	-0.2%	-0.0%	+0.0%
Maintenance/ Technical	2	+0				+0		+0.0%	+0.0%	+0.0%	+0.0%	+0.1%	+0.0%
Patient & Client Care	124	-19	-12	-14	-9	-2	+1	-0.1%	-0.1%	-0.1%	-0.1%	-0.0%	+0.0%
Health Care Assistants	35	-12	-11	-10	-6	+2	-0	-0.3%	-0.2%	-0.2%	-0.2%	+0.0%	-0.0%
Care, other	89	-7	-1	-5	-3	-3	+2	-0.1%	-0.0%	-0.1%	-0.0%	-0.0%	+0.0%

Source: Health Service Personnel Census



Primary Care

Jun 2020 (Dec 2015 figure: 1,647)	WTE Jun 2020	WTE change since Dec 15	WTE change since Dec 16	WTE change since Dec 17	WTE change since Dec 18	WTE change since Dec 19	WTE change since May 20	% change since Dec 15	% change since Dec 16	% change since Dec 17	% change since Dec 18	% change since Dec 19	% change since May 20
Overall	1,719	+72	+32	+28	-56	+17	+18	+4.4%	+1.9%	+1.7%	-3.2%	+1.0%	+1.1%
Medical & Dental	139	+41	+6	+1	-6	+0	+0	+0.4%	+0.0%	+0.0%	-0.0%	+0.0%	+0.0%
Consultants	13	+4	+3	+1	+2	+2	+1	+0.4%	+0.2%	+0.1%	+0.2%	+0.2%	+0.1%
Registrars	42	+34	+4	+5	-1	-3		+3.9%	+0.1%	+0.1%	-0.0%	-0.1%	+0.0%
SHO/ Interns	7	+2	+1	+1	-1	+1	+0	+0.3%	+0.1%	+0.2%	-0.1%	+0.1%	+0.1%
Medical/ Dental, other	76	+2	-1	-6	-6	+1	-1	+0.0%	-0.0%	-0.1%	-0.1%	+0.0%	-0.0%
Nursing & Midwifery	520	+17	+12	+12	-9	-10	-1	+0.0%	+0.0%	+0.0%	-0.0%	-0.0%	-0.0%
Nurse/ Midwife Manager	88	+10	+11	+12	+8	+8	-0	+0.1%	+0.1%	+0.2%	+0.1%	+0.1%	-0.0%
Nurse/ Midwife Specialist & AN/MP	48	+15	+15	+6	+2	+2	+0	+0.5%	+0.4%	+0.1%	+0.0%	+0.1%	+0.0%
Staff Nurse/ Staff Midwife	199	+10	+8	+14	+0	-7	-1	+0.1%	+0.0%	+0.1%	+0.0%	-0.0%	-0.0%
Public Health Nurse	164	-12	-17	-23	-31	-11	+0	-0.1%	-0.1%	-0.1%	-0.2%	-0.1%	+0.0%
Nursing/ Midwifery Student	19	-5	-4	+3	+12	-2	-1	-0.2%	-0.2%	+0.2%	+1.7%	-0.1%	-0.1%
Nursing/ Midwifery other	2	-1	-2	-1				-0.3%	-0.4%	-0.2%	+0.0%	+0.0%	+0.0%
Health & Social Care Professionals	381	+27	+19	+19	+1	+8	+5	+0.1%	+0.1%	+0.1%	+0.0%	+0.0%	+0.0%
Therapy Professions	273	+31	+19	+19	-2	+7	+2	+0.1%	+0.1%	+0.1%	-0.0%	+0.0%	+0.0%
Health Science/ Diagnostics	0	-0	-0	-0	+0	+0	-0	-0.5%	-0.6%	-0.6%	+0.0%	+0.0%	-0.3%
Social Care	4	-0	-0	-0	-0	+1		-0.0%	-0.0%	-0.0%	-0.0%	+0.2%	+0.0%
Social Workers	26	-1	-2	-1	+2	-0	-0	-0.0%	-0.1%	-0.0%	+0.1%	-0.0%	-0.0%
Psychologists	24	+3	+3	+2	+0	+2	+1	+0.2%	+0.2%	+0.1%	+0.0%	+0.1%	+0.0%
Pharmacy	32	-1	+2	+1	+3	-0	+2	-0.0%	+0.1%	+0.0%	+0.1%	-0.0%	+0.1%
H&SC, Other	22	-4	-3	-1	-2	-2	+0	-0.1%	-0.1%	-0.0%	-0.1%	-0.1%	+0.0%
Management & Administrative	292	-10	-11	-18	-19	+5	+4	-0.0%	-0.0%	-0.1%	-0.1%	+0.0%	+0.0%
Management (VIII & above)	29	+4	+2	+1	-1	-4	+1	+0.1%	+0.1%	+0.0%	-0.0%	-0.1%	+0.0%
Administrative/ Supervisory (V to VII)	82	+15	+19	+10	+11	+6	+1	+0.2%	+0.3%	+0.1%	+0.2%	+0.1%	+0.0%
Clerical (III & IV)	181	-29	-31	-29	-28	+4	+2	-0.1%	-0.1%	-0.1%	-0.1%	+0.0%	+0.0%
General Support	125	-14	-11	-6	-8	-0	-2	-0.1%	-0.1%	-0.0%	-0.1%	-0.0%	-0.0%
Support	116	-15	-11	-8	-9	-0	-2	-0.1%	-0.1%	-0.1%	-0.1%	-0.0%	-0.0%
Maintenance/ Technical	9	+1	-0	+2	+1	+0		+0.1%	-0.0%	+0.3%	+0.1%	+0.0%	+0.0%
Patient & Client Care	262	+11	+18	+20	-16	+13	+11	+0.0%	+0.1%	+0.1%	-0.1%	+0.1%	+0.0%
Health Care Assistants	135	+16	+18	+16	-6	+14	+10	+0.1%	+0.2%	+0.1%	-0.0%	+0.1%	+0.1%
Care, other	127	-5	-0	+4	-11	-1	+1	-0.0%	-0.0%	+0.0%	-0.1%	-0.0%	+0.0%

Source: Health Service Personnel Census



Disabilities

Jun 2020 (Dec 2015 figure: 1,867)	WTE Jun 2020	WTE change since Dec 15	WTE change since Dec 16	WTE change since Dec 17	WTE change since Dec 18	WTE change since Dec 19	WTE change since May 20	% change since Dec 15	% change since Dec 16	% change since Dec 17	% change since Dec 18	% change since Dec 19	% change since May 20
Overall	2,973	+1,106	+1,030	+181	+70	-9	+3	+59.2%	+53.0%	+6.5%	+2.4%	-0.3%	+0.1%
Medical & Dental	12	+0	+1	-1	+2	+1	+3	+0.0%	+0.1%	-0.1%	+0.2%	+0.1%	+0.4%
Consultants	1	-3	-2	-2				-0.8%	-0.8%	-0.8%	+0.0%	+0.0%	+0.0%
Registrars	3	+1			+1		+0	+0.5%	+0.0%	+0.0%	+0.3%	+0.0%	+0.2%
SHO/ Interns	8	+3	+3	+1	+1	+1	+3	+0.6%	+0.6%	+0.1%	+0.1%	+0.1%	+0.6%
Medical/ Dental, other	1	-1						-0.3%	+0.0%	+0.0%	+0.0%	+0.0%	+0.0%
Nursing & Midwifery	515	+114	+119	+8	+7	+13	+3	+0.3%	+0.3%	+0.0%	+0.0%	+0.0%	+0.0%
Nurse/ Midwife Manager	122	+28	+22	-11	-2	+0	+1	+0.3%	+0.2%	-0.1%	-0.0%	+0.0%	+0.0%
Nurse/ Midwife Specialist & AN/MP	5	-1	-0	-2	-5	-0	-0	-0.1%	-0.0%	-0.3%	-0.5%	-0.0%	-0.0%
Staff Nurse/ Staff Midwife	373	+74	+84	+7	-1	-2	+2	+0.2%	+0.3%	+0.0%	+0.0%	-0.0%	+0.0%
Nursing/ Midwifery Student	15	+15	+15	+15	+15	+15		-1.0%	-1.0%	-1.0%	-1.0%	-1.0%	+0.0%
Nursing/ Midwifery other	1	-2	-3					-0.8%	-0.8%	+0.0%	+0.0%	+0.0%	+0.0%
Health & Social Care Professionals	568	+338	+313	+63	+31	+16	-1	+1.5%	+1.2%	+0.1%	+0.1%	+0.0%	-0.0%
Therapy Professions	141	+62	+41	+20	+22	+19	+2	+0.8%	+0.4%	+0.2%	+0.2%	+0.2%	+0.0%
Health Science/ Diagnostics	3	+1	+1	+1				+0.4%	+0.2%	+0.5%	+0.0%	+0.0%	+0.0%
Social Care	353	+249	+255	+39	+5	-7	-3	+2.4%	+2.6%	+0.1%	+0.0%	-0.0%	-0.0%
Social Workers	33	+15	+7	+4	-1	-0	-2	+0.8%	+0.3%	+0.1%	-0.0%	-0.0%	-0.1%
Psychologists	29	+7	+6	-3	+2	+2	-0	+0.3%	+0.3%	-0.1%	+0.1%	+0.1%	-0.0%
Pharmacy	5	+1	+1	+1	+0	+1	+1	+0.3%	+0.3%	+0.3%	+0.1%	+0.1%	+0.1%
H&SC, Other	3	+2	+1	+1	+2	+2	+2	+1.3%	+0.4%	+0.4%	+1.3%	+1.3%	+1.3%
Management & Administrative	219	+97	+86	+39	+30	+16	-3	+0.8%	+0.6%	+0.2%	+0.2%	+0.1%	-0.0%
Management (VIII & above)	39	+12	+13	+8	+8	+7	+0	+0.4%	+0.5%	+0.3%	+0.3%	+0.2%	+0.0%
Administrative/ Supervisory (V to VII)	83	+41	+36	+22	+13	+4	-1	+1.0%	+0.8%	+0.4%	+0.2%	+0.0%	-0.0%
Clerical (III & IV)	97	+44	+37	+10	+9	+6	-2	+0.8%	+0.6%	+0.1%	+0.1%	+0.1%	-0.0%
General Support	191	+31	+33	-24	-17	-5	-5	+0.2%	+0.2%	-0.1%	-0.1%	-0.0%	-0.0%
Support	161	+19	+22	-19	-17	-6	-6	+0.1%	+0.2%	-0.1%	-0.1%	-0.0%	-0.0%
Maintenance/ Technical	30	+12	+11	-4	+0	+1	+1	+0.7%	+0.6%	-0.1%	+0.0%	+0.1%	+0.0%
Patient & Client Care	1,468	+526	+478	+96	+17	-50	+6	+0.6%	+0.5%	+0.1%	+0.0%	-0.0%	+0.0%
Health Care Assistants	1,073	+397	+354	+102	+27	-39	+9	+0.6%	+0.5%	+0.1%	+0.0%	-0.0%	+0.0%
Care, other	376	+143	+139	+2	-4	-10	-3	+0.6%	+0.6%	+0.0%	-0.0%	-0.0%	-0.0%
Home Help	18	-14	-14	-8	-5	-1	-0	-0.4%	-0.4%	-0.3%	-0.2%	-0.1%	-0.0%

Source: Health Service Personnel Census

Older People

Jun 2020 (Dec 2015 figure: 1,128)	WTE Jun 2020	WTE change since Dec 15	WTE change since Dec 16	WTE change since Dec 17	WTE change since Dec 18	WTE change since Dec 19	WTE change since May 20	% change since Dec 15	% change since Dec 16	% change since Dec 17	% change since Dec 18	% change since Dec 19	% change since May 20
Overall	1,022	-107	-99	-42	-23	+26	+4	-9.4%	-8.9%	-4.0%	-2.2%	+2.6%	+0.4%
Medical & Dental	6	-4	-3	-2	-1			-0.4%	-0.3%	-0.3%	-0.1%	+0.0%	+0.0%
SHO/ Interns	2	-1	-1	-1				-0.3%	-0.3%	-0.3%	+0.0%	+0.0%	+0.0%
Medical/ Dental, other	4	-3	-2	-1	-1			-0.4%	-0.3%	-0.2%	-0.2%	+0.0%	+0.0%
Nursing & Midwifery	325	-31	-16	+1	+23	+26	+5	-0.1%	-0.0%	+0.0%	+0.1%	+0.1%	+0.0%
Nurse/ Midwife Manager	75	-2	-9	+0	+2	-2	-1	-0.0%	-0.1%	+0.0%	+0.0%	-0.0%	-0.0%
Nurse/ Midwife Specialist & AN/MP	4	-0	+0	-0	-1	+1	-0	-0.0%	+0.0%	-0.0%	-0.2%	+0.3%	-0.0%
Staff Nurse/ Staff Midwife	244	-29	-9	-0	+21	+25	+7	-0.1%	-0.0%	-0.0%	+0.1%	+0.1%	+0.0%
Public Health Nurse		-2	-0					-1.0%	-1.0%	-1.0%	-1.0%	-1.0%	-1.0%
Nursing/ Midwifery Student	2	+2	+2	+2	+2	+2	-2	-1.0%	-1.0%	-1.0%	-1.0%	-1.0%	-0.5%
Health & Social Care Professionals	31	-5	-7	-6	-8	+3	+1	-0.1%	-0.2%	-0.2%	-0.2%	+0.1%	+0.0%
Therapy Professions	13	-2	-3	-4	-4	-0	-0	-0.1%	-0.2%	-0.2%	-0.2%	-0.0%	-0.0%
Health Science/ Diagnostics		-1	-1					-1.0%	-1.0%	-1.0%	-1.0%	-1.0%	-1.0%
Social Workers	14	+0	-1	-0	-2	+3	+1	+0.0%	-0.1%	-0.0%	-0.2%	+0.2%	+0.1%
Pharmacy	3	-1	-1	-1	-1	+1		-0.3%	-0.3%	-0.3%	-0.3%	+0.2%	+0.0%
H&SC, Other	1	-1	-1	-1	-1			-0.5%	-0.5%	-0.5%	-0.5%	+0.0%	+0.0%
Management & Administrative	55	+1	+2	+5	+11	+4	+2	+0.0%	+0.0%	+0.1%	+0.2%	+0.1%	+0.0%
Management (VIII & above)	6	-2	-2	+1	+2	+1	-0	-0.3%	-0.3%	+0.2%	+0.5%	+0.2%	-0.0%
Administrative/ Supervisory (V to VII)	14	+2	+5	+4	+5	+3	+3	+0.1%	+0.5%	+0.4%	+0.5%	+0.3%	+0.3%
Clerical (III & IV)	34	+2	-0	-0	+4	+0	-1	+0.0%	-0.0%	-0.0%	+0.1%	+0.0%	-0.0%
General Support	107	-13	-14	-16	-15	-5	+1	-0.1%	-0.1%	-0.1%	-0.1%	-0.0%	+0.0%
Support	105	-12	-13	-15	-14	-5	+1	-0.1%	-0.1%	-0.1%	-0.1%	-0.0%	+0.0%
Maintenance/ Technical	2	-1	-1	-1	-1			-0.3%	-0.3%	-0.3%	-0.3%	+0.0%	+0.0%
Patient & Client Care	498	-55	-61	-24	-32	-2	-4	-0.1%	-0.1%	-0.0%	-0.1%	-0.0%	-0.0%
Health Care Assistants	379	-43	-38	-2	-32	-9	-3	-0.1%	-0.1%	-0.0%	-0.1%	-0.0%	-0.0%
Care, other	4	-9	-12	-11	-3	-1		-0.7%	-0.7%	-0.7%	-0.4%	-0.1%	+0.0%
Home Help	115	-4	-12	-11	+2	+7	-0	-0.0%	-0.1%	-0.1%	+0.0%	+0.1%	-0.0%

Source: Health Service Personnel Census