

CHO 7 Employment Report: June 2021

Employment by Staff Group

Jun 2021 (Dec 2020 figure: 6,783)	WTE Apr 2021	WTE Jun 2021	WTE change since Apr 21	% change since Apr 21	WTE change since Dec 20	WTE change since Jun 20
Overall	6,812	6,934	+122	+1.8%	+151	+346
Consultants	68	67	-1	-0.7%	+1	+3
Registrars	103	101	-2	-1.5%	+1	+16
SHO/ Interns	37	38	+1	+3.4%	-0	+1
Medical/ Dental, other	74	75	+1	+2.0%	-4	-6
Medical & Dental	281	282	+1	+0.2%	-2	+14
Nurse/ Midwife Manager	429	439	+11	+2.5%	+32	+33
Nurse/ Midwife Specialist & AN/MP	115	111	-5	-4.0%	+1	+8
Staff Nurse/ Staff Midwife	1,024	1,053	+30	+2.9%	+33	+37
Public Health Nurse	172	170	-1	-0.9%	-6	+6
Pre-registration Nurse/ Midwife Intern	21	22	+1	+2.8%	+21	+1
Pre-registration Nurse Intern (COVID-19)	1	1	+0	+81.8%	-2	+0
Post-registration Nurse/ Midwife Student	24	24				
Nursing/ Midwifery awaiting registration	2	1	-2	-67.1%	-3	-2
Nursing/ Midwifery Student	48	48	-1	-1.2%	+16	-20
Nursing/ Midwifery other	11	10	-1	-9.5%	+1	+1
Nursing & Midwifery	1,799	1,831	+32	+1.8%	+76	+65
Therapy Professions	444	455	+11	+2.4%	-8	-19
Health Science/ Diagnostics	4	4	+0	+2.7%	-0	+1
Social Care	401	404	+3	+0.9%	+4	+40
Social Workers	115	113	-2	-1.6%	+5	+4
Psychologists	80	86	+6	+7.3%	-1	+4
Pharmacy	39	38	-1	-1.4%	+0	-3
H&SC, Other	41	41	-0	-0.1%	-0	-4
Health & Social Care Professionals	1,124	1,141	+18	+1.6%	+1	+23
Management (VIII & above)	88	90	+1	+1.6%	+5	+12
Administrative/ Supervisory (V to VII)	220	227	+7	+3.3%	+13	+28
Clerical (III & IV)	377	393	+16	+4.3%	+13	+32
Management & Administrative	686	710	+25	+3.6%	+31	+72
Support	389	395	+6	+1.6%	-6	-3
Maintenance/ Technical	46	47	+1	+2.7%	+1	+4
General Support	435	443	+8	+1.8%	-5	+1
Health Care Assistants	1,743	1,782	+38	+2.2%	+59	+160
Care, other	615	618	+3	+0.4%	-3	+18
Home Help	128	126	-2	-1.7%	-6	-7
Patient & Client Care	2,487	2,526	+39	+1.6%	+51	+170

CHO 7 Employment Report: June 2021

Community Health & Wellbeing

Jun 2021 (Dec 2020 figure: 8)	WTE Apr 2021	WTE Jun 2021	WTE change since Apr 21	% change since Apr 21	WTE change since Dec 20	WTE change since Jun 20
Total Community Health & Wellbeing	7	10	+3	+42.4%	+3	+2
Management (VIII & above)	1	1	0	0		
Administrative/ Supervisory (V to VII)	3	5	+2	+80%	+2	+3
Clerical (III & IV)	2	2	0	0	+1	+1
Management & Administrative	6	8	+2	+42.8%	+3	+4
Care, other	2	3	+1	+41%	-1	-2
Patient & Client Care	2	3	+1	+41.4%	-1	-2

Mental Health

Jun 2021 (Dec 2020 figure: 861)	WTE Apr 2021	WTE Jun 2021	WTE change since Apr 21	% change since Apr 21	WTE change since Dec 20	WTE change since Jun 20
Total Mental Health	879	887	+8	+1.0%	+26	+21
Consultants	54	54	-0	-1%	+1	+4
Registrars	56	55	-1	-2%	+2	+15
SHO/ Interns	17	18	+1	+8%	-2	-2
Medical & Dental	127	127	-0	-0.1%	+0	+17
Nurse/ Midwife Manager	116	117	+1	+1%	-0	-3
Nurse/ Midwife Specialist & AN/MP	52	49	-3	-5%	+3	+3
Staff Nurse/ Staff Midwife	203	215	+11	+6%	+13	+14
Pre-registration Nurse/ Midwife Intern	14	14	+1	+4.3%	+14	+1
Pre-registration Nurse Intern (COVID-19)	1	1	+0	+81.8%	-2	+0
Post-registration Nurse/ Midwife Student	1	1				
Nursing/ Midwifery awaiting registration	1		-1	-100.0%	-3	-1
Nursing/ Midwifery Student	16	16	+0	+0%	+9	-16
Nursing/ Midwifery other	7	6	-1	-16%	-0	-1
Nursing & Midwifery	394	404	+9	+2.3%	+24	-2
Therapy Professions	49	48	-1	-3%	-6	+1
Social Care	7	7	+0	+1%	+0	-0
Social Workers	43	41	-2	-4%	+4	+5
Psychologists	28	29	+0	+1%	-1	-0
Pharmacy	1	1	0	0		
H&SC, Other	18	17	-1	-3%	-1	-1
Health & Social Care Professionals	146	143	-3	-2.2%	-3	+5
Management (VIII & above)	4	4	+0	+1%	+0	+1
Administrative/ Supervisory (V to VII)	17	16	-0	-1%	-1	-1
Clerical (III & IV)	50	48	-2	-5%	-2	-1
Management & Administrative	70	68	-3	-3.6%	-2	-1
Support	18	18	-0	-0%	+0	+0
Maintenance/ Technical	2	2	0	0		
General Support	20	20	-0	-0.1%	+0	+0
Health Care Assistants	35	35	+0	+1%	+1	+0
Care, other	86	91	+5	+6%	+6	+2
Patient & Client Care	120	126	+5	+4.3%	+7	+2

Primary Care

Jun 2021 (Dec 2020 figure: 1,789)	WTE Apr 2021	WTE Jun 2021	WTE change since Apr 21	% change since Apr 21	WTE change since Dec 20	WTE change since Jun 20
Total Primary Care	1,824	1,839	+15	+0.8%	+50	+119
Consultants	13	13	-0	-0%	+0	-1
Registrars	43	43	-0	-1%	-0	+1
SHO/ Interns	10	10	-0	-0%	+1	+3
Medical/ Dental, other	71	72	+1	+2%	-4	-4
Medical & Dental	137	138	+1	+0.8%	-3	-1
Nurse/ Midwife Manager	92	93	+1	+1%	+7	+5
Nurse/ Midwife Specialist & AN/MP	57	55	-2	-3%	-1	+7
Staff Nurse/ Staff Midwife	207	210	+3	+2%	+11	+12
Public Health Nurse	172	170	-1	-1%	-6	+6
<i>Post-registration Nurse/ Midwife Student</i>	23	23				
Nursing/ Midwifery Student	23	23	0	0		+4
Nursing/ Midwifery other	2	2	0	0		
Nursing & Midwifery	553	553	+1	+0.2%	+11	+33
Therapy Professions	248	250	+2	+1%	-8	-24
Health Science/ Diagnostics	1	1	+0	+32%	-0	+1
Social Care	4	3	-1	-24%	-1	-1
Social Workers	28	28	-0	-1%	+2	+2
Psychologists	24	27	+3	+12%	+2	+3
Pharmacy	31	30	-1	-4%	-0	-1
H&SC, Other	21	21	+0	+2%	+0	-1
Health & Social Care Professionals	357	361	+3	+1.0%	-5	-21
Management (VIII & above)	33	33	-0	-1%	+3	+3
Administrative/ Supervisory (V to VII)	95	97	+2	+2%	+10	+16
Clerical (III & IV)	190	197	+7	+4%	+4	+16
Management & Administrative	318	327	+9	+2.9%	+17	+35
Support	109	109	-0	-0%	-1	-7
Maintenance/ Technical	9	9	+0	+0%	-0	+0
General Support	118	118	-0	-0.1%	-1	-6
Health Care Assistants	213	212	-1	-1%	+28	+77
Care, other	128	129	+2	+1%	+3	+2
Patient & Client Care	341	341	+0	+0.1%	+31	+79

Social Care

Jun 2021 (Dec 2020 figure: 4,125)	WTE Apr 2021	WTE Jun 2021	WTE change since Apr 21	% change since Apr 21	WTE change since Dec 20	WTE change since Jun 20
Total Social Care	4,102	4,198	+96	+2.3%	+73	+204
Consultants	1	0	-0	-37%	-0	-0
Registrars	3	3	-0	-0%		
SHO/ Interns	10	10	-0	-0%	+1	+0
Medical/ Dental, other	3	3	0	0		-2
Medical & Dental	17	16	-0	-1.5%	+1	-2
Nurse/ Midwife Manager	220	229	+9	+4%	+24	+31
Nurse/ Midwife Specialist & AN/MP	7	7	-0	-7%	-1	-2
Staff Nurse/ Staff Midwife	614	628	+15	+2%	+9	+11
Pre-registration Nurse/ Midwife Intern	8	8			+8	
Pre-registration Nurse Intern (COVID-19)				-100.0%		
Nursing/ Midwifery awaiting registration	1	1	-1	-45.6%	-1	-1
Nursing/ Midwifery Student	9	8	-1	-8%	+7	-8
Nursing/ Midwifery other	3	3	0	0	+1	+2
Nursing & Midwifery	852	875	+22	+2.6%	+40	+35
Therapy Professions	147	157	+10	+7%	+6	+3
Health Science/ Diagnostics	3	3	-0	-5%	-0	-0
Social Care	390	394	+4	+1%	+5	+41
Social Workers	44	44	+0	+1%	-0	-3
Psychologists	28	30	+3	+9%	-2	+1
Pharmacy	6	7	+1	+10%	+1	-2
H&SC, Other	3	3	0	0		-2
Health & Social Care Professionals	620	638	+18	+2.8%	+9	+39
Management (VIII & above)	51	52	+2	+4%	+3	+8
Administrative/ Supervisory (V to VII)	105	108	+3	+3%	+2	+11
Clerical (III & IV)	136	147	+11	+8%	+9	+16
Management & Administrative	292	308	+16	+5.4%	+14	+34
Support	262	269	+7	+3%	-5	+3
Maintenance/ Technical	35	36	+1	+3%	+1	+4
General Support	297	305	+8	+2.6%	-4	+7
Health Care Assistants	1,496	1,535	+39	+3%	+31	+83
Care, other	400	396	-4	-1%	-12	+15
Home Help	128	126	-2	-2%	-6	-7
Patient & Client Care	2,024	2,057	+32	+1.6%	+13	+91

CHO 7 Employment Report: June 2021

Disabilities

Jun 2021 (Dec 2020 figure: 3,103)	WTE Apr 2021	WTE Jun 2021	WTE change since Apr 21	% change since Apr 21	WTE change since Dec 20	WTE change since Jun 20
Total Disabilities	3,086	3,179	+93	+3.0%	+75	+206
Consultants	1	0	-0	-37.0%	-0	-0
Registrars	3	3	-0	-0.3%		
SHO/ Interns	8	8	-0	-0.5%	+1	+0
Medical/ Dental, other	1	1				
Medical & Dental	13	12	-0	-2.0%	+1	-0
Nurse/ Midwife Manager	124	131	+8	+6.2%	+13	+9
Nurse/ Midwife Specialist & AN/MP	4	4				-1
Staff Nurse/ Staff Midwife	374	389	+15	+4.1%	+11	+17
Pre-registration Nurse/ Midwife Intern	8	8			+8	
Pre-registration Nurse Intern (COVID-19)				-100.0%		
Nursing/ Midwifery Student	8	8			+8	-8
Nursing/ Midwifery other	3	3			+1	+2
Nursing & Midwifery	512	535	+23	+4.5%	+33	+20
Therapy Professions	131	140	+9	+6.6%	+1	-1
Health Science/ Diagnostics	3	3	-0	-4.7%	-0	-0
Social Care	389	394	+4	+1.1%	+5	+41
Social Workers	31	33	+1	+4.0%	+1	-1
Psychologists	28	30	+3	+9.3%	-2	+1
Pharmacy	4	5	+1	+14.3%	+1	-1
H&SC, Other	2	2				-2
Health & Social Care Professionals	588	605	+17	+2.9%	+6	+37
Management (VIII & above)	44	46	+2	+4.1%	+3	+7
Administrative/ Supervisory (V to VII)	90	93	+3	+3.2%	+1	+10
Clerical (III & IV)	100	110	+10	+10.1%	+9	+13
Management & Administrative	234	249	+15	+6.3%	+14	+30
Support	145	152	+8	+5.4%	-3	-8
Maintenance/ Technical	33	34	+1	+3.7%	+1	+4
General Support	177	186	+9	+5.0%	-2	-4
Health Care Assistants	1,149	1,183	+34	+3.0%	+36	+110
Care, other	395	391	-4	-1.1%	-12	+15
Home Help	17	17	-0	-2.3%	-0	-2
Patient & Client Care	1,561	1,590	+29	+1.9%	+24	+123

Older People

Jun 2021 (Dec 2020 figure: 1,021)	WTE Apr 2021	WTE Jun 2021	WTE change since Apr 21	% change since Apr 21	WTE change since Dec 20	WTE change since Jun 20
Total Older People	1,016	1,019	+3	+0.3%	-2	-2
SHO/ Interns	2	2				
Medical/ Dental, other	2	2				-2
Medical & Dental	4	4				-2
Nurse/ Midwife Manager	96	97	+1	+1.1%	+11	+22
Nurse/ Midwife Specialist & AN/MP	3	2	-0	-16.4%	-1	-1
Staff Nurse/ Staff Midwife	240	239	-0	-0.2%	-3	-5
Nursing/ Midwifery Student	1	1	-1	-45.6%	-1	-1
Nursing & Midwifery	340	340	-0	-0.1%	+7	+15
Health & Social Care Professionals	32	32	+0	+1.2%	+3	+1
Management (VIII & above)	6	6	-0	-0.5%	-1	+1
Administrative/ Supervisory (V to VII)	15	15	-0	-1.0%	+0	+0
Clerical (III & IV)	36	37	+1	+3.3%	+0	+3
Management & Administrative	58	59	+1	+1.8%	-0	+4
Support	118	117	-1	-1.0%	-2	+11
Maintenance/ Technical	2	2				
General Support	120	119	-1	-1.0%	-2	+11
Health Care Assistants	347	352	+5	+1.4%	-5	-27
Care, other	5	5				+1
Home Help	111	109	-2	-1.6%	-5	-5
Patient & Client Care	463	467	+3	+0.7%	-11	-31

CHO 7 Employment by Administration (HSE / S38): June 2021

Jun 2021 (Dec 2020 figure: 6,783)	WTE Apr 2021	WTE Jun 2021	WTE change since Apr 21	% change since Apr 21	WTE change since Dec 20	WTE change since Jun 20
Overall	6,812	6,934	+122	+1.8%	+151	+346
HSE	3,341	3,373	+32	+1.0%	+54	+133
Section 38 Voluntary Agencies	3,471	3,561	+90	+2.6%	+97	+213

HSE

Jun 2021 (Dec 2020 figure: 3,319)	WTE Apr 2021	WTE Jun 2021	WTE change since Apr 21	% change since Apr 21	WTE change since Dec 20	WTE change since Jun 20
Overall	3,341	3,373	+32	+1.0%	+54	+133
Consultants	59	59	-0	-0.0%	+1	+3
Registrars	94	92	-2	-0.0%	+1	+15
SHO/ Interns	22	23	+1	+0.1%	-2	-1
Medical/ Dental, other	72	73	+1	+0.0%	-4	-6
Medical & Dental	247	248	+1	+0.4%	-4	+11
Nurse/ Midwife Manager	262	266	+4	+0.0%	+18	+23
Nurse/ Midwife Specialist & AN/MP	73	70	-4	-0.1%	+2	+2
Staff Nurse/ Staff Midwife	545	558	+14	+0.0%	+13	+13
Public Health Nurse	172	170	-1	-0.0%	-6	+6
Pre-registration Nurse/ Midwife Intern	14	14	+1	+0.0%	+13	+14
Pre-registration Nurse Intern (COVID-19)	1	1	+0	+0.8%	+1	-28
Post-registration Nurse/ Midwife Student	24	24		+0.0%	+3	+5
Nursing/ Midwifery awaiting registration	2	1	-2	-0.7%	-9	-5
Nursing/ Midwifery Student	41	40	-1	-0.0%	+8	-13
Nursing/ Midwifery other	7	6	-1	-0.2%	-0	-1
Nursing & Midwifery	1,099	1,110	+11	+1.0%	+34	+31
Therapy Professions	327	325	-2	-0.0%	-15	-17
Social Care	11	10	-1	-0.1%	-1	-1
Social Workers	78	76	-2	-0.0%	+3	+4
Psychologists	61	66	+5	+0.1%	+2	+5
Pharmacy	24	25	+1	+0.0%	+1	-1
H&SC, Other	40	40	-0	-0.0%	-0	-2
Health & Social Care Professionals	541	541	-0	-0.0%	-10	-12
Management (VIII & above)	49	48	-1	-0.0%	+1	+3
Administrative/ Supervisory (V to VII)	126	130	+4	+0.0%	+7	+23
Clerical (III & IV)	258	267	+9	+0.0%	+4	+17
Management & Administrative	433	445	+12	+2.8%	+13	+44
Support	175	175	-0	-0.0%	-2	+11
Maintenance/ Technical	5	5		+0.0%		+0
General Support	181	180	-0	-0.2%	-2	+11
Health Care Assistants	485	489	+4	+0.0%	+19	+47
Care, other	227	234	+7	+0.0%	+11	+8
Home Help	128	126	-2	-0.0%	-6	-7
Patient & Client Care	840	849	+9	+1.1%	+24	+48

Section 38 Voluntary Agencies

Jun 2021 (Dec 2020 figure: 3,464)	WTE Apr 2021	WTE Jun 2021	WTE change since Apr 21	% change since Apr 21	WTE change since Dec 20	WTE change since Jun 20
Overall	3,471	3,561	+90	+2.6%	+97	+213
Consultants	8	8	-0	-0.0%	-0	-0
Registrars	9	9	-0	-0.0%	-0	+1
SHO/ Interns	15	15	-0	-0.0%	+2	+2
Medical/ Dental, other	2	2	+0	+0.0%	+0	+0
Medical & Dental	35	34	-0	-0.8%	+2	+3
Nurse/ Midwife Manager	166	173	+7	+0.0%	+14	+10
Nurse/ Midwife Specialist & AN/MP	42	41	-1	-0.0%	-0	+6
Staff Nurse/ Staff Midwife	479	495	+16	+0.0%	+20	+24
<i>Pre-registration Nurse/ Midwife Intern</i>	8	8		+0.0%	+8	+8
<i>Pre-registration Nurse Intern (COVID-19)</i>				-1.0%		-15
Nursing/ Midwifery Student	8	8		+0.0%	+8	-8
Nursing/ Midwifery other	5	5		+0.0%	+1	+2
Nursing & Midwifery	700	722	+22	+3.1%	+41	+34
Therapy Professions	117	130	+13	+0.1%	+7	-2
Health Science/ Diagnostics	4	4	+0	+0.0%	-0	+1
Social Care	389	394	+4	+0.0%	+5	+41
Social Workers	37	38	+1	+0.0%	+2	-0
Psychologists	19	20	+1	+0.1%	-3	-1
Pharmacy	15	13	-1	-0.1%	-0	-2
H&SC, Other	2	2		+0.0%		-2
Health & Social Care Professionals	582	600	+18	+3.1%	+11	+34
Management (VIII & above)	39	41	+2	+0.1%	+4	+9
Administrative/ Supervisory (V to VII)	94	97	+3	+0.0%	+6	+5
Clerical (III & IV)	119	127	+7	+0.1%	+9	+14
Management & Administrative	253	265	+13	+5.0%	+19	+28
Support	214	221	+7	+0.0%	-4	-14
Maintenance/ Technical	41	42	+1	+0.0%	+1	+4
General Support	254	262	+8	+3.1%	-3	-10
Health Care Assistants	1,259	1,293	+34	+0.0%	+40	+113
Care, other	388	384	-4	-0.0%	-14	+10
Patient & Client Care	1,647	1,677	+30	+1.8%	+26	+123

CHO 7 Employment by S38 Agency: June 2021

Cheeverstown House

Jun 2021 (Dec 2020 figure: 395)	WTE Apr 2021	WTE Jun 2021	WTE change since Apr 21	% change since Apr 21	WTE change since Dec 20	WTE change since Jun 20
Overall	396	414	+18	+4.6%	+20	+21
Consultants	0		-0	-1.0%	-0	-0
Medical/ Dental, other	1	1		+0.0%		
Medical & Dental	1	1	-0	-16.7%	-0	-0
Nurse/ Midwife Manager	29	33	+4	+0.2%	+6	+6
Nurse/ Midwife Specialist & AN/MP	2	2		+0.0%		
Staff Nurse/ Staff Midwife	102	99	-4	-0.0%	-7	-4
Nursing & Midwifery	133	134	+1	+0.5%	-1	+2
Therapy Professions	12	11	-1	-0.1%	-2	-1
Social Care	40	42	+2	+0.0%	+8	+7
Social Workers	5	5		+0.0%	+1	+1
Psychologists	3	3		+0.0%	-2	-2
Pharmacy	0	0		+0.0%		
H&SC, Other	2	2		+0.0%		
Health & Social Care Professionals	62	63	+1	+1.6%	+5	+5
Management (VIII & above)	3	5	+2	+0.7%	+2	+3
Administrative/ Supervisory (V to VII)	16	16	+1	+0.0%	+2	+2
Clerical (III & IV)	11	15	+4	+0.3%	+3	+3
Management & Administrative	30	36	+6	+21.5%	+6	+7
Support	27	26	-0	-0.0%	-1	-1
Maintenance/ Technical	4	4		+0.0%		
General Support	30	30	-0	-0.8%	-1	-1
Health Care Assistants	127	138	+11	+0.1%	+9	+7
Care, other	12	12		+0.0%	+2	+1
Patient & Client Care	140	150	+11	+7.6%	+11	+8

Kare, Newbridge, Co Kildare

Jun 2021 (Dec 2020 figure: 377)	WTE Apr 2021	WTE Jun 2021	WTE change since Apr 21	% change since Apr 21	WTE change since Dec 20	WTE change since Jun 20
Overall	383	394	+11	+2.8%	+17	+49
Nurse/ Midwife Manager	8	8		+0.0%	+1	-2
Staff Nurse/ Staff Midwife	24	22	-2	-0.1%	-3	+0
Nursing & Midwifery	33	31	-2	-6.4%	-2	-2
Therapy Professions	14	15	+1	+0.1%	+2	+2
Social Care	72	74	+2	+0.0%	+6	+15
Social Workers	4	3	-1	-0.2%	-0	-0
Psychologists	7	7	+0	+0.1%	-0	+2
Health & Social Care Professionals	96	99	+3	+3.2%	+8	+19
Management (VIII & above)	6	6		+0.0%		
Administrative/ Supervisory (V to VII)	11	13	+1	+0.1%	-1	-0
Clerical (III & IV)	14	15	+1	+0.1%	+1	+2
Management & Administrative	32	34	+2	+7.2%	+0	+1
Support	1	1		+0.0%	-0	-0
General Support	1	1			-0	-0
Health Care Assistants	107	115	+8	+0.1%	+10	+25
Care, other	114	113	-1	-0.0%	+1	+5
Patient & Client Care	221	229	+7	+3.4%	+11	+30

Our Lady's Hospice & Care Services

Jun 2021 (Dec 2020 figure: 496)	WTE Apr 2021	WTE Jun 2021	WTE change since Apr 21	% change since Apr 21	WTE change since Dec 20	WTE change since Jun 20
Overall	515	512	-3	-0.5%	+17	+17
Consultants	8	8	-0	-0.0%	+0	+0
Registrars	6	6		+0.0%	-0	+1
SHO/ Interns	7	7	-0	-0.0%	+1	+2
Medical/ Dental, other	1	1	+0	+0.0%	+0	+0
Medical & Dental	22	22	-0	-0.1%	+1	+3
Nurse/ Midwife Manager	46	45	-1	-0.0%	+1	+2
Nurse/ Midwife Specialist & AN/MP	38	37	-1	-0.0%	-0	+5
Staff Nurse/ Staff Midwife	105	106	+0	+0.0%	+8	+7
Nursing/ Midwifery other	2	2		+0.0%		
Nursing & Midwifery	191	190	-1	-0.6%	+9	+15
Therapy Professions	34	37	+3	+0.1%	+2	-2
Health Science/ Diagnostics	1	1	+0	+0.3%	-0	+1
Social Workers	12	12	-0	-0.0%	+2	+1
Psychologists	1	1	+0	+0.0%	+0	
Pharmacy	10	9	-2	-0.2%	-1	-1
Health & Social Care Professionals	58	59	+1	+2.0%	+2	-1
Management (VIII & above)	4	4	-0	-0.1%	-0	-0
Administrative/ Supervisory (V to VII)	21	21	+0	+0.0%	+3	+1
Clerical (III & IV)	31	29	-2	-0.1%	+0	+1
Management & Administrative	56	54	-2	-3.4%	+2	+2
Support	69	68	-1	-0.0%	-1	-6
Maintenance/ Technical	8	8	+0	+0.0%		
General Support	77	76	-1	-1.3%	-1	-6
Health Care Assistants	111	111	+0	+0.0%	+3	+4
Care, other	1	1	+0	+0.1%	+0	+0
Patient & Client Care	111	112	+0	+0.3%	+3	+4

Peamount Hospital (Newcastle)

Jun 2021 (Dec 2020 figure: 483)	WTE Apr 2021	WTE Jun 2021	WTE change since Apr 21	% change since Apr 21	WTE change since Dec 20	WTE change since Jun 20
Overall	475	531	+56	+11.8%	+48	+21
Registrars	2	2	-0	-0.0%		
SHO/ Interns	8	8	-0	-0.0%	+1	+0
Medical & Dental	10	10	-0	-0.5%	+1	+0
Nurse/ Midwife Manager	32	34	+2	+0.1%	+6	+7
Nurse/ Midwife Specialist & AN/MP	2	2		+0.0%		+0
Staff Nurse/ Staff Midwife	74	93	+19	+0.3%	+18	+7
Nursing Education/Clinical	1	1		+0.0%	+1	+1
Nursing/ Midwifery other	1	1		+0.0%		+1
Nursing & Midwifery	109	130	+21	+19.2%	+24	+15
Therapy Professions	28	39	+11	+0.4%	+10	-1
Health Science/ Diagnostics	3	3	-0	-0.0%	-0	-0
Social Care	3	4	+1	+0.2%	-0	-1
Social Workers	4	5	+2	+0.4%	+0	-1
Pharmacy	4	4	+1	+0.2%	+1	-1
Health & Social Care Professionals	41	55	+14	+33.3%	+11	-3
Management (VIII & above)	4	4		+0.0%		
Administrative/ Supervisory (V to VII)	17	17	+0	+0.0%	+1	-0
Clerical (III & IV)	20	21	+1	+0.1%	+2	+4
Management & Administrative	42	43	+1	+3.4%	+3	+3
Support	38	44	+6	+0.2%	-0	-2
Maintenance/ Technical	9	9	+0	+0.0%	+0	+0
General Support	47	53	+6	+13.2%	+0	-2
Health Care Assistants	225	239	+14	+0.1%	+12	+9
Care, other	1	1		+0.0%	-2	-2
Patient & Client Care	226	240	+14	+6.0%	+10	+7

Stewart's Hospital, (Palmerstown)

Jun 2021 (Dec 2020 figure: 914)	WTE Apr 2021	WTE Jun 2021	WTE change since Apr 21	% change since Apr 21	WTE change since Dec 20	WTE change since Jun 20
Overall	926	934	+8	+0.8%	+20	+68
Consultants	0	0		+0.0%		
Medical & Dental	0	0				
Nurse/ Midwife Manager	32	32		+0.0%	+1	-1
Staff Nurse/ Staff Midwife	82	83	+1	+0.0%	+2	+9
Pre-registration Nurse/ Midwife Intern	8	8		+0.0%	+8	+8
Pre-registration Nurse Intern (COVID-19)				-1.0%		-15
Nursing/ Midwifery Student	8	8		+0.0%	+8	-8
Nursing/ Midwifery other	2	2		+0.0%	+1	+1
Nursing & Midwifery	123	124	+1	+0.8%	+11	+2
Therapy Professions	17	16	-1	-0.1%	-3	+1
Social Care	12	12		+0.0%	-1	-1
Social Workers	6	6		+0.0%		-1
Psychologists	4	5	+1	+0.3%	+1	+1
Health & Social Care Professionals	38	38	+0	+0.0%	-3	+0
Management (VIII & above)	17	17		+0.0%	+1	+6
Administrative/ Supervisory (V to VII)	18	19	+1	+0.1%	+3	+2
Clerical (III & IV)	24	25	+1	+0.0%	+1	+3
Management & Administrative	60	62	+2	+3.4%	+5	+11
Support	53	53	-0	-0.0%	-1	-4
Maintenance/ Technical	6	7	+1	+0.2%	+1	+3
General Support	59	60	+1	+1.7%	-0	-1
Health Care Assistants	524	528	+5	+0.0%	+9	+47
Care, other	122	121	-1	-0.0%	-1	+8
Patient & Client Care	646	650	+4	+0.6%	+8	+56

St. John of God Liffey Services

Jun 2021 (Dec 2020 figure: 801)	WTE Apr 2021	WTE Jun 2021	WTE change since Apr 21	% change since Apr 21	WTE change since Dec 20	WTE change since Jun 20
Overall	776	775	-0	-0.0%	-25	+37
Registrars	1	1		+0.0%		
Medical & Dental	1	1				
Nurse/ Midwife Manager	20	21	+1	+0.0%	-1	-3
Nurse/ Midwife Specialist & AN/MP	1	1		+0.0%		
Staff Nurse/ Staff Midwife	91	93	+1	+0.0%	+2	+6
Nursing & Midwifery	112	114	+2	+2.0%	+1	+3
Therapy Professions	12	12	-1	-0.1%	-2	-3
Social Care	262	262	-0	-0.0%	-7	+20
Social Workers	6	6	+0	+0.0%	-0	+0
Psychologists	5	5	-0	-0.1%	-1	-2
H&SC, Other				-1.0%		-2
Health & Social Care Professionals	286	285	-1	-0.4%	-10	+14
Management (VIII & above)	5	6	+1	+0.1%	+1	-0
Administrative/ Supervisory (V to VII)	10	10	+0	+0.0%	-1	+0
Clerical (III & IV)	19	20	+2	+0.1%	+2	+2
Management & Administrative	34	36	+2	+7.3%	+2	+3
Support	26	28	+2	+0.1%	-1	-2
Maintenance/ Technical	14	14		+0.0%	-0	+1
General Support	40	42	+2	+5.0%	-1	-1
Health Care Assistants	165	162	-3	-0.0%	-3	+20
Care, other	138	135	-3	-0.0%	-14	-2
Patient & Client Care	303	297	-6	-2.0%	-17	+18

CHO 7 Employment by Grade Group & Staff Category: June 2021

Jun 2021 (Dec 2020 figure: 6,783)	WTE Apr 2021	WTE Jun 2021	WTE change since Apr 21	% change since Apr 21	WTE change since Dec 20	WTE change since Jun 20
Overall	6,812	6,934	+122	+1.8%	+151	+346
Consultant Medicine	9	9	-0	-0.1%	+0	+0
Consultant Paediatrics	0	0				
Consultant Psychiatry	59	58	-0	-0.8%	+1	+4
Consultant Surgery				-100.0%		-1
Consultants	68	67	-1	-0.7%	+1	+3
Registrar	78	74	-3	-4.0%	+0	+7
Senior Registrar	19	20	+1	+6.4%		+5
Specialist Registrar	7	7	+0	+4.7%	+1	+4
Registrars	103	101	-2	-1.5%	+1	+16
Interns	2	2				+2
Senior House Officer	35	36	+1	+3.6%	-0	-1
SHO/ Interns	37	38	+1	+3.4%	-0	+1
Dentists	33	35	+2	+5.0%	-0	+1
Other Medical	41	41	-0	-0.4%	-4	-6
Medical/ Dental, other	74	75	+1	+2.0%	-4	-6
Medical & Dental	281	282	+1	+0.2%	+11	+14
Clinical Nurse/ Midwife Manager	343	355	+11	+3.3%	+26	+25
Director Nursing/Midwifery, Assistant	66	65	-1	-1.7%	+7	+8
Director of Nursing/Midwifery	19	20	+0	+2.0%	-1	+1
Nurse/ Midwife Manager	429	439	+11	+2.5%	+32	+33
Advanced Nurse/ Midwife Practitioner	14	14	-0	-0.1%	+2	+7
Clinical Nurse/ Midwife Specialist	101	97	-5	-4.6%	-1	+1
Nurse/ Midwife Specialist & AN/MP	115	111	-5	-4.0%	+1	+8
Staff Nurse [Intellectual Disability]	263	218	-45	-17.2%	+26	+30
Staff Nurse [Psychiatric]	205	206	+0	+0.2%	+8	+14
Staff Nurses [General/ Children's]	556	630	+74	+13.4%	-2	-7
Staff Nurse/ Staff Midwife	1,024	1,053	+30	+2.9%	+33	+37
Public Health Nurse	172	170	-1	-0.9%	-6	+6
Pre-registration Nurse/ Midwife Intern	21	22	+1	+2.8%	+21	+22
Pre-registration Nurse Intern (COVID-19)	1	1	+0	+81.8%	-2	-43
Post-registration Nurse/ Midwife Student	24	24				+5
Nursing/ Midwifery awaiting registration	2	1	-2	-67.1%	-3	-5
Nursing/ Midwifery Student	48	48	-1	-1.2%	+16	-20
Nursing Education/Clinical	10	9	-1	-10.4%	-0	+0
Other Nursing/ Midwifery	1	1			+1	+1
Nursing/ Midwifery other	11	10	-1	-9.5%	+1	+1
Nursing & Midwifery	1,799	1,831	+32	+1.8%	+131	+65
Dietitians	24	25	+1	+5.2%	-1	-0
Occupational Therapists	178	179	+0	+0.3%	-5	-16
Orthoptists	2	3	+1	+50.0%	+1	+3
Physiotherapists	113	121	+8	+7.2%	+0	-2
Podiatrists & Chiropodists	2	2	-0	-6.8%	+1	-1
Speech & Language Therapists	125	125	+0	+0.1%	-3	-3
Therapy Professions	444	455	+11	+2.4%	-8	-19
Clinical Measurement	2	2				+1
Phlebotomists	1	1	+0	+31.6%	-0	-0
Radiographers	1	1	-0	-14.0%	-0	-0

Jun 2021 (Dec 2020 figure: 6,783)	WTE Apr 2021	WTE Jun 2021	WTE change since Apr 21	% change since Apr 21	WTE change since Dec 20	WTE change since Jun 20
Overall	6,812	6,934	+122	+1.8%	+151	+346
Health Science/ Diagnostics	4	4	+0	+2.7%	-0	+1
Social Care	401	404	+3	+0.9%	+4	+40
Social Workers	115	113	-2	-1.6%	+5	+4
Psychologists	80	86	+6	+7.3%	-1	+4
Pharmacy	39	38	-1	-1.4%	+0	-3
Counsellor Therapists	35	35	-0	-0.3%	-1	-2
Dental Hygienists	4	4			+0	-1
Other Health & Social Care	1	1	+0	+4.9%	+0	+1
Play Therapists/ Specialists	1	1				-2
H&SC, Other	41	41	-0	-0.1%	-0	-4
Health & Social Care Professionals	1,124	1,141	+18	+1.6%	+47	+23
Executive Management	18	18	+0	+0.6%	+2	+3
Senior Management (VIII & GM)	71	72	+1	+1.9%	+3	+9
Management (VIII & above)	88	90	+1	+1.6%	+5	+12
Middle Management (V-VII)	220	227	+7	+3.3%	+14	+29
Other Administrative				-100.0%	-1	-1
Administrative/ Supervisory (V to VII)	220	227	+7	+3.3%	+13	+28
Clerical (III & IV)	377	393	+16	+4.3%	+13	+32
Management & Administrative	686	710	+25	+3.6%	+105	+72
Catering	55	55	-0	-0.2%	-1	-2
Household Services	260	268	+7	+2.8%	+2	+6
Other Labs & Associated	1	1	-0	-11.5%		
Other Support	15	15	+0	+1.5%	+0	+1
Portering	57	57	-1	-1.4%	-8	-8
Support	389	395	+6	+1.6%	-6	-3
Maintenance	41	41	+0	+0.6%	+0	+1
Technical Services	5	6	+1	+20.0%	+1	+3
Maintenance/ Technical	46	47	+1	+2.7%	+1	+4
General Support	435	443	+8	+1.8%	-9	+1
HCA, Nurse's Aide, etc.	1,649	1,688	+39	+2.3%	+33	+88
Health & Social Care Assistants	22	24	+2	+11.2%	+6	+2
Swabber (COVID-19)	73	70	-3	-3.9%	+20	+70
Health Care Assistants	1,743	1,782	+38	+2.2%	+59	+160
Other Care Grades	615	618	+3	+0.4%	-3	+18
Care, other	615	618	+3	+0.4%	-3	+18
Home Help	128	126	-2	-1.7%	-6	-7
Patient & Client Care	2,487	2,526	+39	+1.6%	+134	+170

CHO 7 HSE Employment by Grade Group & Staff Category: June 2021

Jun 2021 (Dec 2020 figure: 3,319)	WTE Apr 2021	WTE Jun 2021	WTE change since Apr 21	% change since Apr 21	WTE change since Dec 20	WTE change since Jun 20
Overall	3,341	3,373	+32	+1.0%	+54	+133
Consultant Medicine	1	1				
Consultant Psychiatry	58	58	-0	-0.5%	+1	+4
Consultant Surgery				-100.0%		-1
Consultants	59	59	-0	-0.5%	+1	+3
Registrar	74	71	-3	-3.7%	+1	+10
Senior Registrar	19	20	+1	+6.4%		+5
Specialist Registrar	1	1				
Registrars	94	92	-2	-1.7%	+1	+15
SHO/ Interns	22	23	+1	+6.1%	-2	-1
Dentists	33	35	+2	+5.0%	-0	+1
Other Medical	38	38	-0	-0.5%	-4	-7
Medical/ Dental, other	72	73	+1	+2.1%	-4	-6
Medical & Dental	247	248	+1	+0.4%	+5	+11
Clinical Nurse/ Midwife Manager	190	193	+4	+1.9%	+11	+15
Director Nursing/Midwifery, Assistant	57	57	-0	-0.5%	+7	+8
Director of Nursing/Midwifery	15	16	+0	+2.5%	-0	+1
Nurse/ Midwife Manager	262	266	+4	+1.4%	+18	+23
Advanced Nurse/ Midwife Practitioner	10	10	-0	-0.2%	+2	+5
Clinical Nurse/ Midwife Specialist	64	60	-4	-5.9%	-1	-2
Nurse/ Midwife Specialist & AN/MP	73	70	-4	-5.1%	+2	+2
Staff Nurse [Intellectual Disability]		1	+1	-100.0%		
Staff Nurse [Psychiatric]	205	206	+0	+0.2%	+8	+14
Staff Nurses [General/ Children's]	339	352	+12	+3.6%	+5	-1
Staff Nurse/ Staff Midwife	545	558	+14	+2.5%	+13	+13
Public Health Nurse	172	170	-1	-0.9%	-6	+6
Pre-registration Nurse/ Midwife Intern	14	14	+1	+4.3%	+14	+14
Pre-registration Nurse Intern (COVID-19)	1	1	+0	+81.8%	-2	-28
Post-registration Nurse/ Midwife Student	24	24				+5
Nursing/ Midwifery awaiting registration	2	1	-2	-67.1%	-3	-5
Nursing/ Midwifery Student	41	40	-1	-1.5%	+8	-13
Nursing Education/Clinical	7	6	-1	-15.9%	-0	-1
Nursing/ Midwifery other	7	6	-1	-15.9%	-0	-1
Nursing & Midwifery	1,099	1,110	+11	+1.0%	+83	+31
Dietitians	16	18	+2	+9.8%	+0	+1
Occupational Therapists	138	134	-4	-3.2%	-11	-13
Orthoptists	2	3	+1	+50.0%	+1	+3
Physiotherapists	75	75	+0	+0.3%	-2	-2
Podiatrists & Chiropodists	2	2	-0	-6.8%	+1	-1
Speech & Language Therapists	95	94	-1	-0.6%	-3	-6
Therapy Professions	327	325	-2	-0.7%	-15	-17
Social Care	11	10	-1	-7.4%	-1	-1
Social Workers	78	76	-2	-3.0%	+3	+4
Psychologists	61	66	+5	+7.8%	+2	+5
Pharmacy	24	25	+1	+3.0%	+1	-1
Counsellor Therapists	33	33	-0	-0.3%	-1	-2
Dental Hygienists	4	4			+0	-1
Other Health & Social Care	1	1	+0	+4.9%	+0	+1
Play Therapists/ Specialists	1	1				
H&SC, Other	40	40	-0	-0.1%	-0	-2

Jun 2021 (Dec 2020 figure: 3,319)	WTE Apr 2021	WTE Jun 2021	WTE change since Apr 21	% change since Apr 21	WTE change since Dec 20	WTE change since Jun 20
Overall	3,341	3,373	+32	+1.0%	+54	+133
Health & Social Care Professionals	541	541	-0	-0.0%	+8	-12
Executive Management	10	10	+0	+1.0%	+1	+2
Senior Management (VIII & GM)	39	38	-1	-2.5%	+0	+1
Management (VIII & above)	49	48	-1	-1.8%	+1	+3
Administrative/ Supervisory (V to VII)	126	130	+4	+3.3%	+7	+23
Clerical (III & IV)	258	267	+9	+3.5%	+4	+17
Management & Administrative	433	445	+12	+2.8%	+68	+44
Catering	28	28	+0	+0.0%	+1	+1
Household Services	98	99	+0	+0.3%	+1	+13
Other Support	6	6	+0	+2.8%	+0	+1
Portering	43	42	-1	-1.8%	-4	-4
Support	175	175	-0	-0.2%	-2	+11
Maintenance/ Technical	5	5				+0
General Support	181	180	-0	-0.2%	+4	+11
HCA, Nurse's Aide, etc.	395	400	+5	+1.3%	-5	-26
Health & Social Care Assistants	17	19	+1	+8.3%	+4	+3
Swabber (COVID-19)	73	70	-3	-3.9%	+20	+70
Health Care Assistants	485	489	+4	+0.8%	+19	+47
Care, other	227	234	+7	+3.1%	+11	+8
Home Help	128	126	-2	-1.7%	-6	-7
Patient & Client Care	840	849	+9	+1.1%	+53	+48

Employment by WTE, Headcount, Gender, Full-Time /Part-Time etc.: Jun 2021

CHO 7	WTE	Headcount	WTE: no.	% Male	% female	Male WTE: no.	Female WTE: no.	% Total Perm	% Male Perm	% Female Perm	% Total Full Time	% Total Part Time	% Male FT	% Female FT
Overall	6,934	8,080	1.17	20.0%	80.0%	1.09	1.19	87.0%	84.2%	87.7%	70.3%	29.7%	83.2%	67.1%
Consultant Medicine	9	10	1.15	30.0%	70.0%	1.12	1.17	70.0%	70.0%	71.4%	70.0%	30.0%	66.7%	71.4%
Consultant Paediatrics	0	1	2.94		100.0%		2.94	100.0%	100.0%	100.0%	0.0%	100.0%		0.0%
Consultant Psychiatry	58	61	1.05	31.1%	68.9%	1.00	1.07	57.4%	57.4%	52.4%	86.9%	13.1%	100.0%	81.0%
Consultants	67	72	1.07	30.6%	69.4%	1.01	1.10	59.7%	68.2%	56.0%	83.3%	16.7%	95.5%	78.0%
Registrar	74	79	1.06	36.7%	63.3%	1.02	1.08	2.5%	2.5%	0.0%	100.0%	0.0%	100.0%	100.0%
Senior Registrar	20	20	1.00	45.0%	55.0%	1.00	1.00	0.0%	0.0%	0.0%	100.0%	0.0%	100.0%	100.0%
Specialist Registrar	7	8	1.17	12.5%	87.5%	1.00	1.20	0.0%	0.0%	0.0%	100.0%	0.0%	100.0%	100.0%
Registrars	101	107	1.06	36.4%	63.6%	1.02	1.08	1.9%	5.1%	0.0%	100.0%	0.0%	100.0%	100.0%
SHO/ Interns	38	38	1.00	21.1%	78.9%	1.00	1.00	10.5%	25.0%	6.7%	100.0%	0.0%	100.0%	100.0%
Dentists	35	41	1.18	17.1%	82.9%	1.09	1.20	100.0%	100.0%	100.0%	63.4%	36.6%	85.7%	58.8%
Other Medical	41	60	1.48	43.3%	56.7%	1.44	1.50	68.3%	68.3%	70.6%	23.3%	76.7%	19.2%	26.5%
Medical/ Dental, other	75	101	1.34	32.7%	67.3%	1.35	1.33	81.2%	72.7%	85.3%	39.6%	60.4%	33.3%	42.6%
Medical & Dental	282	318	1.13	32.1%	67.9%	1.10	1.14	41.2%	42.2%	40.7%	77.0%	23.0%	77.5%	76.9%
Clinical Nurse/ Midwife Manager	355	382	1.08	13.9%	86.1%	1.03	1.09	96.3%	96.3%	97.3%	85.6%	14.4%	98.1%	83.6%
Director Nursing/Midwifery, Assistant	65	70	1.08	15.7%	84.3%	1.00	1.09	97.1%	97.1%	96.6%	94.3%	5.7%	100.0%	93.2%
Director of Nursing/Midwifery	20	20	1.02	10.0%	90.0%	1.00	1.02	95.0%	95.0%	94.4%	90.0%	10.0%	100.0%	88.9%
Nurse/ Midwife Manager	439	472	1.07	14.0%	86.0%	1.02	1.08	96.4%	92.4%	97.0%	87.1%	12.9%	98.5%	85.2%
Advanced Nurse/ Midwife Practitioner	14	15	1.05	6.7%	93.3%	1.00	1.06	100.0%	100.0%	100.0%	86.7%	13.3%	100.0%	85.7%
Clinical Nurse/ Midwife Specialist	97	111	1.15	9.0%	91.0%	1.05	1.16	99.1%	99.1%	99.0%	73.9%	26.1%	100.0%	71.3%
Nurse/ Midwife Specialist & AN/MP	111	126	1.14	8.7%	91.3%	1.04	1.15	99.2%	100.0%	99.1%	75.4%	24.6%	100.0%	73.0%
Staff Nurse [Intellectual Disability]	218	251	1.15	11.2%	88.8%	1.08	1.16	96.4%	96.4%	96.4%	71.3%	28.7%	85.7%	69.5%
Staff Nurse [Psychiatric]	206	229	1.11	22.3%	77.7%	1.05	1.13	94.8%	94.8%	94.9%	85.2%	14.8%	92.2%	83.1%
Staff Nurses [General/ Children's]	630	725	1.15	9.9%	90.1%	1.04	1.17	91.6%	91.6%	91.9%	71.7%	28.3%	93.1%	69.4%
Staff Nurse/ Staff Midwife	1,053	1,205	1.14	12.5%	87.5%	1.05	1.16	93.2%	92.1%	93.4%	74.2%	25.8%	91.4%	71.7%
Public Health Nurse	170	207	1.22	0.5%	99.5%	1.11	1.22	95.2%	100.0%	95.1%	66.7%	33.3%	100.0%	66.5%
Pre-registration Nurse/ Midwife Intern	22	45	2.05	24.4%	75.6%	2.00	2.07	0.0%	0.0%	0.0%	66.7%	33.3%	90.9%	58.8%
Pre-registration Nurse Intern (COVID-19)	1	1	1.00		100.0%		1.00	0.0%	0.0%	0.0%	100.0%	0.0%		100.0%
Post-registration Nurse/ Midwife Student	24	24	1.00		100.0%		1.00	8.3%	8.3%	8.3%	100.0%	0.0%		100.0%

Nursing/ Midwifery awaiting registration	1	1	1.23		100.0%		1.23	0.0%	0.0%	0.0%	100.0%	0.0%		100.0%
Nursing/ Midwifery Student	48	71	1.49	15.5%	84.5%	2.00	1.42	2.8%	0.0%	3.3%	78.9%	21.1%	90.9%	76.7%
Nursing Education/Clinical	9	11	1.21		100.0%		1.21	100.0%	100.0%	100.0%	72.7%	27.3%		72.7%
Other Nursing/ Midwifery	1	1	1.00		100.0%		1.00	100.0%	100.0%	100.0%	100.0%	0.0%		100.0%
Nursing/ Midwifery other	10	12	1.19		100.0%		1.19	100.0%		100.0%	75.0%	25.0%		75.0%
Nursing & Midwifery	1,832	2,093	1.14	11.5%	88.5%	1.06	1.15	91.4%	88.3%	91.9%	76.6%	23.4%	93.8%	74.4%
Dietitians	25	31	1.24	6.5%	93.5%	1.00	1.27	93.5%	93.5%	93.1%	64.5%	35.5%	100.0%	62.1%
Occupational Therapists	179	204	1.14	6.9%	93.1%	1.03	1.15	90.7%	90.7%	90.0%	78.4%	21.6%	92.9%	77.4%
Orthoptists	3	3	1.00	66.7%	33.3%	1.00	1.00	33.3%	33.3%	100.0%	100.0%	0.0%	100.0%	100.0%
Physiotherapists	121	141	1.16	23.4%	76.6%	1.07	1.20	95.0%	95.0%	95.4%	75.9%	24.1%	93.9%	70.4%
Podiatrists & Chiropodists	2	2	1.33		100.0%		1.33	100.0%	100.0%	100.0%	50.0%	50.0%		50.0%
Speech & Language Therapists	125	138	1.10	1.4%	98.6%	1.00	1.10	94.9%	94.9%	96.3%	90.6%	9.4%	100.0%	90.4%
Therapy Professions	455	519	1.14	10.2%	89.8%	1.05	1.15	92.9%	88.7%	93.3%	80.2%	19.8%	94.3%	78.5%
Clinical Measurement	2	2	1.00	100.0%		1.00		100.0%	100.0%		100.0%	0.0%	100.0%	
Phlebotomists	1	2	2.00		100.0%		2.00	100.0%	100.0%	100.0%	0.0%	100.0%		0.0%
Radiographers	1	1	1.16		100.0%		1.16	100.0%	100.0%	100.0%	100.0%	0.0%		100.0%
Health Science/ Diagnostics	4	5	1.30	40.0%	60.0%	1.00	1.61	100.0%	100.0%	100.0%	60.0%	40.0%	100.0%	33.3%
Social Care	404	450	1.11	26.4%	73.6%	1.10	1.12	96.2%	96.6%	96.1%	74.9%	25.1%	83.2%	71.9%
Social Workers	113	129	1.14	14.7%	85.3%	1.05	1.15	97.7%	94.7%	98.2%	81.4%	18.6%	89.5%	80.0%
Psychologists	86	97	1.13	22.7%	77.3%	1.11	1.13	97.9%	100.0%	97.3%	82.5%	17.5%	77.3%	84.0%
Pharmacy	38	44	1.15	22.7%	77.3%	1.07	1.18	63.6%	40.0%	70.6%	47.7%	52.3%	40.0%	50.0%
Counsellor Therapists	35	39	1.13	28.2%	71.8%	1.08	1.15	94.9%	94.9%	92.9%	66.7%	33.3%	72.7%	64.3%
Dental Hygienists	4	7	1.61		100.0%		1.61	100.0%	100.0%	100.0%	14.3%	85.7%		14.3%
Other Health & Social Care	1	3	2.33	33.3%	66.7%	1.25	4.08	100.0%	100.0%	100.0%	0.0%	100.0%	0.0%	0.0%
Play Therapists/ Specialists	1	1	1.00	100.0%		1.00		100.0%	100.0%		100.0%	0.0%	100.0%	
H&SC, Other	41	50	1.21	26.0%	74.0%	1.08	1.26	96.0%	100.0%	94.6%	56.0%	44.0%	69.2%	51.4%
Health & Social Care	1,141	1,294	1.13	18.4%	81.6%	1.08	1.15	94.0%	92.9%	94.3%	76.5%	23.5%	83.2%	75.0%
Executive Management	18	18	1.00	33.3%	66.7%	1.00	1.01	83.3%	83.3%	91.7%	100.0%	0.0%	100.0%	100.0%
Senior Management (VIII & GM)	72	75	1.04	28.0%	72.0%	1.04	1.04	96.0%	96.0%	98.1%	96.0%	4.0%	95.2%	96.3%
Management (VIII & above)	90	93	1.03	29.0%	71.0%	1.03	1.03	93.5%	85.2%	97.0%	96.8%	3.2%	96.3%	97.0%
Administrative/ Supervisory (V to VII)	227	244	1.07	23.8%	76.2%	1.05	1.08	92.6%	89.7%	93.5%	88.1%	11.9%	96.6%	85.5%
Clerical (III & IV)	393	453	1.15	12.4%	87.6%	1.04	1.17	83.9%	76.8%	84.9%	70.6%	29.4%	89.3%	68.0%
Management & Administrative	710	790	1.11	17.8%	82.2%	1.04	1.13	87.7%	83.7%	88.6%	79.1%	20.9%	93.6%	76.0%
Catering	55	59	1.07	30.5%	69.5%	1.02	1.10	94.9%	94.9%	97.6%	76.3%	23.7%	94.4%	68.3%
Household Services	268	352	1.32	15.1%	84.9%	1.14	1.35	84.7%	84.7%	85.6%	39.5%	60.5%	69.8%	34.1%

Other Labs & Associated	1	1	1.00		100.0%		1.00	100.0%	100.0%	100.0%	100.0%	0.0%		100.0%
Other Support	15	19	1.24	73.7%	26.3%	1.26	1.19	73.7%	73.7%	100.0%	57.9%	42.1%	64.3%	40.0%
Portering	57	60	1.06	91.7%	8.3%	1.04	1.32	90.0%	90.0%	80.0%	83.3%	16.7%	89.1%	20.0%
Support	395	491	1.24	28.5%	71.5%	1.09	1.31	86.2%	83.6%	87.2%	50.1%	49.9%	80.0%	38.2%
Maintenance/ Technical	47	52	1.10	88.5%	11.5%	1.09	1.22	90.4%	89.1%	100.0%	82.7%	17.3%	87.0%	50.0%
General Support	443	543	1.23	34.3%	65.7%	1.09	1.31	86.6%	84.9%	87.4%	53.2%	46.8%	81.7%	38.4%
HCA, Nurse's Aide, etc.	1,688	1,980	1.17	23.7%	76.3%	1.08	1.21	86.8%	86.8%	86.2%	63.7%	36.3%	77.2%	59.5%
Health & Social Care Assistants	24	28	1.17	7.1%	92.9%	1.35	1.16	32.1%	32.1%	26.9%	85.7%	14.3%	100.0%	84.6%
Swabber (COVID-19)	70	82	1.18	30.5%	69.5%	1.13	1.20	0.0%	0.0%	0.0%	72.0%	28.0%	92.0%	63.2%
Health Care Assistants	1,782	2,090	1.17	23.7%	76.3%	1.08	1.20	82.6%	84.1%	82.2%	64.3%	35.7%	78.0%	60.0%
Care, other	618	706	1.14	27.5%	72.5%	1.08	1.17	95.3%	92.8%	96.3%	76.2%	23.8%	86.6%	72.3%
Home Help	126	246	1.95	7.3%	92.7%	3.59	1.88	83.3%	61.1%	85.1%	18.3%	81.7%	11.1%	18.9%
Patient & Client Care	2,526	3,042	1.20	23.3%	76.7%	1.10	1.24	85.6%	85.9%	85.6%	63.3%	36.7%	78.7%	58.7%

Employment by WTE, Headcount, Gender, Full-Time /Part-Time etc.: Jun 2021

CHO 7	WTE	Headcount	WTE: no.	% Male	% female	Male WTE: no.	Female WTE: no.	% Total Perm	% Male Perm	% Female Perm	% Total Full Time	% Total Part Time	% Male FT	% Female FT
Overall	6,934	8,080	1.17	20.0%	80.0%	1.09	1.19	87.0%	84.2%	87.7%	70.3%	29.7%	83.2%	67.1%
Community Health & Wellbeing	10	13	1.24	15.4%	84.6%	1.47	1.21	100.0%	100.0%	100.0%	84.6%	15.4%	100.0%	100.0%
Mental Health	887	981	1.11	23.3%	76.7%	1.05	1.12	81.2%	81.2%	82.7%	88.0%	12.0%	95.6%	95.6%
Primary Care	1,839	2,149	1.17	16.3%	83.7%	1.08	1.19	85.0%	85.0%	86.5%	68.9%	31.1%	83.1%	83.1%
Social Care	4,198	4,937	1.18	20.9%	79.1%	1.10	1.20	89.0%	89.0%	89.2%	67.3%	32.7%	80.4%	80.4%

CHO 7 Skills Mix by Staff Grouping: June 2021

Jun 2021 (Dec 2019 figure: 6,515)	WTE Dec 2016	WTE Dec 2017	WTE Dec 2018	WTE Dec 2019	WTE Dec 2020	WTE Apr 2021	WTE Jun 2021
Overall	5,579	6,406	6,557	6,515	6,783	6,812	6,934
Consultant Medicine	3.2%	3.5%	2.7%	2.5%	3.0%	3.1%	3.1%
Consultant Paediatrics	0.1%	0.1%	0.1%	0.1%	0.1%	0.1%	0.1%
Consultant Psychiatry	19.2%	18.2%	18.1%	19.2%	20.1%	20.8%	20.6%
Consultant Surgery	0.3%	0.2%	0.5%	0.3%			
Consultants	22.8%	22.0%	21.3%	22.1%	23.3%	24.0%	23.8%
Registrar	22.2%	20.7%	24.9%	26.5%	26.1%	27.6%	26.4%
Senior Registrar	4.1%	3.7%	5.3%	7.0%	7.0%	6.7%	7.1%
Specialist Registrar	1.5%	2.2%	1.8%	1.5%	2.1%	2.3%	2.4%
Registrars	27.8%	26.6%	31.9%	35.0%	35.2%	36.6%	35.9%
Interns	0.8%	0.8%	0.8%	0.7%	0.7%	0.7%	0.7%
Senior House Officer	15.3%	16.0%	12.6%	12.5%	12.8%	12.3%	12.8%
SHO/ Interns	16.1%	16.8%	13.3%	13.2%	13.5%	13.1%	13.5%
Dentists	15.6%	13.9%	13.8%	12.5%	12.4%	11.8%	12.4%
Other Medical	17.7%	20.8%	19.6%	17.2%	15.7%	14.5%	14.4%
Medical/ Dental, other	33.3%	34.7%	33.4%	29.7%	28.0%	26.3%	26.8%
Medical & Dental	4.6%	4.0%	4.0%	4.2%	4.0%	100.0%	4.1%
Clinical Nurse/ Midwife Manager	18.8%	19.0%	18.9%	19.3%	18.7%	19.1%	19.4%
Director Nursing/Midwifery, Assistant	3.3%	2.9%	3.3%	3.1%	3.3%	3.7%	3.5%
Director of Nursing/Midwifery	1.0%	1.3%	1.1%	0.9%	1.2%	1.1%	1.1%
Nurse/ Midwife Manager	23.2%	23.2%	23.3%	23.3%	23.2%	23.8%	24.0%
Advanced Nurse/ Midwife Practitioner	0.1%	0.1%	0.1%	0.3%	0.7%	0.8%	0.8%
Clinical Nurse/ Midwife Specialist	4.1%	4.5%	5.0%	5.3%	5.6%	5.6%	5.3%
Nurse/ Midwife Specialist & AN/MP	4.2%	4.6%	5.1%	5.5%	6.2%	6.4%	6.1%
Staff Nurse [Intellectual Disability]	14.2%	13.4%	12.9%	11.4%	10.9%	14.6%	11.9%
Staff Nurse [Psychiatric]	13.3%	13.2%	11.7%	11.2%	11.2%	11.4%	11.2%
Staff Nurses [General/ Children's]	31.5%	32.9%	33.9%	35.7%	36.0%	30.9%	34.4%
Staff Nurse/ Staff Midwife	59.1%	59.4%	58.6%	58.4%	58.1%	56.9%	57.5%
Public Health Nurse	11.2%	10.8%	11.5%	10.3%	10.1%	9.5%	9.3%
Pre-registration Nurse/ Midwife Intern	0.1%		0.4%	0.1%	0.0%	1.2%	1.2%
Pre-registration Nurse Intern (COVID-19)					0.2%	0.0%	0.1%
Post-registration Nurse/ Midwife Student	1.4%	0.9%	0.4%	1.2%	1.4%	1.3%	1.3%
Nursing/ Midwifery awaiting registration		0.5%	0.2%	0.6%	0.2%	0.1%	0.0%
Nursing/ Midwifery Student	1.5%	1.4%	1.0%	1.9%	1.8%	2.7%	2.6%
Nursing/ Midwifery other	0.8%	0.5%	0.5%	0.6%	0.5%	0.6%	0.6%
Nursing & Midwifery	28.8%	26.9%	25.9%	26.1%	25.1%	100.0%	26.4%
Dietitians	2.4%	1.8%	2.3%	2.3%	2.3%	2.1%	2.2%
Occupational Therapists	21.3%	16.1%	16.9%	16.8%	16.1%	15.9%	15.6%
Orthoptists	0.0%				0.2%	0.2%	0.3%
Physiotherapists	15.4%	11.8%	11.5%	10.4%	10.6%	10.1%	10.6%
Podiatrists & Chiropodists	0.1%	0.1%	0.1%	0.1%	0.1%	0.1%	0.1%
Speech & Language Therapists	13.5%	12.1%	11.2%	11.5%	11.3%	11.2%	11.0%
Therapy Professions	52.8%	41.9%	41.9%	41.1%	40.6%	39.5%	39.8%
Audiology	0.1%						
Clinical Measurement	0.1%	0.1%	0.1%	0.1%	0.2%	0.2%	0.2%
Medical Science	0.1%						
Phlebotomists	0.1%	0.1%	0.1%	0.1%	0.1%	0.1%	0.1%
Radiographers	0.1%	0.1%	0.1%	0.1%	0.1%	0.1%	0.1%
Health Science/ Diagnostics	0.5%	0.3%	0.3%	0.3%	0.4%	0.3%	0.3%
Social Care	14.2%	31.3%	32.8%	33.9%	35.1%	35.7%	35.4%
Social Workers	13.9%	10.7%	10.1%	9.6%	9.5%	10.3%	9.9%
Psychologists	8.7%	8.1%	7.7%	7.4%	7.6%	7.1%	7.5%

Jun 2021 (Dec 2019 figure: 6,515)	WTE Dec 2016	WTE Dec 2017	WTE Dec 2018	WTE Dec 2019	WTE Dec 2020	WTE Apr 2021	WTE Jun 2021
Overall	5,579	6,406	6,557	6,515	6,783	6,812	6,934
Pharmacy	4.8%	3.7%	3.5%	3.7%	3.3%	3.4%	3.3%
Counsellor Therapists	3.9%	3.1%	2.8%	3.3%	3.1%	3.1%	3.0%
Dental Hygienists	0.4%	0.3%	0.4%	0.5%	0.4%	0.4%	0.4%
Other Health & Social Care	0.6%	0.5%	0.4%	0.2%	0.1%	0.1%	0.1%
Play Therapists/ Specialists	0.1%	0.1%	0.1%	0.1%	0.1%	0.1%	0.1%
H&SC, Other	5.1%	4.1%	3.7%	4.1%	3.6%	3.7%	3.6%
Health & Social Care Professionals	14.2%	16.4%	16.7%	16.8%	16.1%	100.0%	16.5%
Executive Management	2.9%	2.5%	1.9%	2.1%	2.3%	2.6%	2.5%
Senior Management (VIII & GM)	8.7%	8.5%	9.2%	9.9%	10.1%	10.3%	10.1%
Management (VIII & above)	11.6%	11.0%	11.1%	12.0%	12.5%	12.9%	12.7%
Middle Management (V-VII)	23.7%	26.0%	27.2%	29.9%	31.4%	32.1%	32.0%
Other Administrative	0.1%	0.2%	0.1%	0.2%	0.1%		
Administrative/ Supervisory (V to VII)	23.8%	26.1%	27.3%	30.1%	31.5%	32.1%	32.0%
Clerical (III & IV)	64.6%	62.9%	61.6%	57.9%	56.0%	55.0%	55.4%
Management & Administrative	10.0%	9.5%	9.4%	9.3%	8.9%	100.0%	10.2%
Catering	12.0%	13.0%	12.8%	13.1%	12.5%	12.7%	12.4%
Household Services	59.9%	59.9%	60.4%	59.5%	59.2%	59.8%	60.4%
Other Labs & Associated	0.2%	0.2%	0.2%	0.2%	0.2%	0.3%	0.2%
Other Support	3.7%	3.0%	3.2%	3.1%	3.3%	3.5%	3.5%
Portering	16.7%	14.5%	14.6%	14.9%	14.4%	13.2%	12.8%
Support	92.6%	90.6%	91.2%	90.9%	89.7%	89.4%	89.3%
Maintenance/ Technical	7.4%	9.4%	8.8%	9.1%	10.3%	10.6%	10.7%
General Support	7.9%	7.7%	7.4%	6.9%	6.7%	100.0%	6.4%
HCA, Nurse's Aide, etc.	66.9%	66.4%	67.6%	68.7%	66.8%	66.3%	66.8%
Health & Social Care Assistants	0.4%	0.3%	0.9%	0.5%	0.7%	0.9%	0.9%
Swabber (COVID-19)					2.0%	2.9%	2.8%
Health Care Assistants	67.4%	66.7%	68.5%	69.2%	69.6%	70.1%	70.5%
Other Care Grades	24.4%	26.6%	25.8%	25.5%	25.1%	24.7%	24.5%
Care, other	24.4%	26.6%	25.8%	25.5%	25.1%	24.7%	24.5%
Home Help	8.2%	6.7%	5.7%	5.3%	5.3%	5.2%	5.0%
Patient & Client Care	34.6%	35.5%	36.5%	36.7%	35.3%	100.0%	36.4%
Total	100 %	100 %	100 %	100 %	100%	100 %	100 %

CHO 7 Skills Mix by Care Group: June 2021

Jun 2021 (Dec 2019 figure: 835)	WTE Dec 2016	WTE Dec 2017	WTE Dec 2018	WTE Dec 2019	WTE Dec 2020	WTE Apr 2021	WTE Jun 2021
Mental Health	828	859	835	835	861.41	878.58	886.99
Consultants	44.2%	43.0%	43.6%	41.6%	41.8%	42.7%	42.5%
Registrar	19.7%	17.8%	25.1%	22.9%	25.6%	28.7%	26.9%
Senior Registrar	9.4%	9.8%	12.7%	16.5%	15.8%	14.7%	15.7%
Specialist Registrar		1.0%		0.9%	0.8%	0.8%	0.8%
Registrars	29.1%	28.7%	37.8%	40.3%	42.2%	44.2%	43.4%
Interns	2.0%	2.1%	2.0%	1.7%	1.6%	1.6%	1.6%
Senior House Officer	24.7%	26.2%	16.6%	16.4%	14.4%	11.5%	12.6%
SHO/ Interns	26.7%	28.3%	18.6%	18.2%	16.0%	13.1%	14.1%
Medical & Dental	12.2%	11.1%	12.3%	13.8%	13.3%	14.4%	14.4%
Clinical Nurse/ Midwife Manager	25.7%	24.5%	27.0%	26.5%	25.3%	23.8%	24.2%
Director Nursing/Midwifery, Assistant	4.1%	4.5%	5.0%	4.3%	4.6%	4.7%	3.9%
Director of Nursing/Midwifery	0.8%	0.8%	0.8%	0.8%	1.0%	1.0%	1.0%
Nurse/ Midwife Manager	30.6%	29.8%	32.8%	31.5%	31.0%	29.5%	29.1%
Advanced Nurse/ Midwife Practitioner		0.3%	0.3%	0.8%	1.4%	1.7%	1.7%
Clinical Nurse/ Midwife Specialist	7.2%	6.7%	7.0%	10.0%	10.9%	11.4%	10.5%
Nurse/ Midwife Specialist & AN/MP	7.2%	7.0%	7.3%	10.8%	12.3%	13.1%	12.2%
Staff Nurse [Intellectual Disability]					0.3%		0.2%
Staff Nurse [Psychiatric]	58.1%	58.4%	54.3%	51.1%	51.2%	50.9%	49.9%
Staff Nurses [General/ Children's]	1.9%	1.1%	1.2%	1.5%	1.7%	0.6%	3.1%
Staff Nurse/ Staff Midwife	60.1%	59.5%	55.5%	52.6%	53.2%	51.6%	53.2%
Pre-registration Nurse/ Midwife Intern	0.5%		1.6%	0.4%	0.1%	3.5%	3.6%
Pre-registration Nurse Intern (COVID-19)					0.9%	0.1%	0.2%
Post-registration Nurse/ Midwife Student					0.3%	0.3%	0.2%
Nursing/ Midwifery awaiting registration		2.1%	1.1%	2.7%	0.8%	0.2%	
Nursing/ Midwifery Student	0.5%	2.1%	2.8%	3.0%	2.0%	4.2%	4.1%
Nursing Education/Clinical	1.7%	1.6%	1.7%	2.0%	1.5%	1.7%	1.4%
Nursing/ Midwifery other	1.7%	1.6%	1.7%	2.0%	1.5%	1.7%	1.4%
Nursing & Midwifery	43.7%	44.9%	43.3%	44.3%	42.9%	45.5%	45.5%
Dietitians			1.4%	2.1%	2.5%	2.1%	2.8%
Occupational Therapists	30.6%	28.0%	29.8%	27.3%	29.3%	27.3%	26.4%
Speech & Language Therapists	5.0%	4.7%	3.5%	4.8%	4.7%	4.0%	4.1%
Therapy Professions	35.5%	32.7%	34.6%	34.2%	36.5%	33.4%	33.2%
Social Care	7.9%	7.4%	5.8%	5.4%	5.0%	5.0%	5.1%
Social Workers	30.2%	29.0%	26.2%	24.4%	25.7%	29.5%	28.9%
Psychologists	18.3%	20.7%	23.9%	22.4%	20.0%	19.2%	19.9%
Pharmacy				0.7%	0.7%	0.7%	0.7%
Counsellor Therapists	6.6%	8.4%	7.6%	11.4%	12.0%	12.0%	11.8%
Other Health & Social Care	1.5%	1.8%	1.8%	1.4%	0.3%	0.3%	0.3%
H&SC, Other	8.1%	10.2%	9.4%	12.9%	12.3%	12.3%	12.1%
Health & Social Care Professionals	16.4%	16.9%	16.8%	16.8%	16.3%	16.1%	16.1%
Management (VIII & above)	4.3%	4.1%	3.9%	4.3%	5.4%	5.4%	5.7%
Administrative/ Supervisory (V to VII)	18.8%	23.2%	25.3%	24.1%	24.7%	23.6%	24.2%
Clerical (III & IV)	76.9%	72.7%	70.8%	71.6%	69.9%	71.0%	70.1%
Management & Administrative	8.0%	8.0%	8.8%	7.8%	7.6%	7.6%	7.6%
Support	92.3%	92.1%	91.7%	90.5%	89.7%	89.8%	89.8%
Maintenance/ Technical	7.7%	7.9%	8.3%	9.5%	10.3%	10.2%	10.2%
General Support	3.2%	3.0%	2.9%	2.3%	2.3%	2.2%	2.2%

Jun 2021 (Dec 2019 figure: 835)	WTE Dec 2016	WTE Dec 2017	WTE Dec 2018	WTE Dec 2019	WTE Dec 2020	WTE Apr 2021	WTE Jun 2021
Mental Health	828	859	835	835	861.41	878.58	886.99
HCA, Nurse's Aide, etc.	33.7%	32.2%	31.0%	26.6%	29.0%	28.8%	27.9%
Health Care Assistants	33.7%	32.2%	31.0%	26.6%	29.0%	28.8%	27.9%
Care, other	66.3%	67.8%	69.0%	73.4%	71.0%	71.2%	72.1%
Patient & Client Care	16.4%	16.1%	16.0%	15.0%	14.6%	14.2%	14.2%
Total	100 %	100 %	100 %	100 %	100 %	100 %	

Jun 2021 (Dec 2019 figure: 1,702)	WTE Dec 2016	WTE Dec 2017	WTE Dec 2018	WTE Dec 2019	WTE Dec 2020	WTE Apr 2021	WTE Jun 2021
Primary Care	1,687	1,691	1,776	1,702	1,788.84	1,823.58	1,838.56
Consultant Medicine	6.1%	6.4%	4.9%	4.8%	6.0%	6.3%	6.3%
Consultant Psychiatry	1.5%	2.2%	2.1%	2.9%	2.8%	2.9%	2.9%
Consultant Surgery	0.6%	0.3%	0.8%	0.6%			
Consultants	8.2%	8.9%	7.8%	8.3%	8.9%	9.3%	9.2%
Registrars	28.9%	27.1%	30.1%	33.0%	30.7%	31.7%	31.2%
SHO/ Interns	4.5%	4.2%	5.1%	4.3%	6.4%	7.3%	7.2%
Dentists	29.9%	25.7%	25.3%	24.4%	24.8%	24.2%	25.2%
Other Medical	28.5%	34.1%	31.7%	30.1%	29.3%	27.5%	27.2%
Medical/ Dental, other	58.4%	59.8%	57.0%	54.5%	54.1%	51.7%	52.4%
Medical & Dental	7.9%	8.1%	8.1%	8.1%	7.7%	7.5%	7.5%
Clinical Nurse/ Midwife Manager	10.2%	10.1%	10.2%	10.7%	10.5%	10.7%	10.6%
Director Nursing/Midwifery, Assistant	3.9%	3.7%	3.8%	3.4%	4.0%	4.8%	5.0%
Director of Nursing/Midwifery	1.1%	1.1%	1.2%	1.1%	1.3%	1.1%	1.2%
Nurse/ Midwife Manager	15.2%	14.9%	15.2%	15.2%	15.8%	16.7%	16.8%
Nurse/ Midwife Specialist & AN/MP	6.6%	8.4%	8.8%	8.7%	10.2%	10.2%	9.9%
Staff Nurse/ Staff Midwife	37.5%	36.3%	37.5%	38.7%	36.8%	37.5%	38.0%
Public Health Nurse	35.5%	36.7%	36.9%	33.1%	32.6%	31.1%	30.8%
Nursing/ Midwifery Student	4.5%	3.1%	1.3%	4.0%	4.2%	4.2%	4.2%
Nursing Education/Clinical	0.5%	0.5%	0.4%	0.4%	0.4%	0.4%	0.4%
Other Nursing/ Midwifery	0.2%						
Nursing/ Midwifery other	0.7%	0.5%	0.4%	0.4%	0.4%	0.4%	0.4%
Nursing & Midwifery	30.1%	30.1%	29.8%	31.1%	29.6%	30.1%	30.1%
Dietitians	3.8%	4.0%	4.8%	3.8%	4.2%	3.9%	3.9%
Occupational Therapists	24.9%	23.4%	26.8%	26.6%	24.8%	25.7%	25.8%
Orthoptists	0.1%				0.7%	0.6%	0.8%
Physiotherapists	23.1%	22.5%	21.4%	20.1%	22.4%	21.2%	21.1%
Podiatrists & Chiropodists			0.1%	0.3%	0.3%	0.5%	0.4%
Speech & Language Therapists	18.2%	20.3%	19.2%	20.5%	18.1%	17.5%	17.2%
Therapy Professions	70.1%	70.3%	72.4%	71.4%	70.5%	69.3%	69.3%
Phlebotomists	0.2%	0.2%	0.1%	0.1%	0.3%	0.2%	0.3%
Health Science/ Diagnostics	0.2%	0.2%	0.1%	0.1%	0.3%	0.2%	0.3%
Social Care	1.1%	1.1%	1.1%	0.9%	1.0%	1.1%	0.8%
Social Workers	7.7%	7.4%	6.4%	7.0%	7.1%	8.0%	7.8%
Psychologists	5.7%	6.1%	6.2%	5.8%	6.9%	6.8%	7.5%
Pharmacy	8.2%	8.5%	7.6%	8.5%	8.4%	8.8%	8.4%
Counsellor Therapists	5.7%	5.2%	4.8%	5.0%	4.4%	4.4%	4.5%
Dental Hygienists	1.0%	0.9%	1.3%	1.4%	1.1%	1.2%	1.2%
Other Health & Social Care	0.3%	0.3%	0.3%		0.2%	0.2%	0.2%
H&SC, Other	7.0%	6.4%	6.4%	6.4%	5.7%	5.9%	5.9%
Health & Social Care Professionals	21.5%	21.4%	21.4%	21.9%	20.9%	19.6%	19.6%
Executive Management	2.6%	2.3%	1.9%	2.4%	2.6%	2.8%	2.7%

Jun 2021 (Dec 2019 figure: 1,702)	WTE Dec 2016	WTE Dec 2017	WTE Dec 2018	WTE Dec 2019	WTE Dec 2020	WTE Apr 2021	WTE Jun 2021
Primary Care	1,687	1,691	1,776	1,702	1,788.84	1,823.58	1,838.56
Senior Management (VIII & GM)	6.5%	6.8%	8.0%	9.1%	7.2%	7.6%	7.3%
Management (VIII & above)	9.1%	9.1%	9.9%	11.6%	9.7%	10.4%	10.0%
Administrative/ Supervisory (V to VII)	20.8%	23.0%	22.7%	26.5%	28.2%	29.9%	29.8%
Clerical (III & IV)	70.1%	67.9%	67.4%	62.0%	62.1%	59.7%	60.2%
Management & Administrative	18.0%	18.4%	17.5%	16.9%	16.0%	17.8%	17.8%
Support	93.2%	94.6%	93.8%	93.0%	92.2%	92.1%	92.1%
Maintenance	6.1%	4.6%	5.5%	6.2%	7.0%	7.1%	7.1%
Technical Services	0.7%	0.8%	0.7%	0.8%	0.8%	0.8%	0.8%
Maintenance/ Technical	6.8%	5.4%	6.2%	7.0%	7.8%	7.9%	7.9%
General Support	8.0%	7.7%	7.5%	7.3%	7.0%	6.4%	6.4%
HCA, Nurse's Aide, etc.	47.0%	48.3%	44.1%	45.9%	39.1%	36.6%	36.9%
Health & Social Care Assistants	1.0%	0.9%	6.4%	2.8%	4.2%	4.6%	4.8%
Swabber (COVID-19)					16.1%	21.3%	20.4%
Health Care Assistants	48.0%	49.2%	50.6%	48.7%	59.4%	62.5%	62.1%
Other Care Grades	52.0%	50.8%	49.4%	51.3%	40.6%	37.5%	37.9%
Care, other	52.0%	50.8%	49.4%	51.3%	40.6%	37.5%	37.9%
Patient & Client Care	14.5%	14.3%	15.7%	14.6%	13.9%	18.6%	18.6%
Total	100 %	100 %	100 %	100 %	100 %	100 %	

Jun 2021 (Dec 2019 figure: 2,982)	WTE Dec 2016	WTE Dec 2017	WTE Dec 2018	WTE Dec 2019	WTE Dec 2020	WTE Apr 2021	WTE Jun 2021
Disabilities	1,943	2,792	2,903	2,982	3,103.35	3,085.86	3,178.58
Consultant Paediatrics	2.9%	2.5%	3.1%	3.0%	2.9%	2.7%	2.8%
Consultant Psychiatry	19.1%	16.2%	1.9%	1.7%	1.7%	1.6%	
Consultants	22.0%	18.8%	5.0%	4.7%	4.7%	4.3%	2.8%
Registrars	26.0%	22.2%	21.5%	26.1%	26.0%	23.9%	24.3%
SHO/ Interns	43.3%	51.7%	64.3%	60.5%	60.7%	63.9%	64.8%
Medical/ Dental, other	8.7%	7.4%	9.3%	8.7%	8.7%	7.9%	8.1%
Medical & Dental	0.6%	0.5%	0.4%	0.4%	0.4%	0.4%	0.4%
Clinical Nurse/ Midwife Manager	23.2%	23.9%	22.4%	22.4%	21.5%	22.1%	22.7%
Director Nursing/Midwifery, Assistant	1.5%	1.1%	1.1%	1.1%	1.3%	1.5%	1.3%
Director of Nursing/Midwifery	0.5%	1.4%	1.0%	0.8%	0.8%	0.6%	0.6%
Nurse/ Midwife Manager	25.2%	26.4%	24.4%	24.3%	23.6%	24.2%	24.6%
Advanced Nurse/ Midwife Practitioner					0.4%	0.4%	0.4%
Clinical Nurse/ Midwife Specialist	1.3%	1.3%	2.0%	1.0%	0.5%	0.5%	0.4%
Nurse/ Midwife Specialist & AN/MP	1.3%	1.3%	2.0%	1.0%	0.9%	0.8%	0.8%
Staff Nurse [Intellectual Disability]	57.6%	45.5%	43.3%	38.7%	38.0%	51.4%	40.5%
Staff Nurses [General/ Children's]	15.2%	26.7%	30.2%	35.9%	37.2%	21.7%	32.2%
Staff Nurse/ Staff Midwife	72.8%	72.2%	73.5%	74.6%	75.3%	73.0%	72.8%
Pre-registration Nurse/ Midwife Intern						1.5%	1.4%
Nursing/ Midwifery Student						1.5%	1.4%
Nursing/ Midwifery other	0.8%	0.1%	0.1%	0.1%	0.3%	0.5%	0.5%
Nursing & Midwifery	20.4%	18.1%	17.5%	16.8%	16.2%	16.8%	16.8%
Dietitians	1.6%	0.8%	0.8%	1.3%	1.0%	1.0%	0.9%
Occupational Therapists	13.0%	7.8%	7.0%	7.6%	7.6%	7.2%	7.2%
Physiotherapists	11.0%	6.3%	6.1%	5.5%	5.4%	5.0%	5.9%
Speech & Language Therapists	13.5%	9.1%	8.2%	7.6%	9.1%	9.2%	9.0%
Therapy Professions	39.1%	24.0%	22.1%	22.0%	23.1%	22.3%	23.1%
Audiology	0.2%						
Clinical Measurement	0.4%	0.2%	0.2%	0.2%	0.3%	0.3%	0.3%

Jun 2021 (Dec 2019 figure: 2,982)	WTE Dec 2016	WTE Dec 2017	WTE Dec 2018	WTE Dec 2019	WTE Dec 2020	WTE Apr 2021	WTE Jun 2021
Disabilities	1,943	2,792	2,903	2,982	3,103.35	3,085.86	3,178.58
Phlebotomists			0.2%	0.2%			
Radiographers	0.4%	0.2%	0.2%	0.2%	0.2%	0.2%	0.1%
Health Science/ Diagnostics	1.0%	0.4%	0.6%	0.5%	0.5%	0.5%	0.5%
Social Care	38.3%	62.1%	64.8%	65.2%	64.9%	66.2%	65.0%
Social Workers	10.1%	5.8%	6.3%	6.0%	5.3%	5.3%	5.4%
Psychologists	9.1%	6.4%	5.1%	5.0%	5.3%	4.7%	5.0%
Pharmacy	1.6%	0.8%	0.9%	0.9%	0.7%	0.7%	0.8%
Counsellor Therapists	0.6%	0.3%	0.3%	0.3%	0.3%	0.3%	0.2%
Other Health & Social Care	0.4%	0.2%					
H&SC, Other	1.0%	0.5%	0.3%	0.3%	0.3%	0.3%	0.2%
Health & Social Care Professionals	13.1%	18.1%	18.5%	18.5%	17.8%	19.0%	19.0%
Executive Management	5.3%	3.9%	2.6%	2.5%	3.0%	3.4%	3.2%
Senior Management (VIII & GM)	14.3%	13.3%	13.7%	13.3%	15.1%	15.4%	15.2%
Management (VIII & above)	19.5%	17.2%	16.3%	15.8%	18.1%	18.8%	18.4%
Administrative/ Supervisory (V to VII)	35.3%	34.0%	37.0%	39.0%	39.0%	38.6%	37.4%
Clerical (III & IV)	45.1%	48.7%	46.7%	45.3%	42.9%	42.6%	44.2%
Management & Administrative	6.8%	6.4%	6.5%	6.8%	6.5%	7.8%	7.8%
Support	88.2%	84.1%	85.7%	85.4%	82.6%	81.6%	81.8%
Maintenance	11.1%	15.5%	13.8%	13.0%	15.3%	16.2%	15.5%
Technical Services	0.6%	0.5%	0.5%	1.5%	2.1%	2.3%	2.7%
Maintenance/ Technical	11.8%	15.9%	14.3%	14.6%	17.4%	18.4%	18.2%
General Support	8.1%	7.7%	7.1%	6.5%	6.3%	5.9%	5.9%
HCA, Nurse's Aide, etc.	72.1%	70.6%	71.9%	72.9%	72.9%	73.3%	74.0%
Health & Social Care Assistants	0.6%	0.3%	0.2%	0.4%	0.3%	0.3%	0.3%
Health Care Assistants	72.7%	70.8%	72.1%	73.3%	73.2%	73.6%	74.4%
Care, other	24.0%	27.2%	26.2%	25.4%	25.7%	25.3%	24.6%
Home Help	3.3%	1.9%	1.6%	1.3%	1.1%	1.1%	1.1%
Patient & Client Care	50.9%	49.1%	50.0%	50.9%	48.9%	50.0%	50.0%
Total	100 %	100 %	100 %	100 %	100 %	100 %	

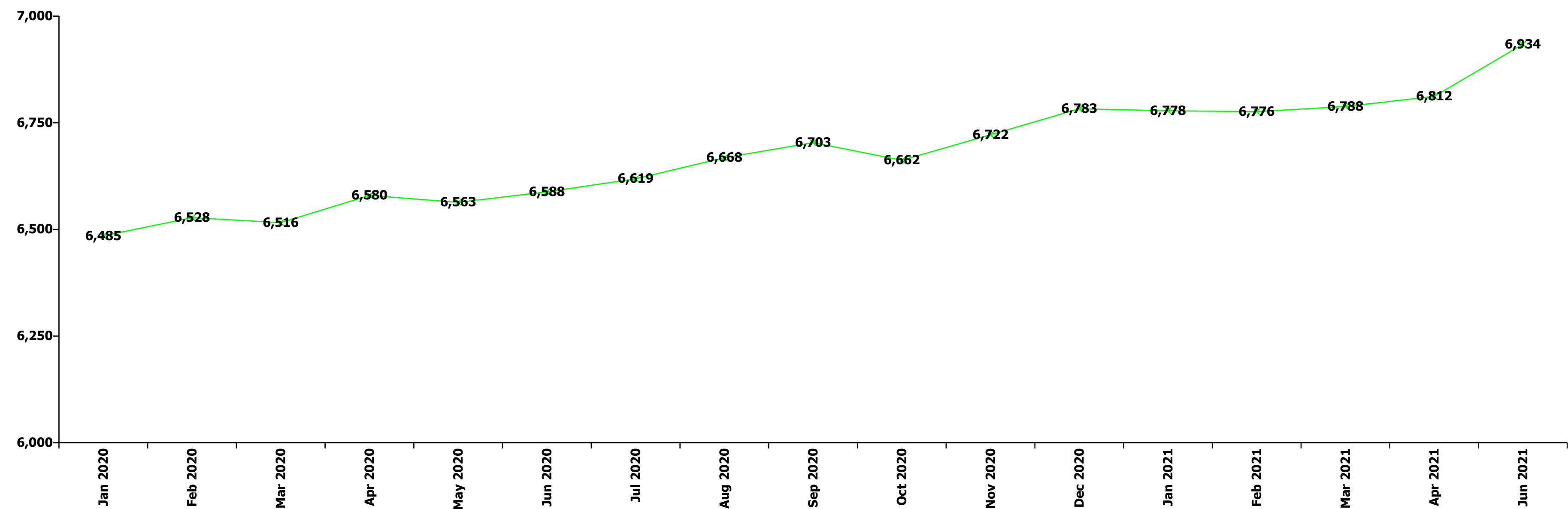
Jun 2021 (Dec 2019 figure: 996)	WTE Dec 2016	WTE Dec 2017	WTE Dec 2018	WTE Dec 2019	WTE Dec 2020	WTE Apr 2021	WTE Jun 2021
Older People	1,121	1,064	1,044	996	1,021.48	1,016.41	1,019.39
Senior House Officer	33.3%	37.5%	28.6%	33.3%	49.5%	49.5%	49.5%
SHO/ Interns	33.3%	37.5%	28.6%	33.3%	49.5%	49.5%	49.5%
Medical/ Dental, other	66.7%	62.5%	71.4%	66.7%	50.5%	50.5%	50.5%
Medical & Dental	0.8%	0.8%	0.7%	0.6%	0.6%	0.4%	0.4%
Clinical Nurse/ Midwife Manager	19.1%	18.6%	18.8%	20.3%	20.2%	22.5%	22.6%
Director Nursing/Midwifery, Assistant	3.8%	2.5%	4.0%	4.3%	3.8%	4.0%	4.3%
Director of Nursing/Midwifery	1.8%	2.2%	1.7%	1.1%	1.8%	1.8%	1.8%
Nurse/ Midwife Manager	24.7%	23.2%	24.4%	25.8%	25.9%	28.3%	28.6%
Nurse/ Midwife Specialist & AN/MP	1.0%	1.1%	1.4%	0.9%	0.9%	0.8%	0.7%
Staff Nurse [Psychiatric]	0.2%	0.2%			0.3%	0.6%	0.6%
Staff Nurses [General/ Children's]	74.1%	75.4%	74.1%	73.3%	72.5%	69.9%	69.8%
Staff Nurse/ Staff Midwife	74.3%	75.6%	74.1%	73.3%	72.8%	70.4%	70.4%
Public Health Nurse	0.1%						
Nursing/ Midwifery awaiting registration					0.4%	0.4%	0.2%
Nursing/ Midwifery Student					0.4%	0.4%	0.2%
Nursing & Midwifery	30.4%	30.4%	28.9%	30.0%	29.3%	33.3%	33.3%

Jun 2021 (Dec 2019 figure: 996)	WTE Dec 2016	WTE Dec 2017	WTE Dec 2018	WTE Dec 2019	WTE Dec 2020	WTE Apr 2021	WTE Jun 2021
Older People	1,121	1,064	1,044	996	1,021.48	1,016.41	1,019.39
Dietitians	2.6%	2.7%		3.6%	3.5%	3.2%	3.1%
Occupational Therapists	10.8%	10.7%	9.6%	14.9%	15.7%	13.7%	13.9%
Physiotherapists	27.3%	28.3%	29.5%	30.5%	23.7%	25.7%	28.8%
Podiatrists & Chiropodists	1.9%	1.8%	2.0%				
Speech & Language Therapists		2.7%	2.6%		3.5%	9.1%	9.4%
Therapy Professions	42.5%	46.1%	43.6%	49.0%	46.4%	51.6%	55.2%
Medical Science	2.6%						
Health Science/ Diagnostics	2.6%						
Social Workers	39.2%	37.7%	41.0%	38.6%	43.2%	38.9%	35.5%
Pharmacy	10.5%	10.8%	10.3%	8.9%	7.0%	6.3%	6.2%
Other Health & Social Care	2.6%	2.7%	2.6%				
Play Therapists/ Specialists	2.6%	2.7%	2.6%	3.6%	3.5%	3.2%	3.1%
H&SC, Other	5.2%	5.4%	5.1%	3.6%	3.5%	3.2%	3.1%
Health & Social Care Professionals	3.4%	3.5%	3.7%	2.8%	2.8%	3.1%	3.1%
Senior Management (VIII & GM)	15.2%	10.0%	9.0%	9.9%	12.3%	11.2%	11.0%
Management (VIII & above)	15.2%	10.0%	9.0%	9.9%	12.3%	11.2%	11.0%
Administrative/ Supervisory (V to VII)	18.5%	21.1%	21.7%	22.7%	24.8%	25.9%	25.2%
Clerical (III & IV)	66.3%	68.9%	69.3%	67.4%	63.0%	62.9%	63.8%
Management & Administrative	4.7%	4.7%	4.2%	5.1%	5.0%	5.7%	5.7%
Support	97.5%	97.6%	97.5%	98.2%	98.3%	98.3%	98.3%
Maintenance/ Technical	2.5%	2.4%	2.5%	1.8%	1.7%	1.7%	1.7%
General Support	10.8%	11.6%	11.7%	11.3%	11.0%	11.6%	11.6%
HCA, Nurse's Aide, etc.	74.5%	73.0%	77.4%	77.5%	74.8%	74.6%	75.1%
Health & Social Care Assistants					0.2%	0.3%	0.4%
Health Care Assistants	74.5%	73.0%	77.4%	77.5%	74.9%	74.9%	75.5%
Care, other	2.9%	2.9%	1.3%	1.0%	1.0%	1.1%	1.1%
Home Help	22.6%	24.1%	21.3%	21.5%	24.0%	24.0%	23.5%
Patient & Client Care	49.9%	49.1%	50.8%	50.2%	49.0%	45.8%	45.8%
Total	100 %	100 %	100 %	100 %	100 %	100 %	

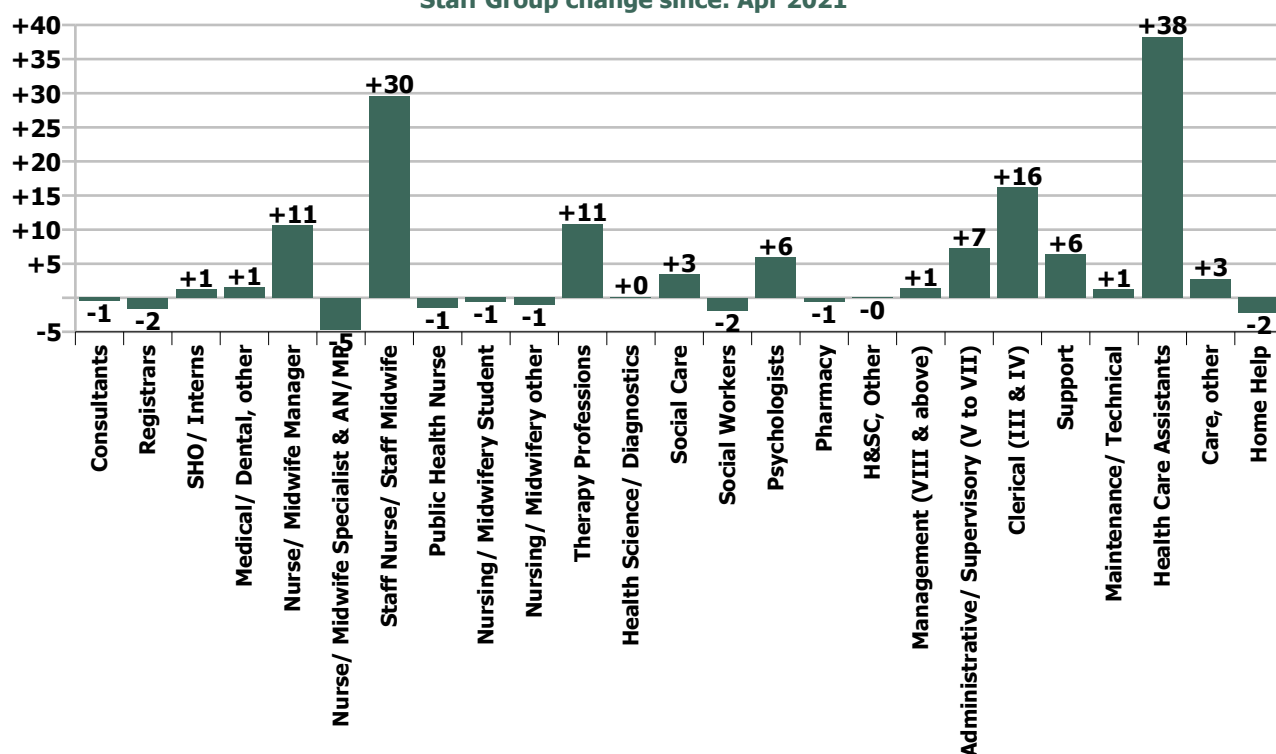
Summary Staff Movement: June 2021

Month-on-month Summary																												
WTE change since Apr 21	% change since Apr 21	overall	Consultants	Registrars	SHO/ Interns	Medical/ Dental, other	Medical & Dental	Nurse/ Midwife Manager	Nurse/ Midwife Specialist & AN/MP	Staff Nurse/ Staff Midwife	Public Health Nurse	Nursing/ Midwifery Student	Nursing/ Midwifery other	Nursing & Midwifery	Therapy Professions	Health Science/ Diagnostics	Social Care	Social Workers	Psychologists	Pharmacy	H&SC, Other	Health & Social Care Professionals	Management (VIII & above)	Administrative/ Supervisory (V to VII)	Clerical (III & IV)	Management & Administrative	General Support	Patient & Client Care
Overall	+1.8%	+122	-0.5	-1.6	+1.3	+1.5	+0.7	+10.6	-4.6	+29.6	-1.5	-0.6	-1.1	+32.5	+10.8	+0.1	+3.5	-1.9	+5.9	-0.6	-0.0	+17.8	+1.4	+7.3	+16.2	+24.8	+7.7	+38.8
Community Health & Wellbeing	+42.4%	+3																					0.0	+2.4	0.0	+2.4		+0.8
Mental Health	+1.0%	+8	-0.3	-1.2	+1.3		-0.2	+1.2	-2.5	+11.5		+0.1	-1.1	+9.1	-1.3		+0.1	-1.8	+0.4	0.0	-0.5	-3.2	+0.0	-0.2	-2.4	-2.5	-0.0	+5.2
Primary Care	+0.8%	+15	-0.0	-0.4	-0.0	+1.5	+1.1	+0.8	-1.7	+3.2	-1.5	0.0	0.0	+0.9	+2.2	+0.2	-0.9	-0.3	+2.9	-1.2	+0.5	+3.4	-0.4	+2.4	+7.3	+9.3	-0.1	+0.5
Disabilities	+3.0%	+93	-0.2	-0.0	-0.0	0.0	-0.3	+7.6	0.0	+15.3		0.0	0.0	+22.9	+8.6	-0.1	+4.3	+1.3	+2.6	+0.6	0.0	+17.2	+1.8	+2.9	+10.1	+14.7	+8.9	+29.2
Older People	+0.3%	+3			0.0	0.0	0.0	+1.1	-0.5	-0.4		-0.7		-0.4	+1.3			-0.9		0.0	0.0	+0.4	-0.0	-0.1	+1.2	+1.0	-1.1	+3.2
Social Care	+2.3%	+96	-0.2	-0.0	-0.0	0.0	-0.3	+8.7	-0.5	+14.9		-0.7	0.0	+22.5	+10.0	-0.1	+4.3	+0.3	+2.6	+0.6	0.0	+17.6	+1.8	+2.7	+11.3	+15.8	+7.8	+32.4
Change	+122.2	+1.8%	-0.7%	-1.5%	+3.4%	+2.0%	+0.2%	+2.5%	-4.0%	+2.9%	-0.9%	-1.2%	-9.5%	+1.8%	+2.4%	+2.7%	+0.9%	-1.6%	+7.3%	-1.4%	-0.1%	+1.6%	+1.6%	+3.3%	+4.3%	+3.6%	+1.8%	+1.6%

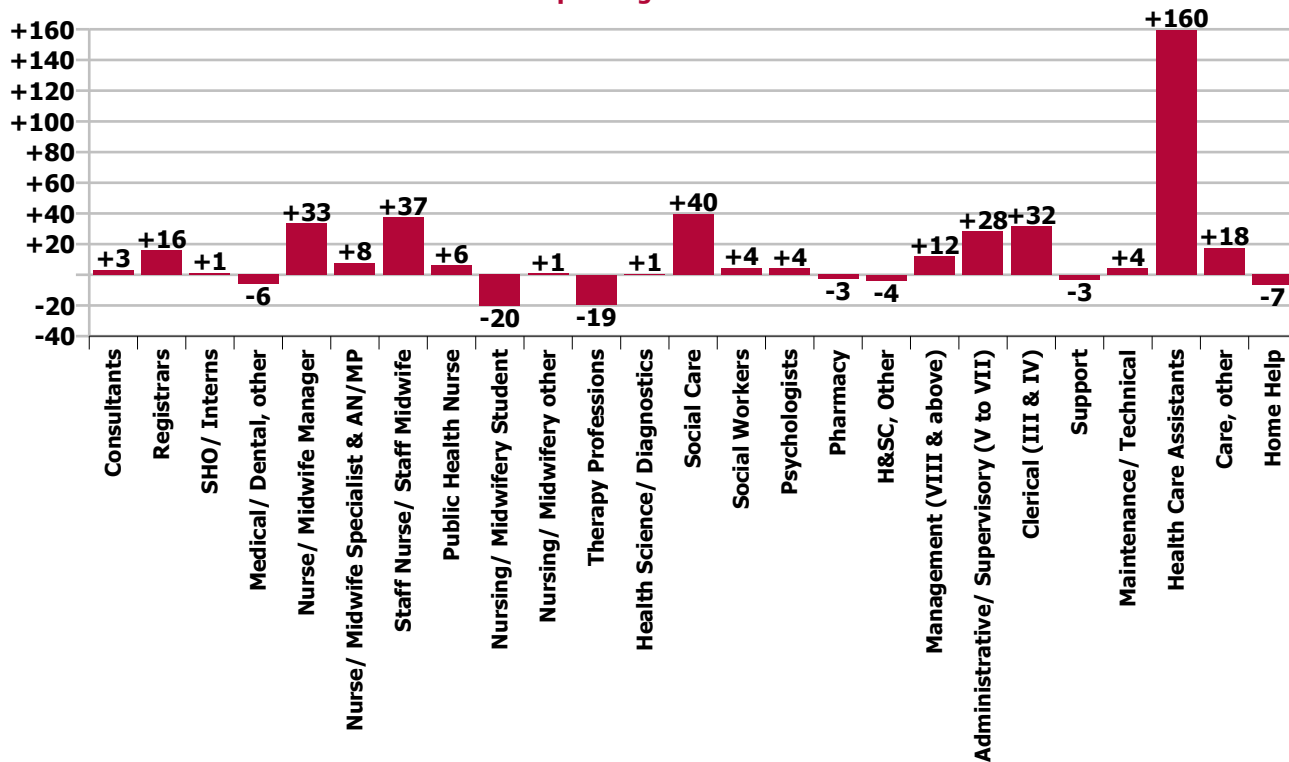
Year-on-year Summary																												
WTE change since Jun 20	% change since Jun 20	overall	Consultants	Registrars	SHO/ Interns	Medical/ Dental, other	Medical & Dental	Nurse/ Midwife Manager	Nurse/ Midwife Specialist & AN/MP	Staff Nurse/ Staff Midwife	Public Health Nurse	Nursing/ Midwifery Student	Nursing/ Midwifery other	Nursing & Midwifery	Therapy Professions	Health Science/ Diagnostics	Social Care	Social Workers	Psychologists	Pharmacy	H&SC, Other	Health & Social Care Professionals	Management (VIII & above)	Administrativ e/ Supervisory (V to VII)	Clerical (III & IV)	Management & Administrative	General Support	Patient & Client Care
Overall	+5.2%	+346	+3.1	+16.0	+1.2	-5.9	+14.3	+33.3	+7.7	+37.4	+6.2	-20.4	+1.1	+65.3	-19.5	+0.6	+39.5	+4.4	+4.0	-2.8	-3.7	+22.6	+12.0	+28.3	+31.6	+71.9	+1.2	+170.5
Community Health & Wellbeing	+42.4%	+3																					0.0	+3.4	+1.0	+4.4		-2.0
Mental Health	+1.0%	+8	+4.0	+15.3	-2.2		+17.2	-2.6	+2.9	+14.5		-16.2	-0.9	-2.4	+1.0		-0.3	+4.7	-0.1	0.0	-0.8	+4.6	+1.0	-1.3	-0.5	-0.9	+0.4	+1.8
Primary Care	+0.8%	+15	-0.7	+0.7	+3.3	-4.0	-0.8	+4.7	+6.6	+11.5	+6.2	+4.0	0.0	+33.1	-23.7	+0.8	-0.9	+2.3	+3.1	-1.3	-0.9	-20.6	+3.3	+15.7	+15.5	+34.6	-6.3	+79.3
Disabilities	+6.9%	+205.8	-0.2	0.0	+0.1	0.0	-0.1	+9.3	-0.6	+16.8		-7.5	+2.0	+19.9	-1.1	-0.1	+40.7	-0.5	+1.0	-0.5	-2.0	+37.4	+7.1	+10.4	+12.7	+30.1	-4.3	+122.8
Older People	-0.2%	-2.2			0.0	-2.0	-2.0	+21.9	-1.2	-5.3		-0.7		+14.7	+4.3			-2.1		-1.0	0.0	+1.2	+0.5	+0.3	+2.9	+3.8	+11.5	-31.4
Social Care	+2.3%	+96	-0.2	0.0	+0.1	-2.0	-2.1	+31.1	-1.8	+11.4		-8.2	+2.0	+34.6	+3.2	-0.1	+40.7	-2.7	+1.0	-1.5	-2.0	+38.6	+7.6	+10.6	+15.6	+33.9	+7.2	+91.4
Change	+345.8	+5.2%	+4.8%	+18.7%	+3.2%	-7.3%	+5.4%	+8.2%	+7.4%	+3.7%	+3.8%	-29.9%	+12.2%	+3.7%	-4.1%	+19.5%	+10.8%	+4.1%	+4.9%	-6.9%	-8.3%	+2.0%	+15.4%	+14.3%	+8.7%	+11.3%	+0.3%	+7.2%

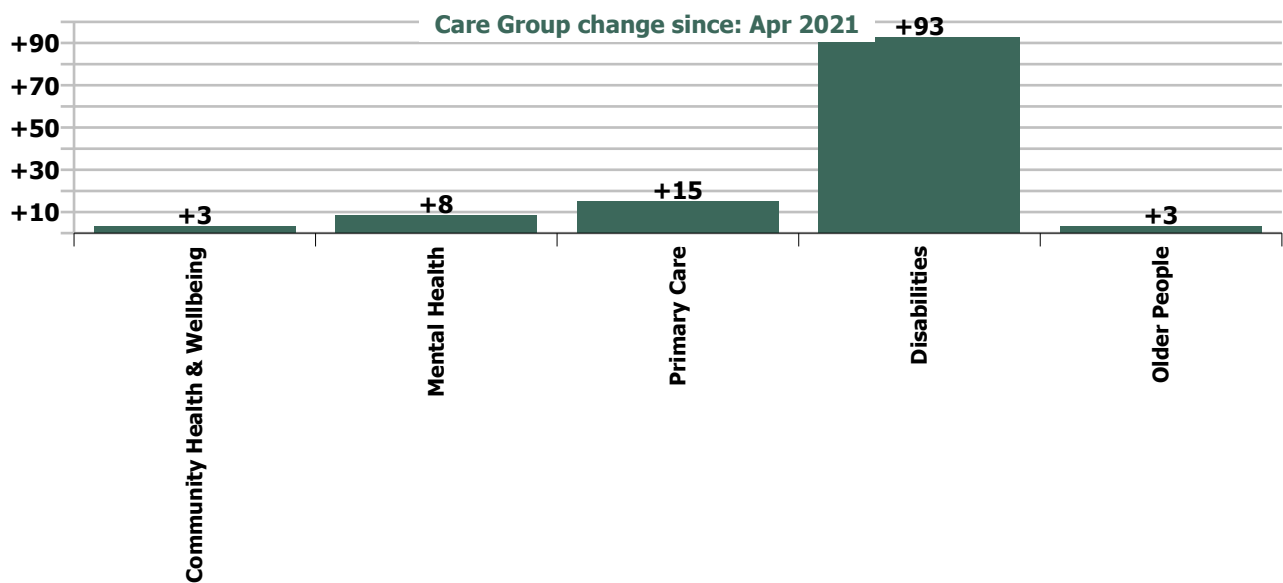


Staff Group change since: Apr 2021

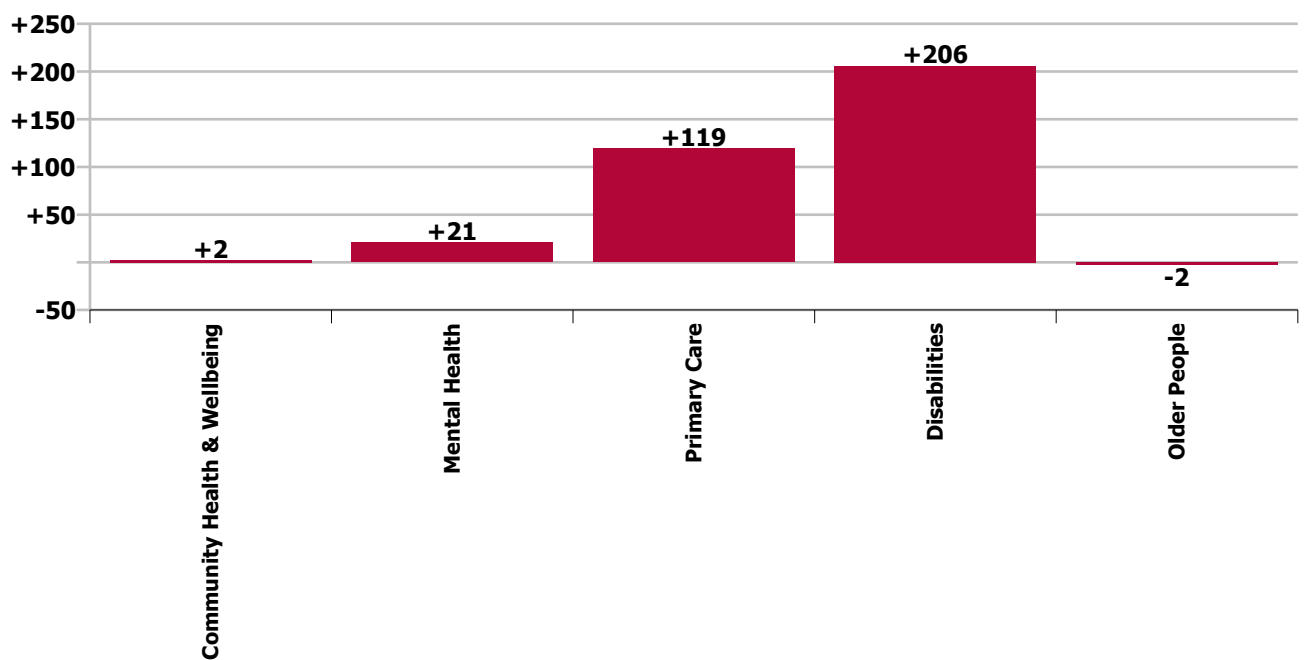


Staff Group change since: Jun 2020





Care Group change since: Jun 2020



Longitudinal Employment Levels by Grade Group - Dec 2016 to Jun 2021

Jun 2021 (Dec 2016 figure: 5,579)	WTE Jun 2021	WTE change since Dec 16	WTE change since Dec 17	WTE change since Dec 18	WTE change since Dec 19	WTE change since Dec 20	WTE change since Apr 21	% change since Dec 16	% change since Dec 17	% change since Dec 18	% change since Dec 19	% change since Dec 20	% change since Apr 21
Overall	6,934	+1,355	+528	+377	+419	+151	+122	+24.3%	+8.2%	+5.7%	+6.4%	+2.2%	+1.8%
Consultant Medicine	9	+1	-0	+2	+2	+0	-0	+6.5%	-1.7%	+21.9%	+30.5%	+1.5%	-0.1%
Consultant Paediatrics	0												
Consultant Psychiatry	58	+9	+12	+10	+6	+1	-0	+18.9%	+25.6%	+21.4%	+11.9%	+1.5%	-0.8%
Consultant Surgery		-1	-0	-1	-1			-100.0%	-100.0%	-100.0%	-100.0%	-100.0%	-100.0%
Consultants	67	+9	+11	+11	+7	+1	-1	+15.5%	+20.0%	+18.8%	+12.4%	+1.5%	-0.7%
Registrar	74	+18	+22	+9	+3	+0	-3	+31.9%	+41.4%	+13.2%	+3.6%	+0.5%	-4.0%
Senior Registrar	20	+10	+11	+6	+1		+1	+90.5%	+114.1%	+42.9%	+5.4%		+6.4%
Specialist Registrar	7	+3	+1	+2	+3	+1	+0	+75.8%	+20.4%	+45.5%	+71.0%	+14.0%	+4.7%
Registrars	101	+30	+34	+17	+6	+1	-2	+43.0%	+49.7%	+19.9%	+6.8%	+1.2%	-1.5%
Interns	2												
Senior House Officer	36	-3	-5	+3	+2	-0	+1	-7.8%	-11.7%	+8.2%	+6.5%	-0.9%	+3.6%
SHO/ Interns	38	-3	-5	+3	+2	-0	+1	-7.4%	-11.2%	+7.7%	+6.1%	-0.9%	+3.4%
Dentists	35	-5	-1	-2	+1	-0	+2	-12.3%	-1.5%	-4.8%	+3.1%	-0.8%	+5.0%
Other Medical	41	-4	-12	-11	-6	-4	-0	-9.6%	-23.3%	-21.6%	-12.9%	-8.8%	-0.4%
Medical/ Dental, other	75	-9	-13	-13	-5	-4	+1	-10.9%	-14.6%	-14.7%	-6.2%	-5.3%	+2.0%
Medical & Dental	282	+27	+27	+17	+11	-2	+1	+10.7%	+10.7%	+6.5%	+4.1%	-0.8%	+0.2%
Clinical Nurse/ Midwife Manager	355	+52	+28	+33	+26	+26	+11	+17.4%	+8.4%	+10.2%	+8.0%	+8.0%	+3.3%
Director Nursing/Midwifery, Assistant	65	+11	+15	+10	+13	+7	-1	+20.9%	+29.8%	+17.2%	+25.3%	+11.6%	-1.7%
Director of Nursing/Midwifery	20	+3	-3	+0	+4	-1	+0	+17.7%	-13.4%	+1.0%	+22.8%	-5.7%	+2.0%
Nurse/ Midwife Manager	439	+67	+39	+42	+43	+32	+11	+17.9%	+9.9%	+10.7%	+10.9%	+7.8%	+2.5%
Advanced Nurse/ Midwife Practitioner	14	+12	+12	+12	+10	+2	-0	+697.2%	+523.1%	+464.0%	+228.8%	+19.1%	-0.1%
Clinical Nurse/ Midwife Specialist	97	+30	+19	+12	+7	-1	-5	+46.1%	+24.1%	+14.0%	+7.9%	-1.0%	-4.6%
Nurse/ Midwife Specialist & AN/MP	111	+43	+31	+24	+17	+1	-5	+63.3%	+38.4%	+27.1%	+18.2%	+1.2%	-4.0%
Staff Nurse [Intellectual Disability]	218	-11	-13	-2	+24	+26	-45	-4.6%	-5.6%	-1.0%	+12.3%	+13.5%	-17.2%
Staff Nurse [Psychiatric]	206	-8	-21	+7	+15	+8	+0	-3.9%	-9.4%	+3.3%	+7.6%	+4.2%	+0.2%
Staff Nurses [General/ Children's]	630	+123	+63	+53	+22	-2	+74	+24.2%	+11.1%	+9.2%	+3.7%	-0.2%	+13.4%
Staff Nurse/ Staff Midwife	1,053	+104	+29	+57	+61	+33	+30	+10.9%	+2.8%	+5.7%	+6.1%	+3.2%	+2.9%
Public Health Nurse	170	-11	-17	-25	-5	-6	-1	-5.9%	-8.9%	-12.8%	-2.9%	-3.6%	-0.9%
Pre-registration Nurse/ Midwife Intern	22	+20	+22	+16	+21	+21	+1	+1222.9%	-100.0%	+268.5%	+1502.9%	+4292.0%	+2.8%
Pre-registration Nurse Intern (COVID-19)	1	+1	+1	+1	+1	-2	+0	-100.0%	-100.0%	-100.0%	-100.0%	-70.5%	+81.8%
Post-registration Nurse/ Midwife Student	24	+1	+8	+17	+3			+4.3%	+50.0%	+242.9%	+14.3%		
Nursing/ Midwifery awaiting registration	1	+1	-7	-3	-9	-3	-2	-100.0%	-90.0%	-79.8%	-91.8%	-80.7%	-67.1%
Nursing/ Midwifery Student	48	+23	+24	+31	+16	+16	-1	+93.7%	+98.1%	+181.7%	+48.2%	+48.9%	-1.2%
Nursing Education/Clinical	9	-2	+0	+1	-1	-0	-1	-20.9%	+1.2%	+7.1%	-9.4%	-2.7%	-10.4%

Jun 2021 (Dec 2016 figure: 5,579)	WTE Jun 2021	WTE change since Dec 16	WTE change since Dec 17	WTE change since Dec 18	WTE change since Dec 19	WTE change since Dec 20	WTE change since Apr 21	% change since Dec 16	% change since Dec 17	% change since Dec 18	% change since Dec 19	% change since Dec 20	% change since Apr 21
Overall	6,934	+1,355	+528	+377	+419	+151	+122	+24.3%	+8.2%	+5.7%	+6.4%	+2.2%	+1.8%
Other Nursing/ Midwifery	1		+1	+1	+1	+1			-100.0%	-100.0%	-100.0%	-100.0%	
Nursing/ Midwifery other	10	-2	+1	+2	+0	+1	-1	-19.2%	+12.3%	+18.8%	+0.6%	+8.0%	-9.5%
Nursing & Midwifery	1,831	+223	+107	+131	+131	+76	+32	+13.9%	+6.2%	+7.7%	+7.7%	+4.3%	+1.8%
Dietitians	25	+6	+6	+0	-0	-1	+1	+31.9%	+29.1%	+0.9%	-1.4%	-4.4%	+5.2%
Occupational Therapists	179	+10	+10	-6	-5	-5	+0	+5.7%	+5.7%	-3.3%	-2.8%	-2.6%	+0.3%
Orthoptists	3	+3	+3	+3	+3	+1	+1	+1100.0%	-100.0%	-100.0%	-100.0%	+20.0%	+50.0%
Physiotherapists	121	-1	-3	-4	+7	+0	+8	-0.9%	-2.1%	-3.5%	+6.1%	+0.3%	+7.2%
Podiatrists & Chiropodists	2	+1	+1	+0	+1	+1	-0	+111.3%	+130.8%	+17.2%	+50.0%	+50.0%	-6.8%
Speech & Language Therapists	125	+18	-2	+3	-0	-3	+0	+17.1%	-1.6%	+2.2%	-0.2%	-2.5%	+0.1%
Therapy Professions	455	+36	+14	-4	+5	-8	+11	+8.7%	+3.3%	-0.9%	+1.1%	-1.7%	+2.4%
Audiology		-0						-100.0%	-100.0%	-100.0%	-100.0%	-100.0%	-100.0%
Clinical Measurement	2	+1	+1	+1	+1			+100.0%	+100.0%	+100.0%	+100.0%		
Medical Science		-1						-100.0%	-100.0%	-100.0%	-100.0%	-100.0%	-100.0%
Phlebotomists	1	+0	+0	-0	-0	-0	+0	+53.8%	+58.7%	-18.0%	-18.0%	-18.0%	+31.6%
Radiographers	1	-0	-0	-0	-0	-0	-0	-14.0%	-14.0%	-14.0%	-14.0%	-14.0%	-14.0%
Health Science/ Diagnostics	4	-0	+1	+1	+1	-0	+0	-5.4%	+46.8%	+19.9%	+19.9%	-8.5%	+2.7%
Social Care	404	+292	+75	+44	+33	+4	+3	+259.3%	+22.8%	+12.3%	+8.8%	+1.1%	+0.9%
Social Care	404	+292	+75	+44	+33	+4	+3	+259.3%	+22.8%	+12.3%	+8.8%	+1.1%	+0.9%
Social Workers	113	+4	+1	+3	+9	+5	-2	+3.3%	+1.1%	+2.4%	+8.5%	+5.0%	-1.6%
Psychologists	86	+17	+1	+2	+5	-1	+6	+25.1%	+1.4%	+2.0%	+6.5%	-0.8%	+7.3%
Pharmacy	38	+0	-1	+0	-2	+0	-1	+0.6%	-1.5%	+0.4%	-4.8%	+1.3%	-1.4%
Counsellor Therapists	35	+3	+2	+4	-2	-1	-0	+11.1%	+5.9%	+13.6%	-4.7%	-1.5%	-0.3%
Dental Hygienists	4	+1	+1	-1	-1	+0		+22.5%	+29.9%	-10.3%	-14.9%	+6.1%	
Other Health & Social Care	1	-4	-4	-3	-1	+0	+0	-74.2%	-77.0%	-71.3%	-35.5%	+7.5%	+4.9%
Play Therapists/ Specialists	1												
H&SC, Other	41	+1	-1	+0	-3	-0	-0	+1.3%	-3.3%	+1.1%	-7.1%	-0.4%	-0.1%
Health & Social Care Professionals	1,141	+349	+91	+45	+47	+1	+18	+44.1%	+8.7%	+4.1%	+4.3%	+0.1%	+1.6%
Executive Management	18	+2	+3	+6	+5	+2	+0	+12.1%	+19.6%	+49.5%	+38.0%	+12.8%	+0.6%
Senior Management (VIII & GM)	72	+24	+20	+15	+12	+3	+1	+48.6%	+38.3%	+27.2%	+20.1%	+4.6%	+1.9%
Management (VIII & above)	90	+25	+23	+21	+17	+5	+1	+39.6%	+34.1%	+31.1%	+23.3%	+6.1%	+1.6%
Middle Management (V-VII)	227	+96	+69	+59	+46	+14	+7	+72.8%	+43.4%	+35.3%	+25.2%	+6.5%	+3.3%
Other Administrative		-1	-1	-1	-1	-1		-100.0%	-100.0%	-100.0%	-100.0%	-100.0%	-100.0%
Administrative/ Supervisory (V to VII)	227	+95	+68	+58	+45	+13	+7	+71.7%	+42.5%	+34.6%	+24.6%	+6.1%	+3.3%
Clerical (III & IV)	393	+35	+10	+13	+43	+13	+16	+9.7%	+2.6%	+3.4%	+12.2%	+3.4%	+4.3%
Management & Administrative	710	+155	+101	+93	+105	+31	+25	+28.0%	+16.5%	+15.0%	+17.3%	+4.6%	+3.6%

Jun 2021 (Dec 2016 figure: 5,579)	WTE Jun 2021	WTE change since Dec 16	WTE change since Dec 17	WTE change since Dec 18	WTE change since Dec 19	WTE change since Dec 20	WTE change since Apr 21	% change since Dec 16	% change since Dec 17	% change since Dec 18	% change since Dec 19	% change since Dec 20	% change since Apr 21
Overall	6,934	+1,355	+528	+377	+419	+151	+122	+24.3%	+8.2%	+5.7%	+6.4%	+2.2%	+1.8%
Catering	55	+2	-9	-7	-4	-1	-0	+4.1%	-14.1%	-11.4%	-6.8%	-2.1%	-0.2%
Household Services	268	+4	-28	-26	-1	+2	+7	+1.5%	-9.5%	-8.8%	-0.5%	+0.9%	+2.8%
Other Labs & Associated	1	-0		-0			-0	-6.5%		-3.8%			-11.5%
Other Support	15	-1	+0	-0	+1	+0	+0	-6.9%	+1.9%	-2.1%	+8.4%	+2.6%	+1.5%
Portering	57	-17	-15	-14	-11	-8	-1	-23.0%	-20.6%	-20.0%	-16.0%	-12.4%	-1.4%
Support	395	-12	-52	-47	-15	-6	+6	-2.9%	-11.5%	-10.7%	-3.7%	-1.6%	+1.6%
Maintenance	41	+11	-3	+0	+4	+0	+0	+34.2%	-6.5%	+1.0%	+11.2%	+0.2%	+0.6%
Technical Services	6	+4	+4	+4	+2	+1	+1	+200.0%	+200.0%	+215.8%	+50.0%	+20.0%	+20.0%
Maintenance/ Technical	47	+15	+1	+5	+6	+1	+1	+44.3%	+2.4%	+10.5%	+15.0%	+2.4%	+2.7%
General Support	443	+2	-51	-43	-9	-5	+8	+0.6%	-10.2%	-8.9%	-2.0%	-1.2%	+1.8%
HCA, Nurse's Aide, etc.	1,688	+397	+178	+71	+46	+33	+39	+30.8%	+11.8%	+4.4%	+2.8%	+2.0%	+2.3%
Health & Social Care Assistants	24	+16	+18	+3	+11	+6	+2	+186.0%	+297.7%	+11.8%	+92.3%	+33.1%	+11.2%
Swabber (COVID-19)	70	+70	+70	+70	+70	+20	-3	-100.0%	-100.0%	-100.0%	-100.0%	+39.6%	-3.9%
Health Care Assistants	1,782	+483	+266	+143	+127	+59	+38	+37.2%	+17.5%	+8.7%	+7.7%	+3.4%	+2.2%
Care, other	618	+147	+13	+1	+8	-3	+3	+31.3%	+2.1%	+0.2%	+1.3%	-0.5%	+0.4%
Home Help	126	-32	-26	-10	-1	-6	-2	-20.4%	-17.2%	-7.6%	-0.6%	-4.2%	-1.7%
Patient & Client Care	2,526	+598	+253	+134	+134	+51	+39	+31.0%	+11.1%	+5.6%	+5.6%	+2.0%	+1.6%

Source: Health Service Personnel Census

Longitudinal Employment Levels by Care Group - Dec 2016 to Jun 2021

Community Health & Wellbeing

Jun 2021 (figure:)	WTE Jun 2021	WTE change since	WTE change since	WTE change since	WTE change since	WTE change since Dec 20	WTE change since Apr 21	% change since	% change since	% change since	% change since	% change since Dec 20	% change since Apr 21
Overall	10	+10	+10	+10	+10	+3	+3	-100.0%	-100.0%	-100.0%	-100.0%	+34.4%	+42.4%
Management & Administrative	8	+8	+8	+8	+8	+3	+2	-1.0%	-1.0%	-1.0%	-1.0%	+0.7%	+0.4%
Management (VIII & above)	1	+1	+1	+1	+1			-1.0%	-1.0%	-1.0%	-1.0%	+0.0%	+0.0%
Administrative/ Supervisory (V to VII)	5	+5	+5	+5	+5	+2	+2	-1.0%	-1.0%	-1.0%	-1.0%	+0.7%	+0.8%
Clerical (III & IV)	2	+2	+2	+2	+2	+1		-1.0%	-1.0%	-1.0%	-1.0%	+1.7%	+0.0%
Patient & Client Care	3	+3	+3	+3	+3	-1	+1	-1.0%	-1.0%	-1.0%	-1.0%	-0.2%	+0.4%
Care, other	3	+3	+3	+3	+3	-1	+1	-1.0%	-1.0%	-1.0%	-1.0%	-0.2%	+0.4%

Source: Health Service Personnel Census

Mental Health

Jun 2021 (Dec 2016 figure: 828)	WTE Jun 2021	WTE change since Dec 16	WTE change since Dec 17	WTE change since Dec 18	WTE change since Dec 19	WTE change since Dec 20	WTE change since Apr 21	% change since Dec 16	% change since Dec 17	% change since Dec 18	% change since Dec 19	% change since Dec 20	% change since Apr 21
Overall	887	+59	+28	+52	+52	+26	+8	+7.2%	+3.2%	+6.3%	+6.2%	+3.0%	+1.0%
Medical & Dental	127	+26	+32	+25	+12	+0	-0	+0.3%	+0.3%	+0.2%	+0.1%	+0.0%	-0.0%
Consultants	54	+9	+13	+9	+6	+1	-0	+0.2%	+0.3%	+0.2%	+0.1%	+0.0%	-0.0%
Registrars	55	+26	+28	+16	+9	+2	-1	+0.9%	+1.0%	+0.4%	+0.2%	+0.0%	-0.0%
SHO/ Interns	18	-9	-9	-1	-3	-2	+1	-0.3%	-0.3%	-0.1%	-0.1%	-0.1%	+0.1%
Nursing & Midwifery	404	+41	+18	+42	+34	+24	+9	+0.1%	+0.0%	+0.1%	+0.1%	+0.1%	+0.0%
Nurse/ Midwife Manager	117	+6	+2	-1	+1	-0	+1	+0.1%	+0.0%	-0.0%	+0.0%	-0.0%	+0.0%
Nurse/ Midwife Specialist & AN/MP	49	+23	+22	+23	+9	+3	-3	+0.9%	+0.8%	+0.9%	+0.2%	+0.1%	-0.0%
Staff Nurse/ Staff Midwife	215	-3	-15	+14	+20	+13	+11	-0.0%	-0.1%	+0.1%	+0.1%	+0.1%	+0.1%
Nursing/ Midwifery Student	16	+15	+8	+7	+5	+9	+0	+8.9%	+1.0%	+0.7%	+0.5%	+1.1%	+0.0%
Nursing/ Midwifery other	6	-0	-0	-0	-2	-0	-1	-0.1%	-0.1%	-0.1%	-0.3%	-0.0%	-0.2%
Health & Social Care Professionals	143	+7	-2	+3	+3	-3	-3	+0.1%	-0.0%	+0.0%	+0.0%	-0.0%	-0.0%
Therapy Professions	48	-1	-0	-1	-0	-6	-1	-0.0%	-0.0%	-0.0%	-0.0%	-0.1%	-0.0%
Social Care	7	-3	-3	-1	-0	+0	+0	-0.3%	-0.3%	-0.1%	-0.0%	+0.0%	+0.0%
Social Workers	41	+0	-1	+5	+7	+4	-2	+0.0%	-0.0%	+0.1%	+0.2%	+0.1%	-0.0%
Psychologists	29	+4	-2	-5	-3	-1	+0	+0.1%	-0.1%	-0.1%	-0.1%	-0.0%	+0.0%
Pharmacy	1	+1	+1	+1				-1.0%	-1.0%	-1.0%	+0.0%	+0.0%	+0.0%
H&SC, Other	17	+6	+3	+4	-1	-1	-1	+0.6%	+0.2%	+0.3%	-0.0%	-0.0%	-0.0%
Management & Administrative	68	+1	-1	-5	+2	-2	-3	+0.0%	-0.0%	-0.1%	+0.0%	-0.0%	-0.0%
Management (VIII & above)	4	+1	+1	+1	+1	+0	+0	+0.4%	+0.4%	+0.4%	+0.4%	+0.0%	+0.0%
Administrative/ Supervisory (V to VII)	16	+4	+0	-2	+1	-1	-0	+0.3%	+0.0%	-0.1%	+0.0%	-0.1%	-0.0%
Clerical (III & IV)	48	-4	-3	-4	+1	-2	-2	-0.1%	-0.1%	-0.1%	+0.0%	-0.0%	-0.0%
General Support	20	-7	-6	-5	-0	+0	-0	-0.3%	-0.2%	-0.2%	-0.0%	+0.0%	-0.0%
Support	18	-7	-6	-5	-0	+0	-0	-0.3%	-0.2%	-0.2%	-0.0%	+0.0%	-0.0%
Maintenance/ Technical	2				+0			+0.0%	+0.0%	+0.0%	+0.1%	+0.0%	+0.0%
Patient & Client Care	126	-10	-13	-8	+0	+7	+5	-0.1%	-0.1%	-0.1%	+0.0%	+0.1%	+0.0%
Health Care Assistants	35	-11	-9	-6	+2	+1	+0	-0.2%	-0.2%	-0.2%	+0.0%	+0.0%	+0.0%
Care, other	91	+0	-3	-1	-1	+6	+5	+0.0%	-0.0%	-0.0%	-0.0%	+0.1%	+0.1%

Source: Health Service Personnel Census

Primary Care

Jun 2021 (Dec 2016 figure: 1,687)	WTE Jun 2021	WTE change since Dec 16	WTE change since Dec 17	WTE change since Dec 18	WTE change since Dec 19	WTE change since Dec 20	WTE change since Apr 21	% change since Dec 16	% change since Dec 17	% change since Dec 18	% change since Dec 19	% change since Dec 20	% change since Apr 21
Overall	1,839	+151	+147	+63	+137	+50	+15	+9.0%	+8.7%	+3.5%	+8.0%	+2.8%	+0.8%
Medical & Dental	138	+5	+0	-6	-0	-3	+1	+0.0%	+0.0%	-0.0%	-0.0%	-0.0%	+0.0%
Consultants	13	+2	+0	+1	+1	+0	-0	+0.2%	+0.0%	+0.1%	+0.1%	+0.0%	-0.0%
Registrars	43	+5	+6	-0	-3	-0	-0	+0.1%	+0.2%	-0.0%	-0.1%	-0.0%	-0.0%
SHO/ Interns	10	+4	+4	+3	+4	+1	-0	+0.7%	+0.7%	+0.4%	+0.7%	+0.1%	-0.0%
Medical/ Dental, other	72	-5	-10	-10	-3	-4	+1	-0.1%	-0.1%	-0.1%	-0.0%	-0.1%	+0.0%
Nursing & Midwifery	553	+45	+45	+24	+24	+11	+1	+0.1%	+0.1%	+0.0%	+0.0%	+0.0%	+0.0%
Nurse/ Midwife Manager	93	+16	+17	+13	+13	+7	+1	+0.2%	+0.2%	+0.2%	+0.2%	+0.1%	+0.0%
Nurse/ Midwife Specialist & AN/MP	55	+22	+12	+8	+9	-1	-2	+0.6%	+0.3%	+0.2%	+0.2%	-0.0%	-0.0%
Staff Nurse/ Staff Midwife	210	+20	+25	+12	+5	+11	+3	+0.1%	+0.1%	+0.1%	+0.0%	+0.1%	+0.0%
Public Health Nurse	170	-10	-17	-25	-5	-6	-1	-0.1%	-0.1%	-0.1%	-0.0%	-0.0%	-0.0%
Nursing/ Midwifery Student	23		+7	+16	+2			+0.0%	+0.4%	+2.3%	+0.1%	+0.0%	+0.0%
Nursing/ Midwifery other	2	-2	-1					-0.4%	-0.2%	+0.0%	+0.0%	+0.0%	+0.0%
Health & Social Care Professionals	361	-2	-1	-20	-13	-5	+3	-0.0%	-0.0%	-0.1%	-0.0%	-0.0%	+0.0%
Therapy Professions	250	-4	-5	-25	-17	-8	+2	-0.0%	-0.0%	-0.1%	-0.1%	-0.0%	+0.0%
Health Science/ Diagnostics	1	+0	+0	+1	+1	-0	+0	+0.5%	+0.6%	+3.5%	+3.5%	-0.2%	+0.3%
Social Care	3	-1	-1	-1	-0	-1	-1	-0.3%	-0.3%	-0.3%	-0.1%	-0.2%	-0.2%
Social Workers	28	+0	+1	+4	+2	+2	-0	+0.0%	+0.0%	+0.2%	+0.1%	+0.1%	-0.0%
Psychologists	27	+6	+5	+4	+6	+2	+3	+0.3%	+0.2%	+0.2%	+0.3%	+0.1%	+0.1%
Pharmacy	30	+0	-0	+1	-1	-0	-1	+0.0%	-0.0%	+0.0%	-0.0%	-0.0%	-0.0%
H&SC, Other	21	-4	-2	-3	-3	+0	+0	-0.2%	-0.1%	-0.1%	-0.1%	+0.0%	+0.0%
Management & Administrative	327	+24	+17	+16	+40	+17	+9	+0.1%	+0.1%	+0.1%	+0.1%	+0.1%	+0.0%
Management (VIII & above)	33	+5	+5	+2	-0	+3	-0	+0.2%	+0.2%	+0.1%	-0.0%	+0.1%	-0.0%
Administrative/ Supervisory (V to VII)	97	+34	+26	+27	+21	+10	+2	+0.5%	+0.4%	+0.4%	+0.3%	+0.1%	+0.0%
Clerical (III & IV)	197	-16	-14	-13	+19	+4	+7	-0.1%	-0.1%	-0.1%	+0.1%	+0.0%	+0.0%
General Support	118	-17	-12	-14	-6	-1	-0	-0.1%	-0.1%	-0.1%	-0.1%	-0.0%	-0.0%
Support	109	-18	-14	-15	-7	-1	-0	-0.1%	-0.1%	-0.1%	-0.1%	-0.0%	-0.0%
Maintenance/ Technical	9	+0	+2	+1	+1		+0	+0.0%	+0.3%	+0.2%	+0.1%	+0.0%	+0.0%
Patient & Client Care	341	+97	+99	+63	+92	+31	+0	+0.4%	+0.4%	+0.2%	+0.4%	+0.1%	+0.0%
Health Care Assistants	212	+95	+93	+71	+91	+28	-1	+0.8%	+0.8%	+0.5%	+0.8%	+0.2%	-0.0%
Care, other	129	+2	+6	-8	+2	+3	+2	+0.0%	+0.1%	-0.1%	+0.0%	+0.0%	+0.0%

Source: Health Service Personnel Census

Disabilities

Jun 2021 (Dec 2016 figure: 1,943)	WTE Jun 2021	WTE change since Dec 16	WTE change since Dec 17	WTE change since Dec 18	WTE change since Dec 19	WTE change since Dec 20	WTE change since Apr 21	% change since Dec 16	% change since Dec 17	% change since Dec 18	% change since Dec 19	% change since Dec 20	% change since Apr 21
Overall	3,179	+1,236	+387	+276	+197	+75	+93	+63.6%	+13.9%	+9.5%	+6.6%	+2.4%	+3.0%
Medical & Dental	12	+1	-1	+2	+1	+1	-0	+0.1%	-0.1%	+0.1%	+0.1%	+0.1%	-0.0%
Consultants	0	-2	-2	-0	-0	-0	-0	-0.9%	-0.9%	-0.4%	-0.4%	-0.4%	-0.4%
Registrars	3			+1			-0	+0.0%	+0.0%	+0.3%	+0.0%	+0.0%	-0.0%
SHO/ Interns	8	+3	+1	+1	+1	+1	-0	+0.6%	+0.1%	+0.2%	+0.1%	+0.1%	-0.0%
Medical/ Dental, other	1							+0.0%	+0.0%	+0.0%	+0.0%	+0.0%	+0.0%
Nursing & Midwifery	535	+139	+28	+27	+33	+33	+23	+0.3%	+0.1%	+0.1%	+0.1%	+0.1%	+0.0%
Nurse/ Midwife Manager	131	+32	-2	+7	+9	+13	+8	+0.3%	-0.0%	+0.1%	+0.1%	+0.1%	+0.1%
Nurse/ Midwife Specialist & AN/MP	4	-1	-3	-6	-1			-0.1%	-0.4%	-0.6%	-0.2%	+0.0%	+0.0%
Staff Nurse/ Staff Midwife	389	+101	+24	+16	+15	+11	+15	+0.3%	+0.1%	+0.0%	+0.0%	+0.0%	+0.0%
Nursing/ Midwifery Student	8	+8	+8	+8	+8	+8		-1.0%	-1.0%	-1.0%	-1.0%	-1.0%	+0.0%
Nursing/ Midwifery other	3	-1	+2	+2	+2	+1		-0.2%	+4.0%	+4.0%	+4.0%	+0.7%	+0.0%
Health & Social Care Professionals	605	+350	+100	+69	+53	+6	+17	+1.4%	+0.2%	+0.1%	+0.1%	+0.0%	+0.0%
Therapy Professions	140	+40	+19	+21	+18	+1	+9	+0.4%	+0.2%	+0.2%	+0.1%	+0.0%	+0.1%
Health Science/ Diagnostics	3	+0	+1	-0	-0	-0	-0	+0.2%	+0.4%	-0.0%	-0.0%	-0.0%	-0.0%
Social Care	394	+296	+80	+46	+33	+5	+4	+3.0%	+0.3%	+0.1%	+0.1%	+0.0%	+0.0%
Social Workers	33	+7	+3	-1	-1	+1	+1	+0.3%	+0.1%	-0.0%	-0.0%	+0.0%	+0.0%
Psychologists	30	+7	-2	+3	+3	-2	+3	+0.3%	-0.1%	+0.1%	+0.1%	-0.1%	+0.1%
Pharmacy	5	+1	+1	-0	+0	+1	+1	+0.2%	+0.2%	-0.0%	+0.0%	+0.2%	+0.1%
H&SC, Other	2	-1	-1					-0.4%	-0.4%	+0.0%	+0.0%	+0.0%	+0.0%
Management & Administrative	249	+116	+69	+60	+46	+14	+15	+0.9%	+0.4%	+0.3%	+0.2%	+0.1%	+0.1%
Management (VIII & above)	46	+20	+15	+15	+14	+3	+2	+0.8%	+0.5%	+0.5%	+0.4%	+0.1%	+0.0%
Administrative/ Supervisory (V to VII)	93	+46	+32	+23	+14	+1	+3	+1.0%	+0.5%	+0.3%	+0.2%	+0.0%	+0.0%
Clerical (III & IV)	110	+50	+22	+22	+18	+9	+10	+0.8%	+0.3%	+0.2%	+0.2%	+0.1%	+0.1%
General Support	186	+29	-28	-21	-9	-2	+9	+0.2%	-0.1%	-0.1%	-0.0%	-0.0%	+0.1%
Support	152	+13	-28	-25	-14	-3	+8	+0.1%	-0.2%	-0.1%	-0.1%	-0.0%	+0.1%
Maintenance/ Technical	34	+15	-0	+4	+5	+1	+1	+0.8%	-0.0%	+0.1%	+0.2%	+0.0%	+0.0%
Patient & Client Care	1,590	+601	+219	+140	+73	+24	+29	+0.6%	+0.2%	+0.1%	+0.0%	+0.0%	+0.0%
Health Care Assistants	1,183	+463	+211	+136	+70	+36	+34	+0.6%	+0.2%	+0.1%	+0.1%	+0.0%	+0.0%
Care, other	391	+153	+17	+10	+5	-12	-4	+0.6%	+0.0%	+0.0%	+0.0%	-0.0%	-0.0%
Home Help	17	-15	-10	-7	-3	-0	-0	-0.5%	-0.4%	-0.3%	-0.1%	-0.0%	-0.0%

Source: Health Service Personnel Census

Older People

Jun 2021 (Dec 2016 figure: 1,121)	WTE Jun 2021	WTE change since Dec 16	WTE change since Dec 17	WTE change since Dec 18	WTE change since Dec 19	WTE change since Dec 20	WTE change since Apr 21	% change since Dec 16	% change since Dec 17	% change since Dec 18	% change since Dec 19	% change since Dec 20	% change since Apr 21
Overall	1,019	-102	-44	-25	+23	-2	+3	-9.1%	-4.2%	-2.4%	+2.4%	-0.2%	+0.3%
Medical & Dental	4	-5	-4	-3	-2			-0.6%	-0.5%	-0.4%	-0.3%	+0.0%	+0.0%
SHO/ Interns	2	-1	-1					-0.3%	-0.3%	+0.0%	+0.0%	+0.0%	+0.0%
Medical/ Dental, other	2	-4	-3	-3	-2			-0.7%	-0.6%	-0.6%	-0.5%	+0.0%	+0.0%
Nursing & Midwifery	340	-2	+16	+38	+41	+7	-0	-0.0%	+0.1%	+0.1%	+0.1%	+0.0%	-0.0%
Nurse/ Midwife Manager	97	+13	+22	+24	+20	+11	+1	+0.2%	+0.3%	+0.3%	+0.3%	+0.1%	+0.0%
Nurse/ Midwife Specialist & AN/MP	2	-1	-1	-2	-0	-1	-0	-0.3%	-0.3%	-0.5%	-0.1%	-0.2%	-0.2%
Staff Nurse/ Staff Midwife	239	-14	-5	+15	+20	-3	-0	-0.1%	-0.0%	+0.1%	+0.1%	-0.0%	-0.0%
Public Health Nurse		-0						-1.0%	-1.0%	-1.0%	-1.0%	-1.0%	-1.0%
Nursing/ Midwifery Student	1	+1	+1	+1	+1	-1	-1	-1.0%	-1.0%	-1.0%	-1.0%	-0.4%	-0.5%
Health & Social Care Professionals	32	-6	-5	-7	+4	+3	+0	-0.2%	-0.1%	-0.2%	+0.1%	+0.1%	+0.0%
Therapy Professions	18	+1	+1	+1	+4	+4	+1	+0.1%	+0.0%	+0.0%	+0.3%	+0.3%	+0.1%
Health Science/ Diagnostics		-1						-1.0%	-1.0%	-1.0%	-1.0%	-1.0%	-1.0%
Social Workers	11	-4	-3	-5	+1	-1	-1	-0.2%	-0.2%	-0.3%	+0.0%	-0.1%	-0.1%
Pharmacy	2	-2	-2	-2	-1			-0.5%	-0.5%	-0.5%	-0.2%	+0.0%	+0.0%
H&SC, Other	1	-1	-1	-1				-0.5%	-0.5%	-0.5%	+0.0%	+0.0%	+0.0%
Management & Administrative	59	+6	+8	+14	+8	-0	+1	+0.1%	+0.2%	+0.3%	+0.2%	-0.0%	+0.0%
Management (VIII & above)	6	-2	+1	+2	+1	-1	-0	-0.2%	+0.3%	+0.6%	+0.3%	-0.1%	-0.0%
Administrative/ Supervisory (V to VII)	15	+5	+4	+5	+3	+0	-0	+0.5%	+0.4%	+0.5%	+0.3%	+0.0%	-0.0%
Clerical (III & IV)	37	+3	+3	+7	+3	+0	+1	+0.1%	+0.1%	+0.2%	+0.1%	+0.0%	+0.0%
General Support	119	-2	-5	-3	+6	-2	-1	-0.0%	-0.0%	-0.0%	+0.1%	-0.0%	-0.0%
Support	117	-1	-4	-2	+6	-2	-1	-0.0%	-0.0%	-0.0%	+0.1%	-0.0%	-0.0%
Maintenance/ Technical	2	-1	-1	-1				-0.3%	-0.3%	-0.3%	+0.0%	+0.0%	+0.0%
Patient & Client Care	467	-93	-55	-64	-34	-11	+3	-0.2%	-0.1%	-0.1%	-0.1%	-0.0%	+0.0%
Health Care Assistants	352	-65	-29	-58	-36	-5	+5	-0.2%	-0.1%	-0.1%	-0.1%	-0.0%	+0.0%
Care, other	5	-11	-10	-2	+0			-0.7%	-0.3%		+0.0%	+0.0%	+0.0%
Home Help	109	-17	-16	-3	+2	-5	-2	-0.1%	-0.1%	-0.0%	+0.0%	-0.0%	-0.0%

Source: Health Service Personnel Census