

CHO 7 Employment Report: May 2020

Employment by Staff Group

May 2020 (Dec 2019 figure: 6,515)	WTE Apr 2020	WTE May 2020	WTE change since Apr 20	% change since Apr 20	WTE change since Dec 19	WTE change since May 19
Overall	6,580	6,563	-16	-0.2%	+49	-46
Consultants	60	62	+2	+3.0%	+2	+5
Registrars	89	85	-4	-4.7%	-10	+2
SHO/ Interns	37	35	-3	-6.9%	-1	+1
Medical/ Dental, other	82	82	+0	+0.2%	+2	-8
Medical & Dental	269	264	-5	-1.8%	-6	-0
Nurse/ Midwife Manager	405	405	+0	+0.1%	+9	+1
Nurse/ Midwife Specialist & AN/MP	100	101	+1	+1.5%	+8	+10
Staff Nurse/ Staff Midwife	997	1,009	+11	+1.1%	+16	-1
Public Health Nurse	163	164	+1	+0.4%	-12	-25
<i>Pre-registration Nurse/ Midwife Intern</i>	1		-1	-100.0%	-1	-1
<i>Pre-registration Nurse Intern (COVID-19)</i>	22	44	+22	+101.2%	+44	+22
<i>Post-registration Nurse/ Midwife Student</i>	21	20	-1	-4.8%	-1	-1
<i>Nursing/ Midwifery awaiting registration</i>	13	7	-6	-44.3%	-3	-6
Nursing/ Midwifery Student	56	71	+15	+26.1%	+39	+44
Nursing/ Midwifery other	10	10			-1	
Nursing & Midwifery	1,731	1,759	+29	+1.7%	+59	+30
Therapy Professions	456	472	+16	+3.5%	+22	+6
Health Science/ Diagnostics	4	3	-1	-16.1%	+0	+0
Social Care	370	367	-3	-0.9%	-4	+8
Social Workers	111	111	+0	+0.4%	+7	+3
Psychologists	80	81	+1	+0.9%	+0	-7
Pharmacy	38	38	+0	+0.3%	-2	+0
H&SC, Other	43	42	-1	-1.9%	-2	-2
Health & Social Care Professionals	1,102	1,115	+13	+1.1%	+21	+8
Management (VIII & above)	77	77	+0	+0.3%	+4	+7
Administrative/ Supervisory (V to VII)	201	196	-6	-2.7%	+14	+6
Clerical (III & IV)	372	362	-10	-2.7%	+11	-14
Management & Administrative	650	635	-15	-2.3%	+29	-1
Support	413	406	-7	-1.8%	-5	-25
Maintenance/ Technical	45	42	-3	-6.8%	+1	-2
General Support	458	448	-10	-2.3%	-4	-27
Health Care Assistants	1,629	1,608	-21	-1.3%	-47	-63
Care, other	604	601	-3	-0.5%	-9	+2
Home Help	136	133	-3	-2.1%	+6	+6
Patient & Client Care	2,369	2,343	-27	-1.1%	-49	-55

CHO 7 Employment Report: May 2020

Community Health & Wellbeing

May 2020 (figure:)	WTE Apr 2020	WTE May 2020	WTE change since Apr 20	% change since Apr 20	WTE change since	WTE change since
Total Community Health & Wellbeing	8	9	+1	+12.3%	+9	+9
Management (VIII & above)	1	1	0	0	+1	+1
Administrative/ Supervisory (V to VII)	2	2	0	0	+2	+2
Clerical (III & IV)	1	1	0	0	+1	+1
Management & Administrative	4	4	0	0	+4	+4
Health Care Assistants		1	+1	-100%	+1	+1
Care, other	5	5	0	0	+5	+5
Patient & Client Care	5	6	+1	+21.9%	+6	+6

Mental Health

May 2020 (Dec 2019 figure: 835)	WTE Apr 2020	WTE May 2020	WTE change since Apr 20	% change since Apr 20	WTE change since Dec 19	WTE change since May 19
Total Mental Health	846	866	+20	+2.3%	+31	+3
Consultants	48	49	+1	+2%	+1	+4
Registrars	40	40	-0	-0%	-6	+1
SHO/ Interns	21	21	-0	-0%	+0	+2
Medical & Dental	110	111	+1	+0.9%	-4	+7
Nurse/ Midwife Manager	115	119	+4	+3%	+3	+1
Nurse/ Midwife Specialist & AN/MP	44	45	+1	+1%	+5	+7
Staff Nurse/ Staff Midwife	205	202	-3	-2%	+8	-14
Pre-registration Nurse/ Midwife Intern				-100.0%	-1	
Pre-registration Nurse Intern (COVID-19)	15	29	+14	+95.0%	+29	+14
Nursing/ Midwifery awaiting registration	4	4	+0	+3.4%	-6	+0
Nursing/ Midwifery Student	19	33	+14	+76%	+22	+18
Nursing/ Midwifery other	7	7	0	0	-1	
Nursing & Midwifery	390	406	+16	+4.0%	+36	+13
Therapy Professions	48	49	+1	+2%	+1	+1
Social Care	7	8	+1	+16%	-0	-2
Social Workers	36	37	+1	+2%	+3	+1
Psychologists	28	28	+0	+0%	-3	-4
Pharmacy	1	1	0	0		+1
H&SC, Other	18	17	-0	-1%	-1	+2
Health & Social Care Professionals	138	140	+2	+1.6%	-0	-1
Management (VIII & above)	3	3	0	0		
Administrative/ Supervisory (V to VII)	17	18	+2	+11%	+3	+5
Clerical (III & IV)	46	47	+1	+3%	+0	-5
Management & Administrative	65	68	+3	+4.8%	+3	+1
Support	17	17	-0	-1%	-1	-5
Maintenance/ Technical	2	2	0	0	+0	
General Support	19	19	-0	-1.0%	-0	-5
Health Care Assistants	35	35	-0	-0%	+2	-3
Care, other	89	87	-2	-2%	-5	-9
Patient & Client Care	125	123	-2	-1.6%	-3	-12

Primary Care

May 2020 (Dec 2019 figure: 1,702)	WTE Apr 2020	WTE May 2020	WTE change since Apr 20	% change since Apr 20	WTE change since Dec 19	WTE change since May 19
Total Primary Care	1,731	1,701	-30	-1.7%	-1	-74
Consultants	12	12	+1	+6%	+1	+1
Registrars	46	42	-3	-7%	-3	+2
SHO/ Interns	7	6	-1	-9%	+0	+0
Medical/ Dental, other	77	77	+0	+0%	+2	-7
Medical & Dental	142	139	-3	-2.1%	+0	-4
Nurse/ Midwife Manager	89	89	-0	-0%	+8	+5
Nurse/ Midwife Specialist & AN/MP	48	48	+0	+1%	+2	+4
Staff Nurse/ Staff Midwife	202	199	-3	-1%	-6	-7
Public Health Nurse	163	164	+1	+0%	-12	-25
<i>Post-registration Nurse/ Midwife Student</i>	21	20	-1	-4.8%	-1	-1
Nursing/ Midwifery Student	21	20	-1	-5%	-1	+15
Nursing/ Midwifery other	2	2	0	0		
Nursing & Midwifery	524	521	-3	-0.6%	-9	-7
Therapy Professions	263	271	+8	+3%	+5	-13
Health Science/ Diagnostics	1	0	-1	-65%	+0	+0
Social Care	4	4	0	0	+1	+0
Social Workers	26	26	+1	+2%	+0	+0
Psychologists	22	23	+1	+3%	+2	-1
Pharmacy	30	29	-0	-1%	-2	-2
H&SC, Other	23	22	-1	-2%	-2	-3
Health & Social Care Professionals	369	376	+8	+2.1%	+3	-17
Management (VIII & above)	29	29	-1	-3%	-5	-1
Administrative/ Supervisory (V to VII)	89	80	-8	-9%	+4	-2
Clerical (III & IV)	191	179	-12	-6%	+1	-23
Management & Administrative	309	288	-21	-6.7%	+1	-26
Support	125	117	-8	-6%	+2	-4
Maintenance/ Technical	10	9	-1	-11%	+0	+0
General Support	135	126	-9	-6.6%	+2	-4
Health Care Assistants	126	126	-1	-0%	+4	-13
Care, other	127	125	-1	-1%	-2	-2
Patient & Client Care	253	251	-2	-0.8%	+2	-16

Social Care

May 2020 (Dec 2019 figure: 3,978)	WTE Apr 2020	WTE May 2020	WTE change since Apr 20	% change since Apr 20	WTE change since Dec 19	WTE change since May 19
Total Social Care	3,994	3,987	-7	-0.2%	+10	+16
Consultants	1	1	0	0		
Registrars	3	3	-1	-26%	-0	-2
SHO/ Interns	9	7	-2	-21%	-2	-1
Medical/ Dental, other	5	5	0	0		-1
Medical & Dental	18	15	-3	-15.4%	-2	-3
Nurse/ Midwife Manager	200	197	-3	-1%	-2	-6
Nurse/ Midwife Specialist & AN/MP	8	9	+0	+6%	+1	-1
Staff Nurse/ Staff Midwife	590	607	+17	+3%	+14	+19
Pre-registration Nurse/ Midwife Intern	1		-1	-100.0%		-1
Pre-registration Nurse Intern (COVID-19)	7	15	+8	+114.3%	+15	+8
Nursing/ Midwifery awaiting registration	9	3	-6	-64.1%	+3	-6
Nursing/ Midwifery Student	17	18	+2	+9%	+18	+11
Nursing/ Midwifery other	1	1	0	0		
Nursing & Midwifery	816	832	+16	+2.0%	+32	+24
Therapy Professions	145	152	+8	+5%	+17	+18
Health Science/ Diagnostics	3	3	0	0		
Social Care	360	356	-4	-1%	-5	+10
Social Workers	49	48	-1	-2%	+4	+1
Psychologists	30	30	+0	+0%	+2	-3
Pharmacy	7	8	+0	+4%	+0	+1
H&SC, Other	3	3	0	0		-1
Health & Social Care Professionals	596	599	+3	+0.5%	+18	+26
Management (VIII & above)	44	45	+1	+3%	+8	+7
Administrative/ Supervisory (V to VII)	94	95	+1	+1%	+5	+1
Clerical (III & IV)	135	135	+0	+0%	+9	+13
Management & Administrative	273	275	+2	+0.9%	+22	+21
Support	270	271	+1	+0%	-6	-16
Maintenance/ Technical	33	31	-2	-6%	+1	-3
General Support	303	302	-1	-0.4%	-5	-18
Health Care Assistants	1,467	1,446	-21	-1%	-54	-48
Care, other	384	384	+0	+0%	-7	+9
Home Help	136	133	-3	-2%	+6	+6
Patient & Client Care	1,987	1,964	-24	-1.2%	-54	-33

CHO 7 Employment Report: May 2020

Disabilities

May 2020 (Dec 2019 figure: 2,982)	WTE Apr 2020	WTE May 2020	WTE change since Apr 20	% change since Apr 20	WTE change since Dec 19	WTE change since May 19
Total Disabilities	2,978	2,970	-8	-0.3%	-12	+33
Consultants	1	1				
Registrars	3	3	-1	-25.5%	-0	-2
SHO/ Interns	7	5	-2	-27.2%	-2	-1
Medical/ Dental, other	1	1				
Medical & Dental	12	9	-3	-23.2%	-2	-2
Nurse/ Midwife Manager	122	121	-1	-0.5%	-1	-6
Nurse/ Midwife Specialist & AN/MP	5	5	+0	+2.8%	-0	-0
Staff Nurse/ Staff Midwife	366	370	+4	+1.1%	-4	+5
<i>Pre-registration Nurse/ Midwife Intern</i>	1		-1	-100.0%		-1
<i>Pre-registration Nurse Intern (COVID-19)</i>	7	15	+8	+114.3%	+15	+8
Nursing/ Midwifery Student	8	15	+8	+100.0%	+15	+8
Nursing/ Midwifery other	1	1				
Nursing & Midwifery	501	512	+11	+2.2%	+10	+7
Therapy Professions	130	139	+8	+6.4%	+17	+22
Health Science/ Diagnostics	3	3				
Social Care	360	356	-4	-1.2%	-5	+10
Social Workers	35	35	+0	+1.2%	+2	+4
Psychologists	30	30	+0	+0.1%	+2	-3
Pharmacy	4	5	+0	+6.0%	-0	+1
H&SC, Other	2	2				
Health & Social Care Professionals	564	569	+5	+0.8%	+16	+34
Management (VIII & above)	38	39	+1	+2.4%	+7	+5
Administrative/ Supervisory (V to VII)	83	84	+1	+1.0%	+5	+2
Clerical (III & IV)	98	100	+1	+1.4%	+8	+9
Management & Administrative	219	222	+3	+1.4%	+19	+16
Support	164	167	+3	+1.7%	-0	-3
Maintenance/ Technical	31	29	-2	-6.3%	+1	-2
General Support	195	196	+1	+0.4%	+1	-5
Health Care Assistants	1,089	1,064	-25	-2.3%	-49	-22
Care, other	379	379	+0	+0.1%	-6	+10
Home Help	18	18	-0	-0.2%	-1	-3
Patient & Client Care	1,487	1,462	-25	-1.7%	-56	-15

Older People

May 2020 (Dec 2019 figure: 996)	WTE Apr 2020	WTE May 2020	WTE change since Apr 20	% change since Apr 20	WTE change since Dec 19	WTE change since May 19
Total Older People	1,016	1,017	+1	+0.1%	+21	-17
SHO/ Interns	2	2				
Medical/ Dental, other	4	4				-1
Medical & Dental	6	6				-1
Nurse/ Midwife Manager	79	76	-2	-3.0%	-1	-0
Nurse/ Midwife Specialist & AN/MP	3	4	+0	+10.7%	+1	-0
Staff Nurse/ Staff Midwife	224	237	+13	+5.8%	+18	+14
Nursing/ Midwifery Student	9	3	-6	-64.1%	+3	+3
Nursing & Midwifery	315	320	+5	+1.6%	+21	+17
Health & Social Care Professionals	32	30	-2	-6.5%	+2	-7
Management (VIII & above)	6	6	+0	+4.2%	+1	+2
Administrative/ Supervisory (V to VII)	12	11	-0	-0.8%	-0	-1
Clerical (III & IV)	36	36	-1	-2.4%	+1	+4
Management & Administrative	54	53	-1	-1.4%	+2	+5
Support	107	104	-2	-2.0%	-6	-12
Maintenance/ Technical	2	2				-1
General Support	109	106	-2	-2.0%	-6	-13
Health Care Assistants	378	382	+4	+1.1%	-5	-26
Care, other	5	4	-0	-7.5%	-1	-1
Home Help	118	115	-3	-2.4%	+7	+9
Patient & Client Care	501	502	+1	+0.2%	+2	-18

CHO 7 Employment by Administration (HSE / S38): May 2020

May 2020 (Dec 2019 figure: 6,515)	WTE Apr 2020	WTE May 2020	WTE change since Apr 20	% change since Apr 20	WTE change since Dec 19	WTE change since May 19
Overall	6,580	6,563	-16	-0.2%	+49	-46
HSE	3,184	3,227	+43	+1.3%	+75	-51
Section 38 Voluntary Agencies	3,396	3,337	-59	-1.7%	-26	+5

HSE

May 2020 (Dec 2019 figure: 3,151)	WTE Apr 2020	WTE May 2020	WTE change since Apr 20	% change since Apr 20	WTE change since Dec 19	WTE change since May 19
Overall	3,184	3,227	+43	+1.3%	+75	-51
Consultants	54	55	+1	+0.0%	+1	+4
Registrars	80	79	-1	-0.0%	-8	+5
SHO/ Interns	25	25	+0	+0.0%	+1	+3
Medical/ Dental, other	80	80	+0	+0.0%	+2	-8
Medical & Dental	239	239	+0	+0.0%	-3	+4
Nurse/ Midwife Manager	238	242	+4	+0.0%	+10	+10
Nurse/ Midwife Specialist & AN/MP	66	67	+1	+0.0%	+6	+8
Staff Nurse/ Staff Midwife	530	539	+10	+0.0%	+20	-11
Public Health Nurse	163	164	+1	+0.0%	-12	-25
<i>Pre-registration Nurse/ Midwife Intern</i>				-1.0%	-6	-13
<i>Pre-registration Nurse Intern (COVID-19)</i>	15	29	+14	+1.0%	+29	+29
<i>Post-registration Nurse/ Midwife Student</i>	21	20	-1	-0.0%	+13	+15
<i>Nursing/ Midwifery awaiting registration</i>	13	7	-6	-0.4%	+3	+6
Nursing/ Midwifery Student	49	56	+7	+0.1%	+24	+37
Nursing/ Midwifery other	7	7		+0.0%	-1	
Nursing & Midwifery	1,053	1,075	+22	+2.1%	+48	+20
Therapy Professions	329	340	+11	+0.0%	+15	-0
Social Care	10	11	+1	+0.1%	+1	-2
Social Workers	71	72	+0	+0.0%	+4	+2
Psychologists	58	59	+1	+0.0%	-3	-9
Pharmacy	25	25	-0	-0.0%	-1	-0
H&SC, Other	41	40	-1	-0.0%	-2	-2
Health & Social Care Professionals	535	548	+12	+2.3%	+14	-11
Management (VIII & above)	44	45	+1	+0.0%	+5	+8
Administrative/ Supervisory (V to VII)	99	106	+7	+0.1%	+10	+8
Clerical (III & IV)	248	247	-1	-0.0%	+5	-18
Management & Administrative	391	398	+6	+1.7%	+20	-2
Support	166	164	-2	-0.0%	-7	-21
Maintenance/ Technical	5	5		+0.0%	-1	-2
General Support	171	169	-2	-1.2%	-8	-23
Health Care Assistants	433	442	+9	+0.0%	+1	-36
Care, other	226	224	-3	-0.0%	-4	-9
Home Help	136	133	-3	-0.0%	+6	+6
Patient & Client Care	795	799	+4	+0.5%	+4	-39

Section 38 Voluntary Agencies

May 2020 (Dec 2019 figure: 3,363)	WTE Apr 2020	WTE May 2020	WTE change since Apr 20	% change since Apr 20	WTE change since Dec 19	WTE change since May 19
Overall	3,396	3,337	-59	-1.7%	-26	+5
Consultants	6	7	+1	+0.1%	+1	+1
Registrars	9	7	-3	-0.3%	-1	-3
SHO/ Interns	12	9	-3	-0.2%	-3	-2
Medical/ Dental, other	2	2	-0	-0.0%	+0	-0
Medical & Dental	30	25	-5	-16.1%	-3	-4
Nurse/ Midwife Manager	167	163	-3	-0.0%	-1	-9
Nurse/ Midwife Specialist & AN/MP	34	34	+0	+0.0%	+1	+2
Staff Nurse/ Staff Midwife	468	469	+2	+0.0%	-4	+10
<i>Pre-registration Nurse/ Midwife Intern</i>	1		-1	-1.0%		-8
<i>Pre-registration Nurse Intern (COVID-19)</i>	7	15	+8	+1.1%	+15	+15
Nursing/ Midwifery Student	8	15	+8	+1.0%	+15	+8
Nursing/ Midwifery other	3	3		+0.0%		
Nursing & Midwifery	678	684	+6	+1.0%	+11	+10
Therapy Professions	127	132	+5	+0.0%	+7	+7
Health Science/ Diagnostics	4	3	-1	-0.2%	+0	+0
Social Care	360	356	-4	-0.0%	-5	+10
Social Workers	39	40	+0	+0.0%	+2	+1
Psychologists	22	22	-0	-0.0%	+3	+2
Pharmacy	13	13	+0	+0.0%	-1	+0
H&SC, Other	2	2		+0.0%		
Health & Social Care Professionals	567	567	+0	+0.1%	+6	+19
Management (VIII & above)	33	32	-1	-0.0%	-1	-2
Administrative/ Supervisory (V to VII)	102	90	-12	-0.1%	+4	-2
Clerical (III & IV)	123	115	-9	-0.1%	+6	+4
Management & Administrative	259	237	-22	-8.4%	+9	+1
Support	248	242	-5	-0.0%	+2	-4
Maintenance/ Technical	40	37	-3	-0.1%	+2	-1
General Support	288	279	-8	-2.9%	+4	-4
Health Care Assistants	1,196	1,166	-30	-0.0%	-47	-27
Care, other	378	377	-1	-0.0%	-5	+11
Patient & Client Care	1,574	1,543	-31	-2.0%	-53	-17

CHO 7 Employment by S38 Agency: May 2020

Cheeverstown House

May 2020 (Dec 2019 figure: 396)	WTE Apr 2020	WTE May 2020	WTE change since Apr 20	% change since Apr 20	WTE change since Dec 19	WTE change since May 19
Overall	399	395	-4	-0.9%	-1	-11
Consultants	0	0		+0.0%		
Medical/ Dental, other	1	1		+0.0%		
Medical & Dental	1	1				
Nurse/ Midwife Manager	28	28	-1	-0.0%	+2	-1
Nurse/ Midwife Specialist & AN/MP	2	2		+0.0%		
Staff Nurse/ Staff Midwife	104	103	-1	-0.0%	-4	-6
Nursing & Midwifery	133	132	-1	-1.0%	-3	-7
Therapy Professions	12	13	+1	+0.1%	-1	-1
Social Care	36	35	-1	-0.0%	+0	-1
Social Workers	6	6		+0.0%		
Psychologists	5	5		+0.0%	+1	+1
Pharmacy	0	0		+0.0%	-0	-0
H&SC, Other	2	2		+0.0%		
Health & Social Care Professionals	61	61	+0	+0.1%	+1	-1
Management (VIII & above)	2	2		+0.0%		-1
Administrative/ Supervisory (V to VII)	14	15	+1	+0.1%		+0
Clerical (III & IV)	12	11	-1	-0.1%	+0	+1
Management & Administrative	28	28			+0	-0
Support	27	27		+0.0%		+1
Maintenance/ Technical	4	4		+0.0%		
General Support	30	30				+1
Health Care Assistants	133	131	-3	-0.0%	+1	-3
Care, other	12	12		+0.0%		-1
Patient & Client Care	145	143	-3	-1.8%	+1	-4

Kare, Newbridge, Co Kildare

May 2020 (Dec 2019 figure: 360)	WTE Apr 2020	WTE May 2020	WTE change since Apr 20	% change since Apr 20	WTE change since Dec 19	WTE change since May 19
Overall	362	352	-11	-2.9%	-8	+15
Nurse/ Midwife Manager	10	10		+0.0%	-2	-2
Staff Nurse/ Staff Midwife	23	22	-1	-0.0%	-0	+1
Nursing & Midwifery	33	33	-1	-1.9%	-2	-1
Therapy Professions	14	13	-1	-0.1%	-2	+0
Social Care	62	60	-2	-0.0%	-1	+1
Social Workers	4	4		+0.0%		+0
Psychologists	6	5	-1	-0.1%	+1	+2
Health & Social Care Professionals	85	82	-4	-4.4%	-2	+3
Management (VIII & above)	6	6		+0.0%		
Administrative/ Supervisory (V to VII)	13	13	-0	-0.0%	+1	+1
Clerical (III & IV)	14	14		+0.0%	+2	+4
Management & Administrative	33	33	-0	-0.2%	+3	+5
Support	2	2		+0.0%	-0	+0
General Support	2	2			-0	+0
Health Care Assistants	100	94	-6	-0.1%	-6	-3
Care, other	110	109	-0	-0.0%	-0	+11
Patient & Client Care	210	203	-6	-3.0%	-7	+8

Our Lady's Hospice & Care Services

May 2020 (Dec 2019 figure: 482)	WTE Apr 2020	WTE May 2020	WTE change since Apr 20	% change since Apr 20	WTE change since Dec 19	WTE change since May 19
Overall	533	487	-46	-8.6%	+5	-2
Consultants	6	7	+1	+0.1%	+1	+1
Registrars	6	4	-2	-0.3%	-1	-2
SHO/ Interns	5	4	-1	-0.1%	-1	-1
Medical/ Dental, other	1	1	-0	-0.0%	+0	-0
Medical & Dental	18	16	-2	-11.5%	-1	-2
Nurse/ Midwife Manager	47	44	-2	-0.1%	-0	-1
Nurse/ Midwife Specialist & AN/MP	30	30	+0	+0.0%	+1	+2
Staff Nurse/ Staff Midwife	101	99	-2	-0.0%	-0	+4
Nursing/ Midwifery other	2	2		+0.0%		
Nursing & Midwifery	179	175	-5	-2.6%	+1	+5
Therapy Professions	38	39	+0	+0.0%	+2	-2
Health Science/ Diagnostics	1	0	-1	-0.7%	+0	+0
Social Workers	11	11	+0	+0.0%	+0	+0
Psychologists	1	1	+0	+0.0%	+0	-0
Pharmacy	8	9	+0	+0.0%	-1	-1
Health & Social Care Professionals	59	59	+0	+0.2%	+1	-2
Management (VIII & above)	4	3	-1	-0.3%	-1	
Administrative/ Supervisory (V to VII)	32	20	-12	-0.4%	-1	-2
Clerical (III & IV)	38	28	-10	-0.3%	+3	+3
Management & Administrative	74	51	-23	-31.5%	+1	+2
Support	84	75	-8	-0.1%	+2	-0
Maintenance/ Technical	9	8	-1	-0.1%	+1	+1
General Support	93	83	-9	-10.1%	+3	+1
Health Care Assistants	108	102	-5	-0.1%	+0	-6
Care, other	2	1	-1	-0.6%		
Patient & Client Care	109	103	-6	-5.8%	+0	-6

Peamount Hospital (Newcastle)

May 2020 (Dec 2019 figure: 486)	WTE Apr 2020	WTE May 2020	WTE change since Apr 20	% change since Apr 20	WTE change since Dec 19	WTE change since May 19
Overall	485	486	+1	+0.3%	-0	+8
Registrars	2	2	-1	-0.4%	-0	-1
SHO/ Interns	7	5	-2	-0.3%	-2	-1
Medical & Dental	9	7	-3	-29.5%	-2	-1
Nurse/ Midwife Manager	25	26	+0	+0.0%	-1	+2
Nurse/ Midwife Specialist & AN/MP	2	2	+0	+0.1%		
Staff Nurse/ Staff Midwife	82	85	+2	+0.0%	+3	+3
Nursing & Midwifery	110	112	+3	+2.3%	+2	+5
Therapy Professions	32	36	+4	+0.1%	+7	+9
Health Science/ Diagnostics	3	3		+0.0%		
Social Care	4	4	+0	+0.1%	+2	+1
Social Workers	5	6	+1	+0.2%	+1	+1
Pharmacy	4	4	+0	+0.1%	+0	+1
Health & Social Care Professionals	48	53	+5	+11.2%	+10	+12
Management (VIII & above)	4	4		+0.0%		+1
Administrative/ Supervisory (V to VII)	17	17	+0	+0.0%	+3	+2
Clerical (III & IV)	19	19	-0	-0.0%	-1	-2
Management & Administrative	40	40	+0	+0.9%	+2	+0
Support	47	51	+4	+0.1%	+4	+3
Maintenance/ Technical	8	8	-0	-0.0%	+0	-1
General Support	55	59	+4	+7.5%	+4	+1
Health Care Assistants	221	212	-9	-0.0%	-16	-9
Care, other	3	3	+1	+0.3%	-0	+0
Patient & Client Care	223	215	-8	-3.7%	-16	-9

Stewart's Hospital, (Palmerstown)

May 2020 (Dec 2019 figure: 852)	WTE Apr 2020	WTE May 2020	WTE change since Apr 20	% change since Apr 20	WTE change since Dec 19	WTE change since May 19
Overall	863	871	+7	+0.9%	+19	-12
Consultants	0	0		+0.0%		
Registrars				-1.0%		-1
Medical & Dental	0	0				-1
Nurse/ Midwife Manager	33	33		+0.0%	-3	-5
Staff Nurse/ Staff Midwife	72	74	+2	+0.0%	+1	+0
Pre-registration Nurse/ Midwife Intern	1		-1	-1.0%		-8
Pre-registration Nurse Intern (COVID-19)	7	15	+8	+1.1%	+15	+15
Nursing/ Midwifery Student	8	15	+8	+1.0%	+15	+8
Nursing/ Midwifery other	1	1		+0.0%		
Nursing & Midwifery	113	122	+9	+8.2%	+13	+3
Therapy Professions	15	16	+1	+0.0%		-0
Social Care	14	14		+0.0%	+4	+3
Social Workers	7	7		+0.0%	+1	
Psychologists	4	4		+0.0%		
Health & Social Care Professionals	40	40	+1	+1.3%	+5	+3
Management (VIII & above)	11	11		+0.0%		-2
Administrative/ Supervisory (V to VII)	16	16		+0.0%	+2	-2
Clerical (III & IV)	23	25	+2	+0.1%	+1	-1
Management & Administrative	49	52	+2	+4.7%	+3	-5
Support	58	58	-0	-0.0%	+1	-1
Maintenance/ Technical	5	5		+0.0%		-1
General Support	63	63	-0	-0.1%	+1	-2
Health Care Assistants	483	480	-3	-0.0%	-1	-1
Care, other	116	114	-2	-0.0%	-2	-8
Patient & Client Care	598	594	-5	-0.8%	-3	-9

St. John of God Liffey Services

May 2020 (Dec 2019 figure: 787)	WTE Apr 2020	WTE May 2020	WTE change since Apr 20	% change since Apr 20	WTE change since Dec 19	WTE change since May 19
Overall	754	746	-8	-1.0%	-41	+9
Registrars	1	1		+0.0%		
Medical & Dental	1	1				
Nurse/ Midwife Manager	24	23	-0	-0.0%	+3	-2
Nurse/ Midwife Specialist & AN/MP	1	1		+0.0%		
Staff Nurse/ Staff Midwife	85	87	+2	+0.0%	-3	+8
Nursing & Midwifery	109	111	+1	+1.1%	-0	+6
Therapy Professions	16	16	+0	+0.0%	+1	
Social Care	244	243	-2	-0.0%	-10	+6
Social Workers	7	6	-1	-0.1%		-1
Psychologists	6	7	+1	+0.1%	+1	-0
Health & Social Care Professionals	274	272	-2	-0.7%	-8	+5
Management (VIII & above)	6	6		+0.0%	-0	+1
Administrative/ Supervisory (V to VII)	11	10	-1	-0.1%	-1	-0
Clerical (III & IV)	18	18		+0.0%	+0	-1
Management & Administrative	35	34	-1	-2.9%	-1	-0
Support	31	30	-1	-0.0%	-5	-6
Maintenance/ Technical	15	13	-2	-0.1%	+0	+1
General Support	46	42	-3	-7.0%	-5	-6
Health Care Assistants	152	147	-5	-0.0%	-25	-5
Care, other	136	139	+2	+0.0%	-3	+9
Patient & Client Care	289	286	-3	-1.0%	-28	+4

CHO 7 Employment by Grade Group & Staff Category: May 2020

May 2020 (Dec 2019 figure: 6,515)	WTE Apr 2020	WTE May 2020	WTE change since Apr 20	% change since Apr 20	WTE change since Dec 19	WTE change since May 19
Overall	6,580	6,563	-16	-0.2%	+49	-46
Consultant Medicine	7	8	+1	+9.8%	+1	+0
Consultant Paediatrics	0	0				
Consultant Psychiatry	52	53	+1	+2.1%	+1	+5
Consultant Surgery	1	1				-0
Consultants	60	62	+2	+3.0%	+2	+5
Registrar	71	67	-4	-5.8%	-5	+3
Senior Registrar	15	16	+1	+6.8%	-3	-0
Specialist Registrar	4	3	-1	-27.6%	-1	-1
Registrars	89	85	-4	-4.7%	-10	+2
Interns	2		-2	-100.0%	-2	-2
Senior House Officer	35	35	-1	-1.8%	+1	+3
SHO/ Interns	37	35	-3	-6.9%	-1	+1
Dentists	35	35	+0	+0.3%	+2	-1
Other Medical	47	47	+0	+0.1%	+0	-7
Medical/ Dental, other	82	82	+0	+0.2%	+2	-8
Medical & Dental	269	264	-5	-1.8%	-0	-0
Clinical Nurse/ Midwife Manager	332	332	-1	-0.2%	+3	+5
Director Nursing/Midwifery, Assistant	53	54	+1	+1.8%	+2	-4
Director of Nursing/Midwifery	20	20	+0	+0.7%	+4	-1
Nurse/ Midwife Manager	405	405	+0	+0.1%	+9	+1
Advanced Nurse/ Midwife Practitioner	7	7	-0	-6.9%	+2	+2
Clinical Nurse/ Midwife Specialist	93	95	+2	+2.1%	+5	+8
Nurse/ Midwife Specialist & AN/MP	100	101	+1	+1.5%	+8	+10
Staff Nurse [Intellectual Disability]	189	188	-1	-0.6%	-6	-23
Staff Nurse [Psychiatric]	195	192	-4	-1.9%	+0	-20
Staff Nurses [General/ Children's]	613	629	+16	+2.6%	+22	+42
Staff Nurse/ Staff Midwife	997	1,009	+11	+1.1%	+16	-1
Public Health Nurse	163	164	+1	+0.4%	-12	-25
Pre-registration Nurse/ Midwife Intern	1		-1	-100.0%	-1	-21
Pre-registration Nurse Intern (COVID-19)	22	44	+22	+101.2%	+44	+44
Post-registration Nurse/ Midwife Student	21	20	-1	-4.8%	-1	+15
Nursing/ Midwifery awaiting registration	13	7	-6	-44.3%	-3	+6
Nursing/ Midwifery Student	56	71	+15	+26.1%	+39	+44
Nursing Education/Clinical	10	10			-1	
Nursing/ Midwifery other	10	10			-1	
Nursing & Midwifery	1,731	1,759	+29	+1.7%	+58	+30
Dietitians	23	23	+0	+0.3%	-2	-3
Occupational Therapists	184	194	+10	+5.3%	+10	+9
Orthoptists				-100.0%		-1
Physiotherapists	121	124	+3	+2.5%	+10	+1
Podiatrists & Chiropractors	1	2	+1	+132.6%	+1	+0
Speech & Language Therapists	126	128	+2	+1.5%	+3	-0
Therapy Professions	456	472	+16	+3.5%	+22	+6
Clinical Measurement	1	1				
Phlebotomists	2	1	-1	-32.3%	+0	+0
Radiographers	1	1				
Health Science/ Diagnostics	4	3	-1	-16.1%	+0	+0

May 2020 (Dec 2019 figure: 6,515)	WTE Apr 2020	WTE May 2020	WTE change since Apr 20	% change since Apr 20	WTE change since Dec 19	WTE change since May 19
Overall	6,580	6,563	-16	-0.2%	+49	-46
Social Care	370	367	-3	-0.9%	-4	+8
Social Workers	111	111	+0	+0.4%	+7	+3
Psychologists	80	81	+1	+0.9%	+0	-7
Pharmacy	38	38	+0	+0.3%	-2	+0
Counsellor Therapists	36	35	-0	-0.4%	-1	+1
Dental Hygienists	5	5	-0	-1.8%	-0	+0
Other Health & Social Care	1	1	-1	-46.3%	-1	-2
Play Therapists/ Specialists	1	1				
H&SC, Other	43	42	-1	-1.9%	-2	-2
Health & Social Care Professionals	1,102	1,115	+13	+1.1%	+19	+8
Executive Management	14	15	+1	+6.4%	+2	+3
Senior Management (VIII & GM)	63	62	-1	-1.0%	+2	+4
Management (VIII & above)	77	77	+0	+0.3%	+4	+7
Middle Management (V-VII)	201	195	-6	-2.8%	+14	+6
Other Administrative	1	1			-0	-0
Administrative/ Supervisory (V to VII)	201	196	-6	-2.7%	+14	+6
General Administrative (III & IV)	372	362	-10	-2.7%	+11	-14
Clerical (III & IV)	372	362	-10	-2.7%	+11	-14
Management & Administrative	650	635	-15	-2.3%	+17	-1
Catering	57	58	+1	+1.2%	-1	-3
Household Services	274	268	-7	-2.4%	-1	-16
Other Labs & Associated	1	1				-0
Other Support	16	14	-2	-9.8%	+0	-1
Portering	65	65	-0	-0.1%	-2	-5
Support	413	406	-7	-1.8%	-5	-25
Maintenance	41	38	-3	-7.4%	+1	-2
Technical Services	4	4				
Maintenance/ Technical	45	42	-3	-6.8%	+1	-2
General Support	458	448	-10	-2.3%	-38	-27
HCA, Nurse's Aide, etc.	1,617	1,592	-25	-1.6%	-50	-56
Health & Social Care Assistants	12	16	+4	+38.4%	+4	-7
Health Care Assistants	1,629	1,608	-21	-1.3%	-47	-63
Community Welfare Officers	1	1				
Other Care Grades	603	600	-3	-0.5%	-9	+2
Care, other	604	601	-3	-0.5%	-9	+2
Home Help	136	133	-3	-2.1%	+6	+6
Patient & Client Care	2,369	2,343	-27	-1.1%	-50	-55

CHO 7 HSE Employment by Grade Group & Staff Category: May 2020

May 2020 (Dec 2019 figure: 3,151)	WTE Apr 2020	WTE May 2020	WTE change since Apr 20	% change since Apr 20	WTE change since Dec 19	WTE change since May 19
Overall	3,184	3,227	+43	+1.3%	+75	-51
Consultant Medicine	1	1				-1
Consultant Psychiatry	52	53	+1	+2.2%	+1	+5
Consultant Surgery	1	1				-0
Consultants	54	55	+1	+2.1%	+1	+4
Registrar	64	62	-2	-3.5%	-5	+3
Senior Registrar	15	16	+1	+6.8%	-3	+1
Specialist Registrar	1	1	-0	-9.5%	-0	+1
Registrars	80	79	-1	-1.7%	-8	+5
SHO/ Interns	25	25	+0	+0.3%	+1	+3
Dentists	35	35	+0	+0.3%	+2	-1
Other Medical	45	45	+0	+0.3%	+0	-7
Medical/ Dental, other	80	80	+0	+0.3%	+2	-8
Medical & Dental	239	239	+0	+0.0%	+4	+4
Clinical Nurse/ Midwife Manager	178	181	+3	+1.4%	+5	+15
Director Nursing/Midwifery, Assistant	45	46	+1	+2.0%	+2	-5
Director of Nursing/Midwifery	15	15	+0	+0.9%	+4	-0
Nurse/ Midwife Manager	238	242	+4	+1.5%	+10	+10
Advanced Nurse/ Midwife Practitioner	5	4	-1	-13.1%	+1	+1
Clinical Nurse/ Midwife Specialist	61	63	+2	+2.6%	+5	+7
Nurse/ Midwife Specialist & AN/MP	66	67	+1	+1.5%	+6	+8
Staff Nurse [Intellectual Disability]	1	1	-0	-4.0%	+1	+1
Staff Nurse [Psychiatric]	195	192	-4	-1.9%	+0	-20
Staff Nurses [General/ Children's]	334	347	+13	+4.0%	+19	+8
Staff Nurse/ Staff Midwife	530	539	+10	+1.8%	+20	-11
Public Health Nurse	163	164	+1	+0.4%	-12	-25
Pre-registration Nurse/ Midwife Intern				-100.0%	-1	-13
Pre-registration Nurse Intern (COVID-19)	15	29	+14	+95.0%	+29	+29
Post-registration Nurse/ Midwife Student	21	20	-1	-4.8%	-1	+15
Nursing/ Midwifery awaiting registration	13	7	-6	-44.3%	-3	+6
Nursing/ Midwifery Student	49	56	+7	+14.8%	+24	+37
Nursing Education/Clinical	7	7			-1	
Nursing/ Midwifery other	7	7			-1	
Nursing & Midwifery	1,053	1,075	+22	+2.1%	+55	+20
Dietitians	15	16	+1	+6.3%	-1	-3
Occupational Therapists	140	147	+7	+4.8%	+8	+6
Orthoptists				-100.0%		-1
Physiotherapists	74	76	+2	+2.8%	+6	-3
Podiatrists & Chiropodists	1	2	+1	+132.6%	+1	+0
Speech & Language Therapists	99	100	+0	+0.3%	+1	-1
Therapy Professions	329	340	+11	+3.4%	+15	-0
Social Care	10	11	+1	+9.9%	+1	-2
Social Workers	71	72	+0	+0.4%	+4	+2
Psychologists	58	59	+1	+1.4%	-3	-9
Pharmacy	25	25	-0	-1.5%	-1	-0
Counsellor Therapists	34	34	-0	-0.4%	-1	+1
Dental Hygienists	5	5	-0	-1.8%	-0	
Other Health & Social Care	1	1	-1	-46.3%	-1	-2
Play Therapists/ Specialists	1	1				
H&SC, Other	41	40	-1	-1.9%	-2	-2

May 2020 (Dec 2019 figure: 3,151)	WTE Apr 2020	WTE May 2020	WTE change since Apr 20	% change since Apr 20	WTE change since Dec 19	WTE change since May 19
Overall	3,184	3,227	+43	+1.3%	+75	-51
Health & Social Care Professionals	535	548	+12	+2.3%	-1	-11
Executive Management	7	8	+1	+12.7%	+1	+1
Senior Management (VIII & GM)	37	37	+0	+1.0%	+4	+7
Management (VIII & above)	44	45	+1	+2.8%	+5	+8
Administrative/ Supervisory (V to VII)	99	106	+7	+6.6%	+10	+8
Clerical (III & IV)	248	247	-1	-0.5%	+5	-18
Management & Administrative	391	398	+6	+1.7%	+5	-2
Catering	27	27	-0	-1.4%	-0	-1
Household Services	88	86	-2	-2.2%	-5	-14
Other Support	5	5			+0	-1
Portering	46	46	+0	+0.6%	-2	-5
Support	166	164	-2	-1.2%	-7	-21
Maintenance/ Technical	5	5			-1	-2
General Support	171	169	-2	-1.2%	-27	-23
HCA, Nurse's Aide, etc.	426	430	+4	+1.0%	-3	-29
Health & Social Care Assistants	7	12	+5	+75.6%	+4	-7
Health Care Assistants	433	442	+9	+2.2%	+1	-36
Care, other	226	224	-3	-1.1%	-4	-9
Home Help	136	133	-3	-2.1%	+6	+6
Patient & Client Care	795	799	+4	+0.5%	-62	-39

Employment by WTE, Headcount, Gender, Full-Time /Part-Time etc.: May 2020

CHO 7	WTE	Headcount	WTE: no.	% Male	% female	Male WTE: no.	Female WTE: no.	% Total Perm	% Male Perm	% Female Perm	% Total Full Time	% Total Part Time	% Male FT	% Female FT
Overall	6,563	7,768	1.18	19.7%	80.3%	1.09	1.21	87.3%	84.8%	87.9%	68.5%	31.5%	83.7%	64.8%
Consultant Medicine	8	8	1.05	25.0%	75.0%	1.19	1.01	87.5%	87.5%	83.3%	87.5%	12.5%	50.0%	100.0%
Consultant Paediatrics	0	1	2.94		100.0%		2.94	100.0%	100.0%	100.0%	0.0%	100.0%		0.0%
Consultant Psychiatry	53	58	1.09	37.9%	62.1%	1.06	1.10	60.3%	60.3%	52.8%	82.8%	17.2%	95.5%	75.0%
Consultant Surgery	1	1	1.25		100.0%		1.25	0.0%	0.0%	0.0%	0.0%	100.0%		0.0%
Consultants	62	68	1.09	35.3%	64.7%	1.07	1.11	63.2%	75.0%	56.8%	80.9%	19.1%	91.7%	75.0%
Registrar	67	68	1.02	33.8%	66.2%	1.03	1.02	1.5%	1.5%	0.0%	100.0%	0.0%	100.0%	100.0%
Senior Registrar	16	17	1.08	35.3%	64.7%	1.02	1.12	0.0%	0.0%	0.0%	88.2%	11.8%	100.0%	81.8%
Specialist Registrar	3	3	1.05		100.0%		1.05	0.0%	0.0%	0.0%	100.0%	0.0%		100.0%
Registrars	85	88	1.03	33.0%	67.0%	1.03	1.04	1.1%	3.4%	0.0%	97.7%	2.3%	100.0%	96.6%
Senior House Officer	35	40	1.15	27.5%	72.5%	1.12	1.17	0.0%	0.0%	0.0%	90.0%	10.0%	100.0%	86.2%
SHO/ Interns	35	40	1.15	27.5%	72.5%	1.12	1.17	0.0%	0.0%	0.0%	90.0%	10.0%	100.0%	86.2%
Dentists	35	42	1.19	14.3%	85.7%	1.11	1.20	100.0%	100.0%	100.0%	61.9%	38.1%	83.3%	58.3%
Other Medical	47	68	1.44	39.7%	60.3%	1.36	1.51	33.8%	33.8%	46.3%	22.1%	77.9%	18.5%	24.4%
Medical/ Dental, other	82	110	1.33	30.0%	70.0%	1.30	1.35	59.1%	30.3%	71.4%	37.3%	62.7%	30.3%	40.3%
Medical & Dental	264	306	1.16	31.7%	68.3%	1.13	1.17	35.6%	29.9%	38.3%	71.2%	28.8%	74.2%	69.9%
Clinical Nurse/ Midwife Manager	332	356	1.07	15.2%	84.8%	1.02	1.08	97.8%	97.8%	98.3%	84.8%	15.2%	96.3%	82.8%
Director Nursing/Midwifery, Assistant	54	57	1.06	14.0%	86.0%	1.00	1.07	94.7%	94.7%	93.9%	87.7%	12.3%	100.0%	85.7%
Director of Nursing/Midwifery	20	20	1.01	5.0%	95.0%	1.00	1.01	95.0%	95.0%	94.7%	95.0%	5.0%	100.0%	94.7%
Nurse/ Midwife Manager	405	433	1.07	14.5%	85.5%	1.01	1.08	97.2%	95.2%	97.6%	85.7%	14.3%	96.8%	83.8%
Advanced Nurse/ Midwife Practitioner	7	8	1.20	12.5%	87.5%	1.04	1.23	100.0%	100.0%	100.0%	75.0%	25.0%	100.0%	71.4%
Clinical Nurse/ Midwife Specialist	95	110	1.16	8.2%	91.8%	1.01	1.18	99.1%	99.1%	99.0%	71.8%	28.2%	100.0%	69.3%
Nurse/ Midwife Specialist & AN/MP	101	118	1.16	8.5%	91.5%	1.02	1.18	99.2%	100.0%	99.1%	72.0%	28.0%	100.0%	69.4%
Staff Nurse [Intellectual Disability]	188	234	1.25	8.5%	91.5%	1.04	1.27	96.2%	96.2%	95.8%	59.4%	40.6%	95.0%	56.1%
Staff Nurse [Psychiatric]	192	214	1.12	23.8%	76.2%	1.06	1.14	94.9%	94.9%	95.1%	84.6%	15.4%	92.2%	82.2%
Staff Nurses [General/ Children's]	629	742	1.18	9.0%	91.0%	1.08	1.19	94.1%	94.1%	93.9%	69.7%	30.3%	91.0%	67.6%
Staff Nurse/ Staff Midwife	1,009	1,190	1.18	11.6%	88.4%	1.06	1.20	94.6%	95.7%	94.5%	70.3%	29.7%	92.0%	67.5%
Public Health Nurse	164	200	1.22	0.5%	99.5%	1.00	1.22	97.0%	100.0%	97.0%	64.5%	35.5%	100.0%	64.3%
Pre-registration Nurse Intern (COVID-19)	44	44	1.00	13.6%	86.4%	1.00	1.00	2.3%	2.3%	2.6%	65.9%	34.1%	100.0%	60.5%

Post-registration Nurse/ Midwife Student	20	20	1.00		100.0%		1.00	0.0%	0.0%	0.0%	100.0%	0.0%		100.0%
Nursing/ Midwifery awaiting registration	7	10	1.36	30.0%	70.0%	2.22	1.17	50.0%	50.0%	71.4%	90.0%	10.0%	100.0%	85.7%
Nursing/ Midwifery Student	71	74	1.04	12.2%	87.8%	1.22	1.02	8.1%	0.0%	9.2%	78.4%	21.6%	100.0%	75.4%
Nursing Education/Clinical	10	10	1.05		100.0%		1.05	100.0%	100.0%	100.0%	70.0%	30.0%		70.0%
Nursing/ Midwifery other	10	10	1.05		100.0%		1.05	100.0%		100.0%	70.0%	30.0%		70.0%
Nursing & Midwifery	1,759	2,025	1.15	10.9%	89.1%	1.05	1.16	92.5%	91.9%	92.6%	73.4%	26.6%	94.1%	70.9%
Dietitians	23	29	1.24	6.9%	93.1%	1.00	1.27	89.7%	89.7%	88.9%	65.5%	34.5%	100.0%	63.0%
Occupational Therapists	194	218	1.12	8.7%	91.3%	1.04	1.13	86.7%	86.7%	85.9%	81.7%	18.3%	94.7%	80.4%
Physiotherapists	124	142	1.14	21.1%	78.9%	1.03	1.18	91.5%	91.5%	90.2%	80.3%	19.7%	96.7%	75.9%
Podiatrists & Chiropodists	2	2	1.00		100.0%		1.00	100.0%	100.0%	100.0%	100.0%	0.0%		100.0%
Speech & Language Therapists	128	139	1.08	0.7%	99.3%	1.00	1.08	84.2%	84.2%	84.8%	86.3%	13.7%	100.0%	86.2%
Therapy Professions	472	530	1.12	9.8%	90.2%	1.03	1.13	87.5%	94.2%	86.8%	81.7%	18.3%	96.2%	80.1%
Clinical Measurement	1	1	1.00	100.0%		1.00		100.0%	100.0%		100.0%	0.0%	100.0%	
Phlebotomists	1	2	1.49	50.0%	50.0%	1.00	2.94	50.0%	50.0%	100.0%	50.0%	50.0%	100.0%	0.0%
Radiographers	1	1	1.00		100.0%		1.00	100.0%	100.0%	100.0%	100.0%	0.0%		100.0%
Health Science/ Diagnostics	3	4	1.20	50.0%	50.0%	1.00	1.49	75.0%	50.0%	100.0%	75.0%	25.0%	100.0%	50.0%
Social Care	367	416	1.13	25.2%	74.8%	1.10	1.15	96.4%	97.1%	96.1%	74.5%	25.5%	82.9%	71.7%
Social Workers	111	122	1.10	16.4%	83.6%	1.01	1.11	95.9%	90.0%	97.1%	83.6%	16.4%	100.0%	80.4%
Psychologists	81	90	1.11	18.9%	81.1%	1.02	1.13	100.0%	100.0%	100.0%	85.6%	14.4%	94.1%	83.6%
Pharmacy	38	46	1.21	21.7%	78.3%	1.07	1.25	56.5%	50.0%	58.3%	45.7%	54.3%	40.0%	47.2%
Counsellor Therapists	35	41	1.16	29.3%	70.7%	1.10	1.18	90.2%	90.2%	89.7%	68.3%	31.7%	75.0%	65.5%
Dental Hygienists	5	7	1.44		100.0%		1.44	100.0%	100.0%	100.0%	28.6%	71.4%		28.6%
Other Health & Social Care	1	1	1.54		100.0%		1.54	100.0%	100.0%	100.0%	0.0%	100.0%		0.0%
Play Therapists/ Specialists	1	1	1.00	100.0%		1.00		100.0%	100.0%		100.0%	0.0%	100.0%	
H&SC, Other	42	50	1.19	26.0%	74.0%	1.09	1.23	92.0%	92.3%	91.9%	62.0%	38.0%	76.9%	56.8%
Health & Social Care	1,115	1,258	1.13	17.4%	82.6%	1.06	1.14	91.2%	93.2%	90.8%	77.7%	22.3%	86.3%	75.8%
Executive Management	15	15	1.01	33.3%	66.7%	1.00	1.01	86.7%	86.7%	90.0%	100.0%	0.0%	100.0%	100.0%
Senior Management (VIII & GM)	62	63	1.01	23.8%	76.2%	1.00	1.02	96.8%	96.8%	95.8%	96.8%	3.2%	100.0%	95.8%
Management (VIII & above)	77	78	1.01	25.6%	74.4%	1.00	1.02	94.9%	95.0%	94.8%	97.4%	2.6%	100.0%	96.6%
Administrative/ Supervisory (V to VII)	196	211	1.08	25.1%	74.9%	1.03	1.09	88.6%	77.4%	92.4%	86.3%	13.7%	98.1%	82.3%
Clerical (III & IV)	362	428	1.18	10.7%	89.3%	1.07	1.20	85.0%	80.4%	85.6%	68.9%	31.1%	87.0%	66.8%
Management & Administrative	635	717	1.13	16.6%	83.4%	1.04	1.15	87.2%	81.5%	88.3%	77.1%	22.9%	94.1%	73.7%
Catering	58	62	1.07	29.0%	71.0%	1.02	1.09	98.4%	98.4%	100.0%	75.8%	24.2%	100.0%	65.9%
Household Services	268	353	1.32	14.2%	85.8%	1.16	1.35	88.4%	88.4%	88.4%	39.1%	60.9%	66.0%	34.7%
Other Labs & Associated	1	1	1.00		100.0%		1.00	100.0%	100.0%	100.0%	100.0%	0.0%		100.0%

Other Support	14	18	1.27	72.2%	27.8%	1.18	1.60	77.8%	77.8%	100.0%	61.1%	38.9%	69.2%	40.0%
Portering	65	69	1.06	92.8%	7.2%	1.05	1.31	84.1%	84.1%	80.0%	84.1%	15.9%	89.1%	20.0%
Support	406	503	1.24	28.8%	71.2%	1.09	1.31	88.7%	85.5%	89.9%	50.7%	49.3%	80.7%	38.5%
Maintenance/ Technical	42	47	1.12	87.2%	12.8%	1.08	1.40	89.4%	87.8%	100.0%	80.9%	19.1%	85.4%	50.0%
General Support	448	550	1.23	33.8%	66.2%	1.09	1.31	88.7%	86.0%	90.1%	53.3%	46.7%	81.7%	38.7%
HCA, Nurse's Aide, etc.	1,592	1,911	1.20	24.3%	75.7%	1.11	1.23	85.8%	85.8%	85.5%	64.5%	35.5%	78.5%	60.0%
Health & Social Care Assistants	16	21	1.30	9.5%	90.5%	1.33	1.29	42.9%	42.9%	42.1%	66.7%	33.3%	100.0%	63.2%
Health Care Assistants	1,608	1,932	1.20	24.2%	75.8%	1.11	1.23	85.3%	86.5%	84.9%	64.5%	35.5%	78.6%	60.0%
Care, other	601	702	1.17	28.5%	71.5%	1.07	1.21	93.6%	94.0%	93.4%	72.1%	27.9%	88.5%	65.5%
Home Help	133	278	2.08	6.8%	93.2%	4.49	2.00	82.7%	52.6%	84.9%	15.8%	84.2%	10.5%	16.2%
Patient & Client Care	2,343	2,912	1.24	23.6%	76.4%	1.12	1.29	87.1%	87.8%	86.8%	61.7%	38.3%	79.6%	56.2%

Employment by WTE, Headcount, Gender, Full-Time /Part-Time etc.: May 2020

CHO 7	WTE	Headcount	WTE: no.	% Male	% female	Male WTE: no.	Female WTE: no.	% Total Perm	% Male Perm	% Female Perm	% Total Full Time	% Total Part Time	% Male FT	% Female FT
Overall	6,563	7,768	1.18	19.7%	80.3%	1.09	1.21	87.3%	84.8%	87.9%	68.5%	31.5%	83.7%	64.8%
Community Health & Wellbeing	9	10	1.10	10.0%	90.0%	1.00	1.11	90.0%	90.0%	88.9%	80.0%	20.0%	100.0%	100.0%
Mental Health	866	944	1.09	22.9%	77.1%	1.04	1.11	82.6%	82.6%	83.2%	86.9%	13.1%	96.3%	96.3%
Primary Care	1,701	2,001	1.18	15.7%	84.3%	1.08	1.20	87.0%	87.0%	88.2%	67.9%	32.1%	81.6%	81.6%
Social Care	3,987	4,813	1.21	20.7%	79.3%	1.11	1.24	88.3%	88.3%	88.6%	65.2%	34.8%	81.6%	81.6%

CHO 7 Skills Mix by Staff Grouping: May 2020

May 2020 (Dec 2018 figure: 6,557)	WTE Dec 2015	WTE Dec 2016	WTE Dec 2017	WTE Dec 2018	WTE Dec 2019	WTE Apr 2020	WTE May 2020
Overall	5,479	5,579	6,406	6,557	6,515	6,580	6,563
Consultant Medicine	2.9%	3.2%	3.5%	2.7%	2.5%	2.6%	2.9%
Consultant Paediatrics	0.2%	0.1%	0.1%	0.1%	0.1%	0.1%	0.1%
Consultant Psychiatry	23.8%	19.2%	18.2%	18.1%	19.2%	19.4%	20.2%
Consultant Surgery	0.3%	0.3%	0.2%	0.5%	0.3%	0.3%	0.3%
Consultants	27.2%	22.8%	22.0%	21.3%	22.1%	22.4%	23.5%
Registrar	10.4%	22.2%	20.7%	24.9%	26.5%	26.3%	25.2%
Senior Registrar	3.0%	4.1%	3.7%	5.3%	7.0%	5.5%	5.9%
Specialist Registrar	2.3%	1.5%	2.2%	1.8%	1.5%	1.5%	1.1%
Registrars	15.7%	27.8%	26.6%	31.9%	35.0%	33.2%	32.2%
Interns	0.9%	0.8%	0.8%	0.8%	0.7%	0.7%	
Senior House Officer	18.1%	15.3%	16.0%	12.6%	12.5%	13.1%	13.1%
SHO/ Interns	19.0%	16.1%	16.8%	13.3%	13.2%	13.8%	13.1%
Dentists	18.4%	15.6%	13.9%	13.8%	12.5%	13.1%	13.4%
Other Medical	19.8%	17.7%	20.8%	19.6%	17.2%	17.5%	17.8%
Medical/ Dental, other	38.2%	33.3%	34.7%	33.4%	29.7%	30.6%	31.2%
Medical & Dental	3.9%	4.6%	4.0%	4.0%	4.1%	100.0%	4.0%
Clinical Nurse/ Midwife Manager	17.4%	18.8%	19.0%	18.9%	19.3%	19.2%	18.8%
Director Nursing/Midwifery, Assistant	2.9%	3.3%	2.9%	3.3%	3.1%	3.0%	3.1%
Director of Nursing/Midwifery	1.1%	1.0%	1.3%	1.1%	0.9%	1.1%	1.1%
Nurse/ Midwife Manager	21.4%	23.2%	23.2%	23.3%	23.3%	23.4%	23.0%
Advanced Nurse/ Midwife Practitioner	0.1%	0.1%	0.1%	0.1%	0.3%	0.4%	0.4%
Clinical Nurse/ Midwife Specialist	4.0%	4.1%	4.5%	5.0%	5.3%	5.4%	5.4%
Nurse/ Midwife Specialist & AN/MP	4.1%	4.2%	4.6%	5.1%	5.5%	5.8%	5.8%
Staff Nurse [Intellectual Disability]	14.4%	14.2%	13.4%	12.9%	11.4%	10.9%	10.7%
Staff Nurse [Psychiatric]	14.7%	13.3%	13.2%	11.7%	11.2%	11.3%	10.9%
Staff Nurses [General/ Children's]	32.5%	31.5%	32.9%	33.9%	35.7%	35.4%	35.8%
Staff Nurse/ Staff Midwife	61.6%	59.1%	59.4%	58.6%	58.4%	57.6%	57.3%
Public Health Nurse	10.9%	11.2%	10.8%	11.5%	10.3%	9.4%	9.3%
Pre-registration Nurse/ Midwife Intern	0.1%	0.1%		0.4%	0.1%	0.0%	
Pre-registration Nurse Intern (COVID-19)						1.3%	2.5%
Post-registration Nurse/ Midwife Student	1.5%	1.4%	0.9%	0.4%	1.2%	1.2%	1.1%
Nursing/ Midwifery awaiting registration			0.5%	0.2%	0.6%	0.8%	0.4%
Nursing/ Midwifery Student	1.6%	1.5%	1.4%	1.0%	1.9%	3.3%	4.0%
Nursing/ Midwifery other	0.6%	0.8%	0.5%	0.5%	0.6%	0.5%	0.5%
Nursing & Midwifery	29.8%	28.8%	26.9%	25.9%	26.1%	100.0%	26.8%
Dietitians	2.3%	2.4%	1.8%	2.3%	2.3%	2.1%	2.1%
Occupational Therapists	21.3%	21.3%	16.1%	16.9%	16.8%	16.7%	17.4%
Orthoptists	0.0%	0.0%					
Physiotherapists	15.3%	15.4%	11.8%	11.5%	10.4%	11.0%	11.2%
Podiatrists & Chiropodists	0.1%	0.1%	0.1%	0.1%	0.1%	0.1%	0.2%
Speech & Language Therapists	11.9%	13.5%	12.1%	11.2%	11.5%	11.5%	11.5%
Therapy Professions	50.8%	52.8%	41.9%	41.9%	41.1%	41.4%	42.3%
Audiology	0.0%	0.1%					
Clinical Measurement	0.1%	0.1%	0.1%	0.1%	0.1%	0.1%	0.1%
Medical Laboratory		0.1%					
Phlebotomists	0.1%	0.1%	0.1%	0.1%	0.1%	0.2%	0.1%
Radiographers	0.2%	0.1%	0.1%	0.1%	0.1%	0.1%	0.1%
Health Science/ Diagnostics	0.4%	0.5%	0.3%	0.3%	0.3%	0.4%	0.3%
Social Care	15.7%	14.2%	31.3%	32.8%	33.9%	33.6%	32.9%
Social Workers	12.9%	13.9%	10.7%	10.1%	9.6%	10.1%	10.0%
Social Workers	12.9%	13.9%	10.7%	10.1%	9.6%	10.1%	10.0%

May 2020 (Dec 2018 figure: 6,557)	WTE Dec 2015	WTE Dec 2016	WTE Dec 2017	WTE Dec 2018	WTE Dec 2019	WTE Apr 2020	WTE May 2020
Overall	5,479	5,579	6,406	6,557	6,515	6,580	6,563
Psychologists	9.4%	8.7%	8.1%	7.7%	7.4%	7.3%	7.3%
Pharmacy	5.5%	4.8%	3.7%	3.5%	3.7%	3.4%	3.4%
Counsellor Therapists	4.2%	3.9%	3.1%	2.8%	3.3%	3.2%	3.2%
Dental Hygienists	0.5%	0.4%	0.3%	0.4%	0.5%	0.4%	0.4%
Other Health & Social Care	0.5%	0.6%	0.5%	0.4%	0.2%	0.1%	0.1%
Play Therapists/ Specialists	0.1%	0.1%	0.1%	0.1%	0.1%	0.1%	0.1%
H&SC, Other	5.2%	5.1%	4.1%	3.7%	4.1%	3.9%	3.8%
Health & Social Care Professionals	13.8%	14.2%	16.4%	16.7%	16.8%	100.0%	17.0%
Executive Management	2.2%	2.9%	2.5%	1.9%	2.1%	2.2%	2.3%
Senior Management (VIII & GM)	9.4%	8.7%	8.5%	9.2%	9.9%	9.7%	9.8%
Management (VIII & above)	11.7%	11.6%	11.0%	11.1%	12.0%	11.8%	12.1%
Middle Management (V-VII)	24.1%	23.7%	26.0%	27.2%	29.9%	30.9%	30.7%
Other Administrative	0.2%	0.1%	0.2%	0.1%	0.2%	0.1%	0.1%
Administrative/ Supervisory (V to VII)	24.3%	23.8%	26.1%	27.3%	30.1%	31.0%	30.9%
Clerical (III & IV)	64.0%	64.6%	62.9%	61.6%	57.9%	57.2%	57.0%
Management & Administrative	9.8%	10.0%	9.5%	9.4%	9.5%	100.0%	9.7%
Catering	12.1%	12.0%	13.0%	12.8%	13.1%	12.5%	12.9%
Household Services	59.6%	59.9%	59.9%	60.4%	59.5%	59.8%	59.8%
Other Labs & Associated	0.3%	0.2%	0.2%	0.2%	0.2%	0.2%	0.2%
Other Support	3.9%	3.7%	3.0%	3.2%	3.1%	3.4%	3.2%
Portering	17.3%	16.7%	14.5%	14.6%	14.9%	14.2%	14.5%
Support	93.2%	92.6%	90.6%	91.2%	90.9%	90.2%	90.6%
Maintenance/ Technical	6.8%	7.4%	9.4%	8.8%	9.1%	9.8%	9.4%
General Support	8.2%	7.9%	7.7%	7.4%	7.5%	100.0%	6.8%
HCA, Nurse's Aide, etc.	66.5%	66.9%	66.4%	67.6%	68.7%	68.3%	68.0%
Health & Social Care Assistants	0.5%	0.4%	0.3%	0.9%	0.5%	0.5%	0.7%
Health Care Assistants	66.9%	67.4%	66.7%	68.5%	69.2%	68.7%	68.6%
Community Welfare Officers	0.1%	0.1%	0.1%	0.0%	0.0%	0.0%	0.0%
Other Care Grades	25.0%	24.3%	26.5%	25.7%	25.5%	25.5%	25.6%
Care, other	25.1%	24.4%	26.6%	25.8%	25.5%	25.5%	25.7%
Home Help	8.0%	8.2%	6.7%	5.7%	5.3%	5.8%	5.7%
Patient & Client Care	34.5%	34.6%	35.5%	36.5%	36.7%	100.0%	35.7%
Total	100 %	100 %	100 %	100 %	100%	100 %	100 %

CHO 7 Skills Mix by Care Group: May 2020

May 2020 (Dec 2018 figure: 835)	WTE Dec 2015	WTE Dec 2016	WTE Dec 2017	WTE Dec 2018	WTE Dec 2019	WTE Apr 2020	WTE May 2020
Mental Health	837	828	859	835	834.98	846.35	866.14
Consultants	47.0%	44.2%	43.0%	43.6%	41.6%	43.8%	44.5%
Registrar	17.2%	19.7%	17.8%	25.1%	22.9%	22.5%	21.3%
Senior Registrar	6.8%	9.4%	9.8%	12.7%	16.5%	13.4%	14.2%
Specialist Registrar			1.0%		0.9%	0.9%	0.8%
Registrars	24.0%	29.1%	28.7%	37.8%	40.3%	36.7%	36.3%
Interns	2.1%	2.0%	2.1%	2.0%	1.7%	1.8%	
Senior House Officer	27.0%	24.7%	26.2%	16.6%	16.4%	17.7%	19.3%
SHO/ Interns	29.1%	26.7%	28.3%	18.6%	18.2%	19.4%	19.3%
Medical & Dental	11.5%	12.2%	11.1%	12.3%	12.3%	12.8%	12.8%
Clinical Nurse/ Midwife Manager	22.3%	25.7%	24.5%	27.0%	26.5%	24.7%	24.5%
Director Nursing/Midwifery, Assistant	3.5%	4.1%	4.5%	5.0%	4.3%	4.1%	4.1%
Director of Nursing/Midwifery	0.8%	0.8%	0.8%	0.8%	0.8%	0.7%	0.7%
Nurse/ Midwife Manager	26.6%	30.6%	29.8%	32.8%	31.5%	29.5%	29.4%
Advanced Nurse/ Midwife Practitioner			0.3%	0.3%	0.8%	1.2%	1.0%
Clinical Nurse/ Midwife Specialist	6.5%	7.2%	6.7%	7.0%	10.0%	10.1%	10.0%
Nurse/ Midwife Specialist & AN/MP	6.5%	7.2%	7.0%	7.3%	10.8%	11.3%	11.0%
Staff Nurse [Intellectual Disability]						0.3%	0.2%
Staff Nurse [Psychiatric]	63.5%	58.1%	58.4%	54.3%	51.1%	49.4%	46.7%
Staff Nurses [General/ Children's]	1.9%	1.9%	1.1%	1.2%	1.5%	2.9%	2.8%
Staff Nurse/ Staff Midwife	65.4%	60.1%	59.5%	55.5%	52.6%	52.6%	49.8%
Pre-registration Nurse/ Midwife Intern	0.4%	0.5%		1.6%	0.4%		
Pre-registration Nurse Intern (COVID-19)						3.8%	7.1%
Nursing/ Midwifery awaiting registration			2.1%	1.1%	2.7%	1.0%	1.0%
Nursing/ Midwifery Student	0.4%	0.5%	2.1%	2.8%	3.0%	4.8%	8.1%
Nursing Education/Clinical	1.1%	1.7%	1.6%	1.7%	2.0%	1.8%	1.7%
Nursing/ Midwifery other	1.1%	1.7%	1.6%	1.7%	2.0%	1.8%	1.7%
Nursing & Midwifery	44.8%	43.7%	44.9%	43.3%	43.3%	46.8%	46.8%
Dietitians	0.7%			1.4%	2.1%	2.1%	2.1%
Occupational Therapists	29.9%	30.6%	28.0%	29.8%	27.3%	28.2%	28.3%
Speech & Language Therapists	4.2%	5.0%	4.7%	3.5%	4.8%	4.4%	4.3%
Therapy Professions	34.9%	35.5%	32.7%	34.6%	34.2%	34.7%	34.7%
Social Care	8.0%	7.9%	7.4%	5.8%	5.4%	4.8%	5.4%
Social Workers	28.9%	30.2%	29.0%	26.2%	24.4%	26.5%	26.6%
Psychologists	21.0%	18.3%	20.7%	23.9%	22.4%	20.5%	20.2%
Pharmacy					0.7%	0.7%	0.7%
Counsellor Therapists	6.2%	6.6%	8.4%	7.6%	11.4%	11.9%	11.9%
Other Health & Social Care	1.1%	1.5%	1.8%	1.8%	1.4%	0.9%	0.5%
H&SC, Other	7.3%	8.1%	10.2%	9.4%	12.9%	12.8%	12.4%
Health & Social Care Professionals	16.0%	16.4%	16.9%	16.8%	16.8%	16.2%	16.2%
Management (VIII & above)	3.3%	4.3%	4.1%	3.9%	4.3%	4.4%	4.2%
Administrative/ Supervisory (V to VII)	14.9%	18.8%	23.2%	25.3%	24.1%	25.5%	27.0%
Clerical (III & IV)	81.7%	76.9%	72.7%	70.8%	71.6%	70.1%	68.8%
Management & Administrative	7.2%	8.0%	8.0%	8.8%	8.8%	7.9%	7.9%
Support	93.2%	92.3%	92.1%	91.7%	90.5%	89.7%	89.6%
Maintenance/ Technical	6.8%	7.7%	7.9%	8.3%	9.5%	10.3%	10.4%
General Support	3.4%	3.2%	3.0%	2.9%	2.9%	2.2%	2.2%
HCA, Nurse's Aide, etc.	33.1%	33.7%	32.2%	31.0%	26.6%	28.4%	28.7%

May 2020 (Dec 2018 figure: 835)	WTE Dec 2015	WTE Dec 2016	WTE Dec 2017	WTE Dec 2018	WTE Dec 2019	WTE Apr 2020	WTE May 2020
Mental Health	837	828	859	835	834.98	846.35	866.14
Health Care Assistants	33.1%	33.7%	32.2%	31.0%	26.6%	28.4%	28.7%
Other Care Grades	66.9%	66.3%	67.8%	69.0%	73.4%	71.6%	71.3%
Care, other	66.9%	66.3%	67.8%	69.0%	73.4%	71.6%	71.3%
Patient & Client Care	17.1%	16.4%	16.1%	16.0%	16.0%	14.1%	14.1%
Total	100 %	100 %	100 %	100 %	100 %	100 %	

May 2020 (Dec 2018 figure: 1,776)	WTE Dec 2015	WTE Dec 2016	WTE Dec 2017	WTE Dec 2018	WTE Dec 2019	WTE Apr 2020	WTE May 2020
Primary Care	1,647	1,687	1,691	1,776	1,702.01	1,731.27	1,701.20
Consultant Medicine	6.3%	6.1%	6.4%	4.9%	4.8%	4.9%	5.5%
Consultant Psychiatry	3.0%	1.5%	2.2%	2.1%	2.9%	2.8%	2.9%
Consultant Surgery	0.8%	0.6%	0.3%	0.8%	0.6%	0.6%	0.6%
Consultants	10.1%	8.2%	8.9%	7.8%	8.3%	8.3%	9.0%
Registrars	8.9%	28.9%	27.1%	30.1%	33.0%	32.2%	30.6%
SHO/ Interns	5.1%	4.5%	4.2%	5.1%	4.3%	4.9%	4.5%
Dentists	39.9%	29.9%	25.7%	25.3%	24.4%	24.9%	25.5%
Other Medical	36.0%	28.5%	34.1%	31.7%	30.1%	29.7%	30.4%
Medical/ Dental, other	75.9%	58.4%	59.8%	57.0%	54.5%	54.6%	55.9%
Medical & Dental	5.9%	7.9%	8.1%	8.1%	8.5%	8.1%	8.1%
Clinical Nurse/ Midwife Manager	11.0%	10.2%	10.1%	10.2%	10.7%	11.6%	11.3%
Director Nursing/Midwifery, Assistant	3.6%	3.9%	3.7%	3.8%	3.4%	4.1%	4.4%
Director of Nursing/Midwifery	1.0%	1.1%	1.1%	1.2%	1.1%	1.3%	1.3%
Nurse/ Midwife Manager	15.5%	15.2%	14.9%	15.2%	15.2%	17.0%	17.0%
Nurse/ Midwife Specialist & AN/MP	6.5%	6.6%	8.4%	8.8%	8.7%	9.1%	9.2%
Staff Nurse/ Staff Midwife	37.5%	37.5%	36.3%	37.5%	38.7%	38.5%	38.2%
Public Health Nurse	35.0%	35.5%	36.7%	36.9%	33.1%	31.1%	31.4%
Nursing/ Midwifery Student	4.8%	4.5%	3.1%	1.3%	4.0%	4.0%	3.8%
Nursing Education/Clinical	0.6%	0.5%	0.5%	0.4%	0.4%	0.4%	0.4%
Other Nursing/ Midwifery		0.2%					
Nursing/ Midwifery other	0.6%	0.7%	0.5%	0.4%	0.4%	0.4%	0.4%
Nursing & Midwifery	30.5%	30.1%	30.1%	29.8%	31.1%	30.6%	30.6%
Dietitians	3.6%	3.8%	4.0%	4.8%	3.8%	3.4%	3.5%
Occupational Therapists	25.9%	24.9%	23.4%	26.8%	26.6%	25.6%	26.1%
Orthoptists	0.1%	0.1%					
Physiotherapists	22.5%	23.1%	22.5%	21.4%	20.1%	21.7%	21.7%
Podiatrists & Chiropodists				0.1%	0.3%	0.2%	0.5%
Speech & Language Therapists	16.4%	18.2%	20.3%	19.2%	20.5%	20.6%	20.3%
Therapy Professions	68.5%	70.1%	70.3%	72.4%	71.4%	71.5%	72.1%
Phlebotomists	0.1%	0.2%	0.2%	0.1%	0.1%	0.3%	0.1%
Health Science/ Diagnostics	0.1%	0.2%	0.2%	0.1%	0.1%	0.3%	0.1%
Social Care	1.1%	1.1%	1.1%	1.1%	0.9%	1.0%	1.0%
Social Workers	7.6%	7.7%	7.4%	6.4%	7.0%	7.0%	7.0%
Psychologists	5.9%	5.7%	6.1%	6.2%	5.8%	6.1%	6.1%
Pharmacy	9.4%	8.2%	8.5%	7.6%	8.5%	8.0%	7.8%
Counsellor Therapists	6.1%	5.7%	5.2%	4.8%	5.0%	4.8%	4.6%
Dental Hygienists	1.0%	1.0%	0.9%	1.3%	1.4%	1.3%	1.3%
Other Health & Social Care	0.3%	0.3%	0.3%	0.3%			
H&SC, Other	7.4%	7.0%	6.4%	6.4%	6.4%	6.2%	5.9%
Health & Social Care Professionals	21.5%	21.5%	21.4%	21.4%	22.3%	22.1%	22.1%
Executive Management	1.7%	2.6%	2.3%	1.9%	2.4%	2.3%	2.4%

May 2020 (Dec 2018 figure: 1,776)	WTE Dec 2015	WTE Dec 2016	WTE Dec 2017	WTE Dec 2018	WTE Dec 2019	WTE Apr 2020	WTE May 2020
Primary Care	1,647	1,687	1,691	1,776	1,702.01	1,731.27	1,701.20
Senior Management (VIII & GM)	6.9%	6.5%	6.8%	8.0%	9.1%	7.3%	7.5%
Management (VIII & above)	8.5%	9.1%	9.1%	9.9%	11.6%	9.5%	9.9%
Administrative/ Supervisory (V to VII)	22.1%	20.8%	23.0%	22.7%	26.5%	28.7%	27.9%
Clerical (III & IV)	69.4%	70.1%	67.9%	67.4%	62.0%	61.8%	62.2%
Management & Administrative	18.4%	18.0%	18.4%	17.5%	18.3%	16.9%	16.9%
Support	94.4%	93.2%	94.6%	93.8%	93.0%	92.6%	92.9%
Maintenance	5.6%	6.1%	4.6%	5.5%	6.2%	6.7%	6.3%
Technical Services		0.7%	0.8%	0.7%	0.8%	0.7%	0.8%
Maintenance/ Technical	5.6%	6.8%	5.4%	6.2%	7.0%	7.4%	7.1%
General Support	8.4%	8.0%	7.7%	7.5%	7.8%	7.4%	7.4%
HCA, Nurse's Aide, etc.	46.0%	47.0%	48.3%	44.1%	45.9%	47.4%	45.6%
Health & Social Care Assistants	1.6%	1.0%	0.9%	6.4%	2.8%	2.5%	4.4%
Health Care Assistants	47.6%	48.0%	49.2%	50.6%	48.7%	49.9%	50.0%
Community Welfare Officers	0.8%	0.8%	0.8%	0.3%	0.4%	0.4%	0.4%
Other Care Grades	51.6%	51.2%	50.0%	49.1%	50.9%	49.8%	49.6%
Care, other	52.4%	52.0%	50.8%	49.4%	51.3%	50.1%	50.0%
Patient & Client Care	15.2%	14.5%	14.3%	15.7%	16.3%	14.7%	14.7%
Total	100 %	100 %	100 %	100 %	100 %	100 %	

May 2020 (Dec 2018 figure: 2,903)	WTE Dec 2015	WTE Dec 2016	WTE Dec 2017	WTE Dec 2018	WTE Dec 2019	WTE Apr 2020	WTE May 2020
Disabilities	1,867	1,943	2,792	2,903	2,981.59	2,977.50	2,969.70
Consultant Paediatrics	2.8%	2.9%	2.5%	3.1%	3.0%	2.9%	3.7%
Consultant Psychiatry	26.5%	19.1%	16.2%	1.9%	1.7%	1.7%	2.2%
Consultants	29.3%	22.0%	18.8%	5.0%	4.7%	4.5%	5.9%
Registrars	16.6%	26.0%	22.2%	21.5%	26.1%	28.7%	27.8%
SHO/ Interns	41.4%	43.3%	51.7%	64.3%	60.5%	58.4%	55.3%
Medical/ Dental, other	12.7%	8.7%	7.4%	9.3%	8.7%	8.4%	11.0%
Medical & Dental	0.6%	0.6%	0.5%	0.4%	0.4%	0.3%	0.3%
Clinical Nurse/ Midwife Manager	21.5%	23.2%	23.9%	22.4%	22.4%	22.4%	21.8%
Director Nursing/Midwifery, Assistant	1.2%	1.5%	1.1%	1.1%	1.1%	1.1%	1.1%
Director of Nursing/Midwifery	0.7%	0.5%	1.4%	1.0%	0.8%	0.8%	0.8%
Nurse/ Midwife Manager	23.5%	25.2%	26.4%	24.4%	24.3%	24.3%	23.7%
Clinical Nurse/ Midwife Specialist	1.4%	1.3%	1.3%	2.0%	1.0%	1.0%	1.0%
Nurse/ Midwife Specialist & AN/MP	1.4%	1.3%	1.3%	2.0%	1.0%	1.0%	1.0%
Staff Nurse [Intellectual Disability]	58.7%	57.6%	45.5%	43.3%	38.7%	37.5%	36.5%
Staff Nurses [General/ Children's]	15.8%	15.2%	26.7%	30.2%	35.9%	35.6%	35.8%
Staff Nurse/ Staff Midwife	74.4%	72.8%	72.2%	73.5%	74.6%	73.1%	72.3%
Pre-registration Nurse/ Midwife Intern						0.1%	
Pre-registration Nurse Intern (COVID-19)						1.4%	2.9%
Nursing/ Midwifery Student						1.5%	2.9%
Nursing/ Midwifery other	0.6%	0.8%	0.1%	0.1%	0.1%	0.1%	0.1%
Nursing & Midwifery	21.5%	20.4%	18.1%	17.5%	17.0%	17.3%	17.3%
Dietitians	1.7%	1.6%	0.8%	0.8%	1.3%	1.2%	1.1%
Occupational Therapists	10.6%	13.0%	7.8%	7.0%	7.6%	8.1%	9.0%
Physiotherapists	11.0%	11.0%	6.3%	6.1%	5.5%	5.9%	6.3%
Speech & Language Therapists	10.7%	13.5%	9.1%	8.2%	7.6%	7.9%	8.1%
Therapy Professions	34.1%	39.1%	24.0%	22.1%	22.0%	23.1%	24.4%
Audiology	0.1%	0.2%					
Clinical Measurement	0.4%	0.4%	0.2%	0.2%	0.2%	0.2%	0.2%

May 2020 (Dec 2018 figure: 2,903)	WTE Dec 2015	WTE Dec 2016	WTE Dec 2017	WTE Dec 2018	WTE Dec 2019	WTE Apr 2020	WTE May 2020
Disabilities	1,867	1,943	2,792	2,903	2,981.59	2,977.50	2,969.70
Phlebotomists				0.2%	0.2%	0.2%	0.2%
Radiographers	0.4%	0.4%	0.2%	0.2%	0.2%	0.2%	0.2%
Health Science/ Diagnostics	0.9%	1.0%	0.4%	0.6%	0.5%	0.5%	0.5%
Social Care	45.2%	38.3%	62.1%	64.8%	65.2%	63.8%	62.5%
Social Workers	7.9%	10.1%	5.8%	6.3%	6.0%	6.2%	6.2%
Psychologists	9.6%	9.1%	6.4%	5.1%	5.0%	5.3%	5.2%
Pharmacy	1.7%	1.6%	0.8%	0.9%	0.9%	0.8%	0.8%
Counsellor Therapists	0.7%	0.6%	0.3%	0.3%	0.3%	0.3%	0.3%
Other Health & Social Care	0.0%	0.4%	0.2%				
H&SC, Other	0.7%	1.0%	0.5%	0.3%	0.3%	0.3%	0.3%
Health & Social Care Professionals	12.3%	13.1%	18.1%	18.5%	18.0%	19.1%	19.1%
Executive Management	4.9%	5.3%	3.9%	2.6%	2.5%	2.7%	3.1%
Senior Management (VIII & GM)	17.2%	14.3%	13.3%	13.7%	13.3%	14.5%	14.3%
Management (VIII & above)	22.1%	19.5%	17.2%	16.3%	15.8%	17.3%	17.4%
Administrative/ Supervisory (V to VII)	34.6%	35.3%	34.0%	37.0%	39.0%	37.8%	37.7%
Clerical (III & IV)	43.3%	45.1%	48.7%	46.7%	45.3%	44.9%	44.9%
Management & Administrative	6.6%	6.8%	6.4%	6.5%	6.3%	7.5%	7.5%
Support	89.0%	88.2%	84.1%	85.7%	85.4%	84.1%	85.2%
Maintenance	9.7%	11.1%	15.5%	13.8%	13.0%	14.4%	13.3%
Technical Services	1.3%	0.6%	0.5%	0.5%	1.5%	1.5%	1.5%
Maintenance/ Technical	11.0%	11.8%	15.9%	14.3%	14.6%	15.9%	14.8%
General Support	8.5%	8.1%	7.7%	7.1%	7.0%	6.6%	6.6%
HCA, Nurse's Aide, etc.	71.3%	72.1%	70.6%	71.9%	72.9%	72.9%	72.5%
Health & Social Care Assistants	0.5%	0.6%	0.3%	0.2%	0.4%	0.4%	0.3%
Health Care Assistants	71.8%	72.7%	70.8%	72.1%	73.3%	73.3%	72.8%
Care, other	24.8%	24.0%	27.2%	26.2%	25.4%	25.5%	26.0%
Home Help	3.4%	3.3%	1.9%	1.6%	1.3%	1.2%	1.3%
Patient & Client Care	50.4%	50.9%	49.1%	50.0%	48.7%	49.2%	49.2%
Total	100 %	100 %	100 %	100 %	100 %	100 %	

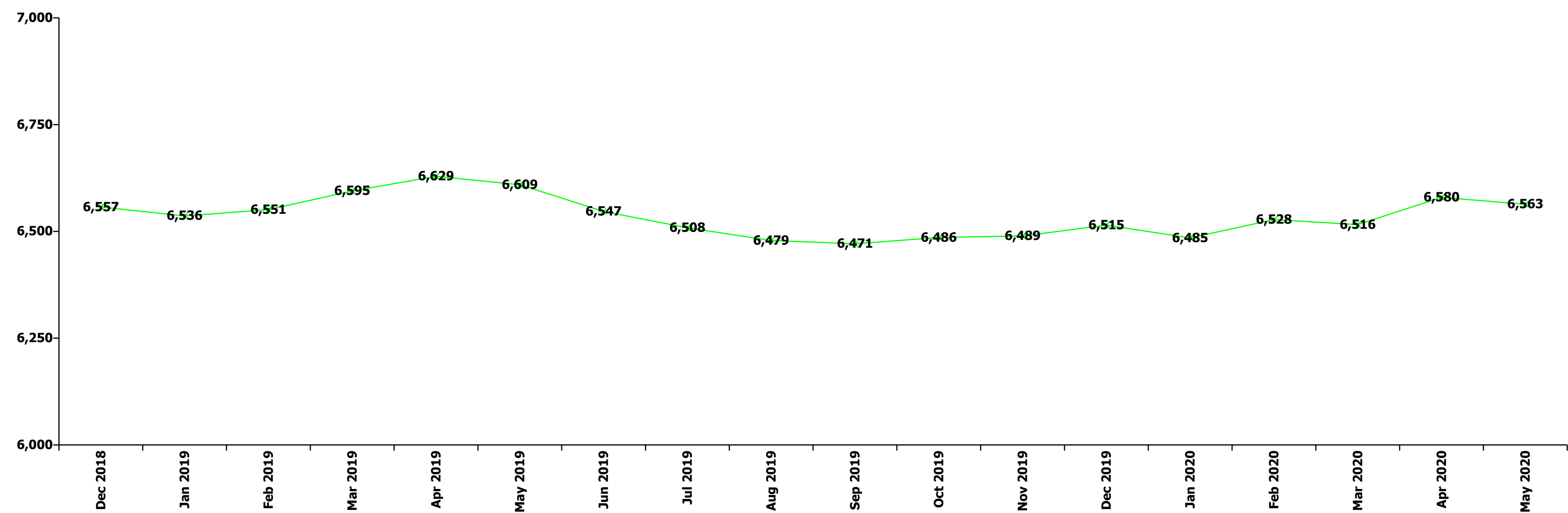
May 2020 (Dec 2018 figure: 1,044)	WTE Dec 2015	WTE Dec 2016	WTE Dec 2017	WTE Dec 2018	WTE Dec 2019	WTE Apr 2020	WTE May 2020
Older People	1,128	1,121	1,064	1,044	995.93	1,016.41	1,017.33
Senior House Officer	31.6%	33.3%	37.5%	28.6%	33.3%	33.3%	33.3%
SHO/ Interns	31.6%	33.3%	37.5%	28.6%	33.3%	33.3%	33.3%
Medical/ Dental, other	68.4%	66.7%	62.5%	71.4%	66.7%	66.7%	66.7%
Medical & Dental	0.8%	0.8%	0.8%	0.7%	0.7%	0.6%	0.6%
Clinical Nurse/ Midwife Manager	16.4%	19.1%	18.6%	18.8%	20.3%	19.9%	19.2%
Director Nursing/Midwifery, Assistant	3.3%	3.8%	2.5%	4.0%	4.3%	3.1%	2.7%
Director of Nursing/Midwifery	2.0%	1.8%	2.2%	1.7%	1.1%	1.9%	1.9%
Nurse/ Midwife Manager	21.6%	24.7%	23.2%	24.4%	25.8%	24.9%	23.8%
Nurse/ Midwife Specialist & AN/MP	1.0%	1.0%	1.1%	1.4%	0.9%	1.0%	1.1%
Staff Nurse [Psychiatric]		0.2%	0.2%				
Staff Nurses [General/ Children's]	76.9%	74.1%	75.4%	74.1%	73.3%	71.1%	74.0%
Staff Nurse/ Staff Midwife	76.9%	74.3%	75.6%	74.1%	73.3%	71.1%	74.0%
Public Health Nurse	0.4%	0.1%					
Nursing/ Midwifery awaiting registration						2.9%	1.0%
Nursing/ Midwifery Student						2.9%	1.0%
Nursing & Midwifery	31.5%	30.4%	30.4%	28.9%	30.3%	31.5%	31.5%

May 2020 (Dec 2018 figure: 1,044)	WTE Dec 2015	WTE Dec 2016	WTE Dec 2017	WTE Dec 2018	WTE Dec 2019	WTE Apr 2020	WTE May 2020
Older People	1,128	1,121	1,064	1,044	995.93	1,016.41	1,017.33
Dietitians		2.6%	2.7%		3.6%	3.1%	3.3%
Occupational Therapists	11.3%	10.8%	10.7%	9.6%	14.9%	16.9%	18.6%
Physiotherapists	27.8%	27.3%	28.3%	29.5%	30.5%	24.9%	23.3%
Podiatrists & Chiropodists	1.8%	1.9%	1.8%	2.0%			
Speech & Language Therapists	2.7%		2.7%	2.6%			
Therapy Professions	43.6%	42.5%	46.1%	43.6%	49.0%	44.8%	45.2%
Medical Laboratory		2.6%					
Radiographers	2.1%						
Health Science/ Diagnostics	2.1%	2.6%					
Social Workers	37.5%	39.2%	37.7%	41.0%	38.6%	42.8%	41.5%
Pharmacy	11.1%	10.5%	10.8%	10.3%	8.9%	9.3%	9.9%
Other Health & Social Care	2.8%	2.6%	2.7%	2.6%			
Play Therapists/ Specialists	2.8%	2.6%	2.7%	2.6%	3.6%	3.1%	3.3%
H&SC, Other	5.6%	5.2%	5.4%	5.1%	3.6%	3.1%	3.3%
Health & Social Care Professionals	3.2%	3.4%	3.5%	3.7%	3.9%	3.0%	3.0%
Senior Management (VIII & GM)	14.9%	15.2%	10.0%	9.0%	9.9%	10.6%	11.2%
Management (VIII & above)	14.9%	15.2%	10.0%	9.0%	9.9%	10.6%	11.2%
Administrative/ Supervisory (V to VII)	23.9%	18.5%	21.1%	21.7%	22.7%	21.4%	21.6%
Clerical (III & IV)	61.1%	66.3%	68.9%	69.3%	67.4%	67.9%	67.2%
Management & Administrative	4.8%	4.7%	4.7%	4.2%	4.4%	5.2%	5.2%
Support	97.5%	97.5%	97.6%	97.5%	98.2%	98.2%	98.1%
Maintenance/ Technical	2.5%	2.5%	2.4%	2.5%	1.8%	1.8%	1.9%
General Support	10.7%	10.8%	11.6%	11.7%	12.2%	10.5%	10.5%
HCA, Nurse's Aide, etc.	76.2%	74.5%	73.0%	77.4%	77.5%	75.5%	76.0%
Health & Social Care Assistants							0.2%
Health Care Assistants	76.2%	74.5%	73.0%	77.4%	77.5%	75.5%	76.2%
Other Care Grades	2.4%	2.9%	2.9%	1.3%	1.0%	0.9%	0.9%
Care, other	2.4%	2.9%	2.9%	1.3%	1.0%	0.9%	0.9%
Home Help	21.4%	22.6%	24.1%	21.3%	21.5%	23.5%	22.9%
Patient & Client Care	49.0%	49.9%	49.1%	50.8%	53.3%	49.3%	49.3%
Total	100 %	100 %	100 %	100 %	100 %	100 %	

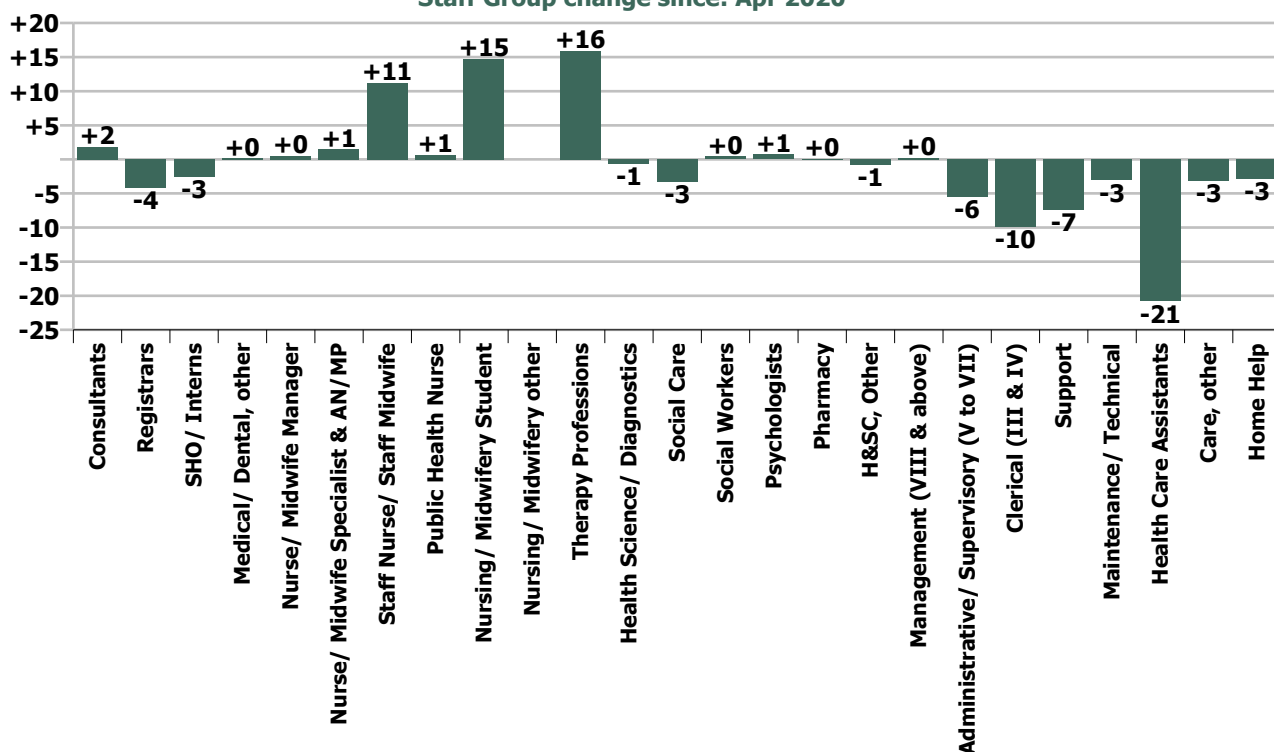
Summary Staff Movement: May 2020

Month-on-month Summary																												
WTE change since Apr 20	% change since Apr 20	overall	Consultants	Registrars	SHO/ Interns	Medical/ Dental, other	Medical & Dental	Nurse/ Midwife Manager	Nurse/ Midwife Specialist & AN/MP	Staff Nurse/ Staff Midwife	Public Health Nurse	Nursing/ Midwifery Student	Nursing/ Midwifery other	Nursing & Midwifery	Therapy Professions	Health Science/ Diagnostics	Social Care	Social Workers	Psychologists	Pharmacy	H&SC, Other	Health & Social Care Professionals	Management (VIII & above)	Administrativ e/ Supervisory (V to VII)	Clerical (III & IV)	Management & Administrativ e	General Support	Patient & Client Care
Overall	-0.2%	-16	+1.8	-4.2	-2.5	+0.2	-4.8	+0.5	+1.5	+11.2	+0.7	+14.7	0.0	+28.6	+16.0	-0.6	-3.3	+0.4	+0.7	+0.1	-0.8	+12.5	+0.2	-5.5	-9.9	-15.2	-10.5	-26.8
Community Health & Wellbeing	+12.3%	+1																					0.0	0.0	0.0	0.0		+1.0
Mental Health	+2.3%	+20	+1.1	-0.2	-0.0		+1.0	+3.9	+0.6	-3.1		+14.2	0.0	+15.6	+0.7		+1.0	+0.8	+0.0	0.0	-0.3	+2.3	0.0	+1.8	+1.3	+3.1	-0.2	-2.0
Primary Care	-1.7%	-30	+0.7	-3.2	-0.6	+0.2	-3.0	-0.4	+0.3	-2.6	+0.7	-1.0	0.0	-3.0	+7.7	-0.6	0.0	+0.5	+0.7	-0.2	-0.6	+7.6	-0.9	-8.1	-11.6	-20.7	-9.0	-2.0
Disabilities	-0.3%	-8	0.0	-0.9	-1.9	0.0	-2.8	-0.6	+0.1	+4.0		+7.5	0.0	+11.1	+8.4	0.0	-4.3	+0.4	+0.0	+0.3	0.0	+4.8	+0.9	+0.8	+1.4	+3.1	+0.9	-24.9
Older People	+0.1%	+1			0.0	0.0	0.0	-2.4	+0.4	+12.9		-5.9		+4.9	-0.8			-1.3		0.0	0.0	-2.1	+0.2	-0.1	-0.9	-0.7	-2.2	+1.0
Social Care	-0.2%	-7	0.0	-0.9	-1.9	0.0	-2.8	-3.0	+0.5	+17.0		+1.5	0.0	+16.0	+7.5	0.0	-4.3	-0.9	+0.0	+0.3	0.0	+2.7	+1.1	+0.7	+0.5	+2.4	-1.3	-23.9
Change	-16.2	-0.2%	+3.0%	-4.7%	-6.9%	+0.2%	-1.8%	+0.1%	+1.5%	+1.1%	+0.4%	+26.1%		+1.7%	+3.5%	-16.1%	-0.9%	+0.4%	+0.9%	+0.3%	-1.9%	+1.1%	+0.3%	-2.7%	-2.7%	-2.3%	-2.3%	-1.1%

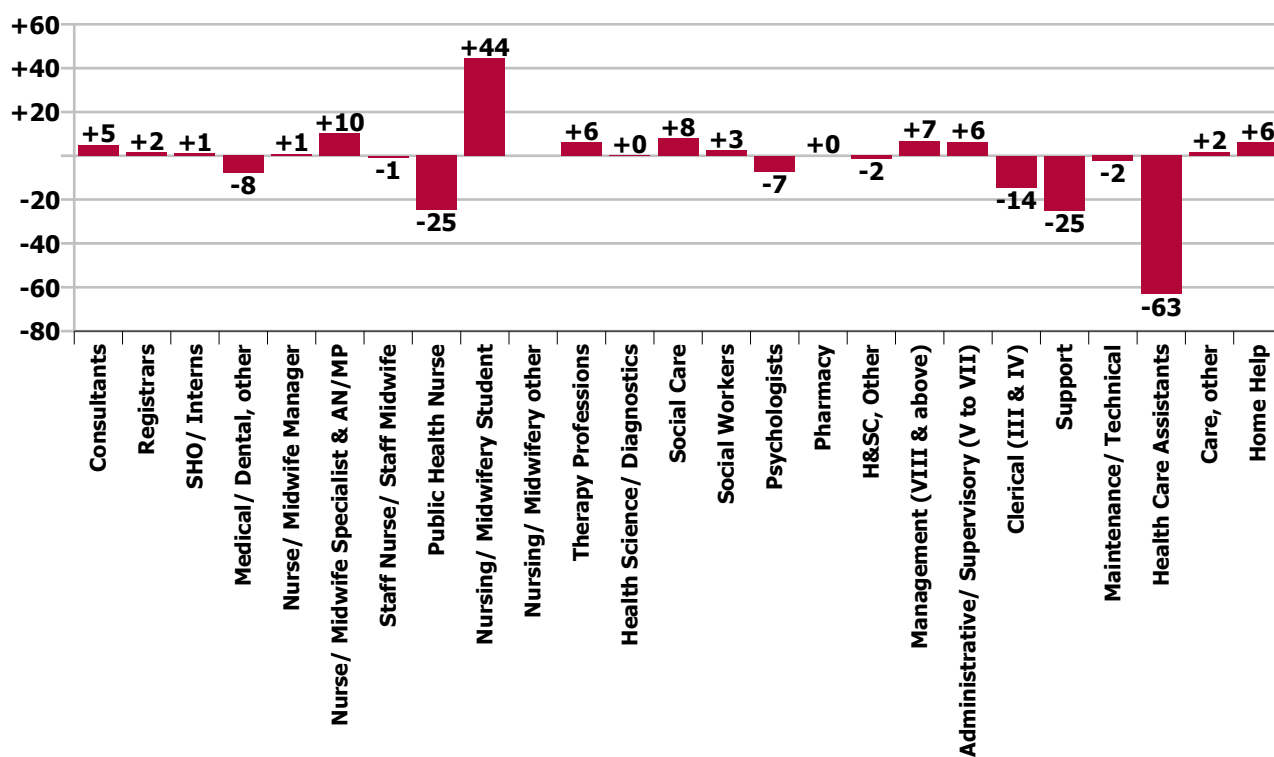
Year-on-year Summary																												
WTE change since May 19	% change since May 19	overall	Consultants	Registrars	SHO/ Interns	Medical/ Dental, other	Medical & Dental	Nurse/ Midwife Manager	Nurse/ Midwife Specialist & AN/MP	Staff Nurse/ Staff Midwife	Public Health Nurse	Nursing/ Midwifery Student	Nursing/ Midwifery other	Nursing & Midwifery	Therapy Professions	Health Science/ Diagnostics	Social Care	Social Workers	Psychologists	Pharmacy	H&SC, Other	Health & Social Care Professionals	Management (VIII & above)	Administrativ e/ Supervisory (V to VII)	Clerical (III & IV)	Management & Administrative	General Support	Patient & Client Care
Overall	-0.7%	-46	+5.0	+1.6	+1.1	-7.9	-0.2	+0.9	+10.3	-0.9	-24.7	+44.3	0.0	+29.8	+6.3	+0.1	+8.1	+2.5	-7.1	+0.0	-1.6	+8.3	+6.8	+6.3	-14.4	-1.2	-27.4	-55.3
Community Health & Wellbeing	+12.3%	+1																					+1.0	+2.0	+0.6	+3.6		+5.6
Mental Health	+2.3%	+20	+4.4	+1.2	+1.8		+7.3	+1.5	+7.2	-13.7		+18.5	0.0	+13.4	+0.7		-1.6	+1.2	-4.0	+0.7	+2.0	-1.0	0.0	+5.4	-4.9	+0.6	-5.0	-12.4
Primary Care	-1.7%	-30	+0.6	+2.0	+0.3	-6.9	-4.0	+5.3	+3.7	-6.5	-24.7	+15.0	0.0	-7.3	-12.9	+0.1	+0.0	+0.3	-0.5	-1.5	-2.6	-17.1	-1.4	-2.0	-22.5	-26.0	-4.2	-15.6
Disabilities	+1.1%	+33.4	0.0	-1.5	-1.0	0.0	-2.5	-5.8	-0.2	+5.5		+7.5	0.0	+7.0	+22.0	0.0	+9.7	+3.5	-2.6	+0.9	0.0	+33.5	+5.3	+2.1	+8.5	+15.9	-5.2	-15.3
Older People	-1.6%	-17.0			0.0	-1.0	-1.0	-0.1	-0.4	+13.9		+3.3		+16.8	-3.6			-2.4		0.0	-1.0	-7.1	+1.9	-1.2	+4.0	+4.8	-12.9	-17.6
Social Care	-0.2%	-7	0.0	-1.5	-1.0	-1.0	-3.5	-5.9	-0.6	+19.4		+10.8	0.0	+23.7	+18.4	0.0	+9.7	+1.1	-2.6	+0.9	-1.0	+26.4	+7.2	+0.9	+12.5	+20.7	-18.1	-32.9
Change	-45.9	-0.7%	+8.7%	+1.9%	+3.3%	-8.7%	-0.1%	+0.2%	+11.3%	-0.1%	-13.1%	+164.6%		+1.7%	+1.3%	+2.1%	+2.2%	+2.3%	-8.1%	+0.1%	-3.6%	+0.7%	+9.7%	+3.3%	-3.8%	-0.2%	-5.8%	-2.3%

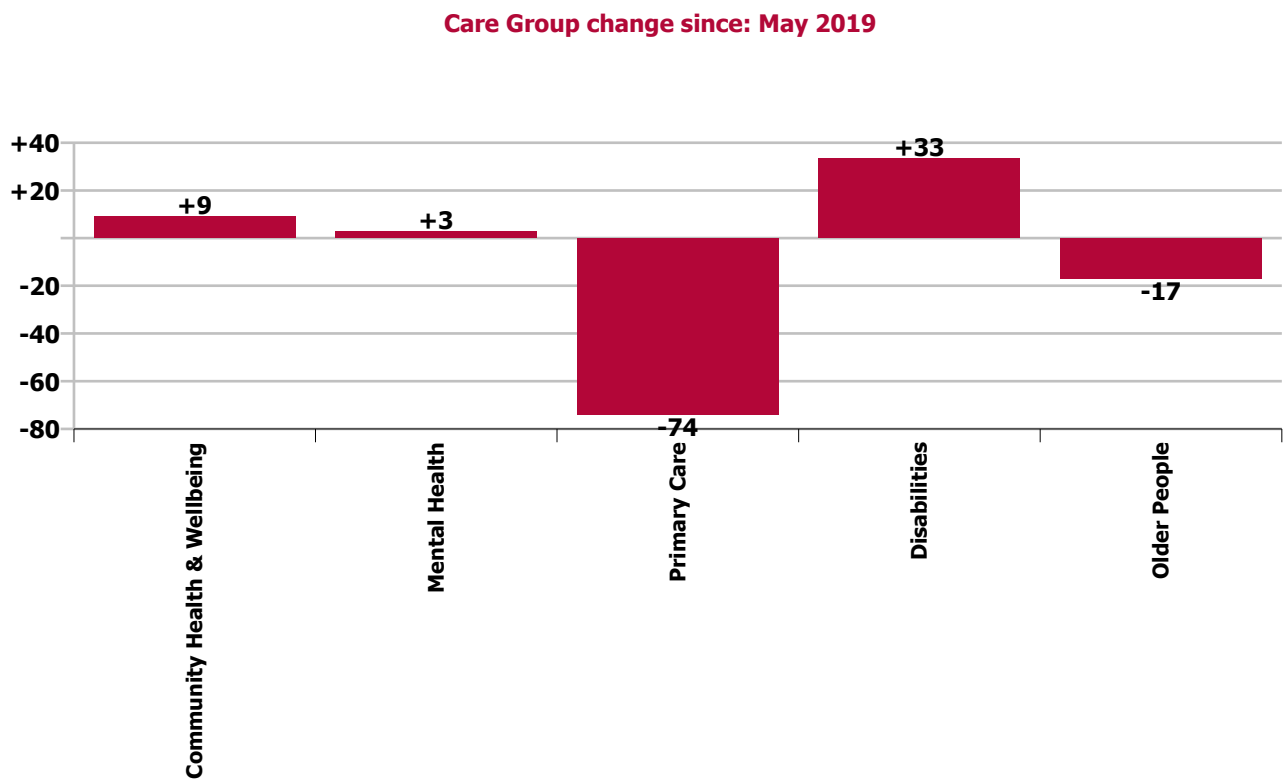
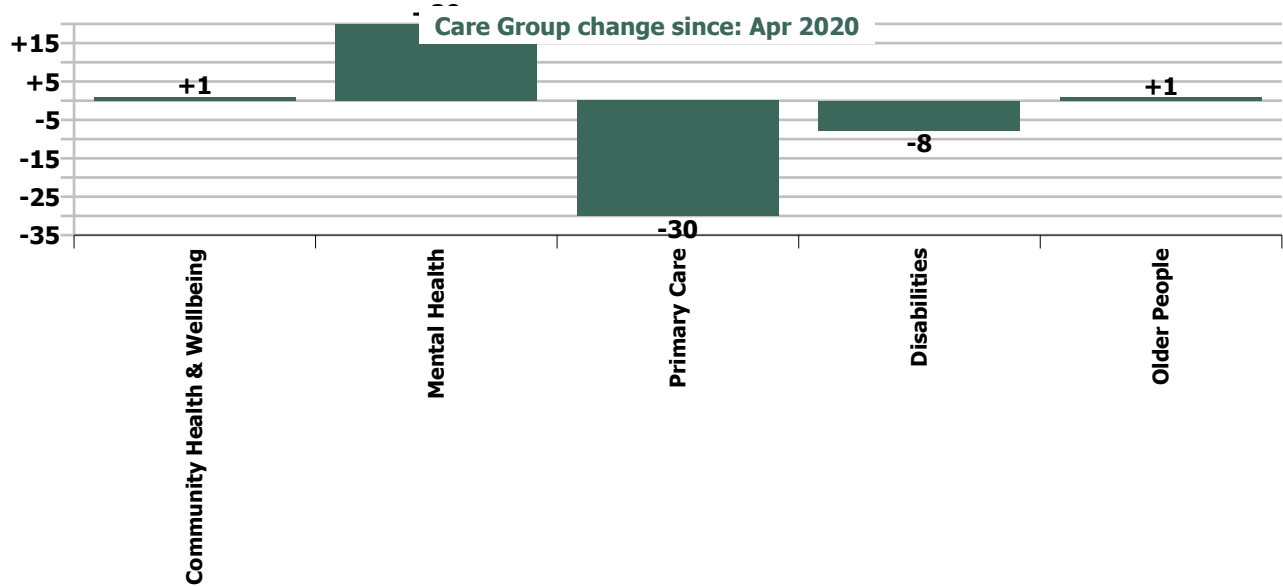


Staff Group change since: Apr 2020



Staff Group change since: May 2019





Longitudinal Employment Levels by Grade Group - Oct 2013 to May 2020

May 2020 (Dec 2015 figure: 5,479)	WTE May 2020	WTE change since Dec 15	WTE change since Dec 16	WTE change since Dec 17	WTE change since Dec 18	WTE change since Dec 18	WTE change since Apr 20	% change since Dec 15	% change since Dec 16	% change since Dec 17	% change since Dec 18	% change since Dec 18	% change since Apr 20
Overall	6,563	+1,085	+985	+158	+6	+6	-16	+19.8%	+17.7%	+2.5%	+0.1%	+0.1%	-0.2%
Consultant Medicine	8	+1	-1	-1	+1	+1	+1	+23.9%	-6.5%	-13.7%	+7.0%	+7.0%	+9.8%
Consultant Paediatrics	0												
Consultant Psychiatry	53	+2	+5	+7	+6	+6	+1	+4.0%	+9.2%	+15.4%	+11.6%	+11.6%	+2.1%
Consultant Surgery	1	+0	+0	+0	-0	-0		+6.7%	+6.7%	+66.7%	-33.3%	-33.3%	
Consultants	62	+4	+4	+6	+6	+6	+2	+6.1%	+7.0%	+11.1%	+10.0%	+10.0%	+3.0%
Registrar	67	+44	+10	+14	+1	+1	-4	+197.9%	+17.9%	+26.4%	+1.2%	+1.2%	-5.8%
Senior Registrar	16	+9	+5	+6	+2	+2	+1	+141.5%	+49.5%	+68.1%	+12.1%	+12.1%	+6.8%
Specialist Registrar	3	-2	-1	-3	-2	-2	-1	-41.9%	-26.5%	-49.6%	-39.1%	-39.1%	-27.6%
Registrars	85	+51	+14	+17	+1	+1	-4	+152.1%	+20.1%	+25.8%	+0.7%	+0.7%	-4.7%
Interns		-2	-2	-2	-2	-2	-2	-100.0%	-100.0%	-100.0%	-100.0%	-100.0%	-100.0%
Senior House Officer	35	-4	-4	-6	+1	+1	-1	-11.2%	-11.2%	-15.0%	+4.2%	+4.2%	-1.8%
SHO/ Interns	35	-6	-6	-8	-1	-1	-3	-15.5%	-15.5%	-19.0%	-1.7%	-1.7%	-6.9%
Dentists	35	-4	-4	-0	-1	-1	+0	-10.7%	-11.0%	-0.1%	-3.4%	-3.4%	+0.3%
Other Medical	47	+4	+2	-6	-5	-5	+0	+10.2%	+4.7%	-11.2%	-9.2%	-9.2%	+0.1%
Medical/ Dental, other	82	+0	-2	-6	-6	-6	+0	+0.2%	-2.7%	-6.8%	-6.8%	-6.8%	+0.2%
Medical & Dental	264	+49	+10	+10	-0	-0	-5	+22.6%	+3.8%	+3.8%	-0.1%	-0.1%	-1.8%
Clinical Nurse/ Midwife Manager	332	+48	+30	+5	+10	+10	-1	+16.9%	+9.8%	+1.4%	+3.0%	+3.0%	-0.2%
Director Nursing/Midwifery, Assistant	54	+6	-0	+4	-2	-2	+1	+13.1%	-0.0%	+7.3%	-3.1%	-3.1%	+1.8%
Director of Nursing/Midwifery	20	+2	+3	-3	+0	+0	+0	+10.3%	+18.3%	-13.0%	+1.4%	+1.4%	+0.7%
Nurse/ Midwife Manager	405	+56	+33	+5	+8	+8	+0	+16.0%	+8.7%	+1.3%	+2.1%	+2.1%	+0.1%
Advanced Nurse/ Midwife Practitioner	7	+6	+5	+4	+4	+4	-0	+565.0%	+271.5%	+190.4%	+162.8%	+162.8%	-6.9%
Clinical Nurse/ Midwife Specialist	95	+29	+29	+17	+10	+10	+2	+44.3%	+43.3%	+21.7%	+11.8%	+11.8%	+2.1%
Nurse/ Midwife Specialist & AN/MP	101	+35	+33	+21	+14	+14	+1	+52.1%	+49.3%	+26.5%	+16.2%	+16.2%	+1.5%
Staff Nurse [Intellectual Disability]	188	-48	-41	-43	-32	-32	-1	-20.2%	-17.8%	-18.6%	-14.7%	-14.7%	-0.6%
Staff Nurse [Psychiatric]	192	-49	-23	-36	-8	-8	-4	-20.3%	-10.6%	-15.7%	-3.8%	-3.8%	-1.9%
Staff Nurses [General/ Children's]	629	+99	+122	+62	+52	+52	+16	+18.6%	+24.1%	+11.0%	+9.1%	+9.1%	+2.6%
Staff Nurse/ Staff Midwife	1,009	+2	+59	-16	+12	+12	+11	+0.2%	+6.2%	-1.6%	+1.2%	+1.2%	+1.1%
Public Health Nursing	164	-14	-17	-23	-32	-32	+1	-7.9%	-9.5%	-12.4%	-16.2%	-16.2%	+0.4%
Public Health Nurse	164	-14	-17	-23	-32	-32	+1	-7.9%	-9.5%	-12.4%	-16.2%	-16.2%	+0.4%
Pre-registration Nurse/ Midwife Intern		-2	-2		-6	-6	-1	-100.0%	-100.0%	-100.0%	-100.0%	-100.0%	-100.0%
Pre-registration Nurse Intern (COVID-19)	44	+44	+44	+44	+44	+44	+22	-100.0%	-100.0%	-100.0%	-100.0%	-100.0%	+101.2%
Post-registration Nurse/ Midwife Student	20	-4	-3	+4	+13	+13	-1	-16.7%	-13.0%	+25.0%	+185.7%	+185.7%	-4.8%
Nursing/ Midwifery awaiting registration	7	+7	+7	-1	+3	+3	-6	-100.0%	-100.0%	-9.6%	+83.3%	+83.3%	-44.3%
Nursing/ Midwifery Student	71	+46	+47	+47	+54	+54	+15	+177.5%	+188.8%	+195.4%	+319.9%	+319.9%	+26.1%

May 2020 (Dec 2015 figure: 5,479)	WTE May 2020	WTE change since Dec 15	WTE change since Dec 16	WTE change since Dec 17	WTE change since Dec 18	WTE change since Dec 18	WTE change since Apr 20	% change since Dec 15	% change since Dec 16	% change since Dec 17	% change since Dec 18	% change since Dec 18	% change since Apr 20
Overall	6,563	+1,085	+985	+158	+6	+6	-16	+19.8%	+17.7%	+2.5%	+0.1%	+0.1%	-0.2%
Nursing Education/Clinical	10	+0	-2	+1	+1	+1		+4.9%	-17.4%	+5.7%	+11.8%	+11.8%	
Other Nursing/ Midwifery		-1	-1					-100.0%	-100.0%	-100.0%	-100.0%	-100.0%	-100.0%
Nursing/ Midwifery other	10	-0	-3	+1	+1	+1		-0.7%	-24.0%	+5.7%	+11.8%	+11.8%	
Nursing & Midwifery	1,759	+124	+151	+35	+58	+58	+29	+7.6%	+9.4%	+2.0%	+3.4%	+3.4%	+1.7%
Dietitians	23	+6	+4	+4	-1	-1	+0	+32.6%	+23.6%	+20.9%	-5.5%	-5.5%	+0.3%
Occupational Therapists	194	+34	+25	+25	+9	+9	+10	+21.2%	+14.9%	+14.9%	+5.1%	+5.1%	+5.3%
Orthoptists		-0	-0					-100.0%	-100.0%	-100.0%	-100.0%	-100.0%	-100.0%
Physiotherapists	124	+9	+2	+1	-1	-1	+3	+8.2%	+1.7%	+0.4%	-1.0%	-1.0%	+2.5%
Podiatrists & Chiropodists	2	+1	+1	+1	+1	+1	+1	+207.7%	+181.7%	+207.7%	+56.3%	+56.3%	+132.6%
Speech & Language Therapists	128	+39	+21	+1	+6	+6	+2	+43.4%	+19.7%	+0.6%	+4.5%	+4.5%	+1.5%
Therapy Professions	472	+89	+54	+32	+13	+13	+16	+23.2%	+12.9%	+7.2%	+2.8%	+2.8%	+3.5%
Audiology		-0	-0					-100.0%	-100.0%	-100.0%	-100.0%	-100.0%	-100.0%
Clinical Measurement	1												
Medical Laboratory			-1					-100.0%	-100.0%	-100.0%	-100.0%	-100.0%	-100.0%
Phlebotomists	1	+1	+1	+1	+0	+0	-1	+211.6%	+106.2%	+112.7%	+9.8%	+9.8%	-32.3%
Radiographers	1	-1						-43.5%					
Health Science/ Diagnostics	3	-0	-1	+1	+0	+0	-1	-0.9%	-18.1%	+27.0%	+3.7%	+3.7%	-16.1%
Social Care	367	+248	+255	+38	+7	+7	-3	+209.4%	+226.4%	+11.6%	+2.0%	+2.0%	-0.9%
Social Care	367	+248	+255	+38	+7	+7	-3	+209.4%	+226.4%	+11.6%	+2.0%	+2.0%	-0.9%
Social Workers	111	+14	+2	-1	+1	+1	+0	+14.8%	+1.4%	-0.8%	+0.5%	+0.5%	+0.4%
Social Workers	111	+14	+2	-1	+1	+1	+0	+14.8%	+1.4%	-0.8%	+0.5%	+0.5%	+0.4%
Psychologists	81	+10	+12	-4	-3	-3	+1	+14.5%	+18.1%	-4.3%	-3.7%	-3.7%	+0.9%
Psychologists	81	+10	+12	-4	-3	-3	+1	+14.5%	+18.1%	-4.3%	-3.7%	-3.7%	+0.9%
Pharmacy	38	-3	+0	-1	+0	+0	+0	-7.3%	+0.5%	-1.5%	+0.3%	+0.3%	+0.3%
Pharmacy	38	-3	+0	-1	+0	+0	+0	-7.3%	+0.5%	-1.5%	+0.3%	+0.3%	+0.3%
Counsellor Therapists	35	+4	+4	+3	+5	+5	-0	+13.0%	+13.8%	+8.5%	+16.3%	+16.3%	-0.4%
Dental Hygienists	5	+1	+1	+2	+0	+0	-0	+36.6%	+36.6%	+44.8%	+0.0%	+0.0%	-1.8%
Other Health & Social Care	1	-3	-4	-5	-4	-4	-1	-81.4%	-87.0%	-88.4%	-85.6%	-85.6%	-46.3%
Play Therapists/ Specialists	1												
H&SC, Other	42	+3	+1	-1	+1	+1	-1	+6.4%	+3.0%	-1.6%	+2.8%	+2.8%	-1.9%
Health & Social Care Professionals	1,115	+362	+323	+65	+19	+19	+13	+48.0%	+40.8%	+6.2%	+1.7%	+1.7%	+1.1%
Executive Management	15	+3	-1	-0	+3	+3	+1	+24.1%	-6.9%	-0.7%	+24.1%	+24.1%	+6.4%
Senior Management (VIII & GM)	62	+11	+14	+10	+6	+6	-1	+22.1%	+28.3%	+19.4%	+9.8%	+9.8%	-1.0%
Management (VIII & above)	77	+14	+13	+10	+8	+8	+0	+22.5%	+19.5%	+14.9%	+12.3%	+12.3%	+0.3%
Middle Management (V-VII)	195	+65	+64	+37	+27	+27	-6	+49.9%	+48.4%	+23.1%	+16.2%	+16.2%	-2.8%
Other Administrative	1			-0						-14.6%			

May 2020 (Dec 2015 figure: 5,479)	WTE May 2020	WTE change since Dec 15	WTE change since Dec 16	WTE change since Dec 17	WTE change since Dec 18	WTE change since Dec 18	WTE change since Apr 20	% change since Dec 15	% change since Dec 16	% change since Dec 17	% change since Dec 18	% change since Dec 18	% change since Apr 20
Overall	6,563	+1,085	+985	+158	+6	+6	-16	+19.8%	+17.7%	+2.5%	+0.1%	+0.1%	-0.2%
Administrative/ Supervisory (V to VII)	196	+65	+64	+37	+27	+27	-6	+49.6%	+48.1%	+22.9%	+16.1%	+16.1%	-2.7%
General Administrative (III & IV)	362	+17	+3	-22	-19	-19	-10	+4.8%	+0.9%	-5.6%	-4.9%	-4.9%	-2.7%
Clerical (III & IV)	362	+17	+3	-22	-19	-19	-10	+4.8%	+0.9%	-5.6%	-4.9%	-4.9%	-2.7%
Management & Administrative	635	+96	+79	+25	+17	+17	-15	+17.8%	+14.3%	+4.1%	+2.7%	+2.7%	-2.3%
Catering	58	+4	+5	-6	-4	-4	+1	+7.2%	+9.6%	-9.6%	-6.7%	-6.7%	+1.2%
Household Services	268	+1	+4	-28	-26	-26	-7	+0.4%	+1.5%	-9.5%	-8.8%	-8.8%	-2.4%
Other Labs & Associated	1	-0	-0		-0	-0		-16.7%	-6.5%		-3.8%	-3.8%	
Other Support	14	-3	-2	-1	-1	-1	-2	-18.8%	-13.9%	-5.7%	-9.5%	-9.5%	-9.8%
Portering	65	-13	-9	-6	-6	-6	-0	-16.1%	-11.6%	-8.9%	-8.2%	-8.2%	-0.1%
Support	406	-11	-2	-41	-37	-37	-7	-2.7%	-0.5%	-9.3%	-8.4%	-8.4%	-1.8%
Maintenance	38	+10	+7	-6	-3	-3	-3	+34.6%	+23.9%	-13.7%	-6.8%	-6.8%	-7.4%
Technical Services	4	+2	+2	+2	+2	+2		+100.0%	+100.0%	+100.0%	+110.5%	+110.5%	
Maintenance/ Technical	42	+12	+9	-4	-1	-1	-3	+38.9%	+28.5%	-8.8%	-1.6%	-1.6%	-6.8%
General Support	448	+1	+7	-46	-38	-38	-10	+0.2%	+1.7%	-9.2%	-7.8%	-7.8%	-2.3%
HCA, Nurse's Aide, etc.	1,592	+336	+301	+82	-26	-26	-25	+26.7%	+23.3%	+5.4%	-1.6%	-1.6%	-1.6%
Health & Social Care Assistants	16	+8	+8	+10	-5	-5	+4	+88.5%	+93.4%	+168.9%	-24.4%	-24.4%	+38.4%
Health Care Assistants	1,608	+344	+309	+92	-31	-31	-21	+27.2%	+23.8%	+6.1%	-1.9%	-1.9%	-1.3%
Care, other	601	+127	+130	-4	-16	-16	-3	+26.9%	+27.7%	-0.7%	-2.6%	-2.6%	-0.5%
Home Helps	133	-17	-25	-19	-3	-3	-3	-11.5%	-15.9%	-12.4%	-2.3%	-2.3%	-2.1%
Home Help	133	-17	-25	-19	-3	-3	-3	-11.5%	-15.9%	-12.4%	-2.3%	-2.3%	-2.1%
Patient & Client Care	2,343	+453	+414	+69	-50	-50	-27	+24.0%	+21.5%	+3.0%	-2.1%	-2.1%	-1.1%

Source: Health Service Personnel Census

Longitudinal Employment Levels by Care Group - Oct 2013 to May 2020

Community Health & Wellbeing

May 2020 (figure:)	WTE May 2020	WTE change since	WTE change since	WTE change since	WTE change since	WTE change since	WTE change since Apr 20	% change since	% change since	% change since	% change since	% change since	% change since Apr 20
Overall	9	+9	+9	+9	+9	+9	+1	-100.0%	-100.0%	-100.0%	-100.0%	-100.0%	+12.3%
Management & Administrative	4	+4	+4	+4	+4	+4		-1.0%	-1.0%	-1.0%	-1.0%	-1.0%	+0.0%
Management (VIII & above)	1	+1	+1	+1	+1	+1		-1.0%	-1.0%	-1.0%	-1.0%	-1.0%	+0.0%
Administrative/ Supervisory (V to VII)	2	+2	+2	+2	+2	+2		-1.0%	-1.0%	-1.0%	-1.0%	-1.0%	+0.0%
Clerical (III & IV)	1	+1	+1	+1	+1	+1		-1.0%	-1.0%	-1.0%	-1.0%	-1.0%	+0.0%
Patient & Client Care	6	+6	+6	+6	+6	+6	+1	-1.0%	-1.0%	-1.0%	-1.0%	-1.0%	+0.2%
Health Care Assistants	1	+1	+1	+1	+1	+1	+1	-1.0%	-1.0%	-1.0%	-1.0%	-1.0%	-1.0%
Care, other	5	+5	+5	+5	+5	+5		-1.0%	-1.0%	-1.0%	-1.0%	-1.0%	+0.0%

Source: Health Service Personnel Census

Mental Health

May 2020 (Dec 2015 figure: 837)	WTE May 2020	WTE change since Dec 15	WTE change since Dec 16	WTE change since Dec 17	WTE change since Dec 18	WTE change since Dec 18	WTE change since Apr 20	% change since Dec 15	% change since Dec 16	% change since Dec 17	% change since Dec 18	% change since Dec 18	% change since Apr 20
Overall	866	+30	+38	+7	+32	+32	+20	+3.5%	+4.6%	+0.8%	+3.8%	+3.8%	+2.3%
Medical & Dental	111	+14	+10	+15	+8	+8	+1	+0.1%	+0.1%	+0.2%	+0.1%	+0.1%	+0.0%
Consultants	49	+4	+5	+8	+5	+5	+1	+0.1%	+0.1%	+0.2%	+0.1%	+0.1%	+0.0%
Registrars	40	+17	+11	+13	+1	+1	-0	+0.7%	+0.4%	+0.5%	+0.0%	+0.0%	-0.0%
SHO/ Interns	21	-7	-6	-6	+2	+2	-0	-0.2%	-0.2%	-0.2%	+0.1%	+0.1%	-0.0%
Nursing & Midwifery	406	+31	+44	+20	+44	+44	+16	+0.1%	+0.1%	+0.1%	+0.1%	+0.1%	+0.0%
Nurse/ Midwife Manager	119	+19	+8	+4	+1	+1	+4	+0.2%	+0.1%	+0.0%	+0.0%	+0.0%	+0.0%
Nurse/ Midwife Specialist & AN/MP	45	+20	+19	+18	+18	+18	+1	+0.8%	+0.7%	+0.7%	+0.7%	+0.7%	+0.0%
Staff Nurse/ Staff Midwife	202	-43	-15	-28	+1	+1	-3	-0.2%	-0.1%	-0.1%	+0.0%	+0.0%	-0.0%
Nursing/ Midwifery Student	33	+31	+31	+25	+23	+23	+14	+18.8%	+18.8%	+3.1%	+2.3%	+2.3%	+0.8%
Nursing/ Midwifery other	7	+3	+1	+1	+1	+1		+0.8%	+0.2%	+0.2%	+0.2%	+0.2%	+0.0%
Health & Social Care Professionals	140	+6	+4	-6	-0	-0	+2	+0.0%	+0.0%	-0.0%	-0.0%	-0.0%	+0.0%
Therapy Professions	49	+2	+0	+1	+0	+0	+1	+0.0%	+0.0%	+0.0%	+0.0%	+0.0%	+0.0%
Social Care	8	-3	-3	-3	-1	-1	+1	-0.3%	-0.3%	-0.3%	-0.1%	-0.1%	+0.2%
Social Workers	37	-1	-4	-5	+0	+0	+1	-0.0%	-0.1%	-0.1%	+0.0%	+0.0%	+0.0%
Psychologists	28	+0	+3	-2	-5	-5	+0	+0.0%	+0.1%	-0.1%	-0.2%	-0.2%	+0.0%
Pharmacy	1	+1	+1	+1	+1	+1		-1.0%	-1.0%	-1.0%	-1.0%	-1.0%	+0.0%
H&SC, Other	17	+8	+6	+2	+4	+4	-0	+0.8%	+0.6%	+0.2%	+0.3%	+0.3%	-0.0%
Management & Administrative	68	+8	+2	-1	-5	-5	+3	+0.1%	+0.0%	-0.0%	-0.1%	-0.1%	+0.0%
Management (VIII & above)	3	+1						+0.4%	+0.0%	+0.0%	+0.0%	+0.0%	+0.0%
Administrative/ Supervisory (V to VII)	18	+9	+6	+2	-0	-0	+2	+1.1%	+0.5%	+0.2%	-0.0%	-0.0%	+0.1%
Clerical (III & IV)	47	-2	-4	-3	-5	-5	+1	-0.0%	-0.1%	-0.1%	-0.1%	-0.1%	+0.0%
General Support	19	-9	-7	-6	-5	-5	-0	-0.3%	-0.3%	-0.2%	-0.2%	-0.2%	-0.0%
Support	17	-10	-7	-6	-5	-5	-0	-0.4%	-0.3%	-0.3%	-0.2%	-0.2%	-0.0%
Maintenance/ Technical	2	+0						+0.0%	+0.0%	+0.0%	+0.0%	+0.0%	+0.0%
Patient & Client Care	123	-21	-14	-16	-11	-11	-2	-0.1%	-0.1%	-0.1%	-0.1%	-0.1%	-0.0%
Health Care Assistants	35	-12	-11	-9	-6	-6	-0	-0.3%	-0.2%	-0.2%	-0.1%	-0.1%	-0.0%
Care, other	87	-8	-3	-6	-5	-5	-2	-0.1%	-0.0%	-0.1%	-0.0%	-0.0%	-0.0%

Source: Health Service Personnel Census

Primary Care

May 2020 (Dec 2015 figure: 1,647)	WTE May 2020	WTE change since Dec 15	WTE change since Dec 16	WTE change since Dec 17	WTE change since Dec 18	WTE change since Dec 18	WTE change since Apr 20	% change since Dec 15	% change since Dec 16	% change since Dec 17	% change since Dec 18	% change since Dec 18	% change since Apr 20
Overall	1,701	+54	+14	+10	-74	-74	-30	+3.3%	+0.8%	+0.6%	-4.2%	-4.2%	-1.7%
Medical & Dental	139	+41	+5	+1	-6	-6	-3	+0.4%	+0.0%	+0.0%	-0.0%	-0.0%	-0.0%
Consultants	12	+3	+2	+0	+1	+1	+1	+0.3%	+0.1%	+0.0%	+0.1%	+0.1%	+0.1%
Registrars	42	+34	+4	+5	-1	-1	-3	+3.9%	+0.1%	+0.1%	-0.0%	-0.0%	-0.1%
SHO/ Interns	6	+1	+0	+1	-1	-1	-1	+0.3%	+0.0%	+0.1%	-0.1%	-0.1%	-0.1%
Medical/ Dental, other	77	+3	-0	-5	-5	-5	+0	+0.0%	-0.0%	-0.1%	-0.1%	-0.1%	+0.0%
Nursing & Midwifery	521	+18	+13	+12	-8	-8	-3	+0.0%	+0.0%	+0.0%	-0.0%	-0.0%	-0.0%
Nurse/ Midwife Manager	89	+10	+11	+13	+8	+8	-0	+0.1%	+0.1%	+0.2%	+0.1%	+0.1%	-0.0%
Nurse/ Midwife Specialist & AN/MP	48	+15	+14	+5	+1	+1	+0	+0.5%	+0.4%	+0.1%	+0.0%	+0.0%	+0.0%
Staff Nurse/ Staff Midwife	199	+10	+9	+14	+1	+1	-3	+0.1%	+0.0%	+0.1%	+0.0%	+0.0%	-0.0%
Public Health Nurse	164	-13	-17	-23	-32	-32	+1	-0.1%	-0.1%	-0.1%	-0.2%	-0.2%	+0.0%
Nursing/ Midwifery Student	20	-4	-3	+4	+13	+13	-1	-0.2%	-0.1%	+0.3%	+1.9%	+1.9%	-0.0%
Nursing/ Midwifery other	2	-1	-2	-1				-0.3%	-0.4%	-0.2%	+0.0%	+0.0%	+0.0%
Health & Social Care Professionals	376	+22	+13	+14	-4	-4	+8	+0.1%	+0.0%	+0.0%	-0.0%	-0.0%	+0.0%
Therapy Professions	271	+29	+17	+17	-4	-4	+8	+0.1%	+0.1%	+0.1%	-0.0%	-0.0%	+0.0%
Health Science/ Diagnostics	0	-0	-0	-0	+0	+0	-1	-0.2%	-0.5%	-0.5%	+0.5%	+0.5%	-0.7%
Social Care	4	-0	-0	-0	-0	-0		-0.0%	-0.0%	-0.0%	-0.0%	-0.0%	+0.0%
Social Workers	26	-1	-2	-1	+2	+2	+1	-0.0%	-0.1%	-0.0%	+0.1%	+0.1%	+0.0%
Psychologists	23	+2	+2	+1	-0	-0	+1	+0.1%	+0.1%	+0.0%	-0.0%	-0.0%	+0.0%
Pharmacy	29	-4	-1	-1	+0	+0	-0	-0.1%	-0.0%	-0.0%	+0.0%	+0.0%	-0.0%
H&SC, Other	22	-4	-3	-1	-2	-2	-1	-0.2%	-0.1%	-0.1%	-0.1%	-0.1%	-0.0%
Management & Administrative	288	-15	-15	-22	-23	-23	-21	-0.0%	-0.1%	-0.1%	-0.1%	-0.1%	-0.1%
Management (VIII & above)	29	+3	+1	+0	-2	-2	-1	+0.1%	+0.0%	+0.0%	-0.1%	-0.1%	-0.0%
Administrative/ Supervisory (V to VII)	80	+14	+17	+9	+10	+10	-8	+0.2%	+0.3%	+0.1%	+0.1%	+0.1%	-0.1%
Clerical (III & IV)	179	-31	-33	-32	-31	-31	-12	-0.1%	-0.2%	-0.2%	-0.1%	-0.1%	-0.1%
General Support	126	-12	-9	-4	-6	-6	-9	-0.1%	-0.1%	-0.0%	-0.0%	-0.0%	-0.1%
Support	117	-13	-9	-6	-7	-7	-8	-0.1%	-0.1%	-0.0%	-0.1%	-0.1%	-0.1%
Maintenance/ Technical	9	+1	-0	+2	+1	+1	-1	+0.1%	-0.0%	+0.3%	+0.1%	+0.1%	-0.1%
Patient & Client Care	251	-0	+7	+9	-27	-27	-2	-0.0%	+0.0%	+0.0%	-0.1%	-0.1%	-0.0%
Health Care Assistants	125	+6	+8	+7	-15	-15	-1	+0.1%	+0.1%	+0.1%	-0.1%	-0.1%	-0.0%
Care, other	125	-6	-1	+3	-12	-12	-1	-0.0%	-0.0%	+0.0%	-0.1%	-0.1%	-0.0%

Source: Health Service Personnel Census

Disabilities

May 2020 (Dec 2015 figure: 1,867)	WTE May 2020	WTE change since Dec 15	WTE change since Dec 16	WTE change since Dec 17	WTE change since Dec 18	WTE change since Dec 18	WTE change since Apr 20	% change since Dec 15	% change since Dec 16	% change since Dec 17	% change since Dec 18	% change since Dec 18	% change since Apr 20
Overall	2,970	+1,103	+1,027	+178	+67	+67	-8	+59.1%	+52.9%	+6.4%	+2.3%	+2.3%	-0.3%
Medical & Dental	9	-3	-2	-4	-2	-2	-3	-0.2%	-0.2%	-0.3%	-0.2%	-0.2%	-0.2%
Consultants	1	-3	-2	-2				-0.8%	-0.8%	-0.8%	+0.0%	+0.0%	+0.0%
Registrars	3	+1	-0	-0	+0	+0	-1	+0.3%	-0.2%	-0.2%	+0.1%	+0.1%	-0.3%
SHO/ Interns	5	+0	+0	-2	-2	-2	-2	+0.0%	+0.0%	-0.3%	-0.3%	-0.3%	-0.3%
Medical/ Dental, other	1	-1						-0.3%	+0.0%	+0.0%	+0.0%	+0.0%	+0.0%
Nursing & Midwifery	512	+111	+116	+6	+4	+4	+11	+0.3%	+0.3%	+0.0%	+0.0%	+0.0%	+0.0%
Nurse/ Midwife Manager	121	+27	+21	-12	-3	-3	-1	+0.3%	+0.2%	-0.1%	-0.0%	-0.0%	-0.0%
Nurse/ Midwife Specialist & AN/MP	5	-1	+0	-2	-5	-5	+0	-0.1%	+0.0%	-0.2%	-0.5%	-0.5%	+0.0%
Staff Nurse/ Staff Midwife	370	+72	+82	+5	-3	-3	+4	+0.2%	+0.3%	+0.0%	+0.0%	-0.0%	+0.0%
Nursing/ Midwifery Student	15	+15	+15	+15	+15	+15	+8	-1.0%	-1.0%	-1.0%	-1.0%	-1.0%	+1.0%
Nursing/ Midwifery other	1	-2	-3					-0.8%	-0.8%	+0.0%	+0.0%	+0.0%	+0.0%
Health & Social Care Professionals	569	+339	+314	+63	+32	+32	+5	+1.5%	+1.2%	+0.1%	+0.1%	+0.1%	+0.0%
Therapy Professions	139	+60	+39	+18	+20	+20	+8	+0.8%	+0.4%	+0.1%	+0.2%	+0.2%	+0.1%
Health Science/ Diagnostics	3	+1	+1	+1				+0.4%	+0.2%	+0.5%	+0.0%	+0.0%	+0.0%
Social Care	356	+252	+258	+41	+8	+8	-4	+2.4%	+2.6%	+0.1%	+0.0%	+0.0%	-0.0%
Social Workers	35	+17	+10	+6	+2	+2	+0	+1.0%	+0.4%	+0.2%	+0.0%	+0.0%	+0.0%
Psychologists	30	+8	+7	-3	+3	+3	+0	+0.4%	+0.3%	-0.1%	+0.1%	+0.1%	+0.0%
Pharmacy	5	+1	+1	+1	-0	-0	+0	+0.2%	+0.2%	+0.2%	-0.1%	-0.1%	+0.1%
H&SC, Other	2		-1	-1				+0.0%	-0.4%	-0.4%	+0.0%	+0.0%	+0.0%
Management & Administrative	222	+100	+89	+42	+33	+33	+3	+0.8%	+0.7%	+0.2%	+0.2%	+0.2%	+0.0%
Management (VIII & above)	39	+12	+13	+8	+8	+8	+1	+0.4%	+0.5%	+0.2%	+0.3%	+0.3%	+0.0%
Administrative/ Supervisory (V to VII)	84	+41	+37	+22	+14	+14	+1	+1.0%	+0.8%	+0.4%	+0.2%	+0.2%	+0.0%
Clerical (III & IV)	100	+47	+40	+12	+11	+11	+1	+0.9%	+0.7%	+0.1%	+0.1%	+0.1%	+0.0%
General Support	196	+36	+38	-18	-12	-12	+1	+0.2%	+0.2%	-0.1%	-0.1%	-0.1%	+0.0%
Support	167	+25	+28	-13	-11	-11	+3	+0.2%	+0.2%	-0.1%	-0.1%	-0.1%	+0.0%
Maintenance/ Technical	29	+12	+11	-5	-1	-1	-2	+0.7%	+0.6%	-0.1%	-0.0%	-0.0%	-0.1%
Patient & Client Care	1,462	+520	+473	+90	+11	+11	-25	+0.6%	+0.5%	+0.1%	+0.0%	+0.0%	-0.0%
Health Care Assistants	1,064	+388	+344	+92	+17	+17	-25	+0.6%	+0.5%	+0.1%	+0.0%	+0.0%	-0.0%
Care, other	379	+146	+142	+6	-1	-1	+0	+0.6%	+0.6%	+0.0%	-0.0%	-0.0%	+0.0%
Home Help	18	-14	-14	-8	-5	-5	-0	-0.4%	-0.4%	-0.3%	-0.2%	-0.2%	-0.0%

Source: Health Service Personnel Census

Older People

May 2020 (Dec 2015 figure: 1,128)	WTE May 2020	WTE change since Dec 15	WTE change since Dec 16	WTE change since Dec 17	WTE change since Dec 18	WTE change since Dec 18	WTE change since Apr 20	% change since Dec 15	% change since Dec 16	% change since Dec 17	% change since Dec 18	% change since Dec 18	% change since Apr 20
Overall	1,017	-111	-104	-46	-27	-27	+1	-9.8%	-9.3%	-4.4%	-2.6%	-2.6%	+0.1%
Medical & Dental	6	-4	-3	-2	-1	-1		-0.4%	-0.3%	-0.3%	-0.1%	-0.1%	+0.0%
SHO/ Interns	2	-1	-1	-1				-0.3%	-0.3%	-0.3%	+0.0%	+0.0%	+0.0%
Medical/ Dental, other	4	-3	-2	-1	-1	-1		-0.4%	-0.3%	-0.2%	-0.2%	-0.2%	+0.0%
Nursing & Midwifery	320	-35	-21	-3	+18	+18	+5	-0.1%	-0.1%	-0.0%	+0.1%	+0.1%	+0.0%
Nurse/ Midwife Manager	76	-1	-8	+1	+2	+2	-2	-0.0%	-0.1%	+0.0%	+0.0%	+0.0%	-0.0%
Nurse/ Midwife Specialist & AN/MP	4	-0	+0		-1	-1	+0	-0.0%	+0.0%	+0.0%	-0.2%	-0.2%	+0.1%
Staff Nurse/ Staff Midwife	237	-37	-16	-8	+13	+13	+13	-0.1%	-0.1%	-0.0%	+0.1%	+0.1%	+0.1%
Public Health Nurse		-2	-0					-1.0%	-1.0%	-1.0%	-1.0%	-1.0%	-1.0%
Nursing/ Midwifery Student	3	+3	+3	+3	+3	+3	-6	-1.0%	-1.0%	-1.0%	-1.0%	-1.0%	-0.6%
Health & Social Care Professionals	30	-6	-8	-7	-9	-9	-2	-0.2%	-0.2%	-0.2%	-0.2%	-0.2%	-0.1%
Therapy Professions	14	-2	-3	-3	-3	-3	-1	-0.1%	-0.2%	-0.2%	-0.2%	-0.2%	-0.1%
Health Science/ Diagnostics		-1	-1					-1.0%	-1.0%	-1.0%	-1.0%	-1.0%	-1.0%
Social Workers	13	-1	-2	-1	-3	-3	-1	-0.1%	-0.2%	-0.1%	-0.2%	-0.2%	-0.1%
Pharmacy	3	-1	-1	-1	-1	-1		-0.3%	-0.3%	-0.3%	-0.3%	-0.3%	+0.0%
H&SC, Other	1	-1	-1	-1	-1	-1		-0.5%	-0.5%	-0.5%	-0.5%	-0.5%	+0.0%
Management & Administrative	53	-1	+0	+3	+9	+9	-1	-0.0%	+0.0%	+0.1%	+0.2%	+0.2%	-0.0%
Management (VIII & above)	6	-2	-2	+1	+2	+2	+0	-0.3%	-0.3%	+0.2%	+0.5%	+0.5%	+0.0%
Administrative/ Supervisory (V to VII)	11	-1	+2	+1	+2	+2	-0	-0.1%	+0.2%	+0.1%	+0.2%	+0.2%	-0.0%
Clerical (III & IV)	36	+3	+1	+1	+5	+5	-1	+0.1%	+0.0%	+0.0%	+0.2%	+0.2%	-0.0%
General Support	106	-14	-15	-17	-16	-16	-2	-0.1%	-0.1%	-0.1%	-0.1%	-0.1%	-0.0%
Support	104	-13	-14	-16	-15	-15	-2	-0.1%	-0.1%	-0.1%	-0.1%	-0.1%	-0.0%
Maintenance/ Technical	2	-1	-1	-1	-1	-1		-0.3%	-0.3%	-0.3%	-0.3%	-0.3%	+0.0%
Patient & Client Care	502	-52	-57	-20	-29	-29	+1	-0.1%	-0.1%	-0.0%	-0.1%	-0.1%	+0.0%
Health Care Assistants	382	-39	-34	+2	-28	-28	+4	-0.1%	-0.1%	+0.0%	-0.1%	-0.1%	+0.0%
Care, other	4	-9	-12	-11	-3	-3	-0	-0.7%	-0.7%	-0.7%	-0.4%	-0.4%	-0.1%
Home Help	115	-4	-11	-11	+2	+2	-3	-0.0%	-0.1%	-0.1%	+0.0%	+0.0%	-0.0%

Source: Health Service Personnel Census