

CHO 7 Employment Report: November 2020

Employment by Staff Group

Nov 2020 (Dec 2019 figure: 6,515)	WTE Oct 2020	WTE Nov 2020	WTE change since Oct 20	% change since Oct 20	WTE change since Dec 19	WTE change since Nov 19
Overall	6,662	6,722	+60	+0.9%	+207	+232
Consultants	69	66	-4	-5.1%	+6	+8
Registrars	100	100	+0	+0.2%	+5	+5
SHO/ Interns	38	37	-0	-0.9%	+1	+2
Medical/ Dental, other	85	83	-2	-2.2%	+3	+2
Medical & Dental	292	286	-6	-1.9%	+15	+17
Nurse/ Midwife Manager	403	400	-3	-0.6%	+4	+5
Nurse/ Midwife Specialist & AN/MP	106	110	+4	+3.8%	+17	+18
Staff Nurse/ Staff Midwife	1,012	1,019	+8	+0.8%	+26	+21
Public Health Nurse	177	175	-1	-0.8%	+0	-2
<i>Pre-registration Nurse/ Midwife Intern</i>				-100.0%	-1	
<i>Pre-registration Nurse Intern (COVID-19)</i>	10	5	-5	-47.8%	+5	-5
<i>Post-registration Nurse/ Midwife Student</i>	21	23	+2	+12.1%	+2	+2
<i>Nursing/ Midwifery awaiting registration</i>	5	4	-1	-17.0%	-5	-1
Nursing/ Midwifery Student	36	33	-3	-9.4%	+1	+2
Nursing/ Midwifery other	12	11	-1	-6.4%	+1	+2
Nursing & Midwifery	1,746	1,749	+3	+0.2%	+49	+45
Therapy Professions	456	460	+4	+0.8%	+10	+14
Health Science/ Diagnostics	4	4	+0	+0.2%	+1	+1
Social Care	385	394	+9	+2.4%	+23	+31
Social Workers	107	109	+2	+1.8%	+5	+6
Psychologists	88	86	-1	-1.4%	+6	+8
Pharmacy	41	38	-3	-7.2%	-2	-1
H&SC, Other	42	42	+1	+1.2%	-2	-2
Health & Social Care Professionals	1,123	1,133	+11	+1.0%	+39	+57
Management (VIII & above)	79	84	+5	+6.6%	+11	+10
Administrative/ Supervisory (V to VII)	202	206	+4	+1.9%	+24	+18
Clerical (III & IV)	376	380	+4	+1.0%	+30	+31
Management & Administrative	657	670	+13	+2.0%	+65	+59
Support	396	402	+6	+1.5%	-8	-11
Maintenance/ Technical	45	45	-0	-0.7%	+4	+3
General Support	442	447	+6	+1.3%	-4	-8
Health Care Assistants	1,660	1,684	+24	+1.4%	+29	+34
Care, other	610	619	+9	+1.5%	+9	+15
Home Help	132	132	-0	-0.4%	+5	+12
Patient & Client Care	2,403	2,435	+32	+1.3%	+43	+62

CHO 7 Employment Report: November 2020

Community Health & Wellbeing

Nov 2020 (figure:)	WTE Oct 2020	WTE Nov 2020	WTE change since Oct 20	% change since Oct 20	WTE change since	WTE change since
Total Community Health & Wellbeing	10	12	+2	+26.1%	+12	+12
<i>Occupational Therapists</i>	1	0	-1	-93.0%	+0	-1
Therapy Professions	1	0	-1	-93%	+0	+0
Health & Social Care Professionals	1	0	-1	-93.0%	+0	+0
Management (VIII & above)	1	2	+1	+81%	+2	+2
Administrative/ Supervisory (V to VII)	3	5	+2	+67%	+5	+5
Clerical (III & IV)	1	1	+1	+107%	+1	+1
Management & Administrative	5	8	+3	+74.8%	+8	+8
Care, other	4	4	+0	+0%	+4	+4
Patient & Client Care	4	4	+0	+0.3%	+4	+4

Mental Health

Nov 2020 (Dec 2019 figure: 835)	WTE Oct 2020	WTE Nov 2020	WTE change since Oct 20	% change since Oct 20	WTE change since Dec 19	WTE change since Nov 19
Total Mental Health	866	861	-4	-0.5%	+26	+30
Consultants	54	52	-2	-3%	+4	+7
Registrars	54	53	-1	-1%	+7	+7
SHO/ Interns	19	19	+0	+1%	-1	-0
Medical & Dental	127	125	-2	-1.5%	+10	+14
Nurse/ Midwife Manager	118	116	-2	-2%	-1	+1
Nurse/ Midwife Specialist & AN/MP	47	49	+1	+3%	+9	+10
Staff Nurse/ Staff Midwife	195	200	+5	+3%	+5	+0
<i>Pre-registration Nurse/ Midwife Intern</i>				-100.0%	-1	
<i>Pre-registration Nurse Intern (COVID-19)</i>	10	5	-5	-47.8%	+5	-5
<i>Post-registration Nurse/ Midwife Student</i>	1	1			+1	
<i>Nursing/ Midwifery awaiting registration</i>	4	3	-1	-23.7%	-7	-1
Nursing/ Midwifery Student	15	9	-6	-39%	-2	-1
Nursing/ Midwifery other	9	8	-1	-9%	+0	+2
Nursing & Midwifery	384	382	-2	-0.6%	+12	+12
Therapy Professions	46	50	+4	+8%	+2	+3
Social Care	8	8	-0	-5%	-0	-0
Social Workers	36	37	+2	+5%	+3	+4
Psychologists	34	31	-2	-7%	-0	+1
Pharmacy	1	1	-0	-1%	-0	-0
H&SC, Other	19	19	-0	-1%	+1	+1
Health & Social Care Professionals	144	146	+3	+1.7%	+6	+10
Management (VIII & above)	3	3	0	0		
Administrative/ Supervisory (V to VII)	18	17	-1	-5%	+2	+1
Clerical (III & IV)	49	49	-1	-1%	+2	+2
Management & Administrative	71	69	-1	-2.1%	+4	+3
Support	16	17	+1	+4%	-1	-2
Maintenance/ Technical	2	2	0	0	+0	
General Support	18	19	+1	+3.2%	-1	-2
Health Care Assistants	36	35	-1	-3%	+1	+0
Care, other	86	86	-0	-1%	-6	-6
Patient & Client Care	122	120	-1	-1.2%	-5	-5

Primary Care

Nov 2020 (Dec 2019 figure: 1,702)	WTE Oct 2020	WTE Nov 2020	WTE change since Oct 20	% change since Oct 20	WTE change since Dec 19	WTE change since Nov 19
Total Primary Care	1,734	1,745	+11	+0.6%	+43	+26
Consultants	15	13	-2	-13%	+1	+1
Registrars	44	44	+0	+1%	-2	-2
SHO/ Interns	9	9	-0	-2%	+3	+2
Medical/ Dental, other	80	78	-2	-2%	+3	+3
Medical & Dental	148	144	-4	-2.5%	+5	+4
Nurse/ Midwife Manager	85	84	-1	-1%	+4	+3
Nurse/ Midwife Specialist & AN/MP	51	54	+3	+6%	+8	+8
Staff Nurse/ Staff Midwife	202	196	-6	-3%	-9	-11
Public Health Nurse	177	175	-1	-1%	+0	-2
<i>Post-registration Nurse/ Midwife Student</i>	20	22	+2	+12.7%	+1	+2
Nursing/ Midwifery Student	20	22	+2	+13%	+1	+1
Nursing/ Midwifery other	2	2	0	0		-1
Nursing & Midwifery	535	533	-2	-0.4%	+3	-2
Therapy Professions	261	259	-2	-1%	-7	-10
Health Science/ Diagnostics	1	1	+0	+1%	+1	+1
Social Care	4	4	0	0	+0	-0
Social Workers	25	26	+1	+6%	+0	-1
Psychologists	23	24	+1	+4%	+3	+3
Pharmacy	32	31	-1	-3%	-1	+1
H&SC, Other	20	21	+1	+4%	-3	-3
Health & Social Care Professionals	366	366	+0	+0.1%	-7	-9
Management (VIII & above)	30	28	-1	-4%	-5	-6
Administrative/ Supervisory (V to VII)	83	82	-0	-0%	+6	+3
Clerical (III & IV)	191	192	+1	+0%	+14	+12
Management & Administrative	304	303	-1	-0.2%	+16	+9
Support	112	112	-0	-0%	-4	-4
Maintenance/ Technical	9	9	+0	+0%	+1	+1
General Support	121	121	+0	+0.0%	-3	-3
Health Care Assistants	132	151	+19	+14%	+30	+29
Care, other	127	126	-1	-1%	-2	-2
Patient & Client Care	260	277	+17	+6.7%	+28	+28

Social Care

Nov 2020 (Dec 2019 figure: 3,978)	WTE Oct 2020	WTE Nov 2020	WTE change since Oct 20	% change since Oct 20	WTE change since Dec 19	WTE change since Nov 19
Total Social Care	4,054	4,104	+50	+1.2%	+126	+164
Consultants	1	1	0	0		
Registrars	2	3	+0	+19%	-0	+0
SHO/ Interns	9	9	-0	-4%	-0	-0
Medical/ Dental, other	5	5	0	0		-1
Medical & Dental	17	17	+0	+0.6%	-0	-0
Nurse/ Midwife Manager	200	200	+0	+0%	+1	+1
Nurse/ Midwife Specialist & AN/MP	8	8	-0	-2%	+0	-0
Staff Nurse/ Staff Midwife	615	623	+8	+1%	+30	+32
<i>Nursing/ Midwifery awaiting registration</i>	2	2			+2	
Nursing/ Midwifery Student	2	2	0	0	+2	+2
Nursing/ Midwifery other	2	2	0	0	+1	+1
Nursing & Midwifery	827	835	+8	+1.0%	+34	+36
Therapy Professions	147	150	+3	+2%	+15	+20
Health Science/ Diagnostics	3	3	0	0		
Social Care	373	383	+10	+3%	+23	+32
Social Workers	47	45	-1	-3%	+1	+3
Psychologists	31	31	+0	+0%	+3	+4
Pharmacy	8	6	-2	-25%	-1	-2
H&SC, Other	3	3	0	0		
Health & Social Care Professionals	611	621	+9	+1.5%	+40	+57
Management (VIII & above)	45	51	+6	+12%	+14	+14
Administrative/ Supervisory (V to VII)	98	102	+3	+3%	+11	+9
Clerical (III & IV)	135	138	+3	+2%	+12	+17
Management & Administrative	279	290	+12	+4.2%	+37	+40
Support	268	274	+5	+2%	-3	-6
Maintenance/ Technical	34	34	-0	-1%	+3	+3
General Support	302	307	+5	+1.6%	-0	-3
Health Care Assistants	1,492	1,498	+6	+0%	-3	+5
Care, other	393	404	+11	+3%	+13	+19
Home Help	132	132	-0	-0%	+5	+12
Patient & Client Care	2,017	2,033	+16	+0.8%	+16	+36

CHO 7 Employment Report: November 2020

Disabilities

Nov 2020 (Dec 2019 figure: 2,982)	WTE Oct 2020	WTE Nov 2020	WTE change since Oct 20	% change since Oct 20	WTE change since Dec 19	WTE change since Nov 19
Total Disabilities	3,028	3,077	+49	+1.6%	+96	+137
Consultants	1	1				
Registrars	2	3	+0	+19.3%	-0	+0
SHO/ Interns	7	7	-0	-5.2%	-0	-0
Medical/ Dental, other	1	1				
Medical & Dental	11	11	+0	+0.9%	-0	+0
Nurse/ Midwife Manager	117	116	-1	-1.1%	-6	-7
Nurse/ Midwife Specialist & AN/MP	4	4			-1	-1
Staff Nurse/ Staff Midwife	373	377	+5	+1.3%	+3	+9
Nursing/ Midwifery other	2	2			+1	+1
Nursing & Midwifery	495	499	+4	+0.7%	-3	+2
Therapy Professions	134	137	+3	+2.1%	+15	+21
Health Science/ Diagnostics	3	3				
Social Care	373	383	+10	+2.6%	+23	+32
Social Workers	33	33	-0	-1.1%	-1	+2
Psychologists	31	31	+0	+0.4%	+3	+4
Pharmacy	5	4	-1	-19.6%	-1	-1
H&SC, Other	2	2				
Health & Social Care Professionals	581	592	+11	+1.9%	+39	+58
Management (VIII & above)	39	44	+5	+13.4%	+12	+12
Administrative/ Supervisory (V to VII)	85	87	+2	+2.6%	+8	+6
Clerical (III & IV)	96	99	+3	+3.5%	+8	+12
Management & Administrative	219	230	+11	+4.9%	+27	+30
Support	154	157	+3	+2.0%	-10	-11
Maintenance/ Technical	32	32	-0	-1.1%	+3	+3
General Support	186	188	+3	+1.5%	-7	-8
Health Care Assistants	1,130	1,140	+10	+0.9%	+28	+39
Care, other	388	399	+11	+2.8%	+13	+18
Home Help	18	17	-0	-0.9%	-2	-3
Patient & Client Care	1,536	1,557	+21	+1.4%	+39	+55

Older People

Nov 2020 (Dec 2019 figure: 996)	WTE Oct 2020	WTE Nov 2020	WTE change since Oct 20	% change since Oct 20	WTE change since Dec 19	WTE change since Nov 19
Total Older People	1,026	1,027	+1	+0.1%	+31	+27
SHO/ Interns	2	2				
Medical/ Dental, other	4	4				-1
Medical & Dental	6	6				-1
Nurse/ Midwife Manager	83	85	+1	+1.8%	+8	+8
Nurse/ Midwife Specialist & AN/MP	4	4	-0	-4.7%	+1	+1
Staff Nurse/ Staff Midwife	242	246	+3	+1.4%	+27	+23
Nursing/ Midwifery Student	2	2			+2	+2
Nursing & Midwifery	331	336	+5	+1.4%	+37	+33
Health & Social Care Professionals	31	29	-2	-6.8%	+1	-1
Management (VIII & above)	7	7	+0	+4.8%	+2	+2
Administrative/ Supervisory (V to VII)	13	15	+1	+7.6%	+3	+3
Clerical (III & IV)	39	39	-0	-1.0%	+4	+4
Management & Administrative	59	60	+1	+1.6%	+10	+10
Support	115	117	+2	+1.9%	+7	+5
Maintenance/ Technical	2	2				
General Support	117	119	+2	+1.9%	+7	+5
Health Care Assistants	362	357	-4	-1.2%	-31	-35
Care, other	5	5			+0	+0
Home Help	115	115	-0	-0.3%	+7	+15
Patient & Client Care	481	477	-5	-1.0%	-23	-20

CHO 7 Employment by Administration (HSE / S38): November 2020

Nov 2020 (Dec 2019 figure: 6,515)	WTE Oct 2020	WTE Nov 2020	WTE change since Oct 20	% change since Oct 20	WTE change since Dec 19	WTE change since Nov 19
Overall	6,662	6,722	+60	+0.9%	+207	+232
HSE	3,274	3,285	+11	+0.3%	+134	+135
Section 38 Voluntary Agencies	3,388	3,436	+49	+1.4%	+73	+97

HSE

Nov 2020 (Dec 2019 figure: 3,151)	WTE Oct 2020	WTE Nov 2020	WTE change since Oct 20	% change since Oct 20	WTE change since Dec 19	WTE change since Nov 19
Overall	3,274	3,285	+11	+0.3%	+134	+135
Consultants	59	57	-2	-0.0%	+4	+6
Registrars	93	91	-1	-0.0%	+4	+5
SHO/ Interns	24	24	+0	+0.0%	+1	+1
Medical/ Dental, other	83	81	-2	-0.0%	+3	+2
Medical & Dental	259	254	-5	-1.9%	+11	+14
Nurse/ Midwife Manager	243	243	-0	-0.0%	+11	+15
Nurse/ Midwife Specialist & AN/MP	71	72	+1	+0.0%	+11	+11
Staff Nurse/ Staff Midwife	541	546	+6	+0.0%	+27	+17
Public Health Nurse	177	175	-1	-0.0%	+0	-2
<i>Pre-registration Nurse/ Midwife Intern</i>				-1.0%	-6	-2
<i>Pre-registration Nurse Intern (COVID-19)</i>	10	5	-5	-0.5%	+5	+5
<i>Post-registration Nurse/ Midwife Student</i>	21	23	+2	+0.1%	+16	+2
<i>Nursing/ Midwifery awaiting registration</i>	5	4	-1	-0.2%	+0	-4
Nursing/ Midwifery Student	36	33	-3	-0.1%	+1	+2
Nursing/ Midwifery other	9	8	-1	-0.1%	+0	+1
Nursing & Midwifery	1,076	1,077	+0	+0.0%	+50	+43
Therapy Professions	337	338	+1	+0.0%	+13	+18
Social Care	12	11	-0	-0.0%	+0	-0
Social Workers	71	73	+1	+0.0%	+5	+8
Psychologists	65	64	-1	-0.0%	+2	+3
Pharmacy	26	24	-2	-0.1%	-1	-0
H&SC, Other	40	41	+1	+0.0%	-2	-2
Health & Social Care Professionals	552	551	-1	-0.2%	+18	+26
Management (VIII & above)	45	46	+1	+0.0%	+6	+6
Administrative/ Supervisory (V to VII)	115	117	+2	+0.0%	+21	+18
Clerical (III & IV)	263	264	+1	+0.0%	+23	+22
Management & Administrative	423	427	+4	+0.9%	+50	+46
Support	173	176	+2	+0.0%	+5	+3
Maintenance/ Technical	5	5		+0.0%	-0	-0
General Support	179	181	+2	+1.2%	+5	+2
Health Care Assistants	426	439	+13	+0.0%	-3	-7
Care, other	227	225	-2	-0.0%	-2	-0
Home Help	132	132	-0	-0.0%	+5	+12
Patient & Client Care	785	796	+11	+1.3%	+0	+5

Section 38 Voluntary Agencies

Nov 2020 (Dec 2019 figure: 3,363)	WTE Oct 2020	WTE Nov 2020	WTE change since Oct 20	% change since Oct 20	WTE change since Dec 19	WTE change since Nov 19
Overall	3,388	3,436	+49	+1.4%	+73	+97
Consultants	10	8	-1	-0.1%	+2	+2
Registrars	7	9	+1	+0.2%	+1	+0
SHO/ Interns	13	13	-1	-0.0%	+1	+1
Medical/ Dental, other	2	2	+0	+0.0%	+0	
Medical & Dental	33	33	-1	-1.6%	+4	+3
Nurse/ Midwife Manager	160	158	-2	-0.0%	-7	-10
Nurse/ Midwife Specialist & AN/MP	35	39	+3	+0.1%	+6	+6
Staff Nurse/ Staff Midwife	471	473	+2	+0.0%	-0	+5
Nursing/ Midwifery other	4	4		+0.0%	+1	+1
Nursing & Midwifery	670	673	+3	+0.5%	-1	+2
Therapy Professions	119	121	+2	+0.0%	-4	-4
Health Science/ Diagnostics	4	4	+0	+0.0%	+1	+1
Social Care	373	383	+10	+0.0%	+23	+32
Social Workers	36	36	+1	+0.0%	-1	-1
Psychologists	23	23	+0	+0.0%	+4	+5
Pharmacy	14	13	-1	-0.1%	-1	-1
H&SC, Other	2	2		+0.0%		
Health & Social Care Professionals	571	582	+12	+2.1%	+21	+31
Management (VIII & above)	34	38	+4	+0.1%	+5	+4
Administrative/ Supervisory (V to VII)	88	89	+2	+0.0%	+3	+0
Clerical (III & IV)	113	116	+3	+0.0%	+7	+10
Management & Administrative	234	243	+9	+3.9%	+15	+14
Support	223	227	+4	+0.0%	-13	-14
Maintenance/ Technical	40	40	-0	-0.0%	+4	+4
General Support	263	266	+3	+1.3%	-9	-10
Health Care Assistants	1,234	1,245	+11	+0.0%	+32	+42
Care, other	383	394	+11	+0.0%	+11	+15
Patient & Client Care	1,617	1,639	+22	+1.3%	+43	+57

CHO 7 Employment by S38 Agency: November 2020

Cheeverstown House

Nov 2020 (Dec 2019 figure: 396)	WTE Oct 2020	WTE Nov 2020	WTE change since Oct 20	% change since Oct 20	WTE change since Dec 19	WTE change since Nov 19
Overall	389	390	+1	+0.2%	-7	-8
Consultants	0	0		+0.0%		
Medical/ Dental, other	1	1		+0.0%		
Medical & Dental	1	1				
Nurse/ Midwife Manager	27	27		+0.0%	+1	-1
Nurse/ Midwife Specialist & AN/MP	2	2		+0.0%		
Staff Nurse/ Staff Midwife	102	103	+1	+0.0%	-4	-4
Nursing & Midwifery	130	131	+1	+1.1%	-3	-5
Therapy Professions	12	11	-1	-0.1%	-2	-2
Social Care	34	34		+0.0%	-1	-1
Social Workers	5	5		+0.0%	-1	-1
Psychologists	5	5		+0.0%	+1	+1
Pharmacy	0	0		+0.0%	-0	-0
H&SC, Other	2	2		+0.0%		
Health & Social Care Professionals	58	57	-1	-1.7%	-3	-3
Management (VIII & above)	2	3	+1	+0.5%	+1	+1
Administrative/ Supervisory (V to VII)	15	15	-1	-0.0%	+0	+0
Clerical (III & IV)	12	12		+0.0%	+1	+1
Management & Administrative	30	30	+1	+1.7%	+2	+2
Support	27	27		+0.0%		
Maintenance/ Technical	4	4		+0.0%		
General Support	30	30				
Health Care Assistants	129	129	-0	-0.0%	-1	-1
Care, other	11	11		+0.0%	-1	-1
Patient & Client Care	140	139	-0	-0.1%	-3	-2

Kare, Newbridge, Co Kildare

Nov 2020 (Dec 2019 figure: 360)	WTE Oct 2020	WTE Nov 2020	WTE change since Oct 20	% change since Oct 20	WTE change since Dec 19	WTE change since Nov 19
Overall	362	372	+10	+2.8%	+13	+18
Nurse/ Midwife Manager	7	7		+0.0%	-5	-4
Staff Nurse/ Staff Midwife	24	24	+0	+0.0%	+2	+2
Nursing & Midwifery	32	32	+0	+0.2%	-3	-2
Therapy Professions	12	13	+1	+0.0%	-2	-1
Social Care	64	65	+0	+0.0%	+4	+5
Social Workers	4	4		+0.0%		
Psychologists	7	7	+0	+0.1%	+3	+4
Health & Social Care Professionals	87	89	+1	+1.5%	+5	+8
Management (VIII & above)	6	6	+0	+0.1%		
Administrative/ Supervisory (V to VII)	13	13	-0	-0.0%	+1	+1
Clerical (III & IV)	14	14		+0.0%	+2	+2
Management & Administrative	32	33	+0	+0.9%	+3	+3
Support	1	1		+0.0%	-0	-0
General Support	1	1			-0	-0
Health Care Assistants	102	107	+5	+0.0%	+6	+6
Care, other	107	111	+4	+0.0%	+2	+4
Patient & Client Care	209	218	+9	+4.1%	+8	+10

Our Lady's Hospice & Care Services

Nov 2020 (Dec 2019 figure: 482)	WTE Oct 2020	WTE Nov 2020	WTE change since Oct 20	% change since Oct 20	WTE change since Dec 19	WTE change since Nov 19
Overall	490	491	+1	+0.3%	+9	+9
Consultants	9	8	-1	-0.2%	+2	+2
Registrars	5	6	+1	+0.2%	+1	+0
SHO/ Interns	6	6	-0	-0.0%	+1	+1
Medical/ Dental, other	1	1	+0	+0.0%	+0	
Medical & Dental	22	21	-1	-2.8%	+4	+3
Nurse/ Midwife Manager	45	44	-1	-0.0%	-1	-1
Nurse/ Midwife Specialist & AN/MP	31	34	+3	+0.1%	+6	+6
Staff Nurse/ Staff Midwife	98	96	-3	-0.0%	-4	-5
Nursing/ Midwifery other	2	2		+0.0%		
Nursing & Midwifery	176	176	-0	-0.2%	+2	+1
Therapy Professions	38	37	-1	-0.0%	+0	+0
Health Science/ Diagnostics	1	1	+0	+0.0%	+1	+1
Social Workers	10	11	+1	+0.1%	+0	+0
Psychologists	1	1	+0	+0.1%	+0	-0
Pharmacy	10	9	-0	-0.0%	-0	+0
Health & Social Care Professionals	60	60	-0	-0.4%	+1	+1
Management (VIII & above)	4	4		+0.0%		
Administrative/ Supervisory (V to VII)	17	18	+1	+0.1%	-2	-2
Clerical (III & IV)	29	28	-0	-0.0%	+3	+5
Management & Administrative	50	51	+1	+1.9%	+1	+3
Support	69	70	+1	+0.0%	-3	-3
Maintenance/ Technical	8	8	+0	+0.0%	+1	+1
General Support	77	78	+1	+0.9%	-2	-2
Health Care Assistants	104	105	+1	+0.0%	+3	+2
Care, other	1	1		+0.0%		
Patient & Client Care	105	105	+1	+0.9%	+3	+2

Peamount Hospital (Newcastle)

Nov 2020 (Dec 2019 figure: 486)	WTE Oct 2020	WTE Nov 2020	WTE change since Oct 20	% change since Oct 20	WTE change since Dec 19	WTE change since Nov 19
Overall	476	477	+1	+0.1%	-9	-9
Registrars	1	2	+0	+0.3%	-0	+0
SHO/ Interns	7	7	-0	-0.1%	-0	-0
Medical & Dental	9	9	+0	+1.1%	-0	+0
Nurse/ Midwife Manager	27	27	-0	-0.0%	+1	+0
Nurse/ Midwife Specialist & AN/MP	2	2		+0.0%		
Staff Nurse/ Staff Midwife	75	77	+2	+0.0%	-5	-5
Nursing Education/Clinical	1	1		+0.0%	+1	+1
Nursing/ Midwifery other	1	1		+0.0%	+1	+1
Nursing & Midwifery	105	107	+2	+1.5%	-3	-4
Therapy Professions	27	27	-0	-0.0%	-2	-3
Health Science/ Diagnostics	3	3		+0.0%		
Social Care	4	4	-0	-0.0%	+2	+2
Social Workers	5	5		+0.0%		+0
Pharmacy	4	4	-1	-0.2%	-1	-1
Health & Social Care Professionals	44	42	-1	-2.9%	-1	-1
Management (VIII & above)	4	4		+0.0%		
Administrative/ Supervisory (V to VII)	18	17	-1	-0.0%	+3	+2
Clerical (III & IV)	17	19	+2	+0.1%	-1	-0
Management & Administrative	39	40	+1	+3.4%	+2	+2
Support	42	44	+2	+0.0%	-3	-4
Maintenance/ Technical	8	8	-0	-0.0%	+1	-0
General Support	50	52	+1	+2.9%	-3	-5
Health Care Assistants	226	224	-2	-0.0%	-4	-1
Care, other	4	3	-0	-0.1%	-0	+0
Patient & Client Care	230	227	-3	-1.2%	-4	-1

Stewart's Hospital, (Palmerstown)

Nov 2020 (Dec 2019 figure: 852)	WTE Oct 2020	WTE Nov 2020	WTE change since Oct 20	% change since Oct 20	WTE change since Dec 19	WTE change since Nov 19
Overall	892	913	+20	+2.3%	+61	+57
Consultants	0	0		+0.0%		
Registrars				-1.0%		
Medical & Dental	0	0				
Nurse/ Midwife Manager	31	30	-1	-0.0%	-6	-6
Staff Nurse/ Staff Midwife	82	83	+1	+0.0%	+10	+10
Nursing/ Midwifery other	1	1		+0.0%		
Nursing & Midwifery	113	113	-1	-0.4%	+4	+4
Therapy Professions	13	18	+5	+0.4%	+2	+2
Social Care	13	13		+0.0%	+3	+3
Social Workers	6	6		+0.0%	+1	+1
Psychologists	4	4		+0.0%	-1	-1
Health & Social Care Professionals	36	41	+5	+14.0%	+5	+5
Management (VIII & above)	13	16	+3	+0.2%	+5	+4
Administrative/ Supervisory (V to VII)	15	16	+1	+0.1%	+2	-0
Clerical (III & IV)	22	24	+2	+0.1%	+1	+2
Management & Administrative	50	56	+6	+11.6%	+8	+5
Support	54	55	+1	+0.0%	-2	-2
Maintenance/ Technical	6	6		+0.0%	+1	+1
General Support	60	61	+1	+0.9%	-1	-1
Health Care Assistants	516	521	+5	+0.0%	+40	+40
Care, other	117	120	+4	+0.0%	+5	+3
Patient & Client Care	633	642	+9	+1.5%	+45	+43

St. John of God Liffey Services

Nov 2020 (Dec 2019 figure: 787)	WTE Oct 2020	WTE Nov 2020	WTE change since Oct 20	% change since Oct 20	WTE change since Dec 19	WTE change since Nov 19
Overall	779	794	+16	+2.0%	+7	+30
Registrars	1	1		+0.0%		
Medical & Dental	1	1				
Nurse/ Midwife Manager	23	22	-0	-0.0%	+3	+2
Nurse/ Midwife Specialist & AN/MP	1	1		+0.0%		
Staff Nurse/ Staff Midwife	90	91	+1	+0.0%	+1	+6
Nursing & Midwifery	113	114	+1	+0.8%	+3	+8
Therapy Professions	16	15	-1	-0.1%	-0	-1
Social Care	258	267	+9	+0.0%	+15	+22
Social Workers	6	6	-0	-0.0%	-1	-1
Psychologists	7	6	-0	-0.0%	+0	+0
Health & Social Care Professionals	286	294	+8	+2.8%	+14	+21
Management (VIII & above)	5	5		+0.0%	-1	-1
Administrative/ Supervisory (V to VII)	10	10	+1	+0.1%	-0	-0
Clerical (III & IV)	19	18	-1	-0.0%	+0	-0
Management & Administrative	33	34	+0	+0.9%	-1	-1
Support	29	30	+1	+0.0%	-5	-4
Maintenance/ Technical	14	14	-0	-0.0%	+2	+2
General Support	43	44	+1	+1.7%	-3	-3
Health Care Assistants	157	160	+2	+0.0%	-12	-4
Care, other	144	148	+3	+0.0%	+6	+9
Patient & Client Care	302	307	+6	+1.9%	-6	+5

CHO 7 Employment by Grade Group & Staff Category: November 2020

Nov 2020 (Dec 2019 figure: 6,515)	WTE Oct 2020	WTE Nov 2020	WTE change since Oct 20	% change since Oct 20	WTE change since Dec 19	WTE change since Nov 19
Overall	6,662	6,722	+60	+0.9%	+207	+232
Consultant Medicine	10	9	-1	-14.1%	+2	+2
Consultant Paediatrics	0	0				
Consultant Psychiatry	58	56	-2	-2.7%	+4	+7
Consultant Surgery	0		-0	-100.0%	-1	-1
Consultants	69	66	-4	-5.1%	+6	+8
Registrar	75	74	-1	-0.9%	+2	+2
Senior Registrar	20	20	-0	-1.0%	+1	+1
Specialist Registrar	5	6	+1	+20.0%	+2	+2
Registrars	100	100	+0	+0.2%	+5	+5
Interns	2	2	+0	+7.5%		+0
Senior House Officer	36	35	-0	-1.4%	+1	+1
SHO/ Interns	38	37	-0	-0.9%	+1	+2
Dentists	37	36	-1	-1.8%	+2	+2
Other Medical	48	47	-1	-2.5%	+1	+0
Medical/ Dental, other	85	83	-2	-2.2%	+3	+2
Medical & Dental	292	286	-6	-1.9%	+22	+17
Clinical Nurse/ Midwife Manager	325	323	-2	-0.5%	-5	-1
Director Nursing/Midwifery, Assistant	60	57	-3	-5.1%	+5	+3
Director of Nursing/Midwifery	18	20	+2	+11.9%	+4	+2
Nurse/ Midwife Manager	403	400	-3	-0.6%	+4	+5
Advanced Nurse/ Midwife Practitioner	12	12	+0	+1.3%	+8	+8
Clinical Nurse/ Midwife Specialist	94	98	+4	+4.1%	+9	+10
Nurse/ Midwife Specialist & AN/MP	106	110	+4	+3.8%	+17	+18
Staff Nurse [Intellectual Disability]	180	194	+14	+7.7%	+0	-7
Staff Nurse [Psychiatric]	187	194	+7	+3.6%	+2	-3
Staff Nurses [General/ Children's]	644	632	-13	-2.0%	+24	+31
Staff Nurse/ Staff Midwife	1,012	1,019	+8	+0.8%	+26	+21
Public Health Nurse	177	175	-1	-0.8%	+0	-2
Pre-registration Nurse/ Midwife Intern				-100.0%	-1	-2
Pre-registration Nurse Intern (COVID-19)	10	5	-5	-47.8%	+5	+5
Post-registration Nurse/ Midwife Student	21	23	+2	+12.1%	+2	+2
Nursing/ Midwifery awaiting registration	5	4	-1	-17.0%	-5	-4
Nursing/ Midwifery Student	36	33	-3	-9.4%	+1	+2
Nursing Education/Clinical	12	11	-1	-6.4%	+1	+3
Other Nursing/ Midwifery				-100.0%		-1
Nursing/ Midwifery other	12	11	-1	-6.4%	+1	+2
Nursing & Midwifery	1,746	1,749	+3	+0.2%	+49	+45
Dietitians	24	24	+0	+1.5%	-1	-1
Occupational Therapists	187	187	+0	+0.1%	+3	+9
Orthoptists	2	2			+2	+2
Physiotherapists	122	121	-1	-0.5%	+7	+4
Podiatrists & Chiropodists	2	1	-1	-50.0%		
Speech & Language Therapists	120	124	+5	+3.9%	-1	-1
Therapy Professions	456	460	+4	+0.8%	+10	+14
Clinical Measurement	2	2			+1	+1
Phlebotomists	1	1	+0	+0.8%	+0	-0
Radiographers	1	1				

Nov 2020 (Dec 2019 figure: 6,515)	WTE Oct 2020	WTE Nov 2020	WTE change since Oct 20	% change since Oct 20	WTE change since Dec 19	WTE change since Nov 19
Overall	6,662	6,722	+60	+0.9%	+207	+232
Health Science/ Diagnostics	4	4	+0	+0.2%	+1	+1
Social Care	385	394	+9	+2.4%	+23	+31
Social Workers	107	109	+2	+1.8%	+5	+6
Psychologists	88	86	-1	-1.4%	+6	+8
Pharmacy	41	38	-3	-7.2%	-2	-1
Counsellor Therapists	35	35	+0	+1.0%	-1	-2
Dental Hygienists	4	4	+0	+6.2%	-1	-0
Other Health & Social Care	2	2	-0	-5.1%	-0	-0
Play Therapists/ Specialists	1	1				
H&SC, Other	42	42	+1	+1.2%	-2	-2
Health & Social Care Professionals	1,123	1,133	+11	+1.0%	+38	+57
Executive Management	15	16	+1	+7.1%	+3	+2
Senior Management (VIII & GM)	64	68	+4	+6.4%	+8	+8
Management (VIII & above)	79	84	+5	+6.6%	+11	+10
Middle Management (V-VII)	202	205	+4	+1.9%	+24	+18
Other Administrative	1	1			-0	-0
Administrative/ Supervisory (V to VII)	202	206	+4	+1.9%	+24	+18
Clerical (III & IV)	376	380	+4	+1.0%	+30	+31
Management & Administrative	657	670	+13	+2.0%	+53	+59
Catering	56	55	-1	-2.2%	-5	-5
Household Services	262	266	+4	+1.6%	-3	-4
Other Labs & Associated	1	1				
Other Support	14	15	+1	+7.4%	+1	+0
Portering	64	65	+2	+2.8%	-2	-2
Support	396	402	+6	+1.5%	-8	-11
Maintenance	40	40	-0	-0.7%	+3	+2
Technical Services	5	5			+1	+1
Maintenance/ Technical	45	45	-0	-0.7%	+4	+3
General Support	442	447	+6	+1.3%	-38	-8
HCA, Nurse's Aide, etc.	1,641	1,666	+25	+1.5%	+24	+29
Health & Social Care Assistants	19	17	-2	-8.5%	+5	+5
Health Care Assistants	1,660	1,684	+24	+1.4%	+29	+34
Community Welfare Officers	1	1				
Other Care Grades	610	619	+9	+1.5%	+9	+15
Care, other	610	619	+9	+1.5%	+9	+15
Home Help	132	132	-0	-0.4%	+5	+12
Patient & Client Care	2,403	2,435	+32	+1.3%	+43	+62

CHO 7 HSE Employment by Grade Group & Staff Category: November 2020

Nov 2020 (Dec 2019 figure: 3,151)	WTE Oct 2020	WTE Nov 2020	WTE change since Oct 20	% change since Oct 20	WTE change since Dec 19	WTE change since Nov 19
Overall	3,274	3,285	+11	+0.3%	+134	+135
Consultant Medicine	1	1				
Consultant Psychiatry	58	56	-2	-2.7%	+4	+7
Consultant Surgery	0		-0	-100.0%	-1	-1
Consultants	59	57	-2	-3.5%	+4	+6
Registrar	72	70	-1	-1.6%	+3	+4
Senior Registrar	20	20	-0	-1.0%	+1	+1
Specialist Registrar	1	1				
Registrars	93	91	-1	-1.4%	+4	+5
SHO/ Interns	24	24	+0	+1.0%	+1	+1
Dentists	37	36	-1	-1.8%	+2	+2
Other Medical	46	45	-1	-2.7%	+1	+0
Medical/ Dental, other	83	81	-2	-2.3%	+3	+2
Medical & Dental	259	254	-5	-1.9%	+19	+14
Clinical Nurse/ Midwife Manager	178	179	+1	+0.3%	+3	+10
Director Nursing/Midwifery, Assistant	51	49	-2	-4.1%	+4	+2
Director of Nursing/Midwifery	14	15	+1	+8.1%	+4	+2
Nurse/ Midwife Manager	243	243	-0	-0.2%	+11	+15
Advanced Nurse/ Midwife Practitioner	7	8	+0	+2.0%	+5	+5
Clinical Nurse/ Midwife Specialist	64	64	+0	+0.7%	+6	+7
Nurse/ Midwife Specialist & AN/MP	71	72	+1	+0.9%	+11	+11
Staff Nurse [Intellectual Disability]	1	1			+1	+1
Staff Nurse [Psychiatric]	187	194	+7	+3.6%	+2	-3
Staff Nurses [General/ Children's]	353	352	-1	-0.3%	+23	+19
Staff Nurse/ Staff Midwife	541	546	+6	+1.0%	+27	+17
Public Health Nurse	177	175	-1	-0.8%	+0	-2
Pre-registration Nurse/ Midwife Intern				-100.0%	-1	-2
Pre-registration Nurse Intern (COVID-19)	10	5	-5	-47.8%	+5	+5
Post-registration Nurse/ Midwife Student	21	23	+2	+12.1%	+2	+2
Nursing/ Midwifery awaiting registration	5	4	-1	-17.0%	-5	-4
Nursing/ Midwifery Student	36	33	-3	-9.4%	+1	+2
Nursing Education/Clinical	9	8	-1	-9.0%	+0	+2
Other Nursing/ Midwifery				-100.0%		-1
Nursing/ Midwifery other	9	8	-1	-9.0%	+0	+1
Nursing & Midwifery	1,076	1,077	+0	+0.0%	+57	+43
Dietitians	16	16	-0	-2.1%	-0	-1
Occupational Therapists	145	146	+1	+0.5%	+7	+14
Orthoptists	2	2			+2	+2
Physiotherapists	78	77	-1	-1.2%	+7	+4
Podiatrists & Chiropodists	2	1	-1	-50.0%		
Speech & Language Therapists	94	97	+3	+3.0%	-2	-1
Therapy Professions	337	338	+1	+0.4%	+13	+18
Social Care	12	11	-0	-3.6%	+0	-0
Social Workers	71	73	+1	+1.8%	+5	+8
Psychologists	65	64	-1	-2.3%	+2	+3
Pharmacy	26	24	-2	-7.1%	-1	-0
Counsellor Therapists	33	34	+0	+1.0%	-1	-2
Dental Hygienists	4	4	+0	+6.2%	-1	-0
Other Health & Social Care	2	2	-0	-5.1%	-0	-0
Play Therapists/ Specialists	1	1				

Nov 2020 (Dec 2019 figure: 3,151)	WTE Oct 2020	WTE Nov 2020	WTE change since Oct 20	% change since Oct 20	WTE change since Dec 19	WTE change since Nov 19
Overall	3,274	3,285	+11	+0.3%	+134	+135
H&SC, Other	40	41	+1	+1.3%	-2	-2
Health & Social Care Professionals	552	551	-1	-0.2%	+2	+26
Executive Management	9	9	+0	+0.6%	+2	+1
Senior Management (VIII & GM)	36	37	+1	+2.2%	+4	+5
Management (VIII & above)	45	46	+1	+1.9%	+6	+6
Administrative/ Supervisory (V to VII)	115	117	+2	+2.1%	+21	+18
Clerical (III & IV)	263	264	+1	+0.2%	+23	+22
Management & Administrative	423	427	+4	+0.9%	+35	+46
Catering	25	25	-0	-0.6%	-2	-3
Household Services	97	98	+1	+0.5%	+7	+6
Other Support	5	6	+1	+20.9%	+1	+0
Portering	46	47	+1	+1.7%	-1	-1
Support	173	176	+2	+1.2%	+5	+3
Maintenance/ Technical	5	5			-0	-0
General Support	179	181	+2	+1.2%	-14	+2
HCA, Nurse's Aide, etc.	410	423	+13	+3.2%	-10	-14
Health & Social Care Assistants	16	15	-0	-3.1%	+7	+7
Health Care Assistants	426	439	+13	+3.0%	-3	-7
Care, other	227	225	-2	-0.8%	-2	-0
Home Help	132	132	-0	-0.4%	+5	+12
Patient & Client Care	785	796	+11	+1.3%	-65	+5

Employment by WTE, Headcount, Gender, Full-Time /Part-Time etc.: Nov 2020

CHO 7	WTE	Headcount	WTE: no.	% Male	% female	Male WTE: no.	Female WTE: no.	% Total Perm	% Male Perm	% Female Perm	% Total Full Time	% Total Part Time	% Male FT	% Female FT
Overall	6,722	7,855	1.17	20.1%	79.9%	1.09	1.19	87.4%	84.3%	88.1%	69.3%	30.7%	83.3%	65.8%
Consultant Medicine	9	10	1.12	30.0%	70.0%	1.12	1.12	60.0%	60.0%	57.1%	60.0%	40.0%	66.7%	57.1%
Consultant Paediatrics	0	1	2.94		100.0%		2.94	100.0%	100.0%	100.0%	0.0%	100.0%		0.0%
Consultant Psychiatry	56	62	1.10	30.6%	69.4%	1.04	1.13	58.1%	58.1%	51.2%	82.3%	17.7%	94.7%	76.7%
Consultants	66	73	1.11	30.1%	69.9%	1.05	1.14	58.9%	72.7%	52.9%	78.1%	21.9%	90.9%	72.5%
Registrar	74	76	1.02	34.2%	65.8%	1.04	1.01	1.3%	1.3%	0.0%	100.0%	0.0%	100.0%	100.0%
Senior Registrar	20	20	1.01	50.0%	50.0%	1.01	1.02	0.0%	0.0%	0.0%	100.0%	0.0%	100.0%	100.0%
Specialist Registrar	6	6	1.00	16.7%	83.3%	1.00	1.00	0.0%	0.0%	0.0%	100.0%	0.0%	100.0%	100.0%
Registrars	100	102	1.02	36.3%	63.7%	1.03	1.01	1.0%	2.7%	0.0%	100.0%	0.0%	100.0%	100.0%
SHO/ Interns	37	44	1.18	20.5%	79.5%	1.21	1.17	0.0%	0.0%	0.0%	100.0%	0.0%	100.0%	100.0%
Dentists	36	42	1.17	16.7%	83.3%	1.08	1.19	100.0%	100.0%	100.0%	64.3%	35.7%	85.7%	60.0%
Other Medical	47	67	1.42	41.8%	58.2%	1.42	1.42	34.3%	34.3%	48.7%	22.4%	77.6%	17.9%	25.6%
Medical/ Dental, other	83	109	1.31	32.1%	67.9%	1.33	1.30	59.6%	31.4%	73.0%	38.5%	61.5%	31.4%	41.9%
Medical & Dental	286	328	1.15	31.4%	68.6%	1.14	1.15	33.2%	27.2%	36.0%	74.7%	25.3%	74.8%	74.7%
Clinical Nurse/ Midwife Manager	323	344	1.07	14.5%	85.5%	1.02	1.07	97.1%	97.1%	98.0%	86.6%	13.4%	96.0%	85.0%
Director Nursing/Midwifery, Assistant	57	61	1.07	19.7%	80.3%	1.00	1.08	95.1%	95.1%	93.9%	88.5%	11.5%	100.0%	85.7%
Director of Nursing/Midwifery	20	21	1.05	9.5%	90.5%	1.33	1.03	100.0%	100.0%	100.0%	95.2%	4.8%	100.0%	94.7%
Nurse/ Midwife Manager	400	426	1.06	15.0%	85.0%	1.02	1.07	96.9%	93.8%	97.5%	87.3%	12.7%	96.9%	85.6%
Advanced Nurse/ Midwife Practitioner	12	13	1.08	7.7%	92.3%	1.00	1.09	100.0%	100.0%	100.0%	84.6%	15.4%	100.0%	83.3%
Clinical Nurse/ Midwife Specialist	98	115	1.17	8.7%	91.3%	1.05	1.18	99.1%	99.1%	99.0%	73.9%	26.1%	100.0%	71.4%
Nurse/ Midwife Specialist & AN/MP	110	128	1.16	8.6%	91.4%	1.05	1.17	99.2%	100.0%	99.1%	75.0%	25.0%	100.0%	72.6%
Staff Nurse [Intellectual Disability]	194	239	1.23	8.8%	91.2%	1.04	1.25	95.4%	95.4%	95.0%	56.9%	43.1%	90.5%	53.7%
Staff Nurse [Psychiatric]	194	217	1.12	24.0%	76.0%	1.10	1.13	96.3%	96.3%	97.0%	83.9%	16.1%	90.4%	81.8%
Staff Nurses [General/ Children's]	632	728	1.15	9.5%	90.5%	1.05	1.16	92.3%	92.3%	92.4%	70.7%	29.3%	91.3%	68.6%
Staff Nurse/ Staff Midwife	1,019	1,184	1.16	12.0%	88.0%	1.07	1.18	93.7%	93.7%	93.7%	70.4%	29.6%	90.8%	67.6%
Public Health Nurse	175	213	1.21	0.5%	99.5%	1.11	1.21	95.8%	100.0%	95.8%	64.8%	35.2%	100.0%	64.6%
Pre-registration Nurse Intern (COVID-19)	5	7	1.29	14.3%	85.7%	3.03	1.18	0.0%	0.0%	0.0%	100.0%	0.0%	100.0%	100.0%
Post-registration Nurse/ Midwife Student	23	23	1.00		100.0%		1.00	8.7%	8.7%	8.7%	100.0%	0.0%		100.0%
Nursing/ Midwifery awaiting registration	4	5	1.13		100.0%		1.13	80.0%	80.0%	80.0%	80.0%	20.0%		80.0%

Nursing/ Midwifery Student	33	35	1.07	2.9%	97.1%	3.03	1.05	17.1%	0.0%	17.6%	97.1%	2.9%	100.0%	97.1%
Nursing Education/Clinical	11	13	1.13		100.0%		1.13	100.0%	100.0%	100.0%	76.9%	23.1%		76.9%
Nursing/ Midwifery other	11	13	1.13		100.0%		1.13	100.0%		100.0%	76.9%	23.1%		76.9%
Nursing & Midwifery	1,749	1,999	1.14	11.0%	89.0%	1.06	1.15	93.6%	93.6%	93.7%	74.2%	25.8%	93.2%	71.9%
Dietitians	24	30	1.25	6.7%	93.3%	1.00	1.27	90.0%	90.0%	89.3%	63.3%	36.7%	100.0%	60.7%
Occupational Therapists	187	213	1.14	9.4%	90.6%	1.03	1.15	88.7%	88.7%	88.6%	79.8%	20.2%	95.0%	78.2%
Orthoptists	2	2	1.00	50.0%	50.0%	1.00	1.00	50.0%	50.0%	100.0%	100.0%	0.0%	100.0%	100.0%
Physiotherapists	121	144	1.19	21.5%	78.5%	1.05	1.24	92.4%	92.4%	91.2%	72.2%	27.8%	93.5%	66.4%
Podiatrists & Chiropodists	1	1	1.00		100.0%		1.00	100.0%	100.0%	100.0%	100.0%	0.0%		100.0%
Speech & Language Therapists	124	138	1.11		100.0%		1.11	93.5%	93.5%	93.5%	89.1%	10.9%		89.1%
Therapy Professions	460	528	1.15	10.2%	89.8%	1.04	1.16	90.9%	92.6%	90.7%	79.4%	20.6%	94.4%	77.6%
Clinical Measurement	2	2	1.00	100.0%		1.00		100.0%	100.0%		100.0%	0.0%	100.0%	
Phlebotomists	1	2	1.63		100.0%		1.63	100.0%	100.0%	100.0%	0.0%	100.0%		0.0%
Radiographers	1	1	1.00		100.0%		1.00	100.0%	100.0%	100.0%	100.0%	0.0%		100.0%
Health Science/ Diagnostics	4	5	1.18	40.0%	60.0%	1.00	1.35	100.0%	100.0%	100.0%	60.0%	40.0%	100.0%	33.3%
Social Care	394	434	1.10	26.5%	73.5%	1.07	1.11	97.7%	98.3%	97.5%	74.0%	26.0%	84.3%	70.2%
Social Workers	109	122	1.12	16.4%	83.6%	1.09	1.12	95.1%	90.0%	96.1%	82.0%	18.0%	90.0%	80.4%
Psychologists	86	97	1.12	23.7%	76.3%	1.10	1.13	96.9%	100.0%	95.9%	86.6%	13.4%	87.0%	86.5%
Pharmacy	38	45	1.19	22.2%	77.8%	1.07	1.23	60.0%	40.0%	65.7%	46.7%	53.3%	40.0%	48.6%
Counsellor Therapists	35	39	1.10	30.8%	69.2%	1.06	1.12	89.7%	89.7%	88.9%	66.7%	33.3%	75.0%	63.0%
Dental Hygienists	4	8	1.88		100.0%		1.88	100.0%	100.0%	100.0%	25.0%	75.0%		25.0%
Other Health & Social Care	2	3	1.81	33.3%	66.7%	6.25	1.33	100.0%	100.0%	100.0%	0.0%	100.0%	0.0%	0.0%
Play Therapists/ Specialists	1	1	1.00	100.0%		1.00		100.0%	100.0%		100.0%	0.0%	100.0%	
H&SC, Other	42	51	1.21	27.5%	72.5%	1.13	1.24	92.2%	92.9%	91.9%	56.9%	43.1%	71.4%	51.4%
Health & Social Care	1,133	1,282	1.13	18.6%	81.4%	1.07	1.15	93.1%	93.7%	92.9%	76.2%	23.8%	84.9%	74.2%
Executive Management	16	16	1.01	37.5%	62.5%	1.00	1.01	81.3%	81.3%	90.0%	100.0%	0.0%	100.0%	100.0%
Senior Management (VIII & GM)	68	71	1.04	28.2%	71.8%	1.03	1.05	94.4%	94.4%	94.1%	95.8%	4.2%	95.0%	96.1%
Management (VIII & above)	84	87	1.03	29.9%	70.1%	1.02	1.04	92.0%	88.5%	93.4%	96.6%	3.4%	96.2%	96.7%
Administrative/ Supervisory (V to VII)	206	220	1.07	23.2%	76.8%	1.02	1.08	89.5%	82.4%	91.7%	89.1%	10.9%	98.0%	86.4%
Clerical (III & IV)	380	443	1.17	11.1%	88.9%	1.07	1.18	84.4%	81.6%	84.8%	70.7%	29.3%	85.7%	68.8%
Management & Administrative	670	750	1.12	16.8%	83.2%	1.04	1.14	86.8%	83.3%	87.5%	79.1%	20.9%	92.9%	76.3%
Catering	55	59	1.08	27.1%	72.9%	1.00	1.12	100.0%	100.0%	100.0%	74.6%	25.4%	100.0%	65.1%
Household Services	266	350	1.31	15.1%	84.9%	1.18	1.34	85.4%	85.4%	86.9%	39.4%	60.6%	66.0%	34.7%
Other Labs & Associated	1	1	1.00		100.0%		1.00	100.0%	100.0%	100.0%	100.0%	0.0%		100.0%
Other Support	15	18	1.21	72.2%	27.8%	1.18	1.29	77.8%	77.8%	100.0%	61.1%	38.9%	69.2%	40.0%

Portering	65	68	1.04	92.6%	7.4%	1.02	1.31	83.8%	83.8%	80.0%	85.3%	14.7%	90.5%	20.0%
Support	402	496	1.23	29.2%	70.8%	1.09	1.31	86.7%	82.1%	88.6%	50.8%	49.2%	80.7%	38.5%
Maintenance/ Technical	45	50	1.11	88.0%	12.0%	1.10	1.22	90.0%	88.6%	100.0%	82.0%	18.0%	86.4%	50.0%
General Support	447	546	1.22	34.6%	65.4%	1.09	1.30	87.0%	83.6%	88.8%	53.7%	46.3%	82.0%	38.7%
HCA, Nurse's Aide, etc.	1,666	1,949	1.17	24.9%	75.1%	1.09	1.20	85.4%	85.4%	85.4%	65.0%	35.0%	79.0%	60.3%
Health & Social Care Assistants	17	21	1.22	4.8%	95.2%	1.00	1.23	23.8%	23.8%	25.0%	81.0%	19.0%	100.0%	80.0%
Health Care Assistants	1,684	1,970	1.17	24.7%	75.3%	1.09	1.20	84.8%	85.2%	84.6%	65.1%	34.9%	79.1%	60.6%
Care, other	619	712	1.15	27.8%	72.2%	1.07	1.18	94.5%	94.4%	94.6%	74.2%	25.8%	87.4%	69.1%
Home Help	132	268	2.03	7.1%	92.9%	4.60	1.95	82.1%	52.6%	84.3%	16.4%	83.6%	10.5%	16.9%
Patient & Client Care	2,435	2,950	1.21	23.9%	76.1%	1.11	1.25	86.9%	86.9%	86.9%	62.9%	37.1%	79.5%	57.7%

Employment by WTE, Headcount, Gender, Full-Time /Part-Time etc.: Nov 2020

CHO 7	WTE	Headcount	WTE: no.	% Male	% female	Male WTE: no.	Female WTE: no.	% Total Perm	% Male Perm	% Female Perm	% Total Full Time	% Total Part Time	% Male FT	% Female FT
Overall	6,722	7,855	1.17	20.1%	79.9%	1.09	1.19	87.4%	84.3%	88.1%	69.3%	30.7%	83.3%	65.8%
Community Health & Wellbeing	12	15	1.25	6.7%	93.3%	1.00	1.27	93.3%	93.3%	92.9%	66.7%	33.3%	100.0%	100.0%
Mental Health	861	943	1.09	22.8%	77.2%	1.06	1.11	83.4%	83.4%	83.7%	87.0%	13.0%	94.9%	94.9%
Primary Care	1,745	2,063	1.18	16.2%	83.8%	1.10	1.20	85.2%	85.2%	87.3%	68.2%	31.8%	82.1%	82.1%
Social Care	4,104	4,834	1.18	21.3%	78.7%	1.09	1.20	89.1%	89.1%	89.4%	66.4%	33.6%	81.2%	81.2%

CHO 7 Skills Mix by Staff Grouping: November 2020

Nov 2020 (Dec 2018 figure: 6,557)	WTE Dec 2015	WTE Dec 2016	WTE Dec 2017	WTE Dec 2018	WTE Dec 2019	WTE Oct 2020	WTE Nov 2020
Overall	5,479	5,579	6,406	6,557	6,515	6,662	6,722
Consultant Medicine	2.9%	3.2%	3.5%	2.7%	2.5%	3.6%	3.1%
Consultant Paediatrics	0.2%	0.1%	0.1%	0.1%	0.1%	0.1%	0.1%
Consultant Psychiatry	23.8%	19.2%	18.2%	18.1%	19.2%	19.8%	19.7%
Consultant Surgery	0.3%	0.3%	0.2%	0.5%	0.3%	0.2%	
Consultants	27.2%	22.8%	22.0%	21.3%	22.1%	23.7%	22.9%
Registrar	10.4%	22.2%	20.7%	24.9%	26.5%	25.7%	26.0%
Senior Registrar	3.0%	4.1%	3.7%	5.3%	7.0%	6.9%	6.9%
Specialist Registrar	2.3%	1.5%	2.2%	1.8%	1.5%	1.7%	2.1%
Registrars	15.7%	27.8%	26.6%	31.9%	35.0%	34.3%	35.0%
Interns	0.9%	0.8%	0.8%	0.8%	0.7%	0.6%	0.7%
Senior House Officer	18.1%	15.3%	16.0%	12.6%	12.5%	12.2%	12.3%
SHO/ Interns	19.0%	16.1%	16.8%	13.3%	13.2%	12.9%	13.0%
Dentists	18.4%	15.6%	13.9%	13.8%	12.5%	12.6%	12.6%
Other Medical	19.8%	17.7%	20.8%	19.6%	17.2%	16.6%	16.5%
Medical/ Dental, other	38.2%	33.3%	34.7%	33.4%	29.7%	29.2%	29.1%
Medical & Dental	3.9%	4.6%	4.0%	4.0%	4.1%	100.0%	4.3%
Clinical Nurse/ Midwife Manager	17.4%	18.8%	19.0%	18.9%	19.3%	18.6%	18.5%
Director Nursing/Midwifery, Assistant	2.9%	3.3%	2.9%	3.3%	3.1%	3.5%	3.3%
Director of Nursing/Midwifery	1.1%	1.0%	1.3%	1.1%	0.9%	1.0%	1.1%
Nurse/ Midwife Manager	21.4%	23.2%	23.2%	23.3%	23.3%	23.1%	22.9%
Advanced Nurse/ Midwife Practitioner	0.1%	0.1%	0.1%	0.1%	0.3%	0.7%	0.7%
Clinical Nurse/ Midwife Specialist	4.0%	4.1%	4.5%	5.0%	5.3%	5.4%	5.6%
Nurse/ Midwife Specialist & AN/MP	4.1%	4.2%	4.6%	5.1%	5.5%	6.1%	6.3%
Staff Nurse [Intellectual Disability]	14.4%	14.2%	13.4%	12.9%	11.4%	10.3%	11.1%
Staff Nurse [Psychiatric]	14.7%	13.3%	13.2%	11.7%	11.2%	10.7%	11.1%
Staff Nurses [General/ Children's]	32.5%	31.5%	32.9%	33.9%	35.7%	36.9%	36.1%
Staff Nurse/ Staff Midwife	61.6%	59.1%	59.4%	58.6%	58.4%	57.9%	58.3%
Public Health Nurse	10.9%	11.2%	10.8%	11.5%	10.3%	10.1%	10.0%
Pre-registration Nurse/ Midwife Intern	0.1%	0.1%		0.4%	0.1%		
Pre-registration Nurse Intern (COVID-19)						0.6%	0.3%
Post-registration Nurse/ Midwife Student	1.5%	1.4%	0.9%	0.4%	1.2%	1.2%	1.3%
Nursing/ Midwifery awaiting registration			0.5%	0.2%	0.6%	0.3%	0.3%
Nursing/ Midwifery Student	1.6%	1.5%	1.4%	1.0%	1.9%	2.1%	1.9%
Nursing/ Midwifery other	0.6%	0.8%	0.5%	0.5%	0.6%	0.7%	0.7%
Nursing & Midwifery	29.8%	28.8%	26.9%	25.9%	26.1%	100.0%	26.0%
Dietitians	2.3%	2.4%	1.8%	2.3%	2.3%	2.1%	2.1%
Occupational Therapists	21.3%	21.3%	16.1%	16.9%	16.8%	16.6%	16.5%
Orthoptists	0.0%	0.0%				0.2%	0.2%
Physiotherapists	15.3%	15.4%	11.8%	11.5%	10.4%	10.8%	10.7%
Podiatrists & Chiropodists	0.1%	0.1%	0.1%	0.1%	0.1%	0.2%	0.1%
Speech & Language Therapists	11.9%	13.5%	12.1%	11.2%	11.5%	10.7%	11.0%
Therapy Professions	50.8%	52.8%	41.9%	41.9%	41.1%	40.6%	40.5%
Audiology	0.0%	0.1%					
Clinical Measurement	0.1%	0.1%	0.1%	0.1%	0.1%	0.2%	0.2%
Medical Laboratory		0.1%					
Phlebotomists	0.1%	0.1%	0.1%	0.1%	0.1%	0.1%	0.1%
Radiographers	0.2%	0.1%	0.1%	0.1%	0.1%	0.1%	0.1%
Health Science/ Diagnostics	0.4%	0.5%	0.3%	0.3%	0.3%	0.4%	0.4%
Social Care	15.7%	14.2%	31.3%	32.8%	33.9%	34.3%	34.8%
Social Workers	12.9%	13.9%	10.7%	10.1%	9.6%	9.6%	9.6%
Psychologists	9.4%	8.7%	8.1%	7.7%	7.4%	7.8%	7.6%

Nov 2020 (Dec 2018 figure: 6,557)	WTE Dec 2015	WTE Dec 2016	WTE Dec 2017	WTE Dec 2018	WTE Dec 2019	WTE Oct 2020	WTE Nov 2020
Overall	5,479	5,579	6,406	6,557	6,515	6,662	6,722
Pharmacy	5.5%	4.8%	3.7%	3.5%	3.7%	3.6%	3.3%
Counsellor Therapists	4.2%	3.9%	3.1%	2.8%	3.3%	3.1%	3.1%
Dental Hygienists	0.5%	0.4%	0.3%	0.4%	0.5%	0.4%	0.4%
Other Health & Social Care	0.5%	0.6%	0.5%	0.4%	0.2%	0.2%	0.1%
Play Therapists/ Specialists	0.1%	0.1%	0.1%	0.1%	0.1%	0.1%	0.1%
H&SC, Other	5.2%	5.1%	4.1%	3.7%	4.1%	3.7%	3.7%
Health & Social Care Professionals	13.8%	14.2%	16.4%	16.7%	16.8%	100.0%	16.9%
Executive Management	2.2%	2.9%	2.5%	1.9%	2.1%	2.3%	2.4%
Senior Management (VIII & GM)	9.4%	8.7%	8.5%	9.2%	9.9%	9.7%	10.2%
Management (VIII & above)	11.7%	11.6%	11.0%	11.1%	12.0%	12.0%	12.5%
Middle Management (V-VII)	24.1%	23.7%	26.0%	27.2%	29.9%	30.7%	30.6%
Other Administrative	0.2%	0.1%	0.2%	0.1%	0.2%	0.1%	0.1%
Administrative/ Supervisory (V to VII)	24.3%	23.8%	26.1%	27.3%	30.1%	30.8%	30.8%
Clerical (III & IV)	64.0%	64.6%	62.9%	61.6%	57.9%	57.2%	56.7%
Management & Administrative	9.8%	10.0%	9.5%	9.4%	9.5%	100.0%	10.0%
Catering	12.1%	12.0%	13.0%	12.8%	13.1%	12.6%	12.2%
Household Services	59.6%	59.9%	59.9%	60.4%	59.5%	59.3%	59.6%
Other Labs & Associated	0.3%	0.2%	0.2%	0.2%	0.2%	0.2%	0.2%
Other Support	3.9%	3.7%	3.0%	3.2%	3.1%	3.1%	3.3%
Portering	17.3%	16.7%	14.5%	14.6%	14.9%	14.4%	14.6%
Support	93.2%	92.6%	90.6%	91.2%	90.9%	89.7%	89.9%
Maintenance/ Technical	6.8%	7.4%	9.4%	8.8%	9.1%	10.3%	10.1%
General Support	8.2%	7.9%	7.7%	7.4%	7.5%	100.0%	6.7%
HCA, Nurse's Aide, etc.	66.5%	66.9%	66.4%	67.6%	68.7%	68.3%	68.4%
Health & Social Care Assistants	0.5%	0.4%	0.3%	0.9%	0.5%	0.8%	0.7%
Health Care Assistants	66.9%	67.4%	66.7%	68.5%	69.2%	69.1%	69.1%
Community Welfare Officers	0.1%	0.1%	0.1%	0.0%	0.0%	0.0%	0.0%
Other Care Grades	25.0%	24.3%	26.5%	25.7%	25.5%	25.4%	25.4%
Care, other	25.1%	24.4%	26.6%	25.8%	25.5%	25.4%	25.4%
Home Help	8.0%	8.2%	6.7%	5.7%	5.3%	5.5%	5.4%
Patient & Client Care	34.5%	34.6%	35.5%	36.5%	36.7%	100.0%	36.2%
Total	100 %	100 %	100 %	100 %	100%	100 %	100 %

CHO 7 Skills Mix by Care Group: November 2020

Nov 2020 (Dec 2018 figure: 835)	WTE Dec 2015	WTE Dec 2016	WTE Dec 2017	WTE Dec 2018	WTE Dec 2019	WTE Oct 2020	WTE Nov 2020
Mental Health	837	828	859	835	834.98	865.51	861.34
Consultants	47.0%	44.2%	43.0%	43.6%	41.6%	42.3%	41.7%
Registrar	17.2%	19.7%	17.8%	25.1%	22.9%	26.0%	26.1%
Senior Registrar	6.8%	9.4%	9.8%	12.7%	16.5%	15.8%	15.8%
Specialist Registrar			1.0%		0.9%	0.8%	0.8%
Registrars	24.0%	29.1%	28.7%	37.8%	40.3%	42.5%	42.7%
Interns	2.1%	2.0%	2.1%	2.0%	1.7%	1.5%	1.6%
Senior House Officer	27.0%	24.7%	26.2%	16.6%	16.4%	13.7%	14.0%
SHO/ Interns	29.1%	26.7%	28.3%	18.6%	18.2%	15.1%	15.6%
Medical & Dental	11.5%	12.2%	11.1%	12.3%	12.3%	14.5%	14.5%
Clinical Nurse/ Midwife Manager	22.3%	25.7%	24.5%	27.0%	26.5%	25.4%	24.9%
Director Nursing/Midwifery, Assistant	3.5%	4.1%	4.5%	5.0%	4.3%	4.6%	4.6%
Director of Nursing/Midwifery	0.8%	0.8%	0.8%	0.8%	0.8%	0.7%	0.9%
Nurse/ Midwife Manager	26.6%	30.6%	29.8%	32.8%	31.5%	30.7%	30.3%
Advanced Nurse/ Midwife Practitioner			0.3%	0.3%	0.8%	1.4%	1.4%
Clinical Nurse/ Midwife Specialist	6.5%	7.2%	6.7%	7.0%	10.0%	10.9%	11.3%
Nurse/ Midwife Specialist & AN/MP	6.5%	7.2%	7.0%	7.3%	10.8%	12.4%	12.8%
Staff Nurse [Intellectual Disability]						0.3%	0.3%
Staff Nurse [Psychiatric]	63.5%	58.1%	58.4%	54.3%	51.1%	48.1%	50.1%
Staff Nurses [General/ Children's]	1.9%	1.9%	1.1%	1.2%	1.5%	2.3%	2.0%
Staff Nurse/ Staff Midwife	65.4%	60.1%	59.5%	55.5%	52.6%	50.7%	52.4%
Pre-registration Nurse/ Midwife Intern	0.4%	0.5%		1.6%	0.4%		
Pre-registration Nurse Intern (COVID-19)						2.7%	1.4%
Post-registration Nurse/ Midwife Student						0.3%	0.3%
Nursing/ Midwifery awaiting registration			2.1%	1.1%	2.7%	1.0%	0.8%
Nursing/ Midwifery Student	0.4%	0.5%	2.1%	2.8%	3.0%	4.0%	2.4%
Nursing Education/Clinical	1.1%	1.7%	1.6%	1.7%	2.0%	2.3%	2.1%
Nursing/ Midwifery other	1.1%	1.7%	1.6%	1.7%	2.0%	2.3%	2.1%
Nursing & Midwifery	44.8%	43.7%	44.9%	43.3%	43.3%	44.3%	44.3%
Dietitians	0.7%			1.4%	2.1%	1.4%	1.5%
Occupational Therapists	29.9%	30.6%	28.0%	29.8%	27.3%	27.5%	28.6%
Speech & Language Therapists	4.2%	5.0%	4.7%	3.5%	4.8%	3.3%	4.1%
Therapy Professions	34.9%	35.5%	32.7%	34.6%	34.2%	32.2%	34.3%
Social Care	8.0%	7.9%	7.4%	5.8%	5.4%	5.6%	5.2%
Social Workers	28.9%	30.2%	29.0%	26.2%	24.4%	24.8%	25.5%
Psychologists	21.0%	18.3%	20.7%	23.9%	22.4%	23.3%	21.2%
Pharmacy					0.7%	0.7%	0.7%
Counsellor Therapists	6.2%	6.6%	8.4%	7.6%	11.4%	12.3%	12.0%
Other Health & Social Care	1.1%	1.5%	1.8%	1.8%	1.4%	1.2%	1.0%
H&SC, Other	7.3%	8.1%	10.2%	9.4%	12.9%	13.5%	13.1%
Health & Social Care Professionals	16.0%	16.4%	16.9%	16.8%	16.8%	17.0%	17.0%
Management (VIII & above)	3.3%	4.3%	4.1%	3.9%	4.3%	4.0%	4.1%
Administrative/ Supervisory (V to VII)	14.9%	18.8%	23.2%	25.3%	24.1%	26.0%	25.2%
Clerical (III & IV)	81.7%	76.9%	72.7%	70.8%	71.6%	70.0%	70.7%
Management & Administrative	7.2%	8.0%	8.0%	8.8%	8.8%	8.0%	8.0%
Support	93.2%	92.3%	92.1%	91.7%	90.5%	89.0%	89.4%
Maintenance/ Technical	6.8%	7.7%	7.9%	8.3%	9.5%	11.0%	10.6%
General Support	3.4%	3.2%	3.0%	2.9%	2.9%	2.2%	2.2%

Nov 2020 (Dec 2018 figure: 835)	WTE Dec 2015	WTE Dec 2016	WTE Dec 2017	WTE Dec 2018	WTE Dec 2019	WTE Oct 2020	WTE Nov 2020
Mental Health	837	828	859	835	834.98	865.51	861.34
HCA, Nurse's Aide, etc.	33.1%	33.7%	32.2%	31.0%	26.6%	29.3%	28.8%
Health Care Assistants	33.1%	33.7%	32.2%	31.0%	26.6%	29.3%	28.8%
Care, other	66.9%	66.3%	67.8%	69.0%	73.4%	70.7%	71.2%
Patient & Client Care	17.1%	16.4%	16.1%	16.0%	16.0%	14.0%	14.0%
Total	100 %	100 %	100 %	100 %	100 %	100 %	

Nov 2020 (Dec 2018 figure: 1,776)	WTE Dec 2015	WTE Dec 2016	WTE Dec 2017	WTE Dec 2018	WTE Dec 2019	WTE Oct 2020	WTE Nov 2020
Primary Care	1,647	1,687	1,691	1,776	1,702.01	1,733.60	1,744.70
Consultant Medicine	6.3%	6.1%	6.4%	4.9%	4.8%	7.0%	6.2%
Consultant Psychiatry	3.0%	1.5%	2.2%	2.1%	2.9%	2.7%	2.8%
Consultant Surgery	0.8%	0.6%	0.3%	0.8%	0.6%	0.3%	
Consultants	10.1%	8.2%	8.9%	7.8%	8.3%	10.1%	9.0%
Registrars	8.9%	28.9%	27.1%	30.1%	33.0%	29.5%	30.4%
SHO/ Interns	5.1%	4.5%	4.2%	5.1%	4.3%	6.2%	6.2%
Dentists	39.9%	29.9%	25.7%	25.3%	24.4%	24.8%	25.0%
Other Medical	36.0%	28.5%	34.1%	31.7%	30.1%	29.4%	29.4%
Medical/ Dental, other	75.9%	58.4%	59.8%	57.0%	54.5%	54.3%	54.4%
Medical & Dental	5.9%	7.9%	8.1%	8.1%	8.5%	8.3%	8.3%
Clinical Nurse/ Midwife Manager	11.0%	10.2%	10.1%	10.2%	10.7%	10.2%	10.4%
Director Nursing/Midwifery, Assistant	3.6%	3.9%	3.7%	3.8%	3.4%	4.4%	4.1%
Director of Nursing/Midwifery	1.0%	1.1%	1.1%	1.2%	1.1%	1.2%	1.2%
Nurse/ Midwife Manager	15.5%	15.2%	14.9%	15.2%	15.2%	15.8%	15.7%
Nurse/ Midwife Specialist & AN/MP	6.5%	6.6%	8.4%	8.8%	8.7%	9.4%	10.0%
Staff Nurse/ Staff Midwife	37.5%	37.5%	36.3%	37.5%	38.7%	37.7%	36.8%
Public Health Nurse	35.0%	35.5%	36.7%	36.9%	33.1%	33.0%	32.9%
Nursing/ Midwifery Student	4.8%	4.5%	3.1%	1.3%	4.0%	3.6%	4.1%
Nursing Education/Clinical	0.6%	0.5%	0.5%	0.4%	0.4%	0.4%	0.4%
Other Nursing/ Midwifery		0.2%					
Nursing/ Midwifery other	0.6%	0.7%	0.5%	0.4%	0.4%	0.4%	0.4%
Nursing & Midwifery	30.5%	30.1%	30.1%	29.8%	31.1%	30.6%	30.6%
Dietitians	3.6%	3.8%	4.0%	4.8%	3.8%	4.0%	4.0%
Occupational Therapists	25.9%	24.9%	23.4%	26.8%	26.6%	26.1%	25.5%
Orthoptists	0.1%	0.1%				0.5%	0.5%
Physiotherapists	22.5%	23.1%	22.5%	21.4%	20.1%	22.4%	22.3%
Podiatrists & Chiropodists				0.1%	0.3%	0.5%	0.3%
Speech & Language Therapists	16.4%	18.2%	20.3%	19.2%	20.5%	17.8%	18.0%
Therapy Professions	68.5%	70.1%	70.3%	72.4%	71.4%	71.3%	70.7%
Phlebotomists	0.1%	0.2%	0.2%	0.1%	0.1%	0.3%	0.3%
Health Science/ Diagnostics	0.1%	0.2%	0.2%	0.1%	0.1%	0.3%	0.3%
Social Care	1.1%	1.1%	1.1%	1.1%	0.9%	1.0%	1.0%
Social Workers	7.6%	7.7%	7.4%	6.4%	7.0%	6.8%	7.2%
Psychologists	5.9%	5.7%	6.1%	6.2%	5.8%	6.4%	6.7%
Pharmacy	9.4%	8.2%	8.5%	7.6%	8.5%	8.7%	8.4%
Counsellor Therapists	6.1%	5.7%	5.2%	4.8%	5.0%	4.3%	4.4%
Dental Hygienists	1.0%	1.0%	0.9%	1.3%	1.4%	1.1%	1.2%
Other Health & Social Care	0.3%	0.3%	0.3%	0.3%			0.0%
H&SC, Other	7.4%	7.0%	6.4%	6.4%	6.4%	5.4%	5.6%
Health & Social Care Professionals	21.5%	21.5%	21.4%	21.4%	22.3%	21.0%	21.0%
Executive Management	1.7%	2.6%	2.3%	1.9%	2.4%	2.6%	2.6%

Nov 2020 (Dec 2018 figure: 1,776)	WTE Dec 2015	WTE Dec 2016	WTE Dec 2017	WTE Dec 2018	WTE Dec 2019	WTE Oct 2020	WTE Nov 2020
Primary Care	1,647	1,687	1,691	1,776	1,702.01	1,733.60	1,744.70
Senior Management (VIII & GM)	6.9%	6.5%	6.8%	8.0%	9.1%	7.2%	6.8%
Management (VIII & above)	8.5%	9.1%	9.1%	9.9%	11.6%	9.8%	9.4%
Administrative/ Supervisory (V to VII)	22.1%	20.8%	23.0%	22.7%	26.5%	27.3%	27.2%
Clerical (III & IV)	69.4%	70.1%	67.9%	67.4%	62.0%	63.0%	63.4%
Management & Administrative	18.4%	18.0%	18.4%	17.5%	18.3%	17.4%	17.4%
Support	94.4%	93.2%	94.6%	93.8%	93.0%	92.3%	92.3%
Maintenance	5.6%	6.1%	4.6%	5.5%	6.2%	6.9%	6.9%
Technical Services		0.7%	0.8%	0.7%	0.8%	0.8%	0.8%
Maintenance/ Technical	5.6%	6.8%	5.4%	6.2%	7.0%	7.7%	7.7%
General Support	8.4%	8.0%	7.7%	7.5%	7.8%	6.9%	6.9%
HCA, Nurse's Aide, etc.	46.0%	47.0%	48.3%	44.1%	45.9%	45.4%	49.6%
Health & Social Care Assistants	1.6%	1.0%	0.9%	6.4%	2.8%	5.6%	5.0%
Health Care Assistants	47.6%	48.0%	49.2%	50.6%	48.7%	51.0%	54.6%
Community Welfare Officers	0.8%	0.8%	0.8%	0.3%	0.4%	0.3%	0.3%
Other Care Grades	51.6%	51.2%	50.0%	49.1%	50.9%	48.6%	45.1%
Care, other	52.4%	52.0%	50.8%	49.4%	51.3%	49.0%	45.4%
Patient & Client Care	15.2%	14.5%	14.3%	15.7%	16.3%	15.9%	15.9%
Total	100 %	100 %	100 %	100 %	100 %	100 %	

Nov 2020 (Dec 2018 figure: 2,903)	WTE Dec 2015	WTE Dec 2016	WTE Dec 2017	WTE Dec 2018	WTE Dec 2019	WTE Oct 2020	WTE Nov 2020
Disabilities	1,867	1,943	2,792	2,903	2,981.59	3,027.99	3,077.18
Consultant Paediatrics	2.8%	2.9%	2.5%	3.1%	3.0%	3.0%	3.0%
Consultant Psychiatry	26.5%	19.1%	16.2%	1.9%	1.7%	1.8%	1.8%
Consultants	29.3%	22.0%	18.8%	5.0%	4.7%	4.8%	4.7%
Registrars	16.6%	26.0%	22.2%	21.5%	26.1%	22.1%	26.1%
SHO/ Interns	41.4%	43.3%	51.7%	64.3%	60.5%	64.2%	60.3%
Medical/ Dental, other	12.7%	8.7%	7.4%	9.3%	8.7%	8.9%	8.8%
Medical & Dental	0.6%	0.6%	0.5%	0.4%	0.4%	0.4%	0.4%
Clinical Nurse/ Midwife Manager	21.5%	23.2%	23.9%	22.4%	22.4%	21.7%	21.3%
Director Nursing/Midwifery, Assistant	1.2%	1.5%	1.1%	1.1%	1.1%	1.3%	1.1%
Director of Nursing/Midwifery	0.7%	0.5%	1.4%	1.0%	0.8%	0.6%	0.8%
Nurse/ Midwife Manager	23.5%	25.2%	26.4%	24.4%	24.3%	23.6%	23.2%
Advanced Nurse/ Midwife Practitioner						0.4%	0.4%
Clinical Nurse/ Midwife Specialist	1.4%	1.3%	1.3%	2.0%	1.0%	0.5%	0.5%
Nurse/ Midwife Specialist & AN/MP	1.4%	1.3%	1.3%	2.0%	1.0%	0.9%	0.9%
Staff Nurse [Intellectual Disability]	58.7%	57.6%	45.5%	43.3%	38.7%	36.2%	38.7%
Staff Nurses [General/ Children's]	15.8%	15.2%	26.7%	30.2%	35.9%	39.0%	37.0%
Staff Nurse/ Staff Midwife	74.4%	72.8%	72.2%	73.5%	74.6%	75.2%	75.6%
Nursing/ Midwifery other	0.6%	0.8%	0.1%	0.1%	0.1%	0.3%	0.3%
Nursing & Midwifery	21.5%	20.4%	18.1%	17.5%	17.0%	16.2%	16.2%
Dietitians	1.7%	1.6%	0.8%	0.8%	1.3%	1.0%	1.0%
Occupational Therapists	10.6%	13.0%	7.8%	7.0%	7.6%	7.9%	7.9%
Physiotherapists	11.0%	11.0%	6.3%	6.1%	5.5%	5.7%	5.5%
Speech & Language Therapists	10.7%	13.5%	9.1%	8.2%	7.6%	8.4%	8.7%
Therapy Professions	34.1%	39.1%	24.0%	22.1%	22.0%	23.1%	23.1%
Audiology	0.1%	0.2%					
Clinical Measurement	0.4%	0.4%	0.2%	0.2%	0.2%	0.3%	0.3%
Phlebotomists				0.2%	0.2%		
Radiographers	0.4%	0.4%	0.2%	0.2%	0.2%	0.2%	0.2%

Nov 2020 (Dec 2018 figure: 2,903)	WTE Dec 2015	WTE Dec 2016	WTE Dec 2017	WTE Dec 2018	WTE Dec 2019	WTE Oct 2020	WTE Nov 2020
Disabilities	1,867	1,943	2,792	2,903	2,981.59	3,027.99	3,077.18
Health Science/ Diagnostics	0.9%	1.0%	0.4%	0.6%	0.5%	0.5%	0.5%
Social Care	45.2%	38.3%	62.1%	64.8%	65.2%	64.3%	64.7%
Social Workers	7.9%	10.1%	5.8%	6.3%	6.0%	5.7%	5.5%
Psychologists	9.6%	9.1%	6.4%	5.1%	5.0%	5.3%	5.2%
Pharmacy	1.7%	1.6%	0.8%	0.9%	0.9%	0.8%	0.7%
Counsellor Therapists	0.7%	0.6%	0.3%	0.3%	0.3%	0.3%	0.3%
Other Health & Social Care	0.0%	0.4%	0.2%				
H&SC, Other	0.7%	1.0%	0.5%	0.3%	0.3%	0.3%	0.3%
Health & Social Care Professionals	12.3%	13.1%	18.1%	18.5%	18.0%	19.2%	19.2%
Executive Management	4.9%	5.3%	3.9%	2.6%	2.5%	2.7%	3.0%
Senior Management (VIII & GM)	17.2%	14.3%	13.3%	13.7%	13.3%	14.8%	16.0%
Management (VIII & above)	22.1%	19.5%	17.2%	16.3%	15.8%	17.6%	19.0%
Administrative/ Supervisory (V to VII)	34.6%	35.3%	34.0%	37.0%	39.0%	38.7%	37.8%
Clerical (III & IV)	43.3%	45.1%	48.7%	46.7%	45.3%	43.8%	43.2%
Management & Administrative	6.6%	6.8%	6.4%	6.5%	6.3%	7.5%	7.5%
Support	89.0%	88.2%	84.1%	85.7%	85.4%	82.7%	83.2%
Maintenance	9.7%	11.1%	15.5%	13.8%	13.0%	15.1%	14.7%
Technical Services	1.3%	0.6%	0.5%	0.5%	1.5%	2.2%	2.1%
Maintenance/ Technical	11.0%	11.8%	15.9%	14.3%	14.6%	17.3%	16.8%
General Support	8.5%	8.1%	7.7%	7.1%	7.0%	6.1%	6.1%
HCA, Nurse's Aide, etc.	71.3%	72.1%	70.6%	71.9%	72.9%	73.4%	73.1%
Health & Social Care Assistants	0.5%	0.6%	0.3%	0.2%	0.4%	0.2%	0.2%
Health Care Assistants	71.8%	72.7%	70.8%	72.1%	73.3%	73.6%	73.3%
Care, other	24.8%	24.0%	27.2%	26.2%	25.4%	25.3%	25.6%
Home Help	3.4%	3.3%	1.9%	1.6%	1.3%	1.1%	1.1%
Patient & Client Care	50.4%	50.9%	49.1%	50.0%	48.7%	50.6%	50.6%
Total	100 %	100 %	100 %	100 %	100 %	100 %	

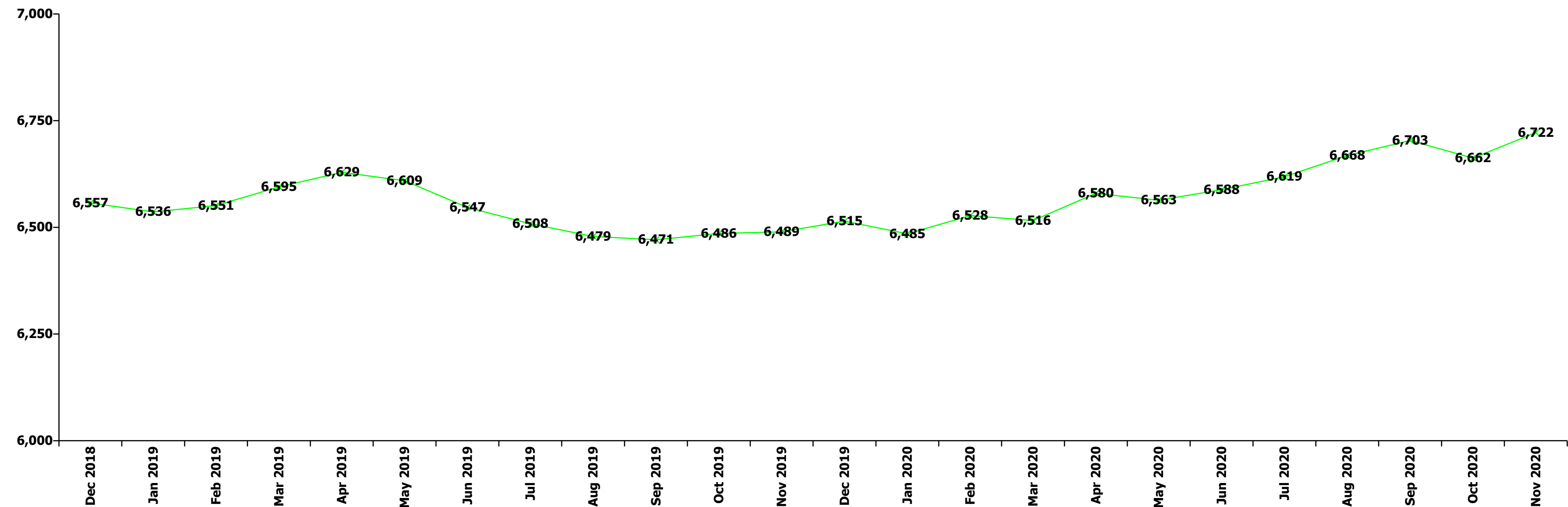
Nov 2020 (Dec 2018 figure: 1,044)	WTE Dec 2015	WTE Dec 2016	WTE Dec 2017	WTE Dec 2018	WTE Dec 2019	WTE Oct 2020	WTE Nov 2020
Older People	1,128	1,121	1,064	1,044	995.93	1,025.62	1,026.61
Senior House Officer	31.6%	33.3%	37.5%	28.6%	33.3%	33.3%	33.3%
SHO/ Interns	31.6%	33.3%	37.5%	28.6%	33.3%	33.3%	33.3%
Medical/ Dental, other	68.4%	66.7%	62.5%	71.4%	66.7%	66.7%	66.7%
Medical & Dental	0.8%	0.8%	0.8%	0.7%	0.7%	0.6%	0.6%
Clinical Nurse/ Midwife Manager	16.4%	19.1%	18.6%	18.8%	20.3%	19.5%	19.7%
Director Nursing/Midwifery, Assistant	3.3%	3.8%	2.5%	4.0%	4.3%	3.8%	3.8%
Director of Nursing/Midwifery	2.0%	1.8%	2.2%	1.7%	1.1%	1.8%	1.8%
Nurse/ Midwife Manager	21.6%	24.7%	23.2%	24.4%	25.8%	25.1%	25.2%
Nurse/ Midwife Specialist & AN/MP	1.0%	1.0%	1.1%	1.4%	0.9%	1.2%	1.1%
Staff Nurse [Psychiatric]		0.2%	0.2%				
Staff Nurses [General/ Children's]	76.9%	74.1%	75.4%	74.1%	73.3%	73.2%	73.2%
Staff Nurse/ Staff Midwife	76.9%	74.3%	75.6%	74.1%	73.3%	73.2%	73.2%
Public Health Nurse	0.4%	0.1%					
Nursing/ Midwifery awaiting registration						0.5%	0.4%
Nursing/ Midwifery Student						0.5%	0.4%
Nursing & Midwifery	31.5%	30.4%	30.4%	28.9%	30.3%	32.7%	32.7%
Dietitians		2.6%	2.7%		3.6%	3.2%	3.5%
Occupational Therapists	11.3%	10.8%	10.7%	9.6%	14.9%	14.6%	15.6%

Nov 2020 (Dec 2018 figure: 1,044)	WTE Dec 2015	WTE Dec 2016	WTE Dec 2017	WTE Dec 2018	WTE Dec 2019	WTE Oct 2020	WTE Nov 2020
Older People	1,128	1,121	1,064	1,044	995.93	1,025.62	1,026.61
Physiotherapists	27.8%	27.3%	28.3%	29.5%	30.5%	22.3%	23.6%
Podiatrists & Chiropodists	1.8%	1.9%	1.8%	2.0%			
Speech & Language Therapists	2.7%		2.7%	2.6%		3.2%	3.5%
Therapy Professions	43.6%	42.5%	46.1%	43.6%	49.0%	43.4%	46.2%
Medical Laboratory		2.6%					
Radiographers	2.1%						
Health Science/ Diagnostics	2.1%	2.6%					
Social Workers	37.5%	39.2%	37.7%	41.0%	38.6%	43.7%	43.4%
Pharmacy	11.1%	10.5%	10.8%	10.3%	8.9%	9.7%	7.0%
Other Health & Social Care	2.8%	2.6%	2.7%	2.6%			
Play Therapists/ Specialists	2.8%	2.6%	2.7%	2.6%	3.6%	3.2%	3.5%
H&SC, Other	5.6%	5.2%	5.4%	5.1%	3.6%	3.2%	3.5%
Health & Social Care Professionals	3.2%	3.4%	3.5%	3.7%	3.9%	2.8%	2.8%
Senior Management (VIII & GM)	14.9%	15.2%	10.0%	9.0%	9.9%	11.6%	12.0%
Management (VIII & above)	14.9%	15.2%	10.0%	9.0%	9.9%	11.6%	12.0%
Administrative/ Supervisory (V to VII)	23.9%	18.5%	21.1%	21.7%	22.7%	22.7%	24.0%
Clerical (III & IV)	61.1%	66.3%	68.9%	69.3%	67.4%	65.7%	64.0%
Management & Administrative	4.8%	4.7%	4.7%	4.2%	4.4%	5.9%	5.9%
Support	97.5%	97.5%	97.6%	97.5%	98.2%	98.3%	98.3%
Maintenance/ Technical	2.5%	2.5%	2.4%	2.5%	1.8%	1.7%	1.7%
General Support	10.7%	10.8%	11.6%	11.7%	12.2%	11.6%	11.6%
HCA, Nurse's Aide, etc.	76.2%	74.5%	73.0%	77.4%	77.5%	74.9%	74.7%
Health & Social Care Assistants						0.2%	0.2%
Health Care Assistants	76.2%	74.5%	73.0%	77.4%	77.5%	75.1%	74.9%
Care, other	2.4%	2.9%	2.9%	1.3%	1.0%	1.0%	1.0%
Home Help	21.4%	22.6%	24.1%	21.3%	21.5%	23.9%	24.0%
Patient & Client Care	49.0%	49.9%	49.1%	50.8%	53.3%	46.4%	46.4%
Total	100 %	100 %	100 %	100 %	100 %	100 %	

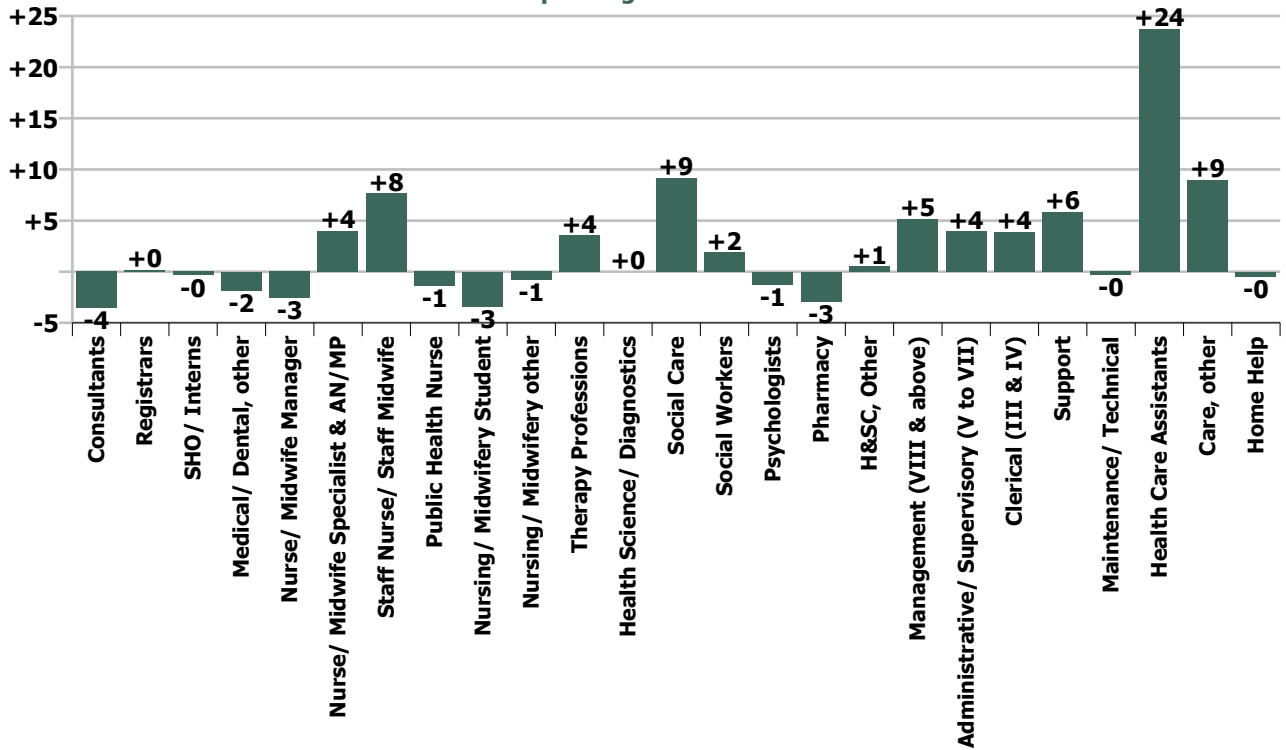
Summary Staff Movement: November 2020

Month-on-month Summary																												
WTE change since Oct 20	% change since Oct 20	overall	Consultants	Registrars	SHO/ Interns	Medical/ Dental, other	Medical & Dental	Nurse/ Midwife Manager	Nurse/ Midwife Specialist & AN/MP	Staff Nurse/ Staff Midwife	Public Health Nurse	Nursing/ Midwifery Student	Nursing/ Midwifery other	Nursing & Midwifery	Therapy Professions	Health Science/ Diagnostics	Social Care	Social Workers	Psychologists	Pharmacy	H&SC, Other	Health & Social Care Professionals	Management (VIII & above)	Administrative/ Supervisory (V to VII)	Clerical (III & IV)	Management & Administrative	General Support	Patient & Client Care
Overall	+0.9%	+60	-3.5	+0.2	-0.3	-1.8	-5.6	-2.6	+4.0	+7.6	-1.4	-3.4	-0.8	+3.5	+3.5	+0.0	+9.2	+1.9	-1.3	-2.9	+0.5	+10.9	+5.2	+3.9	+3.9	+13.0	+5.6	+32.2
Community Health & Wellbeing	+26.1%	+2													-0.9							-0.9	+0.8	+2.0	+0.6	+3.4		+0.0
Mental Health	-0.5%	-4	-1.6	-0.6	+0.3		-1.9	-2.2	+1.2	+5.2		-5.9	-0.8	-2.4	+3.9		-0.4	+1.8	-2.4	-0.0	-0.3	+2.5	0.0	-0.9	-0.6	-1.5	+0.6	-1.4
Primary Care	+0.6%	+11	-2.0	+0.3	-0.2	-1.8	-3.7	-0.6	+3.0	-5.7	-1.4	+2.5	0.0	-2.3	-2.1	+0.0	0.0	+1.5	+1.0	-1.0	+0.8	+0.3	-1.2	-0.4	+0.9	-0.6	+0.0	+17.5
Disabilities	+1.6%	+49	0.0	+0.5	-0.4	0.0	+0.1	-1.3	0.0	+4.8			0.0	+3.5	+2.8	0.0	+9.6	-0.4	+0.1	-0.9	0.0	+11.2	+5.2	+2.2	+3.3	+10.7	+2.8	+20.9
Older People	+0.1%	+1			0.0	0.0	0.0	+1.5	-0.2	+3.4		0.0		+4.7	-0.1			-1.0		-1.0	0.0	-2.1	+0.3	+1.0	-0.4	+0.9	+2.2	-4.7
Social Care	+1.2%	+50	0.0	+0.5	-0.4	0.0	+0.1	+0.2	-0.2	+8.2		0.0	0.0	+8.2	+2.7	0.0	+9.6	-1.4	+0.1	-1.9	0.0	+9.1	+5.5	+3.3	+2.9	+11.7	+4.9	+16.2
Change	+59.6	+0.9%	-5.1%	+0.2%	-0.9%	-2.2%	-1.9%	-0.6%	+3.8%	+0.8%	-0.8%	-9.4%	-6.4%	+0.2%	+0.8%	+0.2%	+2.4%	+1.8%	-1.4%	-7.2%	+1.2%	+1.0%	+6.6%	+1.9%	+1.0%	+2.0%	+1.3%	+1.3%

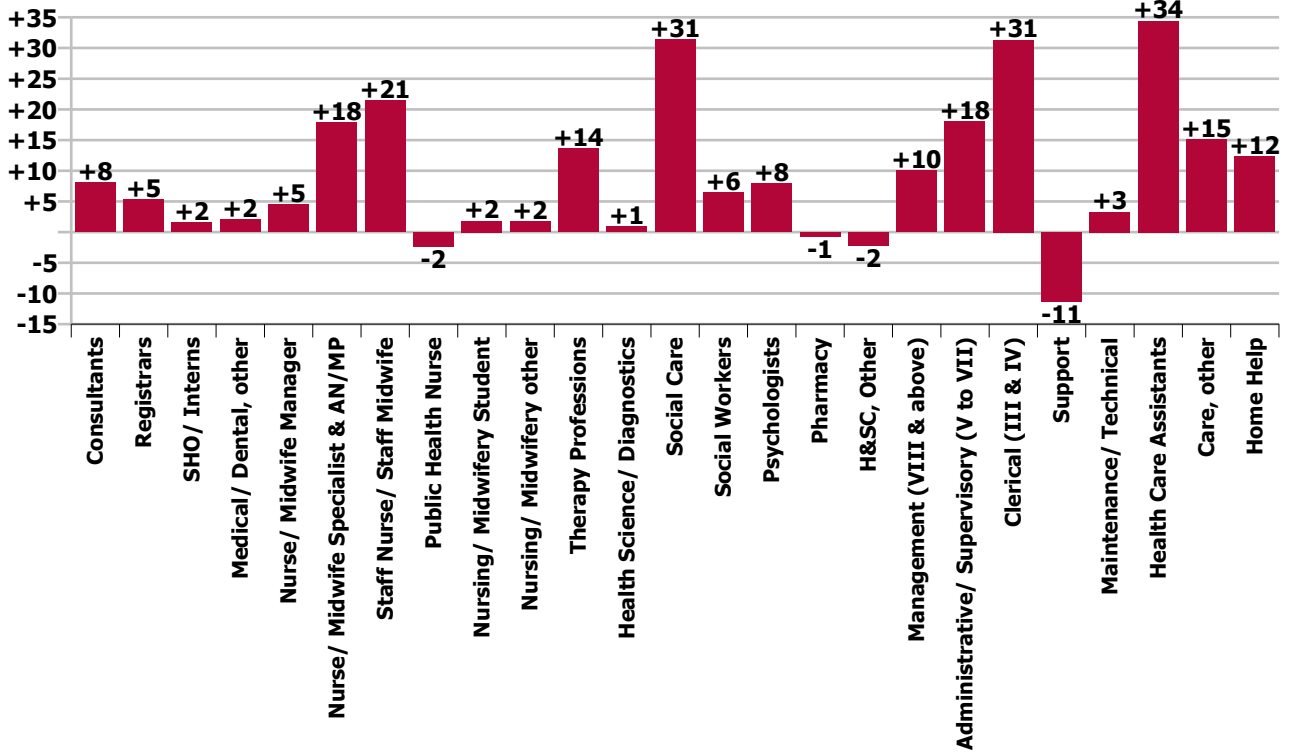
Year-on-year Summary																												
WTE change since Nov 19	% change since Nov 19	overall	Consultants	Registrars	SHO/ Interns	Medical/ Dental, other	Medical & Dental	Nurse/ Midwife Manager	Nurse/ Midwife Specialist & AN/MP	Staff Nurse/ Staff Midwife	Public Health Nurse	Nursing/ Midwifery Student	Nursing/ Midwifery other	Nursing & Midwifery	Therapy Professions	Health Science/ Diagnostics	Social Care	Social Workers	Psychologists	Pharmacy	H&SC, Other	Health & Social Care Professionals	Management (VIII & above)	Administrativ e/ Supervisory (V to VII)	Clerical (III & IV)	Management & Administrative	General Support	Patient & Client Care
Overall	+3.6%	+232	+8.1	+5.4	+1.6	+2.1	+17.1	+4.5	+17.9	+21.4	-2.4	+1.8	+1.7	+44.9	+13.6	+0.9	+31.4	+6.4	+7.9	-0.8	-2.2	+57.3	+10.1	+18.1	+31.3	+59.5	-8.0	+61.8
Community Health & Wellbeing	+26.1%	+2													+0.1							+0.1	+1.8	+5.0	+1.2	+8.0		+4.0
Mental Health	-0.5%	-4	+6.6	+7.3	-0.4		+13.6	+0.5	+10.0	+0.0		-0.7	+1.7	+11.6	+3.4		-0.0	+4.4	+0.8	-0.0	+1.0	+9.6	0.0	+1.0	+1.8	+2.9	-2.0	-5.5
Primary Care	+0.6%	+11	+1.4	-2.3	+2.0	+2.8	+4.0	+3.1	+8.0	-10.9	-2.4	+1.0	-1.0	-2.1	-10.1	+0.9	-0.2	-0.7	+3.3	+0.9	-3.2	-9.0	-5.9	+3.0	+11.7	+8.8	-2.9	+27.7
Disabilities	+4.6%	+136.7	0.0	+0.3	-0.1	0.0	+0.2	-7.5	-0.8	+9.4			+1.0	+2.1	+20.9	0.0	+31.6	+2.1	+3.8	-0.8	0.0	+57.6	+11.9	+6.1	+12.2	+30.2	-8.4	+55.1
Older People	+2.7%	+27.0			0.0	-0.7	-0.7	+8.3	+0.7	+22.9		+1.5		+33.5	-0.8			+0.6		-0.9	0.0	-1.1	+2.2	+2.9	+4.5	+9.6	+5.2	-19.5
Social Care	+1.2%	+50	0.0	+0.3	-0.1	-0.7	-0.4	+0.9	-0.2	+32.3		+1.5	+1.0	+35.5	+20.1	0.0	+31.6	+2.6	+3.8	-1.7	0.0	+56.5	+14.1	+9.0	+16.7	+39.8	-3.2	+35.5
Change	+232.5	+3.6%	+14.0%	+5.6%	+4.4%	+2.6%	+6.3%	+1.1%	+19.3%	+2.1%	-1.4%	+5.9%	+17.2%	+2.6%	+3.0%	+28.6%	+8.6%	+6.2%	+10.1%	-2.0%	-5.0%	+5.3%	+13.6%	+9.6%	+9.0%	+9.7%	-1.8%	+2.6%

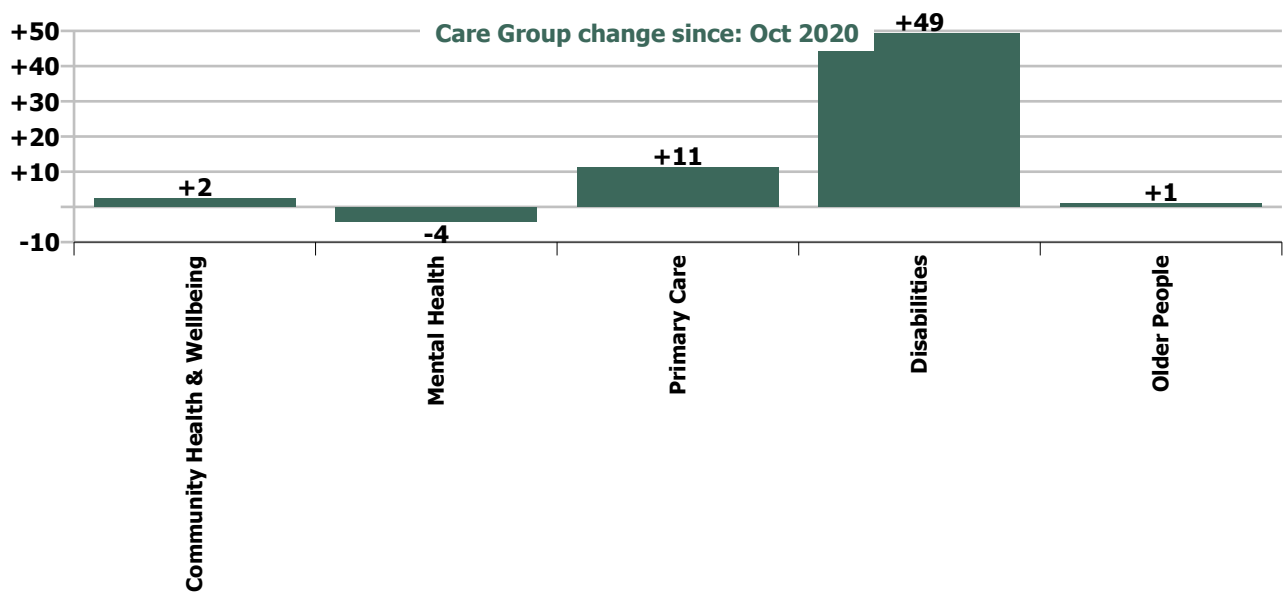


Staff Group change since: Oct 2020

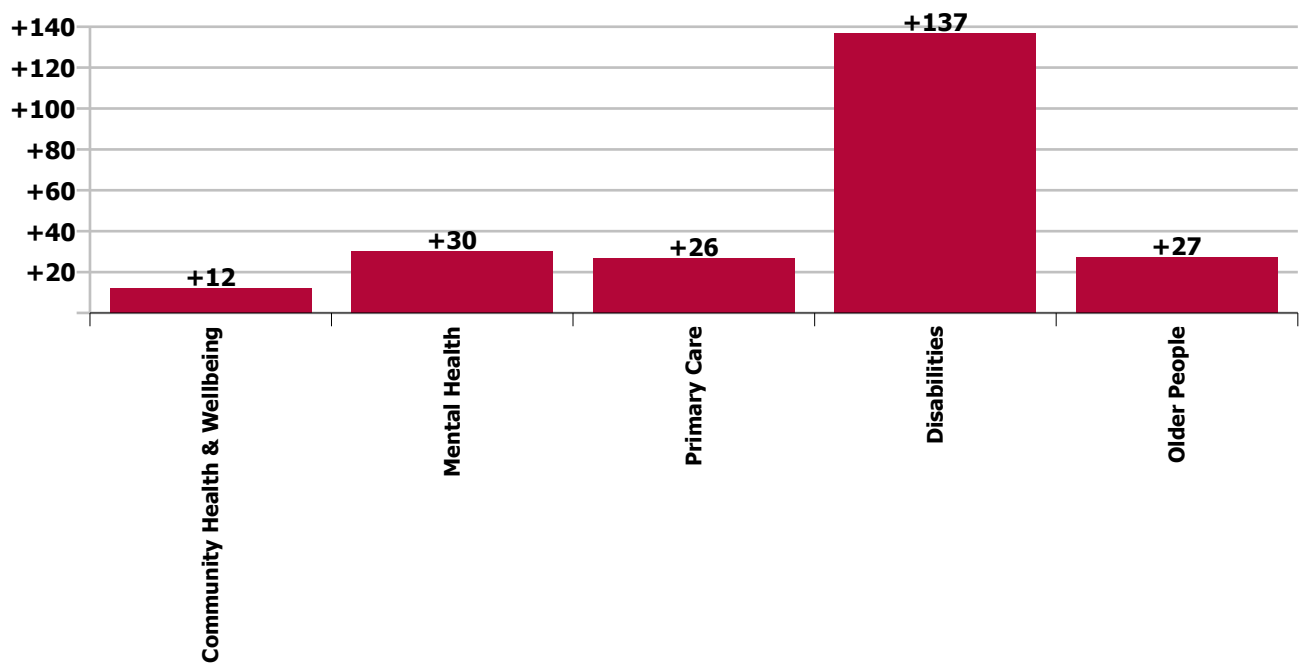


Staff Group change since: Nov 2019





Care Group change since: Nov 2019



Longitudinal Employment Levels by Grade Group - Oct 2013 to Nov 2020

Nov 2020 (Dec 2015 figure: 5,479)	WTE Nov 2020	WTE change since Dec 15	WTE change since Dec 16	WTE change since Dec 17	WTE change since Dec 18	WTE change since Dec 19	WTE change since Oct 20	% change since Dec 15	% change since Dec 16	% change since Dec 17	% change since Dec 18	% change since Dec 19	% change since Oct 20
Overall	6,722	+1,243	+1,143	+316	+165	+207	+60	+22.7%	+20.5%	+4.9%	+2.5%	+3.2%	+0.9%
Consultant Medicine	9	+3	+1	+0	+2	+2	-1	+44.9%	+9.3%	+0.9%	+25.1%	+34.0%	-14.1%
Consultant Paediatrics	0												
Consultant Psychiatry	56	+5	+7	+10	+8	+4	-2	+9.8%	+15.3%	+21.8%	+17.7%	+8.5%	-2.7%
Consultant Surgery		-1	-1	-0	-1	-1	-0	-100.0%	-100.0%	-100.0%	-100.0%	-100.0%	-100.0%
Consultants	66	+7	+7	+10	+9	+6	-4	+12.0%	+12.9%	+17.3%	+16.1%	+9.8%	-5.1%
Registrar	74	+52	+18	+22	+9	+2	-1	+232.7%	+31.6%	+41.2%	+13.0%	+3.4%	-0.9%
Senior Registrar	20	+13	+9	+10	+6	+1	-0	+204.6%	+88.6%	+112.0%	+41.4%	+4.3%	-1.0%
Specialist Registrar	6	+1	+2	+0	+1	+2	+1	+22.0%	+54.2%	+5.6%	+27.7%	+50.0%	+20.0%
Registrars	100	+66	+29	+32	+16	+5	+0	+196.6%	+41.3%	+48.0%	+18.5%	+5.6%	+0.2%
Interns	2						+0						+7.5%
Senior House Officer	35	-4	-4	-5	+2	+1	-0	-9.6%	-9.6%	-13.5%	+6.0%	+4.4%	-1.4%
SHO/ Interns	37	-4	-4	-5	+2	+1	-0	-9.1%	-9.1%	-12.8%	+5.7%	+4.1%	-0.9%
Dentists	36	-4	-4	+1	-1	+2	-1	-9.0%	-9.3%	+1.8%	-1.6%	+6.6%	-1.8%
Other Medical	47	+5	+2	-6	-5	+1	-1	+10.7%	+5.1%	-10.8%	-8.8%	+1.3%	-2.5%
Medical/ Dental, other	83	+1	-1	-5	-5	+3	-2	+1.2%	-1.7%	-5.8%	-5.8%	+3.5%	-2.2%
Medical & Dental	286	+71	+32	+32	+22	+15	-6	+32.8%	+12.4%	+12.4%	+8.1%	+5.7%	-1.9%
Clinical Nurse/ Midwife Manager	323	+39	+21	-4	+1	-5	-2	+13.9%	+6.9%	-1.2%	+0.4%	-1.6%	-0.5%
Director Nursing/Midwifery, Assistant	57	+10	+3	+7	+2	+5	-3	+20.4%	+6.4%	+14.2%	+3.1%	+10.3%	-5.1%
Director of Nursing/Midwifery	20	+2	+3	-3	+1	+4	+2	+11.9%	+19.9%	-11.8%	+2.8%	+25.0%	+11.9%
Nurse/ Midwife Manager	400	+51	+28	+0	+3	+4	-3	+14.6%	+7.4%	+0.1%	+0.9%	+1.1%	-0.6%
Advanced Nurse/ Midwife Practitioner	12	+11	+10	+10	+10	+8	+0	+1104.0%	+572.6%	+425.8%	+375.9%	+177.4%	+1.3%
Clinical Nurse/ Midwife Specialist	98	+33	+32	+21	+14	+9	+4	+49.8%	+48.7%	+26.4%	+16.1%	+9.9%	+4.1%
Nurse/ Midwife Specialist & AN/MP	110	+44	+42	+30	+23	+17	+4	+65.7%	+62.6%	+37.8%	+26.5%	+17.6%	+3.8%
Staff Nurse [Intellectual Disability]	194	-41	-34	-37	-26	+0	+14	-17.6%	-15.0%	-15.9%	-11.8%	+0.0%	+7.7%
Staff Nurse [Psychiatric]	194	-47	-21	-33	-6	+2	+7	-19.4%	-9.6%	-14.7%	-2.8%	+1.3%	+3.6%
Staff Nurses [General/ Children's]	632	+101	+124	+64	+55	+24	-13	+19.0%	+24.5%	+11.4%	+9.5%	+3.9%	-2.0%
Staff Nurse/ Staff Midwife	1,019	+13	+69	-6	+23	+26	+8	+1.3%	+7.3%	-0.6%	+2.3%	+2.7%	+0.8%
Public Health Nurse	175	-2	-5	-11	-20	+0	-1	-1.3%	-3.0%	-6.1%	-10.1%	+0.0%	-0.8%
Pre-registration Nurse/ Midwife Intern		-2	-2		-6	-1		-100.0%	-100.0%	-100.0%	-100.0%	-100.0%	-100.0%
Pre-registration Nurse Intern (COVID-19)	5	+5	+5	+5	+5	+5	-5	-100.0%	-100.0%	-100.0%	-100.0%	-100.0%	-47.8%
Post-registration Nurse/ Midwife Student	23	-1		+7	+16	+2	+2	-4.2%		+43.8%	+228.6%	+9.5%	+12.1%
Nursing/ Midwifery awaiting registration	4	+4	+4	-4	+0	-5	-1	-100.0%	-100.0%	-45.4%	+10.7%	-55.1%	-17.0%
Nursing/ Midwifery Student	33	+7	+8	+9	+16	+1	-3	+28.0%	+33.2%	+36.2%	+93.6%	+1.9%	-9.4%
Nursing Education/Clinical	11	+2	-0	+3	+3	+1	-1	+26.8%	-0.1%	+27.8%	+35.2%	+14.4%	-6.4%

Nov 2020 (Dec 2015 figure: 5,479)	WTE Nov 2020	WTE change since Dec 15	WTE change since Dec 16	WTE change since Dec 17	WTE change since Dec 18	WTE change since Dec 19	WTE change since Oct 20	% change since Dec 15	% change since Dec 16	% change since Dec 17	% change since Dec 18	% change since Dec 19	% change since Oct 20
Overall	6,722	+1,243	+1,143	+316	+165	+207	+60	+22.7%	+20.5%	+4.9%	+2.5%	+3.2%	+0.9%
Other Nursing/ Midwifery		-1	-1					-100.0%	-100.0%	-100.0%	-100.0%	-100.0%	-100.0%
Nursing/ Midwifery other	11	+2	-1	+3	+3	+1	-1	+20.1%	-8.1%	+27.8%	+35.2%	+14.4%	-6.4%
Nursing & Midwifery	1,749	+115	+141	+25	+49	+49	+3	+7.0%	+8.8%	+1.4%	+2.9%	+2.9%	+0.2%
Dietitians	24	+6	+5	+5	-1	-1	+0	+36.8%	+27.5%	+24.7%	-2.5%	-4.7%	+1.5%
Occupational Therapists	187	+27	+18	+18	+2	+3	+0	+16.7%	+10.7%	+10.7%	+1.2%	+1.8%	+0.1%
Orthoptists	2	+2	+2	+2	+2	+2		+700.0%	+700.0%	-100.0%	-100.0%	-100.0%	
Physiotherapists	121	+6	-1	-3	-5	+7	-1	+5.3%	-1.1%	-2.3%	-3.7%	+5.9%	-0.5%
Podiatrists & Chiropodists	1	+0	+0	+0	-0		-1	+53.8%	+40.8%	+53.8%	-21.9%		-50.0%
Speech & Language Therapists	124	+35	+17	-3	+2	-1	+5	+39.2%	+16.1%	-2.4%	+1.4%	-1.0%	+3.9%
Therapy Professions	460	+76	+41	+19	+1	+10	+4	+20.0%	+9.9%	+4.4%	+0.1%	+2.1%	+0.8%
Audiology		-0	-0					-100.0%	-100.0%	-100.0%	-100.0%	-100.0%	-100.0%
Clinical Measurement	2	+1	+1	+1	+1	+1		+100.0%	+100.0%	+100.0%	+100.0%	+100.0%	
Medical Laboratory			-1					-100.0%	-100.0%	-100.0%	-100.0%	-100.0%	-100.0%
Phlebotomists	1	+1	+1	+1	+0	+0	+0	+186.0%	+89.2%	+95.2%	+0.8%	+0.8%	+0.8%
Radiographers	1	-1						-43.5%					
Health Science/ Diagnostics	4	+1	+0	+2	+1	+1	+0	+25.5%	+3.7%	+60.8%	+31.4%	+31.4%	+0.2%
Social Care	394	+276	+282	+65	+35	+23	+9	+232.4%	+250.7%	+19.9%	+9.6%	+6.2%	+2.4%
Social Care	394	+276	+282	+65	+35	+23	+9	+232.4%	+250.7%	+19.9%	+9.6%	+6.2%	+2.4%
Social Workers	109	+12	-1	-3	-2	+5	+2	+12.5%	-0.6%	-2.7%	-1.5%	+4.4%	+1.8%
Psychologists	86	+15	+18	+2	+2	+6	-1	+21.8%	+25.6%	+1.8%	+2.5%	+7.0%	-1.4%
Pharmacy	38	-3	-0	-1	-0	-2	-3	-8.1%	-0.3%	-2.3%	-0.5%	-5.6%	-7.2%
Counsellor Therapists	35	+4	+4	+3	+5	-1	+0	+12.4%	+13.2%	+8.0%	+15.7%	-2.8%	+1.0%
Dental Hygienists	4	+1	+1	+1	-1	-1	+0	+20.0%	+20.0%	+27.2%	-12.2%	-16.6%	+6.2%
Other Health & Social Care	2	-2	-3	-4	-3	-0	-0	-52.6%	-66.8%	-70.5%	-63.1%	-17.0%	-5.1%
Play Therapists/ Specialists	1												
H&SC, Other	42	+3	+1	-0	+1	-2	+1	+7.0%	+3.6%	-1.1%	+3.4%	-5.0%	+1.2%
Health & Social Care Professionals	1,133	+380	+342	+83	+38	+39	+11	+50.5%	+43.1%	+7.9%	+3.4%	+3.6%	+1.0%
Executive Management	16	+4	-0	+1	+4	+3	+1	+32.6%	-0.6%	+6.1%	+32.6%	+22.4%	+7.1%
Senior Management (VIII & GM)	68	+17	+20	+16	+12	+8	+4	+34.0%	+40.8%	+31.0%	+20.5%	+13.7%	+6.4%
Management (VIII & above)	84	+21	+20	+17	+16	+11	+5	+33.8%	+30.5%	+25.4%	+22.6%	+15.3%	+6.6%
Middle Management (V-VII)	205	+75	+74	+47	+38	+24	+4	+57.9%	+56.3%	+29.7%	+22.4%	+13.3%	+1.9%
Other Administrative	1			-0		-0				-14.6%		-14.6%	
Administrative/ Supervisory (V to VII)	206	+75	+74	+47	+38	+24	+4	+57.6%	+56.0%	+29.4%	+22.3%	+13.2%	+1.9%
Clerical (III & IV)	380	+35	+22	-3	-0	+30	+4	+10.2%	+6.0%	-0.8%	-0.1%	+8.4%	+1.0%
Management & Administrative	670	+132	+115	+61	+53	+65	+13	+24.4%	+20.8%	+10.0%	+8.5%	+10.7%	+2.0%

Nov 2020 (Dec 2015 figure: 5,479)	WTE Nov 2020	WTE change since Dec 15	WTE change since Dec 16	WTE change since Dec 17	WTE change since Dec 18	WTE change since Dec 19	WTE change since Oct 20	% change since Dec 15	% change since Dec 16	% change since Dec 17	% change since Dec 18	% change since Dec 19	% change since Oct 20
Overall	6,722	+1,243	+1,143	+316	+165	+207	+60	+22.7%	+20.5%	+4.9%	+2.5%	+3.2%	+0.9%
Catering	55	+0	+2	-10	-8	-5	-1	+0.9%	+3.1%	-14.9%	-12.2%	-7.7%	-2.2%
Household Services	266	-0	+3	-29	-27	-3	+4	-0.1%	+1.0%	-9.9%	-9.2%	-0.9%	+1.6%
Other Labs & Associated	1	-0	-0		-0			-16.7%	-6.5%		-3.8%		
Other Support	15	-3	-2	-0	-1	+1	+1	-14.5%	-9.3%	-0.7%	-4.6%	+5.6%	+7.4%
Portering	65	-12	-8	-6	-5	-2	+2	-15.6%	-11.0%	-8.4%	-7.6%	-3.0%	+2.8%
Support	402	-15	-5	-45	-41	-8	+6	-3.5%	-1.3%	-10.1%	-9.2%	-2.0%	+1.5%
Maintenance	40	+12	+9	-4	-1	+3	-0	+41.8%	+30.5%	-9.1%	-1.8%	+8.2%	-0.7%
Technical Services	5	+3	+3	+3	+3	+1		+150.0%	+150.0%	+150.0%	+163.2%	+25.0%	
Maintenance/ Technical	45	+15	+12	-1	+2	+4	-0	+48.9%	+37.8%	-2.2%	+5.5%	+9.8%	-0.7%
General Support	447	+0	+7	-46	-38	-4	+6	+0.1%	+1.6%	-9.3%	-7.9%	-0.9%	+1.3%
HCA, Nurse's Aide, etc.	1,666	+410	+376	+156	+49	+24	+25	+32.7%	+29.1%	+10.4%	+3.0%	+1.5%	+1.5%
Health & Social Care Assistants	17	+9	+9	+11	-4	+5	-2	+101.2%	+106.5%	+187.0%	-19.3%	+38.8%	-8.5%
Health Care Assistants	1,684	+419	+384	+168	+45	+29	+24	+33.1%	+29.6%	+11.1%	+2.7%	+1.7%	+1.4%
Care, other	619	+146	+149	+14	+3	+9	+9	+30.7%	+31.6%	+2.3%	+0.4%	+1.5%	+1.5%
Home Help	132	-19	-27	-20	-5	+5	-0	-12.5%	-16.8%	-13.4%	-3.4%	+3.9%	-0.4%
Patient & Client Care	2,435	+546	+506	+161	+43	+43	+32	+28.9%	+26.3%	+7.1%	+1.8%	+1.8%	+1.3%

Source: Health Service Personnel Census

Longitudinal Employment Levels by Care Group - Oct 2013 to Nov 2020

Community Health & Wellbeing

Nov 2020 (figure:)	WTE Nov 2020	WTE change since	WTE change since	WTE change since	WTE change since	WTE change since	WTE change since Oct 20	% change since	% change since	% change since	% change since	% change since	% change since Oct 20
Overall	12	+12	+12	+12	+12	+12	+2	-100.0%	-100.0%	-100.0%	-100.0%	-100.0%	+26.1%
Health & Social Care Professionals	0	+0	+0	+0	+0	+0	-1	-1.0%	-1.0%	-1.0%	-1.0%	-1.0%	-0.9%
Therapy Professions	0	+0	+0	+0	+0	+0	-1	-1.0%	-1.0%	-1.0%	-1.0%	-1.0%	-0.9%
Management & Administrative	8	+8	+8	+8	+8	+8	+3	-1.0%	-1.0%	-1.0%	-1.0%	-1.0%	+0.7%
Management (VIII & above)	2	+2	+2	+2	+2	+2	+1	-1.0%	-1.0%	-1.0%	-1.0%	-1.0%	+0.8%
Administrative/ Supervisory (V to VII)	5	+5	+5	+5	+5	+5	+2	-1.0%	-1.0%	-1.0%	-1.0%	-1.0%	+0.7%
Clerical (III & IV)	1	+1	+1	+1	+1	+1	+1	-1.0%	-1.0%	-1.0%	-1.0%	-1.0%	+1.1%
Patient & Client Care	4	+4	+4	+4	+4	+4	+0	-1.0%	-1.0%	-1.0%	-1.0%	-1.0%	+0.0%
Care, other	4	+4	+4	+4	+4	+4	+0	-1.0%	-1.0%	-1.0%	-1.0%	-1.0%	+0.0%

Source: Health Service Personnel Census

Mental Health

Nov 2020 (Dec 2015 figure: 837)	WTE Nov 2020	WTE change since Dec 15	WTE change since Dec 16	WTE change since Dec 17	WTE change since Dec 18	WTE change since Dec 19	WTE change since Oct 20	% change since Dec 15	% change since Dec 16	% change since Dec 17	% change since Dec 18	% change since Dec 19	% change since Oct 20
Overall	861	+25	+34	+2	+27	+26	-4	+3.0%	+4.1%	+0.2%	+3.2%	+3.2%	-0.5%
Medical & Dental	125	+29	+24	+30	+23	+10	-2	+0.3%	+0.2%	+0.3%	+0.2%	+0.1%	-0.0%
Consultants	52	+7	+7	+11	+7	+4	-2	+0.2%	+0.2%	+0.3%	+0.2%	+0.1%	-0.0%
Registrars	53	+30	+24	+26	+15	+7	-1	+1.3%	+0.8%	+1.0%	+0.4%	+0.2%	-0.0%
SHO/ Interns	19	-9	-8	-8	+0	-1	+0	-0.3%	-0.3%	-0.3%	+0.0%	-0.1%	+0.0%
Nursing & Midwifery	382	+7	+20	-4	+20	+12	-2	+0.0%	+0.1%	-0.0%	+0.1%	+0.0%	-0.0%
Nurse/ Midwife Manager	116	+16	+5	+1	-3	-1	-2	+0.2%	+0.0%	+0.0%	-0.0%	-0.0%	-0.0%
Nurse/ Midwife Specialist & AN/MP	49	+24	+23	+22	+22	+9	+1	+1.0%	+0.9%	+0.8%	+0.9%	+0.2%	+0.0%
Staff Nurse/ Staff Midwife	200	-45	-18	-30	-1	+5	+5	-0.2%	-0.1%	-0.1%	-0.0%	+0.0%	+0.0%
Nursing/ Midwifery Student	9	+8	+8	+1	-1	-2	-6	+4.6%	+4.6%	+0.2%	-0.1%	-0.2%	-0.4%
Nursing/ Midwifery other	8	+4	+2	+2	+2	+0	-1	+1.0%	+0.3%	+0.3%	+0.3%	+0.1%	-0.1%
Health & Social Care Professionals	146	+13	+11	+1	+6	+6	+3	+0.1%	+0.1%	+0.0%	+0.0%	+0.0%	+0.0%
Therapy Professions	50	+4	+2	+3	+2	+2	+4	+0.1%	+0.0%	+0.1%	+0.0%	+0.0%	+0.1%
Social Care	8	-3	-3	-3	-1	-0	-0	-0.3%	-0.3%	-0.3%	-0.1%	-0.0%	-0.1%
Social Workers	37	-1	-4	-5	+1	+3	+2	-0.0%	-0.1%	-0.1%	+0.0%	+0.1%	+0.0%
Psychologists	31	+3	+6	+1	-2	-0	-2	+0.1%	+0.2%	+0.0%	-0.1%	-0.0%	-0.1%
Pharmacy	1	+1	+1	+1	+1	-0	-0	-1.0%	-1.0%	-1.0%	-1.0%	-0.0%	-0.0%
H&SC, Other	19	+9	+8	+4	+6	+1	-0	+1.0%	+0.7%	+0.3%	+0.5%	+0.1%	-0.0%
Management & Administrative	69	+9	+3	+0	-4	+4	-1	+0.2%	+0.0%	+0.0%	-0.1%	+0.1%	-0.0%
Management (VIII & above)	3	+1						+0.4%	+0.0%	+0.0%	+0.0%	+0.0%	+0.0%
Administrative/ Supervisory (V to VII)	17	+8	+5	+1	-1	+2	-1	+0.9%	+0.4%	+0.1%	-0.1%	+0.1%	-0.1%
Clerical (III & IV)	49	-0	-2	-1	-3	+2	-1	-0.0%	-0.0%	-0.0%	-0.1%	+0.0%	-0.0%
General Support	19	-10	-7	-7	-5	-1	+1	-0.3%	-0.3%	-0.3%	-0.2%	-0.0%	+0.0%
Support	17	-10	-7	-7	-5	-1	+1	-0.4%	-0.3%	-0.3%	-0.2%	-0.1%	+0.0%
Maintenance/ Technical	2	+0				+0		+0.0%	+0.0%	+0.0%	+0.0%	+0.1%	+0.0%
Patient & Client Care	120	-23	-16	-18	-13	-5	-1	-0.2%	-0.1%	-0.1%	-0.1%	-0.0%	-0.0%
Health Care Assistants	35	-13	-11	-10	-7	+1	-1	-0.3%	-0.2%	-0.2%	-0.2%	+0.0%	-0.0%
Care, other	86	-10	-5	-8	-6	-6	-0	-0.1%	-0.1%	-0.1%	-0.1%	-0.1%	-0.0%

Source: Health Service Personnel Census

Primary Care

Nov 2020 (Dec 2015 figure: 1,647)	WTE Nov 2020	WTE change since Dec 15	WTE change since Dec 16	WTE change since Dec 17	WTE change since Dec 18	WTE change since Dec 19	WTE change since Oct 20	% change since Dec 15	% change since Dec 16	% change since Dec 17	% change since Dec 18	% change since Dec 19	% change since Oct 20
Overall	1,745	+97	+58	+54	-31	+43	+11	+5.9%	+3.4%	+3.2%	-1.7%	+2.5%	+0.6%
Medical & Dental	144	+46	+11	+6	-1	+5	-4	+0.5%	+0.1%	+0.0%	-0.0%	+0.0%	-0.0%
Consultants	13	+3	+2	+1	+2	+1	-2	+0.3%	+0.2%	+0.0%	+0.1%	+0.1%	-0.1%
Registrars	44	+35	+5	+6	+0	-2	+0	+4.0%	+0.1%	+0.2%	+0.0%	-0.0%	+0.0%
SHO/ Interns	9	+4	+3	+3	+2	+3	-0	+0.8%	+0.5%	+0.6%	+0.2%	+0.5%	-0.0%
Medical/ Dental, other	78	+4	+1	-4	-4	+3	-2	+0.1%	+0.0%	-0.0%	-0.1%	+0.0%	-0.0%
Nursing & Midwifery	533	+30	+25	+24	+4	+3	-2	+0.1%	+0.0%	+0.0%	+0.0%	+0.0%	-0.0%
Nurse/ Midwife Manager	84	+6	+6	+8	+3	+4	-1	+0.1%	+0.1%	+0.1%	+0.0%	+0.0%	-0.0%
Nurse/ Midwife Specialist & AN/MP	54	+21	+20	+11	+7	+8	+3	+0.6%	+0.6%	+0.3%	+0.2%	+0.2%	+0.1%
Staff Nurse/ Staff Midwife	196	+7	+6	+11	-2	-9	-6	+0.0%	+0.0%	+0.1%	-0.0%	-0.0%	-0.0%
Public Health Nurse	175	-1	-5	-11	-20	+0	-1	-0.0%	-0.0%	-0.1%	-0.1%	+0.0%	-0.0%
Nursing/ Midwifery Student	22	-2	-1	+6	+15	+1	+2	-0.1%	-0.0%	+0.4%	+2.1%	+0.0%	+0.1%
Nursing/ Midwifery other	2	-1	-2	-1				-0.3%	-0.4%	-0.2%	+0.0%	+0.0%	+0.0%
Health & Social Care Professionals	366	+13	+4	+5	-14	-7	+0	+0.0%	+0.0%	+0.0%	-0.0%	-0.0%	+0.0%
Therapy Professions	259	+17	+5	+5	-16	-7	-2	+0.1%	+0.0%	+0.0%	-0.1%	-0.0%	-0.0%
Health Science/ Diagnostics	1	+1	+1	+1	+1	+1	+0	+1.9%	+0.9%	+1.0%	+4.6%	+4.6%	+0.0%
Social Care	4	-0	-0	-0	-0	+0		-0.1%	-0.1%	-0.1%	-0.1%	+0.1%	+0.0%
Social Workers	26	-0	-2	-0	+2	+0	+1	-0.0%	-0.1%	-0.0%	+0.1%	+0.0%	+0.1%
Psychologists	24	+4	+4	+2	+1	+3	+1	+0.2%	+0.2%	+0.1%	+0.0%	+0.1%	+0.0%
Pharmacy	31	-2	+1	+0	+2	-1	-1	-0.1%	+0.0%	+0.0%	+0.1%	-0.0%	-0.0%
H&SC, Other	21	-6	-5	-3	-4	-3	+1	-0.2%	-0.2%	-0.1%	-0.1%	-0.1%	+0.0%
Management & Administrative	303	+0	-0	-8	-8	+16	-1	+0.0%	-0.0%	-0.0%	-0.0%	+0.1%	-0.0%
Management (VIII & above)	28	+3	+1	+0	-2	-5	-1	+0.1%	+0.0%	+0.0%	-0.1%	-0.1%	-0.0%
Administrative/ Supervisory (V to VII)	82	+16	+19	+11	+12	+6	-0	+0.2%	+0.3%	+0.2%	+0.2%	+0.1%	-0.0%
Clerical (III & IV)	192	-18	-20	-19	-18	+14	+1	-0.1%	-0.1%	-0.1%	-0.1%	+0.1%	+0.0%
General Support	121	-17	-15	-9	-11	-3	+0	-0.1%	-0.1%	-0.1%	-0.1%	-0.0%	+0.0%
Support	112	-19	-15	-12	-12	-4		-0.1%	-0.1%	-0.1%	-0.1%	-0.0%	+0.0%
Maintenance/ Technical	9	+2	+0	+2	+1	+1	+0	+0.2%	+0.0%	+0.3%	+0.2%	+0.1%	+0.0%
Patient & Client Care	277	+26	+33	+35	-1	+28	+17	+0.1%	+0.1%	+0.1%	-0.0%	+0.1%	+0.1%
Health Care Assistants	151	+32	+34	+32	+11	+30	+19	+0.3%	+0.3%	+0.3%	+0.1%	+0.2%	+0.1%
Care, other	126	-6	-1	+3	-12	-2	-1	-0.0%	-0.0%	+0.0%	-0.1%	-0.0%	-0.0%

Source: Health Service Personnel Census

Disabilities

Nov 2020 (Dec 2015 figure: 1,867)	WTE Nov 2020	WTE change since Dec 15	WTE change since Dec 16	WTE change since Dec 17	WTE change since Dec 18	WTE change since Dec 19	WTE change since Oct 20	% change since Dec 15	% change since Dec 16	% change since Dec 17	% change since Dec 18	% change since Dec 19	% change since Oct 20
Overall	3,077	+1,210	+1,134	+285	+174	+96	+49	+64.8%	+58.4%	+10.2%	+6.0%	+3.2%	+1.6%
Medical & Dental	11	-1	-0	-2	+1	-0	+0	-0.1%	-0.0%	-0.2%	+0.1%	-0.0%	+0.0%
Consultants	1	-3	-2	-2				-0.8%	-0.8%	-0.8%	+0.0%	+0.0%	+0.0%
Registrars	3	+1	-0	-0	+1	-0	+0	+0.5%	-0.0%	-0.0%	+0.3%	-0.0%	+0.2%
SHO/ Interns	7	+2	+2	-0	-0	-0	-0	+0.4%	+0.4%	-0.0%	-0.0%	-0.0%	-0.1%
Medical/ Dental, other	1	-1						-0.3%	+0.0%	+0.0%	+0.0%	+0.0%	+0.0%
Nursing & Midwifery	499	+98	+103	-8	-9	-3	+4	+0.2%	+0.3%	-0.0%	-0.0%	-0.0%	+0.0%
Nurse/ Midwife Manager	116	+21	+16	-18	-8	-6	-1	+0.2%	+0.2%	-0.1%	-0.1%	-0.1%	-0.0%
Nurse/ Midwife Specialist & AN/MP	4	-1	-1	-3	-6	-1		-0.3%	-0.1%	-0.4%	-0.6%	-0.2%	+0.0%
Staff Nurse/ Staff Midwife	377	+79	+89	+12	+4	+3	+5	+0.3%	+0.3%	+0.0%	+0.0%	+0.0%	+0.0%
Nursing/ Midwifery other	2	-1	-2	+1	+1	+1		-0.4%	-0.5%	+2.0%	+2.0%	+2.0%	+0.0%
Health & Social Care Professionals	592	+362	+337	+86	+55	+39	+11	+1.6%	+1.3%	+0.2%	+0.1%	+0.1%	+0.0%
Therapy Professions	137	+58	+37	+16	+18	+15	+3	+0.7%	+0.4%	+0.1%	+0.2%	+0.1%	+0.0%
Health Science/ Diagnostics	3	+1	+1	+1				+0.4%	+0.2%	+0.5%	+0.0%	+0.0%	+0.0%
Social Care	383	+279	+285	+69	+35	+23	+10	+2.7%	+2.9%	+0.2%	+0.1%	+0.1%	+0.0%
Social Workers	33	+15	+7	+4	-1	-1	-0	+0.8%	+0.3%	+0.1%	-0.0%	-0.0%	-0.0%
Psychologists	31	+9	+8	-2	+4	+3	+0	+0.4%	+0.3%	-0.1%	+0.1%	+0.1%	+0.0%
Pharmacy	4	-0	-0	-0	-1	-1	-1	-0.0%	-0.0%	-0.0%	-0.2%	-0.2%	-0.2%
H&SC, Other	2		-1	-1				+0.0%	-0.4%	-0.4%	+0.0%	+0.0%	+0.0%
Management & Administrative	230	+108	+97	+50	+41	+27	+11	+0.9%	+0.7%	+0.3%	+0.2%	+0.1%	+0.0%
Management (VIII & above)	44	+17	+18	+13	+13	+12	+5	+0.6%	+0.7%	+0.4%	+0.4%	+0.4%	+0.1%
Administrative/ Supervisory (V to VII)	87	+45	+40	+26	+17	+8	+2	+1.1%	+0.9%	+0.4%	+0.2%	+0.1%	+0.0%
Clerical (III & IV)	99	+46	+39	+11	+11	+8	+3	+0.9%	+0.7%	+0.1%	+0.1%	+0.1%	+0.0%
General Support	188	+29	+31	-26	-19	-7	+3	+0.2%	+0.2%	-0.1%	-0.1%	-0.0%	+0.0%
Support	157	+15	+18	-23	-21	-10	+3	+0.1%	+0.1%	-0.1%	-0.1%	-0.1%	+0.0%
Maintenance/ Technical	32	+14	+13	-2	+2	+3	-0	+0.8%	+0.7%	-0.1%	+0.1%	+0.1%	-0.0%
Patient & Client Care	1,557	+615	+568	+185	+106	+39	+21	+0.7%	+0.6%	+0.1%	+0.1%	+0.0%	+0.0%
Health Care Assistants	1,140	+464	+421	+169	+94	+28	+10	+0.7%	+0.6%	+0.2%	+0.1%	+0.0%	+0.0%
Care, other	399	+166	+162	+25	+19	+13	+11	+0.7%	+0.7%	+0.1%	+0.0%	+0.0%	+0.0%
Home Help	17	-15	-15	-9	-6	-2	-0	-0.5%	-0.5%	-0.3%	-0.3%	-0.1%	-0.0%

Source: Health Service Personnel Census

Older People

Nov 2020 (Dec 2015 figure: 1,128)	WTE Nov 2020	WTE change since Dec 15	WTE change since Dec 16	WTE change since Dec 17	WTE change since Dec 18	WTE change since Dec 19	WTE change since Oct 20	% change since Dec 15	% change since Dec 16	% change since Dec 17	% change since Dec 18	% change since Dec 19	% change since Oct 20
Overall	1,027	-102	-94	-37	-18	+31	+1	-9.0%	-8.4%	-3.5%	-1.7%	+3.1%	+0.1%
Medical & Dental	6	-4	-3	-2	-1			-0.4%	-0.3%	-0.3%	-0.1%	+0.0%	+0.0%
SHO/ Interns	2	-1	-1	-1				-0.3%	-0.3%	-0.3%	+0.0%	+0.0%	+0.0%
Medical/ Dental, other	4	-3	-2	-1	-1			-0.4%	-0.3%	-0.2%	-0.2%	+0.0%	+0.0%
Nursing & Midwifery	336	-20	-5	+12	+34	+37	+5	-0.1%	-0.0%	+0.0%	+0.1%	+0.1%	+0.0%
Nurse/ Midwife Manager	85	+8	+1	+10	+11	+8	+1	+0.1%	+0.0%	+0.1%	+0.2%	+0.1%	+0.0%
Nurse/ Midwife Specialist & AN/MP	4	+0	+0	+0	-1	+1	-0	+0.0%	+0.1%	+0.1%	-0.1%	+0.4%	-0.0%
Staff Nurse/ Staff Midwife	246	-28	-8	+1	+22	+27	+3	-0.1%	-0.0%	+0.0%	+0.1%	+0.1%	+0.0%
Public Health Nurse		-2	-0					-1.0%	-1.0%	-1.0%	-1.0%	-1.0%	-1.0%
Nursing/ Midwifery Student	2	+2	+2	+2	+2	+2		-1.0%	-1.0%	-1.0%	-1.0%	-1.0%	+0.0%
Health & Social Care Professionals	29	-7	-9	-8	-10	+1	-2	-0.2%	-0.2%	-0.2%	-0.3%	+0.0%	-0.1%
Therapy Professions	13	-2	-3	-4	-4	-0	-0	-0.2%	-0.2%	-0.2%	-0.2%	-0.0%	-0.0%
Health Science/ Diagnostics		-1	-1					-1.0%	-1.0%	-1.0%	-1.0%	-1.0%	-1.0%
Social Workers	12	-1	-3	-2	-4	+2	-1	-0.1%	-0.2%	-0.1%	-0.2%	+0.2%	-0.1%
Pharmacy	2	-2	-2	-2	-2	-1	-1	-0.5%	-0.5%	-0.5%	-0.5%	-0.2%	-0.3%
H&SC, Other	1	-1	-1	-1	-1			-0.5%	-0.5%	-0.5%	-0.5%	+0.0%	+0.0%
Management & Administrative	60	+7	+8	+10	+16	+10	+1	+0.1%	+0.2%	+0.2%	+0.4%	+0.2%	+0.0%
Management (VIII & above)	7	-1	-1	+2	+3	+2	+0	-0.1%	-0.1%	+0.4%	+0.8%	+0.4%	+0.0%
Administrative/ Supervisory (V to VII)	15	+2	+5	+4	+5	+3	+1	+0.1%	+0.5%	+0.4%	+0.5%	+0.3%	+0.1%
Clerical (III & IV)	39	+6	+4	+4	+8	+5	-0	+0.2%	+0.1%	+0.1%	+0.3%	+0.1%	-0.0%
General Support	119	-1	-2	-4	-3	+7	+2	-0.0%	-0.0%	-0.0%	-0.0%	+0.1%	+0.0%
Support	117	-0	-1	-3	-2	+7	+2	-0.0%	-0.0%	-0.0%	-0.0%	+0.1%	+0.0%
Maintenance/ Technical	2	-1	-1	-1	-1			-0.3%	-0.3%	-0.3%	-0.3%	+0.0%	+0.0%
Patient & Client Care	477	-77	-83	-45	-54	-23	-5	-0.1%	-0.1%	-0.1%	-0.1%	-0.0%	-0.0%
Health Care Assistants	357	-64	-59	-24	-53	-31	-4	-0.2%	-0.1%	-0.1%	-0.1%	-0.1%	-0.0%
Care, other	5	-8	-11	-10	-2	+0		-0.6%	-0.7%	-0.7%	-0.3%	+0.0%	+0.0%
Home Help	115	-4	-12	-11	+2	+7	-0	-0.0%	-0.1%	-0.1%	+0.0%	+0.1%	-0.0%

Source: Health Service Personnel Census