

## CHO 7 Employment Report: October 2020

### Employment by Staff Group

Oct 2020 (Dec 2019 figure: 6,515)	WTE Sep 2020	WTE Oct 2020	WTE change since Sep 20	% change since Sep 20	WTE change since Dec 19	WTE change since Oct 19
<b>Overall</b>	<b>6,703</b>	<b>6,662</b>	<b>-41</b>	<b>-0.6%</b>	<b>+148</b>	<b>+177</b>
Consultants	70	69	-1	-0.9%	+9	+11
Registrars	102	100	-2	-2.1%	+5	+7
SHO/ Interns	41	38	-3	-7.8%	+2	+2
Medical/ Dental, other	85	85	+0	+0.2%	+5	+4
<b>Medical &amp; Dental</b>	<b>298</b>	<b>292</b>	<b>-6</b>	<b>-1.9%</b>	<b>+21</b>	<b>+24</b>
Nurse/ Midwife Manager	408	403	-5	-1.3%	+7	+12
Nurse/ Midwife Specialist & AN/MP	103	106	+3	+3.0%	+13	+16
Staff Nurse/ Staff Midwife	1,017	1,012	-5	-0.5%	+19	+6
Public Health Nurse	177	177	-1	-0.3%	+1	+1
<i>Pre-registration Nurse/ Midwife Intern</i>				-100.0%	-1	
<i>Pre-registration Nurse Intern (COVID-19)</i>	28	10	-17	-62.6%	+10	-17
<i>Post-registration Nurse/ Midwife Student</i>	0	21	+20	+8108.0%	-0	+20
<i>Nursing/ Midwifery awaiting registration</i>	6	5	-1	-15.4%	-5	-1
Nursing/ Midwifery Student	34	36	+2	+5.7%	+4	+7
Nursing/ Midwifery other	12	12	+1	+5.0%	+2	+3
<b>Nursing &amp; Midwifery</b>	<b>1,751</b>	<b>1,746</b>	<b>-5</b>	<b>-0.3%</b>	<b>+46</b>	<b>+44</b>
Therapy Professions	469	456	-13	-2.8%	+6	+6
Health Science/ Diagnostics	4	4	+0	+11.3%	+1	+1
Social Care	381	385	+5	+1.2%	+14	+20
Social Workers	109	107	-2	-1.9%	+3	+4
Psychologists	87	88	+0	+0.5%	+7	+9
Pharmacy	40	41	+0	+0.8%	+1	+3
H&SC, Other	41	42	+1	+2.9%	-3	-4
<b>Health &amp; Social Care Professionals</b>	<b>1,131</b>	<b>1,123</b>	<b>-9</b>	<b>-0.8%</b>	<b>+28</b>	<b>+38</b>
Management (VIII & above)	79	79	-0	-0.5%	+6	+5
Administrative/ Supervisory (V to VII)	199	202	+4	+1.9%	+20	+15
Clerical (III & IV)	376	376	-0	-0.0%	+26	+24
<b>Management &amp; Administrative</b>	<b>654</b>	<b>657</b>	<b>+3</b>	<b>+0.5%</b>	<b>+52</b>	<b>+44</b>
Support	397	396	-1	-0.2%	-14	-19
Maintenance/ Technical	46	45	-1	-1.2%	+4	+5
<b>General Support</b>	<b>443</b>	<b>442</b>	<b>-2</b>	<b>-0.3%</b>	<b>-10</b>	<b>-14</b>
Health Care Assistants	1,685	1,660	-25	-1.5%	+5	+13
Care, other	609	610	+1	+0.2%	+0	+14
Home Help	132	132	+1	+0.5%	+5	+13
<b>Patient &amp; Client Care</b>	<b>2,426</b>	<b>2,403</b>	<b>-23</b>	<b>-1.0%</b>	<b>+11</b>	<b>+40</b>

## CHO 7 Employment Report: October 2020

### Community Health & Wellbeing

Oct 2020 ( figure: )	WTE Sep 2020	WTE Oct 2020	WTE change since Sep 20	% change since Sep 20	WTE change since	WTE change since
<b>Total Community Health &amp; Wellbeing</b>	<b>10</b>	<b>10</b>	<b>-0</b>	<b>-2.0%</b>	<b>+10</b>	<b>+10</b>
Occupational Therapists	1	1			+1	
Therapy Professions	1	1	0	0	+1	+1
<b>Health &amp; Social Care Professionals</b>	<b>1</b>	<b>1</b>	<b>0</b>	<b>0</b>	<b>+1</b>	<b>+1</b>
Management (VIII & above)	1	1	0	0	+1	+1
Administrative/ Supervisory (V to VII)	3	3	+0	+0%	+3	+3
Clerical (III & IV)	1	1	0	0	+1	+1
<b>Management &amp; Administrative</b>	<b>5</b>	<b>5</b>	<b>+0</b>	<b>+0.2%</b>	<b>+5</b>	<b>+5</b>
Care, other	4	4	-0	-5%	+4	+4
<b>Patient &amp; Client Care</b>	<b>4</b>	<b>4</b>	<b>-0</b>	<b>-4.8%</b>	<b>+4</b>	<b>+4</b>

### Mental Health

Oct 2020 (Dec 2019 figure: 835)	WTE Sep 2020	WTE Oct 2020	WTE change since Sep 20	% change since Sep 20	WTE change since Dec 19	WTE change since Oct 19
<b>Total Mental Health</b>	<b>870</b>	<b>866</b>	<b>-4</b>	<b>-0.5%</b>	<b>+31</b>	<b>+30</b>
Consultants	54	54	-1	-1%	+6	+8
Registrars	54	54	-0	-1%	+8	+9
SHO/ Interns	22	19	-3	-12%	-2	-1
<b>Medical &amp; Dental</b>	<b>131</b>	<b>127</b>	<b>-4</b>	<b>-2.9%</b>	<b>+12</b>	<b>+16</b>
Nurse/ Midwife Manager	117	118	+1	+0%	+1	+5
Nurse/ Midwife Specialist & AN/MP	45	47	+3	+6%	+8	+10
Staff Nurse/ Staff Midwife	194	195	+1	+0%	+0	-17
Pre-registration Nurse/ Midwife Intern				-100.0%	-1	
Pre-registration Nurse Intern (COVID-19)	17	10	-6	-37.9%	+10	-6
Post-registration Nurse/ Midwife Student	0	1	+1	+300.0%	+1	+1
Nursing/ Midwifery awaiting registration	4	4	+0	+0.5%	-6	+0
Nursing/ Midwifery Student	21	15	-6	-27%	+4	+7
Nursing/ Midwifery other	8	9	+1	+7%	+1	+2
<b>Nursing &amp; Midwifery</b>	<b>385</b>	<b>384</b>	<b>-1</b>	<b>-0.2%</b>	<b>+14</b>	<b>+7</b>
Therapy Professions	44	46	+2	+4%	-2	-2
Social Care	7	8	+1	+8%	+0	+0
Social Workers	36	36	-0	-1%	+1	+3
Psychologists	33	34	+1	+2%	+2	+4
Pharmacy	1	1	0	0		
H&SC, Other	18	19	+1	+8%	+1	+0
<b>Health &amp; Social Care Professionals</b>	<b>140</b>	<b>144</b>	<b>+4</b>	<b>+2.8%</b>	<b>+4</b>	<b>+6</b>
Management (VIII & above)	4	3	-1	-26%		
Administrative/ Supervisory (V to VII)	18	18	+0	+1%	+3	+3
Clerical (III & IV)	51	49	-2	-3%	+3	+2
<b>Management &amp; Administrative</b>	<b>73</b>	<b>71</b>	<b>-2</b>	<b>-3.4%</b>	<b>+5</b>	<b>+5</b>
Support	16	16	-0	-0%	-2	-1
Maintenance/ Technical	2	2	+0	+8%	+0	+0
<b>General Support</b>	<b>18</b>	<b>18</b>	<b>+0</b>	<b>+0.4%</b>	<b>-1</b>	<b>-1</b>
Health Care Assistants	35	36	+1	+2%	+2	+0
Care, other	88	86	-2	-2%	-6	-3
<b>Patient &amp; Client Care</b>	<b>123</b>	<b>122</b>	<b>-1</b>	<b>-0.8%</b>	<b>-4</b>	<b>-3</b>

## Primary Care

Oct 2020 (Dec 2019 figure: 1,702)	WTE Sep 2020	WTE Oct 2020	WTE change since Sep 20	% change since Sep 20	WTE change since Dec 19	WTE change since Oct 19
<b>Total Primary Care</b>	<b>1,719</b>	<b>1,734</b>	<b>+15</b>	<b>+0.9%</b>	<b>+32</b>	<b>+16</b>
Consultants	15	15	+0	+1%	+3	+3
Registrars	45	44	-1	-3%	-2	-2
SHO/ Interns	10	9	-1	-8%	+3	+2
Medical/ Dental, other	80	80	+0	+0%	+5	+5
<b>Medical &amp; Dental</b>	<b>149</b>	<b>148</b>	<b>-2</b>	<b>-1.1%</b>	<b>+9</b>	<b>+9</b>
Nurse/ Midwife Manager	84	85	+1	+1%	+4	+3
Nurse/ Midwife Specialist & AN/MP	50	51	+1	+1%	+5	+6
Staff Nurse/ Staff Midwife	203	202	-1	-0%	-3	-6
Public Health Nurse	177	177	-1	-0%	+1	+1
<i>Post-registration Nurse/ Midwife Student</i>		20	+20	-100.0%	-1	+20
Nursing/ Midwifery Student		20	+20	-100%	-1	-1
Nursing/ Midwifery other	2	2	0	0		
<b>Nursing &amp; Midwifery</b>	<b>516</b>	<b>535</b>	<b>+20</b>	<b>+3.8%</b>	<b>+6</b>	<b>+2</b>
Therapy Professions	265	261	-4	-2%	-5	-7
Health Science/ Diagnostics	1	1	+0	+54%	+1	+1
Social Care	4	4	-0	-5%	+0	-0
Social Workers	26	25	-1	-3%	-1	+0
Psychologists	24	23	-1	-3%	+2	+2
Pharmacy	32	32	+0	+1%	+0	+3
H&SC, Other	20	20	-0	-1%	-4	-4
<b>Health &amp; Social Care Professionals</b>	<b>372</b>	<b>366</b>	<b>-5</b>	<b>-1.4%</b>	<b>-7</b>	<b>-5</b>
Management (VIII & above)	31	30	-1	-3%	-4	-4
Administrative/ Supervisory (V to VII)	79	83	+4	+5%	+7	+4
Clerical (III & IV)	192	191	-0	-0%	+13	+9
<b>Management &amp; Administrative</b>	<b>301</b>	<b>304</b>	<b>+3</b>	<b>+0.9%</b>	<b>+17</b>	<b>+9</b>
Support	111	112	+1	+1%	-4	-5
Maintenance/ Technical	10	9	-1	-6%	+1	+1
<b>General Support</b>	<b>121</b>	<b>121</b>	<b>-0</b>	<b>-0.0%</b>	<b>-3</b>	<b>-4</b>
Health Care Assistants	133	132	-0	-0%	+11	+7
Care, other	127	127	-0	-0%	-0	-1
<b>Patient &amp; Client Care</b>	<b>260</b>	<b>260</b>	<b>-1</b>	<b>-0.2%</b>	<b>+11</b>	<b>+6</b>

## Social Care

Oct 2020 (Dec 2019 figure: 3,978)	WTE Sep 2020	WTE Oct 2020	WTE change since Sep 20	% change since Sep 20	WTE change since Dec 19	WTE change since Oct 19
<b>Total Social Care</b>	<b>4,105</b>	<b>4,054</b>	<b>-52</b>	<b>-1.3%</b>	<b>+76</b>	<b>+121</b>
Consultants	1	1	0	0		
Registrars	3	2	-1	-17%	-1	-0
SHO/ Interns	9	9	+0	+3%	+0	+0
Medical/ Dental, other	5	5	0	0		-1
<b>Medical &amp; Dental</b>	<b>18</b>	<b>17</b>	<b>-0</b>	<b>-1.6%</b>	<b>-0</b>	<b>-1</b>
Nurse/ Midwife Manager	207	200	-7	-3%	+1	+3
Nurse/ Midwife Specialist & AN/MP	9	8	-0	-4%	+0	+0
Staff Nurse/ Staff Midwife	620	615	-5	-1%	+22	+29
<i>Pre-registration Nurse Intern (COVID-19)</i>	11		-11	-100.0%		-11
<i>Nursing/ Midwifery awaiting registration</i>	2	2	-1	-39.8%	+2	-1
Nursing/ Midwifery Student	13	2	-12	-89%	+2	+2
Nursing/ Midwifery other	2	2	0	0	+1	+1
<b>Nursing &amp; Midwifery</b>	<b>851</b>	<b>827</b>	<b>-24</b>	<b>-2.8%</b>	<b>+26</b>	<b>+35</b>
Therapy Professions	159	147	-11	-7%	+12	+13
Health Science/ Diagnostics	3	3	0	0		
Social Care	369	373	+4	+1%	+13	+19
Social Workers	47	47	-1	-2%	+2	+1
Psychologists	30	31	+1	+2%	+3	+3
Pharmacy	8	8	+0	+2%	+1	-0
H&SC, Other	3	3	0	0		
<b>Health &amp; Social Care Professionals</b>	<b>619</b>	<b>611</b>	<b>-7</b>	<b>-1.1%</b>	<b>+31</b>	<b>+36</b>
Management (VIII & above)	44	45	+2	+4%	+9	+9
Administrative/ Supervisory (V to VII)	99	98	-1	-1%	+8	+5
Clerical (III & IV)	133	135	+2	+2%	+9	+13
<b>Management &amp; Administrative</b>	<b>276</b>	<b>279</b>	<b>+3</b>	<b>+1.1%</b>	<b>+25</b>	<b>+26</b>
Support	270	268	-2	-1%	-9	-13
Maintenance/ Technical	34	34	-0	-0%	+4	+4
<b>General Support</b>	<b>304</b>	<b>302</b>	<b>-2</b>	<b>-0.5%</b>	<b>-5</b>	<b>-9</b>
Health Care Assistants	1,517	1,492	-26	-2%	-9	+6
Care, other	390	393	+4	+1%	+3	+14
Home Help	132	132	+1	+0%	+5	+13
<b>Patient &amp; Client Care</b>	<b>2,039</b>	<b>2,017</b>	<b>-22</b>	<b>-1.1%</b>	<b>-1</b>	<b>+33</b>

## CHO 7 Employment Report: October 2020

### Disabilities

Oct 2020 (Dec 2019 figure: 2,982)	WTE Sep 2020	WTE Oct 2020	WTE change since Sep 20	% change since Sep 20	WTE change since Dec 19	WTE change since Oct 19
<b>Total Disabilities</b>	<b>3,069</b>	<b>3,028</b>	<b>-41</b>	<b>-1.3%</b>	<b>+46</b>	<b>+101</b>
Consultants	1	1				
Registrars	3	2	-1	-17.3%	-1	-0
SHO/ Interns	7	7	+0	+3.4%	+0	+0
Medical/ Dental, other	1	1				
<b>Medical &amp; Dental</b>	<b>12</b>	<b>11</b>	<b>-0</b>	<b>-2.4%</b>	<b>-0</b>	<b>-0</b>
Nurse/ Midwife Manager	123	117	-6	-4.8%	-5	-7
Nurse/ Midwife Specialist & AN/MP	5	4	-1	-12.2%	-1	-1
Staff Nurse/ Staff Midwife	379	373	-6	-1.7%	-2	+9
<i>Pre-registration Nurse Intern (COVID-19)</i>	11		-11	-100.0%		-11
Nursing/ Midwifery Student	11		-11	-100.0%		
Nursing/ Midwifery other	2	2			+1	+1
<b>Nursing &amp; Midwifery</b>	<b>519</b>	<b>495</b>	<b>-24</b>	<b>-4.6%</b>	<b>-6</b>	<b>+2</b>
Therapy Professions	145	134	-11	-7.5%	+12	+16
Health Science/ Diagnostics	3	3				
Social Care	369	373	+4	+1.1%	+13	+19
Social Workers	34	33	-1	-2.4%	-0	+2
Psychologists	30	31	+1	+2.1%	+3	+3
Pharmacy	5	5	+0	+2.5%	+0	-0
H&SC, Other	2	2				
<b>Health &amp; Social Care Professionals</b>	<b>587</b>	<b>581</b>	<b>-7</b>	<b>-1.2%</b>	<b>+28</b>	<b>+41</b>
Management (VIII & above)	37	39	+1	+3.1%	+7	+7
Administrative/ Supervisory (V to VII)	87	85	-2	-2.0%	+6	+4
Clerical (III & IV)	96	96	+0	+0.2%	+4	+7
<b>Management &amp; Administrative</b>	<b>220</b>	<b>219</b>	<b>-0</b>	<b>-0.2%</b>	<b>+17</b>	<b>+18</b>
Support	157	154	-4	-2.4%	-13	-15
Maintenance/ Technical	32	32	-0	-0.2%	+4	+4
<b>General Support</b>	<b>190</b>	<b>186</b>	<b>-4</b>	<b>-2.1%</b>	<b>-10</b>	<b>-11</b>
Health Care Assistants	1,138	1,130	-8	-0.7%	+18	+38
Care, other	385	388	+4	+0.9%	+2	+14
Home Help	18	18	-0	-2.3%	-2	-1
<b>Patient &amp; Client Care</b>	<b>1,541</b>	<b>1,536</b>	<b>-5</b>	<b>-0.3%</b>	<b>+18</b>	<b>+51</b>

## Older People

Oct 2020 (Dec 2019 figure: 996)	WTE Sep 2020	WTE Oct 2020	WTE change since Sep 20	% change since Sep 20	WTE change since Dec 19	WTE change since Oct 19
<b>Total Older People</b>	<b>1,037</b>	<b>1,026</b>	<b>-11</b>	<b>-1.1%</b>	<b>+30</b>	<b>+20</b>
SHO/ Interns	2	2				
Medical/ Dental, other	4	4				-1
<b>Medical &amp; Dental</b>	<b>6</b>	<b>6</b>				<b>-1</b>
Nurse/ Midwife Manager	84	83	-1	-0.8%	+6	+10
Nurse/ Midwife Specialist & AN/MP	4	4	+0	+6.3%	+1	+1
Staff Nurse/ Staff Midwife	241	242	+1	+0.5%	+23	+20
Nursing/ Midwifery Student	2	2	-1	-39.8%	+2	+2
<b>Nursing &amp; Midwifery</b>	<b>331</b>	<b>331</b>	<b>-0</b>	<b>-0.1%</b>	<b>+32</b>	<b>+32</b>
<b>Health &amp; Social Care Professionals</b>	<b>31</b>	<b>31</b>	<b>-0</b>	<b>-0.7%</b>	<b>+3</b>	<b>-5</b>
Management (VIII & above)	6	7	+0	+6.8%	+2	+2
Administrative/ Supervisory (V to VII)	12	13	+1	+8.5%	+2	+1
Clerical (III & IV)	37	39	+2	+5.4%	+5	+5
<b>Management &amp; Administrative</b>	<b>56</b>	<b>59</b>	<b>+4</b>	<b>+6.3%</b>	<b>+9</b>	<b>+8</b>
Support	112	115	+2	+2.0%	+5	+3
Maintenance/ Technical	2	2				
<b>General Support</b>	<b>114</b>	<b>117</b>	<b>+2</b>	<b>+2.0%</b>	<b>+5</b>	<b>+3</b>
Health Care Assistants	379	362	-17	-4.6%	-26	-32
Care, other	5	5			+0	+0
Home Help	114	115	+1	+0.9%	+7	+14
<b>Patient &amp; Client Care</b>	<b>498</b>	<b>481</b>	<b>-16</b>	<b>-3.3%</b>	<b>-19</b>	<b>-18</b>

## CHO 7 Employment by Administration (HSE / S38): October 2020

Oct 2020 (Dec 2019 figure: 6,515)	WTE Sep 2020	WTE Oct 2020	WTE change since Sep 20	% change since Sep 20	WTE change since Dec 19	WTE change since Oct 19
<b>Overall</b>	<b>6,703</b>	<b>6,662</b>	<b>-41</b>	<b>-0.6%</b>	<b>+148</b>	<b>+177</b>
<b>HSE</b>	<b>3,271</b>	<b>3,274</b>	<b>+3</b>	<b>+0.1%</b>	<b>+123</b>	<b>+111</b>
<b>Section 38 Voluntary Agencies</b>	<b>3,432</b>	<b>3,388</b>	<b>-44</b>	<b>-1.3%</b>	<b>+25</b>	<b>+66</b>

## HSE

Oct 2020 (Dec 2019 figure: 3,151)	WTE Sep 2020	WTE Oct 2020	WTE change since Sep 20	% change since Sep 20	WTE change since Dec 19	WTE change since Oct 19
<b>Overall</b>	<b>3,271</b>	<b>3,274</b>	<b>+3</b>	<b>+0.1%</b>	<b>+123</b>	<b>+111</b>
Consultants	60	59	-1	-0.0%	+6	+8
Registrars	93	93	-1	-0.0%	+6	+8
SHO/ Interns	27	24	-3	-0.1%	+0	+0
Medical/ Dental, other	83	83	+0	+0.0%	+5	+4
<b>Medical &amp; Dental</b>	<b>263</b>	<b>259</b>	<b>-4</b>	<b>-1.5%</b>	<b>+16</b>	<b>+19</b>
Nurse/ Midwife Manager	244	243	-1	-0.0%	+12	+20
Nurse/ Midwife Specialist & AN/MP	68	71	+3	+0.0%	+10	+13
Staff Nurse/ Staff Midwife	539	541	+2	+0.0%	+21	-2
Public Health Nurse	177	177	-1	-0.0%	+1	+1
<i>Pre-registration Nurse/ Midwife Intern</i>				-1.0%	-6	-3
<i>Pre-registration Nurse Intern (COVID-19)</i>	17	10	-6	-0.4%	+10	+10
<i>Post-registration Nurse/ Midwife Student</i>	0	21	+20	+81.1%	+14	-0
<i>Nursing/ Midwifery awaiting registration</i>	6	5	-1	-0.2%	+1	-0
Nursing/ Midwifery Student	23	36	+13	+0.6%	+4	+7
Nursing/ Midwifery other	8	9	+1	+0.1%	+1	+2
<b>Nursing &amp; Midwifery</b>	<b>1,060</b>	<b>1,076</b>	<b>+17</b>	<b>+1.6%</b>	<b>+49</b>	<b>+41</b>
Therapy Professions	338	337	-1	-0.0%	+12	+11
Social Care	11	12	+0	+0.0%	+1	+0
Social Workers	71	71	-0	-0.0%	+4	+6
Psychologists	65	65	-0	-0.0%	+3	+4
Pharmacy	27	26	-0	-0.0%	+1	+2
H&SC, Other	39	40	+1	+0.0%	-3	-4
<b>Health &amp; Social Care Professionals</b>	<b>552</b>	<b>552</b>	<b>+0</b>	<b>+0.0%</b>	<b>+19</b>	<b>+20</b>
Management (VIII & above)	46	45	-1	-0.0%	+5	+6
Administrative/ Supervisory (V to VII)	109	115	+6	+0.1%	+19	+15
Clerical (III & IV)	263	263	-0	-0.0%	+22	+19
<b>Management &amp; Administrative</b>	<b>419</b>	<b>423</b>	<b>+5</b>	<b>+1.1%</b>	<b>+46</b>	<b>+40</b>
Support	170	173	+3	+0.0%	+3	+1
Maintenance/ Technical	6	5	-0	-0.1%	-0	+0
<b>General Support</b>	<b>176</b>	<b>179</b>	<b>+3</b>	<b>+1.6%</b>	<b>+3</b>	<b>+1</b>
Health Care Assistants	442	426	-17	-0.0%	-16	-25
Care, other	228	227	-1	-0.0%	-0	+2
Home Help	132	132	+1	+0.0%	+5	+13
<b>Patient &amp; Client Care</b>	<b>803</b>	<b>785</b>	<b>-17</b>	<b>-2.1%</b>	<b>-10</b>	<b>-10</b>

## Section 38 Voluntary Agencies

Oct 2020 (Dec 2019 figure: 3,363)	WTE Sep 2020	WTE Oct 2020	WTE change since Sep 20	% change since Sep 20	WTE change since Dec 19	WTE change since Oct 19
<b>Overall</b>	<b>3,432</b>	<b>3,388</b>	<b>-44</b>	<b>-1.3%</b>	<b>+25</b>	<b>+66</b>
Consultants	9	10	+0	+0.0%	+4	+4
Registrars	9	7	-2	-0.2%	-1	-1
SHO/ Interns	14	13	-1	-0.0%	+1	+1
Medical/ Dental, other	2	2		+0.0%	+0	
<b>Medical &amp; Dental</b>	<b>35</b>	<b>33</b>	<b>-2</b>	<b>-4.8%</b>	<b>+5</b>	<b>+4</b>
Nurse/ Midwife Manager	164	160	-5	-0.0%	-5	-8
Nurse/ Midwife Specialist & AN/MP	35	35	+1	+0.0%	+2	+3
Staff Nurse/ Staff Midwife	478	471	-7	-0.0%	-2	+7
<i>Pre-registration Nurse Intern (COVID-19)</i>	<i>11</i>		<i>-11</i>	<i>-1.0%</i>		
Nursing/ Midwifery Student	11		-11	-1.0%		
Nursing/ Midwifery other	4	4		+0.0%	+1	+1
<b>Nursing &amp; Midwifery</b>	<b>692</b>	<b>670</b>	<b>-22</b>	<b>-3.2%</b>	<b>-4</b>	<b>+3</b>
Therapy Professions	131	119	-12	-0.1%	-6	-6
Health Science/ Diagnostics	4	4	+0	+0.1%	+1	+1
Social Care	369	373	+4	+0.0%	+13	+19
Social Workers	38	36	-2	-0.1%	-1	-2
Psychologists	22	23	+1	+0.0%	+4	+5
Pharmacy	14	14	+1	+0.1%	-0	+1
H&SC, Other	2	2		+0.0%		
<b>Health &amp; Social Care Professionals</b>	<b>579</b>	<b>571</b>	<b>-9</b>	<b>-1.5%</b>	<b>+10</b>	<b>+19</b>
Management (VIII & above)	33	34	+1	+0.0%	+1	-0
Administrative/ Supervisory (V to VII)	90	88	-2	-0.0%	+1	-1
Clerical (III & IV)	113	113	-0	-0.0%	+4	+5
<b>Management &amp; Administrative</b>	<b>235</b>	<b>234</b>	<b>-1</b>	<b>-0.6%</b>	<b>+5</b>	<b>+4</b>
Support	227	223	-4	-0.0%	-17	-19
Maintenance/ Technical	40	40	-0	-0.0%	+5	+5
<b>General Support</b>	<b>267</b>	<b>263</b>	<b>-4</b>	<b>-1.6%</b>	<b>-12</b>	<b>-15</b>
Health Care Assistants	1,243	1,234	-9	-0.0%	+21	+38
Care, other	381	383	+3	+0.0%	+0	+12
<b>Patient &amp; Client Care</b>	<b>1,623</b>	<b>1,617</b>	<b>-6</b>	<b>-0.4%</b>	<b>+21</b>	<b>+50</b>

## CHO 7 Employment by S38 Agency: October 2020

### Cheeverstown House

Oct 2020 (Dec 2019 figure: 396)	WTE Sep 2020	WTE Oct 2020	WTE change since Sep 20	% change since Sep 20	WTE change since Dec 19	WTE change since Oct 19
<b>Overall</b>	<b>390</b>	<b>389</b>	<b>-1</b>	<b>-0.2%</b>	<b>-7</b>	<b>-10</b>
Consultants	0	0		+0.0%		
Medical/ Dental, other	1	1		+0.0%		
<b>Medical &amp; Dental</b>	<b>1</b>	<b>1</b>				
Nurse/ Midwife Manager	27	27		+0.0%	+1	-1
Nurse/ Midwife Specialist & AN/MP	2	2		+0.0%		
Staff Nurse/ Staff Midwife	102	102	-1	-0.0%	-6	-4
<b>Nursing &amp; Midwifery</b>	<b>131</b>	<b>130</b>	<b>-1</b>	<b>-0.6%</b>	<b>-5</b>	<b>-5</b>
Therapy Professions	12	12		+0.0%	-1	-2
Social Care	33	34	+1	+0.0%	-1	-1
Social Workers	5	5		+0.0%	-1	-1
Psychologists	5	5		+0.0%	+1	+1
Pharmacy	0	0		+0.0%	-0	-0
H&SC, Other	2	2		+0.0%		
<b>Health &amp; Social Care Professionals</b>	<b>57</b>	<b>58</b>	<b>+1</b>	<b>+1.8%</b>	<b>-2</b>	<b>-4</b>
Management (VIII & above)	2	2		+0.0%		
Administrative/ Supervisory (V to VII)	15	15		+0.0%	+1	+1
Clerical (III & IV)	12	12		+0.0%	+1	+1
<b>Management &amp; Administrative</b>	<b>30</b>	<b>30</b>			<b>+2</b>	<b>+2</b>
Support	27	27		+0.0%		
Maintenance/ Technical	4	4		+0.0%		
<b>General Support</b>	<b>30</b>	<b>30</b>				
Health Care Assistants	129	129		+0.0%	-1	-2
Care, other	12	11	-1	-0.1%	-1	-1
<b>Patient &amp; Client Care</b>	<b>141</b>	<b>140</b>	<b>-1</b>	<b>-0.7%</b>	<b>-3</b>	<b>-3</b>

# Kare, Newbridge, Co Kildare

Oct 2020 (Dec 2019 figure: 360)	WTE Sep 2020	WTE Oct 2020	WTE change since Sep 20	% change since Sep 20	WTE change since Dec 19	WTE change since Oct 19
<b>Overall</b>	<b>364</b>	<b>362</b>	<b>-2</b>	<b>-0.7%</b>	<b>+2</b>	<b>+11</b>
Nurse/ Midwife Manager	7	7		+0.0%	-5	-5
Staff Nurse/ Staff Midwife	24	24	+1	+0.0%	+2	+2
<b>Nursing &amp; Midwifery</b>	<b>31</b>	<b>32</b>	<b>+1</b>	<b>+2.0%</b>	<b>-3</b>	<b>-2</b>
Therapy Professions	12	12	-0	-0.0%	-2	-1
Social Care	63	64	+1	+0.0%	+3	+4
Social Workers	4	4		+0.0%		
Psychologists	6	7	+1	+0.1%	+2	+4
<b>Health &amp; Social Care Professionals</b>	<b>86</b>	<b>87</b>	<b>+2</b>	<b>+2.1%</b>	<b>+4</b>	<b>+7</b>
Management (VIII & above)	5	6	+1	+0.1%	-0	-0
Administrative/ Supervisory (V to VII)	13	13	-0	-0.0%	+1	+1
Clerical (III & IV)	14	14		+0.0%	+2	+2
<b>Management &amp; Administrative</b>	<b>32</b>	<b>32</b>	<b>+0</b>	<b>+1.4%</b>	<b>+2</b>	<b>+2</b>
Support	1	1		+0.0%	-0	-0
<b>General Support</b>	<b>1</b>	<b>1</b>			<b>-0</b>	<b>-0</b>
Health Care Assistants	110	102	-8	-0.1%	+1	+1
Care, other	105	107	+3	+0.0%	-2	+3
<b>Patient &amp; Client Care</b>	<b>215</b>	<b>209</b>	<b>-5</b>	<b>-2.5%</b>	<b>-1</b>	<b>+4</b>

**Our Lady's Hospice & Care Services**

<b>Oct 2020 (Dec 2019 figure: 482)</b>	<b>WTE Sep 2020</b>	<b>WTE Oct 2020</b>	<b>WTE change since Sep 20</b>	<b>% change since Sep 20</b>	<b>WTE change since Dec 19</b>	<b>WTE change since Oct 19</b>
<b>Overall</b>	<b>491</b>	<b>490</b>	<b>-2</b>	<b>-0.3%</b>	<b>+8</b>	<b>+10</b>
Consultants	9	9	+0	+0.0%	+4	+4
Registrars	6	5	-1	-0.2%		-0
SHO/ Interns	7	6	-1	-0.1%	+1	+1
Medical/ Dental, other	1	1		+0.0%	+0	
<b>Medical &amp; Dental</b>	<b>23</b>	<b>22</b>	<b>-1</b>	<b>-6.0%</b>	<b>+5</b>	<b>+4</b>
Nurse/ Midwife Manager	44	45	+1	+0.0%	+0	+0
Nurse/ Midwife Specialist & AN/MP	31	31	+1	+0.0%	+2	+3
Staff Nurse/ Staff Midwife	99	98	-1	-0.0%	-1	-1
Nursing/ Midwifery other	2	2		+0.0%		
<b>Nursing &amp; Midwifery</b>	<b>175</b>	<b>176</b>	<b>+1</b>	<b>+0.6%</b>	<b>+2</b>	<b>+2</b>
Therapy Professions	39	38	-0	-0.0%	+1	+2
Health Science/ Diagnostics	1	1	+0	+0.5%	+1	+1
Social Workers	11	10	-1	-0.1%	-0	-0
Psychologists	1	1		+0.0%		-0
Pharmacy	9	10	+1	+0.1%	-0	+1
<b>Health &amp; Social Care Professionals</b>	<b>60</b>	<b>60</b>	<b>-0</b>	<b>-0.1%</b>	<b>+1</b>	<b>+3</b>
Management (VIII & above)	4	4		+0.0%		
Administrative/ Supervisory (V to VII)	17	17	+0	+0.0%	-3	-2
Clerical (III & IV)	29	29	-1	-0.0%	+3	+6
<b>Management &amp; Administrative</b>	<b>50</b>	<b>50</b>	<b>-0</b>	<b>-0.9%</b>	<b>+0</b>	<b>+4</b>
Support	70	69	-0	-0.0%	-4	-4
Maintenance/ Technical	8	8	-0	-0.0%	+1	+1
<b>General Support</b>	<b>78</b>	<b>77</b>	<b>-0</b>	<b>-0.5%</b>	<b>-3</b>	<b>-3</b>
Health Care Assistants	104	104	-0	-0.0%	+2	-0
Care, other	1	1		+0.0%		
<b>Patient &amp; Client Care</b>	<b>105</b>	<b>105</b>	<b>-0</b>	<b>-0.4%</b>	<b>+2</b>	<b>-0</b>

# Peamount Hospital (Newcastle)

Oct 2020 (Dec 2019 figure: 486)	WTE Sep 2020	WTE Oct 2020	WTE change since Sep 20	% change since Sep 20	WTE change since Dec 19	WTE change since Oct 19
<b>Overall</b>	<b>532</b>	<b>476</b>	<b>-56</b>	<b>-10.4%</b>	<b>-10</b>	<b>-14</b>
Registrars	2	1	-1	-0.3%	-1	-0
SHO/ Interns	7	7	+0	+0.0%	+0	+0
<b>Medical &amp; Dental</b>	<b>9</b>	<b>9</b>	<b>-0</b>	<b>-3.1%</b>	<b>-0</b>	<b>-0</b>
Nurse/ Midwife Manager	31	27	-4	-0.1%	+1	+0
Nurse/ Midwife Specialist & AN/MP	2	2		+0.0%		
Staff Nurse/ Staff Midwife	90	75	-15	-0.2%	-7	-8
Nursing Education/Clinical	1	1		+0.0%	+1	+1
Nursing/ Midwifery other	1	1		+0.0%	+1	+1
<b>Nursing &amp; Midwifery</b>	<b>124</b>	<b>105</b>	<b>-19</b>	<b>-15.1%</b>	<b>-5</b>	<b>-6</b>
Therapy Professions	37	27	-10	-0.3%	-2	-3
Health Science/ Diagnostics	3	3		+0.0%		
Social Care	4	4		+0.0%	+2	+2
Social Workers	6	5	-1	-0.2%		+1
Pharmacy	4	4	+0	+0.0%	+0	+0
<b>Health &amp; Social Care Professionals</b>	<b>55</b>	<b>44</b>	<b>-11</b>	<b>-20.6%</b>	<b>+0</b>	<b>-0</b>
Management (VIII & above)	4	4		+0.0%		
Administrative/ Supervisory (V to VII)	18	18	-1	-0.0%	+4	+2
Clerical (III & IV)	18	17	-1	-0.1%	-3	-3
<b>Management &amp; Administrative</b>	<b>41</b>	<b>39</b>	<b>-2</b>	<b>-5.3%</b>	<b>+1</b>	<b>-1</b>
Support	45	42	-3	-0.1%	-5	-7
Maintenance/ Technical	9	8	-0	-0.0%	+1	+0
<b>General Support</b>	<b>54</b>	<b>50</b>	<b>-3</b>	<b>-6.5%</b>	<b>-4</b>	<b>-6</b>
Health Care Assistants	246	226	-20	-0.1%	-2	-0
Care, other	4	4		+0.0%	+0	+0
<b>Patient &amp; Client Care</b>	<b>249</b>	<b>230</b>	<b>-20</b>	<b>-7.8%</b>	<b>-2</b>	<b>+0</b>

# Stewart's Hospital, (Palmerstown)

Oct 2020 (Dec 2019 figure: 852)	WTE Sep 2020	WTE Oct 2020	WTE change since Sep 20	% change since Sep 20	WTE change since Dec 19	WTE change since Oct 19
<b>Overall</b>	<b>880</b>	<b>892</b>	<b>+12</b>	<b>+1.4%</b>	<b>+41</b>	<b>+45</b>
Consultants	0	0		+0.0%		
Registrars				-1.0%		
<b>Medical &amp; Dental</b>	<b>0</b>	<b>0</b>				
Nurse/ Midwife Manager	33	31	-2	-0.1%	-5	-6
Staff Nurse/ Staff Midwife	73	82	+9	+0.1%	+9	+11
Pre-registration Nurse Intern (COVID-19)	11		-11	-1.0%		
Nursing/ Midwifery Student	11		-11	-1.0%		
Nursing/ Midwifery other	1	1		+0.0%		
<b>Nursing &amp; Midwifery</b>	<b>117</b>	<b>113</b>	<b>-4</b>	<b>-3.6%</b>	<b>+4</b>	<b>+5</b>
Therapy Professions	14	13	-1	-0.1%	-3	-3
Social Care	13	13		+0.0%	+3	+3
Social Workers	6	6		+0.0%	+1	+1
Psychologists	4	4		+0.0%	-1	-1
<b>Health &amp; Social Care Professionals</b>	<b>37</b>	<b>36</b>	<b>-1</b>	<b>-3.0%</b>	<b>+0</b>	<b>+1</b>
Management (VIII & above)	12	13	+1	+0.1%	+2	+1
Administrative/ Supervisory (V to VII)	16	15	-1	-0.1%	+1	-1
Clerical (III & IV)	21	22	+1	+0.1%	-1	-2
<b>Management &amp; Administrative</b>	<b>49</b>	<b>50</b>	<b>+1</b>	<b>+2.5%</b>	<b>+2</b>	<b>-2</b>
Support	56	54	-2	-0.0%	-3	-3
Maintenance/ Technical	6	6		+0.0%	+1	+1
<b>General Support</b>	<b>62</b>	<b>60</b>	<b>-2</b>	<b>-2.7%</b>	<b>-2</b>	<b>-2</b>
Health Care Assistants	499	516	+17	+0.0%	+35	+45
Care, other	116	117	+1	+0.0%	+1	-2
<b>Patient &amp; Client Care</b>	<b>615</b>	<b>633</b>	<b>+18</b>	<b>+2.9%</b>	<b>+36</b>	<b>+43</b>

## St. John of God Liffey Services

Oct 2020 (Dec 2019 figure: 787)	WTE Sep 2020	WTE Oct 2020	WTE change since Sep 20	% change since Sep 20	WTE change since Dec 19	WTE change since Oct 19
<b>Overall</b>	<b>775</b>	<b>779</b>	<b>+4</b>	<b>+0.5%</b>	<b>-9</b>	<b>+24</b>
Registrars	1	1		+0.0%		
<b>Medical &amp; Dental</b>	<b>1</b>	<b>1</b>				
Nurse/ Midwife Manager	23	23	-0	-0.0%	+3	+3
Nurse/ Midwife Specialist & AN/MP	1	1		+0.0%		
Staff Nurse/ Staff Midwife	90	90	-0	-0.0%	-0	+7
<b>Nursing &amp; Midwifery</b>	<b>113</b>	<b>113</b>	<b>-0</b>	<b>-0.2%</b>	<b>+2</b>	<b>+10</b>
Therapy Professions	16	16	-1	-0.0%	+1	+1
Social Care	256	258	+2	+0.0%	+5	+12
Social Workers	6	6	-0	-0.0%	-1	-1
Psychologists	7	7	-0	-0.0%	+1	+1
<b>Health &amp; Social Care Professionals</b>	<b>285</b>	<b>286</b>	<b>+1</b>	<b>+0.4%</b>	<b>+6</b>	<b>+12</b>
Management (VIII & above)	6	5	-1	-0.2%	-1	-1
Administrative/ Supervisory (V to VII)	10	10	-0	-0.0%	-1	-1
Clerical (III & IV)	18	19	+1	+0.0%	+1	+1
<b>Management &amp; Administrative</b>	<b>34</b>	<b>33</b>	<b>-0</b>	<b>-1.3%</b>	<b>-2</b>	<b>-1</b>
Support	28	29	+1	+0.0%	-6	-6
Maintenance/ Technical	14	14	+0	+0.0%	+2	+3
<b>General Support</b>	<b>42</b>	<b>43</b>	<b>+1</b>	<b>+2.9%</b>	<b>-4</b>	<b>-4</b>
Health Care Assistants	155	157	+2	+0.0%	-15	-5
Care, other	144	144	+0	+0.0%	+3	+12
<b>Patient &amp; Client Care</b>	<b>299</b>	<b>302</b>	<b>+2</b>	<b>+0.8%</b>	<b>-12</b>	<b>+7</b>

**CHO 7 Employment by Grade Group & Staff Category: October 2020**

Oct 2020 (Dec 2019 figure: 6,515)	WTE Sep 2020	WTE Oct 2020	WTE change since Sep 20	% change since Sep 20	WTE change since Dec 19	WTE change since Oct 19
<b>Overall</b>	<b>6,703</b>	<b>6,662</b>	<b>-41</b>	<b>-0.6%</b>	<b>+148</b>	<b>+177</b>
Consultant Medicine	10	10	+0	+4.4%	+4	+4
Consultant Paediatrics	0	0				
Consultant Psychiatry	59	58	-1	-1.2%	+6	+8
Consultant Surgery	1	0	-0	-38.8%	-0	-0
<b>Consultants</b>	<b>70</b>	<b>69</b>	<b>-1</b>	<b>-0.9%</b>	<b>+9</b>	<b>+11</b>
Registrar	77	75	-2	-2.8%	+3	+3
Senior Registrar	20	20	+0	+0.4%	+1	+3
Specialist Registrar	5	5			+1	+1
<b>Registrars</b>	<b>102</b>	<b>100</b>	<b>-2</b>	<b>-2.1%</b>	<b>+5</b>	<b>+7</b>
Interns	2	2	-0	-5.1%	-0	-0
Senior House Officer	39	36	-3	-8.0%	+2	+2
<b>SHO/ Interns</b>	<b>41</b>	<b>38</b>	<b>-3</b>	<b>-7.8%</b>	<b>+2</b>	<b>+2</b>
Dentists	36	37	+1	+1.7%	+3	+3
Other Medical	49	48	-0	-0.9%	+2	+1
<b>Medical/ Dental, other</b>	<b>85</b>	<b>85</b>	<b>+0</b>	<b>+0.2%</b>	<b>+5</b>	<b>+4</b>
<b>Medical &amp; Dental</b>	<b>298</b>	<b>292</b>	<b>-6</b>	<b>-1.9%</b>	<b>+27</b>	<b>+24</b>
Clinical Nurse/ Midwife Manager	330	325	-5	-1.6%	-4	+6
Director Nursing/Midwifery, Assistant	59	60	+1	+1.8%	+8	+5
Director of Nursing/Midwifery	19	18	-1	-5.5%	+2	+1
<b>Nurse/ Midwife Manager</b>	<b>408</b>	<b>403</b>	<b>-5</b>	<b>-1.3%</b>	<b>+7</b>	<b>+12</b>
Advanced Nurse/ Midwife Practitioner	12	12	+0	+0.3%	+8	+8
Clinical Nurse/ Midwife Specialist	91	94	+3	+3.3%	+5	+8
<b>Nurse/ Midwife Specialist &amp; AN/MP</b>	<b>103</b>	<b>106</b>	<b>+3</b>	<b>+3.0%</b>	<b>+13</b>	<b>+16</b>
Staff Nurse [Intellectual Disability]	169	180	+11	+6.3%	-14	-20
Staff Nurse [Psychiatric]	185	187	+1	+0.8%	-4	-21
Staff Nurses [General/ Children's]	662	644	-17	-2.6%	+37	+47
<b>Staff Nurse/ Staff Midwife</b>	<b>1,017</b>	<b>1,012</b>	<b>-5</b>	<b>-0.5%</b>	<b>+19</b>	<b>+6</b>
<b>Public Health Nurse</b>	<b>177</b>	<b>177</b>	<b>-1</b>	<b>-0.3%</b>	<b>+1</b>	<b>+1</b>
Pre-registration Nurse/ Midwife Intern				-100.0%	-1	-3
Pre-registration Nurse Intern (COVID-19)	28	10	-17	-62.6%	+10	+10
Post-registration Nurse/ Midwife Student	0	21	+20	+8108.0%	-0	-0
Nursing/ Midwifery awaiting registration	6	5	-1	-15.4%	-5	-0
<b>Nursing/ Midwifery Student</b>	<b>34</b>	<b>36</b>	<b>+2</b>	<b>+5.7%</b>	<b>+4</b>	<b>+7</b>
Nursing Education/Clinical	12	12	+1	+5.0%	+2	+3
<b>Nursing/ Midwifery other</b>	<b>12</b>	<b>12</b>	<b>+1</b>	<b>+5.0%</b>	<b>+2</b>	<b>+3</b>
<b>Nursing &amp; Midwifery</b>	<b>1,751</b>	<b>1,746</b>	<b>-5</b>	<b>-0.3%</b>	<b>+45</b>	<b>+44</b>
Dietitians	27	24	-3	-11.9%	-2	-2
Occupational Therapists	191	187	-5	-2.5%	+3	+6
Orthoptists	2	2	+1	+33.3%	+2	+2
Physiotherapists	127	122	-5	-3.9%	+7	+5
Podiatrists & Chiropractors	2	2			+1	+1
Speech & Language Therapists	121	120	-1	-0.8%	-6	-6
<b>Therapy Professions</b>	<b>469</b>	<b>456</b>	<b>-13</b>	<b>-2.8%</b>	<b>+6</b>	<b>+6</b>
Clinical Measurement	2	2			+1	+1
Phlebotomists	1	1	+0	+54.4%		
Radiographers	1	1				
<b>Health Science/ Diagnostics</b>	<b>4</b>	<b>4</b>	<b>+0</b>	<b>+11.3%</b>	<b>+1</b>	<b>+1</b>

Oct 2020 (Dec 2019 figure: 6,515)	WTE Sep 2020	WTE Oct 2020	WTE change since Sep 20	% change since Sep 20	WTE change since Dec 19	WTE change since Oct 19
<b>Overall</b>	<b>6,703</b>	<b>6,662</b>	<b>-41</b>	<b>-0.6%</b>	<b>+148</b>	<b>+177</b>
<b>Social Care</b>	<b>381</b>	<b>385</b>	<b>+5</b>	<b>+1.2%</b>	<b>+14</b>	<b>+20</b>
<b>Social Workers</b>	<b>109</b>	<b>107</b>	<b>-2</b>	<b>-1.9%</b>	<b>+3</b>	<b>+4</b>
<b>Psychologists</b>	<b>87</b>	<b>88</b>	<b>+0</b>	<b>+0.5%</b>	<b>+7</b>	<b>+9</b>
<b>Pharmacy</b>	<b>40</b>	<b>41</b>	<b>+0</b>	<b>+0.8%</b>	<b>+1</b>	<b>+3</b>
Counsellor Therapists	35	35	+0	+0.9%	-1	-3
Dental Hygienists	4	4	+0	+3.1%	-1	-0
Other Health & Social Care	1	2	+1	+75.0%	-0	-0
Play Therapists/ Specialists	1	1				
<b>H&amp;SC, Other</b>	<b>41</b>	<b>42</b>	<b>+1</b>	<b>+2.9%</b>	<b>-3</b>	<b>-4</b>
<b>Health &amp; Social Care Professionals</b>	<b>1,131</b>	<b>1,123</b>	<b>-9</b>	<b>-0.8%</b>	<b>+27</b>	<b>+38</b>
Executive Management	16	15	-1	-6.6%	+2	+1
Senior Management (VIII & GM)	63	64	+1	+1.1%	+4	+5
<b>Management (VIII &amp; above)</b>	<b>79</b>	<b>79</b>	<b>-0</b>	<b>-0.5%</b>	<b>+6</b>	<b>+5</b>
Middle Management (V-VII)	198	202	+4	+1.9%	+20	+15
Other Administrative	1	1			-0	-0
<b>Administrative/ Supervisory (V to VII)</b>	<b>199</b>	<b>202</b>	<b>+4</b>	<b>+1.9%</b>	<b>+20</b>	<b>+15</b>
<b>Clerical (III &amp; IV)</b>	<b>376</b>	<b>376</b>	<b>-0</b>	<b>-0.0%</b>	<b>+26</b>	<b>+24</b>
<b>Management &amp; Administrative</b>	<b>654</b>	<b>657</b>	<b>+3</b>	<b>+0.5%</b>	<b>+40</b>	<b>+44</b>
Catering	55	56	+1	+1.4%	-3	-3
Household Services	264	262	-2	-0.8%	-7	-11
Other Labs & Associated	1	1	-0	-31.0%		
Other Support	14	14			-0	-1
Portering	63	64	+1	+1.3%	-4	-4
<b>Support</b>	<b>397</b>	<b>396</b>	<b>-1</b>	<b>-0.2%</b>	<b>-14</b>	<b>-19</b>
Maintenance	41	40	-1	-1.3%	+3	+3
Technical Services	5	5			+1	+2
<b>Maintenance/ Technical</b>	<b>46</b>	<b>45</b>	<b>-1</b>	<b>-1.2%</b>	<b>+4</b>	<b>+5</b>
<b>General Support</b>	<b>443</b>	<b>442</b>	<b>-2</b>	<b>-0.3%</b>	<b>-44</b>	<b>-14</b>
HCA, Nurse's Aide, etc.	1,664	1,641	-23	-1.4%	-1	+9
Health & Social Care Assistants	21	19	-2	-10.9%	+6	+4
<b>Health Care Assistants</b>	<b>1,685</b>	<b>1,660</b>	<b>-25</b>	<b>-1.5%</b>	<b>+5</b>	<b>+13</b>
Community Welfare Officers	1	1				
Other Care Grades	608	610	+1	+0.2%	+0	+14
<b>Care, other</b>	<b>609</b>	<b>610</b>	<b>+1</b>	<b>+0.2%</b>	<b>+0</b>	<b>+14</b>
<b>Home Help</b>	<b>132</b>	<b>132</b>	<b>+1</b>	<b>+0.5%</b>	<b>+5</b>	<b>+13</b>
<b>Patient &amp; Client Care</b>	<b>2,426</b>	<b>2,403</b>	<b>-23</b>	<b>-1.0%</b>	<b>+10</b>	<b>+40</b>

**CHO 7 HSE Employment by Grade Group & Staff Category: October 2020**

Oct 2020 (Dec 2019 figure: 3,151)	WTE Sep 2020	WTE Oct 2020	WTE change since Sep 20	% change since Sep 20	WTE change since Dec 19	WTE change since Oct 19
<b>Overall</b>	<b>3,271</b>	<b>3,274</b>	<b>+3</b>	<b>+0.1%</b>	<b>+123</b>	<b>+111</b>
Consultant Medicine	1	1				
Consultant Psychiatry	58	58	-1	-1.2%	+6	+8
Consultant Surgery	1	0	-0	-38.8%	-0	-0
<b>Consultants</b>	<b>60</b>	<b>59</b>	<b>-1</b>	<b>-1.7%</b>	<b>+6</b>	<b>+8</b>
Registrar	72	72	-1	-0.9%	+5	+5
Senior Registrar	20	20	+0	+0.4%	+1	+3
Specialist Registrar	1	1				
<b>Registrars</b>	<b>93</b>	<b>93</b>	<b>-1</b>	<b>-0.6%</b>	<b>+6</b>	<b>+8</b>
<b>SHO/ Interns</b>	<b>27</b>	<b>24</b>	<b>-3</b>	<b>-9.7%</b>	<b>+0</b>	<b>+0</b>
Dentists	36	37	+1	+1.7%	+3	+3
Other Medical	46	46	-0	-0.9%	+2	+1
<b>Medical/ Dental, other</b>	<b>83</b>	<b>83</b>	<b>+0</b>	<b>+0.2%</b>	<b>+5</b>	<b>+4</b>
<b>Medical &amp; Dental</b>	<b>263</b>	<b>259</b>	<b>-4</b>	<b>-1.5%</b>	<b>+24</b>	<b>+19</b>
Clinical Nurse/ Midwife Manager	179	178	-1	-0.6%	+2	+15
Director Nursing/Midwifery, Assistant	50	51	+1	+1.1%	+6	+3
Director of Nursing/Midwifery	14	14	-0	-0.3%	+3	+2
<b>Nurse/ Midwife Manager</b>	<b>244</b>	<b>243</b>	<b>-1</b>	<b>-0.2%</b>	<b>+12</b>	<b>+20</b>
Advanced Nurse/ Midwife Practitioner	7	7	+0	+0.4%	+5	+5
Clinical Nurse/ Midwife Specialist	61	64	+2	+4.1%	+6	+8
<b>Nurse/ Midwife Specialist &amp; AN/MP</b>	<b>68</b>	<b>71</b>	<b>+3</b>	<b>+3.7%</b>	<b>+10</b>	<b>+13</b>
Staff Nurse [Intellectual Disability]	1	1			+1	+1
Staff Nurse [Psychiatric]	185	187	+1	+0.8%	-4	-21
Staff Nurses [General/ Children's]	352	353	+0	+0.1%	+24	+19
<b>Staff Nurse/ Staff Midwife</b>	<b>539</b>	<b>541</b>	<b>+2</b>	<b>+0.3%</b>	<b>+21</b>	<b>-2</b>
<b>Public Health Nurse</b>	<b>177</b>	<b>177</b>	<b>-1</b>	<b>-0.3%</b>	<b>+1</b>	<b>+1</b>
Pre-registration Nurse/ Midwife Intern				-100.0%	-1	-3
Pre-registration Nurse Intern (COVID-19)	17	10	-6	-37.9%	+10	+10
Post-registration Nurse/ Midwife Student	0	21	+20	+8108.0%	-0	-0
Nursing/ Midwifery awaiting registration	6	5	-1	-15.4%	-5	-0
<b>Nursing/ Midwifery Student</b>	<b>23</b>	<b>36</b>	<b>+13</b>	<b>+55.7%</b>	<b>+4</b>	<b>+7</b>
Nursing Education/Clinical	8	9	+1	+7.1%	+1	+2
<b>Nursing/ Midwifery other</b>	<b>8</b>	<b>9</b>	<b>+1</b>	<b>+7.1%</b>	<b>+1</b>	<b>+2</b>
<b>Nursing &amp; Midwifery</b>	<b>1,060</b>	<b>1,076</b>	<b>+17</b>	<b>+1.6%</b>	<b>+56</b>	<b>+41</b>
Dietitians	17	16	-1	-5.6%	-0	-1
Occupational Therapists	145	145	-0	-0.1%	+7	+11
Orthoptists	2	2	+1	+33.3%	+2	+2
Physiotherapists	78	78	+0	+0.1%	+8	+5
Podiatrists & Chiropodists	2	2			+1	+1
Speech & Language Therapists	94	94	-0	-0.4%	-5	-6
<b>Therapy Professions</b>	<b>338</b>	<b>337</b>	<b>-1</b>	<b>-0.3%</b>	<b>+12</b>	<b>+11</b>
<b>Social Care</b>	<b>11</b>	<b>12</b>	<b>+0</b>	<b>+3.6%</b>	<b>+1</b>	<b>+0</b>
<b>Social Workers</b>	<b>71</b>	<b>71</b>	<b>-0</b>	<b>-0.1%</b>	<b>+4</b>	<b>+6</b>
<b>Psychologists</b>	<b>65</b>	<b>65</b>	<b>-0</b>	<b>-0.1%</b>	<b>+3</b>	<b>+4</b>
<b>Pharmacy</b>	<b>27</b>	<b>26</b>	<b>-0</b>	<b>-1.6%</b>	<b>+1</b>	<b>+2</b>
Counsellor Therapists	33	33	+0	+1.0%	-1	-3
Dental Hygienists	4	4	+0	+3.1%	-1	-0
Other Health & Social Care	1	2	+1	+75.0%	-0	-0
Play Therapists/ Specialists	1	1				
<b>H&amp;SC, Other</b>	<b>39</b>	<b>40</b>	<b>+1</b>	<b>+3.0%</b>	<b>-3</b>	<b>-4</b>

Oct 2020 (Dec 2019 figure: 3,151)	WTE Sep 2020	WTE Oct 2020	WTE change since Sep 20	% change since Sep 20	WTE change since Dec 19	WTE change since Oct 19
<b>Overall</b>	<b>3,271</b>	<b>3,274</b>	<b>+3</b>	<b>+0.1%</b>	<b>+123</b>	<b>+111</b>
<b>Health &amp; Social Care Professionals</b>	<b>552</b>	<b>552</b>	<b>+0</b>	<b>+0.0%</b>	<b>+3</b>	<b>+20</b>
Executive Management	10	9	-1	-10.6%	+2	+1
Senior Management (VIII & GM)	36	36	+0	+0.1%	+3	+5
<b>Management (VIII &amp; above)</b>	<b>46</b>	<b>45</b>	<b>-1</b>	<b>-2.2%</b>	<b>+5</b>	<b>+6</b>
<b>Administrative/ Supervisory (V to VII)</b>	<b>109</b>	<b>115</b>	<b>+6</b>	<b>+5.2%</b>	<b>+19</b>	<b>+15</b>
<b>Clerical (III &amp; IV)</b>	<b>263</b>	<b>263</b>	<b>+0</b>	<b>+0.0%</b>	<b>+22</b>	<b>+19</b>
<b>Management &amp; Administrative</b>	<b>419</b>	<b>423</b>	<b>+5</b>	<b>+1.1%</b>	<b>+31</b>	<b>+40</b>
Catering	25	25	-0	-0.1%	-2	-3
Household Services	95	97	+2	+2.5%	+7	+6
Other Support	5	5			-0	-1
Portering	45	46	+1	+1.8%	-2	-2
<b>Support</b>	<b>170</b>	<b>173</b>	<b>+3</b>	<b>+1.9%</b>	<b>+3</b>	<b>+1</b>
<b>Maintenance/ Technical</b>	<b>6</b>	<b>5</b>	<b>-0</b>	<b>-7.4%</b>	<b>-0</b>	<b>+0</b>
<b>General Support</b>	<b>176</b>	<b>179</b>	<b>+3</b>	<b>+1.6%</b>	<b>-16</b>	<b>+1</b>
HCA, Nurse's Aide, etc.	426	410	-16	-3.8%	-23	-30
Health & Social Care Assistants	16	16	-0	-1.9%	+8	+5
<b>Health Care Assistants</b>	<b>442</b>	<b>426</b>	<b>-17</b>	<b>-3.8%</b>	<b>-16</b>	<b>-25</b>
<b>Care, other</b>	<b>228</b>	<b>227</b>	<b>-1</b>	<b>-0.5%</b>	<b>-0</b>	<b>+2</b>
<b>Home Help</b>	<b>132</b>	<b>132</b>	<b>+1</b>	<b>+0.5%</b>	<b>+5</b>	<b>+13</b>
<b>Patient &amp; Client Care</b>	<b>803</b>	<b>785</b>	<b>-17</b>	<b>-2.1%</b>	<b>-75</b>	<b>-10</b>

## Employment by WTE, Headcount, Gender, Full-Time /Part-Time etc.: Oct 2020

CHO 7	WTE	Headcount	WTE: no.	% Male	% female	Male WTE: no.	Female WTE: no.	% Total Perm	% Male Perm	% Female Perm	% Total Full Time	% Total Part Time	% Male FT	% Female FT
<b>Overall</b>	<b>6,662</b>	<b>7,818</b>	<b>1.17</b>	<b>19.9%</b>	<b>80.1%</b>	<b>1.09</b>	<b>1.20</b>	<b>87.5%</b>	<b>84.6%</b>	<b>88.2%</b>	<b>69.5%</b>	<b>30.5%</b>	<b>83.4%</b>	<b>66.1%</b>
Consultant Medicine	10	12	1.16	25.0%	75.0%	1.13	1.17	58.3%	58.3%	55.6%	75.0%	25.0%	66.7%	77.8%
Consultant Paediatrics	0	1	2.94		100.0%		2.94	100.0%	100.0%	100.0%	0.0%	100.0%		0.0%
Consultant Psychiatry	58	63	1.09	31.7%	68.3%	1.04	1.11	58.7%	58.7%	51.2%	84.1%	15.9%	95.0%	79.1%
Consultant Surgery	0	1	2.04		100.0%		2.04	0.0%	0.0%	0.0%	0.0%	100.0%		0.0%
<b>Consultants</b>	<b>69</b>	<b>77</b>	<b>1.11</b>	<b>29.9%</b>	<b>70.1%</b>	<b>1.05</b>	<b>1.14</b>	<b>58.4%</b>	<b>73.9%</b>	<b>51.9%</b>	<b>80.5%</b>	<b>19.5%</b>	<b>91.3%</b>	<b>75.9%</b>
Registrar	75	76	1.01	32.9%	67.1%	1.02	1.01	1.3%	1.3%	0.0%	100.0%	0.0%	100.0%	100.0%
Senior Registrar	20	20	1.00	50.0%	50.0%	1.00	1.00	0.0%	0.0%	0.0%	100.0%	0.0%	100.0%	100.0%
Specialist Registrar	5	5	1.00	20.0%	80.0%	1.00	1.00	0.0%	0.0%	0.0%	100.0%	0.0%	100.0%	100.0%
<b>Registrars</b>	<b>100</b>	<b>101</b>	<b>1.01</b>	<b>35.6%</b>	<b>64.4%</b>	<b>1.01</b>	<b>1.01</b>	<b>1.0%</b>	<b>2.8%</b>	<b>0.0%</b>	<b>100.0%</b>	<b>0.0%</b>	<b>100.0%</b>	<b>100.0%</b>
<b>SHO/ Interns</b>	<b>38</b>	<b>44</b>	<b>1.17</b>	<b>25.0%</b>	<b>75.0%</b>	<b>1.36</b>	<b>1.12</b>	<b>0.0%</b>	<b>0.0%</b>	<b>0.0%</b>	<b>100.0%</b>	<b>0.0%</b>	<b>100.0%</b>	<b>100.0%</b>
Dentists	37	43	1.17	16.3%	83.7%	1.07	1.19	100.0%	100.0%	100.0%	65.1%	34.9%	85.7%	61.1%
Other Medical	48	67	1.38	41.8%	58.2%	1.34	1.42	34.3%	34.3%	48.7%	22.4%	77.6%	17.9%	25.6%
<b>Medical/ Dental, other</b>	<b>85</b>	<b>110</b>	<b>1.29</b>	<b>31.8%</b>	<b>68.2%</b>	<b>1.28</b>	<b>1.30</b>	<b>60.0%</b>	<b>31.4%</b>	<b>73.3%</b>	<b>39.1%</b>	<b>60.9%</b>	<b>31.4%</b>	<b>42.7%</b>
<b>Medical &amp; Dental</b>	<b>292</b>	<b>332</b>	<b>1.14</b>	<b>31.6%</b>	<b>68.4%</b>	<b>1.13</b>	<b>1.14</b>	<b>33.7%</b>	<b>27.6%</b>	<b>36.6%</b>	<b>75.3%</b>	<b>24.7%</b>	<b>75.2%</b>	<b>75.3%</b>
Clinical Nurse/ Midwife Manager	325	347	1.07	14.4%	85.6%	1.01	1.08	97.4%	97.4%	98.0%	85.9%	14.1%	96.0%	84.2%
Director Nursing/Midwifery, Assistant	60	64	1.06	18.8%	81.3%	1.00	1.08	93.8%	93.8%	92.3%	87.5%	12.5%	100.0%	84.6%
Director of Nursing/Midwifery	18	19	1.06	5.3%	94.7%	1.00	1.07	100.0%	100.0%	100.0%	89.5%	10.5%	100.0%	88.9%
<b>Nurse/ Midwife Manager</b>	<b>403</b>	<b>430</b>	<b>1.07</b>	<b>14.7%</b>	<b>85.3%</b>	<b>1.01</b>	<b>1.08</b>	<b>97.0%</b>	<b>95.2%</b>	<b>97.3%</b>	<b>86.3%</b>	<b>13.7%</b>	<b>96.8%</b>	<b>84.5%</b>
Advanced Nurse/ Midwife Practitioner	12	13	1.09	7.7%	92.3%	1.04	1.10	100.0%	100.0%	100.0%	84.6%	15.4%	100.0%	83.3%
Clinical Nurse/ Midwife Specialist	94	109	1.15	9.2%	90.8%	1.04	1.17	99.1%	99.1%	99.0%	73.4%	26.6%	100.0%	70.7%
<b>Nurse/ Midwife Specialist &amp; AN/MP</b>	<b>106</b>	<b>122</b>	<b>1.15</b>	<b>9.0%</b>	<b>91.0%</b>	<b>1.04</b>	<b>1.16</b>	<b>99.2%</b>	<b>100.0%</b>	<b>99.1%</b>	<b>74.6%</b>	<b>25.4%</b>	<b>100.0%</b>	<b>72.1%</b>
Staff Nurse [Intellectual Disability]	180	225	1.25	7.6%	92.4%	1.04	1.27	94.7%	94.7%	94.2%	58.2%	41.8%	94.1%	55.3%
Staff Nurse [Psychiatric]	187	212	1.13	23.6%	76.4%	1.08	1.15	96.2%	96.2%	96.9%	83.5%	16.5%	92.0%	80.9%
Staff Nurses [General/ Children's]	644	742	1.15	9.6%	90.4%	1.06	1.16	92.5%	92.5%	92.4%	71.3%	28.7%	90.1%	69.3%
<b>Staff Nurse/ Staff Midwife</b>	<b>1,012</b>	<b>1,179</b>	<b>1.17</b>	<b>11.7%</b>	<b>88.3%</b>	<b>1.06</b>	<b>1.18</b>	<b>93.6%</b>	<b>94.2%</b>	<b>93.5%</b>	<b>71.0%</b>	<b>29.0%</b>	<b>91.3%</b>	<b>68.3%</b>
<b>Public Health Nurse</b>	<b>177</b>	<b>216</b>	<b>1.22</b>	<b>0.5%</b>	<b>99.5%</b>	<b>1.08</b>	<b>1.22</b>	<b>95.8%</b>	<b>100.0%</b>	<b>95.8%</b>	<b>63.9%</b>	<b>36.1%</b>	<b>100.0%</b>	<b>63.7%</b>
Pre-registration Nurse Intern (COVID-19)	10	20	1.93	15.0%	85.0%	1.51	2.03	0.0%	0.0%	0.0%	100.0%	0.0%	100.0%	100.0%
Post-registration Nurse/ Midwife Student	21	25	1.22		100.0%		1.22	16.0%	16.0%	16.0%	100.0%	0.0%		100.0%

Nursing/ Midwifery awaiting registration	5	6	1.12		100.0%		1.12	83.3%	83.3%	83.3%	83.3%	16.7%		83.3%
<b>Nursing/ Midwifery Student</b>	<b>36</b>	<b>51</b>	<b>1.41</b>	<b>5.9%</b>	<b>94.1%</b>	<b>1.51</b>	<b>1.40</b>	<b>17.6%</b>	<b>0.0%</b>	<b>18.8%</b>	<b>98.0%</b>	<b>2.0%</b>	<b>100.0%</b>	<b>97.9%</b>
Nursing Education/Clinical	12	13	1.06		100.0%		1.06	100.0%	100.0%	100.0%	76.9%	23.1%		76.9%
<b>Nursing/ Midwifery other</b>	<b>12</b>	<b>13</b>	<b>1.06</b>		<b>100.0%</b>		<b>1.06</b>	<b>100.0%</b>		<b>100.0%</b>	<b>76.9%</b>	<b>23.1%</b>		<b>76.9%</b>
<b>Nursing &amp; Midwifery</b>	<b>1,746</b>	<b>2,011</b>	<b>1.15</b>	<b>10.7%</b>	<b>89.3%</b>	<b>1.05</b>	<b>1.17</b>	<b>93.0%</b>	<b>93.5%</b>	<b>92.9%</b>	<b>74.4%</b>	<b>25.6%</b>	<b>93.5%</b>	<b>72.1%</b>
Dietitians	24	30	1.27	6.7%	93.3%	1.00	1.29	90.0%	90.0%	89.3%	63.3%	36.7%	100.0%	60.7%
Occupational Therapists	187	214	1.15	9.3%	90.7%	1.08	1.15	89.3%	89.3%	89.2%	78.5%	21.5%	90.0%	77.3%
Orthoptists	2	2	1.00	50.0%	50.0%	1.00	1.00	50.0%	50.0%	100.0%	100.0%	0.0%	100.0%	100.0%
Physiotherapists	122	143	1.18	21.7%	78.3%	1.04	1.22	92.3%	92.3%	91.1%	74.1%	25.9%	93.5%	68.8%
Podiatrists & Chiropodists	2	2	1.00		100.0%		1.00	100.0%	100.0%	100.0%	100.0%	0.0%		100.0%
Speech & Language Therapists	120	134	1.12		100.0%		1.12	93.3%	93.3%	93.3%	87.3%	12.7%		87.3%
<b>Therapy Professions</b>	<b>456</b>	<b>525</b>	<b>1.15</b>	<b>10.3%</b>	<b>89.7%</b>	<b>1.05</b>	<b>1.16</b>	<b>91.0%</b>	<b>92.6%</b>	<b>90.9%</b>	<b>78.9%</b>	<b>21.1%</b>	<b>92.6%</b>	<b>77.3%</b>
Clinical Measurement	2	2	1.00	100.0%		1.00		100.0%	100.0%		100.0%	0.0%	100.0%	
Phlebotomists	1	2	1.64		100.0%		1.64	100.0%	100.0%	100.0%	0.0%	100.0%		0.0%
Radiographers	1	1	1.00		100.0%		1.00	100.0%	100.0%	100.0%	100.0%	0.0%		100.0%
<b>Health Science/ Diagnostics</b>	<b>4</b>	<b>5</b>	<b>1.18</b>	<b>40.0%</b>	<b>60.0%</b>	<b>1.00</b>	<b>1.35</b>	<b>100.0%</b>	<b>100.0%</b>	<b>100.0%</b>	<b>60.0%</b>	<b>40.0%</b>	<b>100.0%</b>	<b>33.3%</b>
<b>Social Care</b>	<b>385</b>	<b>426</b>	<b>1.11</b>	<b>25.4%</b>	<b>74.6%</b>	<b>1.06</b>	<b>1.12</b>	<b>97.2%</b>	<b>98.1%</b>	<b>96.9%</b>	<b>74.4%</b>	<b>25.6%</b>	<b>83.3%</b>	<b>71.4%</b>
<b>Social Workers</b>	<b>107</b>	<b>121</b>	<b>1.13</b>	<b>16.5%</b>	<b>83.5%</b>	<b>1.10</b>	<b>1.14</b>	<b>95.0%</b>	<b>90.0%</b>	<b>96.0%</b>	<b>81.8%</b>	<b>18.2%</b>	<b>90.0%</b>	<b>80.2%</b>
<b>Psychologists</b>	<b>88</b>	<b>95</b>	<b>1.08</b>	<b>20.0%</b>	<b>80.0%</b>	<b>1.03</b>	<b>1.10</b>	<b>98.9%</b>	<b>100.0%</b>	<b>98.7%</b>	<b>87.4%</b>	<b>12.6%</b>	<b>94.7%</b>	<b>85.5%</b>
<b>Pharmacy</b>	<b>41</b>	<b>47</b>	<b>1.15</b>	<b>23.4%</b>	<b>76.6%</b>	<b>1.06</b>	<b>1.19</b>	<b>59.6%</b>	<b>45.5%</b>	<b>63.9%</b>	<b>46.8%</b>	<b>53.2%</b>	<b>45.5%</b>	<b>47.2%</b>
Counsellor Therapists	35	39	1.12	30.8%	69.2%	1.06	1.14	89.7%	89.7%	88.9%	66.7%	33.3%	75.0%	63.0%
Dental Hygienists	4	7	1.75		100.0%		1.75	100.0%	100.0%	100.0%	14.3%	85.7%		14.3%
Other Health & Social Care	2	2	1.14		100.0%		1.14	100.0%	100.0%	100.0%	0.0%	100.0%		0.0%
Play Therapists/ Specialists	1	1	1.00	100.0%		1.00		100.0%	100.0%		100.0%	0.0%	100.0%	
<b>H&amp;SC, Other</b>	<b>42</b>	<b>49</b>	<b>1.17</b>	<b>26.5%</b>	<b>73.5%</b>	<b>1.05</b>	<b>1.23</b>	<b>91.8%</b>	<b>92.3%</b>	<b>91.7%</b>	<b>57.1%</b>	<b>42.9%</b>	<b>76.9%</b>	<b>50.0%</b>
<b>Health &amp; Social Care</b>	<b>1,123</b>	<b>1,268</b>	<b>1.13</b>	<b>17.9%</b>	<b>82.1%</b>	<b>1.06</b>	<b>1.15</b>	<b>93.0%</b>	<b>93.4%</b>	<b>92.9%</b>	<b>76.2%</b>	<b>23.8%</b>	<b>85.0%</b>	<b>74.3%</b>
Executive Management	15	16	1.08	31.3%	68.8%	1.00	1.12	87.5%	87.5%	90.9%	100.0%	0.0%	100.0%	100.0%
Senior Management (VIII & GM)	64	67	1.05	28.4%	71.6%	1.04	1.05	97.0%	97.0%	97.9%	95.5%	4.5%	94.7%	95.8%
<b>Management (VIII &amp; above)</b>	<b>79</b>	<b>83</b>	<b>1.05</b>	<b>28.9%</b>	<b>71.1%</b>	<b>1.03</b>	<b>1.06</b>	<b>95.2%</b>	<b>91.7%</b>	<b>96.6%</b>	<b>96.4%</b>	<b>3.6%</b>	<b>95.8%</b>	<b>96.6%</b>
<b>Administrative/ Supervisory (V to VII)</b>	<b>202</b>	<b>217</b>	<b>1.07</b>	<b>23.5%</b>	<b>76.5%</b>	<b>1.01</b>	<b>1.09</b>	<b>90.8%</b>	<b>84.3%</b>	<b>92.8%</b>	<b>88.0%</b>	<b>12.0%</b>	<b>98.0%</b>	<b>84.9%</b>
<b>Clerical (III &amp; IV)</b>	<b>376</b>	<b>434</b>	<b>1.15</b>	<b>11.1%</b>	<b>88.9%</b>	<b>1.06</b>	<b>1.17</b>	<b>84.1%</b>	<b>79.2%</b>	<b>84.7%</b>	<b>71.0%</b>	<b>29.0%</b>	<b>85.4%</b>	<b>69.2%</b>
<b>Management &amp; Administrative</b>	<b>657</b>	<b>734</b>	<b>1.12</b>	<b>16.8%</b>	<b>83.2%</b>	<b>1.03</b>	<b>1.14</b>	<b>87.3%</b>	<b>83.7%</b>	<b>88.1%</b>	<b>78.9%</b>	<b>21.1%</b>	<b>92.7%</b>	<b>76.1%</b>
Catering	56	60	1.08	28.3%	71.7%	1.05	1.09	98.3%	98.3%	100.0%	75.0%	25.0%	100.0%	65.1%
Household Services	262	348	1.33	15.2%	84.8%	1.21	1.35	85.1%	85.1%	86.4%	39.7%	60.3%	66.0%	34.9%
Other Labs & Associated	1	1	1.00		100.0%		1.00	100.0%	100.0%	100.0%	100.0%	0.0%		100.0%

Other Support	14	17	1.23	76.5%	23.5%	1.18	1.39	76.5%	76.5%	100.0%	58.8%	41.2%	69.2%	25.0%
Portering	64	67	1.05	92.5%	7.5%	1.04	1.31	85.1%	85.1%	80.0%	85.1%	14.9%	90.3%	20.0%
<b>Support</b>	<b>396</b>	<b>493</b>	<b>1.24</b>	<b>29.4%</b>	<b>70.6%</b>	<b>1.11</b>	<b>1.31</b>	<b>86.4%</b>	<b>82.1%</b>	<b>88.2%</b>	<b>50.9%</b>	<b>49.1%</b>	<b>80.7%</b>	<b>38.5%</b>
<b>Maintenance/ Technical</b>	<b>45</b>	<b>50</b>	<b>1.10</b>	<b>88.0%</b>	<b>12.0%</b>	<b>1.09</b>	<b>1.22</b>	<b>90.0%</b>	<b>88.6%</b>	<b>100.0%</b>	<b>82.0%</b>	<b>18.0%</b>	<b>86.4%</b>	<b>50.0%</b>
<b>General Support</b>	<b>442</b>	<b>543</b>	<b>1.23</b>	<b>34.8%</b>	<b>65.2%</b>	<b>1.10</b>	<b>1.31</b>	<b>86.7%</b>	<b>83.6%</b>	<b>88.4%</b>	<b>53.8%</b>	<b>46.2%</b>	<b>82.0%</b>	<b>38.7%</b>
HCA, Nurse's Aide, etc.	1,641	1,929	1.18	24.7%	75.3%	1.09	1.21	86.5%	86.5%	86.3%	65.6%	34.4%	79.0%	61.2%
Health & Social Care Assistants	19	23	1.22	8.7%	91.3%	1.34	1.21	21.7%	21.7%	23.8%	87.0%	13.0%	100.0%	85.7%
<b>Health Care Assistants</b>	<b>1,660</b>	<b>1,952</b>	<b>1.18</b>	<b>24.5%</b>	<b>75.5%</b>	<b>1.09</b>	<b>1.21</b>	<b>85.7%</b>	<b>86.6%</b>	<b>85.4%</b>	<b>65.8%</b>	<b>34.2%</b>	<b>79.1%</b>	<b>61.5%</b>
<b>Care, other</b>	<b>610</b>	<b>709</b>	<b>1.16</b>	<b>27.9%</b>	<b>72.1%</b>	<b>1.06</b>	<b>1.20</b>	<b>94.5%</b>	<b>94.9%</b>	<b>94.3%</b>	<b>73.6%</b>	<b>26.4%</b>	<b>87.9%</b>	<b>68.1%</b>
<b>Home Help</b>	<b>132</b>	<b>269</b>	<b>2.03</b>	<b>7.1%</b>	<b>92.9%</b>	<b>4.49</b>	<b>1.95</b>	<b>82.2%</b>	<b>52.6%</b>	<b>84.4%</b>	<b>16.4%</b>	<b>83.6%</b>	<b>10.5%</b>	<b>16.8%</b>
<b>Patient &amp; Client Care</b>	<b>2,403</b>	<b>2,930</b>	<b>1.22</b>	<b>23.8%</b>	<b>76.2%</b>	<b>1.10</b>	<b>1.26</b>	<b>87.5%</b>	<b>88.1%</b>	<b>87.3%</b>	<b>63.2%</b>	<b>36.8%</b>	<b>79.7%</b>	<b>58.0%</b>

## Employment by WTE, Headcount, Gender, Full-Time /Part-Time etc.: Oct 2020

CHO 7	WTE	Headcount	WTE: no.	% Male	% female	Male WTE: no.	Female WTE: no.	% Total Perm	% Male Perm	% Female Perm	% Total Full Time	% Total Part Time	% Male FT	% Female FT
<b>Overall</b>	<b>6,662</b>	<b>7,818</b>	<b>1.17</b>	<b>19.9%</b>	<b>80.1%</b>	<b>1.09</b>	<b>1.20</b>	<b>87.5%</b>	<b>84.6%</b>	<b>88.2%</b>	<b>69.5%</b>	<b>30.5%</b>	<b>83.4%</b>	<b>66.1%</b>
Community Health & Wellbeing	10	11	1.15	9.1%	90.9%	1.00	1.17	90.9%	90.9%	90.0%	72.7%	27.3%	100.0%	100.0%
Mental Health	866	955	1.10	22.6%	77.4%	1.05	1.12	82.2%	82.2%	82.4%	87.1%	12.9%	95.4%	95.4%
Primary Care	1,734	2,046	1.18	15.8%	84.2%	1.08	1.20	86.3%	86.3%	88.2%	67.7%	32.3%	81.7%	81.7%
Social Care	4,054	4,806	1.19	21.1%	78.9%	1.10	1.21	89.0%	89.0%	89.3%	66.8%	33.2%	81.4%	81.4%

## CHO 7 Skills Mix by Staff Grouping: October 2020

Oct 2020 (Dec 2018 figure: 6,557)	WTE Dec 2015	WTE Dec 2016	WTE Dec 2017	WTE Dec 2018	WTE Dec 2019	WTE Sep 2020	WTE Oct 2020
<b>Overall</b>	<b>5,479</b>	<b>5,579</b>	<b>6,406</b>	<b>6,557</b>	<b>6,515</b>	<b>6,703</b>	<b>6,662</b>
Consultant Medicine	2.9%	3.2%	3.5%	2.7%	2.5%	3.3%	3.6%
Consultant Paediatrics	0.2%	0.1%	0.1%	0.1%	0.1%	0.1%	0.1%
Consultant Psychiatry	23.8%	19.2%	18.2%	18.1%	19.2%	19.7%	19.8%
Consultant Surgery	0.3%	0.3%	0.2%	0.5%	0.3%	0.3%	0.2%
<b>Consultants</b>	<b>27.2%</b>	<b>22.8%</b>	<b>22.0%</b>	<b>21.3%</b>	<b>22.1%</b>	<b>23.4%</b>	<b>23.7%</b>
Registrar	10.4%	22.2%	20.7%	24.9%	26.5%	25.9%	25.7%
Senior Registrar	3.0%	4.1%	3.7%	5.3%	7.0%	6.7%	6.9%
Specialist Registrar	2.3%	1.5%	2.2%	1.8%	1.5%	1.7%	1.7%
<b>Registrars</b>	<b>15.7%</b>	<b>27.8%</b>	<b>26.6%</b>	<b>31.9%</b>	<b>35.0%</b>	<b>34.3%</b>	<b>34.3%</b>
Interns	0.9%	0.8%	0.8%	0.8%	0.7%	0.7%	0.6%
Senior House Officer	18.1%	15.3%	16.0%	12.6%	12.5%	13.1%	12.2%
<b>SHO/ Interns</b>	<b>19.0%</b>	<b>16.1%</b>	<b>16.8%</b>	<b>13.3%</b>	<b>13.2%</b>	<b>13.7%</b>	<b>12.9%</b>
Dentists	18.4%	15.6%	13.9%	13.8%	12.5%	12.1%	12.6%
Other Medical	19.8%	17.7%	20.8%	19.6%	17.2%	16.4%	16.6%
<b>Medical/ Dental, other</b>	<b>38.2%</b>	<b>33.3%</b>	<b>34.7%</b>	<b>33.4%</b>	<b>29.7%</b>	<b>28.6%</b>	<b>29.2%</b>
<b>Medical &amp; Dental</b>	<b>3.9%</b>	<b>4.6%</b>	<b>4.0%</b>	<b>4.0%</b>	<b>4.1%</b>	<b>100.0%</b>	<b>4.4%</b>
Clinical Nurse/ Midwife Manager	17.4%	18.8%	19.0%	18.9%	19.3%	18.8%	18.6%
Director Nursing/Midwifery, Assistant	2.9%	3.3%	2.9%	3.3%	3.1%	3.4%	3.5%
Director of Nursing/Midwifery	1.1%	1.0%	1.3%	1.1%	0.9%	1.1%	1.0%
<b>Nurse/ Midwife Manager</b>	<b>21.4%</b>	<b>23.2%</b>	<b>23.2%</b>	<b>23.3%</b>	<b>23.3%</b>	<b>23.3%</b>	<b>23.1%</b>
Advanced Nurse/ Midwife Practitioner	0.1%	0.1%	0.1%	0.1%	0.3%	0.7%	0.7%
Clinical Nurse/ Midwife Specialist	4.0%	4.1%	4.5%	5.0%	5.3%	5.2%	5.4%
<b>Nurse/ Midwife Specialist &amp; AN/MP</b>	<b>4.1%</b>	<b>4.2%</b>	<b>4.6%</b>	<b>5.1%</b>	<b>5.5%</b>	<b>5.9%</b>	<b>6.1%</b>
Staff Nurse [Intellectual Disability]	14.4%	14.2%	13.4%	12.9%	11.4%	9.7%	10.3%
Staff Nurse [Psychiatric]	14.7%	13.3%	13.2%	11.7%	11.2%	10.6%	10.7%
Staff Nurses [General/ Children's]	32.5%	31.5%	32.9%	33.9%	35.7%	37.8%	36.9%
<b>Staff Nurse/ Staff Midwife</b>	<b>61.6%</b>	<b>59.1%</b>	<b>59.4%</b>	<b>58.6%</b>	<b>58.4%</b>	<b>58.1%</b>	<b>57.9%</b>
<b>Public Health Nurse</b>	<b>10.9%</b>	<b>11.2%</b>	<b>10.8%</b>	<b>11.5%</b>	<b>10.3%</b>	<b>10.1%</b>	<b>10.1%</b>
Pre-registration Nurse/ Midwife Intern	0.1%	0.1%		0.4%	0.1%		
Pre-registration Nurse Intern (COVID-19)						1.6%	0.6%
Post-registration Nurse/ Midwife Student	1.5%	1.4%	0.9%	0.4%	1.2%	0.0%	1.2%
Nursing/ Midwifery awaiting registration			0.5%	0.2%	0.6%	0.4%	0.3%
<b>Nursing/ Midwifery Student</b>	<b>1.6%</b>	<b>1.5%</b>	<b>1.4%</b>	<b>1.0%</b>	<b>1.9%</b>	<b>2.0%</b>	<b>2.1%</b>
<b>Nursing/ Midwifery other</b>	<b>0.6%</b>	<b>0.8%</b>	<b>0.5%</b>	<b>0.5%</b>	<b>0.6%</b>	<b>0.7%</b>	<b>0.7%</b>
<b>Nursing &amp; Midwifery</b>	<b>29.8%</b>	<b>28.8%</b>	<b>26.9%</b>	<b>25.9%</b>	<b>26.1%</b>	<b>100.0%</b>	<b>26.2%</b>
Dietitians	2.3%	2.4%	1.8%	2.3%	2.3%	2.4%	2.1%
Occupational Therapists	21.3%	21.3%	16.1%	16.9%	16.8%	16.9%	16.6%
Orthoptists	0.0%	0.0%				0.1%	0.2%
Physiotherapists	15.3%	15.4%	11.8%	11.5%	10.4%	11.2%	10.8%
Podiatrists & Chiropodists	0.1%	0.1%	0.1%	0.1%	0.1%	0.2%	0.2%
Speech & Language Therapists	11.9%	13.5%	12.1%	11.2%	11.5%	10.7%	10.7%
<b>Therapy Professions</b>	<b>50.8%</b>	<b>52.8%</b>	<b>41.9%</b>	<b>41.9%</b>	<b>41.1%</b>	<b>41.5%</b>	<b>40.6%</b>
Audiology	0.0%	0.1%					
Clinical Measurement	0.1%	0.1%	0.1%	0.1%	0.1%	0.2%	0.2%
Medical Laboratory		0.1%					
Phlebotomists	0.1%	0.1%	0.1%	0.1%	0.1%	0.1%	0.1%
Radiographers	0.2%	0.1%	0.1%	0.1%	0.1%	0.1%	0.1%
<b>Health Science/ Diagnostics</b>	<b>0.4%</b>	<b>0.5%</b>	<b>0.3%</b>	<b>0.3%</b>	<b>0.3%</b>	<b>0.3%</b>	<b>0.4%</b>
<b>Social Care</b>	<b>15.7%</b>	<b>14.2%</b>	<b>31.3%</b>	<b>32.8%</b>	<b>33.9%</b>	<b>33.7%</b>	<b>34.3%</b>
<b>Social Workers</b>	<b>12.9%</b>	<b>13.9%</b>	<b>10.7%</b>	<b>10.1%</b>	<b>9.6%</b>	<b>9.7%</b>	<b>9.6%</b>
<b>Psychologists</b>	<b>9.4%</b>	<b>8.7%</b>	<b>8.1%</b>	<b>7.7%</b>	<b>7.4%</b>	<b>7.7%</b>	<b>7.8%</b>

Oct 2020 (Dec 2018 figure: 6,557)	WTE Dec 2015	WTE Dec 2016	WTE Dec 2017	WTE Dec 2018	WTE Dec 2019	WTE Sep 2020	WTE Oct 2020
<b>Overall</b>	<b>5,479</b>	<b>5,579</b>	<b>6,406</b>	<b>6,557</b>	<b>6,515</b>	<b>6,703</b>	<b>6,662</b>
<b>Pharmacy</b>	<b>5.5%</b>	<b>4.8%</b>	<b>3.7%</b>	<b>3.5%</b>	<b>3.7%</b>	<b>3.6%</b>	<b>3.6%</b>
Counsellor Therapists	4.2%	3.9%	3.1%	2.8%	3.3%	3.1%	3.1%
Dental Hygienists	0.5%	0.4%	0.3%	0.4%	0.5%	0.3%	0.4%
Other Health & Social Care	0.5%	0.6%	0.5%	0.4%	0.2%	0.1%	0.2%
Play Therapists/ Specialists	0.1%	0.1%	0.1%	0.1%	0.1%	0.1%	0.1%
<b>H&amp;SC, Other</b>	<b>5.2%</b>	<b>5.1%</b>	<b>4.1%</b>	<b>3.7%</b>	<b>4.1%</b>	<b>3.6%</b>	<b>3.7%</b>
<b>Health &amp; Social Care Professionals</b>	<b>13.8%</b>	<b>14.2%</b>	<b>16.4%</b>	<b>16.7%</b>	<b>16.8%</b>	<b>100.0%</b>	<b>16.8%</b>
Executive Management	2.2%	2.9%	2.5%	1.9%	2.1%	2.4%	2.3%
Senior Management (VIII & GM)	9.4%	8.7%	8.5%	9.2%	9.9%	9.7%	9.7%
<b>Management (VIII &amp; above)</b>	<b>11.7%</b>	<b>11.6%</b>	<b>11.0%</b>	<b>11.1%</b>	<b>12.0%</b>	<b>12.1%</b>	<b>12.0%</b>
Middle Management (V-VII)	24.1%	23.7%	26.0%	27.2%	29.9%	30.2%	30.7%
Other Administrative	0.2%	0.1%	0.2%	0.1%	0.2%	0.1%	0.1%
<b>Administrative/ Supervisory (V to VII)</b>	<b>24.3%</b>	<b>23.8%</b>	<b>26.1%</b>	<b>27.3%</b>	<b>30.1%</b>	<b>30.4%</b>	<b>30.8%</b>
<b>Clerical (III &amp; IV)</b>	<b>64.0%</b>	<b>64.6%</b>	<b>62.9%</b>	<b>61.6%</b>	<b>57.9%</b>	<b>57.5%</b>	<b>57.2%</b>
<b>Management &amp; Administrative</b>	<b>9.8%</b>	<b>10.0%</b>	<b>9.5%</b>	<b>9.4%</b>	<b>9.5%</b>	<b>100.0%</b>	<b>9.9%</b>
Catering	12.1%	12.0%	13.0%	12.8%	13.1%	12.4%	12.6%
Household Services	59.6%	59.9%	59.9%	60.4%	59.5%	59.6%	59.3%
Other Labs & Associated	0.3%	0.2%	0.2%	0.2%	0.2%	0.3%	0.2%
Other Support	3.9%	3.7%	3.0%	3.2%	3.1%	3.1%	3.1%
Portering	17.3%	16.7%	14.5%	14.6%	14.9%	14.2%	14.4%
<b>Support</b>	<b>93.2%</b>	<b>92.6%</b>	<b>90.6%</b>	<b>91.2%</b>	<b>90.9%</b>	<b>89.6%</b>	<b>89.7%</b>
<b>Maintenance/ Technical</b>	<b>6.8%</b>	<b>7.4%</b>	<b>9.4%</b>	<b>8.8%</b>	<b>9.1%</b>	<b>10.4%</b>	<b>10.3%</b>
<b>General Support</b>	<b>8.2%</b>	<b>7.9%</b>	<b>7.7%</b>	<b>7.4%</b>	<b>7.5%</b>	<b>100.0%</b>	<b>6.6%</b>
HCA, Nurse's Aide, etc.	66.5%	66.9%	66.4%	67.6%	68.7%	68.6%	68.3%
Health & Social Care Assistants	0.5%	0.4%	0.3%	0.9%	0.5%	0.9%	0.8%
<b>Health Care Assistants</b>	<b>66.9%</b>	<b>67.4%</b>	<b>66.7%</b>	<b>68.5%</b>	<b>69.2%</b>	<b>69.5%</b>	<b>69.1%</b>
Community Welfare Officers	0.1%	0.1%	0.1%	0.0%	0.0%	0.0%	0.0%
Other Care Grades	25.0%	24.3%	26.5%	25.7%	25.5%	25.1%	25.4%
<b>Care, other</b>	<b>25.1%</b>	<b>24.4%</b>	<b>26.6%</b>	<b>25.8%</b>	<b>25.5%</b>	<b>25.1%</b>	<b>25.4%</b>
<b>Home Help</b>	<b>8.0%</b>	<b>8.2%</b>	<b>6.7%</b>	<b>5.7%</b>	<b>5.3%</b>	<b>5.4%</b>	<b>5.5%</b>
<b>Patient &amp; Client Care</b>	<b>34.5%</b>	<b>34.6%</b>	<b>35.5%</b>	<b>36.5%</b>	<b>36.7%</b>	<b>100.0%</b>	<b>36.1%</b>
<b>Total</b>	<b>100 %</b>	<b>100 %</b>	<b>100 %</b>	<b>100 %</b>	<b>100%</b>	<b>100 %</b>	<b>100 %</b>

# CHO 7 Skills Mix by Care Group: October 2020

Oct 2020 (Dec 2018 figure: 835)	WTE Dec 2015	WTE Dec 2016	WTE Dec 2017	WTE Dec 2018	WTE Dec 2019	WTE Sep 2020	WTE Oct 2020
<b>Mental Health</b>	<b>837</b>	<b>828</b>	<b>859</b>	<b>835</b>	<b>834.98</b>	<b>869.60</b>	<b>865.51</b>
<b>Consultants</b>	<b>47.0%</b>	<b>44.2%</b>	<b>43.0%</b>	<b>43.6%</b>	<b>41.6%</b>	<b>41.7%</b>	<b>42.3%</b>
Registrar	17.2%	19.7%	17.8%	25.1%	22.9%	25.6%	26.0%
Senior Registrar	6.8%	9.4%	9.8%	12.7%	16.5%	15.3%	15.8%
Specialist Registrar			1.0%		0.9%	0.8%	0.8%
<b>Registrars</b>	<b>24.0%</b>	<b>29.1%</b>	<b>28.7%</b>	<b>37.8%</b>	<b>40.3%</b>	<b>41.6%</b>	<b>42.5%</b>
Interns	2.1%	2.0%	2.1%	2.0%	1.7%	1.5%	1.5%
Senior House Officer	27.0%	24.7%	26.2%	16.6%	16.4%	15.2%	13.7%
<b>SHO/ Interns</b>	<b>29.1%</b>	<b>26.7%</b>	<b>28.3%</b>	<b>18.6%</b>	<b>18.2%</b>	<b>16.7%</b>	<b>15.1%</b>
<b>Medical &amp; Dental</b>	<b>11.5%</b>	<b>12.2%</b>	<b>11.1%</b>	<b>12.3%</b>	<b>12.3%</b>	<b>14.7%</b>	<b>14.7%</b>
Clinical Nurse/ Midwife Manager	22.3%	25.7%	24.5%	27.0%	26.5%	25.4%	25.4%
Director Nursing/Midwifery, Assistant	3.5%	4.1%	4.5%	5.0%	4.3%	4.6%	4.6%
Director of Nursing/Midwifery	0.8%	0.8%	0.8%	0.8%	0.8%	0.5%	0.7%
<b>Nurse/ Midwife Manager</b>	<b>26.6%</b>	<b>30.6%</b>	<b>29.8%</b>	<b>32.8%</b>	<b>31.5%</b>	<b>30.5%</b>	<b>30.7%</b>
Advanced Nurse/ Midwife Practitioner			0.3%	0.3%	0.8%	1.4%	1.4%
Clinical Nurse/ Midwife Specialist	6.5%	7.2%	6.7%	7.0%	10.0%	10.2%	10.9%
<b>Nurse/ Midwife Specialist &amp; AN/MP</b>	<b>6.5%</b>	<b>7.2%</b>	<b>7.0%</b>	<b>7.3%</b>	<b>10.8%</b>	<b>11.6%</b>	<b>12.4%</b>
Staff Nurse [Intellectual Disability]						0.3%	0.3%
Staff Nurse [Psychiatric]	63.5%	58.1%	58.4%	54.3%	51.1%	47.6%	48.1%
Staff Nurses [General/ Children's]	1.9%	1.9%	1.1%	1.2%	1.5%	2.5%	2.3%
<b>Staff Nurse/ Staff Midwife</b>	<b>65.4%</b>	<b>60.1%</b>	<b>59.5%</b>	<b>55.5%</b>	<b>52.6%</b>	<b>50.4%</b>	<b>50.7%</b>
Pre-registration Nurse/ Midwife Intern	0.4%	0.5%		1.6%	0.4%		
Pre-registration Nurse Intern (COVID-19)						4.3%	2.7%
Post-registration Nurse/ Midwife Student						0.1%	0.3%
Nursing/ Midwifery awaiting registration			2.1%	1.1%	2.7%	1.0%	1.0%
<b>Nursing/ Midwifery Student</b>	<b>0.4%</b>	<b>0.5%</b>	<b>2.1%</b>	<b>2.8%</b>	<b>3.0%</b>	<b>5.4%</b>	<b>4.0%</b>
Nursing Education/Clinical	1.1%	1.7%	1.6%	1.7%	2.0%	2.1%	2.3%
<b>Nursing/ Midwifery other</b>	<b>1.1%</b>	<b>1.7%</b>	<b>1.6%</b>	<b>1.7%</b>	<b>2.0%</b>	<b>2.1%</b>	<b>2.3%</b>
<b>Nursing &amp; Midwifery</b>	<b>44.8%</b>	<b>43.7%</b>	<b>44.9%</b>	<b>43.3%</b>	<b>43.3%</b>	<b>44.4%</b>	<b>44.4%</b>
Dietitians	0.7%			1.4%	2.1%	2.0%	1.4%
Occupational Therapists	29.9%	30.6%	28.0%	29.8%	27.3%	27.0%	27.5%
Speech & Language Therapists	4.2%	5.0%	4.7%	3.5%	4.8%	2.7%	3.3%
<b>Therapy Professions</b>	<b>34.9%</b>	<b>35.5%</b>	<b>32.7%</b>	<b>34.6%</b>	<b>34.2%</b>	<b>31.8%</b>	<b>32.2%</b>
<b>Social Care</b>	<b>8.0%</b>	<b>7.9%</b>	<b>7.4%</b>	<b>5.8%</b>	<b>5.4%</b>	<b>5.3%</b>	<b>5.6%</b>
<b>Social Workers</b>	<b>28.9%</b>	<b>30.2%</b>	<b>29.0%</b>	<b>26.2%</b>	<b>24.4%</b>	<b>25.8%</b>	<b>24.8%</b>
<b>Psychologists</b>	<b>21.0%</b>	<b>18.3%</b>	<b>20.7%</b>	<b>23.9%</b>	<b>22.4%</b>	<b>23.6%</b>	<b>23.3%</b>
<b>Pharmacy</b>					<b>0.7%</b>	<b>0.7%</b>	<b>0.7%</b>
Counsellor Therapists	6.2%	6.6%	8.4%	7.6%	11.4%	12.2%	12.3%
Other Health & Social Care	1.1%	1.5%	1.8%	1.8%	1.4%	0.7%	1.2%
<b>H&amp;SC, Other</b>	<b>7.3%</b>	<b>8.1%</b>	<b>10.2%</b>	<b>9.4%</b>	<b>12.9%</b>	<b>12.9%</b>	<b>13.5%</b>
<b>Health &amp; Social Care Professionals</b>	<b>16.0%</b>	<b>16.4%</b>	<b>16.9%</b>	<b>16.8%</b>	<b>16.8%</b>	<b>16.6%</b>	<b>16.6%</b>
<b>Management (VIII &amp; above)</b>	<b>3.3%</b>	<b>4.3%</b>	<b>4.1%</b>	<b>3.9%</b>	<b>4.3%</b>	<b>5.3%</b>	<b>4.0%</b>
<b>Administrative/ Supervisory (V to VII)</b>	<b>14.9%</b>	<b>18.8%</b>	<b>23.2%</b>	<b>25.3%</b>	<b>24.1%</b>	<b>24.7%</b>	<b>26.0%</b>
<b>Clerical (III &amp; IV)</b>	<b>81.7%</b>	<b>76.9%</b>	<b>72.7%</b>	<b>70.8%</b>	<b>71.6%</b>	<b>70.0%</b>	<b>70.0%</b>
<b>Management &amp; Administrative</b>	<b>7.2%</b>	<b>8.0%</b>	<b>8.0%</b>	<b>8.8%</b>	<b>8.8%</b>	<b>8.2%</b>	<b>8.2%</b>
<b>Support</b>	<b>93.2%</b>	<b>92.3%</b>	<b>92.1%</b>	<b>91.7%</b>	<b>90.5%</b>	<b>89.8%</b>	<b>89.0%</b>
<b>Maintenance/ Technical</b>	<b>6.8%</b>	<b>7.7%</b>	<b>7.9%</b>	<b>8.3%</b>	<b>9.5%</b>	<b>10.2%</b>	<b>11.0%</b>
<b>General Support</b>	<b>3.4%</b>	<b>3.2%</b>	<b>3.0%</b>	<b>2.9%</b>	<b>2.9%</b>	<b>2.1%</b>	<b>2.1%</b>

Oct 2020 (Dec 2018 figure: 835)	WTE Dec 2015	WTE Dec 2016	WTE Dec 2017	WTE Dec 2018	WTE Dec 2019	WTE Sep 2020	WTE Oct 2020
<b>Mental Health</b>	<b>837</b>	<b>828</b>	<b>859</b>	<b>835</b>	<b>834.98</b>	<b>869.60</b>	<b>865.51</b>
HCA, Nurse's Aide, etc.	33.1%	33.7%	32.2%	31.0%	26.6%	28.6%	29.3%
<b>Health Care Assistants</b>	<b>33.1%</b>	<b>33.7%</b>	<b>32.2%</b>	<b>31.0%</b>	<b>26.6%</b>	<b>28.6%</b>	<b>29.3%</b>
<b>Care, other</b>	<b>66.9%</b>	<b>66.3%</b>	<b>67.8%</b>	<b>69.0%</b>	<b>73.4%</b>	<b>71.4%</b>	<b>70.7%</b>
<b>Patient &amp; Client Care</b>	<b>17.1%</b>	<b>16.4%</b>	<b>16.1%</b>	<b>16.0%</b>	<b>16.0%</b>	<b>14.1%</b>	<b>14.1%</b>
<b>Total</b>	<b>100 %</b>	<b>100 %</b>	<b>100 %</b>	<b>100 %</b>	<b>100 %</b>	<b>100 %</b>	

Oct 2020 (Dec 2018 figure: 1,776)	WTE Dec 2015	WTE Dec 2016	WTE Dec 2017	WTE Dec 2018	WTE Dec 2019	WTE Sep 2020	WTE Oct 2020
<b>Primary Care</b>	<b>1,647</b>	<b>1,687</b>	<b>1,691</b>	<b>1,776</b>	<b>1,702.01</b>	<b>1,718.91</b>	<b>1,733.60</b>
Consultant Medicine	6.3%	6.1%	6.4%	4.9%	4.8%	6.6%	7.0%
Consultant Psychiatry	3.0%	1.5%	2.2%	2.1%	2.9%	2.7%	2.7%
Consultant Surgery	0.8%	0.6%	0.3%	0.8%	0.6%	0.5%	0.3%
<b>Consultants</b>	<b>10.1%</b>	<b>8.2%</b>	<b>8.9%</b>	<b>7.8%</b>	<b>8.3%</b>	<b>9.9%</b>	<b>10.1%</b>
<b>Registrars</b>	<b>8.9%</b>	<b>28.9%</b>	<b>27.1%</b>	<b>30.1%</b>	<b>33.0%</b>	<b>29.9%</b>	<b>29.5%</b>
<b>SHO/ Interns</b>	<b>5.1%</b>	<b>4.5%</b>	<b>4.2%</b>	<b>5.1%</b>	<b>4.3%</b>	<b>6.7%</b>	<b>6.2%</b>
Dentists	39.9%	29.9%	25.7%	25.3%	24.4%	24.2%	24.8%
Other Medical	36.0%	28.5%	34.1%	31.7%	30.1%	29.4%	29.4%
<b>Medical/ Dental, other</b>	<b>75.9%</b>	<b>58.4%</b>	<b>59.8%</b>	<b>57.0%</b>	<b>54.5%</b>	<b>53.5%</b>	<b>54.3%</b>
<b>Medical &amp; Dental</b>	<b>5.9%</b>	<b>7.9%</b>	<b>8.1%</b>	<b>8.1%</b>	<b>8.5%</b>	<b>8.5%</b>	<b>8.5%</b>
Clinical Nurse/ Midwife Manager	11.0%	10.2%	10.1%	10.2%	10.7%	10.5%	10.2%
Director Nursing/Midwifery, Assistant	3.6%	3.9%	3.7%	3.8%	3.4%	4.4%	4.4%
Director of Nursing/Midwifery	1.0%	1.1%	1.1%	1.2%	1.1%	1.3%	1.2%
<b>Nurse/ Midwife Manager</b>	<b>15.5%</b>	<b>15.2%</b>	<b>14.9%</b>	<b>15.2%</b>	<b>15.2%</b>	<b>16.2%</b>	<b>15.8%</b>
<b>Nurse/ Midwife Specialist &amp; AN/MP</b>	<b>6.5%</b>	<b>6.6%</b>	<b>8.4%</b>	<b>8.8%</b>	<b>8.7%</b>	<b>9.7%</b>	<b>9.4%</b>
<b>Staff Nurse/ Staff Midwife</b>	<b>37.5%</b>	<b>37.5%</b>	<b>36.3%</b>	<b>37.5%</b>	<b>38.7%</b>	<b>39.3%</b>	<b>37.7%</b>
<b>Public Health Nurse</b>	<b>35.0%</b>	<b>35.5%</b>	<b>36.7%</b>	<b>36.9%</b>	<b>33.1%</b>	<b>34.4%</b>	<b>33.0%</b>
<b>Nursing/ Midwifery Student</b>	<b>4.8%</b>	<b>4.5%</b>	<b>3.1%</b>	<b>1.3%</b>	<b>4.0%</b>		<b>3.6%</b>
Nursing Education/Clinical	0.6%	0.5%	0.5%	0.4%	0.4%	0.4%	0.4%
Other Nursing/ Midwifery		0.2%					
<b>Nursing/ Midwifery other</b>	<b>0.6%</b>	<b>0.7%</b>	<b>0.5%</b>	<b>0.4%</b>	<b>0.4%</b>	<b>0.4%</b>	<b>0.4%</b>
<b>Nursing &amp; Midwifery</b>	<b>30.5%</b>	<b>30.1%</b>	<b>30.1%</b>	<b>29.8%</b>	<b>31.1%</b>	<b>30.9%</b>	<b>30.9%</b>
Dietitians	3.6%	3.8%	4.0%	4.8%	3.8%	4.1%	4.0%
Occupational Therapists	25.9%	24.9%	23.4%	26.8%	26.6%	25.7%	26.1%
Orthoptists	0.1%	0.1%				0.4%	0.5%
Physiotherapists	22.5%	23.1%	22.5%	21.4%	20.1%	21.9%	22.4%
Podiatrists & Chiropodists				0.1%	0.3%	0.5%	0.5%
Speech & Language Therapists	16.4%	18.2%	20.3%	19.2%	20.5%	18.7%	17.8%
<b>Therapy Professions</b>	<b>68.5%</b>	<b>70.1%</b>	<b>70.3%</b>	<b>72.4%</b>	<b>71.4%</b>	<b>71.4%</b>	<b>71.3%</b>
Phlebotomists	0.1%	0.2%	0.2%	0.1%	0.1%	0.2%	0.3%
<b>Health Science/ Diagnostics</b>	<b>0.1%</b>	<b>0.2%</b>	<b>0.2%</b>	<b>0.1%</b>	<b>0.1%</b>	<b>0.2%</b>	<b>0.3%</b>
<b>Social Care</b>	<b>1.1%</b>	<b>1.1%</b>	<b>1.1%</b>	<b>1.1%</b>	<b>0.9%</b>	<b>1.0%</b>	<b>1.0%</b>
<b>Social Workers</b>	<b>7.6%</b>	<b>7.7%</b>	<b>7.4%</b>	<b>6.4%</b>	<b>7.0%</b>	<b>7.0%</b>	<b>6.8%</b>
<b>Psychologists</b>	<b>5.9%</b>	<b>5.7%</b>	<b>6.1%</b>	<b>6.2%</b>	<b>5.8%</b>	<b>6.5%</b>	<b>6.4%</b>
<b>Pharmacy</b>	<b>9.4%</b>	<b>8.2%</b>	<b>8.5%</b>	<b>7.6%</b>	<b>8.5%</b>	<b>8.5%</b>	<b>8.7%</b>
Counsellor Therapists	6.1%	5.7%	5.2%	4.8%	5.0%	4.3%	4.3%
Dental Hygienists	1.0%	1.0%	0.9%	1.3%	1.4%	1.0%	1.1%
Other Health & Social Care	0.3%	0.3%	0.3%	0.3%			
<b>H&amp;SC, Other</b>	<b>7.4%</b>	<b>7.0%</b>	<b>6.4%</b>	<b>6.4%</b>	<b>6.4%</b>	<b>5.4%</b>	<b>5.4%</b>
<b>Health &amp; Social Care Professionals</b>	<b>21.5%</b>	<b>21.5%</b>	<b>21.4%</b>	<b>21.4%</b>	<b>22.3%</b>	<b>21.1%</b>	<b>21.1%</b>
Executive Management	1.7%	2.6%	2.3%	1.9%	2.4%	3.0%	2.6%

Oct 2020 (Dec 2018 figure: 1,776)	WTE Dec 2015	WTE Dec 2016	WTE Dec 2017	WTE Dec 2018	WTE Dec 2019	WTE Sep 2020	WTE Oct 2020
<b>Primary Care</b>	<b>1,647</b>	<b>1,687</b>	<b>1,691</b>	<b>1,776</b>	<b>1,702.01</b>	<b>1,718.91</b>	<b>1,733.60</b>
Senior Management (VIII & GM)	6.9%	6.5%	6.8%	8.0%	9.1%	7.2%	7.2%
<b>Management (VIII &amp; above)</b>	<b>8.5%</b>	<b>9.1%</b>	<b>9.1%</b>	<b>9.9%</b>	<b>11.6%</b>	<b>10.2%</b>	<b>9.8%</b>
<b>Administrative/ Supervisory (V to VII)</b>	<b>22.1%</b>	<b>20.8%</b>	<b>23.0%</b>	<b>22.7%</b>	<b>26.5%</b>	<b>26.1%</b>	<b>27.3%</b>
<b>Clerical (III &amp; IV)</b>	<b>69.4%</b>	<b>70.1%</b>	<b>67.9%</b>	<b>67.4%</b>	<b>62.0%</b>	<b>63.7%</b>	<b>63.0%</b>
<b>Management &amp; Administrative</b>	<b>18.4%</b>	<b>18.0%</b>	<b>18.4%</b>	<b>17.5%</b>	<b>18.3%</b>	<b>17.5%</b>	<b>17.5%</b>
<b>Support</b>	<b>94.4%</b>	<b>93.2%</b>	<b>94.6%</b>	<b>93.8%</b>	<b>93.0%</b>	<b>91.8%</b>	<b>92.3%</b>
Maintenance	5.6%	6.1%	4.6%	5.5%	6.2%	7.4%	6.9%
Technical Services		0.7%	0.8%	0.7%	0.8%	0.8%	0.8%
<b>Maintenance/ Technical</b>	<b>5.6%</b>	<b>6.8%</b>	<b>5.4%</b>	<b>6.2%</b>	<b>7.0%</b>	<b>8.2%</b>	<b>7.7%</b>
<b>General Support</b>	<b>8.4%</b>	<b>8.0%</b>	<b>7.7%</b>	<b>7.5%</b>	<b>7.8%</b>	<b>7.0%</b>	<b>7.0%</b>
HCA, Nurse's Aide, etc.	46.0%	47.0%	48.3%	44.1%	45.9%	45.3%	45.4%
Health & Social Care Assistants	1.6%	1.0%	0.9%	6.4%	2.8%	5.8%	5.6%
<b>Health Care Assistants</b>	<b>47.6%</b>	<b>48.0%</b>	<b>49.2%</b>	<b>50.6%</b>	<b>48.7%</b>	<b>51.0%</b>	<b>51.0%</b>
Community Welfare Officers	0.8%	0.8%	0.8%	0.3%	0.4%	0.3%	0.3%
Other Care Grades	51.6%	51.2%	50.0%	49.1%	50.9%	48.6%	48.6%
<b>Care, other</b>	<b>52.4%</b>	<b>52.0%</b>	<b>50.8%</b>	<b>49.4%</b>	<b>51.3%</b>	<b>49.0%</b>	<b>49.0%</b>
<b>Patient &amp; Client Care</b>	<b>15.2%</b>	<b>14.5%</b>	<b>14.3%</b>	<b>15.7%</b>	<b>16.3%</b>	<b>15.0%</b>	<b>15.0%</b>
<b>Total</b>	<b>100 %</b>	<b>100 %</b>	<b>100 %</b>	<b>100 %</b>	<b>100 %</b>	<b>100 %</b>	

Oct 2020 (Dec 2018 figure: 2,903)	WTE Dec 2015	WTE Dec 2016	WTE Dec 2017	WTE Dec 2018	WTE Dec 2019	WTE Sep 2020	WTE Oct 2020
<b>Disabilities</b>	<b>1,867</b>	<b>1,943</b>	<b>2,792</b>	<b>2,903</b>	<b>2,981.59</b>	<b>3,068.56</b>	<b>3,027.99</b>
Consultant Paediatrics	2.8%	2.9%	2.5%	3.1%	3.0%	2.9%	3.0%
Consultant Psychiatry	26.5%	19.1%	16.2%	1.9%	1.7%	1.7%	1.8%
<b>Consultants</b>	<b>29.3%</b>	<b>22.0%</b>	<b>18.8%</b>	<b>5.0%</b>	<b>4.7%</b>	<b>4.7%</b>	<b>4.8%</b>
<b>Registrars</b>	<b>16.6%</b>	<b>26.0%</b>	<b>22.2%</b>	<b>21.5%</b>	<b>26.1%</b>	<b>26.1%</b>	<b>22.1%</b>
<b>SHO/ Interns</b>	<b>41.4%</b>	<b>43.3%</b>	<b>51.7%</b>	<b>64.3%</b>	<b>60.5%</b>	<b>60.6%</b>	<b>64.2%</b>
<b>Medical/ Dental, other</b>	<b>12.7%</b>	<b>8.7%</b>	<b>7.4%</b>	<b>9.3%</b>	<b>8.7%</b>	<b>8.7%</b>	<b>8.9%</b>
<b>Medical &amp; Dental</b>	<b>0.6%</b>	<b>0.6%</b>	<b>0.5%</b>	<b>0.4%</b>	<b>0.4%</b>	<b>0.4%</b>	<b>0.4%</b>
Clinical Nurse/ Midwife Manager	21.5%	23.2%	23.9%	22.4%	22.4%	21.7%	21.7%
Director Nursing/Midwifery, Assistant	1.2%	1.5%	1.1%	1.1%	1.1%	1.2%	1.3%
Director of Nursing/Midwifery	0.7%	0.5%	1.4%	1.0%	0.8%	0.8%	0.6%
<b>Nurse/ Midwife Manager</b>	<b>23.5%</b>	<b>25.2%</b>	<b>26.4%</b>	<b>24.4%</b>	<b>24.3%</b>	<b>23.7%</b>	<b>23.6%</b>
Advanced Nurse/ Midwife Practitioner						0.4%	0.4%
Clinical Nurse/ Midwife Specialist	1.4%	1.3%	1.3%	2.0%	1.0%	0.6%	0.5%
<b>Nurse/ Midwife Specialist &amp; AN/MP</b>	<b>1.4%</b>	<b>1.3%</b>	<b>1.3%</b>	<b>2.0%</b>	<b>1.0%</b>	<b>0.9%</b>	<b>0.9%</b>
Staff Nurse [Intellectual Disability]	58.7%	57.6%	45.5%	43.3%	38.7%	32.4%	36.2%
Staff Nurses [General/ Children's]	15.8%	15.2%	26.7%	30.2%	35.9%	40.5%	39.0%
<b>Staff Nurse/ Staff Midwife</b>	<b>74.4%</b>	<b>72.8%</b>	<b>72.2%</b>	<b>73.5%</b>	<b>74.6%</b>	<b>73.0%</b>	<b>75.2%</b>
Pre-registration Nurse Intern (COVID-19)						2.1%	
<b>Nursing/ Midwifery Student</b>						<b>2.1%</b>	
<b>Nursing/ Midwifery other</b>	<b>0.6%</b>	<b>0.8%</b>	<b>0.1%</b>	<b>0.1%</b>	<b>0.1%</b>	<b>0.3%</b>	<b>0.3%</b>
<b>Nursing &amp; Midwifery</b>	<b>21.5%</b>	<b>20.4%</b>	<b>18.1%</b>	<b>17.5%</b>	<b>17.0%</b>	<b>16.4%</b>	<b>16.4%</b>
Dietitians	1.7%	1.6%	0.8%	0.8%	1.3%	1.3%	1.0%
Occupational Therapists	10.6%	13.0%	7.8%	7.0%	7.6%	9.0%	7.9%
Physiotherapists	11.0%	11.0%	6.3%	6.1%	5.5%	6.5%	5.7%
Speech & Language Therapists	10.7%	13.5%	9.1%	8.2%	7.6%	7.9%	8.4%
<b>Therapy Professions</b>	<b>34.1%</b>	<b>39.1%</b>	<b>24.0%</b>	<b>22.1%</b>	<b>22.0%</b>	<b>24.7%</b>	<b>23.1%</b>
Audiology	0.1%	0.2%					
Clinical Measurement	0.4%	0.4%	0.2%	0.2%	0.2%	0.3%	0.3%

Oct 2020 (Dec 2018 figure: 2,903)	WTE Dec 2015	WTE Dec 2016	WTE Dec 2017	WTE Dec 2018	WTE Dec 2019	WTE Sep 2020	WTE Oct 2020
<b>Disabilities</b>	<b>1,867</b>	<b>1,943</b>	<b>2,792</b>	<b>2,903</b>	<b>2,981.59</b>	<b>3,068.56</b>	<b>3,027.99</b>
Phlebotomists				0.2%	0.2%		
Radiographers	0.4%	0.4%	0.2%	0.2%	0.2%	0.2%	0.2%
<b>Health Science/ Diagnostics</b>	<b>0.9%</b>	<b>1.0%</b>	<b>0.4%</b>	<b>0.6%</b>	<b>0.5%</b>	<b>0.5%</b>	<b>0.5%</b>
<b>Social Care</b>	<b>45.2%</b>	<b>38.3%</b>	<b>62.1%</b>	<b>64.8%</b>	<b>65.2%</b>	<b>62.9%</b>	<b>64.3%</b>
<b>Social Workers</b>	<b>7.9%</b>	<b>10.1%</b>	<b>5.8%</b>	<b>6.3%</b>	<b>6.0%</b>	<b>5.8%</b>	<b>5.7%</b>
<b>Psychologists</b>	<b>9.6%</b>	<b>9.1%</b>	<b>6.4%</b>	<b>5.1%</b>	<b>5.0%</b>	<b>5.1%</b>	<b>5.3%</b>
<b>Pharmacy</b>	<b>1.7%</b>	<b>1.6%</b>	<b>0.8%</b>	<b>0.9%</b>	<b>0.9%</b>	<b>0.8%</b>	<b>0.8%</b>
Counsellor Therapists	0.7%	0.6%	0.3%	0.3%	0.3%	0.3%	0.3%
Other Health & Social Care	0.0%	0.4%	0.2%				
<b>H&amp;SC, Other</b>	<b>0.7%</b>	<b>1.0%</b>	<b>0.5%</b>	<b>0.3%</b>	<b>0.3%</b>	<b>0.3%</b>	<b>0.3%</b>
<b>Health &amp; Social Care Professionals</b>	<b>12.3%</b>	<b>13.1%</b>	<b>18.1%</b>	<b>18.5%</b>	<b>18.0%</b>	<b>19.2%</b>	<b>19.2%</b>
Executive Management	4.9%	5.3%	3.9%	2.6%	2.5%	2.7%	2.7%
Senior Management (VIII & GM)	17.2%	14.3%	13.3%	13.7%	13.3%	14.3%	14.8%
<b>Management (VIII &amp; above)</b>	<b>22.1%</b>	<b>19.5%</b>	<b>17.2%</b>	<b>16.3%</b>	<b>15.8%</b>	<b>17.0%</b>	<b>17.6%</b>
<b>Administrative/ Supervisory (V to VII)</b>	<b>34.6%</b>	<b>35.3%</b>	<b>34.0%</b>	<b>37.0%</b>	<b>39.0%</b>	<b>39.4%</b>	<b>38.7%</b>
<b>Clerical (III &amp; IV)</b>	<b>43.3%</b>	<b>45.1%</b>	<b>48.7%</b>	<b>46.7%</b>	<b>45.3%</b>	<b>43.6%</b>	<b>43.8%</b>
<b>Management &amp; Administrative</b>	<b>6.6%</b>	<b>6.8%</b>	<b>6.4%</b>	<b>6.5%</b>	<b>6.3%</b>	<b>7.2%</b>	<b>7.2%</b>
<b>Support</b>	<b>89.0%</b>	<b>88.2%</b>	<b>84.1%</b>	<b>85.7%</b>	<b>85.4%</b>	<b>83.0%</b>	<b>82.7%</b>
Maintenance	9.7%	11.1%	15.5%	13.8%	13.0%	14.8%	15.1%
Technical Services	1.3%	0.6%	0.5%	0.5%	1.5%	2.1%	2.2%
<b>Maintenance/ Technical</b>	<b>11.0%</b>	<b>11.8%</b>	<b>15.9%</b>	<b>14.3%</b>	<b>14.6%</b>	<b>17.0%</b>	<b>17.3%</b>
<b>General Support</b>	<b>8.5%</b>	<b>8.1%</b>	<b>7.7%</b>	<b>7.1%</b>	<b>7.0%</b>	<b>6.1%</b>	<b>6.1%</b>
HCA, Nurse's Aide, etc.	71.3%	72.1%	70.6%	71.9%	72.9%	73.5%	73.4%
Health & Social Care Assistants	0.5%	0.6%	0.3%	0.2%	0.4%	0.3%	0.2%
<b>Health Care Assistants</b>	<b>71.8%</b>	<b>72.7%</b>	<b>70.8%</b>	<b>72.1%</b>	<b>73.3%</b>	<b>73.9%</b>	<b>73.6%</b>
<b>Care, other</b>	<b>24.8%</b>	<b>24.0%</b>	<b>27.2%</b>	<b>26.2%</b>	<b>25.4%</b>	<b>25.0%</b>	<b>25.3%</b>
<b>Home Help</b>	<b>3.4%</b>	<b>3.3%</b>	<b>1.9%</b>	<b>1.6%</b>	<b>1.3%</b>	<b>1.2%</b>	<b>1.1%</b>
<b>Patient &amp; Client Care</b>	<b>50.4%</b>	<b>50.9%</b>	<b>49.1%</b>	<b>50.0%</b>	<b>48.7%</b>	<b>50.7%</b>	<b>50.7%</b>
<b>Total</b>	<b>100 %</b>	<b>100 %</b>	<b>100 %</b>	<b>100 %</b>	<b>100 %</b>	<b>100 %</b>	

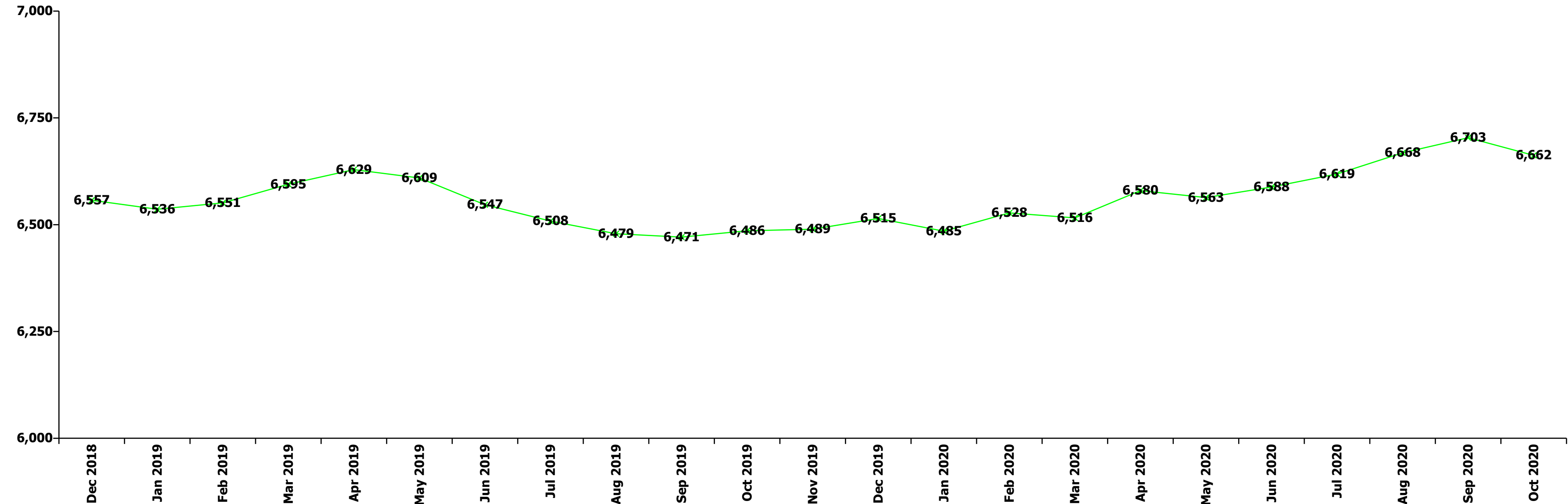
Oct 2020 (Dec 2018 figure: 1,044)	WTE Dec 2015	WTE Dec 2016	WTE Dec 2017	WTE Dec 2018	WTE Dec 2019	WTE Sep 2020	WTE Oct 2020
<b>Older People</b>	<b>1,128</b>	<b>1,121</b>	<b>1,064</b>	<b>1,044</b>	<b>995.93</b>	<b>1,036.66</b>	<b>1,025.62</b>
Senior House Officer	31.6%	33.3%	37.5%	28.6%	33.3%	33.3%	33.3%
<b>SHO/ Interns</b>	<b>31.6%</b>	<b>33.3%</b>	<b>37.5%</b>	<b>28.6%</b>	<b>33.3%</b>	<b>33.3%</b>	<b>33.3%</b>
<b>Medical/ Dental, other</b>	<b>68.4%</b>	<b>66.7%</b>	<b>62.5%</b>	<b>71.4%</b>	<b>66.7%</b>	<b>66.7%</b>	<b>66.7%</b>
<b>Medical &amp; Dental</b>	<b>0.8%</b>	<b>0.8%</b>	<b>0.8%</b>	<b>0.7%</b>	<b>0.7%</b>	<b>0.6%</b>	<b>0.6%</b>
Clinical Nurse/ Midwife Manager	16.4%	19.1%	18.6%	18.8%	20.3%	19.7%	19.5%
Director Nursing/Midwifery, Assistant	3.3%	3.8%	2.5%	4.0%	4.3%	3.8%	3.8%
Director of Nursing/Midwifery	2.0%	1.8%	2.2%	1.7%	1.1%	1.8%	1.8%
<b>Nurse/ Midwife Manager</b>	<b>21.6%</b>	<b>24.7%</b>	<b>23.2%</b>	<b>24.4%</b>	<b>25.8%</b>	<b>25.3%</b>	<b>25.1%</b>
<b>Nurse/ Midwife Specialist &amp; AN/MP</b>	<b>1.0%</b>	<b>1.0%</b>	<b>1.1%</b>	<b>1.4%</b>	<b>0.9%</b>	<b>1.1%</b>	<b>1.2%</b>
Staff Nurse [Psychiatric]		0.2%	0.2%				
Staff Nurses [General/ Children's]	76.9%	74.1%	75.4%	74.1%	73.3%	72.8%	73.2%
<b>Staff Nurse/ Staff Midwife</b>	<b>76.9%</b>	<b>74.3%</b>	<b>75.6%</b>	<b>74.1%</b>	<b>73.3%</b>	<b>72.8%</b>	<b>73.2%</b>
<b>Public Health Nurse</b>	<b>0.4%</b>	<b>0.1%</b>					
Nursing/ Midwifery awaiting registration						0.8%	0.5%
<b>Nursing/ Midwifery Student</b>						<b>0.8%</b>	<b>0.5%</b>
<b>Nursing &amp; Midwifery</b>	<b>31.5%</b>	<b>30.4%</b>	<b>30.4%</b>	<b>28.9%</b>	<b>30.3%</b>	<b>32.3%</b>	<b>32.3%</b>

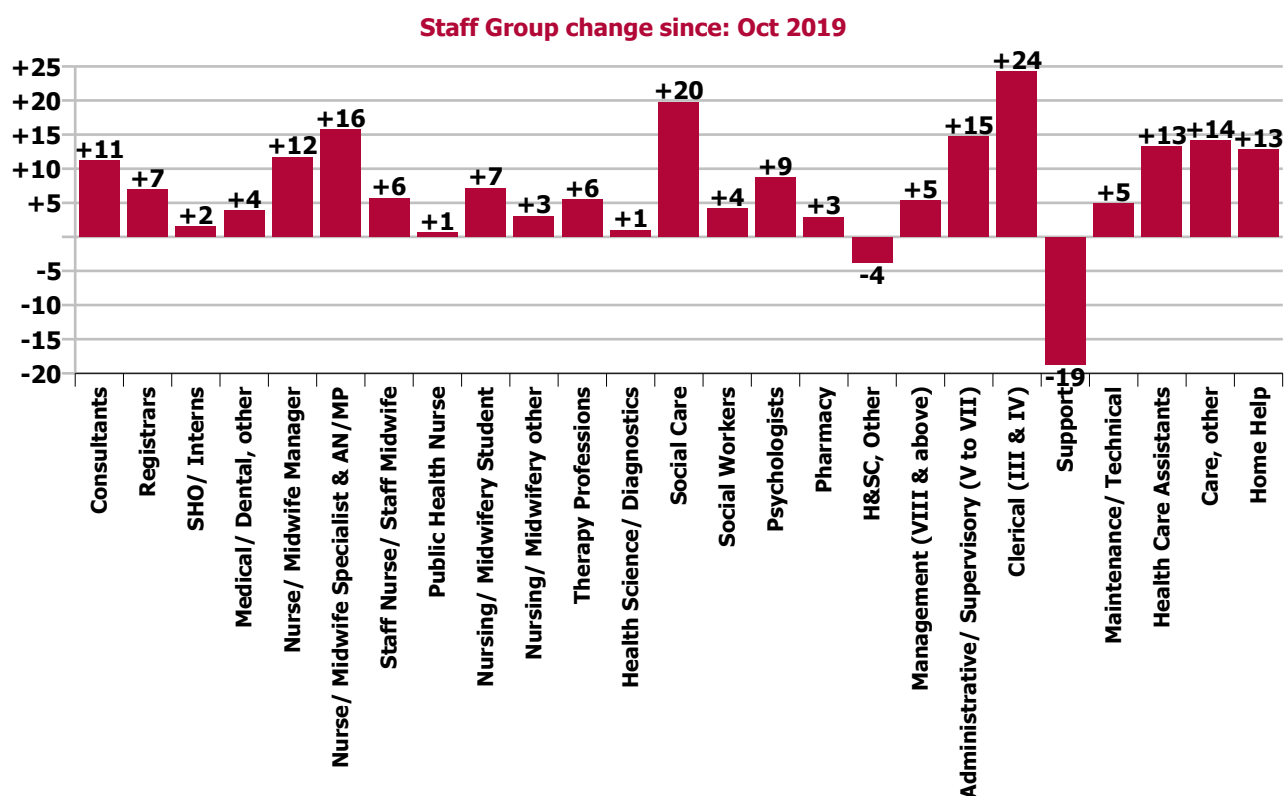
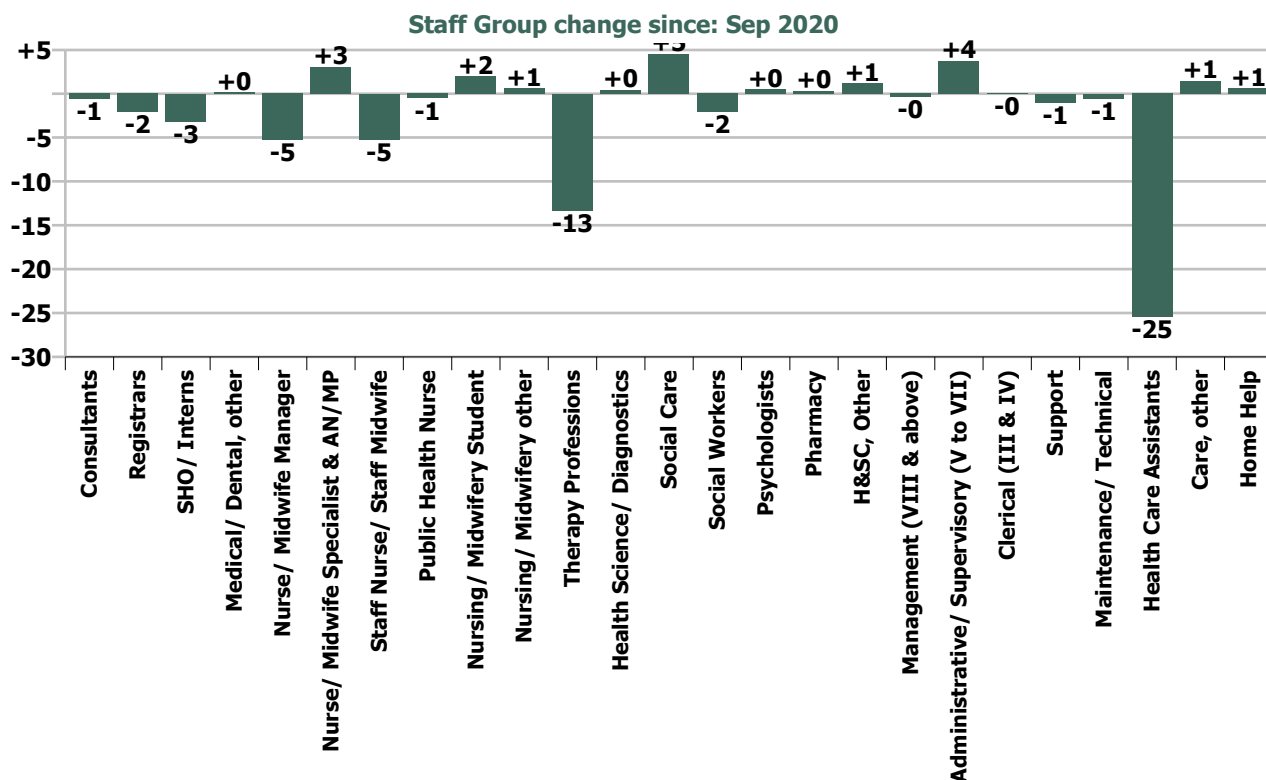
Oct 2020 (Dec 2018 figure: 1,044)	WTE Dec 2015	WTE Dec 2016	WTE Dec 2017	WTE Dec 2018	WTE Dec 2019	WTE Sep 2020	WTE Oct 2020
<b>Older People</b>	<b>1,128</b>	<b>1,121</b>	<b>1,064</b>	<b>1,044</b>	<b>995.93</b>	<b>1,036.66</b>	<b>1,025.62</b>
Dietitians		2.6%	2.7%		3.6%	3.2%	3.2%
Occupational Therapists	11.3%	10.8%	10.7%	9.6%	14.9%	14.5%	14.6%
Physiotherapists	27.8%	27.3%	28.3%	29.5%	30.5%	22.9%	22.3%
Podiatrists & Chiropodists	1.8%	1.9%	1.8%	2.0%			
Speech & Language Therapists	2.7%		2.7%	2.6%		3.2%	3.2%
<b>Therapy Professions</b>	<b>43.6%</b>	<b>42.5%</b>	<b>46.1%</b>	<b>43.6%</b>	<b>49.0%</b>	<b>43.9%</b>	<b>43.4%</b>
Medical Laboratory		2.6%					
Radiographers	2.1%						
<b>Health Science/ Diagnostics</b>	<b>2.1%</b>	<b>2.6%</b>					
<b>Social Workers</b>	<b>37.5%</b>	<b>39.2%</b>	<b>37.7%</b>	<b>41.0%</b>	<b>38.6%</b>	<b>43.3%</b>	<b>43.7%</b>
<b>Pharmacy</b>	<b>11.1%</b>	<b>10.5%</b>	<b>10.8%</b>	<b>10.3%</b>	<b>8.9%</b>	<b>9.7%</b>	<b>9.7%</b>
Other Health & Social Care	2.8%	2.6%	2.7%	2.6%			
Play Therapists/ Specialists	2.8%	2.6%	2.7%	2.6%	3.6%	3.2%	3.2%
<b>H&amp;SC, Other</b>	<b>5.6%</b>	<b>5.2%</b>	<b>5.4%</b>	<b>5.1%</b>	<b>3.6%</b>	<b>3.2%</b>	<b>3.2%</b>
<b>Health &amp; Social Care Professionals</b>	<b>3.2%</b>	<b>3.4%</b>	<b>3.5%</b>	<b>3.7%</b>	<b>3.9%</b>	<b>3.0%</b>	<b>3.0%</b>
Senior Management (VIII & GM)	14.9%	15.2%	10.0%	9.0%	9.9%	11.6%	11.6%
<b>Management (VIII &amp; above)</b>	<b>14.9%</b>	<b>15.2%</b>	<b>10.0%</b>	<b>9.0%</b>	<b>9.9%</b>	<b>11.6%</b>	<b>11.6%</b>
<b>Administrative/ Supervisory (V to VII)</b>	<b>23.9%</b>	<b>18.5%</b>	<b>21.1%</b>	<b>21.7%</b>	<b>22.7%</b>	<b>22.2%</b>	<b>22.7%</b>
<b>Clerical (III &amp; IV)</b>	<b>61.1%</b>	<b>66.3%</b>	<b>68.9%</b>	<b>69.3%</b>	<b>67.4%</b>	<b>66.2%</b>	<b>65.7%</b>
<b>Management &amp; Administrative</b>	<b>4.8%</b>	<b>4.7%</b>	<b>4.7%</b>	<b>4.2%</b>	<b>4.4%</b>	<b>5.8%</b>	<b>5.8%</b>
<b>Support</b>	<b>97.5%</b>	<b>97.5%</b>	<b>97.6%</b>	<b>97.5%</b>	<b>98.2%</b>	<b>98.3%</b>	<b>98.3%</b>
<b>Maintenance/ Technical</b>	<b>2.5%</b>	<b>2.5%</b>	<b>2.4%</b>	<b>2.5%</b>	<b>1.8%</b>	<b>1.7%</b>	<b>1.7%</b>
<b>General Support</b>	<b>10.7%</b>	<b>10.8%</b>	<b>11.6%</b>	<b>11.7%</b>	<b>12.2%</b>	<b>11.4%</b>	<b>11.4%</b>
HCA, Nurse's Aide, etc.	76.2%	74.5%	73.0%	77.4%	77.5%	75.9%	74.9%
Health & Social Care Assistants						0.2%	0.2%
<b>Health Care Assistants</b>	<b>76.2%</b>	<b>74.5%</b>	<b>73.0%</b>	<b>77.4%</b>	<b>77.5%</b>	<b>76.1%</b>	<b>75.1%</b>
<b>Care, other</b>	<b>2.4%</b>	<b>2.9%</b>	<b>2.9%</b>	<b>1.3%</b>	<b>1.0%</b>	<b>1.0%</b>	<b>1.0%</b>
<b>Home Help</b>	<b>21.4%</b>	<b>22.6%</b>	<b>24.1%</b>	<b>21.3%</b>	<b>21.5%</b>	<b>22.9%</b>	<b>23.9%</b>
<b>Patient &amp; Client Care</b>	<b>49.0%</b>	<b>49.9%</b>	<b>49.1%</b>	<b>50.8%</b>	<b>53.3%</b>	<b>46.9%</b>	<b>46.9%</b>
<b>Total</b>	<b>100 %</b>	<b>100 %</b>	<b>100 %</b>	<b>100 %</b>	<b>100 %</b>	<b>100 %</b>	

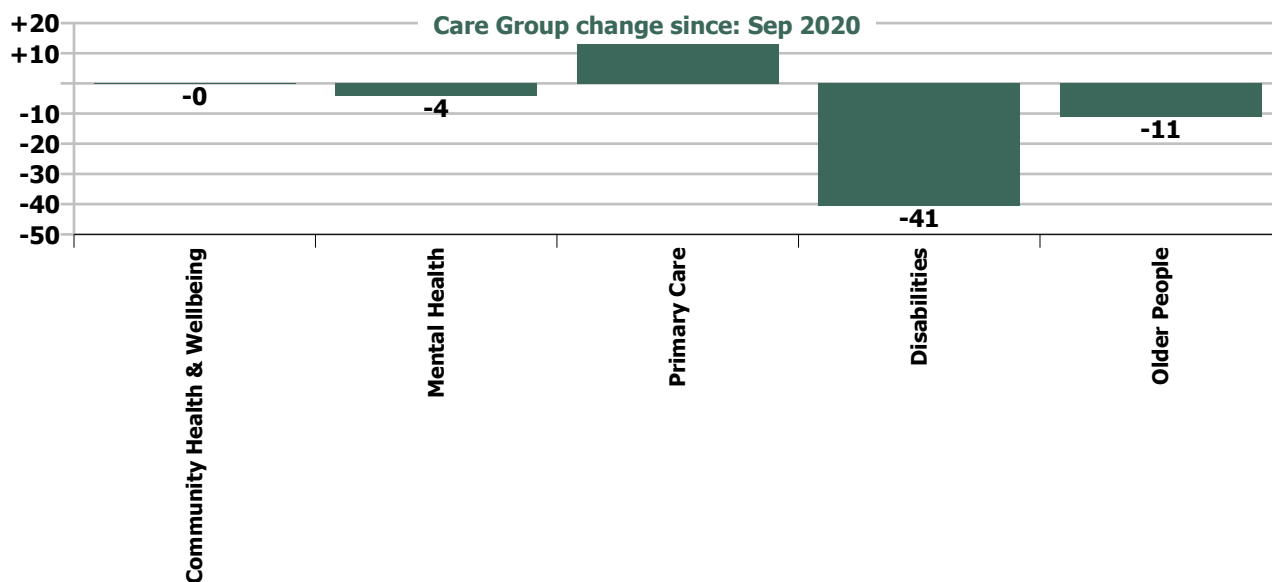
Summary Staff Movement: October 2020

Month-on-month Summary																												
WTE change since Sep 20	% change since Sep 20	overall	Consultants	Registrars	SHO/ Interns	Medical/ Dental, other	Medical & Dental	Nurse/ Midwife Manager	Nurse/ Midwife Specialist & AN/MP	Staff Nurse/ Staff Midwife	Public Health Nurse	Nursing/ Midwifery Student	Nursing/ Midwifery other	Nursing & Midwifery	Therapy Professions	Health Science/ Diagnostics	Social Care	Social Workers	Psychologists	Pharmacy	H&SC, Other	Health & Social Care Professionals	Management (VIII & above)	Administrativ e/ Supervisory (V to VII)	Clerical (III & IV)	Management & Administrativ e	General Support	Patient & Client Care
Overall	-0.6%	-41	-0.6	-2.1	-3.2	+0.2	-5.7	-5.3	+3.1	-5.2	-0.5	+2.0	+0.6	-5.4	-13.3	+0.4	+4.5	-2.1	+0.5	+0.3	+1.2	-8.5	-0.4	+3.8	-0.0	+3.4	-1.5	-23.4
Community Health & Wellbeing	-2.0%	-0													0.0							0.0	0.0	+0.0	0.0	+0.0		-0.2
Mental Health	-0.5%	-4	-0.7	-0.4	-2.6		-3.7	+0.6	+2.7	+0.8		-5.6	+0.6	-0.9	+1.9		+0.6	-0.5	+0.5	0.0	+1.4	+3.9	-1.0	+0.3	-1.7	-2.5	+0.1	-1.0
Primary Care	+0.9%	+15	+0.1	-1.2	-0.8	+0.2	-1.7	+0.8	+0.7	-0.8	-0.5	+19.5	0.0	+19.6	-4.0	+0.4	-0.2	-0.9	-0.7	+0.2	-0.2	-5.3	-1.0	+4.2	-0.5	+2.7	-0.0	-0.6
Disabilities	-1.3%	-41	0.0	-0.5	+0.2	0.0	-0.3	-5.9	-0.6	-6.3		-11.0	0.0	-23.9	-10.9	0.0	+4.1	-0.8	+0.6	+0.1	0.0	-6.9	+1.2	-1.7	+0.2	-0.4	-3.9	-5.2
Older People	-1.1%	-11			0.0	0.0	0.0	-0.6	+0.2	+1.2		-1.0		-0.2	-0.3			+0.0		0.0	0.0	-0.2	+0.4	+1.1	+2.0	+3.5	+2.3	-16.4
Social Care	-1.3%	-52	0.0	-0.5	+0.2	0.0	-0.3	-6.6	-0.4	-5.2		-12.0	0.0	-24.1	-11.2	0.0	+4.1	-0.8	+0.6	+0.1	0.0	-7.1	+1.6	-0.7	+2.2	+3.1	-1.6	-21.6
Change	-41.2	-0.6%	-0.9%	-2.1%	-7.8%	+0.2%	-1.9%	-1.3%	+3.0%	-0.5%	-0.3%	+5.7%	+5.0%	-0.3%	-2.8%	+11.3%	+1.2%	-1.9%	+0.5%	+0.8%	+2.9%	-0.8%	-0.5%	+1.9%	-0.0%	+0.5%	-0.3%	-1.0%

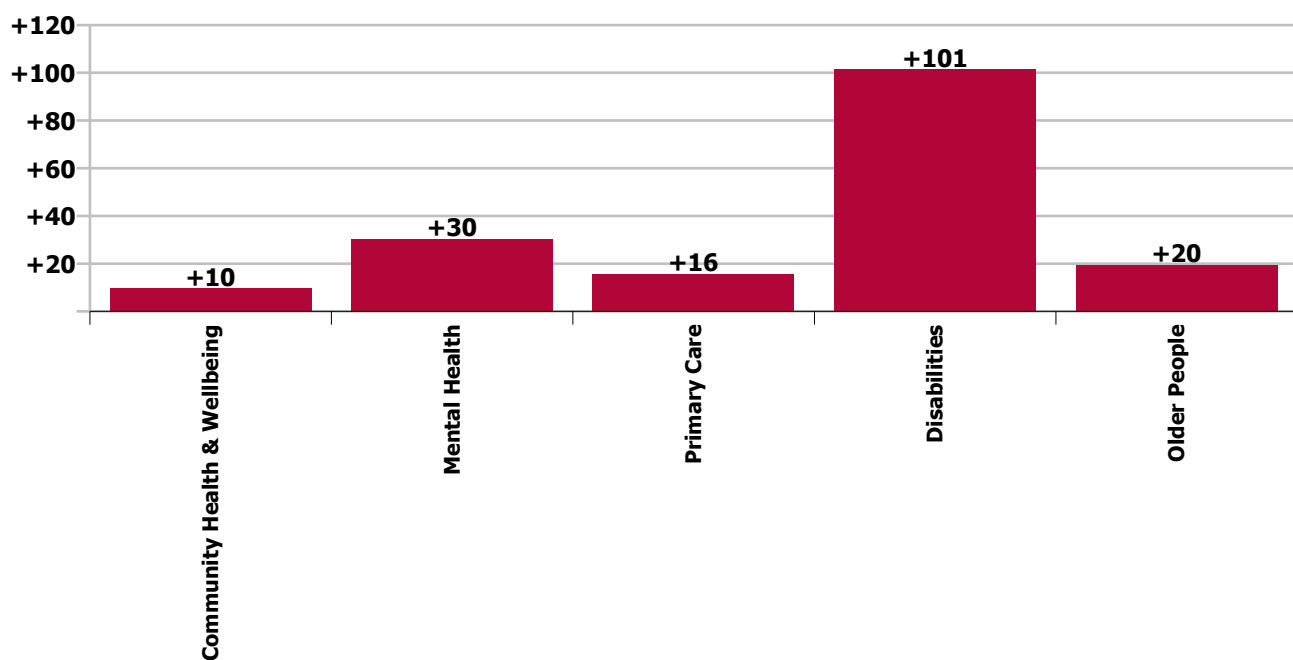
Year-on-year Summary																												
WTE change since Oct 19	% change since Oct 19	overall	Consultants	Registrars	SHO/ Interns	Medical/ Dental, other	Medical & Dental	Nurse/ Midwife Manager	Nurse/ Midwife Specialist & AN/MP	Staff Nurse/ Staff Midwife	Public Health Nurse	Nursing/ Midwifery Student	Nursing/ Midwifery other	Nursing & Midwifery	Therapy Professions	Health Science/ Diagnostics	Social Care	Social Workers	Psychologists	Pharmacy	H&SC, Other	Health & Social Care Professionals	Management (VIII & above)	Administrativ e/ Supervisory (V to VII)	Clerical (III & IV)	Management & Administrative	General Support	Patient & Client Care
Overall	+2.7%	+177	+11.2	+7.0	+1.5	+3.8	+23.6	+11.7	+15.7	+5.7	+0.7	+7.2	+3.1	+44.1	+5.5	+1.0	+19.8	+4.2	+8.7	+2.9	-3.8	+38.3	+5.4	+14.7	+24.3	+44.3	-13.8	+40.1
Community Health & Wellbeing	-2.0%	-0													+1.0							+1.0	+1.0	+3.0	+0.6	+4.6		+4.0
Mental Health	-0.5%	-4	+7.8	+9.0	-0.7		+16.1	+5.2	+10.1	-16.8		+6.8	+2.1	+7.4	-1.6		+0.5	+3.4	+3.8	0.0	+0.2	+6.2	0.0	+2.7	+1.9	+4.5	-0.9	-3.0
Primary Care	+0.9%	+15	+3.4	-1.8	+2.2	+4.9	+8.7	+3.1	+5.6	-6.5	+0.7	-1.1	0.0	+1.8	-6.9	+1.0	-0.2	+0.2	+1.8	+2.9	-4.0	-5.1	-4.2	+4.0	+9.1	+8.9	-4.2	+5.7
Disabilities	+3.5%	+101.5	0.0	-0.3	+0.1	0.0	-0.2	-6.5	-0.8	+8.9			+1.0	+2.5	+16.2	0.0	+19.5	+2.4	+3.2	-0.0	0.0	+41.2	+6.7	+4.0	+7.3	+18.1	-11.4	+51.4
Older People	+1.9%	+19.5			0.0	-1.0	-1.0	+10.0	+0.9	+20.1		+1.5		+32.5	-3.2			-1.8		0.0	0.0	-5.0	+1.9	+0.9	+5.4	+8.2	+2.7	-17.9
Social Care	-1.3%	-52	0.0	-0.3	+0.1	-1.0	-1.2	+3.5	+0.0	+29.0		+1.5	+1.0	+34.9	+13.0	0.0	+19.5	+0.6	+3.2	-0.0	0.0	+36.2	+8.6	+5.0	+12.7	+26.3	-8.7	+33.5
Change	+176.6	+2.7%	+19.4%	+7.5%	+4.3%	+4.7%	+8.8%	+3.0%	+17.4%	+0.6%	+0.4%	+24.6%	+33.5%	+2.6%	+1.2%	+31.1%	+5.4%	+4.1%	+11.0%	+7.7%	-8.3%	+3.5%	+7.3%	+7.8%	+6.9%	+7.2%	-3.0%	+1.7%







**Care Group change since: Oct 2019**



## Longitudinal Employment Levels by Grade Group - Oct 2013 to Oct 2020

Oct 2020 (Dec 2015 figure: 5,479)	WTE Oct 2020	WTE change since Dec 15	WTE change since Dec 16	WTE change since Dec 17	WTE change since Dec 18	WTE change since Dec 19	WTE change since Sep 20	% change since Dec 15	% change since Dec 16	% change since Dec 17	% change since Dec 18	% change since Dec 19	% change since Sep 20
<b>Overall</b>	<b>6,662</b>	<b>+1,183</b>	<b>+1,084</b>	<b>+256</b>	<b>+105</b>	<b>+148</b>	<b>-41</b>	<b>+21.6%</b>	<b>+19.4%</b>	<b>+4.0%</b>	<b>+1.6%</b>	<b>+2.3%</b>	<b>-0.6%</b>
Consultant Medicine	10	+4	+2	+2	+3	+4	+0	+68.6%	+27.2%	+17.4%	+45.6%	+55.9%	+4.4%
Consultant Paediatrics	0												
Consultant Psychiatry	58	+7	+9	+12	+10	+6	-1	+12.8%	+18.5%	+25.2%	+21.0%	+11.5%	-1.2%
Consultant Surgery	0	-0	-0	+0	-1	-0	-0	-34.7%	-34.7%	+2.1%	-59.2%	-38.8%	-38.8%
<b>Consultants</b>	<b>69</b>	<b>+11</b>	<b>+11</b>	<b>+13</b>	<b>+13</b>	<b>+9</b>	<b>-1</b>	<b>+18.0%</b>	<b>+18.9%</b>	<b>+23.6%</b>	<b>+22.3%</b>	<b>+15.7%</b>	<b>-0.9%</b>
Registrar	75	+53	+19	+22	+9	+3	-2	+235.5%	+32.8%	+42.4%	+13.9%	+4.3%	-2.8%
Senior Registrar	20	+14	+10	+11	+6	+1	+0	+207.7%	+90.5%	+114.1%	+42.9%	+5.4%	+0.4%
Specialist Registrar	5	+0	+1	-1	+0	+1		+1.6%	+28.5%	-12.0%	+6.4%	+25.0%	
<b>Registrars</b>	<b>100</b>	<b>+66</b>	<b>+29</b>	<b>+32</b>	<b>+15</b>	<b>+5</b>	<b>-2</b>	<b>+196.1%</b>	<b>+41.1%</b>	<b>+47.7%</b>	<b>+18.3%</b>	<b>+5.4%</b>	<b>-2.1%</b>
Interns	2	-0	-0	-0	-0	-0	-0	-7.0%	-7.0%	-7.0%	-7.0%	-7.0%	-5.1%
Senior House Officer	36	-3	-3	-5	+3	+2	-3	-8.3%	-8.3%	-12.3%	+7.5%	+5.8%	-8.0%
<b>SHO/ Interns</b>	<b>38</b>	<b>-3</b>	<b>-3</b>	<b>-5</b>	<b>+2</b>	<b>+2</b>	<b>-3</b>	<b>-8.3%</b>	<b>-8.3%</b>	<b>-12.0%</b>	<b>+6.7%</b>	<b>+5.1%</b>	<b>-7.8%</b>
Dentists	37	-3	-3	+1	+0	+3	+1	-7.4%	-7.7%	+3.7%	+0.2%	+8.6%	+1.7%
Other Medical	48	+6	+4	-5	-3	+2	-0	+13.5%	+7.8%	-8.6%	-6.5%	+3.9%	-0.9%
<b>Medical/ Dental, other</b>	<b>85</b>	<b>+3</b>	<b>+0</b>	<b>-3</b>	<b>-3</b>	<b>+5</b>	<b>+0</b>	<b>+3.5%</b>	<b>+0.5%</b>	<b>-3.7%</b>	<b>-3.7%</b>	<b>+5.8%</b>	<b>+0.2%</b>
<b>Medical &amp; Dental</b>	<b>292</b>	<b>+76</b>	<b>+37</b>	<b>+37</b>	<b>+27</b>	<b>+21</b>	<b>-6</b>	<b>+35.4%</b>	<b>+14.6%</b>	<b>+14.6%</b>	<b>+10.2%</b>	<b>+7.8%</b>	<b>-1.9%</b>
Clinical Nurse/ Midwife Manager	325	+41	+23	-2	+3	-4	-5	+14.4%	+7.5%	-0.7%	+0.9%	-1.1%	-1.6%
Director Nursing/Midwifery, Assistant	60	+13	+7	+10	+5	+8	+1	+26.9%	+12.1%	+20.4%	+8.7%	+16.2%	+1.8%
Director of Nursing/Midwifery	18	-0	+1	-5	-2	+2	-1	-0.0%	+7.2%	-21.2%	-8.1%	+11.7%	-5.5%
<b>Nurse/ Midwife Manager</b>	<b>403</b>	<b>+54</b>	<b>+30</b>	<b>+3</b>	<b>+6</b>	<b>+7</b>	<b>-5</b>	<b>+15.4%</b>	<b>+8.1%</b>	<b>+0.8%</b>	<b>+1.5%</b>	<b>+1.7%</b>	<b>-1.3%</b>
Advanced Nurse/ Midwife Practitioner	12	+11	+10	+10	+9	+8	+0	+1089.0%	+564.2%	+419.2%	+370.0%	+174.0%	+0.3%
Clinical Nurse/ Midwife Specialist	94	+29	+28	+17	+10	+5	+3	+44.0%	+42.9%	+21.4%	+11.6%	+5.6%	+3.3%
<b>Nurse/ Midwife Specialist &amp; AN/MP</b>	<b>106</b>	<b>+40</b>	<b>+38</b>	<b>+26</b>	<b>+19</b>	<b>+13</b>	<b>+3</b>	<b>+59.7%</b>	<b>+56.7%</b>	<b>+32.8%</b>	<b>+22.0%</b>	<b>+13.4%</b>	<b>+3.0%</b>
Staff Nurse [Intellectual Disability]	180	-55	-48	-50	-40	-14	+11	-23.5%	-21.1%	-21.9%	-18.1%	-7.1%	+6.3%
Staff Nurse [Psychiatric]	187	-53	-27	-40	-12	-4	+1	-22.2%	-12.7%	-17.7%	-6.1%	-2.3%	+0.8%
Staff Nurses [General/ Children's]	644	+114	+137	+77	+68	+37	-17	+21.4%	+27.1%	+13.6%	+11.7%	+6.1%	-2.6%
<b>Staff Nurse/ Staff Midwife</b>	<b>1,012</b>	<b>+5</b>	<b>+62</b>	<b>-13</b>	<b>+15</b>	<b>+19</b>	<b>-5</b>	<b>+0.5%</b>	<b>+6.5%</b>	<b>-1.3%</b>	<b>+1.5%</b>	<b>+1.9%</b>	<b>-0.5%</b>
<b>Public Health Nurse</b>	<b>177</b>	<b>-1</b>	<b>-4</b>	<b>-10</b>	<b>-18</b>	<b>+1</b>	<b>-1</b>	<b>-0.5%</b>	<b>-2.2%</b>	<b>-5.3%</b>	<b>-9.4%</b>	<b>+0.8%</b>	<b>-0.3%</b>
Pre-registration Nurse/ Midwife Intern		-2	-2		-6	-1		-100.0%	-100.0%	-100.0%	-100.0%	-100.0%	-100.0%
Pre-registration Nurse Intern (COVID-19)	10	+10	+10	+10	+10	+10	-17	-100.0%	-100.0%	-100.0%	-100.0%	-100.0%	-62.6%
Post-registration Nurse/ Midwife Student	21	-3	-2	+5	+14	-0	+20	-14.5%	-10.8%	+28.2%	+193.1%	-2.3%	+8108.0%
Nursing/ Midwifery awaiting registration	5	+5	+5	-3	+1	-5	-1	-100.0%	-100.0%	-34.2%	+33.5%	-45.8%	-15.4%
<b>Nursing/ Midwifery Student</b>	<b>36</b>	<b>+11</b>	<b>+12</b>	<b>+12</b>	<b>+19</b>	<b>+4</b>	<b>+2</b>	<b>+41.2%</b>	<b>+46.9%</b>	<b>+50.3%</b>	<b>+113.6%</b>	<b>+12.4%</b>	<b>+5.7%</b>
Nursing Education/Clinical	12	+3	+1	+3	+4	+2	+1	+35.5%	+6.8%	+36.6%	+44.5%	+22.3%	+5.0%

Oct 2020 (Dec 2015 figure: 5,479)	WTE Oct 2020	WTE change since Dec 15	WTE change since Dec 16	WTE change since Dec 17	WTE change since Dec 18	WTE change since Dec 19	WTE change since Sep 20	% change since Dec 15	% change since Dec 16	% change since Dec 17	% change since Dec 18	% change since Dec 19	% change since Sep 20
<b>Overall</b>	<b>6,662</b>	<b>+1,183</b>	<b>+1,084</b>	<b>+256</b>	<b>+105</b>	<b>+148</b>	<b>-41</b>	<b>+21.6%</b>	<b>+19.4%</b>	<b>+4.0%</b>	<b>+1.6%</b>	<b>+2.3%</b>	<b>-0.6%</b>
Other Nursing/ Midwifery		-1	-1					-100.0%	-100.0%	-100.0%	-100.0%	-100.0%	-100.0%
<b>Nursing/ Midwifery other</b>	<b>12</b>	<b>+3</b>	<b>-0</b>	<b>+3</b>	<b>+4</b>	<b>+2</b>	<b>+1</b>	<b>+28.3%</b>	<b>-1.8%</b>	<b>+36.6%</b>	<b>+44.5%</b>	<b>+22.3%</b>	<b>+5.0%</b>
<b>Nursing &amp; Midwifery</b>	<b>1,746</b>	<b>+111</b>	<b>+138</b>	<b>+21</b>	<b>+45</b>	<b>+46</b>	<b>-5</b>	<b>+6.8%</b>	<b>+8.6%</b>	<b>+1.2%</b>	<b>+2.7%</b>	<b>+2.7%</b>	<b>-0.3%</b>
Dietitians	24	+6	+5	+4	-1	-2	-3	+34.7%	+25.6%	+22.8%	-3.9%	-6.1%	-11.9%
Occupational Therapists	187	+27	+18	+18	+2	+3	-5	+16.6%	+10.5%	+10.5%	+1.1%	+1.7%	-2.5%
Orthoptists	2	+2	+2	+2	+2	+2	+1	+700.0%	+700.0%	-100.0%	-100.0%	-100.0%	+33.3%
Physiotherapists	122	+7	-1	-2	-4	+7	-5	+5.9%	-0.5%	-1.7%	-3.1%	+6.5%	-3.9%
Podiatrists & Chiropodists	2	+1	+1	+1	+1	+1		+207.7%	+181.7%	+207.7%	+56.3%	+100.0%	
Speech & Language Therapists	120	+30	+13	-8	-3	-6	-1	+34.0%	+11.8%	-6.0%	-2.4%	-4.7%	-0.8%
<b>Therapy Professions</b>	<b>456</b>	<b>+73</b>	<b>+38</b>	<b>+16</b>	<b>-3</b>	<b>+6</b>	<b>-13</b>	<b>+19.0%</b>	<b>+9.0%</b>	<b>+3.6%</b>	<b>-0.7%</b>	<b>+1.3%</b>	<b>-2.8%</b>
Audiology		-0	-0					-100.0%	-100.0%	-100.0%	-100.0%	-100.0%	-100.0%
Clinical Measurement	2	+1	+1	+1	+1	+1		+100.0%	+100.0%	+100.0%	+100.0%	+100.0%	
Medical Laboratory			-1					-100.0%	-100.0%	-100.0%	-100.0%	-100.0%	-100.0%
Phlebotomists	1	+1	+1	+1			+0	+183.7%	+87.7%	+93.7%			+54.4%
Radiographers	1	-1						-43.5%					
<b>Health Science/ Diagnostics</b>	<b>4</b>	<b>+1</b>	<b>+0</b>	<b>+2</b>	<b>+1</b>	<b>+1</b>	<b>+0</b>	<b>+25.2%</b>	<b>+3.4%</b>	<b>+60.5%</b>	<b>+31.1%</b>	<b>+31.1%</b>	<b>+11.3%</b>
Social Care	385	+267	+273	+56	+25	+14	+5	+224.7%	+242.6%	+17.1%	+7.0%	+3.8%	+1.2%
<b>Social Care</b>	<b>385</b>	<b>+267</b>	<b>+273</b>	<b>+56</b>	<b>+25</b>	<b>+14</b>	<b>+5</b>	<b>+224.7%</b>	<b>+242.6%</b>	<b>+17.1%</b>	<b>+7.0%</b>	<b>+3.8%</b>	<b>+1.2%</b>
<b>Social Workers</b>	<b>107</b>	<b>+10</b>	<b>-3</b>	<b>-5</b>	<b>-4</b>	<b>+3</b>	<b>-2</b>	<b>+10.6%</b>	<b>-2.3%</b>	<b>-4.4%</b>	<b>-3.2%</b>	<b>+2.6%</b>	<b>-1.9%</b>
<b>Psychologists</b>	<b>88</b>	<b>+17</b>	<b>+19</b>	<b>+3</b>	<b>+3</b>	<b>+7</b>	<b>+0</b>	<b>+23.6%</b>	<b>+27.5%</b>	<b>+3.3%</b>	<b>+4.0%</b>	<b>+8.6%</b>	<b>+0.5%</b>
<b>Pharmacy</b>	<b>41</b>	<b>-0</b>	<b>+3</b>	<b>+2</b>	<b>+3</b>	<b>+1</b>	<b>+0</b>	<b>-1.0%</b>	<b>+7.4%</b>	<b>+5.2%</b>	<b>+7.2%</b>	<b>+1.7%</b>	<b>+0.8%</b>
Counsellor Therapists	35	+4	+4	+2	+4	-1	+0	+11.3%	+12.1%	+6.9%	+14.6%	-3.8%	+0.9%
Dental Hygienists	4	+0	+0	+1	-1	-1	+0	+13.0%	+13.0%	+19.7%	-17.3%	-21.5%	+3.1%
Other Health & Social Care	2	-2	-3	-4	-3	-0	+1	-50.0%	-65.0%	-68.9%	-61.1%	-12.5%	+75.0%
Play Therapists/ Specialists	1												
<b>H&amp;SC, Other</b>	<b>42</b>	<b>+2</b>	<b>+1</b>	<b>-1</b>	<b>+1</b>	<b>-3</b>	<b>+1</b>	<b>+5.7%</b>	<b>+2.4%</b>	<b>-2.2%</b>	<b>+2.1%</b>	<b>-6.1%</b>	<b>+2.9%</b>
<b>Health &amp; Social Care Professionals</b>	<b>1,123</b>	<b>+369</b>	<b>+331</b>	<b>+73</b>	<b>+27</b>	<b>+28</b>	<b>-9</b>	<b>+49.0%</b>	<b>+41.8%</b>	<b>+6.9%</b>	<b>+2.4%</b>	<b>+2.6%</b>	<b>-0.8%</b>
Executive Management	15	+3	-1	-0	+3	+2	-1	+23.8%	-7.1%	-0.9%	+23.8%	+14.3%	-6.6%
Senior Management (VIII & GM)	64	+13	+16	+12	+7	+4	+1	+25.9%	+32.3%	+23.1%	+13.2%	+6.9%	+1.1%
<b>Management (VIII &amp; above)</b>	<b>79</b>	<b>+16</b>	<b>+14</b>	<b>+12</b>	<b>+10</b>	<b>+6</b>	<b>-0</b>	<b>+25.5%</b>	<b>+22.5%</b>	<b>+17.7%</b>	<b>+15.1%</b>	<b>+8.2%</b>	<b>-0.5%</b>
Middle Management (V-VII)	202	+71	+70	+43	+34	+20	+4	+54.9%	+53.3%	+27.2%	+20.1%	+11.1%	+1.9%
Other Administrative	1			-0		-0				-14.6%		-14.6%	
<b>Administrative/ Supervisory (V to VII)</b>	<b>202</b>	<b>+71</b>	<b>+70</b>	<b>+43</b>	<b>+34</b>	<b>+20</b>	<b>+4</b>	<b>+54.6%</b>	<b>+53.0%</b>	<b>+27.0%</b>	<b>+20.0%</b>	<b>+11.0%</b>	<b>+1.9%</b>
<b>Clerical (III &amp; IV)</b>	<b>376</b>	<b>+31</b>	<b>+18</b>	<b>-7</b>	<b>-4</b>	<b>+26</b>	<b>-0</b>	<b>+9.0%</b>	<b>+4.9%</b>	<b>-1.8%</b>	<b>-1.1%</b>	<b>+7.3%</b>	<b>-0.0%</b>
<b>Management &amp; Administrative</b>	<b>657</b>	<b>+119</b>	<b>+102</b>	<b>+48</b>	<b>+40</b>	<b>+52</b>	<b>+3</b>	<b>+22.0%</b>	<b>+18.4%</b>	<b>+7.8%</b>	<b>+6.4%</b>	<b>+8.5%</b>	<b>+0.5%</b>

Oct 2020 (Dec 2015 figure: 5,479)	WTE Oct 2020	WTE change since Dec 15	WTE change since Dec 16	WTE change since Dec 17	WTE change since Dec 18	WTE change since Dec 19	WTE change since Sep 20	% change since Dec 15	% change since Dec 16	% change since Dec 17	% change since Dec 18	% change since Dec 19	% change since Sep 20
<b>Overall</b>	<b>6,662</b>	<b>+1,183</b>	<b>+1,084</b>	<b>+256</b>	<b>+105</b>	<b>+148</b>	<b>-41</b>	<b>+21.6%</b>	<b>+19.4%</b>	<b>+4.0%</b>	<b>+1.6%</b>	<b>+2.3%</b>	<b>-0.6%</b>
Catering	56	+2	+3	-8	-6	-3	+1	+3.2%	+5.5%	-13.0%	-10.2%	-5.6%	+1.4%
Household Services	262	-5	-2	-34	-31	-7	-2	-1.7%	-0.6%	-11.4%	-10.7%	-2.5%	-0.8%
Other Labs & Associated	1	-0	-0		-0		-0	-16.7%	-6.5%		-3.8%		-31.0%
Other Support	14	-4	-3	-1	-2	-0		-20.3%	-15.5%	-7.5%	-11.1%	-1.6%	
Portering	64	-14	-10	-8	-7	-4	+1	-17.9%	-13.5%	-10.8%	-10.1%	-5.7%	+1.3%
<b>Support</b>	<b>396</b>	<b>-20</b>	<b>-11</b>	<b>-51</b>	<b>-47</b>	<b>-14</b>	<b>-1</b>	<b>-4.9%</b>	<b>-2.7%</b>	<b>-11.4%</b>	<b>-10.5%</b>	<b>-3.5%</b>	<b>-0.2%</b>
Maintenance	40	+12	+10	-4	-0	+3	-1	+42.9%	+31.5%	-8.5%	-1.1%	+9.0%	-1.3%
Technical Services	5	+3	+3	+3	+3	+1		+150.0%	+150.0%	+150.0%	+163.2%	+25.0%	
<b>Maintenance/ Technical</b>	<b>45</b>	<b>+15</b>	<b>+13</b>	<b>-1</b>	<b>+3</b>	<b>+4</b>	<b>-1</b>	<b>+49.9%</b>	<b>+38.7%</b>	<b>-1.6%</b>	<b>+6.2%</b>	<b>+10.5%</b>	<b>-1.2%</b>
<b>General Support</b>	<b>442</b>	<b>-5</b>	<b>+1</b>	<b>-52</b>	<b>-44</b>	<b>-10</b>	<b>-2</b>	<b>-1.2%</b>	<b>+0.3%</b>	<b>-10.4%</b>	<b>-9.1%</b>	<b>-2.2%</b>	<b>-0.3%</b>
HCA, Nurse's Aide, etc.	1,641	+385	+350	+131	+23	-1	-23	+30.7%	+27.1%	+8.7%	+1.4%	-0.1%	-1.4%
Health & Social Care Assistants	19	+10	+11	+13	-3	+6	-2	+119.8%	+125.6%	+213.6%	-11.9%	+51.6%	-10.9%
<b>Health Care Assistants</b>	<b>1,660</b>	<b>+395</b>	<b>+361</b>	<b>+144</b>	<b>+21</b>	<b>+5</b>	<b>-25</b>	<b>+31.3%</b>	<b>+27.8%</b>	<b>+9.5%</b>	<b>+1.3%</b>	<b>+0.3%</b>	<b>-1.5%</b>
<b>Care, other</b>	<b>610</b>	<b>+137</b>	<b>+140</b>	<b>+5</b>	<b>-6</b>	<b>+0</b>	<b>+1</b>	<b>+28.9%</b>	<b>+29.7%</b>	<b>+0.8%</b>	<b>-1.0%</b>	<b>+0.0%</b>	<b>+0.2%</b>
<b>Home Help</b>	<b>132</b>	<b>-18</b>	<b>-26</b>	<b>-20</b>	<b>-4</b>	<b>+5</b>	<b>+1</b>	<b>-12.2%</b>	<b>-16.5%</b>	<b>-13.1%</b>	<b>-3.0%</b>	<b>+4.3%</b>	<b>+0.5%</b>
<b>Patient &amp; Client Care</b>	<b>2,403</b>	<b>+514</b>	<b>+474</b>	<b>+129</b>	<b>+10</b>	<b>+11</b>	<b>-23</b>	<b>+27.2%</b>	<b>+24.6%</b>	<b>+5.7%</b>	<b>+0.4%</b>	<b>+0.4%</b>	<b>-1.0%</b>

Source: Health Service Personnel Census

Longitudinal Employment Levels by Care Group - Oct 2013 to Oct 2020

Community Health & Wellbeing

Oct 2020 ( figure: )	WTE Oct 2020	WTE change since	WTE change since	WTE change since	WTE change since	WTE change since	WTE change since Sep 20	% change since	% change since	% change since	% change since	% change since	% change since Sep 20
Overall	10	+10	+10	+10	+10	+10	-0	-100.0%	-100.0%	-100.0%	-100.0%	-100.0%	-2.0%
Health & Social Care Professionals	1	+1	+1	+1	+1	+1		-1.0%	-1.0%	-1.0%	-1.0%	-1.0%	+0.0%
Therapy Professions	1	+1	+1	+1	+1	+1		-1.0%	-1.0%	-1.0%	-1.0%	-1.0%	+0.0%
Management & Administrative	5	+5	+5	+5	+5	+5	+0	-1.0%	-1.0%	-1.0%	-1.0%	-1.0%	+0.0%
Management (VIII & above)	1	+1	+1	+1	+1	+1		-1.0%	-1.0%	-1.0%	-1.0%	-1.0%	+0.0%
Administrative/ Supervisory (V to VII)	3	+3	+3	+3	+3	+3	+0	-1.0%	-1.0%	-1.0%	-1.0%	-1.0%	+0.0%
Clerical (III & IV)	1	+1	+1	+1	+1	+1		-1.0%	-1.0%	-1.0%	-1.0%	-1.0%	+0.0%
Patient & Client Care	4	+4	+4	+4	+4	+4	-0	-1.0%	-1.0%	-1.0%	-1.0%	-1.0%	-0.0%
Care, other	4	+4	+4	+4	+4	+4	-0	-1.0%	-1.0%	-1.0%	-1.0%	-1.0%	-0.0%

Source: Health Service Personnel Census

Mental Health

Oct 2020 (Dec 2015 figure: 837)	WTE Oct 2020	WTE change since Dec 15	WTE change since Dec 16	WTE change since Dec 17	WTE change since Dec 18	WTE change since Dec 19	WTE change since Sep 20	% change since Dec 15	% change since Dec 16	% change since Dec 17	% change since Dec 18	% change since Dec 19	% change since Sep 20
Overall	866	+29	+38	+6	+31	+31	-4	+3.5%	+4.6%	+0.7%	+3.7%	+3.7%	-0.5%
Medical & Dental	127	+31	+26	+32	+25	+12	-4	+0.3%	+0.3%	+0.3%	+0.2%	+0.1%	-0.0%
Consultants	54	+9	+9	+13	+9	+6	-1	+0.2%	+0.2%	+0.3%	+0.2%	+0.1%	-0.0%
Registrars	54	+31	+25	+27	+15	+8	-0	+1.3%	+0.8%	+1.0%	+0.4%	+0.2%	-0.0%
SHO/ Interns	19	-9	-8	-8	+0	-2	-3	-0.3%	-0.3%	-0.3%	+0.0%	-0.1%	-0.1%
Nursing & Midwifery	384	+9	+22	-2	+22	+14	-1	+0.0%	+0.1%	-0.0%	+0.1%	+0.0%	-0.0%
Nurse/ Midwife Manager	118	+18	+7	+3	-1	+1	+1	+0.2%	+0.1%	+0.0%	-0.0%	+0.0%	+0.0%
Nurse/ Midwife Specialist & AN/MP	47	+23	+21	+21	+21	+8	+3	+1.0%	+0.8%	+0.8%	+0.8%	+0.2%	+0.1%
Staff Nurse/ Staff Midwife	195	-51	-23	-35	-6	+0	+1	-0.2%	-0.1%	-0.2%	-0.0%	+0.0%	+0.0%
Nursing/ Midwifery Student	15	+14	+14	+7	+5	+4	-6	+8.2%	+8.2%	+0.9%	+0.5%	+0.4%	-0.3%
Nursing/ Midwifery other	9	+5	+3	+3	+3	+1	+1	+1.2%	+0.5%	+0.5%	+0.5%	+0.2%	+0.1%
Health & Social Care Professionals	144	+11	+8	-2	+4	+4	+4	+0.1%	+0.1%	-0.0%	+0.0%	+0.0%	+0.0%
Therapy Professions	46	-0	-2	-1	-2	-2	+2	-0.0%	-0.0%	-0.0%	-0.0%	-0.0%	+0.0%
Social Care	8	-3	-3	-3	-0	+0	+1	-0.2%	-0.3%	-0.3%	-0.0%	+0.1%	+0.1%
Social Workers	36	-3	-5	-7	-1	+1	-0	-0.1%	-0.1%	-0.2%	-0.0%	+0.0%	-0.0%
Psychologists	34	+6	+9	+3	+0	+2	+1	+0.2%	+0.3%	+0.1%	+0.0%	+0.1%	+0.0%
Pharmacy	1	+1	+1	+1	+1			-1.0%	-1.0%	-1.0%	-1.0%	+0.0%	+0.0%
H&SC, Other	19	+10	+8	+5	+6	+1	+1	+1.0%	+0.8%	+0.3%	+0.5%	+0.1%	+0.1%
Management & Administrative	71	+11	+4	+2	-3	+5	-2	+0.2%	+0.1%	+0.0%	-0.0%	+0.1%	-0.0%
Management (VIII & above)	3	+1					-1	+0.4%	+0.0%	+0.0%	+0.0%	+0.0%	-0.3%
Administrative/ Supervisory (V to VII)	18	+9	+6	+2	-0	+3	+0	+1.0%	+0.5%	+0.1%	-0.0%	+0.2%	+0.0%
Clerical (III & IV)	49	+0	-2	-1	-2	+3	-2	+0.0%	-0.0%	-0.0%	-0.0%	+0.1%	-0.0%
General Support	18	-10	-8	-7	-6	-1	+0	-0.4%	-0.3%	-0.3%	-0.2%	-0.1%	+0.0%
Support	16	-10	-8	-7	-6	-2	-0	-0.4%	-0.3%	-0.3%	-0.3%	-0.1%	-0.0%
Maintenance/ Technical	2	+0				+0	+0	+0.0%	+0.0%	+0.0%	+0.0%	+0.1%	+0.1%
Patient & Client Care	122	-21	-14	-16	-12	-4	-1	-0.1%	-0.1%	-0.1%	-0.1%	-0.0%	-0.0%
Health Care Assistants	36	-12	-10	-9	-6	+2	+1	-0.2%	-0.2%	-0.2%	-0.1%	+0.1%	+0.0%
Care, other	86	-10	-4	-8	-6	-6	-2	-0.1%	-0.0%	-0.1%	-0.1%	-0.1%	-0.0%

Source: Health Service Personnel Census

Primary Care

Oct 2020 (Dec 2015 figure: 1,647)	WTE Oct 2020	WTE change since Dec 15	WTE change since Dec 16	WTE change since Dec 17	WTE change since Dec 18	WTE change since Dec 19	WTE change since Sep 20	% change since Dec 15	% change since Dec 16	% change since Dec 17	% change since Dec 18	% change since Dec 19	% change since Sep 20
Overall	1,734	+86	+46	+43	-42	+32	+15	+5.2%	+2.8%	+2.5%	-2.4%	+1.9%	+0.9%
Medical & Dental	148	+50	+15	+10	+3	+9	-2	+0.5%	+0.1%	+0.1%	+0.0%	+0.1%	-0.0%
Consultants	15	+5	+4	+3	+4	+3	+0	+0.5%	+0.4%	+0.2%	+0.3%	+0.3%	+0.0%
Registrars	44	+35	+5	+6	+0	-2	-1	+4.0%	+0.1%	+0.2%	+0.0%	-0.0%	-0.0%
SHO/ Interns	9	+4	+3	+3	+2	+3	-1	+0.8%	+0.5%	+0.6%	+0.3%	+0.5%	-0.1%
Medical/ Dental, other	80	+6	+2	-2	-2	+5	+0	+0.1%	+0.0%	-0.0%	-0.0%	+0.1%	+0.0%
Nursing & Midwifery	535	+32	+27	+27	+6	+6	+20	+0.1%	+0.1%	+0.1%	+0.0%	+0.0%	+0.0%
Nurse/ Midwife Manager	85	+7	+7	+9	+4	+4	+1	+0.1%	+0.1%	+0.1%	+0.1%	+0.1%	+0.0%
Nurse/ Midwife Specialist & AN/MP	51	+18	+17	+8	+4	+5	+1	+0.5%	+0.5%	+0.2%	+0.1%	+0.1%	+0.0%
Staff Nurse/ Staff Midwife	202	+13	+12	+17	+4	-3	-1	+0.1%	+0.1%	+0.1%	+0.0%	-0.0%	-0.0%
Public Health Nurse	177	+1	-4	-10	-18	+1	-1	+0.0%	-0.0%	-0.1%	-0.1%	+0.0%	-0.0%
Nursing/ Midwifery Student	20	-4	-3	+4	+13	-1	+20	-0.2%	-0.2%	+0.2%	+1.8%	-0.1%	-1.0%
Nursing/ Midwifery other	2	-1	-2	-1				-0.3%	-0.4%	-0.2%	+0.0%	+0.0%	+0.0%
Health & Social Care Professionals	366	+12	+4	+4	-14	-7	-5	+0.0%	+0.0%	+0.0%	-0.0%	-0.0%	-0.0%
Therapy Professions	261	+19	+7	+7	-14	-5	-4	+0.1%	+0.0%	+0.0%	-0.1%	-0.0%	-0.0%
Health Science/ Diagnostics	1	+1	+1	+1	+1	+1	+0	+1.8%	+0.9%	+0.9%	+4.5%	+4.5%	+0.5%
Social Care	4	-0	-0	-0	-0	+0	-0	-0.1%	-0.1%	-0.1%	-0.1%	+0.1%	-0.1%
Social Workers	25	-2	-3	-2	+1	-1	-1	-0.1%	-0.1%	-0.1%	+0.0%	-0.0%	-0.0%
Psychologists	23	+3	+3	+1	-0	+2	-1	+0.1%	+0.1%	+0.1%	-0.0%	+0.1%	-0.0%
Pharmacy	32	-1	+2	+1	+3	+0	+0	-0.0%	+0.1%	+0.0%	+0.1%	+0.0%	+0.0%
H&SC, Other	20	-6	-5	-4	-4	-4	-0	-0.2%	-0.2%	-0.2%	-0.2%	-0.2%	-0.0%
Management & Administrative	304	+1	+0	-7	-8	+17	+3	+0.0%	+0.0%	-0.0%	-0.0%	+0.1%	+0.0%
Management (VIII & above)	30	+4	+2	+1	-1	-4	-1	+0.1%	+0.1%	+0.1%	-0.0%	-0.1%	-0.0%
Administrative/ Supervisory (V to VII)	83	+16	+20	+11	+12	+7	+4	+0.2%	+0.3%	+0.2%	+0.2%	+0.1%	+0.1%
Clerical (III & IV)	191	-19	-21	-20	-18	+13	-0	-0.1%	-0.1%	-0.1%	-0.1%	+0.1%	-0.0%
General Support	121	-17	-15	-9	-11	-3	-0	-0.1%	-0.1%	-0.1%	-0.1%	-0.0%	-0.0%
Support	112	-19	-15	-12	-12	-4	+1	-0.1%	-0.1%	-0.1%	-0.1%	-0.0%	+0.0%
Maintenance/ Technical	9	+2	+0	+2	+1	+1	-1	+0.2%	+0.0%	+0.3%	+0.1%	+0.1%	-0.1%
Patient & Client Care	260	+8	+16	+18	-18	+11	-1	+0.0%	+0.1%	+0.1%	-0.1%	+0.0%	-0.0%
Health Care Assistants	132	+13	+15	+14	-8	+11	-0	+0.1%	+0.1%	+0.1%	-0.1%	+0.1%	-0.0%
Care, other	127	-5	+0	+4	-10	-0	-0	-0.0%	+0.0%	+0.0%	-0.1%	-0.0%	-0.0%

Source: Health Service Personnel Census

Disabilities

Oct 2020 (Dec 2015 figure: 1,867)	WTE Oct 2020	WTE change since Dec 15	WTE change since Dec 16	WTE change since Dec 17	WTE change since Dec 18	WTE change since Dec 19	WTE change since Sep 20	% change since Dec 15	% change since Dec 16	% change since Dec 17	% change since Dec 18	% change since Dec 19	% change since Sep 20
Overall	3,028	+1,161	+1,085	+236	+125	+46	-41	+62.2%	+55.9%	+8.5%	+4.3%	+1.6%	-1.3%
Medical & Dental	11	-1	-0	-2	+0	-0	-0	-0.1%	-0.0%	-0.2%	+0.0%	-0.0%	-0.0%
Consultants	1	-3	-2	-2				-0.8%	-0.8%	-0.8%	+0.0%	+0.0%	+0.0%
Registrars	2	+0	-1	-1	+0	-1	-1	+0.2%	-0.2%	-0.2%	+0.1%	-0.2%	-0.2%
SHO/ Interns	7	+2	+2	+0	+0	+0	+0	+0.4%	+0.4%	+0.0%	+0.0%	+0.0%	+0.0%
Medical/ Dental, other	1	-1						-0.3%	+0.0%	+0.0%	+0.0%	+0.0%	+0.0%
Nursing & Midwifery	495	+94	+99	-11	-12	-6	-24	+0.2%	+0.2%	-0.0%	-0.0%	-0.0%	-0.0%
Nurse/ Midwife Manager	117	+23	+17	-17	-7	-5	-6	+0.2%	+0.2%	-0.1%	-0.1%	-0.0%	-0.0%
Nurse/ Midwife Specialist & AN/MP	4	-1	-1	-3	-6	-1	-1	-0.3%	-0.1%	-0.4%	-0.6%	-0.2%	-0.1%
Staff Nurse/ Staff Midwife	373	+74	+84	+7	-1	-2	-6	+0.2%	+0.3%	+0.0%	-0.0%	-0.0%	-0.0%
Nursing/ Midwifery Student							-11	-1.0%	-1.0%	-1.0%	-1.0%	-1.0%	-1.0%
Nursing/ Midwifery other	2	-1	-2	+1	+1	+1		-0.4%	-0.5%	+2.0%	+2.0%	+2.0%	+0.0%
Health & Social Care Professionals	581	+351	+325	+75	+44	+28	-7	+1.5%	+1.3%	+0.1%	+0.1%	+0.1%	-0.0%
Therapy Professions	134	+56	+34	+13	+16	+12	-11	+0.7%	+0.3%	+0.1%	+0.1%	+0.1%	-0.1%
Health Science/ Diagnostics	3	+1	+1	+1				+0.4%	+0.2%	+0.5%	+0.0%	+0.0%	+0.0%
Social Care	373	+270	+276	+59	+26	+13	+4	+2.6%	+2.8%	+0.2%	+0.1%	+0.0%	+0.0%
Social Workers	33	+15	+7	+4	-1	-0	-1	+0.8%	+0.3%	+0.1%	-0.0%	-0.0%	-0.0%
Psychologists	31	+9	+8	-2	+3	+3	+1	+0.4%	+0.3%	-0.1%	+0.1%	+0.1%	+0.0%
Pharmacy	5	+1	+1	+1	-0	+0	+0	+0.2%	+0.2%	+0.2%	-0.0%	+0.0%	+0.0%
H&SC, Other	2		-1	-1				+0.0%	-0.4%	-0.4%	+0.0%	+0.0%	+0.0%
Management & Administrative	219	+97	+86	+39	+30	+17	-0	+0.8%	+0.6%	+0.2%	+0.2%	+0.1%	-0.0%
Management (VIII & above)	39	+12	+13	+8	+8	+7	+1	+0.4%	+0.5%	+0.2%	+0.2%	+0.2%	+0.0%
Administrative/ Supervisory (V to VII)	85	+42	+38	+23	+15	+6	-2	+1.0%	+0.8%	+0.4%	+0.2%	+0.1%	-0.0%
Clerical (III & IV)	96	+43	+36	+8	+7	+4	+0	+0.8%	+0.6%	+0.1%	+0.1%	+0.0%	+0.0%
General Support	186	+26	+28	-29	-22	-10	-4	+0.2%	+0.2%	-0.1%	-0.1%	-0.0%	-0.0%
Support	154	+12	+15	-27	-24	-13	-4	+0.1%	+0.1%	-0.1%	-0.1%	-0.1%	-0.0%
Maintenance/ Technical	32	+15	+14	-2	+2	+4	-0	+0.8%	+0.7%	-0.1%	+0.1%	+0.1%	-0.0%
Patient & Client Care	1,536	+594	+547	+164	+85	+18	-5	+0.6%	+0.6%	+0.1%	+0.1%	+0.0%	-0.0%
Health Care Assistants	1,130	+454	+411	+158	+83	+18	-8	+0.7%	+0.6%	+0.2%	+0.1%	+0.0%	-0.0%
Care, other	388	+155	+151	+15	+8	+2	+4	+0.7%	+0.6%	+0.0%	+0.0%	+0.0%	+0.0%
Home Help	18	-15	-15	-9	-6	-2	-0	-0.5%	-0.5%	-0.3%	-0.3%	-0.1%	-0.0%

Source: Health Service Personnel Census

Older People

Oct 2020 (Dec 2015 figure: 1,128)	WTE Oct 2020	WTE change since Dec 15	WTE change since Dec 16	WTE change since Dec 17	WTE change since Dec 18	WTE change since Dec 19	WTE change since Sep 20	% change since Dec 15	% change since Dec 16	% change since Dec 17	% change since Dec 18	% change since Dec 19	% change since Sep 20
Overall	1,026	-103	-95	-38	-19	+30	-11	-9.1%	-8.5%	-3.6%	-1.8%	+3.0%	-1.1%
Medical & Dental	6	-4	-3	-2	-1			-0.4%	-0.3%	-0.3%	-0.1%	+0.0%	+0.0%
SHO/ Interns	2	-1	-1	-1				-0.3%	-0.3%	-0.3%	+0.0%	+0.0%	+0.0%
Medical/ Dental, other	4	-3	-2	-1	-1			-0.4%	-0.3%	-0.2%	-0.2%	+0.0%	+0.0%
Nursing & Midwifery	331	-25	-10	+8	+29	+32	-0	-0.1%	-0.0%	+0.0%	+0.1%	+0.1%	-0.0%
Nurse/ Midwife Manager	83	+6	-1	+8	+10	+6	-1	+0.1%	-0.0%	+0.1%	+0.1%	+0.1%	-0.0%
Nurse/ Midwife Specialist & AN/MP	4	+0	+1	+0	-0	+1	+0	+0.1%	+0.2%	+0.1%	-0.1%	+0.4%	+0.1%
Staff Nurse/ Staff Midwife	242	-31	-11	-2	+19	+23	+1	-0.1%	-0.0%	-0.0%	+0.1%	+0.1%	+0.0%
Public Health Nurse		-2	-0					-1.0%	-1.0%	-1.0%	-1.0%	-1.0%	-1.0%
Nursing/ Midwifery Student	2	+2	+2	+2	+2	+2	-1	-1.0%	-1.0%	-1.0%	-1.0%	-1.0%	-0.4%
Health & Social Care Professionals	31	-5	-7	-6	-8	+3	-0	-0.1%	-0.2%	-0.2%	-0.2%	+0.1%	-0.0%
Therapy Professions	13	-2	-3	-4	-4	-0	-0	-0.1%	-0.2%	-0.2%	-0.2%	-0.0%	-0.0%
Health Science/ Diagnostics		-1	-1					-1.0%	-1.0%	-1.0%	-1.0%	-1.0%	-1.0%
Social Workers	13	-0	-2	-1	-3	+3	+0	-0.0%	-0.1%	-0.0%	-0.2%	+0.2%	+0.0%
Pharmacy	3	-1	-1	-1	-1	+1		-0.3%	-0.3%	-0.3%	-0.3%	+0.2%	+0.0%
H&SC, Other	1	-1	-1	-1	-1			-0.5%	-0.5%	-0.5%	-0.5%	+0.0%	+0.0%
Management & Administrative	59	+6	+7	+9	+15	+9	+3	+0.1%	+0.1%	+0.2%	+0.3%	+0.2%	+0.1%
Management (VIII & above)	7	-1	-1	+2	+3	+2	+0	-0.1%	-0.1%	+0.4%	+0.7%	+0.4%	+0.1%
Administrative/ Supervisory (V to VII)	13	+1	+4	+3	+4	+2	+1	+0.1%	+0.4%	+0.3%	+0.4%	+0.2%	+0.1%
Clerical (III & IV)	39	+6	+4	+5	+9	+5	+2	+0.2%	+0.1%	+0.1%	+0.3%	+0.1%	+0.1%
General Support	117	-3	-4	-7	-5	+5	+2	-0.0%	-0.0%	-0.1%	-0.0%	+0.0%	+0.0%
Support	115	-2	-3	-6	-4	+5	+2	-0.0%	-0.0%	-0.0%	-0.0%	+0.0%	+0.0%
Maintenance/ Technical	2	-1	-1	-1	-1			-0.3%	-0.3%	-0.3%	-0.3%	+0.0%	+0.0%
Patient & Client Care	481	-72	-78	-40	-49	-19	-16	-0.1%	-0.1%	-0.1%	-0.1%	-0.0%	-0.0%
Health Care Assistants	362	-60	-55	-19	-49	-26	-17	-0.1%	-0.1%	-0.1%	-0.1%	-0.1%	-0.0%
Care, other	5	-8	-11	-10	-2	+0		-0.6%	-0.7%	-0.7%	-0.3%	+0.0%	+0.0%
Home Help	115	-4	-11	-11	+2	+7	+1	-0.0%	-0.1%	-0.1%	+0.0%	+0.1%	+0.0%

Source: Health Service Personnel Census