

CHO 7 Employment Report: September 2020

Employment by Staff Group

Sep 2020 (Dec 2019 figure: 6,515)	WTE Aug 2020	WTE Sep 2020	WTE change since Aug 20	% change since Aug 20	WTE change since Dec 19	WTE change since Sep 19
Overall	6,668	6,703	+35	+0.5%	+189	+233
Consultants	69	70	+0	+0.6%	+10	+12
Registrars	104	102	-2	-2.2%	+7	+8
SHO/ Interns	41	41	+0	+0.6%	+5	+4
Medical/ Dental, other	82	85	+3	+3.6%	+5	+4
Medical & Dental	296	298	+1	+0.4%	+27	+28
Nurse/ Midwife Manager	404	408	+4	+0.9%	+12	+12
Nurse/ Midwife Specialist & AN/MP	105	103	-1	-1.2%	+10	+15
Staff Nurse/ Staff Midwife	1,028	1,017	-11	-1.1%	+24	+14
Public Health Nurse	163	177	+15	+9.0%	+2	+15
<i>Pre-registration Nurse/ Midwife Intern</i>				-100.0%	-1	
<i>Pre-registration Nurse Intern (COVID-19)</i>	39	28	-11	-28.4%	+28	-11
<i>Post-registration Nurse/ Midwife Student</i>	1	0	-0	-50.0%	-21	-0
<i>Nursing/ Midwifery awaiting registration</i>	6	6	+0	+2.3%	-4	+0
Nursing/ Midwifery Student	45	34	-11	-24.5%	+2	+9
Nursing/ Midwifery other	11	12	+0	+1.8%	+2	+2
Nursing & Midwifery	1,757	1,751	-5	-0.3%	+51	+67
Therapy Professions	471	469	-2	-0.4%	+19	+20
Health Science/ Diagnostics	3	4	+1	+17.3%	+1	+1
Social Care	378	381	+2	+0.6%	+9	+15
Social Workers	109	109	+0	+0.3%	+5	+7
Psychologists	86	87	+1	+1.0%	+6	+6
Pharmacy	41	40	-1	-1.3%	+0	+3
H&SC, Other	41	41	-0	-0.7%	-4	-3
Health & Social Care Professionals	1,130	1,131	+1	+0.1%	+37	+49
Management (VIII & above)	79	79	+0	+0.3%	+6	+10
Administrative/ Supervisory (V to VII)	200	199	-1	-0.5%	+16	+13
Clerical (III & IV)	378	376	-2	-0.5%	+26	+22
Management & Administrative	657	654	-3	-0.4%	+48	+44
Support	397	397	+0	+0.1%	-13	-17
Maintenance/ Technical	46	46	-0	-0.8%	+5	+5
General Support	443	443	+0	+0.0%	-8	-13
Health Care Assistants	1,649	1,685	+36	+2.2%	+31	+29
Care, other	603	609	+6	+0.9%	-1	+18
Home Help	133	132	-1	-0.9%	+5	+10
Patient & Client Care	2,386	2,426	+40	+1.7%	+34	+57

CHO 7 Employment Report: September 2020

Community Health & Wellbeing

Sep 2020 (figure:)	WTE Aug 2020	WTE Sep 2020	WTE change since Aug 20	% change since Aug 20	WTE change since	WTE change since
Total Community Health & Wellbeing	8	10	+1	+17.5%	+10	+10
Occupational Therapists		1	+1	-100.0%	+1	+1
Therapy Professions		1	+1	-100%	+1	+1
Health & Social Care Professionals		1	+1	-100.0%	+1	+1
Management (VIII & above)	1	1	0	0	+1	+1
Administrative/ Supervisory (V to VII)	2	3	+1	+33%	+3	+3
Clerical (III & IV)	1	1	0	0	+1	+1
Management & Administrative	4	5	+1	+19.4%	+5	+5
Care, other	4	4	-0	-6%	+4	+4
Patient & Client Care	4	4	-0	-6.5%	+4	+4

Mental Health

Sep 2020 (Dec 2019 figure: 835)	WTE Aug 2020	WTE Sep 2020	WTE change since Aug 20	% change since Aug 20	WTE change since Dec 19	WTE change since Sep 19
Total Mental Health	876	870	-6	-0.7%	+35	+34
Consultants	54	54	+0	+0%	+7	+8
Registrars	55	54	-1	-2%	+8	+7
SHO/ Interns	22	22	+0	+1%	+1	+1
Medical & Dental	131	131	-1	-0.6%	+16	+17
Nurse/ Midwife Manager	116	117	+1	+1%	+1	+4
Nurse/ Midwife Specialist & AN/MP	46	45	-1	-3%	+5	+10
Staff Nurse/ Staff Midwife	193	194	+0	+0%	-1	-14
Pre-registration Nurse/ Midwife Intern				-100.0%	-1	
Pre-registration Nurse Intern (COVID-19)	24	17	-7	-29.5%	+17	-7
Post-registration Nurse/ Midwife Student		0	+0	-100.0%	+0	+0
Nursing/ Midwifery awaiting registration	4	4	+0	+4.1%	-6	+0
Nursing/ Midwifery Student	27	21	-7	-24%	+10	+7
Nursing/ Midwifery other	8	8	+0	+3%	+1	+1
Nursing & Midwifery	391	385	-6	-1.6%	+15	+8
Therapy Professions	43	44	+2	+4%	-3	-2
Social Care	8	7	-0	-1%	-0	+1
Social Workers	37	36	-1	-1%	+2	+4
Psychologists	32	33	+1	+4%	+2	+2
Pharmacy	1	1	0	0		
H&SC, Other	19	18	-1	-3%	+0	+0
Health & Social Care Professionals	138	140	+2	+1.4%	-0	+5
Management (VIII & above)	4	4	0	0	+1	+1
Administrative/ Supervisory (V to VII)	17	18	+1	+8%	+2	+5
Clerical (III & IV)	52	51	-1	-1%	+4	+2
Management & Administrative	72	73	+1	+0.9%	+8	+8
Support	16	16	+0	+1%	-1	-2
Maintenance/ Technical	2	2	-0	-3%	-0	-0
General Support	18	18	+0	+0.9%	-1	-2
Health Care Assistants	35	35	+0	+0%	+2	-0
Care, other	89	88	-2	-2%	-4	-1
Patient & Client Care	124	123	-2	-1.4%	-3	-1

Primary Care

Sep 2020 (Dec 2019 figure: 1,702)	WTE Aug 2020	WTE Sep 2020	WTE change since Aug 20	% change since Aug 20	WTE change since Dec 19	WTE change since Sep 19
Total Primary Care	1,720	1,719	-1	-0.1%	+17	+12
Consultants	14	15	+0	+2%	+3	+3
Registrars	46	45	-1	-3%	-1	-0
SHO/ Interns	10	10	+0	+0%	+4	+3
Medical/ Dental, other	77	80	+3	+4%	+5	+5
Medical & Dental	147	149	+2	+1.3%	+11	+11
Nurse/ Midwife Manager	83	84	+1	+1%	+4	+3
Nurse/ Midwife Specialist & AN/MP	50	50	-0	-0%	+4	+5
Staff Nurse/ Staff Midwife	217	203	-14	-7%	-2	-14
Public Health Nurse	163	177	+15	+9%	+2	+15
<i>Post-registration Nurse/ Midwife Student</i>	1		-1	-100.0%	-21	-1
Nursing/ Midwifery Student	1		-1	-100%	-21	-10
Nursing/ Midwifery other	2	2	0	0		
Nursing & Midwifery	515	516	+1	+0.2%	-14	-1
Therapy Professions	268	265	-3	-1%	-1	-3
Health Science/ Diagnostics	0	1	+1	+243%	+1	+1
Social Care	4	4	+0	+1%	+1	+0
Social Workers	26	26	+0	+0%	-0	+1
Psychologists	25	24	-1	-5%	+3	+2
Pharmacy	33	32	-1	-4%	-0	+3
H&SC, Other	20	20	+0	+1%	-4	-4
Health & Social Care Professionals	376	372	-5	-1.2%	-2	+1
Management (VIII & above)	30	31	+1	+3%	-3	-1
Administrative/ Supervisory (V to VII)	81	79	-2	-2%	+3	-1
Clerical (III & IV)	189	192	+3	+1%	+14	+5
Management & Administrative	299	301	+2	+0.5%	+14	+2
Support	113	111	-2	-1%	-5	-7
Maintenance/ Technical	10	10	+0	+0%	+1	+2
General Support	123	121	-2	-1.2%	-3	-6
Health Care Assistants	132	133	+0	+0%	+12	+4
Care, other	127	127	+0	+0%	-0	+1
Patient & Client Care	260	260	+0	+0.2%	+12	+5

Social Care

Sep 2020 (Dec 2019 figure: 3,978)	WTE Aug 2020	WTE Sep 2020	WTE change since Aug 20	% change since Aug 20	WTE change since Dec 19	WTE change since Sep 19
Total Social Care	4,064	4,105	+41	+1.0%	+128	+177
Consultants	1	1	0	0		
Registrars	3	3	+0	+0%	+0	+1
SHO/ Interns	9	9	+0	+1%	+0	
Medical/ Dental, other	5	5	0	0		-1
Medical & Dental	17	18	+0	+0.6%	+0	+0
Nurse/ Midwife Manager	205	207	+2	+1%	+8	+6
Nurse/ Midwife Specialist & AN/MP	8	9	+0	+3%	+1	-0
Staff Nurse/ Staff Midwife	618	620	+2	+0%	+27	+42
<i>Pre-registration Nurse/ Midwife Intern</i>				-100.0%		
<i>Pre-registration Nurse Intern (COVID-19)</i>	15	11	-4	-26.7%	+11	-4
<i>Nursing/ Midwifery awaiting registration</i>	3	2	-0	-0.4%	+2	-0
Nursing/ Midwifery Student	18	13	-4	-23%	+13	+12
Nursing/ Midwifery other	2	2	0	0	+1	+1
Nursing & Midwifery	850	851	+0	+0.0%	+50	+60
Therapy Professions	160	159	-2	-1%	+23	+24
Health Science/ Diagnostics	3	3	0	0		
Social Care	367	369	+2	+1%	+9	+15
Social Workers	47	47	+1	+2%	+3	+2
Psychologists	29	30	+1	+3%	+2	+2
Pharmacy	7	8	+1	+9%	+0	-0
H&SC, Other	3	3	0	0		
Health & Social Care Professionals	615	619	+3	+0.5%	+38	+42
Management (VIII & above)	45	44	-1	-2%	+7	+9
Administrative/ Supervisory (V to VII)	100	99	-1	-1%	+8	+6
Clerical (III & IV)	136	133	-4	-3%	+7	+15
Management & Administrative	281	276	-5	-2.0%	+22	+30
Support	268	270	+2	+1%	-7	-8
Maintenance/ Technical	34	34	-0	-1%	+4	+4
General Support	303	304	+1	+0.5%	-3	-5
Health Care Assistants	1,482	1,517	+36	+2%	+17	+26
Care, other	382	390	+8	+2%	-1	+14
Home Help	133	132	-1	-1%	+5	+10
Patient & Client Care	1,997	2,039	+42	+2.1%	+21	+50

CHO 7 Employment Report: September 2020

Disabilities

Sep 2020 (Dec 2019 figure: 2,982)	WTE Aug 2020	WTE Sep 2020	WTE change since Aug 20	% change since Aug 20	WTE change since Dec 19	WTE change since Sep 19
Total Disabilities	3,028	3,069	+41	+1.4%	+87	+144
Consultants	1	1				
Registrars	3	3	+0	+0.3%	+0	+1
SHO/ Interns	7	7	+0	+1.4%	+0	
Medical/ Dental, other	1	1				
Medical & Dental	11	12	+0	+1.0%	+0	+1
Nurse/ Midwife Manager	123	123	-0	-0.4%	+1	-4
Nurse/ Midwife Specialist & AN/MP	4	5	+1	+19.4%	-0	-0
Staff Nurse/ Staff Midwife	377	379	+2	+0.4%	+5	+20
<i>Pre-registration Nurse/ Midwife Intern</i>				-100.0%		
<i>Pre-registration Nurse Intern (COVID-19)</i>	15	11	-4	-26.7%	+11	-4
<i>Nursing/ Midwifery awaiting registration</i>				-100.0%		
Nursing/ Midwifery Student	15	11	-4	-26.7%	+11	+10
Nursing/ Midwifery other	2	2			+1	+1
Nursing & Midwifery	521	519	-2	-0.4%	+17	+26
Therapy Professions	147	145	-2	-1.1%	+23	+26
Health Science/ Diagnostics	3	3				
Social Care	367	369	+2	+0.7%	+9	+15
Social Workers	33	34	+1	+2.3%	+1	+3
Psychologists	29	30	+1	+3.1%	+2	+2
Pharmacy	4	5	+1	+14.8%	-0	-0
H&SC, Other	2	2				
Health & Social Care Professionals	584	587	+3	+0.5%	+35	+45
Management (VIII & above)	38	37	-0	-1.2%	+5	+5
Administrative/ Supervisory (V to VII)	87	87	-0	-0.0%	+7	+7
Clerical (III & IV)	98	96	-2	-1.9%	+4	+9
Management & Administrative	222	220	-2	-1.0%	+17	+21
Support	158	157	-1	-0.6%	-9	-8
Maintenance/ Technical	32	32	-0	-1.0%	+4	+4
General Support	191	190	-1	-0.7%	-6	-4
Health Care Assistants	1,101	1,138	+37	+3.4%	+26	+43
Care, other	378	385	+7	+1.7%	-1	+13
Home Help	18	18	-0	-2.7%	-2	-2
Patient & Client Care	1,498	1,541	+43	+2.9%	+23	+54

Older People

Sep 2020 (Dec 2019 figure: 996)	WTE Aug 2020	WTE Sep 2020	WTE change since Aug 20	% change since Aug 20	WTE change since Dec 19	WTE change since Sep 19
Total Older People	1,036	1,037	+0	+0.0%	+41	+33
SHO/ Interns	2	2				
Medical/ Dental, other	4	4				-1
Medical & Dental	6	6				-1
Nurse/ Midwife Manager	82	84	+2	+2.4%	+7	+10
Nurse/ Midwife Specialist & AN/MP	4	4	-1	-13.1%	+1	-0
Staff Nurse/ Staff Midwife	240	241	+1	+0.4%	+22	+22
Nursing/ Midwifery Student	3	2	-0	-0.4%	+2	+2
Nursing & Midwifery	329	331	+2	+0.7%	+32	+34
Health & Social Care Professionals	31	31	+0	+0.1%	+3	-3
Management (VIII & above)	7	6	-0	-3.4%	+1	+3
Administrative/ Supervisory (V to VII)	14	12	-1	-8.1%	+1	-0
Clerical (III & IV)	39	37	-2	-4.8%	+3	+5
Management & Administrative	59	56	-3	-5.4%	+5	+8
Support	110	112	+3	+2.4%	+2	-1
Maintenance/ Technical	2	2				
General Support	112	114	+3	+2.4%	+2	-1
Health Care Assistants	381	379	-2	-0.5%	-9	-18
Care, other	4	5	+1	+25.0%	+0	+1
Home Help	115	114	-1	-0.7%	+6	+13
Patient & Client Care	499	498	-2	-0.3%	-2	-4

CHO 7 Employment by Administration (HSE / S38): September 2020

Sep 2020 (Dec 2019 figure: 6,515)	WTE Aug 2020	WTE Sep 2020	WTE change since Aug 20	% change since Aug 20	WTE change since Dec 19	WTE change since Sep 19
Overall	6,668	6,703	+35	+0.5%	+189	+233
HSE	3,272	3,271	-0	-0.0%	+120	+116
Section 38 Voluntary Agencies	3,396	3,432	+36	+1.1%	+69	+116

HSE

Sep 2020 (Dec 2019 figure: 3,151)	WTE Aug 2020	WTE Sep 2020	WTE change since Aug 20	% change since Aug 20	WTE change since Dec 19	WTE change since Sep 19
Overall	3,272	3,271	-0	-0.0%	+120	+116
Consultants	60	60	+0	+0.0%	+7	+9
Registrars	96	93	-2	-0.0%	+6	+6
SHO/ Interns	27	27	+0	+0.0%	+3	+2
Medical/ Dental, other	80	83	+3	+0.0%	+4	+4
Medical & Dental	262	263	+1	+0.3%	+20	+21
Nurse/ Midwife Manager	239	244	+4	+0.0%	+12	+20
Nurse/ Midwife Specialist & AN/MP	71	68	-2	-0.0%	+8	+12
Staff Nurse/ Staff Midwife	552	539	-13	-0.0%	+19	-6
Public Health Nurse	163	177	+15	+0.1%	+2	+15
<i>Pre-registration Nurse/ Midwife Intern</i>				-1.0%	-6	-13
<i>Pre-registration Nurse Intern (COVID-19)</i>	24	17	-7	-0.3%	+17	+17
<i>Post-registration Nurse/ Midwife Student</i>	1	0	-0	-0.5%	-7	-10
<i>Nursing/ Midwifery awaiting registration</i>	6	6	+0	+0.0%	+2	+5
Nursing/ Midwifery Student	30	23	-7	-0.2%	-9	-1
Nursing/ Midwifery other	8	8	+0	+0.0%	+1	+1
Nursing & Midwifery	1,063	1,060	-3	-0.3%	+33	+42
Therapy Professions	337	338	+1	+0.0%	+13	+12
Social Care	11	11	-0	-0.0%	+0	+1
Social Workers	71	71	+0	+0.0%	+4	+7
Psychologists	65	65	+0	+0.0%	+3	+3
Pharmacy	28	27	-1	-0.0%	+1	+2
H&SC, Other	39	39	-0	-0.0%	-4	-3
Health & Social Care Professionals	551	552	+1	+0.1%	+19	+21
Management (VIII & above)	46	46	+0	+0.0%	+6	+10
Administrative/ Supervisory (V to VII)	109	109	+0	+0.0%	+13	+11
Clerical (III & IV)	263	263	-0	-0.0%	+22	+15
Management & Administrative	418	419	+0	+0.1%	+41	+35
Support	167	170	+3	+0.0%	-0	-6
Maintenance/ Technical	6	6	-0	-0.0%	+0	+0
General Support	173	176	+3	+1.6%	-0	-5
Health Care Assistants	444	442	-2	-0.0%	+1	-13
Care, other	227	228	+1	+0.0%	+1	+5
Home Help	133	132	-1	-0.0%	+5	+10
Patient & Client Care	805	803	-2	-0.3%	+7	+3

Section 38 Voluntary Agencies

Sep 2020 (Dec 2019 figure: 3,363)	WTE Aug 2020	WTE Sep 2020	WTE change since Aug 20	% change since Aug 20	WTE change since Dec 19	WTE change since Sep 19
Overall	3,396	3,432	+36	+1.1%	+69	+116
Consultants	9	9	+0	+0.0%	+3	+3
Registrars	9	9	+0	+0.0%	+1	+2
SHO/ Interns	14	14	+0	+0.0%	+2	+2
Medical/ Dental, other	2	2	-0	-0.0%	+0	+0
Medical & Dental	34	35	+1	+1.6%	+6	+7
Nurse/ Midwife Manager	165	164	-1	-0.0%	-0	-7
Nurse/ Midwife Specialist & AN/MP	34	35	+1	+0.0%	+2	+2
Staff Nurse/ Staff Midwife	476	478	+1	+0.0%	+5	+20
<i>Pre-registration Nurse/ Midwife Intern</i>				-1.0%		-1
<i>Pre-registration Nurse Intern (COVID-19)</i>	15	11	-4	-0.3%	+11	+11
<i>Nursing/ Midwifery awaiting registration</i>				-1.0%		-1
Nursing/ Midwifery Student	15	11	-4	-0.3%	+11	+10
Nursing/ Midwifery other	4	4		+0.0%	+1	+1
Nursing & Midwifery	694	692	-2	-0.3%	+18	+25
Therapy Professions	135	131	-3	-0.0%	+6	+8
Health Science/ Diagnostics	3	4	+1	+0.2%	+1	+1
Social Care	367	369	+2	+0.0%	+9	+15
Social Workers	38	38	+0	+0.0%	+1	+0
Psychologists	22	22	+0	+0.0%	+3	+3
Pharmacy	13	14	+0	+0.0%	-1	+1
H&SC, Other	2	2		+0.0%		
Health & Social Care Professionals	579	579	+1	+0.1%	+18	+28
Management (VIII & above)	33	33	+0	+0.0%	+0	+0
Administrative/ Supervisory (V to VII)	91	90	-1	-0.0%	+3	+2
Clerical (III & IV)	115	113	-2	-0.0%	+4	+7
Management & Administrative	238	235	-3	-1.3%	+7	+9
Support	230	227	-2	-0.0%	-13	-12
Maintenance/ Technical	40	40	-0	-0.0%	+5	+5
General Support	270	267	-3	-1.0%	-8	-7
Health Care Assistants	1,205	1,243	+38	+0.0%	+29	+42
Care, other	376	381	+4	+0.0%	-2	+12
Patient & Client Care	1,581	1,623	+42	+2.7%	+27	+54

CHO 7 Employment by S38 Agency: September 2020

Cheeverstown House

Sep 2020 (Dec 2019 figure: 396)	WTE Aug 2020	WTE Sep 2020	WTE change since Aug 20	% change since Aug 20	WTE change since Dec 19	WTE change since Sep 19
Overall	393	390	-3	-0.8%	-7	-9
Consultants	0	0		+0.0%		
Medical/ Dental, other	1	1		+0.0%		
Medical & Dental	1	1				
Nurse/ Midwife Manager	29	27	-2	-0.1%	+1	-2
Nurse/ Midwife Specialist & AN/MP	2	2		+0.0%		
Staff Nurse/ Staff Midwife	102	102		+0.0%	-5	-1
Nursing & Midwifery	133	131	-2	-1.5%	-4	-3
Therapy Professions	12	12		+0.0%	-1	-2
Social Care	33	33		+0.0%	-2	-4
Social Workers	5	5		+0.0%	-1	-1
Psychologists	5	5		+0.0%	+1	+1
Pharmacy	0	0		+0.0%	-0	-0
H&SC, Other	2	2		+0.0%		
Health & Social Care Professionals	57	57			-3	-7
Management (VIII & above)	2	2		+0.0%		
Administrative/ Supervisory (V to VII)	15	15	+1	+0.0%	+1	+1
Clerical (III & IV)	12	12		+0.0%	+1	+1
Management & Administrative	29	30	+1	+1.8%	+2	+2
Support	27	27		+0.0%		+1
Maintenance/ Technical	4	4		+0.0%		
General Support	30	30				+1
Health Care Assistants	130	129	-2	-0.0%	-1	-2
Care, other	12	12		+0.0%	-0	-0
Patient & Client Care	142	141	-2	-1.1%	-2	-2

Kare, Newbridge, Co Kildare

Sep 2020 (Dec 2019 figure: 360)	WTE Aug 2020	WTE Sep 2020	WTE change since Aug 20	% change since Aug 20	WTE change since Dec 19	WTE change since Sep 19
Overall	347	364	+18	+5.1%	+5	+14
Nurse/ Midwife Manager	7	7		+0.0%	-5	-5
Staff Nurse/ Staff Midwife	23	24	+1	+0.0%	+1	+2
Nursing & Midwifery	30	31	+1	+2.7%	-3	-3
Therapy Professions	13	12	-0	-0.0%	-2	-2
Social Care	61	63	+2	+0.0%	+2	+3
Social Workers	4	4		+0.0%		
Psychologists	6	6	+1	+0.1%	+2	+3
Health & Social Care Professionals	83	86	+2	+2.7%	+2	+3
Management (VIII & above)	5	5	+0	+0.0%	-1	-1
Administrative/ Supervisory (V to VII)	13	13	+0	+0.0%	+1	+1
Clerical (III & IV)	14	14		+0.0%	+2	+3
Management & Administrative	32	32	+0	+0.6%	+2	+3
Support	1	1		+0.0%	-0	+0
General Support	1	1			-0	+0
Health Care Assistants	94	110	+16	+0.2%	+9	+6
Care, other	106	105	-2	-0.0%	-5	+4
Patient & Client Care	200	215	+15	+7.3%	+5	+10

Our Lady's Hospice & Care Services

Sep 2020 (Dec 2019 figure: 482)	WTE Aug 2020	WTE Sep 2020	WTE change since Aug 20	% change since Aug 20	WTE change since Dec 19	WTE change since Sep 19
Overall	494	491	-3	-0.6%	+9	+11
Consultants	9	9	+0	+0.0%	+3	+3
Registrars	6	6	+0	+0.0%	+1	+1
SHO/ Interns	7	7	+0	+0.0%	+2	+2
Medical/ Dental, other	1	1	-0	-0.0%	+0	+0
Medical & Dental	23	23	+0	+1.9%	+6	+6
Nurse/ Midwife Manager	44	44	-0	-0.0%	-1	-1
Nurse/ Midwife Specialist & AN/MP	30	31	+0	+0.0%	+2	+2
Staff Nurse/ Staff Midwife	99	99	-0	-0.0%	-0	-0
Nursing/ Midwifery other	2	2		+0.0%		
Nursing & Midwifery	175	175	-0	-0.2%	+1	+1
Therapy Professions	40	39	-1	-0.0%	+1	+3
Health Science/ Diagnostics	0	1	+1	+2.4%	+1	+1
Social Workers	11	11	+0	+0.0%	+0	+0
Psychologists	1	1	-0	-0.0%		-0
Pharmacy	9	9	-0	-0.0%	-1	+1
Health & Social Care Professionals	61	60	-1	-1.3%	+1	+5
Management (VIII & above)	4	4		+0.0%		
Administrative/ Supervisory (V to VII)	18	17	-1	-0.1%	-3	-2
Clerical (III & IV)	30	29	-0	-0.0%	+4	+6
Management & Administrative	52	50	-1	-2.8%	+1	+4
Support	71	70	-2	-0.0%	-3	-4
Maintenance/ Technical	8	8	+0	+0.0%	+1	+1
General Support	79	78	-2	-1.9%	-2	-3
Health Care Assistants	104	104	+1	+0.0%	+3	-2
Care, other	1	1		+0.0%		
Patient & Client Care	104	105	+1	+0.5%	+3	-2

Peamount Hospital (Newcastle)

Sep 2020 (Dec 2019 figure: 486)	WTE Aug 2020	WTE Sep 2020	WTE change since Aug 20	% change since Aug 20	WTE change since Dec 19	WTE change since Sep 19
Overall	531	532	+1	+0.2%	+46	+44
Registrars	2	2	+0	+0.0%	+0	+1
SHO/ Interns	7	7	+0	+0.0%	+0	
Medical & Dental	9	9	+0	+1.2%	+0	+1
Nurse/ Midwife Manager	30	31	+1	+0.0%	+5	+4
Nurse/ Midwife Specialist & AN/MP	1	2	+1	+1.0%		
Staff Nurse/ Staff Midwife	91	90	-1	-0.0%	+8	+7
Nursing Education/Clinical	1	1		+0.0%	+1	+1
Nursing/ Midwifery other	1	1		+0.0%	+1	+1
Nursing & Midwifery	123	124	+1	+0.6%	+14	+13
Therapy Professions	39	37	-2	-0.0%	+8	+9
Health Science/ Diagnostics	3	3		+0.0%		
Social Care	4	4	-0	-0.1%	+2	+1
Social Workers	6	6	+0	+0.0%	+1	+2
Pharmacy	4	4	+1	+0.2%	+0	-0
Health & Social Care Professionals	56	55	-1	-1.8%	+12	+12
Management (VIII & above)	4	4		+0.0%		
Administrative/ Supervisory (V to VII)	18	18	+0	+0.0%	+4	+3
Clerical (III & IV)	19	18	-0	-0.0%	-2	-2
Management & Administrative	41	41	-0	-0.7%	+3	+1
Support	46	45	-0	-0.0%	-2	-2
Maintenance/ Technical	10	9	-1	-0.1%	+1	+1
General Support	55	54	-1	-2.2%	-1	-1
Health Care Assistants	243	246	+2	+0.0%	+18	+18
Care, other	3	4	+0	+0.1%	+0	+1
Patient & Client Care	247	249	+3	+1.1%	+18	+19

Stewart's Hospital, (Palmerstown)

Sep 2020 (Dec 2019 figure: 852)	WTE Aug 2020	WTE Sep 2020	WTE change since Aug 20	% change since Aug 20	WTE change since Dec 19	WTE change since Sep 19
Overall	866	880	+15	+1.7%	+29	+32
Consultants	0	0		+0.0%		
Registrars				-1.0%		
Medical & Dental	0	0				
Nurse/ Midwife Manager	32	33	+1	+0.0%	-3	-5
Staff Nurse/ Staff Midwife	74	73	-0	-0.0%	+1	+3
Pre-registration Nurse/ Midwife Intern				-1.0%		-1
Pre-registration Nurse Intern (COVID-19)	15	11	-4	-0.3%	+11	+11
Nursing/ Midwifery awaiting registration				-1.0%		-1
Nursing/ Midwifery Student	15	11	-4	-0.3%	+11	+10
Nursing/ Midwifery other	1	1		+0.0%		
Nursing & Midwifery	121	117	-3	-2.9%	+9	+7
Therapy Professions	14	14	+1	+0.0%	-2	-1
Social Care	13	13		+0.0%	+3	+3
Social Workers	6	6		+0.0%	+1	+1
Psychologists	4	4		+0.0%	-1	-1
Health & Social Care Professionals	36	37	+1	+1.4%	+2	+2
Management (VIII & above)	12	12		+0.0%	+1	+1
Administrative/ Supervisory (V to VII)	17	16	-1	-0.1%	+2	-0
Clerical (III & IV)	22	21	-1	-0.0%	-2	-2
Management & Administrative	51	49	-2	-3.2%	+1	-1
Support	57	56	-1	-0.0%	-1	-1
Maintenance/ Technical	6	6		+0.0%	+1	+1
General Support	63	62	-1	-1.0%	+0	+0
Health Care Assistants	480	499	+19	+0.0%	+18	+27
Care, other	115	116	+1	+0.0%	-0	-3
Patient & Client Care	595	615	+20	+3.3%	+18	+24

St. John of God Liffey Services

Sep 2020 (Dec 2019 figure: 787)	WTE Aug 2020	WTE Sep 2020	WTE change since Aug 20	% change since Aug 20	WTE change since Dec 19	WTE change since Sep 19
Overall	766	775	+8	+1.1%	-13	+25
Registrars	1	1		+0.0%		
Medical & Dental	1	1				
Nurse/ Midwife Manager	23	23	-0	-0.0%	+3	+1
Nurse/ Midwife Specialist & AN/MP	1	1		+0.0%		
Staff Nurse/ Staff Midwife	87	90	+2	+0.0%	-0	+9
Nursing & Midwifery	111	113	+2	+1.9%	+3	+10
Therapy Professions	17	16	-1	-0.0%	+2	+1
Social Care	255	256	+1	+0.0%	+3	+12
Social Workers	6	6		+0.0%	-1	-2
Psychologists	7	7		+0.0%	+1	+1
Health & Social Care Professionals	285	285	-0	-0.1%	+5	+12
Management (VIII & above)	6	6	-0	-0.0%	-0	-0
Administrative/ Supervisory (V to VII)	10	10		+0.0%	-1	+1
Clerical (III & IV)	18	18	-0	-0.0%	+0	+0
Management & Administrative	34	34	-0	-1.1%	-1	+0
Support	28	28	-0	-0.0%	-7	-6
Maintenance/ Technical	13	14	+1	+0.0%	+2	+2
General Support	41	42	+1	+1.4%	-5	-4
Health Care Assistants	154	155	+1	+0.0%	-17	-6
Care, other	139	144	+5	+0.0%	+3	+11
Patient & Client Care	293	299	+6	+2.1%	-14	+6

CHO 7 Employment by Grade Group & Staff Category: September 2020

Sep 2020 (Dec 2019 figure: 6,515)	WTE Aug 2020	WTE Sep 2020	WTE change since Aug 20	% change since Aug 20	WTE change since Dec 19	WTE change since Sep 19
Overall	6,668	6,703	+35	+0.5%	+189	+233
Consultant Medicine	10	10	+0	+3.2%	+3	+3
Consultant Paediatrics	0	0				
Consultant Psychiatry	59	59	+0	+0.2%	+7	+8
Consultant Surgery	1	1				
Consultants	69	70	+0	+0.6%	+10	+12
Registrar	81	77	-4	-4.4%	+5	+6
Senior Registrar	19	20	+1	+3.3%	+1	+1
Specialist Registrar	4	5	+1	+14.2%	+1	+1
Registrars	104	102	-2	-2.2%	+7	+8
Interns	2	2	-0	-2.0%	-0	-0
Senior House Officer	39	39	+0	+0.7%	+5	+4
SHO/ Interns	41	41	+0	+0.6%	+5	+4
Dentists	35	36	+1	+2.7%	+2	+2
Other Medical	47	49	+2	+4.3%	+2	+2
Medical/ Dental, other	82	85	+3	+3.6%	+5	+4
Medical & Dental	296	298	+1	+0.4%	+33	+28
Clinical Nurse/ Midwife Manager	330	330	+0	+0.1%	+2	+8
Director Nursing/Midwifery, Assistant	56	59	+3	+5.4%	+7	+3
Director of Nursing/Midwifery	19	19	+0	+1.3%	+3	+2
Nurse/ Midwife Manager	404	408	+4	+0.9%	+12	+12
Advanced Nurse/ Midwife Practitioner	11	12	+1	+7.7%	+8	+7
Clinical Nurse/ Midwife Specialist	94	91	-2	-2.3%	+2	+7
Nurse/ Midwife Specialist & AN/MP	105	103	-1	-1.2%	+10	+15
Staff Nurse [Intellectual Disability]	168	169	+2	+1.0%	-25	-30
Staff Nurse [Psychiatric]	185	185	+1	+0.5%	-6	-18
Staff Nurses [General/ Children's]	676	662	-14	-2.1%	+54	+62
Staff Nurse/ Staff Midwife	1,028	1,017	-11	-1.1%	+24	+14
Public Health Nurse	163	177	+15	+9.0%	+2	+15
Pre-registration Nurse/ Midwife Intern				-100.0%	-1	-14
Pre-registration Nurse Intern (COVID-19)	39	28	-11	-28.4%	+28	+28
Post-registration Nurse/ Midwife Student	1	0	-0	-50.0%	-21	-10
Nursing/ Midwifery awaiting registration	6	6	+0	+2.3%	-4	+4
Nursing/ Midwifery Student	45	34	-11	-24.5%	+2	+9
Nursing Education/Clinical	11	12	+0	+1.8%	+2	+2
Nursing/ Midwifery other	11	12	+0	+1.8%	+2	+2
Nursing & Midwifery	1,757	1,751	-5	-0.3%	+51	+67
Dietitians	27	27	+0	+0.9%	+2	+2
Occupational Therapists	193	191	-2	-0.8%	+8	+14
Orthoptists	1	2	+1	+200.0%	+2	+2
Physiotherapists	126	127	+1	+0.7%	+12	+8
Podiatrists & Chiropractors	2	2			+1	+1
Speech & Language Therapists	123	121	-2	-2.0%	-5	-6
Therapy Professions	471	469	-2	-0.4%	+19	+20
Clinical Measurement	2	2			+1	+1
Phlebotomists	0	1	+1	+243.5%	-0	-0
Radiographers	1	1				
Health Science/ Diagnostics	3	4	+1	+17.3%	+1	+1

Sep 2020 (Dec 2019 figure: 6,515)	WTE Aug 2020	WTE Sep 2020	WTE change since Aug 20	% change since Aug 20	WTE change since Dec 19	WTE change since Sep 19
Overall	6,668	6,703	+35	+0.5%	+189	+233
Social Care	378	381	+2	+0.6%	+9	+15
Social Workers	109	109	+0	+0.3%	+5	+7
Psychologists	86	87	+1	+1.0%	+6	+6
Pharmacy	41	40	-1	-1.3%	+0	+3
Counsellor Therapists	35	35	-1	-1.8%	-2	-2
Dental Hygienists	4	4	+0	+8.1%	-1	-1
Other Health & Social Care	1	1	+0	+5.3%	-1	-1
Play Therapists/ Specialists	1	1				
H&SC, Other	41	41	-0	-0.7%	-4	-3
Health & Social Care Professionals	1,130	1,131	+1	+0.1%	+35	+49
Executive Management	16	16	+0	+0.1%	+3	+2
Senior Management (VIII & GM)	63	63	+0	+0.4%	+3	+8
Management (VIII & above)	79	79	+0	+0.3%	+6	+10
Middle Management (V-VII)	199	198	-1	-0.5%	+16	+13
Other Administrative	1	1			-0	-0
Administrative/ Supervisory (V to VII)	200	199	-1	-0.5%	+16	+13
Clerical (III & IV)	378	376	-2	-0.5%	+26	+22
Management & Administrative	657	654	-3	-0.4%	+36	+44
Catering	56	55	-1	-1.2%	-4	-3
Household Services	263	264	+1	+0.4%	-5	-9
Other Labs & Associated	1	1	+0	+14.2%	+0	+0
Other Support	14	14	-0	-0.4%	-0	-1
Portering	63	63	-0	-0.2%	-5	-5
Support	397	397	+0	+0.1%	-13	-17
Maintenance	41	41	-0	-0.9%	+4	+3
Technical Services	5	5			+1	+2
Maintenance/ Technical	46	46	-0	-0.8%	+5	+5
General Support	443	443	+0	+0.0%	-42	-13
HCA, Nurse's Aide, etc.	1,626	1,664	+38	+2.3%	+22	+24
Health & Social Care Assistants	23	21	-2	-8.2%	+9	+5
Health Care Assistants	1,649	1,685	+36	+2.2%	+31	+29
Community Welfare Officers	1	1				
Other Care Grades	602	608	+6	+0.9%	-1	+18
Care, other	603	609	+6	+0.9%	-1	+18
Home Help	133	132	-1	-0.9%	+5	+10
Patient & Client Care	2,386	2,426	+40	+1.7%	+34	+57

CHO 7 HSE Employment by Grade Group & Staff Category: September 2020

Sep 2020 (Dec 2019 figure: 3,151)	WTE Aug 2020	WTE Sep 2020	WTE change since Aug 20	% change since Aug 20	WTE change since Dec 19	WTE change since Sep 19
Overall	3,272	3,271	-0	-0.0%	+120	+116
Consultant Medicine	1	1				+0
Consultant Psychiatry	58	58	+0	+0.2%	+7	+8
Consultant Surgery	1	1				
Consultants	60	60	+0	+0.2%	+7	+9
Registrar	76	72	-4	-4.8%	+5	+5
Senior Registrar	19	20	+1	+3.3%	+1	+1
Specialist Registrar	1	1	+1	+100.0%		
Registrars	96	93	-2	-2.6%	+6	+6
SHO/ Interns	27	27	+0	+0.5%	+3	+2
Dentists	35	36	+1	+2.7%	+2	+2
Other Medical	44	46	+2	+4.6%	+2	+2
Medical/ Dental, other	80	83	+3	+3.7%	+4	+4
Medical & Dental	262	263	+1	+0.3%	+28	+21
Clinical Nurse/ Midwife Manager	177	179	+3	+1.5%	+3	+16
Director Nursing/Midwifery, Assistant	48	50	+3	+5.4%	+6	+2
Director of Nursing/Midwifery	15	14	-1	-5.1%	+3	+2
Nurse/ Midwife Manager	239	244	+4	+1.9%	+12	+20
Advanced Nurse/ Midwife Practitioner	7	7	-0	-2.0%	+5	+4
Clinical Nurse/ Midwife Specialist	63	61	-2	-3.5%	+3	+8
Nurse/ Midwife Specialist & AN/MP	71	68	-2	-3.4%	+8	+12
Staff Nurse [Intellectual Disability]	1	1			+1	+1
Staff Nurse [Psychiatric]	185	185	+1	+0.5%	-6	-18
Staff Nurses [General/ Children's]	366	352	-14	-3.8%	+24	+11
Staff Nurse/ Staff Midwife	552	539	-13	-2.3%	+19	-6
Public Health Nurse	163	177	+15	+9.0%	+2	+15
Pre-registration Nurse/ Midwife Intern				-100.0%	-1	-13
Pre-registration Nurse Intern (COVID-19)	24	17	-7	-29.5%	+17	+17
Post-registration Nurse/ Midwife Student	1	0	-0	-50.0%	-21	-10
Nursing/ Midwifery awaiting registration	6	6	+0	+2.3%	-4	+5
Nursing/ Midwifery Student	30	23	-7	-23.4%	-9	-1
Nursing Education/Clinical	8	8	+0	+2.6%	+1	+1
Nursing/ Midwifery other	8	8	+0	+2.6%	+1	+1
Nursing & Midwifery	1,063	1,060	-3	-0.3%	+40	+42
Dietitians	17	17	+0	+0.1%	+1	-0
Occupational Therapists	144	145	+1	+1.0%	+7	+13
Orthoptists	1	2	+1	+200.0%	+2	+2
Physiotherapists	76	78	+1	+1.7%	+7	+3
Podiatrists & Chiropodists	2	2			+1	+1
Speech & Language Therapists	96	94	-2	-2.3%	-5	-6
Therapy Professions	337	338	+1	+0.4%	+13	+12
Social Care	11	11	-0	-0.1%	+0	+1
Social Workers	71	71	+0	+0.1%	+4	+7
Psychologists	65	65	+0	+0.6%	+3	+3
Pharmacy	28	27	-1	-3.5%	+1	+2
Counsellor Therapists	34	33	-1	-1.9%	-2	-2
Dental Hygienists	4	4	+0	+8.1%	-1	-1
Other Health & Social Care	1	1	+0	+5.3%	-1	-1
Play Therapists/ Specialists	1	1				
H&SC, Other	39	39	-0	-0.7%	-4	-3

Sep 2020 (Dec 2019 figure: 3,151)	WTE Aug 2020	WTE Sep 2020	WTE change since Aug 20	% change since Aug 20	WTE change since Dec 19	WTE change since Sep 19
Overall	3,272	3,271	-0	-0.0%	+120	+116
Health & Social Care Professionals	551	552	+1	+0.1%	+3	+21
Executive Management	9	10	+1	+11.3%	+3	+2
Senior Management (VIII & GM)	37	36	-1	-2.2%	+3	+8
Management (VIII & above)	46	46	+0	+0.4%	+6	+10
Administrative/ Supervisory (V to VII)	109	109	+0	+0.3%	+13	+11
Clerical (III & IV)	263	263	-0	-0.0%	+22	+15
Management & Administrative	418	419	+0	+0.1%	+26	+35
Catering	25	25	-0	-0.1%	-2	-2
Household Services	92	95	+3	+3.4%	+4	+1
Other Support	5	5	-0	-1.2%	-0	-1
Portering	46	45	-0	-0.3%	-3	-3
Support	167	170	+3	+1.7%	-0	-6
Maintenance/ Technical	6	6	-0	-1.5%	+0	+0
General Support	173	176	+3	+1.6%	-19	-5
HCA, Nurse's Aide, etc.	428	426	-2	-0.4%	-7	-17
Health & Social Care Assistants	16	16	-0	-2.4%	+8	+4
Health Care Assistants	444	442	-2	-0.5%	+1	-13
Care, other	227	228	+1	+0.5%	+1	+5
Home Help	133	132	-1	-0.9%	+5	+10
Patient & Client Care	805	803	-2	-0.3%	-58	+3

Employment by WTE, Headcount, Gender, Full-Time /Part-Time etc.: Sep 2020

CHO 7	WTE	Headcount	WTE: no.	% Male	% female	Male WTE: no.	Female WTE: no.	% Total Perm	% Male Perm	% Female Perm	% Total Full Time	% Total Part Time	% Male FT	% Female FT
Overall	6,703	7,844	1.17	19.8%	80.2%	1.08	1.19	87.2%	84.4%	87.9%	69.3%	30.7%	83.2%	65.9%
Consultant Medicine	10	12	1.21	25.0%	75.0%	1.15	1.23	58.3%	58.3%	55.6%	75.0%	25.0%	66.7%	77.8%
Consultant Paediatrics	0	1	2.94		100.0%		2.94	100.0%	100.0%	100.0%	0.0%	100.0%		0.0%
Consultant Psychiatry	59	64	1.09	32.8%	67.2%	1.07	1.10	56.3%	56.3%	48.8%	84.4%	15.6%	95.2%	79.1%
Consultant Surgery	1	1	1.25		100.0%		1.25	0.0%	0.0%	0.0%	0.0%	100.0%		0.0%
Consultants	70	78	1.12	30.8%	69.2%	1.08	1.14	56.4%	70.8%	50.0%	80.8%	19.2%	91.7%	75.9%
Registrar	77	80	1.04	32.5%	67.5%	1.04	1.03	1.3%	1.3%	0.0%	100.0%	0.0%	100.0%	100.0%
Senior Registrar	20	20	1.00	45.0%	55.0%	1.00	1.01	0.0%	0.0%	0.0%	100.0%	0.0%	100.0%	100.0%
Specialist Registrar	5	5	1.00	20.0%	80.0%	1.00	1.00	0.0%	0.0%	0.0%	100.0%	0.0%	100.0%	100.0%
Registrars	102	105	1.03	34.3%	65.7%	1.03	1.03	1.0%	2.8%	0.0%	100.0%	0.0%	100.0%	100.0%
SHO/ Interns	41	41	1.00	26.8%	73.2%	1.00	1.01	0.0%	0.0%	0.0%	100.0%	0.0%	100.0%	100.0%
Dentists	36	42	1.16	16.7%	83.3%	1.11	1.18	100.0%	100.0%	100.0%	61.9%	38.1%	85.7%	57.1%
Other Medical	49	67	1.37	40.3%	59.7%	1.30	1.42	35.8%	35.8%	50.0%	22.4%	77.6%	18.5%	25.0%
Medical/ Dental, other	85	109	1.28	31.2%	68.8%	1.26	1.30	60.6%	32.4%	73.3%	37.6%	62.4%	32.4%	40.0%
Medical & Dental	298	333	1.12	31.5%	68.5%	1.10	1.13	33.3%	27.6%	36.0%	75.1%	24.9%	76.2%	74.6%
Clinical Nurse/ Midwife Manager	330	354	1.07	14.4%	85.6%	1.01	1.08	97.5%	97.5%	98.0%	85.3%	14.7%	96.1%	83.5%
Director Nursing/Midwifery, Assistant	59	64	1.08	17.2%	82.8%	1.00	1.10	93.8%	93.8%	92.5%	85.9%	14.1%	100.0%	83.0%
Director of Nursing/Midwifery	19	19	1.00	5.3%	94.7%	1.00	1.00	100.0%	100.0%	100.0%	89.5%	10.5%	100.0%	88.9%
Nurse/ Midwife Manager	408	437	1.07	14.4%	85.6%	1.01	1.08	97.0%	95.2%	97.3%	85.6%	14.4%	96.8%	83.7%
Advanced Nurse/ Midwife Practitioner	12	13	1.10	7.7%	92.3%	1.00	1.10	100.0%	100.0%	100.0%	84.6%	15.4%	100.0%	83.3%
Clinical Nurse/ Midwife Specialist	91	106	1.16	9.4%	90.6%	1.03	1.17	99.1%	99.1%	99.0%	72.6%	27.4%	100.0%	69.8%
Nurse/ Midwife Specialist & AN/MP	103	119	1.15	9.2%	90.8%	1.03	1.17	99.2%	100.0%	99.1%	73.9%	26.1%	100.0%	71.3%
Staff Nurse [Intellectual Disability]	169	214	1.26	8.4%	91.6%	1.08	1.28	94.9%	94.9%	94.9%	57.0%	43.0%	88.9%	54.1%
Staff Nurse [Psychiatric]	185	208	1.12	23.1%	76.9%	1.06	1.14	96.2%	96.2%	96.9%	83.7%	16.3%	91.7%	81.3%
Staff Nurses [General/ Children's]	662	760	1.15	9.6%	90.4%	1.05	1.16	92.8%	92.8%	92.7%	71.4%	28.6%	90.4%	69.4%
Staff Nurse/ Staff Midwife	1,017	1,182	1.16	11.8%	88.2%	1.06	1.18	93.7%	93.5%	93.8%	71.0%	29.0%	90.6%	68.4%
Public Health Nurse	177	217	1.22	0.5%	99.5%	1.05	1.22	95.9%	100.0%	95.8%	64.1%	35.9%	100.0%	63.9%
Pre-registration Nurse Intern (COVID-19)	28	37	1.34	16.2%	83.8%	1.53	1.30	0.0%	0.0%	0.0%	100.0%	0.0%	100.0%	100.0%
Post-registration Nurse/ Midwife Student	0	1	4.00		100.0%		4.00	0.0%	0.0%	0.0%	100.0%	0.0%		100.0%

Nursing/ Midwifery awaiting registration	6	7	1.11	14.3%	85.7%	1.01	1.13	71.4%	71.4%	83.3%	85.7%	14.3%	100.0%	83.3%
Nursing/ Midwifery Student	34	45	1.31	15.6%	84.4%	1.42	1.29	11.1%	0.0%	13.2%	97.8%	2.2%	100.0%	97.4%
Nursing Education/Clinical	12	13	1.11		100.0%		1.11	100.0%	100.0%	100.0%	76.9%	23.1%		76.9%
Nursing/ Midwifery other	12	13	1.11		100.0%		1.11	100.0%		100.0%	76.9%	23.1%		76.9%
Nursing & Midwifery	1,751	2,013	1.15	11.0%	89.0%	1.05	1.16	93.2%	91.4%	93.4%	74.2%	25.8%	93.2%	71.9%
Dietitians	27	33	1.23	6.1%	93.9%	1.00	1.24	87.9%	87.9%	87.1%	66.7%	33.3%	100.0%	64.5%
Occupational Therapists	191	222	1.16	9.0%	91.0%	1.07	1.17	86.9%	86.9%	86.6%	80.2%	19.8%	90.0%	79.2%
Orthoptists	2	2	1.33	50.0%	50.0%	1.00	2.00	50.0%	50.0%	100.0%	100.0%	0.0%	100.0%	100.0%
Physiotherapists	127	146	1.15	21.2%	78.8%	1.04	1.19	90.4%	90.4%	88.7%	76.0%	24.0%	93.5%	71.3%
Podiatrists & Chiropodists	2	2	1.00		100.0%		1.00	100.0%	100.0%	100.0%	100.0%	0.0%		100.0%
Speech & Language Therapists	121	135	1.12		100.0%		1.12	87.4%	87.4%	87.4%	85.9%	14.1%		85.9%
Therapy Professions	469	540	1.15	10.0%	90.0%	1.05	1.16	88.0%	92.6%	87.4%	79.8%	20.2%	92.6%	78.4%
Clinical Measurement	2	2	1.00	100.0%		1.00		100.0%	100.0%		100.0%	0.0%	100.0%	
Phlebotomists	1	2	2.53		100.0%		2.53	100.0%	100.0%	100.0%	0.0%	100.0%		0.0%
Radiographers	1	1	1.00		100.0%		1.00	100.0%	100.0%	100.0%	100.0%	0.0%		100.0%
Health Science/ Diagnostics	4	5	1.32	40.0%	60.0%	1.00	1.68	100.0%	100.0%	100.0%	60.0%	40.0%	100.0%	33.3%
Social Care	381	422	1.11	25.4%	74.6%	1.06	1.13	96.9%	98.1%	96.5%	73.5%	26.5%	83.2%	70.2%
Social Workers	109	123	1.13	17.1%	82.9%	1.08	1.14	94.3%	85.7%	96.1%	82.1%	17.9%	90.5%	80.4%
Psychologists	87	99	1.14	19.2%	80.8%	1.02	1.17	99.0%	100.0%	98.8%	85.9%	14.1%	94.7%	83.8%
Pharmacy	40	47	1.16	23.4%	76.6%	1.06	1.20	59.6%	45.5%	63.9%	48.9%	51.1%	45.5%	50.0%
Counsellor Therapists	35	39	1.13	30.8%	69.2%	1.11	1.13	89.7%	89.7%	88.9%	66.7%	33.3%	75.0%	63.0%
Dental Hygienists	4	6	1.54		100.0%		1.54	100.0%	100.0%	100.0%	16.7%	83.3%		16.7%
Other Health & Social Care	1	1	1.00		100.0%		1.00	100.0%	100.0%	100.0%	0.0%	100.0%		0.0%
Play Therapists/ Specialists	1	1	1.00	100.0%		1.00		100.0%	100.0%		100.0%	0.0%	100.0%	
H&SC, Other	41	47	1.16	27.7%	72.3%	1.10	1.18	91.5%	92.3%	91.2%	59.6%	40.4%	76.9%	52.9%
Health & Social Care	1,131	1,283	1.13	17.7%	82.3%	1.06	1.15	91.5%	93.0%	91.2%	76.5%	23.5%	85.0%	74.6%
Executive Management	16	16	1.01	31.3%	68.8%	1.00	1.01	87.5%	87.5%	90.9%	100.0%	0.0%	100.0%	100.0%
Senior Management (VIII & GM)	63	66	1.04	24.2%	75.8%	1.00	1.06	98.5%	98.5%	98.0%	95.5%	4.5%	100.0%	94.0%
Management (VIII & above)	79	82	1.03	25.6%	74.4%	1.00	1.05	96.3%	95.2%	96.7%	96.3%	3.7%	100.0%	95.1%
Administrative/ Supervisory (V to VII)	199	211	1.06	23.7%	76.3%	1.01	1.08	89.6%	82.0%	91.9%	87.7%	12.3%	98.0%	84.5%
Clerical (III & IV)	376	442	1.17	10.9%	89.1%	1.08	1.19	84.2%	77.1%	85.0%	70.8%	29.2%	85.4%	69.0%
Management & Administrative	654	735	1.12	16.2%	83.8%	1.04	1.14	87.1%	82.4%	88.0%	78.5%	21.5%	93.3%	75.6%
Catering	55	60	1.09	28.3%	71.7%	1.06	1.11	98.3%	98.3%	100.0%	75.0%	25.0%	100.0%	65.1%
Household Services	264	355	1.34	14.4%	85.6%	1.22	1.37	85.6%	85.6%	86.5%	39.2%	60.8%	64.7%	34.9%
Other Labs & Associated	1	2	1.38	50.0%	50.0%	2.22	1.00	50.0%	50.0%	100.0%	50.0%	50.0%	0.0%	100.0%

Other Support	14	17	1.23	76.5%	23.5%	1.18	1.39	76.5%	76.5%	100.0%	58.8%	41.2%	69.2%	25.0%
Portering	63	66	1.05	92.4%	7.6%	1.03	1.31	84.8%	84.8%	80.0%	84.8%	15.2%	90.2%	20.0%
Support	397	500	1.26	28.6%	71.4%	1.11	1.33	86.6%	82.5%	88.2%	50.2%	49.8%	79.7%	38.4%
Maintenance/ Technical	46	50	1.09	88.0%	12.0%	1.07	1.22	90.0%	88.6%	100.0%	82.0%	18.0%	86.4%	50.0%
General Support	443	550	1.24	34.0%	66.0%	1.10	1.33	86.9%	84.0%	88.4%	53.1%	46.9%	81.3%	38.6%
HCA, Nurse's Aide, etc.	1,664	1,926	1.16	24.7%	75.3%	1.08	1.19	86.3%	86.3%	86.0%	65.4%	34.6%	77.9%	61.3%
Health & Social Care Assistants	21	25	1.18	16.0%	84.0%	1.29	1.16	32.0%	32.0%	33.3%	84.0%	16.0%	100.0%	81.0%
Health Care Assistants	1,685	1,951	1.16	24.6%	75.4%	1.08	1.19	85.6%	86.8%	85.3%	65.6%	34.4%	78.1%	61.5%
Care, other	609	709	1.16	27.8%	72.2%	1.07	1.21	94.2%	95.4%	93.8%	73.2%	26.8%	88.8%	67.2%
Home Help	132	270	2.05	7.0%	93.0%	4.49	1.97	82.2%	52.6%	84.5%	16.3%	83.7%	10.5%	16.7%
Patient & Client Care	2,426	2,930	1.21	23.7%	76.3%	1.10	1.25	87.4%	88.3%	87.1%	62.9%	37.1%	79.3%	57.8%

Employment by WTE, Headcount, Gender, Full-Time /Part-Time etc.: Sep 2020

CHO 7	WTE	Headcount	WTE: no.	% Male	% female	Male WTE: no.	Female WTE: no.	% Total Perm	% Male Perm	% Female Perm	% Total Full Time	% Total Part Time	% Male FT	% Female FT
Overall	6,703	7,844	1.17	19.8%	80.2%	1.08	1.19	87.2%	84.4%	87.9%	69.3%	30.7%	83.2%	65.9%
Community Health & Wellbeing	10	11	1.13	9.1%	90.9%	1.00	1.14	90.9%	90.9%	90.0%	72.7%	27.3%	100.0%	100.0%
Mental Health	870	958	1.10	22.7%	77.3%	1.05	1.12	81.2%	81.2%	81.4%	87.3%	12.7%	95.4%	95.4%
Primary Care	1,719	2,022	1.18	16.0%	84.0%	1.07	1.20	87.1%	87.1%	89.1%	67.3%	32.7%	81.4%	81.4%
Social Care	4,105	4,853	1.18	20.9%	79.1%	1.09	1.21	88.4%	88.4%	88.6%	66.6%	33.4%	81.1%	81.1%

CHO 7 Skills Mix by Staff Grouping: September 2020

Sep 2020 (Dec 2018 figure: 6,557)	WTE Dec 2015	WTE Dec 2016	WTE Dec 2017	WTE Dec 2018	WTE Dec 2019	WTE Aug 2020	WTE Sep 2020
Overall	5,479	5,579	6,406	6,557	6,515	6,668	6,703
Consultant Medicine	2.9%	3.2%	3.5%	2.7%	2.5%	3.2%	3.3%
Consultant Paediatrics	0.2%	0.1%	0.1%	0.1%	0.1%	0.1%	0.1%
Consultant Psychiatry	23.8%	19.2%	18.2%	18.1%	19.2%	19.8%	19.7%
Consultant Surgery	0.3%	0.3%	0.2%	0.5%	0.3%	0.3%	0.3%
Consultants	27.2%	22.8%	22.0%	21.3%	22.1%	23.4%	23.4%
Registrar	10.4%	22.2%	20.7%	24.9%	26.5%	27.3%	25.9%
Senior Registrar	3.0%	4.1%	3.7%	5.3%	7.0%	6.5%	6.7%
Specialist Registrar	2.3%	1.5%	2.2%	1.8%	1.5%	1.5%	1.7%
Registrars	15.7%	27.8%	26.6%	31.9%	35.0%	35.2%	34.3%
Interns	0.9%	0.8%	0.8%	0.8%	0.7%	0.7%	0.7%
Senior House Officer	18.1%	15.3%	16.0%	12.6%	12.5%	13.0%	13.1%
SHO/ Interns	19.0%	16.1%	16.8%	13.3%	13.2%	13.7%	13.7%
Dentists	18.4%	15.6%	13.9%	13.8%	12.5%	11.9%	12.1%
Other Medical	19.8%	17.7%	20.8%	19.6%	17.2%	15.8%	16.4%
Medical/ Dental, other	38.2%	33.3%	34.7%	33.4%	29.7%	27.7%	28.6%
Medical & Dental	3.9%	4.6%	4.0%	4.0%	4.1%	100.0%	4.4%
Clinical Nurse/ Midwife Manager	17.4%	18.8%	19.0%	18.9%	19.3%	18.8%	18.8%
Director Nursing/Midwifery, Assistant	2.9%	3.3%	2.9%	3.3%	3.1%	3.2%	3.4%
Director of Nursing/Midwifery	1.1%	1.0%	1.3%	1.1%	0.9%	1.1%	1.1%
Nurse/ Midwife Manager	21.4%	23.2%	23.2%	23.3%	23.3%	23.0%	23.3%
Advanced Nurse/ Midwife Practitioner	0.1%	0.1%	0.1%	0.1%	0.3%	0.6%	0.7%
Clinical Nurse/ Midwife Specialist	4.0%	4.1%	4.5%	5.0%	5.3%	5.3%	5.2%
Nurse/ Midwife Specialist & AN/MP	4.1%	4.2%	4.6%	5.1%	5.5%	6.0%	5.9%
Staff Nurse [Intellectual Disability]	14.4%	14.2%	13.4%	12.9%	11.4%	9.5%	9.7%
Staff Nurse [Psychiatric]	14.7%	13.3%	13.2%	11.7%	11.2%	10.5%	10.6%
Staff Nurses [General/ Children's]	32.5%	31.5%	32.9%	33.9%	35.7%	38.5%	37.8%
Staff Nurse/ Staff Midwife	61.6%	59.1%	59.4%	58.6%	58.4%	58.5%	58.1%
Public Health Nurse	10.9%	11.2%	10.8%	11.5%	10.3%	9.3%	10.1%
Pre-registration Nurse/ Midwife Intern	0.1%	0.1%		0.4%	0.1%		
Pre-registration Nurse Intern (COVID-19)						2.2%	1.6%
Post-registration Nurse/ Midwife Student	1.5%	1.4%	0.9%	0.4%	1.2%	0.0%	0.0%
Nursing/ Midwifery awaiting registration			0.5%	0.2%	0.6%	0.4%	0.4%
Nursing/ Midwifery Student	1.6%	1.5%	1.4%	1.0%	1.9%	2.6%	2.0%
Nursing/ Midwifery other	0.6%	0.8%	0.5%	0.5%	0.6%	0.7%	0.7%
Nursing & Midwifery	29.8%	28.8%	26.9%	25.9%	26.1%	100.0%	26.1%
Dietitians	2.3%	2.4%	1.8%	2.3%	2.3%	2.4%	2.4%
Occupational Therapists	21.3%	21.3%	16.1%	16.9%	16.8%	17.1%	16.9%
Orthoptists	0.0%	0.0%				0.0%	0.1%
Physiotherapists	15.3%	15.4%	11.8%	11.5%	10.4%	11.1%	11.2%
Podiatrists & Chiropodists	0.1%	0.1%	0.1%	0.1%	0.1%	0.2%	0.2%
Speech & Language Therapists	11.9%	13.5%	12.1%	11.2%	11.5%	10.9%	10.7%
Therapy Professions	50.8%	52.8%	41.9%	41.9%	41.1%	41.7%	41.5%
Audiology	0.0%	0.1%					
Clinical Measurement	0.1%	0.1%	0.1%	0.1%	0.1%	0.2%	0.2%
Medical Laboratory		0.1%					
Phlebotomists	0.1%	0.1%	0.1%	0.1%	0.1%	0.0%	0.1%
Radiographers	0.2%	0.1%	0.1%	0.1%	0.1%	0.1%	0.1%
Health Science/ Diagnostics	0.4%	0.5%	0.3%	0.3%	0.3%	0.3%	0.3%
Social Care	15.7%	14.2%	31.3%	32.8%	33.9%	33.5%	33.7%
Social Workers	12.9%	13.9%	10.7%	10.1%	9.6%	9.7%	9.7%
Psychologists	9.4%	8.7%	8.1%	7.7%	7.4%	7.6%	7.7%

Sep 2020 (Dec 2018 figure: 6,557)	WTE Dec 2015	WTE Dec 2016	WTE Dec 2017	WTE Dec 2018	WTE Dec 2019	WTE Aug 2020	WTE Sep 2020
Overall	5,479	5,579	6,406	6,557	6,515	6,668	6,703
Pharmacy	5.5%	4.8%	3.7%	3.5%	3.7%	3.6%	3.6%
Counsellor Therapists	4.2%	3.9%	3.1%	2.8%	3.3%	3.1%	3.1%
Dental Hygienists	0.5%	0.4%	0.3%	0.4%	0.5%	0.3%	0.3%
Other Health & Social Care	0.5%	0.6%	0.5%	0.4%	0.2%	0.1%	0.1%
Play Therapists/ Specialists	0.1%	0.1%	0.1%	0.1%	0.1%	0.1%	0.1%
H&SC, Other	5.2%	5.1%	4.1%	3.7%	4.1%	3.6%	3.6%
Health & Social Care Professionals	13.8%	14.2%	16.4%	16.7%	16.8%	100.0%	16.9%
Executive Management	2.2%	2.9%	2.5%	1.9%	2.1%	2.4%	2.4%
Senior Management (VIII & GM)	9.4%	8.7%	8.5%	9.2%	9.9%	9.6%	9.7%
Management (VIII & above)	11.7%	11.6%	11.0%	11.1%	12.0%	12.0%	12.1%
Middle Management (V-VII)	24.1%	23.7%	26.0%	27.2%	29.9%	30.3%	30.2%
Other Administrative	0.2%	0.1%	0.2%	0.1%	0.2%	0.1%	0.1%
Administrative/ Supervisory (V to VII)	24.3%	23.8%	26.1%	27.3%	30.1%	30.4%	30.4%
Clerical (III & IV)	64.0%	64.6%	62.9%	61.6%	57.9%	57.6%	57.5%
Management & Administrative	9.8%	10.0%	9.5%	9.4%	9.5%	100.0%	9.8%
Catering	12.1%	12.0%	13.0%	12.8%	13.1%	12.6%	12.4%
Household Services	59.6%	59.9%	59.9%	60.4%	59.5%	59.4%	59.6%
Other Labs & Associated	0.3%	0.2%	0.2%	0.2%	0.2%	0.3%	0.3%
Other Support	3.9%	3.7%	3.0%	3.2%	3.1%	3.1%	3.1%
Portering	17.3%	16.7%	14.5%	14.6%	14.9%	14.2%	14.2%
Support	93.2%	92.6%	90.6%	91.2%	90.9%	89.5%	89.6%
Maintenance/ Technical	6.8%	7.4%	9.4%	8.8%	9.1%	10.5%	10.4%
General Support	8.2%	7.9%	7.7%	7.4%	7.5%	100.0%	6.6%
HCA, Nurse's Aide, etc.	66.5%	66.9%	66.4%	67.6%	68.7%	68.2%	68.6%
Health & Social Care Assistants	0.5%	0.4%	0.3%	0.9%	0.5%	1.0%	0.9%
Health Care Assistants	66.9%	67.4%	66.7%	68.5%	69.2%	69.1%	69.5%
Community Welfare Officers	0.1%	0.1%	0.1%	0.0%	0.0%	0.0%	0.0%
Other Care Grades	25.0%	24.3%	26.5%	25.7%	25.5%	25.3%	25.1%
Care, other	25.1%	24.4%	26.6%	25.8%	25.5%	25.3%	25.1%
Home Help	8.0%	8.2%	6.7%	5.7%	5.3%	5.6%	5.4%
Patient & Client Care	34.5%	34.6%	35.5%	36.5%	36.7%	100.0%	36.2%
Total	100 %	100 %	100 %	100 %	100%	100 %	100 %

CHO 7 Skills Mix by Care Group: September 2020

Sep 2020 (Dec 2018 figure: 835)	WTE Dec 2015	WTE Dec 2016	WTE Dec 2017	WTE Dec 2018	WTE Dec 2019	WTE Aug 2020	WTE Sep 2020
Mental Health	837	828	859	835	834.98	875.62	869.60
Consultants	47.0%	44.2%	43.0%	43.6%	41.6%	41.3%	41.7%
Registrar	17.2%	19.7%	17.8%	25.1%	22.9%	27.1%	25.6%
Senior Registrar	6.8%	9.4%	9.8%	12.7%	16.5%	14.7%	15.3%
Specialist Registrar			1.0%		0.9%	0.4%	0.8%
Registrars	24.0%	29.1%	28.7%	37.8%	40.3%	42.2%	41.6%
Interns	2.1%	2.0%	2.1%	2.0%	1.7%	1.5%	1.5%
Senior House Officer	27.0%	24.7%	26.2%	16.6%	16.4%	15.0%	15.2%
SHO/ Interns	29.1%	26.7%	28.3%	18.6%	18.2%	16.5%	16.7%
Medical & Dental	11.5%	12.2%	11.1%	12.3%	12.3%	15.0%	15.0%
Clinical Nurse/ Midwife Manager	22.3%	25.7%	24.5%	27.0%	26.5%	24.8%	25.4%
Director Nursing/Midwifery, Assistant	3.5%	4.1%	4.5%	5.0%	4.3%	4.2%	4.6%
Director of Nursing/Midwifery	0.8%	0.8%	0.8%	0.8%	0.8%	0.7%	0.5%
Nurse/ Midwife Manager	26.6%	30.6%	29.8%	32.8%	31.5%	29.8%	30.5%
Advanced Nurse/ Midwife Practitioner			0.3%	0.3%	0.8%	1.4%	1.4%
Clinical Nurse/ Midwife Specialist	6.5%	7.2%	6.7%	7.0%	10.0%	10.4%	10.2%
Nurse/ Midwife Specialist & AN/MP	6.5%	7.2%	7.0%	7.3%	10.8%	11.8%	11.6%
Staff Nurse [Intellectual Disability]						0.3%	0.3%
Staff Nurse [Psychiatric]	63.5%	58.1%	58.4%	54.3%	51.1%	46.7%	47.6%
Staff Nurses [General/ Children's]	1.9%	1.9%	1.1%	1.2%	1.5%	2.4%	2.5%
Staff Nurse/ Staff Midwife	65.4%	60.1%	59.5%	55.5%	52.6%	49.4%	50.4%
Pre-registration Nurse/ Midwife Intern	0.4%	0.5%		1.6%	0.4%		
Pre-registration Nurse Intern (COVID-19)						6.1%	4.3%
Post-registration Nurse/ Midwife Student							0.1%
Nursing/ Midwifery awaiting registration			2.1%	1.1%	2.7%	0.9%	1.0%
Nursing/ Midwifery Student	0.4%	0.5%	2.1%	2.8%	3.0%	7.0%	5.4%
Nursing Education/Clinical	1.1%	1.7%	1.6%	1.7%	2.0%	2.0%	2.1%
Nursing/ Midwifery other	1.1%	1.7%	1.6%	1.7%	2.0%	2.0%	2.1%
Nursing & Midwifery	44.8%	43.7%	44.9%	43.3%	43.3%	44.3%	44.3%
Dietitians	0.7%			1.4%	2.1%	2.2%	2.0%
Occupational Therapists	29.9%	30.6%	28.0%	29.8%	27.3%	26.0%	27.0%
Speech & Language Therapists	4.2%	5.0%	4.7%	3.5%	4.8%	2.8%	2.7%
Therapy Professions	34.9%	35.5%	32.7%	34.6%	34.2%	31.0%	31.8%
Social Care	8.0%	7.9%	7.4%	5.8%	5.4%	5.4%	5.3%
Social Workers	28.9%	30.2%	29.0%	26.2%	24.4%	26.5%	25.8%
Psychologists	21.0%	18.3%	20.7%	23.9%	22.4%	22.9%	23.6%
Pharmacy					0.7%	0.7%	0.7%
Counsellor Therapists	6.2%	6.6%	8.4%	7.6%	11.4%	12.8%	12.2%
Other Health & Social Care	1.1%	1.5%	1.8%	1.8%	1.4%	0.7%	0.7%
H&SC, Other	7.3%	8.1%	10.2%	9.4%	12.9%	13.5%	12.9%
Health & Social Care Professionals	16.0%	16.4%	16.9%	16.8%	16.8%	16.1%	16.1%
Management (VIII & above)	3.3%	4.3%	4.1%	3.9%	4.3%	5.3%	5.3%
Administrative/ Supervisory (V to VII)	14.9%	18.8%	23.2%	25.3%	24.1%	23.1%	24.7%
Clerical (III & IV)	81.7%	76.9%	72.7%	70.8%	71.6%	71.6%	70.0%
Management & Administrative	7.2%	8.0%	8.0%	8.8%	8.8%	8.4%	8.4%
Support	93.2%	92.3%	92.1%	91.7%	90.5%	89.4%	89.8%
Maintenance/ Technical	6.8%	7.7%	7.9%	8.3%	9.5%	10.6%	10.2%
General Support	3.4%	3.2%	3.0%	2.9%	2.9%	2.1%	2.1%

Sep 2020 (Dec 2018 figure: 835)	WTE Dec 2015	WTE Dec 2016	WTE Dec 2017	WTE Dec 2018	WTE Dec 2019	WTE Aug 2020	WTE Sep 2020
Mental Health	837	828	859	835	834.98	875.62	869.60
HCA, Nurse's Aide, etc.	33.1%	33.7%	32.2%	31.0%	26.6%	28.2%	28.6%
Health Care Assistants	33.1%	33.7%	32.2%	31.0%	26.6%	28.2%	28.6%
Care, other	66.9%	66.3%	67.8%	69.0%	73.4%	71.8%	71.4%
Patient & Client Care	17.1%	16.4%	16.1%	16.0%	16.0%	14.1%	14.1%
Total	100 %	100 %	100 %	100 %	100 %	100 %	

Sep 2020 (Dec 2018 figure: 1,776)	WTE Dec 2015	WTE Dec 2016	WTE Dec 2017	WTE Dec 2018	WTE Dec 2019	WTE Aug 2020	WTE Sep 2020
Primary Care	1,647	1,687	1,691	1,776	1,702.01	1,720.24	1,718.91
Consultant Medicine	6.3%	6.1%	6.4%	4.9%	4.8%	6.5%	6.6%
Consultant Psychiatry	3.0%	1.5%	2.2%	2.1%	2.9%	2.7%	2.7%
Consultant Surgery	0.8%	0.6%	0.3%	0.8%	0.6%	0.5%	0.5%
Consultants	10.1%	8.2%	8.9%	7.8%	8.3%	9.8%	9.9%
Registrars	8.9%	28.9%	27.1%	30.1%	33.0%	31.2%	29.9%
SHO/ Interns	5.1%	4.5%	4.2%	5.1%	4.3%	6.8%	6.7%
Dentists	39.9%	29.9%	25.7%	25.3%	24.4%	23.8%	24.2%
Other Medical	36.0%	28.5%	34.1%	31.7%	30.1%	28.4%	29.4%
Medical/ Dental, other	75.9%	58.4%	59.8%	57.0%	54.5%	52.2%	53.5%
Medical & Dental	5.9%	7.9%	8.1%	8.1%	8.5%	8.7%	8.7%
Clinical Nurse/ Midwife Manager	11.0%	10.2%	10.1%	10.2%	10.7%	10.6%	10.5%
Director Nursing/Midwifery, Assistant	3.6%	3.9%	3.7%	3.8%	3.4%	4.1%	4.4%
Director of Nursing/Midwifery	1.0%	1.1%	1.1%	1.2%	1.1%	1.3%	1.3%
Nurse/ Midwife Manager	15.5%	15.2%	14.9%	15.2%	15.2%	16.0%	16.2%
Nurse/ Midwife Specialist & AN/MP	6.5%	6.6%	8.4%	8.8%	8.7%	9.7%	9.7%
Staff Nurse/ Staff Midwife	37.5%	37.5%	36.3%	37.5%	38.7%	42.2%	39.3%
Public Health Nurse	35.0%	35.5%	36.7%	36.9%	33.1%	31.6%	34.4%
Nursing/ Midwifery Student	4.8%	4.5%	3.1%	1.3%	4.0%	0.1%	
Nursing Education/Clinical	0.6%	0.5%	0.5%	0.4%	0.4%	0.4%	0.4%
Other Nursing/ Midwifery		0.2%					
Nursing/ Midwifery other	0.6%	0.7%	0.5%	0.4%	0.4%	0.4%	0.4%
Nursing & Midwifery	30.5%	30.1%	30.1%	29.8%	31.1%	30.0%	30.0%
Dietitians	3.6%	3.8%	4.0%	4.8%	3.8%	4.0%	4.1%
Occupational Therapists	25.9%	24.9%	23.4%	26.8%	26.6%	26.0%	25.7%
Orthoptists	0.1%	0.1%				0.1%	0.4%
Physiotherapists	22.5%	23.1%	22.5%	21.4%	20.1%	21.6%	21.9%
Podiatrists & Chiropodists				0.1%	0.3%	0.5%	0.5%
Speech & Language Therapists	16.4%	18.2%	20.3%	19.2%	20.5%	19.1%	18.7%
Therapy Professions	68.5%	70.1%	70.3%	72.4%	71.4%	71.3%	71.4%
Phlebotomists	0.1%	0.2%	0.2%	0.1%	0.1%	0.1%	0.2%
Health Science/ Diagnostics	0.1%	0.2%	0.2%	0.1%	0.1%	0.1%	0.2%
Social Care	1.1%	1.1%	1.1%	1.1%	0.9%	1.0%	1.0%
Social Workers	7.6%	7.7%	7.4%	6.4%	7.0%	6.9%	7.0%
Psychologists	5.9%	5.7%	6.1%	6.2%	5.8%	6.8%	6.5%
Pharmacy	9.4%	8.2%	8.5%	7.6%	8.5%	8.7%	8.5%
Counsellor Therapists	6.1%	5.7%	5.2%	4.8%	5.0%	4.3%	4.3%
Dental Hygienists	1.0%	1.0%	0.9%	1.3%	1.4%	1.0%	1.0%
Other Health & Social Care	0.3%	0.3%	0.3%	0.3%			
H&SC, Other	7.4%	7.0%	6.4%	6.4%	6.4%	5.2%	5.4%
Health & Social Care Professionals	21.5%	21.5%	21.4%	21.4%	22.3%	21.6%	21.6%
Executive Management	1.7%	2.6%	2.3%	1.9%	2.4%	2.6%	3.0%

Sep 2020 (Dec 2018 figure: 1,776)	WTE Dec 2015	WTE Dec 2016	WTE Dec 2017	WTE Dec 2018	WTE Dec 2019	WTE Aug 2020	WTE Sep 2020
Primary Care	1,647	1,687	1,691	1,776	1,702.01	1,720.24	1,718.91
Senior Management (VIII & GM)	6.9%	6.5%	6.8%	8.0%	9.1%	7.3%	7.2%
Management (VIII & above)	8.5%	9.1%	9.1%	9.9%	11.6%	9.9%	10.2%
Administrative/ Supervisory (V to VII)	22.1%	20.8%	23.0%	22.7%	26.5%	26.9%	26.1%
Clerical (III & IV)	69.4%	70.1%	67.9%	67.4%	62.0%	63.2%	63.7%
Management & Administrative	18.4%	18.0%	18.4%	17.5%	18.3%	17.5%	17.5%
Support	94.4%	93.2%	94.6%	93.8%	93.0%	91.9%	91.8%
Maintenance	5.6%	6.1%	4.6%	5.5%	6.2%	7.3%	7.4%
Technical Services		0.7%	0.8%	0.7%	0.8%	0.8%	0.8%
Maintenance/ Technical	5.6%	6.8%	5.4%	6.2%	7.0%	8.1%	8.2%
General Support	8.4%	8.0%	7.7%	7.5%	7.8%	7.0%	7.0%
HCA, Nurse's Aide, etc.	46.0%	47.0%	48.3%	44.1%	45.9%	45.1%	45.3%
Health & Social Care Assistants	1.6%	1.0%	0.9%	6.4%	2.8%	5.9%	5.8%
Health Care Assistants	47.6%	48.0%	49.2%	50.6%	48.7%	51.0%	51.0%
Community Welfare Officers	0.8%	0.8%	0.8%	0.3%	0.4%	0.3%	0.3%
Other Care Grades	51.6%	51.2%	50.0%	49.1%	50.9%	48.7%	48.6%
Care, other	52.4%	52.0%	50.8%	49.4%	51.3%	49.0%	49.0%
Patient & Client Care	15.2%	14.5%	14.3%	15.7%	16.3%	15.1%	15.1%
Total	100 %	100 %	100 %	100 %	100 %	100 %	

Sep 2020 (Dec 2018 figure: 2,903)	WTE Dec 2015	WTE Dec 2016	WTE Dec 2017	WTE Dec 2018	WTE Dec 2019	WTE Aug 2020	WTE Sep 2020
Disabilities	1,867	1,943	2,792	2,903	2,981.59	3,027.52	3,068.56
Consultant Paediatrics	2.8%	2.9%	2.5%	3.1%	3.0%	3.0%	2.9%
Consultant Psychiatry	26.5%	19.1%	16.2%	1.9%	1.7%	1.7%	1.7%
Consultants	29.3%	22.0%	18.8%	5.0%	4.7%	4.7%	4.7%
Registrars	16.6%	26.0%	22.2%	21.5%	26.1%	26.2%	26.1%
SHO/ Interns	41.4%	43.3%	51.7%	64.3%	60.5%	60.3%	60.6%
Medical/ Dental, other	12.7%	8.7%	7.4%	9.3%	8.7%	8.7%	8.7%
Medical & Dental	0.6%	0.6%	0.5%	0.4%	0.4%	0.4%	0.4%
Clinical Nurse/ Midwife Manager	21.5%	23.2%	23.9%	22.4%	22.4%	21.9%	21.7%
Director Nursing/Midwifery, Assistant	1.2%	1.5%	1.1%	1.1%	1.1%	1.2%	1.2%
Director of Nursing/Midwifery	0.7%	0.5%	1.4%	1.0%	0.8%	0.6%	0.8%
Nurse/ Midwife Manager	23.5%	25.2%	26.4%	24.4%	24.3%	23.7%	23.7%
Advanced Nurse/ Midwife Practitioner						0.2%	0.4%
Clinical Nurse/ Midwife Specialist	1.4%	1.3%	1.3%	2.0%	1.0%	0.6%	0.6%
Nurse/ Midwife Specialist & AN/MP	1.4%	1.3%	1.3%	2.0%	1.0%	0.8%	0.9%
Staff Nurse [Intellectual Disability]	58.7%	57.6%	45.5%	43.3%	38.7%	32.0%	32.4%
Staff Nurses [General/ Children's]	15.8%	15.2%	26.7%	30.2%	35.9%	40.4%	40.5%
Staff Nurse/ Staff Midwife	74.4%	72.8%	72.2%	73.5%	74.6%	72.4%	73.0%
Pre-registration Nurse Intern (COVID-19)						2.9%	2.1%
Nursing/ Midwifery Student						2.9%	2.1%
Nursing/ Midwifery other	0.6%	0.8%	0.1%	0.1%	0.1%	0.3%	0.3%
Nursing & Midwifery	21.5%	20.4%	18.1%	17.5%	17.0%	16.9%	16.9%
Dietitians	1.7%	1.6%	0.8%	0.8%	1.3%	1.3%	1.3%
Occupational Therapists	10.6%	13.0%	7.8%	7.0%	7.6%	9.3%	9.0%
Physiotherapists	11.0%	11.0%	6.3%	6.1%	5.5%	6.4%	6.5%
Speech & Language Therapists	10.7%	13.5%	9.1%	8.2%	7.6%	8.1%	7.9%
Therapy Professions	34.1%	39.1%	24.0%	22.1%	22.0%	25.1%	24.7%
Audiology	0.1%	0.2%					
Clinical Measurement	0.4%	0.4%	0.2%	0.2%	0.2%	0.3%	0.3%

Sep 2020 (Dec 2018 figure: 2,903)	WTE Dec 2015	WTE Dec 2016	WTE Dec 2017	WTE Dec 2018	WTE Dec 2019	WTE Aug 2020	WTE Sep 2020
Disabilities	1,867	1,943	2,792	2,903	2,981.59	3,027.52	3,068.56
Phlebotomists				0.2%	0.2%		
Radiographers	0.4%	0.4%	0.2%	0.2%	0.2%	0.2%	0.2%
Health Science/ Diagnostics	0.9%	1.0%	0.4%	0.6%	0.5%	0.5%	0.5%
Social Care	45.2%	38.3%	62.1%	64.8%	65.2%	62.8%	62.9%
Social Workers	7.9%	10.1%	5.8%	6.3%	6.0%	5.7%	5.8%
Psychologists	9.6%	9.1%	6.4%	5.1%	5.0%	5.0%	5.1%
Pharmacy	1.7%	1.6%	0.8%	0.9%	0.9%	0.7%	0.8%
Counsellor Therapists	0.7%	0.6%	0.3%	0.3%	0.3%	0.3%	0.3%
Other Health & Social Care	0.0%	0.4%	0.2%				
H&SC, Other	0.7%	1.0%	0.5%	0.3%	0.3%	0.3%	0.3%
Health & Social Care Professionals	12.3%	13.1%	18.1%	18.5%	18.0%	19.1%	19.1%
Executive Management	4.9%	5.3%	3.9%	2.6%	2.5%	3.2%	2.7%
Senior Management (VIII & GM)	17.2%	14.3%	13.3%	13.7%	13.3%	13.9%	14.3%
Management (VIII & above)	22.1%	19.5%	17.2%	16.3%	15.8%	17.0%	17.0%
Administrative/ Supervisory (V to VII)	34.6%	35.3%	34.0%	37.0%	39.0%	39.0%	39.4%
Clerical (III & IV)	43.3%	45.1%	48.7%	46.7%	45.3%	44.0%	43.6%
Management & Administrative	6.6%	6.8%	6.4%	6.5%	6.3%	7.2%	7.2%
Support	89.0%	88.2%	84.1%	85.7%	85.4%	83.0%	83.0%
Maintenance	9.7%	11.1%	15.5%	13.8%	13.0%	14.9%	14.8%
Technical Services	1.3%	0.6%	0.5%	0.5%	1.5%	2.1%	2.1%
Maintenance/ Technical	11.0%	11.8%	15.9%	14.3%	14.6%	17.0%	17.0%
General Support	8.5%	8.1%	7.7%	7.1%	7.0%	6.2%	6.2%
HCA, Nurse's Aide, etc.	71.3%	72.1%	70.6%	71.9%	72.9%	73.1%	73.5%
Health & Social Care Assistants	0.5%	0.6%	0.3%	0.2%	0.4%	0.4%	0.3%
Health Care Assistants	71.8%	72.7%	70.8%	72.1%	73.3%	73.5%	73.9%
Care, other	24.8%	24.0%	27.2%	26.2%	25.4%	25.3%	25.0%
Home Help	3.4%	3.3%	1.9%	1.6%	1.3%	1.2%	1.2%
Patient & Client Care	50.4%	50.9%	49.1%	50.0%	48.7%	50.2%	50.2%
Total	100 %	100 %	100 %	100 %	100 %	100 %	

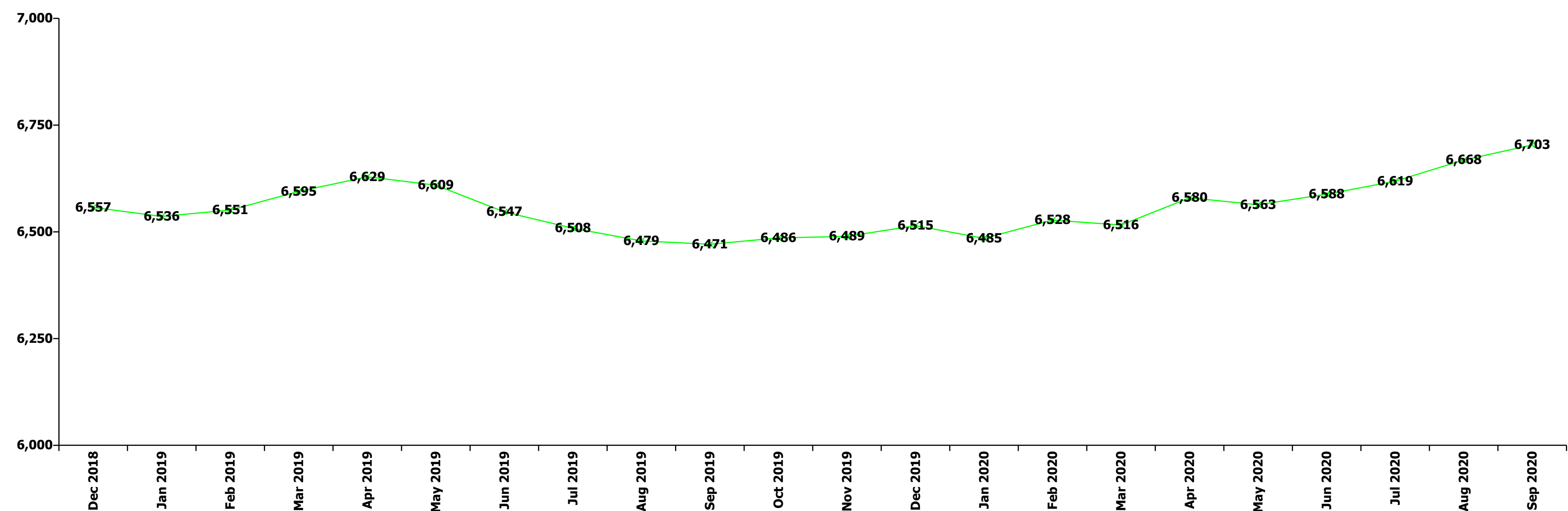
Sep 2020 (Dec 2018 figure: 1,044)	WTE Dec 2015	WTE Dec 2016	WTE Dec 2017	WTE Dec 2018	WTE Dec 2019	WTE Aug 2020	WTE Sep 2020
Older People	1,128	1,121	1,064	1,044	995.93	1,036.43	1,036.66
Senior House Officer	31.6%	33.3%	37.5%	28.6%	33.3%	33.3%	33.3%
SHO/ Interns	31.6%	33.3%	37.5%	28.6%	33.3%	33.3%	33.3%
Medical/ Dental, other	68.4%	66.7%	62.5%	71.4%	66.7%	66.7%	66.7%
Medical & Dental	0.8%	0.8%	0.8%	0.7%	0.7%	0.6%	0.6%
Clinical Nurse/ Midwife Manager	16.4%	19.1%	18.6%	18.8%	20.3%	19.4%	19.7%
Director Nursing/Midwifery, Assistant	3.3%	3.8%	2.5%	4.0%	4.3%	3.7%	3.8%
Director of Nursing/Midwifery	2.0%	1.8%	2.2%	1.7%	1.1%	1.8%	1.8%
Nurse/ Midwife Manager	21.6%	24.7%	23.2%	24.4%	25.8%	24.9%	25.3%
Nurse/ Midwife Specialist & AN/MP	1.0%	1.0%	1.1%	1.4%	0.9%	1.3%	1.1%
Staff Nurse [Psychiatric]		0.2%	0.2%				
Staff Nurses [General/ Children's]	76.9%	74.1%	75.4%	74.1%	73.3%	73.0%	72.8%
Staff Nurse/ Staff Midwife	76.9%	74.3%	75.6%	74.1%	73.3%	73.0%	72.8%
Public Health Nurse	0.4%	0.1%					
Nursing/ Midwifery awaiting registration						0.8%	0.8%
Nursing/ Midwifery Student						0.8%	0.8%
Nursing & Midwifery	31.5%	30.4%	30.4%	28.9%	30.3%	32.0%	32.0%

Sep 2020 (Dec 2018 figure: 1,044)	WTE Dec 2015	WTE Dec 2016	WTE Dec 2017	WTE Dec 2018	WTE Dec 2019	WTE Aug 2020	WTE Sep 2020
Older People	1,128	1,121	1,064	1,044	995.93	1,036.43	1,036.66
Dietitians		2.6%	2.7%		3.6%	3.2%	3.2%
Occupational Therapists	11.3%	10.8%	10.7%	9.6%	14.9%	16.9%	14.5%
Physiotherapists	27.8%	27.3%	28.3%	29.5%	30.5%	23.0%	22.9%
Podiatrists & Chiropodists	1.8%	1.9%	1.8%	2.0%			
Speech & Language Therapists	2.7%		2.7%	2.6%		0.7%	3.2%
Therapy Professions	43.6%	42.5%	46.1%	43.6%	49.0%	43.9%	43.9%
Medical Laboratory		2.6%					
Radiographers	2.1%						
Health Science/ Diagnostics	2.1%	2.6%					
Social Workers	37.5%	39.2%	37.7%	41.0%	38.6%	43.2%	43.3%
Pharmacy	11.1%	10.5%	10.8%	10.3%	8.9%	9.7%	9.7%
Other Health & Social Care	2.8%	2.6%	2.7%	2.6%			
Play Therapists/ Specialists	2.8%	2.6%	2.7%	2.6%	3.6%	3.2%	3.2%
H&SC, Other	5.6%	5.2%	5.4%	5.1%	3.6%	3.2%	3.2%
Health & Social Care Professionals	3.2%	3.4%	3.5%	3.7%	3.9%	3.0%	3.0%
Senior Management (VIII & GM)	14.9%	15.2%	10.0%	9.0%	9.9%	11.3%	11.6%
Management (VIII & above)	14.9%	15.2%	10.0%	9.0%	9.9%	11.3%	11.6%
Administrative/ Supervisory (V to VII)	23.9%	18.5%	21.1%	21.7%	22.7%	22.9%	22.2%
Clerical (III & IV)	61.1%	66.3%	68.9%	69.3%	67.4%	65.8%	66.2%
Management & Administrative	4.8%	4.7%	4.7%	4.2%	4.4%	5.4%	5.4%
Support	97.5%	97.5%	97.6%	97.5%	98.2%	98.2%	98.3%
Maintenance/ Technical	2.5%	2.5%	2.4%	2.5%	1.8%	1.8%	1.7%
General Support	10.7%	10.8%	11.6%	11.7%	12.2%	11.0%	11.0%
HCA, Nurse's Aide, etc.	76.2%	74.5%	73.0%	77.4%	77.5%	76.1%	75.9%
Health & Social Care Assistants						0.2%	0.2%
Health Care Assistants	76.2%	74.5%	73.0%	77.4%	77.5%	76.3%	76.1%
Care, other	2.4%	2.9%	2.9%	1.3%	1.0%	0.8%	1.0%
Home Help	21.4%	22.6%	24.1%	21.3%	21.5%	22.9%	22.9%
Patient & Client Care	49.0%	49.9%	49.1%	50.8%	53.3%	48.0%	48.0%
Total	100 %	100 %	100 %	100 %	100 %	100 %	

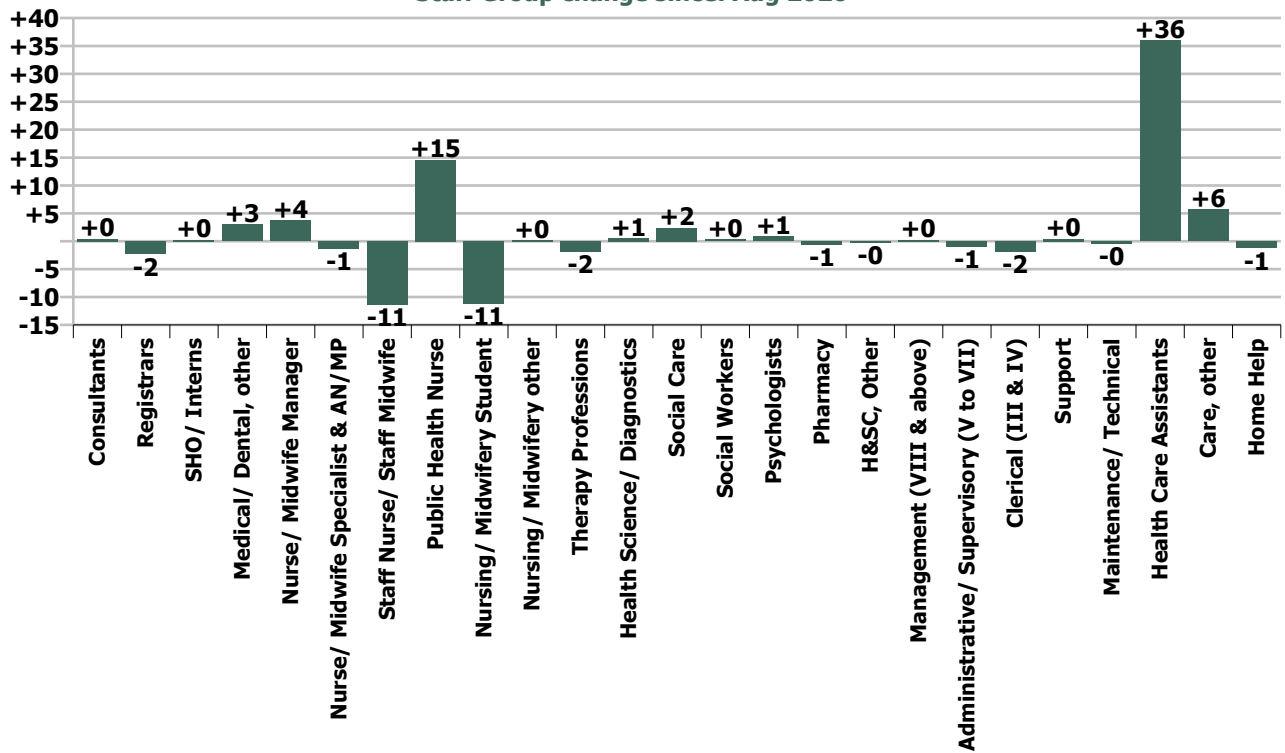
Summary Staff Movement: September 2020

Month-on-month Summary																												
WTE change since Aug 20	% change since Aug 20	overall	Consultants	Registrars	SHO/ Interns	Medical/ Dental, other	Medical & Dental	Nurse/ Midwife Manager	Nurse/ Midwife Specialist & AN/MP	Staff Nurse/ Staff Midwife	Public Health Nurse	Nursing/ Midwifery Student	Nursing/ Midwifery other	Nursing & Midwifery	Therapy Professions	Health Science/ Diagnostics	Social Care	Social Workers	Psychologists	Pharmacy	H&SC, Other	Health & Social Care Professionals	Management (VIII & above)	Administrativ e/ Supervisory (V to VII)	Clerical (III & IV)	Management & Administrativ e	General Support	Patient & Client Care
Overall	+0.5%	+35	+0.4	-2.3	+0.2	+3.0	+1.3	+3.7	-1.3	-11.4	+14.6	-11.1	+0.2	-5.3	-1.9	+0.6	+2.4	+0.3	+0.9	-0.5	-0.3	+1.4	+0.3	-1.0	-1.8	-2.6	+0.1	+40.4
Community Health & Wellbeing	+17.5%	+1													+1.0							+1.0	0.0	+0.7	0.0	+0.7		-0.3
Mental Health	-0.7%	-6	+0.1	-1.0	+0.1		-0.8	+1.0	-1.4	+0.5		-6.6	+0.2	-6.3	+1.7		-0.1	-0.5	+1.4	0.0	-0.5	+2.0	0.0	+1.4	-0.7	+0.6	+0.2	-1.7
Primary Care	-0.1%	-1	+0.3	-1.3	+0.0	+3.0	+2.0	+1.2	-0.1	-14.4	+14.6	-0.5	0.0	+0.8	-3.0	+0.6	+0.0	+0.0	-1.4	-1.2	+0.3	-4.6	+0.9	-1.9	+2.6	+1.5	-1.5	+0.5
Disabilities	+1.4%	+41	0.0	+0.0	+0.1	0.0	+0.1	-0.4	+0.8	+1.6		-4.0	0.0	-2.0	-1.7	0.0	+2.4	+0.8	+0.9	+0.6	0.0	+3.0	-0.5	-0.0	-1.8	-2.3	-1.3	+43.5
Older People	+0.0%	+0			0.0	0.0	0.0	+2.0	-0.6	+0.9		-0.0		+2.3	+0.0			+0.0		0.0	0.0	+0.0	-0.2	-1.1	-1.9	-3.2	+2.7	-1.6
Social Care	+1.0%	+41	0.0	+0.0	+0.1	0.0	+0.1	+1.6	+0.2	+2.5		-4.0	0.0	+0.3	-1.7	0.0	+2.4	+0.8	+0.9	+0.6	0.0	+3.1	-0.7	-1.1	-3.7	-5.5	+1.4	+41.9
Change	+35.4	+0.5%	+0.6%	-2.2%	+0.6%	+3.6%	+0.4%	+0.9%	-1.2%	-1.1%	+9.0%	-24.5%	+1.8%	-0.3%	-0.4%	+17.3%	+0.6%	+0.3%	+1.0%	-1.3%	-0.7%	+0.1%	+0.3%	-0.5%	-0.5%	-0.4%	+0.0%	+1.7%

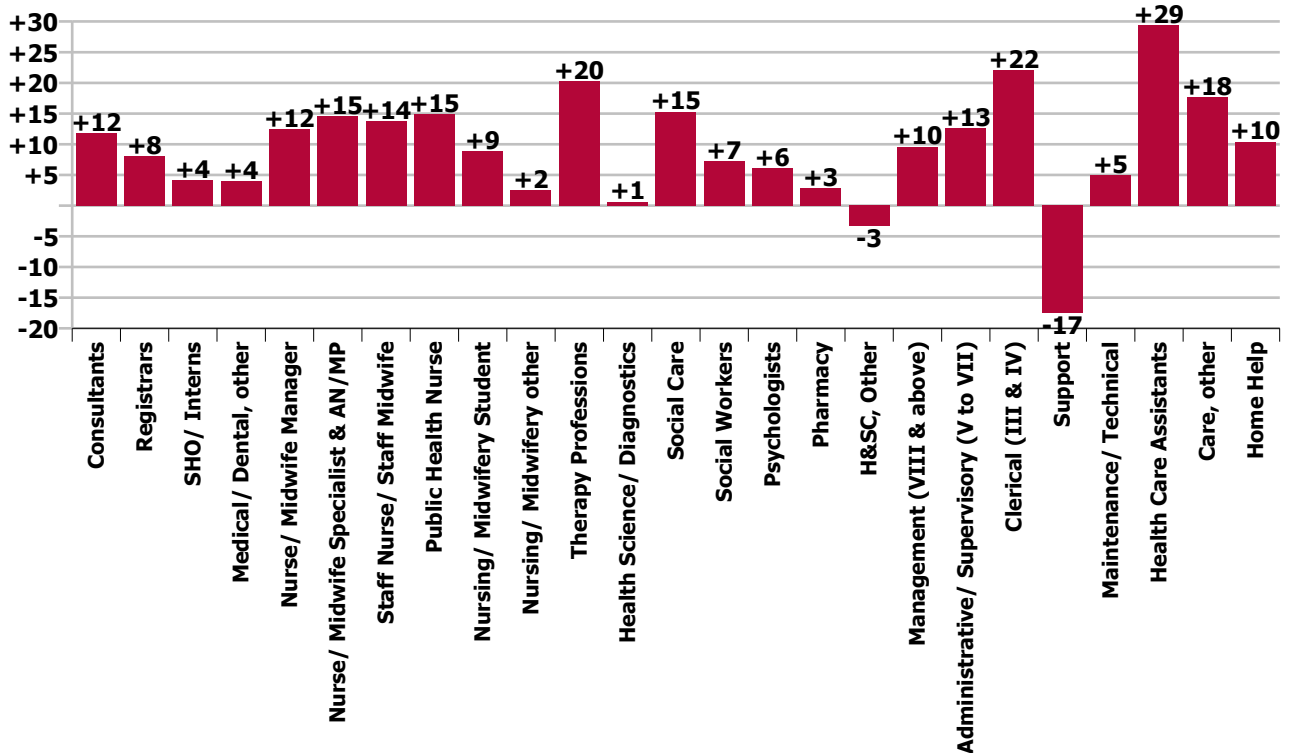
Year-on-year Summary																												
WTE change since Sep 19	% change since Sep 19	overall	Consultants	Registrars	SHO/ Interns	Medical/ Dental, other	Medical & Dental	Nurse/ Midwife Manager	Nurse/ Midwife Specialist & AN/MP	Staff Nurse/ Staff Midwife	Public Health Nurse	Nursing/ Midwifery Student	Nursing/ Midwifery other	Nursing & Midwifery	Therapy Professions	Health Science/ Diagnostics	Social Care	Social Workers	Psychologists	Pharmacy	H&SC, Other	Health & Social Care Professionals	Management (VIII & above)	Administrativ e/ Supervisory (V to VII)	Clerical (III & IV)	Management & Administrative	General Support	Patient & Client Care
Overall	+3.6%	+233	+11.8	+8.0	+4.1	+3.9	+27.9	+12.4	+14.6	+13.7	+14.8	+8.9	+2.5	+66.9	+20.2	+0.6	+15.3	+7.2	+6.1	+2.8	-3.3	+48.9	+9.6	+12.6	+22.0	+44.2	-12.5	+57.3
Community Health & Wellbeing	+17.5%	+1													+1.0							+1.0	+1.0	+3.0	+0.6	+4.6		+4.2
Mental Health	-0.7%	-6	+8.4	+7.1	+1.1		+16.7	+3.6	+9.6	-13.7		+6.6	+1.5	+7.6	-2.4		+0.5	+4.4	+2.2	0.0	+0.4	+5.0	+1.0	+4.6	+2.3	+7.8	-2.2	-1.1
Primary Care	-0.1%	-1	+3.4	-0.1	+3.0	+4.9	+11.2	+3.2	+5.4	-14.4	+14.8	-9.8	0.0	-0.7	-2.7	+0.6	+0.0	+1.3	+2.1	+3.0	-3.7	+0.6	-0.9	-1.4	+4.7	+2.3	-5.7	+4.6
Disabilities	+4.9%	+143.7	0.0	+1.0	0.0	0.0	+1.0	-4.1	-0.2	+20.0		+9.5	+1.0	+26.2	+26.2	0.0	+14.7	+3.0	+1.8	+2.0	0.0	+45.5	+5.4	+6.6	+9.1	+21.1	-4.0	+54.0
Older People	+3.3%	+32.9			0.0	-1.0	-1.0	+9.7	-0.2	+21.8		+2.5		+33.7	-1.9			-1.4		0.0	0.0	-3.2	+3.1	-0.1	+5.4	+8.4	-0.7	-4.4
Social Care	+1.0%	+41	0.0	+1.0	0.0	-1.0	+0.0	+5.6	-0.4	+41.8		+12.0	+1.0	+60.0	+24.3	0.0	+14.7	+1.6	+1.8	-0.2	0.0	+42.3	+8.5	+6.5	+14.5	+29.5	-4.7	+49.6
Change	+232.7	+3.6%	+20.4%	+8.5%	+11.2%	+4.9%	+10.3%	+3.1%	+16.4%	+1.4%	+9.1%	+35.0%	+26.6%	+4.0%	+4.5%	+17.7%	+4.2%	+7.1%	+7.5%	+7.5%	-7.6%	+4.5%	+13.8%	+6.8%	+6.2%	+7.2%	-2.8%	+2.4%

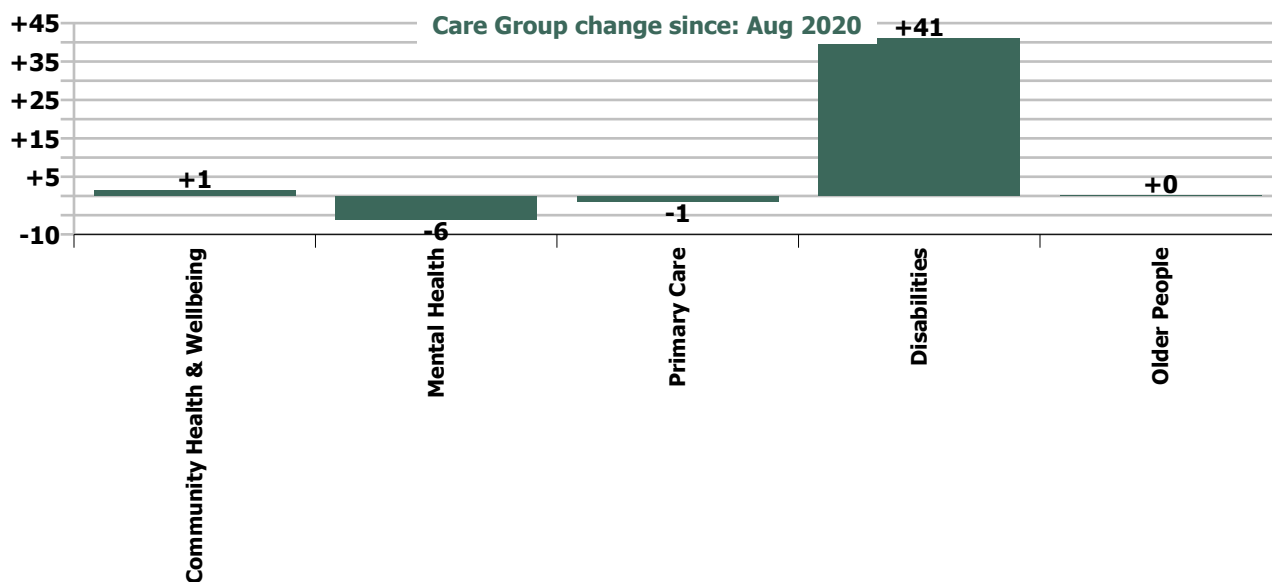


Staff Group change since: Aug 2020

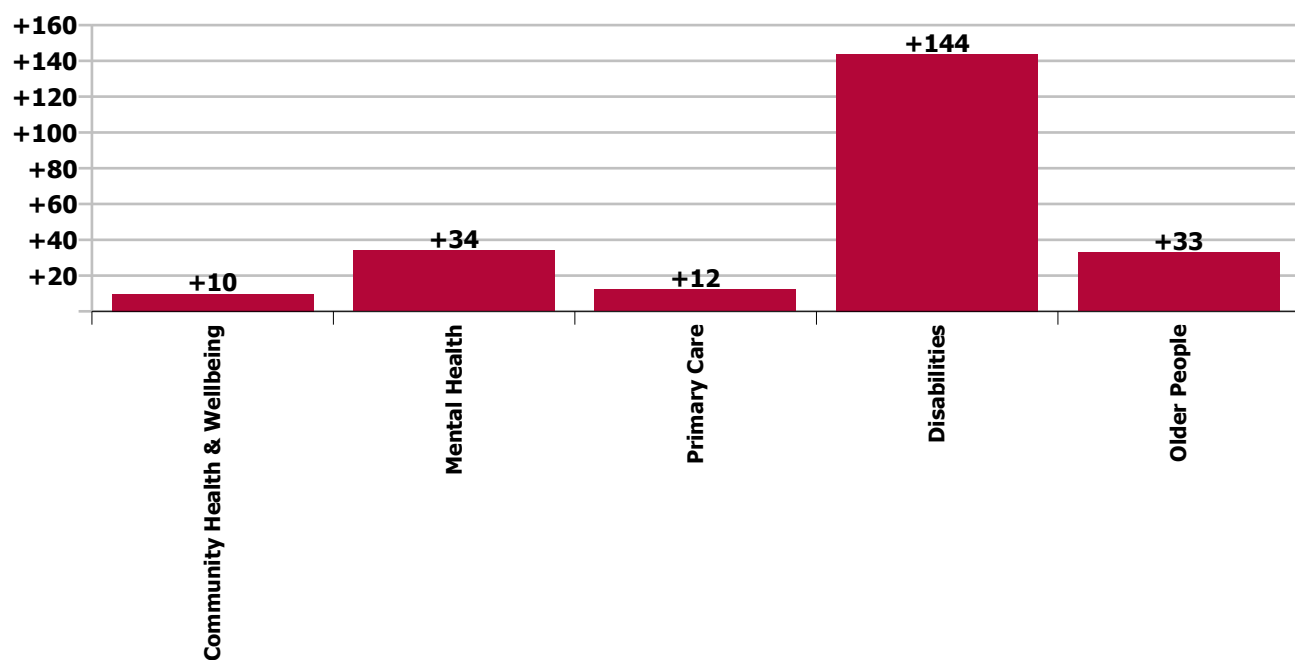


Staff Group change since: Sep 2019





Care Group change since: Sep 2019



Longitudinal Employment Levels by Grade Group - Oct 2013 to Sep 2020

Sep 2020 (Dec 2015 figure: 5,479)	WTE Sep 2020	WTE change since Dec 15	WTE change since Dec 16	WTE change since Dec 17	WTE change since Dec 18	WTE change since Dec 19	WTE change since Aug 20	% change since Dec 15	% change since Dec 16	% change since Dec 17	% change since Dec 18	% change since Dec 19	% change since Aug 20
Overall	6,703	+1,225	+1,125	+298	+146	+189	+35	+22.4%	+20.2%	+4.6%	+2.2%	+2.9%	+0.5%
Consultant Medicine	10	+4	+2	+1	+3	+3	+0	+61.5%	+21.8%	+12.5%	+39.5%	+49.3%	+3.2%
Consultant Paediatrics	0												
Consultant Psychiatry	59	+7	+10	+12	+11	+7	+0	+14.3%	+20.0%	+26.8%	+22.5%	+12.9%	+0.2%
Consultant Surgery	1	+0	+0	+0	-0			+6.7%	+6.7%	+66.7%	-33.3%		
Consultants	70	+11	+12	+14	+13	+10	+0	+19.0%	+20.0%	+24.7%	+23.4%	+16.7%	+0.6%
Registrar	77	+55	+21	+24	+11	+5	-4	+245.3%	+36.6%	+46.5%	+17.2%	+7.3%	-4.4%
Senior Registrar	20	+13	+9	+11	+6	+1	+1	+206.6%	+89.8%	+113.4%	+42.4%	+5.0%	+3.3%
Specialist Registrar	5	+0	+1	-1	+0	+1	+1	+1.6%	+28.5%	-12.0%	+6.4%	+25.0%	+14.2%
Registrars	102	+68	+31	+34	+18	+7	-2	+202.3%	+44.1%	+50.8%	+20.8%	+7.6%	-2.2%
Interns	2	-0	-0	-0	-0	-0	-0	-2.0%	-2.0%	-2.0%	-2.0%	-2.0%	-2.0%
Senior House Officer	39	-0	-0	-2	+6	+5	+0	-0.4%	-0.4%	-4.7%	+16.8%	+14.9%	+0.7%
SHO/ Interns	41	-0	-0	-2	+6	+5	+0	-0.5%	-0.5%	-4.6%	+15.7%	+14.0%	+0.6%
Dentists	36	-4	-4	+1	-1	+2	+1	-8.9%	-9.2%	+2.0%	-1.4%	+6.8%	+2.7%
Other Medical	49	+6	+4	-4	-3	+2	+2	+14.5%	+8.7%	-7.8%	-5.7%	+4.8%	+4.3%
Medical/ Dental, other	85	+3	+0	-3	-3	+5	+3	+3.3%	+0.3%	-3.9%	-3.9%	+5.6%	+3.6%
Medical & Dental	298	+82	+43	+43	+33	+27	+1	+38.0%	+16.8%	+16.8%	+12.4%	+9.9%	+0.4%
Clinical Nurse/ Midwife Manager	330	+46	+28	+3	+8	+2	+0	+16.3%	+9.2%	+0.9%	+2.5%	+0.5%	+0.1%
Director Nursing/Midwifery, Assistant	59	+12	+5	+9	+4	+7	+3	+24.6%	+10.1%	+18.2%	+6.7%	+14.1%	+5.4%
Director of Nursing/Midwifery	19	+1	+2	-4	-1	+3	+0	+5.8%	+13.4%	-16.6%	-2.7%	+18.3%	+1.3%
Nurse/ Midwife Manager	408	+59	+36	+8	+11	+12	+4	+16.9%	+9.5%	+2.1%	+2.8%	+3.0%	+0.9%
Advanced Nurse/ Midwife Practitioner	12	+11	+10	+10	+9	+8	+1	+1086.0%	+562.6%	+417.9%	+368.8%	+173.3%	+7.7%
Clinical Nurse/ Midwife Specialist	91	+26	+25	+14	+7	+2	-2	+39.4%	+38.3%	+17.5%	+8.0%	+2.2%	-2.3%
Nurse/ Midwife Specialist & AN/MP	103	+37	+35	+23	+16	+10	-1	+55.1%	+52.2%	+29.0%	+18.5%	+10.1%	-1.2%
Staff Nurse [Intellectual Disability]	169	-66	-59	-61	-51	-25	+2	-28.0%	-25.8%	-26.5%	-23.0%	-12.6%	+1.0%
Staff Nurse [Psychiatric]	185	-55	-29	-42	-14	-6	+1	-22.8%	-13.4%	-18.3%	-6.9%	-3.0%	+0.5%
Staff Nurses [General/ Children's]	662	+131	+155	+95	+85	+54	-14	+24.7%	+30.5%	+16.7%	+14.7%	+8.9%	-2.1%
Staff Nurse/ Staff Midwife	1,017	+10	+67	-8	+21	+24	-11	+1.0%	+7.1%	-0.8%	+2.1%	+2.4%	-1.1%
Public Health Nurse	177	-0	-3	-9	-18	+2	+15	-0.2%	-1.9%	-5.1%	-9.2%	+1.1%	+9.0%
Pre-registration Nurse/ Midwife Intern		-2	-2		-6	-1		-100.0%	-100.0%	-100.0%	-100.0%	-100.0%	-100.0%
Pre-registration Nurse Intern (COVID-19)	28	+28	+28	+28	+28	+28	-11	-100.0%	-100.0%	-100.0%	-100.0%	-100.0%	-28.4%
Post-registration Nurse/ Midwife Student	0	-24	-23	-16	-7	-21	-0	-99.0%	-98.9%	-98.4%	-96.4%	-98.8%	-50.0%
Nursing/ Midwifery awaiting registration	6	+6	+6	-2	+2	-4	+0	-100.0%	-100.0%	-22.2%	+57.8%	-36.0%	+2.3%
Nursing/ Midwifery Student	34	+9	+10	+10	+17	+2	-11	+33.6%	+39.0%	+42.1%	+102.1%	+6.3%	-24.5%
Nursing Education/Clinical	12	+3	+0	+3	+3	+2	+0	+29.1%	+1.7%	+30.1%	+37.6%	+16.5%	+1.8%

Sep 2020 (Dec 2015 figure: 5,479)	WTE Sep 2020	WTE change since Dec 15	WTE change since Dec 16	WTE change since Dec 17	WTE change since Dec 18	WTE change since Dec 19	WTE change since Aug 20	% change since Dec 15	% change since Dec 16	% change since Dec 17	% change since Dec 18	% change since Dec 19	% change since Aug 20
Overall	6,703	+1,225	+1,125	+298	+146	+189	+35	+22.4%	+20.2%	+4.6%	+2.2%	+2.9%	+0.5%
Other Nursing/ Midwifery		-1	-1					-100.0%	-100.0%	-100.0%	-100.0%	-100.0%	-100.0%
Nursing/ Midwifery other	12	+2	-1	+3	+3	+2	+0	+22.3%	-6.4%	+30.1%	+37.6%	+16.5%	+1.8%
Nursing & Midwifery	1,751	+116	+143	+27	+51	+51	-5	+7.1%	+8.9%	+1.6%	+3.0%	+3.0%	-0.3%
Dietitians	27	+9	+8	+8	+2	+2	+0	+53.0%	+42.6%	+39.5%	+9.1%	+6.6%	+0.9%
Occupational Therapists	191	+31	+23	+23	+7	+8	-2	+19.6%	+13.3%	+13.4%	+3.7%	+4.3%	-0.8%
Orthoptists	2	+1	+1	+2	+2	+2	+1	+500.0%	+500.0%	-100.0%	-100.0%	-100.0%	+200.0%
Physiotherapists	127	+12	+4	+3	+1	+12	+1	+10.1%	+3.5%	+2.2%	+0.8%	+10.8%	+0.7%
Podiatrists & Chiropodists	2	+1	+1	+1	+1	+1		+207.7%	+181.7%	+207.7%	+56.3%	+100.0%	
Speech & Language Therapists	121	+31	+14	-7	-2	-5	-2	+35.0%	+12.7%	-5.3%	-1.6%	-3.9%	-2.0%
Therapy Professions	469	+86	+51	+29	+10	+19	-2	+22.5%	+12.2%	+6.6%	+2.2%	+4.3%	-0.4%
Audiology		-0	-0					-100.0%	-100.0%	-100.0%	-100.0%	-100.0%	-100.0%
Clinical Measurement	2	+1	+1	+1	+1	+1		+100.0%	+100.0%	+100.0%	+100.0%	+100.0%	
Medical Laboratory			-1					-100.0%	-100.0%	-100.0%	-100.0%	-100.0%	-100.0%
Phlebotomists	1	+0	+0	+0	-0	-0	+1	+83.7%	+21.5%	+25.4%	-35.2%	-35.2%	+243.5%
Radiographers	1	-1						-43.5%					
Health Science/ Diagnostics	4	+0	-0	+1	+1	+1	+1	+12.5%	-7.1%	+44.1%	+17.7%	+17.7%	+17.3%
Social Care	381	+262	+268	+52	+21	+9	+2	+220.9%	+238.5%	+15.7%	+5.8%	+2.5%	+0.6%
Social Care	381	+262	+268	+52	+21	+9	+2	+220.9%	+238.5%	+15.7%	+5.8%	+2.5%	+0.6%
Social Workers	109	+12	-0	-3	-1	+5	+0	+12.7%	-0.4%	-2.5%	-1.3%	+4.6%	+0.3%
Psychologists	87	+16	+18	+2	+3	+6	+1	+22.9%	+26.8%	+2.8%	+3.4%	+8.0%	+1.0%
Pharmacy	40	-1	+3	+2	+2	+0	-1	-1.7%	+6.6%	+4.4%	+6.4%	+0.9%	-1.3%
Counsellor Therapists	35	+3	+3	+2	+4	-2	-1	+10.3%	+11.0%	+5.9%	+13.5%	-4.7%	-1.8%
Dental Hygienists	4	+0	+0	+1	-1	-1	+0	+9.6%	+9.6%	+16.1%	-19.8%	-23.9%	+8.1%
Other Health & Social Care	1	-3	-4	-5	-4	-1	+0	-71.4%	-80.0%	-82.2%	-77.8%	-50.0%	+5.3%
Play Therapists/ Specialists	1												
H&SC, Other	41	+1	-0	-2	-0	-4	-0	+2.7%	-0.5%	-5.0%	-0.8%	-8.8%	-0.7%
Health & Social Care Professionals	1,131	+378	+339	+81	+35	+37	+1	+50.1%	+42.8%	+7.7%	+3.2%	+3.4%	+0.1%
Executive Management	16	+4	-0	+1	+4	+3	+0	+32.6%	-0.6%	+6.1%	+32.6%	+22.4%	+0.1%
Senior Management (VIII & GM)	63	+13	+15	+11	+7	+3	+0	+24.6%	+30.9%	+21.7%	+12.0%	+5.7%	+0.4%
Management (VIII & above)	79	+16	+15	+12	+11	+6	+0	+26.1%	+23.1%	+18.2%	+15.6%	+8.7%	+0.3%
Middle Management (V-VII)	198	+68	+66	+39	+30	+16	-1	+52.0%	+50.5%	+24.8%	+17.8%	+9.1%	-0.5%
Other Administrative	1			-0		-0				-14.6%		-14.6%	
Administrative/ Supervisory (V to VII)	199	+68	+66	+39	+30	+16	-1	+51.7%	+50.2%	+24.6%	+17.7%	+8.9%	-0.5%
Clerical (III & IV)	376	+31	+18	-7	-4	+26	-2	+9.0%	+4.9%	-1.8%	-1.1%	+7.3%	-0.5%
Management & Administrative	654	+115	+99	+44	+36	+48	-3	+21.4%	+17.8%	+7.3%	+5.9%	+8.0%	-0.4%

Sep 2020 (Dec 2015 figure: 5,479)	WTE Sep 2020	WTE change since Dec 15	WTE change since Dec 16	WTE change since Dec 17	WTE change since Dec 18	WTE change since Dec 19	WTE change since Aug 20	% change since Dec 15	% change since Dec 16	% change since Dec 17	% change since Dec 18	% change since Dec 19	% change since Aug 20
Overall	6,703	+1,225	+1,125	+298	+146	+189	+35	+22.4%	+20.2%	+4.6%	+2.2%	+2.9%	+0.5%
Catering	55	+1	+2	-9	-7	-4	-1	+1.8%	+4.0%	-14.2%	-11.4%	-6.9%	-1.2%
Household Services	264	-2	+1	-32	-29	-5	+1	-0.9%	+0.2%	-10.7%	-10.0%	-1.8%	+0.4%
Other Labs & Associated	1	+0	+0	+0	+0	+0	+0	+20.8%	+35.5%	+45.0%	+39.4%	+45.0%	+14.2%
Other Support	14	-4	-3	-1	-2	-0	-0	-20.3%	-15.5%	-7.5%	-11.1%	-1.6%	-0.4%
Portering	63	-15	-11	-9	-8	-5	-0	-19.0%	-14.6%	-12.0%	-11.2%	-6.9%	-0.2%
Support	397	-19	-10	-50	-46	-13	+0	-4.7%	-2.5%	-11.1%	-10.3%	-3.2%	+0.1%
Maintenance	41	+13	+10	-3	+0	+4	-0	+44.8%	+33.2%	-7.2%	+0.2%	+10.4%	-0.9%
Technical Services	5	+3	+3	+3	+3	+1		+150.0%	+150.0%	+150.0%	+163.2%	+25.0%	
Maintenance/ Technical	46	+16	+13	-0	+3	+5	-0	+51.7%	+40.4%	-0.4%	+7.5%	+11.9%	-0.8%
General Support	443	-4	+3	-50	-42	-8	+0	-0.8%	+0.7%	-10.1%	-8.7%	-1.8%	+0.0%
HCA, Nurse's Aide, etc.	1,664	+408	+373	+154	+46	+22	+38	+32.5%	+28.9%	+10.2%	+2.9%	+1.3%	+2.3%
Health & Social Care Assistants	21	+13	+13	+15	-0	+9	-2	+146.6%	+153.0%	+251.8%	-1.1%	+70.1%	-8.2%
Health Care Assistants	1,685	+421	+386	+169	+46	+31	+36	+33.3%	+29.7%	+11.2%	+2.8%	+1.8%	+2.2%
Care, other	609	+135	+138	+4	-8	-1	+6	+28.5%	+29.3%	+0.6%	-1.3%	-0.2%	+0.9%
Home Help	132	-19	-27	-21	-5	+5	-1	-12.6%	-16.9%	-13.5%	-3.5%	+3.8%	-0.9%
Patient & Client Care	2,426	+537	+498	+152	+34	+34	+40	+28.4%	+25.8%	+6.7%	+1.4%	+1.4%	+1.7%

Source: Health Service Personnel Census

Longitudinal Employment Levels by Care Group - Oct 2013 to Sep 2020

Community Health & Wellbeing

Sep 2020 (figure:)	WTE Sep 2020	WTE change since	WTE change since	WTE change since	WTE change since	WTE change since	WTE change since Aug 20	% change since	% change since	% change since	% change since	% change since	% change since Aug 20
Overall	10	+10	+10	+10	+10	+10	+1	-100.0%	-100.0%	-100.0%	-100.0%	-100.0%	+17.5%
Health & Social Care Professionals	1	+1	+1	+1	+1	+1	+1	-1.0%	-1.0%	-1.0%	-1.0%	-1.0%	-1.0%
Therapy Professions	1	+1	+1	+1	+1	+1	+1	-1.0%	-1.0%	-1.0%	-1.0%	-1.0%	-1.0%
Management & Administrative	5	+5	+5	+5	+5	+5	+1	-1.0%	-1.0%	-1.0%	-1.0%	-1.0%	+0.2%
Management (VIII & above)	1	+1	+1	+1	+1	+1		-1.0%	-1.0%	-1.0%	-1.0%	-1.0%	+0.0%
Administrative/ Supervisory (V to VII)	3	+3	+3	+3	+3	+3	+1	-1.0%	-1.0%	-1.0%	-1.0%	-1.0%	+0.3%
Clerical (III & IV)	1	+1	+1	+1	+1	+1		-1.0%	-1.0%	-1.0%	-1.0%	-1.0%	+0.0%
Patient & Client Care	4	+4	+4	+4	+4	+4	-0	-1.0%	-1.0%	-1.0%	-1.0%	-1.0%	-0.1%
Care, other	4	+4	+4	+4	+4	+4	-0	-1.0%	-1.0%	-1.0%	-1.0%	-1.0%	-0.1%

Source: Health Service Personnel Census

Mental Health

Sep 2020 (Dec 2015 figure: 837)	WTE Sep 2020	WTE change since Dec 15	WTE change since Dec 16	WTE change since Dec 17	WTE change since Dec 18	WTE change since Dec 19	WTE change since Aug 20	% change since Dec 15	% change since Dec 16	% change since Dec 17	% change since Dec 18	% change since Dec 19	% change since Aug 20
Overall	870	+33	+42	+10	+35	+35	-6	+4.0%	+5.1%	+1.2%	+4.2%	+4.1%	-0.7%
Medical & Dental	131	+34	+30	+35	+28	+16	-1	+0.4%	+0.3%	+0.4%	+0.3%	+0.1%	-0.0%
Consultants	54	+9	+10	+13	+10	+7	+0	+0.2%	+0.2%	+0.3%	+0.2%	+0.1%	+0.0%
Registrars	54	+31	+25	+27	+16	+8	-1	+1.4%	+0.9%	+1.0%	+0.4%	+0.2%	-0.0%
SHO/ Interns	22	-6	-5	-5	+3	+1	+0	-0.2%	-0.2%	-0.2%	+0.1%	+0.0%	+0.0%
Nursing & Midwifery	385	+10	+23	-1	+23	+15	-6	+0.0%	+0.1%	-0.0%	+0.1%	+0.0%	-0.0%
Nurse/ Midwife Manager	117	+18	+6	+2	-1	+1	+1	+0.2%	+0.1%	+0.0%	-0.0%	+0.0%	+0.0%
Nurse/ Midwife Specialist & AN/MP	45	+20	+19	+18	+18	+5	-1	+0.8%	+0.7%	+0.7%	+0.7%	+0.1%	-0.0%
Staff Nurse/ Staff Midwife	194	-51	-24	-36	-7	-1	+0	-0.2%	-0.1%	-0.2%	-0.0%	-0.0%	+0.0%
Nursing/ Midwifery Student	21	+19	+19	+13	+11	+10	-7	+11.5%	+11.5%	+1.6%	+1.1%	+0.9%	-0.2%
Nursing/ Midwifery other	8	+4	+2	+2	+2	+1	+0	+1.0%	+0.4%	+0.4%	+0.4%	+0.1%	+0.0%
Health & Social Care Professionals	140	+7	+4	-5	+0	-0	+2	+0.0%	+0.0%	-0.0%	+0.0%	-0.0%	+0.0%
Therapy Professions	44	-2	-4	-3	-4	-3	+2	-0.0%	-0.1%	-0.1%	-0.1%	-0.1%	+0.0%
Social Care	7	-3	-3	-3	-1	-0	-0	-0.3%	-0.3%	-0.3%	-0.1%	-0.0%	-0.0%
Social Workers	36	-2	-5	-6	-1	+2	-1	-0.1%	-0.1%	-0.1%	-0.0%	+0.1%	-0.0%
Psychologists	33	+5	+8	+3	-0	+2	+1	+0.2%	+0.3%	+0.1%	-0.0%	+0.1%	+0.0%
Pharmacy	1	+1	+1	+1	+1			-1.0%	-1.0%	-1.0%	-1.0%	+0.0%	+0.0%
H&SC, Other	18	+8	+7	+3	+5	+0	-1	+0.9%	+0.6%	+0.2%	+0.4%	+0.0%	-0.0%
Management & Administrative	73	+13	+7	+4	-0	+8	+1	+0.2%	+0.1%	+0.1%	-0.0%	+0.1%	+0.0%
Management (VIII & above)	4	+2	+1	+1	+1	+1		+0.9%	+0.4%	+0.4%	+0.4%	+0.4%	+0.0%
Administrative/ Supervisory (V to VII)	18	+9	+6	+2	-0	+2	+1	+1.0%	+0.4%	+0.1%	-0.0%	+0.1%	+0.1%
Clerical (III & IV)	51	+2	+0	+1	-1	+4	-1	+0.0%	+0.0%	+0.0%	-0.0%	+0.1%	-0.0%
General Support	18	-11	-8	-7	-6	-1	+0	-0.4%	-0.3%	-0.3%	-0.2%	-0.1%	+0.0%
Support	16	-10	-8	-7	-6	-1	+0	-0.4%	-0.3%	-0.3%	-0.3%	-0.1%	+0.0%
Maintenance/ Technical	2	-0	-0	-0	-0	-0	-0	-0.1%	-0.1%	-0.1%	-0.1%	-0.0%	-0.0%
Patient & Client Care	123	-20	-13	-16	-11	-3	-2	-0.1%	-0.1%	-0.1%	-0.1%	-0.0%	-0.0%
Health Care Assistants	35	-12	-11	-9	-6	+2	+0	-0.3%	-0.2%	-0.2%	-0.2%	+0.1%	+0.0%
Care, other	88	-8	-3	-6	-4	-4	-2	-0.1%	-0.0%	-0.1%	-0.0%	-0.0%	-0.0%

Source: Health Service Personnel Census

Primary Care

Sep 2020 (Dec 2015 figure: 1,647)	WTE Sep 2020	WTE change since Dec 15	WTE change since Dec 16	WTE change since Dec 17	WTE change since Dec 18	WTE change since Dec 19	WTE change since Aug 20	% change since Dec 15	% change since Dec 16	% change since Dec 17	% change since Dec 18	% change since Dec 19	% change since Aug 20
Overall	1,719	+72	+32	+28	-57	+17	-1	+4.3%	+1.9%	+1.6%	-3.2%	+1.0%	-0.1%
Medical & Dental	149	+52	+16	+12	+5	+11	+2	+0.5%	+0.1%	+0.1%	+0.0%	+0.1%	+0.0%
Consultants	15	+5	+4	+2	+3	+3	+0	+0.5%	+0.4%	+0.2%	+0.3%	+0.3%	+0.0%
Registrars	45	+36	+6	+7	+1	-1	-1	+4.1%	+0.2%	+0.2%	+0.0%	-0.0%	-0.0%
SHO/ Interns	10	+5	+4	+4	+3	+4	+0	+1.0%	+0.7%	+0.7%	+0.4%	+0.7%	+0.0%
Medical/ Dental, other	80	+6	+2	-2	-2	+5	+3	+0.1%	+0.0%	-0.0%	-0.0%	+0.1%	+0.0%
Nursing & Midwifery	516	+13	+7	+7	-14	-14	+1	+0.0%	+0.0%	+0.0%	-0.0%	-0.0%	+0.0%
Nurse/ Midwife Manager	84	+6	+6	+8	+3	+4	+1	+0.1%	+0.1%	+0.1%	+0.0%	+0.0%	+0.0%
Nurse/ Midwife Specialist & AN/MP	50	+17	+16	+7	+3	+4	-0	+0.5%	+0.5%	+0.2%	+0.1%	+0.1%	-0.0%
Staff Nurse/ Staff Midwife	203	+14	+12	+18	+4	-2	-14	+0.1%	+0.1%	+0.1%	+0.0%	-0.0%	-0.1%
Public Health Nurse	177	+1	-3	-9	-18	+2	+15	+0.0%	-0.0%	-0.1%	-0.1%	+0.0%	+0.1%
Nursing/ Midwifery Student		-24	-23	-16	-7	-21	-1	-1.0%	-1.0%	-1.0%	-1.0%	-1.0%	-1.0%
Nursing/ Midwifery other	2	-1	-2	-1				-0.3%	-0.4%	-0.2%	+0.0%	+0.0%	+0.0%
Health & Social Care Professionals	372	+18	+9	+10	-9	-2	-5	+0.0%	+0.0%	+0.0%	-0.0%	-0.0%	-0.0%
Therapy Professions	265	+23	+11	+11	-10	-1	-3	+0.1%	+0.0%	+0.0%	-0.0%	-0.0%	-0.0%
Health Science/ Diagnostics	1	+0	+0	+0	+1	+1	+1	+0.8%	+0.2%	+0.3%	+2.6%	+2.6%	+2.4%
Social Care	4	-0	-0	-0	-0	+1	+0	-0.0%	-0.0%	-0.0%	-0.0%	+0.2%	+0.0%
Social Workers	26	-1	-2	-1	+2	-0	+0	-0.0%	-0.1%	-0.0%	+0.1%	-0.0%	+0.0%
Psychologists	24	+3	+3	+2	+1	+3	-1	+0.2%	+0.2%	+0.1%	+0.0%	+0.1%	-0.1%
Pharmacy	32	-1	+2	+1	+3	-0	-1	-0.0%	+0.1%	+0.0%	+0.1%	-0.0%	-0.0%
H&SC, Other	20	-6	-5	-3	-4	-4	+0	-0.2%	-0.2%	-0.1%	-0.2%	-0.2%	+0.0%
Management & Administrative	301	-2	-2	-10	-10	+14	+2	-0.0%	-0.0%	-0.0%	-0.0%	+0.0%	+0.0%
Management (VIII & above)	31	+5	+3	+2	-0	-3	+1	+0.2%	+0.1%	+0.1%	-0.0%	-0.1%	+0.0%
Administrative/ Supervisory (V to VII)	79	+12	+16	+7	+8	+3	-2	+0.2%	+0.2%	+0.1%	+0.1%	+0.0%	-0.0%
Clerical (III & IV)	192	-18	-21	-19	-18	+14	+3	-0.1%	-0.1%	-0.1%	-0.1%	+0.1%	+0.0%
General Support	121	-17	-15	-9	-11	-3	-2	-0.1%	-0.1%	-0.1%	-0.1%	-0.0%	-0.0%
Support	111	-20	-15	-12	-13	-5	-2	-0.1%	-0.1%	-0.1%	-0.1%	-0.0%	-0.0%
Maintenance/ Technical	10	+2	+1	+3	+2	+1	+0	+0.3%	+0.1%	+0.4%	+0.2%	+0.1%	+0.0%
Patient & Client Care	260	+9	+16	+19	-18	+12	+0	+0.0%	+0.1%	+0.1%	-0.1%	+0.0%	+0.0%
Health Care Assistants	133	+13	+16	+14	-8	+12	+0	+0.1%	+0.1%	+0.1%	-0.1%	+0.1%	+0.0%
Care, other	127	-4	+1	+5	-10	-0	+0	-0.0%	+0.0%	+0.0%	-0.1%	-0.0%	+0.0%

Source: Health Service Personnel Census

Disabilities

Sep 2020 (Dec 2015 figure: 1,867)	WTE Sep 2020	WTE change since Dec 15	WTE change since Dec 16	WTE change since Dec 17	WTE change since Dec 18	WTE change since Dec 19	WTE change since Aug 20	% change since Dec 15	% change since Dec 16	% change since Dec 17	% change since Dec 18	% change since Dec 19	% change since Aug 20
Overall	3,069	+1,202	+1,126	+277	+166	+87	+41	+64.4%	+58.0%	+9.9%	+5.7%	+2.9%	+1.4%
Medical & Dental	12	-1	+0	-2	+1	+0	+0	-0.0%	+0.0%	-0.1%	+0.1%	+0.0%	+0.0%
Consultants	1	-3	-2	-2				-0.8%	-0.8%	-0.8%	+0.0%	+0.0%	+0.0%
Registrars	3	+1	+0	+0	+1	+0	+0	+0.5%	+0.0%	+0.0%	+0.3%	+0.0%	+0.0%
SHO/ Interns	7	+2	+2		+0	+0	+0	+0.4%	+0.4%	+0.0%	+0.0%	+0.0%	+0.0%
Medical/ Dental, other	1	-1						-0.3%	+0.0%	+0.0%	+0.0%	+0.0%	+0.0%
Nursing & Midwifery	519	+118	+123	+13	+11	+17	-2	+0.3%	+0.3%	+0.0%	+0.0%	+0.0%	-0.0%
Nurse/ Midwife Manager	123	+29	+23	-11	-1	+1	-0	+0.3%	+0.2%	-0.1%	-0.0%	+0.0%	-0.0%
Nurse/ Midwife Specialist & AN/MP	5	-1	-0	-2	-5	-0	+1	-0.1%	-0.0%	-0.3%	-0.5%	-0.0%	+0.2%
Staff Nurse/ Staff Midwife	379	+80	+90	+13	+6	+5	+2	+0.3%	+0.3%	+0.0%	+0.0%	+0.0%	+0.0%
Nursing/ Midwifery Student	11	+11	+11	+11	+11	+11	-4	-1.0%	-1.0%	-1.0%	-1.0%	-1.0%	-0.3%
Nursing/ Midwifery other	2	-1	-2	+1	+1	+1		-0.4%	-0.5%	+2.0%	+2.0%	+2.0%	+0.0%
Health & Social Care Professionals	587	+357	+332	+82	+51	+35	+3	+1.6%	+1.3%	+0.2%	+0.1%	+0.1%	+0.0%
Therapy Professions	145	+67	+45	+24	+27	+23	-2	+0.8%	+0.5%	+0.2%	+0.2%	+0.2%	-0.0%
Health Science/ Diagnostics	3	+1	+1	+1				+0.4%	+0.2%	+0.5%	+0.0%	+0.0%	+0.0%
Social Care	369	+265	+272	+55	+22	+9	+2	+2.6%	+2.8%	+0.2%	+0.1%	+0.0%	+0.0%
Social Workers	34	+16	+8	+5	+0	+1	+1	+0.9%	+0.3%	+0.2%	+0.0%	+0.0%	+0.0%
Psychologists	30	+8	+7	-3	+3	+2	+1	+0.4%	+0.3%	-0.1%	+0.1%	+0.1%	+0.0%
Pharmacy	5	+1	+1	+1	-0	-0	+1	+0.2%	+0.2%	+0.2%	-0.1%	-0.0%	+0.1%
H&SC, Other	2		-1	-1				+0.0%	-0.4%	-0.4%	+0.0%	+0.0%	+0.0%
Management & Administrative	220	+97	+87	+40	+30	+17	-2	+0.8%	+0.7%	+0.2%	+0.2%	+0.1%	-0.0%
Management (VIII & above)	37	+10	+11	+6	+6	+5	-0	+0.4%	+0.4%	+0.2%	+0.2%	+0.2%	-0.0%
Administrative/ Supervisory (V to VII)	87	+44	+39	+25	+17	+7	-0	+1.0%	+0.8%	+0.4%	+0.2%	+0.1%	-0.0%
Clerical (III & IV)	96	+43	+36	+8	+7	+4	-2	+0.8%	+0.6%	+0.1%	+0.1%	+0.0%	-0.0%
General Support	190	+30	+32	-25	-18	-6	-1	+0.2%	+0.2%	-0.1%	-0.1%	-0.0%	-0.0%
Support	157	+15	+18	-23	-20	-9	-1	+0.1%	+0.1%	-0.1%	-0.1%	-0.1%	-0.0%
Maintenance/ Technical	32	+15	+14	-2	+3	+4	-0	+0.8%	+0.7%	-0.1%	+0.1%	+0.1%	-0.0%
Patient & Client Care	1,541	+600	+552	+169	+90	+23	+43	+0.6%	+0.6%	+0.1%	+0.1%	+0.0%	+0.0%
Health Care Assistants	1,138	+462	+419	+167	+92	+26	+37	+0.7%	+0.6%	+0.2%	+0.1%	+0.0%	+0.0%
Care, other	385	+152	+147	+11	+4	-1	+7	+0.7%	+0.6%	+0.0%	+0.0%	-0.0%	+0.0%
Home Help	18	-14	-14	-9	-6	-2	-0	-0.4%	-0.4%	-0.3%	-0.2%	-0.1%	-0.0%

Source: Health Service Personnel Census

Older People

Sep 2020 (Dec 2015 figure: 1,128)	WTE Sep 2020	WTE change since Dec 15	WTE change since Dec 16	WTE change since Dec 17	WTE change since Dec 18	WTE change since Dec 19	WTE change since Aug 20	% change since Dec 15	% change since Dec 16	% change since Dec 17	% change since Dec 18	% change since Dec 19	% change since Aug 20
Overall	1,037	-92	-84	-27	-8	+41	+0	-8.1%	-7.5%	-2.6%	-0.7%	+4.1%	+0.0%
Medical & Dental	6	-4	-3	-2	-1			-0.4%	-0.3%	-0.3%	-0.1%	+0.0%	+0.0%
SHO/ Interns	2	-1	-1	-1				-0.3%	-0.3%	-0.3%	+0.0%	+0.0%	+0.0%
Medical/ Dental, other	4	-3	-2	-1	-1			-0.4%	-0.3%	-0.2%	-0.2%	+0.0%	+0.0%
Nursing & Midwifery	331	-24	-10	+8	+30	+32	+2	-0.1%	-0.0%	+0.0%	+0.1%	+0.1%	+0.0%
Nurse/ Midwife Manager	84	+7	-0	+9	+10	+7	+2	+0.1%	-0.0%	+0.1%	+0.1%	+0.1%	+0.0%
Nurse/ Midwife Specialist & AN/MP	4	+0	+0	+0	-1	+1	-1	+0.0%	+0.1%	+0.0%	-0.1%	+0.4%	-0.1%
Staff Nurse/ Staff Midwife	241	-32	-12	-3	+17	+22	+1	-0.1%	-0.0%	-0.0%	+0.1%	+0.1%	+0.0%
Public Health Nurse		-2	-0					-1.0%	-1.0%	-1.0%	-1.0%	-1.0%	-1.0%
Nursing/ Midwifery Student	2	+2	+2	+2	+2	+2	-0	-1.0%	-1.0%	-1.0%	-1.0%	-1.0%	-0.0%
Health & Social Care Professionals	31	-5	-7	-6	-8	+3	+0	-0.1%	-0.2%	-0.2%	-0.2%	+0.1%	+0.0%
Therapy Professions	14	-2	-3	-4	-3	-0	+0	-0.1%	-0.2%	-0.2%	-0.2%	-0.0%	+0.0%
Health Science/ Diagnostics		-1	-1					-1.0%	-1.0%	-1.0%	-1.0%	-1.0%	-1.0%
Social Workers	13	-0	-2	-1	-3	+3	+0	-0.0%	-0.1%	-0.0%	-0.2%	+0.2%	+0.0%
Pharmacy	3	-1	-1	-1	-1	+1		-0.3%	-0.3%	-0.3%	-0.3%	+0.2%	+0.0%
H&SC, Other	1	-1	-1	-1	-1			-0.5%	-0.5%	-0.5%	-0.5%	+0.0%	+0.0%
Management & Administrative	56	+2	+4	+6	+12	+5	-3	+0.0%	+0.1%	+0.1%	+0.3%	+0.1%	-0.1%
Management (VIII & above)	6	-2	-2	+1	+3	+1	-0	-0.2%	-0.2%	+0.3%	+0.6%	+0.3%	-0.0%
Administrative/ Supervisory (V to VII)	12	-0	+3	+2	+3	+1	-1	-0.0%	+0.3%	+0.2%	+0.3%	+0.1%	-0.1%
Clerical (III & IV)	37	+4	+2	+3	+7	+3	-2	+0.1%	+0.1%	+0.1%	+0.2%	+0.1%	-0.0%
General Support	114	-6	-6	-9	-7	+2	+3	-0.0%	-0.1%	-0.1%	-0.1%	+0.0%	+0.0%
Support	112	-5	-5	-8	-6	+2	+3	-0.0%	-0.0%	-0.1%	-0.1%	+0.0%	+0.0%
Maintenance/ Technical	2	-1	-1	-1	-1			-0.3%	-0.3%	-0.3%	-0.3%	+0.0%	+0.0%
Patient & Client Care	498	-55	-61	-24	-33	-2	-2	-0.1%	-0.1%	-0.0%	-0.1%	-0.0%	-0.0%
Health Care Assistants	379	-43	-38	-2	-32	-9	-2	-0.1%	-0.1%	-0.0%	-0.1%	-0.0%	-0.0%
Care, other	5	-8	-11	-10	-2	+0	+1	-0.6%	-0.7%	-0.7%	-0.3%	+0.0%	+0.3%
Home Help	114	-5	-12	-12	+1	+6	-1	-0.0%	-0.1%	-0.1%	+0.0%	+0.1%	-0.0%

Source: Health Service Personnel Census