

CHO 7 Employment Report: September 2021

Employment by Staff Group

Sep 2021 (Dec 2020 figure: 6,783)	WTE Aug 2021	WTE Sep 2021	WTE change since Aug 21	% change since Aug 21	WTE change since Dec 20	WTE change since Sep 20
Overall	6,949	6,979	+30	+0.4%	+196	+275
Consultants	68	67	-1	-1.3%	+1	-3
Registrars	100	102	+1	+1.3%	+1	-1
SHO/ Interns	41	44	+3	+6.1%	+6	+3
Medical/ Dental, other	73	72	-1	-1.5%	-8	-13
Medical & Dental	283	285	+2	+0.7%	+0	-13
Nurse/ Midwife Manager	440	441	+1	+0.2%	+34	+33
Nurse/ Midwife Specialist & AN/MP	114	112	-2	-1.8%	+3	+9
Staff Nurse/ Staff Midwife	1,043	1,051	+8	+0.7%	+30	+34
Public Health Nurse	188	186	-2	-1.0%	+10	+9
<i>Pre-registration Nurse/ Midwife Intern</i>	22	15	-8	-34.7%	+14	-8
<i>Pre-registration Nurse Intern (COVID-19)</i>	1	0	-0	-12.0%	-3	-0
<i>Post-registration Nurse/ Midwife Student</i>	1		-1	-100.0%	-24	-1
<i>Nursing/ Midwifery awaiting registration</i>	2	10	+8	+400.0%	+6	+8
Nursing/ Midwifery Student	26	25	-1	-3.3%	-7	-9
Nursing/ Midwifery other	10	10	+0	+1.5%	+1	-2
Nursing & Midwifery	1,822	1,826	+4	+0.2%	+70	+75
Therapy Professions	453	456	+3	+0.8%	-6	-13
Health Science/ Diagnostics	3	3	+0	+1.4%	-1	-1
Social Care	422	432	+10	+2.4%	+32	+51
Social Workers	114	114	+0	+0.2%	+6	+4
Psychologists	87	86	-1	-0.7%	-0	-1
Pharmacy	40	40	+0	+0.1%	+3	-0
H&SC, Other	43	42	-1	-3.2%	+0	+1
Health & Social Care Professionals	1,161	1,173	+12	+1.0%	+33	+42
Management (VIII & above)	90	91	+1	+1.3%	+7	+12
Administrative/ Supervisory (V to VII)	229	233	+4	+1.8%	+19	+34
Clerical (III & IV)	392	389	-2	-0.6%	+9	+13
Management & Administrative	711	714	+3	+0.4%	+35	+60
Support	391	394	+2	+0.6%	-8	-4
Maintenance/ Technical	47	47	-0	-0.4%	+0	+1
General Support	438	440	+2	+0.5%	-8	-3
Health Care Assistants	1,783	1,785	+1	+0.1%	+62	+99
Care, other	627	632	+5	+0.9%	+11	+23
Home Help	124	124	+1	+0.6%	-7	-7
Patient & Client Care	2,534	2,542	+8	+0.3%	+66	+115

CHO 7 Employment Report: September 2021

Community Health & Wellbeing

Sep 2021 (Dec 2020 figure: 8)	WTE Aug 2021	WTE Sep 2021	WTE change since Aug 21	% change since Aug 21	WTE change since Dec 20	WTE change since Sep 20
Total Community Health & Wellbeing	11	10	-1	-7.6%	+2	+0
<i>Occupational Therapists</i>				-100.0%		
Therapy Professions				-100%		-1
Health & Social Care Professionals				-100.0%		-1
Management (VIII & above)	1	1	0	0		
Administrative/ Supervisory (V to VII)	7	6	-1	-13%	+3	+3
Clerical (III & IV)	2	2	+0	+1%	+1	+1
Management & Administrative	9	8	-1	-9.5%	+4	+4
Care, other	2	2	+0	+3%	-1	-3
Patient & Client Care	2	2	+0	+3.2%	-1	-3

Mental Health

Sep 2021 (Dec 2020 figure: 861)	WTE Aug 2021	WTE Sep 2021	WTE change since Aug 21	% change since Aug 21	WTE change since Dec 20	WTE change since Sep 20
Total Mental Health	882	883	+1	+0.1%	+22	+14
Consultants	55	54	-1	-2%	+1	-0
Registrars	52	53	+1	+2%	-0	-1
SHO/ Interns	22	23	+1	+6%	+3	+1
Medical & Dental	129	130	+1	+1.0%	+3	-1
Nurse/ Midwife Manager	117	116	-1	-1%	-2	-2
Nurse/ Midwife Specialist & AN/MP	52	51	-1	-3%	+4	+6
Staff Nurse/ Staff Midwife	205	208	+2	+1%	+6	+14
<i>Public Health Nurse</i>	1	1	+0	+7.5%	+1	+0
Public Health Nurse	1	1	+0	+8%	+1	+1
<i>Pre-registration Nurse/ Midwife Intern</i>	15	14	-1	-5.3%	+14	-1
<i>Pre-registration Nurse Intern (COVID-19)</i>	1	0	-0	-12.0%	-3	-0
<i>Post-registration Nurse/ Midwife Student</i>				-100.0%	-1	
<i>Nursing/ Midwifery awaiting registration</i>				-100.0%	-3	
Nursing/ Midwifery Student	15	15	-1	-6%	+7	-6
Nursing/ Midwifery other	5	5	+0	+3%	-0	-3
Nursing & Midwifery	396	395	-1	-0.3%	+16	+10
Therapy Professions	46	46	-0	-1%	-8	+1
Social Care	8	8	+1	+7%	+1	+1
Social Workers	40	41	+1	+4%	+3	+5
Psychologists	31	30	-1	-2%	+1	-3
Pharmacy	1	1	0	0		
H&SC, Other	17	17	+0	+1%	-1	-1
Health & Social Care Professionals	142	143	+1	+0.8%	-4	+3
Management (VIII & above)	5	5	-0	-0%	+1	+1
Administrative/ Supervisory (V to VII)	18	18	-0	-1%	+1	-0
Clerical (III & IV)	47	47	+1	+1%	-2	-4
Management & Administrative	70	70	+0	+0.5%	-0	-3
Support	17	18	+1	+5%	+0	+1
Maintenance/ Technical	2	2	0	0		+0
General Support	19	20	+1	+4.4%	+0	+1
Health Care Assistants	35	34	-1	-1%	-0	-1
Care, other	92	91	-1	-1%	+6	+3
Patient & Client Care	127	125	-2	-1.4%	+6	+3

Primary Care

Sep 2021 (Dec 2020 figure: 1,789)	WTE Aug 2021	WTE Sep 2021	WTE change since Aug 21	% change since Aug 21	WTE change since Dec 20	WTE change since Sep 20
Total Primary Care	1,841	1,838	-3	-0.2%	+49	+119
Consultants	13	13	-0	-0%	+0	-2
Registrars	45	46	+1	+2%	+3	+1
SHO/ Interns	11	11	-0	-0%	+2	+1
Medical/ Dental, other	70	69	-1	-2%	-8	-11
Medical & Dental	139	139	-0	-0.1%	-3	-11
Nurse/ Midwife Manager	97	100	+2	+2%	+14	+16
Nurse/ Midwife Specialist & AN/MP	54	54	-1	-1%	-2	+4
Staff Nurse/ Staff Midwife	204	208	+4	+2%	+8	+5
Public Health Nurse	188	185	-2	-1%	+9	+8
<i>Post-registration Nurse/ Midwife Student</i>	1		-1	-100.0%	-23	-1
Nursing/ Midwifery Student	1		-1	-100%	-23	
Nursing/ Midwifery other	2	2	0	0		
Nursing & Midwifery	546	548	+2	+0.4%	+6	+33
Therapy Professions	246	246	+0	+0%	-11	-19
Health Science/ Diagnostics	1	1	+0	+4%	-0	+0
Social Care	3	3	0	0	-1	-1
Social Workers	28	26	-2	-7%	+0	+1
Psychologists	25	24	-1	-2%	-1	-0
Pharmacy	32	33	+0	+1%	+2	+1
H&SC, Other	23	22	-1	-3%	+1	+2
Health & Social Care Professionals	358	355	-3	-0.7%	-10	-16
Management (VIII & above)	32	33	+1	+3%	+3	+2
Administrative/ Supervisory (V to VII)	96	99	+2	+3%	+11	+20
Clerical (III & IV)	202	201	-1	-0%	+9	+10
Management & Administrative	330	333	+3	+0.8%	+23	+32
Support	109	109	-0	-0%	-2	-3
Maintenance/ Technical	9	9	-0	-0%	-0	-1
General Support	118	118	-0	-0.2%	-2	-3
Health Care Assistants	214	209	-5	-3%	+25	+76
Care, other	135	135	-0	-0%	+9	+8
Patient & Client Care	350	344	-5	-1.5%	+34	+84

Social Care

Sep 2021 (Dec 2020 figure: 4,125)	WTE Aug 2021	WTE Sep 2021	WTE change since Aug 21	% change since Aug 21	WTE change since Dec 20	WTE change since Sep 20
Total Social Care	4,214	4,248	+33	+0.8%	+123	+142
Consultants	0	0	0	0	-0	-0
Registrars	3	2	-1	-21%	-1	-1
SHO/ Interns	9	10	+1	+14%	+1	+1
Medical/ Dental, other	3	3	0	0		-2
Medical & Dental	15	16	+1	+4.0%	+0	-2
Nurse/ Midwife Manager	226	226	-0	-0%	+21	+19
Nurse/ Midwife Specialist & AN/MP	8	8	0	0	+0	-1
Staff Nurse/ Staff Midwife	634	636	+1	+0%	+16	+16
Pre-registration Nurse/ Midwife Intern	8	1	-7	-93.3%	+1	-7
Pre-registration Nurse Intern (COVID-19)				-100.0%		
Nursing/ Midwifery awaiting registration	2	10	+8	+400.0%	+9	+8
Nursing/ Midwifery Student	10	11	+1	+11%	+9	-3
Nursing/ Midwifery other	3	3	0	0	+1	+1
Nursing & Midwifery	880	882	+2	+0.3%	+48	+32
Therapy Professions	161	164	+3	+2%	+12	+6
Health Science/ Diagnostics	2	2	0	0	-1	-1
Social Care	411	421	+10	+2%	+32	+51
Social Workers	46	46	+1	+1%	+2	-1
Psychologists	32	32	+1	+2%	+0	+2
Pharmacy	7	7	-0	-2%	+1	-1
H&SC, Other	4	3	-1	-29%		
Health & Social Care Professionals	661	675	+13	+2.0%	+46	+56
Management (VIII & above)	52	53	+0	+1%	+3	+9
Administrative/ Supervisory (V to VII)	108	110	+3	+2%	+4	+11
Clerical (III & IV)	141	139	-2	-2%	+1	+6
Management & Administrative	301	302	+1	+0.3%	+8	+27
Support	266	267	+2	+1%	-7	-3
Maintenance/ Technical	35	35	-0	-1%	+0	+1
General Support	301	303	+2	+0.5%	-6	-1
Health Care Assistants	1,534	1,541	+7	+0%	+37	+24
Care, other	398	405	+7	+2%	-3	+15
Home Help	124	124	+1	+1%	-7	-7
Patient & Client Care	2,056	2,070	+15	+0.7%	+27	+31

CHO 7 Employment Report: September 2021

Disabilities

Sep 2021 (Dec 2020 figure: 3,103)	WTE Aug 2021	WTE Sep 2021	WTE change since Aug 21	% change since Aug 21	WTE change since Dec 20	WTE change since Sep 20
Total Disabilities	3,199	3,240	+42	+1.3%	+137	+172
Consultants	0	0			-0	-0
Registrars	3	2	-1	-21.0%	-1	-1
SHO/ Interns	7	8	+1	+18.4%	+1	+1
Medical/ Dental, other	1	1				
Medical & Dental	11	12	+1	+5.4%	+0	+0
Nurse/ Midwife Manager	129	130	+1	+0.8%	+12	+7
Nurse/ Midwife Specialist & AN/MP	4	4				-1
Staff Nurse/ Staff Midwife	389	394	+5	+1.4%	+16	+15
<i>Pre-registration Nurse/ Midwife Intern</i>	8	1	-7	-93.3%	+1	-7
<i>Pre-registration Nurse Intern (COVID-19)</i>				-100.0%		
<i>Nursing/ Midwifery awaiting registration</i>		8	+8	-100.0%	+8	+8
Nursing/ Midwifery Student	8	9	+1	+13.3%	+9	-3
Nursing/ Midwifery other	3	3			+1	+1
Nursing & Midwifery	532	540	+7	+1.4%	+38	+20
Therapy Professions	144	148	+4	+2.5%	+9	+3
Health Science/ Diagnostics	2	2			-1	-1
Social Care	411	421	+10	+2.3%	+32	+51
Social Workers	33	34	+0	+0.8%	+2	-0
Psychologists	32	32	+1	+2.2%	+0	+2
Pharmacy	5	5	-0	-3.3%	+1	-0
H&SC, Other	3	2	-1	-40.0%		
Health & Social Care Professionals	629	642	+13	+2.1%	+43	+55
Management (VIII & above)	46	46	+1	+1.3%	+4	+9
Administrative/ Supervisory (V to VII)	93	92	-0	-0.4%	+0	+6
Clerical (III & IV)	106	103	-3	-2.8%	+2	+7
Management & Administrative	244	242	-3	-1.2%	+6	+22
Support	149	153	+3	+2.3%	-3	-5
Maintenance/ Technical	33	33	-0	-0.5%	+0	+1
General Support	183	186	+3	+1.8%	-2	-4
Health Care Assistants	1,190	1,201	+11	+0.9%	+54	+62
Care, other	392	401	+9	+2.4%	-2	+16
Home Help	17	17	+0	+2.2%	+0	-0
Patient & Client Care	1,599	1,619	+20	+1.3%	+53	+78

Older People

Sep 2021 (Dec 2020 figure: 1,021)	WTE Aug 2021	WTE Sep 2021	WTE change since Aug 21	% change since Aug 21	WTE change since Dec 20	WTE change since Sep 20
Total Older People	1,016	1,007	-8	-0.8%	-14	-29
SHO/ Interns	2	2				
Medical/ Dental, other	2	2				-2
Medical & Dental	4	4				-2
Nurse/ Midwife Manager	97	96	-1	-1.0%	+10	+12
Nurse/ Midwife Specialist & AN/MP	3	3			+0	-0
Staff Nurse/ Staff Midwife	245	241	-4	-1.6%	-0	+0
Nursing/ Midwifery Student	2	2			+1	-0
Nursing & Midwifery	348	342	-5	-1.5%	+10	+11
Health & Social Care Professionals	32	32	+0	+1.0%	+3	+1
Management (VIII & above)	6	6	-0	-2.6%	-1	-0
Administrative/ Supervisory (V to VII)	15	18	+3	+20.4%	+4	+6
Clerical (III & IV)	35	36	+1	+2.3%	-1	-1
Management & Administrative	57	61	+4	+6.5%	+2	+5
Support	116	115	-2	-1.5%	-4	+2
Maintenance/ Technical	2	2				
General Support	118	117	-2	-1.4%	-4	+2
Health Care Assistants	344	340	-3	-1.0%	-17	-39
Care, other	7	4	-3	-39.5%	-1	-1
Home Help	107	107	+0	+0.4%	-8	-7
Patient & Client Care	457	451	-5	-1.2%	-26	-47

CHO 7 Employment by Administration (HSE / S38): September 2021

Sep 2021 (Dec 2020 figure: 6,783)	WTE Aug 2021	WTE Sep 2021	WTE change since Aug 21	% change since Aug 21	WTE change since Dec 20	WTE change since Sep 20
Overall	6,949	6,979	+30	+0.4%	+196	+275
HSE	3,362	3,346	-15	-0.5%	+28	+75
Section 38 Voluntary Agencies	3,587	3,632	+46	+1.3%	+168	+200

HSE

Sep 2021 (Dec 2020 figure: 3,319)	WTE Aug 2021	WTE Sep 2021	WTE change since Aug 21	% change since Aug 21	WTE change since Dec 20	WTE change since Sep 20
Overall	3,362	3,346	-15	-0.5%	+28	+75
Consultants	60	59	-1	-0.0%	+1	-1
Registrars	91	93	+2	+0.0%	+2	+0
SHO/ Interns	29	30	+1	+0.0%	+5	+3
Medical/ Dental, other	71	70	-1	-0.0%	-8	-13
Medical & Dental	251	252	+1	+0.5%	+0	-11
Nurse/ Midwife Manager	268	267	-1	-0.0%	+19	+23
Nurse/ Midwife Specialist & AN/MP	73	72	-1	-0.0%	+4	+3
Staff Nurse/ Staff Midwife	550	549	-1	-0.0%	+4	+11
Public Health Nurse	188	186	-2	-0.0%	+10	+9
Pre-registration Nurse/ Midwife Intern	15	14	-1	-0.1%	+13	+14
Pre-registration Nurse Intern (COVID-19)	1	0	-0	-0.1%	+0	-16
Post-registration Nurse/ Midwife Student	1		-1	-1.0%	-21	-0
Nursing/ Midwifery awaiting registration	2	2		+0.0%	-8	-4
Nursing/ Midwifery Student	18	17	-2	-0.1%	-15	-7
Nursing/ Midwifery other	5	5	+0	+0.0%	-0	-3
Nursing & Midwifery	1,103	1,096	-7	-0.7%	+20	+36
Therapy Professions	318	316	-3	-0.0%	-24	-22
Social Care	10	11	+1	+0.1%	+0	-0
Social Workers	74	73	-1	-0.0%	+1	+2
Psychologists	66	65	-1	-0.0%	+1	-0
Pharmacy	25	25	+0	+0.0%	+1	-2
H&SC, Other	42	40	-1	-0.0%	+0	+1
Health & Social Care Professionals	536	530	-5	-1.0%	-21	-21
Management (VIII & above)	48	49	+1	+0.0%	+2	+3
Administrative/ Supervisory (V to VII)	130	136	+6	+0.0%	+14	+27
Clerical (III & IV)	267	266	-1	-0.0%	+4	+3
Management & Administrative	446	452	+6	+1.3%	+19	+33
Support	174	173	-1	-0.0%	-5	+2
Maintenance/ Technical	5	5		+0.0%		-0
General Support	179	178	-1	-0.6%	-5	+2
Health Care Assistants	482	475	-7	-0.0%	+5	+33
Care, other	242	239	-3	-0.0%	+16	+11
Home Help	124	124	+1	+0.0%	-7	-7
Patient & Client Care	847	839	-9	-1.0%	+14	+36

Section 38 Voluntary Agencies

Sep 2021 (Dec 2020 figure: 3,464)	WTE Aug 2021	WTE Sep 2021	WTE change since Aug 21	% change since Aug 21	WTE change since Dec 20	WTE change since Sep 20
Overall	3,587	3,632	+46	+1.3%	+168	+200
Consultants	8	8	-0	-0.0%	-0	-1
Registrars	9	8	-1	-0.1%	-1	-1
SHO/ Interns	13	14	+1	+0.1%	+1	-0
Medical/ Dental, other	2	2	-0	-0.0%		
Medical & Dental	32	33	+0	+1.5%	+0	-2
Nurse/ Midwife Manager	173	174	+2	+0.0%	+15	+10
Nurse/ Midwife Specialist & AN/MP	42	41	-1	-0.0%	-1	+6
Staff Nurse/ Staff Midwife	493	502	+9	+0.0%	+26	+24
<i>Pre-registration Nurse/ Midwife Intern</i>	8	1	-7	-0.9%	+1	+1
<i>Pre-registration Nurse Intern (COVID-19)</i>				-1.0%		-11
<i>Nursing/ Midwifery awaiting registration</i>		8	+8	-1.0%	+8	+8
Nursing/ Midwifery Student	8	9	+1	+0.1%	+9	-3
Nursing/ Midwifery other	5	5		+0.0%	+1	+1
Nursing & Midwifery	719	730	+11	+1.5%	+50	+38
Therapy Professions	134	140	+6	+0.0%	+18	+9
Health Science/ Diagnostics	3	3	+0	+0.0%	-1	-1
Social Care	411	421	+10	+0.0%	+32	+51
Social Workers	39	40	+1	+0.0%	+5	+2
Psychologists	21	21	+0	+0.0%	-1	-1
Pharmacy	15	15	-0	-0.0%	+2	+1
H&SC, Other	2	2		+0.0%		
Health & Social Care Professionals	625	642	+17	+2.8%	+54	+63
Management (VIII & above)	42	43	+1	+0.0%	+5	+10
Administrative/ Supervisory (V to VII)	99	97	-2	-0.0%	+5	+7
Clerical (III & IV)	125	123	-2	-0.0%	+5	+10
Management & Administrative	265	262	-3	-1.1%	+15	+27
Support	218	221	+3	+0.0%	-3	-6
Maintenance/ Technical	41	41	-0	-0.0%	+0	+1
General Support	259	262	+3	+1.2%	-3	-5
Health Care Assistants	1,302	1,310	+8	+0.0%	+57	+67
Care, other	385	393	+9	+0.0%	-4	+13
Patient & Client Care	1,686	1,703	+17	+1.0%	+52	+79

CHO 7 Employment by S38 Agency: September 2021

Cheeverstown House

Sep 2021 (Dec 2020 figure: 395)	WTE Aug 2021	WTE Sep 2021	WTE change since Aug 21	% change since Aug 21	WTE change since Dec 20	WTE change since Sep 20
Overall	418	422	+5	+1.1%	+28	+33
Consultants				-1.0%	-0	-0
Medical/ Dental, other	1	1		+0.0%		
Medical & Dental	1	1			-0	-0
Nurse/ Midwife Manager	32	34	+2	+0.1%	+7	+7
Nurse/ Midwife Specialist & AN/MP	2	2		+0.0%		
Staff Nurse/ Staff Midwife	102	103	+1	+0.0%	-3	+1
Nursing & Midwifery	136	138	+3	+1.9%	+4	+8
Therapy Professions	12	12		+0.0%	-1	
Social Care	43	43		+0.0%	+9	+10
Social Workers	5	5		+0.0%	+1	+1
Psychologists	3	3		+0.0%	-2	-2
Pharmacy		1	+1	-1.0%	+0	+0
H&SC, Other	2	2		+0.0%		
Health & Social Care Professionals	65	66	+1	+0.8%	+7	+9
Management (VIII & above)	5	5		+0.0%	+2	+3
Administrative/ Supervisory (V to VII)	15	15		+0.0%	+1	+0
Clerical (III & IV)	15	15		+0.0%	+3	+3
Management & Administrative	35	35			+5	+6
Support	25	27	+2	+0.1%	-0	-0
Maintenance/ Technical	4	4		+0.0%		
General Support	29	30	+2	+5.2%	-0	-0
Health Care Assistants	139	139		+0.0%	+10	+10
Care, other	12	12		+0.0%	+2	+1
Patient & Client Care	151	151			+12	+11

Kare, Newbridge, Co Kildare

Sep 2021 (Dec 2020 figure: 377)	WTE Aug 2021	WTE Sep 2021	WTE change since Aug 21	% change since Aug 21	WTE change since Dec 20	WTE change since Sep 20
Overall	402	415	+13	+3.2%	+38	+51
Nurse/ Midwife Manager	8	8		+0.0%	+1	+1
Staff Nurse/ Staff Midwife	20	21	+1	+0.0%	-5	-3
Nursing & Midwifery	28	29	+1	+2.8%	-4	-2
Therapy Professions	16	17	+1	+0.1%	+4	+5
Social Care	78	81	+3	+0.0%	+13	+18
Social Workers	3	3	+0	+0.1%	-0	-0
Psychologists	8	8		+0.0%	+0	+1
Health & Social Care Professionals	105	109	+4	+4.1%	+17	+24
Management (VIII & above)	6	6		+0.0%		+1
Administrative/ Supervisory (V to VII)	13	14	+1	+0.0%	+0	+0
Clerical (III & IV)	16	15	-1	-0.0%	+1	+2
Management & Administrative	35	35	-0	-0.6%	+1	+3
Support	1	1		+0.0%	-0	-0
General Support	1	1			-0	-0
Health Care Assistants	119	124	+5	+0.0%	+19	+14
Care, other	114	117	+3	+0.0%	+5	+12
Patient & Client Care	233	241	+8	+3.4%	+24	+27

Our Lady's Hospice & Care Services

Sep 2021 (Dec 2020 figure: 496)	WTE Aug 2021	WTE Sep 2021	WTE change since Aug 21	% change since Aug 21	WTE change since Dec 20	WTE change since Sep 20
Overall	516	517	+1	+0.1%	+21	+26
Consultants	8	8	-0	-0.0%	+0	-1
Registrars	6	6	-0	-0.0%	-0	-0
SHO/ Interns	6	6	-0	-0.0%	-0	-1
Medical/ Dental, other	1	1	-0	-0.0%		
Medical & Dental	21	21	-0	-0.6%	+0	-2
Nurse/ Midwife Manager	46	47	+1	+0.0%	+3	+4
Nurse/ Midwife Specialist & AN/MP	37	37	-1	-0.0%	-1	+6
Staff Nurse/ Staff Midwife	104	107	+3	+0.0%	+10	+8
Nursing/ Midwifery other	2	2		+0.0%		
Nursing & Midwifery	190	193	+4	+1.9%	+12	+18
Therapy Professions	36	38	+2	+0.0%	+2	-1
Health Science/ Diagnostics	1	1	+0	+0.0%	-0	+0
Social Workers	12	12	+0	+0.0%	+2	+1
Psychologists	1	1	-0	-0.0%	+0	+0
Pharmacy	10	10	+0	+0.0%	+1	+2
Health & Social Care Professionals	59	61	+2	+3.1%	+4	+1
Management (VIII & above)	4	4	+0	+0.0%	+0	+0
Administrative/ Supervisory (V to VII)	22	21	-1	-0.1%	+2	+4
Clerical (III & IV)	31	31	+0	+0.0%	+2	+2
Management & Administrative	57	56	-1	-2.3%	+4	+5
Support	68	68	-0	-0.0%	-1	-1
Maintenance/ Technical	8	8	-0	-0.0%	-0	-0
General Support	76	76	-0	-0.1%	-1	-1
Health Care Assistants	112	109	-3	-0.0%	+2	+5
Care, other	1		-1	-1.0%	-1	-1
Patient & Client Care	113	109	-3	-2.9%	+1	+4

Peamount Hospital (Newcastle)

Sep 2021 (Dec 2020 figure: 483)	WTE Aug 2021	WTE Sep 2021	WTE change since Aug 21	% change since Aug 21	WTE change since Dec 20	WTE change since Sep 20
Overall	536	528	-8	-1.5%	+45	-4
Registrars	2	1	-1	-0.3%	-1	-1
SHO/ Interns	7	8	+1	+0.2%	+1	+1
Medical & Dental	9	9	+1	+6.9%	+0	+0
Nurse/ Midwife Manager	33	34	+1	+0.0%	+6	+2
Nurse/ Midwife Specialist & AN/MP	2	2		+0.0%		
Staff Nurse/ Staff Midwife	91	93	+2	+0.0%	+17	+3
Nursing Education/Clinical	1	1		+0.0%	+1	
Nursing/ Midwifery other	1	1		+0.0%		
Nursing & Midwifery	127	129	+2	+1.7%	+23	+5
Therapy Professions	39	40	+1	+0.0%	+11	+3
Health Science/ Diagnostics	2	2		+0.0%	-1	-1
Social Care	5	5		+0.0%	+1	+1
Social Workers	6	6	+0	+0.0%	+1	+0
Psychologists	1	1		+0.0%	+1	+1
Psychologists	1	1		+0.0%	+1	+1
Pharmacy	5	4	-1	-0.1%	+0	-0
Health & Social Care Professionals	58	58	+0	+0.3%	+14	+3
Management (VIII & above)	5	5	+0	+0.0%	+1	+1
Administrative/ Supervisory (V to VII)	18	16	-2	-0.1%	-1	-2
Clerical (III & IV)	21	20	-1	-0.1%	+0	+1
Management & Administrative	44	41	-3	-7.0%	+0	-0
Support	45	45	+0	+0.0%	+0	-1
Maintenance/ Technical	9	9	-0	-0.0%	-0	+0
General Support	53	53	-0	-0.1%	+0	-0
Health Care Assistants	244	236	-8	-0.0%	+10	-10
Care, other	1	1		+0.0%	-2	-3
Patient & Client Care	245	237	-8	-3.2%	+7	-12

Stewart's Hospital, (Palmerstown)

Sep 2021 (Dec 2020 figure: 914)	WTE Aug 2021	WTE Sep 2021	WTE change since Aug 21	% change since Aug 21	WTE change since Dec 20	WTE change since Sep 20
Overall	936	951	+15	+1.6%	+37	+71
Consultants	0	0		+0.0%		
Medical & Dental	0	0				
Nurse/ Midwife Manager	33	33		+0.0%	+2	+1
Staff Nurse/ Staff Midwife	80	81	+1	+0.0%	+0	+7
Pre-registration Nurse/ Midwife Intern	8	1	-7	-0.9%	+1	+1
Pre-registration Nurse Intern (COVID-19)				-1.0%		-11
Nursing/ Midwifery awaiting registration		8	+8	-1.0%	+8	+8
Nursing/ Midwifery Student	8	9	+1	+0.1%	+9	-3
Nursing/ Midwifery other	2	2		+0.0%	+1	+1
Nursing & Midwifery	122	124	+2	+1.2%	+11	+6
Therapy Professions	19	22	+3	+0.2%	+3	+7
Social Care	16	22	+6	+0.4%	+9	+9
Social Workers	6	7	+1	+0.1%	+1	+1
Psychologists	5	5	+1	+0.1%	+2	+2
Health & Social Care Professionals	45	55	+10	+22.1%	+14	+18
Management (VIII & above)	17	17		+0.0%	+1	+5
Administrative/ Supervisory (V to VII)	20	21	+1	+0.0%	+4	+5
Clerical (III & IV)	23	23		+0.0%	-2	+2
Management & Administrative	60	61	+1	+0.8%	+4	+12
Support	53	53		+0.0%	-2	-3
Maintenance/ Technical	7	7		+0.0%	+1	+1
General Support	60	60			-1	-2
Health Care Assistants	528	533	+5	+0.0%	+13	+34
Care, other	120	118	-2	-0.0%	-4	+2
Patient & Client Care	648	651	+3	+0.5%	+10	+37

St. John of God Liffey Services

Sep 2021 (Dec 2020 figure: 801)	WTE Aug 2021	WTE Sep 2021	WTE change since Aug 21	% change since Aug 21	WTE change since Dec 20	WTE change since Sep 20
Overall	779	799	+20	+2.6%	-1	+25
Registrars	1	1		+0.0%		
Medical & Dental	1	1				
Nurse/ Midwife Manager	20	18	-1	-0.1%	-3	-4
Nurse/ Midwife Specialist & AN/MP	1	1		+0.0%		
Staff Nurse/ Staff Midwife	96	97	+2	+0.0%	+6	+7
Nursing & Midwifery	116	116	+0	+0.2%	+3	+3
Therapy Professions	12	12	-0	-0.0%	-2	-5
Social Care	269	270	+1	+0.0%	+0	+14
Social Workers	7	7	+0	+0.0%	+1	+1
Psychologists	5	5		+0.0%	-2	-2
Health & Social Care Professionals	292	293	+1	+0.2%	-2	+8
Management (VIII & above)	5	6	+1	+0.1%	+1	-0
Administrative/ Supervisory (V to VII)	10	10	+1	+0.1%	-1	+0
Clerical (III & IV)	19	19	-0	-0.0%	+1	+1
Management & Administrative	34	35	+1	+3.4%	+1	+1
Support	25	27	+2	+0.1%	-1	-1
Maintenance/ Technical	14	14	-0	-0.0%	-0	-0
General Support	39	41	+2	+4.5%	-2	-1
Health Care Assistants	159	168	+8	+0.1%	+2	+13
Care, other	137	145	+8	+0.1%	-4	+1
Patient & Client Care	296	313	+17	+5.6%	-1	+13

CHO 7 Employment by Grade Group & Staff Category: September 2021

Sep 2021 (Dec 2020 figure: 6,783)	WTE Aug 2021	WTE Sep 2021	WTE change since Aug 21	% change since Aug 21	WTE change since Dec 20	WTE change since Sep 20
Overall	6,949	6,979	+30	+0.4%	+196	+275
Consultant Medicine	9	9	-0	-0.1%	+0	-1
Consultant Paediatrics	0	0				
Consultant Psychiatry	59	58	-1	-1.5%	+1	-1
Consultant Surgery				-100.0%		-1
Consultants	68	67	-1	-1.3%	+1	-3
Registrar	72	73	+1	+1.8%	-1	-4
Senior Registrar	23	23	+0	+0.1%	+3	+4
Specialist Registrar	5	5	-0	-1.4%	-1	-0
Registrars	100	102	+1	+1.3%	+1	-1
Interns	2	2	-0	-9.0%	-0	-0
Senior House Officer	39	42	+3	+6.9%	+6	+3
SHO/ Interns	41	44	+3	+6.1%	+6	+3
Dentists	33	34	+1	+1.8%	-1	-2
Other Medical	40	38	-2	-4.3%	-7	-11
Medical/ Dental, other	73	72	-1	-1.5%	-8	-13
Medical & Dental	283	285	+2	+0.7%	+14	-13
Clinical Nurse/ Midwife Manager	354	352	-2	-0.5%	+24	+22
Director Nursing/Midwifery, Assistant	67	69	+2	+3.2%	+11	+10
Director of Nursing/Midwifery	19	19	+0	+2.1%	-2	+0
Nurse/ Midwife Manager	440	441	+1	+0.2%	+34	+33
Advanced Nurse/ Midwife Practitioner	15	14	-1	-5.3%	+2	+2
Clinical Nurse/ Midwife Specialist	100	99	-1	-1.3%	+1	+7
Nurse/ Midwife Specialist & AN/MP	114	112	-2	-1.8%	+3	+9
Staff Nurse [Intellectual Disability]	213	214	+2	+0.8%	+22	+45
Staff Nurse [Psychiatric]	195	197	+2	+1.2%	-0	+12
Staff Nurses [General/ Children's]	636	640	+4	+0.6%	+8	-22
Staff Nurse/ Staff Midwife	1,043	1,051	+8	+0.7%	+30	+34
Public Health Nurse	188	186	-2	-1.0%	+10	+9
Pre-registration Nurse/ Midwife Intern	22	15	-8	-34.7%	+14	+15
Pre-registration Nurse Intern (COVID-19)	1	0	-0	-12.0%	-3	-27
Post-registration Nurse/ Midwife Student	1		-1	-100.0%	-24	-0
Nursing/ Midwifery awaiting registration	2	10	+8	+400.0%	+6	+4
Nursing/ Midwifery Student	26	25	-1	-3.3%	-7	-9
Nursing Education/Clinical	9	9	+0	+1.7%	-0	-3
Other Nursing/ Midwifery	1	1			+1	+1
Nursing/ Midwifery other	10	10	+0	+1.5%	+1	-2
Nursing & Midwifery	1,822	1,826	+4	+0.2%	+126	+75
Dietitians	25	25	-0	-1.3%	-1	-2
Occupational Therapists	183	184	+1	+0.8%	+1	-7
Orthoptists	3	3	-0	-0.3%	+0	+1
Physiotherapists	121	122	+1	+0.4%	+1	-5
Podiatrists & Chiropodists	2	2			+1	-1
Speech & Language Therapists	119	121	+2	+1.5%	-8	+0
Therapy Professions	453	456	+3	+0.8%	-6	-13
Clinical Measurement	2	2				
Phlebotomists	1	1	+0	+4.2%	-0	+0
Radiographers				-100.0%	-1	-1

Sep 2021 (Dec 2020 figure: 6,783)	WTE Aug 2021	WTE Sep 2021	WTE change since Aug 21	% change since Aug 21	WTE change since Dec 20	WTE change since Sep 20
Overall	6,949	6,979	+30	+0.4%	+196	+275
Health Science/ Diagnostics	3	3	+0	+1.4%	-1	-1
Social Care	422	432	+10	+2.4%	+32	+51
Social Workers	114	114	+0	+0.2%	+6	+4
Psychologists	87	86	-1	-0.7%	-0	-1
Pharmacy	40	40	+0	+0.1%	+3	-0
Counsellor Therapists	37	36	-1	-2.6%	+1	+1
Dental Hygienists	4	4	-0	-9.8%	-0	-0
Other Health & Social Care	1	1			+0	+0
Play Therapists/ Specialists	1	1				
H&SC, Other	43	42	-1	-3.2%	+0	+1
Health & Social Care Professionals	1,161	1,173	+12	+1.0%	+79	+42
Executive Management	18	18	-0	-0.6%	+2	+2
Senior Management (VIII & GM)	72	74	+1	+1.8%	+5	+10
Management (VIII & above)	90	91	+1	+1.3%	+7	+12
Middle Management (V-VII)	229	233	+4	+1.8%	+20	+35
Other Administrative				-100.0%	-1	-1
Administrative/ Supervisory (V to VII)	229	233	+4	+1.8%	+19	+34
Clerical (III & IV)	392	389	-2	-0.6%	+9	+13
Management & Administrative	711	714	+3	+0.4%	+108	+60
Catering	54	53	-1	-1.6%	-3	-2
Household Services	263	265	+2	+0.6%	+0	+1
Other Labs & Associated	1	1				-0
Other Support	15	16	+2	+11.1%	+1	+2
Portering	58	58	-0	-0.2%	-7	-5
Support	391	394	+2	+0.6%	-8	-4
Maintenance	40	40	-0	-0.5%	-2	-1
Technical Services	7	7			+2	+2
Maintenance/ Technical	47	47	-0	-0.4%	+0	+1
General Support	438	440	+2	+0.5%	-11	-3
HCA, Nurse's Aide, etc.	1,688	1,692	+4	+0.2%	+41	+57
HCA (Student Nurse/Midwife COVID-19)				-100.0%	-4	-29
Health & Social Care Assistants	21	19	-2	-9.7%	+1	-2
Swabber (COVID-19)	75	74	-1	-0.8%	+24	+74
Health Care Assistants	1,783	1,785	+1	+0.1%	+62	+99
Other Care Grades	627	632	+5	+0.9%	+11	+23
Care, other	627	632	+5	+0.9%	+11	+23
Home Help	124	124	+1	+0.6%	-7	-7
Patient & Client Care	2,534	2,542	+8	+0.3%	+150	+115

CHO 7 HSE Employment by Grade Group & Staff Category: September 2021

Sep 2021 (Dec 2020 figure: 3,319)	WTE Aug 2021	WTE Sep 2021	WTE change since Aug 21	% change since Aug 21	WTE change since Dec 20	WTE change since Sep 20
Overall	3,362	3,346	-15	-0.5%	+28	+75
Consultant Medicine	1	1				
Consultant Psychiatry	59	58	-1	-1.5%	+1	-0
Consultant Surgery				-100.0%		-1
Consultants	60	59	-1	-1.4%	+1	-1
Registrar	67	69	+2	+2.9%	-1	-3
Senior Registrar	23	23	+0	+0.1%	+3	+3
Specialist Registrar	1	1				
Registrars	91	93	+2	+2.1%	+2	+0
SHO/ Interns	29	30	+1	+4.5%	+5	+3
Dentists	33	34	+1	+1.8%	-1	-2
Other Medical	37	36	-2	-4.4%	-7	-11
Medical/ Dental, other	71	70	-1	-1.5%	-8	-13
Medical & Dental	251	252	+1	+0.5%	+10	-11
Clinical Nurse/ Midwife Manager	194	190	-4	-2.1%	+8	+11
Director Nursing/Midwifery, Assistant	59	61	+2	+3.7%	+11	+11
Director of Nursing/Midwifery	15	16	+1	+4.6%	-0	+2
Nurse/ Midwife Manager	268	267	-1	-0.4%	+19	+23
Advanced Nurse/ Midwife Practitioner	10	9	-1	-7.7%	+2	+2
Clinical Nurse/ Midwife Specialist	63	62	-1	-0.9%	+2	+1
Nurse/ Midwife Specialist & AN/MP	73	72	-1	-1.9%	+4	+3
Staff Nurse [Intellectual Disability]	1	1				
Staff Nurse [Psychiatric]	195	197	+2	+1.2%	-0	+12
Staff Nurses [General/ Children's]	355	351	-3	-1.0%	+5	-1
Staff Nurse/ Staff Midwife	550	549	-1	-0.2%	+4	+11
Public Health Nurse	188	186	-2	-1.0%	+10	+9
Pre-registration Nurse/ Midwife Intern	15	14	-1	-5.3%	+14	+14
Pre-registration Nurse Intern (COVID-19)	1	0	-0	-12.0%	-3	-16
Post-registration Nurse/ Midwife Student	1		-1	-100.0%	-24	-0
Nursing/ Midwifery awaiting registration	2	2			-2	-4
Nursing/ Midwifery Student	18	17	-2	-10.1%	-15	-7
Nursing Education/Clinical	5	5	+0	+2.9%	-0	-3
Nursing/ Midwifery other	5	5	+0	+2.9%	-0	-3
Nursing & Midwifery	1,103	1,096	-7	-0.7%	+69	+36
Dietitians	17	17	-0	-1.9%	-0	-1
Occupational Therapists	133	133	-0	-0.0%	-12	-13
Orthoptists	3	3	-0	-0.3%	+0	+1
Physiotherapists	76	75	-1	-1.0%	-2	-3
Podiatrists & Chiropodists	2	2			+1	-1
Speech & Language Therapists	88	87	-2	-1.8%	-10	-7
Therapy Professions	318	316	-3	-0.8%	-24	-22
Social Care	10	11	+1	+5.4%	+0	-0
Social Workers	74	73	-1	-1.2%	+1	+2
Psychologists	66	65	-1	-1.7%	+1	-0
Pharmacy	25	25	+0	+0.2%	+1	-2
Counsellor Therapists	35	34	-1	-2.8%	+1	+1
Dental Hygienists	4	4	-0	-9.8%	-0	-0
Other Health & Social Care	1	1			+0	+0
Play Therapists/ Specialists	1	1				
H&SC, Other	42	40	-1	-3.3%	+0	+1

Sep 2021 (Dec 2020 figure: 3,319)	WTE Aug 2021	WTE Sep 2021	WTE change since Aug 21	% change since Aug 21	WTE change since Dec 20	WTE change since Sep 20
Overall	3,362	3,346	-15	-0.5%	+28	+75
Health & Social Care Professionals	536	530	-5	-1.0%	-3	-21
Executive Management	10	10	-0	-1.1%	+1	-0
Senior Management (VIII & GM)	38	39	+1	+1.6%	+1	+3
Management (VIII & above)	48	49	+1	+1.0%	+2	+3
Administrative/ Supervisory (V to VII)	130	136	+6	+4.7%	+14	+27
Clerical (III & IV)	267	266	-1	-0.3%	+4	+3
Management & Administrative	446	452	+6	+1.3%	+74	+33
Catering	27	27	-0	-0.1%	+1	+2
Household Services	97	96	-1	-1.2%	-2	+1
Other Support	6	6	+0	+2.5%	-0	+1
Portering	43	43	+0	+0.0%	-3	-2
Support	174	173	-1	-0.6%	-5	+2
Maintenance/ Technical	5	5				-0
General Support	179	178	-1	-0.6%	+2	+2
HCA, Nurse's Aide, etc.	392	387	-4	-1.1%	-14	-11
HCA (Student Nurse/Midwife COVID-19)				-100.0%	-4	-28
Health & Social Care Assistants	15	14	-2	-11.6%	-1	-2
Swabber (COVID-19)	75	74	-1	-0.8%	+24	+74
Health Care Assistants	482	475	-7	-1.4%	+5	+33
Care, other	242	239	-3	-1.3%	+16	+11
Home Help	124	124	+1	+0.6%	-7	-7
Patient & Client Care	847	839	-9	-1.0%	+43	+36

Employment by WTE, Headcount, Gender, Full-Time /Part-Time etc.: Sep 2021

CHO 7	WTE	Headcount	WTE: no.	% Male	% female	Male WTE: no.	Female WTE: no.	% Total Perm	% Male Perm	% Female Perm	% Total Full Time	% Total Part Time	% Male FT	% Female FT
Overall	6,979	8,142	1.17	20.4%	79.6%	1.09	1.19	87.1%	83.9%	88.0%	70.4%	29.6%	83.0%	67.2%
Consultant Medicine	9	10	1.15	30.0%	70.0%	1.13	1.16	70.0%	70.0%	71.4%	70.0%	30.0%	66.7%	71.4%
Consultant Paediatrics	0	1	2.94		100.0%		2.94	100.0%	100.0%	100.0%	0.0%	100.0%		0.0%
Consultant Psychiatry	58	62	1.07	32.3%	67.7%	1.00	1.10	58.1%	58.1%	54.8%	87.1%	12.9%	100.0%	81.0%
Consultants	67	73	1.09	31.5%	68.5%	1.02	1.13	60.3%	65.2%	58.0%	83.6%	16.4%	95.7%	78.0%
Registrar	73	77	1.05	29.9%	70.1%	1.08	1.04	5.2%	5.2%	3.7%	100.0%	0.0%	100.0%	100.0%
Senior Registrar	23	24	1.02	33.3%	66.7%	1.01	1.03	0.0%	0.0%	0.0%	95.8%	4.2%	100.0%	93.8%
Specialist Registrar	5	5	1.01	20.0%	80.0%	1.00	1.02	0.0%	0.0%	0.0%	100.0%	0.0%	100.0%	100.0%
Registrars	102	106	1.04	30.2%	69.8%	1.06	1.04	3.8%	6.3%	2.7%	99.1%	0.9%	100.0%	98.6%
SHO/ Interns	44	46	1.05	34.8%	65.2%	1.01	1.07	6.5%	12.5%	3.3%	100.0%	0.0%	100.0%	100.0%
Dentists	34	41	1.21	12.2%	87.8%	1.12	1.22	100.0%	100.0%	100.0%	68.3%	31.7%	80.0%	66.7%
Other Medical	38	57	1.50	43.9%	56.1%	1.43	1.56	68.4%	68.4%	68.8%	26.3%	73.7%	20.0%	31.3%
Medical/ Dental, other	72	98	1.36	30.6%	69.4%	1.37	1.36	81.6%	73.3%	85.3%	43.9%	56.1%	30.0%	50.0%
Medical & Dental	285	323	1.14	31.3%	68.7%	1.11	1.15	40.6%	40.6%	40.5%	78.9%	21.1%	78.2%	79.3%
Clinical Nurse/ Midwife Manager	352	384	1.09	13.8%	86.2%	1.02	1.10	96.4%	96.4%	97.0%	85.7%	14.3%	98.1%	83.7%
Director Nursing/Midwifery, Assistant	69	73	1.05	17.8%	82.2%	1.00	1.06	97.3%	97.3%	96.7%	94.5%	5.5%	100.0%	93.3%
Director of Nursing/Midwifery	19	20	1.04	10.0%	90.0%	1.04	1.04	95.0%	95.0%	94.4%	95.0%	5.0%	100.0%	94.4%
Nurse/ Midwife Manager	441	477	1.08	14.3%	85.7%	1.02	1.09	96.4%	94.1%	96.8%	87.4%	12.6%	98.5%	85.6%
Advanced Nurse/ Midwife Practitioner	14	15	1.08	6.7%	93.3%	1.00	1.09	100.0%	100.0%	100.0%	86.7%	13.3%	100.0%	85.7%
Clinical Nurse/ Midwife Specialist	99	114	1.16	8.8%	91.2%	1.04	1.17	99.1%	99.1%	99.0%	73.7%	26.3%	100.0%	71.2%
Nurse/ Midwife Specialist & AN/MP	112	129	1.15	8.5%	91.5%	1.04	1.16	99.2%	100.0%	99.2%	75.2%	24.8%	100.0%	72.9%
Staff Nurse [Intellectual Disability]	214	248	1.16	11.7%	88.3%	1.05	1.17	96.4%	96.4%	96.3%	71.0%	29.0%	86.2%	68.9%
Staff Nurse [Psychiatric]	197	220	1.12	21.4%	78.6%	1.05	1.13	94.5%	94.5%	94.8%	83.6%	16.4%	91.5%	81.5%
Staff Nurses [General/ Children's]	640	739	1.16	10.0%	90.0%	1.04	1.17	91.5%	91.5%	91.7%	71.4%	28.6%	93.2%	69.0%
Staff Nurse/ Staff Midwife	1,051	1,207	1.15	12.4%	87.6%	1.05	1.16	93.0%	92.0%	93.2%	73.6%	26.4%	91.3%	71.1%
Public Health Nurse	186	226	1.21	0.4%	99.6%	1.11	1.21	95.6%	100.0%	95.6%	68.1%	31.9%	100.0%	68.0%
Pre-registration Nurse/ Midwife Intern	15	30	2.04	33.3%	66.7%	2.08	2.03	0.0%	0.0%	0.0%	96.7%	3.3%	100.0%	95.0%
Pre-registration Nurse Intern (COVID-19)	0	1	2.27		100.0%		2.27	0.0%	0.0%	0.0%	100.0%	0.0%		100.0%
Nursing/ Midwifery awaiting registration	10	10	1.00	10.0%	90.0%	1.00	1.00	0.0%	0.0%	0.0%	20.0%	80.0%	0.0%	22.2%

Nursing/ Midwifery Student	25	41	1.63	26.8%	73.2%	1.89	1.55	0.0%	0.0%	0.0%	78.0%	22.0%	90.9%	73.3%
Nursing Education/Clinical	9	11	1.24		100.0%		1.24	100.0%	100.0%	100.0%	72.7%	27.3%		72.7%
Other Nursing/ Midwifery	1	1	1.00		100.0%		1.00	100.0%	100.0%	100.0%	100.0%	0.0%		100.0%
Nursing/ Midwifery other	10	12	1.21		100.0%		1.21	100.0%		100.0%	75.0%	25.0%		75.0%
Nursing & Midwifery	1,826	2,092	1.15	11.5%	88.5%	1.06	1.16	92.7%	88.8%	93.2%	76.3%	23.7%	93.8%	74.1%
Dietitians	25	31	1.24	6.5%	93.5%	1.00	1.27	93.5%	93.5%	93.1%	64.5%	35.5%	100.0%	62.1%
Occupational Therapists	184	215	1.17	7.4%	92.6%	1.03	1.18	91.6%	91.6%	91.5%	79.1%	20.9%	93.8%	77.9%
Orthoptists	3	3	1.00	66.7%	33.3%	1.00	1.01	33.3%	33.3%	100.0%	100.0%	0.0%	100.0%	100.0%
Physiotherapists	122	146	1.20	21.9%	78.1%	1.08	1.24	95.9%	95.9%	96.5%	74.7%	25.3%	90.6%	70.2%
Podiatrists & Chiropodists	2	2	1.33		100.0%		1.33	100.0%	100.0%	100.0%	50.0%	50.0%		50.0%
Speech & Language Therapists	121	137	1.13	1.5%	98.5%	1.00	1.14	90.5%	90.5%	91.9%	90.5%	9.5%	100.0%	90.4%
Therapy Professions	456	534	1.17	10.1%	89.9%	1.06	1.18	92.3%	87.0%	92.9%	80.0%	20.0%	92.6%	78.5%
Clinical Measurement	2	2	1.00	100.0%		1.00		100.0%	100.0%		100.0%	0.0%	100.0%	
Phlebotomists	1	2	2.02		100.0%		2.02	100.0%	100.0%	100.0%	0.0%	100.0%		0.0%
Health Science/ Diagnostics	3	4	1.34	50.0%	50.0%	1.00	2.02	100.0%	100.0%	100.0%	50.0%	50.0%	100.0%	0.0%
Social Care	432	473	1.10	28.3%	71.7%	1.09	1.10	94.9%	94.8%	95.0%	75.1%	24.9%	84.3%	71.4%
Social Workers	114	133	1.17	15.8%	84.2%	1.18	1.17	96.2%	90.5%	97.3%	81.2%	18.8%	85.7%	80.4%
Psychologists	86	97	1.13	22.7%	77.3%	1.13	1.12	97.9%	100.0%	97.3%	81.4%	18.6%	77.3%	82.7%
Pharmacy	40	48	1.19	18.8%	81.3%	1.03	1.24	60.4%	22.2%	69.2%	54.2%	45.8%	33.3%	59.0%
Counsellor Therapists	36	41	1.15	31.7%	68.3%	1.11	1.17	97.6%	97.6%	96.4%	68.3%	31.7%	76.9%	64.3%
Dental Hygienists	4	7	1.86		100.0%		1.86	100.0%	100.0%	100.0%	14.3%	85.7%		14.3%
Other Health & Social Care	1	3	2.33	33.3%	66.7%	1.25	4.08	100.0%	100.0%	100.0%	0.0%	100.0%	0.0%	0.0%
Play Therapists/ Specialists	1	1	1.00	100.0%		1.00		100.0%	100.0%		100.0%	0.0%	100.0%	
H&SC, Other	42	52	1.24	28.8%	71.2%	1.11	1.31	98.1%	100.0%	97.3%	57.7%	42.3%	73.3%	51.4%
Health & Social Care	1,173	1,341	1.14	19.2%	80.8%	1.09	1.16	93.1%	91.1%	93.6%	76.6%	23.4%	83.3%	75.0%
Executive Management	18	18	1.01	33.3%	66.7%	1.00	1.01	83.3%	83.3%	91.7%	100.0%	0.0%	100.0%	100.0%
Senior Management (VIII & GM)	74	78	1.06	29.5%	70.5%	1.09	1.05	96.2%	96.2%	98.2%	96.2%	3.8%	95.7%	96.4%
Management (VIII & above)	91	96	1.05	30.2%	69.8%	1.07	1.04	93.8%	86.2%	97.0%	96.9%	3.1%	96.6%	97.0%
Administrative/ Supervisory (V to VII)	233	249	1.07	22.9%	77.1%	1.03	1.08	94.4%	94.7%	94.3%	88.4%	11.6%	96.5%	85.9%
Clerical (III & IV)	389	448	1.15	12.9%	87.1%	1.03	1.17	83.5%	75.9%	84.6%	71.7%	28.3%	89.7%	69.0%
Management & Administrative	714	793	1.11	18.2%	81.8%	1.04	1.13	88.1%	85.4%	88.8%	79.9%	20.1%	93.8%	76.9%
Catering	53	60	1.12	31.7%	68.3%	1.04	1.17	95.0%	95.0%	97.6%	76.7%	23.3%	94.7%	68.3%
Household Services	265	346	1.31	15.9%	84.1%	1.15	1.34	85.5%	85.5%	86.9%	39.6%	60.4%	70.9%	33.7%
Other Labs & Associated	1	1	1.00		100.0%		1.00	100.0%	100.0%	100.0%	100.0%	0.0%		100.0%
Other Support	16	21	1.28	76.2%	23.8%	1.27	1.33	76.2%	76.2%	100.0%	57.1%	42.9%	62.5%	40.0%

Portering	58	61	1.06	91.8%	8.2%	1.04	1.32	91.8%	91.8%	100.0%	82.0%	18.0%	87.5%	20.0%
Support	394	489	1.24	29.9%	70.1%	1.10	1.32	87.1%	83.6%	88.6%	50.3%	49.7%	79.5%	37.9%
Maintenance/ Technical	47	51	1.09	88.2%	11.8%	1.08	1.22	90.2%	88.9%	100.0%	84.3%	15.7%	88.9%	50.0%
General Support	440	540	1.23	35.4%	64.6%	1.10	1.31	87.4%	84.8%	88.8%	53.5%	46.5%	81.7%	38.1%
HCA, Nurse's Aide, etc.	1,692	1,980	1.17	23.6%	76.4%	1.08	1.20	86.9%	86.9%	86.2%	63.1%	36.9%	77.4%	58.7%
Health & Social Care Assistants	19	21	1.12	9.5%	90.5%	1.00	1.14	47.6%	47.6%	42.1%	71.4%	28.6%	100.0%	68.4%
Swabber (COVID-19)	74	88	1.19	33.0%	67.0%	1.13	1.22	0.0%	0.0%	0.0%	71.6%	28.4%	82.8%	66.1%
Health Care Assistants	1,785	2,089	1.17	23.9%	76.1%	1.08	1.20	82.8%	84.0%	82.5%	63.5%	36.5%	77.8%	59.1%
Care, other	632	727	1.15	28.2%	71.8%	1.12	1.16	93.4%	90.7%	94.4%	77.2%	22.8%	85.4%	73.9%
Home Help	124	237	1.90	8.0%	92.0%	3.50	1.83	82.7%	57.9%	84.9%	19.4%	80.6%	15.8%	19.7%
Patient & Client Care	2,542	3,053	1.20	23.7%	76.3%	1.11	1.23	85.3%	85.2%	85.4%	63.3%	36.7%	78.3%	58.7%

Employment by WTE, Headcount, Gender, Full-Time /Part-Time etc.: Sep 2021

CHO 7	WTE	Headcount	WTE: no.	% Male	% female	Male WTE: no.	Female WTE: no.	% Total Perm	% Male Perm	% Female Perm	% Total Full Time	% Total Part Time	% Male FT	% Female FT
Overall	6,979	8,142	1.17	20.4%	79.6%	1.09	1.19	87.1%	83.9%	88.0%	70.4%	29.6%	83.0%	67.2%
Community Health & Wellbeing	10	11	1.10	18.2%	81.8%	1.00	1.12	100.0%	100.0%	100.0%	81.8%	18.2%	100.0%	100.0%
Mental Health	883	981	1.11	23.8%	76.2%	1.06	1.13	81.1%	81.1%	83.0%	87.8%	12.2%	95.7%	95.7%
Primary Care	1,838	2,173	1.18	16.4%	83.6%	1.08	1.20	85.7%	85.7%	87.5%	69.1%	30.9%	81.7%	81.7%
Social Care	4,248	4,977	1.17	21.4%	78.6%	1.10	1.19	88.9%	88.9%	89.1%	67.6%	32.4%	80.7%	80.7%

CHO 7 Skills Mix by Staff Grouping: September 2021

Sep 2021 (Dec 2019 figure: 6,515)	WTE Dec 2016	WTE Dec 2017	WTE Dec 2018	WTE Dec 2019	WTE Dec 2020	WTE Aug 2021	WTE Sep 2021
Overall	5,579	6,406	6,557	6,515	6,783	6,949	6,979
Consultant Medicine	3.2%	3.5%	2.7%	2.5%	3.0%	3.1%	3.0%
Consultant Paediatrics	0.1%	0.1%	0.1%	0.1%	0.1%	0.1%	0.1%
Consultant Psychiatry	19.2%	18.2%	18.1%	19.2%	20.1%	20.8%	20.4%
Consultant Surgery	0.3%	0.2%	0.5%	0.3%			
Consultants	22.8%	22.0%	21.3%	22.1%	23.3%	24.0%	23.6%
Registrar	22.2%	20.7%	24.9%	26.5%	26.1%	25.4%	25.7%
Senior Registrar	4.1%	3.7%	5.3%	7.0%	7.0%	8.3%	8.2%
Specialist Registrar	1.5%	2.2%	1.8%	1.5%	2.1%	1.8%	1.7%
Registrars	27.8%	26.6%	31.9%	35.0%	35.2%	35.5%	35.7%
Interns	0.8%	0.8%	0.8%	0.7%	0.7%	0.7%	0.6%
Senior House Officer	15.3%	16.0%	12.6%	12.5%	12.8%	13.9%	14.8%
SHO/ Interns	16.1%	16.8%	13.3%	13.2%	13.5%	14.6%	15.4%
Dentists	15.6%	13.9%	13.8%	12.5%	12.4%	11.8%	11.9%
Other Medical	17.7%	20.8%	19.6%	17.2%	15.7%	14.0%	13.4%
Medical/ Dental, other	33.3%	34.7%	33.4%	29.7%	28.0%	25.9%	25.3%
Medical & Dental	4.6%	4.0%	4.0%	4.2%	4.0%	100.0%	4.1%
Clinical Nurse/ Midwife Manager	18.8%	19.0%	18.9%	19.3%	18.7%	19.4%	19.3%
Director Nursing/Midwifery, Assistant	3.3%	2.9%	3.3%	3.1%	3.3%	3.7%	3.8%
Director of Nursing/Midwifery	1.0%	1.3%	1.1%	0.9%	1.2%	1.0%	1.1%
Nurse/ Midwife Manager	23.2%	23.2%	23.3%	23.3%	23.2%	24.2%	24.2%
Advanced Nurse/ Midwife Practitioner	0.1%	0.1%	0.1%	0.3%	0.7%	0.8%	0.8%
Clinical Nurse/ Midwife Specialist	4.1%	4.5%	5.0%	5.3%	5.6%	5.5%	5.4%
Nurse/ Midwife Specialist & AN/MP	4.2%	4.6%	5.1%	5.5%	6.2%	6.3%	6.2%
Staff Nurse [Intellectual Disability]	14.2%	13.4%	12.9%	11.4%	10.9%	11.7%	11.7%
Staff Nurse [Psychiatric]	13.3%	13.2%	11.7%	11.2%	11.2%	10.7%	10.8%
Staff Nurses [General/ Children's]	31.5%	32.9%	33.9%	35.7%	36.0%	34.9%	35.0%
Staff Nurse/ Staff Midwife	59.1%	59.4%	58.6%	58.4%	58.1%	57.3%	57.6%
Public Health Nurse	11.2%	10.8%	11.5%	10.3%	10.1%	10.3%	10.2%
Pre-registration Nurse/ Midwife Intern	0.1%		0.4%	0.1%	0.0%	1.2%	0.8%
Pre-registration Nurse Intern (COVID-19)					0.2%	0.0%	0.0%
Post-registration Nurse/ Midwife Student	1.4%	0.9%	0.4%	1.2%	1.4%	0.1%	
Nursing/ Midwifery awaiting registration		0.5%	0.2%	0.6%	0.2%	0.1%	0.5%
Nursing/ Midwifery Student	1.5%	1.4%	1.0%	1.9%	1.8%	1.4%	1.4%
Nursing/ Midwifery other	0.8%	0.5%	0.5%	0.6%	0.5%	0.5%	0.5%
Nursing & Midwifery	28.8%	26.9%	25.9%	26.1%	25.1%	100.0%	26.2%
Dietitians	2.4%	1.8%	2.3%	2.3%	2.3%	2.2%	2.1%
Occupational Therapists	21.3%	16.1%	16.9%	16.8%	16.1%	15.7%	15.7%
Orthoptists	0.0%				0.2%	0.3%	0.3%
Physiotherapists	15.4%	11.8%	11.5%	10.4%	10.6%	10.4%	10.4%
Podiatrists & Chiropodists	0.1%	0.1%	0.1%	0.1%	0.1%	0.1%	0.1%
Speech & Language Therapists	13.5%	12.1%	11.2%	11.5%	11.3%	10.3%	10.3%
Therapy Professions	52.8%	41.9%	41.9%	41.1%	40.6%	39.0%	38.9%
Audiology	0.1%						
Clinical Measurement	0.1%	0.1%	0.1%	0.1%	0.2%	0.2%	0.2%
Medical Science	0.1%						
Phlebotomists	0.1%	0.1%	0.1%	0.1%	0.1%	0.1%	0.1%
Radiographers	0.1%	0.1%	0.1%	0.1%	0.1%		
Health Science/ Diagnostics	0.5%	0.3%	0.3%	0.3%	0.4%	0.3%	0.3%
Social Care	14.2%	31.3%	32.8%	33.9%	35.1%	36.3%	36.8%
Social Workers	13.9%	10.7%	10.1%	9.6%	9.5%	9.8%	9.7%
Psychologists	8.7%	8.1%	7.7%	7.4%	7.6%	7.5%	7.3%

Sep 2021 (Dec 2019 figure: 6,515)	WTE Dec 2016	WTE Dec 2017	WTE Dec 2018	WTE Dec 2019	WTE Dec 2020	WTE Aug 2021	WTE Sep 2021
Overall	5,579	6,406	6,557	6,515	6,783	6,949	6,979
Pharmacy	4.8%	3.7%	3.5%	3.7%	3.3%	3.5%	3.4%
Counsellor Therapists	3.9%	3.1%	2.8%	3.3%	3.1%	3.2%	3.0%
Dental Hygienists	0.4%	0.3%	0.4%	0.5%	0.4%	0.4%	0.3%
Other Health & Social Care	0.6%	0.5%	0.4%	0.2%	0.1%	0.1%	0.1%
Play Therapists/ Specialists	0.1%	0.1%	0.1%	0.1%	0.1%	0.1%	0.1%
H&SC, Other	5.1%	4.1%	3.7%	4.1%	3.6%	3.7%	3.6%
Health & Social Care Professionals	14.2%	16.4%	16.7%	16.8%	16.1%	100.0%	16.8%
Executive Management	2.9%	2.5%	1.9%	2.1%	2.3%	2.5%	2.5%
Senior Management (VIII & GM)	8.7%	8.5%	9.2%	9.9%	10.1%	10.2%	10.3%
Management (VIII & above)	11.6%	11.0%	11.1%	12.0%	12.5%	12.7%	12.8%
Middle Management (V-VII)	23.7%	26.0%	27.2%	29.9%	31.4%	32.2%	32.6%
Other Administrative	0.1%	0.2%	0.1%	0.2%	0.1%		
Administrative/ Supervisory (V to VII)	23.8%	26.1%	27.3%	30.1%	31.5%	32.2%	32.6%
Clerical (III & IV)	64.6%	62.9%	61.6%	57.9%	56.0%	55.1%	54.5%
Management & Administrative	10.0%	9.5%	9.4%	9.3%	8.9%	100.0%	10.2%
Catering	12.0%	13.0%	12.8%	13.1%	12.5%	12.4%	12.1%
Household Services	59.9%	59.9%	60.4%	59.5%	59.2%	60.1%	60.2%
Other Labs & Associated	0.2%	0.2%	0.2%	0.2%	0.2%	0.2%	0.2%
Other Support	3.7%	3.0%	3.2%	3.1%	3.3%	3.4%	3.7%
Portering	16.7%	14.5%	14.6%	14.9%	14.4%	13.2%	13.1%
Support	92.6%	90.6%	91.2%	90.9%	89.7%	89.3%	89.4%
Maintenance/ Technical	7.4%	9.4%	8.8%	9.1%	10.3%	10.7%	10.6%
General Support	7.9%	7.7%	7.4%	6.9%	6.7%	100.0%	6.3%
HCA, Nurse's Aide, etc.	66.9%	66.4%	67.6%	68.7%	66.7%	66.6%	66.6%
HCA (Student Nurse/Midwife COVID-19)					0.2%		
Health & Social Care Assistants	0.4%	0.3%	0.9%	0.5%	0.7%	0.8%	0.7%
Swabber (COVID-19)					2.0%	2.9%	2.9%
Health Care Assistants	67.4%	66.7%	68.5%	69.2%	69.6%	70.4%	70.2%
Other Care Grades	24.4%	26.6%	25.8%	25.5%	25.1%	24.7%	24.9%
Care, other	24.4%	26.6%	25.8%	25.5%	25.1%	24.7%	24.9%
Home Help	8.2%	6.7%	5.7%	5.3%	5.3%	4.9%	4.9%
Patient & Client Care	34.6%	35.5%	36.5%	36.7%	35.3%	100.0%	36.4%
Total	100 %	100 %	100 %	100 %	100%	100 %	100 %

CHO 7 Skills Mix by Care Group: September 2021

Sep 2021 (Dec 2019 figure: 835)	WTE Dec 2016	WTE Dec 2017	WTE Dec 2018	WTE Dec 2019	WTE Dec 2020	WTE Aug 2021	WTE Sep 2021
Mental Health	828	859	835	835	861.41	882.23	883.22
Consultants	44.2%	43.0%	43.6%	41.6%	41.8%	42.6%	41.5%
Registrar	19.7%	17.8%	25.1%	22.9%	25.6%	21.6%	22.0%
Senior Registrar	9.4%	9.8%	12.7%	16.5%	15.8%	18.2%	18.0%
Specialist Registrar		1.0%		0.9%	0.8%	0.8%	0.8%
Registrars	29.1%	28.7%	37.8%	40.3%	42.2%	40.5%	40.8%
Interns	2.0%	2.1%	2.0%	1.7%	1.6%	1.6%	1.4%
Senior House Officer	24.7%	26.2%	16.6%	16.4%	14.4%	15.3%	16.2%
SHO/ Interns	26.7%	28.3%	18.6%	18.2%	16.0%	16.8%	17.6%
Medical & Dental	12.2%	11.1%	12.3%	13.8%	13.3%	14.7%	14.7%
Clinical Nurse/ Midwife Manager	25.7%	24.5%	27.0%	26.5%	25.3%	24.3%	23.9%
Director Nursing/Midwifery, Assistant	4.1%	4.5%	5.0%	4.3%	4.6%	4.3%	4.4%
Director of Nursing/Midwifery	0.8%	0.8%	0.8%	0.8%	1.0%	1.0%	1.0%
Nurse/ Midwife Manager	30.6%	29.8%	32.8%	31.5%	31.0%	29.5%	29.3%
Advanced Nurse/ Midwife Practitioner		0.3%	0.3%	0.8%	1.4%	1.8%	1.6%
Clinical Nurse/ Midwife Specialist	7.2%	6.7%	7.0%	10.0%	10.9%	11.4%	11.3%
Nurse/ Midwife Specialist & AN/MP	7.2%	7.0%	7.3%	10.8%	12.3%	13.2%	12.9%
Staff Nurse [Intellectual Disability]					0.3%	0.3%	0.3%
Staff Nurse [Psychiatric]	58.1%	58.4%	54.3%	51.1%	51.2%	48.2%	49.0%
Staff Nurses [General/ Children's]	1.9%	1.1%	1.2%	1.5%	1.7%	3.3%	3.3%
Staff Nurse/ Staff Midwife	60.1%	59.5%	55.5%	52.6%	53.2%	51.8%	52.5%
Public Health Nurse						0.2%	0.3%
Public Health Nurse						0.2%	0.3%
Pre-registration Nurse/ Midwife Intern	0.5%		1.6%	0.4%	0.1%	3.8%	3.6%
Pre-registration Nurse Intern (COVID-19)					0.9%	0.1%	0.1%
Post-registration Nurse/ Midwife Student					0.3%		
Nursing/ Midwifery awaiting registration		2.1%	1.1%	2.7%	0.8%		
Nursing/ Midwifery Student	0.5%	2.1%	2.8%	3.0%	2.0%	3.9%	3.7%
Nursing Education/Clinical	1.7%	1.6%	1.7%	2.0%	1.5%	1.3%	1.4%
Nursing/ Midwifery other	1.7%	1.6%	1.7%	2.0%	1.5%	1.3%	1.4%
Nursing & Midwifery	43.7%	44.9%	43.3%	44.3%	42.9%	44.8%	44.8%
Dietitians			1.4%	2.1%	2.5%	2.8%	2.8%
Occupational Therapists	30.6%	28.0%	29.8%	27.3%	29.3%	26.3%	25.6%
Speech & Language Therapists	5.0%	4.7%	3.5%	4.8%	4.7%	3.5%	3.6%
Therapy Professions	35.5%	32.7%	34.6%	34.2%	36.5%	32.6%	32.1%
Social Care	7.9%	7.4%	5.8%	5.4%	5.0%	5.3%	5.7%
Social Workers	30.2%	29.0%	26.2%	24.4%	25.7%	27.9%	28.8%
Psychologists	18.3%	20.7%	23.9%	22.4%	20.0%	21.6%	20.9%
Pharmacy				0.7%	0.7%	0.7%	0.7%
Counsellor Therapists	6.6%	8.4%	7.6%	11.4%	12.0%	11.5%	11.6%
Other Health & Social Care	1.5%	1.8%	1.8%	1.4%	0.3%	0.3%	0.3%
H&SC, Other	8.1%	10.2%	9.4%	12.9%	12.3%	11.9%	11.9%
Health & Social Care Professionals	16.4%	16.9%	16.8%	16.8%	16.3%	16.2%	16.2%
Management (VIII & above)	4.3%	4.1%	3.9%	4.3%	5.4%	6.9%	6.9%
Administrative/ Supervisory (V to VII)	18.8%	23.2%	25.3%	24.1%	24.7%	26.0%	25.7%
Clerical (III & IV)	76.9%	72.7%	70.8%	71.6%	69.9%	67.1%	67.4%
Management & Administrative	8.0%	8.0%	8.8%	7.8%	7.6%	7.9%	7.9%
Support	92.3%	92.1%	91.7%	90.5%	89.7%	89.4%	89.8%

Sep 2021 (Dec 2019 figure: 835)	WTE Dec 2016	WTE Dec 2017	WTE Dec 2018	WTE Dec 2019	WTE Dec 2020	WTE Aug 2021	WTE Sep 2021
Mental Health	828	859	835	835	861.41	882.23	883.22
Maintenance/ Technical	7.7%	7.9%	8.3%	9.5%	10.3%	10.6%	10.2%
General Support	3.2%	3.0%	2.9%	2.3%	2.3%	2.2%	2.2%
HCA, Nurse's Aide, etc.	33.7%	32.2%	31.0%	26.6%	29.0%	27.5%	27.5%
Health Care Assistants	33.7%	32.2%	31.0%	26.6%	29.0%	27.5%	27.5%
Care, other	66.3%	67.8%	69.0%	73.4%	71.0%	72.5%	72.5%
Patient & Client Care	16.4%	16.1%	16.0%	15.0%	14.6%	14.2%	14.2%
Total	100 %	100 %	100 %	100 %	100 %	100 %	

Sep 2021 (Dec 2019 figure: 1,702)	WTE Dec 2016	WTE Dec 2017	WTE Dec 2018	WTE Dec 2019	WTE Dec 2020	WTE Aug 2021	WTE Sep 2021
Primary Care	1,687	1,691	1,776	1,702	1,788.84	1,841.18	1,837.85
Consultant Medicine	6.1%	6.4%	4.9%	4.8%	6.0%	6.3%	6.3%
Consultant Psychiatry	1.5%	2.2%	2.1%	2.9%	2.8%	2.9%	2.9%
Consultant Surgery	0.6%	0.3%	0.8%	0.6%			
Consultants	8.2%	8.9%	7.8%	8.3%	8.9%	9.1%	9.1%
Registrars	28.9%	27.1%	30.1%	33.0%	30.7%	32.5%	33.2%
SHO/ Interns	4.5%	4.2%	5.1%	4.3%	6.4%	7.9%	7.9%
Dentists	29.9%	25.7%	25.3%	24.4%	24.8%	24.1%	24.5%
Other Medical	28.5%	34.1%	31.7%	30.1%	29.3%	26.4%	25.2%
Medical/ Dental, other	58.4%	59.8%	57.0%	54.5%	54.1%	50.5%	49.7%
Medical & Dental	7.9%	8.1%	8.1%	8.1%	7.7%	7.5%	7.5%
Clinical Nurse/ Midwife Manager	10.2%	10.1%	10.2%	10.7%	10.5%	11.4%	11.5%
Director Nursing/Midwifery, Assistant	3.9%	3.7%	3.8%	3.4%	4.0%	5.3%	5.6%
Director of Nursing/Midwifery	1.1%	1.1%	1.2%	1.1%	1.3%	1.1%	1.1%
Nurse/ Midwife Manager	15.2%	14.9%	15.2%	15.2%	15.8%	17.8%	18.2%
Nurse/ Midwife Specialist & AN/MP	6.6%	8.4%	8.8%	8.7%	10.2%	10.0%	9.8%
Staff Nurse/ Staff Midwife	37.5%	36.3%	37.5%	38.7%	36.8%	37.3%	37.9%
Public Health Nurse	35.5%	36.7%	36.9%	33.1%	32.6%	34.3%	33.8%
Nursing/ Midwifery Student	4.5%	3.1%	1.3%	4.0%	4.2%	0.2%	
Nursing Education/Clinical	0.5%	0.5%	0.4%	0.4%	0.4%	0.4%	0.4%
Other Nursing/ Midwifery	0.2%						
Nursing/ Midwifery other	0.7%	0.5%	0.4%	0.4%	0.4%	0.4%	0.4%
Nursing & Midwifery	30.1%	30.1%	29.8%	31.1%	29.6%	29.8%	29.8%
Dietitians	3.8%	4.0%	4.8%	3.8%	4.2%	3.8%	3.8%
Occupational Therapists	24.9%	23.4%	26.8%	26.6%	24.8%	25.6%	26.1%
Orthoptists	0.1%				0.7%	0.8%	0.8%
Physiotherapists	23.1%	22.5%	21.4%	20.1%	22.4%	21.5%	21.8%
Podiatrists & Chiroprodists			0.1%	0.3%	0.3%	0.4%	0.4%
Speech & Language Therapists	18.2%	20.3%	19.2%	20.5%	18.1%	16.4%	16.3%
Therapy Professions	70.1%	70.3%	72.4%	71.4%	70.5%	68.7%	69.3%
Phlebotomists	0.2%	0.2%	0.1%	0.1%	0.3%	0.3%	0.3%
Health Science/ Diagnostics	0.2%	0.2%	0.1%	0.1%	0.3%	0.3%	0.3%
Social Care	1.1%	1.1%	1.1%	0.9%	1.0%	0.8%	0.8%
Social Workers	7.7%	7.4%	6.4%	7.0%	7.1%	7.9%	7.4%
Psychologists	5.7%	6.1%	6.2%	5.8%	6.9%	6.9%	6.7%
Pharmacy	8.2%	8.5%	7.6%	8.5%	8.4%	9.1%	9.2%
Counsellor Therapists	5.7%	5.2%	4.8%	5.0%	4.4%	5.0%	5.0%
Dental Hygienists	1.0%	0.9%	1.3%	1.4%	1.1%	1.2%	1.1%
Other Health & Social Care	0.3%	0.3%	0.3%		0.2%	0.2%	0.2%
H&SC, Other	7.0%	6.4%	6.4%	6.4%	5.7%	6.4%	6.3%

Sep 2021 (Dec 2019 figure: 1,702)	WTE Dec 2016	WTE Dec 2017	WTE Dec 2018	WTE Dec 2019	WTE Dec 2020	WTE Aug 2021	WTE Sep 2021
Primary Care	1,687	1,691	1,776	1,702	1,788.84	1,841.18	1,837.85
Health & Social Care Professionals	21.5%	21.4%	21.4%	21.9%	20.9%	19.3%	19.3%
Executive Management	2.6%	2.3%	1.9%	2.4%	2.6%	2.7%	2.7%
Senior Management (VIII & GM)	6.5%	6.8%	8.0%	9.1%	7.2%	7.0%	7.2%
Management (VIII & above)	9.1%	9.1%	9.9%	11.6%	9.7%	9.7%	9.9%
Administrative/ Supervisory (V to VII)	20.8%	23.0%	22.7%	26.5%	28.2%	29.1%	29.7%
Clerical (III & IV)	70.1%	67.9%	67.4%	62.0%	62.1%	61.1%	60.4%
Management & Administrative	18.0%	18.4%	17.5%	16.9%	16.0%	18.1%	18.1%
Support	93.2%	94.6%	93.8%	93.0%	92.2%	92.1%	92.1%
Maintenance	6.1%	4.6%	5.5%	6.2%	7.0%	7.1%	7.1%
Technical Services	0.7%	0.8%	0.7%	0.8%	0.8%	0.8%	0.8%
Maintenance/ Technical	6.8%	5.4%	6.2%	7.0%	7.8%	7.9%	7.9%
General Support	8.0%	7.7%	7.5%	7.3%	7.0%	6.4%	6.4%
HCA, Nurse's Aide, etc.	47.0%	48.3%	44.1%	45.9%	39.1%	36.3%	36.0%
Health & Social Care Assistants	1.0%	0.9%	6.4%	2.8%	4.2%	3.7%	3.2%
Swabber (COVID-19)					16.1%	21.3%	21.5%
Health Care Assistants	48.0%	49.2%	50.6%	48.7%	59.4%	61.3%	60.7%
Other Care Grades	52.0%	50.8%	49.4%	51.3%	40.6%	38.7%	39.3%
Care, other	52.0%	50.8%	49.4%	51.3%	40.6%	38.7%	39.3%
Patient & Client Care	14.5%	14.3%	15.7%	14.6%	13.9%	18.7%	18.7%
Total	100 %	100 %	100 %	100 %	100 %	100 %	

Sep 2021 (Dec 2019 figure: 2,982)	WTE Dec 2016	WTE Dec 2017	WTE Dec 2018	WTE Dec 2019	WTE Dec 2020	WTE Aug 2021	WTE Sep 2021
Disabilities	1,943	2,792	2,903	2,982	3,103.35	3,198.71	3,240.29
Consultant Paediatrics	2.9%	2.5%	3.1%	3.0%	2.9%	3.1%	2.9%
Consultant Psychiatry	19.1%	16.2%	1.9%	1.7%	1.7%		
Consultants	22.0%	18.8%	5.0%	4.7%	4.7%	3.1%	2.9%
Registrars	26.0%	22.2%	21.5%	26.1%	26.0%	27.2%	20.4%
SHO/ Interns	43.3%	51.7%	64.3%	60.5%	60.7%	60.6%	68.1%
Medical/ Dental, other	8.7%	7.4%	9.3%	8.7%	8.7%	9.1%	8.6%
Medical & Dental	0.6%	0.5%	0.4%	0.4%	0.4%	0.4%	0.4%
Clinical Nurse/ Midwife Manager	23.2%	23.9%	22.4%	22.4%	21.5%	22.5%	22.4%
Director Nursing/Midwifery, Assistant	1.5%	1.1%	1.1%	1.1%	1.3%	1.2%	1.2%
Director of Nursing/Midwifery	0.5%	1.4%	1.0%	0.8%	0.8%	0.6%	0.5%
Nurse/ Midwife Manager	25.2%	26.4%	24.4%	24.3%	23.6%	24.2%	24.1%
Advanced Nurse/ Midwife Practitioner					0.4%	0.4%	0.4%
Clinical Nurse/ Midwife Specialist	1.3%	1.3%	2.0%	1.0%	0.5%	0.4%	0.4%
Nurse/ Midwife Specialist & AN/MP	1.3%	1.3%	2.0%	1.0%	0.9%	0.8%	0.8%
Staff Nurse [Intellectual Disability]	57.6%	45.5%	43.3%	38.7%	38.0%	39.7%	39.5%
Staff Nurses [General/ Children's]	15.2%	26.7%	30.2%	35.9%	37.2%	33.3%	33.6%
Staff Nurse/ Staff Midwife	72.8%	72.2%	73.5%	74.6%	75.3%	73.1%	73.1%
Pre-registration Nurse/ Midwife Intern						1.4%	0.1%
Nursing/ Midwifery awaiting registration							1.5%
Nursing/ Midwifery Student						1.4%	1.6%
Nursing/ Midwifery other	0.8%	0.1%	0.1%	0.1%	0.3%	0.5%	0.5%
Nursing & Midwifery	20.4%	18.1%	17.5%	16.8%	16.2%	16.7%	16.7%
Dietitians	1.6%	0.8%	0.8%	1.3%	1.0%	1.0%	1.0%
Occupational Therapists	13.0%	7.8%	7.0%	7.6%	7.6%	7.9%	7.8%
Physiotherapists	11.0%	6.3%	6.1%	5.5%	5.4%	5.7%	5.6%

Sep 2021 (Dec 2019 figure: 2,982)	WTE Dec 2016	WTE Dec 2017	WTE Dec 2018	WTE Dec 2019	WTE Dec 2020	WTE Aug 2021	WTE Sep 2021
Disabilities	1,943	2,792	2,903	2,982	3,103.35	3,198.71	3,240.29
Speech & Language Therapists	13.5%	9.1%	8.2%	7.6%	9.1%	8.3%	8.5%
Therapy Professions	39.1%	24.0%	22.1%	22.0%	23.1%	22.9%	23.0%
Audiology	0.2%						
Clinical Measurement	0.4%	0.2%	0.2%	0.2%	0.3%	0.3%	0.3%
Phlebotomists			0.2%	0.2%			
Radiographers	0.4%	0.2%	0.2%	0.2%	0.2%		
Health Science/ Diagnostics	1.0%	0.4%	0.6%	0.5%	0.5%	0.3%	0.3%
Social Care	38.3%	62.1%	64.8%	65.2%	64.9%	65.3%	65.5%
Social Workers	10.1%	5.8%	6.3%	6.0%	5.3%	5.3%	5.2%
Psychologists	9.1%	6.4%	5.1%	5.0%	5.3%	5.0%	5.0%
Pharmacy	1.6%	0.8%	0.9%	0.9%	0.7%	0.8%	0.7%
Counsellor Therapists	0.6%	0.3%	0.3%	0.3%	0.3%	0.4%	0.2%
Other Health & Social Care	0.4%	0.2%					
H&SC, Other	1.0%	0.5%	0.3%	0.3%	0.3%	0.4%	0.2%
Health & Social Care Professionals	13.1%	18.1%	18.5%	18.5%	17.8%	19.8%	19.8%
Executive Management	5.3%	3.9%	2.6%	2.5%	3.0%	3.3%	3.3%
Senior Management (VIII & GM)	14.3%	13.3%	13.7%	13.3%	15.1%	15.5%	15.9%
Management (VIII & above)	19.5%	17.2%	16.3%	15.8%	18.1%	18.7%	19.2%
Administrative/ Supervisory (V to VII)	35.3%	34.0%	37.0%	39.0%	39.0%	37.9%	38.2%
Clerical (III & IV)	45.1%	48.7%	46.7%	45.3%	42.9%	43.4%	42.6%
Management & Administrative	6.8%	6.4%	6.5%	6.8%	6.5%	7.5%	7.5%
Support	88.2%	84.1%	85.7%	85.4%	82.6%	81.7%	82.1%
Maintenance	11.1%	15.5%	13.8%	13.0%	15.3%	15.0%	14.7%
Technical Services	0.6%	0.5%	0.5%	1.5%	2.1%	3.3%	3.2%
Maintenance/ Technical	11.8%	15.9%	14.3%	14.6%	17.4%	18.3%	17.9%
General Support	8.1%	7.7%	7.1%	6.5%	6.3%	5.7%	5.7%
HCA, Nurse's Aide, etc.	72.1%	70.6%	71.9%	72.9%	72.9%	74.1%	73.8%
Health & Social Care Assistants	0.6%	0.3%	0.2%	0.4%	0.3%	0.4%	0.3%
Health Care Assistants	72.7%	70.8%	72.1%	73.3%	73.2%	74.4%	74.2%
Care, other	24.0%	27.2%	26.2%	25.4%	25.7%	24.5%	24.8%
Home Help	3.3%	1.9%	1.6%	1.3%	1.1%	1.1%	1.1%
Patient & Client Care	50.9%	49.1%	50.0%	50.9%	48.9%	50.0%	50.0%
Total	100 %	100 %	100 %	100 %	100 %	100 %	

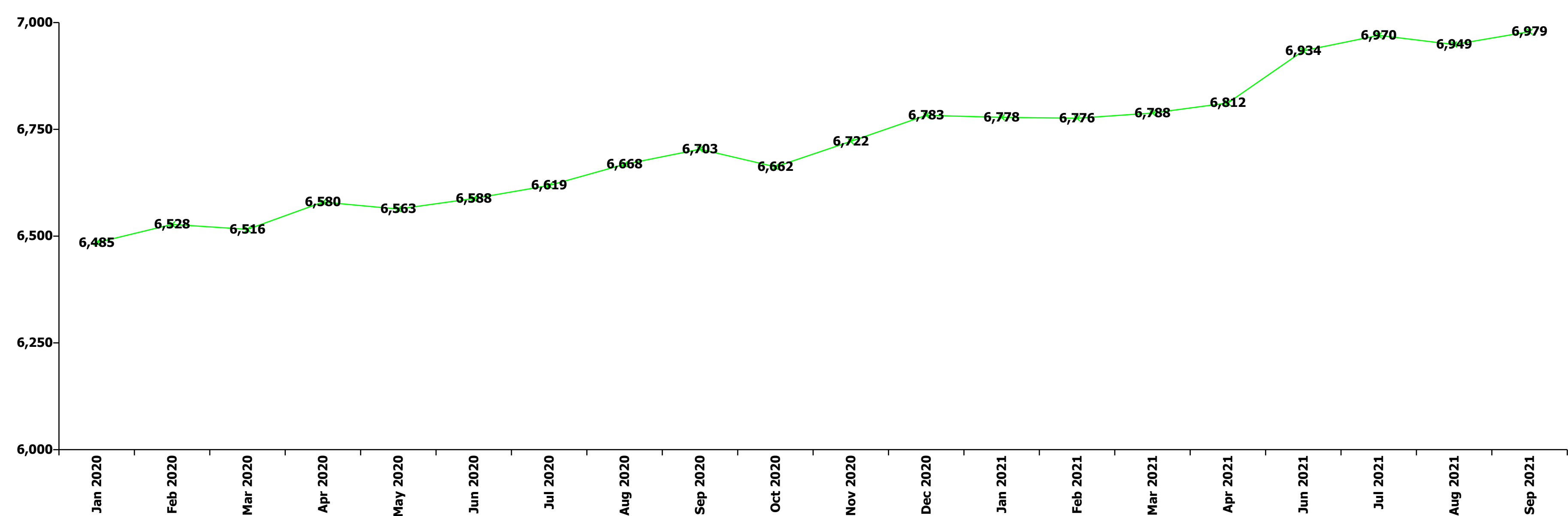
Sep 2021 (Dec 2019 figure: 996)	WTE Dec 2016	WTE Dec 2017	WTE Dec 2018	WTE Dec 2019	WTE Dec 2020	WTE Aug 2021	WTE Sep 2021
Older People	1,121	1,064	1,044	996	1,021.48	1,015.55	1,007.40
Senior House Officer	33.3%	37.5%	28.6%	33.3%	49.5%	49.5%	49.5%
SHO/ Interns	33.3%	37.5%	28.6%	33.3%	49.5%	49.5%	49.5%
Medical/ Dental, other	66.7%	62.5%	71.4%	66.7%	50.5%	50.5%	50.5%
Medical & Dental	0.8%	0.8%	0.7%	0.6%	0.6%	0.4%	0.4%
Clinical Nurse/ Midwife Manager	19.1%	18.6%	18.8%	20.3%	20.2%	21.9%	21.7%
Director Nursing/Midwifery, Assistant	3.8%	2.5%	4.0%	4.3%	3.8%	4.2%	4.3%
Director of Nursing/Midwifery	1.8%	2.2%	1.7%	1.1%	1.8%	1.7%	2.0%
Nurse/ Midwife Manager	24.7%	23.2%	24.4%	25.8%	25.9%	27.8%	28.0%
Nurse/ Midwife Specialist & AN/MP	1.0%	1.1%	1.4%	0.9%	0.9%	1.0%	1.0%
Staff Nurse [Psychiatric]	0.2%	0.2%			0.3%	0.6%	0.6%
Staff Nurses [General/ Children's]	74.1%	75.4%	74.1%	73.3%	72.5%	70.0%	69.9%
Staff Nurse/ Staff Midwife	74.3%	75.6%	74.1%	73.3%	72.8%	70.6%	70.5%

Sep 2021 (Dec 2019 figure: 996)	WTE Dec 2016	WTE Dec 2017	WTE Dec 2018	WTE Dec 2019	WTE Dec 2020	WTE Aug 2021	WTE Sep 2021
Older People	1,121	1,064	1,044	996	1,021.48	1,015.55	1,007.40
Public Health Nurse	0.1%						
Nursing/ Midwifery awaiting registration					0.4%	0.6%	0.6%
Nursing/ Midwifery Student					0.4%	0.6%	0.6%
Nursing & Midwifery	30.4%	30.4%	28.9%	30.0%	29.3%	34.0%	34.0%
Dietitians	2.6%	2.7%		3.6%	3.5%	3.1%	3.1%
Occupational Therapists	10.8%	10.7%	9.6%	14.9%	15.7%	13.0%	13.5%
Physiotherapists	27.3%	28.3%	29.5%	30.5%	23.7%	26.3%	25.2%
Podiatrists & Chiropodists	1.9%	1.8%	2.0%				
Speech & Language Therapists		2.7%	2.6%		3.5%	9.4%	9.3%
Therapy Professions	42.5%	46.1%	43.6%	49.0%	46.4%	51.8%	51.1%
Medical Science	2.6%						
Health Science/ Diagnostics	2.6%						
Social Workers	39.2%	37.7%	41.0%	38.6%	43.2%	38.8%	39.6%
Pharmacy	10.5%	10.8%	10.3%	8.9%	7.0%	6.3%	6.2%
Other Health & Social Care	2.6%	2.7%	2.6%				
Play Therapists/ Specialists	2.6%	2.7%	2.6%	3.6%	3.5%	3.1%	3.1%
H&SC, Other	5.2%	5.4%	5.1%	3.6%	3.5%	3.1%	3.1%
Health & Social Care Professionals	3.4%	3.5%	3.7%	2.8%	2.8%	3.2%	3.2%
Senior Management (VIII & GM)	15.2%	10.0%	9.0%	9.9%	12.3%	11.3%	10.4%
Management (VIII & above)	15.2%	10.0%	9.0%	9.9%	12.3%	11.3%	10.4%
Administrative/ Supervisory (V to VII)	18.5%	21.1%	21.7%	22.7%	24.8%	26.4%	29.9%
Clerical (III & IV)	66.3%	68.9%	69.3%	67.4%	63.0%	62.2%	59.8%
Management & Administrative	4.7%	4.7%	4.2%	5.1%	5.0%	6.0%	6.0%
Support	97.5%	97.6%	97.5%	98.2%	98.3%	98.3%	98.3%
Maintenance/ Technical	2.5%	2.4%	2.5%	1.8%	1.7%	1.7%	1.7%
General Support	10.8%	11.6%	11.7%	11.3%	11.0%	11.6%	11.6%
HCA, Nurse's Aide, etc.	74.5%	73.0%	77.4%	77.5%	73.9%	74.8%	75.0%
HCA (Student Nurse/Midwife COVID-19)					0.8%		
Health & Social Care Assistants					0.2%	0.4%	0.4%
Health Care Assistants	74.5%	73.0%	77.4%	77.5%	74.9%	75.2%	75.4%
Care, other	2.9%	2.9%	1.3%	1.0%	1.0%	1.4%	0.9%
Home Help	22.6%	24.1%	21.3%	21.5%	24.0%	23.3%	23.7%
Patient & Client Care	49.9%	49.1%	50.8%	50.2%	49.0%	44.8%	44.8%
Total	100 %	100 %	100 %	100 %	100 %	100 %	

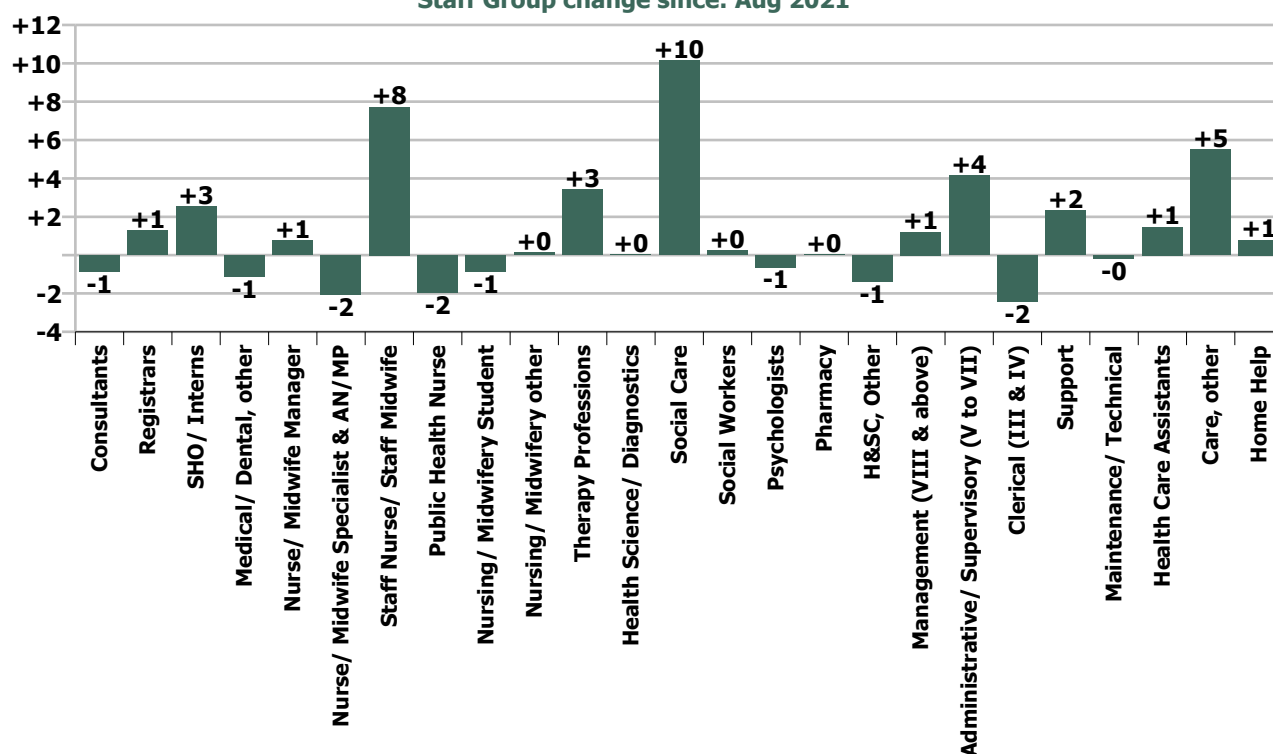
Summary Staff Movement: September 2021

Month-on-month Summary																												
WTE change since Aug 21	% change since Aug 21	overall	Consultants	Registrars	SHO/ Interns	Medical/ Dental, other	Medical & Dental	Nurse/ Midwife Manager	Nurse/ Midwife Specialist & AN/MP	Staff Nurse/ Staff Midwife	Public Health Nurse	Nursing/ Midwifery Student	Nursing/ Midwifery other	Nursing & Midwifery	Therapy Professions	Health Science/ Diagnostics	Social Care	Social Workers	Psychologists	Pharmacy	H&SC, Other	Health & Social Care Professionals	Management (VIII & above)	Administrative/ Supervisory (IV to VII)	Clerical (III & IV)	Management Administrative	General Support	Patient & Client Care
Overall	+0.4%	+30	-0.9	+1.3	+2.5	-1.1	+1.8	+0.7	-2.1	+7.7	-2.0	-0.9	+0.2	+3.7	+3.4	+0.0	+10.2	+0.3	-0.6	+0.0	-1.4	+11.9	+1.2	+4.2	-2.5	+2.9	+2.1	+7.8
Community Health & Wellbeing	-7.6%	-1																					0.0	-0.9	+0.0	-0.9		+0.0
Mental Health	+0.1%	+1	-0.9	+0.9	+1.3		+1.3	-1.4	-1.4	+2.4	+0.1	-0.9	+0.2	-1.0	-0.3		+0.6	+1.5	-0.7	0.0	+0.2	+1.2	-0.0	-0.1	+0.5	+0.4	+0.8	-1.7
Primary Care	-0.2%	-3	-0.0	+1.0	-0.0	-1.1	-0.1	+2.2	-0.7	+4.0	-2.0	-1.0	0.0	+2.4	+0.3	+0.0	0.0	-1.9	-0.6	+0.2	-0.6	-2.5	+0.8	+2.5	-0.8	+2.5	-0.2	-5.4
Disabilities	+1.3%	+42	0.0	-0.6	+1.2	0.0	+0.6	+1.0	0.0	+5.4		+1.0	0.0	+7.4	+3.5	0.0	+9.6	+0.3	+0.7	-0.2	-1.0	+12.9	+0.6	-0.4	-3.0	-2.8	+3.2	+20.3
Older People	-0.8%	-8			0.0	0.0	0.0	-1.0	0.0	-4.0		0.0		-5.0	-0.1			+0.4		0.0	0.0	+0.3	-0.2	+3.1	+0.8	+3.7	-1.7	-5.4
Social Care	+0.8%	+33	0.0	-0.6	+1.2	0.0	+0.6	-0.0	0.0	+1.3		+1.0	0.0	+2.3	+3.5	0.0	+9.6	+0.6	+0.7	-0.2	-1.0	+13.3	+0.4	+2.7	-2.2	+0.9	+1.5	+14.9
Change	+30.3	+0.4%	-1.3%	+1.3%	+6.1%	-1.5%	+0.7%	+0.2%	-1.8%	+0.7%	-1.0%	-3.3%	+1.5%	+0.2%	+0.8%	+1.4%	+2.4%	+0.2%	-0.7%	+0.1%	-3.2%	+1.0%	+1.3%	+1.8%	-0.6%	+0.4%	+0.5%	+0.3%

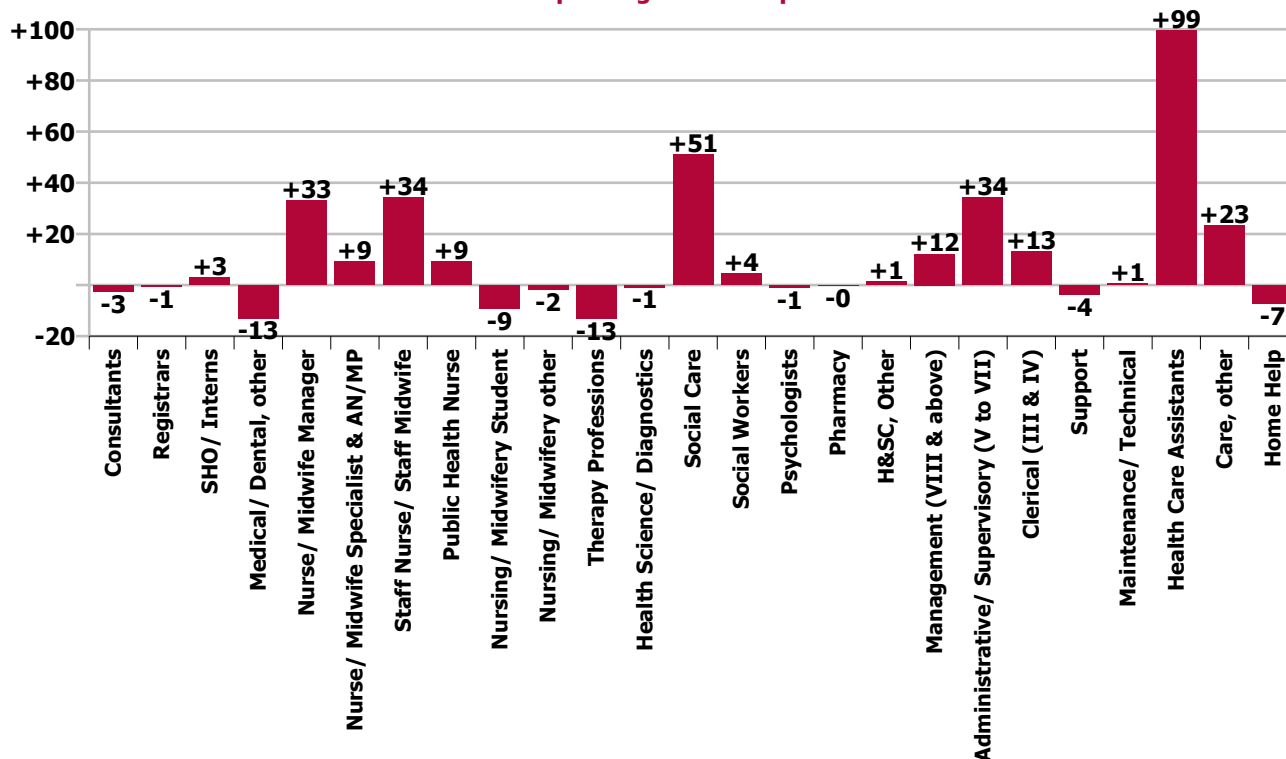
Year-on-year Summary																												
WTE change since Sep 20	% change since Sep 20	overall	Consultants	Registrars	SHO/ Interns	Medical/ Dental, other	Medical & Dental	Nurse/ Midwife Manager	Nurse/ Midwife Specialist & AN/MP	Staff Nurse/ Staff Midwife	Public Health Nurse	Nursing/ Midwifery Student	Nursing/ Midwifery other	Nursing & Midwifery	Therapy Professions	Health Science/ Diagnostics	Social Care	Social Workers	Psychologists	Pharmacy	H&SC, Other	Health & Social Care Professionals	Management (VIII & above)	Administrative Supervisory (V to VII)	Clerical (III & IV)	Management & Administrative	General Support	Patient & Client Care
Overall	+4.1%	+275	-2.6	-0.5	+3.1	-13.0	-13.1	+33.0	+9.1	+34.3	+9.1	-9.2	-1.8	+74.6	-13.1	-0.8	+51.1	+4.4	-0.9	-0.2	+1.3	+41.8	+12.2	+34.4	+13.1	+59.6	-3.1	+115.5
Community Health & Wellbeing	-7.6%	-1													-1.0							-1.0	0.0	+2.9	+1.0	+3.9		-2.6
Mental Health	+0.1%	+1	-0.4	-1.3	+1.2		-0.5	-1.7	+6.3	+13.7	+1.0	-6.2	-2.8	+10.4	+1.4		+0.6	+5.0	-3.2	0.0	-1.0	+2.8	+1.0	-0.1	-4.0	-3.1	+1.5	+2.6
Primary Care	-0.2%	-3	-2.1	+1.4	+1.0	-11.0	-10.7	+15.8	+3.9	+4.9	+8.1		0.0	+32.7	-19.0	+0.2	-0.9	+0.5	-0.1	+0.9	+2.3	-16.1	+2.4	+20.1	+9.6	+32.1	-3.1	+84.1
Disabilities	+5.6%	+171.7	-0.2	-0.6	+0.9	0.0	+0.1	+7.1	-0.6	+15.4		-2.5	+1.0	+20.4	+2.7	-1.0	+51.4	-0.3	+2.3	+0.1	0.0	+54.9	+9.0	+5.8	+7.2	+22.0	-3.7	+78.0
Older People	-2.8%	-29.3			0.0	-2.0	-2.0	+11.9	-0.4	+0.2		-0.5		+11.2	+2.8			-0.7		-1.0	0.0	+1.1	-0.2	+5.7	-0.8	+4.8	+2.2	-46.6
Social Care	+0.8%	+33	-0.2	-0.6	+0.9	-2.0	-1.9	+19.0	-1.0	+15.7		-3.0	+1.0	+31.6	+5.5	-1.0	+51.4	-1.1	+2.3	-1.1	0.0	+56.1	+8.8	+11.5	+6.5	+26.7	-1.5	+31.4
Change	+275.3	+4.1%	-3.8%	-0.5%	+7.5%	-15.3%	-4.4%	+8.1%	+8.8%	+3.4%	+5.1%	-26.7%	-15.5%	+4.3%	-2.8%	-21.1%	+13.4%	+4.1%	-1.1%	-0.4%	+3.1%	+3.7%	+15.4%	+17.3%	+3.5%	+9.1%	-0.7%	+4.8%

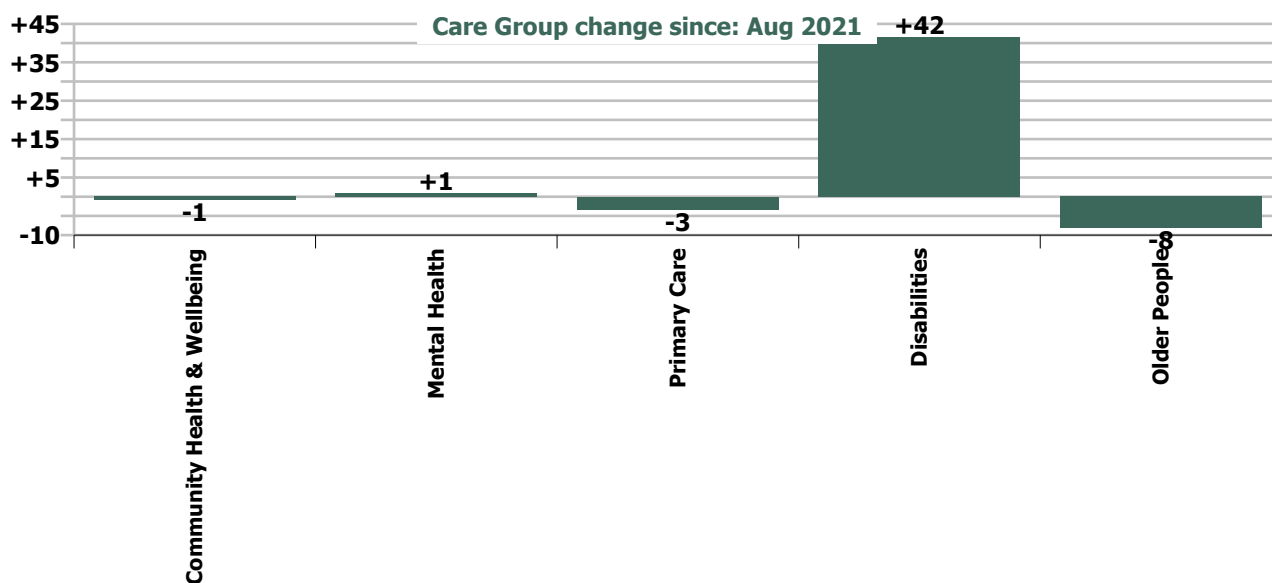


Staff Group change since: Aug 2021

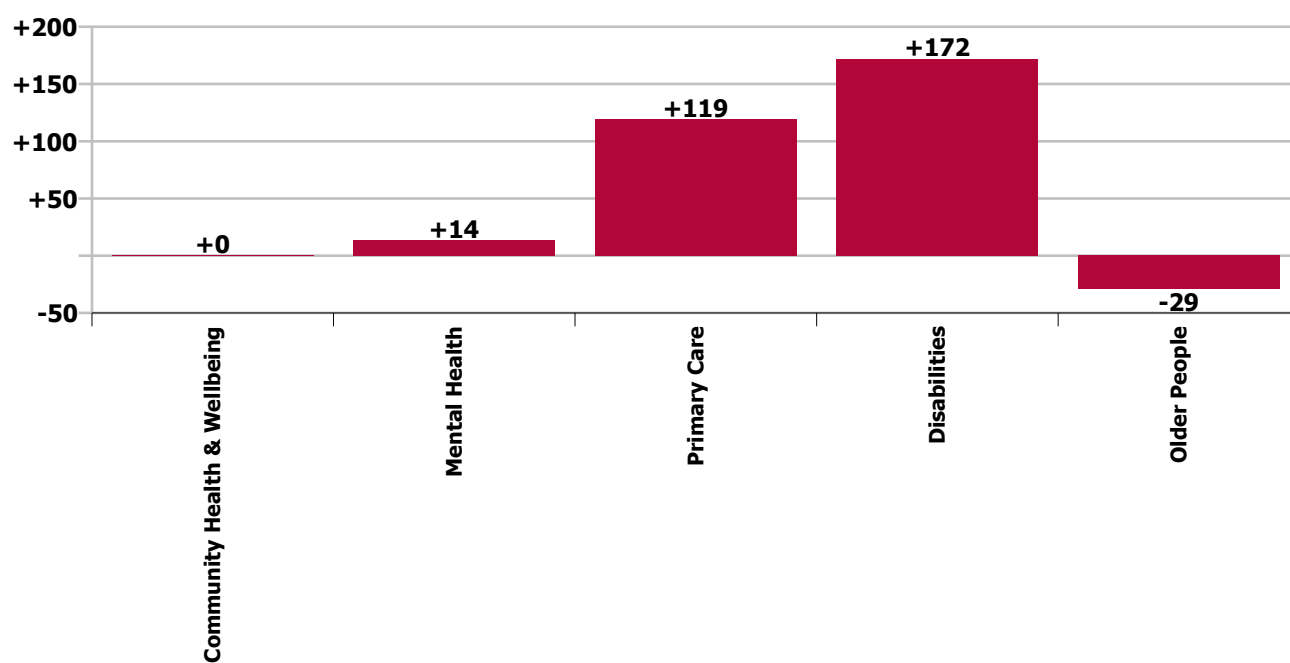


Staff Group change since: Sep 2020





Care Group change since: Sep 2020



Longitudinal Employment Levels by Grade Group - Dec 2016 to Sep 2021

Sep 2021 (Dec 2016 figure: 5,579)	WTE Sep 2021	WTE change since Dec 16	WTE change since Dec 17	WTE change since Dec 18	WTE change since Dec 19	WTE change since Dec 20	WTE change since Aug 21	% change since Dec 16	% change since Dec 17	% change since Dec 18	% change since Dec 19	% change since Dec 20	% change since Aug 21
Overall	6,979	+1,400	+573	+422	+464	+196	+30	+25.1%	+8.9%	+6.4%	+7.1%	+2.9%	+0.4%
Consultant Medicine	9	+1	-0	+2	+2	+0	-0	+6.4%	-1.8%	+21.8%	+30.4%	+1.4%	-0.1%
Consultant Paediatrics	0												
Consultant Psychiatry	58	+9	+12	+10	+6	+1	-1	+18.8%	+25.5%	+21.3%	+11.8%	+1.4%	-1.5%
Consultant Surgery		-1	-0	-1	-1			-100.0%	-100.0%	-100.0%	-100.0%	-100.0%	-100.0%
Consultants	67	+9	+11	+11	+7	+1	-1	+15.4%	+20.0%	+18.7%	+12.3%	+1.4%	-1.3%
Registrar	73	+17	+21	+7	+1	-1	+1	+29.7%	+39.0%	+11.3%	+1.9%	-1.2%	+1.8%
Senior Registrar	23	+13	+14	+9	+4	+3	+0	+123.1%	+150.9%	+67.4%	+23.4%	+17.2%	+0.1%
Specialist Registrar	5	+1	-1	+0	+1	-1	-0	+26.7%	-13.2%	+4.9%	+23.2%	-17.8%	-1.4%
Registrars	102	+31	+34	+17	+7	+1	+1	+43.3%	+50.1%	+20.2%	+7.1%	+1.5%	+1.3%
Interns	2	-0	-0	-0	-0	-0	-0	-9.0%	-9.0%	-9.0%	-9.0%	-9.0%	-9.0%
Senior House Officer	42	+3	+1	+9	+8	+6	+3	+7.8%	+3.2%	+26.4%	+24.4%	+15.8%	+6.9%
SHO/ Interns	44	+3	+1	+9	+8	+6	+3	+7.0%	+2.6%	+24.4%	+22.5%	+14.5%	+6.1%
Dentists	34	-6	-1	-3	+0	-1	+1	-14.4%	-3.9%	-7.2%	+0.6%	-3.2%	+1.8%
Other Medical	38	-7	-15	-14	-9	-7	-2	-15.5%	-28.3%	-26.7%	-18.6%	-14.7%	-4.3%
Medical/ Dental, other	72	-13	-16	-16	-8	-8	-1	-15.0%	-18.6%	-18.6%	-10.5%	-9.7%	-1.5%
Medical & Dental	285	+30	+30	+20	+14	+0	+2	+11.7%	+11.7%	+7.5%	+5.0%	+0.1%	+0.7%
Clinical Nurse/ Midwife Manager	352	+50	+25	+31	+24	+24	-2	+16.7%	+7.8%	+9.5%	+7.4%	+7.3%	-0.5%
Director Nursing/Midwifery, Assistant	69	+16	+19	+14	+18	+11	+2	+29.2%	+38.8%	+25.3%	+34.0%	+19.3%	+3.2%
Director of Nursing/Midwifery	19	+3	-3	-0	+3	-2	+0	+15.2%	-15.3%	-1.2%	+20.1%	-7.7%	+2.1%
Nurse/ Midwife Manager	441	+69	+41	+44	+45	+34	+1	+18.4%	+10.3%	+11.2%	+11.4%	+8.2%	+0.2%
Advanced Nurse/ Midwife Practitioner	14	+12	+12	+11	+10	+2	-1	+674.3%	+505.2%	+447.8%	+219.4%	+15.7%	-5.3%
Clinical Nurse/ Midwife Specialist	99	+32	+21	+14	+9	+1	-1	+49.2%	+26.7%	+16.4%	+10.2%	+1.0%	-1.3%
Nurse/ Midwife Specialist & AN/MP	112	+45	+32	+25	+19	+3	-2	+65.6%	+40.4%	+28.9%	+19.9%	+2.6%	-1.8%
Staff Nurse [Intellectual Disability]	214	-14	-16	-6	+20	+22	+2	-6.2%	-7.1%	-2.7%	+10.4%	+11.6%	+0.8%
Staff Nurse [Psychiatric]	197	-17	-30	-2	+6	-0	+2	-8.0%	-13.2%	-1.0%	+3.0%	-0.2%	+1.2%
Staff Nurses [General/ Children's]	640	+133	+73	+63	+32	+8	+4	+26.1%	+12.8%	+10.9%	+5.3%	+1.3%	+0.6%
Staff Nurse/ Staff Midwife	1,051	+101	+26	+55	+58	+30	+8	+10.7%	+2.6%	+5.5%	+5.9%	+3.0%	+0.7%
Public Health Nurse	186	+6	-0	-9	+11	+10	-2	+3.1%	-0.2%	-4.5%	+6.3%	+5.6%	-1.0%
Pre-registration Nurse/ Midwife Intern	15	+13	+15	+9	+13	+14	-8	+783.7%	-100.0%	+146.1%	+970.8%	+2834.0%	-34.7%
Pre-registration Nurse Intern (COVID-19)	0	+0	+0	+0	+0	-3	-0	-100.0%	-100.0%	-100.0%	-100.0%	-87.0%	-12.0%
Post-registration Nurse/ Midwife Student		-23	-16	-7	-21	-24	-1	-100.0%	-100.0%	-100.0%	-100.0%	-100.0%	-100.0%
Nursing/ Midwifery awaiting registration	10	+10	+2	+6	+0	+6	+8	-100.0%	+23.3%	+150.0%	+1.4%	+138.1%	+400.0%
Nursing/ Midwifery Student	25	+0	+1	+8	-7	-7	-1	+1.8%	+4.1%	+48.1%	-22.1%	-21.8%	-3.3%
Nursing Education/Clinical	9	-3	-0	+0	-1	-0	+0	-22.7%	-1.1%	+4.6%	-11.5%	-4.9%	+1.7%

Sep 2021 (Dec 2016 figure: 5,579)	WTE Sep 2021	WTE change since Dec 16	WTE change since Dec 17	WTE change since Dec 18	WTE change since Dec 19	WTE change since Dec 20	WTE change since Aug 21	% change since Dec 16	% change since Dec 17	% change since Dec 18	% change since Dec 19	% change since Dec 20	% change since Aug 21
Overall	6,979	+1,400	+573	+422	+464	+196	+30	+25.1%	+8.9%	+6.4%	+7.1%	+2.9%	+0.4%
Other Nursing/ Midwifery	1		+1	+1	+1	+1			-100.0%	-100.0%	-100.0%	-100.0%	
Nursing/ Midwifery other	10	-3	+1	+1	-0	+1	+0	-20.9%	+10.0%	+16.4%	-1.5%	+5.8%	+1.5%
Nursing & Midwifery	1,826	+218	+101	+125	+126	+70	+4	+13.6%	+5.9%	+7.4%	+7.4%	+4.0%	+0.2%
Dietitians	25	+6	+6	+0	-0	-1	-0	+31.9%	+29.1%	+0.9%	-1.4%	-4.4%	-1.3%
Occupational Therapists	184	+15	+15	-1	+0	+1	+1	+9.0%	+9.0%	-0.3%	+0.3%	+0.4%	+0.8%
Orthoptists	3	+3	+3	+3	+3	+0	-0	+1096.0%	-100.0%	-100.0%	-100.0%	+19.6%	-0.3%
Physiotherapists	122	-1	-2	-4	+7	+1	+1	-0.5%	-1.7%	-3.2%	+6.4%	+0.6%	+0.4%
Podiatrists & Chiropodists	2	+1	+1	+0	+1	+1		+111.3%	+130.8%	+17.2%	+50.0%	+50.0%	
Speech & Language Therapists	121	+14	-7	-2	-5	-8	+2	+12.8%	-5.1%	-1.5%	-3.8%	-6.0%	+1.5%
Therapy Professions	456	+38	+16	-3	+6	-6	+3	+9.1%	+3.6%	-0.6%	+1.4%	-1.4%	+0.8%
Audiology		-0						-100.0%	-100.0%	-100.0%	-100.0%	-100.0%	-100.0%
Clinical Measurement	2	+1	+1	+1	+1			+100.0%	+100.0%	+100.0%	+100.0%		
Medical Science		-1						-100.0%	-100.0%	-100.0%	-100.0%	-100.0%	-100.0%
Phlebotomists	1	+0	+0	-0	-0	-0	+0	+52.3%	+57.1%	-18.9%	-18.9%	-18.9%	+4.2%
Radiographers		-1	-1	-1	-1	-1		-100.0%	-100.0%	-100.0%	-100.0%	-100.0%	-100.0%
Health Science/ Diagnostics	3	-1	+0	-0	-0	-1	+0	-26.7%	+13.7%	-7.1%	-7.1%	-29.1%	+1.4%
Social Care	432	+319	+103	+72	+61	+32	+10	+284.0%	+31.3%	+20.0%	+16.3%	+8.0%	+2.4%
Social Care	432	+319	+103	+72	+61	+32	+10	+284.0%	+31.3%	+20.0%	+16.3%	+8.0%	+2.4%
Social Workers	114	+4	+2	+3	+9	+6	+0	+3.7%	+1.4%	+2.7%	+8.8%	+5.4%	+0.2%
Psychologists	86	+17	+1	+2	+5	-0	-1	+25.4%	+1.7%	+2.3%	+6.8%	-0.6%	-0.7%
Pharmacy	40	+2	+2	+2	+0	+3	+0	+6.2%	+4.0%	+6.0%	+0.5%	+7.0%	+0.1%
Counsellor Therapists	36	+5	+3	+5	-1	+1	-1	+14.5%	+9.2%	+17.1%	-1.7%	+1.6%	-2.6%
Dental Hygienists	4	+0	+0	-1	-1	-0	-0	+6.2%	+12.5%	-22.3%	-26.2%	-8.0%	-9.8%
Other Health & Social Care	1	-4	-4	-3	-1	+0		-74.2%	-77.0%	-71.3%	-35.5%	+7.5%	
Play Therapists/ Specialists	1												
H&SC, Other	42	+1	-1	+1	-3	+0	-1	+2.6%	-2.1%	+2.3%	-6.0%	+0.8%	-3.2%
Health & Social Care Professionals	1,173	+381	+123	+77	+79	+33	+12	+48.1%	+11.7%	+7.0%	+7.2%	+2.9%	+1.0%
Executive Management	18	+2	+3	+6	+5	+2	-0	+11.7%	+19.1%	+48.9%	+37.5%	+12.3%	-0.6%
Senior Management (VIII & GM)	74	+25	+22	+17	+14	+5	+1	+52.0%	+41.4%	+30.1%	+22.8%	+6.9%	+1.8%
Management (VIII & above)	91	+27	+24	+23	+19	+7	+1	+42.0%	+36.4%	+33.4%	+25.4%	+8.0%	+1.3%
Middle Management (V-VII)	233	+102	+75	+65	+52	+20	+4	+77.3%	+47.1%	+38.8%	+28.5%	+9.2%	+1.8%
Other Administrative		-1	-1	-1	-1	-1		-100.0%	-100.0%	-100.0%	-100.0%	-100.0%	-100.0%
Administrative/ Supervisory (V to VII)	233	+101	+74	+64	+51	+19	+4	+76.2%	+46.2%	+38.1%	+27.8%	+8.8%	+1.8%
Clerical (III & IV)	389	+31	+6	+9	+39	+9	-2	+8.6%	+1.6%	+2.3%	+11.1%	+2.4%	-0.6%
Management & Administrative	714	+159	+104	+96	+108	+35	+3	+28.6%	+17.1%	+15.5%	+17.8%	+5.1%	+0.4%

Sep 2021 (Dec 2016 figure: 5,579)	WTE Sep 2021	WTE change since Dec 16	WTE change since Dec 17	WTE change since Dec 18	WTE change since Dec 19	WTE change since Dec 20	WTE change since Aug 21	% change since Dec 16	% change since Dec 17	% change since Dec 18	% change since Dec 19	% change since Dec 20	% change since Aug 21
Overall	6,979	+1,400	+573	+422	+464	+196	+30	+25.1%	+8.9%	+6.4%	+7.1%	+2.9%	+0.4%
Catering	53	+0	-11	-9	-6	-3	-1	+0.9%	-16.7%	-14.0%	-9.7%	-5.1%	-1.6%
Household Services	265	+1	-31	-28	-4	+0	+2	+0.5%	-10.4%	-9.7%	-1.4%	+0.0%	+0.6%
Other Labs & Associated	1	-0		-0				-6.5%		-3.8%			
Other Support	16	-0	+1	+1	+2	+1	+2	-0.4%	+9.1%	+4.7%	+16.0%	+9.8%	+11.1%
Portering	58	-16	-14	-13	-10	-7	-0	-21.5%	-19.1%	-18.4%	-14.4%	-10.7%	-0.2%
Support	394	-14	-54	-49	-17	-8	+2	-3.4%	-12.0%	-11.2%	-4.1%	-2.1%	+0.6%
Maintenance	40	+9	-5	-1	+3	-2	-0	+28.9%	-10.2%	-3.0%	+6.9%	-3.7%	-0.5%
Technical Services	7	+5	+5	+5	+3	+2		+250.0%	+250.0%	+268.4%	+75.0%	+40.0%	
Maintenance/ Technical	47	+14	+0	+4	+6	+0	-0	+42.4%	+1.0%	+9.1%	+13.5%	+1.0%	-0.4%
General Support	440	-0	-53	-46	-11	-8	+2	-0.0%	-10.8%	-9.4%	-2.5%	-1.7%	+0.5%
HCA, Nurse's Aide, etc.	1,692	+401	+182	+74	+50	+41	+4	+31.1%	+12.1%	+4.6%	+3.0%	+2.5%	+0.2%
HCA (Student Nurse/Midwife COVID-19)						-4		-100.0%	-100.0%	-100.0%	-100.0%	-100.0%	-100.0%
Health & Social Care Assistants	19	+10	+13	-3	+6	+1	-2	+123.4%	+210.6%	-12.7%	+50.2%	+3.9%	-9.7%
Swabber (COVID-19)	74	+74	+74	+74	+74	+24	-1	-100.0%	-100.0%	-100.0%	-100.0%	+48.2%	-0.8%
Health Care Assistants	1,785	+486	+269	+146	+130	+62	+1	+37.4%	+17.7%	+8.9%	+7.9%	+3.6%	+0.1%
Care, other	632	+162	+27	+16	+22	+11	+5	+34.3%	+4.5%	+2.5%	+3.6%	+1.8%	+0.9%
Home Help	124	-34	-28	-12	-3	-7	+1	-21.5%	-18.3%	-8.8%	-2.0%	-5.5%	+0.6%
Patient & Client Care	2,542	+613	+268	+149	+150	+66	+8	+31.8%	+11.8%	+6.2%	+6.3%	+2.7%	+0.3%

Source: Health Service Personnel Census

Longitudinal Employment Levels by Care Group - Dec 2016 to Sep 2021

Community Health & Wellbeing

Sep 2021 (figure:)	WTE Sep 2021	WTE change since	WTE change since	WTE change since	WTE change since	WTE change since Dec 20	WTE change since Aug 21	% change since	% change since	% change since	% change since	% change since Dec 20	% change since Aug 21
Overall	10	+10	+10	+10	+10	+2	-1	-100.0%	-100.0%	-100.0%	-100.0%	+28.9%	-7.6%
Management & Administrative	8	+8	+8	+8	+8	+4	-1	-1.0%	-1.0%	-1.0%	-1.0%	+0.8%	-0.1%
Management (VIII & above)	1	+1	+1	+1	+1			-1.0%	-1.0%	-1.0%	-1.0%	+0.0%	+0.0%
Administrative/ Supervisory (V to VII)	6	+6	+6	+6	+6	+3	-1	-1.0%	-1.0%	-1.0%	-1.0%	+0.9%	-0.1%
Clerical (III & IV)	2	+2	+2	+2	+2	+1	+0	-1.0%	-1.0%	-1.0%	-1.0%	+1.7%	+0.0%
Patient & Client Care	2	+2	+2	+2	+2	-1	+0	-1.0%	-1.0%	-1.0%	-1.0%	-0.5%	+0.0%
Care, other	2	+2	+2	+2	+2	-1	+0	-1.0%	-1.0%	-1.0%	-1.0%	-0.5%	+0.0%

Source: Health Service Personnel Census

Mental Health

Sep 2021 (Dec 2016 figure: 828)	WTE Sep 2021	WTE change since Dec 16	WTE change since Dec 17	WTE change since Dec 18	WTE change since Dec 19	WTE change since Dec 20	WTE change since Aug 21	% change since Dec 16	% change since Dec 17	% change since Dec 18	% change since Dec 19	% change since Dec 20	% change since Aug 21
Overall	883	+56	+24	+49	+48	+22	+1	+6.7%	+2.8%	+5.8%	+5.8%	+2.5%	+0.1%
Medical & Dental	130	+29	+35	+28	+15	+3	+1	+0.3%	+0.4%	+0.3%	+0.1%	+0.0%	+0.0%
Consultants	54	+9	+13	+9	+6	+1	-1	+0.2%	+0.3%	+0.2%	+0.1%	+0.0%	-0.0%
Registrars	53	+24	+26	+14	+7	-0	+1	+0.8%	+0.9%	+0.4%	+0.1%	-0.0%	+0.0%
SHO/ Interns	23	-4	-4	+4	+2	+3	+1	-0.1%	-0.1%	+0.2%	+0.1%	+0.1%	+0.1%
Nursing & Midwifery	395	+33	+10	+34	+26	+16	-1	+0.1%	+0.0%	+0.1%	+0.1%	+0.0%	-0.0%
Nurse/ Midwife Manager	116	+5	+1	-3	-1	-2	-1	+0.0%	+0.0%	-0.0%	-0.0%	-0.0%	-0.0%
Nurse/ Midwife Specialist & AN/MP	51	+25	+24	+25	+11	+4	-1	+1.0%	+0.9%	+0.9%	+0.3%	+0.1%	-0.0%
Staff Nurse/ Staff Midwife	208	-10	-22	+7	+13	+6	+2	-0.0%	-0.1%	+0.0%	+0.1%	+0.0%	+0.0%
Public Health Nurse	1	+1	+1	+1	+1	+1	+0	-1.0%	-1.0%	-1.0%	-1.0%	-1.0%	+0.1%
Nursing/ Midwifery Student	15	+13	+7	+5	+3	+7	-1	+7.8%	+0.8%	+0.5%	+0.3%	+0.9%	-0.1%
Nursing/ Midwifery other	5	-1	-1	-1	-2	-0	+0	-0.1%	-0.1%	-0.1%	-0.3%	-0.1%	+0.0%
Health & Social Care Professionals	143	+7	-3	+3	+3	-4	+1	+0.1%	-0.0%	+0.0%	+0.0%	-0.0%	+0.0%
Therapy Professions	46	-2	-2	-3	-2	-8	-0	-0.1%	-0.0%	-0.1%	-0.0%	-0.1%	-0.0%
Social Care	8	-3	-3	-0	+0	+1	+1	-0.2%	-0.2%	-0.0%	+0.1%	+0.1%	+0.1%
Social Workers	41	+0	-1	+4	+7	+3	+1	+0.0%	-0.0%	+0.1%	+0.2%	+0.1%	+0.0%
Psychologists	30	+5	-0	-4	-2	+1	-1	+0.2%	-0.0%	-0.1%	-0.0%	+0.0%	-0.0%
Pharmacy	1	+1	+1	+1				-1.0%	-1.0%	-1.0%	+0.0%	+0.0%	+0.0%
H&SC, Other	17	+6	+2	+4	-1	-1	+0	+0.6%	+0.1%	+0.3%	-0.1%	-0.1%	+0.0%
Management & Administrative	70	+3	+1	-3	+5	-0	+0	+0.1%	+0.0%	-0.0%	+0.1%	-0.0%	+0.0%
Management (VIII & above)	5	+2	+2	+2	+2	+1	-0	+0.7%	+0.7%	+0.7%	+0.7%	+0.3%	-0.0%
Administrative/ Supervisory (V to VII)	18	+6	+2	-1	+2	+1	-0	+0.4%	+0.1%	-0.0%	+0.1%	+0.0%	-0.0%
Clerical (III & IV)	47	-4	-3	-5	+0	-2	+1	-0.1%	-0.1%	-0.1%	+0.0%	-0.0%	+0.0%
General Support	20	-7	-6	-5	+0	+0	+1	-0.2%	-0.2%	-0.2%	+0.0%	+0.0%	+0.0%
Support	18	-7	-6	-5	-0	+0	+1	-0.3%	-0.2%	-0.2%	-0.0%	+0.0%	+0.0%
Maintenance/ Technical	2				+0			+0.0%	+0.0%	+0.0%	+0.1%	+0.0%	+0.0%
Patient & Client Care	125	-11	-13	-8	-0	+6	-2	-0.1%	-0.1%	-0.1%	-0.0%	+0.1%	-0.0%
Health Care Assistants	34	-11	-10	-7	+1	-0	-1	-0.2%	-0.2%	-0.2%	+0.0%	-0.0%	-0.0%
Care, other	91	+1	-3	-1	-1	+6	-1	+0.0%	-0.0%	-0.0%	-0.0%	+0.1%	-0.0%

Source: Health Service Personnel Census

Primary Care

Sep 2021 (Dec 2016 figure: 1,687)	WTE Sep 2021	WTE change since Dec 16	WTE change since Dec 17	WTE change since Dec 18	WTE change since Dec 19	WTE change since Dec 20	WTE change since Aug 21	% change since Dec 16	% change since Dec 17	% change since Dec 18	% change since Dec 19	% change since Dec 20	% change since Aug 21
Overall	1,838	+151	+147	+62	+136	+49	-3	+8.9%	+8.7%	+3.5%	+8.0%	+2.7%	-0.2%
Medical & Dental	139	+6	+1	-6	+0	-3	-0	+0.0%	+0.0%	-0.0%	+0.0%	-0.0%	-0.0%
Consultants	13	+2	+0	+1	+1	+0	-0	+0.2%	+0.0%	+0.1%	+0.1%	+0.0%	-0.0%
Registrars	46	+8	+9	+3	+0	+3	+1	+0.2%	+0.2%	+0.1%	+0.0%	+0.1%	+0.0%
SHO/ Interns	11	+5	+5	+4	+5	+2	-0	+0.8%	+0.9%	+0.5%	+0.8%	+0.2%	-0.0%
Medical/ Dental, other	69	-9	-13	-14	-7	-8	-1	-0.1%	-0.2%	-0.2%	-0.1%	-0.1%	-0.0%
Nursing & Midwifery	548	+40	+40	+19	+19	+6	+2	+0.1%	+0.1%	+0.0%	+0.0%	+0.0%	+0.0%
Nurse/ Midwife Manager	100	+22	+24	+19	+19	+14	+2	+0.3%	+0.3%	+0.2%	+0.2%	+0.2%	+0.0%
Nurse/ Midwife Specialist & AN/MP	54	+20	+11	+7	+8	-2	-1	+0.6%	+0.3%	+0.2%	+0.2%	-0.0%	-0.0%
Staff Nurse/ Staff Midwife	208	+17	+23	+9	+3	+8	+4	+0.1%	+0.1%	+0.0%	+0.0%	+0.0%	+0.0%
Public Health Nurse	185	+5	-1	-10	+10	+9	-2	+0.0%	-0.0%	-0.0%	+0.1%	+0.1%	-0.0%
Nursing/ Midwifery Student		-23	-16	-7	-21	-23	-1	-1.0%	-1.0%	-1.0%	-1.0%	-1.0%	-1.0%
Nursing/ Midwifery other	2	-2	-1					-0.4%	-0.2%	+0.0%	+0.0%	+0.0%	+0.0%
Health & Social Care Professionals	355	-7	-7	-25	-18	-10	-3	-0.0%	-0.0%	-0.1%	-0.0%	-0.0%	-0.0%
Therapy Professions	246	-8	-8	-29	-20	-11	+0	-0.0%	-0.0%	-0.1%	-0.1%	-0.0%	+0.0%
Health Science/ Diagnostics	1	+0	+0	+1	+1	-0	+0	+0.5%	+0.6%	+3.5%	+3.5%	-0.2%	+0.0%
Social Care	3	-1	-1	-1	-0	-1		-0.3%	-0.3%	-0.3%	-0.1%	-0.2%	+0.0%
Social Workers	26	-2	-0	+2	+0	+0	-2	-0.1%	-0.0%	+0.1%	+0.0%	+0.0%	-0.1%
Psychologists	24	+3	+2	+0	+2	-1	-1	+0.2%	+0.1%	+0.0%	+0.1%	-0.1%	-0.0%
Pharmacy	33	+3	+2	+4	+1	+2	+0	+0.1%	+0.1%	+0.1%	+0.0%	+0.1%	+0.0%
H&SC, Other	22	-3	-1	-2	-2	+1	-1	-0.1%	-0.0%	-0.1%	-0.1%	+0.1%	-0.0%
Management & Administrative	333	+30	+23	+22	+46	+23	+3	+0.1%	+0.1%	+0.1%	+0.2%	+0.1%	+0.0%
Management (VIII & above)	33	+5	+5	+2	-0	+3	+1	+0.2%	+0.2%	+0.1%	-0.0%	+0.1%	+0.0%
Administrative/ Supervisory (V to VII)	99	+36	+27	+28	+23	+11	+2	+0.6%	+0.4%	+0.4%	+0.3%	+0.1%	+0.0%
Clerical (III & IV)	201	-11	-9	-8	+23	+9	-1	-0.1%	-0.0%	-0.0%	+0.1%	+0.0%	-0.0%
General Support	118	-18	-12	-14	-7	-2	-0	-0.1%	-0.1%	-0.1%	-0.1%	-0.0%	-0.0%
Support	109	-18	-15	-16	-7	-2	-0	-0.1%	-0.1%	-0.1%	-0.1%	-0.0%	-0.0%
Maintenance/ Technical	9	+0	+2	+1	+1	-0	-0	+0.0%	+0.3%	+0.1%	+0.1%	-0.0%	-0.0%
Patient & Client Care	344	+100	+103	+66	+96	+34	-5	+0.4%	+0.4%	+0.2%	+0.4%	+0.1%	-0.0%
Health Care Assistants	209	+92	+90	+68	+88	+25	-5	+0.8%	+0.8%	+0.5%	+0.7%	+0.1%	-0.0%
Care, other	135	+8	+12	-2	+8	+9	-0	+0.1%	+0.1%	-0.0%	+0.1%	+0.1%	-0.0%

Source: Health Service Personnel Census

Disabilities

Sep 2021 (Dec 2016 figure: 1,943)	WTE Sep 2021	WTE change since Dec 16	WTE change since Dec 17	WTE change since Dec 18	WTE change since Dec 19	WTE change since Dec 20	WTE change since Aug 21	% change since Dec 16	% change since Dec 17	% change since Dec 18	% change since Dec 19	% change since Dec 20	% change since Aug 21
Overall	3,240	+1,298	+449	+337	+259	+137	+42	+66.8%	+16.1%	+11.6%	+8.7%	+4.4%	+1.3%
Medical & Dental	12	+0	-2	+1	+0	+0	+1	+0.0%	-0.1%	+0.1%	+0.0%	+0.0%	+0.1%
Consultants	0	-2	-2	-0	-0	-0		-0.9%	-0.9%	-0.4%	-0.4%	-0.4%	+0.0%
Registrars	2	-1	-1	+0	-1	-1	-1	-0.2%	-0.2%	+0.0%	-0.2%	-0.2%	-0.2%
SHO/ Interns	8	+3	+1	+1	+1	+1	+1	+0.6%	+0.1%	+0.1%	+0.1%	+0.1%	+0.2%
Medical/ Dental, other	1							+0.0%	+0.0%	+0.0%	+0.0%	+0.0%	+0.0%
Nursing & Midwifery	540	+143	+33	+32	+38	+38	+7	+0.4%	+0.1%	+0.1%	+0.1%	+0.1%	+0.0%
Nurse/ Midwife Manager	130	+30	-4	+6	+8	+12	+1	+0.3%	-0.0%	+0.0%	+0.1%	+0.1%	+0.0%
Nurse/ Midwife Specialist & AN/MP	4	-1	-3	-6	-1			-0.1%	-0.4%	-0.6%	-0.2%	+0.0%	+0.0%
Staff Nurse/ Staff Midwife	394	+106	+29	+21	+20	+16	+5	+0.4%	+0.1%	+0.1%	+0.1%	+0.0%	+0.0%
Nursing/ Midwifery Student	9	+9	+9	+9	+9	+9	+1	-1.0%	-1.0%	-1.0%	-1.0%	-1.0%	+0.1%
Nursing/ Midwifery other	3	-1	+2	+2	+2	+1		-0.2%	+4.0%	+4.0%	+4.0%	+0.7%	+0.0%
Health & Social Care Professionals	642	+387	+137	+106	+90	+43	+13	+1.5%	+0.3%	+0.2%	+0.2%	+0.1%	+0.0%
Therapy Professions	148	+48	+26	+29	+26	+9	+4	+0.5%	+0.2%	+0.2%	+0.2%	+0.1%	+0.0%
Health Science/ Diagnostics	2	-0		-1	-1	-1		-0.2%	+0.0%	-0.3%	-0.3%	-0.3%	+0.0%
Social Care	421	+323	+107	+73	+60	+32	+10	+3.3%	+0.3%	+0.2%	+0.2%	+0.1%	+0.0%
Social Workers	34	+8	+4	-0	+0	+2	+0	+0.3%	+0.2%	-0.0%	+0.0%	+0.1%	+0.0%
Psychologists	32	+9	-0	+5	+5	+0	+1	+0.4%	-0.0%	+0.2%	+0.2%	+0.0%	+0.0%
Pharmacy	5	+1	+1	-0	-0	+1	-0	+0.2%	+0.2%	-0.1%	-0.0%	+0.2%	-0.0%
H&SC, Other	2	-1	-1				-1	-0.4%	-0.4%	+0.0%	+0.0%	+0.0%	-0.4%
Management & Administrative	242	+109	+62	+52	+39	+6	-3	+0.8%	+0.3%	+0.3%	+0.2%	+0.0%	-0.0%
Management (VIII & above)	46	+20	+15	+15	+14	+4	+1	+0.8%	+0.5%	+0.5%	+0.5%	+0.1%	+0.0%
Administrative/ Supervisory (V to VII)	92	+45	+31	+22	+13	+0	-0	+1.0%	+0.5%	+0.3%	+0.2%	+0.0%	-0.0%
Clerical (III & IV)	103	+43	+15	+15	+11	+2	-3	+0.7%	+0.2%	+0.2%	+0.1%	+0.0%	-0.0%
General Support	186	+28	-28	-22	-9	-2	+3	+0.2%	-0.1%	-0.1%	-0.0%	-0.0%	+0.0%
Support	153	+14	-28	-25	-14	-3	+3	+0.1%	-0.2%	-0.1%	-0.1%	-0.0%	+0.0%
Maintenance/ Technical	33	+15	-1	+4	+5	+0	-0	+0.8%	-0.0%	+0.1%	+0.2%	+0.0%	-0.0%
Patient & Client Care	1,619	+630	+247	+168	+101	+53	+20	+0.6%	+0.2%	+0.1%	+0.1%	+0.0%	+0.0%
Health Care Assistants	1,201	+481	+229	+154	+88	+54	+11	+0.7%	+0.2%	+0.1%	+0.1%	+0.0%	+0.0%
Care, other	401	+163	+27	+20	+15	-2	+9	+0.7%	+0.1%	+0.1%	+0.0%	-0.0%	+0.0%
Home Help	17	-15	-9	-6	-2	+0	+0	-0.5%	-0.3%	-0.3%	-0.1%	+0.0%	+0.0%

Source: Health Service Personnel Census

Older People

Sep 2021 (Dec 2016 figure: 1,121)	WTE Sep 2021	WTE change since Dec 16	WTE change since Dec 17	WTE change since Dec 18	WTE change since Dec 19	WTE change since Dec 20	WTE change since Aug 21	% change since Dec 16	% change since Dec 17	% change since Dec 18	% change since Dec 19	% change since Dec 20	% change since Aug 21
Overall	1,007	-114	-56	-37	+11	-14	-8	-10.1%	-5.3%	-3.5%	+1.2%	-1.4%	-0.8%
Medical & Dental	4	-5	-4	-3	-2			-0.6%	-0.5%	-0.4%	-0.3%	+0.0%	+0.0%
SHO/ Interns	2	-1	-1					-0.3%	-0.3%	+0.0%	+0.0%	+0.0%	+0.0%
Medical/ Dental, other	2	-4	-3	-3	-2			-0.7%	-0.6%	-0.6%	-0.5%	+0.0%	+0.0%
Nursing & Midwifery	342	+1	+19	+41	+44	+10	-5	+0.0%	+0.1%	+0.1%	+0.1%	+0.0%	-0.0%
Nurse/ Midwife Manager	96	+12	+21	+22	+19	+10	-1	+0.1%	+0.3%	+0.3%	+0.2%	+0.1%	-0.0%
Nurse/ Midwife Specialist & AN/MP	3	-0	-0	-1	+1	+0		-0.0%	-0.1%	-0.2%	+0.2%	+0.1%	+0.0%
Staff Nurse/ Staff Midwife	241	-12	-3	+18	+22	-0	-4	-0.0%	-0.0%	+0.1%	+0.1%	-0.0%	-0.0%
Public Health Nurse		-0						-1.0%	-1.0%	-1.0%	-1.0%	-1.0%	-1.0%
Nursing/ Midwifery Student	2	+2	+2	+2	+2	+1		-1.0%	-1.0%	-1.0%	-1.0%	+0.5%	+0.0%
Health & Social Care Professionals	32	-6	-5	-7	+4	+3	+0	-0.2%	-0.1%	-0.2%	+0.1%	+0.1%	+0.0%
Therapy Professions	16	+0	-1	-1	+3	+3	-0	+0.0%	-0.0%	-0.0%	+0.2%	+0.2%	-0.0%
Health Science/ Diagnostics		-1						-1.0%	-1.0%	-1.0%	-1.0%	-1.0%	-1.0%
Social Workers	13	-2	-1	-3	+2	+0	+0	-0.1%	-0.1%	-0.2%	+0.2%	+0.0%	+0.0%
Pharmacy	2	-2	-2	-2	-1			-0.5%	-0.5%	-0.5%	-0.2%	+0.0%	+0.0%
H&SC, Other	1	-1	-1	-1				-0.5%	-0.5%	-0.5%	+0.0%	+0.0%	+0.0%
Management & Administrative	61	+8	+11	+17	+10	+2	+4	+0.2%	+0.2%	+0.4%	+0.2%	+0.0%	+0.1%
Management (VIII & above)	6	-2	+1	+2	+1	-1	-0	-0.2%	+0.3%	+0.6%	+0.3%	-0.1%	-0.0%
Administrative/ Supervisory (V to VII)	18	+8	+8	+9	+7	+4	+3	+0.9%	+0.7%	+0.9%	+0.6%	+0.2%	+0.2%
Clerical (III & IV)	36	+2	+2	+6	+2	-1	+1	+0.0%	+0.1%	+0.2%	+0.1%	-0.0%	+0.0%
General Support	117	-4	-7	-5	+5	-4	-2	-0.0%	-0.1%	-0.0%	+0.0%	-0.0%	-0.0%
Support	115	-3	-6	-4	+5	-4	-2	-0.0%	-0.0%	-0.0%	+0.0%	-0.0%	-0.0%
Maintenance/ Technical	2	-1	-1	-1				-0.3%	-0.3%	-0.3%	+0.0%	+0.0%	+0.0%
Patient & Client Care	451	-108	-71	-79	-49	-26	-5	-0.2%	-0.1%	-0.1%	-0.1%	-0.1%	-0.0%
Health Care Assistants	340	-76	-40	-70	-47	-17	-3	-0.2%	-0.1%	-0.2%	-0.1%	-0.0%	-0.0%
Care, other	4	-12	-11	-3	-1	-1	-3	-0.8%	-0.7%	-0.4%	-0.2%	-0.2%	-0.4%
Home Help	107	-19	-19	-6	-1	-8	+0	-0.2%	-0.1%	-0.1%	-0.0%	-0.1%	+0.0%

Source: Health Service Personnel Census