

CHO 8 Employment Report: April 2021

Employment by Staff Group

Apr 2021 (Dec 2020 figure: 6,337)	WTE Mar 2021	WTE Apr 2021	WTE change since Mar 21	% change since Mar 21	WTE change since Dec 20	WTE change since Apr 20
Overall	6,417	6,444	+27	+0.4%	+107	+228
Consultants	44	45	+1	+2.0%	+1	+2
Registrars	111	113	+3	+2.4%	-1	+15
SHO/ Interns	27	25	-2	-6.2%	-2	-16
Medical/ Dental, other	73	68	-5	-7.1%	-5	-6
Medical & Dental	254	251	-3	-1.3%	-6	-5
Nurse/ Midwife Manager	377	376	-0	-0.0%	-3	-1
Nurse/ Midwife Specialist & AN/MP	114	113	-1	-0.8%	+2	+10
Staff Nurse/ Staff Midwife	1,017	1,024	+7	+0.7%	+11	+25
Public Health Nurse	203	203	-0	-0.0%	+2	-6
<i>Pre-registration Nurse/ Midwife Intern</i>	29	29	+1	+2.7%	+29	+1
<i>Pre-registration Nurse Intern (COVID-19)</i>		0	+0	-100.0%	-5	+0
<i>Post-registration Nurse/ Midwife Student</i>	13	13			+1	
Nursing/ Midwifery Student	42	43	+1	+2.7%	+26	+1
Nursing/ Midwifery other	13	13	+0	+0.5%	+0	-0
Nursing & Midwifery	1,766	1,773	+7	+0.4%	+39	+29
Therapy Professions	394	398	+4	+1.0%	+3	+12
Health Science/ Diagnostics	10	10			+1	+2
Social Care	383	387	+4	+1.1%	-0	+12
Social Workers	93	96	+3	+3.2%	+7	+8
Psychologists	119	120	+1	+0.8%	+5	+3
Pharmacy	12	12			+3	+4
H&SC, Other	56	57	+1	+1.1%	+3	+4
Health & Social Care Professionals	1,067	1,080	+13	+1.2%	+22	+45
Management (VIII & above)	68	71	+3	+3.8%	+4	+8
Administrative/ Supervisory (V to VII)	200	205	+5	+2.4%	+1	+4
Clerical (III & IV)	533	524	-9	-1.7%	-9	-6
Management & Administrative	801	799	-2	-0.2%	-4	+6
Support	117	116	-1	-1.0%	-2	-11
Maintenance/ Technical	67	68	+2	+2.9%	-0	-0
General Support	184	184	+1	+0.4%	-2	-12
Health Care Assistants	1,713	1,718	+4	+0.3%	+55	+164
Care, other	241	243	+2	+0.8%	+5	+4
Home Help	391	395	+4	+1.1%	-2	-3
Patient & Client Care	2,345	2,356	+11	+0.5%	+58	+164

CHO 8 Employment Report: April 2021

Community Health & Wellbeing

Apr 2021 (Dec 2020 figure: 30)	WTE Mar 2021	WTE Apr 2021	WTE change since Mar 21	% change since Mar 21	WTE change since Dec 20	WTE change since Apr 20
Total Community Health & Wellbeing	29	29	+0	+1.2%	-1	+4
Public Health Nurse				-100.0%		-1
Nursing & Midwifery				-100.0%		-1
Therapy Professions	2	2	+0	+2.0%	+0	+0
Health & Social Care Professionals	2	2	+0	+2.0%	+0	+0
Management (VIII & above)	3	3			+0	+2
Administrative/ Supervisory (V to VII)	20	20	+0	+2.1%	-1	+3
Clerical (III & IV)	4	4	-0	-2.7%	-0	+0
Management & Administrative	27	27	+0	+1.2%	-1	+5

Mental Health

Apr 2021 (Dec 2020 figure: 1,112)	WTE Mar 2021	WTE Apr 2021	WTE change since Mar 21	% change since Mar 21	WTE change since Dec 20	WTE change since Apr 20
Total Mental Health	1,117	1,122	+5	+0.5%	+10	-1
Consultants	38	38	+0	+0.8%	+2	+3
Registrars	31	34	+3	+8.6%	+3	+13
SHO/ Interns	26	25	-1	-3.8%	-1	-14
Medical & Dental	95	97	+2	+2.1%	+3	+2
Nurse/ Midwife Manager	114	117	+3	+2.5%	-3	-8
Nurse/ Midwife Specialist & AN/MP	60	59	-1	-2.1%	-1	+1
Staff Nurse/ Staff Midwife	336	339	+4	+1.1%	-3	+13
<i>Pre-registration Nurse Intern (COVID-19)</i>				-100.0%	-1	
<i>Pre-registration Nurse/ Midwife Intern</i>	23	24	+1	+5.5%	+24	+1
Nursing/ Midwifery Student	23	24	+1	+5.5%	+23	+4
Nursing/ Midwifery other	3	3				-1
Nursing & Midwifery	536	543	+7	+1.2%	+17	+10
Therapy Professions	44	43	-0	-0.4%	+1	-3
Social Care	6	7	+0	+2.2%	-0	-1
Social Workers	47	47	-0	-0.2%	+3	+4
Psychologists	39	39	-0	-0.6%	+2	+1
Pharmacy	2	2				
H&SC, Other	15	15	-0	-1.0%	-6	-6
Health & Social Care Professionals	153	152	-1	-0.3%	-1	-5
Management (VIII & above)	2	3	+1	+48.0%	-0	-0
Administrative/ Supervisory (V to VII)	20	22	+1	+6.1%	+1	+1
Clerical (III & IV)	98	95	-3	-2.8%	-2	-3
Management & Administrative	120	119	-1	-0.5%	-1	-2
Support	30	30	-0	-1.3%	-1	-3
Maintenance/ Technical	28	29	+1	+4.0%	+1	+2
General Support	58	59	+1	+1.2%	-1	-0
Health Care Assistants	152	149	-3	-2.0%	-8	-5
Care, other	3	3	+0	+6.0%	-0	-0
Patient & Client Care	155	152	-3	-1.8%	-8	-5

Primary Care

Apr 2021 (Dec 2020 figure: 1,506)	WTE Mar 2021	WTE Apr 2021	WTE change since Mar 21	% change since Mar 21	WTE change since Dec 20	WTE change since Apr 20
Total Primary Care	1,566	1,565	-1	-0.0%	+59	+152
Consultants	6	6	+1	+9.3%	+0	+1
Registrars	78	78	-0	-0.0%	-4	+1
SHO/ Interns	1	0	-1	-71.6%	-1	-2
Medical/ Dental, other	61	56	-5	-8.4%	-5	-6
Medical & Dental	146	141	-5	-3.6%	-9	-6
Nurse/ Midwife Manager	50	50	+0	+0.6%	-1	-2
Nurse/ Midwife Specialist & AN/MP	44	44	+0	+0.5%	+2	+9
Staff Nurse/ Staff Midwife	106	107	+0	+0.1%	+2	+3
Public Health Nurse	199	199	+0	+0.0%	+2	-6
<i>Post-registration Nurse/ Midwife Student</i>	13	13			+1	
Nursing/ Midwifery Student	13	13			+1	+11
Nursing/ Midwifery other	1	1			+0	+0
Nursing & Midwifery	414	414	+1	+0.2%	+8	+15
Therapy Professions	229	230	+1	+0.4%	+1	+5
Health Science/ Diagnostics	8	8			+1	+2
Social Care	1	1				+1
Social Workers	16	17	+2	+10.3%	+1	+1
Psychologists	55	56	+1	+1.2%	-0	+1
Pharmacy	7	7			+2	+3
H&SC, Other	34	34	+0	+1.4%	+8	+9
Health & Social Care Professionals	350	353	+4	+1.1%	+14	+22
Management (VIII & above)	43	44	+1	+2.2%	+3	+2
Administrative/ Supervisory (V to VII)	83	86	+3	+4.0%	+2	+5
Clerical (III & IV)	273	269	-4	-1.5%	-3	-1
Management & Administrative	399	399	+0	+0.0%	+2	+6
Support	21	20	-0	-2.1%	-0	-2
Maintenance/ Technical	3	3				+0
General Support	24	23	-0	-1.8%	-0	-1
Health Care Assistants	134	134	+0	+0.1%	+44	+117
Care, other	100	100	+0	+0.3%	+0	-1
Patient & Client Care	234	235	+0	+0.2%	+45	+116

Social Care

Apr 2021 (Dec 2020 figure: 3,689)	WTE Mar 2021	WTE Apr 2021	WTE change since Mar 21	% change since Mar 21	WTE change since Dec 20	WTE change since Apr 20
Total Social Care	3,705	3,727	+22	+0.6%	+38	+74
Consultants				-100.0%	-1	-1
Registrars	1	1				
Medical/ Dental, other	12	12	-0	-0.4%	-0	
Medical & Dental	13	13	-0	-0.4%	-1	-1
Nurse/ Midwife Manager	212	209	-3	-1.6%	+1	+10
Nurse/ Midwife Specialist & AN/MP	10	10	+0	+0.6%	+0	+0
Staff Nurse/ Staff Midwife	575	579	+4	+0.6%	+12	+8
Public Health Nurse	4	4	-0	-2.5%	+0	+1
<i>Pre-registration Nurse Intern (COVID-19)</i>		0	+0	-100.0%	-4	+0
<i>Pre-registration Nurse/ Midwife Intern</i>	6	5	-0	-8.5%	+5	-0
Nursing/ Midwifery Student	6	6	-0	-2.1%	+2	-14
Nursing/ Midwifery other	9	9	+0	+0.7%	+0	+1
Nursing & Midwifery	816	816	+0	+0.0%	+14	+5
Therapy Professions	120	123	+3	+2.7%	+1	+10
Health Science/ Diagnostics	2	2				
Social Care	376	380	+4	+1.1%	-0	+13
Social Workers	31	32	+2	+4.9%	+3	+3
Psychologists	25	25	+1	+2.2%	+3	+1
Pharmacy	3	3			+1	+1
H&SC, Other	7	7	+0	+4.8%	+1	+1
Health & Social Care Professionals	563	573	+10	+1.7%	+9	+28
Management (VIII & above)	20	21	+1	+3.6%	+1	+4
Administrative/ Supervisory (V to VII)	77	77	-0	-0.3%	-1	-5
Clerical (III & IV)	158	156	-2	-1.3%	-4	-2
Management & Administrative	255	254	-2	-0.6%	-4	-2
Support	66	66	-0	-0.5%	-1	-7
Maintenance/ Technical	36	37	+1	+2.3%	-1	-3
General Support	102	103	+1	+0.5%	-2	-10
Health Care Assistants	1,427	1,435	+7	+0.5%	+18	+52
Care, other	138	140	+2	+1.1%	+5	+5
Home Help	391	395	+4	+1.1%	-2	-3
Patient & Client Care	1,956	1,969	+13	+0.7%	+21	+54

CHO 8 Employment Report: April 2021

Disabilities

Apr 2021 (Dec 2020 figure: 2,205)	WTE Mar 2021	WTE Apr 2021	WTE change since Mar 21	% change since Mar 21	WTE change since Dec 20	WTE change since Apr 20
Total Disabilities	2,221	2,245	+25	+1.1%	+40	+79
Consultants				-100.0%	-1	-1
Registrars	1	1				
Medical/ Dental, other	1	1				
Medical & Dental	2	2			-1	-1
Nurse/ Midwife Manager	121	119	-3	-2.1%	-0	+2
Nurse/ Midwife Specialist & AN/MP	5	5	-0	-0.6%	-1	-2
Staff Nurse/ Staff Midwife	321	323	+3	+0.9%	+11	+7
Public Health Nurse	1	1			-0	
<i>Pre-registration Nurse Intern (COVID-19)</i>		0	+0	-100.0%	-4	+0
<i>Pre-registration Nurse/ Midwife Intern</i>	6	5	-0	-8.5%	+5	-0
Nursing/ Midwifery Student	6	6	-0	-2.1%	+2	-14
Nursing/ Midwifery other	7	7	+0	+0.6%	+0	-0
Nursing & Midwifery	461	461	+0	+0.1%	+12	-8
Therapy Professions	94	97	+3	+2.9%	-1	+5
Health Science/ Diagnostics	2	2				
Social Care	376	380	+4	+1.1%	-0	+13
Social Workers	25	27	+1	+5.1%	+2	+2
Psychologists	25	25	+1	+2.2%	+3	+1
H&SC, Other	7	7	+0	+4.8%	+1	+1
Health & Social Care Professionals	529	538	+9	+1.7%	+5	+22
Management (VIII & above)	14	15	+1	+7.2%	+2	+4
Administrative/ Supervisory (V to VII)	54	54	-0	-0.1%	-2	-6
Clerical (III & IV)	89	88	-1	-1.0%	+1	+0
Management & Administrative	158	158	+0	+0.0%	+0	-2
Support	41	41	-0	-1.0%	-1	-4
Maintenance/ Technical	13	14	+1	+7.7%	+0	-2
General Support	54	55	+1	+1.1%	-1	-6
Health Care Assistants	879	892	+13	+1.5%	+21	+70
Care, other	117	119	+2	+1.4%	+5	+4
Home Help	22	22	-0	-0.5%	-1	-1
Patient & Client Care	1,018	1,033	+15	+1.4%	+24	+73

Older People

Apr 2021 (Dec 2020 figure: 1,484)	WTE Mar 2021	WTE Apr 2021	WTE change since Mar 21	% change since Mar 21	WTE change since Dec 20	WTE change since Apr 20
Total Older People	1,485	1,482	-3	-0.2%	-2	-5
Medical/ Dental, other	11	11	-0	-0.5%	-0	
Medical & Dental	11	11	-0	-0.5%	-0	
Nurse/ Midwife Manager	91	90	-1	-0.9%	+1	+8
Nurse/ Midwife Specialist & AN/MP	5	5	+0	+1.9%	+1	+2
Staff Nurse/ Staff Midwife	255	255	+1	+0.2%	+0	+1
Public Health Nurse	3	3	-0	-3.3%	+0	+1
Nursing/ Midwifery other	2	2	+0	+1.0%	+0	+1
Nursing & Midwifery	355	355	-0	-0.0%	+2	+12
Health & Social Care Professionals	34	35	+1	+2.1%	+4	+6
Management (VIII & above)	6	6	-0	-4.5%	-1	+0
Administrative/ Supervisory (V to VII)	23	23	-0	-0.7%	+1	+2
Clerical (III & IV)	69	68	-1	-1.6%	-4	-2
Management & Administrative	98	96	-2	-1.6%	-4	-0
Support	25	25	+0	+0.4%	+0	-3
Maintenance/ Technical	23	23	-0	-0.7%	-1	-1
General Support	48	48	-0	-0.1%	-1	-4
Health Care Assistants	548	542	-6	-1.1%	-2	-18
Care, other	21	21	-0	-0.4%	-1	+1
Home Help	369	374	+4	+1.2%	-0	-3
Patient & Client Care	939	937	-2	-0.2%	-3	-20

CHO 8 Employment by Administration (HSE / S38): April 2021

Apr 2021 (Dec 2020 figure: 6,337)	WTE Mar 2021	WTE Apr 2021	WTE change since Mar 21	% change since Mar 21	WTE change since Dec 20	WTE change since Apr 20
Overall	6,417	6,444	+27	+0.4%	+107	+228
HSE	4,800	4,812	+11	+0.2%	+70	+158
Section 38 Voluntary Agencies	1,616	1,632	+15	+1.0%	+37	+71

HSE

Apr 2021 (Dec 2020 figure: 4,742)	WTE Mar 2021	WTE Apr 2021	WTE change since Mar 21	% change since Mar 21	WTE change since Dec 20	WTE change since Apr 20
Overall	4,800	4,812	+11	+0.2%	+70	+158
Consultants	44	45	+1	+0.0%	+1	+2
Registrars	110	112	+3	+0.0%	-1	+15
SHO/ Interns	27	25	-2	-0.1%	-2	-16
Medical/ Dental, other	73	68	-5	-0.1%	-5	-6
Medical & Dental	253	250	-3	-1.3%	-6	-5
Nurse/ Midwife Manager	291	292	+2	+0.0%	-1	+2
Nurse/ Midwife Specialist & AN/MP	110	109	-1	-0.0%	+2	+11
Staff Nurse/ Staff Midwife	798	804	+7	+0.0%	-1	+9
Public Health Nurse	203	203	-0	-0.0%	+2	-6
Pre-registration Nurse/ Midwife Intern	23	24	+1	+0.1%	+24	+4
Pre-registration Nurse Intern (COVID-19)				-1.0%		
Post-registration Nurse/ Midwife Student	13	13		+0.0%	+11	+11
Nursing/ Midwifery awaiting registration				-1.0%	-2	
Nursing/ Midwifery Student	36	37	+1	+0.0%	+24	+15
Nursing/ Midwifery other	6	6	+0	+0.0%	+0	+0
Nursing & Midwifery	1,443	1,452	+9	+0.6%	+27	+31
Therapy Professions	381	386	+4	+0.0%	+4	+12
Health Science/ Diagnostics	10	10		+0.0%	+1	+2
Social Care	13	13	+0	+0.0%	-0	-0
Social Workers	81	84	+3	+0.0%	+7	+8
Psychologists	113	114	+1	+0.0%	+5	+3
Pharmacy	12	12		+0.0%	+3	+4
H&SC, Other	49	50	+1	+0.0%	+2	+4
Health & Social Care Professionals	659	668	+9	+1.4%	+22	+33
Management (VIII & above)	59	61	+2	+0.0%	+2	+3
Administrative/ Supervisory (V to VII)	173	179	+6	+0.0%	+2	+7
Clerical (III & IV)	486	477	-10	-0.0%	-10	-5
Management & Administrative	719	716	-2	-0.3%	-6	+4
Support	82	81	-1	-0.0%	-1	-7
Maintenance/ Technical	56	56	+1	+0.0%	-0	+1
General Support	138	138	+0	+0.2%	-2	-6
Health Care Assistants	1,042	1,035	-6	-0.0%	+33	+95
Care, other	156	157	+1	+0.0%	+3	+9
Home Help	391	395	+4	+0.0%	-2	-3
Patient & Client Care	1,588	1,587	-1	-0.1%	+34	+100

Section 38 Voluntary Agencies

Apr 2021 (Dec 2020 figure: 1,595)	WTE Mar 2021	WTE Apr 2021	WTE change since Mar 21	% change since Mar 21	WTE change since Dec 20	WTE change since Apr 20
Overall	1,616	1,632	+15	+1.0%	+37	+71
Registrars	1	1		+0.0%		
Medical & Dental	1	1				
Nurse/ Midwife Manager	86	84	-2	-0.0%	-2	-3
Nurse/ Midwife Specialist & AN/MP	5	4	-0	-0.0%	-0	-1
Staff Nurse/ Staff Midwife	219	220	+1	+0.0%	+12	+16
Pre-registration Nurse/ Midwife Intern	6	5	-0	-0.1%	+5	-7
Pre-registration Nurse Intern (COVID-19)		0	+0	-1.0%	+0	-8
Nursing/ Midwifery Student	6	6	-0	-0.0%	+2	-14
Nursing/ Midwifery other	7	7	+0	+0.0%	+0	-0
Nursing & Midwifery	322	321	-1	-0.4%	+12	-2
Therapy Professions	13	13	-0	-0.0%	-1	-0
Social Care	370	375	+4	+0.0%	-0	+12
Social Workers	12	12		+0.0%	+0	+1
Psychologists	6	6	+0	+0.0%	+0	-0
H&SC, Other	6	6		+0.0%	+1	+0
Health & Social Care Professionals	408	412	+4	+0.9%	+0	+13
Management (VIII & above)	9	10	+1	+0.1%	+2	+5
Administrative/ Supervisory (V to VII)	27	26	-1	-0.0%	-1	-3
Clerical (III & IV)	47	47	+1	+0.0%	+1	-1
Management & Administrative	83	83	+1	+0.7%	+2	+1
Support	35	34	-0	-0.0%	-1	-4
Maintenance/ Technical	11	12	+1	+0.1%	+0	-1
General Support	46	46	+1	+1.2%	-1	-5
Health Care Assistants	672	682	+11	+0.0%	+22	+68
Care, other	85	86	+1	+0.0%	+2	-5
Patient & Client Care	757	769	+12	+1.6%	+24	+64

CHO 8 Employment by S38 Agency: April 2021

Muiriosa Foundation, Laois/Offaly

Apr 2021 (Dec 2020 figure: 320)	WTE Mar 2021	WTE Apr 2021	WTE change since Mar 21	% change since Mar 21	WTE change since Dec 20	WTE change since Apr 20
Overall	335	343	+8	+2.5%	+22	+43
Nurse/ Midwife Manager	18	17	-0	-0.0%	+1	+1
Staff Nurse/ Staff Midwife	29	29	-0	-0.0%	+0	-0
Nursing & Midwifery	47	46	-1	-1.1%	+1	+1
Social Care	104	107	+2	+0.0%	+2	+10
Social Workers	3	3		+0.0%		-0
Psychologists	1	1		+0.0%		
H&SC, Other	1	1		+0.0%		
Health & Social Care Professionals	109	112	+2	+2.3%	+2	+10
Management (VIII & above)	3	3		+0.0%		+2
Administrative/ Supervisory (V to VII)	5	5	-0	-0.1%	-0	-0
Clerical (III & IV)	11	12	+1	+0.1%	+1	+1
Management & Administrative	19	20	+0	+1.5%	+0	+3
Support	1	1	+0	+0.0%	-0	+0
Maintenance/ Technical	2	2		+0.0%		
General Support	3	3	+0	+1.2%	-0	+0
Health Care Assistants	128	134	+6	+0.0%	+20	+31
Care, other	28	28	-0	-0.0%	+0	-2
Patient & Client Care	156	162	+6	+3.8%	+20	+29

Muiriosa Foundation, Longford/Westmeath

Apr 2021 (Dec 2020 figure: 284)	WTE Mar 2021	WTE Apr 2021	WTE change since Mar 21	% change since Mar 21	WTE change since Dec 20	WTE change since Apr 20
Overall	292	291	-1	-0.3%	+7	+20
Nurse/ Midwife Manager	9	9	-0	-0.0%	-0	-1
Staff Nurse/ Staff Midwife	4	4	+0	+0.0%	-0	-0
Nursing & Midwifery	13	13	+0	+0.2%	-1	-1
Therapy Professions	3	3		+0.0%		
Social Care	101	98	-3	-0.0%	-2	-2
Social Workers	4	4		+0.0%	+0	+1
Psychologists	2	2	+0	+0.0%	+0	+0
H&SC, Other	3	3		+0.0%	+1	+0
Health & Social Care Professionals	112	110	-3	-2.5%	-1	-1
Senior Management (VIII & GM)	1	1		+0.0%	+1	+1
Management (VIII & above)	1	1		+0.0%	+1	+1
Administrative/ Supervisory (V to VII)	4	4	-1	-0.1%		-1
Clerical (III & IV)	10	11	+1	+0.1%	+1	+1
Management & Administrative	16	16	+1	+3.2%	+2	+1
Support	1	1		+0.0%		
Maintenance/ Technical	3	3		+0.0%		
General Support	4	4				
Health Care Assistants	132	133	+1	+0.0%	+7	+22
Care, other	15	15	+0	+0.0%	-0	-2
Patient & Client Care	147	148	+1	+1.0%	+7	+21

Muiriosa Foundation, South Kildare

Apr 2021 (Dec 2020 figure: 342)	WTE Mar 2021	WTE Apr 2021	WTE change since Mar 21	% change since Mar 21	WTE change since Dec 20	WTE change since Apr 20
Overall	343	341	-2	-0.7%	-1	-7
Nurse/ Midwife Manager	14	15	+0	+0.0%	+1	-2
Nurse/ Midwife Specialist & AN/MP	2	2	-0	-0.0%	-0	+0
Staff Nurse/ Staff Midwife	20	21	+1	+0.0%	-1	-2
Pre-registration Nurse/ Midwife Intern	6	5	-0	-0.1%	+5	-0
Pre-registration Nurse Intern (COVID-19)		0	+0	-1.0%	+0	-4
Nursing/ Midwifery Student	6	6	-0	-0.0%	+6	-4
Nursing/ Midwifery other	6	6	+0	+0.0%	-1	-1
Nursing & Midwifery	48	49	+1	+2.1%	+5	-9
Therapy Professions	8	7	-0	-0.1%	-1	-1
Social Care	95	95	-0	-0.0%	+0	+5
Social Workers	3	3		+0.0%		+0
Psychologists	2	2		+0.0%		-0
H&SC, Other	3	3		+0.0%		
Health & Social Care Professionals	109	109	-1	-0.5%	-1	+3
Management (VIII & above)	4	4		+0.0%		+1
Administrative/ Supervisory (V to VII)	12	12		+0.0%	-1	-2
Clerical (III & IV)	13	12	-1	-0.1%	-0	-2
Management & Administrative	29	28	-1	-3.3%	-1	-3
Support	13	13	-0	-0.0%	-1	-2
Maintenance/ Technical	4	4		+0.0%		-1
General Support	17	17	-0	-1.1%	-1	-3
Health Care Assistants	130	129	-1	-0.0%	-4	+4
Care, other	9	9	-0	-0.0%	+0	+1
Patient & Client Care	140	138	-2	-1.2%	-3	+4

Apr 2021 (Dec 2020 figure: 648)	WTE Mar 2021	WTE Apr 2021	WTE change since Mar 21	% change since Mar 21	WTE change since Dec 20	WTE change since Apr 20
Overall	646	657	+10	+1.6%	+8	+15
Registrars	1	1		+0.0%		
Medical & Dental	1	1				
Nurse/ Midwife Manager	45	43	-2	-0.0%	-4	-2
Nurse/ Midwife Specialist & AN/MP	3	3		+0.0%	-0	-1
Staff Nurse/ Staff Midwife	166	166	+0	+0.0%	+13	+19
Pre-registration Nurse/ Midwife Intern				-1.0%		-6
Pre-registration Nurse Intern (COVID-19)				-1.0%		-4
Nursing/ Midwifery Student				-1.0%	-4	-11
Nursing Education/Clinical	1	1		+0.0%	+1	+1
Nursing/ Midwifery other	1	1		+0.0%	+1	+1
Nursing & Midwifery	214	212	-2	-0.9%	+6	+7
Therapy Professions	3	3		+0.0%		+1
Social Care	71	75	+5	+0.1%	-0	-0
Social Workers	2	2		+0.0%		
Psychologists	1	1		+0.0%		
Health & Social Care Professionals	77	81	+5	+6.0%	-0	+1
Management (VIII & above)	1	2	+1	+1.0%	+1	+1
Administrative/ Supervisory (V to VII)	6	6		+0.0%	+0	+0
Clerical (III & IV)	12	11	-0	-0.0%	-0	-1
Management & Administrative	18	19	+1	+4.0%	+1	+1
Support	20	19	-0	-0.0%	+0	-3
Maintenance/ Technical	2	3	+1	+0.5%	+0	+0
General Support	22	22	+1	+3.3%	+0	-3
Health Care Assistants	282	286	+5	+0.0%	-1	+11
Care, other	33	34	+1	+0.0%	+2	-2
Patient & Client Care	315	321	+6	+1.9%	+1	+10

CHO 8 Employment by Grade Group & Staff Category: April 2021

Apr 2021 (Dec 2020 figure: 6,337)	WTE Mar 2021	WTE Apr 2021	WTE change since Mar 21	% change since Mar 21	WTE change since Dec 20	WTE change since Apr 20
Overall	6,417	6,444	+27	+0.4%	+107	+228
Consultant Dentistry	1	1				
Consultant Medicine	5	6	+1	+11.0%	+0	+1
Consultant Psychiatry	38	38	+0	+0.8%	+1	+2
Consultants	44	45	+1	+2.0%	+1	+2
Registrar	98	101	+3	+2.8%	-0	+14
Senior Registrar	12	12	-0	-0.4%	-1	+1
Registrars	111	113	+3	+2.4%	-1	+15
SHO/ Interns	27	25	-2	-6.2%	-2	-16
Dentists	36	36	+0	+0.3%	-0	+0
Other Medical	36	31	-5	-14.4%	-4	-6
Medical/ Dental, other	73	68	-5	-7.1%	-5	-6
Medical & Dental	254	251	-3	-1.3%	-8	-5
Clinical Nurse/ Midwife Manager	287	287	+0	+0.0%	+1	-7
Director Nursing/Midwifery, Assistant	64	65	+1	+1.3%	-1	+6
Director of Nursing/Midwifery	26	25	-1	-4.1%	-3	-0
Nurse/ Midwife Manager	377	376	-0	-0.0%	-3	-1
Advanced Nurse/ Midwife Practitioner	9	9	+0	+0.1%	+0	+5
Clinical Nurse/ Midwife Specialist	105	104	-1	-0.9%	+2	+5
Nurse/ Midwife Specialist & AN/MP	114	113	-1	-0.8%	+2	+10
Staff Nurse [Intellectual Disability]	121	126	+5	+4.4%	-131	-104
Staff Nurse [Psychiatric]	481	484	+3	+0.6%	+142	+163
Staff Nurses [General/ Children's]	416	414	-1	-0.3%	+0	-34
Staff Nurse/ Staff Midwife	1,017	1,024	+7	+0.7%	+11	+25
Public Health Nurse	203	203	-0	-0.0%	+2	-6
Pre-registration Nurse/ Midwife Intern	29	29	+1	+2.7%	+29	-3
Pre-registration Nurse Intern (COVID-19)		0	+0	-100.0%	-5	-8
Post-registration Nurse/ Midwife Student	13	13			+1	+11
Nursing/ Midwifery awaiting registration				-100.0%		
Nursing/ Midwifery Student	42	43	+1	+2.7%	+26	+1
Nursing Education/Clinical	13	13	+0	+0.5%	+0	-0
Nursing/ Midwifery other	13	13	+0	+0.5%	+0	-0
Nursing & Midwifery	1,766	1,773	+7	+0.4%	+91	+29
Dietitians	23	25	+1	+5.9%	+4	+4
Occupational Therapists	151	150	-0	-0.3%	+0	+11
Orthoptists	2	2				+2
Physiotherapists	105	107	+2	+2.2%	-1	-4
Podiatrists & Chiropodists	4	4	+0	+0.5%	-0	-1
Speech & Language Therapists	110	111	+1	+0.7%	+1	+0
Therapy Professions	394	398	+4	+1.0%	+3	+12
Audiology	6	6			+1	+2
Clinical Engineering	4	4				
Health Science/ Diagnostics	10	10			+1	+2
Social Care	383	387	+4	+1.1%	-0	+12
Social Workers	93	96	+3	+3.2%	+7	+8
Psychologists	119	120	+1	+0.8%	+5	+3
Pharmacy	12	12			+3	+4
Counsellor Therapists	42	42	+0	+0.6%	+4	+5

Apr 2021 (Dec 2020 figure: 6,337)	WTE Mar 2021	WTE Apr 2021	WTE change since Mar 21	% change since Mar 21	WTE change since Dec 20	WTE change since Apr 20
Overall	6,417	6,444	+27	+0.4%	+107	+228
Dental Hygienists	12	12	+0	+0.0%	-1	-0
Other Health & Social Care	1	2	+0	+29.4%	-0	-0
Play Therapists/ Specialists	1	1				
H&SC, Other	56	57	+1	+1.1%	+3	+4
Health & Social Care Professionals	1,067	1,080	+13	+1.2%	+61	+45
Executive Management	9	10	+1	+8.0%	-0	+1
Senior Management (VIII & GM)	59	61	+2	+3.2%	+4	+7
Management (VIII & above)	68	71	+3	+3.8%	+4	+8
Administrative/ Supervisory (V to VII)	200	205	+5	+2.4%	+1	+4
Clerical (III & IV)	533	524	-9	-1.7%	-9	-6
Management & Administrative	801	799	-2	-0.2%	+54	+6
Catering	31	30	-1	-2.4%	-0	-5
Household Services	52	52	+0	+0.2%	-2	-5
Other Support	29	29	-0	-1.7%	-0	-2
Portering	5	5				
Support	117	116	-1	-1.0%	-2	-11
Maintenance	66	68	+2	+2.9%	-0	-0
Technical Services	0	0				
Maintenance/ Technical	67	68	+2	+2.9%	-0	-0
General Support	184	184	+1	+0.4%	-12	-12
HCA, Nurse's Aide, etc.	1,585	1,590	+4	+0.3%	+11	+46
Health & Social Care Assistants	15	16	+1	+6.7%	+1	+6
Swabber (COVID-19)	113	112	-1	-0.7%	+43	+112
Health Care Assistants	1,713	1,718	+4	+0.3%	+55	+164
Other Care Grades	241	243	+2	+0.8%	+5	+4
Care, other	241	243	+2	+0.8%	+5	+4
Home Help	391	395	+4	+1.1%	-2	-3
Patient & Client Care	2,345	2,356	+11	+0.5%	+123	+164

CHO 8 HSE Employment by Grade Group & Staff Category: April 2021

Apr 2021 (Dec 2020 figure: 4,742)	WTE Mar 2021	WTE Apr 2021	WTE change since Mar 21	% change since Mar 21	WTE change since Dec 20	WTE change since Apr 20
Overall	4,800	4,812	+11	+0.2%	+70	+158
Consultant Dentistry	1	1				
Consultant Medicine	5	6	+1	+11.0%	+0	+1
Consultant Psychiatry	38	38	+0	+0.8%	+1	+2
Consultants	44	45	+1	+2.0%	+1	+2
Registrar	97	100	+3	+2.8%	-0	+14
Senior Registrar	12	12	-0	-0.4%	-1	+1
Registrars	110	112	+3	+2.4%	-1	+15
SHO/ Interns	27	25	-2	-6.2%	-2	-16
Dentists	36	36	+0	+0.3%	-0	+0
Other Medical	36	31	-5	-14.4%	-4	-6
Medical/ Dental, other	73	68	-5	-7.1%	-5	-6
Medical & Dental	253	250	-3	-1.3%	-8	-5
Clinical Nurse/ Midwife Manager	211	212	+1	+0.4%	+2	-6
Director Nursing/Midwifery, Assistant	57	58	+1	+1.5%	-0	+6
Director of Nursing/Midwifery	23	23	-0	-0.2%	-2	+2
Nurse/ Midwife Manager	291	292	+2	+0.6%	-1	+2
Advanced Nurse/ Midwife Practitioner	8	8	+0	+0.1%	+0	+4
Clinical Nurse/ Midwife Specialist	102	101	-1	-0.9%	+2	+7
Nurse/ Midwife Specialist & AN/MP	110	109	-1	-0.8%	+2	+11
Staff Nurse [Intellectual Disability]	69	74	+4	+6.3%	+5	+8
Staff Nurse [Psychiatric]	335	340	+5	+1.4%	-2	+19
Staff Nurses [General/ Children's]	393	391	-2	-0.6%	-4	-17
Staff Nurse/ Staff Midwife	798	804	+7	+0.8%	-1	+9
Public Health Nurse	203	203	-0	-0.0%	+2	-6
Pre-registration Nurse/ Midwife Intern	23	24	+1	+5.5%	+24	+4
Pre-registration Nurse Intern (COVID-19)				-100.0%	-1	
Post-registration Nurse/ Midwife Student	13	13			+1	+11
Nursing/ Midwifery awaiting registration				-100.0%		
Nursing/ Midwifery Student	36	37	+1	+3.5%	+24	+15
Nursing Education/Clinical	6	6	+0	+0.3%	+0	+0
Nursing/ Midwifery other	6	6	+0	+0.3%	+0	+0
Nursing & Midwifery	1,443	1,452	+9	+0.6%	+75	+31
Dietitians	23	25	+1	+5.9%	+4	+4
Occupational Therapists	146	146	+0	+0.0%	+1	+12
Orthoptists	2	2				+2
Physiotherapists	101	103	+2	+2.3%	-1	-4
Podiatrists & Chiropodists	4	4	+0	+0.5%	-0	-1
Speech & Language Therapists	105	106	+1	+0.7%	+1	-0
Therapy Professions	381	386	+4	+1.2%	+4	+12
Audiology	6	6			+1	+2
Clinical Engineering	4	4				
Health Science/ Diagnostics	10	10			+1	+2
Social Care	13	13	+0	+1.1%	-0	-0
Social Workers	81	84	+3	+3.7%	+7	+8
Psychologists	113	114	+1	+0.9%	+5	+3
Pharmacy	12	12			+3	+4
Counsellor Therapists	36	36	+0	+0.7%	+3	+4
Dental Hygienists	12	12	-0	-0.0%	-1	-0
Other Health & Social Care	1	2	+0	+29.4%	-0	-0

Apr 2021 (Dec 2020 figure: 4,742)	WTE Mar 2021	WTE Apr 2021	WTE change since Mar 21	% change since Mar 21	WTE change since Dec 20	WTE change since Apr 20
Overall	4,800	4,812	+11	+0.2%	+70	+158
H&SC, Other	49	50	+1	+1.3%	+2	+4
Health & Social Care Professionals	659	668	+9	+1.4%	+43	+33
Executive Management	8	9	+1	+9.0%	-0	+1
Senior Management (VIII & GM)	51	52	+1	+1.7%	+2	+2
Management (VIII & above)	59	61	+2	+2.7%	+2	+3
Administrative/ Supervisory (V to VII)	173	179	+6	+3.3%	+2	+7
Clerical (III & IV)	486	477	-10	-2.0%	-10	-5
Management & Administrative	719	716	-2	-0.3%	+50	+4
Catering	23	23	+0	+0.5%	-1	-5
Household Services	30	29	-0	-1.4%	-1	-0
Other Support	25	25	-0	-1.5%	-0	-2
Portering	4	4				
Support	82	81	-1	-0.8%	-1	-7
Maintenance/ Technical	56	57	+1	+1.7%	-0	+1
General Support	138	138	+0	+0.2%	-5	-6
HCA, Nurse's Aide, etc.	914	907	-7	-0.7%	-11	-23
Health & Social Care Assistants	15	16	+1	+6.7%	+1	+6
Swabber (COVID-19)	113	112	-1	-0.7%	+43	+112
Health Care Assistants	1,042	1,035	-6	-0.6%	+33	+95
Care, other	156	157	+1	+0.7%	+3	+9
Home Help	391	395	+4	+1.1%	-2	-3
Patient & Client Care	1,588	1,587	-1	-0.1%	+74	+100

Employment by WTE, Headcount, Gender, Full-Time /Part-Time etc.: Apr 2021

CHO 8	WTE	Headcount	WTE: no.	% Male	% female	Male WTE: no.	Female WTE: no.	% Total Perm	% Male Perm	% Female Perm	% Total Full Time	% Total Part Time	% Male FT	% Female FT
Overall	6,444	7,708	1.20	17.2%	82.8%	1.10	1.22	88.1%	84.4%	88.8%	58.2%	41.8%	73.3%	55.0%
Consultant Dentistry	1	1	1.10	100.0%		1.10		100.0%	100.0%		0.0%	100.0%	0.0%	
Consultant Medicine	6	6	1.08	33.3%	66.7%	1.00	1.13	66.7%	66.7%	50.0%	100.0%	0.0%	100.0%	100.0%
Consultant Psychiatry	38	40	1.04	47.5%	52.5%	1.05	1.04	85.0%	85.0%	95.2%	92.5%	7.5%	94.7%	90.5%
Consultants	45	47	1.05	46.8%	53.2%	1.04	1.05	83.0%	77.3%	88.0%	91.5%	8.5%	90.9%	92.0%
Registrar	101	105	1.04	38.1%	61.9%	1.01	1.06	0.0%	0.0%	0.0%	100.0%	0.0%	100.0%	100.0%
Senior Registrar	12	14	1.13	28.6%	71.4%	1.01	1.19	0.0%	0.0%	0.0%	92.9%	7.1%	100.0%	90.0%
Registrars	113	119	1.05	37.0%	63.0%	1.01	1.08	0.0%	0.0%	0.0%	99.2%	0.8%	100.0%	98.7%
Senior House Officer	25	26	1.03	46.2%	53.8%	1.01	1.06	0.0%	0.0%	0.0%	100.0%	0.0%	100.0%	100.0%
SHO/ Interns	25	26	1.03	46.2%	53.8%	1.01	1.06	0.0%	0.0%	0.0%	100.0%	0.0%	100.0%	100.0%
Dentists	36	44	1.21	36.4%	63.6%	1.25	1.19	90.9%	90.9%	89.3%	63.6%	36.4%	68.8%	60.7%
Other Medical	31	46	1.47	58.7%	41.3%	1.67	1.26	73.9%	73.9%	78.9%	39.1%	60.9%	40.7%	36.8%
Medical/ Dental, other	68	90	1.33	47.8%	52.2%	1.48	1.22	82.2%	79.1%	85.1%	51.1%	48.9%	51.2%	51.1%
Medical & Dental	251	282	1.12	42.9%	57.1%	1.14	1.11	40.1%	42.1%	38.5%	82.6%	17.4%	81.0%	83.9%
Clinical Nurse/ Midwife Manager	287	325	1.13	16.0%	84.0%	1.10	1.14	93.5%	93.5%	94.5%	78.5%	21.5%	100.0%	74.4%
Director Nursing/Midwifery, Assistant	65	68	1.05	17.6%	82.4%	1.00	1.06	98.5%	98.5%	98.2%	88.2%	11.8%	100.0%	85.7%
Director of Nursing/Midwifery	25	25	1.01	24.0%	76.0%	1.02	1.00	96.0%	96.0%	94.7%	100.0%	0.0%	100.0%	100.0%
Nurse/ Midwife Manager	376	418	1.11	16.7%	83.3%	1.07	1.12	94.5%	91.4%	95.1%	81.3%	18.7%	100.0%	77.6%
Advanced Nurse/ Midwife Practitioner	9	9	1.02	22.2%	77.8%	1.00	1.02	100.0%	100.0%	100.0%	100.0%	0.0%	100.0%	100.0%
Clinical Nurse/ Midwife Specialist	104	118	1.13	15.3%	84.7%	1.01	1.16	99.2%	99.2%	99.0%	73.7%	26.3%	94.4%	70.0%
Nurse/ Midwife Specialist & AN/MP	113	127	1.12	15.7%	84.3%	1.01	1.15	99.2%	100.0%	99.1%	75.6%	24.4%	95.0%	72.0%
Staff Nurse [Intellectual Disability]	126	153	1.21	7.8%	92.2%	1.06	1.23	96.7%	96.7%	96.5%	51.0%	49.0%	75.0%	48.9%
Staff Nurse [Psychiatric]	484	533	1.10	19.1%	80.9%	1.03	1.12	95.7%	95.7%	95.1%	82.0%	18.0%	95.1%	78.9%
Staff Nurses [General/ Children's]	414	518	1.25	6.2%	93.8%	1.07	1.26	93.1%	93.1%	93.2%	55.2%	44.8%	96.9%	52.5%
Staff Nurse/ Staff Midwife	1,024	1,204	1.18	12.1%	87.9%	1.04	1.20	94.7%	96.6%	94.4%	66.5%	33.5%	93.8%	62.8%
Public Health Nurse	203	241	1.19		100.0%		1.19	98.8%		98.8%	72.6%	27.4%		72.6%
Pre-registration Nurse/ Midwife Intern	29	64	2.17	6.3%	93.8%	2.25	2.17	0.0%	0.0%	0.0%	100.0%	0.0%	100.0%	100.0%
Pre-registration Nurse Intern (COVID-19)	0	1	2.78	100.0%		2.78		0.0%	0.0%		100.0%	0.0%	100.0%	
Post-registration Nurse/ Midwife Student	13	13	1.00		100.0%		1.00	53.8%	53.8%	53.8%	100.0%	0.0%		100.0%

Nursing/ Midwifery Student	43	78	1.82	6.4%	93.6%	2.34	1.79	9.0%	0.0%	9.6%	100.0%	0.0%	100.0%	100.0%
Nursing Education/Clinical	13	14	1.09	14.3%	85.7%	1.00	1.11	92.9%	92.9%	91.7%	78.6%	21.4%	100.0%	75.0%
Nursing/ Midwifery other	13	14	1.09	14.3%	85.7%	1.00	1.11	92.9%	100.0%	91.7%	78.6%	21.4%	100.0%	75.0%
Nursing & Midwifery	1,773	2,082	1.17	11.7%	88.3%	1.06	1.19	92.2%	93.4%	92.0%	72.1%	27.9%	95.9%	69.0%
Dietitians	25	29	1.17		100.0%		1.17	100.0%	100.0%	100.0%	55.2%	44.8%		55.2%
Occupational Therapists	150	173	1.15	7.5%	92.5%	1.04	1.16	98.3%	98.3%	98.1%	78.6%	21.4%	100.0%	76.9%
Orthoptists	2	2	1.25		100.0%		1.25	100.0%	100.0%	100.0%	50.0%	50.0%		50.0%
Physiotherapists	107	131	1.22	18.3%	81.7%	1.07	1.26	97.7%	97.7%	98.1%	58.0%	42.0%	79.2%	53.3%
Podiatrists & Chiropodists	4	7	1.87		100.0%		1.87	57.1%	57.1%	57.1%	14.3%	85.7%		14.3%
Speech & Language Therapists	111	136	1.23	1.5%	98.5%	1.01	1.23	98.5%	98.5%	98.5%	61.0%	39.0%	100.0%	60.4%
Therapy Professions	398	478	1.20	8.2%	91.8%	1.05	1.22	97.7%	97.4%	97.7%	65.5%	34.5%	87.2%	63.6%
Audiology	6	7	1.11	28.6%	71.4%	1.05	1.13	100.0%	100.0%	100.0%	57.1%	42.9%	50.0%	60.0%
Clinical Engineering	4	4	1.00	100.0%		1.00		100.0%	100.0%		100.0%	0.0%	100.0%	
Health Science/ Diagnostics	10	11	1.07	54.5%	45.5%	1.02	1.13	100.0%	100.0%	100.0%	72.7%	27.3%	83.3%	60.0%
Social Care	387	464	1.20	14.7%	85.3%	1.12	1.21	98.5%	98.5%	98.5%	25.4%	74.6%	23.5%	25.8%
Social Workers	96	109	1.13	13.8%	86.2%	1.01	1.16	100.0%	100.0%	100.0%	83.5%	16.5%	100.0%	80.9%
Psychologists	120	128	1.07	27.3%	72.7%	1.03	1.08	81.3%	97.1%	75.3%	86.7%	13.3%	97.1%	82.8%
Pharmacy	12	13	1.13	23.1%	76.9%	1.00	1.18	84.6%	66.7%	90.0%	76.9%	23.1%	100.0%	70.0%
Counsellor Therapists	42	47	1.12	19.1%	80.9%	1.03	1.15	89.4%	89.4%	89.5%	63.8%	36.2%	88.9%	57.9%
Dental Hygienists	12	13	1.07		100.0%		1.07	100.0%	100.0%	100.0%	69.2%	30.8%		69.2%
Other Health & Social Care	2	3	1.84		100.0%		1.84	33.3%	33.3%	33.3%	33.3%	66.7%		33.3%
Play Therapists/ Specialists	1	1	1.00	100.0%		1.00		100.0%	100.0%		100.0%	0.0%	100.0%	
H&SC, Other	57	64	1.13	15.6%	84.4%	1.03	1.15	89.1%	90.0%	88.9%	64.1%	35.9%	90.0%	59.3%
Health & Social Care	1,080	1,267	1.17	13.9%	86.1%	1.07	1.19	96.0%	97.2%	95.8%	54.6%	45.4%	65.9%	52.8%
Executive Management	10	10	1.03	10.0%	90.0%	1.00	1.03	90.0%	90.0%	88.9%	100.0%	0.0%	100.0%	100.0%
Senior Management (VIII & GM)	61	63	1.03	27.0%	73.0%	1.03	1.03	93.7%	93.7%	91.3%	85.7%	14.3%	82.4%	87.0%
Management (VIII & above)	71	73	1.03	24.7%	75.3%	1.03	1.03	93.2%	100.0%	90.9%	87.7%	12.3%	83.3%	89.1%
Administrative/ Supervisory (V to VII)	205	220	1.07	15.0%	85.0%	1.05	1.08	96.8%	97.0%	96.8%	80.9%	19.1%	97.0%	78.1%
Clerical (III & IV)	524	620	1.18	4.7%	95.3%	1.07	1.19	92.3%	82.8%	92.7%	60.5%	39.5%	82.8%	59.4%
Management & Administrative	799	913	1.14	8.8%	91.2%	1.05	1.15	93.4%	92.5%	93.5%	67.6%	32.4%	88.8%	65.5%
Catering	30	33	1.09	18.2%	81.8%	1.03	1.10	100.0%	100.0%	100.0%	63.6%	36.4%	83.3%	59.3%
Household Services	52	63	1.22	31.7%	68.3%	1.11	1.28	92.1%	92.1%	93.0%	50.8%	49.2%	70.0%	41.9%
Other Support	29	47	1.62	44.7%	55.3%	1.09	2.67	57.4%	57.4%	26.9%	46.8%	53.2%	81.0%	19.2%
Portering	5	5	1.00	100.0%		1.00		100.0%	100.0%		100.0%	0.0%	100.0%	
Support	116	148	1.28	35.1%	64.9%	1.08	1.41	83.1%	94.2%	77.1%	54.1%	45.9%	78.8%	40.6%

Maintenance/ Technical	68	70	1.02	98.6%	1.4%	1.02	1.00	98.6%	98.6%	100.0%	98.6%	1.4%	98.6%	100.0%
General Support	184	218	1.18	55.5%	44.5%	1.05	1.41	88.1%	96.7%	77.3%	68.3%	31.7%	90.1%	41.2%
HCA, Nurse's Aide, etc.	1,590	1,869	1.18	22.9%	77.1%	1.10	1.20	94.7%	94.7%	94.9%	48.2%	51.8%	57.9%	45.3%
Health & Social Care Assistants	16	17	1.07	17.6%	82.4%	1.00	1.08	23.5%	23.5%	28.6%	82.4%	17.6%	100.0%	78.6%
Swabber (COVID-19)	112	123	1.10	40.7%	59.3%	1.07	1.12	1.6%	1.6%	1.4%	79.7%	20.3%	86.0%	75.3%
Health Care Assistants	1,718	2,009	1.17	23.9%	76.1%	1.10	1.19	88.4%	83.8%	89.9%	50.4%	49.6%	61.1%	47.1%
Care, other	243	289	1.19	29.1%	70.9%	1.23	1.17	94.5%	85.7%	98.0%	56.4%	43.6%	60.7%	54.6%
Home Help	395	648	1.64	3.4%	96.6%	2.59	1.62	68.8%	27.3%	70.3%	18.2%	81.8%	9.1%	18.5%
Patient & Client Care	2,356	2,946	1.25	19.9%	80.1%	1.14	1.28	84.7%	81.9%	85.4%	43.9%	56.1%	59.1%	40.1%

Employment by WTE, Headcount, Gender, Full-Time /Part-Time etc.: Apr 2021

CHO 8	WTE	Headcount	WTE: no.	% Male	% female	Male WTE: no.	Female WTE: no.	% Total Perm	% Male Perm	% Female Perm	% Total Full Time	% Total Part Time	% Male FT	% Female FT
Overall	6,444	7,708	1.20	17.2%	82.8%	1.10	1.22	88.1%	84.4%	88.8%	58.2%	41.8%	73.3%	55.0%
Community Health & Wellbeing	29	33	1.14	3.0%	97.0%	1.25	1.14	97.0%	97.0%	96.9%	60.6%	39.4%	100.0%	100.0%
Mental Health	1,122	1,239	1.10	24.3%	75.7%	1.03	1.13	85.8%	85.8%	85.8%	86.2%	13.8%	95.3%	95.3%
Primary Care	1,565	1,856	1.19	14.4%	85.6%	1.08	1.21	82.1%	82.1%	85.1%	64.3%	35.7%	82.0%	82.0%
Social Care	3,727	4,580	1.23	16.6%	83.4%	1.14	1.25	91.0%	91.0%	91.0%	48.1%	51.9%	61.5%	61.5%

CHO 8 Skills Mix by Staff Grouping: April 2021

Apr 2021 (Dec 2019 figure: 6,135)	WTE Dec 2016	WTE Dec 2017	WTE Dec 2018	WTE Dec 2019	WTE Dec 2020	WTE Mar 2021	WTE Apr 2021
Overall	6,014	6,092	6,128	6,135	6,337	6,417	6,444
Consultant Dentistry	0.4%	0.4%	0.4%	0.4%	0.4%	0.4%	0.4%
Consultant Medicine	1.7%	2.1%	1.7%	1.9%	2.0%	2.0%	2.2%
Consultant Psychiatry	15.6%	14.6%	15.0%	14.1%	14.6%	15.0%	15.3%
Consultants	17.7%	17.1%	17.1%	16.3%	16.9%	17.3%	17.9%
Registrar	36.4%	37.3%	36.6%	35.7%	39.2%	38.6%	40.2%
Senior Registrar	4.7%	5.9%	5.4%	5.3%	5.1%	4.9%	4.9%
Registrars	41.1%	43.2%	42.0%	41.0%	44.4%	43.5%	45.1%
Interns	0.4%						
Senior House Officer	11.4%	11.0%	11.8%	14.7%	10.5%	10.6%	10.0%
SHO/ Interns	11.8%	11.0%	11.8%	14.7%	10.5%	10.6%	10.0%
Dentists	15.1%	14.5%	13.9%	13.7%	14.3%	14.3%	14.5%
Other Medical	14.3%	14.3%	15.2%	14.3%	13.9%	14.4%	12.5%
Medical/ Dental, other	29.4%	28.8%	29.1%	28.0%	28.2%	28.6%	26.9%
Medical & Dental	3.9%	3.9%	3.9%	4.2%	4.1%	100.0%	3.9%
Clinical Nurse/ Midwife Manager	17.2%	17.5%	17.4%	17.1%	16.5%	16.2%	16.2%
Director Nursing/Midwifery, Assistant	3.3%	3.5%	3.6%	3.6%	3.8%	3.6%	3.6%
Director of Nursing/Midwifery	1.5%	1.6%	1.3%	1.4%	1.6%	1.5%	1.4%
Nurse/ Midwife Manager	22.0%	22.5%	22.3%	22.1%	21.9%	21.3%	21.2%
Advanced Nurse/ Midwife Practitioner	0.1%	0.1%	0.1%	0.2%	0.5%	0.5%	0.5%
Clinical Nurse/ Midwife Specialist	5.6%	5.6%	5.7%	5.7%	5.9%	6.0%	5.9%
Nurse/ Midwife Specialist & AN/MP	5.6%	5.7%	5.8%	5.9%	6.4%	6.5%	6.4%
Staff Nurse [Intellectual Disability]	14.8%	15.2%	15.6%	13.8%	14.8%	6.8%	7.1%
Staff Nurse [Psychiatric]	19.2%	19.3%	19.4%	19.8%	19.7%	27.2%	27.3%
Staff Nurses [General/ Children's]	25.5%	24.4%	24.2%	25.7%	23.9%	23.5%	23.4%
Staff Nurse/ Staff Midwife	59.6%	59.0%	59.2%	59.3%	58.4%	57.6%	57.8%
Public Health Nurse	11.4%	11.6%	11.6%	11.8%	11.6%	11.5%	11.5%
Pre-registration Nurse/ Midwife Intern		0.0%	0.0%	0.0%		1.6%	1.7%
Pre-registration Nurse Intern (COVID-19)					0.3%		0.0%
Post-registration Nurse/ Midwife Student	0.9%	0.8%	0.5%	0.1%	0.7%	0.7%	0.7%
Nursing/ Midwifery awaiting registration	0.1%	0.0%	0.1%	0.1%			
Nursing/ Midwifery Student	1.0%	0.8%	0.6%	0.3%	1.0%	2.4%	2.4%
Nursing/ Midwifery other	0.4%	0.5%	0.4%	0.6%	0.7%	0.7%	0.7%
Nursing & Midwifery	29.0%	28.2%	27.7%	27.4%	26.5%	100.0%	27.5%
Dietitians	1.8%	1.7%	1.9%	1.9%	2.0%	2.2%	2.3%
Occupational Therapists	14.3%	14.3%	13.5%	13.7%	14.2%	14.1%	13.9%
Orthoptists	0.0%	0.0%	0.0%		0.2%	0.1%	0.1%
Physiotherapists	12.1%	11.0%	10.8%	10.5%	10.2%	9.8%	9.9%
Podiatrists & Chiropodists	0.3%	0.4%	0.4%	0.4%	0.4%	0.3%	0.3%
Speech & Language Therapists	11.6%	11.7%	10.9%	10.4%	10.4%	10.3%	10.2%
Therapy Professions	40.1%	39.1%	37.6%	37.0%	37.3%	36.9%	36.9%
Audiology	0.5%	0.4%	0.4%	0.3%	0.5%	0.6%	0.6%
Clinical Engineering	0.4%	0.4%	0.4%	0.4%	0.4%	0.4%	0.4%
Radiographers	0.3%	0.3%					
Health Science/ Diagnostics	1.2%	1.1%	0.8%	0.7%	0.9%	1.0%	1.0%
Social Care	32.7%	34.0%	36.0%	36.1%	36.7%	35.9%	35.9%
Social Workers	9.5%	9.1%	9.0%	8.6%	8.4%	8.7%	8.9%
Psychologists	10.7%	10.8%	10.5%	11.7%	10.9%	11.2%	11.1%
Pharmacy	0.5%	0.5%	0.6%	0.7%	0.8%	1.1%	1.1%
Counsellor Therapists	3.8%	3.9%	3.9%	3.7%	3.6%	3.9%	3.9%
Dental Hygienists	1.3%	1.2%	1.2%	1.2%	1.2%	1.1%	1.1%
Other Health & Social Care	0.2%	0.2%	0.2%	0.2%	0.2%	0.1%	0.2%

Apr 2021 (Dec 2019 figure: 6,135)	WTE Dec 2016	WTE Dec 2017	WTE Dec 2018	WTE Dec 2019	WTE Dec 2020	WTE Mar 2021	WTE Apr 2021
Overall	6,014	6,092	6,128	6,135	6,337	6,417	6,444
Play Therapists/ Specialists	0.1%	0.1%	0.1%	0.1%	0.1%	0.1%	0.1%
H&SC, Other	5.4%	5.4%	5.4%	5.1%	5.1%	5.2%	5.2%
Health & Social Care Professionals	15.4%	16.5%	16.4%	16.6%	16.1%	100.0%	16.8%
Executive Management	1.2%	1.3%	1.3%	1.2%	1.2%	1.1%	1.2%
Senior Management (VIII & GM)	6.8%	7.2%	6.7%	7.2%	7.1%	7.4%	7.6%
Management (VIII & above)	8.1%	8.6%	8.0%	8.4%	8.3%	8.5%	8.8%
Middle Management (V-VII)	19.7%	20.3%	23.3%	23.7%	25.3%	25.0%	25.6%
Other Administrative	0.1%						
Administrative/ Supervisory (V to VII)	19.9%	20.3%	23.3%	23.7%	25.3%	25.0%	25.6%
Clerical (III & IV)	72.1%	71.1%	68.6%	68.0%	66.3%	66.5%	65.5%
Management & Administrative	12.1%	12.0%	12.2%	12.2%	11.8%	100.0%	12.4%
Catering	16.6%	15.7%	17.8%	16.9%	16.4%	16.9%	16.4%
Household Services	32.8%	31.1%	28.0%	29.3%	28.6%	28.1%	28.0%
Other Support	16.6%	17.7%	16.4%	16.1%	15.6%	16.1%	15.7%
Portering	2.3%	2.4%	2.5%	2.5%	2.7%	2.7%	2.7%
Support	68.3%	66.9%	64.6%	64.9%	63.2%	63.7%	62.8%
Maintenance/ Technical	31.7%	33.1%	35.4%	35.1%	36.8%	36.3%	37.2%
General Support	3.6%	3.5%	3.3%	3.2%	3.1%	100.0%	2.9%
HCA, Nurse's Aide, etc.	69.1%	69.4%	69.0%	70.0%	68.7%	67.6%	67.5%
Health & Social Care Assistants	0.2%	0.2%	0.9%	0.6%	0.6%	0.6%	0.7%
Swabber (COVID-19)					3.0%	4.8%	4.8%
Health Care Assistants	69.3%	69.6%	69.9%	70.6%	72.4%	73.0%	72.9%
Other Care Grades	12.4%	11.8%	10.9%	10.6%	10.4%	10.3%	10.3%
Care, other	12.4%	11.8%	10.9%	10.6%	10.4%	10.3%	10.3%
Home Help	18.3%	18.6%	19.2%	18.7%	17.3%	16.7%	16.8%
Patient & Client Care	36.0%	36.0%	36.6%	36.4%	35.2%	100.0%	36.6%
Total	100 %	100 %	100 %	100 %	100%	100 %	100 %

CHO 8 Skills Mix by Care Group: April 2021

Apr 2021 (Dec 2019 figure: 1,098)	WTE Dec 2016	WTE Dec 2017	WTE Dec 2018	WTE Dec 2019	WTE Dec 2020	WTE Mar 2021	WTE Apr 2021
Mental Health	1,041	1,080	1,069	1,098	1,111.73	1,116.59	1,121.91
Consultants	43.1%	38.0%	40.0%	36.4%	38.9%	40.0%	39.5%
Registrar	9.9%	17.7%	15.3%	12.4%	19.1%	19.7%	22.1%
Senior Registrar	13.6%	15.8%	14.8%	14.1%	14.0%	13.1%	12.7%
Registrars	23.6%	33.5%	30.1%	26.5%	33.2%	32.8%	34.9%
Interns	1.2%						
Senior House Officer	32.1%	28.5%	29.9%	37.1%	28.0%	27.2%	25.6%
SHO/ Interns	33.3%	28.5%	29.9%	37.1%	28.0%	27.2%	25.6%
Medical & Dental	7.7%	8.1%	8.1%	8.8%	8.7%	8.7%	8.7%
Clinical Nurse/ Midwife Manager	20.1%	21.3%	20.9%	19.8%	18.8%	17.7%	17.9%
Director Nursing/Midwifery, Assistant	3.7%	3.6%	3.9%	3.3%	3.7%	3.3%	3.4%
Director of Nursing/Midwifery	0.6%	0.6%	0.2%	0.4%	0.4%	0.4%	0.4%
Nurse/ Midwife Manager	24.3%	25.5%	25.0%	23.4%	22.9%	21.4%	21.6%
Advanced Nurse/ Midwife Practitioner	0.2%	0.2%	0.4%	0.8%	0.8%	0.7%	0.7%
Clinical Nurse/ Midwife Specialist	9.4%	9.4%	9.8%	10.1%	10.6%	10.4%	10.1%
Nurse/ Midwife Specialist & AN/MP	9.6%	9.6%	10.2%	10.9%	11.3%	11.2%	10.8%
Staff Nurse [Psychiatric]	64.1%	63.2%	63.2%	63.2%	63.9%	61.7%	61.8%
Staff Nurses [General/ Children's]	1.2%	0.9%	1.0%	1.2%	1.1%	0.9%	0.7%
Staff Nurse/ Staff Midwife	65.3%	64.1%	64.2%	64.4%	65.0%	62.6%	62.5%
Pre-registration Nurse/ Midwife Intern		0.1%		0.1%		4.3%	4.5%
Pre-registration Nurse Intern (COVID-19)					0.2%		
Nursing/ Midwifery awaiting registration	0.4%	0.1%	0.2%	0.4%			
Nursing/ Midwifery Student	0.4%	0.2%	0.2%	0.5%	0.2%	4.3%	4.5%
Nursing/ Midwifery other	0.4%	0.6%	0.4%	0.8%	0.6%	0.6%	0.6%
Nursing & Midwifery	48.5%	47.3%	47.4%	46.9%	46.3%	48.4%	48.4%
Dietitians	0.7%	1.3%	1.4%	1.3%			0.7%
Occupational Therapists	21.4%	24.3%	25.4%	23.8%	23.3%	24.2%	23.8%
Podiatrists & Chiropodists		0.1%	0.0%		0.0%	0.0%	0.0%
Speech & Language Therapists	4.3%	3.7%	3.1%	3.8%	4.5%	4.2%	3.9%
Therapy Professions	26.5%	29.4%	29.8%	28.8%	27.9%	28.5%	28.4%
Social Care	5.2%	4.4%	4.4%	4.7%	4.6%	4.2%	4.3%
Social Workers	31.4%	28.5%	26.8%	26.9%	28.6%	30.6%	30.6%
Psychologists	22.2%	24.6%	25.6%	25.5%	24.0%	25.8%	25.8%
Pharmacy	0.5%	0.7%	0.7%	0.7%	1.0%	1.0%	1.0%
Counsellor Therapists	14.1%	12.4%	12.7%	13.3%	14.0%	9.9%	9.9%
Other Health & Social Care	0.1%						
H&SC, Other	14.3%	12.4%	12.7%	13.3%	14.0%	9.9%	9.9%
Health & Social Care Professionals	12.9%	14.0%	13.8%	14.0%	13.8%	13.6%	13.6%
Management (VIII & above)	1.0%	1.8%	1.8%	2.6%	2.5%	1.6%	2.4%
Administrative/ Supervisory (V to VII)	15.4%	16.7%	20.0%	19.8%	16.8%	16.9%	18.0%
Clerical (III & IV)	83.6%	81.5%	78.2%	77.6%	80.8%	81.4%	79.5%
Management & Administrative	9.7%	10.3%	10.1%	10.4%	10.2%	10.6%	10.6%
Support	52.1%	55.4%	53.9%	55.5%	52.6%	52.0%	50.8%
Maintenance/ Technical	47.9%	44.6%	46.1%	44.5%	47.4%	48.0%	49.2%
General Support	5.6%	5.8%	5.7%	5.3%	5.3%	5.2%	5.2%
Health Care Assistants	97.2%	97.1%	98.1%	97.8%	98.0%	98.1%	97.9%
Care, other	2.8%	2.9%	1.9%	2.2%	2.0%	1.9%	2.1%
Patient & Client Care	15.6%	14.5%	14.8%	14.6%	14.4%	13.5%	13.5%
Total	100 %	100 %	100 %	100 %	100 %	100 %	100%

Apr 2021 (Dec 2019 figure: 1,387)	WTE Dec 2016	WTE Dec 2017	WTE Dec 2018	WTE Dec 2019	WTE Dec 2020	WTE Mar 2021	WTE Apr 2021
Primary Care	1,457	1,436	1,422	1,387	1,505.95	1,566.01	1,565.27
Consultant Dentistry	0.6%	0.7%	0.7%	0.6%	0.6%	0.6%	0.6%
Consultant Medicine	2.8%	3.7%	2.9%	3.4%	3.4%	3.4%	3.9%
Consultant Psychiatry	0.7%						
Consultants	4.2%	4.4%	3.6%	4.0%	4.0%	4.0%	4.6%
Registrars	54.6%	53.2%	53.4%	53.3%	54.9%	53.6%	55.6%
SHO/ Interns	0.7%	0.7%	1.5%	1.4%	0.5%	0.7%	0.2%
Dentists	25.3%	25.4%	24.2%	24.2%	24.6%	24.8%	25.8%
Other Medical	15.2%	16.3%	17.3%	17.1%	15.9%	16.8%	13.8%
Medical/ Dental, other	40.5%	41.7%	41.5%	41.3%	40.6%	41.7%	39.6%
Medical & Dental	9.6%	9.4%	9.5%	10.6%	9.7%	9.0%	9.0%
Clinical Nurse/ Midwife Manager	7.3%	7.3%	7.9%	7.1%	6.1%	6.0%	6.0%
Director Nursing/Midwifery, Assistant	4.8%	4.2%	4.6%	4.8%	4.9%	4.8%	4.9%
Director of Nursing/Midwifery	1.2%	1.5%	1.0%	1.6%	1.5%	1.2%	1.2%
Nurse/ Midwife Manager	13.4%	12.9%	13.5%	13.4%	12.5%	12.0%	12.1%
Nurse/ Midwife Specialist & AN/MP	9.0%	9.2%	9.5%	9.1%	10.3%	10.6%	10.7%
Staff Nurse/ Staff Midwife	27.2%	27.1%	26.4%	25.7%	25.6%	25.7%	25.7%
Public Health Nurse	46.6%	47.6%	48.7%	51.3%	48.5%	48.2%	48.2%
Nursing/ Midwifery Student	3.8%	3.2%	2.0%	0.5%	3.0%	3.1%	3.1%
Nursing Education/Clinical					0.2%	0.2%	0.2%
Nursing/ Midwifery other					0.2%	0.2%	0.2%
Nursing & Midwifery	28.7%	28.5%	27.8%	27.5%	25.4%	26.5%	26.5%
Dietitians	4.7%	4.5%	4.8%	5.2%	5.5%	5.5%	5.5%
Occupational Therapists	17.7%	18.1%	17.2%	17.5%	18.2%	17.7%	17.4%
Orthoptists	0.1%	0.1%	0.1%		0.5%	0.5%	0.5%
Physiotherapists	25.5%	23.7%	24.6%	23.8%	23.4%	22.0%	21.9%
Podiatrists & Chiropodists	0.5%	0.8%	1.1%	1.1%	1.2%	1.1%	1.0%
Speech & Language Therapists	19.9%	21.6%	20.5%	20.1%	18.6%	18.8%	18.7%
Therapy Professions	68.4%	69.0%	68.2%	67.7%	67.3%	65.5%	65.0%
Audiology	1.3%	1.3%	1.3%	1.0%	1.6%	1.8%	1.8%
Clinical Engineering	0.6%	0.6%	0.6%	0.6%	0.6%	0.6%	0.6%
Radiographers		0.1%					
Health Science/ Diagnostics	2.0%	2.0%	1.9%	1.6%	2.2%	2.4%	2.4%
Social Care	0.3%				0.3%	0.3%	0.3%
Social Workers	5.1%	5.1%	5.8%	4.8%	4.6%	4.5%	4.9%
Psychologists	15.7%	14.4%	14.3%	17.1%	16.5%	15.7%	15.7%
Pharmacy	0.9%	0.8%	0.9%	1.2%	1.4%	2.0%	2.0%
Counsellor Therapists	3.6%	4.8%	4.8%	3.6%	3.6%	6.0%	6.0%
Dental Hygienists	3.7%	3.6%	3.8%	3.8%	3.8%	3.5%	3.4%
Other Health & Social Care	0.3%	0.3%	0.3%	0.3%	0.3%	0.2%	0.2%
H&SC, Other	7.6%	8.7%	8.9%	7.7%	7.7%	9.7%	9.7%
Health & Social Care Professionals	22.4%	23.6%	23.0%	23.5%	21.6%	22.6%	22.6%
Executive Management	1.9%	2.0%	1.9%	2.0%	2.0%	1.8%	1.9%
Senior Management (VIII & GM)	8.2%	8.3%	8.9%	9.6%	8.3%	9.0%	9.1%
Management (VIII & above)	10.1%	10.3%	10.8%	11.7%	10.3%	10.8%	11.0%
Administrative/ Supervisory (V to VII)	15.8%	16.7%	19.6%	20.0%	21.1%	20.7%	21.6%
Clerical (III & IV)	74.1%	73.0%	69.5%	68.3%	68.6%	68.5%	67.5%
Management & Administrative	28.5%	28.0%	28.6%	27.9%	25.7%	25.5%	25.5%
Support	93.1%	89.8%	88.8%	88.9%	87.5%	87.6%	87.3%
Maintenance/ Technical	6.9%	10.2%	11.2%	11.1%	12.5%	12.4%	12.7%
General Support	1.8%	2.0%	1.8%	1.8%	1.7%	1.5%	1.5%
HCA, Nurse's Aide, etc.	11.7%	11.3%	10.5%	8.5%	4.0%	3.6%	3.5%

Apr 2021 (Dec 2019 figure: 1,387)	WTE Dec 2016	WTE Dec 2017	WTE Dec 2018	WTE Dec 2019	WTE Dec 2020	WTE Mar 2021	WTE Apr 2021
Primary Care	1,457	1,436	1,422	1,387	1,505.95	1,566.01	1,565.27
Health & Social Care Assistants	0.8%	0.9%	11.5%	8.8%	6.9%	5.6%	6.0%
Swabber (COVID-19)					36.5%	48.1%	47.7%
Health Care Assistants	12.5%	12.2%	22.1%	17.3%	47.5%	57.3%	57.2%
Other Care Grades	86.9%	86.8%	77.7%	82.4%	52.5%	42.7%	42.8%
Care, other	86.9%	86.8%	77.7%	82.4%	52.5%	42.7%	42.8%
Home Help	0.6%	1.0%	0.2%	0.3%			
Patient & Client Care	8.9%	8.5%	9.2%	8.6%	7.9%	15.0%	15.0%
Total	100 %	100 %	100 %	100 %	100 %	100 %	100%

Apr 2021 (Dec 2019 figure: 2,162)	WTE Dec 2016	WTE Dec 2017	WTE Dec 2018	WTE Dec 2019	WTE Dec 2020	WTE Mar 2021	WTE Apr 2021
Disabilities	1,984	2,078	2,134	2,162	2,205.48	2,220.73	2,245.44
Consultant Psychiatry	33.3%	33.3%	33.3%	25.0%	33.3%		
Consultants	33.3%	33.3%	33.3%	25.0%	33.3%		
Registrars	33.3%	33.3%	33.3%	50.0%	33.3%	50.0%	50.0%
Medical/ Dental, other	33.3%	33.3%	33.3%	25.0%	33.3%	50.0%	50.0%
Medical & Dental	0.2%	0.1%	0.1%	0.2%	0.2%	0.1%	0.1%
Clinical Nurse/ Midwife Manager	22.7%	22.6%	22.7%	23.5%	22.6%	22.7%	22.3%
Director Nursing/Midwifery, Assistant	2.1%	2.4%	2.3%	2.3%	2.6%	2.4%	2.6%
Director of Nursing/Midwifery	1.0%	1.1%	1.1%	1.2%	1.3%	1.3%	0.9%
Nurse/ Midwife Manager	25.9%	26.0%	26.1%	27.0%	26.6%	26.4%	25.8%
Advanced Nurse/ Midwife Practitioner					0.2%	0.2%	0.2%
Clinical Nurse/ Midwife Specialist	2.0%	1.7%	1.6%	1.6%	1.2%	1.0%	0.9%
Nurse/ Midwife Specialist & AN/MP	2.0%	1.7%	1.6%	1.6%	1.4%	1.2%	1.2%
Staff Nurse [Intellectual Disability]	56.0%	57.3%	57.4%	50.9%	57.2%	26.2%	27.4%
Staff Nurse [Psychiatric]	2.0%	1.7%	1.7%	1.5%	1.1%	32.4%	32.0%
Staff Nurses [General/ Children's]	13.0%	12.1%	11.8%	17.6%	11.2%	11.0%	10.8%
Staff Nurse/ Staff Midwife	71.0%	71.0%	70.8%	70.0%	69.5%	69.6%	70.2%
Public Health Nurse	0.2%		0.2%	0.2%	0.2%	0.2%	0.2%
Pre-registration Nurse/ Midwife Intern			0.1%			1.2%	1.1%
Pre-registration Nurse Intern (COVID-19)					0.9%		0.1%
Nursing/ Midwifery Student			0.1%		0.9%	1.2%	1.2%
Nursing/ Midwifery other	1.0%	1.2%	1.2%	1.2%	1.5%	1.5%	1.5%
Nursing & Midwifery	23.2%	21.9%	21.6%	21.1%	20.6%	20.5%	20.5%
Occupational Therapists	9.0%	7.7%	6.7%	7.2%	8.0%	8.0%	8.0%
Physiotherapists	4.3%	4.4%	4.0%	4.3%	3.5%	3.6%	3.8%
Speech & Language Therapists	8.0%	7.3%	7.0%	6.4%	7.0%	6.2%	6.3%
Therapy Professions	21.3%	19.4%	17.8%	18.0%	18.4%	17.8%	18.0%
Clinical Engineering	0.5%	0.4%	0.4%	0.4%	0.4%	0.4%	0.4%
Health Science/ Diagnostics	0.5%	0.4%	0.4%	0.4%	0.4%	0.4%	0.4%
Social Care	67.5%	68.8%	71.2%	70.7%	71.3%	71.1%	70.6%
Social Workers	5.2%	5.5%	5.1%	4.7%	4.5%	4.8%	4.9%
Psychologists	4.2%	4.7%	4.2%	4.9%	4.2%	4.7%	4.7%
Counsellor Therapists	1.0%	0.9%	0.9%	1.0%	0.8%	1.0%	1.0%
Other Health & Social Care	0.1%	0.1%	0.2%	0.1%	0.1%	0.1%	0.1%
Play Therapists/ Specialists	0.2%	0.2%	0.2%	0.2%	0.2%	0.2%	0.2%
H&SC, Other	1.4%	1.3%	1.3%	1.4%	1.2%	1.3%	1.3%
Health & Social Care Professionals	22.1%	23.5%	23.3%	23.6%	23.1%	23.9%	23.9%
Executive Management	0.7%	1.3%	1.3%	0.7%	0.6%	0.6%	0.6%
Senior Management (VIII & GM)	8.7%	10.6%	6.0%	5.2%	7.9%	8.2%	8.9%
Management (VIII & above)	9.4%	12.0%	7.4%	5.9%	8.5%	8.9%	9.5%
Administrative/ Supervisory (V to VII)	36.4%	33.3%	36.4%	37.6%	35.8%	34.6%	34.5%
Clerical (III & IV)	54.2%	54.7%	56.3%	56.5%	55.7%	56.6%	56.0%
Management & Administrative	6.9%	7.2%	7.0%	6.9%	6.8%	7.0%	7.0%
Support	79.5%	76.5%	74.6%	74.3%	74.8%	75.9%	74.4%
Maintenance	20.3%	23.4%	25.2%	25.5%	25.1%	23.9%	25.5%
Technical Services	0.1%	0.1%	0.1%	0.2%	0.2%	0.2%	0.2%
Maintenance/ Technical	20.5%	23.5%	25.4%	25.7%	25.2%	24.1%	25.6%
General Support	4.3%	3.5%	3.1%	2.9%	2.8%	2.4%	2.4%
HCA, Nurse's Aide, etc.	82.5%	83.3%	84.9%	85.9%	86.5%	86.4%	86.4%
Health & Social Care Assistants			0.3%	0.1%			
Health Care Assistants	82.5%	83.3%	85.3%	86.0%	86.5%	86.4%	86.4%
Care, other	14.9%	13.9%	12.4%	11.7%	11.3%	11.5%	11.5%

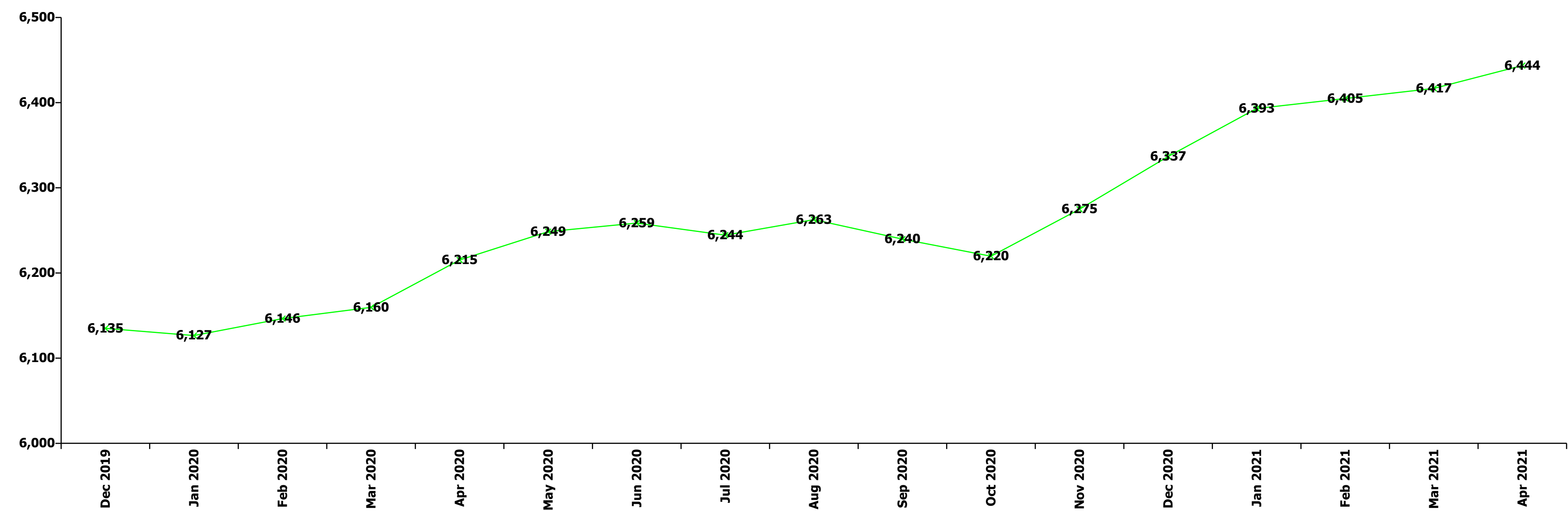
Apr 2021 (Dec 2019 figure: 2,162)	WTE Dec 2016	WTE Dec 2017	WTE Dec 2018	WTE Dec 2019	WTE Dec 2020	WTE Mar 2021	WTE Apr 2021
Disabilities	1,984	2,078	2,134	2,162	2,205.48	2,220.73	2,245.44
Home Help	2.6%	2.8%	2.3%	2.3%	2.3%	2.1%	2.1%
Patient & Client Care	43.4%	43.8%	44.8%	45.4%	44.5%	46.0%	46.0%
Total	100 %	100 %	100 %	100 %	100 %	100 %	100%

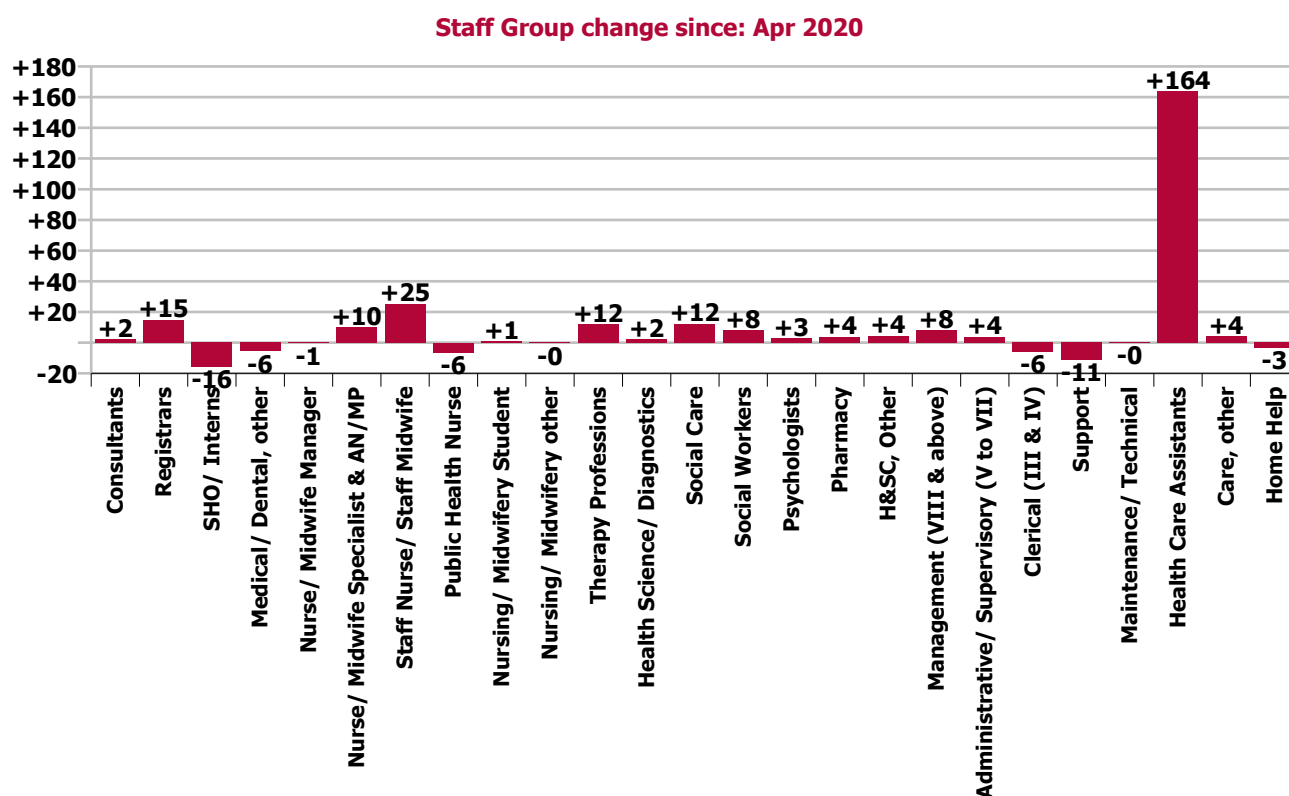
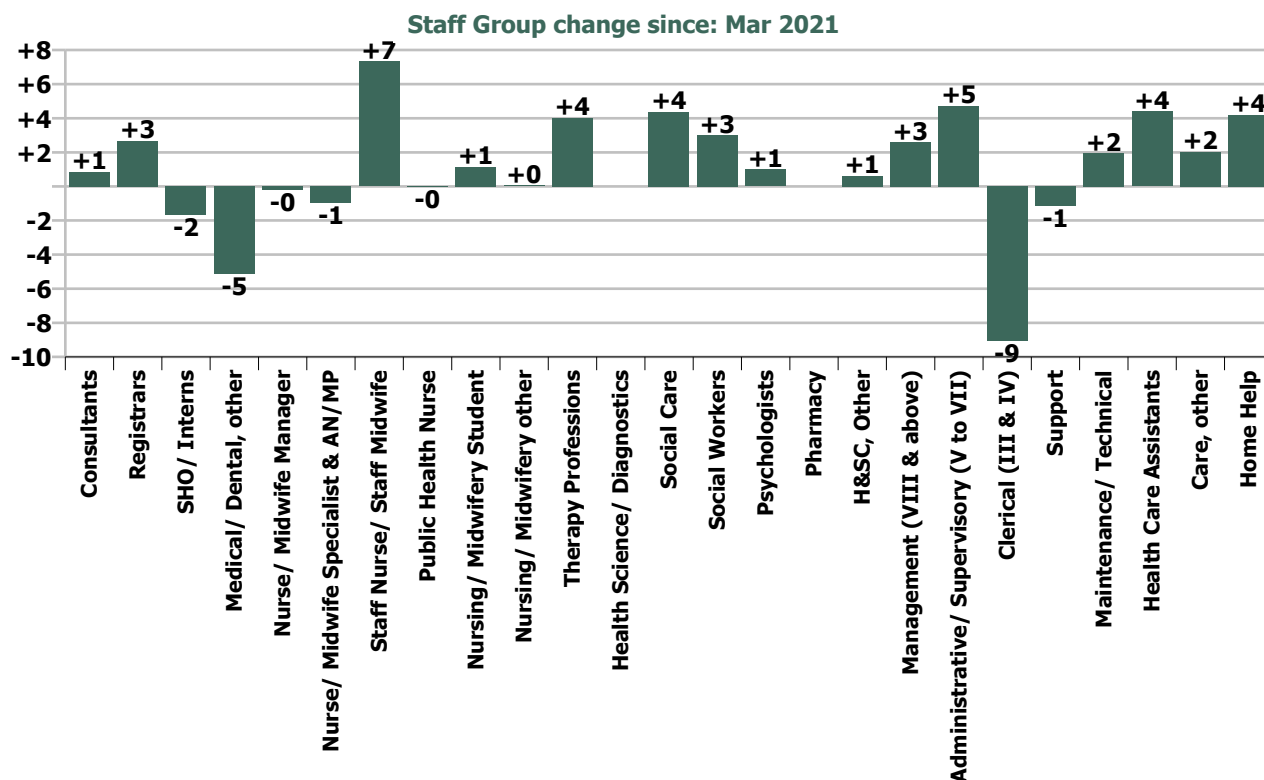
Apr 2021 (Dec 2019 figure: 1,488)	WTE Dec 2016	WTE Dec 2017	WTE Dec 2018	WTE Dec 2019	WTE Dec 2020	WTE Mar 2021	WTE Apr 2021
Older People	1,531	1,498	1,503	1,488	1,483.75	1,484.75	1,481.95
Medical/ Dental, other	100.0%	100.0%	100.0%	100.0%	100.0%	100.0%	100.0%
Medical & Dental	0.7%	0.7%	0.8%	0.7%	0.7%	0.7%	0.7%
Clinical Nurse/ Midwife Manager	17.6%	17.1%	16.2%	15.5%	17.2%	17.6%	17.4%
Director Nursing/Midwifery, Assistant	2.4%	3.8%	3.8%	4.4%	4.1%	4.3%	4.0%
Director of Nursing/Midwifery	3.6%	3.8%	3.6%	3.3%	4.0%	3.7%	3.9%
Nurse/ Midwife Manager	23.6%	24.7%	23.5%	23.2%	25.2%	25.6%	25.4%
Advanced Nurse/ Midwife Practitioner					0.5%	0.5%	0.5%
Clinical Nurse/ Midwife Specialist	0.8%	0.9%	0.9%	0.6%	0.6%	0.8%	0.8%
Nurse/ Midwife Specialist & AN/MP	0.8%	0.9%	0.9%	0.6%	1.1%	1.4%	1.4%
Staff Nurse [Intellectual Disability]	0.3%						
Staff Nurse [Psychiatric]	0.3%	0.3%	0.3%	0.3%	0.3%	0.3%	0.3%
Staff Nurses [General/ Children's]	74.0%	73.0%	74.3%	75.2%	72.0%	71.4%	71.6%
Staff Nurse/ Staff Midwife	74.5%	73.3%	74.6%	75.5%	72.3%	71.7%	71.9%
Public Health Nurse	1.1%	1.1%	1.0%	0.7%	0.8%	0.8%	0.8%
Nursing Education/Clinical					0.6%	0.6%	0.6%
Nursing/ Midwifery other					0.6%	0.6%	0.6%
Nursing & Midwifery	23.4%	22.8%	22.2%	22.2%	22.3%	24.0%	24.0%
Dietitians			3.4%	3.4%	3.0%	7.6%	7.5%
Occupational Therapists	24.3%	28.0%	29.2%	29.7%	32.6%	27.1%	27.0%
Physiotherapists	33.4%	32.0%	26.1%	25.5%	33.1%	26.2%	27.1%
Podiatrists & Chiropodists	3.0%	3.4%	3.1%	3.4%			
Speech & Language Therapists	6.9%	10.1%	9.4%	7.5%	9.0%	14.5%	13.7%
Therapy Professions	67.6%	73.5%	71.2%	69.5%	77.7%	75.3%	75.2%
Radiographers	8.1%	8.5%					
Health Science/ Diagnostics	8.1%	8.5%					
Social Workers	20.8%	14.4%	22.0%	22.1%	16.0%	15.9%	16.2%
Pharmacy	3.5%	3.6%	6.8%	8.4%	6.4%	8.7%	8.6%
Health & Social Care Professionals	1.9%	1.9%	2.0%	2.0%	2.0%	2.4%	2.4%
Management (VIII & above)	3.9%	2.5%	3.4%	5.8%	6.9%	6.4%	6.2%
Administrative/ Supervisory (V to VII)	17.8%	18.6%	22.5%	21.2%	21.5%	23.3%	23.5%
Clerical (III & IV)	78.3%	78.9%	74.1%	73.0%	71.7%	70.3%	70.3%
Management & Administrative	4.8%	4.7%	5.4%	6.4%	6.4%	6.5%	6.5%
Support	54.2%	53.5%	51.7%	52.0%	51.6%	52.5%	52.8%
Maintenance/ Technical	45.8%	46.5%	48.3%	48.0%	48.4%	47.5%	47.2%
General Support	3.1%	3.1%	3.3%	3.3%	3.3%	3.2%	3.2%
HCA, Nurse's Aide, etc.	60.5%	59.6%	56.7%	57.0%	57.7%	58.2%	57.7%
Health & Social Care Assistants	0.3%	0.3%	0.3%	0.2%	0.2%	0.2%	0.2%
Health Care Assistants	60.8%	59.9%	56.9%	57.2%	57.9%	58.4%	57.9%
Care, other	2.3%	2.1%	2.1%	2.1%	2.3%	2.2%	2.2%
Home Help	37.0%	38.0%	41.0%	40.7%	39.8%	39.3%	39.9%
Patient & Client Care	66.0%	66.8%	66.3%	65.3%	65.5%	63.2%	63.2%
Total	100 %	100 %	100 %	100 %	100 %	100 %	100%

Summary Staff Movement: April 2021

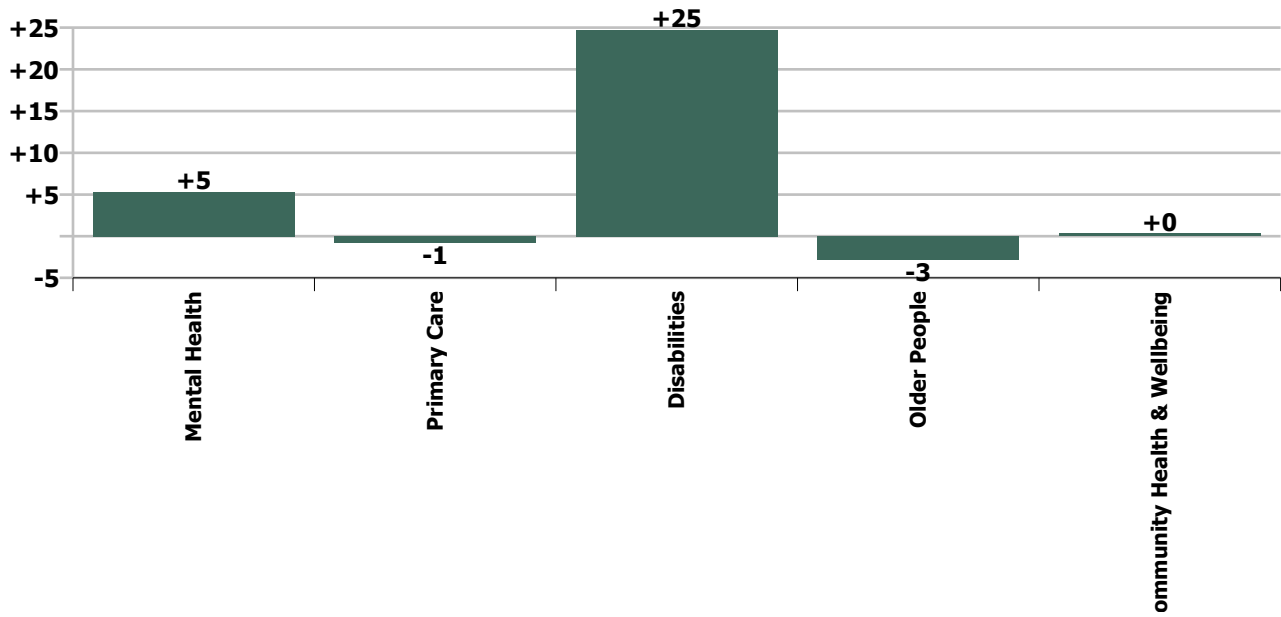
Month-on-month Summary																												
WTE change since Mar 21	% change since Mar 21	overall	Consultants	Registrars	SHO/ Interns	Medical/ Dental, other	Medical & Dental	Nurse/ Midwife Manager	Nurse/ Midwife Specialist & AN/MP	Staff Nurse/ Staff Midwife	Public Health Nurse	Nursing/ Midwifery Student	Nursing/ Midwifery other	Nursing & Midwifery	Therapy Professions	Health Science/ Diagnostics	Social Care	Social Workers	Psychologists	Pharmacy	H&SC, Other	Health & Social Care Professionals	Management (VIII & above)	Administrative/ Supervisory (V to VII)	Clerical (III & IV)	Management & Administrative	General Support	Patient & Client Care
Overall	+0.4%	+27	+0.9	+2.7	-1.7	-5.1	-3.3	-0.2	-1.0	+7.3	-0.0	+1.1	+0.1	+7.4	+4.0	0.0	+4.4	+3.0	+1.0	0.0	+0.6	+13.0	+2.6	+4.7	-9.1	-1.8	+0.8	+10.6
Community Health & Wellbeing	+1.2%	+0													+0.0							+0.0	0.0	+0.4	-0.1	+0.3		
Mental Health	+0.5%	+5	+0.3	+2.7	-1.0		+2.0	+2.9	-1.2	+3.7		+1.3	0.0	+6.5	-0.2		+0.1	-0.1	-0.2	0.0	-0.2	-0.5	+0.9	+1.2	-2.8	-0.6	+0.7	-2.8
Primary Care	-0.0%	-1	+0.5	-0.0	-0.7	-5.1	-5.2	+0.3	+0.2	+0.1	+0.1	0.0	0.0	+0.7	+1.0	0.0	0.0	+1.6	+0.7	0.0	+0.5	+3.7	+0.9	+3.3	-4.2	+0.1	-0.4	+0.4
Disabilities	+1.1%	+25		0.0		0.0	0.0	-2.5	-0.0	+2.9	0.0	-0.1	+0.0	+0.3	+2.7	0.0	+4.2	+1.3	+0.6		+0.3	+9.1	+1.0	-0.0	-0.9	+0.0	+0.6	+14.7
Older People	-0.2%	-3				-0.0	-0.0	-0.8	+0.1	+0.6	-0.1		+0.0	-0.2	+0.5			+0.2		0.0		+0.7	-0.3	-0.2	-1.1	-1.6	-0.1	-1.7
Social Care	+0.6%	+22		0.0		-0.0	-0.0	-3.4	+0.1	+3.6	-0.1	-0.1	+0.1	+0.1	+3.2	0.0	+4.2	+1.5	+0.6	0.0	+0.3	+9.8	+0.7	-0.2	-2.0	-1.5	+0.5	+13.0
Change	+26.8	+0.4%	+2.0%	+2.4%	-6.2%	-7.1%	-1.3%	-0.0%	-0.8%	+0.7%	-0.0%	+2.7%	+0.5%	+0.4%	+1.0%		+1.1%	+3.2%	+0.8%		+1.1%	+1.2%	+3.8%	+2.4%	-1.7%	-0.2%	+0.4%	+0.5%

Year-on-year Summary																												
WTE change since Apr 20	% change since Apr 20	overall	Consultants	Registrars	SHO/ Interns	Medical/ Dental, other	Medical & Dental	Nurse/ Midwife Manager	Nurse/ Midwife Specialist & AN/MP	Staff Nurse/ Staff Midwife	Public Health Nurse	Nursing/ Midwifery Student	Nursing/ Midwifery other	Nursing & Midwifery	Therapy Professions	Health Science/ Diagnostics	Social Care	Social Workers	Psychologists	Pharmacy	H&SC, Other	Health & Social Care Professionals	Management (VIII & above)	Administrativ e/ Supervisory (V to VII)	Clerical (III & IV)	Management & Administrative	General Support	Patient & Client Care
Overall	+3.7%	+228	+2.3	+14.8	-15.9	-5.7	-4.5	-0.5	+10.1	+25.2	-6.4	+0.9	-0.4	+29.0	+11.9	+2.1	+12.4	+8.1	+2.9	+3.9	+4.3	+45.4	+7.8	+3.9	-5.9	+5.8	-11.5	+164.2
Community Health & Wellbeing	+1.2%	+0									-1.0			-1.0	+0.0							+0.0	+2.0	+2.6	+0.1	+4.7		
Mental Health	+0.5%	+5	+2.8	+13.4	-14.1		+2.0	-7.8	+1.3	+13.5		+3.8	-1.0	+9.8	-3.3		-0.9	+4.1	+0.6	0.0	-5.6	-5.1	-0.1	+1.3	-3.2	-2.0	-0.0	-5.5
Primary Care	-0.0%	-1	+0.5	+1.3	-1.7	-5.7	-5.6	-2.3	+8.7	+3.3	-5.9	+11.4	+0.0	+15.2	+4.8	+2.1	+0.7	+0.8	+1.1	+3.3	+9.4	+22.1	+1.6	+4.9	-0.9	+5.5	-1.4	+115.8
Disabilities	+3.6%	+78.8	-1.0	0.0		0.0	-1.0	+1.9	-1.8	+7.2	0.0	-14.3	-0.4	-7.5	+5.4	0.0	+12.5	+2.4	+1.2		+0.5	+22.0	+4.2	-6.3	+0.0	-2.1	-6.1	+73.5
Older People	-0.3%	-5.1				0.0	0.0	+7.7	+1.9	+1.3	+0.6		+1.0	+12.4	+5.0			+0.8		+0.6		+6.4	+0.1	+1.5	-1.9	-0.3	-4.1	-19.6
Social Care	+0.6%	+22	-1.0	0.0		0.0	-1.0	+9.6	+0.1	+8.5	+0.6	-14.3	+0.6	+4.9	+10.4	0.0	+12.5	+3.2	+1.2	+0.6	+0.5	+28.4	+4.3	-4.8	-1.9	-2.4	-10.1	+53.9
Change	+228.3	+3.7%	+5.5%	+15.0%	-38.6%	-7.8%	-1.8%	-0.1%	+9.8%	+2.5%	-3.0%	+2.1%	-3.0%	+1.7%	+3.1%	+24.9%	+3.3%	+9.2%	+2.5%	+50.5%	+8.2%	+4.4%	+12.5%	+1.9%	-1.1%	+0.7%	-5.9%	+7.5%

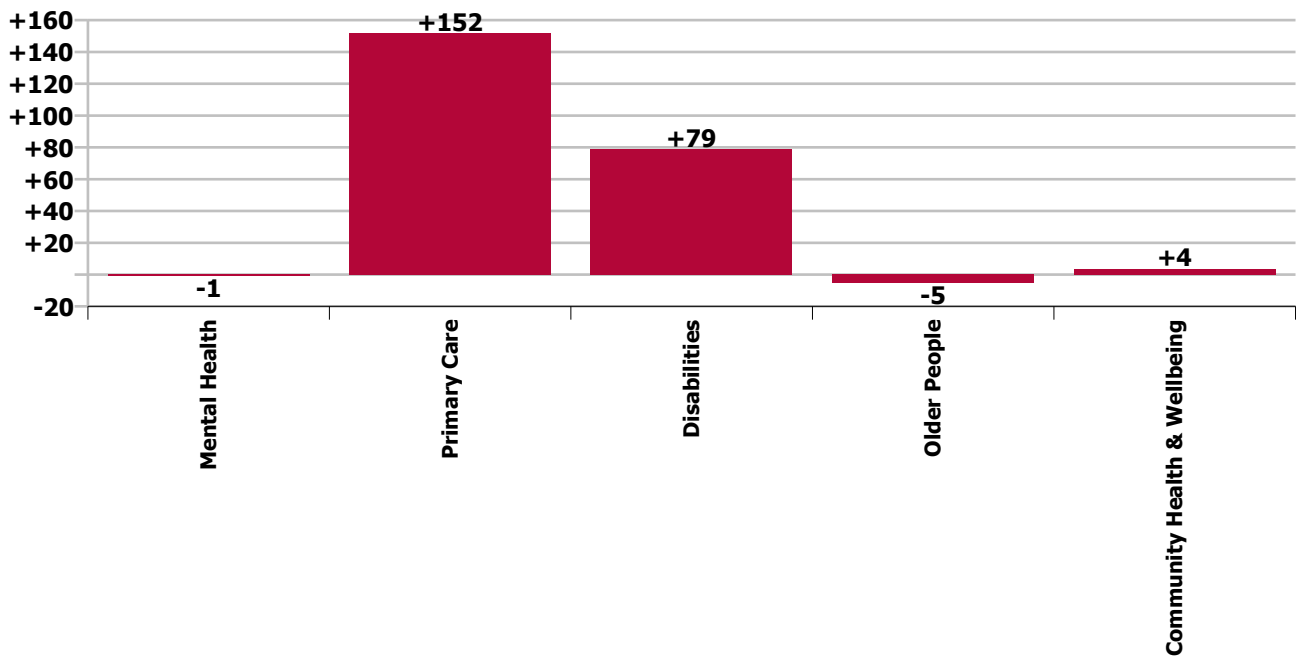




Care Group change since: Mar 2021



Care Group change since: Apr 2020



Longitudinal Employment Levels by Grade Group - Dec 2015 to Apr 2021

Apr 2021 (Dec 2016 figure: 6,014)	WTE Apr 2021	WTE change since Dec 15	WTE change since Dec 16	WTE change since Dec 17	WTE change since Dec 18	WTE change since Dec 19	WTE change since Dec 20	WTE change since Mar 21	% change since Dec 15	% change since Dec 16	% change since Dec 17	% change since Dec 18	% change since Dec 19	% change since Dec 20	% change since Mar 21
Overall	6,444	+630	+430	+352	+316	+309	+107	+27	+10.8%	+7.2%	+5.8%	+5.2%	+5.0%	+1.7%	+0.4%
Consultant Dentistry	1														
Consultant Medicine	6	+2	+2	+1	+2	+1	+0	+1	+38.7%	+38.7%	+11.0%	+40.2%	+11.0%	+8.4%	+11.0%
Consultant Psychiatry	38	+2	+2	+4	+3	+2	+1	+0	+6.5%	+4.5%	+11.9%	+8.2%	+5.6%	+2.5%	+0.8%
Consultants	45	+4	+3	+5	+5	+3	+1	+1	+9.5%	+7.7%	+11.5%	+11.2%	+6.1%	+3.1%	+2.0%
Registrar	101	+21	+15	+13	+14	+9	-0	+3	+26.9%	+17.6%	+14.6%	+16.6%	+9.3%	-0.1%	+2.8%
Senior Registrar	12	+3	+1	-1	-0	-1	-1	-0	+30.7%	+12.7%	-10.3%	-2.7%	-9.4%	-5.8%	-0.4%
Registrars	113	+24	+16	+11	+14	+7	-1	+3	+27.3%	+17.0%	+11.2%	+14.1%	+6.9%	-0.8%	+2.4%
Interns		-1	-1						-100.0%	-100.0%	-100.0%	-100.0%	-100.0%	-100.0%	-100.0%
Senior House Officer	25	-6	-2	-1	-3	-13	-2	-2	-18.3%	-6.0%	-2.7%	-9.4%	-33.7%	-6.7%	-6.2%
SHO/ Interns	25	-7	-3	-1	-3	-13	-2	-2	-20.8%	-9.4%	-2.7%	-9.4%	-33.7%	-6.7%	-6.2%
Dentists	36	+3	+1	+2	+4	+1	-0	+0	+9.2%	+2.4%	+6.6%	+11.1%	+2.3%	-1.3%	+0.3%
Other Medical	31	-3	-2	-2	-5	-6	-4	-5	-7.8%	-7.3%	-7.3%	-13.1%	-15.3%	-12.5%	-14.4%
Medical/ Dental, other	68	+0	-2	-0	-1	-5	-5	-5	+0.6%	-2.3%	-0.3%	-1.5%	-6.7%	-6.8%	-7.1%
Medical & Dental	251	+22	+15	+15	+15	-8	-6	-3	+9.6%	+6.5%	+6.4%	+6.3%	-3.0%	-2.4%	-1.3%
Clinical Nurse/ Midwife Manager	287	-2	-13	-13	-10	-0	+1	+0	-0.8%	-4.2%	-4.2%	-3.2%	-0.1%	+0.3%	+0.0%
Director Nursing/Midwifery, Assistant	65	+11	+7	+5	+3	+4	-1	+1	+20.6%	+13.0%	+9.1%	+5.4%	+7.4%	-1.2%	+1.3%
Director of Nursing/Midwifery	25	+0	-1	-2	+3	+1	-3	-1	+0.2%	-3.0%	-7.2%	+14.2%	+2.7%	-11.0%	-4.1%
Nurse/ Midwife Manager	376	+9	-6	-9	-3	+5	-3	-0	+2.4%	-1.6%	-2.4%	-0.8%	+1.3%	-0.8%	-0.0%
Advanced Nurse/ Midwife Practitioner	9	+9	+8	+8	+7	+5	+0	+0	-100.0%	+784.0%	+784.0%	+342.0%	+123.2%	+0.2%	+0.1%
Clinical Nurse/ Midwife Specialist	104	+14	+7	+8	+7	+9	+2	-1	+15.8%	+7.6%	+8.3%	+7.5%	+8.9%	+1.8%	-0.9%
Nurse/ Midwife Specialist & AN/MP	113	+23	+15	+16	+14	+13	+2	-1	+25.6%	+15.5%	+16.2%	+14.2%	+13.4%	+1.7%	-0.8%
Staff Nurse [Intellectual Disability]	126	-131	-132	-135	-139	-106	-131	+5	-51.0%	-51.2%	-51.6%	-52.3%	-45.5%	-50.9%	+4.4%
Staff Nurse [Psychiatric]	484	+133	+149	+152	+154	+151	+142	+3	+37.8%	+44.7%	+45.9%	+46.8%	+45.2%	+41.4%	+0.6%
Staff Nurses [General/ Children's]	414	-19	-30	-5	+3	-19	+0	-1	-4.4%	-6.8%	-1.1%	+0.7%	-4.3%	+0.0%	-0.3%
Staff Nurse/ Staff Midwife	1,024	-18	-13	+13	+18	+27	+11	+7	-1.7%	-1.3%	+1.3%	+1.8%	+2.7%	+1.1%	+0.7%
Public Health Nurse	203	+9	+4	+5	+6	+4	+2	-0	+4.9%	+2.0%	+2.5%	+3.3%	+2.1%	+1.2%	-0.0%
Pre-registration Nurse/ Midwife Intern	29	+29	+29	+29	+29	+29	+29	+1	-100.0%	-100.0%	+5794.0%	+5794.0%	+5794.0%	-100.0%	+2.7%
Pre-registration Nurse Intern (COVID-19)	0	+0	+0	+0	+0	+0	-5	+0	-100.0%	-100.0%	-100.0%	-100.0%	-100.0%	-92.8%	-100.0%
Post-registration Nurse/ Midwife Student	13	+2	-3		+5	+11	+1		+18.2%	-18.8%		+62.5%	+556.6%	+8.3%	
Nursing/ Midwifery awaiting registration			-2	-1	-1	-2			-100.0%	-100.0%	-100.0%	-100.0%	-100.0%	-100.0%	-100.0%
Nursing/ Midwifery Student	43	+32	+25	+29	+33	+38	+26	+1	+289.4%	+137.9%	+205.1%	+346.6%	+856.0%	+151.5%	+2.7%
Nursing Education/Clinical	13	+7	+7	+4	+6	+3	+0	+0	+108.5%	+105.1%	+50.5%	+75.1%	+36.2%	+3.3%	+0.5%
Nursing/ Midwifery other	13	+7	+7	+4	+6	+3	+0	+0	+108.5%	+105.1%	+50.5%	+75.1%	+36.2%	+3.3%	+0.5%
Nursing & Midwifery	1,773	+62	+31	+58	+75	+91	+39	+7	+3.6%	+1.8%	+3.4%	+4.4%	+5.4%	+2.2%	+0.4%
Dietitians	25	+11	+8	+7	+6	+5	+4	+1	+84.0%	+51.7%	+42.5%	+31.6%	+25.0%	+18.4%	+5.9%
Occupational Therapists	150	+20	+17	+7	+14	+11	+0	-0	+15.4%	+12.9%	+4.9%	+10.6%	+7.8%	+0.1%	-0.3%
Orthoptists	2	+1	+1	+1	+1	+2			+300.0%	+263.6%	+263.6%	+263.6%	-100.0%		
Physiotherapists	107	-2	-5	-4	-1	+0	-1	+2	-1.4%	-4.3%	-3.2%	-1.0%	+0.4%	-0.9%	+2.2%
Podiatrists & Chiropodists	4	+1	+1	-0	-1	-1	-0	+0	+29.8%	+53.1%	-3.1%	-15.9%	-17.9%	-10.1%	+0.5%

Apr 2021 (Dec 2016 figure: 6,014)	WTE Apr 2021	WTE change since Dec 15	WTE change since Dec 16	WTE change since Dec 17	WTE change since Dec 18	WTE change since Dec 19	WTE change since Dec 20	WTE change since Mar 21	% change since Dec 15	% change since Dec 16	% change since Dec 17	% change since Dec 18	% change since Dec 19	% change since Dec 20	% change since Mar 21
Overall	6,444	+630	+430	+352	+316	+309	+107	+27	+10.8%	+7.2%	+5.8%	+5.2%	+5.0%	+1.7%	+0.4%
Speech & Language Therapists	111	+26	+3	-7	+1	+4	+1	+1	+31.1%	+2.5%	-5.8%	+1.1%	+3.8%	+0.7%	+0.7%
Therapy Professions	398	+58	+26	+5	+21	+21	+3	+4	+17.1%	+7.0%	+1.3%	+5.5%	+5.6%	+0.8%	+1.0%
Audiology	6	+2	+2	+2	+2	+3	+1		+52.3%	+43.3%	+46.3%	+46.3%	+95.7%	+18.8%	
Clinical Engineering	4	+4							-100.0%						
Radiographers		-2	-2	-3					-100.0%	-100.0%	-100.0%	-100.0%	-100.0%	-100.0%	-100.0%
Health Science/ Diagnostics	10	+4	-0	-1	+2	+3	+1		+67.8%	-3.9%	-7.8%	+24.0%	+42.7%	+10.7%	
Social Care	387	+112	+84	+45	+26	+19	-0	+4	+40.4%	+27.6%	+13.2%	+7.3%	+5.3%	-0.1%	+1.1%
Social Workers	96	+15	+8	+5	+6	+9	+7	+3	+18.0%	+9.4%	+5.4%	+6.1%	+9.7%	+8.4%	+3.2%
Psychologists	120	+16	+21	+12	+14	+0	+5	+1	+15.3%	+21.1%	+10.6%	+13.6%	+0.3%	+4.3%	+0.8%
Pharmacy	12	+8	+7	+7	+6	+4	+3		+221.2%	+151.1%	+141.1%	+94.3%	+58.2%	+38.4%	
Counsellor Therapists	42	+8	+7	+2	+3	+4	+4	+0	+23.8%	+18.5%	+5.8%	+7.0%	+11.8%	+9.5%	+0.6%
Dental Hygienists	12	-1	-0	-0	-0	-0	-1		-7.1%	-0.3%	-1.4%	-2.4%	-1.3%	-4.9%	
Other Health & Social Care	2	-0	-0	-0	-0		-0	+0	-7.4%	-9.9%	-5.8%	-11.4%		-2.4%	+29.4%
Play Therapists/ Specialists	1														
H&SC, Other	57	+7	+6	+2	+2	+4	+3	+1	+14.1%	+12.6%	+3.7%	+4.1%	+8.2%	+5.6%	+1.1%
Health & Social Care Professionals	1,080	+219	+152	+75	+77	+61	+22	+13	+25.5%	+16.4%	+7.4%	+7.7%	+6.0%	+2.1%	+1.2%
Executive Management	10	+6	+1	-0	-0	+1	-0	+1	+143.0%	+9.7%	-1.4%	-0.6%	+9.7%	-0.9%	+8.0%
Senior Management (VIII & GM)	61	+13	+11	+8	+11	+7	+4	+2	+27.8%	+22.8%	+14.7%	+22.4%	+13.9%	+6.7%	+3.2%
Management (VIII & above)	71	+19	+12	+8	+11	+8	+4	+3	+36.7%	+20.8%	+12.2%	+18.6%	+13.3%	+5.6%	+3.8%
Middle Management (V-VII)	205	+72	+62	+56	+31	+29	+1	+5	+54.2%	+43.1%	+38.0%	+17.9%	+16.2%	+0.6%	+2.4%
Other Administrative			-1						-100.0%	-100.0%	-100.0%	-100.0%	-100.0%	-100.0%	-100.0%
Administrative/ Supervisory (V to VII)	205	+72	+61	+56	+31	+29	+1	+5	+54.2%	+42.1%	+38.0%	+17.9%	+16.2%	+0.6%	+2.4%
Clerical (III & IV)	524	+8	+0	+2	+13	+17	-9	-9	+1.5%	+0.0%	+0.4%	+2.5%	+3.3%	-1.7%	-1.7%
Management & Administrative	799	+99	+73	+66	+55	+54	-4	-2	+14.1%	+10.0%	+9.0%	+7.4%	+7.2%	-0.5%	-0.2%
Catering	30	-7	-6	-3	-6	-3	-0	-1	-18.8%	-16.2%	-8.7%	-16.5%	-8.9%	-1.0%	-2.4%
Household Services	52	-29	-20	-14	-5	-6	-2	+0	-36.2%	-27.5%	-21.3%	-9.6%	-10.3%	-3.3%	+0.2%
Other Support	29	-4	-7	-8	-4	-3	-0	-0	-11.3%	-19.6%	-22.4%	-13.4%	-8.4%	-0.5%	-1.7%
Portering	5	+1							+34.0%						
Support	116	-39	-32	-25	-16	-11	-2	-1	-25.1%	-21.9%	-17.9%	-12.1%	-9.0%	-1.9%	-1.0%
Maintenance	68	+0	-0	-1	-4	-0	-0	+2	+0.6%	-0.5%	-1.9%	-5.1%	-0.4%	-0.2%	+2.9%
Technical Services	0														
Maintenance/ Technical	68	+0	-0	-1	-4	-0	-0	+2	+0.6%	-0.5%	-1.8%	-5.1%	-0.4%	-0.2%	+2.9%
General Support	184	-38	-33	-26	-20	-12	-2	+1	-17.2%	-15.1%	-12.6%	-9.6%	-6.0%	-1.3%	+0.4%
HCA, Nurse's Aide, etc.	1,590	+150	+94	+68	+44	+26	+11	+4	+10.4%	+6.3%	+4.5%	+2.8%	+1.6%	+0.7%	+0.3%
Health & Social Care Assistants	16	+12	+12	+12	-5	+3	+1	+1	+338.8%	+311.6%	+311.6%	-23.2%	+19.1%	+6.7%	+6.7%
Swabber (COVID-19)	112	+112	+112	+112	+112	+112	+43	-1	-100.0%	-100.0%	-100.0%	-100.0%	-100.0%	+61.1%	-0.7%
Health Care Assistants	1,718	+274	+218	+192	+151	+140	+55	+4	+19.0%	+14.6%	+12.6%	+9.6%	+8.9%	+3.3%	+0.3%
Care, other	243	-17	-25	-16	-1	+6	+5	+2	-6.6%	-9.4%	-6.1%	-0.4%	+2.4%	+2.1%	+0.8%
Home Help	395	+9	-2	-11	-36	-23	-2	+4	+2.3%	-0.5%	-2.8%	-8.3%	-5.5%	-0.4%	+1.1%

Apr 2021 (Dec 2016 figure: 6,014)	WTE Apr 2021	WTE change since Dec 15	WTE change since Dec 16	WTE change since Dec 17	WTE change since Dec 18	WTE change since Dec 19	WTE change since Dec 20	WTE change since Mar 21	% change since Dec 15	% change since Dec 16	% change since Dec 17	% change since Dec 18	% change since Dec 19	% change since Dec 20	% change since Mar 21
Overall	6,444	+630	+430	+352	+316	+309	+107	+27	+10.8%	+7.2%	+5.8%	+5.2%	+5.0%	+1.7%	+0.4%
Patient & Client Care	2,356	+266	+191	+165	+114	+123	+58	+11	+12.7%	+8.8%	+7.5%	+5.1%	+5.5%	+2.5%	+0.5%

Source: Health Service Personnel Census

Longitudinal Employment Levels by Care Group - Dec 2015 to Apr 2021

Community Health & Wellbeing

Apr 2021 (figure:)	WTE Apr 2021	WTE change since	WTE change since	WTE change since	WTE change since	WTE change since	WTE change since	WTE change since Mar 21	% change since	% change since	% change since	% change since	% change since	% change since	% change since Mar 21
Overall	29	+29	+29	+29	+29	+29	+29	+0	-100.0%	-100.0%	-100.0%	-100.0%	-100.0%	-100.0%	+1.2%
Health & Social Care Professionals	2	+2	+2	+2	+2	+2	+2	+0	-1.0%	-1.0%	-1.0%	-1.0%	-1.0%	-1.0%	+0.0%
Therapy Professions	2	+2	+2	+2	+2	+2	+2	+0	-1.0%	-1.0%	-1.0%	-1.0%	-1.0%	-1.0%	+0.0%
Management & Administrative	27	+27	+27	+27	+27	+27	+27	+0	-1.0%	-1.0%	-1.0%	-1.0%	-1.0%	-1.0%	+0.0%
Management (VIII & above)	3	+3	+3	+3	+3	+3	+3		-1.0%	-1.0%	-1.0%	-1.0%	-1.0%	-1.0%	+0.0%
Administrative/ Supervisory (V to VII)	20	+20	+20	+20	+20	+20	+20	+0	-1.0%	-1.0%	-1.0%	-1.0%	-1.0%	-1.0%	+0.0%
Clerical (III & IV)	4	+4	+4	+4	+4	+4	+4	-0	-1.0%	-1.0%	-1.0%	-1.0%	-1.0%	-1.0%	-0.0%

Source: Health Service Personnel Census

Mental Health

Apr 2021 (Dec 2016 figure: 1,041)	WTE Apr 2021	WTE change since Dec 15	WTE change since Dec 16	WTE change since Dec 17	WTE change since Dec 18	WTE change since Dec 19	WTE change since Dec 19	WTE change since Mar 21	% change since Dec 15	% change since Dec 16	% change since Dec 17	% change since Dec 18	% change since Dec 19	% change since Dec 19	% change since Mar 21
Overall	1,122	+80	+81	+42	+53	+24	+24	+5	+7.7%	+7.8%	+3.9%	+4.9%	+2.2%	+2.2%	+0.5%
Medical & Dental	97	+15	+17	+10	+11	+0	+0	+2	+0.2%	+0.2%	+0.1%	+0.1%	+0.0%	+0.0%	+0.0%
Consultants	38	+4	+4	+5	+4	+3	+3	+0	+0.1%	+0.1%	+0.2%	+0.1%	+0.1%	+0.1%	+0.0%
Registrars	34	+17	+15	+5	+8	+8	+8	+3	+1.1%	+0.8%	+0.2%	+0.3%	+0.3%	+0.3%	+0.1%
SHO/ Interns	25	-7	-2	-0	-1	-11	-11	-1	-0.2%	-0.1%	-0.0%	-0.0%	-0.3%	-0.3%	-0.0%
Nursing & Midwifery	543	+41	+38	+32	+35	+28	+28	+7	+0.1%	+0.1%	+0.1%	+0.1%	+0.1%	+0.1%	+0.0%
Nurse/ Midwife Manager	117	+2	-5	-13	-10	-3	-3	+3	+0.0%	-0.0%	-0.1%	-0.1%	-0.0%	-0.0%	+0.0%
Nurse/ Midwife Specialist & AN/MP	59	+16	+10	+10	+7	+3	+3	-1	+0.4%	+0.2%	+0.2%	+0.1%	+0.0%	+0.0%	-0.0%
Staff Nurse/ Staff Midwife	339	-2	+9	+12	+14	+8	+8	+4	-0.0%	+0.0%	+0.0%	+0.0%	+0.0%	+0.0%	+0.0%
Nursing/ Midwifery Student	24	+24	+22	+23	+23	+22	+22	+1	-1.0%	+11.2%	+22.4%	+21.3%	+8.7%	+8.7%	+0.1%
Nursing/ Midwifery other	3	+1	+1	+0	+1	-1	-1		+0.6%	+0.6%	+0.0%	+0.5%	-0.2%	-0.2%	+0.0%
Health & Social Care Professionals	152	+16	+18	+1	+4	-1	-1	-1	+0.1%	+0.1%	+0.0%	+0.0%	-0.0%	-0.0%	-0.0%
Therapy Professions	43	+5	+8	-1	-1	-1	-1	-0	+0.1%	+0.2%	-0.0%	-0.0%	-0.0%	-0.0%	-0.0%
Social Care	7	+1	-0	-0	+0	-1	-1	+0	+0.1%	-0.0%	-0.0%	+0.0%	-0.1%	-0.1%	+0.0%
Social Workers	47	+6	+4	+4	+7	+5	+5	-0	+0.1%	+0.1%	+0.1%	+0.2%	+0.1%	+0.1%	-0.0%
Psychologists	39	+7	+10	+2	+1	+0	+0	-0	+0.2%	+0.3%	+0.1%	+0.0%	+0.0%	+0.0%	-0.0%
Pharmacy	2	+2	+1	+1	+1	+1	+1		-1.0%	+1.4%	+0.5%	+0.5%	+0.5%	+0.5%	+0.0%
H&SC, Other	15	-4	-4	-4	-4	-5	-5	-0	-0.2%	-0.2%	-0.2%	-0.2%	-0.3%	-0.3%	-0.0%
Management & Administrative	119	+21	+19	+8	+11	+6	+6	-1	+0.2%	+0.2%	+0.1%	+0.1%	+0.1%	+0.1%	-0.0%
Management (VIII & above)	3	-0	+2	+1	+1	-0	-0	+1	-0.0%	+1.9%	+0.4%	+0.5%	-0.0%	-0.0%	+0.5%
Administrative/ Supervisory (V to VII)	22	+6	+6	+3	-0	-1	-1	+1	+0.4%	+0.4%	+0.2%	-0.0%	-0.0%	-0.0%	+0.1%
Clerical (III & IV)	95	+14	+11	+5	+10	+7	+7	-3	+0.2%	+0.1%	+0.1%	+0.1%	+0.1%	+0.1%	-0.0%
General Support	59	-1	+0	-5	-2	-0	-0	+1	-0.0%	+0.0%	-0.1%	-0.0%	-0.0%	-0.0%	+0.0%
Support	30	-2	-1	-5	-3	-3	-3	-0	-0.1%	-0.0%	-0.2%	-0.1%	-0.1%	-0.1%	-0.0%
Maintenance/ Technical	29	+1	+1	+1	+1	+3	+3	+1	+0.0%	+0.0%	+0.0%	+0.0%	+0.1%	+0.1%	+0.0%
Patient & Client Care	152	-11	-11	-5	-7	-9	-9	-3	-0.1%	-0.1%	-0.0%	-0.0%	-0.1%	-0.1%	-0.0%
Health Care Assistants	149	-10	-10	-4	-7	-8	-8	-3	-0.1%	-0.1%	-0.0%	-0.0%	-0.1%	-0.1%	-0.0%
Care, other	3	-1	-1	-1	+0	-0	-0	+0	-0.3%	-0.3%	-0.3%	+0.1%	-0.1%	-0.1%	+0.1%

Source: Health Service Personnel Census

Primary Care

Apr 2021 (Dec 2016 figure: 1,457)	WTE Apr 2021	WTE change since Dec 15	WTE change since Dec 16	WTE change since Dec 17	WTE change since Dec 18	WTE change since Dec 19	WTE change since Dec 19	WTE change since Mar 21	% change since Dec 15	% change since Dec 16	% change since Dec 17	% change since Dec 18	% change since Dec 19	% change since Dec 19	% change since Mar 21
Overall	1,565	+172	+108	+129	+143	+179	+179	-1	+12.4%	+7.4%	+9.0%	+10.1%	+12.9%	+12.9%	-0.0%
Medical & Dental	141	+7	+0	+6	+5	-6	-6	-5	+0.1%	+0.0%	+0.0%	+0.0%	-0.0%	-0.0%	-0.0%
Consultants	6	+1	+1	+1	+2	+1	+1	+1	+0.1%	+0.1%	+0.1%	+0.3%	+0.1%	+0.1%	+0.1%
Registrars	78	+7	+2	+7	+6	+0	+0	-0	+0.1%	+0.0%	+0.1%	+0.1%	+0.0%	+0.0%	-0.0%
SHO/ Interns	0	+0	-1	-1	-2	-2	-2	-1	-1.0%	-0.7%	-0.7%	-0.9%	-0.9%	-0.9%	-0.7%
Medical/ Dental, other	56	-0	-1	-0	-0	-5	-5	-5	-0.0%	-0.0%	-0.0%	-0.0%	-0.0%	-0.1%	-0.1%
Nursing & Midwifery	414	+30	-4	+6	+19	+32	+32	+1	+0.1%	-0.0%	+0.0%	+0.0%	+0.1%	+0.1%	+0.0%
Nurse/ Midwife Manager	50	+1	-6	-3	-3	-1	-1	+0	+0.0%	-0.1%	-0.1%	-0.1%	-0.0%	-0.0%	+0.0%
Nurse/ Midwife Specialist & AN/MP	44	+9	+7	+7	+7	+10	+10	+0	+0.3%	+0.2%	+0.2%	+0.2%	+0.3%	+0.3%	+0.0%
Staff Nurse/ Staff Midwife	107	+7	-7	-4	+2	+8	+8	+0	+0.1%	-0.1%	-0.0%	+0.0%	+0.1%	+0.1%	+0.0%
Public Health Nurse	199	+10	+5	+5	+7	+4	+4	+0	+0.1%	+0.0%	+0.0%	+0.0%	+0.0%	+0.0%	+0.0%
Nursing/ Midwifery Student	13	+2	-3		+5	+11	+11		+0.2%	-0.2%	+0.0%	+0.6%	+5.6%	+5.6%	+0.0%
Nursing/ Midwifery other	1	+1	+1	+1	+1	+1	+1		-1.0%	-1.0%	-1.0%	-1.0%	-1.0%	-1.0%	+0.0%
Health & Social Care Professionals	353	+26	+26	+15	+26	+28	+28	+4	+0.1%	+0.1%	+0.0%	+0.1%	+0.1%	+0.1%	+0.0%
Therapy Professions	230	+8	+6	-4	+6	+9	+9	+1	+0.0%	+0.0%	-0.0%	+0.0%	+0.0%	+0.0%	+0.0%
Health Science/ Diagnostics	8	+4	+2	+2	+2	+3	+3		+1.0%	+0.3%	+0.2%	+0.3%	+0.6%	+0.6%	+0.0%
Social Care	1			+1	+1	+1	+1		+0.0%	+0.0%	-1.0%	-1.0%	-1.0%	-1.0%	+0.0%
Social Workers	17	-0	+0	+0	-2	+2	+2	+2	-0.0%	+0.0%	+0.0%	-0.1%	+0.1%	+0.1%	+0.1%
Psychologists	56	+1	+4	+7	+9	-0	-0	+1	+0.0%	+0.1%	+0.1%	+0.2%	-0.0%	-0.0%	+0.0%
Pharmacy	7	+4	+4	+4	+4	+3	+3		+1.7%	+1.4%	+1.5%	+1.4%	+0.9%	+0.9%	+0.0%
H&SC, Other	34	+9	+9	+5	+5	+9	+9	+0	+0.4%	+0.4%	+0.2%	+0.2%	+0.4%	+0.4%	+0.0%
Management & Administrative	399	+9	-17	-4	-8	+11	+11	+0	+0.0%	-0.0%	-0.0%	-0.0%	+0.0%	+0.0%	+0.0%
Management (VIII & above)	44	+11	+2	+2	-0	-1	-1	+1	+0.3%	+0.0%	+0.1%	-0.0%	-0.0%	-0.0%	+0.0%
Administrative/ Supervisory (V to VII)	86	+28	+20	+19	+6	+8	+8	+3	+0.5%	+0.3%	+0.3%	+0.1%	+0.1%	+0.1%	+0.0%
Clerical (III & IV)	269	-30	-39	-25	-14	+4	+4	-4	-0.1%	-0.1%	-0.1%	-0.0%	+0.0%	+0.0%	-0.0%
General Support	23	-3	-4	-6	-3	-2	-2	-0	-0.1%	-0.1%	-0.2%	-0.1%	-0.1%	-0.1%	-0.0%
Support	20	-3	-5	-6	-3	-2	-2	-0	-0.1%	-0.2%	-0.2%	-0.1%	-0.1%	-0.1%	-0.0%
Maintenance/ Technical	3	-0	+1	-0	+0	+0	+0		-0.0%	+0.6%	-0.0%	+0.0%	+0.0%	+0.0%	+0.0%
Patient & Client Care	235	+103	+105	+112	+104	+115	+115	+0	+0.8%	+0.8%	+0.9%	+0.8%	+1.0%	+1.0%	+0.0%
Health Care Assistants	134	+119	+118	+119	+105	+114	+114	+0	+7.5%	+7.3%	+8.0%	+3.6%	+5.5%	+5.5%	+0.0%
Care, other	100	-15	-12	-6	-2	+2	+2	+0	-0.1%	-0.1%	-0.1%	-0.0%	+0.0%	+0.0%	+0.0%
Home Help		-1	-1	-1	-0	-0	-0		-1.0%	-1.0%	-1.0%	-1.0%	-1.0%	-1.0%	-1.0%

Source: Health Service Personnel Census

Disabilities

Apr 2021 (Dec 2016 figure: 1,984)	WTE Apr 2021	WTE change since Dec 15	WTE change since Dec 16	WTE change since Dec 17	WTE change since Dec 18	WTE change since Dec 19	WTE change since Dec 19	WTE change since Mar 21	% change since Dec 15	% change since Dec 16	% change since Dec 17	% change since Dec 18	% change since Dec 19	% change since Dec 19	% change since Mar 21
Overall	2,245	+403	+261	+167	+112	+83	+83	+25	+21.9%	+13.2%	+8.0%	+5.2%	+3.9%	+3.9%	+1.1%
Medical & Dental	2	-1	-1	-1	-1	-2	-2		-0.3%	-0.3%	-0.3%	-0.3%	-0.5%	-0.5%	+0.0%
Consultants		-1	-1	-1	-1	-1	-1		-1.0%	-1.0%	-1.0%	-1.0%	-1.0%	-1.0%	-1.0%
Registrars	1					-1	-1		+0.0%	+0.0%	+0.0%	+0.0%	-0.5%	-0.5%	+0.0%
Medical/ Dental, other	1								+0.0%	+0.0%	+0.0%	+0.0%	+0.0%	+0.0%	+0.0%
Nursing & Midwifery	461	+2	+1	+6	-0	+6	+6	+0	+0.0%	+0.0%	+0.0%	-0.0%	+0.0%	+0.0%	+0.0%
Nurse/ Midwife Manager	119	+4	-0	+0	-2	-4	-4	-3	+0.0%	-0.0%	+0.0%	-0.0%	-0.0%	-0.0%	-0.0%
Nurse/ Midwife Specialist & AN/MP	5	-4	-4	-3	-2	-2	-2	-0	-0.4%	-0.4%	-0.3%	-0.3%	-0.2%	-0.2%	-0.0%
Staff Nurse/ Staff Midwife	323	-6	-3	+0	-3	+5	+5	+3	-0.0%	-0.0%	+0.0%	-0.0%	+0.0%	+0.0%	+0.0%
Public Health Nurse	1	+1	-0	+1	-0				+1.1%	-0.0%	-1.0%	-0.0%	+0.0%	+0.0%	+0.0%
Nursing/ Midwifery Student	6	+6	+6	+6	+5	+6	+6	-0	-1.0%	-1.0%	-1.0%	+10.0%	-1.0%	-1.0%	-0.0%
Nursing/ Midwifery other	7	+2	+2	+1	+1	+1	+1	+0	+0.6%	+0.6%	+0.2%	+0.3%	+0.3%	+0.3%	+0.0%
Health & Social Care Professionals	538	+167	+100	+50	+40	+27	+27	+9	+0.5%	+0.2%	+0.1%	+0.1%	+0.1%	+0.1%	+0.0%
Therapy Professions	97	+35	+4	+2	+9	+5	+5	+3	+0.6%	+0.0%	+0.0%	+0.1%	+0.1%	+0.1%	+0.0%
Health Science/ Diagnostics	2	+2							-1.0%	+0.0%	+0.0%	+0.0%	+0.0%	+0.0%	+0.0%
Social Care	380	+111	+84	+44	+25	+19	+19	+4	+0.4%	+0.3%	+0.1%	+0.1%	+0.1%	+0.1%	+0.0%
Social Workers	27	+10	+4	-0	+1	+2	+2	+1	+0.6%	+0.2%	-0.0%	+0.0%	+0.1%	+0.1%	+0.1%
Psychologists	25	+8	+7	+2	+4	+0	+0	+1	+0.5%	+0.4%	+0.1%	+0.2%	+0.0%	+0.0%	+0.0%
H&SC, Other	7	+1	+1	+1	+1	+0	+0	+0	+0.2%	+0.2%	+0.2%	+0.1%	+0.0%	+0.0%	+0.0%
Management & Administrative	158	+21	+21	+9	+9	+8	+8	+0	+0.2%	+0.2%	+0.1%	+0.1%	+0.1%	+0.1%	+0.0%
Management (VIII & above)	15	+2	+2	-3	+4	+6	+6	+1	+0.2%	+0.2%	-0.2%	+0.4%	+0.7%	+0.7%	+0.1%
Administrative/ Supervisory (V to VII)	54	+7	+5	+5	+0	-2	-2	-0	+0.2%	+0.1%	+0.1%	+0.0%	-0.0%	-0.0%	-0.0%
Clerical (III & IV)	88	+12	+14	+7	+5	+4	+4	-1	+0.2%	+0.2%	+0.1%	+0.1%	+0.0%	+0.0%	-0.0%
General Support	55	-33	-30	-18	-13	-8	-8	+1	-0.4%	-0.4%	-0.2%	-0.2%	-0.1%	-0.1%	+0.0%
Support	41	-32	-27	-15	-9	-6	-6	-0	-0.4%	-0.4%	-0.3%	-0.2%	-0.1%	-0.1%	-0.0%
Maintenance/ Technical	14	-1	-3	-3	-3	-2	-2	+1	-0.1%	-0.2%	-0.2%	-0.2%	-0.1%	-0.1%	+0.1%
Patient & Client Care	1,033	+246	+171	+122	+76	+52	+52	+15	+0.3%	+0.2%	+0.1%	+0.1%	+0.1%	+0.1%	+0.0%
Health Care Assistants	892	+249	+182	+133	+77	+49	+49	+13	+0.4%	+0.3%	+0.2%	+0.1%	+0.1%	+0.1%	+0.0%
Care, other	119	+0	-10	-8	+0	+4	+4	+2	+0.0%	-0.1%	-0.1%	+0.0%	+0.0%	+0.0%	+0.0%
Home Help	22	-2	-1	-4	-1	-1	-1	-0	-0.1%	-0.0%	-0.1%	-0.0%	-0.0%	-0.0%	-0.0%

Source: Health Service Personnel Census

Older People

Apr 2021 (Dec 2016 figure: 1,531)	WTE Apr 2021	WTE change since Dec 15	WTE change since Dec 16	WTE change since Dec 17	WTE change since Dec 18	WTE change since Dec 19	WTE change since Dec 19	WTE change since Mar 21	% change since Dec 15	% change since Dec 16	% change since Dec 17	% change since Dec 18	% change since Dec 19	% change since Dec 19	% change since Mar 21
Overall	1,482	-54	-49	-16	-21	-6	-6	-3	-3.5%	-3.2%	-1.1%	-1.4%	-0.4%	-0.4%	-0.2%
Medical & Dental	11	+1	-0	+0	-1			-0	+0.1%	-0.0%	+0.0%	-0.1%	+0.0%	+0.0%	-0.0%
Medical/ Dental, other	11	+1	-0	+0	-1			-0	+0.1%	-0.0%	+0.0%	-0.1%	+0.0%	+0.0%	-0.0%
Nursing & Midwifery	355	-11	-4	+14	+21	+25	+25	-0	-0.0%	-0.0%	+0.0%	+0.1%	+0.1%	+0.1%	-0.0%
Nurse/ Midwife Manager	90	+3	+5	+6	+11	+13	+13	-1	+0.0%	+0.1%	+0.1%	+0.1%	+0.2%	+0.2%	-0.0%
Nurse/ Midwife Specialist & AN/MP	5	+2	+2	+2	+2	+3	+3	+0	+0.7%	+0.6%	+0.6%	+0.6%	+1.5%	+1.5%	+0.0%
Staff Nurse/ Staff Midwife	255	-17	-12	+5	+6	+6	+6	+1	-0.1%	-0.0%	+0.0%	+0.0%	+0.0%	+0.0%	+0.0%
Public Health Nurse	3	-1	-1	-1	-0	+1	+1	-0	-0.2%	-0.2%	-0.2%	-0.1%	+0.3%	+0.3%	-0.0%
Nursing/ Midwifery other	2	+2	+2	+2	+2	+2	+2	+0	-1.0%	-1.0%	-1.0%	-1.0%	-1.0%	-1.0%	+0.0%
Health & Social Care Professionals	35	+8	+6	+7	+5	+5	+5	+1	+0.3%	+0.2%	+0.3%	+0.2%	+0.2%	+0.2%	+0.0%
Therapy Professions	26	+8	+7	+6	+5	+6	+6	+1	+0.4%	+0.4%	+0.3%	+0.3%	+0.3%	+0.3%	+0.0%
Health Science/ Diagnostics		-2	-2	-2					-1.0%	-1.0%	-1.0%	-1.0%	-1.0%	-1.0%	-1.0%
Social Workers	6	-0	-0	+2	-1	-1	-1	+0	-0.1%	-0.1%	+0.4%	-0.1%	-0.1%	-0.1%	+0.0%
Pharmacy	3	+2	+2	+2	+1	+1	+1		+2.0%	+2.0%	+2.0%	+0.5%	+0.2%	+0.2%	+0.0%
Management & Administrative	96	+21	+22	+25	+15	+1	+1	-2	+0.3%	+0.3%	+0.4%	+0.2%	+0.0%	+0.0%	-0.0%
Management (VIII & above)	6	+3	+3	+4	+3	+0	+0	-0	+1.2%	+1.1%	+2.4%	+1.2%	+0.1%	+0.1%	-0.0%
Administrative/ Supervisory (V to VII)	23	+10	+9	+9	+4	+2	+2	-0	+0.9%	+0.7%	+0.7%	+0.2%	+0.1%	+0.1%	-0.0%
Clerical (III & IV)	68	+7	+10	+11	+7	-2	-2	-1	+0.1%	+0.2%	+0.2%	+0.1%	-0.0%	-0.0%	-0.0%
General Support	48	-1	+1	+1	-2	-1	-1	-0	-0.0%	+0.0%	+0.0%	-0.0%	-0.0%	-0.0%	-0.0%
Support	25	-2	-0	+0	-0	-0	-0	+0	-0.1%	-0.0%	+0.0%	-0.0%	-0.0%	-0.0%	+0.0%
Maintenance/ Technical	23	+1	+1	+1	-1	-1	-1	-0	+0.0%	+0.0%	+0.0%	-0.1%	-0.0%	-0.0%	-0.0%
Patient & Client Care	937	-72	-74	-63	-59	-35	-35	-2	-0.1%	-0.1%	-0.1%	-0.1%	-0.0%	-0.0%	-0.0%
Health Care Assistants	542	-83	-72	-57	-25	-14	-14	-6	-0.1%	-0.1%	-0.1%	-0.0%	-0.0%	-0.0%	-0.0%
Care, other	21	-1	-2	-0	+0	+0	+0	-0	-0.1%	-0.1%	-0.0%	+0.0%	+0.0%	+0.0%	-0.0%
Home Help	374	+12	-0	-7	-35	-22	-22	+4	+0.0%	-0.0%	-0.0%	-0.1%	-0.1%	-0.1%	+0.0%

Source: Health Service Personnel Census