

## CHO 8 Employment Report: February 2021

### Employment by Staff Group

Feb 2021 (Dec 2020 figure: 6,337)	WTE Jan 2021	WTE Feb 2021	WTE change since Jan 21	% change since Jan 21	WTE change since Dec 20	WTE change since Feb 20
<b>Overall</b>	<b>6,393</b>	<b>6,405</b>	<b>+12</b>	<b>+0.2%</b>	<b>+68</b>	<b>+258</b>
Consultants	44	44	+0	+0.5%	+1	+1
Registrars	110	108	-1	-1.3%	-6	+8
SHO/ Interns	32	30	-2	-6.3%	+3	-10
Medical/ Dental, other	73	72	-1	-1.1%	-1	-2
<b>Medical &amp; Dental</b>	<b>258</b>	<b>254</b>	<b>-4</b>	<b>-1.5%</b>	<b>-4</b>	<b>-3</b>
Nurse/ Midwife Manager	383	379	-4	-0.9%	-0	+9
Nurse/ Midwife Specialist & AN/MP	109	113	+3	+3.1%	+1	+12
Staff Nurse/ Staff Midwife	1,007	1,023	+16	+1.6%	+10	+30
Public Health Nurse	203	205	+2	+1.2%	+4	+1
Pre-registration Nurse/ Midwife Intern	19	28	+9	+45.2%	+28	+9
Pre-registration Nurse Intern (COVID-19)	0		-0	-100.0%	-5	-0
Post-registration Nurse/ Midwife Student	13	13	+0	+2.0%	+1	+0
Nursing/ Midwifery awaiting registration				-100.0%		
Nursing/ Midwifery Student	32	41	+9	+27.2%	+24	+5
Nursing/ Midwifery other	12	13	+1	+5.5%	+0	+1
<b>Nursing &amp; Midwifery</b>	<b>1,745</b>	<b>1,773</b>	<b>+28</b>	<b>+1.6%</b>	<b>+39</b>	<b>+58</b>
Therapy Professions	401	399	-2	-0.5%	+5	+21
Health Science/ Diagnostics	9	10	+1	+10.4%	+1	+3
Social Care	391	385	-6	-1.6%	-3	+25
Social Workers	89	91	+2	+2.3%	+2	+4
Psychologists	117	117	+0	+0.3%	+2	+2
Pharmacy	9	11	+2	+19.9%	+3	+4
H&SC, Other	55	55	-0	-0.5%	+1	+2
<b>Health &amp; Social Care Professionals</b>	<b>1,072</b>	<b>1,069</b>	<b>-3</b>	<b>-0.3%</b>	<b>+11</b>	<b>+60</b>
Management (VIII & above)	67	67	+0	+0.6%	-0	+5
Administrative/ Supervisory (V to VII)	205	198	-7	-3.5%	-6	+2
Clerical (III & IV)	535	533	-2	-0.5%	+0	+9
<b>Management &amp; Administrative</b>	<b>807</b>	<b>798</b>	<b>-9</b>	<b>-1.2%</b>	<b>-6</b>	<b>+16</b>
Support	118	118	+0	+0.3%	-0	-7
Maintenance/ Technical	69	67	-2	-3.1%	-2	-2
<b>General Support</b>	<b>186</b>	<b>185</b>	<b>-2</b>	<b>-0.9%</b>	<b>-2</b>	<b>-9</b>
Health Care Assistants	1,692	1,697	+5	+0.3%	+35	+150
Care, other	237	237	-0	-0.0%	-2	-2
Home Help	396	393	-2	-0.6%	-4	-13
<b>Patient &amp; Client Care</b>	<b>2,325</b>	<b>2,327</b>	<b>+2</b>	<b>+0.1%</b>	<b>+29</b>	<b>+135</b>

## CHO 8 Employment Report: February 2021

### Community Health & Wellbeing

Feb 2021 (Dec 2020 figure: 30)	WTE Jan 2021	WTE Feb 2021	WTE change since Jan 21	% change since Jan 21	WTE change since Dec 20	WTE change since Feb 20
<b>Total Community Health &amp; Wellbeing</b>	<b>29</b>	<b>29</b>	<b>-0</b>	<b>-0.5%</b>	<b>-1</b>	<b>+4</b>
Public Health Nurse				-100.0%		-1
<b>Nursing &amp; Midwifery</b>				<b>-100.0%</b>		<b>-1</b>
Therapy Professions	1	2	+0	+5.6%	+0	+0
<b>Health &amp; Social Care Professionals</b>	<b>1</b>	<b>2</b>	<b>+0</b>	<b>+5.6%</b>	<b>+0</b>	<b>+0</b>
Management (VIII & above)	3	3	+0	+2.4%	+0	+2
Administrative/ Supervisory (V to VII)	21	20	-0	-2.0%	-1	+2
Clerical (III & IV)	4	4	+0	+2.5%	+0	+0
<b>Management &amp; Administrative</b>	<b>28</b>	<b>28</b>	<b>-0</b>	<b>-0.9%</b>	<b>-1</b>	<b>+5</b>

### Mental Health

Feb 2021 (Dec 2020 figure: 1,112)	WTE Jan 2021	WTE Feb 2021	WTE change since Jan 21	% change since Jan 21	WTE change since Dec 20	WTE change since Feb 20
<b>Total Mental Health</b>	<b>1,114</b>	<b>1,125</b>	<b>+11</b>	<b>+1.0%</b>	<b>+14</b>	<b>+19</b>
Consultants	37	38	+1	+3.3%	+2	+2
Registrars	30	28	-2	-7.2%	-4	+9
SHO/ Interns	31	29	-2	-6.4%	+3	-8
<b>Medical &amp; Dental</b>	<b>97</b>	<b>94</b>	<b>-3</b>	<b>-3.0%</b>	<b>+1</b>	<b>+2</b>
Nurse/ Midwife Manager	117	115	-2	-1.7%	-5	-7
Nurse/ Midwife Specialist & AN/MP	58	60	+3	+4.8%	+1	+5
Staff Nurse/ Staff Midwife	338	338	-0	-0.1%	-4	+14
<i>Nursing/ Midwifery awaiting registration</i>				-100.0%		
<i>Pre-registration Nurse Intern (COVID-19)</i>	0		-0	-100.0%	-1	-0
<i>Pre-registration Nurse/ Midwife Intern</i>	6	22	+15	+234.8%	+22	+15
Nursing/ Midwifery Student	7	22	+15	+226.8%	+21	+2
Nursing/ Midwifery other	3	3				-1
<b>Nursing &amp; Midwifery</b>	<b>523</b>	<b>539</b>	<b>+16</b>	<b>+3.0%</b>	<b>+13</b>	<b>+12</b>
Therapy Professions	44	42	-2	-4.3%	-0	-4
Social Care	7	7	-1	-9.4%	-0	+0
Social Workers	45	46	+1	+1.7%	+2	+4
Psychologists	38	39	+1	+2.4%	+2	+1
Pharmacy	1	1			-0	+0
H&SC, Other	22	22	+0	+1.2%	+1	+2
<b>Health &amp; Social Care Professionals</b>	<b>158</b>	<b>157</b>	<b>-1</b>	<b>-0.4%</b>	<b>+4</b>	<b>+4</b>
Management (VIII & above)	3	2	-1	-32.2%	-1	-1
Administrative/ Supervisory (V to VII)	20	19	-2	-7.7%	-1	-1
Clerical (III & IV)	96	100	+4	+4.3%	+3	+5
<b>Management &amp; Administrative</b>	<b>119</b>	<b>121</b>	<b>+2</b>	<b>+1.4%</b>	<b>+1</b>	<b>+3</b>
Support	30	31	+0	+0.7%	-1	-2
Maintenance/ Technical	28	28	-0	-0.9%	-0	+2
<b>General Support</b>	<b>59</b>	<b>59</b>	<b>-0</b>	<b>-0.0%</b>	<b>-1</b>	<b>+0</b>
Health Care Assistants	155	153	-2	-1.3%	-3	-3
Care, other	3	3	-0	-7.1%	-0	-0
<b>Patient &amp; Client Care</b>	<b>158</b>	<b>156</b>	<b>-2</b>	<b>-1.4%</b>	<b>-3</b>	<b>-3</b>

## Primary Care

Feb 2021 (Dec 2020 figure: 1,506)	WTE Jan 2021	WTE Feb 2021	WTE change since Jan 21	% change since Jan 21	WTE change since Dec 20	WTE change since Feb 20
<b>Total Primary Care</b>	<b>1,533</b>	<b>1,550</b>	<b>+17</b>	<b>+1.1%</b>	<b>+44</b>	<b>+150</b>
Consultants	6	6			-0	
Registrars	79	80	+1	+1.0%	-2	-1
SHO/ Interns	1	1				-1
Medical/ Dental, other	61	60	-1	-1.3%	-1	-2
<b>Medical &amp; Dental</b>	<b>146</b>	<b>146</b>	<b>-0</b>	<b>-0.0%</b>	<b>-3</b>	<b>-4</b>
Nurse/ Midwife Manager	54	51	-3	-5.4%	+1	-0
Nurse/ Midwife Specialist & AN/MP	42	42	+0	+0.9%	+0	+6
Staff Nurse/ Staff Midwife	106	106	+0	+0.1%	+2	+4
Public Health Nurse	199	201	+2	+1.2%	+4	+2
<i>Post-registration Nurse/ Midwife Student</i>	13	13	+0	+2.0%	+1	+0
Nursing/ Midwifery Student	13	13	+0	+2.0%	+1	+11
Nursing/ Midwifery other	1	1	+0	+11.1%	+0	+0
<b>Nursing &amp; Midwifery</b>	<b>414</b>	<b>414</b>	<b>+0</b>	<b>+0.1%</b>	<b>+7</b>	<b>+22</b>
Therapy Professions	232	233	+1	+0.6%	+5	+15
Health Science/ Diagnostics	7	8	+1	+13.3%	+1	+3
Social Care	1	1				+1
Social Workers	14	15	+1	+3.7%	-1	-2
Psychologists	56	55	-1	-2.0%	-1	+1
Pharmacy	5	7	+2	+29.6%	+2	+3
H&SC, Other	27	26	-1	-4.1%	-0	+1
<b>Health &amp; Social Care Professionals</b>	<b>343</b>	<b>345</b>	<b>+2</b>	<b>+0.6%</b>	<b>+6</b>	<b>+22</b>
Management (VIII & above)	40	41	+1	+3.3%	+0	-2
Administrative/ Supervisory (V to VII)	85	83	-2	-2.3%	-1	+4
Clerical (III & IV)	273	271	-2	-0.7%	-2	+4
<b>Management &amp; Administrative</b>	<b>397</b>	<b>395</b>	<b>-2</b>	<b>-0.6%</b>	<b>-2</b>	<b>+6</b>
Support	20	21	+1	+3.7%	+0	-2
Maintenance/ Technical	3	3	-0	-1.4%		
<b>General Support</b>	<b>23</b>	<b>23</b>	<b>+1</b>	<b>+3.0%</b>	<b>+0</b>	<b>-2</b>
Health Care Assistants	113	128	+15	+13.5%	+38	+109
Care, other	98	98	+1	+0.8%	-1	-4
<b>Patient &amp; Client Care</b>	<b>210</b>	<b>226</b>	<b>+16</b>	<b>+7.6%</b>	<b>+36</b>	<b>+105</b>

## Social Care

Feb 2021 (Dec 2020 figure: 3,689)	WTE Jan 2021	WTE Feb 2021	WTE change since Jan 21	% change since Jan 21	WTE change since Dec 20	WTE change since Feb 20
<b>Total Social Care</b>	<b>3,717</b>	<b>3,700</b>	<b>-16</b>	<b>-0.4%</b>	<b>+11</b>	<b>+85</b>
Consultants	1		-1	-100.0%	-1	-1
Registrars	1	1				
Medical/ Dental, other	12	12			-0	
<b>Medical &amp; Dental</b>	<b>14</b>	<b>13</b>	<b>-1</b>	<b>-7.2%</b>	<b>-1</b>	<b>-1</b>
Nurse/ Midwife Manager	211	212	+1	+0.6%	+4	+16
Nurse/ Midwife Specialist & AN/MP	10	10	+0	+2.7%	+0	+1
Staff Nurse/ Staff Midwife	563	579	+16	+2.9%	+12	+13
Public Health Nurse	4	4	+0	+0.8%	+0	+1
<i>Pre-registration Nurse Intern (COVID-19)</i>				-100.0%	-4	
<i>Pre-registration Nurse/ Midwife Intern</i>	12	6	-7	-53.4%	+6	-7
Nursing/ Midwifery Student	12	6	-7	-53.4%	+2	-8
Nursing/ Midwifery other	8	9	+1	+7.0%	+0	+2
<b>Nursing &amp; Midwifery</b>	<b>809</b>	<b>820</b>	<b>+12</b>	<b>+1.5%</b>	<b>+19</b>	<b>+25</b>
Therapy Professions	124	122	-2	-1.3%	-0	+10
Health Science/ Diagnostics	2	2				
Social Care	383	377	-6	-1.5%	-2	+23
Social Workers	29	30	+1	+2.5%	+1	+1
Psychologists	24	24	+1	+2.5%	+2	-0
Pharmacy	3	3	+0	+11.9%	+1	+1
H&SC, Other	6	6	+1	+9.8%	+0	-1
<b>Health &amp; Social Care Professionals</b>	<b>570</b>	<b>565</b>	<b>-5</b>	<b>-0.9%</b>	<b>+1</b>	<b>+33</b>
Management (VIII & above)	21	21	-0	-0.3%	+1	+6
Administrative/ Supervisory (V to VII)	79	76	-3	-4.2%	-2	-4
Clerical (III & IV)	163	158	-5	-3.0%	-1	+0
<b>Management &amp; Administrative</b>	<b>263</b>	<b>254</b>	<b>-8</b>	<b>-3.2%</b>	<b>-3</b>	<b>+2</b>
Support	67	67	-1	-0.8%	+0	-4
Maintenance/ Technical	38	36	-2	-4.8%	-2	-4
<b>General Support</b>	<b>105</b>	<b>103</b>	<b>-2</b>	<b>-2.3%</b>	<b>-2</b>	<b>-8</b>
Health Care Assistants	1,424	1,416	-8	-0.6%	-0	+44
Care, other	136	135	-1	-0.5%	+0	+2
Home Help	396	393	-2	-0.6%	-4	-13
<b>Patient &amp; Client Care</b>	<b>1,956</b>	<b>1,944</b>	<b>-11</b>	<b>-0.6%</b>	<b>-4</b>	<b>+33</b>

## CHO 8 Employment Report: February 2021

### Disabilities

Feb 2021 (Dec 2020 figure: 2,205)	WTE Jan 2021	WTE Feb 2021	WTE change since Jan 21	% change since Jan 21	WTE change since Dec 20	WTE change since Feb 20
<b>Total Disabilities</b>	<b>2,234</b>	<b>2,218</b>	<b>-16</b>	<b>-0.7%</b>	<b>+13</b>	<b>+87</b>
Consultants	1		-1	-100.0%	-1	-1
Registrars	1	1				
Medical/ Dental, other	1	1				
<b>Medical &amp; Dental</b>	<b>3</b>	<b>2</b>	<b>-1</b>	<b>-33.3%</b>	<b>-1</b>	<b>-1</b>
Nurse/ Midwife Manager	121	121	+0	+0.4%	+2	+4
Nurse/ Midwife Specialist & AN/MP	6	5	-1	-12.5%	-1	-2
Staff Nurse/ Staff Midwife	309	324	+16	+5.1%	+12	+9
Public Health Nurse	1	1			-0	
<i>Pre-registration Nurse Intern (COVID-19)</i>				-100.0%	-4	
<i>Pre-registration Nurse/ Midwife Intern</i>	12	6	-7	-53.4%	+6	-7
Nursing/ Midwifery Student	12	6	-7	-53.4%	+2	-8
Nursing/ Midwifery other	6	7	+1	+9.2%	+0	+0
<b>Nursing &amp; Midwifery</b>	<b>455</b>	<b>464</b>	<b>+9</b>	<b>+2.0%</b>	<b>+15</b>	<b>+4</b>
Therapy Professions	98	97	-1	-1.3%	-1	+5
Health Science/ Diagnostics	2	2				
Social Care	383	377	-6	-1.5%	-2	+23
Social Workers	24	25	+1	+2.8%	+1	+1
Psychologists	24	24	+1	+2.5%	+2	-0
H&SC, Other	6	6	+1	+9.8%	+0	-1
<b>Health &amp; Social Care Professionals</b>	<b>537</b>	<b>532</b>	<b>-5</b>	<b>-0.9%</b>	<b>-1</b>	<b>+28</b>
Management (VIII & above)	14	14	-0	-0.2%	+1	+5
Administrative/ Supervisory (V to VII)	57	54	-4	-6.1%	-3	-4
Clerical (III & IV)	90	89	-1	-1.0%	+2	+3
<b>Management &amp; Administrative</b>	<b>162</b>	<b>157</b>	<b>-4</b>	<b>-2.7%</b>	<b>-0</b>	<b>+4</b>
Support	42	41	-1	-2.4%	+0	-1
Maintenance/ Technical	14	13	-1	-7.1%	-1	-3
<b>General Support</b>	<b>56</b>	<b>54</b>	<b>-2</b>	<b>-3.5%</b>	<b>-1</b>	<b>-4</b>
Health Care Assistants	884	871	-13	-1.5%	-1	+56
Care, other	114	114	-0	-0.2%	+1	+0
Home Help	23	23	+0	+0.8%	+0	+1
<b>Patient &amp; Client Care</b>	<b>1,022</b>	<b>1,008</b>	<b>-13</b>	<b>-1.3%</b>	<b>+0</b>	<b>+57</b>

## Older People

Feb 2021 (Dec 2020 figure: 1,484)	WTE Jan 2021	WTE Feb 2021	WTE change since Jan 21	% change since Jan 21	WTE change since Dec 20	WTE change since Feb 20
<b>Total Older People</b>	<b>1,482</b>	<b>1,482</b>	<b>+0</b>	<b>+0.0%</b>	<b>-2</b>	<b>-2</b>
Medical/ Dental, other	11	11			-0	
<b>Medical &amp; Dental</b>	<b>11</b>	<b>11</b>			<b>-0</b>	
Nurse/ Midwife Manager	90	91	+1	+1.0%	+2	+12
Nurse/ Midwife Specialist & AN/MP	4	5	+1	+26.5%	+1	+3
Staff Nurse/ Staff Midwife	254	255	+1	+0.2%	+0	+4
Public Health Nurse	3	3	+0	+1.0%	+0	+1
Nursing/ Midwifery other	2	2			+0	+2
<b>Nursing &amp; Midwifery</b>	<b>353</b>	<b>356</b>	<b>+3</b>	<b>+0.7%</b>	<b>+3</b>	<b>+21</b>
<b>Health &amp; Social Care Professionals</b>	<b>34</b>	<b>34</b>	<b>-0</b>	<b>-0.1%</b>	<b>+2</b>	<b>+5</b>
Management (VIII & above)	7	7	-0	-0.6%	+0	+1
Administrative/ Supervisory (V to VII)	22	22	+0	+0.8%	+0	
Clerical (III & IV)	73	69	-4	-5.6%	-3	-3
<b>Management &amp; Administrative</b>	<b>101</b>	<b>97</b>	<b>-4</b>	<b>-3.9%</b>	<b>-3</b>	<b>-2</b>
Support	25	25	+0	+1.7%	+0	-2
Maintenance/ Technical	24	23	-1	-3.5%	-1	-1
<b>General Support</b>	<b>49</b>	<b>48</b>	<b>-0</b>	<b>-0.8%</b>	<b>-1</b>	<b>-3</b>
Health Care Assistants	540	545	+5	+0.9%	+1	-12
Care, other	21	21	-0	-2.0%	-1	+2
Home Help	373	370	-3	-0.7%	-4	-13
<b>Patient &amp; Client Care</b>	<b>934</b>	<b>936</b>	<b>+2</b>	<b>+0.2%</b>	<b>-4</b>	<b>-24</b>

## CHO 8 Employment by Administration (HSE / S38): February 2021

Feb 2021 (Dec 2020 figure: 6,337)	WTE Jan 2021	WTE Feb 2021	WTE change since Jan 21	% change since Jan 21	WTE change since Dec 20	WTE change since Feb 20
<b>Overall</b>	<b>6,393</b>	<b>6,405</b>	<b>+12</b>	<b>+0.2%</b>	<b>+68</b>	<b>+258</b>
<b>HSE</b>	<b>4,766</b>	<b>4,795</b>	<b>+29</b>	<b>+0.6%</b>	<b>+53</b>	<b>+171</b>
<b>Section 38 Voluntary Agencies</b>	<b>1,627</b>	<b>1,610</b>	<b>-17</b>	<b>-1.0%</b>	<b>+15</b>	<b>+87</b>

## HSE

Feb 2021 (Dec 2020 figure: 4,742)	WTE Jan 2021	WTE Feb 2021	WTE change since Jan 21	% change since Jan 21	WTE change since Dec 20	WTE change since Feb 20
<b>Overall</b>	<b>4,766</b>	<b>4,795</b>	<b>+29</b>	<b>+0.6%</b>	<b>+53</b>	<b>+171</b>
Consultants	44	44	+0	+0.0%	+1	+1
Registrars	109	107	-1	-0.0%	-6	+8
SHO/ Interns	32	30	-2	-0.1%	+3	-10
Medical/ Dental, other	73	72	-1	-0.0%	-1	-2
<b>Medical &amp; Dental</b>	<b>257</b>	<b>253</b>	<b>-4</b>	<b>-1.5%</b>	<b>-4</b>	<b>-3</b>
Nurse/ Midwife Manager	296	294	-2	-0.0%	+1	+9
Nurse/ Midwife Specialist & AN/MP	105	108	+3	+0.0%	+1	+13
Staff Nurse/ Staff Midwife	798	800	+2	+0.0%	-6	+8
Public Health Nurse	203	205	+2	+0.0%	+4	+1
Pre-registration Nurse/ Midwife Intern	6	22	+15	+2.3%	+21	+3
Pre-registration Nurse Intern (COVID-19)	0		-0	-1.0%		
Post-registration Nurse/ Midwife Student	13	13	+0	+0.0%	+11	+11
Nursing/ Midwifery awaiting registration				-1.0%	-2	-1
Nursing/ Midwifery Student	19	35	+15	+0.8%	+22	+13
Nursing/ Midwifery other	6	6	+0	+0.0%	+0	+1
<b>Nursing &amp; Midwifery</b>	<b>1,426</b>	<b>1,448</b>	<b>+21</b>	<b>+1.5%</b>	<b>+23</b>	<b>+45</b>
Therapy Professions	388	386	-2	-0.0%	+5	+20
Health Science/ Diagnostics	9	10	+1	+0.1%	+1	+3
Social Care	13	13	-1	-0.1%	-0	+2
Social Workers	76	78	+2	+0.0%	+2	+3
Psychologists	111	112	+0	+0.0%	+2	+3
Pharmacy	9	11	+2	+0.2%	+3	+4
H&SC, Other	50	49	-1	-0.0%	+1	+3
<b>Health &amp; Social Care Professionals</b>	<b>658</b>	<b>659</b>	<b>+1</b>	<b>+0.2%</b>	<b>+13</b>	<b>+37</b>
Management (VIII & above)	58	58	+0	+0.0%	-1	+1
Administrative/ Supervisory (V to VII)	177	171	-6	-0.0%	-5	+4
Clerical (III & IV)	489	487	-2	-0.0%	-0	+10
<b>Management &amp; Administrative</b>	<b>723</b>	<b>716</b>	<b>-7</b>	<b>-1.0%</b>	<b>-6</b>	<b>+15</b>
Support	81	83	+1	+0.0%	-0	-5
Maintenance/ Technical	57	56	-1	-0.0%	-1	+0
<b>General Support</b>	<b>138</b>	<b>138</b>	<b>+0</b>	<b>+0.2%</b>	<b>-1</b>	<b>-5</b>
Health Care Assistants	1,017	1,036	+19	+0.0%	+33	+91
Care, other	152	152	+1	+0.0%	-1	+4
Home Help	396	393	-2	-0.0%	-4	-13
<b>Patient &amp; Client Care</b>	<b>1,564</b>	<b>1,581</b>	<b>+17</b>	<b>+1.1%</b>	<b>+29</b>	<b>+82</b>

## Section 38 Voluntary Agencies

Feb 2021 (Dec 2020 figure: 1,595)	WTE Jan 2021	WTE Feb 2021	WTE change since Jan 21	% change since Jan 21	WTE change since Dec 20	WTE change since Feb 20
<b>Overall</b>	<b>1,627</b>	<b>1,610</b>	<b>-17</b>	<b>-1.0%</b>	<b>+15</b>	<b>+87</b>
Registrars	1	1		+0.0%		
<b>Medical &amp; Dental</b>	<b>1</b>	<b>1</b>				
Nurse/ Midwife Manager	87	85	-2	-0.0%	-1	-0
Nurse/ Midwife Specialist & AN/MP	4	4	+0	+0.0%	-0	-1
Staff Nurse/ Staff Midwife	209	223	+14	+0.1%	+15	+22
<i>Pre-registration Nurse/ Midwife Intern</i>	12	6	-7	-0.5%	+6	-8
<i>Pre-registration Nurse Intern (COVID-19)</i>				-1.0%		
Nursing/ Midwifery Student	12	6	-7	-0.5%	+2	-8
Nursing/ Midwifery other	6	7	+1	+0.1%	+0	+0
<b>Nursing &amp; Midwifery</b>	<b>319</b>	<b>325</b>	<b>+6</b>	<b>+2.0%</b>	<b>+16</b>	<b>+13</b>
Therapy Professions	14	14	+0	+0.0%	-0	+1
Social Care	378	372	-6	-0.0%	-2	+23
Social Workers	12	12	+0	+0.0%	+0	+0
Psychologists	6	6	+0	+0.0%	+0	-1
H&SC, Other	5	6	+1	+0.1%	+0	-0
<b>Health &amp; Social Care Professionals</b>	<b>414</b>	<b>410</b>	<b>-5</b>	<b>-1.1%</b>	<b>-2</b>	<b>+23</b>
Management (VIII & above)	9	9		+0.0%	+1	+4
Administrative/ Supervisory (V to VII)	28	27	-2	-0.1%	-0	-2
Clerical (III & IV)	47	46	-0	-0.0%	+0	-1
<b>Management &amp; Administrative</b>	<b>84</b>	<b>82</b>	<b>-2</b>	<b>-2.3%</b>	<b>+1</b>	<b>+2</b>
Support	36	35	-1	-0.0%	+0	-2
Maintenance/ Technical	12	11	-1	-0.1%	-1	-2
<b>General Support</b>	<b>48</b>	<b>46</b>	<b>-2</b>	<b>-4.1%</b>	<b>-1</b>	<b>-4</b>
Health Care Assistants	675	661	-14	-0.0%	+1	+59
Care, other	85	84	-1	-0.0%	-0	-6
<b>Patient &amp; Client Care</b>	<b>760</b>	<b>746</b>	<b>-15</b>	<b>-1.9%</b>	<b>+1</b>	<b>+53</b>



## CHO 8 Employment by S38 Agency: February 2021

### Muiriosa Foundation, Laois/Offaly

Feb 2021 (Dec 2020 figure: 320)	WTE Jan 2021	WTE Feb 2021	WTE change since Jan 21	% change since Jan 21	WTE change since Dec 20	WTE change since Feb 20
<b>Overall</b>	<b>331</b>	<b>335</b>	<b>+4</b>	<b>+1.1%</b>	<b>+14</b>	<b>+35</b>
Nurse/ Midwife Manager	17	18	+0	+0.0%	+1	+2
Staff Nurse/ Staff Midwife	29	32	+3	+0.1%	+4	+4
<b>Nursing &amp; Midwifery</b>	<b>46</b>	<b>50</b>	<b>+3</b>	<b>+7.5%</b>	<b>+5</b>	<b>+6</b>
Social Care	107	110	+2	+0.0%	+5	+15
Social Workers	3	3	+0	+0.0%		-1
Psychologists	1	1		+0.0%		-1
H&SC, Other	1	1		+0.0%		
<b>Health &amp; Social Care Professionals</b>	<b>112</b>	<b>115</b>	<b>+2</b>	<b>+2.1%</b>	<b>+5</b>	<b>+14</b>
Management (VIII & above)	3	3		+0.0%		+2
Administrative/ Supervisory (V to VII)	6	5	-1	-0.2%	+0	+0
Clerical (III & IV)	11	11	-0	-0.0%	-0	+0
<b>Management &amp; Administrative</b>	<b>20</b>	<b>19</b>	<b>-1</b>	<b>-5.8%</b>	<b>-0</b>	<b>+2</b>
Support	1	1	+0	+0.1%	+0	+0
Maintenance/ Technical	2	2		+0.0%		
<b>General Support</b>	<b>3</b>	<b>3</b>	<b>+0</b>	<b>+2.4%</b>	<b>+0</b>	<b>+0</b>
Health Care Assistants	121	120	-0	-0.0%	+6	+15
Care, other	28	27	-1	-0.0%	-1	-2
<b>Patient &amp; Client Care</b>	<b>148</b>	<b>147</b>	<b>-1</b>	<b>-0.7%</b>	<b>+5</b>	<b>+13</b>

## Muiriosa Foundation, Longford/Westmeath

Feb 2021 (Dec 2020 figure: 284)	WTE Jan 2021	WTE Feb 2021	WTE change since Jan 21	% change since Jan 21	WTE change since Dec 20	WTE change since Feb 20
<b>Overall</b>	<b>285</b>	<b>287</b>	<b>+2</b>	<b>+0.6%</b>	<b>+2</b>	<b>+22</b>
Nurse/ Midwife Manager	9	9	+0	+0.0%	-0	-0
Staff Nurse/ Staff Midwife	4	4	+0	+0.0%	-0	-0
<b>Nursing &amp; Midwifery</b>	<b>13</b>	<b>13</b>	<b>+0</b>	<b>+1.7%</b>	<b>-1</b>	<b>-1</b>
Therapy Professions	3	3		+0.0%		
Social Care	99	99	+0	+0.0%	-0	+7
Social Workers	4	4	+0	+0.0%	+0	+1
Psychologists	2	2	+0	+0.0%	+0	+0
H&SC, Other	2	2	+1	+0.4%	+0	-0
<b>Health &amp; Social Care Professionals</b>	<b>109</b>	<b>111</b>	<b>+1</b>	<b>+1.1%</b>	<b>+0</b>	<b>+8</b>
Senior Management (VIII & GM)	1	1		+0.0%	+1	+1
Management (VIII & above)	1	1		+0.0%	+1	+1
Administrative/ Supervisory (V to VII)	4	4	+0	+0.0%		-1
Clerical (III & IV)	10	10	+0	+0.0%	+0	-0
<b>Management &amp; Administrative</b>	<b>15</b>	<b>15</b>	<b>+0</b>	<b>+0.9%</b>	<b>+1</b>	<b>+0</b>
Support	1	1		+0.0%		
Maintenance/ Technical	3	3		+0.0%		
<b>General Support</b>	<b>4</b>	<b>4</b>				
Health Care Assistants	128	128	+0	+0.0%	+2	+16
Care, other	16	15	-0	-0.0%	-0	-2
<b>Patient &amp; Client Care</b>	<b>143</b>	<b>144</b>	<b>+0</b>	<b>+0.2%</b>	<b>+2</b>	<b>+14</b>

## Muiriosa Foundation, South Kildare

Feb 2021 (Dec 2020 figure: 342)	WTE Jan 2021	WTE Feb 2021	WTE change since Jan 21	% change since Jan 21	WTE change since Dec 20	WTE change since Feb 20
<b>Overall</b>	<b>341</b>	<b>342</b>	<b>+1</b>	<b>+0.2%</b>	<b>+0</b>	<b>+12</b>
Nurse/ Midwife Manager	14	13	-0	-0.0%	-0	-3
Nurse/ Midwife Specialist & AN/MP	2	2	+0	+0.0%	+0	+0
Staff Nurse/ Staff Midwife	21	21	+0	+0.0%	-1	-3
<i>Pre-registration Nurse/ Midwife Intern</i>	1	6	+5	+6.6%	+6	+1
Nursing/ Midwifery Student	1	6	+5	+6.6%	+6	+1
Nursing/ Midwifery other	6	6	-0	-0.0%	-1	-1
<b>Nursing &amp; Midwifery</b>	<b>43</b>	<b>48</b>	<b>+5</b>	<b>+11.9%</b>	<b>+4</b>	<b>-4</b>
Therapy Professions	8	8		+0.0%	-0	-0
Social Care	94	92	-2	-0.0%	-2	+5
Social Workers	3	3		+0.0%		+0
Psychologists	2	2		+0.0%		+0
H&SC, Other	3	3		+0.0%		
<b>Health &amp; Social Care Professionals</b>	<b>109</b>	<b>108</b>	<b>-2</b>	<b>-1.7%</b>	<b>-2</b>	<b>+5</b>
Management (VIII & above)	4	4		+0.0%		+1
Administrative/ Supervisory (V to VII)	13	12	-1	-0.0%	-1	-2
Clerical (III & IV)	13	13	+0	+0.0%	+0	-1
<b>Management &amp; Administrative</b>	<b>30</b>	<b>29</b>	<b>-0</b>	<b>-0.9%</b>	<b>-0</b>	<b>-1</b>
Support	14	13	-1	-0.0%	-0	-1
Maintenance/ Technical	4	4		+0.0%		-1
<b>General Support</b>	<b>18</b>	<b>17</b>	<b>-1</b>	<b>-3.2%</b>	<b>-0</b>	<b>-2</b>
Health Care Assistants	133	131	-2	-0.0%	-2	+15
Care, other	9	9	+0	+0.0%	+0	+0
<b>Patient &amp; Client Care</b>	<b>141</b>	<b>140</b>	<b>-2</b>	<b>-1.1%</b>	<b>-1</b>	<b>+15</b>

Feb 2021 (Dec 2020 figure: 648)	WTE Jan 2021	WTE Feb 2021	WTE change since Jan 21	% change since Jan 21	WTE change since Dec 20	WTE change since Feb 20
<b>Overall</b>	<b>670</b>	<b>646</b>	<b>-23</b>	<b>-3.5%</b>	<b>-2</b>	<b>+18</b>
Registrars	1	1		+0.0%		
<b>Medical &amp; Dental</b>	<b>1</b>	<b>1</b>				
Nurse/ Midwife Manager	47	45	-2	-0.0%	-2	+0
Nurse/ Midwife Specialist & AN/MP	3	3		+0.0%	-0	-1
Staff Nurse/ Staff Midwife	155	166	+11	+0.1%	+13	+21
Pre-registration Nurse/ Midwife Intern	12		-12	-1.0%		-9
Pre-registration Nurse Intern (COVID-19)				-1.0%		
Nursing/ Midwifery Student	12		-12	-1.0%	-4	-9
Nursing Education/Clinical		1	+1	-1.0%	+1	+1
Nursing/ Midwifery other		1	+1	-1.0%	+1	+1
<b>Nursing &amp; Midwifery</b>	<b>216</b>	<b>214</b>	<b>-2</b>	<b>-1.1%</b>	<b>+8</b>	<b>+12</b>
Therapy Professions	3	3		+0.0%		+1
Social Care	77	71	-6	-0.1%	-5	-4
Social Workers	2	2		+0.0%		+0
Psychologists	1	1		+0.0%		
<b>Health &amp; Social Care Professionals</b>	<b>83</b>	<b>77</b>	<b>-6</b>	<b>-7.7%</b>	<b>-5</b>	<b>-3</b>
Management (VIII & above)	1	1		+0.0%	+0	+0
Administrative/ Supervisory (V to VII)	6	6	-0	-0.0%	+0	+0
Clerical (III & IV)	12	12	-1	-0.0%	+0	+0
<b>Management &amp; Administrative</b>	<b>19</b>	<b>18</b>	<b>-1</b>	<b>-3.1%</b>	<b>+0</b>	<b>+0</b>
Support	20	20	-1	-0.0%	+0	-1
Maintenance/ Technical	3	2	-1	-0.3%	-1	-1
<b>General Support</b>	<b>23</b>	<b>22</b>	<b>-2</b>	<b>-6.5%</b>	<b>-1</b>	<b>-2</b>
Health Care Assistants	294	282	-12	-0.0%	-5	+13
Care, other	33	33	+0	+0.0%	+0	-2
<b>Patient &amp; Client Care</b>	<b>327</b>	<b>315</b>	<b>-12</b>	<b>-3.8%</b>	<b>-5</b>	<b>+11</b>

**CHO 8 Employment by Grade Group & Staff Category: February 2021**

Feb 2021 (Dec 2020 figure: 6,337)	WTE Jan 2021	WTE Feb 2021	WTE change since Jan 21	% change since Jan 21	WTE change since Dec 20	WTE change since Feb 20
<b>Overall</b>	<b>6,393</b>	<b>6,405</b>	<b>+12</b>	<b>+0.2%</b>	<b>+68</b>	<b>+258</b>
Consultant Dentistry	1	1				
Consultant Medicine	5	5			-0	
Consultant Psychiatry	38	38	+0	+0.6%	+1	+1
<b>Consultants</b>	<b>44</b>	<b>44</b>	<b>+0</b>	<b>+0.5%</b>	<b>+1</b>	<b>+1</b>
Registrar	96	96	-1	-0.7%	-5	+6
Senior Registrar	13	12	-1	-5.4%	-1	+2
<b>Registrars</b>	<b>110</b>	<b>108</b>	<b>-1</b>	<b>-1.3%</b>	<b>-6</b>	<b>+8</b>
<b>SHO/ Interns</b>	<b>32</b>	<b>30</b>	<b>-2</b>	<b>-6.3%</b>	<b>+3</b>	<b>-10</b>
Dentists	37	36	-1	-1.8%	-1	
Other Medical	36	35	-0	-0.4%	-0	-2
<b>Medical/ Dental, other</b>	<b>73</b>	<b>72</b>	<b>-1</b>	<b>-1.1%</b>	<b>-1</b>	<b>-2</b>
<b>Medical &amp; Dental</b>	<b>258</b>	<b>254</b>	<b>-4</b>	<b>-1.5%</b>	<b>-5</b>	<b>-3</b>
Clinical Nurse/ Midwife Manager	290	290	-0	-0.1%	+4	+4
Director Nursing/Midwifery, Assistant	64	61	-3	-3.9%	-4	+1
Director of Nursing/Midwifery	29	28	-1	-2.4%	+0	+4
<b>Nurse/ Midwife Manager</b>	<b>383</b>	<b>379</b>	<b>-4</b>	<b>-0.9%</b>	<b>-0</b>	<b>+9</b>
Advanced Nurse/ Midwife Practitioner	9	9	+0	+0.9%	+0	+5
Clinical Nurse/ Midwife Specialist	100	104	+3	+3.3%	+1	+7
<b>Nurse/ Midwife Specialist &amp; AN/MP</b>	<b>109</b>	<b>113</b>	<b>+3</b>	<b>+3.1%</b>	<b>+1</b>	<b>+12</b>
Staff Nurse [Intellectual Disability]	259	125	-134	-51.8%	-132	-103
Staff Nurse [Psychiatric]	337	483	+147	+43.5%	+141	+157
Staff Nurses [General/ Children's]	411	415	+4	+0.9%	+1	-24
<b>Staff Nurse/ Staff Midwife</b>	<b>1,007</b>	<b>1,023</b>	<b>+16</b>	<b>+1.6%</b>	<b>+10</b>	<b>+30</b>
<b>Public Health Nurse</b>	<b>203</b>	<b>205</b>	<b>+2</b>	<b>+1.2%</b>	<b>+4</b>	<b>+1</b>
Pre-registration Nurse/ Midwife Intern	19	28	+9	+45.2%	+28	-5
Pre-registration Nurse Intern (COVID-19)	0		-0	-100.0%	-5	
Post-registration Nurse/ Midwife Student	13	13	+0	+2.0%	+1	+11
Nursing/ Midwifery awaiting registration				-100.0%		-1
<b>Nursing/ Midwifery Student</b>	<b>32</b>	<b>41</b>	<b>+9</b>	<b>+27.2%</b>	<b>+24</b>	<b>+5</b>
Nursing Education/Clinical	12	13	+1	+5.5%	+0	+1
<b>Nursing/ Midwifery other</b>	<b>12</b>	<b>13</b>	<b>+1</b>	<b>+5.5%</b>	<b>+0</b>	<b>+1</b>
<b>Nursing &amp; Midwifery</b>	<b>1,745</b>	<b>1,773</b>	<b>+28</b>	<b>+1.6%</b>	<b>+91</b>	<b>+58</b>
Dietitians	22	23	+1	+4.8%	+2	+4
Occupational Therapists	152	153	+1	+0.6%	+3	+14
Orthoptists	2	2	+0	+1.3%		+2
Physiotherapists	109	108	-2	-1.6%	-1	-1
Podiatrists & Chiropodists	4	4	-0	-7.5%	-0	-0
Speech & Language Therapists	112	110	-2	-1.9%	+0	+2
<b>Therapy Professions</b>	<b>401</b>	<b>399</b>	<b>-2</b>	<b>-0.5%</b>	<b>+5</b>	<b>+21</b>
Audiology	5	6	+1	+18.2%	+1	+3
Clinical Engineering	4	4				
<b>Health Science/ Diagnostics</b>	<b>9</b>	<b>10</b>	<b>+1</b>	<b>+10.4%</b>	<b>+1</b>	<b>+3</b>
<b>Social Care</b>	<b>391</b>	<b>385</b>	<b>-6</b>	<b>-1.6%</b>	<b>-3</b>	<b>+25</b>
<b>Social Workers</b>	<b>89</b>	<b>91</b>	<b>+2</b>	<b>+2.3%</b>	<b>+2</b>	<b>+4</b>
<b>Psychologists</b>	<b>117</b>	<b>117</b>	<b>+0</b>	<b>+0.3%</b>	<b>+2</b>	<b>+2</b>
<b>Pharmacy</b>	<b>9</b>	<b>11</b>	<b>+2</b>	<b>+19.9%</b>	<b>+3</b>	<b>+4</b>
Counsellor Therapists	40	41	+1	+2.6%	+2	+3

Feb 2021 (Dec 2020 figure: 6,337)	WTE Jan 2021	WTE Feb 2021	WTE change since Jan 21	% change since Jan 21	WTE change since Dec 20	WTE change since Feb 20
<b>Overall</b>	<b>6,393</b>	<b>6,405</b>	<b>+12</b>	<b>+0.2%</b>	<b>+68</b>	<b>+258</b>
Dental Hygienists	13	12	-1	-9.3%	-1	-0
Other Health & Social Care	2	2	-0	-6.7%	-0	-0
Play Therapists/ Specialists	1	1				
<b>H&amp;SC, Other</b>	<b>55</b>	<b>55</b>	<b>-0</b>	<b>-0.5%</b>	<b>+1</b>	<b>+2</b>
<b>Health &amp; Social Care Professionals</b>	<b>1,072</b>	<b>1,069</b>	<b>-3</b>	<b>-0.3%</b>	<b>+50</b>	<b>+60</b>
Executive Management	10	10	+0	+0.7%	+0	+2
Senior Management (VIII & GM)	57	57	+0	+0.5%	-0	+3
<b>Management (VIII &amp; above)</b>	<b>67</b>	<b>67</b>	<b>+0</b>	<b>+0.6%</b>	<b>-0</b>	<b>+5</b>
<b>Administrative/ Supervisory (V to VII)</b>	<b>205</b>	<b>198</b>	<b>-7</b>	<b>-3.5%</b>	<b>-6</b>	<b>+2</b>
<b>Clerical (III &amp; IV)</b>	<b>535</b>	<b>533</b>	<b>-2</b>	<b>-0.5%</b>	<b>+0</b>	<b>+9</b>
<b>Management &amp; Administrative</b>	<b>807</b>	<b>798</b>	<b>-9</b>	<b>-1.2%</b>	<b>+52</b>	<b>+16</b>
Catering	30	31	+1	+3.9%	+1	-3
Household Services	54	52	-2	-2.9%	-1	-3
Other Support	29	29	+1	+2.7%	+0	-2
Portering	5	5				
<b>Support</b>	<b>118</b>	<b>118</b>	<b>+0</b>	<b>+0.3%</b>	<b>-0</b>	<b>-7</b>
Maintenance	69	67	-2	-3.1%	-2	-2
Technical Services	0	0				
<b>Maintenance/ Technical</b>	<b>69</b>	<b>67</b>	<b>-2</b>	<b>-3.1%</b>	<b>-2</b>	<b>-2</b>
<b>General Support</b>	<b>186</b>	<b>185</b>	<b>-2</b>	<b>-0.9%</b>	<b>-11</b>	<b>-9</b>
HCA, Nurse's Aide, etc.	1,584	1,575	-9	-0.6%	-2	+39
HCA (Student Nurse/Midwife COVID-19)	1	1	-1	-48.2%	-1	+1
Health & Social Care Assistants	15	16	+0	+3.0%	+1	+5
Swabber (COVID-19)	92	106	+14	+15.6%	+37	+106
<b>Health Care Assistants</b>	<b>1,692</b>	<b>1,697</b>	<b>+5</b>	<b>+0.3%</b>	<b>+35</b>	<b>+150</b>
Other Care Grades	237	237	-0	-0.0%	-2	-2
<b>Care, other</b>	<b>237</b>	<b>237</b>	<b>-0</b>	<b>-0.0%</b>	<b>-2</b>	<b>-2</b>
<b>Home Help</b>	<b>396</b>	<b>393</b>	<b>-2</b>	<b>-0.6%</b>	<b>-4</b>	<b>-13</b>
<b>Patient &amp; Client Care</b>	<b>2,325</b>	<b>2,327</b>	<b>+2</b>	<b>+0.1%</b>	<b>+94</b>	<b>+135</b>

# CHO 8 HSE Employment by Grade Group & Staff Category: February 2021

Feb 2021 (Dec 2020 figure: 4,742)	WTE Jan 2021	WTE Feb 2021	WTE change since Jan 21	% change since Jan 21	WTE change since Dec 20	WTE change since Feb 20
<b>Overall</b>	<b>4,766</b>	<b>4,795</b>	<b>+29</b>	<b>+0.6%</b>	<b>+53</b>	<b>+171</b>
Consultant Dentistry	1	1				
Consultant Medicine	5	5			-0	
Consultant Psychiatry	38	38	+0	+0.6%	+1	+1
<b>Consultants</b>	<b>44</b>	<b>44</b>	<b>+0</b>	<b>+0.5%</b>	<b>+1</b>	<b>+1</b>
Registrar	95	95	-1	-0.7%	-5	+6
Senior Registrar	13	12	-1	-5.4%	-1	+2
<b>Registrars</b>	<b>109</b>	<b>107</b>	<b>-1</b>	<b>-1.3%</b>	<b>-6</b>	<b>+8</b>
<b>SHO/ Interns</b>	<b>32</b>	<b>30</b>	<b>-2</b>	<b>-6.3%</b>	<b>+3</b>	<b>-10</b>
Dentists	37	36	-1	-1.8%	-1	
Other Medical	36	35	-0	-0.4%	-0	-2
<b>Medical/ Dental, other</b>	<b>73</b>	<b>72</b>	<b>-1</b>	<b>-1.1%</b>	<b>-1</b>	<b>-2</b>
<b>Medical &amp; Dental</b>	<b>257</b>	<b>253</b>	<b>-4</b>	<b>-1.5%</b>	<b>-5</b>	<b>-3</b>
Clinical Nurse/ Midwife Manager	214	214	+0	+0.2%	+4	+4
Director Nursing/Midwifery, Assistant	56	54	-2	-3.1%	-3	+1
Director of Nursing/Midwifery	26	25	-1	-2.6%	+0	+5
<b>Nurse/ Midwife Manager</b>	<b>296</b>	<b>294</b>	<b>-2</b>	<b>-0.7%</b>	<b>+1</b>	<b>+9</b>
Advanced Nurse/ Midwife Practitioner	8	8	+0	+1.0%	+0	+4
Clinical Nurse/ Midwife Specialist	97	100	+3	+3.4%	+1	+9
<b>Nurse/ Midwife Specialist &amp; AN/MP</b>	<b>105</b>	<b>108</b>	<b>+3</b>	<b>+3.2%</b>	<b>+1</b>	<b>+13</b>
Staff Nurse [Intellectual Disability]	67	70	+2	+3.5%	+1	+3
Staff Nurse [Psychiatric]	337	338	+1	+0.3%	-4	+12
Staff Nurses [General/ Children's]	394	393	-1	-0.3%	-3	-7
<b>Staff Nurse/ Staff Midwife</b>	<b>798</b>	<b>800</b>	<b>+2</b>	<b>+0.3%</b>	<b>-6</b>	<b>+8</b>
<b>Public Health Nurse</b>	<b>203</b>	<b>205</b>	<b>+2</b>	<b>+1.2%</b>	<b>+4</b>	<b>+1</b>
Pre-registration Nurse/ Midwife Intern	6	22	+15	+234.8%	+22	+3
Pre-registration Nurse Intern (COVID-19)	0		-0	-100.0%	-1	
Post-registration Nurse/ Midwife Student	13	13	+0	+2.0%	+1	+11
Nursing/ Midwifery awaiting registration				-100.0%		-1
<b>Nursing/ Midwifery Student</b>	<b>19</b>	<b>35</b>	<b>+15</b>	<b>+79.0%</b>	<b>+22</b>	<b>+13</b>
Nursing Education/Clinical	6	6	+0	+1.7%	+0	+1
<b>Nursing/ Midwifery other</b>	<b>6</b>	<b>6</b>	<b>+0</b>	<b>+1.7%</b>	<b>+0</b>	<b>+1</b>
<b>Nursing &amp; Midwifery</b>	<b>1,426</b>	<b>1,448</b>	<b>+21</b>	<b>+1.5%</b>	<b>+70</b>	<b>+45</b>
Dietitians	22	23	+1	+4.8%	+2	+4
Occupational Therapists	148	149	+1	+0.7%	+3	+14
Orthoptists	2	2	+0	+1.3%		+2
Physiotherapists	106	104	-2	-1.6%	-1	-1
Podiatrists & Chiropodists	4	4	-0	-7.5%	-0	-0
Speech & Language Therapists	107	105	-2	-2.0%	+0	+2
<b>Therapy Professions</b>	<b>388</b>	<b>386</b>	<b>-2</b>	<b>-0.5%</b>	<b>+5</b>	<b>+20</b>
Audiology	5	6	+1	+18.2%	+1	+3
Clinical Engineering	4	4				
<b>Health Science/ Diagnostics</b>	<b>9</b>	<b>10</b>	<b>+1</b>	<b>+10.4%</b>	<b>+1</b>	<b>+3</b>
<b>Social Care</b>	<b>13</b>	<b>13</b>	<b>-1</b>	<b>-5.1%</b>	<b>-0</b>	<b>+2</b>
<b>Social Workers</b>	<b>76</b>	<b>78</b>	<b>+2</b>	<b>+2.4%</b>	<b>+2</b>	<b>+3</b>
<b>Psychologists</b>	<b>111</b>	<b>112</b>	<b>+0</b>	<b>+0.3%</b>	<b>+2</b>	<b>+3</b>
<b>Pharmacy</b>	<b>9</b>	<b>11</b>	<b>+2</b>	<b>+19.9%</b>	<b>+3</b>	<b>+4</b>
Counsellor Therapists	35	36	+0	+1.0%	+2	+4
Dental Hygienists	13	12	-1	-9.3%	-1	-0
Other Health & Social Care	2	2	-0	-6.7%	-0	-0

Feb 2021 (Dec 2020 figure: 4,742)	WTE Jan 2021	WTE Feb 2021	WTE change since Jan 21	% change since Jan 21	WTE change since Dec 20	WTE change since Feb 20
<b>Overall</b>	<b>4,766</b>	<b>4,795</b>	<b>+29</b>	<b>+0.6%</b>	<b>+53</b>	<b>+171</b>
<b>H&amp;SC, Other</b>	<b>50</b>	<b>49</b>	<b>-1</b>	<b>-1.9%</b>	<b>+1</b>	<b>+3</b>
<b>Health &amp; Social Care Professionals</b>	<b>658</b>	<b>659</b>	<b>+1</b>	<b>+0.2%</b>	<b>+33</b>	<b>+37</b>
Executive Management	9	9	+0	+0.8%	+0	+2
Senior Management (VIII & GM)	49	49	+0	+0.6%	-1	-1
<b>Management (VIII &amp; above)</b>	<b>58</b>	<b>58</b>	<b>+0</b>	<b>+0.7%</b>	<b>-1</b>	<b>+1</b>
<b>Administrative/ Supervisory (V to VII)</b>	<b>177</b>	<b>171</b>	<b>-6</b>	<b>-3.2%</b>	<b>-5</b>	<b>+4</b>
<b>Clerical (III &amp; IV)</b>	<b>489</b>	<b>487</b>	<b>-2</b>	<b>-0.4%</b>	<b>-0</b>	<b>+10</b>
<b>Management &amp; Administrative</b>	<b>723</b>	<b>716</b>	<b>-7</b>	<b>-1.0%</b>	<b>+49</b>	<b>+15</b>
Catering	23	23	+0	+1.8%	-1	-4
Household Services	30	30	+0	+0.8%	+0	+1
Other Support	25	25	+1	+3.0%	+0	-2
Portering	4	4				
<b>Support</b>	<b>81</b>	<b>83</b>	<b>+1</b>	<b>+1.7%</b>	<b>-0</b>	<b>-5</b>
<b>Maintenance/ Technical</b>	<b>57</b>	<b>56</b>	<b>-1</b>	<b>-1.9%</b>	<b>-1</b>	<b>+0</b>
<b>General Support</b>	<b>138</b>	<b>138</b>	<b>+0</b>	<b>+0.2%</b>	<b>-4</b>	<b>-5</b>
HCA, Nurse's Aide, etc.	909	914	+5	+0.5%	-3	-21
HCA (Student Nurse/Midwife COVID-19)	1	1	-1	-48.2%	-1	+1
Health & Social Care Assistants	15	16	+0	+3.0%	+1	+5
Swabber (COVID-19)	92	106	+14	+15.6%	+37	+106
<b>Health Care Assistants</b>	<b>1,017</b>	<b>1,036</b>	<b>+19</b>	<b>+1.8%</b>	<b>+33</b>	<b>+91</b>
<b>Care, other</b>	<b>152</b>	<b>152</b>	<b>+1</b>	<b>+0.5%</b>	<b>-1</b>	<b>+4</b>
<b>Home Help</b>	<b>396</b>	<b>393</b>	<b>-2</b>	<b>-0.6%</b>	<b>-4</b>	<b>-13</b>
<b>Patient &amp; Client Care</b>	<b>1,564</b>	<b>1,581</b>	<b>+17</b>	<b>+1.1%</b>	<b>+68</b>	<b>+82</b>



## Employment by WTE, Headcount, Gender, Full-Time /Part-Time etc.: Feb 2021

CHO 8	WTE	Headcount	WTE: no.	% Male	% female	Male WTE: no.	Female WTE: no.	% Total Perm	% Male Perm	% Female Perm	% Total Full Time	% Total Part Time	% Male FT	% Female FT
<b>Overall</b>	<b>6,405</b>	<b>7,669</b>	<b>1.20</b>	<b>17.2%</b>	<b>82.8%</b>	<b>1.11</b>	<b>1.22</b>	<b>86.2%</b>	<b>83.8%</b>	<b>86.8%</b>	<b>57.7%</b>	<b>42.3%</b>	<b>72.7%</b>	<b>54.6%</b>
Consultant Dentistry	1	1	1.10	100.0%		1.10		100.0%	100.0%		0.0%	100.0%	0.0%	
Consultant Medicine	5	5	1.00	40.0%	60.0%	1.00	1.00	60.0%	60.0%	33.3%	100.0%	0.0%	100.0%	100.0%
Consultant Psychiatry	38	39	1.02	46.2%	53.8%	1.00	1.04	82.1%	82.1%	95.2%	92.3%	7.7%	94.4%	90.5%
<b>Consultants</b>	<b>44</b>	<b>45</b>	<b>1.02</b>	<b>46.7%</b>	<b>53.3%</b>	<b>1.01</b>	<b>1.03</b>	<b>80.0%</b>	<b>71.4%</b>	<b>87.5%</b>	<b>91.1%</b>	<b>8.9%</b>	<b>90.5%</b>	<b>91.7%</b>
Registrar	96	103	1.08	39.8%	60.2%	1.09	1.07	0.0%	0.0%	0.0%	100.0%	0.0%	100.0%	100.0%
Senior Registrar	12	14	1.12	28.6%	71.4%	1.01	1.18	0.0%	0.0%	0.0%	92.9%	7.1%	100.0%	90.0%
<b>Registrars</b>	<b>108</b>	<b>117</b>	<b>1.08</b>	<b>38.5%</b>	<b>61.5%</b>	<b>1.08</b>	<b>1.08</b>	<b>0.0%</b>	<b>0.0%</b>	<b>0.0%</b>	<b>99.1%</b>	<b>0.9%</b>	<b>100.0%</b>	<b>98.6%</b>
Senior House Officer	30	34	1.15	44.1%	55.9%	1.02	1.27	0.0%	0.0%	0.0%	100.0%	0.0%	100.0%	100.0%
<b>SHO/ Interns</b>	<b>30</b>	<b>34</b>	<b>1.15</b>	<b>44.1%</b>	<b>55.9%</b>	<b>1.02</b>	<b>1.27</b>	<b>0.0%</b>	<b>0.0%</b>	<b>0.0%</b>	<b>100.0%</b>	<b>0.0%</b>	<b>100.0%</b>	<b>100.0%</b>
Dentists	36	44	1.21	36.4%	63.6%	1.25	1.20	90.9%	90.9%	89.3%	63.6%	36.4%	68.8%	60.7%
Other Medical	35	50	1.41	58.0%	42.0%	1.55	1.25	68.0%	68.0%	71.4%	38.0%	62.0%	37.9%	38.1%
<b>Medical/ Dental, other</b>	<b>72</b>	<b>94</b>	<b>1.31</b>	<b>47.9%</b>	<b>52.1%</b>	<b>1.43</b>	<b>1.22</b>	<b>78.7%</b>	<b>75.6%</b>	<b>81.6%</b>	<b>50.0%</b>	<b>50.0%</b>	<b>48.9%</b>	<b>51.0%</b>
<b>Medical &amp; Dental</b>	<b>254</b>	<b>290</b>	<b>1.14</b>	<b>43.4%</b>	<b>56.6%</b>	<b>1.16</b>	<b>1.13</b>	<b>37.9%</b>	<b>38.9%</b>	<b>37.2%</b>	<b>82.1%</b>	<b>17.9%</b>	<b>80.2%</b>	<b>83.5%</b>
Clinical Nurse/ Midwife Manager	290	317	1.09	15.1%	84.9%	1.01	1.11	94.0%	94.0%	95.2%	79.2%	20.8%	100.0%	75.5%
Director Nursing/Midwifery, Assistant	61	65	1.06	20.0%	80.0%	1.07	1.06	98.5%	98.5%	98.1%	89.2%	10.8%	100.0%	86.5%
Director of Nursing/Midwifery	28	28	1.00	21.4%	78.6%	1.01	1.00	96.4%	96.4%	95.5%	100.0%	0.0%	100.0%	100.0%
<b>Nurse/ Midwife Manager</b>	<b>379</b>	<b>410</b>	<b>1.08</b>	<b>16.3%</b>	<b>83.7%</b>	<b>1.02</b>	<b>1.09</b>	<b>94.9%</b>	<b>91.0%</b>	<b>95.6%</b>	<b>82.2%</b>	<b>17.8%</b>	<b>100.0%</b>	<b>78.7%</b>
Advanced Nurse/ Midwife Practitioner	9	9	1.00	22.2%	77.8%	1.00	1.01	100.0%	100.0%	100.0%	100.0%	0.0%	100.0%	100.0%
Clinical Nurse/ Midwife Specialist	104	115	1.11	15.7%	84.3%	1.01	1.13	100.0%	100.0%	100.0%	73.9%	26.1%	94.4%	70.1%
<b>Nurse/ Midwife Specialist &amp; AN/MP</b>	<b>113</b>	<b>124</b>	<b>1.10</b>	<b>16.1%</b>	<b>83.9%</b>	<b>1.01</b>	<b>1.12</b>	<b>100.0%</b>	<b>100.0%</b>	<b>100.0%</b>	<b>75.8%</b>	<b>24.2%</b>	<b>95.0%</b>	<b>72.1%</b>
Staff Nurse [Intellectual Disability]	125	150	1.20	8.0%	92.0%	1.06	1.22	96.7%	96.7%	96.4%	50.0%	50.0%	75.0%	47.8%
Staff Nurse [Psychiatric]	483	527	1.09	19.2%	80.8%	1.04	1.10	95.4%	95.4%	95.1%	82.9%	17.1%	96.0%	79.8%
Staff Nurses [General/ Children's]	415	521	1.25	5.8%	94.2%	1.09	1.27	93.5%	93.5%	93.5%	55.1%	44.9%	96.7%	52.5%
<b>Staff Nurse/ Staff Midwife</b>	<b>1,023</b>	<b>1,198</b>	<b>1.17</b>	<b>11.9%</b>	<b>88.1%</b>	<b>1.05</b>	<b>1.19</b>	<b>94.7%</b>	<b>96.5%</b>	<b>94.5%</b>	<b>66.7%</b>	<b>33.3%</b>	<b>94.4%</b>	<b>62.9%</b>
<b>Public Health Nurse</b>	<b>205</b>	<b>243</b>	<b>1.19</b>		<b>100.0%</b>		<b>1.19</b>	<b>98.8%</b>		<b>98.8%</b>	<b>72.8%</b>	<b>27.2%</b>		<b>72.8%</b>
Pre-registration Nurse/ Midwife Intern	28	60	2.18	5.0%	95.0%	2.26	2.17	0.0%	0.0%	0.0%	100.0%	0.0%	100.0%	100.0%
Post-registration Nurse/ Midwife Student	13	13	1.00		100.0%		1.00	53.8%	53.8%	53.8%	100.0%	0.0%		100.0%
<b>Nursing/ Midwifery Student</b>	<b>41</b>	<b>73</b>	<b>1.80</b>	<b>4.1%</b>	<b>95.9%</b>	<b>2.26</b>	<b>1.79</b>	<b>9.6%</b>	<b>0.0%</b>	<b>10.0%</b>	<b>100.0%</b>	<b>0.0%</b>	<b>100.0%</b>	<b>100.0%</b>

Nursing Education/Clinical	13	14	1.10	14.3%	85.7%	1.00	1.11	92.9%	92.9%	91.7%	78.6%	21.4%	100.0%	75.0%
<b>Nursing/ Midwifery other</b>	<b>13</b>	<b>14</b>	<b>1.10</b>	<b>14.3%</b>	<b>85.7%</b>	<b>1.00</b>	<b>1.11</b>	<b>92.9%</b>	<b>100.0%</b>	<b>91.7%</b>	<b>78.6%</b>	<b>21.4%</b>	<b>100.0%</b>	<b>75.0%</b>
<b>Nursing &amp; Midwifery</b>	<b>1,773</b>	<b>2,062</b>	<b>1.16</b>	<b>11.4%</b>	<b>88.6%</b>	<b>1.04</b>	<b>1.18</b>	<b>92.5%</b>	<b>94.0%</b>	<b>92.3%</b>	<b>72.3%</b>	<b>27.7%</b>	<b>96.2%</b>	<b>69.2%</b>
Dietitians	23	28	1.24		100.0%		1.24	100.0%	100.0%	100.0%	53.6%	46.4%		53.6%
Occupational Therapists	153	175	1.14	7.4%	92.6%	1.00	1.15	98.3%	98.3%	98.1%	78.9%	21.1%	100.0%	77.2%
Orthoptists	2	2	1.25		100.0%		1.25	100.0%	100.0%	100.0%	50.0%	50.0%		50.0%
Physiotherapists	108	130	1.21	17.7%	82.3%	1.07	1.24	97.7%	97.7%	98.1%	57.7%	42.3%	78.3%	53.3%
Podiatrists & Chiropodists	4	6	1.52		100.0%		1.52	66.7%	66.7%	66.7%	16.7%	83.3%		16.7%
Speech & Language Therapists	110	130	1.18	1.5%	98.5%	1.00	1.19	99.2%	99.2%	99.2%	62.3%	37.7%	100.0%	61.7%
<b>Therapy Professions</b>	<b>399</b>	<b>471</b>	<b>1.18</b>	<b>8.1%</b>	<b>91.9%</b>	<b>1.04</b>	<b>1.19</b>	<b>98.1%</b>	<b>97.4%</b>	<b>98.2%</b>	<b>66.0%</b>	<b>34.0%</b>	<b>86.8%</b>	<b>64.2%</b>
Audiology	6	7	1.11	28.6%	71.4%	1.05	1.14	100.0%	100.0%	100.0%	57.1%	42.9%	50.0%	60.0%
Clinical Engineering	4	4	1.00	100.0%		1.00		100.0%	100.0%		100.0%	0.0%	100.0%	
<b>Health Science/ Diagnostics</b>	<b>10</b>	<b>11</b>	<b>1.07</b>	<b>54.5%</b>	<b>45.5%</b>	<b>1.02</b>	<b>1.14</b>	<b>100.0%</b>	<b>100.0%</b>	<b>100.0%</b>	<b>72.7%</b>	<b>27.3%</b>	<b>83.3%</b>	<b>60.0%</b>
<b>Social Care</b>	<b>385</b>	<b>469</b>	<b>1.22</b>	<b>14.7%</b>	<b>85.3%</b>	<b>1.16</b>	<b>1.23</b>	<b>98.7%</b>	<b>100.0%</b>	<b>98.5%</b>	<b>24.1%</b>	<b>75.9%</b>	<b>21.7%</b>	<b>24.5%</b>
<b>Social Workers</b>	<b>91</b>	<b>103</b>	<b>1.14</b>	<b>13.6%</b>	<b>86.4%</b>	<b>1.05</b>	<b>1.15</b>	<b>98.1%</b>	<b>92.9%</b>	<b>98.9%</b>	<b>82.5%</b>	<b>17.5%</b>	<b>92.9%</b>	<b>80.9%</b>
<b>Psychologists</b>	<b>117</b>	<b>127</b>	<b>1.08</b>	<b>26.8%</b>	<b>73.2%</b>	<b>1.01</b>	<b>1.11</b>	<b>80.3%</b>	<b>94.1%</b>	<b>75.3%</b>	<b>85.8%</b>	<b>14.2%</b>	<b>97.1%</b>	<b>81.7%</b>
<b>Pharmacy</b>	<b>11</b>	<b>13</b>	<b>1.14</b>	<b>23.1%</b>	<b>76.9%</b>	<b>1.00</b>	<b>1.19</b>	<b>84.6%</b>	<b>66.7%</b>	<b>90.0%</b>	<b>76.9%</b>	<b>23.1%</b>	<b>100.0%</b>	<b>70.0%</b>
Counsellor Therapists	41	46	1.13	19.6%	80.4%	1.04	1.16	91.3%	91.3%	91.9%	63.0%	37.0%	77.8%	59.5%
Dental Hygienists	12	13	1.11		100.0%		1.11	100.0%	100.0%	100.0%	76.9%	23.1%		76.9%
Other Health & Social Care	2	3	1.95		100.0%		1.95	33.3%	33.3%	33.3%	33.3%	66.7%		33.3%
Play Therapists/ Specialists	1	1	1.00	100.0%		1.00		100.0%	100.0%		100.0%	0.0%	100.0%	
<b>H&amp;SC, Other</b>	<b>55</b>	<b>63</b>	<b>1.15</b>	<b>15.9%</b>	<b>84.1%</b>	<b>1.04</b>	<b>1.17</b>	<b>90.5%</b>	<b>90.0%</b>	<b>90.6%</b>	<b>65.1%</b>	<b>34.9%</b>	<b>80.0%</b>	<b>62.3%</b>
<b>Health &amp; Social Care</b>	<b>1,069</b>	<b>1,257</b>	<b>1.18</b>	<b>13.8%</b>	<b>86.2%</b>	<b>1.08</b>	<b>1.19</b>	<b>96.0%</b>	<b>96.6%</b>	<b>95.9%</b>	<b>53.9%</b>	<b>46.1%</b>	<b>63.2%</b>	<b>52.4%</b>
Executive Management	10	11	1.10	18.2%	81.8%	1.92	1.00	81.8%	81.8%	77.8%	100.0%	0.0%	100.0%	100.0%
Senior Management (VIII & GM)	57	59	1.04	28.8%	71.2%	1.02	1.04	96.6%	96.6%	95.2%	83.1%	16.9%	82.4%	83.3%
<b>Management (VIII &amp; above)</b>	<b>67</b>	<b>70</b>	<b>1.05</b>	<b>27.1%</b>	<b>72.9%</b>	<b>1.08</b>	<b>1.03</b>	<b>94.3%</b>	<b>100.0%</b>	<b>92.2%</b>	<b>85.7%</b>	<b>14.3%</b>	<b>84.2%</b>	<b>86.3%</b>
<b>Administrative/ Supervisory (V to VII)</b>	<b>198</b>	<b>211</b>	<b>1.07</b>	<b>14.2%</b>	<b>85.8%</b>	<b>1.02</b>	<b>1.08</b>	<b>97.2%</b>	<b>96.7%</b>	<b>97.2%</b>	<b>79.1%</b>	<b>20.9%</b>	<b>96.7%</b>	<b>76.2%</b>
<b>Clerical (III &amp; IV)</b>	<b>533</b>	<b>635</b>	<b>1.19</b>	<b>5.0%</b>	<b>95.0%</b>	<b>1.08</b>	<b>1.20</b>	<b>90.1%</b>	<b>84.4%</b>	<b>90.4%</b>	<b>59.8%</b>	<b>40.2%</b>	<b>84.4%</b>	<b>58.5%</b>
<b>Management &amp; Administrative</b>	<b>798</b>	<b>916</b>	<b>1.15</b>	<b>8.8%</b>	<b>91.2%</b>	<b>1.06</b>	<b>1.16</b>	<b>92.0%</b>	<b>92.6%</b>	<b>92.0%</b>	<b>66.3%</b>	<b>33.7%</b>	<b>88.9%</b>	<b>64.1%</b>
Catering	31	34	1.09	20.6%	79.4%	1.03	1.11	100.0%	100.0%	100.0%	64.7%	35.3%	85.7%	59.3%
Household Services	52	63	1.20	33.3%	66.7%	1.13	1.25	92.1%	92.1%	92.9%	52.4%	47.6%	71.4%	42.9%
Other Support	29	48	1.63	45.8%	54.2%	1.14	2.57	56.3%	56.3%	26.9%	45.8%	54.2%	77.3%	19.2%
Portering	5	5	1.00	100.0%		1.00		100.0%	100.0%		100.0%	0.0%	100.0%	
<b>Support</b>	<b>118</b>	<b>150</b>	<b>1.27</b>	<b>36.7%</b>	<b>63.3%</b>	<b>1.11</b>	<b>1.39</b>	<b>82.7%</b>	<b>92.7%</b>	<b>76.8%</b>	<b>54.7%</b>	<b>45.3%</b>	<b>78.2%</b>	<b>41.1%</b>
<b>Maintenance/ Technical</b>	<b>67</b>	<b>68</b>	<b>1.02</b>	<b>98.5%</b>	<b>1.5%</b>	<b>1.02</b>	<b>1.00</b>	<b>98.5%</b>	<b>98.5%</b>	<b>100.0%</b>	<b>98.5%</b>	<b>1.5%</b>	<b>98.5%</b>	<b>100.0%</b>

<b>General Support</b>	<b>185</b>	<b>218</b>	<b>1.18</b>	<b>56.0%</b>	<b>44.0%</b>	<b>1.06</b>	<b>1.39</b>	<b>87.6%</b>	<b>95.9%</b>	<b>77.1%</b>	<b>68.3%</b>	<b>31.7%</b>	<b>89.3%</b>	<b>41.7%</b>
HCA, Nurse's Aide, etc.	1,575	1,857	1.18	22.7%	77.3%	1.11	1.20	<b>95.0%</b>	95.0%	95.2%	<b>48.3%</b>	51.7%	57.3%	45.6%
HCA (Student Nurse/Midwife COVID-19)	1	1	1.69		100.0%		1.69	<b>0.0%</b>	0.0%	0.0%	<b>0.0%</b>	100.0%		0.0%
Health & Social Care Assistants	16	17	1.09	17.6%	82.4%	1.00	1.11	<b>23.5%</b>	23.5%	28.6%	<b>82.4%</b>	17.6%	100.0%	78.6%
Swabber (COVID-19)	106	123	1.16	42.3%	57.7%	1.12	1.19	<b>1.6%</b>	1.6%	1.4%	<b>78.9%</b>	21.1%	88.5%	71.8%
<b>Health Care Assistants</b>	<b>1,697</b>	<b>1,998</b>	<b>1.18</b>	<b>23.9%</b>	<b>76.1%</b>	<b>1.11</b>	<b>1.20</b>	<b>88.6%</b>	<b>83.9%</b>	<b>90.1%</b>	<b>50.5%</b>	<b>49.5%</b>	<b>61.0%</b>	<b>47.1%</b>
<b>Care, other</b>	<b>237</b>	<b>279</b>	<b>1.18</b>	<b>29.7%</b>	<b>70.3%</b>	<b>1.21</b>	<b>1.17</b>	<b>95.0%</b>	<b>86.7%</b>	<b>98.5%</b>	<b>55.9%</b>	<b>44.1%</b>	<b>60.2%</b>	<b>54.1%</b>
<b>Home Help</b>	<b>393</b>	<b>649</b>	<b>1.65</b>	<b>3.4%</b>	<b>96.6%</b>	<b>2.64</b>	<b>1.63</b>	<b>49.2%</b>	<b>18.2%</b>	<b>50.2%</b>	<b>15.4%</b>	<b>84.6%</b>	<b>4.5%</b>	<b>15.8%</b>
<b>Patient &amp; Client Care</b>	<b>2,327</b>	<b>2,926</b>	<b>1.26</b>	<b>19.9%</b>	<b>80.1%</b>	<b>1.15</b>	<b>1.29</b>	<b>80.5%</b>	<b>81.8%</b>	<b>80.2%</b>	<b>43.2%</b>	<b>56.8%</b>	<b>58.8%</b>	<b>39.3%</b>

## Employment by WTE, Headcount, Gender, Full-Time /Part-Time etc.: Feb 2021

CHO 8	WTE	Headcount	WTE: no.	% Male	% female	Male WTE: no.	Female WTE: no.	% Total Perm	% Male Perm	% Female Perm	% Total Full Time	% Total Part Time	% Male FT	% Female FT
<b>Overall</b>	<b>6,405</b>	<b>7,669</b>	<b>1.20</b>	<b>17.2%</b>	<b>82.8%</b>	<b>1.11</b>	<b>1.22</b>	<b>86.2%</b>	<b>83.8%</b>	<b>86.8%</b>	<b>57.7%</b>	<b>42.3%</b>	<b>72.7%</b>	<b>54.6%</b>
Community Health & Wellbeing	29	34	1.17	2.9%	97.1%	1.25	1.17	97.1%	97.1%	97.0%	58.8%	41.2%	100.0%	100.0%
Mental Health	1,125	1,249	1.11	24.2%	75.8%	1.04	1.13	84.8%	84.8%	85.0%	85.7%	14.3%	94.4%	94.4%
Primary Care	1,550	1,846	1.19	14.6%	85.4%	1.09	1.21	81.7%	81.7%	85.0%	63.7%	36.3%	81.5%	81.5%
Social Care	3,700	4,540	1.23	16.5%	83.5%	1.14	1.25	88.4%	88.4%	87.8%	47.6%	52.4%	60.8%	60.8%

## CHO 8 Skills Mix by Staff Grouping: February 2021

Feb 2021 (Dec 2019 figure: 6,135)	WTE Dec 2016	WTE Dec 2017	WTE Dec 2018	WTE Dec 2019	WTE Dec 2020	WTE Jan 2021	WTE Feb 2021
<b>Overall</b>	<b>6,014</b>	<b>6,092</b>	<b>6,128</b>	<b>6,135</b>	<b>6,337</b>	<b>6,393</b>	<b>6,405</b>
Consultant Dentistry	0.4%	0.4%	0.4%	0.4%	0.4%	0.4%	0.4%
Consultant Medicine	1.7%	2.1%	1.7%	1.9%	2.0%	1.9%	2.0%
Consultant Psychiatry	15.6%	14.6%	15.0%	14.1%	14.6%	14.7%	15.0%
<b>Consultants</b>	<b>17.7%</b>	<b>17.1%</b>	<b>17.1%</b>	<b>16.3%</b>	<b>16.9%</b>	<b>17.0%</b>	<b>17.4%</b>
Registrar	36.4%	37.3%	36.6%	35.7%	39.2%	37.4%	37.8%
Senior Registrar	4.7%	5.9%	5.4%	5.3%	5.1%	5.1%	4.9%
<b>Registrars</b>	<b>41.1%</b>	<b>43.2%</b>	<b>42.0%</b>	<b>41.0%</b>	<b>44.4%</b>	<b>42.5%</b>	<b>42.7%</b>
Interns	0.4%						
Senior House Officer	11.4%	11.0%	11.8%	14.7%	10.5%	12.3%	11.7%
<b>SHO/ Interns</b>	<b>11.8%</b>	<b>11.0%</b>	<b>11.8%</b>	<b>14.7%</b>	<b>10.5%</b>	<b>12.3%</b>	<b>11.7%</b>
Dentists	15.1%	14.5%	13.9%	13.7%	14.3%	14.3%	14.3%
Other Medical	14.3%	14.3%	15.2%	14.3%	13.9%	13.8%	14.0%
<b>Medical/ Dental, other</b>	<b>29.4%</b>	<b>28.8%</b>	<b>29.1%</b>	<b>28.0%</b>	<b>28.2%</b>	<b>28.2%</b>	<b>28.3%</b>
<b>Medical &amp; Dental</b>	<b>3.9%</b>	<b>3.9%</b>	<b>3.9%</b>	<b>4.2%</b>	<b>4.1%</b>	<b>100.0%</b>	<b>4.0%</b>
Clinical Nurse/ Midwife Manager	17.2%	17.5%	17.4%	17.1%	16.5%	16.6%	16.3%
Director Nursing/Midwifery, Assistant	3.3%	3.5%	3.6%	3.6%	3.8%	3.7%	3.5%
Director of Nursing/Midwifery	1.5%	1.6%	1.3%	1.4%	1.6%	1.6%	1.6%
<b>Nurse/ Midwife Manager</b>	<b>22.0%</b>	<b>22.5%</b>	<b>22.3%</b>	<b>22.1%</b>	<b>21.9%</b>	<b>21.9%</b>	<b>21.4%</b>
Advanced Nurse/ Midwife Practitioner	0.1%	0.1%	0.1%	0.2%	0.5%	0.5%	0.5%
Clinical Nurse/ Midwife Specialist	5.6%	5.6%	5.7%	5.7%	5.9%	5.8%	5.9%
<b>Nurse/ Midwife Specialist &amp; AN/MP</b>	<b>5.6%</b>	<b>5.7%</b>	<b>5.8%</b>	<b>5.9%</b>	<b>6.4%</b>	<b>6.3%</b>	<b>6.4%</b>
Staff Nurse [Intellectual Disability]	14.8%	15.2%	15.6%	13.8%	14.8%	14.8%	7.0%
Staff Nurse [Psychiatric]	19.2%	19.3%	19.4%	19.8%	19.7%	19.3%	27.3%
Staff Nurses [General/ Children's]	25.5%	24.4%	24.2%	25.7%	23.9%	23.6%	23.4%
<b>Staff Nurse/ Staff Midwife</b>	<b>59.6%</b>	<b>59.0%</b>	<b>59.2%</b>	<b>59.3%</b>	<b>58.4%</b>	<b>57.7%</b>	<b>57.7%</b>
<b>Public Health Nurse</b>	<b>11.4%</b>	<b>11.6%</b>	<b>11.6%</b>	<b>11.8%</b>	<b>11.6%</b>	<b>11.6%</b>	<b>11.6%</b>
Pre-registration Nurse/ Midwife Intern		0.0%	0.0%	0.0%		1.1%	1.6%
Pre-registration Nurse Intern (COVID-19)					0.3%	0.0%	
Post-registration Nurse/ Midwife Student	0.9%	0.8%	0.5%	0.1%	0.7%	0.7%	0.7%
Nursing/ Midwifery awaiting registration	0.1%	0.0%	0.1%	0.1%			
<b>Nursing/ Midwifery Student</b>	<b>1.0%</b>	<b>0.8%</b>	<b>0.6%</b>	<b>0.3%</b>	<b>1.0%</b>	<b>1.8%</b>	<b>2.3%</b>
<b>Nursing/ Midwifery other</b>	<b>0.4%</b>	<b>0.5%</b>	<b>0.4%</b>	<b>0.6%</b>	<b>0.7%</b>	<b>0.7%</b>	<b>0.7%</b>
<b>Nursing &amp; Midwifery</b>	<b>29.0%</b>	<b>28.2%</b>	<b>27.7%</b>	<b>27.4%</b>	<b>26.5%</b>	<b>100.0%</b>	<b>27.7%</b>
Dietitians	1.8%	1.7%	1.9%	1.9%	2.0%	2.0%	2.1%
Occupational Therapists	14.3%	14.3%	13.5%	13.7%	14.2%	14.2%	14.4%
Orthoptists	0.0%	0.0%	0.0%		0.2%	0.1%	0.1%
Physiotherapists	12.1%	11.0%	10.8%	10.5%	10.2%	10.2%	10.1%
Podiatrists & Chiropodists	0.3%	0.4%	0.4%	0.4%	0.4%	0.4%	0.4%
Speech & Language Therapists	11.6%	11.7%	10.9%	10.4%	10.4%	10.4%	10.3%
<b>Therapy Professions</b>	<b>40.1%</b>	<b>39.1%</b>	<b>37.6%</b>	<b>37.0%</b>	<b>37.3%</b>	<b>37.4%</b>	<b>37.4%</b>
Audiology	0.5%	0.4%	0.4%	0.3%	0.5%	0.5%	0.6%
Clinical Engineering	0.4%	0.4%	0.4%	0.4%	0.4%	0.4%	0.4%
Radiographers	0.3%	0.3%					
<b>Health Science/ Diagnostics</b>	<b>1.2%</b>	<b>1.1%</b>	<b>0.8%</b>	<b>0.7%</b>	<b>0.9%</b>	<b>0.9%</b>	<b>1.0%</b>
<b>Social Care</b>	<b>32.7%</b>	<b>34.0%</b>	<b>36.0%</b>	<b>36.1%</b>	<b>36.7%</b>	<b>36.5%</b>	<b>36.0%</b>
<b>Social Workers</b>	<b>9.5%</b>	<b>9.1%</b>	<b>9.0%</b>	<b>8.6%</b>	<b>8.4%</b>	<b>8.3%</b>	<b>8.5%</b>
<b>Psychologists</b>	<b>10.7%</b>	<b>10.8%</b>	<b>10.5%</b>	<b>11.7%</b>	<b>10.9%</b>	<b>10.9%</b>	<b>11.0%</b>
<b>Pharmacy</b>	<b>0.5%</b>	<b>0.5%</b>	<b>0.6%</b>	<b>0.7%</b>	<b>0.8%</b>	<b>0.9%</b>	<b>1.1%</b>
Counsellor Therapists	3.8%	3.9%	3.9%	3.7%	3.6%	3.7%	3.8%
Dental Hygienists	1.3%	1.2%	1.2%	1.2%	1.2%	1.2%	1.1%
Other Health & Social Care	0.2%	0.2%	0.2%	0.2%	0.2%	0.2%	0.1%

Feb 2021 (Dec 2019 figure: 6,135)	WTE Dec 2016	WTE Dec 2017	WTE Dec 2018	WTE Dec 2019	WTE Dec 2020	WTE Jan 2021	WTE Feb 2021
<b>Overall</b>	<b>6,014</b>	<b>6,092</b>	<b>6,128</b>	<b>6,135</b>	<b>6,337</b>	<b>6,393</b>	<b>6,405</b>
Play Therapists/ Specialists	0.1%	0.1%	0.1%	0.1%	0.1%	0.1%	0.1%
<b>H&amp;SC, Other</b>	<b>5.4%</b>	<b>5.4%</b>	<b>5.4%</b>	<b>5.1%</b>	<b>5.1%</b>	<b>5.1%</b>	<b>5.1%</b>
<b>Health &amp; Social Care Professionals</b>	<b>15.4%</b>	<b>16.5%</b>	<b>16.4%</b>	<b>16.6%</b>	<b>16.1%</b>	<b>100.0%</b>	<b>16.7%</b>
Executive Management	1.2%	1.3%	1.3%	1.2%	1.2%	1.2%	1.3%
Senior Management (VIII & GM)	6.8%	7.2%	6.7%	7.2%	7.1%	7.0%	7.1%
<b>Management (VIII &amp; above)</b>	<b>8.1%</b>	<b>8.6%</b>	<b>8.0%</b>	<b>8.4%</b>	<b>8.3%</b>	<b>8.3%</b>	<b>8.4%</b>
Middle Management (V-VII)	19.7%	20.3%	23.3%	23.7%	25.3%	25.4%	24.8%
Other Administrative	0.1%						
<b>Administrative/ Supervisory (V to VII)</b>	<b>19.9%</b>	<b>20.3%</b>	<b>23.3%</b>	<b>23.7%</b>	<b>25.3%</b>	<b>25.4%</b>	<b>24.8%</b>
<b>Clerical (III &amp; IV)</b>	<b>72.1%</b>	<b>71.1%</b>	<b>68.6%</b>	<b>68.0%</b>	<b>66.3%</b>	<b>66.3%</b>	<b>66.8%</b>
<b>Management &amp; Administrative</b>	<b>12.1%</b>	<b>12.0%</b>	<b>12.2%</b>	<b>12.2%</b>	<b>11.8%</b>	<b>100.0%</b>	<b>12.5%</b>
Catering	16.6%	15.7%	17.8%	16.9%	16.4%	16.1%	16.9%
Household Services	32.8%	31.1%	28.0%	29.3%	28.6%	28.9%	28.4%
Other Support	16.6%	17.7%	16.4%	16.1%	15.6%	15.3%	15.9%
Portering	2.3%	2.4%	2.5%	2.5%	2.7%	2.7%	2.7%
<b>Support</b>	<b>68.3%</b>	<b>66.9%</b>	<b>64.6%</b>	<b>64.9%</b>	<b>63.2%</b>	<b>63.1%</b>	<b>63.9%</b>
<b>Maintenance/ Technical</b>	<b>31.7%</b>	<b>33.1%</b>	<b>35.4%</b>	<b>35.1%</b>	<b>36.8%</b>	<b>36.9%</b>	<b>36.1%</b>
<b>General Support</b>	<b>3.6%</b>	<b>3.5%</b>	<b>3.3%</b>	<b>3.2%</b>	<b>3.1%</b>	<b>100.0%</b>	<b>2.9%</b>
HCA, Nurse's Aide, etc.	69.1%	69.4%	69.0%	70.0%	68.6%	68.2%	67.7%
HCA (Student Nurse/Midwife COVID-19)					0.0%	0.0%	0.0%
Health & Social Care Assistants	0.2%	0.2%	0.9%	0.6%	0.6%	0.7%	0.7%
Swabber (COVID-19)					3.0%	3.9%	4.6%
<b>Health Care Assistants</b>	<b>69.3%</b>	<b>69.6%</b>	<b>69.9%</b>	<b>70.6%</b>	<b>72.4%</b>	<b>72.8%</b>	<b>72.9%</b>
Other Care Grades	12.4%	11.8%	10.9%	10.6%	10.4%	10.2%	10.2%
<b>Care, other</b>	<b>12.4%</b>	<b>11.8%</b>	<b>10.9%</b>	<b>10.6%</b>	<b>10.4%</b>	<b>10.2%</b>	<b>10.2%</b>
<b>Home Help</b>	<b>18.3%</b>	<b>18.6%</b>	<b>19.2%</b>	<b>18.7%</b>	<b>17.3%</b>	<b>17.0%</b>	<b>16.9%</b>
<b>Patient &amp; Client Care</b>	<b>36.0%</b>	<b>36.0%</b>	<b>36.6%</b>	<b>36.4%</b>	<b>35.2%</b>	<b>100.0%</b>	<b>36.3%</b>
<b>Total</b>	<b>100 %</b>	<b>100 %</b>	<b>100 %</b>	<b>100 %</b>	<b>100%</b>	<b>100 %</b>	<b>100 %</b>

# CHO 8 Skills Mix by Care Group: February 2021

Feb 2021 (Dec 2019 figure: 1,098)	WTE Dec 2016	WTE Dec 2017	WTE Dec 2018	WTE Dec 2019	WTE Dec 2020	WTE Jan 2021	WTE Feb 2021
<b>Mental Health</b>	<b>1,041</b>	<b>1,080</b>	<b>1,069</b>	<b>1,098</b>	<b>1,111.73</b>	<b>1,114.00</b>	<b>1,125.47</b>
<b>Consultants</b>	<b>43.1%</b>	<b>38.0%</b>	<b>40.0%</b>	<b>36.4%</b>	<b>38.9%</b>	<b>37.9%</b>	<b>40.4%</b>
Registrar	9.9%	17.7%	15.3%	12.4%	19.1%	16.9%	15.9%
Senior Registrar	13.6%	15.8%	14.8%	14.1%	14.0%	13.5%	13.2%
<b>Registrars</b>	<b>23.6%</b>	<b>33.5%</b>	<b>30.1%</b>	<b>26.5%</b>	<b>33.2%</b>	<b>30.4%</b>	<b>29.1%</b>
Interns	1.2%						
Senior House Officer	32.1%	28.5%	29.9%	37.1%	28.0%	31.6%	30.5%
<b>SHO/ Interns</b>	<b>33.3%</b>	<b>28.5%</b>	<b>29.9%</b>	<b>37.1%</b>	<b>28.0%</b>	<b>31.6%</b>	<b>30.5%</b>
<b>Medical &amp; Dental</b>	<b>7.7%</b>	<b>8.1%</b>	<b>8.1%</b>	<b>8.8%</b>	<b>8.7%</b>	<b>8.4%</b>	<b>8.4%</b>
Clinical Nurse/ Midwife Manager	20.1%	21.3%	20.9%	19.8%	18.8%	18.8%	18.0%
Director Nursing/Midwifery, Assistant	3.7%	3.6%	3.9%	3.3%	3.7%	3.2%	3.0%
Director of Nursing/Midwifery	0.6%	0.6%	0.2%	0.4%	0.4%	0.4%	0.4%
<b>Nurse/ Midwife Manager</b>	<b>24.3%</b>	<b>25.5%</b>	<b>25.0%</b>	<b>23.4%</b>	<b>22.9%</b>	<b>22.4%</b>	<b>21.4%</b>
Advanced Nurse/ Midwife Practitioner	0.2%	0.2%	0.4%	0.8%	0.8%	0.8%	0.7%
Clinical Nurse/ Midwife Specialist	9.4%	9.4%	9.8%	10.1%	10.6%	10.3%	10.5%
<b>Nurse/ Midwife Specialist &amp; AN/MP</b>	<b>9.6%</b>	<b>9.6%</b>	<b>10.2%</b>	<b>10.9%</b>	<b>11.3%</b>	<b>11.0%</b>	<b>11.2%</b>
Staff Nurse [Psychiatric]	64.1%	63.2%	63.2%	63.2%	63.9%	63.5%	61.9%
Staff Nurses [General/ Children's]	1.2%	0.9%	1.0%	1.2%	1.1%	1.2%	0.9%
<b>Staff Nurse/ Staff Midwife</b>	<b>65.3%</b>	<b>64.1%</b>	<b>64.2%</b>	<b>64.4%</b>	<b>65.0%</b>	<b>64.7%</b>	<b>62.8%</b>
Pre-registration Nurse/ Midwife Intern		0.1%		0.1%		1.2%	4.0%
Pre-registration Nurse Intern (COVID-19)					0.2%	0.0%	
Nursing/ Midwifery awaiting registration	0.4%	0.1%	0.2%	0.4%			
<b>Nursing/ Midwifery Student</b>	<b>0.4%</b>	<b>0.2%</b>	<b>0.2%</b>	<b>0.5%</b>	<b>0.2%</b>	<b>1.3%</b>	<b>4.0%</b>
<b>Nursing/ Midwifery other</b>	<b>0.4%</b>	<b>0.6%</b>	<b>0.4%</b>	<b>0.8%</b>	<b>0.6%</b>	<b>0.6%</b>	<b>0.6%</b>
<b>Nursing &amp; Midwifery</b>	<b>48.5%</b>	<b>47.3%</b>	<b>47.4%</b>	<b>46.9%</b>	<b>46.3%</b>	<b>47.9%</b>	<b>47.9%</b>
Dietitians	0.7%	1.3%	1.4%	1.3%			
Occupational Therapists	21.4%	24.3%	25.4%	23.8%	23.3%	23.6%	23.2%
Podiatrists & Chiropodists		0.1%	0.0%		0.0%	0.1%	0.1%
Speech & Language Therapists	4.3%	3.7%	3.1%	3.8%	4.5%	4.4%	3.6%
<b>Therapy Professions</b>	<b>26.5%</b>	<b>29.4%</b>	<b>29.8%</b>	<b>28.8%</b>	<b>27.9%</b>	<b>28.0%</b>	<b>26.9%</b>
<b>Social Care</b>	<b>5.2%</b>	<b>4.4%</b>	<b>4.4%</b>	<b>4.7%</b>	<b>4.6%</b>	<b>4.7%</b>	<b>4.2%</b>
<b>Social Workers</b>	<b>31.4%</b>	<b>28.5%</b>	<b>26.8%</b>	<b>26.9%</b>	<b>28.6%</b>	<b>28.5%</b>	<b>29.1%</b>
<b>Psychologists</b>	<b>22.2%</b>	<b>24.6%</b>	<b>25.6%</b>	<b>25.5%</b>	<b>24.0%</b>	<b>23.9%</b>	<b>24.5%</b>
<b>Pharmacy</b>	<b>0.5%</b>	<b>0.7%</b>	<b>0.7%</b>	<b>0.7%</b>	<b>1.0%</b>	<b>0.9%</b>	<b>0.9%</b>
Counsellor Therapists	14.1%	12.4%	12.7%	13.3%	14.0%	14.1%	14.3%
Other Health & Social Care	0.1%						
<b>H&amp;SC, Other</b>	<b>14.3%</b>	<b>12.4%</b>	<b>12.7%</b>	<b>13.3%</b>	<b>14.0%</b>	<b>14.1%</b>	<b>14.3%</b>
<b>Health &amp; Social Care Professionals</b>	<b>12.9%</b>	<b>14.0%</b>	<b>13.8%</b>	<b>14.0%</b>	<b>13.8%</b>	<b>13.9%</b>	<b>13.9%</b>
<b>Management (VIII &amp; above)</b>	<b>1.0%</b>	<b>1.8%</b>	<b>1.8%</b>	<b>2.6%</b>	<b>2.5%</b>	<b>2.4%</b>	<b>1.6%</b>
<b>Administrative/ Supervisory (V to VII)</b>	<b>15.4%</b>	<b>16.7%</b>	<b>20.0%</b>	<b>19.8%</b>	<b>16.8%</b>	<b>17.0%</b>	<b>15.5%</b>
<b>Clerical (III &amp; IV)</b>	<b>83.6%</b>	<b>81.5%</b>	<b>78.2%</b>	<b>77.6%</b>	<b>80.8%</b>	<b>80.5%</b>	<b>82.9%</b>
<b>Management &amp; Administrative</b>	<b>9.7%</b>	<b>10.3%</b>	<b>10.1%</b>	<b>10.4%</b>	<b>10.2%</b>	<b>10.7%</b>	<b>10.7%</b>
<b>Support</b>	<b>52.1%</b>	<b>55.4%</b>	<b>53.9%</b>	<b>55.5%</b>	<b>52.6%</b>	<b>51.9%</b>	<b>52.3%</b>
<b>Maintenance/ Technical</b>	<b>47.9%</b>	<b>44.6%</b>	<b>46.1%</b>	<b>44.5%</b>	<b>47.4%</b>	<b>48.1%</b>	<b>47.7%</b>
<b>General Support</b>	<b>5.6%</b>	<b>5.8%</b>	<b>5.7%</b>	<b>5.3%</b>	<b>5.3%</b>	<b>5.2%</b>	<b>5.2%</b>
<b>Health Care Assistants</b>	<b>97.2%</b>	<b>97.1%</b>	<b>98.1%</b>	<b>97.8%</b>	<b>98.0%</b>	<b>98.0%</b>	<b>98.1%</b>
<b>Care, other</b>	<b>2.8%</b>	<b>2.9%</b>	<b>1.9%</b>	<b>2.2%</b>	<b>2.0%</b>	<b>2.0%</b>	<b>1.9%</b>
<b>Patient &amp; Client Care</b>	<b>15.6%</b>	<b>14.5%</b>	<b>14.8%</b>	<b>14.6%</b>	<b>14.4%</b>	<b>13.9%</b>	<b>13.9%</b>
<b>Total</b>	<b>100 %</b>	<b>100 %</b>	<b>100 %</b>	<b>100 %</b>	<b>100 %</b>	<b>100 %</b>	<b>100%</b>



Feb 2021 (Dec 2019 figure: 1,387)	WTE Dec 2016	WTE Dec 2017	WTE Dec 2018	WTE Dec 2019	WTE Dec 2020	WTE Jan 2021	WTE Feb 2021
<b>Primary Care</b>	<b>1,457</b>	<b>1,436</b>	<b>1,422</b>	<b>1,387</b>	<b>1,505.95</b>	<b>1,533.39</b>	<b>1,550.18</b>
Consultant Dentistry	0.6%	0.7%	0.7%	0.6%	0.6%	0.6%	0.6%
Consultant Medicine	2.8%	3.7%	2.9%	3.4%	3.4%	3.4%	3.4%
Consultant Psychiatry	0.7%						
<b>Consultants</b>	<b>4.2%</b>	<b>4.4%</b>	<b>3.6%</b>	<b>4.0%</b>	<b>4.0%</b>	<b>4.0%</b>	<b>4.0%</b>
<b>Registrars</b>	<b>54.6%</b>	<b>53.2%</b>	<b>53.4%</b>	<b>53.3%</b>	<b>54.9%</b>	<b>54.0%</b>	<b>54.5%</b>
<b>SHO/ Interns</b>	<b>0.7%</b>	<b>0.7%</b>	<b>1.5%</b>	<b>1.4%</b>	<b>0.5%</b>	<b>0.5%</b>	<b>0.5%</b>
Dentists	25.3%	25.4%	24.2%	24.2%	24.6%	25.2%	24.8%
Other Medical	15.2%	16.3%	17.3%	17.1%	15.9%	16.2%	16.1%
<b>Medical/ Dental, other</b>	<b>40.5%</b>	<b>41.7%</b>	<b>41.5%</b>	<b>41.3%</b>	<b>40.6%</b>	<b>41.5%</b>	<b>40.9%</b>
<b>Medical &amp; Dental</b>	<b>9.6%</b>	<b>9.4%</b>	<b>9.5%</b>	<b>10.6%</b>	<b>9.7%</b>	<b>9.4%</b>	<b>9.4%</b>
Clinical Nurse/ Midwife Manager	7.3%	7.3%	7.9%	7.1%	6.1%	6.5%	6.2%
Director Nursing/Midwifery, Assistant	4.8%	4.2%	4.6%	4.8%	4.9%	5.0%	4.8%
Director of Nursing/Midwifery	1.2%	1.5%	1.0%	1.6%	1.5%	1.6%	1.4%
<b>Nurse/ Midwife Manager</b>	<b>13.4%</b>	<b>12.9%</b>	<b>13.5%</b>	<b>13.4%</b>	<b>12.5%</b>	<b>13.1%</b>	<b>12.4%</b>
<b>Nurse/ Midwife Specialist &amp; AN/MP</b>	<b>9.0%</b>	<b>9.2%</b>	<b>9.5%</b>	<b>9.1%</b>	<b>10.3%</b>	<b>10.1%</b>	<b>10.1%</b>
<b>Staff Nurse/ Staff Midwife</b>	<b>27.2%</b>	<b>27.1%</b>	<b>26.4%</b>	<b>25.7%</b>	<b>25.6%</b>	<b>25.5%</b>	<b>25.5%</b>
<b>Public Health Nurse</b>	<b>46.6%</b>	<b>47.6%</b>	<b>48.7%</b>	<b>51.3%</b>	<b>48.5%</b>	<b>48.0%</b>	<b>48.6%</b>
<b>Nursing/ Midwifery Student</b>	<b>3.8%</b>	<b>3.2%</b>	<b>2.0%</b>	<b>0.5%</b>	<b>3.0%</b>	<b>3.1%</b>	<b>3.1%</b>
Nursing Education/Clinical					0.2%	0.2%	0.2%
<b>Nursing/ Midwifery other</b>					<b>0.2%</b>	<b>0.2%</b>	<b>0.2%</b>
<b>Nursing &amp; Midwifery</b>	<b>28.7%</b>	<b>28.5%</b>	<b>27.8%</b>	<b>27.5%</b>	<b>25.4%</b>	<b>26.7%</b>	<b>26.7%</b>
Dietitians	4.7%	4.5%	4.8%	5.2%	5.5%	5.5%	5.5%
Occupational Therapists	17.7%	18.1%	17.2%	17.5%	18.2%	17.8%	18.3%
Orthoptists	0.1%	0.1%	0.1%		0.5%	0.5%	0.5%
Physiotherapists	25.5%	23.7%	24.6%	23.8%	23.4%	23.5%	23.0%
Podiatrists & Chiropodists	0.5%	0.8%	1.1%	1.1%	1.2%	1.2%	1.1%
Speech & Language Therapists	19.9%	21.6%	20.5%	20.1%	18.6%	19.2%	19.2%
<b>Therapy Professions</b>	<b>68.4%</b>	<b>69.0%</b>	<b>68.2%</b>	<b>67.7%</b>	<b>67.3%</b>	<b>67.6%</b>	<b>67.6%</b>
Audiology	1.3%	1.3%	1.3%	1.0%	1.6%	1.6%	1.8%
Clinical Engineering	0.6%	0.6%	0.6%	0.6%	0.6%	0.6%	0.6%
Radiographers		0.1%					
<b>Health Science/ Diagnostics</b>	<b>2.0%</b>	<b>2.0%</b>	<b>1.9%</b>	<b>1.6%</b>	<b>2.2%</b>	<b>2.1%</b>	<b>2.4%</b>
<b>Social Care</b>	<b>0.3%</b>				<b>0.3%</b>	<b>0.3%</b>	<b>0.3%</b>
<b>Social Workers</b>	<b>5.1%</b>	<b>5.1%</b>	<b>5.8%</b>	<b>4.8%</b>	<b>4.6%</b>	<b>4.2%</b>	<b>4.3%</b>
<b>Psychologists</b>	<b>15.7%</b>	<b>14.4%</b>	<b>14.3%</b>	<b>17.1%</b>	<b>16.5%</b>	<b>16.3%</b>	<b>15.8%</b>
<b>Pharmacy</b>	<b>0.9%</b>	<b>0.8%</b>	<b>0.9%</b>	<b>1.2%</b>	<b>1.4%</b>	<b>1.5%</b>	<b>2.0%</b>
Counsellor Therapists	3.6%	4.8%	4.8%	3.6%	3.6%	3.8%	3.8%
Dental Hygienists	3.7%	3.6%	3.8%	3.8%	3.8%	3.8%	3.4%
Other Health & Social Care	0.3%	0.3%	0.3%	0.3%	0.3%	0.3%	0.3%
<b>H&amp;SC, Other</b>	<b>7.6%</b>	<b>8.7%</b>	<b>8.9%</b>	<b>7.7%</b>	<b>7.7%</b>	<b>7.9%</b>	<b>7.5%</b>
<b>Health &amp; Social Care Professionals</b>	<b>22.4%</b>	<b>23.6%</b>	<b>23.0%</b>	<b>23.5%</b>	<b>21.6%</b>	<b>22.2%</b>	<b>22.2%</b>
Executive Management	1.9%	2.0%	1.9%	2.0%	2.0%	2.0%	2.0%
Senior Management (VIII & GM)	8.2%	8.3%	8.9%	9.6%	8.3%	8.0%	8.4%
<b>Management (VIII &amp; above)</b>	<b>10.1%</b>	<b>10.3%</b>	<b>10.8%</b>	<b>11.7%</b>	<b>10.3%</b>	<b>10.0%</b>	<b>10.4%</b>
<b>Administrative/ Supervisory (V to VII)</b>	<b>15.8%</b>	<b>16.7%</b>	<b>19.6%</b>	<b>20.0%</b>	<b>21.1%</b>	<b>21.4%</b>	<b>21.0%</b>
<b>Clerical (III &amp; IV)</b>	<b>74.1%</b>	<b>73.0%</b>	<b>69.5%</b>	<b>68.3%</b>	<b>68.6%</b>	<b>68.6%</b>	<b>68.5%</b>
<b>Management &amp; Administrative</b>	<b>28.5%</b>	<b>28.0%</b>	<b>28.6%</b>	<b>27.9%</b>	<b>25.7%</b>	<b>25.5%</b>	<b>25.5%</b>
<b>Support</b>	<b>93.1%</b>	<b>89.8%</b>	<b>88.8%</b>	<b>88.9%</b>	<b>87.5%</b>	<b>87.0%</b>	<b>87.6%</b>
<b>Maintenance/ Technical</b>	<b>6.9%</b>	<b>10.2%</b>	<b>11.2%</b>	<b>11.1%</b>	<b>12.5%</b>	<b>13.0%</b>	<b>12.4%</b>
<b>General Support</b>	<b>1.8%</b>	<b>2.0%</b>	<b>1.8%</b>	<b>1.8%</b>	<b>1.7%</b>	<b>1.5%</b>	<b>1.5%</b>
HCA, Nurse's Aide, etc.	11.7%	11.3%	10.5%	8.5%	4.0%	3.6%	3.6%



Feb 2021 (Dec 2019 figure: 1,387)	WTE Dec 2016	WTE Dec 2017	WTE Dec 2018	WTE Dec 2019	WTE Dec 2020	WTE Jan 2021	WTE Feb 2021
<b>Primary Care</b>	<b>1,457</b>	<b>1,436</b>	<b>1,422</b>	<b>1,387</b>	<b>1,505.95</b>	<b>1,533.39</b>	<b>1,550.18</b>
Health & Social Care Assistants	0.8%	0.9%	11.5%	8.8%	6.9%	6.4%	6.1%
Swabber (COVID-19)					36.5%	43.6%	46.8%
<b>Health Care Assistants</b>	<b>12.5%</b>	<b>12.2%</b>	<b>22.1%</b>	<b>17.3%</b>	<b>47.5%</b>	<b>53.6%</b>	<b>56.5%</b>
Other Care Grades	86.9%	86.8%	77.7%	82.4%	52.5%	46.4%	43.5%
<b>Care, other</b>	<b>86.9%</b>	<b>86.8%</b>	<b>77.7%</b>	<b>82.4%</b>	<b>52.5%</b>	<b>46.4%</b>	<b>43.5%</b>
<b>Home Help</b>	<b>0.6%</b>	<b>1.0%</b>	<b>0.2%</b>	<b>0.3%</b>			
<b>Patient &amp; Client Care</b>	<b>8.9%</b>	<b>8.5%</b>	<b>9.2%</b>	<b>8.6%</b>	<b>7.9%</b>	<b>14.6%</b>	<b>14.6%</b>
<b>Total</b>	<b>100 %</b>	<b>100 %</b>	<b>100 %</b>	<b>100 %</b>	<b>100 %</b>	<b>100 %</b>	<b>100%</b>

Feb 2021 (Dec 2019 figure: 2,162)	WTE Dec 2016	WTE Dec 2017	WTE Dec 2018	WTE Dec 2019	WTE Dec 2020	WTE Jan 2021	WTE Feb 2021
<b>Disabilities</b>	<b>1,984</b>	<b>2,078</b>	<b>2,134</b>	<b>2,162</b>	<b>2,205.48</b>	<b>2,234.49</b>	<b>2,218.03</b>
Consultant Psychiatry	33.3%	33.3%	33.3%	25.0%	33.3%	33.3%	
<b>Consultants</b>	<b>33.3%</b>	<b>33.3%</b>	<b>33.3%</b>	<b>25.0%</b>	<b>33.3%</b>	<b>33.3%</b>	
<b>Registrars</b>	<b>33.3%</b>	<b>33.3%</b>	<b>33.3%</b>	<b>50.0%</b>	<b>33.3%</b>	<b>33.3%</b>	<b>50.0%</b>
<b>Medical/ Dental, other</b>	<b>33.3%</b>	<b>33.3%</b>	<b>33.3%</b>	<b>25.0%</b>	<b>33.3%</b>	<b>33.3%</b>	<b>50.0%</b>
<b>Medical &amp; Dental</b>	<b>0.2%</b>	<b>0.1%</b>	<b>0.1%</b>	<b>0.2%</b>	<b>0.2%</b>	<b>0.1%</b>	<b>0.1%</b>
Clinical Nurse/ Midwife Manager	22.7%	22.6%	22.7%	23.5%	22.6%	22.7%	22.5%
Director Nursing/Midwifery, Assistant	2.1%	2.4%	2.3%	2.3%	2.6%	2.6%	2.4%
Director of Nursing/Midwifery	1.0%	1.1%	1.1%	1.2%	1.3%	1.3%	1.3%
<b>Nurse/ Midwife Manager</b>	<b>25.9%</b>	<b>26.0%</b>	<b>26.1%</b>	<b>27.0%</b>	<b>26.6%</b>	<b>26.5%</b>	<b>26.1%</b>
Advanced Nurse/ Midwife Practitioner					0.2%	0.2%	0.2%
Clinical Nurse/ Midwife Specialist	2.0%	1.7%	1.6%	1.6%	1.2%	1.1%	0.9%
<b>Nurse/ Midwife Specialist &amp; AN/MP</b>	<b>2.0%</b>	<b>1.7%</b>	<b>1.6%</b>	<b>1.6%</b>	<b>1.4%</b>	<b>1.4%</b>	<b>1.2%</b>
Staff Nurse [Intellectual Disability]	56.0%	57.3%	57.4%	50.9%	57.2%	56.9%	26.8%
Staff Nurse [Psychiatric]	2.0%	1.7%	1.7%	1.5%	1.1%	0.8%	32.1%
Staff Nurses [General/ Children's]	13.0%	12.1%	11.8%	17.6%	11.2%	10.2%	10.9%
<b>Staff Nurse/ Staff Midwife</b>	<b>71.0%</b>	<b>71.0%</b>	<b>70.8%</b>	<b>70.0%</b>	<b>69.5%</b>	<b>67.8%</b>	<b>69.8%</b>
<b>Public Health Nurse</b>	<b>0.2%</b>		<b>0.2%</b>	<b>0.2%</b>	<b>0.2%</b>	<b>0.2%</b>	<b>0.2%</b>
Pre-registration Nurse/ Midwife Intern			0.1%			2.7%	1.3%
Pre-registration Nurse Intern (COVID-19)					0.9%		
<b>Nursing/ Midwifery Student</b>			<b>0.1%</b>		<b>0.9%</b>	<b>2.7%</b>	<b>1.3%</b>
<b>Nursing/ Midwifery other</b>	<b>1.0%</b>	<b>1.2%</b>	<b>1.2%</b>	<b>1.2%</b>	<b>1.5%</b>	<b>1.4%</b>	<b>1.5%</b>
<b>Nursing &amp; Midwifery</b>	<b>23.2%</b>	<b>21.9%</b>	<b>21.6%</b>	<b>21.1%</b>	<b>20.6%</b>	<b>20.9%</b>	<b>20.9%</b>
Occupational Therapists	9.0%	7.7%	6.7%	7.2%	8.0%	8.2%	8.4%
Physiotherapists	4.3%	4.4%	4.0%	4.3%	3.5%	3.4%	3.4%
Speech & Language Therapists	8.0%	7.3%	7.0%	6.4%	7.0%	6.7%	6.4%
<b>Therapy Professions</b>	<b>21.3%</b>	<b>19.4%</b>	<b>17.8%</b>	<b>18.0%</b>	<b>18.4%</b>	<b>18.3%</b>	<b>18.2%</b>
Clinical Engineering	0.5%	0.4%	0.4%	0.4%	0.4%	0.4%	0.4%
<b>Health Science/ Diagnostics</b>	<b>0.5%</b>	<b>0.4%</b>	<b>0.4%</b>	<b>0.4%</b>	<b>0.4%</b>	<b>0.4%</b>	<b>0.4%</b>
<b>Social Care</b>	<b>67.5%</b>	<b>68.8%</b>	<b>71.2%</b>	<b>70.7%</b>	<b>71.3%</b>	<b>71.3%</b>	<b>71.0%</b>
<b>Social Workers</b>	<b>5.2%</b>	<b>5.5%</b>	<b>5.1%</b>	<b>4.7%</b>	<b>4.5%</b>	<b>4.5%</b>	<b>4.7%</b>
<b>Psychologists</b>	<b>4.2%</b>	<b>4.7%</b>	<b>4.2%</b>	<b>4.9%</b>	<b>4.2%</b>	<b>4.4%</b>	<b>4.5%</b>
Counsellor Therapists	1.0%	0.9%	0.9%	1.0%	0.8%	0.8%	0.9%
Other Health & Social Care	0.1%	0.1%	0.2%	0.1%	0.1%	0.1%	0.1%
Play Therapists/ Specialists	0.2%	0.2%	0.2%	0.2%	0.2%	0.2%	0.2%
<b>H&amp;SC, Other</b>	<b>1.4%</b>	<b>1.3%</b>	<b>1.3%</b>	<b>1.4%</b>	<b>1.2%</b>	<b>1.1%</b>	<b>1.2%</b>
<b>Health &amp; Social Care Professionals</b>	<b>22.1%</b>	<b>23.5%</b>	<b>23.3%</b>	<b>23.6%</b>	<b>23.1%</b>	<b>24.0%</b>	<b>24.0%</b>
Executive Management	0.7%	1.3%	1.3%	0.7%	0.6%	0.6%	0.6%
Senior Management (VIII & GM)	8.7%	10.6%	6.0%	5.2%	7.9%	8.0%	8.2%
<b>Management (VIII &amp; above)</b>	<b>9.4%</b>	<b>12.0%</b>	<b>7.4%</b>	<b>5.9%</b>	<b>8.5%</b>	<b>8.6%</b>	<b>8.9%</b>
<b>Administrative/ Supervisory (V to VII)</b>	<b>36.4%</b>	<b>33.3%</b>	<b>36.4%</b>	<b>37.6%</b>	<b>35.8%</b>	<b>35.4%</b>	<b>34.2%</b>
<b>Clerical (III &amp; IV)</b>	<b>54.2%</b>	<b>54.7%</b>	<b>56.3%</b>	<b>56.5%</b>	<b>55.7%</b>	<b>55.9%</b>	<b>56.9%</b>
<b>Management &amp; Administrative</b>	<b>6.9%</b>	<b>7.2%</b>	<b>7.0%</b>	<b>6.9%</b>	<b>6.8%</b>	<b>7.1%</b>	<b>7.1%</b>
<b>Support</b>	<b>79.5%</b>	<b>76.5%</b>	<b>74.6%</b>	<b>74.3%</b>	<b>74.8%</b>	<b>75.2%</b>	<b>76.1%</b>
Maintenance	20.3%	23.4%	25.2%	25.5%	25.1%	24.6%	23.7%
Technical Services	0.1%	0.1%	0.1%	0.2%	0.2%	0.2%	0.2%
<b>Maintenance/ Technical</b>	<b>20.5%</b>	<b>23.5%</b>	<b>25.4%</b>	<b>25.7%</b>	<b>25.2%</b>	<b>24.8%</b>	<b>23.9%</b>
<b>General Support</b>	<b>4.3%</b>	<b>3.5%</b>	<b>3.1%</b>	<b>2.9%</b>	<b>2.8%</b>	<b>2.5%</b>	<b>2.5%</b>
HCA, Nurse's Aide, etc.	82.5%	83.3%	84.9%	85.9%	86.5%	86.6%	86.4%
Health & Social Care Assistants			0.3%	0.1%			
<b>Health Care Assistants</b>	<b>82.5%</b>	<b>83.3%</b>	<b>85.3%</b>	<b>86.0%</b>	<b>86.5%</b>	<b>86.6%</b>	<b>86.4%</b>
<b>Care, other</b>	<b>14.9%</b>	<b>13.9%</b>	<b>12.4%</b>	<b>11.7%</b>	<b>11.3%</b>	<b>11.2%</b>	<b>11.3%</b>

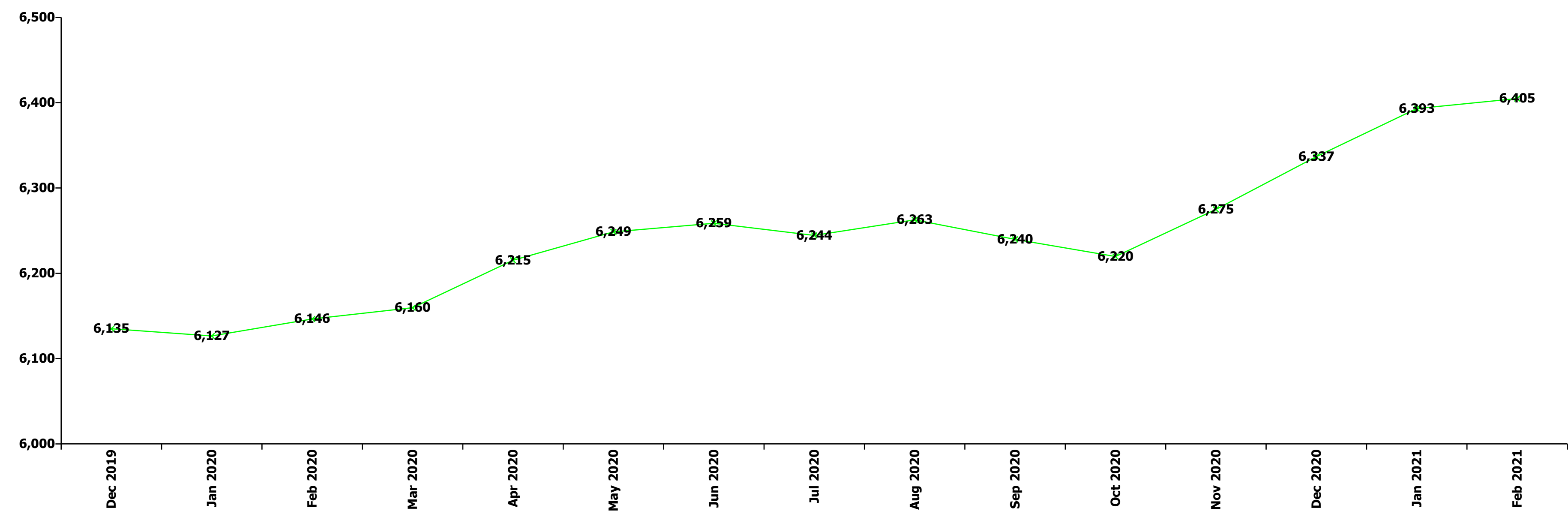
Feb 2021 (Dec 2019 figure: 2,162)	WTE Dec 2016	WTE Dec 2017	WTE Dec 2018	WTE Dec 2019	WTE Dec 2020	WTE Jan 2021	WTE Feb 2021
<b>Disabilities</b>	<b>1,984</b>	<b>2,078</b>	<b>2,134</b>	<b>2,162</b>	<b>2,205.48</b>	<b>2,234.49</b>	<b>2,218.03</b>
Home Help	2.6%	2.8%	2.3%	2.3%	2.3%	2.2%	2.3%
Patient & Client Care	43.4%	43.8%	44.8%	45.4%	44.5%	45.5%	45.5%
<b>Total</b>	<b>100 %</b>	<b>100 %</b>	<b>100 %</b>	<b>100 %</b>	<b>100 %</b>	<b>100 %</b>	<b>100%</b>

Feb 2021 (Dec 2019 figure: 1,488)	WTE Dec 2016	WTE Dec 2017	WTE Dec 2018	WTE Dec 2019	WTE Dec 2020	WTE Jan 2021	WTE Feb 2021
<b>Older People</b>	<b>1,531</b>	<b>1,498</b>	<b>1,503</b>	<b>1,488</b>	<b>1,483.75</b>	<b>1,482.01</b>	<b>1,482.11</b>
Medical/ Dental, other	100.0%	100.0%	100.0%	100.0%	100.0%	100.0%	100.0%
<b>Medical &amp; Dental</b>	<b>0.7%</b>	<b>0.7%</b>	<b>0.8%</b>	<b>0.7%</b>	<b>0.7%</b>	<b>0.7%</b>	<b>0.7%</b>
Clinical Nurse/ Midwife Manager	17.6%	17.1%	16.2%	15.5%	17.2%	17.5%	17.6%
Director Nursing/Midwifery, Assistant	2.4%	3.8%	3.8%	4.4%	4.1%	4.0%	4.0%
Director of Nursing/Midwifery	3.6%	3.8%	3.6%	3.3%	4.0%	4.0%	3.9%
<b>Nurse/ Midwife Manager</b>	<b>23.6%</b>	<b>24.7%</b>	<b>23.5%</b>	<b>23.2%</b>	<b>25.2%</b>	<b>25.5%</b>	<b>25.6%</b>
Advanced Nurse/ Midwife Practitioner					0.5%	0.5%	0.6%
Clinical Nurse/ Midwife Specialist	0.8%	0.9%	0.9%	0.6%	0.6%	0.6%	0.8%
<b>Nurse/ Midwife Specialist &amp; AN/MP</b>	<b>0.8%</b>	<b>0.9%</b>	<b>0.9%</b>	<b>0.6%</b>	<b>1.1%</b>	<b>1.1%</b>	<b>1.4%</b>
Staff Nurse [Intellectual Disability]	0.3%						
Staff Nurse [Psychiatric]	0.3%	0.3%	0.3%	0.3%	0.3%	0.3%	0.3%
Staff Nurses [General/ Children's]	74.0%	73.0%	74.3%	75.2%	72.0%	71.7%	71.4%
<b>Staff Nurse/ Staff Midwife</b>	<b>74.5%</b>	<b>73.3%</b>	<b>74.6%</b>	<b>75.5%</b>	<b>72.3%</b>	<b>72.0%</b>	<b>71.6%</b>
<b>Public Health Nurse</b>	<b>1.1%</b>	<b>1.1%</b>	<b>1.0%</b>	<b>0.7%</b>	<b>0.8%</b>	<b>0.8%</b>	<b>0.8%</b>
Nursing Education/Clinical					0.6%	0.6%	0.6%
<b>Nursing/ Midwifery other</b>					<b>0.6%</b>	<b>0.6%</b>	<b>0.6%</b>
<b>Nursing &amp; Midwifery</b>	<b>23.4%</b>	<b>22.8%</b>	<b>22.2%</b>	<b>22.2%</b>	<b>22.3%</b>	<b>24.0%</b>	<b>24.0%</b>
Dietitians			3.4%	3.4%	3.0%	3.9%	6.4%
Occupational Therapists	24.3%	28.0%	29.2%	29.7%	32.6%	30.6%	28.0%
Physiotherapists	33.4%	32.0%	26.1%	25.5%	33.1%	31.8%	29.8%
Podiatrists & Chiropodists	3.0%	3.4%	3.1%	3.4%			
Speech & Language Therapists	6.9%	10.1%	9.4%	7.5%	9.0%	11.0%	11.9%
<b>Therapy Professions</b>	<b>67.6%</b>	<b>73.5%</b>	<b>71.2%</b>	<b>69.5%</b>	<b>77.7%</b>	<b>77.2%</b>	<b>76.1%</b>
Radiographers	8.1%	8.5%					
<b>Health Science/ Diagnostics</b>	<b>8.1%</b>	<b>8.5%</b>					
<b>Social Workers</b>	<b>20.8%</b>	<b>14.4%</b>	<b>22.0%</b>	<b>22.1%</b>	<b>16.0%</b>	<b>14.8%</b>	<b>14.9%</b>
<b>Pharmacy</b>	<b>3.5%</b>	<b>3.6%</b>	<b>6.8%</b>	<b>8.4%</b>	<b>6.4%</b>	<b>8.0%</b>	<b>9.0%</b>
<b>Health &amp; Social Care Professionals</b>	<b>1.9%</b>	<b>1.9%</b>	<b>2.0%</b>	<b>2.0%</b>	<b>2.0%</b>	<b>2.3%</b>	<b>2.3%</b>
Management (VIII & above)	3.9%	2.5%	3.4%	5.8%	6.9%	6.9%	7.1%
Administrative/ Supervisory (V to VII)	17.8%	18.6%	22.5%	21.2%	21.5%	21.4%	22.4%
Clerical (III & IV)	78.3%	78.9%	74.1%	73.0%	71.7%	71.8%	70.5%
<b>Management &amp; Administrative</b>	<b>4.8%</b>	<b>4.7%</b>	<b>5.4%</b>	<b>6.4%</b>	<b>6.4%</b>	<b>6.6%</b>	<b>6.6%</b>
<b>Support</b>	<b>54.2%</b>	<b>53.5%</b>	<b>51.7%</b>	<b>52.0%</b>	<b>51.6%</b>	<b>51.4%</b>	<b>52.7%</b>
<b>Maintenance/ Technical</b>	<b>45.8%</b>	<b>46.5%</b>	<b>48.3%</b>	<b>48.0%</b>	<b>48.4%</b>	<b>48.6%</b>	<b>47.3%</b>
<b>General Support</b>	<b>3.1%</b>	<b>3.1%</b>	<b>3.3%</b>	<b>3.3%</b>	<b>3.3%</b>	<b>3.3%</b>	<b>3.3%</b>
HCA, Nurse's Aide, etc.	60.5%	59.6%	56.7%	57.0%	57.6%	57.5%	58.0%
HCA (Student Nurse/Midwife COVID-19)					0.1%	0.1%	0.1%
Health & Social Care Assistants	0.3%	0.3%	0.3%	0.2%	0.2%	0.2%	0.2%
<b>Health Care Assistants</b>	<b>60.8%</b>	<b>59.9%</b>	<b>56.9%</b>	<b>57.2%</b>	<b>57.9%</b>	<b>57.8%</b>	<b>58.2%</b>
<b>Care, other</b>	<b>2.3%</b>	<b>2.1%</b>	<b>2.1%</b>	<b>2.1%</b>	<b>2.3%</b>	<b>2.3%</b>	<b>2.2%</b>
<b>Home Help</b>	<b>37.0%</b>	<b>38.0%</b>	<b>41.0%</b>	<b>40.7%</b>	<b>39.8%</b>	<b>39.9%</b>	<b>39.5%</b>
<b>Patient &amp; Client Care</b>	<b>66.0%</b>	<b>66.8%</b>	<b>66.3%</b>	<b>65.3%</b>	<b>65.5%</b>	<b>63.2%</b>	<b>63.2%</b>
<b>Total</b>	<b>100 %</b>	<b>100 %</b>	<b>100 %</b>	<b>100 %</b>	<b>100 %</b>	<b>100 %</b>	<b>100%</b>

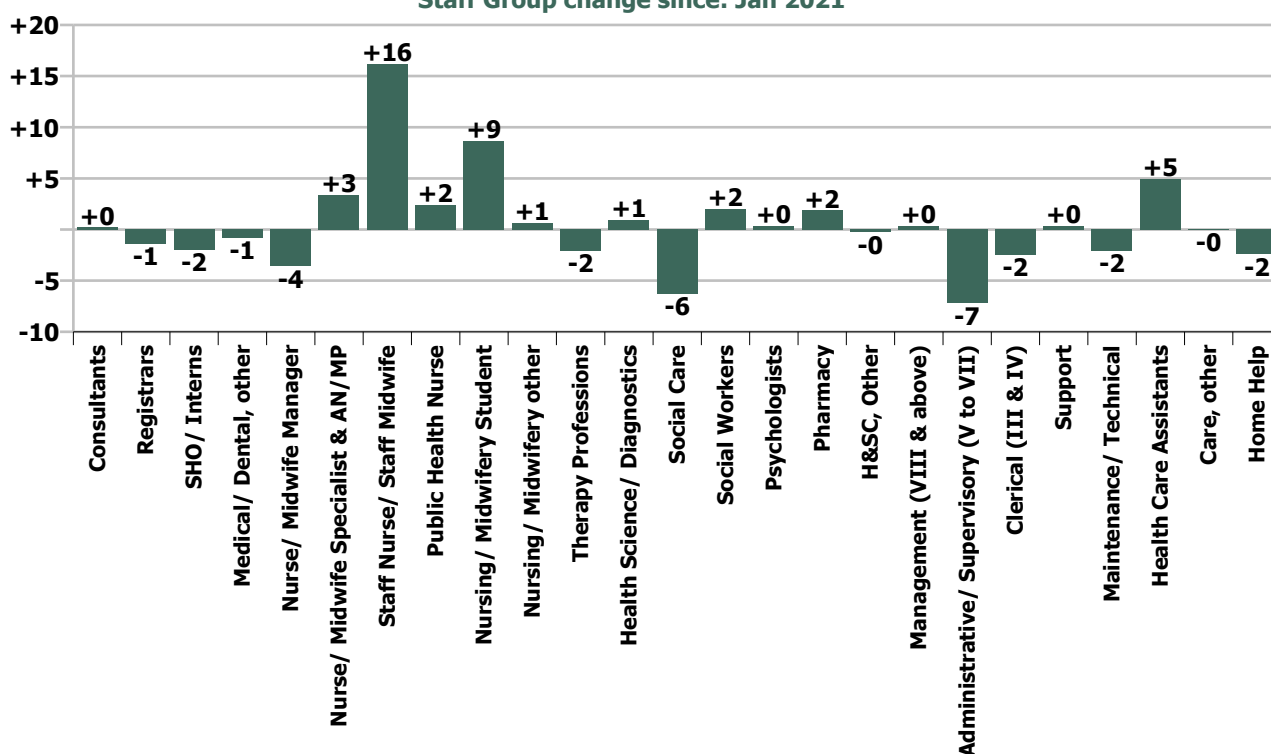
Summary Staff Movement: February 2021

Month-on-month Summary																												
WTE change since Jan 21	% change since Jan 21	overall	Consultants	Registrars	SHO/ Interns	Medical/ Dental, other	Medical & Dental	Nurse/ Midwife Manager	Nurse/ Midwife Specialist & AN/MP	Staff Nurse/ Staff Midwife	Public Health Nurse	Nursing/ Midwifery Student	Nursing/ Midwifery other	Nursing & Midwifery	Therapy Professions	Health Science/ Diagnostics	Social Care	Social Workers	Psychologists	Pharmacy	H&SC, Other	Health & Social Care Professionals	Management (VIII & above)	Administrative/ Supervisory (V to VII)	Clerical (III & IV)	Management & Administrative	General Support	Patient & Client Care
Overall	+0.2%	+12	+0.2	-1.4	-2.0	-0.8	-4.0	-3.6	+3.4	+16.2	+2.4	+8.7	+0.7	+27.7	-2.1	+1.0	-6.3	+2.0	+0.4	+1.9	-0.3	-3.4	+0.4	-7.2	-2.5	-9.3	-1.7	+2.4
Community Health & Wellbeing	-0.5%	-0													+0.1							+0.1	+0.1	-0.4	+0.1	-0.2		
Mental Health	+1.0%	+11	+1.2	-2.1	-2.0		-2.9	-2.0	+2.8	-0.3		+15.1	0.0	+15.6	-1.9		-0.7	+0.8	+0.9	0.0	+0.3	-0.6	-0.9	-1.6	+4.2	+1.7	-0.0	-2.2
Primary Care	+1.1%	+17	0.0	+0.8	0.0	-0.8	-0.1	-3.0	+0.4	+0.1	+2.4	+0.3	+0.1	+0.3	+1.4	+1.0	0.0	+0.5	-1.1	+1.6	-1.1	+2.2	+1.3	-1.9	-1.8	-2.4	+0.7	+16.1
Disabilities	-0.7%	-16	-1.0	0.0		0.0	-1.0	+0.4	-0.8	+15.7	0.0	-6.7	+0.6	+9.3	-1.3	0.0	-5.6	+0.7	+0.6		+0.6	-5.0	-0.0	-3.5	-0.9	-4.4	-2.0	-13.3
Older People	+0.0%	+0				0.0	0.0	+0.9	+1.0	+0.6	+0.0		0.0	+2.5	-0.4			+0.0		+0.3		-0.0	-0.0	+0.2	-4.1	-3.9	-0.4	+1.9
Social Care	-0.4%	-16	-1.0	0.0		0.0	-1.0	+1.4	+0.3	+16.3	+0.0	-6.7	+0.6	+11.8	-1.7	0.0	-5.6	+0.7	+0.6	+0.3	+0.6	-5.1	-0.1	-3.3	-4.9	-8.3	-2.4	-11.4
Change	+11.7	+0.2%	+0.5%	-1.3%	-6.3%	-1.1%	-1.5%	-0.9%	+3.1%	+1.6%	+1.2%	+27.2%	+5.5%	+1.6%	-0.5%	+10.4%	-1.6%	+2.3%	+0.3%	+19.9%	-0.5%	-0.3%	+0.6%	-3.5%	-0.5%	-1.2%	-0.9%	+0.1%

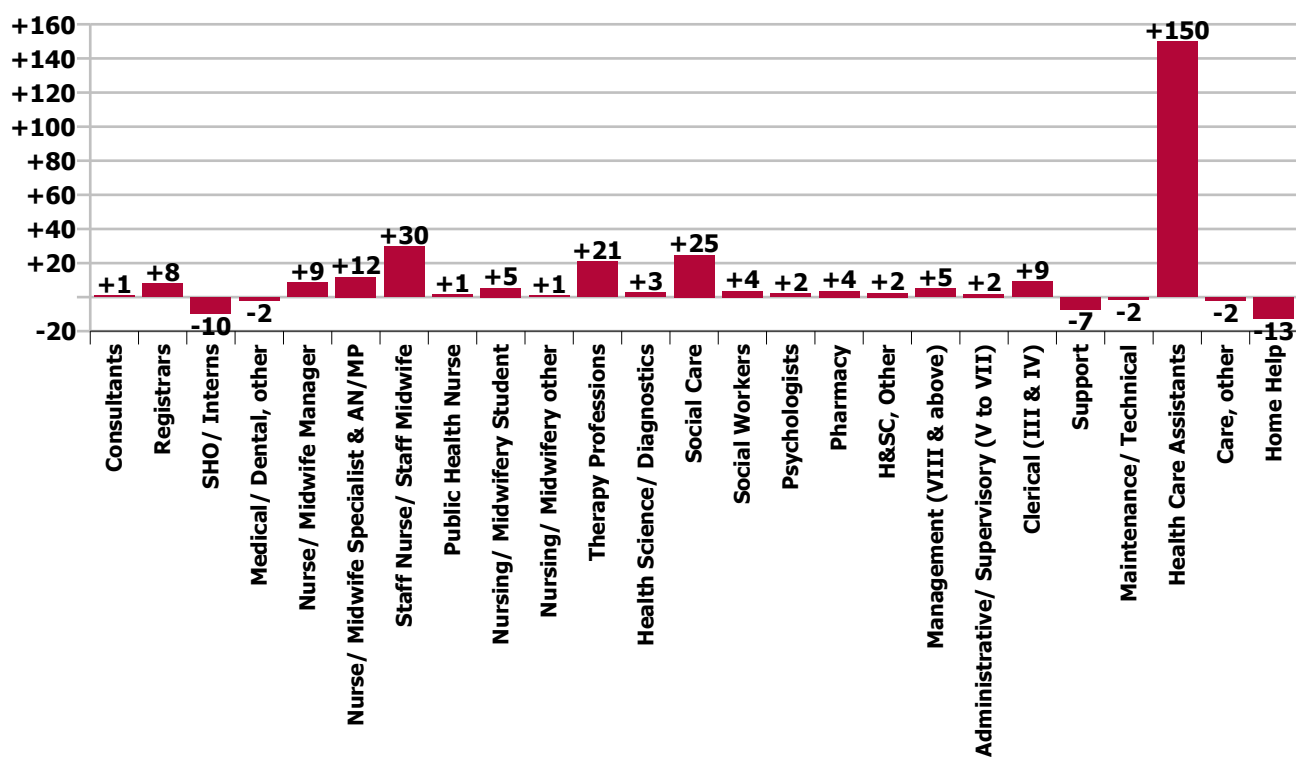
Year-on-year Summary																												
WTE change since Feb 20	% change since Feb 20	overall	Consultants	Registrars	SHO/ Interns	Medical/ Dental, other	Medical & Dental	Nurse/ Midwife Manager	Nurse/ Midwife Specialist & AN/MP	Staff Nurse/ Staff Midwife	Public Health Nurse	Nursing/ Midwifery Student	Nursing/ Midwifery other	Nursing & Midwifery	Therapy Professions	Health Science/ Diagnostics	Social Care	Social Workers	Psychologists	Pharmacy	H&SC, Other	Health & Social Care Professionals	Management (VIII & above)	Administrative/ Supervisory (V to VII)	Clerical (III & IV)	Management & Administrative	General Support	Patient & Client Care
Overall	+4.2%	+258	+0.9	+8.1	-9.7	-2.0	-2.6	+8.8	+11.9	+29.9	+1.3	+5.4	+1.1	+58.3	+20.8	+2.6	+24.7	+3.6	+2.0	+3.7	+2.4	+59.8	+5.0	+1.8	+9.4	+16.1	-8.6	+135.4
Community Health & Wellbeing	-0.5%	-0									-1.0			-1.0	+0.0							+0.0	+2.0	+2.4	+0.1	+4.5		
Mental Health	+1.0%	+11	+1.9	+8.8	-8.5		+2.2	-7.1	+4.9	+13.7		+1.9	-1.0	+12.4	-3.7		+0.4	+4.4	+1.4	+0.1	+1.9	+4.3	-1.0	-1.2	+5.2	+3.0	+0.5	-3.0
Primary Care	+1.1%	+17	0.0	-0.7	-1.2	-2.0	-3.9	-0.0	+5.7	+3.7	+1.8	+11.1	+0.0	+22.2	+14.6	+2.6	+1.0	-1.6	+1.1	+3.1	+1.3	+22.0	-1.6	+4.4	+3.6	+6.5	-1.5	+104.9
Disabilities	+4.1%	+87.5	-1.0	0.0		0.0	-1.0	+3.8	-1.7	+9.0	0.0	-7.6	+0.1	+3.6	+5.5	0.0	+23.3	+0.7	-0.4		-0.7	+28.3	+4.5	-3.8	+3.0	+3.8	-4.4	+57.2
Older People	-0.2%	-2.3				0.0	0.0	+12.1	+3.0	+3.5	+0.5		+2.0	+21.1	+4.5			+0.1		+0.5		+5.1	+1.0	-0.0	-2.6	-1.6	-3.1	-23.7
Social Care	-0.4%	-16	-1.0	0.0		0.0	-1.0	+15.9	+1.3	+12.5	+0.6	-7.6	+2.1	+24.7	+9.9	0.0	+23.3	+0.8	-0.4	+0.5	-0.7	+33.4	+5.6	-3.8	+0.4	+2.2	-7.6	+33.5
Change	+258.4	+4.2%	+2.1%	+8.1%	-24.6%	-2.7%	-1.0%	+2.4%	+11.7%	+3.0%	+0.7%	+15.3%	+9.5%	+3.4%	+5.5%	+34.0%	+6.8%	+4.1%	+1.7%	+47.3%	+4.6%	+5.9%	+8.1%	+0.9%	+1.8%	+2.1%	-4.4%	+6.2%



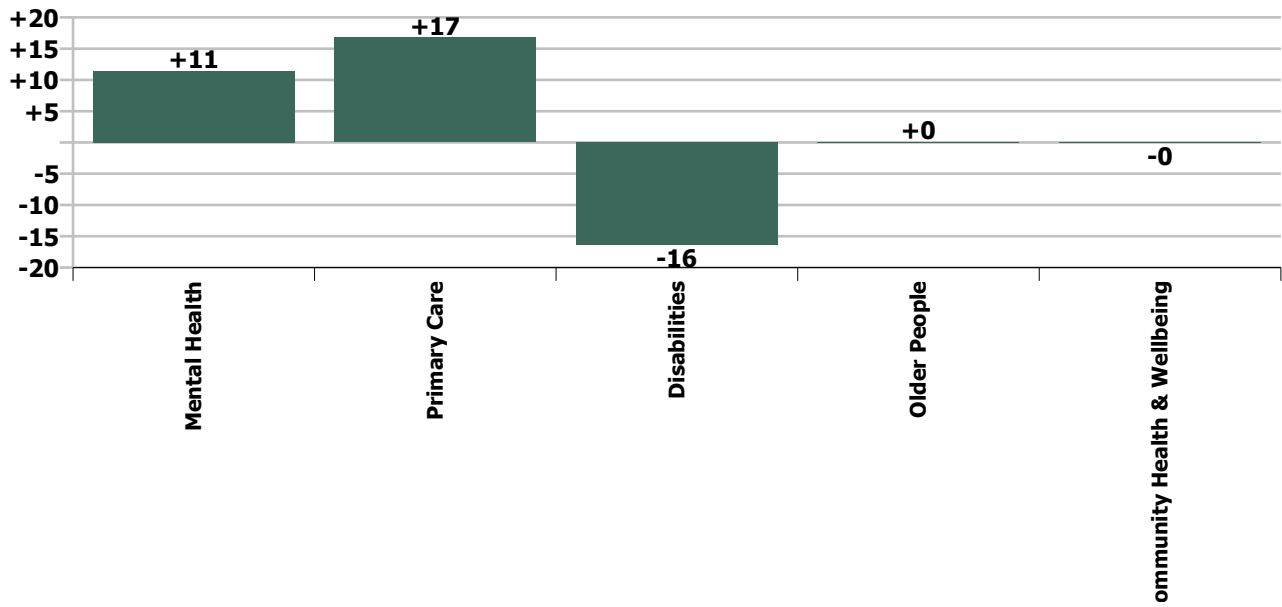
Staff Group change since: Jan 2021



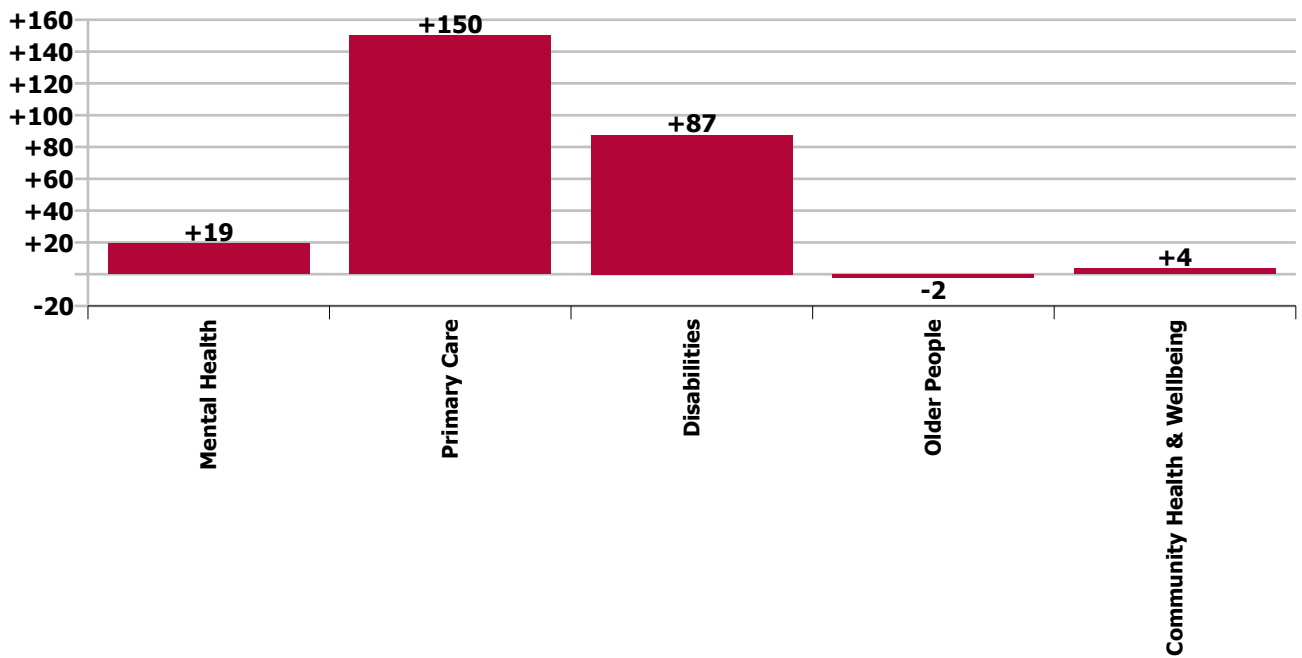
Staff Group change since: Feb 2020



Care Group change since: Jan 2021



Care Group change since: Feb 2020



## Longitudinal Employment Levels by Grade Group - Dec 2015 to Feb 2021

Feb 2021 (Dec 2016 figure: 6,014)	WTE Feb 2021	WTE change since Dec 15	WTE change since Dec 16	WTE change since Dec 17	WTE change since Dec 18	WTE change since Dec 19	WTE change since Dec 20	WTE change since Jan 21	% change since Dec 15	% change since Dec 16	% change since Dec 17	% change since Dec 18	% change since Dec 19	% change since Dec 20	% change since Jan 21
<b>Overall</b>	<b>6,405</b>	<b>+591</b>	<b>+391</b>	<b>+313</b>	<b>+277</b>	<b>+270</b>	<b>+68</b>	<b>+12</b>	<b>+10.2%</b>	<b>+6.5%</b>	<b>+5.1%</b>	<b>+4.5%</b>	<b>+4.4%</b>	<b>+1.1%</b>	<b>+0.2%</b>
Consultant Dentistry	1														
Consultant Medicine	5	+1	+1		+1		-0		+25.0%	+25.0%		+26.3%		-2.3%	
Consultant Psychiatry	38	+2	+1	+4	+3	+2	+1	+0	+5.8%	+3.8%	+11.2%	+7.5%	+4.9%	+1.8%	+0.6%
<b>Consultants</b>	<b>44</b>	<b>+3</b>	<b>+2</b>	<b>+4</b>	<b>+4</b>	<b>+2</b>	<b>+1</b>	<b>+0</b>	<b>+7.6%</b>	<b>+5.8%</b>	<b>+9.5%</b>	<b>+9.2%</b>	<b>+4.2%</b>	<b>+1.3%</b>	<b>+0.5%</b>
Registrar	96	+16	+10	+8	+9	+4	-5	-1	+20.5%	+11.6%	+8.8%	+10.7%	+3.8%	-5.1%	-0.7%
Senior Registrar	12	+3	+1	-1	-0	-1	-1	-1	+31.3%	+13.3%	-9.8%	-2.2%	-8.9%	-5.4%	-5.4%
<b>Registrars</b>	<b>108</b>	<b>+19</b>	<b>+11</b>	<b>+6</b>	<b>+9</b>	<b>+2</b>	<b>-6</b>	<b>-1</b>	<b>+21.6%</b>	<b>+11.8%</b>	<b>+6.3%</b>	<b>+9.0%</b>	<b>+2.2%</b>	<b>-5.2%</b>	<b>-1.3%</b>
Interns		-1	-1						-100.0%	-100.0%	-100.0%	-100.0%	-100.0%	-100.0%	-100.0%
Senior House Officer	30	-1	+3	+4	+2	-8	+3	-2	-4.0%	+10.4%	+14.3%	+6.5%	-22.0%	+9.7%	-6.3%
<b>SHO/ Interns</b>	<b>30</b>	<b>-2</b>	<b>+2</b>	<b>+4</b>	<b>+2</b>	<b>-8</b>	<b>+3</b>	<b>-2</b>	<b>-7.0%</b>	<b>+6.5%</b>	<b>+14.3%</b>	<b>+6.5%</b>	<b>-22.0%</b>	<b>+9.7%</b>	<b>-6.3%</b>
Dentists	36	+3	+1	+2	+4	+1	-1	-1	+8.9%	+2.1%	+6.3%	+10.8%	+2.1%	-1.6%	-1.8%
Other Medical	35	+2	+2	+2	-1	-1	-0	-0	+4.5%	+5.1%	+5.1%	-1.4%	-4.0%	-0.8%	-0.4%
<b>Medical/ Dental, other</b>	<b>72</b>	<b>+4</b>	<b>+2</b>	<b>+4</b>	<b>+3</b>	<b>-1</b>	<b>-1</b>	<b>-1</b>	<b>+6.7%</b>	<b>+3.6%</b>	<b>+5.7%</b>	<b>+4.4%</b>	<b>-1.0%</b>	<b>-1.2%</b>	<b>-1.1%</b>
<b>Medical &amp; Dental</b>	<b>254</b>	<b>+25</b>	<b>+18</b>	<b>+18</b>	<b>+17</b>	<b>-5</b>	<b>-4</b>	<b>-4</b>	<b>+10.7%</b>	<b>+7.7%</b>	<b>+7.6%</b>	<b>+7.4%</b>	<b>-1.9%</b>	<b>-1.4%</b>	<b>-1.5%</b>
Clinical Nurse/ Midwife Manager	290	+1	-10	-10	-7	+3	+4	-0	+0.3%	-3.3%	-3.2%	-2.2%	+0.9%	+1.3%	-0.1%
Director Nursing/Midwifery, Assistant	61	+8	+4	+2	-0	+1	-4	-3	+14.2%	+7.0%	+3.3%	-0.2%	+1.7%	-6.5%	-3.9%
Director of Nursing/Midwifery	28	+3	+2	+1	+6	+4	+0	-1	+12.7%	+9.0%	+4.3%	+28.3%	+15.4%	+0.0%	-2.4%
<b>Nurse/ Midwife Manager</b>	<b>379</b>	<b>+12</b>	<b>-3</b>	<b>-7</b>	<b>-0</b>	<b>+7</b>	<b>-0</b>	<b>-4</b>	<b>+3.1%</b>	<b>-0.9%</b>	<b>-1.7%</b>	<b>-0.1%</b>	<b>+2.0%</b>	<b>-0.1%</b>	<b>-0.9%</b>
Advanced Nurse/ Midwife Practitioner	9	+9	+8	+8	+7	+5	+0	+0	-100.0%	+796.0%	+796.0%	+348.0%	+126.3%	+1.6%	+0.9%
Clinical Nurse/ Midwife Specialist	104	+14	+7	+7	+7	+8	+1	+3	+15.2%	+7.0%	+7.7%	+6.9%	+8.3%	+1.2%	+3.3%
<b>Nurse/ Midwife Specialist &amp; AN/MP</b>	<b>113</b>	<b>+23</b>	<b>+15</b>	<b>+15</b>	<b>+14</b>	<b>+13</b>	<b>+1</b>	<b>+3</b>	<b>+25.1%</b>	<b>+15.1%</b>	<b>+15.8%</b>	<b>+13.8%</b>	<b>+13.0%</b>	<b>+1.3%</b>	<b>+3.1%</b>
Staff Nurse [Intellectual Disability]	125	-133	-134	-136	-140	-107	-132	-134	-51.6%	-51.8%	-52.2%	-52.9%	-46.2%	-51.5%	-51.8%
Staff Nurse [Psychiatric]	483	+132	+149	+152	+154	+150	+141	+147	+37.7%	+44.5%	+45.8%	+46.7%	+45.1%	+41.3%	+43.5%
Staff Nurses [General/ Children's]	415	-18	-29	-4	+3	-18	+1	+4	-4.2%	-6.6%	-0.9%	+0.8%	-4.1%	+0.2%	+0.9%
<b>Staff Nurse/ Staff Midwife</b>	<b>1,023</b>	<b>-19</b>	<b>-14</b>	<b>+12</b>	<b>+17</b>	<b>+25</b>	<b>+10</b>	<b>+16</b>	<b>-1.8%</b>	<b>-1.4%</b>	<b>+1.2%</b>	<b>+1.7%</b>	<b>+2.5%</b>	<b>+1.0%</b>	<b>+1.6%</b>
<b>Public Health Nurse</b>	<b>205</b>	<b>+11</b>	<b>+6</b>	<b>+7</b>	<b>+8</b>	<b>+6</b>	<b>+4</b>	<b>+2</b>	<b>+5.7%</b>	<b>+2.8%</b>	<b>+3.3%</b>	<b>+4.1%</b>	<b>+2.9%</b>	<b>+2.0%</b>	<b>+1.2%</b>
Pre-registration Nurse/ Midwife Intern	28	+28	+28	+27	+27	+27	+28	+9	-100.0%	-100.0%	+5408.0%	+5408.0%	+5408.0%	-100.0%	+45.2%
Pre-registration Nurse Intern (COVID-19)							-5	-0	-100.0%	-100.0%	-100.0%	-100.0%	-100.0%	-100.0%	-100.0%
Post-registration Nurse/ Midwife Student	13	+2	-3		+5	+11	+1	+0	+18.2%	-18.8%		+62.5%	+556.6%	+8.3%	+2.0%
Nursing/ Midwifery awaiting registration			-2	-1	-1	-2			-100.0%	-100.0%	-100.0%	-100.0%	-100.0%	-100.0%	-100.0%
<b>Nursing/ Midwifery Student</b>	<b>41</b>	<b>+30</b>	<b>+23</b>	<b>+27</b>	<b>+31</b>	<b>+36</b>	<b>+24</b>	<b>+9</b>	<b>+268.5%</b>	<b>+125.2%</b>	<b>+188.7%</b>	<b>+322.7%</b>	<b>+804.9%</b>	<b>+138.1%</b>	<b>+27.2%</b>
Nursing Education/Clinical	13	+7	+7	+4	+5	+3	+0	+1	+107.6%	+104.3%	+49.9%	+74.5%	+35.7%	+2.9%	+5.5%
<b>Nursing/ Midwifery other</b>	<b>13</b>	<b>+7</b>	<b>+7</b>	<b>+4</b>	<b>+5</b>	<b>+3</b>	<b>+0</b>	<b>+1</b>	<b>+107.6%</b>	<b>+104.3%</b>	<b>+49.9%</b>	<b>+74.5%</b>	<b>+35.7%</b>	<b>+2.9%</b>	<b>+5.5%</b>
<b>Nursing &amp; Midwifery</b>	<b>1,773</b>	<b>+62</b>	<b>+32</b>	<b>+58</b>	<b>+75</b>	<b>+91</b>	<b>+39</b>	<b>+28</b>	<b>+3.6%</b>	<b>+1.8%</b>	<b>+3.4%</b>	<b>+4.4%</b>	<b>+5.4%</b>	<b>+2.2%</b>	<b>+1.6%</b>
Dietitians	23	+9	+6	+5	+4	+3	+2	+1	+68.7%	+39.1%	+30.7%	+20.6%	+14.6%	+8.5%	+4.8%
Occupational Therapists	153	+23	+20	+10	+18	+14	+3	+1	+17.9%	+15.3%	+7.1%	+13.0%	+10.1%	+2.3%	+0.6%
Orthoptists	2	+1	+1	+1	+1	+2		+0	+300.0%	+263.6%	+263.6%	+263.6%	-100.0%		+1.3%
Physiotherapists	108	-1	-4	-3	-1	+1	-1	-2	-0.9%	-3.8%	-2.8%	-0.6%	+0.8%	-0.5%	-1.6%
Podiatrists & Chiropractors	4	+1	+2	+0	-1	-1	-0	-0	+36.7%	+61.2%	+2.1%	-11.4%	-13.6%	-5.3%	-7.5%



Feb 2021 (Dec 2016 figure: 6,014)	WTE Feb 2021	WTE change since Dec 15	WTE change since Dec 16	WTE change since Dec 17	WTE change since Dec 18	WTE change since Dec 19	WTE change since Dec 20	WTE change since Jan 21	% change since Dec 15	% change since Dec 16	% change since Dec 17	% change since Dec 18	% change since Dec 19	% change since Dec 20	% change since Jan 21
<b>Overall</b>	<b>6,405</b>	<b>+591</b>	<b>+391</b>	<b>+313</b>	<b>+277</b>	<b>+270</b>	<b>+68</b>	<b>+12</b>	<b>+10.2%</b>	<b>+6.5%</b>	<b>+5.1%</b>	<b>+4.5%</b>	<b>+4.4%</b>	<b>+1.1%</b>	<b>+0.2%</b>
Speech & Language Therapists	110	+26	+2	-8	+1	+3	+0	-2	+30.3%	+1.9%	-6.4%	+0.5%	+3.2%	+0.1%	-1.9%
<b>Therapy Professions</b>	<b>399</b>	<b>+59</b>	<b>+27</b>	<b>+6</b>	<b>+22</b>	<b>+22</b>	<b>+5</b>	<b>-2</b>	<b>+17.4%</b>	<b>+7.3%</b>	<b>+1.6%</b>	<b>+5.9%</b>	<b>+5.9%</b>	<b>+1.1%</b>	<b>-0.5%</b>
Audiology	6	+2	+2	+2	+2	+3	+1	+1	+51.6%	+42.6%	+45.6%	+45.6%	+94.7%	+18.2%	+18.2%
Clinical Engineering	4	+4							-100.0%						
Radiographers		-2	-2	-3					-100.0%	-100.0%	-100.0%	-100.0%	-100.0%	-100.0%	-100.0%
<b>Health Science/ Diagnostics</b>	<b>10</b>	<b>+4</b>	<b>-0</b>	<b>-1</b>	<b>+2</b>	<b>+3</b>	<b>+1</b>	<b>+1</b>	<b>+67.3%</b>	<b>-4.2%</b>	<b>-8.0%</b>	<b>+23.7%</b>	<b>+42.3%</b>	<b>+10.4%</b>	<b>+10.4%</b>
<b>Social Care</b>	<b>385</b>	<b>+109</b>	<b>+82</b>	<b>+43</b>	<b>+24</b>	<b>+17</b>	<b>-3</b>	<b>-6</b>	<b>+39.6%</b>	<b>+26.9%</b>	<b>+12.5%</b>	<b>+6.7%</b>	<b>+4.7%</b>	<b>-0.7%</b>	<b>-1.6%</b>
<b>Social Workers</b>	<b>91</b>	<b>+9</b>	<b>+3</b>	<b>-1</b>	<b>+0</b>	<b>+3</b>	<b>+2</b>	<b>+2</b>	<b>+11.2%</b>	<b>+3.2%</b>	<b>-0.6%</b>	<b>+0.0%</b>	<b>+3.4%</b>	<b>+2.2%</b>	<b>+2.3%</b>
<b>Psychologists</b>	<b>117</b>	<b>+13</b>	<b>+18</b>	<b>+9</b>	<b>+12</b>	<b>-2</b>	<b>+2</b>	<b>+0</b>	<b>+12.7%</b>	<b>+18.3%</b>	<b>+8.1%</b>	<b>+11.1%</b>	<b>-2.0%</b>	<b>+1.9%</b>	<b>+0.3%</b>
<b>Pharmacy</b>	<b>11</b>	<b>+8</b>	<b>+7</b>	<b>+7</b>	<b>+5</b>	<b>+4</b>	<b>+3</b>	<b>+2</b>	<b>+217.6%</b>	<b>+148.3%</b>	<b>+138.4%</b>	<b>+92.1%</b>	<b>+56.4%</b>	<b>+36.8%</b>	<b>+19.9%</b>
Counsellor Therapists	41	+7	+5	+1	+1	+3	+2	+1	+20.1%	+14.9%	+2.7%	+3.8%	+8.5%	+6.2%	+2.6%
Dental Hygienists	12	-1	-0	-1	-1	-1	-1	-1	-10.4%	-3.9%	-4.9%	-5.9%	-4.8%	-8.2%	-9.3%
Other Health & Social Care	2	-0	-0	-0	-0	-0	-0	-0	-12.5%	-14.9%	-11.0%	-16.3%	-5.5%	-7.8%	-6.7%
Play Therapists/ Specialists	1														
<b>H&amp;SC, Other</b>	<b>55</b>	<b>+5</b>	<b>+5</b>	<b>+0</b>	<b>+0</b>	<b>+2</b>	<b>+1</b>	<b>-0</b>	<b>+10.5%</b>	<b>+9.0%</b>	<b>+0.5%</b>	<b>+0.8%</b>	<b>+4.8%</b>	<b>+2.2%</b>	<b>-0.5%</b>
<b>Health &amp; Social Care Professionals</b>	<b>1,069</b>	<b>+208</b>	<b>+141</b>	<b>+63</b>	<b>+66</b>	<b>+50</b>	<b>+11</b>	<b>-3</b>	<b>+24.2%</b>	<b>+15.2%</b>	<b>+6.3%</b>	<b>+6.6%</b>	<b>+4.9%</b>	<b>+1.1%</b>	<b>-0.3%</b>
Executive Management	10	+6	+1	+0	+0	+1	+0	+0	+150.0%	+12.9%	+1.4%	+2.2%	+12.9%	+1.9%	+0.7%
Senior Management (VIII & GM)	57	+9	+7	+4	+7	+3	-0	+0	+19.4%	+14.7%	+7.2%	+14.3%	+6.4%	-0.4%	+0.5%
<b>Management (VIII &amp; above)</b>	<b>67</b>	<b>+15</b>	<b>+8</b>	<b>+4</b>	<b>+7</b>	<b>+5</b>	<b>-0</b>	<b>+0</b>	<b>+29.5%</b>	<b>+14.4%</b>	<b>+6.3%</b>	<b>+12.3%</b>	<b>+7.3%</b>	<b>-0.0%</b>	<b>+0.6%</b>
Middle Management (V-VII)	198	+65	+54	+49	+24	+21	-6	-7	+48.8%	+38.0%	+33.1%	+13.7%	+12.1%	-2.9%	-3.5%
Other Administrative			-1						-100.0%	-100.0%	-100.0%	-100.0%	-100.0%	-100.0%	-100.0%
<b>Administrative/ Supervisory (V to VII)</b>	<b>198</b>	<b>+65</b>	<b>+53</b>	<b>+49</b>	<b>+24</b>	<b>+21</b>	<b>-6</b>	<b>-7</b>	<b>+48.8%</b>	<b>+37.1%</b>	<b>+33.1%</b>	<b>+13.7%</b>	<b>+12.1%</b>	<b>-2.9%</b>	<b>-3.5%</b>
<b>Clerical (III &amp; IV)</b>	<b>533</b>	<b>+17</b>	<b>+9</b>	<b>+11</b>	<b>+22</b>	<b>+26</b>	<b>+0</b>	<b>-2</b>	<b>+3.3%</b>	<b>+1.8%</b>	<b>+2.2%</b>	<b>+4.3%</b>	<b>+5.1%</b>	<b>+0.0%</b>	<b>-0.5%</b>
<b>Management &amp; Administrative</b>	<b>798</b>	<b>+97</b>	<b>+71</b>	<b>+64</b>	<b>+53</b>	<b>+52</b>	<b>-6</b>	<b>-9</b>	<b>+13.9%</b>	<b>+9.8%</b>	<b>+8.8%</b>	<b>+7.1%</b>	<b>+7.0%</b>	<b>-0.7%</b>	<b>-1.2%</b>
Catering	31	-6	-5	-2	-5	-2	+1	+1	-16.2%	-13.5%	-5.8%	-13.8%	-5.9%	+2.1%	+3.9%
Household Services	52	-29	-19	-13	-5	-5	-1	-2	-35.3%	-26.4%	-20.1%	-8.3%	-9.0%	-1.9%	-2.9%
Other Support	29	-3	-7	-8	-4	-2	+0	+1	-10.1%	-18.5%	-21.3%	-12.2%	-7.1%	+0.9%	+2.7%
Portering	5	+1							+34.0%						
<b>Support</b>	<b>118</b>	<b>-37</b>	<b>-30</b>	<b>-23</b>	<b>-14</b>	<b>-9</b>	<b>-0</b>	<b>+0</b>	<b>-23.7%</b>	<b>-20.5%</b>	<b>-16.4%</b>	<b>-10.5%</b>	<b>-7.4%</b>	<b>-0.1%</b>	<b>+0.3%</b>
Maintenance	67	-1	-2	-3	-5	-2	-2	-2	-2.0%	-3.1%	-4.4%	-7.6%	-3.0%	-2.8%	-3.1%
Technical Services	0														
<b>Maintenance/ Technical</b>	<b>67</b>	<b>-1</b>	<b>-2</b>	<b>-3</b>	<b>-5</b>	<b>-2</b>	<b>-2</b>	<b>-2</b>	<b>-2.0%</b>	<b>-3.1%</b>	<b>-4.4%</b>	<b>-7.6%</b>	<b>-3.0%</b>	<b>-2.8%</b>	<b>-3.1%</b>
<b>General Support</b>	<b>185</b>	<b>-38</b>	<b>-33</b>	<b>-26</b>	<b>-19</b>	<b>-11</b>	<b>-2</b>	<b>-2</b>	<b>-17.1%</b>	<b>-15.0%</b>	<b>-12.4%</b>	<b>-9.5%</b>	<b>-5.8%</b>	<b>-1.1%</b>	<b>-0.9%</b>
HCA, Nurse's Aide, etc.	1,575	+135	+79	+53	+29	+11	-2	-9	+9.4%	+5.3%	+3.5%	+1.9%	+0.7%	-0.1%	-0.6%
HCA (Student Nurse/Midwife COVID-19)	1	+1	+1	+1	+1	+1	-1	-1	-100.0%	-100.0%	-100.0%	-100.0%	-100.0%	-46.4%	-48.2%
Health & Social Care Assistants	16	+12	+12	+12	-5	+2	+1	+0	+330.9%	+304.1%	+304.1%	-24.6%	+17.0%	+4.8%	+3.0%
Swabber (COVID-19)	106	+106	+106	+106	+106	+106	+37	+14	-100.0%	-100.0%	-100.0%	-100.0%	-100.0%	+52.6%	+15.6%
<b>Health Care Assistants</b>	<b>1,697</b>	<b>+254</b>	<b>+198</b>	<b>+172</b>	<b>+131</b>	<b>+120</b>	<b>+35</b>	<b>+5</b>	<b>+17.6%</b>	<b>+13.2%</b>	<b>+11.3%</b>	<b>+8.3%</b>	<b>+7.6%</b>	<b>+2.1%</b>	<b>+0.3%</b>
<b>Care, other</b>	<b>237</b>	<b>-24</b>	<b>-32</b>	<b>-22</b>	<b>-8</b>	<b>-1</b>	<b>-2</b>	<b>-0</b>	<b>-9.1%</b>	<b>-11.8%</b>	<b>-8.6%</b>	<b>-3.1%</b>	<b>-0.4%</b>	<b>-0.6%</b>	<b>-0.0%</b>



Feb 2021 (Dec 2016 figure: 6,014)	WTE Feb 2021	WTE change since Dec 15	WTE change since Dec 16	WTE change since Dec 17	WTE change since Dec 18	WTE change since Dec 19	WTE change since Dec 20	WTE change since Jan 21	% change since Dec 15	% change since Dec 16	% change since Dec 17	% change since Dec 18	% change since Dec 19	% change since Dec 20	% change since Jan 21
<b>Overall</b>	<b>6,405</b>	<b>+591</b>	<b>+391</b>	<b>+313</b>	<b>+277</b>	<b>+270</b>	<b>+68</b>	<b>+12</b>	<b>+10.2%</b>	<b>+6.5%</b>	<b>+5.1%</b>	<b>+4.5%</b>	<b>+4.4%</b>	<b>+1.1%</b>	<b>+0.2%</b>
<b>Home Help</b>	<b>393</b>	<b>+7</b>	<b>-4</b>	<b>-13</b>	<b>-38</b>	<b>-25</b>	<b>-4</b>	<b>-2</b>	<b>+1.7%</b>	<b>-1.0%</b>	<b>-3.3%</b>	<b>-8.7%</b>	<b>-6.0%</b>	<b>-0.9%</b>	<b>-0.6%</b>
<b>Patient &amp; Client Care</b>	<b>2,327</b>	<b>+237</b>	<b>+162</b>	<b>+136</b>	<b>+85</b>	<b>+94</b>	<b>+29</b>	<b>+2</b>	<b>+11.3%</b>	<b>+7.5%</b>	<b>+6.2%</b>	<b>+3.8%</b>	<b>+4.2%</b>	<b>+1.3%</b>	<b>+0.1%</b>

Source: Health Service Personnel Census

Longitudinal Employment Levels by Care Group - Dec 2015 to Feb 2021

Community Health & Wellbeing

Feb 2021 ( figure: )	WTE Feb 2021	WTE change since	WTE change since	WTE change since	WTE change since	WTE change since	WTE change since	WTE change since Jan 21	% change since	% change since	% change since	% change since	% change since	% change since	% change since Jan 21
Overall	29	+29	+29	+29	+29	+29	+29	-0	-100.0%	-100.0%	-100.0%	-100.0%	-100.0%	-100.0%	-0.5%
Health & Social Care Professionals	2	+2	+2	+2	+2	+2	+2	+0	-1.0%	-1.0%	-1.0%	-1.0%	-1.0%	-1.0%	+0.1%
Therapy Professions	2	+2	+2	+2	+2	+2	+2	+0	-1.0%	-1.0%	-1.0%	-1.0%	-1.0%	-1.0%	+0.1%
Management & Administrative	28	+28	+28	+28	+28	+28	+28	-0	-1.0%	-1.0%	-1.0%	-1.0%	-1.0%	-1.0%	-0.0%
Management (VIII & above)	3	+3	+3	+3	+3	+3	+3	+0	-1.0%	-1.0%	-1.0%	-1.0%	-1.0%	-1.0%	+0.0%
Administrative/ Supervisory (V to VII)	20	+20	+20	+20	+20	+20	+20	-0	-1.0%	-1.0%	-1.0%	-1.0%	-1.0%	-1.0%	-0.0%
Clerical (III & IV)	4	+4	+4	+4	+4	+4	+4	+0	-1.0%	-1.0%	-1.0%	-1.0%	-1.0%	-1.0%	+0.0%

Source: Health Service Personnel Census

Mental Health

Feb 2021 (Dec 2016 figure: 1,041)	WTE Feb 2021	WTE change since Dec 15	WTE change since Dec 16	WTE change since Dec 17	WTE change since Dec 18	WTE change since Dec 19	WTE change since Dec 19	WTE change since Jan 21	% change since Dec 15	% change since Dec 16	% change since Dec 17	% change since Dec 18	% change since Dec 19	% change since Dec 19	% change since Jan 21
Overall	1,125	+84	+84	+46	+56	+28	+28	+11	+8.0%	+8.1%	+4.2%	+5.2%	+2.5%	+2.5%	+1.0%
Medical & Dental	94	+12	+14	+7	+8	-3	-3	-3	+0.1%	+0.2%	+0.1%	+0.1%	-0.0%	-0.0%	-0.0%
Consultants	38	+4	+3	+5	+4	+3	+3	+1	+0.1%	+0.1%	+0.1%	+0.1%	+0.1%	+0.1%	+0.0%
Registrars	28	+11	+9	-2	+2	+2	+2	-2	+0.7%	+0.4%	-0.1%	+0.1%	+0.1%	+0.1%	-0.1%
SHO/ Interns	29	-3	+2	+4	+3	-7	-7	-2	-0.1%	+0.1%	+0.2%	+0.1%	-0.2%	-0.2%	-0.1%
Nursing & Midwifery	539	+37	+34	+28	+31	+24	+24	+16	+0.1%	+0.1%	+0.1%	+0.1%	+0.0%	+0.0%	+0.0%
Nurse/ Midwife Manager	115	-0	-8	-15	-12	-5	-5	-2	-0.0%	-0.1%	-0.1%	-0.1%	-0.0%	-0.0%	-0.0%
Nurse/ Midwife Specialist & AN/MP	60	+18	+12	+11	+9	+4	+4	+3	+0.4%	+0.3%	+0.2%	+0.2%	+0.1%	+0.1%	+0.0%
Staff Nurse/ Staff Midwife	338	-3	+8	+11	+13	+7	+7	-0	-0.0%	+0.0%	+0.0%	+0.0%	+0.0%	+0.0%	-0.0%
Nursing/ Midwifery Student	22	+22	+20	+21	+21	+19	+19	+15	-1.0%	+9.9%	+19.9%	+18.9%	+7.7%	+7.7%	+2.3%
Nursing/ Midwifery other	3	+1	+1	+0	+1	-1	-1		+0.6%	+0.6%	+0.0%	+0.5%	-0.2%	-0.2%	+0.0%
Health & Social Care Professionals	157	+21	+23	+6	+9	+3	+3	-1	+0.2%	+0.2%	+0.0%	+0.1%	+0.0%	+0.0%	-0.0%
Therapy Professions	42	+4	+7	-2	-2	-2	-2	-2	+0.1%	+0.2%	-0.0%	-0.0%	-0.0%	-0.0%	-0.0%
Social Care	7	+1	-0	+0	+0	-1	-1	-1	+0.1%	-0.0%	+0.0%	+0.0%	-0.1%	-0.1%	-0.1%
Social Workers	46	+5	+3	+3	+6	+4	+4	+1	+0.1%	+0.1%	+0.1%	+0.1%	+0.1%	+0.1%	+0.0%
Psychologists	39	+6	+9	+1	+1	-1	-1	+1	+0.2%	+0.3%	+0.0%	+0.0%	-0.0%	-0.0%	+0.0%
Pharmacy	1	+1	+1	+0	+0	+0	+0		-1.0%	+1.4%	+0.5%	+0.5%	+0.5%	+0.5%	+0.0%
H&SC, Other	22	+4	+3	+4	+4	+2	+2	+0	+0.2%	+0.2%	+0.2%	+0.2%	+0.1%	+0.1%	+0.0%
Management & Administrative	121	+22	+20	+10	+12	+7	+7	+2	+0.2%	+0.2%	+0.1%	+0.1%	+0.1%	+0.1%	+0.0%
Management (VIII & above)	2	-1	+1	-0	+0	-1	-1	-1	-0.3%	+1.0%	-0.0%	+0.0%	-0.3%	-0.3%	-0.3%
Administrative/ Supervisory (V to VII)	19	+3	+3	+0	-3	-4	-4	-2	+0.2%	+0.2%	+0.0%	-0.1%	-0.2%	-0.2%	-0.1%
Clerical (III & IV)	100	+19	+16	+10	+15	+12	+12	+4	+0.2%	+0.2%	+0.1%	+0.2%	+0.1%	+0.1%	+0.0%
General Support	59	-1	+0	-5	-2	-0	-0	-0	-0.0%	+0.0%	-0.1%	-0.0%	-0.0%	-0.0%	-0.0%
Support	31	-1	+0	-4	-2	-2	-2	+0	-0.0%	+0.0%	-0.1%	-0.1%	-0.1%	-0.1%	+0.0%
Maintenance/ Technical	28	-0	+0	-0	-0	+2	+2	-0	-0.0%	+0.0%	-0.0%	-0.0%	+0.1%	+0.1%	-0.0%
Patient & Client Care	156	-7	-7	-1	-2	-4	-4	-2	-0.0%	-0.0%	-0.0%	-0.0%	-0.0%	-0.0%	-0.0%
Health Care Assistants	153	-5	-5	+1	-2	-4	-4	-2	-0.0%	-0.0%	+0.0%	-0.0%	-0.0%	-0.0%	-0.0%
Care, other	3	-2	-2	-2		-1	-1	-0	-0.3%	-0.3%	-0.3%	+0.0%	-0.2%	-0.2%	-0.1%

Source: Health Service Personnel Census

Primary Care

Feb 2021 (Dec 2016 figure: 1,457)	WTE Feb 2021	WTE change since Dec 15	WTE change since Dec 16	WTE change since Dec 17	WTE change since Dec 18	WTE change since Dec 19	WTE change since Dec 19	WTE change since Jan 21	% change since Dec 15	% change since Dec 16	% change since Dec 17	% change since Dec 18	% change since Dec 19	% change since Dec 19	% change since Jan 21
Overall	1,550	+157	+93	+114	+128	+164	+164	+17	+11.3%	+6.4%	+8.0%	+9.0%	+11.8%	+11.8%	+1.1%
Medical & Dental	146	+13	+6	+12	+11	-0	-0	-0	+0.1%	+0.0%	+0.1%	+0.1%	-0.0%	-0.0%	-0.0%
Consultants	6				+1				+0.0%	+0.0%	+0.0%	+0.2%	+0.0%	+0.0%	+0.0%
Registrars	80	+8	+3	+8	+7	+1	+1	+1	+0.1%	+0.0%	+0.1%	+0.1%	+0.0%	+0.0%	+0.0%
SHO/ Interns	1	+1	-0	-0	-1	-1	-1		-1.0%	-0.2%	-0.2%	-0.6%	-0.6%	-0.6%	+0.0%
Medical/ Dental, other	60	+4	+3	+4	+4	-1	-1	-1	+0.1%	+0.1%	+0.1%	+0.1%	-0.0%	-0.0%	-0.0%
Nursing & Midwifery	414	+30	-4	+6	+19	+32	+32	+0	+0.1%	-0.0%	+0.0%	+0.0%	+0.1%	+0.1%	+0.0%
Nurse/ Midwife Manager	51	+2	-4	-1	-2	+0	+0	-3	+0.0%	-0.1%	-0.0%	-0.0%	+0.0%	+0.0%	-0.1%
Nurse/ Midwife Specialist & AN/MP	42	+7	+4	+4	+5	+7	+7	+0	+0.2%	+0.1%	+0.1%	+0.1%	+0.2%	+0.2%	+0.0%
Staff Nurse/ Staff Midwife	106	+6	-8	-5	+1	+7	+7	+0	+0.1%	-0.1%	-0.0%	+0.0%	+0.1%	+0.1%	+0.0%
Public Health Nurse	201	+12	+7	+6	+9	+5	+5	+2	+0.1%	+0.0%	+0.0%	+0.0%	+0.0%	+0.0%	+0.0%
Nursing/ Midwifery Student	13	+2	-3		+5	+11	+11	+0	+0.2%	-0.2%	+0.0%	+0.6%	+5.6%	+5.6%	+0.0%
Nursing/ Midwifery other	1	+1	+1	+1	+1	+1	+1	+0	-1.0%	-1.0%	-1.0%	-1.0%	-1.0%	-1.0%	+0.1%
Health & Social Care Professionals	345	+18	+18	+6	+17	+19	+19	+2	+0.1%	+0.1%	+0.0%	+0.1%	+0.1%	+0.1%	+0.0%
Therapy Professions	233	+11	+9	-1	+10	+13	+13	+1	+0.1%	+0.0%	-0.0%	+0.0%	+0.1%	+0.1%	+0.0%
Health Science/ Diagnostics	8	+4	+2	+1	+2	+3	+3	+1	+1.0%	+0.3%	+0.2%	+0.3%	+0.6%	+0.6%	+0.1%
Social Care	1			+1	+1	+1	+1		+0.0%	+0.0%	-1.0%	-1.0%	-1.0%	-1.0%	+0.0%
Social Workers	15	-3	-2	-2	-4	-1	-1	+1	-0.1%	-0.1%	-0.1%	-0.2%	-0.0%	-0.0%	+0.0%
Psychologists	55	-0	+3	+6	+8	-1	-1	-1	-0.0%	+0.1%	+0.1%	+0.2%	-0.0%	-0.0%	-0.0%
Pharmacy	7	+4	+4	+4	+4	+3	+3	+2	+1.7%	+1.3%	+1.5%	+1.4%	+0.8%	+0.8%	+0.3%
H&SC, Other	26	+1	+1	-4	-3	+1	+1	-1	+0.0%	+0.0%	-0.1%	-0.1%	+0.0%	+0.0%	-0.0%
Management & Administrative	395	+5	-20	-8	-11	+8	+8	-2	+0.0%	-0.0%	-0.0%	-0.0%	+0.0%	+0.0%	-0.0%
Management (VIII & above)	41	+8	-1	-0	-3	-4	-4	+1	+0.2%	-0.0%	-0.0%	-0.1%	-0.1%	-0.1%	+0.0%
Administrative/ Supervisory (V to VII)	83	+25	+17	+16	+3	+5	+5	-2	+0.4%	+0.3%	+0.2%	+0.0%	+0.1%	+0.1%	-0.0%
Clerical (III & IV)	271	-28	-37	-23	-12	+6	+6	-2	-0.1%	-0.1%	-0.1%	-0.0%	+0.0%	+0.0%	-0.0%
General Support	23	-3	-3	-5	-2	-2	-2	+1	-0.1%	-0.1%	-0.2%	-0.1%	-0.1%	-0.1%	+0.0%
Support	21	-3	-4	-5	-2	-2	-2	+1	-0.1%	-0.2%	-0.2%	-0.1%	-0.1%	-0.1%	+0.0%
Maintenance/ Technical	3	-0	+1	-0	+0	+0	+0	-0	-0.0%	+0.6%	-0.0%	+0.0%	+0.0%	+0.0%	-0.0%
Patient & Client Care	226	+95	+97	+104	+95	+107	+107	+16	+0.7%	+0.8%	+0.8%	+0.7%	+0.9%	+0.9%	+0.1%
Health Care Assistants	128	+112	+112	+113	+99	+107	+107	+15	+7.1%	+6.9%	+7.6%	+3.4%	+5.2%	+5.2%	+0.1%
Care, other	98	-17	-14	-8	-4	-0	-0	+1	-0.1%	-0.1%	-0.1%	-0.0%	-0.0%	-0.0%	+0.0%
Home Help		-1	-1	-1	-0	-0	-0		-1.0%	-1.0%	-1.0%	-1.0%	-1.0%	-1.0%	-1.0%

Source: Health Service Personnel Census

Disabilities

Feb 2021 (Dec 2016 figure: 1,984)	WTE Feb 2021	WTE change since Dec 15	WTE change since Dec 16	WTE change since Dec 17	WTE change since Dec 18	WTE change since Dec 19	WTE change since Dec 19	WTE change since Jan 21	% change since Dec 15	% change since Dec 16	% change since Dec 17	% change since Dec 18	% change since Dec 19	% change since Dec 19	% change since Jan 21
Overall	2,218	+375	+234	+140	+84	+56	+56	-16	+20.4%	+11.8%	+6.7%	+4.0%	+2.6%	+2.6%	-0.7%
Medical & Dental	2	-1	-1	-1	-1	-2	-2	-1	-0.3%	-0.3%	-0.3%	-0.3%	-0.5%	-0.5%	-0.3%
Consultants		-1	-1	-1	-1	-1	-1	-1	-1.0%	-1.0%	-1.0%	-1.0%	-1.0%	-1.0%	-1.0%
Registrars	1					-1	-1		+0.0%	+0.0%	+0.0%	+0.0%	-0.5%	-0.5%	+0.0%
Medical/ Dental, other	1								+0.0%	+0.0%	+0.0%	+0.0%	+0.0%	+0.0%	+0.0%
Nursing & Midwifery	464	+6	+4	+9	+3	+9	+9	+9	+0.0%	+0.0%	+0.0%	+0.0%	+0.0%	+0.0%	+0.0%
Nurse/ Midwife Manager	121	+6	+2	+3	+1	-2	-2	+0	+0.1%	+0.0%	+0.0%	+0.0%	-0.0%	-0.0%	+0.0%
Nurse/ Midwife Specialist & AN/MP	5	-4	-4	-3	-2	-2	-2	-1	-0.4%	-0.4%	-0.3%	-0.2%	-0.2%	-0.2%	-0.1%
Staff Nurse/ Staff Midwife	324	-5	-2	+1	-3	+6	+6	+16	-0.0%	-0.0%	+0.0%	-0.0%	+0.0%	+0.0%	+0.1%
Public Health Nurse	1	+1	-0	+1	-0				+1.1%	-0.0%	-1.0%	-0.0%	+0.0%	+0.0%	+0.0%
Nursing/ Midwifery Student	6	+6	+6	+6	+5	+6	+6	-7	-1.0%	-1.0%	-1.0%	+10.6%	-1.0%	-1.0%	-0.5%
Nursing/ Midwifery other	7	+2	+2	+1	+1	+1	+1	+1	+0.6%	+0.5%	+0.2%	+0.3%	+0.2%	+0.2%	+0.1%
Health & Social Care Professionals	532	+162	+94	+44	+34	+22	+22	-5	+0.4%	+0.2%	+0.1%	+0.1%	+0.0%	+0.0%	-0.0%
Therapy Professions	97	+35	+3	+2	+8	+5	+5	-1	+0.6%	+0.0%	+0.0%	+0.1%	+0.1%	+0.1%	-0.0%
Health Science/ Diagnostics	2	+2							-1.0%	+0.0%	+0.0%	+0.0%	+0.0%	+0.0%	+0.0%
Social Care	377	+109	+82	+42	+23	+17	+17	-6	+0.4%	+0.3%	+0.1%	+0.1%	+0.0%	+0.0%	-0.0%
Social Workers	25	+8	+2	-2	-0	+1	+1	+1	+0.5%	+0.1%	-0.1%	-0.0%	+0.0%	+0.0%	+0.0%
Psychologists	24	+7	+6	+1	+3	-1	-1	+1	+0.4%	+0.3%	+0.1%	+0.1%	-0.0%	-0.0%	+0.0%
H&SC, Other	6	+1	+0	+0	-0	-0	-0	+1	+0.1%	+0.1%	+0.0%	-0.0%	-0.1%	-0.1%	+0.1%
Management & Administrative	157	+21	+20	+9	+9	+8	+8	-4	+0.2%	+0.1%	+0.1%	+0.1%	+0.1%	+0.1%	-0.0%
Management (VIII & above)	14	+1	+1	-4	+3	+5	+5	-0	+0.1%	+0.1%	-0.2%	+0.3%	+0.6%	+0.6%	-0.0%
Administrative/ Supervisory (V to VII)	54	+6	+4	+4	-0	-2	-2	-4	+0.1%	+0.1%	+0.1%	-0.0%	-0.0%	-0.0%	-0.1%
Clerical (III & IV)	89	+13	+15	+8	+6	+5	+5	-1	+0.2%	+0.2%	+0.1%	+0.1%	+0.1%	+0.1%	-0.0%
General Support	54	-34	-30	-18	-13	-8	-8	-2	-0.4%	-0.4%	-0.2%	-0.2%	-0.1%	-0.1%	-0.0%
Support	41	-31	-26	-14	-9	-5	-5	-1	-0.4%	-0.4%	-0.3%	-0.2%	-0.1%	-0.1%	-0.0%
Maintenance/ Technical	13	-2	-4	-4	-4	-3	-3	-1	-0.2%	-0.3%	-0.2%	-0.2%	-0.2%	-0.2%	-0.1%
Patient & Client Care	1,008	+222	+147	+97	+52	+27	+27	-13	+0.3%	+0.2%	+0.1%	+0.1%	+0.0%	+0.0%	-0.0%
Health Care Assistants	871	+227	+161	+112	+56	+28	+28	-13	+0.4%	+0.2%	+0.1%	+0.1%	+0.0%	+0.0%	-0.0%
Care, other	114	-4	-14	-13	-4	-1	-1	-0	-0.0%	-0.1%	-0.1%	-0.0%	-0.0%	-0.0%	-0.0%
Home Help	23	-1	+0	-2	+1	+1	+1	+0	-0.0%	+0.0%	-0.1%	+0.0%	+0.0%	+0.0%	+0.0%

Source: Health Service Personnel Census

Older People

Feb 2021 (Dec 2016 figure: 1,531)	WTE Feb 2021	WTE change since Dec 15	WTE change since Dec 16	WTE change since Dec 17	WTE change since Dec 18	WTE change since Dec 19	WTE change since Dec 19	WTE change since Jan 21	% change since Dec 15	% change since Dec 16	% change since Dec 17	% change since Dec 18	% change since Dec 19	% change since Dec 19	% change since Jan 21
Overall	1,482	-54	-49	-16	-20	-6	-6	+0	-3.5%	-3.2%	-1.0%	-1.4%	-0.4%	-0.4%	+0.0%
Medical & Dental	11	+1	-0	+0	-1				+0.1%	-0.0%	+0.0%	-0.1%	+0.0%	+0.0%	+0.0%
Medical/ Dental, other	11	+1	-0	+0	-1				+0.1%	-0.0%	+0.0%	-0.1%	+0.0%	+0.0%	+0.0%
Nursing & Midwifery	356	-10	-3	+15	+22	+26	+26	+3	-0.0%	-0.0%	+0.0%	+0.1%	+0.1%	+0.1%	+0.0%
Nurse/ Midwife Manager	91	+4	+6	+7	+12	+14	+14	+1	+0.0%	+0.1%	+0.1%	+0.2%	+0.2%	+0.2%	+0.0%
Nurse/ Midwife Specialist & AN/MP	5	+2	+2	+2	+2	+3	+3	+1	+0.7%	+0.7%	+0.7%	+0.7%	+1.5%	+1.5%	+0.3%
Staff Nurse/ Staff Midwife	255	-17	-12	+5	+6	+6	+6	+1	-0.1%	-0.0%	+0.0%	+0.0%	+0.0%	+0.0%	+0.0%
Public Health Nurse	3	-1	-1	-1	-0	+1	+1	+0	-0.2%	-0.2%	-0.2%	-0.1%	+0.3%	+0.3%	+0.0%
Nursing/ Midwifery other	2	+2	+2	+2	+2	+2	+2		-1.0%	-1.0%	-1.0%	-1.0%	-1.0%	-1.0%	+0.0%
Health & Social Care Professionals	34	+6	+5	+6	+4	+4	+4	-0	+0.2%	+0.2%	+0.2%	+0.1%	+0.1%	+0.1%	-0.0%
Therapy Professions	26	+7	+6	+5	+4	+5	+5	-0	+0.4%	+0.3%	+0.2%	+0.2%	+0.2%	+0.2%	-0.0%
Health Science/ Diagnostics		-2	-2	-2					-1.0%	-1.0%	-1.0%	-1.0%	-1.0%	-1.0%	-1.0%
Social Workers	5	-1	-1	+1	-2	-2	-2	+0	-0.2%	-0.2%	+0.3%	-0.2%	-0.2%	-0.2%	+0.0%
Pharmacy	3	+2	+2	+2	+1	+1	+1	+0	+2.0%	+2.0%	+2.0%	+0.5%	+0.2%	+0.2%	+0.1%
Management & Administrative	97	+22	+23	+26	+16	+2	+2	-4	+0.3%	+0.3%	+0.4%	+0.2%	+0.0%	+0.0%	-0.0%
Management (VIII & above)	7	+4	+4	+5	+4	+1	+1	-0	+1.5%	+1.4%	+2.9%	+1.5%	+0.2%	+0.2%	-0.0%
Administrative/ Supervisory (V to VII)	22	+10	+9	+9	+3	+2	+2	+0	+0.8%	+0.7%	+0.6%	+0.2%	+0.1%	+0.1%	+0.0%
Clerical (III & IV)	69	+9	+11	+13	+8	-1	-1	-4	+0.1%	+0.2%	+0.2%	+0.1%	-0.0%	-0.0%	-0.1%
General Support	48	-0	+1	+2	-2	-1	-1	-0	-0.0%	+0.0%	+0.0%	-0.0%	-0.0%	-0.0%	-0.0%
Support	25	-1	-0	+0	-0	-0	-0	+0	-0.1%	-0.0%	+0.0%	-0.0%	-0.0%	-0.0%	+0.0%
Maintenance/ Technical	23	+1	+1	+1	-1	-1	-1	-1	+0.1%	+0.1%	+0.1%	-0.1%	-0.0%	-0.0%	-0.0%
Patient & Client Care	936	-73	-75	-64	-60	-36	-36	+2	-0.1%	-0.1%	-0.1%	-0.1%	-0.0%	-0.0%	+0.0%
Health Care Assistants	545	-80	-70	-54	-22	-11	-11	+5	-0.1%	-0.1%	-0.1%	-0.0%	-0.0%	-0.0%	+0.0%
Care, other	21	-1	-2	-0	+0	+1	+1	-0	-0.1%	-0.1%	-0.0%	+0.0%	+0.0%	+0.0%	-0.0%
Home Help	370	+9	-3	-10	-38	-25	-25	-3	+0.0%	-0.0%	-0.0%	-0.1%	-0.1%	-0.1%	-0.0%

Source: Health Service Personnel Census