

CHO 8 Employment Report: June 2021

Employment by Staff Group

Jun 2021 (Dec 2020 figure: 6,337)	WTE Apr 2021	WTE Jun 2021	WTE change since Apr 21	% change since Apr 21	WTE change since Dec 20	WTE change since Jun 20
Overall	6,444	6,428	-15	-0.2%	+91	+170
Consultants	45	44	-1	-1.4%	+1	+2
Registrars	113	112	-1	-1.1%	-2	+10
SHO/ Interns	25	25	-0	-1.2%	-2	-10
Medical/ Dental, other	68	66	-2	-2.4%	-7	-7
Medical & Dental	251	247	-4	-1.5%	-10	-6
Nurse/ Midwife Manager	376	374	-2	-0.6%	-5	-2
Nurse/ Midwife Specialist & AN/MP	113	117	+3	+3.0%	+5	+11
Staff Nurse/ Staff Midwife	1,024	1,028	+4	+0.4%	+15	+32
Public Health Nurse	203	195	-8	-3.9%	-6	-10
<i>Pre-registration Nurse/ Midwife Intern</i>	29	31	+1	+4.2%	+31	+1
<i>Pre-registration Nurse Intern (COVID-19)</i>	0	0	+0	+30.6%	-5	+0
<i>Post-registration Nurse/ Midwife Student</i>	13	10	-3	-23.1%	-2	-3
Nursing/ Midwifery Student	43	41	-2	-3.9%	+24	-17
Nursing/ Midwifery other	13	14	+1	+8.3%	+1	+1
Nursing & Midwifery	1,773	1,770	-3	-0.2%	+35	+14
Therapy Professions	398	394	-4	-1.0%	-1	+3
Health Science/ Diagnostics	10	11	+1	+5.3%	+2	+3
Social Care	387	386	-2	-0.4%	-2	+4
Social Workers	96	97	+1	+0.9%	+8	+6
Psychologists	120	120	-0	-0.0%	+5	+5
Pharmacy	12	12			+3	+5
H&SC, Other	57	56	-1	-1.1%	+2	+4
Health & Social Care Professionals	1,080	1,075	-5	-0.5%	+18	+30
Management (VIII & above)	71	70	-1	-0.9%	+3	+6
Administrative/ Supervisory (V to VII)	205	200	-5	-2.3%	-3	-1
Clerical (III & IV)	524	538	+14	+2.6%	+5	+8
Management & Administrative	799	808	+8	+1.1%	+5	+13
Support	116	114	-2	-1.6%	-4	-11
Maintenance/ Technical	68	70	+1	+1.9%	+1	+0
General Support	184	184	-1	-0.3%	-3	-11
Health Care Assistants	1,718	1,719	+1	+0.1%	+56	+130
Care, other	243	240	-3	-1.2%	+2	+4
Home Help	395	386	-10	-2.4%	-11	-5
Patient & Client Care	2,356	2,345	-11	-0.5%	+47	+129

CHO 8 Employment Report: June 2021

Community Health & Wellbeing

Jun 2021 (Dec 2020 figure: 30)	WTE Apr 2021	WTE Jun 2021	WTE change since Apr 21	% change since Apr 21	WTE change since Dec 20	WTE change since Jun 20
Total Community Health & Wellbeing	29	29	-0	-0.3%	-1	+2
Therapy Professions	2	1	-0	-5.8%	+0	-0
Health & Social Care Professionals	2	1	-0	-5.8%	+0	-0
Management (VIII & above)	3	3			+0	+2
Administrative/ Supervisory (V to VII)	20	20			-1	+1
Clerical (III & IV)	4	4			-0	-1
Management & Administrative	27	27	+0	+0.0%	-1	+2

Mental Health

Jun 2021 (Dec 2020 figure: 1,112)	WTE Apr 2021	WTE Jun 2021	WTE change since Apr 21	% change since Apr 21	WTE change since Dec 20	WTE change since Jun 20
Total Mental Health	1,122	1,126	+4	+0.3%	+14	+4
Consultants	38	38	-0	-0.2%	+2	+3
Registrars	34	34	+0	+1.4%	+3	+11
SHO/ Interns	25	24	-1	-4.1%	-2	-9
Medical & Dental	97	97	-1	-0.6%	+3	+4
Nurse/ Midwife Manager	117	117	-0	-0.1%	-3	-5
Nurse/ Midwife Specialist & AN/MP	59	61	+2	+3.8%	+1	+2
Staff Nurse/ Staff Midwife	339	341	+1	+0.4%	-2	+17
Pre-registration Nurse Intern (COVID-19)				-100.0%	-1	
Pre-registration Nurse/ Midwife Intern	24	24	+0	+0.5%	+24	+0
Nursing/ Midwifery Student	24	24	+0	+0.5%	+23	-4
Nursing/ Midwifery other	3	3				-1
Nursing & Midwifery	543	546	+4	+0.7%	+20	+9
Therapy Professions	43	43	-0	-0.6%	+0	-1
Social Care	7	7	+0	+3.2%	-0	-0
Social Workers	47	47	-0	-0.3%	+3	+2
Psychologists	39	40	+1	+1.6%	+3	+2
Pharmacy	2	2				
H&SC, Other	15	15	+0	+0.3%	-6	-5
Health & Social Care Professionals	152	153	+0	+0.3%	-0	-3
Management (VIII & above)	3	3	+0	+0.3%	-0	-0
Administrative/ Supervisory (V to VII)	22	23	+1	+5.8%	+3	+2
Clerical (III & IV)	95	93	-2	-1.8%	-4	-6
Management & Administrative	119	119	-0	-0.4%	-1	-5
Support	30	30	+0	+0.3%	-1	-1
Maintenance/ Technical	29	29	+0	+0.7%	+1	+2
General Support	59	59	+0	+0.5%	-0	+1
Health Care Assistants	149	149	+1	+0.4%	-7	-2
Care, other	3	3	-0	-5.7%	-0	-1
Patient & Client Care	152	152	+0	+0.3%	-7	-3

Primary Care

Jun 2021 (Dec 2020 figure: 1,506)	WTE Apr 2021	WTE Jun 2021	WTE change since Apr 21	% change since Apr 21	WTE change since Dec 20	WTE change since Jun 20
Total Primary Care	1,565	1,558	-8	-0.5%	+52	+143
Consultants	6	6	-1	-8.5%	-0	
Registrars	78	77	-2	-2.2%	-5	-1
SHO/ Interns	0	1	+1	+270.4%	+0	-1
Medical/ Dental, other	56	54	-2	-3.0%	-7	-7
Medical & Dental	141	138	-3	-2.3%	-12	-9
Nurse/ Midwife Manager	50	52	+2	+3.4%	+1	-2
Nurse/ Midwife Specialist & AN/MP	44	42	-2	-4.1%	+1	+6
Staff Nurse/ Staff Midwife	107	110	+3	+2.9%	+5	+7
Public Health Nurse	199	192	-8	-3.9%	-5	-11
Post-registration Nurse/ Midwife Student	13	10	-3	-23.1%	-2	-3
Nursing/ Midwifery Student	13	10	-3	-23.1%	-2	+9
Nursing/ Midwifery other	1	1			+0	+0
Nursing & Midwifery	414	406	-8	-1.9%	-0	+10
Therapy Professions	230	228	-2	-0.9%	-1	-3
Health Science/ Diagnostics	8	9	+1	+12.0%	+2	+3
Social Care	1	1	-0	-4.0%	-0	-0
Social Workers	17	18	+1	+4.0%	+2	+1
Psychologists	56	55	-1	-1.9%	-1	-1
Pharmacy	7	7			+2	+3
H&SC, Other	34	34	-0	-1.1%	+8	+9
Health & Social Care Professionals	353	352	-2	-0.5%	+13	+12
Management (VIII & above)	44	44	+0	+0.3%	+3	+1
Administrative/ Supervisory (V to VII)	86	82	-4	-4.5%	-2	+1
Clerical (III & IV)	269	279	+10	+3.6%	+6	+14
Management & Administrative	399	405	+6	+1.5%	+8	+15
Support	20	20	-0	-1.8%	-1	-1
Maintenance/ Technical	3	3				
General Support	23	23	-0	-1.6%	-1	-1
Health Care Assistants	134	136	+1	+1.0%	+45	+118
Care, other	100	99	-2	-1.7%	-1	-2
Patient & Client Care	235	234	-0	-0.2%	+44	+116

Social Care

Jun 2021 (Dec 2020 figure: 3,689)	WTE Apr 2021	WTE Jun 2021	WTE change since Apr 21	% change since Apr 21	WTE change since Dec 20	WTE change since Jun 20
Total Social Care	3,727	3,716	-12	-0.3%	+27	+20
Consultants				-100.0%	-1	-1
Registrars	1	1				
Medical/ Dental, other	12	12	+0	+0.4%		
Medical & Dental	13	13	+0	+0.4%	-1	-1
Nurse/ Midwife Manager	209	205	-4	-1.7%	-3	+5
Nurse/ Midwife Specialist & AN/MP	10	13	+3	+28.7%	+3	+3
Staff Nurse/ Staff Midwife	579	578	-1	-0.1%	+11	+8
Public Health Nurse	4	4	-0	-3.4%	-0	+0
<i>Pre-registration Nurse Intern (COVID-19)</i>	0	0	+0	+30.6%	-4	+0
<i>Pre-registration Nurse/ Midwife Intern</i>	5	6	+1	+21.5%	+6	+1
Nursing/ Midwifery Student	6	7	+1	+22.1%	+3	-23
Nursing/ Midwifery other	9	10	+1	+12.1%	+1	+2
Nursing & Midwifery	816	817	+1	+0.1%	+15	-5
Therapy Professions	123	122	-2	-1.4%	-1	+8
Health Science/ Diagnostics	2	2	-0	-22.5%	-0	-0
Social Care	380	378	-2	-0.5%	-2	+5
Social Workers	32	33	+0	+1.1%	+3	+3
Psychologists	25	26	+0	+1.5%	+3	+4
Pharmacy	3	3			+1	+2
H&SC, Other	7	7	-0	-3.7%	+1	+0
Health & Social Care Professionals	573	569	-3	-0.6%	+5	+21
Management (VIII & above)	21	20	-1	-3.7%	-0	+3
Administrative/ Supervisory (V to VII)	77	75	-2	-2.6%	-3	-5
Clerical (III & IV)	156	162	+6	+3.7%	+2	+1
Management & Administrative	254	257	+3	+1.2%	-1	-0
Support	66	64	-2	-2.4%	-2	-8
Maintenance/ Technical	37	38	+1	+3.0%	+0	-2
General Support	103	102	-0	-0.5%	-2	-10
Health Care Assistants	1,435	1,434	-1	-0.0%	+18	+14
Care, other	140	139	-1	-0.8%	+4	+6
Home Help	395	386	-10	-2.4%	-11	-5
Patient & Client Care	1,969	1,958	-11	-0.6%	+10	+16

CHO 8 Employment Report: June 2021

Disabilities

Jun 2021 (Dec 2020 figure: 2,205)	WTE Apr 2021	WTE Jun 2021	WTE change since Apr 21	% change since Apr 21	WTE change since Dec 20	WTE change since Jun 20
Total Disabilities	2,245	2,240	-5	-0.2%	+35	+54
Consultants				-100.0%	-1	-1
Registrars	1	1				
Medical/ Dental, other	1	1				
Medical & Dental	2	2			-1	-1
Nurse/ Midwife Manager	119	117	-2	-1.4%	-2	+0
Nurse/ Midwife Specialist & AN/MP	5	6	+1	+18.6%	+0	-1
Staff Nurse/ Staff Midwife	323	321	-3	-0.8%	+9	+3
Public Health Nurse	1	1			-0	
Pre-registration Nurse Intern (COVID-19)	0	0	+0	+30.6%	-4	+0
Pre-registration Nurse/ Midwife Intern	5	6	+1	+21.5%	+6	+1
Nursing/ Midwifery Student	6	7	+1	+22.1%	+3	-23
Nursing/ Midwifery other	7	7	+0	+1.0%	+0	-0
Nursing & Midwifery	461	459	-2	-0.4%	+10	-21
Therapy Professions	97	93	-4	-3.6%	-5	-0
Health Science/ Diagnostics	2	2	-0	-22.5%	-0	-0
Social Care	380	378	-2	-0.5%	-2	+5
Social Workers	27	26	-1	-2.6%	+2	+1
Psychologists	25	26	+0	+1.5%	+3	+4
H&SC, Other	7	7	-0	-3.7%	+1	+0
Health & Social Care Professionals	538	531	-6	-1.2%	-1	+9
Management (VIII & above)	15	15			+2	+5
Administrative/ Supervisory (V to VII)	54	52	-2	-3.6%	-4	-8
Clerical (III & IV)	88	94	+6	+6.2%	+6	+4
Management & Administrative	158	161	+4	+2.3%	+4	+1
Support	41	40	-0	-1.1%	-1	-4
Maintenance/ Technical	14	14	+0	+0.0%	+0	-2
General Support	55	54	-0	-0.8%	-1	-6
Health Care Assistants	892	894	+2	+0.2%	+23	+67
Care, other	119	117	-2	-1.8%	+3	+5
Home Help	22	21	-0	-1.2%	-1	-1
Patient & Client Care	1,033	1,032	-0	-0.0%	+24	+71

Older People

Jun 2021 (Dec 2020 figure: 1,484)	WTE Apr 2021	WTE Jun 2021	WTE change since Apr 21	% change since Apr 21	WTE change since Dec 20	WTE change since Jun 20
Total Older People	1,482	1,476	-6	-0.4%	-8	-33
Medical/ Dental, other	11	11	+0	+0.5%		
Medical & Dental	11	11	+0	+0.5%		
Nurse/ Midwife Manager	90	88	-2	-2.2%	-1	+5
Nurse/ Midwife Specialist & AN/MP	5	7	+2	+39.8%	+3	+4
Staff Nurse/ Staff Midwife	255	257	+2	+0.8%	+2	+5
Public Health Nurse	3	3	-0	-4.5%	-0	+0
Nursing/ Midwifery other	2	3	+1	+50.0%	+1	+2
Nursing & Midwifery	355	358	+3	+0.8%	+5	+16
Health & Social Care Professionals	35	38	+3	+7.9%	+6	+12
Management (VIII & above)	6	5	-1	-12.8%	-2	-2
Administrative/ Supervisory (V to VII)	23	22	-0	-0.3%	+1	+3
Clerical (III & IV)	68	68	+0	+0.4%	-4	-3
Management & Administrative	96	95	-1	-0.6%	-5	-2
Support	25	24	-1	-4.6%	-1	-4
Maintenance/ Technical	23	24	+1	+4.9%	+0	+0
General Support	48	48	-0	-0.1%	-1	-4
Health Care Assistants	542	540	-3	-0.5%	-5	-53
Care, other	21	22	+1	+5.1%	+0	+1
Home Help	374	364	-9	-2.5%	-10	-4
Patient & Client Care	937	926	-11	-1.2%	-14	-55

CHO 8 Employment by Administration (HSE / S38): June 2021

Jun 2021 (Dec 2020 figure: 6,337)	WTE Apr 2021	WTE Jun 2021	WTE change since Apr 21	% change since Apr 21	WTE change since Dec 20	WTE change since Jun 20
Overall	6,444	6,428	-15	-0.2%	+91	+170
HSE	4,812	4,792	-19	-0.4%	+51	+115
Section 38 Voluntary Agencies	1,632	1,636	+4	+0.2%	+41	+54

HSE

Jun 2021 (Dec 2020 figure: 4,742)	WTE Apr 2021	WTE Jun 2021	WTE change since Apr 21	% change since Apr 21	WTE change since Dec 20	WTE change since Jun 20
Overall	4,812	4,792	-19	-0.4%	+51	+115
Consultants	45	44	-1	-0.0%	+1	+2
Registrars	112	111	-1	-0.0%	-2	+10
SHO/ Interns	25	25	-0	-0.0%	-2	-10
Medical/ Dental, other	68	66	-2	-0.0%	-7	-7
Medical & Dental	250	246	-4	-1.5%	-10	-6
Nurse/ Midwife Manager	292	290	-3	-0.0%	-3	-1
Nurse/ Midwife Specialist & AN/MP	109	111	+2	+0.0%	+4	+11
Staff Nurse/ Staff Midwife	804	809	+5	+0.0%	+3	+18
Public Health Nurse	203	195	-8	-0.0%	-6	-10
Pre-registration Nurse/ Midwife Intern	24	24	+0	+0.0%	+24	+22
Pre-registration Nurse Intern (COVID-19)				-1.0%		-26
Post-registration Nurse/ Midwife Student	13	10	-3	-0.2%	+8	+9
Nursing/ Midwifery awaiting registration				-1.0%	-2	
Nursing/ Midwifery Student	37	34	-3	-0.1%	+21	+6
Nursing/ Midwifery other	6	7	+1	+0.2%	+1	+1
Nursing & Midwifery	1,452	1,447	-5	-0.4%	+22	+25
Therapy Professions	386	383	-3	-0.0%	+1	+5
Health Science/ Diagnostics	10	11	+1	+0.1%	+2	+3
Social Care	13	13	+0	+0.0%	-0	+0
Social Workers	84	85	+2	+0.0%	+9	+6
Psychologists	114	114	-0	-0.0%	+5	+5
Pharmacy	12	12		+0.0%	+3	+5
H&SC, Other	50	50	-0	-0.0%	+2	+4
Health & Social Care Professionals	668	667	-1	-0.2%	+21	+28
Management (VIII & above)	61	60	-1	-0.0%	+2	+1
Administrative/ Supervisory (V to VII)	179	176	-3	-0.0%	-1	+3
Clerical (III & IV)	477	483	+6	+0.0%	-4	+1
Management & Administrative	716	718	+2	+0.3%	-4	+5
Support	81	80	-2	-0.0%	-3	-7
Maintenance/ Technical	56	58	+1	+0.0%	+1	+1
General Support	138	138	-0	-0.2%	-2	-5
Health Care Assistants	1,035	1,034	-1	-0.0%	+32	+66
Care, other	157	156	-0	-0.0%	+3	+8
Home Help	395	386	-10	-0.0%	-11	-5
Patient & Client Care	1,587	1,576	-11	-0.7%	+23	+69

Section 38 Voluntary Agencies

Jun 2021 (Dec 2020 figure: 1,595)	WTE Apr 2021	WTE Jun 2021	WTE change since Apr 21	% change since Apr 21	WTE change since Dec 20	WTE change since Jun 20
Overall	1,632	1,636	+4	+0.2%	+41	+54
Registrars	1	1		+0.0%		
Medical & Dental	1	1				
Nurse/ Midwife Manager	84	84	+0	+0.0%	-2	-1
Nurse/ Midwife Specialist & AN/MP	4	5	+1	+0.2%	+1	+0
Staff Nurse/ Staff Midwife	220	219	-1	-0.0%	+11	+14
<i>Pre-registration Nurse/ Midwife Intern</i>	5	6	+1	+0.2%	+6	+6
<i>Pre-registration Nurse Intern (COVID-19)</i>	0	0	+0	+0.3%	+0	-29
Nursing/ Midwifery Student	6	7	+1	+0.2%	+3	-23
Nursing/ Midwifery other	7	7	+0	+0.0%	+0	-0
Nursing & Midwifery	321	323	+2	+0.6%	+13	-11
Therapy Professions	13	11	-1	-0.1%	-2	-1
Social Care	375	373	-2	-0.0%	-2	+4
Social Workers	12	12	-1	-0.1%	-1	-1
Psychologists	6	6	-0	-0.0%	+0	-0
H&SC, Other	6	6	-0	-0.0%	+1	+0
Health & Social Care Professionals	412	408	-4	-0.9%	-4	+2
Management (VIII & above)	10	10		+0.0%	+2	+5
Administrative/ Supervisory (V to VII)	26	25	-1	-0.0%	-2	-4
Clerical (III & IV)	47	55	+8	+0.2%	+9	+7
Management & Administrative	83	90	+6	+7.7%	+8	+8
Support	34	34	-0	-0.0%	-1	-4
Maintenance/ Technical	12	12		+0.0%	+0	-1
General Support	46	46	-0	-0.6%	-1	-5
Health Care Assistants	682	685	+2	+0.0%	+25	+64
Care, other	86	84	-3	-0.0%	-1	-4
Patient & Client Care	769	769	-0	-0.0%	+24	+60

CHO 8 Employment by S38 Agency: June 2021

Muiriosa Foundation, Laois/Offaly

Jun 2021 (Dec 2020 figure: 320)	WTE Apr 2021	WTE Jun 2021	WTE change since Apr 21	% change since Apr 21	WTE change since Dec 20	WTE change since Jun 20
Overall	343	347	+5	+1.3%	+27	+52
Nurse/ Midwife Manager	17	17		+0.0%	+1	+2
Staff Nurse/ Staff Midwife	29	30	+1	+0.0%	+2	+2
Nursing & Midwifery	46	47	+1	+2.9%	+2	+4
Social Care	107	110	+3	+0.0%	+5	+10
Social Workers	3	4	+1	+0.2%	+1	+0
Psychologists	1	1		+0.0%		
H&SC, Other	1	1		+0.0%		
Health & Social Care Professionals	112	115	+3	+3.1%	+5	+10
Management (VIII & above)	3	3		+0.0%		+2
Administrative/ Supervisory (V to VII)	5	3	-2	-0.3%	-2	-2
Clerical (III & IV)	12	14	+2	+0.1%	+2	+3
Management & Administrative	20	20	+0	+0.7%	+0	+3
Support	1	2	+0	+0.2%	+0	+0
Maintenance/ Technical	2	2		+0.0%		
General Support	3	4	+0	+7.1%	+0	+0
Health Care Assistants	134	133	-1	-0.0%	+19	+35
Care, other	28	28	+0	+0.0%	+0	-0
Patient & Client Care	162	161	-1	-0.4%	+19	+35

Muiriosa Foundation, Longford/Westmeath

Jun 2021 (Dec 2020 figure: 284)	WTE Apr 2021	WTE Jun 2021	WTE change since Apr 21	% change since Apr 21	WTE change since Dec 20	WTE change since Jun 20
Overall	291	289	-2	-0.8%	+5	+14
Nurse/ Midwife Manager	9	8	-1	-0.1%	-1	-2
Staff Nurse/ Staff Midwife	4	4	-0	-0.0%	-0	-0
Nursing & Midwifery	13	12	-1	-7.8%	-2	-2
Therapy Professions	3	2	-0	-0.1%	-0	-0
Social Care	98	94	-4	-0.0%	-6	-4
Social Workers	4	4		+0.0%	+0	+0
Psychologists	2	2	-0	-0.0%	+0	-0
H&SC, Other	3	3	-0	-0.1%	+1	+0
Health & Social Care Professionals	110	106	-4	-3.8%	-5	-4
Senior Management (VIII & GM)	1	1		+0.0%	+1	+1
Management (VIII & above)	1	1		+0.0%	+1	+1
Administrative/ Supervisory (V to VII)	4	4		+0.0%		-1
Clerical (III & IV)	11	12	+1	+0.0%	+2	+2
Management & Administrative	16	17	+1	+3.1%	+2	+1
Support	1	1		+0.0%		
Maintenance/ Technical	3	3		+0.0%		
General Support	4	4				
Health Care Assistants	133	135	+2	+0.0%	+9	+20
Care, other	15	15	-0	-0.0%	-0	-2
Patient & Client Care	148	151	+2	+1.6%	+9	+19

Muiriosa Foundation, South Kildare

Jun 2021 (Dec 2020 figure: 342)	WTE Apr 2021	WTE Jun 2021	WTE change since Apr 21	% change since Apr 21	WTE change since Dec 20	WTE change since Jun 20
Overall	341	347	+6	+1.8%	+5	-8
Nurse/ Midwife Manager	15	15	+0	+0.0%	+1	-1
Nurse/ Midwife Specialist & AN/MP	2	2		+0.0%	-0	+0
Staff Nurse/ Staff Midwife	21	22	+1	+0.0%	-1	-3
Pre-registration Nurse/ Midwife Intern	5	6	+1	+0.2%	+6	+6
Pre-registration Nurse Intern (COVID-19)	0	0	+0	+0.3%	+0	-8
Nursing/ Midwifery Student	6	7	+1	+0.2%	+7	-2
Nursing/ Midwifery other	6	6	+0	+0.0%	-0	-1
Nursing & Midwifery	49	51	+2	+4.7%	+7	-7
Therapy Professions	7	6	-1	-0.1%	-2	-1
Social Care	95	95	+0	+0.0%	+1	+1
Social Workers	3	1	-1	-0.5%	-1	-1
Psychologists	2	2		+0.0%		+0
H&SC, Other	3	3		+0.0%		
Health & Social Care Professionals	109	107	-2	-1.6%	-2	-1
Management (VIII & above)	4	4		+0.0%		+1
Administrative/ Supervisory (V to VII)	12	12		+0.0%	-1	-2
Clerical (III & IV)	12	18	+6	+0.4%	+5	+4
Management & Administrative	28	34	+6	+19.5%	+4	+3
Support	13	13	+0	+0.0%	-1	-1
Maintenance/ Technical	4	4		+0.0%		-1
General Support	17	17	+0	+1.0%	-1	-2
Health Care Assistants	129	129	-0	-0.0%	-4	-2
Care, other	9	9	-0	-0.0%	-0	+1
Patient & Client Care	138	138	-0	-0.2%	-4	-1

Jun 2021 (Dec 2020 figure: 648)	WTE Apr 2021	WTE Jun 2021	WTE change since Apr 21	% change since Apr 21	WTE change since Dec 20	WTE change since Jun 20
Overall	657	652	-4	-0.7%	+4	-5
Registrars	1	1		+0.0%		
Medical & Dental	1	1				
Nurse/ Midwife Manager	43	44	+1	+0.0%	-3	-0
Nurse/ Midwife Specialist & AN/MP	3	4	+1	+0.3%	+1	+0
Staff Nurse/ Staff Midwife	166	163	-3	-0.0%	+11	+15
<i>Pre-registration Nurse Intern (COVID-19)</i>				-1.0%		-21
Nursing/ Midwifery Student				-1.0%	-4	-21
<i>Nursing Education/Clinical</i>	1	1	-0	-0.2%	+1	+1
Nursing/ Midwifery other	1	1	-0	-0.2%	+1	+1
Nursing & Midwifery	212	212	-1	-0.3%	+6	-6
Therapy Professions	3	3		+0.0%		
Social Care	75	74	-1	-0.0%	-1	-4
Social Workers	2	2		+0.0%		
Psychologists	1	1		+0.0%		
Health & Social Care Professionals	81	80	-1	-1.7%	-1	-4
Management (VIII & above)	2	2		+0.0%	+1	+1
Administrative/ Supervisory (V to VII)	6	6	+0	+0.0%	+0	+0
Clerical (III & IV)	11	11	+0	+0.0%	-0	-1
Management & Administrative	19	19	+0	+1.5%	+1	+1
Support	19	19	-1	-0.0%	-1	-4
Maintenance/ Technical	3	3		+0.0%	+0	+0
General Support	22	22	-1	-3.1%	-1	-4
Health Care Assistants	286	287	+0	+0.0%	-0	+10
Care, other	34	32	-2	-0.1%	-1	-3
Patient & Client Care	321	319	-2	-0.6%	-1	+8

CHO 8 Employment by Grade Group & Staff Category: June 2021

Jun 2021 (Dec 2020 figure: 6,337)	WTE Apr 2021	WTE Jun 2021	WTE change since Apr 21	% change since Apr 21	WTE change since Dec 20	WTE change since Jun 20
Overall	6,444	6,428	-15	-0.2%	+91	+170
Consultant Dentistry	1	1				
Consultant Medicine	6	5	-1	-9.9%	-0	
Consultant Psychiatry	38	38	-0	-0.2%	+1	+2
Consultants	45	44	-1	-1.4%	+1	+2
Registrar	101	100	-1	-0.8%	-1	+9
Senior Registrar	12	12	-0	-3.7%	-1	+1
Registrars	113	112	-1	-1.1%	-2	+10
SHO/ Interns	25	25	-0	-1.2%	-2	-10
Dentists	36	36	-1	-2.0%	-1	+1
Other Medical	31	30	-1	-2.8%	-5	-8
Medical/ Dental, other	68	66	-2	-2.4%	-7	-7
Medical & Dental	251	247	-4	-1.5%	-11	-6
Clinical Nurse/ Midwife Manager	287	288	+1	+0.3%	+2	-1
Director Nursing/Midwifery, Assistant	65	63	-2	-2.3%	-2	+2
Director of Nursing/Midwifery	25	23	-1	-5.9%	-5	-3
Nurse/ Midwife Manager	376	374	-2	-0.6%	-5	-2
Advanced Nurse/ Midwife Practitioner	9	10	+1	+11.0%	+1	+6
Clinical Nurse/ Midwife Specialist	104	107	+2	+2.3%	+4	+5
Nurse/ Midwife Specialist & AN/MP	113	117	+3	+3.0%	+5	+11
Staff Nurse [Intellectual Disability]	126	128	+2	+1.4%	-129	-100
Staff Nurse [Psychiatric]	484	482	-2	-0.4%	+140	+156
Staff Nurses [General/ Children's]	414	419	+4	+1.0%	+4	-24
Staff Nurse/ Staff Midwife	1,024	1,028	+4	+0.4%	+15	+32
Public Health Nurse	203	195	-8	-3.9%	-6	-10
Pre-registration Nurse/ Midwife Intern	29	31	+1	+4.2%	+31	+29
Pre-registration Nurse Intern (COVID-19)	0	0	+0	+30.6%	-5	-55
Post-registration Nurse/ Midwife Student	13	10	-3	-23.1%	-2	+9
Nursing/ Midwifery awaiting registration				-100.0%		
Nursing/ Midwifery Student	43	41	-2	-3.9%	+24	-17
Nursing Education/Clinical	13	14	+1	+8.3%	+1	+1
Nursing/ Midwifery other	13	14	+1	+8.3%	+1	+1
Nursing & Midwifery	1,773	1,770	-3	-0.2%	+87	+14
Dietitians	25	26	+1	+3.7%	+5	+4
Occupational Therapists	150	145	-5	-3.2%	-5	+2
Orthoptists	2	2				+2
Physiotherapists	107	110	+2	+2.2%	+1	-2
Podiatrists & Chiropodists	4	3	-1	-32.8%	-2	-1
Speech & Language Therapists	111	109	-1	-1.2%	-1	-0
Therapy Professions	398	394	-4	-1.0%	-1	+3
Audiology	6	6			+1	+2
Clinical Engineering	4	5	+1	+13.7%	+1	+1
Health Science/ Diagnostics	10	11	+1	+5.3%	+2	+3
Social Care	387	386	-2	-0.4%	-2	+4
Social Workers	96	97	+1	+0.9%	+8	+6
Psychologists	120	120	-0	-0.0%	+5	+5
Pharmacy	12	12			+3	+5
Counsellor Therapists	42	41	-0	-1.1%	+3	+5

Jun 2021 (Dec 2020 figure: 6,337)	WTE Apr 2021	WTE Jun 2021	WTE change since Apr 21	% change since Apr 21	WTE change since Dec 20	WTE change since Jun 20
Overall	6,444	6,428	-15	-0.2%	+91	+170
Dental Hygienists	12	12	-0	-1.9%	-1	-1
Other Health & Social Care	2	2	+0	+6.1%	+0	-0
Play Therapists/ Specialists	1	1				
H&SC, Other	57	56	-1	-1.1%	+2	+4
Health & Social Care Professionals	1,080	1,075	-5	-0.5%	+56	+30
Executive Management	10	10	+0	+2.9%	+0	-1
Senior Management (VIII & GM)	61	60	-1	-1.5%	+3	+7
Management (VIII & above)	71	70	-1	-0.9%	+3	+6
Administrative/ Supervisory (V to VII)	205	200	-5	-2.3%	-3	-1
Clerical (III & IV)	524	538	+14	+2.6%	+5	+8
Management & Administrative	799	808	+8	+1.1%	+62	+13
Catering	30	29	-1	-4.9%	-2	-5
Household Services	52	52	+0	+0.2%	-2	-5
Other Support	29	28	-1	-1.8%	-1	-2
Portering	5	5				
Support	116	114	-2	-1.6%	-4	-11
Maintenance	68	70	+1	+1.9%	+1	+0
Technical Services	0	0				
Maintenance/ Technical	68	70	+1	+1.9%	+1	+0
General Support	184	184	-1	-0.3%	-12	-11
HCA, Nurse's Aide, etc.	1,590	1,590	-0	-0.0%	+11	+11
Health & Social Care Assistants	16	16	-0	-0.0%	+1	+6
Swabber (COVID-19)	112	113	+1	+1.2%	+44	+113
Health Care Assistants	1,718	1,719	+1	+0.1%	+56	+130
Other Care Grades	243	240	-3	-1.2%	+2	+4
Care, other	243	240	-3	-1.2%	+2	+4
Home Help	395	386	-10	-2.4%	-11	-5
Patient & Client Care	2,356	2,345	-11	-0.5%	+112	+129

CHO 8 HSE Employment by Grade Group & Staff Category: June 2021

Jun 2021 (Dec 2020 figure: 4,742)	WTE Apr 2021	WTE Jun 2021	WTE change since Apr 21	% change since Apr 21	WTE change since Dec 20	WTE change since Jun 20
Overall	4,812	4,792	-19	-0.4%	+51	+115
Consultant Dentistry	1	1				
Consultant Medicine	6	5	-1	-9.9%	-0	
Consultant Psychiatry	38	38	-0	-0.2%	+1	+2
Consultants	45	44	-1	-1.4%	+1	+2
Registrar	100	99	-1	-0.8%	-1	+9
Senior Registrar	12	12	-0	-3.7%	-1	+1
Registrars	112	111	-1	-1.1%	-2	+10
SHO/ Interns	25	25	-0	-1.2%	-2	-10
Dentists	36	36	-1	-2.0%	-1	+1
Other Medical	31	30	-1	-2.8%	-5	-8
Medical/ Dental, other	68	66	-2	-2.4%	-7	-7
Medical & Dental	250	246	-4	-1.5%	-11	-6
Clinical Nurse/ Midwife Manager	212	212	+0	+0.0%	+2	-2
Director Nursing/Midwifery, Assistant	58	57	-1	-0.9%	-1	+3
Director of Nursing/Midwifery	23	21	-2	-9.2%	-4	-2
Nurse/ Midwife Manager	292	290	-3	-0.9%	-3	-1
Advanced Nurse/ Midwife Practitioner	8	9	+1	+12.4%	+1	+5
Clinical Nurse/ Midwife Specialist	101	102	+1	+1.4%	+3	+6
Nurse/ Midwife Specialist & AN/MP	109	111	+2	+2.2%	+4	+11
Staff Nurse [Intellectual Disability]	74	74	+1	+0.9%	+6	+9
Staff Nurse [Psychiatric]	340	339	-1	-0.4%	-3	+13
Staff Nurses [General/ Children's]	391	396	+5	+1.4%	+1	-4
Staff Nurse/ Staff Midwife	804	809	+5	+0.6%	+3	+18
Public Health Nurse	203	195	-8	-3.9%	-6	-10
Pre-registration Nurse/ Midwife Intern	24	24	+0	+0.5%	+24	+22
Pre-registration Nurse Intern (COVID-19)				-100.0%	-1	-26
Post-registration Nurse/ Midwife Student	13	10	-3	-23.1%	-2	+9
Nursing/ Midwifery awaiting registration				-100.0%		
Nursing/ Midwifery Student	37	34	-3	-7.7%	+21	+6
Nursing Education/Clinical	6	7	+1	+16.7%	+1	+1
Nursing/ Midwifery other	6	7	+1	+16.7%	+1	+1
Nursing & Midwifery	1,452	1,447	-5	-0.4%	+69	+25
Dietitians	25	26	+1	+3.7%	+5	+4
Occupational Therapists	146	142	-5	-3.3%	-4	+2
Orthoptists	2	2				+2
Physiotherapists	103	106	+2	+2.3%	+1	-2
Podiatrists & Chiropodists	4	3	-1	-32.8%	-2	-1
Speech & Language Therapists	106	105	-0	-0.2%	+1	+1
Therapy Professions	386	383	-3	-0.8%	+1	+5
Audiology	6	6			+1	+2
Clinical Engineering	4	5	+1	+13.7%	+1	+1
Health Science/ Diagnostics	10	11	+1	+5.3%	+2	+3
Social Care	13	13	+0	+1.3%	-0	+0
Social Workers	84	85	+2	+1.8%	+9	+6
Psychologists	114	114	-0	-0.0%	+5	+5
Pharmacy	12	12			+3	+5
Counsellor Therapists	36	36	-0	-0.6%	+2	+5
Dental Hygienists	12	12	-0	-1.9%	-1	-1
Other Health & Social Care	2	2	+0	+6.1%	+0	-0

Jun 2021 (Dec 2020 figure: 4,742)	WTE Apr 2021	WTE Jun 2021	WTE change since Apr 21	% change since Apr 21	WTE change since Dec 20	WTE change since Jun 20
Overall	4,812	4,792	-19	-0.4%	+51	+115
H&SC, Other	50	50	-0	-0.7%	+2	+4
Health & Social Care Professionals	668	667	-1	-0.2%	+42	+28
Executive Management	9	9	+0	+3.2%	+0	-1
Senior Management (VIII & GM)	52	51	-1	-1.8%	+1	+2
Management (VIII & above)	61	60	-1	-1.1%	+2	+1
Administrative/ Supervisory (V to VII)	179	176	-3	-1.9%	-1	+3
Clerical (III & IV)	477	483	+6	+1.3%	-4	+1
Management & Administrative	716	718	+2	+0.3%	+52	+5
Catering	23	22	-1	-5.1%	-2	-4
Household Services	29	30	+0	+0.2%	-1	-1
Other Support	25	24	-1	-2.0%	-1	-2
Portering	4	4				
Support	81	80	-2	-2.0%	-3	-7
Maintenance/ Technical	56	58	+1	+2.3%	+1	+1
General Support	138	138	-0	-0.2%	-5	-5
HCA, Nurse's Aide, etc.	907	905	-2	-0.3%	-13	-53
Health & Social Care Assistants	16	16			+1	+6
Swabber (COVID-19)	112	113	+1	+1.2%	+44	+113
Health Care Assistants	1,035	1,034	-1	-0.1%	+32	+66
Care, other	157	156	-0	-0.2%	+3	+8
Home Help	395	386	-10	-2.4%	-11	-5
Patient & Client Care	1,587	1,576	-11	-0.7%	+63	+69

Employment by WTE, Headcount, Gender, Full-Time /Part-Time etc.: Jun 2021

CHO 8	WTE	Headcount	WTE: no.	% Male	% female	Male WTE: no.	Female WTE: no.	% Total Perm	% Male Perm	% Female Perm	% Total Full Time	% Total Part Time	% Male FT	% Female FT
Overall	6,428	7,695	1.20	17.4%	82.6%	1.10	1.22	88.0%	84.1%	88.8%	58.1%	41.9%	73.1%	55.0%
Consultant Dentistry	1	1	1.10	100.0%		1.10		100.0%	100.0%		0.0%	100.0%	0.0%	
Consultant Medicine	5	5	1.00	40.0%	60.0%	1.00	1.00	80.0%	80.0%	66.7%	100.0%	0.0%	100.0%	100.0%
Consultant Psychiatry	38	40	1.04	47.5%	52.5%	1.00	1.08	85.0%	85.0%	95.2%	90.0%	10.0%	94.7%	85.7%
Consultants	44	46	1.04	47.8%	52.2%	1.01	1.07	84.8%	77.3%	91.7%	89.1%	10.9%	90.9%	87.5%
Registrar	100	103	1.03	38.8%	61.2%	1.01	1.04	0.0%	0.0%	0.0%	100.0%	0.0%	100.0%	100.0%
Senior Registrar	12	13	1.09	30.8%	69.2%	1.01	1.13	0.0%	0.0%	0.0%	92.3%	7.7%	100.0%	88.9%
Registrars	112	116	1.04	37.9%	62.1%	1.01	1.05	0.0%	0.0%	0.0%	99.1%	0.9%	100.0%	98.6%
Senior House Officer	25	26	1.04	42.3%	57.7%	1.01	1.07	0.0%	0.0%	0.0%	100.0%	0.0%	100.0%	100.0%
SHO/ Interns	25	26	1.04	42.3%	57.7%	1.01	1.07	0.0%	0.0%	0.0%	100.0%	0.0%	100.0%	100.0%
Dentists	36	43	1.21	37.2%	62.8%	1.25	1.18	93.0%	93.0%	92.6%	65.1%	34.9%	68.8%	63.0%
Other Medical	30	43	1.42	58.1%	41.9%	1.59	1.23	81.4%	81.4%	88.9%	41.9%	58.1%	44.0%	38.9%
Medical/ Dental, other	66	86	1.30	47.7%	52.3%	1.44	1.20	87.2%	82.9%	91.1%	53.5%	46.5%	53.7%	53.3%
Medical & Dental	247	274	1.11	43.1%	56.9%	1.12	1.10	41.6%	43.2%	40.4%	83.2%	16.8%	82.2%	84.0%
Clinical Nurse/ Midwife Manager	288	313	1.09	16.0%	84.0%	1.01	1.11	96.2%	96.2%	96.6%	80.2%	19.8%	100.0%	76.4%
Director Nursing/Midwifery, Assistant	63	66	1.04	15.2%	84.8%	1.00	1.05	100.0%	100.0%	100.0%	87.9%	12.1%	100.0%	85.7%
Director of Nursing/Midwifery	23	24	1.03	20.8%	79.2%	1.01	1.03	100.0%	100.0%	100.0%	100.0%	0.0%	100.0%	100.0%
Nurse/ Midwife Manager	374	403	1.08	16.1%	83.9%	1.01	1.09	97.0%	95.4%	97.3%	82.6%	17.4%	100.0%	79.3%
Advanced Nurse/ Midwife Practitioner	10	10	1.02	20.0%	80.0%	1.00	1.02	100.0%	100.0%	100.0%	100.0%	0.0%	100.0%	100.0%
Clinical Nurse/ Midwife Specialist	107	121	1.13	14.9%	85.1%	1.01	1.16	99.2%	99.2%	99.0%	73.6%	26.4%	94.4%	69.9%
Nurse/ Midwife Specialist & AN/MP	117	131	1.12	15.3%	84.7%	1.01	1.15	99.2%	100.0%	99.1%	75.6%	24.4%	95.0%	72.1%
Staff Nurse [Intellectual Disability]	128	156	1.22	8.3%	91.7%	1.08	1.23	96.2%	96.2%	95.8%	50.6%	49.4%	76.9%	48.3%
Staff Nurse [Psychiatric]	482	520	1.08	19.0%	81.0%	1.02	1.09	96.2%	96.2%	95.7%	82.7%	17.3%	96.0%	79.6%
Staff Nurses [General/ Children's]	419	526	1.26	6.7%	93.3%	1.08	1.27	93.0%	93.0%	93.1%	55.5%	44.5%	94.3%	52.7%
Staff Nurse/ Staff Midwife	1,028	1,202	1.17	12.2%	87.8%	1.04	1.19	94.8%	96.6%	94.5%	66.6%	33.4%	93.9%	62.8%
Public Health Nurse	195	235	1.20		100.0%		1.20	98.7%		98.7%	73.2%	26.8%		73.2%
Pre-registration Nurse/ Midwife Intern	31	63	2.05	6.3%	93.7%	2.06	2.05	0.0%	0.0%	0.0%	100.0%	0.0%	100.0%	100.0%
Pre-registration Nurse Intern (COVID-19)	0	1	2.13	100.0%		2.13		0.0%	0.0%		100.0%	0.0%	100.0%	
Post-registration Nurse/ Midwife Student	10	10	1.00		100.0%		1.00	50.0%	50.0%	50.0%	100.0%	0.0%		100.0%

Nursing/ Midwifery Student	41	74	1.80	6.8%	93.2%	2.07	1.78	6.8%	0.0%	7.2%	100.0%	0.0%	100.0%	100.0%
Nursing Education/Clinical	14	15	1.08	13.3%	86.7%	1.00	1.09	93.3%	93.3%	92.3%	80.0%	20.0%	100.0%	76.9%
Nursing/ Midwifery other	14	15	1.08	13.3%	86.7%	1.00	1.09	93.3%	100.0%	92.3%	80.0%	20.0%	100.0%	76.9%
Nursing & Midwifery	1,770	2,060	1.16	11.6%	88.4%	1.04	1.18	92.8%	94.6%	92.5%	72.4%	27.6%	95.8%	69.3%
Dietitians	26	31	1.21		100.0%		1.21	100.0%	100.0%	100.0%	54.8%	45.2%		54.8%
Occupational Therapists	145	167	1.15	7.2%	92.8%	1.00	1.16	98.2%	98.2%	98.1%	77.8%	22.2%	100.0%	76.1%
Orthoptists	2	2	1.25		100.0%		1.25	100.0%	100.0%	100.0%	50.0%	50.0%		50.0%
Physiotherapists	110	136	1.24	16.9%	83.1%	1.08	1.28	97.8%	97.8%	98.2%	56.6%	43.4%	78.3%	52.2%
Podiatrists & Chiropodists	3	5	1.98		100.0%		1.98	40.0%	40.0%	40.0%	0.0%	100.0%		0.0%
Speech & Language Therapists	109	133	1.22	1.5%	98.5%	1.08	1.22	99.2%	99.2%	99.2%	60.2%	39.8%	100.0%	59.5%
Therapy Professions	394	474	1.20	7.8%	92.2%	1.05	1.22	97.9%	97.3%	97.9%	64.3%	35.7%	86.5%	62.5%
Audiology	6	7	1.11	28.6%	71.4%	1.05	1.13	100.0%	100.0%	100.0%	57.1%	42.9%	50.0%	60.0%
Clinical Engineering	5	5	1.10	100.0%		1.10		80.0%	80.0%		100.0%	0.0%	100.0%	
Health Science/ Diagnostics	11	12	1.10	58.3%	41.7%	1.08	1.13	91.7%	85.7%	100.0%	75.0%	25.0%	85.7%	60.0%
Social Care	386	466	1.21	14.6%	85.4%	1.13	1.22	98.5%	98.5%	98.5%	25.3%	74.7%	23.5%	25.6%
Social Workers	97	111	1.15	14.4%	85.6%	1.01	1.17	100.0%	100.0%	100.0%	82.9%	17.1%	100.0%	80.0%
Psychologists	120	129	1.08	26.4%	73.6%	1.04	1.09	81.4%	97.1%	75.8%	86.8%	13.2%	97.1%	83.2%
Pharmacy	12	13	1.13	23.1%	76.9%	1.00	1.18	84.6%	66.7%	90.0%	76.9%	23.1%	100.0%	70.0%
Counsellor Therapists	41	47	1.14	19.1%	80.9%	1.02	1.17	89.4%	89.4%	89.5%	63.8%	36.2%	88.9%	57.9%
Dental Hygienists	12	13	1.09		100.0%		1.09	100.0%	100.0%	100.0%	69.2%	30.8%		69.2%
Other Health & Social Care	2	3	1.73		100.0%		1.73	33.3%	33.3%	33.3%	33.3%	66.7%		33.3%
Play Therapists/ Specialists	1	1	1.00	100.0%		1.00		100.0%	100.0%		100.0%	0.0%	100.0%	
H&SC, Other	56	64	1.14	15.6%	84.4%	1.01	1.17	89.1%	90.0%	88.9%	64.1%	35.9%	90.0%	59.3%
Health & Social Care	1,075	1,269	1.18	13.8%	86.2%	1.07	1.20	96.0%	96.6%	95.9%	54.1%	45.9%	65.7%	52.3%
Executive Management	10	10	1.00	10.0%	90.0%	1.00	1.00	90.0%	90.0%	88.9%	100.0%	0.0%	100.0%	100.0%
Senior Management (VIII & GM)	60	63	1.05	28.6%	71.4%	1.02	1.06	98.4%	98.4%	97.8%	85.7%	14.3%	83.3%	86.7%
Management (VIII & above)	70	73	1.04	26.0%	74.0%	1.02	1.05	97.3%	100.0%	96.3%	87.7%	12.3%	84.2%	88.9%
Administrative/ Supervisory (V to VII)	200	214	1.07	15.0%	85.0%	1.02	1.08	96.7%	96.9%	96.7%	81.3%	18.7%	100.0%	78.0%
Clerical (III & IV)	538	653	1.21	6.4%	93.6%	1.25	1.21	88.1%	66.7%	89.5%	60.0%	40.0%	76.2%	58.9%
Management & Administrative	808	940	1.16	9.9%	90.1%	1.11	1.17	90.7%	83.9%	91.5%	67.0%	33.0%	86.0%	64.9%
Catering	29	32	1.11	15.6%	84.4%	1.04	1.13	100.0%	100.0%	100.0%	62.5%	37.5%	80.0%	59.3%
Household Services	52	63	1.22	31.7%	68.3%	1.13	1.26	93.7%	93.7%	95.3%	50.8%	49.2%	70.0%	41.9%
Other Support	28	47	1.65	44.7%	55.3%	1.15	2.56	57.4%	57.4%	26.9%	44.7%	55.3%	81.0%	15.4%
Portering	5	5	1.00	100.0%		1.00		100.0%	100.0%		100.0%	0.0%	100.0%	
Support	114	147	1.29	34.7%	65.3%	1.11	1.41	83.7%	94.1%	78.1%	53.1%	46.9%	78.4%	39.6%

Maintenance/ Technical	70	71	1.02	98.6%	1.4%	1.02	1.00	98.6%	98.6%	100.0%	98.6%	1.4%	98.6%	100.0%
General Support	184	218	1.19	55.5%	44.5%	1.06	1.40	88.5%	96.7%	78.4%	67.9%	32.1%	90.1%	40.2%
HCA, Nurse's Aide, etc.	1,590	1,869	1.18	23.3%	76.7%	1.10	1.20	94.5%	94.5%	94.8%	48.0%	52.0%	57.5%	45.1%
Health & Social Care Assistants	16	17	1.07	17.6%	82.4%	1.00	1.08	23.5%	23.5%	28.6%	82.4%	17.6%	100.0%	78.6%
Swabber (COVID-19)	113	124	1.09	40.3%	59.7%	1.10	1.09	1.6%	1.6%	1.4%	81.5%	18.5%	88.0%	77.0%
Health Care Assistants	1,719	2,010	1.17	24.3%	75.7%	1.10	1.19	88.2%	83.6%	89.7%	50.3%	49.7%	60.9%	47.0%
Care, other	240	283	1.18	28.3%	71.7%	1.23	1.16	95.4%	86.3%	99.0%	57.2%	42.8%	60.0%	56.2%
Home Help	386	641	1.66	3.4%	96.6%	2.48	1.64	68.5%	27.3%	70.0%	18.1%	81.9%	9.1%	18.4%
Patient & Client Care	2,345	2,934	1.25	20.1%	79.9%	1.14	1.28	84.6%	81.9%	85.3%	44.0%	56.0%	58.8%	40.2%

Employment by WTE, Headcount, Gender, Full-Time /Part-Time etc.: Jun 2021

CHO 8	WTE	Headcount	WTE: no.	% Male	% female	Male WTE: no.	Female WTE: no.	% Total Perm	% Male Perm	% Female Perm	% Total Full Time	% Total Part Time	% Male FT	% Female FT
Overall	6,428	7,695	1.20	17.4%	82.6%	1.10	1.22	88.0%	84.1%	88.8%	58.1%	41.9%	73.1%	55.0%
Community Health & Wellbeing	29	33	1.14	3.0%	97.0%	1.25	1.14	97.0%	97.0%	96.9%	60.6%	39.4%	100.0%	100.0%
Mental Health	1,126	1,236	1.10	24.2%	75.8%	1.02	1.12	86.0%	86.0%	86.1%	86.2%	13.8%	95.3%	95.3%
Primary Care	1,558	1,854	1.19	14.4%	85.6%	1.09	1.21	82.1%	82.1%	85.2%	64.9%	35.1%	83.5%	83.5%
Social Care	3,716	4,572	1.23	16.8%	83.2%	1.13	1.25	90.9%	90.9%	90.9%	47.8%	52.2%	60.9%	60.9%

CHO 8 Skills Mix by Staff Grouping: June 2021

Jun 2021 (Dec 2019 figure: 6,135)	WTE Dec 2016	WTE Dec 2017	WTE Dec 2018	WTE Dec 2019	WTE Dec 2020	WTE Apr 2021	WTE Jun 2021
Overall	6,013	6,092	6,128	6,135	6,337	6,444	6,428
Consultant Dentistry	0.4%	0.4%	0.4%	0.4%	0.4%	0.4%	0.4%
Consultant Medicine	1.7%	2.1%	1.7%	1.9%	2.0%	2.2%	2.0%
Consultant Psychiatry	15.6%	14.6%	15.0%	14.1%	14.6%	15.3%	15.5%
Consultants	17.7%	17.1%	17.1%	16.3%	16.9%	17.9%	17.9%
Registrar	36.4%	37.3%	36.6%	35.7%	39.2%	40.2%	40.5%
Senior Registrar	4.7%	5.9%	5.4%	5.3%	5.1%	4.9%	4.8%
Registrars	41.1%	43.2%	42.0%	41.0%	44.4%	45.1%	45.3%
Interns	0.4%						
Senior House Officer	11.4%	11.0%	11.8%	14.7%	10.5%	10.0%	10.1%
SHO/ Interns	11.8%	11.0%	11.8%	14.7%	10.5%	10.0%	10.1%
Dentists	15.1%	14.5%	13.9%	13.7%	14.3%	14.5%	14.4%
Other Medical	14.3%	14.3%	15.2%	14.3%	13.9%	12.5%	12.3%
Medical/ Dental, other	29.4%	28.8%	29.1%	28.0%	28.2%	26.9%	26.7%
Medical & Dental	3.9%	3.9%	3.9%	4.2%	4.1%	100.0%	3.8%
Clinical Nurse/ Midwife Manager	17.2%	17.5%	17.4%	17.1%	16.5%	16.2%	16.3%
Director Nursing/Midwifery, Assistant	3.3%	3.5%	3.6%	3.6%	3.8%	3.6%	3.6%
Director of Nursing/Midwifery	1.5%	1.6%	1.3%	1.4%	1.6%	1.4%	1.3%
Nurse/ Midwife Manager	22.0%	22.5%	22.3%	22.1%	21.9%	21.2%	21.2%
Advanced Nurse/ Midwife Practitioner	0.1%	0.1%	0.1%	0.2%	0.5%	0.5%	0.6%
Clinical Nurse/ Midwife Specialist	5.6%	5.6%	5.7%	5.7%	5.9%	5.9%	6.0%
Nurse/ Midwife Specialist & AN/MP	5.6%	5.7%	5.8%	5.9%	6.4%	6.4%	6.6%
Staff Nurse [Intellectual Disability]	14.8%	15.2%	15.6%	13.8%	14.8%	7.1%	7.2%
Staff Nurse [Psychiatric]	19.2%	19.3%	19.4%	19.8%	19.7%	27.3%	27.2%
Staff Nurses [General/ Children's]	25.5%	24.4%	24.2%	25.7%	23.9%	23.4%	23.7%
Staff Nurse/ Staff Midwife	59.6%	59.0%	59.2%	59.3%	58.4%	57.8%	58.1%
Public Health Nurse	11.4%	11.6%	11.6%	11.8%	11.6%	11.5%	11.0%
Pre-registration Nurse/ Midwife Intern		0.0%	0.0%	0.0%		1.7%	1.7%
Pre-registration Nurse Intern (COVID-19)					0.3%	0.0%	0.0%
Post-registration Nurse/ Midwife Student	0.9%	0.8%	0.5%	0.1%	0.7%	0.7%	0.6%
Nursing/ Midwifery awaiting registration	0.1%	0.0%	0.1%	0.1%			
Nursing/ Midwifery Student	1.0%	0.8%	0.6%	0.3%	1.0%	2.4%	2.3%
Nursing/ Midwifery other	0.4%	0.5%	0.4%	0.6%	0.7%	0.7%	0.8%
Nursing & Midwifery	29.0%	28.2%	27.7%	27.4%	26.5%	100.0%	27.5%
Dietitians	1.8%	1.7%	1.9%	1.9%	2.0%	2.3%	2.4%
Occupational Therapists	14.3%	14.3%	13.5%	13.7%	14.2%	13.9%	13.5%
Orthoptists	0.0%	0.0%	0.0%		0.2%	0.1%	0.1%
Physiotherapists	12.1%	11.0%	10.8%	10.5%	10.2%	9.9%	10.2%
Podiatrists & Chiropodists	0.3%	0.4%	0.4%	0.4%	0.4%	0.3%	0.2%
Speech & Language Therapists	11.6%	11.7%	10.9%	10.4%	10.4%	10.2%	10.2%
Therapy Professions	40.1%	39.1%	37.6%	37.0%	37.3%	36.9%	36.6%
Audiology	0.5%	0.4%	0.4%	0.3%	0.5%	0.6%	0.6%
Clinical Engineering	0.4%	0.4%	0.4%	0.4%	0.4%	0.4%	0.4%
Radiographers	0.3%	0.3%					
Health Science/ Diagnostics	1.2%	1.1%	0.8%	0.7%	0.9%	1.0%	1.0%
Social Care	32.7%	34.0%	36.0%	36.1%	36.7%	35.9%	35.9%
Social Workers	9.5%	9.1%	9.0%	8.6%	8.4%	8.9%	9.0%
Psychologists	10.7%	10.8%	10.5%	11.7%	10.9%	11.1%	11.2%
Pharmacy	0.5%	0.5%	0.6%	0.7%	0.8%	1.1%	1.1%
Counsellor Therapists	3.8%	3.9%	3.9%	3.7%	3.6%	3.9%	3.9%
Dental Hygienists	1.3%	1.2%	1.2%	1.2%	1.2%	1.1%	1.1%
Other Health & Social Care	0.2%	0.2%	0.2%	0.2%	0.2%	0.2%	0.2%

Jun 2021 (Dec 2019 figure: 6,135)	WTE Dec 2016	WTE Dec 2017	WTE Dec 2018	WTE Dec 2019	WTE Dec 2020	WTE Apr 2021	WTE Jun 2021
Overall	6,013	6,092	6,128	6,135	6,337	6,444	6,428
Play Therapists/ Specialists	0.1%	0.1%	0.1%	0.1%	0.1%	0.1%	0.1%
H&SC, Other	5.4%	5.4%	5.4%	5.1%	5.1%	5.2%	5.2%
Health & Social Care Professionals	15.4%	16.5%	16.4%	16.6%	16.1%	100.0%	16.7%
Executive Management	1.2%	1.3%	1.3%	1.2%	1.2%	1.2%	1.2%
Senior Management (VIII & GM)	6.8%	7.2%	6.7%	7.2%	7.1%	7.6%	7.4%
Management (VIII & above)	8.1%	8.6%	8.0%	8.4%	8.3%	8.8%	8.7%
Middle Management (V-VII)	19.7%	20.3%	23.3%	23.7%	25.3%	25.6%	24.8%
Other Administrative	0.1%						
Administrative/ Supervisory (V to VII)	19.9%	20.3%	23.3%	23.7%	25.3%	25.6%	24.8%
Clerical (III & IV)	72.1%	71.1%	68.6%	68.0%	66.3%	65.5%	66.5%
Management & Administrative	12.1%	12.0%	12.2%	12.2%	11.8%	100.0%	12.6%
Catering	16.6%	15.7%	17.8%	16.9%	16.4%	16.4%	15.7%
Household Services	32.8%	31.1%	28.0%	29.3%	28.6%	28.0%	28.2%
Other Support	16.6%	17.7%	16.4%	16.1%	15.6%	15.7%	15.5%
Portering	2.3%	2.4%	2.5%	2.5%	2.7%	2.7%	2.7%
Support	68.3%	66.9%	64.6%	64.9%	63.2%	62.8%	62.0%
Maintenance/ Technical	31.7%	33.1%	35.4%	35.1%	36.8%	37.2%	38.0%
General Support	3.6%	3.5%	3.3%	3.2%	3.1%	100.0%	2.9%
HCA, Nurse's Aide, etc.	69.1%	69.4%	69.0%	70.0%	68.7%	67.5%	67.8%
Health & Social Care Assistants	0.2%	0.2%	0.9%	0.6%	0.6%	0.7%	0.7%
Swabber (COVID-19)					3.0%	4.8%	4.8%
Health Care Assistants	69.3%	69.6%	69.9%	70.6%	72.4%	72.9%	73.3%
Other Care Grades	12.4%	11.8%	10.9%	10.6%	10.4%	10.3%	10.2%
Care, other	12.4%	11.8%	10.9%	10.6%	10.4%	10.3%	10.2%
Home Help	18.3%	18.6%	19.2%	18.7%	17.3%	16.8%	16.4%
Patient & Client Care	36.0%	36.0%	36.6%	36.4%	35.2%	100.0%	36.5%
Total	100 %	100 %	100 %	100 %	100%	100 %	100 %

CHO 8 Skills Mix by Care Group: June 2021

Jun 2021 (Dec 2019 figure: 1,098)	WTE Dec 2016	WTE Dec 2017	WTE Dec 2018	WTE Dec 2019	WTE Dec 2020	WTE Apr 2021	WTE Jun 2021
Mental Health	1,041	1,080	1,069	1,098	1,111.73	1,121.91	1,125.69
Consultants	43.1%	38.0%	40.0%	36.4%	38.9%	39.5%	39.7%
Registrar	9.9%	17.7%	15.3%	12.4%	19.1%	22.1%	23.2%
Senior Registrar	13.6%	15.8%	14.8%	14.1%	14.0%	12.7%	12.4%
Registrars	23.6%	33.5%	30.1%	26.5%	33.2%	34.9%	35.6%
Interns	1.2%						
Senior House Officer	32.1%	28.5%	29.9%	37.1%	28.0%	25.6%	24.7%
SHO/ Interns	33.3%	28.5%	29.9%	37.1%	28.0%	25.6%	24.7%
Medical & Dental	7.7%	8.1%	8.1%	8.8%	8.7%	8.6%	8.6%
Clinical Nurse/ Midwife Manager	20.1%	21.3%	20.9%	19.8%	18.8%	17.9%	18.0%
Director Nursing/Midwifery, Assistant	3.7%	3.6%	3.9%	3.3%	3.7%	3.4%	3.1%
Director of Nursing/Midwifery	0.6%	0.6%	0.2%	0.4%	0.4%	0.4%	0.4%
Nurse/ Midwife Manager	24.3%	25.5%	25.0%	23.4%	22.9%	21.6%	21.5%
Advanced Nurse/ Midwife Practitioner	0.2%	0.2%	0.4%	0.8%	0.8%	0.7%	0.7%
Clinical Nurse/ Midwife Specialist	9.4%	9.4%	9.8%	10.1%	10.6%	10.1%	10.4%
Nurse/ Midwife Specialist & AN/MP	9.6%	9.6%	10.2%	10.9%	11.3%	10.8%	11.2%
Staff Nurse [Psychiatric]	64.1%	63.2%	63.2%	63.2%	63.9%	61.8%	61.4%
Staff Nurses [General/ Children's]	1.2%	0.9%	1.0%	1.2%	1.1%	0.7%	0.9%
Staff Nurse/ Staff Midwife	65.3%	64.1%	64.2%	64.4%	65.0%	62.5%	62.4%
Pre-registration Nurse/ Midwife Intern		0.1%		0.1%		4.5%	4.5%
Pre-registration Nurse Intern (COVID-19)					0.2%		
Nursing/ Midwifery awaiting registration	0.4%	0.1%	0.2%	0.4%			
Nursing/ Midwifery Student	0.4%	0.2%	0.2%	0.5%	0.2%	4.5%	4.5%
Nursing/ Midwifery other	0.4%	0.6%	0.4%	0.8%	0.6%	0.6%	0.5%
Nursing & Midwifery	48.5%	47.3%	47.4%	46.9%	46.3%	48.5%	48.5%
Dietitians	0.7%	1.3%	1.4%	1.3%		0.7%	0.6%
Occupational Therapists	21.4%	24.3%	25.4%	23.8%	23.3%	23.8%	23.5%
Podiatrists & Chiropodists		0.1%	0.0%		0.0%	0.0%	0.1%
Speech & Language Therapists	4.3%	3.7%	3.1%	3.8%	4.5%	3.9%	4.0%
Therapy Professions	26.5%	29.4%	29.8%	28.8%	27.9%	28.4%	28.2%
Social Care	5.2%	4.4%	4.4%	4.7%	4.6%	4.3%	4.5%
Social Workers	31.4%	28.5%	26.8%	26.9%	28.6%	30.6%	30.4%
Psychologists	22.2%	24.6%	25.6%	25.5%	24.0%	25.8%	26.1%
Pharmacy	0.5%	0.7%	0.7%	0.7%	1.0%	1.0%	1.0%
Counsellor Therapists	14.1%	12.4%	12.7%	13.3%	14.0%	9.9%	9.8%
Other Health & Social Care	0.1%						
H&SC, Other	14.3%	12.4%	12.7%	13.3%	14.0%	9.9%	9.8%
Health & Social Care Professionals	12.9%	14.0%	13.8%	14.0%	13.8%	13.6%	13.6%
Management (VIII & above)	1.0%	1.8%	1.8%	2.6%	2.5%	2.4%	2.4%
Administrative/ Supervisory (V to VII)	15.4%	16.7%	20.0%	19.8%	16.8%	18.0%	19.2%
Clerical (III & IV)	83.6%	81.5%	78.2%	77.6%	80.8%	79.5%	78.4%
Management & Administrative	9.7%	10.3%	10.1%	10.4%	10.2%	10.6%	10.6%
Support	52.1%	55.4%	53.9%	55.5%	52.6%	50.8%	50.7%
Maintenance/ Technical	47.9%	44.6%	46.1%	44.5%	47.4%	49.2%	49.3%
General Support	5.6%	5.8%	5.7%	5.3%	5.3%	5.2%	5.2%
Health Care Assistants	97.2%	97.1%	98.1%	97.8%	98.0%	97.9%	98.0%
Care, other	2.8%	2.9%	1.9%	2.2%	2.0%	2.1%	2.0%
Patient & Client Care	15.6%	14.5%	14.8%	14.6%	14.4%	13.5%	13.5%
Total	100 %	100 %	100 %	100 %	100 %	100 %	100%

Jun 2021 (Dec 2019 figure: 1,387)	WTE Dec 2016	WTE Dec 2017	WTE Dec 2018	WTE Dec 2019	WTE Dec 2020	WTE Apr 2021	WTE Jun 2021
Primary Care	1,457	1,436	1,422	1,387	1,505.95	1,565.27	1,557.68
Consultant Dentistry	0.6%	0.7%	0.7%	0.6%	0.6%	0.6%	0.7%
Consultant Medicine	2.8%	3.7%	2.9%	3.4%	3.4%	3.9%	3.6%
Consultant Psychiatry	0.7%						
Consultants	4.2%	4.4%	3.6%	4.0%	4.0%	4.6%	4.3%
Registrars	54.6%	53.2%	53.4%	53.3%	54.9%	55.6%	55.7%
SHO/ Interns	0.7%	0.7%	1.5%	1.4%	0.5%	0.2%	0.7%
Dentists	25.3%	25.4%	24.2%	24.2%	24.6%	25.8%	25.9%
Other Medical	15.2%	16.3%	17.3%	17.1%	15.9%	13.8%	13.4%
Medical/ Dental, other	40.5%	41.7%	41.5%	41.3%	40.6%	39.6%	39.3%
Medical & Dental	9.6%	9.4%	9.5%	10.6%	9.7%	8.8%	8.8%
Clinical Nurse/ Midwife Manager	7.3%	7.3%	7.9%	7.1%	6.1%	6.0%	6.3%
Director Nursing/Midwifery, Assistant	4.8%	4.2%	4.6%	4.8%	4.9%	4.9%	4.9%
Director of Nursing/Midwifery	1.2%	1.5%	1.0%	1.6%	1.5%	1.2%	1.5%
Nurse/ Midwife Manager	13.4%	12.9%	13.5%	13.4%	12.5%	12.1%	12.7%
Nurse/ Midwife Specialist & AN/MP	9.0%	9.2%	9.5%	9.1%	10.3%	10.7%	10.4%
Staff Nurse/ Staff Midwife	27.2%	27.1%	26.4%	25.7%	25.6%	25.7%	27.0%
Public Health Nurse	46.6%	47.6%	48.7%	51.3%	48.5%	48.2%	47.2%
Nursing/ Midwifery Student	3.8%	3.2%	2.0%	0.5%	3.0%	3.1%	2.5%
Nursing Education/Clinical					0.2%	0.2%	0.2%
Nursing/ Midwifery other					0.2%	0.2%	0.2%
Nursing & Midwifery	28.7%	28.5%	27.8%	27.5%	25.4%	26.1%	26.1%
Dietitians	4.7%	4.5%	4.8%	5.2%	5.5%	5.5%	5.6%
Occupational Therapists	17.7%	18.1%	17.2%	17.5%	18.2%	17.4%	16.9%
Orthoptists	0.1%	0.1%	0.1%		0.5%	0.5%	0.5%
Physiotherapists	25.5%	23.7%	24.6%	23.8%	23.4%	21.9%	22.4%
Podiatrists & Chiropodists	0.5%	0.8%	1.1%	1.1%	1.2%	1.0%	0.7%
Speech & Language Therapists	19.9%	21.6%	20.5%	20.1%	18.6%	18.7%	18.8%
Therapy Professions	68.4%	69.0%	68.2%	67.7%	67.3%	65.0%	64.8%
Audiology	1.3%	1.3%	1.3%	1.0%	1.6%	1.8%	1.8%
Clinical Engineering	0.6%	0.6%	0.6%	0.6%	0.6%	0.6%	0.9%
Radiographers		0.1%					
Health Science/ Diagnostics	2.0%	2.0%	1.9%	1.6%	2.2%	2.4%	2.7%
Social Care	0.3%				0.3%	0.3%	0.3%
Social Workers	5.1%	5.1%	5.8%	4.8%	4.6%	4.9%	5.1%
Psychologists	15.7%	14.4%	14.3%	17.1%	16.5%	15.7%	15.5%
Pharmacy	0.9%	0.8%	0.9%	1.2%	1.4%	2.0%	2.0%
Counsellor Therapists	3.6%	4.8%	4.8%	3.6%	3.6%	6.0%	6.0%
Dental Hygienists	3.7%	3.6%	3.8%	3.8%	3.8%	3.4%	3.4%
Other Health & Social Care	0.3%	0.3%	0.3%	0.3%	0.3%	0.2%	0.3%
H&SC, Other	7.6%	8.7%	8.9%	7.7%	7.7%	9.7%	9.7%
Health & Social Care Professionals	22.4%	23.6%	23.0%	23.5%	21.6%	22.6%	22.6%
Executive Management	1.9%	2.0%	1.9%	2.0%	2.0%	1.9%	2.0%
Senior Management (VIII & GM)	8.2%	8.3%	8.9%	9.6%	8.3%	9.1%	8.9%
Management (VIII & above)	10.1%	10.3%	10.8%	11.7%	10.3%	11.0%	10.9%
Administrative/ Supervisory (V to VII)	15.8%	16.7%	19.6%	20.0%	21.1%	21.6%	20.3%
Clerical (III & IV)	74.1%	73.0%	69.5%	68.3%	68.6%	67.5%	68.9%
Management & Administrative	28.5%	28.0%	28.6%	27.9%	25.7%	26.0%	26.0%
Support	93.1%	89.8%	88.8%	88.9%	87.5%	87.3%	87.1%
Maintenance/ Technical	6.9%	10.2%	11.2%	11.1%	12.5%	12.7%	12.9%
General Support	1.8%	2.0%	1.8%	1.8%	1.7%	1.5%	1.5%
HCA, Nurse's Aide, etc.	11.7%	11.3%	10.5%	8.5%	4.0%	3.5%	3.5%

Jun 2021 (Dec 2019 figure: 1,387)	WTE Dec 2016	WTE Dec 2017	WTE Dec 2018	WTE Dec 2019	WTE Dec 2020	WTE Apr 2021	WTE Jun 2021
Primary Care	1,457	1,436	1,422	1,387	1,505.95	1,565.27	1,557.68
Health & Social Care Assistants	0.8%	0.9%	11.5%	8.8%	6.9%	6.0%	6.0%
Swabber (COVID-19)					36.5%	47.7%	48.3%
Health Care Assistants	12.5%	12.2%	22.1%	17.3%	47.5%	57.2%	57.9%
Other Care Grades	86.9%	86.8%	77.7%	82.4%	52.5%	42.8%	42.1%
Care, other	86.9%	86.8%	77.7%	82.4%	52.5%	42.8%	42.1%
Home Help	0.6%	1.0%	0.2%	0.3%			
Patient & Client Care	8.9%	8.5%	9.2%	8.6%	7.9%	15.0%	15.0%
Total	100 %	100 %	100 %	100 %	100 %	100 %	100%

Jun 2021 (Dec 2019 figure: 2,162)	WTE Dec 2016	WTE Dec 2017	WTE Dec 2018	WTE Dec 2019	WTE Dec 2020	WTE Apr 2021	WTE Jun 2021
Disabilities	1,984	2,078	2,134	2,162	2,205.48	2,245.44	2,240.03
Consultant Psychiatry	33.3%	33.3%	33.3%	25.0%	33.3%		
Consultants	33.3%	33.3%	33.3%	25.0%	33.3%		
Registrars	33.3%	33.3%	33.3%	50.0%	33.3%	50.0%	50.0%
Medical/ Dental, other	33.3%	33.3%	33.3%	25.0%	33.3%	50.0%	50.0%
Medical & Dental	0.2%	0.1%	0.1%	0.2%	0.2%	0.1%	0.1%
Clinical Nurse/ Midwife Manager	22.7%	22.6%	22.7%	23.5%	22.6%	22.3%	22.2%
Director Nursing/Midwifery, Assistant	2.1%	2.4%	2.3%	2.3%	2.6%	2.6%	2.4%
Director of Nursing/Midwifery	1.0%	1.1%	1.1%	1.2%	1.3%	0.9%	1.0%
Nurse/ Midwife Manager	25.9%	26.0%	26.1%	27.0%	26.6%	25.8%	25.6%
Advanced Nurse/ Midwife Practitioner					0.2%	0.2%	0.2%
Clinical Nurse/ Midwife Specialist	2.0%	1.7%	1.6%	1.6%	1.2%	0.9%	1.2%
Nurse/ Midwife Specialist & AN/MP	2.0%	1.7%	1.6%	1.6%	1.4%	1.2%	1.4%
Staff Nurse [Intellectual Disability]	56.0%	57.3%	57.4%	50.9%	57.2%	27.4%	27.9%
Staff Nurse [Psychiatric]	2.0%	1.7%	1.7%	1.5%	1.1%	32.0%	31.6%
Staff Nurses [General/ Children's]	13.0%	12.1%	11.8%	17.6%	11.2%	10.8%	10.4%
Staff Nurse/ Staff Midwife	71.0%	71.0%	70.8%	70.0%	69.5%	70.2%	69.9%
Public Health Nurse	0.2%		0.2%	0.2%	0.2%	0.2%	0.2%
Pre-registration Nurse/ Midwife Intern			0.1%			1.1%	1.4%
Pre-registration Nurse Intern (COVID-19)					0.9%	0.1%	0.1%
Nursing/ Midwifery Student			0.1%		0.9%	1.2%	1.5%
Nursing/ Midwifery other	1.0%	1.2%	1.2%	1.2%	1.5%	1.5%	1.5%
Nursing & Midwifery	23.2%	21.9%	21.6%	21.1%	20.6%	20.5%	20.5%
Occupational Therapists	9.0%	7.7%	6.7%	7.2%	8.0%	8.0%	7.7%
Physiotherapists	4.3%	4.4%	4.0%	4.3%	3.5%	3.8%	3.9%
Speech & Language Therapists	8.0%	7.3%	7.0%	6.4%	7.0%	6.3%	6.0%
Therapy Professions	21.3%	19.4%	17.8%	18.0%	18.4%	18.0%	17.6%
Clinical Engineering	0.5%	0.4%	0.4%	0.4%	0.4%	0.4%	0.3%
Health Science/ Diagnostics	0.5%	0.4%	0.4%	0.4%	0.4%	0.4%	0.3%
Social Care	67.5%	68.8%	71.2%	70.7%	71.3%	70.6%	71.1%
Social Workers	5.2%	5.5%	5.1%	4.7%	4.5%	4.9%	4.9%
Psychologists	4.2%	4.7%	4.2%	4.9%	4.2%	4.7%	4.8%
Counsellor Therapists	1.0%	0.9%	0.9%	1.0%	0.8%	1.0%	1.0%
Other Health & Social Care	0.1%	0.1%	0.2%	0.1%	0.1%	0.1%	0.1%
Play Therapists/ Specialists	0.2%	0.2%	0.2%	0.2%	0.2%	0.2%	0.2%
H&SC, Other	1.4%	1.3%	1.3%	1.4%	1.2%	1.3%	1.3%
Health & Social Care Professionals	22.1%	23.5%	23.3%	23.6%	23.1%	23.7%	23.7%
Executive Management	0.7%	1.3%	1.3%	0.7%	0.6%	0.6%	0.6%
Senior Management (VIII & GM)	8.7%	10.6%	6.0%	5.2%	7.9%	8.9%	8.7%
Management (VIII & above)	9.4%	12.0%	7.4%	5.9%	8.5%	9.5%	9.3%
Administrative/ Supervisory (V to VII)	36.4%	33.3%	36.4%	37.6%	35.8%	34.5%	32.6%
Clerical (III & IV)	54.2%	54.7%	56.3%	56.5%	55.7%	56.0%	58.2%
Management & Administrative	6.9%	7.2%	7.0%	6.9%	6.8%	7.2%	7.2%
Support	79.5%	76.5%	74.6%	74.3%	74.8%	74.4%	74.2%
Maintenance	20.3%	23.4%	25.2%	25.5%	25.1%	25.5%	25.7%
Technical Services	0.1%	0.1%	0.1%	0.2%	0.2%	0.2%	0.2%
Maintenance/ Technical	20.5%	23.5%	25.4%	25.7%	25.2%	25.6%	25.8%
General Support	4.3%	3.5%	3.1%	2.9%	2.8%	2.4%	2.4%
HCA, Nurse's Aide, etc.	82.5%	83.3%	84.9%	85.9%	86.5%	86.4%	86.6%
Health & Social Care Assistants			0.3%	0.1%			
Health Care Assistants	82.5%	83.3%	85.3%	86.0%	86.5%	86.4%	86.6%
Care, other	14.9%	13.9%	12.4%	11.7%	11.3%	11.5%	11.3%

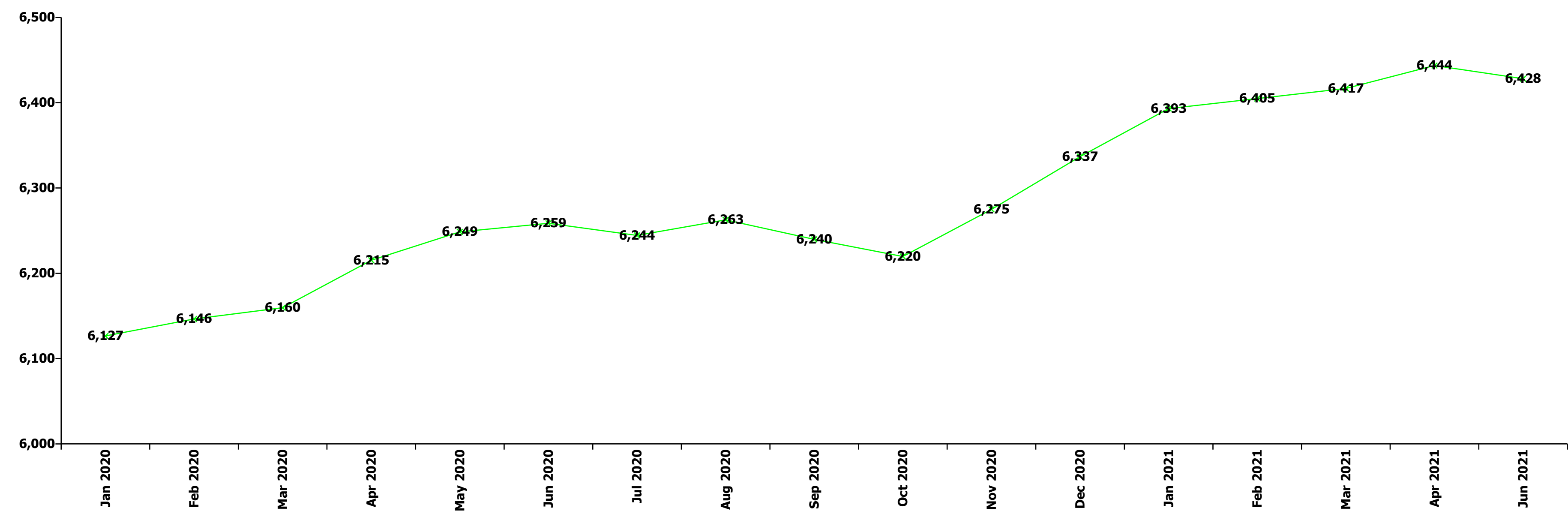
Jun 2021 (Dec 2019 figure: 2,162)	WTE Dec 2016	WTE Dec 2017	WTE Dec 2018	WTE Dec 2019	WTE Dec 2020	WTE Apr 2021	WTE Jun 2021
Disabilities	1,984	2,078	2,134	2,162	2,205.48	2,245.44	2,240.03
Home Help	2.6%	2.8%	2.3%	2.3%	2.3%	2.1%	2.1%
Patient & Client Care	43.4%	43.8%	44.8%	45.4%	44.5%	46.1%	46.1%
Total	100 %	100 %	100 %	100 %	100 %	100 %	100%

Jun 2021 (Dec 2019 figure: 1,488)	WTE Dec 2016	WTE Dec 2017	WTE Dec 2018	WTE Dec 2019	WTE Dec 2020	WTE Apr 2021	WTE Jun 2021
Older People	1,531	1,498	1,503	1,488	1,483.75	1,481.95	1,475.86
Medical/ Dental, other	100.0%	100.0%	100.0%	100.0%	100.0%	100.0%	100.0%
Medical & Dental	0.7%	0.7%	0.8%	0.7%	0.7%	0.7%	0.7%
Clinical Nurse/ Midwife Manager	17.6%	17.1%	16.2%	15.5%	17.2%	17.4%	17.2%
Director Nursing/Midwifery, Assistant	2.4%	3.8%	3.8%	4.4%	4.1%	4.0%	4.3%
Director of Nursing/Midwifery	3.6%	3.8%	3.6%	3.3%	4.0%	3.9%	3.1%
Nurse/ Midwife Manager	23.6%	24.7%	23.5%	23.2%	25.2%	25.4%	24.6%
Advanced Nurse/ Midwife Practitioner					0.5%	0.5%	0.8%
Clinical Nurse/ Midwife Specialist	0.8%	0.9%	0.9%	0.6%	0.6%	0.8%	1.1%
Nurse/ Midwife Specialist & AN/MP	0.8%	0.9%	0.9%	0.6%	1.1%	1.4%	1.9%
Staff Nurse [Intellectual Disability]	0.3%						
Staff Nurse [Psychiatric]	0.3%	0.3%	0.3%	0.3%	0.3%	0.3%	0.3%
Staff Nurses [General/ Children's]	74.0%	73.0%	74.3%	75.2%	72.0%	71.6%	71.6%
Staff Nurse/ Staff Midwife	74.5%	73.3%	74.6%	75.5%	72.3%	71.9%	71.9%
Public Health Nurse	1.1%	1.1%	1.0%	0.7%	0.8%	0.8%	0.8%
Nursing Education/Clinical					0.6%	0.6%	0.8%
Nursing/ Midwifery other					0.6%	0.6%	0.8%
Nursing & Midwifery	23.4%	22.8%	22.2%	22.2%	22.3%	24.2%	24.2%
Dietitians			3.4%	3.4%	3.0%	7.5%	9.4%
Occupational Therapists	24.3%	28.0%	29.2%	29.7%	32.6%	27.0%	24.4%
Physiotherapists	33.4%	32.0%	26.1%	25.5%	33.1%	27.1%	26.8%
Podiatrists & Chiropodists	3.0%	3.4%	3.1%	3.4%			
Speech & Language Therapists	6.9%	10.1%	9.4%	7.5%	9.0%	13.7%	13.7%
Therapy Professions	67.6%	73.5%	71.2%	69.5%	77.7%	75.2%	74.3%
Radiographers	8.1%	8.5%					
Health Science/ Diagnostics	8.1%	8.5%					
Social Workers	20.8%	14.4%	22.0%	22.1%	16.0%	16.2%	17.8%
Pharmacy	3.5%	3.6%	6.8%	8.4%	6.4%	8.6%	7.9%
Health & Social Care Professionals	1.9%	1.9%	2.0%	2.0%	2.0%	2.6%	2.6%
Management (VIII & above)	3.9%	2.5%	3.4%	5.8%	6.9%	6.2%	5.5%
Administrative/ Supervisory (V to VII)	17.8%	18.6%	22.5%	21.2%	21.5%	23.5%	23.5%
Clerical (III & IV)	78.3%	78.9%	74.1%	73.0%	71.7%	70.3%	71.0%
Management & Administrative	4.8%	4.7%	5.4%	6.4%	6.4%	6.5%	6.5%
Support	54.2%	53.5%	51.7%	52.0%	51.6%	52.8%	50.4%
Maintenance/ Technical	45.8%	46.5%	48.3%	48.0%	48.4%	47.2%	49.6%
General Support	3.1%	3.1%	3.3%	3.3%	3.3%	3.3%	3.3%
HCA, Nurse's Aide, etc.	60.5%	59.6%	56.7%	57.0%	57.7%	57.7%	58.1%
Health & Social Care Assistants	0.3%	0.3%	0.3%	0.2%	0.2%	0.2%	0.2%
Health Care Assistants	60.8%	59.9%	56.9%	57.2%	57.9%	57.9%	58.3%
Care, other	2.3%	2.1%	2.1%	2.1%	2.3%	2.2%	2.4%
Home Help	37.0%	38.0%	41.0%	40.7%	39.8%	39.9%	39.3%
Patient & Client Care	66.0%	66.8%	66.3%	65.3%	65.5%	62.7%	62.7%
Total	100 %	100 %	100 %	100 %	100 %	100 %	100%

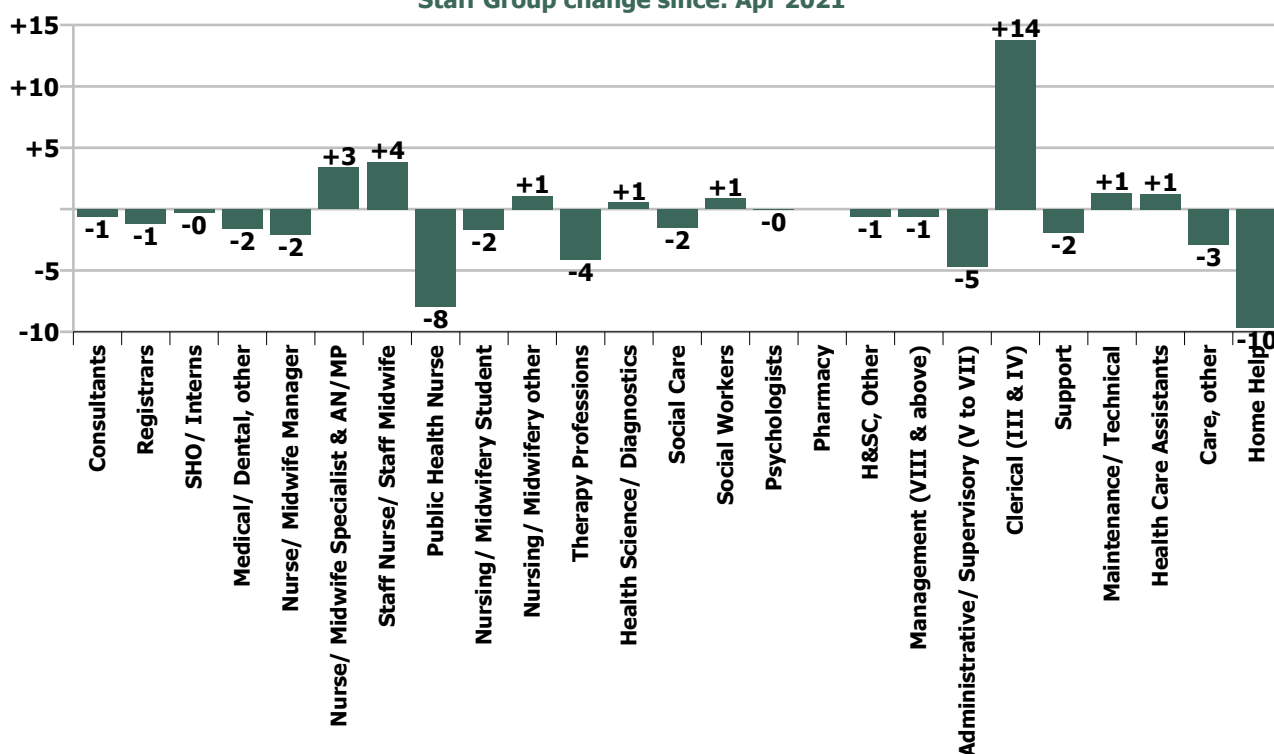
Summary Staff Movement: June 2021

Month-on-month Summary																												
WTE change since Apr 21	% change since Apr 21	overall	Consultants	Registrars	SHO/ Interns	Medical/ Dental, other	Medical & Dental	Nurse/ Midwife Manager	Nurse/ Midwife Specialist & AN/MP	Staff Nurse/ Staff Midwife	Public Health Nurse	Nursing/ Midwifery Student	Nursing/ Midwifery other	Nursing & Midwifery	Therapy Professions	Health Science/ Diagnostics	Social Care	Social Workers	Psychologists	Pharmacy	H&SC, Other	Health & Social Care Professionals	Management (VIII & above)	Administrative/ Supervisory (V to VII)	Clerical (III & IV)	Management & Administrative	General Support	Patient & Client Care
Overall	-0.2%	-15	-0.6	-1.2	-0.3	-1.6	-3.7	-2.1	+3.4	+3.8	-7.9	-1.7	+1.1	-3.3	-4.1	+0.6	-1.5	+0.9	-0.1	0.0	-0.6	-4.9	-0.6	-4.7	+13.8	+8.5	-0.6	-11.3
Community Health & Wellbeing	-0.3%	-0													-0.1							-0.1	0.0	0.0	0.0	+0.0		
Mental Health	+0.3%	+4	-0.1	+0.5	-1.0		-0.6	-0.2	+2.3	+1.4		+0.1	0.0	+3.7	-0.2		+0.2	-0.2	+0.6	0.0	+0.0	+0.5	+0.0	+1.2	-1.7	-0.4	+0.3	+0.4
Primary Care	-0.5%	-8	-0.5	-1.7	+0.7	-1.7	-3.2	+1.7	-1.8	+3.1	-7.8	-3.0	0.0	-7.8	-2.0	+1.0	-0.0	+0.7	-1.0	0.0	-0.4	-1.8	+0.1	-3.9	+9.7	+5.9	-0.4	-0.4
Disabilities	-0.2%	-5		0.0		0.0	0.0	-1.6	+1.0	-2.7	0.0	+1.2	+0.1	-2.0	-3.5	-0.4	-1.7	-0.7	+0.4		-0.3	-6.3	0.0	-1.9	+5.5	+3.6	-0.4	-0.2
Older People	-0.4%	-6				+0.0	+0.0	-2.0	+1.9	+2.1	-0.1		+1.0	+2.9	+1.8			+1.0		0.0		+2.8	-0.8	-0.1	+0.3	-0.6	-0.1	-11.2
Social Care	-0.3%	-12		0.0		+0.0	+0.0	-3.6	+3.0	-0.7	-0.1	+1.2	+1.1	+0.8	-1.8	-0.4	-1.7	+0.4	+0.4	0.0	-0.3	-3.5	-0.8	-2.0	+5.8	+3.0	-0.5	-11.4
Change	-15.4	-0.2%	-1.4%	-1.1%	-1.2%	-2.4%	-1.5%	-0.6%	+3.0%	+0.4%	-3.9%	-3.9%	+8.3%	-0.2%	-1.0%	+5.3%	-0.4%	+0.9%	-0.0%		-1.1%	-0.5%	-0.9%	-2.3%	+2.6%	+1.1%	-0.3%	-0.5%

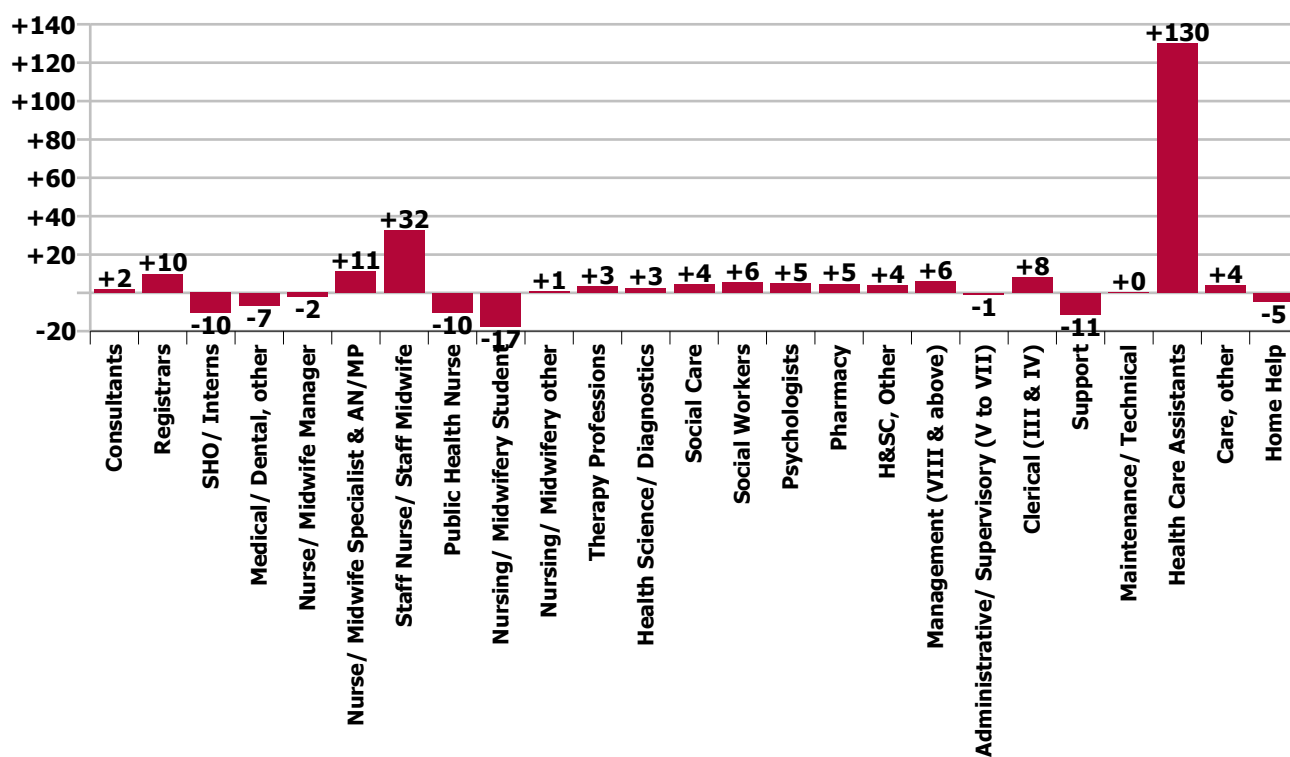
Year-on-year Summary																												
WTE change since Jun 20	% change since Jun 20	overall	Consultants	Registrars	SHO/ Interns	Medical/ Dental, other	Medical & Dental	Nurse/ Midwife Manager	Nurse/ Midwife Specialist & AN/MP	Staff Nurse/ Staff Midwife	Public Health Nurse	Nursing/ Midwifery Student	Nursing/ Midwifery other	Nursing & Midwifery	Therapy Professions	Health Science/ Diagnostics	Social Care	Social Workers	Psychologists	Pharmacy	H&SC, Other	Health & Social Care Professionals	Management (VIII & above)	Administrative/ Supervisory (V to VII)	Clerical (III & IV)	Management & Administrative	General Support	Patient & Client Care
Overall	+2.7%	+170	+1.7	+9.8	-10.5	-6.8	-5.7	-2.3	+11.1	+32.3	-10.2	-17.4	+0.8	+14.3	+3.4	+2.6	+4.3	+5.6	+5.1	+4.7	+4.0	+29.6	+5.8	-1.0	+8.1	+12.8	-10.9	+129.4
Community Health & Wellbeing	-0.3%	-0													-0.1							-0.1	+2.0	+1.4	-0.9	+2.5		
Mental Health	+0.3%	+4	+2.7	+11.1	-9.5		+4.4	-5.5	+2.1	+16.9		-3.6	-1.0	+8.8	-1.5		-0.4	+1.8	+2.5	0.0	-5.2	-2.8	-0.0	+1.5	-6.4	-4.9	+0.9	-2.6
Primary Care	-0.5%	-8	0.0	-1.3	-1.0	-6.8	-9.1	-1.9	+6.0	+7.3	-10.7	+9.4	+0.1	+10.1	-3.1	+3.0	-0.0	+0.6	-1.1	+3.2	+9.1	+11.8	+0.8	+0.7	+13.9	+15.4	-1.5	+116.2
Disabilities	+2.4%	+53.6	-1.0	0.0		0.0	-1.0	+0.1	-0.9	+3.4	0.0	-23.2	-0.3	-20.8	-0.3	-0.4	+4.7	+1.4	+3.6		+0.1	+9.0	+4.8	-7.9	+4.5	+1.4	-6.2	+71.1
Older People	-2.2%	-33.1				0.0	0.0	+5.0	+3.8	+4.8	+0.5		+2.0	+16.1	+8.4			+1.8		+1.5		+11.8	-1.7	+3.2	-3.0	-1.5	-4.1	-55.3
Social Care	-0.3%	-12	-1.0	0.0		0.0	-1.0	+5.2	+3.0	+8.2	+0.5	-23.2	+1.7	-4.7	+8.1	-0.4	+4.7	+3.2	+3.6	+1.5	+0.1	+20.8	+3.1	-4.7	+1.4	-0.2	-10.3	+15.8
Change	+169.5	+2.7%	+4.0%	+9.6%	-29.6%	-9.4%	-2.3%	-0.6%	+10.5%	+3.2%	-5.0%	-29.7%	+5.8%	+0.8%	+0.9%	+30.6%	+1.1%	+6.1%	+4.4%	+68.9%	+7.6%	+2.8%	+9.0%	-0.5%	+1.5%	+1.6%	-5.6%	+5.8%



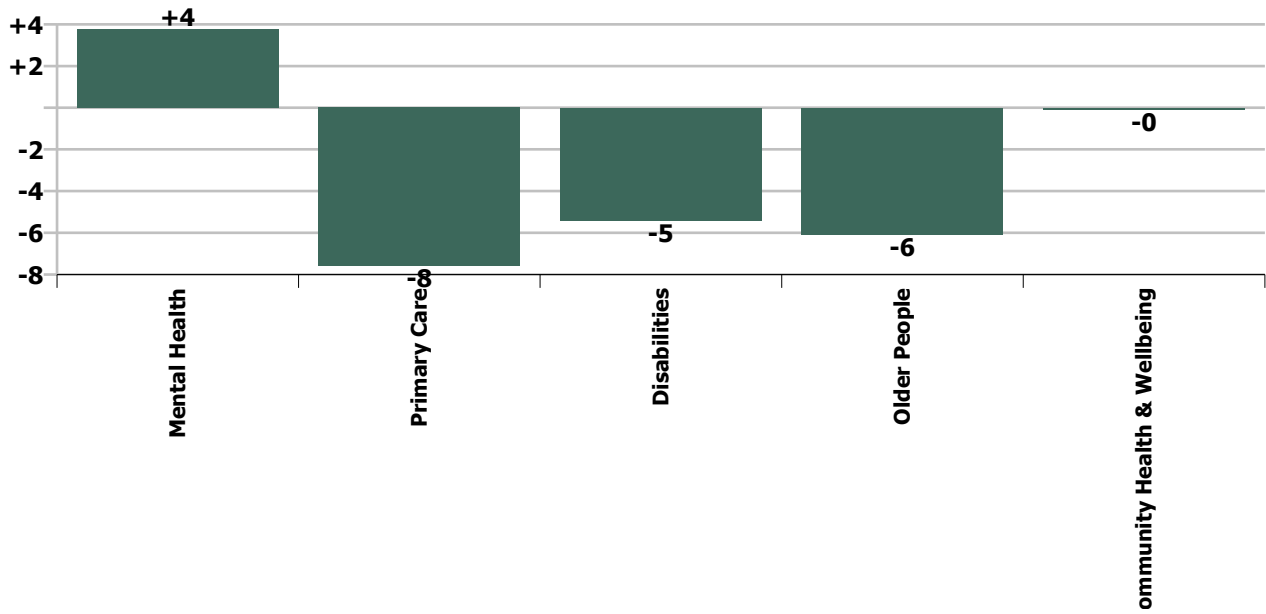
Staff Group change since: Apr 2021



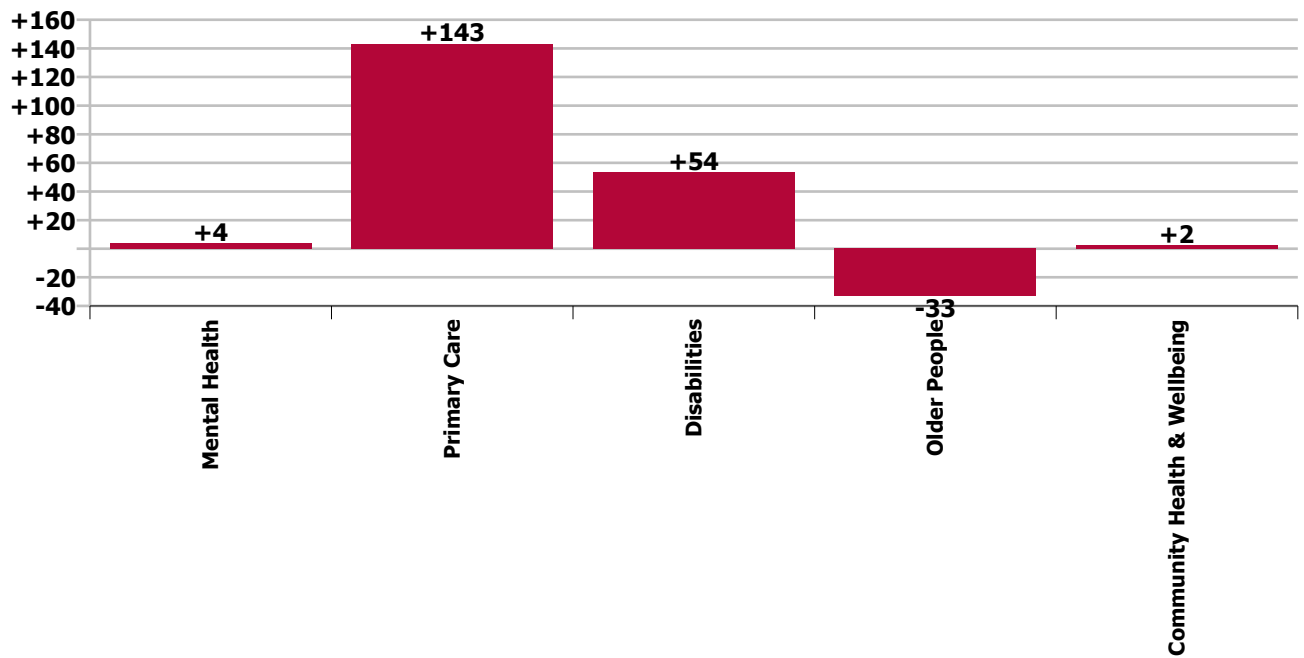
Staff Group change since: Jun 2020



Care Group change since: Apr 2021



Care Group change since: Jun 2020



Longitudinal Employment Levels by Grade Group - Dec 2016 to Jun 2021

Jun 2021 (Dec 2016 figure: 6,013)	WTE Jun 2021	WTE change since Dec 16	WTE change since Dec 17	WTE change since Dec 18	WTE change since Dec 19	WTE change since Dec 20	WTE change since Apr 21	% change since Dec 16	% change since Dec 17	% change since Dec 18	% change since Dec 19	% change since Dec 20	% change since Apr 21
Overall	6,428	+415	+337	+300	+293	+91	-15	+6.9%	+5.5%	+4.9%	+4.8%	+1.4%	-0.2%
Consultant Dentistry	1												
Consultant Medicine	5	+1		+1		-0	-1	+25.0%		+26.3%		-2.3%	-9.9%
Consultant Psychiatry	38	+2	+4	+3	+2	+1	-0	+4.3%	+11.7%	+8.0%	+5.4%	+2.3%	-0.2%
Consultants	44	+3	+4	+4	+2	+1	-1	+6.2%	+10.0%	+9.6%	+4.7%	+1.7%	-1.4%
Registrar	100	+14	+12	+14	+8	-1	-1	+16.7%	+13.8%	+15.7%	+8.5%	-0.8%	-0.8%
Senior Registrar	12	+1	-2	-1	-2	-1	-0	+8.5%	-13.6%	-6.3%	-12.7%	-9.3%	-3.7%
Registrars	112	+15	+10	+13	+6	-2	-1	+15.7%	+10.1%	+12.9%	+5.8%	-1.8%	-1.1%
Interns		-1						-100.0%	-100.0%	-100.0%	-100.0%	-100.0%	-100.0%
Senior House Officer	25	-2	-1	-3	-13	-2	-0	-7.1%	-3.9%	-10.4%	-34.4%	-7.8%	-1.2%
SHO/ Interns	25	-3	-1	-3	-13	-2	-0	-10.5%	-3.9%	-10.4%	-34.4%	-7.8%	-1.2%
Dentists	36	+0	+2	+3	+0	-1	-1	+0.4%	+4.5%	+8.9%	+0.3%	-3.3%	-2.0%
Other Medical	30	-3	-3	-6	-7	-5	-1	-10.0%	-10.0%	-15.5%	-17.7%	-15.0%	-2.8%
Medical/ Dental, other	66	-3	-2	-3	-6	-7	-2	-4.7%	-2.7%	-3.9%	-8.9%	-9.0%	-2.4%
Medical & Dental	247	+12	+11	+11	-11	-10	-4	+5.0%	+4.8%	+4.7%	-4.4%	-3.9%	-1.5%
Clinical Nurse/ Midwife Manager	288	-12	-12	-9	+1	+2	+1	-4.0%	-3.9%	-2.9%	+0.2%	+0.6%	+0.3%
Director Nursing/Midwifery, Assistant	63	+6	+4	+2	+3	-2	-2	+10.3%	+6.6%	+3.0%	+4.9%	-3.5%	-2.3%
Director of Nursing/Midwifery	23	-2	-3	+2	-1	-5	-1	-8.7%	-12.7%	+7.5%	-3.3%	-16.2%	-5.9%
Nurse/ Midwife Manager	374	-8	-11	-5	+3	-5	-2	-2.1%	-2.9%	-1.4%	+0.7%	-1.3%	-0.6%
Advanced Nurse/ Midwife Practitioner	10	+9	+9	+8	+6	+1	+1	+881.0%	+881.0%	+390.5%	+147.7%	+11.2%	+11.0%
Clinical Nurse/ Midwife Specialist	107	+10	+10	+10	+11	+4	+2	+10.1%	+10.8%	+10.0%	+11.4%	+4.2%	+2.3%
Nurse/ Midwife Specialist & AN/MP	117	+19	+19	+17	+17	+5	+3	+19.0%	+19.7%	+17.7%	+16.9%	+4.7%	+3.0%
Staff Nurse [Intellectual Disability]	128	-131	-133	-137	-104	-129	+2	-50.5%	-51.0%	-51.7%	-44.8%	-50.2%	+1.4%
Staff Nurse [Psychiatric]	482	+147	+150	+152	+149	+140	-2	+44.1%	+45.3%	+46.2%	+44.6%	+40.8%	-0.4%
Staff Nurses [General/ Children's]	419	-26	-1	+7	-14	+4	+4	-5.8%	-0.1%	+1.7%	-3.3%	+1.0%	+1.0%
Staff Nurse/ Staff Midwife	1,028	-9	+17	+22	+30	+15	+4	-0.9%	+1.7%	+2.2%	+3.0%	+1.5%	+0.4%
Public Health Nurse	195	-4	-3	-1	-4	-6	-8	-2.0%	-1.5%	-0.7%	-1.9%	-2.8%	-3.9%
Pre-registration Nurse/ Midwife Intern	31	+31	+30	+30	+30	+31	+1	-100.0%	+6040.0%	+6040.0%	+6040.0%	-100.0%	+4.2%
Pre-registration Nurse Intern (COVID-19)	0	+0	+0	+0	+0	-5	+0	-100.0%	-100.0%	-100.0%	-100.0%	-90.7%	+30.6%
Post-registration Nurse/ Midwife Student	10	-6	-3	+2	+8	-2	-3	-37.5%	-23.1%	+25.0%	+405.1%	-16.7%	-23.1%
Nursing/ Midwifery awaiting registration		-2	-1	-1	-2			-100.0%	-100.0%	-100.0%	-100.0%	-100.0%	-100.0%
Nursing/ Midwifery Student	41	+23	+27	+32	+37	+24	-2	+128.7%	+193.2%	+329.3%	+819.0%	+141.7%	-3.9%
Nursing Education/Clinical	14	+8	+5	+7	+4	+1	+1	+122.2%	+63.0%	+89.8%	+47.6%	+11.9%	+8.3%
Nursing/ Midwifery other	14	+8	+5	+7	+4	+1	+1	+122.2%	+63.0%	+89.8%	+47.6%	+11.9%	+8.3%

Jun 2021 (Dec 2016 figure: 6,013)	WTE Jun 2021	WTE change since Dec 16	WTE change since Dec 17	WTE change since Dec 18	WTE change since Dec 19	WTE change since Dec 20	WTE change since Apr 21	% change since Dec 16	% change since Dec 17	% change since Dec 18	% change since Dec 19	% change since Dec 20	% change since Apr 21
Overall	6,428	+415	+337	+300	+293	+91	-15	+6.9%	+5.5%	+4.9%	+4.8%	+1.4%	-0.2%
Nursing & Midwifery	1,770	+28	+54	+71	+87	+35	-3	+1.6%	+3.2%	+4.2%	+5.2%	+2.0%	-0.2%
Dietitians	26	+9	+8	+7	+6	+5	+1	+57.4%	+47.8%	+36.5%	+29.7%	+22.8%	+3.7%
Occupational Therapists	145	+12	+2	+10	+6	-5	-5	+9.3%	+1.5%	+7.1%	+4.3%	-3.1%	-3.2%
Orthoptists	2	+1	+1	+1	+2			+263.6%	+263.6%	+263.6%	-100.0%		
Physiotherapists	110	-2	-1	+1	+3	+1	+2	-2.1%	-1.1%	+1.2%	+2.6%	+1.3%	+2.2%
Podiatrists & Chiropodists	3	+0	-1	-2	-2	-2	-1	+2.9%	-34.9%	-43.5%	-44.9%	-39.6%	-32.8%
Speech & Language Therapists	109	+1	-8	-0	+3	-1	-1	+1.2%	-7.0%	-0.1%	+2.6%	-0.6%	-1.2%
Therapy Professions	394	+22	+1	+17	+17	-1	-4	+5.9%	+0.2%	+4.5%	+4.5%	-0.2%	-1.0%
Audiology	6	+2	+2	+2	+3	+1		+43.3%	+46.3%	+46.3%	+95.7%	+18.8%	
Clinical Engineering	5	+1	+1	+1	+1	+1	+1	+13.7%	+13.7%	+13.7%	+13.7%	+13.7%	+13.7%
Radiographers		-2	-3					-100.0%	-100.0%	-100.0%	-100.0%	-100.0%	-100.0%
Health Science/ Diagnostics	11	+0	-0	+3	+4	+2	+1	+1.2%	-2.9%	+30.6%	+50.3%	+16.6%	+5.3%
Social Care	386	+82	+44	+25	+18	-2	-2	+27.1%	+12.8%	+6.9%	+4.9%	-0.5%	-0.4%
Social Workers	97	+9	+6	+6	+9	+8	+1	+10.4%	+6.4%	+7.1%	+10.7%	+9.4%	+0.9%
Psychologists	120	+21	+11	+14	+0	+5	-0	+21.0%	+10.6%	+13.6%	+0.2%	+4.2%	-0.0%
Pharmacy	12	+7	+7	+6	+4	+3		+151.1%	+141.1%	+94.3%	+58.2%	+38.4%	
Counsellor Therapists	41	+6	+2	+2	+4	+3	-0	+17.1%	+4.6%	+5.8%	+10.5%	+8.3%	-1.1%
Dental Hygienists	12	-0	-0	-1	-0	-1	-0	-2.2%	-3.3%	-4.3%	-3.2%	-6.7%	-1.9%
Other Health & Social Care	2	-0		-0	+0	+0	+0	-4.4%		-6.0%	+6.1%	+3.6%	+6.1%
Play Therapists/ Specialists	1												
H&SC, Other	56	+6	+1	+2	+4	+2	-1	+11.4%	+2.6%	+3.0%	+7.0%	+4.4%	-1.1%
Health & Social Care Professionals	1,075	+147	+70	+72	+56	+18	-5	+15.8%	+6.9%	+7.2%	+5.5%	+1.7%	-0.5%
Executive Management	10	+1	+0	+0	+1	+0	+0	+12.9%	+1.4%	+2.2%	+12.9%	+1.9%	+2.9%
Senior Management (VIII & GM)	60	+10	+7	+10	+7	+3	-1	+20.9%	+13.0%	+20.5%	+12.2%	+5.1%	-1.5%
Management (VIII & above)	70	+12	+7	+10	+8	+3	-1	+19.7%	+11.2%	+17.5%	+12.3%	+4.6%	-0.9%
Middle Management (V-VII)	200	+57	+52	+26	+24	-3	-5	+39.8%	+34.8%	+15.2%	+13.5%	-1.7%	-2.3%
Other Administrative		-1						-100.0%	-100.0%	-100.0%	-100.0%	-100.0%	-100.0%
Administrative/ Supervisory (V to VII)	200	+56	+52	+26	+24	-3	-5	+38.9%	+34.8%	+15.2%	+13.5%	-1.7%	-2.3%
Clerical (III & IV)	538	+14	+16	+26	+31	+5	+14	+2.6%	+3.0%	+5.2%	+6.0%	+0.9%	+2.6%
Management & Administrative	808	+81	+75	+63	+62	+5	+8	+11.2%	+10.2%	+8.5%	+8.3%	+0.6%	+1.1%
Catering	29	-7	-4	-7	-4	-2	-1	-20.3%	-13.2%	-20.6%	-13.3%	-5.9%	-4.9%
Household Services	52	-19	-14	-5	-6	-2	+0	-27.3%	-21.1%	-9.4%	-10.1%	-3.1%	+0.2%
Other Support	28	-8	-9	-5	-3	-1	-1	-21.0%	-23.8%	-14.9%	-10.0%	-2.3%	-1.8%
Portering	5												
Support	114	-34	-27	-18	-13	-4	-2	-23.2%	-19.2%	-13.5%	-10.5%	-3.5%	-1.6%

Jun 2021 (Dec 2016 figure: 6,013)	WTE Jun 2021	WTE change since Dec 16	WTE change since Dec 17	WTE change since Dec 18	WTE change since Dec 19	WTE change since Dec 20	WTE change since Apr 21	% change since Dec 16	% change since Dec 17	% change since Dec 18	% change since Dec 19	% change since Dec 20	% change since Apr 21
Overall	6,428	+415	+337	+300	+293	+91	-15	+6.9%	+5.5%	+4.9%	+4.8%	+1.4%	-0.2%
Maintenance	70	+1	+0	-2	+1	+1	+1	+1.4%	+0.0%	-3.3%	+1.5%	+1.7%	+1.9%
Technical Services	0												
Maintenance/ Technical	70	+1	+0	-2	+1	+1	+1	+1.4%	+0.0%	-3.3%	+1.5%	+1.7%	+1.9%
General Support	184	-33	-27	-20	-12	-3	-1	-15.4%	-12.8%	-9.9%	-6.3%	-1.6%	-0.3%
HCA, Nurse's Aide, etc.	1,590	+94	+68	+44	+26	+11	-0	+6.3%	+4.5%	+2.8%	+1.6%	+0.7%	-0.0%
Health & Social Care Assistants	16	+12	+12	-5	+3	+1	-0	+311.6%	+311.6%	-23.2%	+19.1%	+6.7%	-0.0%
Swabber (COVID-19)	113	+113	+113	+113	+113	+44	+1	-100.0%	-100.0%	-100.0%	-100.0%	+63.0%	+1.2%
Health Care Assistants	1,719	+219	+193	+152	+141	+56	+1	+14.6%	+12.7%	+9.7%	+9.0%	+3.4%	+0.1%
Care, other	240	-28	-19	-4	+3	+2	-3	-10.5%	-7.2%	-1.6%	+1.2%	+0.9%	-1.2%
Home Help	386	-11	-21	-45	-33	-11	-10	-2.9%	-5.2%	-10.5%	-7.8%	-2.8%	-2.4%
Patient & Client Care	2,345	+180	+154	+103	+112	+47	-11	+8.3%	+7.0%	+4.6%	+5.0%	+2.0%	-0.5%

Source: Health Service Personnel Census

Longitudinal Employment Levels by Care Group - Dec 2016 to Jun 2021

Community Health & Wellbeing

Jun 2021 (figure:)	WTE Jun 2021	WTE change since	WTE change since	WTE change since	WTE change since	WTE change since Dec 20	WTE change since Apr 21	% change since	% change since	% change since	% change since	% change since Dec 20	% change since Apr 21
Overall	29	+29	+29	+29	+29	-1	-0	-100.0%	-100.0%	-100.0%	-100.0%	-3.3%	-0.3%
Health & Social Care Professionals	1	+1	+1	+1	+1	+0	-0	-1.0%	-1.0%	-1.0%	-1.0%	+0.2%	-0.1%
Therapy Professions	1	+1	+1	+1	+1	+0	-0	-1.0%	-1.0%	-1.0%	-1.0%	+0.2%	-0.1%
Management & Administrative	27	+27	+27	+27	+27	-1	-0	-1.0%	-1.0%	-1.0%	-1.0%	-0.0%	-0.0%
Management (VIII & above)	3	+3	+3	+3	+3	+0		-1.0%	-1.0%	-1.0%	-1.0%	+0.0%	+0.0%
Administrative/ Supervisory (V to VII)	20	+20	+20	+20	+20	-1		-1.0%	-1.0%	-1.0%	-1.0%	-0.1%	+0.0%
Clerical (III & IV)	4	+4	+4	+4	+4	-0		-1.0%	-1.0%	-1.0%	-1.0%	-0.0%	+0.0%

Source: Health Service Personnel Census

Mental Health

Jun 2021 (Dec 2016 figure: 1,041)	WTE Jun 2021	WTE change since Dec 16	WTE change since Dec 17	WTE change since Dec 18	WTE change since Dec 19	WTE change since Dec 20	WTE change since Apr 21	% change since Dec 16	% change since Dec 17	% change since Dec 18	% change since Dec 19	% change since Dec 20	% change since Apr 21
Overall	1,126	+85	+46	+56	+28	+14	+4	+8.1%	+4.2%	+5.3%	+2.5%	+1.3%	+0.3%
Medical & Dental	97	+16	+9	+10	-0	+3	-1	+0.2%	+0.1%	+0.1%	-0.0%	+0.0%	-0.0%
Consultants	38	+4	+5	+4	+3	+2	-0	+0.1%	+0.2%	+0.1%	+0.1%	+0.1%	-0.0%
Registrars	34	+15	+5	+8	+9	+3	+0	+0.8%	+0.2%	+0.3%	+0.3%	+0.1%	+0.0%
SHO/ Interns	24	-3	-1	-2	-12	-2	-1	-0.1%	-0.0%	-0.1%	-0.3%	-0.1%	-0.0%
Nursing & Midwifery	546	+42	+36	+39	+31	+20	+4	+0.1%	+0.1%	+0.1%	+0.1%	+0.0%	+0.0%
Nurse/ Midwife Manager	117	-6	-13	-10	-3	-3	-0	-0.0%	-0.1%	-0.1%	-0.0%	-0.0%	-0.0%
Nurse/ Midwife Specialist & AN/MP	61	+13	+12	+9	+5	+1	+2	+0.3%	+0.2%	+0.2%	+0.1%	+0.0%	+0.0%
Staff Nurse/ Staff Midwife	341	+11	+13	+15	+9	-2	+1	+0.0%	+0.0%	+0.0%	+0.0%	-0.0%	+0.0%
Nursing/ Midwifery Student	24	+22	+23	+23	+22	+23	+0	+11.2%	+22.5%	+21.4%	+8.8%	+22.7%	+0.0%
Nursing/ Midwifery other	3	+1	+0	+1	-1			+0.6%	+0.0%	+0.5%	-0.2%	+0.0%	+0.0%
Health & Social Care Professionals	153	+19	+2	+5	-1	-0	+0	+0.1%	+0.0%	+0.0%	-0.0%	-0.0%	+0.0%
Therapy Professions	43	+8	-1	-1	-1	+0	-0	+0.2%	-0.0%	-0.0%	-0.0%	+0.0%	-0.0%
Social Care	7	-0	+0	+0	-0	-0	+0	-0.0%	+0.0%	+0.0%	-0.1%	-0.0%	+0.0%
Social Workers	47	+4	+3	+7	+5	+3	-0	+0.1%	+0.1%	+0.2%	+0.1%	+0.1%	-0.0%
Psychologists	40	+10	+3	+2	+1	+3	+1	+0.3%	+0.1%	+0.1%	+0.0%	+0.1%	+0.0%
Pharmacy	2	+1	+1	+1	+1			+1.4%	+0.5%	+0.5%	+0.5%	+0.0%	+0.0%
H&SC, Other	15	-4	-4	-4	-5	-6	+0	-0.2%	-0.2%	-0.2%	-0.3%	-0.3%	+0.0%
Management & Administrative	119	+18	+8	+11	+5	-1	-0	+0.2%	+0.1%	+0.1%	+0.0%	-0.0%	-0.0%
Management (VIII & above)	3	+2	+1	+1	-0	-0	+0	+1.9%	+0.5%	+0.5%	-0.0%	-0.0%	+0.0%
Administrative/ Supervisory (V to VII)	23	+7	+4	+1	+0	+3	+1	+0.5%	+0.2%	+0.0%	+0.0%	+0.1%	+0.1%
Clerical (III & IV)	93	+9	+3	+9	+5	-4	-2	+0.1%	+0.0%	+0.1%	+0.1%	-0.0%	-0.0%
General Support	59	+1	-4	-2	+0	-0	+0	+0.0%	-0.1%	-0.0%	+0.0%	-0.0%	+0.0%
Support	30	-1	-5	-3	-3	-1	+0	-0.0%	-0.1%	-0.1%	-0.1%	-0.0%	+0.0%
Maintenance/ Technical	29	+1	+1	+1	+3	+1	+0	+0.0%	+0.0%	+0.0%	+0.1%	+0.0%	+0.0%
Patient & Client Care	152	-11	-5	-6	-8	-7	+0	-0.1%	-0.0%	-0.0%	-0.1%	-0.0%	+0.0%
Health Care Assistants	149	-9	-3	-6	-8	-7	+1	-0.1%	-0.0%	-0.0%	-0.0%	-0.0%	+0.0%
Care, other	3	-2	-2		-1	-0	-0	-0.3%	-0.3%	+0.0%	-0.2%	-0.1%	-0.1%

Source: Health Service Personnel Census

Primary Care

Jun 2021 (Dec 2016 figure: 1,457)	WTE Jun 2021	WTE change since Dec 16	WTE change since Dec 17	WTE change since Dec 18	WTE change since Dec 19	WTE change since Dec 20	WTE change since Apr 21	% change since Dec 16	% change since Dec 17	% change since Dec 18	% change since Dec 19	% change since Dec 20	% change since Apr 21
Overall	1,558	+101	+122	+136	+171	+52	-8	+6.9%	+8.5%	+9.5%	+12.3%	+3.4%	-0.5%
Medical & Dental	138	-3	+3	+2	-9	-12	-3	-0.0%	+0.0%	+0.0%	-0.1%	-0.1%	-0.0%
Consultants	6			+1		-0	-1	+0.0%	+0.0%	+0.2%	+0.0%	-0.0%	-0.1%
Registrars	77	-0	+5	+4	-2	-5	-2	-0.0%	+0.1%	+0.1%	-0.0%	-0.1%	-0.0%
SHO/ Interns	1	+0	+0	-1	-1	+0	+1	+0.0%	+0.1%	-0.5%	-0.5%	+0.3%	+2.7%
Medical/ Dental, other	54	-3	-2	-2	-6	-7	-2	-0.0%	-0.0%	-0.0%	-0.1%	-0.1%	-0.0%
Nursing & Midwifery	406	-11	-2	+11	+25	-0	-8	-0.0%	-0.0%	+0.0%	+0.1%	-0.0%	-0.0%
Nurse/ Midwife Manager	52	-4	-1	-2	+1	+1	+2	-0.1%	-0.0%	-0.0%	+0.0%	+0.0%	+0.0%
Nurse/ Midwife Specialist & AN/MP	42	+5	+5	+5	+8	+1	-2	+0.1%	+0.1%	+0.1%	+0.2%	+0.0%	-0.0%
Staff Nurse/ Staff Midwife	110	-4	-1	+5	+11	+5	+3	-0.0%	-0.0%	+0.1%	+0.1%	+0.1%	+0.0%
Public Health Nurse	192	-3	-3	-1	-4	-5	-8	-0.0%	-0.0%	-0.0%	-0.0%	-0.0%	-0.0%
Nursing/ Midwifery Student	10	-6	-3	+2	+8	-2	-3	-0.4%	-0.2%	+0.3%	+4.1%	-0.2%	-0.2%
Nursing/ Midwifery other	1	+1	+1	+1	+1	+0		-1.0%	-1.0%	-1.0%	-1.0%	+0.1%	+0.0%
Health & Social Care Professionals	352	+25	+13	+24	+26	+13	-2	+0.1%	+0.0%	+0.1%	+0.1%	+0.0%	-0.0%
Therapy Professions	228	+4	-6	+4	+7	-1	-2	+0.0%	-0.0%	+0.0%	+0.0%	-0.0%	-0.0%
Health Science/ Diagnostics	9	+3	+3	+3	+4	+2	+1	+0.5%	+0.4%	+0.5%	+0.8%	+0.3%	+0.1%
Social Care	1	-0	+1	+1	+1	-0	-0	-0.0%	-1.0%	-1.0%	-1.0%	-0.0%	-0.0%
Social Workers	18	+1	+1	-1	+2	+2	+1	+0.1%	+0.0%	-0.1%	+0.1%	+0.1%	+0.0%
Psychologists	55	+3	+6	+8	-1	-1	-1	+0.1%	+0.1%	+0.2%	-0.0%	-0.0%	-0.0%
Pharmacy	7	+4	+4	+4	+3	+2		+1.4%	+1.5%	+1.4%	+0.9%	+0.5%	+0.0%
H&SC, Other	34	+9	+4	+5	+9	+8	-0	+0.4%	+0.1%	+0.2%	+0.4%	+0.3%	-0.0%
Management & Administrative	405	-11	+2	-2	+17	+8	+6	-0.0%	+0.0%	-0.0%	+0.0%	+0.0%	+0.0%
Management (VIII & above)	44	+2	+3	-0	-1	+3	+0	+0.1%	+0.1%	-0.0%	-0.0%	+0.1%	+0.0%
Administrative/ Supervisory (V to VII)	82	+16	+15	+2	+5	-2	-4	+0.2%	+0.2%	+0.0%	+0.1%	-0.0%	-0.0%
Clerical (III & IV)	279	-29	-15	-4	+14	+6	+10	-0.1%	-0.1%	-0.0%	+0.1%	+0.0%	+0.0%
General Support	23	-4	-6	-3	-3	-1	-0	-0.1%	-0.2%	-0.1%	-0.1%	-0.0%	-0.0%
Support	20	-5	-6	-3	-3	-1	-0	-0.2%	-0.2%	-0.1%	-0.1%	-0.0%	-0.0%
Maintenance/ Technical	3	+1	-0	+0	+0			+0.6%	-0.0%	+0.0%	+0.0%	+0.0%	+0.0%
Patient & Client Care	234	+105	+112	+103	+115	+44	-0	+0.8%	+0.9%	+0.8%	+1.0%	+0.2%	-0.0%
Health Care Assistants	136	+119	+121	+107	+115	+45	+1	+7.4%	+8.1%	+3.7%	+5.5%	+0.5%	+0.0%
Care, other	99	-14	-8	-3	+0	-1	-2	-0.1%	-0.1%	-0.0%	+0.0%	-0.0%	-0.0%
Home Help		-1	-1	-0	-0			-1.0%	-1.0%	-1.0%	-1.0%	-1.0%	-1.0%

Source: Health Service Personnel Census

Disabilities

Jun 2021 (Dec 2016 figure: 1,984)	WTE Jun 2021	WTE change since Dec 16	WTE change since Dec 17	WTE change since Dec 18	WTE change since Dec 19	WTE change since Dec 20	WTE change since Apr 21	% change since Dec 16	% change since Dec 17	% change since Dec 18	% change since Dec 19	% change since Dec 20	% change since Apr 21
Overall	2,240	+256	+162	+106	+78	+35	-5	+12.9%	+7.8%	+5.0%	+3.6%	+1.6%	-0.2%
Medical & Dental	2	-1	-1	-1	-2	-1		-0.3%	-0.3%	-0.3%	-0.5%	-0.3%	+0.0%
Consultants		-1	-1	-1	-1	-1		-1.0%	-1.0%	-1.0%	-1.0%	-1.0%	-1.0%
Registrars	1				-1			+0.0%	+0.0%	+0.0%	-0.5%	+0.0%	+0.0%
Medical/ Dental, other	1							+0.0%	+0.0%	+0.0%	+0.0%	+0.0%	+0.0%
Nursing & Midwifery	459	-1	+4	-2	+4	+10	-2	-0.0%	+0.0%	-0.0%	+0.0%	+0.0%	-0.0%
Nurse/ Midwife Manager	117	-2	-1	-3	-6	-2	-2	-0.0%	-0.0%	-0.0%	-0.0%	-0.0%	-0.0%
Nurse/ Midwife Specialist & AN/MP	6	-3	-2	-1	-1	+0	+1	-0.3%	-0.2%	-0.1%	-0.1%	+0.0%	+0.2%
Staff Nurse/ Staff Midwife	321	-6	-3	-6	+2	+9	-3	-0.0%	-0.0%	-0.0%	+0.0%	+0.0%	-0.0%
Public Health Nurse	1	-0	+1	-0		-0		-0.0%	-1.0%	-0.0%	+0.0%	-0.0%	+0.0%
Nursing/ Midwifery Student	7	+7	+7	+6	+7	+3	+1	-1.0%	-1.0%	+12.5%	-1.0%	+0.7%	+0.2%
Nursing/ Midwifery other	7	+3	+1	+2	+1	+0	+0	+0.6%	+0.2%	+0.3%	+0.3%	+0.1%	+0.0%
Health & Social Care Professionals	531	+93	+43	+34	+21	-1	-6	+0.2%	+0.1%	+0.1%	+0.0%	-0.0%	-0.0%
Therapy Professions	93	+0	-1	+5	+2	-5	-4	+0.0%	-0.0%	+0.1%	+0.0%	-0.0%	-0.0%
Health Science/ Diagnostics	2	-0	-0	-0	-0	-0	-0	-0.2%	-0.2%	-0.2%	-0.2%	-0.2%	-0.2%
Social Care	378	+83	+43	+24	+17	-2	-2	+0.3%	+0.1%	+0.1%	+0.0%	-0.0%	-0.0%
Social Workers	26	+3	-1	+1	+2	+2	-1	+0.1%	-0.0%	+0.0%	+0.1%	+0.1%	-0.0%
Psychologists	26	+7	+3	+4	+1	+3	+0	+0.4%	+0.1%	+0.2%	+0.0%	+0.1%	+0.0%
H&SC, Other	7	+1	+1	+0	+0	+1	-0	+0.1%	+0.1%	+0.1%	+0.0%	+0.1%	-0.0%
Management & Administrative	161	+25	+13	+13	+12	+4	+4	+0.2%	+0.1%	+0.1%	+0.1%	+0.0%	+0.0%
Management (VIII & above)	15	+2	-3	+4	+6	+2		+0.2%	-0.2%	+0.4%	+0.7%	+0.1%	+0.0%
Administrative/ Supervisory (V to VII)	52	+3	+3	-1	-4	-4	-2	+0.1%	+0.1%	-0.0%	-0.1%	-0.1%	-0.0%
Clerical (III & IV)	94	+20	+12	+10	+9	+6	+6	+0.3%	+0.2%	+0.1%	+0.1%	+0.1%	+0.1%
General Support	54	-31	-18	-13	-8	-1	-0	-0.4%	-0.2%	-0.2%	-0.1%	-0.0%	-0.0%
Support	40	-27	-15	-10	-6	-1	-0	-0.4%	-0.3%	-0.2%	-0.1%	-0.0%	-0.0%
Maintenance/ Technical	14	-3	-3	-3	-2	+0	+0	-0.2%	-0.2%	-0.2%	-0.1%	+0.0%	+0.0%
Patient & Client Care	1,032	+171	+121	+76	+51	+24	-0	+0.2%	+0.1%	+0.1%	+0.1%	+0.0%	-0.0%
Health Care Assistants	894	+184	+135	+79	+51	+23	+2	+0.3%	+0.2%	+0.1%	+0.1%	+0.0%	+0.0%
Care, other	117	-12	-10	-2	+2	+3	-2	-0.1%	-0.1%	-0.0%	+0.0%	+0.0%	-0.0%
Home Help	21	-1	-4	-1	-1	-1	-0	-0.1%	-0.2%	-0.0%	-0.0%	-0.1%	-0.0%

Source: Health Service Personnel Census

Older People

Jun 2021 (Dec 2016 figure: 1,531)	WTE Jun 2021	WTE change since Dec 16	WTE change since Dec 17	WTE change since Dec 18	WTE change since Dec 19	WTE change since Dec 20	WTE change since Apr 21	% change since Dec 16	% change since Dec 17	% change since Dec 18	% change since Dec 19	% change since Dec 20	% change since Apr 21
Overall	1,476	-55	-22	-27	-12	-8	-6	-3.6%	-1.5%	-1.8%	-0.8%	-0.5%	-0.4%
Medical & Dental	11	-0	+0	-1	+0		+0	-0.0%	+0.0%	-0.1%	+0.0%	+0.0%	+0.0%
Medical/ Dental, other	11	-0	+0	-1	+0		+0	-0.0%	+0.0%	-0.1%	+0.0%	+0.0%	+0.0%
Nursing & Midwifery	358	-1	+17	+24	+27	+5	+3	-0.0%	+0.0%	+0.1%	+0.1%	+0.0%	+0.0%
Nurse/ Midwife Manager	88	+3	+4	+9	+11	-1	-2	+0.0%	+0.0%	+0.1%	+0.1%	-0.0%	-0.0%
Nurse/ Midwife Specialist & AN/MP	7	+4	+4	+4	+5	+3	+2	+1.3%	+1.3%	+1.3%	+2.4%	+0.8%	+0.4%
Staff Nurse/ Staff Midwife	257	-10	+7	+8	+8	+2	+2	-0.0%	+0.0%	+0.0%	+0.0%	+0.0%	+0.0%
Public Health Nurse	3	-1	-1	-1	+0	-0	-0	-0.3%	-0.3%	-0.2%	+0.2%	-0.0%	-0.0%
Nursing/ Midwifery other	3	+3	+3	+3	+3	+1	+1	-1.0%	-1.0%	-1.0%	-1.0%	+0.5%	+0.5%
Health & Social Care Professionals	38	+9	+10	+8	+8	+6	+3	+0.3%	+0.4%	+0.3%	+0.3%	+0.2%	+0.1%
Therapy Professions	28	+9	+8	+7	+7	+4	+2	+0.4%	+0.4%	+0.3%	+0.4%	+0.2%	+0.1%
Health Science/ Diagnostics		-2	-2					-1.0%	-1.0%	-1.0%	-1.0%	-1.0%	-1.0%
Social Workers	7	+1	+3	+0	+0	+2	+1	+0.1%	+0.7%	+0.0%	+0.0%	+0.3%	+0.2%
Pharmacy	3	+2	+2	+1	+1	+1		+2.0%	+2.0%	+0.5%	+0.2%	+0.5%	+0.0%
Management & Administrative	95	+22	+24	+14	-0	-5	-1	+0.3%	+0.3%	+0.2%	-0.0%	-0.0%	-0.0%
Management (VIII & above)	5	+2	+3	+2	-0	-2	-1	+0.8%	+1.9%	+0.9%	-0.1%	-0.2%	-0.1%
Administrative/ Supervisory (V to VII)	22	+9	+9	+4	+2	+1	-0	+0.7%	+0.7%	+0.2%	+0.1%	+0.0%	-0.0%
Clerical (III & IV)	68	+10	+12	+7	-2	-4	+0	+0.2%	+0.2%	+0.1%	-0.0%	-0.1%	+0.0%
General Support	48	+1	+1	-2	-2	-1	-0	+0.0%	+0.0%	-0.0%	-0.0%	-0.0%	-0.0%
Support	24	-2	-1	-2	-2	-1	-1	-0.1%	-0.0%	-0.1%	-0.1%	-0.0%	-0.0%
Maintenance/ Technical	24	+2	+2	-0	+0	+0	+1	+0.1%	+0.1%	-0.0%	+0.0%	+0.0%	+0.0%
Patient & Client Care	926	-85	-74	-70	-47	-14	-11	-0.1%	-0.1%	-0.1%	-0.0%	-0.0%	-0.0%
Health Care Assistants	540	-75	-59	-27	-17	-5	-3	-0.1%	-0.1%	-0.0%	-0.0%	-0.0%	-0.0%
Care, other	22	-1	+1	+1	+2	+0	+1	-0.0%	+0.0%	+0.1%	+0.1%	+0.0%	+0.1%
Home Help	364	-9	-16	-44	-31	-10	-9	-0.0%	-0.0%	-0.1%	-0.1%	-0.0%	-0.0%

Source: Health Service Personnel Census