

CHO 8 Employment Report: March 2021

Employment by Staff Group

Mar 2021 (Dec 2020 figure: 6,337)	WTE Feb 2021	WTE Mar 2021	WTE change since Feb 21	% change since Feb 21	WTE change since Dec 20	WTE change since Mar 20
Overall	6,405	6,417	+12	+0.2%	+80	+257
Consultants	44	44	-0	-0.2%	+0	+2
Registrars	108	111	+2	+2.2%	-4	+13
SHO/ Interns	30	27	-3	-9.3%	-0	-14
Medical/ Dental, other	72	73	+1	+1.5%	+0	+0
Medical & Dental	254	254	+1	+0.2%	-3	+0
Nurse/ Midwife Manager	379	377	-2	-0.6%	-3	+7
Nurse/ Midwife Specialist & AN/MP	113	114	+1	+1.3%	+3	+10
Staff Nurse/ Staff Midwife	1,023	1,017	-6	-0.6%	+4	+25
Public Health Nurse	205	203	-2	-0.8%	+2	-3
Pre-registration Nurse/ Midwife Intern	28	29	+1	+4.2%	+29	+1
Pre-registration Nurse Intern (COVID-19)				-100.0%	-5	
Post-registration Nurse/ Midwife Student	13	13			+1	
Nursing/ Midwifery awaiting registration				-100.0%		
Nursing/ Midwifery Student	41	42	+1	+2.8%	+25	+6
Nursing/ Midwifery other	13	13	-0	-0.1%	+0	+1
Nursing & Midwifery	1,773	1,766	-8	-0.4%	+31	+46
Therapy Professions	399	394	-5	-1.3%	-1	+15
Health Science/ Diagnostics	10	10	+0	+0.3%	+1	+2
Social Care	385	383	-2	-0.5%	-5	+15
Social Workers	91	93	+3	+2.8%	+4	+6
Psychologists	117	119	+2	+1.5%	+4	+5
Pharmacy	11	12	+0	+1.1%	+3	+4
H&SC, Other	55	56	+1	+2.1%	+2	+4
Health & Social Care Professionals	1,069	1,067	-2	-0.2%	+9	+51
Management (VIII & above)	67	68	+1	+1.7%	+1	+6
Administrative/ Supervisory (V to VII)	198	200	+2	+1.3%	-3	+1
Clerical (III & IV)	533	533	-0	-0.0%	+0	+8
Management & Administrative	798	801	+4	+0.4%	-2	+15
Support	118	117	-1	-0.8%	-1	-10
Maintenance/ Technical	67	67	-0	-0.3%	-2	-2
General Support	185	184	-1	-0.6%	-3	-12
Health Care Assistants	1,697	1,713	+16	+0.9%	+51	+167
Care, other	237	241	+5	+1.9%	+3	+3
Home Help	393	391	-2	-0.6%	-6	-13
Patient & Client Care	2,327	2,345	+18	+0.8%	+48	+157

CHO 8 Employment Report: March 2021

Community Health & Wellbeing

Mar 2021 (Dec 2020 figure: 30)	WTE Feb 2021	WTE Mar 2021	WTE change since Feb 21	% change since Feb 21	WTE change since Dec 20	WTE change since Mar 20
Total Community Health & Wellbeing	29	29	-0	-1.4%	-1	+3
Public Health Nurse				-100.0%		-1
Nursing & Midwifery				-100.0%		-1
Therapy Professions	2	2			+0	+0
Health & Social Care Professionals	2	2			+0	+0
Management (VIII & above)	3	3			+0	+2
Administrative/ Supervisory (V to VII)	20	20	-0	-1.7%	-2	+2
Clerical (III & IV)	4	4	-0	-1.5%	+0	+0
Management & Administrative	28	27	-0	-1.5%	-2	+4

Mental Health

Mar 2021 (Dec 2020 figure: 1,112)	WTE Feb 2021	WTE Mar 2021	WTE change since Feb 21	% change since Feb 21	WTE change since Dec 20	WTE change since Mar 20
Total Mental Health	1,125	1,117	-9	-0.8%	+5	+3
Consultants	38	38	-0	-0.2%	+2	+3
Registrars	28	31	+4	+13.6%	+0	+12
SHO/ Interns	29	26	-3	-10.1%	-0	-13
Medical & Dental	94	95	+1	+0.8%	+1	+1
Nurse/ Midwife Manager	115	114	-1	-0.7%	-6	-8
Nurse/ Midwife Specialist & AN/MP	60	60	-0	-0.7%	+0	+2
Staff Nurse/ Staff Midwife	338	336	-3	-0.8%	-7	+12
<i>Nursing/ Midwifery awaiting registration</i>				-100.0%		
<i>Pre-registration Nurse Intern (COVID-19)</i>				-100.0%	-1	
<i>Pre-registration Nurse/ Midwife Intern</i>	22	23	+1	+6.1%	+23	+1
Nursing/ Midwifery Student	22	23	+1	+6.1%	+22	+2
Nursing/ Midwifery other	3	3				-1
Nursing & Midwifery	539	536	-3	-0.5%	+10	+7
Therapy Professions	42	44	+1	+3.0%	+1	-3
Social Care	7	6	-0	-2.9%	-1	-0
Social Workers	46	47	+1	+2.5%	+3	+5
Psychologists	39	39	+1	+2.5%	+3	+3
Pharmacy	1	2	+0	+0.7%		
H&SC, Other	22	15	-7	-32.4%	-6	-5
Health & Social Care Professionals	157	153	-4	-2.6%	-0	-0
Management (VIII & above)	2	2			-1	-1
Administrative/ Supervisory (V to VII)	19	20	+2	+8.5%	+0	+0
Clerical (III & IV)	100	98	-2	-2.3%	+1	+1
Management & Administrative	121	120	-1	-0.6%	-0	-0
Support	31	30	-0	-1.6%	-1	-2
Maintenance/ Technical	28	28	-0	-0.6%	-0	+1
General Support	59	58	-1	-1.1%	-1	-1
Health Care Assistants	153	152	-2	-1.1%	-5	-3
Care, other	3	3			-0	-1
Patient & Client Care	156	155	-2	-1.1%	-5	-4

Primary Care

Mar 2021 (Dec 2020 figure: 1,506)	WTE Feb 2021	WTE Mar 2021	WTE change since Feb 21	% change since Feb 21	WTE change since Dec 20	WTE change since Mar 20
Total Primary Care	1,550	1,566	+16	+1.0%	+60	+169
Consultants	6	6			-0	
Registrars	80	78	-1	-1.7%	-4	+1
SHO/ Interns	1	1	+0	+18.8%	+0	-1
Medical/ Dental, other	60	61	+1	+1.7%	+0	+0
Medical & Dental	146	146	-0	-0.2%	-3	-0
Nurse/ Midwife Manager	51	50	-2	-3.3%	-1	-1
Nurse/ Midwife Specialist & AN/MP	42	44	+2	+4.7%	+2	+7
Staff Nurse/ Staff Midwife	106	106	+1	+0.8%	+2	+7
Public Health Nurse	201	199	-2	-0.9%	+2	-3
<i>Post-registration Nurse/ Midwife Student</i>	13	13			+1	
Nursing/ Midwifery Student	13	13			+1	+11
Nursing/ Midwifery other	1	1			+0	+0
Nursing & Midwifery	414	414	-1	-0.2%	+7	+21
Therapy Professions	233	229	-4	-1.8%	+0	+10
Health Science/ Diagnostics	8	8	+0	+0.4%	+1	+2
Social Care	1	1				+1
Social Workers	15	16	+1	+4.3%	-0	-1
Psychologists	55	55	+0	+0.6%	-1	+0
Pharmacy	7	7	+0	+1.7%	+2	+3
H&SC, Other	26	34	+8	+30.8%	+8	+10
Health & Social Care Professionals	345	350	+5	+1.4%	+11	+26
Management (VIII & above)	41	43	+2	+4.3%	+2	+1
Administrative/ Supervisory (V to VII)	83	83	-0	-0.5%	-1	+3
Clerical (III & IV)	271	273	+2	+0.9%	+1	+6
Management & Administrative	395	399	+4	+1.0%	+2	+10
Support	21	21	+0	+0.2%	+0	-2
Maintenance/ Technical	3	3				+0
General Support	23	24	+0	+0.2%	+0	-2
Health Care Assistants	128	134	+6	+4.9%	+44	+115
Care, other	98	100	+2	+1.7%	+0	-1
Patient & Client Care	226	234	+8	+3.5%	+44	+114

Social Care

Mar 2021 (Dec 2020 figure: 3,689)	WTE Feb 2021	WTE Mar 2021	WTE change since Feb 21	% change since Feb 21	WTE change since Dec 20	WTE change since Mar 20
Total Social Care	3,700	3,705	+5	+0.1%	+16	+82
Consultants				-100.0%	-1	-1
Registrars	1	1				
Medical/ Dental, other	12	12	+0	+0.4%		+0
Medical & Dental	13	13	+0	+0.4%	-1	-1
Nurse/ Midwife Manager	212	212	+0	+0.0%	+4	+17
Nurse/ Midwife Specialist & AN/MP	10	10	-0	-1.4%	+0	+0
Staff Nurse/ Staff Midwife	579	575	-4	-0.7%	+8	+6
Public Health Nurse	4	4	+0	+2.6%	+0	+1
<i>Pre-registration Nurse Intern (COVID-19)</i>				-100.0%	-4	
<i>Pre-registration Nurse/ Midwife Intern</i>	6	6	-0	-2.9%	+6	-0
Nursing/ Midwifery Student	6	6	-0	-2.9%	+2	-7
Nursing/ Midwifery other	9	9	-0	-0.1%	+0	+2
Nursing & Midwifery	820	816	-4	-0.5%	+14	+19
Therapy Professions	122	120	-2	-1.8%	-2	+8
Health Science/ Diagnostics	2	2				
Social Care	377	376	-2	-0.5%	-4	+14
Social Workers	30	31	+1	+2.4%	+2	+2
Psychologists	24	25	+0	+1.7%	+2	+2
Pharmacy	3	3			+1	+1
H&SC, Other	6	7	+0	+6.5%	+1	
Health & Social Care Professionals	565	563	-3	-0.5%	-1	+26
Management (VIII & above)	21	20	-1	-2.9%	-0	+4
Administrative/ Supervisory (V to VII)	76	77	+2	+2.1%	-1	-4
Clerical (III & IV)	158	158	-0	-0.2%	-2	+1
Management & Administrative	254	255	+1	+0.3%	-2	+1
Support	67	66	-1	-0.8%	-0	-6
Maintenance/ Technical	36	36			-2	-4
General Support	103	102	-1	-0.5%	-2	-10
Health Care Assistants	1,416	1,427	+11	+0.8%	+11	+56
Care, other	135	138	+3	+2.2%	+3	+4
Home Help	393	391	-2	-0.6%	-6	-13
Patient & Client Care	1,944	1,956	+12	+0.6%	+8	+47

CHO 8 Employment Report: March 2021

Disabilities

Mar 2021 (Dec 2020 figure: 2,205)	WTE Feb 2021	WTE Mar 2021	WTE change since Feb 21	% change since Feb 21	WTE change since Dec 20	WTE change since Mar 20
Total Disabilities	2,218	2,221	+3	+0.1%	+15	+82
Consultants				-100.0%	-1	-1
Registrars	1	1				
Medical/ Dental, other	1	1				
Medical & Dental	2	2			-1	-1
Nurse/ Midwife Manager	121	121	+0	+0.3%	+2	+7
Nurse/ Midwife Specialist & AN/MP	5	5	+0	+0.2%	-1	-2
Staff Nurse/ Staff Midwife	324	321	-4	-1.2%	+8	+3
Public Health Nurse	1	1			-0	
<i>Pre-registration Nurse Intern (COVID-19)</i>				-100.0%	-4	
<i>Pre-registration Nurse/ Midwife Intern</i>	6	6	-0	-2.9%	+6	-0
Nursing/ Midwifery Student	6	6	-0	-2.9%	+2	-7
Nursing/ Midwifery other	7	7	+0	+0.1%	+0	-0
Nursing & Midwifery	464	461	-4	-0.8%	+12	+1
Therapy Professions	97	94	-3	-2.6%	-4	+2
Health Science/ Diagnostics	2	2				
Social Care	377	376	-2	-0.5%	-4	+14
Social Workers	25	25	+0	+1.0%	+1	+1
Psychologists	24	25	+0	+1.7%	+2	+2
H&SC, Other	6	7	+0	+6.5%	+1	
Health & Social Care Professionals	532	529	-3	-0.6%	-4	+20
Management (VIII & above)	14	14	+0	+0.2%	+1	+4
Administrative/ Supervisory (V to VII)	54	54	+1	+1.3%	-2	-4
Clerical (III & IV)	89	89	-0	-0.3%	+2	+2
Management & Administrative	157	158	+0	+0.3%	+0	+1
Support	41	41	-0	-0.9%	-0	-3
Maintenance/ Technical	13	13			-1	-3
General Support	54	54	-0	-0.7%	-1	-5
Health Care Assistants	871	879	+8	+0.9%	+7	+64
Care, other	114	117	+3	+2.5%	+4	+3
Home Help	23	22	-1	-5.5%	-1	-1
Patient & Client Care	1,008	1,018	+10	+0.9%	+10	+67

Older People

Mar 2021 (Dec 2020 figure: 1,484)	WTE Feb 2021	WTE Mar 2021	WTE change since Feb 21	% change since Feb 21	WTE change since Dec 20	WTE change since Mar 20
Total Older People	1,482	1,485	+3	+0.2%	+1	+1
Medical/ Dental, other	11	11	+0	+0.5%		+0
Medical & Dental	11	11	+0	+0.5%		+0
Nurse/ Midwife Manager	91	91	-0	-0.3%	+2	+10
Nurse/ Midwife Specialist & AN/MP	5	5	-0	-3.0%	+1	+2
Staff Nurse/ Staff Midwife	255	255	-0	-0.2%	-0	+4
Public Health Nurse	3	3	+0	+3.4%	+0	+1
Nursing/ Midwifery other	2	2	-0	-1.0%		+2
Nursing & Midwifery	356	355	-1	-0.2%	+3	+18
Health & Social Care Professionals	34	34	+1	+2.3%	+3	+6
Management (VIII & above)	7	6	-1	-9.1%	-1	+0
Administrative/ Supervisory (V to VII)	22	23	+1	+4.1%	+1	+0
Clerical (III & IV)	69	69	+0	+0.1%	-3	-1
Management & Administrative	97	98	+0	+0.3%	-3	+0
Support	25	25	-0	-0.6%	+0	-3
Maintenance/ Technical	23	23			-1	-1
General Support	48	48	-0	-0.3%	-1	-4
Health Care Assistants	545	548	+3	+0.6%	+4	-9
Care, other	21	21	+0	+0.3%	-1	+1
Home Help	370	369	-1	-0.2%	-5	-12
Patient & Client Care	936	939	+2	+0.3%	-1	-19

CHO 8 Employment by Administration (HSE / S38): March 2021

Mar 2021 (Dec 2020 figure: 6,337)	WTE Feb 2021	WTE Mar 2021	WTE change since Feb 21	% change since Feb 21	WTE change since Dec 20	WTE change since Mar 20
Overall	6,405	6,417	+12	+0.2%	+80	+257
HSE	4,795	4,800	+5	+0.1%	+58	+171
Section 38 Voluntary Agencies	1,610	1,616	+6	+0.4%	+22	+86

HSE

Mar 2021 (Dec 2020 figure: 4,742)	WTE Feb 2021	WTE Mar 2021	WTE change since Feb 21	% change since Feb 21	WTE change since Dec 20	WTE change since Mar 20
Overall	4,795	4,800	+5	+0.1%	+58	+171
Consultants	44	44	-0	-0.0%	+0	+2
Registrars	107	110	+2	+0.0%	-4	+13
SHO/ Interns	30	27	-3	-0.1%	-0	-14
Medical/ Dental, other	72	73	+1	+0.0%	+0	+0
Medical & Dental	253	253	+1	+0.2%	-3	+0
Nurse/ Midwife Manager	294	291	-3	-0.0%	-2	+7
Nurse/ Midwife Specialist & AN/MP	108	110	+1	+0.0%	+3	+11
Staff Nurse/ Staff Midwife	800	798	-2	-0.0%	-8	+9
Public Health Nurse	205	203	-2	-0.0%	+2	-3
Pre-registration Nurse/ Midwife Intern	22	23	+1	+0.1%	+23	+3
Pre-registration Nurse Intern (COVID-19)				-1.0%		
Post-registration Nurse/ Midwife Student	13	13		+0.0%	+11	+11
Nursing/ Midwifery awaiting registration				-1.0%	-2	-1
Nursing/ Midwifery Student	35	36	+1	+0.0%	+23	+13
Nursing/ Midwifery other	6	6	-0	-0.0%	+0	+1
Nursing & Midwifery	1,448	1,443	-4	-0.3%	+18	+37
Therapy Professions	386	381	-5	-0.0%	-0	+15
Health Science/ Diagnostics	10	10	+0	+0.0%	+1	+2
Social Care	13	13	-0	-0.0%	-1	+1
Social Workers	78	81	+3	+0.0%	+4	+6
Psychologists	112	113	+2	+0.0%	+4	+5
Pharmacy	11	12	+0	+0.0%	+3	+4
H&SC, Other	49	49	+1	+0.0%	+1	+4
Health & Social Care Professionals	659	659	+0	+0.0%	+13	+36
Management (VIII & above)	58	59	+1	+0.0%	+1	+2
Administrative/ Supervisory (V to VII)	171	173	+2	+0.0%	-3	+3
Clerical (III & IV)	487	486	-0	-0.0%	-1	+8
Management & Administrative	716	719	+3	+0.4%	-3	+13
Support	83	82	-1	-0.0%	-1	-7
Maintenance/ Technical	56	56	-0	-0.0%	-1	-0
General Support	138	138	-1	-0.6%	-2	-8
Health Care Assistants	1,036	1,042	+6	+0.0%	+39	+97
Care, other	152	156	+3	+0.0%	+2	+7
Home Help	393	391	-2	-0.0%	-6	-13
Patient & Client Care	1,581	1,588	+7	+0.4%	+35	+92

Section 38 Voluntary Agencies

Mar 2021 (Dec 2020 figure: 1,595)	WTE Feb 2021	WTE Mar 2021	WTE change since Feb 21	% change since Feb 21	WTE change since Dec 20	WTE change since Mar 20
Overall	1,610	1,616	+6	+0.4%	+22	+86
Registrars	1	1		+0.0%		
Medical & Dental	1	1				
Nurse/ Midwife Manager	85	86	+1	+0.0%	-1	+1
Nurse/ Midwife Specialist & AN/MP	4	5	+0	+0.0%	-0	-1
Staff Nurse/ Staff Midwife	223	219	-4	-0.0%	+12	+16
Pre-registration Nurse/ Midwife Intern	6	6	-0	-0.0%	+6	-7
Pre-registration Nurse Intern (COVID-19)				-1.0%		
Nursing/ Midwifery Student	6	6	-0	-0.0%	+2	-7
Nursing/ Midwifery other	7	7	+0	+0.0%	+0	-0
Nursing & Midwifery	325	322	-3	-1.0%	+13	+8
Therapy Professions	14	13	-1	-0.0%	-1	+0
Social Care	372	370	-2	-0.0%	-4	+14
Social Workers	12	12	-0	-0.0%	+0	+1
Psychologists	6	6	-0	-0.0%	+0	+0
H&SC, Other	6	6	+1	+0.1%	+1	+0
Health & Social Care Professionals	410	408	-2	-0.5%	-4	+15
Management (VIII & above)	9	9		+0.0%	+1	+4
Administrative/ Supervisory (V to VII)	27	27	+1	+0.0%	+0	-2
Clerical (III & IV)	46	47	+0	+0.0%	+1	-0
Management & Administrative	82	83	+1	+0.8%	+1	+2
Support	35	35	-0	-0.0%	-0	-2
Maintenance/ Technical	11	11		+0.0%	-1	-2
General Support	46	46	-0	-0.8%	-1	-4
Health Care Assistants	661	672	+10	+0.0%	+12	+70
Care, other	84	85	+1	+0.0%	+1	-5
Patient & Client Care	746	757	+11	+1.5%	+12	+65

CHO 8 Employment by S38 Agency: March 2021

Muiriosa Foundation, Laois/Offaly

Mar 2021 (Dec 2020 figure: 320)	WTE Feb 2021	WTE Mar 2021	WTE change since Feb 21	% change since Feb 21	WTE change since Dec 20	WTE change since Mar 20
Overall	335	335	-0	-0.1%	+14	+35
Nurse/ Midwife Manager	18	18	-0	-0.0%	+1	+2
Staff Nurse/ Staff Midwife	32	29	-3	-0.1%	+1	+0
Nursing & Midwifery	50	47	-3	-6.8%	+1	+2
Social Care	110	104	-6	-0.1%	-1	+9
Social Workers	3	3		+0.0%		-0
Psychologists	1	1		+0.0%		
H&SC, Other	1	1		+0.0%		
Health & Social Care Professionals	115	109	-6	-4.9%	-1	+8
Management (VIII & above)	3	3		+0.0%		+2
Administrative/ Supervisory (V to VII)	5	5		+0.0%	+0	+0
Clerical (III & IV)	11	11	+0	+0.0%	-0	+1
Management & Administrative	19	19	+0	+0.9%	-0	+3
Support	1	1	-0	-0.1%	-0	+0
Maintenance/ Technical	2	2		+0.0%		
General Support	3	3	-0	-2.9%	-0	+0
Health Care Assistants	120	128	+8	+0.1%	+14	+23
Care, other	27	28	+1	+0.0%	+0	-1
Patient & Client Care	147	156	+9	+5.8%	+14	+22

Muiriosa Foundation, Longford/Westmeath

Mar 2021 (Dec 2020 figure: 284)	WTE Feb 2021	WTE Mar 2021	WTE change since Feb 21	% change since Feb 21	WTE change since Dec 20	WTE change since Mar 20
Overall	287	292	+5	+1.9%	+8	+23
Nurse/ Midwife Manager	9	9	+0	+0.0%	-0	-0
Staff Nurse/ Staff Midwife	4	4		+0.0%	-0	-0
Nursing & Midwifery	13	13	+0	+0.1%	-1	-1
Therapy Professions	3	3		+0.0%		
Social Care	99	101	+1	+0.0%	+1	+4
Social Workers	4	4	-0	-0.0%	+0	+1
Psychologists	2	2	-0	-0.0%	+0	+0
H&SC, Other	2	3	+1	+0.2%	+1	+0
Health & Social Care Professionals	111	112	+2	+1.6%	+2	+5
Senior Management (VIII & GM)	1	1		+0.0%	+1	+1
Management (VIII & above)	1	1		+0.0%	+1	+1
Administrative/ Supervisory (V to VII)	4	4	+1	+0.1%	+1	-1
Clerical (III & IV)	10	10	-0	-0.0%	+0	-0
Management & Administrative	15	16	+0	+3.2%	+1	+0
Support	1	1		+0.0%		
Maintenance/ Technical	3	3		+0.0%		
General Support	4	4				
Health Care Assistants	128	132	+3	+0.0%	+6	+20
Care, other	15	15	-0	-0.0%	-0	-2
Patient & Client Care	144	147	+3	+2.2%	+5	+19

Muiriosa Foundation, South Kildare

Mar 2021 (Dec 2020 figure: 342)	WTE Feb 2021	WTE Mar 2021	WTE change since Feb 21	% change since Feb 21	WTE change since Dec 20	WTE change since Mar 20
Overall	342	343	+1	+0.4%	+1	+13
Nurse/ Midwife Manager	13	14	+1	+0.1%	+1	-2
Nurse/ Midwife Specialist & AN/MP	2	2	+0	+0.0%	+0	+0
Staff Nurse/ Staff Midwife	21	20	-1	-0.0%	-2	-3
<i>Pre-registration Nurse/ Midwife Intern</i>	6	6	-0	-0.0%	+6	+1
Nursing/ Midwifery Student	6	6	-0	-0.0%	+6	+1
Nursing/ Midwifery other	6	6	+0	+0.0%	-1	-1
Nursing & Midwifery	48	48	+0	+0.1%	+4	-5
Therapy Professions	8	8	-1	-0.1%	-1	-1
Social Care	92	95	+2	+0.0%	+1	+6
Social Workers	3	3		+0.0%		+0
Psychologists	2	2		+0.0%		+0
H&SC, Other	3	3		+0.0%		
Health & Social Care Professionals	108	109	+2	+1.8%	-0	+5
Management (VIII & above)	4	4		+0.0%		+1
Administrative/ Supervisory (V to VII)	12	12		+0.0%	-1	-2
Clerical (III & IV)	13	13		+0.0%	+0	-1
Management & Administrative	29	29			-0	-2
Support	13	13	-0	-0.0%	-1	-1
Maintenance/ Technical	4	4		+0.0%		-1
General Support	17	17	-0	-1.6%	-1	-2
Health Care Assistants	131	130	-1	-0.0%	-2	+15
Care, other	9	9	+0	+0.0%	+0	+1
Patient & Client Care	140	140	-0	-0.2%	-2	+16

Mar 2021 (Dec 2020 figure: 648)	WTE Feb 2021	WTE Mar 2021	WTE change since Feb 21	% change since Feb 21	WTE change since Dec 20	WTE change since Mar 20
Overall	646	646			-2	+15
Registrars	1	1		+0.0%		
Medical & Dental	1	1				
Nurse/ Midwife Manager	45	45		+0.0%	-2	+1
Nurse/ Midwife Specialist & AN/MP	3	3		+0.0%	-0	-1
Staff Nurse/ Staff Midwife	166	166		+0.0%	+13	+19
Pre-registration Nurse/ Midwife Intern				-1.0%		-9
Pre-registration Nurse Intern (COVID-19)				-1.0%		
Nursing/ Midwifery Student				-1.0%	-4	-9
Nursing Education/Clinical	1	1		+0.0%	+1	+1
Nursing/ Midwifery other	1	1		+0.0%	+1	+1
Nursing & Midwifery	214	214			+8	+12
Therapy Professions	3	3		+0.0%		+1
Social Care	71	71		+0.0%	-5	-4
Social Workers	2	2		+0.0%		
Psychologists	1	1		+0.0%		
Health & Social Care Professionals	77	77			-5	-4
Management (VIII & above)	1	1		+0.0%	+0	+0
Administrative/ Supervisory (V to VII)	6	6		+0.0%	+0	+0
Clerical (III & IV)	12	12		+0.0%	+0	+0
Management & Administrative	18	18			+0	+0
Support	20	20		+0.0%	+0	-1
Maintenance/ Technical	2	2		+0.0%	-1	-1
General Support	22	22			-1	-2
Health Care Assistants	282	282		+0.0%	-5	+11
Care, other	33	33		+0.0%	+0	-2
Patient & Client Care	315	315			-5	+9

CHO 8 Employment by Grade Group & Staff Category: March 2021

Mar 2021 (Dec 2020 figure: 6,337)	WTE Feb 2021	WTE Mar 2021	WTE change since Feb 21	% change since Feb 21	WTE change since Dec 20	WTE change since Mar 20
Overall	6,405	6,417	+12	+0.2%	+80	+257
Consultant Dentistry	1	1				
Consultant Medicine	5	5			-0	
Consultant Psychiatry	38	38	-0	-0.2%	+1	+2
Consultants	44	44	-0	-0.2%	+0	+2
Registrar	96	98	+2	+2.5%	-3	+11
Senior Registrar	12	12	-0	-0.1%	-1	+1
Registrars	108	111	+2	+2.2%	-4	+13
SHO/ Interns	30	27	-3	-9.3%	-0	-14
Dentists	36	36			-1	+1
Other Medical	35	36	+1	+3.0%	+1	-0
Medical/ Dental, other	72	73	+1	+1.5%	+0	+0
Medical & Dental	254	254	+1	+0.2%	-4	+0
Clinical Nurse/ Midwife Manager	290	287	-3	-1.0%	+1	-1
Director Nursing/Midwifery, Assistant	61	64	+3	+4.2%	-2	+7
Director of Nursing/Midwifery	28	26	-2	-7.3%	-2	+1
Nurse/ Midwife Manager	379	377	-2	-0.6%	-3	+7
Advanced Nurse/ Midwife Practitioner	9	9	-0	-1.5%	+0	+5
Clinical Nurse/ Midwife Specialist	104	105	+2	+1.5%	+3	+5
Nurse/ Midwife Specialist & AN/MP	113	114	+1	+1.3%	+3	+10
Staff Nurse [Intellectual Disability]	125	121	-4	-3.0%	-136	-111
Staff Nurse [Psychiatric]	483	481	-3	-0.6%	+139	+163
Staff Nurses [General/ Children's]	415	416	+0	+0.1%	+1	-27
Staff Nurse/ Staff Midwife	1,023	1,017	-6	-0.6%	+4	+25
Public Health Nurse	205	203	-2	-0.8%	+2	-3
Pre-registration Nurse/ Midwife Intern	28	29	+1	+4.2%	+29	-4
Pre-registration Nurse Intern (COVID-19)				-100.0%	-5	
Post-registration Nurse/ Midwife Student	13	13			+1	+11
Nursing/ Midwifery awaiting registration				-100.0%		-1
Nursing/ Midwifery Student	41	42	+1	+2.8%	+25	+6
Nursing Education/Clinical	13	13	-0	-0.1%	+0	+1
Nursing/ Midwifery other	13	13	-0	-0.1%	+0	+1
Nursing & Midwifery	1,773	1,766	-8	-0.4%	+83	+46
Dietitians	23	23	+1	+3.0%	+2	+4
Occupational Therapists	153	151	-3	-1.8%	+1	+13
Orthoptists	2	2				+2
Physiotherapists	108	105	-3	-2.6%	-3	-5
Podiatrists & Chiropodists	4	4	-0	-5.6%	-0	-0
Speech & Language Therapists	110	110	-0	-0.1%	-0	+1
Therapy Professions	399	394	-5	-1.3%	-1	+15
Audiology	6	6	+0	+0.5%	+1	+2
Clinical Engineering	4	4				
Health Science/ Diagnostics	10	10	+0	+0.3%	+1	+2
Social Care	385	383	-2	-0.5%	-5	+15
Social Workers	91	93	+3	+2.8%	+4	+6
Psychologists	117	119	+2	+1.5%	+4	+5
Pharmacy	11	12	+0	+1.1%	+3	+4
Counsellor Therapists	41	42	+1	+2.4%	+3	+4

Mar 2021 (Dec 2020 figure: 6,337)	WTE Feb 2021	WTE Mar 2021	WTE change since Feb 21	% change since Feb 21	WTE change since Dec 20	WTE change since Mar 20
Overall	6,405	6,417	+12	+0.2%	+80	+257
Dental Hygienists	12	12	+0	+3.7%	-1	+0
Other Health & Social Care	2	1	-0	-18.2%	-0	-0
Play Therapists/ Specialists	1	1				
H&SC, Other	55	56	+1	+2.1%	+2	+4
Health & Social Care Professionals	1,069	1,067	-2	-0.2%	+48	+51
Executive Management	10	9	-1	-10.0%	-1	+1
Senior Management (VIII & GM)	57	59	+2	+3.8%	+2	+5
Management (VIII & above)	67	68	+1	+1.7%	+1	+6
Administrative/ Supervisory (V to VII)	198	200	+2	+1.3%	-3	+1
Clerical (III & IV)	533	533	-0	-0.0%	+0	+8
Management & Administrative	798	801	+3	+0.4%	+55	+15
Catering	31	31	-0	-0.7%	+0	-4
Household Services	52	52	-1	-1.6%	-2	-4
Other Support	29	29	+0	+0.3%	+0	-2
Portering	5	5				
Support	118	117	-1	-0.8%	-1	-10
Maintenance	67	66	-0	-0.3%	-2	-2
Technical Services	0	0				
Maintenance/ Technical	67	67	-0	-0.3%	-2	-2
General Support	185	184	-1	-0.6%	-13	-12
HCA, Nurse's Aide, etc.	1,575	1,585	+10	+0.6%	+8	+50
HCA (Student Nurse/Midwife COVID-19)	1	1	-0	-15.3%	-1	+1
Health & Social Care Assistants	16	15	-1	-4.5%	+0	+4
Swabber (COVID-19)	106	113	+7	+6.3%	+43	+113
Health Care Assistants	1,697	1,713	+16	+0.9%	+51	+167
Other Care Grades	237	241	+5	+1.9%	+3	+3
Care, other	237	241	+5	+1.9%	+3	+3
Home Help	393	391	-2	-0.6%	-6	-13
Patient & Client Care	2,327	2,345	+18	+0.8%	+112	+157

CHO 8 HSE Employment by Grade Group & Staff Category: March 2021

Mar 2021 (Dec 2020 figure: 4,742)	WTE Feb 2021	WTE Mar 2021	WTE change since Feb 21	% change since Feb 21	WTE change since Dec 20	WTE change since Mar 20
Overall	4,795	4,800	+5	+0.1%	+58	+171
Consultant Dentistry	1	1				
Consultant Medicine	5	5			-0	
Consultant Psychiatry	38	38	-0	-0.2%	+1	+2
Consultants	44	44	-0	-0.2%	+0	+2
Registrar	95	97	+2	+2.5%	-3	+11
Senior Registrar	12	12	-0	-0.1%	-1	+1
Registrars	107	110	+2	+2.2%	-4	+13
SHO/ Interns	30	27	-3	-9.3%	-0	-14
Dentists	36	36			-1	+1
Other Medical	35	36	+1	+3.0%	+1	-0
Medical/ Dental, other	72	73	+1	+1.5%	+0	+0
Medical & Dental	253	253	+1	+0.2%	-4	+0
Clinical Nurse/ Midwife Manager	214	211	-3	-1.6%	+1	-2
Director Nursing/Midwifery, Assistant	54	57	+3	+4.8%	-1	+7
Director of Nursing/Midwifery	25	23	-2	-8.1%	-2	+2
Nurse/ Midwife Manager	294	291	-3	-1.0%	-2	+7
Advanced Nurse/ Midwife Practitioner	8	8	-0	-1.6%	+0	+4
Clinical Nurse/ Midwife Specialist	100	102	+2	+1.5%	+3	+7
Nurse/ Midwife Specialist & AN/MP	108	110	+1	+1.3%	+3	+11
Staff Nurse [Intellectual Disability]	70	69	-0	-0.6%	+1	+1
Staff Nurse [Psychiatric]	338	335	-3	-0.8%	-7	+17
Staff Nurses [General/ Children's]	393	393	+1	+0.2%	-2	-9
Staff Nurse/ Staff Midwife	800	798	-2	-0.3%	-8	+9
Public Health Nurse	205	203	-2	-0.8%	+2	-3
Pre-registration Nurse/ Midwife Intern	22	23	+1	+6.1%	+23	+3
Pre-registration Nurse Intern (COVID-19)				-100.0%	-1	
Post-registration Nurse/ Midwife Student	13	13			+1	+11
Nursing/ Midwifery awaiting registration				-100.0%		-1
Nursing/ Midwifery Student	35	36	+1	+3.8%	+23	+13
Nursing Education/Clinical	6	6	-0	-0.3%	+0	+1
Nursing/ Midwifery other	6	6	-0	-0.3%	+0	+1
Nursing & Midwifery	1,448	1,443	-4	-0.3%	+66	+37
Dietitians	23	23	+1	+3.0%	+2	+4
Occupational Therapists	149	146	-2	-1.5%	+1	+14
Orthoptists	2	2				+2
Physiotherapists	104	101	-3	-2.7%	-3	-5
Podiatrists & Chiropodists	4	4	-0	-5.6%	-0	-0
Speech & Language Therapists	105	105	-0	-0.1%	+0	+0
Therapy Professions	386	381	-5	-1.2%	-0	+15
Audiology	6	6	+0	+0.5%	+1	+2
Clinical Engineering	4	4				
Health Science/ Diagnostics	10	10	+0	+0.3%	+1	+2
Social Care	13	13	-0	-1.8%	-1	+1
Social Workers	78	81	+3	+3.3%	+4	+6
Psychologists	112	113	+2	+1.6%	+4	+5
Pharmacy	11	12	+0	+1.1%	+3	+4
Counsellor Therapists	36	36	+0	+1.3%	+2	+4
Dental Hygienists	12	12	+0	+3.7%	-1	+0
Other Health & Social Care	2	1	-0	-18.2%	-0	-0

Mar 2021 (Dec 2020 figure: 4,742)	WTE Feb 2021	WTE Mar 2021	WTE change since Feb 21	% change since Feb 21	WTE change since Dec 20	WTE change since Mar 20
Overall	4,795	4,800	+5	+0.1%	+58	+171
H&SC, Other	49	49	+1	+1.2%	+1	+4
Health & Social Care Professionals	659	659	+0	+0.0%	+33	+36
Executive Management	9	8	-1	-11.1%	-1	+1
Senior Management (VIII & GM)	49	51	+2	+4.4%	+1	+1
Management (VIII & above)	58	59	+1	+2.0%	+1	+2
Administrative/ Supervisory (V to VII)	171	173	+2	+1.2%	-3	+3
Clerical (III & IV)	487	486	-0	-0.1%	-1	+8
Management & Administrative	716	719	+3	+0.4%	+52	+13
Catering	23	23	-0	-0.6%	-1	-5
Household Services	30	30	-1	-1.7%	-0	+1
Other Support	25	25	+0	+0.2%	+0	-2
Portering	4	4				
Support	83	82	-1	-0.7%	-1	-7
Maintenance/ Technical	56	56	-0	-0.3%	-1	-0
General Support	138	138	-1	-0.6%	-5	-8
HCA, Nurse's Aide, etc.	914	913	-0	-0.0%	-4	-20
HCA (Student Nurse/Midwife COVID-19)	1	1	-0	-15.3%	-1	+1
Health & Social Care Assistants	16	15	-1	-4.5%		+4
Swabber (COVID-19)	106	113	+7	+6.3%	+43	+113
Health Care Assistants	1,036	1,042	+6	+0.5%	+39	+97
Care, other	152	156	+3	+2.2%	+2	+7
Home Help	393	391	-2	-0.6%	-6	-13
Patient & Client Care	1,581	1,588	+7	+0.4%	+75	+92

Employment by WTE, Headcount, Gender, Full-Time /Part-Time etc.: Mar 2021

CHO 8	WTE	Headcount	WTE: no.	% Male	% female	Male WTE: no.	Female WTE: no.	% Total Perm	% Male Perm	% Female Perm	% Total Full Time	% Total Part Time	% Male FT	% Female FT
Overall	6,417	7,674	1.20	17.2%	82.8%	1.10	1.22	88.1%	84.3%	88.8%	58.0%	42.0%	72.8%	54.9%
Consultant Dentistry	1	1	1.10	100.0%		1.10		100.0%	100.0%		0.0%	100.0%	0.0%	
Consultant Medicine	5	5	1.00	40.0%	60.0%	1.00	1.00	60.0%	60.0%	33.3%	100.0%	0.0%	100.0%	100.0%
Consultant Psychiatry	38	39	1.02	46.2%	53.8%	1.01	1.04	84.6%	84.6%	95.2%	92.3%	7.7%	94.4%	90.5%
Consultants	44	45	1.02	46.7%	53.3%	1.01	1.03	82.2%	76.2%	87.5%	91.1%	8.9%	90.5%	91.7%
Registrar	98	101	1.03	38.6%	61.4%	1.01	1.05	0.0%	0.0%	0.0%	100.0%	0.0%	100.0%	100.0%
Senior Registrar	12	14	1.12	28.6%	71.4%	1.01	1.18	0.0%	0.0%	0.0%	92.9%	7.1%	100.0%	90.0%
Registrars	111	115	1.04	37.4%	62.6%	1.01	1.06	0.0%	0.0%	0.0%	99.1%	0.9%	100.0%	98.6%
Senior House Officer	27	27	1.00	44.4%	55.6%	1.01	1.00	0.0%	0.0%	0.0%	100.0%	0.0%	100.0%	100.0%
SHO/ Interns	27	27	1.00	44.4%	55.6%	1.01	1.00	0.0%	0.0%	0.0%	100.0%	0.0%	100.0%	100.0%
Dentists	36	44	1.21	36.4%	63.6%	1.25	1.19	90.9%	90.9%	89.3%	63.6%	36.4%	68.8%	60.7%
Other Medical	36	51	1.40	58.8%	41.2%	1.54	1.23	66.7%	66.7%	71.4%	37.3%	62.7%	36.7%	38.1%
Medical/ Dental, other	73	95	1.31	48.4%	51.6%	1.43	1.21	77.9%	73.9%	81.6%	49.5%	50.5%	47.8%	51.0%
Medical & Dental	254	282	1.11	43.3%	56.7%	1.13	1.09	39.4%	41.0%	38.1%	81.2%	18.8%	78.7%	83.1%
Clinical Nurse/ Midwife Manager	287	314	1.09	15.6%	84.4%	1.00	1.11	93.9%	93.9%	95.1%	78.7%	21.3%	100.0%	74.7%
Director Nursing/Midwifery, Assistant	64	67	1.05	17.9%	82.1%	1.00	1.06	98.5%	98.5%	98.2%	89.6%	10.4%	100.0%	87.3%
Director of Nursing/Midwifery	26	26	1.00	23.1%	76.9%	1.01	1.00	96.2%	96.2%	95.0%	100.0%	0.0%	100.0%	100.0%
Nurse/ Midwife Manager	377	407	1.08	16.5%	83.5%	1.00	1.10	94.8%	91.0%	95.6%	81.8%	18.2%	100.0%	78.2%
Advanced Nurse/ Midwife Practitioner	9	9	1.02	22.2%	77.8%	1.00	1.02	100.0%	100.0%	100.0%	100.0%	0.0%	100.0%	100.0%
Clinical Nurse/ Midwife Specialist	105	118	1.12	15.3%	84.7%	1.01	1.14	100.0%	100.0%	100.0%	74.6%	25.4%	94.4%	71.0%
Nurse/ Midwife Specialist & AN/MP	114	127	1.11	15.7%	84.3%	1.01	1.13	100.0%	100.0%	100.0%	76.4%	23.6%	95.0%	72.9%
Staff Nurse [Intellectual Disability]	121	150	1.24	8.0%	92.0%	1.06	1.26	96.7%	96.7%	96.4%	50.7%	49.3%	75.0%	48.6%
Staff Nurse [Psychiatric]	481	526	1.09	19.2%	80.8%	1.04	1.11	95.8%	95.8%	95.5%	82.9%	17.1%	96.0%	79.8%
Staff Nurses [General/ Children's]	416	522	1.26	5.7%	94.3%	1.10	1.27	93.3%	93.3%	93.3%	54.8%	45.2%	96.7%	52.2%
Staff Nurse/ Staff Midwife	1,017	1,198	1.18	11.9%	88.1%	1.06	1.20	94.8%	96.5%	94.6%	66.6%	33.4%	94.4%	62.8%
Public Health Nurse	203	243	1.19		100.0%		1.19	98.8%		98.8%	72.8%	27.2%		72.8%
Pre-registration Nurse/ Midwife Intern	29	61	2.13	4.9%	95.1%	2.07	2.13	0.0%	0.0%	0.0%	100.0%	0.0%	100.0%	100.0%
Post-registration Nurse/ Midwife Student	13	13	1.00		100.0%		1.00	53.8%	53.8%	53.8%	100.0%	0.0%		100.0%
Nursing/ Midwifery Student	42	74	1.78	4.1%	95.9%	2.07	1.76	9.5%	0.0%	9.9%	100.0%	0.0%	100.0%	100.0%

Nursing Education/Clinical	13	14	1.10	14.3%	85.7%	1.00	1.12	92.9%	92.9%	91.7%	78.6%	21.4%	100.0%	75.0%
Nursing/ Midwifery other	13	14	1.10	14.3%	85.7%	1.00	1.12	92.9%	100.0%	91.7%	78.6%	21.4%	100.0%	75.0%
Nursing & Midwifery	1,766	2,063	1.17	11.4%	88.6%	1.04	1.19	92.5%	94.0%	92.3%	72.2%	27.8%	96.2%	69.1%
Dietitians	23	28	1.20		100.0%		1.20	100.0%	100.0%	100.0%	53.6%	46.4%		53.6%
Occupational Therapists	151	175	1.16	7.4%	92.6%	1.00	1.18	98.3%	98.3%	98.1%	78.9%	21.1%	100.0%	77.2%
Orthoptists	2	2	1.25		100.0%		1.25	100.0%	100.0%	100.0%	50.0%	50.0%		50.0%
Physiotherapists	105	129	1.23	17.8%	82.2%	1.08	1.27	97.7%	97.7%	98.1%	58.1%	41.9%	78.3%	53.8%
Podiatrists & Chiropodists	4	6	1.61		100.0%		1.61	66.7%	66.7%	66.7%	16.7%	83.3%		16.7%
Speech & Language Therapists	110	130	1.18	1.5%	98.5%	1.30	1.18	98.5%	98.5%	98.4%	61.5%	38.5%	100.0%	60.9%
Therapy Professions	394	470	1.19	8.1%	91.9%	1.06	1.21	97.9%	97.4%	97.9%	66.0%	34.0%	86.8%	64.1%
Audiology	6	7	1.11	28.6%	71.4%	1.05	1.13	100.0%	100.0%	100.0%	57.1%	42.9%	50.0%	60.0%
Clinical Engineering	4	4	1.00	100.0%		1.00		100.0%	100.0%		100.0%	0.0%	100.0%	
Health Science/ Diagnostics	10	11	1.07	54.5%	45.5%	1.02	1.13	100.0%	100.0%	100.0%	72.7%	27.3%	83.3%	60.0%
Social Care	383	466	1.22	14.8%	85.2%	1.16	1.23	98.7%	100.0%	98.5%	24.0%	76.0%	21.7%	24.4%
Social Workers	93	107	1.15	14.0%	86.0%	1.05	1.17	99.1%	93.3%	100.0%	84.1%	15.9%	100.0%	81.5%
Psychologists	119	128	1.08	26.6%	73.4%	1.02	1.10	81.3%	97.1%	75.5%	86.7%	13.3%	97.1%	83.0%
Pharmacy	12	13	1.13	23.1%	76.9%	1.00	1.18	84.6%	66.7%	90.0%	76.9%	23.1%	100.0%	70.0%
Counsellor Therapists	42	46	1.11	19.6%	80.4%	1.03	1.12	91.3%	91.3%	91.9%	63.0%	37.0%	77.8%	59.5%
Dental Hygienists	12	13	1.07		100.0%		1.07	100.0%	100.0%	100.0%	76.9%	23.1%		76.9%
Other Health & Social Care	1	3	2.38		100.0%		2.38	33.3%	33.3%	33.3%	33.3%	66.7%		33.3%
Play Therapists/ Specialists	1	1	1.00	100.0%		1.00		100.0%	100.0%		100.0%	0.0%	100.0%	
H&SC, Other	56	63	1.13	15.9%	84.1%	1.03	1.15	90.5%	90.0%	90.6%	65.1%	34.9%	80.0%	62.3%
Health & Social Care	1,067	1,258	1.18	13.9%	86.1%	1.08	1.20	96.1%	97.1%	95.9%	54.2%	45.8%	64.0%	52.6%
Executive Management	9	9	1.00	11.1%	88.9%	1.00	1.00	88.9%	88.9%	87.5%	100.0%	0.0%	100.0%	100.0%
Senior Management (VIII & GM)	59	63	1.07	28.6%	71.4%	1.07	1.07	95.2%	95.2%	93.3%	84.1%	15.9%	83.3%	84.4%
Management (VIII & above)	68	72	1.06	26.4%	73.6%	1.06	1.05	94.4%	100.0%	92.5%	86.1%	13.9%	84.2%	86.8%
Administrative/ Supervisory (V to VII)	200	214	1.07	14.0%	86.0%	1.03	1.07	96.7%	96.7%	96.7%	80.4%	19.6%	96.7%	77.7%
Clerical (III & IV)	533	634	1.19	5.0%	95.0%	1.05	1.20	91.6%	84.4%	92.0%	60.1%	39.9%	84.4%	58.8%
Management & Administrative	801	920	1.15	8.8%	91.2%	1.05	1.16	93.0%	92.6%	93.1%	66.8%	33.2%	88.9%	64.7%
Catering	31	34	1.10	20.6%	79.4%	1.03	1.12	100.0%	100.0%	100.0%	64.7%	35.3%	85.7%	59.3%
Household Services	52	63	1.22	33.3%	66.7%	1.15	1.26	92.1%	92.1%	92.9%	52.4%	47.6%	71.4%	42.9%
Other Support	29	47	1.60	44.7%	55.3%	1.09	2.57	57.4%	57.4%	26.9%	46.8%	53.2%	81.0%	19.2%
Portering	5	5	1.00	100.0%		1.00		100.0%	100.0%		100.0%	0.0%	100.0%	
Support	117	149	1.27	36.2%	63.8%	1.09	1.41	83.2%	94.4%	76.8%	55.0%	45.0%	79.6%	41.1%
Maintenance/ Technical	67	68	1.02	98.5%	1.5%	1.02	1.00	98.5%	98.5%	100.0%	98.5%	1.5%	98.5%	100.0%

General Support	184	217	1.18	55.8%	44.2%	1.05	1.40	88.0%	96.7%	77.1%	68.7%	31.3%	90.1%	41.7%
HCA, Nurse's Aide, etc.	1,585	1,860	1.17	22.8%	77.2%	1.11	1.19	94.7%	94.7%	94.8%	48.2%	51.8%	57.6%	45.4%
HCA (Student Nurse/Midwife COVID-19)	1	1	2.00		100.0%		2.00	0.0%	0.0%	0.0%	0.0%	100.0%		0.0%
Health & Social Care Assistants	15	16	1.07	18.8%	81.3%	1.00	1.09	25.0%	25.0%	30.8%	81.3%	18.8%	100.0%	76.9%
Swabber (COVID-19)	113	126	1.12	41.3%	58.7%	1.08	1.14	1.6%	1.6%	1.4%	79.4%	20.6%	86.5%	74.3%
Health Care Assistants	1,713	2,003	1.17	24.0%	76.0%	1.10	1.19	88.2%	83.5%	89.7%	50.4%	49.6%	61.0%	47.0%
Care, other	241	283	1.17	29.3%	70.7%	1.20	1.16	95.1%	86.7%	98.5%	56.2%	43.8%	60.2%	54.5%
Home Help	391	648	1.66	3.4%	96.6%	2.61	1.64	68.8%	27.3%	70.3%	18.2%	81.8%	9.1%	18.5%
Patient & Client Care	2,345	2,934	1.25	19.9%	80.1%	1.14	1.28	84.6%	81.9%	85.3%	43.8%	56.2%	59.0%	40.1%

Employment by WTE, Headcount, Gender, Full-Time /Part-Time etc.: Mar 2021

CHO 8	WTE	Headcount	WTE: no.	% Male	% female	Male WTE: no.	Female WTE: no.	% Total Perm	% Male Perm	% Female Perm	% Total Full Time	% Total Part Time	% Male FT	% Female FT
Overall	6,417	7,674	1.20	17.2%	82.8%	1.10	1.22	88.1%	84.3%	88.8%	58.0%	42.0%	72.8%	54.9%
Community Health & Wellbeing	29	34	1.19	2.9%	97.1%	2.50	1.17	97.1%	97.1%	97.0%	58.8%	41.2%	100.0%	100.0%
Mental Health	1,117	1,232	1.10	24.2%	75.8%	1.03	1.13	85.9%	85.9%	85.9%	86.2%	13.8%	94.6%	94.6%
Primary Care	1,566	1,860	1.19	14.5%	85.5%	1.08	1.21	82.0%	82.0%	85.3%	63.9%	36.1%	81.0%	81.0%
Social Care	3,705	4,548	1.23	16.5%	83.5%	1.14	1.25	91.1%	91.1%	91.0%	47.9%	52.1%	61.1%	61.1%

CHO 8 Skills Mix by Staff Grouping: March 2021

Mar 2021 (Dec 2019 figure: 6,135)	WTE Dec 2016	WTE Dec 2017	WTE Dec 2018	WTE Dec 2019	WTE Dec 2020	WTE Feb 2021	WTE Mar 2021
Overall	6,014	6,092	6,128	6,135	6,337	6,405	6,417
Consultant Dentistry	0.4%	0.4%	0.4%	0.4%	0.4%	0.4%	0.4%
Consultant Medicine	1.7%	2.1%	1.7%	1.9%	2.0%	2.0%	2.0%
Consultant Psychiatry	15.6%	14.6%	15.0%	14.1%	14.6%	15.0%	15.0%
Consultants	17.7%	17.1%	17.1%	16.3%	16.9%	17.4%	17.3%
Registrar	36.4%	37.3%	36.6%	35.7%	39.2%	37.8%	38.6%
Senior Registrar	4.7%	5.9%	5.4%	5.3%	5.1%	4.9%	4.9%
Registrars	41.1%	43.2%	42.0%	41.0%	44.4%	42.7%	43.5%
Interns	0.4%						
Senior House Officer	11.4%	11.0%	11.8%	14.7%	10.5%	11.7%	10.6%
SHO/ Interns	11.8%	11.0%	11.8%	14.7%	10.5%	11.7%	10.6%
Dentists	15.1%	14.5%	13.9%	13.7%	14.3%	14.3%	14.3%
Other Medical	14.3%	14.3%	15.2%	14.3%	13.9%	14.0%	14.4%
Medical/ Dental, other	29.4%	28.8%	29.1%	28.0%	28.2%	28.3%	28.6%
Medical & Dental	3.9%	3.9%	3.9%	4.2%	4.1%	100.0%	4.0%
Clinical Nurse/ Midwife Manager	17.2%	17.5%	17.4%	17.1%	16.5%	16.3%	16.2%
Director Nursing/Midwifery, Assistant	3.3%	3.5%	3.6%	3.6%	3.8%	3.5%	3.6%
Director of Nursing/Midwifery	1.5%	1.6%	1.3%	1.4%	1.6%	1.6%	1.5%
Nurse/ Midwife Manager	22.0%	22.5%	22.3%	22.1%	21.9%	21.4%	21.3%
Advanced Nurse/ Midwife Practitioner	0.1%	0.1%	0.1%	0.2%	0.5%	0.5%	0.5%
Clinical Nurse/ Midwife Specialist	5.6%	5.6%	5.7%	5.7%	5.9%	5.9%	6.0%
Nurse/ Midwife Specialist & AN/MP	5.6%	5.7%	5.8%	5.9%	6.4%	6.4%	6.5%
Staff Nurse [Intellectual Disability]	14.8%	15.2%	15.6%	13.8%	14.8%	7.0%	6.8%
Staff Nurse [Psychiatric]	19.2%	19.3%	19.4%	19.8%	19.7%	27.3%	27.2%
Staff Nurses [General/ Children's]	25.5%	24.4%	24.2%	25.7%	23.9%	23.4%	23.5%
Staff Nurse/ Staff Midwife	59.6%	59.0%	59.2%	59.3%	58.4%	57.7%	57.6%
Public Health Nurse	11.4%	11.6%	11.6%	11.8%	11.6%	11.6%	11.5%
Pre-registration Nurse/ Midwife Intern		0.0%	0.0%	0.0%		1.6%	1.6%
Pre-registration Nurse Intern (COVID-19)					0.3%		
Post-registration Nurse/ Midwife Student	0.9%	0.8%	0.5%	0.1%	0.7%	0.7%	0.7%
Nursing/ Midwifery awaiting registration	0.1%	0.0%	0.1%	0.1%			
Nursing/ Midwifery Student	1.0%	0.8%	0.6%	0.3%	1.0%	2.3%	2.4%
Nursing/ Midwifery other	0.4%	0.5%	0.4%	0.6%	0.7%	0.7%	0.7%
Nursing & Midwifery	29.0%	28.2%	27.7%	27.4%	26.5%	100.0%	27.5%
Dietitians	1.8%	1.7%	1.9%	1.9%	2.0%	2.1%	2.2%
Occupational Therapists	14.3%	14.3%	13.5%	13.7%	14.2%	14.4%	14.1%
Orthoptists	0.0%	0.0%	0.0%		0.2%	0.1%	0.1%
Physiotherapists	12.1%	11.0%	10.8%	10.5%	10.2%	10.1%	9.8%
Podiatrists & Chiropodists	0.3%	0.4%	0.4%	0.4%	0.4%	0.4%	0.3%
Speech & Language Therapists	11.6%	11.7%	10.9%	10.4%	10.4%	10.3%	10.3%
Therapy Professions	40.1%	39.1%	37.6%	37.0%	37.3%	37.4%	36.9%
Audiology	0.5%	0.4%	0.4%	0.3%	0.5%	0.6%	0.6%
Clinical Engineering	0.4%	0.4%	0.4%	0.4%	0.4%	0.4%	0.4%
Radiographers	0.3%	0.3%					
Health Science/ Diagnostics	1.2%	1.1%	0.8%	0.7%	0.9%	1.0%	1.0%
Social Care	32.7%	34.0%	36.0%	36.1%	36.7%	36.0%	35.9%
Social Workers	9.5%	9.1%	9.0%	8.6%	8.4%	8.5%	8.7%
Psychologists	10.7%	10.8%	10.5%	11.7%	10.9%	11.0%	11.2%
Pharmacy	0.5%	0.5%	0.6%	0.7%	0.8%	1.1%	1.1%
Counsellor Therapists	3.8%	3.9%	3.9%	3.7%	3.6%	3.8%	3.9%
Dental Hygienists	1.3%	1.2%	1.2%	1.2%	1.2%	1.1%	1.1%
Other Health & Social Care	0.2%	0.2%	0.2%	0.2%	0.2%	0.1%	0.1%

Mar 2021 (Dec 2019 figure: 6,135)	WTE Dec 2016	WTE Dec 2017	WTE Dec 2018	WTE Dec 2019	WTE Dec 2020	WTE Feb 2021	WTE Mar 2021
Overall	6,014	6,092	6,128	6,135	6,337	6,405	6,417
Play Therapists/ Specialists	0.1%	0.1%	0.1%	0.1%	0.1%	0.1%	0.1%
H&SC, Other	5.4%	5.4%	5.4%	5.1%	5.1%	5.1%	5.2%
Health & Social Care Professionals	15.4%	16.5%	16.4%	16.6%	16.1%	100.0%	16.6%
Executive Management	1.2%	1.3%	1.3%	1.2%	1.2%	1.3%	1.1%
Senior Management (VIII & GM)	6.8%	7.2%	6.7%	7.2%	7.1%	7.1%	7.4%
Management (VIII & above)	8.1%	8.6%	8.0%	8.4%	8.3%	8.4%	8.5%
Middle Management (V-VII)	19.7%	20.3%	23.3%	23.7%	25.3%	24.8%	25.0%
Other Administrative	0.1%						
Administrative/ Supervisory (V to VII)	19.9%	20.3%	23.3%	23.7%	25.3%	24.8%	25.0%
Clerical (III & IV)	72.1%	71.1%	68.6%	68.0%	66.3%	66.8%	66.5%
Management & Administrative	12.1%	12.0%	12.2%	12.2%	11.8%	100.0%	12.5%
Catering	16.6%	15.7%	17.8%	16.9%	16.4%	16.9%	16.9%
Household Services	32.8%	31.1%	28.0%	29.3%	28.6%	28.4%	28.1%
Other Support	16.6%	17.7%	16.4%	16.1%	15.6%	15.9%	16.1%
Portering	2.3%	2.4%	2.5%	2.5%	2.7%	2.7%	2.7%
Support	68.3%	66.9%	64.6%	64.9%	63.2%	63.9%	63.7%
Maintenance/ Technical	31.7%	33.1%	35.4%	35.1%	36.8%	36.1%	36.3%
General Support	3.6%	3.5%	3.3%	3.2%	3.1%	100.0%	2.9%
HCA, Nurse's Aide, etc.	69.1%	69.4%	69.0%	70.0%	68.6%	67.7%	67.6%
HCA (Student Nurse/Midwife COVID-19)					0.0%	0.0%	0.0%
Health & Social Care Assistants	0.2%	0.2%	0.9%	0.6%	0.6%	0.7%	0.6%
Swabber (COVID-19)					3.0%	4.6%	4.8%
Health Care Assistants	69.3%	69.6%	69.9%	70.6%	72.4%	72.9%	73.0%
Other Care Grades	12.4%	11.8%	10.9%	10.6%	10.4%	10.2%	10.3%
Care, other	12.4%	11.8%	10.9%	10.6%	10.4%	10.2%	10.3%
Home Help	18.3%	18.6%	19.2%	18.7%	17.3%	16.9%	16.7%
Patient & Client Care	36.0%	36.0%	36.6%	36.4%	35.2%	100.0%	36.6%
Total	100 %	100 %	100 %	100 %	100%	100 %	100 %

CHO 8 Skills Mix by Care Group: March 2021

Mar 2021 (Dec 2019 figure: 1,098)	WTE Dec 2016	WTE Dec 2017	WTE Dec 2018	WTE Dec 2019	WTE Dec 2020	WTE Feb 2021	WTE Mar 2021
Mental Health	1,041	1,080	1,069	1,098	1,111.73	1,125.47	1,116.59
Consultants	43.1%	38.0%	40.0%	36.4%	38.9%	40.4%	40.0%
Registrar	9.9%	17.7%	15.3%	12.4%	19.1%	15.9%	19.7%
Senior Registrar	13.6%	15.8%	14.8%	14.1%	14.0%	13.2%	13.1%
Registrars	23.6%	33.5%	30.1%	26.5%	33.2%	29.1%	32.8%
Interns	1.2%						
Senior House Officer	32.1%	28.5%	29.9%	37.1%	28.0%	30.5%	27.2%
SHO/ Interns	33.3%	28.5%	29.9%	37.1%	28.0%	30.5%	27.2%
Medical & Dental	7.7%	8.1%	8.1%	8.8%	8.7%	8.5%	8.5%
Clinical Nurse/ Midwife Manager	20.1%	21.3%	20.9%	19.8%	18.8%	18.0%	17.7%
Director Nursing/Midwifery, Assistant	3.7%	3.6%	3.9%	3.3%	3.7%	3.0%	3.3%
Director of Nursing/Midwifery	0.6%	0.6%	0.2%	0.4%	0.4%	0.4%	0.4%
Nurse/ Midwife Manager	24.3%	25.5%	25.0%	23.4%	22.9%	21.4%	21.4%
Advanced Nurse/ Midwife Practitioner	0.2%	0.2%	0.4%	0.8%	0.8%	0.7%	0.7%
Clinical Nurse/ Midwife Specialist	9.4%	9.4%	9.8%	10.1%	10.6%	10.5%	10.4%
Nurse/ Midwife Specialist & AN/MP	9.6%	9.6%	10.2%	10.9%	11.3%	11.2%	11.2%
Staff Nurse [Psychiatric]	64.1%	63.2%	63.2%	63.2%	63.9%	61.9%	61.7%
Staff Nurses [General/ Children's]	1.2%	0.9%	1.0%	1.2%	1.1%	0.9%	0.9%
Staff Nurse/ Staff Midwife	65.3%	64.1%	64.2%	64.4%	65.0%	62.8%	62.6%
Pre-registration Nurse/ Midwife Intern		0.1%		0.1%		4.0%	4.3%
Pre-registration Nurse Intern (COVID-19)					0.2%		
Nursing/ Midwifery awaiting registration	0.4%	0.1%	0.2%	0.4%			
Nursing/ Midwifery Student	0.4%	0.2%	0.2%	0.5%	0.2%	4.0%	4.3%
Nursing/ Midwifery other	0.4%	0.6%	0.4%	0.8%	0.6%	0.6%	0.6%
Nursing & Midwifery	48.5%	47.3%	47.4%	46.9%	46.3%	48.0%	48.0%
Dietitians	0.7%	1.3%	1.4%	1.3%			
Occupational Therapists	21.4%	24.3%	25.4%	23.8%	23.3%	23.2%	24.2%
Podiatrists & Chiropodists		0.1%	0.0%		0.0%	0.1%	0.0%
Speech & Language Therapists	4.3%	3.7%	3.1%	3.8%	4.5%	3.6%	4.2%
Therapy Professions	26.5%	29.4%	29.8%	28.8%	27.9%	26.9%	28.5%
Social Care	5.2%	4.4%	4.4%	4.7%	4.6%	4.2%	4.2%
Social Workers	31.4%	28.5%	26.8%	26.9%	28.6%	29.1%	30.6%
Psychologists	22.2%	24.6%	25.6%	25.5%	24.0%	24.5%	25.8%
Pharmacy	0.5%	0.7%	0.7%	0.7%	1.0%	0.9%	1.0%
Counsellor Therapists	14.1%	12.4%	12.7%	13.3%	14.0%	14.3%	9.9%
Other Health & Social Care	0.1%						
H&SC, Other	14.3%	12.4%	12.7%	13.3%	14.0%	14.3%	9.9%
Health & Social Care Professionals	12.9%	14.0%	13.8%	14.0%	13.8%	13.7%	13.7%
Management (VIII & above)	1.0%	1.8%	1.8%	2.6%	2.5%	1.6%	1.6%
Administrative/ Supervisory (V to VII)	15.4%	16.7%	20.0%	19.8%	16.8%	15.5%	16.9%
Clerical (III & IV)	83.6%	81.5%	78.2%	77.6%	80.8%	82.9%	81.4%
Management & Administrative	9.7%	10.3%	10.1%	10.4%	10.2%	10.8%	10.8%
Support	52.1%	55.4%	53.9%	55.5%	52.6%	52.3%	52.0%
Maintenance/ Technical	47.9%	44.6%	46.1%	44.5%	47.4%	47.7%	48.0%
General Support	5.6%	5.8%	5.7%	5.3%	5.3%	5.2%	5.2%
Health Care Assistants	97.2%	97.1%	98.1%	97.8%	98.0%	98.1%	98.1%
Care, other	2.8%	2.9%	1.9%	2.2%	2.0%	1.9%	1.9%
Patient & Client Care	15.6%	14.5%	14.8%	14.6%	14.4%	13.8%	13.8%
Total	100 %	100 %	100 %	100 %	100 %	100 %	100%

Mar 2021 (Dec 2019 figure: 1,387)	WTE Dec 2016	WTE Dec 2017	WTE Dec 2018	WTE Dec 2019	WTE Dec 2020	WTE Feb 2021	WTE Mar 2021
Primary Care	1,457	1,436	1,422	1,387	1,505.95	1,550.18	1,566.01
Consultant Dentistry	0.6%	0.7%	0.7%	0.6%	0.6%	0.6%	0.6%
Consultant Medicine	2.8%	3.7%	2.9%	3.4%	3.4%	3.4%	3.4%
Consultant Psychiatry	0.7%						
Consultants	4.2%	4.4%	3.6%	4.0%	4.0%	4.0%	4.0%
Registrars	54.6%	53.2%	53.4%	53.3%	54.9%	54.5%	53.6%
SHO/ Interns	0.7%	0.7%	1.5%	1.4%	0.5%	0.5%	0.7%
Dentists	25.3%	25.4%	24.2%	24.2%	24.6%	24.8%	24.8%
Other Medical	15.2%	16.3%	17.3%	17.1%	15.9%	16.1%	16.8%
Medical/ Dental, other	40.5%	41.7%	41.5%	41.3%	40.6%	40.9%	41.7%
Medical & Dental	9.6%	9.4%	9.5%	10.6%	9.7%	9.3%	9.3%
Clinical Nurse/ Midwife Manager	7.3%	7.3%	7.9%	7.1%	6.1%	6.2%	6.0%
Director Nursing/Midwifery, Assistant	4.8%	4.2%	4.6%	4.8%	4.9%	4.8%	4.8%
Director of Nursing/Midwifery	1.2%	1.5%	1.0%	1.6%	1.5%	1.4%	1.2%
Nurse/ Midwife Manager	13.4%	12.9%	13.5%	13.4%	12.5%	12.4%	12.0%
Nurse/ Midwife Specialist & AN/MP	9.0%	9.2%	9.5%	9.1%	10.3%	10.1%	10.6%
Staff Nurse/ Staff Midwife	27.2%	27.1%	26.4%	25.7%	25.6%	25.5%	25.7%
Public Health Nurse	46.6%	47.6%	48.7%	51.3%	48.5%	48.6%	48.2%
Nursing/ Midwifery Student	3.8%	3.2%	2.0%	0.5%	3.0%	3.1%	3.1%
Nursing Education/Clinical					0.2%	0.2%	0.2%
Nursing/ Midwifery other					0.2%	0.2%	0.2%
Nursing & Midwifery	28.7%	28.5%	27.8%	27.5%	25.4%	26.4%	26.4%
Dietitians	4.7%	4.5%	4.8%	5.2%	5.5%	5.5%	5.5%
Occupational Therapists	17.7%	18.1%	17.2%	17.5%	18.2%	18.3%	17.7%
Orthoptists	0.1%	0.1%	0.1%		0.5%	0.5%	0.5%
Physiotherapists	25.5%	23.7%	24.6%	23.8%	23.4%	23.0%	22.0%
Podiatrists & Chiropodists	0.5%	0.8%	1.1%	1.1%	1.2%	1.1%	1.1%
Speech & Language Therapists	19.9%	21.6%	20.5%	20.1%	18.6%	19.2%	18.8%
Therapy Professions	68.4%	69.0%	68.2%	67.7%	67.3%	67.6%	65.5%
Audiology	1.3%	1.3%	1.3%	1.0%	1.6%	1.8%	1.8%
Clinical Engineering	0.6%	0.6%	0.6%	0.6%	0.6%	0.6%	0.6%
Radiographers		0.1%					
Health Science/ Diagnostics	2.0%	2.0%	1.9%	1.6%	2.2%	2.4%	2.4%
Social Care	0.3%				0.3%	0.3%	0.3%
Social Workers	5.1%	5.1%	5.8%	4.8%	4.6%	4.3%	4.5%
Psychologists	15.7%	14.4%	14.3%	17.1%	16.5%	15.8%	15.7%
Pharmacy	0.9%	0.8%	0.9%	1.2%	1.4%	2.0%	2.0%
Counsellor Therapists	3.6%	4.8%	4.8%	3.6%	3.6%	3.8%	6.0%
Dental Hygienists	3.7%	3.6%	3.8%	3.8%	3.8%	3.4%	3.5%
Other Health & Social Care	0.3%	0.3%	0.3%	0.3%	0.3%	0.3%	0.2%
H&SC, Other	7.6%	8.7%	8.9%	7.7%	7.7%	7.5%	9.7%
Health & Social Care Professionals	22.4%	23.6%	23.0%	23.5%	21.6%	22.3%	22.3%
Executive Management	1.9%	2.0%	1.9%	2.0%	2.0%	2.0%	1.8%
Senior Management (VIII & GM)	8.2%	8.3%	8.9%	9.6%	8.3%	8.4%	9.0%
Management (VIII & above)	10.1%	10.3%	10.8%	11.7%	10.3%	10.4%	10.8%
Administrative/ Supervisory (V to VII)	15.8%	16.7%	19.6%	20.0%	21.1%	21.0%	20.7%
Clerical (III & IV)	74.1%	73.0%	69.5%	68.3%	68.6%	68.5%	68.5%
Management & Administrative	28.5%	28.0%	28.6%	27.9%	25.7%	25.5%	25.5%
Support	93.1%	89.8%	88.8%	88.9%	87.5%	87.6%	87.6%
Maintenance/ Technical	6.9%	10.2%	11.2%	11.1%	12.5%	12.4%	12.4%
General Support	1.8%	2.0%	1.8%	1.8%	1.7%	1.5%	1.5%
HCA, Nurse's Aide, etc.	11.7%	11.3%	10.5%	8.5%	4.0%	3.6%	3.6%

Mar 2021 (Dec 2019 figure: 1,387)	WTE Dec 2016	WTE Dec 2017	WTE Dec 2018	WTE Dec 2019	WTE Dec 2020	WTE Feb 2021	WTE Mar 2021
Primary Care	1,457	1,436	1,422	1,387	1,505.95	1,550.18	1,566.01
Health & Social Care Assistants	0.8%	0.9%	11.5%	8.8%	6.9%	6.1%	5.6%
Swabber (COVID-19)					36.5%	46.8%	48.1%
Health Care Assistants	12.5%	12.2%	22.1%	17.3%	47.5%	56.5%	57.3%
Other Care Grades	86.9%	86.8%	77.7%	82.4%	52.5%	43.5%	42.7%
Care, other	86.9%	86.8%	77.7%	82.4%	52.5%	43.5%	42.7%
Home Help	0.6%	1.0%	0.2%	0.3%			
Patient & Client Care	8.9%	8.5%	9.2%	8.6%	7.9%	15.0%	15.0%
Total	100 %	100 %	100 %	100 %	100 %	100 %	100%

Mar 2021 (Dec 2019 figure: 2,162)	WTE Dec 2016	WTE Dec 2017	WTE Dec 2018	WTE Dec 2019	WTE Dec 2020	WTE Feb 2021	WTE Mar 2021
Disabilities	1,984	2,078	2,134	2,162	2,205.48	2,218.03	2,220.73
Consultant Psychiatry	33.3%	33.3%	33.3%	25.0%	33.3%		
Consultants	33.3%	33.3%	33.3%	25.0%	33.3%		
Registrars	33.3%	33.3%	33.3%	50.0%	33.3%	50.0%	50.0%
Medical/ Dental, other	33.3%	33.3%	33.3%	25.0%	33.3%	50.0%	50.0%
Medical & Dental	0.2%	0.1%	0.1%	0.2%	0.2%	0.1%	0.1%
Clinical Nurse/ Midwife Manager	22.7%	22.6%	22.7%	23.5%	22.6%	22.5%	22.7%
Director Nursing/Midwifery, Assistant	2.1%	2.4%	2.3%	2.3%	2.6%	2.4%	2.4%
Director of Nursing/Midwifery	1.0%	1.1%	1.1%	1.2%	1.3%	1.3%	1.3%
Nurse/ Midwife Manager	25.9%	26.0%	26.1%	27.0%	26.6%	26.1%	26.4%
Advanced Nurse/ Midwife Practitioner					0.2%	0.2%	0.2%
Clinical Nurse/ Midwife Specialist	2.0%	1.7%	1.6%	1.6%	1.2%	0.9%	1.0%
Nurse/ Midwife Specialist & AN/MP	2.0%	1.7%	1.6%	1.6%	1.4%	1.2%	1.2%
Staff Nurse [Intellectual Disability]	56.0%	57.3%	57.4%	50.9%	57.2%	26.8%	26.2%
Staff Nurse [Psychiatric]	2.0%	1.7%	1.7%	1.5%	1.1%	32.1%	32.4%
Staff Nurses [General/ Children's]	13.0%	12.1%	11.8%	17.6%	11.2%	10.9%	11.0%
Staff Nurse/ Staff Midwife	71.0%	71.0%	70.8%	70.0%	69.5%	69.8%	69.6%
Public Health Nurse	0.2%		0.2%	0.2%	0.2%	0.2%	0.2%
Pre-registration Nurse/ Midwife Intern			0.1%			1.3%	1.2%
Pre-registration Nurse Intern (COVID-19)					0.9%		
Nursing/ Midwifery Student			0.1%		0.9%	1.3%	1.2%
Nursing/ Midwifery other	1.0%	1.2%	1.2%	1.2%	1.5%	1.5%	1.5%
Nursing & Midwifery	23.2%	21.9%	21.6%	21.1%	20.6%	20.7%	20.7%
Occupational Therapists	9.0%	7.7%	6.7%	7.2%	8.0%	8.4%	8.0%
Physiotherapists	4.3%	4.4%	4.0%	4.3%	3.5%	3.4%	3.6%
Speech & Language Therapists	8.0%	7.3%	7.0%	6.4%	7.0%	6.4%	6.2%
Therapy Professions	21.3%	19.4%	17.8%	18.0%	18.4%	18.2%	17.8%
Clinical Engineering	0.5%	0.4%	0.4%	0.4%	0.4%	0.4%	0.4%
Health Science/ Diagnostics	0.5%	0.4%	0.4%	0.4%	0.4%	0.4%	0.4%
Social Care	67.5%	68.8%	71.2%	70.7%	71.3%	71.0%	71.1%
Social Workers	5.2%	5.5%	5.1%	4.7%	4.5%	4.7%	4.8%
Psychologists	4.2%	4.7%	4.2%	4.9%	4.2%	4.5%	4.7%
Counsellor Therapists	1.0%	0.9%	0.9%	1.0%	0.8%	0.9%	1.0%
Other Health & Social Care	0.1%	0.1%	0.2%	0.1%	0.1%	0.1%	0.1%
Play Therapists/ Specialists	0.2%	0.2%	0.2%	0.2%	0.2%	0.2%	0.2%
H&SC, Other	1.4%	1.3%	1.3%	1.4%	1.2%	1.2%	1.3%
Health & Social Care Professionals	22.1%	23.5%	23.3%	23.6%	23.1%	23.8%	23.8%
Executive Management	0.7%	1.3%	1.3%	0.7%	0.6%	0.6%	0.6%
Senior Management (VIII & GM)	8.7%	10.6%	6.0%	5.2%	7.9%	8.2%	8.2%
Management (VIII & above)	9.4%	12.0%	7.4%	5.9%	8.5%	8.9%	8.9%
Administrative/ Supervisory (V to VII)	36.4%	33.3%	36.4%	37.6%	35.8%	34.2%	34.6%
Clerical (III & IV)	54.2%	54.7%	56.3%	56.5%	55.7%	56.9%	56.6%
Management & Administrative	6.9%	7.2%	7.0%	6.9%	6.8%	7.1%	7.1%
Support	79.5%	76.5%	74.6%	74.3%	74.8%	76.1%	75.9%
Maintenance	20.3%	23.4%	25.2%	25.5%	25.1%	23.7%	23.9%
Technical Services	0.1%	0.1%	0.1%	0.2%	0.2%	0.2%	0.2%
Maintenance/ Technical	20.5%	23.5%	25.4%	25.7%	25.2%	23.9%	24.1%
General Support	4.3%	3.5%	3.1%	2.9%	2.8%	2.4%	2.4%
HCA, Nurse's Aide, etc.	82.5%	83.3%	84.9%	85.9%	86.5%	86.4%	86.4%
Health & Social Care Assistants			0.3%	0.1%			
Health Care Assistants	82.5%	83.3%	85.3%	86.0%	86.5%	86.4%	86.4%
Care, other	14.9%	13.9%	12.4%	11.7%	11.3%	11.3%	11.5%

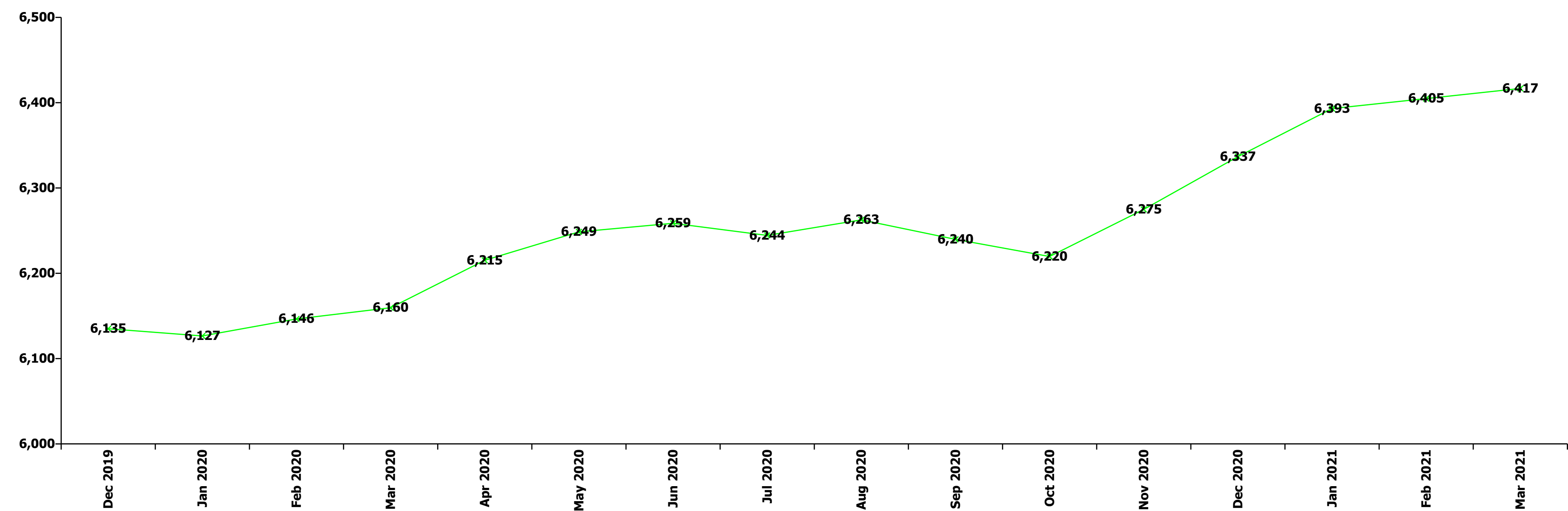
Mar 2021 (Dec 2019 figure: 2,162)	WTE Dec 2016	WTE Dec 2017	WTE Dec 2018	WTE Dec 2019	WTE Dec 2020	WTE Feb 2021	WTE Mar 2021
Disabilities	1,984	2,078	2,134	2,162	2,205.48	2,218.03	2,220.73
Home Help	2.6%	2.8%	2.3%	2.3%	2.3%	2.3%	2.1%
Patient & Client Care	43.4%	43.8%	44.8%	45.4%	44.5%	45.8%	45.8%
Total	100 %	100 %	100 %	100 %	100 %	100 %	100%

Mar 2021 (Dec 2019 figure: 1,488)	WTE Dec 2016	WTE Dec 2017	WTE Dec 2018	WTE Dec 2019	WTE Dec 2020	WTE Feb 2021	WTE Mar 2021
Older People	1,531	1,498	1,503	1,488	1,483.75	1,482.11	1,484.75
Medical/ Dental, other	100.0%	100.0%	100.0%	100.0%	100.0%	100.0%	100.0%
Medical & Dental	0.7%	0.7%	0.8%	0.7%	0.7%	0.7%	0.7%
Clinical Nurse/ Midwife Manager	17.6%	17.1%	16.2%	15.5%	17.2%	17.6%	17.6%
Director Nursing/Midwifery, Assistant	2.4%	3.8%	3.8%	4.4%	4.1%	4.0%	4.3%
Director of Nursing/Midwifery	3.6%	3.8%	3.6%	3.3%	4.0%	3.9%	3.7%
Nurse/ Midwife Manager	23.6%	24.7%	23.5%	23.2%	25.2%	25.6%	25.6%
Advanced Nurse/ Midwife Practitioner					0.5%	0.6%	0.5%
Clinical Nurse/ Midwife Specialist	0.8%	0.9%	0.9%	0.6%	0.6%	0.8%	0.8%
Nurse/ Midwife Specialist & AN/MP	0.8%	0.9%	0.9%	0.6%	1.1%	1.4%	1.4%
Staff Nurse [Intellectual Disability]	0.3%						
Staff Nurse [Psychiatric]	0.3%	0.3%	0.3%	0.3%	0.3%	0.3%	0.3%
Staff Nurses [General/ Children's]	74.0%	73.0%	74.3%	75.2%	72.0%	71.4%	71.4%
Staff Nurse/ Staff Midwife	74.5%	73.3%	74.6%	75.5%	72.3%	71.6%	71.7%
Public Health Nurse	1.1%	1.1%	1.0%	0.7%	0.8%	0.8%	0.8%
Nursing Education/Clinical					0.6%	0.6%	0.6%
Nursing/ Midwifery other					0.6%	0.6%	0.6%
Nursing & Midwifery	23.4%	22.8%	22.2%	22.2%	22.3%	23.9%	23.9%
Dietitians			3.4%	3.4%	3.0%	6.4%	7.6%
Occupational Therapists	24.3%	28.0%	29.2%	29.7%	32.6%	28.0%	27.1%
Physiotherapists	33.4%	32.0%	26.1%	25.5%	33.1%	29.8%	26.2%
Podiatrists & Chiropodists	3.0%	3.4%	3.1%	3.4%			
Speech & Language Therapists	6.9%	10.1%	9.4%	7.5%	9.0%	11.9%	14.5%
Therapy Professions	67.6%	73.5%	71.2%	69.5%	77.7%	76.1%	75.3%
Radiographers	8.1%	8.5%					
Health Science/ Diagnostics	8.1%	8.5%					
Social Workers	20.8%	14.4%	22.0%	22.1%	16.0%	14.9%	15.9%
Pharmacy	3.5%	3.6%	6.8%	8.4%	6.4%	9.0%	8.7%
Health & Social Care Professionals	1.9%	1.9%	2.0%	2.0%	2.0%	2.3%	2.3%
Management (VIII & above)	3.9%	2.5%	3.4%	5.8%	6.9%	7.1%	6.4%
Administrative/ Supervisory (V to VII)	17.8%	18.6%	22.5%	21.2%	21.5%	22.4%	23.3%
Clerical (III & IV)	78.3%	78.9%	74.1%	73.0%	71.7%	70.5%	70.3%
Management & Administrative	4.8%	4.7%	5.4%	6.4%	6.4%	6.6%	6.6%
Support	54.2%	53.5%	51.7%	52.0%	51.6%	52.7%	52.5%
Maintenance/ Technical	45.8%	46.5%	48.3%	48.0%	48.4%	47.3%	47.5%
General Support	3.1%	3.1%	3.3%	3.3%	3.3%	3.2%	3.2%
HCA, Nurse's Aide, etc.	60.5%	59.6%	56.7%	57.0%	57.6%	58.0%	58.2%
HCA (Student Nurse/Midwife COVID-19)					0.1%	0.1%	0.1%
Health & Social Care Assistants	0.3%	0.3%	0.3%	0.2%	0.2%	0.2%	0.2%
Health Care Assistants	60.8%	59.9%	56.9%	57.2%	57.9%	58.2%	58.4%
Care, other	2.3%	2.1%	2.1%	2.1%	2.3%	2.2%	2.2%
Home Help	37.0%	38.0%	41.0%	40.7%	39.8%	39.5%	39.3%
Patient & Client Care	66.0%	66.8%	66.3%	65.3%	65.5%	63.2%	63.2%
Total	100 %	100 %	100 %	100 %	100 %	100 %	100%

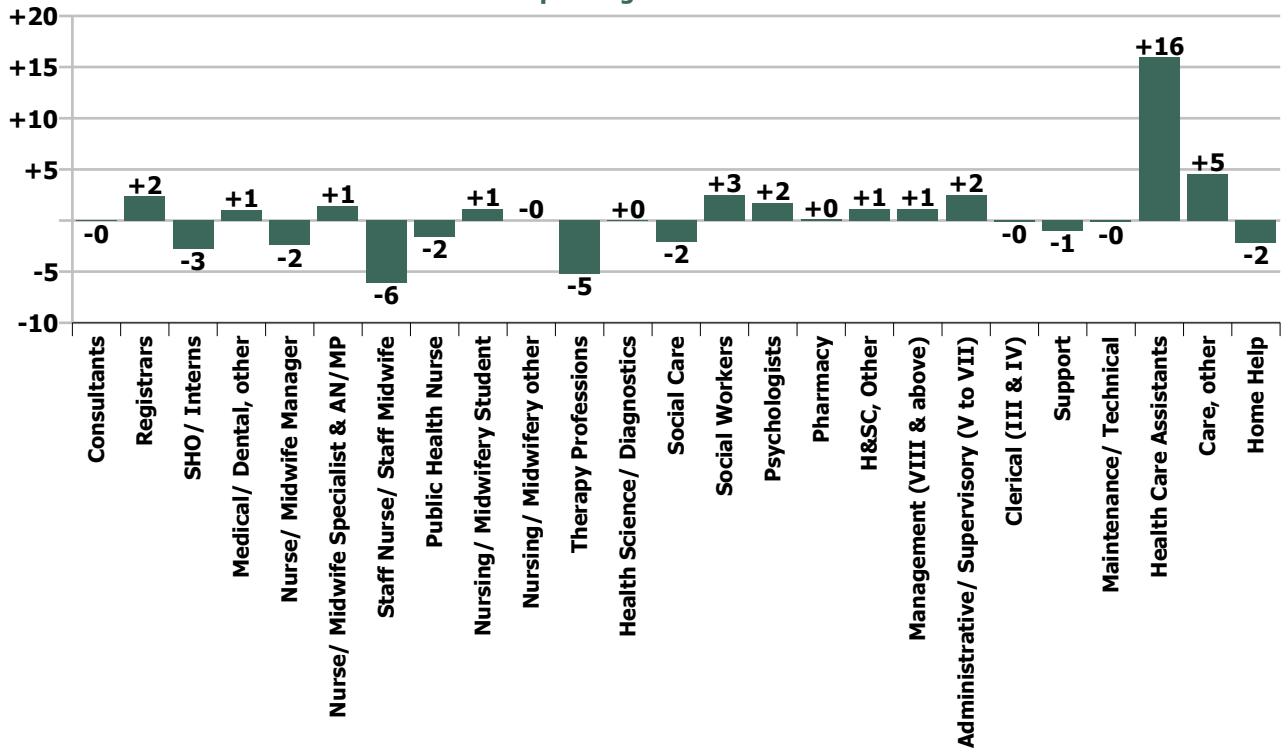
Summary Staff Movement: March 2021

Month-on-month Summary																												
WTE change since Feb 21	% change since Feb 21	overall	Consultants	Registrars	SHO/ Interns	Medical/ Dental, other	Medical & Dental	Nurse/ Midwife Manager	Nurse/ Midwife Specialist & AN/MP	Staff Nurse/ Staff Midwife	Public Health Nurse	Nursing/ Midwifery Student	Nursing/ Midwifery other	Nursing & Midwifery	Therapy Professions	Health Science/ Diagnostics	Social Care	Social Workers	Psychologists	Pharmacy	H&SC, Other	Health & Social Care Professionals	Management (VIII & above)	Administrative/ Supervisory (V to VII)	Clerical (III & IV)	Management & Administrative	General Support	Patient & Client Care
Overall	+0.2%	+12	-0.1	+2.4	-2.8	+1.1	+0.6	-2.4	+1.4	-6.1	-1.6	+1.1	-0.0	-7.6	-5.2	+0.0	-2.1	+2.5	+1.7	+0.1	+1.1	-1.8	+1.2	+2.5	-0.1	+3.5	-1.2	+18.3
Community Health & Wellbeing	-1.4%	-0													0.0							0.0	0.0	-0.3	-0.1	-0.4		
Mental Health	-0.8%	-9	-0.1	+3.8	-2.9		+0.8	-0.8	-0.4	-2.7		+1.3	0.0	-2.6	+1.3		-0.2	+1.1	+1.0	+0.0	-7.3	-4.1	0.0	+1.6	-2.3	-0.7	-0.7	-1.6
Primary Care	+1.0%	+16	0.0	-1.4	+0.2	+1.0	-0.2	-1.7	+2.0	+0.8	-1.7	0.0	0.0	-0.6	-4.3	+0.0	0.0	+0.6	+0.3	+0.1	+8.0	+4.8	+1.7	-0.4	+2.5	+3.8	+0.0	+8.0
Disabilities	+0.1%	+3		0.0		0.0	0.0	+0.3	+0.0	-3.7	0.0	-0.2	+0.0	-3.6	-2.5	0.0	-1.9	+0.3	+0.4		+0.4	-3.3	+0.0	+0.7	-0.3	+0.4	-0.4	+9.6
Older People	+0.2%	+3				+0.0	+0.0	-0.3	-0.1	-0.5	+0.1		-0.0	-0.8	+0.3			+0.5		0.0		+0.8	-0.6	+0.9	+0.0	+0.3	-0.2	+2.5
Social Care	+0.1%	+5		0.0		+0.0	+0.0	+0.0	-0.1	-4.2	+0.1	-0.2	-0.0	-4.4	-2.2	0.0	-1.9	+0.7	+0.4	0.0	+0.4	-2.6	-0.6	+1.6	-0.2	+0.8	-0.5	+12.0
Change	+11.9	+0.2%	-0.2%	+2.2%	-9.3%	+1.5%	+0.2%	-0.6%	+1.3%	-0.6%	-0.8%	+2.8%	-0.1%	-0.4%	-1.3%	+0.3%	-0.5%	+2.8%	+1.5%	+1.1%	+2.1%	-0.2%	+1.7%	+1.3%	-0.0%	+0.4%	-0.6%	+0.8%

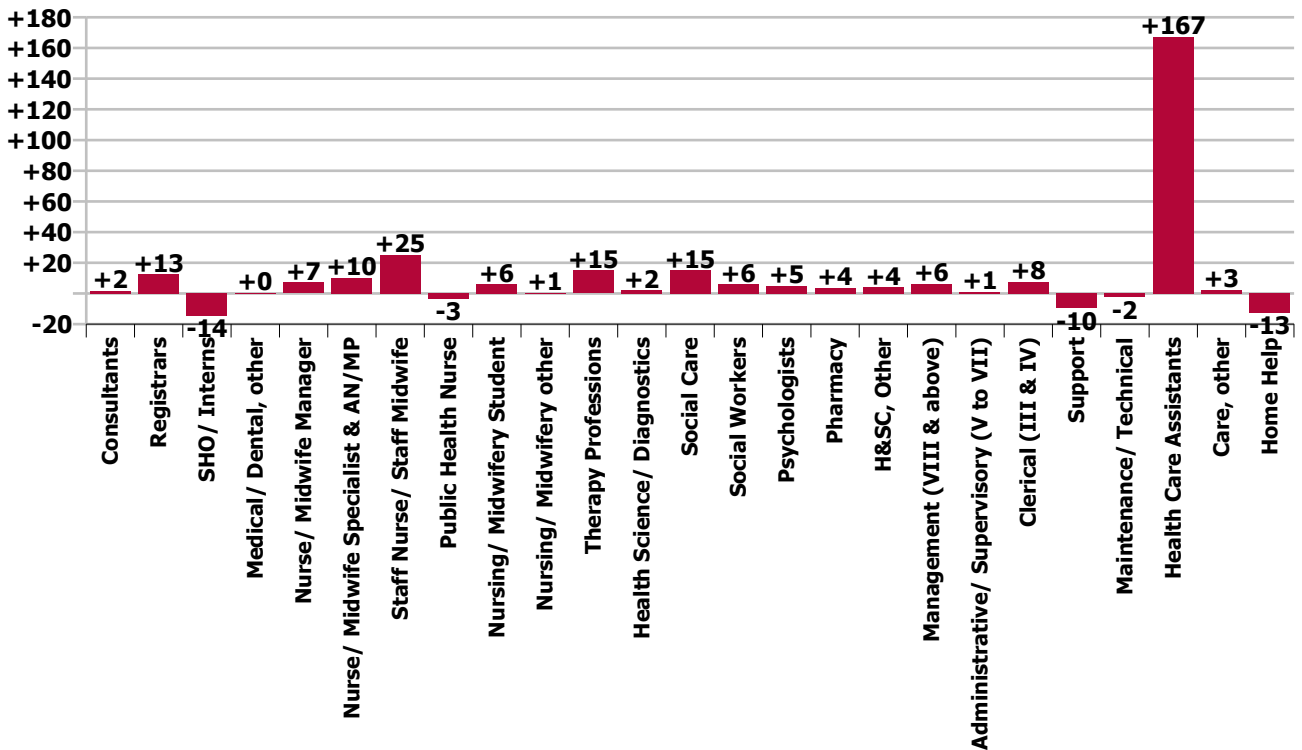
Year-on-year Summary																												
WTE change since Mar 20	% change since Mar 20	overall	Consultants	Registrars	SHO/ Interns	Medical/ Dental, other	Medical & Dental	Nurse/ Midwife Manager	Nurse/ Midwife Specialist & AN/MP	Staff Nurse/ Staff Midwife	Public Health Nurse	Nursing/ Midwifery Student	Nursing/ Midwifery other	Nursing & Midwifery	Therapy Professions	Health Science/ Diagnostics	Social Care	Social Workers	Psychologists	Pharmacy	H&SC, Other	Health & Social Care Professionals	Management (VIII & above)	Administrative/ Supervisory (V to VII)	Clerical (III & IV)	Management & Administrative	General Support	Patient & Client Care
Overall	+4.2%	+257	+1.6	+12.5	-14.4	+0.5	+0.3	+7.2	+10.3	+25.2	-3.3	+5.9	+0.6	+45.8	+15.0	+2.1	+15.2	+6.1	+4.9	+3.7	+4.2	+51.0	+6.5	+0.9	+7.8	+15.1	-12.2	+157.1
Community Health & Wellbeing	-1.4%	-0									-1.0			-1.0	+0.0							+0.0	+2.0	+2.2	+0.0	+4.2		
Mental Health	-0.8%	-9	+2.6	+11.9	-13.3		+1.2	-8.4	+2.5	+11.8		+1.7	-1.0	+6.5	-2.7		-0.1	+5.1	+2.6	0.0	-5.4	-0.5	-1.0	+0.0	+0.6	-0.3	-0.6	-3.7
Primary Care	+1.0%	+16	0.0	+0.6	-1.0	+0.4	-0.0	-1.4	+7.4	+6.9	-3.0	+11.4	+0.0	+21.4	+10.2	+2.1	+1.0	-0.8	+0.4	+3.2	+9.5	+25.6	+1.3	+2.9	+6.0	+10.2	-1.8	+113.7
Disabilities	+3.8%	+81.6	-1.0	0.0		0.0	-1.0	+7.2	-1.7	+2.9	0.0	-7.1	-0.4	+0.9	+2.2	0.0	+14.3	+1.3	+1.8		0.0	+19.7	+3.7	-4.5	+1.7	+1.0	-5.5	+66.5
Older People	+0.0%	+0.7				+0.0	+0.0	+9.8	+2.1	+3.5	+0.6		+2.0	+18.0	+5.3			+0.5		+0.5		+6.3	+0.4	+0.2	-0.6	+0.0	-4.4	-19.4
Social Care	+0.1%	+5	-1.0	0.0		+0.0	-1.0	+17.0	+0.4	+6.4	+0.6	-7.1	+1.6	+18.9	+7.5	0.0	+14.3	+1.8	+1.8	+0.5	0.0	+25.9	+4.1	-4.2	+1.1	+1.0	-9.8	+47.1
Change	+257.1	+4.2%	+3.8%	+12.8%	-34.8%	+0.7%	+0.1%	+1.9%	+9.9%	+2.5%	-1.6%	+16.6%	+4.9%	+2.7%	+3.9%	+25.4%	+4.1%	+7.0%	+4.3%	+48.0%	+8.0%	+5.0%	+10.5%	+0.4%	+1.5%	+1.9%	-6.2%	+7.2%



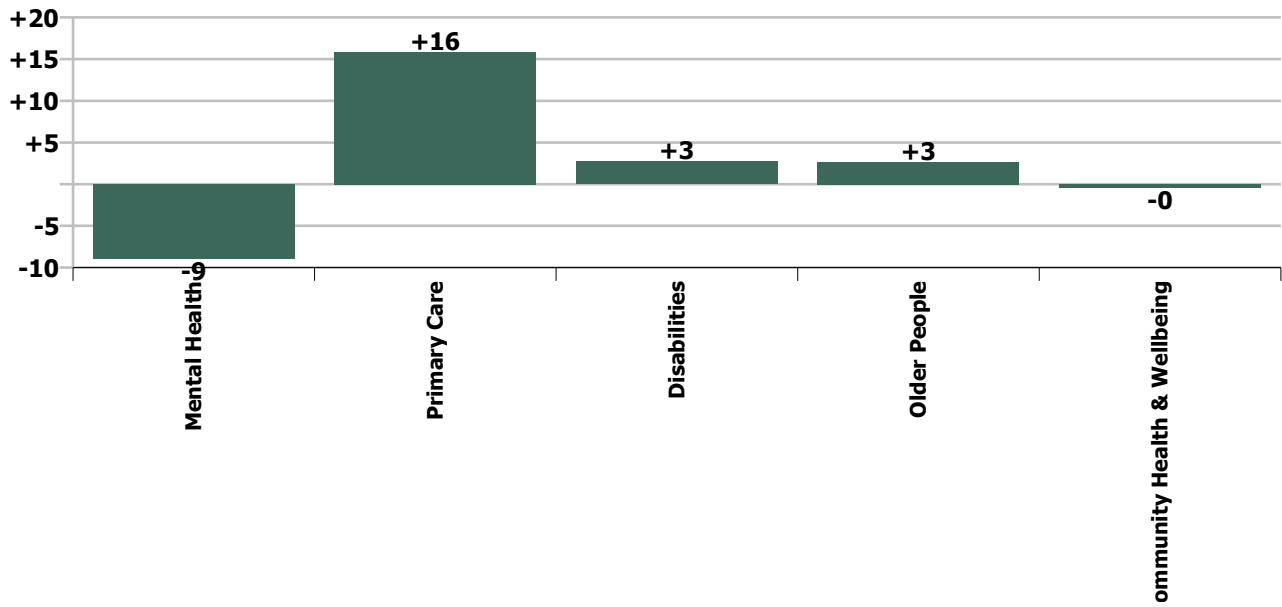
Staff Group change since: Feb 2021



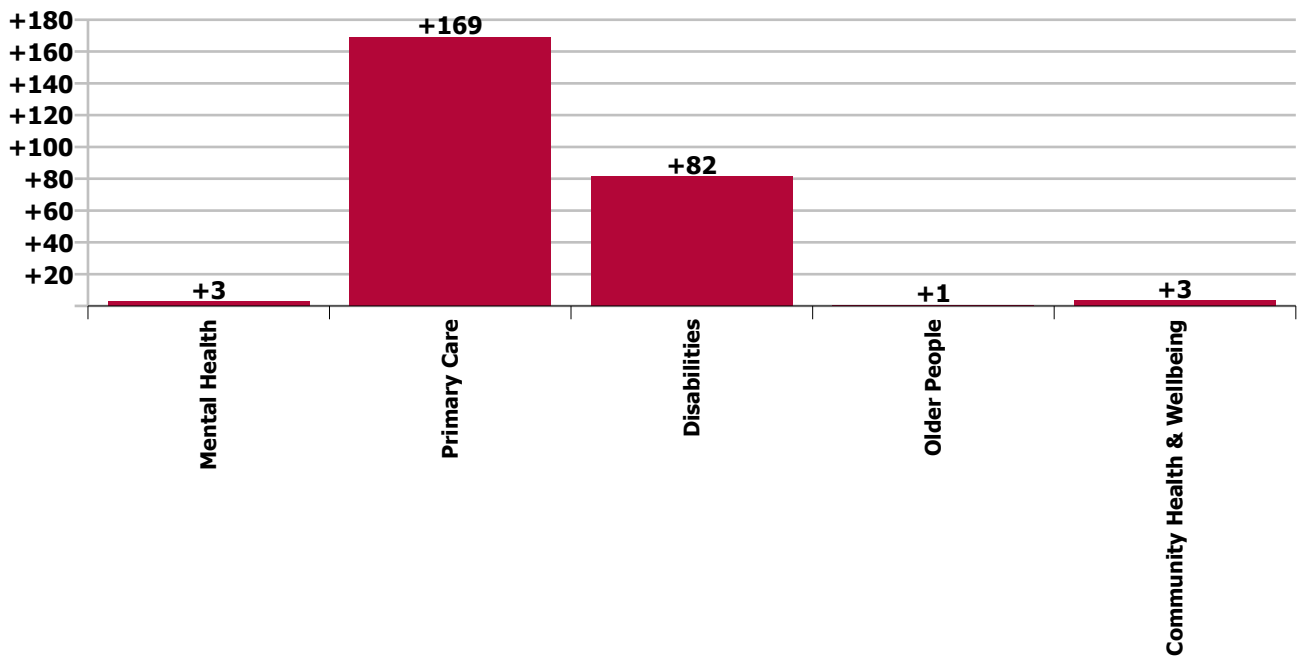
Staff Group change since: Mar 2020



Care Group change since: Feb 2021



Care Group change since: Mar 2020



Longitudinal Employment Levels by Grade Group - Dec 2015 to Mar 2021

Mar 2021 (Dec 2016 figure: 6,014)	WTE Mar 2021	WTE change since Dec 15	WTE change since Dec 16	WTE change since Dec 17	WTE change since Dec 18	WTE change since Dec 19	WTE change since Dec 20	WTE change since Feb 21	% change since Dec 15	% change since Dec 16	% change since Dec 17	% change since Dec 18	% change since Dec 19	% change since Dec 20	% change since Feb 21
Overall	6,417	+603	+403	+325	+289	+282	+80	+12	+10.4%	+6.7%	+5.3%	+4.7%	+4.6%	+1.3%	+0.2%
Consultant Dentistry	1														
Consultant Medicine	5	+1	+1		+1		-0		+25.0%	+25.0%		+26.3%		-2.3%	
Consultant Psychiatry	38	+2	+1	+4	+3	+2	+1	-0	+5.6%	+3.6%	+11.0%	+7.3%	+4.7%	+1.6%	-0.2%
Consultants	44	+3	+2	+4	+4	+2	+0	-0	+7.4%	+5.6%	+9.3%	+9.0%	+4.0%	+1.1%	-0.2%
Registrar	98	+19	+12	+10	+12	+6	-3	+2	+23.5%	+14.4%	+11.6%	+13.4%	+6.4%	-2.8%	+2.5%
Senior Registrar	12	+3	+1	-1	-0	-1	-1	-0	+31.2%	+13.2%	-9.9%	-2.3%	-9.0%	-5.5%	-0.1%
Registrars	111	+22	+14	+9	+11	+5	-4	+2	+24.3%	+14.3%	+8.6%	+11.4%	+4.4%	-3.1%	+2.2%
Interns		-1	-1						-100.0%	-100.0%	-100.0%	-100.0%	-100.0%	-100.0%	-100.0%
Senior House Officer	27	-4	+0	+1	-1	-11	-0	-3	-12.9%	+0.2%	+3.7%	-3.4%	-29.3%	-0.5%	-9.3%
SHO/ Interns	27	-5	-1	+1	-1	-11	-0	-3	-15.6%	-3.4%	+3.7%	-3.4%	-29.3%	-0.5%	-9.3%
Dentists	36	+3	+1	+2	+4	+1	-1		+8.9%	+2.1%	+6.3%	+10.8%	+2.1%	-1.6%	
Other Medical	36	+3	+3	+3	+1	-0	+1	+1	+7.6%	+8.2%	+8.2%	+1.5%	-1.1%	+2.2%	+3.0%
Medical/ Dental, other	73	+6	+4	+5	+4	+0	+0	+1	+8.2%	+5.1%	+7.2%	+5.9%	+0.4%	+0.3%	+1.5%
Medical & Dental	254	+25	+19	+18	+18	-4	-3	+1	+11.0%	+7.9%	+7.8%	+7.7%	-1.7%	-1.2%	+0.2%
Clinical Nurse/ Midwife Manager	287	-2	-13	-13	-10	-0	+1	-3	-0.8%	-4.3%	-4.2%	-3.2%	-0.1%	+0.3%	-1.0%
Director Nursing/Midwifery, Assistant	64	+10	+7	+5	+2	+4	-2	+3	+19.0%	+11.5%	+7.7%	+4.1%	+6.0%	-2.5%	+4.2%
Director of Nursing/Midwifery	26	+1	+0	-1	+4	+2	-2	-2	+4.5%	+1.1%	-3.3%	+19.0%	+7.0%	-7.2%	-7.3%
Nurse/ Midwife Manager	377	+9	-6	-9	-3	+5	-3	-2	+2.5%	-1.5%	-2.3%	-0.8%	+1.3%	-0.7%	-0.6%
Advanced Nurse/ Midwife Practitioner	9	+9	+8	+8	+7	+5	+0	-0	-100.0%	+783.0%	+783.0%	+341.5%	+123.0%	+0.1%	-1.5%
Clinical Nurse/ Midwife Specialist	105	+15	+8	+9	+8	+9	+3	+2	+16.9%	+8.6%	+9.3%	+8.5%	+9.9%	+2.7%	+1.5%
Nurse/ Midwife Specialist & AN/MP	114	+24	+16	+17	+15	+14	+3	+1	+26.7%	+16.5%	+17.2%	+15.2%	+14.4%	+2.5%	+1.3%
Staff Nurse [Intellectual Disability]	121	-137	-138	-140	-144	-111	-136	-4	-53.1%	-53.3%	-53.7%	-54.4%	-47.9%	-53.0%	-3.0%
Staff Nurse [Psychiatric]	481	+130	+146	+149	+151	+147	+139	-3	+36.9%	+43.7%	+45.0%	+45.9%	+44.3%	+40.5%	-0.6%
Staff Nurses [General/ Children's]	416	-18	-29	-4	+4	-17	+1	+0	-4.1%	-6.5%	-0.9%	+0.9%	-4.0%	+0.3%	+0.1%
Staff Nurse/ Staff Midwife	1,017	-25	-20	+6	+11	+19	+4	-6	-2.4%	-2.0%	+0.6%	+1.1%	+1.9%	+0.4%	-0.6%
Public Health Nurse	203	+10	+4	+5	+6	+4	+2	-2	+4.9%	+2.0%	+2.5%	+3.3%	+2.1%	+1.2%	-0.8%
Pre-registration Nurse/ Midwife Intern	29	+29	+29	+28	+28	+28	+29	+1	-100.0%	-100.0%	+5638.0%	+5638.0%	+5638.0%	-100.0%	+4.2%
Pre-registration Nurse Intern (COVID-19)							-5		-100.0%	-100.0%	-100.0%	-100.0%	-100.0%	-100.0%	-100.0%
Post-registration Nurse/ Midwife Student	13	+2	-3		+5	+11	+1		+18.2%	-18.8%		+62.5%	+556.6%	+8.3%	
Nursing/ Midwifery awaiting registration			-2	-1	-1	-2			-100.0%	-100.0%	-100.0%	-100.0%	-100.0%	-100.0%	-100.0%
Nursing/ Midwifery Student	42	+31	+24	+28	+32	+37	+25	+1	+279.0%	+131.6%	+196.9%	+334.7%	+830.6%	+144.8%	+2.8%
Nursing Education/Clinical	13	+7	+7	+4	+5	+3	+0	-0	+107.5%	+104.2%	+49.8%	+74.3%	+35.6%	+2.8%	-0.1%
Nursing/ Midwifery other	13	+7	+7	+4	+5	+3	+0	-0	+107.5%	+104.2%	+49.8%	+74.3%	+35.6%	+2.8%	-0.1%
Nursing & Midwifery	1,766	+55	+24	+50	+67	+83	+31	-8	+3.2%	+1.4%	+2.9%	+4.0%	+5.0%	+1.8%	-0.4%
Dietitians	23	+10	+7	+6	+5	+4	+2	+1	+73.7%	+43.3%	+34.6%	+24.3%	+18.0%	+11.8%	+3.0%
Occupational Therapists	151	+21	+18	+7	+15	+11	+1	-3	+15.8%	+13.2%	+5.2%	+11.0%	+8.1%	+0.4%	-1.8%
Orthoptists	2	+1	+1	+1	+1	+2			+300.0%	+263.6%	+263.6%	+263.6%	-100.0%		
Physiotherapists	105	-4	-7	-6	-3	-2	-3	-3	-3.6%	-6.3%	-5.4%	-3.2%	-1.8%	-3.1%	-2.6%
Podiatrists & Chiropodists	4	+1	+1	-0	-1	-1	-0	-0	+29.1%	+52.2%	-3.6%	-16.4%	-18.4%	-10.6%	-5.6%

Mar 2021 (Dec 2016 figure: 6,014)	WTE Mar 2021	WTE change since Dec 15	WTE change since Dec 16	WTE change since Dec 17	WTE change since Dec 18	WTE change since Dec 19	WTE change since Dec 20	WTE change since Feb 21	% change since Dec 15	% change since Dec 16	% change since Dec 17	% change since Dec 18	% change since Dec 19	% change since Dec 20	% change since Feb 21
Overall	6,417	+603	+403	+325	+289	+282	+80	+12	+10.4%	+6.7%	+5.3%	+4.7%	+4.6%	+1.3%	+0.2%
Speech & Language Therapists	110	+25	+2	-8	+0	+3	-0	-0	+30.2%	+1.8%	-6.5%	+0.4%	+3.2%	-0.0%	-0.1%
Therapy Professions	394	+54	+22	+1	+17	+17	-1	-5	+15.9%	+5.9%	+0.2%	+4.5%	+4.5%	-0.2%	-1.3%
Audiology	6	+2	+2	+2	+2	+3	+1	+0	+52.3%	+43.3%	+46.3%	+46.3%	+95.7%	+18.8%	+0.5%
Clinical Engineering	4	+4							-100.0%						
Radiographers		-2	-2	-3					-100.0%	-100.0%	-100.0%	-100.0%	-100.0%	-100.0%	-100.0%
Health Science/ Diagnostics	10	+4	-0	-1	+2	+3	+1	+0	+67.8%	-3.9%	-7.8%	+24.0%	+42.7%	+10.7%	+0.3%
Social Care	383	+107	+80	+41	+22	+15	-5	-2	+38.9%	+26.2%	+11.9%	+6.1%	+4.1%	-1.2%	-0.5%
Social Workers	93	+12	+5	+2	+3	+6	+4	+3	+14.3%	+6.0%	+2.1%	+2.8%	+6.3%	+5.0%	+2.8%
Psychologists	119	+15	+20	+11	+13	-1	+4	+2	+14.4%	+20.1%	+9.7%	+12.7%	-0.6%	+3.4%	+1.5%
Pharmacy	12	+8	+7	+7	+6	+4	+3	+0	+221.2%	+151.1%	+141.1%	+94.3%	+58.2%	+38.4%	+1.1%
Counsellor Therapists	42	+8	+6	+2	+2	+4	+3	+1	+23.0%	+17.7%	+5.2%	+6.3%	+11.1%	+8.8%	+2.4%
Dental Hygienists	12	-1	-0	-0	-0	-0	-1	+0	-7.1%	-0.3%	-1.4%	-2.4%	-1.3%	-4.9%	+3.7%
Other Health & Social Care	1	-1	-1	-0	-1	-0	-0	-0	-28.4%	-30.4%	-27.2%	-31.5%	-22.7%	-24.6%	-18.2%
Play Therapists/ Specialists	1														
H&SC, Other	56	+6	+6	+1	+2	+4	+2	+1	+12.8%	+11.3%	+2.6%	+2.9%	+6.9%	+4.4%	+2.1%
Health & Social Care Professionals	1,067	+206	+139	+61	+64	+48	+9	-2	+24.0%	+15.0%	+6.1%	+6.4%	+4.7%	+0.9%	-0.2%
Executive Management	9	+5	+0	-1	-1	+0	-1	-1	+125.0%	+1.6%	-8.7%	-8.0%	+1.6%	-8.3%	-10.0%
Senior Management (VIII & GM)	59	+11	+9	+6	+9	+6	+2	+2	+23.9%	+19.0%	+11.2%	+18.6%	+10.4%	+3.4%	+3.8%
Management (VIII & above)	68	+16	+10	+5	+9	+6	+1	+1	+31.7%	+16.4%	+8.1%	+14.3%	+9.1%	+1.7%	+1.7%
Middle Management (V-VII)	200	+67	+57	+52	+26	+24	-3	+2	+50.6%	+39.8%	+34.8%	+15.2%	+13.5%	-1.7%	+1.3%
Other Administrative			-1						-100.0%	-100.0%	-100.0%	-100.0%	-100.0%	-100.0%	-100.0%
Administrative/ Supervisory (V to VII)	200	+67	+56	+52	+26	+24	-3	+2	+50.6%	+38.8%	+34.8%	+15.2%	+13.5%	-1.7%	+1.3%
Clerical (III & IV)	533	+17	+9	+11	+22	+26	+0	-0	+3.3%	+1.7%	+2.1%	+4.2%	+5.1%	+0.0%	-0.0%
Management & Administrative	801	+101	+75	+68	+57	+55	-2	+4	+14.4%	+10.3%	+9.3%	+7.6%	+7.4%	-0.3%	+0.4%
Catering	31	-6	-5	-2	-5	-2	+0	-0	-16.8%	-14.2%	-6.5%	-14.5%	-6.6%	+1.4%	-0.7%
Household Services	52	-29	-20	-14	-6	-6	-2	-1	-36.4%	-27.6%	-21.4%	-9.8%	-10.5%	-3.5%	-1.6%
Other Support	29	-3	-7	-8	-4	-2	+0	+0	-9.8%	-18.3%	-21.1%	-11.9%	-6.8%	+1.2%	+0.3%
Portering	5	+1							+34.0%						
Support	117	-38	-31	-24	-15	-10	-1	-1	-24.4%	-21.1%	-17.1%	-11.2%	-8.1%	-0.9%	-0.8%
Maintenance	66	-2	-2	-3	-6	-2	-2	-0	-2.3%	-3.4%	-4.6%	-7.8%	-3.3%	-3.0%	-0.3%
Technical Services	0														
Maintenance/ Technical	67	-2	-2	-3	-6	-2	-2	-0	-2.3%	-3.4%	-4.6%	-7.8%	-3.3%	-3.0%	-0.3%
General Support	184	-39	-34	-27	-20	-13	-3	-1	-17.6%	-15.5%	-13.0%	-10.0%	-6.4%	-1.7%	-0.6%
HCA, Nurse's Aide, etc.	1,585	+145	+89	+64	+39	+21	+8	+10	+10.1%	+6.0%	+4.2%	+2.5%	+1.3%	+0.5%	+0.6%
HCA (Student Nurse/Midwife COVID-19)	1	+1	+1	+1	+1	+1	-1	-0	-100.0%	-100.0%	-100.0%	-100.0%	-100.0%	-54.5%	-15.3%
Health & Social Care Assistants	15	+11	+11	+11	-6	+2	+0	-1	+311.3%	+285.8%	+285.8%	-28.0%	+11.7%	+0.0%	-4.5%
Swabber (COVID-19)	113	+113	+113	+113	+113	+113	+43	+7	-100.0%	-100.0%	-100.0%	-100.0%	-100.0%	+62.2%	+6.3%
Health Care Assistants	1,713	+270	+214	+188	+147	+136	+51	+16	+18.7%	+14.3%	+12.3%	+9.4%	+8.6%	+3.0%	+0.9%
Care, other	241	-19	-27	-18	-3	+4	+3	+5	-7.3%	-10.1%	-6.9%	-1.3%	+1.6%	+1.3%	+1.9%

Mar 2021 (Dec 2016 figure: 6,014)	WTE Mar 2021	WTE change since Dec 15	WTE change since Dec 16	WTE change since Dec 17	WTE change since Dec 18	WTE change since Dec 19	WTE change since Dec 20	WTE change since Feb 21	% change since Dec 15	% change since Dec 16	% change since Dec 17	% change since Dec 18	% change since Dec 19	% change since Dec 20	% change since Feb 21
Overall	6,417	+603	+403	+325	+289	+282	+80	+12	+10.4%	+6.7%	+5.3%	+4.7%	+4.6%	+1.3%	+0.2%
Home Help	391	+4	-6	-16	-40	-27	-6	-2	+1.2%	-1.5%	-3.8%	-9.3%	-6.5%	-1.5%	-0.6%
Patient & Client Care	2,345	+255	+181	+154	+104	+112	+48	+18	+12.2%	+8.3%	+7.1%	+4.6%	+5.0%	+2.1%	+0.8%

Source: Health Service Personnel Census

Longitudinal Employment Levels by Care Group - Dec 2015 to Mar 2021

Community Health & Wellbeing

Mar 2021 (figure:)	WTE Mar 2021	WTE change since	WTE change since	WTE change since	WTE change since	WTE change since	WTE change since	WTE change since Feb 21	% change since	% change since	% change since	% change since	% change since	% change since	% change since Feb 21
Overall	29	+29	+29	+29	+29	+29	+29	-0	-100.0%	-100.0%	-100.0%	-100.0%	-100.0%	-100.0%	-1.4%
Health & Social Care Professionals	2	+2	+2	+2	+2	+2	+2		-1.0%	-1.0%	-1.0%	-1.0%	-1.0%	-1.0%	+0.0%
Therapy Professions	2	+2	+2	+2	+2	+2	+2		-1.0%	-1.0%	-1.0%	-1.0%	-1.0%	-1.0%	+0.0%
Management & Administrative	27	+27	+27	+27	+27	+27	+27	-0	-1.0%	-1.0%	-1.0%	-1.0%	-1.0%	-1.0%	-0.0%
Management (VIII & above)	3	+3	+3	+3	+3	+3	+3		-1.0%	-1.0%	-1.0%	-1.0%	-1.0%	-1.0%	+0.0%
Administrative/ Supervisory (V to VII)	20	+20	+20	+20	+20	+20	+20	-0	-1.0%	-1.0%	-1.0%	-1.0%	-1.0%	-1.0%	-0.0%
Clerical (III & IV)	4	+4	+4	+4	+4	+4	+4	-0	-1.0%	-1.0%	-1.0%	-1.0%	-1.0%	-1.0%	-0.0%

Source: Health Service Personnel Census

Mental Health

Mar 2021 (Dec 2016 figure: 1,041)	WTE Mar 2021	WTE change since Dec 15	WTE change since Dec 16	WTE change since Dec 17	WTE change since Dec 18	WTE change since Dec 19	WTE change since Dec 19	WTE change since Feb 21	% change since Dec 15	% change since Dec 16	% change since Dec 17	% change since Dec 18	% change since Dec 19	% change since Dec 19	% change since Feb 21
Overall	1,117	+75	+75	+37	+47	+19	+19	-9	+7.2%	+7.2%	+3.4%	+4.4%	+1.7%	+1.7%	-0.8%
Medical & Dental	95	+13	+15	+8	+9	-2	-2	+1	+0.2%	+0.2%	+0.1%	+0.1%	-0.0%	-0.0%	+0.0%
Consultants	38	+4	+3	+5	+4	+3	+3	-0	+0.1%	+0.1%	+0.1%	+0.1%	+0.1%	+0.1%	-0.0%
Registrars	31	+15	+12	+2	+5	+6	+6	+4	+0.9%	+0.6%	+0.1%	+0.2%	+0.2%	+0.2%	+0.1%
SHO/ Interns	26	-6	-1	+1	+0	-10	-10	-3	-0.2%	-0.0%	+0.0%	+0.0%	-0.3%	-0.3%	-0.1%
Nursing & Midwifery	536	+35	+31	+26	+29	+21	+21	-3	+0.1%	+0.1%	+0.1%	+0.1%	+0.0%	+0.0%	-0.0%
Nurse/ Midwife Manager	115	-1	-8	-16	-12	-6	-6	-1	-0.0%	-0.1%	-0.1%	-0.1%	-0.1%	-0.1%	-0.0%
Nurse/ Midwife Specialist & AN/MP	60	+17	+12	+11	+8	+4	+4	-0	+0.4%	+0.2%	+0.2%	+0.2%	+0.1%	+0.1%	-0.0%
Staff Nurse/ Staff Midwife	336	-6	+6	+8	+10	+4	+4	-3	-0.0%	+0.0%	+0.0%	+0.0%	+0.0%	+0.0%	-0.0%
Nursing/ Midwifery Student	23	+23	+21	+22	+22	+21	+21	+1	-1.0%	+10.5%	+21.2%	+20.1%	+8.2%	+8.2%	+0.1%
Nursing/ Midwifery other	3	+1	+1	+0	+1	-1	-1		+0.6%	+0.6%	+0.0%	+0.5%	-0.2%	-0.2%	+0.0%
Health & Social Care Professionals	153	+17	+19	+2	+5	-1	-1	-4	+0.1%	+0.1%	+0.0%	+0.0%	-0.0%	-0.0%	-0.0%
Therapy Professions	44	+5	+8	-1	-1	-1	-1	+1	+0.1%	+0.2%	-0.0%	-0.0%	-0.0%	-0.0%	+0.0%
Social Care	6	+0	-0	-0	-0	-1	-1	-0	+0.1%	-0.1%	-0.0%	-0.0%	-0.1%	-0.1%	-0.0%
Social Workers	47	+6	+5	+4	+7	+5	+5	+1	+0.1%	+0.1%	+0.1%	+0.2%	+0.1%	+0.1%	+0.0%
Psychologists	39	+7	+10	+2	+2	+0	+0	+1	+0.2%	+0.3%	+0.1%	+0.0%	+0.0%	+0.0%	+0.0%
Pharmacy	2	+2	+1	+1	+1	+1	+1	+0	-1.0%	+1.4%	+0.5%	+0.5%	+0.5%	+0.5%	+0.0%
H&SC, Other	15	-4	-4	-4	-4	-5	-5	-7	-0.2%	-0.2%	-0.2%	-0.2%	-0.3%	-0.3%	-0.3%
Management & Administrative	120	+21	+20	+9	+12	+6	+6	-1	+0.2%	+0.2%	+0.1%	+0.1%	+0.1%	+0.1%	-0.0%
Management (VIII & above)	2	-1	+1	-0	+0	-1	-1		-0.3%	+1.0%	-0.0%	+0.0%	-0.3%	-0.3%	+0.0%
Administrative/ Supervisory (V to VII)	20	+5	+5	+2	-1	-2	-2	+2	+0.3%	+0.3%	+0.1%	-0.1%	-0.1%	-0.1%	+0.1%
Clerical (III & IV)	98	+17	+14	+7	+13	+10	+10	-2	+0.2%	+0.2%	+0.1%	+0.2%	+0.1%	+0.1%	-0.0%
General Support	58	-2	-0	-5	-3	-1	-1	-1	-0.0%	-0.0%	-0.1%	-0.1%	-0.0%	-0.0%	-0.0%
Support	30	-2	-0	-5	-3	-2	-2	-0	-0.1%	-0.0%	-0.1%	-0.1%	-0.1%	-0.1%	-0.0%
Maintenance/ Technical	28	-0	-0	-0	-0	+2	+2	-0	-0.0%	-0.0%	-0.0%	-0.0%	+0.1%	+0.1%	-0.0%
Patient & Client Care	155	-9	-8	-3	-4	-6	-6	-2	-0.1%	-0.1%	-0.0%	-0.0%	-0.0%	-0.0%	-0.0%
Health Care Assistants	152	-7	-7	-1	-4	-5	-5	-2	-0.0%	-0.0%	-0.0%	-0.0%	-0.0%	-0.0%	-0.0%
Care, other	3	-2	-2	-2		-1	-1		-0.3%	-0.3%	-0.3%	+0.0%	-0.2%	-0.2%	+0.0%

Source: Health Service Personnel Census

Primary Care

Mar 2021 (Dec 2016 figure: 1,457)	WTE Mar 2021	WTE change since Dec 15	WTE change since Dec 16	WTE change since Dec 17	WTE change since Dec 18	WTE change since Dec 19	WTE change since Dec 19	WTE change since Feb 21	% change since Dec 15	% change since Dec 16	% change since Dec 17	% change since Dec 18	% change since Dec 19	% change since Dec 19	% change since Feb 21
Overall	1,566	+173	+109	+130	+144	+179	+179	+16	+12.4%	+7.5%	+9.1%	+10.1%	+12.9%	+12.9%	+1.0%
Medical & Dental	146	+13	+5	+12	+11	-1	-1	-0	+0.1%	+0.0%	+0.1%	+0.1%	-0.0%	-0.0%	-0.0%
Consultants	6				+1				+0.0%	+0.0%	+0.0%	+0.2%	+0.0%	+0.0%	+0.0%
Registrars	78	+7	+2	+7	+6	+0	+0	-1	+0.1%	+0.0%	+0.1%	+0.1%	+0.0%	+0.0%	-0.0%
SHO/ Interns	1	+1	-0		-1	-1	-1	+0	-1.0%	-0.0%	+0.0%	-0.5%	-0.5%	-0.5%	+0.2%
Medical/ Dental, other	61	+5	+4	+5	+5	+0	+0	+1	+0.1%	+0.1%	+0.1%	+0.1%	+0.0%	+0.0%	+0.0%
Nursing & Midwifery	414	+29	-4	+5	+18	+32	+32	-1	+0.1%	-0.0%	+0.0%	+0.0%	+0.1%	+0.1%	-0.0%
Nurse/ Midwife Manager	50	+0	-6	-3	-4	-1	-1	-2	+0.0%	-0.1%	-0.1%	-0.1%	-0.0%	-0.0%	-0.0%
Nurse/ Midwife Specialist & AN/MP	44	+9	+6	+6	+7	+9	+9	+2	+0.3%	+0.2%	+0.2%	+0.2%	+0.3%	+0.3%	+0.0%
Staff Nurse/ Staff Midwife	106	+7	-7	-4	+2	+8	+8	+1	+0.1%	-0.1%	-0.0%	+0.0%	+0.1%	+0.1%	+0.0%
Public Health Nurse	199	+10	+5	+5	+7	+4	+4	-2	+0.1%	+0.0%	+0.0%	+0.0%	+0.0%	+0.0%	-0.0%
Nursing/ Midwifery Student	13	+2	-3		+5	+11	+11		+0.2%	-0.2%	+0.0%	+0.6%	+5.6%	+5.6%	+0.0%
Nursing/ Midwifery other	1	+1	+1	+1	+1	+1	+1		-1.0%	-1.0%	-1.0%	-1.0%	-1.0%	-1.0%	+0.0%
Health & Social Care Professionals	350	+23	+23	+11	+22	+24	+24	+5	+0.1%	+0.1%	+0.0%	+0.1%	+0.1%	+0.1%	+0.0%
Therapy Professions	229	+7	+5	-5	+5	+8	+8	-4	+0.0%	+0.0%	-0.0%	+0.0%	+0.0%	+0.0%	-0.0%
Health Science/ Diagnostics	8	+4	+2	+2	+2	+3	+3	+0	+1.0%	+0.3%	+0.2%	+0.3%	+0.6%	+0.6%	+0.0%
Social Care	1			+1	+1	+1	+1		+0.0%	+0.0%	-1.0%	-1.0%	-1.0%	-1.0%	+0.0%
Social Workers	16	-2	-1	-2	-3	-0	-0	+1	-0.1%	-0.1%	-0.1%	-0.2%	-0.0%	-0.0%	+0.0%
Psychologists	55	+0	+4	+6	+8	-1	-1	+0	+0.0%	+0.1%	+0.1%	+0.2%	-0.0%	-0.0%	+0.0%
Pharmacy	7	+4	+4	+4	+4	+3	+3	+0	+1.7%	+1.4%	+1.5%	+1.4%	+0.9%	+0.9%	+0.0%
H&SC, Other	34	+9	+9	+4	+5	+9	+9	+8	+0.4%	+0.4%	+0.1%	+0.2%	+0.4%	+0.4%	+0.3%
Management & Administrative	399	+9	-17	-4	-8	+11	+11	+4	+0.0%	-0.0%	-0.0%	-0.0%	+0.0%	+0.0%	+0.0%
Management (VIII & above)	43	+10	+1	+1	-1	-2	-2	+2	+0.3%	+0.0%	+0.0%	-0.0%	-0.0%	-0.0%	+0.0%
Administrative/ Supervisory (V to VII)	83	+24	+17	+15	+3	+5	+5	-0	+0.4%	+0.3%	+0.2%	+0.0%	+0.1%	+0.1%	-0.0%
Clerical (III & IV)	273	-25	-35	-21	-9	+9	+9	+2	-0.1%	-0.1%	-0.1%	-0.0%	+0.0%	+0.0%	+0.0%
General Support	24	-3	-3	-5	-2	-2	-2	+0	-0.1%	-0.1%	-0.2%	-0.1%	-0.1%	-0.1%	+0.0%
Support	21	-3	-4	-5	-2	-2	-2	+0	-0.1%	-0.2%	-0.2%	-0.1%	-0.1%	-0.1%	+0.0%
Maintenance/ Technical	3	-0	+1	-0	+0	+0	+0		-0.0%	+0.6%	-0.0%	+0.0%	+0.0%	+0.0%	+0.0%
Patient & Client Care	234	+103	+105	+112	+103	+115	+115	+8	+0.8%	+0.8%	+0.9%	+0.8%	+1.0%	+1.0%	+0.0%
Health Care Assistants	134	+118	+118	+119	+105	+114	+114	+6	+7.5%	+7.3%	+8.0%	+3.6%	+5.5%	+5.5%	+0.0%
Care, other	100	-15	-12	-6	-2	+2	+2	+2	-0.1%	-0.1%	-0.1%	-0.0%	+0.0%	+0.0%	+0.0%
Home Help		-1	-1	-1	-0	-0	-0		-1.0%	-1.0%	-1.0%	-1.0%	-1.0%	-1.0%	-1.0%

Source: Health Service Personnel Census

Disabilities

Mar 2021 (Dec 2016 figure: 1,984)	WTE Mar 2021	WTE change since Dec 15	WTE change since Dec 16	WTE change since Dec 17	WTE change since Dec 18	WTE change since Dec 19	WTE change since Dec 19	WTE change since Feb 21	% change since Dec 15	% change since Dec 16	% change since Dec 17	% change since Dec 18	% change since Dec 19	% change since Dec 19	% change since Feb 21
Overall	2,221	+378	+237	+142	+87	+59	+59	+3	+20.5%	+11.9%	+6.9%	+4.1%	+2.7%	+2.7%	+0.1%
Medical & Dental	2	-1	-1	-1	-1	-2	-2		-0.3%	-0.3%	-0.3%	-0.3%	-0.5%	-0.5%	+0.0%
Consultants		-1	-1	-1	-1	-1	-1		-1.0%	-1.0%	-1.0%	-1.0%	-1.0%	-1.0%	-1.0%
Registrars	1					-1	-1		+0.0%	+0.0%	+0.0%	+0.0%	-0.5%	-0.5%	+0.0%
Medical/ Dental, other	1								+0.0%	+0.0%	+0.0%	+0.0%	+0.0%	+0.0%	+0.0%
Nursing & Midwifery	461	+2	+1	+5	-1	+6	+6	-4	+0.0%	+0.0%	+0.0%	-0.0%	+0.0%	+0.0%	-0.0%
Nurse/ Midwife Manager	121	+6	+2	+3	+1	-2	-2	+0	+0.1%	+0.0%	+0.0%	+0.0%	-0.0%	-0.0%	+0.0%
Nurse/ Midwife Specialist & AN/MP	5	-4	-4	-2	-2	-2	-2	+0	-0.4%	-0.4%	-0.3%	-0.2%	-0.2%	-0.2%	+0.0%
Staff Nurse/ Staff Midwife	321	-9	-6	-3	-6	+2	+2	-4	-0.0%	-0.0%	-0.0%	-0.0%	+0.0%	+0.0%	-0.0%
Public Health Nurse	1	+1	-0	+1	-0				+1.1%	-0.0%	-1.0%	-0.0%	+0.0%	+0.0%	+0.0%
Nursing/ Midwifery Student	6	+6	+6	+6	+5	+6	+6	-0	-1.0%	-1.0%	-1.0%	+10.3%	-1.0%	-1.0%	-0.0%
Nursing/ Midwifery other	7	+2	+2	+1	+1	+1	+1	+0	+0.6%	+0.5%	+0.2%	+0.3%	+0.3%	+0.3%	+0.0%
Health & Social Care Professionals	529	+158	+90	+40	+31	+18	+18	-3	+0.4%	+0.2%	+0.1%	+0.1%	+0.0%	+0.0%	-0.0%
Therapy Professions	94	+33	+1	-0	+6	+3	+3	-3	+0.5%	+0.0%	-0.0%	+0.1%	+0.0%	+0.0%	-0.0%
Health Science/ Diagnostics	2	+2							-1.0%	+0.0%	+0.0%	+0.0%	+0.0%	+0.0%	+0.0%
Social Care	376	+107	+80	+40	+21	+15	+15	-2	+0.4%	+0.3%	+0.1%	+0.1%	+0.0%	+0.0%	-0.0%
Social Workers	25	+8	+2	-2	-0	+1	+1	+0	+0.5%	+0.1%	-0.1%	-0.0%	+0.0%	+0.0%	+0.0%
Psychologists	25	+8	+6	+2	+4	-0	-0	+0	+0.4%	+0.4%	+0.1%	+0.2%	-0.0%	-0.0%	+0.0%
H&SC, Other	7	+1	+1	+1	+0	-0	-0	+0	+0.2%	+0.1%	+0.1%	+0.1%	-0.0%	-0.0%	+0.1%
Management & Administrative	158	+21	+21	+9	+9	+8	+8	+0	+0.2%	+0.2%	+0.1%	+0.1%	+0.1%	+0.1%	+0.0%
Management (VIII & above)	14	+1	+1	-4	+3	+5	+5	+0	+0.1%	+0.1%	-0.2%	+0.3%	+0.6%	+0.6%	+0.0%
Administrative/ Supervisory (V to VII)	54	+7	+5	+5	+1	-2	-2	+1	+0.2%	+0.1%	+0.1%	+0.0%	-0.0%	-0.0%	+0.0%
Clerical (III & IV)	89	+13	+15	+8	+6	+5	+5	-0	+0.2%	+0.2%	+0.1%	+0.1%	+0.1%	+0.1%	-0.0%
General Support	54	-34	-31	-18	-13	-8	-8	-0	-0.4%	-0.4%	-0.3%	-0.2%	-0.1%	-0.1%	-0.0%
Support	41	-32	-26	-14	-9	-5	-5	-0	-0.4%	-0.4%	-0.3%	-0.2%	-0.1%	-0.1%	-0.0%
Maintenance/ Technical	13	-2	-4	-4	-4	-3	-3		-0.2%	-0.3%	-0.2%	-0.2%	-0.2%	-0.2%	+0.0%
Patient & Client Care	1,018	+232	+156	+107	+62	+37	+37	+10	+0.3%	+0.2%	+0.1%	+0.1%	+0.0%	+0.0%	+0.0%
Health Care Assistants	879	+235	+169	+120	+64	+35	+35	+8	+0.4%	+0.2%	+0.2%	+0.1%	+0.0%	+0.0%	+0.0%
Care, other	117	-1	-11	-10	-2	+2	+2	+3	-0.0%	-0.1%	-0.1%	-0.0%	+0.0%	+0.0%	+0.0%
Home Help	22	-2	-1	-4	-1	-1	-1	-1	-0.1%	-0.0%	-0.1%	-0.0%	-0.0%	-0.0%	-0.1%

Source: Health Service Personnel Census

Older People

Mar 2021 (Dec 2016 figure: 1,531)	WTE Mar 2021	WTE change since Dec 15	WTE change since Dec 16	WTE change since Dec 17	WTE change since Dec 18	WTE change since Dec 19	WTE change since Dec 19	WTE change since Feb 21	% change since Dec 15	% change since Dec 16	% change since Dec 17	% change since Dec 18	% change since Dec 19	% change since Dec 19	% change since Feb 21
Overall	1,485	-51	-47	-13	-18	-4	-4	+3	-3.3%	-3.0%	-0.9%	-1.2%	-0.2%	-0.2%	+0.2%
Medical & Dental	11	+1	-0	+0	-1	+0	+0	+0	+0.1%	-0.0%	+0.0%	-0.1%	+0.0%	+0.0%	+0.0%
Medical/ Dental, other	11	+1	-0	+0	-1	+0	+0	+0	+0.1%	-0.0%	+0.0%	-0.1%	+0.0%	+0.0%	+0.0%
Nursing & Midwifery	355	-11	-4	+14	+21	+25	+25	-1	-0.0%	-0.0%	+0.0%	+0.1%	+0.1%	+0.1%	-0.0%
Nurse/ Midwife Manager	91	+4	+6	+7	+12	+14	+14	-0	+0.0%	+0.1%	+0.1%	+0.2%	+0.2%	+0.2%	-0.0%
Nurse/ Midwife Specialist & AN/MP	5	+2	+2	+2	+2	+3	+3	-0	+0.6%	+0.6%	+0.6%	+0.6%	+1.4%	+1.4%	-0.0%
Staff Nurse/ Staff Midwife	255	-17	-13	+4	+5	+5	+5	-0	-0.1%	-0.0%	+0.0%	+0.0%	+0.0%	+0.0%	-0.0%
Public Health Nurse	3	-1	-1	-1	-0	+1	+1	+0	-0.2%	-0.2%	-0.2%	-0.1%	+0.3%	+0.3%	+0.0%
Nursing/ Midwifery other	2	+2	+2	+2	+2	+2	+2	-0	-1.0%	-1.0%	-1.0%	-1.0%	-1.0%	-1.0%	-0.0%
Health & Social Care Professionals	34	+7	+6	+6	+5	+5	+5	+1	+0.3%	+0.2%	+0.2%	+0.2%	+0.2%	+0.2%	+0.0%
Therapy Professions	26	+8	+6	+5	+5	+5	+5	+0	+0.4%	+0.3%	+0.3%	+0.2%	+0.3%	+0.3%	+0.0%
Health Science/ Diagnostics		-2	-2	-2					-1.0%	-1.0%	-1.0%	-1.0%	-1.0%	-1.0%	-1.0%
Social Workers	5	-1	-1	+1	-1	-1	-1	+0	-0.1%	-0.1%	+0.4%	-0.2%	-0.2%	-0.2%	+0.1%
Pharmacy	3	+2	+2	+2	+1	+1	+1		+2.0%	+2.0%	+2.0%	+0.5%	+0.2%	+0.2%	+0.0%
Management & Administrative	98	+23	+24	+27	+16	+2	+2	+0	+0.3%	+0.3%	+0.4%	+0.2%	+0.0%	+0.0%	+0.0%
Management (VIII & above)	6	+4	+3	+5	+4	+1	+1	-1	+1.3%	+1.2%	+2.5%	+1.3%	+0.1%	+0.1%	-0.1%
Administrative/ Supervisory (V to VII)	23	+11	+10	+9	+4	+2	+2	+1	+0.9%	+0.7%	+0.7%	+0.2%	+0.1%	+0.1%	+0.0%
Clerical (III & IV)	69	+9	+11	+13	+8	-1	-1	+0	+0.1%	+0.2%	+0.2%	+0.1%	-0.0%	-0.0%	+0.0%
General Support	48	-0	+1	+1	-2	-1	-1	-0	-0.0%	+0.0%	+0.0%	-0.0%	-0.0%	-0.0%	-0.0%
Support	25	-2	-0	+0	-1	-0	-0	-0	-0.1%	-0.0%	+0.0%	-0.0%	-0.0%	-0.0%	-0.0%
Maintenance/ Technical	23	+1	+1	+1	-1	-1	-1		+0.1%	+0.1%	+0.1%	-0.1%	-0.0%	-0.0%	+0.0%
Patient & Client Care	939	-71	-72	-62	-57	-34	-34	+2	-0.1%	-0.1%	-0.1%	-0.1%	-0.0%	-0.0%	+0.0%
Health Care Assistants	548	-77	-66	-51	-19	-8	-8	+3	-0.1%	-0.1%	-0.1%	-0.0%	-0.0%	-0.0%	+0.0%
Care, other	21	-1	-2	-0	+0	+1	+1	+0	-0.1%	-0.1%	-0.0%	+0.0%	+0.0%	+0.0%	+0.0%
Home Help	369	+8	-4	-11	-39	-26	-26	-1	+0.0%	-0.0%	-0.0%	-0.1%	-0.1%	-0.1%	-0.0%

Source: Health Service Personnel Census