

## CHO 8 Employment Report: November 2020

### Employment by Staff Group

Nov 2020 (Dec 2019 figure: 6,135)	WTE Oct 2020	WTE Nov 2020	WTE change since Oct 20	% change since Oct 20	WTE change since Dec 19	WTE change since Nov 19
<b>Overall</b>	<b>6,220</b>	<b>6,275</b>	<b>+55</b>	<b>+0.9%</b>	<b>+140</b>	<b>+160</b>
Consultants	42	44	+1	+2.8%	+1	+2
Registrars	116	118	+2	+1.8%	+12	+12
SHO/ Interns	30	26	-4	-12.8%	-12	-11
Medical/ Dental, other	73	72	-1	-1.1%	-0	+1
<b>Medical &amp; Dental</b>	<b>261</b>	<b>260</b>	<b>-1</b>	<b>-0.5%</b>	<b>+1</b>	<b>+3</b>
Nurse/ Midwife Manager	354	377	+23	+6.5%	+5	+4
Nurse/ Midwife Specialist & AN/MP	103	108	+5	+4.9%	+9	+9
Staff Nurse/ Staff Midwife	999	1,024	+25	+2.5%	+26	+27
Public Health Nurse	199	199	-0	-0.1%	+0	-1
<i>Pre-registration Nurse/ Midwife Intern</i>	1	1			+1	
<i>Pre-registration Nurse Intern (COVID-19)</i>	20	10	-10	-48.9%	+10	-10
<i>Post-registration Nurse/ Midwife Student</i>	9	12	+3	+27.5%	+10	+3
<i>Nursing/ Midwifery awaiting registration</i>				-100.0%	-2	
Nursing/ Midwifery Student	30	23	-7	-24.0%	+19	+18
Nursing/ Midwifery other	32	11	-21	-65.8%	+1	+2
<b>Nursing &amp; Midwifery</b>	<b>1,718</b>	<b>1,743</b>	<b>+25</b>	<b>+1.5%</b>	<b>+60</b>	<b>+60</b>
Therapy Professions	391	394	+3	+0.7%	+17	+21
Health Science/ Diagnostics	9	9	-0	-0.2%	+2	+2
Social Care	383	386	+3	+0.8%	+18	+21
Social Workers	93	93	+0	+0.0%	+5	+5
Psychologists	117	118	+0	+0.1%	-2	-1
Pharmacy	8	8	+0	+4.3%	+1	+1
H&SC, Other	53	53	+1	+1.4%	+1	+1
<b>Health &amp; Social Care Professionals</b>	<b>1,054</b>	<b>1,061</b>	<b>+7</b>	<b>+0.7%</b>	<b>+41</b>	<b>+51</b>
Management (VIII & above)	68	67	-1	-1.5%	+5	+5
Administrative/ Supervisory (V to VII)	198	197	-1	-0.3%	+21	+24
Clerical (III & IV)	530	532	+3	+0.5%	+25	+24
<b>Management &amp; Administrative</b>	<b>796</b>	<b>797</b>	<b>+1</b>	<b>+0.1%</b>	<b>+51</b>	<b>+53</b>
Support	120	121	+1	+1.2%	-6	-5
Maintenance/ Technical	68	68	-1	-0.9%	-1	-1
<b>General Support</b>	<b>188</b>	<b>189</b>	<b>+1</b>	<b>+0.4%</b>	<b>-7</b>	<b>-6</b>
Health Care Assistants	1,567	1,591	+24	+1.5%	+14	+17
Care, other	238	241	+2	+1.0%	+3	+5
Home Help	397	394	-3	-0.9%	-24	-22
<b>Patient &amp; Client Care</b>	<b>2,203</b>	<b>2,226</b>	<b>+23</b>	<b>+1.0%</b>	<b>-7</b>	<b>-0</b>

## CHO 8 Employment Report: November 2020

### Community Health & Wellbeing

Nov 2020 ( figure: )	WTE Oct 2020	WTE Nov 2020	WTE change since Oct 20	% change since Oct 20	WTE change since	WTE change since
<b>Total Community Health &amp; Wellbeing</b>	<b>27</b>	<b>30</b>	<b>+2</b>	<b>+8.9%</b>	<b>+30</b>	<b>+30</b>
Therapy Professions	1	1	+0	+1.4%	+1	+1
<b>Health &amp; Social Care Professionals</b>	<b>1</b>	<b>1</b>	<b>+0</b>	<b>+1.4%</b>	<b>+1</b>	<b>+1</b>
Management (VIII & above)	1	3	+2	+186.0%	+3	+3
Administrative/ Supervisory (V to VII)	21	22	+1	+2.5%	+22	+22
Clerical (III & IV)	4	4	+0	+1.3%	+4	+4
<b>Management &amp; Administrative</b>	<b>26</b>	<b>28</b>	<b>+2</b>	<b>+9.3%</b>	<b>+28</b>	<b>+28</b>

### Mental Health

Nov 2020 (Dec 2019 figure: 1,098)	WTE Oct 2020	WTE Nov 2020	WTE change since Oct 20	% change since Oct 20	WTE change since Dec 19	WTE change since Nov 19
<b>Total Mental Health</b>	<b>1,116</b>	<b>1,114</b>	<b>-2</b>	<b>-0.2%</b>	<b>+16</b>	<b>+15</b>
Consultants	35	36	+1	+3.4%	+0	+0
Registrars	31	33	+2	+4.9%	+7	+7
SHO/ Interns	29	25	-4	-13.2%	-11	-11
<b>Medical &amp; Dental</b>	<b>95</b>	<b>94</b>	<b>-1</b>	<b>-1.2%</b>	<b>-3</b>	<b>-3</b>
Nurse/ Midwife Manager	117	116	-0	-0.2%	-4	-5
Nurse/ Midwife Specialist & AN/MP	60	59	-1	-1.7%	+3	+3
Staff Nurse/ Staff Midwife	331	343	+12	+3.5%	+11	+6
<i>Nursing/ Midwifery awaiting registration</i>				-100.0%	-2	
<i>Pre-registration Nurse Intern (COVID-19)</i>	19	5	-14	-71.7%	+5	-14
<i>Pre-registration Nurse/ Midwife Intern</i>		1	+1	-100.0%	+1	+1
Nursing/ Midwifery Student	19	6	-13	-66.5%	+4	+3
Nursing/ Midwifery other	3	3	+0	+1.0%	-1	
<b>Nursing &amp; Midwifery</b>	<b>530</b>	<b>528</b>	<b>-2</b>	<b>-0.5%</b>	<b>+13</b>	<b>+7</b>
Therapy Professions	43	43	+1	+1.3%	-1	-1
Social Care	7	7	-0	-1.0%	-0	-0
Social Workers	45	45	+0	+0.9%	+4	+5
Psychologists	38	37	-1	-2.4%	-2	-2
Pharmacy	1	2	+0	+27.1%	+1	+1
H&SC, Other	20	20	-0	-0.4%	-0	+1
<b>Health &amp; Social Care Professionals</b>	<b>154</b>	<b>154</b>	<b>+0</b>	<b>+0.1%</b>	<b>+1</b>	<b>+3</b>
Management (VIII & above)	3	3	-0	-2.0%	-0	-0
Administrative/ Supervisory (V to VII)	21	20	-0	-1.7%	-2	-2
Clerical (III & IV)	98	98	-0	-0.2%	+10	+11
<b>Management &amp; Administrative</b>	<b>122</b>	<b>121</b>	<b>-1</b>	<b>-0.5%</b>	<b>+7</b>	<b>+9</b>
Support	31	31	-0	-0.5%	-2	-1
Maintenance/ Technical	27	28	+1	+2.3%	+2	+1
<b>General Support</b>	<b>58</b>	<b>59</b>	<b>+0</b>	<b>+0.8%</b>	<b>-0</b>	<b>-0</b>
Health Care Assistants	154	155	+1	+0.8%	-2	+0
Care, other	3	3			-1	-1
<b>Patient &amp; Client Care</b>	<b>157</b>	<b>158</b>	<b>+1</b>	<b>+0.8%</b>	<b>-2</b>	<b>-0</b>

## Primary Care

Nov 2020 (Dec 2019 figure: 1,387)	WTE Oct 2020	WTE Nov 2020	WTE change since Oct 20	% change since Oct 20	WTE change since Dec 19	WTE change since Nov 19
<b>Total Primary Care</b>	<b>1,429</b>	<b>1,456</b>	<b>+27</b>	<b>+1.9%</b>	<b>+70</b>	<b>+62</b>
Consultants	7	7	-0	-0.1%	+1	+1
Registrars	84	84	+1	+0.7%	+6	+6
SHO/ Interns	1	1	-0	-1.2%	-1	-0
Medical/ Dental, other	61	60	-1	-1.4%	-0	+1
<b>Medical &amp; Dental</b>	<b>153</b>	<b>153</b>	<b>-0</b>	<b>-0.2%</b>	<b>+6</b>	<b>+7</b>
Nurse/ Midwife Manager	51	52	+1	+1.8%	+1	-0
Nurse/ Midwife Specialist & AN/MP	36	38	+2	+5.7%	+4	+3
Staff Nurse/ Staff Midwife	102	107	+5	+5.1%	+9	+4
Public Health Nurse	196	195	-0	-0.1%	-0	-1
<i>Post-registration Nurse/ Midwife Student</i>	9	12	+3	+27.5%	+10	+3
Nursing/ Midwifery Student	9	12	+3	+27.5%	+10	+10
Nursing/ Midwifery other	1	1	+0	+5.7%	+1	+1
<b>Nursing &amp; Midwifery</b>	<b>395</b>	<b>406</b>	<b>+11</b>	<b>+2.7%</b>	<b>+24</b>	<b>+17</b>
Therapy Professions	230	230	+1	+0.2%	+10	+10
Health Science/ Diagnostics	7	7	-0	-0.3%	+2	+2
Social Care	1	1			+1	+1
Social Workers	17	16	-0	-2.3%	+1	+0
Psychologists	58	57	-1	-2.0%	+1	+1
Pharmacy	5	5	+0	+0.4%	+1	+1
H&SC, Other	25	26	+1	+2.8%	+1	+1
<b>Health &amp; Social Care Professionals</b>	<b>343</b>	<b>342</b>	<b>-0</b>	<b>-0.1%</b>	<b>+17</b>	<b>+17</b>
Management (VIII & above)	44	42	-2	-5.0%	-3	-3
Administrative/ Supervisory (V to VII)	79	80	+1	+1.0%	+3	+3
Clerical (III & IV)	271	272	+1	+0.4%	+8	+6
<b>Management &amp; Administrative</b>	<b>395</b>	<b>394</b>	<b>-0</b>	<b>-0.1%</b>	<b>+7</b>	<b>+6</b>
Support	21	21	+0	+0.3%	-2	-2
Maintenance/ Technical	3	3	+0	+1.0%	+0	
<b>General Support</b>	<b>24</b>	<b>24</b>	<b>+0</b>	<b>+0.4%</b>	<b>-2</b>	<b>-2</b>
Health Care Assistants	20	37	+18	+90.4%	+16	+15
Care, other	101	101	-0	-0.2%	+2	+2
Home Help				-100.0%	-0	-0
<b>Patient &amp; Client Care</b>	<b>120</b>	<b>138</b>	<b>+17</b>	<b>+14.5%</b>	<b>+18</b>	<b>+17</b>

## Social Care

Nov 2020 (Dec 2019 figure: 3,650)	WTE Oct 2020	WTE Nov 2020	WTE change since Oct 20	% change since Oct 20	WTE change since Dec 19	WTE change since Nov 19
<b>Total Social Care</b>	<b>3,648</b>	<b>3,675</b>	<b>+28</b>	<b>+0.8%</b>	<b>+25</b>	<b>+53</b>
Consultants	1	1				
Registrars	1	1			-1	-1
Medical/ Dental, other	12	12			+0	
<b>Medical &amp; Dental</b>	<b>14</b>	<b>14</b>	<b>-0</b>	<b>-0.0%</b>	<b>-1</b>	<b>-1</b>
Nurse/ Midwife Manager	186	208	+22	+11.9%	+9	+10
Nurse/ Midwife Specialist & AN/MP	7	11	+4	+55.7%	+2	+2
Staff Nurse/ Staff Midwife	566	574	+8	+1.5%	+6	+17
Public Health Nurse	4	4	-0	-0.5%	+1	+1
<i>Pre-registration Nurse Intern (COVID-19)</i>	1	5	+4	+440.0%	+5	+4
<i>Pre-registration Nurse/ Midwife Intern</i>	1		-1	-100.0%		-1
Nursing/ Midwifery Student	2	5	+3	+155.8%	+5	+5
Nursing/ Midwifery other	28	7	-21	-75.2%	+1	+1
<b>Nursing &amp; Midwifery</b>	<b>793</b>	<b>809</b>	<b>+17</b>	<b>+2.1%</b>	<b>+24</b>	<b>+36</b>
Therapy Professions	117	119	+2	+1.4%	+7	+11
Health Science/ Diagnostics	2	2				
Social Care	374	377	+3	+0.8%	+17	+20
Social Workers	31	31	+0	+0.1%	+1	+0
Psychologists	22	24	+2	+9.8%	-1	-1
Pharmacy	2	2			-1	-1
H&SC, Other	7	7	+0	+1.7%	+0	-0
<b>Health &amp; Social Care Professionals</b>	<b>555</b>	<b>562</b>	<b>+7</b>	<b>+1.2%</b>	<b>+23</b>	<b>+30</b>
Management (VIII & above)	20	20	-1	-3.0%	+5	+5
Administrative/ Supervisory (V to VII)	77	75	-1	-1.9%	-1	+1
Clerical (III & IV)	156	158	+2	+1.0%	+4	+3
<b>Management &amp; Administrative</b>	<b>254</b>	<b>253</b>	<b>-0</b>	<b>-0.2%</b>	<b>+8</b>	<b>+9</b>
Support	68	69	+2	+2.2%	-3	-2
Maintenance/ Technical	38	37	-1	-3.2%	-3	-2
<b>General Support</b>	<b>106</b>	<b>107</b>	<b>+0</b>	<b>+0.2%</b>	<b>-5</b>	<b>-4</b>
Health Care Assistants	1,394	1,399	+5	+0.4%	-1	+1
Care, other	135	137	+2	+1.8%	+2	+3
Home Help	397	394	-3	-0.9%	-24	-21
<b>Patient &amp; Client Care</b>	<b>1,925</b>	<b>1,929</b>	<b>+4</b>	<b>+0.2%</b>	<b>-24</b>	<b>-17</b>

## CHO 8 Employment Report: November 2020

### Disabilities

Nov 2020 (Dec 2019 figure: 2,162)	WTE Oct 2020	WTE Nov 2020	WTE change since Oct 20	% change since Oct 20	WTE change since Dec 19	WTE change since Nov 19
<b>Total Disabilities</b>	<b>2,171</b>	<b>2,194</b>	<b>+23</b>	<b>+1.1%</b>	<b>+31</b>	<b>+55</b>
Consultants	1	1				
Registrars	1	1			-1	-1
Medical/ Dental, other	1	1				
<b>Medical &amp; Dental</b>	<b>3</b>	<b>3</b>			<b>-1</b>	<b>-1</b>
Nurse/ Midwife Manager	97	119	+22	+22.7%	-4	-1
Nurse/ Midwife Specialist & AN/MP	4	7	+3	+77.0%	-0	-0
Staff Nurse/ Staff Midwife	314	316	+2	+0.7%	-2	+7
Public Health Nurse	1	1	-0	-2.1%	-0	-0
Pre-registration Nurse Intern (COVID-19)	1	5	+4	+440.0%	+5	+4
Pre-registration Nurse/ Midwife Intern	1		-1	-100.0%		-1
Nursing/ Midwifery Student	2	5	+3	+155.8%	+5	+5
Nursing/ Midwifery other	27	6	-21	-79.0%	+0	+0
<b>Nursing &amp; Midwifery</b>	<b>445</b>	<b>454</b>	<b>+9</b>	<b>+2.1%</b>	<b>-1</b>	<b>+11</b>
Therapy Professions	98	98	+0	+0.3%	+6	+10
Health Science/ Diagnostics	2	2				
Social Care	374	377	+3	+0.8%	+17	+20
Social Workers	24	24	-0	-0.8%	+0	-0
Psychologists	22	24	+2	+9.8%	-1	-1
H&SC, Other	7	7	+0	+1.7%	+0	-0
<b>Health &amp; Social Care Professionals</b>	<b>527</b>	<b>532</b>	<b>+5</b>	<b>+1.0%</b>	<b>+22</b>	<b>+29</b>
Management (VIII & above)	13	13	-0	-0.0%	+4	+3
Administrative/ Supervisory (V to VII)	56	54	-3	-4.5%	-2	-2
Clerical (III & IV)	87	88	+1	+1.3%	+4	+3
<b>Management &amp; Administrative</b>	<b>156</b>	<b>155</b>	<b>-1</b>	<b>-0.9%</b>	<b>+6</b>	<b>+5</b>
Support	41	43	+2	+5.4%	-3	-2
Maintenance/ Technical	15	14	-1	-6.7%	-2	-2
<b>General Support</b>	<b>56</b>	<b>57</b>	<b>+1</b>	<b>+2.2%</b>	<b>-5</b>	<b>-4</b>
Health Care Assistants	846	853	+7	+0.8%	+9	+11
Care, other	114	117	+3	+2.4%	+2	+3
Home Help	24	23	-1	-4.5%	+0	+1
<b>Patient &amp; Client Care</b>	<b>983</b>	<b>992</b>	<b>+9</b>	<b>+0.9%</b>	<b>+11</b>	<b>+15</b>

## Older People

Nov 2020 (Dec 2019 figure: 1,488)	WTE Oct 2020	WTE Nov 2020	WTE change since Oct 20	% change since Oct 20	WTE change since Dec 19	WTE change since Nov 19
<b>Total Older People</b>	<b>1,477</b>	<b>1,481</b>	<b>+5</b>	<b>+0.3%</b>	<b>-7</b>	<b>-3</b>
Medical/ Dental, other	11	11			+0	
<b>Medical &amp; Dental</b>	<b>11</b>	<b>11</b>			<b>+0</b>	<b>+0</b>
Nurse/ Midwife Manager	89	89	+0	+0.2%	+13	+11
Nurse/ Midwife Specialist & AN/MP	3	4	+1	+30.7%	+2	+2
Staff Nurse/ Staff Midwife	251	258	+6	+2.4%	+8	+10
Public Health Nurse	3	3			+1	+1
Nursing/ Midwifery other	1	1	+0	+25.0%	+1	+1
<b>Nursing &amp; Midwifery</b>	<b>348</b>	<b>355</b>	<b>+8</b>	<b>+2.2%</b>	<b>+25</b>	<b>+25</b>
<b>Health &amp; Social Care Professionals</b>	<b>29</b>	<b>30</b>	<b>+2</b>	<b>+5.5%</b>	<b>+1</b>	<b>+1</b>
Management (VIII & above)	7	7	-1	-8.2%	+1	+2
Administrative/ Supervisory (V to VII)	20	21	+1	+5.4%	+1	+3
Clerical (III & IV)	70	70	+0	+0.7%	+0	-1
<b>Management &amp; Administrative</b>	<b>97</b>	<b>98</b>	<b>+1</b>	<b>+1.0%</b>	<b>+3</b>	<b>+4</b>
Support	27	26	-1	-2.7%	+0	+0
Maintenance/ Technical	24	23	-0	-1.0%	-1	-0
<b>General Support</b>	<b>50</b>	<b>49</b>	<b>-1</b>	<b>-1.9%</b>	<b>-0</b>	<b>+0</b>
Health Care Assistants	548	546	-2	-0.4%	-11	-11
Care, other	21	20	-0	-1.4%	+0	+0
Home Help	374	371	-2	-0.6%	-24	-22
<b>Patient &amp; Client Care</b>	<b>942</b>	<b>937</b>	<b>-5</b>	<b>-0.5%</b>	<b>-35</b>	<b>-33</b>

## CHO 8 Employment by Administration (HSE / S38): November 2020

Nov 2020 (Dec 2019 figure: 6,135)	WTE Oct 2020	WTE Nov 2020	WTE change since Oct 20	% change since Oct 20	WTE change since Dec 19	WTE change since Nov 19
<b>Overall</b>	<b>6,220</b>	<b>6,275</b>	<b>+55</b>	<b>+0.9%</b>	<b>+140</b>	<b>+160</b>
<b>HSE</b>	<b>4,655</b>	<b>4,692</b>	<b>+37</b>	<b>+0.8%</b>	<b>+109</b>	<b>+116</b>
<b>Section 38 Voluntary Agencies</b>	<b>1,565</b>	<b>1,583</b>	<b>+18</b>	<b>+1.2%</b>	<b>+31</b>	<b>+45</b>

## HSE

Nov 2020 (Dec 2019 figure: 4,583)	WTE Oct 2020	WTE Nov 2020	WTE change since Oct 20	% change since Oct 20	WTE change since Dec 19	WTE change since Nov 19
<b>Overall</b>	<b>4,655</b>	<b>4,692</b>	<b>+37</b>	<b>+0.8%</b>	<b>+109</b>	<b>+116</b>
Consultants	42	44	+1	+0.0%	+1	+2
Registrars	115	117	+2	+0.0%	+12	+12
SHO/ Interns	30	26	-4	-0.1%	-12	-11
Medical/ Dental, other	73	72	-1	-0.0%	-0	+1
<b>Medical &amp; Dental</b>	<b>260</b>	<b>259</b>	<b>-1</b>	<b>-0.5%</b>	<b>+1</b>	<b>+3</b>
Nurse/ Midwife Manager	289	292	+4	+0.0%	+7	+6
Nurse/ Midwife Specialist & AN/MP	101	103	+2	+0.0%	+9	+9
Staff Nurse/ Staff Midwife	791	813	+22	+0.0%	+23	+15
Public Health Nurse	199	199	-0	-0.0%	+0	-1
<i>Pre-registration Nurse/ Midwife Intern</i>		1	+1	-1.0%	+1	+1
<i>Pre-registration Nurse Intern (COVID-19)</i>	19	5	-14	-0.7%	+5	+5
<i>Post-registration Nurse/ Midwife Student</i>	9	12	+3	+0.3%	+4	+10
<i>Nursing/ Midwifery awaiting registration</i>				-1.0%	-1	-3
Nursing/ Midwifery Student	29	18	-10	-0.4%	+14	+13
Nursing/ Midwifery other	5	5	+0	+0.1%	+1	+2
<b>Nursing &amp; Midwifery</b>	<b>1,413</b>	<b>1,431</b>	<b>+18</b>	<b>+1.3%</b>	<b>+54</b>	<b>+43</b>
Therapy Professions	377	380	+3	+0.0%	+16	+20
Health Science/ Diagnostics	9	9	-0	-0.0%	+2	+2
Social Care	13	13	-0	-0.0%	+1	+1
Social Workers	80	81	+0	+0.0%	+5	+5
Psychologists	112	112	+0	+0.0%	-2	-1
Pharmacy	8	8	+0	+0.0%	+1	+1
H&SC, Other	46	47	+1	+0.0%	+1	+1
<b>Health &amp; Social Care Professionals</b>	<b>646</b>	<b>650</b>	<b>+4</b>	<b>+0.6%</b>	<b>+24</b>	<b>+30</b>
Management (VIII & above)	60	59	-1	-0.0%	+2	+2
Administrative/ Supervisory (V to VII)	170	170	+0	+0.0%	+21	+24
Clerical (III & IV)	484	486	+3	+0.0%	+26	+25
<b>Management &amp; Administrative</b>	<b>714</b>	<b>715</b>	<b>+2</b>	<b>+0.2%</b>	<b>+49</b>	<b>+51</b>
Support	84	84	-0	-0.0%	-3	-3
Maintenance/ Technical	55	56	+0	+0.0%	+0	+0
<b>General Support</b>	<b>140</b>	<b>140</b>	<b>+0</b>	<b>+0.1%</b>	<b>-3</b>	<b>-3</b>
Health Care Assistants	930	948	+18	+0.0%	-1	+2
Care, other	154	154	-0	-0.0%	+8	+10
Home Help	397	394	-3	-0.0%	-24	-22
<b>Patient &amp; Client Care</b>	<b>1,482</b>	<b>1,496</b>	<b>+15</b>	<b>+1.0%</b>	<b>-17</b>	<b>-10</b>

## Section 38 Voluntary Agencies

Nov 2020 (Dec 2019 figure: 1,552)	WTE Oct 2020	WTE Nov 2020	WTE change since Oct 20	% change since Oct 20	WTE change since Dec 19	WTE change since Nov 19
<b>Overall</b>	<b>1,565</b>	<b>1,583</b>	<b>+18</b>	<b>+1.2%</b>	<b>+31</b>	<b>+45</b>
Registrars	1	1		+0.0%		
<b>Medical &amp; Dental</b>	<b>1</b>	<b>1</b>				
Nurse/ Midwife Manager	65	84	+19	+0.3%	-2	-2
Nurse/ Midwife Specialist & AN/MP	2	5	+3	+1.3%	+0	+0
Staff Nurse/ Staff Midwife	208	211	+3	+0.0%	+3	+13
<i>Pre-registration Nurse/ Midwife Intern</i>	1		-1	-1.0%	-1	
<i>Pre-registration Nurse Intern (COVID-19)</i>	1	5	+4	+4.4%	+5	+5
Nursing/ Midwifery Student	2	5	+3	+1.6%	+5	+5
Nursing/ Midwifery other	27	6	-21	-0.8%	+0	+0
<b>Nursing &amp; Midwifery</b>	<b>305</b>	<b>311</b>	<b>+7</b>	<b>+2.2%</b>	<b>+7</b>	<b>+16</b>
Therapy Professions	14	14	+0	+0.0%	+1	+1
Social Care	369	372	+3	+0.0%	+16	+20
Social Workers	12	12	-0	-0.0%	+0	+0
Psychologists	6	6		+0.0%	-0	-0
H&SC, Other	6	6	+0	+0.0%	+0	-0
<b>Health &amp; Social Care Professionals</b>	<b>407</b>	<b>410</b>	<b>+3</b>	<b>+0.7%</b>	<b>+17</b>	<b>+20</b>
Management (VIII & above)	8	8		+0.0%	+3	+3
Administrative/ Supervisory (V to VII)	28	27	-1	-0.0%	-1	-1
Clerical (III & IV)	46	46	+0	+0.0%	-0	-1
<b>Management &amp; Administrative</b>	<b>82</b>	<b>82</b>	<b>-1</b>	<b>-0.6%</b>	<b>+2</b>	<b>+2</b>
Support	36	37	+2	+0.0%	-3	-2
Maintenance/ Technical	13	12	-1	-0.1%	-1	-1
<b>General Support</b>	<b>49</b>	<b>49</b>	<b>+1</b>	<b>+1.5%</b>	<b>-4</b>	<b>-3</b>
Health Care Assistants	637	643	+6	+0.0%	+15	+14
Care, other	84	87	+3	+0.0%	-5	-5
<b>Patient &amp; Client Care</b>	<b>721</b>	<b>730</b>	<b>+8</b>	<b>+1.2%</b>	<b>+10</b>	<b>+9</b>



## CHO 8 Employment by S38 Agency: November 2020

### Muiriosa Foundation, Laois/Offaly

Nov 2020 (Dec 2019 figure: 302)	WTE Oct 2020	WTE Nov 2020	WTE change since Oct 20	% change since Oct 20	WTE change since Dec 19	WTE change since Nov 19
<b>Overall</b>	<b>314</b>	<b>313</b>	<b>-1</b>	<b>-0.2%</b>	<b>+11</b>	<b>+10</b>
Nurse/ Midwife Manager	15	16	+1	+0.0%	+0	+0
Staff Nurse/ Staff Midwife	30	30	-0	-0.0%	+4	+3
<i>Pre-registration Nurse Intern (COVID-19)</i>	1	1	-0	-0.0%	+1	+1
Nursing/ Midwifery Student	1	1	-0	-0.0%	+1	+1
<b>Nursing &amp; Midwifery</b>	<b>46</b>	<b>46</b>	<b>+0</b>	<b>+0.5%</b>	<b>+5</b>	<b>+4</b>
Social Care	102	102	+1	+0.0%	+7	+8
Social Workers	4	3	-0	-0.1%	-1	-0
Psychologists	1	1		+0.0%		
H&SC, Other	1	1		+0.0%		
<b>Health &amp; Social Care Professionals</b>	<b>107</b>	<b>107</b>	<b>+0</b>	<b>+0.3%</b>	<b>+7</b>	<b>+7</b>
Management (VIII & above)	2	3	+1	+0.3%	+2	+2
Administrative/ Supervisory (V to VII)	6	5	-1	-0.2%	+0	+0
Clerical (III & IV)	12	11	-0	-0.0%	+0	-0
<b>Management &amp; Administrative</b>	<b>20</b>	<b>19</b>	<b>-1</b>	<b>-3.6%</b>	<b>+2</b>	<b>+2</b>
Support	1	1	-0	-0.0%	+0	+0
Maintenance/ Technical	2	2		+0.0%		
<b>General Support</b>	<b>3</b>	<b>3</b>	<b>-0</b>	<b>-0.3%</b>	<b>+0</b>	<b>+0</b>
Health Care Assistants	110	109	-1	-0.0%	-0	-1
Care, other	28	28	+0	+0.0%	-2	-2
<b>Patient &amp; Client Care</b>	<b>137</b>	<b>137</b>	<b>-1</b>	<b>-0.4%</b>	<b>-2</b>	<b>-3</b>

## Muiriosa Foundation, Longford/Westmeath

Nov 2020 (Dec 2019 figure: 270)	WTE Oct 2020	WTE Nov 2020	WTE change since Oct 20	% change since Oct 20	WTE change since Dec 19	WTE change since Nov 19
<b>Overall</b>	<b>280</b>	<b>281</b>	<b>+1</b>	<b>+0.5%</b>	<b>+11</b>	<b>+10</b>
Nurse/ Midwife Manager	9	10	+0	+0.0%	+0	-0
Staff Nurse/ Staff Midwife	5	5	+0	+0.1%	-0	-0
<b>Nursing &amp; Midwifery</b>	<b>14</b>	<b>14</b>	<b>+0</b>	<b>+2.9%</b>	<b>-0</b>	<b>-0</b>
Therapy Professions	3	3		+0.0%		
Social Care	98	100	+1	+0.0%	+6	+8
Social Workers	4	4		+0.0%	+1	+1
Psychologists	2	2	-0	-0.0%	-0	-0
H&SC, Other	3	3	+0	+0.1%	+0	-0
<b>Health &amp; Social Care Professionals</b>	<b>110</b>	<b>111</b>	<b>+1</b>	<b>+1.3%</b>	<b>+6</b>	<b>+8</b>
Administrative/ Supervisory (V to VII)	5	4	-1	-0.1%	+0	+0
Clerical (III & IV)	10	10	+0	+0.0%	-0	-0
<b>Management &amp; Administrative</b>	<b>15</b>	<b>14</b>	<b>-0</b>	<b>-3.0%</b>	<b>+0</b>	<b>+0</b>
Support	1	1		+0.0%		
Maintenance/ Technical	3	3		+0.0%		
<b>General Support</b>	<b>4</b>	<b>4</b>				
Health Care Assistants	121	121	+0	+0.0%	+6	+3
Care, other	17	17	-0	-0.0%	-1	-1
<b>Patient &amp; Client Care</b>	<b>137</b>	<b>137</b>	<b>+0</b>	<b>+0.0%</b>	<b>+5</b>	<b>+2</b>

## Muiriosa Foundation, South Kildare

Nov 2020 (Dec 2019 figure: 334)	WTE Oct 2020	WTE Nov 2020	WTE change since Oct 20	% change since Oct 20	WTE change since Dec 19	WTE change since Nov 19
<b>Overall</b>	<b>335</b>	<b>342</b>	<b>+6</b>	<b>+1.9%</b>	<b>+8</b>	<b>+10</b>
Nurse/ Midwife Manager	13	13	-0	-0.0%	-5	-5
Nurse/ Midwife Specialist & AN/MP	2	2		+0.0%	+0	+0
Staff Nurse/ Staff Midwife	22	23	+1	+0.1%	-0	-2
Nursing/ Midwifery other	5	6	+0	+0.1%	+0	+0
<b>Nursing &amp; Midwifery</b>	<b>42</b>	<b>43</b>	<b>+2</b>	<b>+3.7%</b>	<b>-5</b>	<b>-7</b>
Therapy Professions	9	9	+0	+0.0%	+1	+1
Social Care	94	94	+0	+0.0%	+5	+5
Social Workers	2	3	+0	+0.1%	+0	-0
Psychologists	2	2	+0	+0.0%		
H&SC, Other	3	3		+0.0%		
<b>Health &amp; Social Care Professionals</b>	<b>110</b>	<b>110</b>	<b>+0</b>	<b>+0.2%</b>	<b>+6</b>	<b>+6</b>
Management (VIII & above)	5	5	-1	-0.1%	+2	+2
Administrative/ Supervisory (V to VII)	12	13	+1	+0.1%	-1	-1
Clerical (III & IV)	13	13	-0	-0.0%	-1	-1
<b>Management &amp; Administrative</b>	<b>29</b>	<b>30</b>	<b>+0</b>	<b>+1.4%</b>	<b>-0</b>	<b>-1</b>
Support	14	14	+0	+0.0%	-2	-2
Maintenance/ Technical	5	4	-1	-0.2%	-1	-1
<b>General Support</b>	<b>19</b>	<b>18</b>	<b>-1</b>	<b>-4.5%</b>	<b>-3</b>	<b>-3</b>
Health Care Assistants	128	132	+4	+0.0%	+9	+13
Care, other	8	9	+1	+0.1%	+1	+1
<b>Patient &amp; Client Care</b>	<b>136</b>	<b>141</b>	<b>+5</b>	<b>+3.6%</b>	<b>+10</b>	<b>+14</b>

Nov 2020 (Dec 2019 figure: 647)	WTE Oct 2020	WTE Nov 2020	WTE change since Oct 20	% change since Oct 20	WTE change since Dec 19	WTE change since Nov 19
<b>Overall</b>	<b>636</b>	<b>647</b>	<b>+11</b>	<b>+1.8%</b>	<b>+0</b>	<b>+15</b>
Registrars	1	1		+0.0%		
<b>Medical &amp; Dental</b>	<b>1</b>	<b>1</b>				
Nurse/ Midwife Manager	27	46	+19	+0.7%	+3	+4
Nurse/ Midwife Specialist & AN/MP	1	4	+3	+3.9%	-0	-0
Staff Nurse/ Staff Midwife	152	153	+1	+0.0%	+1	+12
Pre-registration Nurse/ Midwife Intern	1		-1	-1.0%	-1	
Pre-registration Nurse Intern (COVID-19)		4	+4	-1.0%	+4	+4
Nursing/ Midwifery Student	1	4	+3	+3.0%	+4	+4
Nursing Education/Clinical	22		-22	-1.0%		
Nursing/ Midwifery other	22		-22	-1.0%		
<b>Nursing &amp; Midwifery</b>	<b>203</b>	<b>207</b>	<b>+5</b>	<b>+2.3%</b>	<b>+7</b>	<b>+19</b>
Therapy Professions	3	3		+0.0%		
Social Care	75	76	+1	+0.0%	-2	-1
Social Workers	2	2		+0.0%	-0	+0
Psychologists	1	1		+0.0%		
<b>Health &amp; Social Care Professionals</b>	<b>81</b>	<b>82</b>	<b>+1</b>	<b>+1.2%</b>	<b>-2</b>	<b>-1</b>
Management (VIII & above)	1	1		+0.0%	-0	-0
Administrative/ Supervisory (V to VII)	6	6		+0.0%	-0	
Clerical (III & IV)	12	12	+0	+0.0%	+0	+1
<b>Management &amp; Administrative</b>	<b>18</b>	<b>18</b>	<b>+0</b>	<b>+1.2%</b>	<b>+0</b>	<b>+1</b>
Support	20	21	+2	+0.1%	-2	-1
Maintenance/ Technical	3	3		+0.0%	-0	-0
<b>General Support</b>	<b>23</b>	<b>24</b>	<b>+2</b>	<b>+7.0%</b>	<b>-2</b>	<b>-1</b>
Health Care Assistants	279	281	+2	+0.0%	+0	-1
Care, other	32	33	+1	+0.0%	-3	-3
<b>Patient &amp; Client Care</b>	<b>311</b>	<b>314</b>	<b>+4</b>	<b>+1.2%</b>	<b>-3</b>	<b>-4</b>

**CHO 8 Employment by Grade Group & Staff Category: November 2020**

Nov 2020 (Dec 2019 figure: 6,135)	WTE Oct 2020	WTE Nov 2020	WTE change since Oct 20	% change since Oct 20	WTE change since Dec 19	WTE change since Nov 19
<b>Overall</b>	<b>6,220</b>	<b>6,275</b>	<b>+55</b>	<b>+0.9%</b>	<b>+140</b>	<b>+160</b>
Consultant Dentistry	1	1	-0	-1.1%		
Consultant Medicine	6	6			+1	+1
Consultant Psychiatry	36	37	+1	+3.3%	+0	+0
<b>Consultants</b>	<b>42</b>	<b>44</b>	<b>+1</b>	<b>+2.8%</b>	<b>+1</b>	<b>+2</b>
Registrar	102	104	+2	+1.8%	+12	+12
Senior Registrar	14	14	+0	+1.7%	+0	+0
<b>Registrars</b>	<b>116</b>	<b>118</b>	<b>+2</b>	<b>+1.8%</b>	<b>+12</b>	<b>+12</b>
<b>SHO/ Interns</b>	<b>30</b>	<b>26</b>	<b>-4</b>	<b>-12.8%</b>	<b>-12</b>	<b>-11</b>
Dentists	36	37	+1	+2.4%	+2	+2
Other Medical	37	35	-2	-4.6%	-2	-1
<b>Medical/ Dental, other</b>	<b>73</b>	<b>72</b>	<b>-1</b>	<b>-1.1%</b>	<b>-0</b>	<b>+1</b>
<b>Medical &amp; Dental</b>	<b>261</b>	<b>260</b>	<b>-1</b>	<b>-0.5%</b>	<b>+24</b>	<b>+3</b>
Clinical Nurse/ Midwife Manager	265	285	+20	+7.7%	-2	-2
Director Nursing/Midwifery, Assistant	61	64	+2	+4.0%	+4	+4
Director of Nursing/Midwifery	28	28	-0	-0.1%	+4	+2
<b>Nurse/ Midwife Manager</b>	<b>354</b>	<b>377</b>	<b>+23</b>	<b>+6.5%</b>	<b>+5</b>	<b>+4</b>
Advanced Nurse/ Midwife Practitioner	8	9	+1	+11.0%	+5	+5
Clinical Nurse/ Midwife Specialist	95	100	+4	+4.4%	+4	+4
<b>Nurse/ Midwife Specialist &amp; AN/MP</b>	<b>103</b>	<b>108</b>	<b>+5</b>	<b>+4.9%</b>	<b>+9</b>	<b>+9</b>
Staff Nurse [Intellectual Disability]	115	226	+111	+96.0%	-6	+4
Staff Nurse [Psychiatric]	341	344	+2	+0.7%	+10	+5
Staff Nurses [General/ Children's]	543	455	-88	-16.2%	+22	+19
<b>Staff Nurse/ Staff Midwife</b>	<b>999</b>	<b>1,024</b>	<b>+25</b>	<b>+2.5%</b>	<b>+26</b>	<b>+27</b>
<b>Public Health Nurse</b>	<b>199</b>	<b>199</b>	<b>-0</b>	<b>-0.1%</b>	<b>+0</b>	<b>-1</b>
Pre-registration Nurse/ Midwife Intern	1	1			+1	+1
Pre-registration Nurse Intern (COVID-19)	20	10	-10	-48.9%	+10	+10
Post-registration Nurse/ Midwife Student	9	12	+3	+27.5%	+10	+10
Nursing/ Midwifery awaiting registration				-100.0%	-2	-3
<b>Nursing/ Midwifery Student</b>	<b>30</b>	<b>23</b>	<b>-7</b>	<b>-24.0%</b>	<b>+19</b>	<b>+18</b>
Nursing Education/Clinical	32	11	-21	-65.8%	+1	+2
<b>Nursing/ Midwifery other</b>	<b>32</b>	<b>11</b>	<b>-21</b>	<b>-65.8%</b>	<b>+1</b>	<b>+2</b>
<b>Nursing &amp; Midwifery</b>	<b>1,718</b>	<b>1,743</b>	<b>+25</b>	<b>+1.5%</b>	<b>+44</b>	<b>+60</b>
Dietitians	20	21	+1	+4.7%	+1	+1
Occupational Therapists	146	148	+2	+1.1%	+9	+10
Orthoptists	1	2	+1	+201.9%	+2	+2
Physiotherapists	110	108	-1	-1.3%	+2	+2
Podiatrists & Chiropodists	4	4	+0	+2.2%	-0	+0
Speech & Language Therapists	110	111	+0	+0.4%	+4	+6
<b>Therapy Professions</b>	<b>391</b>	<b>394</b>	<b>+3</b>	<b>+0.7%</b>	<b>+17</b>	<b>+21</b>
Audiology	5	5	-0	-0.4%	+2	+2
Clinical Engineering	4	4				
<b>Health Science/ Diagnostics</b>	<b>9</b>	<b>9</b>	<b>-0</b>	<b>-0.2%</b>	<b>+2</b>	<b>+2</b>
<b>Social Care</b>	<b>383</b>	<b>386</b>	<b>+3</b>	<b>+0.8%</b>	<b>+18</b>	<b>+21</b>
<b>Social Workers</b>	<b>93</b>	<b>93</b>	<b>+0</b>	<b>+0.0%</b>	<b>+5</b>	<b>+5</b>
<b>Psychologists</b>	<b>117</b>	<b>118</b>	<b>+0</b>	<b>+0.1%</b>	<b>-2</b>	<b>-1</b>
<b>Pharmacy</b>	<b>8</b>	<b>8</b>	<b>+0</b>	<b>+4.3%</b>	<b>+1</b>	<b>+1</b>
Counsellor Therapists	37	38	+1	+2.5%	+1	+2

Nov 2020 (Dec 2019 figure: 6,135)	WTE Oct 2020	WTE Nov 2020	WTE change since Oct 20	% change since Oct 20	WTE change since Dec 19	WTE change since Nov 19
<b>Overall</b>	<b>6,220</b>	<b>6,275</b>	<b>+55</b>	<b>+0.9%</b>	<b>+140</b>	<b>+160</b>
Dental Hygienists	13	13	-0	-1.4%	+0	+0
Other Health & Social Care	2	2	-0	-1.2%	+0	-0
Play Therapists/ Specialists	1	1				
<b>H&amp;SC, Other</b>	<b>53</b>	<b>53</b>	<b>+1</b>	<b>+1.4%</b>	<b>+1</b>	<b>+1</b>
<b>Health &amp; Social Care Professionals</b>	<b>1,054</b>	<b>1,061</b>	<b>+7</b>	<b>+0.7%</b>	<b>+58</b>	<b>+51</b>
Executive Management	11	11			+2	+2
Senior Management (VIII & GM)	57	56	-1	-1.7%	+3	+3
<b>Management (VIII &amp; above)</b>	<b>68</b>	<b>67</b>	<b>-1</b>	<b>-1.5%</b>	<b>+5</b>	<b>+5</b>
<b>Administrative/ Supervisory (V to VII)</b>	<b>198</b>	<b>197</b>	<b>-1</b>	<b>-0.3%</b>	<b>+21</b>	<b>+24</b>
<b>Clerical (III &amp; IV)</b>	<b>530</b>	<b>532</b>	<b>+3</b>	<b>+0.5%</b>	<b>+25</b>	<b>+24</b>
<b>Management &amp; Administrative</b>	<b>796</b>	<b>797</b>	<b>+1</b>	<b>+0.1%</b>	<b>+52</b>	<b>+53</b>
Catering	32	32	-0	-1.2%	-1	-1
Household Services	53	55	+1	+2.4%	-3	-2
Other Support	29	30	+1	+1.9%	-2	-2
Portering	5	5				
<b>Support</b>	<b>120</b>	<b>121</b>	<b>+1</b>	<b>+1.2%</b>	<b>-6</b>	<b>-5</b>
Maintenance	68	68	-1	-0.9%	-1	-1
Technical Services	0	0				
<b>Maintenance/ Technical</b>	<b>68</b>	<b>68</b>	<b>-1</b>	<b>-0.9%</b>	<b>-1</b>	<b>-1</b>
<b>General Support</b>	<b>188</b>	<b>189</b>	<b>+1</b>	<b>+0.4%</b>	<b>-15</b>	<b>-6</b>
HCA, Nurse's Aide, etc.	1,553	1,578	+24	+1.6%	+14	+17
Health & Social Care Assistants	14	13	-0	-3.5%	+0	-1
<b>Health Care Assistants</b>	<b>1,567</b>	<b>1,591</b>	<b>+24</b>	<b>+1.5%</b>	<b>+14</b>	<b>+17</b>
Community Welfare Officers				-100.0%		
Other Care Grades	238	241	+2	+1.0%	+3	+5
<b>Care, other</b>	<b>238</b>	<b>241</b>	<b>+2</b>	<b>+1.0%</b>	<b>+3</b>	<b>+5</b>
<b>Home Help</b>	<b>397</b>	<b>394</b>	<b>-3</b>	<b>-0.9%</b>	<b>-24</b>	<b>-22</b>
<b>Patient &amp; Client Care</b>	<b>2,203</b>	<b>2,226</b>	<b>+23</b>	<b>+1.0%</b>	<b>-16</b>	<b>-0</b>

# CHO 8 HSE Employment by Grade Group & Staff Category: November 2020

Nov 2020 (Dec 2019 figure: 4,583)	WTE Oct 2020	WTE Nov 2020	WTE change since Oct 20	% change since Oct 20	WTE change since Dec 19	WTE change since Nov 19
<b>Overall</b>	<b>4,655</b>	<b>4,692</b>	<b>+37</b>	<b>+0.8%</b>	<b>+109</b>	<b>+116</b>
Consultant Dentistry	1	1	-0	-1.1%		
Consultant Medicine	6	6			+1	+1
Consultant Psychiatry	36	37	+1	+3.3%	+0	+0
<b>Consultants</b>	<b>42</b>	<b>44</b>	<b>+1</b>	<b>+2.8%</b>	<b>+1</b>	<b>+2</b>
Registrar	101	103	+2	+1.8%	+12	+12
Senior Registrar	14	14	+0	+1.7%	+0	+0
<b>Registrars</b>	<b>115</b>	<b>117</b>	<b>+2</b>	<b>+1.8%</b>	<b>+12</b>	<b>+12</b>
<b>SHO/ Interns</b>	<b>30</b>	<b>26</b>	<b>-4</b>	<b>-12.8%</b>	<b>-12</b>	<b>-11</b>
Dentists	36	37	+1	+2.4%	+2	+2
Other Medical	37	35	-2	-4.6%	-2	-1
<b>Medical/ Dental, other</b>	<b>73</b>	<b>72</b>	<b>-1</b>	<b>-1.1%</b>	<b>-0</b>	<b>+1</b>
<b>Medical &amp; Dental</b>	<b>260</b>	<b>259</b>	<b>-1</b>	<b>-0.5%</b>	<b>+24</b>	<b>+3</b>
Clinical Nurse/ Midwife Manager	206	210	+4	+1.8%	-2	-2
Director Nursing/Midwifery, Assistant	57	58	+0	+0.4%	+4	+5
Director of Nursing/Midwifery	25	25	-0	-0.1%	+5	+3
<b>Nurse/ Midwife Manager</b>	<b>289</b>	<b>292</b>	<b>+4</b>	<b>+1.3%</b>	<b>+7</b>	<b>+6</b>
Advanced Nurse/ Midwife Practitioner	6	8	+2	+26.4%	+4	+4
Clinical Nurse/ Midwife Specialist	95	95	+0	+0.4%	+5	+5
<b>Nurse/ Midwife Specialist &amp; AN/MP</b>	<b>101</b>	<b>103</b>	<b>+2</b>	<b>+2.0%</b>	<b>+9</b>	<b>+9</b>
Staff Nurse [Intellectual Disability]	69	68	-0	-0.4%	+4	+5
Staff Nurse [Psychiatric]	332	344	+12	+3.6%	+10	+5
Staff Nurses [General/ Children's]	390	401	+11	+2.8%	+8	+5
<b>Staff Nurse/ Staff Midwife</b>	<b>791</b>	<b>813</b>	<b>+22</b>	<b>+2.8%</b>	<b>+23</b>	<b>+15</b>
<b>Public Health Nurse</b>	<b>199</b>	<b>199</b>	<b>-0</b>	<b>-0.1%</b>	<b>+0</b>	<b>-1</b>
Pre-registration Nurse/ Midwife Intern		1	+1	-100.0%	+1	+1
Pre-registration Nurse Intern (COVID-19)	19	5	-14	-71.7%	+5	+5
Post-registration Nurse/ Midwife Student	9	12	+3	+27.5%	+10	+10
Nursing/ Midwifery awaiting registration				-100.0%	-2	-3
<b>Nursing/ Midwifery Student</b>	<b>29</b>	<b>18</b>	<b>-10</b>	<b>-35.9%</b>	<b>+14</b>	<b>+13</b>
Nursing Education/Clinical	5	5	+0	+6.8%	+1	+2
<b>Nursing/ Midwifery other</b>	<b>5</b>	<b>5</b>	<b>+0</b>	<b>+6.8%</b>	<b>+1</b>	<b>+2</b>
<b>Nursing &amp; Midwifery</b>	<b>1,413</b>	<b>1,431</b>	<b>+18</b>	<b>+1.3%</b>	<b>+38</b>	<b>+43</b>
Dietitians	20	21	+1	+4.7%	+1	+1
Occupational Therapists	142	143	+2	+1.1%	+9	+10
Orthoptists	1	2	+1	+201.9%	+2	+2
Physiotherapists	106	105	-1	-1.4%	+2	+3
Podiatrists & Chiropodists	4	4	+0	+2.2%	-0	+0
Speech & Language Therapists	104	105	+0	+0.4%	+3	+5
<b>Therapy Professions</b>	<b>377</b>	<b>380</b>	<b>+3</b>	<b>+0.7%</b>	<b>+16</b>	<b>+20</b>
Audiology	5	5	-0	-0.4%	+2	+2
Clinical Engineering	4	4				
<b>Health Science/ Diagnostics</b>	<b>9</b>	<b>9</b>	<b>-0</b>	<b>-0.2%</b>	<b>+2</b>	<b>+2</b>
<b>Social Care</b>	<b>13</b>	<b>13</b>	<b>-0</b>	<b>-0.6%</b>	<b>+1</b>	<b>+1</b>
<b>Social Workers</b>	<b>80</b>	<b>81</b>	<b>+0</b>	<b>+0.4%</b>	<b>+5</b>	<b>+5</b>
<b>Psychologists</b>	<b>112</b>	<b>112</b>	<b>+0</b>	<b>+0.1%</b>	<b>-2</b>	<b>-1</b>
<b>Pharmacy</b>	<b>8</b>	<b>8</b>	<b>+0</b>	<b>+4.3%</b>	<b>+1</b>	<b>+1</b>
Counsellor Therapists	32	33	+1	+2.5%	+1	+2
Dental Hygienists	13	13	-0	-1.4%	+0	+0
Other Health & Social Care	2	2	-0	-1.2%	+0	-0

Nov 2020 (Dec 2019 figure: 4,583)	WTE Oct 2020	WTE Nov 2020	WTE change since Oct 20	% change since Oct 20	WTE change since Dec 19	WTE change since Nov 19
<b>Overall</b>	<b>4,655</b>	<b>4,692</b>	<b>+37</b>	<b>+0.8%</b>	<b>+109</b>	<b>+116</b>
<b>H&amp;SC, Other</b>	<b>46</b>	<b>47</b>	<b>+1</b>	<b>+1.3%</b>	<b>+1</b>	<b>+1</b>
<b>Health &amp; Social Care Professionals</b>	<b>646</b>	<b>650</b>	<b>+4</b>	<b>+0.6%</b>	<b>+36</b>	<b>+30</b>
Executive Management	10	10			+2	+2
Senior Management (VIII & GM)	50	49	-1	-2.0%	-0	-0
<b>Management (VIII &amp; above)</b>	<b>60</b>	<b>59</b>	<b>-1</b>	<b>-1.6%</b>	<b>+2</b>	<b>+2</b>
<b>Administrative/ Supervisory (V to VII)</b>	<b>170</b>	<b>170</b>	<b>+0</b>	<b>+0.0%</b>	<b>+21</b>	<b>+24</b>
<b>Clerical (III &amp; IV)</b>	<b>484</b>	<b>486</b>	<b>+3</b>	<b>+0.5%</b>	<b>+26</b>	<b>+25</b>
<b>Management &amp; Administrative</b>	<b>714</b>	<b>715</b>	<b>+2</b>	<b>+0.2%</b>	<b>+54</b>	<b>+51</b>
Catering	26	25	-1	-3.3%	-1	-0
Household Services	30	30	-0	-0.0%	-0	-0
Other Support	25	25	+1	+2.2%	-2	-2
Portering	4	4				
<b>Support</b>	<b>84</b>	<b>84</b>	<b>-0</b>	<b>-0.3%</b>	<b>-3</b>	<b>-3</b>
<b>Maintenance/ Technical</b>	<b>55</b>	<b>56</b>	<b>+0</b>	<b>+0.7%</b>	<b>+0</b>	<b>+0</b>
<b>General Support</b>	<b>140</b>	<b>140</b>	<b>+0</b>	<b>+0.1%</b>	<b>-6</b>	<b>-3</b>
HCA, Nurse's Aide, etc.	916	935	+19	+2.1%	-1	+3
Health & Social Care Assistants	14	13	-0	-3.5%	+0	-1
<b>Health Care Assistants</b>	<b>930</b>	<b>948</b>	<b>+18</b>	<b>+2.0%</b>	<b>-1</b>	<b>+2</b>
<b>Care, other</b>	<b>154</b>	<b>154</b>	<b>-0</b>	<b>-0.3%</b>	<b>+8</b>	<b>+10</b>
<b>Home Help</b>	<b>397</b>	<b>394</b>	<b>-3</b>	<b>-0.9%</b>	<b>-24</b>	<b>-22</b>
<b>Patient &amp; Client Care</b>	<b>1,482</b>	<b>1,496</b>	<b>+15</b>	<b>+1.0%</b>	<b>-43</b>	<b>-10</b>



## Employment by WTE, Headcount, Gender, Full-Time /Part-Time etc.: Nov 2020

CHO 8	WTE	Headcount	WTE: no.	% Male	% female	Male WTE: no.	Female WTE: no.	% Total Perm	% Male Perm	% Female Perm	% Total Full Time	% Total Part Time	% Male FT	% Female FT
<b>Overall</b>	<b>6,275</b>	<b>7,534</b>	<b>1.20</b>	<b>16.9%</b>	<b>83.1%</b>	<b>1.11</b>	<b>1.22</b>	<b>88.0%</b>	<b>86.4%</b>	<b>88.3%</b>	<b>56.6%</b>	<b>43.4%</b>	<b>73.2%</b>	<b>53.2%</b>
Consultant Dentistry	1	1	1.10	100.0%		1.10		100.0%	100.0%		0.0%	100.0%	0.0%	
Consultant Medicine	6	6	1.00	33.3%	66.7%	1.00	1.00	66.7%	66.7%	50.0%	100.0%	0.0%	100.0%	100.0%
Consultant Psychiatry	37	38	1.04	44.7%	55.3%	1.00	1.06	84.2%	84.2%	95.2%	92.1%	7.9%	94.1%	90.5%
<b>Consultants</b>	<b>44</b>	<b>45</b>	<b>1.03</b>	<b>44.4%</b>	<b>55.6%</b>	<b>1.01</b>	<b>1.05</b>	<b>82.2%</b>	<b>75.0%</b>	<b>88.0%</b>	<b>91.1%</b>	<b>8.9%</b>	<b>90.0%</b>	<b>92.0%</b>
Registrar	104	107	1.03	41.1%	58.9%	1.00	1.04	0.0%	0.0%	0.0%	100.0%	0.0%	100.0%	100.0%
Senior Registrar	14	16	1.15	25.0%	75.0%	1.01	1.21	0.0%	0.0%	0.0%	93.8%	6.3%	100.0%	91.7%
<b>Registrars</b>	<b>118</b>	<b>123</b>	<b>1.04</b>	<b>39.0%</b>	<b>61.0%</b>	<b>1.00</b>	<b>1.07</b>	<b>0.0%</b>	<b>0.0%</b>	<b>0.0%</b>	<b>99.2%</b>	<b>0.8%</b>	<b>100.0%</b>	<b>98.7%</b>
Senior House Officer	26	27	1.04	37.0%	63.0%	1.09	1.02	0.0%	0.0%	0.0%	100.0%	0.0%	100.0%	100.0%
<b>SHO/ Interns</b>	<b>26</b>	<b>27</b>	<b>1.04</b>	<b>37.0%</b>	<b>63.0%</b>	<b>1.09</b>	<b>1.02</b>	<b>0.0%</b>	<b>0.0%</b>	<b>0.0%</b>	<b>100.0%</b>	<b>0.0%</b>	<b>100.0%</b>	<b>100.0%</b>
Dentists	37	45	1.21	35.6%	64.4%	1.23	1.20	88.9%	88.9%	86.2%	62.2%	37.8%	68.8%	58.6%
Other Medical	35	48	1.36	58.3%	41.7%	1.47	1.24	68.8%	68.8%	75.0%	35.4%	64.6%	35.7%	35.0%
<b>Medical/ Dental, other</b>	<b>72</b>	<b>93</b>	<b>1.28</b>	<b>47.3%</b>	<b>52.7%</b>	<b>1.37</b>	<b>1.22</b>	<b>78.5%</b>	<b>75.0%</b>	<b>81.6%</b>	<b>48.4%</b>	<b>51.6%</b>	<b>47.7%</b>	<b>49.0%</b>
<b>Medical &amp; Dental</b>	<b>260</b>	<b>288</b>	<b>1.11</b>	<b>42.4%</b>	<b>57.6%</b>	<b>1.12</b>	<b>1.10</b>	<b>38.2%</b>	<b>39.3%</b>	<b>37.3%</b>	<b>81.6%</b>	<b>18.4%</b>	<b>79.5%</b>	<b>83.1%</b>
Clinical Nurse/ Midwife Manager	285	310	1.09	16.1%	83.9%	1.00	1.11	93.2%	93.2%	94.2%	77.4%	22.6%	100.0%	73.1%
Director Nursing/Midwifery, Assistant	64	69	1.08	18.8%	81.2%	1.00	1.10	98.6%	98.6%	98.2%	88.4%	11.6%	100.0%	85.7%
Director of Nursing/Midwifery	28	28	1.00	21.4%	78.6%	1.00	1.01	96.4%	96.4%	95.5%	100.0%	0.0%	100.0%	100.0%
<b>Nurse/ Midwife Manager</b>	<b>377</b>	<b>407</b>	<b>1.08</b>	<b>17.0%</b>	<b>83.0%</b>	<b>1.00</b>	<b>1.10</b>	<b>94.3%</b>	<b>91.3%</b>	<b>95.0%</b>	<b>80.8%</b>	<b>19.2%</b>	<b>100.0%</b>	<b>76.9%</b>
Advanced Nurse/ Midwife Practitioner	9	9	1.01	22.2%	77.8%	1.01	1.01	100.0%	100.0%	100.0%	100.0%	0.0%	100.0%	100.0%
Clinical Nurse/ Midwife Specialist	100	112	1.12	15.2%	84.8%	1.02	1.14	100.0%	100.0%	100.0%	74.1%	25.9%	94.1%	70.5%
<b>Nurse/ Midwife Specialist &amp; AN/MP</b>	<b>108</b>	<b>121</b>	<b>1.12</b>	<b>15.7%</b>	<b>84.3%</b>	<b>1.02</b>	<b>1.13</b>	<b>100.0%</b>	<b>100.0%</b>	<b>100.0%</b>	<b>76.0%</b>	<b>24.0%</b>	<b>94.7%</b>	<b>72.5%</b>
Staff Nurse [Intellectual Disability]	226	268	1.19	8.6%	91.4%	1.14	1.19	97.0%	97.0%	96.7%	61.9%	38.1%	82.6%	60.0%
Staff Nurse [Psychiatric]	344	369	1.07	23.6%	76.4%	1.06	1.08	94.9%	94.9%	94.3%	88.9%	11.1%	96.6%	86.5%
Staff Nurses [General/ Children's]	455	558	1.23	6.1%	93.9%	1.06	1.24	97.8%	97.8%	97.7%	52.7%	47.3%	97.1%	49.8%
<b>Staff Nurse/ Staff Midwife</b>	<b>1,024</b>	<b>1,195</b>	<b>1.17</b>	<b>12.1%</b>	<b>87.9%</b>	<b>1.07</b>	<b>1.18</b>	<b>96.7%</b>	<b>97.9%</b>	<b>96.6%</b>	<b>65.9%</b>	<b>34.1%</b>	<b>94.4%</b>	<b>62.0%</b>
<b>Public Health Nurse</b>	<b>199</b>	<b>239</b>	<b>1.20</b>		<b>100.0%</b>		<b>1.20</b>	<b>98.7%</b>		<b>98.7%</b>	<b>72.4%</b>	<b>27.6%</b>		<b>72.4%</b>
Pre-registration Nurse/ Midwife Intern	1	1	1.00		100.0%		1.00	0.0%	0.0%	0.0%	100.0%	0.0%		100.0%
Pre-registration Nurse Intern (COVID-19)	10	13	1.26	7.7%	92.3%	7.69	1.18	7.7%	7.7%	8.3%	92.3%	7.7%	100.0%	91.7%
Post-registration Nurse/ Midwife Student	12	12	1.01		100.0%		1.01	50.0%	50.0%	50.0%	100.0%	0.0%		100.0%

<b>Nursing/ Midwifery Student</b>	<b>23</b>	<b>26</b>	<b>1.12</b>	<b>3.8%</b>	<b>96.2%</b>	<b>7.69</b>	<b>1.08</b>	<b>26.9%</b>	<b>0.0%</b>	<b>28.0%</b>	<b>96.2%</b>	<b>3.8%</b>	<b>100.0%</b>	<b>96.0%</b>
Nursing Education/Clinical	11	14	1.30	14.3%	85.7%	1.60	1.26	92.9%	92.9%	91.7%	85.7%	14.3%	100.0%	83.3%
<b>Nursing/ Midwifery other</b>	<b>11</b>	<b>14</b>	<b>1.30</b>	<b>14.3%</b>	<b>85.7%</b>	<b>1.60</b>	<b>1.26</b>	<b>92.9%</b>	<b>100.0%</b>	<b>91.7%</b>	<b>85.7%</b>	<b>14.3%</b>	<b>100.0%</b>	<b>83.3%</b>
<b>Nursing &amp; Midwifery</b>	<b>1,743</b>	<b>2,002</b>	<b>1.15</b>	<b>11.7%</b>	<b>88.3%</b>	<b>1.05</b>	<b>1.16</b>	<b>95.8%</b>	<b>95.7%</b>	<b>95.8%</b>	<b>70.9%</b>	<b>29.1%</b>	<b>96.2%</b>	<b>67.5%</b>
Dietitians	21	26	1.22		100.0%		1.22	100.0%	100.0%	100.0%	53.8%	46.2%		53.8%
Occupational Therapists	148	174	1.18	6.9%	93.1%	1.01	1.19	98.3%	98.3%	98.1%	78.7%	21.3%	100.0%	77.2%
Orthoptists	2	2	1.25		100.0%		1.25	100.0%	100.0%	100.0%	50.0%	50.0%		50.0%
Physiotherapists	108	133	1.23	17.3%	82.7%	1.07	1.27	97.7%	97.7%	98.2%	54.9%	45.1%	78.3%	50.0%
Podiatrists & Chiropodists	4	7	1.66		100.0%		1.66	57.1%	57.1%	57.1%	14.3%	85.7%		14.3%
Speech & Language Therapists	111	132	1.19	1.5%	98.5%	1.00	1.20	97.7%	97.7%	97.7%	64.4%	35.6%	100.0%	63.8%
<b>Therapy Professions</b>	<b>394</b>	<b>474</b>	<b>1.20</b>	<b>7.8%</b>	<b>92.2%</b>	<b>1.05</b>	<b>1.22</b>	<b>97.5%</b>	<b>97.3%</b>	<b>97.5%</b>	<b>65.6%</b>	<b>34.4%</b>	<b>86.5%</b>	<b>63.8%</b>
Audiology	5	6	1.13	33.3%	66.7%	1.05	1.17	100.0%	100.0%	100.0%	50.0%	50.0%	50.0%	50.0%
Clinical Engineering	4	4	1.00	100.0%		1.00		100.0%	100.0%		100.0%	0.0%	100.0%	
<b>Health Science/ Diagnostics</b>	<b>9</b>	<b>10</b>	<b>1.07</b>	<b>60.0%</b>	<b>40.0%</b>	<b>1.02</b>	<b>1.17</b>	<b>100.0%</b>	<b>100.0%</b>	<b>100.0%</b>	<b>70.0%</b>	<b>30.0%</b>	<b>83.3%</b>	<b>50.0%</b>
<b>Social Care</b>	<b>386</b>	<b>464</b>	<b>1.20</b>	<b>14.0%</b>	<b>86.0%</b>	<b>1.13</b>	<b>1.22</b>	<b>98.7%</b>	<b>98.5%</b>	<b>98.7%</b>	<b>24.8%</b>	<b>75.2%</b>	<b>23.1%</b>	<b>25.1%</b>
<b>Social Workers</b>	<b>93</b>	<b>107</b>	<b>1.15</b>	<b>14.0%</b>	<b>86.0%</b>	<b>1.08</b>	<b>1.17</b>	<b>98.1%</b>	<b>93.3%</b>	<b>98.9%</b>	<b>80.4%</b>	<b>19.6%</b>	<b>86.7%</b>	<b>79.3%</b>
<b>Psychologists</b>	<b>118</b>	<b>128</b>	<b>1.09</b>	<b>26.6%</b>	<b>73.4%</b>	<b>1.01</b>	<b>1.12</b>	<b>79.7%</b>	<b>94.1%</b>	<b>74.5%</b>	<b>85.9%</b>	<b>14.1%</b>	<b>97.1%</b>	<b>81.9%</b>
<b>Pharmacy</b>	<b>8</b>	<b>10</b>	<b>1.20</b>	<b>20.0%</b>	<b>80.0%</b>	<b>1.00</b>	<b>1.27</b>	<b>100.0%</b>	<b>100.0%</b>	<b>100.0%</b>	<b>60.0%</b>	<b>40.0%</b>	<b>100.0%</b>	<b>50.0%</b>
Counsellor Therapists	38	42	1.10	21.4%	78.6%	1.03	1.13	90.5%	90.5%	90.9%	66.7%	33.3%	77.8%	63.6%
Dental Hygienists	13	14	1.12		100.0%		1.12	100.0%	100.0%	100.0%	78.6%	21.4%		78.6%
Other Health & Social Care	2	2	1.21		100.0%		1.21	50.0%	50.0%	50.0%	50.0%	50.0%		50.0%
Play Therapists/ Specialists	1	1	1.00	100.0%		1.00		100.0%	100.0%		100.0%	0.0%	100.0%	
<b>H&amp;SC, Other</b>	<b>53</b>	<b>59</b>	<b>1.11</b>	<b>16.9%</b>	<b>83.1%</b>	<b>1.02</b>	<b>1.13</b>	<b>91.5%</b>	<b>90.0%</b>	<b>91.8%</b>	<b>69.5%</b>	<b>30.5%</b>	<b>80.0%</b>	<b>67.3%</b>
<b>Health &amp; Social Care</b>	<b>1,061</b>	<b>1,252</b>	<b>1.18</b>	<b>13.5%</b>	<b>86.5%</b>	<b>1.07</b>	<b>1.20</b>	<b>95.9%</b>	<b>96.4%</b>	<b>95.8%</b>	<b>54.0%</b>	<b>46.0%</b>	<b>63.9%</b>	<b>52.4%</b>
Executive Management	11	11	1.02	27.3%	72.7%	1.00	1.02	90.9%	90.9%	87.5%	100.0%	0.0%	100.0%	100.0%
Senior Management (VIII & GM)	56	61	1.08	26.2%	73.8%	1.05	1.09	98.4%	98.4%	97.8%	83.6%	16.4%	81.3%	84.4%
<b>Management (VIII &amp; above)</b>	<b>67</b>	<b>72</b>	<b>1.07</b>	<b>26.4%</b>	<b>73.6%</b>	<b>1.04</b>	<b>1.08</b>	<b>97.2%</b>	<b>100.0%</b>	<b>96.2%</b>	<b>86.1%</b>	<b>13.9%</b>	<b>84.2%</b>	<b>86.8%</b>
<b>Administrative/ Supervisory (V to VII)</b>	<b>197</b>	<b>213</b>	<b>1.08</b>	<b>15.5%</b>	<b>84.5%</b>	<b>1.02</b>	<b>1.09</b>	<b>96.7%</b>	<b>97.0%</b>	<b>96.7%</b>	<b>77.9%</b>	<b>22.1%</b>	<b>97.0%</b>	<b>74.4%</b>
<b>Clerical (III &amp; IV)</b>	<b>532</b>	<b>640</b>	<b>1.20</b>	<b>4.8%</b>	<b>95.2%</b>	<b>1.09</b>	<b>1.21</b>	<b>90.8%</b>	<b>80.6%</b>	<b>91.3%</b>	<b>58.8%</b>	<b>41.3%</b>	<b>80.6%</b>	<b>57.6%</b>
<b>Management &amp; Administrative</b>	<b>797</b>	<b>925</b>	<b>1.16</b>	<b>9.0%</b>	<b>91.0%</b>	<b>1.05</b>	<b>1.17</b>	<b>92.6%</b>	<b>91.6%</b>	<b>92.8%</b>	<b>65.3%</b>	<b>34.7%</b>	<b>88.0%</b>	<b>63.1%</b>
Catering	32	36	1.13	16.7%	83.3%	1.03	1.15	100.0%	100.0%	100.0%	63.9%	36.1%	83.3%	60.0%
Household Services	55	69	1.26	31.9%	68.1%	1.09	1.36	92.8%	92.8%	91.5%	49.3%	50.7%	72.7%	38.3%
Other Support	30	50	1.69	44.0%	56.0%	1.15	2.68	54.0%	54.0%	25.0%	44.0%	56.0%	77.3%	17.9%
Portering	5	5	1.00	100.0%		1.00		100.0%	100.0%		100.0%	0.0%	100.0%	
<b>Support</b>	<b>121</b>	<b>160</b>	<b>1.32</b>	<b>34.4%</b>	<b>65.6%</b>	<b>1.10</b>	<b>1.48</b>	<b>82.5%</b>	<b>94.5%</b>	<b>76.2%</b>	<b>52.5%</b>	<b>47.5%</b>	<b>78.2%</b>	<b>39.0%</b>

<b>Maintenance/ Technical</b>	<b>68</b>	<b>70</b>	<b>1.03</b>	<b>98.6%</b>	<b>1.4%</b>	<b>1.03</b>	<b>1.00</b>	<b>98.6%</b>	<b>98.6%</b>	<b>100.0%</b>	<b>97.1%</b>	<b>2.9%</b>	<b>97.1%</b>	<b>100.0%</b>
<b>General Support</b>	<b>189</b>	<b>230</b>	<b>1.22</b>	<b>53.9%</b>	<b>46.1%</b>	<b>1.06</b>	<b>1.47</b>	<b>87.4%</b>	<b>96.8%</b>	<b>76.4%</b>	<b>66.1%</b>	<b>33.9%</b>	<b>88.7%</b>	<b>39.6%</b>
HCA, Nurse's Aide, etc.	1,578	1,877	1.19	22.9%	77.1%	1.12	1.21	93.7%	93.7%	94.5%	48.9%	51.1%	60.5%	45.5%
Health & Social Care Assistants	13	16	1.19	18.8%	81.3%	2.00	1.09	25.0%	25.0%	30.8%	81.3%	18.8%	100.0%	76.9%
<b>Health Care Assistants</b>	<b>1,591</b>	<b>1,893</b>	<b>1.19</b>	<b>22.9%</b>	<b>77.1%</b>	<b>1.12</b>	<b>1.21</b>	<b>93.1%</b>	<b>90.3%</b>	<b>94.0%</b>	<b>49.2%</b>	<b>50.8%</b>	<b>60.7%</b>	<b>45.8%</b>
<b>Care, other</b>	<b>241</b>	<b>284</b>	<b>1.18</b>	<b>29.9%</b>	<b>70.1%</b>	<b>1.20</b>	<b>1.17</b>	<b>95.1%</b>	<b>87.1%</b>	<b>98.5%</b>	<b>54.9%</b>	<b>45.1%</b>	<b>62.4%</b>	<b>51.8%</b>
<b>Home Help</b>	<b>394</b>	<b>660</b>	<b>1.68</b>	<b>3.5%</b>	<b>96.5%</b>	<b>2.73</b>	<b>1.65</b>	<b>47.0%</b>	<b>17.4%</b>	<b>48.0%</b>	<b>13.9%</b>	<b>86.1%</b>	<b>8.7%</b>	<b>14.1%</b>
<b>Patient &amp; Client Care</b>	<b>2,226</b>	<b>2,837</b>	<b>1.27</b>	<b>19.1%</b>	<b>80.9%</b>	<b>1.16</b>	<b>1.30</b>	<b>82.6%</b>	<b>86.7%</b>	<b>81.6%</b>	<b>41.6%</b>	<b>58.4%</b>	<b>58.8%</b>	<b>37.5%</b>

## Employment by WTE, Headcount, Gender, Full-Time /Part-Time etc.: Nov 2020

CHO 8	WTE	Headcount	WTE: no.	% Male	% female	Male WTE: no.	Female WTE: no.	% Total Perm	% Male Perm	% Female Perm	% Total Full Time	% Total Part Time	% Male FT	% Female FT
<b>Overall</b>	<b>6,275</b>	<b>7,534</b>	<b>1.20</b>	<b>16.9%</b>	<b>83.1%</b>	<b>1.11</b>	<b>1.22</b>	<b>88.0%</b>	<b>86.4%</b>	<b>88.3%</b>	<b>56.6%</b>	<b>43.4%</b>	<b>73.2%</b>	<b>53.2%</b>
Community Health & Wellbeing	30	35	1.17	2.9%	97.1%	1.25	1.17	97.1%	97.1%	97.1%	60.0%	40.0%	100.0%	100.0%
Mental Health	1,114	1,206	1.08	25.0%	75.0%	1.04	1.10	88.3%	88.3%	89.2%	85.2%	14.8%	94.0%	94.0%
Primary Care	1,456	1,763	1.21	13.4%	86.6%	1.12	1.23	85.8%	85.8%	88.0%	62.5%	37.5%	80.9%	80.9%
Social Care	3,675	4,530	1.23	16.2%	83.8%	1.13	1.25	88.7%	88.7%	88.1%	46.7%	53.3%	62.0%	62.0%

## CHO 8 Skills Mix by Staff Grouping: November 2020

Nov 2020 (Dec 2018 figure: 6,128)	WTE Dec 2015	WTE Dec 2016	WTE Dec 2017	WTE Dec 2018	WTE Dec 2019	WTE Oct 2020	WTE Nov 2020
<b>Overall</b>	<b>5,814</b>	<b>6,014</b>	<b>6,092</b>	<b>6,128</b>	<b>6,135</b>	<b>6,220</b>	<b>6,275</b>
Consultant Dentistry	0.4%	0.4%	0.4%	0.4%	0.4%	0.4%	0.3%
Consultant Medicine	1.7%	1.7%	2.1%	1.7%	1.9%	2.3%	2.3%
Consultant Psychiatry	15.7%	15.6%	14.6%	15.0%	14.1%	13.6%	14.1%
<b>Consultants</b>	<b>17.9%</b>	<b>17.7%</b>	<b>17.1%</b>	<b>17.1%</b>	<b>16.3%</b>	<b>16.2%</b>	<b>16.8%</b>
Registrar	34.7%	36.4%	37.3%	36.6%	35.7%	39.2%	40.1%
Senior Registrar	4.1%	4.7%	5.9%	5.4%	5.3%	5.2%	5.3%
<b>Registrars</b>	<b>38.8%</b>	<b>41.1%</b>	<b>43.2%</b>	<b>42.0%</b>	<b>41.0%</b>	<b>44.4%</b>	<b>45.4%</b>
Interns	0.4%	0.4%					
Senior House Officer	13.5%	11.4%	11.0%	11.8%	14.7%	11.4%	9.9%
<b>SHO/ Interns</b>	<b>13.9%</b>	<b>11.8%</b>	<b>11.0%</b>	<b>11.8%</b>	<b>14.7%</b>	<b>11.4%</b>	<b>9.9%</b>
Dentists	14.5%	15.1%	14.5%	13.9%	13.7%	13.9%	14.3%
Other Medical	14.8%	14.3%	14.3%	15.2%	14.3%	14.1%	13.5%
<b>Medical/ Dental, other</b>	<b>29.4%</b>	<b>29.4%</b>	<b>28.8%</b>	<b>29.1%</b>	<b>28.0%</b>	<b>28.0%</b>	<b>27.8%</b>
<b>Medical &amp; Dental</b>	<b>3.9%</b>	<b>3.9%</b>	<b>3.9%</b>	<b>3.9%</b>	<b>3.8%</b>	<b>100.0%</b>	<b>4.1%</b>
Clinical Nurse/ Midwife Manager	16.9%	17.2%	17.5%	17.4%	17.1%	15.4%	16.3%
Director Nursing/Midwifery, Assistant	3.1%	3.3%	3.5%	3.6%	3.6%	3.6%	3.7%
Director of Nursing/Midwifery	1.4%	1.5%	1.6%	1.3%	1.4%	1.6%	1.6%
<b>Nurse/ Midwife Manager</b>	<b>21.5%</b>	<b>22.0%</b>	<b>22.5%</b>	<b>22.3%</b>	<b>22.1%</b>	<b>20.6%</b>	<b>21.6%</b>
Advanced Nurse/ Midwife Practitioner		0.1%	0.1%	0.1%	0.2%	0.5%	0.5%
Clinical Nurse/ Midwife Specialist	5.3%	5.6%	5.6%	5.7%	5.7%	5.6%	5.7%
<b>Nurse/ Midwife Specialist &amp; AN/MP</b>	<b>5.3%</b>	<b>5.6%</b>	<b>5.7%</b>	<b>5.8%</b>	<b>5.9%</b>	<b>6.0%</b>	<b>6.2%</b>
Staff Nurse [Intellectual Disability]	15.1%	14.8%	15.2%	15.6%	13.8%	6.7%	13.0%
Staff Nurse [Psychiatric]	20.5%	19.2%	19.3%	19.4%	19.8%	19.9%	19.7%
Staff Nurses [General/ Children's]	25.3%	25.5%	24.4%	24.2%	25.7%	31.6%	26.1%
<b>Staff Nurse/ Staff Midwife</b>	<b>60.9%</b>	<b>59.6%</b>	<b>59.0%</b>	<b>59.2%</b>	<b>59.3%</b>	<b>58.2%</b>	<b>58.8%</b>
<b>Public Health Nurse</b>	<b>11.3%</b>	<b>11.4%</b>	<b>11.6%</b>	<b>11.6%</b>	<b>11.8%</b>	<b>11.6%</b>	<b>11.4%</b>
Pre-registration Nurse/ Midwife Intern			0.0%	0.0%	0.0%	0.1%	0.1%
Pre-registration Nurse Intern (COVID-19)						1.2%	0.6%
Post-registration Nurse/ Midwife Student	0.6%	0.9%	0.8%	0.5%	0.1%	0.5%	0.7%
Nursing/ Midwifery awaiting registration		0.1%	0.0%	0.1%	0.1%		
<b>Nursing/ Midwifery Student</b>	<b>0.6%</b>	<b>1.0%</b>	<b>0.8%</b>	<b>0.6%</b>	<b>0.3%</b>	<b>1.8%</b>	<b>1.3%</b>
<b>Nursing/ Midwifery other</b>	<b>0.4%</b>	<b>0.4%</b>	<b>0.5%</b>	<b>0.4%</b>	<b>0.6%</b>	<b>1.8%</b>	<b>0.6%</b>
<b>Nursing &amp; Midwifery</b>	<b>29.4%</b>	<b>29.0%</b>	<b>28.2%</b>	<b>27.7%</b>	<b>27.7%</b>	<b>100.0%</b>	<b>27.8%</b>
Dietitians	1.6%	1.8%	1.7%	1.9%	1.9%	1.9%	2.0%
Occupational Therapists	15.1%	14.3%	14.3%	13.5%	13.7%	13.9%	14.0%
Orthoptists	0.0%	0.0%	0.0%	0.0%		0.1%	0.2%
Physiotherapists	12.6%	12.1%	11.0%	10.8%	10.5%	10.4%	10.2%
Podiatrists & Chiropodists	0.3%	0.3%	0.4%	0.4%	0.4%	0.4%	0.4%
Speech & Language Therapists	9.8%	11.6%	11.7%	10.9%	10.4%	10.4%	10.4%
<b>Therapy Professions</b>	<b>39.5%</b>	<b>40.1%</b>	<b>39.1%</b>	<b>37.6%</b>	<b>37.0%</b>	<b>37.1%</b>	<b>37.1%</b>
Audiology	0.5%	0.5%	0.4%	0.4%	0.3%	0.5%	0.5%
Clinical Engineering		0.4%	0.4%	0.4%	0.4%	0.4%	0.4%
Radiographers	0.2%	0.3%	0.3%				
<b>Health Science/ Diagnostics</b>	<b>0.7%</b>	<b>1.2%</b>	<b>1.1%</b>	<b>0.8%</b>	<b>0.7%</b>	<b>0.9%</b>	<b>0.9%</b>
<b>Social Care</b>	<b>32.0%</b>	<b>32.7%</b>	<b>34.0%</b>	<b>36.0%</b>	<b>36.1%</b>	<b>36.3%</b>	<b>36.3%</b>
<b>Social Workers</b>	<b>9.5%</b>	<b>9.5%</b>	<b>9.1%</b>	<b>9.0%</b>	<b>8.6%</b>	<b>8.8%</b>	<b>8.7%</b>
<b>Psychologists</b>	<b>12.1%</b>	<b>10.7%</b>	<b>10.8%</b>	<b>10.5%</b>	<b>11.7%</b>	<b>11.1%</b>	<b>11.1%</b>
<b>Pharmacy</b>	<b>0.4%</b>	<b>0.5%</b>	<b>0.5%</b>	<b>0.6%</b>	<b>0.7%</b>	<b>0.8%</b>	<b>0.8%</b>
Counsellor Therapists	3.9%	3.8%	3.9%	3.9%	3.7%	3.5%	3.6%
Dental Hygienists	1.5%	1.3%	1.2%	1.2%	1.2%	1.2%	1.2%
Other Health & Social Care	0.2%	0.2%	0.2%	0.2%	0.2%	0.2%	0.2%

Nov 2020 (Dec 2018 figure: 6,128)	WTE Dec 2015	WTE Dec 2016	WTE Dec 2017	WTE Dec 2018	WTE Dec 2019	WTE Oct 2020	WTE Nov 2020
<b>Overall</b>	<b>5,814</b>	<b>6,014</b>	<b>6,092</b>	<b>6,128</b>	<b>6,135</b>	<b>6,220</b>	<b>6,275</b>
Play Therapists/ Specialists	0.1%	0.1%	0.1%	0.1%	0.1%	0.1%	0.1%
<b>H&amp;SC, Other</b>	<b>5.8%</b>	<b>5.4%</b>	<b>5.4%</b>	<b>5.4%</b>	<b>5.1%</b>	<b>5.0%</b>	<b>5.0%</b>
<b>Health &amp; Social Care Professionals</b>	<b>14.8%</b>	<b>15.4%</b>	<b>16.5%</b>	<b>16.4%</b>	<b>16.3%</b>	<b>100.0%</b>	<b>16.9%</b>
Executive Management	0.6%	1.2%	1.3%	1.3%	1.2%	1.4%	1.4%
Senior Management (VIII & GM)	6.8%	6.8%	7.2%	6.7%	7.2%	7.2%	7.1%
<b>Management (VIII &amp; above)</b>	<b>7.4%</b>	<b>8.1%</b>	<b>8.6%</b>	<b>8.0%</b>	<b>8.4%</b>	<b>8.6%</b>	<b>8.4%</b>
Middle Management (V-VII)	19.0%	19.7%	20.3%	23.3%	23.7%	24.9%	24.8%
Other Administrative		0.1%					
<b>Administrative/ Supervisory (V to VII)</b>	<b>19.0%</b>	<b>19.9%</b>	<b>20.3%</b>	<b>23.3%</b>	<b>23.7%</b>	<b>24.9%</b>	<b>24.8%</b>
<b>Clerical (III &amp; IV)</b>	<b>73.6%</b>	<b>72.1%</b>	<b>71.1%</b>	<b>68.6%</b>	<b>68.0%</b>	<b>66.6%</b>	<b>66.8%</b>
<b>Management &amp; Administrative</b>	<b>12.0%</b>	<b>12.1%</b>	<b>12.0%</b>	<b>12.2%</b>	<b>12.1%</b>	<b>100.0%</b>	<b>12.7%</b>
Catering	16.7%	16.6%	15.7%	17.8%	16.9%	17.2%	16.9%
Household Services	36.4%	32.8%	31.1%	28.0%	29.3%	28.4%	28.9%
Other Support	14.7%	16.6%	17.7%	16.4%	16.1%	15.4%	15.6%
Portering	1.7%	2.3%	2.4%	2.5%	2.5%	2.7%	2.6%
<b>Support</b>	<b>69.4%</b>	<b>68.3%</b>	<b>66.9%</b>	<b>64.6%</b>	<b>64.9%</b>	<b>63.6%</b>	<b>64.1%</b>
<b>Maintenance/ Technical</b>	<b>30.6%</b>	<b>31.7%</b>	<b>33.1%</b>	<b>35.4%</b>	<b>35.1%</b>	<b>36.4%</b>	<b>35.9%</b>
<b>General Support</b>	<b>3.8%</b>	<b>3.6%</b>	<b>3.5%</b>	<b>3.3%</b>	<b>3.3%</b>	<b>100.0%</b>	<b>3.0%</b>
HCA, Nurse's Aide, etc.	68.9%	69.1%	69.4%	69.0%	70.0%	70.5%	70.9%
Health & Social Care Assistants	0.2%	0.2%	0.2%	0.9%	0.6%	0.6%	0.6%
<b>Health Care Assistants</b>	<b>69.1%</b>	<b>69.3%</b>	<b>69.6%</b>	<b>69.9%</b>	<b>70.6%</b>	<b>71.1%</b>	<b>71.5%</b>
Community Welfare Officers	0.0%	0.0%	0.0%	0.0%			
Other Care Grades	12.4%	12.3%	11.8%	10.9%	10.6%	10.8%	10.8%
<b>Care, other</b>	<b>12.5%</b>	<b>12.4%</b>	<b>11.8%</b>	<b>10.9%</b>	<b>10.6%</b>	<b>10.8%</b>	<b>10.8%</b>
<b>Home Help</b>	<b>18.5%</b>	<b>18.3%</b>	<b>18.6%</b>	<b>19.2%</b>	<b>18.7%</b>	<b>18.0%</b>	<b>17.7%</b>
<b>Patient &amp; Client Care</b>	<b>36.0%</b>	<b>36.0%</b>	<b>36.0%</b>	<b>36.6%</b>	<b>36.5%</b>	<b>100.0%</b>	<b>35.5%</b>
<b>Total</b>	<b>100 %</b>	<b>100 %</b>	<b>100 %</b>	<b>100 %</b>	<b>100%</b>	<b>100 %</b>	<b>100 %</b>

# CHO 8 Skills Mix by Care Group: November 2020

Nov 2020 (Dec 2018 figure: 1,069)	WTE Dec 2015	WTE Dec 2016	WTE Dec 2017	WTE Dec 2018	WTE Dec 2019	WTE Oct 2020	WTE Nov 2020
<b>Mental Health</b>	<b>1,042</b>	<b>1,041</b>	<b>1,080</b>	<b>1,069</b>	<b>1,097.95</b>	<b>1,115.65</b>	<b>1,113.52</b>
<b>Consultants</b>	<b>41.3%</b>	<b>43.1%</b>	<b>38.0%</b>	<b>40.0%</b>	<b>36.4%</b>	<b>36.5%</b>	<b>38.2%</b>
Registrar	8.5%	9.9%	17.7%	15.3%	12.4%	18.6%	20.2%
Senior Registrar	11.5%	13.6%	15.8%	14.8%	14.1%	14.4%	14.8%
<b>Registrars</b>	<b>20.0%</b>	<b>23.6%</b>	<b>33.5%</b>	<b>30.1%</b>	<b>26.5%</b>	<b>33.0%</b>	<b>35.1%</b>
Interns	1.2%	1.2%					
Senior House Officer	37.4%	32.1%	28.5%	29.9%	37.1%	30.5%	26.8%
<b>SHO/ Interns</b>	<b>38.7%</b>	<b>33.3%</b>	<b>28.5%</b>	<b>29.9%</b>	<b>37.1%</b>	<b>30.5%</b>	<b>26.8%</b>
<b>Medical &amp; Dental</b>	<b>7.9%</b>	<b>7.7%</b>	<b>8.1%</b>	<b>8.1%</b>	<b>7.9%</b>	<b>8.4%</b>	<b>8.4%</b>
Clinical Nurse/ Midwife Manager	19.1%	20.1%	21.3%	20.9%	19.8%	17.9%	17.9%
Director Nursing/Midwifery, Assistant	3.4%	3.7%	3.6%	3.9%	3.3%	3.7%	3.7%
Director of Nursing/Midwifery	0.6%	0.6%	0.6%	0.2%	0.4%	0.4%	0.4%
<b>Nurse/ Midwife Manager</b>	<b>23.1%</b>	<b>24.3%</b>	<b>25.5%</b>	<b>25.0%</b>	<b>23.4%</b>	<b>22.0%</b>	<b>22.0%</b>
Advanced Nurse/ Midwife Practitioner		0.2%	0.2%	0.4%	0.8%	0.7%	0.7%
Clinical Nurse/ Midwife Specialist	8.5%	9.4%	9.4%	9.8%	10.1%	10.6%	10.5%
<b>Nurse/ Midwife Specialist &amp; AN/MP</b>	<b>8.5%</b>	<b>9.6%</b>	<b>9.6%</b>	<b>10.2%</b>	<b>10.9%</b>	<b>11.3%</b>	<b>11.2%</b>
Staff Nurse [Psychiatric]	67.1%	64.1%	63.2%	63.2%	63.2%	61.3%	64.0%
Staff Nurses [General/ Children's]	1.0%	1.2%	0.9%	1.0%	1.2%	1.1%	1.0%
<b>Staff Nurse/ Staff Midwife</b>	<b>68.1%</b>	<b>65.3%</b>	<b>64.1%</b>	<b>64.2%</b>	<b>64.4%</b>	<b>62.5%</b>	<b>65.0%</b>
Pre-registration Nurse/ Midwife Intern			0.1%		0.1%		0.2%
Pre-registration Nurse Intern (COVID-19)						3.6%	1.0%
Nursing/ Midwifery awaiting registration		0.4%	0.1%	0.2%	0.4%		
<b>Nursing/ Midwifery Student</b>		<b>0.4%</b>	<b>0.2%</b>	<b>0.2%</b>	<b>0.5%</b>	<b>3.6%</b>	<b>1.2%</b>
<b>Nursing/ Midwifery other</b>	<b>0.4%</b>	<b>0.4%</b>	<b>0.6%</b>	<b>0.4%</b>	<b>0.8%</b>	<b>0.6%</b>	<b>0.6%</b>
<b>Nursing &amp; Midwifery</b>	<b>48.1%</b>	<b>48.5%</b>	<b>47.3%</b>	<b>47.4%</b>	<b>46.2%</b>	<b>47.4%</b>	<b>47.4%</b>
Dietitians		0.7%	1.3%	1.4%	1.3%		
Occupational Therapists	25.1%	21.4%	24.3%	25.4%	23.8%	23.4%	23.4%
Podiatrists & Chiropodists	0.1%		0.1%	0.0%		0.1%	0.1%
Speech & Language Therapists	2.8%	4.3%	3.7%	3.1%	3.8%	4.1%	4.5%
<b>Therapy Professions</b>	<b>27.9%</b>	<b>26.5%</b>	<b>29.4%</b>	<b>29.8%</b>	<b>28.8%</b>	<b>27.6%</b>	<b>28.0%</b>
<b>Social Care</b>	<b>4.4%</b>	<b>5.2%</b>	<b>4.4%</b>	<b>4.4%</b>	<b>4.7%</b>	<b>4.6%</b>	<b>4.6%</b>
<b>Social Workers</b>	<b>30.2%</b>	<b>31.4%</b>	<b>28.5%</b>	<b>26.8%</b>	<b>26.9%</b>	<b>29.1%</b>	<b>29.3%</b>
<b>Psychologists</b>	<b>23.8%</b>	<b>22.2%</b>	<b>24.6%</b>	<b>25.6%</b>	<b>25.5%</b>	<b>24.7%</b>	<b>24.1%</b>
<b>Pharmacy</b>		<b>0.5%</b>	<b>0.7%</b>	<b>0.7%</b>	<b>0.7%</b>	<b>0.8%</b>	<b>1.0%</b>
Counsellor Therapists	13.6%	14.1%	12.4%	12.7%	13.3%	13.2%	13.1%
Other Health & Social Care	0.1%	0.1%					
<b>H&amp;SC, Other</b>	<b>13.7%</b>	<b>14.3%</b>	<b>12.4%</b>	<b>12.7%</b>	<b>13.3%</b>	<b>13.2%</b>	<b>13.1%</b>
<b>Health &amp; Social Care Professionals</b>	<b>13.1%</b>	<b>12.9%</b>	<b>14.0%</b>	<b>13.8%</b>	<b>13.5%</b>	<b>13.9%</b>	<b>13.9%</b>
<b>Management (VIII &amp; above)</b>	<b>3.0%</b>	<b>1.0%</b>	<b>1.8%</b>	<b>1.8%</b>	<b>2.6%</b>	<b>2.4%</b>	<b>2.4%</b>
<b>Administrative/ Supervisory (V to VII)</b>	<b>15.4%</b>	<b>15.4%</b>	<b>16.7%</b>	<b>20.0%</b>	<b>19.8%</b>	<b>17.0%</b>	<b>16.7%</b>
<b>Clerical (III &amp; IV)</b>	<b>81.5%</b>	<b>83.6%</b>	<b>81.5%</b>	<b>78.2%</b>	<b>77.6%</b>	<b>80.6%</b>	<b>80.9%</b>
<b>Management &amp; Administrative</b>	<b>9.5%</b>	<b>9.7%</b>	<b>10.3%</b>	<b>10.1%</b>	<b>9.9%</b>	<b>10.9%</b>	<b>10.9%</b>
<b>Support</b>	<b>53.3%</b>	<b>52.1%</b>	<b>55.4%</b>	<b>53.9%</b>	<b>55.5%</b>	<b>53.4%</b>	<b>52.7%</b>
<b>Maintenance/ Technical</b>	<b>46.7%</b>	<b>47.9%</b>	<b>44.6%</b>	<b>46.1%</b>	<b>44.5%</b>	<b>46.6%</b>	<b>47.3%</b>
<b>General Support</b>	<b>5.8%</b>	<b>5.6%</b>	<b>5.8%</b>	<b>5.7%</b>	<b>5.6%</b>	<b>5.3%</b>	<b>5.3%</b>
<b>Health Care Assistants</b>	<b>97.2%</b>	<b>97.2%</b>	<b>97.1%</b>	<b>98.1%</b>	<b>97.8%</b>	<b>98.1%</b>	<b>98.1%</b>
<b>Care, other</b>	<b>2.8%</b>	<b>2.8%</b>	<b>2.9%</b>	<b>1.9%</b>	<b>2.2%</b>	<b>1.9%</b>	<b>1.9%</b>
<b>Patient &amp; Client Care</b>	<b>15.7%</b>	<b>15.6%</b>	<b>14.5%</b>	<b>14.8%</b>	<b>14.4%</b>	<b>14.2%</b>	<b>14.2%</b>
<b>Total</b>	<b>100 %</b>	<b>100 %</b>	<b>100 %</b>	<b>100 %</b>	<b>100 %</b>	<b>100 %</b>	<b>100%</b>



Nov 2020 (Dec 2018 figure: 1,422)	WTE Dec 2015	WTE Dec 2016	WTE Dec 2017	WTE Dec 2018	WTE Dec 2019	WTE Oct 2020	WTE Nov 2020
<b>Primary Care</b>	<b>1,393</b>	<b>1,457</b>	<b>1,436</b>	<b>1,422</b>	<b>1,386.65</b>	<b>1,429.12</b>	<b>1,456.49</b>
Consultant Dentistry	0.7%	0.6%	0.7%	0.7%	0.6%	0.6%	0.6%
Consultant Medicine	3.0%	2.8%	3.7%	2.9%	3.4%	3.9%	3.9%
Consultant Psychiatry	0.7%	0.7%					
<b>Consultants</b>	<b>4.4%</b>	<b>4.2%</b>	<b>4.4%</b>	<b>3.6%</b>	<b>4.0%</b>	<b>4.5%</b>	<b>4.5%</b>
<b>Registrars</b>	<b>53.5%</b>	<b>54.6%</b>	<b>53.2%</b>	<b>53.4%</b>	<b>53.3%</b>	<b>54.8%</b>	<b>55.3%</b>
<b>SHO/ Interns</b>		<b>0.7%</b>	<b>0.7%</b>	<b>1.5%</b>	<b>1.4%</b>	<b>0.5%</b>	<b>0.5%</b>
Dentists	24.9%	25.3%	25.4%	24.2%	24.2%	23.7%	24.4%
Other Medical	17.1%	15.2%	16.3%	17.3%	17.1%	16.4%	15.3%
<b>Medical/ Dental, other</b>	<b>42.0%</b>	<b>40.5%</b>	<b>41.7%</b>	<b>41.5%</b>	<b>41.3%</b>	<b>40.1%</b>	<b>39.6%</b>
<b>Medical &amp; Dental</b>	<b>9.6%</b>	<b>9.6%</b>	<b>9.4%</b>	<b>9.5%</b>	<b>9.8%</b>	<b>10.5%</b>	<b>10.5%</b>
Clinical Nurse/ Midwife Manager	7.2%	7.3%	7.3%	7.9%	7.1%	6.6%	6.4%
Director Nursing/Midwifery, Assistant	4.3%	4.8%	4.2%	4.6%	4.8%	4.8%	4.9%
Director of Nursing/Midwifery	1.3%	1.2%	1.5%	1.0%	1.6%	1.5%	1.5%
<b>Nurse/ Midwife Manager</b>	<b>12.8%</b>	<b>13.4%</b>	<b>12.9%</b>	<b>13.5%</b>	<b>13.4%</b>	<b>12.9%</b>	<b>12.8%</b>
<b>Nurse/ Midwife Specialist &amp; AN/MP</b>	<b>9.1%</b>	<b>9.0%</b>	<b>9.2%</b>	<b>9.5%</b>	<b>9.1%</b>	<b>9.1%</b>	<b>9.4%</b>
<b>Staff Nurse/ Staff Midwife</b>	<b>25.9%</b>	<b>27.2%</b>	<b>27.1%</b>	<b>26.4%</b>	<b>25.7%</b>	<b>25.8%</b>	<b>26.4%</b>
<b>Public Health Nurse</b>	<b>49.3%</b>	<b>46.6%</b>	<b>47.6%</b>	<b>48.7%</b>	<b>51.3%</b>	<b>49.5%</b>	<b>48.2%</b>
<b>Nursing/ Midwifery Student</b>	<b>2.9%</b>	<b>3.8%</b>	<b>3.2%</b>	<b>2.0%</b>	<b>0.5%</b>	<b>2.4%</b>	<b>2.9%</b>
Nursing Education/Clinical						0.2%	0.2%
<b>Nursing/ Midwifery other</b>						<b>0.2%</b>	<b>0.2%</b>
<b>Nursing &amp; Midwifery</b>	<b>27.6%</b>	<b>28.7%</b>	<b>28.5%</b>	<b>27.8%</b>	<b>28.5%</b>	<b>27.8%</b>	<b>27.8%</b>
Dietitians	4.0%	4.7%	4.5%	4.8%	5.2%	5.5%	5.6%
Occupational Therapists	20.0%	17.7%	18.1%	17.2%	17.5%	18.3%	18.3%
Orthoptists	0.1%	0.1%	0.1%	0.1%		0.2%	0.5%
Physiotherapists	24.9%	25.5%	23.7%	24.6%	23.8%	23.7%	23.5%
Podiatrists & Chiropodists	0.5%	0.5%	0.8%	1.1%	1.1%	1.1%	1.2%
Speech & Language Therapists	18.4%	19.9%	21.6%	20.5%	20.1%	18.3%	18.2%
<b>Therapy Professions</b>	<b>67.9%</b>	<b>68.4%</b>	<b>69.0%</b>	<b>68.2%</b>	<b>67.7%</b>	<b>67.1%</b>	<b>67.3%</b>
Audiology	1.3%	1.3%	1.3%	1.3%	1.0%	1.6%	1.6%
Clinical Engineering		0.6%	0.6%	0.6%	0.6%	0.6%	0.6%
Radiographers			0.1%				
<b>Health Science/ Diagnostics</b>	<b>1.3%</b>	<b>2.0%</b>	<b>2.0%</b>	<b>1.9%</b>	<b>1.6%</b>	<b>2.1%</b>	<b>2.1%</b>
<b>Social Care</b>	<b>0.3%</b>	<b>0.3%</b>				<b>0.3%</b>	<b>0.3%</b>
<b>Social Workers</b>	<b>5.4%</b>	<b>5.1%</b>	<b>5.1%</b>	<b>5.8%</b>	<b>4.8%</b>	<b>4.9%</b>	<b>4.8%</b>
<b>Psychologists</b>	<b>16.7%</b>	<b>15.7%</b>	<b>14.4%</b>	<b>14.3%</b>	<b>17.1%</b>	<b>16.9%</b>	<b>16.5%</b>
<b>Pharmacy</b>	<b>0.8%</b>	<b>0.9%</b>	<b>0.8%</b>	<b>0.9%</b>	<b>1.2%</b>	<b>1.4%</b>	<b>1.4%</b>
Counsellor Therapists	3.4%	3.6%	4.8%	4.8%	3.6%	3.4%	3.6%
Dental Hygienists	4.0%	3.7%	3.6%	3.8%	3.8%	3.7%	3.7%
Other Health & Social Care	0.3%	0.3%	0.3%	0.3%	0.3%	0.3%	0.3%
<b>H&amp;SC, Other</b>	<b>7.6%</b>	<b>7.6%</b>	<b>8.7%</b>	<b>8.9%</b>	<b>7.7%</b>	<b>7.4%</b>	<b>7.6%</b>
<b>Health &amp; Social Care Professionals</b>	<b>23.5%</b>	<b>22.4%</b>	<b>23.6%</b>	<b>23.0%</b>	<b>23.6%</b>	<b>23.5%</b>	<b>23.5%</b>
Executive Management	0.8%	1.9%	2.0%	1.9%	2.0%	2.5%	2.3%
Senior Management (VIII & GM)	7.8%	8.2%	8.3%	8.9%	9.6%	8.6%	8.3%
<b>Management (VIII &amp; above)</b>	<b>8.5%</b>	<b>10.1%</b>	<b>10.3%</b>	<b>10.8%</b>	<b>11.7%</b>	<b>11.1%</b>	<b>10.6%</b>
<b>Administrative/ Supervisory (V to VII)</b>	<b>14.9%</b>	<b>15.8%</b>	<b>16.7%</b>	<b>19.6%</b>	<b>20.0%</b>	<b>20.1%</b>	<b>20.3%</b>
<b>Clerical (III &amp; IV)</b>	<b>76.5%</b>	<b>74.1%</b>	<b>73.0%</b>	<b>69.5%</b>	<b>68.3%</b>	<b>68.8%</b>	<b>69.1%</b>
<b>Management &amp; Administrative</b>	<b>28.0%</b>	<b>28.5%</b>	<b>28.0%</b>	<b>28.6%</b>	<b>29.3%</b>	<b>27.1%</b>	<b>27.1%</b>
<b>Support</b>	<b>88.5%</b>	<b>93.1%</b>	<b>89.8%</b>	<b>88.8%</b>	<b>88.9%</b>	<b>87.8%</b>	<b>87.7%</b>
<b>Maintenance/ Technical</b>	<b>11.5%</b>	<b>6.9%</b>	<b>10.2%</b>	<b>11.2%</b>	<b>11.1%</b>	<b>12.2%</b>	<b>12.3%</b>
<b>General Support</b>	<b>1.9%</b>	<b>1.8%</b>	<b>2.0%</b>	<b>1.8%</b>	<b>1.9%</b>	<b>1.6%</b>	<b>1.6%</b>
HCA, Nurse's Aide, etc.	11.4%	11.7%	11.3%	10.5%	8.5%	6.2%	18.6%



Nov 2020 (Dec 2018 figure: 1,422)	WTE Dec 2015	WTE Dec 2016	WTE Dec 2017	WTE Dec 2018	WTE Dec 2019	WTE Oct 2020	WTE Nov 2020
<b>Primary Care</b>	<b>1,393</b>	<b>1,457</b>	<b>1,436</b>	<b>1,422</b>	<b>1,386.65</b>	<b>1,429.12</b>	<b>1,456.49</b>
Health & Social Care Assistants	0.6%	0.8%	0.9%	11.5%	8.8%	10.1%	8.4%
<b>Health Care Assistants</b>	<b>12.1%</b>	<b>12.5%</b>	<b>12.2%</b>	<b>22.1%</b>	<b>17.3%</b>	<b>16.2%</b>	<b>27.0%</b>
Community Welfare Officers	0.8%	0.8%	0.8%	0.8%			
Other Care Grades	86.6%	86.1%	86.0%	77.0%	82.4%	83.8%	73.0%
<b>Care, other</b>	<b>87.3%</b>	<b>86.9%</b>	<b>86.8%</b>	<b>77.7%</b>	<b>82.4%</b>	<b>83.8%</b>	<b>73.0%</b>
<b>Home Help</b>	<b>0.6%</b>	<b>0.6%</b>	<b>1.0%</b>	<b>0.2%</b>	<b>0.3%</b>		
<b>Patient &amp; Client Care</b>	<b>9.5%</b>	<b>8.9%</b>	<b>8.5%</b>	<b>9.2%</b>	<b>9.5%</b>	<b>9.5%</b>	<b>9.5%</b>
<b>Total</b>	<b>100 %</b>	<b>100 %</b>	<b>100 %</b>	<b>100 %</b>	<b>100 %</b>	<b>100 %</b>	<b>100%</b>

Nov 2020 (Dec 2018 figure: 2,134)	WTE Dec 2015	WTE Dec 2016	WTE Dec 2017	WTE Dec 2018	WTE Dec 2019	WTE Oct 2020	WTE Nov 2020
<b>Disabilities</b>	<b>1,843</b>	<b>1,984</b>	<b>2,078</b>	<b>2,134</b>	<b>2,162.12</b>	<b>2,170.56</b>	<b>2,193.57</b>
Consultant Psychiatry	33.3%	33.3%	33.3%	33.3%	25.0%	33.3%	33.3%
<b>Consultants</b>	<b>33.3%</b>	<b>33.3%</b>	<b>33.3%</b>	<b>33.3%</b>	<b>25.0%</b>	<b>33.3%</b>	<b>33.3%</b>
<b>Registrars</b>	<b>33.3%</b>	<b>33.3%</b>	<b>33.3%</b>	<b>33.3%</b>	<b>50.0%</b>	<b>33.3%</b>	<b>33.3%</b>
<b>Medical/ Dental, other</b>	<b>33.3%</b>	<b>33.3%</b>	<b>33.3%</b>	<b>33.3%</b>	<b>25.0%</b>	<b>33.3%</b>	<b>33.3%</b>
<b>Medical &amp; Dental</b>	<b>0.2%</b>	<b>0.2%</b>	<b>0.1%</b>	<b>0.1%</b>	<b>0.1%</b>	<b>0.1%</b>	<b>0.1%</b>
Clinical Nurse/ Midwife Manager	22.2%	22.7%	22.6%	22.7%	23.5%	18.9%	22.9%
Director Nursing/Midwifery, Assistant	1.6%	2.1%	2.4%	2.3%	2.3%	1.6%	2.0%
Director of Nursing/Midwifery	1.3%	1.0%	1.1%	1.1%	1.2%	1.3%	1.3%
<b>Nurse/ Midwife Manager</b>	<b>25.1%</b>	<b>25.9%</b>	<b>26.0%</b>	<b>26.1%</b>	<b>27.0%</b>	<b>21.8%</b>	<b>26.3%</b>
Advanced Nurse/ Midwife Practitioner						0.4%	0.2%
Clinical Nurse/ Midwife Specialist	2.1%	2.0%	1.7%	1.6%	1.6%	0.5%	1.3%
<b>Nurse/ Midwife Specialist &amp; AN/MP</b>	<b>2.1%</b>	<b>2.0%</b>	<b>1.7%</b>	<b>1.6%</b>	<b>1.6%</b>	<b>0.9%</b>	<b>1.5%</b>
Staff Nurse [Intellectual Disability]	55.9%	56.0%	57.3%	57.4%	50.9%	25.9%	49.8%
Staff Nurse [Psychiatric]	3.0%	2.0%	1.7%	1.7%	1.5%	3.4%	1.1%
Staff Nurses [General/ Children's]	12.8%	13.0%	12.1%	11.8%	17.6%	41.3%	18.9%
<b>Staff Nurse/ Staff Midwife</b>	<b>71.8%</b>	<b>71.0%</b>	<b>71.0%</b>	<b>70.8%</b>	<b>70.0%</b>	<b>70.6%</b>	<b>69.7%</b>
<b>Public Health Nurse</b>	<b>0.1%</b>	<b>0.2%</b>		<b>0.2%</b>	<b>0.2%</b>	<b>0.2%</b>	<b>0.2%</b>
Pre-registration Nurse/ Midwife Intern				0.1%		0.2%	
Pre-registration Nurse Intern (COVID-19)						0.2%	1.1%
<b>Nursing/ Midwifery Student</b>				<b>0.1%</b>		<b>0.4%</b>	<b>1.1%</b>
<b>Nursing/ Midwifery other</b>	<b>0.9%</b>	<b>1.0%</b>	<b>1.2%</b>	<b>1.2%</b>	<b>1.2%</b>	<b>6.0%</b>	<b>1.2%</b>
<b>Nursing &amp; Midwifery</b>	<b>24.9%</b>	<b>23.2%</b>	<b>21.9%</b>	<b>21.6%</b>	<b>21.3%</b>	<b>20.7%</b>	<b>20.7%</b>
Occupational Therapists	6.8%	9.0%	7.7%	6.7%	7.2%	7.5%	7.6%
Physiotherapists	4.9%	4.3%	4.4%	4.0%	4.3%	3.8%	3.6%
Speech & Language Therapists	5.0%	8.0%	7.3%	7.0%	6.4%	7.3%	7.2%
<b>Therapy Professions</b>	<b>16.7%</b>	<b>21.3%</b>	<b>19.4%</b>	<b>17.8%</b>	<b>18.0%</b>	<b>18.5%</b>	<b>18.4%</b>
Clinical Engineering		0.5%	0.4%	0.4%	0.4%	0.4%	0.4%
<b>Health Science/ Diagnostics</b>		<b>0.5%</b>	<b>0.4%</b>	<b>0.4%</b>	<b>0.4%</b>	<b>0.4%</b>	<b>0.4%</b>
<b>Social Care</b>	<b>72.6%</b>	<b>67.5%</b>	<b>68.8%</b>	<b>71.2%</b>	<b>70.7%</b>	<b>71.1%</b>	<b>70.9%</b>
<b>Social Workers</b>	<b>4.6%</b>	<b>5.2%</b>	<b>5.5%</b>	<b>5.1%</b>	<b>4.7%</b>	<b>4.6%</b>	<b>4.5%</b>
<b>Psychologists</b>	<b>4.6%</b>	<b>4.2%</b>	<b>4.7%</b>	<b>4.2%</b>	<b>4.9%</b>	<b>4.1%</b>	<b>4.5%</b>
Counsellor Therapists	1.2%	1.0%	0.9%	0.9%	1.0%	1.0%	1.0%
Other Health & Social Care	0.2%	0.1%	0.1%	0.2%	0.1%	0.1%	0.1%
Play Therapists/ Specialists	0.3%	0.2%	0.2%	0.2%	0.2%	0.2%	0.2%
<b>H&amp;SC, Other</b>	<b>1.6%</b>	<b>1.4%</b>	<b>1.3%</b>	<b>1.3%</b>	<b>1.4%</b>	<b>1.3%</b>	<b>1.3%</b>
<b>Health &amp; Social Care Professionals</b>	<b>20.1%</b>	<b>22.1%</b>	<b>23.5%</b>	<b>23.3%</b>	<b>23.0%</b>	<b>24.3%</b>	<b>24.3%</b>
Executive Management	0.7%	0.7%	1.3%	1.3%	0.7%	0.6%	0.6%
Senior Management (VIII & GM)	8.5%	8.7%	10.6%	6.0%	5.2%	7.6%	7.7%
<b>Management (VIII &amp; above)</b>	<b>9.3%</b>	<b>9.4%</b>	<b>12.0%</b>	<b>7.4%</b>	<b>5.9%</b>	<b>8.2%</b>	<b>8.3%</b>
<b>Administrative/ Supervisory (V to VII)</b>	<b>34.6%</b>	<b>36.4%</b>	<b>33.3%</b>	<b>36.4%</b>	<b>37.6%</b>	<b>36.1%</b>	<b>34.8%</b>
<b>Clerical (III &amp; IV)</b>	<b>56.1%</b>	<b>54.2%</b>	<b>54.7%</b>	<b>56.3%</b>	<b>56.5%</b>	<b>55.6%</b>	<b>56.9%</b>
<b>Management &amp; Administrative</b>	<b>7.4%</b>	<b>6.9%</b>	<b>7.2%</b>	<b>7.0%</b>	<b>6.9%</b>	<b>7.1%</b>	<b>7.1%</b>
<b>Support</b>	<b>82.6%</b>	<b>79.5%</b>	<b>76.5%</b>	<b>74.6%</b>	<b>74.3%</b>	<b>73.4%</b>	<b>75.7%</b>
Maintenance	17.3%	20.3%	23.4%	25.2%	25.5%	26.5%	24.2%
Technical Services	0.1%	0.1%	0.1%	0.1%	0.2%	0.2%	0.2%
<b>Maintenance/ Technical</b>	<b>17.4%</b>	<b>20.5%</b>	<b>23.5%</b>	<b>25.4%</b>	<b>25.7%</b>	<b>26.6%</b>	<b>24.3%</b>
<b>General Support</b>	<b>4.8%</b>	<b>4.3%</b>	<b>3.5%</b>	<b>3.1%</b>	<b>3.1%</b>	<b>2.6%</b>	<b>2.6%</b>
HCA, Nurse's Aide, etc.	81.9%	82.5%	83.3%	84.9%	85.9%	86.0%	86.0%
Health & Social Care Assistants				0.3%	0.1%		
<b>Health Care Assistants</b>	<b>81.9%</b>	<b>82.5%</b>	<b>83.3%</b>	<b>85.3%</b>	<b>86.0%</b>	<b>86.0%</b>	<b>86.0%</b>
<b>Care, other</b>	<b>15.1%</b>	<b>14.9%</b>	<b>13.9%</b>	<b>12.4%</b>	<b>11.7%</b>	<b>11.6%</b>	<b>11.7%</b>

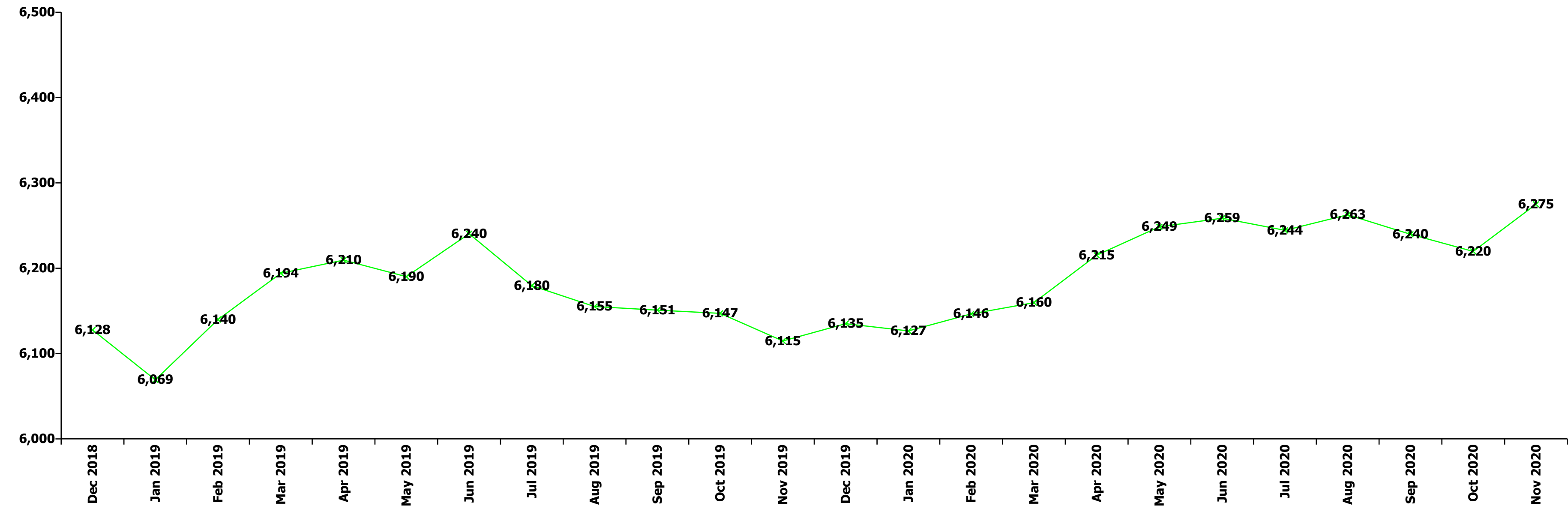
Nov 2020 (Dec 2018 figure: 2,134)	WTE Dec 2015	WTE Dec 2016	WTE Dec 2017	WTE Dec 2018	WTE Dec 2019	WTE Oct 2020	WTE Nov 2020
<b>Disabilities</b>	<b>1,843</b>	<b>1,984</b>	<b>2,078</b>	<b>2,134</b>	<b>2,162.12</b>	<b>2,170.56</b>	<b>2,193.57</b>
Home Help	3.1%	2.6%	2.8%	2.3%	2.3%	2.4%	2.3%
Patient & Client Care	42.7%	43.4%	43.8%	44.8%	44.2%	45.2%	45.2%
<b>Total</b>	<b>100 %</b>	<b>100 %</b>	<b>100 %</b>	<b>100 %</b>	<b>100 %</b>	<b>100 %</b>	<b>100%</b>

Nov 2020 (Dec 2018 figure: 1,503)	WTE Dec 2015	WTE Dec 2016	WTE Dec 2017	WTE Dec 2018	WTE Dec 2019	WTE Oct 2020	WTE Nov 2020
<b>Older People</b>	<b>1,536</b>	<b>1,531</b>	<b>1,498</b>	<b>1,503</b>	<b>1,488.29</b>	<b>1,476.98</b>	<b>1,481.48</b>
Medical/ Dental, other	100.0%	100.0%	100.0%	100.0%	100.0%	100.0%	100.0%
<b>Medical &amp; Dental</b>	<b>0.7%</b>	<b>0.7%</b>	<b>0.7%</b>	<b>0.8%</b>	<b>0.8%</b>	<b>0.7%</b>	<b>0.7%</b>
Clinical Nurse/ Midwife Manager	17.4%	17.6%	17.1%	16.2%	15.5%	17.1%	16.9%
Director Nursing/Midwifery, Assistant	3.5%	2.4%	3.8%	3.8%	4.4%	4.5%	4.3%
Director of Nursing/Midwifery	3.0%	3.6%	3.8%	3.6%	3.3%	4.0%	3.9%
<b>Nurse/ Midwife Manager</b>	<b>23.9%</b>	<b>23.6%</b>	<b>24.7%</b>	<b>23.5%</b>	<b>23.2%</b>	<b>25.6%</b>	<b>25.1%</b>
Advanced Nurse/ Midwife Practitioner						0.1%	0.6%
Clinical Nurse/ Midwife Specialist	0.8%	0.8%	0.9%	0.9%	0.6%	0.8%	0.7%
<b>Nurse/ Midwife Specialist &amp; AN/MP</b>	<b>0.8%</b>	<b>0.8%</b>	<b>0.9%</b>	<b>0.9%</b>	<b>0.6%</b>	<b>1.0%</b>	<b>1.2%</b>
Staff Nurse [Intellectual Disability]	0.3%	0.3%					
Staff Nurse [Psychiatric]	0.3%	0.3%	0.3%	0.3%	0.3%	0.3%	0.3%
Staff Nurses [General/ Children's]	73.7%	74.0%	73.0%	74.3%	75.2%	72.0%	72.2%
<b>Staff Nurse/ Staff Midwife</b>	<b>74.3%</b>	<b>74.5%</b>	<b>73.3%</b>	<b>74.6%</b>	<b>75.5%</b>	<b>72.3%</b>	<b>72.5%</b>
<b>Public Health Nurse</b>	<b>1.1%</b>	<b>1.1%</b>	<b>1.1%</b>	<b>1.0%</b>	<b>0.7%</b>	<b>0.8%</b>	<b>0.8%</b>
Nursing Education/Clinical						0.3%	0.4%
<b>Nursing/ Midwifery other</b>						<b>0.3%</b>	<b>0.4%</b>
<b>Nursing &amp; Midwifery</b>	<b>23.8%</b>	<b>23.4%</b>	<b>22.8%</b>	<b>22.2%</b>	<b>22.4%</b>	<b>24.0%</b>	<b>24.0%</b>
Dietitians	1.3%			3.4%	3.4%		2.7%
Occupational Therapists	21.2%	24.3%	28.0%	29.2%	29.7%	29.1%	29.0%
Physiotherapists	33.3%	33.4%	32.0%	26.1%	25.5%	30.3%	29.0%
Podiatrists & Chiropodists	4.4%	3.0%	3.4%	3.1%	3.4%		
Speech & Language Therapists	6.8%	6.9%	10.1%	9.4%	7.5%	9.8%	9.5%
<b>Therapy Professions</b>	<b>66.9%</b>	<b>67.6%</b>	<b>73.5%</b>	<b>71.2%</b>	<b>69.5%</b>	<b>69.3%</b>	<b>70.2%</b>
Radiographers	7.3%	8.1%	8.5%				
<b>Health Science/ Diagnostics</b>	<b>7.3%</b>	<b>8.1%</b>	<b>8.5%</b>				
<b>Social Workers</b>	<b>22.0%</b>	<b>20.8%</b>	<b>14.4%</b>	<b>22.0%</b>	<b>22.1%</b>	<b>23.7%</b>	<b>23.2%</b>
<b>Pharmacy</b>	<b>3.7%</b>	<b>3.5%</b>	<b>3.6%</b>	<b>6.8%</b>	<b>8.4%</b>	<b>7.0%</b>	<b>6.6%</b>
<b>Health &amp; Social Care Professionals</b>	<b>1.8%</b>	<b>1.9%</b>	<b>1.9%</b>	<b>2.0%</b>	<b>2.0%</b>	<b>2.0%</b>	<b>2.0%</b>
Management (VIII & above)	3.6%	3.9%	2.5%	3.4%	5.8%	7.7%	7.0%
Administrative/ Supervisory (V to VII)	16.2%	17.8%	18.6%	22.5%	21.2%	20.9%	21.8%
Clerical (III & IV)	80.2%	78.3%	78.9%	74.1%	73.0%	71.4%	71.2%
<b>Management &amp; Administrative</b>	<b>4.9%</b>	<b>4.8%</b>	<b>4.7%</b>	<b>5.4%</b>	<b>5.5%</b>	<b>6.6%</b>	<b>6.6%</b>
<b>Support</b>	<b>55.3%</b>	<b>54.2%</b>	<b>53.5%</b>	<b>51.7%</b>	<b>52.0%</b>	<b>53.2%</b>	<b>52.8%</b>
<b>Maintenance/ Technical</b>	<b>44.7%</b>	<b>45.8%</b>	<b>46.5%</b>	<b>48.3%</b>	<b>48.0%</b>	<b>46.8%</b>	<b>47.2%</b>
<b>General Support</b>	<b>3.2%</b>	<b>3.1%</b>	<b>3.1%</b>	<b>3.3%</b>	<b>3.4%</b>	<b>3.3%</b>	<b>3.3%</b>
HCA, Nurse's Aide, etc.	61.7%	60.5%	59.6%	56.7%	57.0%	58.0%	58.0%
Health & Social Care Assistants	0.3%	0.3%	0.3%	0.3%	0.2%	0.2%	0.2%
<b>Health Care Assistants</b>	<b>62.0%</b>	<b>60.8%</b>	<b>59.9%</b>	<b>56.9%</b>	<b>57.2%</b>	<b>58.1%</b>	<b>58.2%</b>
<b>Care, other</b>	<b>2.2%</b>	<b>2.3%</b>	<b>2.1%</b>	<b>2.1%</b>	<b>2.1%</b>	<b>2.2%</b>	<b>2.2%</b>
<b>Home Help</b>	<b>35.8%</b>	<b>37.0%</b>	<b>38.0%</b>	<b>41.0%</b>	<b>40.7%</b>	<b>39.6%</b>	<b>39.6%</b>
<b>Patient &amp; Client Care</b>	<b>65.7%</b>	<b>66.0%</b>	<b>66.8%</b>	<b>66.3%</b>	<b>66.9%</b>	<b>63.3%</b>	<b>63.3%</b>
<b>Total</b>	<b>100 %</b>	<b>100 %</b>	<b>100 %</b>	<b>100 %</b>	<b>100 %</b>	<b>100 %</b>	<b>100%</b>

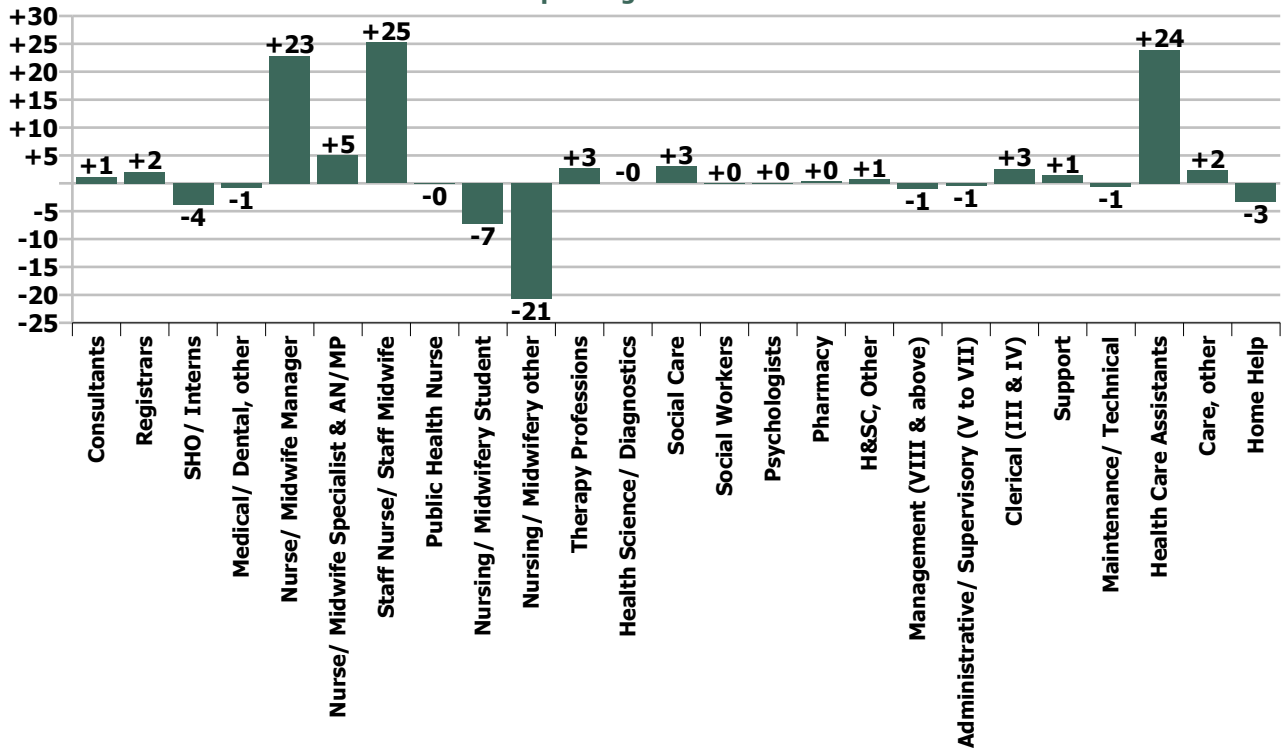
Summary Staff Movement: November 2020

Month-on-month Summary																												
WTE change since Oct 20	% change since Oct 20	overall	Consultants	Registrars	SHO/ Interns	Medical/ Dental, other	Medical & Dental	Nurse/ Midwife Manager	Nurse/ Midwife Specialist & AN/MP	Staff Nurse/ Staff Midwife	Public Health Nurse	Nursing/ Midwifery Student	Nursing/ Midwifery other	Nursing & Midwifery	Therapy Professions	Health Science/ Diagnostics	Social Care	Social Workers	Psychologists	Pharmacy	H&SC, Other	Health & Social Care Professionals	Management (VIII & above)	Administrative/ Supervisory (V to VII)	Clerical (III & IV)	Management & Administrative	General Support	Patient & Client Care
Overall	+0.9%	+55	+1.2	+2.1	-3.8	-0.8	-1.4	+22.9	+5.0	+25.2	-0.1	-7.3	-20.8	+25.0	+2.7	-0.0	+3.0	+0.0	+0.1	+0.3	+0.7	+6.9	-1.0	-0.5	+2.6	+1.1	+0.8	+22.8
Community Health & Wellbeing	+8.9%	+2													+0.0							+0.0	+1.9	+0.5	+0.1	+2.4		
Mental Health	-0.2%	-2	+1.2	+1.5	-3.8		-1.1	-0.3	-1.1	+11.7		-12.8	+0.0	-2.4	+0.5		-0.1	+0.4	-0.9	+0.3	-0.1	+0.2	-0.1	-0.4	-0.2	-0.6	+0.5	+1.3
Primary Care	+1.9%	+27	-0.0	+0.6	-0.0	-0.8	-0.3	+0.9	+2.1	+5.2	-0.1	+2.6	+0.1	+10.6	+0.5	-0.0	0.0	-0.4	-1.2	+0.0	+0.7	-0.3	-2.2	+0.8	+1.1	-0.3	+0.1	+17.5
Disabilities	+1.1%	+23	0.0	0.0		0.0	0.0	+22.1	+3.0	+2.2	-0.0	+3.0	-21.1	+9.1	+0.3	0.0	+3.1	-0.2	+2.1		+0.1	+5.4	-0.0	-2.6	+1.2	-1.4	+1.2	+8.7
Older People	+0.3%	+4				0.0	0.0	+0.1	+1.0	+6.2	0.0		+0.3	+7.6	+1.3			+0.2		0.0		+1.6	-0.6	+1.1	+0.5	+1.0	-1.0	-4.7
Social Care	+0.8%	+28	0.0	0.0		0.0	-0.0	+22.2	+4.0	+8.4	-0.0	+3.0	-20.8	+16.7	+1.6	0.0	+3.1	+0.0	+2.1	0.0	+0.1	+6.9	-0.6	-1.5	+1.6	-0.4	+0.3	+4.0
Change	+55.2	+0.9%	+2.8%	+1.8%	-12.8%	-1.1%	-0.5%	+6.5%	+4.9%	+2.5%	-0.1%	-24.0%	-65.8%	+1.5%	+0.7%	-0.2%	+0.8%	+0.0%	+0.1%	+4.3%	+1.4%	+0.7%	-1.5%	-0.3%	+0.5%	+0.1%	+0.4%	+1.0%

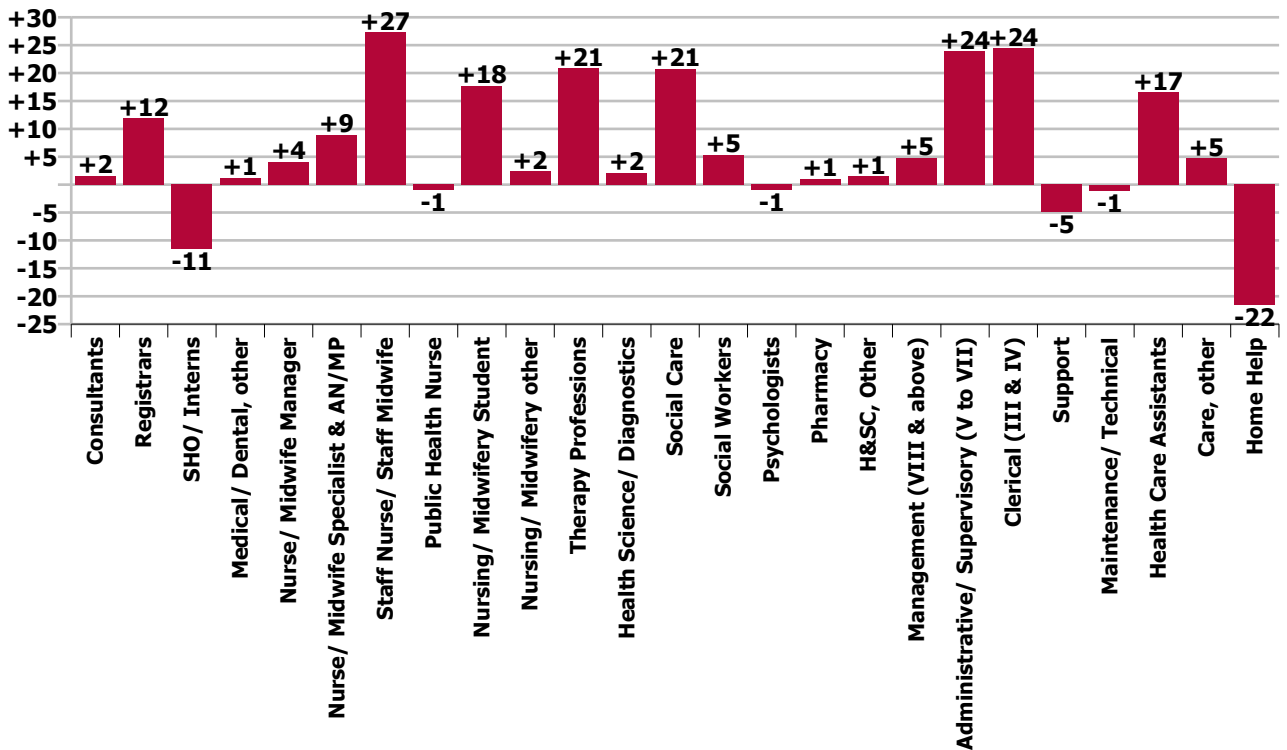
Year-on-year Summary																												
WTE change since Nov 19	% change since Nov 19	overall	Consultants	Registrars	SHO/ Interns	Medical/ Dental, other	Medical & Dental	Nurse/ Midwife Manager	Nurse/ Midwife Specialist & AN/MP	Staff Nurse/ Staff Midwife	Public Health Nurse	Nursing/ Midwifery Student	Nursing/ Midwifery other	Nursing & Midwifery	Therapy Professions	Health Science/ Diagnostics	Social Care	Social Workers	Psychologists	Pharmacy	H&SC, Other	Health & Social Care Professionals	Management (VIII & above)	Administrative/ Supervisory (V to VII)	Clerical (III & IV)	Management & Administrative	General Support	Patient & Client Care
Overall	+2.6%	+160	+1.6	+11.9	-11.5	+1.2	+3.2	+4.1	+8.9	+27.3	-0.9	+17.7	+2.4	+59.5	+20.9	+2.1	+20.7	+5.4	-0.9	+1.0	+1.5	+50.7	+4.8	+23.9	+24.4	+53.1	-6.0	-0.3
Community Health & Wellbeing	+8.9%	+2													+1.4							+1.4	+2.9	+21.5	+4.0	+28.4		
Mental Health	-0.2%	-2	+0.5	+7.3	-11.0		-3.2	-5.3	+3.5	+5.7		+3.0	0.0	+6.8	-1.5		-0.2	+4.7	-1.5	+0.5	+0.6	+2.6	-0.0	-2.0	+11.5	+9.5	-0.1	-0.1
Primary Care	+1.9%	+27	+1.1	+5.5	-0.4	+1.2	+7.3	-0.3	+3.3	+4.4	-1.5	+9.9	+0.9	+16.8	+10.0	+2.1	+1.0	+0.3	+1.2	+1.0	+1.1	+16.7	-3.1	+3.2	+6.3	+6.4	-1.9	+17.0
Disabilities	+2.6%	+55.2	0.0	-1.0		0.0	-1.0	-1.3	-0.2	+7.1	-0.0	+4.9	+0.2	+10.7	+10.2	0.0	+19.9	-0.0	-0.6		-0.2	+29.4	+3.0	-1.5	+3.2	+4.7	-4.1	+15.5
Older People	-0.2%	-2.6				0.0	0.0	+11.0	+2.3	+10.1	+0.5		+1.3	+25.3	+0.7			+0.4		-0.5		+0.6	+2.0	+2.6	-0.6	+4.1	+0.1	-32.7
Social Care	+0.8%	+28	0.0	-1.0		0.0	-0.9	+9.8	+2.2	+17.2	+0.5	+4.9	+1.5	+36.0	+10.9	0.0	+19.9	+0.4	-0.6	-0.5	-0.2	+30.0	+5.1	+1.1	+2.7	+8.8	-4.1	-17.2
Change	+160.2	+2.6%	+3.7%	+11.2%	-30.7%	+1.7%	+1.2%	+1.1%	+9.0%	+2.7%	-0.5%	+323.2%	+28.2%	+3.5%	+5.6%	+28.9%	+5.7%	+6.1%	-0.8%	+14.3%	+2.9%	+5.0%	+7.7%	+13.8%	+4.8%	+7.1%	-3.1%	-0.0%



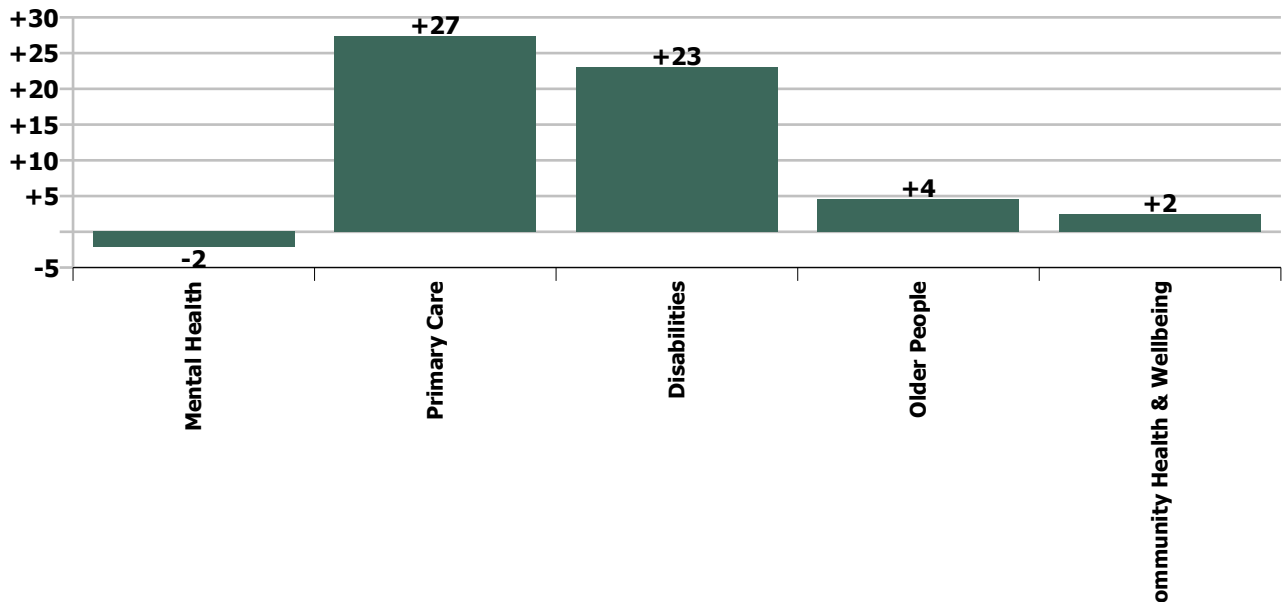
Staff Group change since: Oct 2020



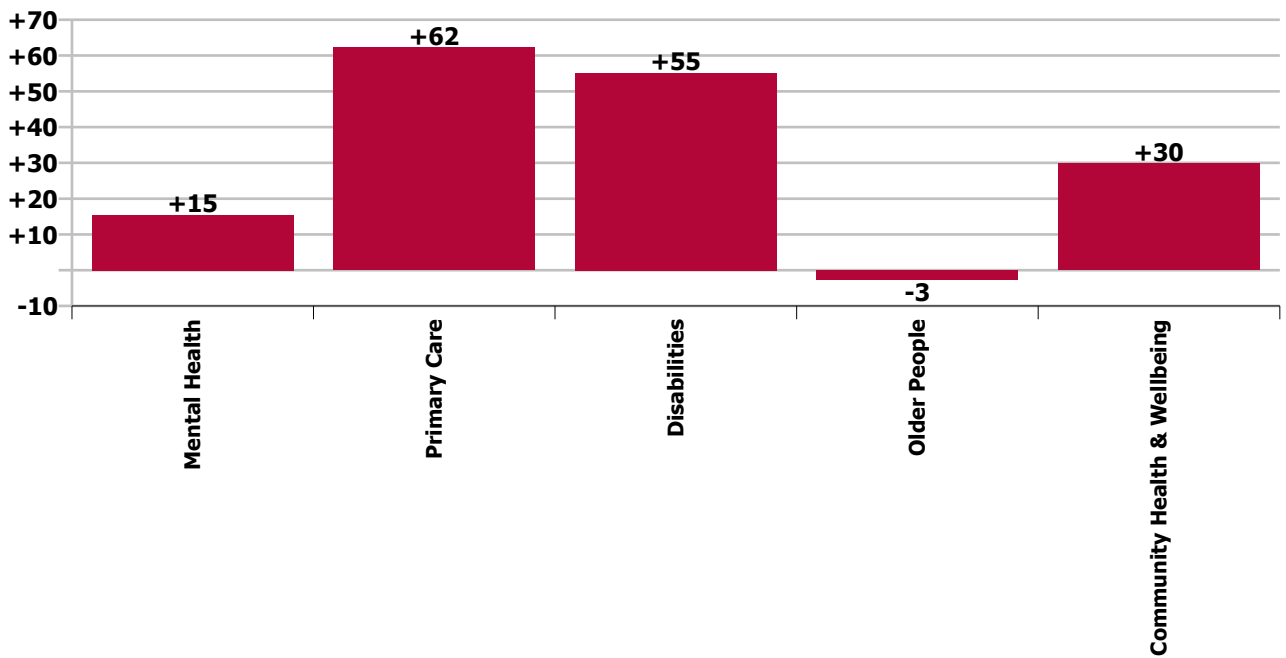
Staff Group change since: Nov 2019



Care Group change since: Oct 2020



Care Group change since: Nov 2019



## Longitudinal Employment Levels by Grade Group - Oct 2013 to Nov 2020

Nov 2020 (Dec 2015 figure: 5,814)	WTE Nov 2020	WTE change since Dec 15	WTE change since Dec 16	WTE change since Dec 17	WTE change since Dec 18	WTE change since Dec 19	WTE change since Oct 20	% change since Dec 15	% change since Dec 16	% change since Dec 17	% change since Dec 18	% change since Dec 19	% change since Oct 20
<b>Overall</b>	<b>6,275</b>	<b>+461</b>	<b>+261</b>	<b>+183</b>	<b>+147</b>	<b>+140</b>	<b>+55</b>	<b>+7.9%</b>	<b>+4.3%</b>	<b>+3.0%</b>	<b>+2.4%</b>	<b>+2.3%</b>	<b>+0.9%</b>
Consultant Dentistry	1						-0						-1.1%
Consultant Medicine	6	+2	+2	+1	+2	+1		+50.0%	+50.0%	+20.0%	+51.5%	+20.0%	
Consultant Psychiatry	37	+1	-0	+2	+1	+0	+1	+1.8%	-0.2%	+6.9%	+3.4%	+0.9%	+3.3%
<b>Consultants</b>	<b>44</b>	<b>+3</b>	<b>+2</b>	<b>+3</b>	<b>+3</b>	<b>+1</b>	<b>+1</b>	<b>+6.4%</b>	<b>+4.7%</b>	<b>+8.4%</b>	<b>+8.1%</b>	<b>+3.1%</b>	<b>+2.8%</b>
Registrar	104	+25	+19	+16	+18	+12	+2	+31.3%	+21.6%	+18.6%	+20.6%	+13.1%	+1.8%
Senior Registrar	14	+4	+3	+0	+1	+0	+0	+46.0%	+26.0%	+0.3%	+8.8%	+1.3%	+1.7%
<b>Registrars</b>	<b>118</b>	<b>+29</b>	<b>+21</b>	<b>+16</b>	<b>+19</b>	<b>+12</b>	<b>+2</b>	<b>+32.8%</b>	<b>+22.1%</b>	<b>+16.1%</b>	<b>+19.1%</b>	<b>+11.6%</b>	<b>+1.8%</b>
Interns		-1	-1					-100.0%	-100.0%	-100.0%	-100.0%	-100.0%	-100.0%
Senior House Officer	26	-5	-1	-0	-2	-12	-4	-16.1%	-3.6%	-0.2%	-7.0%	-31.9%	-12.8%
<b>SHO/ Interns</b>	<b>26</b>	<b>-6</b>	<b>-2</b>	<b>-0</b>	<b>-2</b>	<b>-12</b>	<b>-4</b>	<b>-18.8%</b>	<b>-7.0%</b>	<b>-0.2%</b>	<b>-7.0%</b>	<b>-31.9%</b>	<b>-12.8%</b>
Dentists	37	+4	+2	+3	+4	+2	+1	+11.6%	+4.7%	+8.9%	+13.6%	+4.6%	+2.4%
Other Medical	35	+1	+2	+2	-1	-2	-2	+3.9%	+4.5%	+4.5%	-2.0%	-4.5%	-4.6%
<b>Medical/ Dental, other</b>	<b>72</b>	<b>+5</b>	<b>+3</b>	<b>+5</b>	<b>+4</b>	<b>-0</b>	<b>-1</b>	<b>+7.7%</b>	<b>+4.6%</b>	<b>+6.7%</b>	<b>+5.4%</b>	<b>-0.0%</b>	<b>-1.1%</b>
<b>Medical &amp; Dental</b>	<b>260</b>	<b>+31</b>	<b>+25</b>	<b>+24</b>	<b>+24</b>	<b>+1</b>	<b>-1</b>	<b>+13.6%</b>	<b>+10.4%</b>	<b>+10.3%</b>	<b>+10.1%</b>	<b>+0.5%</b>	<b>-0.5%</b>
Clinical Nurse/ Midwife Manager	285	-4	-15	-15	-11	-2	+20	-1.4%	-4.9%	-4.9%	-3.9%	-0.8%	+7.7%
Director Nursing/Midwifery, Assistant	64	+10	+7	+5	+3	+4	+2	+19.2%	+11.6%	+7.8%	+4.2%	+6.1%	+4.0%
Director of Nursing/Midwifery	28	+3	+2	+1	+6	+4	-0	+12.5%	+8.8%	+4.1%	+28.1%	+15.2%	-0.1%
<b>Nurse/ Midwife Manager</b>	<b>377</b>	<b>+9</b>	<b>-6</b>	<b>-9</b>	<b>-3</b>	<b>+5</b>	<b>+23</b>	<b>+2.5%</b>	<b>-1.5%</b>	<b>-2.3%</b>	<b>-0.7%</b>	<b>+1.4%</b>	<b>+6.5%</b>
Advanced Nurse/ Midwife Practitioner	9	+9	+8	+8	+7	+5	+1	-100.0%	+790.0%	+790.0%	+345.0%	+124.7%	+11.0%
Clinical Nurse/ Midwife Specialist	100	+10	+3	+3	+3	+4	+4	+10.6%	+2.7%	+3.4%	+2.6%	+3.9%	+4.4%
<b>Nurse/ Midwife Specialist &amp; AN/MP</b>	<b>108</b>	<b>+18</b>	<b>+11</b>	<b>+11</b>	<b>+9</b>	<b>+9</b>	<b>+5</b>	<b>+20.5%</b>	<b>+10.7%</b>	<b>+11.4%</b>	<b>+9.5%</b>	<b>+8.7%</b>	<b>+4.9%</b>
Staff Nurse [Intellectual Disability]	226	-32	-33	-35	-39	-6	+111	-12.3%	-12.6%	-13.4%	-14.7%	-2.5%	+96.0%
Staff Nurse [Psychiatric]	344	-7	+9	+12	+14	+10	+2	-2.1%	+2.8%	+3.7%	+4.3%	+3.1%	+0.7%
Staff Nurses [General/ Children's]	455	+21	+10	+36	+43	+22	-88	+4.9%	+2.3%	+8.5%	+10.4%	+5.0%	-16.2%
<b>Staff Nurse/ Staff Midwife</b>	<b>1,024</b>	<b>-18</b>	<b>-13</b>	<b>+13</b>	<b>+18</b>	<b>+26</b>	<b>+25</b>	<b>-1.7%</b>	<b>-1.3%</b>	<b>+1.3%</b>	<b>+1.8%</b>	<b>+2.7%</b>	<b>+2.5%</b>
<b>Public Health Nurse</b>	<b>199</b>	<b>+5</b>	<b>-0</b>	<b>+1</b>	<b>+2</b>	<b>+0</b>	<b>-0</b>	<b>+2.8%</b>	<b>-0.1%</b>	<b>+0.4%</b>	<b>+1.2%</b>	<b>+0.0%</b>	<b>-0.1%</b>
Pre-registration Nurse/ Midwife Intern	1	+1	+1	+1	+1	+1		-100.0%	-100.0%	+100.0%	+100.0%	+100.0%	
Pre-registration Nurse Intern (COVID-19)	10	+10	+10	+10	+10	+10	-10	-100.0%	-100.0%	-100.0%	-100.0%	-100.0%	-48.9%
Post-registration Nurse/ Midwife Student	12	+1	-4	-1	+4	+10	+3	+8.0%	-25.7%	-8.6%	+48.5%	+500.0%	+27.5%
Nursing/ Midwifery awaiting registration			-2	-1	-1	-2		-100.0%	-100.0%	-100.0%	-100.0%	-100.0%	-100.0%
<b>Nursing/ Midwifery Student</b>	<b>23</b>	<b>+12</b>	<b>+5</b>	<b>+9</b>	<b>+14</b>	<b>+19</b>	<b>-7</b>	<b>+110.8%</b>	<b>+28.8%</b>	<b>+65.2%</b>	<b>+141.8%</b>	<b>+417.6%</b>	<b>-24.0%</b>
Nursing Education/Clinical	11	+5	+5	+2	+3	+1	-21	+75.3%	+72.5%	+26.5%	+47.3%	+14.6%	-65.8%
<b>Nursing/ Midwifery other</b>	<b>11</b>	<b>+5</b>	<b>+5</b>	<b>+2</b>	<b>+3</b>	<b>+1</b>	<b>-21</b>	<b>+75.3%</b>	<b>+72.5%</b>	<b>+26.5%</b>	<b>+47.3%</b>	<b>+14.6%</b>	<b>-65.8%</b>



Nov 2020 (Dec 2015 figure: 5,814)	WTE Nov 2020	WTE change since Dec 15	WTE change since Dec 16	WTE change since Dec 17	WTE change since Dec 18	WTE change since Dec 19	WTE change since Oct 20	% change since Dec 15	% change since Dec 16	% change since Dec 17	% change since Dec 18	% change since Dec 19	% change since Oct 20
<b>Overall</b>	<b>6,275</b>	<b>+461</b>	<b>+261</b>	<b>+183</b>	<b>+147</b>	<b>+140</b>	<b>+55</b>	<b>+7.9%</b>	<b>+4.3%</b>	<b>+3.0%</b>	<b>+2.4%</b>	<b>+2.3%</b>	<b>+0.9%</b>
<b>Nursing &amp; Midwifery</b>	<b>1,743</b>	<b>+32</b>	<b>+1</b>	<b>+27</b>	<b>+44</b>	<b>+60</b>	<b>+25</b>	<b>+1.9%</b>	<b>+0.1%</b>	<b>+1.6%</b>	<b>+2.6%</b>	<b>+3.6%</b>	<b>+1.5%</b>
Dietitians	21	+8	+5	+4	+2	+1	+1	+58.0%	+30.2%	+22.4%	+13.0%	+7.3%	+4.7%
Occupational Therapists	148	+18	+15	+5	+12	+9	+2	+13.7%	+11.2%	+3.3%	+9.0%	+6.2%	+1.1%
Orthoptists	2	+1	+1	+1	+1	+2	+1	+300.0%	+263.6%	+263.6%	+263.6%	-100.0%	+201.9%
Physiotherapists	108	-0	-4	-2	-0	+2	-1	-0.4%	-3.3%	-2.2%	-0.0%	+1.4%	-1.3%
Podiatrists & Chiropodists	4	+1	+2	+0	-0	-0	+0	+46.0%	+72.2%	+9.0%	-5.4%	-7.7%	+2.2%
Speech & Language Therapists	111	+26	+3	-7	+1	+4	+0	+31.1%	+2.5%	-5.9%	+1.1%	+3.8%	+0.4%
<b>Therapy Professions</b>	<b>394</b>	<b>+54</b>	<b>+22</b>	<b>+1</b>	<b>+17</b>	<b>+17</b>	<b>+3</b>	<b>+15.9%</b>	<b>+5.9%</b>	<b>+0.2%</b>	<b>+4.5%</b>	<b>+4.5%</b>	<b>+0.7%</b>
Audiology	5	+1	+1	+1	+1	+2	-0	+28.2%	+20.6%	+23.1%	+23.1%	+64.7%	-0.4%
Clinical Engineering	4	+4						-100.0%					
Radiographers		-2	-2	-3				-100.0%	-100.0%	-100.0%	-100.0%	-100.0%	-100.0%
<b>Health Science/ Diagnostics</b>	<b>9</b>	<b>+3</b>	<b>-1</b>	<b>-2</b>	<b>+1</b>	<b>+2</b>	<b>-0</b>	<b>+51.5%</b>	<b>-13.2%</b>	<b>-16.7%</b>	<b>+12.0%</b>	<b>+28.9%</b>	<b>-0.2%</b>
<b>Social Care</b>	<b>386</b>	<b>+110</b>	<b>+82</b>	<b>+43</b>	<b>+25</b>	<b>+18</b>	<b>+3</b>	<b>+39.8%</b>	<b>+27.0%</b>	<b>+12.7%</b>	<b>+6.8%</b>	<b>+4.8%</b>	<b>+0.8%</b>
<b>Social Workers</b>	<b>93</b>	<b>+11</b>	<b>+5</b>	<b>+2</b>	<b>+2</b>	<b>+5</b>	<b>+0</b>	<b>+13.9%</b>	<b>+5.6%</b>	<b>+1.7%</b>	<b>+2.4%</b>	<b>+5.9%</b>	<b>+0.0%</b>
<b>Psychologists</b>	<b>118</b>	<b>+13</b>	<b>+18</b>	<b>+9</b>	<b>+12</b>	<b>-2</b>	<b>+0</b>	<b>+12.9%</b>	<b>+18.6%</b>	<b>+8.3%</b>	<b>+11.3%</b>	<b>-1.8%</b>	<b>+0.1%</b>
<b>Pharmacy</b>	<b>8</b>	<b>+5</b>	<b>+4</b>	<b>+4</b>	<b>+2</b>	<b>+1</b>	<b>+0</b>	<b>+132.1%</b>	<b>+81.4%</b>	<b>+74.2%</b>	<b>+40.4%</b>	<b>+14.3%</b>	<b>+4.3%</b>
Counsellor Therapists	38	+4	+3	-1	-1	+1	+1	+12.6%	+7.8%	-3.7%	-2.7%	+1.7%	+2.5%
Dental Hygienists	13	-1	+0	+0	+0	+0	-0	-3.9%	+3.1%	+2.0%	+1.0%	+2.1%	-1.4%
Other Health & Social Care	2	-0	-0	-0	-0	+0	-0	-6.3%	-8.8%	-4.6%	-10.3%	+1.2%	-1.2%
Play Therapists/ Specialists	1												
<b>H&amp;SC, Other</b>	<b>53</b>	<b>+4</b>	<b>+3</b>	<b>-1</b>	<b>-1</b>	<b>+1</b>	<b>+1</b>	<b>+7.3%</b>	<b>+5.9%</b>	<b>-2.4%</b>	<b>-2.0%</b>	<b>+1.8%</b>	<b>+1.4%</b>
<b>Health &amp; Social Care Professionals</b>	<b>1,061</b>	<b>+200</b>	<b>+133</b>	<b>+55</b>	<b>+58</b>	<b>+41</b>	<b>+7</b>	<b>+23.2%</b>	<b>+14.3%</b>	<b>+5.5%</b>	<b>+5.8%</b>	<b>+4.1%</b>	<b>+0.7%</b>
Executive Management	11	+7	+2	+1	+1	+2		+170.5%	+22.1%	+9.7%	+10.6%	+22.1%	
Senior Management (VIII & GM)	56	+9	+7	+3	+7	+3	-1	+18.1%	+13.4%	+6.0%	+13.1%	+5.2%	-1.7%
<b>Management (VIII &amp; above)</b>	<b>67</b>	<b>+15</b>	<b>+9</b>	<b>+4</b>	<b>+8</b>	<b>+5</b>	<b>-1</b>	<b>+29.9%</b>	<b>+14.8%</b>	<b>+6.6%</b>	<b>+12.7%</b>	<b>+7.6%</b>	<b>-1.5%</b>
Middle Management (V-VII)	197	+64	+54	+49	+23	+21	-1	+48.4%	+37.7%	+32.8%	+13.5%	+11.8%	-0.3%
Other Administrative			-1					-100.0%	-100.0%	-100.0%	-100.0%	-100.0%	-100.0%
<b>Administrative/ Supervisory (V to VII)</b>	<b>197</b>	<b>+64</b>	<b>+53</b>	<b>+49</b>	<b>+23</b>	<b>+21</b>	<b>-1</b>	<b>+48.4%</b>	<b>+36.8%</b>	<b>+32.8%</b>	<b>+13.5%</b>	<b>+11.8%</b>	<b>-0.3%</b>
<b>Clerical (III &amp; IV)</b>	<b>532</b>	<b>+17</b>	<b>+9</b>	<b>+11</b>	<b>+21</b>	<b>+25</b>	<b>+3</b>	<b>+3.2%</b>	<b>+1.7%</b>	<b>+2.1%</b>	<b>+4.2%</b>	<b>+5.0%</b>	<b>+0.5%</b>
<b>Management &amp; Administrative</b>	<b>797</b>	<b>+96</b>	<b>+70</b>	<b>+64</b>	<b>+52</b>	<b>+51</b>	<b>+1</b>	<b>+13.8%</b>	<b>+9.7%</b>	<b>+8.7%</b>	<b>+7.0%</b>	<b>+6.8%</b>	<b>+0.1%</b>
Catering	32	-5	-4	-1	-4	-1	-0	-14.4%	-11.7%	-3.8%	-12.0%	-3.9%	-1.2%
Household Services	55	-26	-17	-11	-2	-3	+1	-32.5%	-23.2%	-16.6%	-4.3%	-5.0%	+2.4%
Other Support	30	-3	-6	-8	-4	-2	+1	-9.5%	-18.0%	-20.8%	-11.6%	-6.5%	+1.9%
Portering	5	+1						+34.0%					
<b>Support</b>	<b>121</b>	<b>-34</b>	<b>-27</b>	<b>-20</b>	<b>-11</b>	<b>-6</b>	<b>+1</b>	<b>-21.7%</b>	<b>-18.3%</b>	<b>-14.1%</b>	<b>-8.1%</b>	<b>-4.9%</b>	<b>+1.2%</b>



Nov 2020 (Dec 2015 figure: 5,814)	WTE Nov 2020	WTE change since Dec 15	WTE change since Dec 16	WTE change since Dec 17	WTE change since Dec 18	WTE change since Dec 19	WTE change since Oct 20	% change since Dec 15	% change since Dec 16	% change since Dec 17	% change since Dec 18	% change since Dec 19	% change since Oct 20
<b>Overall</b>	<b>6,275</b>	<b>+461</b>	<b>+261</b>	<b>+183</b>	<b>+147</b>	<b>+140</b>	<b>+55</b>	<b>+7.9%</b>	<b>+4.3%</b>	<b>+3.0%</b>	<b>+2.4%</b>	<b>+2.3%</b>	<b>+0.9%</b>
Maintenance	68	-0	-1	-2	-4	-1	-1	-0.3%	-1.5%	-2.8%	-6.0%	-1.4%	-0.9%
Technical Services	0												
<b>Maintenance/ Technical</b>	<b>68</b>	<b>-0</b>	<b>-1</b>	<b>-2</b>	<b>-4</b>	<b>-1</b>	<b>-1</b>	<b>-0.3%</b>	<b>-1.5%</b>	<b>-2.8%</b>	<b>-6.0%</b>	<b>-1.4%</b>	<b>-0.9%</b>
<b>General Support</b>	<b>189</b>	<b>-34</b>	<b>-28</b>	<b>-22</b>	<b>-15</b>	<b>-7</b>	<b>+1</b>	<b>-15.2%</b>	<b>-13.0%</b>	<b>-10.4%</b>	<b>-7.4%</b>	<b>-3.7%</b>	<b>+0.4%</b>
HCA, Nurse's Aide, etc.	1,578	+138	+82	+56	+32	+14	+24	+9.6%	+5.5%	+3.7%	+2.1%	+0.9%	+1.6%
Health & Social Care Assistants	13	+10	+10	+10	-7	+0	-0	+270.2%	+247.3%	+247.3%	-35.2%	+0.5%	-3.5%
<b>Health Care Assistants</b>	<b>1,591</b>	<b>+148</b>	<b>+92</b>	<b>+66</b>	<b>+25</b>	<b>+14</b>	<b>+24</b>	<b>+10.2%</b>	<b>+6.1%</b>	<b>+4.3%</b>	<b>+1.6%</b>	<b>+0.9%</b>	<b>+1.5%</b>
<b>Care, other</b>	<b>241</b>	<b>-20</b>	<b>-28</b>	<b>-18</b>	<b>-4</b>	<b>+3</b>	<b>+2</b>	<b>-7.5%</b>	<b>-10.3%</b>	<b>-7.1%</b>	<b>-1.5%</b>	<b>+1.3%</b>	<b>+1.0%</b>
<b>Home Help</b>	<b>394</b>	<b>+7</b>	<b>-3</b>	<b>-13</b>	<b>-37</b>	<b>-24</b>	<b>-3</b>	<b>+1.9%</b>	<b>-0.8%</b>	<b>-3.1%</b>	<b>-8.6%</b>	<b>-5.8%</b>	<b>-0.9%</b>
<b>Patient &amp; Client Care</b>	<b>2,226</b>	<b>+135</b>	<b>+61</b>	<b>+35</b>	<b>-16</b>	<b>-7</b>	<b>+23</b>	<b>+6.5%</b>	<b>+2.8%</b>	<b>+1.6%</b>	<b>-0.7%</b>	<b>-0.3%</b>	<b>+1.0%</b>

Source: Health Service Personnel Census

Longitudinal Employment Levels by Care Group - Oct 2013 to Nov 2020

Community Health & Wellbeing

Nov 2020 ( figure: )	WTE Nov 2020	WTE change since	WTE change since	WTE change since	WTE change since	WTE change since	WTE change since Oct 20	% change since	% change since	% change since	% change since	% change since	% change since Oct 20
Overall	30	+30	+30	+30	+30	+30	+2	-100.0%	-100.0%	-100.0%	-100.0%	-100.0%	+8.9%
Health & Social Care Professionals	1	+1	+1	+1	+1	+1	+0	-1.0%	-1.0%	-1.0%	-1.0%	-1.0%	+0.0%
Therapy Professions	1	+1	+1	+1	+1	+1	+0	-1.0%	-1.0%	-1.0%	-1.0%	-1.0%	+0.0%
Management & Administrative	28	+28	+28	+28	+28	+28	+2	-1.0%	-1.0%	-1.0%	-1.0%	-1.0%	+0.1%
Management (VIII & above)	3	+3	+3	+3	+3	+3	+2	-1.0%	-1.0%	-1.0%	-1.0%	-1.0%	+1.9%
Administrative/ Supervisory (V to VII)	22	+22	+22	+22	+22	+22	+1	-1.0%	-1.0%	-1.0%	-1.0%	-1.0%	+0.0%
Clerical (III & IV)	4	+4	+4	+4	+4	+4	+0	-1.0%	-1.0%	-1.0%	-1.0%	-1.0%	+0.0%

Source: Health Service Personnel Census

Mental Health

Nov 2020 (Dec 2015 figure: 1,042)	WTE Nov 2020	WTE change since Dec 15	WTE change since Dec 16	WTE change since Dec 17	WTE change since Dec 18	WTE change since Dec 18	WTE change since Oct 20	% change since Dec 15	% change since Dec 16	% change since Dec 17	% change since Dec 18	% change since Dec 18	% change since Oct 20
Overall	1,114	+72	+72	+34	+44	+44	-2	+6.9%	+7.0%	+3.1%	+4.1%	+4.1%	-0.2%
Medical & Dental	94	+11	+13	+6	+7	+7	-1	+0.1%	+0.2%	+0.1%	+0.1%	+0.1%	-0.0%
Consultants	36	+2	+1	+2	+1	+1	+1	+0.0%	+0.0%	+0.1%	+0.0%	+0.0%	+0.0%
Registrars	33	+16	+14	+3	+7	+7	+2	+1.0%	+0.7%	+0.1%	+0.3%	+0.3%	+0.0%
SHO/ Interns	25	-7	-2	+0	-1	-1	-4	-0.2%	-0.1%	+0.0%	-0.0%	-0.0%	-0.1%
Nursing & Midwifery	528	+26	+23	+17	+21	+21	-2	+0.1%	+0.0%	+0.0%	+0.0%	+0.0%	-0.0%
Nurse/ Midwife Manager	116	+1	-7	-14	-11	-11	-0	+0.0%	-0.1%	-0.1%	-0.1%	-0.1%	-0.0%
Nurse/ Midwife Specialist & AN/MP	59	+17	+11	+10	+8	+8	-1	+0.4%	+0.2%	+0.2%	+0.1%	+0.1%	-0.0%
Staff Nurse/ Staff Midwife	343	+2	+13	+16	+17	+17	+12	+0.0%	+0.0%	+0.0%	+0.1%	+0.1%	+0.0%
Nursing/ Midwifery Student	6	+6	+4	+5	+5	+5	-13	-1.0%	+2.2%	+5.2%	+4.9%	+4.9%	-0.7%
Nursing/ Midwifery other	3	+1	+1	+0	+1	+1	+0	+0.6%	+0.6%	+0.0%	+0.5%	+0.5%	+0.0%
Health & Social Care Professionals	154	+18	+20	+3	+6	+6	+0	+0.1%	+0.2%	+0.0%	+0.0%	+0.0%	+0.0%
Therapy Professions	43	+5	+8	-1	-1	-1	+1	+0.1%	+0.2%	-0.0%	-0.0%	-0.0%	+0.0%
Social Care	7	+1	+0	+0	+1	+1	-0	+0.2%	+0.0%	+0.1%	+0.1%	+0.1%	-0.0%
Social Workers	45	+4	+3	+2	+5	+5	+0	+0.1%	+0.1%	+0.0%	+0.1%	+0.1%	+0.0%
Psychologists	37	+5	+7	+0	-1	-1	-1	+0.1%	+0.3%	+0.0%	-0.0%	-0.0%	-0.0%
Pharmacy	2	+2	+1	+1	+1	+1	+0	-1.0%	+1.4%	+0.5%	+0.5%	+0.5%	+0.3%
H&SC, Other	20	+2	+1	+1	+1	+1	-0	+0.1%	+0.1%	+0.1%	+0.1%	+0.1%	-0.0%
Management & Administrative	121	+22	+21	+10	+13	+13	-1	+0.2%	+0.2%	+0.1%	+0.1%	+0.1%	-0.0%
Management (VIII & above)	3	-0	+2	+1	+1	+1	-0	-0.0%	+1.9%	+0.5%	+0.5%	+0.5%	-0.0%
Administrative/ Supervisory (V to VII)	20	+5	+5	+2	-1	-1	-0	+0.3%	+0.3%	+0.1%	-0.1%	-0.1%	-0.0%
Clerical (III & IV)	98	+17	+14	+7	+13	+13	-0	+0.2%	+0.2%	+0.1%	+0.2%	+0.2%	-0.0%
General Support	59	-1	+0	-5	-2	-2	+0	-0.0%	+0.0%	-0.1%	-0.0%	-0.0%	+0.0%
Support	31	-1	+0	-4	-2	-2	-0	-0.0%	+0.0%	-0.1%	-0.1%	-0.1%	-0.0%
Maintenance/ Technical	28	-0	-0	-0	-0	-0	+1	-0.0%	-0.0%	-0.0%	-0.0%	-0.0%	+0.0%
Patient & Client Care	158	-5	-5	+1	-0	-0	+1	-0.0%	-0.0%	+0.0%	-0.0%	-0.0%	+0.0%
Health Care Assistants	155	-3	-3	+3	-0	-0	+1	-0.0%	-0.0%	+0.0%	-0.0%	-0.0%	+0.0%
Care, other	3	-2	-2	-2				-0.3%	-0.3%	-0.3%	+0.0%	+0.0%	+0.0%

Source: Health Service Personnel Census

Primary Care

Nov 2020 (Dec 2015 figure: 1,393)	WTE Nov 2020	WTE change since Dec 15	WTE change since Dec 16	WTE change since Dec 17	WTE change since Dec 18	WTE change since Dec 18	WTE change since Oct 20	% change since Dec 15	% change since Dec 16	% change since Dec 17	% change since Dec 18	% change since Dec 18	% change since Oct 20
Overall	1,456	+63	-0	+21	+34	+34	+27	+4.5%	-0.0%	+1.4%	+2.4%	+2.4%	+1.9%
Medical & Dental	153	+19	+12	+18	+17	+17	-0	+0.1%	+0.1%	+0.1%	+0.1%	+0.1%	-0.0%
Consultants	7	+1	+1	+1	+2	+2	-0	+0.2%	+0.2%	+0.2%	+0.4%	+0.4%	-0.0%
Registrars	84	+13	+8	+13	+12	+12	+1	+0.2%	+0.1%	+0.2%	+0.2%	+0.2%	+0.0%
SHO/ Interns	1	+1	-0	-0	-1	-1	-0	-1.0%	-0.2%	-0.2%	-0.6%	-0.6%	-0.0%
Medical/ Dental, other	60	+4	+4	+4	+4	+4	-1	+0.1%	+0.1%	+0.1%	+0.1%	+0.1%	-0.0%
Nursing & Midwifery	406	+21	-12	-3	+10	+10	+11	+0.1%	-0.0%	-0.0%	+0.0%	+0.0%	+0.0%
Nurse/ Midwife Manager	52	+3	-4	-1	-1	-1	+1	+0.1%	-0.1%	-0.0%	-0.0%	-0.0%	+0.0%
Nurse/ Midwife Specialist & AN/MP	38	+3	+1	+1	+1	+1	+2	+0.1%	+0.0%	+0.0%	+0.0%	+0.0%	+0.1%
Staff Nurse/ Staff Midwife	107	+7	-7	-3	+3	+3	+5	+0.1%	-0.1%	-0.0%	+0.0%	+0.0%	+0.1%
Public Health Nurse	195	+6	+1	+1	+3	+3	-0	+0.0%	+0.0%	+0.0%	+0.0%	+0.0%	-0.0%
Nursing/ Midwifery Student	12	+1	-4	-1	+4	+4	+3	+0.1%	-0.3%	-0.1%	+0.5%	+0.5%	+0.3%
Nursing/ Midwifery other	1	+1	+1	+1	+1	+1	+0	-1.0%	-1.0%	-1.0%	-1.0%	-1.0%	+0.1%
Health & Social Care Professionals	342	+15	+15	+4	+15	+15	-0	+0.0%	+0.0%	+0.0%	+0.0%	+0.0%	-0.0%
Therapy Professions	230	+8	+7	-3	+7	+7	+1	+0.0%	+0.0%	-0.0%	+0.0%	+0.0%	+0.0%
Health Science/ Diagnostics	7	+3	+1	+1	+1	+1	-0	+0.8%	+0.1%	+0.1%	+0.2%	+0.2%	-0.0%
Social Care	1			+1	+1	+1		+0.0%	+0.0%	-1.0%	-1.0%	-1.0%	+0.0%
Social Workers	16	-1	-0	-1	-3	-3	-0	-0.1%	-0.0%	-0.0%	-0.1%	-0.1%	-0.0%
Psychologists	57	+2	+5	+8	+10	+10	-1	+0.0%	+0.1%	+0.2%	+0.2%	+0.2%	-0.0%
Pharmacy	5	+2	+2	+2	+2	+2	+0	+0.9%	+0.6%	+0.7%	+0.6%	+0.6%	+0.0%
H&SC, Other	26	+1	+1	-4	-3	-3	+1	+0.0%	+0.0%	-0.1%	-0.1%	-0.1%	+0.0%
Management & Administrative	394	+4	-21	-8	-12	-12	-0	+0.0%	-0.1%	-0.0%	-0.0%	-0.0%	-0.0%
Management (VIII & above)	42	+8	-0	+0	-2	-2	-2	+0.3%	-0.0%	+0.0%	-0.1%	-0.1%	-0.0%
Administrative/ Supervisory (V to VII)	80	+22	+14	+13	+0	+0	+1	+0.4%	+0.2%	+0.2%	+0.0%	+0.0%	+0.0%
Clerical (III & IV)	272	-26	-35	-21	-10	-10	+1	-0.1%	-0.1%	-0.1%	-0.0%	-0.0%	+0.0%
General Support	24	-2	-3	-5	-2	-2	+0	-0.1%	-0.1%	-0.2%	-0.1%	-0.1%	+0.0%
Support	21	-2	-4	-5	-2	-2	+0	-0.1%	-0.2%	-0.2%	-0.1%	-0.1%	+0.0%
Maintenance/ Technical	3	-0	+1	-0	+0	+0	+0	-0.0%	+0.6%	-0.0%	+0.0%	+0.0%	+0.0%
Patient & Client Care	138	+6	+9	+15	+7	+7	+18	+0.0%	+0.1%	+0.1%	+0.1%	+0.1%	+0.1%
Health Care Assistants	37	+21	+21	+22	+8	+8	+18	+1.3%	+1.3%	+1.5%	+0.3%	+0.3%	+0.9%
Care, other	101	-14	-12	-6	-1	-1	-0	-0.1%	-0.1%	-0.1%	-0.0%	-0.0%	-0.0%
Home Help		-1	-1	-1	-0	-0		-1.0%	-1.0%	-1.0%	-1.0%	-1.0%	-1.0%

Source: Health Service Personnel Census

Disabilities

Nov 2020 (Dec 2015 figure: 1,843)	WTE Nov 2020	WTE change since Dec 15	WTE change since Dec 16	WTE change since Dec 17	WTE change since Dec 18	WTE change since Dec 18	WTE change since Oct 20	% change since Dec 15	% change since Dec 16	% change since Dec 17	% change since Dec 18	% change since Dec 18	% change since Oct 20
Overall	2,194	+351	+209	+115	+60	+60	+23	+19.0%	+10.6%	+5.5%	+2.8%	+2.8%	+1.1%
Medical & Dental	3							+0.0%	+0.0%	+0.0%	+0.0%	+0.0%	+0.0%
Consultants	1							+0.0%	+0.0%	+0.0%	+0.0%	+0.0%	+0.0%
Registrars	1							+0.0%	+0.0%	+0.0%	+0.0%	+0.0%	+0.0%
Medical/ Dental, other	1							+0.0%	+0.0%	+0.0%	+0.0%	+0.0%	+0.0%
Nursing & Midwifery	454	-5	-6	-1	-7	-7	+9	-0.0%	-0.0%	-0.0%	-0.0%	-0.0%	+0.0%
Nurse/ Midwife Manager	119	+4	+0	+1	-1	-1	+22	+0.0%	+0.0%	+0.0%	-0.0%	-0.0%	+0.2%
Nurse/ Midwife Specialist & AN/MP	7	-3	-2	-1	-0	-0	+3	-0.3%	-0.2%	-0.1%	-0.0%	-0.0%	+0.8%
Staff Nurse/ Staff Midwife	316	-13	-10	-7	-10	-10	+2	-0.0%	-0.0%	-0.0%	-0.0%	-0.0%	+0.0%
Public Health Nurse	1	+0	-0	+1	-0	-0	-0	+1.1%	-1.0%	-1.0%	-0.1%	-0.1%	-0.0%
Nursing/ Midwifery Student	5	+5	+5	+5	+4	+4	+3	-1.0%	-1.0%	-1.0%	+8.7%	+8.7%	+1.6%
Nursing/ Midwifery other	6	+1	+1	-0	+0	+0	-21	+0.3%	+0.3%	-0.0%	+0.1%	+0.1%	-0.8%
Health & Social Care Professionals	532	+162	+94	+44	+35	+35	+5	+0.4%	+0.2%	+0.1%	+0.1%	+0.1%	+0.0%
Therapy Professions	98	+36	+4	+3	+9	+9	+0	+0.6%	+0.0%	+0.0%	+0.1%	+0.1%	+0.0%
Health Science/ Diagnostics	2	+2						-1.0%	+0.0%	+0.0%	+0.0%	+0.0%	+0.0%
Social Care	377	+109	+82	+42	+23	+23	+3	+0.4%	+0.3%	+0.1%	+0.1%	+0.1%	+0.0%
Social Workers	24	+7	+1	-3	-1	-1	-0	+0.4%	+0.1%	-0.1%	-0.0%	-0.0%	-0.0%
Psychologists	24	+7	+6	+1	+3	+3	+2	+0.4%	+0.3%	+0.0%	+0.1%	+0.1%	+0.1%
H&SC, Other	7	+1	+1	+1	+1	+1	+0	+0.2%	+0.1%	+0.1%	+0.1%	+0.1%	+0.0%
Management & Administrative	155	+18	+18	+6	+6	+6	-1	+0.1%	+0.1%	+0.0%	+0.0%	+0.0%	-0.0%
Management (VIII & above)	13	+0	+0	-5	+2	+2	-0	+0.0%	+0.0%	-0.3%	+0.2%	+0.2%	-0.0%
Administrative/ Supervisory (V to VII)	54	+7	+4	+4	-0	-0	-3	+0.1%	+0.1%	+0.1%	-0.0%	-0.0%	-0.0%
Clerical (III & IV)	88	+11	+14	+7	+5	+5	+1	+0.2%	+0.2%	+0.1%	+0.1%	+0.1%	+0.0%
General Support	57	-31	-27	-15	-10	-10	+1	-0.3%	-0.3%	-0.2%	-0.1%	-0.1%	+0.0%
Support	43	-29	-24	-12	-7	-7	+2	-0.4%	-0.4%	-0.2%	-0.1%	-0.1%	+0.1%
Maintenance/ Technical	14	-1	-3	-3	-3	-3	-1	-0.1%	-0.2%	-0.2%	-0.2%	-0.2%	-0.1%
Patient & Client Care	992	+206	+131	+81	+36	+36	+9	+0.3%	+0.2%	+0.1%	+0.0%	+0.0%	+0.0%
Health Care Assistants	853	+209	+143	+94	+38	+38	+7	+0.3%	+0.2%	+0.1%	+0.0%	+0.0%	+0.0%
Care, other	117	-2	-12	-10	-2	-2	+3	-0.0%	-0.1%	-0.1%	-0.0%	-0.0%	+0.0%
Home Help	23	-2	-0	-3	+0	+0	-1	-0.1%	-0.0%	-0.1%	+0.0%	+0.0%	-0.0%

Source: Health Service Personnel Census

Older People

Nov 2020 (Dec 2015 figure: 1,536)	WTE Nov 2020	WTE change since Dec 15	WTE change since Dec 16	WTE change since Dec 17	WTE change since Dec 18	WTE change since Dec 18	WTE change since Oct 20	% change since Dec 15	% change since Dec 16	% change since Dec 17	% change since Dec 18	% change since Dec 18	% change since Oct 20
Overall	1,481	-55	-50	-16	-21	-21	+5	-3.6%	-3.3%	-1.1%	-1.4%	-1.4%	+0.3%
Medical & Dental	11	+1	-0	+0	-1	-1	-0	+0.1%	-0.0%	+0.0%	-0.1%	-0.1%	-0.0%
Medical/ Dental, other	11	+1	-0	+0	-1	-1		+0.1%	-0.0%	+0.0%	-0.1%	-0.1%	+0.0%
Nursing & Midwifery	355	-11	-3	+14	+21	+21	+8	-0.0%	-0.0%	+0.0%	+0.1%	+0.1%	+0.0%
Nurse/ Midwife Manager	89	+2	+5	+5	+11	+11	+0	+0.0%	+0.1%	+0.1%	+0.1%	+0.1%	+0.0%
Nurse/ Midwife Specialist & AN/MP	4	+1	+1	+1	+1	+1	+1	+0.5%	+0.5%	+0.4%	+0.4%	+0.4%	+0.3%
Staff Nurse/ Staff Midwife	258	-14	-10	+8	+8	+8	+6	-0.1%	-0.0%	+0.0%	+0.0%	+0.0%	+0.0%
Public Health Nurse	3	-1	-1	-1	-0	-0		-0.3%	-0.2%	-0.2%	-0.1%	-0.1%	+0.0%
Nursing/ Midwifery other	1	+1	+1	+1	+1	+1	+0	-1.0%	-1.0%	-1.0%	-1.0%	-1.0%	+0.3%
Health & Social Care Professionals	30	+3	+1	+2	+1	+1	+2	+0.1%	+0.0%	+0.1%	+0.0%	+0.0%	+0.1%
Therapy Professions	21	+3	+2	+1	+0	+0	+1	+0.2%	+0.1%	+0.0%	+0.0%	+0.0%	+0.1%
Health Science/ Diagnostics		-2	-2	-2				-1.0%	-1.0%	-1.0%	-1.0%	-1.0%	-1.0%
Social Workers	7	+1	+1	+3	+1	+1	+0	+0.2%	+0.2%	+0.8%	+0.1%	+0.1%	+0.0%
Pharmacy	2	+1	+1	+1				+1.0%	+1.0%	+1.0%	+0.0%	+0.0%	+0.0%
Management & Administrative	98	+23	+24	+27	+17	+17	+1	+0.3%	+0.3%	+0.4%	+0.2%	+0.2%	+0.0%
Management (VIII & above)	7	+4	+4	+5	+4	+4	-1	+1.5%	+1.4%	+2.9%	+1.5%	+1.5%	-0.1%
Administrative/ Supervisory (V to VII)	21	+9	+8	+8	+3	+3	+1	+0.8%	+0.6%	+0.6%	+0.2%	+0.2%	+0.1%
Clerical (III & IV)	70	+10	+12	+14	+10	+10	+0	+0.2%	+0.2%	+0.2%	+0.2%	+0.2%	+0.0%
General Support	49	+1	+2	+3	-1	-1	-1	+0.0%	+0.0%	+0.1%	-0.0%	-0.0%	-0.0%
Support	26	-1	+0	+1	+0	+0	-1	-0.0%	+0.0%	+0.0%	+0.0%	+0.0%	-0.0%
Maintenance/ Technical	23	+2	+2	+2	-1	-1	-0	+0.1%	+0.1%	+0.1%	-0.0%	-0.0%	-0.0%
Patient & Client Care	937	-72	-74	-63	-58	-58	-5	-0.1%	-0.1%	-0.1%	-0.1%	-0.1%	-0.0%
Health Care Assistants	546	-80	-69	-53	-21	-21	-2	-0.1%	-0.1%	-0.1%	-0.0%	-0.0%	-0.0%
Care, other	20	-2	-2	-1	-0	-0	-0	-0.1%	-0.1%	-0.0%	-0.0%	-0.0%	-0.0%
Home Help	371	+10	-2	-9	-37	-37	-2	+0.0%	-0.0%	-0.0%	-0.1%	-0.1%	-0.0%

Source: Health Service Personnel Census