

CHO 8 Employment Report: October 2020

Employment by Staff Group

Oct 2020 (Dec 2019 figure: 6,135)	WTE Sep 2020	WTE Oct 2020	WTE change since Sep 20	% change since Sep 20	WTE change since Dec 19	WTE change since Oct 19
Overall	6,240	6,220	-20	-0.3%	+85	+73
Consultants	42	42	+0	+0.1%	+0	-1
Registrars	116	116	+1	+0.5%	+10	+10
SHO/ Interns	31	30	-2	-5.1%	-8	-9
Medical/ Dental, other	73	73	+1	+0.9%	+1	+1
Medical & Dental	262	261	-0	-0.1%	+3	+1
Nurse/ Midwife Manager	376	354	-22	-5.8%	-18	-22
Nurse/ Midwife Specialist & AN/MP	103	103	+0	+0.1%	+4	+4
Staff Nurse/ Staff Midwife	989	999	+10	+1.0%	+1	+8
Public Health Nurse	202	199	-3	-1.4%	+0	+3
Pre-registration Nurse/ Midwife Intern		1	+1	-100.0%	+1	+1
Pre-registration Nurse Intern (COVID-19)	47	20	-27	-57.0%	+20	-27
Post-registration Nurse/ Midwife Student	1	9	+8	+822.8%	+7	+8
Nursing/ Midwifery awaiting registration				-100.0%	-2	
Nursing/ Midwifery Student	48	30	-17	-36.4%	+26	+18
Nursing/ Midwifery other	10	32	+21	+210.4%	+22	+23
Nursing & Midwifery	1,728	1,718	-10	-0.6%	+36	+35
Therapy Professions	387	391	+4	+1.0%	+14	+11
Health Science/ Diagnostics	9	9	+0	+0.9%	+2	+2
Social Care	383	383	-0	-0.1%	+15	+21
Social Workers	90	93	+3	+2.9%	+5	+4
Psychologists	115	117	+2	+2.1%	-2	-3
Pharmacy	7	8	+1	+9.8%	+1	+1
H&SC, Other	51	53	+1	+2.6%	+0	+0
Health & Social Care Professionals	1,043	1,054	+11	+1.0%	+35	+36
Management (VIII & above)	68	68	+0	+0.3%	+6	+5
Administrative/ Supervisory (V to VII)	195	198	+3	+1.6%	+21	+29
Clerical (III & IV)	527	530	+3	+0.5%	+23	+19
Management & Administrative	790	796	+6	+0.8%	+50	+53
Support	121	120	-1	-1.1%	-8	-6
Maintenance/ Technical	69	68	-0	-0.2%	-0	-1
General Support	190	188	-1	-0.8%	-8	-8
Health Care Assistants	1,593	1,567	-26	-1.6%	-10	-20
Care, other	235	238	+4	+1.5%	+1	-0
Home Help	400	397	-3	-0.7%	-21	-25
Patient & Client Care	2,228	2,203	-25	-1.1%	-30	-45

CHO 8 Employment Report: October 2020

Community Health & Wellbeing

Oct 2020 (figure:)	WTE Sep 2020	WTE Oct 2020	WTE change since Sep 20	% change since Sep 20	WTE change since	WTE change since
Total Community Health & Wellbeing	26	27	+2	+6.3%	+27	+27
Therapy Professions	2	1	-0	-9.2%	+1	+1
Health & Social Care Professionals	2	1	-0	-9.2%	+1	+1
Management (VIII & above)	1	1			+1	+1
Administrative/ Supervisory (V to VII)	19	21	+2	+10.5%	+21	+21
Clerical (III & IV)	4	4	-0	-5.2%	+4	+4
Management & Administrative	24	26	+2	+7.3%	+26	+26

Mental Health

Oct 2020 (Dec 2019 figure: 1,098)	WTE Sep 2020	WTE Oct 2020	WTE change since Sep 20	% change since Sep 20	WTE change since Dec 19	WTE change since Oct 19
Total Mental Health	1,122	1,116	-7	-0.6%	+18	+8
Consultants	35	35	-0	-0.1%	-1	-2
Registrars	31	31	-0	-0.6%	+6	+6
SHO/ Interns	30	29	-2	-5.1%	-7	-8
Medical & Dental	96	95	-2	-1.8%	-2	-4
Nurse/ Midwife Manager	119	117	-2	-1.9%	-4	-6
Nurse/ Midwife Specialist & AN/MP	60	60	+0	+0.4%	+4	+4
Staff Nurse/ Staff Midwife	327	331	+4	+1.2%	-0	-0
<i>Nursing/ Midwifery awaiting registration</i>				-100.0%	-2	
<i>Pre-registration Nurse Intern (COVID-19)</i>	29	19	-10	-33.2%	+19	-10
<i>Pre-registration Nurse/ Midwife Intern</i>				-100.0%	-1	
Nursing/ Midwifery Student	29	19	-10	-33.2%	+17	+12
Nursing/ Midwifery other	3	3	-0	-1.0%	-1	-0
Nursing & Midwifery	538	530	-8	-1.4%	+15	+10
Therapy Professions	44	43	-2	-4.0%	-2	-4
Social Care	7	7	-0	-1.5%	-0	-0
Social Workers	43	45	+1	+3.3%	+3	+3
Psychologists	39	38	-1	-2.2%	-1	-3
Pharmacy	1	1	+0	+24.2%	+0	+0
H&SC, Other	20	20	+0	+1.8%	-0	+0
Health & Social Care Professionals	155	154	-1	-0.5%	+1	-4
Management (VIII & above)	3	3			+0	-0
Administrative/ Supervisory (V to VII)	21	21	-1	-2.8%	-2	-1
Clerical (III & IV)	97	98	+1	+1.5%	+10	+12
Management & Administrative	121	122	+1	+0.7%	+8	+11
Support	31	31	+0	+0.3%	-2	-1
Maintenance/ Technical	27	27	-0	-0.7%	+1	-0
General Support	58	58	-0	-0.2%	-1	-2
Health Care Assistants	151	154	+3	+1.8%	-3	-3
Care, other	3	3			-1	-1
Patient & Client Care	154	157	+3	+1.8%	-3	-3

Primary Care

Oct 2020 (Dec 2019 figure: 1,387)	WTE Sep 2020	WTE Oct 2020	WTE change since Sep 20	% change since Sep 20	WTE change since Dec 19	WTE change since Oct 19
Total Primary Care	1,416	1,429	+13	+0.9%	+42	+28
Consultants	7	7	+0	+0.7%	+1	+1
Registrars	83	84	+1	+0.9%	+6	+5
SHO/ Interns	1	1	-0	-4.7%	-1	-1
Medical/ Dental, other	61	61	+1	+1.2%	+1	+1
Medical & Dental	151	153	+1	+1.0%	+6	+6
Nurse/ Midwife Manager	53	51	-2	-2.9%	-0	-1
Nurse/ Midwife Specialist & AN/MP	34	36	+2	+7.2%	+2	+0
Staff Nurse/ Staff Midwife	102	102	-0	-0.1%	+4	-3
Public Health Nurse	199	196	-3	-1.6%	-0	+3
<i>Post-registration Nurse/ Midwife Student</i>	1	9	+8	+822.8%	+7	+8
Nursing/ Midwifery Student	1	9	+8	+822.8%	+7	+5
Nursing/ Midwifery other	1	1	-0	-9.4%	+1	+1
Nursing & Midwifery	389	395	+6	+1.5%	+13	+5
Therapy Professions	229	230	+1	+0.4%	+9	+7
Health Science/ Diagnostics	7	7	+0	+1.1%	+2	+2
Social Care	1	1			+1	+1
Social Workers	17	17	+0	+0.4%	+1	+0
Psychologists	56	58	+2	+2.8%	+2	+3
Pharmacy	5	5	-0	-0.4%	+1	+1
H&SC, Other	24	25	+1	+3.4%	+0	-0
Health & Social Care Professionals	339	343	+3	+1.0%	+17	+15
Management (VIII & above)	43	44	+1	+2.8%	-1	-1
Administrative/ Supervisory (V to VII)	79	79	+0	+0.2%	+2	+4
Clerical (III & IV)	268	271	+3	+1.3%	+7	+2
Management & Administrative	390	395	+5	+1.2%	+7	+5
Support	21	21	-0	-1.1%	-2	-2
Maintenance/ Technical	3	3	-0	-1.0%	+0	-0
General Support	24	24	-0	-1.1%	-2	-2
Health Care Assistants	22	20	-2	-10.6%	-1	-2
Care, other	100	101	+1	+0.6%	+2	+2
Home Help				-100.0%	-0	-0
Patient & Client Care	122	120	-2	-1.4%	+1	-1

Social Care

Oct 2020 (Dec 2019 figure: 3,650)	WTE Sep 2020	WTE Oct 2020	WTE change since Sep 20	% change since Sep 20	WTE change since Dec 19	WTE change since Oct 19
Total Social Care	3,676	3,648	-29	-0.8%	-3	+9
Consultants	1	1				
Registrars	1	1			-1	-1
Medical/ Dental, other	12	12	-0	-0.5%	+0	-0
Medical & Dental	14	14	-0	-0.4%	-1	-1
Nurse/ Midwife Manager	204	186	-18	-8.8%	-14	-14
Nurse/ Midwife Specialist & AN/MP	10	7	-3	-25.8%	-2	-1
Staff Nurse/ Staff Midwife	559	566	+6	+1.1%	-2	+11
Public Health Nurse	3	4	+1	+15.1%	+1	+1
<i>Nursing/ Midwifery awaiting registration</i>				-100.0%		
<i>Pre-registration Nurse Intern (COVID-19)</i>	18	1	-17	-95.0%	+1	-17
<i>Pre-registration Nurse/ Midwife Intern</i>		1	+1	-100.0%	+1	+1
Nursing/ Midwifery Student	18	2	-16	-89.5%	+2	+1
Nursing/ Midwifery other	6	28	+22	+346.8%	+22	+22
Nursing & Midwifery	801	793	-8	-1.0%	+7	+20
Therapy Professions	112	117	+5	+4.4%	+5	+6
Health Science/ Diagnostics	2	2				
Social Care	374	374	-0	-0.0%	+14	+20
Social Workers	30	31	+1	+3.6%	+1	+1
Psychologists	20	22	+2	+8.3%	-3	-3
Pharmacy	2	2	+1	+33.3%	-1	-0
H&SC, Other	7	7	+0	+2.1%	-0	+0
Health & Social Care Professionals	547	555	+8	+1.5%	+16	+24
Management (VIII & above)	21	20	-1	-4.6%	+6	+6
Administrative/ Supervisory (V to VII)	75	77	+2	+2.1%	+0	+4
Clerical (III & IV)	159	156	-2	-1.3%	+2	+1
Management & Administrative	255	254	-1	-0.6%	+9	+11
Support	69	68	-1	-1.7%	-4	-3
Maintenance/ Technical	38	38	+0	+0.2%	-1	-1
General Support	108	106	-1	-1.0%	-6	-4
Health Care Assistants	1,420	1,394	-26	-1.8%	-6	-15
Care, other	132	135	+3	+2.2%	-1	-1
Home Help	400	397	-3	-0.7%	-21	-24
Patient & Client Care	1,951	1,925	-26	-1.3%	-28	-40

CHO 8 Employment Report: October 2020

Disabilities

Oct 2020 (Dec 2019 figure: 2,162)	WTE Sep 2020	WTE Oct 2020	WTE change since Sep 20	% change since Sep 20	WTE change since Dec 19	WTE change since Oct 19
Total Disabilities	2,164	2,171	+6	+0.3%	+8	+34
Consultants	1	1				
Registrars	1	1			-1	-1
Medical/ Dental, other	1	1				
Medical & Dental	3	3			-1	-1
Nurse/ Midwife Manager	115	97	-18	-15.8%	-26	-23
Nurse/ Midwife Specialist & AN/MP	7	4	-3	-42.0%	-3	-3
Staff Nurse/ Staff Midwife	305	314	+9	+2.9%	-4	+10
Public Health Nurse	1	1				-0
<i>Nursing/ Midwifery awaiting registration</i>				-100.0%		
<i>Pre-registration Nurse Intern (COVID-19)</i>	18	1	-17	-95.0%	+1	-17
<i>Pre-registration Nurse/ Midwife Intern</i>		1	+1	-100.0%	+1	+1
Nursing/ Midwifery Student	18	2	-16	-89.5%	+2	+1
Nursing/ Midwifery other	5	27	+22	+413.5%	+21	+21
Nursing & Midwifery	452	445	-7	-1.5%	-10	+6
Therapy Professions	93	98	+4	+4.4%	+6	+8
Health Science/ Diagnostics	2	2				
Social Care	374	374	-0	-0.0%	+14	+20
Social Workers	24	24	+0	+0.7%	+0	+0
Psychologists	20	22	+2	+8.3%	-3	-3
H&SC, Other	7	7	+0	+2.1%	-0	+0
Health & Social Care Professionals	521	527	+6	+1.2%	+17	+26
Management (VIII & above)	14	13	-1	-7.1%	+4	+3
Administrative/ Supervisory (V to VII)	55	56	+1	+2.3%	+0	+3
Clerical (III & IV)	88	87	-1	-0.8%	+3	+2
Management & Administrative	157	156	-0	-0.2%	+7	+8
Support	42	41	-1	-1.3%	-5	-4
Maintenance/ Technical	15	15			-1	-1
General Support	57	56	-1	-1.0%	-6	-5
Health Care Assistants	841	846	+5	+0.6%	+2	+3
Care, other	111	114	+3	+2.4%	-1	-3
Home Help	23	24	+0	+1.7%	+1	+0
Patient & Client Care	975	983	+8	+0.8%	+2	+1

Older People

Oct 2020 (Dec 2019 figure: 1,488)	WTE Sep 2020	WTE Oct 2020	WTE change since Sep 20	% change since Sep 20	WTE change since Dec 19	WTE change since Oct 19
Total Older People	1,512	1,477	-35	-2.3%	-11	-25
Medical/ Dental, other	11	11	-0	-0.5%	+0	-0
Medical & Dental	11	11	-0	-0.5%	+0	-0
Nurse/ Midwife Manager	89	89	+0	+0.4%	+12	+9
Nurse/ Midwife Specialist & AN/MP	3	3	+0	+10.7%	+1	+2
Staff Nurse/ Staff Midwife	254	251	-3	-1.0%	+2	+1
Public Health Nurse	2	3	+1	+21.3%	+1	+1
Nursing/ Midwifery other	1	1			+1	+1
Nursing & Midwifery	349	348	-1	-0.4%	+17	+14
Health & Social Care Professionals	26	29	+2	+8.6%	-1	-1
Management (VIII & above)	7	7	-0	-0.1%	+2	+3
Administrative/ Supervisory (V to VII)	20	20	+0	+1.5%	+0	+1
Clerical (III & IV)	71	70	-1	-1.9%	-0	-1
Management & Administrative	98	97	-1	-1.1%	+2	+3
Support	27	27	-1	-2.3%	+1	+1
Maintenance/ Technical	23	24	+0	+0.4%	-0	-0
General Support	51	50	-1	-1.1%	+1	+1
Health Care Assistants	579	548	-31	-5.4%	-9	-18
Care, other	21	21	+0	+1.3%	+0	+1
Home Help	377	374	-3	-0.8%	-22	-24
Patient & Client Care	976	942	-34	-3.5%	-30	-41

CHO 8 Employment by Administration (HSE / S38): October 2020

Oct 2020 (Dec 2019 figure: 6,135)	WTE Sep 2020	WTE Oct 2020	WTE change since Sep 20	% change since Sep 20	WTE change since Dec 19	WTE change since Oct 19
Overall	6,240	6,220	-20	-0.3%	+85	+73
HSE	4,676	4,655	-21	-0.5%	+72	+43
Section 38 Voluntary Agencies	1,564	1,565	+1	+0.1%	+13	+29

HSE

Oct 2020 (Dec 2019 figure: 4,583)	WTE Sep 2020	WTE Oct 2020	WTE change since Sep 20	% change since Sep 20	WTE change since Dec 19	WTE change since Oct 19
Overall	4,676	4,655	-21	-0.5%	+72	+43
Consultants	42	42	+0	+0.0%	+0	-1
Registrars	115	115	+1	+0.0%	+10	+10
SHO/ Interns	31	30	-2	-0.1%	-8	-9
Medical/ Dental, other	73	73	+1	+0.0%	+1	+1
Medical & Dental	261	260	-0	-0.1%	+3	+1
Nurse/ Midwife Manager	292	289	-4	-0.0%	+3	-1
Nurse/ Midwife Specialist & AN/MP	98	101	+3	+0.0%	+7	+7
Staff Nurse/ Staff Midwife	791	791	-0	-0.0%	+1	-6
Public Health Nurse	202	199	-3	-0.0%	+0	+3
<i>Pre-registration Nurse/ Midwife Intern</i>				-1.0%		-2
<i>Pre-registration Nurse Intern (COVID-19)</i>	29	19	-10	-0.3%	+19	+19
<i>Post-registration Nurse/ Midwife Student</i>	1	9	+8	+8.2%	+1	+5
<i>Nursing/ Midwifery awaiting registration</i>				-1.0%	-1	-5
Nursing/ Midwifery Student	30	29	-1	-0.0%	+24	+17
Nursing/ Midwifery other	5	5	-0	-0.0%	+1	+2
Nursing & Midwifery	1,418	1,413	-5	-0.3%	+36	+21
Therapy Professions	374	377	+3	+0.0%	+14	+10
Health Science/ Diagnostics	9	9	+0	+0.0%	+2	+2
Social Care	13	13	-0	-0.0%	+1	+1
Social Workers	78	80	+2	+0.0%	+5	+4
Psychologists	110	112	+2	+0.0%	-2	-3
Pharmacy	7	8	+1	+0.1%	+1	+1
H&SC, Other	45	46	+1	+0.0%	+0	-0
Health & Social Care Professionals	637	646	+9	+1.4%	+21	+15
Management (VIII & above)	60	60	+0	+0.0%	+3	+2
Administrative/ Supervisory (V to VII)	167	170	+2	+0.0%	+21	+29
Clerical (III & IV)	481	484	+3	+0.0%	+23	+20
Management & Administrative	708	714	+6	+0.8%	+47	+51
Support	85	84	-1	-0.0%	-3	-3
Maintenance/ Technical	56	55	-0	-0.0%	-0	-1
General Support	140	140	-1	-0.5%	-3	-4
Health Care Assistants	959	930	-29	-0.0%	-19	-26
Care, other	152	154	+2	+0.0%	+8	+10
Home Help	400	397	-3	-0.0%	-21	-25
Patient & Client Care	1,512	1,482	-30	-2.0%	-32	-41

Section 38 Voluntary Agencies

Oct 2020 (Dec 2019 figure: 1,552)	WTE Sep 2020	WTE Oct 2020	WTE change since Sep 20	% change since Sep 20	WTE change since Dec 19	WTE change since Oct 19
Overall	1,564	1,565	+1	+0.1%	+13	+29
Registrars	1	1		+0.0%		
Medical & Dental	1	1				
Nurse/ Midwife Manager	83	65	-18	-0.2%	-21	-20
Nurse/ Midwife Specialist & AN/MP	5	2	-3	-0.6%	-3	-3
Staff Nurse/ Staff Midwife	198	208	+10	+0.1%	+1	+14
<i>Pre-registration Nurse/ Midwife Intern</i>		1	+1	-1.0%	+1	+1
<i>Pre-registration Nurse Intern (COVID-19)</i>	18	1	-17	-1.0%	+1	+1
<i>Nursing/ Midwifery awaiting registration</i>				-1.0%		-1
Nursing/ Midwifery Student	18	2	-16	-0.9%	+2	+1
Nursing/ Midwifery other	5	27	+22	+4.1%	+21	+21
Nursing & Midwifery	310	305	-5	-1.7%	-0	+13
Therapy Professions	13	14	+1	+0.1%	+1	+1
Social Care	369	369	-0	-0.0%	+13	+20
Social Workers	12	12	+0	+0.0%	+0	+0
Psychologists	6	6	+0	+0.0%	-0	-0
H&SC, Other	6	6	+0	+0.0%	-0	+0
Health & Social Care Professionals	406	407	+2	+0.4%	+14	+22
Management (VIII & above)	8	8		+0.0%	+3	+3
Administrative/ Supervisory (V to VII)	27	28	+1	+0.0%	-0	-0
Clerical (III & IV)	46	46	-0	-0.0%	-0	-1
Management & Administrative	82	82	+0	+0.6%	+3	+2
Support	36	36	-1	-0.0%	-5	-4
Maintenance/ Technical	13	13	-0	-0.0%	-0	-0
General Support	49	49	-1	-1.5%	-5	-4
Health Care Assistants	633	637	+4	+0.0%	+9	+6
Care, other	82	84	+2	+0.0%	-7	-10
Patient & Client Care	716	721	+5	+0.7%	+2	-4

CHO 8 Employment by S38 Agency: October 2020

Muiriosa Foundation, Laois/Offaly

Oct 2020 (Dec 2019 figure: 302)	WTE Sep 2020	WTE Oct 2020	WTE change since Sep 20	% change since Sep 20	WTE change since Dec 19	WTE change since Oct 19
Overall	310	314	+4	+1.2%	+12	+10
Nurse/ Midwife Manager	15	15	-0	-0.0%	-0	-1
Staff Nurse/ Staff Midwife	29	30	+1	+0.1%	+4	+3
<i>Pre-registration Nurse Intern (COVID-19)</i>		1	+1	-1.0%	+1	+1
Nursing/ Midwifery Student		1	+1	-1.0%	+1	+1
Nursing & Midwifery	44	46	+2	+5.3%	+4	+3
Social Care	103	102	-2	-0.0%	+7	+6
Social Workers	3	4	+0	+0.1%	-0	
Psychologists	1	1		+0.0%		
H&SC, Other	1	1		+0.0%		
Health & Social Care Professionals	109	107	-2	-1.5%	+7	+6
Management (VIII & above)	2	2		+0.0%	+1	+1
Administrative/ Supervisory (V to VII)	5	6	+1	+0.2%	+1	+1
Clerical (III & IV)	11	12	+0	+0.0%	+1	-1
Management & Administrative	18	20	+1	+6.7%	+3	+1
Support	1	1		+0.0%	+0	+0
Maintenance/ Technical	2	2		+0.0%		
General Support	3	3			+0	+0
Health Care Assistants	107	110	+2	+0.0%	+0	+1
Care, other	28	28	-0	-0.0%	-2	-2
Patient & Client Care	136	137	+2	+1.4%	-2	-1

Muiriosa Foundation, Longford/Westmeath

Oct 2020 (Dec 2019 figure: 270)	WTE Sep 2020	WTE Oct 2020	WTE change since Sep 20	% change since Sep 20	WTE change since Dec 19	WTE change since Oct 19
Overall	279	280	+1	+0.4%	+10	+10
Nurse/ Midwife Manager	9	9		+0.0%		
Staff Nurse/ Staff Midwife	5	5	-0	-0.0%	-1	-1
Nursing & Midwifery	14	14	-0	-1.1%	-1	-1
Therapy Professions	3	3		+0.0%		
Social Care	99	98	-0	-0.0%	+5	+7
Social Workers	4	4		+0.0%	+1	+2
Psychologists	2	2	+0	+0.0%	-0	-0
H&SC, Other	3	3	+0	+0.1%	-0	-0
Health & Social Care Professionals	110	110	-0	-0.0%	+5	+8
Administrative/ Supervisory (V to VII)	5	5		+0.0%	+1	+1
Clerical (III & IV)	10	10	-0	-0.0%	-0	-0
Management & Administrative	15	15	-0	-0.3%	+1	+0
Support	1	1		+0.0%		
Maintenance/ Technical	3	3		+0.0%		
General Support	4	4				
Health Care Assistants	120	121	+0	+0.0%	+6	+3
Care, other	16	17	+1	+0.1%	-1	-1
Patient & Client Care	136	137	+1	+0.9%	+5	+2

Muiriosa Foundation, South Kildare

Oct 2020 (Dec 2019 figure: 334)	WTE Sep 2020	WTE Oct 2020	WTE change since Sep 20	% change since Sep 20	WTE change since Dec 19	WTE change since Oct 19
Overall	338	335	-2	-0.6%	+2	+4
Nurse/ Midwife Manager	13	13	+0	+0.0%	-5	-4
Nurse/ Midwife Specialist & AN/MP	1	2	+0	+0.1%	+0	+0
Staff Nurse/ Staff Midwife	22	22	+0	+0.0%	-2	-3
Pre-registration Nurse Intern (COVID-19)	6		-6	-1.0%		
Nursing/ Midwifery awaiting registration				-1.0%		-1
Nursing/ Midwifery Student	6		-6	-1.0%		-1
Nursing/ Midwifery other	5	5		+0.0%	-0	-0
Nursing & Midwifery	47	42	-5	-11.4%	-7	-8
Therapy Professions	8	9	+1	+0.2%	+1	+1
Social Care	91	94	+3	+0.0%	+5	+9
Social Workers	2	2		+0.0%		-1
Psychologists	2	2		+0.0%	-0	
H&SC, Other	3	3		+0.0%		+1
Health & Social Care Professionals	106	110	+4	+3.6%	+6	+9
Management (VIII & above)	5	5		+0.0%	+2	+2
Administrative/ Supervisory (V to VII)	12	12	-0	-0.0%	-2	-2
Clerical (III & IV)	13	13	-1	-0.0%	-1	-1
Management & Administrative	30	29	-1	-2.3%	-1	-1
Support	14	14	-0	-0.0%	-2	-3
Maintenance/ Technical	5	5		+0.0%		
General Support	19	19	-0	-0.9%	-2	-3
Health Care Assistants	128	128	+0	+0.0%	+5	+8
Care, other	8	8	+0	+0.0%		-1
Patient & Client Care	135	136	+0	+0.2%	+5	+7

Oct 2020 (Dec 2019 figure: 647)	WTE Sep 2020	WTE Oct 2020	WTE change since Sep 20	% change since Sep 20	WTE change since Dec 19	WTE change since Oct 19
Overall	637	636	-1	-0.2%	-11	+6
Registrars	1	1		+0.0%		
Medical & Dental	1	1				
Nurse/ Midwife Manager	45	27	-18	-0.4%	-16	-15
Nurse/ Midwife Specialist & AN/MP	4	1	-3	-0.8%	-3	-3
Staff Nurse/ Staff Midwife	143	152	+9	+0.1%	-1	+15
Pre-registration Nurse/ Midwife Intern		1	+1	-1.0%	+1	+1
Pre-registration Nurse Intern (COVID-19)	12		-12	-1.0%		
Nursing/ Midwifery Student	12	1	-11	-0.9%	+1	+1
Nursing Education/Clinical		22	+22	-1.0%	+22	+22
Nursing/ Midwifery other		22	+22	-1.0%	+22	+22
Nursing & Midwifery	205	203	-2	-1.1%	+3	+19
Therapy Professions	3	3		+0.0%		
Social Care	76	75	-1	-0.0%	-3	-2
Social Workers	2	2		+0.0%	-0	
Psychologists	1	1		+0.0%		
Health & Social Care Professionals	82	81	-1	-0.7%	-3	-2
Management (VIII & above)	1	1		+0.0%	-0	-0
Administrative/ Supervisory (V to VII)	6	6		+0.0%	-0	+0
Clerical (III & IV)	12	12	+0	+0.0%	+0	+1
Management & Administrative	18	18	+0	+0.1%	+0	+1
Support	20	20	-1	-0.0%	-4	-1
Maintenance/ Technical	3	3		+0.0%	-0	-0
General Support	23	23	-1	-2.5%	-4	-1
Health Care Assistants	278	279	+1	+0.0%	-2	-5
Care, other	31	32	+1	+0.0%	-4	-6
Patient & Client Care	309	311	+2	+0.6%	-7	-11

CHO 8 Employment by Grade Group & Staff Category: October 2020

Oct 2020 (Dec 2019 figure: 6,135)	WTE Sep 2020	WTE Oct 2020	WTE change since Sep 20	% change since Sep 20	WTE change since Dec 19	WTE change since Oct 19
Overall	6,240	6,220	-20	-0.3%	+85	+73
Consultant Dentistry	1	1	+0	+1.1%	+0	
Consultant Medicine	6	6	+0	+0.7%	+1	+1
Consultant Psychiatry	36	36	-0	-0.1%	-1	-2
Consultants	42	42	+0	+0.1%	+0	-1
Registrar	102	102	+1	+0.7%	+10	+10
Senior Registrar	14	14	-0	-1.0%	-0	-0
Registrars	116	116	+1	+0.5%	+10	+10
SHO/ Interns	31	30	-2	-5.1%	-8	-9
Dentists	36	36	+1	+1.9%	+1	+1
Other Medical	37	37	+0	+0.1%	+0	-0
Medical/ Dental, other	73	73	+1	+0.9%	+1	+1
Medical & Dental	262	261	-0	-0.1%	+25	+1
Clinical Nurse/ Midwife Manager	286	265	-21	-7.4%	-23	-24
Director Nursing/Midwifery, Assistant	63	61	-2	-2.8%	+1	+1
Director of Nursing/Midwifery	27	28	+1	+4.0%	+4	+1
Nurse/ Midwife Manager	376	354	-22	-5.8%	-18	-22
Advanced Nurse/ Midwife Practitioner	5	8	+3	+68.1%	+4	+4
Clinical Nurse/ Midwife Specialist	99	95	-3	-3.1%	-0	-1
Nurse/ Midwife Specialist & AN/MP	103	103	+0	+0.1%	+4	+4
Staff Nurse [Intellectual Disability]	220	115	-105	-47.7%	-116	-103
Staff Nurse [Psychiatric]	327	341	+14	+4.4%	+8	+8
Staff Nurses [General/ Children's]	441	543	+101	+22.9%	+110	+102
Staff Nurse/ Staff Midwife	989	999	+10	+1.0%	+1	+8
Public Health Nurse	202	199	-3	-1.4%	+0	+3
Pre-registration Nurse/ Midwife Intern		1	+1	-100.0%	+1	-1
Pre-registration Nurse Intern (COVID-19)	47	20	-27	-57.0%	+20	+20
Post-registration Nurse/ Midwife Student	1	9	+8	+822.8%	+7	+5
Nursing/ Midwifery awaiting registration				-100.0%	-2	-6
Nursing/ Midwifery Student	48	30	-17	-36.4%	+26	+18
Nursing Education/Clinical	10	32	+21	+210.4%	+22	+23
Nursing/ Midwifery other	10	32	+21	#####	+22	+23
Nursing & Midwifery	1,728	1,718	-10	-0.6%	+19	+35
Dietitians	20	20	+0	+1.8%	+0	+0
Occupational Therapists	144	146	+3	+1.9%	+7	+7
Orthoptists		1	+1	-100.0%	+1	+1
Physiotherapists	112	110	-2	-2.1%	+3	+3
Podiatrists & Chiropodists	4	4			-0	-1
Speech & Language Therapists	108	110	+3	+2.4%	+4	+1
Therapy Professions	387	391	+4	+1.0%	+14	+11
Audiology	5	5	+0	+1.5%	+2	+2
Clinical Engineering	4	4				
Health Science/ Diagnostics	9	9	+0	+0.9%	+2	+2
Social Care	383	383	-0	-0.1%	+15	+21
Social Workers	90	93	+3	+2.9%	+5	+4
Psychologists	115	117	+2	+2.1%	-2	-3
Pharmacy	7	8	+1	+9.8%	+1	+1
Counsellor Therapists	36	37	+2	+4.2%	-0	+0

Oct 2020 (Dec 2019 figure: 6,135)	WTE Sep 2020	WTE Oct 2020	WTE change since Sep 20	% change since Sep 20	WTE change since Dec 19	WTE change since Oct 19
Overall	6,240	6,220	-20	-0.3%	+85	+73
Dental Hygienists	13	13	-0	-1.5%	+0	+0
Other Health & Social Care	2	2			+0	-0
Play Therapists/ Specialists	1	1				
H&SC, Other	51	53	+1	+2.6%	+0	+0
Health & Social Care Professionals	1,043	1,054	+11	+1.0%	+51	+36
Executive Management	11	11	-0	-0.4%	+2	+2
Senior Management (VIII & GM)	57	57	+0	+0.4%	+4	+3
Management (VIII & above)	68	68	+0	+0.3%	+6	+5
Administrative/ Supervisory (V to VII)	195	198	+3	+1.6%	+21	+29
Clerical (III & IV)	527	530	+3	+0.5%	+23	+19
Management & Administrative	790	796	+6	+0.8%	+51	+53
Catering	34	32	-1	-4.3%	-1	-0
Household Services	53	53	+0	+0.3%	-4	-3
Other Support	29	29	-0	-0.1%	-3	-3
Portering	5	5				
Support	121	120	-1	-1.1%	-8	-6
Maintenance	68	68	-0	-0.2%	-0	-1
Technical Services	0	0				
Maintenance/ Technical	69	68	-0	-0.2%	-0	-1
General Support	190	188	-1	-0.8%	-16	-8
HCA, Nurse's Aide, etc.	1,578	1,553	-24	-1.5%	-11	-20
Health & Social Care Assistants	15	14	-1	-8.9%	+1	+0
Health Care Assistants	1,593	1,567	-26	-1.6%	-10	-20
Community Welfare Officers				-100.0%		
Other Care Grades	235	238	+4	+1.5%	+1	-0
Care, other	235	238	+4	+1.5%	+1	-0
Home Help	400	397	-3	-0.7%	-21	-25
Patient & Client Care	2,228	2,203	-25	-1.1%	-39	-45

CHO 8 HSE Employment by Grade Group & Staff Category: October 2020

Oct 2020 (Dec 2019 figure: 4,583)	WTE Sep 2020	WTE Oct 2020	WTE change since Sep 20	% change since Sep 20	WTE change since Dec 19	WTE change since Oct 19
Overall	4,676	4,655	-21	-0.5%	+72	+43
Consultant Dentistry	1	1	+0	+1.1%	+0	
Consultant Medicine	6	6	+0	+0.7%	+1	+1
Consultant Psychiatry	36	36	-0	-0.1%	-1	-2
Consultants	42	42	+0	+0.1%	+0	-1
Registrar	101	101	+1	+0.7%	+10	+10
Senior Registrar	14	14	-0	-1.0%	-0	-0
Registrars	115	115	+1	+0.5%	+10	+10
SHO/ Interns	31	30	-2	-5.1%	-8	-9
Dentists	36	36	+1	+1.9%	+1	+1
Other Medical	37	37	+0	+0.1%	+0	-0
Medical/ Dental, other	73	73	+1	+0.9%	+1	+1
Medical & Dental	261	260	-0	-0.1%	+25	+1
Clinical Nurse/ Midwife Manager	210	206	-4	-1.7%	-5	-7
Director Nursing/Midwifery, Assistant	58	57	-1	-1.8%	+4	+4
Director of Nursing/Midwifery	24	25	+1	+4.5%	+5	+2
Nurse/ Midwife Manager	292	289	-4	-1.2%	+3	-1
Advanced Nurse/ Midwife Practitioner	4	6	+2	+58.6%	+2	+2
Clinical Nurse/ Midwife Specialist	94	95	+1	+0.8%	+4	+4
Nurse/ Midwife Specialist & AN/MP	98	101	+3	+3.1%	+7	+6
Staff Nurse [Intellectual Disability]	69	69	-1	-0.9%	+5	+9
Staff Nurse [Psychiatric]	327	332	+5	+1.5%	-1	-1
Staff Nurses [General/ Children's]	395	390	-4	-1.1%	-3	-13
Staff Nurse/ Staff Midwife	791	791	-0	-0.0%	+1	-6
Public Health Nurse	202	199	-3	-1.4%	+0	+3
Pre-registration Nurse/ Midwife Intern				-100.0%	-1	-2
Pre-registration Nurse Intern (COVID-19)	29	19	-10	-33.2%	+19	+19
Post-registration Nurse/ Midwife Student	1	9	+8	+822.8%	+7	+5
Nursing/ Midwifery awaiting registration				-100.0%	-2	-5
Nursing/ Midwifery Student	30	29	-1	-4.2%	+24	+17
Nursing Education/Clinical	5	5	-0	-2.4%	+1	+2
Nursing/ Midwifery other	5	5	-0	-2.4%	+1	+2
Nursing & Midwifery	1,418	1,413	-5	-0.3%	+19	+21
Dietitians	20	20	+0	+1.8%	+0	+0
Occupational Therapists	140	142	+2	+1.5%	+7	+7
Orthoptists		1	+1	-100.0%	+1	+1
Physiotherapists	108	106	-2	-2.1%	+4	+4
Podiatrists & Chiropodists	4	4			-0	-1
Speech & Language Therapists	102	104	+2	+1.9%	+2	-0
Therapy Professions	374	377	+3	+0.7%	+14	+10
Audiology	5	5	+0	+1.5%	+2	+2
Clinical Engineering	4	4				
Health Science/ Diagnostics	9	9	+0	+0.9%	+2	+2
Social Care	13	13	-0	-0.7%	+1	+1
Social Workers	78	80	+2	+3.0%	+5	+4
Psychologists	110	112	+2	+2.1%	-2	-3
Pharmacy	7	8	+1	+9.8%	+1	+1
Counsellor Therapists	31	32	+1	+4.5%	-0	-0
Dental Hygienists	13	13	-0	-1.5%	+0	+0
Other Health & Social Care	2	2			+0	-0

Oct 2020 (Dec 2019 figure: 4,583)	WTE Sep 2020	WTE Oct 2020	WTE change since Sep 20	% change since Sep 20	WTE change since Dec 19	WTE change since Oct 19
Overall	4,676	4,655	-21	-0.5%	+72	+43
H&SC, Other	45	46	+1	+2.6%	+0	-0
Health & Social Care Professionals	637	646	+9	+1.4%	+32	+15
Executive Management	10	10	-0	-0.4%	+2	+2
Senior Management (VIII & GM)	50	50	+0	+0.5%	+1	+0
Management (VIII & above)	60	60	+0	+0.3%	+3	+2
Administrative/ Supervisory (V to VII)	167	170	+2	+1.4%	+21	+29
Clerical (III & IV)	481	484	+3	+0.6%	+23	+20
Management & Administrative	708	714	+6	+0.8%	+52	+51
Catering	27	26	-1	-5.4%	+0	+0
Household Services	29	30	+1	+3.2%	-0	-0
Other Support	25	25	-0	-0.1%	-3	-3
Portering	4	4				
Support	85	84	-1	-0.7%	-3	-3
Maintenance/ Technical	56	55	-0	-0.2%	-0	-1
General Support	140	140	-1	-0.5%	-7	-4
HCA, Nurse's Aide, etc.	944	916	-28	-3.0%	-20	-26
Health & Social Care Assistants	15	14	-1	-8.9%	+1	+0
Health Care Assistants	959	930	-29	-3.1%	-19	-26
Care, other	152	154	+2	+1.3%	+8	+10
Home Help	400	397	-3	-0.7%	-21	-25
Patient & Client Care	1,512	1,482	-30	-2.0%	-58	-41

Employment by WTE, Headcount, Gender, Full-Time /Part-Time etc.: Oct 2020

CHO 8	WTE	Headcount	WTE: no.	% Male	% female	Male WTE: no.	Female WTE: no.	% Total Perm	% Male Perm	% Female Perm	% Total Full Time	% Total Part Time	% Male FT	% Female FT
Overall	6,220	7,468	1.20	16.6%	83.4%	1.10	1.22	87.9%	87.0%	88.1%	56.3%	43.7%	73.2%	53.0%
Consultant Dentistry	1	1	1.09	100.0%		1.09		100.0%	100.0%		0.0%	100.0%	0.0%	
Consultant Medicine	6	6	1.00	33.3%	66.7%	1.00	1.00	66.7%	66.7%	50.0%	100.0%	0.0%	100.0%	100.0%
Consultant Psychiatry	36	37	1.04	45.9%	54.1%	1.00	1.08	86.5%	86.5%	100.0%	91.9%	8.1%	94.1%	90.0%
Consultants	42	44	1.04	45.5%	54.5%	1.01	1.06	84.1%	75.0%	91.7%	90.9%	9.1%	90.0%	91.7%
Registrar	102	105	1.03	41.0%	59.0%	1.00	1.04	0.0%	0.0%	0.0%	100.0%	0.0%	100.0%	100.0%
Senior Registrar	14	15	1.10	26.7%	73.3%	1.04	1.12	0.0%	0.0%	0.0%	93.3%	6.7%	100.0%	90.9%
Registrars	116	120	1.03	39.2%	60.8%	1.01	1.05	0.0%	0.0%	0.0%	99.2%	0.8%	100.0%	98.6%
Senior House Officer	30	31	1.04	38.7%	61.3%	1.07	1.03	0.0%	0.0%	0.0%	100.0%	0.0%	100.0%	100.0%
SHO/ Interns	30	31	1.04	38.7%	61.3%	1.07	1.03	0.0%	0.0%	0.0%	100.0%	0.0%	100.0%	100.0%
Dentists	36	43	1.18	34.9%	65.1%	1.24	1.16	90.7%	90.7%	89.3%	62.8%	37.2%	66.7%	60.7%
Other Medical	37	51	1.38	58.8%	41.2%	1.52	1.22	66.7%	66.7%	71.4%	37.3%	62.7%	36.7%	38.1%
Medical/ Dental, other	73	94	1.28	47.9%	52.1%	1.42	1.18	77.7%	73.3%	81.6%	48.9%	51.1%	46.7%	51.0%
Medical & Dental	261	289	1.11	42.9%	57.1%	1.13	1.09	38.1%	38.7%	37.6%	81.7%	18.3%	79.0%	83.6%
Clinical Nurse/ Midwife Manager	265	288	1.09	16.0%	84.0%	1.00	1.11	98.3%	98.3%	98.8%	76.7%	23.3%	100.0%	72.3%
Director Nursing/Midwifery, Assistant	61	66	1.07	18.2%	81.8%	1.00	1.09	98.5%	98.5%	98.1%	89.4%	10.6%	100.0%	87.0%
Director of Nursing/Midwifery	28	28	1.00	21.4%	78.6%	1.00	1.00	96.4%	96.4%	95.5%	100.0%	0.0%	100.0%	100.0%
Nurse/ Midwife Manager	354	382	1.08	16.8%	83.2%	1.00	1.10	98.2%	96.9%	98.4%	80.6%	19.4%	100.0%	76.7%
Advanced Nurse/ Midwife Practitioner	8	9	1.12	22.2%	77.8%	1.00	1.16	100.0%	100.0%	100.0%	88.9%	11.1%	100.0%	85.7%
Clinical Nurse/ Midwife Specialist	95	106	1.11	14.2%	85.8%	1.01	1.13	100.0%	100.0%	100.0%	72.6%	27.4%	93.3%	69.2%
Nurse/ Midwife Specialist & AN/MP	103	115	1.11	14.8%	85.2%	1.01	1.13	100.0%	100.0%	100.0%	73.9%	26.1%	94.1%	70.4%
Staff Nurse [Intellectual Disability]	115	140	1.21	7.9%	92.1%	1.08	1.23	96.4%	96.4%	96.1%	51.4%	48.6%	72.7%	49.6%
Staff Nurse [Psychiatric]	341	367	1.08	22.6%	77.4%	1.03	1.09	91.8%	91.8%	90.1%	88.8%	11.2%	97.6%	86.3%
Staff Nurses [General/ Children's]	543	661	1.22	6.5%	93.5%	1.04	1.23	97.7%	97.7%	97.6%	55.7%	44.3%	95.3%	52.9%
Staff Nurse/ Staff Midwife	999	1,168	1.17	11.7%	88.3%	1.04	1.19	95.7%	98.5%	95.3%	65.6%	34.4%	94.9%	61.7%
Public Health Nurse	199	238	1.19		100.0%		1.19	98.3%		98.3%	72.7%	27.3%		72.7%
Pre-registration Nurse/ Midwife Intern	1	1	1.00		100.0%		1.00	100.0%	100.0%	100.0%	100.0%	0.0%		100.0%
Pre-registration Nurse Intern (COVID-19)	20	23	1.14	17.4%	82.6%	1.17	1.13	4.3%	4.3%	5.3%	95.7%	4.3%	100.0%	94.7%
Post-registration Nurse/ Midwife Student	9	12	1.29		100.0%		1.29	50.0%	50.0%	50.0%	100.0%	0.0%		100.0%

Nursing/ Midwifery Student	31	36	1.18	11.1%	88.9%	1.17	1.18	22.2%	0.0%	25.0%	97.2%	2.8%	100.0%	96.9%
Nursing Education/Clinical	32	35	1.11	17.1%	82.9%	1.00	1.14	60.0%	60.0%	65.5%	88.6%	11.4%	100.0%	86.2%
Nursing/ Midwifery other	32	35	1.11	17.1%	82.9%	1.00	1.14	60.0%	33.3%	65.5%	88.6%	11.4%	100.0%	86.2%
Nursing & Midwifery	1,718	1,974	1.15	11.6%	88.4%	1.03	1.17	94.8%	94.7%	94.8%	70.8%	29.2%	96.5%	67.5%
Dietitians	20	25	1.23		100.0%		1.23	100.0%	100.0%	100.0%	52.0%	48.0%		52.0%
Occupational Therapists	146	171	1.17	7.0%	93.0%	1.00	1.18	98.2%	98.2%	98.1%	78.9%	21.1%	100.0%	77.4%
Orthoptists	1	2	3.77		100.0%		3.77	100.0%	100.0%	100.0%	50.0%	50.0%		50.0%
Physiotherapists	110	134	1.22	17.2%	82.8%	1.07	1.26	97.0%	97.0%	97.3%	55.2%	44.8%	78.3%	50.5%
Podiatrists & Chiropodists	4	7	1.69		100.0%		1.69	57.1%	57.1%	57.1%	14.3%	85.7%		14.3%
Speech & Language Therapists	110	134	1.22	1.5%	98.5%	1.04	1.22	97.0%	97.0%	97.0%	62.7%	37.3%	100.0%	62.1%
Therapy Professions	391	473	1.21	7.8%	92.2%	1.05	1.23	97.0%	97.3%	97.0%	65.1%	34.9%	86.5%	63.3%
Audiology	5	6	1.12	33.3%	66.7%	1.04	1.17	100.0%	100.0%	100.0%	50.0%	50.0%	50.0%	50.0%
Clinical Engineering	4	4	1.00	100.0%		1.00		100.0%	100.0%		100.0%	0.0%	100.0%	
Health Science/ Diagnostics	9	10	1.07	60.0%	40.0%	1.01	1.17	100.0%	100.0%	100.0%	70.0%	30.0%	83.3%	50.0%
Social Care	383	458	1.20	14.2%	85.8%	1.13	1.21	98.7%	98.5%	98.7%	25.1%	74.9%	23.1%	25.4%
Social Workers	93	107	1.15	14.0%	86.0%	1.06	1.17	98.1%	93.3%	98.9%	79.4%	20.6%	86.7%	78.3%
Psychologists	117	128	1.09	26.6%	73.4%	1.02	1.12	79.7%	94.1%	74.5%	85.2%	14.8%	97.1%	80.9%
Pharmacy	8	10	1.25	20.0%	80.0%	1.00	1.34	100.0%	100.0%	100.0%	60.0%	40.0%	100.0%	50.0%
Counsellor Therapists	37	42	1.13	21.4%	78.6%	1.15	1.12	90.5%	90.5%	90.9%	64.3%	35.7%	77.8%	60.6%
Dental Hygienists	13	14	1.10		100.0%		1.10	100.0%	100.0%	100.0%	78.6%	21.4%		78.6%
Other Health & Social Care	2	2	1.20		100.0%		1.20	50.0%	50.0%	50.0%	50.0%	50.0%		50.0%
Play Therapists/ Specialists	1	1	1.00	100.0%		1.00		100.0%	100.0%		100.0%	0.0%	100.0%	
H&SC, Other	53	59	1.12	16.9%	83.1%	1.14	1.12	91.5%	90.0%	91.8%	67.8%	32.2%	80.0%	65.3%
Health & Social Care	1,054	1,245	1.18	13.6%	86.4%	1.08	1.20	95.7%	96.4%	95.6%	53.8%	46.2%	63.9%	52.2%
Executive Management	11	11	1.02	27.3%	72.7%	1.00	1.02	90.9%	90.9%	87.5%	100.0%	0.0%	100.0%	100.0%
Senior Management (VIII & GM)	57	60	1.05	26.7%	73.3%	1.04	1.05	96.7%	96.7%	97.7%	83.3%	16.7%	81.3%	84.1%
Management (VIII & above)	68	71	1.04	26.8%	73.2%	1.04	1.04	95.8%	94.7%	96.2%	85.9%	14.1%	84.2%	86.5%
Administrative/ Supervisory (V to VII)	198	214	1.08	15.0%	85.0%	1.02	1.09	96.3%	96.9%	96.2%	78.5%	21.5%	96.9%	75.3%
Clerical (III & IV)	530	634	1.20	5.0%	95.0%	1.07	1.20	90.4%	78.1%	91.0%	58.4%	41.6%	84.4%	57.0%
Management & Administrative	796	919	1.15	9.0%	91.0%	1.04	1.17	92.2%	89.2%	92.5%	65.2%	34.8%	89.2%	62.8%
Catering	32	39	1.21	15.4%	84.6%	1.03	1.25	97.4%	97.4%	97.0%	59.0%	41.0%	83.3%	54.5%
Household Services	53	66	1.24	31.8%	68.2%	1.08	1.33	90.9%	90.9%	91.1%	50.0%	50.0%	76.2%	37.8%
Other Support	29	50	1.72	44.0%	56.0%	1.14	2.90	52.0%	52.0%	25.0%	44.0%	56.0%	77.3%	17.9%
Portering	5	5	1.00	100.0%		1.00		100.0%	100.0%		100.0%	0.0%	100.0%	
Support	120	160	1.34	33.8%	66.3%	1.09	1.51	80.6%	90.7%	75.5%	51.9%	48.1%	79.6%	37.7%

Maintenance/ Technical	68	70	1.02	98.6%	1.4%	1.02	1.00	100.0%	100.0%	100.0%	97.1%	2.9%	97.1%	100.0%
General Support	188	230	1.22	53.5%	46.5%	1.05	1.51	86.5%	95.9%	75.7%	65.7%	34.3%	89.4%	38.3%
HCA, Nurse's Aide, etc.	1,553	1,847	1.19	22.0%	78.0%	1.11	1.21	95.1%	95.1%	95.3%	48.5%	51.5%	60.0%	45.2%
Health & Social Care Assistants	14	15	1.08	6.7%	93.3%	1.00	1.08	33.3%	33.3%	35.7%	80.0%	20.0%	100.0%	78.6%
Health Care Assistants	1,567	1,862	1.19	21.9%	78.1%	1.11	1.21	94.6%	94.1%	94.8%	48.7%	51.3%	60.0%	45.5%
Care, other	238	282	1.18	29.8%	70.2%	1.21	1.17	95.0%	86.9%	98.5%	54.6%	45.4%	61.9%	51.5%
Home Help	397	667	1.68	3.4%	96.6%	2.74	1.66	46.9%	17.4%	48.0%	13.8%	86.2%	8.7%	14.0%
Patient & Client Care	2,203	2,811	1.28	18.3%	81.7%	1.15	1.31	83.4%	89.5%	82.0%	41.0%	59.0%	58.1%	37.2%

Employment by WTE, Headcount, Gender, Full-Time /Part-Time etc.: Oct 2020

CHO 8	WTE	Headcount	WTE: no.	% Male	% female	Male WTE: no.	Female WTE: no.	% Total Perm	% Male Perm	% Female Perm	% Total Full Time	% Total Part Time	% Male FT	% Female FT
Overall	6,220	7,468	1.20	16.6%	83.4%	1.10	1.22	87.9%	87.0%	88.1%	56.3%	43.7%	73.2%	53.0%
Community Health & Wellbeing	27	32	1.17	3.1%	96.9%	1.25	1.17	100.0%	100.0%	100.0%	59.4%	40.6%	100.0%	100.0%
Mental Health	1,116	1,207	1.08	24.9%	75.1%	1.03	1.10	87.1%	87.1%	87.9%	85.0%	15.0%	94.4%	94.4%
Primary Care	1,429	1,725	1.21	12.6%	87.4%	1.09	1.23	86.8%	86.8%	88.3%	61.6%	38.4%	79.3%	79.3%
Social Care	3,648	4,504	1.23	16.1%	83.9%	1.13	1.26	88.4%	88.4%	87.9%	46.6%	53.4%	62.5%	62.5%

CHO 8 Skills Mix by Staff Grouping: October 2020

Oct 2020 (Dec 2018 figure: 6,128)	WTE Dec 2015	WTE Dec 2016	WTE Dec 2017	WTE Dec 2018	WTE Dec 2019	WTE Sep 2020	WTE Oct 2020
Overall	5,814	6,014	6,092	6,128	6,135	6,240	6,220
Consultant Dentistry	0.4%	0.4%	0.4%	0.4%	0.4%	0.3%	0.4%
Consultant Medicine	1.7%	1.7%	2.1%	1.7%	1.9%	2.3%	2.3%
Consultant Psychiatry	15.7%	15.6%	14.6%	15.0%	14.1%	13.6%	13.6%
Consultants	17.9%	17.7%	17.1%	17.1%	16.3%	16.2%	16.2%
Registrar	34.7%	36.4%	37.3%	36.6%	35.7%	38.9%	39.2%
Senior Registrar	4.1%	4.7%	5.9%	5.4%	5.3%	5.3%	5.2%
Registrars	38.8%	41.1%	43.2%	42.0%	41.0%	44.1%	44.4%
Interns	0.4%	0.4%					
Senior House Officer	13.5%	11.4%	11.0%	11.8%	14.7%	11.9%	11.4%
SHO/ Interns	13.9%	11.8%	11.0%	11.8%	14.7%	11.9%	11.4%
Dentists	14.5%	15.1%	14.5%	13.9%	13.7%	13.6%	13.9%
Other Medical	14.8%	14.3%	14.3%	15.2%	14.3%	14.1%	14.1%
Medical/ Dental, other	29.4%	29.4%	28.8%	29.1%	28.0%	27.7%	28.0%
Medical & Dental	3.9%	3.9%	3.9%	3.9%	3.8%	100.0%	4.2%
Clinical Nurse/ Midwife Manager	16.9%	17.2%	17.5%	17.4%	17.1%	16.5%	15.4%
Director Nursing/Midwifery, Assistant	3.1%	3.3%	3.5%	3.6%	3.6%	3.7%	3.6%
Director of Nursing/Midwifery	1.4%	1.5%	1.6%	1.3%	1.4%	1.6%	1.6%
Nurse/ Midwife Manager	21.5%	22.0%	22.5%	22.3%	22.1%	21.7%	20.6%
Advanced Nurse/ Midwife Practitioner		0.1%	0.1%	0.1%	0.2%	0.3%	0.5%
Clinical Nurse/ Midwife Specialist	5.3%	5.6%	5.6%	5.7%	5.7%	5.7%	5.6%
Nurse/ Midwife Specialist & AN/MP	5.3%	5.6%	5.7%	5.8%	5.9%	6.0%	6.0%
Staff Nurse [Intellectual Disability]	15.1%	14.8%	15.2%	15.6%	13.8%	12.8%	6.7%
Staff Nurse [Psychiatric]	20.5%	19.2%	19.3%	19.4%	19.8%	18.9%	19.9%
Staff Nurses [General/ Children's]	25.3%	25.5%	24.4%	24.2%	25.7%	25.5%	31.6%
Staff Nurse/ Staff Midwife	60.9%	59.6%	59.0%	59.2%	59.3%	57.2%	58.2%
Public Health Nurse	11.3%	11.4%	11.6%	11.6%	11.8%	11.7%	11.6%
Pre-registration Nurse/ Midwife Intern			0.0%	0.0%	0.0%		0.1%
Pre-registration Nurse Intern (COVID-19)						2.7%	1.2%
Post-registration Nurse/ Midwife Student	0.6%	0.9%	0.8%	0.5%	0.1%	0.1%	0.5%
Nursing/ Midwifery awaiting registration		0.1%	0.0%	0.1%	0.1%		
Nursing/ Midwifery Student	0.6%	1.0%	0.8%	0.6%	0.3%	2.8%	1.8%
Nursing/ Midwifery other	0.4%	0.4%	0.5%	0.4%	0.6%	0.6%	1.8%
Nursing & Midwifery	29.4%	29.0%	28.2%	27.7%	27.7%	100.0%	27.6%
Dietitians	1.6%	1.8%	1.7%	1.9%	1.9%	1.9%	1.9%
Occupational Therapists	15.1%	14.3%	14.3%	13.5%	13.7%	13.8%	13.9%
Orthoptists	0.0%	0.0%	0.0%	0.0%			0.1%
Physiotherapists	12.6%	12.1%	11.0%	10.8%	10.5%	10.7%	10.4%
Podiatrists & Chiropodists	0.3%	0.3%	0.4%	0.4%	0.4%	0.4%	0.4%
Speech & Language Therapists	9.8%	11.6%	11.7%	10.9%	10.4%	10.3%	10.4%
Therapy Professions	39.5%	40.1%	39.1%	37.6%	37.0%	37.1%	37.1%
Audiology	0.5%	0.5%	0.4%	0.4%	0.3%	0.5%	0.5%
Clinical Engineering		0.4%	0.4%	0.4%	0.4%	0.4%	0.4%
Radiographers	0.2%	0.3%	0.3%				
Health Science/ Diagnostics	0.7%	1.2%	1.1%	0.8%	0.7%	0.9%	0.9%
Social Care	32.0%	32.7%	34.0%	36.0%	36.1%	36.7%	36.3%
Social Workers	9.5%	9.5%	9.1%	9.0%	8.6%	8.6%	8.8%
Psychologists	12.1%	10.7%	10.8%	10.5%	11.7%	11.0%	11.1%
Pharmacy	0.4%	0.5%	0.5%	0.6%	0.7%	0.7%	0.8%
Counsellor Therapists	3.9%	3.8%	3.9%	3.9%	3.7%	3.4%	3.5%
Dental Hygienists	1.5%	1.3%	1.2%	1.2%	1.2%	1.2%	1.2%
Other Health & Social Care	0.2%	0.2%	0.2%	0.2%	0.2%	0.2%	0.2%

Oct 2020 (Dec 2018 figure: 6,128)	WTE Dec 2015	WTE Dec 2016	WTE Dec 2017	WTE Dec 2018	WTE Dec 2019	WTE Sep 2020	WTE Oct 2020
Overall	5,814	6,014	6,092	6,128	6,135	6,240	6,220
Play Therapists/ Specialists	0.1%	0.1%	0.1%	0.1%	0.1%	0.1%	0.1%
H&SC, Other	5.8%	5.4%	5.4%	5.4%	5.1%	4.9%	5.0%
Health & Social Care Professionals	14.8%	15.4%	16.5%	16.4%	16.3%	100.0%	16.9%
Executive Management	0.6%	1.2%	1.3%	1.3%	1.2%	1.4%	1.4%
Senior Management (VIII & GM)	6.8%	6.8%	7.2%	6.7%	7.2%	7.2%	7.2%
Management (VIII & above)	7.4%	8.1%	8.6%	8.0%	8.4%	8.6%	8.6%
Middle Management (V-VII)	19.0%	19.7%	20.3%	23.3%	23.7%	24.6%	24.9%
Other Administrative		0.1%					
Administrative/ Supervisory (V to VII)	19.0%	19.9%	20.3%	23.3%	23.7%	24.6%	24.9%
Clerical (III & IV)	73.6%	72.1%	71.1%	68.6%	68.0%	66.8%	66.6%
Management & Administrative	12.0%	12.1%	12.0%	12.2%	12.1%	100.0%	12.8%
Catering	16.7%	16.6%	15.7%	17.8%	16.9%	17.8%	17.2%
Household Services	36.4%	32.8%	31.1%	28.0%	29.3%	28.1%	28.4%
Other Support	14.7%	16.6%	17.7%	16.4%	16.1%	15.3%	15.4%
Portering	1.7%	2.3%	2.4%	2.5%	2.5%	2.6%	2.7%
Support	69.4%	68.3%	66.9%	64.6%	64.9%	63.8%	63.6%
Maintenance/ Technical	30.6%	31.7%	33.1%	35.4%	35.1%	36.2%	36.4%
General Support	3.8%	3.6%	3.5%	3.3%	3.3%	100.0%	3.0%
HCA, Nurse's Aide, etc.	68.9%	69.1%	69.4%	69.0%	70.0%	70.8%	70.5%
Health & Social Care Assistants	0.2%	0.2%	0.2%	0.9%	0.6%	0.7%	0.6%
Health Care Assistants	69.1%	69.3%	69.6%	69.9%	70.6%	71.5%	71.1%
Community Welfare Officers	0.0%	0.0%	0.0%	0.0%			
Other Care Grades	12.4%	12.3%	11.8%	10.9%	10.6%	10.5%	10.8%
Care, other	12.5%	12.4%	11.8%	10.9%	10.6%	10.5%	10.8%
Home Help	18.5%	18.3%	18.6%	19.2%	18.7%	18.0%	18.0%
Patient & Client Care	36.0%	36.0%	36.0%	36.6%	36.5%	100.0%	35.4%
Total	100 %	100 %	100 %	100 %	100%	100 %	100 %

CHO 8 Skills Mix by Care Group: October 2020

Oct 2020 (Dec 2018 figure: 1,069)	WTE Dec 2015	WTE Dec 2016	WTE Dec 2017	WTE Dec 2018	WTE Dec 2019	WTE Sep 2020	WTE Oct 2020
Mental Health	1,042	1,041	1,080	1,069	1,097.95	1,122.24	1,115.65
Consultants	41.3%	43.1%	38.0%	40.0%	36.4%	35.8%	36.5%
Registrar	8.5%	9.9%	17.7%	15.3%	12.4%	18.4%	18.6%
Senior Registrar	11.5%	13.6%	15.8%	14.8%	14.1%	14.3%	14.4%
Registrars	20.0%	23.6%	33.5%	30.1%	26.5%	32.6%	33.0%
Interns	1.2%	1.2%					
Senior House Officer	37.4%	32.1%	28.5%	29.9%	37.1%	31.5%	30.5%
SHO/ Interns	38.7%	33.3%	28.5%	29.9%	37.1%	31.5%	30.5%
Medical & Dental	7.9%	7.7%	8.1%	8.1%	7.9%	8.5%	8.5%
Clinical Nurse/ Midwife Manager	19.1%	20.1%	21.3%	20.9%	19.8%	18.2%	17.9%
Director Nursing/Midwifery, Assistant	3.4%	3.7%	3.6%	3.9%	3.3%	3.5%	3.7%
Director of Nursing/Midwifery	0.6%	0.6%	0.6%	0.2%	0.4%	0.4%	0.4%
Nurse/ Midwife Manager	23.1%	24.3%	25.5%	25.0%	23.4%	22.1%	22.0%
Advanced Nurse/ Midwife Practitioner		0.2%	0.2%	0.4%	0.8%	0.7%	0.7%
Clinical Nurse/ Midwife Specialist	8.5%	9.4%	9.4%	9.8%	10.1%	10.4%	10.6%
Nurse/ Midwife Specialist & AN/MP	8.5%	9.6%	9.6%	10.2%	10.9%	11.1%	11.3%
Staff Nurse [Psychiatric]	67.1%	64.1%	63.2%	63.2%	63.2%	59.7%	61.3%
Staff Nurses [General/ Children's]	1.0%	1.2%	0.9%	1.0%	1.2%	1.1%	1.1%
Staff Nurse/ Staff Midwife	68.1%	65.3%	64.1%	64.2%	64.4%	60.8%	62.5%
Pre-registration Nurse/ Midwife Intern			0.1%		0.1%		
Pre-registration Nurse Intern (COVID-19)						5.4%	3.6%
Nursing/ Midwifery awaiting registration		0.4%	0.1%	0.2%	0.4%		
Nursing/ Midwifery Student		0.4%	0.2%	0.2%	0.5%	5.4%	3.6%
Nursing/ Midwifery other	0.4%	0.4%	0.6%	0.4%	0.8%	0.6%	0.6%
Nursing & Midwifery	48.1%	48.5%	47.3%	47.4%	46.2%	47.5%	47.5%
Dietitians		0.7%	1.3%	1.4%	1.3%		
Occupational Therapists	25.1%	21.4%	24.3%	25.4%	23.8%	24.3%	23.4%
Podiatrists & Chiropodists	0.1%		0.1%	0.0%		0.1%	0.1%
Speech & Language Therapists	2.8%	4.3%	3.7%	3.1%	3.8%	4.2%	4.1%
Therapy Professions	27.9%	26.5%	29.4%	29.8%	28.8%	28.7%	27.6%
Social Care	4.4%	5.2%	4.4%	4.4%	4.7%	4.7%	4.6%
Social Workers	30.2%	31.4%	28.5%	26.8%	26.9%	28.0%	29.1%
Psychologists	23.8%	22.2%	24.6%	25.6%	25.5%	25.1%	24.7%
Pharmacy		0.5%	0.7%	0.7%	0.7%	0.6%	0.8%
Counsellor Therapists	13.6%	14.1%	12.4%	12.7%	13.3%	12.9%	13.2%
Other Health & Social Care	0.1%	0.1%					
H&SC, Other	13.7%	14.3%	12.4%	12.7%	13.3%	12.9%	13.2%
Health & Social Care Professionals	13.1%	12.9%	14.0%	13.8%	13.5%	13.8%	13.8%
Management (VIII & above)	3.0%	1.0%	1.8%	1.8%	2.6%	2.4%	2.4%
Administrative/ Supervisory (V to VII)	15.4%	15.4%	16.7%	20.0%	19.8%	17.6%	17.0%
Clerical (III & IV)	81.5%	83.6%	81.5%	78.2%	77.6%	80.0%	80.6%
Management & Administrative	9.5%	9.7%	10.3%	10.1%	9.9%	10.9%	10.9%
Support	53.3%	52.1%	55.4%	53.9%	55.5%	53.2%	53.4%
Maintenance/ Technical	46.7%	47.9%	44.6%	46.1%	44.5%	46.8%	46.6%
General Support	5.8%	5.6%	5.8%	5.7%	5.6%	5.2%	5.2%
Health Care Assistants	97.2%	97.2%	97.1%	98.1%	97.8%	98.1%	98.1%
Care, other	2.8%	2.8%	2.9%	1.9%	2.2%	1.9%	1.9%
Patient & Client Care	15.7%	15.6%	14.5%	14.8%	14.4%	14.1%	14.1%
Total	100 %	100 %	100 %	100 %	100 %	100 %	100%

Oct 2020 (Dec 2018 figure: 1,422)	WTE Dec 2015	WTE Dec 2016	WTE Dec 2017	WTE Dec 2018	WTE Dec 2019	WTE Sep 2020	WTE Oct 2020
Primary Care	1,393	1,457	1,436	1,422	1,386.65	1,415.73	1,429.12
Consultant Dentistry	0.7%	0.6%	0.7%	0.7%	0.6%	0.6%	0.6%
Consultant Medicine	3.0%	2.8%	3.7%	2.9%	3.4%	3.9%	3.9%
Consultant Psychiatry	0.7%	0.7%					
Consultants	4.4%	4.2%	4.4%	3.6%	4.0%	4.5%	4.5%
Registrars	53.5%	54.6%	53.2%	53.4%	53.3%	54.9%	54.8%
SHO/ Interns		0.7%	0.7%	1.5%	1.4%	0.6%	0.5%
Dentists	24.9%	25.3%	25.4%	24.2%	24.2%	23.5%	23.7%
Other Medical	17.1%	15.2%	16.3%	17.3%	17.1%	16.5%	16.4%
Medical/ Dental, other	42.0%	40.5%	41.7%	41.5%	41.3%	40.0%	40.1%
Medical & Dental	9.6%	9.6%	9.4%	9.5%	9.8%	10.7%	10.7%
Clinical Nurse/ Midwife Manager	7.2%	7.3%	7.3%	7.9%	7.1%	6.8%	6.6%
Director Nursing/Midwifery, Assistant	4.3%	4.8%	4.2%	4.6%	4.8%	5.2%	4.8%
Director of Nursing/Midwifery	1.3%	1.2%	1.5%	1.0%	1.6%	1.5%	1.5%
Nurse/ Midwife Manager	12.8%	13.4%	12.9%	13.5%	13.4%	13.5%	12.9%
Nurse/ Midwife Specialist & AN/MP	9.1%	9.0%	9.2%	9.5%	9.1%	8.7%	9.1%
Staff Nurse/ Staff Midwife	25.9%	27.2%	27.1%	26.4%	25.7%	26.3%	25.8%
Public Health Nurse	49.3%	46.6%	47.6%	48.7%	51.3%	51.1%	49.5%
Nursing/ Midwifery Student	2.9%	3.8%	3.2%	2.0%	0.5%	0.3%	2.4%
Nursing Education/Clinical						0.2%	0.2%
Nursing/ Midwifery other						0.2%	0.2%
Nursing & Midwifery	27.6%	28.7%	28.5%	27.8%	28.5%	27.6%	27.6%
Dietitians	4.0%	4.7%	4.5%	4.8%	5.2%	5.4%	5.5%
Occupational Therapists	20.0%	17.7%	18.1%	17.2%	17.5%	17.8%	18.3%
Orthoptists	0.1%	0.1%	0.1%	0.1%			0.2%
Physiotherapists	24.9%	25.5%	23.7%	24.6%	23.8%	24.6%	23.7%
Podiatrists & Chiropodists	0.5%	0.5%	0.8%	1.1%	1.1%	1.2%	1.1%
Speech & Language Therapists	18.4%	19.9%	21.6%	20.5%	20.1%	18.4%	18.3%
Therapy Professions	67.9%	68.4%	69.0%	68.2%	67.7%	67.5%	67.1%
Audiology	1.3%	1.3%	1.3%	1.3%	1.0%	1.5%	1.6%
Clinical Engineering		0.6%	0.6%	0.6%	0.6%	0.6%	0.6%
Radiographers			0.1%				
Health Science/ Diagnostics	1.3%	2.0%	2.0%	1.9%	1.6%	2.1%	2.1%
Social Care	0.3%	0.3%				0.3%	0.3%
Social Workers	5.4%	5.1%	5.1%	5.8%	4.8%	4.9%	4.9%
Psychologists	16.7%	15.7%	14.4%	14.3%	17.1%	16.6%	16.9%
Pharmacy	0.8%	0.9%	0.8%	0.9%	1.2%	1.4%	1.4%
Counsellor Therapists	3.4%	3.6%	4.8%	4.8%	3.6%	3.1%	3.4%
Dental Hygienists	4.0%	3.7%	3.6%	3.8%	3.8%	3.8%	3.7%
Other Health & Social Care	0.3%	0.3%	0.3%	0.3%	0.3%	0.3%	0.3%
H&SC, Other	7.6%	7.6%	8.7%	8.9%	7.7%	7.2%	7.4%
Health & Social Care Professionals	23.5%	22.4%	23.6%	23.0%	23.6%	24.0%	24.0%
Executive Management	0.8%	1.9%	2.0%	1.9%	2.0%	2.5%	2.5%
Senior Management (VIII & GM)	7.8%	8.2%	8.3%	8.9%	9.6%	8.4%	8.6%
Management (VIII & above)	8.5%	10.1%	10.3%	10.8%	11.7%	11.0%	11.1%
Administrative/ Supervisory (V to VII)	14.9%	15.8%	16.7%	19.6%	20.0%	20.3%	20.1%
Clerical (III & IV)	76.5%	74.1%	73.0%	69.5%	68.3%	68.7%	68.8%
Management & Administrative	28.0%	28.5%	28.0%	28.6%	29.3%	27.6%	27.6%
Support	88.5%	93.1%	89.8%	88.8%	88.9%	87.8%	87.8%
Maintenance/ Technical	11.5%	6.9%	10.2%	11.2%	11.1%	12.2%	12.2%
General Support	1.9%	1.8%	2.0%	1.8%	1.9%	1.7%	1.7%
HCA, Nurse's Aide, etc.	11.4%	11.7%	11.3%	10.5%	8.5%	6.9%	6.2%

Oct 2020 (Dec 2018 figure: 2,134)	WTE Dec 2015	WTE Dec 2016	WTE Dec 2017	WTE Dec 2018	WTE Dec 2019	WTE Sep 2020	WTE Oct 2020
Disabilities	1,843	1,984	2,078	2,134	2,162.12	2,164.14	2,170.56
Consultant Psychiatry	33.3%	33.3%	33.3%	33.3%	25.0%	33.3%	33.3%
Consultants	33.3%	33.3%	33.3%	33.3%	25.0%	33.3%	33.3%
Registrars	33.3%	33.3%	33.3%	33.3%	50.0%	33.3%	33.3%
Medical/ Dental, other	33.3%	33.3%	33.3%	33.3%	25.0%	33.3%	33.3%
Medical & Dental	0.2%	0.2%	0.1%	0.1%	0.1%	0.1%	0.1%
Clinical Nurse/ Midwife Manager	22.2%	22.7%	22.6%	22.7%	23.5%	22.7%	18.9%
Director Nursing/Midwifery, Assistant	1.6%	2.1%	2.4%	2.3%	2.3%	1.8%	1.6%
Director of Nursing/Midwifery	1.3%	1.0%	1.1%	1.1%	1.2%	1.1%	1.3%
Nurse/ Midwife Manager	25.1%	25.9%	26.0%	26.1%	27.0%	25.5%	21.8%
Advanced Nurse/ Midwife Practitioner						0.2%	0.4%
Clinical Nurse/ Midwife Specialist	2.1%	2.0%	1.7%	1.6%	1.6%	1.3%	0.5%
Nurse/ Midwife Specialist & AN/MP	2.1%	2.0%	1.7%	1.6%	1.6%	1.5%	0.9%
Staff Nurse [Intellectual Disability]	55.9%	56.0%	57.3%	57.4%	50.9%	48.8%	25.9%
Staff Nurse [Psychiatric]	3.0%	2.0%	1.7%	1.7%	1.5%	1.1%	3.4%
Staff Nurses [General/ Children's]	12.8%	13.0%	12.1%	11.8%	17.6%	17.7%	41.3%
Staff Nurse/ Staff Midwife	71.8%	71.0%	71.0%	70.8%	70.0%	67.6%	70.6%
Public Health Nurse	0.1%	0.2%		0.2%	0.2%	0.2%	0.2%
Pre-registration Nurse/ Midwife Intern				0.1%			0.2%
Pre-registration Nurse Intern (COVID-19)						4.0%	0.2%
Nursing/ Midwifery Student				0.1%		4.0%	0.4%
Nursing/ Midwifery other	0.9%	1.0%	1.2%	1.2%	1.2%	1.2%	6.0%
Nursing & Midwifery	24.9%	23.2%	21.9%	21.6%	21.3%	20.5%	20.5%
Occupational Therapists	6.8%	9.0%	7.7%	6.7%	7.2%	7.1%	7.5%
Physiotherapists	4.9%	4.3%	4.4%	4.0%	4.3%	4.0%	3.8%
Speech & Language Therapists	5.0%	8.0%	7.3%	7.0%	6.4%	6.8%	7.3%
Therapy Professions	16.7%	21.3%	19.4%	17.8%	18.0%	17.9%	18.5%
Clinical Engineering		0.5%	0.4%	0.4%	0.4%	0.4%	0.4%
Health Science/ Diagnostics		0.5%	0.4%	0.4%	0.4%	0.4%	0.4%
Social Care	72.6%	67.5%	68.8%	71.2%	70.7%	71.9%	71.1%
Social Workers	4.6%	5.2%	5.5%	5.1%	4.7%	4.7%	4.6%
Psychologists	4.6%	4.2%	4.7%	4.2%	4.9%	3.8%	4.1%
Counsellor Therapists	1.2%	1.0%	0.9%	0.9%	1.0%	1.0%	1.0%
Other Health & Social Care	0.2%	0.1%	0.1%	0.2%	0.1%	0.1%	0.1%
Play Therapists/ Specialists	0.3%	0.2%	0.2%	0.2%	0.2%	0.2%	0.2%
H&SC, Other	1.6%	1.4%	1.3%	1.3%	1.4%	1.3%	1.3%
Health & Social Care Professionals	20.1%	22.1%	23.5%	23.3%	23.0%	24.3%	24.3%
Executive Management	0.7%	0.7%	1.3%	1.3%	0.7%	0.6%	0.6%
Senior Management (VIII & GM)	8.5%	8.7%	10.6%	6.0%	5.2%	8.2%	7.6%
Management (VIII & above)	9.3%	9.4%	12.0%	7.4%	5.9%	8.8%	8.2%
Administrative/ Supervisory (V to VII)	34.6%	36.4%	33.3%	36.4%	37.6%	35.2%	36.1%
Clerical (III & IV)	56.1%	54.2%	54.7%	56.3%	56.5%	55.9%	55.6%
Management & Administrative	7.4%	6.9%	7.2%	7.0%	6.9%	7.2%	7.2%
Support	82.6%	79.5%	76.5%	74.6%	74.3%	73.6%	73.4%
Maintenance	17.3%	20.3%	23.4%	25.2%	25.5%	26.2%	26.5%
Technical Services	0.1%	0.1%	0.1%	0.1%	0.2%	0.2%	0.2%
Maintenance/ Technical	17.4%	20.5%	23.5%	25.4%	25.7%	26.4%	26.6%
General Support	4.8%	4.3%	3.5%	3.1%	3.1%	2.6%	2.6%
HCA, Nurse's Aide, etc.	81.9%	82.5%	83.3%	84.9%	85.9%	86.2%	86.0%
Health & Social Care Assistants				0.3%	0.1%		
Health Care Assistants	81.9%	82.5%	83.3%	85.3%	86.0%	86.2%	86.0%
Care, other	15.1%	14.9%	13.9%	12.4%	11.7%	11.4%	11.6%

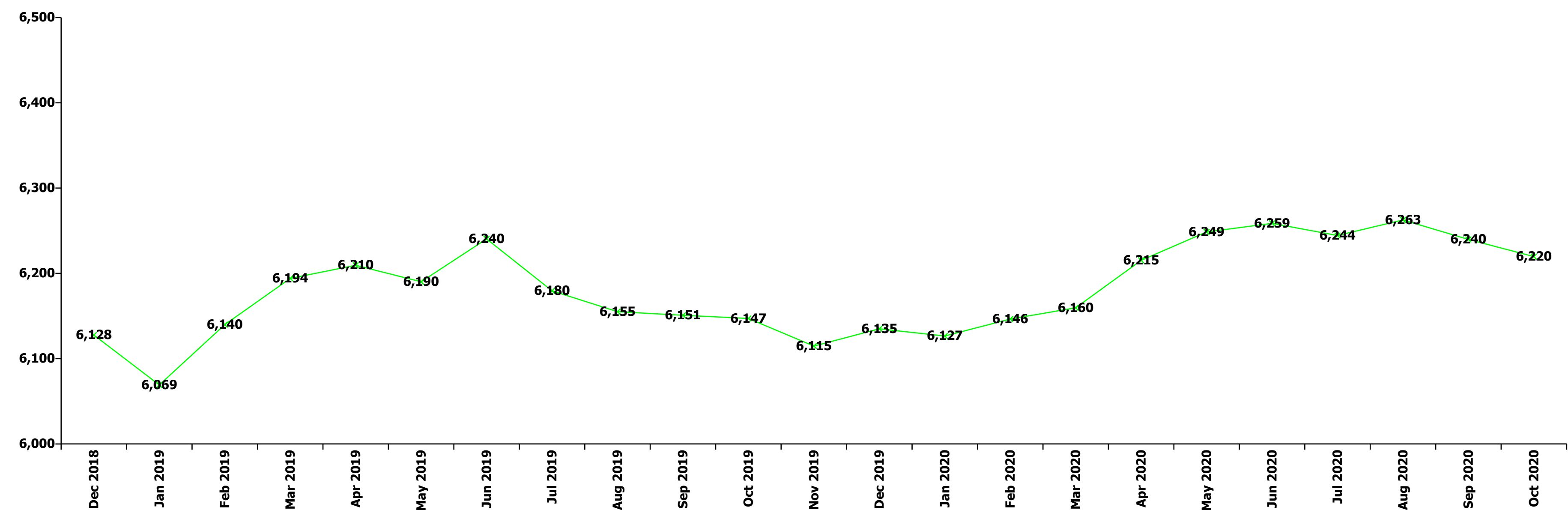
Oct 2020 (Dec 2018 figure: 2,134)	WTE Dec 2015	WTE Dec 2016	WTE Dec 2017	WTE Dec 2018	WTE Dec 2019	WTE Sep 2020	WTE Oct 2020
Disabilities	1,843	1,984	2,078	2,134	2,162.12	2,164.14	2,170.56
Home Help	3.1%	2.6%	2.8%	2.3%	2.3%	2.4%	2.4%
Patient & Client Care	42.7%	43.4%	43.8%	44.8%	44.2%	45.3%	45.3%
Total	100 %	100 %	100 %	100 %	100 %	100 %	100%

Oct 2020 (Dec 2018 figure: 1,503)	WTE Dec 2015	WTE Dec 2016	WTE Dec 2017	WTE Dec 2018	WTE Dec 2019	WTE Sep 2020	WTE Oct 2020
Older People	1,536	1,531	1,498	1,503	1,488.29	1,511.90	1,476.98
Medical/ Dental, other	100.0%	100.0%	100.0%	100.0%	100.0%	100.0%	100.0%
Medical & Dental	0.7%	0.7%	0.7%	0.8%	0.8%	0.7%	0.7%
Clinical Nurse/ Midwife Manager	17.4%	17.6%	17.1%	16.2%	15.5%	16.8%	17.1%
Director Nursing/Midwifery, Assistant	3.5%	2.4%	3.8%	3.8%	4.4%	4.6%	4.5%
Director of Nursing/Midwifery	3.0%	3.6%	3.8%	3.6%	3.3%	4.0%	4.0%
Nurse/ Midwife Manager	23.9%	23.6%	24.7%	23.5%	23.2%	25.4%	25.6%
Advanced Nurse/ Midwife Practitioner							0.1%
Clinical Nurse/ Midwife Specialist	0.8%	0.8%	0.9%	0.9%	0.6%	0.9%	0.8%
Nurse/ Midwife Specialist & AN/MP	0.8%	0.8%	0.9%	0.9%	0.6%	0.9%	1.0%
Staff Nurse [Intellectual Disability]	0.3%	0.3%					
Staff Nurse [Psychiatric]	0.3%	0.3%	0.3%	0.3%	0.3%	0.3%	0.3%
Staff Nurses [General/ Children's]	73.7%	74.0%	73.0%	74.3%	75.2%	72.5%	72.0%
Staff Nurse/ Staff Midwife	74.3%	74.5%	73.3%	74.6%	75.5%	72.8%	72.3%
Public Health Nurse	1.1%	1.1%	1.1%	1.0%	0.7%	0.7%	0.8%
Nursing Education/Clinical						0.3%	0.3%
Nursing/ Midwifery other						0.3%	0.3%
Nursing & Midwifery	23.8%	23.4%	22.8%	22.2%	22.4%	23.5%	23.5%
Dietitians	1.3%			3.4%	3.4%		
Occupational Therapists	21.2%	24.3%	28.0%	29.2%	29.7%	31.6%	29.1%
Physiotherapists	33.3%	33.4%	32.0%	26.1%	25.5%	29.4%	30.3%
Podiatrists & Chiropodists	4.4%	3.0%	3.4%	3.1%	3.4%		
Speech & Language Therapists	6.8%	6.9%	10.1%	9.4%	7.5%	11.1%	9.8%
Therapy Professions	66.9%	67.6%	73.5%	71.2%	69.5%	72.0%	69.3%
Radiographers	7.3%	8.1%	8.5%				
Health Science/ Diagnostics	7.3%	8.1%	8.5%				
Social Workers	22.0%	20.8%	14.4%	22.0%	22.1%	22.3%	23.7%
Pharmacy	3.7%	3.5%	3.6%	6.8%	8.4%	5.7%	7.0%
Health & Social Care Professionals	1.8%	1.9%	1.9%	2.0%	2.0%	1.9%	1.9%
Management (VIII & above)	3.6%	3.9%	2.5%	3.4%	5.8%	7.6%	7.7%
Administrative/ Supervisory (V to VII)	16.2%	17.8%	18.6%	22.5%	21.2%	20.3%	20.9%
Clerical (III & IV)	80.2%	78.3%	78.9%	74.1%	73.0%	72.0%	71.4%
Management & Administrative	4.9%	4.8%	4.7%	5.4%	5.5%	6.6%	6.6%
Support	55.3%	54.2%	53.5%	51.7%	52.0%	53.9%	53.2%
Maintenance/ Technical	44.7%	45.8%	46.5%	48.3%	48.0%	46.1%	46.8%
General Support	3.2%	3.1%	3.1%	3.3%	3.4%	3.4%	3.4%
HCA, Nurse's Aide, etc.	61.7%	60.5%	59.6%	56.7%	57.0%	59.1%	58.0%
Health & Social Care Assistants	0.3%	0.3%	0.3%	0.3%	0.2%	0.2%	0.2%
Health Care Assistants	62.0%	60.8%	59.9%	56.9%	57.2%	59.3%	58.1%
Care, other	2.2%	2.3%	2.1%	2.1%	2.1%	2.1%	2.2%
Home Help	35.8%	37.0%	38.0%	41.0%	40.7%	38.6%	39.6%
Patient & Client Care	65.7%	66.0%	66.8%	66.3%	66.9%	63.8%	63.8%
Total	100 %	100 %	100 %	100 %	100 %	100 %	100%

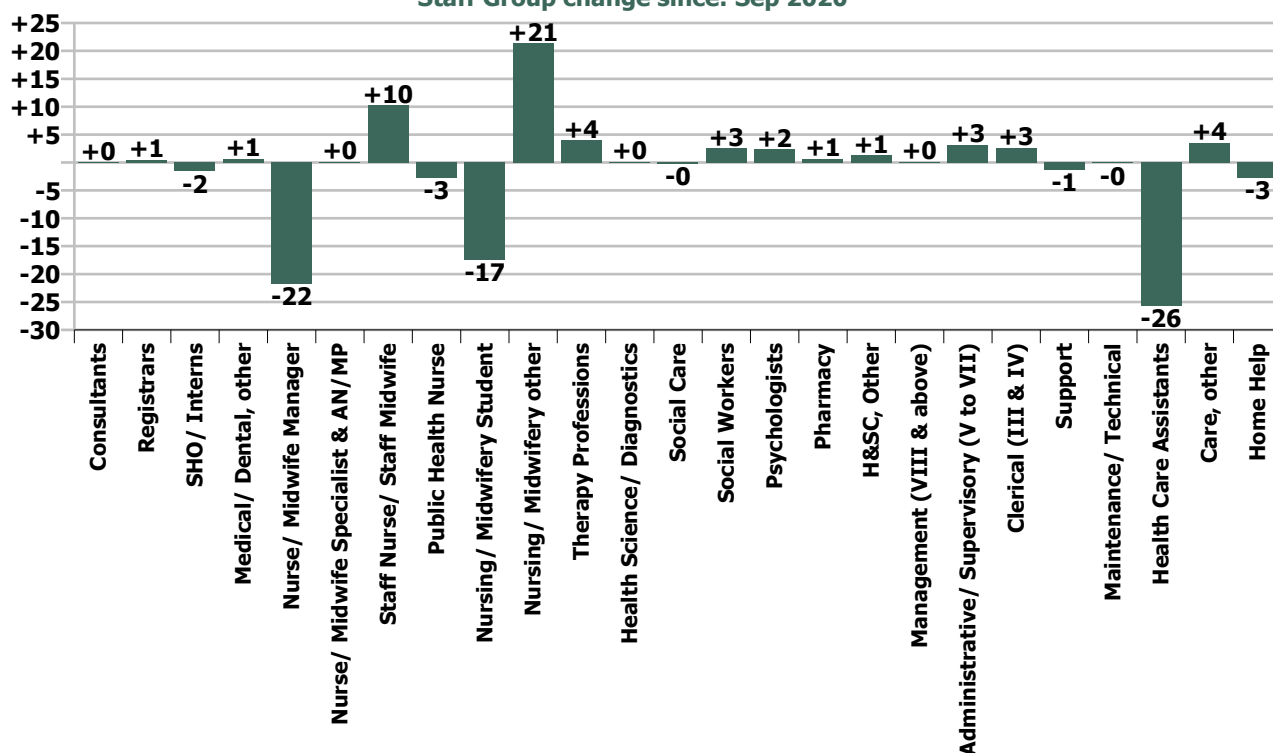
Summary Staff Movement: October 2020

Month-on-month Summary																												
WTE change since Sep 20	% change since Sep 20	overall	Consultants	Registrars	SHO/ Interns	Medical/ Dental, other	Medical & Dental	Nurse/ Midwife Manager	Nurse/ Midwife Specialist & AN/MP	Staff Nurse/ Staff Midwife	Public Health Nurse	Nursing/ Midwifery Student	Nursing/ Midwifery other	Nursing & Midwifery	Therapy Professions	Health Science/ Diagnostics	Social Care	Social Workers	Psychologists	Pharmacy	H&SC, Other	Health & Social Care Professionals	Management (VIII & above)	Administrative/ Supervisory (V to VII)	Clerical (III & IV)	Management & Administrative	General Support	Patient & Client Care
Overall	-0.3%	-20	+0.0	+0.5	-1.6	+0.7	-0.4	-21.7	+0.1	+10.2	-2.8	-17.5	+21.4	-10.2	+4.0	+0.1	-0.2	+2.6	+2.4	+0.7	+1.3	+10.8	+0.2	+3.2	+2.6	+6.0	-1.5	-24.9
Community Health & Wellbeing	+6.3%	+2													-0.1							-0.1	0.0	+2.0	-0.2	+1.8		
Mental Health	-0.6%	-7	-0.0	-0.2	-1.6		-1.8	-2.3	+0.2	+4.1		-9.6	-0.0	-7.6	-1.8		-0.1	+1.4	-0.9	+0.2	+0.4	-0.8	0.0	-0.6	+1.5	+0.9	-0.1	+2.8
Primary Care	+0.9%	+13	+0.0	+0.7	-0.0	+0.7	+1.5	-1.5	+2.4	-0.1	-3.3	+8.3	-0.1	+5.7	+0.9	+0.1	0.0	+0.1	+1.6	-0.0	+0.8	+3.4	+1.2	+0.2	+3.5	+4.8	-0.3	-1.7
Disabilities	+0.3%	+6	0.0	0.0		0.0	0.0	-18.2	-2.8	+8.8	0.0	-16.2	+21.5	-6.9	+4.1	0.0	-0.1	+0.2	+1.7		+0.1	+6.0	-1.0	+1.3	-0.7	-0.4	-0.6	+8.3
Older People	-2.3%	-35				-0.1	-0.1	+0.3	+0.3	-2.5	+0.5		0.0	-1.4	+0.9			+0.9		+0.5		+2.3	-0.0	+0.3	-1.4	-1.1	-0.5	-34.2
Social Care	-0.8%	-29	0.0	0.0		-0.1	-0.1	-17.9	-2.5	+6.3	+0.5	-16.2	+21.5	-8.3	+5.0	0.0	-0.1	+1.1	+1.7	+0.5	+0.1	+8.3	-1.0	+1.6	-2.0	-1.4	-1.1	-25.9
Change	-20.1	-0.3%	+0.1%	+0.5%	-5.1%	+0.9%	-0.1%	-5.8%	+0.1%	+1.0%	-1.4%	-36.4%	+210.4%	-0.6%	+1.0%	+0.9%	-0.1%	+2.9%	+2.1%	+9.8%	+2.6%	+1.0%	+0.3%	+1.6%	+0.5%	+0.8%	-0.8%	-1.1%

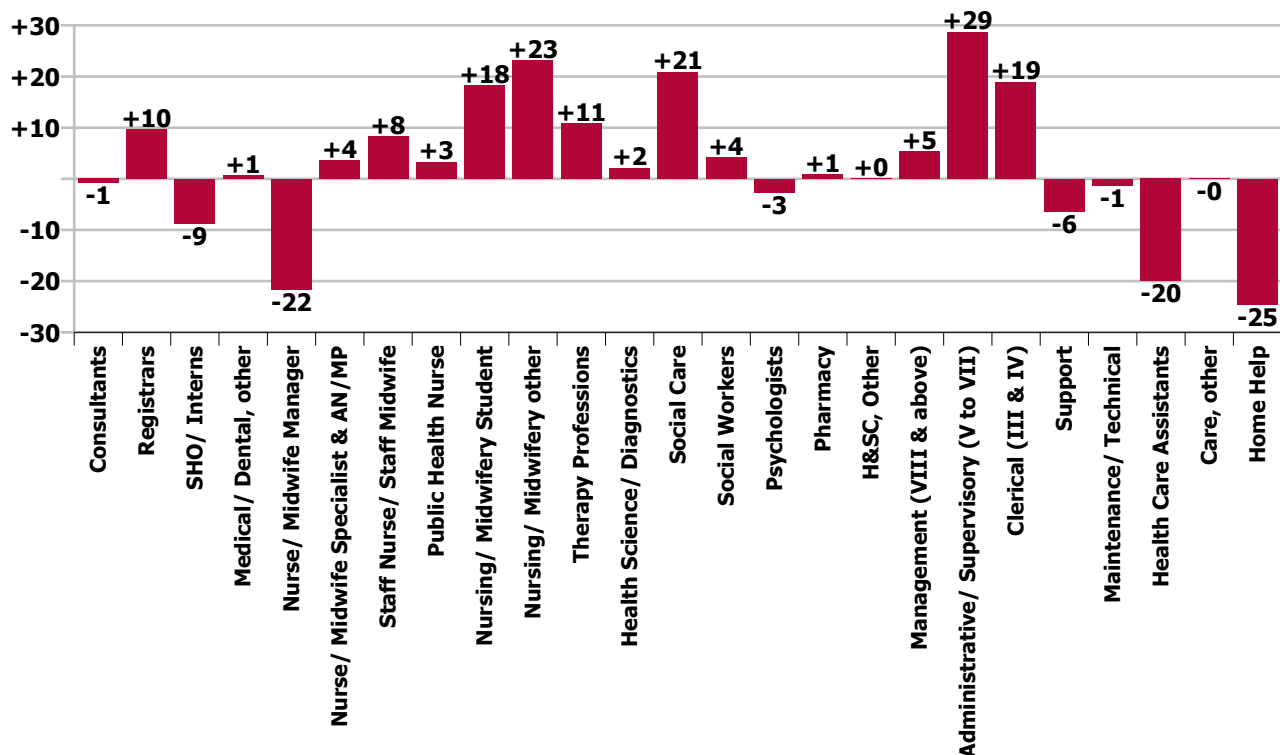
Year-on-year Summary																												
WTE change since Oct 19	% change since Oct 19	overall	Consultants	Registrars	SHO/ Interns	Medical/ Dental, other	Medical & Dental	Nurse/ Midwife Manager	Nurse/ Midwife Specialist & AN/MP	Staff Nurse/ Staff Midwife	Public Health Nurse	Nursing/ Midwifery Student	Nursing/ Midwifery other	Nursing & Midwifery	Therapy Professions	Health Science/ Diagnostics	Social Care	Social Workers	Psychologists	Pharmacy	H&SC, Other	Health & Social Care Professionals	Management (VIII & above)	Administrative/ Supervisory (V to VII)	Clerical (III & IV)	Management & Administrative	General Support	Patient & Client Care
Overall	+1.2%	+73	-0.8	+9.6	-8.8	+0.7	+0.8	-21.6	+3.6	+8.3	+3.3	+18.3	+23.1	+35.0	+10.8	+2.1	+20.9	+4.2	-2.7	+0.8	+0.1	+36.2	+5.4	+28.7	+18.9	+53.0	-7.8	-44.6
Community Health & Wellbeing	+6.3%	+2													+1.4							+1.4	+1.0	+21.0	+4.0	+26.0		
Mental Health	-0.6%	-7	-1.8	+5.7	-7.9		-4.0	-6.3	+4.5	-0.1		+11.6	-0.0	+9.7	-4.1		-0.2	+3.3	-3.1	+0.2	+0.0	-4.0	-0.0	-0.8	+12.2	+11.3	-1.7	-3.3
Primary Care	+0.9%	+13	+1.0	+5.0	-0.9	+0.9	+6.0	-1.5	+0.3	-2.7	+2.8	+5.3	+0.9	+5.2	+7.1	+2.1	+1.0	+0.2	+3.3	+1.0	-0.2	+14.6	-1.1	+4.1	+1.8	+4.7	-2.0	-0.8
Disabilities	+1.6%	+34.3	0.0	-1.0		0.0	-1.0	-23.1	-3.2	+10.0	-0.0	+1.3	+21.3	+6.3	+7.9	0.0	+20.1	+0.3	-2.9		+0.3	+25.7	+3.0	+3.1	+1.5	+7.6	-5.1	+0.8
Older People	-1.7%	-25.0				-0.2	-0.2	+9.2	+2.0	+1.0	+0.5		+1.0	+13.7	-1.5			+0.5		-0.4		-1.5	+2.6	+1.3	-0.6	+3.3	+1.0	-41.3
Social Care	-0.8%	-29	0.0	-1.0		-0.2	-1.2	-13.9	-1.2	+11.0	+0.5	+1.3	+22.3	+20.0	+6.4	0.0	+20.1	+0.7	-2.9	-0.4	+0.3	+24.2	+5.5	+4.4	+1.0	+10.9	-4.1	-40.5
Change	+72.6	+1.2%	-1.9%	+9.1%	-22.8%	+1.0%	+0.3%	-5.8%	+3.6%	+0.8%	+1.7%	+150.0%	+275.0%	+2.1%	+2.8%	+29.4%	+5.8%	+4.7%	-2.3%	+11.3%	+0.2%	+3.6%	+8.6%	+17.0%	+3.7%	+7.1%	-4.0%	-2.0%



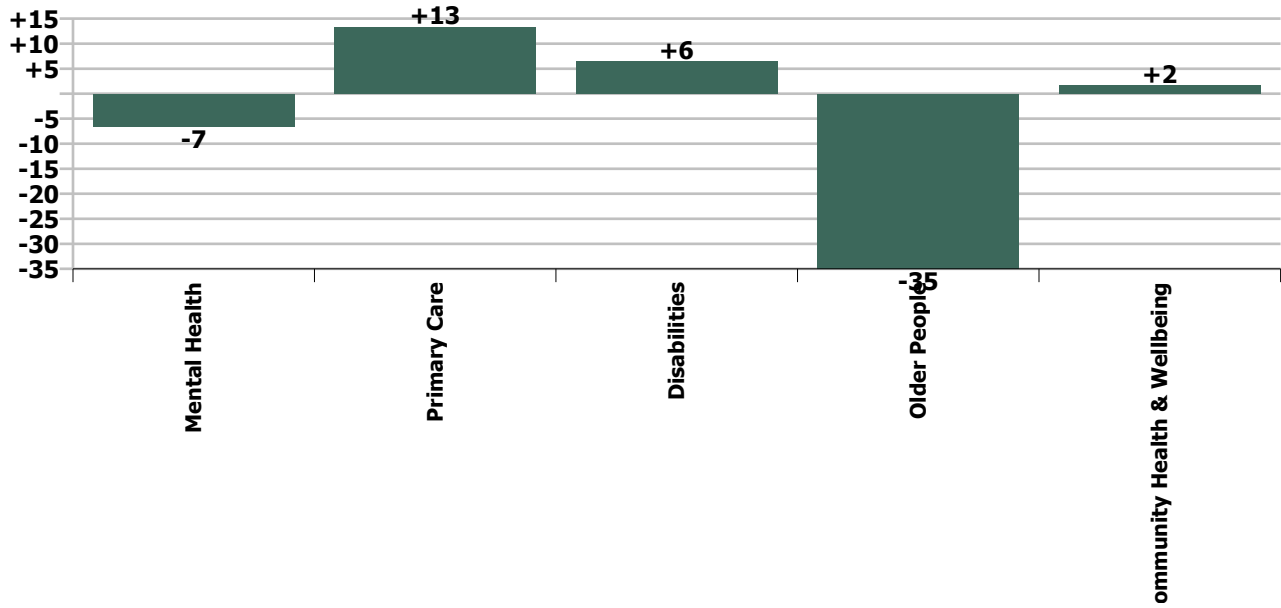
Staff Group change since: Sep 2020



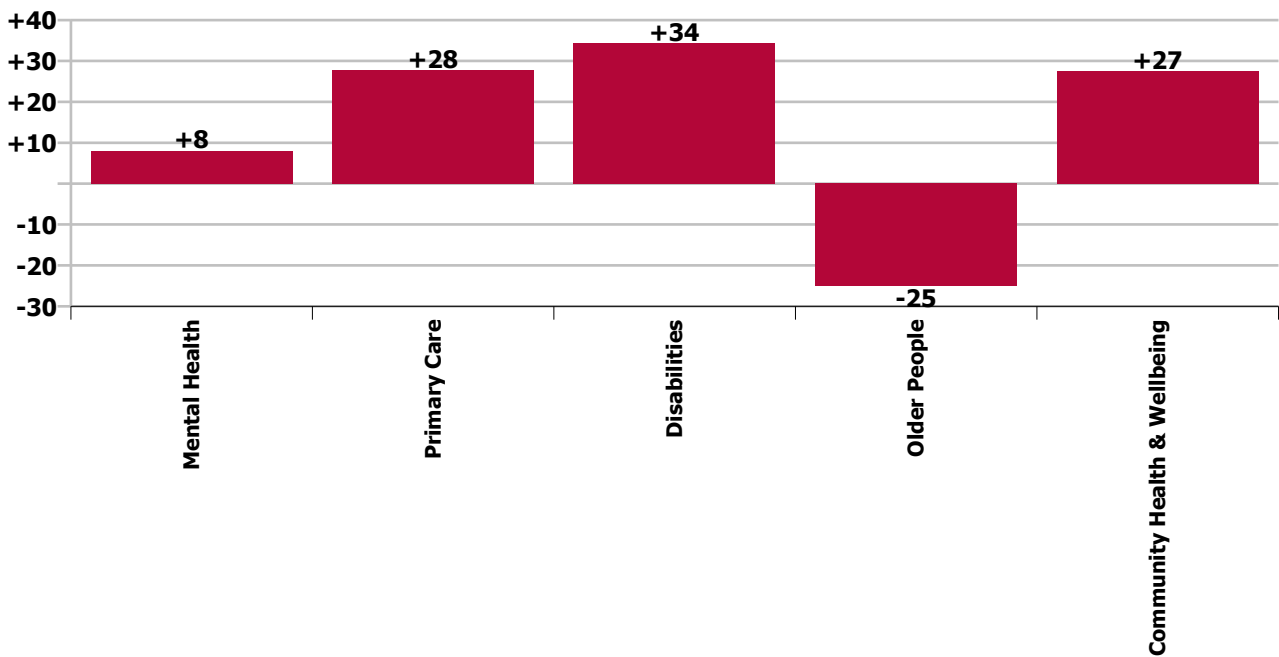
Staff Group change since: Oct 2019



Care Group change since: Sep 2020



Care Group change since: Oct 2019



Longitudinal Employment Levels by Grade Group - Oct 2013 to Oct 2020

Oct 2020 (Dec 2015 figure: 5,814)	WTE Oct 2020	WTE change since Dec 15	WTE change since Dec 16	WTE change since Dec 17	WTE change since Dec 18	WTE change since Dec 19	WTE change since Sep 20	% change since Dec 15	% change since Dec 16	% change since Dec 17	% change since Dec 18	% change since Dec 19	% change since Sep 20
Overall	6,220	+406	+206	+128	+92	+85	-20	+7.0%	+3.4%	+2.1%	+1.5%	+1.4%	-0.3%
Consultant Dentistry	1	+0	+0	+0	+0	+0	+0	+1.1%	+1.1%	+1.1%	+1.1%	+1.1%	+1.1%
Consultant Medicine	6	+2	+2	+1	+2	+1	+0	+50.0%	+50.0%	+20.0%	+51.5%	+20.0%	+0.7%
Consultant Psychiatry	36	-1	-1	+1	+0	-1	-0	-1.5%	-3.4%	+3.5%	+0.1%	-2.3%	-0.1%
Consultants	42	+1	+1	+2	+2	+0	+0	+3.6%	+1.8%	+5.5%	+5.2%	+0.4%	+0.1%
Registrar	102	+23	+17	+14	+16	+10	+1	+28.9%	+19.4%	+16.5%	+18.4%	+11.1%	+0.7%
Senior Registrar	14	+4	+3	-0	+1	-0	-0	+43.6%	+23.9%	-1.4%	+7.0%	-0.4%	-1.0%
Registrars	116	+27	+19	+14	+17	+10	+1	+30.5%	+19.9%	+14.0%	+16.9%	+9.6%	+0.5%
Interns		-1	-1					-100.0%	-100.0%	-100.0%	-100.0%	-100.0%	-100.0%
Senior House Officer	30	-1	+3	+4	+2	-8	-2	-3.8%	+10.6%	+14.5%	+6.7%	-21.9%	-5.1%
SHO/ Interns	30	-2	+2	+4	+2	-8	-2	-6.8%	+6.6%	+14.5%	+6.7%	-21.9%	-5.1%
Dentists	36	+3	+1	+2	+4	+1	+1	+9.0%	+2.2%	+6.4%	+10.9%	+2.2%	+1.9%
Other Medical	37	+3	+3	+3	+1	+0	+0	+8.9%	+9.5%	+9.5%	+2.7%	+0.1%	+0.1%
Medical/ Dental, other	73	+6	+4	+5	+5	+1	+1	+8.9%	+5.8%	+7.9%	+6.6%	+1.1%	+0.9%
Medical & Dental	261	+32	+26	+26	+25	+3	-0	+14.2%	+11.0%	+10.9%	+10.7%	+1.1%	-0.1%
Clinical Nurse/ Midwife Manager	265	-25	-35	-35	-32	-23	-21	-8.5%	-11.7%	-11.7%	-10.7%	-7.9%	-7.4%
Director Nursing/Midwifery, Assistant	61	+8	+4	+2	+0	+1	-2	+14.6%	+7.3%	+3.6%	+0.2%	+2.0%	-2.8%
Director of Nursing/Midwifery	28	+3	+2	+1	+6	+4	+1	+12.6%	+8.9%	+4.2%	+28.2%	+15.3%	+4.0%
Nurse/ Midwife Manager	354	-14	-29	-32	-26	-18	-22	-3.7%	-7.5%	-8.2%	-6.7%	-4.8%	-5.8%
Advanced Nurse/ Midwife Practitioner	8	+8	+7	+7	+6	+4	+3	-100.0%	+702.0%	+702.0%	+301.0%	+102.5%	+68.1%
Clinical Nurse/ Midwife Specialist	95	+5	-2	-1	-2	-0	-3	+6.0%	-1.6%	-1.0%	-1.7%	-0.4%	-3.1%
Nurse/ Midwife Specialist & AN/MP	103	+13	+5	+6	+4	+4	+0	+14.9%	+5.6%	+6.3%	+4.4%	+3.7%	+0.1%
Staff Nurse [Intellectual Disability]	115	-142	-143	-146	-149	-116	-105	-55.3%	-55.4%	-55.8%	-56.5%	-50.2%	-47.7%
Staff Nurse [Psychiatric]	341	-10	+7	+10	+12	+8	+14	-2.8%	+2.0%	+3.0%	+3.6%	+2.4%	+4.4%
Staff Nurses [General/ Children's]	543	+109	+98	+123	+131	+110	+101	+25.2%	+22.0%	+29.4%	+31.8%	+25.3%	+22.9%
Staff Nurse/ Staff Midwife	999	-43	-38	-12	-7	+1	+10	-4.1%	-3.7%	-1.2%	-0.7%	+0.1%	+1.0%
Public Health Nurse	199	+5	-0	+1	+2	+0	-3	+2.8%	-0.0%	+0.4%	+1.2%	+0.1%	-1.4%
Pre-registration Nurse/ Midwife Intern	1	+1	+1	+1	+1	+1	+1	-100.0%	-100.0%	+100.0%	+100.0%	+100.0%	-100.0%
Pre-registration Nurse Intern (COVID-19)	20	+20	+20	+20	+20	+20	-27	-100.0%	-100.0%	-100.0%	-100.0%	-100.0%	-57.0%
Post-registration Nurse/ Midwife Student	9	-2	-7	-4	+1	+7	+8	-15.3%	-41.8%	-28.3%	+16.5%	+370.7%	+822.8%
Nursing/ Midwifery awaiting registration			-2	-1	-1	-2		-100.0%	-100.0%	-100.0%	-100.0%	-100.0%	-100.0%
Nursing/ Midwifery Student	30	+19	+12	+16	+21	+26	-17	+177.3%	+69.4%	+117.2%	+218.0%	+580.8%	-36.4%
Nursing Education/Clinical	32	+25	+25	+23	+24	+22	+21	+412.8%	+404.6%	+270.2%	+330.9%	+235.2%	+210.4%
Nursing/ Midwifery other	32	+25	+25	+23	+24	+22	+21	+412.8%	+404.6%	+270.2%	+330.9%	+235.2%	+210.4%

Oct 2020 (Dec 2015 figure: 5,814)	WTE Oct 2020	WTE change since Dec 15	WTE change since Dec 16	WTE change since Dec 17	WTE change since Dec 18	WTE change since Dec 19	WTE change since Sep 20	% change since Dec 15	% change since Dec 16	% change since Dec 17	% change since Dec 18	% change since Dec 19	% change since Sep 20
Overall	6,220	+406	+206	+128	+92	+85	-20	+7.0%	+3.4%	+2.1%	+1.5%	+1.4%	-0.3%
Nursing & Midwifery	1,718	+7	-24	+2	+19	+36	-10	+0.4%	-1.4%	+0.1%	+1.1%	+2.1%	-0.6%
Dietitians	20	+7	+4	+3	+1	+0	+0	+50.8%	+24.4%	+16.8%	+7.9%	+2.5%	+1.8%
Occupational Therapists	146	+16	+13	+3	+11	+7	+3	+12.5%	+10.0%	+2.2%	+7.8%	+5.1%	+1.9%
Orthoptists	1	+0	+0	+0	+0	+1	+1	+32.5%	+20.5%	+20.5%	+20.5%	-100.0%	-100.0%
Physiotherapists	110	+1	-2	-1	+1	+3	-2	+1.0%	-2.0%	-0.9%	+1.3%	+2.8%	-2.1%
Podiatrists & Chiropodists	4	+1	+2	+0	-0	-0		+42.9%	+68.6%	+6.7%	-7.4%	-9.6%	
Speech & Language Therapists	110	+26	+2	-7	+1	+4	+3	+30.6%	+2.1%	-6.2%	+0.7%	+3.4%	+2.4%
Therapy Professions	391	+51	+19	-2	+14	+14	+4	+15.1%	+5.1%	-0.5%	+3.7%	+3.8%	+1.0%
Audiology	5	+1	+1	+1	+1	+2	+0	+28.7%	+21.1%	+23.6%	+23.6%	+65.3%	+1.5%
Clinical Engineering	4	+4						-100.0%					
Radiographers		-2	-2	-3				-100.0%	-100.0%	-100.0%	-100.0%	-100.0%	-100.0%
Health Science/ Diagnostics	9	+3	-1	-2	+1	+2	+0	+51.9%	-13.0%	-16.5%	+12.3%	+29.2%	+0.9%
Social Care	383	+107	+79	+40	+22	+15	-0	+38.7%	+26.0%	+11.8%	+6.0%	+4.0%	-0.1%
Social Workers	93	+11	+5	+2	+2	+5	+3	+13.8%	+5.6%	+1.7%	+2.4%	+5.8%	+2.9%
Psychologists	117	+13	+18	+9	+12	-2	+2	+12.9%	+18.5%	+8.3%	+11.2%	-1.9%	+2.1%
Pharmacy	8	+4	+3	+3	+2	+1	+1	+122.6%	+74.0%	+67.1%	+34.6%	+9.6%	+9.8%
Counsellor Therapists	37	+3	+2	-2	-2	-0	+2	+9.8%	+5.1%	-6.1%	-5.1%	-0.8%	+4.2%
Dental Hygienists	13	-0	+1	+0	+0	+0	-0	-2.5%	+4.6%	+3.5%	+2.4%	+3.6%	-1.5%
Other Health & Social Care	2	-0	-0	-0	-0	+0		-5.1%	-7.7%	-3.5%	-9.2%	+2.5%	
Play Therapists/ Specialists	1												
H&SC, Other	53	+3	+2	-2	-2	+0	+1	+5.8%	+4.4%	-3.8%	-3.4%	+0.3%	+2.6%
Health & Social Care Professionals	1,054	+193	+126	+48	+51	+35	+11	+22.4%	+13.5%	+4.8%	+5.1%	+3.4%	+1.0%
Executive Management	11	+7	+2	+1	+1	+2	-0	+170.5%	+22.1%	+9.7%	+10.6%	+22.1%	-0.4%
Senior Management (VIII & GM)	57	+10	+8	+4	+8	+4	+0	+20.2%	+15.4%	+7.9%	+15.1%	+7.1%	+0.4%
Management (VIII & above)	68	+16	+10	+5	+9	+6	+0	+31.8%	+16.5%	+8.2%	+14.4%	+9.2%	+0.3%
Middle Management (V-VII)	198	+65	+55	+49	+24	+21	+3	+48.8%	+38.1%	+33.1%	+13.8%	+12.1%	+1.6%
Other Administrative			-1					-100.0%	-100.0%	-100.0%	-100.0%	-100.0%	-100.0%
Administrative/ Supervisory (V to VII)	198	+65	+54	+49	+24	+21	+3	+48.8%	+37.1%	+33.1%	+13.8%	+12.1%	+1.6%
Clerical (III & IV)	530	+14	+6	+8	+19	+23	+3	+2.7%	+1.2%	+1.6%	+3.7%	+4.5%	+0.5%
Management & Administrative	796	+95	+69	+63	+51	+50	+6	+13.6%	+9.5%	+8.5%	+6.9%	+6.7%	+0.8%
Catering	32	-5	-4	-1	-4	-1	-1	-13.4%	-10.6%	-2.6%	-10.9%	-2.7%	-4.3%
Household Services	53	-28	-18	-12	-4	-4	+0	-34.1%	-25.0%	-18.6%	-6.5%	-7.2%	+0.3%
Other Support	29	-4	-7	-8	-4	-3	-0	-11.2%	-19.5%	-22.3%	-13.3%	-8.3%	-0.1%
Portering	5	+1						+34.0%					
Support	120	-35	-29	-21	-12	-8	-1	-22.6%	-19.3%	-15.1%	-9.2%	-6.0%	-1.1%

Oct 2020 (Dec 2015 figure: 5,814)	WTE Oct 2020	WTE change since Dec 15	WTE change since Dec 16	WTE change since Dec 17	WTE change since Dec 18	WTE change since Dec 19	WTE change since Sep 20	% change since Dec 15	% change since Dec 16	% change since Dec 17	% change since Dec 18	% change since Dec 19	% change since Sep 20
Overall	6,220	+406	+206	+128	+92	+85	-20	+7.0%	+3.4%	+2.1%	+1.5%	+1.4%	-0.3%
Maintenance	68	+0	-0	-1	-4	-0	-0	+0.5%	-0.6%	-1.9%	-5.2%	-0.5%	-0.2%
Technical Services	0												
Maintenance/ Technical	68	+0	-0	-1	-4	-0	-0	+0.5%	-0.6%	-1.9%	-5.2%	-0.5%	-0.2%
General Support	188	-35	-29	-23	-16	-8	-1	-15.5%	-13.4%	-10.8%	-7.8%	-4.1%	-0.8%
HCA, Nurse's Aide, etc.	1,553	+114	+58	+32	+7	-11	-24	+7.9%	+3.9%	+2.1%	+0.5%	-0.7%	-1.5%
Health & Social Care Assistants	14	+10	+10	+10	-7	+1	-1	+283.7%	+259.9%	+259.9%	-32.9%	+4.2%	-8.9%
Health Care Assistants	1,567	+124	+68	+42	+1	-10	-26	+8.6%	+4.5%	+2.7%	+0.0%	-0.6%	-1.6%
Care, other	238	-22	-30	-21	-6	+1	+4	-8.4%	-11.2%	-8.0%	-2.4%	+0.4%	+1.5%
Home Help	397	+11	+0	-9	-34	-21	-3	+2.8%	+0.0%	-2.3%	-7.8%	-5.0%	-0.7%
Patient & Client Care	2,203	+113	+38	+12	-39	-30	-25	+5.4%	+1.8%	+0.5%	-1.7%	-1.4%	-1.1%

Source: Health Service Personnel Census

Longitudinal Employment Levels by Care Group - Oct 2013 to Oct 2020

Community Health & Wellbeing

Oct 2020 (figure:)	WTE Oct 2020	WTE change since	WTE change since	WTE change since	WTE change since	WTE change since	WTE change since Sep 20	% change since	% change since	% change since	% change since	% change since	% change since Sep 20
Overall	27	+27	+27	+27	+27	+27	+2	-100.0%	-100.0%	-100.0%	-100.0%	-100.0%	+6.3%
Health & Social Care Professionals	1	+1	+1	+1	+1	+1	-0	-1.0%	-1.0%	-1.0%	-1.0%	-1.0%	-0.1%
Therapy Professions	1	+1	+1	+1	+1	+1	-0	-1.0%	-1.0%	-1.0%	-1.0%	-1.0%	-0.1%
Management & Administrative	26	+26	+26	+26	+26	+26	+2	-1.0%	-1.0%	-1.0%	-1.0%	-1.0%	+0.1%
Management (VIII & above)	1	+1	+1	+1	+1	+1		-1.0%	-1.0%	-1.0%	-1.0%	-1.0%	+0.0%
Administrative/ Supervisory (V to VII)	21	+21	+21	+21	+21	+21	+2	-1.0%	-1.0%	-1.0%	-1.0%	-1.0%	+0.1%
Clerical (III & IV)	4	+4	+4	+4	+4	+4	-0	-1.0%	-1.0%	-1.0%	-1.0%	-1.0%	-0.1%

Source: Health Service Personnel Census

Mental Health

Oct 2020 (Dec 2015 figure: 1,042)	WTE Oct 2020	WTE change since Dec 15	WTE change since Dec 16	WTE change since Dec 17	WTE change since Dec 18	WTE change since Dec 18	WTE change since Sep 20	% change since Dec 15	% change since Dec 16	% change since Dec 17	% change since Dec 18	% change since Dec 18	% change since Sep 20
Overall	1,116	+74	+75	+36	+46	+46	-7	+7.1%	+7.2%	+3.3%	+4.3%	+4.3%	-0.6%
Medical & Dental	95	+12	+14	+7	+8	+8	-2	+0.1%	+0.2%	+0.1%	+0.1%	+0.1%	-0.0%
Consultants	35	+0	-0	+1	+0	+0	-0	+0.0%	-0.0%	+0.0%	+0.0%	+0.0%	-0.0%
Registrars	31	+15	+12	+2	+5	+5	-0	+0.9%	+0.6%	+0.1%	+0.2%	+0.2%	-0.0%
SHO/ Interns	29	-3	+2	+4	+3	+3	-2	-0.1%	+0.1%	+0.2%	+0.1%	+0.1%	-0.1%
Nursing & Midwifery	530	+29	+25	+20	+23	+23	-8	+0.1%	+0.1%	+0.0%	+0.0%	+0.0%	-0.0%
Nurse/ Midwife Manager	117	+1	-6	-14	-10	-10	-2	+0.0%	-0.1%	-0.1%	-0.1%	-0.1%	-0.0%
Nurse/ Midwife Specialist & AN/MP	60	+18	+12	+11	+9	+9	+0	+0.4%	+0.2%	+0.2%	+0.2%	+0.2%	+0.0%
Staff Nurse/ Staff Midwife	331	-10	+2	+4	+6	+6	+4	-0.0%	+0.0%	+0.0%	+0.0%	+0.0%	+0.0%
Nursing/ Midwifery Student	19	+19	+17	+18	+18	+18	-10	-1.0%	+8.6%	+17.5%	+16.7%	+16.7%	-0.3%
Nursing/ Midwifery other	3	+1	+1	+0	+1	+1	-0	+0.6%	+0.6%	+0.0%	+0.5%	+0.5%	-0.0%
Health & Social Care Professionals	154	+18	+20	+3	+6	+6	-1	+0.1%	+0.1%	+0.0%	+0.0%	+0.0%	-0.0%
Therapy Professions	43	+5	+7	-2	-2	-2	-2	+0.1%	+0.2%	-0.0%	-0.0%	-0.0%	-0.0%
Social Care	7	+1	+0	+1	+1	+1	-0	+0.2%	+0.0%	+0.1%	+0.1%	+0.1%	-0.0%
Social Workers	45	+4	+3	+2	+5	+5	+1	+0.1%	+0.1%	+0.0%	+0.1%	+0.1%	+0.0%
Psychologists	38	+6	+8	+1	+0	+0	-1	+0.2%	+0.3%	+0.0%	+0.0%	+0.0%	-0.0%
Pharmacy	1	+1	+1	+0	+0	+0	+0	-1.0%	+0.9%	+0.2%	+0.2%	+0.2%	+0.2%
H&SC, Other	20	+2	+1	+2	+2	+2	+0	+0.1%	+0.1%	+0.1%	+0.1%	+0.1%	+0.0%
Management & Administrative	122	+23	+21	+11	+13	+13	+1	+0.2%	+0.2%	+0.1%	+0.1%	+0.1%	+0.0%
Management (VIII & above)	3	-0	+2	+1	+1	+1		-0.0%	+2.0%	+0.5%	+0.5%	+0.5%	+0.0%
Administrative/ Supervisory (V to VII)	21	+5	+5	+2	-1	-1	-1	+0.4%	+0.3%	+0.1%	-0.0%	-0.0%	-0.0%
Clerical (III & IV)	98	+18	+14	+8	+13	+13	+1	+0.2%	+0.2%	+0.1%	+0.2%	+0.2%	+0.0%
General Support	58	-2	-0	-5	-3	-3	-0	-0.0%	-0.0%	-0.1%	-0.0%	-0.0%	-0.0%
Support	31	-1	+1	-4	-2	-2	+0	-0.0%	+0.0%	-0.1%	-0.1%	-0.1%	+0.0%
Maintenance/ Technical	27	-1	-1	-1	-1	-1	-0	-0.0%	-0.0%	-0.0%	-0.0%	-0.0%	-0.0%
Patient & Client Care	157	-6	-6	-0	-2	-2	+3	-0.0%	-0.0%	-0.0%	-0.0%	-0.0%	+0.0%
Health Care Assistants	154	-5	-4	+1	-2	-2	+3	-0.0%	-0.0%	+0.0%	-0.0%	-0.0%	+0.0%
Care, other	3	-2	-2	-2				-0.3%	-0.3%	-0.3%	+0.0%	+0.0%	+0.0%

Source: Health Service Personnel Census

Primary Care

Oct 2020 (Dec 2015 figure: 1,393)	WTE Oct 2020	WTE change since Dec 15	WTE change since Dec 16	WTE change since Dec 17	WTE change since Dec 18	WTE change since Dec 18	WTE change since Sep 20	% change since Dec 15	% change since Dec 16	% change since Dec 17	% change since Dec 18	% change since Dec 18	% change since Sep 20
Overall	1,429	+36	-28	-7	+7	+7	+13	+2.6%	-1.9%	-0.5%	+0.5%	+0.5%	+0.9%
Medical & Dental	153	+19	+12	+19	+18	+18	+1	+0.1%	+0.1%	+0.1%	+0.1%	+0.1%	+0.0%
Consultants	7	+1	+1	+1	+2	+2	+0	+0.2%	+0.2%	+0.2%	+0.4%	+0.4%	+0.0%
Registrars	84	+12	+7	+12	+12	+12	+1	+0.2%	+0.1%	+0.2%	+0.2%	+0.2%	+0.0%
SHO/ Interns	1	+1	-0	-0	-1	-1	-0	-1.0%	-0.2%	-0.1%	-0.6%	-0.6%	-0.0%
Medical/ Dental, other	61	+5	+4	+5	+5	+5	+1	+0.1%	+0.1%	+0.1%	+0.1%	+0.1%	+0.0%
Nursing & Midwifery	395	+10	-23	-14	-1	-1	+6	+0.0%	-0.1%	-0.0%	-0.0%	-0.0%	+0.0%
Nurse/ Midwife Manager	51	+2	-5	-2	-2	-2	-2	+0.0%	-0.1%	-0.0%	-0.0%	-0.0%	-0.0%
Nurse/ Midwife Specialist & AN/MP	36	+1	-2	-1	-1	-1	+2	+0.0%	-0.0%	-0.0%	-0.0%	-0.0%	+0.1%
Staff Nurse/ Staff Midwife	102	+2	-12	-9	-2	-2	-0	+0.0%	-0.1%	-0.1%	-0.0%	-0.0%	-0.0%
Public Health Nurse	196	+6	+1	+1	+3	+3	-3	+0.0%	+0.0%	+0.0%	+0.0%	+0.0%	-0.0%
Nursing/ Midwifery Student	9	-2	-7	-4	+1	+1	+8	-0.2%	-0.4%	-0.3%	+0.2%	+0.2%	+8.2%
Nursing/ Midwifery other	1	+1	+1	+1	+1	+1	-0	-1.0%	-1.0%	-1.0%	-1.0%	-1.0%	-0.1%
Health & Social Care Professionals	343	+16	+16	+4	+15	+15	+3	+0.0%	+0.0%	+0.0%	+0.0%	+0.0%	+0.0%
Therapy Professions	230	+8	+6	-4	+6	+6	+1	+0.0%	+0.0%	-0.0%	+0.0%	+0.0%	+0.0%
Health Science/ Diagnostics	7	+3	+1	+1	+1	+1	+0	+0.8%	+0.1%	+0.1%	+0.2%	+0.2%	+0.0%
Social Care	1			+1	+1	+1		+0.0%	+0.0%	-1.0%	-1.0%	-1.0%	+0.0%
Social Workers	17	-1	-0	-0	-2	-2	+0	-0.0%	-0.0%	-0.0%	-0.1%	-0.1%	+0.0%
Psychologists	58	+3	+7	+9	+11	+11	+2	+0.1%	+0.1%	+0.2%	+0.2%	+0.2%	+0.0%
Pharmacy	5	+2	+2	+2	+2	+2	-0	+0.9%	+0.6%	+0.7%	+0.6%	+0.6%	-0.0%
H&SC, Other	25	+0	+0	-4	-4	-4	+1	+0.0%	+0.0%	-0.1%	-0.1%	-0.1%	+0.0%
Management & Administrative	395	+4	-21	-8	-12	-12	+5	+0.0%	-0.1%	-0.0%	-0.0%	-0.0%	+0.0%
Management (VIII & above)	44	+11	+2	+2	-0	-0	+1	+0.3%	+0.0%	+0.1%	-0.0%	-0.0%	+0.0%
Administrative/ Supervisory (V to VII)	79	+21	+14	+12	-0	-0	+0	+0.4%	+0.2%	+0.2%	-0.0%	-0.0%	+0.0%
Clerical (III & IV)	271	-27	-36	-23	-11	-11	+3	-0.1%	-0.1%	-0.1%	-0.0%	-0.0%	+0.0%
General Support	24	-3	-3	-5	-2	-2	-0	-0.1%	-0.1%	-0.2%	-0.1%	-0.1%	-0.0%
Support	21	-2	-4	-5	-2	-2	-0	-0.1%	-0.2%	-0.2%	-0.1%	-0.1%	-0.0%
Maintenance/ Technical	3	-0	+1	-0	-0	-0	-0	-0.0%	+0.6%	-0.0%	-0.0%	-0.0%	-0.0%
Patient & Client Care	120	-11	-9	-2	-11	-11	-2	-0.1%	-0.1%	-0.0%	-0.1%	-0.1%	-0.0%
Health Care Assistants	20	+4	+3	+5	-9	-9	-2	+0.2%	+0.2%	+0.3%	-0.3%	-0.3%	-0.1%
Care, other	101	-14	-12	-6	-1	-1	+1	-0.1%	-0.1%	-0.1%	-0.0%	-0.0%	+0.0%
Home Help		-1	-1	-1	-0	-0		-1.0%	-1.0%	-1.0%	-1.0%	-1.0%	-1.0%

Source: Health Service Personnel Census

Disabilities

Oct 2020 (Dec 2015 figure: 1,843)	WTE Oct 2020	WTE change since Dec 15	WTE change since Dec 16	WTE change since Dec 17	WTE change since Dec 18	WTE change since Dec 18	WTE change since Sep 20	% change since Dec 15	% change since Dec 16	% change since Dec 17	% change since Dec 18	% change since Dec 18	% change since Sep 20
Overall	2,171	+328	+186	+92	+37	+37	+6	+17.8%	+9.4%	+4.4%	+1.7%	+1.7%	+0.3%
Medical & Dental	3							+0.0%	+0.0%	+0.0%	+0.0%	+0.0%	+0.0%
Consultants	1							+0.0%	+0.0%	+0.0%	+0.0%	+0.0%	+0.0%
Registrars	1							+0.0%	+0.0%	+0.0%	+0.0%	+0.0%	+0.0%
Medical/ Dental, other	1							+0.0%	+0.0%	+0.0%	+0.0%	+0.0%	+0.0%
Nursing & Midwifery	445	-14	-15	-10	-16	-16	-7	-0.0%	-0.0%	-0.0%	-0.0%	-0.0%	-0.0%
Nurse/ Midwife Manager	97	-18	-22	-21	-23	-23	-18	-0.2%	-0.2%	-0.2%	-0.2%	-0.2%	-0.2%
Nurse/ Midwife Specialist & AN/MP	4	-6	-5	-4	-3	-3	-3	-0.6%	-0.6%	-0.5%	-0.5%	-0.5%	-0.4%
Staff Nurse/ Staff Midwife	314	-15	-12	-9	-13	-13	+9	-0.0%	-0.0%	-0.0%	-0.0%	-0.0%	+0.0%
Public Health Nurse	1	+1	-0	+1	-0	-0		+1.1%	-0.0%	-1.0%	-0.0%	-0.0%	+0.0%
Nursing/ Midwifery Student	2	+2	+2	+2	+1	+1	-16	-1.0%	-1.0%	-1.0%	+2.8%	+2.8%	-0.9%
Nursing/ Midwifery other	27	+22	+22	+21	+21	+21	+22	+5.2%	+5.1%	+3.8%	+4.0%	+4.0%	+4.1%
Health & Social Care Professionals	527	+157	+89	+39	+29	+29	+6	+0.4%	+0.2%	+0.1%	+0.1%	+0.1%	+0.0%
Therapy Professions	98	+36	+4	+3	+9	+9	+4	+0.6%	+0.0%	+0.0%	+0.1%	+0.1%	+0.0%
Health Science/ Diagnostics	2	+2						-1.0%	+0.0%	+0.0%	+0.0%	+0.0%	+0.0%
Social Care	374	+106	+79	+39	+20	+20	-0	+0.4%	+0.3%	+0.1%	+0.1%	+0.1%	-0.0%
Social Workers	24	+8	+2	-2	-1	-1	+0	+0.4%	+0.1%	-0.1%	-0.0%	-0.0%	+0.0%
Psychologists	22	+5	+3	-1	+1	+1	+2	+0.3%	+0.2%	-0.1%	+0.0%	+0.0%	+0.1%
H&SC, Other	7	+1	+1	+1	+0	+0	+0	+0.2%	+0.1%	+0.1%	+0.1%	+0.1%	+0.0%
Management & Administrative	156	+20	+20	+8	+8	+8	-0	+0.1%	+0.1%	+0.1%	+0.1%	+0.1%	-0.0%
Management (VIII & above)	13	+0	+0	-5	+2	+2	-1	+0.0%	+0.0%	-0.3%	+0.2%	+0.2%	-0.1%
Administrative/ Supervisory (V to VII)	56	+9	+7	+7	+2	+2	+1	+0.2%	+0.1%	+0.1%	+0.0%	+0.0%	+0.0%
Clerical (III & IV)	87	+10	+13	+6	+3	+3	-1	+0.1%	+0.2%	+0.1%	+0.0%	+0.0%	-0.0%
General Support	56	-32	-29	-16	-11	-11	-1	-0.4%	-0.3%	-0.2%	-0.2%	-0.2%	-0.0%
Support	41	-31	-26	-14	-9	-9	-1	-0.4%	-0.4%	-0.3%	-0.2%	-0.2%	-0.0%
Maintenance/ Technical	15	-0	-2	-2	-2	-2		-0.0%	-0.1%	-0.1%	-0.1%	-0.1%	+0.0%
Patient & Client Care	983	+197	+122	+72	+27	+27	+8	+0.3%	+0.1%	+0.1%	+0.0%	+0.0%	+0.0%
Health Care Assistants	846	+202	+136	+87	+31	+31	+5	+0.3%	+0.2%	+0.1%	+0.0%	+0.0%	+0.0%
Care, other	114	-5	-15	-13	-5	-5	+3	-0.0%	-0.1%	-0.1%	-0.0%	-0.0%	+0.0%
Home Help	24	-0	+1	-2	+1	+1	+0	-0.0%	+0.0%	-0.1%	+0.1%	+0.1%	+0.0%

Source: Health Service Personnel Census

Older People

Oct 2020 (Dec 2015 figure: 1,536)	WTE Oct 2020	WTE change since Dec 15	WTE change since Dec 16	WTE change since Dec 17	WTE change since Dec 18	WTE change since Dec 18	WTE change since Sep 20	% change since Dec 15	% change since Dec 16	% change since Dec 17	% change since Dec 18	% change since Dec 18	% change since Sep 20
Overall	1,477	-59	-54	-21	-26	-26	-35	-3.9%	-3.5%	-1.4%	-1.7%	-1.7%	-2.3%
Medical & Dental	11	+1	-0	+0	-1	-1	-0	+0.1%	-0.0%	+0.0%	-0.1%	-0.1%	-0.0%
Medical/ Dental, other	11	+1	-0	+0	-1	-1	-0	+0.1%	-0.0%	+0.0%	-0.1%	-0.1%	-0.0%
Nursing & Midwifery	348	-18	-11	+7	+14	+14	-1	-0.0%	-0.0%	+0.0%	+0.0%	+0.0%	-0.0%
Nurse/ Midwife Manager	89	+2	+4	+5	+10	+10	+0	+0.0%	+0.1%	+0.1%	+0.1%	+0.1%	+0.0%
Nurse/ Midwife Specialist & AN/MP	3	+0	+0	+0	+0	+0	+0	+0.1%	+0.1%	+0.1%	+0.1%	+0.1%	+0.1%
Staff Nurse/ Staff Midwife	251	-20	-16	+1	+2	+2	-3	-0.1%	-0.1%	+0.0%	+0.0%	+0.0%	-0.0%
Public Health Nurse	3	-1	-1	-1	-0	-0	+1	-0.3%	-0.2%	-0.2%	-0.1%	-0.1%	+0.2%
Nursing/ Midwifery other	1	+1	+1	+1	+1	+1		-1.0%	-1.0%	-1.0%	-1.0%	-1.0%	+0.0%
Health & Social Care Professionals	29	+1	-0	+1	-1	-1	+2	+0.1%	-0.0%	+0.0%	-0.0%	-0.0%	+0.1%
Therapy Professions	20	+2	+0	-1	-1	-1	+1	+0.1%	+0.0%	-0.0%	-0.1%	-0.1%	+0.0%
Health Science/ Diagnostics		-2	-2	-2				-1.0%	-1.0%	-1.0%	-1.0%	-1.0%	-1.0%
Social Workers	7	+1	+1	+3	+0	+0	+1	+0.1%	+0.1%	+0.7%	+0.0%	+0.0%	+0.2%
Pharmacy	2	+1	+1	+1			+1	+1.0%	+1.0%	+1.0%	+0.0%	+0.0%	+0.3%
Management & Administrative	97	+22	+24	+26	+16	+16	-1	+0.3%	+0.3%	+0.4%	+0.2%	+0.2%	-0.0%
Management (VIII & above)	7	+5	+5	+6	+5	+5	-0	+1.8%	+1.6%	+3.2%	+1.7%	+1.7%	-0.0%
Administrative/ Supervisory (V to VII)	20	+8	+7	+7	+2	+2	+0	+0.7%	+0.5%	+0.5%	+0.1%	+0.1%	+0.0%
Clerical (III & IV)	70	+10	+12	+14	+9	+9	-1	+0.2%	+0.2%	+0.2%	+0.2%	+0.2%	-0.0%
General Support	50	+2	+3	+4	+0	+0	-1	+0.0%	+0.1%	+0.1%	+0.0%	+0.0%	-0.0%
Support	27	-0	+1	+2	+1	+1	-1	-0.0%	+0.0%	+0.1%	+0.0%	+0.0%	-0.0%
Maintenance/ Technical	24	+2	+2	+2	-1	-1	+0	+0.1%	+0.1%	+0.1%	-0.0%	-0.0%	+0.0%
Patient & Client Care	942	-67	-69	-58	-54	-54	-34	-0.1%	-0.1%	-0.1%	-0.1%	-0.1%	-0.0%
Health Care Assistants	548	-78	-67	-51	-19	-19	-31	-0.1%	-0.1%	-0.1%	-0.0%	-0.0%	-0.1%
Care, other	21	-2	-2	-0	+0	+0	+0	-0.1%	-0.1%	-0.0%	+0.0%	+0.0%	+0.0%
Home Help	374	+12	-0	-7	-35	-35	-3	+0.0%	-0.0%	-0.0%	-0.1%	-0.1%	-0.0%

Source: Health Service Personnel Census