

CHO 8 Employment Report: September 2020

Employment by Staff Group

Sep 2020 (Dec 2019 figure: 6,135)	WTE Aug 2020	WTE Sep 2020	WTE change since Aug 20	% change since Aug 20	WTE change since Dec 19	WTE change since Sep 19
Overall	6,263	6,240	-23	-0.4%	+105	+89
Consultants	42	42	+1	+1.4%	+0	+1
Registrars	116	116	-1	-0.8%	+10	+8
SHO/ Interns	32	31	-0	-1.5%	-7	-7
Medical/ Dental, other	74	73	-1	-1.6%	+0	+3
Medical & Dental	264	262	-2	-0.8%	+3	+6
Nurse/ Midwife Manager	374	376	+1	+0.4%	+4	-2
Nurse/ Midwife Specialist & AN/MP	106	103	-2	-2.2%	+4	+5
Staff Nurse/ Staff Midwife	995	989	-6	-0.6%	-9	+5
Public Health Nurse	206	202	-4	-2.0%	+3	+9
<i>Pre-registration Nurse/ Midwife Intern</i>				-100.0%	-1	
<i>Pre-registration Nurse Intern (COVID-19)</i>	60	47	-13	-21.8%	+47	-13
<i>Post-registration Nurse/ Midwife Student</i>	1	1	+0	+62.9%	-1	+0
<i>Nursing/ Midwifery awaiting registration</i>				-100.0%	-2	
Nursing/ Midwifery Student	61	48	-13	-20.9%	+43	+22
Nursing/ Midwifery other	12	10	-2	-13.7%	+1	+3
Nursing & Midwifery	1,753	1,728	-25	-1.4%	+46	+41
Therapy Professions	385	387	+3	+0.7%	+10	+13
Health Science/ Diagnostics	8	9	+1	+17.7%	+2	+2
Social Care	384	383	-1	-0.2%	+15	+18
Social Workers	90	90	+0	+0.3%	+3	+1
Psychologists	112	115	+3	+2.8%	-5	-2
Pharmacy	7	7	+0	+6.6%	-0	-0
H&SC, Other	51	51	+0	+0.9%	-1	-2
Health & Social Care Professionals	1,036	1,043	+7	+0.7%	+24	+30
Management (VIII & above)	67	68	+1	+1.2%	+6	+3
Administrative/ Supervisory (V to VII)	199	195	-5	-2.4%	+18	+25
Clerical (III & IV)	525	527	+3	+0.5%	+20	+20
Management & Administrative	791	790	-1	-0.2%	+44	+48
Support	122	121	-1	-1.1%	-6	-8
Maintenance/ Technical	69	69	-0	-0.5%	-0	-2
General Support	191	190	-2	-0.9%	-7	-10
Health Care Assistants	1,595	1,593	-3	-0.2%	+16	-2
Care, other	234	235	+1	+0.4%	-3	-1
Home Help	399	400	+1	+0.4%	-18	-23
Patient & Client Care	2,228	2,228	-0	-0.0%	-5	-25

CHO 8 Employment Report: September 2020

Community Health & Wellbeing

Sep 2020 (figure:)	WTE Aug 2020	WTE Sep 2020	WTE change since Aug 20	% change since Aug 20	WTE change since	WTE change since
Total Community Health & Wellbeing	25	26	+1	+2.8%	+26	+26
Therapy Professions	2	2			+2	+2
Health & Social Care Professionals	2	2			+2	+2
Management (VIII & above)	1	1	+0	+81.8%	+1	+1
Administrative/ Supervisory (V to VII)	19	19	+0	+1.7%	+19	+19
Clerical (III & IV)	4	4	-0	-1.2%	+4	+4
Management & Administrative	24	24	+1	+3.0%	+24	+24

Mental Health

Sep 2020 (Dec 2019 figure: 1,098)	WTE Aug 2020	WTE Sep 2020	WTE change since Aug 20	% change since Aug 20	WTE change since Dec 19	WTE change since Sep 19
Total Mental Health	1,127	1,122	-5	-0.4%	+24	+14
Consultants	34	35	+1	+1.8%	-1	+0
Registrars	29	31	+2	+8.2%	+6	+7
SHO/ Interns	31	30	-0	-1.2%	-6	-6
Medical & Dental	94	96	+3	+2.8%	-1	+1
Nurse/ Midwife Manager	122	119	-3	-2.3%	-2	-7
Nurse/ Midwife Specialist & AN/MP	60	60	+0	+0.0%	+4	+5
Staff Nurse/ Staff Midwife	329	327	-2	-0.5%	-4	+8
<i>Nursing/ Midwifery awaiting registration</i>				-100.0%	-2	
<i>Pre-registration Nurse Intern (COVID-19)</i>	32	29	-3	-8.6%	+29	-3
<i>Pre-registration Nurse/ Midwife Intern</i>				-100.0%	-1	
Nursing/ Midwifery Student	32	29	-3	-8.6%	+26	+12
Nursing/ Midwifery other	4	3	-1	-25.0%	-1	+1
Nursing & Midwifery	546	538	-8	-1.5%	+23	+20
Therapy Professions	44	44	+0	+0.3%	+0	-3
Social Care	7	7	+0	+2.1%	+0	-0
Social Workers	44	43	-0	-0.9%	+2	+1
Psychologists	37	39	+2	+6.0%	-0	-3
Pharmacy	1	1	+0	+90.0%	-0	-0
H&SC, Other	20	20	-0	-1.0%	-1	-1
Health & Social Care Professionals	152	155	+2	+1.5%	+1	-7
Management (VIII & above)	3	3			+0	
Administrative/ Supervisory (V to VII)	20	21	+1	+4.7%	-1	-1
Clerical (III & IV)	99	97	-2	-2.2%	+8	+12
Management & Administrative	122	121	-1	-1.0%	+7	+10
Support	32	31	-1	-1.9%	-2	-3
Maintenance/ Technical	27	27	-0	-0.8%	+1	-1
General Support	59	58	-1	-1.4%	-1	-3
Health Care Assistants	151	151	+0	+0.2%	-6	-7
Care, other	3	3	-0	-8.3%	-1	-1
Patient & Client Care	154	154	+0	+0.1%	-6	-8

Primary Care

Sep 2020 (Dec 2019 figure: 1,387)	WTE Aug 2020	WTE Sep 2020	WTE change since Aug 20	% change since Aug 20	WTE change since Dec 19	WTE change since Sep 19
Total Primary Care	1,426	1,416	-10	-0.7%	+29	+12
Consultants	7	7	-0	-0.6%	+1	+1
Registrars	86	83	-3	-3.2%	+5	+2
SHO/ Interns	1	1	-0	-12.4%	-1	-1
Medical/ Dental, other	62	61	-1	-2.0%	+0	+3
Medical & Dental	155	151	-4	-2.7%	+5	+5
Nurse/ Midwife Manager	52	53	+0	+0.6%	+1	+2
Nurse/ Midwife Specialist & AN/MP	36	34	-2	-5.3%	-1	-2
Staff Nurse/ Staff Midwife	104	102	-2	-1.7%	+4	-8
Public Health Nurse	203	199	-4	-2.1%	+3	+9
<i>Post-registration Nurse/ Midwife Student</i>	1	1	+0	+62.9%	-1	+0
Nursing/ Midwifery Student	1	1	+0	+62.9%	-1	-4
Nursing/ Midwifery other	1	1			+1	+1
Nursing & Midwifery	396	389	-7	-1.8%	+7	-2
Therapy Professions	228	229	+1	+0.6%	+8	+6
Health Science/ Diagnostics	6	7	+1	+23.7%	+2	+2
Social Care	1	1			+1	+1
Social Workers	17	17	-0	-0.7%	+1	+0
Psychologists	56	56	-0	-0.2%	+1	+2
Pharmacy	5	5			+1	+1
H&SC, Other	24	24	+1	+2.7%	-0	-1
Health & Social Care Professionals	336	339	+3	+0.9%	+14	+11
Management (VIII & above)	43	43	-1	-1.5%	-2	-3
Administrative/ Supervisory (V to VII)	83	79	-4	-4.6%	+2	+4
Clerical (III & IV)	264	268	+4	+1.6%	+3	-0
Management & Administrative	390	390	-0	-0.1%	+2	-0
Support	21	21	-0	-0.4%	-2	-2
Maintenance/ Technical	3	3			+0	
General Support	24	24	-0	-0.3%	-2	-2
Health Care Assistants	23	22	-1	-4.7%	+1	-2
Care, other	101	100	-1	-0.6%	+2	+2
Home Help				-100.0%	-0	-0
Patient & Client Care	124	122	-2	-1.4%	+3	-0

Social Care

Sep 2020 (Dec 2019 figure: 3,650)	WTE Aug 2020	WTE Sep 2020	WTE change since Aug 20	% change since Aug 20	WTE change since Dec 19	WTE change since Sep 19
Total Social Care	3,684	3,676	-8	-0.2%	+26	+38
Consultants	1	1				
Registrars	2	1	-1	-38.3%	-1	-1
Medical/ Dental, other	12	12	+0	+0.5%	+0	+0
Medical & Dental	15	14	-1	-3.9%	-1	-1
Nurse/ Midwife Manager	200	204	+4	+1.9%	+4	+2
Nurse/ Midwife Specialist & AN/MP	10	10	-0	-4.0%	+1	+2
Staff Nurse/ Staff Midwife	562	559	-2	-0.4%	-9	+5
Public Health Nurse	3	3	+0	+5.8%	+0	+0
<i>Pre-registration Nurse Intern (COVID-19)</i>	28	18	-10	-36.4%	+18	-10
<i>Pre-registration Nurse/ Midwife Intern</i>				-100.0%		
Nursing/ Midwifery Student	28	18	-10	-36.4%	+18	+14
Nursing/ Midwifery other	7	6	-1	-9.0%	+1	+1
Nursing & Midwifery	811	801	-10	-1.2%	+15	+24
Therapy Professions	111	112	+1	+0.9%	+0	+9
Health Science/ Diagnostics	2	2				
Social Care	376	374	-1	-0.3%	+14	+17
Social Workers	29	30	+1	+2.7%	-0	+0
Psychologists	19	20	+1	+5.8%	-5	-2
Pharmacy	2	2			-1	-1
H&SC, Other	7	7	+0	+0.3%	-0	+0
Health & Social Care Professionals	545	547	+2	+0.3%	+7	+24
Management (VIII & above)	20	21	+1	+5.1%	+7	+6
Administrative/ Supervisory (V to VII)	77	75	-2	-2.9%	-1	+3
Clerical (III & IV)	158	159	+1	+0.4%	+4	+5
Management & Administrative	256	255	-1	-0.2%	+10	+14
Support	70	69	-1	-1.0%	-3	-4
Maintenance/ Technical	39	38	-0	-0.3%	-1	-1
General Support	108	108	-1	-0.8%	-5	-5
Health Care Assistants	1,422	1,420	-2	-0.1%	+20	+7
Care, other	130	132	+2	+1.4%	-4	-2
Home Help	399	400	+1	+0.4%	-18	-22
Patient & Client Care	1,950	1,951	+1	+0.1%	-2	-17

CHO 8 Employment Report: September 2020

Disabilities

Sep 2020 (Dec 2019 figure: 2,162)	WTE Aug 2020	WTE Sep 2020	WTE change since Aug 20	% change since Aug 20	WTE change since Dec 19	WTE change since Sep 19
Total Disabilities	2,166	2,164	-2	-0.1%	+2	+28
Consultants	1	1				
Registrars	2	1	-1	-38.3%	-1	-1
Medical/ Dental, other	1	1				
Medical & Dental	4	3	-1	-17.1%	-1	-1
Nurse/ Midwife Manager	115	115	+0	+0.2%	-8	-4
Nurse/ Midwife Specialist & AN/MP	7	7	-0	-5.7%	-0	-0
Staff Nurse/ Staff Midwife	309	305	-4	-1.2%	-13	-1
Public Health Nurse	1	1				
Pre-registration Nurse Intern (COVID-19)	28	18	-10	-36.4%	+18	-10
Pre-registration Nurse/ Midwife Intern				-100.0%		
Nursing/ Midwifery Student	28	18	-10	-36.4%	+18	+14
Nursing/ Midwifery other	6	5	-1	-10.5%	-0	-0
Nursing & Midwifery	467	452	-15	-3.2%	-3	+8
Therapy Professions	92	93	+1	+1.6%	+2	+10
Health Science/ Diagnostics	2	2				
Social Care	376	374	-1	-0.3%	+14	+17
Social Workers	24	24	-0	-0.9%	+0	+1
Psychologists	19	20	+1	+5.8%	-5	-2
H&SC, Other	7	7	+0	+0.3%	-0	+0
Health & Social Care Professionals	520	521	+1	+0.3%	+11	+26
Management (VIII & above)	13	14	+1	+8.0%	+5	+3
Administrative/ Supervisory (V to VII)	58	55	-3	-4.7%	-1	+1
Clerical (III & IV)	87	88	+0	+0.6%	+3	+4
Management & Administrative	158	157	-1	-0.8%	+7	+8
Support	42	42	-0	-0.1%	-5	-5
Maintenance/ Technical	15	15			-1	-1
General Support	57	57	-0	-0.1%	-6	-6
Health Care Assistants	829	841	+11	+1.4%	-3	-4
Care, other	108	111	+3	+2.8%	-4	-3
Home Help	24	23	-1	-2.2%	+1	+1
Patient & Client Care	961	975	+14	+1.4%	-6	-7

Older People

Sep 2020 (Dec 2019 figure: 1,488)	WTE Aug 2020	WTE Sep 2020	WTE change since Aug 20	% change since Aug 20	WTE change since Dec 19	WTE change since Sep 19
Total Older People	1,519	1,512	-7	-0.4%	+24	+9
Medical/ Dental, other	11	11	+0	+0.5%	+0	+0
Medical & Dental	11	11	+0	+0.5%	+0	+0
Nurse/ Midwife Manager	85	89	+4	+4.3%	+12	+7
Nurse/ Midwife Specialist & AN/MP	3	3			+1	+2
Staff Nurse/ Staff Midwife	253	254	+1	+0.5%	+5	+6
Public Health Nurse	2	2	+0	+8.3%	+0	+0
Nursing/ Midwifery other	1	1			+1	+1
Nursing & Midwifery	344	349	+5	+1.5%	+19	+15
Health & Social Care Professionals	26	26	+1	+2.1%	-3	-3
Management (VIII & above)	7	7	+0	+0.0%	+2	+2
Administrative/ Supervisory (V to VII)	20	20	+0	+2.5%	-0	+2
Clerical (III & IV)	71	71	+0	+0.3%	+1	+2
Management & Administrative	98	98	+1	+0.7%	+3	+6
Support	28	27	-1	-2.4%	+2	+1
Maintenance/ Technical	24	23	-0	-0.5%	-0	-0
General Support	52	51	-1	-1.5%	+1	+1
Health Care Assistants	592	579	-13	-2.2%	+23	+11
Care, other	22	21	-1	-5.4%	+0	+1
Home Help	375	377	+2	+0.5%	-19	-23
Patient & Client Care	989	976	-12	-1.3%	+4	-11

CHO 8 Employment by Administration (HSE / S38): September 2020

Sep 2020 (Dec 2019 figure: 6,135)	WTE Aug 2020	WTE Sep 2020	WTE change since Aug 20	% change since Aug 20	WTE change since Dec 19	WTE change since Sep 19
Overall	6,263	6,240	-23	-0.4%	+105	+89
HSE	4,694	4,676	-18	-0.4%	+93	+72
Section 38 Voluntary Agencies	1,568	1,564	-5	-0.3%	+12	+17

HSE

Sep 2020 (Dec 2019 figure: 4,583)	WTE Aug 2020	WTE Sep 2020	WTE change since Aug 20	% change since Aug 20	WTE change since Dec 19	WTE change since Sep 19
Overall	4,694	4,676	-18	-0.4%	+93	+72
Consultants	42	42	+1	+0.0%	+0	+1
Registrars	115	115	-1	-0.0%	+10	+8
SHO/ Interns	32	31	-0	-0.0%	-7	-7
Medical/ Dental, other	74	73	-1	-0.0%	+0	+3
Medical & Dental	263	261	-2	-0.8%	+3	+6
Nurse/ Midwife Manager	292	292	+0	+0.0%	+7	-0
Nurse/ Midwife Specialist & AN/MP	100	98	-2	-0.0%	+4	+5
Staff Nurse/ Staff Midwife	795	791	-4	-0.0%	+1	+3
Public Health Nurse	206	202	-4	-0.0%	+3	+9
<i>Pre-registration Nurse/ Midwife Intern</i>				-1.0%		-11
<i>Pre-registration Nurse Intern (COVID-19)</i>	32	29	-3	-0.1%	+29	+29
<i>Post-registration Nurse/ Midwife Student</i>	1	1	+0	+0.6%	-7	-4
<i>Nursing/ Midwifery awaiting registration</i>				-1.0%	-1	-6
Nursing/ Midwifery Student	32	30	-2	-0.1%	+25	+8
Nursing/ Midwifery other	6	5	-1	-0.2%	+1	+3
Nursing & Midwifery	1,431	1,418	-13	-0.9%	+41	+28
Therapy Professions	372	374	+2	+0.0%	+11	+13
Health Science/ Diagnostics	8	9	+1	+0.2%	+2	+2
Social Care	13	13	+0	+0.0%	+1	+1
Social Workers	78	78	+0	+0.0%	+2	+1
Psychologists	106	110	+3	+0.0%	-5	-2
Pharmacy	7	7	+0	+0.1%	-0	-0
H&SC, Other	45	45	+0	+0.0%	-1	-3
Health & Social Care Professionals	629	637	+8	+1.3%	+11	+12
Management (VIII & above)	59	60	+1	+0.0%	+3	+1
Administrative/ Supervisory (V to VII)	171	167	-3	-0.0%	+19	+25
Clerical (III & IV)	478	481	+3	+0.0%	+20	+21
Management & Administrative	708	708	+1	+0.1%	+42	+48
Support	86	85	-1	-0.0%	-2	-4
Maintenance/ Technical	56	56	-0	-0.0%	-0	-2
General Support	142	140	-2	-1.2%	-2	-6
Health Care Assistants	974	959	-15	-0.0%	+10	-3
Care, other	150	152	+3	+0.0%	+6	+10
Home Help	399	400	+1	+0.0%	-18	-23
Patient & Client Care	1,522	1,512	-10	-0.7%	-2	-16

Section 38 Voluntary Agencies

Sep 2020 (Dec 2019 figure: 1,552)	WTE Aug 2020	WTE Sep 2020	WTE change since Aug 20	% change since Aug 20	WTE change since Dec 19	WTE change since Sep 19
Overall	1,568	1,564	-5	-0.3%	+12	+17
Registrars	1	1		+0.0%		
Medical & Dental	1	1				
Nurse/ Midwife Manager	82	83	+1	+0.0%	-3	-2
Nurse/ Midwife Specialist & AN/MP	5	5		+0.0%	+0	-0
Staff Nurse/ Staff Midwife	200	198	-2	-0.0%	-10	+1
<i>Pre-registration Nurse/ Midwife Intern</i>				-1.0%	-1	-4
<i>Pre-registration Nurse Intern (COVID-19)</i>	28	18	-10	-0.4%	+18	+18
Nursing/ Midwifery Student	28	18	-10	-0.4%	+18	+14
Nursing/ Midwifery other	6	5	-1	-0.1%	-0	-0
Nursing & Midwifery	322	310	-12	-3.7%	+5	+13
Therapy Professions	13	13	+0	+0.0%	-1	-1
Social Care	370	369	-1	-0.0%	+13	+17
Social Workers	12	12	-0	-0.0%	+0	+1
Psychologists	6	6	-0	-0.0%	-0	-0
H&SC, Other	6	6	-0	-0.0%	-0	+1
Health & Social Care Professionals	407	406	-1	-0.3%	+12	+18
Management (VIII & above)	8	8		+0.0%	+3	+2
Administrative/ Supervisory (V to VII)	29	27	-2	-0.1%	-1	-1
Clerical (III & IV)	47	46	-0	-0.0%	+0	-0
Management & Administrative	83	82	-2	-2.2%	+2	+1
Support	36	36	-0	-0.0%	-4	-5
Maintenance/ Technical	13	13	+0	+0.0%	-0	-0
General Support	49	49	-0	-0.1%	-4	-5
Health Care Assistants	622	633	+12	+0.0%	+5	+1
Care, other	84	82	-2	-0.0%	-9	-11
Patient & Client Care	706	716	+10	+1.4%	-4	-9

CHO 8 Employment by S38 Agency: September 2020

Muiriosa Foundation, Laois/Offaly

Sep 2020 (Dec 2019 figure: 302)	WTE Aug 2020	WTE Sep 2020	WTE change since Aug 20	% change since Aug 20	WTE change since Dec 19	WTE change since Sep 19
Overall	304	310	+6	+2.1%	+8	+7
Nurse/ Midwife Manager	15	15	+1	+0.0%	-0	-0
Staff Nurse/ Staff Midwife	28	29	+1	+0.0%	+3	+1
Nursing & Midwifery	43	44	+1	+3.0%	+2	+1
Social Care	102	103	+1	+0.0%	+9	+8
Social Workers	4	3	-0	-0.0%	-0	-0
Psychologists	1	1		+0.0%		
H&SC, Other	1	1		+0.0%		-0
Health & Social Care Professionals	107	109	+1	+1.0%	+8	+8
Management (VIII & above)	2	2		+0.0%	+1	+1
Administrative/ Supervisory (V to VII)	5	5	+0	+0.1%	+0	+0
Clerical (III & IV)	11	11	+0	+0.0%	+0	-1
Management & Administrative	18	18	+0	+2.7%	+1	+0
Support	1	1	+0	+0.0%	+0	+0
Maintenance/ Technical	2	2		+0.0%		
General Support	3	3	+0	+0.3%	+0	+0
Health Care Assistants	104	107	+3	+0.0%	-2	-1
Care, other	28	28	+0	+0.0%	-2	-1
Patient & Client Care	132	136	+3	+2.6%	-4	-2

Muiriosa Foundation, Longford/Westmeath

Sep 2020 (Dec 2019 figure: 270)	WTE Aug 2020	WTE Sep 2020	WTE change since Aug 20	% change since Aug 20	WTE change since Dec 19	WTE change since Sep 19
Overall	279	279	+0	+0.0%	+9	+7
Nurse/ Midwife Manager	9	9	-0	-0.0%		
Staff Nurse/ Staff Midwife	4	5	+1	+0.1%	-1	-1
Nursing & Midwifery	14	14	+0	+3.7%	-1	-1
Therapy Professions	3	3		+0.0%		
Social Care	99	99	-0	-0.0%	+5	+5
Social Workers	4	4		+0.0%	+1	+2
Psychologists	2	2	-0	-0.0%	-0	-0
H&SC, Other	3	3		+0.0%	-0	-0
Health & Social Care Professionals	110	110	-0	-0.2%	+5	+7
Administrative/ Supervisory (V to VII)	5	5		+0.0%	+1	+1
Clerical (III & IV)	10	10		+0.0%	-0	+1
Management & Administrative	15	15			+1	+2
Support	1	1		+0.0%		
Maintenance/ Technical	3	3		+0.0%		
General Support	4	4				
Health Care Assistants	120	120	+1	+0.0%	+6	+3
Care, other	17	16	-1	-0.1%	-2	-2
Patient & Client Care	136	136	-0	-0.1%	+4	+1

Muiriosa Foundation, South Kildare

Sep 2020 (Dec 2019 figure: 334)	WTE Aug 2020	WTE Sep 2020	WTE change since Aug 20	% change since Aug 20	WTE change since Dec 19	WTE change since Sep 19
Overall	342	338	-5	-1.3%	+4	+1
Nurse/ Midwife Manager	14	13	-1	-0.0%	-5	-5
Nurse/ Midwife Specialist & AN/MP	1	1		+0.0%		-0
Staff Nurse/ Staff Midwife	23	22	-1	-0.0%	-2	-3
Pre-registration Nurse/ Midwife Intern				-1.0%		-1
Pre-registration Nurse Intern (COVID-19)	8	6	-2	-0.2%	+6	+6
Nursing/ Midwifery Student	8	6	-2	-0.2%	+6	+5
Nursing/ Midwifery other	6	5	-1	-0.1%	-0	-0
Nursing & Midwifery	51	47	-4	-7.9%	-1	-4
Therapy Professions	7	8	+0	+0.0%	-1	-1
Social Care	92	91	-0	-0.0%	+3	+5
Social Workers	2	2		+0.0%		-0
Psychologists	2	2	-0	-0.0%	-0	+0
H&SC, Other	3	3		+0.0%		+1
Health & Social Care Professionals	106	106	+0	+0.2%	+2	+6
Management (VIII & above)	5	5		+0.0%	+2	+2
Administrative/ Supervisory (V to VII)	14	12	-2	-0.1%	-2	-2
Clerical (III & IV)	14	13	-0	-0.0%	-0	-1
Management & Administrative	32	30	-2	-7.1%	+0	-1
Support	14	14	+0	+0.0%	-1	-3
Maintenance/ Technical	5	5		+0.0%		
General Support	19	19	+0	+0.5%	-1	-3
Health Care Assistants	126	128	+2	+0.0%	+5	+4
Care, other	8	8	-0	-0.0%	-0	-1
Patient & Client Care	134	135	+1	+1.1%	+5	+3

Sep 2020 (Dec 2019 figure: 647)	WTE Aug 2020	WTE Sep 2020	WTE change since Aug 20	% change since Aug 20	WTE change since Dec 19	WTE change since Sep 19
Overall	644	637	-7	-1.0%	-9	+2
Registrars	1	1		+0.0%		
Medical & Dental	1	1				
Nurse/ Midwife Manager	44	45	+1	+0.0%	+2	+3
Nurse/ Midwife Specialist & AN/MP	4	4		+0.0%	+0	+0
Staff Nurse/ Staff Midwife	145	143	-2	-0.0%	-9	+5
Pre-registration Nurse/ Midwife Intern				-1.0%	-1	-3
Pre-registration Nurse Intern (COVID-19)	21	12	-9	-0.4%	+12	+12
Nursing/ Midwifery Student	21	12	-9	-0.4%	+12	+10
Nursing & Midwifery	214	205	-10	-4.6%	+5	+18
Therapy Professions	3	3		+0.0%		
Social Care	78	76	-2	-0.0%	-3	-2
Social Workers	2	2		+0.0%	-0	-0
Psychologists	1	1		+0.0%		
Health & Social Care Professionals	84	82	-2	-2.4%	-3	-2
Management (VIII & above)	1	1		+0.0%	-0	-1
Administrative/ Supervisory (V to VII)	6	6		+0.0%	-0	+0
Clerical (III & IV)	12	12	-0	-0.0%	+0	+1
Management & Administrative	18	18	-0	-0.1%	+0	-0
Support	20	20	-0	-0.0%	-3	-2
Maintenance/ Technical	3	3		+0.0%	-0	-0
General Support	23	23	-0	-0.6%	-3	-2
Health Care Assistants	272	278	+6	+0.0%	-3	-5
Care, other	32	31	-1	-0.0%	-5	-6
Patient & Client Care	303	309	+5	+1.8%	-9	-11

CHO 8 Employment by Grade Group & Staff Category: September 2020

Sep 2020 (Dec 2019 figure: 6,135)	WTE Aug 2020	WTE Sep 2020	WTE change since Aug 20	% change since Aug 20	WTE change since Dec 19	WTE change since Sep 19
Overall	6,263	6,240	-23	-0.4%	+105	+89
Consultant Dentistry	1	1				
Consultant Medicine	6	6	-0	-0.7%	+1	+1
Consultant Psychiatry	35	36	+1	+1.8%	-1	+0
Consultants	42	42	+1	+1.4%	+0	+1
Registrar	103	102	-2	-1.6%	+10	+7
Senior Registrar	13	14	+1	+5.0%	+0	+1
Registrars	116	116	-1	-0.8%	+10	+8
SHO/ Interns	32	31	-0	-1.5%	-7	-7
Dentists	36	36	-1	-1.5%	+0	+2
Other Medical	38	37	-1	-1.7%	+0	+2
Medical/ Dental, other	74	73	-1	-1.6%	+0	+3
Medical & Dental	264	262	-2	-0.8%	+26	+6
Clinical Nurse/ Midwife Manager	289	286	-4	-1.2%	-2	-8
Director Nursing/Midwifery, Assistant	60	63	+3	+5.0%	+3	+3
Director of Nursing/Midwifery	25	27	+2	+7.7%	+3	+2
Nurse/ Midwife Manager	374	376	+1	+0.4%	+4	-2
Advanced Nurse/ Midwife Practitioner	4	5	+1	+19.2%	+1	+1
Clinical Nurse/ Midwife Specialist	102	99	-3	-3.0%	+3	+4
Nurse/ Midwife Specialist & AN/MP	106	103	-2	-2.2%	+4	+5
Staff Nurse [Intellectual Disability]	224	220	-3	-1.5%	-11	-29
Staff Nurse [Psychiatric]	329	327	-2	-0.5%	-6	+6
Staff Nurses [General/ Children's]	442	441	-1	-0.2%	+8	+28
Staff Nurse/ Staff Midwife	995	989	-6	-0.6%	-9	+5
Public Health Nurse	206	202	-4	-2.0%	+3	+9
Pre-registration Nurse/ Midwife Intern				-100.0%	-1	-14
Pre-registration Nurse Intern (COVID-19)	60	47	-13	-21.8%	+47	+47
Post-registration Nurse/ Midwife Student	1	1	+0	+62.9%	-1	-4
Nursing/ Midwifery awaiting registration				-100.0%	-2	-6
Nursing/ Midwifery Student	61	48	-13	-20.9%	+43	+22
Nursing Education/Clinical	12	10	-2	-13.7%	+1	+3
Nursing/ Midwifery other	12	10	-2	-13.7%	+1	+3
Nursing & Midwifery	1,753	1,728	-25	-1.4%	+30	+41
Dietitians	21	20	-1	-4.1%	+0	-1
Occupational Therapists	143	144	+1	+0.7%	+4	+6
Orthoptists				-100.0%		
Physiotherapists	113	112	-1	-1.0%	+5	+8
Podiatrists & Chiropodists	4	4	+0	+7.8%	-0	+0
Speech & Language Therapists	104	108	+3	+3.1%	+1	-0
Therapy Professions	385	387	+3	+0.7%	+10	+13
Audiology	4	5	+1	+35.9%	+2	+2
Clinical Engineering	4	4				
Health Science/ Diagnostics	8	9	+1	+17.7%	+2	+2
Social Care	384	383	-1	-0.2%	+15	+18
Social Workers	90	90	+0	+0.3%	+3	+1
Psychologists	112	115	+3	+2.8%	-5	-2
Pharmacy	7	7	+0	+6.6%	-0	-0
Counsellor Therapists	36	36	-0	-0.7%	-2	-3

Sep 2020 (Dec 2019 figure: 6,135)	WTE Aug 2020	WTE Sep 2020	WTE change since Aug 20	% change since Aug 20	WTE change since Dec 19	WTE change since Sep 19
Overall	6,263	6,240	-23	-0.4%	+105	+89
Dental Hygienists	12	13	+1	+5.6%	+1	+1
Other Health & Social Care	2	2	+0	+1.2%	+0	-0
Play Therapists/ Specialists	1	1				
H&SC, Other	51	51	+0	+0.9%	-1	-2
Health & Social Care Professionals	1,036	1,043	+7	+0.7%	+40	+30
Executive Management	11	11			+2	+1
Senior Management (VIII & GM)	56	57	+1	+1.5%	+4	+2
Management (VIII & above)	67	68	+1	+1.2%	+6	+3
Administrative/ Supervisory (V to VII)	199	195	-5	-2.4%	+18	+25
Clerical (III & IV)	525	527	+3	+0.5%	+20	+20
Management & Administrative	791	790	-1	-0.2%	+45	+48
Catering	35	34	-1	-2.5%	+1	+0
Household Services	54	53	-0	-0.8%	-4	-5
Other Support	29	29	-0	-0.3%	-3	-4
Portering	5	5				
Support	122	121	-1	-1.1%	-6	-8
Maintenance	69	68	-0	-0.5%	-0	-2
Technical Services	0	0				
Maintenance/ Technical	69	69	-0	-0.5%	-0	-2
General Support	191	190	-2	-0.9%	-14	-10
HCA, Nurse's Aide, etc.	1,579	1,578	-1	-0.1%	+14	-1
Health & Social Care Assistants	17	15	-1	-7.5%	+2	-1
Health Care Assistants	1,595	1,593	-3	-0.2%	+16	-2
Community Welfare Officers				-100.0%		
Other Care Grades	234	235	+1	+0.4%	-3	-1
Care, other	234	235	+1	+0.4%	-3	-1
Home Help	399	400	+1	+0.4%	-18	-23
Patient & Client Care	2,228	2,228	-0	-0.0%	-14	-25

CHO 8 HSE Employment by Grade Group & Staff Category: September 2020

Sep 2020 (Dec 2019 figure: 4,583)	WTE Aug 2020	WTE Sep 2020	WTE change since Aug 20	% change since Aug 20	WTE change since Dec 19	WTE change since Sep 19
Overall	4,694	4,676	-18	-0.4%	+93	+72
Consultant Dentistry	1	1				
Consultant Medicine	6	6	-0	-0.7%	+1	+1
Consultant Psychiatry	35	36	+1	+1.8%	-1	+0
Consultants	42	42	+1	+1.4%	+0	+1
Registrar	102	101	-2	-1.6%	+10	+7
Senior Registrar	13	14	+1	+5.0%	+0	+1
Registrars	115	115	-1	-0.8%	+10	+8
SHO/ Interns	32	31	-0	-1.5%	-7	-7
Dentists	36	36	-1	-1.5%	+0	+2
Other Medical	38	37	-1	-1.7%	+0	+2
Medical/ Dental, other	74	73	-1	-1.6%	+0	+3
Medical & Dental	263	261	-2	-0.8%	+26	+6
Clinical Nurse/ Midwife Manager	214	210	-5	-2.1%	-2	-8
Director Nursing/Midwifery, Assistant	55	58	+3	+5.4%	+5	+5
Director of Nursing/Midwifery	22	24	+2	+8.8%	+4	+3
Nurse/ Midwife Manager	292	292	+0	+0.1%	+7	-0
Advanced Nurse/ Midwife Practitioner	4	4	-0	-1.5%	-0	-0
Clinical Nurse/ Midwife Specialist	96	94	-2	-2.3%	+4	+5
Nurse/ Midwife Specialist & AN/MP	100	98	-2	-2.3%	+4	+5
Staff Nurse [Intellectual Disability]	70	69	-1	-1.5%	+5	+10
Staff Nurse [Psychiatric]	329	327	-2	-0.5%	-6	+6
Staff Nurses [General/ Children's]	396	395	-1	-0.2%	+2	-12
Staff Nurse/ Staff Midwife	795	791	-4	-0.5%	+1	+3
Public Health Nurse	206	202	-4	-2.0%	+3	+9
Pre-registration Nurse/ Midwife Intern				-100.0%	-1	-11
Pre-registration Nurse Intern (COVID-19)	32	29	-3	-8.6%	+29	+29
Post-registration Nurse/ Midwife Student	1	1	+0	+62.9%	-1	-4
Nursing/ Midwifery awaiting registration				-100.0%	-2	-6
Nursing/ Midwifery Student	32	30	-2	-7.2%	+25	+8
Nursing Education/Clinical	6	5	-1	-16.8%	+1	+3
Nursing/ Midwifery other	6	5	-1	-16.8%	+1	+3
Nursing & Midwifery	1,431	1,418	-13	-0.9%	+24	+28
Dietitians	21	20	-1	-4.1%	+0	-1
Occupational Therapists	139	140	+1	+0.5%	+5	+6
Orthoptists				-100.0%		
Physiotherapists	109	108	-1	-1.0%	+6	+9
Podiatrists & Chiropodists	4	4	+0	+7.8%	-0	+0
Speech & Language Therapists	99	102	+3	+3.3%	+0	-1
Therapy Professions	372	374	+2	+0.6%	+11	+13
Audiology	4	5	+1	+35.9%	+2	+2
Clinical Engineering	4	4				
Health Science/ Diagnostics	8	9	+1	+17.7%	+2	+2
Social Care	13	13	+0	+1.5%	+1	+1
Social Workers	78	78	+0	+0.6%	+2	+1
Psychologists	106	110	+3	+3.0%	-5	-2
Pharmacy	7	7	+0	+6.6%	-0	-0
Counsellor Therapists	31	31	-0	-0.8%	-2	-3
Dental Hygienists	12	13	+1	+5.6%	+1	+1
Other Health & Social Care	2	2	+0	+1.2%	+0	-0

Sep 2020 (Dec 2019 figure: 4,583)	WTE Aug 2020	WTE Sep 2020	WTE change since Aug 20	% change since Aug 20	WTE change since Dec 19	WTE change since Sep 19
Overall	4,694	4,676	-18	-0.4%	+93	+72
H&SC, Other	45	45	+0	+1.1%	-1	-3
Health & Social Care Professionals	629	637	+8	+1.3%	+23	+12
Executive Management	10	10			+2	+1
Senior Management (VIII & GM)	49	50	+1	+1.7%	+1	+0
Management (VIII & above)	59	60	+1	+1.4%	+3	+1
Administrative/ Supervisory (V to VII)	171	167	-3	-1.9%	+19	+25
Clerical (III & IV)	478	481	+3	+0.6%	+20	+21
Management & Administrative	708	708	+1	+0.1%	+47	+48
Catering	28	27	-1	-2.5%	+2	+1
Household Services	29	29	-1	-2.0%	-1	-2
Other Support	25	25	-0	-0.4%	-3	-3
Portering	4	4				
Support	86	85	-1	-1.6%	-2	-4
Maintenance/ Technical	56	56	-0	-0.6%	-0	-2
General Support	142	140	-2	-1.2%	-6	-6
HCA, Nurse's Aide, etc.	957	944	-13	-1.4%	+8	-4
Health & Social Care Assistants	17	15	-1	-7.5%	+2	+0
Health Care Assistants	974	959	-15	-1.5%	+10	-3
Care, other	150	152	+3	+1.8%	+6	+10
Home Help	399	400	+1	+0.4%	-18	-23
Patient & Client Care	1,522	1,512	-10	-0.7%	-27	-16

Employment by WTE, Headcount, Gender, Full-Time /Part-Time etc.: Sep 2020

CHO 8	WTE	Headcount	WTE: no.	% Male	% female	Male WTE: no.	Female WTE: no.	% Total Perm	% Male Perm	% Female Perm	% Total Full Time	% Total Part Time	% Male FT	% Female FT
Overall	6,240	7,504	1.20	16.8%	83.2%	1.10	1.22	87.0%	86.4%	87.1%	56.1%	43.9%	72.6%	52.8%
Consultant Dentistry	1	1	1.10	100.0%		1.10		100.0%	100.0%		0.0%	100.0%	0.0%	
Consultant Medicine	6	6	1.01	33.3%	66.7%	1.00	1.01	66.7%	66.7%	50.0%	100.0%	0.0%	100.0%	100.0%
Consultant Psychiatry	36	38	1.07	47.4%	52.6%	1.06	1.08	86.8%	86.8%	100.0%	89.5%	10.5%	88.9%	90.0%
Consultants	42	45	1.06	46.7%	53.3%	1.05	1.07	84.4%	76.2%	91.7%	88.9%	11.1%	85.7%	91.7%
Registrar	102	104	1.02	41.3%	58.7%	1.00	1.04	0.0%	0.0%	0.0%	100.0%	0.0%	100.0%	100.0%
Senior Registrar	14	15	1.09	26.7%	73.3%	1.02	1.12	0.0%	0.0%	0.0%	93.3%	6.7%	100.0%	90.9%
Registrars	116	119	1.03	39.5%	60.5%	1.00	1.05	0.0%	0.0%	0.0%	99.2%	0.8%	100.0%	98.6%
Senior House Officer	31	32	1.02	37.5%	62.5%	1.00	1.04	0.0%	0.0%	0.0%	100.0%	0.0%	100.0%	100.0%
SHO/ Interns	31	32	1.02	37.5%	62.5%	1.00	1.04	0.0%	0.0%	0.0%	100.0%	0.0%	100.0%	100.0%
Dentists	36	44	1.23	34.1%	65.9%	1.24	1.23	88.6%	88.6%	86.2%	61.4%	38.6%	66.7%	58.6%
Other Medical	37	50	1.35	58.0%	42.0%	1.47	1.22	68.0%	68.0%	71.4%	38.0%	62.0%	37.9%	38.1%
Medical/ Dental, other	73	94	1.30	46.8%	53.2%	1.38	1.23	77.7%	75.0%	80.0%	48.9%	51.1%	47.7%	50.0%
Medical & Dental	262	290	1.11	42.8%	57.2%	1.12	1.10	38.3%	39.5%	37.3%	81.4%	18.6%	79.0%	83.1%
Clinical Nurse/ Midwife Manager	285	313	1.10	16.0%	84.0%	1.00	1.12	93.6%	93.6%	94.7%	77.6%	22.4%	100.0%	73.4%
Director Nursing/Midwifery, Assistant	63	67	1.06	17.9%	82.1%	1.00	1.07	98.5%	98.5%	98.2%	86.6%	13.4%	100.0%	83.6%
Director of Nursing/Midwifery	27	27	1.01	22.2%	77.8%	1.00	1.01	96.3%	96.3%	95.2%	100.0%	0.0%	100.0%	100.0%
Nurse/ Midwife Manager	376	407	1.08	16.7%	83.3%	1.00	1.10	94.6%	91.2%	95.3%	80.6%	19.4%	100.0%	76.7%
Advanced Nurse/ Midwife Practitioner	5	5	1.05	40.0%	60.0%	1.00	1.08	100.0%	100.0%	100.0%	100.0%	0.0%	100.0%	100.0%
Clinical Nurse/ Midwife Specialist	99	109	1.11	15.6%	84.4%	1.01	1.13	100.0%	100.0%	100.0%	73.4%	26.6%	94.1%	69.6%
Nurse/ Midwife Specialist & AN/MP	103	114	1.10	16.7%	83.3%	1.01	1.12	100.0%	100.0%	100.0%	74.6%	25.4%	94.7%	70.5%
Staff Nurse [Intellectual Disability]	220	259	1.17	8.9%	91.1%	1.08	1.19	96.9%	96.9%	96.6%	61.4%	38.6%	82.6%	59.3%
Staff Nurse [Psychiatric]	327	350	1.07	24.0%	76.0%	1.04	1.08	94.9%	94.9%	94.7%	87.7%	12.3%	95.2%	85.3%
Staff Nurses [General/ Children's]	441	541	1.23	5.7%	94.3%	1.00	1.24	97.8%	97.8%	97.6%	51.8%	48.2%	96.8%	49.0%
Staff Nurse/ Staff Midwife	989	1,150	1.16	12.0%	88.0%	1.04	1.18	96.7%	97.1%	96.6%	64.9%	35.1%	93.5%	61.0%
Public Health Nurse	202	242	1.20		100.0%		1.20	98.3%		98.3%	73.1%	26.9%		73.1%
Pre-registration Nurse Intern (COVID-19)	47	55	1.17	18.2%	81.8%	1.39	1.13	0.0%	0.0%	0.0%	100.0%	0.0%	100.0%	100.0%
Post-registration Nurse/ Midwife Student	1	2	1.98		100.0%		1.98	100.0%	100.0%	100.0%	100.0%	0.0%		100.0%
Nursing/ Midwifery Student	48	57	1.19	17.5%	82.5%	1.39	1.15	3.5%	0.0%	4.3%	100.0%	0.0%	100.0%	100.0%

Nursing Education/Clinical	10	13	1.28	7.7%	92.3%	1.00	1.31	84.6%	84.6%	83.3%	84.6%	15.4%	100.0%	83.3%
Nursing/ Midwifery other	10	13	1.28	7.7%	92.3%	1.00	1.31	84.6%	100.0%	83.3%	84.6%	15.4%	100.0%	83.3%
Nursing & Midwifery	1,728	1,983	1.15	11.9%	88.1%	1.04	1.16	93.9%	91.5%	94.2%	70.8%	29.2%	95.8%	67.4%
Dietitians	20	25	1.26		100.0%		1.26	100.0%	100.0%	100.0%	52.0%	48.0%		52.0%
Occupational Therapists	144	167	1.16	7.2%	92.8%	1.00	1.18	98.2%	98.2%	98.1%	78.4%	21.6%	100.0%	76.8%
Physiotherapists	112	138	1.23	17.4%	82.6%	1.07	1.27	97.1%	97.1%	97.4%	55.8%	44.2%	79.2%	50.9%
Podiatrists & Chiropodists	4	7	1.69		100.0%		1.69	57.1%	57.1%	57.1%	14.3%	85.7%		14.3%
Speech & Language Therapists	108	131	1.22	1.5%	98.5%	1.03	1.22	96.9%	96.9%	96.9%	61.8%	38.2%	100.0%	61.2%
Therapy Professions	387	468	1.21	8.1%	91.9%	1.04	1.23	97.0%	97.4%	97.0%	64.7%	35.3%	86.8%	62.8%
Audiology	5	6	1.14	33.3%	66.7%	1.08	1.17	100.0%	100.0%	100.0%	50.0%	50.0%	50.0%	50.0%
Clinical Engineering	4	4	1.00	100.0%		1.00		100.0%	100.0%		100.0%	0.0%	100.0%	
Health Science/ Diagnostics	9	10	1.08	60.0%	40.0%	1.03	1.17	100.0%	100.0%	100.0%	70.0%	30.0%	83.3%	50.0%
Social Care	383	461	1.20	14.3%	85.7%	1.14	1.22	98.5%	98.5%	98.5%	24.7%	75.3%	22.7%	25.1%
Social Workers	90	106	1.18	14.2%	85.8%	1.08	1.19	98.1%	93.3%	98.9%	78.3%	21.7%	86.7%	76.9%
Psychologists	115	130	1.13	26.9%	73.1%	1.04	1.17	76.9%	91.4%	71.6%	86.2%	13.8%	97.1%	82.1%
Pharmacy	7	9	1.24	22.2%	77.8%	1.00	1.33	100.0%	100.0%	100.0%	66.7%	33.3%	100.0%	57.1%
Counsellor Therapists	36	40	1.12	17.5%	82.5%	1.06	1.14	90.0%	90.0%	90.9%	65.0%	35.0%	71.4%	63.6%
Dental Hygienists	13	14	1.08		100.0%		1.08	100.0%	100.0%	100.0%	78.6%	21.4%		78.6%
Other Health & Social Care	2	2	1.20		100.0%		1.20	50.0%	50.0%	50.0%	50.0%	50.0%		50.0%
Play Therapists/ Specialists	1	1	1.00	100.0%		1.00		100.0%	100.0%		100.0%	0.0%	100.0%	
H&SC, Other	51	57	1.11	14.0%	86.0%	1.05	1.12	91.2%	87.5%	91.8%	68.4%	31.6%	75.0%	67.3%
Health & Social Care	1,043	1,241	1.19	13.7%	86.3%	1.08	1.21	95.3%	95.9%	95.2%	53.5%	46.5%	63.5%	51.9%
Executive Management	11	11	1.01	27.3%	72.7%	1.00	1.02	90.9%	90.9%	87.5%	100.0%	0.0%	100.0%	100.0%
Senior Management (VIII & GM)	57	60	1.05	26.7%	73.3%	1.04	1.05	96.7%	96.7%	97.7%	83.3%	16.7%	81.3%	84.1%
Management (VIII & above)	68	71	1.04	26.8%	73.2%	1.04	1.05	95.8%	94.7%	96.2%	85.9%	14.1%	84.2%	86.5%
Administrative/ Supervisory (V to VII)	195	213	1.09	15.0%	85.0%	1.02	1.11	96.2%	96.9%	96.1%	78.4%	21.6%	96.9%	75.1%
Clerical (III & IV)	527	632	1.20	5.4%	94.6%	1.13	1.20	88.9%	76.5%	89.6%	58.5%	41.5%	76.5%	57.5%
Management & Administrative	790	916	1.16	9.3%	90.7%	1.06	1.17	91.2%	88.2%	91.5%	65.3%	34.7%	85.9%	63.2%
Catering	34	38	1.13	15.8%	84.2%	1.03	1.15	97.4%	97.4%	96.9%	57.9%	42.1%	83.3%	53.1%
Household Services	53	66	1.24	31.8%	68.2%	1.09	1.32	92.4%	92.4%	91.1%	48.5%	51.5%	71.4%	37.8%
Other Support	29	50	1.72	44.0%	56.0%	1.12	2.96	52.0%	52.0%	25.0%	44.0%	56.0%	77.3%	17.9%
Portering	5	5	1.00	100.0%		1.00		100.0%	100.0%		100.0%	0.0%	100.0%	
Support	121	159	1.31	34.0%	66.0%	1.09	1.47	81.1%	92.6%	75.2%	50.9%	49.1%	77.8%	37.1%
Maintenance/ Technical	69	70	1.02	98.6%	1.4%	1.02	1.00	100.0%	100.0%	100.0%	97.1%	2.9%	97.1%	100.0%
General Support	190	229	1.21	53.7%	46.3%	1.05	1.46	86.9%	96.7%	75.5%	65.1%	34.9%	88.6%	37.7%

HCA, Nurse's Aide, etc.	1,578	1,875	1.19	21.8%	78.2%	1.11	1.21	93.2%	93.2%	92.9%	48.0%	52.0%	59.8%	44.7%
Health & Social Care Assistants	15	17	1.11	5.9%	94.1%	1.00	1.12	29.4%	29.4%	31.3%	82.4%	17.6%	100.0%	81.3%
Health Care Assistants	1,593	1,892	1.19	21.6%	78.4%	1.11	1.21	92.7%	94.1%	92.2%	48.3%	51.7%	59.9%	45.1%
Care, other	235	286	1.22	30.1%	69.9%	1.25	1.20	94.4%	86.0%	98.0%	53.5%	46.5%	60.5%	50.5%
Home Help	400	667	1.67	3.6%	96.4%	2.83	1.64	46.9%	20.8%	47.9%	13.8%	86.2%	8.3%	14.0%
Patient & Client Care	2,228	2,845	1.28	18.2%	81.8%	1.17	1.31	82.1%	89.4%	80.5%	40.7%	59.3%	57.6%	37.0%

Employment by WTE, Headcount, Gender, Full-Time /Part-Time etc.: Sep 2020

CHO 8	WTE	Headcount	WTE: no.	% Male	% female	Male WTE: no.	Female WTE: no.	% Total Perm	% Male Perm	% Female Perm	% Total Full Time	% Total Part Time	% Male FT	% Female FT
Overall	6,240	7,504	1.20	16.8%	83.2%	1.10	1.22	87.0%	86.4%	87.1%	56.1%	43.9%	72.6%	52.8%
Community Health & Wellbeing	26	30	1.16	3.3%	96.7%	1.18	1.16	100.0%	100.0%	100.0%	56.7%	43.3%	100.0%	100.0%
Mental Health	1,122	1,216	1.08	25.0%	75.0%	1.04	1.10	85.6%	85.6%	86.1%	84.6%	15.4%	93.4%	93.4%
Primary Care	1,416	1,714	1.21	12.5%	87.5%	1.08	1.23	87.1%	87.1%	88.6%	61.3%	38.7%	79.5%	79.5%
Social Care	3,676	4,544	1.24	16.2%	83.8%	1.14	1.26	87.2%	87.2%	86.6%	46.5%	53.5%	62.0%	62.0%

CHO 8 Skills Mix by Staff Grouping: September 2020

Sep 2020 (Dec 2018 figure: 6,128)	WTE Dec 2015	WTE Dec 2016	WTE Dec 2017	WTE Dec 2018	WTE Dec 2019	WTE Aug 2020	WTE Sep 2020
Overall	5,814	6,014	6,092	6,128	6,135	6,263	6,240
Consultant Dentistry	0.4%	0.4%	0.4%	0.4%	0.4%	0.3%	0.3%
Consultant Medicine	1.7%	1.7%	2.1%	1.7%	1.9%	2.3%	2.3%
Consultant Psychiatry	15.7%	15.6%	14.6%	15.0%	14.1%	13.2%	13.6%
Consultants	17.9%	17.7%	17.1%	17.1%	16.3%	15.9%	16.2%
Registrar	34.7%	36.4%	37.3%	36.6%	35.7%	39.2%	38.9%
Senior Registrar	4.1%	4.7%	5.9%	5.4%	5.3%	5.0%	5.3%
Registrars	38.8%	41.1%	43.2%	42.0%	41.0%	44.2%	44.1%
Interns	0.4%	0.4%					
Senior House Officer	13.5%	11.4%	11.0%	11.8%	14.7%	12.0%	11.9%
SHO/ Interns	13.9%	11.8%	11.0%	11.8%	14.7%	12.0%	11.9%
Dentists	14.5%	15.1%	14.5%	13.9%	13.7%	13.7%	13.6%
Other Medical	14.8%	14.3%	14.3%	15.2%	14.3%	14.2%	14.1%
Medical/ Dental, other	29.4%	29.4%	28.8%	29.1%	28.0%	27.9%	27.7%
Medical & Dental	3.9%	3.9%	3.9%	3.9%	3.8%	100.0%	4.2%
Clinical Nurse/ Midwife Manager	16.9%	17.2%	17.5%	17.4%	17.1%	16.5%	16.5%
Director Nursing/Midwifery, Assistant	3.1%	3.3%	3.5%	3.6%	3.6%	3.4%	3.7%
Director of Nursing/Midwifery	1.4%	1.5%	1.6%	1.3%	1.4%	1.4%	1.6%
Nurse/ Midwife Manager	21.5%	22.0%	22.5%	22.3%	22.1%	21.3%	21.7%
Advanced Nurse/ Midwife Practitioner		0.1%	0.1%	0.1%	0.2%	0.2%	0.3%
Clinical Nurse/ Midwife Specialist	5.3%	5.6%	5.6%	5.7%	5.7%	5.8%	5.7%
Nurse/ Midwife Specialist & AN/MP	5.3%	5.6%	5.7%	5.8%	5.9%	6.0%	6.0%
Staff Nurse [Intellectual Disability]	15.1%	14.8%	15.2%	15.6%	13.8%	12.8%	12.8%
Staff Nurse [Psychiatric]	20.5%	19.2%	19.3%	19.4%	19.8%	18.7%	18.9%
Staff Nurses [General/ Children's]	25.3%	25.5%	24.4%	24.2%	25.7%	25.2%	25.5%
Staff Nurse/ Staff Midwife	60.9%	59.6%	59.0%	59.2%	59.3%	56.7%	57.2%
Public Health Nurse	11.3%	11.4%	11.6%	11.6%	11.8%	11.8%	11.7%
Pre-registration Nurse/ Midwife Intern			0.0%	0.0%	0.0%		
Pre-registration Nurse Intern (COVID-19)						3.4%	2.7%
Post-registration Nurse/ Midwife Student	0.6%	0.9%	0.8%	0.5%	0.1%	0.0%	0.1%
Nursing/ Midwifery awaiting registration		0.1%	0.0%	0.1%	0.1%		
Nursing/ Midwifery Student	0.6%	1.0%	0.8%	0.6%	0.3%	3.5%	2.8%
Nursing/ Midwifery other	0.4%	0.4%	0.5%	0.4%	0.6%	0.7%	0.6%
Nursing & Midwifery	29.4%	29.0%	28.2%	27.7%	27.7%	100.0%	27.7%
Dietitians	1.6%	1.8%	1.7%	1.9%	1.9%	2.0%	1.9%
Occupational Therapists	15.1%	14.3%	14.3%	13.5%	13.7%	13.8%	13.8%
Orthoptists	0.0%	0.0%	0.0%	0.0%			
Physiotherapists	12.6%	12.1%	11.0%	10.8%	10.5%	10.9%	10.7%
Podiatrists & Chiropodists	0.3%	0.3%	0.4%	0.4%	0.4%	0.4%	0.4%
Speech & Language Therapists	9.8%	11.6%	11.7%	10.9%	10.4%	10.1%	10.3%
Therapy Professions	39.5%	40.1%	39.1%	37.6%	37.0%	37.2%	37.1%
Audiology	0.5%	0.5%	0.4%	0.4%	0.3%	0.4%	0.5%
Clinical Engineering		0.4%	0.4%	0.4%	0.4%	0.4%	0.4%
Radiographers	0.2%	0.3%	0.3%				
Health Science/ Diagnostics	0.7%	1.2%	1.1%	0.8%	0.7%	0.8%	0.9%
Social Care	32.0%	32.7%	34.0%	36.0%	36.1%	37.0%	36.7%
Social Workers	9.5%	9.5%	9.1%	9.0%	8.6%	8.7%	8.6%
Psychologists	12.1%	10.7%	10.8%	10.5%	11.7%	10.8%	11.0%
Pharmacy	0.4%	0.5%	0.5%	0.6%	0.7%	0.7%	0.7%
Counsellor Therapists	3.9%	3.8%	3.9%	3.9%	3.7%	3.5%	3.4%
Dental Hygienists	1.5%	1.3%	1.2%	1.2%	1.2%	1.2%	1.2%
Other Health & Social Care	0.2%	0.2%	0.2%	0.2%	0.2%	0.2%	0.2%

Sep 2020 (Dec 2018 figure: 6,128)	WTE Dec 2015	WTE Dec 2016	WTE Dec 2017	WTE Dec 2018	WTE Dec 2019	WTE Aug 2020	WTE Sep 2020
Overall	5,814	6,014	6,092	6,128	6,135	6,263	6,240
Play Therapists/ Specialists	0.1%	0.1%	0.1%	0.1%	0.1%	0.1%	0.1%
H&SC, Other	5.8%	5.4%	5.4%	5.4%	5.1%	4.9%	4.9%
Health & Social Care Professionals	14.8%	15.4%	16.5%	16.4%	16.3%	100.0%	16.7%
Executive Management	0.6%	1.2%	1.3%	1.3%	1.2%	1.4%	1.4%
Senior Management (VIII & GM)	6.8%	6.8%	7.2%	6.7%	7.2%	7.1%	7.2%
Management (VIII & above)	7.4%	8.1%	8.6%	8.0%	8.4%	8.5%	8.6%
Middle Management (V-VII)	19.0%	19.7%	20.3%	23.3%	23.7%	25.2%	24.6%
Other Administrative		0.1%					
Administrative/ Supervisory (V to VII)	19.0%	19.9%	20.3%	23.3%	23.7%	25.2%	24.6%
Clerical (III & IV)	73.6%	72.1%	71.1%	68.6%	68.0%	66.3%	66.8%
Management & Administrative	12.0%	12.1%	12.0%	12.2%	12.1%	100.0%	12.7%
Catering	16.7%	16.6%	15.7%	17.8%	16.9%	18.1%	17.8%
Household Services	36.4%	32.8%	31.1%	28.0%	29.3%	28.1%	28.1%
Other Support	14.7%	16.6%	17.7%	16.4%	16.1%	15.2%	15.3%
Portering	1.7%	2.3%	2.4%	2.5%	2.5%	2.6%	2.6%
Support	69.4%	68.3%	66.9%	64.6%	64.9%	64.0%	63.8%
Maintenance/ Technical	30.6%	31.7%	33.1%	35.4%	35.1%	36.0%	36.2%
General Support	3.8%	3.6%	3.5%	3.3%	3.3%	100.0%	3.0%
HCA, Nurse's Aide, etc.	68.9%	69.1%	69.4%	69.0%	70.0%	70.9%	70.8%
Health & Social Care Assistants	0.2%	0.2%	0.2%	0.9%	0.6%	0.7%	0.7%
Health Care Assistants	69.1%	69.3%	69.6%	69.9%	70.6%	71.6%	71.5%
Community Welfare Officers	0.0%	0.0%	0.0%	0.0%			
Other Care Grades	12.4%	12.3%	11.8%	10.9%	10.6%	10.5%	10.5%
Care, other	12.5%	12.4%	11.8%	10.9%	10.6%	10.5%	10.5%
Home Help	18.5%	18.3%	18.6%	19.2%	18.7%	17.9%	18.0%
Patient & Client Care	36.0%	36.0%	36.0%	36.6%	36.5%	100.0%	35.7%
Total	100 %	100 %	100 %	100 %	100%	100 %	100 %

CHO 8 Skills Mix by Care Group: September 2020

Sep 2020 (Dec 2018 figure: 1,069)	WTE Dec 2015	WTE Dec 2016	WTE Dec 2017	WTE Dec 2018	WTE Dec 2019	WTE Aug 2020	WTE Sep 2020
Mental Health	1,042	1,041	1,080	1,069	1,097.95	1,127.27	1,122.24
Consultants	41.3%	43.1%	38.0%	40.0%	36.4%	36.2%	35.8%
Registrar	8.5%	9.9%	17.7%	15.3%	12.4%	17.0%	18.4%
Senior Registrar	11.5%	13.6%	15.8%	14.8%	14.1%	14.0%	14.3%
Registrars	20.0%	23.6%	33.5%	30.1%	26.5%	31.0%	32.6%
Interns	1.2%	1.2%					
Senior House Officer	37.4%	32.1%	28.5%	29.9%	37.1%	32.8%	31.5%
SHO/ Interns	38.7%	33.3%	28.5%	29.9%	37.1%	32.8%	31.5%
Medical & Dental	7.9%	7.7%	8.1%	8.1%	7.9%	8.6%	8.6%
Clinical Nurse/ Midwife Manager	19.1%	20.1%	21.3%	20.9%	19.8%	18.6%	18.2%
Director Nursing/Midwifery, Assistant	3.4%	3.7%	3.6%	3.9%	3.3%	3.3%	3.5%
Director of Nursing/Midwifery	0.6%	0.6%	0.6%	0.2%	0.4%	0.4%	0.4%
Nurse/ Midwife Manager	23.1%	24.3%	25.5%	25.0%	23.4%	22.3%	22.1%
Advanced Nurse/ Midwife Practitioner		0.2%	0.2%	0.4%	0.8%	0.7%	0.7%
Clinical Nurse/ Midwife Specialist	8.5%	9.4%	9.4%	9.8%	10.1%	10.2%	10.4%
Nurse/ Midwife Specialist & AN/MP	8.5%	9.6%	9.6%	10.2%	10.9%	11.0%	11.1%
Staff Nurse [Psychiatric]	67.1%	64.1%	63.2%	63.2%	63.2%	59.1%	59.7%
Staff Nurses [General/ Children's]	1.0%	1.2%	0.9%	1.0%	1.2%	1.1%	1.1%
Staff Nurse/ Staff Midwife	68.1%	65.3%	64.1%	64.2%	64.4%	60.2%	60.8%
Pre-registration Nurse/ Midwife Intern			0.1%		0.1%		
Pre-registration Nurse Intern (COVID-19)						5.8%	5.4%
Nursing/ Midwifery awaiting registration		0.4%	0.1%	0.2%	0.4%		
Nursing/ Midwifery Student		0.4%	0.2%	0.2%	0.5%	5.8%	5.4%
Nursing/ Midwifery other	0.4%	0.4%	0.6%	0.4%	0.8%	0.7%	0.6%
Nursing & Midwifery	48.1%	48.5%	47.3%	47.4%	46.2%	47.9%	47.9%
Dietitians		0.7%	1.3%	1.4%	1.3%	0.7%	
Occupational Therapists	25.1%	21.4%	24.3%	25.4%	23.8%	24.6%	24.3%
Podiatrists & Chiropodists	0.1%		0.1%	0.0%			0.1%
Speech & Language Therapists	2.8%	4.3%	3.7%	3.1%	3.8%	3.8%	4.2%
Therapy Professions	27.9%	26.5%	29.4%	29.8%	28.8%	29.0%	28.7%
Social Care	4.4%	5.2%	4.4%	4.4%	4.7%	4.7%	4.7%
Social Workers	30.2%	31.4%	28.5%	26.8%	26.9%	28.7%	28.0%
Psychologists	23.8%	22.2%	24.6%	25.6%	25.5%	24.1%	25.1%
Pharmacy		0.5%	0.7%	0.7%	0.7%	0.3%	0.6%
Counsellor Therapists	13.6%	14.1%	12.4%	12.7%	13.3%	13.2%	12.9%
Other Health & Social Care	0.1%	0.1%					
H&SC, Other	13.7%	14.3%	12.4%	12.7%	13.3%	13.2%	12.9%
Health & Social Care Professionals	13.1%	12.9%	14.0%	13.8%	13.5%	13.8%	13.8%
Management (VIII & above)	3.0%	1.0%	1.8%	1.8%	2.6%	2.4%	2.4%
Administrative/ Supervisory (V to VII)	15.4%	15.4%	16.7%	20.0%	19.8%	16.6%	17.6%
Clerical (III & IV)	81.5%	83.6%	81.5%	78.2%	77.6%	81.0%	80.0%
Management & Administrative	9.5%	9.7%	10.3%	10.1%	9.9%	10.8%	10.8%
Support	53.3%	52.1%	55.4%	53.9%	55.5%	53.4%	53.2%
Maintenance/ Technical	46.7%	47.9%	44.6%	46.1%	44.5%	46.6%	46.8%
General Support	5.8%	5.6%	5.8%	5.7%	5.6%	5.2%	5.2%
Health Care Assistants	97.2%	97.2%	97.1%	98.1%	97.8%	97.9%	98.1%
Care, other	2.8%	2.8%	2.9%	1.9%	2.2%	2.1%	1.9%
Patient & Client Care	15.7%	15.6%	14.5%	14.8%	14.4%	13.7%	13.7%
Total	100 %	100 %	100 %	100 %	100 %	100 %	100%

Sep 2020 (Dec 2018 figure: 1,422)	WTE Dec 2015	WTE Dec 2016	WTE Dec 2017	WTE Dec 2018	WTE Dec 2019	WTE Aug 2020	WTE Sep 2020
Primary Care	1,393	1,457	1,436	1,422	1,386.65	1,425.92	1,415.73
Consultant Dentistry	0.7%	0.6%	0.7%	0.7%	0.6%	0.6%	0.6%
Consultant Medicine	3.0%	2.8%	3.7%	2.9%	3.4%	3.9%	3.9%
Consultant Psychiatry	0.7%	0.7%					
Consultants	4.4%	4.2%	4.4%	3.6%	4.0%	4.4%	4.5%
Registrars	53.5%	54.6%	53.2%	53.4%	53.3%	55.2%	54.9%
SHO/ Interns		0.7%	0.7%	1.5%	1.4%	0.6%	0.6%
Dentists	24.9%	25.3%	25.4%	24.2%	24.2%	23.3%	23.5%
Other Medical	17.1%	15.2%	16.3%	17.3%	17.1%	16.5%	16.5%
Medical/ Dental, other	42.0%	40.5%	41.7%	41.5%	41.3%	39.8%	40.0%
Medical & Dental	9.6%	9.6%	9.4%	9.5%	9.8%	10.7%	10.7%
Clinical Nurse/ Midwife Manager	7.2%	7.3%	7.3%	7.9%	7.1%	6.9%	6.8%
Director Nursing/Midwifery, Assistant	4.3%	4.8%	4.2%	4.6%	4.8%	4.8%	5.2%
Director of Nursing/Midwifery	1.3%	1.2%	1.5%	1.0%	1.6%	1.5%	1.5%
Nurse/ Midwife Manager	12.8%	13.4%	12.9%	13.5%	13.4%	13.2%	13.5%
Nurse/ Midwife Specialist & AN/MP	9.1%	9.0%	9.2%	9.5%	9.1%	9.0%	8.7%
Staff Nurse/ Staff Midwife	25.9%	27.2%	27.1%	26.4%	25.7%	26.2%	26.3%
Public Health Nurse	49.3%	46.6%	47.6%	48.7%	51.3%	51.2%	51.1%
Nursing/ Midwifery Student	2.9%	3.8%	3.2%	2.0%	0.5%	0.2%	0.3%
Nursing Education/Clinical						0.2%	0.2%
Nursing/ Midwifery other						0.2%	0.2%
Nursing & Midwifery	27.6%	28.7%	28.5%	27.8%	28.5%	27.5%	27.5%
Dietitians	4.0%	4.7%	4.5%	4.8%	5.2%	5.4%	5.4%
Occupational Therapists	20.0%	17.7%	18.1%	17.2%	17.5%	17.9%	17.8%
Orthoptists	0.1%	0.1%	0.1%	0.1%			
Physiotherapists	24.9%	25.5%	23.7%	24.6%	23.8%	25.0%	24.6%
Podiatrists & Chiropodists	0.5%	0.5%	0.8%	1.1%	1.1%	1.1%	1.2%
Speech & Language Therapists	18.4%	19.9%	21.6%	20.5%	20.1%	18.3%	18.4%
Therapy Professions	67.9%	68.4%	69.0%	68.2%	67.7%	67.7%	67.5%
Audiology	1.3%	1.3%	1.3%	1.3%	1.0%	1.2%	1.5%
Clinical Engineering		0.6%	0.6%	0.6%	0.6%	0.6%	0.6%
Radiographers			0.1%				
Health Science/ Diagnostics	1.3%	2.0%	2.0%	1.9%	1.6%	1.7%	2.1%
Social Care	0.3%	0.3%				0.3%	0.3%
Social Workers	5.4%	5.1%	5.1%	5.8%	4.8%	5.0%	4.9%
Psychologists	16.7%	15.7%	14.4%	14.3%	17.1%	16.8%	16.6%
Pharmacy	0.8%	0.9%	0.8%	0.9%	1.2%	1.4%	1.4%
Counsellor Therapists	3.4%	3.6%	4.8%	4.8%	3.6%	3.2%	3.1%
Dental Hygienists	4.0%	3.7%	3.6%	3.8%	3.8%	3.6%	3.8%
Other Health & Social Care	0.3%	0.3%	0.3%	0.3%	0.3%	0.3%	0.3%
H&SC, Other	7.6%	7.6%	8.7%	8.9%	7.7%	7.1%	7.2%
Health & Social Care Professionals	23.5%	22.4%	23.6%	23.0%	23.6%	24.0%	24.0%
Executive Management	0.8%	1.9%	2.0%	1.9%	2.0%	2.5%	2.5%
Senior Management (VIII & GM)	7.8%	8.2%	8.3%	8.9%	9.6%	8.6%	8.4%
Management (VIII & above)	8.5%	10.1%	10.3%	10.8%	11.7%	11.1%	11.0%
Administrative/ Supervisory (V to VII)	14.9%	15.8%	16.7%	19.6%	20.0%	21.3%	20.3%
Clerical (III & IV)	76.5%	74.1%	73.0%	69.5%	68.3%	67.6%	68.7%
Management & Administrative	28.0%	28.5%	28.0%	28.6%	29.3%	27.5%	27.5%
Support	88.5%	93.1%	89.8%	88.8%	88.9%	87.8%	87.8%
Maintenance/ Technical	11.5%	6.9%	10.2%	11.2%	11.1%	12.2%	12.2%
General Support	1.9%	1.8%	2.0%	1.8%	1.9%	1.7%	1.7%
HCA, Nurse's Aide, etc.	11.4%	11.7%	11.3%	10.5%	8.5%	6.7%	6.9%

Sep 2020 (Dec 2018 figure: 1,422)	WTE Dec 2015	WTE Dec 2016	WTE Dec 2017	WTE Dec 2018	WTE Dec 2019	WTE Aug 2020	WTE Sep 2020
Primary Care	1,393	1,457	1,436	1,422	1,386.65	1,425.92	1,415.73
Health & Social Care Assistants	0.6%	0.8%	0.9%	11.5%	8.8%	11.9%	11.1%
Health Care Assistants	12.1%	12.5%	12.2%	22.1%	17.3%	18.5%	17.9%
Community Welfare Officers	0.8%	0.8%	0.8%	0.8%			
Other Care Grades	86.6%	86.1%	86.0%	77.0%	82.4%	81.5%	82.1%
Care, other	87.3%	86.9%	86.8%	77.7%	82.4%	81.5%	82.1%
Home Help	0.6%	0.6%	1.0%	0.2%	0.3%		
Patient & Client Care	9.5%	8.9%	8.5%	9.2%	9.5%	8.6%	8.6%
Total	100 %	100 %	100 %	100 %	100 %	100 %	100%

Sep 2020 (Dec 2018 figure: 2,134)	WTE Dec 2015	WTE Dec 2016	WTE Dec 2017	WTE Dec 2018	WTE Dec 2019	WTE Aug 2020	WTE Sep 2020
Disabilities	1,843	1,984	2,078	2,134	2,162.12	2,165.69	2,164.14
Consultant Psychiatry	33.3%	33.3%	33.3%	33.3%	25.0%	27.6%	33.3%
Consultants	33.3%	33.3%	33.3%	33.3%	25.0%	27.6%	33.3%
Registrars	33.3%	33.3%	33.3%	33.3%	50.0%	44.8%	33.3%
Medical/ Dental, other	33.3%	33.3%	33.3%	33.3%	25.0%	27.6%	33.3%
Medical & Dental	0.2%	0.2%	0.1%	0.1%	0.1%	0.1%	0.1%
Clinical Nurse/ Midwife Manager	22.2%	22.7%	22.6%	22.7%	23.5%	21.9%	22.7%
Director Nursing/Midwifery, Assistant	1.6%	2.1%	2.4%	2.3%	2.3%	1.9%	1.8%
Director of Nursing/Midwifery	1.3%	1.0%	1.1%	1.1%	1.2%	0.8%	1.1%
Nurse/ Midwife Manager	25.1%	25.9%	26.0%	26.1%	27.0%	24.7%	25.5%
Advanced Nurse/ Midwife Practitioner							0.2%
Clinical Nurse/ Midwife Specialist	2.1%	2.0%	1.7%	1.6%	1.6%	1.5%	1.3%
Nurse/ Midwife Specialist & AN/MP	2.1%	2.0%	1.7%	1.6%	1.6%	1.5%	1.5%
Staff Nurse [Intellectual Disability]	55.9%	56.0%	57.3%	57.4%	50.9%	48.0%	48.8%
Staff Nurse [Psychiatric]	3.0%	2.0%	1.7%	1.7%	1.5%	1.1%	1.1%
Staff Nurses [General/ Children's]	12.8%	13.0%	12.1%	11.8%	17.6%	17.2%	17.7%
Staff Nurse/ Staff Midwife	71.8%	71.0%	71.0%	70.8%	70.0%	66.2%	67.6%
Public Health Nurse	0.1%	0.2%		0.2%	0.2%	0.2%	0.2%
Pre-registration Nurse/ Midwife Intern				0.1%			
Pre-registration Nurse Intern (COVID-19)						6.1%	4.0%
Nursing/ Midwifery Student				0.1%		6.1%	4.0%
Nursing/ Midwifery other	0.9%	1.0%	1.2%	1.2%	1.2%	1.2%	1.2%
Nursing & Midwifery	24.9%	23.2%	21.9%	21.6%	21.3%	20.9%	20.9%
Occupational Therapists	6.8%	9.0%	7.7%	6.7%	7.2%	7.0%	7.1%
Physiotherapists	4.9%	4.3%	4.4%	4.0%	4.3%	4.2%	4.0%
Speech & Language Therapists	5.0%	8.0%	7.3%	7.0%	6.4%	6.6%	6.8%
Therapy Professions	16.7%	21.3%	19.4%	17.8%	18.0%	17.7%	17.9%
Clinical Engineering		0.5%	0.4%	0.4%	0.4%	0.4%	0.4%
Health Science/ Diagnostics		0.5%	0.4%	0.4%	0.4%	0.4%	0.4%
Social Care	72.6%	67.5%	68.8%	71.2%	70.7%	72.3%	71.9%
Social Workers	4.6%	5.2%	5.5%	5.1%	4.7%	4.7%	4.7%
Psychologists	4.6%	4.2%	4.7%	4.2%	4.9%	3.6%	3.8%
Counsellor Therapists	1.2%	1.0%	0.9%	0.9%	1.0%	1.0%	1.0%
Other Health & Social Care	0.2%	0.1%	0.1%	0.2%	0.1%	0.1%	0.1%
Play Therapists/ Specialists	0.3%	0.2%	0.2%	0.2%	0.2%	0.2%	0.2%
H&SC, Other	1.6%	1.4%	1.3%	1.3%	1.4%	1.3%	1.3%
Health & Social Care Professionals	20.1%	22.1%	23.5%	23.3%	23.0%	24.1%	24.1%
Executive Management	0.7%	0.7%	1.3%	1.3%	0.7%	0.6%	0.6%
Senior Management (VIII & GM)	8.5%	8.7%	10.6%	6.0%	5.2%	7.5%	8.2%
Management (VIII & above)	9.3%	9.4%	12.0%	7.4%	5.9%	8.1%	8.8%
Administrative/ Supervisory (V to VII)	34.6%	36.4%	33.3%	36.4%	37.6%	36.7%	35.2%
Clerical (III & IV)	56.1%	54.2%	54.7%	56.3%	56.5%	55.2%	55.9%
Management & Administrative	7.4%	6.9%	7.2%	7.0%	6.9%	7.2%	7.2%
Support	82.6%	79.5%	76.5%	74.6%	74.3%	73.6%	73.6%
Maintenance	17.3%	20.3%	23.4%	25.2%	25.5%	26.2%	26.2%
Technical Services	0.1%	0.1%	0.1%	0.1%	0.2%	0.2%	0.2%
Maintenance/ Technical	17.4%	20.5%	23.5%	25.4%	25.7%	26.4%	26.4%
General Support	4.8%	4.3%	3.5%	3.1%	3.1%	2.6%	2.6%
HCA, Nurse's Aide, etc.	81.9%	82.5%	83.3%	84.9%	85.9%	86.3%	86.2%
Health & Social Care Assistants				0.3%	0.1%		
Health Care Assistants	81.9%	82.5%	83.3%	85.3%	86.0%	86.3%	86.2%
Care, other	15.1%	14.9%	13.9%	12.4%	11.7%	11.2%	11.4%

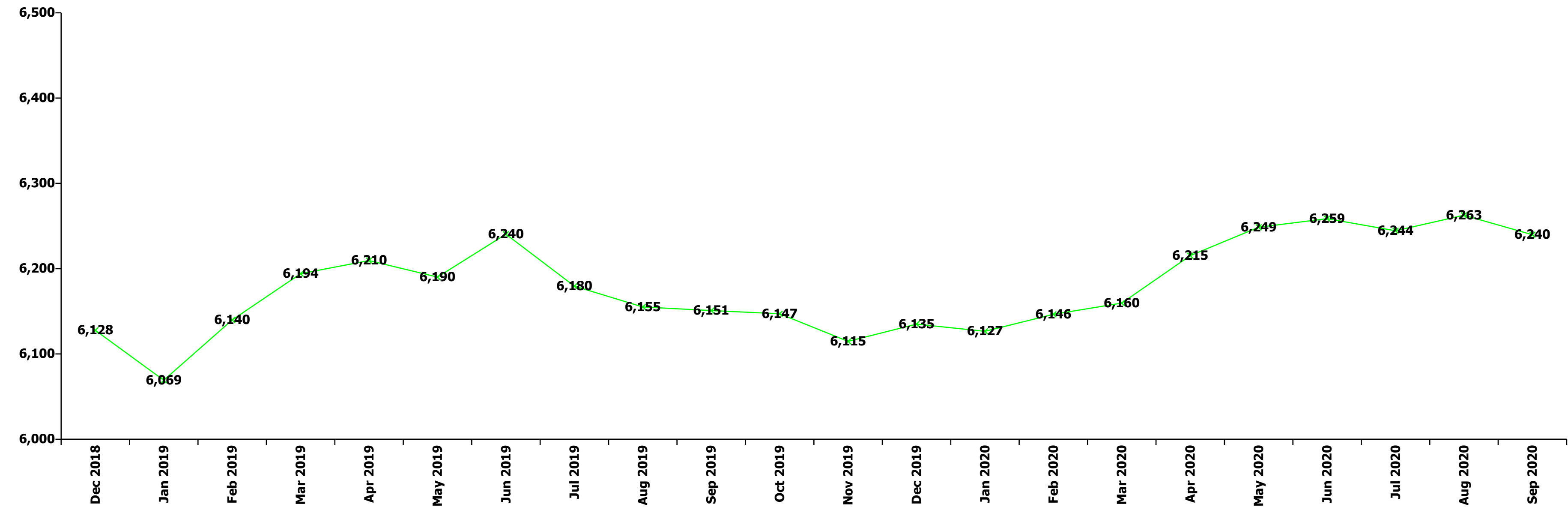
Sep 2020 (Dec 2018 figure: 2,134)	WTE Dec 2015	WTE Dec 2016	WTE Dec 2017	WTE Dec 2018	WTE Dec 2019	WTE Aug 2020	WTE Sep 2020
Disabilities	1,843	1,984	2,078	2,134	2,162.12	2,165.69	2,164.14
Home Help	3.1%	2.6%	2.8%	2.3%	2.3%	2.5%	2.4%
Patient & Client Care	42.7%	43.4%	43.8%	44.8%	44.2%	45.1%	45.1%
Total	100 %	100 %	100 %	100 %	100 %	100 %	100%

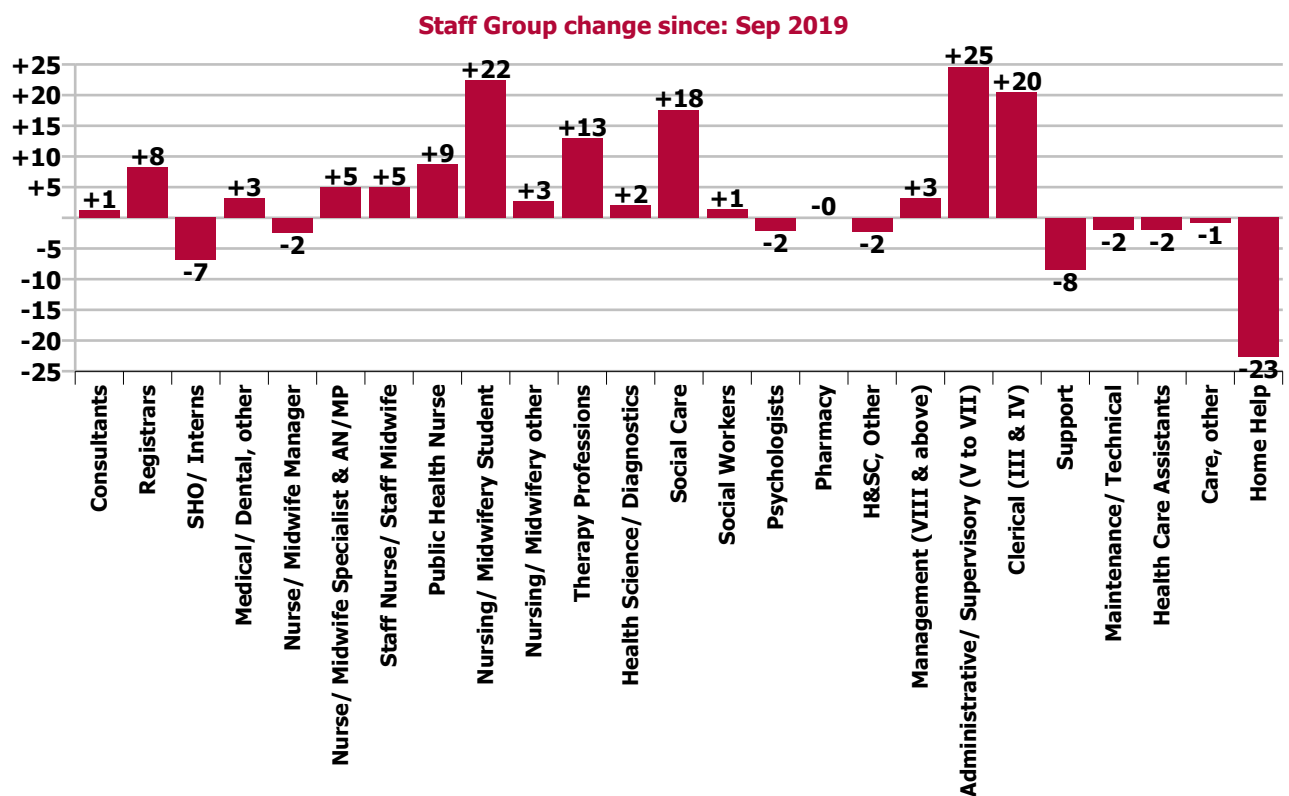
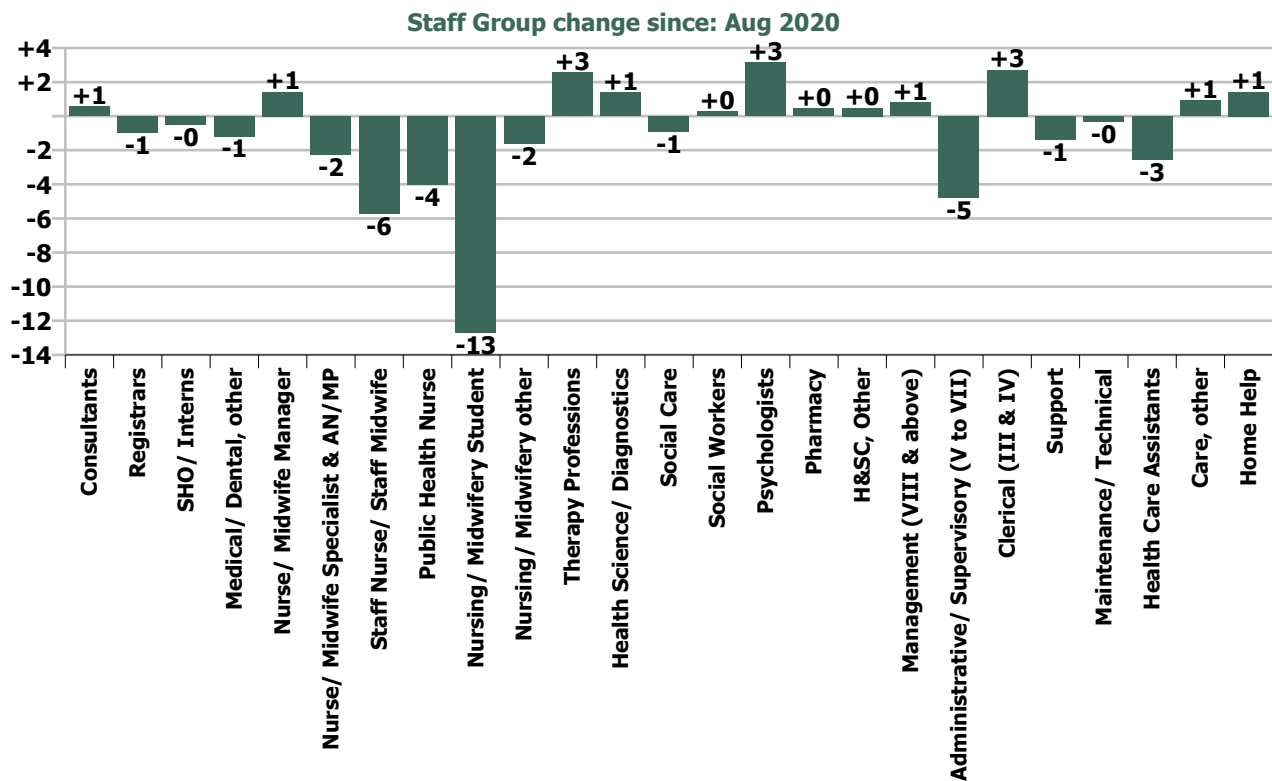
Sep 2020 (Dec 2018 figure: 1,503)	WTE Dec 2015	WTE Dec 2016	WTE Dec 2017	WTE Dec 2018	WTE Dec 2019	WTE Aug 2020	WTE Sep 2020
Older People	1,536	1,531	1,498	1,503	1,488.29	1,518.67	1,511.90
Medical/ Dental, other	100.0%	100.0%	100.0%	100.0%	100.0%	100.0%	100.0%
Medical & Dental	0.7%	0.7%	0.7%	0.8%	0.8%	0.7%	0.7%
Clinical Nurse/ Midwife Manager	17.4%	17.6%	17.1%	16.2%	15.5%	16.7%	16.8%
Director Nursing/Midwifery, Assistant	3.5%	2.4%	3.8%	3.8%	4.4%	4.2%	4.6%
Director of Nursing/Midwifery	3.0%	3.6%	3.8%	3.6%	3.3%	3.8%	4.0%
Nurse/ Midwife Manager	23.9%	23.6%	24.7%	23.5%	23.2%	24.7%	25.4%
Clinical Nurse/ Midwife Specialist	0.8%	0.8%	0.9%	0.9%	0.6%	0.9%	0.9%
Nurse/ Midwife Specialist & AN/MP	0.8%	0.8%	0.9%	0.9%	0.6%	0.9%	0.9%
Staff Nurse [Intellectual Disability]	0.3%	0.3%					
Staff Nurse [Psychiatric]	0.3%	0.3%	0.3%	0.3%	0.3%	0.3%	0.3%
Staff Nurses [General/ Children's]	73.7%	74.0%	73.0%	74.3%	75.2%	73.2%	72.5%
Staff Nurse/ Staff Midwife	74.3%	74.5%	73.3%	74.6%	75.5%	73.5%	72.8%
Public Health Nurse	1.1%	1.1%	1.1%	1.0%	0.7%	0.6%	0.7%
Nursing Education/Clinical						0.3%	0.3%
Nursing/ Midwifery other						0.3%	0.3%
Nursing & Midwifery	23.8%	23.4%	22.8%	22.2%	22.4%	23.1%	23.1%
Dietitians	1.3%			3.4%	3.4%		
Occupational Therapists	21.2%	24.3%	28.0%	29.2%	29.7%	34.3%	31.6%
Physiotherapists	33.3%	33.4%	32.0%	26.1%	25.5%	29.4%	29.4%
Podiatrists & Chiropodists	4.4%	3.0%	3.4%	3.1%	3.4%		
Speech & Language Therapists	6.8%	6.9%	10.1%	9.4%	7.5%	11.6%	11.1%
Therapy Professions	66.9%	67.6%	73.5%	71.2%	69.5%	75.3%	72.0%
Radiographers	7.3%	8.1%	8.5%				
Health Science/ Diagnostics	7.3%	8.1%	8.5%				
Social Workers	22.0%	20.8%	14.4%	22.0%	22.1%	18.9%	22.3%
Pharmacy	3.7%	3.5%	3.6%	6.8%	8.4%	5.8%	5.7%
Health & Social Care Professionals	1.8%	1.9%	1.9%	2.0%	2.0%	1.7%	1.7%
Management (VIII & above)	3.6%	3.9%	2.5%	3.4%	5.8%	7.7%	7.6%
Administrative/ Supervisory (V to VII)	16.2%	17.8%	18.6%	22.5%	21.2%	20.0%	20.3%
Clerical (III & IV)	80.2%	78.3%	78.9%	74.1%	73.0%	72.3%	72.0%
Management & Administrative	4.9%	4.8%	4.7%	5.4%	5.5%	6.5%	6.5%
Support	55.3%	54.2%	53.5%	51.7%	52.0%	54.3%	53.9%
Maintenance/ Technical	44.7%	45.8%	46.5%	48.3%	48.0%	45.7%	46.1%
General Support	3.2%	3.1%	3.1%	3.3%	3.4%	3.4%	3.4%
HCA, Nurse's Aide, etc.	61.7%	60.5%	59.6%	56.7%	57.0%	59.7%	59.1%
Health & Social Care Assistants	0.3%	0.3%	0.3%	0.3%	0.2%	0.2%	0.2%
Health Care Assistants	62.0%	60.8%	59.9%	56.9%	57.2%	59.9%	59.3%
Care, other	2.2%	2.3%	2.1%	2.1%	2.1%	2.2%	2.1%
Home Help	35.8%	37.0%	38.0%	41.0%	40.7%	37.9%	38.6%
Patient & Client Care	65.7%	66.0%	66.8%	66.3%	66.9%	64.6%	64.6%
Total	100 %	100 %	100 %	100 %	100 %	100 %	100%

Summary Staff Movement: September 2020

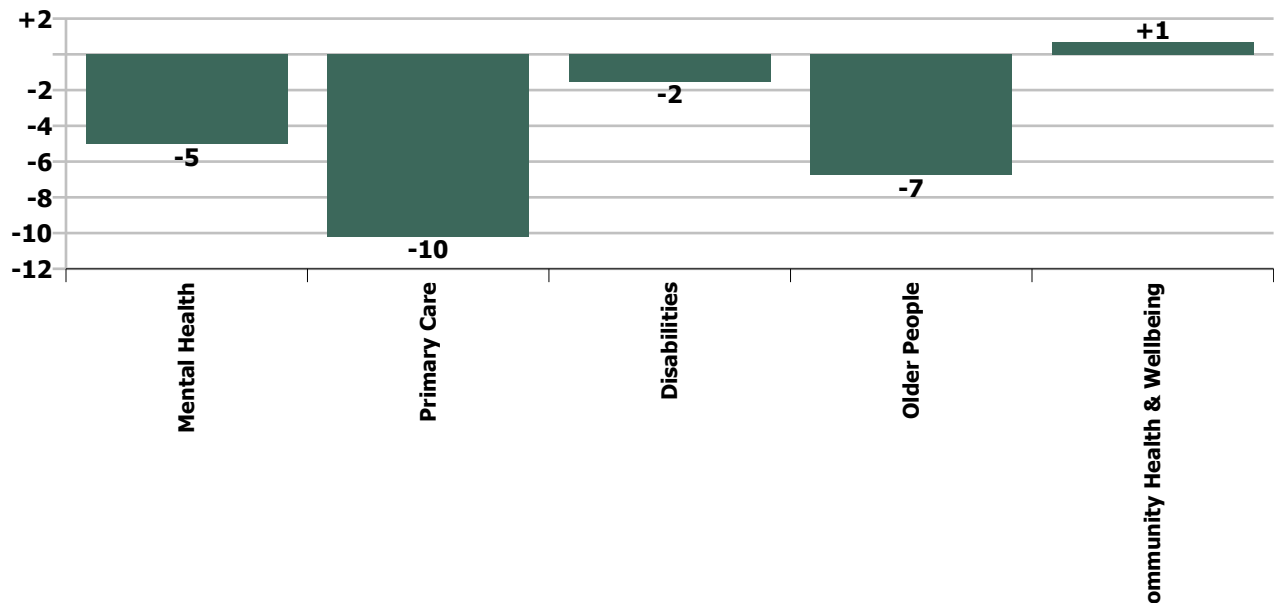
Month-on-month Summary																												
WTE change since Aug 20	% change since Aug 20	overall	Consultants	Registrars	SHO/ Interns	Medical/ Dental, other	Med/ical & Dental	Nurse/ Midwife Manager	Nurse/ Midwife Specialist & AN/MP	Staff Nurse/ Staff Midwife	Public Health Nurse	Nursing/ Midwifery Student	Nursing/ Midwifery other	Nursing & Midwifery	Therapy Professions	Health Science/ Diagnostics	Social Care	Social Workers	Psychologists	Pharmacy	H&SC, Other	Health & Social Care Professionals	Management (VIII & above)	Administrativ e/ Supervisory (V to VII)	Clerical (III & IV)	Management & Administrativ e	General Support	Patient & Client Care
Overall	-0.4%	-23	+0.6	-1.0	-0.5	-1.2	-2.0	+1.4	-2.3	-5.7	-4.1	-12.7	-1.6	-25.0	+2.6	+1.4	-0.9	+0.3	+3.2	+0.4	+0.5	+7.4	+0.8	-4.8	+2.7	-1.3	-1.7	-0.2
Community Health & Wellbeing	+2.8%	+1													0.0							0.0	+0.4	+0.3	-0.0	+0.7		
Mental Health	-0.4%	-5	+0.6	+2.4	-0.4		+2.6	-2.7	+0.0	-1.6		-2.7	-1.0	-8.1	+0.1		+0.1	-0.4	+2.2	+0.4	-0.2	+2.4	0.0	+1.0	-2.2	-1.2	-0.8	+0.1
Primary Care	-0.7%	-10	-0.0	-2.7	-0.1	-1.2	-4.1	+0.3	-1.9	-1.7	-4.2	+0.4	0.0	-7.2	+1.4	+1.4	0.0	-0.1	-0.1	0.0	+0.7	+3.2	-0.7	-3.8	+4.3	-0.2	-0.1	-1.7
Disabilities	-0.1%	-2	0.0	-0.6		0.0	-0.6	+0.2	-0.4	-3.7	0.0	-10.4	-0.6	-14.8	+1.5	0.0	-1.0	-0.2	+1.1		+0.0	+1.3	+1.0	-2.7	+0.5	-1.2	-0.0	+13.8
Older People	-0.4%	-7				+0.1	+0.1	+3.7	0.0	+1.3	+0.2		0.0	+5.1	-0.5			+1.0		0.0		+0.6	+0.0	+0.5	+0.2	+0.7	-0.8	-12.4
Social Care	-0.2%	-8	0.0	-0.6		+0.1	-0.6	+3.9	-0.4	-2.4	+0.2	-10.4	-0.6	-9.7	+1.0	0.0	-1.0	+0.8	+1.1	0.0	+0.0	+1.9	+1.0	-2.2	+0.7	-0.5	-0.8	+1.4
Change	-22.8	-0.4%	+1.4%	-0.8%	-1.5%	-1.6%	-0.8%	+0.4%	-2.2%	-0.6%	-2.0%	-20.9%	-13.7%	-1.4%	+0.7%	+17.7%	-0.2%	+0.3%	+2.8%	+6.6%	+0.9%	+0.7%	+1.2%	-2.4%	+0.5%	-0.2%	-0.9%	-0.0%

Year-on-year Summary																												
WTE change since Sep 19	% change since Sep 19	overall	Consultants	Registrars	SHO/ Interns	Medical/ Dental, other	Medical & Dental	Nurse/ Midwife Manager	Nurse/ Midwife Specialist & AN/MP	Staff Nurse/ Staff Midwife	Public Health Nurse	Nursing/ Midwifery Student	Nursing/ Midwifery other	Nursing & Midwifery	Therapy Professions	Health Science/ Diagnostics	Social Care	Social Workers	Psychologists	Pharmacy	H&SC, Other	Health & Social Care Professionals	Management (VIII & above)	Administrative/ Supervisory (V to VII)	Clerical (III & IV)	Management & Administrative	General Support	Patient & Client Care
Overall	+1.4%	+89	+1.3	+8.2	-6.9	+3.2	+5.7	-2.4	+4.9	+4.9	+8.6	+22.4	+2.7	+41.2	+12.9	+2.0	+17.6	+1.4	-2.1	-0.0	-2.2	+29.6	+3.2	+24.6	+20.4	+48.2	-10.4	-25.4
Community Health & Wellbeing	+2.8%	+1													+1.5							+1.5	+1.0	+19.0	+4.2	+24.2		
Mental Health	-0.4%	-5	+0.3	+7.2	-6.0		+1.5	-6.7	+5.5	+8.3		+11.9	+1.0	+20.0	-3.1		-0.1	+0.6	-2.7	-0.1	-1.3	-6.6	0.0	-1.2	+11.5	+10.4	-3.4	-7.8
Primary Care	-0.7%	-10	+1.0	+2.0	-0.9	+3.1	+5.1	+1.9	-2.1	-8.1	+8.6	-3.7	+1.0	-2.4	+5.7	+2.0	+1.0	+0.3	+2.2	+1.0	-1.4	+10.9	-3.3	+3.8	-0.5	-0.0	-1.7	-0.3
Disabilities	+1.3%	+28.4	0.0	-1.0		0.0	-1.0	-4.5	-0.4	-0.9	0.0	+14.3	-0.3	+8.3	+10.1	0.0	+16.6	+0.9	-1.6		+0.5	+26.5	+3.0	+0.9	+3.6	+7.5	-6.3	-6.6
Older People	+0.6%	+9.1				+0.1	+0.1	+6.9	+1.9	+5.6	+0.0		+1.0	+15.4	-1.3			-0.4		-1.0		-2.7	+2.5	+2.1	+1.5	+6.1	+1.0	-10.8
Social Care	-0.2%	-8	0.0	-1.0		+0.1	-0.9	+2.4	+1.6	+4.6	+0.0	+14.3	+0.8	+23.6	+8.8	0.0	+16.6	+0.5	-1.6	-1.0	+0.5	+23.8	+5.5	+2.9	+5.2	+13.6	-5.3	-17.4
Change	+88.9	+1.4%	+3.0%	+7.6%	-18.1%	+4.6%	+2.2%	-0.6%	+5.0%	+0.5%	+4.5%	+87.5%	+36.4%	+2.4%	+3.5%	+28.1%	+4.8%	+1.6%	-1.8%	-0.1%	-4.1%	+2.9%	+4.9%	+14.4%	+4.0%	+6.5%	-5.2%	-1.1%

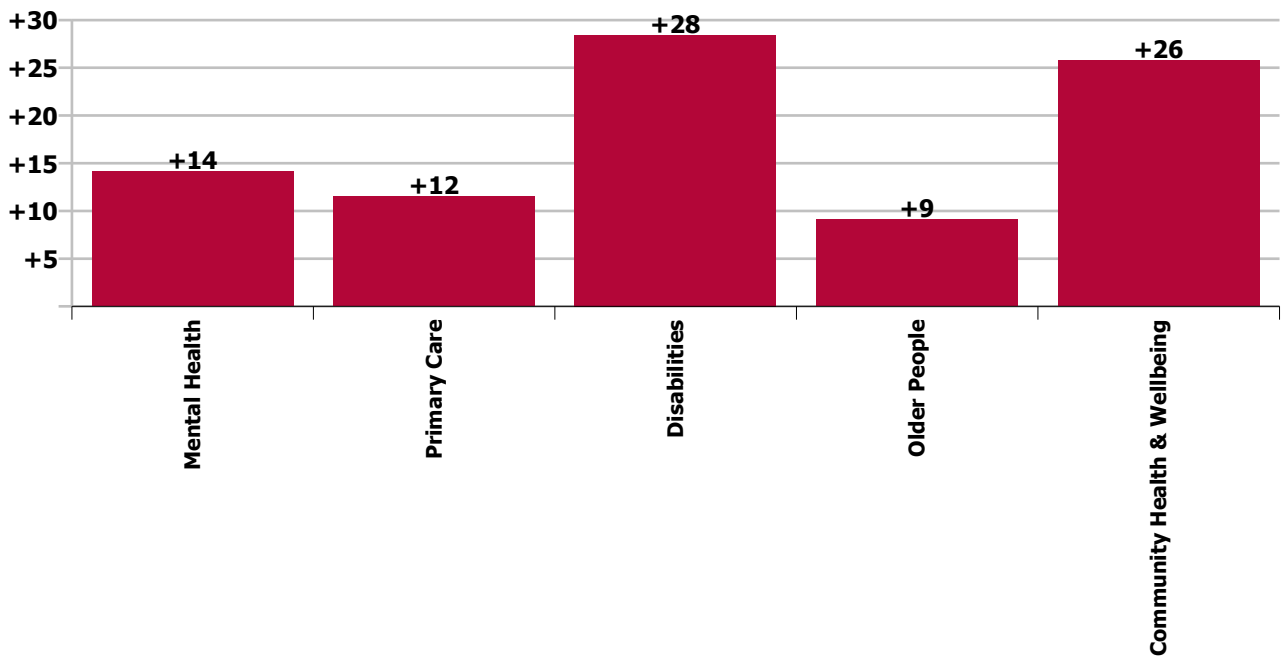




Care Group change since: Aug 2020



Care Group change since: Sep 2019



Longitudinal Employment Levels by Grade Group - Oct 2013 to Sep 2020

Sep 2020 (Dec 2015 figure: 5,814)	WTE Sep 2020	WTE change since Dec 15	WTE change since Dec 16	WTE change since Dec 17	WTE change since Dec 18	WTE change since Dec 19	WTE change since Aug 20	% change since Dec 15	% change since Dec 16	% change since Dec 17	% change since Dec 18	% change since Dec 19	% change since Aug 20
Overall	6,240	+426	+226	+148	+112	+105	-23	+7.3%	+3.8%	+2.4%	+1.8%	+1.7%	-0.4%
Consultant Dentistry	1												
Consultant Medicine	6	+2	+2	+1	+2	+1	-0	+49.0%	+49.0%	+19.2%	+50.5%	+19.2%	-0.7%
Consultant Psychiatry	36	-1	-1	+1	+0	-1	+1	-1.4%	-3.3%	+3.6%	+0.1%	-2.3%	+1.8%
Consultants	42	+1	+1	+2	+2	+0	+1	+3.5%	+1.8%	+5.4%	+5.1%	+0.3%	+1.4%
Registrar	102	+22	+16	+14	+15	+10	-2	+28.1%	+18.6%	+15.7%	+17.6%	+10.3%	-1.6%
Senior Registrar	14	+4	+3	-0	+1	+0	+1	+45.1%	+25.2%	-0.4%	+8.1%	+0.7%	+5.0%
Registrars	116	+27	+19	+14	+16	+10	-1	+29.9%	+19.4%	+13.5%	+16.4%	+9.1%	-0.8%
Interns		-1	-1					-100.0%	-100.0%	-100.0%	-100.0%	-100.0%	-100.0%
Senior House Officer	31	+0	+4	+5	+3	-7	-0	+1.4%	+16.5%	+20.6%	+12.4%	-17.7%	-1.5%
SHO/ Interns	31	-1	+3	+5	+3	-7	-0	-1.8%	+12.4%	+20.6%	+12.4%	-17.7%	-1.5%
Dentists	36	+2	+0	+2	+3	+0	-1	+7.0%	+0.4%	+4.5%	+8.9%	+0.3%	-1.5%
Other Medical	37	+3	+3	+3	+1	+0	-1	+8.8%	+9.5%	+9.5%	+2.7%	+0.0%	-1.7%
Medical/ Dental, other	73	+5	+3	+5	+4	+0	-1	+7.9%	+4.8%	+6.9%	+5.7%	+0.2%	-1.6%
Medical & Dental	262	+33	+26	+26	+26	+3	-2	+14.3%	+11.2%	+11.0%	+10.9%	+1.2%	-0.8%
Clinical Nurse/ Midwife Manager	286	-4	-14	-14	-11	-2	-4	-1.2%	-4.7%	-4.7%	-3.7%	-0.6%	-1.2%
Director Nursing/Midwifery, Assistant	63	+10	+6	+4	+2	+3	+3	+17.9%	+10.5%	+6.7%	+3.1%	+5.0%	+5.0%
Director of Nursing/Midwifery	27	+2	+1	+0	+5	+3	+2	+8.3%	+4.8%	+0.2%	+23.3%	+10.9%	+7.7%
Nurse/ Midwife Manager	376	+8	-7	-10	-4	+4	+1	+2.2%	-1.8%	-2.6%	-1.0%	+1.1%	+0.4%
Advanced Nurse/ Midwife Practitioner	5	+5	+4	+4	+3	+1	+1	-100.0%	+377.0%	+377.0%	+138.5%	+20.5%	+19.2%
Clinical Nurse/ Midwife Specialist	99	+8	+2	+2	+1	+3	-3	+9.4%	+1.6%	+2.3%	+1.5%	+2.8%	-3.0%
Nurse/ Midwife Specialist & AN/MP	103	+13	+5	+6	+4	+4	-2	+14.7%	+5.4%	+6.1%	+4.2%	+3.5%	-2.2%
Staff Nurse [Intellectual Disability]	220	-37	-38	-40	-44	-11	-3	-14.4%	-14.7%	-15.5%	-16.7%	-4.9%	-1.5%
Staff Nurse [Psychiatric]	327	-24	-7	-4	-2	-6	-2	-6.9%	-2.2%	-1.3%	-0.8%	-1.9%	-0.5%
Staff Nurses [General/ Children's]	441	+8	-3	+22	+30	+8	-1	+1.8%	-0.7%	+5.3%	+7.2%	+1.9%	-0.2%
Staff Nurse/ Staff Midwife	989	-53	-49	-23	-17	-9	-6	-5.1%	-4.7%	-2.2%	-1.7%	-0.9%	-0.6%
Public Health Nurse	202	+8	+3	+4	+5	+3	-4	+4.2%	+1.4%	+1.8%	+2.6%	+1.5%	-2.0%
Pre-registration Nurse/ Midwife Intern				-1	-1	-1		-100.0%	-100.0%	-100.0%	-100.0%	-100.0%	-100.0%
Pre-registration Nurse Intern (COVID-19)	47	+47	+47	+47	+47	+47	-13	-100.0%	-100.0%	-100.0%	-100.0%	-100.0%	-21.8%
Post-registration Nurse/ Midwife Student	1	-10	-15	-12	-7	-1	+0	-90.8%	-93.7%	-92.2%	-87.4%	-49.0%	+62.9%
Nursing/ Midwifery awaiting registration			-2	-1	-1	-2		-100.0%	-100.0%	-100.0%	-100.0%	-100.0%	-100.0%
Nursing/ Midwifery Student	48	+37	+30	+34	+38	+43	-13	+336.0%	+166.4%	+241.6%	+400.1%	+970.5%	-20.9%
Nursing Education/Clinical	10	+4	+4	+2	+3	+1	-2	+65.2%	+62.6%	+19.2%	+38.8%	+8.0%	-13.7%
Nursing/ Midwifery other	10	+4	+4	+2	+3	+1	-2	+65.2%	+62.6%	+19.2%	+38.8%	+8.0%	-13.7%

Sep 2020 (Dec 2015 figure: 5,814)	WTE Sep 2020	WTE change since Dec 15	WTE change since Dec 16	WTE change since Dec 17	WTE change since Dec 18	WTE change since Dec 19	WTE change since Aug 20	% change since Dec 15	% change since Dec 16	% change since Dec 17	% change since Dec 18	% change since Dec 19	% change since Aug 20
Overall	6,240	+426	+226	+148	+112	+105	-23	+7.3%	+3.8%	+2.4%	+1.8%	+1.7%	-0.4%
Nursing & Midwifery	1,728	+17	-14	+13	+30	+46	-25	+1.0%	-0.8%	+0.7%	+1.7%	+2.7%	-1.4%
Dietitians	20	+6	+4	+3	+1	+0	-1	+48.1%	+22.1%	+14.8%	+6.0%	+0.7%	-4.1%
Occupational Therapists	144	+13	+11	+0	+8	+4	+1	+10.3%	+7.9%	+0.3%	+5.8%	+3.0%	+0.7%
Orthoptists		-0	-0	-0	-0			-100.0%	-100.0%	-100.0%	-100.0%	-100.0%	-100.0%
Physiotherapists	112	+3	+0	+1	+4	+5	-1	+3.1%	+0.1%	+1.2%	+3.5%	+4.9%	-1.0%
Podiatrists & Chiropodists	4	+1	+2	+0	-0	-0	+0	+42.9%	+68.6%	+6.7%	-7.4%	-9.6%	+7.8%
Speech & Language Therapists	108	+23	-0	-10	-2	+1	+3	+27.5%	-0.3%	-8.4%	-1.7%	+1.0%	+3.1%
Therapy Professions	387	+47	+15	-6	+10	+10	+3	+13.9%	+4.1%	-1.5%	+2.7%	+2.7%	+0.7%
Audiology	5	+1	+1	+1	+1	+2	+1	+26.7%	+19.3%	+21.8%	+21.8%	+62.8%	+35.9%
Clinical Engineering	4	+4						-100.0%					
Radiographers		-2	-2	-3				-100.0%	-100.0%	-100.0%	-100.0%	-100.0%	-100.0%
Health Science/ Diagnostics	9	+3	-1	-2	+1	+2	+1	+50.6%	-13.8%	-17.2%	+11.3%	+28.1%	+17.7%
Social Care	383	+107	+79	+41	+22	+15	-1	+38.8%	+26.1%	+11.9%	+6.0%	+4.0%	-0.2%
Social Workers	90	+9	+2	-1	-0	+3	+0	+10.7%	+2.6%	-1.1%	-0.5%	+2.9%	+0.3%
Psychologists	115	+11	+16	+7	+9	-5	+3	+10.6%	+16.1%	+6.1%	+9.0%	-3.9%	+2.8%
Pharmacy	7	+4	+3	+2	+1	-0	+0	+102.8%	+58.5%	+52.2%	+22.6%	-0.1%	+6.6%
Counsellor Therapists	36	+2	+0	-4	-3	-2	-0	+5.4%	+0.8%	-9.9%	-8.9%	-4.8%	-0.7%
Dental Hygienists	13	-0	+1	+1	+0	+1	+1	-1.0%	+6.3%	+5.1%	+4.0%	+5.2%	+5.6%
Other Health & Social Care	2	-0	-0	-0	-0	+0	+0	-5.1%	-7.7%	-3.5%	-9.2%	+2.5%	+1.2%
Play Therapists/ Specialists	1												
H&SC, Other	51	+2	+1	-3	-3	-1	+0	+3.2%	+1.8%	-6.2%	-5.8%	-2.2%	+0.9%
Health & Social Care Professionals	1,043	+182	+115	+37	+40	+24	+7	+21.2%	+12.4%	+3.7%	+4.0%	+2.3%	+0.7%
Executive Management	11	+7	+2	+1	+1	+2		+171.5%	+22.6%	+10.1%	+11.0%	+22.6%	
Senior Management (VIII & GM)	57	+9	+7	+4	+7	+4	+1	+19.7%	+15.0%	+7.4%	+14.6%	+6.7%	+1.5%
Management (VIII & above)	68	+16	+9	+5	+8	+6	+1	+31.4%	+16.1%	+7.9%	+14.0%	+8.9%	+1.2%
Middle Management (V-VII)	195	+62	+51	+46	+21	+18	-5	+46.4%	+35.9%	+31.0%	+11.9%	+10.3%	-2.4%
Other Administrative			-1					-100.0%	-100.0%	-100.0%	-100.0%	-100.0%	-100.0%
Administrative/ Supervisory (V to VII)	195	+62	+50	+46	+21	+18	-5	+46.4%	+34.9%	+31.0%	+11.9%	+10.3%	-2.4%
Clerical (III & IV)	527	+11	+4	+6	+16	+20	+3	+2.2%	+0.7%	+1.1%	+3.1%	+4.0%	+0.5%
Management & Administrative	790	+89	+63	+57	+45	+44	-1	+12.8%	+8.7%	+7.7%	+6.1%	+5.9%	-0.2%
Catering	34	-4	-2	+1	-2	+1	-1	-9.4%	-6.5%	+1.8%	-6.8%	+1.7%	-2.5%
Household Services	53	-28	-18	-12	-4	-4	-0	-34.2%	-25.2%	-18.8%	-6.8%	-7.5%	-0.8%
Other Support	29	-4	-7	-8	-4	-3	-0	-11.1%	-19.5%	-22.3%	-13.2%	-8.2%	-0.3%
Portering	5	+1						+34.0%					
Support	121	-34	-27	-20	-11	-6	-1	-21.7%	-18.4%	-14.2%	-8.2%	-5.0%	-1.1%

Sep 2020 (Dec 2015 figure: 5,814)	WTE Sep 2020	WTE change since Dec 15	WTE change since Dec 16	WTE change since Dec 17	WTE change since Dec 18	WTE change since Dec 19	WTE change since Aug 20	% change since Dec 15	% change since Dec 16	% change since Dec 17	% change since Dec 18	% change since Dec 19	% change since Aug 20
Overall	6,240	+426	+226	+148	+112	+105	-23	+7.3%	+3.8%	+2.4%	+1.8%	+1.7%	-0.4%
Maintenance	68	+0	-0	-1	-4	-0	-0	+0.7%	-0.4%	-1.7%	-5.0%	-0.3%	-0.5%
Technical Services	0												
Maintenance/ Technical	69	+0	-0	-1	-4	-0	-0	+0.7%	-0.4%	-1.7%	-5.0%	-0.3%	-0.5%
General Support	190	-33	-28	-21	-14	-7	-2	-14.9%	-12.7%	-10.1%	-7.0%	-3.3%	-0.9%
HCA, Nurse's Aide, etc.	1,578	+138	+82	+56	+32	+14	-1	+9.6%	+5.5%	+3.7%	+2.1%	+0.9%	-0.1%
Health & Social Care Assistants	15	+12	+11	+11	-5	+2	-1	+321.2%	+295.1%	+295.1%	-26.3%	+14.4%	-7.5%
Health Care Assistants	1,593	+150	+94	+68	+26	+16	-3	+10.4%	+6.2%	+4.4%	+1.7%	+1.0%	-0.2%
Care, other	235	-25	-33	-24	-9	-3	+1	-9.8%	-12.5%	-9.3%	-3.9%	-1.1%	+0.4%
Home Help	400	+13	+3	-7	-31	-18	+1	+3.5%	+0.7%	-1.6%	-7.2%	-4.4%	+0.4%
Patient & Client Care	2,228	+138	+63	+37	-14	-5	-0	+6.6%	+2.9%	+1.7%	-0.6%	-0.2%	-0.0%

Source: Health Service Personnel Census

Longitudinal Employment Levels by Care Group - Oct 2013 to Sep 2020

Community Health & Wellbeing

Sep 2020 (figure:)	WTE Sep 2020	WTE change since	WTE change since	WTE change since	WTE change since	WTE change since	WTE change since Aug 20	% change since	% change since	% change since	% change since	% change since	% change since Aug 20
Overall	26	+26	+26	+26	+26	+26	+1	-100.0%	-100.0%	-100.0%	-100.0%	-100.0%	+2.8%
Health & Social Care Professionals	2	+2	+2	+2	+2	+2		-1.0%	-1.0%	-1.0%	-1.0%	-1.0%	+0.0%
Therapy Professions	2	+2	+2	+2	+2	+2		-1.0%	-1.0%	-1.0%	-1.0%	-1.0%	+0.0%
Management & Administrative	24	+24	+24	+24	+24	+24	+1	-1.0%	-1.0%	-1.0%	-1.0%	-1.0%	+0.0%
Management (VIII & above)	1	+1	+1	+1	+1	+1	+0	-1.0%	-1.0%	-1.0%	-1.0%	-1.0%	+0.8%
Administrative/ Supervisory (V to VII)	19	+19	+19	+19	+19	+19	+0	-1.0%	-1.0%	-1.0%	-1.0%	-1.0%	+0.0%
Clerical (III & IV)	4	+4	+4	+4	+4	+4	-0	-1.0%	-1.0%	-1.0%	-1.0%	-1.0%	-0.0%

Source: Health Service Personnel Census

Mental Health

Sep 2020 (Dec 2015 figure: 1,042)	WTE Sep 2020	WTE change since Dec 15	WTE change since Dec 16	WTE change since Dec 17	WTE change since Dec 18	WTE change since Dec 18	WTE change since Aug 20	% change since Dec 15	% change since Dec 16	% change since Dec 17	% change since Dec 18	% change since Dec 18	% change since Aug 20
Overall	1,122	+81	+81	+42	+53	+53	-5	+7.7%	+7.8%	+3.9%	+4.9%	+4.9%	-0.4%
Medical & Dental	96	+14	+16	+9	+10	+10	+3	+0.2%	+0.2%	+0.1%	+0.1%	+0.1%	+0.0%
Consultants	35	+0	-0	+1	+0	+0	+1	+0.0%	-0.0%	+0.0%	+0.0%	+0.0%	+0.0%
Registrars	31	+15	+12	+2	+6	+6	+2	+0.9%	+0.7%	+0.1%	+0.2%	+0.2%	+0.1%
SHO/ Interns	30	-1	+4	+5	+5	+5	-0	-0.0%	+0.1%	+0.2%	+0.2%	+0.2%	-0.0%
Nursing & Midwifery	538	+36	+33	+27	+31	+31	-8	+0.1%	+0.1%	+0.1%	+0.1%	+0.1%	-0.0%
Nurse/ Midwife Manager	119	+3	-4	-11	-8	-8	-3	+0.0%	-0.0%	-0.1%	-0.1%	-0.1%	-0.0%
Nurse/ Midwife Specialist & AN/MP	60	+17	+12	+11	+8	+8	+0	+0.4%	+0.2%	+0.2%	+0.2%	+0.2%	+0.0%
Staff Nurse/ Staff Midwife	327	-14	-3	-0	+2	+2	-2	-0.0%	-0.0%	-0.0%	+0.0%	+0.0%	-0.0%
Nursing/ Midwifery Student	29	+29	+27	+28	+28	+28	-3	-1.0%	+13.4%	+26.7%	+25.5%	+25.5%	-0.1%
Nursing/ Midwifery other	3	+1	+1	+0	+1	+1	-1	+0.6%	+0.6%	+0.0%	+0.5%	+0.5%	-0.3%
Health & Social Care Professionals	155	+19	+21	+4	+7	+7	+2	+0.1%	+0.2%	+0.0%	+0.0%	+0.0%	+0.0%
Therapy Professions	44	+6	+9	+0	+0	+0	+0	+0.2%	+0.2%	+0.0%	+0.0%	+0.0%	+0.0%
Social Care	7	+1	+0	+1	+1	+1	+0	+0.2%	+0.0%	+0.1%	+0.1%	+0.1%	+0.0%
Social Workers	43	+2	+1	+0	+4	+4	-0	+0.1%	+0.0%	+0.0%	+0.1%	+0.1%	-0.0%
Psychologists	39	+7	+9	+2	+1	+1	+2	+0.2%	+0.3%	+0.0%	+0.0%	+0.0%	+0.1%
Pharmacy	1	+1	+0	-0	-0	-0	+0	-1.0%	+0.5%	-0.1%	-0.1%	-0.1%	+0.9%
H&SC, Other	20	+1	+1	+1	+1	+1	-0	+0.1%	+0.0%	+0.1%	+0.1%	+0.1%	-0.0%
Management & Administrative	121	+22	+20	+10	+13	+13	-1	+0.2%	+0.2%	+0.1%	+0.1%	+0.1%	-0.0%
Management (VIII & above)	3	-0	+2	+1	+1	+1		-0.0%	+2.0%	+0.5%	+0.5%	+0.5%	+0.0%
Administrative/ Supervisory (V to VII)	21	+6	+6	+3	-0	-0	+1	+0.4%	+0.4%	+0.1%	-0.0%	-0.0%	+0.0%
Clerical (III & IV)	97	+16	+13	+6	+12	+12	-2	+0.2%	+0.2%	+0.1%	+0.1%	+0.1%	-0.0%
General Support	58	-2	-0	-5	-3	-3	-1	-0.0%	-0.0%	-0.1%	-0.0%	-0.0%	-0.0%
Support	31	-1	+1	-4	-2	-2	-1	-0.0%	+0.0%	-0.1%	-0.1%	-0.1%	-0.0%
Maintenance/ Technical	27	-1	-1	-1	-1	-1	-0	-0.0%	-0.0%	-0.0%	-0.0%	-0.0%	-0.0%
Patient & Client Care	154	-9	-9	-3	-4	-4	+0	-0.1%	-0.1%	-0.0%	-0.0%	-0.0%	+0.0%
Health Care Assistants	151	-7	-7	-1	-4	-4	+0	-0.0%	-0.0%	-0.0%	-0.0%	-0.0%	+0.0%
Care, other	3	-2	-2	-2			-0	-0.3%	-0.3%	-0.3%	+0.0%	+0.0%	-0.1%

Source: Health Service Personnel Census

Primary Care

Sep 2020 (Dec 2015 figure: 1,393)	WTE Sep 2020	WTE change since Dec 15	WTE change since Dec 16	WTE change since Dec 17	WTE change since Dec 18	WTE change since Dec 18	WTE change since Aug 20	% change since Dec 15	% change since Dec 16	% change since Dec 17	% change since Dec 18	% change since Dec 18	% change since Aug 20
Overall	1,416	+23	-41	-20	-6	-6	-10	+1.6%	-2.8%	-1.4%	-0.4%	-0.4%	-0.7%
Medical & Dental	151	+18	+11	+17	+16	+16	-4	+0.1%	+0.1%	+0.1%	+0.1%	+0.1%	-0.0%
Consultants	7	+1	+1	+1	+2	+2	-0	+0.2%	+0.2%	+0.2%	+0.4%	+0.4%	-0.0%
Registrars	83	+12	+6	+12	+11	+11	-3	+0.2%	+0.1%	+0.2%	+0.1%	+0.1%	-0.0%
SHO/ Interns	1	+1	-0	-0	-1	-1	-0	-1.0%	-0.1%	-0.1%	-0.6%	-0.6%	-0.1%
Medical/ Dental, other	61	+4	+4	+5	+4	+4	-1	+0.1%	+0.1%	+0.1%	+0.1%	+0.1%	-0.0%
Nursing & Midwifery	389	+5	-29	-19	-6	-6	-7	+0.0%	-0.1%	-0.0%	-0.0%	-0.0%	-0.0%
Nurse/ Midwife Manager	53	+3	-3	-0	-1	-1	+0	+0.1%	-0.1%	-0.0%	-0.0%	-0.0%	+0.0%
Nurse/ Midwife Specialist & AN/MP	34	-1	-4	-4	-4	-4	-2	-0.0%	-0.1%	-0.1%	-0.1%	-0.1%	-0.1%
Staff Nurse/ Staff Midwife	102	+2	-12	-8	-2	-2	-2	+0.0%	-0.1%	-0.1%	-0.0%	-0.0%	-0.0%
Public Health Nurse	199	+9	+4	+4	+6	+6	-4	+0.0%	+0.0%	+0.0%	+0.0%	+0.0%	-0.0%
Nursing/ Midwifery Student	1	-10	-15	-12	-7	-7	+0	-0.9%	-0.9%	-0.9%	-0.9%	-0.9%	+0.6%
Nursing/ Midwifery other	1	+1	+1	+1	+1	+1		-1.0%	-1.0%	-1.0%	-1.0%	-1.0%	+0.0%
Health & Social Care Professionals	339	+12	+12	+1	+12	+12	+3	+0.0%	+0.0%	+0.0%	+0.0%	+0.0%	+0.0%
Therapy Professions	229	+7	+5	-5	+5	+5	+1	+0.0%	+0.0%	-0.0%	+0.0%	+0.0%	+0.0%
Health Science/ Diagnostics	7	+3	+1	+0	+1	+1	+1	+0.7%	+0.1%	+0.1%	+0.1%	+0.1%	+0.2%
Social Care	1			+1	+1	+1		+0.0%	+0.0%	-1.0%	-1.0%	-1.0%	+0.0%
Social Workers	17	-1	-0	-1	-2	-2	-0	-0.0%	-0.0%	-0.0%	-0.1%	-0.1%	-0.0%
Psychologists	56	+1	+5	+8	+10	+10	-0	+0.0%	+0.1%	+0.2%	+0.2%	+0.2%	-0.0%
Pharmacy	5	+2	+2	+2	+2	+2		+0.9%	+0.6%	+0.7%	+0.6%	+0.6%	+0.0%
H&SC, Other	24	-1	-1	-5	-5	-5	+1	-0.0%	-0.0%	-0.2%	-0.2%	-0.2%	+0.0%
Management & Administrative	390	-0	-26	-13	-17	-17	-0	-0.0%	-0.1%	-0.0%	-0.0%	-0.0%	-0.0%
Management (VIII & above)	43	+9	+1	+1	-1	-1	-1	+0.3%	+0.0%	+0.0%	-0.0%	-0.0%	-0.0%
Administrative/ Supervisory (V to VII)	79	+21	+13	+12	-1	-1	-4	+0.4%	+0.2%	+0.2%	-0.0%	-0.0%	-0.0%
Clerical (III & IV)	268	-31	-40	-26	-15	-15	+4	-0.1%	-0.1%	-0.1%	-0.1%	-0.1%	+0.0%
General Support	24	-2	-3	-5	-2	-2	-0	-0.1%	-0.1%	-0.2%	-0.1%	-0.1%	-0.0%
Support	21	-2	-4	-5	-2	-2	-0	-0.1%	-0.2%	-0.2%	-0.1%	-0.1%	-0.0%
Maintenance/ Technical	3	-0	+1	-0	+0	+0		-0.0%	+0.6%	-0.0%	+0.0%	+0.0%	+0.0%
Patient & Client Care	122	-10	-7	-1	-9	-9	-2	-0.1%	-0.1%	-0.0%	-0.1%	-0.1%	-0.0%
Health Care Assistants	22	+6	+6	+7	-7	-7	-1	+0.4%	+0.4%	+0.5%	-0.2%	-0.2%	-0.0%
Care, other	100	-15	-12	-6	-2	-2	-1	-0.1%	-0.1%	-0.1%	-0.0%	-0.0%	-0.0%
Home Help		-1	-1	-1	-0	-0		-1.0%	-1.0%	-1.0%	-1.0%	-1.0%	-1.0%

Source: Health Service Personnel Census

Disabilities

Sep 2020 (Dec 2015 figure: 1,843)	WTE Sep 2020	WTE change since Dec 15	WTE change since Dec 16	WTE change since Dec 17	WTE change since Dec 18	WTE change since Dec 18	WTE change since Aug 20	% change since Dec 15	% change since Dec 16	% change since Dec 17	% change since Dec 18	% change since Dec 18	% change since Aug 20
Overall	2,164	+322	+180	+86	+31	+31	-2	+17.5%	+9.1%	+4.1%	+1.4%	+1.4%	-0.1%
Medical & Dental	3						-1	+0.0%	+0.0%	+0.0%	+0.0%	+0.0%	-0.2%
Consultants	1							+0.0%	+0.0%	+0.0%	+0.0%	+0.0%	+0.0%
Registrars	1						-1	+0.0%	+0.0%	+0.0%	+0.0%	+0.0%	-0.4%
Medical/ Dental, other	1							+0.0%	+0.0%	+0.0%	+0.0%	+0.0%	+0.0%
Nursing & Midwifery	452	-7	-8	-4	-10	-10	-15	-0.0%	-0.0%	-0.0%	-0.0%	-0.0%	-0.0%
Nurse/ Midwife Manager	115	+0	-4	-3	-5	-5	+0	+0.0%	-0.0%	-0.0%	-0.0%	-0.0%	+0.0%
Nurse/ Midwife Specialist & AN/MP	7	-3	-2	-1	-0	-0	-0	-0.3%	-0.3%	-0.1%	-0.1%	-0.1%	-0.1%
Staff Nurse/ Staff Midwife	305	-24	-21	-18	-21	-21	-4	-0.1%	-0.1%	-0.1%	-0.1%	-0.1%	-0.0%
Public Health Nurse	1	+1	-0	+1	-0	-0		+1.1%	-0.0%	-0.0%	-0.0%	-0.0%	+0.0%
Nursing/ Midwifery Student	18	+18	+18	+18	+18	+18	-10	-1.0%	-1.0%	-1.0%	+35.2%	+35.2%	-0.4%
Nursing/ Midwifery other	5	+1	+1	-0	-0	-0	-1	+0.2%	+0.2%	-0.1%	-0.0%	-0.0%	-0.1%
Health & Social Care Professionals	521	+151	+83	+33	+23	+23	+1	+0.4%	+0.2%	+0.1%	+0.0%	+0.0%	+0.0%
Therapy Professions	93	+32	+0	-1	+5	+5	+1	+0.5%	+0.0%	-0.0%	+0.1%	+0.1%	+0.0%
Health Science/ Diagnostics	2	+2						-1.0%	+0.0%	+0.0%	+0.0%	+0.0%	+0.0%
Social Care	374	+106	+79	+39	+20	+20	-1	+0.4%	+0.3%	+0.1%	+0.1%	+0.1%	-0.0%
Social Workers	24	+7	+1	-3	-1	-1	-0	+0.4%	+0.1%	-0.1%	-0.0%	-0.0%	-0.0%
Psychologists	20	+3	+2	-3	-1	-1	+1	+0.2%	+0.1%	-0.1%	-0.1%	-0.1%	+0.1%
H&SC, Other	7	+1	+1	+1	+0	+0	+0	+0.1%	+0.1%	+0.1%	+0.0%	+0.0%	+0.0%
Management & Administrative	157	+20	+20	+8	+8	+8	-1	+0.1%	+0.1%	+0.1%	+0.1%	+0.1%	-0.0%
Management (VIII & above)	14	+1	+1	-4	+3	+3	+1	+0.1%	+0.1%	-0.2%	+0.3%	+0.3%	+0.1%
Administrative/ Supervisory (V to VII)	55	+8	+5	+6	+1	+1	-3	+0.2%	+0.1%	+0.1%	+0.0%	+0.0%	-0.0%
Clerical (III & IV)	88	+11	+14	+6	+4	+4	+0	+0.1%	+0.2%	+0.1%	+0.0%	+0.0%	+0.0%
General Support	57	-31	-28	-15	-10	-10	-0	-0.4%	-0.3%	-0.2%	-0.2%	-0.2%	-0.0%
Support	42	-31	-26	-13	-8	-8	-0	-0.4%	-0.4%	-0.2%	-0.2%	-0.2%	-0.0%
Maintenance/ Technical	15	-0	-2	-2	-2	-2		-0.0%	-0.1%	-0.1%	-0.1%	-0.1%	+0.0%
Patient & Client Care	975	+189	+114	+64	+19	+19	+14	+0.2%	+0.1%	+0.1%	+0.0%	+0.0%	+0.0%
Health Care Assistants	841	+197	+130	+82	+26	+26	+11	+0.3%	+0.2%	+0.1%	+0.0%	+0.0%	+0.0%
Care, other	111	-7	-17	-16	-7	-7	+3	-0.1%	-0.1%	-0.1%	-0.1%	-0.1%	+0.0%
Home Help	23	-1	+1	-2	+1	+1	-1	-0.0%	+0.0%	-0.1%	+0.0%	+0.0%	-0.0%

Source: Health Service Personnel Census

Older People

Sep 2020 (Dec 2015 figure: 1,536)	WTE Sep 2020	WTE change since Dec 15	WTE change since Dec 16	WTE change since Dec 17	WTE change since Dec 18	WTE change since Dec 18	WTE change since Aug 20	% change since Dec 15	% change since Dec 16	% change since Dec 17	% change since Dec 18	% change since Dec 18	% change since Aug 20
Overall	1,512	-24	-19	+14	+9	+9	-7	-1.6%	-1.3%	+0.9%	+0.6%	+0.6%	-0.4%
Medical & Dental	11	+1	-0	+0	-1	-1	+0	+0.1%	-0.0%	+0.0%	-0.0%	-0.0%	+0.0%
Medical/ Dental, other	11	+1	-0	+0	-1	-1	+0	+0.1%	-0.0%	+0.0%	-0.0%	-0.0%	+0.0%
Nursing & Midwifery	349	-17	-10	+8	+15	+15	+5	-0.0%	-0.0%	+0.0%	+0.0%	+0.0%	+0.0%
Nurse/ Midwife Manager	89	+1	+4	+5	+10	+10	+4	+0.0%	+0.0%	+0.1%	+0.1%	+0.1%	+0.0%
Nurse/ Midwife Specialist & AN/MP	3	+0	+0					+0.0%	+0.0%	+0.0%	+0.0%	+0.0%	+0.0%
Staff Nurse/ Staff Midwife	254	-18	-13	+4	+5	+5	+1	-0.1%	-0.0%	+0.0%	+0.0%	+0.0%	+0.0%
Public Health Nurse	2	-1	-1	-1	-1	-1	+0	-0.4%	-0.4%	-0.4%	-0.3%	-0.3%	+0.1%
Nursing/ Midwifery other	1	+1	+1	+1	+1	+1		-1.0%	-1.0%	-1.0%	-1.0%	-1.0%	+0.0%
Health & Social Care Professionals	26	-1	-2	-2	-3	-3	+1	-0.0%	-0.1%	-0.1%	-0.1%	-0.1%	+0.0%
Therapy Professions	19	+1	-0	-2	-2	-2	-0	+0.0%	-0.0%	-0.1%	-0.1%	-0.1%	-0.0%
Health Science/ Diagnostics		-2	-2	-2				-1.0%	-1.0%	-1.0%	-1.0%	-1.0%	-1.0%
Social Workers	6	-0	-0	+2	-1	-1	+1	-0.0%	-0.0%	+0.5%	-0.1%	-0.1%	+0.2%
Pharmacy	2	+1	+1	+1	-1	-1		+0.5%	+0.5%	+0.5%	-0.3%	-0.3%	+0.0%
Management & Administrative	98	+24	+25	+27	+17	+17	+1	+0.3%	+0.3%	+0.4%	+0.2%	+0.2%	+0.0%
Management (VIII & above)	7	+5	+5	+6	+5	+5	-0	+1.8%	+1.6%	+3.2%	+1.7%	+1.7%	-0.0%
Administrative/ Supervisory (V to VII)	20	+8	+7	+7	+2	+2	+0	+0.6%	+0.5%	+0.5%	+0.1%	+0.1%	+0.0%
Clerical (III & IV)	71	+11	+13	+15	+10	+10	+0	+0.2%	+0.2%	+0.3%	+0.2%	+0.2%	+0.0%
General Support	51	+2	+3	+4	+1	+1	-1	+0.0%	+0.1%	+0.1%	+0.0%	+0.0%	-0.0%
Support	27	+0	+2	+2	+1	+1	-1	+0.0%	+0.1%	+0.1%	+0.1%	+0.1%	-0.0%
Maintenance/ Technical	23	+2	+2	+2	-1	-1	-0	+0.1%	+0.1%	+0.1%	-0.0%	-0.0%	-0.0%
Patient & Client Care	976	-33	-35	-24	-20	-20	-12	-0.0%	-0.0%	-0.0%	-0.0%	-0.0%	-0.0%
Health Care Assistants	579	-46	-35	-20	+12	+12	-13	-0.1%	-0.1%	-0.0%	+0.0%	+0.0%	-0.0%
Care, other	21	-2	-2	-1	-0	-0	-1	-0.1%	-0.1%	-0.0%	-0.0%	-0.0%	-0.1%
Home Help	377	+15	+3	-3	-32	-32	+2	+0.0%	+0.0%	-0.0%	-0.1%	-0.1%	+0.0%

Source: Health Service Personnel Census