

CHO 9 Employment Report: January 2021

Employment by Staff Group

Jan 2021 (Dec 2019 figure: 6,582)	WTE Dec 2020	WTE Jan 2021	WTE change since Dec 20	% change since Dec 20	WTE change since Dec 19	WTE change since Jan 20
Overall	6,950	6,953	+4	+0.1%	+371	+380
Consultants	64	63	-1	-1.8%	-5	-5
Registrars	91	94	+3	+2.9%	-5	-3
SHO/ Interns	71	67	-4	-5.7%	+1	+4
Medical/ Dental, other	56	55	-1	-1.9%	-2	-2
Medical & Dental	283	279	-4	-1.3%	-10	-5
Nurse/ Midwife Manager	457	455	-2	-0.5%	+20	+17
Nurse/ Midwife Specialist & AN/MP	101	102	+0	+0.3%	+17	+15
Staff Nurse/ Staff Midwife	1,223	1,225	+2	+0.2%	+30	+40
Public Health Nurse	182	179	-3	-1.7%	+3	+7
Pre-registration Nurse/ Midwife Intern	13	38	+25	+195.0%	+20	+25
Pre-registration Nurse Intern (COVID-19)	16	7	-9	-56.2%	+7	-9
Post-registration Nurse/ Midwife Student	31	31			+5	
Nursing/ Midwifery awaiting registration				-100.0%	-11	
Nursing/ Midwifery Student	60	76	+16	+26.4%	+21	+10
Nursing/ Midwifery other	23	22	-1	-2.2%	+3	+3
Nursing & Midwifery	2,046	2,059	+12	+0.6%	+93	+92
Therapy Professions	530	534	+4	+0.8%	+48	+39
Health Science/ Diagnostics	34	34	+1	+2.6%	-2	-1
Social Care	745	752	+7	+0.9%	+57	+53
Social Workers	139	140	+1	+1.1%	+15	+14
Psychologists	183	184	+1	+0.8%	+20	+19
Pharmacy	29	29	+0	+0.0%	+5	+6
H&SC, Other	69	68	-1	-0.9%	-2	-1
Health & Social Care Professionals	1,728	1,742	+14	+0.8%	+139	+129
Management (VIII & above)	85	86	+1	+1.2%	+7	+5
Administrative/ Supervisory (V to VII)	243	250	+7	+3.0%	+42	+35
Clerical (III & IV)	507	500	-6	-1.2%	+49	+59
Management & Administrative	835	837	+2	+0.2%	+98	+99
Support	403	401	-2	-0.5%	-51	-50
Maintenance/ Technical	36	35	-1	-2.7%	+0	+1
General Support	439	436	-3	-0.7%	-51	-49
Health Care Assistants	1,385	1,364	-21	-1.5%	+86	+98
Care, other	233	236	+3	+1.3%	+15	+16
Patient & Client Care	1,618	1,600	-18	-1.1%	+102	+114

CHO 9 Employment Report: January 2021

Community Health & Wellbeing

Jan 2021 (figure:)	WTE Dec 2020	WTE Jan 2021	WTE change since Dec 20	% change since Dec 20	WTE change since	WTE change since Jan 20
Total Community Health & Wellbeing	8	11	+3	+32.9%	+11	+3
Therapy Professions	1	1			+1	
Health & Social Care Professionals	1	1			+1	
Management (VIII & above)	1	1			+1	+0
Administrative/ Supervisory (V to VII)	5	7	+3	+57.3%	+7	+3
Clerical (III & IV)	2	2	-0	-3.1%	+2	-0
Management & Administrative	7	10	+3	+36.3%	+10	+3

Mental Health

Jan 2021 (Dec 2019 figure: 1,272)	WTE Dec 2020	WTE Jan 2021	WTE change since Dec 20	% change since Dec 20	WTE change since Dec 19	WTE change since Jan 20
Total Mental Health	1,331	1,329	-2	-0.1%	+57	+53
Consultants	46	46	-0	-0.6%	-4	-4
Registrars	32	36	+4	+11.2%	+5	+1
SHO/ Interns	54	47	-6	-11.4%	-6	-1
Medical & Dental	132	129	-3	-2.1%	-5	-4
Nurse/ Midwife Manager	138	136	-1	-1.0%	+4	+3
Nurse/ Midwife Specialist & AN/MP	76	76	+0	+0.4%	+11	+9
Staff Nurse/ Staff Midwife	371	372	+1	+0.2%	+21	+25
Pre-registration Nurse/ Midwife Intern	10	21	+11	+103.5%	+11	+11
Pre-registration Nurse Intern (COVID-19)	5	3	-3	-54.0%	+3	-3
Nursing/ Midwifery awaiting registration				-100.0%	-11	
Nursing/ Midwifery Student	16	23	+8	+48.8%	+2	-5
Nursing/ Midwifery other	13	12	-1	-4.9%	+1	+1
Nursing & Midwifery	613	620	+7	+1.1%	+39	+32
Therapy Professions	61	60	-1	-1.8%	+5	+1
Social Care	1	1	-0	-5.0%	+0	+0
Social Workers	43	44	+1	+1.7%	+0	+1
Psychologists	53	53	-0	-0.8%	+7	+7
Pharmacy	9	9	+0	+1.1%	+1	+2
H&SC, Other	14	14	+0	+0.4%	-0	+0
Health & Social Care Professionals	181	180	-1	-0.4%	+13	+11
Management (VIII & above)	5	5			+0	+0
Administrative/ Supervisory (V to VII)	29	28	-1	-2.9%	+0	-1
Clerical (III & IV)	114	111	-3	-2.3%	+8	+9
Management & Administrative	148	145	-3	-2.3%	+8	+9
Support	104	102	-2	-1.7%	-1	+0
Maintenance/ Technical	11	11			+0	+0
General Support	115	113	-2	-1.5%	-1	+1
Health Care Assistants	129	129			+3	+4
Care, other	12	13	+0	+0.3%	-0	-0
Patient & Client Care	142	142	+0	+0.0%	+3	+4

Primary Care

Jan 2021 (Dec 2019 figure: 1,247)	WTE Dec 2020	WTE Jan 2021	WTE change since Dec 20	% change since Dec 20	WTE change since Dec 19	WTE change since Jan 20
Total Primary Care	1,412	1,428	+16	+1.1%	+181	+192
Consultants	4	4	-1	-11.4%	-0	-1
Registrars	52	50	-2	-3.5%	-5	-2
SHO/ Interns	5	9	+4	+78.0%	+8	+5
Medical/ Dental, other	49	48	-1	-2.2%	-2	-2
Medical & Dental	111	111	+0	+0.4%	+0	+1
Nurse/ Midwife Manager	43	45	+2	+4.8%	+8	+9
Nurse/ Midwife Specialist & AN/MP	8	8	-0	-0.6%	+2	+2
Staff Nurse/ Staff Midwife	105	108	+3	+2.6%	+8	+6
Public Health Nurse	182	179	-3	-1.7%	+4	+7
<i>Post-registration Nurse/ Midwife Student</i>	31	31			+5	
Nursing/ Midwifery Student	31	31			+5	+5
Nursing/ Midwifery other	1	1	-0	-4.0%	+1	+1
Nursing & Midwifery	370	372	+2	+0.4%	+27	+30
Therapy Professions	211	207	-4	-1.8%	+11	+13
Health Science/ Diagnostics	20	19	-0	-0.6%	-1	-1
Social Care	4	4	+0	+0.6%	-1	-1
Social Workers	23	23	+0	+2.1%	+6	+6
Psychologists	65	65	-0	-0.1%	-0	-1
Pharmacy	15	15	-0	-0.6%	+3	+3
H&SC, Other	36	35	-1	-1.9%	-2	-2
Health & Social Care Professionals	373	368	-4	-1.1%	+17	+17
Management (VIII & above)	29	30	+2	+6.5%	+2	+3
Administrative/ Supervisory (V to VII)	88	89	+1	+0.9%	+12	+12
Clerical (III & IV)	221	226	+6	+2.6%	+44	+51
Management & Administrative	338	346	+8	+2.4%	+58	+66
Support	33	34	+0	+0.9%	-1	-1
General Support	33	34	+0	+0.9%	-1	-1
Health Care Assistants	74	81	+8	+10.2%	+68	+69
Care, other	114	115	+2	+1.6%	+10	+9
Patient & Client Care	187	197	+9	+5.0%	+79	+78

Social Care

Jan 2021 (Dec 2019 figure: 4,064)	WTE Dec 2020	WTE Jan 2021	WTE change since Dec 20	% change since Dec 20	WTE change since Dec 19	WTE change since Jan 20
Total Social Care	4,199	4,186	-13	-0.3%	+123	+131
Consultants	14	13	-0	-2.6%	-1	-0
Registrars	7	8	+1	+13.5%	-4	-2
SHO/ Interns	13	11	-2	-14.8%	-1	-0
Medical/ Dental, other	7	7				
Medical & Dental	40	39	-1	-3.3%	-6	-2
Nurse/ Midwife Manager	277	274	-3	-1.1%	+7	+5
Nurse/ Midwife Specialist & AN/MP	18	18	+0	+0.2%	+4	+4
Staff Nurse/ Staff Midwife	747	745	-2	-0.2%	+1	+9
Public Health Nurse				-100.0%	-0	-0
Pre-registration Nurse/ Midwife Intern	3	17	+14	+568.8%	+9	+14
Pre-registration Nurse Intern (COVID-19)	11	5	-6	-57.3%	+5	-6
Nursing/ Midwifery Student	13	21	+8	+62.4%	+13	+10
Nursing/ Midwifery other	9	9	+0	+1.9%	+1	+1
Nursing & Midwifery	1,063	1,067	+4	+0.4%	+27	+29
Therapy Professions	257	267	+9	+3.6%	+31	+25
Health Science/ Diagnostics	14	15	+1	+7.1%	-1	
Social Care	741	747	+7	+0.9%	+57	+53
Social Workers	73	73	+0	+0.4%	+8	+8
Psychologists	64	66	+2	+3.0%	+13	+13
Pharmacy	6	6			+1	+1
H&SC, Other	19	19	-0	-0.1%	-0	+1
Health & Social Care Professionals	1,174	1,193	+19	+1.6%	+109	+100
Management (VIII & above)	50	49	-1	-1.7%	+3	+2
Administrative/ Supervisory (V to VII)	121	126	+5	+3.8%	+23	+21
Clerical (III & IV)	170	161	-9	-5.4%	-4	-1
Management & Administrative	342	336	-6	-1.6%	+22	+21
Support	265	265	-0	-0.2%	-49	-49
Maintenance/ Technical	25	24	-1	-3.9%	-0	+0
General Support	290	289	-1	-0.5%	-49	-49
Health Care Assistants	1,182	1,154	-29	-2.4%	+15	+25
Care, other	107	108	+1	+1.1%	+5	+7
Patient & Client Care	1,289	1,262	-27	-2.1%	+20	+32

CHO 9 Employment Report: January 2021

Disabilities

Jan 2021 (Dec 2019 figure: 3,194)	WTE Dec 2020	WTE Jan 2021	WTE change since Dec 20	% change since Dec 20	WTE change since Dec 19	WTE change since Jan 20
Total Disabilities	3,285	3,276	-9	-0.3%	+82	+82
Consultants	11	11			-1	-0
Registrars	2	2	+0	+12.5%	-4	-2
SHO/ Interns	2	2	-0	-23.0%	+2	+1
Medical/ Dental, other	6	6				
Medical & Dental	21	21	-0	-1.0%	-3	-1
Nurse/ Midwife Manager	196	194	-2	-1.0%	+2	+1
Nurse/ Midwife Specialist & AN/MP	12	12	+0	+1.7%	+3	+3
Staff Nurse/ Staff Midwife	513	509	-4	-0.8%	-8	-2
<i>Pre-registration Nurse/ Midwife Intern</i>	3	17	+14	+568.8%	+9	+14
<i>Pre-registration Nurse Intern (COVID-19)</i>	11	5	-6	-57.3%	+5	-6
Nursing/ Midwifery Student	13	21	+8	+62.4%	+13	+10
Nursing/ Midwifery other	8	8	+0	+2.1%	+1	+1
Nursing & Midwifery	741	744	+3	+0.4%	+12	+13
Therapy Professions	187	194	+8	+4.0%	+13	+9
Health Science/ Diagnostics	13	14	+1	+7.7%	-1	
Social Care	740	746	+7	+0.9%	+57	+53
Social Workers	50	50	+0	+0.6%	+6	+5
Psychologists	64	66	+2	+3.0%	+13	+13
Pharmacy	2	2				
H&SC, Other	18	18	-0	-0.1%	-1	+1
Health & Social Care Professionals	1,073	1,091	+17	+1.6%	+88	+81
Management (VIII & above)	41	42	+0	+0.4%	+4	+3
Administrative/ Supervisory (V to VII)	100	104	+4	+3.9%	+16	+15
Clerical (III & IV)	126	118	-8	-6.5%	-7	-6
Management & Administrative	268	264	-4	-1.5%	+13	+13
Support	145	145	+0	+0.3%	-50	-50
Maintenance/ Technical	23	22	-1	-4.3%	-0	+0
General Support	168	167	-1	-0.3%	-50	-50
Health Care Assistants	911	886	-25	-2.8%	+17	+19
Care, other	102	103	+1	+1.2%	+6	+8
Patient & Client Care	1,013	988	-24	-2.4%	+23	+27

Older People

Jan 2021 (Dec 2019 figure: 870)	WTE Dec 2020	WTE Jan 2021	WTE change since Dec 20	% change since Dec 20	WTE change since Dec 19	WTE change since Jan 20
Total Older People	914	911	-4	-0.4%	+41	+50
Consultants	2	2	-0	-14.9%	+0	-0
Registrars	5	6	+1	+13.8%		
SHO/ Interns	11	9	-1	-13.3%	-3	-1
Medical/ Dental, other	1	1				
Medical & Dental	19	18	-1	-5.9%	-2	-1
Nurse/ Midwife Manager	81	80	-1	-1.2%	+5	+4
Nurse/ Midwife Specialist & AN/MP	6	6	-0	-2.9%	+1	+1
Staff Nurse/ Staff Midwife	234	236	+2	+1.0%	+9	+12
Public Health Nurse				-100.0%	-0	-0
Nursing/ Midwifery other	1	1				
Nursing & Midwifery	322	323	+1	+0.4%	+15	+17
Health & Social Care Professionals	101	102	+2	+1.8%	+21	+19
Management (VIII & above)	9	8	-1	-11.7%	-1	-1
Administrative/ Supervisory (V to VII)	21	22	+1	+3.3%	+7	+6
Clerical (III & IV)	44	43	-1	-2.5%	+3	+4
Management & Administrative	74	72	-1	-1.9%	+8	+9
Support	120	119	-1	-0.7%	+1	+1
Maintenance/ Technical	2	2				
General Support	123	122	-1	-0.7%	+1	+1
Health Care Assistants	271	268	-3	-1.2%	-2	+6
Care, other	5	5	-0	-1.5%	-1	-1
Patient & Client Care	277	274	-3	-1.2%	-2	+5

CHO 9 Employment by Administration (HSE / S38): January 2021

Jan 2021 (Dec 2019 figure: 6,582)	WTE Dec 2020	WTE Jan 2021	WTE change since Dec 20	% change since Dec 20	WTE change since Dec 19	WTE change since Jan 20
Overall	6,950	6,953	+4	+0.1%	+371	+380
HSE	3,660	3,681	+21	+0.6%	+274	+282
Section 38 Voluntary Agencies	3,290	3,272	-18	-0.5%	+97	+98

HSE

Jan 2021 (Dec 2019 figure: 3,407)	WTE Dec 2020	WTE Jan 2021	WTE change since Dec 20	% change since Dec 20	WTE change since Dec 19	WTE change since Jan 20
Overall	3,660	3,681	+21	+0.6%	+274	+282
Consultants	52	51	-1	-0.0%	-5	-5
Registrars	87	90	+3	+0.0%	-1	+1
SHO/ Interns	66	62	-4	-0.1%	+2	+4
Medical/ Dental, other	50	49	-1	-0.0%	-2	-2
Medical & Dental	256	252	-4	-1.4%	-5	-3
Nurse/ Midwife Manager	266	264	-2	-0.0%	+16	+16
Nurse/ Midwife Specialist & AN/MP	88	88	+0	+0.0%	+14	+12
Staff Nurse/ Staff Midwife	703	706	+3	+0.0%	+13	+18
Public Health Nurse	182	179	-3	-0.0%	+3	+7
<i>Pre-registration Nurse/ Midwife Intern</i>	3	18	+15	+5.5%	+12	+2
<i>Pre-registration Nurse Intern (COVID-19)</i>	6	7	+2	+0.3%	+7	+7
<i>Post-registration Nurse/ Midwife Student</i>	31	31		+0.0%	+9	+5
<i>Nursing/ Midwifery awaiting registration</i>				-1.0%	-3	-10
Nursing/ Midwifery Student	39	56	+16	+0.4%	+15	+4
Nursing/ Midwifery other	15	15	-1	-0.0%	+2	+2
Nursing & Midwifery	1,293	1,307	+14	+1.1%	+63	+58
Therapy Professions	336	334	-2	-0.0%	+34	+32
Health Science/ Diagnostics	20	19	-0	-0.0%	-1	-1
Social Care	8	8	-0	-0.0%	+0	+0
Social Workers	85	86	+1	+0.0%	+8	+8
Psychologists	132	132	+0	+0.0%	+8	+8
Pharmacy	22	22	+0	+0.0%	+4	+5
H&SC, Other	55	55	-0	-0.0%	-2	-1
Health & Social Care Professionals	657	656	-1	-0.2%	+51	+51
Management (VIII & above)	46	47	+1	+0.0%	+3	+3
Administrative/ Supervisory (V to VII)	142	146	+4	+0.0%	+34	+27
Clerical (III & IV)	358	360	+2	+0.0%	+57	+65
Management & Administrative	547	554	+7	+1.2%	+94	+95
Support	196	195	-0	-0.0%	-3	-0
Maintenance/ Technical	9	9	-0	-0.0%	+0	+0
General Support	205	205	-0	-0.1%	-3	+0
Health Care Assistants	570	574	+4	+0.0%	+64	+71
Care, other	132	134	+2	+0.0%	+9	+9
Patient & Client Care	702	708	+6	+0.8%	+73	+80

Section 38 Voluntary Agencies

Jan 2021 (Dec 2019 figure: 3,175)	WTE Dec 2020	WTE Jan 2021	WTE change since Dec 20	% change since Dec 20	WTE change since Dec 19	WTE change since Jan 20
Overall	3,290	3,272	-18	-0.5%	+97	+98
Consultants	12	12	-0	-0.0%	-0	+0
Registrars	4	4		+0.0%	-4	-3
SHO/ Interns	5	5		+0.0%	-1	
Medical/ Dental, other	6	6		+0.0%		
Medical & Dental	27	27	+0	+0.0%	-5	-3
Nurse/ Midwife Manager	192	191	-0	-0.0%	+4	+1
Nurse/ Midwife Specialist & AN/MP	13	13	+0	+0.0%	+3	+3
Staff Nurse/ Staff Midwife	520	519	-1	-0.0%	+17	+22
<i>Pre-registration Nurse/ Midwife Intern</i>	10	20	+10	+1.0%	+5	+6
<i>Pre-registration Nurse Intern (COVID-19)</i>	11		-11	-1.0%		
Nursing/ Midwifery Student	21	20	-1	-0.0%	+6	+6
Nursing/ Midwifery other	8	8		+0.0%	+1	+1
Nursing & Midwifery	753	752	-2	-0.2%	+30	+34
Therapy Professions	194	201	+7	+0.0%	+14	+7
Health Science/ Diagnostics	14	15	+1	+0.1%	-1	
Social Care	738	744	+7	+0.0%	+56	+53
Social Workers	54	54	+0	+0.0%	+6	+6
Psychologists	51	52	+1	+0.0%	+12	+11
Pharmacy	7	7		+0.0%	+1	+1
H&SC, Other	14	13	-0	-0.0%	-1	+0
Health & Social Care Professionals	1,071	1,086	+16	+1.5%	+89	+78
Management (VIII & above)	38	39	+0	+0.0%	+3	+2
Administrative/ Supervisory (V to VII)	101	104	+3	+0.0%	+8	+8
Clerical (III & IV)	148	140	-8	-0.1%	-8	-6
Management & Administrative	288	283	-5	-1.6%	+4	+4
Support	207	206	-2	-0.0%	-48	-49
Maintenance/ Technical	27	26	-1	-0.0%	-0	+0
General Support	234	232	-3	-1.1%	-48	-49
Health Care Assistants	815	790	-25	-0.0%	+22	+28
Care, other	101	102	+1	+0.0%	+6	+7
Patient & Client Care	916	892	-24	-2.6%	+28	+34

CHO 9 Employment by S38 Agency: January 2021

Central Remedial Clinic

Jan 2021 (Dec 2019 figure: 278)	WTE Dec 2020	WTE Jan 2021	WTE change since Dec 20	% change since Dec 20	WTE change since Dec 19	WTE change since Jan 20
Overall	296	299	+3	+1.0%	+20	+15
Consultants	1	1		+0.0%		
Medical/ Dental, other	0	0		+0.0%		
Medical & Dental	2	2				
Nurse/ Midwife Manager	2	2		+0.0%		
Nurse/ Midwife Specialist & AN/MP	2	2		+0.0%	+1	+1
Staff Nurse/ Staff Midwife	4	4	-1	-0.2%		
Nursing/ Midwifery other	1	1		+0.0%	+1	+1
Nursing & Midwifery	9	8	-1	-8.9%	+2	+2
Therapy Professions	78	79	+1	+0.0%	+2	-0
Health Science/ Diagnostics	13	14	+1	+0.1%	-1	
Social Workers	8	9	+1	+0.1%	+1	+1
Psychologists	13	13		+0.0%	+2	+2
Health & Social Care Professionals	112	115	+3	+2.5%	+4	+3
Management (VIII & above)	7	7		+0.0%		
Administrative/ Supervisory (V to VII)	15	14	-1	-0.1%	-1	-1
Clerical (III & IV)	34	34		+0.0%	+2	+2
Management & Administrative	57	56	-1	-1.8%	+1	+1
Support	12	12		+0.0%	-2	-3
Maintenance/ Technical	2	2		+0.0%	+1	+1
General Support	14	14			-1	-2
Health Care Assistants	58	59	+1	+0.0%	+8	+5
Care, other	44	45	+1	+0.0%	+7	+7
Patient & Client Care	102	104	+2	+2.0%	+15	+11

Daughters of Charity, Dublin

Jan 2021 (Dec 2019 figure: 1,034)	WTE Dec 2020	WTE Jan 2021	WTE change since Dec 20	% change since Dec 20	WTE change since Dec 19	WTE change since Jan 20
Overall	1,063	1,072	+8	+0.8%	+38	+36
Consultants	2	2		+0.0%	+1	+1
Medical/ Dental, other	2	2		+0.0%		
Medical & Dental	4	4			+1	+1
Nurse/ Midwife Manager	62	62		+0.0%	+0	-2
Nurse/ Midwife Specialist & AN/MP	10	10	+0	+0.0%	+2	+2
Staff Nurse/ Staff Midwife	188	188		+0.0%	+2	+5
Pre-registration Nurse/ Midwife Intern		10	+10	-1.0%	+3	+3
Pre-registration Nurse Intern (COVID-19)	10		-10	-1.0%		
Nursing/ Midwifery Student	10	10	+1	+0.1%	+3	+3
Nursing/ Midwifery other	4	4		+0.0%		
Nursing & Midwifery	274	275	+1	+0.3%	+7	+8
Therapy Professions	32	36	+4	+0.1%	+3	+3
Social Care	173	177	+4	+0.0%	+14	+13
Social Workers	13	13		+0.0%	+3	+3
Psychologists	11	12	+1	+0.1%	+5	+4
Pharmacy	2	2		+0.0%		
H&SC, Other	5	5		+0.0%	+1	+1
Health & Social Care Professionals	235	244	+9	+3.7%	+25	+23
Management (VIII & above)	9	9		+0.0%	+3	+2
Administrative/ Supervisory (V to VII)	27	27	-0	-0.0%	+2	+1
Clerical (III & IV)	32	31	-1	-0.0%	-2	-0
Management & Administrative	68	67	-1	-1.2%	+3	+3
Support	76	77	+1	+0.0%	-1	-2
Maintenance/ Technical	8	7	-1	-0.1%	-1	-1
General Support	84	84	+0	+0.2%	-2	-3
Health Care Assistants	366	366	-1	-0.0%	+4	+4
Care, other	31	32	+0	+0.0%	+0	+1
Patient & Client Care	398	398	-0	-0.1%	+4	+5

Incorporated Orthopaedic Hospital

Jan 2021 (Dec 2019 figure: 226)	WTE Dec 2020	WTE Jan 2021	WTE change since Dec 20	% change since Dec 20	WTE change since Dec 19	WTE change since Jan 20
Overall	267	267	+0	+0.0%	+41	+42
Consultants	2	2		+0.0%	+1	+0
Registrars	2	2		+0.0%		
SHO/ Interns	4	4		+0.0%	-1	
Medical & Dental	8	8				+0
Nurse/ Midwife Manager	18	18		+0.0%	+0	+0
Staff Nurse/ Staff Midwife	70	70		+0.0%	+10	+10
Nursing & Midwifery	88	88			+11	+11
Therapy Professions	34	34		+0.0%	+14	+11
Health Science/ Diagnostics	1	1		+0.0%		
Social Workers	9	9		+0.0%	+2	+2
Pharmacy	4	4		+0.0%	+1	+1
Health & Social Care Professionals	47	47			+16	+13
Management (VIII & above)	2	2		+0.0%	+1	+1
Administrative/ Supervisory (V to VII)	6	6		+0.0%		
Clerical (III & IV)	10	10		+0.0%		
Management & Administrative	18	18			+1	+1
Support	40	40		+0.0%	+6	+5
Maintenance/ Technical	2	2		+0.0%		
General Support	42	42			+6	+5
Health Care Assistants	64	64		+0.0%	+8	+12
Care, other	0	0		+0.0%		
Patient & Client Care	64	64			+8	+12

St. Michael's House, Dublin

Jan 2021 (Dec 2019 figure: 1,431)	WTE Dec 2020	WTE Jan 2021	WTE change since Dec 20	% change since Dec 20	WTE change since Dec 19	WTE change since Jan 20
Overall	1,453	1,427	-27	-1.8%	-4	+2
Consultants	6	6		+0.0%	-2	-1
Registrars	1	1		+0.0%	-3	-2
Medical/ Dental, other	4	4		+0.0%		
Medical & Dental	11	11			-5	-3
Nurse/ Midwife Manager	88	87	-0	-0.0%	+3	+3
Staff Nurse/ Staff Midwife	165	165	-0	-0.0%	+3	+6
Nursing & Midwifery	253	252	-1	-0.2%	+6	+9
Therapy Professions	46	48	+2	+0.0%	-4	-6
Social Care	565	568	+3	+0.0%	+43	+40
Social Workers	22	21	-1	-0.0%	+1	+1
Psychologists	23	23	+0	+0.0%	+5	+5
H&SC, Other	9	9	-0	-0.0%	-1	-1
Health & Social Care Professionals	665	669	+4	+0.6%	+44	+38
Management (VIII & above)	20	21	+0	+0.0%	-1	-1
Administrative/ Supervisory (V to VII)	46	50	+4	+0.1%	+7	+8
Clerical (III & IV)	53	46	-8	-0.1%	-8	-8
Management & Administrative	120	117	-3	-2.4%	-1	-0
Support	48	46	-2	-0.0%	-50	-49
Maintenance/ Technical	12	12		+0.0%	-0	+0
General Support	60	58	-2	-2.7%	-50	-49
Health Care Assistants	321	296	-25	-0.1%	+3	+8
Care, other	24	24	-0	-0.0%	-1	-1
Patient & Client Care	345	320	-26	-7.4%	+2	+7

St. Vincent's, Fairview

Jan 2021 (Dec 2019 figure: 206)	WTE Dec 2020	WTE Jan 2021	WTE change since Dec 20	% change since Dec 20	WTE change since Dec 19	WTE change since Jan 20
Overall	210	208	-2	-1.0%	+2	+3
Consultants	1	1		+0.0%		
Registrars	1	1		+0.0%	-1	-1
SHO/ Interns	1	1		+0.0%		
Medical & Dental	3	3			-1	-1
Nurse/ Midwife Manager	21	21		+0.0%	-0	-0
Nurse/ Midwife Specialist & AN/MP	2	2		+0.0%		
Staff Nurse/ Staff Midwife	92	92		+0.0%	+1	+1
Nursing/ Midwifery Student	11	10	-1	-0.1%	+3	+3
Nursing/ Midwifery other	3	3		+0.0%		
Nursing & Midwifery	129	128	-1	-0.8%	+4	+4
Therapy Professions	5	5		+0.0%		
Social Workers	2	2		+0.0%		
Psychologists	4	4		+0.0%		
Pharmacy	2	2		+0.0%	+0	+0
Health & Social Care Professionals	12	12			+0	+0
Administrative/ Supervisory (V to VII)	6	6		+0.0%		
Clerical (III & IV)	19	19		+0.0%	+0	+0
Management & Administrative	26	26			+0	+0
Support	31	30	-1	-0.0%	-1	-1
Maintenance/ Technical	3	3		+0.0%		
General Support	34	33	-1	-3.4%	-1	-1
Health Care Assistants	6	6		+0.0%		
Care, other	1	1		+0.0%		
Patient & Client Care	7	7				

CHO 9 Employment by Grade Group & Staff Category: January 2021

Jan 2021 (Dec 2019 figure: 6,582)	WTE Dec 2020	WTE Jan 2021	WTE change since Dec 20	% change since Dec 20	WTE change since Dec 19	WTE change since Jan 20
Overall	6,950	6,953	+4	+0.1%	+371	+380
Consultant Medicine	2	2	-0	-14.9%	+0	-0
Consultant Paediatrics	1	1				
Consultant Psychiatry	61	60	-1	-1.3%	-6	-5
Consultant Surgery				-100.0%		
Consultants	64	63	-1	-1.8%	-5	-5
Registrar	70	72	+1	+2.1%	-7	-5
Senior Registrar	20	21	+1	+5.9%	+5	+4
Specialist Registrar	1	1			-3	-2
Registrars	91	94	+3	+2.9%	-5	-3
Interns				-100.0%	-2	-2
Senior House Officer	71	67	-4	-5.7%	+3	+6
SHO/ Interns	71	67	-4	-5.7%	+1	+4
Dentists	33	32	-1	-2.8%	+0	-0
Other Medical	24	23	-0	-0.8%	-2	-2
Medical/ Dental, other	56	55	-1	-1.9%	-2	-2
Medical & Dental	283	279	-4	-1.3%	-12	-5
Clinical Nurse/ Midwife Manager	367	365	-3	-0.7%	+16	+12
Director Nursing/Midwifery, Assistant	69	68	-1	-1.2%	+7	+5
Director of Nursing/Midwifery	21	22	+1	+5.0%	-3	-1
Nurse/ Midwife Manager	457	455	-2	-0.5%	+20	+17
Advanced Nurse/ Midwife Practitioner	9	9	-0	-2.1%	+2	+2
Clinical Nurse/ Midwife Specialist	92	93	+0	+0.5%	+15	+13
Nurse/ Midwife Specialist & AN/MP	101	102	+0	+0.3%	+17	+15
Staff Midwives	1	1			+1	+1
Staff Nurse [Intellectual Disability]	423	422	-1	-0.2%	+2	+7
Staff Nurse [Psychiatric]	385	384	-1	-0.4%	+13	+18
Staff Nurses [General/ Children's]	414	418	+4	+1.0%	+14	+14
Staff Nurse/ Staff Midwife	1,223	1,225	+2	+0.2%	+30	+40
Public Health Nurse	182	179	-3	-1.7%	+3	+7
Pre-registration Nurse/ Midwife Intern	13	38	+25	+195.0%	+20	+8
Pre-registration Nurse Intern (COVID-19)	16	7	-9	-56.2%	+7	+7
Post-registration Nurse/ Midwife Student	31	31			+5	+5
Nursing/ Midwifery awaiting registration				-100.0%	-11	-10
Nursing/ Midwifery Student	60	76	+16	+26.4%	+21	+10
Nursing Education/Clinical	23	22	-1	-2.2%	+3	+3
Other Nursing/ Midwifery				-100.0%		
Nursing/ Midwifery other	23	22	-1	-2.2%	+3	+3
Nursing & Midwifery	2,046	2,059	+12	+0.6%	+45	+92
Dietitians	26	26	+0	+0.1%	+5	+5
Occupational Therapists	203	204	+0	+0.2%	+22	+17
Orthoptists	6	6	+0	+3.0%	+1	+1
Physiotherapists	157	160	+3	+1.9%	+17	+16
Podiatrists & Chiropodists	2	2	-0	-3.7%	+1	+1
Speech & Language Therapists	136	136	+1	+0.6%	+3	-0
Therapy Professions	530	534	+4	+0.8%	+48	+39
Audiology	15	14	-0	-0.8%	-1	-1
Clinical Engineering	14	15	+1	+7.1%	-1	

Jan 2021 (Dec 2019 figure: 6,582)	WTE Dec 2020	WTE Jan 2021	WTE change since Dec 20	% change since Dec 20	WTE change since Dec 19	WTE change since Jan 20
Overall	6,950	6,953	+4	+0.1%	+371	+380
Medical Laboratory	4	4				
Radiographers	1	1			-0	
Health Science/ Diagnostics	34	34	+1	+2.6%	-2	-1
Social Care	745	752	+7	+0.9%	+57	+53
Social Workers	139	140	+1	+1.1%	+15	+14
Psychologists	183	184	+1	+0.8%	+20	+19
Pharmacy	29	29	+0	+0.0%	+5	+6
Counsellor Therapists	42	42	+0	+0.2%	-0	-0
Dental Hygienists	6	6	-0	-0.3%	-0	
Other Health & Social Care	19	19	-0	-2.3%	-1	-0
Play Therapists/ Specialists	2	1	-0	-13.8%	-1	-0
H&SC, Other	69	68	-1	-0.9%	-2	-1
Health & Social Care Professionals	1,728	1,742	+14	+0.8%	+166	+129
Executive Management	12	12	+0	+0.2%	+1	+1
Senior Management (VIII & GM)	73	74	+1	+1.3%	+5	+4
Management (VIII & above)	85	86	+1	+1.2%	+7	+5
Middle Management (V-VII)	234	241	+7	+3.1%	+41	+33
Other Administrative	10	10	+0	+0.0%	+1	+2
Administrative/ Supervisory (V to VII)	243	250	+7	+3.0%	+42	+35
General Administrative (III & IV)	507	500	-6	-1.2%	+49	+59
Clerical (III & IV)	507	500	-6	-1.2%	+49	+59
Management & Administrative	835	837	+2	+0.2%	+90	+99
Catering	59	59	+0	+0.6%	-2	-2
Household Services	225	223	-2	-0.8%	+3	+3
Other Support	45	45	+0	+0.3%	-50	-48
Portering	74	74	-1	-0.8%	-2	-3
Support	403	401	-2	-0.5%	-51	-50
Maintenance	33	32	-1	-3.0%	-1	-1
Technical Services	3	3			+1	+1
Maintenance/ Technical	36	35	-1	-2.7%	+0	+1
General Support	439	436	-3	-0.7%	-86	-49
HCA, Nurse's Aide, etc.	1,360	1,339	-21	-1.6%	+74	+85
Health & Social Care Assistants	25	25	-0	-0.2%	+13	+13
Health Care Assistants	1,385	1,364	-21	-1.5%	+86	+98
Other Care Grades	233	236	+3	+1.3%	+15	+16
Care, other	233	236	+3	+1.3%	+15	+16
Patient & Client Care	1,618	1,600	-18	-1.1%	+116	+114

CHO 9 HSE Employment by Grade Group & Staff Category: January 2021

Jan 2021 (Dec 2019 figure: 3,407)	WTE Dec 2020	WTE Jan 2021	WTE change since Dec 20	% change since Dec 20	WTE change since Dec 19	WTE change since Jan 20
Overall	3,660	3,681	+21	+0.6%	+274	+282
Consultant Medicine	1	0	-0	-43.9%	-1	-1
Consultant Psychiatry	52	51	-1	-1.5%	-4	-5
Consultant Surgery				-100.0%		
Consultants	52	51	-1	-2.2%	-5	-5
Registrar	68	70	+1	+2.2%	-6	-4
Senior Registrar	19	20	+1	+6.2%	+5	+4
Registrars	87	90	+3	+3.0%	-1	+1
SHO/ Interns	66	62	-4	-6.2%	+2	+4
Dentists	33	32	-1	-2.8%	+0	-0
Other Medical	17	17	-0	-1.0%	-2	-2
Medical/ Dental, other	50	49	-1	-2.2%	-2	-2
Medical & Dental	256	252	-4	-1.4%	-14	-3
Clinical Nurse/ Midwife Manager	196	193	-2	-1.1%	+9	+8
Director Nursing/Midwifery, Assistant	60	59	-1	-1.3%	+7	+5
Director of Nursing/Midwifery	10	11	+1	+10.5%	+0	+2
Nurse/ Midwife Manager	266	264	-2	-0.7%	+16	+16
Advanced Nurse/ Midwife Practitioner	8	8	-0	-2.4%	+1	+1
Clinical Nurse/ Midwife Specialist	80	80	+0	+0.3%	+13	+11
Nurse/ Midwife Specialist & AN/MP	88	88	+0	+0.1%	+13	+12
Staff Midwives	1	1			+1	+1
Staff Nurse [Intellectual Disability]	69	69	-0	-0.6%	-4	-4
Staff Nurse [Psychiatric]	295	293	-1	-0.5%	+11	+16
Staff Nurses [General/ Children's]	338	343	+5	+1.5%	+4	+5
Staff Nurse/ Staff Midwife	703	706	+3	+0.4%	+13	+18
Public Health Nurse	182	179	-3	-1.7%	+3	+7
Pre-registration Nurse/ Midwife Intern	3	18	+15	+545.8%	+14	+2
Pre-registration Nurse Intern (COVID-19)	6	7	+2	+27.2%	+7	+7
Post-registration Nurse/ Midwife Student	31	31			+5	+5
Nursing/ Midwifery awaiting registration				-100.0%	-11	-10
Nursing/ Midwifery Student	39	56	+16	+41.5%	+15	+4
Nursing Education/Clinical	15	15	-1	-3.3%	+2	+2
Other Nursing/ Midwifery				-100.0%		
Nursing/ Midwifery other	15	15	-1	-3.3%	+2	+2
Nursing & Midwifery	1,293	1,307	+14	+1.1%	+26	+58
Dietitians	19	19	+0	+0.1%	+4	+5
Occupational Therapists	134	133	-0	-0.3%	+15	+12
Orthoptists	6	6	+0	+3.0%	+1	+1
Physiotherapists	84	85	+1	+1.2%	+10	+11
Podiatrists & Chiropodists	2	2	-0	-3.7%	+1	+1
Speech & Language Therapists	92	89	-3	-3.4%	+3	+2
Therapy Professions	336	334	-2	-0.7%	+34	+32
Audiology	15	14	-0	-0.8%	-1	-1
Clinical Engineering	5	5				
Radiographers				-100.0%	-0	
Health Science/ Diagnostics	20	19	-0	-0.6%	-1	-1
Social Care	8	8	-0	-0.5%	+0	+0
Social Workers	85	86	+1	+1.6%	+8	+8
Psychologists	132	132	+0	+0.3%	+8	+8
Pharmacy	22	22	+0	+0.0%	+4	+5

Jan 2021 (Dec 2019 figure: 3,407)	WTE Dec 2020	WTE Jan 2021	WTE change since Dec 20	% change since Dec 20	WTE change since Dec 19	WTE change since Jan 20
Overall	3,660	3,681	+21	+0.6%	+274	+282
Counsellor Therapists	42	42	+0	+0.2%	-0	-0
Dental Hygienists	6	6	-0	-0.3%	-0	
Other Health & Social Care	6	6	+0	+2.6%	-1	-0
Play Therapists/ Specialists	2	1	-1	-40.1%	-1	-1
H&SC, Other	55	55	-0	-0.8%	-2	-1
Health & Social Care Professionals	657	656	-1	-0.2%	+21	+51
Executive Management	8	8	+0	+0.3%	+1	+1
Senior Management (VIII & GM)	39	40	+1	+2.1%	+2	+2
Management (VIII & above)	46	47	+1	+1.8%	+3	+3
Administrative/ Supervisory (V to VII)	142	146	+4	+2.7%	+34	+27
Clerical (III & IV)	358	360	+2	+0.5%	+57	+65
Management & Administrative	547	554	+7	+1.2%	+78	+95
Catering	23	23	+1	+3.3%	-1	-1
Household Services	103	103	-0	-0.1%	+1	+2
Other Support	8	8	-0	-3.2%	-2	-2
Portering	61	61	-1	-1.0%	-1	+0
Support	195	195	-0	-0.1%	-3	-0
Maintenance/ Technical	9	9			+0	+0
General Support	205	205	-0	-0.1%	-34	+0
HCA, Nurse's Aide, etc.	550	554	+4	+0.7%	+54	+60
Health & Social Care Assistants	20	20	-0	-0.3%	+10	+11
Health Care Assistants	570	574	+4	+0.7%	+64	+71
Care, other	132	134	+2	+1.3%	+9	+9
Patient & Client Care	702	708	+6	+0.8%	+54	+80

Employment by WTE, Headcount, Gender, Full-Time /Part-Time etc.: Jan 2021

CHO 9	WTE	Headcount	WTE: no.	% Male	% female	Male WTE: no.	Female WTE: no.	% Total Perm	% Male Perm	% Female Perm	% Total Full Time	% Total Part Time	% Male FT	% Female FT
Overall	6,953	8,057	1.16	18.0%	82.0%	1.08	1.18	85.1%	80.8%	86.0%	67.3%	32.7%	83.9%	63.7%
Consultant Medicine	2	4	1.94		100.0%		1.94	75.0%	75.0%	75.0%	25.0%	75.0%		25.0%
Consultant Paediatrics	1	3	2.48	33.3%	66.7%	1.82	3.03	33.3%	33.3%	50.0%	33.3%	66.7%	100.0%	0.0%
Consultant Psychiatry	60	68	1.13	35.3%	64.7%	1.17	1.11	79.4%	79.4%	84.1%	82.4%	17.6%	83.3%	81.8%
Consultants	63	75	1.18	33.3%	66.7%	1.18	1.18	77.3%	68.0%	82.0%	77.3%	22.7%	84.0%	74.0%
Registrar	72	87	1.22	35.6%	64.4%	1.15	1.26	4.6%	4.6%	1.8%	97.7%	2.3%	96.8%	98.2%
Senior Registrar	21	24	1.14	41.7%	58.3%	1.01	1.25	0.0%	0.0%	0.0%	100.0%	0.0%	100.0%	100.0%
Specialist Registrar	1	1	1.00	100.0%		1.00		0.0%	0.0%		100.0%	0.0%	100.0%	
Registrars	94	112	1.20	37.5%	62.5%	1.11	1.26	3.6%	7.1%	1.4%	98.2%	1.8%	97.6%	98.6%
Senior House Officer	67	76	1.13	31.6%	68.4%	1.19	1.11	0.0%	0.0%	0.0%	100.0%	0.0%	100.0%	100.0%
SHO/ Interns	67	76	1.13	31.6%	68.4%	1.19	1.11	0.0%	0.0%	0.0%	100.0%	0.0%	100.0%	100.0%
Dentists	32	38	1.20	21.1%	78.9%	1.11	1.23	92.1%	92.1%	93.3%	73.7%	26.3%	87.5%	70.0%
Other Medical	23	34	1.45	23.5%	76.5%	1.62	1.40	70.6%	70.6%	69.2%	41.2%	58.8%	37.5%	42.3%
Medical/ Dental, other	55	72	1.31	22.2%	77.8%	1.32	1.30	81.9%	81.3%	82.1%	58.3%	41.7%	62.5%	57.1%
Medical & Dental	279	335	1.20	31.9%	68.1%	1.17	1.21	36.1%	30.8%	38.6%	85.4%	14.6%	89.7%	83.3%
Clinical Nurse/ Midwife Manager	365	388	1.06	18.6%	81.4%	1.01	1.08	97.2%	97.2%	96.5%	85.3%	14.7%	97.2%	82.6%
Director Nursing/Midwifery, Assistant	68	72	1.06	16.7%	83.3%	1.00	1.07	98.6%	98.6%	98.3%	88.9%	11.1%	100.0%	86.7%
Director of Nursing/Midwifery	22	24	1.08	8.3%	91.7%	1.00	1.09	87.5%	87.5%	86.4%	91.7%	8.3%	100.0%	90.9%
Nurse/ Midwife Manager	455	484	1.06	17.8%	82.2%	1.01	1.08	96.9%	100.0%	96.2%	86.2%	13.8%	97.7%	83.7%
Advanced Nurse/ Midwife Practitioner	9	9	1.03		100.0%		1.03	88.9%	88.9%	88.9%	88.9%	11.1%		88.9%
Clinical Nurse/ Midwife Specialist	93	98	1.05	12.2%	87.8%	1.00	1.06	100.0%	100.0%	100.0%	88.8%	11.2%	100.0%	87.2%
Nurse/ Midwife Specialist & AN/MP	102	107	1.05	11.2%	88.8%	1.00	1.06	99.1%	100.0%	98.9%	88.8%	11.2%	100.0%	87.4%
Staff Midwives	1	1	1.00		100.0%		1.00	0.0%	0.0%	0.0%	100.0%	0.0%		100.0%
Staff Nurse [Intellectual Disability]	422	486	1.15	8.4%	91.6%	1.07	1.16	95.1%	95.1%	95.5%	68.1%	31.9%	87.8%	66.3%
Staff Nurse [Psychiatric]	384	420	1.09	23.8%	76.2%	1.07	1.10	94.3%	94.3%	95.3%	85.5%	14.5%	90.0%	84.1%
Staff Nurses [General/ Children's]	418	476	1.14	10.7%	89.3%	1.04	1.15	90.5%	90.5%	91.3%	75.6%	24.4%	94.1%	73.4%
Staff Nurse/ Staff Midwife	1,225	1,383	1.13	13.9%	86.1%	1.06	1.14	93.2%	89.1%	93.9%	76.0%	24.0%	90.6%	73.6%
Public Health Nurse	179	216	1.21	0.5%	99.5%	1.00	1.21	95.4%	100.0%	95.3%	71.3%	28.7%	100.0%	71.2%
Pre-registration Nurse/ Midwife Intern	38	93	2.48	9.7%	90.3%	2.05	2.54	22.6%	22.6%	23.8%	78.5%	21.5%	100.0%	76.2%

Pre-registration Nurse Intern (COVID-19)	7	8	1.14	37.5%	62.5%	1.09	1.17	0.0%	0.0%	0.0%	100.0%	0.0%	100.0%	100.0%
Post-registration Nurse/ Midwife Student	31	31	1.00	6.5%	93.5%	1.00	1.00	16.1%	16.1%	17.2%	100.0%	0.0%	100.0%	100.0%
Nursing/ Midwifery Student	76	132	1.75	10.6%	89.4%	1.53	1.78	19.7%	7.1%	21.2%	84.8%	15.2%	100.0%	83.1%
Nursing Education/Clinical	22	24	1.07	8.3%	91.7%	1.00	1.08	95.8%	95.8%	95.5%	87.5%	12.5%	100.0%	86.4%
Nursing/ Midwifery other	22	24	1.07	8.3%	91.7%	1.00	1.08	95.8%	100.0%	95.5%	87.5%	12.5%	100.0%	86.4%
Nursing & Midwifery	2,059	2,346	1.14	13.1%	86.9%	1.06	1.15	90.3%	88.9%	90.5%	78.9%	21.1%	93.5%	76.7%
Dietitians	26	35	1.32	5.7%	94.3%	1.00	1.35	85.7%	85.7%	84.8%	45.7%	54.3%	100.0%	42.4%
Occupational Therapists	204	226	1.11	10.2%	89.8%	1.04	1.12	91.2%	91.2%	90.6%	76.5%	23.5%	95.7%	74.4%
Orthoptists	6	7	1.20	14.3%	85.7%	1.00	1.24	85.7%	85.7%	83.3%	57.1%	42.9%	100.0%	50.0%
Physiotherapists	160	187	1.17	15.5%	84.5%	1.04	1.19	87.7%	87.7%	88.0%	67.4%	32.6%	89.7%	63.3%
Podiatrists & Chiropodists	2	2	1.30	50.0%	50.0%	1.00	1.85	50.0%	50.0%	0.0%	50.0%	50.0%	100.0%	0.0%
Speech & Language Therapists	136	158	1.16	1.3%	98.7%	1.01	1.16	89.2%	89.2%	89.1%	75.3%	24.7%	100.0%	75.0%
Therapy Professions	534	615	1.15	9.4%	90.6%	1.03	1.16	89.1%	91.4%	88.9%	71.4%	28.6%	93.1%	69.1%
Audiology	14	16	1.11	25.0%	75.0%	1.01	1.15	100.0%	100.0%	100.0%	75.0%	25.0%	100.0%	66.7%
Clinical Engineering	15	15	1.00	93.3%	6.7%	1.00	1.00	100.0%	100.0%	100.0%	100.0%	0.0%	100.0%	100.0%
Medical Laboratory	4	4	1.00	75.0%	25.0%	1.00	1.00	75.0%	75.0%	100.0%	100.0%	0.0%	100.0%	100.0%
Radiographers	1	2	2.00		100.0%		2.00	100.0%	100.0%	100.0%	0.0%	100.0%		0.0%
Health Science/ Diagnostics	34	37	1.08	56.8%	43.2%	1.00	1.19	97.3%	95.2%	100.0%	83.8%	16.2%	100.0%	62.5%
Social Care	752	902	1.20	12.2%	87.8%	1.06	1.22	88.6%	87.3%	88.8%	45.5%	54.5%	70.0%	42.0%
Social Workers	140	156	1.11	14.7%	85.3%	1.02	1.13	94.2%	91.3%	94.7%	73.1%	26.9%	91.3%	69.9%
Psychologists	184	203	1.10	15.3%	84.7%	1.08	1.11	68.0%	61.3%	69.2%	77.8%	22.2%	83.9%	76.7%
Pharmacy	29	34	1.16	11.8%	88.2%	1.11	1.17	58.8%	25.0%	63.3%	70.6%	29.4%	75.0%	70.0%
Counsellor Therapists	42	45	1.08	33.3%	66.7%	1.03	1.11	91.1%	91.1%	96.7%	77.8%	22.2%	93.3%	70.0%
Dental Hygienists	6	8	1.32		100.0%		1.32	100.0%	100.0%	100.0%	25.0%	75.0%		25.0%
Other Health & Social Care	19	25	1.32	16.0%	84.0%	1.27	1.32	84.0%	84.0%	81.0%	52.0%	48.0%	75.0%	47.6%
Play Therapists/ Specialists	1	2	1.39		100.0%		1.39	100.0%	100.0%	100.0%	50.0%	50.0%		50.0%
H&SC, Other	68	80	1.17	23.8%	76.3%	1.07	1.21	90.0%	84.2%	91.8%	63.7%	36.3%	89.5%	55.7%
Health & Social Care	1,742	2,027	1.16	13.1%	86.9%	1.05	1.18	86.8%	85.0%	87.1%	60.5%	39.5%	82.3%	57.2%
Executive Management	12	12	1.02	8.3%	91.7%	1.00	1.02	91.7%	91.7%	90.9%	100.0%	0.0%	100.0%	100.0%
Senior Management (VIII & GM)	74	75	1.01	29.3%	70.7%	1.00	1.01	97.3%	97.3%	100.0%	97.3%	2.7%	100.0%	96.2%
Management (VIII & above)	86	87	1.01	26.4%	73.6%	1.00	1.02	96.6%	91.3%	98.4%	97.7%	2.3%	100.0%	96.9%
Administrative/ Supervisory (V to VII)	250	274	1.09	17.2%	82.8%	1.01	1.11	93.1%	97.9%	92.1%	72.3%	27.7%	78.7%	70.9%
Clerical (III & IV)	500	584	1.17	14.2%	85.8%	1.09	1.18	80.5%	68.7%	82.4%	66.3%	33.7%	85.5%	63.1%
Management & Administrative	837	945	1.13	16.2%	83.8%	1.05	1.15	85.6%	81.0%	86.5%	70.9%	29.1%	85.6%	68.1%
Catering	59	69	1.17	42.0%	58.0%	1.06	1.26	95.7%	95.7%	95.0%	65.2%	34.8%	89.7%	47.5%

Household Services	223	283	1.27	12.0%	88.0%	1.17	1.28	89.8%	89.8%	90.4%	42.0%	58.0%	76.5%	37.3%
Other Support	45	58	1.29	62.1%	37.9%	1.27	1.33	86.2%	86.2%	86.4%	36.2%	63.8%	38.9%	31.8%
Portering	74	76	1.03	93.4%	6.6%	1.02	1.22	78.9%	78.9%	60.0%	90.8%	9.2%	91.5%	80.0%
Support	401	486	1.21	35.0%	65.0%	1.10	1.28	88.5%	85.3%	90.2%	52.3%	47.7%	77.1%	38.9%
Maintenance/ Technical	35	37	1.05	94.6%	5.4%	1.05	1.06	94.6%	94.3%	100.0%	73.0%	27.0%	74.3%	50.0%
General Support	436	523	1.20	39.2%	60.8%	1.09	1.28	88.9%	86.8%	90.3%	53.7%	46.3%	76.6%	39.0%
HCA, Nurse's Aide, etc.	1,339	1,586	1.18	20.4%	79.6%	1.09	1.21	84.4%	84.4%	84.8%	57.6%	42.4%	78.7%	52.2%
Health & Social Care Assistants	25	27	1.08	11.1%	88.9%	1.01	1.09	40.7%	40.7%	41.7%	85.2%	14.8%	100.0%	83.3%
Health Care Assistants	1,364	1,613	1.18	20.3%	79.7%	1.09	1.21	83.6%	82.3%	84.0%	58.1%	41.9%	78.9%	52.8%
Care, other	236	268	1.13	31.7%	68.3%	1.08	1.16	85.8%	81.2%	88.0%	64.2%	35.8%	80.0%	56.8%
Patient & Client Care	1,600	1,881	1.18	21.9%	78.1%	1.09	1.20	83.9%	82.0%	84.5%	59.0%	41.0%	79.1%	53.3%

Employment by WTE, Headcount, Gender, Full-Time /Part-Time etc.: Jan 2021

CHO 9	WTE	Headcount	WTE: no.	% Male	% female	Male WTE: no.	Female WTE: no.	% Total Perm	% Male Perm	% Female Perm	% Total Full Time	% Total Part Time	% Male FT	% Female FT
Overall	6,953	8,057	1.16	18.0%	82.0%	1.08	1.18	85.1%	80.8%	86.0%	67.3%	32.7%	83.9%	63.7%
Community Health & Wellbeing	11	13	1.21		100.0%		1.21	92.3%	92.3%	92.3%	69.2%	30.8%		
Mental Health	1,329	1,496	1.13	27.4%	72.6%	1.06	1.15	81.4%	81.4%	82.1%	85.0%	15.0%	94.4%	94.4%
Primary Care	1,428	1,650	1.16	16.5%	83.5%	1.08	1.17	75.5%	75.5%	77.8%	73.4%	26.6%	88.3%	88.3%
HSE	1,122	1,260	1.12	25.6%	74.4%	1.06	1.15	87.3%	87.3%	88.2%	78.8%	21.2%	89.8%	89.8%
Section 38 Voluntary Agencies	3,064	3,638	1.19	12.2%	87.8%	1.10	1.20	90.1%	90.1%	90.2%	53.3%	46.7%	67.2%	67.2%
Social Care	4,186	4,898	1.17	15.7%	84.3%	1.08	1.19	89.4%	89.4%	89.7%	59.8%	40.2%	76.7%	76.7%

CHO 9 Skills Mix by Staff Grouping: January 2021

Jan 2021 (Dec 2018 figure: 6,634)	WTE Dec 2015	WTE Dec 2016	WTE Dec 2017	WTE Dec 2018	WTE Dec 2019	WTE Dec 2020	WTE Jan 2021
Overall	6,089	6,286	6,438	6,634	6,582	6,950	6,953
Consultant Medicine	1.7%	2.3%	2.6%	0.6%	0.6%	0.9%	0.7%
Consultant Paediatrics	0.5%	0.5%	0.4%	0.4%	0.4%	0.4%	0.4%
Consultant Psychiatry	21.9%	21.3%	21.8%	21.9%	22.7%	21.5%	21.5%
Consultant Surgery	0.4%	0.3%	0.0%	0.0%			
Consultants	24.5%	24.5%	24.8%	23.0%	23.6%	22.8%	22.7%
Registrar	23.2%	21.3%	22.5%	25.4%	27.0%	24.8%	25.6%
Senior Registrar	4.4%	5.1%	3.9%	5.3%	5.5%	7.1%	7.6%
Specialist Registrar	1.1%	1.4%	1.8%	0.3%	1.4%	0.4%	0.4%
Registrars	28.8%	27.9%	28.2%	31.1%	33.9%	32.2%	33.5%
Interns	1.4%	1.8%	1.4%	0.7%	0.7%		
Senior House Officer	19.0%	19.5%	21.2%	21.3%	22.2%	25.2%	24.0%
SHO/ Interns	20.4%	21.3%	22.6%	22.0%	22.8%	25.2%	24.0%
Dentists	11.2%	11.7%	10.7%	11.0%	10.9%	11.5%	11.3%
Other Medical	15.1%	14.6%	13.7%	13.0%	8.7%	8.4%	8.4%
Medical/ Dental, other	26.3%	26.3%	24.4%	24.0%	19.6%	19.9%	19.7%
Medical & Dental	4.5%	4.4%	4.4%	4.4%	4.4%	100.0%	4.0%
Clinical Nurse/ Midwife Manager	18.9%	18.9%	19.2%	18.5%	17.7%	17.9%	17.7%
Director Nursing/Midwifery, Assistant	2.9%	3.1%	3.0%	2.8%	3.1%	3.4%	3.3%
Director of Nursing/Midwifery	1.3%	1.3%	1.3%	1.1%	1.3%	1.0%	1.1%
Nurse/ Midwife Manager	23.2%	23.3%	23.5%	22.3%	22.1%	22.3%	22.1%
Advanced Nurse/ Midwife Practitioner	0.0%	0.1%	0.2%	0.3%	0.3%	0.4%	0.4%
Clinical Nurse/ Midwife Specialist	2.4%	2.9%	3.8%	3.7%	4.0%	4.5%	4.5%
Nurse/ Midwife Specialist & AN/MP	2.5%	3.0%	4.0%	4.1%	4.3%	5.0%	4.9%
Graduate Nursing/ Midwifery	0.0%						
Staff Midwives						0.0%	0.0%
Staff Nurse [Intellectual Disability]	21.9%	22.0%	22.1%	21.2%	21.4%	20.7%	20.5%
Staff Nurse [Psychiatric]	19.8%	19.5%	18.7%	19.0%	18.9%	18.8%	18.6%
Staff Nurses [General/ Children's]	20.8%	21.0%	20.2%	21.4%	20.6%	20.2%	20.3%
Staff Nurse/ Staff Midwife	62.6%	62.4%	61.1%	61.6%	60.8%	59.8%	59.5%
Public Health Nurse	9.1%	9.0%	8.8%	8.6%	8.9%	8.9%	8.7%
Pre-registration Nurse/ Midwife Intern	0.5%	0.2%	0.1%	1.0%	0.9%	0.6%	1.8%
Pre-registration Nurse Intern (COVID-19)						0.8%	0.3%
Post-registration Nurse/ Midwife Student	1.3%	1.0%	1.4%	1.1%	1.3%	1.5%	1.5%
Nursing/ Midwifery awaiting registration				0.1%	0.5%		
Nursing/ Midwifery Student	1.8%	1.2%	1.5%	2.2%	2.8%	2.9%	3.7%
Nursing/ Midwifery other	0.9%	1.0%	1.1%	1.2%	1.0%	1.1%	1.1%
Nursing & Midwifery	32.9%	31.1%	30.6%	30.4%	30.6%	100.0%	29.6%
Dietitians	1.3%	1.6%	1.5%	1.5%	1.3%	1.5%	1.5%
Occupational Therapists	12.3%	11.4%	11.9%	11.4%	11.4%	11.8%	11.7%
Orthoptists	0.1%	0.1%	0.1%	0.2%	0.3%	0.3%	0.3%
Physiotherapists	10.0%	9.1%	9.0%	8.7%	9.0%	9.1%	9.2%
Podiatrists & Chiropodists			0.1%	0.1%	0.1%	0.1%	0.1%
Speech & Language Therapists	8.2%	8.8%	8.9%	8.9%	8.3%	7.8%	7.8%
Therapy Professions	32.0%	30.8%	31.4%	30.8%	30.4%	30.7%	30.7%
Audiology	1.0%	0.8%	1.2%	1.1%	0.9%	0.8%	0.8%
Clinical Engineering	1.4%	1.1%	1.0%	1.0%	1.0%	0.8%	0.9%
Medical Laboratory	0.2%	0.2%	0.2%	0.3%	0.2%	0.2%	0.2%
Radiographers	0.2%	0.1%	0.1%	0.1%	0.1%	0.1%	0.1%
Health Science/ Diagnostics	2.8%	2.3%	2.5%	2.5%	2.3%	1.9%	2.0%
Social Care	36.5%	39.9%	39.7%	41.5%	43.4%	43.1%	43.2%
Social Workers	9.6%	8.3%	8.5%	8.3%	7.8%	8.0%	8.0%

Jan 2021 (Dec 2018 figure: 6,634)	WTE Dec 2015	WTE Dec 2016	WTE Dec 2017	WTE Dec 2018	WTE Dec 2019	WTE Dec 2020	WTE Jan 2021
Overall	6,089	6,286	6,438	6,634	6,582	6,950	6,953
Psychologists	11.4%	11.4%	10.8%	10.8%	10.2%	10.6%	10.6%
Pharmacy	2.3%	2.4%	2.2%	1.9%	1.5%	1.7%	1.7%
Counsellor Therapists	2.9%	2.5%	2.6%	2.4%	2.6%	2.4%	2.4%
Dental Hygienists	0.5%	0.4%	0.4%	0.4%	0.4%	0.4%	0.3%
Other Health & Social Care	1.9%	1.8%	1.6%	1.4%	1.2%	1.1%	1.1%
Play Therapists/ Specialists	0.2%	0.1%	0.2%	0.2%	0.1%	0.1%	0.1%
H&SC, Other	5.4%	4.8%	4.7%	4.3%	4.4%	4.0%	3.9%
Health & Social Care Professionals	21.8%	23.3%	23.8%	23.8%	23.9%	100.0%	25.1%
Executive Management	1.1%	0.8%	1.0%	1.2%	1.4%	1.4%	1.4%
Senior Management (VIII & GM)	7.9%	7.8%	8.6%	8.4%	9.3%	8.8%	8.9%
Management (VIII & above)	9.0%	8.6%	9.7%	9.6%	10.8%	10.2%	10.3%
Middle Management (V-VII)	24.3%	26.2%	24.9%	27.0%	27.0%	28.0%	28.8%
Other Administrative	1.5%	1.4%	1.6%	1.7%	1.2%	1.1%	1.1%
Administrative/ Supervisory (V to VII)	25.8%	27.6%	26.5%	28.7%	28.1%	29.1%	29.9%
Clerical (III & IV)	65.2%	63.8%	63.8%	61.6%	61.1%	60.7%	59.8%
Management & Administrative	10.2%	10.1%	10.6%	11.3%	11.3%	100.0%	12.0%
Catering	11.7%	12.3%	12.3%	12.2%	12.5%	13.4%	13.5%
Household Services	43.9%	43.0%	41.6%	43.7%	45.3%	51.2%	51.2%
Other Support	22.8%	23.0%	24.3%	22.8%	19.4%	10.2%	10.3%
Portering	14.6%	15.4%	14.8%	14.3%	15.5%	16.9%	16.9%
Support	93.0%	93.6%	93.1%	93.0%	92.8%	91.7%	91.9%
Maintenance/ Technical	7.0%	6.4%	6.9%	7.0%	7.2%	8.3%	8.1%
General Support	9.7%	8.8%	8.4%	7.9%	7.9%	100.0%	6.3%
HCA, Nurse's Aide, etc.	83.8%	84.6%	85.6%	84.2%	84.4%	84.0%	83.7%
Health & Social Care Assistants	0.8%	0.7%	0.8%	1.5%	0.8%	1.6%	1.6%
Health Care Assistants	84.5%	85.3%	86.4%	85.7%	85.3%	85.6%	85.2%
Community Welfare Officers	0.1%	0.1%					
Other Care Grades	15.4%	14.6%	13.6%	14.3%	14.7%	14.4%	14.8%
Care, other	15.5%	14.7%	13.6%	14.3%	14.7%	14.4%	14.8%
Patient & Client Care	20.9%	22.2%	22.3%	22.4%	22.6%	100.0%	23.0%
Total	100 %	100 %	100 %	100 %	100%	100 %	100 %

CHO 9 Skills Mix by Care Group: January 2021

Jan 2021 (Dec 2018 figure: 1,301)	WTE Dec 2015	WTE Dec 2016	WTE Dec 2017	WTE Dec 2018	WTE Dec 2019	WTE Dec 2020	WTE Jan 2021
Mental Health	1,223	1,217	1,220	1,301	1,272	1,331	1,329
Consultant Medicine			0.1%	0.1%			
Consultant Psychiatry	41.3%	37.8%	36.3%	37.8%	37.3%	35.2%	35.7%
Consultants	41.3%	37.8%	36.3%	37.8%	37.3%	35.2%	35.7%
Registrar	16.6%	15.3%	11.4%	11.0%	11.9%	9.9%	12.7%
Senior Registrar	9.4%	10.6%	8.1%	10.6%	11.2%	14.4%	14.9%
Specialist Registrar		0.8%	0.8%				
Registrars	26.0%	26.7%	20.3%	21.6%	23.1%	24.2%	27.5%
Interns	3.4%	4.0%	3.2%	1.5%	1.5%		
Senior House Officer	29.3%	30.7%	40.1%	39.1%	38.2%	40.6%	36.8%
SHO/ Interns	32.7%	34.7%	43.4%	40.6%	39.6%	40.6%	36.8%
Medical/ Dental, other		0.8%					
Medical & Dental	9.8%	10.2%	10.1%	10.4%	10.7%	9.7%	9.7%
Clinical Nurse/ Midwife Manager	22.0%	21.3%	20.3%	19.3%	18.5%	18.0%	17.7%
Director Nursing/Midwifery, Assistant	3.6%	3.5%	3.9%	3.4%	3.7%	4.0%	3.8%
Director of Nursing/Midwifery	0.7%	0.9%	0.6%	0.3%	0.5%	0.5%	0.5%
Nurse/ Midwife Manager	26.3%	25.7%	24.7%	23.0%	22.7%	22.5%	22.0%
Advanced Nurse/ Midwife Practitioner		0.2%	0.4%	1.0%	1.0%	1.0%	1.0%
Clinical Nurse/ Midwife Specialist	5.4%	7.1%	10.0%	9.8%	10.2%	11.4%	11.3%
Nurse/ Midwife Specialist & AN/MP	5.4%	7.3%	10.4%	10.8%	11.2%	12.3%	12.2%
Staff Midwives						0.2%	0.2%
Staff Nurse [Intellectual Disability]	0.3%	0.3%	0.3%	0.3%	0.3%	0.1%	0.1%
Staff Nurse [Psychiatric]	61.6%	61.0%	59.1%	58.5%	57.9%	58.6%	58.1%
Staff Nurses [General/ Children's]	3.2%	2.9%	2.7%	2.5%	2.2%	1.7%	1.7%
Staff Nurse/ Staff Midwife	65.1%	64.2%	62.1%	61.4%	60.5%	60.6%	60.1%
Public Health Nurse		0.2%	0.2%				
Pre-registration Nurse/ Midwife Intern	1.3%	0.6%	0.2%	2.0%	1.7%	1.7%	3.4%
Pre-registration Nurse Intern (COVID-19)						0.9%	0.4%
Nursing/ Midwifery awaiting registration				0.5%	1.9%		
Nursing/ Midwifery Student	1.3%	0.6%	0.2%	2.5%	3.6%	2.6%	3.8%
Nursing Education/Clinical	1.9%	2.1%	2.5%	2.3%	2.0%	2.1%	2.0%
Nursing/ Midwifery other	1.9%	2.1%	2.5%	2.3%	2.0%	2.1%	2.0%
Nursing & Midwifery	47.8%	47.0%	46.3%	45.7%	46.8%	46.7%	46.7%
Dietitians		1.2%	0.9%	0.8%	0.9%	1.3%	1.3%
Occupational Therapists	27.2%	23.5%	25.8%	26.7%	27.5%	25.6%	25.1%
Physiotherapists	0.4%	0.4%	0.4%	0.6%	0.7%	0.6%	0.6%
Speech & Language Therapists	6.3%	6.9%	4.8%	5.7%	3.7%	6.2%	6.3%
Therapy Professions	34.0%	32.0%	32.0%	33.8%	32.8%	33.7%	33.3%
Social Care	0.6%	0.6%	0.6%	0.6%	0.5%	0.6%	0.5%
Social Workers	28.3%	24.3%	28.3%	26.1%	26.0%	23.7%	24.1%
Psychologists	24.2%	29.3%	27.1%	28.2%	27.3%	29.3%	29.2%
Pharmacy	4.3%	5.5%	5.3%	4.3%	4.7%	4.9%	4.9%
Counsellor Therapists	7.5%	7.6%	6.5%	6.0%	8.1%	7.6%	7.7%
Other Health & Social Care	1.2%	0.7%	0.4%	1.0%	0.6%	0.2%	0.2%
H&SC, Other	8.6%	8.2%	6.8%	7.0%	8.7%	7.9%	7.9%
Health & Social Care Professionals	13.0%	13.2%	13.7%	14.0%	14.3%	13.6%	13.6%
Management (VIII & above)	1.8%	1.8%	1.6%	1.5%	3.7%	3.4%	3.5%
Administrative/ Supervisory (V to VII)	16.3%	18.0%	21.1%	20.5%	20.4%	19.5%	19.4%
Clerical (III & IV)	81.8%	80.2%	77.3%	78.1%	76.0%	77.1%	77.2%

Jan 2021 (Dec 2018 figure: 1,301)	WTE Dec 2015	WTE Dec 2016	WTE Dec 2017	WTE Dec 2018	WTE Dec 2019	WTE Dec 2020	WTE Jan 2021
Mental Health	1,223	1,217	1,220	1,301	1,272	1,331	1,329
Management & Administrative	9.0%	9.3%	10.3%	10.5%	10.8%	10.9%	10.9%
Support	91.4%	92.0%	91.4%	91.4%	90.4%	90.4%	90.3%
Maintenance/ Technical	8.6%	8.0%	8.6%	8.6%	9.6%	9.6%	9.7%
General Support	11.3%	11.2%	10.4%	9.8%	10.1%	8.5%	8.5%
HCA, Nurse's Aide, etc.	96.5%	96.4%	96.4%	92.9%	87.2%	89.1%	89.1%
Health & Social Care Assistants	1.7%	2.7%	1.8%	2.4%	3.6%	2.1%	2.1%
Health Care Assistants	98.2%	99.1%	98.2%	95.4%	90.8%	91.2%	91.2%
Care, other	1.8%	0.9%	1.8%	4.6%	9.2%	8.8%	8.8%
Patient & Client Care	9.1%	9.1%	9.1%	9.5%	9.8%	10.7%	10.7%
Total	100 %	100 %	100 %	100 %	100 %	100 %	100 %

Jan 2021 (Dec 2018 figure: 1,300)	WTE Dec 2015	WTE Dec 2016	WTE Dec 2017	WTE Dec 2018	WTE Dec 2019	WTE Dec 2020	WTE Jan 2021
Primary Care	1,207	1,162	1,239	1,300	1,247	1,412	1,428
Consultant Psychiatry	3.4%	3.5%	5.6%	2.9%	3.9%	4.0%	3.5%
Consultants	3.4%	3.5%	5.6%	2.9%	3.9%	4.0%	3.5%
Registrars	33.1%	31.2%	37.4%	43.7%	50.3%	47.2%	45.3%
SHO/ Interns	9.1%	8.7%	2.6%		0.9%	4.5%	8.0%
Dentists	25.9%	28.5%	26.5%	27.1%	28.5%	29.4%	28.5%
Other Medical	28.5%	28.1%	27.8%	26.3%	16.4%	14.9%	14.7%
Medical/ Dental, other	54.4%	56.6%	54.3%	53.4%	44.8%	44.3%	43.1%
Medical & Dental	9.9%	9.8%	9.2%	9.1%	9.5%	7.8%	7.8%
Clinical Nurse/ Midwife Manager	3.7%	4.0%	4.7%	4.2%	4.3%	5.2%	5.3%
Director Nursing/Midwifery, Assistant	5.6%	6.1%	5.3%	5.7%	5.5%	5.6%	5.6%
Director of Nursing/Midwifery	0.9%	0.6%	0.8%	0.8%	0.9%	0.8%	1.1%
Nurse/ Midwife Manager	10.2%	10.7%	10.9%	10.7%	10.7%	11.6%	12.1%
Nurse/ Midwife Specialist & AN/MP	0.6%	1.3%	2.3%	1.5%	1.8%	2.2%	2.2%
Staff Nurse/ Staff Midwife	28.6%	28.3%	30.7%	32.3%	29.1%	28.4%	29.0%
Public Health Nurse	52.5%	53.3%	47.9%	48.7%	50.8%	49.1%	48.1%
Nursing/ Midwifery Student	7.5%	5.8%	7.8%	6.2%	7.5%	8.4%	8.3%
Nursing Education/Clinical	0.3%	0.3%	0.3%	0.3%		0.3%	0.3%
Other Nursing/ Midwifery	0.3%	0.3%	0.1%	0.3%			
Nursing/ Midwifery other	0.6%	0.6%	0.4%	0.6%		0.3%	0.3%
Nursing & Midwifery	28.6%	28.4%	29.0%	27.3%	28.4%	26.0%	26.0%
Dietitians	2.3%	2.8%	2.8%	2.6%	2.2%	2.1%	1.8%
Occupational Therapists	17.4%	16.8%	17.3%	14.9%	15.8%	17.6%	17.7%
Orthoptists	0.4%	0.5%	0.4%	1.0%	1.5%	1.5%	1.6%
Physiotherapists	18.4%	17.2%	16.3%	15.3%	17.0%	17.1%	17.6%
Podiatrists & Chiropodists			0.3%	0.3%	0.3%	0.4%	0.4%
Speech & Language Therapists	15.9%	18.5%	20.4%	20.3%	19.1%	17.8%	17.1%
Therapy Professions	54.4%	55.8%	57.4%	54.4%	55.8%	56.6%	56.2%
Audiology				5.0%	4.3%	3.9%	3.9%
Clinical Engineering				1.4%	1.4%	1.3%	1.4%
Health Science/ Diagnostics				6.4%	5.8%	5.2%	5.3%
Social Care	1.7%	1.5%	1.4%	1.1%	1.2%	1.0%	1.0%
Social Workers	7.0%	5.2%	5.3%	4.9%	4.7%	6.1%	6.2%
Psychologists	19.8%	19.8%	18.7%	18.3%	18.6%	17.5%	17.7%
Pharmacy	6.2%	7.1%	6.0%	5.1%	3.4%	4.0%	4.1%
Counsellor Therapists	8.3%	8.0%	8.4%	7.4%	8.1%	7.4%	7.5%

Jan 2021 (Dec 2018 figure: 1,300)	WTE Dec 2015	WTE Dec 2016	WTE Dec 2017	WTE Dec 2018	WTE Dec 2019	WTE Dec 2020	WTE Jan 2021
Primary Care	1,207	1,162	1,239	1,300	1,247	1,412	1,428
Dental Hygienists	1.9%	1.9%	1.8%	1.8%	1.8%	1.6%	1.6%
Other Health & Social Care	0.1%	0.2%	0.4%	0.2%	0.0%	0.0%	0.0%
Play Therapists/ Specialists	0.6%	0.4%	0.6%	0.6%	0.5%	0.4%	0.3%
H&SC, Other	10.9%	10.6%	11.2%	9.9%	10.4%	9.6%	9.5%
Health & Social Care Professionals	26.3%	26.9%	27.5%	27.3%	28.5%	25.8%	25.8%
Executive Management	1.2%	0.4%	0.4%	1.0%	1.3%	1.2%	1.1%
Senior Management (VIII & GM)	7.7%	7.2%	9.2%	8.2%	8.4%	7.3%	7.7%
Management (VIII & above)	8.9%	7.6%	9.6%	9.2%	9.8%	8.5%	8.8%
Administrative/ Supervisory (V to VII)	22.1%	24.0%	21.3%	27.0%	26.9%	26.2%	25.8%
Clerical (III & IV)	69.0%	68.4%	69.0%	63.8%	63.3%	65.3%	65.4%
Management & Administrative	21.2%	21.2%	21.4%	22.8%	23.8%	24.2%	24.2%
Support	100.0%	100.0%	100.0%	100.0%	100.0%	100.0%	100.0%
General Support	4.5%	4.5%	4.1%	3.7%	3.8%	2.4%	2.4%
HCA, Nurse's Aide, etc.	2.7%	2.6%	3.7%	6.6%	6.9%	31.4%	33.7%
Health & Social Care Assistants	2.1%	2.2%	3.6%	12.0%	4.2%	8.0%	7.6%
Health Care Assistants	4.7%	4.8%	7.3%	18.6%	11.1%	39.4%	41.4%
Community Welfare Officers	0.9%	0.9%					
Other Care Grades	94.4%	94.3%	92.7%	81.4%	88.9%	60.6%	58.6%
Care, other	95.3%	95.2%	92.7%	81.4%	88.9%	60.6%	58.6%
Patient & Client Care	9.4%	9.3%	8.9%	9.8%	10.2%	13.8%	13.8%
Total	100 %	100 %	100 %	100 %	100 %	100 %	100 %

Jan 2021 (Dec 2018 figure: 3,125)	WTE Dec 2015	WTE Dec 2016	WTE Dec 2017	WTE Dec 2018	WTE Dec 2019	WTE Dec 2020	WTE Jan 2021
Disabilities	2,807	3,043	3,100	3,125	3,194	3,285	3,276
Consultant Paediatrics	7.9%	7.8%	5.6%	6.3%	4.9%	5.6%	5.7%
Consultant Psychiatry	38.9%	42.7%	45.2%	48.2%	45.8%	47.0%	47.5%
Consultant Surgery	0.5%	0.5%					
Consultants	47.2%	51.0%	50.8%	54.5%	50.7%	52.7%	53.2%
Registrars	16.0%	15.8%	22.9%	15.7%	24.3%	9.3%	10.6%
SHO/ Interns						9.3%	7.2%
Medical/ Dental, other	36.8%	33.3%	26.3%	29.8%	25.0%	28.7%	29.0%
Medical & Dental	0.7%	0.6%	0.7%	0.6%	0.6%	0.6%	0.6%
Clinical Nurse/ Midwife Manager	22.2%	23.1%	23.5%	23.7%	22.9%	23.4%	23.0%
Director Nursing/Midwifery, Assistant	1.0%	0.9%	0.9%	0.8%	1.4%	1.6%	1.4%
Director of Nursing/Midwifery	2.1%	2.2%	2.1%	1.7%	1.9%	1.5%	1.6%
Nurse/ Midwife Manager	25.3%	26.1%	26.5%	26.2%	26.2%	26.4%	26.1%
Advanced Nurse/ Midwife Practitioner						0.1%	0.1%
Clinical Nurse/ Midwife Specialist	1.4%	1.2%	1.1%	1.2%	1.2%	1.5%	1.5%
Nurse/ Midwife Specialist & AN/MP	1.4%	1.2%	1.1%	1.2%	1.2%	1.6%	1.6%
Graduate Nursing/ Midwifery	0.1%						
Staff Nurse [Intellectual Disability]	56.5%	56.9%	57.4%	56.6%	57.2%	57.0%	56.7%
Staff Nurse [Psychiatric]	4.4%	4.0%	3.4%	4.4%	4.4%	3.2%	2.9%
Staff Nurses [General/ Children's]	11.5%	11.0%	10.7%	9.6%	9.1%	8.9%	8.7%
Staff Nurse/ Staff Midwife	72.5%	71.8%	71.5%	70.6%	70.6%	69.1%	68.4%
Pre-registration Nurse/ Midwife Intern	0.3%	0.1%		1.1%	1.1%	0.3%	2.2%
Pre-registration Nurse Intern (COVID-19)						1.4%	0.6%
Nursing/ Midwifery Student	0.3%	0.1%		1.1%	1.1%	1.8%	2.9%
Nursing/ Midwifery other	0.5%	0.7%	0.8%	0.9%	1.0%	1.1%	1.1%

Jan 2021 (Dec 2018 figure: 3,125)	WTE Dec 2015	WTE Dec 2016	WTE Dec 2017	WTE Dec 2018	WTE Dec 2019	WTE Dec 2020	WTE Jan 2021
Disabilities	2,807	3,043	3,100	3,125	3,194	3,285	3,276
Nursing & Midwifery	27.5%	24.8%	24.4%	24.0%	23.5%	22.7%	22.7%
Dietitians	0.8%	0.7%	0.6%	0.6%	0.6%	0.5%	0.5%
Occupational Therapists	6.4%	6.4%	6.4%	6.2%	6.2%	6.2%	6.3%
Physiotherapists	6.4%	6.2%	5.6%	5.8%	5.7%	5.5%	5.6%
Speech & Language Therapists	5.7%	6.1%	5.9%	5.7%	5.5%	5.1%	5.4%
Therapy Professions	19.3%	19.4%	18.5%	18.3%	18.1%	17.4%	17.8%
Audiology	1.8%	1.3%	1.9%				
Clinical Engineering	2.3%	1.8%	1.7%	1.0%	1.1%	0.8%	0.9%
Medical Laboratory	0.4%	0.3%	0.3%	0.4%	0.4%	0.4%	0.4%
Health Science/ Diagnostics	4.4%	3.4%	3.9%	1.5%	1.5%	1.2%	1.3%
Social Care	60.7%	62.6%	63.7%	67.9%	68.7%	68.9%	68.4%
Social Workers	5.9%	5.5%	5.2%	4.5%	4.4%	4.6%	4.6%
Psychologists	6.4%	6.2%	6.1%	5.6%	5.3%	6.0%	6.1%
Pharmacy	0.3%	0.2%	0.2%	0.2%	0.2%	0.2%	0.2%
Other Health & Social Care	3.0%	2.6%	2.3%	2.0%	1.8%	1.7%	1.6%
Play Therapists/ Specialists	0.1%	0.1%	0.1%	0.1%	0.0%		0.0%
H&SC, Other	3.0%	2.6%	2.4%	2.0%	1.9%	1.7%	1.7%
Health & Social Care Professionals	28.0%	30.4%	30.5%	30.6%	29.9%	33.3%	33.3%
Executive Management	1.5%	1.4%	1.3%	1.3%	1.1%	1.1%	1.1%
Senior Management (VIII & GM)	12.0%	11.8%	12.6%	12.8%	13.8%	14.4%	14.7%
Management (VIII & above)	13.5%	13.1%	14.0%	14.1%	15.0%	15.5%	15.8%
Administrative/ Supervisory (V to VII)	35.1%	36.8%	35.3%	36.0%	35.0%	37.4%	39.4%
Clerical (III & IV)	51.5%	50.1%	50.7%	49.9%	50.1%	47.1%	44.8%
Management & Administrative	7.2%	7.2%	7.2%	7.6%	7.5%	8.1%	8.1%
Support	90.0%	90.8%	89.9%	89.6%	89.9%	86.3%	86.9%
Maintenance	9.6%	8.8%	9.7%	9.5%	9.2%	11.9%	11.4%
Technical Services	0.4%	0.4%	0.4%	0.9%	0.9%	1.8%	1.8%
Maintenance/ Technical	10.0%	9.2%	10.1%	10.4%	10.1%	13.7%	13.1%
General Support	9.5%	7.9%	7.6%	7.1%	7.0%	5.1%	5.1%
HCA, Nurse's Aide, etc.	88.4%	88.4%	90.0%	89.1%	89.7%	89.7%	89.3%
Health & Social Care Assistants	0.5%	0.3%	0.4%	0.2%	0.2%	0.3%	0.3%
Health Care Assistants	88.9%	88.8%	90.3%	89.4%	90.0%	90.0%	89.6%
Care, other	11.1%	11.2%	9.7%	10.6%	10.0%	10.0%	10.4%
Patient & Client Care	27.1%	29.1%	29.6%	30.1%	29.4%	30.2%	30.2%
Total	100 %	100 %	100 %	100 %	100 %	100 %	100 %

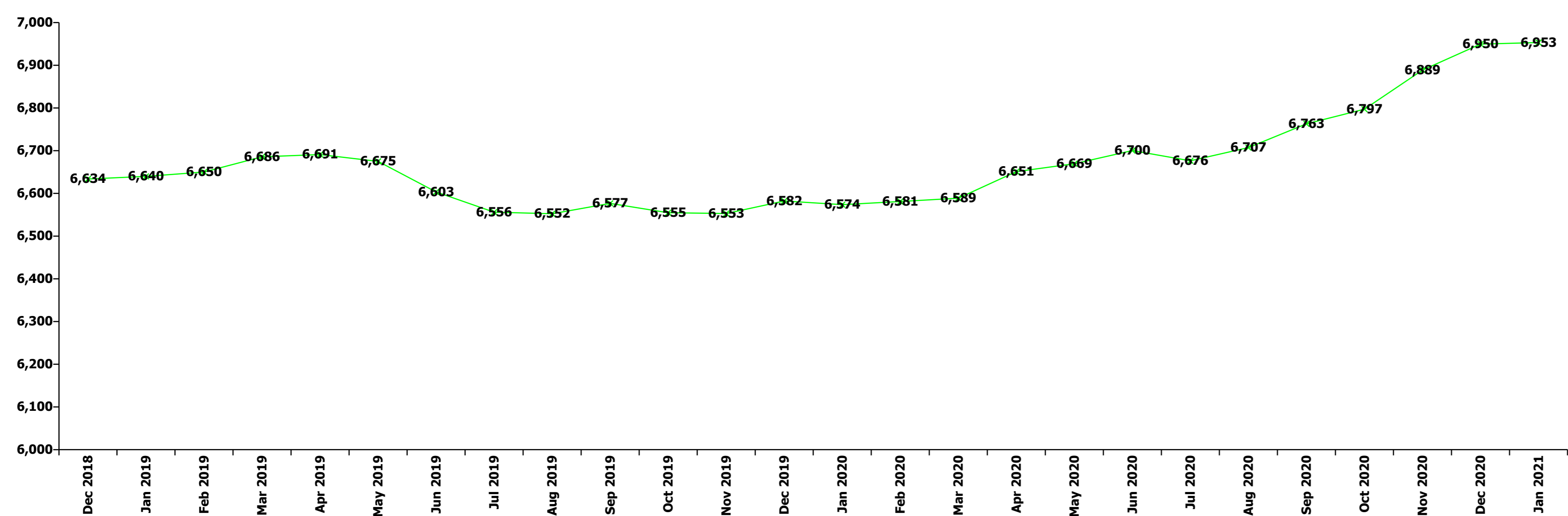
Jan 2021 (Dec 2018 figure: 908)	WTE Dec 2015	WTE Dec 2016	WTE Dec 2017	WTE Dec 2018	WTE Dec 2019	WTE Dec 2020	WTE Jan 2021
Older People	852	865	878	908	870	914	911
Consultant Medicine	23.6%	32.5%	33.1%	8.9%	8.0%	12.8%	11.6%
Consultant Surgery	5.1%	3.8%	0.6%	0.7%			
Consultants	28.7%	36.3%	33.7%	9.6%	8.0%	12.8%	11.6%
Registrar	26.2%	23.1%	29.9%	35.3%	27.4%	25.6%	30.9%
Specialist Registrar	5.1%	5.1%					
Registrars	31.3%	28.2%	29.9%	35.3%	27.4%	25.6%	30.9%
Senior House Officer	34.8%	30.4%	31.8%	49.6%	59.7%	56.4%	51.9%
SHO/ Interns	34.8%	30.4%	31.8%	49.6%	59.7%	56.4%	51.9%
Medical/ Dental, other	5.1%	5.1%	4.6%	5.6%	5.0%	5.3%	5.6%
Medical & Dental	2.3%	2.3%	2.5%	2.0%	2.1%	2.0%	2.0%

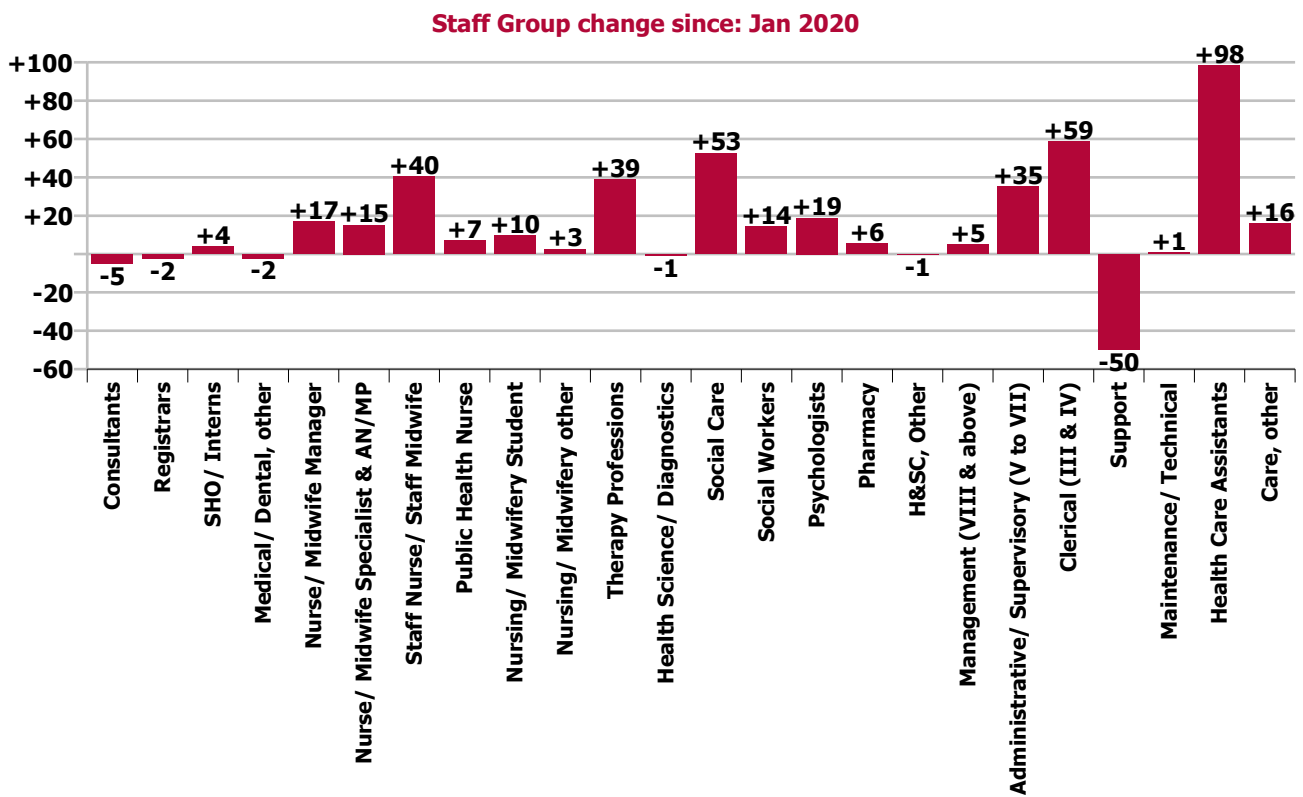
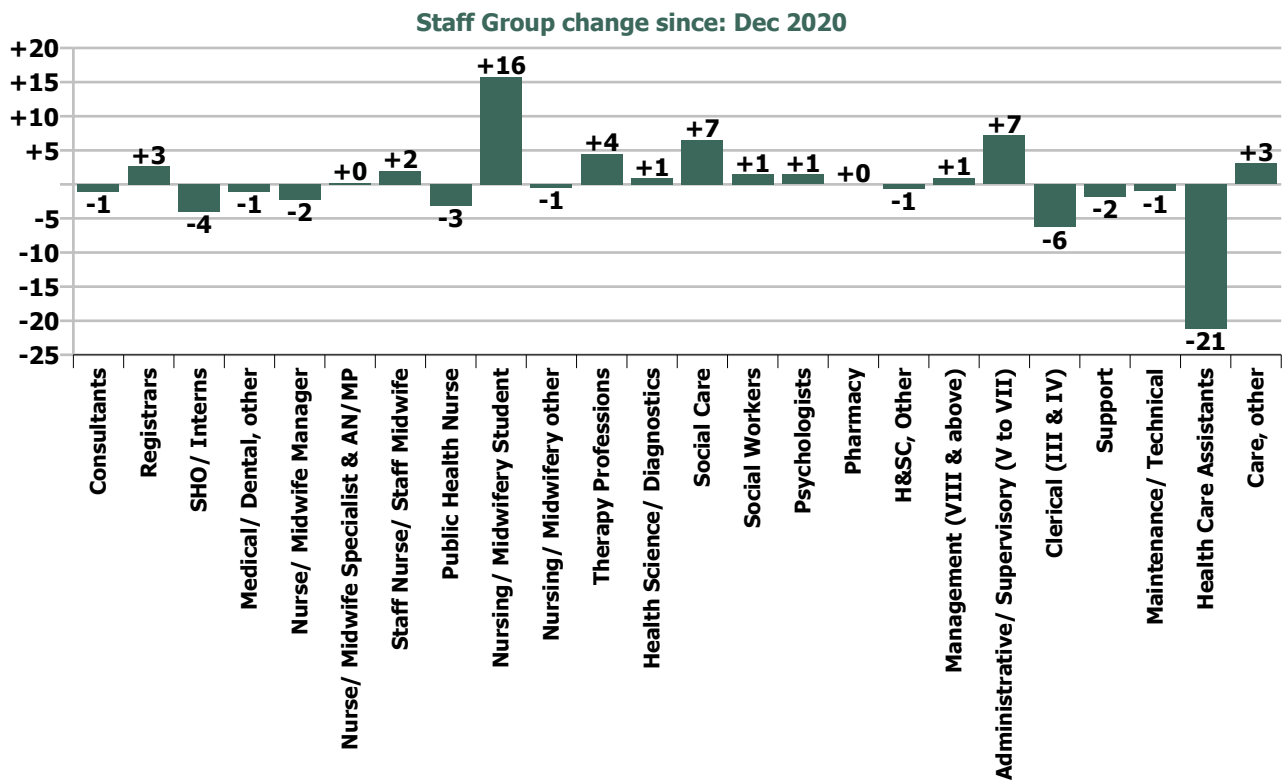
Jan 2021 (Dec 2018 figure: 908)	WTE Dec 2015	WTE Dec 2016	WTE Dec 2017	WTE Dec 2018	WTE Dec 2019	WTE Dec 2020	WTE Jan 2021
Older People	852	865	878	908	870	914	911
Clinical Nurse/ Midwife Manager	21.8%	20.2%	23.7%	20.6%	19.1%	20.1%	19.7%
Director Nursing/Midwifery, Assistant	3.4%	4.3%	4.1%	2.8%	3.6%	3.7%	4.0%
Director of Nursing/Midwifery	1.3%	1.0%	1.0%	1.3%	1.6%	1.2%	0.9%
Nurse/ Midwife Manager	26.5%	25.5%	28.8%	24.8%	24.3%	25.1%	24.7%
Advanced Nurse/ Midwife Practitioner	0.3%	0.3%	0.3%	0.3%	0.3%	0.3%	0.3%
Clinical Nurse/ Midwife Specialist	1.3%	0.7%	0.7%	0.9%	1.3%	1.5%	1.5%
Nurse/ Midwife Specialist & AN/MP	1.7%	1.0%	1.0%	1.2%	1.5%	1.8%	1.8%
Staff Nurse [Psychiatric]	0.7%	0.7%	0.7%	0.6%	0.6%	0.5%	0.5%
Staff Nurses [General/ Children's]	70.8%	72.4%	69.0%	72.9%	73.1%	72.3%	72.7%
Staff Nurse/ Staff Midwife	71.5%	73.1%	69.7%	73.6%	73.7%	72.8%	73.2%
Public Health Nurse		0.1%	0.1%	0.1%	0.1%		
Nursing Education/Clinical	0.3%	0.3%	0.3%	0.3%	0.3%	0.3%	0.3%
Nursing/ Midwifery other	0.3%	0.3%	0.3%	0.3%	0.3%	0.3%	0.3%
Nursing & Midwifery	34.9%	34.8%	33.0%	34.7%	36.2%	35.4%	35.4%
Dietitians	6.1%	8.1%	8.4%	8.9%	7.5%	9.8%	10.6%
Occupational Therapists	21.4%	24.9%	25.0%	22.7%	22.9%	24.3%	24.7%
Physiotherapists	36.7%	30.7%	34.6%	30.9%	31.1%	33.0%	32.4%
Speech & Language Therapists	5.9%	4.9%	4.4%	4.1%	5.5%	3.2%	3.2%
Therapy Professions	70.0%	68.6%	72.4%	66.6%	67.0%	70.4%	71.0%
Radiographers	3.1%	2.9%	2.5%	2.4%	1.8%	1.0%	1.0%
Health Science/ Diagnostics	3.1%	2.9%	2.5%	2.4%	1.8%	1.0%	1.0%
Social Care	1.4%	1.4%	1.2%	1.2%	1.2%	1.0%	1.0%
Social Workers	21.2%	22.5%	20.0%	26.1%	26.1%	23.6%	23.1%
Pharmacy	4.2%	4.1%	3.5%	3.3%	3.4%	3.5%	3.4%
H&SC, Other		0.5%	0.5%	0.4%	0.4%	0.5%	0.5%
Health & Social Care Professionals	7.7%	7.9%	9.1%	9.3%	9.7%	11.2%	11.2%
Executive Management	1.8%	1.7%	4.4%	4.1%	4.6%	5.2%	5.2%
Senior Management (VIII & GM)	5.5%	7.0%	6.1%	8.1%	9.4%	6.8%	5.5%
Management (VIII & above)	7.3%	8.7%	10.5%	12.2%	14.0%	12.0%	10.8%
Administrative/ Supervisory (V to VII)	28.2%	27.1%	27.4%	27.6%	23.4%	28.3%	29.8%
Clerical (III & IV)	64.5%	64.2%	62.1%	60.2%	62.6%	59.8%	59.4%
Management & Administrative	6.4%	6.6%	7.5%	8.1%	8.5%	8.0%	8.0%
Support	98.1%	98.1%	98.1%	98.1%	98.0%	98.1%	98.0%
Maintenance/ Technical	1.9%	1.9%	1.9%	1.9%	2.0%	1.9%	2.0%
General Support	15.1%	14.3%	14.1%	13.6%	14.2%	13.4%	13.4%
HCA, Nurse's Aide, etc.	98.5%	98.5%	98.5%	98.5%	97.7%	96.6%	96.6%
Health & Social Care Assistants	0.7%	0.7%	0.7%	0.3%		1.4%	1.5%
Health Care Assistants	99.2%	99.2%	99.2%	98.8%	97.7%	98.0%	98.0%
Care, other	0.8%	0.8%	0.8%	1.2%	2.3%	2.0%	2.0%
Patient & Client Care	33.7%	34.1%	33.8%	32.3%	33.7%	30.0%	30.0%
Total	100 %	100 %	100 %	100 %	100 %	100 %	100 %

Summary Staff Movement: January 2021

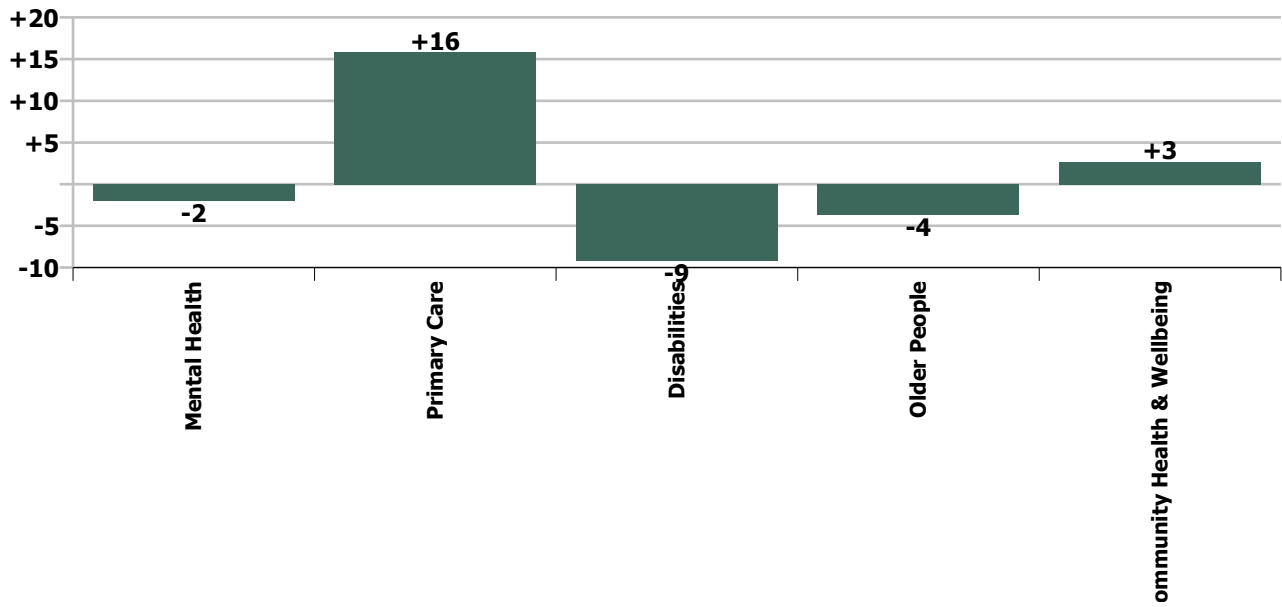
Month-on-month Summary																												
WTE change since Dec 20	% change since Dec 20	overall	Consultants	Registrars	SHO/ Interns	Medical/ Dental, other	Medical & Dental	Nurse/ Midwife Manager	Nurse/ Midwife Specialist & AN/MP	Staff Nurse/ Staff Midwife	Public Health Nurse	Nursing/ Midwifery Student	Nursing/ Midwifery other	Nursing & Midwifery	Therapy Professions	Health Science/ Diagnostics	Social Care	Social Workers	Psychologists	Pharmacy	H&SC, Other	Health & Social Care Professionals	Management (VIII & above)	Administrative/ Supervisory (V to VII)	Clerical (III & IV)	Management & Administrative	General Support	Patient & Client Care
Overall	+0.1%	+4	-1.1	+2.7	-4.1	-1.1	-3.7	-2.3	+0.3	+2.0	-3.1	+15.8	-0.5	+12.1	+4.5	+0.9	+6.5	+1.5	+1.5	+0.0	-0.6	+14.2	+1.0	+7.2	-6.3	+1.9	-2.9	-18.1
Community Health & Wellbeing	+32.9%	+3													0.0							0.0	0.0	+2.7	-0.1	+2.7		
Mental Health	-0.1%	-2	-0.3	+3.6	-6.1		-2.8	-1.4	+0.3	+0.8		+7.6	-0.6	+6.7	-1.1		-0.0	+0.7	-0.4	+0.1	+0.1	-0.7	0.0	-0.8	-2.6	-3.4	-1.8	+0.0
Primary Care	+1.1%	+16	-0.5	-1.9	+3.9	-1.1	+0.5	+2.1	-0.0	+2.7	-3.1	0.0	-0.0	+1.6	-3.8	-0.1	+0.0	+0.5	-0.0	-0.1	-0.7	-4.2	+1.9	+0.8	+5.7	+8.3	+0.3	+9.3
Disabilities	-0.3%	-9	0.0	+0.3	-0.5	0.0	-0.2	-2.0	+0.2	-3.9		+8.2	+0.2	+2.7	+7.5	+1.0	+6.6	+0.3	+1.9	0.0	-0.0	+17.3	+0.2	+3.9	-8.2	-4.1	-0.5	-24.2
Older People	-0.4%	-4	-0.4	+0.7	-1.4	0.0	-1.1	-0.9	-0.2	+2.3			0.0	+1.2	+1.8	0.0	0.0	0.0		0.0	0.0	+1.8	-1.0	+0.7	-1.1	-1.4	-0.9	-3.3
Social Care	-0.3%	-13	-0.4	+0.9	-1.9	0.0	-1.3	-2.9	+0.0	-1.6		+8.2	+0.2	+3.9	+9.3	+1.0	+6.6	+0.3	+1.9	0.0	-0.0	+19.1	-0.9	+4.6	-9.3	-5.6	-1.4	-27.5
Change	+3.6	+0.1%	-1.8%	+2.9%	-5.7%	-1.9%	-1.3%	-0.5%	+0.3%	+0.2%	-1.7%	+26.4%	-2.2%	+0.6%	+0.8%	+2.6%	+0.9%	+1.1%	+0.8%	+0.0%	-0.9%	+0.8%	+1.2%	+3.0%	-1.2%	+0.2%	-0.7%	-1.1%

Year-on-year Summary																												
WTE change since Jan 20	% change since Jan 20	overall	Consultants	Registrars	SHO/ Interns	Medical/ Dental, other	Medical & Dental	Nurse/ Midwife Manager	Nurse/ Midwife Specialist & AN/MP	Staff Nurse/ Staff Midwife	Public Health Nurse	Nursing/ Midwifery Student	Nursing/ Midwifery other	Nursing & Midwifery	Therapy Professions	Health Science/ Diagnostics	Social Care	Social Workers	Psychologists	Pharmacy	H&SC, Other	Health & Social Care Professionals	Management (VIII & above)	Administrative/ Supervisory (V to VII)	Clerical (III & IV)	Management & Administrative	General Support	Patient & Client Care
Overall	+5.8%	+380	-4.9	-2.5	+4.1	-2.1	-5.4	+16.8	+15.2	+40.4	+7.1	+9.8	+2.6	+91.9	+38.9	-0.6	+52.6	+14.2	+18.8	+5.7	-0.5	+129.0	+5.1	+35.1	+58.6	+98.8	-48.9	+114.1
Community Health & Wellbeing	+32.9%	+3													0.0							0.0	+0.0	+2.9	-0.1	+2.9		
Mental Health	-0.1%	-2	-4.2	+1.4	-0.7		-3.5	+2.6	+9.0	+24.7		-4.8	+0.6	+32.2	+1.5		+0.0	+0.6	+7.0	+2.3	+0.1	+11.5	+0.0	-0.7	+9.3	+8.6	+0.6	+4.0
Primary Care	+1.1%	+16	-0.5	-1.9	+5.1	-2.1	+0.5	+8.7	+1.9	+6.4	+7.5	+5.0	+1.0	+30.5	+12.5	-0.6	-0.6	+5.9	-0.9	+2.6	-1.6	+17.4	+3.2	+11.9	+50.8	+65.8	-0.6	+78.2
Disabilities	+2.6%	+81.7	-0.0	-2.0	+0.5	0.0	-1.5	+1.1	+3.3	-2.3		+9.6	+1.0	+12.7	+8.7	0.0	+53.5	+5.4	+12.7	0.0	+0.7	+81.0	+3.0	+15.3	-5.6	+12.8	-50.1	+26.9
Older People	+5.8%	+49.6	-0.1	0.0	-0.8	0.0	-0.9	+4.4	+1.0	+11.6	-0.4		0.0	+16.6	+16.1	0.0	-0.2	+2.4		+0.7	+0.2	+19.1	-1.2	+5.6	+4.2	+8.6	+1.2	+5.0
Social Care	-0.3%	-13	-0.2	-2.0	-0.2	0.0	-2.4	+5.5	+4.3	+9.3	-0.4	+9.6	+1.0	+29.3	+24.8	0.0	+53.2	+7.7	+12.7	+0.7	+0.9	+100.1	+1.9	+21.0	-1.4	+21.4	-48.9	+31.9
Change	+379.6	+5.8%	-7.1%	-2.6%	+6.6%	-3.7%	-1.9%	+3.8%	+17.5%	+3.4%	+4.1%	+14.9%	+13.2%	+4.7%	+7.8%	-1.8%	+7.5%	+11.3%	+11.4%	+23.9%	-0.8%	+8.0%	+6.3%	+16.3%	+13.3%	+13.4%	-10.1%	+7.7%

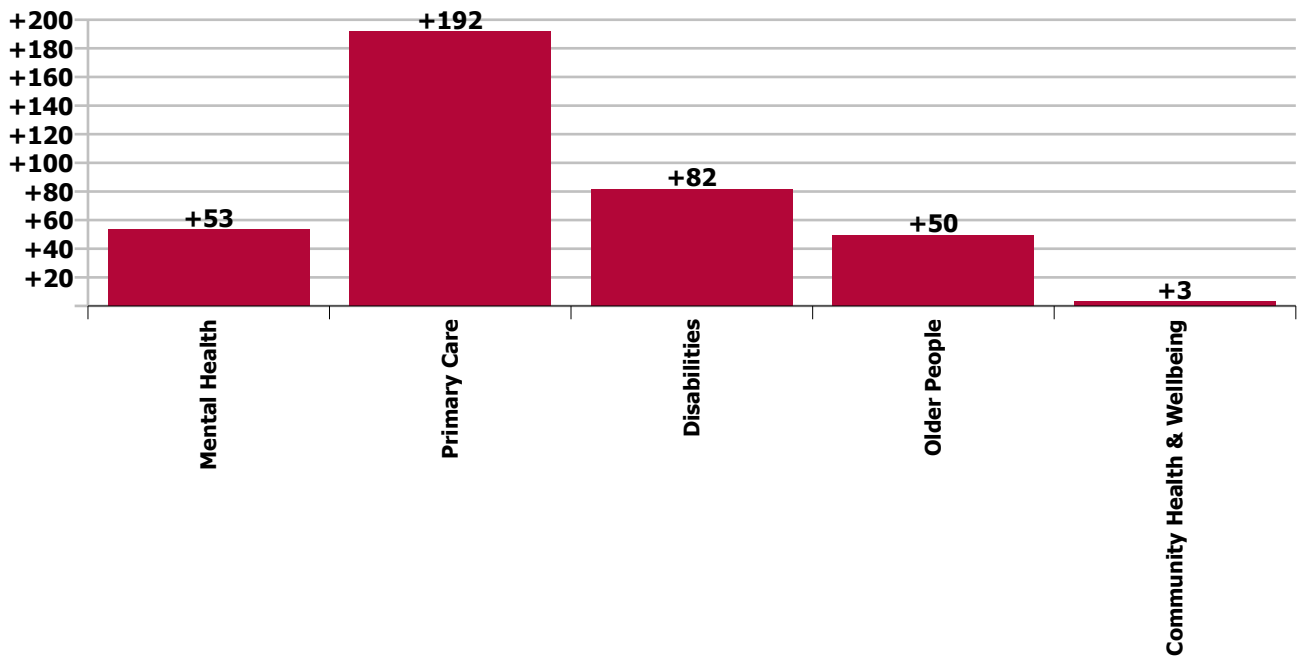




Care Group change since: Dec 2020



Care Group change since: Jan 2020



Longitudinal Employment Levels by Grade Group - Oct 2013 to Jan 2021

Jan 2021 (Dec 2015 figure: 6,089)	WTE Jan 2021	WTE change since Dec 15	WTE change since Dec 16	WTE change since Dec 17	WTE change since Dec 18	WTE change since Dec 19	WTE change since Dec 20	% change since Dec 15	% change since Dec 16	% change since Dec 17	% change since Dec 18	% change since Dec 19	% change since Dec 20
Overall	6,953	+865	+667	+515	+320	+371	+4	+14.2%	+10.6%	+8.0%	+4.8%	+5.6%	+0.1%
Consultant Medicine	2	-3	-4	-5	+0	+0	-0	-55.2%	-67.6%	-71.8%	+21.2%	+28.7%	-14.9%
Consultant Paediatrics	1	-0	-0					-18.2%	-18.2%				
Consultant Psychiatry	60	-1	+1	-1	-4	-6	-1	-0.9%	+1.7%	-1.9%	-6.1%	-8.6%	-1.3%
Consultant Surgery		-1	-1	-0	-0			-100.0%	-100.0%	-100.0%	-100.0%	-100.0%	-100.0%
Consultants	63	-4	-4	-7	-4	-5	-1	-6.6%	-6.5%	-9.3%	-5.5%	-7.5%	-1.8%
Registrar	72	+7	+13	+8	-3	-7	+1	+11.1%	+21.3%	+13.0%	-3.5%	-8.5%	+2.1%
Senior Registrar	21	+9	+7	+10	+6	+5	+1	+72.3%	+48.7%	+92.3%	+37.1%	+32.0%	+5.9%
Specialist Registrar	1	-2	-3	-4		-3		-66.7%	-75.0%	-80.0%		-75.0%	
Registrars	94	+14	+16	+14	+3	-5	+3	+17.6%	+21.3%	+18.2%	+3.4%	-4.6%	+2.9%
Interns		-4	-5	-4	-2	-2		-100.0%	-100.0%	-100.0%	-100.0%	-100.0%	-100.0%
Senior House Officer	67	+14	+13	+7	+5	+3	-4	+27.5%	+24.2%	+12.5%	+8.1%	+4.6%	-5.7%
SHO/ Interns	67	+10	+8	+3	+3	+1	-4	+18.5%	+13.7%	+5.4%	+4.7%	+1.4%	-5.7%
Dentists	32	+1	-1	+1	-1	+0	-1	+2.1%	-2.3%	+4.9%	-1.6%	+0.4%	-2.8%
Other Medical	23	-18	-17	-15	-14	-2	-0	-44.0%	-41.8%	-38.9%	-38.1%	-7.3%	-0.8%
Medical/ Dental, other	55	-18	-18	-13	-15	-2	-1	-24.4%	-24.2%	-19.6%	-21.3%	-3.0%	-1.9%
Medical & Dental	279	+2	+3	-2	-12	-10	-4	+0.8%	+0.9%	-0.8%	-4.3%	-3.6%	-1.3%
Clinical Nurse/ Midwife Manager	365	-14	-5	-13	-7	+16	-3	-3.6%	-1.4%	-3.5%	-1.9%	+4.6%	-0.7%
Director Nursing/Midwifery, Assistant	68	+10	+8	+8	+13	+7	-1	+16.9%	+13.7%	+13.6%	+22.7%	+10.9%	-1.2%
Director of Nursing/Midwifery	22	-5	-4	-3	+0	-3	+1	-17.8%	-15.4%	-12.2%	+0.8%	-11.3%	+5.0%
Nurse/ Midwife Manager	455	-9	-1	-8	+6	+20	-2	-1.9%	-0.2%	-1.8%	+1.3%	+4.6%	-0.5%
Advanced Nurse/ Midwife Practitioner	9	+8	+7	+6	+2	+2	-0	+777.0%	+342.9%	+192.3%	+26.6%	+28.4%	-2.1%
Clinical Nurse/ Midwife Specialist	93	+44	+36	+17	+17	+15	+0	+91.5%	+64.6%	+23.0%	+23.2%	+19.1%	+0.5%
Nurse/ Midwife Specialist & AN/MP	102	+52	+43	+23	+19	+17	+0	+105.3%	+74.0%	+29.5%	+23.4%	+19.8%	+0.3%
Graduate Nursing/ Midwifery		-1						-100.0%	-100.0%	-100.0%	-100.0%	-100.0%	-100.0%
Staff Midwives	1	+1	+1	+1	+1	+1		-100.0%	-100.0%	-100.0%	-100.0%	-100.0%	
Staff Nurse [Intellectual Disability]	422	-16	-8	-14	-4	+2	-1	-3.7%	-1.8%	-3.1%	-0.9%	+0.4%	-0.2%
Staff Nurse [Psychiatric]	384	-12	+3	+15	+1	+13	-1	-3.1%	+0.7%	+4.0%	+0.2%	+3.6%	-0.4%
Staff Nurses [General/ Children's]	418	+1	+8	+19	-13	+14	+4	+0.3%	+1.9%	+4.8%	-3.0%	+3.4%	+1.0%
Staff Nurse/ Staff Midwife	1,225	-27	+4	+21	-15	+30	+2	-2.2%	+0.3%	+1.8%	-1.2%	+2.5%	+0.2%
Public Health Nurse	179	-3	+2	+6	+6	+3	-3	-1.4%	+1.1%	+3.2%	+3.2%	+1.9%	-1.7%
Pre-registration Nurse/ Midwife Intern	38	+28	+33	+36	+17	+20	+25	+294.7%	+733.3%	+3025.0%	+82.5%	+109.8%	+195.0%
Pre-registration Nurse Intern (COVID-19)	7	+7	+7	+7	+7	+7	-9	-100.0%	-100.0%	-100.0%	-100.0%	-100.0%	-56.2%
Post-registration Nurse/ Midwife Student	31	+5	+12	+3	+9	+5		+19.2%	+63.2%	+10.7%	+40.9%	+19.2%	
Nursing/ Midwifery awaiting registration					-3	-11		-100.0%	-100.0%	-100.0%	-100.0%	-100.0%	-100.0%

Jan 2021 (Dec 2015 figure: 6,089)	WTE Jan 2021	WTE change since Dec 15	WTE change since Dec 16	WTE change since Dec 17	WTE change since Dec 18	WTE change since Dec 19	WTE change since Dec 20	% change since Dec 15	% change since Dec 16	% change since Dec 17	% change since Dec 18	% change since Dec 19	% change since Dec 20
Overall	6,953	+865	+667	+515	+320	+371	+4	+14.2%	+10.6%	+8.0%	+4.8%	+5.6%	+0.1%
Nursing/ Midwifery Student	76	+40	+52	+46	+30	+21	+16	+112.7%	+221.4%	+158.6%	+66.7%	+38.1%	+26.4%
Nursing Education/Clinical	22	+5	+4	+0	-0	+3	-1	+29.1%	+18.8%	+2.0%	-0.6%	+13.6%	-2.2%
Other Nursing/ Midwifery		-1	-1	-0	-1			-100.0%	-100.0%	-100.0%	-100.0%	-100.0%	-100.0%
Nursing/ Midwifery other	22	+4	+3	-0	-1	+3	-1	+22.1%	+12.8%	-0.1%	-4.8%	+13.6%	-2.2%
Nursing & Midwifery	2,059	+58	+102	+88	+45	+93	+12	+2.9%	+5.2%	+4.5%	+2.2%	+4.7%	+0.6%
Dietitians	26	+9	+4	+4	+2	+5	+0	+53.0%	+15.9%	+15.9%	+10.4%	+24.5%	+0.1%
Occupational Therapists	204	+41	+37	+21	+24	+22	+0	+25.1%	+22.4%	+11.8%	+13.4%	+11.8%	+0.2%
Orthoptists	6	+4	+4	+5	+2	+1	+0	+314.9%	+314.9%	+383.5%	+57.7%	+12.3%	+3.0%
Physiotherapists	160	+27	+28	+23	+23	+17	+3	+20.3%	+20.7%	+17.0%	+17.0%	+11.7%	+1.9%
Podiatrists & Chiropodists	2	+2	+2	+1	+1	+1	-0	-100.0%	-100.0%	+63.8%	+54.0%	+54.0%	-3.7%
Speech & Language Therapists	136	+27	+8	-0	-4	+3	+1	+25.1%	+6.3%	-0.2%	-2.6%	+2.4%	+0.6%
Therapy Professions	534	+110	+82	+53	+49	+48	+4	+26.1%	+18.2%	+11.1%	+10.1%	+9.9%	+0.8%
Audiology	14	+1	+2	-3	-3	-1	-0	+4.6%	+17.7%	-19.4%	-18.4%	-5.3%	-0.8%
Clinical Engineering	15	-3	-1	-1		-1	+1	-17.1%	-8.0%	-6.3%		-6.3%	+7.1%
Medical Laboratory	4	+1	+1	+1				+33.3%	+33.3%	+33.3%			
Radiographers	1	-1	-1	-1	-1	-0		-50.0%	-50.0%	-50.0%	-50.0%	-31.0%	
Health Science/ Diagnostics	34	-2	+1	-4	-4	-2	+1	-6.7%	+2.6%	-11.5%	-11.0%	-6.2%	+2.6%
Social Care	752	+268	+166	+144	+98	+57	+7	+55.4%	+28.3%	+23.6%	+15.0%	+8.2%	+0.9%
Social Workers	140	+13	+18	+10	+10	+15	+1	+10.0%	+14.9%	+7.3%	+7.6%	+11.7%	+1.1%
Psychologists	184	+32	+17	+18	+14	+20	+1	+21.3%	+10.5%	+10.8%	+8.4%	+12.3%	+0.8%
Pharmacy	29	-2	-6	-5	-1	+5	+0	-5.7%	-17.8%	-14.1%	-4.0%	+18.8%	+0.0%
Counsellor Therapists	42	+3	+4	+2	+5	-0	+0	+8.9%	+12.1%	+5.4%	+12.2%	-0.6%	+0.2%
Dental Hygienists	6	-0	-0	-0	-0	-0	-0	-0.7%	-0.7%	-0.8%	-4.3%	-5.9%	-0.3%
Other Health & Social Care	19	-6	-7	-5	-3	-1	-0	-25.0%	-26.7%	-21.7%	-11.7%	-5.0%	-2.3%
Play Therapists/ Specialists	1	-1	-0	-1	-1	-1	-0	-42.4%	-24.2%	-42.4%	-42.4%	-36.8%	-13.8%
H&SC, Other	68	-4	-3	-4	+1	-2	-1	-5.6%	-4.2%	-5.9%	+1.0%	-3.5%	-0.9%
Health & Social Care Professionals	1,742	+415	+276	+211	+166	+139	+14	+31.3%	+18.8%	+13.8%	+10.6%	+8.7%	+0.8%
Executive Management	12	+5	+7	+5	+3	+1	+0	+67.9%	+135.0%	+69.8%	+30.6%	+11.7%	+0.2%
Senior Management (VIII & GM)	74	+25	+25	+15	+11	+5	+1	+51.2%	+49.5%	+26.1%	+17.9%	+7.7%	+1.3%
Management (VIII & above)	86	+30	+31	+20	+14	+7	+1	+53.2%	+57.3%	+30.7%	+19.5%	+8.2%	+1.2%
Middle Management (V-VII)	241	+89	+74	+72	+39	+41	+7	+58.9%	+44.6%	+42.3%	+19.3%	+20.8%	+3.1%
Other Administrative	10	+0	+0	-2	-3	+1	+0	+0.4%	+5.2%	-13.8%	-24.1%	+11.3%	+0.0%
Administrative/ Supervisory (V to VII)	250	+89	+75	+70	+36	+42	+7	+55.5%	+42.6%	+38.9%	+16.7%	+20.4%	+3.0%
Clerical (III & IV)	500	+94	+94	+66	+40	+49	-6	+23.1%	+23.3%	+15.2%	+8.8%	+10.8%	-1.2%
Management & Administrative	837	+213	+201	+156	+90	+98	+2	+34.2%	+31.5%	+23.0%	+12.1%	+13.3%	+0.2%

Jan 2021 (Dec 2015 figure: 6,089)	WTE Jan 2021	WTE change since Dec 15	WTE change since Dec 16	WTE change since Dec 17	WTE change since Dec 18	WTE change since Dec 19	WTE change since Dec 20	% change since Dec 15	% change since Dec 16	% change since Dec 17	% change since Dec 18	% change since Dec 19	% change since Dec 20
Overall	6,953	+865	+667	+515	+320	+371	+4	+14.2%	+10.6%	+8.0%	+4.8%	+5.6%	+0.1%
Catering	59	-10	-9	-8	-5	-2	+0	-14.3%	-13.1%	-11.3%	-7.4%	-3.1%	+0.6%
Household Services	223	-35	-15	-2	-5	+3	-2	-13.6%	-6.2%	-0.7%	-2.1%	+1.3%	-0.8%
Other Support	45	-89	-82	-86	-74	-50	+0	-66.5%	-64.7%	-65.7%	-62.3%	-52.5%	+0.3%
Portering	74	-12	-11	-6	-1	-2	-1	-14.1%	-13.5%	-8.0%	-1.1%	-2.7%	-0.8%
Support	401	-146	-118	-102	-85	-51	-2	-26.7%	-22.7%	-20.2%	-17.4%	-11.3%	-0.5%
Maintenance	32	-7	-2	-4	-2	-1	-1	-18.8%	-6.2%	-10.9%	-6.3%	-2.8%	-3.0%
Technical Services	3	+2	+2	+2	+1	+1		+200.0%	+200.0%	+200.0%	+50.0%	+50.0%	
Maintenance/ Technical	35	-5	-0	-2	-1	+0	-1	-13.4%	-0.4%	-5.3%	-3.2%	+0.2%	-2.7%
General Support	436	-152	-118	-104	-86	-51	-3	-25.8%	-21.3%	-19.2%	-16.4%	-10.4%	-0.7%
HCA, Nurse's Aide, etc.	1,339	+273	+158	+111	+89	+74	-21	+25.6%	+13.3%	+9.0%	+7.1%	+5.8%	-1.6%
Health & Social Care Assistants	25	+15	+15	+14	+3	+13	-0	+149.4%	+146.9%	+122.6%	+16.2%	+103.6%	-0.2%
Health Care Assistants	1,364	+288	+172	+125	+92	+86	-21	+26.8%	+14.5%	+10.1%	+7.3%	+6.8%	-1.5%
Care, other	236	+40	+31	+42	+23	+15	+3	+20.1%	+15.0%	+21.3%	+11.0%	+7.0%	+1.3%
Patient & Client Care	1,600	+328	+203	+166	+116	+102	-18	+25.8%	+14.6%	+11.6%	+7.8%	+6.8%	-1.1%

Source: Health Service Personnel Census

Longitudinal Employment Levels by Care Group - Oct 2013 to Jan 2021

Community Health & Wellbeing

Jan 2021 (figure:)	WTE Jan 2021	WTE change since	WTE change since	WTE change since	WTE change since	WTE change since	WTE change since Dec 20	% change since	% change since	% change since	% change since	% change since	% change since Dec 20
Overall	11	+11	+11	+11	+11	+11	+3	-100.0%	-100.0%	-100.0%	-100.0%	-100.0%	+32.9%
Health & Social Care Professionals	1	+1	+1	+1	+1	+1		-1.0%	-1.0%	-1.0%	-1.0%	-1.0%	+0.0%
Therapy Professions	1	+1	+1	+1	+1	+1		-1.0%	-1.0%	-1.0%	-1.0%	-1.0%	+0.0%
Management & Administrative	10	+10	+10	+10	+10	+10	+3	-1.0%	-1.0%	-1.0%	-1.0%	-1.0%	+0.4%
Management (VIII & above)	1	+1	+1	+1	+1	+1		-1.0%	-1.0%	-1.0%	-1.0%	-1.0%	+0.0%
Administrative/ Supervisory (V to VII)	7	+7	+7	+7	+7	+7	+3	-1.0%	-1.0%	-1.0%	-1.0%	-1.0%	+0.6%
Clerical (III & IV)	2	+2	+2	+2	+2	+2	-0	-1.0%	-1.0%	-1.0%	-1.0%	-1.0%	-0.0%

Source: Health Service Personnel Census

Mental Health

Jan 2021 (Dec 2015 figure: 1,223)	WTE Jan 2021	WTE change since Dec 15	WTE change since Dec 16	WTE change since Dec 17	WTE change since Dec 18	WTE change since Dec 19	WTE change since Dec 20	% change since Dec 15	% change since Dec 16	% change since Dec 17	% change since Dec 18	% change since Dec 19	% change since Dec 20
Overall	1,329	+106	+112	+108	+28	+57	-2	+8.7%	+9.2%	+8.9%	+2.1%	+4.5%	-0.1%
Medical & Dental	129	+10	+5	+5	-7	-5	-3	+0.1%	+0.0%	+0.0%	-0.1%	-0.0%	-0.0%
Consultants	46	-3	-1	+1	-5	-4	-0	-0.1%	-0.0%	+0.0%	-0.1%	-0.1%	-0.0%
Registrars	36	+5	+2	+10	+6	+5	+4	+0.1%	+0.1%	+0.4%	+0.2%	+0.1%	+0.1%
SHO/ Interns	47	+8	+4	-6	-8	-6	-6	+0.2%	+0.1%	-0.1%	-0.1%	-0.1%	-0.1%
Medical/ Dental, other			-1					-1.0%	-1.0%	-1.0%	-1.0%	-1.0%	-1.0%
Nursing & Midwifery	620	+35	+48	+55	+25	+39	+7	+0.1%	+0.1%	+0.1%	+0.0%	+0.1%	+0.0%
Nurse/ Midwife Manager	136	-17	-11	-3	-1	+4	-1	-0.1%	-0.1%	-0.0%	-0.0%	+0.0%	-0.0%
Nurse/ Midwife Specialist & AN/MP	76	+44	+34	+17	+11	+11	+0	+1.4%	+0.8%	+0.3%	+0.2%	+0.2%	+0.0%
Staff Nurse/ Staff Midwife	372	-8	+5	+22	+8	+21	+1	-0.0%	+0.0%	+0.1%	+0.0%	+0.1%	+0.0%
Public Health Nurse			-1	-1				-1.0%	-1.0%	-1.0%	-1.0%	-1.0%	-1.0%
Nursing/ Midwifery Student	23	+16	+20	+22	+8	+2	+8	+2.1%	+5.7%	+18.4%	+0.6%	+0.1%	+0.5%
Nursing/ Midwifery other	12	+1	+0	-2	-1	+1	-1	+0.1%	+0.0%	-0.1%	-0.1%	+0.1%	-0.0%
Health & Social Care Professionals	180	+22	+20	+14	-1	+13	-1	+0.1%	+0.1%	+0.1%	-0.0%	+0.1%	-0.0%
Therapy Professions	60	+6	+9	+7	-2	+5	-1	+0.1%	+0.2%	+0.1%	-0.0%	+0.1%	-0.0%
Social Care	1	-0	-0	+0	-0	+0	-0	-0.0%	-0.0%	+0.0%	-0.0%	+0.1%	-0.0%
Social Workers	43	-1	+5	-4	-4	+0	+1	-0.0%	+0.1%	-0.1%	-0.1%	+0.0%	+0.0%
Psychologists	53	+14	+6	+7	+1	+7	-0	+0.4%	+0.1%	+0.2%	+0.0%	+0.2%	-0.0%
Pharmacy	9	+2	+0	+0	+1	+1	+0	+0.3%	+0.0%	+0.0%	+0.1%	+0.1%	+0.0%
H&SC, Other	14	+1	+1	+3	+1	-0	+0	+0.0%	+0.1%	+0.3%	+0.1%	-0.0%	+0.0%
Management & Administrative	145	+34	+31	+19	+7	+8	-3	+0.3%	+0.3%	+0.2%	+0.1%	+0.1%	-0.0%
Management (VIII & above)	5	+3	+3	+3	+3	+0		+1.5%	+1.5%	+1.5%	+1.5%	+0.0%	+0.0%
Administrative/ Supervisory (V to VII)	28	+10	+8	+1	-0	+0	-1	+0.6%	+0.4%	+0.1%	-0.0%	+0.0%	-0.0%
Clerical (III & IV)	112	+21	+21	+14	+4	+8	-3	+0.2%	+0.2%	+0.1%	+0.0%	+0.1%	-0.0%
General Support	113	-25	-23	-14	-14	-1	-2	-0.2%	-0.2%	-0.1%	-0.1%	-0.0%	-0.0%
Support	102	-24	-23	-14	-14	-1	-2	-0.2%	-0.2%	-0.1%	-0.1%	-0.0%	-0.0%
Maintenance/ Technical	11	-1	+0			+0		-0.1%	+0.0%	+0.0%	+0.0%	+0.0%	+0.0%
Patient & Client Care	142	+30	+31	+30	+18	+3	+0	+0.3%	+0.3%	+0.3%	+0.1%	+0.0%	+0.0%
Health Care Assistants	129	+20	+20	+19	+11	+3		+0.2%	+0.2%	+0.2%	+0.1%	+0.0%	+0.0%
Care, other	13	+11	+12	+11	+7	-0	+0	+5.3%	+11.5%	+5.3%	+1.2%	-0.0%	+0.0%

Source: Health Service Personnel Census

Primary Care

Jan 2021 (Dec 2015 figure: 1,207)	WTE Jan 2021	WTE change since Dec 15	WTE change since Dec 16	WTE change since Dec 17	WTE change since Dec 18	WTE change since Dec 19	WTE change since Dec 20	% change since Dec 15	% change since Dec 16	% change since Dec 17	% change since Dec 18	% change since Dec 19	% change since Dec 20
Overall	1,428	+221	+266	+189	+128	+181	+16	+18.3%	+22.9%	+15.3%	+9.8%	+14.5%	+1.1%
Medical & Dental	111	-8	-3	-3	-7	+0	+0	-0.1%	-0.0%	-0.0%	-0.1%	+0.0%	+0.0%
Consultants	4	-0	-0	-3	+1	-0	-1	-0.0%	-0.0%	-0.4%	+0.1%	-0.1%	-0.1%
Registrars	50	+11	+15	+8	-1	-5	-2	+0.3%	+0.4%	+0.2%	-0.0%	-0.1%	-0.0%
SHO/ Interns	9	-2	-1	+6	+9	+8	+4	-0.2%	-0.1%	+2.0%	-1.0%	+7.9%	+0.8%
Medical/ Dental, other	48	-17	-16	-14	-15	-2	-1	-0.3%	-0.3%	-0.2%	-0.2%	-0.0%	-0.0%
Nursing & Midwifery	372	+26	+42	+13	+17	+27	+2	+0.1%	+0.1%	+0.0%	+0.0%	+0.1%	+0.0%
Nurse/ Midwife Manager	45	+9	+9	+6	+7	+8	+2	+0.3%	+0.3%	+0.2%	+0.2%	+0.2%	+0.0%
Nurse/ Midwife Specialist & AN/MP	8	+6	+4	-0	+3	+2	-0	+3.0%	+0.9%	-0.0%	+0.5%	+0.3%	-0.0%
Staff Nurse/ Staff Midwife	108	+9	+15	-2	-7	+8	+3	+0.1%	+0.2%	-0.0%	-0.1%	+0.1%	+0.0%
Public Health Nurse	179	-3	+3	+7	+6	+4	-3	-0.0%	+0.0%	+0.0%	+0.0%	+0.0%	-0.0%
Nursing/ Midwifery Student	31	+5	+12	+3	+9	+5		+0.2%	+0.6%	+0.1%	+0.4%	+0.2%	+0.0%
Nursing/ Midwifery other	1	-1	-1	-0	-1	+1	-0	-0.5%	-0.5%	-0.3%	-0.5%	-1.0%	-0.0%
Health & Social Care Professionals	368	+51	+56	+28	+13	+17	-4	+0.2%	+0.2%	+0.1%	+0.0%	+0.0%	-0.0%
Therapy Professions	207	+34	+33	+12	+14	+11	-4	+0.2%	+0.2%	+0.1%	+0.1%	+0.1%	-0.0%
Health Science/ Diagnostics	19	+19	+19	+19	-3	-1	-0	-1.0%	-1.0%	-1.0%	-0.1%	-0.0%	-0.0%
Social Care	4	-2	-1	-1	-0	-1	+0	-0.3%	-0.2%	-0.3%	-0.1%	-0.2%	+0.0%
Social Workers	23	+1	+7	+5	+6	+6	+0	+0.0%	+0.4%	+0.3%	+0.3%	+0.4%	+0.0%
Psychologists	65	+2	+3	+1	+0	-0	-0	+0.0%	+0.1%	+0.0%	+0.0%	-0.0%	-0.0%
Pharmacy	15	-5	-7	-6	-3	+3	-0	-0.2%	-0.3%	-0.3%	-0.2%	+0.2%	-0.0%
H&SC, Other	35	+0	+2	-3	-0	-2	-1	+0.0%	+0.1%	-0.1%	-0.0%	-0.0%	-0.0%
Management & Administrative	346	+89	+100	+81	+49	+58	+8	+0.3%	+0.4%	+0.3%	+0.2%	+0.2%	+0.0%
Management (VIII & above)	30	+8	+12	+5	+3	+2	+2	+0.3%	+0.6%	+0.2%	+0.1%	+0.1%	+0.1%
Administrative/ Supervisory (V to VII)	89	+33	+30	+33	+9	+12	+1	+0.6%	+0.5%	+0.6%	+0.1%	+0.2%	+0.0%
Clerical (III & IV)	226	+49	+58	+43	+37	+44	+6	+0.3%	+0.3%	+0.2%	+0.2%	+0.2%	+0.0%
General Support	34	-21	-18	-17	-14	-1	+0	-0.4%	-0.4%	-0.3%	-0.3%	-0.0%	+0.0%
Support	34	-21	-18	-17	-14	-1	+0	-0.4%	-0.4%	-0.3%	-0.3%	-0.0%	+0.0%
Patient & Client Care	197	+83	+89	+87	+69	+79	+9	+0.7%	+0.8%	+0.8%	+0.5%	+0.7%	+0.0%
Health Care Assistants	81	+76	+76	+73	+58	+68	+8	+14.2%	+14.8%	+9.2%	+2.4%	+5.2%	+0.1%
Care, other	115	+7	+13	+14	+12	+10	+2	+0.1%	+0.1%	+0.1%	+0.1%	+0.1%	+0.0%

Source: Health Service Personnel Census

Disabilities

Jan 2021 (Dec 2015 figure: 2,807)	WTE Jan 2021	WTE change since Dec 15	WTE change since Dec 16	WTE change since Dec 17	WTE change since Dec 18	WTE change since Dec 19	WTE change since Dec 20	% change since Dec 15	% change since Dec 16	% change since Dec 17	% change since Dec 18	% change since Dec 19	% change since Dec 20
Overall	3,276	+469	+233	+175	+151	+82	-9	+16.7%	+7.7%	+5.7%	+4.8%	+2.6%	-0.3%
Medical & Dental	21	+2	+2	-1	+2	-3	-0	+0.1%	+0.1%	-0.0%	+0.1%	-0.1%	-0.0%
Consultants	11	+2	+2	+0	+1	-1	-0	+0.3%	+0.2%	+0.0%	+0.1%	-0.1%	-0.0%
Registrars	2	-1	-1	-3	-1	-4	+0	-0.3%	-0.3%	-0.6%	-0.3%	-0.6%	+0.1%
SHO/ Interns	2	+2	+2	+2	+2	+2	-0	-1.0%	-1.0%	-1.0%	-1.0%	-1.0%	-0.2%
Medical/ Dental, other	6	-1	-0	+0	+0			-0.1%	-0.0%	+0.1%	+0.1%	+0.0%	+0.0%
Nursing & Midwifery	744	-29	-9	-13	-5	+12	+3	-0.0%	-0.0%	-0.0%	-0.0%	+0.0%	+0.0%
Nurse/ Midwife Manager	194	-2	-3	-7	-2	+2	-2	-0.0%	-0.0%	-0.0%	-0.0%	+0.0%	-0.0%
Nurse/ Midwife Specialist & AN/MP	12	+1	+3	+3	+3	+3	+0	+0.1%	+0.3%	+0.4%	+0.4%	+0.4%	+0.0%
Staff Nurse/ Staff Midwife	509	-52	-33	-33	-20	-8	-4	-0.1%	-0.1%	-0.1%	-0.0%	-0.0%	-0.0%
Nursing/ Midwifery Student	21	+19	+20	+21	+13	+13	+8	+9.6%	+20.2%	-1.0%	+1.5%	+1.7%	+0.6%
Nursing/ Midwifery other	8	+4	+3	+2	+1	+1	+0	+1.1%	+0.7%	+0.4%	+0.2%	+0.1%	+0.0%
Health & Social Care Professionals	1,091	+305	+165	+146	+136	+88	+17	+0.4%	+0.2%	+0.2%	+0.1%	+0.1%	+0.0%
Therapy Professions	194	+42	+14	+19	+20	+13	+8	+0.3%	+0.1%	+0.1%	+0.1%	+0.1%	+0.0%
Health Science/ Diagnostics	14	-21	-18	-23		-1	+1	-0.6%	-0.6%	-0.6%	+0.0%	-0.1%	+0.1%
Social Care	746	+270	+167	+145	+98	+57	+7	+0.6%	+0.3%	+0.2%	+0.2%	+0.1%	+0.0%
Social Workers	50	+4	-1	+0	+6	+6	+0	+0.1%	-0.0%	+0.0%	+0.1%	+0.1%	+0.0%
Psychologists	66	+16	+8	+9	+13	+13	+2	+0.3%	+0.1%	+0.2%	+0.2%	+0.3%	+0.0%
Pharmacy	2							+0.0%	+0.0%	+0.0%	+0.0%	+0.0%	+0.0%
H&SC, Other	18	-5	-6	-4	-1	-1	-0	-0.2%	-0.3%	-0.2%	-0.1%	-0.0%	-0.0%
Management & Administrative	264	+61	+45	+39	+25	+13	-4	+0.3%	+0.2%	+0.2%	+0.1%	+0.1%	-0.0%
Management (VIII & above)	42	+14	+13	+10	+8	+4	+0	+0.5%	+0.4%	+0.3%	+0.2%	+0.1%	+0.0%
Administrative/ Supervisory (V to VII)	104	+33	+23	+25	+18	+16	+4	+0.5%	+0.3%	+0.3%	+0.2%	+0.2%	+0.0%
Clerical (III & IV)	118	+14	+8	+4	-1	-7	-8	+0.1%	+0.1%	+0.0%	-0.0%	-0.1%	-0.1%
General Support	167	-99	-74	-70	-56	-50	-1	-0.4%	-0.3%	-0.3%	-0.3%	-0.2%	-0.0%
Support	145	-94	-74	-68	-55	-50	+0	-0.4%	-0.3%	-0.3%	-0.3%	-0.3%	+0.0%
Maintenance/ Technical	22	-5	-0	-2	-1	-0	-1	-0.2%	-0.0%	-0.1%	-0.1%	-0.0%	-0.0%
Patient & Client Care	988	+228	+104	+72	+49	+23	-24	+0.3%	+0.1%	+0.1%	+0.1%	+0.0%	-0.0%
Health Care Assistants	886	+209	+101	+58	+45	+17	-25	+0.3%	+0.1%	+0.1%	+0.1%	+0.0%	-0.0%
Care, other	103	+19	+3	+14	+3	+6	+1	+0.2%	+0.0%	+0.2%	+0.0%	+0.1%	+0.0%

Source: Health Service Personnel Census

Older People

Jan 2021 (Dec 2015 figure: 852)	WTE Jan 2021	WTE change since Dec 15	WTE change since Dec 16	WTE change since Dec 17	WTE change since Dec 18	WTE change since Dec 19	WTE change since Dec 20	% change since Dec 15	% change since Dec 16	% change since Dec 17	% change since Dec 18	% change since Dec 19	% change since Dec 20
Overall	911	+58	+46	+32	+2	+41	-4	+6.9%	+5.3%	+3.7%	+0.3%	+4.7%	-0.4%
Medical & Dental	18	-2	-2	-4	-0	-2	-1	-0.1%	-0.1%	-0.2%	-0.0%	-0.1%	-0.1%
Consultants	2	-4	-5	-5	+0	+0	-0	-0.6%	-0.7%	-0.7%	+0.2%	+0.3%	-0.1%
Registrars	6	-1		-1	-1		+1	-0.1%	+0.0%	-0.2%	-0.1%	+0.0%	+0.1%
SHO/ Interns	9	+2	+3	+2	+0		-3	+0.4%	+0.6%	+0.3%	+0.0%	-0.2%	-0.1%
Medical/ Dental, other	1		+0					+0.0%	+0.0%	+0.0%	+0.0%	+0.0%	+0.0%
Nursing & Midwifery	323	+25	+22	+33	+8	+15	+1	+0.1%	+0.1%	+0.1%	+0.0%	+0.0%	+0.0%
Nurse/ Midwife Manager	80	+1	+3	-4	+2	+5	-1	+0.0%	+0.0%	-0.0%	+0.0%	+0.1%	-0.0%
Nurse/ Midwife Specialist & AN/MP	6	+1	+3	+3	+2	+1	-0	+0.1%	+0.9%	+0.9%	+0.4%	+0.2%	-0.0%
Staff Nurse/ Staff Midwife	236	+24	+17	+34	+5	+9	+2	+0.1%	+0.1%	+0.2%	+0.0%	+0.0%	+0.0%
Public Health Nurse			-0	-0	-0	-0		-1.0%	-1.0%	-1.0%	-1.0%	-1.0%	-1.0%
Nursing/ Midwifery other	1							+0.0%	+0.0%	+0.0%	+0.0%	+0.0%	+0.0%
Health & Social Care Professionals	102	+37	+34	+22	+18	+21	+2	+0.6%	+0.5%	+0.3%	+0.2%	+0.3%	+0.0%
Therapy Professions	73	+27	+26	+15	+16	+18	+2	+0.6%	+0.5%	+0.3%	+0.3%	+0.3%	+0.0%
Health Science/ Diagnostics	1	-1	-1	-1	-1		-0	-0.5%	-0.5%	-0.5%	-0.5%	-0.3%	+0.0%
Social Care	1	+0	+0	+0				+0.1%	+0.0%	+0.1%	+0.0%	+0.0%	+0.0%
Social Workers	24	+10	+8	+8	+2	+2	-0	+0.7%	+0.5%	+0.5%	+0.1%	+0.1%	-0.0%
Pharmacy	4	+1	+1	+1	+1	+1		+0.3%	+0.3%	+0.3%	+0.3%	+0.3%	+0.0%
H&SC, Other	1	+1	+0	+0	+0	+0		-1.0%	+0.5%	+0.5%	+0.5%	+0.5%	+0.0%
Management & Administrative	72	+18	+15	+7	-2	+8	-1	+0.3%	+0.3%	+0.1%	-0.0%	+0.1%	-0.0%
Management (VIII & above)	8	+4	+3	+1	-1	-1	-1	+1.0%	+0.6%	+0.1%	-0.1%	-0.1%	-0.1%
Administrative/ Supervisory (V to VII)	22	+6	+6	+4	+1	+7	+1	+0.4%	+0.4%	+0.2%	+0.1%	+0.4%	+0.0%
Clerical (III & IV)	43	+8	+6	+2	-2	+3	-1	+0.2%	+0.2%	+0.1%	-0.0%	+0.1%	-0.0%
General Support	122	-7	-2	-2	-2	+1	-1	-0.1%	-0.0%	-0.0%	-0.0%	+0.0%	-0.0%
Support	119	-7	-2	-2	-2	+1	-1	-0.1%	-0.0%	-0.0%	-0.0%	+0.0%	-0.0%
Maintenance/ Technical	2							+0.0%	+0.0%	+0.0%	+0.0%	+0.0%	+0.0%
Patient & Client Care	274	-13	-21	-23	-20	-2	-3	-0.0%	-0.1%	-0.1%	-0.1%	-0.0%	-0.0%
Health Care Assistants	268	-16	-24	-26	-22	-2	-3	-0.1%	-0.1%	-0.1%	-0.1%	-0.0%	-0.0%
Care, other	5	+3	+3	+3	+2	-1	-0	+1.3%	+1.2%	+1.2%	+0.6%	-0.1%	-0.0%

Source: Health Service Personnel Census