

CHO 9 Employment Report: July 2020

Employment by Staff Group

Jul 2020 (Dec 2019 figure: 6,582)	WTE Jun 2020	WTE Jul 2020	WTE change since Jun 20	% change since Jun 20	WTE change since Dec 19	WTE change since Jul 19
Overall	6,700	6,676	-24	-0.4%	+94	+120
Consultants	65	63	-2	-3.0%	-6	-2
Registrars	94	91	-3	-3.5%	-7	+8
SHO/ Interns	61	59	-2	-3.7%	-8	-6
Medical/ Dental, other	56	56	-1	-1.5%	-1	-1
Medical & Dental	276	268	-8	-3.0%	-22	-1
Nurse/ Midwife Manager	456	454	-1	-0.3%	+19	+16
Nurse/ Midwife Specialist & AN/MP	90	93	+3	+3.1%	+8	+10
Staff Nurse/ Staff Midwife	1,211	1,209	-2	-0.1%	+13	+8
Public Health Nurse	163	161	-2	-1.5%	-15	-11
<i>Pre-registration Nurse/ Midwife Intern</i>	1	24	+23	+4694.0%	+6	+23
<i>Pre-registration Nurse Intern (COVID-19)</i>	83	58	-26	-31.0%	+58	-26
<i>Post-registration Nurse/ Midwife Student</i>	2	2			-24	
<i>Nursing/ Midwifery awaiting registration</i>				-100.0%	-11	
Nursing/ Midwifery Student	86	83	-2	-2.8%	+29	+47
Nursing/ Midwifery other	21	22	+1	+4.4%	+2	+2
Nursing & Midwifery	2,027	2,022	-4	-0.2%	+57	+72
Therapy Professions	511	522	+10	+2.0%	+35	+34
Health Science/ Diagnostics	34	34	+0	+0.8%	-3	-4
Social Care	709	700	-9	-1.2%	+5	+35
Social Workers	129	130	+1	+0.7%	+5	+1
Psychologists	174	173	-1	-0.5%	+10	+7
Pharmacy	25	25	-0	-1.7%	-0	-1
H&SC, Other	70	69	-1	-1.6%	-2	-2
Health & Social Care Professionals	1,652	1,652	+0	+0.0%	+49	+69
Management (VIII & above)	81	81	-0	-0.2%	+1	+2
Administrative/ Supervisory (V to VII)	220	221	+1	+0.6%	+13	+9
Clerical (III & IV)	443	453	+10	+2.2%	+1	-9
Management & Administrative	744	755	+11	+1.5%	+16	+1
Support	443	419	-25	-5.6%	-33	-21
Maintenance/ Technical	35	35	-0	-0.5%	-0	-3
General Support	479	454	-25	-5.2%	-33	-23
Health Care Assistants	1,305	1,306	+0	+0.0%	+28	+6
Care, other	218	220	+2	+1.1%	-1	-4
Patient & Client Care	1,523	1,525	+2	+0.2%	+27	+2

CHO 9 Employment Report: July 2020

Community Health & Wellbeing

Jul 2020 (figure:)	WTE Jun 2020	WTE Jul 2020	WTE change since Jun 20	% change since Jun 20	WTE change since	WTE change since
Total Community Health & Wellbeing	8	8	-0	-5.4%	+8	+8
Therapy Professions	1	1	-0	-16.0%	+1	+1
Health & Social Care Professionals	1	1	-0	-16.0%	+1	+1
Management (VIII & above)	1	1			+1	+1
Administrative/ Supervisory (V to VII)	5	5			+5	+5
Clerical (III & IV)	2	1	-0	-19.9%	+1	+1
Management & Administrative	8	7	-0	-4.4%	+7	+7

Mental Health

Jul 2020 (Dec 2019 figure: 1,272)	WTE Jun 2020	WTE Jul 2020	WTE change since Jun 20	% change since Jun 20	WTE change since Dec 19	WTE change since Jul 19
Total Mental Health	1,308	1,297	-11	-0.8%	+26	+7
Consultants	47	45	-2	-5.2%	-5	-4
Registrars	34	31	-3	-7.9%	+0	+7
SHO/ Interns	44	42	-2	-4.6%	-11	-11
Medical & Dental	125	118	-7	-5.7%	-16	-8
Nurse/ Midwife Manager	139	140	+1	+0.5%	+8	+4
Nurse/ Midwife Specialist & AN/MP	68	70	+2	+3.0%	+5	+6
Staff Nurse/ Staff Midwife	356	347	-10	-2.7%	-4	-13
Pre-registration Nurse/ Midwife Intern	1	17	+17	+3336.0%	+7	+17
Pre-registration Nurse Intern (COVID-19)	52	34	-18	-34.8%	+34	-18
Nursing/ Midwifery awaiting registration				-100.0%	-11	
Nursing/ Midwifery Student	53	51	-2	-2.9%	+30	+29
Nursing/ Midwifery other	12	12	+1	+7.9%	+1	+1
Nursing & Midwifery	628	621	-8	-1.2%	+40	+28
Therapy Professions	61	61	+0	+0.5%	+6	+3
Social Care	1	1	+0	+3.3%	+0	-0
Social Workers	43	44	+1	+1.3%	+0	+1
Psychologists	49	50	+1	+1.2%	+4	+1
Pharmacy	7	7	-0	-2.6%	-1	-1
H&SC, Other	14	13	-0	-2.5%	-1	-0
Health & Social Care Professionals	175	176	+1	+0.6%	+9	+3
Management (VIII & above)	5	5				+0
Administrative/ Supervisory (V to VII)	28	28	-1	-2.4%	-0	+0
Clerical (III & IV)	95	99	+4	+3.7%	-5	-11
Management & Administrative	128	131	+3	+2.2%	-5	-11
Support	102	102	-1	-0.5%	-2	-4
Maintenance/ Technical	11	11	-0	-1.6%	-0	-0
General Support	113	112	-1	-0.6%	-2	-4
Health Care Assistants	126	127	+1	+0.4%	+1	-1
Care, other	12	12	+0	+0.4%	-0	-1
Patient & Client Care	138	139	+1	+0.4%	+0	-1

Primary Care

Jul 2020 (Dec 2019 figure: 1,247)	WTE Jun 2020	WTE Jul 2020	WTE change since Jun 20	% change since Jun 20	WTE change since Dec 19	WTE change since Jul 19
Total Primary Care	1,251	1,269	+18	+1.4%	+22	-2
Consultants	4	4			+0	+1
Registrars	50	52	+2	+3.7%	-3	+5
SHO/ Interns	4	5	+1	+23.0%	+4	+4
Medical/ Dental, other	49	48	-0	-1.0%	-1	-1
Medical & Dental	108	110	+2	+2.1%	-1	+9
Nurse/ Midwife Manager	42	41	-0	-0.6%	+5	+3
Nurse/ Midwife Specialist & AN/MP	6	7	+1	+12.3%	+1	+2
Staff Nurse/ Staff Midwife	126	131	+5	+4.0%	+31	+15
Public Health Nurse	163	161	-2	-1.5%	-14	-10
<i>Post-registration Nurse/ Midwife Student</i>	2	2			-24	
Nursing/ Midwifery Student	2	2			-24	
Nursing/ Midwifery other				-100.0%		-1
Nursing & Midwifery	340	343	+3	+0.9%	-2	+8
Therapy Professions	192	200	+8	+4.2%	+4	-1
Health Science/ Diagnostics	20	20	+0	+1.4%	-0	-2
Social Care	5	5	+0	+0.2%	+0	+1
Social Workers	17	18	+1	+6.3%	+2	-1
Psychologists	67	64	-2	-3.3%	-1	+0
Pharmacy	13	12	-1	-5.7%	-0	-1
H&SC, Other	36	35	-1	-2.2%	-2	-2
Health & Social Care Professionals	349	355	+6	+1.6%	+3	-5
Management (VIII & above)	31	31	-0	-0.6%	+3	+2
Administrative/ Supervisory (V to VII)	81	81	+0	+0.3%	+3	-3
Clerical (III & IV)	183	189	+6	+3.2%	+7	-5
Management & Administrative	295	301	+6	+2.0%	+13	-5
Support	33	32	-0	-1.5%	-2	-5
General Support	33	32	-0	-1.5%	-2	-5
Health Care Assistants	21	22	+0	+2.1%	+8	-3
Care, other	106	107	+1	+0.9%	+2	-0
Patient & Client Care	127	128	+1	+1.1%	+10	-3

Social Care

Jul 2020 (Dec 2019 figure: 4,064)	WTE Jun 2020	WTE Jul 2020	WTE change since Jun 20	% change since Jun 20	WTE change since Dec 19	WTE change since Jul 19
Total Social Care	4,133	4,102	-31	-0.7%	+39	+108
Consultants	13	14	+1	+4.1%	-0	+1
Registrars	10	7	-2	-25.4%	-4	-4
SHO/ Interns	13	12	-1	-9.0%	-0	+1
Medical/ Dental, other	8	7	-0	-4.7%		
Medical & Dental	44	40	-3	-7.9%	-5	-2
Nurse/ Midwife Manager	275	273	-2	-0.7%	+7	+9
Nurse/ Midwife Specialist & AN/MP	15	15			+2	+2
Staff Nurse/ Staff Midwife	728	731	+3	+0.4%	-13	+5
Public Health Nurse				-100.0%	-0	-0
Pre-registration Nurse/ Midwife Intern		7	+7	-100.0%	-1	+7
Pre-registration Nurse Intern (COVID-19)	31	23	-8	-24.7%	+23	-8
Nursing/ Midwifery Student	31	30	-1	-2.8%	+22	+18
Nursing/ Midwifery other	9	9			+1	+2
Nursing & Midwifery	1,059	1,059	+0	+0.0%	+19	+36
Therapy Professions	257	259	+2	+0.7%	+24	+31
Health Science/ Diagnostics	14	14			-2	-3
Social Care	703	695	-9	-1.2%	+5	+35
Social Workers	69	68	-1	-1.1%	+3	+1
Psychologists	59	59	+1	+1.1%	+6	+6
Pharmacy	5	6	+1	+10.0%	+1	+1
H&SC, Other	20	20	-0	-0.0%	+1	+1
Health & Social Care Professionals	1,127	1,121	-6	-0.6%	+37	+70
Management (VIII & above)	44	44			-3	-2
Administrative/ Supervisory (V to VII)	106	108	+2	+1.6%	+5	+7
Clerical (III & IV)	163	164	+1	+0.5%	-2	+6
Management & Administrative	313	315	+3	+0.8%	+1	+10
Support	308	285	-24	-7.7%	-29	-12
Maintenance/ Technical	24	24			-0	-3
General Support	333	309	-24	-7.1%	-29	-14
Health Care Assistants	1,158	1,157	-1	-0.1%	+19	+10
Care, other	100	101	+1	+1.3%	-2	-3
Patient & Client Care	1,258	1,258	+0	+0.0%	+16	+7

CHO 9 Employment Report: July 2020

Disabilities

Jul 2020 (Dec 2019 figure: 3,194)	WTE Jun 2020	WTE Jul 2020	WTE change since Jun 20	% change since Jun 20	WTE change since Dec 19	WTE change since Jul 19
Total Disabilities	3,211	3,167	-45	-1.4%	-27	+68
Consultants	11	11	+0	+1.3%	-1	+0
Registrars	4	3	-1	-30.9%	-3	-3
SHO/ Interns	2	2	-0	-8.5%	+2	+2
Medical/ Dental, other	7	6	-0	-5.4%		
Medical & Dental	23	22	-1	-6.4%	-3	-0
Nurse/ Midwife Manager	192	194	+1	+0.8%	+2	+5
Nurse/ Midwife Specialist & AN/MP	9	10	+1	+10.5%	+2	+1
Staff Nurse/ Staff Midwife	500	496	-3	-0.7%	-21	+2
<i>Pre-registration Nurse/ Midwife Intern</i>		7	+7	-100.0%	-1	+7
<i>Pre-registration Nurse Intern (COVID-19)</i>	31	23	-8	-24.7%	+23	-8
Nursing/ Midwifery Student	31	30	-1	-2.8%	+22	+18
Nursing/ Midwifery other	8	8			+1	+2
Nursing & Midwifery	741	739	-2	-0.2%	+7	+27
Therapy Professions	188	189	+0	+0.2%	+8	+15
Health Science/ Diagnostics	13	13			-2	-2
Social Care	702	694	-9	-1.3%	+5	+35
Social Workers	48	47	-1	-2.3%	+2	+2
Psychologists	59	59	+1	+1.1%	+6	+6
Pharmacy	2	2				
H&SC, Other	20	20	+0	+0.0%	+1	+1
Health & Social Care Professionals	1,032	1,023	-9	-0.9%	+20	+55
Management (VIII & above)	36	36			-2	-2
Administrative/ Supervisory (V to VII)	90	90	-0	-0.2%	+2	+5
Clerical (III & IV)	122	121	-0	-0.2%	-4	+5
Management & Administrative	247	247	-1	-0.2%	-4	+8
Support	188	164	-23	-12.3%	-31	-10
Maintenance/ Technical	22	22	+0	+0.0%	-0	-3
General Support	210	186	-23	-11.0%	-31	-13
Health Care Assistants	865	855	-10	-1.2%	-14	-7
Care, other	94	95	+1	+1.3%	-1	-2
Patient & Client Care	959	950	-9	-0.9%	-16	-10

Older People

Jul 2020 (Dec 2019 figure: 870)	WTE Jun 2020	WTE Jul 2020	WTE change since Jun 20	% change since Jun 20	WTE change since Dec 19	WTE change since Jul 19
Total Older People	922	936	+14	+1.5%	+66	+40
Consultants	2	3	+0	+18.2%	+1	+1
Registrars	6	5	-1	-22.1%	-1	-2
SHO/ Interns	11	10	-1	-9.1%	-2	-1
Medical/ Dental, other	1	1				
Medical & Dental	20	18	-2	-9.5%	-2	-2
Nurse/ Midwife Manager	82	79	-3	-4.1%	+4	+5
Nurse/ Midwife Specialist & AN/MP	6	5	-1	-17.1%	+0	+1
Staff Nurse/ Staff Midwife	229	235	+6	+2.8%	+8	+4
Public Health Nurse				-100.0%	-0	-0
Nursing/ Midwifery other	1	1				
Nursing & Midwifery	318	320	+2	+0.6%	+12	+9
Health & Social Care Professionals	96	98	+2	+2.5%	+17	+15
Management (VIII & above)	8	8			-1	
Administrative/ Supervisory (V to VII)	16	18	+2	+11.8%	+3	+1
Clerical (III & IV)	41	42	+1	+2.7%	+2	+1
Management & Administrative	66	69	+3	+4.6%	+5	+2
Support	121	120	-1	-0.4%	+2	-2
Maintenance/ Technical	2	2				
General Support	123	123	-1	-0.4%	+2	-2
Health Care Assistants	294	303	+9	+3.1%	+33	+18
Care, other	5	5	-0	-0.0%	-1	-1
Patient & Client Care	299	308	+9	+3.0%	+32	+17

CHO 9 Employment by Administration (HSE / S38): July 2020

Jul 2020 (Dec 2019 figure: 6,582)	WTE Jun 2020	WTE Jul 2020	WTE change since Jun 20	% change since Jun 20	WTE change since Dec 19	WTE change since Jul 19
Overall	6,700	6,676	-24	-0.4%	+94	+120
HSE	3,473	3,492	+19	+0.5%	+84	+7
Section 38 Voluntary Agencies	3,227	3,185	-43	-1.3%	+10	+113

HSE

Jul 2020 (Dec 2019 figure: 3,407)	WTE Jun 2020	WTE Jul 2020	WTE change since Jun 20	% change since Jun 20	WTE change since Dec 19	WTE change since Jul 19
Overall	3,473	3,492	+19	+0.5%	+84	+7
Consultants	53	51	-2	-0.0%	-5	-3
Registrars	88	86	-2	-0.0%	-4	+12
SHO/ Interns	56	54	-2	-0.0%	-7	-5
Medical/ Dental, other	50	49	-0	-0.0%	-1	-1
Medical & Dental	247	240	-7	-3.0%	-17	+2
Nurse/ Midwife Manager	267	265	-2	-0.0%	+17	+9
Nurse/ Midwife Specialist & AN/MP	79	81	+2	+0.0%	+6	+9
Staff Nurse/ Staff Midwife	705	704	-1	-0.0%	+10	-7
Public Health Nurse	163	161	-2	-0.0%	-15	-11
Pre-registration Nurse/ Midwife Intern	1	24	+23	+46.9%	+18	+5
Pre-registration Nurse Intern (COVID-19)	55	30	-26	-0.5%	+30	+30
Post-registration Nurse/ Midwife Student	2	2		+0.0%	-20	
Nursing/ Midwifery awaiting registration				-1.0%	-3	
Nursing/ Midwifery Student	58	55	-2	-0.0%	+15	+34
Nursing/ Midwifery other	13	14	+1	+0.1%	+1	+0
Nursing & Midwifery	1,285	1,279	-5	-0.4%	+35	+34
Therapy Professions	311	322	+11	+0.0%	+22	+11
Health Science/ Diagnostics	20	20	+0	+0.0%	-1	-2
Social Care	8	8	+0	+0.0%	+0	+1
Social Workers	78	80	+2	+0.0%	+2	-3
Psychologists	131	130	-1	-0.0%	+6	+2
Pharmacy	18	17	-1	-0.1%	-1	-2
H&SC, Other	55	54	-1	-0.0%	-3	-2
Health & Social Care Professionals	620	630	+10	+1.7%	+26	+4
Management (VIII & above)	46	46	-0	-0.0%	+2	+3
Administrative/ Supervisory (V to VII)	123	124	+1	+0.0%	+12	+5
Clerical (III & IV)	297	307	+10	+0.0%	+4	-16
Management & Administrative	466	478	+11	+2.4%	+18	-9
Support	189	187	-1	-0.0%	-11	-21
Maintenance/ Technical	9	9	-0	-0.0%	-0	-0
General Support	198	196	-2	-0.8%	-11	-22
Health Care Assistants	532	543	+10	+0.0%	+33	-2
Care, other	124	125	+1	+0.0%	+0	-2
Patient & Client Care	656	668	+11	+1.7%	+33	-4

Section 38 Voluntary Agencies

Jul 2020 (Dec 2019 figure: 3,175)	WTE Jun 2020	WTE Jul 2020	WTE change since Jun 20	% change since Jun 20	WTE change since Dec 19	WTE change since Jul 19
Overall	3,227	3,185	-43	-1.3%	+10	+113
Consultants	12	12	+1	+0.0%	-0	+1
Registrars	6	5	-1	-0.2%	-3	-4
SHO/ Interns	5	5		+0.0%	-1	-1
Medical/ Dental, other	7	6	-0	-0.1%		
Medical & Dental	29	28	-1	-3.2%	-5	-3
Nurse/ Midwife Manager	189	190	+1	+0.0%	+2	+7
Nurse/ Midwife Specialist & AN/MP	11	12	+1	+0.1%	+2	+1
Staff Nurse/ Staff Midwife	506	505	-1	-0.0%	+3	+15
<i>Pre-registration Nurse/ Midwife Intern</i>				-1.0%	-15	-15
<i>Pre-registration Nurse Intern (COVID-19)</i>	28	28		+0.0%	+28	+28
Nursing/ Midwifery Student	28	28		+0.0%	+14	+13
Nursing/ Midwifery other	8	8		+0.0%	+1	+2
Nursing & Midwifery	742	743	+1	+0.1%	+21	+37
Therapy Professions	201	200	-1	-0.0%	+13	+23
Health Science/ Diagnostics	14	14		+0.0%	-2	-2
Social Care	701	693	-9	-0.0%	+5	+34
Social Workers	51	50	-1	-0.0%	+3	+4
Psychologists	43	43		+0.0%	+3	+4
Pharmacy	7	7	+1	+0.1%	+1	+1
H&SC, Other	15	15		+0.0%	+1	+1
Health & Social Care Professionals	1,032	1,022	-10	-1.0%	+24	+65
Management (VIII & above)	35	35		+0.0%	-1	-1
Administrative/ Supervisory (V to VII)	97	97	-0	-0.0%	+1	+4
Clerical (III & IV)	146	146	-0	-0.0%	-3	+6
Management & Administrative	277	277	-0	-0.2%	-2	+10
Support	255	232	-23	-0.1%	-22	+1
Maintenance/ Technical	26	26		+0.0%	-0	-3
General Support	281	258	-23	-8.2%	-22	-2
Health Care Assistants	773	763	-10	-0.0%	-5	+9
Care, other	94	95	+1	+0.0%	-1	-2
Patient & Client Care	867	858	-9	-1.0%	-6	+6

CHO 9 Employment by S38 Agency: July 2020

Central Remedial Clinic

Jul 2020 (Dec 2019 figure: 278)	WTE Jun 2020	WTE Jul 2020	WTE change since Jun 20	% change since Jun 20	WTE change since Dec 19	WTE change since Jul 19
Overall	283	283	+0	+0.0%	+5	+7
Consultants	1	1		+0.0%		
Medical/ Dental, other	0	0		+0.0%		
Medical & Dental	2	2				
Nurse/ Midwife Manager	2	2		+0.0%		
Nurse/ Midwife Specialist & AN/MP	1	2	+1	+2.0%	+1	
Staff Nurse/ Staff Midwife	4	4		+0.0%	+1	+1
Nursing/ Midwifery other	1	1		+0.0%	+1	+1
Nursing & Midwifery	8	9	+1	+12.2%	+3	+2
Therapy Professions	78	77	-1	-0.0%	-1	+2
Health Science/ Diagnostics	13	13		+0.0%	-2	-2
Social Workers	9	9		+0.0%	+1	+1
Psychologists	11	11		+0.0%	+0	+0
Health & Social Care Professionals	110	109	-1	-0.9%	-2	+2
Management (VIII & above)	5	5		+0.0%	-2	-2
Administrative/ Supervisory (V to VII)	15	15		+0.0%		+1
Clerical (III & IV)	33	33		+0.0%	+0	+2
Management & Administrative	53	53			-2	+1
Support	14	14		+0.0%	+0	+0
Maintenance/ Technical	1	1		+0.0%		
General Support	15	15			+0	+0
Health Care Assistants	57	56	-1	-0.0%	+5	+0
Care, other	38	39	+1	+0.0%	+0	+1
Patient & Client Care	94	94	+0	+0.1%	+5	+2

Daughters of Charity, Dublin

Jul 2020 (Dec 2019 figure: 1,034)	WTE Jun 2020	WTE Jul 2020	WTE change since Jun 20	% change since Jun 20	WTE change since Dec 19	WTE change since Jul 19
Overall	1,071	1,050	-21	-1.9%	+16	+44
Consultants	2	2		+0.0%	+1	+1
Medical/ Dental, other	2	2		+0.0%		
Medical & Dental	4	4			+1	+1
Nurse/ Midwife Manager	62	62		+0.0%	-0	+2
Nurse/ Midwife Specialist & AN/MP	9	9		+0.0%	+1	+1
Staff Nurse/ Staff Midwife	185	186	+0	+0.0%	-1	+4
Pre-registration Nurse/ Midwife Intern				-1.0%	-8	-8
Pre-registration Nurse Intern (COVID-19)	15	15		+0.0%	+15	+15
Nursing/ Midwifery Student	15	15		+0.0%	+8	+8
Nursing/ Midwifery other	4	4		+0.0%		+1
Nursing & Midwifery	275	276	+0	+0.1%	+8	+16
Therapy Professions	34	34		+0.0%	+1	+2
Social Care	168	165	-3	-0.0%	+2	+15
Social Workers	11	11		+0.0%	+1	+1
Psychologists	10	10		+0.0%	+3	+2
Pharmacy	2	2		+0.0%		
H&SC, Other	5	5		+0.0%	+1	+1
Health & Social Care Professionals	229	226	-3	-1.3%	+7	+20
Management (VIII & above)	7	7		+0.0%	+1	
Administrative/ Supervisory (V to VII)	27	27		+0.0%	+2	-0
Clerical (III & IV)	32	32		+0.0%	-1	-1
Management & Administrative	66	66			+2	-1
Support	78	79	+1	+0.0%	-0	+1
Maintenance/ Technical	8	8		+0.0%		-2
General Support	86	86	+1	+0.6%	-0	-1
Health Care Assistants	380	361	-18	-0.0%	-0	+13
Care, other	31	31		+0.0%	-1	-3
Patient & Client Care	410	392	-18	-4.5%	-1	+10

Incorporated Orthopaedic Hospital

Jul 2020 (Dec 2019 figure: 226)	WTE Jun 2020	WTE Jul 2020	WTE change since Jun 20	% change since Jun 20	WTE change since Dec 19	WTE change since Jul 19
Overall	258	264	+6	+2.3%	+38	+39
Consultants	1	2	+0	+0.3%	+1	+1
Registrars	2	2		+0.0%		
SHO/ Interns	4	4		+0.0%	-1	-1
Medical & Dental	7	8	+0	+5.6%		
Nurse/ Midwife Manager	17	17		+0.0%	-1	-1
Staff Nurse/ Staff Midwife	71	74	+3	+0.0%	+14	+14
Nursing & Midwifery	88	91	+3	+3.4%	+13	+13
Therapy Professions	30	30		+0.0%	+10	+10
Health Science/ Diagnostics	1	1		+0.0%		
Social Workers	8	8		+0.0%	+1	+1
Pharmacy	3	4	+1	+0.2%	+1	+1
Health & Social Care Professionals	42	43	+1	+1.2%	+11	+11
Management (VIII & above)	1	1		+0.0%		
Administrative/ Supervisory (V to VII)	6	6		+0.0%		
Clerical (III & IV)	11	11		+0.0%	+1	+2
Management & Administrative	18	18			+1	+2
Support	40	40		+0.0%	+6	+6
Maintenance/ Technical	2	2		+0.0%		
General Support	42	42			+6	+6
Health Care Assistants	61	63	+2	+0.0%	+7	+7
Care, other	0	0		+0.0%		
Patient & Client Care	61	63	+2	+3.3%	+7	+7

St. Michael's House, Dublin

Jul 2020 (Dec 2019 figure: 1,431)	WTE Jun 2020	WTE Jul 2020	WTE change since Jun 20	% change since Jun 20	WTE change since Dec 19	WTE change since Jul 19
Overall	1,403	1,376	-27	-1.9%	-55	+21
Consultants	6	6	+0	+0.0%	-2	-0
Registrars	3	2	-1	-0.4%	-2	-3
Medical/ Dental, other	4	4	-0	-0.1%		
Medical & Dental	13	12	-1	-10.3%	-4	-3
Nurse/ Midwife Manager	86	87	+1	+0.0%	+3	+6
Staff Nurse/ Staff Midwife	154	152	-3	-0.0%	-10	-3
Nursing & Midwifery	241	238	-2	-0.9%	-7	+3
Therapy Professions	55	55	-0	-0.0%	+3	+10
Social Care	533	527	-6	-0.0%	+2	+20
Social Workers	21	21	-1	-0.0%	+1	+1
Psychologists	19	19		+0.0%	+0	+2
H&SC, Other	10	10		+0.0%	+0	-0
Health & Social Care Professionals	639	632	-7	-1.1%	+7	+33
Management (VIII & above)	22	22		+0.0%	+0	+1
Administrative/ Supervisory (V to VII)	42	42	-0	-0.0%	-1	+3
Clerical (III & IV)	51	51	-0	-0.0%	-3	+4
Management & Administrative	115	114	-0	-0.4%	-4	+8
Support	90	67	-24	-0.3%	-29	-7
Maintenance/ Technical	12	12		+0.0%	-0	-1
General Support	102	79	-24	-23.1%	-29	-8
Health Care Assistants	271	278	+7	+0.0%	-16	-11
Care, other	24	24	+0	+0.0%	-1	-1
Patient & Client Care	294	301	+7	+2.4%	-17	-12

St. Vincent's, Fairview

Jul 2020 (Dec 2019 figure: 206)	WTE Jun 2020	WTE Jul 2020	WTE change since Jun 20	% change since Jun 20	WTE change since Dec 19	WTE change since Jul 19
Overall	212	211	-1	-0.5%	+5	+4
Consultants	1	1		+0.0%		
Registrars	1	1		+0.0%	-1	-1
SHO/ Interns	1	1		+0.0%		
Medical & Dental	3	3			-1	-1
Nurse/ Midwife Manager	21	21		+0.0%		
Nurse/ Midwife Specialist & AN/MP	2	2		+0.0%		
Staff Nurse/ Staff Midwife	91	90	-1	-0.0%	-1	-2
Nursing/ Midwifery Student	13	13		+0.0%	+6	+6
Nursing/ Midwifery other	3	3		+0.0%		
Nursing & Midwifery	130	129	-1	-0.8%	+5	+4
Therapy Professions	5	5		+0.0%		
Social Workers	2	2		+0.0%		
Psychologists	4	4		+0.0%		
Pharmacy	2	2		+0.0%	+0	+0
Health & Social Care Professionals	12	12			+0	+0
Administrative/ Supervisory (V to VII)	6	6		+0.0%		
Clerical (III & IV)	19	19		+0.0%	+0	+0
Management & Administrative	25	25			+0	+0
Support	32	32		+0.0%	+1	+1
Maintenance/ Technical	3	3		+0.0%		
General Support	35	35			+1	+1
Health Care Assistants	6	6		+0.0%		
Care, other	1	1		+0.0%		
Patient & Client Care	7	7				

CHO 9 Employment by Grade Group & Staff Category: July 2020

Jul 2020 (Dec 2019 figure: 6,582)	WTE Jun 2020	WTE Jul 2020	WTE change since Jun 20	% change since Jun 20	WTE change since Dec 19	WTE change since Jul 19
Overall	6,700	6,676	-24	-0.4%	+94	+120
Consultant Medicine	2	3	+0	+18.2%	+1	+1
Consultant Paediatrics	1	1				
Consultant Psychiatry	61	59	-2	-3.8%	-7	-3
Consultant Surgery				-100.0%		
Consultants	65	63	-2	-3.0%	-6	-2
Registrar	74	72	-2	-3.1%	-6	+7
Senior Registrar	16	16	+0	+1.1%	+0	+3
Specialist Registrar	4	3	-1	-30.9%	-1	-3
Registrars	94	91	-3	-3.5%	-7	+8
Interns				-100.0%	-2	-1
Senior House Officer	61	59	-2	-3.7%	-6	-5
SHO/ Interns	61	59	-2	-3.7%	-8	-6
Dentists	31	32	+0	+0.7%	+0	-1
Other Medical	25	24	-1	-4.2%	-1	+1
Medical/ Dental, other	56	56	-1	-1.5%	-1	-1
Medical & Dental	276	268	-8	-3.0%	-24	-1
Clinical Nurse/ Midwife Manager	362	363	+1	+0.3%	+14	+9
Director Nursing/Midwifery, Assistant	68	67	-1	-1.4%	+6	+6
Director of Nursing/Midwifery	26	24	-2	-6.5%	-1	+1
Nurse/ Midwife Manager	456	454	-1	-0.3%	+19	+16
Advanced Nurse/ Midwife Practitioner	7	7	+0	+0.7%	+0	+0
Clinical Nurse/ Midwife Specialist	83	86	+3	+3.3%	+8	+9
Nurse/ Midwife Specialist & AN/MP	90	93	+3	+3.1%	+8	+10
Staff Midwives	1	1			+1	+1
Staff Nurse [Intellectual Disability]	408	406	-3	-0.7%	-15	+3
Staff Nurse [Psychiatric]	369	358	-11	-3.0%	-13	-16
Staff Nurses [General/ Children's]	433	445	+12	+2.8%	+40	+20
Staff Nurse/ Staff Midwife	1,211	1,209	-2	-0.1%	+13	+8
Public Health Nurse	163	161	-2	-1.5%	-15	-11
Pre-registration Nurse/ Midwife Intern	1	24	+23	+4694.0%	+6	-10
Pre-registration Nurse Intern (COVID-19)	83	58	-26	-31.0%	+58	+58
Post-registration Nurse/ Midwife Student	2	2			-24	
Nursing/ Midwifery awaiting registration				-100.0%	-11	
Nursing/ Midwifery Student	86	83	-2	-2.8%	+29	+47
Nursing Education/Clinical	21	22	+1	+4.4%	+2	+2
Other Nursing/ Midwifery				-100.0%		
Nursing/ Midwifery other	21	22	+1	+4.4%	+2	+2
Nursing & Midwifery	2,027	2,022	-4	-0.2%	+9	+72
Dietitians	28	30	+2	+7.3%	+9	+8
Occupational Therapists	192	192	+1	+0.4%	+10	+9
Orthoptists	5	5	-0	-1.9%	-0	+1
Physiotherapists	146	147	+1	+0.7%	+4	+8
Podiatrists & Chiropodists	1	1				
Speech & Language Therapists	140	146	+6	+4.7%	+13	+8
Therapy Professions	511	522	+10	+2.0%	+35	+34
Audiology	15	15	+0	+1.9%	-0	-2
Clinical Engineering	14	14			-2	-2

Jul 2020 (Dec 2019 figure: 6,582)	WTE Jun 2020	WTE Jul 2020	WTE change since Jun 20	% change since Jun 20	WTE change since Dec 19	WTE change since Jul 19
Overall	6,700	6,676	-24	-0.4%	+94	+120
Medical Laboratory	4	4				
Radiographers	1	1			-0	-1
Health Science/ Diagnostics	34	34	+0	+0.8%	-3	-4
Social Care	709	700	-9	-1.2%	+5	+35
Social Workers	129	130	+1	+0.7%	+5	+1
Psychologists	174	173	-1	-0.5%	+10	+7
Pharmacy	25	25	-0	-1.7%	-0	-1
Counsellor Therapists	40	39	-1	-3.1%	-3	-1
Dental Hygienists	6	6	-0	-1.3%	-0	-1
Other Health & Social Care	21	21			+1	+0
Play Therapists/ Specialists	2	2	+0	+11.1%	-0	-0
H&SC, Other	70	69	-1	-1.6%	-2	-2
Health & Social Care Professionals	1,652	1,652	+0	+0.0%	+76	+69
Executive Management	12	11	-1	-4.4%	+1	+1
Senior Management (VIII & GM)	69	69	+0	+0.5%	+0	+0
Management (VIII & above)	81	81	-0	-0.2%	+1	+2
Middle Management (V-VII)	211	213	+1	+0.6%	+13	+11
Other Administrative	9	9				-2
Administrative/ Supervisory (V to VII)	220	221	+1	+0.6%	+13	+9
General Administrative (III & IV)	443	453	+10	+2.2%	+1	-9
Clerical (III & IV)	443	453	+10	+2.2%	+1	-9
Management & Administrative	744	755	+11	+1.5%	+8	+1
Catering	56	56	-1	-1.3%	-5	-6
Household Services	221	219	-2	-0.7%	-1	-9
Other Support	91	68	-23	-25.3%	-26	-5
Portering	75	76	+1	+1.0%	-0	-1
Support	443	419	-25	-5.6%	-33	-21
Maintenance	33	33	-0	-0.5%	-0	-3
Technical Services	2	2				
Maintenance/ Technical	35	35	-0	-0.5%	-0	-3
General Support	479	454	-25	-5.2%	-68	-23
HCA, Nurse's Aide, etc.	1,286	1,285	-0	-0.0%	+20	+10
Health & Social Care Assistants	20	20	+0	+2.4%	+8	-3
Health Care Assistants	1,305	1,306	+0	+0.0%	+28	+6
Other Care Grades	218	220	+2	+1.1%	-1	-4
Care, other	218	220	+2	+1.1%	-1	-4
Patient & Client Care	1,523	1,525	+2	+0.2%	+41	+2

CHO 9 HSE Employment by Grade Group & Staff Category: July 2020

Jul 2020 (Dec 2019 figure: 3,407)	WTE Jun 2020	WTE Jul 2020	WTE change since Jun 20	% change since Jun 20	WTE change since Dec 19	WTE change since Jul 19
Overall	3,473	3,492	+19	+0.5%	+84	+7
Consultant Medicine	1	1				
Consultant Psychiatry	52	50	-2	-4.7%	-5	-3
Consultant Surgery				-100.0%		
Consultants	53	51	-2	-4.6%	-5	-3
Registrar	72	70	-2	-3.2%	-5	+8
Senior Registrar	15	15	+0	+1.1%	+0	+3
Specialist Registrar	1	1			+1	
Registrars	88	86	-2	-2.4%	-4	+12
SHO/ Interns	56	54	-2	-4.1%	-7	-5
Dentists	31	32	+0	+0.7%	+0	-1
Other Medical	19	18	-1	-3.7%	-1	+1
Medical/ Dental, other	50	49	-0	-1.0%	-1	-1
Medical & Dental	247	240	-7	-3.0%	-26	+2
Clinical Nurse/ Midwife Manager	195	195	+0	+0.2%	+11	+2
Director Nursing/Midwifery, Assistant	59	58	-1	-1.6%	+6	+6
Director of Nursing/Midwifery	13	11	-2	-13.2%	+0	+1
Nurse/ Midwife Manager	267	265	-2	-0.8%	+17	+9
Advanced Nurse/ Midwife Practitioner	7	7	+0	+0.7%	+0	+0
Clinical Nurse/ Midwife Specialist	72	74	+2	+2.5%	+6	+9
Nurse/ Midwife Specialist & AN/MP	79	81	+2	+2.3%	+6	+9
Staff Midwives	1	1			+1	+1
Staff Nurse [Intellectual Disability]	68	68	-0	-0.0%	-4	+1
Staff Nurse [Psychiatric]	280	270	-10	-3.6%	-12	-14
Staff Nurses [General/ Children's]	355	364	+9	+2.5%	+26	+5
Staff Nurse/ Staff Midwife	705	704	-1	-0.1%	+10	-7
Public Health Nurse	163	161	-2	-1.5%	-15	-11
Pre-registration Nurse/ Midwife Intern	1	24	+23	+4694.0%	+21	+5
Pre-registration Nurse Intern (COVID-19)	55	30	-26	-46.7%	+30	+30
Post-registration Nurse/ Midwife Student	2	2			-24	
Nursing/ Midwifery awaiting registration				-100.0%	-11	
Nursing/ Midwifery Student	58	55	-2	-4.1%	+15	+34
Nursing Education/Clinical	13	14	+1	+7.0%	+1	+0
Other Nursing/ Midwifery				-100.0%		
Nursing/ Midwifery other	13	14	+1	+7.0%	+1	+0
Nursing & Midwifery	1,285	1,279	-5	-0.4%	-1	+34
Dietitians	19	21	+2	+10.6%	+7	+6
Occupational Therapists	124	125	+2	+1.4%	+7	+2
Orthoptists	5	5	-0	-1.9%	-0	+1
Physiotherapists	73	74	+1	+1.3%	-1	-2
Podiatrists & Chiropodists	1	1				
Speech & Language Therapists	88	95	+7	+7.6%	+9	+4
Therapy Professions	311	322	+11	+3.7%	+22	+11
Audiology	15	15	+0	+1.9%	-0	-2
Clinical Engineering	5	5				
Radiographers				-100.0%	-0	-1
Health Science/ Diagnostics	20	20	+0	+1.4%	-1	-2
Social Care	8	8	+0	+0.5%	+0	+1
Social Workers	78	80	+2	+2.2%	+2	-3
Psychologists	131	130	-1	-0.7%	+6	+2

Jul 2020 (Dec 2019 figure: 3,407)	WTE Jun 2020	WTE Jul 2020	WTE change since Jun 20	% change since Jun 20	WTE change since Dec 19	WTE change since Jul 19
Overall	3,473	3,492	+19	+0.5%	+84	+7
Pharmacy	18	17	-1	-5.1%	-1	-2
Counsellor Therapists	40	39	-1	-3.1%	-3	-1
Dental Hygienists	6	6	-0	-1.3%	-0	-1
Other Health & Social Care	7	7	+0	+0.0%	+0	-1
Play Therapists/ Specialists	2	2	+0	+11.1%	+0	+0
H&SC, Other	55	54	-1	-2.1%	-3	-2
Health & Social Care Professionals	620	630	+10	+1.7%	-4	+4
Executive Management	8	7	-1	-6.7%	+1	+1
Senior Management (VIII & GM)	38	39	+0	+0.9%	+1	+1
Management (VIII & above)	46	46	-0	-0.4%	+2	+3
Administrative/ Supervisory (V to VII)	123	124	+1	+1.1%	+12	+5
Clerical (III & IV)	297	307	+10	+3.5%	+4	-16
Management & Administrative	466	478	+11	+2.4%	+3	-9
Catering	22	22	+0	+0.7%	-2	-2
Household Services	98	96	-2	-2.1%	-7	-16
Other Support	8	8	-0	-3.9%	-2	-2
Portering	60	61	+1	+1.3%	-1	-1
Support	189	187	-1	-0.8%	-11	-21
Maintenance/ Technical	9	9	-0	-1.8%	-0	-0
General Support	198	196	-2	-0.8%	-42	-22
HCA, Nurse's Aide, etc.	517	526	+10	+1.9%	+26	+3
Health & Social Care Assistants	16	16	+0	+3.1%	+6	-5
Health Care Assistants	532	543	+10	+1.9%	+33	-2
Care, other	124	125	+1	+0.8%	+0	-2
Patient & Client Care	656	668	+11	+1.7%	+14	-4

Employment by WTE, Headcount, Gender, Full-Time /Part-Time etc.: Jul 2020

CHO 9	WTE	Headcount	WTE: no.	% Male	% female	Male WTE: no.	Female WTE: no.	% Total Perm	% Male Perm	% Female Perm	% Total Full Time	% Total Part Time	% Male FT	% Female FT
Overall	6,676	7,755	1.16	17.9%	82.1%	1.09	1.18	84.9%	80.7%	85.8%	66.6%	33.4%	84.0%	62.7%
Consultant Medicine	3	4	1.54		100.0%		1.54	75.0%	75.0%	75.0%	25.0%	75.0%		25.0%
Consultant Paediatrics	1	3	2.48	33.3%	66.7%	1.82	3.03	33.3%	33.3%	50.0%	33.3%	66.7%	100.0%	0.0%
Consultant Psychiatry	59	67	1.13	35.8%	64.2%	1.11	1.15	79.1%	79.1%	83.7%	80.6%	19.4%	83.3%	79.1%
Consultants	63	74	1.18	33.8%	66.2%	1.13	1.20	77.0%	68.0%	81.6%	75.7%	24.3%	84.0%	71.4%
Registrar	72	97	1.35	34.0%	66.0%	1.25	1.40	3.1%	3.1%	0.0%	97.9%	2.1%	97.0%	98.4%
Senior Registrar	16	28	1.73	39.3%	60.7%	1.63	1.80	0.0%	0.0%	0.0%	100.0%	0.0%	100.0%	100.0%
Specialist Registrar	3	5	1.99	40.0%	60.0%	1.82	2.13	0.0%	0.0%	0.0%	40.0%	60.0%	0.0%	66.7%
Registrars	91	130	1.43	35.4%	64.6%	1.35	1.49	2.3%	6.5%	0.0%	96.2%	3.8%	93.5%	97.6%
Senior House Officer	59	82	1.40	40.2%	59.8%	1.42	1.38	0.0%	0.0%	0.0%	100.0%	0.0%	100.0%	100.0%
SHO/ Interns	59	82	1.40	40.2%	59.8%	1.42	1.38	0.0%	0.0%	0.0%	100.0%	0.0%	100.0%	100.0%
Dentists	32	37	1.17	18.9%	81.1%	1.14	1.17	89.2%	89.2%	90.0%	70.3%	29.7%	85.7%	66.7%
Other Medical	24	33	1.38	21.2%	78.8%	1.48	1.35	72.7%	72.7%	69.2%	42.4%	57.6%	42.9%	42.3%
Medical/ Dental, other	56	70	1.26	20.0%	80.0%	1.29	1.25	81.4%	85.7%	80.4%	57.1%	42.9%	64.3%	55.4%
Medical & Dental	268	356	1.33	33.1%	66.9%	1.31	1.34	32.9%	27.1%	35.7%	85.1%	14.9%	89.8%	82.8%
Clinical Nurse/ Midwife Manager	363	391	1.08	18.9%	81.1%	1.02	1.09	96.7%	96.7%	95.9%	83.6%	16.4%	97.3%	80.4%
Director Nursing/Midwifery, Assistant	67	72	1.07	16.7%	83.3%	1.00	1.08	98.6%	98.6%	98.3%	88.9%	11.1%	100.0%	86.7%
Director of Nursing/Midwifery	24	24	1.00	8.3%	91.7%	1.00	1.00	95.8%	95.8%	95.5%	100.0%	0.0%	100.0%	100.0%
Nurse/ Midwife Manager	454	487	1.07	18.1%	81.9%	1.02	1.09	96.9%	100.0%	96.2%	85.2%	14.8%	97.7%	82.5%
Advanced Nurse/ Midwife Practitioner	7	7	1.01		100.0%		1.01	100.0%	100.0%	100.0%	85.7%	14.3%		85.7%
Clinical Nurse/ Midwife Specialist	86	92	1.07	13.0%	87.0%	1.00	1.08	100.0%	100.0%	100.0%	85.9%	14.1%	100.0%	83.8%
Nurse/ Midwife Specialist & AN/MP	93	99	1.07	12.1%	87.9%	1.00	1.08	100.0%	100.0%	100.0%	85.9%	14.1%	100.0%	83.9%
Staff Midwives	1	1	1.00		100.0%		1.00	0.0%	0.0%	0.0%	100.0%	0.0%		100.0%
Staff Nurse [Intellectual Disability]	406	462	1.14	8.9%	91.1%	1.05	1.15	95.9%	95.9%	96.0%	69.5%	30.5%	90.2%	67.5%
Staff Nurse [Psychiatric]	358	397	1.11	24.2%	75.8%	1.08	1.12	93.7%	93.7%	95.0%	83.4%	16.6%	88.5%	81.7%
Staff Nurses [General/ Children's]	445	504	1.13	10.1%	89.9%	1.03	1.15	89.5%	89.5%	90.5%	77.0%	23.0%	94.1%	75.1%
Staff Nurse/ Staff Midwife	1,209	1,364	1.13	13.8%	86.2%	1.06	1.14	92.8%	88.3%	93.5%	76.3%	23.7%	90.4%	74.1%
Public Health Nurse	161	192	1.19		100.0%		1.19	94.8%		94.8%	68.8%	31.3%		68.8%
Pre-registration Nurse/ Midwife Intern	24	26	1.08	11.5%	88.5%	1.03	1.09	0.0%	0.0%	0.0%	100.0%	0.0%	100.0%	100.0%

Pre-registration Nurse Intern (COVID-19)	58	60	1.04	11.7%	88.3%	1.02	1.05	26.7%	26.7%	30.2%	75.0%	25.0%	100.0%	71.7%
Post-registration Nurse/ Midwife Student	2	2	1.00		100.0%		1.00	50.0%	50.0%	50.0%	100.0%	0.0%		100.0%
Nursing/ Midwifery Student	83	88	1.05	11.4%	88.6%	1.02	1.06	19.3%	0.0%	21.8%	83.0%	17.0%	100.0%	80.8%
Nursing Education/Clinical	22	23	1.06	4.3%	95.7%	1.00	1.06	95.7%	95.7%	95.5%	87.0%	13.0%	100.0%	86.4%
Nursing/ Midwifery other	22	23	1.06	4.3%	95.7%	1.00	1.06	95.7%	100.0%	95.5%	87.0%	13.0%	100.0%	86.4%
Nursing & Midwifery	2,022	2,253	1.11	13.3%	86.7%	1.04	1.13	91.3%	89.3%	91.7%	78.4%	21.6%	93.3%	76.1%
Dietitians	30	39	1.29	5.1%	94.9%	1.00	1.31	82.1%	82.1%	81.1%	51.3%	48.7%	100.0%	48.6%
Occupational Therapists	192	216	1.12	10.6%	89.4%	1.06	1.13	93.5%	93.5%	93.8%	76.9%	23.1%	91.3%	75.1%
Orthoptists	5	6	1.18	16.7%	83.3%	1.00	1.22	83.3%	83.3%	80.0%	66.7%	33.3%	100.0%	60.0%
Physiotherapists	147	173	1.18	16.8%	83.2%	1.08	1.20	91.3%	91.3%	91.0%	65.3%	34.7%	86.2%	61.1%
Podiatrists & Chiropodists	1	2	2.00	50.0%	50.0%	1.67	2.50	50.0%	50.0%	0.0%	50.0%	50.0%	100.0%	0.0%
Speech & Language Therapists	146	166	1.14	1.2%	98.8%	1.00	1.14	89.8%	89.8%	90.2%	75.3%	24.7%	100.0%	75.0%
Therapy Professions	522	602	1.15	9.6%	90.4%	1.07	1.16	90.9%	91.4%	90.8%	71.3%	28.7%	89.7%	69.3%
Audiology	15	17	1.15	23.5%	76.5%	1.00	1.20	100.0%	100.0%	100.0%	70.6%	29.4%	100.0%	61.5%
Clinical Engineering	14	14	1.00	85.7%	14.3%	1.00	1.00	92.9%	92.9%	50.0%	100.0%	0.0%	100.0%	100.0%
Medical Laboratory	4	4	1.00	75.0%	25.0%	1.00	1.00	75.0%	75.0%	0.0%	100.0%	0.0%	100.0%	100.0%
Radiographers	1	2	2.00		100.0%		2.00	100.0%	100.0%	100.0%	0.0%	100.0%		0.0%
Health Science/ Diagnostics	34	37	1.09	51.4%	48.6%	1.00	1.22	94.6%	100.0%	88.9%	81.1%	18.9%	100.0%	61.1%
Social Care	700	844	1.21	12.4%	87.6%	1.06	1.23	86.6%	81.0%	87.4%	44.7%	55.3%	70.5%	41.0%
Social Workers	130	146	1.12	13.7%	86.3%	1.00	1.14	94.5%	90.0%	95.2%	74.0%	26.0%	100.0%	69.8%
Psychologists	173	192	1.11	15.1%	84.9%	1.10	1.11	68.2%	65.5%	68.7%	79.2%	20.8%	82.8%	78.5%
Pharmacy	25	30	1.22	13.3%	86.7%	1.33	1.21	56.7%	25.0%	61.5%	70.0%	30.0%	75.0%	69.2%
Counsellor Therapists	39	44	1.12	34.1%	65.9%	1.10	1.13	90.9%	90.9%	96.6%	81.8%	18.2%	93.3%	75.9%
Dental Hygienists	6	8	1.32		100.0%		1.32	100.0%	100.0%	100.0%	25.0%	75.0%		25.0%
Other Health & Social Care	21	27	1.26	14.8%	85.2%	1.27	1.26	85.2%	85.2%	82.6%	51.9%	48.1%	75.0%	47.8%
Play Therapists/ Specialists	2	2	1.00		100.0%		1.00	100.0%	100.0%	100.0%	100.0%	0.0%		100.0%
H&SC, Other	69	81	1.18	23.5%	76.5%	1.13	1.19	90.1%	84.2%	91.9%	66.7%	33.3%	89.5%	59.7%
Health & Social Care	1,652	1,932	1.17	13.1%	86.9%	1.06	1.19	86.5%	83.1%	87.1%	60.6%	39.4%	82.3%	57.3%
Executive Management	11	12	1.05	8.3%	91.7%	1.00	1.06	83.3%	83.3%	81.8%	100.0%	0.0%	100.0%	100.0%
Senior Management (VIII & GM)	69	71	1.02	29.6%	70.4%	1.00	1.04	100.0%	100.0%	100.0%	97.2%	2.8%	100.0%	96.0%
Management (VIII & above)	81	83	1.03	26.5%	73.5%	1.00	1.04	97.6%	100.0%	96.7%	97.6%	2.4%	100.0%	96.7%
Administrative/ Supervisory (V to VII)	221	242	1.09	16.5%	83.5%	1.00	1.12	93.8%	100.0%	92.6%	75.6%	24.4%	100.0%	70.8%
Clerical (III & IV)	453	537	1.19	11.9%	88.1%	1.10	1.20	86.2%	79.7%	87.1%	63.3%	36.7%	82.8%	60.7%
Management & Administrative	755	862	1.14	14.6%	85.4%	1.05	1.16	89.4%	89.7%	89.4%	70.1%	29.9%	91.3%	66.4%
Catering	56	65	1.17	43.1%	56.9%	1.06	1.26	95.4%	95.4%	94.6%	64.6%	35.4%	89.3%	45.9%

Household Services	219	286	1.31	10.8%	89.2%	1.19	1.32	88.1%	88.1%	89.0%	40.2%	59.8%	67.7%	36.9%
Other Support	68	99	1.45	39.4%	60.6%	1.30	1.56	82.8%	82.8%	85.0%	22.2%	77.8%	35.9%	13.3%
Portering	76	80	1.06	93.8%	6.3%	1.05	1.18	80.0%	80.0%	60.0%	90.0%	10.0%	90.7%	80.0%
Support	419	530	1.27	32.6%	67.4%	1.13	1.35	86.8%	83.2%	88.5%	47.4%	52.6%	74.0%	34.5%
Maintenance/ Technical	35	37	1.05	94.6%	5.4%	1.05	1.06	97.3%	97.1%	100.0%	70.3%	29.7%	71.4%	50.0%
General Support	454	567	1.25	36.7%	63.3%	1.11	1.35	87.5%	85.6%	88.6%	48.9%	51.1%	73.6%	34.5%
HCA, Nurse's Aide, etc.	1,285	1,510	1.17	20.1%	79.9%	1.09	1.20	82.7%	82.7%	82.3%	57.4%	42.6%	77.6%	52.2%
Health & Social Care Assistants	20	24	1.18	12.5%	87.5%	1.00	1.22	37.5%	37.5%	38.1%	83.3%	16.7%	100.0%	81.0%
Health Care Assistants	1,306	1,534	1.18	20.0%	80.0%	1.09	1.20	82.0%	84.0%	81.5%	57.8%	42.2%	77.9%	52.7%
Care, other	220	251	1.14	31.5%	68.5%	1.06	1.18	84.9%	79.7%	87.2%	61.4%	38.6%	84.8%	50.6%
Patient & Client Care	1,525	1,785	1.17	21.6%	78.4%	1.08	1.20	82.4%	83.2%	82.2%	58.3%	41.7%	79.3%	52.5%

Employment by WTE, Headcount, Gender, Full-Time /Part-Time etc.: Jul 2020

CHO 9	WTE	Headcount	WTE: no.	% Male	% female	Male WTE: no.	Female WTE: no.	% Total Perm	% Male Perm	% Female Perm	% Total Full Time	% Total Part Time	% Male FT	% Female FT
Overall	6,676	7,755	1.16	17.9%	82.1%	1.09	1.18	84.9%	80.7%	85.8%	66.6%	33.4%	84.0%	62.7%
Community Health & Wellbeing	8	9	1.15		100.0%		1.15	100.0%	100.0%	100.0%	66.7%	33.3%		
Mental Health	1,297	1,455	1.12	28.0%	72.0%	1.08	1.14	81.1%	81.1%	82.6%	84.7%	15.3%	93.9%	93.9%
Primary Care	1,269	1,479	1.17	14.7%	85.3%	1.09	1.18	80.5%	80.5%	81.5%	73.1%	26.9%	92.2%	92.2%
HSE	1,129	1,275	1.13	24.9%	75.1%	1.07	1.15	83.9%	83.9%	84.4%	77.3%	22.7%	88.7%	88.7%
Section 38 Voluntary Agencies	2,973	3,537	1.19	12.6%	87.4%	1.11	1.20	88.7%	88.7%	89.1%	52.5%	47.5%	67.6%	67.6%
Social Care	4,102	4,812	1.17	15.9%	84.1%	1.09	1.19	87.4%	87.4%	88.0%	59.0%	41.0%	76.3%	76.3%

CHO 9 Skills Mix by Staff Grouping: July 2020

Jul 2020 (Dec 2018 figure: 6,634)	WTE Dec 2015	WTE Dec 2016	WTE Dec 2017	WTE Dec 2018	WTE Dec 2019	WTE Jun 2020	WTE Jul 2020
Overall	6,089	6,286	6,438	6,634	6,582	6,700	6,676
Consultant Medicine	1.7%	2.3%	2.6%	0.6%	0.6%	0.8%	1.0%
Consultant Paediatrics	0.5%	0.5%	0.4%	0.4%	0.4%	0.4%	0.5%
Consultant Psychiatry	21.9%	21.3%	21.8%	21.9%	22.7%	22.2%	22.1%
Consultant Surgery	0.4%	0.3%	0.0%	0.0%			
Consultants	24.5%	24.5%	24.8%	23.0%	23.6%	23.5%	23.5%
Registrar	23.2%	21.3%	22.5%	25.4%	27.0%	26.9%	26.9%
Senior Registrar	4.4%	5.1%	3.9%	5.3%	5.5%	5.8%	6.0%
Specialist Registrar	1.1%	1.4%	1.8%	0.3%	1.4%	1.3%	0.9%
Registrars	28.8%	27.9%	28.2%	31.1%	33.9%	34.0%	33.9%
Interns	1.4%	1.8%	1.4%	0.7%	0.7%		
Senior House Officer	19.0%	19.5%	21.2%	21.3%	22.2%	22.0%	21.9%
SHO/ Interns	20.4%	21.3%	22.6%	22.0%	22.8%	22.0%	21.9%
Dentists	11.2%	11.7%	10.7%	11.0%	10.9%	11.4%	11.8%
Other Medical	15.1%	14.6%	13.7%	13.0%	8.7%	9.1%	8.9%
Medical/ Dental, other	26.3%	26.3%	24.4%	24.0%	19.6%	20.4%	20.8%
Medical & Dental	4.5%	4.4%	4.4%	4.4%	4.4%	100.0%	4.0%
Clinical Nurse/ Midwife Manager	18.9%	18.9%	19.2%	18.5%	17.7%	17.9%	17.9%
Director Nursing/Midwifery, Assistant	2.9%	3.1%	3.0%	2.8%	3.1%	3.4%	3.3%
Director of Nursing/Midwifery	1.3%	1.3%	1.3%	1.1%	1.3%	1.3%	1.2%
Nurse/ Midwife Manager	23.2%	23.3%	23.5%	22.3%	22.1%	22.5%	22.5%
Advanced Nurse/ Midwife Practitioner	0.0%	0.1%	0.2%	0.3%	0.3%	0.3%	0.3%
Clinical Nurse/ Midwife Specialist	2.4%	2.9%	3.8%	3.7%	4.0%	4.1%	4.2%
Nurse/ Midwife Specialist & AN/MP	2.5%	3.0%	4.0%	4.1%	4.3%	4.4%	4.6%
Graduate Nursing/ Midwifery	0.0%						
Staff Midwives						0.0%	0.0%
Staff Nurse [Intellectual Disability]	21.9%	22.0%	22.1%	21.2%	21.4%	20.1%	20.1%
Staff Nurse [Psychiatric]	19.8%	19.5%	18.7%	19.0%	18.9%	18.2%	17.7%
Staff Nurses [General/ Children's]	20.8%	21.0%	20.2%	21.4%	20.6%	21.4%	22.0%
Staff Nurse/ Staff Midwife	62.6%	62.4%	61.1%	61.6%	60.8%	59.7%	59.8%
Public Health Nurse	9.1%	9.0%	8.8%	8.6%	8.9%	8.1%	8.0%
Pre-registration Nurse/ Midwife Intern	0.5%	0.2%	0.1%	1.0%	0.9%	0.0%	1.2%
Pre-registration Nurse Intern (COVID-19)						4.1%	2.8%
Post-registration Nurse/ Midwife Student	1.3%	1.0%	1.4%	1.1%	1.3%	0.1%	0.1%
Nursing/ Midwifery awaiting registration				0.1%	0.5%		
Nursing/ Midwifery Student	1.8%	1.2%	1.5%	2.2%	2.8%	4.2%	4.1%
Nursing/ Midwifery other	0.9%	1.0%	1.1%	1.2%	1.0%	1.0%	1.1%
Nursing & Midwifery	32.9%	31.1%	30.6%	30.4%	30.6%	100.0%	30.3%
Dietitians	1.3%	1.6%	1.5%	1.5%	1.3%	1.7%	1.8%
Occupational Therapists	12.3%	11.4%	11.9%	11.4%	11.4%	11.6%	11.6%
Orthoptists	0.1%	0.1%	0.1%	0.2%	0.3%	0.3%	0.3%
Physiotherapists	10.0%	9.1%	9.0%	8.7%	9.0%	8.8%	8.9%
Podiatrists & Chiropodists			0.1%	0.1%	0.1%	0.1%	0.1%
Speech & Language Therapists	8.2%	8.8%	8.9%	8.9%	8.3%	8.4%	8.8%
Therapy Professions	32.0%	30.8%	31.4%	30.8%	30.4%	31.0%	31.6%
Audiology	1.0%	0.8%	1.2%	1.1%	0.9%	0.9%	0.9%
Clinical Engineering	1.4%	1.1%	1.0%	1.0%	1.0%	0.8%	0.8%
Medical Laboratory	0.2%	0.2%	0.2%	0.3%	0.2%	0.2%	0.2%
Radiographers	0.2%	0.1%	0.1%	0.1%	0.1%	0.1%	0.1%
Health Science/ Diagnostics	2.8%	2.3%	2.5%	2.5%	2.3%	2.0%	2.0%
Social Care	36.5%	39.9%	39.7%	41.5%	43.4%	42.9%	42.4%
Social Workers	9.6%	8.3%	8.5%	8.3%	7.8%	7.8%	7.9%

Jul 2020 (Dec 2018 figure: 6,634)	WTE Dec 2015	WTE Dec 2016	WTE Dec 2017	WTE Dec 2018	WTE Dec 2019	WTE Jun 2020	WTE Jul 2020
Overall	6,089	6,286	6,438	6,634	6,582	6,700	6,676
Psychologists	11.4%	11.4%	10.8%	10.8%	10.2%	10.6%	10.5%
Pharmacy	2.3%	2.4%	2.2%	1.9%	1.5%	1.5%	1.5%
Counsellor Therapists	2.9%	2.5%	2.6%	2.4%	2.6%	2.4%	2.4%
Dental Hygienists	0.5%	0.4%	0.4%	0.4%	0.4%	0.4%	0.4%
Other Health & Social Care	1.9%	1.8%	1.6%	1.4%	1.2%	1.3%	1.3%
Play Therapists/ Specialists	0.2%	0.1%	0.2%	0.2%	0.1%	0.1%	0.1%
H&SC, Other	5.4%	4.8%	4.7%	4.3%	4.4%	4.2%	4.2%
Health & Social Care Professionals	21.8%	23.3%	23.8%	23.8%	23.9%	100.0%	24.7%
Executive Management	1.1%	0.8%	1.0%	1.2%	1.4%	1.6%	1.5%
Senior Management (VIII & GM)	7.9%	7.8%	8.6%	8.4%	9.3%	9.3%	9.2%
Management (VIII & above)	9.0%	8.6%	9.7%	9.6%	10.8%	10.9%	10.7%
Middle Management (V-VII)	24.3%	26.2%	24.9%	27.0%	27.0%	28.4%	28.2%
Other Administrative	1.5%	1.4%	1.6%	1.7%	1.2%	1.2%	1.1%
Administrative/ Supervisory (V to VII)	25.8%	27.6%	26.5%	28.7%	28.1%	29.6%	29.3%
Clerical (III & IV)	65.2%	63.8%	63.8%	61.6%	61.1%	59.6%	60.0%
Management & Administrative	10.2%	10.1%	10.6%	11.3%	11.3%	100.0%	11.3%
Catering	11.7%	12.3%	12.3%	12.2%	12.5%	11.8%	12.3%
Household Services	43.9%	43.0%	41.6%	43.7%	45.3%	46.1%	48.3%
Other Support	22.8%	23.0%	24.3%	22.8%	19.4%	19.1%	15.1%
Portering	14.6%	15.4%	14.8%	14.3%	15.5%	15.6%	16.7%
Support	93.0%	93.6%	93.1%	93.0%	92.8%	92.6%	92.3%
Maintenance/ Technical	7.0%	6.4%	6.9%	7.0%	7.2%	7.4%	7.7%
General Support	9.7%	8.8%	8.4%	7.9%	7.9%	100.0%	6.8%
HCA, Nurse's Aide, etc.	83.8%	84.6%	85.6%	84.2%	84.4%	84.4%	84.3%
Health & Social Care Assistants	0.8%	0.7%	0.8%	1.5%	0.8%	1.3%	1.3%
Health Care Assistants	84.5%	85.3%	86.4%	85.7%	85.3%	85.7%	85.6%
Community Welfare Officers	0.1%	0.1%					
Other Care Grades	15.4%	14.6%	13.6%	14.3%	14.7%	14.3%	14.4%
Care, other	15.5%	14.7%	13.6%	14.3%	14.7%	14.3%	14.4%
Patient & Client Care	20.9%	22.2%	22.3%	22.4%	22.6%	100.0%	22.8%
Total	100 %	100 %	100 %	100 %	100%	100 %	100 %

CHO 9 Skills Mix by Care Group: July 2020

Jul 2020 (Dec 2018 figure: 1,301)	WTE Dec 2015	WTE Dec 2016	WTE Dec 2017	WTE Dec 2018	WTE Dec 2019	WTE Jun 2020	WTE Jul 2020
Mental Health	1,223	1,217	1,220	1,301	1,272	1,308	1,297
Consultant Medicine			0.1%	0.1%			
Consultant Psychiatry	41.3%	37.8%	36.3%	37.8%	37.3%	37.7%	37.9%
Consultants	41.3%	37.8%	36.3%	37.8%	37.3%	37.7%	37.9%
Registrar	16.6%	15.3%	11.4%	11.0%	11.9%	15.2%	13.7%
Senior Registrar	9.4%	10.6%	8.1%	10.6%	11.2%	12.0%	12.9%
Specialist Registrar		0.8%	0.8%				
Registrars	26.0%	26.7%	20.3%	21.6%	23.1%	27.2%	26.6%
Interns	3.4%	4.0%	3.2%	1.5%	1.5%		
Senior House Officer	29.3%	30.7%	40.1%	39.1%	38.2%	35.1%	35.5%
SHO/ Interns	32.7%	34.7%	43.4%	40.6%	39.6%	35.1%	35.5%
Medical/ Dental, other		0.8%					
Medical & Dental	9.8%	10.2%	10.1%	10.4%	10.7%	9.1%	9.1%
Clinical Nurse/ Midwife Manager	22.0%	21.3%	20.3%	19.3%	18.5%	17.8%	18.1%
Director Nursing/Midwifery, Assistant	3.6%	3.5%	3.9%	3.4%	3.7%	3.8%	3.9%
Director of Nursing/Midwifery	0.7%	0.9%	0.6%	0.3%	0.5%	0.5%	0.5%
Nurse/ Midwife Manager	26.3%	25.7%	24.7%	23.0%	22.7%	22.2%	22.5%
Advanced Nurse/ Midwife Practitioner		0.2%	0.4%	1.0%	1.0%	0.9%	1.0%
Clinical Nurse/ Midwife Specialist	5.4%	7.1%	10.0%	9.8%	10.2%	9.9%	10.4%
Nurse/ Midwife Specialist & AN/MP	5.4%	7.3%	10.4%	10.8%	11.2%	10.9%	11.3%
Staff Midwives						0.2%	0.2%
Staff Nurse [Intellectual Disability]	0.3%	0.3%	0.3%	0.3%	0.3%	0.1%	0.1%
Staff Nurse [Psychiatric]	61.6%	61.0%	59.1%	58.5%	57.9%	54.4%	53.6%
Staff Nurses [General/ Children's]	3.2%	2.9%	2.7%	2.5%	2.2%	2.0%	2.1%
Staff Nurse/ Staff Midwife	65.1%	64.2%	62.1%	61.4%	60.5%	56.7%	55.9%
Public Health Nurse		0.2%	0.2%				
Pre-registration Nurse/ Midwife Intern	1.3%	0.6%	0.2%	2.0%	1.7%	0.1%	2.8%
Pre-registration Nurse Intern (COVID-19)						8.3%	5.5%
Nursing/ Midwifery awaiting registration				0.5%	1.9%		
Nursing/ Midwifery Student	1.3%	0.6%	0.2%	2.5%	3.6%	8.4%	8.3%
Nursing Education/Clinical	1.9%	2.1%	2.5%	2.3%	2.0%	1.8%	2.0%
Nursing/ Midwifery other	1.9%	2.1%	2.5%	2.3%	2.0%	1.8%	2.0%
Nursing & Midwifery	47.8%	47.0%	46.3%	45.7%	46.8%	47.8%	47.8%
Dietitians		1.2%	0.9%	0.8%	0.9%	0.9%	1.3%
Occupational Therapists	27.2%	23.5%	25.8%	26.7%	27.5%	27.7%	27.4%
Physiotherapists	0.4%	0.4%	0.4%	0.6%	0.7%	0.6%	0.6%
Speech & Language Therapists	6.3%	6.9%	4.8%	5.7%	3.7%	5.5%	5.4%
Therapy Professions	34.0%	32.0%	32.0%	33.8%	32.8%	34.8%	34.7%
Social Care	0.6%	0.6%	0.6%	0.6%	0.5%	0.5%	0.5%
Social Workers	28.3%	24.3%	28.3%	26.1%	26.0%	24.7%	24.9%
Psychologists	24.2%	29.3%	27.1%	28.2%	27.3%	28.1%	28.2%
Pharmacy	4.3%	5.5%	5.3%	4.3%	4.7%	4.1%	4.0%
Counsellor Therapists	7.5%	7.6%	6.5%	6.0%	8.1%	7.3%	7.1%
Other Health & Social Care	1.2%	0.7%	0.4%	1.0%	0.6%	0.6%	0.6%
H&SC, Other	8.6%	8.2%	6.8%	7.0%	8.7%	7.9%	7.6%
Health & Social Care Professionals	13.0%	13.2%	13.7%	14.0%	14.3%	13.6%	13.6%
Management (VIII & above)	1.8%	1.8%	1.6%	1.5%	3.7%	3.9%	3.8%
Administrative/ Supervisory (V to VII)	16.3%	18.0%	21.1%	20.5%	20.4%	22.0%	21.0%
Clerical (III & IV)	81.8%	80.2%	77.3%	78.1%	76.0%	74.1%	75.2%

Jul 2020 (Dec 2018 figure: 1,301)	WTE Dec 2015	WTE Dec 2016	WTE Dec 2017	WTE Dec 2018	WTE Dec 2019	WTE Jun 2020	WTE Jul 2020
Mental Health	1,223	1,217	1,220	1,301	1,272	1,308	1,297
Management & Administrative	9.0%	9.3%	10.3%	10.5%	10.8%	10.1%	10.1%
Support	91.4%	92.0%	91.4%	91.4%	90.4%	90.3%	90.4%
Maintenance/ Technical	8.6%	8.0%	8.6%	8.6%	9.6%	9.7%	9.6%
General Support	11.3%	11.2%	10.4%	9.8%	10.1%	8.7%	8.7%
HCA, Nurse's Aide, etc.	96.5%	96.4%	96.4%	92.9%	87.2%	89.0%	89.0%
Health & Social Care Assistants	1.7%	2.7%	1.8%	2.4%	3.6%	2.2%	2.2%
Health Care Assistants	98.2%	99.1%	98.2%	95.4%	90.8%	91.1%	91.1%
Care, other	1.8%	0.9%	1.8%	4.6%	9.2%	8.9%	8.9%
Patient & Client Care	9.1%	9.1%	9.1%	9.5%	9.8%	10.7%	10.7%
Total	100 %	100 %	100 %	100 %	100 %	100 %	100 %

Jul 2020 (Dec 2018 figure: 1,300)	WTE Dec 2015	WTE Dec 2016	WTE Dec 2017	WTE Dec 2018	WTE Dec 2019	WTE Jun 2020	WTE Jul 2020
Primary Care	1,207	1,162	1,239	1,300	1,247	1,251	1,269
Consultant Psychiatry	3.4%	3.5%	5.6%	2.9%	3.9%	4.1%	4.0%
Consultants	3.4%	3.5%	5.6%	2.9%	3.9%	4.1%	4.0%
Registrars	33.1%	31.2%	37.4%	43.7%	50.3%	46.8%	47.5%
SHO/ Interns	9.1%	8.7%	2.6%		0.9%	3.7%	4.5%
Dentists	25.9%	28.5%	26.5%	27.1%	28.5%	29.2%	28.8%
Other Medical	28.5%	28.1%	27.8%	26.3%	16.4%	16.2%	15.3%
Medical/ Dental, other	54.4%	56.6%	54.3%	53.4%	44.8%	45.4%	44.1%
Medical & Dental	9.9%	9.8%	9.2%	9.1%	9.5%	8.7%	8.7%
Clinical Nurse/ Midwife Manager	3.7%	4.0%	4.7%	4.2%	4.3%	4.6%	4.8%
Director Nursing/Midwifery, Assistant	5.6%	6.1%	5.3%	5.7%	5.5%	5.7%	5.8%
Director of Nursing/Midwifery	0.9%	0.6%	0.8%	0.8%	0.9%	2.0%	1.5%
Nurse/ Midwife Manager	10.2%	10.7%	10.9%	10.7%	10.7%	12.3%	12.1%
Nurse/ Midwife Specialist & AN/MP	0.6%	1.3%	2.3%	1.5%	1.8%	1.9%	2.1%
Staff Nurse/ Staff Midwife	28.6%	28.3%	30.7%	32.3%	29.1%	37.1%	38.3%
Public Health Nurse	52.5%	53.3%	47.9%	48.7%	50.8%	48.1%	47.0%
Nursing/ Midwifery Student	7.5%	5.8%	7.8%	6.2%	7.5%	0.6%	0.6%
Nursing Education/Clinical	0.3%	0.3%	0.3%	0.3%			
Other Nursing/ Midwifery	0.3%	0.3%	0.1%	0.3%			
Nursing/ Midwifery other	0.6%	0.6%	0.4%	0.6%			
Nursing & Midwifery	28.6%	28.4%	29.0%	27.3%	28.4%	27.0%	27.0%
Dietitians	2.3%	2.8%	2.8%	2.6%	2.2%	2.3%	2.3%
Occupational Therapists	17.4%	16.8%	17.3%	14.9%	15.8%	15.8%	16.1%
Orthoptists	0.4%	0.5%	0.4%	1.0%	1.5%	1.5%	1.4%
Physiotherapists	18.4%	17.2%	16.3%	15.3%	17.0%	16.5%	16.4%
Podiatrists & Chiropodists			0.3%	0.3%	0.3%	0.3%	0.3%
Speech & Language Therapists	15.9%	18.5%	20.4%	20.3%	19.1%	18.8%	20.0%
Therapy Professions	54.4%	55.8%	57.4%	54.4%	55.8%	55.2%	56.5%
Audiology				5.0%	4.3%	4.2%	4.2%
Clinical Engineering				1.4%	1.4%	1.4%	1.4%
Health Science/ Diagnostics				6.4%	5.8%	5.6%	5.6%
Social Care	1.7%	1.5%	1.4%	1.1%	1.2%	1.3%	1.3%
Social Workers	7.0%	5.2%	5.3%	4.9%	4.7%	4.9%	5.1%
Psychologists	19.8%	19.8%	18.7%	18.3%	18.6%	19.1%	18.2%
Pharmacy	6.2%	7.1%	6.0%	5.1%	3.4%	3.7%	3.4%
Counsellor Therapists	8.3%	8.0%	8.4%	7.4%	8.1%	7.9%	7.5%

Jul 2020 (Dec 2018 figure: 1,300)	WTE Dec 2015	WTE Dec 2016	WTE Dec 2017	WTE Dec 2018	WTE Dec 2019	WTE Jun 2020	WTE Jul 2020
Primary Care	1,207	1,162	1,239	1,300	1,247	1,251	1,269
Dental Hygienists	1.9%	1.9%	1.8%	1.8%	1.8%	1.8%	1.7%
Other Health & Social Care	0.1%	0.2%	0.4%	0.2%	0.0%	0.0%	0.0%
Play Therapists/ Specialists	0.6%	0.4%	0.6%	0.6%	0.5%	0.5%	0.6%
H&SC, Other	10.9%	10.6%	11.2%	9.9%	10.4%	10.3%	9.9%
Health & Social Care Professionals	26.3%	26.9%	27.5%	27.3%	28.5%	27.9%	27.9%
Executive Management	1.2%	0.4%	0.4%	1.0%	1.3%	1.7%	1.5%
Senior Management (VIII & GM)	7.7%	7.2%	9.2%	8.2%	8.4%	8.9%	8.8%
Management (VIII & above)	8.9%	7.6%	9.6%	9.2%	9.8%	10.6%	10.3%
Administrative/ Supervisory (V to VII)	22.1%	24.0%	21.3%	27.0%	26.9%	27.3%	26.8%
Clerical (III & IV)	69.0%	68.4%	69.0%	63.8%	63.3%	62.1%	62.8%
Management & Administrative	21.2%	21.2%	21.4%	22.8%	23.8%	23.7%	23.7%
Support	100.0%	100.0%	100.0%	100.0%	100.0%	100.0%	100.0%
General Support	4.5%	4.5%	4.1%	3.7%	3.8%	2.6%	2.6%
HCA, Nurse's Aide, etc.	2.7%	2.6%	3.7%	6.6%	6.9%	6.6%	6.5%
Health & Social Care Assistants	2.1%	2.2%	3.6%	12.0%	4.2%	10.0%	10.3%
Health Care Assistants	4.7%	4.8%	7.3%	18.6%	11.1%	16.6%	16.8%
Community Welfare Officers	0.9%	0.9%					
Other Care Grades	94.4%	94.3%	92.7%	81.4%	88.9%	83.4%	83.2%
Care, other	95.3%	95.2%	92.7%	81.4%	88.9%	83.4%	83.2%
Patient & Client Care	9.4%	9.3%	8.9%	9.8%	10.2%	10.1%	10.1%
Total	100 %	100 %	100 %	100 %	100 %	100 %	100 %

Jul 2020 (Dec 2018 figure: 3,125)	WTE Dec 2015	WTE Dec 2016	WTE Dec 2017	WTE Dec 2018	WTE Dec 2019	WTE Jun 2020	WTE Jul 2020
Disabilities	2,807	3,043	3,100	3,125	3,194	3,211	3,167
Consultant Paediatrics	7.9%	7.8%	5.6%	6.3%	4.9%	5.2%	5.6%
Consultant Psychiatry	38.9%	42.7%	45.2%	48.2%	45.8%	42.7%	46.3%
Consultant Surgery	0.5%	0.5%					
Consultants	47.2%	51.0%	50.8%	54.5%	50.7%	47.9%	51.8%
Registrars	16.0%	15.8%	22.9%	15.7%	24.3%	15.6%	11.5%
SHO/ Interns						8.6%	8.4%
Medical/ Dental, other	36.8%	33.3%	26.3%	29.8%	25.0%	28.0%	28.3%
Medical & Dental	0.7%	0.6%	0.7%	0.6%	0.6%	0.7%	0.7%
Clinical Nurse/ Midwife Manager	22.2%	23.1%	23.5%	23.7%	22.9%	22.9%	23.1%
Director Nursing/Midwifery, Assistant	1.0%	0.9%	0.9%	0.8%	1.4%	1.5%	1.5%
Director of Nursing/Midwifery	2.1%	2.2%	2.1%	1.7%	1.9%	1.6%	1.6%
Nurse/ Midwife Manager	25.3%	26.1%	26.5%	26.2%	26.2%	26.0%	26.2%
Clinical Nurse/ Midwife Specialist	1.4%	1.2%	1.1%	1.2%	1.2%	1.3%	1.4%
Nurse/ Midwife Specialist & AN/MP	1.4%	1.2%	1.1%	1.2%	1.2%	1.3%	1.4%
Graduate Nursing/ Midwifery	0.1%						
Staff Nurse [Intellectual Disability]	56.5%	56.9%	57.4%	56.6%	57.2%	55.0%	54.8%
Staff Nurse [Psychiatric]	4.4%	4.0%	3.4%	4.4%	4.4%	3.3%	3.1%
Staff Nurses [General/ Children's]	11.5%	11.0%	10.7%	9.6%	9.1%	9.1%	9.2%
Staff Nurse/ Staff Midwife	72.5%	71.8%	71.5%	70.6%	70.6%	67.4%	67.1%
Pre-registration Nurse/ Midwife Intern	0.3%	0.1%		1.1%	1.1%		0.9%
Pre-registration Nurse Intern (COVID-19)						4.2%	3.2%
Nursing/ Midwifery Student	0.3%	0.1%		1.1%	1.1%	4.2%	4.1%
Nursing/ Midwifery other	0.5%	0.7%	0.8%	0.9%	1.0%	1.1%	1.1%
Nursing & Midwifery	27.5%	24.8%	24.4%	24.0%	23.5%	23.3%	23.3%

Jul 2020 (Dec 2018 figure: 3,125)	WTE Dec 2015	WTE Dec 2016	WTE Dec 2017	WTE Dec 2018	WTE Dec 2019	WTE Jun 2020	WTE Jul 2020
Disabilities	2,807	3,043	3,100	3,125	3,194	3,211	3,167
Dietitians	0.8%	0.7%	0.6%	0.6%	0.6%	0.6%	0.6%
Occupational Therapists	6.4%	6.4%	6.4%	6.2%	6.2%	6.3%	6.3%
Physiotherapists	6.4%	6.2%	5.6%	5.8%	5.7%	5.5%	5.6%
Speech & Language Therapists	5.7%	6.1%	5.9%	5.7%	5.5%	5.8%	6.0%
Therapy Professions	19.3%	19.4%	18.5%	18.3%	18.1%	18.3%	18.5%
Audiology	1.8%	1.3%	1.9%				
Clinical Engineering	2.3%	1.8%	1.7%	1.0%	1.1%	0.9%	0.9%
Medical Laboratory	0.4%	0.3%	0.3%	0.4%	0.4%	0.4%	0.4%
Health Science/ Diagnostics	4.4%	3.4%	3.9%	1.5%	1.5%	1.3%	1.3%
Social Care	60.7%	62.6%	63.7%	67.9%	68.7%	68.1%	67.8%
Social Workers	5.9%	5.5%	5.2%	4.5%	4.4%	4.6%	4.5%
Psychologists	6.4%	6.2%	6.1%	5.6%	5.3%	5.7%	5.8%
Pharmacy	0.3%	0.2%	0.2%	0.2%	0.2%	0.2%	0.2%
Other Health & Social Care	3.0%	2.6%	2.3%	2.0%	1.8%	1.9%	1.9%
Play Therapists/ Specialists	0.1%	0.1%	0.1%	0.1%	0.0%		
H&SC, Other	3.0%	2.6%	2.4%	2.0%	1.9%	1.9%	1.9%
Health & Social Care Professionals	28.0%	30.4%	30.5%	30.6%	29.9%	32.3%	32.3%
Executive Management	1.5%	1.4%	1.3%	1.3%	1.1%	1.2%	1.2%
Senior Management (VIII & GM)	12.0%	11.8%	12.6%	12.8%	13.8%	13.2%	13.2%
Management (VIII & above)	13.5%	13.1%	14.0%	14.1%	15.0%	14.4%	14.5%
Administrative/ Supervisory (V to VII)	35.1%	36.8%	35.3%	36.0%	35.0%	36.3%	36.3%
Clerical (III & IV)	51.5%	50.1%	50.7%	49.9%	50.1%	49.2%	49.2%
Management & Administrative	7.2%	7.2%	7.2%	7.6%	7.5%	7.8%	7.8%
Support	90.0%	90.8%	89.9%	89.6%	89.9%	89.5%	88.2%
Maintenance	9.6%	8.8%	9.7%	9.5%	9.2%	9.5%	10.7%
Technical Services	0.4%	0.4%	0.4%	0.9%	0.9%	1.0%	1.1%
Maintenance/ Technical	10.0%	9.2%	10.1%	10.4%	10.1%	10.5%	11.8%
General Support	9.5%	7.9%	7.6%	7.1%	7.0%	5.9%	5.9%
HCA, Nurse's Aide, etc.	88.4%	88.4%	90.0%	89.1%	89.7%	89.9%	89.6%
Health & Social Care Assistants	0.5%	0.3%	0.4%	0.2%	0.2%	0.3%	0.3%
Health Care Assistants	88.9%	88.8%	90.3%	89.4%	90.0%	90.2%	90.0%
Care, other	11.1%	11.2%	9.7%	10.6%	10.0%	9.8%	10.0%
Patient & Client Care	27.1%	29.1%	29.6%	30.1%	29.4%	30.0%	30.0%
Total	100 %	100 %	100 %	100 %	100 %	100 %	100 %

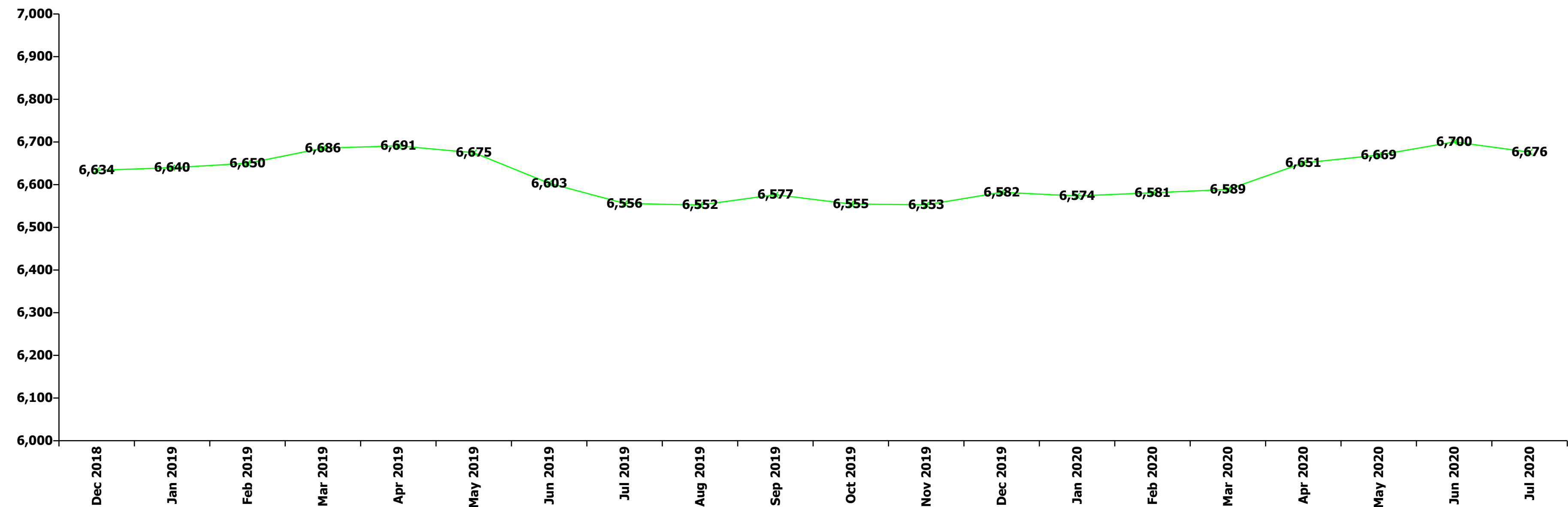
Jul 2020 (Dec 2018 figure: 908)	WTE Dec 2015	WTE Dec 2016	WTE Dec 2017	WTE Dec 2018	WTE Dec 2019	WTE Jun 2020	WTE Jul 2020
Older People	852	865	878	908	870	922	936
Consultant Medicine	23.6%	32.5%	33.1%	8.9%	8.0%	10.9%	14.2%
Consultant Surgery	5.1%	3.8%	0.6%	0.7%			
Consultants	28.7%	36.3%	33.7%	9.6%	8.0%	10.9%	14.2%
Registrar	26.2%	23.1%	29.9%	35.3%	27.4%	24.8%	20.1%
Specialist Registrar	5.1%	5.1%				4.9%	5.5%
Registrars	31.3%	28.2%	29.9%	35.3%	27.4%	29.7%	25.6%
Senior House Officer	34.8%	30.4%	31.8%	49.6%	59.7%	54.4%	54.7%
SHO/ Interns	34.8%	30.4%	31.8%	49.6%	59.7%	54.4%	54.7%
Medical/ Dental, other	5.1%	5.1%	4.6%	5.6%	5.0%	4.9%	5.5%
Medical & Dental	2.3%	2.3%	2.5%	2.0%	2.1%	2.0%	2.0%
Clinical Nurse/ Midwife Manager	21.8%	20.2%	23.7%	20.6%	19.1%	20.3%	19.6%
Director Nursing/Midwifery, Assistant	3.4%	4.3%	4.1%	2.8%	3.6%	4.4%	3.8%

Jul 2020 (Dec 2018 figure: 908)	WTE Dec 2015	WTE Dec 2016	WTE Dec 2017	WTE Dec 2018	WTE Dec 2019	WTE Jun 2020	WTE Jul 2020
Older People	852	865	878	908	870	922	936
Director of Nursing/Midwifery	1.3%	1.0%	1.0%	1.3%	1.6%	1.3%	1.3%
Nurse/ Midwife Manager	26.5%	25.5%	28.8%	24.8%	24.3%	25.9%	24.7%
Advanced Nurse/ Midwife Practitioner	0.3%	0.3%	0.3%	0.3%	0.3%	0.3%	0.3%
Clinical Nurse/ Midwife Specialist	1.3%	0.7%	0.7%	0.9%	1.3%	1.5%	1.2%
Nurse/ Midwife Specialist & AN/MP	1.7%	1.0%	1.0%	1.2%	1.5%	1.8%	1.5%
Staff Nurse [Psychiatric]	0.7%	0.7%	0.7%	0.6%	0.6%	0.6%	0.6%
Staff Nurses [General/ Children's]	70.8%	72.4%	69.0%	72.9%	73.1%	71.3%	72.8%
Staff Nurse/ Staff Midwife	71.5%	73.1%	69.7%	73.6%	73.7%	71.9%	73.5%
Public Health Nurse		0.1%	0.1%	0.1%	0.1%		
Nursing Education/Clinical	0.3%	0.3%	0.3%	0.3%	0.3%	0.3%	0.3%
Nursing/ Midwifery other	0.3%	0.3%	0.3%	0.3%	0.3%	0.3%	0.3%
Nursing & Midwifery	34.9%	34.8%	33.0%	34.7%	36.2%	34.2%	34.2%
Dietitians	6.1%	8.1%	8.4%	8.9%	7.5%	12.0%	13.0%
Occupational Therapists	21.4%	24.9%	25.0%	22.7%	22.9%	23.7%	23.4%
Physiotherapists	36.7%	30.7%	34.6%	30.9%	31.1%	31.8%	31.0%
Speech & Language Therapists	5.9%	4.9%	4.4%	4.1%	5.5%	4.7%	4.6%
Therapy Professions	70.0%	68.6%	72.4%	66.6%	67.0%	72.2%	72.0%
Radiographers	3.1%	2.9%	2.5%	2.4%	1.8%	1.0%	1.0%
Health Science/ Diagnostics	3.1%	2.9%	2.5%	2.4%	1.8%	1.0%	1.0%
Social Care	1.4%	1.4%	1.2%	1.2%	1.2%	1.0%	1.0%
Social Workers	21.2%	22.5%	20.0%	26.1%	26.1%	22.2%	22.0%
Pharmacy	4.2%	4.1%	3.5%	3.3%	3.4%	3.1%	3.6%
H&SC, Other		0.5%	0.5%	0.4%	0.4%	0.4%	0.4%
Health & Social Care Professionals	7.7%	7.9%	9.1%	9.3%	9.7%	10.5%	10.5%
Executive Management	1.8%	1.7%	4.4%	4.1%	4.6%	4.6%	4.4%
Senior Management (VIII & GM)	5.5%	7.0%	6.1%	8.1%	9.4%	7.6%	7.3%
Management (VIII & above)	7.3%	8.7%	10.5%	12.2%	14.0%	12.2%	11.7%
Administrative/ Supervisory (V to VII)	28.2%	27.1%	27.4%	27.6%	23.4%	24.9%	26.6%
Clerical (III & IV)	64.5%	64.2%	62.1%	60.2%	62.6%	62.9%	61.7%
Management & Administrative	6.4%	6.6%	7.5%	8.1%	8.5%	7.3%	7.3%
Support	98.1%	98.1%	98.1%	98.1%	98.0%	98.1%	98.1%
Maintenance/ Technical	1.9%	1.9%	1.9%	1.9%	2.0%	1.9%	1.9%
General Support	15.1%	14.3%	14.1%	13.6%	14.2%	13.1%	13.1%
HCA, Nurse's Aide, etc.	98.5%	98.5%	98.5%	98.5%	97.7%	97.8%	97.9%
Health & Social Care Assistants	0.7%	0.7%	0.7%	0.3%		0.3%	0.3%
Health Care Assistants	99.2%	99.2%	99.2%	98.8%	97.7%	98.2%	98.2%
Care, other	0.8%	0.8%	0.8%	1.2%	2.3%	1.8%	1.8%
Patient & Client Care	33.7%	34.1%	33.8%	32.3%	33.7%	32.9%	32.9%
Total	100 %	100 %	100 %	100 %	100 %	100 %	100 %

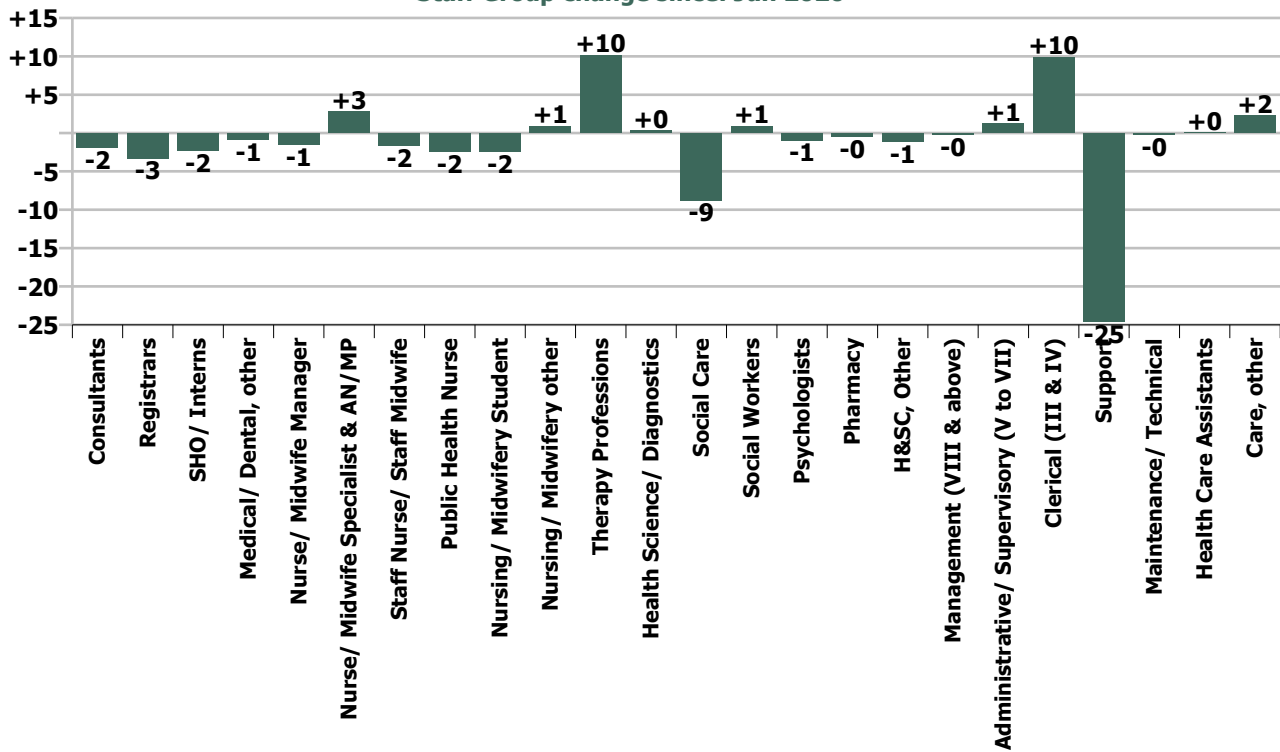
Summary Staff Movement: July 2020

Month-on-month Summary																												
WTE change since Jun 20	% change since Jun 20	overall	Consultants	Registrars	SHO/ Interns	Medical/ Dental, other	Medical & Dental	Nurse/ Midwife Manager	Nurse/ Midwife Specialist & AN/MP	Staff Nurse/ Staff Midwife	Public Health Nurse	Nursing/ Midwifery Student	Nursing/ Midwifery other	Nursing & Midwifery	Therapy Professions	Health Science/ Diagnostics	Social Care	Social Workers	Psychologists	Pharmacy	H&SC, Other	Health & Social Care Professionals	Management (VII & above)	Administrative/ Supervisory (V to VI)	Clerical (III & IV)	Management & Administrative	General Support	Patient & Client Care
Overall	-0.4%	-24	-1.9	-3.3	-2.3	-0.8	-8.3	-1.5	+2.8	-1.7	-2.4	-2.4	+0.9	-4.2	+10.2	+0.3	-8.8	+0.9	-0.9	-0.4	-1.1	+0.1	-0.2	+1.2	+9.9	+10.9	-24.8	+2.3
Community Health & Wellbeing	-5.4%	-0													-0.1							-0.1	0.0	0.0	-0.3	-0.3		
Mental Health	-0.8%	-11	-2.5	-2.7	-2.0		-7.2	+0.7	+2.0	-9.6		-1.5	+0.9	-7.5	+0.3		+0.0	+0.6	+0.6	-0.2	-0.3	+1.0	0.0	-0.7	+3.5	+2.8	-0.7	+0.6
Primary Care	+1.4%	+18	0.0	+1.9	+0.9	-0.5	+2.3	-0.3	+0.8	+5.1	-2.4	0.0		+3.2	+8.0	+0.3	+0.0	+1.1	-2.2	-0.7	-0.8	+5.7	-0.2	+0.2	+5.9	+5.9	-0.5	+1.4
Disabilities	-1.4%	-45	+0.2	-1.1	-0.2	-0.3	-1.5	+1.5	+1.0	-3.5		-0.9	0.0	-1.8	+0.4	0.0	-8.8	-1.1	+0.7	0.0	0.0	-8.9	0.0	-0.2	-0.3	-0.5	-23.1	-8.8
Older People	+1.5%	+14	+0.4	-1.3	-1.0	0.0	-1.9	-3.3	-1.0	+6.3			0.0	+2.0	+1.5	0.0	0.0	+0.4		+0.5	0.0	+2.4	0.0	+1.9	+1.1	+3.0	-0.5	+9.1
Social Care	-0.7%	-31	+0.5	-2.5	-1.2	-0.3	-3.4	-1.9	0.0	+2.9		-0.9	0.0	+0.1	+1.9	0.0	-8.8	-0.7	+0.7	+0.5	-0.0	-6.4	0.0	+1.7	+0.8	+2.5	-23.6	+0.3
Change	-23.9	-0.4%	-3.0%	-3.5%	-3.7%	-1.5%	-3.0%	-0.3%	+3.1%	-0.1%	-1.5%	-2.8%	+4.4%	-0.2%	+2.0%	+0.8%	-1.2%	+0.7%	-0.5%	-1.7%	-1.6%	+0.0%	-0.2%	+0.6%	+2.2%	+1.5%	-5.2%	+0.2%

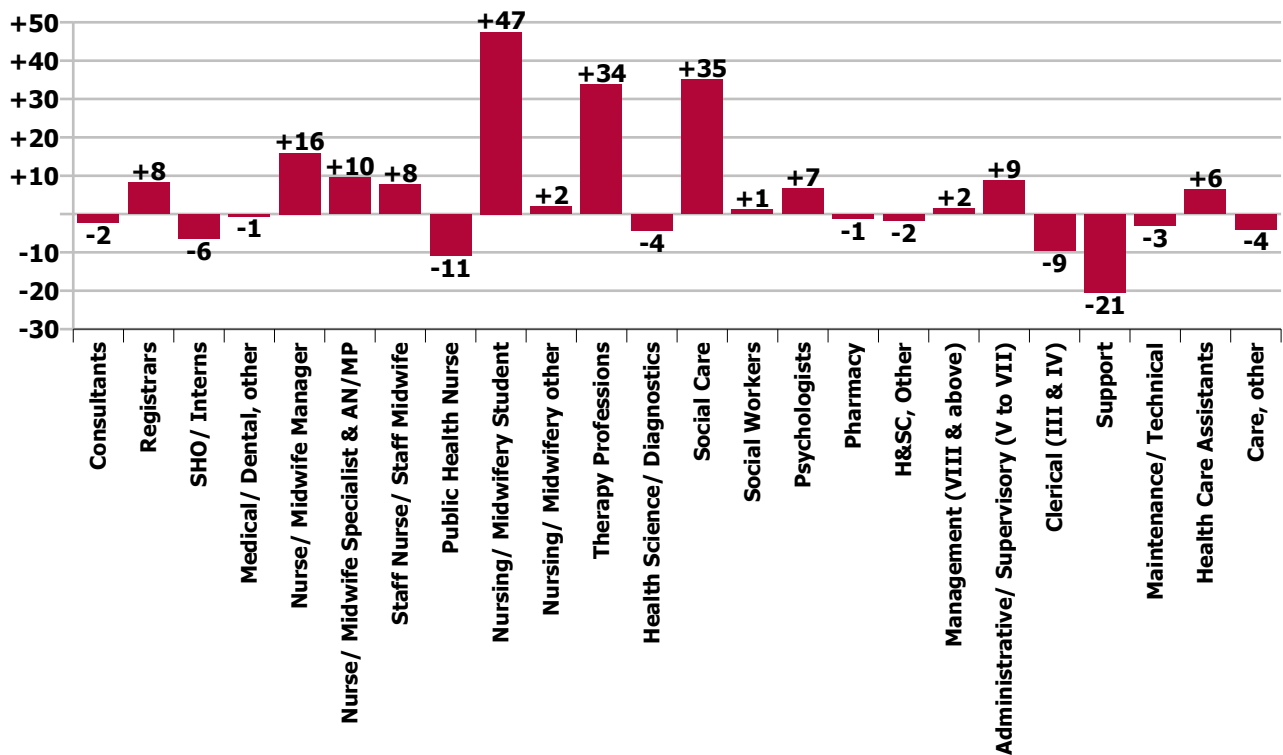
Year-on-year Summary																												
WTE change since Jul 19	% change since Jul 19	overall	Consultants	Registrars	SHO/ Interns	Medical/ Dental, other	Medical & Dental	Nurse/ Midwife Manager	Nurse/ Midwife Specialist & AN/MP	Staff Nurse/ Staff Midwife	Public Health Nurse	Nursing/ Midwifery Student	Nursing/ Midwifery other	Nursing & Midwifery	Therapy Professions	Health Science/ Diagnostics	Social Care	Social Workers	Psychologists	Pharmacy	H&SC, Other	Health & Social Care Professionals	Management (VIII & above)	Administrative/ Supervisory (V to VII)	Clerical (III & IV)	Management & Administrative	General Support	Patient & Client Care
Overall	+1.8%	+120	-2.2	+8.1	-6.3	-0.5	-0.9	+15.9	+9.5	+7.7	-10.8	+47.5	+2.0	+71.7	+33.8	-4.3	+35.0	+1.2	+6.6	-1.1	-1.8	+69.4	+1.6	+8.8	-9.4	+1.0	-23.5	+2.4
Community Health & Wellbeing	-5.4%	-0													+0.6							+0.6	+1.0	+4.9	+1.3	+7.2		
Mental Health	-0.8%	-11	-4.5	+7.4	-11.2		-8.2	+4.0	+6.1	-12.5		+29.3	+1.0	+27.9	+2.8		-0.0	+1.1	+0.9	-1.1	-0.2	+3.4	+0.3	+0.0	-11.4	-11.1	-3.9	-1.4
Primary Care	+1.4%	+18	+1.0	+5.1	+3.9	-0.5	+9.5	+2.7	+1.6	+14.9	-10.4	0.0	-1.0	+7.7	-0.5	-1.7	+0.5	-0.6	+0.1	-0.7	-2.2	-5.1	+2.3	-2.6	-5.2	-5.5	-5.3	-3.4
Disabilities	+2.2%	+68.1	+0.2	-2.5	+1.8	0.0	-0.5	+4.7	+0.8	+1.5		+18.1	+2.0	+27.2	+14.6	-2.0	+34.5	+2.2	+5.6	0.0	+0.6	+55.5	-2.0	+5.2	+5.0	+8.2	-12.6	-9.7
Older People	+4.4%	+39.7	+1.0	-1.8	-0.9	0.0	-1.7	+4.6	+1.0	+3.7	-0.4		0.0	+8.9	+16.3	-0.6	0.0	-1.4		+0.7	0.0	+15.0	0.0	+1.4	+0.8	+2.2	-1.7	+16.9
Social Care	-0.7%	-31	+1.2	-4.4	+0.9	0.0	-2.2	+9.3	+1.8	+5.3	-0.4	+18.1	+2.0	+36.1	+30.9	-2.6	+34.5	+0.8	+5.6	+0.7	+0.6	+70.5	-2.0	+6.6	+5.8	+10.4	-14.3	+7.2
Change	+120.1	+1.8%	-3.4%	+9.9%	-9.7%	-0.9%	-0.4%	+3.6%	+11.5%	+0.6%	-6.3%	+131.9%	+10.2%	+3.7%	+6.9%	-11.2%	+5.3%	+1.0%	+4.0%	-4.4%	-2.5%	+4.4%	+2.0%	+4.2%	-2.0%	+0.1%	-4.9%	+0.2%



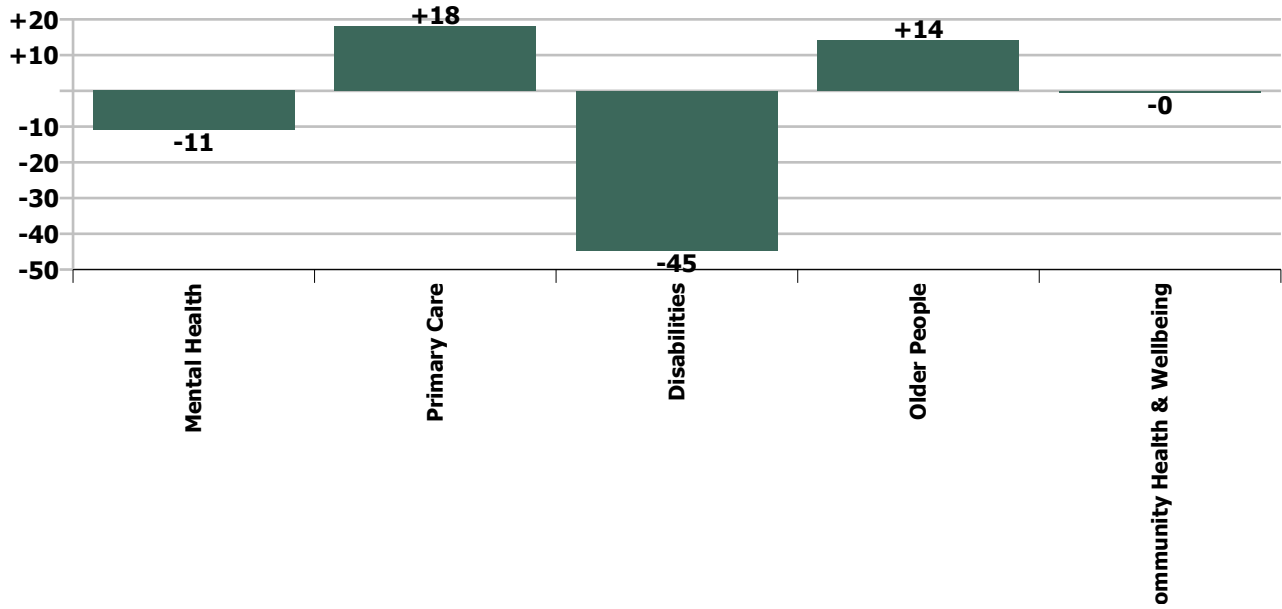
Staff Group change since: Jun 2020



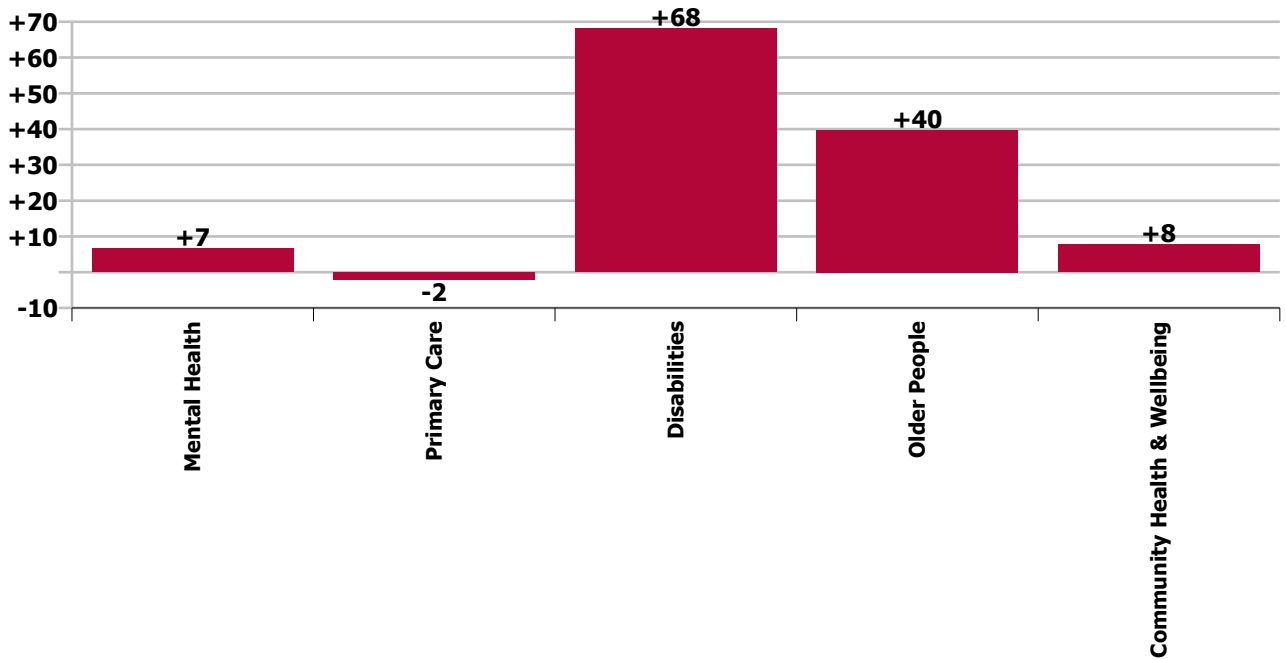
Staff Group change since: Jul 2019



Care Group change since: Jun 2020



Care Group change since: Jul 2019



Longitudinal Employment Levels by Grade Group - Oct 2013 to Jul 2020

Jul 2020 (Dec 2015 figure: 6,089)	WTE Jul 2020	WTE change since Dec 15	WTE change since Dec 16	WTE change since Dec 17	WTE change since Dec 18	WTE change since Dec 19	WTE change since Jun 20	% change since Dec 15	% change since Dec 16	% change since Dec 17	% change since Dec 18	% change since Dec 19	% change since Jun 20
Overall	6,676	+588	+390	+239	+43	+94	-24	+9.7%	+6.2%	+3.7%	+0.6%	+1.4%	-0.4%
Consultant Medicine	3	-2	-4	-5	+1	+1	+0	-43.5%	-59.1%	-64.4%	+52.9%	+62.5%	+18.2%
Consultant Paediatrics	1	-0	-0					-18.2%	-18.2%				
Consultant Psychiatry	59	-1	+0	-2	-5	-7	-2	-2.5%	+0.2%	-3.4%	-7.6%	-10.0%	-3.8%
Consultant Surgery		-1	-1	-0	-0			-100.0%	-100.0%	-100.0%	-100.0%	-100.0%	-100.0%
Consultants	63	-5	-5	-7	-4	-6	-2	-7.2%	-7.1%	-9.9%	-6.0%	-8.1%	-3.0%
Registrar	72	+8	+13	+9	-2	-6	-2	+11.9%	+22.2%	+13.9%	-2.8%	-7.8%	-3.1%
Senior Registrar	16	+4	+2	+5	+1	+0	+0	+31.9%	+13.9%	+47.3%	+5.0%	+1.1%	+1.1%
Specialist Registrar	3	-0	-1	-2	+2	-1	-1	-16.3%	-37.3%	-49.8%	+151.0%	-37.3%	-30.9%
Registrars	91	+11	+14	+11	+0	-7	-3	+13.9%	+17.6%	+14.5%	+0.2%	-7.6%	-3.5%
Interns		-4	-5	-4	-2	-2		-100.0%	-100.0%	-100.0%	-100.0%	-100.0%	-100.0%
Senior House Officer	59	+6	+5	-1	-3	-6	-2	+11.4%	+8.5%	-1.7%	-5.6%	-8.7%	-3.7%
SHO/ Interns	59	+2	-0	-5	-5	-8	-2	+3.5%	-0.7%	-7.9%	-8.5%	-11.4%	-3.7%
Dentists	32	+1	-1	+2	-0	+0	+0	+2.3%	-2.2%	+5.1%	-1.5%	+0.6%	+0.7%
Other Medical	24	-18	-16	-14	-14	-1	-1	-42.8%	-40.5%	-37.6%	-36.7%	-5.3%	-4.2%
Medical/ Dental, other	56	-17	-17	-13	-14	-1	-1	-23.6%	-23.4%	-18.8%	-20.5%	-2.0%	-1.5%
Medical & Dental	268	-9	-9	-13	-24	-22	-8	-3.2%	-3.1%	-4.7%	-8.1%	-7.5%	-3.0%
Clinical Nurse/ Midwife Manager	363	-15	-7	-15	-9	+14	+1	-4.1%	-1.8%	-3.9%	-2.3%	+4.1%	+0.3%
Director Nursing/Midwifery, Assistant	67	+9	+7	+7	+12	+6	-1	+15.6%	+12.4%	+12.3%	+21.3%	+9.7%	-1.4%
Director of Nursing/Midwifery	24	-3	-2	-1	+2	-1	-2	-11.0%	-8.4%	-5.0%	+9.1%	-4.0%	-6.5%
Nurse/ Midwife Manager	454	-9	-2	-9	+5	+19	-1	-2.0%	-0.4%	-1.9%	+1.1%	+4.4%	-0.3%
Advanced Nurse/ Midwife Practitioner	7	+6	+5	+4	+0	+0	+0	+596.0%	+251.5%	+132.0%	+0.4%	+1.9%	+0.7%
Clinical Nurse/ Midwife Specialist	86	+37	+29	+10	+10	+8	+3	+76.7%	+51.9%	+13.6%	+13.7%	+9.9%	+3.3%
Nurse/ Midwife Specialist & AN/MP	93	+43	+34	+14	+10	+8	+3	+87.2%	+58.7%	+18.1%	+12.6%	+9.2%	+3.1%
Graduate Nursing/ Midwifery		-1						-100.0%	-100.0%	-100.0%	-100.0%	-100.0%	-100.0%
Staff Midwives	1	+1	+1	+1	+1	+1		-100.0%	-100.0%	-100.0%	-100.0%	-100.0%	
Staff Nurse [Intellectual Disability]	406	-33	-24	-30	-21	-15	-3	-7.5%	-5.7%	-7.0%	-4.8%	-3.6%	-0.7%
Staff Nurse [Psychiatric]	358	-38	-24	-11	-25	-13	-11	-9.7%	-6.2%	-3.1%	-6.6%	-3.5%	-3.0%
Staff Nurses [General/ Children's]	445	+28	+34	+46	+14	+40	+12	+6.7%	+8.4%	+11.5%	+3.3%	+10.0%	+2.8%
Staff Nurse/ Staff Midwife	1,209	-43	-12	+5	-31	+13	-2	-3.5%	-1.0%	+0.4%	-2.5%	+1.1%	-0.1%
Public Health Nurse	161	-20	-16	-12	-12	-15	-2	-11.2%	-9.0%	-7.1%	-7.1%	-8.3%	-1.5%
Pre-registration Nurse/ Midwife Intern	24	+14	+19	+23	+3	+6	+23	+152.3%	+432.7%	+1897.5%	+16.6%	+34.1%	+4694.0%
Pre-registration Nurse Intern (COVID-19)	58	+58	+58	+58	+58	+58	-26	-100.0%	-100.0%	-100.0%	-100.0%	-100.0%	-31.0%
Post-registration Nurse/ Midwife Student	2	-24	-17	-26	-20	-24		-92.3%	-89.5%	-92.9%	-90.9%	-92.3%	
Nursing/ Midwifery awaiting registration					-3	-11		-100.0%	-100.0%	-100.0%	-100.0%	-100.0%	-100.0%

Jul 2020 (Dec 2015 figure: 6,089)	WTE Jul 2020	WTE change since Dec 15	WTE change since Dec 16	WTE change since Dec 17	WTE change since Dec 18	WTE change since Dec 19	WTE change since Jun 20	% change since Dec 15	% change since Dec 16	% change since Dec 17	% change since Dec 18	% change since Dec 19	% change since Jun 20
Overall	6,676	+588	+390	+239	+43	+94	-24	+9.7%	+6.2%	+3.7%	+0.6%	+1.4%	-0.4%
Nursing/ Midwifery Student	83	+48	+60	+54	+38	+29	-2	+135.1%	+255.2%	+185.9%	+84.3%	+52.7%	-2.8%
Nursing Education/Clinical	22	+4	+3	-0	-1	+2	+1	+25.3%	+15.3%	-1.0%	-3.5%	+10.3%	+4.4%
Other Nursing/ Midwifery		-1	-1	-0	-1			-100.0%	-100.0%	-100.0%	-100.0%	-100.0%	-100.0%
Nursing/ Midwifery other	22	+3	+2	-1	-2	+2	+1	+18.5%	+9.5%	-3.0%	-7.6%	+10.3%	+4.4%
Nursing & Midwifery	2,022	+22	+66	+52	+9	+57	-4	+1.1%	+3.4%	+2.6%	+0.4%	+2.9%	-0.2%
Dietitians	30	+13	+7	+7	+6	+9	+2	+74.7%	+32.3%	+32.3%	+26.1%	+42.1%	+7.3%
Occupational Therapists	192	+29	+26	+10	+12	+10	+1	+18.0%	+15.4%	+5.4%	+6.9%	+5.5%	+0.4%
Orthoptists	5	+4	+4	+4	+1	-0	-0	+261.7%	+261.7%	+321.5%	+37.5%	-2.1%	-1.9%
Physiotherapists	147	+14	+14	+10	+10	+4	+1	+10.3%	+10.7%	+7.3%	+7.4%	+2.5%	+0.7%
Podiatrists & Chiropodists	1	+1	+1	+0				-100.0%	-100.0%	+6.4%			
Speech & Language Therapists	146	+37	+18	+9	+6	+13	+7	+33.9%	+13.7%	+6.7%	+4.2%	+9.6%	+4.7%
Therapy Professions	522	+98	+70	+40	+36	+35	+10	+23.0%	+15.4%	+8.4%	+7.4%	+7.2%	+2.0%
Audiology	15	+1	+3	-3	-3	-0	+0	+7.5%	+20.9%	-17.2%	-16.2%	-2.8%	+1.9%
Clinical Engineering	14	-4	-2	-2	-1	-2		-22.7%	-14.1%	-12.5%	-6.7%	-12.5%	
Medical Laboratory	4	+1	+1	+1				+33.3%	+33.3%	+33.3%			
Radiographers	1	-1	-1	-1	-1	-0		-50.0%	-50.0%	-50.0%	-50.0%	-31.0%	
Health Science/ Diagnostics	34	-3	+0	-5	-5	-3	+0	-8.3%	+0.8%	-13.0%	-12.6%	-7.8%	+0.8%
Social Care	700	+216	+114	+92	+46	+5	-9	+44.7%	+19.5%	+15.1%	+7.1%	+0.7%	-1.2%
Social Workers	130	+3	+8	-0	-0	+5	+1	+2.2%	+6.7%	-0.4%	-0.1%	+3.7%	+0.7%
Psychologists	173	+22	+7	+7	+4	+10	-1	+14.3%	+4.1%	+4.4%	+2.2%	+5.8%	-0.5%
Pharmacy	25	-7	-11	-10	-6	-0	-0	-21.2%	-31.3%	-28.2%	-19.7%	-0.7%	-1.7%
Counsellor Therapists	39	+1	+2	-0	+2	-3	-1	+2.7%	+5.6%	-0.7%	+5.8%	-6.3%	-3.1%
Dental Hygienists	6	-0	-0	-0	-0	-0	-0	-0.7%	-0.7%	-0.8%	-4.3%	-5.9%	-1.3%
Other Health & Social Care	21	-4	-5	-3	-0	+1		-15.4%	-17.4%	-11.7%	-0.5%	+7.0%	
Play Therapists/ Specialists	2	-1	+0	-1	-1	-0	+0	-20.0%	+5.3%	-20.0%	-20.0%	-12.3%	+11.1%
H&SC, Other	69	-3	-2	-4	+1	-2	-1	-4.8%	-3.3%	-5.0%	+1.9%	-2.7%	-1.6%
Health & Social Care Professionals	1,652	+325	+186	+121	+76	+49	+0	+24.5%	+12.7%	+7.9%	+4.8%	+3.1%	+0.0%
Executive Management	11	+4	+6	+5	+2	+1	-1	+63.1%	+128.4%	+65.0%	+26.9%	+8.6%	-4.4%
Senior Management (VIII & GM)	69	+20	+20	+10	+6	+0	+0	+41.1%	+39.5%	+17.7%	+10.1%	+0.5%	+0.5%
Management (VIII & above)	81	+25	+26	+15	+9	+1	-0	+43.9%	+47.7%	+22.7%	+12.2%	+1.6%	-0.2%
Middle Management (V-VII)	213	+61	+46	+43	+11	+13	+1	+40.3%	+27.7%	+25.7%	+5.3%	+6.6%	+0.6%
Other Administrative	9	-1	-1	-3	-4			-9.8%	-5.5%	-22.6%	-31.8%		
Administrative/ Supervisory (V to VII)	221	+60	+46	+41	+7	+13	+1	+37.3%	+25.9%	+22.7%	+3.1%	+6.4%	+0.6%
Clerical (III & IV)	453	+46	+47	+19	-7	+1	+10	+11.4%	+11.6%	+4.3%	-1.5%	+0.3%	+2.2%
Management & Administrative	755	+131	+119	+74	+8	+16	+11	+21.0%	+18.6%	+10.9%	+1.1%	+2.2%	+1.5%

Jul 2020 (Dec 2015 figure: 6,089)	WTE Jul 2020	WTE change since Dec 15	WTE change since Dec 16	WTE change since Dec 17	WTE change since Dec 18	WTE change since Dec 19	WTE change since Jun 20	% change since Dec 15	% change since Dec 16	% change since Dec 17	% change since Dec 18	% change since Dec 19	% change since Jun 20
Overall	6,676	+588	+390	+239	+43	+94	-24	+9.7%	+6.2%	+3.7%	+0.6%	+1.4%	-0.4%
Catering	56	-13	-12	-11	-8	-5	-1	-19.4%	-18.2%	-16.5%	-12.9%	-8.9%	-1.3%
Household Services	219	-39	-19	-6	-9	-1	-2	-15.2%	-7.9%	-2.5%	-3.8%	-0.6%	-0.7%
Other Support	68	-66	-59	-63	-51	-26	-23	-49.0%	-46.4%	-47.9%	-42.7%	-27.8%	-25.3%
Portering	76	-10	-9	-4	+1	-0	+1	-11.8%	-11.1%	-5.5%	+1.7%	-0.0%	+1.0%
Support	419	-128	-100	-84	-67	-33	-25	-23.4%	-19.2%	-16.7%	-13.7%	-7.3%	-5.6%
Maintenance	33	-7	-1	-3	-1	-0	-0	-16.8%	-4.0%	-8.8%	-4.0%	-0.5%	-0.5%
Technical Services	2	+1	+1	+1				+100.0%	+100.0%	+100.0%			
Maintenance/ Technical	35	-6	-0	-2	-1	-0	-0	-14.0%	-1.0%	-5.9%	-3.8%	-0.4%	-0.5%
General Support	454	-134	-100	-86	-68	-33	-25	-22.8%	-18.1%	-15.9%	-13.0%	-6.8%	-5.2%
HCA, Nurse's Aide, etc.	1,285	+219	+104	+57	+35	+20	-0	+20.6%	+8.8%	+4.6%	+2.8%	+1.6%	-0.0%
Health & Social Care Assistants	20	+10	+10	+9	-1	+8	+0	+102.0%	+100.0%	+80.3%	-5.9%	+64.9%	+2.4%
Health Care Assistants	1,306	+230	+114	+66	+34	+28	+0	+21.3%	+9.6%	+5.3%	+2.6%	+2.2%	+0.0%
Care, other	220	+23	+14	+25	+7	-1	+2	+11.8%	+7.0%	+12.9%	+3.3%	-0.5%	+1.1%
Patient & Client Care	1,525	+253	+128	+91	+41	+27	+2	+19.9%	+9.2%	+6.4%	+2.7%	+1.8%	+0.2%

Source: Health Service Personnel Census

Longitudinal Employment Levels by Care Group - Oct 2013 to Jul 2020

Community Health & Wellbeing

Jul 2020 (figure:)	WTE Jul 2020	WTE change since	WTE change since	WTE change since	WTE change since	WTE change since	WTE change since Jun 20	% change since	% change since	% change since	% change since	% change since	% change since Jun 20
Overall	8	+8	+8	+8	+8	+8	-0	-100.0%	-100.0%	-100.0%	-100.0%	-100.0%	-5.4%
Health & Social Care Professionals	1	+1	+1	+1	+1	+1	-0	-1.0%	-1.0%	-1.0%	-1.0%	-1.0%	-0.2%
Therapy Professions	1	+1	+1	+1	+1	+1	-0	-1.0%	-1.0%	-1.0%	-1.0%	-1.0%	-0.2%
Management & Administrative	7	+7	+7	+7	+7	+7	-0	-1.0%	-1.0%	-1.0%	-1.0%	-1.0%	-0.0%
Management (VIII & above)	1	+1	+1	+1	+1	+1		-1.0%	-1.0%	-1.0%	-1.0%	-1.0%	+0.0%
Administrative/ Supervisory (V to VII)	5	+5	+5	+5	+5	+5		-1.0%	-1.0%	-1.0%	-1.0%	-1.0%	+0.0%
Clerical (III & IV)	1	+1	+1	+1	+1	+1	-0	-1.0%	-1.0%	-1.0%	-1.0%	-1.0%	-0.2%

Source: Health Service Personnel Census

Mental Health

Jul 2020 (Dec 2015 figure: 1,223)	WTE Jul 2020	WTE change since Dec 15	WTE change since Dec 16	WTE change since Dec 17	WTE change since Dec 18	WTE change since Dec 19	WTE change since Jun 20	% change since Dec 15	% change since Dec 16	% change since Dec 17	% change since Dec 18	% change since Dec 19	% change since Jun 20
Overall	1,297	+75	+80	+77	-4	+26	-11	+6.1%	+6.6%	+6.3%	-0.3%	+2.0%	-0.8%
Medical & Dental	118	-1	-6	-6	-18	-16	-7	-0.0%	-0.1%	-0.0%	-0.1%	-0.1%	-0.1%
Consultants	45	-5	-2	-0	-7	-5	-2	-0.1%	-0.0%	-0.0%	-0.1%	-0.1%	-0.1%
Registrars	31	+0	-2	+6	+2	+0	-3	+0.0%	-0.1%	+0.2%	+0.1%	+0.0%	-0.1%
SHO/ Interns	42	+3	-1	-12	-13	-11	-2	+0.1%	-0.0%	-0.2%	-0.2%	-0.2%	-0.0%
Medical/ Dental, other			-1					-1.0%	-1.0%	-1.0%	-1.0%	-1.0%	-1.0%
Nursing & Midwifery	621	+36	+48	+55	+26	+40	-8	+0.1%	+0.1%	+0.1%	+0.0%	+0.1%	-0.0%
Nurse/ Midwife Manager	140	-14	-7	+0	+3	+8	+1	-0.1%	-0.0%	+0.0%	+0.0%	+0.1%	+0.0%
Nurse/ Midwife Specialist & AN/MP	70	+39	+29	+12	+6	+5	+2	+1.2%	+0.7%	+0.2%	+0.1%	+0.1%	+0.0%
Staff Nurse/ Staff Midwife	347	-34	-20	-4	-18	-4	-10	-0.1%	-0.1%	-0.0%	-0.0%	-0.0%	-0.0%
Public Health Nurse			-1	-1				-1.0%	-1.0%	-1.0%	-1.0%	-1.0%	-1.0%
Nursing/ Midwifery Student	51	+44	+48	+50	+37	+30	-2	+5.8%	+13.7%	+41.8%	+2.5%	+1.5%	-0.0%
Nursing/ Midwifery other	12	+1	+1	-2	-1	+1	+1	+0.1%	+0.0%	-0.1%	-0.1%	+0.1%	+0.1%
Health & Social Care Professionals	176	+18	+16	+10	-5	+9	+1	+0.1%	+0.1%	+0.1%	-0.0%	+0.1%	+0.0%
Therapy Professions	61	+7	+10	+8	-0	+6	+0	+0.1%	+0.2%	+0.1%	-0.0%	+0.1%	+0.0%
Social Care	1	-0	-0		-0	+0	+0	-0.1%	-0.1%	+0.0%	-0.1%	+0.0%	+0.0%
Social Workers	44	-1	+5	-3	-4	+0	+1	-0.0%	+0.1%	-0.1%	-0.1%	+0.0%	+0.0%
Psychologists	50	+11	+3	+5	-1	+4	+1	+0.3%	+0.1%	+0.1%	-0.0%	+0.1%	+0.0%
Pharmacy	7	+0	-2	-2	-1	-1	-0	+0.0%	-0.2%	-0.2%	-0.1%	-0.1%	-0.0%
H&SC, Other	13	-0	+0	+2	+1	-1	-0	-0.0%	+0.0%	+0.2%	+0.1%	-0.1%	-0.0%
Management & Administrative	131	+21	+18	+6	-6	-5	+3	+0.2%	+0.2%	+0.0%	-0.0%	-0.0%	+0.0%
Management (VIII & above)	5	+3	+3	+3	+3			+1.5%	+1.5%	+1.5%	+1.5%	+0.0%	+0.0%
Administrative/ Supervisory (V to VII)	28	+10	+7	+1	-1	-0	-1	+0.5%	+0.4%	+0.0%	-0.0%	-0.0%	-0.0%
Clerical (III & IV)	99	+9	+8	+2	-8	-5	+4	+0.1%	+0.1%	+0.0%	-0.1%	-0.1%	+0.0%
General Support	112	-26	-24	-15	-15	-2	-1	-0.2%	-0.2%	-0.1%	-0.1%	-0.0%	-0.0%
Support	102	-25	-24	-15	-15	-2	-1	-0.2%	-0.2%	-0.1%	-0.1%	-0.0%	-0.0%
Maintenance/ Technical	11	-1	-0	-0	-0	-0	-0	-0.1%	-0.0%	-0.0%	-0.0%	-0.0%	-0.0%
Patient & Client Care	139	+28	+29	+27	+15	+0	+1	+0.2%	+0.3%	+0.2%	+0.1%	+0.0%	+0.0%
Health Care Assistants	127	+17	+18	+17	+8	+1	+1	+0.2%	+0.2%	+0.2%	+0.1%	+0.0%	+0.0%
Care, other	12	+10	+11	+10	+7	-0	+0	+5.2%	+11.3%	+5.2%	+1.1%	-0.0%	+0.0%

Source: Health Service Personnel Census

Primary Care

Jul 2020 (Dec 2015 figure: 1,207)	WTE Jul 2020	WTE change since Dec 15	WTE change since Dec 16	WTE change since Dec 17	WTE change since Dec 18	WTE change since Dec 19	WTE change since Jun 20	% change since Dec 15	% change since Dec 16	% change since Dec 17	% change since Dec 18	% change since Dec 19	% change since Jun 20
Overall	1,269	+62	+107	+30	-31	+22	+18	+5.1%	+9.2%	+2.4%	-2.4%	+1.7%	+1.4%
Medical & Dental	110	-9	-4	-4	-8	-1	+2	-0.1%	-0.0%	-0.0%	-0.1%	-0.0%	+0.0%
Consultants	4	+0	+0	-2	+1	+0		+0.1%	+0.1%	-0.3%	+0.3%	+0.0%	+0.0%
Registrars	52	+13	+17	+10	+0	-3	+2	+0.3%	+0.5%	+0.2%	+0.0%	-0.1%	+0.0%
SHO/ Interns	5	-6	-5	+2	+5	+4	+1	-0.5%	-0.5%	+0.6%	-1.0%	+3.9%	+0.2%
Medical/ Dental, other	48	-16	-16	-13	-15	-1	-0	-0.3%	-0.2%	-0.2%	-0.2%	-0.0%	-0.0%
Nursing & Midwifery	343	-3	+13	-16	-12	-2	+3	-0.0%	+0.0%	-0.0%	-0.0%	-0.0%	+0.0%
Nurse/ Midwife Manager	41	+6	+6	+3	+4	+5	-0	+0.2%	+0.2%	+0.1%	+0.1%	+0.1%	-0.0%
Nurse/ Midwife Specialist & AN/MP	7	+5	+3	-1	+2	+1	+1	+2.5%	+0.6%	-0.1%	+0.3%	+0.1%	+0.1%
Staff Nurse/ Staff Midwife	131	+32	+38	+21	+17	+31	+5	+0.3%	+0.4%	+0.2%	+0.1%	+0.3%	+0.0%
Public Health Nurse	161	-20	-15	-11	-12	-14	-2	-0.1%	-0.1%	-0.1%	-0.1%	-0.1%	-0.0%
Nursing/ Midwifery Student	2	-24	-17	-26	-20	-24		-0.9%	-0.9%	-0.9%	-0.9%	-0.9%	+0.0%
Nursing/ Midwifery other		-2	-2	-1	-2			-1.0%	-1.0%	-1.0%	-1.0%	-1.0%	-1.0%
Health & Social Care Professionals	355	+37	+42	+14	-0	+3	+6	+0.1%	+0.1%	+0.0%	-0.0%	+0.0%	+0.0%
Therapy Professions	200	+28	+26	+5	+7	+4	+8	+0.2%	+0.2%	+0.0%	+0.0%	+0.0%	+0.0%
Health Science/ Diagnostics	20	+20	+20	+20	-3	-0	+0	-1.0%	-1.0%	-1.0%	-0.1%	-0.0%	+0.0%
Social Care	5	-1	-0	-0	+1	+0	+0	-0.1%	-0.0%	-0.0%	+0.2%	+0.1%	+0.0%
Social Workers	18	-4	+2	+0	+1	+2	+1	-0.2%	+0.1%	+0.0%	+0.0%	+0.1%	+0.1%
Psychologists	64	+2	+3	+1	-0	-1	-2	+0.0%	+0.0%	+0.0%	-0.0%	-0.0%	-0.0%
Pharmacy	12	-8	-10	-9	-6	-0	-1	-0.4%	-0.5%	-0.4%	-0.3%	-0.0%	-0.1%
H&SC, Other	35	+0	+2	-3		-2	-1	+0.0%	+0.1%	-0.1%	+0.0%	-0.0%	-0.0%
Management & Administrative	301	+45	+55	+36	+5	+13	+6	+0.2%	+0.2%	+0.1%	+0.0%	+0.0%	+0.0%
Management (VIII & above)	31	+8	+12	+6	+4	+3	-0	+0.4%	+0.6%	+0.2%	+0.1%	+0.1%	-0.0%
Administrative/ Supervisory (V to VII)	81	+24	+22	+24	+1	+3	+0	+0.4%	+0.4%	+0.4%	+0.0%	+0.0%	+0.0%
Clerical (III & IV)	189	+12	+21	+6	-0	+7	+6	+0.1%	+0.1%	+0.0%	-0.0%	+0.0%	+0.0%
General Support	32	-22	-20	-19	-15	-2	-0	-0.4%	-0.4%	-0.4%	-0.3%	-0.1%	-0.0%
Support	32	-22	-20	-19	-15	-2	-0	-0.4%	-0.4%	-0.4%	-0.3%	-0.1%	-0.0%
Patient & Client Care	128	+14	+20	+18	+1	+10	+1	+0.1%	+0.2%	+0.2%	+0.0%	+0.1%	+0.0%
Health Care Assistants	22	+16	+16	+14	-2	+8	+0	+3.0%	+3.2%	+1.7%	-0.1%	+0.6%	+0.0%
Care, other	107	-2	+4	+5	+3	+2	+1	-0.0%	+0.0%	+0.0%	+0.0%	+0.0%	+0.0%

Source: Health Service Personnel Census

Disabilities

Jul 2020 (Dec 2015 figure: 2,807)	WTE Jul 2020	WTE change since Dec 15	WTE change since Dec 16	WTE change since Dec 17	WTE change since Dec 18	WTE change since Dec 19	WTE change since Jun 20	% change since Dec 15	% change since Dec 16	% change since Dec 17	% change since Dec 18	% change since Dec 19	% change since Jun 20
Overall	3,167	+360	+124	+66	+42	-27	-45	+12.8%	+4.1%	+2.1%	+1.3%	-0.9%	-1.4%
Medical & Dental	22	+3	+3	+0	+3	-3	-1	+0.2%	+0.1%	+0.0%	+0.1%	-0.1%	-0.1%
Consultants	11	+2	+2	+0	+1	-1	+0	+0.3%	+0.2%	+0.0%	+0.1%	-0.1%	+0.0%
Registrars	3	-0	-0	-2	-0	-3	-1	-0.2%	-0.2%	-0.5%	-0.2%	-0.6%	-0.3%
SHO/ Interns	2	+2	+2	+2	+2	+2	-0	-1.0%	-1.0%	-1.0%	-1.0%	-1.0%	-0.1%
Medical/ Dental, other	6	-1	-0	+0	+0		-0	-0.1%	-0.0%	+0.1%	+0.1%	+0.0%	-0.1%
Nursing & Midwifery	739	-34	-15	-18	-10	+7	-2	-0.0%	-0.0%	-0.0%	-0.0%	+0.0%	-0.0%
Nurse/ Midwife Manager	194	-2	-3	-7	-2	+2	+1	-0.0%	-0.0%	-0.0%	-0.0%	+0.0%	+0.0%
Nurse/ Midwife Specialist & AN/MP	10	-0	+1	+2	+2	+2	+1	-0.0%	+0.1%	+0.2%	+0.2%	+0.2%	+0.1%
Staff Nurse/ Staff Midwife	496	-64	-45	-45	-33	-21	-3	-0.1%	-0.1%	-0.1%	-0.1%	-0.0%	-0.0%
Nursing/ Midwifery Student	30	+28	+29	+30	+22	+22	-1	+14.1%	+29.1%	-1.0%	+2.5%	+2.9%	-0.0%
Nursing/ Midwifery other	8	+4	+3	+2	+1	+1		+1.1%	+0.7%	+0.4%	+0.2%	+0.1%	+0.0%
Health & Social Care Professionals	1,023	+237	+97	+79	+68	+20	-9	+0.3%	+0.1%	+0.1%	+0.1%	+0.0%	-0.0%
Therapy Professions	189	+37	+9	+14	+14	+8	+0	+0.2%	+0.1%	+0.1%	+0.1%	+0.0%	+0.0%
Health Science/ Diagnostics	13	-22	-19	-24	-1	-2		-0.6%	-0.6%	-0.6%	-0.1%	-0.1%	+0.0%
Social Care	694	+217	+114	+92	+46	+5	-9	+0.5%	+0.2%	+0.2%	+0.1%	+0.0%	-0.0%
Social Workers	47	+0	-5	-3	+3	+2	-1	+0.0%	-0.1%	-0.1%	+0.1%	+0.1%	-0.0%
Psychologists	59	+9	+1	+2	+6	+6	+1	+0.2%	+0.0%	+0.0%	+0.1%	+0.1%	+0.0%
Pharmacy	2							+0.0%	+0.0%	+0.0%	+0.0%	+0.0%	+0.0%
H&SC, Other	20	-4	-5	-3	+1	+1	+0	-0.2%	-0.2%	-0.1%	+0.0%	+0.0%	+0.0%
Management & Administrative	247	+44	+28	+22	+8	-4	-1	+0.2%	+0.1%	+0.1%	+0.0%	-0.0%	-0.0%
Management (VIII & above)	36	+8	+7	+4	+2	-2		+0.3%	+0.2%	+0.1%	+0.1%	-0.0%	+0.0%
Administrative/ Supervisory (V to VII)	90	+19	+9	+10	+4	+2	-0	+0.3%	+0.1%	+0.1%	+0.0%	+0.0%	-0.0%
Clerical (III & IV)	121	+17	+12	+8	+2	-4	-0	+0.2%	+0.1%	+0.1%	+0.0%	-0.0%	-0.0%
General Support	186	-80	-55	-51	-37	-31	-23	-0.3%	-0.2%	-0.2%	-0.2%	-0.1%	-0.1%
Support	164	-75	-55	-49	-36	-31	-23	-0.3%	-0.2%	-0.2%	-0.2%	-0.2%	-0.1%
Maintenance/ Technical	22	-5	-0	-2	-1	-0		-0.2%	-0.0%	-0.1%	-0.1%	-0.0%	+0.0%
Patient & Client Care	950	+189	+66	+34	+10	-16	-9	+0.2%	+0.1%	+0.0%	+0.0%	-0.0%	-0.0%
Health Care Assistants	855	+178	+70	+27	+14	-14	-10	+0.3%	+0.1%	+0.0%	+0.0%	-0.0%	-0.0%
Care, other	95	+11	-4	+7	-4	-1	+1	+0.1%	-0.0%	+0.1%	-0.0%	-0.0%	+0.0%

Source: Health Service Personnel Census

Older People

Jul 2020 (Dec 2015 figure: 852)	WTE Jul 2020	WTE change since Dec 15	WTE change since Dec 16	WTE change since Dec 17	WTE change since Dec 18	WTE change since Dec 19	WTE change since Jun 20	% change since Dec 15	% change since Dec 16	% change since Dec 17	% change since Dec 18	% change since Dec 19	% change since Jun 20
Overall	936	+84	+71	+57	+27	+66	+14	+9.8%	+8.2%	+6.5%	+3.0%	+7.6%	+1.5%
Medical & Dental	18	-1	-1	-3	+0	-2	-2	-0.1%	-0.1%	-0.2%	+0.0%	-0.1%	-0.1%
Consultants	3	-3	-5	-5	+1	+1	+0	-0.5%	-0.6%	-0.6%	+0.5%	+0.6%	+0.2%
Registrars	5	-1	-1	-2	-2	-1	-1	-0.2%	-0.2%	-0.3%	-0.3%	-0.2%	-0.2%
SHO/ Interns	10	+3	+4	+3	+1	-2	-1	+0.5%	+0.7%	+0.4%	+0.1%	-0.2%	-0.1%
Medical/ Dental, other	1		+0					+0.0%	+0.0%	+0.0%	+0.0%	+0.0%	+0.0%
Nursing & Midwifery	320	+23	+19	+30	+5	+12	+2	+0.1%	+0.1%	+0.1%	+0.0%	+0.0%	+0.0%
Nurse/ Midwife Manager	79	+0	+3	-5	+1	+4	-3	+0.0%	+0.0%	-0.1%	+0.0%	+0.1%	-0.0%
Nurse/ Midwife Specialist & AN/MP	5	-0	+2	+2	+1	+0	-1	-0.0%	+0.6%	+0.6%	+0.2%	+0.0%	-0.2%
Staff Nurse/ Staff Midwife	235	+22	+15	+33	+3	+8	+6	+0.1%	+0.1%	+0.2%	+0.0%	+0.0%	+0.0%
Public Health Nurse			-0	-0	-0	-0		-1.0%	-1.0%	-1.0%	-1.0%	-1.0%	-1.0%
Nursing/ Midwifery other	1							+0.0%	+0.0%	+0.0%	+0.0%	+0.0%	+0.0%
Health & Social Care Professionals	98	+33	+30	+18	+13	+17	+2	+0.5%	+0.4%	+0.2%	+0.2%	+0.2%	+0.0%
Therapy Professions	71	+25	+24	+13	+14	+16	+2	+0.5%	+0.5%	+0.2%	+0.3%	+0.3%	+0.0%
Health Science/ Diagnostics	1	-1	-1	-1	-1	-0		-0.5%	-0.5%	-0.5%	-0.5%	-0.3%	+0.0%
Social Care	1	+0	+0	+0				+0.1%	+0.0%	+0.1%	+0.0%	+0.0%	+0.0%
Social Workers	22	+8	+6	+6	-1	+0	+0	+0.6%	+0.4%	+0.3%	-0.0%	+0.0%	+0.0%
Pharmacy	4	+1	+1	+1	+1	+1	+1	+0.3%	+0.3%	+0.3%	+0.3%	+0.3%	+0.2%
H&SC, Other	0	+0						-1.0%	+0.0%	+0.0%	+0.0%	+0.0%	+0.0%
Management & Administrative	69	+14	+11	+3	-5	+5	+3	+0.3%	+0.2%	+0.0%	-0.1%	+0.1%	+0.0%
Management (VIII & above)	8	+4	+3	+1	-1	-1		+1.0%	+0.6%	+0.2%	-0.1%	-0.1%	+0.0%
Administrative/ Supervisory (V to VII)	18	+3	+3	+0	-2	+3	+2	+0.2%	+0.2%	+0.0%	-0.1%	+0.2%	+0.1%
Clerical (III & IV)	42	+7	+5	+2	-2	+2	+1	+0.2%	+0.1%	+0.0%	-0.0%	+0.1%	+0.0%
General Support	123	-6	-1	-2	-1	+2	-1	-0.0%	-0.0%	-0.0%	-0.0%	+0.0%	-0.0%
Support	120	-6	-1	-2	-1	+2	-1	-0.0%	-0.0%	-0.0%	-0.0%	+0.0%	-0.0%
Maintenance/ Technical	2							+0.0%	+0.0%	+0.0%	+0.0%	+0.0%	+0.0%
Patient & Client Care	308	+21	+13	+11	+15	+32	+9	+0.1%	+0.0%	+0.0%	+0.1%	+0.1%	+0.0%
Health Care Assistants	303	+18	+10	+8	+13	+33	+9	+0.1%	+0.0%	+0.0%	+0.0%	+0.1%	+0.0%
Care, other	5	+3	+3	+3	+2	-1	+0	+1.3%	+1.2%	+1.2%	+0.6%	-0.1%	+0.0%

Source: Health Service Personnel Census