

CHO 9 Employment Report: July 2021

Employment by Staff Group

Jul 2021 (Dec 2020 figure: 6,950)	WTE Jun 2021	WTE Jul 2021	WTE change since Jun 21	% change since Jun 21	WTE change since Dec 20	WTE change since Jul 20
Overall	7,072	7,071	-1	-0.0%	+122	+395
Consultants	62	63	+1	+1.5%	-2	-0
Registrars	94	105	+11	+11.6%	+14	+15
SHO/ Interns	55	41	-14	-25.8%	-31	-18
Medical/ Dental, other	54	57	+2	+4.1%	+1	+1
Medical & Dental	266	266	+0	+0.0%	-17	-2
Nurse/ Midwife Manager	457	456	-1	-0.3%	-1	+2
Nurse/ Midwife Specialist & AN/MP	108	111	+2	+2.2%	+9	+18
Staff Nurse/ Staff Midwife	1,246	1,230	-16	-1.3%	+7	+21
Public Health Nurse	173	184	+12	+6.8%	+3	+23
Pre-registration Nurse/ Midwife Intern	46	45	-1	-1.6%	+32	-1
Pre-registration Nurse Intern (COVID-19)				-100.0%	-16	
Post-registration Nurse/ Midwife Student	12	2	-10	-83.3%	-29	-10
Nursing/ Midwifery awaiting registration	1	1	+0	+7.5%	+1	+0
Nursing/ Midwifery Student	59	48	-11	-18.2%	-12	-35
Nursing/ Midwifery other	19	19	-0	-0.4%	-4	-2
Nursing & Midwifery	2,063	2,049	-14	-0.7%	+3	+27
Therapy Professions	554	547	-7	-1.3%	+17	+25
Health Science/ Diagnostics	34	34	-0	-0.3%	+0	-0
Social Care	786	795	+10	+1.2%	+50	+95
Social Workers	141	139	-1	-0.9%	+1	+9
Psychologists	176	175	-1	-0.8%	-8	+1
Pharmacy	30	29	-1	-2.8%	-1	+4
H&SC, Other	71	72	+1	+1.5%	+3	+3
Health & Social Care Professionals	1,791	1,791	-0	-0.0%	+63	+139
Management (VIII & above)	88	90	+3	+3.2%	+6	+10
Administrative/ Supervisory (V to VII)	267	275	+8	+3.0%	+32	+54
Clerical (III & IV)	537	549	+12	+2.2%	+42	+96
Management & Administrative	892	915	+23	+2.5%	+80	+160
Support	397	396	-1	-0.3%	-7	-23
Maintenance/ Technical	34	34	-0	-0.2%	-2	-1
General Support	432	430	-1	-0.3%	-9	-23
Health Care Assistants	1,393	1,388	-5	-0.3%	+3	+83
Care, other	236	232	-4	-1.5%	-1	+13
Patient & Client Care	1,629	1,620	-8	-0.5%	+2	+95

CHO 9 Employment Report: July 2021

Community Health & Wellbeing

Jul 2021 (Dec 2020 figure: 8)	WTE Jun 2021	WTE Jul 2021	WTE change since Jun 21	% change since Jun 21	WTE change since Dec 20	WTE change since Jul 20
Total Community Health & Wellbeing	15	12	-3	-19.8%	+4	+5
Therapy Professions	1	1				+0
Health & Social Care Professionals	1	1				+0
Management (VIII & above)	1	1	-0	-1.0%	-0	-0
Administrative/ Supervisory (V to VII)	8	8	-0	-0.6%	+3	+3
Clerical (III & IV)	3	2	-0	-5.0%	+1	+1
Management & Administrative	12	12	-0	-1.6%	+4	+4
Care, other	3		-3	-100.0%		
Patient & Client Care	3		-3	-100.0%		

Mental Health

Jul 2021 (Dec 2020 figure: 1,331)	WTE Jun 2021	WTE Jul 2021	WTE change since Jun 21	% change since Jun 21	WTE change since Dec 20	WTE change since Jul 20
Total Mental Health	1,341	1,326	-14	-1.1%	-4	+29
Consultants	45	45	+0	+0.1%	-1	+1
Registrars	38	42	+5	+12.7%	+10	+11
SHO/ Interns	36	23	-13	-36.7%	-31	-19
Medical & Dental	119	110	-8	-7.1%	-22	-8
Nurse/ Midwife Manager	134	134	-0	-0.3%	-4	-6
Nurse/ Midwife Specialist & AN/MP	81	83	+2	+3.0%	+7	+13
Staff Nurse/ Staff Midwife	369	364	-6	-1.5%	-8	+17
Pre-registration Nurse/ Midwife Intern	28	27	-1	-2.7%	+17	-1
Pre-registration Nurse Intern (COVID-19)				-100.0%	-5	
Nursing/ Midwifery awaiting registration	1	1	+0	+7.5%	+1	+0
Nursing/ Midwifery Student	29	28	-1	-2.3%	+12	-23
Nursing/ Midwifery other	10	11	+1	+8.8%	-2	-1
Nursing & Midwifery	623	620	-4	-0.6%	+7	-1
Therapy Professions	66	65	-1	-1.4%	+4	+4
Social Care	1	1	+0	+7.4%	-0	-0
Social Workers	47	47	-0	-0.1%	+4	+3
Psychologists	53	54	+1	+2.2%	+1	+4
Pharmacy	9	9	+0	+1.6%	-0	+2
H&SC, Other	16	14	-1	-7.6%	+0	+1
Health & Social Care Professionals	191	190	-1	-0.4%	+9	+14
Management (VIII & above)	6	7	+1	+12.3%	+2	+2
Administrative/ Supervisory (V to VII)	28	26	-3	-9.4%	-3	-2
Clerical (III & IV)	113	114	+0	+0.2%	-1	+15
Management & Administrative	148	146	-2	-1.1%	-2	+15
Support	103	103	+0	+0.0%	-1	+2
Maintenance/ Technical	11	11	+0	+0.2%		+0
General Support	114	114	+0	+0.1%	-1	+2
Health Care Assistants	134	133	-0	-0.3%	+4	+7
Care, other	12	12	+0	+2.3%	-0	+0
Patient & Client Care	146	146	-0	-0.0%	+4	+7

Primary Care

Jul 2021 (Dec 2020 figure: 1,412)	WTE Jun 2021	WTE Jul 2021	WTE change since Jun 21	% change since Jun 21	WTE change since Dec 20	WTE change since Jul 20
Total Primary Care	1,465	1,478	+13	+0.9%	+67	+209
Consultants	4	4				
Registrars	48	52	+4	+7.2%	-0	-0
SHO/ Interns	8	8	-0	-4.7%	+3	+3
Medical/ Dental, other	47	49	+2	+4.7%	+1	+1
Medical & Dental	108	113	+5	+4.9%	+3	+3
Nurse/ Midwife Manager	48	47	-1	-2.4%	+4	+6
Nurse/ Midwife Specialist & AN/MP	9	9	-0	-0.3%	+1	+2
Staff Nurse/ Staff Midwife	132	124	-8	-5.8%	+19	-7
Public Health Nurse	173	184	+12	+6.8%	+3	+23
<i>Post-registration Nurse/ Midwife Student</i>	12	2	-10	-83.3%	-29	-10
Nursing/ Midwifery Student	12	2	-10	-83.3%	-29	
Nursing/ Midwifery other	1	1			-0	+1
Nursing & Midwifery	375	368	-7	-1.9%	-2	+25
Therapy Professions	209	208	-1	-0.4%	-3	+8
Health Science/ Diagnostics	19	19	-0	-0.6%	-1	-1
Social Care	4	3	-0	-3.6%	-0	-1
Social Workers	22	22	+1	+2.5%	-0	+4
Psychologists	65	64	-1	-1.0%	-1	-1
Pharmacy	16	15	-1	-6.3%	-0	+3
H&SC, Other	38	40	+2	+5.9%	+5	+5
Health & Social Care Professionals	371	371	+0	+0.0%	-1	+17
Management (VIII & above)	27	27	+1	+3.4%	-1	-4
Administrative/ Supervisory (V to VII)	95	102	+8	+8.0%	+14	+22
Clerical (III & IV)	242	251	+9	+3.9%	+31	+62
Management & Administrative	363	381	+18	+4.9%	+43	+80
Support	33	33	+0	+1.3%	-0	+1
General Support	33	33	+0	+1.3%	-0	+1
Health Care Assistants	99	95	-4	-4.2%	+21	+74
Care, other	116	116	+1	+0.5%	+3	+10
Patient & Client Care	215	211	-4	-1.7%	+24	+83

Social Care

Jul 2021 (Dec 2020 figure: 4,199)	WTE Jun 2021	WTE Jul 2021	WTE change since Jun 21	% change since Jun 21	WTE change since Dec 20	WTE change since Jul 20
Total Social Care	4,251	4,254	+4	+0.1%	+55	+152
Consultants	12	13	+1	+7.4%	-0	-1
Registrars	9	11	+3	+32.1%	+4	+4
SHO/ Interns	11	10	-1	-5.0%	-3	-2
Medical/ Dental, other	7	7				
Medical & Dental	39	42	+3	+8.0%	+1	+2
Nurse/ Midwife Manager	274	275	+0	+0.1%	-2	+2
Nurse/ Midwife Specialist & AN/MP	19	19	+0	+0.2%	+1	+3
Staff Nurse/ Staff Midwife	745	742	-3	-0.3%	-4	+11
Pre-registration Nurse/ Midwife Intern	18	18			+16	
Pre-registration Nurse Intern (COVID-19)				-100.0%	-11	
Nursing/ Midwifery Student	18	18			+5	-12
Nursing/ Midwifery other	8	7	-1	-11.5%	-2	-2
Nursing & Midwifery	1,064	1,061	-3	-0.3%	-2	+2
Therapy Professions	278	273	-5	-1.9%	+15	+14
Health Science/ Diagnostics	15	15			+1	+1
Social Care	781	791	+10	+1.2%	+50	+96
Social Workers	72	70	-2	-2.4%	-3	+2
Psychologists	59	57	-2	-3.3%	-7	-2
Pharmacy	6	6				
H&SC, Other	17	17	+0	+0.2%	-1	-3
Health & Social Care Professionals	1,228	1,229	+1	+0.1%	+55	+108
Management (VIII & above)	54	55	+1	+2.1%	+5	+12
Administrative/ Supervisory (V to VII)	136	139	+3	+2.2%	+18	+31
Clerical (III & IV)	179	182	+2	+1.4%	+11	+18
Management & Administrative	370	376	+7	+1.8%	+34	+61
Support	261	260	-2	-0.6%	-6	-25
Maintenance/ Technical	23	23	-0	-0.3%	-2	-1
General Support	285	283	-2	-0.6%	-8	-26
Health Care Assistants	1,160	1,160	-0	-0.0%	-23	+2
Care, other	105	104	-2	-1.6%	-3	+3
Patient & Client Care	1,265	1,263	-2	-0.1%	-26	+5

CHO 9 Employment Report: July 2021

Disabilities

Jul 2021 (Dec 2020 figure: 3,285)	WTE Jun 2021	WTE Jul 2021	WTE change since Jun 21	% change since Jun 21	WTE change since Dec 20	WTE change since Jul 20
Total Disabilities	3,316	3,306	-10	-0.3%	+21	+140
Consultants	10	11	+1	+9.2%	-0	-0
Registrars	3	4	+1	+33.7%	+2	+2
SHO/ Interns				-100.0%	-2	-2
Medical/ Dental, other	6	6				
Medical & Dental	19	21	+2	+10.1%	-0	-1
Nurse/ Midwife Manager	195	194	-1	-0.7%	-2	-0
Nurse/ Midwife Specialist & AN/MP	14	14	+0	+0.3%	+2	+4
Staff Nurse/ Staff Midwife	514	508	-6	-1.1%	-4	+12
Pre-registration Nurse/ Midwife Intern	18	18			+16	
Pre-registration Nurse Intern (COVID-19)				-100.0%	-11	
Nursing/ Midwifery Student	18	18			+5	-12
Nursing/ Midwifery other	8	7	-1	-11.5%	-1	-1
Nursing & Midwifery	750	742	-8	-1.0%	+0	+3
Therapy Professions	193	189	-4	-2.0%	+2	+0
Health Science/ Diagnostics	14	14			+1	+1
Social Care	780	790	+10	+1.2%	+50	+96
Social Workers	45	44	-1	-3.1%	-6	-2
Psychologists	59	57	-2	-3.3%	-7	-2
Pharmacy	2	2				
H&SC, Other	17	17	+0	+0.2%	-1	-3
Health & Social Care Professionals	1,110	1,113	+3	+0.2%	+39	+90
Management (VIII & above)	45	46	+0	+0.6%	+4	+10
Administrative/ Supervisory (V to VII)	114	115	+1	+0.8%	+15	+25
Clerical (III & IV)	127	130	+3	+2.4%	+3	+8
Management & Administrative	286	290	+4	+1.5%	+22	+44
Support	144	143	-2	-1.1%	-2	-22
Maintenance/ Technical	21	21	-0	-0.4%	-2	-1
General Support	165	164	-2	-1.0%	-4	-23
Health Care Assistants	887	879	-8	-0.9%	-32	+25
Care, other	99	97	-2	-1.7%	-4	+2
Patient & Client Care	986	976	-9	-1.0%	-36	+27

Older People

Jul 2021 (Dec 2020 figure: 914)	WTE Jun 2021	WTE Jul 2021	WTE change since Jun 21	% change since Jun 21	WTE change since Dec 20	WTE change since Jul 20
Total Older People	934	948	+14	+1.5%	+34	+13
Consultants	2	2			-0	-0
Registrars	6	7	+2	+31.2%	+2	+3
SHO/ Interns	11	10	-1	-5.0%	-1	+0
Medical/ Dental, other	1	1				
Medical & Dental	20	21	+1	+6.0%	+2	+3
Nurse/ Midwife Manager	80	81	+2	+1.9%	+0	+2
Nurse/ Midwife Specialist & AN/MP	5	5			-1	-0
Staff Nurse/ Staff Midwife	231	234	+3	+1.3%	-0	-1
Nursing/ Midwifery other				-100.0%	-1	-1
Nursing & Midwifery	315	319	+5	+1.5%	-2	-0
Health & Social Care Professionals	118	116	-2	-1.5%	+16	+18
Management (VIII & above)	9	10	+1	+10.1%	+1	+2
Administrative/ Supervisory (V to VII)	22	24	+2	+9.5%	+3	+6
Clerical (III & IV)	53	52	-1	-1.0%	+8	+10
Management & Administrative	83	86	+2	+2.9%	+12	+17
Support	117	117	-0	-0.1%	-3	-3
Maintenance/ Technical	2	2				
General Support	119	119	-0	-0.1%	-3	-3
Health Care Assistants	273	280	+8	+2.8%	+9	-23
Care, other	6	6			+1	+1
Patient & Client Care	279	287	+8	+2.7%	+10	-22

CHO 9 Employment by Administration (HSE / S38): July 2021

Jul 2021 (Dec 2020 figure: 6,950)	WTE Jun 2021	WTE Jul 2021	WTE change since Jun 21	% change since Jun 21	WTE change since Dec 20	WTE change since Jul 20
Overall	7,072	7,071	-1	-0.0%	+122	+395
HSE	3,779	3,769	-9	-0.2%	+110	+277
Section 38 Voluntary Agencies	3,294	3,302	+9	+0.3%	+12	+118

HSE

Jul 2021 (Dec 2020 figure: 3,660)	WTE Jun 2021	WTE Jul 2021	WTE change since Jun 21	% change since Jun 21	WTE change since Dec 20	WTE change since Jul 20
Overall	3,779	3,769	-9	-0.2%	+110	+277
Consultants	51	51	+0	+0.0%	-1	+0
Registrars	90	98	+8	+0.1%	+11	+12
SHO/ Interns	50	34	-16	-0.3%	-33	-20
Medical/ Dental, other	48	50	+2	+0.0%	+0	+1
Medical & Dental	240	234	-6	-2.5%	-22	-6
Nurse/ Midwife Manager	266	265	-1	-0.0%	-1	+0
Nurse/ Midwife Specialist & AN/MP	94	96	+2	+0.0%	+8	+15
Staff Nurse/ Staff Midwife	737	728	-9	-0.0%	+25	+24
Public Health Nurse	173	184	+12	+0.1%	+3	+23
Pre-registration Nurse/ Midwife Intern	25	25	-1	-0.0%	+21	+1
Pre-registration Nurse Intern (COVID-19)				-1.0%		-30
Post-registration Nurse/ Midwife Student	12	2	-10	-0.8%	-24	
Nursing/ Midwifery awaiting registration	1	1	+0	+0.1%	-10	+1
Nursing/ Midwifery Student	38	28	-11	-0.3%	-12	-28
Nursing/ Midwifery other	12	12	-0	-0.0%	-4	-2
Nursing & Midwifery	1,319	1,312	-7	-0.5%	+19	+33
Therapy Professions	351	349	-2	-0.0%	+13	+27
Health Science/ Diagnostics	19	19	-0	-0.0%	-1	-1
Social Care	7	7	-0	-0.0%	-0	-0
Social Workers	90	90	+0	+0.0%	+5	+11
Psychologists	129	128	-0	-0.0%	-3	-2
Pharmacy	22	21	-1	-0.0%	-1	+4
H&SC, Other	59	60	+1	+0.0%	+5	+6
Health & Social Care Professionals	678	675	-2	-0.4%	+18	+45
Management (VIII & above)	48	50	+2	+0.0%	+4	+4
Administrative/ Supervisory (V to VII)	163	170	+7	+0.0%	+28	+45
Clerical (III & IV)	398	407	+9	+0.0%	+49	+100
Management & Administrative	609	627	+18	+3.0%	+80	+150
Support	194	194	+0	+0.0%	-1	+7
Maintenance/ Technical	8	8	+0	+0.0%	-1	-1
General Support	202	203	+0	+0.2%	-2	+6
Health Care Assistants	593	583	-10	-0.0%	+13	+40
Care, other	137	135	-2	-0.0%	+3	+10
Patient & Client Care	730	718	-12	-1.7%	+16	+50

Section 38 Voluntary Agencies

Jul 2021 (Dec 2020 figure: 3,290)	WTE Jun 2021	WTE Jul 2021	WTE change since Jun 21	% change since Jun 21	WTE change since Dec 20	WTE change since Jul 20
Overall	3,294	3,302	+9	+0.3%	+12	+118
Consultants	11	12	+1	+0.1%	-0	-0
Registrars	4	7	+3	+0.8%	+3	+3
SHO/ Interns	5	7	+2	+0.4%	+2	+2
Medical/ Dental, other	6	6		+0.0%		
Medical & Dental	26	32	+6	+22.9%	+5	+4
Nurse/ Midwife Manager	191	191	-0	-0.0%	-0	+1
Nurse/ Midwife Specialist & AN/MP	15	15		+0.0%	+1	+3
Staff Nurse/ Staff Midwife	509	503	-7	-0.0%	-18	-3
<i>Pre-registration Nurse/ Midwife Intern</i>	21	21		+0.0%	+6	+21
<i>Pre-registration Nurse Intern (COVID-19)</i>				-1.0%		-28
Nursing/ Midwifery Student	21	21		+0.0%		-8
Nursing/ Midwifery other	8	8		+0.0%		
Nursing & Midwifery	744	737	-7	-1.0%	-17	-6
Therapy Professions	203	198	-5	-0.0%	+4	-2
Health Science/ Diagnostics	15	15		+0.0%	+1	+1
Social Care	778	788	+10	+0.0%	+50	+95
Social Workers	50	49	-1	-0.0%	-4	-1
Psychologists	48	46	-1	-0.0%	-4	+3
Pharmacy	7	7		+0.0%		
H&SC, Other	12	12		+0.0%	-2	-3
Health & Social Care Professionals	1,113	1,116	+2	+0.2%	+45	+94
Management (VIII & above)	39	40	+1	+0.0%	+2	+5
Administrative/ Supervisory (V to VII)	104	105	+1	+0.0%	+5	+9
Clerical (III & IV)	139	142	+3	+0.0%	-7	-4
Management & Administrative	283	287	+5	+1.6%	-0	+10
Support	204	202	-2	-0.0%	-5	-30
Maintenance/ Technical	26	26	-0	-0.0%	-1	-0
General Support	230	228	-2	-0.7%	-6	-30
Health Care Assistants	799	805	+6	+0.0%	-10	+42
Care, other	99	98	-2	-0.0%	-3	+3
Patient & Client Care	898	903	+4	+0.5%	-14	+45

CHO 9 Employment by S38 Agency: July 2021

Central Remedial Clinic

Jul 2021 (Dec 2020 figure: 296)	WTE Jun 2021	WTE Jul 2021	WTE change since Jun 21	% change since Jun 21	WTE change since Dec 20	WTE change since Jul 20
Overall	297	293	-4	-1.5%	-3	+10
Consultants	1	1		+0.0%	-1	-1
Medical/ Dental, other	0	0		+0.0%		
Medical & Dental	1	1			-1	-1
Nurse/ Midwife Manager	2	2		+0.0%		
Nurse/ Midwife Specialist & AN/MP	2	2		+0.0%		
Staff Nurse/ Staff Midwife	3	3		+0.0%	-1	-1
Nursing/ Midwifery other	1	1		+0.0%		
Nursing & Midwifery	8	8			-1	-1
Therapy Professions	76	72	-4	-0.1%	-6	-4
Health Science/ Diagnostics	14	14		+0.0%	+1	+1
Social Workers	7	7		+0.0%	-1	-2
Psychologists	12	11	-1	-0.0%	-1	+1
Health & Social Care Professionals	109	105	-5	-4.2%	-7	-5
Management (VIII & above)	7	7		+0.0%		+2
Administrative/ Supervisory (V to VII)	14	15	+1	+0.1%		
Clerical (III & IV)	33	34	+1	+0.0%		+2
Management & Administrative	55	57	+2	+3.3%		+4
Support	13	13		+0.0%	+0	-2
Maintenance/ Technical	2	2		+0.0%		+1
General Support	15	15			+0	-1
Health Care Assistants	60	59	-2	-0.0%	+1	+3
Care, other	49	49	-0	-0.0%	+5	+10
Patient & Client Care	109	108	-2	-1.4%	+5	+13

Daughters of Charity, Dublin

Jul 2021 (Dec 2020 figure: 1,063)	WTE Jun 2021	WTE Jul 2021	WTE change since Jun 21	% change since Jun 21	WTE change since Dec 20	WTE change since Jul 20
Overall	1,079	1,080	+1	+0.1%	+17	+30
Consultants	2	2		+0.0%	-0	-0
Senior Registrar		1	+1	-1.0%	+1	+1
Registrars		1	+1	-1.0%	+1	+1
Medical/ Dental, other	2	2		+0.0%		
Medical & Dental	4	5	+1	+26.2%	+1	+1
Nurse/ Midwife Manager	63	62	-1	-0.0%	+0	+0
Nurse/ Midwife Specialist & AN/MP	12	12		+0.0%	+1	+3
Staff Nurse/ Staff Midwife	183	181	-2	-0.0%	-7	-5
Pre-registration Nurse/ Midwife Intern	11	11		+0.0%	+3	+11
Pre-registration Nurse Intern (COVID-19)				-1.0%		-15
Nursing/ Midwifery Student	11	11		+0.0%	+1	-5
Nursing/ Midwifery other	4	4		+0.0%		
Nursing & Midwifery	273	270	-3	-1.0%	-5	-6
Therapy Professions	34	34		+0.0%	+2	+0
Social Care	192	193	+1	+0.0%	+20	+28
Social Workers	13	12	-1	-0.1%	-1	+1
Psychologists	12	13	+0	+0.0%	+2	+2
Pharmacy	2	2		+0.0%		
H&SC, Other	3	3		+0.0%	-2	-2
Health & Social Care Professionals	256	256	+1	+0.2%	+21	+30
Management (VIII & above)	9	9		+0.0%		+2
Administrative/ Supervisory (V to VII)	29	29		+0.0%	+2	+2
Clerical (III & IV)	31	32	+2	+0.0%	+0	-0
Management & Administrative	68	70	+2	+2.2%	+2	+4
Support	78	77	-1	-0.0%	+1	-1
Maintenance/ Technical	7	7		+0.0%	-1	-1
General Support	85	84	-1	-0.7%	+0	-2
Health Care Assistants	365	367	+2	+0.0%	+0	+5
Care, other	29	28	-0	-0.0%	-3	-2
Patient & Client Care	394	395	+2	+0.4%	-3	+3

Incorporated Orthopaedic Hospital

Jul 2021 (Dec 2020 figure: 267)	WTE Jun 2021	WTE Jul 2021	WTE change since Jun 21	% change since Jun 21	WTE change since Dec 20	WTE change since Jul 20
Overall	271	276	+5	+1.8%	+9	+12
Consultants	2	2		+0.0%		
Registrars	2	3	+1	+0.5%	+1	+1
SHO/ Interns	4	6	+2	+0.5%	+2	+2
Medical & Dental	8	11	+3	+39.5%	+3	+3
Nurse/ Midwife Manager	18	18		+0.0%		+1
Staff Nurse/ Staff Midwife	70	70		+0.0%		-4
Nursing & Midwifery	88	88				-3
Therapy Professions	35	35		+0.0%	+1	+5
Health Science/ Diagnostics	1	1		+0.0%		
Social Workers	9	9		+0.0%		+1
Pharmacy	4	4		+0.0%		
Health & Social Care Professionals	49	49			+1	+6
Management (VIII & above)	2	2		+0.0%		+1
Administrative/ Supervisory (V to VII)	7	7		+0.0%	+1	+1
Clerical (III & IV)	10	10		+0.0%		-1
Management & Administrative	19	19			+1	+1
Support	40	40		+0.0%		
Maintenance/ Technical	2	2		+0.0%		
General Support	42	42				
Health Care Assistants	66	68	+2	+0.0%	+4	+5
Care, other	0	0		+0.0%		
Patient & Client Care	66	68	+2	+3.0%	+4	+5

St. Michael's House, Dublin

Jul 2021 (Dec 2020 figure: 1,453)	WTE Jun 2021	WTE Jul 2021	WTE change since Jun 21	% change since Jun 21	WTE change since Dec 20	WTE change since Jul 20
Overall	1,439	1,448	+9	+0.6%	-5	+72
Consultants	5	6	+1	+0.2%	+0	+0
Registrars	1	1	+0	+0.0%	+0	-1
Medical/ Dental, other	4	4		+0.0%		
Medical & Dental	10	11	+1	+9.1%	+0	-0
Nurse/ Midwife Manager	87	87	+0	+0.0%	-1	+0
Staff Nurse/ Staff Midwife	162	160	-2	-0.0%	-5	+9
Nursing & Midwifery	248	247	-1	-0.5%	-6	+9
Therapy Professions	53	52	-1	-0.0%	+7	-2
Social Care	586	595	+8	+0.0%	+30	+67
Social Workers	20	19	-0	-0.0%	-3	-1
Psychologists	20	19	-1	-0.0%	-5	
H&SC, Other	9	9		+0.0%	+0	-1
Health & Social Care Professionals	688	694	+6	+0.9%	+30	+63
Management (VIII & above)	20	21	+1	+0.0%	+1	-1
Administrative/ Supervisory (V to VII)	49	49		+0.0%	+3	+7
Clerical (III & IV)	46	47	+1	+0.0%	-7	-4
Management & Administrative	115	116	+1	+1.2%	-4	+2
Support	43	42	-1	-0.0%	-6	-25
Maintenance/ Technical	12	12	-0	-0.0%	-0	-0
General Support	55	54	-1	-1.8%	-6	-25
Health Care Assistants	303	306	+4	+0.0%	-15	+29
Care, other	20	19	-1	-0.1%	-5	-5
Patient & Client Care	323	325	+2	+0.7%	-20	+24

St. Vincent's, Fairview

Jul 2021 (Dec 2020 figure: 210)	WTE Jun 2021	WTE Jul 2021	WTE change since Jun 21	% change since Jun 21	WTE change since Dec 20	WTE change since Jul 20
Overall	207	205	-2	-1.0%	-5	-6
Consultants	1	1		+0.0%		
Registrars	1	2	+1	+1.0%	+1	+1
SHO/ Interns	1	1		+0.0%		
Medical & Dental	3	4	+1	+31.4%	+1	+1
Nurse/ Midwife Manager	21	21		+0.0%		-0
Nurse/ Midwife Specialist & AN/MP	2	2		+0.0%		
Staff Nurse/ Staff Midwife	91	88	-3	-0.0%	-4	-2
Nursing/ Midwifery Student	10	10		+0.0%	-1	-3
Nursing/ Midwifery other	3	3		+0.0%		
Nursing & Midwifery	127	124	-3	-2.4%	-5	-5
Therapy Professions	5	5		+0.0%		
Social Workers	2	2		+0.0%		
Psychologists	4	4		+0.0%		
Pharmacy	2	2		+0.0%		
Health & Social Care Professionals	12	12				
Executive Management	1	1		+0.0%	+1	+1
Management (VIII & above)	1	1		+0.0%	+1	+1
Administrative/ Supervisory (V to VII)	5	5		+0.0%	-1	-1
Clerical (III & IV)	19	19		+0.0%		+0
Management & Administrative	26	26				+0
Support	30	30		+0.0%	-1	-2
Maintenance/ Technical	3	3		+0.0%		
General Support	33	33			-1	-2
Health Care Assistants	6	6		+0.0%		
Care, other	1	1		+0.0%		
Patient & Client Care	7	7				

CHO 9 Employment by Grade Group & Staff Category: July 2021

Jul 2021 (Dec 2020 figure: 6,950)	WTE Jun 2021	WTE Jul 2021	WTE change since Jun 21	% change since Jun 21	WTE change since Dec 20	WTE change since Jul 20
Overall	7,072	7,071	-1	-0.0%	+122	+395
Consultant Medicine	2	2			-0	-0
Consultant Paediatrics	1	1			-1	-1
Consultant Psychiatry	59	60	+1	+1.6%	-1	+1
Consultants	62	63	+1	+1.5%	-2	-0
Registrar	72	87	+16	+21.7%	+17	+15
Senior Registrar	21	15	-5	-25.8%	-5	-1
Specialist Registrar	2	3	+1	+38.0%	+2	+0
Registrars	94	105	+11	+11.6%	+14	+15
Interns		2	+2	-100.0%	+2	+2
Senior House Officer	55	39	-16	-28.9%	-32	-20
SHO/ Interns	55	41	-14	-25.8%	-31	-18
Dentists	32	31	-0	-0.9%	-1	-0
Other Medical	23	25	+2	+10.9%	+2	+1
Medical/ Dental, other	54	57	+2	+4.1%	+1	+1
Medical & Dental	266	266	+0	+0.0%	-24	-2
Clinical Nurse/ Midwife Manager	368	369	+2	+0.5%	+2	+6
Director Nursing/Midwifery, Assistant	67	66	-1	-1.6%	-3	-2
Director of Nursing/Midwifery	23	21	-2	-8.7%	-0	-3
Nurse/ Midwife Manager	457	456	-1	-0.3%	-1	+2
Advanced Nurse/ Midwife Practitioner	10	11	+1	+5.3%	+2	+4
Clinical Nurse/ Midwife Specialist	98	100	+2	+1.9%	+8	+14
Nurse/ Midwife Specialist & AN/MP	108	111	+2	+2.2%	+9	+18
Staff Midwives				-100.0%	-1	-1
Staff Nurse [Intellectual Disability]	417	413	-4	-0.9%	-10	+8
Staff Nurse [Psychiatric]	386	383	-2	-0.6%	-2	+25
Staff Nurses [General/ Children's]	444	434	-10	-2.2%	+20	-11
Staff Nurse/ Staff Midwife	1,246	1,230	-16	-1.3%	+7	+21
Public Health Nurse	173	184	+12	+6.8%	+3	+23
Pre-registration Nurse/ Midwife Intern	46	45	-1	-1.6%	+32	+21
Pre-registration Nurse Intern (COVID-19)				-100.0%	-16	-58
Post-registration Nurse/ Midwife Student	12	2	-10	-83.3%	-29	
Nursing/ Midwifery awaiting registration	1	1	+0	+7.5%	+1	+1
Nursing/ Midwifery Student	59	48	-11	-18.2%	-12	-35
Nursing Education/Clinical	19	19	-0	-0.4%	-4	-2
Nursing/ Midwifery other	19	19	-0	-0.4%	-4	-2
Nursing & Midwifery	2,063	2,049	-14	-0.7%	+84	+27
Dietitians	31	30	-0	-1.4%	+4	+0
Occupational Therapists	223	221	-2	-1.0%	+18	+29
Orthoptists	3	3	+0	+7.3%	-2	-2
Physiotherapists	157	157	+1	+0.3%	-0	+10
Podiatrists & Chiropractors	1	1	-0	-2.6%	-0	+0
Speech & Language Therapists	139	134	-5	-3.6%	-2	-12
Therapy Professions	554	547	-7	-1.3%	+17	+25
Audiology	14	14	-0	-1.3%	-1	-1
Clinical Engineering	15	15	+0	+0.5%	+1	+1
Medical Science	4	4				
Radiographers	1	1				

Jul 2021 (Dec 2020 figure: 6,950)	WTE Jun 2021	WTE Jul 2021	WTE change since Jun 21	% change since Jun 21	WTE change since Dec 20	WTE change since Jul 20
Overall	7,072	7,071	-1	-0.0%	+122	+395
Health Science/ Diagnostics	34	34	-0	-0.3%	+0	-0
Social Care	786	795	+10	+1.2%	+50	+95
Social Workers	141	139	-1	-0.9%	+1	+9
Psychologists	176	175	-1	-0.8%	-8	+1
Pharmacy	30	29	-1	-2.8%	-1	+4
Counsellor Therapists	42	40	-2	-4.6%	-2	+1
Dental Hygienists	6	6	-0	-0.2%	-0	
Other Health & Social Care	20	20	+0	+1.7%	+0	-2
Play Therapists/ Specialists	2	2			-0	-1
HSCP Trainees/ Students	2	5	+3	+138.5%	+5	+5
H&SC, Other	71	72	+1	+1.5%	+3	+3
Health & Social Care Professionals	1,791	1,791	-0	-0.0%	+188	+139
Executive Management	13	14	+1	+4.6%	+2	+2
Senior Management (VIII & GM)	75	77	+2	+2.9%	+4	+8
Management (VIII & above)	88	90	+3	+3.2%	+6	+10
Middle Management (V-VII)	258	266	+8	+3.1%	+32	+53
Other Administrative	10	10				+1
Administrative/ Supervisory (V to VII)	267	275	+8	+3.0%	+32	+54
General Administrative (III & IV)	537	549	+12	+2.2%	+42	+96
Clerical (III & IV)	537	549	+12	+2.2%	+42	+96
Management & Administrative	892	915	+23	+2.5%	+176	+160
Catering	57	57	-0	-0.6%	-2	+1
Household Services	223	223	-0	-0.1%	-2	+4
Other Support	44	44	+0	+0.5%	-1	-24
Portering	73	73	-1	-1.3%	-2	-3
Support	397	396	-1	-0.3%	-7	-23
Maintenance	31	31	+0	+0.1%	-2	-2
Technical Services	3	3	-0	-3.3%	-0	+1
Maintenance/ Technical	34	34	-0	-0.2%	-2	-1
General Support	432	430	-1	-0.3%	-57	-23
HCA, Nurse's Aide, etc.	1,287	1,285	-2	-0.2%	-24	+44
HCA (Student Nurse/Midwife COVID-19)	0	0	+0	+2.2%	-0	-43
Health & Social Care Assistants	29	30	+1	+2.4%	+5	+10
Swabber (COVID-19)	76	73	-3	-4.1%	+22	+73
Health Care Assistants	1,393	1,388	-5	-0.3%	+3	+83
Other Care Grades	236	232	-4	-1.5%	-1	+13
Care, other	236	232	-4	-1.5%	-1	+13
Patient & Client Care	1,629	1,620	-8	-0.5%	+122	+95

CHO 9 HSE Employment by Grade Group & Staff Category: July 2021

Jul 2021 (Dec 2020 figure: 3,660)	WTE Jun 2021	WTE Jul 2021	WTE change since Jun 21	% change since Jun 21	WTE change since Dec 20	WTE change since Jul 20
Overall	3,779	3,769	-9	-0.2%	+110	+277
Consultant Medicine	1	1			-0	-0
Consultant Psychiatry	50	50	+0	+0.1%	-1	+1
Consultants	51	51	+0	+0.1%	-1	+0
Registrar	70	83	+14	+19.5%	+15	+13
Senior Registrar	20	13	-6	-32.2%	-6	-2
Specialist Registrar	1	2	+1	+75.0%	+2	+1
Registrars	90	98	+8	+8.8%	+11	+12
SHO/ Interns	50	34	-16	-32.5%	-33	-20
Dentists	32	31	-0	-0.9%	-1	-0
Other Medical	17	19	+2	+14.9%	+2	+1
Medical/ Dental, other	48	51	+2	+4.6%	+1	+1
Medical & Dental	240	234	-6	-2.5%	-23	-6
Clinical Nurse/ Midwife Manager	196	197	+1	+0.6%	+2	+2
Director Nursing/Midwifery, Assistant	58	57	-1	-1.8%	-3	-2
Director of Nursing/Midwifery	12	11	-1	-8.4%	+1	-0
Nurse/ Midwife Manager	266	265	-1	-0.3%	-1	+0
Advanced Nurse/ Midwife Practitioner	9	10	+1	+5.9%	+2	+3
Clinical Nurse/ Midwife Specialist	85	86	+2	+2.2%	+6	+13
Nurse/ Midwife Specialist & AN/MP	94	96	+2	+2.6%	+8	+15
Staff Midwives				-100.0%	-1	-1
Staff Nurse [Intellectual Disability]	72	72	-0	-0.1%	+3	+4
Staff Nurse [Psychiatric]	296	296	+1	+0.2%	+2	+27
Staff Nurses [General/ Children's]	369	359	-10	-2.6%	+21	-5
Staff Nurse/ Staff Midwife	737	728	-9	-1.3%	+25	+24
Public Health Nurse	173	184	+12	+6.8%	+3	+23
Pre-registration Nurse/ Midwife Intern	25	25	-1	-2.9%	+22	+1
Pre-registration Nurse Intern (COVID-19)				-100.0%	-6	-30
Post-registration Nurse/ Midwife Student	12	2	-10	-83.3%	-29	
Nursing/ Midwifery awaiting registration	1	1	+0	+7.5%	+1	+1
Nursing/ Midwifery Student	38	28	-11	-27.9%	-12	-28
Nursing Education/Clinical	12	12	-0	-0.6%	-4	-2
Nursing/ Midwifery other	12	12	-0	-0.6%	-4	-2
Nursing & Midwifery	1,319	1,312	-7	-0.5%	+68	+33
Dietitians	22	22	-0	-1.9%	+3	+0
Occupational Therapists	138	137	-1	-0.5%	+3	+12
Orthoptists	3	3	+0	+7.3%	-2	-2
Physiotherapists	87	88	+1	+0.6%	+4	+13
Podiatrists & Chiropodists	1	1	-0	-2.6%	-0	+0
Speech & Language Therapists	100	98	-2	-2.1%	+6	+3
Therapy Professions	351	349	-2	-0.7%	+13	+27
Audiology	14	14	-0	-1.3%	-1	-1
Clinical Engineering	5	5	+0	+1.4%		
Radiographers				-100.0%		
Health Science/ Diagnostics	19	19	-0	-0.6%	-1	-1
Social Care	7	7	-0	-1.0%	-0	-0
Social Workers	90	90	+0	+0.0%	+5	+11
Psychologists	129	128	-0	-0.1%	-3	-2
Pharmacy	22	21	-1	-3.8%	-1	+4
Counsellor Therapists	42	40	-2	-4.6%	-2	+1

Jul 2021 (Dec 2020 figure: 3,660)	WTE Jun 2021	WTE Jul 2021	WTE change since Jun 21	% change since Jun 21	WTE change since Dec 20	WTE change since Jul 20
Overall	3,779	3,769	-9	-0.2%	+110	+277
Dental Hygienists	6	6	-0	-0.2%	-0	
Other Health & Social Care	8	8	+0	+4.3%	+2	+2
Play Therapists/ Specialists	1	1			-1	-1
HSCP Trainees/ Students	2	5	+3	+138.5%	+5	+5
H&SC, Other	59	60	+1	+1.8%	+5	+6
Health & Social Care Professionals	678	675	-2	-0.4%	+70	+45
Executive Management	8	9	+1	+7.5%	+1	+1
Senior Management (VIII & GM)	40	42	+2	+3.9%	+3	+3
Management (VIII & above)	48	50	+2	+4.5%	+4	+4
Administrative/ Supervisory (V to VII)	163	170	+7	+4.2%	+28	+45
Clerical (III & IV)	398	407	+9	+2.2%	+49	+100
Management & Administrative	609	627	+18	+3.0%	+168	+150
Catering	21	21	-0	-1.4%	-2	-1
Household Services	104	105	+1	+1.0%	+2	+10
Other Support	8	9	+1	+6.4%	+1	+1
Portering	60	59	-1	-1.5%	-3	-2
Support	194	194	+0	+0.2%	-1	+7
Maintenance/ Technical	8	8	+0	+0.2%	-1	-1
General Support	202	203	+0	+0.2%	-5	+6
HCA, Nurse's Aide, etc.	495	489	-6	-1.2%	-10	+1
HCA (Student Nurse/Midwife COVID-19)	0	0	+0	+2.2%	-0	-38
Health & Social Care Assistants	22	21	-1	-5.9%	+1	+5
Swabber (COVID-19)	76	73	-3	-4.1%	+22	+73
Health Care Assistants	593	583	-10	-1.8%	+13	+40
Care, other	137	135	-2	-1.4%	+3	+10
Patient & Client Care	730	718	-12	-1.7%	+83	+50

Employment by WTE, Headcount, Gender, Full-Time /Part-Time etc.: Jul 2021

CHO 9	WTE	Headcount	WTE: no.	% Male	% female	Male WTE: no.	Female WTE: no.	% Total Perm	% Male Perm	% Female Perm	% Total Full Time	% Total Part Time	% Male FT	% Female FT
Overall	7,071	8,243	1.17	18.2%	81.8%	1.09	1.18	84.6%	79.9%	85.7%	67.6%	32.4%	84.5%	63.9%
Consultant Medicine	2	4	1.67		100.0%		1.67	75.0%	75.0%	75.0%	25.0%	75.0%		25.0%
Consultant Paediatrics	1	2	3.03		100.0%		3.03	50.0%	50.0%	50.0%	0.0%	100.0%		0.0%
Consultant Psychiatry	60	68	1.14	35.3%	64.7%	1.13	1.14	79.4%	79.4%	84.1%	82.4%	17.6%	87.5%	79.5%
Consultants	63	74	1.18	32.4%	67.6%	1.13	1.20	78.4%	70.8%	82.0%	77.0%	23.0%	87.5%	72.0%
Registrar	87	123	1.41	36.6%	63.4%	1.36	1.44	2.4%	2.4%	1.3%	99.2%	0.8%	100.0%	98.7%
Senior Registrar	15	21	1.37	47.6%	52.4%	1.47	1.28	0.0%	0.0%	0.0%	100.0%	0.0%	100.0%	100.0%
Specialist Registrar	3	4	1.45	25.0%	75.0%	3.13	1.23	0.0%	0.0%	0.0%	50.0%	50.0%	0.0%	66.7%
Registrars	105	148	1.40	37.8%	62.2%	1.40	1.41	2.0%	3.6%	1.1%	98.0%	2.0%	98.2%	97.8%
Interns	2	2	1.20		100.0%		1.20	0.0%	0.0%	0.0%	100.0%	0.0%		100.0%
Senior House Officer	39	55	1.41	32.7%	67.3%	1.55	1.36	1.8%	1.8%	0.0%	100.0%	0.0%	100.0%	100.0%
SHO/ Interns	41	57	1.40	31.6%	68.4%	1.55	1.35	1.8%	5.6%	0.0%	100.0%	0.0%	100.0%	100.0%
Dentists	31	37	1.18	16.2%	83.8%	1.00	1.22	91.9%	91.9%	90.3%	75.7%	24.3%	100.0%	71.0%
Other Medical	25	32	1.26	25.0%	75.0%	1.41	1.22	78.1%	78.1%	79.2%	46.9%	53.1%	37.5%	50.0%
Medical/ Dental, other	57	69	1.22	20.3%	79.7%	1.20	1.22	85.5%	85.7%	85.5%	62.3%	37.7%	64.3%	61.8%
Medical & Dental	266	348	1.31	32.2%	67.8%	1.32	1.30	34.8%	28.6%	37.7%	86.8%	13.2%	92.0%	84.3%
Clinical Nurse/ Midwife Manager	369	394	1.07	18.5%	81.5%	1.01	1.08	97.0%	97.0%	96.3%	84.8%	15.2%	97.3%	81.9%
Director Nursing/Midwifery, Assistant	66	70	1.07	18.6%	81.4%	1.00	1.08	98.6%	98.6%	98.2%	90.0%	10.0%	100.0%	87.7%
Director of Nursing/Midwifery	21	22	1.05	9.1%	90.9%	1.00	1.05	86.4%	86.4%	85.0%	90.9%	9.1%	100.0%	90.0%
Nurse/ Midwife Manager	456	486	1.07	18.1%	81.9%	1.01	1.08	96.7%	100.0%	96.0%	85.8%	14.2%	97.7%	83.2%
Advanced Nurse/ Midwife Practitioner	11	11	1.03		100.0%		1.03	81.8%	81.8%	81.8%	90.9%	9.1%		90.9%
Clinical Nurse/ Midwife Specialist	100	106	1.06	13.2%	86.8%	1.01	1.07	99.1%	99.1%	98.9%	88.7%	11.3%	100.0%	87.0%
Nurse/ Midwife Specialist & AN/MP	111	117	1.06	12.0%	88.0%	1.01	1.06	97.4%	100.0%	97.1%	88.9%	11.1%	100.0%	87.4%
Staff Nurse [Intellectual Disability]	413	474	1.15	8.9%	91.1%	1.05	1.16	95.4%	95.4%	95.6%	68.1%	31.9%	88.1%	66.2%
Staff Nurse [Psychiatric]	383	421	1.10	23.5%	76.5%	1.08	1.11	92.2%	92.2%	93.8%	83.8%	16.2%	89.9%	82.0%
Staff Nurses [General/ Children's]	434	492	1.13	11.6%	88.4%	1.03	1.15	90.7%	90.7%	90.8%	77.0%	23.0%	96.5%	74.5%
Staff Nurse/ Staff Midwife	1,230	1,387	1.13	14.3%	85.7%	1.06	1.14	92.7%	88.9%	93.4%	76.1%	23.9%	91.4%	73.5%
Public Health Nurse	184	225	1.22	0.9%	99.1%	1.12	1.22	92.9%	50.0%	93.3%	72.9%	27.1%	100.0%	72.6%
Pre-registration Nurse/ Midwife Intern	45	92	2.04	6.5%	93.5%	2.00	2.05	22.8%	22.8%	24.4%	77.2%	22.8%	100.0%	75.6%

Post-registration Nurse/ Midwife Student	2	2	1.00		100.0%		1.00	50.0%	50.0%	50.0%	100.0%	0.0%		100.0%
Nursing/ Midwifery awaiting registration	1	1	1.00		100.0%		1.00	100.0%	100.0%	100.0%	100.0%	0.0%		100.0%
Nursing/ Midwifery Student	48	95	1.98	6.3%	93.7%	2.00	1.98	24.2%	0.0%	25.8%	77.9%	22.1%	100.0%	76.4%
Nursing Education/Clinical	19	22	1.14	9.1%	90.9%	1.00	1.15	95.5%	95.5%	95.0%	86.4%	13.6%	100.0%	85.0%
Nursing/ Midwifery other	19	22	1.14	9.1%	90.9%	1.00	1.15	95.5%	100.0%	95.0%	86.4%	13.6%	100.0%	85.0%
Nursing & Midwifery	2,049	2,332	1.14	13.3%	86.7%	1.05	1.15	91.0%	90.6%	91.1%	78.6%	21.4%	93.9%	76.3%
Dietitians	30	38	1.25	7.9%	92.1%	1.04	1.28	92.1%	92.1%	94.3%	55.3%	44.7%	100.0%	51.4%
Occupational Therapists	221	245	1.11	9.8%	90.2%	1.02	1.12	92.2%	92.2%	91.9%	80.8%	19.2%	100.0%	78.7%
Orthoptists	3	4	1.18		100.0%		1.18	100.0%	100.0%	100.0%	50.0%	50.0%		50.0%
Physiotherapists	157	185	1.18	13.5%	86.5%	1.08	1.20	89.7%	89.7%	88.8%	68.1%	31.9%	88.0%	65.0%
Podiatrists & Chiropodists	1	2	1.77		100.0%		1.77	50.0%	50.0%	50.0%	0.0%	100.0%		0.0%
Speech & Language Therapists	134	153	1.14	0.7%	99.3%	25.00	1.13	88.9%	88.9%	88.8%	77.8%	22.2%	100.0%	77.6%
Therapy Professions	547	627	1.15	8.5%	91.5%	1.07	1.15	90.6%	94.3%	90.2%	74.3%	25.7%	94.3%	72.5%
Audiology	14	16	1.16	25.0%	75.0%	1.12	1.18	100.0%	100.0%	100.0%	81.3%	18.8%	100.0%	75.0%
Clinical Engineering	15	15	1.00	93.3%	6.7%	1.00	1.00	100.0%	100.0%	100.0%	100.0%	0.0%	100.0%	100.0%
Medical Science	4	4	1.00	75.0%	25.0%	1.00	1.00	75.0%	75.0%	100.0%	100.0%	0.0%	100.0%	100.0%
Radiographers	1	2	2.00		100.0%		2.00	100.0%	100.0%	100.0%	0.0%	100.0%		0.0%
Health Science/ Diagnostics	34	37	1.10	56.8%	43.2%	1.02	1.21	97.3%	95.2%	100.0%	86.5%	13.5%	100.0%	68.8%
Social Care	795	958	1.20	12.6%	87.4%	1.09	1.22	88.5%	86.8%	88.8%	44.1%	55.9%	66.9%	40.7%
Social Workers	139	158	1.13	14.6%	85.4%	1.02	1.16	95.6%	91.3%	96.3%	72.2%	27.8%	91.3%	68.9%
Psychologists	175	193	1.10	14.5%	85.5%	1.04	1.12	65.8%	64.3%	66.1%	78.8%	21.2%	89.3%	77.0%
Pharmacy	29	34	1.18	11.8%	88.2%	1.11	1.19	73.5%	50.0%	76.7%	73.5%	26.5%	75.0%	73.3%
Counsellor Therapists	40	44	1.10	34.1%	65.9%	1.04	1.14	93.2%	93.2%	96.6%	77.3%	22.7%	86.7%	72.4%
Dental Hygienists	6	8	1.32		100.0%		1.32	100.0%	100.0%	100.0%	25.0%	75.0%		25.0%
Other Health & Social Care	20	27	1.36	18.5%	81.5%	1.20	1.40	92.6%	92.6%	90.9%	51.9%	48.1%	80.0%	45.5%
Play Therapists/ Specialists	2	2	1.33		100.0%		1.33	100.0%	100.0%	100.0%	50.0%	50.0%		50.0%
HSCP Trainees/ Students	5	5	1.08	20.0%	80.0%	1.00	1.10	0.0%	0.0%	0.0%	80.0%	20.0%	100.0%	75.0%
H&SC, Other	72	86	1.19	24.4%	75.6%	1.07	1.24	88.4%	85.7%	89.2%	64.0%	36.0%	85.7%	56.9%
Health & Social Care	1,791	2,093	1.17	12.9%	87.1%	1.07	1.19	87.5%	86.3%	87.7%	60.5%	39.5%	80.8%	57.5%
Executive Management	14	14	1.03	7.1%	92.9%	1.00	1.03	92.9%	92.9%	92.3%	100.0%	0.0%	100.0%	100.0%
Senior Management (VIII & GM)	77	78	1.01	32.1%	67.9%	1.00	1.02	97.4%	97.4%	100.0%	97.4%	2.6%	100.0%	96.2%
Management (VIII & above)	90	92	1.02	28.3%	71.7%	1.00	1.02	96.7%	92.3%	98.5%	97.8%	2.2%	100.0%	97.0%
Administrative/ Supervisory (V to VII)	275	298	1.08	17.8%	82.2%	1.01	1.10	94.6%	92.5%	95.1%	75.8%	24.2%	83.0%	74.3%
Clerical (III & IV)	549	648	1.18	15.3%	84.7%	1.08	1.20	75.9%	58.6%	79.1%	68.1%	31.9%	87.9%	64.5%
Management & Administrative	915	1,038	1.13	17.1%	82.9%	1.05	1.15	83.1%	73.6%	85.1%	72.9%	27.1%	88.2%	69.8%

Catering	57	66	1.16	40.9%	59.1%	1.07	1.24	97.0%	97.0%	97.4%	65.2%	34.8%	88.9%	48.7%
Household Services	223	282	1.27	12.1%	87.9%	1.16	1.28	90.8%	90.8%	91.5%	42.9%	57.1%	76.5%	38.3%
Other Support	44	55	1.24	61.8%	38.2%	1.25	1.23	83.6%	83.6%	90.5%	40.0%	60.0%	41.2%	38.1%
Portering	73	76	1.05	94.7%	5.3%	1.05	1.07	81.6%	81.6%	75.0%	92.1%	7.9%	91.7%	100.0%
Support	396	479	1.21	34.9%	65.1%	1.11	1.27	89.4%	84.4%	92.0%	53.4%	46.6%	77.8%	40.4%
Maintenance/ Technical	34	36	1.05	91.7%	8.3%	1.05	1.04	94.4%	93.9%	100.0%	69.4%	30.6%	69.7%	66.7%
General Support	430	515	1.20	38.8%	61.2%	1.10	1.27	89.7%	86.0%	92.1%	54.6%	45.4%	76.5%	40.6%
HCA, Nurse's Aide, etc.	1,285	1,526	1.19	20.1%	79.9%	1.09	1.21	87.8%	87.8%	87.0%	56.6%	43.4%	79.4%	50.9%
HCA (Student Nurse/Midwife COVID-19)	0	1	2.13		100.0%		2.13	0.0%	0.0%	0.0%	0.0%	100.0%		0.0%
Health & Social Care Assistants	30	33	1.11	15.2%	84.8%	1.08	1.11	39.4%	39.4%	39.3%	87.9%	12.1%	100.0%	85.7%
Swabber (COVID-19)	73	92	1.26	34.8%	65.2%	1.25	1.27	0.0%	0.0%	0.0%	72.8%	27.2%	75.0%	71.7%
Health Care Assistants	1,388	1,652	1.19	20.8%	79.2%	1.10	1.22	81.9%	81.9%	81.9%	58.1%	41.9%	79.3%	52.6%
Care, other	232	265	1.14	32.8%	67.2%	1.07	1.18	84.2%	79.3%	86.5%	66.8%	33.2%	85.1%	57.9%
Patient & Client Care	1,620	1,917	1.18	22.4%	77.6%	1.10	1.21	82.2%	81.4%	82.4%	59.3%	40.7%	80.5%	53.2%

Employment by WTE, Headcount, Gender, Full-Time /Part-Time etc.: Jul 2021

CHO 9	WTE	Headcount	WTE: no.	% Male	% female	Male WTE: no.	Female WTE: no.	% Total Perm	% Male Perm	% Female Perm	% Total Full Time	% Total Part Time	% Male FT	% Female FT
Overall	7,071	8,243	1.17	18.2%	81.8%	1.09	1.18	84.6%	79.9%	85.7%	67.6%	32.4%	84.5%	63.9%
Community Health & Wellbeing	12	14	1.14	7.1%	92.9%	1.49	1.12	92.9%	92.9%	100.0%	85.7%	14.3%	100.0%	100.0%
Mental Health	1,326	1,508	1.14	27.8%	72.2%	1.09	1.15	83.1%	83.1%	85.1%	84.9%	15.1%	94.5%	94.5%
Primary Care	1,478	1,734	1.17	17.1%	82.9%	1.10	1.19	73.2%	73.2%	75.7%	75.7%	24.3%	91.2%	91.2%
HSE	1,158	1,297	1.12	25.1%	74.9%	1.05	1.15	89.7%	89.7%	90.0%	79.2%	20.8%	90.8%	90.8%
Section 38 Voluntary Agencies	3,097	3,690	1.19	12.4%	87.6%	1.11	1.20	88.8%	88.8%	88.9%	52.7%	47.3%	66.7%	66.7%
Social Care	4,254	4,987	1.17	15.7%	84.3%	1.08	1.19	89.1%	89.1%	89.2%	59.6%	40.4%	76.7%	76.7%

CHO 9 Skills Mix by Staff Grouping: July 2021

Jul 2021 (Dec 2019 figure: 6,582)	WTE Dec 2016	WTE Dec 2017	WTE Dec 2018	WTE Dec 2019	WTE Dec 2020	WTE Jun 2021	WTE Jul 2021
Overall	6,286	6,438	6,634	6,582	6,950	7,072	7,071
Consultant Medicine	2.3%	2.6%	0.6%	0.6%	0.9%	0.9%	0.9%
Consultant Paediatrics	0.5%	0.4%	0.4%	0.4%	0.4%	0.2%	0.2%
Consultant Psychiatry	21.3%	21.8%	21.9%	22.7%	21.5%	22.2%	22.5%
Consultant Surgery	0.3%	0.0%	0.0%				
Consultants	24.5%	24.8%	23.0%	23.6%	22.8%	23.3%	23.7%
Registrar	21.3%	22.5%	25.4%	27.0%	24.8%	27.0%	32.9%
Senior Registrar	5.1%	3.9%	5.3%	5.5%	7.1%	7.8%	5.8%
Specialist Registrar	1.4%	1.8%	0.3%	1.4%	0.4%	0.8%	1.0%
Registrars	27.9%	28.2%	31.1%	33.9%	32.2%	35.6%	39.7%
Interns	1.8%	1.4%	0.7%	0.7%			0.6%
Senior House Officer	19.5%	21.2%	21.3%	22.2%	25.2%	20.6%	14.6%
SHO/ Interns	21.3%	22.6%	22.0%	22.8%	25.2%	20.6%	15.3%
Dentists	11.7%	10.7%	11.0%	10.9%	11.5%	11.9%	11.8%
Other Medical	14.6%	13.7%	13.0%	8.7%	8.4%	8.6%	9.5%
Medical/ Dental, other	26.3%	24.4%	24.0%	19.6%	19.9%	20.5%	21.3%
Medical & Dental	4.4%	4.4%	4.4%	4.4%	4.2%	100.0%	3.8%
Clinical Nurse/ Midwife Manager	18.9%	19.2%	18.5%	17.7%	17.9%	17.8%	18.0%
Director Nursing/Midwifery, Assistant	3.1%	3.0%	2.8%	3.1%	3.4%	3.2%	3.2%
Director of Nursing/Midwifery	1.3%	1.3%	1.1%	1.3%	1.0%	1.1%	1.0%
Nurse/ Midwife Manager	23.3%	23.5%	22.3%	22.1%	22.3%	22.2%	22.3%
Advanced Nurse/ Midwife Practitioner	0.1%	0.2%	0.3%	0.3%	0.4%	0.5%	0.5%
Clinical Nurse/ Midwife Specialist	2.9%	3.8%	3.7%	4.0%	4.5%	4.8%	4.9%
Nurse/ Midwife Specialist & AN/MP	3.0%	4.0%	4.1%	4.3%	5.0%	5.3%	5.4%
Staff Midwives					0.0%		
Staff Nurse [Intellectual Disability]	22.0%	22.1%	21.2%	21.4%	20.7%	20.2%	20.2%
Staff Nurse [Psychiatric]	19.5%	18.7%	19.0%	18.9%	18.8%	18.7%	18.7%
Staff Nurses [General/ Children's]	21.0%	20.2%	21.4%	20.6%	20.2%	21.5%	21.2%
Staff Nurse/ Staff Midwife	62.4%	61.1%	61.6%	60.8%	59.8%	60.4%	60.0%
Public Health Nurse	9.0%	8.8%	8.6%	8.9%	8.9%	8.4%	9.0%
Pre-registration Nurse/ Midwife Intern	0.2%	0.1%	1.0%	0.9%	0.6%	2.2%	2.2%
Pre-registration Nurse Intern (COVID-19)					0.8%		
Post-registration Nurse/ Midwife Student	1.0%	1.4%	1.1%	1.3%	1.5%	0.6%	0.1%
Nursing/ Midwifery awaiting registration			0.1%	0.5%		0.0%	0.0%
Nursing/ Midwifery Student	1.2%	1.5%	2.2%	2.8%	2.9%	2.8%	2.3%
Nursing/ Midwifery other	1.0%	1.1%	1.2%	1.0%	1.1%	0.9%	0.9%
Nursing & Midwifery	31.1%	30.6%	30.4%	29.9%	28.3%	100.0%	29.0%
Dietitians	1.6%	1.5%	1.5%	1.3%	1.5%	1.7%	1.7%
Occupational Therapists	11.4%	11.9%	11.4%	11.4%	11.8%	12.5%	12.3%
Orthoptists	0.1%	0.1%	0.2%	0.3%	0.3%	0.2%	0.2%
Physiotherapists	9.1%	9.0%	8.7%	9.0%	9.1%	8.7%	8.8%
Podiatrists & Chiropodists		0.1%	0.1%	0.1%	0.1%	0.1%	0.1%
Speech & Language Therapists	8.8%	8.9%	8.9%	8.3%	7.8%	7.8%	7.5%
Therapy Professions	30.8%	31.4%	30.8%	30.4%	30.7%	30.9%	30.5%
Audiology	0.8%	1.2%	1.1%	0.9%	0.8%	0.8%	0.8%
Clinical Engineering	1.1%	1.0%	1.0%	1.0%	0.8%	0.8%	0.8%
Medical Science	0.2%	0.2%	0.3%	0.2%	0.2%	0.2%	0.2%
Radiographers	0.1%	0.1%	0.1%	0.1%	0.1%	0.1%	0.1%
Health Science/ Diagnostics	2.3%	2.5%	2.5%	2.3%	1.9%	1.9%	1.9%
Social Care	39.9%	39.7%	41.5%	43.4%	43.1%	43.9%	44.4%
Social Workers	8.3%	8.5%	8.3%	7.8%	8.0%	7.9%	7.8%
Psychologists	11.4%	10.8%	10.8%	10.2%	10.6%	9.8%	9.8%

Jul 2021 (Dec 2019 figure: 6,582)	WTE Dec 2016	WTE Dec 2017	WTE Dec 2018	WTE Dec 2019	WTE Dec 2020	WTE Jun 2021	WTE Jul 2021
Overall	6,286	6,438	6,634	6,582	6,950	7,072	7,071
Pharmacy	2.4%	2.2%	1.9%	1.5%	1.7%	1.7%	1.6%
Counsellor Therapists	2.5%	2.6%	2.4%	2.6%	2.4%	2.3%	2.2%
Dental Hygienists	0.4%	0.4%	0.4%	0.4%	0.4%	0.3%	0.3%
Other Health & Social Care	1.8%	1.6%	1.4%	1.2%	1.1%	1.1%	1.1%
Play Therapists/ Specialists	0.1%	0.2%	0.2%	0.1%	0.1%	0.1%	0.1%
HSCP Trainees/ Students						0.1%	0.3%
H&SC, Other	4.8%	4.7%	4.3%	4.4%	4.0%	4.0%	4.0%
Health & Social Care Professionals	23.3%	23.8%	23.8%	24.4%	23.1%	100.0%	25.3%
Executive Management	0.8%	1.0%	1.2%	1.4%	1.4%	1.5%	1.5%
Senior Management (VIII & GM)	7.8%	8.6%	8.4%	9.3%	8.8%	8.4%	8.4%
Management (VIII & above)	8.6%	9.7%	9.6%	10.8%	10.2%	9.8%	9.9%
Middle Management (V-VII)	26.2%	24.9%	27.0%	27.0%	28.0%	28.9%	29.1%
Other Administrative	1.4%	1.6%	1.7%	1.2%	1.1%	1.1%	1.0%
Administrative/ Supervisory (V to VII)	27.6%	26.5%	28.7%	28.1%	29.1%	30.0%	30.1%
Clerical (III & IV)	63.8%	63.8%	61.6%	61.1%	60.7%	60.2%	60.0%
Management & Administrative	10.1%	10.6%	11.3%	11.2%	10.6%	100.0%	12.9%
Catering	12.3%	12.3%	12.2%	12.5%	13.4%	13.2%	13.2%
Household Services	43.0%	41.6%	43.7%	45.3%	51.2%	51.6%	51.7%
Other Support	23.0%	24.3%	22.8%	19.4%	10.2%	10.2%	10.3%
Portering	15.4%	14.8%	14.3%	15.5%	16.9%	17.0%	16.9%
Support	93.6%	93.1%	93.0%	92.8%	91.7%	92.0%	92.0%
Maintenance/ Technical	6.4%	6.9%	7.0%	7.2%	8.3%	8.0%	8.0%
General Support	8.8%	8.4%	7.9%	7.4%	7.0%	100.0%	6.1%
HCA, Nurse's Aide, etc.	84.6%	85.6%	84.2%	84.4%	80.9%	79.0%	79.3%
HCA (Student Nurse/Midwife COVID-19)					0.0%	0.0%	0.0%
Health & Social Care Assistants	0.7%	0.8%	1.5%	0.8%	1.6%	1.8%	1.8%
Swabber (COVID-19)					3.1%	4.7%	4.5%
Health Care Assistants	85.3%	86.4%	85.7%	85.3%	85.6%	85.5%	85.7%
Other Care Grades	14.7%	13.6%	14.3%	14.7%	14.4%	14.5%	14.3%
Care, other	14.7%	13.6%	14.3%	14.7%	14.4%	14.5%	14.3%
Patient & Client Care	22.2%	22.3%	22.4%	22.8%	21.6%	100.0%	22.9%
Total	100 %	100 %	100 %	100 %	100%	100 %	100 %

CHO 9 Skills Mix by Care Group: July 2021

Jul 2021 (Dec 2019 figure: 1,272)	WTE Dec 2016	WTE Dec 2017	WTE Dec 2018	WTE Dec 2019	WTE Dec 2020	WTE Jun 2021	WTE Jul 2021
Mental Health	1,217	1,220	1,301	1,272	1,331	1,341	1,326
Consultant Medicine		0.1%	0.1%				
Consultant Psychiatry	37.8%	36.3%	37.8%	37.3%	35.2%	38.1%	41.0%
Consultants	37.8%	36.3%	37.8%	37.3%	35.2%	38.1%	41.0%
Registrar	15.3%	11.4%	11.0%	11.9%	9.9%	15.8%	27.1%
Senior Registrar	10.6%	8.1%	10.6%	11.2%	14.4%	15.8%	11.2%
Specialist Registrar	0.8%	0.8%					
Registrars	26.7%	20.3%	21.6%	23.1%	24.2%	31.6%	38.3%
Interns	4.0%	3.2%	1.5%	1.5%			1.5%
Senior House Officer	30.7%	40.1%	39.1%	38.2%	40.6%	30.3%	19.2%
SHO/ Interns	34.7%	43.4%	40.6%	39.6%	40.6%	30.3%	20.7%
Medical/ Dental, other	0.8%						
Medical & Dental	10.2%	10.1%	10.4%	10.5%	10.1%	8.3%	8.3%
Clinical Nurse/ Midwife Manager	21.3%	20.3%	19.3%	18.5%	18.0%	17.3%	17.4%
Director Nursing/Midwifery, Assistant	3.5%	3.9%	3.4%	3.7%	4.0%	3.8%	3.7%
Director of Nursing/Midwifery	0.9%	0.6%	0.3%	0.5%	0.5%	0.5%	0.5%
Nurse/ Midwife Manager	25.7%	24.7%	23.0%	22.7%	22.5%	21.6%	21.6%
Advanced Nurse/ Midwife Practitioner	0.2%	0.4%	1.0%	1.0%	1.0%	1.2%	1.3%
Clinical Nurse/ Midwife Specialist	7.1%	10.0%	9.8%	10.2%	11.4%	11.7%	12.1%
Nurse/ Midwife Specialist & AN/MP	7.3%	10.4%	10.8%	11.2%	12.3%	12.9%	13.4%
Staff Midwives					0.2%		
Staff Nurse [Intellectual Disability]	0.3%	0.3%	0.3%	0.3%	0.1%	0.2%	0.2%
Staff Nurse [Psychiatric]	61.0%	59.1%	58.5%	57.9%	58.6%	56.7%	56.4%
Staff Nurses [General/ Children's]	2.9%	2.7%	2.5%	2.2%	1.7%	2.3%	2.1%
Staff Nurse/ Staff Midwife	64.2%	62.1%	61.4%	60.5%	60.6%	59.3%	58.7%
Public Health Nurse	0.2%	0.2%					
Pre-registration Nurse/ Midwife Intern	0.6%	0.2%	2.0%	1.7%	1.7%	4.5%	4.4%
Pre-registration Nurse Intern (COVID-19)					0.9%		
Nursing/ Midwifery awaiting registration			0.5%	1.9%		0.1%	0.2%
Nursing/ Midwifery Student	0.6%	0.2%	2.5%	3.6%	2.6%	4.6%	4.5%
Nursing Education/Clinical	2.1%	2.5%	2.3%	2.0%	2.1%	1.6%	1.8%
Nursing/ Midwifery other	2.1%	2.5%	2.3%	2.0%	2.1%	1.6%	1.8%
Nursing & Midwifery	47.0%	46.3%	45.7%	45.7%	43.6%	46.7%	46.7%
Dietitians	1.2%	0.9%	0.8%	0.9%	1.3%	1.3%	1.2%
Occupational Therapists	23.5%	25.8%	26.7%	27.5%	25.6%	27.0%	26.9%
Physiotherapists	0.4%	0.4%	0.6%	0.7%	0.6%	0.6%	0.6%
Speech & Language Therapists	6.9%	4.8%	5.7%	3.7%	6.2%	5.9%	5.7%
Therapy Professions	32.0%	32.0%	33.8%	32.8%	33.7%	34.8%	34.4%
Social Care	0.6%	0.6%	0.6%	0.5%	0.6%	0.4%	0.5%
Social Workers	24.3%	28.3%	26.1%	26.0%	23.7%	24.6%	24.7%
Psychologists	29.3%	27.1%	28.2%	27.3%	29.3%	27.6%	28.3%
Pharmacy	5.5%	5.3%	4.3%	4.7%	4.9%	4.5%	4.6%
Counsellor Therapists	7.6%	6.5%	6.0%	8.1%	7.6%	8.0%	7.4%
Other Health & Social Care	0.7%	0.4%	1.0%	0.6%	0.2%	0.2%	0.2%
H&SC, Other	8.2%	6.8%	7.0%	8.7%	7.9%	8.2%	7.6%
Health & Social Care Professionals	13.2%	13.7%	14.0%	13.1%	12.6%	14.3%	14.3%
Management (VIII & above)	1.8%	1.6%	1.5%	3.7%	3.4%	4.1%	4.6%
Administrative/ Supervisory (V to VII)	18.0%	21.1%	20.5%	20.4%	19.5%	19.2%	17.6%
Clerical (III & IV)	80.2%	77.3%	78.1%	76.0%	77.1%	76.7%	77.8%

Jul 2021 (Dec 2019 figure: 1,272)	WTE Dec 2016	WTE Dec 2017	WTE Dec 2018	WTE Dec 2019	WTE Dec 2020	WTE Jun 2021	WTE Jul 2021
Mental Health	1,217	1,220	1,301	1,272	1,331	1,341	1,326
Management & Administrative	9.3%	10.3%	10.5%	10.7%	10.3%	11.0%	11.0%
Support	92.0%	91.4%	91.4%	90.4%	90.4%	90.4%	90.4%
Maintenance/ Technical	8.0%	8.6%	8.6%	9.6%	9.6%	9.6%	9.6%
General Support	11.2%	10.4%	9.8%	9.0%	8.6%	8.6%	8.6%
HCA, Nurse's Aide, etc.	96.4%	96.4%	92.9%	87.2%	89.1%	88.3%	88.3%
Health & Social Care Assistants	2.7%	1.8%	2.4%	3.6%	2.1%	3.4%	3.2%
Health Care Assistants	99.1%	98.2%	95.4%	90.8%	91.2%	91.7%	91.5%
Care, other	0.9%	1.8%	4.6%	9.2%	8.8%	8.3%	8.5%
Patient & Client Care	9.1%	9.1%	9.5%	10.9%	10.4%	11.0%	11.0%
Total	100 %	100 %	100 %	100 %	100 %	100 %	100 %

Jul 2021 (Dec 2019 figure: 1,247)	WTE Dec 2016	WTE Dec 2017	WTE Dec 2018	WTE Dec 2019	WTE Dec 2020	WTE Jun 2021	WTE Jul 2021
Primary Care	1,162	1,239	1,300	1,247	1,412	1,465	1,478
Consultant Psychiatry	3.5%	5.6%	2.9%	3.9%	4.0%	4.1%	3.9%
Consultants	3.5%	5.6%	2.9%	3.9%	4.0%	4.1%	3.9%
Registrars	31.2%	37.4%	43.7%	50.3%	47.2%	44.8%	45.8%
SHO/ Interns	8.7%	2.6%		0.9%	4.5%	7.4%	6.7%
Dentists	28.5%	26.5%	27.1%	28.5%	29.4%	29.2%	27.6%
Other Medical	28.1%	27.8%	26.3%	16.4%	14.9%	14.5%	16.0%
Medical/ Dental, other	56.6%	54.3%	53.4%	44.8%	44.3%	43.7%	43.6%
Medical & Dental	9.8%	9.2%	9.1%	8.9%	7.8%	7.7%	7.7%
Clinical Nurse/ Midwife Manager	4.0%	4.7%	4.2%	4.3%	5.2%	6.5%	6.6%
Director Nursing/Midwifery, Assistant	6.1%	5.3%	5.7%	5.5%	5.6%	5.3%	5.1%
Director of Nursing/Midwifery	0.6%	0.8%	0.8%	0.9%	0.8%	1.1%	1.1%
Nurse/ Midwife Manager	10.7%	10.9%	10.7%	10.7%	11.6%	12.9%	12.8%
Nurse/ Midwife Specialist & AN/MP	1.3%	2.3%	1.5%	1.8%	2.2%	2.4%	2.5%
Staff Nurse/ Staff Midwife	28.3%	30.7%	32.3%	29.1%	28.4%	35.2%	33.8%
Public Health Nurse	53.3%	47.9%	48.7%	50.8%	49.1%	46.0%	50.1%
Nursing/ Midwifery Student	5.8%	7.8%	6.2%	7.5%	8.4%	3.2%	0.5%
Nursing Education/Clinical	0.3%	0.3%	0.3%		0.3%	0.3%	0.3%
Other Nursing/ Midwifery	0.3%	0.1%	0.3%				
Nursing/ Midwifery other	0.6%	0.4%	0.6%		0.3%	0.3%	0.3%
Nursing & Midwifery	28.4%	29.0%	27.3%	27.6%	24.4%	24.9%	24.9%
Dietitians	2.8%	2.8%	2.6%	2.2%	2.1%	2.1%	2.4%
Occupational Therapists	16.8%	17.3%	14.9%	15.8%	17.6%	17.1%	16.8%
Orthoptists	0.5%	0.4%	1.0%	1.5%	1.5%	0.9%	0.9%
Physiotherapists	17.2%	16.3%	15.3%	17.0%	17.1%	16.8%	17.0%
Podiatrists & Chiropodists		0.3%	0.3%	0.3%	0.4%	0.3%	0.3%
Speech & Language Therapists	18.5%	20.4%	20.3%	19.1%	17.8%	19.1%	18.7%
Therapy Professions	55.8%	57.4%	54.4%	55.8%	56.6%	56.3%	56.1%
Audiology			5.0%	4.3%	3.9%	3.8%	3.7%
Clinical Engineering			1.4%	1.4%	1.3%	1.3%	1.3%
Health Science/ Diagnostics			6.4%	5.8%	5.2%	5.1%	5.1%
Social Care	1.5%	1.4%	1.1%	1.2%	1.0%	1.0%	0.9%
Social Workers	5.2%	5.3%	4.9%	4.7%	6.1%	5.9%	6.0%
Psychologists	19.8%	18.7%	18.3%	18.6%	17.5%	17.4%	17.2%
Pharmacy	7.1%	6.0%	5.1%	3.4%	4.0%	4.2%	3.9%
Counsellor Therapists	8.0%	8.4%	7.4%	8.1%	7.4%	7.2%	7.0%

Jul 2021 (Dec 2019 figure: 1,247)	WTE Dec 2016	WTE Dec 2017	WTE Dec 2018	WTE Dec 2019	WTE Dec 2020	WTE Jun 2021	WTE Jul 2021
Primary Care	1,162	1,239	1,300	1,247	1,412	1,465	1,478
Dental Hygienists	1.9%	1.8%	1.8%	1.8%	1.6%	1.6%	1.6%
Other Health & Social Care	0.2%	0.4%	0.2%	0.0%	0.0%	0.6%	0.7%
Play Therapists/ Specialists	0.4%	0.6%	0.6%	0.5%	0.4%	0.3%	0.3%
HSCP Trainees/ Students						0.5%	1.3%
H&SC, Other	10.6%	11.2%	9.9%	10.4%	9.6%	10.2%	10.8%
Health & Social Care Professionals	26.9%	27.5%	27.3%	28.2%	24.9%	25.1%	25.1%
Executive Management	0.4%	0.4%	1.0%	1.3%	1.2%	1.2%	1.3%
Senior Management (VIII & GM)	7.2%	9.2%	8.2%	8.4%	7.3%	6.1%	5.9%
Management (VIII & above)	7.6%	9.6%	9.2%	9.8%	8.5%	7.3%	7.2%
Administrative/ Supervisory (V to VII)	24.0%	21.3%	27.0%	26.9%	26.2%	26.1%	26.9%
Clerical (III & IV)	68.4%	69.0%	63.8%	63.3%	65.3%	66.6%	65.9%
Management & Administrative	21.2%	21.4%	22.8%	23.1%	20.4%	25.8%	25.8%
Support	100.0%	100.0%	100.0%	100.0%	100.0%	100.0%	100.0%
General Support	4.5%	4.1%	3.7%	2.8%	2.5%	2.2%	2.2%
HCA, Nurse's Aide, etc.	2.6%	3.7%	6.6%	6.9%	4.5%	3.9%	3.9%
Health & Social Care Assistants	2.2%	3.6%	12.0%	4.2%	8.0%	7.0%	6.6%
Swabber (COVID-19)					26.9%	35.3%	34.4%
Health Care Assistants	4.8%	7.3%	18.6%	11.1%	39.4%	46.2%	44.9%
Other Care Grades	95.2%	92.7%	81.4%	88.9%	60.6%	53.8%	55.1%
Care, other	95.2%	92.7%	81.4%	88.9%	60.6%	53.8%	55.1%
Patient & Client Care	9.3%	8.9%	9.8%	9.5%	8.4%	14.3%	14.3%
Total	100 %	100 %	100 %	100 %	100 %	100 %	100 %

Jul 2021 (Dec 2019 figure: 3,194)	WTE Dec 2016	WTE Dec 2017	WTE Dec 2018	WTE Dec 2019	WTE Dec 2020	WTE Jun 2021	WTE Jul 2021
Disabilities	3,043	3,100	3,125	3,194	3,285	3,316	3,306
Consultant Paediatrics	7.8%	5.6%	6.3%	4.9%	5.6%	3.5%	3.1%
Consultant Psychiatry	42.7%	45.2%	48.2%	45.8%	47.0%	48.7%	48.6%
Consultant Surgery	0.5%						
Consultants	51.0%	50.8%	54.5%	50.7%	52.7%	52.1%	51.7%
Registrars	15.8%	22.9%	15.7%	24.3%	9.3%	15.7%	19.0%
SHO/ Interns					9.3%		
Medical/ Dental, other	33.3%	26.3%	29.8%	25.0%	28.7%	32.2%	29.2%
Medical & Dental	0.6%	0.7%	0.6%	0.8%	0.8%	0.6%	0.6%
Clinical Nurse/ Midwife Manager	23.1%	23.5%	23.7%	22.9%	23.4%	22.8%	23.0%
Director Nursing/Midwifery, Assistant	0.9%	0.9%	0.8%	1.4%	1.6%	1.6%	1.6%
Director of Nursing/Midwifery	2.2%	2.1%	1.7%	1.9%	1.5%	1.6%	1.5%
Nurse/ Midwife Manager	26.1%	26.5%	26.2%	26.2%	26.4%	26.0%	26.1%
Advanced Nurse/ Midwife Practitioner					0.1%	0.1%	0.1%
Clinical Nurse/ Midwife Specialist	1.2%	1.1%	1.2%	1.2%	1.5%	1.8%	1.8%
Nurse/ Midwife Specialist & AN/MP	1.2%	1.1%	1.2%	1.2%	1.6%	1.9%	1.9%
Staff Nurse [Intellectual Disability]	56.9%	57.4%	56.6%	57.2%	57.0%	55.4%	55.5%
Staff Nurse [Psychiatric]	4.0%	3.4%	4.4%	4.4%	3.2%	4.1%	4.4%
Staff Nurses [General/ Children's]	11.0%	10.7%	9.6%	9.1%	8.9%	9.0%	8.6%
Staff Nurse/ Staff Midwife	71.8%	71.5%	70.6%	70.6%	69.1%	68.6%	68.6%
Pre-registration Nurse/ Midwife Intern	0.1%		1.1%	1.1%	0.3%	2.4%	2.4%
Pre-registration Nurse Intern (COVID-19)					1.4%		
Nursing/ Midwifery Student	0.1%		1.1%	1.1%	1.8%	2.4%	2.4%
Nursing/ Midwifery other	0.7%	0.8%	0.9%	1.0%	1.1%	1.1%	1.0%

Jul 2021 (Dec 2019 figure: 3,194)	WTE Dec 2016	WTE Dec 2017	WTE Dec 2018	WTE Dec 2019	WTE Dec 2020	WTE Jun 2021	WTE Jul 2021
Disabilities	3,043	3,100	3,125	3,194	3,285	3,316	3,306
Nursing & Midwifery	24.8%	24.4%	24.0%	22.9%	22.3%	22.4%	22.4%
Dietitians	0.7%	0.6%	0.6%	0.6%	0.5%	0.5%	0.5%
Occupational Therapists	6.4%	6.4%	6.2%	6.2%	6.2%	7.1%	7.0%
Physiotherapists	6.2%	5.6%	5.8%	5.7%	5.5%	5.1%	5.1%
Speech & Language Therapists	6.1%	5.9%	5.7%	5.5%	5.1%	4.6%	4.4%
Therapy Professions	19.4%	18.5%	18.3%	18.1%	17.4%	17.4%	17.0%
Audiology	1.3%	1.9%					
Clinical Engineering	1.8%	1.7%	1.0%	1.1%	0.8%	0.9%	0.9%
Medical Science	0.3%	0.3%	0.4%	0.4%	0.4%	0.4%	0.4%
Health Science/ Diagnostics	3.4%	3.9%	1.5%	1.5%	1.2%	1.3%	1.3%
Social Care	62.6%	63.7%	67.9%	68.7%	68.9%	70.3%	71.0%
Social Workers	5.5%	5.2%	4.5%	4.4%	4.6%	4.1%	4.0%
Psychologists	6.2%	6.1%	5.6%	5.3%	6.0%	5.3%	5.1%
Pharmacy	0.2%	0.2%	0.2%	0.2%	0.2%	0.2%	0.2%
Other Health & Social Care	2.6%	2.3%	2.0%	1.8%	1.7%	1.5%	1.5%
Play Therapists/ Specialists	0.1%	0.1%	0.1%	0.0%		0.0%	0.0%
H&SC, Other	2.6%	2.4%	2.0%	1.9%	1.7%	1.5%	1.5%
Health & Social Care Professionals	30.4%	30.5%	30.6%	31.4%	30.5%	33.7%	33.7%
Executive Management	1.4%	1.3%	1.3%	1.1%	1.1%	1.0%	1.0%
Senior Management (VIII & GM)	11.8%	12.6%	12.8%	13.8%	14.4%	14.8%	14.7%
Management (VIII & above)	13.1%	14.0%	14.1%	15.0%	15.5%	15.9%	15.7%
Administrative/ Supervisory (V to VII)	36.8%	35.3%	36.0%	35.0%	37.4%	39.9%	39.6%
Clerical (III & IV)	50.1%	50.7%	49.9%	50.1%	47.1%	44.3%	44.7%
Management & Administrative	7.2%	7.2%	7.6%	7.8%	7.6%	8.8%	8.8%
Support	90.8%	89.9%	89.6%	89.9%	86.3%	87.3%	87.2%
Maintenance	8.8%	9.7%	9.5%	9.2%	11.9%	10.9%	11.0%
Technical Services	0.4%	0.4%	0.9%	0.9%	1.8%	1.8%	1.8%
Maintenance/ Technical	9.2%	10.1%	10.4%	10.1%	13.7%	12.7%	12.8%
General Support	7.9%	7.6%	7.1%	6.8%	6.6%	4.9%	4.9%
HCA, Nurse's Aide, etc.	88.4%	90.0%	89.1%	89.7%	89.7%	89.7%	89.7%
Health & Social Care Assistants	0.3%	0.4%	0.2%	0.2%	0.3%	0.3%	0.3%
Health Care Assistants	88.8%	90.3%	89.4%	90.0%	90.0%	90.0%	90.0%
Care, other	11.2%	9.7%	10.6%	10.0%	10.0%	10.0%	10.0%
Patient & Client Care	29.1%	29.6%	30.1%	30.2%	29.4%	29.5%	29.5%
Total	100 %	100 %	100 %	100 %	100 %	100 %	100 %

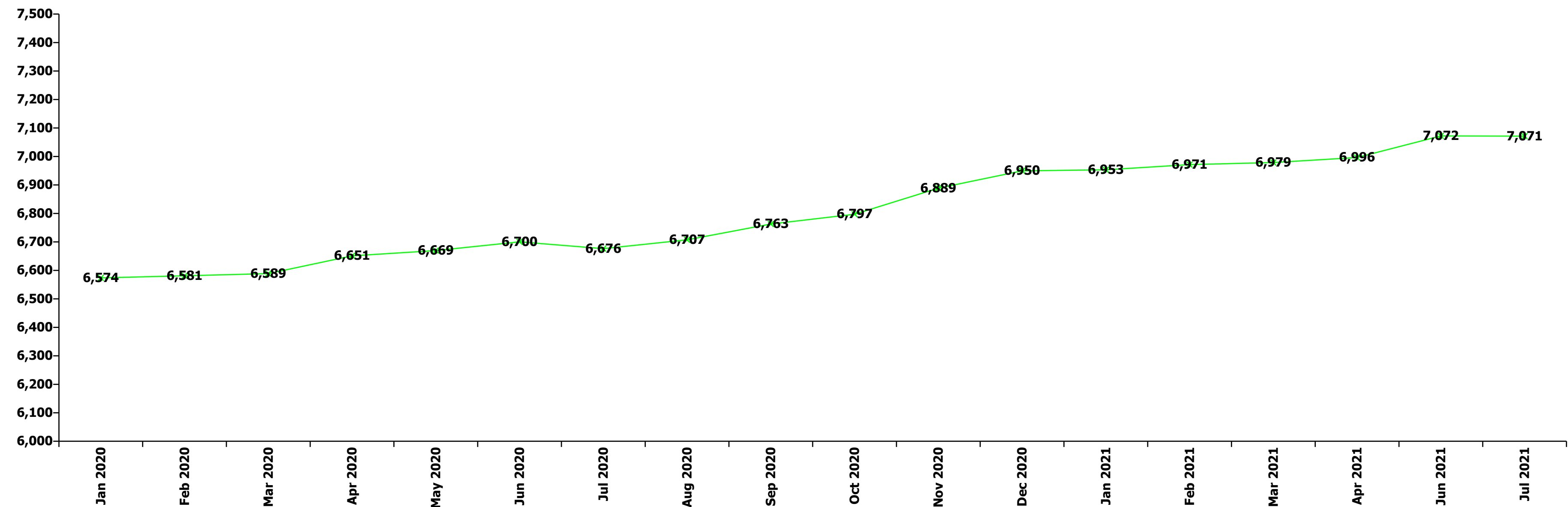
Jul 2021 (Dec 2019 figure: 870)	WTE Dec 2016	WTE Dec 2017	WTE Dec 2018	WTE Dec 2019	WTE Dec 2020	WTE Jun 2021	WTE Jul 2021
Older People	865	878	908	870	914	934	948
Consultant Medicine	32.5%	33.1%	8.9%	8.0%	12.8%	12.2%	11.5%
Consultant Surgery	3.8%	0.6%	0.7%				
Consultants	36.3%	33.7%	9.6%	8.0%	12.8%	12.2%	11.5%
Registrar	23.1%	29.9%	35.3%	27.4%	25.6%	23.0%	26.3%
Specialist Registrar	5.1%					5.1%	8.4%
Registrars	28.2%	29.9%	35.3%	27.4%	25.6%	28.1%	34.8%
Senior House Officer	30.4%	31.8%	49.6%	59.7%	56.4%	54.6%	48.9%
SHO/ Interns	30.4%	31.8%	49.6%	59.7%	56.4%	54.6%	48.9%
Medical/ Dental, other	5.1%	4.6%	5.6%	5.0%	5.3%	5.1%	4.8%
Medical & Dental	2.3%	2.5%	2.0%	2.3%	2.2%	2.2%	2.2%

Jul 2021 (Dec 2019 figure: 870)	WTE Dec 2016	WTE Dec 2017	WTE Dec 2018	WTE Dec 2019	WTE Dec 2020	WTE Jun 2021	WTE Jul 2021
Older People	865	878	908	870	914	934	948
Clinical Nurse/ Midwife Manager	20.2%	23.7%	20.6%	19.1%	20.1%	20.3%	20.8%
Director Nursing/Midwifery, Assistant	4.3%	4.1%	2.8%	3.6%	3.7%	3.6%	3.6%
Director of Nursing/Midwifery	1.0%	1.0%	1.3%	1.6%	1.2%	1.3%	0.9%
Nurse/ Midwife Manager	25.5%	28.8%	24.8%	24.3%	25.1%	25.3%	25.4%
Advanced Nurse/ Midwife Practitioner	0.3%	0.3%	0.3%	0.3%	0.3%	0.3%	0.3%
Clinical Nurse/ Midwife Specialist	0.7%	0.7%	0.9%	1.3%	1.5%	1.2%	1.2%
Nurse/ Midwife Specialist & AN/MP	1.0%	1.0%	1.2%	1.5%	1.8%	1.4%	1.4%
Staff Nurse [Psychiatric]	0.7%	0.7%	0.6%	0.6%	0.5%	0.3%	0.3%
Staff Nurses [General/ Children's]	72.4%	69.0%	72.9%	73.1%	72.3%	73.0%	72.9%
Staff Nurse/ Staff Midwife	73.1%	69.7%	73.6%	73.7%	72.8%	73.3%	73.2%
Public Health Nurse	0.1%	0.1%	0.1%	0.1%			
Nursing Education/Clinical	0.3%	0.3%	0.3%	0.3%	0.3%		
Nursing/ Midwifery other	0.3%	0.3%	0.3%	0.3%	0.3%		
Nursing & Midwifery	34.8%	33.0%	34.7%	35.4%	33.7%	33.7%	33.7%
Dietitians	8.1%	8.4%	8.9%	7.5%	9.8%	11.9%	11.1%
Occupational Therapists	24.9%	25.0%	22.7%	22.9%	24.3%	25.0%	25.6%
Physiotherapists	30.7%	34.6%	30.9%	31.1%	33.0%	30.8%	31.0%
Speech & Language Therapists	4.9%	4.4%	4.1%	5.5%	3.2%	4.5%	4.4%
Therapy Professions	68.6%	72.4%	66.6%	67.0%	70.4%	72.3%	72.2%
Radiographers	2.9%	2.5%	2.4%	1.8%	1.0%	0.8%	0.9%
Health Science/ Diagnostics	2.9%	2.5%	2.4%	1.8%	1.0%	0.8%	0.9%
Social Care	1.4%	1.2%	1.2%	1.2%	1.0%	0.8%	0.9%
Social Workers	22.5%	20.0%	26.1%	26.1%	23.6%	22.6%	22.6%
Pharmacy	4.1%	3.5%	3.3%	3.4%	3.5%	3.0%	3.0%
H&SC, Other	0.5%	0.5%	0.4%	0.4%	0.5%	0.5%	0.5%
Health & Social Care Professionals	7.9%	9.1%	9.3%	9.3%	8.9%	12.3%	12.3%
Executive Management	1.7%	4.4%	4.1%	4.6%	5.2%	4.6%	4.4%
Senior Management (VIII & GM)	7.0%	6.1%	8.1%	9.4%	6.8%	6.0%	6.9%
Management (VIII & above)	8.7%	10.5%	12.2%	14.0%	12.0%	10.6%	11.3%
Administrative/ Supervisory (V to VII)	27.1%	27.4%	27.6%	23.4%	28.3%	26.4%	28.1%
Clerical (III & IV)	64.2%	62.1%	60.2%	62.6%	59.8%	63.0%	60.6%
Management & Administrative	6.6%	7.5%	8.1%	7.4%	7.0%	9.0%	9.0%
Support	98.1%	98.1%	98.1%	98.0%	98.1%	98.0%	98.0%
Maintenance/ Technical	1.9%	1.9%	1.9%	2.0%	1.9%	2.0%	2.0%
General Support	14.3%	14.1%	13.6%	13.9%	13.2%	12.6%	12.6%
HCA, Nurse's Aide, etc.	98.5%	98.5%	98.5%	97.7%	96.4%	95.4%	94.8%
HCA (Student Nurse/Midwife COVID-19)					0.2%	0.2%	0.2%
Health & Social Care Assistants	0.7%	0.7%	0.3%		1.4%	2.2%	2.8%
Health Care Assistants	99.2%	99.2%	98.8%	97.7%	98.0%	97.7%	97.7%
Care, other	0.8%	0.8%	1.2%	2.3%	2.0%	2.3%	2.3%
Patient & Client Care	34.1%	33.8%	32.3%	31.7%	30.2%	30.2%	30.2%
Total	100 %	100 %	100 %	100 %	100 %	100 %	100 %

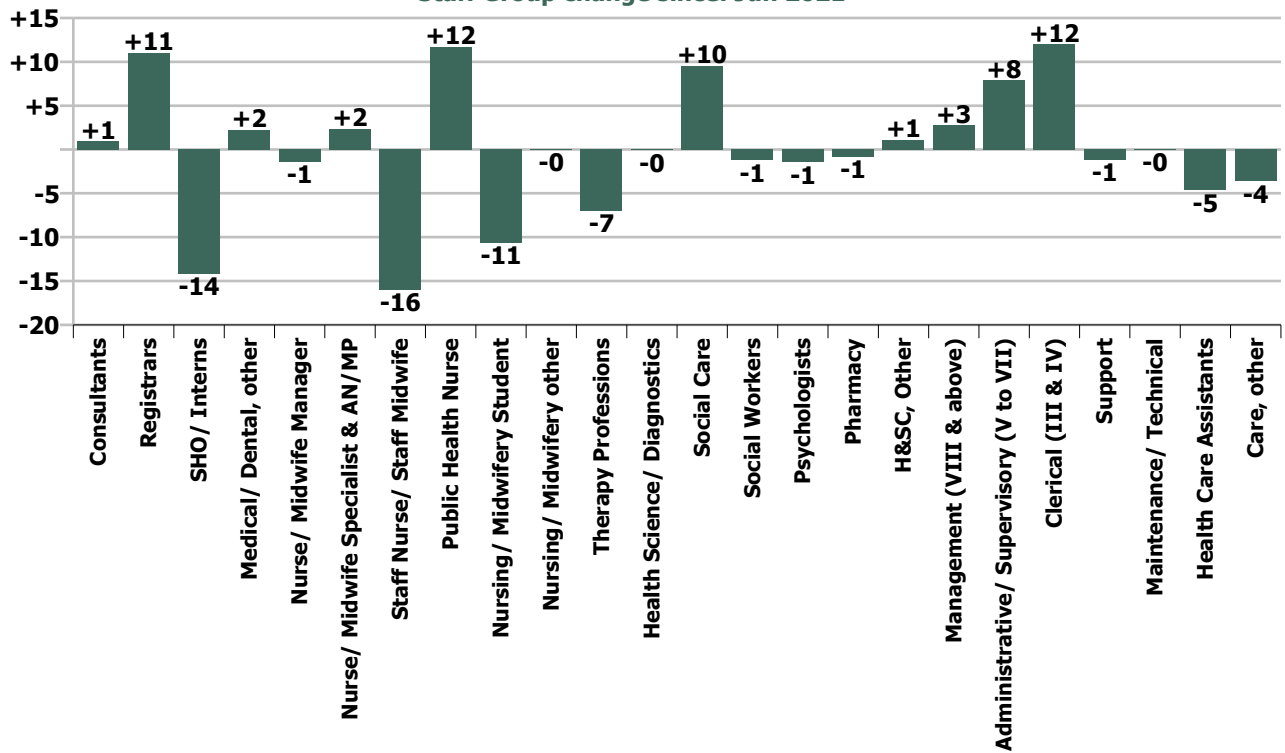
Summary Staff Movement: July 2021

Month-on-month Summary																												
WTE change since Jun 21	% change since Jun 21	overall	Consultants	Registrars	SHO/ Interns	Medical/ Dental, other	Medical & Dental	Nurse/ Midwife Manager	Nurse/ Midwife Specialist & AN/MP	Staff Nurse/ Staff Midwife	Public Health Nurse	Nursing/ Midwifery Student	Nursing/ Midwifery other	Nursing & Midwifery	Therapy Professions	Health Science/ Diagnostics	Social Care	Social Workers	Psychologists	Pharmacy	H&SC, Other	Health & Social Care Professionals	Management (VIII & above)	Administrative/ Supervisory (V to VII)	Clerical (III & IV)	Management & Administrative	General Support	Patient & Client Care
Overall	-0.0%	-1	+0.9	+11.0	-14.1	+2.2	+0.0	-1.4	+2.4	-16.0	+11.7	-10.7	-0.1	-14.0	-7.0	-0.1	+9.6	-1.2	-1.5	-0.8	+1.1	+0.0	+2.8	+7.9	+12.0	+22.6	-1.2	-8.3
Community Health & Wellbeing	-19.8%	-3													0.0							0.0	-0.0	-0.1	-0.1	-0.2		-2.9
Mental Health	-1.1%	-14	+0.0	+4.8	-13.2		-8.4	-0.5	+2.4	-5.7		-0.7	+0.9	-3.5	-0.9		+0.1	-0.0	+1.1	+0.1	-1.2	-0.8	+0.7	-2.7	+0.3	-1.7	+0.1	-0.1
Primary Care	+0.9%	+13	0.0	+3.5	-0.4	+2.2	+5.3	-1.2	-0.0	-7.7	+11.7	-10.0	0.0	-7.2	-0.9	-0.1	-0.1	+0.6	-0.7	-1.0	+2.2	+0.0	+0.9	+7.6	+9.4	+17.9	+0.4	-3.6
Disabilities	-0.3%	-10	+0.9	+1.0		0.0	+1.9	-1.3	+0.0	-5.6		0.0	-1.0	-7.8	-3.8	0.0	+9.6	-1.4	-1.9	0.0	+0.0	+2.5	+0.3	+0.9	+3.0	+4.2	-1.6	-9.4
Older People	+1.5%	+14	0.0	+1.7	-0.5	0.0	+1.2	+1.5	0.0	+3.1				+4.6	-1.4	0.0	0.0	-0.3		0.0	0.0	-1.7	+0.9	+2.1	-0.5	+2.4	-0.1	+7.7
Social Care	+0.1%	+4	+0.9	+2.7	-0.5	0.0	+3.1	+0.3	+0.0	-2.6		0.0	-1.0	-3.2	-5.2	0.0	+9.6	-1.8	-1.9	0.0	+0.0	+0.8	+1.1	+3.0	+2.5	+6.6	-1.7	-1.7
Change	-0.8	-0.0%	+1.5%	+11.6%	-25.8%	+4.1%	+0.0%	-0.3%	+2.2%	-1.3%	+6.8%	-18.2%	-0.4%	-0.7%	-1.3%	-0.3%	+1.2%	-0.9%	-0.8%	-2.8%	+1.5%	+0.0%	+3.2%	+3.0%	+2.2%	+2.5%	-0.3%	-0.5%

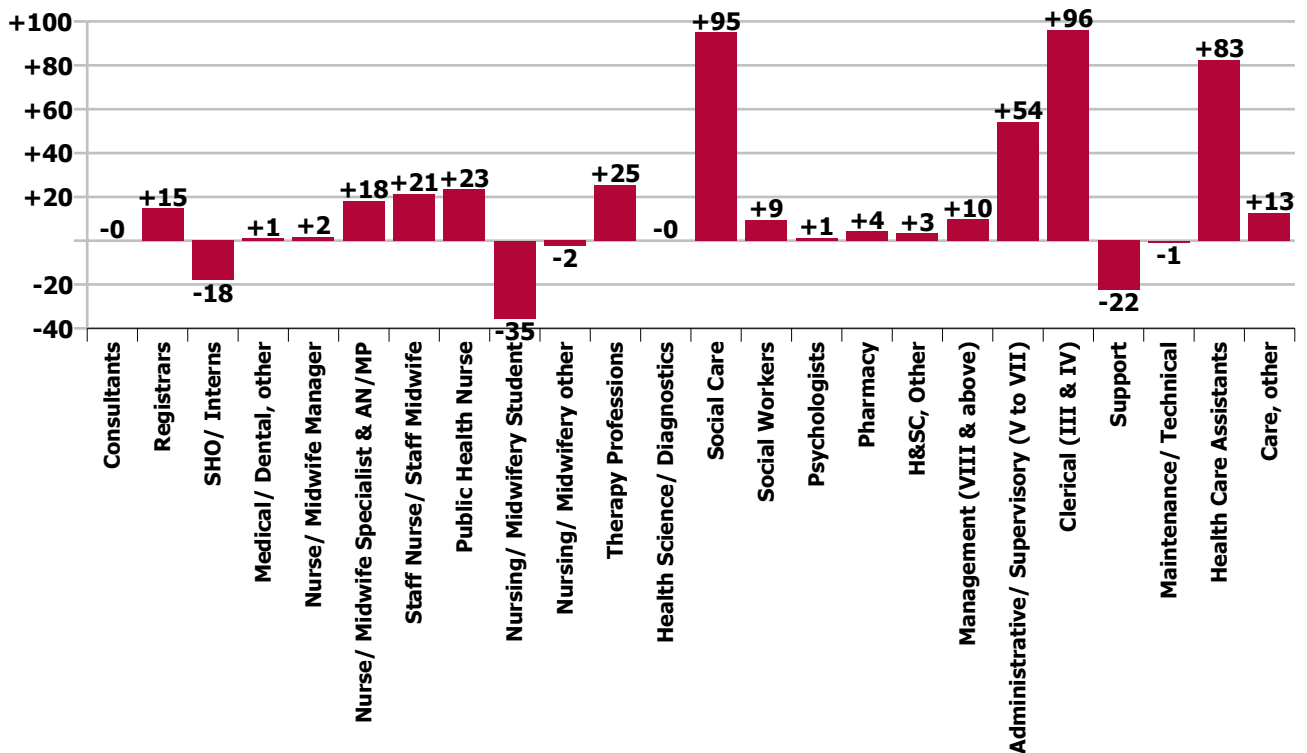
Year-on-year Summary																												
WTE change since Jul 20	% change since Jul 20	overall	Consultants	Registrars	SHO/ Interns	Medical/ Dental, other	Medical & Dental	Nurse/ Midwife Manager	Nurse/ Midwife Specialist & AN/MP	Staff Nurse/ Staff Midwife	Public Health Nurse	Nursing/ Midwifery Student	Nursing/ Midwifery other	Nursing & Midwifery	Therapy Professions	Health Science/ Diagnostics	Social Care	Social Workers	Psychologists	Pharmacy	H&SC, Other	Health & Social Care Professionals	Management (VIII & above)	Administrative/ Supervisory (V to VII)	Clerical (III & IV)	Management & Administrative	General Support	Patient & Client Care
Overall	+5.9%	+395	-0.0	+14.7	-18.0	+1.0	-2.3	+1.7	+18.1	+21.3	+23.4	-35.4	-2.4	+26.7	+25.5	-0.0	+95.1	+9.4	+1.3	+4.3	+3.4	+138.9	+9.8	+54.2	+96.1	+160.1	-23.4	+95.2
Community Health & Wellbeing	-19.8%	-3													+0.1							+0.1	-0.0	+3.3	+1.1	+4.4		
Mental Health	-1.1%	-14	+0.6	+11.0	-19.1		-7.5	-5.8	+12.7	+17.0		-23.3	-1.4	-0.8	+4.2		-0.1	+3.0	+4.0	+1.7	+1.0	+13.8	+1.8	-1.9	+15.0	+14.8	+2.0	+6.8
Primary Care	+0.9%	+13	0.0	-0.3	+2.7	+1.0	+3.4	+5.7	+2.0	-6.9	+23.4	0.0	+1.0	+25.2	+7.6	-1.0	-1.3	+4.2	-0.6	+2.6	+5.2	+16.6	-3.6	+21.6	+62.0	+80.0	+0.8	+83.4
Disabilities	+4.4%	+139.6	-0.4	+1.5	-1.8	0.0	-0.7	-0.2	+3.8	+12.4		-12.1	-1.0	+2.8	+0.2	+1.0	+96.4	-2.5	-2.1	0.0	-3.0	+90.0	+10.0	+25.4	+8.4	+43.8	-22.8	+26.5
Older People	+1.3%	+12.5	-0.2	+2.6	+0.2	0.0	+2.5	+2.0	-0.3	-1.1			-1.0	-0.5	+13.3	0.0	0.0	+4.8		0.0	+0.2	+18.2	+1.7	+5.8	+9.6	+17.1	-3.3	-21.6
Social Care	+0.1%	+4	-0.6	+4.1	-1.7	0.0	+1.8	+1.7	+3.5	+11.2		-12.1	-2.0	+2.3	+13.5	+1.0	+96.4	+2.3	-2.1	0.0	-2.8	+108.3	+11.7	+31.2	+18.0	+60.9	-26.1	+5.0
Change	+395.1	+5.9%	-0.1%	+16.2%	-30.8%	+1.8%	-0.9%	+0.4%	+19.6%	+1.8%	+14.6%	-42.4%	-11.1%	+1.3%	+4.9%	-0.1%	+13.6%	+7.3%	+0.7%	+17.4%	+4.9%	+8.4%	+12.1%	+24.5%	+21.2%	+21.2%	-5.2%	+6.2%



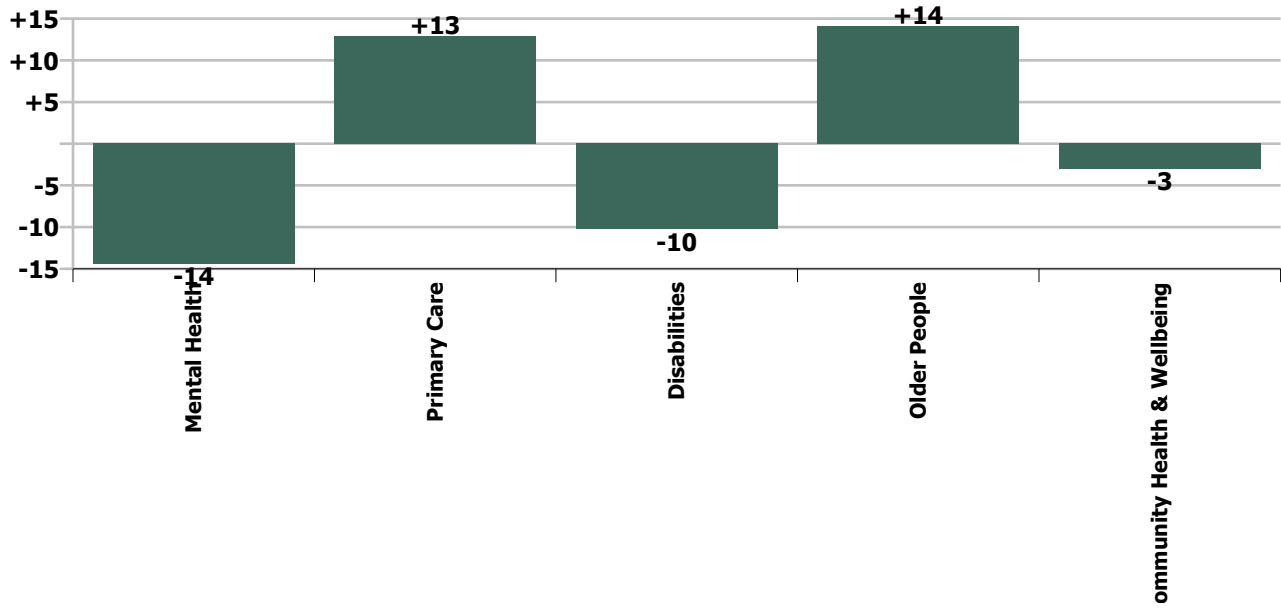
Staff Group change since: Jun 2021



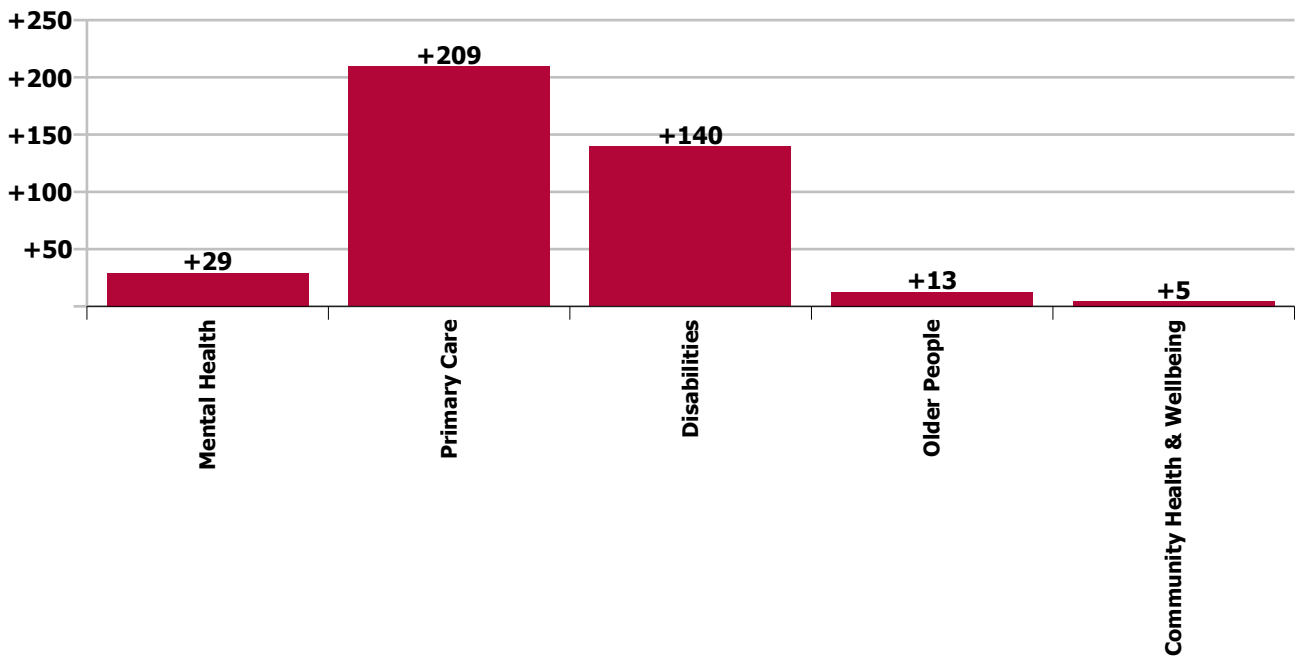
Staff Group change since: Jul 2020



Care Group change since: Jun 2021



Care Group change since: Jul 2020



Longitudinal Employment Levels by Grade Group - Dec 2016 to Jul 2021

Jul 2021 (Dec 2016 figure: 6,286)	WTE Jul 2021	WTE change since Dec 16	WTE change since Dec 17	WTE change since Dec 18	WTE change since Dec 19	WTE change since Dec 20	WTE change since Jun 21	% change since Dec 16	% change since Dec 17	% change since Dec 18	% change since Dec 19	% change since Dec 20	% change since Jun 21
Overall	7,071	+785	+634	+438	+489	+122	-1	+12.5%	+9.8%	+6.6%	+7.4%	+1.8%	-0.0%
Consultant Medicine	2	-4	-5	+1	+1	-0		-62.3%	-67.1%	+41.2%	+50.0%	-0.8%	
Consultant Paediatrics	1	-1	-1	-1	-1	-1		-55.4%	-45.5%	-45.5%	-45.5%	-45.5%	
Consultant Psychiatry	60	+1	-1	-4	-6	-1	+1	+1.4%	-2.3%	-6.4%	-8.9%	-1.7%	+1.6%
Consultant Surgery		-1	-0	-0				-100.0%	-100.0%	-100.0%	-100.0%	-100.0%	-100.0%
Consultants	63	-5	-7	-4	-6	-2	+1	-7.1%	-10.0%	-6.1%	-8.2%	-2.5%	+1.5%
Registrar	87	+28	+24	+13	+9	+17	+16	+48.1%	+38.0%	+17.8%	+11.7%	+24.7%	+21.7%
Senior Registrar	15	+1	+4	-0	-1	-5	-5	+8.3%	+40.1%	-0.1%	-3.9%	-22.9%	-25.8%
Specialist Registrar	3	-1	-2	+2	-1	+2	+1	-31.0%	-44.8%	+176.0%	-31.0%	+176.0%	+38.0%
Registrars	105	+28	+26	+15	+7	+14	+11	+36.7%	+33.1%	+16.5%	+7.5%	+15.9%	+11.6%
Interns	2	-3	-2	-0	-0	+2	+2	-66.6%	-58.3%	-16.5%	-16.5%	-100.0%	-100.0%
Senior House Officer	39	-15	-21	-23	-25	-32	-16	-28.0%	-34.8%	-37.3%	-39.4%	-45.3%	-28.9%
SHO/ Interns	41	-18	-23	-23	-26	-31	-14	-31.3%	-36.2%	-36.7%	-38.7%	-43.0%	-25.8%
Dentists	31	-1	+1	-1	-0	-1	-0	-3.2%	+4.0%	-2.5%	-0.5%	-3.6%	-0.9%
Other Medical	25	-15	-13	-13	+0	+2	+2	-37.2%	-34.1%	-33.1%	+0.1%	+7.1%	+10.9%
Medical/ Dental, other	57	-16	-12	-13	-0	+1	+2	-22.0%	-17.3%	-19.1%	-0.2%	+0.9%	+4.1%
Medical & Dental	266	-11	-16	-26	-24	-17	+0	-4.0%	-5.6%	-8.9%	-8.3%	-6.1%	+0.0%
Clinical Nurse/ Midwife Manager	369	-0	-8	-2	+21	+2	+2	-0.1%	-2.2%	-0.6%	+5.9%	+0.6%	+0.5%
Director Nursing/Midwifery, Assistant	66	+6	+6	+10	+4	-3	-1	+9.5%	+9.4%	+18.1%	+6.8%	-4.8%	-1.6%
Director of Nursing/Midwifery	21	-5	-4	-1	-4	-0	-2	-20.0%	-17.0%	-4.7%	-16.1%	-0.7%	-8.7%
Nurse/ Midwife Manager	456	+0	-7	+7	+21	-1	-1	+0.0%	-1.5%	+1.5%	+4.8%	-0.3%	-0.3%
Advanced Nurse/ Midwife Practitioner	11	+9	+8	+4	+4	+2	+1	+438.9%	+255.7%	+54.0%	+56.2%	+19.1%	+5.3%
Clinical Nurse/ Midwife Specialist	100	+44	+25	+25	+22	+8	+2	+77.5%	+32.7%	+32.8%	+28.4%	+8.4%	+1.9%
Nurse/ Midwife Specialist & AN/MP	111	+52	+32	+28	+26	+9	+2	+89.7%	+41.2%	+34.6%	+30.6%	+9.3%	+2.2%
Staff Midwives						-1		-100.0%	-100.0%	-100.0%	-100.0%	-100.0%	-100.0%
Staff Nurse [Intellectual Disability]	413	-17	-23	-13	-7	-10	-4	-3.8%	-5.2%	-3.0%	-1.7%	-2.3%	-0.9%
Staff Nurse [Psychiatric]	383	+2	+14	+0	+13	-2	-2	+0.5%	+3.8%	+0.1%	+3.4%	-0.6%	-0.6%
Staff Nurses [General/ Children's]	434	+23	+35	+3	+29	+20	-10	+5.7%	+8.8%	+0.7%	+7.3%	+4.8%	-2.2%
Staff Nurse/ Staff Midwife	1,230	+9	+26	-9	+35	+7	-16	+0.7%	+2.2%	-0.8%	+2.9%	+0.6%	-1.3%
Public Health Nurse	184	+7	+11	+11	+9	+3	+12	+4.2%	+6.4%	+6.5%	+5.1%	+1.4%	+6.8%
Pre-registration Nurse/ Midwife Intern	45	+41	+44	+24	+27	+32	-1	+900.9%	+3653.3%	+119.2%	+152.0%	+254.4%	-1.6%
Pre-registration Nurse Intern (COVID-19)						-16		-100.0%	-100.0%	-100.0%	-100.0%	-100.0%	-100.0%
Post-registration Nurse/ Midwife Student	2	-17	-26	-20	-24	-29	-10	-89.5%	-92.9%	-90.9%	-92.3%	-93.5%	-83.3%
Nursing/ Midwifery awaiting registration	1	+1	+1	-2	-10	+1	+0	-100.0%	-100.0%	-63.6%	-90.7%	-100.0%	+7.5%
Nursing/ Midwifery Student	48	+25	+19	+3	-7	-12	-11	+104.4%	+64.5%	+6.0%	-12.1%	-19.6%	-18.2%

Jul 2021 (Dec 2016 figure: 6,286)	WTE Jul 2021	WTE change since Dec 16	WTE change since Dec 17	WTE change since Dec 18	WTE change since Dec 19	WTE change since Dec 20	WTE change since Jun 21	% change since Dec 16	% change since Dec 17	% change since Dec 18	% change since Dec 19	% change since Dec 20	% change since Jun 21
Overall	7,071	+785	+634	+438	+489	+122	-1	+12.5%	+9.8%	+6.6%	+7.4%	+1.8%	-0.0%
Nursing Education/Clinical	19	+0	-3	-3	-0	-4	-0	+2.5%	-12.0%	-14.2%	-1.9%	-15.6%	-0.4%
Other Nursing/ Midwifery		-1	-0	-1				-100.0%	-100.0%	-100.0%	-100.0%	-100.0%	-100.0%
Nursing/ Midwifery other	19	-1	-3	-4	-0	-4	-0	-2.6%	-13.8%	-17.9%	-1.9%	-15.6%	-0.4%
Nursing & Midwifery	2,049	+93	+78	+36	+84	+3	-14	+4.7%	+4.0%	+1.8%	+4.3%	+0.1%	-0.7%
Dietitians	30	+8	+8	+6	+9	+4	-0	+33.0%	+33.0%	+26.8%	+42.9%	+14.9%	-1.4%
Occupational Therapists	221	+55	+39	+41	+39	+18	-2	+32.8%	+21.3%	+23.1%	+21.4%	+8.7%	-1.0%
Orthoptists	3	+2	+2	-0	-2	-2	+0	+141.1%	+181.0%	-8.4%	-34.7%	-40.1%	+7.3%
Physiotherapists	157	+24	+20	+20	+14	-0	+1	+18.2%	+14.5%	+14.6%	+9.4%	-0.2%	+0.3%
Podiatrists & Chiropodists	1	+1	+0	+0	+0	-0	-0	-100.0%	+20.2%	+13.0%	+13.0%	-29.4%	-2.6%
Speech & Language Therapists	134	+6	-3	-6	+1	-2	-5	+4.3%	-2.1%	-4.3%	+0.6%	-1.2%	-3.6%
Therapy Professions	547	+95	+66	+62	+61	+17	-7	+21.0%	+13.7%	+12.7%	+12.5%	+3.2%	-1.3%
Audiology	14	+2	-4	-4	-1	-1	-0	+12.4%	-23.0%	-22.1%	-9.6%	-5.3%	-1.3%
Clinical Engineering	15	-1	-1		-1	+1	+0	-8.0%	-6.3%		-6.3%	+7.1%	+0.5%
Medical Science	4	+1	+1					+33.3%	+33.3%				
Radiographers	1	-1	-1	-1	-0			-50.0%	-50.0%	-50.0%	-31.0%		
Health Science/ Diagnostics	34	+0	-5	-5	-3	+0	-0	+0.7%	-13.1%	-12.7%	-7.9%	+0.7%	-0.3%
Social Care	795	+209	+187	+141	+100	+50	+10	+35.7%	+30.7%	+21.6%	+14.4%	+6.7%	+1.2%
Social Workers	139	+18	+9	+9	+14	+1	-1	+14.5%	+6.9%	+7.2%	+11.2%	+0.7%	-0.9%
Psychologists	175	+8	+9	+5	+11	-8	-1	+4.9%	+5.1%	+2.9%	+6.6%	-4.3%	-0.8%
Pharmacy	29	-7	-5	-2	+4	-1	-1	-19.4%	-15.7%	-5.8%	+16.5%	-1.9%	-2.8%
Counsellor Therapists	40	+3	+1	+3	-2	-2	-2	+7.7%	+1.3%	+7.9%	-4.5%	-3.7%	-4.6%
Dental Hygienists	6	-0	-0	-0	-0	-0	-0	-0.7%	-0.8%	-4.3%	-5.9%	-0.3%	-0.2%
Other Health & Social Care	20	-6	-4	-2	-0	+0	+0	-23.4%	-18.1%	-7.7%	-0.7%	+2.1%	+1.7%
Play Therapists/ Specialists	2	-0	-1	-1	-1	-0		-21.1%	-40.0%	-40.0%	-34.2%	-10.2%	
HSCP Trainees/ Students	5	+5	+5	+5	+5	+5	+3	-100.0%	-100.0%	-100.0%	-100.0%	-100.0%	+138.5%
H&SC, Other	72	+1	-0	+5	+1	+3	+1	+1.4%	-0.4%	+6.9%	+2.1%	+4.9%	+1.5%
Health & Social Care Professionals	1,791	+324	+259	+215	+188	+63	+0	+22.1%	+16.9%	+13.7%	+11.7%	+3.6%	+0.0%
Executive Management	14	+9	+7	+5	+3	+2	+1	+172.2%	+96.7%	+51.2%	+29.4%	+16.0%	+4.6%
Senior Management (VIII & GM)	77	+27	+18	+14	+8	+4	+2	+54.9%	+30.7%	+22.2%	+11.6%	+5.0%	+2.9%
Management (VIII & above)	90	+36	+25	+19	+11	+6	+3	+65.6%	+37.6%	+25.8%	+13.9%	+6.5%	+3.2%
Middle Management (V-VII)	266	+99	+97	+64	+66	+32	+8	+59.6%	+57.1%	+31.7%	+33.4%	+13.8%	+3.1%
Other Administrative	10	+0	-2	-3	+1			+5.2%	-13.8%	-24.1%	+11.3%		
Administrative/ Supervisory (V to VII)	275	+100	+95	+61	+67	+32	+8	+56.8%	+52.8%	+28.4%	+32.4%	+13.3%	+3.0%
Clerical (III & IV)	549	+143	+115	+89	+98	+42	+12	+35.3%	+26.4%	+19.4%	+21.6%	+8.4%	+2.2%
Management & Administrative	915	+279	+235	+168	+176	+80	+23	+43.8%	+34.5%	+22.6%	+23.8%	+9.6%	+2.5%

Jul 2021 (Dec 2016 figure: 6,286)	WTE Jul 2021	WTE change since Dec 16	WTE change since Dec 17	WTE change since Dec 18	WTE change since Dec 19	WTE change since Dec 20	WTE change since Jun 21	% change since Dec 16	% change since Dec 17	% change since Dec 18	% change since Dec 19	% change since Dec 20	% change since Jun 21
Overall	7,071	+785	+634	+438	+489	+122	-1	+12.5%	+9.8%	+6.6%	+7.4%	+1.8%	-0.0%
Catering	57	-11	-10	-7	-4	-2	-0	-16.6%	-14.9%	-11.2%	-7.1%	-3.5%	-0.6%
Household Services	223	-15	-2	-5	+2	-2	-0	-6.4%	-0.9%	-2.3%	+1.0%	-1.0%	-0.1%
Other Support	44	-83	-87	-75	-50	-1	+0	-65.3%	-66.2%	-62.9%	-53.3%	-1.2%	+0.5%
Portering	73	-13	-7	-2	-3	-2	-1	-14.7%	-9.3%	-2.5%	-4.1%	-2.2%	-1.3%
Support	396	-122	-106	-89	-56	-7	-1	-23.6%	-21.1%	-18.4%	-12.3%	-1.6%	-0.3%
Maintenance	31	-3	-5	-3	-2	-2	+0	-9.1%	-13.7%	-9.2%	-5.8%	-6.0%	+0.1%
Technical Services	3	+2	+2	+1	+1	-0	-0	+190.0%	+190.0%	+45.0%	+45.0%	-3.3%	-3.3%
Maintenance/ Technical	34	-1	-3	-2	-1	-2	-0	-3.5%	-8.2%	-6.2%	-2.9%	-5.8%	-0.2%
General Support	430	-123	-109	-91	-57	-9	-1	-22.3%	-20.3%	-17.5%	-11.6%	-2.0%	-0.3%
HCA, Nurse's Aide, etc.	1,285	+103	+57	+35	+20	-24	-2	+8.8%	+4.6%	+2.8%	+1.6%	-1.8%	-0.2%
HCA (Student Nurse/Midwife COVID-19)	0	+0	+0	+0	+0	-0	+0	-100.0%	-100.0%	-100.0%	-100.0%	-13.0%	+2.2%
Health & Social Care Assistants	30	+20	+19	+8	+17	+5	+1	+193.7%	+164.7%	+38.2%	+142.1%	+18.6%	+2.4%
Swabber (COVID-19)	73	+73	+73	+73	+73	+22	-3	-100.0%	-100.0%	-100.0%	-100.0%	+44.1%	-4.1%
Health Care Assistants	1,388	+196	+149	+116	+110	+3	-5	+16.5%	+12.0%	+9.1%	+8.6%	+0.2%	-0.3%
Care, other	232	+27	+38	+20	+12	-1	-4	+13.2%	+19.4%	+9.2%	+5.2%	-0.3%	-1.5%
Patient & Client Care	1,620	+223	+186	+136	+122	+2	-8	+16.0%	+13.0%	+9.1%	+8.1%	+0.1%	-0.5%

Source: Health Service Personnel Census

Longitudinal Employment Levels by Care Group - Dec 2016 to Jul 2021

Community Health & Wellbeing

Jul 2021 (figure:)	WTE Jul 2021	WTE change since	WTE change since	WTE change since	WTE change since	WTE change since Dec 20	WTE change since Jun 21	% change since	% change since	% change since	% change since	% change since Dec 20	% change since Jun 21
Overall	12	+12	+12	+12	+12	+4	-3	-100.0%	-100.0%	-100.0%	-100.0%	+52.5%	-19.8%
Health & Social Care Professionals	1	+1	+1	+1	+1			-1.0%	-1.0%	-1.0%	-1.0%	+0.0%	+0.0%
Therapy Professions	1	+1	+1	+1	+1			-1.0%	-1.0%	-1.0%	-1.0%	+0.0%	+0.0%
Management & Administrative	12	+12	+12	+12	+12	+4	-0	-1.0%	-1.0%	-1.0%	-1.0%	+0.6%	-0.0%
Management (VIII & above)	1	+1	+1	+1	+1	-0	-0	-1.0%	-1.0%	-1.0%	-1.0%	-0.0%	-0.0%
Administrative/ Supervisory (V to VII)	8	+8	+8	+8	+8	+3	-0	-1.0%	-1.0%	-1.0%	-1.0%	+0.7%	-0.0%
Clerical (III & IV)	2	+2	+2	+2	+2	+1	-0	-1.0%	-1.0%	-1.0%	-1.0%	+0.5%	-0.0%
Patient & Client Care							-3	-1.0%	-1.0%	-1.0%	-1.0%	-1.0%	-1.0%
Care, other							-3	-1.0%	-1.0%	-1.0%	-1.0%	-1.0%	-1.0%

Source: Health Service Personnel Census

Mental Health

Jul 2021 (Dec 2016 figure: 1,217)	WTE Jul 2021	WTE change since Dec 16	WTE change since Dec 17	WTE change since Dec 18	WTE change since Dec 19	WTE change since Dec 20	WTE change since Jun 21	% change since Dec 16	% change since Dec 17	% change since Dec 18	% change since Dec 19	% change since Dec 20	% change since Jun 21
Overall	1,326	+110	+106	+25	+55	-4	-14	+9.0%	+8.7%	+1.9%	+4.3%	-0.3%	-1.1%
Medical & Dental	110	-14	-14	-26	-24	-22	-8	-0.1%	-0.1%	-0.2%	-0.2%	-0.2%	-0.1%
Consultants	45	-2	+0	-6	-5	-1	+0	-0.0%	+0.0%	-0.1%	-0.1%	-0.0%	+0.0%
Registrars	42	+9	+17	+13	+11	+10	+5	+0.3%	+0.7%	+0.4%	+0.4%	+0.3%	+0.1%
SHO/ Interns	23	-20	-31	-32	-30	-31	-13	-0.5%	-0.6%	-0.6%	-0.6%	-0.6%	-0.4%
Medical/ Dental, other		-1						-1.0%	-1.0%	-1.0%	-1.0%	-1.0%	-1.0%
Nursing & Midwifery	620	+48	+55	+25	+39	+7	-4	+0.1%	+0.1%	+0.0%	+0.1%	+0.0%	-0.0%
Nurse/ Midwife Manager	134	-13	-6	-3	+2	-4	-0	-0.1%	-0.0%	-0.0%	+0.0%	-0.0%	-0.0%
Nurse/ Midwife Specialist & AN/MP	83	+41	+24	+18	+18	+7	+2	+1.0%	+0.4%	+0.3%	+0.3%	+0.1%	+0.0%
Staff Nurse/ Staff Midwife	364	-3	+13	-1	+13	-8	-6	-0.0%	+0.0%	-0.0%	+0.0%	-0.0%	-0.0%
Public Health Nurse		-1	-1					-1.0%	-1.0%	-1.0%	-1.0%	-1.0%	-1.0%
Nursing/ Midwifery Student	28	+25	+27	+13	+7	+12	-1	+7.0%	+22.4%	+0.9%	+0.3%	+0.8%	-0.0%
Nursing/ Midwifery other	11	-1	-3	-3	-0	-2	+1	-0.1%	-0.2%	-0.2%	-0.0%	-0.1%	+0.1%
Health & Social Care Professionals	190	+30	+23	+8	+23	+9	-1	+0.2%	+0.1%	+0.0%	+0.1%	+0.1%	-0.0%
Therapy Professions	65	+14	+12	+4	+11	+4	-1	+0.3%	+0.2%	+0.1%	+0.2%	+0.1%	-0.0%
Social Care	1	-0	-0	-0	-0	-0	+0	-0.1%	-0.1%	-0.1%	-0.0%	-0.1%	+0.1%
Social Workers	47	+8	-0	-1	+3	+4	-0	+0.2%	-0.0%	-0.0%	+0.1%	+0.1%	-0.0%
Psychologists	54	+7	+9	+2	+8	+1	+1	+0.1%	+0.2%	+0.0%	+0.2%	+0.0%	+0.0%
Pharmacy	9	-0	-0	+1	+1	-0	+0	-0.0%	-0.0%	+0.1%	+0.1%	-0.0%	+0.0%
H&SC, Other	14	+1	+3	+2	-0	+0	-1	+0.1%	+0.3%	+0.1%	-0.0%	+0.0%	-0.1%
Management & Administrative	146	+33	+20	+9	+9	-2	-2	+0.3%	+0.2%	+0.1%	+0.1%	-0.0%	-0.0%
Management (VIII & above)	7	+5	+5	+5	+2	+2	+1	+2.4%	+2.4%	+2.4%	+0.4%	+0.3%	+0.1%
Administrative/ Supervisory (V to VII)	26	+5	-1	-2	-2	-3	-3	+0.3%	-0.0%	-0.1%	-0.1%	-0.1%	-0.1%
Clerical (III & IV)	114	+23	+17	+7	+10	-1	+0	+0.3%	+0.2%	+0.1%	+0.1%	-0.0%	+0.0%
General Support	114	-22	-13	-13	+0	-1	+0	-0.2%	-0.1%	-0.1%	+0.0%	-0.0%	+0.0%
Support	103	-22	-13	-13	+0	-1	+0	-0.2%	-0.1%	-0.1%	+0.0%	-0.0%	+0.0%
Maintenance/ Technical	11	+0			+0		+0	+0.0%	+0.0%	+0.0%	+0.0%	+0.0%	+0.0%
Patient & Client Care	146	+36	+34	+22	+7	+4	-0	+0.3%	+0.3%	+0.2%	+0.1%	+0.0%	-0.0%
Health Care Assistants	133	+24	+24	+15	+7	+4	-0	+0.2%	+0.2%	+0.1%	+0.1%	+0.0%	-0.0%
Care, other	12	+11	+10	+7	-0	-0	+0	+11.4%	+5.2%	+1.1%	-0.0%	-0.0%	+0.0%

Source: Health Service Personnel Census

Primary Care

Jul 2021 (Dec 2016 figure: 1,162)	WTE Jul 2021	WTE change since Dec 16	WTE change since Dec 17	WTE change since Dec 18	WTE change since Dec 19	WTE change since Dec 20	WTE change since Jun 21	% change since Dec 16	% change since Dec 17	% change since Dec 18	% change since Dec 19	% change since Dec 20	% change since Jun 21
Overall	1,478	+316	+240	+179	+231	+67	+13	+27.2%	+19.4%	+13.7%	+18.5%	+4.7%	+0.9%
Medical & Dental	113	-0	-0	-5	+3	+3	+5	-0.0%	-0.0%	-0.0%	+0.0%	+0.0%	+0.0%
Consultants	4	+0	-2	+1	+0			+0.1%	-0.3%	+0.3%	+0.0%	+0.0%	+0.0%
Registrars	52	+16	+9	+0	-4	-0	+4	+0.5%	+0.2%	+0.0%	-0.1%	-0.0%	+0.1%
SHO/ Interns	8	-2	+5	+8	+7	+3	-0	-0.2%	+1.5%	-1.0%	+6.6%	+0.5%	-0.0%
Medical/ Dental, other	50	-15	-12	-14	-0	+1	+2	-0.2%	-0.2%	-0.2%	-0.0%	+0.0%	+0.0%
Nursing & Midwifery	368	+38	+9	+13	+23	-2	-7	+0.1%	+0.0%	+0.0%	+0.1%	-0.0%	-0.0%
Nurse/ Midwife Manager	47	+12	+8	+9	+10	+4	-1	+0.3%	+0.2%	+0.2%	+0.3%	+0.1%	-0.0%
Nurse/ Midwife Specialist & AN/MP	9	+5	+1	+4	+3	+1	-0	+1.1%	+0.1%	+0.7%	+0.4%	+0.1%	-0.0%
Staff Nurse/ Staff Midwife	124	+31	+14	+10	+24	+19	-8	+0.3%	+0.1%	+0.1%	+0.2%	+0.2%	-0.1%
Public Health Nurse	184	+9	+13	+12	+9	+3	+12	+0.1%	+0.1%	+0.1%	+0.1%	+0.0%	+0.1%
Nursing/ Midwifery Student	2	-17	-26	-20	-24	-29	-10	-0.9%	-0.9%	-0.9%	-0.9%	-0.9%	-0.8%
Nursing/ Midwifery other	1	-1	-0	-1	+1	-0		-0.5%	-0.3%	-0.5%	-1.0%	-0.0%	+0.0%
Health & Social Care Professionals	371	+59	+30	+16	+20	-1	+0	+0.2%	+0.1%	+0.0%	+0.1%	-0.0%	+0.0%
Therapy Professions	208	+34	+13	+15	+12	-3	-1	+0.2%	+0.1%	+0.1%	+0.1%	-0.0%	-0.0%
Health Science/ Diagnostics	19	+19	+19	-4	-1	-1	-0	-1.0%	-1.0%	-0.2%	-0.1%	-0.0%	-0.0%
Social Care	3	-1	-1	-0	-1	-0	-0	-0.3%	-0.3%	-0.1%	-0.2%	-0.0%	-0.0%
Social Workers	22	+6	+4	+5	+6	-0	+1	+0.4%	+0.2%	+0.3%	+0.3%	-0.0%	+0.0%
Psychologists	64	+2	+0	-1	-1	-1	-1	+0.0%	+0.0%	-0.0%	-0.0%	-0.0%	-0.0%
Pharmacy	15	-8	-6	-3	+3	-0	-1	-0.3%	-0.3%	-0.2%	+0.2%	-0.0%	-0.1%
H&SC, Other	40	+7	+2	+5	+3	+5	+2	+0.2%	+0.1%	+0.1%	+0.1%	+0.1%	+0.1%
Management & Administrative	381	+135	+116	+85	+93	+43	+18	+0.5%	+0.4%	+0.3%	+0.3%	+0.1%	+0.0%
Management (VIII & above)	27	+9	+2	+0	-1	-1	+1	+0.5%	+0.1%	+0.0%	-0.0%	-0.0%	+0.0%
Administrative/ Supervisory (V to VII)	102	+43	+46	+22	+25	+14	+8	+0.7%	+0.8%	+0.3%	+0.3%	+0.2%	+0.1%
Clerical (III & IV)	251	+83	+68	+62	+69	+31	+9	+0.5%	+0.4%	+0.3%	+0.4%	+0.1%	+0.0%
General Support	33	-19	-18	-14	-2	-0	+0	-0.4%	-0.4%	-0.3%	-0.0%	-0.0%	+0.0%
Support	33	-19	-18	-14	-2	-0	+0	-0.4%	-0.4%	-0.3%	-0.0%	-0.0%	+0.0%
Patient & Client Care	211	+104	+102	+84	+93	+24	-4	+1.0%	+0.9%	+0.7%	+0.8%	+0.1%	-0.0%
Health Care Assistants	95	+90	+87	+71	+82	+21	-4	+17.4%	+10.9%	+3.0%	+6.3%	+0.3%	-0.0%
Care, other	116	+14	+15	+13	+11	+3	+1	+0.1%	+0.1%	+0.1%	+0.1%	+0.0%	+0.0%

Source: Health Service Personnel Census

Disabilities

Jul 2021 (Dec 2016 figure: 3,043)	WTE Jul 2021	WTE change since Dec 16	WTE change since Dec 17	WTE change since Dec 18	WTE change since Dec 19	WTE change since Dec 20	WTE change since Jun 21	% change since Dec 16	% change since Dec 17	% change since Dec 18	% change since Dec 19	% change since Dec 20	% change since Jun 21
Overall	3,306	+263	+206	+182	+112	+21	-10	+8.7%	+6.6%	+5.8%	+3.5%	+0.7%	-0.3%
Medical & Dental	21	+2	-1	+2	-4	-0	+2	+0.1%	-0.0%	+0.1%	-0.1%	-0.0%	+0.1%
Consultants	11	+1	-0	+0	-2	-0	+1	+0.1%	-0.0%	+0.0%	-0.1%	-0.0%	+0.1%
Registrars	4	+1	-1	+1	-2	+2	+1	+0.3%	-0.2%	+0.3%	-0.3%	+1.0%	+0.3%
SHO/ Interns						-2		-1.0%	-1.0%	-1.0%	-1.0%	-1.0%	-1.0%
Medical/ Dental, other	6	-0	+0	+0				-0.0%	+0.1%	+0.1%	+0.0%	+0.0%	+0.0%
Nursing & Midwifery	742	-12	-15	-7	+9	+0	-8	-0.0%	-0.0%	-0.0%	+0.0%	+0.0%	-0.0%
Nurse/ Midwife Manager	194	-3	-7	-3	+2	-2	-1	-0.0%	-0.0%	-0.0%	+0.0%	-0.0%	-0.0%
Nurse/ Midwife Specialist & AN/MP	14	+5	+6	+6	+6	+2	+0	+0.5%	+0.7%	+0.7%	+0.6%	+0.2%	+0.0%
Staff Nurse/ Staff Midwife	508	-33	-33	-20	-9	-4	-6	-0.1%	-0.1%	-0.0%	-0.0%	-0.0%	-0.0%
Nursing/ Midwifery Student	18	+17	+18	+10	+10	+5		+17.0%	-1.0%	+1.1%	+1.3%	+0.4%	+0.0%
Nursing/ Midwifery other	7	+2	+1	+0	+0	-1	-1	+0.5%	+0.2%	+0.0%	+0.0%	-0.1%	-0.1%
Health & Social Care Professionals	1,113	+187	+169	+158	+110	+39	+3	+0.2%	+0.2%	+0.2%	+0.1%	+0.0%	+0.0%
Therapy Professions	189	+9	+14	+14	+8	+2	-4	+0.1%	+0.1%	+0.1%	+0.0%	+0.0%	-0.0%
Health Science/ Diagnostics	14	-18	-23		-1	+1		-0.6%	-0.6%	+0.0%	-0.1%	+0.1%	+0.0%
Social Care	790	+211	+188	+142	+101	+50	+10	+0.4%	+0.3%	+0.2%	+0.1%	+0.1%	+0.0%
Social Workers	44	-7	-5	+1	-0	-6	-1	-0.1%	-0.1%	+0.0%	-0.0%	-0.1%	-0.0%
Psychologists	57	-1	-0	+3	+4	-7	-2	-0.0%	-0.0%	+0.1%	+0.1%	-0.1%	-0.0%
Pharmacy	2							+0.0%	+0.0%	+0.0%	+0.0%	+0.0%	+0.0%
H&SC, Other	17	-8	-6	-2	-2	-1	+0	-0.3%	-0.2%	-0.1%	-0.1%	-0.1%	+0.0%
Management & Administrative	290	+71	+66	+52	+40	+22	+4	+0.3%	+0.3%	+0.2%	+0.2%	+0.1%	+0.0%
Management (VIII & above)	46	+17	+14	+12	+8	+4	+0	+0.6%	+0.5%	+0.4%	+0.2%	+0.1%	+0.0%
Administrative/ Supervisory (V to VII)	115	+34	+36	+29	+27	+15	+1	+0.4%	+0.5%	+0.3%	+0.3%	+0.1%	+0.0%
Clerical (III & IV)	130	+20	+16	+11	+4	+3	+3	+0.2%	+0.1%	+0.1%	+0.0%	+0.0%	+0.0%
General Support	164	-78	-73	-60	-54	-4	-2	-0.3%	-0.3%	-0.3%	-0.2%	-0.0%	-0.0%
Support	143	-76	-70	-57	-53	-2	-2	-0.3%	-0.3%	-0.3%	-0.3%	-0.0%	-0.0%
Maintenance/ Technical	21	-1	-3	-2	-1	-2	-0	-0.1%	-0.1%	-0.1%	-0.1%	-0.1%	-0.0%
Patient & Client Care	977	+92	+60	+37	+11	-36	-9	+0.1%	+0.1%	+0.0%	+0.0%	-0.0%	-0.0%
Health Care Assistants	879	+94	+52	+39	+10	-32	-8	+0.1%	+0.1%	+0.0%	+0.0%	-0.0%	-0.0%
Care, other	97	-2	+9	-3	+0	-4	-2	-0.0%	+0.1%	-0.0%	+0.0%	-0.0%	-0.0%

Source: Health Service Personnel Census

Older People

Jul 2021 (Dec 2016 figure: 865)	WTE Jul 2021	WTE change since Dec 16	WTE change since Dec 17	WTE change since Dec 18	WTE change since Dec 19	WTE change since Dec 20	WTE change since Jun 21	% change since Dec 16	% change since Dec 17	% change since Dec 18	% change since Dec 19	% change since Dec 20	% change since Jun 21
Overall	948	+83	+70	+40	+78	+34	+14	+9.6%	+8.0%	+4.4%	+9.0%	+3.7%	+1.5%
Medical & Dental	21	+1	-1	+3	+1	+2	+1	+0.1%	-0.0%	+0.2%	+0.0%	+0.1%	+0.1%
Consultants	2	-5	-5	+1	+1	-0		-0.7%	-0.7%	+0.4%	+0.5%	-0.0%	+0.0%
Registrars	7	+2	+1	+1	+2	+2	+2	+0.3%	+0.1%	+0.1%	+0.3%	+0.5%	+0.3%
SHO/ Interns	10	+4	+3	+1	-2	-1	-1	+0.7%	+0.5%	+0.1%	-0.2%	-0.0%	-0.1%
Medical/ Dental, other	1	+0						+0.0%	+0.0%	+0.0%	+0.0%	+0.0%	+0.0%
Nursing & Midwifery	319	+19	+29	+4	+12	-2	+5	+0.1%	+0.1%	+0.0%	+0.0%	-0.0%	+0.0%
Nurse/ Midwife Manager	81	+4	-3	+3	+6	+0	+2	+0.1%	-0.0%	+0.0%	+0.1%	+0.0%	+0.0%
Nurse/ Midwife Specialist & AN/MP	5	+2	+2	+1	-0	-1		+0.5%	+0.5%	+0.2%	-0.1%	-0.2%	+0.0%
Staff Nurse/ Staff Midwife	234	+14	+32	+2	+7	-0	+3	+0.1%	+0.2%	+0.0%	+0.0%	-0.0%	+0.0%
Public Health Nurse		-0	-0	-0	-0			-1.0%	-1.0%	-1.0%	-1.0%	-1.0%	-1.0%
Nursing/ Midwifery other		-1	-1	-1	-1	-1		-1.0%	-1.0%	-1.0%	-1.0%	-1.0%	-1.0%
Health & Social Care Professionals	116	+48	+36	+32	+35	+16	-2	+0.7%	+0.5%	+0.4%	+0.4%	+0.2%	-0.0%
Therapy Professions	84	+37	+26	+28	+29	+13	-1	+0.8%	+0.4%	+0.5%	+0.5%	+0.2%	-0.0%
Health Science/ Diagnostics	1	-1	-1	-1	-0			-0.5%	-0.5%	-0.5%	-0.3%	+0.0%	+0.0%
Social Care	1	+0	+0					+0.0%	+0.1%	+0.0%	+0.0%	+0.0%	+0.0%
Social Workers	26	+11	+10	+4	+5	+3	-0	+0.7%	+0.6%	+0.2%	+0.2%	+0.1%	-0.0%
Pharmacy	4	+1	+1	+1	+1			+0.3%	+0.3%	+0.3%	+0.3%	+0.0%	+0.0%
H&SC, Other	1	+0	+0	+0	+0			+0.5%	+0.5%	+0.5%	+0.5%	+0.0%	+0.0%
Management & Administrative	86	+28	+20	+12	+22	+12	+2	+0.5%	+0.3%	+0.2%	+0.3%	+0.2%	+0.0%
Management (VIII & above)	10	+5	+3	+1	+1	+1	+1	+0.9%	+0.4%	+0.1%	+0.1%	+0.1%	+0.1%
Administrative/ Supervisory (V to VII)	24	+9	+6	+4	+9	+3	+2	+0.5%	+0.3%	+0.2%	+0.6%	+0.2%	+0.1%
Clerical (III & IV)	52	+15	+11	+7	+12	+8	-1	+0.4%	+0.3%	+0.2%	+0.3%	+0.2%	-0.0%
General Support	119	-5	-5	-4	-1	-3	-0	-0.0%	-0.0%	-0.0%	-0.0%	-0.0%	-0.0%
Support	117	-5	-5	-4	-1	-3	-0	-0.0%	-0.0%	-0.0%	-0.0%	-0.0%	-0.0%
Maintenance/ Technical	2							+0.0%	+0.0%	+0.0%	+0.0%	+0.0%	+0.0%
Patient & Client Care	287	-8	-10	-6	+11	+10	+8	-0.0%	-0.0%	-0.0%	+0.0%	+0.0%	+0.0%
Health Care Assistants	280	-12	-14	-9	+11	+9	+8	-0.0%	-0.0%	-0.0%	+0.0%	+0.0%	+0.0%
Care, other	6	+4	+4	+3	+0	+1	+0	+1.6%	+1.6%	+0.9%	+0.0%	+0.2%	+0.0%

Source: Health Service Personnel Census