

## CHO 9 Employment Report: June 2020

### Employment by Staff Group

Jun 2020 (Dec 2019 figure: 6,582)	WTE May 2020	WTE Jun 2020	WTE change since May 20	% change since May 20	WTE change since Dec 19	WTE change since Jun 19
<b>Overall</b>	<b>6,670</b>	<b>6,700</b>	<b>+31</b>	<b>+0.5%</b>	<b>+118</b>	<b>+97</b>
Consultants	67	65	-2	-2.8%	-4	-0
Registrars	95	94	-1	-1.3%	-4	+8
SHO/ Interns	61	61	-1	-1.0%	-5	-10
Medical/ Dental, other	58	56	-2	-3.1%	-0	+1
<b>Medical &amp; Dental</b>	<b>282</b>	<b>276</b>	<b>-6</b>	<b>-2.0%</b>	<b>-13</b>	<b>-2</b>
Nurse/ Midwife Manager	445	456	+10	+2.3%	+21	+18
Nurse/ Midwife Specialist & AN/MP	91	90	-1	-1.0%	+5	+8
Staff Nurse/ Staff Midwife	1,184	1,211	+27	+2.3%	+15	+3
Public Health Nurse	169	163	-5	-3.1%	-12	-3
<i>Pre-registration Nurse/ Midwife Intern</i>	1	1			-17	
<i>Pre-registration Nurse Intern (COVID-19)</i>	77	83	+6	+7.7%	+83	+6
<i>Post-registration Nurse/ Midwife Student</i>	25	2	-23	-92.0%	-24	-23
<i>Nursing/ Midwifery awaiting registration</i>				-100.0%	-11	
Nursing/ Midwifery Student	103	86	-17	-16.6%	+31	+42
Nursing/ Midwifery other	22	21	-1	-4.6%	+1	+1
<b>Nursing &amp; Midwifery</b>	<b>2,014</b>	<b>2,027</b>	<b>+13</b>	<b>+0.6%</b>	<b>+61</b>	<b>+68</b>
Therapy Professions	509	511	+2	+0.4%	+25	+20
Health Science/ Diagnostics	34	34	-1	-2.4%	-3	-5
Social Care	700	709	+9	+1.2%	+14	+43
Social Workers	128	129	+1	+1.0%	+4	-2
Psychologists	172	174	+3	+1.6%	+10	+7
Pharmacy	25	25	-0	-1.4%	+0	+0
H&SC, Other	71	70	-1	-1.8%	-1	+0
<b>Health &amp; Social Care Professionals</b>	<b>1,640</b>	<b>1,652</b>	<b>+12</b>	<b>+0.7%</b>	<b>+49</b>	<b>+64</b>
Management (VIII & above)	80	81	+1	+0.8%	+1	+5
Administrative/ Supervisory (V to VII)	217	220	+3	+1.3%	+12	+6
Clerical (III & IV)	445	443	-2	-0.5%	-8	-23
<b>Management &amp; Administrative</b>	<b>743</b>	<b>744</b>	<b>+1</b>	<b>+0.1%</b>	<b>+5</b>	<b>-12</b>
Support	444	443	-1	-0.2%	-8	-17
Maintenance/ Technical	35	35			+0	-3
<b>General Support</b>	<b>479</b>	<b>479</b>	<b>-1</b>	<b>-0.2%</b>	<b>-8</b>	<b>-20</b>
Health Care Assistants	1,295	1,305	+11	+0.8%	+28	+8
Care, other	217	218	+0	+0.1%	-3	-9
<b>Patient &amp; Client Care</b>	<b>1,512</b>	<b>1,523</b>	<b>+11</b>	<b>+0.7%</b>	<b>+24</b>	<b>-2</b>

## CHO 9 Employment Report: June 2020

### Community Health & Wellbeing

Jun 2020 ( figure: )	WTE May 2020	WTE Jun 2020	WTE change since May 20	% change since May 20	WTE change since	WTE change since
<b>Total Community Health &amp; Wellbeing</b>	<b>8</b>	<b>8</b>	<b>+0</b>	<b>+2.9%</b>	<b>+8</b>	<b>+8</b>
Therapy Professions	1	1			+1	+1
<b>Health &amp; Social Care Professionals</b>	<b>1</b>	<b>1</b>			<b>+1</b>	<b>+1</b>
Management (VIII & above)	1	1			+1	+1
Administrative/ Supervisory (V to VII)	5	5			+5	+5
Clerical (III & IV)	1	2	+0	+16.1%	+2	+2
<b>Management &amp; Administrative</b>	<b>7</b>	<b>8</b>	<b>+0</b>	<b>+3.2%</b>	<b>+8</b>	<b>+8</b>

### Mental Health

Jun 2020 (Dec 2019 figure: 1,272)	WTE May 2020	WTE Jun 2020	WTE change since May 20	% change since May 20	WTE change since Dec 19	WTE change since Jun 19
<b>Total Mental Health</b>	<b>1,300</b>	<b>1,308</b>	<b>+8</b>	<b>+0.6%</b>	<b>+37</b>	<b>+12</b>
Consultants	49	47	-2	-3.8%	-3	-2
Registrars	34	34	+0	+0.3%	+3	+8
SHO/ Interns	45	44	-2	-3.6%	-9	-16
<b>Medical &amp; Dental</b>	<b>128</b>	<b>125</b>	<b>-3</b>	<b>-2.6%</b>	<b>-9</b>	<b>-9</b>
Nurse/ Midwife Manager	136	139	+3	+2.1%	+7	+4
Nurse/ Midwife Specialist & AN/MP	69	68	-1	-1.2%	+3	+5
Staff Nurse/ Staff Midwife	352	356	+5	+1.4%	+5	-1
Pre-registration Nurse/ Midwife Intern	1	1			-10	
Pre-registration Nurse Intern (COVID-19)	48	52	+4	+9.4%	+52	+4
Nursing/ Midwifery awaiting registration				-100.0%	-11	
Nursing/ Midwifery Student	48	53	+4	+9.3%	+32	+31
Nursing/ Midwifery other	12	12			+0	+0
<b>Nursing &amp; Midwifery</b>	<b>617</b>	<b>628</b>	<b>+11</b>	<b>+1.8%</b>	<b>+48</b>	<b>+38</b>
Therapy Professions	63	61	-2	-2.8%	+6	+4
Social Care	1	1				-0
Social Workers	43	43	+0	+0.2%	-0	-0
Psychologists	48	49	+1	+1.7%	+4	+0
Pharmacy	7	7	-0	-0.7%	-1	-1
H&SC, Other	14	14	-1	-4.4%	-1	+0
<b>Health &amp; Social Care Professionals</b>	<b>177</b>	<b>175</b>	<b>-2</b>	<b>-0.9%</b>	<b>+8</b>	<b>+3</b>
Management (VIII & above)	5	5	-0	-0.2%		+2
Administrative/ Supervisory (V to VII)	28	28	-0	-0.6%	+0	+1
Clerical (III & IV)	96	95	-1	-1.2%	-9	-15
<b>Management &amp; Administrative</b>	<b>130</b>	<b>128</b>	<b>-1</b>	<b>-1.0%</b>	<b>-8</b>	<b>-13</b>
Support	101	102	+1	+0.8%	-1	-3
Maintenance/ Technical	11	11			+0	+0
<b>General Support</b>	<b>112</b>	<b>113</b>	<b>+1</b>	<b>+0.7%</b>	<b>-1</b>	<b>-3</b>
Health Care Assistants	124	126	+2	+1.6%	+0	-1
Care, other	12	12	+0	+1.0%	-0	-2
<b>Patient &amp; Client Care</b>	<b>136</b>	<b>138</b>	<b>+2</b>	<b>+1.5%</b>	<b>-0</b>	<b>-3</b>

## Primary Care

Jun 2020 (Dec 2019 figure: 1,247)	WTE May 2020	WTE Jun 2020	WTE change since May 20	% change since May 20	WTE change since Dec 19	WTE change since Jun 19
<b>Total Primary Care</b>	<b>1,249</b>	<b>1,251</b>	<b>+2</b>	<b>+0.1%</b>	<b>+4</b>	<b>-28</b>
Consultants	4	4			+0	+1
Registrars	51	50	-1	-1.0%	-5	+1
SHO/ Interns	4	4			+3	+4
Medical/ Dental, other	51	49	-2	-3.3%	-1	+0
<b>Medical &amp; Dental</b>	<b>110</b>	<b>108</b>	<b>-2</b>	<b>-2.0%</b>	<b>-3</b>	<b>+6</b>
Nurse/ Midwife Manager	38	42	+4	+9.3%	+5	+3
Nurse/ Midwife Specialist & AN/MP	6	6				+1
Staff Nurse/ Staff Midwife	101	126	+25	+24.4%	+26	+11
Public Health Nurse	169	163	-5	-3.1%	-12	-2
<i>Post-registration Nurse/ Midwife Student</i>	25	2	-23	-92.0%	-24	-23
Nursing/ Midwifery Student	25	2	-23	-92.0%	-24	-8
Nursing/ Midwifery other				-100.0%		-1
<b>Nursing &amp; Midwifery</b>	<b>340</b>	<b>340</b>	<b>-0</b>	<b>-0.0%</b>	<b>-5</b>	<b>+4</b>
Therapy Professions	194	192	-1	-0.7%	-4	-11
Health Science/ Diagnostics	20	20	-1	-4.0%	-1	-2
Social Care	5	5	+0	+2.2%	+0	+1
Social Workers	17	17	+0	+0.6%	+1	-3
Psychologists	66	67	+1	+1.7%	+1	+0
Pharmacy	13	13	-0	-2.3%	+1	+1
H&SC, Other	36	36	-1	-1.8%	-1	-1
<b>Health &amp; Social Care Professionals</b>	<b>351</b>	<b>349</b>	<b>-2</b>	<b>-0.5%</b>	<b>-2</b>	<b>-15</b>
Management (VIII & above)	31	31	+1	+2.0%	+3	+3
Administrative/ Supervisory (V to VII)	77	81	+4	+4.8%	+3	-3
Clerical (III & IV)	183	183	+0	+0.2%	+1	-11
<b>Management &amp; Administrative</b>	<b>291</b>	<b>295</b>	<b>+5</b>	<b>+1.6%</b>	<b>+7</b>	<b>-11</b>
Support	33	33	-0	-1.2%	-2	-5
<b>General Support</b>	<b>33</b>	<b>33</b>	<b>-0</b>	<b>-1.2%</b>	<b>-2</b>	<b>-5</b>
Health Care Assistants	21	21	+1	+2.7%	+8	-5
Care, other	105	106	+1	+1.0%	+1	-2
<b>Patient &amp; Client Care</b>	<b>125</b>	<b>127</b>	<b>+2</b>	<b>+1.3%</b>	<b>+9</b>	<b>-7</b>

## Social Care

Jun 2020 (Dec 2019 figure: 4,064)	WTE May 2020	WTE Jun 2020	WTE change since May 20	% change since May 20	WTE change since Dec 19	WTE change since Jun 19
<b>Total Social Care</b>	<b>4,112</b>	<b>4,133</b>	<b>+21</b>	<b>+0.5%</b>	<b>+69</b>	<b>+105</b>
Consultants	13	13			-1	+0
Registrars	11	10	-1	-8.3%	-2	-1
SHO/ Interns	12	13	+1	+8.3%	+1	+2
Medical/ Dental, other	8	8	-0	-2.0%	+0	+0
<b>Medical &amp; Dental</b>	<b>44</b>	<b>43</b>	<b>-0</b>	<b>-0.0%</b>	<b>-1</b>	<b>+2</b>
Nurse/ Midwife Manager	271	275	+4	+1.4%	+9	+11
Nurse/ Midwife Specialist & AN/MP	15	15	-0	-0.5%	+2	+2
Staff Nurse/ Staff Midwife	731	728	-3	-0.4%	-16	-7
Public Health Nurse				-100.0%	-0	-0
Pre-registration Nurse/ Midwife Intern				-100.0%	-8	
Pre-registration Nurse Intern (COVID-19)	30	31	+1	+4.9%	+31	+1
Nursing/ Midwifery Student	30	31	+1	+4.9%	+23	+19
Nursing/ Midwifery other	10	9	-1	-9.7%	+1	+2
<b>Nursing &amp; Midwifery</b>	<b>1,057</b>	<b>1,059</b>	<b>+2</b>	<b>+0.2%</b>	<b>+18</b>	<b>+27</b>
Therapy Professions	252	257	+5	+2.0%	+22	+27
Health Science/ Diagnostics	14	14			-2	-3
Social Care	695	703	+8	+1.2%	+13	+43
Social Workers	68	69	+1	+1.6%	+3	+1
Psychologists	58	59	+1	+1.6%	+6	+6
Pharmacy	5	5			+0	+0
H&SC, Other	20	20			+1	+1
<b>Health &amp; Social Care Professionals</b>	<b>1,112</b>	<b>1,127</b>	<b>+16</b>	<b>+1.4%</b>	<b>+43</b>	<b>+75</b>
Management (VIII & above)	44	44			-3	-1
Administrative/ Supervisory (V to VII)	107	106	-1	-0.7%	+4	+3
Clerical (III & IV)	165	163	-2	-1.1%	-2	+2
<b>Management &amp; Administrative</b>	<b>315</b>	<b>313</b>	<b>-3</b>	<b>-0.8%</b>	<b>-2</b>	<b>+4</b>
Support	309	308	-1	-0.4%	-5	-9
Maintenance/ Technical	24	24			-0	-3
<b>General Support</b>	<b>334</b>	<b>333</b>	<b>-1</b>	<b>-0.4%</b>	<b>-6</b>	<b>-12</b>
Health Care Assistants	1,150	1,158	+8	+0.7%	+20	+15
Care, other	101	100	-1	-0.9%	-4	-6
<b>Patient &amp; Client Care</b>	<b>1,251</b>	<b>1,258</b>	<b>+7</b>	<b>+0.6%</b>	<b>+16</b>	<b>+9</b>

## CHO 9 Employment Report: June 2020

### Disabilities

Jun 2020 (Dec 2019 figure: 3,194)	WTE May 2020	WTE Jun 2020	WTE change since May 20	% change since May 20	WTE change since Dec 19	WTE change since Jun 19
<b>Total Disabilities</b>	<b>3,200</b>	<b>3,211</b>	<b>+12</b>	<b>+0.4%</b>	<b>+17</b>	<b>+80</b>
Consultants	11	11			-1	-0
Registrars	4	4	-0	-9.3%	-2	-0
SHO/ Interns	1	2	+1	+100.0%	+2	+2
Medical/ Dental, other	7	7	-0	-2.3%	+0	+0
<b>Medical &amp; Dental</b>	<b>23</b>	<b>23</b>	<b>+0</b>	<b>+2.1%</b>	<b>-1</b>	<b>+2</b>
Nurse/ Midwife Manager	191	192	+1	+0.7%	+1	+3
Nurse/ Midwife Specialist & AN/MP	9	9			+1	-0
Staff Nurse/ Staff Midwife	502	500	-2	-0.5%	-18	-2
<i>Pre-registration Nurse/ Midwife Intern</i>				-100.0%	-8	
<i>Pre-registration Nurse Intern (COVID-19)</i>	30	31	+1	+4.9%	+31	+1
Nursing/ Midwifery Student	30	31	+1	+4.9%	+23	+19
Nursing/ Midwifery other	9	8	-1	-10.7%	+1	+2
<b>Nursing &amp; Midwifery</b>	<b>741</b>	<b>741</b>	<b>-1</b>	<b>-0.1%</b>	<b>+8</b>	<b>+22</b>
Therapy Professions	184	188	+4	+2.2%	+7	+15
Health Science/ Diagnostics	13	13			-2	-2
Social Care	694	702	+8	+1.2%	+13	+43
Social Workers	47	48	+1	+1.8%	+3	+3
Psychologists	58	59	+1	+1.6%	+6	+6
Pharmacy	2	2				
H&SC, Other	20	20			+1	+1
<b>Health &amp; Social Care Professionals</b>	<b>1,017</b>	<b>1,032</b>	<b>+14</b>	<b>+1.4%</b>	<b>+29</b>	<b>+64</b>
Management (VIII & above)	36	36			-2	-1
Administrative/ Supervisory (V to VII)	91	90	-1	-0.8%	+2	+5
Clerical (III & IV)	122	122	-0	-0.3%	-4	+3
<b>Management &amp; Administrative</b>	<b>248</b>	<b>247</b>	<b>-1</b>	<b>-0.5%</b>	<b>-3</b>	<b>+7</b>
Support	188	188	-1	-0.3%	-8	-11
Maintenance/ Technical	22	22	-0	-0.0%	-0	-3
<b>General Support</b>	<b>210</b>	<b>210</b>	<b>-1</b>	<b>-0.3%</b>	<b>-8</b>	<b>-14</b>
Health Care Assistants	865	865	-0	-0.0%	-4	+4
Care, other	95	94	-1	-0.9%	-3	-5
<b>Patient &amp; Client Care</b>	<b>960</b>	<b>959</b>	<b>-1</b>	<b>-0.1%</b>	<b>-7</b>	<b>-0</b>

## Older People

Jun 2020 (Dec 2019 figure: 870)	WTE May 2020	WTE Jun 2020	WTE change since May 20	% change since May 20	WTE change since Dec 19	WTE change since Jun 19
<b>Total Older People</b>	<b>912</b>	<b>922</b>	<b>+9</b>	<b>+1.0%</b>	<b>+52</b>	<b>+25</b>
Consultants	2	2			+1	+1
Registrars	7	6	-1	-7.7%	+1	-1
SHO/ Interns	11	11			-1	
Medical/ Dental, other	1	1				
<b>Medical &amp; Dental</b>	<b>21</b>	<b>20</b>	<b>-1</b>	<b>-2.4%</b>	<b>+0</b>	<b>+0</b>
Nurse/ Midwife Manager	80	82	+3	+3.2%	+8	+8
Nurse/ Midwife Specialist & AN/MP	6	6	-0	-1.3%	+1	+2
Staff Nurse/ Staff Midwife	229	229	-0	-0.1%	+2	-5
Public Health Nurse				-100.0%	-0	-0
Nursing/ Midwifery other	1	1				
<b>Nursing &amp; Midwifery</b>	<b>316</b>	<b>318</b>	<b>+2</b>	<b>+0.7%</b>	<b>+10</b>	<b>+5</b>
<b>Health &amp; Social Care Professionals</b>	<b>94</b>	<b>96</b>	<b>+1</b>	<b>+1.3%</b>	<b>+14</b>	<b>+11</b>
Management (VIII & above)	8	8			-1	
Administrative/ Supervisory (V to VII)	16	16	-0	-0.3%	+1	-2
Clerical (III & IV)	43	41	-1	-3.1%	+1	-1
<b>Management &amp; Administrative</b>	<b>67</b>	<b>66</b>	<b>-1</b>	<b>-2.1%</b>	<b>+2</b>	<b>-2</b>
Support	121	121	-1	-0.5%	+3	+2
Maintenance/ Technical	2	2				
<b>General Support</b>	<b>124</b>	<b>123</b>	<b>-1</b>	<b>-0.5%</b>	<b>+3</b>	<b>+2</b>
Health Care Assistants	285	294	+8	+2.9%	+24	+10
Care, other	6	5	-0	-1.4%	-1	-1
<b>Patient &amp; Client Care</b>	<b>291</b>	<b>299</b>	<b>+8</b>	<b>+2.8%</b>	<b>+23</b>	<b>+9</b>

## CHO 9 Employment by Administration (HSE / S38): June 2020

Jun 2020 (Dec 2019 figure: 6,582)	WTE May 2020	WTE Jun 2020	WTE change since May 20	% change since May 20	WTE change since Dec 19	WTE change since Jun 19
<b>Overall</b>	<b>6,670</b>	<b>6,700</b>	<b>+31</b>	<b>+0.5%</b>	<b>+118</b>	<b>+97</b>
<b>HSE</b>	<b>3,444</b>	<b>3,473</b>	<b>+29</b>	<b>+0.8%</b>	<b>+66</b>	<b>-34</b>
<b>Section 38 Voluntary Agencies</b>	<b>3,226</b>	<b>3,227</b>	<b>+2</b>	<b>+0.1%</b>	<b>+52</b>	<b>+131</b>

## HSE

Jun 2020 (Dec 2019 figure: 3,407)	WTE May 2020	WTE Jun 2020	WTE change since May 20	% change since May 20	WTE change since Dec 19	WTE change since Jun 19
<b>Overall</b>	<b>3,444</b>	<b>3,473</b>	<b>+29</b>	<b>+0.8%</b>	<b>+66</b>	<b>-34</b>
Consultants	55	53	-2	-0.0%	-3	-1
Registrars	89	88	-1	-0.0%	-2	+8
SHO/ Interns	56	56	-1	-0.0%	-4	-9
Medical/ Dental, other	52	50	-2	-0.0%	-1	+0
<b>Medical &amp; Dental</b>	<b>253</b>	<b>247</b>	<b>-5</b>	<b>-2.0%</b>	<b>-10</b>	<b>-1</b>
Nurse/ Midwife Manager	256	267	+10	+0.0%	+19	+12
Nurse/ Midwife Specialist & AN/MP	80	79	-1	-0.0%	+4	+8
Staff Nurse/ Staff Midwife	675	705	+30	+0.0%	+11	-14
Public Health Nurse	169	163	-5	-0.0%	-12	-3
<i>Pre-registration Nurse/ Midwife Intern</i>	<i>1</i>	<i>1</i>		<i>+0.0%</i>	<i>-5</i>	<i>-19</i>
<i>Pre-registration Nurse Intern (COVID-19)</i>	<i>49</i>	<i>55</i>	<i>+6</i>	<i>+0.1%</i>	<i>+55</i>	<i>+55</i>
<i>Post-registration Nurse/ Midwife Student</i>	<i>25</i>	<i>2</i>	<i>-23</i>	<i>-0.9%</i>	<i>-20</i>	<i>-8</i>
<i>Nursing/ Midwifery awaiting registration</i>				<i>-1.0%</i>	<i>-3</i>	
Nursing/ Midwifery Student	75	58	-17	-0.2%	+18	+29
Nursing/ Midwifery other	14	13	-1	-0.1%	+0	-1
<b>Nursing &amp; Midwifery</b>	<b>1,269</b>	<b>1,285</b>	<b>+16</b>	<b>+1.3%</b>	<b>+41</b>	<b>+31</b>
Therapy Professions	312	311	-1	-0.0%	+11	-4
Health Science/ Diagnostics	20	20	-1	-0.0%	-1	-3
Social Care	8	8	+0	+0.0%	+0	+1
Social Workers	77	78	+1	+0.0%	-0	-6
Psychologists	128	131	+3	+0.0%	+7	+2
Pharmacy	19	18	-0	-0.0%	-0	-0
H&SC, Other	56	55	-1	-0.0%	-2	-1
<b>Health &amp; Social Care Professionals</b>	<b>619</b>	<b>620</b>	<b>+1</b>	<b>+0.1%</b>	<b>+15</b>	<b>-11</b>
Management (VIII & above)	46	46	+1	+0.0%	+2	+5
Administrative/ Supervisory (V to VII)	120	123	+3	+0.0%	+11	+2
Clerical (III & IV)	298	297	-1	-0.0%	-6	-26
<b>Management &amp; Administrative</b>	<b>464</b>	<b>466</b>	<b>+2</b>	<b>+0.4%</b>	<b>+7</b>	<b>-19</b>
Support	189	189	-0	-0.0%	-9	-17
Maintenance/ Technical	9	9		+0.0%	+0	+0
<b>General Support</b>	<b>198</b>	<b>198</b>	<b>-0</b>	<b>-0.2%</b>	<b>-9</b>	<b>-17</b>
Health Care Assistants	517	532	+15	+0.0%	+22	-13
Care, other	123	124	+1	+0.0%	-1	-5
<b>Patient &amp; Client Care</b>	<b>640</b>	<b>656</b>	<b>+16</b>	<b>+2.5%</b>	<b>+22</b>	<b>-18</b>

## Section 38 Voluntary Agencies

Jun 2020 (Dec 2019 figure: 3,175)	WTE May 2020	WTE Jun 2020	WTE change since May 20	% change since May 20	WTE change since Dec 19	WTE change since Jun 19
<b>Overall</b>	<b>3,226</b>	<b>3,227</b>	<b>+2</b>	<b>+0.1%</b>	<b>+52</b>	<b>+131</b>
Consultants	12	12		+0.0%	-1	+0
Registrars	6	6	-0	-0.1%	-2	-0
SHO/ Interns	5	5		+0.0%	-1	-1
Medical/ Dental, other	7	7	-0	-0.0%	+0	+0
<b>Medical &amp; Dental</b>	<b>29</b>	<b>29</b>	<b>-1</b>	<b>-1.8%</b>	<b>-4</b>	<b>-1</b>
Nurse/ Midwife Manager	189	189	-0	-0.0%	+1	+6
Nurse/ Midwife Specialist & AN/MP	11	11		+0.0%	+1	-0
Staff Nurse/ Staff Midwife	509	506	-3	-0.0%	+4	+17
<i>Pre-registration Nurse/ Midwife Intern</i>				-1.0%	-15	-15
<i>Pre-registration Nurse Intern (COVID-19)</i>	28	28		+0.0%	+28	+28
Nursing/ Midwifery Student	28	28		+0.0%	+14	+13
Nursing/ Midwifery other	8	8		+0.0%	+1	+2
<b>Nursing &amp; Midwifery</b>	<b>745</b>	<b>742</b>	<b>-3</b>	<b>-0.4%</b>	<b>+20</b>	<b>+37</b>
Therapy Professions	198	201	+3	+0.0%	+14	+24
Health Science/ Diagnostics	14	14		+0.0%	-2	-2
Social Care	693	701	+8	+0.0%	+13	+43
Social Workers	51	51		+0.0%	+4	+4
Psychologists	43	43		+0.0%	+3	+5
Pharmacy	7	7		+0.0%	+0	+0
H&SC, Other	15	15		+0.0%	+1	+1
<b>Health &amp; Social Care Professionals</b>	<b>1,020</b>	<b>1,032</b>	<b>+12</b>	<b>+1.1%</b>	<b>+34</b>	<b>+75</b>
Management (VIII & above)	35	35		+0.0%	-1	
Administrative/ Supervisory (V to VII)	97	97	+0	+0.0%	+1	+4
Clerical (III & IV)	147	146	-1	-0.0%	-2	+3
<b>Management &amp; Administrative</b>	<b>279</b>	<b>277</b>	<b>-1</b>	<b>-0.4%</b>	<b>-2</b>	<b>+7</b>
Support	255	255	-0	-0.0%	+1	-1
Maintenance/ Technical	26	26	+0	+0.0%	-0	-3
<b>General Support</b>	<b>281</b>	<b>281</b>	<b>-0</b>	<b>-0.1%</b>	<b>+1</b>	<b>-4</b>
Health Care Assistants	777	773	-4	-0.0%	+5	+21
Care, other	94	94	-1	-0.0%	-3	-5
<b>Patient &amp; Client Care</b>	<b>872</b>	<b>867</b>	<b>-5</b>	<b>-0.6%</b>	<b>+3</b>	<b>+16</b>



## CHO 9 Employment by S38 Agency: June 2020

### Central Remedial Clinic

Jun 2020 (Dec 2019 figure: 278)	WTE May 2020	WTE Jun 2020	WTE change since May 20	% change since May 20	WTE change since Dec 19	WTE change since Jun 19
<b>Overall</b>	<b>284</b>	<b>283</b>	<b>-1</b>	<b>-0.3%</b>	<b>+5</b>	<b>+5</b>
Consultants	1	1		+0.0%		
Medical/ Dental, other	0	0		+0.0%		
<b>Medical &amp; Dental</b>	<b>2</b>	<b>2</b>				
Nurse/ Midwife Manager	2	2		+0.0%		
Nurse/ Midwife Specialist & AN/MP	1	1		+0.0%		-1
Staff Nurse/ Staff Midwife	4	4		+0.0%	+1	+1
Nursing/ Midwifery other	1	1		+0.0%	+1	+1
<b>Nursing &amp; Midwifery</b>	<b>8</b>	<b>8</b>			<b>+2</b>	<b>+1</b>
Therapy Professions	77	78	+1	+0.0%	+0	+3
Health Science/ Diagnostics	13	13		+0.0%	-2	-2
Social Workers	9	9		+0.0%	+1	+1
Psychologists	11	11		+0.0%	+0	+0
<b>Health &amp; Social Care Professionals</b>	<b>109</b>	<b>110</b>	<b>+1</b>	<b>+0.9%</b>	<b>-1</b>	<b>+3</b>
Management (VIII & above)	6	5	-1	-0.2%	-2	-2
Administrative/ Supervisory (V to VII)	15	15		+0.0%		+1
Clerical (III & IV)	33	33		+0.0%	+0	+1
<b>Management &amp; Administrative</b>	<b>54</b>	<b>53</b>	<b>-1</b>	<b>-1.8%</b>	<b>-2</b>	<b>-0</b>
Support	14	14		+0.0%	+0	+0
Maintenance/ Technical	1	1		+0.0%		
<b>General Support</b>	<b>15</b>	<b>15</b>			<b>+0</b>	<b>+0</b>
Health Care Assistants	57	57		+0.0%	+6	+1
Care, other	39	38	-1	-0.0%	-1	-1
<b>Patient &amp; Client Care</b>	<b>95</b>	<b>94</b>	<b>-1</b>	<b>-1.0%</b>	<b>+5</b>	<b>+1</b>

## Daughters of Charity, Dublin

Jun 2020 (Dec 2019 figure: 1,034)	WTE May 2020	WTE Jun 2020	WTE change since May 20	% change since May 20	WTE change since Dec 19	WTE change since Jun 19
<b>Overall</b>	<b>1,073</b>	<b>1,071</b>	<b>-2</b>	<b>-0.2%</b>	<b>+37</b>	<b>+59</b>
Consultants	2	2		+0.0%	+1	+1
Medical/ Dental, other	2	2		+0.0%		
<b>Medical &amp; Dental</b>	<b>4</b>	<b>4</b>			<b>+1</b>	<b>+1</b>
Nurse/ Midwife Manager	62	62		+0.0%	-0	+3
Nurse/ Midwife Specialist & AN/MP	9	9		+0.0%	+1	+1
Staff Nurse/ Staff Midwife	187	185	-1	-0.0%	-1	+5
Pre-registration Nurse/ Midwife Intern				-1.0%	-8	-8
Pre-registration Nurse Intern (COVID-19)	15	15		+0.0%	+15	+15
Nursing/ Midwifery Student	15	15		+0.0%	+8	+8
Nursing/ Midwifery other	4	4		+0.0%		+1
<b>Nursing &amp; Midwifery</b>	<b>277</b>	<b>275</b>	<b>-1</b>	<b>-0.5%</b>	<b>+7</b>	<b>+17</b>
Therapy Professions	34	34		+0.0%	+1	+1
Social Care	164	168	+4	+0.0%	+5	+13
Social Workers	11	11		+0.0%	+1	+1
Psychologists	10	10		+0.0%	+3	+2
Pharmacy	2	2		+0.0%		
H&SC, Other	5	5		+0.0%	+1	+1
<b>Health &amp; Social Care Professionals</b>	<b>225</b>	<b>229</b>	<b>+4</b>	<b>+1.7%</b>	<b>+10</b>	<b>+17</b>
Management (VIII & above)	7	7		+0.0%	+1	
Administrative/ Supervisory (V to VII)	27	27		+0.0%	+2	+0
Clerical (III & IV)	32	32		+0.0%	-1	-0
<b>Management &amp; Administrative</b>	<b>66</b>	<b>66</b>			<b>+2</b>	<b>-0</b>
Support	78	78		+0.0%	-1	-0
Maintenance/ Technical	8	8		+0.0%		-2
<b>General Support</b>	<b>86</b>	<b>86</b>			<b>-1</b>	<b>-2</b>
Health Care Assistants	384	380	-4	-0.0%	+18	+31
Care, other	31	31	-0	-0.0%	-1	-3
<b>Patient &amp; Client Care</b>	<b>415</b>	<b>410</b>	<b>-4</b>	<b>-1.1%</b>	<b>+17</b>	<b>+28</b>

## Incorporated Orthopaedic Hospital

Jun 2020 (Dec 2019 figure: 226)	WTE May 2020	WTE Jun 2020	WTE change since May 20	% change since May 20	WTE change since Dec 19	WTE change since Jun 19
<b>Overall</b>	<b>258</b>	<b>258</b>			<b>+32</b>	<b>+33</b>
Consultants	1	1		+0.0%	+1	+1
Registrars	2	2		+0.0%		
SHO/ Interns	4	4		+0.0%	-1	-1
<b>Medical &amp; Dental</b>	<b>7</b>	<b>7</b>			<b>-0</b>	<b>-0</b>
Nurse/ Midwife Manager	17	17		+0.0%	-1	-1
Staff Nurse/ Staff Midwife	71	71		+0.0%	+11	+11
<b>Nursing &amp; Midwifery</b>	<b>88</b>	<b>88</b>			<b>+10</b>	<b>+10</b>
Therapy Professions	30	30		+0.0%	+10	+10
Health Science/ Diagnostics	1	1		+0.0%		
Social Workers	8	8		+0.0%	+1	+1
Pharmacy	3	3		+0.0%	+0	+0
<b>Health &amp; Social Care Professionals</b>	<b>42</b>	<b>42</b>			<b>+11</b>	<b>+10</b>
Management (VIII & above)	1	1		+0.0%		
Administrative/ Supervisory (V to VII)	6	6		+0.0%		
Clerical (III & IV)	11	11		+0.0%	+1	+2
<b>Management &amp; Administrative</b>	<b>18</b>	<b>18</b>			<b>+1</b>	<b>+2</b>
Support	40	40		+0.0%	+6	+6
Maintenance/ Technical	2	2		+0.0%		
<b>General Support</b>	<b>42</b>	<b>42</b>			<b>+6</b>	<b>+6</b>
Health Care Assistants	61	61		+0.0%	+5	+5
Care, other	0	0		+0.0%		
<b>Patient &amp; Client Care</b>	<b>61</b>	<b>61</b>			<b>+5</b>	<b>+5</b>

St. Michael's House, Dublin

Jun 2020 (Dec 2019 figure: 1,431)	WTE May 2020	WTE Jun 2020	WTE change since May 20	% change since May 20	WTE change since Dec 19	WTE change since Jun 19
<b>Overall</b>	<b>1,398</b>	<b>1,403</b>	<b>+6</b>	<b>+0.4%</b>	<b>-27</b>	<b>+29</b>
Consultants	6	6		+0.0%	-2	-1
Registrars	3	3	-0	-0.1%	-1	+1
Medical/ Dental, other	4	4	-0	-0.0%	+0	+0
<b>Medical &amp; Dental</b>	<b>13</b>	<b>13</b>	<b>-1</b>	<b>-3.9%</b>	<b>-3</b>	<b>+0</b>
Nurse/ Midwife Manager	86	86	-0	-0.0%	+2	+4
Staff Nurse/ Staff Midwife	155	154	-0	-0.0%	-7	+1
<b>Nursing &amp; Midwifery</b>	<b>241</b>	<b>241</b>	<b>-1</b>	<b>-0.3%</b>	<b>-5</b>	<b>+4</b>
Therapy Professions	53	55	+2	+0.0%	+4	+10
Social Care	529	533	+5	+0.0%	+8	+30
Social Workers	21	21		+0.0%	+1	+2
Psychologists	19	19		+0.0%	+0	+2
H&SC, Other	10	10		+0.0%	+0	-0
<b>Health &amp; Social Care Professionals</b>	<b>632</b>	<b>639</b>	<b>+7</b>	<b>+1.1%</b>	<b>+14</b>	<b>+44</b>
Management (VIII & above)	21	22	+1	+0.0%	+0	+2
Administrative/ Supervisory (V to VII)	42	42	+0	+0.0%	-1	+3
Clerical (III & IV)	52	51	-1	-0.0%	-3	+0
<b>Management &amp; Administrative</b>	<b>115</b>	<b>115</b>	<b>-0</b>	<b>-0.1%</b>	<b>-3</b>	<b>+5</b>
Support	91	90	-0	-0.0%	-6	-8
Maintenance/ Technical	12	12		+0.0%	-0	-1
<b>General Support</b>	<b>103</b>	<b>102</b>	<b>-0</b>	<b>-0.4%</b>	<b>-6</b>	<b>-9</b>
Health Care Assistants	270	271	+0	+0.0%	-23	-15
Care, other	23	24	+0	+0.0%	-1	-1
<b>Patient &amp; Client Care</b>	<b>294</b>	<b>294</b>	<b>+0</b>	<b>+0.2%</b>	<b>-24</b>	<b>-16</b>

St. Vincent's, Fairview

Jun 2020 (Dec 2019 figure: 206)	WTE May 2020	WTE Jun 2020	WTE change since May 20	% change since May 20	WTE change since Dec 19	WTE change since Jun 19
<b>Overall</b>	<b>213</b>	<b>212</b>	<b>-1</b>	<b>-0.5%</b>	<b>+6</b>	<b>+5</b>
Consultants	1	1		+0.0%		
Registrars	1	1		+0.0%	-1	-1
SHO/ Interns	1	1		+0.0%		
<b>Medical &amp; Dental</b>	<b>3</b>	<b>3</b>			<b>-1</b>	<b>-1</b>
Nurse/ Midwife Manager	21	21		+0.0%		
Nurse/ Midwife Specialist & AN/MP	2	2		+0.0%		
Staff Nurse/ Staff Midwife	92	91	-1	-0.0%		-1
Nursing/ Midwifery Student	13	13		+0.0%	+6	+6
Nursing/ Midwifery other	3	3		+0.0%		
<b>Nursing &amp; Midwifery</b>	<b>131</b>	<b>130</b>	<b>-1</b>	<b>-0.8%</b>	<b>+6</b>	<b>+5</b>
Therapy Professions	5	5		+0.0%		
Social Workers	2	2		+0.0%		
Psychologists	4	4		+0.0%		
Pharmacy	2	2		+0.0%	+0	+0
<b>Health &amp; Social Care Professionals</b>	<b>12</b>	<b>12</b>			<b>+0</b>	<b>+0</b>
Administrative/ Supervisory (V to VII)	6	6		+0.0%		
Clerical (III & IV)	19	19		+0.0%	+0	+0
<b>Management &amp; Administrative</b>	<b>25</b>	<b>25</b>			<b>+0</b>	<b>+0</b>
Support	32	32		+0.0%	+1	+1
Maintenance/ Technical	3	3		+0.0%		
<b>General Support</b>	<b>35</b>	<b>35</b>			<b>+1</b>	<b>+1</b>
Health Care Assistants	6	6		+0.0%		
Care, other	1	1		+0.0%		
<b>Patient &amp; Client Care</b>	<b>7</b>	<b>7</b>				

**CHO 9 Employment by Grade Group & Staff Category: June 2020**

Jun 2020 (Dec 2019 figure: 6,582)	WTE May 2020	WTE Jun 2020	WTE change since May 20	% change since May 20	WTE change since Dec 19	WTE change since Jun 19
<b>Overall</b>	<b>6,670</b>	<b>6,700</b>	<b>+31</b>	<b>+0.5%</b>	<b>+118</b>	<b>+97</b>
Consultant Medicine	2	2			+1	+1
Consultant Paediatrics	1	1				
Consultant Psychiatry	63	61	-2	-2.9%	-4	-1
Consultant Surgery				-100.0%		
<b>Consultants</b>	<b>67</b>	<b>65</b>	<b>-2</b>	<b>-2.8%</b>	<b>-4</b>	<b>-0</b>
Registrar	75	74	-1	-1.2%	-4	+5
Senior Registrar	16	16	+0	+0.2%		+3
Specialist Registrar	4	4	-0	-9.3%	-0	+1
<b>Registrars</b>	<b>95</b>	<b>94</b>	<b>-1</b>	<b>-1.3%</b>	<b>-4</b>	<b>+8</b>
Interns				-100.0%	-2	-2
Senior House Officer	61	61	-1	-1.0%	-3	-8
<b>SHO/ Interns</b>	<b>61</b>	<b>61</b>	<b>-1</b>	<b>-1.0%</b>	<b>-5</b>	<b>-10</b>
Dentists	34	31	-2	-6.2%	-0	-1
Other Medical	25	25	+0	+1.0%	-0	+2
<b>Medical/ Dental, other</b>	<b>58</b>	<b>56</b>	<b>-2</b>	<b>-3.1%</b>	<b>-0</b>	<b>+1</b>
<b>Medical &amp; Dental</b>	<b>282</b>	<b>276</b>	<b>-6</b>	<b>-2.0%</b>	<b>-15</b>	<b>-2</b>
Clinical Nurse/ Midwife Manager	356	362	+6	+1.6%	+13	+7
Director Nursing/Midwifery, Assistant	63	68	+5	+7.8%	+7	+7
Director of Nursing/Midwifery	26	26	-0	-1.2%	+1	+4
<b>Nurse/ Midwife Manager</b>	<b>445</b>	<b>456</b>	<b>+10</b>	<b>+2.3%</b>	<b>+21</b>	<b>+18</b>
Advanced Nurse/ Midwife Practitioner	7	7	-0	-0.7%	+0	-0
Clinical Nurse/ Midwife Specialist	84	83	-1	-1.1%	+5	+8
<b>Nurse/ Midwife Specialist &amp; AN/MP</b>	<b>91</b>	<b>90</b>	<b>-1</b>	<b>-1.0%</b>	<b>+5</b>	<b>+8</b>
Staff Midwives	1	1			+1	+1
Staff Nurse [Intellectual Disability]	414	408	-5	-1.3%	-12	+5
Staff Nurse [Psychiatric]	360	369	+9	+2.5%	-2	-7
Staff Nurses [General/ Children's]	410	433	+23	+5.6%	+28	+4
<b>Staff Nurse/ Staff Midwife</b>	<b>1,184</b>	<b>1,211</b>	<b>+27</b>	<b>+2.3%</b>	<b>+15</b>	<b>+3</b>
<b>Public Health Nurse</b>	<b>169</b>	<b>163</b>	<b>-5</b>	<b>-3.1%</b>	<b>-12</b>	<b>-3</b>
Pre-registration Nurse/ Midwife Intern	1	1			-17	-34
Pre-registration Nurse Intern (COVID-19)	77	83	+6	+7.7%	+83	+83
Post-registration Nurse/ Midwife Student	25	2	-23	-92.0%	-24	-8
Nursing/ Midwifery awaiting registration				-100.0%	-11	
<b>Nursing/ Midwifery Student</b>	<b>103</b>	<b>86</b>	<b>-17</b>	<b>-16.6%</b>	<b>+31</b>	<b>+42</b>
Nursing Education/Clinical	22	21	-1	-4.6%	+1	+1
Other Nursing/ Midwifery				-100.0%		
<b>Nursing/ Midwifery other</b>	<b>22</b>	<b>21</b>	<b>-1</b>	<b>-4.6%</b>	<b>+1</b>	<b>+1</b>
<b>Nursing &amp; Midwifery</b>	<b>2,014</b>	<b>2,027</b>	<b>+13</b>	<b>+0.6%</b>	<b>+13</b>	<b>+68</b>
Dietitians	28	28	+0	+1.5%	+7	+6
Occupational Therapists	192	192	-1	-0.4%	+9	+9
Orthoptists	5	5	-0	-0.2%	-0	+1
Physiotherapists	146	146	+0	+0.0%	+3	+3
Podiatrists & Chiropodists	1	1	-0	-16.0%		-0
Speech & Language Therapists	137	140	+3	+1.8%	+6	+2
<b>Therapy Professions</b>	<b>509</b>	<b>511</b>	<b>+2</b>	<b>+0.4%</b>	<b>+25</b>	<b>+20</b>
Audiology	15	15	-1	-5.4%	-1	-2
Clinical Engineering	14	14	+0	+0.1%	-2	-2

Jun 2020 (Dec 2019 figure: 6,582)	WTE May 2020	WTE Jun 2020	WTE change since May 20	% change since May 20	WTE change since Dec 19	WTE change since Jun 19
<b>Overall</b>	<b>6,670</b>	<b>6,700</b>	<b>+31</b>	<b>+0.5%</b>	<b>+118</b>	<b>+97</b>
Medical Laboratory	4	4				
Radiographers	1	1			-0	-1
<b>Health Science/ Diagnostics</b>	<b>34</b>	<b>34</b>	<b>-1</b>	<b>-2.4%</b>	<b>-3</b>	<b>-5</b>
<b>Social Care</b>	<b>700</b>	<b>709</b>	<b>+9</b>	<b>+1.2%</b>	<b>+14</b>	<b>+43</b>
<b>Social Workers</b>	<b>128</b>	<b>129</b>	<b>+1</b>	<b>+1.0%</b>	<b>+4</b>	<b>-2</b>
<b>Psychologists</b>	<b>172</b>	<b>174</b>	<b>+3</b>	<b>+1.6%</b>	<b>+10</b>	<b>+7</b>
<b>Pharmacy</b>	<b>25</b>	<b>25</b>	<b>-0</b>	<b>-1.4%</b>	<b>+0</b>	<b>+0</b>
Counsellor Therapists	41	40	-1	-1.9%	-1	+1
Dental Hygienists	7	6	-0	-6.6%	-0	-1
Other Health & Social Care	21	21	-0	-0.0%	+1	+0
Play Therapists/ Specialists	2	2	-0	-5.3%	-0	-0
<b>H&amp;SC, Other</b>	<b>71</b>	<b>70</b>	<b>-1</b>	<b>-1.8%</b>	<b>-1</b>	<b>+0</b>
<b>Health &amp; Social Care Professionals</b>	<b>1,640</b>	<b>1,652</b>	<b>+12</b>	<b>+0.7%</b>	<b>+76</b>	<b>+64</b>
Executive Management	12	12	-0	-0.3%	+1	+3
Senior Management (VIII & GM)	68	69	+1	+0.9%	+0	+2
<b>Management (VIII &amp; above)</b>	<b>80</b>	<b>81</b>	<b>+1</b>	<b>+0.8%</b>	<b>+1</b>	<b>+5</b>
Middle Management (V-VII)	209	211	+3	+1.3%	+12	+8
Other Administrative	9	9				-2
<b>Administrative/ Supervisory (V to VII)</b>	<b>217</b>	<b>220</b>	<b>+3</b>	<b>+1.3%</b>	<b>+12</b>	<b>+6</b>
General Administrative (III & IV)	445	443	-2	-0.5%	-8	-23
<b>Clerical (III &amp; IV)</b>	<b>445</b>	<b>443</b>	<b>-2</b>	<b>-0.5%</b>	<b>-8</b>	<b>-23</b>
<b>Management &amp; Administrative</b>	<b>743</b>	<b>744</b>	<b>+1</b>	<b>+0.1%</b>	<b>-3</b>	<b>-12</b>
Catering	56	56	+0	+0.6%	-5	-5
Household Services	222	221	-1	-0.6%	+0	-8
Other Support	91	91	+0	+0.2%	-3	-3
Portering	75	75	+0	+0.1%	-1	-1
<b>Support</b>	<b>444</b>	<b>443</b>	<b>-1</b>	<b>-0.2%</b>	<b>-8</b>	<b>-17</b>
Maintenance	33	33			+0	-3
Technical Services	2	2				
<b>Maintenance/ Technical</b>	<b>35</b>	<b>35</b>			<b>+0</b>	<b>-3</b>
<b>General Support</b>	<b>480</b>	<b>479</b>	<b>-1</b>	<b>-0.2%</b>	<b>-43</b>	<b>-20</b>
HCA, Nurse's Aide, etc.	1,275	1,286	+11	+0.9%	+20	+14
Health & Social Care Assistants	20	20	-0	-0.1%	+8	-6
<b>Health Care Assistants</b>	<b>1,295</b>	<b>1,305</b>	<b>+11</b>	<b>+0.8%</b>	<b>+28</b>	<b>+8</b>
Other Care Grades	217	218	+0	+0.1%	-3	-9
<b>Care, other</b>	<b>217</b>	<b>218</b>	<b>+0</b>	<b>+0.1%</b>	<b>-3</b>	<b>-9</b>
<b>Patient &amp; Client Care</b>	<b>1,512</b>	<b>1,523</b>	<b>+11</b>	<b>+0.7%</b>	<b>+38</b>	<b>-2</b>

## CHO 9 HSE Employment by Grade Group & Staff Category: June 2020

Jun 2020 (Dec 2019 figure: 3,407)	WTE May 2020	WTE Jun 2020	WTE change since May 20	% change since May 20	WTE change since Dec 19	WTE change since Jun 19
<b>Overall</b>	<b>3,444</b>	<b>3,473</b>	<b>+29</b>	<b>+0.8%</b>	<b>+66</b>	<b>-34</b>
Consultant Medicine	1	1				+0
Consultant Psychiatry	54	52	-2	-3.4%	-3	-1
Consultant Surgery				-100.0%		
<b>Consultants</b>	<b>55</b>	<b>53</b>	<b>-2</b>	<b>-3.4%</b>	<b>-3</b>	<b>-1</b>
Registrar	73	72	-1	-1.3%	-3	+6
Senior Registrar	15	15	+0	+0.2%		+3
Specialist Registrar	1	1			+1	
<b>Registrars</b>	<b>89</b>	<b>88</b>	<b>-1</b>	<b>-1.0%</b>	<b>-2</b>	<b>+8</b>
<b>SHO/ Interns</b>	<b>56</b>	<b>56</b>	<b>-1</b>	<b>-1.1%</b>	<b>-4</b>	<b>-9</b>
Dentists	34	31	-2	-6.2%	-0	-1
Other Medical	18	19	+0	+2.2%	-1	+1
<b>Medical/ Dental, other</b>	<b>52</b>	<b>50</b>	<b>-2</b>	<b>-3.2%</b>	<b>-1</b>	<b>+0</b>
<b>Medical &amp; Dental</b>	<b>253</b>	<b>247</b>	<b>-5</b>	<b>-2.0%</b>	<b>-18</b>	<b>-1</b>
Clinical Nurse/ Midwife Manager	189	195	+6	+3.1%	+11	+2
Director Nursing/Midwifery, Assistant	54	59	+5	+9.1%	+7	+7
Director of Nursing/Midwifery	13	13	-0	-2.4%	+2	+4
<b>Nurse/ Midwife Manager</b>	<b>256</b>	<b>267</b>	<b>+10</b>	<b>+4.1%</b>	<b>+19</b>	<b>+12</b>
Advanced Nurse/ Midwife Practitioner	7	7	-0	-0.7%	+0	-0
Clinical Nurse/ Midwife Specialist	73	72	-1	-1.2%	+4	+8
<b>Nurse/ Midwife Specialist &amp; AN/MP</b>	<b>80</b>	<b>79</b>	<b>-1</b>	<b>-1.2%</b>	<b>+4</b>	<b>+8</b>
Staff Midwives	1	1			+1	+1
Staff Nurse [Intellectual Disability]	72	68	-3	-4.8%	-4	-1
Staff Nurse [Psychiatric]	270	280	+10	+3.8%	-2	-6
Staff Nurses [General/ Children's]	332	355	+23	+7.0%	+17	-8
<b>Staff Nurse/ Staff Midwife</b>	<b>675</b>	<b>705</b>	<b>+30</b>	<b>+4.4%</b>	<b>+11</b>	<b>-14</b>
<b>Public Health Nurse</b>	<b>169</b>	<b>163</b>	<b>-5</b>	<b>-3.1%</b>	<b>-12</b>	<b>-3</b>
Pre-registration Nurse/ Midwife Intern	1	1			-3	-19
Pre-registration Nurse Intern (COVID-19)	49	55	+6	+12.0%	+55	+55
Post-registration Nurse/ Midwife Student	25	2	-23	-92.0%	-24	-8
Nursing/ Midwifery awaiting registration				-100.0%	-11	
<b>Nursing/ Midwifery Student</b>	<b>75</b>	<b>58</b>	<b>-17</b>	<b>-22.8%</b>	<b>+18</b>	<b>+29</b>
Nursing Education/Clinical	14	13	-1	-7.1%	+0	-1
Other Nursing/ Midwifery				-100.0%		
<b>Nursing/ Midwifery other</b>	<b>14</b>	<b>13</b>	<b>-1</b>	<b>-7.1%</b>	<b>+0</b>	<b>-1</b>
<b>Nursing &amp; Midwifery</b>	<b>1,269</b>	<b>1,285</b>	<b>+16</b>	<b>+1.3%</b>	<b>+4</b>	<b>+31</b>
Dietitians	19	19	+0	+2.2%	+5	+3
Occupational Therapists	124	124	-1	-0.7%	+5	-0
Orthoptists	5	5	-0	-0.2%	-0	+1
Physiotherapists	75	73	-1	-2.0%	-2	-6
Podiatrists & Chiropodists	1	1	-0	-16.0%		-0
Speech & Language Therapists	87	88	+1	+1.1%	+3	-2
<b>Therapy Professions</b>	<b>312</b>	<b>311</b>	<b>-1</b>	<b>-0.4%</b>	<b>+11</b>	<b>-4</b>
Audiology	15	15	-1	-5.4%	-1	-2
Clinical Engineering	5	5	+0	+0.4%		
Radiographers				-100.0%	-0	-1
<b>Health Science/ Diagnostics</b>	<b>20</b>	<b>20</b>	<b>-1</b>	<b>-4.0%</b>	<b>-1</b>	<b>-3</b>
<b>Social Care</b>	<b>8</b>	<b>8</b>	<b>+0</b>	<b>+1.3%</b>	<b>+0</b>	<b>+1</b>
<b>Social Workers</b>	<b>77</b>	<b>78</b>	<b>+1</b>	<b>+1.7%</b>	<b>-0</b>	<b>-6</b>
<b>Psychologists</b>	<b>128</b>	<b>131</b>	<b>+3</b>	<b>+2.2%</b>	<b>+7</b>	<b>+2</b>



Jun 2020 (Dec 2019 figure: 3,407)	WTE May 2020	WTE Jun 2020	WTE change since May 20	% change since May 20	WTE change since Dec 19	WTE change since Jun 19
<b>Overall</b>	<b>3,444</b>	<b>3,473</b>	<b>+29</b>	<b>+0.8%</b>	<b>+66</b>	<b>-34</b>
<b>Pharmacy</b>	<b>19</b>	<b>18</b>	<b>-0</b>	<b>-1.9%</b>	<b>-0</b>	<b>-0</b>
Counsellor Therapists	41	40	-1	-1.9%	-1	+1
Dental Hygienists	7	6	-0	-6.6%	-0	-1
Other Health & Social Care	7	7	-0	-0.0%		-1
Play Therapists/ Specialists	2	2	-0	-5.3%		
<b>H&amp;SC, Other</b>	<b>56</b>	<b>55</b>	<b>-1</b>	<b>-2.3%</b>	<b>-2</b>	<b>-1</b>
<b>Health &amp; Social Care Professionals</b>	<b>619</b>	<b>620</b>	<b>+1</b>	<b>+0.1%</b>	<b>-15</b>	<b>-11</b>
Executive Management	8	8	-0	-0.4%	+1	+3
Senior Management (VIII & GM)	38	38	+1	+1.7%	+1	+2
<b>Management (VIII &amp; above)</b>	<b>46</b>	<b>46</b>	<b>+1</b>	<b>+1.3%</b>	<b>+2</b>	<b>+5</b>
<b>Administrative/ Supervisory (V to VII)</b>	<b>120</b>	<b>123</b>	<b>+3</b>	<b>+2.2%</b>	<b>+11</b>	<b>+2</b>
<b>Clerical (III &amp; IV)</b>	<b>298</b>	<b>297</b>	<b>-1</b>	<b>-0.4%</b>	<b>-6</b>	<b>-26</b>
<b>Management &amp; Administrative</b>	<b>464</b>	<b>466</b>	<b>+2</b>	<b>+0.4%</b>	<b>-9</b>	<b>-19</b>
Catering	22	22	-0	-0.5%	-2	-2
Household Services	98	98	-0	-0.5%	-5	-12
Other Support	8	8	+0	+0.1%	-1	-1
Portering	60	60	+0	+0.1%	-1	-1
<b>Support</b>	<b>189</b>	<b>189</b>	<b>-0</b>	<b>-0.2%</b>	<b>-9</b>	<b>-17</b>
<b>Maintenance/ Technical</b>	<b>9</b>	<b>9</b>			<b>+0</b>	<b>+0</b>
<b>General Support</b>	<b>198</b>	<b>198</b>	<b>-0</b>	<b>-0.2%</b>	<b>-40</b>	<b>-17</b>
HCA, Nurse's Aide, etc.	502	517	+15	+3.0%	+17	-5
Health & Social Care Assistants	16	16	-0	-0.1%	+6	-8
<b>Health Care Assistants</b>	<b>517</b>	<b>532</b>	<b>+15</b>	<b>+2.9%</b>	<b>+22</b>	<b>-13</b>
<b>Care, other</b>	<b>123</b>	<b>124</b>	<b>+1</b>	<b>+0.9%</b>	<b>-1</b>	<b>-5</b>
<b>Patient &amp; Client Care</b>	<b>640</b>	<b>656</b>	<b>+16</b>	<b>+2.5%</b>	<b>+3</b>	<b>-18</b>

## Employment by WTE, Headcount, Gender, Full-Time /Part-Time etc.: Jun 2020

CHO 9	WTE	Headcount	WTE: no.	% Male	% female	Male WTE: no.	Female WTE: no.	% Total Perm	% Male Perm	% Female Perm	% Total Full Time	% Total Part Time	% Male FT	% Female FT
<b>Overall</b>	<b>6,700</b>	<b>7,742</b>	<b>1.16</b>	<b>17.5%</b>	<b>82.5%</b>	<b>1.07</b>	<b>1.18</b>	<b>85.0%</b>	<b>81.7%</b>	<b>85.7%</b>	<b>65.8%</b>	<b>34.2%</b>	<b>83.9%</b>	<b>62.0%</b>
Consultant Medicine	2	3	1.36		100.0%		1.36	66.7%	66.7%	66.7%	33.3%	66.7%		33.3%
Consultant Paediatrics	1	3	2.48	33.3%	66.7%	1.82	3.03	33.3%	33.3%	50.0%	33.3%	66.7%	100.0%	0.0%
Consultant Psychiatry	61	69	1.12	34.8%	65.2%	1.11	1.13	78.3%	78.3%	82.2%	79.7%	20.3%	83.3%	77.8%
<b>Consultants</b>	<b>65</b>	<b>75</b>	<b>1.16</b>	<b>33.3%</b>	<b>66.7%</b>	<b>1.13</b>	<b>1.17</b>	<b>76.0%</b>	<b>68.0%</b>	<b>80.0%</b>	<b>76.0%</b>	<b>24.0%</b>	<b>84.0%</b>	<b>72.0%</b>
Registrar	74	78	1.05	35.9%	64.1%	1.01	1.07	2.6%	2.6%	0.0%	97.4%	2.6%	96.4%	98.0%
Senior Registrar	16	16	1.00	37.5%	62.5%	1.00	1.00	0.0%	0.0%	0.0%	100.0%	0.0%	100.0%	100.0%
Specialist Registrar	4	4	1.10	25.0%	75.0%	1.00	1.14	0.0%	0.0%	0.0%	75.0%	25.0%	100.0%	66.7%
<b>Registrars</b>	<b>94</b>	<b>98</b>	<b>1.04</b>	<b>35.7%</b>	<b>64.3%</b>	<b>1.01</b>	<b>1.06</b>	<b>2.0%</b>	<b>5.7%</b>	<b>0.0%</b>	<b>96.9%</b>	<b>3.1%</b>	<b>97.1%</b>	<b>96.8%</b>
Senior House Officer	61	62	1.02	35.5%	64.5%	1.02	1.02	0.0%	0.0%	0.0%	100.0%	0.0%	100.0%	100.0%
<b>SHO/ Interns</b>	<b>61</b>	<b>62</b>	<b>1.02</b>	<b>35.5%</b>	<b>64.5%</b>	<b>1.02</b>	<b>1.02</b>	<b>0.0%</b>	<b>0.0%</b>	<b>0.0%</b>	<b>100.0%</b>	<b>0.0%</b>	<b>100.0%</b>	<b>100.0%</b>
Dentists	31	36	1.14	22.2%	77.8%	1.23	1.12	88.9%	88.9%	92.9%	72.2%	27.8%	87.5%	67.9%
Other Medical	25	33	1.32	21.2%	78.8%	1.48	1.28	72.7%	72.7%	69.2%	42.4%	57.6%	42.9%	42.3%
<b>Medical/ Dental, other</b>	<b>56</b>	<b>69</b>	<b>1.22</b>	<b>21.7%</b>	<b>78.3%</b>	<b>1.34</b>	<b>1.19</b>	<b>81.2%</b>	<b>80.0%</b>	<b>81.5%</b>	<b>58.0%</b>	<b>42.0%</b>	<b>66.7%</b>	<b>55.6%</b>
<b>Medical &amp; Dental</b>	<b>276</b>	<b>304</b>	<b>1.10</b>	<b>31.9%</b>	<b>68.1%</b>	<b>1.08</b>	<b>1.11</b>	<b>37.8%</b>	<b>32.0%</b>	<b>40.6%</b>	<b>83.6%</b>	<b>16.4%</b>	<b>89.7%</b>	<b>80.7%</b>
Clinical Nurse/ Midwife Manager	362	386	1.07	19.2%	80.8%	1.02	1.08	96.9%	96.9%	96.2%	84.5%	15.5%	97.3%	81.4%
Director Nursing/Midwifery, Assistant	68	73	1.07	16.4%	83.6%	1.01	1.08	98.6%	98.6%	98.4%	89.0%	11.0%	100.0%	86.9%
Director of Nursing/Midwifery	26	26	1.01	7.7%	92.3%	1.00	1.01	88.5%	88.5%	87.5%	92.3%	7.7%	100.0%	91.7%
<b>Nurse/ Midwife Manager</b>	<b>456</b>	<b>485</b>	<b>1.06</b>	<b>18.1%</b>	<b>81.9%</b>	<b>1.02</b>	<b>1.08</b>	<b>96.7%</b>	<b>100.0%</b>	<b>96.0%</b>	<b>85.6%</b>	<b>14.4%</b>	<b>97.7%</b>	<b>82.9%</b>
Advanced Nurse/ Midwife Practitioner	7	7	1.01		100.0%		1.01	100.0%	100.0%	100.0%	85.7%	14.3%		85.7%
Clinical Nurse/ Midwife Specialist	83	88	1.06	13.6%	86.4%	1.00	1.07	100.0%	100.0%	100.0%	85.2%	14.8%	100.0%	82.9%
<b>Nurse/ Midwife Specialist &amp; AN/MP</b>	<b>90</b>	<b>95</b>	<b>1.06</b>	<b>12.6%</b>	<b>87.4%</b>	<b>1.00</b>	<b>1.07</b>	<b>100.0%</b>	<b>100.0%</b>	<b>100.0%</b>	<b>85.3%</b>	<b>14.7%</b>	<b>100.0%</b>	<b>83.1%</b>
Staff Midwives	1	1	1.00		100.0%		1.00	0.0%	0.0%	0.0%	100.0%	0.0%		100.0%
Staff Nurse [Intellectual Disability]	408	463	1.13	8.4%	91.6%	1.04	1.14	96.1%	96.1%	96.0%	70.0%	30.0%	92.3%	67.9%
Staff Nurse [Psychiatric]	369	406	1.10	23.6%	76.4%	1.08	1.11	94.1%	94.1%	95.5%	84.0%	16.0%	89.6%	82.3%
Staff Nurses [General/ Children's]	433	498	1.15	10.0%	90.0%	1.04	1.16	90.0%	90.0%	91.1%	76.3%	23.7%	94.0%	74.3%
<b>Staff Nurse/ Staff Midwife</b>	<b>1,211</b>	<b>1,368</b>	<b>1.13</b>	<b>13.5%</b>	<b>86.5%</b>	<b>1.06</b>	<b>1.14</b>	<b>93.2%</b>	<b>88.6%</b>	<b>93.9%</b>	<b>76.5%</b>	<b>23.5%</b>	<b>91.4%</b>	<b>74.1%</b>
<b>Public Health Nurse</b>	<b>163</b>	<b>198</b>	<b>1.21</b>		<b>100.0%</b>		<b>1.21</b>	<b>94.4%</b>		<b>94.4%</b>	<b>69.2%</b>	<b>30.8%</b>		<b>69.2%</b>
Pre-registration Nurse/ Midwife Intern	1	1	2.00		100.0%		2.00	0.0%	0.0%	0.0%	100.0%	0.0%		100.0%

Pre-registration Nurse Intern (COVID-19)	83	84	1.01	11.9%	88.1%	1.00	1.01	19.0%	19.0%	21.6%	82.1%	17.9%	100.0%	79.7%
Post-registration Nurse/ Midwife Student	2	2	1.00		100.0%		1.00	50.0%	50.0%	50.0%	100.0%	0.0%		100.0%
<b>Nursing/ Midwifery Student</b>	<b>86</b>	<b>87</b>	<b>1.01</b>	<b>11.5%</b>	<b>88.5%</b>	<b>1.00</b>	<b>1.01</b>	<b>19.5%</b>	<b>0.0%</b>	<b>22.1%</b>	<b>82.8%</b>	<b>17.2%</b>	<b>100.0%</b>	<b>80.5%</b>
Nursing Education/Clinical	21	22	1.06	4.5%	95.5%	1.00	1.06	95.5%	95.5%	95.2%	86.4%	13.6%	100.0%	85.7%
<b>Nursing/ Midwifery other</b>	<b>21</b>	<b>22</b>	<b>1.06</b>	<b>4.5%</b>	<b>95.5%</b>	<b>1.00</b>	<b>1.06</b>	<b>95.5%</b>	<b>100.0%</b>	<b>95.2%</b>	<b>86.4%</b>	<b>13.6%</b>	<b>100.0%</b>	<b>85.7%</b>
<b>Nursing &amp; Midwifery</b>	<b>2,027</b>	<b>2,255</b>	<b>1.11</b>	<b>13.1%</b>	<b>86.9%</b>	<b>1.04</b>	<b>1.12</b>	<b>91.5%</b>	<b>89.5%</b>	<b>91.8%</b>	<b>78.5%</b>	<b>21.5%</b>	<b>93.9%</b>	<b>76.2%</b>
Dietitians	28	37	1.32	5.4%	94.6%	1.00	1.34	81.1%	81.1%	80.0%	48.6%	51.4%	100.0%	45.7%
Occupational Therapists	192	214	1.12	10.7%	89.3%	1.06	1.13	93.5%	93.5%	93.7%	76.6%	23.4%	91.3%	74.9%
Orthoptists	5	6	1.15	16.7%	83.3%	1.00	1.19	83.3%	83.3%	80.0%	66.7%	33.3%	100.0%	60.0%
Physiotherapists	146	172	1.18	16.3%	83.7%	1.05	1.21	91.3%	91.3%	91.0%	64.0%	36.0%	85.7%	59.7%
Podiatrists & Chiropodists	1	2	2.00	50.0%	50.0%	1.67	2.50	50.0%	50.0%	0.0%	50.0%	50.0%	100.0%	0.0%
Speech & Language Therapists	140	160	1.15	1.3%	98.8%	1.00	1.15	90.0%	90.0%	90.5%	73.8%	26.3%	100.0%	73.4%
<b>Therapy Professions</b>	<b>511</b>	<b>591</b>	<b>1.16</b>	<b>9.6%</b>	<b>90.4%</b>	<b>1.05</b>	<b>1.17</b>	<b>90.9%</b>	<b>91.2%</b>	<b>90.8%</b>	<b>70.2%</b>	<b>29.8%</b>	<b>89.5%</b>	<b>68.2%</b>
Audiology	15	17	1.17	23.5%	76.5%	1.00	1.24	100.0%	100.0%	100.0%	70.6%	29.4%	100.0%	61.5%
Clinical Engineering	14	14	1.00	85.7%	14.3%	1.00	1.00	92.9%	92.9%	50.0%	100.0%	0.0%	100.0%	100.0%
Medical Laboratory	4	4	1.00	75.0%	25.0%	1.00	1.00	75.0%	75.0%	0.0%	100.0%	0.0%	100.0%	100.0%
Radiographers	1	1	1.00		100.0%		1.00	100.0%	100.0%	100.0%	100.0%	0.0%		100.0%
<b>Health Science/ Diagnostics</b>	<b>34</b>	<b>36</b>	<b>1.07</b>	<b>52.8%</b>	<b>47.2%</b>	<b>1.00</b>	<b>1.17</b>	<b>94.4%</b>	<b>100.0%</b>	<b>88.2%</b>	<b>86.1%</b>	<b>13.9%</b>	<b>100.0%</b>	<b>70.6%</b>
<b>Social Care</b>	<b>709</b>	<b>843</b>	<b>1.19</b>	<b>12.5%</b>	<b>87.5%</b>	<b>1.06</b>	<b>1.21</b>	<b>86.7%</b>	<b>81.0%</b>	<b>87.5%</b>	<b>45.2%</b>	<b>54.8%</b>	<b>72.4%</b>	<b>41.3%</b>
<b>Social Workers</b>	<b>129</b>	<b>146</b>	<b>1.13</b>	<b>13.7%</b>	<b>86.3%</b>	<b>1.00</b>	<b>1.15</b>	<b>94.5%</b>	<b>90.0%</b>	<b>95.2%</b>	<b>74.7%</b>	<b>25.3%</b>	<b>100.0%</b>	<b>70.6%</b>
<b>Psychologists</b>	<b>174</b>	<b>193</b>	<b>1.11</b>	<b>15.0%</b>	<b>85.0%</b>	<b>1.10</b>	<b>1.11</b>	<b>67.9%</b>	<b>65.5%</b>	<b>68.3%</b>	<b>79.3%</b>	<b>20.7%</b>	<b>82.8%</b>	<b>78.7%</b>
<b>Pharmacy</b>	<b>25</b>	<b>29</b>	<b>1.16</b>	<b>13.8%</b>	<b>86.2%</b>	<b>1.21</b>	<b>1.15</b>	<b>55.2%</b>	<b>25.0%</b>	<b>60.0%</b>	<b>72.4%</b>	<b>27.6%</b>	<b>75.0%</b>	<b>72.0%</b>
Counsellor Therapists	40	45	1.11	31.1%	68.9%	1.02	1.16	91.1%	91.1%	96.8%	80.0%	20.0%	92.9%	74.2%
Dental Hygienists	6	8	1.31		100.0%		1.31	100.0%	100.0%	100.0%	25.0%	75.0%		25.0%
Other Health & Social Care	21	27	1.26	14.8%	85.2%	1.27	1.26	85.2%	85.2%	82.6%	51.9%	48.1%	75.0%	47.8%
Play Therapists/ Specialists	2	2	1.11		100.0%		1.11	100.0%	100.0%	100.0%	100.0%	0.0%		100.0%
<b>H&amp;SC, Other</b>	<b>70</b>	<b>82</b>	<b>1.17</b>	<b>22.0%</b>	<b>78.0%</b>	<b>1.07</b>	<b>1.21</b>	<b>90.2%</b>	<b>83.3%</b>	<b>92.2%</b>	<b>65.9%</b>	<b>34.1%</b>	<b>88.9%</b>	<b>59.4%</b>
<b>Health &amp; Social Care</b>	<b>1,652</b>	<b>1,920</b>	<b>1.16</b>	<b>13.1%</b>	<b>86.9%</b>	<b>1.06</b>	<b>1.18</b>	<b>86.5%</b>	<b>82.9%</b>	<b>87.1%</b>	<b>60.6%</b>	<b>39.4%</b>	<b>82.9%</b>	<b>57.3%</b>
Executive Management	12	12	1.00	8.3%	91.7%	1.00	1.00	83.3%	83.3%	81.8%	100.0%	0.0%	100.0%	100.0%
Senior Management (VIII & GM)	69	70	1.02	30.0%	70.0%	1.00	1.02	98.6%	98.6%	100.0%	95.7%	4.3%	100.0%	93.9%
<b>Management (VIII &amp; above)</b>	<b>81</b>	<b>82</b>	<b>1.01</b>	<b>26.8%</b>	<b>73.2%</b>	<b>1.00</b>	<b>1.02</b>	<b>96.3%</b>	<b>95.5%</b>	<b>96.7%</b>	<b>96.3%</b>	<b>3.7%</b>	<b>100.0%</b>	<b>95.0%</b>
<b>Administrative/ Supervisory (V to VII)</b>	<b>220</b>	<b>242</b>	<b>1.10</b>	<b>16.5%</b>	<b>83.5%</b>	<b>1.00</b>	<b>1.12</b>	<b>93.4%</b>	<b>100.0%</b>	<b>92.1%</b>	<b>77.3%</b>	<b>22.7%</b>	<b>100.0%</b>	<b>72.8%</b>
<b>Clerical (III &amp; IV)</b>	<b>443</b>	<b>527</b>	<b>1.19</b>	<b>11.6%</b>	<b>88.4%</b>	<b>1.11</b>	<b>1.20</b>	<b>86.3%</b>	<b>78.7%</b>	<b>87.3%</b>	<b>62.2%</b>	<b>37.8%</b>	<b>82.0%</b>	<b>59.7%</b>
<b>Management &amp; Administrative</b>	<b>744</b>	<b>851</b>	<b>1.14</b>	<b>14.5%</b>	<b>85.5%</b>	<b>1.05</b>	<b>1.16</b>	<b>89.3%</b>	<b>88.6%</b>	<b>89.4%</b>	<b>69.8%</b>	<b>30.2%</b>	<b>91.1%</b>	<b>66.2%</b>
Catering	56	66	1.17	42.4%	57.6%	1.06	1.27	95.5%	95.5%	94.7%	63.6%	36.4%	89.3%	44.7%

Household Services	221	289	1.31	10.7%	89.3%	1.20	1.32	88.6%	88.6%	89.5%	39.8%	60.2%	67.7%	36.4%
Other Support	91	156	1.71	27.6%	72.4%	1.34	1.90	63.5%	63.5%	58.4%	14.1%	85.9%	32.6%	7.1%
Portering	75	79	1.05	93.7%	6.3%	1.05	1.10	81.0%	81.0%	60.0%	89.9%	10.1%	90.5%	80.0%
<b>Support</b>	<b>443</b>	<b>590</b>	<b>1.33</b>	<b>29.8%</b>	<b>70.2%</b>	<b>1.14</b>	<b>1.43</b>	<b>81.7%</b>	<b>83.0%</b>	<b>81.2%</b>	<b>42.4%</b>	<b>57.6%</b>	<b>72.2%</b>	<b>29.7%</b>
<b>Maintenance/ Technical</b>	<b>35</b>	<b>37</b>	<b>1.05</b>	<b>94.6%</b>	<b>5.4%</b>	<b>1.05</b>	<b>1.06</b>	<b>97.3%</b>	<b>97.1%</b>	<b>100.0%</b>	<b>70.3%</b>	<b>29.7%</b>	<b>71.4%</b>	<b>50.0%</b>
<b>General Support</b>	<b>479</b>	<b>627</b>	<b>1.31</b>	<b>33.7%</b>	<b>66.3%</b>	<b>1.12</b>	<b>1.43</b>	<b>82.6%</b>	<b>85.3%</b>	<b>81.3%</b>	<b>44.0%</b>	<b>56.0%</b>	<b>72.0%</b>	<b>29.8%</b>
HCA, Nurse's Aide, etc.	1,286	1,516	1.18	19.7%	80.3%	1.09	1.20	82.0%	82.0%	81.4%	57.1%	42.9%	77.9%	52.1%
Health & Social Care Assistants	20	22	1.11	13.6%	86.4%	1.00	1.13	40.9%	40.9%	42.1%	81.8%	18.2%	100.0%	78.9%
<b>Health Care Assistants</b>	<b>1,305</b>	<b>1,538</b>	<b>1.18</b>	<b>19.6%</b>	<b>80.4%</b>	<b>1.09</b>	<b>1.20</b>	<b>81.4%</b>	<b>84.1%</b>	<b>80.8%</b>	<b>57.5%</b>	<b>42.5%</b>	<b>78.1%</b>	<b>52.5%</b>
<b>Care, other</b>	<b>218</b>	<b>247</b>	<b>1.14</b>	<b>31.6%</b>	<b>68.4%</b>	<b>1.07</b>	<b>1.17</b>	<b>85.0%</b>	<b>80.8%</b>	<b>87.0%</b>	<b>62.3%</b>	<b>37.7%</b>	<b>84.6%</b>	<b>52.1%</b>
<b>Patient &amp; Client Care</b>	<b>1,523</b>	<b>1,785</b>	<b>1.17</b>	<b>21.2%</b>	<b>78.8%</b>	<b>1.08</b>	<b>1.20</b>	<b>81.9%</b>	<b>83.4%</b>	<b>81.5%</b>	<b>58.2%</b>	<b>41.8%</b>	<b>79.4%</b>	<b>52.4%</b>

## Employment by WTE, Headcount, Gender, Full-Time /Part-Time etc.: Jun 2020

CHO 9	WTE	Headcount	WTE: no.	% Male	% female	Male WTE: no.	Female WTE: no.	% Total Perm	% Male Perm	% Female Perm	% Total Full Time	% Total Part Time	% Male FT	% Female FT
<b>Overall</b>	<b>6,700</b>	<b>7,742</b>	<b>1.16</b>	<b>17.5%</b>	<b>82.5%</b>	<b>1.07</b>	<b>1.18</b>	<b>85.0%</b>	<b>81.7%</b>	<b>85.7%</b>	<b>65.8%</b>	<b>34.2%</b>	<b>83.9%</b>	<b>62.0%</b>
Community Health & Wellbeing	8	9	1.09		100.0%		1.09	100.0%	100.0%	100.0%	66.7%	33.3%		
Mental Health	1,308	1,426	1.09	27.4%	72.6%	1.05	1.11	83.0%	83.0%	84.3%	84.4%	15.6%	93.6%	93.6%
Primary Care	1,251	1,442	1.15	14.8%	85.2%	1.06	1.17	81.6%	81.6%	82.8%	72.3%	27.7%	92.0%	92.0%
HSE	1,118	1,269	1.14	24.5%	75.5%	1.06	1.16	84.2%	84.2%	84.4%	76.9%	23.1%	89.1%	89.1%
Section 38 Voluntary Agencies	3,015	3,596	1.19	12.3%	87.7%	1.11	1.21	87.4%	87.4%	87.6%	51.9%	48.1%	67.7%	67.7%
Social Care	4,133	4,865	1.18	15.5%	84.5%	1.09	1.19	86.6%	86.6%	86.9%	58.5%	41.5%	76.5%	76.5%

## CHO 9 Skills Mix by Staff Grouping: June 2020

Jun 2020 (Dec 2018 figure: 6,634)	WTE Dec 2015	WTE Dec 2016	WTE Dec 2017	WTE Dec 2018	WTE Dec 2019	WTE May 2020	WTE Jun 2020
<b>Overall</b>	<b>6,089</b>	<b>6,286</b>	<b>6,438</b>	<b>6,634</b>	<b>6,582</b>	<b>6,670</b>	<b>6,700</b>
Consultant Medicine	1.7%	2.3%	2.6%	0.6%	0.6%	0.8%	0.8%
Consultant Paediatrics	0.5%	0.5%	0.4%	0.4%	0.4%	0.4%	0.4%
Consultant Psychiatry	21.9%	21.3%	21.8%	21.9%	22.7%	22.5%	22.2%
Consultant Surgery	0.4%	0.3%	0.0%	0.0%			
<b>Consultants</b>	<b>24.5%</b>	<b>24.5%</b>	<b>24.8%</b>	<b>23.0%</b>	<b>23.6%</b>	<b>23.7%</b>	<b>23.5%</b>
Registrar	23.2%	21.3%	22.5%	25.4%	27.0%	26.7%	26.9%
Senior Registrar	4.4%	5.1%	3.9%	5.3%	5.5%	5.7%	5.8%
Specialist Registrar	1.1%	1.4%	1.8%	0.3%	1.4%	1.4%	1.3%
<b>Registrars</b>	<b>28.8%</b>	<b>27.9%</b>	<b>28.2%</b>	<b>31.1%</b>	<b>33.9%</b>	<b>33.8%</b>	<b>34.0%</b>
Interns	1.4%	1.8%	1.4%	0.7%	0.7%		
Senior House Officer	19.0%	19.5%	21.2%	21.3%	22.2%	21.8%	22.0%
<b>SHO/ Interns</b>	<b>20.4%</b>	<b>21.3%</b>	<b>22.6%</b>	<b>22.0%</b>	<b>22.8%</b>	<b>21.8%</b>	<b>22.0%</b>
Dentists	11.2%	11.7%	10.7%	11.0%	10.9%	11.9%	11.4%
Other Medical	15.1%	14.6%	13.7%	13.0%	8.7%	8.8%	9.1%
<b>Medical/ Dental, other</b>	<b>26.3%</b>	<b>26.3%</b>	<b>24.4%</b>	<b>24.0%</b>	<b>19.6%</b>	<b>20.7%</b>	<b>20.4%</b>
<b>Medical &amp; Dental</b>	<b>4.5%</b>	<b>4.4%</b>	<b>4.4%</b>	<b>4.4%</b>	<b>4.4%</b>	<b>100.0%</b>	<b>4.1%</b>
Clinical Nurse/ Midwife Manager	18.9%	18.9%	19.2%	18.5%	17.7%	17.7%	17.9%
Director Nursing/Midwifery, Assistant	2.9%	3.1%	3.0%	2.8%	3.1%	3.1%	3.4%
Director of Nursing/Midwifery	1.3%	1.3%	1.3%	1.1%	1.3%	1.3%	1.3%
<b>Nurse/ Midwife Manager</b>	<b>23.2%</b>	<b>23.3%</b>	<b>23.5%</b>	<b>22.3%</b>	<b>22.1%</b>	<b>22.1%</b>	<b>22.5%</b>
Advanced Nurse/ Midwife Practitioner	0.0%	0.1%	0.2%	0.3%	0.3%	0.3%	0.3%
Clinical Nurse/ Midwife Specialist	2.4%	2.9%	3.8%	3.7%	4.0%	4.2%	4.1%
<b>Nurse/ Midwife Specialist &amp; AN/MP</b>	<b>2.5%</b>	<b>3.0%</b>	<b>4.0%</b>	<b>4.1%</b>	<b>4.3%</b>	<b>4.5%</b>	<b>4.4%</b>
Graduate Nursing/ Midwifery	0.0%						
Staff Midwives						0.0%	0.0%
Staff Nurse [Intellectual Disability]	21.9%	22.0%	22.1%	21.2%	21.4%	20.5%	20.1%
Staff Nurse [Psychiatric]	19.8%	19.5%	18.7%	19.0%	18.9%	17.9%	18.2%
Staff Nurses [General/ Children's]	20.8%	21.0%	20.2%	21.4%	20.6%	20.4%	21.4%
<b>Staff Nurse/ Staff Midwife</b>	<b>62.6%</b>	<b>62.4%</b>	<b>61.1%</b>	<b>61.6%</b>	<b>60.8%</b>	<b>58.8%</b>	<b>59.7%</b>
<b>Public Health Nurse</b>	<b>9.1%</b>	<b>9.0%</b>	<b>8.8%</b>	<b>8.6%</b>	<b>8.9%</b>	<b>8.4%</b>	<b>8.1%</b>
Pre-registration Nurse/ Midwife Intern	0.5%	0.2%	0.1%	1.0%	0.9%	0.0%	0.0%
Pre-registration Nurse Intern (COVID-19)						3.8%	4.1%
Post-registration Nurse/ Midwife Student	1.3%	1.0%	1.4%	1.1%	1.3%	1.2%	0.1%
Nursing/ Midwifery awaiting registration				0.1%	0.5%		
<b>Nursing/ Midwifery Student</b>	<b>1.8%</b>	<b>1.2%</b>	<b>1.5%</b>	<b>2.2%</b>	<b>2.8%</b>	<b>5.1%</b>	<b>4.2%</b>
<b>Nursing/ Midwifery other</b>	<b>0.9%</b>	<b>1.0%</b>	<b>1.1%</b>	<b>1.2%</b>	<b>1.0%</b>	<b>1.1%</b>	<b>1.0%</b>
<b>Nursing &amp; Midwifery</b>	<b>32.9%</b>	<b>31.1%</b>	<b>30.6%</b>	<b>30.4%</b>	<b>30.6%</b>	<b>100.0%</b>	<b>30.2%</b>
Dietitians	1.3%	1.6%	1.5%	1.5%	1.3%	1.7%	1.7%
Occupational Therapists	12.3%	11.4%	11.9%	11.4%	11.4%	11.7%	11.6%
Orthoptists	0.1%	0.1%	0.1%	0.2%	0.3%	0.3%	0.3%
Physiotherapists	10.0%	9.1%	9.0%	8.7%	9.0%	8.9%	8.8%
Podiatrists & Chiropodists			0.1%	0.1%	0.1%	0.1%	0.1%
Speech & Language Therapists	8.2%	8.8%	8.9%	8.9%	8.3%	8.4%	8.4%
<b>Therapy Professions</b>	<b>32.0%</b>	<b>30.8%</b>	<b>31.4%</b>	<b>30.8%</b>	<b>30.4%</b>	<b>31.1%</b>	<b>31.0%</b>
Audiology	1.0%	0.8%	1.2%	1.1%	0.9%	0.9%	0.9%
Clinical Engineering	1.4%	1.1%	1.0%	1.0%	1.0%	0.9%	0.8%
Medical Laboratory	0.2%	0.2%	0.2%	0.3%	0.2%	0.2%	0.2%
Radiographers	0.2%	0.1%	0.1%	0.1%	0.1%	0.1%	0.1%
<b>Health Science/ Diagnostics</b>	<b>2.8%</b>	<b>2.3%</b>	<b>2.5%</b>	<b>2.5%</b>	<b>2.3%</b>	<b>2.1%</b>	<b>2.0%</b>
<b>Social Care</b>	<b>36.5%</b>	<b>39.9%</b>	<b>39.7%</b>	<b>41.5%</b>	<b>43.4%</b>	<b>42.7%</b>	<b>42.9%</b>
<b>Social Workers</b>	<b>9.6%</b>	<b>8.3%</b>	<b>8.5%</b>	<b>8.3%</b>	<b>7.8%</b>	<b>7.8%</b>	<b>7.8%</b>

Jun 2020 (Dec 2018 figure: 6,634)	WTE Dec 2015	WTE Dec 2016	WTE Dec 2017	WTE Dec 2018	WTE Dec 2019	WTE May 2020	WTE Jun 2020
<b>Overall</b>	<b>6,089</b>	<b>6,286</b>	<b>6,438</b>	<b>6,634</b>	<b>6,582</b>	<b>6,670</b>	<b>6,700</b>
<b>Psychologists</b>	<b>11.4%</b>	<b>11.4%</b>	<b>10.8%</b>	<b>10.8%</b>	<b>10.2%</b>	<b>10.5%</b>	<b>10.6%</b>
<b>Pharmacy</b>	<b>2.3%</b>	<b>2.4%</b>	<b>2.2%</b>	<b>1.9%</b>	<b>1.5%</b>	<b>1.5%</b>	<b>1.5%</b>
Counsellor Therapists	2.9%	2.5%	2.6%	2.4%	2.6%	2.5%	2.4%
Dental Hygienists	0.5%	0.4%	0.4%	0.4%	0.4%	0.4%	0.4%
Other Health & Social Care	1.9%	1.8%	1.6%	1.4%	1.2%	1.3%	1.3%
Play Therapists/ Specialists	0.2%	0.1%	0.2%	0.2%	0.1%	0.1%	0.1%
<b>H&amp;SC, Other</b>	<b>5.4%</b>	<b>4.8%</b>	<b>4.7%</b>	<b>4.3%</b>	<b>4.4%</b>	<b>4.3%</b>	<b>4.2%</b>
<b>Health &amp; Social Care Professionals</b>	<b>21.8%</b>	<b>23.3%</b>	<b>23.8%</b>	<b>23.8%</b>	<b>23.9%</b>	<b>100.0%</b>	<b>24.7%</b>
Executive Management	1.1%	0.8%	1.0%	1.2%	1.4%	1.6%	1.6%
Senior Management (VIII & GM)	7.9%	7.8%	8.6%	8.4%	9.3%	9.2%	9.3%
<b>Management (VIII &amp; above)</b>	<b>9.0%</b>	<b>8.6%</b>	<b>9.7%</b>	<b>9.6%</b>	<b>10.8%</b>	<b>10.8%</b>	<b>10.9%</b>
Middle Management (V-VII)	24.3%	26.2%	24.9%	27.0%	27.0%	28.1%	28.4%
Other Administrative	1.5%	1.4%	1.6%	1.7%	1.2%	1.2%	1.2%
<b>Administrative/ Supervisory (V to VII)</b>	<b>25.8%</b>	<b>27.6%</b>	<b>26.5%</b>	<b>28.7%</b>	<b>28.1%</b>	<b>29.2%</b>	<b>29.6%</b>
<b>Clerical (III &amp; IV)</b>	<b>65.2%</b>	<b>63.8%</b>	<b>63.8%</b>	<b>61.6%</b>	<b>61.1%</b>	<b>60.0%</b>	<b>59.6%</b>
<b>Management &amp; Administrative</b>	<b>10.2%</b>	<b>10.1%</b>	<b>10.6%</b>	<b>11.3%</b>	<b>11.3%</b>	<b>100.0%</b>	<b>11.1%</b>
Catering	11.7%	12.3%	12.3%	12.2%	12.5%	11.7%	11.8%
Household Services	43.9%	43.0%	41.6%	43.7%	45.3%	46.3%	46.1%
Other Support	22.8%	23.0%	24.3%	22.8%	19.4%	19.0%	19.1%
Portering	14.6%	15.4%	14.8%	14.3%	15.5%	15.6%	15.6%
<b>Support</b>	<b>93.0%</b>	<b>93.6%</b>	<b>93.1%</b>	<b>93.0%</b>	<b>92.8%</b>	<b>92.6%</b>	<b>92.6%</b>
<b>Maintenance/ Technical</b>	<b>7.0%</b>	<b>6.4%</b>	<b>6.9%</b>	<b>7.0%</b>	<b>7.2%</b>	<b>7.4%</b>	<b>7.4%</b>
<b>General Support</b>	<b>9.7%</b>	<b>8.8%</b>	<b>8.4%</b>	<b>7.9%</b>	<b>7.9%</b>	<b>100.0%</b>	<b>7.1%</b>
HCA, Nurse's Aide, etc.	83.8%	84.6%	85.6%	84.2%	84.4%	84.3%	84.4%
Health & Social Care Assistants	0.8%	0.7%	0.8%	1.5%	0.8%	1.3%	1.3%
<b>Health Care Assistants</b>	<b>84.5%</b>	<b>85.3%</b>	<b>86.4%</b>	<b>85.7%</b>	<b>85.3%</b>	<b>85.6%</b>	<b>85.7%</b>
Community Welfare Officers	0.1%	0.1%					
Other Care Grades	15.4%	14.6%	13.6%	14.3%	14.7%	14.4%	14.3%
<b>Care, other</b>	<b>15.5%</b>	<b>14.7%</b>	<b>13.6%</b>	<b>14.3%</b>	<b>14.7%</b>	<b>14.4%</b>	<b>14.3%</b>
<b>Patient &amp; Client Care</b>	<b>20.9%</b>	<b>22.2%</b>	<b>22.3%</b>	<b>22.4%</b>	<b>22.6%</b>	<b>100.0%</b>	<b>22.7%</b>
<b>Total</b>	<b>100 %</b>	<b>100 %</b>	<b>100 %</b>	<b>100 %</b>	<b>100%</b>	<b>100 %</b>	<b>100 %</b>



## CHO 9 Skills Mix by Care Group: June 2020

Jun 2020 (Dec 2018 figure: 1,301)	WTE Dec 2015	WTE Dec 2016	WTE Dec 2017	WTE Dec 2018	WTE Dec 2019	WTE May 2020	WTE Jun 2020
<b>Mental Health</b>	<b>1,223</b>	<b>1,217</b>	<b>1,220</b>	<b>1,301</b>	<b>1,272</b>	<b>1,300</b>	<b>1,308</b>
Consultant Medicine			0.1%	0.1%			
Consultant Psychiatry	41.3%	37.8%	36.3%	37.8%	37.3%	38.1%	37.7%
<b>Consultants</b>	<b>41.3%</b>	<b>37.8%</b>	<b>36.3%</b>	<b>37.8%</b>	<b>37.3%</b>	<b>38.1%</b>	<b>37.7%</b>
Registrar	16.6%	15.3%	11.4%	11.0%	11.9%	14.7%	15.2%
Senior Registrar	9.4%	10.6%	8.1%	10.6%	11.2%	11.7%	12.0%
Specialist Registrar		0.8%	0.8%				
<b>Registrars</b>	<b>26.0%</b>	<b>26.7%</b>	<b>20.3%</b>	<b>21.6%</b>	<b>23.1%</b>	<b>26.4%</b>	<b>27.2%</b>
Interns	3.4%	4.0%	3.2%	1.5%	1.5%		
Senior House Officer	29.3%	30.7%	40.1%	39.1%	38.2%	35.5%	35.1%
<b>SHO/ Interns</b>	<b>32.7%</b>	<b>34.7%</b>	<b>43.4%</b>	<b>40.6%</b>	<b>39.6%</b>	<b>35.5%</b>	<b>35.1%</b>
<b>Medical/ Dental, other</b>		<b>0.8%</b>					
<b>Medical &amp; Dental</b>	<b>9.8%</b>	<b>10.2%</b>	<b>10.1%</b>	<b>10.4%</b>	<b>10.7%</b>	<b>9.5%</b>	<b>9.5%</b>
Clinical Nurse/ Midwife Manager	22.0%	21.3%	20.3%	19.3%	18.5%	17.7%	17.8%
Director Nursing/Midwifery, Assistant	3.6%	3.5%	3.9%	3.4%	3.7%	3.9%	3.8%
Director of Nursing/Midwifery	0.7%	0.9%	0.6%	0.3%	0.5%	0.5%	0.5%
<b>Nurse/ Midwife Manager</b>	<b>26.3%</b>	<b>25.7%</b>	<b>24.7%</b>	<b>23.0%</b>	<b>22.7%</b>	<b>22.1%</b>	<b>22.2%</b>
Advanced Nurse/ Midwife Practitioner		0.2%	0.4%	1.0%	1.0%	1.0%	0.9%
Clinical Nurse/ Midwife Specialist	5.4%	7.1%	10.0%	9.8%	10.2%	10.2%	9.9%
<b>Nurse/ Midwife Specialist &amp; AN/MP</b>	<b>5.4%</b>	<b>7.3%</b>	<b>10.4%</b>	<b>10.8%</b>	<b>11.2%</b>	<b>11.2%</b>	<b>10.9%</b>
Staff Midwives						0.2%	0.2%
Staff Nurse [Intellectual Disability]	0.3%	0.3%	0.3%	0.3%	0.3%	0.2%	0.1%
Staff Nurse [Psychiatric]	61.6%	61.0%	59.1%	58.5%	57.9%	54.6%	54.4%
Staff Nurses [General/ Children's]	3.2%	2.9%	2.7%	2.5%	2.2%	2.1%	2.0%
<b>Staff Nurse/ Staff Midwife</b>	<b>65.1%</b>	<b>64.2%</b>	<b>62.1%</b>	<b>61.4%</b>	<b>60.5%</b>	<b>57.0%</b>	<b>56.7%</b>
<b>Public Health Nurse</b>		<b>0.2%</b>	<b>0.2%</b>				
Pre-registration Nurse/ Midwife Intern	1.3%	0.6%	0.2%	2.0%	1.7%	0.1%	0.1%
Pre-registration Nurse Intern (COVID-19)						7.8%	8.3%
Nursing/ Midwifery awaiting registration				0.5%	1.9%		
<b>Nursing/ Midwifery Student</b>	<b>1.3%</b>	<b>0.6%</b>	<b>0.2%</b>	<b>2.5%</b>	<b>3.6%</b>	<b>7.8%</b>	<b>8.4%</b>
Nursing Education/Clinical	1.9%	2.1%	2.5%	2.3%	2.0%	1.9%	1.8%
<b>Nursing/ Midwifery other</b>	<b>1.9%</b>	<b>2.1%</b>	<b>2.5%</b>	<b>2.3%</b>	<b>2.0%</b>	<b>1.9%</b>	<b>1.8%</b>
<b>Nursing &amp; Midwifery</b>	<b>47.8%</b>	<b>47.0%</b>	<b>46.3%</b>	<b>45.7%</b>	<b>46.8%</b>	<b>48.0%</b>	<b>48.0%</b>
Dietitians		1.2%	0.9%	0.8%	0.9%	0.8%	0.9%
Occupational Therapists	27.2%	23.5%	25.8%	26.7%	27.5%	27.9%	27.7%
Physiotherapists	0.4%	0.4%	0.4%	0.6%	0.7%	0.6%	0.6%
Speech & Language Therapists	6.3%	6.9%	4.8%	5.7%	3.7%	6.1%	5.5%
<b>Therapy Professions</b>	<b>34.0%</b>	<b>32.0%</b>	<b>32.0%</b>	<b>33.8%</b>	<b>32.8%</b>	<b>35.4%</b>	<b>34.8%</b>
<b>Social Care</b>	<b>0.6%</b>	<b>0.6%</b>	<b>0.6%</b>	<b>0.6%</b>	<b>0.5%</b>	<b>0.5%</b>	<b>0.5%</b>
<b>Social Workers</b>	<b>28.3%</b>	<b>24.3%</b>	<b>28.3%</b>	<b>26.1%</b>	<b>26.0%</b>	<b>24.4%</b>	<b>24.7%</b>
<b>Psychologists</b>	<b>24.2%</b>	<b>29.3%</b>	<b>27.1%</b>	<b>28.2%</b>	<b>27.3%</b>	<b>27.4%</b>	<b>28.1%</b>
<b>Pharmacy</b>	<b>4.3%</b>	<b>5.5%</b>	<b>5.3%</b>	<b>4.3%</b>	<b>4.7%</b>	<b>4.1%</b>	<b>4.1%</b>
Counsellor Therapists	7.5%	7.6%	6.5%	6.0%	8.1%	7.6%	7.3%
Other Health & Social Care	1.2%	0.7%	0.4%	1.0%	0.6%	0.6%	0.6%
<b>H&amp;SC, Other</b>	<b>8.6%</b>	<b>8.2%</b>	<b>6.8%</b>	<b>7.0%</b>	<b>8.7%</b>	<b>8.2%</b>	<b>7.9%</b>
<b>Health &amp; Social Care Professionals</b>	<b>13.0%</b>	<b>13.2%</b>	<b>13.7%</b>	<b>14.0%</b>	<b>14.3%</b>	<b>13.4%</b>	<b>13.4%</b>
<b>Management (VIII &amp; above)</b>	<b>1.8%</b>	<b>1.8%</b>	<b>1.6%</b>	<b>1.5%</b>	<b>3.7%</b>	<b>3.9%</b>	<b>3.9%</b>
<b>Administrative/ Supervisory (V to VII)</b>	<b>16.3%</b>	<b>18.0%</b>	<b>21.1%</b>	<b>20.5%</b>	<b>20.4%</b>	<b>21.9%</b>	<b>22.0%</b>
<b>Clerical (III &amp; IV)</b>	<b>81.8%</b>	<b>80.2%</b>	<b>77.3%</b>	<b>78.1%</b>	<b>76.0%</b>	<b>74.2%</b>	<b>74.1%</b>



Jun 2020 (Dec 2018 figure: 1,301)	WTE Dec 2015	WTE Dec 2016	WTE Dec 2017	WTE Dec 2018	WTE Dec 2019	WTE May 2020	WTE Jun 2020
<b>Mental Health</b>	<b>1,223</b>	<b>1,217</b>	<b>1,220</b>	<b>1,301</b>	<b>1,272</b>	<b>1,300</b>	<b>1,308</b>
<b>Management &amp; Administrative</b>	<b>9.0%</b>	<b>9.3%</b>	<b>10.3%</b>	<b>10.5%</b>	<b>10.8%</b>	<b>9.8%</b>	<b>9.8%</b>
<b>Support</b>	<b>91.4%</b>	<b>92.0%</b>	<b>91.4%</b>	<b>91.4%</b>	<b>90.4%</b>	<b>90.3%</b>	<b>90.3%</b>
<b>Maintenance/ Technical</b>	<b>8.6%</b>	<b>8.0%</b>	<b>8.6%</b>	<b>8.6%</b>	<b>9.6%</b>	<b>9.7%</b>	<b>9.7%</b>
<b>General Support</b>	<b>11.3%</b>	<b>11.2%</b>	<b>10.4%</b>	<b>9.8%</b>	<b>10.1%</b>	<b>8.6%</b>	<b>8.6%</b>
HCA, Nurse's Aide, etc.	96.5%	96.4%	96.4%	92.9%	87.2%	88.9%	89.0%
Health & Social Care Assistants	1.7%	2.7%	1.8%	2.4%	3.6%	2.2%	2.2%
<b>Health Care Assistants</b>	<b>98.2%</b>	<b>99.1%</b>	<b>98.2%</b>	<b>95.4%</b>	<b>90.8%</b>	<b>91.1%</b>	<b>91.1%</b>
<b>Care, other</b>	<b>1.8%</b>	<b>0.9%</b>	<b>1.8%</b>	<b>4.6%</b>	<b>9.2%</b>	<b>8.9%</b>	<b>8.9%</b>
<b>Patient &amp; Client Care</b>	<b>9.1%</b>	<b>9.1%</b>	<b>9.1%</b>	<b>9.5%</b>	<b>9.8%</b>	<b>10.6%</b>	<b>10.6%</b>
<b>Total</b>	<b>100 %</b>	<b>100 %</b>	<b>100 %</b>	<b>100 %</b>	<b>100 %</b>	<b>100 %</b>	<b>100 %</b>

Jun 2020 (Dec 2018 figure: 1,300)	WTE Dec 2015	WTE Dec 2016	WTE Dec 2017	WTE Dec 2018	WTE Dec 2019	WTE May 2020	WTE Jun 2020
<b>Primary Care</b>	<b>1,207</b>	<b>1,162</b>	<b>1,239</b>	<b>1,300</b>	<b>1,247</b>	<b>1,249</b>	<b>1,251</b>
Consultant Psychiatry	3.4%	3.5%	5.6%	2.9%	3.9%	4.0%	4.1%
<b>Consultants</b>	<b>3.4%</b>	<b>3.5%</b>	<b>5.6%</b>	<b>2.9%</b>	<b>3.9%</b>	<b>4.0%</b>	<b>4.1%</b>
<b>Registrars</b>	<b>33.1%</b>	<b>31.2%</b>	<b>37.4%</b>	<b>43.7%</b>	<b>50.3%</b>	<b>46.3%</b>	<b>46.8%</b>
<b>SHO/ Interns</b>	<b>9.1%</b>	<b>8.7%</b>	<b>2.6%</b>		<b>0.9%</b>	<b>3.6%</b>	<b>3.7%</b>
Dentists	25.9%	28.5%	26.5%	27.1%	28.5%	30.5%	29.2%
Other Medical	28.5%	28.1%	27.8%	26.3%	16.4%	15.6%	16.2%
<b>Medical/ Dental, other</b>	<b>54.4%</b>	<b>56.6%</b>	<b>54.3%</b>	<b>53.4%</b>	<b>44.8%</b>	<b>46.1%</b>	<b>45.4%</b>
<b>Medical &amp; Dental</b>	<b>9.9%</b>	<b>9.8%</b>	<b>9.2%</b>	<b>9.1%</b>	<b>9.5%</b>	<b>8.6%</b>	<b>8.6%</b>
Clinical Nurse/ Midwife Manager	3.7%	4.0%	4.7%	4.2%	4.3%	4.5%	4.6%
Director Nursing/Midwifery, Assistant	5.6%	6.1%	5.3%	5.7%	5.5%	5.0%	5.7%
Director of Nursing/Midwifery	0.9%	0.6%	0.8%	0.8%	0.9%	1.8%	2.0%
<b>Nurse/ Midwife Manager</b>	<b>10.2%</b>	<b>10.7%</b>	<b>10.9%</b>	<b>10.7%</b>	<b>10.7%</b>	<b>11.2%</b>	<b>12.3%</b>
<b>Nurse/ Midwife Specialist &amp; AN/MP</b>	<b>0.6%</b>	<b>1.3%</b>	<b>2.3%</b>	<b>1.5%</b>	<b>1.8%</b>	<b>1.9%</b>	<b>1.9%</b>
<b>Staff Nurse/ Staff Midwife</b>	<b>28.6%</b>	<b>28.3%</b>	<b>30.7%</b>	<b>32.3%</b>	<b>29.1%</b>	<b>29.9%</b>	<b>37.1%</b>
<b>Public Health Nurse</b>	<b>52.5%</b>	<b>53.3%</b>	<b>47.9%</b>	<b>48.7%</b>	<b>50.8%</b>	<b>49.7%</b>	<b>48.1%</b>
<b>Nursing/ Midwifery Student</b>	<b>7.5%</b>	<b>5.8%</b>	<b>7.8%</b>	<b>6.2%</b>	<b>7.5%</b>	<b>7.4%</b>	<b>0.6%</b>
Nursing Education/Clinical	0.3%	0.3%	0.3%	0.3%			
Other Nursing/ Midwifery	0.3%	0.3%	0.1%	0.3%			
<b>Nursing/ Midwifery other</b>	<b>0.6%</b>	<b>0.6%</b>	<b>0.4%</b>	<b>0.6%</b>			
<b>Nursing &amp; Midwifery</b>	<b>28.6%</b>	<b>28.4%</b>	<b>29.0%</b>	<b>27.3%</b>	<b>28.4%</b>	<b>27.2%</b>	<b>27.2%</b>
Dietitians	2.3%	2.8%	2.8%	2.6%	2.2%	2.3%	2.3%
Occupational Therapists	17.4%	16.8%	17.3%	14.9%	15.8%	16.2%	15.8%
Orthoptists	0.4%	0.5%	0.4%	1.0%	1.5%	1.5%	1.5%
Physiotherapists	18.4%	17.2%	16.3%	15.3%	17.0%	16.6%	16.5%
Podiatrists & Chiropodists			0.3%	0.3%	0.3%	0.3%	0.3%
Speech & Language Therapists	15.9%	18.5%	20.4%	20.3%	19.1%	18.3%	18.8%
<b>Therapy Professions</b>	<b>54.4%</b>	<b>55.8%</b>	<b>57.4%</b>	<b>54.4%</b>	<b>55.8%</b>	<b>55.3%</b>	<b>55.2%</b>
Audiology				5.0%	4.3%	4.4%	4.2%
Clinical Engineering				1.4%	1.4%	1.4%	1.4%
<b>Health Science/ Diagnostics</b>				<b>6.4%</b>	<b>5.8%</b>	<b>5.8%</b>	<b>5.6%</b>
<b>Social Care</b>	<b>1.7%</b>	<b>1.5%</b>	<b>1.4%</b>	<b>1.1%</b>	<b>1.2%</b>	<b>1.3%</b>	<b>1.3%</b>
<b>Social Workers</b>	<b>7.0%</b>	<b>5.2%</b>	<b>5.3%</b>	<b>4.9%</b>	<b>4.7%</b>	<b>4.8%</b>	<b>4.9%</b>
<b>Psychologists</b>	<b>19.8%</b>	<b>19.8%</b>	<b>18.7%</b>	<b>18.3%</b>	<b>18.6%</b>	<b>18.7%</b>	<b>19.1%</b>
<b>Pharmacy</b>	<b>6.2%</b>	<b>7.1%</b>	<b>6.0%</b>	<b>5.1%</b>	<b>3.4%</b>	<b>3.7%</b>	<b>3.7%</b>
Counsellor Therapists	8.3%	8.0%	8.4%	7.4%	8.1%	7.9%	7.9%

Jun 2020 (Dec 2018 figure: 1,300)	WTE Dec 2015	WTE Dec 2016	WTE Dec 2017	WTE Dec 2018	WTE Dec 2019	WTE May 2020	WTE Jun 2020
<b>Primary Care</b>	<b>1,207</b>	<b>1,162</b>	<b>1,239</b>	<b>1,300</b>	<b>1,247</b>	<b>1,249</b>	<b>1,251</b>
Dental Hygienists	1.9%	1.9%	1.8%	1.8%	1.8%	1.9%	1.8%
Other Health & Social Care	0.1%	0.2%	0.4%	0.2%	0.0%	0.0%	0.0%
Play Therapists/ Specialists	0.6%	0.4%	0.6%	0.6%	0.5%	0.5%	0.5%
<b>H&amp;SC, Other</b>	<b>10.9%</b>	<b>10.6%</b>	<b>11.2%</b>	<b>9.9%</b>	<b>10.4%</b>	<b>10.4%</b>	<b>10.3%</b>
<b>Health &amp; Social Care Professionals</b>	<b>26.3%</b>	<b>26.9%</b>	<b>27.5%</b>	<b>27.3%</b>	<b>28.5%</b>	<b>27.9%</b>	<b>27.9%</b>
Executive Management	1.2%	0.4%	0.4%	1.0%	1.3%	1.7%	1.7%
Senior Management (VIII & GM)	7.7%	7.2%	9.2%	8.2%	8.4%	8.8%	8.9%
<b>Management (VIII &amp; above)</b>	<b>8.9%</b>	<b>7.6%</b>	<b>9.6%</b>	<b>9.2%</b>	<b>9.8%</b>	<b>10.5%</b>	<b>10.6%</b>
<b>Administrative/ Supervisory (V to VII)</b>	<b>22.1%</b>	<b>24.0%</b>	<b>21.3%</b>	<b>27.0%</b>	<b>26.9%</b>	<b>26.5%</b>	<b>27.3%</b>
<b>Clerical (III &amp; IV)</b>	<b>69.0%</b>	<b>68.4%</b>	<b>69.0%</b>	<b>63.8%</b>	<b>63.3%</b>	<b>63.0%</b>	<b>62.1%</b>
<b>Management &amp; Administrative</b>	<b>21.2%</b>	<b>21.2%</b>	<b>21.4%</b>	<b>22.8%</b>	<b>23.8%</b>	<b>23.6%</b>	<b>23.6%</b>
<b>Support</b>	<b>100.0%</b>	<b>100.0%</b>	<b>100.0%</b>	<b>100.0%</b>	<b>100.0%</b>	<b>100.0%</b>	<b>100.0%</b>
<b>General Support</b>	<b>4.5%</b>	<b>4.5%</b>	<b>4.1%</b>	<b>3.7%</b>	<b>3.8%</b>	<b>2.6%</b>	<b>2.6%</b>
HCA, Nurse's Aide, etc.	2.7%	2.6%	3.7%	6.6%	6.9%	6.2%	6.6%
Health & Social Care Assistants	2.1%	2.2%	3.6%	12.0%	4.2%	10.2%	10.0%
<b>Health Care Assistants</b>	<b>4.7%</b>	<b>4.8%</b>	<b>7.3%</b>	<b>18.6%</b>	<b>11.1%</b>	<b>16.4%</b>	<b>16.6%</b>
Community Welfare Officers	0.9%	0.9%					
Other Care Grades	94.4%	94.3%	92.7%	81.4%	88.9%	83.6%	83.4%
<b>Care, other</b>	<b>95.3%</b>	<b>95.2%</b>	<b>92.7%</b>	<b>81.4%</b>	<b>88.9%</b>	<b>83.6%</b>	<b>83.4%</b>
<b>Patient &amp; Client Care</b>	<b>9.4%</b>	<b>9.3%</b>	<b>8.9%</b>	<b>9.8%</b>	<b>10.2%</b>	<b>10.1%</b>	<b>10.1%</b>
<b>Total</b>	<b>100 %</b>	<b>100 %</b>	<b>100 %</b>	<b>100 %</b>	<b>100 %</b>	<b>100 %</b>	<b>100 %</b>

Jun 2020 (Dec 2018 figure: 3,125)	WTE Dec 2015	WTE Dec 2016	WTE Dec 2017	WTE Dec 2018	WTE Dec 2019	WTE May 2020	WTE Jun 2020
<b>Disabilities</b>	<b>2,807</b>	<b>3,043</b>	<b>3,100</b>	<b>3,125</b>	<b>3,194</b>	<b>3,200</b>	<b>3,211</b>
Consultant Paediatrics	7.9%	7.8%	5.6%	6.3%	4.9%	5.3%	5.2%
Consultant Psychiatry	38.9%	42.7%	45.2%	48.2%	45.8%	43.6%	42.7%
Consultant Surgery	0.5%	0.5%					
<b>Consultants</b>	<b>47.2%</b>	<b>51.0%</b>	<b>50.8%</b>	<b>54.5%</b>	<b>50.7%</b>	<b>48.9%</b>	<b>47.9%</b>
<b>Registrars</b>	<b>16.0%</b>	<b>15.8%</b>	<b>22.9%</b>	<b>15.7%</b>	<b>24.3%</b>	<b>17.5%</b>	<b>15.6%</b>
<b>SHO/ Interns</b>						<b>4.4%</b>	<b>8.6%</b>
<b>Medical/ Dental, other</b>	<b>36.8%</b>	<b>33.3%</b>	<b>26.3%</b>	<b>29.8%</b>	<b>25.0%</b>	<b>29.2%</b>	<b>28.0%</b>
<b>Medical &amp; Dental</b>	<b>0.7%</b>	<b>0.6%</b>	<b>0.7%</b>	<b>0.6%</b>	<b>0.6%</b>	<b>0.7%</b>	<b>0.7%</b>
Clinical Nurse/ Midwife Manager	22.2%	23.1%	23.5%	23.7%	22.9%	22.8%	22.9%
Director Nursing/Midwifery, Assistant	1.0%	0.9%	0.9%	0.8%	1.4%	1.3%	1.5%
Director of Nursing/Midwifery	2.1%	2.2%	2.1%	1.7%	1.9%	1.6%	1.6%
<b>Nurse/ Midwife Manager</b>	<b>25.3%</b>	<b>26.1%</b>	<b>26.5%</b>	<b>26.2%</b>	<b>26.2%</b>	<b>25.8%</b>	<b>26.0%</b>
Clinical Nurse/ Midwife Specialist	1.4%	1.2%	1.1%	1.2%	1.2%	1.3%	1.3%
<b>Nurse/ Midwife Specialist &amp; AN/MP</b>	<b>1.4%</b>	<b>1.2%</b>	<b>1.1%</b>	<b>1.2%</b>	<b>1.2%</b>	<b>1.3%</b>	<b>1.3%</b>
Graduate Nursing/ Midwifery	0.1%						
Staff Nurse [Intellectual Disability]	56.5%	56.9%	57.4%	56.6%	57.2%	55.6%	55.0%
Staff Nurse [Psychiatric]	4.4%	4.0%	3.4%	4.4%	4.4%	2.8%	3.3%
Staff Nurses [General/ Children's]	11.5%	11.0%	10.7%	9.6%	9.1%	9.3%	9.1%
<b>Staff Nurse/ Staff Midwife</b>	<b>72.5%</b>	<b>71.8%</b>	<b>71.5%</b>	<b>70.6%</b>	<b>70.6%</b>	<b>67.7%</b>	<b>67.4%</b>
Pre-registration Nurse/ Midwife Intern	0.3%	0.1%		1.1%	1.1%		
Pre-registration Nurse Intern (COVID-19)						4.0%	4.2%
<b>Nursing/ Midwifery Student</b>	<b>0.3%</b>	<b>0.1%</b>		<b>1.1%</b>	<b>1.1%</b>	<b>4.0%</b>	<b>4.2%</b>
<b>Nursing/ Midwifery other</b>	<b>0.5%</b>	<b>0.7%</b>	<b>0.8%</b>	<b>0.9%</b>	<b>1.0%</b>	<b>1.3%</b>	<b>1.1%</b>
<b>Nursing &amp; Midwifery</b>	<b>27.5%</b>	<b>24.8%</b>	<b>24.4%</b>	<b>24.0%</b>	<b>23.5%</b>	<b>23.1%</b>	<b>23.1%</b>

Jun 2020 (Dec 2018 figure: 3,125)	WTE Dec 2015	WTE Dec 2016	WTE Dec 2017	WTE Dec 2018	WTE Dec 2019	WTE May 2020	WTE Jun 2020
<b>Disabilities</b>	<b>2,807</b>	<b>3,043</b>	<b>3,100</b>	<b>3,125</b>	<b>3,194</b>	<b>3,200</b>	<b>3,211</b>
Dietitians	0.8%	0.7%	0.6%	0.6%	0.6%	0.6%	0.6%
Occupational Therapists	6.4%	6.4%	6.4%	6.2%	6.2%	6.3%	6.3%
Physiotherapists	6.4%	6.2%	5.6%	5.8%	5.7%	5.5%	5.5%
Speech & Language Therapists	5.7%	6.1%	5.9%	5.7%	5.5%	5.7%	5.8%
<b>Therapy Professions</b>	<b>19.3%</b>	<b>19.4%</b>	<b>18.5%</b>	<b>18.3%</b>	<b>18.1%</b>	<b>18.1%</b>	<b>18.3%</b>
Audiology	1.8%	1.3%	1.9%				
Clinical Engineering	2.3%	1.8%	1.7%	1.0%	1.1%	0.9%	0.9%
Medical Laboratory	0.4%	0.3%	0.3%	0.4%	0.4%	0.4%	0.4%
<b>Health Science/ Diagnostics</b>	<b>4.4%</b>	<b>3.4%</b>	<b>3.9%</b>	<b>1.5%</b>	<b>1.5%</b>	<b>1.3%</b>	<b>1.3%</b>
<b>Social Care</b>	<b>60.7%</b>	<b>62.6%</b>	<b>63.7%</b>	<b>67.9%</b>	<b>68.7%</b>	<b>68.2%</b>	<b>68.1%</b>
<b>Social Workers</b>	<b>5.9%</b>	<b>5.5%</b>	<b>5.2%</b>	<b>4.5%</b>	<b>4.4%</b>	<b>4.6%</b>	<b>4.6%</b>
<b>Psychologists</b>	<b>6.4%</b>	<b>6.2%</b>	<b>6.1%</b>	<b>5.6%</b>	<b>5.3%</b>	<b>5.7%</b>	<b>5.7%</b>
<b>Pharmacy</b>	<b>0.3%</b>	<b>0.2%</b>	<b>0.2%</b>	<b>0.2%</b>	<b>0.2%</b>	<b>0.2%</b>	<b>0.2%</b>
Other Health & Social Care	3.0%	2.6%	2.3%	2.0%	1.8%	2.0%	1.9%
Play Therapists/ Specialists	0.1%	0.1%	0.1%	0.1%	0.0%		
<b>H&amp;SC, Other</b>	<b>3.0%</b>	<b>2.6%</b>	<b>2.4%</b>	<b>2.0%</b>	<b>1.9%</b>	<b>2.0%</b>	<b>1.9%</b>
<b>Health &amp; Social Care Professionals</b>	<b>28.0%</b>	<b>30.4%</b>	<b>30.5%</b>	<b>30.6%</b>	<b>29.9%</b>	<b>32.1%</b>	<b>32.1%</b>
Executive Management	1.5%	1.4%	1.3%	1.3%	1.1%	1.2%	1.2%
Senior Management (VIII & GM)	12.0%	11.8%	12.6%	12.8%	13.8%	13.2%	13.2%
<b>Management (VIII &amp; above)</b>	<b>13.5%</b>	<b>13.1%</b>	<b>14.0%</b>	<b>14.1%</b>	<b>15.0%</b>	<b>14.4%</b>	<b>14.4%</b>
<b>Administrative/ Supervisory (V to VII)</b>	<b>35.1%</b>	<b>36.8%</b>	<b>35.3%</b>	<b>36.0%</b>	<b>35.0%</b>	<b>36.5%</b>	<b>36.3%</b>
<b>Clerical (III &amp; IV)</b>	<b>51.5%</b>	<b>50.1%</b>	<b>50.7%</b>	<b>49.9%</b>	<b>50.1%</b>	<b>49.2%</b>	<b>49.2%</b>
<b>Management &amp; Administrative</b>	<b>7.2%</b>	<b>7.2%</b>	<b>7.2%</b>	<b>7.6%</b>	<b>7.5%</b>	<b>7.7%</b>	<b>7.7%</b>
<b>Support</b>	<b>90.0%</b>	<b>90.8%</b>	<b>89.9%</b>	<b>89.6%</b>	<b>89.9%</b>	<b>89.5%</b>	<b>89.5%</b>
Maintenance	9.6%	8.8%	9.7%	9.5%	9.2%	9.5%	9.5%
Technical Services	0.4%	0.4%	0.4%	0.9%	0.9%	1.0%	1.0%
<b>Maintenance/ Technical</b>	<b>10.0%</b>	<b>9.2%</b>	<b>10.1%</b>	<b>10.4%</b>	<b>10.1%</b>	<b>10.5%</b>	<b>10.5%</b>
<b>General Support</b>	<b>9.5%</b>	<b>7.9%</b>	<b>7.6%</b>	<b>7.1%</b>	<b>7.0%</b>	<b>6.5%</b>	<b>6.5%</b>
HCA, Nurse's Aide, etc.	88.4%	88.4%	90.0%	89.1%	89.7%	89.8%	89.9%
Health & Social Care Assistants	0.5%	0.3%	0.4%	0.2%	0.2%	0.3%	0.3%
<b>Health Care Assistants</b>	<b>88.9%</b>	<b>88.8%</b>	<b>90.3%</b>	<b>89.4%</b>	<b>90.0%</b>	<b>90.1%</b>	<b>90.2%</b>
<b>Care, other</b>	<b>11.1%</b>	<b>11.2%</b>	<b>9.7%</b>	<b>10.6%</b>	<b>10.0%</b>	<b>9.9%</b>	<b>9.8%</b>
<b>Patient &amp; Client Care</b>	<b>27.1%</b>	<b>29.1%</b>	<b>29.6%</b>	<b>30.1%</b>	<b>29.4%</b>	<b>29.9%</b>	<b>29.9%</b>
<b>Total</b>	<b>100 %</b>	<b>100 %</b>	<b>100 %</b>	<b>100 %</b>	<b>100 %</b>	<b>100 %</b>	<b>100 %</b>

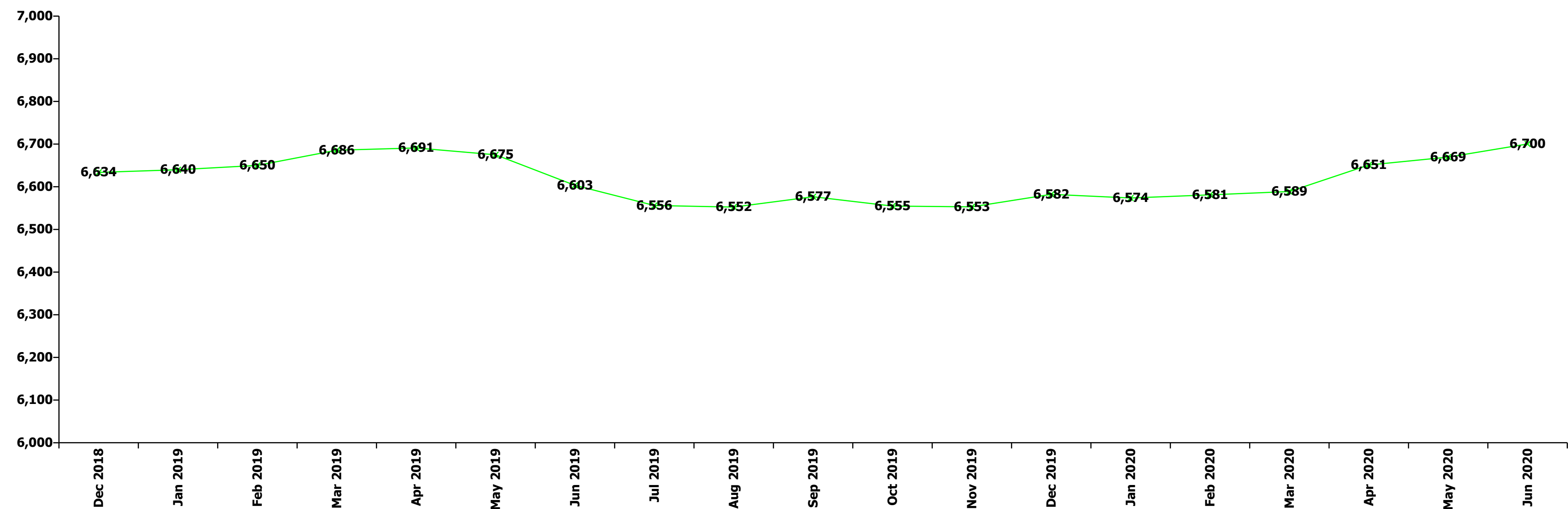
Jun 2020 (Dec 2018 figure: 908)	WTE Dec 2015	WTE Dec 2016	WTE Dec 2017	WTE Dec 2018	WTE Dec 2019	WTE May 2020	WTE Jun 2020
<b>Older People</b>	<b>852</b>	<b>865</b>	<b>878</b>	<b>908</b>	<b>870</b>	<b>912</b>	<b>922</b>
Consultant Medicine	23.6%	32.5%	33.1%	8.9%	8.0%	10.6%	10.9%
Consultant Surgery	5.1%	3.8%	0.6%	0.7%			
<b>Consultants</b>	<b>28.7%</b>	<b>36.3%</b>	<b>33.7%</b>	<b>9.6%</b>	<b>8.0%</b>	<b>10.6%</b>	<b>10.9%</b>
Registrar	26.2%	23.1%	29.9%	35.3%	27.4%	26.6%	24.8%
Specialist Registrar	5.1%	5.1%				4.8%	4.9%
<b>Registrars</b>	<b>31.3%</b>	<b>28.2%</b>	<b>29.9%</b>	<b>35.3%</b>	<b>27.4%</b>	<b>31.4%</b>	<b>29.7%</b>
Senior House Officer	34.8%	30.4%	31.8%	49.6%	59.7%	53.1%	54.4%
<b>SHO/ Interns</b>	<b>34.8%</b>	<b>30.4%</b>	<b>31.8%</b>	<b>49.6%</b>	<b>59.7%</b>	<b>53.1%</b>	<b>54.4%</b>
<b>Medical/ Dental, other</b>	<b>5.1%</b>	<b>5.1%</b>	<b>4.6%</b>	<b>5.6%</b>	<b>5.0%</b>	<b>4.8%</b>	<b>4.9%</b>
<b>Medical &amp; Dental</b>	<b>2.3%</b>	<b>2.3%</b>	<b>2.5%</b>	<b>2.0%</b>	<b>2.1%</b>	<b>2.2%</b>	<b>2.2%</b>
Clinical Nurse/ Midwife Manager	21.8%	20.2%	23.7%	20.6%	19.1%	19.8%	20.3%
Director Nursing/Midwifery, Assistant	3.4%	4.3%	4.1%	2.8%	3.6%	3.9%	4.4%

Jun 2020 (Dec 2018 figure: 908)	WTE Dec 2015	WTE Dec 2016	WTE Dec 2017	WTE Dec 2018	WTE Dec 2019	WTE May 2020	WTE Jun 2020
<b>Older People</b>	<b>852</b>	<b>865</b>	<b>878</b>	<b>908</b>	<b>870</b>	<b>912</b>	<b>922</b>
Director of Nursing/Midwifery	1.3%	1.0%	1.0%	1.3%	1.6%	1.6%	1.3%
<b>Nurse/ Midwife Manager</b>	<b>26.5%</b>	<b>25.5%</b>	<b>28.8%</b>	<b>24.8%</b>	<b>24.3%</b>	<b>25.3%</b>	<b>25.9%</b>
Advanced Nurse/ Midwife Practitioner	0.3%	0.3%	0.3%	0.3%	0.3%	0.3%	0.3%
Clinical Nurse/ Midwife Specialist	1.3%	0.7%	0.7%	0.9%	1.3%	1.6%	1.5%
<b>Nurse/ Midwife Specialist &amp; AN/MP</b>	<b>1.7%</b>	<b>1.0%</b>	<b>1.0%</b>	<b>1.2%</b>	<b>1.5%</b>	<b>1.9%</b>	<b>1.8%</b>
Staff Nurse [Psychiatric]	0.7%	0.7%	0.7%	0.6%	0.6%	0.6%	0.6%
Staff Nurses [General/ Children's]	70.8%	72.4%	69.0%	72.9%	73.1%	71.9%	71.3%
<b>Staff Nurse/ Staff Midwife</b>	<b>71.5%</b>	<b>73.1%</b>	<b>69.7%</b>	<b>73.6%</b>	<b>73.7%</b>	<b>72.5%</b>	<b>71.9%</b>
<b>Public Health Nurse</b>		<b>0.1%</b>	<b>0.1%</b>	<b>0.1%</b>	<b>0.1%</b>		
Nursing Education/Clinical	0.3%	0.3%	0.3%	0.3%	0.3%	0.3%	0.3%
<b>Nursing/ Midwifery other</b>	<b>0.3%</b>	<b>0.3%</b>	<b>0.3%</b>	<b>0.3%</b>	<b>0.3%</b>	<b>0.3%</b>	<b>0.3%</b>
<b>Nursing &amp; Midwifery</b>	<b>34.9%</b>	<b>34.8%</b>	<b>33.0%</b>	<b>34.7%</b>	<b>36.2%</b>	<b>34.5%</b>	<b>34.5%</b>
Dietitians	6.1%	8.1%	8.4%	8.9%	7.5%	11.7%	12.0%
Occupational Therapists	21.4%	24.9%	25.0%	22.7%	22.9%	23.1%	23.7%
Physiotherapists	36.7%	30.7%	34.6%	30.9%	31.1%	32.5%	31.8%
Speech & Language Therapists	5.9%	4.9%	4.4%	4.1%	5.5%	4.7%	4.7%
<b>Therapy Professions</b>	<b>70.0%</b>	<b>68.6%</b>	<b>72.4%</b>	<b>66.6%</b>	<b>67.0%</b>	<b>72.1%</b>	<b>72.2%</b>
Radiographers	3.1%	2.9%	2.5%	2.4%	1.8%	1.1%	1.0%
<b>Health Science/ Diagnostics</b>	<b>3.1%</b>	<b>2.9%</b>	<b>2.5%</b>	<b>2.4%</b>	<b>1.8%</b>	<b>1.1%</b>	<b>1.0%</b>
<b>Social Care</b>	<b>1.4%</b>	<b>1.4%</b>	<b>1.2%</b>	<b>1.2%</b>	<b>1.2%</b>	<b>1.1%</b>	<b>1.0%</b>
<b>Social Workers</b>	<b>21.2%</b>	<b>22.5%</b>	<b>20.0%</b>	<b>26.1%</b>	<b>26.1%</b>	<b>22.2%</b>	<b>22.2%</b>
<b>Pharmacy</b>	<b>4.2%</b>	<b>4.1%</b>	<b>3.5%</b>	<b>3.3%</b>	<b>3.4%</b>	<b>3.2%</b>	<b>3.1%</b>
<b>H&amp;SC, Other</b>		<b>0.5%</b>	<b>0.5%</b>	<b>0.4%</b>	<b>0.4%</b>	<b>0.4%</b>	<b>0.4%</b>
<b>Health &amp; Social Care Professionals</b>	<b>7.7%</b>	<b>7.9%</b>	<b>9.1%</b>	<b>9.3%</b>	<b>9.7%</b>	<b>10.4%</b>	<b>10.4%</b>
Executive Management	1.8%	1.7%	4.4%	4.1%	4.6%	4.5%	4.6%
Senior Management (VIII & GM)	5.5%	7.0%	6.1%	8.1%	9.4%	7.5%	7.6%
<b>Management (VIII &amp; above)</b>	<b>7.3%</b>	<b>8.7%</b>	<b>10.5%</b>	<b>12.2%</b>	<b>14.0%</b>	<b>11.9%</b>	<b>12.2%</b>
<b>Administrative/ Supervisory (V to VII)</b>	<b>28.2%</b>	<b>27.1%</b>	<b>27.4%</b>	<b>27.6%</b>	<b>23.4%</b>	<b>24.5%</b>	<b>24.9%</b>
<b>Clerical (III &amp; IV)</b>	<b>64.5%</b>	<b>64.2%</b>	<b>62.1%</b>	<b>60.2%</b>	<b>62.6%</b>	<b>63.6%</b>	<b>62.9%</b>
<b>Management &amp; Administrative</b>	<b>6.4%</b>	<b>6.6%</b>	<b>7.5%</b>	<b>8.1%</b>	<b>8.5%</b>	<b>7.1%</b>	<b>7.1%</b>
<b>Support</b>	<b>98.1%</b>	<b>98.1%</b>	<b>98.1%</b>	<b>98.1%</b>	<b>98.0%</b>	<b>98.1%</b>	<b>98.1%</b>
<b>Maintenance/ Technical</b>	<b>1.9%</b>	<b>1.9%</b>	<b>1.9%</b>	<b>1.9%</b>	<b>2.0%</b>	<b>1.9%</b>	<b>1.9%</b>
<b>General Support</b>	<b>15.1%</b>	<b>14.3%</b>	<b>14.1%</b>	<b>13.6%</b>	<b>14.2%</b>	<b>13.4%</b>	<b>13.4%</b>
HCA, Nurse's Aide, etc.	98.5%	98.5%	98.5%	98.5%	97.7%	97.7%	97.8%
Health & Social Care Assistants	0.7%	0.7%	0.7%	0.3%		0.3%	0.3%
<b>Health Care Assistants</b>	<b>99.2%</b>	<b>99.2%</b>	<b>99.2%</b>	<b>98.8%</b>	<b>97.7%</b>	<b>98.1%</b>	<b>98.2%</b>
<b>Care, other</b>	<b>0.8%</b>	<b>0.8%</b>	<b>0.8%</b>	<b>1.2%</b>	<b>2.3%</b>	<b>1.9%</b>	<b>1.8%</b>
<b>Patient &amp; Client Care</b>	<b>33.7%</b>	<b>34.1%</b>	<b>33.8%</b>	<b>32.3%</b>	<b>33.7%</b>	<b>32.5%</b>	<b>32.5%</b>
<b>Total</b>	<b>100 %</b>	<b>100 %</b>	<b>100 %</b>	<b>100 %</b>	<b>100 %</b>	<b>100 %</b>	<b>100 %</b>

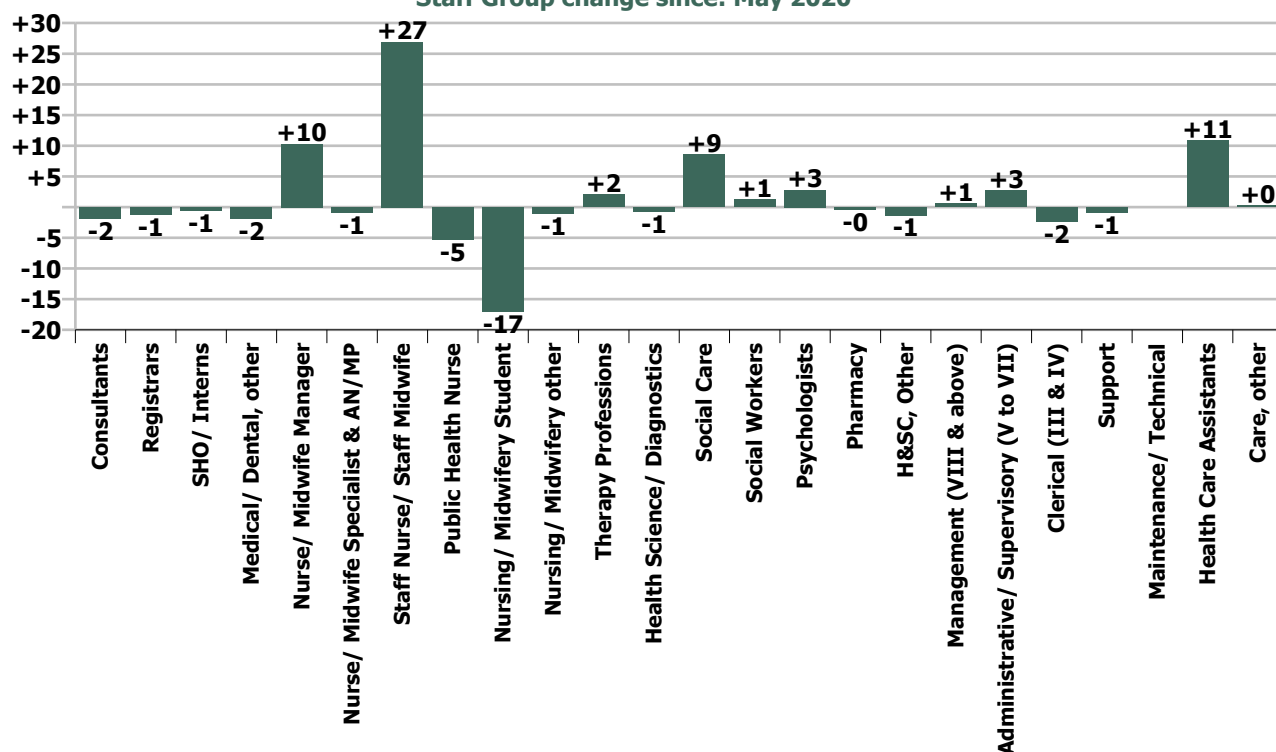
Summary Staff Movement: June 2020

Month-on-month Summary																												
WTE change since May 20	% change since May 20	overall	Consultants	Registrars	SHO/ Interns	Medical/ Dental, other	Medical & Dental	Nurse/ Midwife Manager	Nurse/ Midwife Specialist & AN/MP	Staff Nurse/ Staff Midwife	Public Health Nurse	Nursing/ Midwifery Student	Nursing/ Midwifery other	Nursing & Midwifery	Therapy Professions	Health Science/ Diagnostics	Social Care	Social Workers	Psychologists	Pharmacy	H&SC, Other	Health & Social Care Professionals	Management (VIII & above)	Administrative/ Supervisory (v to VII)	Clerical (III & IV)	Management & Administrative	General Support	Patient & Client Care
Overall	+0.5%	+31	-1.9	-1.3	-0.6	-1.8	-5.6	+10.3	-0.9	+26.9	-5.3	-17.1	-1.0	+12.9	+2.0	-0.8	+8.6	+1.3	+2.8	-0.3	-1.3	+12.2	+0.6	+2.7	-2.4	+1.0	-0.8	+11.1
Community Health & Wellbeing	+2.9%	+0													0.0							0.0	0.0	0.0	+0.2	+0.2		
Mental Health	+0.6%	+8	-1.9	+0.1	-1.6		-3.4	+2.8	-0.9	+4.8		+4.5	0.0	+11.2	-1.7		0.0	+0.1	+0.8	-0.0	-0.6	-1.5	-0.0	-0.2	-1.2	-1.3	+0.8	+2.1
Primary Care	+0.1%	+2	0.0	-0.5	0.0	-1.7	-2.2	+3.5	0.0	+24.7	-5.3	-23.0		-0.0	-1.4	-0.8	+0.1	+0.1	+1.1	-0.3	-0.7	-1.8	+0.6	+3.7	+0.3	+4.6	-0.4	+1.6
Disabilities	+0.4%	+12	0.0	-0.4	+1.0	-0.2	+0.5	+1.3	0.0	-2.4		+1.4	-1.0	-0.7	+4.1	0.0	+8.5	+0.9	+0.9	0.0	0.0	+14.4	0.0	-0.7	-0.4	-1.1	-0.6	-0.8
Older People	+1.0%	+9	0.0	-0.5	0.0	0.0	-0.5	+2.6	-0.1	-0.2			0.0	+2.3	+1.0	0.0	0.0	+0.2		0.0	0.0	+1.3	0.0	-0.1	-1.3	-1.4	-0.6	+8.3
Social Care	+0.5%	+21	0.0	-0.9	+1.0	-0.2	-0.0	+3.9	-0.1	-2.6		+1.4	-1.0	+1.7	+5.1	0.0	+8.5	+1.1	+0.9	0.0	0.0	+15.6	0.0	-0.8	-1.7	-2.5	-1.2	+7.4
Change	+30.7	+0.5%	-2.8%	-1.3%	-1.0%	-3.1%	-2.0%	+2.3%	-1.0%	+2.3%	-3.1%	-16.6%	-4.6%	+0.6%	+0.4%	-2.4%	+1.2%	+1.0%	+1.6%	-1.4%	-1.8%	+0.7%	+0.8%	+1.3%	-0.5%	+0.1%	-0.2%	+0.7%

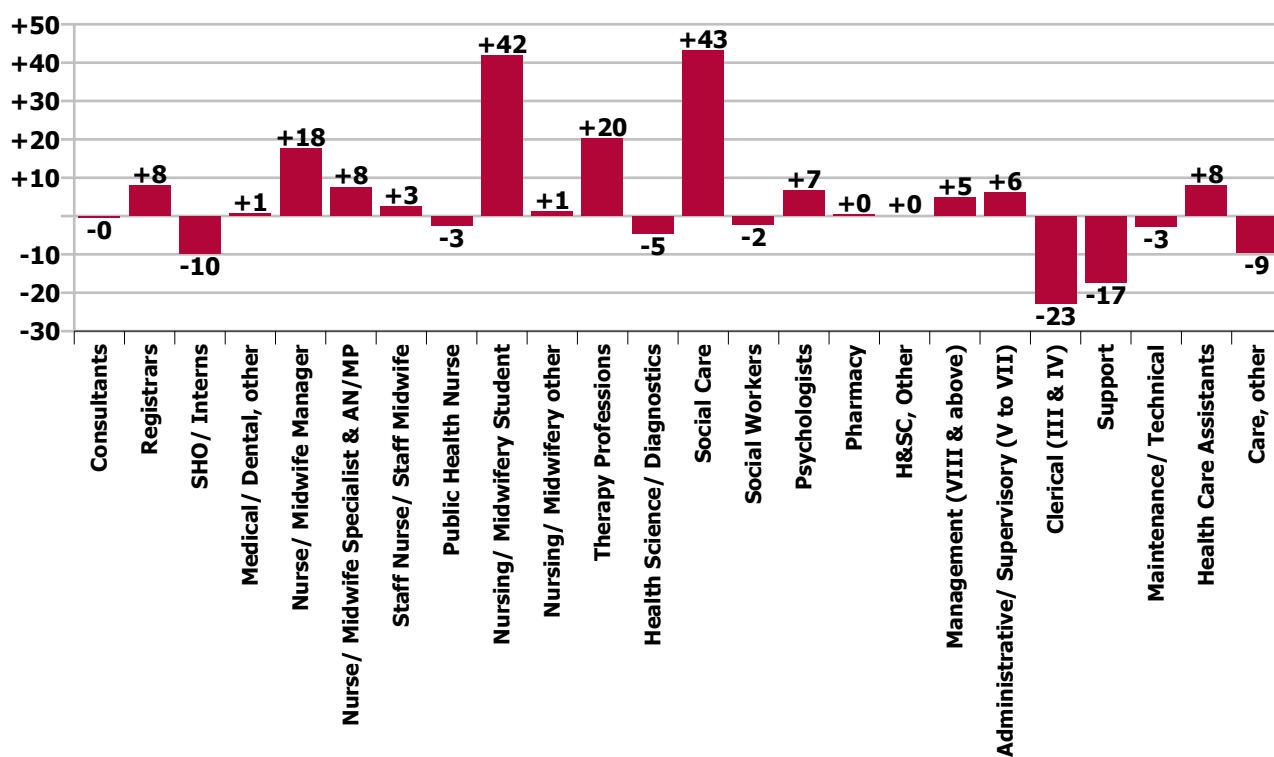
Year-on-year Summary																												
WTE change since Jun 19	% change since Jun 19	overall	Consultants	Registrars	SHO/ Interns	Medical/ Dental, other	Medical & Dental	Nurse/ Midwife Manager	Nurse/ Midwife Specialist & AN/MP	Staff Nurse/ Staff Midwife	Public Health Nurse	Nursing/ Midwifery Student	Nursing/ Midwifery other	Nursing & Midwifery	Therapy Professions	Health Science/ Diagnostics	Social Care	Social Workers	Psychologists	Pharmacy	H&SC, Other	Health & Social Care Professionals	Management (VIII & above)	Administrative/ Supervisory (V to VII)	Clerical (III & IV)	Management & Administrative	General Support	Patient & Client Care
Overall	+1.5%	+97	-0.4	+7.9	-9.9	+0.7	-1.7	+17.7	+7.6	+2.6	-2.5	+41.9	+1.3	+68.4	+20.2	-4.5	+43.2	-2.2	+6.7	+0.3	+0.0	+63.8	+4.8	+6.2	-22.8	-11.9	-20.1	-1.5
Community Health & Wellbeing	+2.9%	+0													+0.8							+0.8	+1.0	+4.9	+1.7	+7.5		
Mental Health	+0.6%	+8	-1.6	+8.1	-15.9		-9.4	+3.7	+4.8	-1.2		+30.9	+0.3	+38.4	+3.5		-0.1	-0.4	+0.4	-1.0	+0.2	+2.6	+2.0	+0.8	-15.4	-12.6	-3.3	-3.4
Primary Care	+0.1%	+2	+1.0	+0.7	+4.0	+0.3	+6.0	+3.1	+1.0	+10.6	-2.1	-8.0	-1.0	+3.5	-11.5	-1.9	+0.8	-2.6	+0.2	+1.1	-0.8	-14.7	+2.8	-2.9	-11.2	-11.4	-4.7	-7.1
Disabilities	+2.6%	+80.1	-0.5	-0.4	+2.0	+0.3	+1.5	+3.4	-0.2	-2.3		+19.0	+2.0	+21.9	+14.6	-2.0	+42.5	+2.7	+6.0	0.0	+0.6	+64.4	-1.0	+5.1	+2.7	+6.8	-14.2	-0.4
Older People	+2.7%	+24.5	+0.7	-0.5	0.0	0.0	+0.1	+7.5	+2.0	-4.6	-0.4		0.0	+4.6	+12.8	-0.6	0.0	-1.8		+0.2	+0.0	+10.7	0.0	-1.6	-0.6	-2.3	+2.0	+9.4
Social Care	+0.5%	+21	+0.2	-0.9	+2.0	+0.3	+1.7	+10.9	+1.8	-6.8	-0.4	+19.0	+2.0	+26.5	+27.4	-2.6	+42.5	+0.9	+6.0	+0.2	+0.6	+75.1	-1.0	+3.4	+2.1	+4.5	-12.1	+9.0
Change	+96.8	+1.5%	-0.6%	+9.1%	-14.0%	+1.3%	-0.6%	+4.0%	+9.2%	+0.2%	-1.5%	+95.2%	+6.4%	+3.5%	+4.1%	-11.9%	+6.5%	-1.6%	+4.0%	+1.4%	+0.0%	+4.0%	+6.3%	+2.9%	-4.9%	-1.6%	-4.0%	-0.1%



Staff Group change since: May 2020

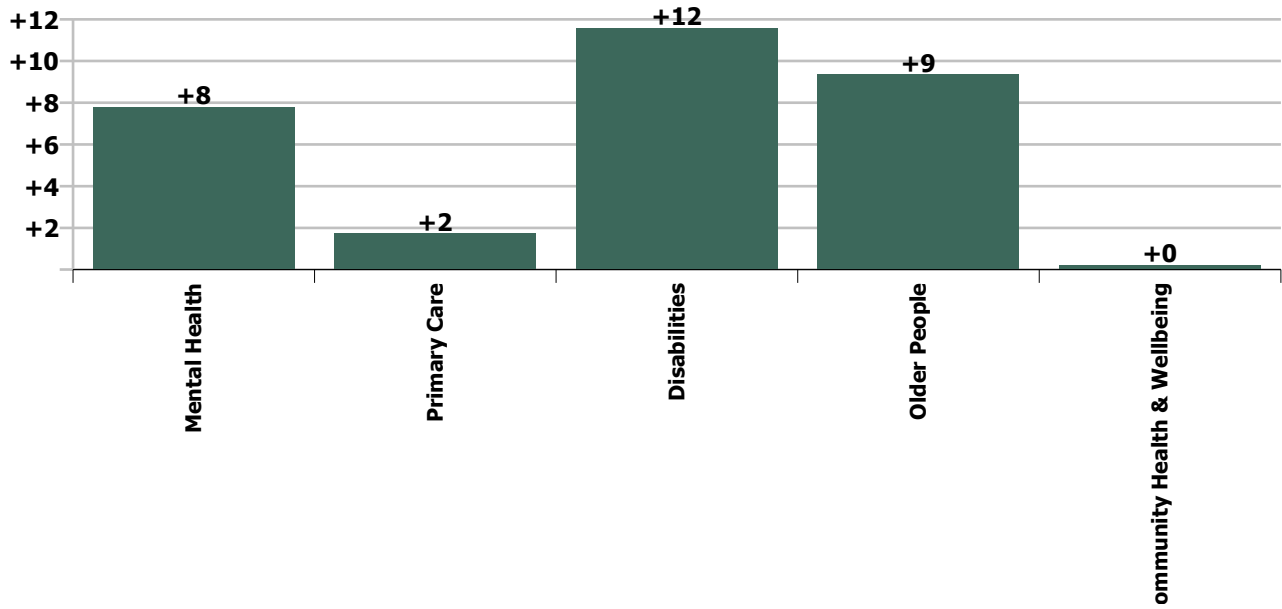


Staff Group change since: Jun 2019

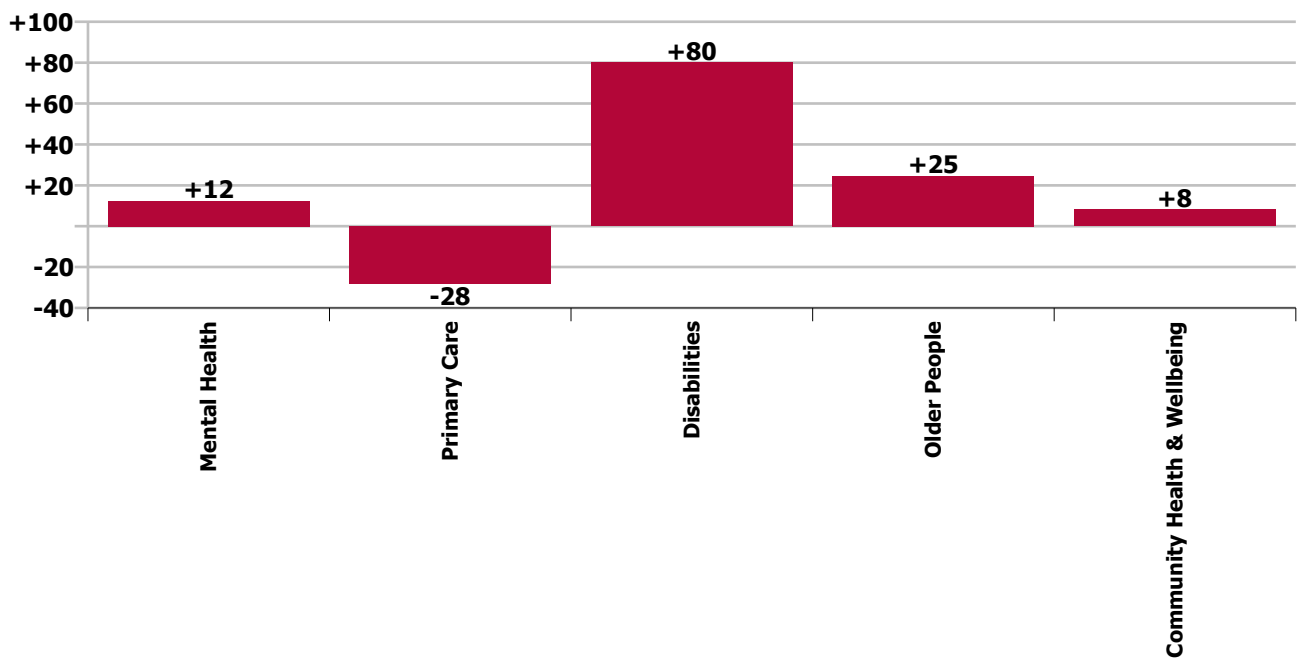




Care Group change since: May 2020



Care Group change since: Jun 2019



## Longitudinal Employment Levels by Grade Group - Oct 2013 to Jun 2020

Jun 2020 (Dec 2015 figure: 6,089)	WTE Jun 2020	WTE change since Dec 15	WTE change since Dec 16	WTE change since Dec 17	WTE change since Dec 18	WTE change since Dec 19	WTE change since May 20	% change since Dec 15	% change since Dec 16	% change since Dec 17	% change since Dec 18	% change since Dec 19	% change since May 20
<b>Overall</b>	<b>6,700</b>	<b>+612</b>	<b>+414</b>	<b>+263</b>	<b>+67</b>	<b>+118</b>	<b>+31</b>	<b>+10.0%</b>	<b>+6.6%</b>	<b>+4.1%</b>	<b>+1.0%</b>	<b>+1.8%</b>	<b>+0.5%</b>
Consultant Medicine	2	-2	-4	-5	+1	+1		-52.2%	-65.4%	-69.9%	+29.4%	+37.5%	
Consultant Paediatrics	1	-0	-0					-18.2%	-18.2%				
Consultant Psychiatry	61	+1	+2	+0	-3	-4	-2	+1.4%	+4.1%	+0.4%	-3.9%	-6.5%	-2.9%
Consultant Surgery		-1	-1	-0	-0			-100.0%	-100.0%	-100.0%	-100.0%	-100.0%	-100.0%
<b>Consultants</b>	<b>65</b>	<b>-3</b>	<b>-3</b>	<b>-5</b>	<b>-2</b>	<b>-4</b>	<b>-2</b>	<b>-4.3%</b>	<b>-4.2%</b>	<b>-7.1%</b>	<b>-3.2%</b>	<b>-5.3%</b>	<b>-2.8%</b>
Registrar	74	+10	+15	+11	+0	-4	-1	+15.5%	+26.1%	+17.5%	+0.3%	-4.8%	-1.2%
Senior Registrar	16	+4	+2	+5	+1		+0	+30.5%	+12.7%	+45.7%	+3.9%		+0.2%
Specialist Registrar	4	+1	-0	-1	+3	-0	-0	+21.0%	-9.3%	-27.4%	+263.0%	-9.3%	-9.3%
<b>Registrars</b>	<b>94</b>	<b>+14</b>	<b>+17</b>	<b>+15</b>	<b>+3</b>	<b>-4</b>	<b>-1</b>	<b>+18.1%</b>	<b>+21.8%</b>	<b>+18.6%</b>	<b>+3.8%</b>	<b>-4.2%</b>	<b>-1.3%</b>
Interns		-4	-5	-4	-2	-2		-100.0%	-100.0%	-100.0%	-100.0%	-100.0%	-100.0%
Senior House Officer	61	+8	+7	+1	-1	-3	-1	+15.7%	+12.7%	+2.1%	-1.9%	-5.1%	-1.0%
<b>SHO/ Interns</b>	<b>61</b>	<b>+4</b>	<b>+2</b>	<b>-3</b>	<b>-3</b>	<b>-5</b>	<b>-1</b>	<b>+7.5%</b>	<b>+3.1%</b>	<b>-4.3%</b>	<b>-5.0%</b>	<b>-8.0%</b>	<b>-1.0%</b>
Dentists	31	+1	-1	+1	-1	-0	-2	+1.6%	-2.8%	+4.4%	-2.1%	-0.1%	-6.2%
Other Medical	25	-17	-15	-13	-13	-0	+0	-40.3%	-37.9%	-34.9%	-34.0%	-1.1%	+1.0%
<b>Medical/ Dental, other</b>	<b>56</b>	<b>-16</b>	<b>-16</b>	<b>-12</b>	<b>-14</b>	<b>-0</b>	<b>-2</b>	<b>-22.5%</b>	<b>-22.3%</b>	<b>-17.6%</b>	<b>-19.3%</b>	<b>-0.6%</b>	<b>-3.1%</b>
<b>Medical &amp; Dental</b>	<b>276</b>	<b>-1</b>	<b>-0</b>	<b>-5</b>	<b>-15</b>	<b>-13</b>	<b>-6</b>	<b>-0.2%</b>	<b>-0.1%</b>	<b>-1.8%</b>	<b>-5.3%</b>	<b>-4.6%</b>	<b>-2.0%</b>
Clinical Nurse/ Midwife Manager	362	-16	-8	-16	-10	+13	+6	-4.4%	-2.2%	-4.2%	-2.6%	+3.8%	+1.6%
Director Nursing/Midwifery, Assistant	68	+10	+8	+8	+13	+7	+5	+17.2%	+14.0%	+13.9%	+23.0%	+11.2%	+7.8%
Director of Nursing/Midwifery	26	-1	-1	+0	+4	+1	-0	-4.8%	-2.0%	+1.7%	+16.7%	+2.7%	-1.2%
<b>Nurse/ Midwife Manager</b>	<b>456</b>	<b>-8</b>	<b>-0</b>	<b>-7</b>	<b>+7</b>	<b>+21</b>	<b>+10</b>	<b>-1.7%</b>	<b>-0.0%</b>	<b>-1.6%</b>	<b>+1.5%</b>	<b>+4.8%</b>	<b>+2.3%</b>
Advanced Nurse/ Midwife Practitioner	7	+6	+5	+4	-0	+0	-0	+591.0%	+249.0%	+130.3%	-0.3%	+1.2%	-0.7%
Clinical Nurse/ Midwife Specialist	83	+34	+27	+7	+8	+5	-1	+71.0%	+47.0%	+9.9%	+10.0%	+6.3%	-1.1%
<b>Nurse/ Midwife Specialist &amp; AN/MP</b>	<b>90</b>	<b>+40</b>	<b>+31</b>	<b>+11</b>	<b>+8</b>	<b>+5</b>	<b>-1</b>	<b>+81.5%</b>	<b>+53.9%</b>	<b>+14.5%</b>	<b>+9.1%</b>	<b>+5.9%</b>	<b>-1.0%</b>
Graduate Nursing/ Midwifery		-1						-100.0%	-100.0%	-100.0%	-100.0%	-100.0%	-100.0%
Staff Midwives	1	+1	+1	+1	+1	+1		-100.0%	-100.0%	-100.0%	-100.0%	-100.0%	
Staff Nurse [Intellectual Disability]	408	-30	-22	-28	-18	-12	-5	-6.9%	-5.0%	-6.4%	-4.2%	-3.0%	-1.3%
Staff Nurse [Psychiatric]	369	-27	-13	-0	-14	-2	+9	-6.9%	-3.3%	-0.1%	-3.7%	-0.5%	+2.5%
Staff Nurses [General/ Children's]	433	+16	+22	+34	+2	+28	+23	+3.8%	+5.5%	+8.5%	+0.5%	+7.0%	+5.6%
<b>Staff Nurse/ Staff Midwife</b>	<b>1,211</b>	<b>-42</b>	<b>-11</b>	<b>+7</b>	<b>-29</b>	<b>+15</b>	<b>+27</b>	<b>-3.3%</b>	<b>-0.9%</b>	<b>+0.6%</b>	<b>-2.3%</b>	<b>+1.3%</b>	<b>+2.3%</b>
<b>Public Health Nurse</b>	<b>163</b>	<b>-18</b>	<b>-14</b>	<b>-10</b>	<b>-10</b>	<b>-12</b>	<b>-5</b>	<b>-9.9%</b>	<b>-7.7%</b>	<b>-5.7%</b>	<b>-5.7%</b>	<b>-6.9%</b>	<b>-3.1%</b>
Pre-registration Nurse/ Midwife Intern	1	-9	-4	-1	-20	-17		-94.7%	-88.9%	-58.3%	-97.6%	-97.2%	
Pre-registration Nurse Intern (COVID-19)	83	+83	+83	+83	+83	+83	+6	-100.0%	-100.0%	-100.0%	-100.0%	-100.0%	+7.7%
Post-registration Nurse/ Midwife Student	2	-24	-17	-26	-20	-24	-23	-92.3%	-89.5%	-92.9%	-90.9%	-92.3%	-92.0%
Nursing/ Midwifery awaiting registration					-3	-11		-100.0%	-100.0%	-100.0%	-100.0%	-100.0%	-100.0%



Jun 2020 (Dec 2015 figure: 6,089)	WTE Jun 2020	WTE change since Dec 15	WTE change since Dec 16	WTE change since Dec 17	WTE change since Dec 18	WTE change since Dec 19	WTE change since May 20	% change since Dec 15	% change since Dec 16	% change since Dec 17	% change since Dec 18	% change since Dec 19	% change since May 20
<b>Overall</b>	<b>6,700</b>	<b>+612</b>	<b>+414</b>	<b>+263</b>	<b>+67</b>	<b>+118</b>	<b>+31</b>	<b>+10.0%</b>	<b>+6.6%</b>	<b>+4.1%</b>	<b>+1.0%</b>	<b>+1.8%</b>	<b>+0.5%</b>
<b>Nursing/ Midwifery Student</b>	<b>86</b>	<b>+50</b>	<b>+62</b>	<b>+57</b>	<b>+41</b>	<b>+31</b>	<b>-17</b>	<b>+141.9%</b>	<b>+265.4%</b>	<b>+194.1%</b>	<b>+89.6%</b>	<b>+57.1%</b>	<b>-16.6%</b>
Nursing Education/Clinical	21	+3	+2	-1	-2	+1	-1	+20.1%	+10.5%	-5.2%	-7.6%	+5.7%	-4.6%
Other Nursing/ Midwifery		-1	-1	-0	-1			-100.0%	-100.0%	-100.0%	-100.0%	-100.0%	-100.0%
<b>Nursing/ Midwifery other</b>	<b>21</b>	<b>+2</b>	<b>+1</b>	<b>-2</b>	<b>-3</b>	<b>+1</b>	<b>-1</b>	<b>+13.5%</b>	<b>+4.9%</b>	<b>-7.1%</b>	<b>-11.5%</b>	<b>+5.7%</b>	<b>-4.6%</b>
<b>Nursing &amp; Midwifery</b>	<b>2,027</b>	<b>+26</b>	<b>+70</b>	<b>+56</b>	<b>+13</b>	<b>+61</b>	<b>+13</b>	<b>+1.3%</b>	<b>+3.6%</b>	<b>+2.8%</b>	<b>+0.7%</b>	<b>+3.1%</b>	<b>+0.6%</b>
Dietitians	28	+11	+5	+5	+4	+7	+0	+62.8%	+23.3%	+23.3%	+17.5%	+32.5%	+1.5%
Occupational Therapists	192	+29	+25	+9	+12	+9	-1	+17.6%	+15.0%	+5.0%	+6.5%	+5.1%	-0.4%
Orthoptists	5	+4	+4	+4	+1	-0	-0	+268.8%	+268.8%	+329.8%	+40.2%	-0.2%	-0.2%
Physiotherapists	146	+13	+13	+9	+9	+3	+0	+9.6%	+10.0%	+6.6%	+6.6%	+1.8%	+0.0%
Podiatrists & Chiropodists	1	+1	+1	+0			-0	-100.0%	-100.0%	+6.4%			-16.0%
Speech & Language Therapists	140	+30	+11	+3	-1	+6	+3	+27.9%	+8.6%	+2.0%	-0.4%	+4.7%	+1.8%
<b>Therapy Professions</b>	<b>511</b>	<b>+87</b>	<b>+59</b>	<b>+30</b>	<b>+26</b>	<b>+25</b>	<b>+2</b>	<b>+20.6%</b>	<b>+13.1%</b>	<b>+6.3%</b>	<b>+5.4%</b>	<b>+5.1%</b>	<b>+0.4%</b>
Audiology	15	+1	+2	-3	-3	-1	-1	+5.4%	+18.6%	-18.7%	-17.8%	-4.6%	-5.4%
Clinical Engineering	14	-4	-2	-2	-1	-2	+0	-22.7%	-14.1%	-12.5%	-6.7%	-12.5%	+0.1%
Medical Laboratory	4	+1	+1	+1				+33.3%	+33.3%	+33.3%			
Radiographers	1	-1	-1	-1	-1	-0		-50.0%	-50.0%	-50.0%	-50.0%	-31.0%	
<b>Health Science/ Diagnostics</b>	<b>34</b>	<b>-3</b>	<b>-0</b>	<b>-5</b>	<b>-5</b>	<b>-3</b>	<b>-1</b>	<b>-9.1%</b>	<b>-0.1%</b>	<b>-13.8%</b>	<b>-13.3%</b>	<b>-8.6%</b>	<b>-2.4%</b>
<b>Social Care</b>	<b>709</b>	<b>+225</b>	<b>+123</b>	<b>+101</b>	<b>+55</b>	<b>+14</b>	<b>+9</b>	<b>+46.5%</b>	<b>+21.0%</b>	<b>+16.5%</b>	<b>+8.4%</b>	<b>+2.0%</b>	<b>+1.2%</b>
<b>Social Workers</b>	<b>129</b>	<b>+2</b>	<b>+7</b>	<b>-1</b>	<b>-1</b>	<b>+4</b>	<b>+1</b>	<b>+1.5%</b>	<b>+6.0%</b>	<b>-1.1%</b>	<b>-0.8%</b>	<b>+3.0%</b>	<b>+1.0%</b>
<b>Psychologists</b>	<b>174</b>	<b>+23</b>	<b>+8</b>	<b>+8</b>	<b>+5</b>	<b>+10</b>	<b>+3</b>	<b>+14.9%</b>	<b>+4.7%</b>	<b>+4.9%</b>	<b>+2.7%</b>	<b>+6.4%</b>	<b>+1.6%</b>
<b>Pharmacy</b>	<b>25</b>	<b>-6</b>	<b>-11</b>	<b>-9</b>	<b>-6</b>	<b>+0</b>	<b>-0</b>	<b>-19.8%</b>	<b>-30.1%</b>	<b>-26.9%</b>	<b>-18.4%</b>	<b>+1.0%</b>	<b>-1.4%</b>
Counsellor Therapists	40	+2	+3	+1	+3	-1	-1	+6.0%	+9.0%	+2.5%	+9.2%	-3.3%	-1.9%
Dental Hygienists	6	+0	+0	+0	-0	-0	-0	+0.7%	+0.7%	+0.5%	-3.0%	-4.7%	-6.6%
Other Health & Social Care	21	-4	-5	-3	-0	+1		-15.4%	-17.4%	-11.7%	-0.5%	+7.0%	
Play Therapists/ Specialists	2	-1	-0	-1	-1	-0	-0	-28.0%	-5.3%	-28.0%	-28.0%	-21.1%	-5.3%
<b>H&amp;SC, Other</b>	<b>70</b>	<b>-2</b>	<b>-1</b>	<b>-3</b>	<b>+2</b>	<b>-1</b>	<b>-1</b>	<b>-3.2%</b>	<b>-1.7%</b>	<b>-3.5%</b>	<b>+3.6%</b>	<b>-1.1%</b>	<b>-1.8%</b>
<b>Health &amp; Social Care Professionals</b>	<b>1,652</b>	<b>+325</b>	<b>+185</b>	<b>+121</b>	<b>+76</b>	<b>+49</b>	<b>+12</b>	<b>+24.5%</b>	<b>+12.6%</b>	<b>+7.9%</b>	<b>+4.8%</b>	<b>+3.1%</b>	<b>+0.7%</b>
Executive Management	12	+5	+7	+5	+3	+1	-0	+70.7%	+139.0%	+72.7%	+32.8%	+13.6%	-0.3%
Senior Management (VIII & GM)	69	+20	+19	+10	+6	+0	+1	+40.5%	+38.9%	+17.2%	+9.6%	+0.0%	+0.9%
<b>Management (VIII &amp; above)</b>	<b>81</b>	<b>+25</b>	<b>+26</b>	<b>+15</b>	<b>+9</b>	<b>+1</b>	<b>+1</b>	<b>+44.2%</b>	<b>+48.0%</b>	<b>+23.0%</b>	<b>+12.5%</b>	<b>+1.8%</b>	<b>+0.8%</b>
Middle Management (V-VII)	211	+60	+45	+42	+9	+12	+3	+39.5%	+26.9%	+24.9%	+4.7%	+6.0%	+1.3%
Other Administrative	9	-1	-1	-3	-4			-9.8%	-5.5%	-22.6%	-31.8%		
<b>Administrative/ Supervisory (V to VII)</b>	<b>220</b>	<b>+59</b>	<b>+44</b>	<b>+40</b>	<b>+5</b>	<b>+12</b>	<b>+3</b>	<b>+36.6%</b>	<b>+25.2%</b>	<b>+22.0%</b>	<b>+2.5%</b>	<b>+5.8%</b>	<b>+1.3%</b>
<b>Clerical (III &amp; IV)</b>	<b>443</b>	<b>+37</b>	<b>+37</b>	<b>+9</b>	<b>-17</b>	<b>-8</b>	<b>-2</b>	<b>+9.0%</b>	<b>+9.1%</b>	<b>+2.0%</b>	<b>-3.7%</b>	<b>-1.9%</b>	<b>-0.5%</b>
<b>Management &amp; Administrative</b>	<b>744</b>	<b>+120</b>	<b>+108</b>	<b>+63</b>	<b>-3</b>	<b>+5</b>	<b>+1</b>	<b>+19.3%</b>	<b>+16.9%</b>	<b>+9.3%</b>	<b>-0.3%</b>	<b>+0.7%</b>	<b>+0.1%</b>

Jun 2020 (Dec 2015 figure: 6,089)	WTE Jun 2020	WTE change since Dec 15	WTE change since Dec 16	WTE change since Dec 17	WTE change since Dec 18	WTE change since Dec 19	WTE change since May 20	% change since Dec 15	% change since Dec 16	% change since Dec 17	% change since Dec 18	% change since Dec 19	% change since May 20
<b>Overall</b>	<b>6,700</b>	<b>+612</b>	<b>+414</b>	<b>+263</b>	<b>+67</b>	<b>+118</b>	<b>+31</b>	<b>+10.0%</b>	<b>+6.6%</b>	<b>+4.1%</b>	<b>+1.0%</b>	<b>+1.8%</b>	<b>+0.5%</b>
Catering	56	-13	-12	-10	-8	-5	+0	-18.3%	-17.2%	-15.4%	-11.8%	-7.7%	+0.6%
Household Services	221	-38	-17	-4	-7	+0	-1	-14.6%	-7.3%	-1.8%	-3.2%	+0.1%	-0.6%
Other Support	91	-43	-36	-40	-28	-3	+0	-31.7%	-28.2%	-30.2%	-23.3%	-3.4%	+0.2%
Portering	75	-11	-10	-5	+0	-1	+0	-12.6%	-12.0%	-6.4%	+0.6%	-1.0%	+0.1%
<b>Support</b>	<b>443</b>	<b>-104</b>	<b>-75</b>	<b>-59</b>	<b>-42</b>	<b>-8</b>	<b>-1</b>	<b>-18.9%</b>	<b>-14.5%</b>	<b>-11.8%</b>	<b>-8.7%</b>	<b>-1.9%</b>	<b>-0.2%</b>
Maintenance	33	-7	-1	-3	-1	+0		-16.4%	-3.5%	-8.3%	-3.5%	+0.1%	
Technical Services	2	+1	+1	+1				+100.0%	+100.0%	+100.0%			
<b>Maintenance/ Technical</b>	<b>35</b>	<b>-6</b>	<b>-0</b>	<b>-2</b>	<b>-1</b>	<b>+0</b>		<b>-13.6%</b>	<b>-0.6%</b>	<b>-5.4%</b>	<b>-3.3%</b>	<b>+0.1%</b>	
<b>General Support</b>	<b>479</b>	<b>-109</b>	<b>-75</b>	<b>-61</b>	<b>-43</b>	<b>-8</b>	<b>-1</b>	<b>-18.6%</b>	<b>-13.6%</b>	<b>-11.3%</b>	<b>-8.3%</b>	<b>-1.7%</b>	<b>-0.2%</b>
HCA, Nurse's Aide, etc.	1,286	+220	+104	+57	+35	+20	+11	+20.6%	+8.8%	+4.7%	+2.8%	+1.6%	+0.9%
Health & Social Care Assistants	20	+10	+10	+9	-2	+8	-0	+97.2%	+95.3%	+76.0%	-8.1%	+61.0%	-0.1%
<b>Health Care Assistants</b>	<b>1,305</b>	<b>+230</b>	<b>+114</b>	<b>+66</b>	<b>+34</b>	<b>+28</b>	<b>+11</b>	<b>+21.3%</b>	<b>+9.5%</b>	<b>+5.3%</b>	<b>+2.6%</b>	<b>+2.2%</b>	<b>+0.8%</b>
<b>Care, other</b>	<b>218</b>	<b>+21</b>	<b>+12</b>	<b>+23</b>	<b>+5</b>	<b>-3</b>	<b>+0</b>	<b>+10.6%</b>	<b>+5.9%</b>	<b>+11.7%</b>	<b>+2.2%</b>	<b>-1.5%</b>	<b>+0.1%</b>
<b>Patient &amp; Client Care</b>	<b>1,523</b>	<b>+250</b>	<b>+126</b>	<b>+89</b>	<b>+38</b>	<b>+24</b>	<b>+11</b>	<b>+19.7%</b>	<b>+9.0%</b>	<b>+6.2%</b>	<b>+2.6%</b>	<b>+1.6%</b>	<b>+0.7%</b>

Source: Health Service Personnel Census

Longitudinal Employment Levels by Care Group - Oct 2013 to Jun 2020

Community Health & Wellbeing

Jun 2020 ( figure: )	WTE Jun 2020	WTE change since	WTE change since	WTE change since	WTE change since	WTE change since	WTE change since May 20	% change since	% change since	% change since	% change since	% change since	% change since May 20
Overall	8	+8	+8	+8	+8	+8	+0	-100.0%	-100.0%	-100.0%	-100.0%	-100.0%	+2.9%
Health & Social Care Professionals	1	+1	+1	+1	+1	+1		-1.0%	-1.0%	-1.0%	-1.0%	-1.0%	+0.0%
Therapy Professions	1	+1	+1	+1	+1	+1		-1.0%	-1.0%	-1.0%	-1.0%	-1.0%	+0.0%
Management & Administrative	8	+8	+8	+8	+8	+8	+0	-1.0%	-1.0%	-1.0%	-1.0%	-1.0%	+0.0%
Management (VIII & above)	1	+1	+1	+1	+1	+1		-1.0%	-1.0%	-1.0%	-1.0%	-1.0%	+0.0%
Administrative/ Supervisory (V to VII)	5	+5	+5	+5	+5	+5		-1.0%	-1.0%	-1.0%	-1.0%	-1.0%	+0.0%
Clerical (III & IV)	2	+2	+2	+2	+2	+2	+0	-1.0%	-1.0%	-1.0%	-1.0%	-1.0%	+0.2%

Source: Health Service Personnel Census

Mental Health

Jun 2020 (Dec 2015 figure: 1,223)	WTE Jun 2020	WTE change since Dec 15	WTE change since Dec 16	WTE change since Dec 17	WTE change since Dec 18	WTE change since Dec 19	WTE change since May 20	% change since Dec 15	% change since Dec 16	% change since Dec 17	% change since Dec 18	% change since Dec 19	% change since May 20
Overall	1,308	+86	+91	+88	+7	+37	+8	+7.0%	+7.5%	+7.2%	+0.6%	+2.9%	+0.6%
Medical & Dental	125	+6	+1	+1	-11	-9	-3	+0.0%	+0.0%	+0.0%	-0.1%	-0.1%	-0.0%
Consultants	47	-2	+0	+2	-4	-3	-2	-0.0%	+0.0%	+0.0%	-0.1%	-0.1%	-0.0%
Registrars	34	+3	+1	+9	+5	+3	+0	+0.1%	+0.0%	+0.4%	+0.2%	+0.1%	+0.0%
SHO/ Interns	44	+5	+1	-10	-11	-9	-2	+0.1%	+0.0%	-0.2%	-0.2%	-0.2%	-0.0%
Medical/ Dental, other			-1					-1.0%	-1.0%	-1.0%	-1.0%	-1.0%	-1.0%
Nursing & Midwifery	628	+43	+56	+63	+34	+48	+11	+0.1%	+0.1%	+0.1%	+0.1%	+0.1%	+0.0%
Nurse/ Midwife Manager	139	-14	-8	-1	+2	+7	+3	-0.1%	-0.1%	-0.0%	+0.0%	+0.1%	+0.0%
Nurse/ Midwife Specialist & AN/MP	68	+37	+27	+10	+4	+3	-1	+1.2%	+0.6%	+0.2%	+0.1%	+0.0%	-0.0%
Staff Nurse/ Staff Midwife	356	-24	-11	+6	-8	+5	+5	-0.1%	-0.0%	+0.0%	-0.0%	+0.0%	+0.0%
Public Health Nurse			-1	-1				-1.0%	-1.0%	-1.0%	-1.0%	-1.0%	-1.0%
Nursing/ Midwifery Student	53	+45	+49	+52	+38	+32	+4	+6.0%	+14.1%	+43.1%	+2.6%	+1.5%	+0.1%
Nursing/ Midwifery other	12	+0	-0	-3	-2	+0		+0.0%	-0.0%	-0.2%	-0.1%	+0.0%	+0.0%
Health & Social Care Professionals	175	+17	+15	+9	-7	+8	-2	+0.1%	+0.1%	+0.1%	-0.0%	+0.0%	-0.0%
Therapy Professions	61	+7	+10	+8	-1	+6	-2	+0.1%	+0.2%	+0.1%	-0.0%	+0.1%	-0.0%
Social Care	1	-0	-0	-0	-0			-0.1%	-0.1%	-0.0%	-0.1%	+0.0%	+0.0%
Social Workers	43	-2	+4	-4	-4	-0	+0	-0.0%	+0.1%	-0.1%	-0.1%	-0.0%	+0.0%
Psychologists	49	+11	+2	+4	-2	+4	+1	+0.3%	+0.0%	+0.1%	-0.0%	+0.1%	+0.0%
Pharmacy	7	+0	-2	-2	-1	-1	-0	+0.1%	-0.2%	-0.2%	-0.1%	-0.1%	-0.0%
H&SC, Other	14	+0	+1	+2	+1	-1	-1	+0.0%	+0.0%	+0.2%	+0.1%	-0.1%	-0.0%
Management & Administrative	128	+18	+15	+3	-9	-8	-1	+0.2%	+0.1%	+0.0%	-0.1%	-0.1%	-0.0%
Management (VIII & above)	5	+3	+3	+3	+3		-0	+1.5%	+1.5%	+1.5%	+1.5%	+0.0%	-0.0%
Administrative/ Supervisory (V to VII)	28	+10	+8	+2	+0	+0	-0	+0.6%	+0.4%	+0.1%	+0.0%	+0.0%	-0.0%
Clerical (III & IV)	95	+5	+4	-2	-12	-9	-1	+0.1%	+0.0%	-0.0%	-0.1%	-0.1%	-0.0%
General Support	113	-25	-24	-14	-15	-1	+1	-0.2%	-0.2%	-0.1%	-0.1%	-0.0%	+0.0%
Support	102	-25	-24	-14	-15	-1	+1	-0.2%	-0.2%	-0.1%	-0.1%	-0.0%	+0.0%
Maintenance/ Technical	11	-1	+0	-0	-0	+0		-0.1%	+0.0%	-0.0%	-0.0%	+0.0%	+0.0%
Patient & Client Care	138	+27	+28	+27	+14	-0	+2	+0.2%	+0.3%	+0.2%	+0.1%	-0.0%	+0.0%
Health Care Assistants	126	+17	+17	+17	+8	+0	+2	+0.2%	+0.2%	+0.2%	+0.1%	+0.0%	+0.0%
Care, other	12	+10	+11	+10	+7	-0	+0	+5.1%	+11.3%	+5.1%	+1.1%	-0.0%	+0.0%

Source: Health Service Personnel Census

Primary Care

Jun 2020 (Dec 2015 figure: 1,207)	WTE Jun 2020	WTE change since Dec 15	WTE change since Dec 16	WTE change since Dec 17	WTE change since Dec 18	WTE change since Dec 19	WTE change since May 20	% change since Dec 15	% change since Dec 16	% change since Dec 17	% change since Dec 18	% change since Dec 19	% change since May 20
Overall	1,251	+44	+89	+12	-49	+4	+2	+3.6%	+7.7%	+1.0%	-3.8%	+0.3%	+0.1%
Medical & Dental	108	-12	-6	-6	-11	-3	-2	-0.1%	-0.1%	-0.1%	-0.1%	-0.0%	-0.0%
Consultants	4	+0	+0	-2	+1	+0		+0.1%	+0.1%	-0.3%	+0.3%	+0.0%	+0.0%
Registrars	50	+11	+15	+8	-1	-5	-1	+0.3%	+0.4%	+0.2%	-0.0%	-0.1%	-0.0%
SHO/ Interns	4	-7	-6	+1	+4	+3		-0.6%	-0.6%	+0.3%	-1.0%	+3.0%	+0.0%
Medical/ Dental, other	49	-16	-15	-13	-14	-1	-2	-0.2%	-0.2%	-0.2%	-0.2%	-0.0%	-0.0%
Nursing & Midwifery	340	-6	+10	-19	-15	-5	-0	-0.0%	+0.0%	-0.1%	-0.0%	-0.0%	-0.0%
Nurse/ Midwife Manager	42	+6	+6	+3	+4	+5	+4	+0.2%	+0.2%	+0.1%	+0.1%	+0.1%	+0.1%
Nurse/ Midwife Specialist & AN/MP	6	+4	+2	-2	+1			+2.1%	+0.5%	-0.2%	+0.2%	+0.0%	+0.0%
Staff Nurse/ Staff Midwife	126	+27	+33	+16	+12	+26	+25	+0.3%	+0.4%	+0.1%	+0.1%	+0.3%	+0.2%
Public Health Nurse	163	-18	-12	-9	-9	-12	-5	-0.1%	-0.1%	-0.0%	-0.1%	-0.1%	-0.0%
Nursing/ Midwifery Student	2	-24	-17	-26	-20	-24	-23	-0.9%	-0.9%	-0.9%	-0.9%	-0.9%	-0.9%
Nursing/ Midwifery other		-2	-2	-1	-2			-1.0%	-1.0%	-1.0%	-1.0%	-1.0%	-1.0%
Health & Social Care Professionals	349	+32	+36	+8	-6	-2	-2	+0.1%	+0.1%	+0.0%	-0.0%	-0.0%	-0.0%
Therapy Professions	192	+20	+18	-3	-1	-4	-1	+0.1%	+0.1%	-0.0%	-0.0%	-0.0%	-0.0%
Health Science/ Diagnostics	20	+20	+20	+20	-3	-1	-1	-1.0%	-1.0%	-1.0%	-0.1%	-0.0%	-0.0%
Social Care	5	-1	-0	-0	+1	+0	+0	-0.1%	-0.0%	-0.0%	+0.2%	+0.1%	+0.0%
Social Workers	17	-5	+1	-1	-0	+0	+0	-0.2%	+0.0%	-0.0%	-0.0%	+0.0%	+0.0%
Psychologists	67	+4	+5	+3	+2	+1	+1	+0.1%	+0.1%	+0.0%	+0.0%	+0.0%	+0.0%
Pharmacy	13	-7	-9	-8	-5	+1	-0	-0.3%	-0.4%	-0.4%	-0.3%	+0.1%	-0.0%
H&SC, Other	36	+1	+3	-2	+1	-1	-1	+0.0%	+0.1%	-0.1%	+0.0%	-0.0%	-0.0%
Management & Administrative	295	+39	+49	+30	-1	+7	+5	+0.2%	+0.2%	+0.1%	-0.0%	+0.0%	+0.0%
Management (VIII & above)	31	+8	+12	+6	+4	+3	+1	+0.4%	+0.7%	+0.2%	+0.1%	+0.1%	+0.0%
Administrative/ Supervisory (V to VII)	81	+24	+22	+24	+1	+3	+4	+0.4%	+0.4%	+0.4%	+0.0%	+0.0%	+0.0%
Clerical (III & IV)	183	+6	+15	+1	-6	+1	+0	+0.0%	+0.1%	+0.0%	-0.0%	+0.0%	+0.0%
General Support	33	-22	-19	-18	-15	-2	-0	-0.4%	-0.4%	-0.4%	-0.3%	-0.1%	-0.0%
Support	33	-22	-19	-18	-15	-2	-0	-0.4%	-0.4%	-0.4%	-0.3%	-0.1%	-0.0%
Patient & Client Care	127	+13	+19	+17	-1	+9	+2	+0.1%	+0.2%	+0.2%	-0.0%	+0.1%	+0.0%
Health Care Assistants	21	+16	+16	+13	-3	+8	+1	+2.9%	+3.1%	+1.6%	-0.1%	+0.6%	+0.0%
Care, other	106	-3	+3	+4	+2	+1	+1	-0.0%	+0.0%	+0.0%	+0.0%	+0.0%	+0.0%

Source: Health Service Personnel Census

Disabilities

Jun 2020 (Dec 2015 figure: 2,807)	WTE Jun 2020	WTE change since Dec 15	WTE change since Dec 16	WTE change since Dec 17	WTE change since Dec 18	WTE change since Dec 19	WTE change since May 20	% change since Dec 15	% change since Dec 16	% change since Dec 17	% change since Dec 18	% change since Dec 19	% change since May 20
Overall	3,211	+405	+168	+111	+87	+17	+12	+14.4%	+5.5%	+3.6%	+2.8%	+0.5%	+0.4%
Medical & Dental	23	+5	+4	+2	+4	-1	+0	+0.2%	+0.2%	+0.1%	+0.2%	-0.1%	+0.0%
Consultants	11	+2	+1	+0	+1	-1		+0.3%	+0.1%	+0.0%	+0.1%	-0.1%	+0.0%
Registrars	4	+1	+1	-1	+1	-2	-0	+0.2%	+0.2%	-0.3%	+0.2%	-0.4%	-0.1%
SHO/ Interns	2	+2	+2	+2	+2	+2	+1	-1.0%	-1.0%	-1.0%	-1.0%	-1.0%	+1.0%
Medical/ Dental, other	7	-0	+0	+1	+1	+0	-0	-0.1%	+0.0%	+0.1%	+0.1%	+0.1%	-0.0%
Nursing & Midwifery	741	-32	-13	-16	-8	+8	-1	-0.0%	-0.0%	-0.0%	-0.0%	+0.0%	-0.0%
Nurse/ Midwife Manager	192	-3	-5	-8	-4	+1	+1	-0.0%	-0.0%	-0.0%	-0.0%	+0.0%	+0.0%
Nurse/ Midwife Specialist & AN/MP	9	-1	+0	+1	+1	+1		-0.1%	+0.0%	+0.1%	+0.1%	+0.1%	+0.0%
Staff Nurse/ Staff Midwife	500	-61	-42	-42	-29	-18	-2	-0.1%	-0.1%	-0.1%	-0.1%	-0.0%	-0.0%
Nursing/ Midwifery Student	31	+29	+30	+31	+23	+23	+1	+14.5%	+30.0%	-1.0%	+2.6%	+3.0%	+0.0%
Nursing/ Midwifery other	8	+4	+3	+2	+1	+1	-1	+1.1%	+0.7%	+0.4%	+0.2%	+0.1%	-0.1%
Health & Social Care Professionals	1,032	+246	+106	+87	+77	+29	+14	+0.3%	+0.1%	+0.1%	+0.1%	+0.0%	+0.0%
Therapy Professions	188	+37	+9	+14	+14	+7	+4	+0.2%	+0.0%	+0.1%	+0.1%	+0.0%	+0.0%
Health Science/ Diagnostics	13	-22	-19	-24	-1	-2		-0.6%	-0.6%	-0.6%	-0.1%	-0.1%	+0.0%
Social Care	702	+226	+123	+101	+54	+13	+8	+0.5%	+0.2%	+0.2%	+0.1%	+0.0%	+0.0%
Social Workers	48	+1	-3	-2	+4	+3	+1	+0.0%	-0.1%	-0.0%	+0.1%	+0.1%	+0.0%
Psychologists	59	+8	+1	+1	+5	+6	+1	+0.2%	+0.0%	+0.0%	+0.1%	+0.1%	+0.0%
Pharmacy	2							+0.0%	+0.0%	+0.0%	+0.0%	+0.0%	+0.0%
H&SC, Other	20	-4	-5	-3	+1	+1	-0	-0.2%	-0.2%	-0.1%	+0.0%	+0.0%	-0.0%
Management & Administrative	247	+45	+28	+23	+8	-3	-1	+0.2%	+0.1%	+0.1%	+0.0%	-0.0%	-0.0%
Management (VIII & above)	36	+8	+7	+4	+2	-2		+0.3%	+0.2%	+0.1%	+0.1%	-0.0%	+0.0%
Administrative/ Supervisory (V to VII)	90	+19	+9	+11	+4	+2	-1	+0.3%	+0.1%	+0.1%	+0.0%	+0.0%	-0.0%
Clerical (III & IV)	122	+18	+12	+8	+3	-4	-0	+0.2%	+0.1%	+0.1%	+0.0%	-0.0%	-0.0%
General Support	210	-57	-32	-27	-14	-8	-1	-0.2%	-0.1%	-0.1%	-0.1%	-0.0%	-0.0%
Support	188	-52	-31	-25	-12	-8	-1	-0.2%	-0.1%	-0.1%	-0.1%	-0.0%	-0.0%
Maintenance/ Technical	22	-5	-0	-2	-1	-0		-0.2%	-0.0%	-0.1%	-0.1%	-0.0%	+0.0%
Patient & Client Care	959	+198	+74	+43	+19	-7	-1	+0.3%	+0.1%	+0.0%	+0.0%	-0.0%	-0.0%
Health Care Assistants	865	+188	+80	+37	+24	-4	-0	+0.3%	+0.1%	+0.0%	+0.0%	-0.0%	-0.0%
Care, other	94	+10	-5	+6	-6	-3	-1	+0.1%	-0.1%	+0.1%	-0.1%	-0.0%	-0.0%

Source: Health Service Personnel Census

Older People

Jun 2020 (Dec 2015 figure: 852)	WTE Jun 2020	WTE change since Dec 15	WTE change since Dec 16	WTE change since Dec 17	WTE change since Dec 18	WTE change since Dec 19	WTE change since May 20	% change since Dec 15	% change since Dec 16	% change since Dec 17	% change since Dec 18	% change since Dec 19	% change since May 20
Overall	922	+69	+57	+43	+13	+52	+9	+8.1%	+6.5%	+4.9%	+1.5%	+6.0%	+1.0%
Medical & Dental	20	+1	+1	-2	+2	+0	-1	+0.0%	+0.0%	-0.1%	+0.1%	+0.0%	-0.0%
Consultants	2	-3	-5	-5	+0	+1		-0.6%	-0.7%	-0.7%	+0.3%	+0.4%	+0.0%
Registrars	6	-0	+1	-1	-0	+1	-1	-0.0%	+0.1%	-0.1%	-0.1%	+0.1%	-0.1%
SHO/ Interns	11	+4	+5	+4	+2	-1		+0.6%	+0.8%	+0.6%	+0.2%	-0.1%	+0.0%
Medical/ Dental, other	1		+0					+0.0%	+0.0%	+0.0%	+0.0%	+0.0%	+0.0%
Nursing & Midwifery	318	+21	+17	+28	+3	+10	+2	+0.1%	+0.1%	+0.1%	+0.0%	+0.0%	+0.0%
Nurse/ Midwife Manager	82	+4	+6	-1	+4	+8	+3	+0.0%	+0.1%	-0.0%	+0.1%	+0.1%	+0.0%
Nurse/ Midwife Specialist & AN/MP	6	+1	+3	+3	+2	+1	-0	+0.2%	+1.0%	+1.0%	+0.5%	+0.2%	-0.0%
Staff Nurse/ Staff Midwife	229	+16	+9	+27	-3	+2	-0	+0.1%	+0.0%	+0.1%	-0.0%	+0.0%	-0.0%
Public Health Nurse			-0	-0	-0	-0		-1.0%	-1.0%	-1.0%	-1.0%	-1.0%	-1.0%
Nursing/ Midwifery other	1							+0.0%	+0.0%	+0.0%	+0.0%	+0.0%	+0.0%
Health & Social Care Professionals	96	+30	+27	+16	+11	+14	+1	+0.5%	+0.4%	+0.2%	+0.1%	+0.2%	+0.0%
Therapy Professions	69	+23	+22	+11	+13	+15	+1	+0.5%	+0.5%	+0.2%	+0.2%	+0.3%	+0.0%
Health Science/ Diagnostics	1	-1	-1	-1	-1	-0		-0.5%	-0.5%	-0.5%	-0.5%	-0.3%	+0.0%
Social Care	1	+0	+0	+0				+0.1%	+0.0%	+0.1%	+0.0%	+0.0%	+0.0%
Social Workers	21	+7	+6	+5	-1	-0	+0	+0.5%	+0.4%	+0.3%	-0.0%	-0.0%	+0.0%
Pharmacy	3	+0	+0	+0	+0	+0		+0.1%	+0.1%	+0.1%	+0.1%	+0.1%	+0.0%
H&SC, Other	0	+0						-1.0%	+0.0%	+0.0%	+0.0%	+0.0%	+0.0%
Management & Administrative	66	+11	+8	-0	-8	+2	-1	+0.2%	+0.1%	-0.0%	-0.1%	+0.0%	-0.0%
Management (VIII & above)	8	+4	+3	+1	-1	-1		+1.0%	+0.6%	+0.2%	-0.1%	-0.1%	+0.0%
Administrative/ Supervisory (V to VII)	16	+1	+1	-2	-4	+1	-0	+0.1%	+0.1%	-0.1%	-0.2%	+0.1%	-0.0%
Clerical (III & IV)	41	+6	+4	+0	-3	+1	-1	+0.2%	+0.1%	+0.0%	-0.1%	+0.0%	-0.0%
General Support	123	-5	-1	-1	-0	+2	-1	-0.0%	-0.0%	-0.0%	-0.0%	+0.0%	-0.0%
Support	121	-5	-1	-1	-0	+2	-1	-0.0%	-0.0%	-0.0%	-0.0%	+0.0%	-0.0%
Maintenance/ Technical	2							+0.0%	+0.0%	+0.0%	+0.0%	+0.0%	+0.0%
Patient & Client Care	299	+12	+4	+2	+6	+23	+8	+0.0%	+0.0%	+0.0%	+0.0%	+0.1%	+0.0%
Health Care Assistants	294	+9	+1	-1	+4	+24	+8	+0.0%	+0.0%	-0.0%	+0.0%	+0.1%	+0.0%
Care, other	5	+3	+3	+3	+2	-1	-0	+1.3%	+1.2%	+1.2%	+0.6%	-0.1%	-0.0%

Source: Health Service Personnel Census