

CHO 9 Employment Report: March 2021

Employment by Staff Group

Mar 2021 (Dec 2020 figure: 6,950)	WTE Feb 2021	WTE Mar 2021	WTE change since Feb 21	% change since Feb 21	WTE change since Dec 20	WTE change since Mar 20
Overall	6,971	6,979	+7	+0.1%	+29	+390
Consultants	63	63	-1	-0.8%	-2	-2
Registrars	95	95	-1	-0.5%	+4	-1
SHO/ Interns	59	57	-1	-2.3%	-14	-4
Medical/ Dental, other	55	54	-1	-0.9%	-2	-1
Medical & Dental	272	269	-3	-1.1%	-14	-7
Nurse/ Midwife Manager	457	456	-0	-0.1%	-1	+20
Nurse/ Midwife Specialist & AN/MP	107	106	-1	-1.0%	+5	+17
Staff Nurse/ Staff Midwife	1,228	1,233	+5	+0.4%	+10	+42
Public Health Nurse	179	176	-3	-1.8%	-6	+8
<i>Pre-registration Nurse/ Midwife Intern</i>	46	46	-0	-0.9%	+33	-0
<i>Pre-registration Nurse Intern (COVID-19)</i>	4		-4	-100.0%	-16	-4
<i>Post-registration Nurse/ Midwife Student</i>	31	31	+0	+1.3%	+0	+0
Nursing/ Midwifery Student	81	77	-4	-5.0%	+18	+8
Nursing/ Midwifery other	22	22	-0	-0.2%	-1	+3
Nursing & Midwifery	2,075	2,071	-3	-0.2%	+25	+97
Therapy Professions	538	539	+1	+0.2%	+9	+46
Health Science/ Diagnostics	34	35	+0	+0.7%	+1	+1
Social Care	756	765	+8	+1.1%	+19	+57
Social Workers	139	140	+1	+0.7%	+2	+14
Psychologists	178	180	+2	+1.2%	-2	+9
Pharmacy	30	30	+1	+2.5%	+1	+6
H&SC, Other	68	68	+0	+0.6%	-0	-0
Health & Social Care Professionals	1,743	1,758	+14	+0.8%	+29	+133
Management (VIII & above)	85	84	-1	-0.8%	-1	+4
Administrative/ Supervisory (V to VII)	257	259	+3	+1.0%	+16	+38
Clerical (III & IV)	502	501	-0	-0.1%	-5	+62
Management & Administrative	843	844	+2	+0.2%	+10	+103
Support	400	402	+1	+0.3%	-1	-46
Maintenance/ Technical	35	35	-0	-0.0%	-1	+0
General Support	436	437	+1	+0.3%	-2	-46
Health Care Assistants	1,369	1,365	-5	-0.3%	-21	+95
Care, other	234	235	+1	+0.4%	+1	+15
Patient & Client Care	1,603	1,599	-4	-0.2%	-19	+110

CHO 9 Employment Report: March 2021

Community Health & Wellbeing

Mar 2021 (Dec 2020 figure: 8)	WTE Feb 2021	WTE Mar 2021	WTE change since Feb 21	% change since Feb 21	WTE change since Dec 20	WTE change since Mar 20
Total Community Health & Wellbeing	11	11	+0	+1.1%	+3	+3
Therapy Professions	1	1				
Health & Social Care Professionals	1	1				
Management (VIII & above)	1	1				
Administrative/ Supervisory (V to VII)	8	8	+0	+1.5%	+3	+3
Clerical (III & IV)	2	2				
Management & Administrative	10	11	+0	+1.1%	+3	+3

Mental Health

Mar 2021 (Dec 2020 figure: 1,331)	WTE Feb 2021	WTE Mar 2021	WTE change since Feb 21	% change since Feb 21	WTE change since Dec 20	WTE change since Mar 20
Total Mental Health	1,330	1,340	+10	+0.7%	+9	+63
Consultants	46	46	-0	-0.2%	+0	-1
Registrars	39	39	-0	-0.6%	+7	+4
SHO/ Interns	42	40	-2	-4.1%	-13	-6
Medical & Dental	128	126	-2	-1.6%	-6	-2
Nurse/ Midwife Manager	135	136	+0	+0.3%	-2	+5
Nurse/ Midwife Specialist & AN/MP	79	78	-1	-0.8%	+2	+9
Staff Nurse/ Staff Midwife	366	374	+8	+2.1%	+2	+15
Pre-registration Nurse/ Midwife Intern	28	28	-0	-1.5%	+18	-0
Pre-registration Nurse Intern (COVID-19)	1		-1	-100.0%	-5	-1
Nursing/ Midwifery Student	29	28	-1	-4.9%	+12	+0
Nursing/ Midwifery other	12	12	-0	-0.5%	-1	+1
Nursing & Midwifery	622	627	+6	+0.9%	+14	+30
Therapy Professions	63	65	+2	+2.5%	+4	+6
Social Care	1	1	+0	+5.6%	-0	
Social Workers	44	44	+1	+1.6%	+2	+1
Psychologists	49	51	+2	+3.8%	-2	+4
Pharmacy	9	9	+0	+0.1%	-0	+2
H&SC, Other	14	15	+1	+6.0%	+1	+1
Health & Social Care Professionals	180	185	+5	+2.8%	+4	+14
Management (VIII & above)	6	6			+1	+1
Administrative/ Supervisory (V to VII)	28	27	-0	-0.8%	-1	-2
Clerical (III & IV)	111	111	-1	-0.6%	-3	+13
Management & Administrative	145	144	-1	-0.6%	-4	+12
Support	103	104	+1	+0.8%	-1	+4
Maintenance/ Technical	11	11				+0
General Support	114	115	+1	+0.7%	-1	+4
Health Care Assistants	130	131	+1	+0.5%	+2	+5
Care, other	12	12	+0	+1.1%	+0	+0
Patient & Client Care	142	143	+1	+0.6%	+2	+5

Primary Care

Mar 2021 (Dec 2020 figure: 1,412)	WTE Feb 2021	WTE Mar 2021	WTE change since Feb 21	% change since Feb 21	WTE change since Dec 20	WTE change since Mar 20
Total Primary Care	1,437	1,405	-32	-2.2%	-7	+168
Consultants	3	4	+1	+29.4%		
Registrars	48	47	-1	-1.1%	-5	-4
SHO/ Interns	8	8	-1	-7.3%	+3	+4
Medical/ Dental, other	48	47	-0	-1.0%	-2	-1
Medical & Dental	107	106	-1	-0.6%	-4	-1
Nurse/ Midwife Manager	47	48	+1	+3.1%	+6	+13
Nurse/ Midwife Specialist & AN/MP	9	9	+1	+5.8%	+1	+3
Staff Nurse/ Staff Midwife	110	109	-1	-1.1%	+3	+8
Public Health Nurse	179	176	-3	-1.8%	-6	+8
<i>Post-registration Nurse/ Midwife Student</i>	31	31	+0	+1.3%	+0	+0
Nursing/ Midwifery Student	31	31	+0	+1.3%	+0	+5
Nursing/ Midwifery other	1	1			-0	+1
Nursing & Midwifery	377	375	-2	-0.6%	+4	+39
Therapy Professions	207	204	-4	-1.8%	-7	+7
Health Science/ Diagnostics	19	20	+0	+1.2%	+0	-0
Social Care	4	4	+0	+1.7%	+0	-1
Social Workers	22	22			-0	+6
Psychologists	68	68	+0	+0.6%	+3	+2
Pharmacy	15	16	+1	+4.7%	+1	+3
H&SC, Other	35	35	-0	-0.2%	-1	-1
Health & Social Care Professionals	371	368	-2	-0.7%	-4	+17
Management (VIII & above)	29	23	-5	-18.3%	-5	-5
Administrative/ Supervisory (V to VII)	92	86	-6	-6.6%	-2	+5
Clerical (III & IV)	229	211	-18	-8.0%	-10	+36
Management & Administrative	350	320	-30	-8.5%	-17	+36
Support	32	33	+1	+2.7%	-0	-0
General Support	32	33	+1	+2.7%	-0	-0
Health Care Assistants	85	87	+2	+2.2%	+13	+67
Care, other	116	116	-0	-0.2%	+2	+10
Patient & Client Care	201	203	+2	+0.8%	+15	+77

Social Care

Mar 2021 (Dec 2020 figure: 4,199)	WTE Feb 2021	WTE Mar 2021	WTE change since Feb 21	% change since Feb 21	WTE change since Dec 20	WTE change since Mar 20
Total Social Care	4,193	4,222	+30	+0.7%	+23	+156
Consultants	13	12	-1	-10.8%	-2	-1
Registrars	9	9	+0	+2.9%	+2	-1
SHO/ Interns	8	9	+1	+12.5%	-4	-2
Medical/ Dental, other	7	7				
Medical & Dental	37	37	-0	-0.5%	-4	-4
Nurse/ Midwife Manager	274	272	-2	-0.8%	-4	+2
Nurse/ Midwife Specialist & AN/MP	20	19	-1	-4.6%	+1	+5
Staff Nurse/ Staff Midwife	752	751	-1	-0.1%	+4	+19
Public Health Nurse				-100.0%		-0
Pre-registration Nurse/ Midwife Intern	18	18			+16	
Pre-registration Nurse Intern (COVID-19)	3		-3	-100.0%	-11	-3
Nursing/ Midwifery Student	21	18	-3	-14.3%	+5	+3
Nursing/ Midwifery other	9	9	+0	+0.1%	+0	+1
Nursing & Midwifery	1,076	1,069	-7	-0.6%	+6	+29
Therapy Professions	266	270	+3	+1.3%	+12	+33
Health Science/ Diagnostics	15	15			+1	+1
Social Care	752	760	+8	+1.1%	+19	+58
Social Workers	73	73	+0	+0.3%	+0	+7
Psychologists	62	62	-0	-0.0%	-2	+2
Pharmacy	6	6				+1
H&SC, Other	19	19	-0	-1.8%	-0	-0
Health & Social Care Professionals	1,192	1,204	+12	+1.0%	+30	+101
Management (VIII & above)	49	53	+5	+9.4%	+3	+8
Administrative/ Supervisory (V to VII)	129	137	+9	+6.9%	+16	+31
Clerical (III & IV)	160	179	+18	+11.5%	+8	+12
Management & Administrative	337	369	+32	+9.5%	+28	+52
Support	265	265	-0	-0.2%	-0	-50
Maintenance/ Technical	24	24	-0	-0.0%	-1	-0
General Support	290	289	-0	-0.1%	-1	-50
Health Care Assistants	1,154	1,147	-7	-0.6%	-35	+23
Care, other	105	106	+1	+0.9%	-1	+5
Patient & Client Care	1,260	1,253	-6	-0.5%	-36	+27

CHO 9 Employment Report: March 2021

Disabilities

Mar 2021 (Dec 2020 figure: 3,285)	WTE Feb 2021	WTE Mar 2021	WTE change since Feb 21	% change since Feb 21	WTE change since Dec 20	WTE change since Mar 20
Total Disabilities	3,282	3,298	+16	+0.5%	+14	+88
Consultants	11	10	-1	-8.9%	-1	-0
Registrars	3	3			+1	-1
SHO/ Interns				-100.0%	-2	-1
Medical/ Dental, other	6	6				
Medical & Dental	20	19	-1	-4.9%	-2	-2
Nurse/ Midwife Manager	195	193	-2	-1.0%	-3	-1
Nurse/ Midwife Specialist & AN/MP	14	13	-1	-6.4%	+1	+4
Staff Nurse/ Staff Midwife	519	520	+2	+0.3%	+8	+9
<i>Pre-registration Nurse/ Midwife Intern</i>	18	18			+16	
<i>Pre-registration Nurse Intern (COVID-19)</i>	3		-3	-100.0%	-11	-3
Nursing/ Midwifery Student	21	18	-3	-14.3%	+5	+3
Nursing/ Midwifery other	8	8	+0	+0.1%	+0	+1
Nursing & Midwifery	757	753	-4	-0.6%	+11	+16
Therapy Professions	194	192	-1	-0.7%	+6	+10
Health Science/ Diagnostics	14	14			+1	+1
Social Care	751	759	+8	+1.1%	+19	+58
Social Workers	48	49	+0	+0.6%	-1	+1
Psychologists	62	62	-0	-0.0%	-2	+2
Pharmacy	2	2				
H&SC, Other	19	18	-0	-1.9%	-0	-0
Health & Social Care Professionals	1,089	1,096	+7	+0.6%	+23	+72
Management (VIII & above)	42	45	+4	+9.0%	+4	+9
Administrative/ Supervisory (V to VII)	106	113	+7	+6.9%	+13	+24
Clerical (III & IV)	117	126	+9	+7.5%	-0	+1
Management & Administrative	265	285	+20	+7.5%	+17	+34
Support	146	147	+1	+0.8%	+2	-49
Maintenance/ Technical	22	22			-1	-0
General Support	168	169	+1	+0.7%	+1	-49
Health Care Assistants	883	876	-7	-0.8%	-35	+12
Care, other	100	100	+0	+0.2%	-2	+4
Patient & Client Care	983	976	-6	-0.7%	-37	+17

Older People

Mar 2021 (Dec 2020 figure: 914)	WTE Feb 2021	WTE Mar 2021	WTE change since Feb 21	% change since Feb 21	WTE change since Dec 20	WTE change since Mar 20
Total Older People	910	924	+14	+1.5%	+10	+68
Consultants	2	2	-0	-21.6%	-1	-1
Registrars	6	6	+0	+4.5%	+1	+0
SHO/ Interns	8	9	+1	+12.5%	-2	-1
Medical/ Dental, other	1	1				
Medical & Dental	17	17	+1	+4.9%	-2	-1
Nurse/ Midwife Manager	80	79	-0	-0.3%	-1	+2
Nurse/ Midwife Specialist & AN/MP	6	6			-0	+1
Staff Nurse/ Staff Midwife	233	231	-2	-1.0%	-3	+10
Public Health Nurse				-100.0%		-0
Nursing/ Midwifery other	1	1				
Nursing & Midwifery	319	317	-3	-0.8%	-5	+13
Health & Social Care Professionals	103	108	+5	+4.6%	+7	+29
Management (VIII & above)	7	8	+1	+11.5%	-1	-1
Administrative/ Supervisory (V to VII)	23	24	+2	+7.0%	+3	+8
Clerical (III & IV)	43	52	+10	+22.6%	+8	+11
Management & Administrative	72	84	+12	+16.6%	+11	+18
Support	120	118	-2	-1.3%	-2	-1
Maintenance/ Technical	2	2				
General Support	122	120	-2	-1.3%	-2	-1
Health Care Assistants	271	271	-1	-0.2%	-0	+10
Care, other	6	7	+1	+12.5%	+1	+0
Patient & Client Care	277	277	+0	+0.1%	+1	+10

CHO 9 Employment by Administration (HSE / S38): March 2021

Mar 2021 (Dec 2020 figure: 6,950)	WTE Feb 2021	WTE Mar 2021	WTE change since Feb 21	% change since Feb 21	WTE change since Dec 20	WTE change since Mar 20
Overall	6,971	6,979	+7	+0.1%	+29	+390
HSE	3,694	3,702	+8	+0.2%	+42	+304
Section 38 Voluntary Agencies	3,278	3,277	-1	-0.0%	-13	+86

HSE

Mar 2021 (Dec 2020 figure: 3,660)	WTE Feb 2021	WTE Mar 2021	WTE change since Feb 21	% change since Feb 21	WTE change since Dec 20	WTE change since Mar 20
Overall	3,694	3,702	+8	+0.2%	+42	+304
Consultants	51	52	+0	+0.0%	-1	-2
Registrars	91	91	-0	-0.0%	+4	+1
SHO/ Interns	54	52	-1	-0.0%	-14	-4
Medical/ Dental, other	49	48	-1	-0.0%	-2	-1
Medical & Dental	245	243	-2	-0.8%	-13	-5
Nurse/ Midwife Manager	265	266	+1	+0.0%	+0	+20
Nurse/ Midwife Specialist & AN/MP	92	91	-0	-0.0%	+3	+13
Staff Nurse/ Staff Midwife	707	717	+9	+0.0%	+14	+22
Public Health Nurse	179	176	-3	-0.0%	-6	+8
Pre-registration Nurse/ Midwife Intern	27	25	-1	-0.1%	+22	-3
Pre-registration Nurse Intern (COVID-19)	4		-4	-1.0%		
Post-registration Nurse/ Midwife Student	31	31	+0	+0.0%	+5	+5
Nursing/ Midwifery awaiting registration				-1.0%	-11	
Nursing/ Midwifery Student	62	57	-5	-0.1%	+18	+2
Nursing/ Midwifery other	15	15	-0	-0.0%	-1	+2
Nursing & Midwifery	1,320	1,322	+2	+0.1%	+29	+66
Therapy Professions	333	334	+1	+0.0%	-2	+34
Health Science/ Diagnostics	19	20	+0	+0.0%	+0	-0
Social Care	7	8	+0	+0.0%	-0	+0
Social Workers	87	88	+1	+0.0%	+3	+10
Psychologists	128	129	+2	+0.0%	-2	+4
Pharmacy	22	23	+1	+0.0%	+1	+5
H&SC, Other	55	55	+1	+0.0%	+0	+1
Health & Social Care Professionals	652	657	+5	+0.8%	-0	+54
Management (VIII & above)	45	44	-1	-0.0%	-2	-1
Administrative/ Supervisory (V to VII)	151	154	+3	+0.0%	+12	+29
Clerical (III & IV)	362	360	-2	-0.0%	+2	+70
Management & Administrative	558	559	+0	+0.0%	+12	+98
Support	194	195	+1	+0.0%	-0	+6
Maintenance/ Technical	9	9		+0.0%	-0	+0
General Support	203	204	+1	+0.5%	-0	+7
Health Care Assistants	582	582	+1	+0.0%	+12	+75
Care, other	134	135	+1	+0.0%	+3	+10
Patient & Client Care	716	717	+1	+0.2%	+15	+85

Section 38 Voluntary Agencies

Mar 2021 (Dec 2020 figure: 3,290)	WTE Feb 2021	WTE Mar 2021	WTE change since Feb 21	% change since Feb 21	WTE change since Dec 20	WTE change since Mar 20
Overall	3,278	3,277	-1	-0.0%	-13	+86
Consultants	12	11	-1	-0.1%	-1	+0
Registrars	4	4		+0.0%		-2
SHO/ Interns	5	5		+0.0%		
Medical/ Dental, other	6	6		+0.0%		
Medical & Dental	27	26	-1	-3.7%	-1	-2
Nurse/ Midwife Manager	192	190	-1	-0.0%	-1	+0
Nurse/ Midwife Specialist & AN/MP	15	15	-1	-0.1%	+1	+4
Staff Nurse/ Staff Midwife	520	516	-4	-0.0%	-4	+20
<i>Pre-registration Nurse/ Midwife Intern</i>	20	21	+1	+0.1%	+6	+6
<i>Pre-registration Nurse Intern (COVID-19)</i>				-1.0%		
Nursing/ Midwifery Student	20	21	+1	+0.1%		+6
Nursing/ Midwifery other	8	8		+0.0%		+1
Nursing & Midwifery	755	750	-5	-0.7%	-4	+31
Therapy Professions	205	205	+0	+0.0%	+11	+12
Health Science/ Diagnostics	15	15		+0.0%	+1	+1
Social Care	749	757	+8	+0.0%	+19	+57
Social Workers	52	53	+0	+0.0%	-1	+4
Psychologists	50	51	+1	+0.0%	+0	+6
Pharmacy	7	7		+0.0%		+1
H&SC, Other	14	13	-0	-0.0%	-0	-1
Health & Social Care Professionals	1,092	1,101	+9	+0.8%	+30	+79
Management (VIII & above)	40	40		+0.0%	+1	+5
Administrative/ Supervisory (V to VII)	105	105	+0	+0.0%	+4	+9
Clerical (III & IV)	140	141	+1	+0.0%	-7	-8
Management & Administrative	284	286	+1	+0.5%	-2	+5
Support	206	207	+0	+0.0%	-1	-53
Maintenance/ Technical	26	26	-0	-0.0%	-1	
General Support	232	233	+0	+0.1%	-2	-53
Health Care Assistants	788	782	-5	-0.0%	-33	+20
Care, other	99	100	+0	+0.0%	-1	+5
Patient & Client Care	887	882	-5	-0.6%	-34	+25

CHO 9 Employment by S38 Agency: March 2021

Central Remedial Clinic

Mar 2021 (Dec 2020 figure: 296)	WTE Feb 2021	WTE Mar 2021	WTE change since Feb 21	% change since Feb 21	WTE change since Dec 20	WTE change since Mar 20
Overall	298	298	+0	+0.1%	+2	+14
Consultants	1	1		+0.0%		
Medical/ Dental, other	0	0		+0.0%		
Medical & Dental	2	2				
Nurse/ Midwife Manager	2	2		+0.0%		
Nurse/ Midwife Specialist & AN/MP	2	2		+0.0%		+1
Staff Nurse/ Staff Midwife	4	4		+0.0%	-1	
Nursing/ Midwifery other	1	1		+0.0%		+1
Nursing & Midwifery	8	8			-1	+2
Therapy Professions	78	78		+0.0%	+0	-0
Health Science/ Diagnostics	14	14		+0.0%	+1	+1
Social Workers	9	9		+0.0%	+1	+1
Psychologists	13	13		+0.0%		+2
Health & Social Care Professionals	114	114			+2	+4
Management (VIII & above)	7	7		+0.0%		
Administrative/ Supervisory (V to VII)	14	14		+0.0%	-1	-1
Clerical (III & IV)	34	34		+0.0%		+2
Management & Administrative	56	56			-1	+1
Support	13	13		+0.0%	+1	-2
Maintenance/ Technical	2	2		+0.0%		+1
General Support	15	15			+1	-1
Health Care Assistants	58	57	-1	-0.0%	-1	+1
Care, other	45	46	+1	+0.0%	+2	+7
Patient & Client Care	103	103	+0	+0.2%	+1	+8

Daughters of Charity, Dublin

Mar 2021 (Dec 2020 figure: 1,063)	WTE Feb 2021	WTE Mar 2021	WTE change since Feb 21	% change since Feb 21	WTE change since Dec 20	WTE change since Mar 20
Overall	1,075	1,075	-1	-0.1%	+11	+24
Consultants	2	2		+0.0%	-0	+0
Medical/ Dental, other	2	2		+0.0%		
Medical & Dental	4	4			-0	+0
Nurse/ Midwife Manager	63	63		+0.0%	+1	+1
Nurse/ Midwife Specialist & AN/MP	12	12	-1	-0.1%	+1	+3
Staff Nurse/ Staff Midwife	187	186	-2	-0.0%	-3	+1
Pre-registration Nurse/ Midwife Intern	10	11	+1	+0.1%	+3	+3
Pre-registration Nurse Intern (COVID-19)				-1.0%		
Nursing/ Midwifery Student	10	11	+1	+0.1%	+1	+3
Nursing/ Midwifery other	4	4		+0.0%		
Nursing & Midwifery	277	275	-2	-0.6%	+1	+8
Therapy Professions	36	35	-2	-0.0%	+3	+0
Social Care	177	183	+6	+0.0%	+10	+15
Social Workers	13	13		+0.0%	-0	+1
Psychologists	11	12	+1	+0.1%	+1	+3
Pharmacy	2	2		+0.0%		
H&SC, Other	5	4	-1	-0.2%	-1	-1
Health & Social Care Professionals	245	249	+4	+1.7%	+14	+19
Management (VIII & above)	9	9		+0.0%		+3
Administrative/ Supervisory (V to VII)	28	28		+0.0%	+1	+1
Clerical (III & IV)	31	31		+0.0%	-1	-1
Management & Administrative	68	68			+0	+3
Support	77	77		+0.0%	+1	-2
Maintenance/ Technical	7	7		+0.0%	-1	-1
General Support	84	84			+0	-3
Health Care Assistants	368	365	-3	-0.0%	-2	-3
Care, other	30	30		+0.0%	-1	+0
Patient & Client Care	398	395	-3	-0.8%	-3	-3

Incorporated Orthopaedic Hospital

Mar 2021 (Dec 2020 figure: 267)	WTE Feb 2021	WTE Mar 2021	WTE change since Feb 21	% change since Feb 21	WTE change since Dec 20	WTE change since Mar 20
Overall	269	271	+2	+0.8%	+4	+44
Consultants	2	2		+0.0%		+0
Registrars	2	2		+0.0%		
SHO/ Interns	4	4		+0.0%		
Medical & Dental	8	8				+0
Nurse/ Midwife Manager	18	18		+0.0%		+1
Staff Nurse/ Staff Midwife	70	70		+0.0%		+9
Nursing & Midwifery	88	88				+10
Therapy Professions	35	37	+2	+0.1%	+3	+14
Health Science/ Diagnostics	1	1		+0.0%		
Social Workers	9	9		+0.0%		+3
Pharmacy	4	4		+0.0%		+1
Health & Social Care Professionals	48	51	+2	+4.6%	+3	+18
Management (VIII & above)	2	2		+0.0%		+1
Administrative/ Supervisory (V to VII)	7	7		+0.0%	+1	+1
Clerical (III & IV)	10	10		+0.0%		-1
Management & Administrative	19	19			+1	+1
Support	40	40		+0.0%		+2
Maintenance/ Technical	2	2		+0.0%		
General Support	42	42				+2
Health Care Assistants	64	64		+0.0%		+12
Care, other	0	0		+0.0%		
Patient & Client Care	64	64				+12

St. Michael's House, Dublin

Mar 2021 (Dec 2020 figure: 1,453)	WTE Feb 2021	WTE Mar 2021	WTE change since Feb 21	% change since Feb 21	WTE change since Dec 20	WTE change since Mar 20
Overall	1,428	1,426	-2	-0.2%	-27	+2
Consultants	6	5	-1	-0.2%	-1	-1
Registrars	1	1		+0.0%		-2
Medical/ Dental, other	4	4		+0.0%		
Medical & Dental	11	10	-1	-9.1%	-1	-3
Nurse/ Midwife Manager	87	86	-1	-0.0%	-2	-1
Staff Nurse/ Staff Midwife	168	166	-2	-0.0%	+1	+10
Nursing & Midwifery	255	251	-3	-1.3%	-1	+8
Therapy Professions	51	50	-1	-0.0%	+4	-2
Social Care	572	574	+3	+0.0%	+9	+42
Social Workers	20	20	+0	+0.0%	-2	-1
Psychologists	22	22	-0	-0.0%	-1	+1
H&SC, Other	9	9	+1	+0.1%	+1	-1
Health & Social Care Professionals	673	676	+2	+0.4%	+11	+38
Management (VIII & above)	21	21		+0.0%	+0	
Administrative/ Supervisory (V to VII)	50	50	+0	+0.0%	+4	+9
Clerical (III & IV)	45	47	+1	+0.0%	-7	-8
Management & Administrative	116	118	+1	+1.2%	-2	+1
Support	46	46	+0	+0.0%	-2	-50
Maintenance/ Technical	12	12		+0.0%		
General Support	58	58	+0	+0.3%	-2	-50
Health Care Assistants	292	291	-2	-0.0%	-31	+10
Care, other	23	22	-0	-0.0%	-2	-3
Patient & Client Care	315	313	-2	-0.7%	-33	+8

St. Vincent's, Fairview

Mar 2021 (Dec 2020 figure: 210)	WTE Feb 2021	WTE Mar 2021	WTE change since Feb 21	% change since Feb 21	WTE change since Dec 20	WTE change since Mar 20
Overall	207	207			-3	+3
Consultants	1	1		+0.0%		
Registrars	1	1		+0.0%		
SHO/ Interns	1	1		+0.0%		
Medical & Dental	3	3				
Nurse/ Midwife Manager	21	21		+0.0%		-0
Nurse/ Midwife Specialist & AN/MP	2	2		+0.0%		
Staff Nurse/ Staff Midwife	91	91		+0.0%	-1	-0
Nursing/ Midwifery Student	10	10		+0.0%	-1	+3
Nursing/ Midwifery other	3	3		+0.0%		
Nursing & Midwifery	127	127			-2	+3
Therapy Professions	5	5		+0.0%		
Social Workers	2	2		+0.0%		
Psychologists	4	4		+0.0%		
Pharmacy	2	2		+0.0%		+0
Health & Social Care Professionals	12	12				+0
Executive Management	1	1		+0.0%	+1	+1
Management (VIII & above)	1	1		+0.0%	+1	+1
Administrative/ Supervisory (V to VII)	5	5		+0.0%	-1	-1
Clerical (III & IV)	19	19		+0.0%		+0
Management & Administrative	26	26				+0
Support	30	30		+0.0%	-1	-1
Maintenance/ Technical	3	3		+0.0%		
General Support	33	33			-1	-1
Health Care Assistants	6	6		+0.0%		
Care, other	1	1		+0.0%		
Patient & Client Care	7	7				

CHO 9 Employment by Grade Group & Staff Category: March 2021

Mar 2021 (Dec 2020 figure: 6,950)	WTE Feb 2021	WTE Mar 2021	WTE change since Feb 21	% change since Feb 21	WTE change since Dec 20	WTE change since Mar 20
Overall	6,971	6,979	+7	+0.1%	+29	+390
Consultant Medicine	2	2	-0	-21.6%	-1	-1
Consultant Paediatrics	1	1				
Consultant Psychiatry	60	60	-0	-0.1%	-1	-2
Consultants	63	63	-1	-0.8%	-2	-2
Registrar	73	73	-0	-0.1%	+2	-4
Senior Registrar	22	21	-1	-3.3%	+1	+6
Specialist Registrar	1	1	+0	+25.0%	+0	-2
Registrars	95	95	-1	-0.5%	+4	-1
Interns				-100.0%		-2
Senior House Officer	59	57	-1	-2.3%	-14	-2
SHO/ Interns	59	57	-1	-2.3%	-14	-4
Dentists	31	31	-0	-0.8%	-2	-0
Other Medical	24	23	-0	-1.1%	-0	-1
Medical/ Dental, other	55	54	-1	-0.9%	-2	-1
Medical & Dental	272	269	-3	-1.1%	-21	-7
Clinical Nurse/ Midwife Manager	368	366	-1	-0.3%	-1	+15
Director Nursing/Midwifery, Assistant	66	68	+2	+2.8%	-1	+7
Director of Nursing/Midwifery	23	22	-1	-4.3%	+1	-2
Nurse/ Midwife Manager	457	456	-0	-0.1%	-1	+20
Advanced Nurse/ Midwife Practitioner	9	8	-1	-10.4%	-1	+1
Clinical Nurse/ Midwife Specialist	98	98	-0	-0.1%	+6	+16
Nurse/ Midwife Specialist & AN/MP	107	106	-1	-1.0%	+5	+17
Staff Midwives	1	1	+0	+33.3%		
Staff Nurse [Intellectual Disability]	428	425	-3	-0.7%	+2	+9
Staff Nurse [Psychiatric]	381	390	+9	+2.4%	+5	+19
Staff Nurses [General/ Children's]	418	417	-1	-0.3%	+3	+14
Staff Nurse/ Staff Midwife	1,228	1,233	+5	+0.4%	+10	+42
Public Health Nurse	179	176	-3	-1.8%	-6	+8
Pre-registration Nurse/ Midwife Intern	46	46	-0	-0.9%	+33	+3
Pre-registration Nurse Intern (COVID-19)	4		-4	-100.0%	-16	
Post-registration Nurse/ Midwife Student	31	31	+0	+1.3%	+0	+5
Nursing/ Midwifery awaiting registration				-100.0%		
Nursing/ Midwifery Student	81	77	-4	-5.0%	+18	+8
Nursing Education/Clinical	22	22	-0	-0.2%	-1	+3
Nursing/ Midwifery other	22	22	-0	-0.2%	-1	+3
Nursing & Midwifery	2,075	2,071	-3	-0.2%	+106	+97
Dietitians	27	27	+1	+2.6%	+1	+6
Occupational Therapists	222	221	-1	-0.3%	+18	+34
Orthoptists	6	6			+0	+1
Physiotherapists	157	156	-1	-0.6%	-1	+12
Podiatrists & Chiropodists	1	1			-1	-0
Speech & Language Therapists	125	127	+2	+1.6%	-8	-8
Therapy Professions	538	539	+1	+0.2%	+9	+46
Audiology	14	15	+0	+1.7%	+0	-0
Clinical Engineering	15	15			+1	+1
Medical Science	4	4				
Radiographers	1	1				

Mar 2021 (Dec 2020 figure: 6,950)	WTE Feb 2021	WTE Mar 2021	WTE change since Feb 21	% change since Feb 21	WTE change since Dec 20	WTE change since Mar 20
Overall	6,971	6,979	+7	+0.1%	+29	+390
Health Science/ Diagnostics	34	35	+0	+0.7%	+1	+1
Social Care	756	765	+8	+1.1%	+19	+57
Social Workers	139	140	+1	+0.7%	+2	+14
Psychologists	178	180	+2	+1.2%	-2	+9
Pharmacy	30	30	+1	+2.5%	+1	+6
Counsellor Therapists	41	42	+1	+1.9%	+1	+1
Dental Hygienists	6	6	-0	-0.0%	-0	+0
Other Health & Social Care	19	19	-0	-1.8%	-1	-1
Play Therapists/ Specialists	2	2			-0	-0
H&SC, Other	68	68	+0	+0.6%	-0	-0
Health & Social Care Professionals	1,743	1,758	+14	+0.8%	+155	+133
Executive Management	13	13	-0	-0.0%	+1	+2
Senior Management (VIII & GM)	72	71	-1	-0.9%	-2	+2
Management (VIII & above)	85	84	-1	-0.8%	-1	+4
Middle Management (V-VII)	247	250	+3	+1.1%	+16	+37
Other Administrative	10	10	+0	+0.0%	+0	+1
Administrative/ Supervisory (V to VII)	257	259	+3	+1.0%	+16	+38
General Administrative (III & IV)	502	501	-0	-0.1%	-5	+62
Clerical (III & IV)	502	501	-0	-0.1%	-5	+62
Management & Administrative	843	844	+2	+0.2%	+106	+103
Catering	58	58	-0	-0.3%	-0	-1
Household Services	223	225	+2	+0.8%	-0	+4
Other Support	46	46	+0	+0.5%	+1	-49
Portering	73	73	-0	-0.7%	-1	-0
Support	400	402	+1	+0.3%	-1	-46
Maintenance	32	32	-0	-0.0%	-1	-1
Technical Services	3	3				+1
Maintenance/ Technical	35	35	-0	-0.0%	-1	+0
General Support	436	437	+1	+0.3%	-50	-46
HCA, Nurse's Aide, etc.	1,281	1,274	-7	-0.5%	-35	+25
HCA (Student Nurse/Midwife COVID-19)	0	0	+0	+17.9%	-0	+0
Health & Social Care Assistants	26	27	+1	+3.4%	+2	+7
Swabber (COVID-19)	61	62	+1	+2.0%	+12	+62
Health Care Assistants	1,369	1,365	-5	-0.3%	-21	+95
Other Care Grades	234	235	+1	+0.4%	+1	+15
Care, other	234	235	+1	+0.4%	+1	+15
Patient & Client Care	1,603	1,599	-4	-0.2%	+101	+110

CHO 9 HSE Employment by Grade Group & Staff Category: March 2021

Mar 2021 (Dec 2020 figure: 3,660)	WTE Feb 2021	WTE Mar 2021	WTE change since Feb 21	% change since Feb 21	WTE change since Dec 20	WTE change since Mar 20
Overall	3,694	3,702	+8	+0.2%	+42	+304
Consultant Medicine	0		-0	-100.0%	-1	-1
Consultant Psychiatry	51	52	+1	+1.8%	+0	-1
Consultants	51	52	+0	+1.0%	-1	-2
Registrar	71	71	-0	-0.1%	+2	-4
Senior Registrar	21	20	-1	-3.4%	+1	+6
Specialist Registrar		0	+0	-100.0%	+0	
Registrars	91	91	-1	-0.5%	+4	+1
SHO/ Interns	54	52	-1	-2.5%	-14	-4
Dentists	31	31	-0	-0.8%	-2	-0
Other Medical	18	17	-0	-1.5%	-0	-1
Medical/ Dental, other	49	48	-1	-1.0%	-2	-1
Medical & Dental	245	243	-2	-0.8%	-14	-5
Clinical Nurse/ Midwife Manager	196	196	+0	+0.0%	+0	+12
Director Nursing/Midwifery, Assistant	57	59	+2	+3.3%	-1	+7
Director of Nursing/Midwifery	12	11	-1	-8.3%	+1	+1
Nurse/ Midwife Manager	265	266	+1	+0.3%	+0	+20
Advanced Nurse/ Midwife Practitioner	8	7	-1	-11.7%	-1	-0
Clinical Nurse/ Midwife Specialist	84	85	+1	+0.9%	+4	+13
Nurse/ Midwife Specialist & AN/MP	92	91	-0	-0.2%	+3	+13
Staff Midwives	1	1	+0	+33.3%		
Staff Nurse [Intellectual Disability]	73	73	+1	+1.3%	+4	-2
Staff Nurse [Psychiatric]	291	301	+9	+3.2%	+6	+18
Staff Nurses [General/ Children's]	343	342	-1	-0.3%	+4	+6
Staff Nurse/ Staff Midwife	707	717	+9	+1.3%	+14	+22
Public Health Nurse	179	176	-3	-1.8%	-6	+8
Pre-registration Nurse/ Midwife Intern	27	25	-1	-5.3%	+23	-3
Pre-registration Nurse Intern (COVID-19)	4		-4	-100.0%	-6	
Post-registration Nurse/ Midwife Student	31	31	+0	+1.3%	+0	+5
Nursing/ Midwifery awaiting registration				-100.0%		
Nursing/ Midwifery Student	62	57	-5	-8.1%	+18	+2
Nursing Education/Clinical	15	15	-0	-0.3%	-1	+2
Nursing/ Midwifery other	15	15	-0	-0.3%	-1	+2
Nursing & Midwifery	1,320	1,322	+2	+0.1%	+77	+66
Dietitians	19	21	+1	+6.2%	+2	+7
Occupational Therapists	136	138	+1	+0.8%	+4	+16
Orthoptists	6	6			+0	+1
Physiotherapists	85	83	-2	-2.2%	-1	+10
Podiatrists & Chiropodists	1	1			-1	-0
Speech & Language Therapists	86	87	+1	+0.7%	-5	+1
Therapy Professions	333	334	+1	+0.3%	-2	+34
Audiology	14	15	+0	+1.7%	+0	-0
Clinical Engineering	5	5				
Radiographers				-100.0%		
Health Science/ Diagnostics	19	20	+0	+1.2%	+0	-0
Social Care	7	8	+0	+1.5%	-0	+0
Social Workers	87	88	+1	+0.7%	+3	+10
Psychologists	128	129	+2	+1.3%	-2	+4
Pharmacy	22	23	+1	+3.3%	+1	+5
Counsellor Therapists	41	42	+1	+1.9%	+1	+1

Mar 2021 (Dec 2020 figure: 3,660)	WTE Feb 2021	WTE Mar 2021	WTE change since Feb 21	% change since Feb 21	WTE change since Dec 20	WTE change since Mar 20
Overall	3,694	3,702	+8	+0.2%	+42	+304
Dental Hygienists	6	6			-0	+0
Other Health & Social Care	6	6			+0	+1
Play Therapists/ Specialists	1	1			-1	-1
H&SC, Other	55	55	+1	+1.4%	+0	+1
Health & Social Care Professionals	652	657	+5	+0.8%	+52	+54
Executive Management	8	8	-0	-0.0%	+0	+1
Senior Management (VIII & GM)	37	36	-1	-1.8%	-2	-2
Management (VIII & above)	45	44	-1	-1.5%	-2	-1
Administrative/ Supervisory (V to VII)	151	154	+3	+1.7%	+12	+29
Clerical (III & IV)	362	360	-2	-0.5%	+2	+70
Management & Administrative	558	559	+0	+0.0%	+99	+98
Catering	23	22	-0	-1.4%	-0	-0
Household Services	103	105	+2	+1.6%	+2	+6
Other Support	9	9	+0	+2.5%	+1	+0
Portering	60	59	-0	-0.8%	-2	+1
Support	194	195	+1	+0.6%	-0	+6
Maintenance/ Technical	9	9				+0
General Support	203	204	+1	+0.5%	-3	+7
HCA, Nurse's Aide, etc.	499	497	-2	-0.4%	-2	+6
HCA (Student Nurse/Midwife COVID-19)	0	0	+0	+17.9%	-0	+0
Health & Social Care Assistants	21	23	+1	+6.5%	+3	+6
Swabber (COVID-19)	61	62	+1	+2.0%	+12	+62
Health Care Assistants	582	582	+1	+0.1%	+12	+75
Care, other	134	135	+1	+0.5%	+3	+10
Patient & Client Care	716	717	+1	+0.2%	+83	+85

Employment by WTE, Headcount, Gender, Full-Time /Part-Time etc.: Mar 2021

CHO 9	WTE	Headcount	WTE: no.	% Male	% female	Male WTE: no.	Female WTE: no.	% Total Perm	% Male Perm	% Female Perm	% Total Full Time	% Total Part Time	% Male FT	% Female FT
Overall	6,979	8,039	1.15	18.0%	82.0%	1.07	1.17	85.7%	82.0%	86.5%	67.2%	32.8%	83.9%	63.5%
Consultant Medicine	2	3	1.88		100.0%		1.88	66.7%	66.7%	66.7%	0.0%	100.0%		0.0%
Consultant Paediatrics	1	3	2.48	33.3%	66.7%	1.82	3.03	33.3%	33.3%	50.0%	33.3%	66.7%	100.0%	0.0%
Consultant Psychiatry	60	67	1.12	35.8%	64.2%	1.14	1.11	80.6%	80.6%	86.0%	82.1%	17.9%	83.3%	81.4%
Consultants	63	73	1.16	34.2%	65.8%	1.16	1.17	78.1%	68.0%	83.3%	76.7%	23.3%	84.0%	72.9%
Registrar	73	76	1.05	39.5%	60.5%	1.02	1.07	5.3%	5.3%	2.2%	97.4%	2.6%	96.7%	97.8%
Senior Registrar	21	22	1.05	45.5%	54.5%	1.10	1.01	0.0%	0.0%	0.0%	100.0%	0.0%	100.0%	100.0%
Specialist Registrar	1	2	1.60	50.0%	50.0%	1.00	4.00	0.0%	0.0%	0.0%	100.0%	0.0%	100.0%	100.0%
Registrars	95	100	1.06	41.0%	59.0%	1.04	1.07	4.0%	7.3%	1.7%	98.0%	2.0%	97.6%	98.3%
Senior House Officer	57	60	1.05	25.0%	75.0%	1.00	1.06	0.0%	0.0%	0.0%	100.0%	0.0%	100.0%	100.0%
SHO/ Interns	57	60	1.05	25.0%	75.0%	1.00	1.06	0.0%	0.0%	0.0%	100.0%	0.0%	100.0%	100.0%
Dentists	31	37	1.20	21.6%	78.4%	1.11	1.22	91.9%	91.9%	93.1%	73.0%	27.0%	87.5%	69.0%
Other Medical	23	35	1.50	22.9%	77.1%	1.64	1.46	68.6%	68.6%	66.7%	40.0%	60.0%	37.5%	40.7%
Medical/ Dental, other	54	72	1.33	22.2%	77.8%	1.32	1.33	80.6%	81.3%	80.4%	56.9%	43.1%	62.5%	55.4%
Medical & Dental	269	305	1.13	31.8%	68.2%	1.10	1.15	39.0%	34.0%	41.3%	83.6%	16.4%	88.7%	81.3%
Clinical Nurse/ Midwife Manager	366	393	1.07	18.6%	81.4%	1.01	1.09	96.7%	96.7%	96.3%	85.0%	15.0%	97.3%	82.2%
Director Nursing/Midwifery, Assistant	68	72	1.06	16.7%	83.3%	1.00	1.07	98.6%	98.6%	98.3%	88.9%	11.1%	100.0%	86.7%
Director of Nursing/Midwifery	22	23	1.05	8.7%	91.3%	1.00	1.05	87.0%	87.0%	85.7%	91.3%	8.7%	100.0%	90.5%
Nurse/ Midwife Manager	456	488	1.07	17.8%	82.2%	1.01	1.08	96.5%	98.9%	96.0%	85.9%	14.1%	97.7%	83.3%
Advanced Nurse/ Midwife Practitioner	8	9	1.15		100.0%		1.15	88.9%	88.9%	88.9%	88.9%	11.1%		88.9%
Clinical Nurse/ Midwife Specialist	98	104	1.06	13.5%	86.5%	1.01	1.07	99.0%	99.0%	98.9%	89.4%	10.6%	100.0%	87.8%
Nurse/ Midwife Specialist & AN/MP	106	113	1.07	12.4%	87.6%	1.01	1.08	98.2%	100.0%	98.0%	89.4%	10.6%	100.0%	87.9%
Staff Midwives	1	1	1.00		100.0%		1.00	0.0%	0.0%	0.0%	100.0%	0.0%		100.0%
Staff Nurse [Intellectual Disability]	425	487	1.15	8.8%	91.2%	1.07	1.15	95.7%	95.7%	95.9%	67.4%	32.6%	88.4%	65.3%
Staff Nurse [Psychiatric]	390	426	1.09	23.7%	76.3%	1.04	1.11	93.4%	93.4%	95.1%	85.2%	14.8%	91.1%	83.4%
Staff Nurses [General/ Children's]	417	474	1.14	11.2%	88.8%	1.03	1.15	92.0%	92.0%	92.4%	75.7%	24.3%	94.3%	73.4%
Staff Nurse/ Staff Midwife	1,233	1,388	1.13	14.2%	85.8%	1.05	1.14	93.7%	89.3%	94.4%	75.7%	24.3%	91.4%	73.1%
Public Health Nurse	176	209	1.19	0.5%	99.5%	1.00	1.19	96.2%	100.0%	96.2%	70.3%	29.7%	100.0%	70.2%
Pre-registration Nurse/ Midwife Intern	46	93	2.02	7.5%	92.5%	2.00	2.02	23.7%	23.7%	24.4%	77.4%	22.6%	100.0%	75.6%

Post-registration Nurse/ Midwife Student	31	32	1.02	6.3%	93.8%	1.00	1.02	18.8%	18.8%	20.0%	100.0%	0.0%	100.0%	100.0%
Nursing/ Midwifery Student	77	125	1.62	7.2%	92.8%	1.64	1.61	22.4%	11.1%	23.3%	83.2%	16.8%	100.0%	81.9%
Nursing Education/Clinical	22	24	1.07	8.3%	91.7%	1.00	1.08	95.8%	95.8%	95.5%	87.5%	12.5%	100.0%	86.4%
Nursing/ Midwifery other	22	24	1.07	8.3%	91.7%	1.00	1.08	95.8%	100.0%	95.5%	87.5%	12.5%	100.0%	86.4%
Nursing & Midwifery	2,071	2,347	1.13	13.2%	86.8%	1.04	1.15	90.9%	90.3%	91.0%	78.5%	21.5%	93.9%	76.2%
Dietitians	27	36	1.31	5.6%	94.4%	1.00	1.34	91.7%	91.7%	91.2%	50.0%	50.0%	100.0%	47.1%
Occupational Therapists	221	246	1.11	10.6%	89.4%	1.04	1.12	89.8%	89.8%	89.1%	78.0%	22.0%	96.2%	75.9%
Orthoptists	6	7	1.16	14.3%	85.7%	1.00	1.20	100.0%	100.0%	100.0%	57.1%	42.9%	100.0%	50.0%
Physiotherapists	156	184	1.18	13.6%	86.4%	1.04	1.20	87.0%	87.0%	86.8%	66.3%	33.7%	88.0%	62.9%
Podiatrists & Chiropodists	1	1	1.67		100.0%		1.67	0.0%	0.0%	0.0%	0.0%	100.0%		0.0%
Speech & Language Therapists	127	148	1.16	0.7%	99.3%	1.00	1.16	89.2%	89.2%	89.1%	75.0%	25.0%	100.0%	74.8%
Therapy Professions	539	622	1.15	8.8%	91.2%	1.03	1.17	88.9%	92.7%	88.5%	71.9%	28.1%	92.7%	69.8%
Audiology	15	17	1.17	23.5%	76.5%	1.01	1.23	100.0%	100.0%	100.0%	76.5%	23.5%	100.0%	69.2%
Clinical Engineering	15	15	1.00	93.3%	6.7%	1.00	1.00	100.0%	100.0%	100.0%	100.0%	0.0%	100.0%	100.0%
Medical Science	4	4	1.00	75.0%	25.0%	1.00	1.00	75.0%	75.0%	100.0%	100.0%	0.0%	100.0%	100.0%
Radiographers	1	2	2.00		100.0%		2.00	100.0%	100.0%	100.0%	0.0%	100.0%		0.0%
Health Science/ Diagnostics	35	38	1.10	55.3%	44.7%	1.00	1.25	97.4%	95.2%	100.0%	84.2%	15.8%	100.0%	64.7%
Social Care	765	915	1.20	12.1%	87.9%	1.06	1.22	88.7%	88.3%	88.8%	45.0%	55.0%	68.5%	41.8%
Social Workers	140	157	1.12	14.0%	86.0%	1.02	1.14	94.3%	90.9%	94.8%	72.6%	27.4%	90.9%	69.6%
Psychologists	180	199	1.10	14.6%	85.4%	1.05	1.11	67.8%	62.1%	68.8%	77.4%	22.6%	86.2%	75.9%
Pharmacy	30	35	1.16	11.4%	88.6%	1.11	1.16	65.7%	25.0%	71.0%	71.4%	28.6%	75.0%	71.0%
Counsellor Therapists	42	46	1.09	32.6%	67.4%	1.05	1.11	91.3%	91.3%	96.8%	78.3%	21.7%	93.3%	71.0%
Dental Hygienists	6	8	1.32		100.0%		1.32	100.0%	100.0%	100.0%	25.0%	75.0%		25.0%
Other Health & Social Care	19	25	1.33	16.0%	84.0%	1.27	1.34	88.0%	88.0%	85.7%	48.0%	52.0%	75.0%	42.9%
Play Therapists/ Specialists	2	2	1.33		100.0%		1.33	100.0%	100.0%	100.0%	50.0%	50.0%		50.0%
H&SC, Other	68	81	1.18	23.5%	76.5%	1.09	1.22	91.4%	84.2%	93.5%	63.0%	37.0%	89.5%	54.8%
Health & Social Care	1,758	2,047	1.16	12.8%	87.2%	1.05	1.18	87.1%	85.8%	87.2%	60.3%	39.7%	81.6%	57.2%
Executive Management	13	13	1.02	7.7%	92.3%	1.00	1.02	92.3%	92.3%	91.7%	100.0%	0.0%	100.0%	100.0%
Senior Management (VIII & GM)	71	73	1.03	30.1%	69.9%	1.01	1.04	97.3%	97.3%	100.0%	97.3%	2.7%	100.0%	96.1%
Management (VIII & above)	84	86	1.03	26.7%	73.3%	1.01	1.03	96.5%	91.3%	98.4%	97.7%	2.3%	100.0%	96.8%
Administrative/ Supervisory (V to VII)	259	283	1.09	17.7%	82.3%	1.01	1.11	94.0%	96.0%	93.6%	73.1%	26.9%	80.0%	71.7%
Clerical (III & IV)	501	586	1.17	13.8%	86.2%	1.08	1.18	81.4%	70.4%	83.2%	65.7%	34.3%	85.2%	62.6%
Management & Administrative	844	955	1.13	16.1%	83.9%	1.04	1.15	86.5%	81.8%	87.4%	70.8%	29.2%	85.7%	67.9%
Catering	58	67	1.15	41.8%	58.2%	1.07	1.22	95.5%	95.5%	94.9%	65.7%	34.3%	89.3%	48.7%
Household Services	225	284	1.26	12.3%	87.7%	1.19	1.28	90.5%	90.5%	91.2%	42.6%	57.4%	77.1%	37.8%

Other Support	46	58	1.27	62.1%	37.9%	1.27	1.26	86.2%	86.2%	86.4%	37.9%	62.1%	38.9%	36.4%
Portering	73	75	1.03	94.7%	5.3%	1.03	1.07	81.3%	81.3%	75.0%	92.0%	8.0%	91.5%	100.0%
Support	402	484	1.21	35.1%	64.9%	1.11	1.26	89.3%	85.9%	91.1%	52.9%	47.1%	77.1%	39.8%
Maintenance/ Technical	35	37	1.05	94.6%	5.4%	1.05	1.06	94.6%	94.3%	100.0%	73.0%	27.0%	74.3%	50.0%
General Support	437	521	1.19	39.3%	60.7%	1.10	1.26	89.6%	87.3%	91.1%	54.3%	45.7%	76.6%	39.9%
HCA, Nurse's Aide, etc.	1,274	1,496	1.17	20.2%	79.8%	1.07	1.20	88.2%	88.2%	87.7%	57.5%	42.5%	79.8%	51.8%
HCA (Student Nurse/Midwife COVID-19)	0	1	2.17		100.0%		2.17	0.0%	0.0%	0.0%	0.0%	100.0%		0.0%
Health & Social Care Assistants	27	29	1.06	13.8%	86.2%	1.07	1.06	41.4%	41.4%	40.0%	89.7%	10.3%	100.0%	88.0%
Swabber (COVID-19)	62	73	1.17	37.0%	63.0%	1.18	1.17	0.0%	0.0%	0.0%	65.8%	34.2%	66.7%	65.2%
Health Care Assistants	1,365	1,599	1.17	20.8%	79.2%	1.08	1.20	83.2%	82.3%	83.5%	58.4%	41.6%	79.0%	53.0%
Care, other	235	265	1.13	32.1%	67.9%	1.08	1.16	85.7%	81.2%	87.8%	66.4%	33.6%	83.5%	58.3%
Patient & Client Care	1,599	1,864	1.17	22.4%	77.6%	1.08	1.19	83.6%	82.1%	84.0%	59.5%	40.5%	79.9%	53.7%

Employment by WTE, Headcount, Gender, Full-Time /Part-Time etc.: Mar 2021

CHO 9	WTE	Headcount	WTE: no.	% Male	% female	Male WTE: no.	Female WTE: no.	% Total Perm	% Male Perm	% Female Perm	% Total Full Time	% Total Part Time	% Male FT	% Female FT
Overall	6,979	8,039	1.15	18.0%	82.0%	1.07	1.17	85.7%	82.0%	86.5%	67.2%	32.8%	83.9%	63.5%
Community Health & Wellbeing	11	13	1.14		100.0%		1.14	92.3%	92.3%	92.3%	69.2%	30.8%		
Mental Health	1,340	1,493	1.11	27.3%	72.7%	1.05	1.14	83.1%	83.1%	84.4%	84.7%	15.3%	94.1%	94.1%
Primary Care	1,405	1,609	1.15	16.4%	83.6%	1.06	1.16	76.3%	76.3%	78.4%	73.1%	26.9%	88.6%	88.6%
HSE	1,153	1,288	1.12	25.2%	74.8%	1.05	1.14	89.5%	89.5%	89.7%	79.6%	20.4%	90.4%	90.4%
Section 38 Voluntary Agencies	3,070	3,636	1.18	12.3%	87.7%	1.10	1.20	89.5%	89.5%	89.6%	53.0%	47.0%	67.3%	67.3%
Social Care	4,222	4,924	1.17	15.7%	84.3%	1.08	1.18	89.5%	89.5%	89.6%	60.0%	40.0%	77.0%	77.0%

CHO 9 Skills Mix by Staff Grouping: March 2021

Mar 2021 (Dec 2019 figure: 6,582)	WTE Dec 2016	WTE Dec 2017	WTE Dec 2018	WTE Dec 2019	WTE Dec 2020	WTE Feb 2021	WTE Mar 2021
Overall	6,286	6,438	6,634	6,582	6,950	6,971	6,979
Consultant Medicine	2.3%	2.6%	0.6%	0.6%	0.9%	0.8%	0.6%
Consultant Paediatrics	0.5%	0.4%	0.4%	0.4%	0.4%	0.4%	0.4%
Consultant Psychiatry	21.3%	21.8%	21.9%	22.7%	21.5%	22.0%	22.2%
Consultant Surgery	0.3%	0.0%	0.0%				
Consultants	24.5%	24.8%	23.0%	23.6%	22.8%	23.2%	23.3%
Registrar	21.3%	22.5%	25.4%	27.0%	24.8%	26.7%	27.0%
Senior Registrar	5.1%	3.9%	5.3%	5.5%	7.1%	8.0%	7.8%
Specialist Registrar	1.4%	1.8%	0.3%	1.4%	0.4%	0.4%	0.5%
Registrars	27.9%	28.2%	31.1%	33.9%	32.2%	35.0%	35.2%
Interns	1.8%	1.4%	0.7%	0.7%			
Senior House Officer	19.5%	21.2%	21.3%	22.2%	25.2%	21.6%	21.3%
SHO/ Interns	21.3%	22.6%	22.0%	22.8%	25.2%	21.6%	21.3%
Dentists	11.7%	10.7%	11.0%	10.9%	11.5%	11.5%	11.5%
Other Medical	14.6%	13.7%	13.0%	8.7%	8.4%	8.7%	8.7%
Medical/ Dental, other	26.3%	24.4%	24.0%	19.6%	19.9%	20.2%	20.2%
Medical & Dental	4.4%	4.4%	4.4%	4.4%	4.2%	100.0%	3.9%
Clinical Nurse/ Midwife Manager	18.9%	19.2%	18.5%	17.7%	17.9%	17.7%	17.7%
Director Nursing/Midwifery, Assistant	3.1%	3.0%	2.8%	3.1%	3.4%	3.2%	3.3%
Director of Nursing/Midwifery	1.3%	1.3%	1.1%	1.3%	1.0%	1.1%	1.1%
Nurse/ Midwife Manager	23.3%	23.5%	22.3%	22.1%	22.3%	22.0%	22.0%
Advanced Nurse/ Midwife Practitioner	0.1%	0.2%	0.3%	0.3%	0.4%	0.4%	0.4%
Clinical Nurse/ Midwife Specialist	2.9%	3.8%	3.7%	4.0%	4.5%	4.7%	4.7%
Nurse/ Midwife Specialist & AN/MP	3.0%	4.0%	4.1%	4.3%	5.0%	5.2%	5.1%
Staff Midwives					0.0%	0.0%	0.0%
Staff Nurse [Intellectual Disability]	22.0%	22.1%	21.2%	21.4%	20.7%	20.6%	20.5%
Staff Nurse [Psychiatric]	19.5%	18.7%	19.0%	18.9%	18.8%	18.4%	18.8%
Staff Nurses [General/ Children's]	21.0%	20.2%	21.4%	20.6%	20.2%	20.1%	20.1%
Staff Nurse/ Staff Midwife	62.4%	61.1%	61.6%	60.8%	59.8%	59.2%	59.5%
Public Health Nurse	9.0%	8.8%	8.6%	8.9%	8.9%	8.6%	8.5%
Pre-registration Nurse/ Midwife Intern	0.2%	0.1%	1.0%	0.9%	0.6%	2.2%	2.2%
Pre-registration Nurse Intern (COVID-19)					0.8%	0.2%	
Post-registration Nurse/ Midwife Student	1.0%	1.4%	1.1%	1.3%	1.5%	1.5%	1.5%
Nursing/ Midwifery awaiting registration			0.1%	0.5%			
Nursing/ Midwifery Student	1.2%	1.5%	2.2%	2.8%	2.9%	3.9%	3.7%
Nursing/ Midwifery other	1.0%	1.1%	1.2%	1.0%	1.1%	1.1%	1.1%
Nursing & Midwifery	31.1%	30.6%	30.4%	29.9%	28.3%	100.0%	29.7%
Dietitians	1.6%	1.5%	1.5%	1.3%	1.5%	1.5%	1.6%
Occupational Therapists	11.4%	11.9%	11.4%	11.4%	11.8%	12.7%	12.6%
Orthoptists	0.1%	0.1%	0.2%	0.3%	0.3%	0.3%	0.3%
Physiotherapists	9.1%	9.0%	8.7%	9.0%	9.1%	9.0%	8.9%
Podiatrists & Chiropodists		0.1%	0.1%	0.1%	0.1%	0.0%	0.0%
Speech & Language Therapists	8.8%	8.9%	8.9%	8.3%	7.8%	7.2%	7.3%
Therapy Professions	30.8%	31.4%	30.8%	30.4%	30.7%	30.9%	30.7%
Audiology	0.8%	1.2%	1.1%	0.9%	0.8%	0.8%	0.8%
Clinical Engineering	1.1%	1.0%	1.0%	1.0%	0.8%	0.9%	0.9%
Medical Science	0.2%	0.2%	0.3%	0.2%	0.2%	0.2%	0.2%
Radiographers	0.1%	0.1%	0.1%	0.1%	0.1%	0.1%	0.1%
Health Science/ Diagnostics	2.3%	2.5%	2.5%	2.3%	1.9%	2.0%	2.0%
Social Care	39.9%	39.7%	41.5%	43.4%	43.1%	43.4%	43.5%
Social Workers	8.3%	8.5%	8.3%	7.8%	8.0%	8.0%	8.0%
Psychologists	11.4%	10.8%	10.8%	10.2%	10.6%	10.2%	10.3%

Mar 2021 (Dec 2019 figure: 6,582)	WTE Dec 2016	WTE Dec 2017	WTE Dec 2018	WTE Dec 2019	WTE Dec 2020	WTE Feb 2021	WTE Mar 2021
Overall	6,286	6,438	6,634	6,582	6,950	6,971	6,979
Pharmacy	2.4%	2.2%	1.9%	1.5%	1.7%	1.7%	1.7%
Counsellor Therapists	2.5%	2.6%	2.4%	2.6%	2.4%	2.4%	2.4%
Dental Hygienists	0.4%	0.4%	0.4%	0.4%	0.4%	0.3%	0.3%
Other Health & Social Care	1.8%	1.6%	1.4%	1.2%	1.1%	1.1%	1.1%
Play Therapists/ Specialists	0.1%	0.2%	0.2%	0.1%	0.1%	0.1%	0.1%
H&SC, Other	4.8%	4.7%	4.3%	4.4%	4.0%	3.9%	3.9%
Health & Social Care Professionals	23.3%	23.8%	23.8%	24.4%	23.1%	100.0%	25.2%
Executive Management	0.8%	1.0%	1.2%	1.4%	1.4%	1.5%	1.5%
Senior Management (VIII & GM)	7.8%	8.6%	8.4%	9.3%	8.8%	8.5%	8.4%
Management (VIII & above)	8.6%	9.7%	9.6%	10.8%	10.2%	10.0%	9.9%
Middle Management (V-VII)	26.2%	24.9%	27.0%	27.0%	28.0%	29.3%	29.6%
Other Administrative	1.4%	1.6%	1.7%	1.2%	1.1%	1.1%	1.1%
Administrative/ Supervisory (V to VII)	27.6%	26.5%	28.7%	28.1%	29.1%	30.4%	30.7%
Clerical (III & IV)	63.8%	63.8%	61.6%	61.1%	60.7%	59.5%	59.4%
Management & Administrative	10.1%	10.6%	11.3%	11.2%	10.6%	100.0%	12.1%
Catering	12.3%	12.3%	12.2%	12.5%	13.4%	13.4%	13.3%
Household Services	43.0%	41.6%	43.7%	45.3%	51.2%	51.2%	51.4%
Other Support	23.0%	24.3%	22.8%	19.4%	10.2%	10.5%	10.5%
Portering	15.4%	14.8%	14.3%	15.5%	16.9%	16.8%	16.7%
Support	93.6%	93.1%	93.0%	92.8%	91.7%	91.9%	91.9%
Maintenance/ Technical	6.4%	6.9%	7.0%	7.2%	8.3%	8.1%	8.1%
General Support	8.8%	8.4%	7.9%	7.4%	7.0%	100.0%	6.3%
HCA, Nurse's Aide, etc.	84.6%	85.6%	84.2%	84.4%	80.9%	79.9%	79.7%
HCA (Student Nurse/Midwife COVID-19)					0.0%	0.0%	0.0%
Health & Social Care Assistants	0.7%	0.8%	1.5%	0.8%	1.6%	1.6%	1.7%
Swabber (COVID-19)					3.1%	3.8%	3.9%
Health Care Assistants	85.3%	86.4%	85.7%	85.3%	85.6%	85.4%	85.3%
Other Care Grades	14.7%	13.6%	14.3%	14.7%	14.4%	14.6%	14.7%
Care, other	14.7%	13.6%	14.3%	14.7%	14.4%	14.6%	14.7%
Patient & Client Care	22.2%	22.3%	22.4%	22.8%	21.6%	100.0%	22.9%
Total	100 %	100 %	100 %	100 %	100%	100 %	100 %

CHO 9 Skills Mix by Care Group: March 2021

Mar 2021 (Dec 2019 figure: 1,272)	WTE Dec 2016	WTE Dec 2017	WTE Dec 2018	WTE Dec 2019	WTE Dec 2020	WTE Feb 2021	WTE Mar 2021
Mental Health	1,217	1,220	1,301	1,272	1,331	1,330	1,340
Consultant Medicine		0.1%	0.1%				
Consultant Psychiatry	37.8%	36.3%	37.8%	37.3%	35.2%	36.3%	36.9%
Consultants	37.8%	36.3%	37.8%	37.3%	35.2%	36.3%	36.9%
Registrar	15.3%	11.4%	11.0%	11.9%	9.9%	15.2%	15.9%
Senior Registrar	10.6%	8.1%	10.6%	11.2%	14.4%	15.4%	15.1%
Specialist Registrar	0.8%	0.8%					
Registrars	26.7%	20.3%	21.6%	23.1%	24.2%	30.7%	31.0%
Interns	4.0%	3.2%	1.5%	1.5%			
Senior House Officer	30.7%	40.1%	39.1%	38.2%	40.6%	33.0%	32.2%
SHO/ Interns	34.7%	43.4%	40.6%	39.6%	40.6%	33.0%	32.2%
Medical/ Dental, other	0.8%						
Medical & Dental	10.2%	10.1%	10.4%	10.5%	10.1%	9.4%	9.4%
Clinical Nurse/ Midwife Manager	21.3%	20.3%	19.3%	18.5%	18.0%	17.5%	17.3%
Director Nursing/Midwifery, Assistant	3.5%	3.9%	3.4%	3.7%	4.0%	3.8%	3.9%
Director of Nursing/Midwifery	0.9%	0.6%	0.3%	0.5%	0.5%	0.5%	0.5%
Nurse/ Midwife Manager	25.7%	24.7%	23.0%	22.7%	22.5%	21.8%	21.6%
Advanced Nurse/ Midwife Practitioner	0.2%	0.4%	1.0%	1.0%	1.0%	1.0%	0.8%
Clinical Nurse/ Midwife Specialist	7.1%	10.0%	9.8%	10.2%	11.4%	11.7%	11.6%
Nurse/ Midwife Specialist & AN/MP	7.3%	10.4%	10.8%	11.2%	12.3%	12.7%	12.4%
Staff Midwives					0.2%	0.1%	0.2%
Staff Nurse [Intellectual Disability]	0.3%	0.3%	0.3%	0.3%	0.1%	0.1%	0.1%
Staff Nurse [Psychiatric]	61.0%	59.1%	58.5%	57.9%	58.6%	57.0%	57.6%
Staff Nurses [General/ Children's]	2.9%	2.7%	2.5%	2.2%	1.7%	1.7%	1.7%
Staff Nurse/ Staff Midwife	64.2%	62.1%	61.4%	60.5%	60.6%	58.9%	59.5%
Public Health Nurse	0.2%	0.2%					
Pre-registration Nurse/ Midwife Intern	0.6%	0.2%	2.0%	1.7%	1.7%	4.6%	4.5%
Pre-registration Nurse Intern (COVID-19)					0.9%	0.2%	
Nursing/ Midwifery awaiting registration			0.5%	1.9%			
Nursing/ Midwifery Student	0.6%	0.2%	2.5%	3.6%	2.6%	4.7%	4.5%
Nursing Education/Clinical	2.1%	2.5%	2.3%	2.0%	2.1%	1.9%	1.9%
Nursing/ Midwifery other	2.1%	2.5%	2.3%	2.0%	2.1%	1.9%	1.9%
Nursing & Midwifery	47.0%	46.3%	45.7%	45.7%	43.6%	46.8%	46.8%
Dietitians	1.2%	0.9%	0.8%	0.9%	1.3%	1.3%	1.2%
Occupational Therapists	23.5%	25.8%	26.7%	27.5%	25.6%	27.2%	26.8%
Physiotherapists	0.4%	0.4%	0.6%	0.7%	0.6%	0.6%	0.6%
Speech & Language Therapists	6.9%	4.8%	5.7%	3.7%	6.2%	6.2%	6.6%
Therapy Professions	32.0%	32.0%	33.8%	32.8%	33.7%	35.3%	35.2%
Social Care	0.6%	0.6%	0.6%	0.5%	0.6%	0.5%	0.5%
Social Workers	24.3%	28.3%	26.1%	26.0%	23.7%	24.3%	24.0%
Psychologists	29.3%	27.1%	28.2%	27.3%	29.3%	27.2%	27.4%
Pharmacy	5.5%	5.3%	4.3%	4.7%	4.9%	4.9%	4.7%
Counsellor Therapists	7.6%	6.5%	6.0%	8.1%	7.6%	7.6%	7.9%
Other Health & Social Care	0.7%	0.4%	1.0%	0.6%	0.2%	0.2%	0.2%
H&SC, Other	8.2%	6.8%	7.0%	8.7%	7.9%	7.8%	8.1%
Health & Social Care Professionals	13.2%	13.7%	14.0%	13.1%	12.6%	13.8%	13.8%
Management (VIII & above)	1.8%	1.6%	1.5%	3.7%	3.4%	4.1%	4.2%
Administrative/ Supervisory (V to VII)	18.0%	21.1%	20.5%	20.4%	19.5%	19.1%	19.0%
Clerical (III & IV)	80.2%	77.3%	78.1%	76.0%	77.1%	76.8%	76.8%

Mar 2021 (Dec 2019 figure: 1,272)	WTE Dec 2016	WTE Dec 2017	WTE Dec 2018	WTE Dec 2019	WTE Dec 2020	WTE Feb 2021	WTE Mar 2021
Mental Health	1,217	1,220	1,301	1,272	1,331	1,330	1,340
Management & Administrative	9.3%	10.3%	10.5%	10.7%	10.3%	10.8%	10.8%
Support	92.0%	91.4%	91.4%	90.4%	90.4%	90.3%	90.4%
Maintenance/ Technical	8.0%	8.6%	8.6%	9.6%	9.6%	9.7%	9.6%
General Support	11.2%	10.4%	9.8%	9.0%	8.6%	8.5%	8.5%
HCA, Nurse's Aide, etc.	96.4%	96.4%	92.9%	87.2%	89.1%	88.5%	88.0%
Health & Social Care Assistants	2.7%	1.8%	2.4%	3.6%	2.1%	2.8%	3.3%
Health Care Assistants	99.1%	98.2%	95.4%	90.8%	91.2%	91.3%	91.3%
Care, other	0.9%	1.8%	4.6%	9.2%	8.8%	8.7%	8.7%
Patient & Client Care	9.1%	9.1%	9.5%	10.9%	10.4%	10.7%	10.7%
Total	100 %	100 %	100 %	100 %	100 %	100 %	100 %

Mar 2021 (Dec 2019 figure: 1,247)	WTE Dec 2016	WTE Dec 2017	WTE Dec 2018	WTE Dec 2019	WTE Dec 2020	WTE Feb 2021	WTE Mar 2021
Primary Care	1,162	1,239	1,300	1,247	1,412	1,437	1,405
Consultant Psychiatry	3.5%	5.6%	2.9%	3.9%	4.0%	3.2%	4.1%
Consultants	3.5%	5.6%	2.9%	3.9%	4.0%	3.2%	4.1%
Registrars	31.2%	37.4%	43.7%	50.3%	47.2%	44.4%	44.2%
SHO/ Interns	8.7%	2.6%		0.9%	4.5%	7.8%	7.3%
Dentists	28.5%	26.5%	27.1%	28.5%	29.4%	29.1%	29.1%
Other Medical	28.1%	27.8%	26.3%	16.4%	14.9%	15.4%	15.3%
Medical/ Dental, other	56.6%	54.3%	53.4%	44.8%	44.3%	44.5%	44.3%
Medical & Dental	9.8%	9.2%	9.1%	8.9%	7.8%	7.6%	7.6%
Clinical Nurse/ Midwife Manager	4.0%	4.7%	4.2%	4.3%	5.2%	5.6%	6.3%
Director Nursing/Midwifery, Assistant	6.1%	5.3%	5.7%	5.5%	5.6%	5.8%	5.8%
Director of Nursing/Midwifery	0.6%	0.8%	0.8%	0.9%	0.8%	1.1%	0.8%
Nurse/ Midwife Manager	10.7%	10.9%	10.7%	10.7%	11.6%	12.5%	12.9%
Nurse/ Midwife Specialist & AN/MP	1.3%	2.3%	1.5%	1.8%	2.2%	2.3%	2.4%
Staff Nurse/ Staff Midwife	28.3%	30.7%	32.3%	29.1%	28.4%	29.1%	29.0%
Public Health Nurse	53.3%	47.9%	48.7%	50.8%	49.1%	47.6%	47.0%
Nursing/ Midwifery Student	5.8%	7.8%	6.2%	7.5%	8.4%	8.2%	8.4%
Nursing Education/Clinical	0.3%	0.3%	0.3%		0.3%	0.3%	0.3%
Other Nursing/ Midwifery	0.3%	0.1%	0.3%				
Nursing/ Midwifery other	0.6%	0.4%	0.6%		0.3%	0.3%	0.3%
Nursing & Midwifery	28.4%	29.0%	27.3%	27.6%	24.4%	26.7%	26.7%
Dietitians	2.8%	2.8%	2.6%	2.2%	2.1%	1.9%	2.1%
Occupational Therapists	16.8%	17.3%	14.9%	15.8%	17.6%	18.1%	18.4%
Orthoptists	0.5%	0.4%	1.0%	1.5%	1.5%	1.6%	1.6%
Physiotherapists	17.2%	16.3%	15.3%	17.0%	17.1%	17.7%	17.4%
Podiatrists & Chiropodists		0.3%	0.3%	0.3%	0.4%	0.2%	0.2%
Speech & Language Therapists	18.5%	20.4%	20.3%	19.1%	17.8%	16.4%	15.6%
Therapy Professions	55.8%	57.4%	54.4%	55.8%	56.6%	56.0%	55.3%
Audiology			5.0%	4.3%	3.9%	3.9%	4.0%
Clinical Engineering			1.4%	1.4%	1.3%	1.3%	1.4%
Health Science/ Diagnostics			6.4%	5.8%	5.2%	5.2%	5.3%
Social Care	1.5%	1.4%	1.1%	1.2%	1.0%	1.0%	1.0%
Social Workers	5.2%	5.3%	4.9%	4.7%	6.1%	6.1%	6.1%
Psychologists	19.8%	18.7%	18.3%	18.6%	17.5%	18.2%	18.5%
Pharmacy	7.1%	6.0%	5.1%	3.4%	4.0%	4.1%	4.3%
Counsellor Therapists	8.0%	8.4%	7.4%	8.1%	7.4%	7.5%	7.5%

Mar 2021 (Dec 2019 figure: 1,247)	WTE Dec 2016	WTE Dec 2017	WTE Dec 2018	WTE Dec 2019	WTE Dec 2020	WTE Feb 2021	WTE Mar 2021
Primary Care	1,162	1,239	1,300	1,247	1,412	1,437	1,405
Dental Hygienists	1.9%	1.8%	1.8%	1.8%	1.6%	1.6%	1.6%
Other Health & Social Care	0.2%	0.4%	0.2%	0.0%	0.0%	0.0%	0.0%
Play Therapists/ Specialists	0.4%	0.6%	0.6%	0.5%	0.4%	0.3%	0.3%
H&SC, Other	10.6%	11.2%	9.9%	10.4%	9.6%	9.4%	9.5%
Health & Social Care Professionals	26.9%	27.5%	27.3%	28.2%	24.9%	26.2%	26.2%
Executive Management	0.4%	0.4%	1.0%	1.3%	1.2%	1.1%	1.2%
Senior Management (VIII & GM)	7.2%	9.2%	8.2%	8.4%	7.3%	7.0%	6.1%
Management (VIII & above)	7.6%	9.6%	9.2%	9.8%	8.5%	8.2%	7.3%
Administrative/ Supervisory (V to VII)	24.0%	21.3%	27.0%	26.9%	26.2%	26.4%	27.0%
Clerical (III & IV)	68.4%	69.0%	63.8%	63.3%	65.3%	65.4%	65.7%
Management & Administrative	21.2%	21.4%	22.8%	23.1%	20.4%	22.8%	22.8%
Support	100.0%	100.0%	100.0%	100.0%	100.0%	100.0%	100.0%
General Support	4.5%	4.1%	3.7%	2.8%	2.5%	2.4%	2.4%
HCA, Nurse's Aide, etc.	2.6%	3.7%	6.6%	6.9%	4.5%	4.1%	4.1%
Health & Social Care Assistants	2.2%	3.6%	12.0%	4.2%	8.0%	7.7%	7.9%
Swabber (COVID-19)					26.9%	30.5%	30.8%
Health Care Assistants	4.8%	7.3%	18.6%	11.1%	39.4%	42.3%	42.8%
Other Care Grades	95.2%	92.7%	81.4%	88.9%	60.6%	57.7%	57.2%
Care, other	95.2%	92.7%	81.4%	88.9%	60.6%	57.7%	57.2%
Patient & Client Care	9.3%	8.9%	9.8%	9.5%	8.4%	14.4%	14.4%
Total	100 %	100 %	100 %	100 %	100 %	100 %	100 %

Mar 2021 (Dec 2019 figure: 3,194)	WTE Dec 2016	WTE Dec 2017	WTE Dec 2018	WTE Dec 2019	WTE Dec 2020	WTE Feb 2021	WTE Mar 2021
Disabilities	3,043	3,100	3,125	3,194	3,285	3,282	3,298
Consultant Paediatrics	7.8%	5.6%	6.3%	4.9%	5.6%	5.9%	6.2%
Consultant Psychiatry	42.7%	45.2%	48.2%	45.8%	47.0%	49.3%	46.7%
Consultant Surgery	0.5%						
Consultants	51.0%	50.8%	54.5%	50.7%	52.7%	55.2%	52.9%
Registrars	15.8%	22.9%	15.7%	24.3%	9.3%	14.7%	15.4%
SHO/ Interns					9.3%		
Medical/ Dental, other	33.3%	26.3%	29.8%	25.0%	28.7%	30.1%	31.7%
Medical & Dental	0.6%	0.7%	0.6%	0.8%	0.8%	0.6%	0.6%
Clinical Nurse/ Midwife Manager	23.1%	23.5%	23.7%	22.9%	23.4%	22.8%	22.7%
Director Nursing/Midwifery, Assistant	0.9%	0.9%	0.8%	1.4%	1.6%	1.3%	1.3%
Director of Nursing/Midwifery	2.2%	2.1%	1.7%	1.9%	1.5%	1.6%	1.6%
Nurse/ Midwife Manager	26.1%	26.5%	26.2%	26.2%	26.4%	25.7%	25.6%
Advanced Nurse/ Midwife Practitioner					0.1%	0.1%	0.1%
Clinical Nurse/ Midwife Specialist	1.2%	1.1%	1.2%	1.2%	1.5%	1.7%	1.6%
Nurse/ Midwife Specialist & AN/MP	1.2%	1.1%	1.2%	1.2%	1.6%	1.8%	1.7%
Staff Nurse [Intellectual Disability]	56.9%	57.4%	56.6%	57.2%	57.0%	56.5%	56.4%
Staff Nurse [Psychiatric]	4.0%	3.4%	4.4%	4.4%	3.2%	3.3%	3.7%
Staff Nurses [General/ Children's]	11.0%	10.7%	9.6%	9.1%	8.9%	8.8%	9.0%
Staff Nurse/ Staff Midwife	71.8%	71.5%	70.6%	70.6%	69.1%	68.6%	69.1%
Pre-registration Nurse/ Midwife Intern	0.1%		1.1%	1.1%	0.3%	2.4%	2.4%
Pre-registration Nurse Intern (COVID-19)					1.4%	0.4%	
Nursing/ Midwifery Student	0.1%		1.1%	1.1%	1.8%	2.8%	2.4%
Nursing/ Midwifery other	0.7%	0.8%	0.9%	1.0%	1.1%	1.1%	1.1%
Nursing & Midwifery	24.8%	24.4%	24.0%	22.9%	22.3%	22.8%	22.8%

Mar 2021 (Dec 2019 figure: 3,194)	WTE Dec 2016	WTE Dec 2017	WTE Dec 2018	WTE Dec 2019	WTE Dec 2020	WTE Feb 2021	WTE Mar 2021
Disabilities	3,043	3,100	3,125	3,194	3,285	3,282	3,298
Dietitians	0.7%	0.6%	0.6%	0.6%	0.5%	0.5%	0.5%
Occupational Therapists	6.4%	6.4%	6.2%	6.2%	6.2%	7.3%	7.0%
Physiotherapists	6.2%	5.6%	5.8%	5.7%	5.5%	5.3%	5.3%
Speech & Language Therapists	6.1%	5.9%	5.7%	5.5%	5.1%	4.7%	4.9%
Therapy Professions	19.4%	18.5%	18.3%	18.1%	17.4%	17.8%	17.6%
Audiology	1.3%	1.9%					
Clinical Engineering	1.8%	1.7%	1.0%	1.1%	0.8%	0.9%	0.9%
Medical Science	0.3%	0.3%	0.4%	0.4%	0.4%	0.4%	0.4%
Health Science/ Diagnostics	3.4%	3.9%	1.5%	1.5%	1.2%	1.3%	1.3%
Social Care	62.6%	63.7%	67.9%	68.7%	68.9%	68.9%	69.3%
Social Workers	5.5%	5.2%	4.5%	4.4%	4.6%	4.4%	4.4%
Psychologists	6.2%	6.1%	5.6%	5.3%	6.0%	5.7%	5.6%
Pharmacy	0.2%	0.2%	0.2%	0.2%	0.2%	0.2%	0.2%
Other Health & Social Care	2.6%	2.3%	2.0%	1.8%	1.7%	1.7%	1.6%
Play Therapists/ Specialists	0.1%	0.1%	0.1%	0.0%		0.0%	0.0%
H&SC, Other	2.6%	2.4%	2.0%	1.9%	1.7%	1.7%	1.7%
Health & Social Care Professionals	30.4%	30.5%	30.6%	31.4%	30.5%	33.2%	33.2%
Executive Management	1.4%	1.3%	1.3%	1.1%	1.1%	1.1%	1.1%
Senior Management (VIII & GM)	11.8%	12.6%	12.8%	13.8%	14.4%	14.6%	14.9%
Management (VIII & above)	13.1%	14.0%	14.1%	15.0%	15.5%	15.7%	15.9%
Administrative/ Supervisory (V to VII)	36.8%	35.3%	36.0%	35.0%	37.4%	40.0%	39.8%
Clerical (III & IV)	50.1%	50.7%	49.9%	50.1%	47.1%	44.3%	44.3%
Management & Administrative	7.2%	7.2%	7.6%	7.8%	7.6%	8.6%	8.6%
Support	90.8%	89.9%	89.6%	89.9%	86.3%	86.9%	87.0%
Maintenance	8.8%	9.7%	9.5%	9.2%	11.9%	11.3%	11.2%
Technical Services	0.4%	0.4%	0.9%	0.9%	1.8%	1.8%	1.8%
Maintenance/ Technical	9.2%	10.1%	10.4%	10.1%	13.7%	13.1%	13.0%
General Support	7.9%	7.6%	7.1%	6.8%	6.6%	5.1%	5.1%
HCA, Nurse's Aide, etc.	88.4%	90.0%	89.1%	89.7%	89.7%	89.6%	89.5%
Health & Social Care Assistants	0.3%	0.4%	0.2%	0.2%	0.3%	0.3%	0.3%
Health Care Assistants	88.8%	90.3%	89.4%	90.0%	90.0%	89.9%	89.8%
Care, other	11.2%	9.7%	10.6%	10.0%	10.0%	10.1%	10.2%
Patient & Client Care	29.1%	29.6%	30.1%	30.2%	29.4%	29.6%	29.6%
Total	100 %	100 %	100 %	100 %	100 %	100 %	100 %

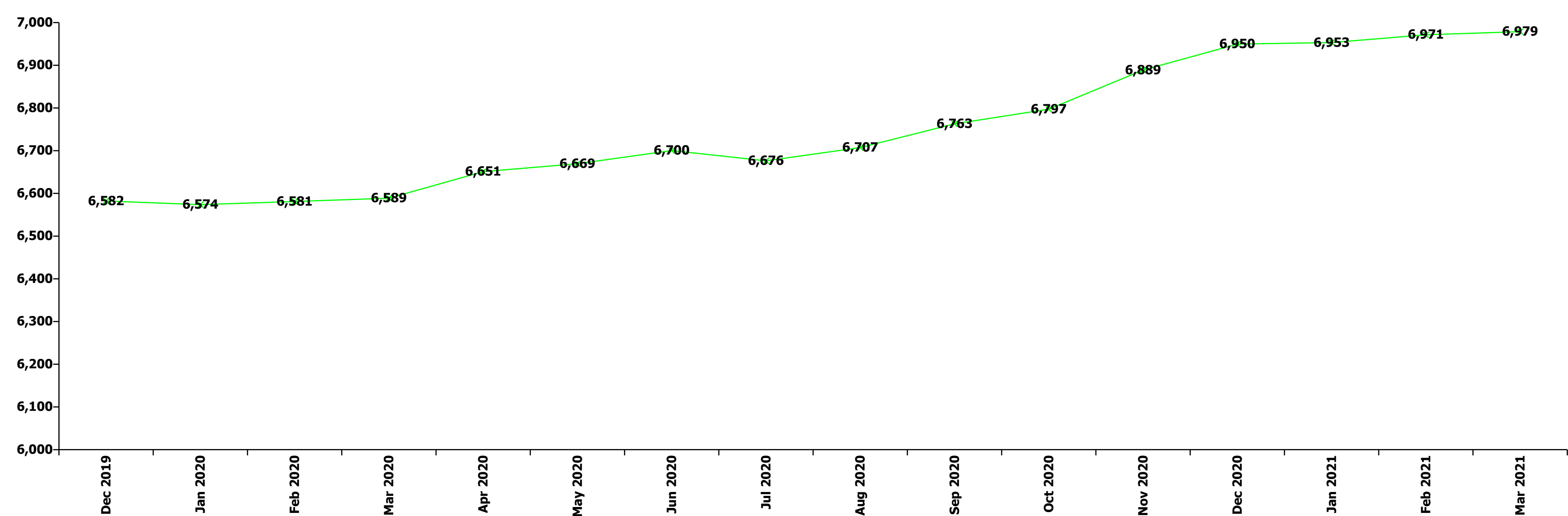
Mar 2021 (Dec 2019 figure: 870)	WTE Dec 2016	WTE Dec 2017	WTE Dec 2018	WTE Dec 2019	WTE Dec 2020	WTE Feb 2021	WTE Mar 2021
Older People	865	878	908	870	914	910	924
Consultant Medicine	32.5%	33.1%	8.9%	8.0%	12.8%	12.3%	9.2%
Consultant Surgery	3.8%	0.6%	0.7%				
Consultants	36.3%	33.7%	9.6%	8.0%	12.8%	12.3%	9.2%
Registrar	23.1%	29.9%	35.3%	27.4%	25.6%	33.3%	31.7%
Specialist Registrar	5.1%						1.4%
Registrars	28.2%	29.9%	35.3%	27.4%	25.6%	33.3%	33.2%
Senior House Officer	30.4%	31.8%	49.6%	59.7%	56.4%	48.3%	51.8%
SHO/ Interns	30.4%	31.8%	49.6%	59.7%	56.4%	48.3%	51.8%
Medical/ Dental, other	5.1%	4.6%	5.6%	5.0%	5.3%	6.0%	5.8%
Medical & Dental	2.3%	2.5%	2.0%	2.3%	2.2%	1.9%	1.9%
Clinical Nurse/ Midwife Manager	20.2%	23.7%	20.6%	19.1%	20.1%	20.2%	20.0%
Director Nursing/Midwifery, Assistant	4.3%	4.1%	2.8%	3.6%	3.7%	3.4%	3.8%

Mar 2021 (Dec 2019 figure: 870)	WTE Dec 2016	WTE Dec 2017	WTE Dec 2018	WTE Dec 2019	WTE Dec 2020	WTE Feb 2021	WTE Mar 2021
Older People	865	878	908	870	914	910	924
Director of Nursing/Midwifery	1.0%	1.0%	1.3%	1.6%	1.2%	1.2%	1.3%
Nurse/ Midwife Manager	25.5%	28.8%	24.8%	24.3%	25.1%	24.9%	25.1%
Advanced Nurse/ Midwife Practitioner	0.3%	0.3%	0.3%	0.3%	0.3%	0.3%	0.3%
Clinical Nurse/ Midwife Specialist	0.7%	0.7%	0.9%	1.3%	1.5%	1.5%	1.5%
Nurse/ Midwife Specialist & AN/MP	1.0%	1.0%	1.2%	1.5%	1.8%	1.8%	1.8%
Staff Nurse [Psychiatric]	0.7%	0.7%	0.6%	0.6%	0.5%	0.6%	0.3%
Staff Nurses [General/ Children's]	72.4%	69.0%	72.9%	73.1%	72.3%	72.4%	72.5%
Staff Nurse/ Staff Midwife	73.1%	69.7%	73.6%	73.7%	72.8%	73.0%	72.8%
Public Health Nurse	0.1%	0.1%	0.1%	0.1%			
Nursing Education/Clinical	0.3%	0.3%	0.3%	0.3%	0.3%	0.3%	0.3%
Nursing/ Midwifery other	0.3%	0.3%	0.3%	0.3%	0.3%	0.3%	0.3%
Nursing & Midwifery	34.8%	33.0%	34.7%	35.4%	33.7%	34.3%	34.3%
Dietitians	8.1%	8.4%	8.9%	7.5%	9.8%	10.6%	10.6%
Occupational Therapists	24.9%	25.0%	22.7%	22.9%	24.3%	25.4%	25.9%
Physiotherapists	30.7%	34.6%	30.9%	31.1%	33.0%	31.6%	31.0%
Speech & Language Therapists	4.9%	4.4%	4.1%	5.5%	3.2%	2.7%	4.1%
Therapy Professions	68.6%	72.4%	66.6%	67.0%	70.4%	70.2%	71.6%
Radiographers	2.9%	2.5%	2.4%	1.8%	1.0%	1.0%	0.9%
Health Science/ Diagnostics	2.9%	2.5%	2.4%	1.8%	1.0%	1.0%	0.9%
Social Care	1.4%	1.2%	1.2%	1.2%	1.0%	1.0%	0.9%
Social Workers	22.5%	20.0%	26.1%	26.1%	23.6%	23.9%	22.8%
Pharmacy	4.1%	3.5%	3.3%	3.4%	3.5%	3.4%	3.2%
H&SC, Other	0.5%	0.5%	0.4%	0.4%	0.5%	0.5%	0.5%
Health & Social Care Professionals	7.9%	9.1%	9.3%	9.3%	8.9%	11.7%	11.7%
Executive Management	1.7%	4.4%	4.1%	4.6%	5.2%	5.2%	4.5%
Senior Management (VIII & GM)	7.0%	6.1%	8.1%	9.4%	6.8%	4.7%	5.0%
Management (VIII & above)	8.7%	10.5%	12.2%	14.0%	12.0%	9.9%	9.5%
Administrative/ Supervisory (V to VII)	27.1%	27.4%	27.6%	23.4%	28.3%	31.2%	28.6%
Clerical (III & IV)	64.2%	62.1%	60.2%	62.6%	59.8%	58.9%	61.9%
Management & Administrative	6.6%	7.5%	8.1%	7.4%	7.0%	9.1%	9.1%
Support	98.1%	98.1%	98.1%	98.0%	98.1%	98.0%	98.0%
Maintenance/ Technical	1.9%	1.9%	1.9%	2.0%	1.9%	2.0%	2.0%
General Support	14.3%	14.1%	13.6%	13.9%	13.2%	13.0%	13.0%
HCA, Nurse's Aide, etc.	98.5%	98.5%	98.5%	97.7%	96.4%	96.4%	96.0%
HCA (Student Nurse/Midwife COVID-19)					0.2%	0.1%	0.2%
Health & Social Care Assistants	0.7%	0.7%	0.3%		1.4%	1.4%	1.4%
Health Care Assistants	99.2%	99.2%	98.8%	97.7%	98.0%	97.9%	97.6%
Care, other	0.8%	0.8%	1.2%	2.3%	2.0%	2.1%	2.4%
Patient & Client Care	34.1%	33.8%	32.3%	31.7%	30.2%	30.0%	30.0%
Total	100 %	100 %	100 %	100 %	100 %	100 %	100 %

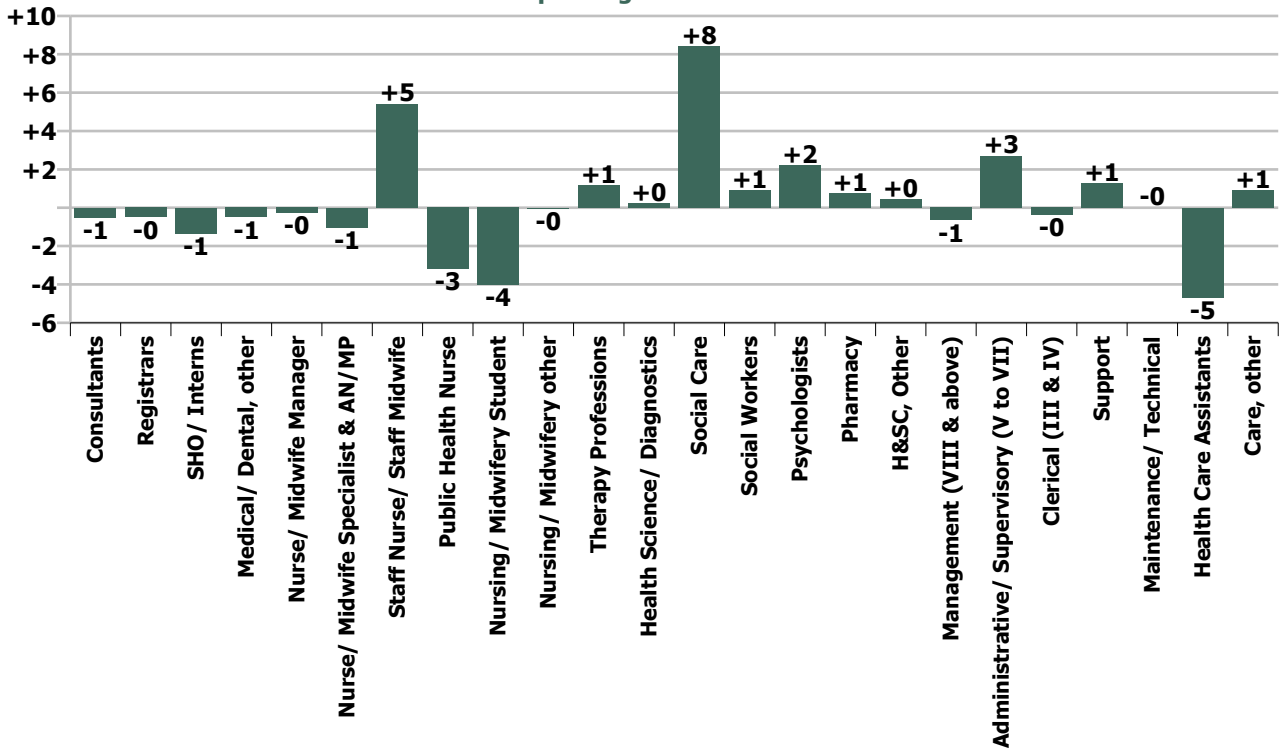
Summary Staff Movement: March 2021

Month-on-month Summary																												
WTE change since Feb 21	% change since Feb 21	overall	Consultants	Registrars	SHO/ Interns	Medical/ Dental, other	Medical & Dental	Nurse/ Midwife Manager	Nurse/ Midwife Specialist & AN/MP	Staff Nurse/ Staff Midwife	Public Health Nurse	Nursing/ Midwifery Student	Nursing/ Midwifery other	Nursing & Midwifery	Therapy Professions	Health Science/ Diagnostics	Social Care	Social Workers	Psychologists	Pharmacy	H&SC, Other	Health & Social Care Professionals	Management (VIII & above)	Administrative/ Supervisory (V to VII)	Clerical (III & IV)	Management & Administrative	General Support	Patient & Client Care
Overall	+0.1%	+7	-0.5	-0.5	-1.4	-0.5	-2.9	-0.3	-1.0	+5.4	-3.2	-4.0	-0.0	-3.2	+1.1	+0.2	+8.4	+0.9	+2.2	+0.7	+0.4	+14.1	-0.7	+2.7	-0.4	+1.7	+1.3	-3.8
Community Health & Wellbeing	+1.1%	+0													0.0							0.0	0.0	+0.1	0.0	+0.1		
Mental Health	+0.7%	+10	-0.1	-0.2	-1.7		-2.0	+0.4	-0.6	+7.6		-1.4	-0.1	+5.8	+1.6		+0.1	+0.7	+1.8	+0.0	+0.9	+5.0	0.0	-0.2	-0.6	-0.8	+0.8	+0.8
Primary Care	-2.2%	-32	+1.0	-0.5	-0.6	-0.5	-0.6	+1.5	+0.5	-1.2	-3.2	+0.4	0.0	-2.1	-3.8	+0.2	+0.1	0.0	+0.4	+0.7	-0.1	-2.4	-5.2	-6.1	-18.2	-29.6	+0.9	+1.6
Disabilities	+0.5%	+16	-1.0	0.0		0.0	-1.0	-1.9	-0.9	+1.5		-3.0	+0.0	-4.3	-1.4	0.0	+8.3	+0.3	-0.0	0.0	-0.4	+6.8	+3.7	+7.3	+8.9	+19.9	+1.1	-6.4
Older People	+1.5%	+14	-0.4	+0.3	+1.0	0.0	+0.8	-0.3	0.0	-2.4			0.0	-2.7	+4.8	0.0	0.0	-0.1		0.0	0.0	+4.7	+0.8	+1.6	+9.6	+12.0	-1.5	+0.2
Social Care	+0.7%	+30	-1.4	+0.3	+1.0	0.0	-0.2	-2.1	-0.9	-0.9		-3.0	+0.0	-6.9	+3.4	0.0	+8.3	+0.2	-0.0	0.0	-0.4	+11.5	+4.6	+8.9	+18.5	+32.0	-0.4	-6.3
Change	+7.2	+0.1%	-0.8%	-0.5%	-2.3%	-0.9%	-1.1%	-0.1%	-1.0%	+0.4%	-1.8%	-5.0%	-0.2%	-0.2%	+0.2%	+0.7%	+1.1%	+0.7%	+1.2%	+2.5%	+0.6%	+0.8%	-0.8%	+1.0%	-0.1%	+0.2%	+0.3%	-0.2%

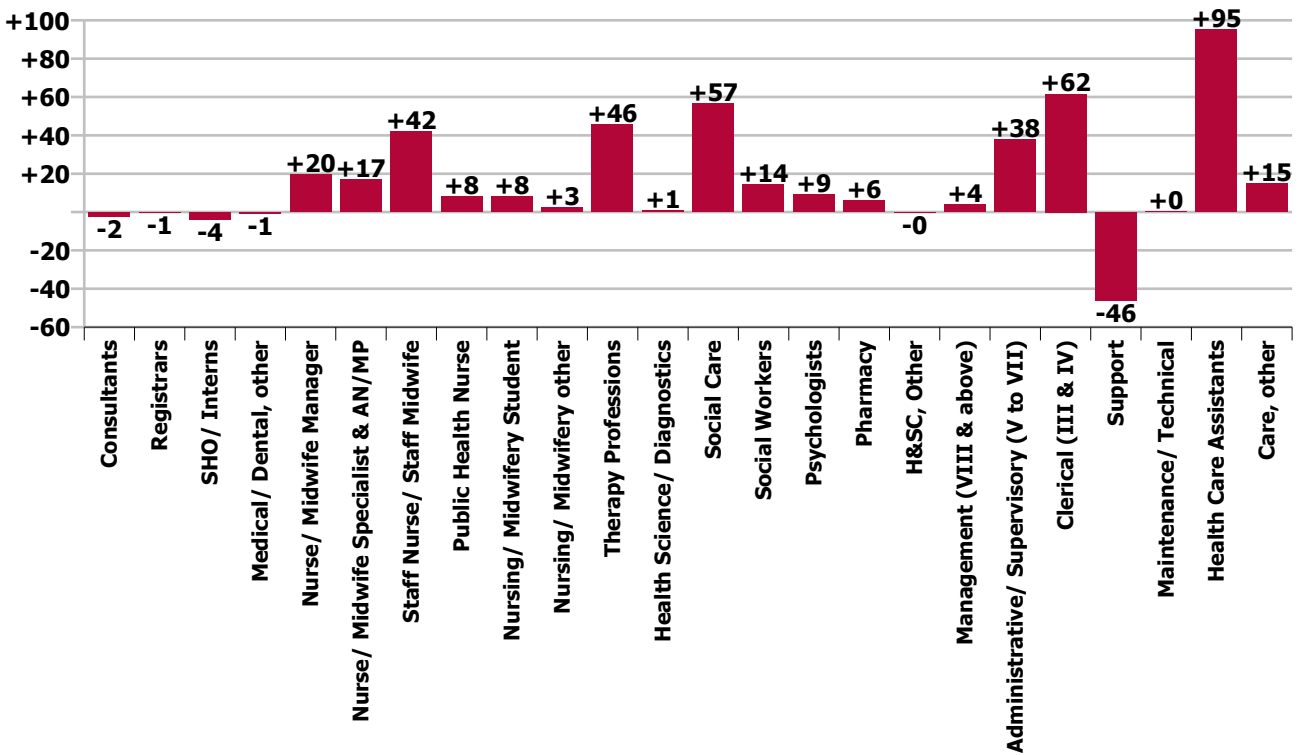
Year-on-year Summary																												
WTE change since Mar 20	% change since Mar 20	overall	Consultants	Registrars	SHO/ Interns	Medical/ Dental, other	Medical & Dental	Nurse/ Midwife Manager	Nurse/ Midwife Specialist & AN/MP	Staff Nurse/ Staff Midwife	Public Health Nurse	Nursing/ Midwifery Student	Nursing/ Midwifery other	Nursing & Midwifery	Therapy Professions	Health Science/ Diagnostics	Social Care	Social Workers	Psychologists	Pharmacy	H&SC, Other	Health & Social Care Professionals	Management (VIII & above)	Administrative/ Supervisory (V to VII)	Clerical (III & IV)	Management & Administrative	General Support	Patient & Client Care
Overall	+5.9%	+390	-2.2	-0.5	-3.8	-0.8	-7.3	+19.7	+16.9	+42.0	+8.0	+8.0	+2.5	+97.2	+45.7	+0.9	+56.7	+14.3	+9.3	+6.1	-0.1	+132.8	+3.9	+37.7	+61.6	+103.1	-46.1	+110.0
Community Health & Wellbeing	+1.1%	+0													0.0							0.0	0.0	+3.3	0.0	+3.3		
Mental Health	+0.7%	+10	-1.2	+4.5	-5.6		-2.3	+4.6	+9.3	+15.3		+0.1	+0.6	+29.9	+5.6		0.0	+0.9	+4.4	+2.3	+0.9	+14.0	+1.0	-2.4	+12.9	+11.5	+4.3	+5.3
Primary Care	-2.2%	-32	0.0	-4.3	+3.8	-0.8	-1.3	+13.4	+2.8	+7.7	+8.4	+5.4	+1.0	+38.6	+7.4	-0.1	-0.9	+6.2	+2.5	+3.1	-0.8	+17.3	-5.1	+5.3	+36.3	+36.5	-0.4	+77.4
Disabilities	+2.7%	+87.5	-0.3	-1.0	-1.0	0.0	-2.3	-0.7	+4.0	+9.3		+2.5	+1.0	+16.1	+10.0	+1.0	+57.6	+1.5	+2.5	0.0	-0.4	+72.2	+9.0	+23.8	+1.0	+33.8	-49.1	+16.8
Older People	+8.0%	+68.3	-0.6	+0.3	-1.0	0.0	-1.3	+2.5	+0.8	+9.7	-0.4		0.0	+12.7	+22.7	0.0	0.0	+5.7		+0.7	+0.2	+29.3	-1.0	+7.6	+11.4	+18.0	-0.9	+10.5
Social Care	+0.7%	+30	-0.9	-0.7	-2.0	0.0	-3.6	+1.8	+4.8	+19.0	-0.4	+2.5	+1.0	+28.7	+32.7	+1.0	+57.6	+7.2	+2.5	+0.7	-0.2	+101.5	+8.0	+31.4	+12.4	+51.9	-49.9	+27.3
Change	+389.8	+5.9%	-3.3%	-0.5%	-6.2%	-1.5%	-2.6%	+4.5%	+19.0%	+3.5%	+4.8%	+11.5%	+12.7%	+4.9%	+9.3%	+2.6%	+8.0%	+11.3%	+5.4%	+25.5%	-0.2%	+8.2%	+4.9%	+17.0%	+14.0%	+13.9%	-9.5%	+7.4%



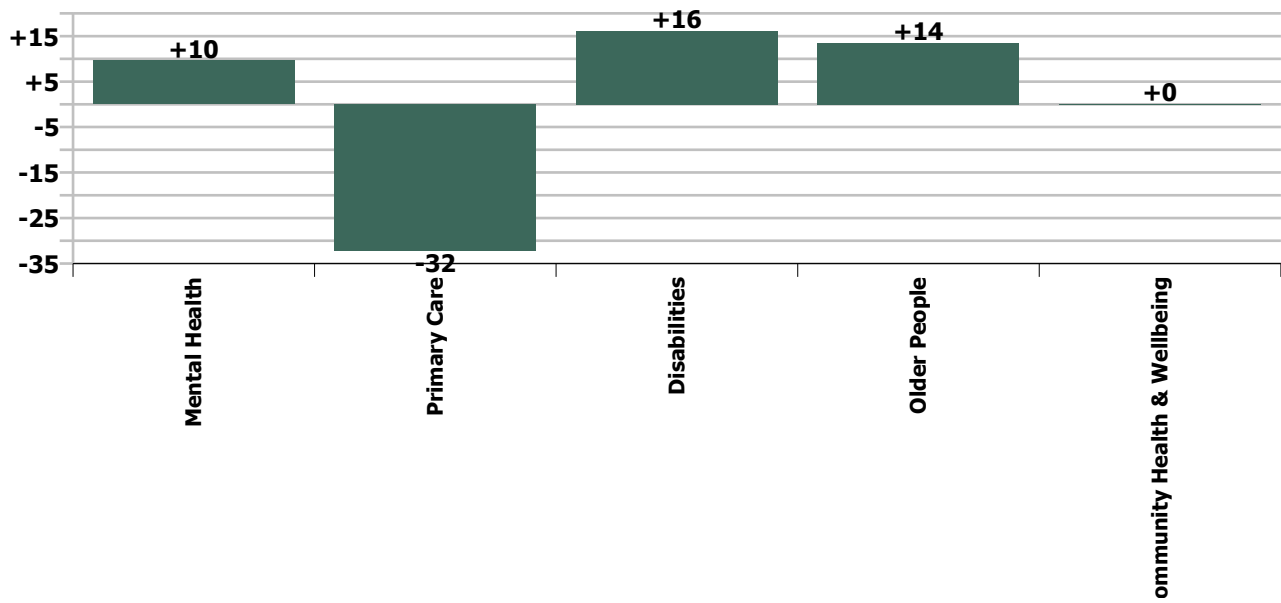
Staff Group change since: Feb 2021



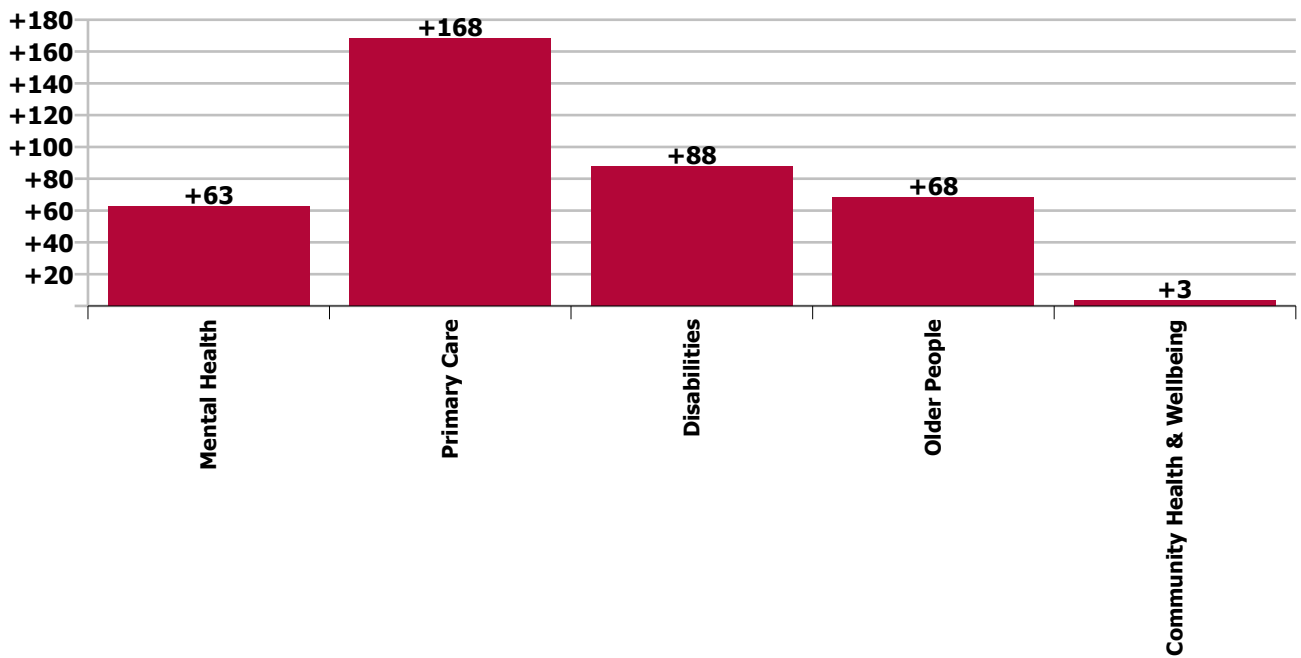
Staff Group change since: Mar 2020



Care Group change since: Feb 2021



Care Group change since: Mar 2020



Longitudinal Employment Levels by Grade Group - Dec 2015 to Mar 2021

Mar 2021 (Dec 2016 figure: 6,286)	WTE Mar 2021	WTE change since Dec 15	WTE change since Dec 16	WTE change since Dec 17	WTE change since Dec 18	WTE change since Dec 19	WTE change since Dec 20	WTE change since Feb 21	% change since Dec 15	% change since Dec 16	% change since Dec 17	% change since Dec 18	% change since Dec 19	% change since Dec 20	% change since Feb 21
Overall	6,979	+890	+692	+541	+345	+396	+29	+7	+14.6%	+11.0%	+8.4%	+5.2%	+6.0%	+0.4%	+0.1%
Consultant Medicine	2	-3	-5	-6	-0		-1	-0	-65.2%	-74.8%	-78.1%	-5.9%		-33.9%	-21.6%
Consultant Paediatrics	1	-0	-0						-18.2%	-18.2%					
Consultant Psychiatry	60	-1	+1	-1	-4	-6	-1	-0	-1.2%	+1.4%	-2.2%	-6.4%	-8.8%	-1.6%	-0.1%
Consultant Surgery		-1	-1	-0	-0				-100.0%	-100.0%	-100.0%	-100.0%	-100.0%	-100.0%	-100.0%
Consultants	63	-5	-5	-7	-4	-6	-2	-1	-7.5%	-7.4%	-10.2%	-6.4%	-8.5%	-2.8%	-0.8%
Registrar	73	+8	+14	+9	-2	-6	+2	-0	+12.7%	+23.0%	+14.7%	-2.2%	-7.2%	+3.6%	-0.1%
Senior Registrar	21	+9	+7	+10	+6	+5	+1	-1	+71.4%	+48.0%	+91.3%	+36.4%	+31.3%	+5.4%	-3.3%
Specialist Registrar	1	-2	-3	-4	+0	-3	+0	+0	-58.3%	-68.8%	-75.0%	+25.0%	-68.8%	+25.0%	+25.0%
Registrars	95	+15	+18	+16	+4	-3	+4	-1	+19.1%	+22.8%	+19.6%	+4.7%	-3.4%	+4.2%	-0.5%
Interns		-4	-5	-4	-2	-2			-100.0%	-100.0%	-100.0%	-100.0%	-100.0%	-100.0%	-100.0%
Senior House Officer	57	+5	+3	-2	-5	-7	-14	-1	+8.9%	+6.0%	-3.9%	-7.7%	-10.7%	-19.5%	-2.3%
SHO/ Interns	57	+1	-2	-6	-7	-9	-14	-1	+1.2%	-2.9%	-10.0%	-10.6%	-13.4%	-19.5%	-2.3%
Dentists	31	-0	-1	+1	-1	-1	-2	-0	-0.2%	-4.5%	+2.6%	-3.8%	-1.8%	-5.0%	-0.8%
Other Medical	23	-18	-17	-15	-14	-2	-0	-0	-44.1%	-41.9%	-39.0%	-38.2%	-7.5%	-1.0%	-1.1%
Medical/ Dental, other	54	-19	-18	-14	-16	-2	-2	-1	-25.4%	-25.3%	-20.7%	-22.4%	-4.3%	-3.3%	-0.9%
Medical & Dental	269		-7	-12	-23	-21	-14	-3		-2.7%	-4.3%	-7.7%	-7.1%	-4.8%	-1.1%
Clinical Nurse/ Midwife Manager	366	-12	-3	-12	-5	+18	-1	-1	-3.2%	-0.9%	-3.0%	-1.4%	+5.1%	-0.2%	-0.3%
Director Nursing/Midwifery, Assistant	68	+10	+8	+8	+13	+7	-1	+2	+16.9%	+13.7%	+13.6%	+22.7%	+11.0%	-1.1%	+2.8%
Director of Nursing/Midwifery	22	-5	-4	-3	-0	-3	+1	-1	-18.6%	-16.2%	-13.0%	-0.1%	-12.1%	+4.0%	-4.3%
Nurse/ Midwife Manager	456	-7	+1	-7	+7	+21	-1	-0	-1.5%	+0.1%	-1.4%	+1.6%	+4.9%	-0.2%	-0.1%
Advanced Nurse/ Midwife Practitioner	8	+7	+6	+5	+1	+1	-1	-1	+686.0%	+297.0%	+162.0%	+13.4%	+15.1%	-12.3%	-10.4%
Clinical Nurse/ Midwife Specialist	98	+50	+42	+23	+23	+20	+6	-0	+102.1%	+73.7%	+29.9%	+30.0%	+25.7%	+6.1%	-0.1%
Nurse/ Midwife Specialist & AN/MP	106	+56	+48	+27	+24	+21	+5	-1	+113.9%	+81.3%	+34.9%	+28.6%	+24.8%	+4.5%	-1.0%
Graduate Nursing/ Midwifery		-1							-100.0%	-100.0%	-100.0%	-100.0%	-100.0%	-100.0%	-100.0%
Staff Midwives	1	+1	+1	+1	+1	+1		+0	-100.0%	-100.0%	-100.0%	-100.0%	-100.0%		+33.3%
Staff Nurse [Intellectual Disability]	425	-13	-5	-11	-1	+4	+2	-3	-3.1%	-1.1%	-2.5%	-0.3%	+1.0%	+0.5%	-0.7%
Staff Nurse [Psychiatric]	390	-6	+9	+21	+8	+20	+5	+9	-1.4%	+2.4%	+5.8%	+2.0%	+5.4%	+1.3%	+2.4%
Staff Nurses [General/ Children's]	417	-0	+6	+18	-14	+12	+3	-1	-0.1%	+1.5%	+4.5%	-3.3%	+3.0%	+0.7%	-0.3%
Staff Nurse/ Staff Midwife	1,233	-19	+12	+29	-7	+37	+10	+5	-1.5%	+0.9%	+2.4%	-0.5%	+3.1%	+0.8%	+0.4%
Public Health Nurse	176	-5	-1	+3	+3	+1	-6	-3	-2.9%	-0.5%	+1.6%	+1.7%	+0.3%	-3.2%	-1.8%
Pre-registration Nurse/ Midwife Intern	46	+36	+41	+45	+25	+28	+33	-0	+384.0%	+921.8%	+3731.7%	+123.7%	+157.3%	+261.8%	-0.9%
Pre-registration Nurse Intern (COVID-19)							-16	-4	-100.0%	-100.0%	-100.0%	-100.0%	-100.0%	-100.0%	-100.0%
Post-registration Nurse/ Midwife Student	31	+5	+12	+3	+9	+5	+0	+0	+20.8%	+65.3%	+12.1%	+42.7%	+20.8%	+1.3%	+1.3%
Nursing/ Midwifery awaiting registration					-3	-11			-100.0%	-100.0%	-100.0%	-100.0%	-100.0%	-100.0%	-100.0%
Nursing/ Midwifery Student	77	+42	+54	+48	+32	+23	+18	-4	+118.0%	+229.3%	+165.0%	+70.8%	+41.5%	+29.5%	-5.0%
Nursing Education/Clinical	22	+5	+3	+0	-0	+3	-1	-0	+28.8%	+18.5%	+1.7%	-0.9%	+13.3%	-2.4%	-0.2%
Other Nursing/ Midwifery		-1	-1	-0	-1				-100.0%	-100.0%	-100.0%	-100.0%	-100.0%	-100.0%	-100.0%
Nursing/ Midwifery other	22	+4	+2	-0	-1	+3	-1	-0	+21.7%	+12.5%	-0.4%	-5.1%	+13.3%	-2.4%	-0.2%
Nursing & Midwifery	2,071		+115	+101	+58	+106	+25	-3		+5.9%	+5.1%	+2.9%	+5.4%	+1.2%	-0.2%

Mar 2021 (Dec 2016 figure: 6,286)	WTE Mar 2021	WTE change since Dec 15	WTE change since Dec 16	WTE change since Dec 17	WTE change since Dec 18	WTE change since Dec 19	WTE change since Dec 20	WTE change since Feb 21	% change since Dec 15	% change since Dec 16	% change since Dec 17	% change since Dec 18	% change since Dec 19	% change since Dec 20	% change since Feb 21
Overall	6,979	+890	+692	+541	+345	+396	+29	+7	+14.6%	+11.0%	+8.4%	+5.2%	+6.0%	+0.4%	+0.1%
Dietitians	27	+10	+5	+5	+4	+6	+1	+1	+58.8%	+20.3%	+20.3%	+14.6%	+29.2%	+3.9%	+2.6%
Occupational Therapists	221	+59	+55	+39	+42	+39	+18	-1	+36.0%	+33.0%	+21.4%	+23.2%	+21.5%	+8.9%	-0.3%
Orthoptists	6	+5	+5	+5	+2	+1	+0		+326.2%	+326.2%	+396.7%	+62.0%	+15.4%	+5.8%	
Physiotherapists	156	+23	+23	+19	+19	+13	-1	-1	+17.1%	+17.5%	+13.9%	+14.0%	+8.8%	-0.7%	-0.6%
Podiatrists & Chiropodists	1	+1	+1	-0	-0	-0	-1		-100.0%	-100.0%	-36.2%	-40.0%	-40.0%	-62.5%	
Speech & Language Therapists	127	+18	-1	-9	-13	-6	-8	+2	+16.8%	-0.8%	-6.8%	-9.0%	-4.3%	-6.0%	+1.6%
Therapy Professions	539	+115	+87	+58	+54	+53	+9	+1	+27.1%	+19.3%	+12.0%	+11.0%	+10.8%	+1.7%	+0.2%
Audiology	15	+1	+2	-3	-3	-1	+0	+0	+5.7%	+18.9%	-18.6%	-17.6%	-4.4%	+0.1%	+1.7%
Clinical Engineering	15	-3	-1	-1		-1	+1		-17.1%	-8.0%	-6.3%		-6.3%	+7.1%	
Medical Science	4	+1	+1	+1					+33.3%	+33.3%	+33.3%				
Radiographers	1	-1	-1	-1	-1	-0			-50.0%	-50.0%	-50.0%	-50.0%	-31.0%		
Health Science/ Diagnostics	35	-2	+1	-4	-4	-2	+1	+0	-6.3%	+3.0%	-11.1%	-10.6%	-5.8%	+3.0%	+0.7%
Social Care	765	+281	+179	+156	+111	+70	+19	+8	+58.0%	+30.5%	+25.7%	+17.0%	+10.0%	+2.6%	+1.1%
Social Workers	140	+13	+18	+10	+10	+15	+2	+1	+10.1%	+15.0%	+7.4%	+7.7%	+11.7%	+1.1%	+0.7%
Psychologists	180	+29	+14	+14	+11	+16	-2	+2	+18.9%	+8.3%	+8.5%	+6.2%	+10.0%	-1.2%	+1.2%
Pharmacy	30	-1	-5	-4	-0	+6	+1	+1	-2.9%	-15.3%	-11.5%	-1.1%	+22.3%	+3.0%	+2.5%
Counsellor Therapists	42	+4	+5	+3	+5	+0	+1	+1	+10.3%	+13.5%	+6.7%	+13.6%	+0.6%	+1.5%	+1.9%
Dental Hygienists	6	-0	-0	-0	-0	-0	-0		-0.7%	-0.7%	-0.8%	-4.3%	-5.9%	-0.3%	
Other Health & Social Care	19	-7	-7	-5	-3	-1	-1	-0	-25.8%	-27.5%	-22.5%	-12.6%	-6.0%	-3.3%	-1.8%
Play Therapists/ Specialists	2	-1	-0	-1	-1	-1	-0		-40.0%	-21.1%	-40.0%	-40.0%	-34.2%	-10.2%	
H&SC, Other	68	-4	-3	-4	+1	-2	-0	+0	-5.0%	-3.6%	-5.3%	+1.6%	-3.0%	-0.3%	+0.6%
Health & Social Care Professionals	1,758		+291	+226	+182	+155	+29	+14		+19.8%	+14.8%	+11.5%	+9.7%	+1.7%	+0.8%
Executive Management	13	+6	+8	+6	+4	+2	+1		+82.7%	+155.8%	+84.8%	+42.1%	+21.6%	+9.0%	
Senior Management (VIII & GM)	71	+22	+21	+12	+8	+2	-2	-1	+44.8%	+43.1%	+20.8%	+12.9%	+3.1%	-3.0%	-0.9%
Management (VIII & above)	84	+28	+29	+18	+12	+4	-1	-1	+49.5%	+53.4%	+27.5%	+16.6%	+5.6%	-1.3%	-0.8%
Middle Management (V-VII)	250	+98	+83	+81	+48	+50	+16	+3	+64.8%	+50.0%	+47.6%	+23.7%	+25.3%	+6.9%	+1.1%
Other Administrative	10	+0	+0	-2	-3	+1	+0		+0.4%	+5.2%	-13.8%	-24.1%	+11.3%	+0.0%	
Administrative/ Supervisory (V to VII)	259	+98	+84	+79	+45	+51	+16	+3	+61.0%	+47.7%	+43.9%	+20.9%	+24.7%	+6.7%	+1.0%
Clerical (III & IV)	501	+95	+95	+67	+41	+50	-5	-0	+23.3%	+23.5%	+15.4%	+9.0%	+11.1%	-1.1%	-0.1%
Management & Administrative	844		+208	+164	+98	+106	+10	+2		+32.8%	+24.1%	+13.1%	+14.3%	+1.2%	+0.2%
Catering	58	-11	-10	-8	-6	-3	-0	-0	-15.5%	-14.3%	-12.6%	-8.8%	-4.5%	-0.8%	-0.3%
Household Services	225	-34	-13	-0	-3	+4	-0	+2	-13.0%	-5.6%	-0.0%	-1.4%	+1.9%	-0.2%	+0.8%
Other Support	46	-88	-82	-85	-73	-49	+1	+0	-65.8%	-64.0%	-65.0%	-61.6%	-51.6%	+2.3%	+0.5%
Portering	73	-13	-12	-7	-2	-3	-1	-0	-15.0%	-14.4%	-9.0%	-2.1%	-3.7%	-1.8%	-0.7%
Support	402	-145	-117	-101	-84	-50	-1	+1	-26.6%	-22.5%	-20.1%	-17.3%	-11.1%	-0.3%	+0.3%
Maintenance	32	-7	-2	-4	-2	-1	-1	-0	-18.8%	-6.2%	-10.9%	-6.3%	-2.8%	-3.0%	-0.0%
Technical Services	3	+2	+2	+2	+1	+1			+200.0%	+200.0%	+200.0%	+50.0%	+50.0%		
Maintenance/ Technical	35	-5	-0	-2	-1	+0	-1	-0	-13.4%	-0.4%	-5.3%	-3.2%	+0.2%	-2.7%	-0.0%
General Support	437		-117	-103	-85	-50	-2	+1		-21.1%	-19.1%	-16.3%	-10.3%	-0.5%	+0.3%
HCA, Nurse's Aide, etc.	1,274	+209	+93	+46	+24	+9	-35	-7	+19.6%	+7.9%	+3.8%	+1.9%	+0.7%	-2.6%	-0.5%

Mar 2021 (Dec 2016 figure: 6,286)	WTE Mar 2021	WTE change since Dec 15	WTE change since Dec 16	WTE change since Dec 17	WTE change since Dec 18	WTE change since Dec 19	WTE change since Dec 20	WTE change since Feb 21	% change since Dec 15	% change since Dec 16	% change since Dec 17	% change since Dec 18	% change since Dec 19	% change since Dec 20	% change since Feb 21
Overall	6,979	+890	+692	+541	+345	+396	+29	+7	+14.6%	+11.0%	+8.4%	+5.2%	+6.0%	+0.4%	+0.1%
HCA (Student Nurse/Midwife COVID-19)	0	+0	+0	+0	+0	+0	-0	+0	-100.0%	-100.0%	-100.0%	-100.0%	-100.0%	-14.8%	+17.9%
Health & Social Care Assistants	27	+17	+17	+16	+6	+15	+2	+1	+172.2%	+169.5%	+142.9%	+26.8%	+122.2%	+8.9%	+3.4%
Swabber (COVID-19)	62	+62	+62	+62	+62	+62	+12	+1	-100.0%	-100.0%	-100.0%	-100.0%	-100.0%	+23.6%	+2.0%
Health Care Assistants	1,365	+289	+173	+125	+93	+87	-21	-5	+26.8%	+14.5%	+10.1%	+7.3%	+6.8%	-1.5%	-0.3%
Care, other	235	+38	+29	+40	+22	+14	+1	+1	+19.2%	+14.2%	+20.5%	+10.2%	+6.2%	+0.6%	+0.4%
Patient & Client Care	1,599		+202	+165	+115	+101	-19	-4		+14.5%	+11.5%	+7.7%	+6.7%	-1.2%	-0.2%

Source: Health Service Personnel Census

Longitudinal Employment Levels by Care Group - Dec 2015 to Mar 2021

Community Health & Wellbeing

Mar 2021 (figure:)	WTE Mar 2021	WTE change since	WTE change since	WTE change since	WTE change since	WTE change since	WTE change since Dec 20	WTE change since Feb 21	% change since	% change since	% change since	% change since	% change since	% change since Dec 20	% change since Feb 21
Overall	11	+11	+11	+11	+11	+11	+3	+0	-100.0%	-100.0%	-100.0%	-100.0%	-100.0%	+40.6%	+1.1%
Health & Social Care Professionals	1	+1	+1	+1	+1	+1			-1.0%	-1.0%	-1.0%	-1.0%	-1.0%	+0.0%	+0.0%
Therapy Professions	1	+1	+1	+1	+1	+1			-1.0%	-1.0%	-1.0%	-1.0%	-1.0%	+0.0%	+0.0%
Management & Administrative	11	+11	+11	+11	+11	+11	+3	+0	-1.0%	-1.0%	-1.0%	-1.0%	-1.0%	+0.4%	+0.0%
Management (VIII & above)	1	+1	+1	+1	+1	+1			-1.0%	-1.0%	-1.0%	-1.0%	-1.0%	+0.0%	+0.0%
Administrative/ Supervisory (V to VII)	8	+8	+8	+8	+8	+8	+3	+0	-1.0%	-1.0%	-1.0%	-1.0%	-1.0%	+0.7%	+0.0%
Clerical (III & IV)	2	+2	+2	+2	+2	+2			-1.0%	-1.0%	-1.0%	-1.0%	-1.0%	+0.0%	+0.0%

Source: Health Service Personnel Census

Mental Health

Mar 2021 (Dec 2016 figure: 1,217)	WTE Mar 2021	WTE change since Dec 15	WTE change since Dec 16	WTE change since Dec 17	WTE change since Dec 18	WTE change since Dec 19	WTE change since Dec 20	WTE change since Feb 21	% change since Dec 15	% change since Dec 16	% change since Dec 17	% change since Dec 18	% change since Dec 19	% change since Dec 20	% change since Feb 21
Overall	1,340	+117	+123	+120	+39	+68	+9	+10	+9.6%	+10.1%	+9.8%	+3.0%	+5.4%	+0.7%	+0.7%
Medical & Dental	126	+7	+2	+2	-10	-8	-6	-2	+0.1%	+0.0%	+0.0%	-0.1%	-0.1%	-0.0%	-0.0%
Consultants	46	-3	-1	+1	-5	-4	+0	-0	-0.1%	-0.0%	+0.0%	-0.1%	-0.1%	+0.0%	-0.0%
Registrars	39	+8	+6	+14	+10	+8	+7	-0	+0.3%	+0.2%	+0.6%	+0.3%	+0.3%	+0.2%	-0.0%
SHO/ Interns	40	+2	-3	-13	-15	-13	-13	-2	+0.0%	-0.1%	-0.2%	-0.3%	-0.2%	-0.2%	-0.0%
Medical/ Dental, other			-1						-1.0%	-1.0%	-1.0%	-1.0%	-1.0%	-1.0%	-1.0%
Nursing & Midwifery	627	+43	+55	+62	+33	+47	+14	+6	+0.1%	+0.1%	+0.1%	+0.1%	+0.1%	+0.0%	+0.0%
Nurse/ Midwife Manager	136	-18	-11	-4	-1	+4	-2	+0	-0.1%	-0.1%	-0.0%	-0.0%	+0.0%	-0.0%	+0.0%
Nurse/ Midwife Specialist & AN/MP	78	+46	+36	+20	+14	+13	+2	-1	+1.5%	+0.9%	+0.3%	+0.2%	+0.2%	+0.0%	-0.0%
Staff Nurse/ Staff Midwife	374	-7	+6	+23	+9	+22	+2	+8	-0.0%	+0.0%	+0.1%	+0.0%	+0.1%	+0.0%	+0.0%
Public Health Nurse			-1	-1					-1.0%	-1.0%	-1.0%	-1.0%	-1.0%	-1.0%	-1.0%
Nursing/ Midwifery Student	28	+20	+24	+27	+13	+7	+12	-1	+2.7%	+7.0%	+22.3%	+0.9%	+0.3%	+0.8%	-0.0%
Nursing/ Midwifery other	12	+1	+0	-2	-1	+1	-1	-0	+0.1%	+0.0%	-0.1%	-0.1%	+0.1%	-0.1%	-0.0%
Health & Social Care Professionals	185	+26	+25	+18	+3	+18	+4	+5	+0.2%	+0.2%	+0.1%	+0.0%	+0.1%	+0.0%	+0.0%
Therapy Professions	65	+11	+14	+12	+4	+10	+4	+2	+0.2%	+0.3%	+0.2%	+0.1%	+0.2%	+0.1%	+0.0%
Social Care	1	-0	-0	+0	-0	+0	-0	+0	-0.0%	-0.0%	+0.0%	-0.0%	+0.1%	-0.0%	+0.1%
Social Workers	44	-0	+5	-3	-3	+1	+2	+1	-0.0%	+0.1%	-0.1%	-0.1%	+0.0%	+0.0%	+0.0%
Psychologists	51	+12	+4	+6	-1	+5	-2	+2	+0.3%	+0.1%	+0.1%	-0.0%	+0.1%	-0.0%	+0.0%
Pharmacy	9	+2	-0	-0	+1	+1	-0	+0	+0.3%	-0.0%	-0.0%	+0.1%	+0.1%	-0.0%	+0.0%
H&SC, Other	15	+1	+2	+4	+2	+0	+1	+1	+0.1%	+0.1%	+0.3%	+0.2%	+0.0%	+0.1%	+0.1%
Management & Administrative	144	+34	+31	+19	+7	+7	-4	-1	+0.3%	+0.3%	+0.1%	+0.1%	+0.1%	-0.0%	-0.0%
Management (VIII & above)	6	+4	+4	+4	+4	+1	+1		+2.0%	+2.0%	+2.0%	+2.0%	+0.2%	+0.2%	+0.0%
Administrative/ Supervisory (V to VII)	27	+9	+7	+1	-1	-0	-1	-0	+0.5%	+0.3%	+0.0%	-0.0%	-0.0%	-0.0%	-0.0%
Clerical (III & IV)	111	+21	+20	+14	+4	+7	-3	-1	+0.2%	+0.2%	+0.1%	+0.0%	+0.1%	-0.0%	-0.0%
General Support	115	-24	-22	-13	-13	+0	-1	+1	-0.2%	-0.2%	-0.1%	-0.1%	+0.0%	-0.0%	+0.0%
Support	104	-23	-22	-13	-13	+0	-1	+1	-0.2%	-0.2%	-0.1%	-0.1%	+0.0%	-0.0%	+0.0%
Maintenance/ Technical	11	-1	+0			+0			-0.1%	+0.0%	+0.0%	+0.0%	+0.0%	+0.0%	+0.0%
Patient & Client Care	143	+32	+33	+32	+19	+5	+2	+1	+0.3%	+0.3%	+0.3%	+0.2%	+0.0%	+0.0%	+0.0%
Health Care Assistants	131	+21	+22	+21	+13	+5	+2	+1	+0.2%	+0.2%	+0.2%	+0.1%	+0.0%	+0.0%	+0.0%
Care, other	12	+10	+11	+10	+7	-0	+0	+0	+5.2%	+11.5%	+5.2%	+1.2%	-0.0%	+0.0%	+0.0%

Source: Health Service Personnel Census

Primary Care

Mar 2021 (Dec 2016 figure: 1,162)	WTE Mar 2021	WTE change since Dec 15	WTE change since Dec 16	WTE change since Dec 17	WTE change since Dec 18	WTE change since Dec 19	WTE change since Dec 20	WTE change since Feb 21	% change since Dec 15	% change since Dec 16	% change since Dec 17	% change since Dec 18	% change since Dec 19	% change since Dec 20	% change since Feb 21
Overall	1,405	+198	+243	+166	+105	+158	-7	-32	+16.4%	+20.9%	+13.4%	+8.1%	+12.7%	-0.5%	-2.2%
Medical & Dental	106	-13	-7	-7	-12	-4	-4	-1	-0.1%	-0.1%	-0.1%	-0.1%	-0.0%	-0.0%	-0.0%
Consultants	4	+0	+0	-2	+1	+0		+1	+0.1%	+0.1%	-0.3%	+0.3%	+0.0%	+0.0%	+0.3%
Registrars	47	+8	+12	+4	-5	-9	-5	-1	+0.2%	+0.3%	+0.1%	-0.1%	-0.2%	-0.1%	-0.0%
SHO/ Interns	8	-3	-2	+5	+8	+7	+3	-1	-0.3%	-0.2%	+1.6%	-1.0%	+6.8%	+0.6%	-0.1%
Medical/ Dental, other	47	-18	-17	-15	-16	-2	-2	-1	-0.3%	-0.3%	-0.2%	-0.3%	-0.0%	-0.0%	-0.0%
Nursing & Midwifery	375	+29	+45	+16	+20	+30	+4	-2	+0.1%	+0.1%	+0.0%	+0.1%	+0.1%	+0.0%	-0.0%
Nurse/ Midwife Manager	48	+13	+13	+10	+11	+12	+6	+1	+0.4%	+0.4%	+0.2%	+0.3%	+0.3%	+0.1%	+0.0%
Nurse/ Midwife Specialist & AN/MP	9	+7	+5	+1	+4	+3	+1	+1	+3.5%	+1.1%	+0.1%	+0.7%	+0.4%	+0.1%	+0.1%
Staff Nurse/ Staff Midwife	109	+10	+15	-1	-6	+8	+3	-1	+0.1%	+0.2%	-0.0%	-0.1%	+0.1%	+0.0%	-0.0%
Public Health Nurse	176	-5	+1	+4	+3	+1	-6	-3	-0.0%	+0.0%	+0.0%	+0.0%	+0.0%	-0.0%	-0.0%
Nursing/ Midwifery Student	31	+5	+12	+3	+9	+5	+0	+0	+0.2%	+0.7%	+0.1%	+0.4%	+0.2%	+0.0%	+0.0%
Nursing/ Midwifery other	1	-1	-1	-0	-1	+1	-0		-0.5%	-0.5%	-0.3%	-0.5%	-1.0%	-0.0%	+0.0%
Health & Social Care Professionals	368	+51	+56	+27	+13	+17	-4	-2	+0.2%	+0.2%	+0.1%	+0.0%	+0.0%	-0.0%	-0.0%
Therapy Professions	204	+31	+30	+8	+11	+8	-7	-4	+0.2%	+0.2%	+0.0%	+0.1%	+0.0%	-0.0%	-0.0%
Health Science/ Diagnostics	20	+20	+20	+20	-3	-1	+0	+0	-1.0%	-1.0%	-1.0%	-0.1%	-0.0%	+0.0%	+0.0%
Social Care	4	-2	-1	-1	-0	-1	+0	+0	-0.3%	-0.2%	-0.3%	-0.1%	-0.2%	+0.0%	+0.0%
Social Workers	22	+0	+6	+5	+5	+6	-0	+0	+0.0%	+0.4%	+0.3%	+0.3%	+0.4%	-0.0%	+0.0%
Psychologists	68	+5	+6	+4	+3	+3	+3	+0	+0.1%	+0.1%	+0.1%	+0.0%	+0.0%	+0.0%	+0.0%
Pharmacy	16	-4	-6	-5	-2	+4	+1	+1	-0.2%	-0.3%	-0.2%	-0.1%	+0.3%	+0.1%	+0.0%
H&SC, Other	35	+0	+2	-3	-0	-2	-1	-0	+0.0%	+0.1%	-0.1%	-0.0%	-0.1%	-0.0%	-0.0%
Management & Administrative	320	+64	+74	+56	+24	+33	-17	-30	+0.2%	+0.3%	+0.2%	+0.1%	+0.1%	-0.1%	-0.1%
Management (VIII & above)	23	+1	+5	-2	-4	-5	-5	-5	+0.0%	+0.2%	-0.1%	-0.1%	-0.2%	-0.2%	-0.2%
Administrative/ Supervisory (V to VII)	86	+30	+27	+30	+6	+9	-2	-6	+0.5%	+0.5%	+0.5%	+0.1%	+0.1%	-0.0%	-0.1%
Clerical (III & IV)	211	+33	+42	+28	+21	+28	-10	-18	+0.2%	+0.2%	+0.2%	+0.1%	+0.2%	-0.0%	-0.1%
General Support	33	-22	-19	-18	-14	-2	-0	+1	-0.4%	-0.4%	-0.4%	-0.3%	-0.0%	-0.0%	+0.0%
Support	33	-22	-19	-18	-14	-2	-0	+1	-0.4%	-0.4%	-0.4%	-0.3%	-0.0%	-0.0%	+0.0%
Patient & Client Care	203	+89	+95	+93	+75	+84	+15	+2	+0.8%	+0.9%	+0.8%	+0.6%	+0.7%	+0.1%	+0.0%
Health Care Assistants	87	+81	+82	+79	+63	+74	+13	+2	+15.2%	+15.8%	+9.9%	+2.7%	+5.6%	+0.2%	+0.0%
Care, other	116	+7	+13	+14	+12	+11	+2	-0	+0.1%	+0.1%	+0.1%	+0.1%	+0.1%	+0.0%	-0.0%

Source: Health Service Personnel Census

Disabilities

Mar 2021 (Dec 2016 figure: 3,043)	WTE Mar 2021	WTE change since Dec 15	WTE change since Dec 16	WTE change since Dec 17	WTE change since Dec 18	WTE change since Dec 19	WTE change since Dec 20	WTE change since Feb 21	% change since Dec 15	% change since Dec 16	% change since Dec 17	% change since Dec 18	% change since Dec 19	% change since Dec 20	% change since Feb 21
Overall	3,298	+492	+256	+198	+174	+105	+14	+16	+17.5%	+8.4%	+6.4%	+5.6%	+3.3%	+0.4%	+0.5%
Medical & Dental	19	+1	+0	-2	+0	-5	-2	-1	+0.0%	+0.0%	-0.1%	+0.0%	-0.2%	-0.1%	-0.0%
Consultants	10	+1	+1	-1	-0	-2	-1	-1	+0.2%	+0.1%	-0.1%	-0.0%	-0.2%	-0.1%	-0.1%
Registrars	3			-2		-3	+1		+0.0%	+0.0%	-0.4%	+0.0%	-0.5%	+0.5%	+0.0%
SHO/ Interns							-2		-1.0%	-1.0%	-1.0%	-1.0%	-1.0%	-1.0%	-1.0%
Medical/ Dental, other	6	-1	-0	+0	+0				-0.1%	-0.0%	+0.1%	+0.1%	+0.0%	+0.0%	+0.0%
Nursing & Midwifery	753	-20	-1	-4	+4	+20	+11	-4	-0.0%	-0.0%	-0.0%	+0.0%	+0.0%	+0.0%	-0.0%
Nurse/ Midwife Manager	193	-3	-4	-8	-3	+1	-3	-2	-0.0%	-0.0%	-0.0%	-0.0%	+0.0%	-0.0%	-0.0%
Nurse/ Midwife Specialist & AN/MP	13	+2	+4	+4	+4	+4	+1	-1	+0.2%	+0.4%	+0.5%	+0.5%	+0.5%	+0.1%	-0.1%
Staff Nurse/ Staff Midwife	520	-40	-21	-21	-8	+3	+8	+2	-0.1%	-0.0%	-0.0%	-0.0%	+0.0%	+0.0%	+0.0%
Nursing/ Midwifery Student	18	+16	+17	+18	+10	+10	+5	-3	+8.0%	+17.0%	-1.0%	+1.1%	+1.3%	+0.4%	-0.1%
Nursing/ Midwifery other	8	+4	+3	+2	+1	+1	+0	+0	+1.1%	+0.7%	+0.4%	+0.2%	+0.1%	+0.0%	+0.0%
Health & Social Care Professionals	1,096	+310	+171	+152	+141	+93	+23	+7	+0.4%	+0.2%	+0.2%	+0.1%	+0.1%	+0.0%	+0.0%
Therapy Professions	192	+41	+13	+18	+18	+11	+6	-1	+0.3%	+0.1%	+0.1%	+0.1%	+0.1%	+0.0%	-0.0%
Health Science/ Diagnostics	14	-21	-18	-23		-1	+1		-0.6%	-0.6%	-0.6%	+0.0%	-0.1%	+0.1%	+0.0%
Social Care	759	+282	+180	+158	+111	+70	+19	+8	+0.6%	+0.3%	+0.3%	+0.2%	+0.1%	+0.0%	+0.0%
Social Workers	49	+2	-2	-1	+5	+5	-1	+0	+0.1%	-0.0%	-0.0%	+0.1%	+0.1%	-0.0%	+0.0%
Psychologists	62	+11	+4	+5	+8	+9	-2	-0	+0.2%	+0.1%	+0.1%	+0.2%	+0.2%	-0.0%	-0.0%
Pharmacy	2								+0.0%	+0.0%	+0.0%	+0.0%	+0.0%	+0.0%	+0.0%
H&SC, Other	18	-6	-6	-4	-1	-1	-0	-0	-0.2%	-0.3%	-0.2%	-0.1%	-0.0%	-0.0%	-0.0%
Management & Administrative	285	+83	+66	+61	+46	+35	+17	+20	+0.4%	+0.3%	+0.3%	+0.2%	+0.1%	+0.1%	+0.1%
Management (VIII & above)	45	+18	+17	+14	+12	+8	+4	+4	+0.7%	+0.6%	+0.4%	+0.3%	+0.2%	+0.1%	+0.1%
Administrative/ Supervisory (V to VII)	113	+42	+33	+34	+27	+26	+13	+7	+0.6%	+0.4%	+0.4%	+0.3%	+0.3%	+0.1%	+0.1%
Clerical (III & IV)	126	+22	+17	+13	+7	+1	-0	+9	+0.2%	+0.2%	+0.1%	+0.1%	+0.0%	-0.0%	+0.1%
General Support	169	-97	-72	-68	-54	-48	+1	+1	-0.4%	-0.3%	-0.3%	-0.2%	-0.2%	+0.0%	+0.0%
Support	147	-92	-72	-66	-53	-48	+2	+1	-0.4%	-0.3%	-0.3%	-0.3%	-0.2%	+0.0%	+0.0%
Maintenance/ Technical	22	-5	-0	-2	-1	-0	-1		-0.2%	-0.0%	-0.1%	-0.1%	-0.0%	-0.0%	+0.0%
Patient & Client Care	976	+215	+92	+60	+36	+10	-37	-6	+0.3%	+0.1%	+0.1%	+0.0%	+0.0%	-0.0%	-0.0%
Health Care Assistants	876	+200	+91	+49	+36	+7	-35	-7	+0.3%	+0.1%	+0.1%	+0.0%	+0.0%	-0.0%	-0.0%
Care, other	100	+16	+0	+11		+3	-2	+0	+0.2%	+0.0%	+0.1%	+0.0%	+0.0%	-0.0%	+0.0%

Source: Health Service Personnel Census

Older People

Mar 2021 (Dec 2016 figure: 865)	WTE Mar 2021	WTE change since Dec 15	WTE change since Dec 16	WTE change since Dec 17	WTE change since Dec 18	WTE change since Dec 19	WTE change since Dec 20	WTE change since Feb 21	% change since Dec 15	% change since Dec 16	% change since Dec 17	% change since Dec 18	% change since Dec 19	% change since Dec 20	% change since Feb 21
Overall	924	+72	+59	+46	+16	+54	+10	+14	+8.4%	+6.8%	+5.2%	+1.7%	+6.2%	+1.1%	+1.5%
Medical & Dental	17	-2	-2	-4	-1	-3	-2	+1	-0.1%	-0.1%	-0.2%	-0.0%	-0.1%	-0.1%	+0.0%
Consultants	2	-4	-6	-6	-0		-1	-0	-0.7%	-0.8%	-0.8%	-0.1%	+0.0%	-0.3%	-0.2%
Registrars	6	-0	+0	-1	-1	+0	+1	+0	-0.1%	+0.0%	-0.1%	-0.1%	+0.0%	+0.2%	+0.0%
SHO/ Interns	9	+2	+3	+2	+0	-3	-2	+1	+0.3%	+0.5%	+0.3%	+0.0%	-0.3%	-0.2%	+0.1%
Medical/ Dental, other	1		+0						+0.0%	+0.0%	+0.0%	+0.0%	+0.0%	+0.0%	+0.0%
Nursing & Midwifery	317	+19	+16	+27	+2	+9	-5	-3	+0.1%	+0.1%	+0.1%	+0.0%	+0.0%	-0.0%	-0.0%
Nurse/ Midwife Manager	79	+1	+3	-4	+1	+5	-1	-0	+0.0%	+0.0%	-0.1%	+0.0%	+0.1%	-0.0%	-0.0%
Nurse/ Midwife Specialist & AN/MP	6	+1	+3	+3	+2	+1	-0		+0.1%	+0.9%	+0.9%	+0.4%	+0.2%	-0.0%	+0.0%
Staff Nurse/ Staff Midwife	231	+18	+11	+29	-1	+4	-3	-2	+0.1%	+0.0%	+0.1%	-0.0%	+0.0%	-0.0%	-0.0%
Public Health Nurse			-0	-0	-0	-0			-1.0%	-1.0%	-1.0%	-1.0%	-1.0%	-1.0%	-1.0%
Nursing/ Midwifery other	1								+0.0%	+0.0%	+0.0%	+0.0%	+0.0%	+0.0%	+0.0%
Health & Social Care Professionals	108	+42	+39	+28	+23	+27	+7	+5	+0.7%	+0.6%	+0.3%	+0.3%	+0.3%	+0.1%	+0.0%
Therapy Professions	77	+31	+30	+19	+21	+23	+6	+5	+0.7%	+0.6%	+0.3%	+0.4%	+0.4%	+0.1%	+0.1%
Health Science/ Diagnostics	1	-1	-1	-1	-1	-0			-0.5%	-0.5%	-0.5%	-0.5%	-0.3%	+0.0%	+0.0%
Social Care	1	+0	+0	+0					+0.1%	+0.0%	+0.1%	+0.0%	+0.0%	+0.0%	+0.0%
Social Workers	25	+11	+9	+9	+3	+3	+1	-0	+0.8%	+0.6%	+0.5%	+0.1%	+0.2%	+0.0%	-0.0%
Pharmacy	4	+1	+1	+1	+1	+1			+0.3%	+0.3%	+0.3%	+0.3%	+0.3%	+0.0%	+0.0%
H&SC, Other	1	+1	+0	+0	+0	+0			-1.0%	+0.5%	+0.5%	+0.5%	+0.5%	+0.0%	+0.0%
Management & Administrative	84	+30	+27	+19	+10	+20	+11	+12	+0.5%	+0.5%	+0.3%	+0.1%	+0.3%	+0.1%	+0.2%
Management (VIII & above)	8	+4	+3	+1	-1	-1	-1	+1	+1.0%	+0.6%	+0.2%	-0.1%	-0.1%	-0.1%	+0.1%
Administrative/ Supervisory (V to VII)	24	+9	+9	+6	+4	+9	+3	+2	+0.6%	+0.6%	+0.3%	+0.2%	+0.6%	+0.2%	+0.1%
Clerical (III & IV)	52	+17	+15	+11	+8	+12	+8	+10	+0.5%	+0.4%	+0.3%	+0.2%	+0.3%	+0.2%	+0.2%
General Support	120	-8	-4	-4	-3	-0	-2	-2	-0.1%	-0.0%	-0.0%	-0.0%	-0.0%	-0.0%	-0.0%
Support	118	-8	-4	-4	-3	-0	-2	-2	-0.1%	-0.0%	-0.0%	-0.0%	-0.0%	-0.0%	-0.0%
Maintenance/ Technical	2								+0.0%	+0.0%	+0.0%	+0.0%	+0.0%	+0.0%	+0.0%
Patient & Client Care	277	-9	-18	-19	-16	+1	+1	+0	-0.0%	-0.1%	-0.1%	-0.1%	+0.0%	+0.0%	+0.0%
Health Care Assistants	271	-14	-22	-23	-19	+1	-0	-1	-0.0%	-0.1%	-0.1%	-0.1%	+0.0%	-0.0%	-0.0%
Care, other	7	+4	+4	+4	+3	+0	+1	+1	+1.8%	+1.6%	+1.6%	+0.9%	+0.0%	+0.2%	+0.1%

Source: Health Service Personnel Census