

CHO 9 Employment Report: May 2020

Employment by Staff Group

May 2020 (Dec 2019 figure: 6,582)	WTE Apr 2020	WTE May 2020	WTE change since Apr 20	% change since Apr 20	WTE change since Dec 19	WTE change since May 19
Overall	6,651	6,670	+19	+0.3%	+87	-5
Consultants	66	67	+1	+0.8%	-2	+2
Registrars	97	95	-2	-2.1%	-3	+6
SHO/ Interns	62	61	-0	-0.6%	-5	-10
Medical/ Dental, other	56	58	+2	+4.4%	+1	-11
Medical & Dental	281	282	+1	+0.2%	-8	-14
Nurse/ Midwife Manager	441	445	+4	+1.0%	+10	+6
Nurse/ Midwife Specialist & AN/MP	90	91	+1	+0.6%	+6	+7
Staff Nurse/ Staff Midwife	1,186	1,184	-2	-0.2%	-12	-40
Public Health Nurse	170	169	-1	-0.7%	-7	+3
<i>Pre-registration Nurse/ Midwife Intern</i>	20	1	-20	-97.5%	-17	-20
<i>Pre-registration Nurse Intern (COVID-19)</i>	43	77	+34	+80.3%	+77	+34
<i>Post-registration Nurse/ Midwife Student</i>	25	25			-1	
<i>Nursing/ Midwifery awaiting registration</i>				-100.0%	-11	
Nursing/ Midwifery Student	88	103	+15	+16.7%	+48	+51
Nursing/ Midwifery other	22	22	+0	+0.6%	+2	+2
Nursing & Midwifery	1,997	2,014	+17	+0.8%	+48	+29
Therapy Professions	505	509	+4	+0.8%	+23	+17
Health Science/ Diagnostics	34	34	+0	+0.2%	-2	-5
Social Care	708	700	-8	-1.1%	+5	+35
Social Workers	127	128	+1	+0.7%	+2	-6
Psychologists	170	172	+2	+0.9%	+8	-0
Pharmacy	25	25	+0	+0.8%	+1	-5
H&SC, Other	70	71	+2	+2.3%	+1	+2
Health & Social Care Professionals	1,639	1,640	+1	+0.0%	+37	+37
Management (VIII & above)	81	80	-0	-0.3%	+1	+5
Administrative/ Supervisory (V to VII)	221	217	-4	-1.9%	+9	-0
Clerical (III & IV)	442	445	+4	+0.9%	-6	-27
Management & Administrative	744	743	-1	-0.1%	+4	-23
Support	447	444	-3	-0.7%	-8	-20
Maintenance/ Technical	35	35	+0	+0.7%	+0	-3
General Support	482	480	-3	-0.6%	-8	-22
Health Care Assistants	1,288	1,295	+7	+0.5%	+17	+3
Care, other	220	217	-3	-1.2%	-4	-15
Patient & Client Care	1,508	1,512	+4	+0.3%	+13	-12

CHO 9 Employment Report: May 2020

Community Health & Wellbeing

May 2020 (figure:)	WTE Apr 2020	WTE May 2020	WTE change since Apr 20	% change since Apr 20	WTE change since	WTE change since
Total Community Health & Wellbeing	8	8	+0	+2.7%	+8	+8
Therapy Professions	1	1			+1	+1
Health & Social Care Professionals	1	1			+1	+1
Management (VIII & above)	1	1			+1	+1
Administrative/ Supervisory (V to VII)	5	5	+0	+0.6%	+5	+5
Clerical (III & IV)	1	1	+0	+14.4%	+1	+1
Management & Administrative	7	7	+0	+3.0%	+7	+7

Mental Health

May 2020 (Dec 2019 figure: 1,272)	WTE Apr 2020	WTE May 2020	WTE change since Apr 20	% change since Apr 20	WTE change since Dec 19	WTE change since May 19
Total Mental Health	1,288	1,300	+12	+0.9%	+29	-17
Consultants	48	49	+1	+1.1%	-1	-1
Registrars	35	34	-2	-4.4%	+3	+9
SHO/ Interns	46	45	-1	-1.6%	-8	-16
Medical & Dental	130	128	-2	-1.3%	-6	-7
Nurse/ Midwife Manager	136	136	+1	+0.5%	+4	+1
Nurse/ Midwife Specialist & AN/MP	69	69	+1	+0.8%	+4	+4
Staff Nurse/ Staff Midwife	353	352	-1	-0.3%	+0	-17
Pre-registration Nurse/ Midwife Intern	15	1	-15	-96.7%	-10	-15
Pre-registration Nurse Intern (COVID-19)	23	48	+25	+111.2%	+48	+25
Nursing/ Midwifery awaiting registration				-100.0%	-11	
Nursing/ Midwifery Student	38	48	+10	+27.6%	+27	+27
Nursing/ Midwifery other	12	12			+0	
Nursing & Midwifery	606	617	+11	+1.8%	+36	+15
Therapy Professions	61	63	+1	+2.1%	+8	+5
Social Care	1	1	-0	-7.2%		-0
Social Workers	43	43	-0	-0.1%	-0	-3
Psychologists	46	48	+3	+6.3%	+3	-3
Pharmacy	7	7	-0	-2.2%	-1	-1
H&SC, Other	14	14	+0	+0.9%	-0	+2
Health & Social Care Professionals	173	177	+4	+2.3%	+10	-1
Management (VIII & above)	5	5	+0	+0.2%	+0	+2
Administrative/ Supervisory (V to VII)	29	28	-0	-1.5%	+1	+0
Clerical (III & IV)	97	96	-0	-0.3%	-8	-14
Management & Administrative	130	130	-1	-0.6%	-7	-11
Support	101	101	+0	+0.3%	-2	-7
Maintenance/ Technical	11	11	+0	+2.1%	+0	-0
General Support	112	112	+1	+0.5%	-2	-7
Health Care Assistants	125	124	-1	-0.4%	-2	-4
Care, other	12	12	-0	-1.5%	-1	-3
Patient & Client Care	137	136	-1	-0.5%	-2	-7

Primary Care

May 2020 (Dec 2019 figure: 1,247)	WTE Apr 2020	WTE May 2020	WTE change since Apr 20	% change since Apr 20	WTE change since Dec 19	WTE change since May 19
Total Primary Care	1,242	1,249	+8	+0.6%	+2	-63
Consultants	4	4			+0	+1
Registrars	51	51	-0	-0.9%	-5	-3
SHO/ Interns	4	4			+3	+4
Medical/ Dental, other	48	51	+2	+4.5%	+1	-12
Medical & Dental	108	110	+2	+1.6%	-1	-10
Nurse/ Midwife Manager	35	38	+3	+8.8%	+1	+1
Nurse/ Midwife Specialist & AN/MP	6	6				+0
Staff Nurse/ Staff Midwife	100	101	+1	+1.2%	+1	-12
Public Health Nurse	170	169	-1	-0.6%	-6	+4
<i>Post-registration Nurse/ Midwife Student</i>	25	25			-1	
Nursing/ Midwifery Student	25	25			-1	+7
Nursing/ Midwifery other				-100.0%		-1
Nursing & Midwifery	336	340	+3	+1.0%	-5	-1
Therapy Professions	195	194	-1	-0.5%	-2	-8
Health Science/ Diagnostics	20	20	+0	+0.4%	+0	-2
Social Care	5	5	+0	+0.9%	+0	+1
Social Workers	16	17	+0	+2.9%	+0	-2
Psychologists	65	66	+1	+1.0%	+0	-1
Pharmacy	13	13	+0	+1.0%	+1	-4
H&SC, Other	36	36	+1	+1.6%	-0	-1
Health & Social Care Professionals	350	351	+1	+0.3%	-1	-18
Management (VIII & above)	30	31	+1	+2.3%	+3	+3
Administrative/ Supervisory (V to VII)	81	77	-4	-5.4%	-1	-7
Clerical (III & IV)	178	183	+5	+2.7%	+1	-12
Management & Administrative	289	291	+1	+0.4%	+3	-16
Support	33	33	+0	+1.1%	-1	-5
General Support	33	33	+0	+1.1%	-1	-5
Health Care Assistants	20	21	+1	+2.9%	+7	-6
Care, other	105	105	-0	-0.4%	-0	-7
Patient & Client Care	125	125	+0	+0.1%	+7	-13

Social Care

May 2020 (Dec 2019 figure: 4,064)	WTE Apr 2020	WTE May 2020	WTE change since Apr 20	% change since Apr 20	WTE change since Dec 19	WTE change since May 19
Total Social Care	4,113	4,112	-1	-0.0%	+48	+67
Consultants	13	13	+0	+0.0%	-1	+1
Registrars	11	11			-1	+0
SHO/ Interns	12	12	+0	+3.0%		+1
Medical/ Dental, other	7	8	+0	+3.7%	+1	+0
Medical & Dental	43	44	+1	+1.4%	-1	+3
Nurse/ Midwife Manager	270	271	+1	+0.3%	+5	+4
Nurse/ Midwife Specialist & AN/MP	15	15	+0	+0.4%	+2	+3
Staff Nurse/ Staff Midwife	733	731	-2	-0.3%	-13	-12
Public Health Nurse	0		-0	-100.0%	-0	-0
Pre-registration Nurse/ Midwife Intern	5		-5	-100.0%	-8	-5
Pre-registration Nurse Intern (COVID-19)	20	30	+9	+45.7%	+30	+9
Nursing/ Midwifery Student	25	30	+4	+16.9%	+22	+17
Nursing/ Midwifery other	10	10	+0	+1.4%	+2	+3
Nursing & Midwifery	1,054	1,057	+3	+0.3%	+17	+15
Therapy Professions	248	252	+4	+1.6%	+17	+19
Health Science/ Diagnostics	14	14			-2	-3
Social Care	703	695	-8	-1.1%	+5	+34
Social Workers	67	68	+0	+0.7%	+2	-1
Psychologists	60	58	-2	-3.3%	+5	+4
Pharmacy	5	5	+0	+4.8%	+0	+0
H&SC, Other	19	20	+1	+4.4%	+1	+1
Health & Social Care Professionals	1,116	1,112	-4	-0.4%	+27	+55
Management (VIII & above)	45	44	-1	-2.2%	-3	-1
Administrative/ Supervisory (V to VII)	106	107	+1	+0.5%	+4	+2
Clerical (III & IV)	166	165	-1	-0.6%	-1	-3
Management & Administrative	317	315	-1	-0.4%	+1	-2
Support	313	309	-4	-1.2%	-4	-8
Maintenance/ Technical	24	24			-0	-3
General Support	338	334	-4	-1.1%	-4	-11
Health Care Assistants	1,143	1,150	+7	+0.6%	+11	+13
Care, other	103	101	-2	-1.9%	-3	-5
Patient & Client Care	1,246	1,251	+5	+0.4%	+9	+8

CHO 9 Employment Report: May 2020

Disabilities

May 2020 (Dec 2019 figure: 3,194)	WTE Apr 2020	WTE May 2020	WTE change since Apr 20	% change since Apr 20	WTE change since Dec 19	WTE change since May 19
Total Disabilities	3,217	3,200	-18	-0.5%	+6	+63
Consultants	11	11			-1	+1
Registrars	4	4			-2	
SHO/ Interns	1	1			+1	+1
Medical/ Dental, other	6	7	+0	+4.2%	+1	+0
Medical & Dental	23	23	+0	+1.2%	-2	+2
Nurse/ Midwife Manager	192	191	-0	-0.2%	-0	+0
Nurse/ Midwife Specialist & AN/MP	9	9			+1	+1
Staff Nurse/ Staff Midwife	504	502	-2	-0.4%	-15	-6
<i>Pre-registration Nurse/ Midwife Intern</i>	5		-5	-100.0%	-8	-5
<i>Pre-registration Nurse Intern (COVID-19)</i>	20	30	+9	+45.7%	+30	+9
Nursing/ Midwifery Student	25	30	+4	+16.9%	+22	+17
Nursing/ Midwifery other	9	9	+0	+1.5%	+2	+3
Nursing & Midwifery	740	741	+2	+0.3%	+9	+15
Therapy Professions	183	184	+1	+0.5%	+3	+9
Health Science/ Diagnostics	13	13			-2	-2
Social Care	702	694	-8	-1.1%	+5	+34
Social Workers	47	47	+0	+0.4%	+3	+1
Psychologists	60	58	-2	-3.3%	+5	+4
Pharmacy	2	2				
H&SC, Other	19	20	+1	+4.5%	+1	+1
Health & Social Care Professionals	1,025	1,017	-8	-0.7%	+14	+47
Management (VIII & above)	36	36			-2	-0
Administrative/ Supervisory (V to VII)	90	91	+1	+0.9%	+3	+5
Clerical (III & IV)	123	122	-1	-0.6%	-3	+1
Management & Administrative	248	248	+0	+0.0%	-2	+6
Support	194	188	-6	-2.9%	-7	-12
Maintenance/ Technical	22	22			-0	-3
General Support	216	210	-6	-2.6%	-7	-15
Health Care Assistants	870	865	-5	-0.6%	-4	+12
Care, other	96	95	-1	-1.4%	-2	-4
Patient & Client Care	966	960	-6	-0.7%	-6	+8

Older People

May 2020 (Dec 2019 figure: 870)	WTE Apr 2020	WTE May 2020	WTE change since Apr 20	% change since Apr 20	WTE change since Dec 19	WTE change since May 19
Total Older People	896	912	+16	+1.8%	+42	+4
Consultants	2	2			+1	+1
Registrars	7	7			+1	+0
SHO/ Interns	11	11	+0	+3.3%	-1	+0
Medical/ Dental, other	1	1				
Medical & Dental	20	21	+0	+1.7%	+1	+1
Nurse/ Midwife Manager	79	80	+1	+1.4%	+5	+4
Nurse/ Midwife Specialist & AN/MP	6	6	+0	+1.0%	+1	+2
Staff Nurse/ Staff Midwife	229	229	-0	-0.1%	+2	-6
Public Health Nurse	0		-0	-100.0%	-0	-0
Nursing/ Midwifery other	1	1				
Nursing & Midwifery	315	316	+1	+0.3%	+8	+0
Health & Social Care Professionals	91	94	+3	+3.8%	+13	+8
Management (VIII & above)	9	8	-1	-11.0%	-1	-1
Administrative/ Supervisory (V to VII)	17	16	-0	-1.4%	+1	-3
Clerical (III & IV)	43	43	-0	-0.3%	+3	-4
Management & Administrative	68	67	-1	-2.0%	+3	-8
Support	120	121	+2	+1.6%	+3	+4
Maintenance/ Technical	2	2				
General Support	122	124	+2	+1.6%	+3	+4
Health Care Assistants	274	285	+12	+4.3%	+16	+1
Care, other	6	6	-1	-10.3%	-1	-1
Patient & Client Care	280	291	+11	+4.0%	+15	+0

CHO 9 Employment by Administration (HSE / S38): May 2020

May 2020 (Dec 2019 figure: 6,582)	WTE Apr 2020	WTE May 2020	WTE change since Apr 20	% change since Apr 20	WTE change since Dec 19	WTE change since May 19
Overall	6,651	6,670	+19	+0.3%	+87	-5
HSE	3,402	3,444	+42	+1.2%	+37	-131
Section 38 Voluntary Agencies	3,249	3,226	-23	-0.7%	+51	+125

HSE

May 2020 (Dec 2019 figure: 3,407)	WTE Apr 2020	WTE May 2020	WTE change since Apr 20	% change since Apr 20	WTE change since Dec 19	WTE change since May 19
Overall	3,402	3,444	+42	+1.2%	+37	-131
Consultants	55	55	+1	+0.0%	-1	+0
Registrars	91	89	-2	-0.0%	-1	+6
SHO/ Interns	57	56	-0	-0.0%	-4	-9
Medical/ Dental, other	49	52	+2	+0.0%	+1	-12
Medical & Dental	252	253	+0	+0.1%	-5	-15
Nurse/ Midwife Manager	252	256	+5	+0.0%	+9	-0
Nurse/ Midwife Specialist & AN/MP	79	80	+1	+0.0%	+5	+7
Staff Nurse/ Staff Midwife	678	675	-3	-0.0%	-18	-50
Public Health Nurse	170	169	-1	-0.0%	-7	+3
Pre-registration Nurse/ Midwife Intern	20	1	-20	-1.0%	-5	-19
Pre-registration Nurse Intern (COVID-19)	15	49	+34	+2.3%	+49	+49
Post-registration Nurse/ Midwife Student	25	25		+0.0%	+3	+7
Nursing/ Midwifery awaiting registration				-1.0%	-3	
Nursing/ Midwifery Student	60	75	+15	+0.2%	+35	+38
Nursing/ Midwifery other	14	14	+0	+0.0%	+1	+0
Nursing & Midwifery	1,253	1,269	+16	+1.2%	+25	-3
Therapy Professions	306	312	+5	+0.0%	+12	-4
Health Science/ Diagnostics	20	20	+0	+0.0%	-0	-3
Social Care	8	8	-0	-0.0%	+0	+1
Social Workers	76	77	+1	+0.0%	-1	-10
Psychologists	125	128	+3	+0.0%	+4	-5
Pharmacy	19	19	-0	-0.0%	+0	-6
H&SC, Other	55	56	+1	+0.0%	-0	+1
Health & Social Care Professionals	609	619	+11	+1.8%	+14	-26
Management (VIII & above)	46	46	-0	-0.0%	+2	+4
Administrative/ Supervisory (V to VII)	125	120	-4	-0.0%	+8	-4
Clerical (III & IV)	294	298	+5	+0.0%	-5	-28
Management & Administrative	464	464	+0	+0.0%	+5	-28
Support	186	189	+3	+0.0%	-9	-16
Maintenance/ Technical	9	9	+0	+0.0%	+0	-0
General Support	196	198	+3	+1.5%	-9	-16
Health Care Assistants	504	517	+13	+0.0%	+7	-32
Care, other	124	123	-1	-0.0%	-2	-11
Patient & Client Care	628	640	+12	+1.9%	+6	-44

Section 38 Voluntary Agencies

May 2020 (Dec 2019 figure: 3,175)	WTE Apr 2020	WTE May 2020	WTE change since Apr 20	% change since Apr 20	WTE change since Dec 19	WTE change since May 19
Overall	3,249	3,226	-23	-0.7%	+51	+125
Consultants	12	12		+0.0%	-1	+1
Registrars	6	6		+0.0%	-2	
SHO/ Interns	5	5		+0.0%	-1	-1
Medical/ Dental, other	6	7	+0	+0.0%	+1	+0
Medical & Dental	29	29	+0	+0.9%	-3	+1
Nurse/ Midwife Manager	189	189	-0	-0.0%	+2	+6
Nurse/ Midwife Specialist & AN/MP	11	11		+0.0%	+1	+1
Staff Nurse/ Staff Midwife	508	509	+1	+0.0%	+7	+10
<i>Pre-registration Nurse/ Midwife Intern</i>				-1.0%	-15	-15
<i>Pre-registration Nurse Intern (COVID-19)</i>	28	28		+0.0%	+28	+28
Nursing/ Midwifery Student	28	28		+0.0%	+14	+13
Nursing/ Midwifery other	8	8		+0.0%	+1	+2
Nursing & Midwifery	744	745	+1	+0.2%	+23	+31
Therapy Professions	199	198	-1	-0.0%	+11	+21
Health Science/ Diagnostics	14	14		+0.0%	-2	-2
Social Care	701	693	-8	-0.0%	+5	+34
Social Workers	51	51	-0	-0.0%	+4	+4
Psychologists	45	43	-2	-0.0%	+3	+5
Pharmacy	7	7	+0	+0.0%	+0	+0
H&SC, Other	15	15	+0	+0.0%	+1	+1
Health & Social Care Professionals	1,031	1,020	-10	-1.0%	+23	+62
Management (VIII & above)	35	35		+0.0%	-1	+1
Administrative/ Supervisory (V to VII)	97	97	-0	-0.0%	+1	+4
Clerical (III & IV)	148	147	-1	-0.0%	-1	+1
Management & Administrative	279	279	-1	-0.3%	-1	+5
Support	261	255	-6	-0.0%	+1	-4
Maintenance/ Technical	26	26		+0.0%	-0	-3
General Support	287	281	-6	-2.0%	+1	-6
Health Care Assistants	784	777	-7	-0.0%	+10	+35
Care, other	96	94	-1	-0.0%	-2	-3
Patient & Client Care	879	872	-8	-0.9%	+8	+32

CHO 9 Employment by S38 Agency: May 2020

Central Remedial Clinic

May 2020 (Dec 2019 figure: 278)	WTE Apr 2020	WTE May 2020	WTE change since Apr 20	% change since Apr 20	WTE change since Dec 19	WTE change since May 19
Overall	286	284	-2	-0.6%	+5	+8
Consultants	1	1		+0.0%		
Medical/ Dental, other	0	0		+0.0%		
Medical & Dental	2	2				
Nurse/ Midwife Manager	2	2		+0.0%		
Nurse/ Midwife Specialist & AN/MP	1	1		+0.0%		-1
Staff Nurse/ Staff Midwife	4	4		+0.0%	+1	+1
Nursing/ Midwifery other	1	1		+0.0%	+1	+1
Nursing & Midwifery	8	8			+2	+1
Therapy Professions	78	77	-1	-0.0%	-1	+4
Health Science/ Diagnostics	13	13		+0.0%	-2	-2
Social Workers	9	9		+0.0%	+1	+1
Psychologists	11	11		+0.0%	+0	+0
Health & Social Care Professionals	110	109	-1	-0.9%	-2	+4
Management (VIII & above)	7	6	-1	-0.1%	-1	-1
Administrative/ Supervisory (V to VII)	15	15		+0.0%		
Clerical (III & IV)	33	33		+0.0%	+0	+0
Management & Administrative	55	54	-1	-1.8%	-1	-1
Support	14	14		+0.0%	+0	+0
Maintenance/ Technical	1	1		+0.0%		
General Support	15	15			+0	+0
Health Care Assistants	56	57	+0	+0.0%	+6	+3
Care, other	39	39		+0.0%		+0
Patient & Client Care	95	95	+0	+0.4%	+6	+3

Daughters of Charity, Dublin

May 2020 (Dec 2019 figure: 1,034)	WTE Apr 2020	WTE May 2020	WTE change since Apr 20	% change since Apr 20	WTE change since Dec 19	WTE change since May 19
Overall	1,072	1,073	+1	+0.1%	+39	+70
Consultants	2	2		+0.0%	+1	+1
Medical/ Dental, other	2	2		+0.0%		
Medical & Dental	4	4			+1	+1
Nurse/ Midwife Manager	62	62		+0.0%	-0	+3
Nurse/ Midwife Specialist & AN/MP	9	9		+0.0%	+1	+2
Staff Nurse/ Staff Midwife	187	187	-1	-0.0%	+1	+2
Pre-registration Nurse/ Midwife Intern				-1.0%	-8	-8
Pre-registration Nurse Intern (COVID-19)	15	15		+0.0%	+15	+15
Nursing/ Midwifery Student	15	15		+0.0%	+8	+8
Nursing/ Midwifery other	4	4		+0.0%		+1
Nursing & Midwifery	277	277	-1	-0.2%	+9	+15
Therapy Professions	34	34		+0.0%	+1	+1
Social Care	168	164	-4	-0.0%	+1	+8
Social Workers	11	11		+0.0%	+1	+1
Psychologists	9	10	+1	+0.1%	+3	+2
Pharmacy	2	2		+0.0%		
H&SC, Other	5	5		+0.0%	+1	+1
Health & Social Care Professionals	228	225	-3	-1.3%	+6	+12
Management (VIII & above)	6	7	+1	+0.2%	+1	
Administrative/ Supervisory (V to VII)	27	27		+0.0%	+2	+0
Clerical (III & IV)	32	32		+0.0%	-1	-1
Management & Administrative	65	66	+1	+1.5%	+2	-1
Support	79	78	-1	-0.0%	-1	+2
Maintenance	8	8		+0.0%	-2	-2
Maintenance/ Technical	8	8		+0.0%		-2
General Support	87	86	-1	-1.4%	-1	-0
Health Care Assistants	379	384	+5	+0.0%	+22	+46
Care, other	32	31	-1	-0.0%	-1	-2
Patient & Client Care	411	415	+4	+1.1%	+22	+44

Incorporated Orthopaedic Hospital

May 2020 (Dec 2019 figure: 226)	WTE Apr 2020	WTE May 2020	WTE change since Apr 20	% change since Apr 20	WTE change since Dec 19	WTE change since May 19
Overall	264	258	-6	-2.2%	+32	+33
Consultants	1	1		+0.0%	+1	+1
Registrars	2	2		+0.0%		
SHO/ Interns	4	4		+0.0%	-1	-1
Medical & Dental	7	7			-0	-0
Nurse/ Midwife Manager	17	17		+0.0%	-1	-1
Staff Nurse/ Staff Midwife	71	71		+0.0%	+11	+11
Nursing & Midwifery	88	88			+10	+10
Therapy Professions	30	30		+0.0%	+10	+10
Health Science/ Diagnostics	1	1		+0.0%		
Social Workers	8	8		+0.0%	+1	+1
Pharmacy	3	3	+0	+0.1%	+0	+0
Health & Social Care Professionals	42	42	+0	+0.5%	+11	+10
Management (VIII & above)	1	1		+0.0%		
Administrative/ Supervisory (V to VII)	6	6		+0.0%		+1
Clerical (III & IV)	11	11		+0.0%	+1	+1
Management & Administrative	18	18			+1	+2
Support	40	40		+0.0%	+6	+6
Maintenance/ Technical	2	2		+0.0%		
General Support	42	42			+6	+6
Health Care Assistants	67	61	-6	-0.1%	+5	+5
Care, other	0	0		+0.0%		
Patient & Client Care	67	61	-6	-9.0%	+5	+5

St. Michael's House, Dublin

May 2020 (Dec 2019 figure: 1,431)	WTE Apr 2020	WTE May 2020	WTE change since Apr 20	% change since Apr 20	WTE change since Dec 19	WTE change since May 19
Overall	1,414	1,398	-16	-1.1%	-33	+21
Consultants	6	6		+0.0%	-2	+0
Registrars	3	3		+0.0%	-1	+1
Medical/ Dental, other	4	4	+0	+0.1%	+1	+0
Medical & Dental	13	13	+0	+2.1%	-2	+2
Nurse/ Midwife Manager	86	86	-0	-0.0%	+2	+5
Staff Nurse/ Staff Midwife	153	155	+2	+0.0%	-7	+2
Nursing & Midwifery	239	241	+2	+0.7%	-5	+7
Therapy Professions	53	53	-0	-0.0%	+1	+6
Social Care	532	529	-4	-0.0%	+3	+27
Social Workers	21	21	-0	-0.0%	+1	+1
Psychologists	21	19	-3	-0.1%	+0	+2
H&SC, Other	10	10	+0	+0.0%	+0	-0
Health & Social Care Professionals	638	632	-6	-1.0%	+7	+36
Management (VIII & above)	21	21		+0.0%	-1	+2
Administrative/ Supervisory (V to VII)	42	42		+0.0%	-1	+3
Clerical (III & IV)	53	52	-1	-0.0%	-2	+1
Management & Administrative	116	115	-1	-0.7%	-3	+6
Support	95	91	-4	-0.0%	-5	-11
Maintenance/ Technical	12	12		+0.0%	-0	-1
General Support	107	103	-4	-4.2%	-5	-12
Health Care Assistants	276	270	-6	-0.0%	-23	-16
Care, other	24	23	-0	-0.0%	-1	-1
Patient & Client Care	300	294	-7	-2.2%	-24	-17

St. Vincent's, Fairview

May 2020 (Dec 2019 figure: 206)	WTE Apr 2020	WTE May 2020	WTE change since Apr 20	% change since Apr 20	WTE change since Dec 19	WTE change since May 19
Overall	213	213			+7	-6
Consultants	1	1		+0.0%		
Registrars	1	1		+0.0%	-1	-1
SHO/ Interns	1	1		+0.0%		
Medical & Dental	3	3			-1	-1
Nurse/ Midwife Manager	21	21		+0.0%		-1
Nurse/ Midwife Specialist & AN/MP	2	2		+0.0%		
Staff Nurse/ Staff Midwife	92	92		+0.0%	+1	-7
Nursing/ Midwifery Student	13	13		+0.0%	+6	+6
Nursing/ Midwifery other	3	3		+0.0%		
Nursing & Midwifery	131	131			+7	-2
Therapy Professions	5	5		+0.0%		
Social Workers	2	2		+0.0%		
Psychologists	4	4		+0.0%		
Pharmacy	2	2		+0.0%	+0	+0
Health & Social Care Professionals	12	12			+0	+0
Administrative/ Supervisory (V to VII)	6	6		+0.0%		
Clerical (III & IV)	19	19		+0.0%	+0	+0
Management & Administrative	25	25			+0	+0
Support	32	32		+0.0%	+1	-1
Maintenance/ Technical	3	3		+0.0%		
General Support	35	35			+1	-1
Health Care Assistants	6	6		+0.0%		-2
Care, other	1	1		+0.0%		
Patient & Client Care	7	7				-2

CHO 9 Employment by Grade Group & Staff Category: May 2020

May 2020 (Dec 2019 figure: 6,582)	WTE Apr 2020	WTE May 2020	WTE change since Apr 20	% change since Apr 20	WTE change since Dec 19	WTE change since May 19
Overall	6,651	6,670	+19	+0.3%	+87	-5
Consultant Medicine	2	2			+1	+0
Consultant Paediatrics	1	1				
Consultant Psychiatry	63	63	+1	+0.8%	-2	+1
Consultant Surgery				-100.0%		-0
Consultants	66	67	+1	+0.8%	-2	+2
Registrar	77	75	-1	-1.9%	-3	+3
Senior Registrar	17	16	-1	-3.2%	-0	+2
Specialist Registrar	4	4				+1
Registrars	97	95	-2	-2.1%	-3	+6
Interns	2		-2	-100.0%	-2	-2
Senior House Officer	60	61	+1	+1.9%	-3	-8
SHO/ Interns	62	61	-0	-0.6%	-5	-10
Dentists	32	34	+2	+5.4%	+2	+3
Other Medical	24	25	+1	+3.0%	-1	-14
Medical/ Dental, other	56	58	+2	+4.4%	+1	-11
Medical & Dental	281	282	+1	+0.2%	-10	-14
Clinical Nurse/ Midwife Manager	354	356	+2	+0.5%	+7	-2
Director Nursing/Midwifery, Assistant	62	63	+1	+1.5%	+2	+4
Director of Nursing/Midwifery	24	26	+2	+7.6%	+1	+4
Nurse/ Midwife Manager	441	445	+4	+1.0%	+10	+6
Advanced Nurse/ Midwife Practitioner	7	7			+0	
Clinical Nurse/ Midwife Specialist	83	84	+1	+0.7%	+6	+7
Nurse/ Midwife Specialist & AN/MP	90	91	+1	+0.6%	+6	+7
Staff Midwives	1	1			+1	+1
Staff Nurse [Intellectual Disability]	415	414	-1	-0.3%	-7	+4
Staff Nurse [Psychiatric]	359	360	+1	+0.2%	-11	-26
Staff Nurses [General/ Children's]	411	410	-1	-0.4%	+5	-19
Staff Nurse/ Staff Midwife	1,186	1,184	-2	-0.2%	-12	-40
Public Health Nurse	170	169	-1	-0.7%	-7	+3
Pre-registration Nurse/ Midwife Intern	20	1	-20	-97.5%	-17	-34
Pre-registration Nurse Intern (COVID-19)	43	77	+34	+80.3%	+77	+77
Post-registration Nurse/ Midwife Student	25	25			-1	+7
Nursing/ Midwifery awaiting registration				-100.0%	-11	
Nursing/ Midwifery Student	88	103	+15	+16.7%	+48	+51
Nursing Education/Clinical	22	22	+0	+0.6%	+2	+2
Other Nursing/ Midwifery				-100.0%		
Nursing/ Midwifery other	22	22	+0	+0.6%	+2	+2
Nursing & Midwifery	1,997	2,014	+17	+0.8%	+0	+29
Dietitians	25	28	+2	+9.5%	+6	+6
Occupational Therapists	191	192	+1	+0.5%	+10	+8
Orthoptists	5	5				+1
Physiotherapists	146	146	+0	+0.1%	+3	+2
Podiatrists & Chiropodists	1	1	-0	-12.5%	+0	-0
Speech & Language Therapists	136	137	+1	+0.6%	+4	+1
Therapy Professions	505	509	+4	+0.8%	+23	+17
Audiology	15	15	+0	+0.7%	+0	-2
Clinical Engineering	14	14	-0	-0.1%	-2	-2

May 2020 (Dec 2019 figure: 6,582)	WTE Apr 2020	WTE May 2020	WTE change since Apr 20	% change since Apr 20	WTE change since Dec 19	WTE change since May 19
Overall	6,651	6,670	+19	+0.3%	+87	-5
Medical Laboratory	4	4				
Radiographers	1	1			-0	-1
Health Science/ Diagnostics	34	34	+0	+0.2%	-2	-5
Social Care	708	700	-8	-1.1%	+5	+35
Social Workers	127	128	+1	+0.7%	+2	-6
Psychologists	170	172	+2	+0.9%	+8	-0
Pharmacy	25	25	+0	+0.8%	+1	-5
Counsellor Therapists	41	41	+0	+0.5%	-1	+2
Dental Hygienists	6	7	+0	+6.7%	+0	-0
Other Health & Social Care	21	21	+1	+4.5%	+1	+0
Play Therapists/ Specialists	2	2	+0	+2.2%	-0	-1
H&SC, Other	70	71	+2	+2.3%	+1	+2
Health & Social Care Professionals	1,639	1,640	+1	+0.0%	+64	+37
Executive Management	13	12	-1	-4.2%	+1	+2
Senior Management (VIII & GM)	68	68	+0	+0.4%	-1	+3
Management (VIII & above)	81	80	-0	-0.3%	+1	+5
Middle Management (V-VII)	213	209	-4	-2.0%	+9	+2
Other Administrative	9	9				-2
Administrative/ Supervisory (V to VII)	221	217	-4	-1.9%	+9	-0
General Administrative (III & IV)	442	445	+4	+0.9%	-6	-27
Clerical (III & IV)	442	445	+4	+0.9%	-6	-27
Management & Administrative	744	743	-1	-0.1%	-4	-23
Catering	57	56	-1	-1.3%	-5	-5
Household Services	224	222	-2	-0.9%	+2	-9
Other Support	94	91	-2	-2.6%	-3	-6
Portering	73	75	+2	+2.8%	-1	+0
Support	447	444	-3	-0.7%	-8	-20
Maintenance	33	33	+0	+0.7%	+0	-3
Technical Services	2	2				
Maintenance/ Technical	35	35	+0	+0.7%	+0	-3
General Support	482	480	-3	-0.6%	-42	-22
HCA, Nurse's Aide, etc.	1,266	1,275	+9	+0.7%	+9	+10
Health & Social Care Assistants	22	20	-2	-9.3%	+8	-7
Health Care Assistants	1,288	1,295	+7	+0.5%	+17	+3
Other Care Grades	220	217	-3	-1.2%	-4	-15
Care, other	220	217	-3	-1.2%	-4	-15
Patient & Client Care	1,508	1,512	+4	+0.3%	+27	-12

CHO 9 HSE Employment by Grade Group & Staff Category: May 2020

May 2020 (Dec 2019 figure: 3,407)	WTE Apr 2020	WTE May 2020	WTE change since Apr 20	% change since Apr 20	WTE change since Dec 19	WTE change since May 19
Overall	3,402	3,444	+42	+1.2%	+37	-131
Consultant Medicine	1	1				-0
Consultant Psychiatry	54	54	+1	+1.0%	-1	+1
Consultant Surgery				-100.0%		-0
Consultants	55	55	+1	+1.0%	-1	+0
Registrar	75	73	-1	-2.0%	-2	+4
Senior Registrar	16	15	-1	-3.4%	-0	+2
Specialist Registrar	1	1			+1	
Registrars	91	89	-2	-2.2%	-1	+6
SHO/ Interns	57	56	-0	-0.7%	-4	-9
Dentists	32	34	+2	+5.4%	+2	+3
Other Medical	18	18	+0	+2.5%	-1	-14
Medical/ Dental, other	49	52	+2	+4.4%	+1	-12
Medical & Dental	252	253	+0	+0.1%	-13	-15
Clinical Nurse/ Midwife Manager	188	189	+1	+0.7%	+5	-7
Director Nursing/Midwifery, Assistant	53	54	+1	+1.8%	+2	+3
Director of Nursing/Midwifery	11	13	+2	+23.0%	+2	+4
Nurse/ Midwife Manager	252	256	+5	+1.8%	+9	-0
Advanced Nurse/ Midwife Practitioner	7	7			+0	
Clinical Nurse/ Midwife Specialist	72	73	+1	+0.8%	+5	+7
Nurse/ Midwife Specialist & AN/MP	79	80	+1	+0.7%	+5	+7
Staff Midwives	1	1			+1	+1
Staff Nurse [Intellectual Disability]	74	72	-2	-3.3%	-1	-1
Staff Nurse [Psychiatric]	269	270	+1	+0.2%	-12	-20
Staff Nurses [General/ Children's]	334	332	-1	-0.4%	-7	-31
Staff Nurse/ Staff Midwife	678	675	-3	-0.5%	-18	-50
Public Health Nurse	170	169	-1	-0.7%	-7	+3
Pre-registration Nurse/ Midwife Intern	20	1	-20	-97.5%	-3	-19
Pre-registration Nurse Intern (COVID-19)	15	49	+34	+230.5%	+49	+49
Post-registration Nurse/ Midwife Student	25	25			-1	+7
Nursing/ Midwifery awaiting registration				-100.0%	-11	
Nursing/ Midwifery Student	60	75	+15	+24.5%	+35	+38
Nursing Education/Clinical	14	14	+0	+1.0%	+1	+0
Other Nursing/ Midwifery				-100.0%		
Nursing/ Midwifery other	14	14	+0	+1.0%	+1	+0
Nursing & Midwifery	1,253	1,269	+16	+1.2%	-12	-3
Dietitians	17	19	+2	+14.5%	+4	+2
Occupational Therapists	123	124	+2	+1.5%	+6	+0
Orthoptists	5	5				+1
Physiotherapists	74	75	+1	+0.7%	-0	-6
Podiatrists & Chiropodists	1	1	-0	-12.5%	+0	-0
Speech & Language Therapists	86	87	+1	+0.9%	+2	-1
Therapy Professions	306	312	+5	+1.7%	+12	-4
Audiology	15	15	+0	+0.7%	+0	-2
Clinical Engineering	5	5	-0	-0.4%	-0	+0
Radiographers				-100.0%	-0	-1
Health Science/ Diagnostics	20	20	+0	+0.4%	-0	-3
Social Care	8	8	-0	-1.1%	+0	+1
Social Workers	76	77	+1	+1.3%	-1	-10
Psychologists	125	128	+3	+2.5%	+4	-5

May 2020 (Dec 2019 figure: 3,407)	WTE Apr 2020	WTE May 2020	WTE change since Apr 20	% change since Apr 20	WTE change since Dec 19	WTE change since May 19
Overall	3,402	3,444	+42	+1.2%	+37	-131
Pharmacy	19	19	-0	-0.2%	+0	-6
Counsellor Therapists	41	41	+0	+0.5%	-1	+2
Dental Hygienists	6	7	+0	+6.7%	+0	-0
Other Health & Social Care	6	7	+1	+11.1%	+0	-1
Play Therapists/ Specialists	2	2	+0	+2.2%	+0	-0
H&SC, Other	55	56	+1	+2.3%	-0	+1
Health & Social Care Professionals	609	619	+11	+1.8%	-15	-26
Executive Management	9	8	-1	-6.1%	+1	+2
Senior Management (VIII & GM)	37	38	+0	+0.6%	+0	+2
Management (VIII & above)	46	46	-0	-0.6%	+2	+4
Administrative/ Supervisory (V to VII)	125	120	-4	-3.4%	+8	-4
Clerical (III & IV)	294	298	+5	+1.6%	-5	-28
Management & Administrative	464	464	+0	+0.0%	-11	-28
Catering	22	22	+1	+3.9%	-2	-3
Household Services	98	98	-0	-0.2%	-4	-12
Other Support	9	8	-0	-1.1%	-1	-1
Portering	58	60	+2	+3.5%	-1	-0
Support	186	189	+3	+1.4%	-9	-16
Maintenance/ Technical	9	9	+0	+2.5%	+0	-0
General Support	196	198	+3	+1.5%	-40	-16
HCA, Nurse's Aide, etc.	487	502	+15	+3.1%	+2	-23
Health & Social Care Assistants	18	16	-2	-10.4%	+6	-9
Health Care Assistants	504	517	+13	+2.6%	+7	-32
Care, other	124	123	-1	-1.0%	-2	-11
Patient & Client Care	628	640	+12	+1.9%	-13	-44

Employment by WTE, Headcount, Gender, Full-Time /Part-Time etc.: May 2020

CHO 9	WTE	Headcount	WTE: no.	% Male	% female	Male WTE: no.	Female WTE: no.	% Total Perm	% Male Perm	% Female Perm	% Total Full Time	% Total Part Time	% Male FT	% Female FT
Overall	6,670	7,716	1.16	17.3%	82.7%	1.07	1.18	85.2%	82.7%	85.7%	65.6%	34.4%	83.9%	61.7%
Consultant Medicine	2	3	1.36		100.0%		1.36	66.7%	66.7%	66.7%	33.3%	66.7%		33.3%
Consultant Paediatrics	1	3	2.48	33.3%	66.7%	1.82	3.03	33.3%	33.3%	50.0%	33.3%	66.7%	100.0%	0.0%
Consultant Psychiatry	63	71	1.12	33.8%	66.2%	1.11	1.13	78.9%	78.9%	83.0%	80.3%	19.7%	83.3%	78.7%
Consultants	67	77	1.15	32.5%	67.5%	1.13	1.17	76.6%	68.0%	80.8%	76.6%	23.4%	84.0%	73.1%
Registrar	75	78	1.04	35.9%	64.1%	1.01	1.05	2.6%	2.6%	0.0%	97.4%	2.6%	96.4%	98.0%
Senior Registrar	16	16	1.00	37.5%	62.5%	1.00	1.00	0.0%	0.0%	0.0%	100.0%	0.0%	100.0%	100.0%
Specialist Registrar	4	4	1.00	25.0%	75.0%	1.00	1.00	0.0%	0.0%	0.0%	100.0%	0.0%	100.0%	100.0%
Registrars	95	98	1.03	35.7%	64.3%	1.01	1.04	2.0%	5.7%	0.0%	98.0%	2.0%	97.1%	98.4%
Senior House Officer	61	62	1.01	33.9%	66.1%	1.01	1.01	0.0%	0.0%	0.0%	100.0%	0.0%	100.0%	100.0%
SHO/ Interns	61	62	1.01	33.9%	66.1%	1.01	1.01	0.0%	0.0%	0.0%	100.0%	0.0%	100.0%	100.0%
Dentists	34	36	1.07	22.2%	77.8%	1.08	1.07	88.9%	88.9%	92.9%	75.0%	25.0%	100.0%	67.9%
Other Medical	25	33	1.33	21.2%	78.8%	1.48	1.30	72.7%	72.7%	69.2%	45.5%	54.5%	42.9%	46.2%
Medical/ Dental, other	58	69	1.18	21.7%	78.3%	1.23	1.17	81.2%	80.0%	81.5%	60.9%	39.1%	73.3%	57.4%
Medical & Dental	282	306	1.09	31.4%	68.6%	1.07	1.09	38.2%	32.3%	41.0%	84.6%	15.4%	90.6%	81.9%
Clinical Nurse/ Midwife Manager	356	380	1.07	18.9%	81.1%	1.01	1.08	97.1%	97.1%	96.4%	84.7%	15.3%	97.2%	81.8%
Director Nursing/Midwifery, Assistant	63	68	1.07	16.2%	83.8%	1.00	1.09	98.5%	98.5%	98.2%	88.2%	11.8%	100.0%	86.0%
Director of Nursing/Midwifery	26	26	1.00	7.7%	92.3%	1.01	1.00	88.5%	88.5%	87.5%	92.3%	7.7%	100.0%	91.7%
Nurse/ Midwife Manager	445	474	1.06	17.9%	82.1%	1.01	1.08	96.8%	100.0%	96.1%	85.7%	14.3%	97.6%	83.0%
Advanced Nurse/ Midwife Practitioner	7	7	1.01		100.0%		1.01	100.0%	100.0%	100.0%	85.7%	14.3%		85.7%
Clinical Nurse/ Midwife Specialist	84	89	1.06	13.5%	86.5%	1.00	1.07	100.0%	100.0%	100.0%	85.4%	14.6%	100.0%	83.1%
Nurse/ Midwife Specialist & AN/MP	91	96	1.06	12.5%	87.5%	1.00	1.07	100.0%	100.0%	100.0%	85.4%	14.6%	100.0%	83.3%
Staff Midwives	1	1	1.00		100.0%		1.00	0.0%	0.0%	0.0%	100.0%	0.0%		100.0%
Staff Nurse [Intellectual Disability]	414	471	1.14	8.7%	91.3%	1.05	1.15	95.5%	95.5%	95.6%	69.4%	30.6%	90.2%	67.4%
Staff Nurse [Psychiatric]	360	393	1.09	23.9%	76.1%	1.07	1.10	95.2%	95.2%	96.3%	85.2%	14.8%	90.4%	83.6%
Staff Nurses [General/ Children's]	410	472	1.15	10.0%	90.0%	1.03	1.17	92.8%	92.8%	94.1%	74.2%	25.8%	93.6%	72.0%
Staff Nurse/ Staff Midwife	1,184	1,337	1.13	13.6%	86.4%	1.05	1.14	94.4%	89.6%	95.2%	75.8%	24.2%	91.2%	73.3%
Public Health Nurse	169	202	1.20		100.0%		1.20	94.1%		94.1%	70.3%	29.7%		70.3%
Pre-registration Nurse/ Midwife Intern	1	1	2.00		100.0%		2.00	0.0%	0.0%	0.0%	100.0%	0.0%		100.0%

Pre-registration Nurse Intern (COVID-19)	77	85	1.10	11.8%	88.2%	1.04	1.11	18.8%	18.8%	21.3%	82.4%	17.6%	100.0%	80.0%
Post-registration Nurse/ Midwife Student	25	25	1.00	4.0%	96.0%	1.00	1.00	28.0%	28.0%	25.0%	100.0%	0.0%	100.0%	100.0%
Nursing/ Midwifery Student	103	111	1.08	9.9%	90.1%	1.04	1.08	20.7%	9.1%	22.0%	86.5%	13.5%	100.0%	85.0%
Nursing Education/Clinical	22	23	1.05	4.3%	95.7%	1.00	1.06	95.7%	95.7%	95.5%	87.0%	13.0%	100.0%	86.4%
Nursing/ Midwifery other	22	23	1.05	4.3%	95.7%	1.00	1.06	95.7%	100.0%	95.5%	87.0%	13.0%	100.0%	86.4%
Nursing & Midwifery	2,014	2,243	1.11	13.0%	87.0%	1.04	1.13	91.5%	90.0%	91.7%	78.4%	21.6%	93.8%	76.1%
Dietitians	28	36	1.30	5.6%	94.4%	1.00	1.32	80.6%	80.6%	79.4%	44.4%	55.6%	100.0%	41.2%
Occupational Therapists	192	214	1.11	10.7%	89.3%	1.06	1.12	93.0%	93.0%	93.2%	77.6%	22.4%	91.3%	75.9%
Orthoptists	5	6	1.15	16.7%	83.3%	1.00	1.19	83.3%	83.3%	80.0%	66.7%	33.3%	100.0%	60.0%
Physiotherapists	146	172	1.18	16.3%	83.7%	1.05	1.21	91.3%	91.3%	91.0%	64.5%	35.5%	85.7%	60.4%
Podiatrists & Chiropodists	1	2	1.68	50.0%	50.0%	1.67	1.69	50.0%	50.0%	0.0%	50.0%	50.0%	100.0%	0.0%
Speech & Language Therapists	137	155	1.13	0.6%	99.4%	1.00	1.13	90.3%	90.3%	90.3%	75.5%	24.5%	100.0%	75.3%
Therapy Professions	509	585	1.15	9.6%	90.4%	1.06	1.16	90.8%	92.9%	90.5%	70.9%	29.1%	89.3%	69.0%
Audiology	15	17	1.11	23.5%	76.5%	1.00	1.15	100.0%	100.0%	100.0%	70.6%	29.4%	100.0%	61.5%
Clinical Engineering	14	14	1.00	85.7%	14.3%	1.00	1.00	92.9%	92.9%	50.0%	100.0%	0.0%	100.0%	100.0%
Medical Laboratory	4	4	1.00	75.0%	25.0%	1.00	1.00	75.0%	75.0%	0.0%	100.0%	0.0%	100.0%	100.0%
Radiographers	1	1	1.00		100.0%		1.00	100.0%	100.0%	100.0%	100.0%	0.0%		100.0%
Health Science/ Diagnostics	34	36	1.05	52.8%	47.2%	1.00	1.11	94.4%	100.0%	88.2%	86.1%	13.9%	100.0%	70.6%
Social Care	700	845	1.21	12.3%	87.7%	1.05	1.23	86.0%	81.7%	86.6%	44.7%	55.3%	72.1%	40.9%
Social Workers	128	144	1.13	13.9%	86.1%	1.00	1.15	94.4%	90.0%	95.2%	74.3%	25.7%	100.0%	70.2%
Psychologists	172	189	1.10	14.8%	85.2%	1.07	1.11	68.8%	67.9%	68.9%	78.8%	21.2%	82.1%	78.3%
Pharmacy	25	29	1.15	13.8%	86.2%	1.11	1.15	55.2%	25.0%	60.0%	72.4%	27.6%	75.0%	72.0%
Counsellor Therapists	41	45	1.09	31.1%	68.9%	1.01	1.13	91.1%	91.1%	96.8%	80.0%	20.0%	92.9%	74.2%
Dental Hygienists	7	8	1.22		100.0%		1.22	100.0%	100.0%	100.0%	25.0%	75.0%		25.0%
Other Health & Social Care	21	27	1.26	14.8%	85.2%	1.27	1.26	85.2%	85.2%	82.6%	51.9%	48.1%	75.0%	47.8%
Play Therapists/ Specialists	2	2	1.05		100.0%		1.05	100.0%	100.0%	100.0%	100.0%	0.0%		100.0%
H&SC, Other	71	82	1.15	22.0%	78.0%	1.06	1.18	90.2%	83.3%	92.2%	65.9%	34.1%	88.9%	59.4%
Health & Social Care	1,640	1,910	1.16	13.0%	87.0%	1.05	1.18	86.3%	83.9%	86.6%	60.5%	39.5%	82.7%	57.1%
Executive Management	12	12	1.00	8.3%	91.7%	1.00	1.00	83.3%	83.3%	81.8%	100.0%	0.0%	100.0%	100.0%
Senior Management (VIII & GM)	68	70	1.02	30.0%	70.0%	1.00	1.04	98.6%	98.6%	100.0%	94.3%	5.7%	100.0%	91.8%
Management (VIII & above)	80	82	1.02	26.8%	73.2%	1.00	1.03	96.3%	95.5%	96.7%	95.1%	4.9%	100.0%	93.3%
Administrative/ Supervisory (V to VII)	217	239	1.10	16.7%	83.3%	1.01	1.12	93.3%	100.0%	92.0%	75.7%	24.3%	100.0%	70.9%
Clerical (III & IV)	445	524	1.18	11.3%	88.7%	1.09	1.19	85.1%	78.0%	86.0%	61.6%	38.4%	81.4%	59.1%
Management & Administrative	743	845	1.14	14.3%	85.7%	1.04	1.15	88.5%	88.4%	88.5%	68.9%	31.1%	90.9%	65.2%
Catering	56	69	1.23	42.0%	58.0%	1.14	1.31	95.7%	95.7%	95.0%	62.3%	37.7%	86.2%	45.0%

Household Services	222	290	1.31	10.7%	89.3%	1.19	1.32	88.6%	88.6%	89.6%	39.7%	60.3%	67.7%	36.3%
Other Support	91	156	1.71	27.6%	72.4%	1.35	1.90	64.1%	64.1%	59.3%	14.7%	85.3%	32.6%	8.0%
Portering	75	78	1.04	93.6%	6.4%	1.03	1.17	82.1%	82.1%	60.0%	91.0%	9.0%	91.8%	80.0%
Support	444	593	1.34	29.7%	70.3%	1.14	1.44	82.1%	83.5%	81.5%	42.5%	57.5%	72.2%	30.0%
Maintenance/ Technical	35	37	1.05	94.6%	5.4%	1.05	1.06	97.3%	97.1%	100.0%	70.3%	29.7%	71.4%	50.0%
General Support	479	630	1.31	33.5%	66.5%	1.13	1.43	83.0%	85.8%	81.6%	44.1%	55.9%	72.0%	30.1%
HCA, Nurse's Aide, etc.	1,275	1,512	1.19	19.2%	80.8%	1.08	1.22	83.7%	83.7%	83.0%	56.4%	43.6%	78.0%	51.3%
Health & Social Care Assistants	20	22	1.11	13.6%	86.4%	1.00	1.13	40.9%	40.9%	42.1%	81.8%	18.2%	100.0%	78.9%
Health Care Assistants	1,295	1,534	1.18	19.2%	80.8%	1.08	1.21	83.1%	86.4%	82.3%	56.8%	43.2%	78.2%	51.7%
Care, other	217	248	1.14	30.6%	69.4%	1.06	1.18	85.5%	81.6%	87.2%	62.5%	37.5%	85.5%	52.3%
Patient & Client Care	1,512	1,782	1.18	20.8%	79.2%	1.07	1.21	83.4%	85.4%	82.9%	57.6%	42.4%	79.7%	51.8%

Employment by WTE, Headcount, Gender, Full-Time /Part-Time etc.: May 2020

CHO 9	WTE	Headcount	WTE: no.	% Male	% female	Male WTE: no.	Female WTE: no.	% Total Perm	% Male Perm	% Female Perm	% Total Full Time	% Total Part Time	% Male FT	% Female FT
Overall	6,670	7,716	1.16	17.3%	82.7%	1.07	1.18	85.2%	82.7%	85.7%	65.6%	34.4%	83.9%	61.7%
Community Health & Wellbeing	8	9	1.12		100.0%		1.12	100.0%	100.0%	100.0%	66.7%	33.3%		
Mental Health	1,300	1,422	1.09	27.3%	72.7%	1.05	1.11	82.8%	82.8%	83.8%	84.5%	15.5%	93.6%	93.6%
Primary Care	1,249	1,432	1.15	14.5%	85.5%	1.05	1.17	80.8%	80.8%	81.7%	72.1%	27.9%	92.8%	92.8%
HSE	1,100	1,238	1.13	24.4%	75.6%	1.06	1.15	85.9%	85.9%	86.2%	77.1%	22.9%	89.4%	89.4%
Section 38 Voluntary Agencies	3,012	3,615	1.20	12.2%	87.8%	1.10	1.22	87.6%	87.6%	87.7%	51.6%	48.4%	67.5%	67.5%
Social Care	4,112	4,853	1.18	15.3%	84.7%	1.08	1.20	87.2%	87.2%	87.4%	58.1%	41.9%	76.4%	76.4%

CHO 9 Skills Mix by Staff Grouping: May 2020

May 2020 (Dec 2018 figure: 6,634)	WTE Dec 2015	WTE Dec 2016	WTE Dec 2017	WTE Dec 2018	WTE Dec 2019	WTE Apr 2020	WTE May 2020
Overall	6,089	6,286	6,438	6,634	6,582	6,651	6,670
Consultant Medicine	1.7%	2.3%	2.6%	0.6%	0.6%	0.8%	0.8%
Consultant Paediatrics	0.5%	0.5%	0.4%	0.4%	0.4%	0.4%	0.4%
Consultant Psychiatry	21.9%	21.3%	21.8%	21.9%	22.7%	22.3%	22.5%
Consultant Surgery	0.4%	0.3%	0.0%	0.0%			
Consultants	24.5%	24.5%	24.8%	23.0%	23.6%	23.5%	23.7%
Registrar	23.2%	21.3%	22.5%	25.4%	27.0%	27.3%	26.7%
Senior Registrar	4.4%	5.1%	3.9%	5.3%	5.5%	5.9%	5.7%
Specialist Registrar	1.1%	1.4%	1.8%	0.3%	1.4%	1.4%	1.4%
Registrars	28.8%	27.9%	28.2%	31.1%	33.9%	34.6%	33.8%
Interns	1.4%	1.8%	1.4%	0.7%	0.7%	0.5%	
Senior House Officer	19.0%	19.5%	21.2%	21.3%	22.2%	21.5%	21.8%
SHO/ Interns	20.4%	21.3%	22.6%	22.0%	22.8%	22.0%	21.8%
Dentists	11.2%	11.7%	10.7%	11.0%	10.9%	11.3%	11.9%
Other Medical	15.1%	14.6%	13.7%	13.0%	8.7%	8.6%	8.8%
Medical/ Dental, other	26.3%	26.3%	24.4%	24.0%	19.6%	19.9%	20.7%
Medical & Dental	4.5%	4.4%	4.4%	4.4%	4.4%	100.0%	4.2%
Clinical Nurse/ Midwife Manager	18.9%	18.9%	19.2%	18.5%	17.7%	17.8%	17.7%
Director Nursing/Midwifery, Assistant	2.9%	3.1%	3.0%	2.8%	3.1%	3.1%	3.1%
Director of Nursing/Midwifery	1.3%	1.3%	1.3%	1.1%	1.3%	1.2%	1.3%
Nurse/ Midwife Manager	23.2%	23.3%	23.5%	22.3%	22.1%	22.1%	22.1%
Advanced Nurse/ Midwife Practitioner	0.0%	0.1%	0.2%	0.3%	0.3%	0.3%	0.3%
Clinical Nurse/ Midwife Specialist	2.4%	2.9%	3.8%	3.7%	4.0%	4.2%	4.2%
Nurse/ Midwife Specialist & AN/MP	2.5%	3.0%	4.0%	4.1%	4.3%	4.5%	4.5%
Graduate Nursing/ Midwifery	0.0%						
Staff Midwives						0.1%	0.0%
Staff Nurse [Intellectual Disability]	21.9%	22.0%	22.1%	21.2%	21.4%	20.8%	20.5%
Staff Nurse [Psychiatric]	19.8%	19.5%	18.7%	19.0%	18.9%	18.0%	17.9%
Staff Nurses [General/ Children's]	20.8%	21.0%	20.2%	21.4%	20.6%	20.6%	20.4%
Staff Nurse/ Staff Midwife	62.6%	62.4%	61.1%	61.6%	60.8%	59.4%	58.8%
Public Health Nurse	9.1%	9.0%	8.8%	8.6%	8.9%	8.5%	8.4%
Pre-registration Nurse/ Midwife Intern	0.5%	0.2%	0.1%	1.0%	0.9%	1.0%	0.0%
Pre-registration Nurse Intern (COVID-19)						2.2%	3.8%
Post-registration Nurse/ Midwife Student	1.3%	1.0%	1.4%	1.1%	1.3%	1.3%	1.2%
Nursing/ Midwifery awaiting registration				0.1%	0.5%		
Nursing/ Midwifery Student	1.8%	1.2%	1.5%	2.2%	2.8%	4.4%	5.1%
Nursing/ Midwifery other	0.9%	1.0%	1.1%	1.2%	1.0%	1.1%	1.1%
Nursing & Midwifery	32.9%	31.1%	30.6%	30.4%	30.6%	100.0%	30.2%
Dietitians	1.3%	1.6%	1.5%	1.5%	1.3%	1.5%	1.7%
Occupational Therapists	12.3%	11.4%	11.9%	11.4%	11.4%	11.7%	11.7%
Orthoptists	0.1%	0.1%	0.1%	0.2%	0.3%	0.3%	0.3%
Physiotherapists	10.0%	9.1%	9.0%	8.7%	9.0%	8.9%	8.9%
Podiatrists & Chiropodists			0.1%	0.1%	0.1%	0.1%	0.1%
Speech & Language Therapists	8.2%	8.8%	8.9%	8.9%	8.3%	8.3%	8.4%
Therapy Professions	32.0%	30.8%	31.4%	30.8%	30.4%	30.8%	31.1%
Audiology	1.0%	0.8%	1.2%	1.1%	0.9%	0.9%	0.9%
Clinical Engineering	1.4%	1.1%	1.0%	1.0%	1.0%	0.9%	0.9%
Medical Laboratory	0.2%	0.2%	0.2%	0.3%	0.2%	0.2%	0.2%
Radiographers	0.2%	0.1%	0.1%	0.1%	0.1%	0.1%	0.1%
Health Science/ Diagnostics	2.8%	2.3%	2.5%	2.5%	2.3%	2.1%	2.1%
Social Care	36.5%	39.9%	39.7%	41.5%	43.4%	43.2%	42.7%
Social Workers	9.6%	8.3%	8.5%	8.3%	7.8%	7.7%	7.8%

May 2020 (Dec 2018 figure: 6,634)	WTE Dec 2015	WTE Dec 2016	WTE Dec 2017	WTE Dec 2018	WTE Dec 2019	WTE Apr 2020	WTE May 2020
Overall	6,089	6,286	6,438	6,634	6,582	6,651	6,670
Social Workers	9.6%	8.3%	8.5%	8.3%	7.8%	7.7%	7.8%
Psychologists	11.4%	11.4%	10.8%	10.8%	10.2%	10.4%	10.5%
Pharmacy	2.3%	2.4%	2.2%	1.9%	1.5%	1.5%	1.5%
Counsellor Therapists	2.9%	2.5%	2.6%	2.4%	2.6%	2.5%	2.5%
Dental Hygienists	0.5%	0.4%	0.4%	0.4%	0.4%	0.4%	0.4%
Other Health & Social Care	1.9%	1.8%	1.6%	1.4%	1.2%	1.3%	1.3%
Play Therapists/ Specialists	0.2%	0.1%	0.2%	0.2%	0.1%	0.1%	0.1%
H&SC, Other	5.4%	4.8%	4.7%	4.3%	4.4%	4.2%	4.3%
Health & Social Care Professionals	21.8%	23.3%	23.8%	23.8%	23.9%	100.0%	24.6%
Executive Management	1.1%	0.8%	1.0%	1.2%	1.4%	1.7%	1.6%
Senior Management (VIII & GM)	7.9%	7.8%	8.6%	8.4%	9.3%	9.2%	9.2%
Management (VIII & above)	9.0%	8.6%	9.7%	9.6%	10.8%	10.8%	10.8%
Middle Management (V-VII)	24.3%	26.2%	24.9%	27.0%	27.0%	28.6%	28.1%
Other Administrative	1.5%	1.4%	1.6%	1.7%	1.2%	1.2%	1.2%
Administrative/ Supervisory (V to VII)	25.8%	27.6%	26.5%	28.7%	28.1%	29.8%	29.2%
Clerical (III & IV)	65.2%	63.8%	63.8%	61.6%	61.1%	59.4%	60.0%
Management & Administrative	10.2%	10.1%	10.6%	11.3%	11.3%	100.0%	11.1%
Catering	11.7%	12.3%	12.3%	12.2%	12.5%	11.8%	11.7%
Household Services	43.9%	43.0%	41.6%	43.7%	45.3%	46.4%	46.3%
Other Support	22.8%	23.0%	24.3%	22.8%	19.4%	19.4%	19.0%
Portering	14.6%	15.4%	14.8%	14.3%	15.5%	15.1%	15.6%
Support	93.0%	93.6%	93.1%	93.0%	92.8%	92.7%	92.6%
Maintenance/ Technical	7.0%	6.4%	6.9%	7.0%	7.2%	7.3%	7.4%
General Support	9.7%	8.8%	8.4%	7.9%	7.9%	100.0%	7.2%
HCA, Nurse's Aide, etc.	83.8%	84.6%	85.6%	84.2%	84.4%	84.0%	84.3%
Health & Social Care Assistants	0.8%	0.7%	0.8%	1.5%	0.8%	1.4%	1.3%
Health Care Assistants	84.5%	85.3%	86.4%	85.7%	85.3%	85.4%	85.6%
Community Welfare Officers	0.1%	0.1%					
Other Care Grades	15.4%	14.6%	13.6%	14.3%	14.7%	14.6%	14.4%
Care, other	15.5%	14.7%	13.6%	14.3%	14.7%	14.6%	14.4%
Patient & Client Care	20.9%	22.2%	22.3%	22.4%	22.6%	100.0%	22.7%
Total	100 %	100 %	100 %	100 %	100%	100 %	100 %

CHO 9 Skills Mix by Care Group: May 2020

May 2020 (Dec 2018 figure: 1,301)	WTE Dec 2015	WTE Dec 2016	WTE Dec 2017	WTE Dec 2018	WTE Dec 2019	WTE Apr 2020	WTE May 2020
Mental Health	1,223	1,217	1,220	1,301	1,272	1,288	1,300
Consultant Medicine			0.1%	0.1%			
Consultant Psychiatry	41.3%	37.8%	36.3%	37.8%	37.3%	37.2%	38.1%
Consultants	41.3%	37.8%	36.3%	37.8%	37.3%	37.2%	38.1%
Registrar	16.6%	15.3%	11.4%	11.0%	11.9%	15.3%	14.7%
Senior Registrar	9.4%	10.6%	8.1%	10.6%	11.2%	11.9%	11.7%
Specialist Registrar		0.8%	0.8%				
Registrars	26.0%	26.7%	20.3%	21.6%	23.1%	27.2%	26.4%
Interns	3.4%	4.0%	3.2%	1.5%	1.5%	1.2%	
Senior House Officer	29.3%	30.7%	40.1%	39.1%	38.2%	34.4%	35.5%
SHO/ Interns	32.7%	34.7%	43.4%	40.6%	39.6%	35.5%	35.5%
Medical/ Dental, other		0.8%					
Medical & Dental	9.8%	10.2%	10.1%	10.4%	10.7%	9.9%	9.9%
Clinical Nurse/ Midwife Manager	22.0%	21.3%	20.3%	19.3%	18.5%	17.9%	17.7%
Director Nursing/Midwifery, Assistant	3.6%	3.5%	3.9%	3.4%	3.7%	4.0%	3.9%
Director of Nursing/Midwifery	0.7%	0.9%	0.6%	0.3%	0.5%	0.5%	0.5%
Nurse/ Midwife Manager	26.3%	25.7%	24.7%	23.0%	22.7%	22.4%	22.1%
Advanced Nurse/ Midwife Practitioner		0.2%	0.4%	1.0%	1.0%	1.0%	1.0%
Clinical Nurse/ Midwife Specialist	5.4%	7.1%	10.0%	9.8%	10.2%	10.3%	10.2%
Nurse/ Midwife Specialist & AN/MP	5.4%	7.3%	10.4%	10.8%	11.2%	11.3%	11.2%
Staff Midwives						0.2%	0.2%
Staff Nurse [Intellectual Disability]	0.3%	0.3%	0.3%	0.3%	0.3%	0.3%	0.2%
Staff Nurse [Psychiatric]	61.6%	61.0%	59.1%	58.5%	57.9%	55.4%	54.6%
Staff Nurses [General/ Children's]	3.2%	2.9%	2.7%	2.5%	2.2%	2.3%	2.1%
Staff Nurse/ Staff Midwife	65.1%	64.2%	62.1%	61.4%	60.5%	58.2%	57.0%
Public Health Nurse		0.2%	0.2%				
Pre-registration Nurse/ Midwife Intern	1.3%	0.6%	0.2%	2.0%	1.7%	2.5%	0.1%
Pre-registration Nurse Intern (COVID-19)						3.7%	7.8%
Nursing/ Midwifery awaiting registration				0.5%	1.9%		
Nursing/ Midwifery Student	1.3%	0.6%	0.2%	2.5%	3.6%	6.3%	7.8%
Nursing Education/Clinical	1.9%	2.1%	2.5%	2.3%	2.0%	1.9%	1.9%
Nursing/ Midwifery other	1.9%	2.1%	2.5%	2.3%	2.0%	1.9%	1.9%
Nursing & Midwifery	47.8%	47.0%	46.3%	45.7%	46.8%	47.4%	47.4%
Dietitians		1.2%	0.9%	0.8%	0.9%	0.9%	0.8%
Occupational Therapists	27.2%	23.5%	25.8%	26.7%	27.5%	27.7%	27.9%
Physiotherapists	0.4%	0.4%	0.4%	0.6%	0.7%	0.6%	0.6%
Speech & Language Therapists	6.3%	6.9%	4.8%	5.7%	3.7%	6.3%	6.1%
Therapy Professions	34.0%	32.0%	32.0%	33.8%	32.8%	35.5%	35.4%
Social Care	0.6%	0.6%	0.6%	0.6%	0.5%	0.6%	0.5%
Social Workers	28.3%	24.3%	28.3%	26.1%	26.0%	25.0%	24.4%
Psychologists	24.2%	29.3%	27.1%	28.2%	27.3%	26.3%	27.4%
Pharmacy	4.3%	5.5%	5.3%	4.3%	4.7%	4.3%	4.1%
Counsellor Therapists	7.5%	7.6%	6.5%	6.0%	8.1%	7.7%	7.6%
Other Health & Social Care	1.2%	0.7%	0.4%	1.0%	0.6%	0.5%	0.6%
H&SC, Other	8.6%	8.2%	6.8%	7.0%	8.7%	8.3%	8.2%
Health & Social Care Professionals	13.0%	13.2%	13.7%	14.0%	14.3%	13.6%	13.6%
Management (VIII & above)	1.8%	1.8%	1.6%	1.5%	3.7%	3.8%	3.9%
Administrative/ Supervisory (V to VII)	16.3%	18.0%	21.1%	20.5%	20.4%	22.1%	21.9%
Clerical (III & IV)	81.8%	80.2%	77.3%	78.1%	76.0%	74.0%	74.2%

May 2020 (Dec 2018 figure: 1,301)	WTE Dec 2015	WTE Dec 2016	WTE Dec 2017	WTE Dec 2018	WTE Dec 2019	WTE Apr 2020	WTE May 2020
Mental Health	1,223	1,217	1,220	1,301	1,272	1,288	1,300
Management & Administrative	9.0%	9.3%	10.3%	10.5%	10.8%	10.0%	10.0%
Support	91.4%	92.0%	91.4%	91.4%	90.4%	90.4%	90.3%
Maintenance	8.6%	8.0%	8.6%	8.6%	9.6%	9.6%	9.7%
Maintenance/ Technical	8.6%	8.0%	8.6%	8.6%	9.6%	9.6%	9.7%
General Support	11.3%	11.2%	10.4%	9.8%	10.1%	8.6%	8.6%
HCA, Nurse's Aide, etc.	96.5%	96.4%	96.4%	92.9%	87.2%	87.3%	88.9%
Health & Social Care Assistants	1.7%	2.7%	1.8%	2.4%	3.6%	3.6%	2.2%
Health Care Assistants	98.2%	99.1%	98.2%	95.4%	90.8%	91.0%	91.1%
Other Care Grades	1.8%	0.9%	1.8%	4.6%	9.2%	9.0%	8.9%
Care, other	1.8%	0.9%	1.8%	4.6%	9.2%	9.0%	8.9%
Patient & Client Care	9.1%	9.1%	9.1%	9.5%	9.8%	10.5%	10.5%
Total	100 %	100 %	100 %	100 %	100 %	100 %	100 %

May 2020 (Dec 2018 figure: 1,300)	WTE Dec 2015	WTE Dec 2016	WTE Dec 2017	WTE Dec 2018	WTE Dec 2019	WTE Apr 2020	WTE May 2020
Primary Care	1,207	1,162	1,239	1,300	1,247	1,242	1,249
Consultant Psychiatry	3.4%	3.5%	5.6%	2.9%	3.9%	4.1%	4.0%
Consultants	3.4%	3.5%	5.6%	2.9%	3.9%	4.1%	4.0%
Registrars	33.1%	31.2%	37.4%	43.7%	50.3%	47.4%	46.3%
SHO/ Interns	9.1%	8.7%	2.6%		0.9%	3.7%	3.6%
Dentists	25.9%	28.5%	26.5%	27.1%	28.5%	29.4%	30.5%
Other Medical	28.5%	28.1%	27.8%	26.3%	16.4%	15.4%	15.6%
Medical/ Dental, other	54.4%	56.6%	54.3%	53.4%	44.8%	44.8%	46.1%
Medical & Dental	9.9%	9.8%	9.2%	9.1%	9.5%	8.8%	8.8%
Clinical Nurse/ Midwife Manager	3.7%	4.0%	4.7%	4.2%	4.3%	4.5%	4.5%
Director Nursing/Midwifery, Assistant	5.6%	6.1%	5.3%	5.7%	5.5%	4.9%	5.0%
Director of Nursing/Midwifery	0.9%	0.6%	0.8%	0.8%	0.9%	1.1%	1.8%
Nurse/ Midwife Manager	10.2%	10.7%	10.9%	10.7%	10.7%	10.4%	11.2%
Nurse/ Midwife Specialist & AN/MP	0.6%	1.3%	2.3%	1.5%	1.8%	1.9%	1.9%
Staff Nurse/ Staff Midwife	28.6%	28.3%	30.7%	32.3%	29.1%	29.8%	29.9%
Public Health Nurse	52.5%	53.3%	47.9%	48.7%	50.8%	50.5%	49.7%
Nursing/ Midwifery Student	7.5%	5.8%	7.8%	6.2%	7.5%	7.4%	7.4%
Nursing Education/Clinical	0.3%	0.3%	0.3%	0.3%			
Other Nursing/ Midwifery	0.3%	0.3%	0.1%	0.3%			
Nursing/ Midwifery other	0.6%	0.6%	0.4%	0.6%			
Nursing & Midwifery	28.6%	28.4%	29.0%	27.3%	28.4%	27.2%	27.2%
Dietitians	2.3%	2.8%	2.8%	2.6%	2.2%	2.2%	2.3%
Occupational Therapists	17.4%	16.8%	17.3%	14.9%	15.8%	16.2%	16.2%
Orthoptists	0.4%	0.5%	0.4%	1.0%	1.5%	1.5%	1.5%
Physiotherapists	18.4%	17.2%	16.3%	15.3%	17.0%	16.7%	16.6%
Podiatrists & Chiropodists			0.3%	0.3%	0.3%	0.4%	0.3%
Speech & Language Therapists	15.9%	18.5%	20.4%	20.3%	19.1%	18.7%	18.3%
Therapy Professions	54.4%	55.8%	57.4%	54.4%	55.8%	55.7%	55.3%
Audiology				5.0%	4.3%	4.4%	4.4%
Clinical Engineering				1.4%	1.4%	1.4%	1.4%
Health Science/ Diagnostics				6.4%	5.8%	5.8%	5.8%
Social Care	1.7%	1.5%	1.4%	1.1%	1.2%	1.3%	1.3%
Social Workers	7.0%	5.2%	5.3%	4.9%	4.7%	4.7%	4.8%
Psychologists	19.8%	19.8%	18.7%	18.3%	18.6%	18.5%	18.7%

May 2020 (Dec 2018 figure: 1,300)	WTE Dec 2015	WTE Dec 2016	WTE Dec 2017	WTE Dec 2018	WTE Dec 2019	WTE Apr 2020	WTE May 2020
Primary Care	1,207	1,162	1,239	1,300	1,247	1,242	1,249
Pharmacy	6.2%	7.1%	6.0%	5.1%	3.4%	3.7%	3.7%
Counsellor Therapists	8.3%	8.0%	8.4%	7.4%	8.1%	7.9%	7.9%
Dental Hygienists	1.9%	1.9%	1.8%	1.8%	1.8%	1.8%	1.9%
Other Health & Social Care	0.1%	0.2%	0.4%	0.2%	0.0%	0.0%	0.0%
Play Therapists/ Specialists	0.6%	0.4%	0.6%	0.6%	0.5%	0.5%	0.5%
H&SC, Other	10.9%	10.6%	11.2%	9.9%	10.4%	10.3%	10.4%
Health & Social Care Professionals	26.3%	26.9%	27.5%	27.3%	28.5%	28.1%	28.1%
Executive Management	1.2%	0.4%	0.4%	1.0%	1.3%	1.6%	1.7%
Senior Management (VIII & GM)	7.7%	7.2%	9.2%	8.2%	8.4%	8.8%	8.8%
Management (VIII & above)	8.9%	7.6%	9.6%	9.2%	9.8%	10.3%	10.5%
Administrative/ Supervisory (V to VII)	22.1%	24.0%	21.3%	27.0%	26.9%	28.1%	26.5%
Clerical (III & IV)	69.0%	68.4%	69.0%	63.8%	63.3%	61.6%	63.0%
Management & Administrative	21.2%	21.2%	21.4%	22.8%	23.8%	23.3%	23.3%
Support	100.0%	100.0%	100.0%	100.0%	100.0%	100.0%	100.0%
General Support	4.5%	4.5%	4.1%	3.7%	3.8%	2.7%	2.7%
HCA, Nurse's Aide, etc.	2.7%	2.6%	3.7%	6.6%	6.9%	5.9%	6.2%
Health & Social Care Assistants	2.1%	2.2%	3.6%	12.0%	4.2%	10.0%	10.2%
Health Care Assistants	4.7%	4.8%	7.3%	18.6%	11.1%	16.0%	16.4%
Community Welfare Officers	0.9%	0.9%					
Other Care Grades	94.4%	94.3%	92.7%	81.4%	88.9%	84.0%	83.6%
Care, other	95.3%	95.2%	92.7%	81.4%	88.9%	84.0%	83.6%
Patient & Client Care	9.4%	9.3%	8.9%	9.8%	10.2%	10.0%	10.0%
Total	100 %	100 %	100 %	100 %	100 %	100 %	100 %

May 2020 (Dec 2018 figure: 3,125)	WTE Dec 2015	WTE Dec 2016	WTE Dec 2017	WTE Dec 2018	WTE Dec 2019	WTE Apr 2020	WTE May 2020
Disabilities	2,807	3,043	3,100	3,125	3,194	3,217	3,200
Consultant Paediatrics	7.9%	7.8%	5.6%	6.3%	4.9%	5.4%	5.3%
Consultant Psychiatry	38.9%	42.7%	45.2%	48.2%	45.8%	44.1%	43.6%
Consultant Surgery	0.5%	0.5%					
Consultants	47.2%	51.0%	50.8%	54.5%	50.7%	49.5%	48.9%
Registrars	16.0%	15.8%	22.9%	15.7%	24.3%	17.7%	17.5%
SHO/ Interns						4.4%	4.4%
Medical/ Dental, other	36.8%	33.3%	26.3%	29.8%	25.0%	28.3%	29.2%
Medical & Dental	0.7%	0.6%	0.7%	0.6%	0.6%	0.7%	0.7%
Clinical Nurse/ Midwife Manager	22.2%	23.1%	23.5%	23.7%	22.9%	22.9%	22.8%
Director Nursing/Midwifery, Assistant	1.0%	0.9%	0.9%	0.8%	1.4%	1.3%	1.3%
Director of Nursing/Midwifery	2.1%	2.2%	2.1%	1.7%	1.9%	1.7%	1.6%
Nurse/ Midwife Manager	25.3%	26.1%	26.5%	26.2%	26.2%	25.9%	25.8%
Clinical Nurse/ Midwife Specialist	1.4%	1.2%	1.1%	1.2%	1.2%	1.3%	1.3%
Nurse/ Midwife Specialist & AN/MP	1.4%	1.2%	1.1%	1.2%	1.2%	1.3%	1.3%
Graduate Nursing/ Midwifery	0.1%						
Staff Nurse [Intellectual Disability]	56.5%	56.9%	57.4%	56.6%	57.2%	55.8%	55.6%
Staff Nurse [Psychiatric]	4.4%	4.0%	3.4%	4.4%	4.4%	2.9%	2.8%
Staff Nurses [General/ Children's]	11.5%	11.0%	10.7%	9.6%	9.1%	9.5%	9.3%
Staff Nurse/ Staff Midwife	72.5%	71.8%	71.5%	70.6%	70.6%	68.2%	67.7%
Pre-registration Nurse/ Midwife Intern	0.3%	0.1%		1.1%	1.1%	0.7%	
Pre-registration Nurse Intern (COVID-19)						2.7%	4.0%
Nursing/ Midwifery Student	0.3%	0.1%		1.1%	1.1%	3.4%	4.0%
Nursing/ Midwifery other	0.5%	0.7%	0.8%	0.9%	1.0%	1.2%	1.3%

May 2020 (Dec 2018 figure: 3,125)	WTE Dec 2015	WTE Dec 2016	WTE Dec 2017	WTE Dec 2018	WTE Dec 2019	WTE Apr 2020	WTE May 2020
Disabilities	2,807	3,043	3,100	3,125	3,194	3,217	3,200
Nursing & Midwifery	27.5%	24.8%	24.4%	24.0%	23.5%	23.2%	23.2%
Dietitians	0.8%	0.7%	0.6%	0.6%	0.6%	0.6%	0.6%
Occupational Therapists	6.4%	6.4%	6.4%	6.2%	6.2%	6.3%	6.3%
Physiotherapists	6.4%	6.2%	5.6%	5.8%	5.7%	5.5%	5.5%
Speech & Language Therapists	5.7%	6.1%	5.9%	5.7%	5.5%	5.4%	5.7%
Therapy Professions	19.3%	19.4%	18.5%	18.3%	18.1%	17.9%	18.1%
Audiology	1.8%	1.3%	1.9%				
Clinical Engineering	2.3%	1.8%	1.7%	1.0%	1.1%	0.9%	0.9%
Medical Laboratory	0.4%	0.3%	0.3%	0.4%	0.4%	0.4%	0.4%
Health Science/ Diagnostics	4.4%	3.4%	3.9%	1.5%	1.5%	1.3%	1.3%
Social Care	60.7%	62.6%	63.7%	67.9%	68.7%	68.4%	68.2%
Social Workers	5.9%	5.5%	5.2%	4.5%	4.4%	4.5%	4.6%
Psychologists	6.4%	6.2%	6.1%	5.6%	5.3%	5.8%	5.7%
Pharmacy	0.3%	0.2%	0.2%	0.2%	0.2%	0.2%	0.2%
Pharmacy	0.3%	0.2%	0.2%	0.2%	0.2%	0.2%	0.2%
Other Health & Social Care	3.0%	2.6%	2.3%	2.0%	1.8%	1.9%	2.0%
Play Therapists/ Specialists	0.1%	0.1%	0.1%	0.1%	0.0%		
H&SC, Other	3.0%	2.6%	2.4%	2.0%	1.9%	1.9%	2.0%
Health & Social Care Professionals	28.0%	30.4%	30.5%	30.6%	29.9%	31.8%	31.8%
Executive Management	1.5%	1.4%	1.3%	1.3%	1.1%	1.2%	1.2%
Senior Management (VIII & GM)	12.0%	11.8%	12.6%	12.8%	13.8%	13.2%	13.2%
Management (VIII & above)	13.5%	13.1%	14.0%	14.1%	15.0%	14.4%	14.4%
Administrative/ Supervisory (V to VII)	35.1%	36.8%	35.3%	36.0%	35.0%	36.1%	36.5%
Clerical (III & IV)	51.5%	50.1%	50.7%	49.9%	50.1%	49.5%	49.2%
Management & Administrative	7.2%	7.2%	7.2%	7.6%	7.5%	7.8%	7.8%
Support	90.0%	90.8%	89.9%	89.6%	89.9%	89.8%	89.5%
Maintenance	9.6%	8.8%	9.7%	9.5%	9.2%	9.3%	9.5%
Technical Services	0.4%	0.4%	0.4%	0.9%	0.9%	0.9%	1.0%
Maintenance/ Technical	10.0%	9.2%	10.1%	10.4%	10.1%	10.2%	10.5%
General Support	9.5%	7.9%	7.6%	7.1%	7.0%	6.6%	6.6%
HCA, Nurse's Aide, etc.	88.4%	88.4%	90.0%	89.1%	89.7%	89.7%	89.8%
Health & Social Care Assistants	0.5%	0.3%	0.4%	0.2%	0.2%	0.3%	0.3%
Health Care Assistants	88.9%	88.8%	90.3%	89.4%	90.0%	90.0%	90.1%
Other Care Grades	11.1%	11.2%	9.7%	10.6%	10.0%	10.0%	9.9%
Care, other	11.1%	11.2%	9.7%	10.6%	10.0%	10.0%	9.9%
Patient & Client Care	27.1%	29.1%	29.6%	30.1%	29.4%	30.0%	30.0%
Total	100 %	100 %	100 %	100 %	100 %	100 %	100 %

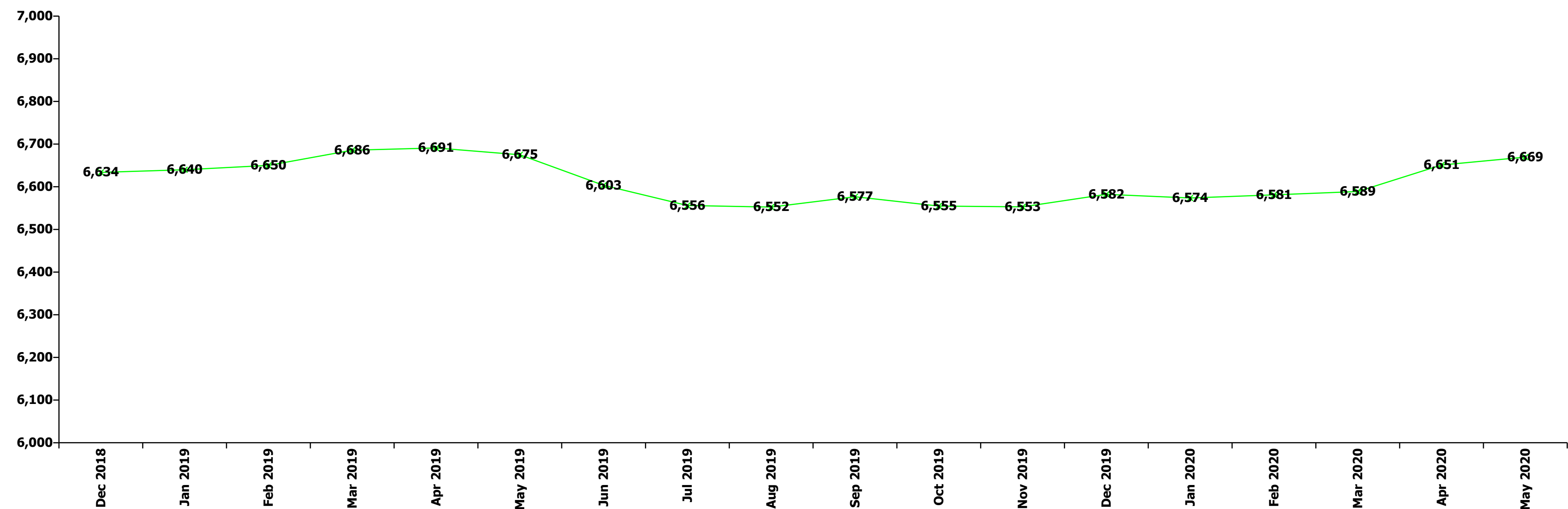
May 2020 (Dec 2018 figure: 908)	WTE Dec 2015	WTE Dec 2016	WTE Dec 2017	WTE Dec 2018	WTE Dec 2019	WTE Apr 2020	WTE May 2020
Older People	852	865	878	908	870	896	912
Consultant Medicine	23.6%	32.5%	33.1%	8.9%	8.0%	10.8%	10.6%
Consultant Surgery	5.1%	3.8%	0.6%	0.7%			
Consultants	28.7%	36.3%	33.7%	9.6%	8.0%	10.8%	10.6%
Registrar	26.2%	23.1%	29.9%	35.3%	27.4%	27.1%	26.6%
Specialist Registrar	5.1%	5.1%				4.9%	4.8%
Registrars	31.3%	28.2%	29.9%	35.3%	27.4%	32.0%	31.4%
Senior House Officer	34.8%	30.4%	31.8%	49.6%	59.7%	52.3%	53.1%
SHO/ Interns	34.8%	30.4%	31.8%	49.6%	59.7%	52.3%	53.1%
Medical/ Dental, other	5.1%	5.1%	4.6%	5.6%	5.0%	4.9%	4.8%

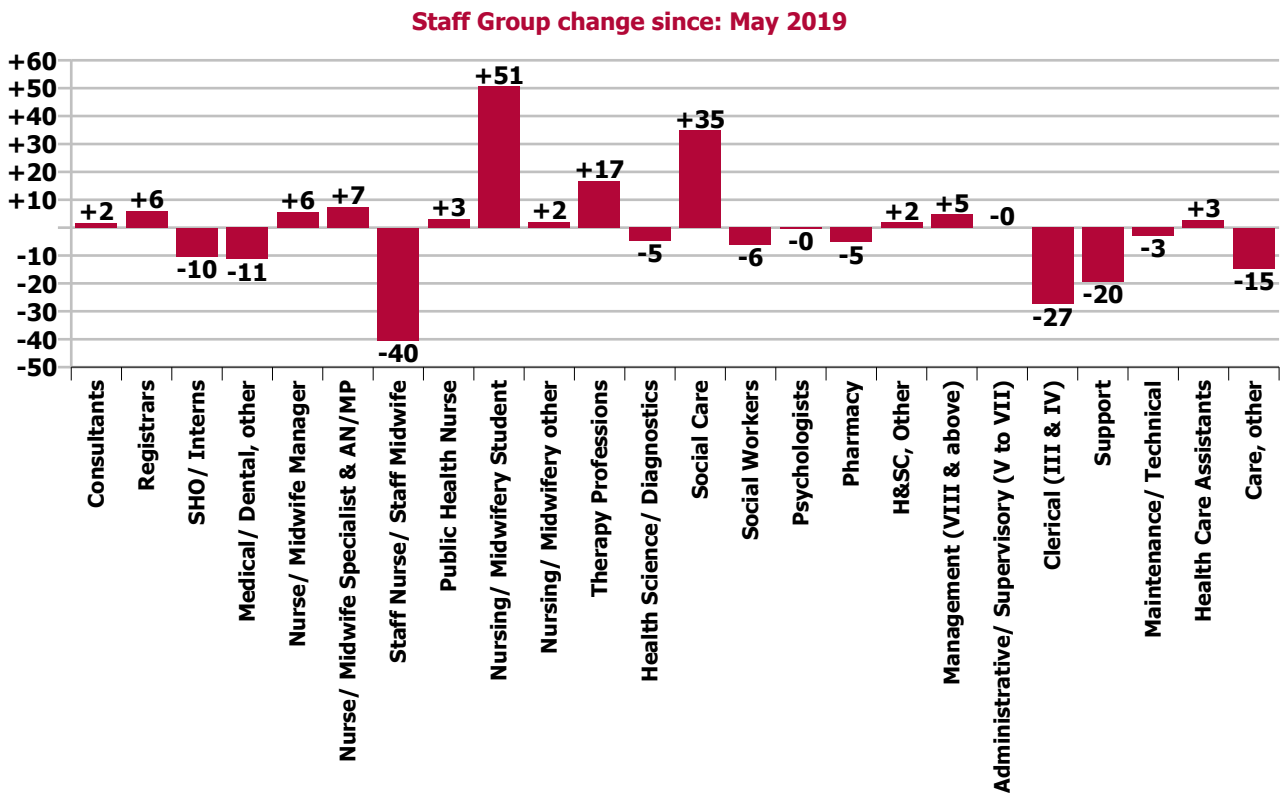
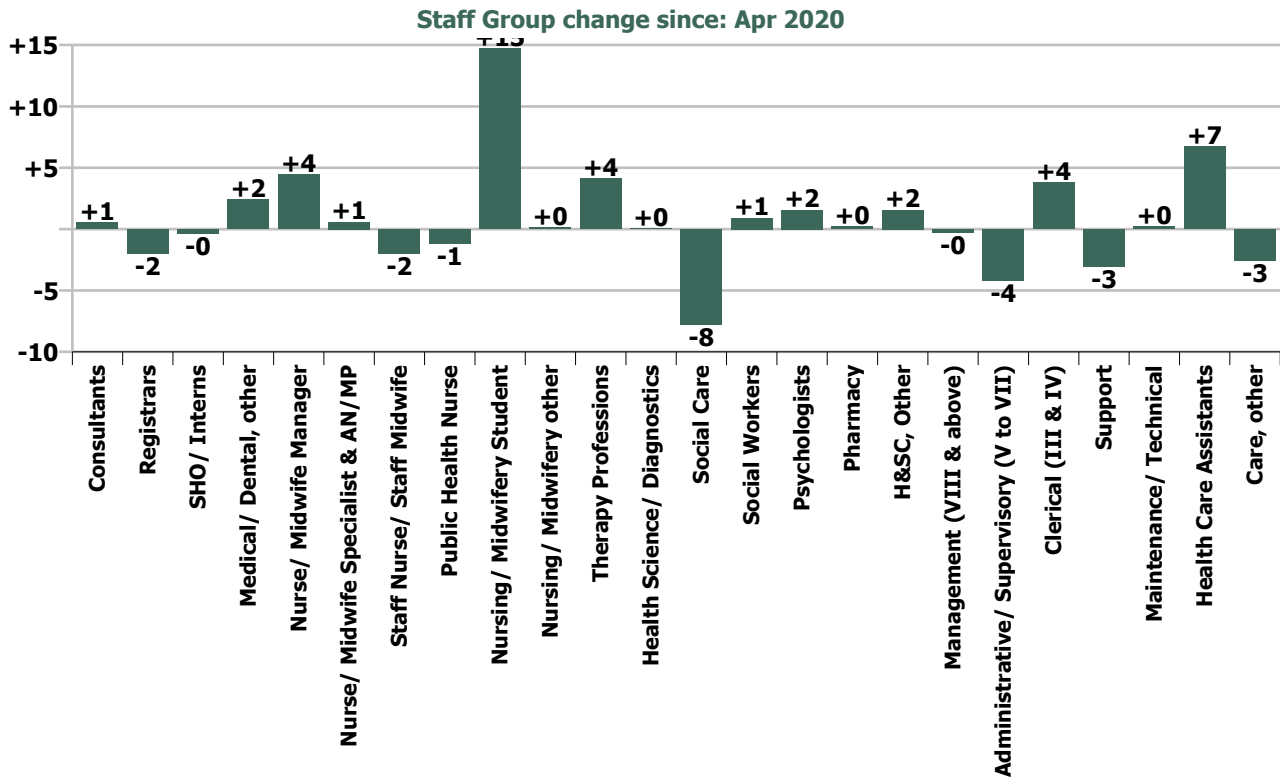
May 2020 (Dec 2018 figure: 908)	WTE Dec 2015	WTE Dec 2016	WTE Dec 2017	WTE Dec 2018	WTE Dec 2019	WTE Apr 2020	WTE May 2020
Older People	852	865	878	908	870	896	912
Medical & Dental	2.3%	2.3%	2.5%	2.0%	2.1%	2.3%	2.3%
Clinical Nurse/ Midwife Manager	21.8%	20.2%	23.7%	20.6%	19.1%	19.7%	19.8%
Director Nursing/Midwifery, Assistant	3.4%	4.3%	4.1%	2.8%	3.6%	3.8%	3.9%
Director of Nursing/Midwifery	1.3%	1.0%	1.0%	1.3%	1.6%	1.6%	1.6%
Nurse/ Midwife Manager	26.5%	25.5%	28.8%	24.8%	24.3%	25.0%	25.3%
Advanced Nurse/ Midwife Practitioner	0.3%	0.3%	0.3%	0.3%	0.3%	0.3%	0.3%
Clinical Nurse/ Midwife Specialist	1.3%	0.7%	0.7%	0.9%	1.3%	1.5%	1.6%
Nurse/ Midwife Specialist & AN/MP	1.7%	1.0%	1.0%	1.2%	1.5%	1.9%	1.9%
Staff Nurse [Psychiatric]	0.7%	0.7%	0.7%	0.6%	0.6%	0.6%	0.6%
Staff Nurses [General/ Children's]	70.8%	72.4%	69.0%	72.9%	73.1%	72.1%	71.9%
Staff Nurse/ Staff Midwife	71.5%	73.1%	69.7%	73.6%	73.7%	72.8%	72.5%
Public Health Nurse		0.1%	0.1%	0.1%	0.1%	0.0%	
Nursing Education/Clinical	0.3%	0.3%	0.3%	0.3%	0.3%	0.3%	0.3%
Nursing/ Midwifery other	0.3%	0.3%	0.3%	0.3%	0.3%	0.3%	0.3%
Nursing & Midwifery	34.9%	34.8%	33.0%	34.7%	36.2%	34.6%	34.6%
Dietitians	6.1%	8.1%	8.4%	8.9%	7.5%	10.1%	11.7%
Occupational Therapists	21.4%	24.9%	25.0%	22.7%	22.9%	23.7%	23.1%
Physiotherapists	36.7%	30.7%	34.6%	30.9%	31.1%	32.9%	32.5%
Speech & Language Therapists	5.9%	4.9%	4.4%	4.1%	5.5%	4.8%	4.7%
Therapy Professions	70.0%	68.6%	72.4%	66.6%	67.0%	71.5%	72.1%
Radiographers	3.1%	2.9%	2.5%	2.4%	1.8%	1.1%	1.1%
Health Science/ Diagnostics	3.1%	2.9%	2.5%	2.4%	1.8%	1.1%	1.1%
Social Care	1.4%	1.4%	1.2%	1.2%	1.2%	1.2%	1.1%
Social Care	1.4%	1.4%	1.2%	1.2%	1.2%	1.2%	1.1%
Social Workers	21.2%	22.5%	20.0%	26.1%	26.1%	22.8%	22.2%
Social Workers	21.2%	22.5%	20.0%	26.1%	26.1%	22.8%	22.2%
Pharmacy	4.2%	4.1%	3.5%	3.3%	3.4%	3.0%	3.2%
Pharmacy	4.2%	4.1%	3.5%	3.3%	3.4%	3.0%	3.2%
Other Health & Social Care		0.5%	0.5%	0.4%	0.4%	0.4%	0.4%
H&SC, Other		0.5%	0.5%	0.4%	0.4%	0.4%	0.4%
Health & Social Care Professionals	7.7%	7.9%	9.1%	9.3%	9.7%	10.3%	10.3%
Executive Management	1.8%	1.7%	4.4%	4.1%	4.6%	5.9%	4.5%
Senior Management (VIII & GM)	5.5%	7.0%	6.1%	8.1%	9.4%	7.3%	7.5%
Management (VIII & above)	7.3%	8.7%	10.5%	12.2%	14.0%	13.2%	11.9%
Administrative/ Supervisory (V to VII)	28.2%	27.1%	27.4%	27.6%	23.4%	24.3%	24.5%
Clerical (III & IV)	64.5%	64.2%	62.1%	60.2%	62.6%	62.5%	63.6%
Management & Administrative	6.4%	6.6%	7.5%	8.1%	8.5%	7.3%	7.3%
Support	98.1%	98.1%	98.1%	98.1%	98.0%	98.0%	98.1%
Maintenance	1.9%	1.9%	1.9%	1.9%	2.0%	2.0%	1.9%
Maintenance/ Technical	1.9%	1.9%	1.9%	1.9%	2.0%	2.0%	1.9%
General Support	15.1%	14.3%	14.1%	13.6%	14.2%	13.6%	13.6%
HCA, Nurse's Aide, etc.	98.5%	98.5%	98.5%	98.5%	97.7%	97.4%	97.7%
Health & Social Care Assistants	0.7%	0.7%	0.7%	0.3%		0.4%	0.3%
Health Care Assistants	99.2%	99.2%	99.2%	98.8%	97.7%	97.8%	98.1%
Other Care Grades	0.8%	0.8%	0.8%	1.2%	2.3%	2.2%	1.9%
Care, other	0.8%	0.8%	0.8%	1.2%	2.3%	2.2%	1.9%
Patient & Client Care	33.7%	34.1%	33.8%	32.3%	33.7%	31.9%	31.9%
Total	100 %	100 %	100 %	100 %	100 %	100 %	100 %

Summary Staff Movement: May 2020

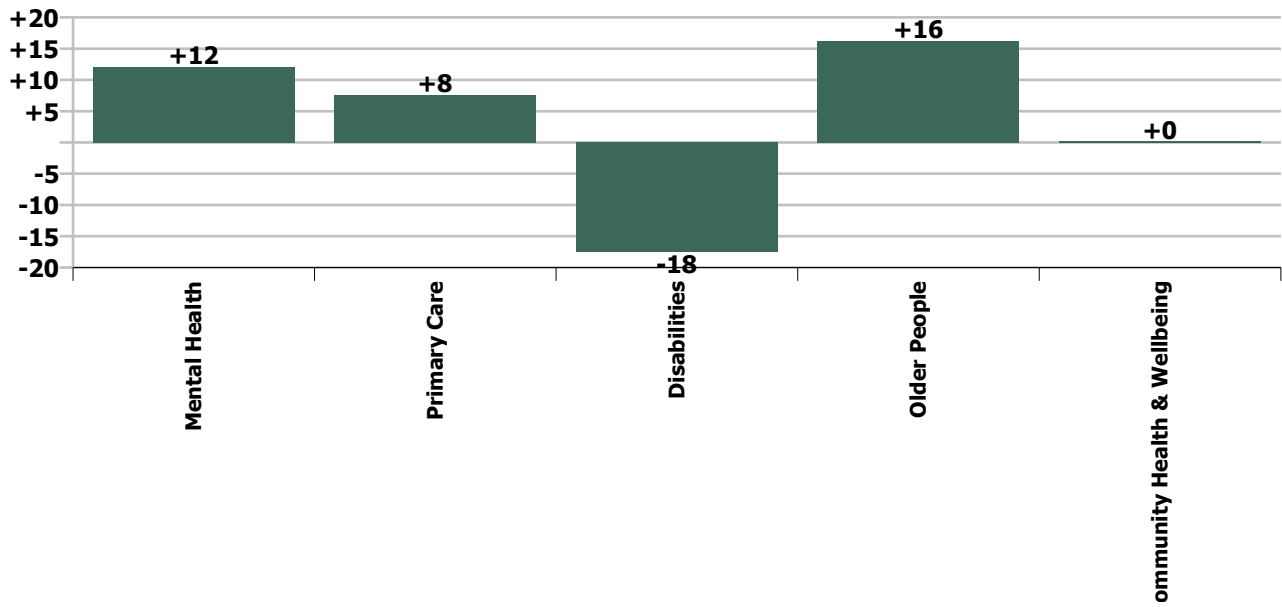
Month-on-month Summary																												
WTE change since Apr 20	% change since Apr 20	overall	Consultants	Registrars	SHO/ Interns	Medical/ Dental, other	Medical & Dental	Nurse/ Midwife Manager	Nurse/ Midwife Specialist & AN/MP	Staff Nurse/ Staff Midwife	Public Health Nurse	Nursing/ Midwifery Student	Nursing/ Midwifery other	Nursing & Midwifery	Therapy Professions	Health Science/ Diagnostics	Social Care	Social Workers	Psychologists	Pharmacy	H&SC, Other	Health & Social Care Professionals	Management (VIII & above)	Administrative/ Supervisory (v to VII)	Clerical (III & IV)	Management & Administrative	General Support	Patient & Client Care
Overall	+0.3%	+19	+0.5	-2.0	-0.4	+2.4	+0.6	+4.5	+0.6	-2.0	-1.2	+14.7	+0.1	+16.8	+4.1	+0.1	-7.8	+0.9	+1.6	+0.2	+1.6	+0.7	-0.3	-4.2	+3.8	-0.7	-2.9	+4.2
Community Health & Wellbeing	+2.7%	+0													0.0							0.0	0.0	+0.0	+0.2	+0.2		
Mental Health	+0.9%	+12	+0.5	-1.5	-0.7		-1.8	+0.7	+0.5	-0.9		+10.5	0.0	+10.7	+1.3		-0.1	-0.0	+2.8	-0.2	+0.1	+4.0	+0.0	-0.4	-0.3	-0.7	+0.6	-0.7
Primary Care	+0.6%	+8	0.0	-0.5	0.0	+2.2	+1.7	+3.1	0.0	+1.2	-1.1	0.0		+3.3	-1.1	+0.1	+0.0	+0.5	+0.7	+0.1	+0.6	+0.9	+0.7	-4.4	+4.8	+1.2	+0.3	+0.2
Disabilities	-0.5%	-18	0.0	0.0	0.0	+0.3	+0.3	-0.4	0.0	-2.1		+4.3	+0.1	+1.9	+0.9	0.0	-7.7	+0.2	-2.0	0.0	+0.8	-7.7	0.0	+0.8	-0.8	+0.0	-5.7	-6.4
Older People	+1.8%	+16	0.0	0.0	+0.3	0.0	+0.4	+1.1	+0.1	-0.2	-0.1		0.0	+0.8	+3.0	0.0	-0.1	+0.3		+0.2	0.0	+3.4	-1.0	-0.2	-0.1	-1.4	+1.9	+11.1
Social Care	-0.0%	-1	+0.0	0.0	+0.3	+0.3	+0.6	+0.7	+0.1	-2.3	-0.1	+4.3	+0.1	+2.8	+3.9	0.0	-7.8	+0.5	-2.0	+0.2	+0.9	-4.3	-1.0	+0.6	-0.9	-1.4	-3.8	+4.7
Change	+18.6	+0.3%	+0.8%	-2.1%	-0.6%	+4.4%	+0.2%	+1.0%	+0.6%	-0.2%	-0.7%	+16.7%	+0.6%	+0.8%	+0.8%	+0.2%	-1.1%	+0.7%	+0.9%	+0.8%	+2.3%	+0.0%	-0.3%	-1.9%	+0.9%	-0.1%	-0.6%	+0.3%

Year-on-year Summary																												
WTE change since May 19	% change since May 19	overall	Consultants	Registrars	SHO/ Interns	Medical/ Dental, other	Medical & Dental	Nurse/ Midwife Manager	Nurse/ Midwife Specialist & AN/MP	Staff Nurse/ Staff Midwife	Public Health Nurse	Nursing/ Midwifery Student	Nursing/ Midwifery other	Nursing & Midwifery	Therapy Professions	Health Science/ Diagnostics	Social Care	Social Workers	Psychologists	Pharmacy	H&SC, Other	Health & Social Care Professionals	Management (VIII & above)	Administrative/ Supervisory (V to VII)	Clerical (III & IV)	Management & Administrative	General Support	Patient & Client Care
Overall	-0.1%	-5	+1.7	+6.1	-10.4	-11.3	-14.0	+5.7	+7.5	-40.4	+3.1	+50.7	+2.1	+28.6	+16.8	-4.7	+34.9	-6.3	-0.5	-5.2	+1.8	+36.8	+4.9	-0.0	-27.5	-22.7	-22.4	-11.8
Community Health & Wellbeing	+2.7%	+0													+0.8							+0.8	+1.0	+4.9	+1.4	+7.3		
Mental Health	+0.9%	+12	-0.5	+8.9	-15.5		-7.1	+0.7	+4.5	-16.7		+26.6	0.0	+15.1	+5.2		-0.1	-3.0	-3.4	-1.1	+1.8	-0.6	+2.0	+0.4	-13.8	-11.5	-6.6	-6.7
Primary Care	+0.6%	+8	+1.0	-2.9	+4.0	-11.8	-9.7	+0.6	+0.3	-11.8	+3.5	+7.0	-0.9	-1.4	-8.2	-2.1	+0.7	-2.3	-1.2	-4.3	-0.6	-18.1	+3.2	-7.3	-12.4	-16.5	-4.8	-12.8
Disabilities	+2.0%	+62.7	+0.7	0.0	+1.0	+0.4	+2.2	+0.2	+0.8	-6.4		+17.1	+3.0	+14.7	+8.9	-2.0	+34.3	+1.0	+4.1	0.0	+0.6	+47.0	-0.4	+5.0	+1.4	+6.1	-14.7	+7.5
Older People	+0.5%	+4.4	+0.5	+0.0	+0.1	0.0	+0.7	+4.3	+1.9	-5.5	-0.4		0.0	+0.3	+10.1	-0.6	+0.0	-2.0		+0.2	0.0	+7.7	-1.0	-3.0	-4.1	-8.1	+3.8	+0.1
Social Care	-0.0%	-1	+1.2	+0.0	+1.1	+0.4	+2.8	+4.5	+2.7	-11.9	-0.4	+17.1	+3.0	+14.9	+19.0	-2.6	+34.3	-1.0	+4.1	+0.2	+0.6	+54.7	-1.4	+2.0	-2.6	-2.0	-11.0	+7.6
Change	-5.5	-0.1%	+2.6%	+6.8%	-14.5%	-16.3%	-4.7%	+1.3%	+9.0%	-3.3%	+1.9%	+97.0%	+10.5%	+1.4%	+3.4%	-12.1%	+5.2%	-4.7%	-0.3%	-17.1%	+2.6%	+2.3%	+6.5%	-0.0%	-5.8%	-3.0%	-4.5%	-0.8%

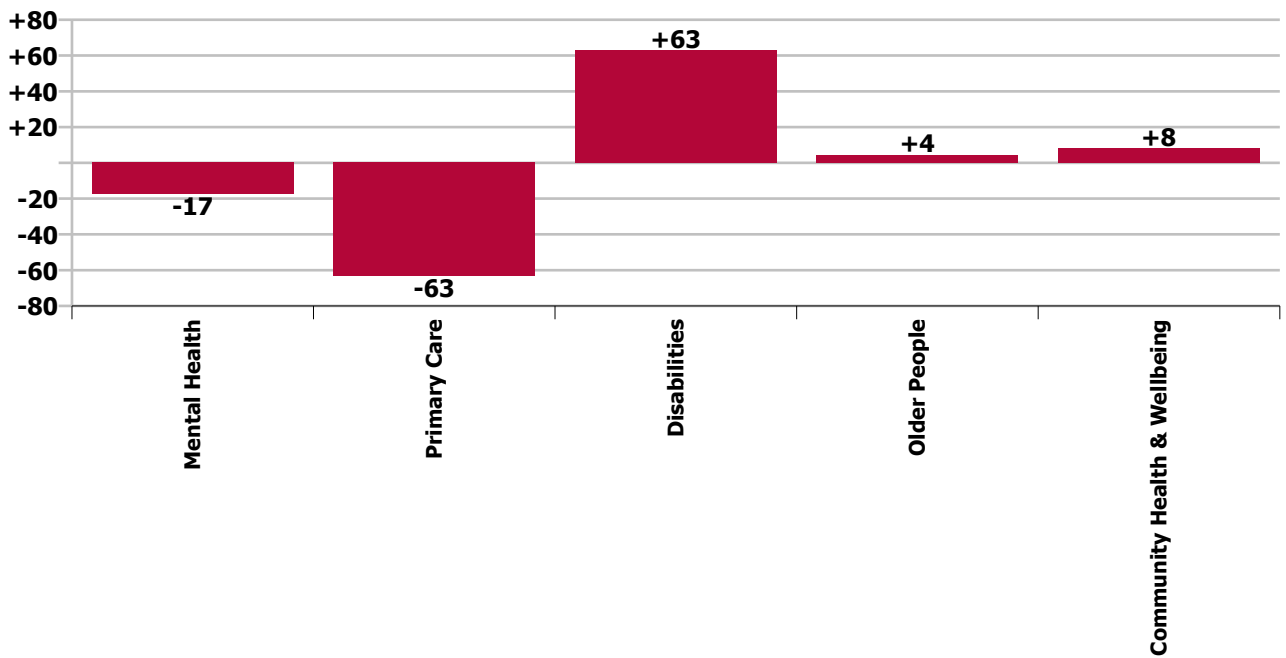




Care Group change since: Apr 2020



Care Group change since: May 2019



Longitudinal Employment Levels by Grade Group - Oct 2013 to May 2020

May 2020 (Dec 2015 figure: 6,089)	WTE May 2020	WTE change since Dec 15	WTE change since Dec 16	WTE change since Dec 17	WTE change since Dec 18	WTE change since Dec 18	WTE change since Apr 20	% change since Dec 15	% change since Dec 16	% change since Dec 17	% change since Dec 18	% change since Dec 18	% change since Apr 20
Overall	6,670	+581	+383	+232	+36	+36	+19	+9.5%	+6.1%	+3.6%	+0.5%	+0.5%	+0.3%
Consultant Medicine	2	-2	-4	-5	+1	+1		-52.2%	-65.4%	-69.9%	+29.4%	+29.4%	
Consultant Paediatrics	1	-0	-0					-18.2%	-18.2%				
Consultant Psychiatry	63	+3	+4	+2	-1	-1	+1	+4.4%	+7.2%	+3.4%	-1.0%	-1.0%	+0.8%
Consultant Surgery		-1	-1	-0	-0	-0		-100.0%	-100.0%	-100.0%	-100.0%	-100.0%	-100.0%
Consultants	67	-1	-1	-3	-0	-0	+1	-1.6%	-1.5%	-4.5%	-0.4%	-0.4%	+0.8%
Registrar	75	+11	+16	+12	+1	+1	-1	+17.0%	+27.7%	+19.0%	+1.6%	+1.6%	-1.9%
Senior Registrar	16	+4	+2	+5	+1	+1	-1	+30.3%	+12.5%	+45.4%	+3.7%	+3.7%	-3.2%
Specialist Registrar	4	+1		-1	+3	+3		+33.3%		-20.0%	+300.0%	+300.0%	
Registrars	95	+16	+18	+16	+5	+5	-2	+19.7%	+23.5%	+20.2%	+5.2%	+5.2%	-2.1%
Interns		-4	-5	-4	-2	-2	-2	-100.0%	-100.0%	-100.0%	-100.0%	-100.0%	-100.0%
Senior House Officer	61	+9	+7	+2	-1	-1	+1	+16.9%	+13.8%	+3.1%	-0.9%	-0.9%	+1.9%
SHO/ Interns	61	+5	+2	-2	-3	-3	-0	+8.6%	+4.2%	-3.4%	-4.0%	-4.0%	-0.6%
Dentists	34	+3	+1	+3	+1	+1	+2	+8.3%	+3.6%	+11.3%	+4.3%	+4.3%	+5.4%
Other Medical	25	-17	-16	-14	-13	-13	+1	-40.9%	-38.6%	-35.5%	-34.6%	-34.6%	+3.0%
Medical/ Dental, other	58	-15	-14	-10	-12	-12	+2	-20.0%	-19.8%	-14.9%	-16.7%	-16.7%	+4.4%
Medical & Dental	282	+5	+5	+1	-10	-10	+1	+1.8%	+1.9%	+0.2%	-3.4%	-3.4%	+0.2%
Clinical Nurse/ Midwife Manager	356	-22	-14	-22	-15	-15	+2	-5.9%	-3.7%	-5.7%	-4.2%	-4.2%	+0.5%
Director Nursing/Midwifery, Assistant	63	+5	+3	+3	+8	+8	+1	+8.7%	+5.7%	+5.7%	+14.1%	+14.1%	+1.5%
Director of Nursing/Midwifery	26	-1	-0	+1	+4	+4	+2	-3.7%	-0.8%	+2.9%	+18.1%	+18.1%	+7.6%
Nurse/ Midwife Manager	445	-18	-10	-18	-4	-4	+4	-3.9%	-2.3%	-3.8%	-0.8%	-0.8%	+1.0%
Advanced Nurse/ Midwife Practitioner	7	+6	+5	+4	+0	+0		+596.0%	+251.5%	+132.0%	+0.4%	+0.4%	
Clinical Nurse/ Midwife Specialist	84	+35	+27	+8	+8	+8	+1	+72.9%	+48.6%	+11.1%	+11.2%	+11.2%	+0.7%
Nurse/ Midwife Specialist & AN/MP	91	+41	+32	+12	+8	+8	+1	+83.4%	+55.5%	+15.7%	+10.3%	+10.3%	+0.6%
Graduate Nursing/ Midwifery		-1						-100.0%	-100.0%	-100.0%	-100.0%	-100.0%	-100.0%
Staff Midwives	1	+1	+1	+1	+1	+1		-100.0%	-100.0%	-100.0%	-100.0%	-100.0%	
Staff Nurse [Intellectual Disability]	414	-25	-16	-22	-13	-13	-1	-5.7%	-3.8%	-5.1%	-2.9%	-2.9%	-0.3%
Staff Nurse [Psychiatric]	360	-37	-22	-10	-23	-23	+1	-9.2%	-5.7%	-2.6%	-6.1%	-6.1%	+0.2%
Staff Nurses [General/ Children's]	410	-7	-1	+11	-21	-21	-1	-1.7%	-0.2%	+2.7%	-4.9%	-4.9%	-0.4%
Staff Nurse/ Staff Midwife	1,184	-69	-38	-20	-56	-56	-2	-5.5%	-3.1%	-1.7%	-4.5%	-4.5%	-0.2%
Public Health Nursing	169	-13	-8	-5	-5	-5	-1	-7.0%	-4.7%	-2.6%	-2.6%	-2.6%	-0.7%
Public Health Nurse	169	-13	-8	-5	-5	-5	-1	-7.0%	-4.7%	-2.6%	-2.6%	-2.6%	-0.7%
Pre-registration Nurse/ Midwife Intern	1	-9	-4	-1	-20	-20	-20	-94.7%	-88.9%	-58.3%	-97.6%	-97.6%	-97.5%
Pre-registration Nurse Intern (COVID-19)	77	+77	+77	+77	+77	+77	+34	-100.0%	-100.0%	-100.0%	-100.0%	-100.0%	+80.3%
Post-registration Nurse/ Midwife Student	25	-1	+6	-3	+3	+3		-3.8%	+31.6%	-10.7%	+13.6%	+13.6%	

May 2020 (Dec 2015 figure: 6,089)	WTE May 2020	WTE change since Dec 15	WTE change since Dec 16	WTE change since Dec 17	WTE change since Dec 18	WTE change since Dec 18	WTE change since Apr 20	% change since Dec 15	% change since Dec 16	% change since Dec 17	% change since Dec 18	% change since Dec 18	% change since Apr 20
Overall	6,670	+581	+383	+232	+36	+36	+19	+9.5%	+6.1%	+3.6%	+0.5%	+0.5%	+0.3%
Nursing/ Midwifery awaiting registration					-3	-3		-100.0%	-100.0%	-100.0%	-100.0%	-100.0%	-100.0%
Nursing/ Midwifery Student	103	+67	+79	+74	+58	+58	+15	+190.0%	+338.0%	+252.5%	+127.2%	+127.2%	+16.7%
Nursing Education/Clinical	22	+4	+3	-0	-1	-1	+0	+25.8%	+15.8%	-0.6%	-3.1%	-3.1%	+0.6%
Other Nursing/ Midwifery		-1	-1	-0	-1	-1		-100.0%	-100.0%	-100.0%	-100.0%	-100.0%	-100.0%
Nursing/ Midwifery other	22	+3	+2	-1	-2	-2	+0	+19.0%	+10.0%	-2.6%	-7.3%	-7.3%	+0.6%
Nursing & Midwifery	2,014	+13	+58	+43	+0	+0	+17	+0.6%	+2.9%	+2.2%	+0.0%	+0.0%	+0.8%
Dietitians	28	+10	+5	+5	+4	+4	+2	+60.4%	+21.4%	+21.4%	+15.8%	+15.8%	+9.5%
Occupational Therapists	192	+29	+26	+10	+12	+12	+1	+18.0%	+15.4%	+5.4%	+6.9%	+6.9%	+0.5%
Orthoptists	5	+4	+4	+4	+2	+2		+269.5%	+269.5%	+330.6%	+40.4%	+40.4%	
Physiotherapists	146	+13	+13	+9	+9	+9	+0	+9.6%	+10.0%	+6.6%	+6.6%	+6.6%	+0.1%
Podiatrists & Chiropodists	1	+1	+1	+0	+0	+0	-0	-100.0%	-100.0%	+26.6%	+19.0%	+19.0%	-12.5%
Speech & Language Therapists	137	+28	+9	+0	-3	-3	+1	+25.6%	+6.7%	+0.2%	-2.2%	-2.2%	+0.6%
Therapy Professions	509	+85	+57	+28	+24	+24	+4	+20.1%	+12.7%	+5.9%	+4.9%	+4.9%	+0.8%
Audiology	15	+2	+3	-3	-2	-2	+0	+11.5%	+25.4%	-14.1%	-13.1%	-13.1%	+0.7%
Clinical Engineering	14	-4	-2	-2	-1	-1	-0	-22.8%	-14.2%	-12.6%	-6.8%	-6.8%	-0.1%
Medical Laboratory	4	+1	+1	+1				+33.3%	+33.3%	+33.3%			
Radiographers	1	-1	-1	-1	-1	-1		-50.0%	-50.0%	-50.0%	-50.0%	-50.0%	
Health Science/ Diagnostics	34	-3	+1	-5	-4	-4	+0	-6.9%	+2.4%	-11.7%	-11.2%	-11.2%	+0.2%
Social Care	700	+216	+114	+92	+46	+46	-8	+44.7%	+19.5%	+15.1%	+7.1%	+7.1%	-1.1%
Social Care	700	+216	+114	+92	+46	+46	-8	+44.7%	+19.5%	+15.1%	+7.1%	+7.1%	-1.1%
Social Workers	128	+1	+6	-3	-2	-2	+1	+0.5%	+4.9%	-2.0%	-1.8%	-1.8%	+0.7%
Social Workers	128	+1	+6	-3	-2	-2	+1	+0.5%	+4.9%	-2.0%	-1.8%	-1.8%	+0.7%
Psychologists	172	+20	+5	+5	+2	+2	+2	+13.1%	+3.0%	+3.2%	+1.0%	+1.0%	+0.9%
Psychologists	172	+20	+5	+5	+2	+2	+2	+13.1%	+3.0%	+3.2%	+1.0%	+1.0%	+0.9%
Pharmacy	25	-6	-10	-9	-5	-5	+0	-18.7%	-29.1%	-25.9%	-17.2%	-17.2%	+0.8%
Pharmacy	25	-6	-10	-9	-5	-5	+0	-18.7%	-29.1%	-25.9%	-17.2%	-17.2%	+0.8%
Counsellor Therapists	41	+3	+4	+2	+4	+4	+0	+8.0%	+11.1%	+4.5%	+11.3%	+11.3%	+0.5%
Dental Hygienists	7	+0	+0	+0	+0	+0	+0	+7.7%	+7.7%	+7.5%	+3.8%	+3.8%	+6.7%
Other Health & Social Care	21	-4	-5	-3	-0	-0	+1	-15.4%	-17.4%	-11.7%	-0.5%	-0.5%	+4.5%
Play Therapists/ Specialists	2	-1		-1	-1	-1	+0	-24.0%		-24.0%	-24.0%	-24.0%	+2.2%
H&SC, Other	71	-1	+0	-1	+4	+4	+2	-1.4%	+0.1%	-1.7%	+5.5%	+5.5%	+2.3%
Health & Social Care Professionals	1,640	+313	+173	+108	+64	+64	+1	+23.6%	+11.8%	+7.1%	+4.1%	+4.1%	+0.0%
Executive Management	12	+5	+7	+5	+3	+3	-1	+71.1%	+139.6%	+73.1%	+33.1%	+33.1%	-4.2%
Senior Management (VIII & GM)	68	+19	+19	+9	+5	+5	+0	+39.2%	+37.6%	+16.1%	+8.6%	+8.6%	+0.4%
Management (VIII & above)	80	+24	+26	+15	+8	+8	-0	+43.2%	+46.9%	+22.1%	+11.6%	+11.6%	-0.3%
Middle Management (V-VII)	209	+57	+42	+39	+7	+7	-4	+37.7%	+25.3%	+23.3%	+3.3%	+3.3%	-2.0%

May 2020 (Dec 2015 figure: 6,089)	WTE May 2020	WTE change since Dec 15	WTE change since Dec 16	WTE change since Dec 17	WTE change since Dec 18	WTE change since Dec 18	WTE change since Apr 20	% change since Dec 15	% change since Dec 16	% change since Dec 17	% change since Dec 18	% change since Dec 18	% change since Apr 20
Overall	6,670	+581	+383	+232	+36	+36	+19	+9.5%	+6.1%	+3.6%	+0.5%	+0.5%	+0.3%
Other Administrative	9	-1	-1	-3	-4	-4		-9.8%	-5.5%	-22.6%	-31.8%	-31.8%	
Administrative/ Supervisory (V to VII)	217	+56	+42	+37	+3	+3	-4	+34.9%	+23.7%	+20.5%	+1.3%	+1.3%	-1.9%
General Administrative (III & IV)	445	+39	+40	+11	-15	-15	+4	+9.6%	+9.7%	+2.5%	-3.2%	-3.2%	+0.9%
Clerical (III & IV)	445	+39	+40	+11	-15	-15	+4	+9.6%	+9.7%	+2.5%	-3.2%	-3.2%	+0.9%
Management & Administrative	743	+119	+107	+63	-4	-4	-1	+19.1%	+16.8%	+9.2%	-0.5%	-0.5%	-0.1%
Catering	56	-13	-12	-11	-8	-8	-1	-18.8%	-17.6%	-15.9%	-12.3%	-12.3%	-1.3%
Household Services	222	-36	-16	-3	-6	-6	-2	-14.0%	-6.7%	-1.2%	-2.6%	-2.6%	-0.9%
Other Support	91	-43	-36	-40	-28	-28	-2	-31.8%	-28.3%	-30.3%	-23.4%	-23.4%	-2.6%
Portering	75	-11	-10	-5	+0	+0	+2	-12.7%	-12.1%	-6.5%	+0.5%	+0.5%	+2.8%
Support	444	-103	-74	-58	-41	-41	-3	-18.8%	-14.3%	-11.6%	-8.5%	-8.5%	-0.7%
Maintenance	33	-7	-1	-3	-1	-1	+0	-16.4%	-3.5%	-8.3%	-3.5%	-3.5%	+0.7%
Technical Services	2	+1	+1	+1				+100.0%	+100.0%	+100.0%			
Maintenance/ Technical	35	-6	-0	-2	-1	-1	+0	-13.6%	-0.6%	-5.4%	-3.3%	-3.3%	+0.7%
General Support	480	-108	-74	-60	-42	-42	-3	-18.4%	-13.4%	-11.2%	-8.1%	-8.1%	-0.6%
HCA, Nurse's Aide, etc.	1,275	+209	+93	+47	+25	+25	+9	+19.6%	+7.9%	+3.8%	+2.0%	+2.0%	+0.7%
Health & Social Care Assistants	20	+10	+10	+9	-2	-2	-2	+97.3%	+95.4%	+76.1%	-8.1%	-8.1%	-9.3%
Health Care Assistants	1,295	+219	+103	+55	+23	+23	+7	+20.3%	+8.6%	+4.4%	+1.8%	+1.8%	+0.5%
Care, other	217	+21	+12	+23	+4	+4	-3	+10.5%	+5.8%	+11.6%	+2.1%	+2.1%	-1.2%
Patient & Client Care	1,512	+239	+115	+78	+27	+27	+4	+18.8%	+8.2%	+5.4%	+1.8%	+1.8%	+0.3%

Source: Health Service Personnel Census

Longitudinal Employment Levels by Care Group - Oct 2013 to May 2020

Community Health & Wellbeing

May 2020 (figure:)	WTE May 2020	WTE change since	WTE change since	WTE change since	WTE change since	WTE change since	WTE change since Apr 20	% change since	% change since	% change since	% change since	% change since	% change since Apr 20
Overall	8	+8	+8	+8	+8	+8	+0	-100.0%	-100.0%	-100.0%	-100.0%	-100.0%	+2.7%
Health & Social Care Professionals	1	+1	+1	+1	+1	+1		-1.0%	-1.0%	-1.0%	-1.0%	-1.0%	+0.0%
Therapy Professions	1	+1	+1	+1	+1	+1		-1.0%	-1.0%	-1.0%	-1.0%	-1.0%	+0.0%
Management & Administrative	7	+7	+7	+7	+7	+7	+0	-1.0%	-1.0%	-1.0%	-1.0%	-1.0%	+0.0%
Management (VIII & above)	1	+1	+1	+1	+1	+1		-1.0%	-1.0%	-1.0%	-1.0%	-1.0%	+0.0%
Administrative/ Supervisory (V to VII)	5	+5	+5	+5	+5	+5	+0	-1.0%	-1.0%	-1.0%	-1.0%	-1.0%	+0.0%
Clerical (III & IV)	1	+1	+1	+1	+1	+1	+0	-1.0%	-1.0%	-1.0%	-1.0%	-1.0%	+0.1%

Source: Health Service Personnel Census

Mental Health

May 2020 (Dec 2015 figure: 1,223)	WTE May 2020	WTE change since Dec 15	WTE change since Dec 16	WTE change since Dec 17	WTE change since Dec 18	WTE change since Dec 18	WTE change since Apr 20	% change since Dec 15	% change since Dec 16	% change since Dec 17	% change since Dec 18	% change since Dec 18	% change since Apr 20
Overall	1,300	+78	+84	+80	-1	-1	+12	+6.4%	+6.9%	+6.6%	-0.0%	-0.0%	+0.9%
Medical & Dental	128	+9	+4	+4	-8	-8	-2	+0.1%	+0.0%	+0.0%	-0.1%	-0.1%	-0.0%
Consultants	49	-0	+2	+4	-2	-2	+1	-0.0%	+0.0%	+0.1%	-0.0%	-0.0%	+0.0%
Registrars	34	+3	+1	+9	+5	+5	-2	+0.1%	+0.0%	+0.3%	+0.2%	+0.2%	-0.0%
SHO/ Interns	45	+7	+2	-8	-10	-10	-1	+0.2%	+0.1%	-0.2%	-0.2%	-0.2%	-0.0%
Medical/ Dental, other			-1					-1.0%	-1.0%	-1.0%	-1.0%	-1.0%	-1.0%
Nursing & Midwifery	617	+32	+45	+52	+22	+22	+11	+0.1%	+0.1%	+0.1%	+0.0%	+0.0%	+0.0%
Nurse/ Midwife Manager	136	-17	-11	-3	-1	-1	+1	-0.1%	-0.1%	-0.0%	-0.0%	-0.0%	+0.0%
Nurse/ Midwife Specialist & AN/MP	69	+37	+27	+11	+5	+5	+1	+1.2%	+0.7%	+0.2%	+0.1%	+0.1%	+0.0%
Staff Nurse/ Staff Midwife	352	-29	-16	+1	-13	-13	-1	-0.1%	-0.0%	+0.0%	-0.0%	-0.0%	-0.0%
Public Health Nurse			-1	-1				-1.0%	-1.0%	-1.0%	-1.0%	-1.0%	-1.0%
Nursing/ Midwifery Student	48	+41	+45	+47	+34	+34	+10	+5.5%	+12.8%	+39.3%	+2.3%	+2.3%	+0.3%
Nursing/ Midwifery other	12	+0	-0	-3	-2	-2		+0.0%	-0.0%	-0.2%	-0.1%	-0.1%	+0.0%
Health & Social Care Professionals	177	+18	+16	+10	-5	-5	+4	+0.1%	+0.1%	+0.1%	-0.0%	-0.0%	+0.0%
Therapy Professions	63	+9	+11	+9	+1	+1	+1	+0.2%	+0.2%	+0.2%	+0.0%	+0.0%	+0.0%
Social Care	1	-0	-0	-0	-0	-0	-0	-0.1%	-0.1%	-0.0%	-0.1%	-0.1%	-0.1%
Social Workers	43	-2	+4	-4	-4	-4	-0	-0.0%	+0.1%	-0.1%	-0.1%	-0.1%	-0.0%
Psychologists	48	+10	+1	+3	-3	-3	+3	+0.3%	+0.0%	+0.1%	-0.1%	-0.1%	+0.1%
Pharmacy	7	+0	-2	-2	-1	-1	-0	+0.1%	-0.2%	-0.2%	-0.1%	-0.1%	-0.0%
H&SC, Other	14	+1	+1	+3	+2	+2	+0	+0.1%	+0.1%	+0.3%	+0.1%	+0.1%	+0.0%
Management & Administrative	130	+20	+17	+4	-7	-7	-1	+0.2%	+0.1%	+0.0%	-0.1%	-0.1%	-0.0%
Management (VIII & above)	5	+3	+3	+3	+3	+3	+0	+1.5%	+1.5%	+1.5%	+1.5%	+1.5%	+0.0%
Administrative/ Supervisory (V to VII)	28	+10	+8	+2	+0	+0	-0	+0.6%	+0.4%	+0.1%	+0.0%	+0.0%	-0.0%
Clerical (III & IV)	96	+6	+5	-1	-11	-11	-0	+0.1%	+0.1%	-0.0%	-0.1%	-0.1%	-0.0%
General Support	112	-26	-24	-15	-15	-15	+1	-0.2%	-0.2%	-0.1%	-0.1%	-0.1%	+0.0%
Support	101	-25	-24	-15	-15	-15	+0	-0.2%	-0.2%	-0.1%	-0.1%	-0.1%	+0.0%
Maintenance/ Technical	11	-1	+0	-0	-0	-0	+0	-0.1%	+0.0%	-0.0%	-0.0%	-0.0%	+0.0%
Patient & Client Care	136	+25	+26	+25	+12	+12	-1	+0.2%	+0.2%	+0.2%	+0.1%	+0.1%	-0.0%
Health Care Assistants	124	+15	+15	+15	+6	+6	-1	+0.1%	+0.1%	+0.1%	+0.1%	+0.1%	-0.0%
Care, other	12	+10	+11	+10	+6	+6	-0	+5.1%	+11.2%	+5.1%	+1.1%	+1.1%	-0.0%

Source: Health Service Personnel Census

Primary Care

May 2020 (Dec 2015 figure: 1,207)	WTE May 2020	WTE change since Dec 15	WTE change since Dec 16	WTE change since Dec 17	WTE change since Dec 18	WTE change since Dec 18	WTE change since Apr 20	% change since Dec 15	% change since Dec 16	% change since Dec 17	% change since Dec 18	% change since Dec 18	% change since Apr 20
Overall	1,249	+42	+87	+11	-50	-50	+8	+3.5%	+7.5%	+0.8%	-3.9%	-3.9%	+0.6%
Medical & Dental	110	-9	-4	-4	-9	-9	+2	-0.1%	-0.0%	-0.0%	-0.1%	-0.1%	+0.0%
Consultants	4	+0	+0	-2	+1	+1		+0.1%	+0.1%	-0.3%	+0.3%	+0.3%	+0.0%
Registrars	51	+11	+15	+8	-1	-1	-0	+0.3%	+0.4%	+0.2%	-0.0%	-0.0%	-0.0%
SHO/ Interns	4	-7	-6	+1	+4	+4		-0.6%	-0.6%	+0.3%	-1.0%	-1.0%	+0.0%
Medical/ Dental, other	51	-14	-14	-11	-13	-13	+2	-0.2%	-0.2%	-0.2%	-0.2%	-0.2%	+0.0%
Nursing & Midwifery	340	-6	+10	-19	-15	-15	+3	-0.0%	+0.0%	-0.1%	-0.0%	-0.0%	+0.0%
Nurse/ Midwife Manager	38	+3	+3	-1	+0	+0	+3	+0.1%	+0.1%	-0.0%	+0.0%	+0.0%	+0.1%
Nurse/ Midwife Specialist & AN/MP	6	+4	+2	-2	+1	+1		+2.1%	+0.5%	-0.2%	+0.2%	+0.2%	+0.0%
Staff Nurse/ Staff Midwife	101	+2	+8	-9	-13	-13	+1	+0.0%	+0.1%	-0.1%	-0.1%	-0.1%	+0.0%
Public Health Nurse	169	-13	-7	-3	-4	-4	-1	-0.1%	-0.0%	-0.0%	-0.0%	-0.0%	-0.0%
Nursing/ Midwifery Student	25	-1	+6	-3	+3	+3		-0.0%	+0.3%	-0.1%	+0.1%	+0.1%	+0.0%
Nursing/ Midwifery other		-2	-2	-1	-2	-2		-1.0%	-1.0%	-1.0%	-1.0%	-1.0%	-1.0%
Health & Social Care Professionals	351	+33	+38	+10	-4	-4	+1	+0.1%	+0.1%	+0.0%	-0.0%	-0.0%	+0.0%
Therapy Professions	194	+21	+20	-2	+1	+1	-1	+0.1%	+0.1%	-0.0%	+0.0%	+0.0%	-0.0%
Health Science/ Diagnostics	20	+20	+20	+20	-2	-2	+0	-1.0%	-1.0%	-1.0%	-0.1%	-0.1%	+0.0%
Social Care	5	-1	-0	-0	+1	+1	+0	-0.1%	-0.0%	-0.1%	+0.2%	+0.2%	+0.0%
Social Workers	17	-5	+1	-1	-0	-0	+0	-0.2%	+0.0%	-0.1%	-0.0%	-0.0%	+0.0%
Psychologists	66	+3	+4	+2	+1	+1	+1	+0.0%	+0.1%	+0.0%	+0.0%	+0.0%	+0.0%
Pharmacy	13	-6	-9	-8	-5	-5	+0	-0.3%	-0.4%	-0.4%	-0.3%	-0.3%	+0.0%
H&SC, Other	36	+2	+3	-2	+1	+1	+1	+0.1%	+0.1%	-0.0%	+0.0%	+0.0%	+0.0%
Management & Administrative	291	+34	+44	+26	-6	-6	+1	+0.1%	+0.2%	+0.1%	-0.0%	-0.0%	+0.0%
Management (VIII & above)	31	+8	+12	+5	+3	+3	+1	+0.3%	+0.6%	+0.2%	+0.1%	+0.1%	+0.0%
Administrative/ Supervisory (V to VII)	77	+20	+18	+20	-3	-3	-4	+0.4%	+0.3%	+0.4%	-0.0%	-0.0%	-0.1%
Clerical (III & IV)	183	+6	+14	+0	-6	-6	+5	+0.0%	+0.1%	+0.0%	-0.0%	-0.0%	+0.0%
General Support	33	-21	-19	-18	-14	-14	+0	-0.4%	-0.4%	-0.3%	-0.3%	-0.3%	+0.0%
Support	33	-21	-19	-18	-14	-14	+0	-0.4%	-0.4%	-0.3%	-0.3%	-0.3%	+0.0%
Patient & Client Care	125	+11	+17	+15	-2	-2	+0	+0.1%	+0.2%	+0.1%	-0.0%	-0.0%	+0.0%
Health Care Assistants	21	+15	+15	+13	-3	-3	+1	+2.8%	+3.0%	+1.6%	-0.1%	-0.1%	+0.0%
Care, other	105	-4	+2	+3	+1	+1	-0	-0.0%	+0.0%	+0.0%	+0.0%	+0.0%	-0.0%

Source: Health Service Personnel Census

Disabilities

May 2020 (Dec 2015 figure: 2,807)	WTE May 2020	WTE change since Dec 15	WTE change since Dec 16	WTE change since Dec 17	WTE change since Dec 18	WTE change since Dec 18	WTE change since Apr 20	% change since Dec 15	% change since Dec 16	% change since Dec 17	% change since Dec 18	% change since Dec 18	% change since Apr 20
Overall	3,200	+393	+157	+99	+75	+75	-18	+14.0%	+5.2%	+3.2%	+2.4%	+2.4%	-0.5%
Medical & Dental	23	+4	+4	+1	+4	+4	+0	+0.2%	+0.2%	+0.0%	+0.2%	+0.2%	+0.0%
Consultants	11	+2	+1	+0	+1	+1		+0.3%	+0.1%	+0.0%	+0.1%	+0.1%	+0.0%
Registrars	4	+1	+1	-1	+1	+1		+0.3%	+0.3%	-0.2%	+0.3%	+0.3%	+0.0%
SHO/ Interns	1	+1	+1	+1	+1	+1		-1.0%	-1.0%	-1.0%	-1.0%	-1.0%	+0.0%
Medical/ Dental, other	7	-0	+0	+1	+1	+1	+0	-0.0%	+0.1%	+0.2%	+0.2%	+0.2%	+0.0%
Nursing & Midwifery	741	-31	-12	-15	-8	-8	+2	-0.0%	-0.0%	-0.0%	-0.0%	-0.0%	+0.0%
Nurse/ Midwife Manager	191	-5	-6	-10	-5	-5	-0	-0.0%	-0.0%	-0.0%	-0.0%	-0.0%	-0.0%
Nurse/ Midwife Specialist & AN/MP	9	-1	+0	+1	+1	+1		-0.1%	+0.0%	+0.1%	+0.1%	+0.1%	+0.0%
Staff Nurse/ Staff Midwife	502	-58	-39	-39	-27	-27	-2	-0.1%	-0.1%	-0.1%	-0.1%	-0.1%	-0.0%
Nursing/ Midwifery Student	30	+28	+29	+30	+21	+21	+4	+13.8%	+28.6%	-1.0%	+2.5%	+2.5%	+0.2%
Nursing/ Midwifery other	9	+5	+4	+3	+2	+2	+0	+1.3%	+0.9%	+0.6%	+0.3%	+0.3%	+0.0%
Health & Social Care Professionals	1,017	+232	+92	+73	+63	+63	-8	+0.3%	+0.1%	+0.1%	+0.1%	+0.1%	-0.0%
Therapy Professions	184	+33	+5	+10	+10	+10	+1	+0.2%	+0.0%	+0.1%	+0.1%	+0.1%	+0.0%
Health Science/ Diagnostics	13	-22	-19	-24	-1	-1		-0.6%	-0.6%	-0.6%	-0.1%	-0.1%	+0.0%
Social Care	694	+217	+115	+92	+46	+46	-8	+0.5%	+0.2%	+0.2%	+0.1%	+0.1%	-0.0%
Social Workers	47	+0	-4	-3	+3	+3	+0	+0.0%	-0.1%	-0.1%	+0.1%	+0.1%	+0.0%
Psychologists	58	+7	-0	+0	+4	+4	-2	+0.1%	-0.0%	+0.0%	+0.1%	+0.1%	-0.0%
Pharmacy	2							+0.0%	+0.0%	+0.0%	+0.0%	+0.0%	+0.0%
H&SC, Other	20	-4	-5	-3	+1	+1	+1	-0.2%	-0.2%	-0.1%	+0.0%	+0.0%	+0.0%
Management & Administrative	248	+46	+29	+24	+10	+10	+0	+0.2%	+0.1%	+0.1%	+0.0%	+0.0%	+0.0%
Management (VIII & above)	36	+8	+7	+4	+2	+2		+0.3%	+0.2%	+0.1%	+0.1%	+0.1%	+0.0%
Administrative/ Supervisory (V to VII)	91	+20	+10	+11	+5	+5	+1	+0.3%	+0.1%	+0.1%	+0.1%	+0.1%	+0.0%
Clerical (III & IV)	122	+18	+12	+8	+3	+3	-1	+0.2%	+0.1%	+0.1%	+0.0%	+0.0%	-0.0%
General Support	210	-56	-31	-27	-13	-13	-6	-0.2%	-0.1%	-0.1%	-0.1%	-0.1%	-0.0%
Support	188	-51	-31	-25	-12	-12	-6	-0.2%	-0.1%	-0.1%	-0.1%	-0.1%	-0.0%
Maintenance/ Technical	22	-5	-0	-2	-1	-1		-0.2%	-0.0%	-0.1%	-0.1%	-0.1%	+0.0%
Patient & Client Care	960	+199	+75	+43	+20	+20	-6	+0.3%	+0.1%	+0.0%	+0.0%	+0.0%	-0.0%
Health Care Assistants	865	+188	+80	+37	+24	+24	-5	+0.3%	+0.1%	+0.0%	+0.0%	+0.0%	-0.0%
Care, other	95	+11	-4	+6	-5	-5	-1	+0.1%	-0.0%	+0.1%	-0.0%	-0.0%	-0.0%

Source: Health Service Personnel Census

Older People

May 2020 (Dec 2015 figure: 852)	WTE May 2020	WTE change since Dec 15	WTE change since Dec 16	WTE change since Dec 17	WTE change since Dec 18	WTE change since Dec 18	WTE change since Apr 20	% change since Dec 15	% change since Dec 16	% change since Dec 17	% change since Dec 18	% change since Dec 18	% change since Apr 20
Overall	912	+60	+47	+34	+4	+4	+16	+7.0%	+5.5%	+3.9%	+0.4%	+0.4%	+1.8%
Medical & Dental	21	+1	+1	-1	+3	+3	+0	+0.1%	+0.1%	-0.0%	+0.1%	+0.1%	+0.0%
Consultants	2	-3	-5	-5	+0	+0		-0.6%	-0.7%	-0.7%	+0.3%	+0.3%	+0.0%
Registrars	7	+0	+1		+0	+0		+0.1%	+0.2%	+0.0%	+0.0%	+0.0%	+0.0%
SHO/ Interns	11	+4	+5	+4	+2	+2	+0	+0.6%	+0.8%	+0.6%	+0.2%	+0.2%	+0.0%
Medical/ Dental, other	1		+0					+0.0%	+0.0%	+0.0%	+0.0%	+0.0%	+0.0%
Nursing & Midwifery	316	+18	+15	+26	+0	+0	+1	+0.1%	+0.0%	+0.1%	+0.0%	+0.0%	+0.0%
Nurse/ Midwife Manager	80	+1	+3	-4	+2	+2	+1	+0.0%	+0.0%	-0.0%	+0.0%	+0.0%	+0.0%
Nurse/ Midwife Specialist & AN/MP	6	+1	+3	+3	+2	+2	+0	+0.2%	+1.0%	+1.0%	+0.5%	+0.5%	+0.0%
Staff Nurse/ Staff Midwife	229	+16	+9	+27	-3	-3	-0	+0.1%	+0.0%	+0.1%	-0.0%	-0.0%	-0.0%
Public Health Nurse			-0	-0	-0	-0	-0	-1.0%	-1.0%	-1.0%	-1.0%	-1.0%	-1.0%
Nursing/ Midwifery other	1							+0.0%	+0.0%	+0.0%	+0.0%	+0.0%	+0.0%
Health & Social Care Professionals	94	+29	+26	+14	+10	+10	+3	+0.4%	+0.4%	+0.2%	+0.1%	+0.1%	+0.0%
Therapy Professions	68	+22	+21	+10	+12	+12	+3	+0.5%	+0.5%	+0.2%	+0.2%	+0.2%	+0.0%
Health Science/ Diagnostics	1	-1	-1	-1	-1	-1		-0.5%	-0.5%	-0.5%	-0.5%	-0.5%	+0.0%
Social Care	1	+0	+0	+0			-0	+0.1%	+0.0%	+0.1%	+0.0%	+0.0%	-0.0%
Social Workers	21	+7	+6	+5	-1	-1	+0	+0.5%	+0.4%	+0.3%	-0.0%	-0.0%	+0.0%
Pharmacy	3	+0	+0	+0	+0	+0	+0	+0.1%	+0.1%	+0.1%	+0.1%	+0.1%	+0.1%
H&SC, Other	0	+0						-1.0%	+0.0%	+0.0%	+0.0%	+0.0%	+0.0%
Management & Administrative	67	+12	+10	+1	-7	-7	-1	+0.2%	+0.2%	+0.0%	-0.1%	-0.1%	-0.0%
Management (VIII & above)	8	+4	+3	+1	-1	-1	-1	+1.0%	+0.6%	+0.2%	-0.1%	-0.1%	-0.1%
Administrative/ Supervisory (V to VII)	16	+1	+1	-2	-4	-4	-0	+0.1%	+0.1%	-0.1%	-0.2%	-0.2%	-0.0%
Clerical (III & IV)	43	+7	+6	+2	-2	-2	-0	+0.2%	+0.2%	+0.0%	-0.0%	-0.0%	-0.0%
General Support	124	-5	-0	-0	+0	+0	+2	-0.0%	-0.0%	-0.0%	+0.0%	+0.0%	+0.0%
Support	121	-5	-0	-0	+0	+0	+2	-0.0%	-0.0%	-0.0%	+0.0%	+0.0%	+0.0%
Maintenance/ Technical	2							+0.0%	+0.0%	+0.0%	+0.0%	+0.0%	+0.0%
Patient & Client Care	291	+4	-4	-6	-2	-2	+11	+0.0%	-0.0%	-0.0%	-0.0%	-0.0%	+0.0%
Health Care Assistants	285	+1	-7	-9	-4	-4	+12	+0.0%	-0.0%	-0.0%	-0.0%	-0.0%	+0.0%
Care, other	6	+3	+3	+3	+2	+2	-1	+1.4%	+1.2%	+1.2%	+0.6%	+0.6%	-0.1%

Source: Health Service Personnel Census