

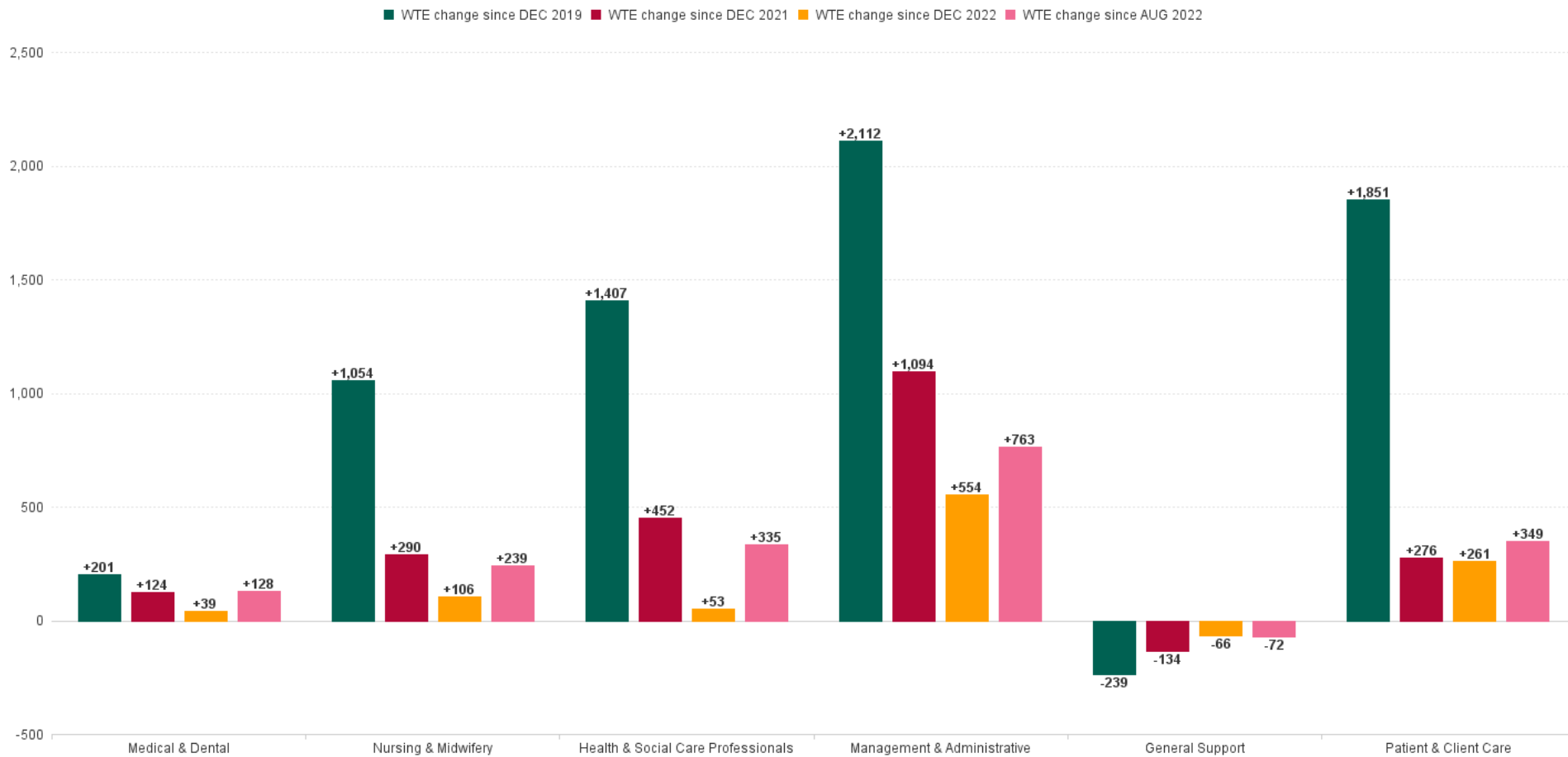
Community Services Employment Report : AUG 2023

Employment Report by Staff Group

AUG 2023	WTE DEC 2019	WTE DEC 2022	WTE JUL 2023	WTE AUG 2023	WTE change since DEC 2019	% WTE Change since Dec 2019	WTE change since DEC 2022	% WTE Change since Dec 2022	WTE change since JUL 2023	No. AUG 2023
Overall	52,085	57,523	58,502	58,471	+6,386	+12.26%	+948	+1.65%	-31	68,690
Consultants	424	472	484	489	+65	+15.41%	+17	+3.58%	+5	548
Registrars	687	798	885	850	+163	+23.74%	+52	+6.49%	-35	914
SHO/ Interns	319	327	304	345	+25	+7.91%	+17	+5.33%	+41	377
Medical/ Dental, other	634	629	596	582	-52	-8.24%	-47	-7.43%	-14	867
Medical & Dental	2,065	2,227	2,269	2,266	+201	+9.75%	+39	+1.77%	-3	2,706
Nurse/ Midwife Manager	3,162	3,449	3,516	3,522	+360	+11.39%	+73	+2.12%	+7	3,762
Nurse/ Midwife Specialist & AN/MP	691	1,064	1,227	1,222	+531	+76.80%	+158	+14.85%	-5	1,337
Staff Nurse/ Staff Midwife	9,008	9,366	9,233	9,168	+160	+1.77%	-198	-2.12%	-65	10,511
Public Health Nurse	1,534	1,502	1,463	1,477	-57	-3.73%	-25	-1.69%	+13	1,793
<i>Nursing/ Midwifery awaiting registration</i>	72	43	10	8	-64	-88.93%	-36	-81.74%	-3	9
<i>Post-registration Nurse/ Midwife Student</i>	98	97	29	25	-73	-74.70%	-72	-74.44%	-4	26
<i>Pre-registration Nurse/ Midwife Intern</i>	53	33	243	242	+189	+354.52%	+209	+623.33%	-1	480
Nursing/ Midwifery Student	223	174	283	275	+52	+23.39%	+101	+58.25%	-8	515
Nursing/ Midwifery other	59	70	66	67	+9	+14.83%	-3	-3.76%	+2	75
Nursing & Midwifery	14,677	15,625	15,787	15,731	+1,054	+7.18%	+106	+0.68%	-56	17,993
Therapy Professions	3,204	3,740	3,804	3,792	+588	+18.34%	+52	+1.39%	-12	4,462
Health Science/ Diagnostics	108	125	125	126	+18	+16.48%	+1	+0.62%	+1	139
Social Care	2,707	3,167	3,183	3,150	+443	+16.37%	-18	-0.56%	-33	3,714
Social Workers	807	970	987	985	+178	+22.08%	+15	+1.50%	-2	1,106
Psychologists	901	983	993	981	+80	+8.87%	-2	-0.17%	-11	1,104
Pharmacy	98	125	131	131	+32	+33.06%	+5	+4.27%	-1	164
H&SC, Other	403	471	475	471	+68	+16.91%	-0	-0.09%	-4	566
Health & Social Care Professionals	8,228	9,582	9,697	9,635	+1,407	+17.10%	+53	+0.55%	-63	11,255
Management (VIII & above)	618	827	837	832	+214	+34.60%	+5	+0.60%	-5	860
Administrative/ Supervisory (V to VII)	1,507	2,400	2,602	2,636	+1,129	+74.89%	+236	+9.84%	+34	2,811
Clerical (III & IV)	3,694	4,150	4,472	4,463	+769	+20.81%	+313	+7.55%	-9	5,119
Management & Administrative	5,819	7,377	7,911	7,931	+2,112	+36.28%	+554	+7.51%	+20	8,790
Support	2,461	2,269	2,184	2,189	-272	-11.06%	-80	-3.53%	+5	2,744
Maintenance/ Technical	406	425	434	440	+34	+8.29%	+14	+3.40%	+6	465
General Support	2,867	2,694	2,618	2,628	-239	-8.32%	-66	-2.43%	+11	3,209
Health Care Assistants	12,147	13,075	13,374	13,448	+1,301	+10.71%	+373	+2.85%	+74	15,675
Care, other	2,717	3,162	3,171	3,154	+437	+16.08%	-7	-0.24%	-17	3,744
Home Help	3,565	3,782	3,676	3,678	+113	+3.17%	-104	-2.74%	+2	5,318
Patient & Client Care	18,430	20,019	20,221	20,280	+1,851	+10.04%	+261	+1.31%	+60	24,737



WTE Change by Staff Category



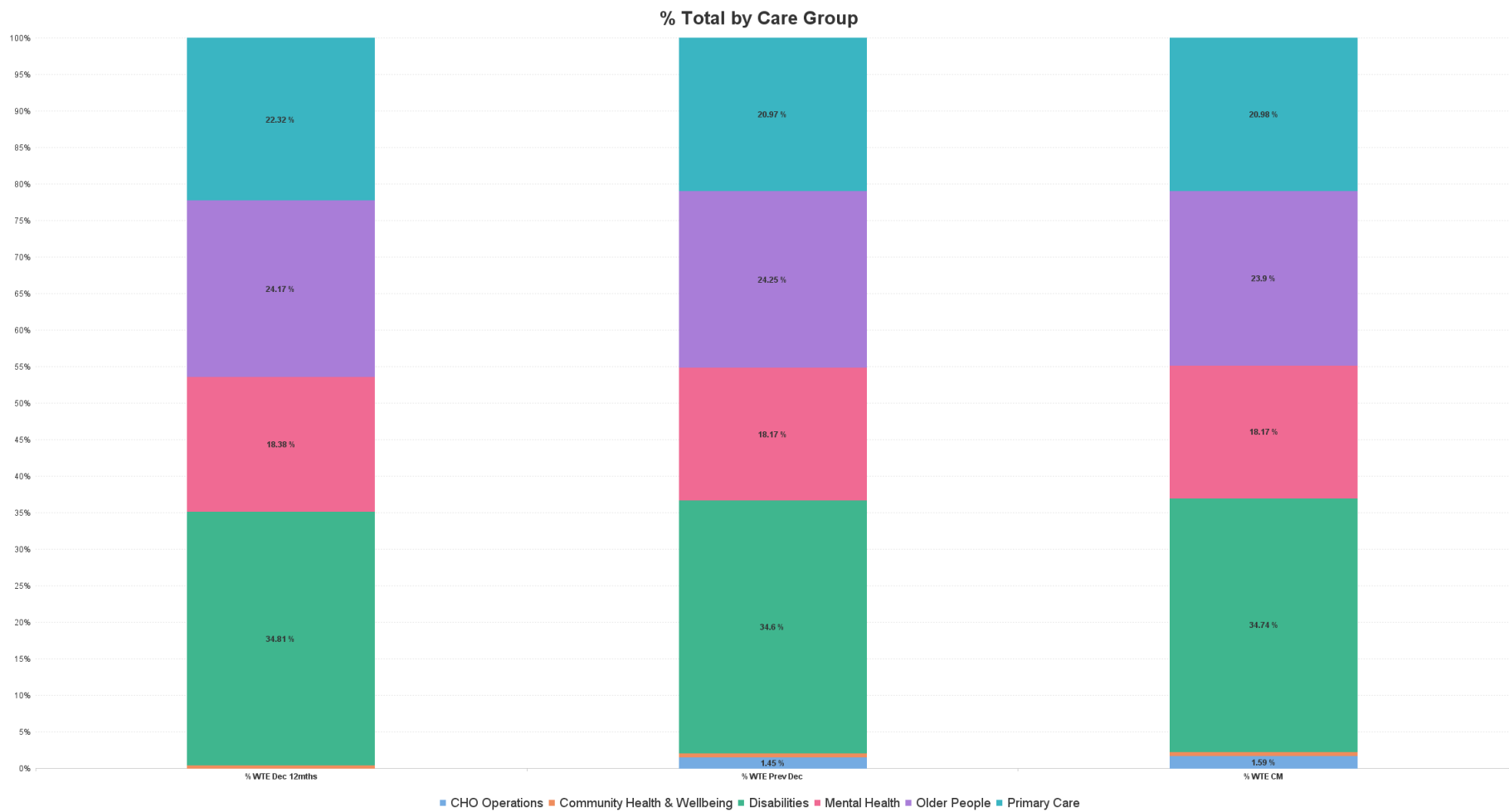
Community Services Report by CHO: AUG 2023

AUG 2023	WTE DEC 2019	WTE DEC 2022	WTE JUL 2023	WTE AUG 2023	WTE change since DEC 2019	% WTE Change since Dec 2019	WTE change since DEC 2022	% WTE Change since Dec 2022	WTE change since JUL 2023	No. AUG 2023
Overall	52,085	57,523	58,502	58,471	+6,386	+12.26%	+948	+1.65%	-31	68,690
CHO Operations		89	101	100	+100		+11	+12.33%	-1	104
Community Health & Wellbeing		28	37	37	+37		+9	+33.13%	-0	41
Disabilities	1,498	1,698	1,744	1,755	+257	+17.14%	+57	+3.36%	+11	1,936
Mental Health	953	1,024	1,056	1,056	+103	+10.80%	+32	+3.11%	-0	1,146
Older People	1,836	2,087	2,141	2,146	+310	+16.89%	+58	+2.79%	+5	2,515
Primary Care	1,182	1,472	1,526	1,509	+327	+27.70%	+38	+2.55%	-17	1,770
CHO 1	5,468	6,398	6,606	6,603	+1,135	+20.75%	+205	+3.20%	-3	7,512
CHO Operations		82	108	103	+103		+21	+26.21%	-5	110
Community Health & Wellbeing		21	36	35	+35		+14	+64.77%	-1	38
Disabilities	1,497	1,607	1,721	1,720	+223	+14.92%	+114	+7.06%	-1	2,091
Mental Health	1,308	1,329	1,323	1,322	+14	+1.07%	-7	-0.51%	-0	1,463
Older People	1,606	1,582	1,568	1,565	-41	-2.56%	-18	-1.13%	-3	1,831
Primary Care	1,134	1,351	1,303	1,267	+133	+11.76%	-84	-6.19%	-36	1,494
CHO 2	5,545	5,972	6,060	6,013	+468	+8.44%	+41	+0.68%	-47	7,027
CHO Operations		192	205	210	+210		+18	+9.27%	+5	225
Community Health & Wellbeing		38	42	43	+43		+5	+12.19%	+1	47
Disabilities	1,823	1,989	2,021	2,031	+207	+11.37%	+42	+2.12%	+10	2,411
Mental Health	795	814	814	815	+20	+2.48%	+1	+0.12%	+1	905
Older People	974	1,264	1,276	1,283	+309	+31.74%	+19	+1.52%	+7	1,564
Primary Care	764	772	835	823	+59	+7.76%	+51	+6.66%	-12	985
CHO 3	4,357	5,069	5,193	5,205	+849	+19.48%	+136	+2.69%	+12	6,137
CHO Operations			43	43	+43		+43		+0	45
Community Health & Wellbeing		52	45	43	+43		-9	-17.31%	-2	60
Disabilities	2,425	2,640	2,664	2,678	+253	+10.41%	+37	+1.42%	+13	3,156
Mental Health	1,499	1,562	1,568	1,568	+69	+4.61%	+6	+0.39%	+0	1,751
Older People	2,919	3,000	2,722	2,717	-202	-6.91%	-283	-9.44%	-5	3,649
Primary Care	1,346	1,707	1,806	1,778	+432	+32.11%	+71	+4.18%	-28	2,212
CHO 4	8,189	8,961	8,848	8,827	+638	+7.79%	-134	-1.49%	-21	10,873
CHO Operations		94	96	95	+95		+2	+1.80%	-0	100
Community Health & Wellbeing		38	49	51	+51		+13	+33.30%	+2	57
Disabilities	1,488	1,656	1,712	1,696	+208	+13.97%	+40	+2.39%	-16	2,008
Mental Health	1,177	1,224	1,291	1,297	+119	+10.15%	+72	+5.92%	+6	1,444
Older People	1,653	1,641	1,717	1,721	+68	+4.10%	+80	+4.86%	+4	2,106
Primary Care	958	1,152	1,178	1,157	+199	+20.75%	+6	+0.48%	-21	1,384
CHO 5	5,277	5,805	6,042	6,017	+740	+14.03%	+212	+3.65%	-25	7,099
CHO Operations		60	72	73	+73		+13	+22.06%	+2	78
Community Health & Wellbeing		17	15	16	+16		-1	-5.47%	+2	17
Disabilities	1,198	1,216	1,210	1,207	+9	+0.75%	-10	-0.81%	-4	1,396
Mental Health	593	650	663	670	+78	+13.15%	+21	+3.23%	+7	746
Older People	823	813	843	848	+25	+2.98%	+35	+4.34%	+5	927
Primary Care	765	864	877	881	+116	+15.22%	+16	+1.90%	+4	1,116
CHO 6	3,378	3,620	3,680	3,695	+317	+9.39%	+75	+2.08%	+16	4,280
CHO Operations		113	120	118	+118		+4	+3.77%	-2	128
Community Health & Wellbeing		49	45	45	+45		-4	-8.30%	-0	50
Disabilities	2,982	3,410	3,481	3,475	+494	+16.56%	+66	+1.92%	-6	4,106
Mental Health	835	879	901	903	+68	+8.15%	+25	+2.79%	+2	1,001
Older People	996	999	1,000	1,001	+5	+0.54%	+3	+0.26%	+2	1,147
Primary Care	1,702	1,765	1,779	1,783	+81	+4.78%	+18	+1.02%	+4	2,087
CHO 7	6,514	7,215	7,326	7,326	+811	+12.45%	+111	+1.54%	-1	8,519
CHO Operations		58	61	59	+59		+1	+1.42%	-2	61
Community Health & Wellbeing		33	43	45	+45		+12	+37.65%	+2	49



AUG 2023	WTE DEC 2019	WTE DEC 2022	WTE JUL 2023	WTE AUG 2023	WTE change since DEC 2019	% WTE Change since Dec 2019	WTE change since DEC 2022	% WTE Change since Dec 2022	WTE change since JUL 2023	No. AUG 2023
Overall	52,085	57,523	58,502	58,471	+6,386	+12.26%	+948	+1.65%	-31	68,690
Disabilities	2,162	2,345	2,410	2,425	+263	+12.14%	+79	+3.38%	+14	2,931
Mental Health	1,098	1,091	1,131	1,135	+37	+3.40%	+45	+4.10%	+4	1,256
Older People	1,488	1,489	1,551	1,563	+75	+5.02%	+74	+4.94%	+12	1,915
Primary Care	1,387	1,498	1,544	1,546	+159	+11.47%	+48	+3.19%	+2	1,846
CHO 8	6,135	6,514	6,739	6,772	+637	+10.39%	+258	+3.97%	+33	8,058
CHO Operations		144	134	129	+129		-15	-10.35%	-4	140
Community Health & Wellbeing		46	49	49	+49		+3	+7.18%	+0	52
Disabilities	3,194	3,336	3,332	3,318	+125	+3.90%	-18	-0.53%	-14	3,944
Mental Health	1,272	1,371	1,308	1,305	+34	+2.64%	-66	-4.80%	-3	1,454
Older People	870	976	1,006	1,016	+146	+16.77%	+40	+4.05%	+10	1,143
Primary Care	1,247	1,357	1,389	1,392	+145	+11.66%	+36	+2.62%	+4	1,602
CHO 9	6,582	7,230	7,217	7,210	+628	+9.54%	-20	-0.28%	-8	8,335
Disabilities	6	6	6	7	+1	+16.47%	+1	+16.86%	+1	7
Mental Health	438	511	547	553	+115	+26.37%	+42	+8.21%	+6	580
Older People	74	95	111	113	+39	+51.99%	+18	+18.90%	+2	123
Primary Care	122	127	127	131	+8	+6.68%	+3	+2.39%	+3	140
other Community Services	640	740	791	804	+163	+25.50%	+64	+8.66%	+12	850





Community Services Employment Report by HSE/S38: AUG 2023

AUG 2023	WTE DEC 2019	WTE DEC 2022	WTE JUL 2023	WTE AUG 2023	WTE change since DEC 2019	% WTE Change since Dec 2019	WTE change since DEC 2022	% WTE Change since Dec 2022	WTE change since JUL 2023	No. AUG 2023
Overall	52,085	57,523	58,502	58,471	+6,386	+12.26%	+948	+1.65%	-31	68,690
Health Service Executive	35,860	39,878	40,636	40,590	+4,730	+13.19%	+713	+1.79%	-46	47,347
Section 38 Voluntary Agencies	16,225	17,645	17,866	17,881	+1,656	+10.21%	+236	+1.34%	+15	21,343



Community Services Employment Report by HSE: AUG 2023

AUG 2023	WTE DEC 2019	WTE DEC 2022	WTE JUL 2023	WTE AUG 2023	WTE change since DEC 2019	% WTE Change since Dec 2019	WTE change since DEC 2022	% WTE Change since Dec 2022	WTE change since JUL 2023	No. AUG 2023
Total HSE	35,860	39,878	40,636	40,590	+4,730	+13.19%	+713	+1.79%	-46	47,347
Consultants	376	416	424	428	+53	+14.03%	+12	+2.92%	+4	472
Registrars	644	756	844	807	+163	+25.23%	+51	+6.72%	-37	865
SHO/ Interns	284	291	262	299	+16	+5.56%	+9	+2.98%	+37	319
Medical/ Dental, other	610	600	571	559	-51	-8.28%	-40	-6.73%	-12	821
Medical & Dental	1,914	2,063	2,102	2,094	+181	+9.43%	+31	+1.52%	-7	2,477
Nurse/ Midwife Manager	2,386	2,617	2,682	2,691	+305	+12.80%	+74	+2.83%	+10	2,856
Nurse/ Midwife Specialist & AN/MP	608	958	1,116	1,113	+505	+83.17%	+155	+16.14%	-3	1,207
Staff Nurse/ Staff Midwife	6,818	7,121	7,069	7,037	+218	+3.20%	-84	-1.19%	-33	8,024
Public Health Nurse	1,534	1,502	1,463	1,477	-57	-3.73%	-25	-1.69%	+13	1,793
Nursing/ Midwifery awaiting registration	72	41	10	8	-44	-88.93%	+4	-80.49%	-3	9
Post-registration Nurse/ Midwife Student	98	97	29	25	+45	-74.70%	-6	-74.44%	-4	26
Pre-registration Nurse/ Midwife Intern	21	25	177	176	+6	+727.40%	-3	+591.01%	-1	354
Nursing/ Midwifery Student	191	163	217	209	+18	+9.43%	+46	+28.15%	-8	389
Nursing/ Midwifery other	40	46	48	48	+9	+22.13%	+2	+4.63%	+0	54
Nursing & Midwifery	11,576	12,408	12,595	12,575	+999	+8.63%	+167	+1.35%	-20	14,323
Therapy Professions	2,645	3,132	3,215	3,184	+540	+20.40%	+52	+1.66%	-31	3,763
Health Science/ Diagnostics	85	105	105	106	+21	+24.36%	+1	+1.11%	+1	116
Social Care	175	194	202	192	+17	+9.46%	-2	-1.04%	-10	226
Social Workers	601	744	771	769	+168	+27.99%	+25	+3.42%	-1	854
Psychologists	756	813	831	822	+65	+8.62%	+8	+1.04%	-9	920
Pharmacy	75	102	108	108	+32	+42.93%	+6	+5.93%	-0	134
H&SC, Other	338	418	424	421	+84	+24.78%	+3	+0.79%	-2	498
Health & Social Care Professionals	4,676	5,508	5,656	5,602	+926	+19.81%	+94	+1.71%	-53	6,511
Management (VIII & above)	471	646	659	651	+181	+38.35%	+6	+0.89%	-8	673
Administrative/ Supervisory (V to VII)	1,095	1,884	2,028	2,057	+962	+87.82%	+174	+9.23%	+29	2,186
Clerical (III & IV)	3,076	3,493	3,777	3,766	+690	+22.43%	+274	+7.84%	-10	4,273
Management & Administrative	4,643	6,022	6,465	6,475	+1,833	+39.47%	+453	+7.53%	+11	7,132
Support	1,580	1,470	1,454	1,463	-117	-7.40%	-7	-0.46%	+9	1,769
Maintenance/ Technical	278	294	295	296	+18	+6.56%	+2	+0.60%	+1	306
General Support	1,858	1,764	1,749	1,759	-99	-5.31%	-5	-0.28%	+10	2,075
Health Care Assistants	6,507	6,841	6,857	6,866	+359	+5.51%	+25	+0.36%	+9	7,736
Care, other	1,122	1,490	1,537	1,541	+419	+37.32%	+50	+3.38%	+4	1,775
Home Help	3,565	3,782	3,676	3,678	+113	+3.17%	-104	-2.74%	+2	5,318
Patient & Client Care	11,195	12,113	12,070	12,085	+890	+7.95%	-28	-0.23%	+15	14,829

Community Services Employment Report by S38 Voluntary Agencies: AUG 2

AUG 2023	WTE DEC 2019	WTE DEC 2022	WTE JUL 2023	WTE AUG 2023	WTE change since DEC 2019	% WTE Change since Dec 2019	WTE change since DEC 2022	% WTE Change since Dec 2022	WTE change since JUL 2023	No. AUG 2023
Total S38 Voluntary Agencies	16,225	17,645	17,866	17,881	+1,656	+10.21%	+236	+1.34%	+15	21,343
Consultants	48	56	60	61	+13	+26.12%	+5	+8.47%	+1	76
Registrars	43	42	41	43	+1	+1.31%	+1	+2.41%	+2	49
SHO/ Interns	36	36	42	45	+9	+26.64%	+9	+24.13%	+3	58
Medical/ Dental, other	24	29	24	23	-2	-7.25%	-6	-21.90%	-2	46
Medical & Dental	151	164	167	172	+21	+13.81%	+8	+4.99%	+5	229
Nurse/ Midwife Manager	776	832	834	831	+55	+7.03%	-1	-0.12%	-3	906
Nurse/ Midwife Specialist & AN/MP	84	106	111	109	+26	+30.56%	+3	+3.16%	-2	130
Staff Nurse/ Staff Midwife	2,190	2,245	2,163	2,131	-59	-2.69%	-114	-5.08%	-32	2,487
Nursing/ Midwifery awaiting registration		3					-0	-100.00%		
Pre-registration Nurse/ Midwife Intern	32	8	66	66	-8	+106.56%	+4	+726.25%	+0	126
Nursing/ Midwifery Student	32	11	66	66	+34	+106.56%	+55	+512.60%	+0	126
Nursing/ Midwifery other	19	24	18	19	-0	-0.38%	-5	-20.14%	+1	21
Nursing & Midwifery	3,101	3,217	3,192	3,156	+55	+1.78%	-61	-1.90%	-36	3,670
Therapy Professions	559	607	589	607	+48	+8.60%	-0	-0.01%	+19	699
Health Science/ Diagnostics	23	20	20	20	-3	-13.12%	-0	-1.94%	+0	23
Social Care	2,531	2,974	2,981	2,958	+426	+16.85%	-16	-0.52%	-23	3,488
Social Workers	206	226	216	215	+10	+4.78%	-11	-4.81%	-1	252
Psychologists	145	170	162	160	+15	+10.15%	-10	-5.96%	-2	184
Pharmacy	23	24	23	23	+0	+0.48%	-1	-2.88%	-0	30
H&SC, Other	65	53	51	49	-16	-24.01%	-4	-6.97%	-2	68
Health & Social Care Professionals	3,552	4,074	4,042	4,033	+481	+13.53%	-41	-1.02%	-9	4,744
Management (VIII & above)	147	182	178	181	+33	+22.61%	-1	-0.44%	+3	187
Administrative/ Supervisory (V to VII)	412	516	574	579	+167	+40.51%	+62	+12.08%	+5	625
Clerical (III & IV)	618	657	695	696	+79	+12.75%	+39	+5.99%	+2	846
Management & Administrative	1,177	1,355	1,447	1,456	+279	+23.70%	+101	+7.45%	+9	1,658
Support	881	799	730	726	-155	-17.63%	-73	-9.17%	-4	975
Maintenance/ Technical	128	131	139	144	+15	+12.03%	+13	+9.70%	+5	159
General Support	1,009	930	869	869	-140	-13.86%	-61	-6.51%	+0	1,134
Health Care Assistants	5,640	6,234	6,516	6,582	+942	+16.71%	+348	+5.58%	+65	7,939
Care, other	1,595	1,671	1,634	1,613	+18	+1.13%	-58	-3.46%	-20	1,969
Patient & Client Care	7,235	7,905	8,150	8,195	+960	+13.27%	+290	+3.66%	+45	9,908

Community Services Employment Report by Grade Group: AUG 2023

CHO 1

AUG 2023	WTE DEC 2019	WTE DEC 2022	WTE JUL 2023	WTE AUG 2023	WTE change since DEC 2019	% WTE Change since Dec 2019	WTE change since DEC 2022	% WTE Change since Dec 2022	WTE change since JUL 2023	No. AUG 2023
Overall	5,468	6,398	6,606	6,603	+1,135	+20.75%	+205	+3.20%	-3	7,512
Consultants	34	39	40	39	+6	+16.51%	+1	+1.42%	-0	42
Registrars	65	77	87	74	+9	+13.12%	-3	-3.80%	-13	81
SHO/ Interns	26	22	21	24	-2	-7.04%	+3	+12.01%	+4	25
Medical/ Dental, other	80	72	60	59	-21	-26.37%	-13	-18.00%	-1	96
Medical & Dental	205	209	207	197	-9	-4.29%	-13	-6.06%	-11	244
Nurse/ Midwife Manager	350	375	392	390	+41	+11.59%	+15	+4.13%	-2	411
Nurse/ Midwife Specialist & AN/MP	102	170	192	197	+95	+92.84%	+27	+15.78%	+4	209
Staff Nurse/ Staff Midwife	1,014	1,086	1,090	1,094	+80	+7.92%	+9	+0.81%	+4	1,227
Public Health Nurse	156	152	146	146	-10	-6.29%	-6	-4.09%	-0	171
Nursing/ Midwifery Student	21	21	34	29	+8	+39.90%	+9	+42.61%	-5	56
Nursing/ Midwifery other	6	8	8	8	+2	+43.28%	+0	+0.99%	+0	9
Nursing & Midwifery	1648	1811	1863	1865	+217	+13.14%	+54	+2.96%	+1	2,083
Therapy Professions	316	405	404	403	+87	+27.43%	-2	-0.61%	-1	465
Health Science/ Diagnostics	7	9	10	10	+3	+48.70%	+0	+3.96%	-0	11
Social Care	11	21	25	27	+16	+138.61%	+6	+30.83%	+2	30
Social Workers	85	107	115	116	+31	+37.09%	+9	+8.83%	+2	125
Psychologists	60	64	72	71	+11	+18.18%	+7	+11.35%	-1	79
Pharmacy	2	3	3	3	+2	+126.00%	+1	+33.99%	-0	4
H&SC, Other	32	47	47	46	+14	+42.65%	-0	-0.60%	-0	63
Health & Social Care Professionals	513	655	676	676	+164	+31.90%	+21	+3.28%	+1	777
Management (VIII & above)	60	81	82	80	+21	+34.54%	-0	-0.36%	-2	83
Administrative/ Supervisory (V to VII)	135	243	283	284	+149	+109.65%	+41	+16.93%	+1	301
Clerical (III & IV)	456	554	564	560	+104	+22.91%	+6	+1.08%	-4	636
Management & Administrative	651	877	929	924	+274	+42.03%	+47	+5.34%	-4	1,020
Support	306	283	286	292	-14	-4.45%	+9	+3.28%	+6	365
Maintenance/ Technical	36	37	33	34	-2	-5.95%	-3	-8.34%	+0	34
General Support	342	320	319	326	-16	-4.61%	+6	+1.94%	+7	399
Health Care Assistants	1,423	1,592	1,616	1,613	+191	+13.40%	+21	+1.34%	-2	1,796
Care, other	131	170	182	179	+48	+36.93%	+9	+5.53%	-4	200
Home Help	556	764	814	823	+267	+47.95%	+59	+7.69%	+9	993
Patient & Client Care	2110	2526	2612	2615	+506	+23.97%	+90	+3.54%	+4	2,989



Community Services Employment Report by Grade Group: AUG 2023

CHO 2

AUG 2023	WTE DEC 2019	WTE DEC 2022	WTE JUL 2023	WTE AUG 2023	WTE change since DEC 2019	% WTE Change since Dec 2019	WTE change since DEC 2022	% WTE Change since Dec 2022	WTE change since JUL 2023	No. AUG 2023
Overall	5,545	5,972	6,060	6,013	+468	+8.44%	+41	+0.68%	-47	7,027
Consultants	42	43	47	47	+5	+11.75%	+4	+8.91%	+0	54
Registrars	75	91	106	99	+24	+32.08%	+9	+9.63%	-7	103
SHO/ Interns	36	43	29	37	+1	+3.12%	-6	-13.57%	+8	40
Medical/ Dental, other	59	57	59	57	-2	-3.40%	-1	-1.06%	-2	71
Medical & Dental	212	234	240	240	+28	+13.30%	+6	+2.63%	-0	268
Nurse/ Midwife Manager	309	331	336	344	+35	+11.33%	+13	+3.98%	+7	367
Nurse/ Midwife Specialist & AN/MP	93	141	157	155	+62	+67.36%	+14	+9.69%	-2	170
Staff Nurse/ Staff Midwife	898	916	900	888	-10	-1.13%	-28	-3.05%	-12	1,022
Public Health Nurse	192	187	179	178	-14	-7.33%	-10	-5.16%	-1	212
Nursing/ Midwifery Student	9	25	25	23	+15	+163.47%	-2	-8.32%	-1	47
Nursing/ Midwifery other	2	4	5	5	+3	+125.00%	+1	+12.50%	+0	5
Nursing & Midwifery	1502	1604	1601	1592	+90	+6.01%	-12	-0.77%	-9	1,823
Therapy Professions	338	421	427	411	+73	+21.51%	-10	-2.41%	-16	492
Health Science/ Diagnostics	6	10	11	11	+4	+65.59%	+1	+10.50%	+0	11
Social Care	245	300	315	312	+67	+27.20%	+12	+3.98%	-3	373
Social Workers	84	102	100	99	+15	+17.74%	-4	-3.54%	-1	118
Psychologists	73	88	93	91	+17	+23.48%	+3	+2.85%	-3	105
Pharmacy	5	6	6	5	+0	+10.38%	-1	-13.79%	-1	6
H&SC, Other	59	77	69	71	+12	+19.90%	-6	-8.04%	+2	86
Health & Social Care Professionals	811	1004	1020	999	+188	+23.19%	-5	-0.52%	-21	1,191
Management (VIII & above)	56	70	71	67	+11	+19.57%	-4	-5.16%	-4	70
Administrative/ Supervisory (V to VII)	134	235	253	255	+122	+91.06%	+20	+8.44%	+2	277
Clerical (III & IV)	468	451	488	471	+3	+0.65%	+20	+4.34%	-17	545
Management & Administrative	657	757	812	793	+136	+20.63%	+36	+4.73%	-19	892
Support	158	140	137	137	-21	-13.45%	-4	-2.51%	-1	195
Maintenance/ Technical	68	79	79	80	+12	+17.46%	+1	+1.04%	+1	82
General Support	226	219	216	216	-9	-4.14%	-3	-1.23%	+1	277
Health Care Assistants	1,367	1,412	1,462	1,469	+102	+7.43%	+57	+4.04%	+7	1,684
Care, other	271	335	327	329	+59	+21.63%	-6	-1.67%	+2	393
Home Help	499	407	382	374	-125	-25.03%	-33	-8.01%	-8	499
Patient & Client Care	2137	2154	2171	2173	+35	+1.65%	+19	+0.88%	+2	2,576



Community Services Employment Report by Grade Group: AUG 2023

CHO 3

AUG 2023	WTE DEC 2019	WTE DEC 2022	WTE JUL 2023	WTE AUG 2023	WTE change since DEC 2019	% WTE Change since Dec 2019	WTE change since DEC 2022	% WTE Change since Dec 2022	WTE change since JUL 2023	No. AUG 2023
Overall	4,357	5,069	5,193	5,205	+849	+19.48%	+136	+2.69%	+12	6,137
Consultants	27	33	33	33	+6	+20.32%	-1	-1.85%	-1	40
Registrars	42	47	61	54	+12	+30.02%	+8	+16.10%	-7	57
SHO/ Interns	25	35	16	19	-6	-22.65%	-16	-45.37%	+3	20
Medical/ Dental, other	58	52	51	50	-8	-13.75%	-2	-3.55%	-1	67
Medical & Dental	152	167	162	156	+4	+2.90%	-11	-6.57%	-6	184
Nurse/ Midwife Manager	246	262	261	261	+14	+5.87%	-1	-0.41%	-0	275
Nurse/ Midwife Specialist & AN/MP	56	75	88	86	+31	+54.85%	+11	+14.27%	-2	96
Staff Nurse/ Staff Midwife	787	842	846	847	+59	+7.53%	+4	+0.51%	+0	963
Public Health Nurse	127	126	121	125	-2	-1.55%	-0	-0.38%	+4	155
Nursing/ Midwifery Student	20	11	25	24	+3	+15.08%	+12	+109.45%	-2	46
Nursing/ Midwifery other	4	4	4	4	+0	+7.53%	+0	+6.95%	+0	4
Nursing & Midwifery	1241	1320	1346	1346	+106	+8.52%	+26	+1.97%	+1	1,539
Therapy Professions	214	278	302	306	+92	+42.89%	+28	+10.04%	+3	354
Health Science/ Diagnostics	5	9	9	10	+5	+87.36%	+1	+11.68%	+1	12
Social Care	245	282	281	276	+31	+12.87%	-6	-2.15%	-5	317
Social Workers	59	67	66	65	+5	+8.78%	-3	-4.13%	-1	71
Psychologists	124	128	126	124	+0	+0.31%	-4	-2.88%	-2	132
Pharmacy	5	6	6	6	+2	+33.33%	+1	+15.73%	+0	8
H&SC, Other	32	36	37	38	+6	+17.34%	+2	+5.93%	+0	46
Health & Social Care Professionals	684	805	828	825	+141	+20.58%	+19	+2.41%	-3	940
Management (VIII & above)	38	56	59	62	+24	+62.90%	+6	+11.31%	+3	63
Administrative/ Supervisory (V to VII)	132	210	217	222	+90	+67.95%	+12	+5.57%	+5	237
Clerical (III & IV)	320	348	394	395	+75	+23.42%	+48	+13.68%	+2	440
Management & Administrative	491	614	670	679	+189	+38.48%	+66	+10.68%	+9	740
Support	163	142	145	145	-17	-10.72%	+3	+2.35%	-0	178
Maintenance/ Technical	77	84	87	87	+10	+12.57%	+3	+4.03%	+0	90
General Support	240	226	232	232	-8	-3.21%	+7	+2.97%	+0	268
Health Care Assistants	1,140	1,298	1,313	1,325	+186	+16.28%	+27	+2.08%	+13	1,619
Care, other	234	296	303	301	+68	+28.89%	+5	+1.64%	-2	343
Home Help	176	342	340	340	+164	+93.08%	-2	-0.70%	-0	504
Patient & Client Care	1549	1937	1955	1966	+417	+26.90%	+29	+1.52%	+11	2,466



Community Services Employment Report by Grade Group: AUG 2023

CHO 4

AUG 2023	WTE DEC 2019	WTE DEC 2022	WTE JUL 2023	WTE AUG 2023	WTE change since DEC 2019	% WTE Change since Dec 2019	WTE change since DEC 2022	% WTE Change since Dec 2022	WTE change since JUL 2023	No. AUG 2023
Overall	8,189	8,961	8,848	8,827	+638	+7.79%	-134	-1.49%	-21	10,873
Consultants	55	70	71	72	+17	+30.92%	+2	+3.23%	+1	84
Registrars	103	96	123	110	+7	+6.51%	+14	+14.78%	-13	118
SHO/ Interns	38	46	47	50	+11	+29.88%	+3	+6.67%	+3	54
Medical/ Dental, other	111	140	128	124	+13	+11.47%	-16	-11.13%	-4	224
Medical & Dental	308	352	369	356	+48	+15.56%	+4	+1.13%	-13	480
Nurse/ Midwife Manager	433	490	498	499	+67	+15.43%	+10	+1.99%	+1	543
Nurse/ Midwife Specialist & AN/MP	81	106	136	137	+56	+69.45%	+31	+29.75%	+2	148
Staff Nurse/ Staff Midwife	1,446	1,532	1,465	1,447	+1	+0.10%	-85	-5.54%	-18	1,737
Public Health Nurse	216	216	205	208	-8	-3.57%	-8	-3.77%	+3	263
Nursing/ Midwifery Student	60	18	42	41	-18	-30.93%	+23	+125.15%	-1	76
Nursing/ Midwifery other	1	1	1	1	+0	+96.08%	+0	+0.00%	+0	1
Nursing & Midwifery	2235	2363	2348	2334	+99	+4.42%	-29	-1.23%	-14	2,768
Therapy Professions	448	549	558	556	+109	+24.30%	+7	+1.28%	-2	662
Health Science/ Diagnostics	12	14	12	12	+0	+3.27%	-2	-14.64%	+0	14
Social Care	240	272	271	261	+21	+8.69%	-11	-4.22%	-10	309
Social Workers	115	147	155	152	+37	+32.66%	+5	+3.63%	-3	175
Psychologists	138	156	152	151	+13	+9.44%	-5	-3.15%	-1	171
Pharmacy	8	9	12	12	+4	+54.67%	+4	+44.25%	-0	19
H&SC, Other	60	72	76	70	+10	+16.37%	-2	-2.76%	-6	89
Health & Social Care Professionals	1020	1219	1238	1215	+195	+19.08%	-4	-0.36%	-23	1,439
Management (VIII & above)	73	90	99	101	+28	+38.16%	+10	+11.44%	+2	103
Administrative/ Supervisory (V to VII)	161	254	287	298	+137	+85.27%	+44	+17.36%	+11	321
Clerical (III & IV)	505	572	605	601	+96	+19.03%	+29	+4.99%	-5	720
Management & Administrative	738	916	991	999	+261	+35.35%	+83	+9.06%	+8	1,144
Support	337	353	299	300	-37	-11.10%	-54	-15.21%	+1	380
Maintenance/ Technical	22	22	20	20	-3	-11.22%	-2	-10.13%	-1	25
General Support	359	375	319	319	-40	-11.11%	-56	-14.91%	+0	405
Health Care Assistants	1,954	2,135	2,126	2,138	+184	+9.43%	+4	+0.18%	+12	2,461
Care, other	450	524	525	534	+84	+18.64%	+9	+1.77%	+9	654
Home Help	1,124	1,076	932	931	-192	-17.12%	-145	-13.45%	-1	1,522
Patient & Client Care	3528	3735	3583	3603	+76	+2.14%	-132	-3.52%	+20	4,637



Community Services Employment Report by Grade Group: AUG 2023

CHO 5

AUG 2023	WTE DEC 2019	WTE DEC 2022	WTE JUL 2023	WTE AUG 2023	WTE change since DEC 2019	% WTE Change since Dec 2019	WTE change since DEC 2022	% WTE Change since Dec 2022	WTE change since JUL 2023	No. AUG 2023
Overall	5,277	5,805	6,042	6,017	+740	+14.03%	+212	+3.65%	-25	7,099
Consultants	30	36	34	35	+5	+15.18%	-1	-3.92%	+1	37
Registrars	29	41	62	50	+21	+74.07%	+9	+21.76%	-12	53
SHO/ Interns	37	32	26	30	-7	-17.65%	-2	-5.78%	+4	31
Medical/ Dental, other	65	75	73	70	+5	+7.76%	-5	-6.75%	-3	99
Medical & Dental	161	185	196	186	+25	+15.25%	+1	+0.36%	-10	220
Nurse/ Midwife Manager	345	375	378	380	+34	+9.96%	+4	+1.19%	+2	401
Nurse/ Midwife Specialist & AN/MP	53	112	142	142	+89	+169.22%	+31	+27.60%	+1	151
Staff Nurse/ Staff Midwife	962	982	996	996	+34	+3.52%	+13	+1.37%	-0	1,148
Public Health Nurse	176	165	162	160	-16	-9.21%	-5	-2.91%	-2	195
Nursing/ Midwifery Student	8	11	32	29	+21	+267.09%	+18	+169.73%	-4	55
Nursing/ Midwifery other	4	4	5	5	+1	+21.40%	+1	+22.50%	+0	6
Nursing & Midwifery	1549	1649	1715	1712	+163	+10.55%	+63	+3.82%	-4	1,956
Therapy Professions	325	369	399	394	+69	+21.20%	+25	+6.89%	-4	453
Health Science/ Diagnostics	4	7	11	11	+7	+180.26%	+3	+42.38%	-0	11
Social Care	164	174	180	171	+7	+4.10%	-3	-1.73%	-9	207
Social Workers	61	70	72	72	+12	+19.33%	+3	+4.20%	+1	81
Psychologists	79	80	86	86	+8	+9.54%	+7	+8.32%	+1	99
Pharmacy	1	3	3	3	+2	+184.00%	-0	-0.35%	-0	3
H&SC, Other	34	50	50	50	+16	+46.60%	-0	-0.42%	-0	55
Health & Social Care Professionals	668	752	800	787	+120	+17.90%	+35	+4.64%	-12	909
Management (VIII & above)	44	72	71	71	+27	+60.36%	-2	-2.15%	-0	73
Administrative/ Supervisory (V to VII)	130	215	243	243	+113	+86.61%	+28	+12.93%	+0	253
Clerical (III & IV)	329	398	437	445	+116	+35.36%	+48	+11.95%	+8	501
Management & Administrative	504	686	751	759	+256	+50.82%	+74	+10.77%	+8	827
Support	303	279	276	280	-23	-7.51%	+1	+0.48%	+4	351
Maintenance/ Technical	32	29	30	30	-2	-5.57%	+1	+1.73%	-0	33
General Support	334	308	306	310	-25	-7.33%	+2	+0.60%	+4	384
Health Care Assistants	1,178	1,281	1,362	1,355	+177	+15.05%	+75	+5.84%	-7	1,552
Care, other	218	297	286	283	+65	+29.64%	-14	-4.70%	-3	351
Home Help	665	648	626	624	-41	-6.12%	-23	-3.62%	-1	900
Patient & Client Care	2061	2225	2274	2262	+201	+9.76%	+37	+1.68%	-11	2,803



Community Services Employment Report by Grade Group: AUG 2023

CHO 6

AUG 2023	WTE DEC 2019	WTE DEC 2022	WTE JUL 2023	WTE AUG 2023	WTE change since DEC 2019	% WTE Change since Dec 2019	WTE change since DEC 2022	% WTE Change since Dec 2022	WTE change since JUL 2023	No. AUG 2023
Overall	3,378	3,620	3,680	3,695	+317	+9.39%	+75	+2.08%	+16	4,280
Consultants	48	58	61	63	+15	+30.67%	+5	+8.56%	+2	72
Registrars	49	63	62	79	+30	+60.96%	+15	+23.91%	+16	82
SHO/ Interns	16	16	20	21	+5	+34.45%	+5	+29.44%	+1	29
Medical/ Dental, other	51	49	47	47	-4	-7.34%	-1	-2.20%	+0	69
Medical & Dental	164	186	191	210	+46	+28.16%	+24	+12.79%	+19	252
Nurse/ Midwife Manager	211	210	213	209	-1	-0.54%	-0	-0.22%	-3	221
Nurse/ Midwife Specialist & AN/MP	21	37	54	56	+35	+172.10%	+19	+53.06%	+2	62
Staff Nurse/ Staff Midwife	542	556	555	558	+16	+2.97%	+2	+0.41%	+3	622
Public Health Nurse	117	99	100	100	-17	-14.65%	+1	+0.75%	+0	121
Nursing/ Midwifery Student	14	7	7	8	-6	-44.07%	+0	+3.28%	+1	13
Nursing/ Midwifery other	2	5	4	3	+1	+50.00%	-2	-36.97%	-1	3
Nursing & Midwifery	905	913	932	934	+28	+3.14%	+20	+2.24%	+1	1,042
Therapy Professions	238	252	256	255	+17	+7.14%	+3	+1.19%	-1	313
Health Science/ Diagnostics	18	17	16	16	-2	-9.85%	-1	-3.95%	+1	19
Social Care	364	413	408	410	+46	+12.67%	-3	-0.71%	+2	468
Social Workers	57	71	73	75	+18	+31.30%	+4	+5.31%	+2	85
Psychologists	56	68	66	65	+8	+14.41%	-3	-4.83%	-2	81
Pharmacy	4	9	7	6	+3	+71.86%	-2	-28.36%	-1	9
H&SC, Other	14	17	19	20	+6	+39.73%	+3	+19.89%	+1	24
Health & Social Care Professionals	752	847	845	848	+96	+12.73%	+1	+0.09%	+2	999
Management (VIII & above)	68	95	88	85	+17	+25.33%	-10	-10.77%	-3	90
Administrative/ Supervisory (V to VII)	170	241	244	244	+74	+43.39%	+3	+1.16%	+0	270
Clerical (III & IV)	237	259	271	270	+33	+13.76%	+11	+4.09%	-1	312
Management & Administrative	475	596	602	599	+124	+26.02%	+3	+0.53%	-3	672
Support	191	177	177	178	-13	-7.05%	+1	+0.57%	+0	211
Maintenance/ Technical	23	22	25	26	+3	+14.52%	+4	+15.90%	+1	28
General Support	214	199	203	204	-10	-4.76%	+5	+2.30%	+1	239
Health Care Assistants	538	556	576	580	+42	+7.76%	+24	+4.32%	+4	657
Care, other	330	324	331	322	-8	-2.47%	-2	-0.49%	-9	419
Patient & Client Care	869	880	907	902	+34	+3.87%	+22	+2.55%	-5	1,076



Community Services Employment Report by Grade Group: AUG 2023

CHO 7

AUG 2023	WTE DEC 2019	WTE DEC 2022	WTE JUL 2023	WTE AUG 2023	WTE change since DEC 2019	% WTE Change since Dec 2019	WTE change since DEC 2022	% WTE Change since Dec 2022	WTE change since JUL 2023	No. AUG 2023
Overall	6,514	7,215	7,326	7,326	+811	+12.45%	+111	+1.54%	-1	8,519
Consultants	60	63	66	69	+9	+15.28%	+6	+9.14%	+3	74
Registrars	95	104	99	107	+12	+12.86%	+3	+3.34%	+8	116
SHO/ Interns	36	47	51	57	+21	+58.70%	+10	+22.10%	+6	63
Medical/ Dental, other	80	63	64	63	-17	-21.73%	-0	-0.36%	-1	92
Medical & Dental	271	276	279	296	+25	+9.18%	+19	+6.97%	+16	345
Nurse/ Midwife Manager	396	455	471	470	+74	+18.79%	+16	+3.46%	-1	507
Nurse/ Midwife Specialist & AN/MP	94	133	146	141	+47	+50.15%	+8	+6.08%	-5	161
Staff Nurse/ Staff Midwife	993	1,060	1,042	1,021	+28	+2.79%	-39	-3.70%	-22	1,176
Public Health Nurse	175	164	170	171	-4	-2.33%	+7	+4.34%	+1	206
Nursing/ Midwifery Student	32	28	29	27	-5	-14.96%	-0	-1.47%	-2	52
Nursing/ Midwifery other	10	11	10	10	+0	+3.78%	-1	-9.00%	+1	13
Nursing & Midwifery	1700	1851	1869	1841	+141	+8.27%	-10	-0.52%	-28	2,115
Therapy Professions	450	490	476	479	+29	+6.47%	-11	-2.30%	+3	556
Health Science/ Diagnostics	3	11	10	10	+7	+210.25%	-1	-10.40%	-0	12
Social Care	371	477	477	470	+99	+26.70%	-7	-1.47%	-7	521
Social Workers	105	123	124	123	+18	+17.28%	-0	-0.07%	-1	136
Psychologists	81	96	101	100	+19	+23.73%	+3	+3.52%	-1	113
Pharmacy	40	41	41	41	+1	+2.30%	+0	+0.17%	-0	49
H&SC, Other	44	45	46	44	-0	-0.74%	-1	-2.69%	-2	52
Health & Social Care Professionals	1094	1284	1275	1267	+173	+15.79%	-17	-1.35%	-8	1,439
Management (VIII & above)	73	109	102	103	+30	+40.82%	-6	-5.87%	+0	106
Administrative/ Supervisory (V to VII)	182	287	301	307	+125	+68.63%	+21	+7.27%	+6	324
Clerical (III & IV)	351	439	459	463	+113	+32.17%	+25	+5.61%	+4	524
Management & Administrative	606	834	863	873	+268	+44.18%	+39	+4.68%	+11	954
Support	410	382	375	370	-41	-9.88%	-12	-3.19%	-5	464
Maintenance/ Technical	41	46	48	52	+11	+25.96%	+6	+12.58%	+4	58
General Support	452	428	423	422	-30	-6.62%	-6	-1.49%	-1	522
Health Care Assistants	1,655	1,752	1,817	1,843	+189	+11.40%	+91	+5.21%	+26	2,168
Care, other	610	659	666	647	+37	+6.05%	-11	-1.71%	-18	737
Home Help	127	131	135	137	+10	+7.51%	+6	+4.61%	+1	239
Patient & Client Care	2392	2541	2618	2627	+235	+9.83%	+86	+3.39%	+9	3,144



Community Services Employment Report by Grade Group: AUG 2023

CHO 8

AUG 2023	WTE DEC 2019	WTE DEC 2022	WTE JUL 2023	WTE AUG 2023	WTE change since DEC 2019	% WTE Change since Dec 2019	WTE change since DEC 2022	% WTE Change since Dec 2022	WTE change since JUL 2023	No. AUG 2023
Overall	6,135	6,514	6,739	6,772	+637	+10.39%	+258	+3.97%	+33	8,058
Consultants	42	42	43	44	+2	+4.33%	+2	+4.30%	+1	47
Registrars	106	122	137	124	+18	+16.65%	+1	+0.92%	-14	146
SHO/ Interns	38	29	32	35	-3	-6.87%	+6	+22.29%	+3	40
Medical/ Dental, other	72	65	59	59	-13	-17.92%	-6	-8.58%	+0	80
Medical & Dental	259	259	272	262	+4	+1.50%	+4	+1.48%	-9	313
Nurse/ Midwife Manager	372	376	368	376	+4	+1.16%	-0	-0.02%	+8	405
Nurse/ Midwife Specialist & AN/MP	100	131	142	142	+42	+41.98%	+11	+8.02%	-1	156
Staff Nurse/ Staff Midwife	998	1,023	1,021	1,015	+17	+1.72%	-8	-0.78%	-6	1,161
Public Health Nurse	199	220	207	208	+8	+4.25%	-13	-5.82%	+0	252
Nursing/ Midwifery Student	4	10	43	47	+42	+942.63%	+37	+383.54%	+3	85
Nursing/ Midwifery other	9	10	11	11	+2	+17.07%	+1	+6.99%	+0	12
Nursing & Midwifery	1682	1770	1794	1798	+116	+6.87%	+27	+1.55%	+4	2,071
Therapy Professions	377	378	398	404	+27	+7.06%	+25	+6.72%	+6	491
Health Science/ Diagnostics	7	13	12	12	+5	+63.07%	-1	-11.09%	-0	13
Social Care	368	421	430	430	+62	+16.83%	+8	+2.00%	-0	520
Social Workers	88	108	106	107	+19	+21.77%	-1	-0.93%	+1	121
Psychologists	120	111	108	105	-15	-12.65%	-6	-5.41%	-3	118
Pharmacy	7	11	12	12	+5	+63.69%	+1	+5.87%	+0	15
H&SC, Other	52	61	59	59	+6	+12.29%	-2	-3.13%	+0	68
Health & Social Care Professionals	1019	1103	1124	1127	+108	+10.61%	+24	+2.19%	+3	1,346
Management (VIII & above)	62	84	84	85	+23	+36.32%	+1	+1.15%	+2	89
Administrative/ Supervisory (V to VII)	176	240	256	261	+85	+48.14%	+21	+8.79%	+6	275
Clerical (III & IV)	507	532	617	627	+120	+23.63%	+95	+17.80%	+9	720
Management & Administrative	746	856	957	973	+227	+30.49%	+117	+13.64%	+17	1,084
Support	127	105	107	105	-22	-17.45%	+0	+0.42%	-2	133
Maintenance/ Technical	69	61	69	69	+1	+0.77%	+8	+12.94%	+1	70
General Support	196	166	175	174	-22	-11.06%	+8	+5.05%	-1	203
Health Care Assistants	1,577	1,670	1,696	1,711	+133	+8.45%	+41	+2.45%	+15	2,055
Care, other	237	275	274	277	+40	+16.68%	+2	+0.90%	+3	325
Home Help	418	415	448	449	+31	+7.43%	+35	+8.32%	+1	661
Patient & Client Care	2233	2359	2417	2437	+204	+9.13%	+78	+3.30%	+20	3,041



Community Services Employment Report by Grade Group: AUG 2023

CHO 9

AUG 2023	WTE DEC 2019	WTE DEC 2022	WTE JUL 2023	WTE AUG 2023	WTE change since DEC 2019	% WTE Change since Dec 2019	WTE change since DEC 2022	% WTE Change since Dec 2022	WTE change since JUL 2023	No. AUG 2023
Overall	6,582	7,230	7,217	7,210	+628	+9.54%	-20	-0.28%	-8	8,335
Consultants	68	71	71	69	+0	+0.44%	-2	-2.47%	-2	78
Registrars	98	128	120	123	+25	+25.71%	-5	-3.56%	+4	128
SHO/ Interns	66	52	59	68	+2	+2.65%	+16	+31.18%	+9	72
Medical/ Dental, other	57	56	55	52	-4	-7.78%	-4	-6.80%	-2	69
Medical & Dental	290	306	304	312	+23	+7.90%	+6	+1.96%	+8	347
Nurse/ Midwife Manager	435	488	508	504	+69	+15.82%	+15	+3.16%	-4	540
Nurse/ Midwife Specialist & AN/MP	85	149	160	156	+71	+83.40%	+7	+4.51%	-4	172
Staff Nurse/ Staff Midwife	1,196	1,214	1,158	1,142	-54	-4.49%	-72	-5.97%	-16	1,286
Public Health Nurse	176	172	173	181	+5	+3.03%	+9	+5.13%	+8	218
Nursing/ Midwifery Student	55	43	44	47	-8	-14.23%	+4	+10.10%	+3	85
Nursing/ Midwifery other	20	20	16	18	-2	-10.15%	-2	-12.02%	+1	20
Nursing & Midwifery	1966	2087	2059	2047	+81	+4.14%	-40	-1.90%	-12	2,321
Therapy Professions	486	587	575	576	+89	+18.37%	-11	-1.85%	+1	668
Health Science/ Diagnostics	37	26	28	28	-9	-23.64%	+2	+8.36%	+0	29
Social Care	695	804	793	789	+94	+13.55%	-15	-1.85%	-4	965
Social Workers	125	161	158	159	+33	+26.52%	-2	-1.31%	+0	174
Psychologists	164	187	184	185	+21	+12.67%	-2	-1.17%	+1	201
Pharmacy	25	27	27	27	+3	+11.25%	+1	+2.31%	+0	36
H&SC, Other	71	64	67	68	-3	-3.58%	+4	+5.63%	+1	78
Health & Social Care Professionals	1603	1856	1833	1832	+229	+14.30%	-24	-1.27%	-1	2,151
Management (VIII & above)	79	97	99	99	+20	+25.20%	+3	+2.80%	+1	101
Administrative/ Supervisory (V to VII)	208	360	398	398	+190	+91.26%	+38	+10.46%	-0	423
Clerical (III & IV)	451	522	546	536	+84	+18.70%	+14	+2.65%	-10	618
Management & Administrative	739	979	1043	1033	+294	+39.82%	+54	+5.53%	-10	1,142
Support	452	383	359	361	-91	-20.17%	-23	-5.87%	+1	444
Maintenance/ Technical	35	36	35	34	-1	-2.41%	-1	-3.04%	-0	37
General Support	487	419	394	395	-92	-18.89%	-24	-5.63%	+1	481
Health Care Assistants	1,278	1,315	1,332	1,336	+58	+4.57%	+21	+1.57%	+4	1,601
Care, other	221	269	253	255	+34	+15.26%	-14	-5.26%	+2	292
Patient & Client Care	1499	1584	1585	1591	+92	+6.14%	+7	+0.41%	+6	1,893



Community Services Employment Report by Grade Group: AUG 2023

other Community Services

AUG 2023	WTE DEC 2019	WTE DEC 2022	WTE JUL 2023	WTE AUG 2023	WTE change since DEC 2019	% WTE Change since Dec 2019	WTE change since DEC 2022	% WTE Change since Dec 2022	WTE change since JUL 2023	No. AUG 2023
Overall	640	740	791	804	+163	+25.50%	+64	+8.66%	+12	850
Consultant Medicine	1	1	1	1	+0	+0.00%	+0	+0.00%	+0	1
Consultant Psychiatry	16	16	17	17	+2	+10.18%	+1	+9.27%	+0	19
Consultants	17	17	18	18	+2	+9.57%	+1	+8.72%	+0	20
Registrar	23	26	25	26	+3	+12.83%	+0	+0.43%	+1	26
Senior Registrar	2	4	3	4	+2	+100.00%	+0	+0.50%	+1	4
Registrars	25	30	27	30	+5	+19.80%	+0	+0.44%	+3	30
Senior House Officer	2	5	3	3	+1	+81.94%	-2	-43.60%	+0	3
SHO/ Interns	2	5	3	3	+1	+81.94%	-2	-43.60%	+0	3
Other Medical	0				-0	-100.00%				
Medical/ Dental, other	0				-0	-100.00%				
Medical & Dental	44	52	48	51	+7	+17.11%	-1	-1.14%	+3	53
Clinical Nurse/ Midwife Manager 1	27	42	40	40	+13	+49.49%	-2	-4.53%	-1	41
Clinical Nurse/ Midwife Manager 2	27	31	32	32	+5	+17.46%	+1	+3.44%	-0	34
Clinical Nurse/ Midwife Manager 3	3	4	5	5	+2	+65.67%	+1	+37.67%	+0	5
Director Nursing/Midwifery, Assistant	6	7	8	8	+2	+25.00%	+1	+15.44%	+0	8
Director of Nursing/Midwifery	3	5	4	4	+1	+33.33%	-1	-19.19%	+0	4
Nurse/ Midwife Manager	66	88	89	89	+22	+33.99%	+1	+0.74%	-1	92
Advanced Nurse/ Midwife Practitioner		2	2	2	+2		+0	+1.52%	+0	2
Adv. Nurse/ Midwife, Candidate	1	1	1	1	+0	+0.00%	+0	+1.01%	+0	1
Clinical Nurse/ Midwife Specialist	7	8	7	8	+1	+7.31%	-0	-3.23%	+0	9
Nurse/ Midwife Specialist & AN/MP	8	11	10	11	+3	+30.67%	-0	-2.00%	+0	12
Staff Nurse [Psychiatric]	167	150	155	158	-9	-5.28%	+8	+5.36%	+3	164
Staff Nurses [General/ Children's]	7	6	4	3	-4	-51.29%	-3	-44.37%	-1	5
Staff Nurse/ Staff Midwife	174	156	159	161	-12	-7.14%	+5	+3.40%	+3	169
Nursing Education/Clinical	1	2	2	2	+1	+100.00%	+0	+1.52%	+0	2
Nursing/ Midwifery other	1	2	2	2	+1	+100.00%	+0	+1.52%	+0	2
Nursing & Midwifery	249	257	261	263	+14	+5.47%	+6	+2.24%	+2	275
Occupational Therapists	11	10	9	8	-3	-30.73%	-2	-21.69%	-2	8
Therapy Professions	11	10	9	8	-3	-30.73%	-2	-21.69%	-2	8
Biochemists	8	8	6	6	-2	-19.92%	-2	-20.85%	+0	7
Radiographers	1				-1	-100.00%				
Health Science/ Diagnostics	9	8	6	6	-3	-29.20%	-2	-20.85%	+0	7
Social Care	4	3	3	4	+0	+9.04%	+1	+38.85%	+1	4
Social Care	4	3	3	4	+0	+9.04%	+1	+38.85%	+1	4
Social Workers	29	15	18	18	-11	-37.94%	+3	+17.87%	-0	20
Social Workers	29	15	18	18	-11	-37.94%	+3	+17.87%	-0	20
Psychologists	7	6	5	5	-2	-28.57%	-1	-21.63%	+0	5
Psychologists	7	6	5	5	-2	-28.57%	-1	-21.63%	+0	5
Pharmacists	2	7	8	9	+7	+407.51%	+1	+20.27%	+0	9
Pharmacy Technicians	1	5	6	5	+4	+428.00%	+0	+5.60%	-0	6
Pharmacy	3	12	14	14	+11	+415.02%	+2	+14.31%	+0	15
Counsellor Therapists	3	2	5	5	+2	+64.95%	+2	+92.77%	+0	5



Community Services Employment Report by Grade Group: AUG 2023

AUG 2023	WTE DEC 2019	WTE DEC 2022	WTE JUL 2023	WTE AUG 2023	WTE change since DEC 2019	% WTE Change since Dec 2019	WTE change since DEC 2022	% WTE Change since Dec 2022	WTE change since JUL 2023	No. AUG 2023
Overall	640	740	791	804	+163	+25.50%	+64	+8.66%	+12	850
H&SC, Other	3	2	5	5	+2	+64.95%	+2	+92.77%	+0	5
Health & Social Care Professionals	65	57	60	59	-5	-8.14%	+3	+4.87%	-0	64
Executive Management	17	16	18	18	+0	+0.46%	+1	+6.61%	+0	18
Senior Management (VIII & GM)	48	57	66	62	+14	+30.07%	+6	+10.12%	-4	64
Management (VIII & above)	65	73	83	80	+14	+22.14%	+7	+9.33%	-4	82
Middle Management (V-VII)	78	114	120	123	+45	+57.84%	+9	+8.05%	+3	130
Administrative/ Supervisory (V to VII)	78	114	120	123	+45	+57.84%	+9	+8.05%	+3	130
General Administrative (III & IV)	70	75	90	95	+24	+34.61%	+20	+27.04%	+4	103
Clerical (III & IV)	70	75	90	95	+24	+34.61%	+20	+27.04%	+4	103
Management & Administrative	214	261	294	297	+84	+39.26%	+36	+13.82%	+4	315
Catering	3	8	8	8	+5	+163.33%	+0	+1.41%	+0	8
Household Services	6	9	11	11	+5	+76.81%	+2	+22.00%	-0	12
Other Labs & Associated	2	1	2	2	-0	-5.21%	+1	+217.46%	+0	2
Portering	3	8	1	1	-2	-66.67%	-7	-87.41%	+0	1
Support	14	25	22	22	+8	+52.79%	-3	-13.72%	-0	23
Maintenance	3	9	8	8	+5	+161.00%	-1	-12.71%	-0	8
Maintenance/ Technical	3	9	8	8	+5	+161.00%	-1	-12.71%	-0	8
General Support	17	34	30	30	+12	+71.54%	-5	-13.46%	-1	31
Attendant/ Aide	8	12	4	4	-4	-50.31%	-8	-65.99%	+0	8
Health Care Assistant/ Care Assistant	27	50	62	62	+34	+125.83%	+12	+23.08%	-0	63
Health & Social Care Assistants	2	3	9	11	+9	+606.67%	+8	+264.26%	+1	11
Health Care Assistants	37	65	75	76	+39	+106.90%	+11	+17.74%	+1	82
Other Care Grades	15	13	22	25	+11	+70.35%	+13	+97.75%	+3	28
Pastoral Care	1	0	1	1	+1	+100.00%	+1	+112.77%	+0	1
Workshop Services		1	1	1	+1		+0	+1.16%	+0	1
Care, other	15	14	24	27	+12	+76.94%	+13	+92.39%	+3	30
Patient & Client Care	52	79	99	103	+51	+98.05%	+25	+31.18%	+4	112



Community Services Employment Report by Grade Group: AUG 2023

CHO 1

AUG 2023	WTE DEC 2019	WTE DEC 2022	WTE JUL 2023	WTE AUG 2023	WTE change since DEC 2019	% WTE Change since Dec 2019	WTE change since DEC 2022	% WTE Change since Dec 2022	WTE change since JUL 2023	No. AUG 2023
Overall	5,468	6,398	6,606	6,603	+1,135	+20.75%	+205	+3.20%	-3	7,512
Consultants	34	39	40	39	+6	+16.51%	+1	+1.42%	-0	42
Registrars	65	77	87	74	+9	+13.12%	-3	-3.80%	-13	81
SHO/ Interns	26	22	21	24	-2	-7.04%	+3	+12.01%	+4	25
Medical/ Dental, other	80	72	60	59	-21	-26.37%	-13	-18.00%	-1	96
Medical & Dental	205	209	207	197	-9	-4.29%	-13	-6.06%	-11	244
Nurse/ Midwife Manager	350	375	392	390	+41	+11.59%	+15	+4.13%	-2	411
Nurse/ Midwife Specialist & AN/MP	102	170	192	197	+95	+92.84%	+27	+15.78%	+4	209
Staff Nurse/ Staff Midwife	1,014	1,086	1,090	1,094	+80	+7.92%	+9	+0.81%	+4	1,227
Public Health Nurse	156	152	146	146	-10	-6.29%	-6	-4.09%	-0	171
Nursing/ Midwifery Student	21	21	34	29	+8	+39.90%	+9	+42.61%	-5	56
Nursing/ Midwifery other	6	8	8	8	+2	+43.28%	+0	+0.99%	+0	9
Nursing & Midwifery	1648	1811	1863	1865	+217	+13.14%	+54	+2.96%	+1	2,083
Therapy Professions	316	405	404	403	+87	+27.43%	-2	-0.61%	-1	465
Health Science/ Diagnostics	7	9	10	10	+3	+48.70%	+0	+3.96%	-0	11
Social Care	11	21	25	27	+16	+138.61%	+6	+30.83%	+2	30
Social Workers	85	107	115	116	+31	+37.09%	+9	+8.83%	+2	125
Psychologists	60	64	72	71	+11	+18.18%	+7	+11.35%	-1	79
Pharmacy	2	3	3	3	+2	+126.00%	+1	+33.99%	-0	4
H&SC, Other	32	47	47	46	+14	+42.65%	-0	-0.60%	-0	63
Health & Social Care Professionals	513	655	676	676	+164	+31.90%	+21	+3.28%	+1	777
Management (VIII & above)	60	81	82	80	+21	+34.54%	-0	-0.36%	-2	83
Administrative/ Supervisory (V to VII)	135	243	283	284	+149	+109.65%	+41	+16.93%	+1	301
Clerical (III & IV)	456	554	564	560	+104	+22.91%	+6	+1.08%	-4	636
Management & Administrative	651	877	929	924	+274	+42.03%	+47	+5.34%	-4	1,020
Support	306	283	286	292	-14	-4.45%	+9	+3.28%	+6	365
Maintenance/ Technical	36	37	33	34	-2	-5.95%	-3	-8.34%	+0	34
General Support	342	320	319	326	-16	-4.61%	+6	+1.94%	+7	399
Health Care Assistants	1,423	1,592	1,616	1,613	+191	+13.40%	+21	+1.34%	-2	1,796
Care, other	131	170	182	179	+48	+36.93%	+9	+5.53%	-4	200
Home Help	556	764	814	823	+267	+47.95%	+59	+7.69%	+9	993
Patient & Client Care	2110	2526	2612	2615	+506	+23.97%	+90	+3.54%	+4	2,989



Community Services Employment Report by Grade Group: AUG 2023

CHO 2

AUG 2023	WTE DEC 2019	WTE DEC 2022	WTE JUL 2023	WTE AUG 2023	WTE change since DEC 2019	% WTE Change since Dec 2019	WTE change since DEC 2022	% WTE Change since Dec 2022	WTE change since JUL 2023	No. AUG 2023
Overall	4,256	4,596	4,593	4,552	+296	+6.95%	-44	-0.96%	-41	5,229
Consultants	40	41	44	45	+5	+12.41%	+4	+9.44%	+0	51
Registrars	73	90	105	98	+25	+34.32%	+9	+9.74%	-7	102
SHO/ Interns	36	42	28	36	+0	+0.33%	-6	-13.89%	+8	39
Medical/ Dental, other	59	57	59	57	-2	-3.40%	-1	-1.06%	-2	71
Medical & Dental	208	230	236	236	+28	+13.57%	+6	+2.68%	-0	263
Nurse/ Midwife Manager	241	266	272	278	+37	+15.26%	+12	+4.69%	+6	294
Nurse/ Midwife Specialist & AN/MP	88	137	154	152	+64	+72.99%	+15	+10.92%	-2	166
Staff Nurse/ Staff Midwife	778	789	780	768	-10	-1.26%	-21	-2.65%	-12	877
Public Health Nurse	192	187	179	178	-14	-7.33%	-10	-5.16%	-1	212
Nursing/ Midwifery Student	9	25	25	23	+15	+163.47%	-2	-8.32%	-1	47
Nursing/ Midwifery other	2	4	5	5	+3	+125.00%	+1	+12.50%	+0	5
Nursing & Midwifery	1310	1408	1414	1404	+94	+7.18%	-5	-0.34%	-10	1,601
Therapy Professions	304	387	390	374	+70	+23.07%	-13	-3.41%	-16	446
Health Science/ Diagnostics	6	10	11	11	+4	+65.59%	+1	+10.50%	+0	11
Social Care	50	48	49	49	-1	-2.01%	+1	+1.50%	-0	55
Social Workers	58	77	74	75	+16	+27.66%	-3	-3.24%	+0	84
Psychologists	59	74	79	78	+18	+30.65%	+4	+5.32%	-1	88
Pharmacy	5	6	6	5	+0	+10.38%	-1	-13.79%	-1	6
H&SC, Other	43	66	58	62	+19	+44.96%	-3	-4.70%	+5	73
Health & Social Care Professionals	525	667	666	653	+128	+24.28%	-14	-2.09%	-13	763
Management (VIII & above)	43	58	56	52	+9	+21.37%	-5	-9.42%	-4	55
Administrative/ Supervisory (V to VII)	99	184	194	195	+96	+97.13%	+10	+5.62%	+1	214
Clerical (III & IV)	431	410	438	422	-8	-1.97%	+12	+3.04%	-15	485
Management & Administrative	573	652	688	669	+97	+16.89%	+17	+2.67%	-19	754
Support	113	94	94	95	-18	-15.68%	+1	+1.05%	+2	123
Maintenance/ Technical	63	75	74	75	+12	+18.91%	+0	+0.29%	+1	77
General Support	176	169	167	170	-6	-3.31%	+1	+0.72%	+3	200
Health Care Assistants	821	846	835	838	+17	+2.04%	-7	-0.87%	+3	918
Care, other	144	218	205	208	+63	+43.91%	-10	-4.65%	+3	231
Home Help	499	407	382	374	-125	-25.03%	-33	-8.01%	-8	499
Patient & Client Care	1465	1470	1421	1420	-45	-3.07%	-50	-3.41%	-1	1,648



Community Services Employment Report by Grade Group: AUG 2023

CHO 3

AUG 2023	WTE DEC 2019	WTE DEC 2022	WTE JUL 2023	WTE AUG 2023	WTE change since DEC 2019	% WTE Change since Dec 2019	WTE change since DEC 2022	% WTE Change since Dec 2022	WTE change since JUL 2023	No. AUG 2023
Overall	2,655	3,200	3,299	3,303	+647	+24.38%	+102	+3.20%	+4	3,870
Consultants	26	33	33	33	+6	+24.52%	-1	-1.77%	-1	39
Registrars	42	47	61	54	+12	+30.02%	+8	+16.10%	-7	57
SHO/ Interns	25	35	16	19	-6	-22.65%	-16	-45.37%	+3	20
Medical/ Dental, other	57	51	51	50	-8	-13.13%	-2	-3.58%	-1	66
Medical & Dental	150	167	161	156	+6	+3.86%	-11	-6.57%	-6	182
Nurse/ Midwife Manager	170	181	180	182	+12	+6.82%	+1	+0.79%	+2	193
Nurse/ Midwife Specialist & AN/MP	43	65	75	73	+30	+70.33%	+9	+13.23%	-2	82
Staff Nurse/ Staff Midwife	540	585	591	590	+51	+9.36%	+6	+1.01%	-0	681
Public Health Nurse	127	126	121	125	-2	-1.55%	-0	-0.38%	+4	155
Nursing/ Midwifery Student	9	11	20	18	+9	+101.79%	+7	+60.43%	-2	35
Nursing/ Midwifery other		1	1	1	+1		+0	+1.01%	+0	1
Nursing & Midwifery	890	968	987	990	+100	+11.29%	+22	+2.30%	+3	1,147
Therapy Professions	186	251	276	278	+92	+49.70%	+26	+10.48%	+2	325
Health Science/ Diagnostics	5	9	9	10	+5	+87.36%	+1	+11.68%	+1	12
Social Care	5	4	2	2	-3	-58.93%	-2	-47.23%	+0	2
Social Workers	45	51	51	49	+4	+9.03%	-2	-3.51%	-2	53
Psychologists	111	114	114	112	+1	+0.99%	-1	-1.13%	-2	119
Pharmacy	5	6	6	6	+2	+33.33%	+1	+15.73%	+0	8
H&SC, Other	22	26	28	28	+6	+29.78%	+2	+9.02%	+0	33
Health & Social Care Professionals	378	460	486	486	+107	+28.37%	+26	+5.60%	+0	552
Management (VIII & above)	32	49	49	50	+18	+55.57%	+1	+2.73%	+1	51
Administrative/ Supervisory (V to VII)	105	174	182	186	+81	+77.27%	+12	+6.91%	+3	200
Clerical (III & IV)	282	315	355	357	+75	+26.50%	+42	+13.30%	+1	397
Management & Administrative	419	537	587	592	+174	+41.43%	+55	+10.27%	+5	648
Support	110	88	94	95	-15	-13.90%	+7	+7.55%	+1	120
Maintenance/ Technical	65	73	76	76	+11	+17.12%	+3	+4.64%	+0	77
General Support	175	161	169	171	-4	-2.39%	+10	+6.23%	+1	197
Health Care Assistants	381	446	439	439	+59	+15.37%	-7	-1.46%	+0	496
Care, other	87	120	130	129	+42	+48.20%	+9	+7.62%	-0	144
Home Help	176	342	340	340	+164	+93.08%	-2	-0.70%	-0	504
Patient & Client Care	644	908	908	908	+264	+41.06%	+0	+0.03%	+0	1,144



Community Services Employment Report by Grade Group: AUG 2023

CHO 4

AUG 2023	WTE DEC 2019	WTE DEC 2022	WTE JUL 2023	WTE AUG 2023	WTE change since DEC 2019	% WTE Change since Dec 2019	WTE change since DEC 2022	% WTE Change since Dec 2022	WTE change since JUL 2023	No. AUG 2023
Overall	5,939	6,531	6,391	6,353	+414	+6.97%	-178	-2.73%	-38	7,903
Consultants	55	66	66	68	+13	+23.40%	+2	+3.43%	+1	79
Registrars	98	93	121	107	+9	+9.29%	+15	+15.69%	-13	115
SHO/ Interns	32	42	44	47	+15	+45.47%	+4	+9.66%	+3	51
Medical/ Dental, other	98	120	113	112	+13	+13.38%	-9	-7.15%	-1	191
Medical & Dental	284	321	344	333	+50	+17.52%	+12	+3.84%	-10	436
Nurse/ Midwife Manager	358	405	414	413	+55	+15.42%	+8	+2.03%	-1	443
Nurse/ Midwife Specialist & AN/MP	68	93	122	124	+56	+81.38%	+31	+33.93%	+2	134
Staff Nurse/ Staff Midwife	1,161	1,261	1,191	1,180	+18	+1.58%	-81	-6.45%	-11	1,404
Public Health Nurse	216	216	205	208	-8	-3.57%	-8	-3.77%	+3	263
Nursing/ Midwifery Student	54	18	32	31	-22	-41.82%	+13	+70.59%	-1	56
Nursing & Midwifery	1857	1993	1965	1957	+99	+5.33%	-37	-1.85%	-8	2,300
Therapy Professions	359	459	470	464	+104	+29.09%	+5	+1.00%	-7	553
Health Science/ Diagnostics	10	12	10	10	+0	+3.94%	-2	-17.00%	+0	12
Social Care	39	44	43	33	-6	-14.68%	-11	-25.45%	-10	46
Social Workers	88	119	131	126	+38	+43.86%	+7	+6.00%	-4	144
Psychologists	107	123	120	117	+11	+9.82%	-5	-4.24%	-2	134
Pharmacy	8	9	12	12	+4	+54.67%	+4	+44.25%	-0	19
H&SC, Other	56	67	72	65	+9	+16.18%	-2	-2.95%	-6	82
Health & Social Care Professionals	667	833	858	828	+162	+24.25%	-5	-0.60%	-30	990
Management (VIII & above)	58	73	81	82	+24	+41.91%	+8	+11.40%	+1	84
Administrative/ Supervisory (V to VII)	123	204	232	243	+120	+97.33%	+40	+19.56%	+11	263
Clerical (III & IV)	415	479	512	508	+93	+22.32%	+29	+6.07%	-4	592
Management & Administrative	596	756	825	833	+237	+39.72%	+77	+10.22%	+8	939
Support	207	222	206	206	-1	-0.44%	-16	-7.29%	-0	238
Maintenance/ Technical	13	13	10	10	-3	-24.77%	-3	-24.71%	-1	12
General Support	220	235	216	216	-4	-1.88%	-19	-8.26%	-1	250
Health Care Assistants	1,079	1,166	1,101	1,107	+28	+2.60%	-59	-5.04%	+5	1,265
Care, other	113	151	150	149	+35	+30.95%	-3	-1.95%	-2	201
Home Help	1,124	1,076	932	931	-192	-17.12%	-145	-13.45%	-1	1,522
Patient & Client Care	2316	2393	2184	2186	-129	-5.58%	-206	-8.63%	+3	2,988



Community Services Employment Report by Grade Group: AUG 2023

CHO 5

AUG 2023	WTE DEC 2019	WTE DEC 2022	WTE JUL 2023	WTE AUG 2023	WTE change since DEC 2019	% WTE Change since Dec 2019	WTE change since DEC 2022	% WTE Change since Dec 2022	WTE change since JUL 2023	No. AUG 2023
Overall	4,153	4,571	4,779	4,771	+618	+14.88%	+200	+4.37%	-8	5,636
Consultants	29	35	33	35	+6	+18.92%	-1	-1.50%	+2	37
Registrars	29	41	62	50	+21	+74.07%	+9	+21.76%	-12	53
SHO/ Interns	37	32	26	30	-7	-17.65%	-2	-5.78%	+4	31
Medical/ Dental, other	65	75	73	70	+5	+7.76%	-5	-6.75%	-3	99
Medical & Dental	160	184	195	186	+26	+15.93%	+2	+0.84%	-9	220
Nurse/ Midwife Manager	299	327	326	331	+32	+10.87%	+4	+1.31%	+5	351
Nurse/ Midwife Specialist & AN/MP	53	112	142	142	+89	+169.22%	+31	+27.60%	+1	151
Staff Nurse/ Staff Midwife	862	878	908	906	+44	+5.06%	+28	+3.13%	-2	1,042
Public Health Nurse	176	165	162	160	-16	-9.21%	-5	-2.91%	-2	195
Nursing/ Midwifery Student	8	11	27	24	+16	+203.32%	+13	+122.87%	-4	45
Nursing/ Midwifery other	4	4	5	5	+1	+21.40%	+1	+22.50%	+0	6
Nursing & Midwifery	1402	1497	1570	1569	+166	+11.85%	+72	+4.80%	-2	1,790
Therapy Professions	323	368	398	393	+70	+21.83%	+25	+6.91%	-4	452
Health Science/ Diagnostics	4	7	11	11	+7	+180.26%	+3	+42.38%	-0	11
Social Care	26	30	34	31	+5	+18.65%	+1	+3.45%	-3	36
Social Workers	49	61	66	66	+17	+34.24%	+5	+8.90%	+1	74
Psychologists	74	75	81	81	+7	+9.43%	+7	+8.89%	+1	93
Pharmacy	1	3	3	3	+2	+184.00%	-0	-0.35%	-0	3
H&SC, Other	27	44	46	45	+18	+66.04%	+1	+1.85%	-1	48
Health & Social Care Professionals	505	588	637	631	+126	+24.94%	+43	+7.23%	-6	717
Management (VIII & above)	37	60	58	58	+21	+56.98%	-2	-3.11%	+0	60
Administrative/ Supervisory (V to VII)	108	190	211	212	+104	+96.23%	+21	+11.24%	+1	220
Clerical (III & IV)	283	351	387	393	+111	+39.08%	+43	+12.17%	+6	441
Management & Administrative	428	601	656	664	+236	+55.06%	+62	+10.35%	+7	721
Support	290	271	271	273	-17	-5.75%	+2	+0.76%	+3	342
Maintenance/ Technical	24	20	21	21	-3	-13.30%	+1	+5.11%	-0	23
General Support	315	291	292	295	-20	-6.34%	+3	+1.06%	+3	365
Health Care Assistants	600	633	674	674	+74	+12.34%	+41	+6.42%	-0	763
Care, other	78	128	129	130	+51	+65.45%	+1	+1.06%	+1	160
Home Help	665	648	626	624	-41	-6.12%	-23	-3.62%	-1	900
Patient & Client Care	1343	1409	1429	1428	+85	+6.30%	+19	+1.32%	-1	1,823



Community Services Employment Report by Grade Group: AUG 2023

CHO 6

AUG 2023	WTE DEC 2019	WTE DEC 2022	WTE JUL 2023	WTE AUG 2023	WTE change since DEC 2019	% WTE Change since Dec 2019	WTE change since DEC 2022	% WTE Change since Dec 2022	WTE change since JUL 2023	No. AUG 2023
Overall	1,605	1,772	1,826	1,837	+232	+14.42%	+65	+3.66%	+10	2,095
Consultants	23	27	27	28	+5	+23.12%	+1	+4.77%	+1	30
Registrars	30	41	44	58	+28	+93.18%	+17	+41.24%	+14	59
SHO/ Interns	4	3	5	5	+1	+20.75%	+2	+62.63%	-0	5
Medical/ Dental, other	49	48	45	45	-4	-7.64%	-2	-4.36%	+0	67
Medical & Dental	106	118	122	136	+30	+28.52%	+18	+15.17%	+15	161
Nurse/ Midwife Manager	138	138	140	137	-1	-0.73%	-2	-1.37%	-3	143
Nurse/ Midwife Specialist & AN/MP	15	20	33	35	+20	+129.03%	+16	+79.95%	+2	36
Staff Nurse/ Staff Midwife	286	303	306	307	+22	+7.55%	+4	+1.45%	+1	349
Public Health Nurse	117	99	100	100	-17	-14.65%	+1	+0.75%	+0	121
Nursing/ Midwifery Student	14	7	7	8	-6	-44.07%	+0	+3.28%	+1	13
Nursing/ Midwifery other	2	4	3	2	+0	+0.00%	-2	-46.81%	-1	2
Nursing & Midwifery	571	571	589	588	+17	+3.05%	+17	+3.05%	-1	664
Therapy Professions	158	173	185	183	+25	+15.66%	+10	+5.57%	-3	223
Health Science/ Diagnostics	17	15	14	15	-2	-10.74%	-1	-4.33%	+1	16
Social Care	11	11	14	14	+3	+22.78%	+2	+20.71%	-1	15
Social Workers	26	39	40	40	+14	+54.07%	+2	+3.93%	+0	46
Psychologists	38	39	40	38	+0	+0.79%	-1	-2.84%	-2	48
Pharmacy	2	7	5	5	+3	+151.67%	-2	-31.05%	-0	6
H&SC, Other	8	16	16	16	+8	+90.15%	+0	+2.04%	+0	19
Health & Social Care Professionals	260	300	314	310	+50	+19.31%	+10	+3.33%	-4	373
Management (VIII & above)	35	53	52	51	+17	+47.89%	-2	-3.71%	-1	52
Administrative/ Supervisory (V to VII)	91	145	142	144	+53	+58.17%	-2	-1.29%	+1	151
Clerical (III & IV)	134	162	165	166	+31	+23.22%	+3	+2.09%	+0	184
Management & Administrative	260	361	360	360	+101	+38.71%	-0	-0.13%	+0	387
Support	85	73	73	73	-12	-13.65%	+0	+0.51%	+1	85
Maintenance/ Technical	3	2	2	2	-1	-31.62%	+0	+0.51%	+0	2
General Support	88	75	75	75	-13	-14.25%	+0	+0.51%	+1	87
Health Care Assistants	267	279	287	286	+20	+7.33%	+7	+2.68%	-0	329
Care, other	54	68	81	81	+26	+48.09%	+12	+17.76%	-0	94
Patient & Client Care	321	347	367	367	+46	+14.24%	+20	+5.65%	-1	423



Community Services Employment Report by Grade Group: AUG 2023

CHO 7

AUG 2023	WTE DEC 2019	WTE DEC 2022	WTE JUL 2023	WTE AUG 2023	WTE change since DEC 2019	% WTE Change since Dec 2019	WTE change since DEC 2022	% WTE Change since Dec 2022	WTE change since JUL 2023	No. AUG 2023
Overall	3,151	3,411	3,464	3,476	+324	+10.29%	+64	+1.88%	+11	4,011
Consultants	54	57	60	62	+8	+15.22%	+5	+8.34%	+2	65
Registrars	87	94	88	95	+8	+9.69%	+2	+1.75%	+8	102
SHO/ Interns	24	33	36	40	+16	+66.62%	+6	+19.20%	+4	41
Medical/ Dental, other	78	61	63	61	-17	-21.49%	-0	-0.13%	-2	90
Medical & Dental	242	245	246	258	+16	+6.47%	+13	+5.18%	+12	298
Nurse/ Midwife Manager	231	256	274	271	+39	+16.99%	+15	+5.80%	-3	290
Nurse/ Midwife Specialist & AN/MP	61	90	100	97	+36	+59.38%	+6	+7.09%	-3	106
Staff Nurse/ Staff Midwife	520	537	516	513	-7	-1.29%	-24	-4.51%	-3	582
Public Health Nurse	175	164	170	171	-4	-2.33%	+7	+4.34%	+1	206
Nursing/ Midwifery Student	32	27	21	19	-13	-39.78%	-7	-27.63%	-2	36
Nursing/ Midwifery other	8	6	8	7	-0	-3.71%	+1	+22.43%	-0	9
Nursing & Midwifery	1027	1080	1089	1078	+51	+5.01%	-2	-0.18%	-11	1,229
Therapy Professions	325	348	335	338	+13	+4.08%	-10	-2.81%	+3	393
Health Science/ Diagnostics		8	8	8	+8		+0	+3.06%	-1	9
Social Care	11	11	10	10	-1	-12.00%	-1	-9.25%	-0	11
Social Workers	67	76	80	80	+13	+18.76%	+3	+4.43%	-0	87
Psychologists	62	75	79	81	+19	+30.62%	+5	+6.89%	+2	91
Pharmacy	25	27	27	27	+1	+4.49%	-0	-0.75%	-0	30
H&SC, Other	43	44	43	42	-1	-1.93%	-2	-3.92%	-1	50
Health & Social Care Professionals	533	588	582	585	+51	+9.66%	-4	-0.66%	+3	671
Management (VIII & above)	40	67	62	62	+22	+56.02%	-5	-7.38%	+0	65
Administrative/ Supervisory (V to VII)	96	175	186	188	+93	+96.50%	+14	+7.75%	+2	197
Clerical (III & IV)	241	300	316	317	+76	+31.41%	+17	+5.79%	+1	354
Management & Administrative	377	542	565	568	+191	+50.56%	+26	+4.79%	+3	616
Support	171	154	154	154	-17	-9.81%	-0	-0.25%	+0	175
Maintenance/ Technical	6	5	5	5	-0	-4.99%	+0	+0.76%	-0	6
General Support	176	159	159	159	-17	-9.66%	-0	-0.22%	+0	181
Health Care Assistants	441	403	414	419	-22	-5.10%	+16	+3.93%	+5	480
Care, other	227	262	274	272	+45	+19.66%	+10	+3.74%	-2	297
Home Help	127	131	135	137	+10	+7.51%	+6	+4.61%	+1	239
Patient & Client Care	796	796	824	828	+32	+3.99%	+32	+3.98%	+4	1,016



Community Services Employment Report by Grade Group: AUG 2023

CHO 8

AUG 2023	WTE DEC 2019	WTE DEC 2022	WTE JUL 2023	WTE AUG 2023	WTE change since DEC 2019	% WTE Change since Dec 2019	WTE change since DEC 2022	% WTE Change since Dec 2022	WTE change since JUL 2023	No. AUG 2023
Overall	4,583	4,753	4,934	4,951	+368	+8.03%	+198	+4.17%	+17	5,825
Consultants	42	42	43	44	+2	+4.33%	+2	+4.30%	+1	47
Registrars	105	121	136	123	+18	+16.80%	+1	+0.93%	-14	145
SHO/ Interns	38	29	32	35	-3	-6.87%	+6	+22.29%	+3	40
Medical/ Dental, other	72	65	59	59	-13	-17.92%	-6	-8.58%	+0	80
Medical & Dental	258	258	271	261	+4	+1.50%	+4	+1.48%	-9	312
Nurse/ Midwife Manager	285	295	290	297	+12	+4.28%	+2	+0.76%	+7	317
Nurse/ Midwife Specialist & AN/MP	95	128	140	139	+45	+47.21%	+12	+9.05%	-1	153
Staff Nurse/ Staff Midwife	790	800	800	797	+7	+0.88%	-3	-0.33%	-3	898
Public Health Nurse	199	220	207	208	+8	+4.25%	-13	-5.82%	+0	252
Nursing/ Midwifery Student	4	9	25	28	+24	+527.46%	+19	+216.91%	+3	54
Nursing/ Midwifery other	4	5	5	5	+1	+20.55%	-0	-2.43%	+0	5
Nursing & Midwifery	1377	1457	1467	1474	+97	+7.02%	+17	+1.20%	+7	1,679
Therapy Professions	363	368	389	394	+31	+8.51%	+26	+7.13%	+6	480
Health Science/ Diagnostics	7	13	12	12	+5	+63.07%	-1	-11.09%	-0	13
Social Care	12	12	13	13	+1	+12.35%	+2	+17.04%	+1	16
Social Workers	76	96	94	95	+19	+25.50%	-1	-1.02%	+0	107
Psychologists	114	106	103	101	-14	-11.94%	-6	-5.22%	-3	113
Pharmacy	7	11	12	12	+5	+63.69%	+1	+5.87%	+0	15
H&SC, Other	46	52	52	53	+6	+14.05%	+0	+0.29%	+0	60
Health & Social Care Professionals	626	658	675	679	+54	+8.58%	+21	+3.19%	+4	804
Management (VIII & above)	57	74	73	74	+17	+29.14%	+0	+0.11%	+1	78
Administrative/ Supervisory (V to VII)	148	213	226	232	+83	+56.00%	+18	+8.67%	+5	244
Clerical (III & IV)	461	474	553	561	+101	+21.86%	+87	+18.33%	+8	646
Management & Administrative	666	762	853	867	+201	+30.09%	+106	+13.86%	+14	968
Support	87	77	81	81	-6	-6.97%	+3	+4.42%	-1	100
Maintenance/ Technical	56	50	55	55	-0	-0.68%	+5	+9.77%	+1	56
General Support	142	128	136	136	-6	-4.51%	+8	+6.53%	-0	156
Health Care Assistants	949	886	892	891	-58	-6.14%	+5	+0.56%	-1	1,022
Care, other	146	190	191	193	+47	+32.14%	+3	+1.34%	+2	223
Home Help	418	415	448	449	+31	+7.43%	+35	+8.32%	+1	661
Patient & Client Care	1514	1491	1531	1533	+20	+1.30%	+42	+2.82%	+2	1,906



Community Services Employment Report by Grade Group: AUG 2023

CHO 9

AUG 2023	WTE DEC 2019	WTE DEC 2022	WTE JUL 2023	WTE AUG 2023	WTE change since DEC 2019	% WTE Change since Dec 2019	WTE change since DEC 2022	% WTE Change since Dec 2022	WTE change since JUL 2023	No. AUG 2023
Overall	3,407	3,905	3,952	3,941	+533	+15.66%	+36	+0.92%	-11	4,416
Consultants	56	59	59	57	+1	+0.89%	-3	-4.55%	-2	62
Registrars	90	123	113	117	+27	+29.86%	-6	-4.78%	+4	121
SHO/ Interns	60	47	51	60	-0	-0.42%	+13	+28.09%	+9	64
Medical/ Dental, other	51	50	49	46	-4	-8.33%	-4	-7.14%	-2	61
Medical & Dental	257	279	272	280	+23	+8.92%	+1	+0.35%	+8	308
Nurse/ Midwife Manager	248	287	304	303	+56	+22.55%	+16	+5.72%	-1	322
Nurse/ Midwife Specialist & AN/MP	75	134	146	143	+68	+91.27%	+9	+6.50%	-3	158
Staff Nurse/ Staff Midwife	693	726	730	719	+26	+3.74%	-7	-1.00%	-10	795
Public Health Nurse	176	172	173	181	+5	+3.03%	+9	+5.13%	+8	218
Nursing/ Midwifery Student	40	34	25	28	-12	-30.57%	-6	-16.97%	+3	47
Nursing/ Midwifery other	13	12	12	13	+0	+2.25%	+1	+8.93%	+1	15
Nursing & Midwifery	1244	1365	1389	1387	+143	+11.52%	+22	+1.62%	-2	1,555
Therapy Professions	300	363	359	350	+50	+16.70%	-13	-3.50%	-9	418
Health Science/ Diagnostics	21	13	14	14	-7	-32.27%	+1	+9.03%	+0	14
Social Care	7	11	10	10	+3	+36.39%	-1	-12.94%	+0	11
Social Workers	78	103	102	104	+26	+33.36%	+1	+1.08%	+2	114
Psychologists	124	138	138	138	+14	+11.27%	+0	+0.02%	-0	150
Pharmacy	18	20	20	21	+2	+12.81%	+1	+5.72%	+0	28
H&SC, Other	57	54	58	58	+2	+3.23%	+4	+8.20%	+0	65
Health & Social Care Professionals	605	701	702	695	+90	+14.92%	-6	-0.90%	-7	800
Management (VIII & above)	44	58	61	61	+17	+39.66%	+4	+6.43%	+0	63
Administrative/ Supervisory (V to VII)	112	241	252	251	+139	+124.04%	+10	+4.06%	-0	266
Clerical (III & IV)	303	374	395	387	+84	+27.76%	+14	+3.73%	-7	435
Management & Administrative	459	673	708	700	+241	+52.40%	+27	+4.08%	-8	764
Support	198	182	175	172	-26	-13.09%	-10	-5.23%	-3	198
Maintenance/ Technical	9	10	10	10	+1	+6.24%	-0	-3.89%	-0	11
General Support	207	192	185	182	-25	-12.22%	-10	-5.16%	-3	209
Health Care Assistants	510	527	525	523	+13	+2.46%	-4	-0.79%	-2	585
Care, other	125	168	171	174	+49	+39.32%	+6	+3.55%	+3	195
Patient & Client Care	635	694	696	696	+62	+9.70%	+2	+0.26%	+0	780



Community Services Employment Report by Grade Group: AUG 2023

other Community Services

AUG 2023	WTE DEC 2019	WTE DEC 2022	WTE JUL 2023	WTE AUG 2023	WTE change since DEC 2019	% WTE Change since Dec 2019	WTE change since DEC 2022	% WTE Change since Dec 2022	WTE change since JUL 2023	No. AUG 2023
Overall	640	740	791	804	+163	+25.50%	+64	+8.66%	+12	850
Consultants	17	17	18	18	+2	+9.57%	+1	+8.72%	+0	20
Registrars	25	30	27	30	+5	+19.80%	+0	+0.44%	+3	30
SHO/ Interns	2	5	3	3	+1	+81.94%	-2	-43.60%	+0	3
Medical/ Dental, other	0				-0	-100.00%				
Medical & Dental	44	52	48	51	+7	+17.11%	-1	-1.14%	+3	53
Nurse/ Midwife Manager	66	88	89	89	+22	+33.99%	+1	+0.74%	-1	92
Nurse/ Midwife Specialist & AN/MP	8	11	10	11	+3	+30.67%	-0	-2.00%	+0	12
Staff Nurse/ Staff Midwife	174	156	159	161	-12	-7.14%	+5	+3.40%	+3	169
Nursing/ Midwifery other	1	2	2	2	+1	+100.00%	+0	+1.52%	+0	2
Nursing & Midwifery	249	257	261	263	+14	+5.47%	+6	+2.24%	+2	275
Therapy Professions	11	10	9	8	-3	-30.73%	-2	-21.69%	-2	8
Health Science/ Diagnostics	9	8	6	6	-3	-29.20%	-2	-20.85%	+0	7
Social Care	4	3	3	4	+0	+9.04%	+1	+38.85%	+1	4
Social Workers	29	15	18	18	-11	-37.94%	+3	+17.87%	-0	20
Psychologists	7	6	5	5	-2	-28.57%	-1	-21.63%	+0	5
Pharmacy	3	12	14	14	+11	+415.02%	+2	+14.31%	+0	15
H&SC, Other	3	2	5	5	+2	+64.95%	+2	+92.77%	+0	5
Health & Social Care Professionals	65	57	60	59	-5	-8.14%	+3	+4.87%	-0	64
Management (VIII & above)	65	73	83	80	+14	+22.14%	+7	+9.33%	-4	82
Administrative/ Supervisory (V to VII)	78	114	120	123	+45	+57.84%	+9	+8.05%	+3	130
Clerical (III & IV)	70	75	90	95	+24	+34.61%	+20	+27.04%	+4	103
Management & Administrative	214	261	294	297	+84	+39.26%	+36	+13.82%	+4	315
Support	14	25	22	22	+8	+52.79%	-3	-13.72%	-0	23
Maintenance/ Technical	3	9	8	8	+5	+161.00%	-1	-12.71%	-0	8
General Support	17	34	30	30	+12	+71.54%	-5	-13.46%	-1	31
Health Care Assistants	37	65	75	76	+39	+106.90%	+11	+17.74%	+1	82
Care, other	15	14	24	27	+12	+76.94%	+13	+92.39%	+3	30
Patient & Client Care	52	79	99	103	+51	+98.05%	+25	+31.18%	+4	112



Community Services Employment Report : AUG 2023

Employment Report by S38 Agencies

AUG 2023	WTE DEC 2019	WTE DEC 2022	WTE JUL 2023	WTE AUG 2023	WTE change since DEC 2019	% WTE Change since Dec 2019	WTE change since DEC 2022	% WTE Change since Dec 2022	WTE change since JUL 2023	No. AUG 2023
Overall	52,085	57,523	58,502	58,471	+6,386	+12.26%	+948	+1.65%	-31	68,690
Health Service Executive	5468	6398	6606	6603	+1,135	+20.75%	+205	+3.20%	-3	7,512
CHO 1	5468	6398	6606	6603	+1,135	+20.75%	+205	+3.20%	-3	7,512
Health Service Executive	4256	4596	4593	4552	+296	+6.95%	-44	-0.96%	-41	5,229
Bros. of Charity Galway	939				-939	-100.00%				
Bros. of Charity West Region		1,376	1,467	1,460	+1,460		+85	+6.15%	-6	1,798
Bros. of Charity Roscommon	349				-349	-100.00%				
Section 38 Voluntary Agencies	1288	1376	1467	1460	+172	+13.35%	+85	+6.15%	-6	1,798
CHO 2	5545	5972	6060	6013	+468	+8.44%	+41	+0.68%	-47	7,027
Health Service Executive	2655	3200	3299	3303	+647	+24.38%	+102	+3.20%	+4	3,870
Bros. of Charity Limerick	520	600	598	600	+80	+15.48%	+0	+0.03%	+2	689
Bros. of Charity Clare	348	424	450	456	+108	+31.01%	+32	+7.50%	+6	576
Avista Limerick	543	547	546	546	+3	+0.53%	-0	-0.05%	+0	615
Avista Roscrea	290	298	300	300	+10	+3.49%	+2	+0.66%	-0	387
Section 38 Voluntary Agencies	1701	1869	1895	1903	+201	+11.84%	+34	+1.81%	+8	2,267
CHO 3	4357	5069	5193	5205	+849	+19.48%	+136	+2.69%	+12	6,137
Health Service Executive	5939	6531	6391	6353	+414	+6.97%	-178	-2.73%	-38	7,903
Cork Dental Hospital	103	117	113	112	+9	+8.48%	-6	-4.79%	-1	164
St. John of God Kerry	315	321	324	324	+9	+2.94%	+3	+0.93%	+0	402
Bros. of Charity Southern	740	827	851	869	+128	+17.30%	+41	+5.02%	+18	1,061
Cope Foundation	1,091	1,163	1,168	1,169	+78	+7.16%	+5	+0.47%	+1	1,343
Section 38 Voluntary Agencies	2249	2429	2456	2473	+224	+9.97%	+44	+1.82%	+17	2,970
CHO 4	8189	8961	8848	8827	+638	+7.79%	-134	-1.49%	-21	10,873
Health Service Executive	4153	4571	4779	4771	+618	+14.88%	+200	+4.37%	-8	5,636
Bros. of Charity Waterford	630	742	773	767	+137	+21.66%	+25	+3.34%	-6	916
Aurora	279	268	275	268	-11	-3.90%	+0	+0.17%	-7	293
Carriglea Cairde Services	214	224	214	211	-3	-1.63%	-13	-5.94%	-3	254
Section 38 Voluntary Agencies	1123	1234	1263	1246	+122	+10.87%	+12	+0.97%	-17	1,463
CHO 5	5277	5805	6042	6017	+740	+14.03%	+212	+3.65%	-25	7,099
Health Service Executive	1605	1772	1826	1837	+232	+14.42%	+65	+3.66%	+10	2,095
Dublin Dental Hospital	91	92	92	93	+2	+1.65%	+1	+1.09%	+1	168
St. John of God (IDS)	456	425	411	406	-51	-11.09%	-20	-4.60%	-5	496
St. John of God (MHS)	235	246	253	256	+20	+8.71%	+10	+4.12%	+2	296
Our Lady's Hospice & Care, Wicklow		45	42	42	+42		-4	-8.27%	-1	52
Royal Hospital Donnybrook, Dublin	272	270	274	275	+3	+1.10%	+5	+1.73%	+0	286
Leopardstown Park Hospital	211	187	191	194	-17	-8.13%	+6	+3.34%	+3	216
Children's Sunshine Home	58	53	52	53	-6	-9.82%	-0	-0.60%	+1	60
Sunbeam House Services	449	480	491	496	+46	+10.32%	+15	+3.20%	+4	560
St John of God HQ		50	46	46	+46		-3	-6.86%	+0	51
Section 38 Voluntary Agencies	1773	1848	1853	1859	+86	+4.84%	+10	+0.56%	+5	2,185
CHO 6	3378	3620	3680	3695	+317	+9.39%	+75	+2.08%	+16	4,280
Health Service Executive	3151	3411	3464	3476	+324	+10.29%	+64	+1.88%	+11	4,011
Stewart's Hospital (Palmerstown)	852	1,057	1,089	1,098	+246	+28.90%	+40	+3.81%	+8	1,267
Cheeverstown House	396	427	445	437	+41	+10.26%	+9	+2.20%	-8	503
Our Lady's Hospice & Care, Dublin	482	526	502	499	+17	+3.62%	-26	-5.00%	-3	604
Peamount Hospital (Newcastle)	486	549	578	582	+96	+19.65%	+32	+5.90%	+4	677
St. John of God Liffey Services	787	795	797	783	-5	-0.60%	-12	-1.56%	-14	901



AUG 2023	WTE DEC 2019	WTE DEC 2022	WTE JUL 2023	WTE AUG 2023	WTE change since DEC 2019	% WTE Change since Dec 2019	WTE change since DEC 2022	% WTE Change since Dec 2022	WTE change since JUL 2023	No. AUG 2023
Overall	52,085	57,523	58,502	58,471	+6,386	+12.26%	+948	+1.65%	-31	68,690
Kare, Newbridge Co Kildare	360	448	450	452	+92	+25.58%	+3	+0.76%	+1	556
Section 38 Voluntary Agencies	3363	3803	3862	3850	+487	+14.48%	+47	+1.23%	-12	4,508
CHO 7	6514	7215	7326	7326	+811	+12.45%	+111	+1.54%	-1	8,519
Health Service Executive	4583	4753	4934	4951	+368	+8.03%	+198	+4.17%	+17	5,825
St. John of God Drumcar	647	655	658	661	+14	+2.21%	+6	+0.87%	+3	761
Muiriosa Foundation Longford/Westmeath	270	359	365	374	+104	+38.70%	+15	+4.31%	+9	470
Muiriosa Foundation South Kildare	334	352	370	371	+37	+11.14%	+19	+5.28%	+1	471
Muiriosa Foundation Laois/Offaly	302	394	412	415	+113	+37.51%	+20	+5.19%	+3	531
Section 38 Voluntary Agencies	1552	1761	1805	1821	+269	+17.34%	+60	+3.42%	+16	2,233
CHO 8	6135	6514	6739	6772	+637	+10.39%	+258	+3.97%	+33	8,058
Health Service Executive	3407	3905	3952	3941	+533	+15.66%	+36	+0.92%	-11	4,416
St. Michael's House Dublin	1,431	1,449	1,459	1,463	+32	+2.24%	+13	+0.90%	+4	1,792
Avista Dublin	1,034	1,078	1,067	1,054	+19	+1.87%	-24	-2.22%	-13	1,244
St. Vincent's Fairview	206	185	135	134	-72	-35.07%	-51	-27.74%	-1	164
Incorporated Orthopaedic Hospital	226	273	284	298	+72	+32.12%	+25	+8.98%	+14	347
Central Remedial Clinic	278	340	321	321	+43	+15.35%	-19	-5.45%	+0	372
Section 38 Voluntary Agencies	3175	3325	3266	3269	+94	+2.97%	-56	-1.69%	+3	3,919
CHO 9	6582	7230	7217	7210	+628	+9.54%	-20	-0.28%	-8	8,335
Health Service Executive	640	740	791	804	+163	+25.50%	+64	+8.66%	+12	850
other Community Services	640	740	791	804	+163	+25.50%	+64	+8.66%	+12	850

Community Services Employment Report by Grade Group: AUG 2023

AUG 2023	WTE DEC 2019	WTE DEC 2022	WTE JUL 2023	WTE AUG 2023	WTE change since DEC 2019	% WTE Change since Dec 2019	WTE change since DEC 2022	% WTE Change since Dec 2022	WTE change since JUL 2023	No. AUG 2023
Overall	52,085	57,523	58,502	58,471	+6,386	+12.26%	+948	+1.65%	-31	68,690
Consultant Anaesthesia			0						-0	
Consultant Dentistry	11	13	15	15	+4	+38.74%	+2	+17.82%	+0	18
Consultant Medicine	22	31	31	32	+9	+41.23%	+0	+0.48%	+0	41
Consultant Paediatrics	5	4	4	4	-0	-10.77%	+0	+0.00%	+0	5
Consultant Pathology			1	1	+1		+1		+0	1
Consultant Psychiatry	381	420	429	434	+53	+13.90%	+14	+3.26%	+4	478
Consultant Radiology	1	1	1	1	+0	+0.00%	+0	+0.00%	+0	1
Consultant Surgery	4	3	3	2	-2	-40.74%	-0	-9.43%	-0	4
Consultants	424	472	484	489	+65	+15.41%	+17	+3.58%	+5	548
Registrar	566	652	745	699	+133	+23.58%	+47	+7.14%	-46	749
Senior Registrar	103	133	129	134	+31	+29.88%	+1	+0.49%	+5	145
Specialist Registrar	19	13	12	17	-1	-5.57%	+5	+35.11%	+6	20
Registrars	687	798	885	850	+163	+23.74%	+52	+6.49%	-35	914
Interns	8	5	9	8	+0	+1.38%	+3	+64.84%	-1	10
Senior House Officer	311	322	295	336	+25	+8.08%	+14	+4.42%	+42	367
SHO/ Interns	319	327	304	345	+25	+7.91%	+17	+5.33%	+41	377
Dentists	301	307	297	287	-14	-4.78%	-20	-6.49%	-10	385
Other Medical	333	322	299	295	-38	-11.37%	-27	-8.32%	-3	482
Medical/ Dental, other	634	629	596	582	-52	-8.24%	-47	-7.43%	-14	867
Medical & Dental	2065	2227	2269	2266	+201	+9.75%	+39	+1.77%	-3	2,706
Clinical Nurse/ Midwife Manager 1	642	643	648	651	+10	+1.52%	+8	+1.22%	+3	700
Clinical Nurse/ Midwife Manager 2	1,598	1,736	1,757	1,758	+160	+9.99%	+22	+1.27%	+1	1,893
Clinical Nurse/ Midwife Manager 3	255	289	303	303	+48	+18.67%	+14	+4.97%	+0	315
Director Nursing/Midwifery, Assistant	460	556	585	586	+126	+27.32%	+30	+5.40%	+0	624
Director of Nursing/Midwifery	207	225	223	224	+17	+8.30%	-1	-0.49%	+1	230
Nurse/ Midwife Manager	3,162	3,449	3,516	3,522	+360	+11.39%	+73	+2.12%	+7	3,762
Advanced Nurse/ Midwife Practitioner	27	94	108	110	+83	+302.60%	+16	+16.87%	+2	115
Adv. Nurse/ Midwife, Candidate	18	63	85	88	+70	+397.23%	+25	+39.07%	+3	91
Clinical Nurse/ Midwife Specialist	646	907	1,034	1,024	+378	+58.50%	+117	+12.95%	-10	1,131
Nurse/ Midwife Specialist & AN/MP	691	1,064	1,227	1,222	+531	+76.80%	+158	+14.85%	-5	1,337
Staff Midwives	8	5	6	6	-2	-25.12%	+1	+11.56%	-0	8
Staff Nurse [Intellectual Disability]	1,602	1,779	1,718	1,705	+103	+6.42%	-74	-4.17%	-14	1,983
Staff Nurse [Psychiatric]	2,984	2,915	2,810	2,783	-202	-6.76%	-132	-4.53%	-27	3,030
Staff Nurses [General/ Children's]	4,414	4,667	4,698	4,675	+260	+5.90%	+7	+0.15%	-23	5,490
Staff Nurse/ Staff Midwife	9,008	9,366	9,233	9,168	+160	+1.77%	-198	-2.12%	-65	10,511
Public Health Nurse	1,534	1,502	1,463	1,477	-57	-3.73%	-25	-1.69%	+13	1,793
Public Health Nurse	1,534	1,502	1,463	1,477	-57	-3.73%	-25	-1.69%	+13	1,793
Nursing/ Midwifery awaiting registration	72	43	10	8	-64	-88.93%	-36	-81.74%	-3	9
Post-registration Nurse/ Midwife Student	98	97	29	25	-73	-74.70%	-72	-74.44%	-4	26
Pre-registration Nurse/ Midwife Intern	53	33	243	242	+189	+354.52%	+209	+623.33%	-1	480
Nursing/ Midwifery Student	223	174	283	275	+52	+23.39%	+101	+58.25%	-8	515
Nursing Education/Clinical	58	69	66	67	+10	+16.82%	-2	-2.37%	+2	75
Other Nursing/ Midwifery	1	1			-1	-100.00%	-1	-100.00%		
Nursing/ Midwifery other	59	70	66	67	+9	+14.83%	-3	-3.76%	+2	75



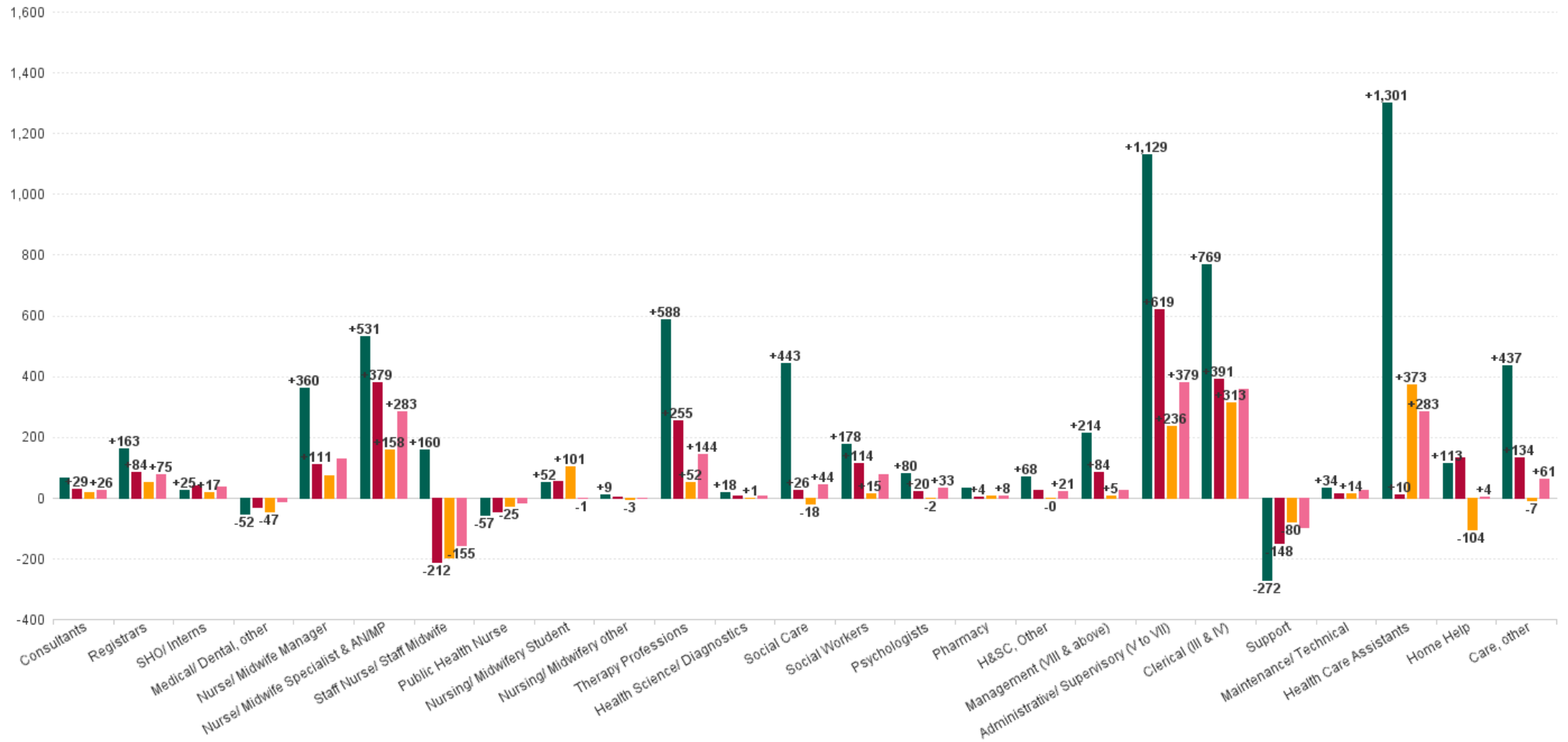
AUG 2023	WTE DEC 2019	WTE DEC 2022	WTE JUL 2023	WTE AUG 2023	WTE change since DEC 2019	% WTE Change since Dec 2019	WTE change since DEC 2022	% WTE Change since Dec 2022	WTE change since JUL 2023	No. AUG 2023
Overall	52,085	57,523	58,502	58,471	+6,386	+12.26%	+948	+1.65%	-31	68,690
Nursing & Midwifery	14677	15625	15787	15731	+1,054	+7.18%	+106	+0.68%	-56	17,993
Dietitians	163	269	293	290	+126	+77.32%	+21	+7.77%	-3	347
Occupational Therapists	1,229	1,415	1,422	1,424	+195	+15.86%	+9	+0.61%	+2	1,645
Orthoptists	13	20	19	20	+7	+49.81%	-0	-0.55%	+0	23
Physiotherapists	857	1,003	1,039	1,037	+179	+20.90%	+34	+3.34%	-3	1,240
Podiatrists & Chiropodists	37	87	95	94	+56	+150.64%	+7	+8.31%	-1	109
Speech & Language Therapists	903	946	936	928	+24	+2.68%	-18	-1.93%	-8	1,098
Therapy Professions	3,204	3,740	3,804	3,792	+588	+18.34%	+52	+1.39%	-12	4,462
Audiology	44	57	61	61	+17	+39.30%	+4	+7.05%	-0	66
Biochemists	8	8	6	6	-2	-19.92%	-2	-20.85%	+0	7
Cardiac Physiologists		1	1	1	+1		+0	+0.00%	+0	1
Clinical Engineering	21	24	25	25	+4	+17.95%	+1	+3.60%	+0	25
Medical Science	20	18	16	17	-3	-14.46%	-2	-9.09%	+1	18
Phlebotomists	1	0	0	0	-1	-80.33%	-0	-20.00%	+0	1
Physicists	2	2	2	2	-0	-13.50%	+0	+6.79%	+0	2
Radiographers	11	13	13	13	+1	+12.40%	+0	+0.95%	-0	17
Respiratory Physiologists	1	2	1	1	+0	+0.00%	-1	-50.00%	+0	1
Vascular Physiologists	0	0	0	0	-0	-19.05%	+0	+0.00%	+0	1
Health Science/ Diagnostics	108	125	125	126	+18	+16.48%	+1	+0.62%	+1	139
Other Health & Social Care			68	80	+80		+80		+11	84
Social Care	2,707	3,167	3,115	3,070	+363	+13.42%	-97	-3.07%	-45	3,630
Social Care	2,707	3,167	3,183	3,150	+443	+16.37%	-18	-0.56%	-33	3,714
Social Workers	807	970	987	985	+178	+22.08%	+15	+1.50%	-2	1,106
Social Workers	807	970	987	985	+178	+22.08%	+15	+1.50%	-2	1,106
Psychologists	901	983	993	981	+80	+8.87%	-2	-0.17%	-11	1,104
Psychologists	901	983	993	981	+80	+8.87%	-2	-0.17%	-11	1,104
Pharmacists	84	104	107	106	+22	+26.55%	+2	+2.31%	-1	135
Pharmacy Technicians	14	22	24	25	+10	+70.82%	+3	+13.59%	+1	29
Pharmacy	98	125	131	131	+32	+33.06%	+5	+4.27%	-1	164
Counsellor Therapists	228	271	279	278	+50	+21.79%	+7	+2.54%	-0	312
Dental Hygienists	58	61	59	58	+0	+0.76%	-3	-4.78%	-1	75
Environmental Health Officers			1	1	+1		+1		+0	1
HSCP Trainees/Students				1	+1		+1		+1	1
Other Health & Social Care	96	82	96	96	-0	-0.04%	+14	+16.50%	+0	116
Play Therapists/ Specialists	20	21	22	23	+3	+12.76%	+2	+8.67%	+1	30
Vaccinators		35	19	13	+13		-22	-62.17%	-5	31
H&SC, Other	403	471	475	471	+68	+16.91%	-0	-0.09%	-4	566
Health & Social Care Professionals	8228	9582	9697	9635	+1,407	+17.10%	+53	+0.55%	-63	11,255
Executive Management	124	159	144	143	+19	+14.96%	-16	-9.92%	-1	145
Senior Management (VIII & GM)	494	668	693	689	+195	+39.55%	+21	+3.10%	-4	715
Management (VIII & above)	618	827	837	832	+214	+34.60%	+5	+0.60%	-5	860
Middle Management (V-VII)	1,488	2,385	2,579	2,613	+1,125	+75.64%	+228	+9.55%	+34	2,787
Other Administrative	20	15	24	23	+3	+17.77%	+8	+57.97%	-1	24
Administrative/ Supervisory (V to VII)	1,507	2,400	2,602	2,636	+1,129	+74.89%	+236	+9.84%	+34	2,811
General Administrative (III & IV)	3,694	4,150	4,472	4,463	+769	+20.81%	+313	+7.55%	-9	5,119
Clerical (III & IV)	3,694	4,150	4,472	4,463	+769	+20.81%	+313	+7.55%	-9	5,119
Management & Administrative	5819	7377	7911	7931	+2,112	+36.28%	+554	+7.51%	+20	8,790



AUG 2023	WTE DEC 2019	WTE DEC 2022	WTE JUL 2023	WTE AUG 2023	WTE change since DEC 2019	% WTE Change since Dec 2019	WTE change since DEC 2022	% WTE Change since Dec 2022	WTE change since JUL 2023	No. AUG 2023
Overall	52,085	57,523	58,502	58,471	+6,386	+12.26%	+948	+1.65%	-31	68,690
Catering	409	384	393	394	-15	-3.68%	+9	+2.44%	+0	444
Household Services	1,438	1,364	1,322	1,328	-110	-7.67%	-36	-2.65%	+6	1,667
Other Labs & Associated	4	2	7	7	+3	+70.32%	+5	+189.26%	+0	7
Other Support	378	318	261	259	-119	-31.58%	-59	-18.67%	-2	405
Portering	231	200	201	201	-30	-13.07%	+2	+0.82%	+0	221
Support	2,461	2,269	2,184	2,189	-272	-11.06%	-80	-3.53%	+5	2,744
Maintenance	397	400	407	412	+15	+3.80%	+12	+2.92%	+5	437
Technical Services	9	25	27	28	+19	+203.86%	+3	+11.17%	+1	28
Maintenance/ Technical	406	425	434	440	+34	+8.29%	+14	+3.40%	+6	465
General Support	2867	2694	2618	2628	-239	-8.32%	-66	-2.43%	+11	3,209
Attendant/ Aide	3,199	2,297	2,221	2,203	-995	-31.11%	-93	-4.07%	-17	2,579
Health Care Assistant/ Care Assistant	8,838	10,578	10,862	10,959	+2,121	+23.99%	+381	+3.60%	+97	12,774
Health & Social Care Assistants	110	201	291	286	+176	+159.51%	+85	+42.18%	-5	322
Health Care Assistants	12,147	13,075	13,374	13,448	+1,301	+10.71%	+373	+2.85%	+74	15,675
Health Promotion		22	18	17	+17		-5	-23.99%	-1	23
Home Care Services	132	186	191	191	+59	+44.62%	+5	+2.52%	-0	214
Other Care Grades	931	1,259	1,262	1,279	+348	+37.35%	+20	+1.58%	+17	1,499
Pastoral Care	58	40	40	40	-18	-31.54%	+0	+0.60%	+0	78
Workshop Services	1,596	1,654	1,660	1,628	+32	+1.98%	-27	-1.62%	-32	1,930
Care, other	2,717	3,162	3,171	3,154	+437	+16.08%	-7	-0.24%	-17	3,744
Home Helps	3,565	3,782	3,676	3,678	+113	+3.17%	-104	-2.74%	+2	5,318
Home Help	3,565	3,782	3,676	3,678	+113	+3.17%	-104	-2.74%	+2	5,318
Patient & Client Care	18430	20019	20221	20280	+1,851	+10.04%	+261	+1.31%	+60	24,737

WTE Change by Staff Category

■ WTE change since DEC 2019 ■ WTE change since DEC 2021 ■ WTE change since DEC 2022 ■ WTE change since AUG 2022



Community Services Employment Report by WTE, Headcount, Gender, Full-Time / Part-Time etc. AUG 2023

AUG 2023	WTE AUG 2023	No. AUG 2023	WTE : No	% Male	% Female	Male WTE : No.	Female WTE : No	Perm Count %	Perm Count Male %	Perm Count Female %	Fulltime Count %	Part time Count %	FT Count Male %	FT Count Female %
Total	58,471	68,690	1:0.9	18.37%	81.63%	1:0.9	1:0.8	86.62%	15.33%	71.29%	64.68%	35.32%	79.83%	61.27%
Consultants	489.14	548	1:0.9	39.60%	60.40%	1:0.9	1:0.9	70.62%	28.28%	42.34%	83.21%	16.79%	91.24%	77.95%
Registrars	850.23	914	1:0.9	39.50%	60.50%	1:0.9	1:0.9	2.63%	1.20%	1.42%	96.39%	3.61%	99.17%	94.58%
SHO/ Interns	344.54	377	1:0.9	40.85%	59.15%	1:0.9	1:0.9	1.06%	0.53%	0.53%	98.94%	1.06%	100.00%	98.21%
Medical/ Dental, other	582.11	867	1:0.7	32.53%	67.47%	1:0.6	1:0.7	79.70%	23.07%	56.63%	41.29%	58.71%	41.13%	41.37%
Medical & Dental	2,266	2,706	1:0.8	37.47%	62.53%	1:0.8	1:0.8	40.87%	13.60%	27.27%	76.42%	23.58%	81.46%	73.40%
Nurse/ Midwife Manager	3,522.1	3,762	1:0.9	18.71%	81.29%	1:1	1:0.9	96.44%	18.21%	78.23%	87.48%	12.52%	97.44%	85.19%
Nurse/ Midwife Specialist & AN/MP	1,222.14	1,337	1:0.9	12.34%	87.66%	1:1	1:0.9	97.98%	12.27%	85.71%	85.94%	14.06%	97.58%	84.30%
Staff Nurse/ Staff Midwife	9,167.83	10,511	1:0.9	13.85%	86.15%	1:0.9	1:0.9	90.80%	12.36%	78.44%	70.81%	29.19%	88.80%	67.92%
Public Health Nurse	1,476.75	1,793	1:0.8	0.56%	99.44%	1:0.9	1:0.8	96.32%	0.56%	95.76%	69.60%	30.40%	80.00%	69.55%
Nursing/ Midwifery Student	274.83	515	1:0.5	14.56%	85.44%	1:0.5	1:0.5	9.90%	0.39%	9.51%	87.38%	12.62%	89.33%	87.05%
Nursing/ Midwifery other	67.23	75	1:0.9	8.00%	92.00%	1:1	1:0.9	100.00%	8.00%	92.00%	80.00%	20.00%	100.00%	78.26%
Nursing & Midwifery	15,731	17,993	1:0.9	13.43%	86.57%	1:0.9	1:0.9	90.79%	12.04%	78.75%	75.81%	24.19%	91.93%	73.31%
Therapy Professions	3,791.65	4,462	1:0.8	9.39%	90.61%	1:0.9	1:0.8	94.53%	8.61%	85.93%	74.59%	25.41%	89.74%	73.02%
Health Science/ Diagnostics	125.81	139	1:0.9	32.37%	67.63%	1:1	1:0.9	89.21%	29.50%	59.71%	83.45%	16.55%	91.11%	79.79%
Social Care	3,149.79	3,714	1:0.8	17.15%	82.85%	1:0.9	1:0.8	92.65%	15.83%	76.82%	50.13%	49.87%	64.68%	47.12%
H&SC, Other	96	116	1:0.8	107.76%	380.17%	1:0.9	1:0.8	440.52%	101.72%	338.79%	322.41%	165.52%	85.60%	60.54%
Social Workers	984.88	1,106	1:0.9	16.91%	83.09%	1:1	1:0.9	93.13%	15.46%	77.67%	81.65%	18.35%	93.05%	79.33%
Psychologists	981.34	1,104	1:0.9	18.57%	81.43%	1:1	1:0.9	79.80%	15.40%	64.40%	79.08%	20.92%	94.63%	75.53%
Pharmacy	130.74	164	1:0.8	18.29%	81.71%	1:0.8	1:0.8	76.83%	12.20%	64.63%	62.20%	37.80%	53.33%	64.18%
H&SC, Other	374.55	450	1:0.8	27.78%	98.00%	1:0.9	1:0.8	113.56%	26.22%	87.33%	83.11%	42.67%	85.60%	60.54%
Health & Social Care Professionals	9,635	11,255	1:0.9	14.64%	85.36%	1:0.9	1:0.8	91.79%	13.26%	78.53%	67.15%	32.85%	80.10%	64.93%
Management (VIII & above)	832.11	860	1:1	28.37%	71.63%	1:1	1:1	95.23%	26.51%	68.72%	97.21%	2.79%	98.36%	96.75%
Administrative/ Supervisory (V to VII)	2,635.95	2,811	1:0.9	18.61%	81.39%	1:1	1:0.9	94.59%	17.29%	77.30%	89.40%	10.60%	97.51%	87.54%
Clerical (III & IV)	4,462.91	5,119	1:0.9	10.31%	89.69%	1:0.9	1:0.9	86.38%	8.36%	78.02%	70.91%	29.09%	89.96%	68.72%
Management & Administrative	7,931	8,790	1:0.9	14.73%	85.27%	1:1	1:0.9	89.87%	12.99%	76.88%	79.40%	20.60%	94.59%	76.77%
Support	2,188.59	2,744	1:0.8	32.62%	67.38%	1:0.9	1:0.8	86.12%	27.77%	58.35%	54.34%	45.66%	77.54%	43.10%
Maintenance/ Technical	439.59	465	1:0.9	95.27%	4.73%	1:1	1:0.8	93.98%	89.46%	4.52%	88.60%	11.40%	90.97%	40.91%
General Support	2,628	3,209	1:0.8	41.70%	58.30%	1:0.9	1:0.8	87.25%	36.71%	50.55%	59.30%	40.70%	81.99%	43.08%
Health Care Assistants	13,447.74	15,675	1:0.9	23.56%	76.44%	1:0.9	1:0.8	86.74%	20.55%	66.19%	57.15%	42.85%	71.08%	52.85%
Home Help	3,678.19	5,318	1:0.7	5.83%	94.17%	1:0.8	1:0.7	76.29%	3.55%	72.73%	16.17%	83.83%	24.19%	15.67%



AUG 2023	WTE AUG 2023	No. AUG 2023	WTE : No	% Male	% Female	Male WTE : No.	Female WTE : No	Perm Count %	Perm Count Male %	Perm Count Female %	Fulltime Count %	Part time Count %	FT Count Male %	FT Count Female %
Total	58,471	68,690	1:0.9	18.37%	81.63%	1:0.9	1:0.8	86.62%	15.33%	71.29%	64.68%	35.32%	79.83%	61.27%
Care, other	3,154.19	3,744	1:0.8	24.15%	75.85%	1:0.9	1:0.8	90.17%	20.70%	69.47%	65.71%	34.29%	75.66%	62.54%
Patient & Client Care	20,280	24,737	1:0.8	19.84%	80.16%	1:0.9	1:0.8	85.01%	16.92%	68.09%	49.63%	50.37%	68.96%	44.85%



Community Services Employment Report by CHO : WTE, Headcount, Gender, Full-Time / Part-Time etc. AUG 2023

AUG 2023	WTE AUG 2023	No. AUG 2023	WTE : No	% Male	% Female	Male WTE : No.	Female WTE : No	Perm Count %	Number Male %	Number Female %	Fulltime Count %	Part time Count %	FT Count Male %	FT Count Female %
Total	58,471	68,690	1:0.9	18.37%	81.63%	1:0.9	1:0.8	86.62%	15.33%	71.29%	64.68%	35.32%	79.83%	61.27%
CHO 1	6,603	7,512	1:0.9	17.04%	82.96%	1:0.9	1:0.9	85.68%	14.62%	71.06%	64.91%	35.09%	83.20%	61.15%
CHO 2	6,013	7,027	1:0.9	19.89%	80.11%	1:0.9	1:0.8	87.90%	16.39%	71.51%	64.58%	35.42%	76.11%	61.72%
CHO 3	5,205	6,137	1:0.8	14.75%	85.25%	1:0.9	1:0.8	87.19%	12.38%	74.81%	60.09%	39.91%	73.59%	57.76%
CHO 4	8,827	10,873	1:0.8	16.64%	83.36%	1:0.9	1:0.8	75.96%	11.54%	64.42%	58.33%	41.67%	76.56%	54.69%
CHO 5	6,017	7,099	1:0.8	17.09%	82.91%	1:0.9	1:0.8	90.90%	14.66%	76.24%	60.80%	39.20%	77.16%	57.42%
CHO 6	3,695	4,280	1:0.9	22.55%	77.45%	1:0.9	1:0.8	89.91%	19.74%	70.16%	74.46%	25.54%	87.88%	70.56%
CHO 7	7,326	8,519	1:0.9	20.72%	79.28%	1:0.9	1:0.8	88.23%	17.84%	70.38%	72.10%	27.90%	84.53%	68.85%
CHO 8	6,772	8,058	1:0.8	17.82%	82.18%	1:0.9	1:0.8	90.63%	15.30%	75.33%	60.60%	39.40%	71.66%	58.20%
CHO 9	7,210	8,335	1:0.9	18.03%	81.97%	1:0.9	1:0.8	88.78%	15.96%	72.83%	68.03%	31.97%	84.17%	64.48%
other Community Services	804	850	1:0.9	40.47%	59.53%	1:1	1:0.9	89.18%	34.94%	54.24%	92.35%	7.65%	93.90%	91.30%



Previous Month Summary

	% WTE change since JUL 2023	WTE change since JUL 2023	CHO 1	CHO 2	CHO 3	CHO 4	CHO 5	CHO 6	CHO 7	CHO 8	CHO 9	other Community Services
Total	-0.05%	-31.2	-2.8	-47.1	+12.2	-20.9	-25.2	+15.8	-0.7	+32.9	-7.5	+12.2
Consultants	+1.11%	+5.4	-0.3	+0.5	-0.5	+1.4	+0.6	+1.7	+3.0	+0.9	-2.1	+0.2
Registrars	-3.95%	-35.0	-12.8	-6.6	-7.2	-13.3	-11.9	+16.2	+8.1	-13.7	+3.5	+2.7
SHO/ Interns	+13.38%	+40.7	+3.6	+7.9	+3.1	+2.7	+4.3	+1.1	+6.0	+3.0	+8.9	+0.1
Medical/ Dental, other	-2.29%	-13.6	-1.0	-1.9	-1.0	-4.0	-3.2	+0.1	-0.6	+0.3	-2.3	
Medical & Dental	-0.11%	-2.5	-10.5	-0.1	-5.7	-13.2	-10.2	+19.1	+16.4	-9.4	+8.1	+3.1
Nurse/ Midwife Manager	+0.19%	+6.5	-2.4	+7.5	-0.5	+0.9	+2.1	-3.4	-0.7	+7.8	-4.1	-0.6
Nurse/ Midwife Specialist & AN/MP	-0.41%	-5.0	+4.3	-2.2	-1.6	+1.5	+0.7	+2.0	-4.9	-0.9	-4.3	+0.3
Staff Nurse/ Staff Midwife	-0.70%	-64.7	+4.5	-12.1	+0.1	-18.1	-0.3	+3.0	-21.9	-6.3	-16.1	+2.5
Public Health Nurse	+0.92%	+13.4	-0.3	-1.0	+4.1	+3.1	-2.4	+0.1	+1.1	+0.3	+8.3	
Nursing/ Midwifery Student	-2.78%	-7.9	-5.0	-1.1	-1.7	-1.1	-3.6	+0.6	-2.1	+3.3	+2.9	
Nursing/ Midwifery other	+2.53%	+1.7	+0.3	+0.0	+0.3	+0.0	+0.0	-1.0	+0.8	+0.0	+1.3	+0.0
Nursing & Midwifery	-0.35%	-55.9	+1.3	-8.9	+0.7	-13.7	-3.5	+1.3	-27.6	+4.3	-11.9	+2.2
Therapy Professions	-0.32%	-12.3	-0.9	-15.6	+3.1	-2.0	-4.3	-0.9	+3.4	+5.7	+1.2	-1.8
Health Science/ Diagnostics	+0.93%	+1.2	-0.1	+0.0	+1.0	+0.1	-0.2	+0.7	-0.5	-0.3	+0.0	+0.5
Social Care	-1.05%	-33.4	+1.6	-2.8	-4.9	-10.3	-9.2	+2.2	-6.9	-0.1	-4.1	+1.1
Social Workers	-0.18%	-1.8	+1.6	-1.2	-1.4	-2.7	+0.8	+1.9	-1.4	+0.5	+0.2	-0.1
Psychologists	-1.15%	-11.4	-1.2	-2.6	-1.7	-1.3	+0.5	-1.8	-0.8	-3.3	+0.6	+0.0
Pharmacy	-0.38%	-0.5	-0.1	-0.8	+0.4	-0.1	-0.0	-0.7	-0.0	+0.3	+0.5	+0.1
H&SC, Other	-0.91%	-4.3	-0.4	+2.1	+0.4	-6.3	-0.1	+1.1	-2.1	+0.1	+0.8	+0.0
Health & Social Care Professionals	-0.65%	-62.6	+0.5	-20.8	-3.1	-22.6	-12.4	+2.4	-8.4	+2.9	-0.8	-0.3
Management (VIII & above)	-0.62%	-5.2	-1.6	-4.3	+2.9	+1.7	-0.1	-2.6	+0.3	+1.5	+0.6	-3.5
Administrative/ Supervisory (V to VII)	+1.30%	+33.8	+1.3	+1.9	+4.9	+10.9	+0.5	+0.2	+6.3	+5.7	-0.4	+2.6
Clerical (III & IV)	-0.20%	-8.8	-4.1	-17.1	+1.7	-4.6	+8.1	-0.8	+4.3	+9.4	-10.2	+4.5
Management & Administrative	+0.25%	+19.8	-4.4	-19.5	+9.5	+8.1	+8.5	-3.2	+10.8	+16.6	-10.0	+3.5
Support	+0.22%	+4.9	+6.3	-0.7	-0.1	+0.8	+3.8	+0.1	-4.9	-1.5	+1.4	-0.2



Maintenance/ Technical	+1.30%	+5.7	+0.5	+1.3	+0.2	-0.6	-0.0	+0.7	+3.7	+0.5	-0.2	-0.4
General Support	+0.40%	+10.5	+6.8	+0.5	+0.0	+0.2	+3.7	+0.9	-1.2	-1.0	+1.2	-0.6
Health Care Assistants	+0.55%	+74.1	-2.1	+7.3	+12.7	+12.2	-6.8	+4.2	+26.4	+15.1	+4.1	+1.1
Home Help	+0.05%	+2.0	+9.2	-7.5	-0.0	-0.7	-1.4		+1.2	+1.2		
Care, other	-0.52%	-16.5	-3.6	+1.9	-1.8	+8.8	-3.0	-8.7	-18.3	+3.3	+1.8	+3.1
Patient & Client Care	+0.29%	+59.6	+3.6	+1.6	+10.8	+20.3	-11.2	-4.5	+9.3	+19.6	+5.9	+4.2



Year on Year Summary

	% WTE change since AUG 2022	WTE change since AUG 2022	CHO 1	CHO 2	CHO 3	CHO 4	CHO 5	CHO 6	CHO 7	CHO 8	CHO 9	other Communi ty Services
Total	+3.07%	+1,741.5	+326.7	+233.4	+152.8	-32.0	+230.1	+95.2	+238.7	+338.6	+86.1	+71.9
Consultants	+5.65%	+26.2	+1.5	+1.6	+1.6	+7.1	-1.4	+12.1	+5.4	-1.5	-0.3	+0.1
Registrars	+9.73%	+75.4	-3.0	+11.7	+8.5	+25.2	+7.7	+16.9	+4.4	-2.5	+6.4	+0.1
SHO/ Interns	+11.90%	+36.7	+4.6	-7.5	-8.8	-0.7	-2.0	+4.3	+8.4	+11.3	+27.1	-0.2
Medical/ Dental, other	-1.73%	-10.3	+2.6	+1.5	-0.9	-5.0	-1.9	+0.9	+1.4	-5.6	-3.3	
Medical & Dental	+5.98%	+127.9	+5.7	+7.3	+0.3	+26.7	+2.4	+34.2	+19.6	+1.8	+29.9	-0.0
Nurse/ Midwife Manager	+3.80%	+129.0	+13.2	+23.9	+10.3	+6.6	+2.5	+8.8	+25.9	+9.9	+20.7	+7.2
Nurse/ Midwife Specialist & AN/MP	+30.17%	+283.3	+49.4	+25.3	+26.9	+40.5	+48.7	+27.1	+20.6	+23.7	+20.4	+0.7
Staff Nurse/ Staff Midwife	-1.66%	-154.8	+26.6	-32.8	-16.9	-55.6	+17.5	-12.2	-32.0	+15.9	-65.7	+0.2
Public Health Nurse	-1.06%	-15.8	-10.5	+1.6	+3.7	+0.6	+1.1	-3.6	+0.4	-5.8	-3.2	
Nursing/ Midwifery Student	-0.44%	-1.2	-8.0	-0.3	+4.5	-11.1	-0.5	+1.2	+2.1	+9.0	+1.9	
Nursing/ Midwifery other	-2.00%	-1.4	+0.1	+1.5	+0.3	+0.0	+1.1	-1.8	-0.8	-1.3	-0.3	+0.0
Nursing & Midwifery	+1.54%	+239.1	+70.8	+19.2	+28.7	-19.0	+70.4	+19.5	+16.2	+51.4	-26.2	+8.2
Therapy Professions	+3.96%	+144.4	+10.4	+26.4	+33.1	+29.7	+18.2	+3.0	-8.2	+33.2	+0.5	-1.8
Health Science/ Diagnostics	+5.98%	+7.1	-0.2	+1.2	+1.6	-1.3	+4.8	-0.5	+1.9	+0.2	+1.0	-1.5
Social Care	+1.41%	+43.7	+11.3	+22.3	+2.6	-4.5	+3.8	-10.8	+16.3	+8.0	-6.3	+1.0
Social Workers	+8.58%	+77.8	+14.9	+9.9	+3.6	+15.0	+9.1	+15.2	+6.0	+8.2	+8.1	-12.1
Psychologists	+3.53%	+33.4	+6.1	+8.7	+1.0	+7.9	+6.1	-6.8	+11.1	-2.7	+4.4	-2.3
Pharmacy	+6.18%	+7.6	-0.1	+0.4	+0.1	+2.2	-0.5	+0.8	-0.6	+0.8	-0.4	+5.0
H&SC, Other	+4.75%	+21.3	+3.9	+2.5	+4.9	-1.6	+0.7	+5.1	-1.9	+2.4	+3.6	+1.8
Health & Social Care Professionals	+3.61%	+335.4	+46.4	+71.3	+46.8	+47.4	+42.1	+6.1	+24.5	+50.0	+10.9	-10.0
Management (VIII & above)	+3.13%	+25.3	+3.6	-4.7	+8.2	+13.5	-0.7	-1.5	-8.7	+9.5	-0.3	+6.3
Administrative/ Supervisory (V to VII)	+16.80%	+379.2	+50.8	+40.5	+6.8	+65.1	+41.3	+17.0	+45.0	+31.7	+65.1	+15.9
Clerical (III & IV)	+8.73%	+358.2	+17.2	+36.8	+36.5	+20.2	+80.5	+5.3	+35.8	+87.5	+11.2	+27.3



Management & Administrative	+10.64%	+762.7	+71.6	+72.7	+51.5	+98.8	+121.1	+20.8	+72.1	+128.7	+76.0	+49.5
Support	-4.22%	-96.4	+0.9	+2.9	+1.2	-54.8	-1.4	-2.4	-11.7	-5.7	-23.3	-2.1
Maintenance/ Technical	+5.78%	+24.0	-2.7	+3.6	+5.4	-2.1	+1.6	+3.2	+8.7	+6.6	+1.9	-2.2
General Support	-2.68%	-72.3	-1.8	+6.6	+6.6	-56.9	+0.2	+0.8	-3.1	+0.9	-21.4	-4.2
Health Care Assistants	+2.15%	+283.5	+13.8	+69.4	-3.2	-41.6	+19.2	+13.3	+111.0	+57.3	+29.6	+14.7
Home Help	+0.11%	+3.9	+112.9	-25.1	+8.1	-102.8	-26.7		+6.6	+30.9		
Care, other	+1.98%	+61.3	+7.3	+12.0	+14.1	+15.5	+1.4	+0.5	-8.3	+17.6	-12.5	+13.7
Patient & Client Care	+1.75%	+348.7	+134.1	+56.3	+19.0	-129.0	-6.1	+13.8	+109.4	+105.8	+17.0	+28.4



Year to Date Summary

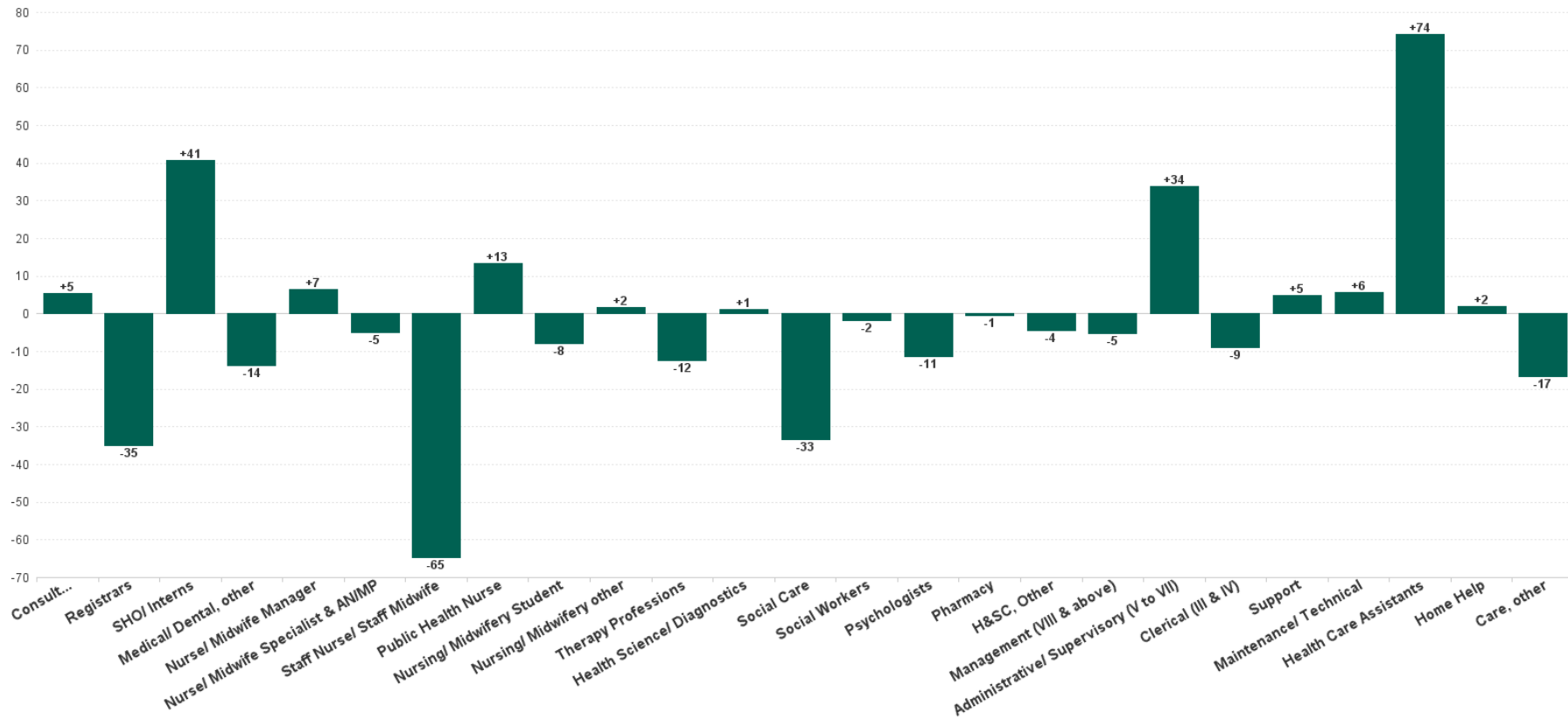
	% WTE change since DEC 2022	WTE change since DEC 2022	CHO 1	CHO 2	CHO 3	CHO 4	CHO 5	CHO 6	CHO 7	CHO 8	CHO 9	other Communi ty Services
Total	+1.65%	+948.2	+205.0	+40.5	+136.2	-133.9	+211.7	+75.2	+111.0	+258.5	-20.1	+64.0
Consultants	+3.58%	+16.9	+0.6	+3.9	-0.6	+2.3	-1.4	+5.0	+5.8	+1.8	-1.7	+1.5
Registrars	+6.49%	+51.8	-2.9	+8.7	+7.5	+14.2	+9.0	+15.2	+3.5	+1.1	-4.6	+0.1
SHO/ Interns	+5.33%	+17.4	+2.6	-5.8	-16.0	+3.1	-1.9	+4.7	+10.3	+6.5	+16.1	-2.2
Medical/ Dental, other	-7.43%	-46.7	-12.9	-0.6	-1.8	-15.5	-5.1	-1.1	-0.2	-5.6	-3.8	
Medical & Dental	+1.77%	+39.4	-12.7	+6.2	-11.0	+4.0	+0.7	+23.8	+19.3	+3.8	+6.0	-0.6
Nurse/ Midwife Manager	+2.12%	+73.1	+15.5	+13.2	-1.1	+9.8	+4.5	-0.5	+15.7	-0.1	+15.5	+0.7
Nurse/ Midwife Specialist & AN/MP	+14.85%	+158.0	+26.8	+13.7	+10.8	+31.4	+30.8	+19.4	+8.1	+10.5	+6.7	-0.2
Staff Nurse/ Staff Midwife	-2.12%	-198.4	+8.8	-28.0	+4.3	-84.9	+13.4	+2.3	-39.2	-8.0	-72.5	+5.3
Public Health Nurse	-1.69%	-25.5	-6.2	-9.7	-0.5	-8.2	-4.8	+0.7	+7.1	-12.8	+8.8	
Nursing/ Midwifery Student	+58.25%	+101.2	+8.8	-2.1	+12.3	+22.9	+18.1	+0.2	-0.4	+37.1	+4.3	
Nursing/ Midwifery other	-3.76%	-2.6	+0.1	+0.5	+0.3	+0.0	+1.0	-1.8	-1.0	+0.7	-2.4	+0.0
Nursing & Midwifery	+0.68%	+105.8	+53.7	-12.4	+26.0	-29.0	+63.0	+20.5	-9.7	+27.4	-39.6	+5.8
Therapy Professions	+1.39%	+51.9	-2.5	-10.1	+27.9	+7.0	+25.4	+3.0	-11.3	+25.4	-10.8	-2.1
Health Science/ Diagnostics	+0.62%	+0.8	+0.4	+1.0	+1.1	-2.1	+3.2	-0.7	-1.2	-1.5	+2.2	-1.6
Social Care	-0.56%	-17.6	+6.3	+11.9	-6.1	-11.5	-3.0	-2.9	-7.0	+8.4	-14.9	+1.1
Social Workers	+1.50%	+14.6	+9.4	-3.6	-2.8	+5.3	+2.9	+3.8	-0.1	-1.0	-2.1	+2.7
Psychologists	-0.17%	-1.7	+7.2	+2.5	-3.7	-4.9	+6.6	-3.3	+3.4	-6.0	-2.2	-1.4
Pharmacy	+4.27%	+5.4	+0.9	-0.8	+0.9	+3.8	-0.0	-2.5	+0.1	+0.7	+0.6	+1.8
H&SC, Other	-0.09%	-0.4	-0.3	-6.2	+2.1	-2.0	-0.2	+3.3	-1.2	-1.9	+3.6	+2.3
Health & Social Care Professionals	+0.55%	+53.0	+21.5	-5.3	+19.4	-4.3	+34.9	+0.7	-17.3	+24.2	-23.6	+2.8
Management (VIII & above)	+0.60%	+5.0	-0.3	-3.6	+6.3	+10.3	-1.6	-10.3	-6.4	+1.0	+2.7	+6.8
Administrative/ Supervisory (V to VII)	+9.84%	+236.2	+41.1	+19.9	+11.7	+44.1	+27.9	+2.8	+20.8	+21.1	+37.6	+9.2
Clerical (III & IV)	+7.55%	+313.2	+6.0	+19.6	+47.6	+28.6	+47.6	+10.6	+24.6	+94.7	+13.8	+20.2



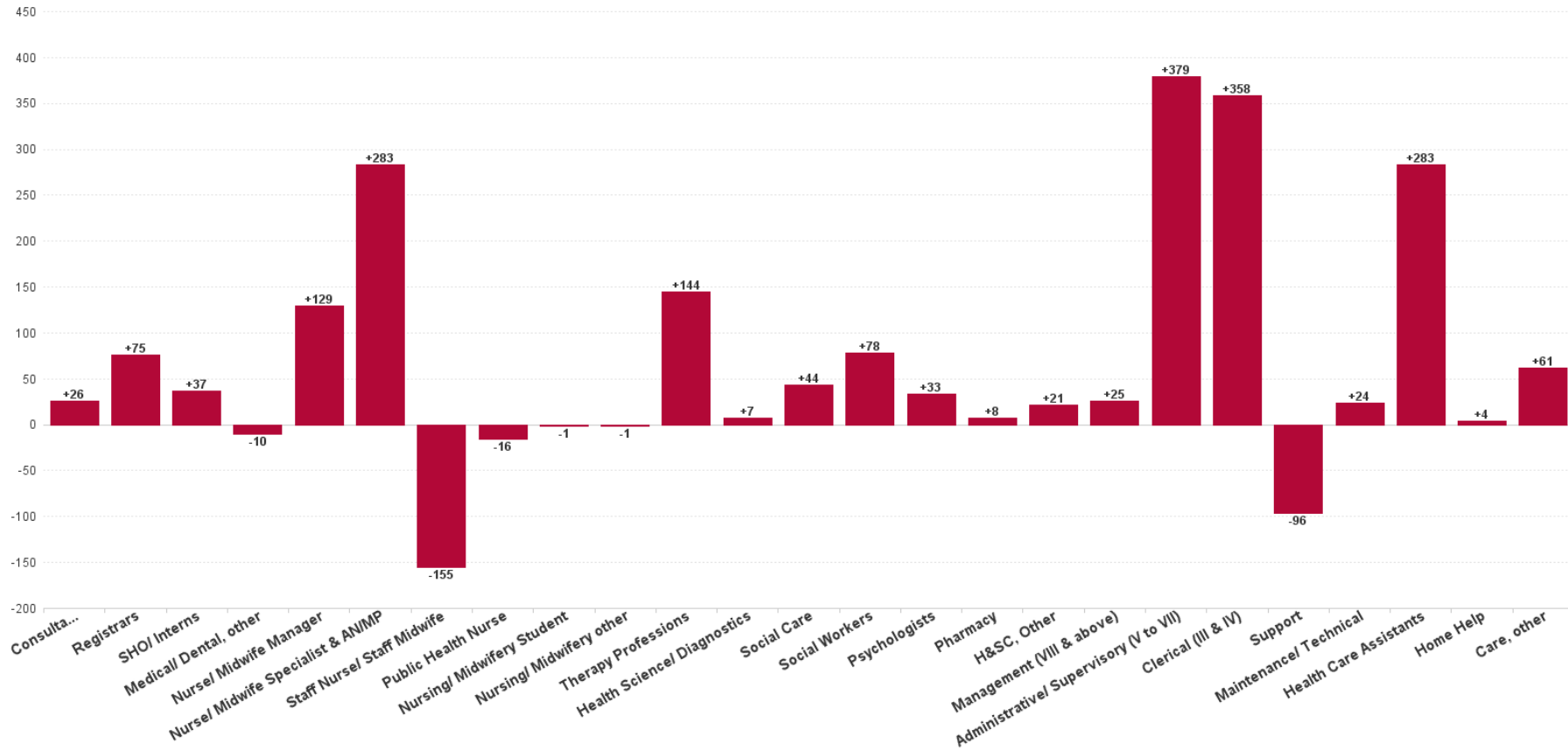
Management & Administrative	+7.51%	+554.3	+46.8	+35.8	+65.6	+83.0	+73.9	+3.1	+39.0	+116.8	+54.2	+36.1
Support	-3.53%	-80.0	+9.3	-3.5	+3.3	-53.7	+1.3	+1.0	-12.2	+0.4	-22.5	-3.5
Maintenance/ Technical	+3.40%	+14.5	-3.1	+0.8	+3.4	-2.2	+0.5	+3.6	+5.8	+7.9	-1.1	-1.1
General Support	-2.43%	-65.5	+6.2	-2.7	+6.7	-56.0	+1.9	+4.6	-6.4	+8.4	-23.6	-4.6
Health Care Assistants	+2.85%	+372.5	+21.4	+57.1	+27.0	+3.8	+74.8	+24.0	+91.3	+40.9	+20.6	+11.5
Home Help	-2.74%	-103.8	+58.8	-32.6	-2.4	-144.7	-23.4		+6.0	+34.5		
Care, other	-0.24%	-7.4	+9.4	-5.6	+4.9	+9.3	-13.9	-1.6	-11.3	+2.5	-14.1	+13.1
Patient & Client Care	+1.31%	+261.3	+89.5	+18.9	+29.5	-131.6	+37.5	+22.5	+86.1	+77.9	+6.5	+24.6



Previous Month Summary Chart: Change since JUL 2023



Previous Year Summary Chart: Change since AUG 2022



YTD Summary Chart: Change since DEC 2022

