

Community Services Employment Report: Staff Groups December 2020

Employment by Staff Group

Dec 2020 (Dec 2019 figure: 52,089)	WTE Nov 2020	WTE Dec 2020	WTE change since Nov 20	% change since Nov 20	WTE change since Dec 19	WTE change since Dec 19
Community Services	53,830	54,377	+547	+1.0%	+2,288	+2,288
Consultants	440	440	+0	+0.0%	+17	+17
Registrars	703	701	-1	-0.2%	+15	+15
SHO/ Interns	337	340	+4	+1.1%	+20	+20
Medical/ Dental, other	635	642	+7	+1.1%	+7	+7
Medical & Dental	2,115	2,124	+9	+0.4%	+59	+59
Nurse/ Midwife Manager	3,266	3,291	+24	+0.7%	+136	+136
Nurse/ Midwife Specialist & AN/MP	808	815	+7	+0.9%	+125	+125
Staff Nurse/ Staff Midwife	9,181	9,223	+42	+0.5%	+209	+209
Public Health Nurse	1,558	1,553	-5	-0.3%	+21	+21
Pre-registration Nurse/ Midwife Intern	13	13	-0	-1.8%	-49	-43
Pre-registration Nurse Intern (COVID-19)	109	74	-34	-31.7%	+74	+74
Post-registration Nurse/ Midwife Student	107	107	+0	+0.0%	+14	+9
Nursing/ Midwifery awaiting registration	19	19	-0	-1.2%	-1	-55
Nursing/ Midwifery Student	249	214	-35	-14.0%	-13	-13
Nursing/ Midwifery other	69	66	-3	-3.9%	+8	+8
Nursing & Midwifery	15,131	15,161	+30	+0.2%	+485	+485
Therapy Professions	3,330	3,334	+4	+0.1%	+128	+128
Health Science/ Diagnostics	144	146	+2	+1.2%	+11	+11
Social Care	2,896	2,905	+9	+0.3%	+198	+198
Social Workers	849	852	+2	+0.3%	+46	+46
Psychologists	954	954	+0	+0.0%	+53	+53
Pharmacy	106	107	+1	+1.1%	+9	+9
H&SC, Other	371	367	-4	-1.1%	-10	-10
Health & Social Care Professionals	8,651	8,664	+14	+0.2%	+434	+434
Management (VIII & above)	658	660	+3	+0.4%	+43	+43
Administrative/ Supervisory (V to VII)	1,665	1,696	+31	+1.8%	+196	+196
Clerical (III & IV)	3,805	3,854	+49	+1.3%	+159	+159
Management & Administrative	6,127	6,210	+82	+1.3%	+397	+397
Support	2,420	2,409	-11	-0.4%	-81	-81
Maintenance/ Technical	420	421	+0	+0.1%	+8	+8
General Support	2,840	2,830	-10	-0.4%	-73	-73
Health Care Assistants	12,673	13,022	+349	+2.8%	+911	+911
Home Help	3,474	3,543	+69	+2.0%	-26	-26
Care, other	2,819	2,823	+4	+0.1%	+102	+102
Patient & Client Care	18,966	19,387	+422	+2.2%	+986	+986

Community Services Employment Report: CHO by Division December 2020

Dec 2020 (Dec 2019 figure: 52,089)	WTE Nov 2020	WTE Dec 2020	WTE change since Nov 20	% change since Nov 20	WTE change since Dec 19	WTE change since Dec 19
Community Services	53,830	54,377	+547	+1.0%	+2,288	+2,288
Community Health & Wellbeing	18	18	+0	+1.1%	+18	+18
Mental Health	972	976	+4	+0.4%	+23	+23
Primary Care	1,267	1,296	+29	+2.3%	+115	+115
Disabilities	1,557	1,547	-10	-0.6%	+48	+48
Older People	1,854	1,918	+64	+3.4%	+82	+82
CHO 1	5,667	5,755	+88	+1.5%	+287	+287
Community Health & Wellbeing	10	10	+0	+1.5%	+10	+10
Mental Health	1,345	1,340	-5	-0.4%	+32	+32
Primary Care	1,191	1,235	+43	+3.6%	+101	+101
Disabilities	1,505	1,516	+11	+0.7%	+19	+19
Older People	1,561	1,590	+28	+1.8%	-16	-16
CHO 2	5,612	5,690	+78	+1.4%	+145	+145
Community Health & Wellbeing	14	13	-0	-2.9%	+13	+13
Mental Health	807	809	+2	+0.2%	+13	+13
Primary Care	763	812	+48	+6.3%	+48	+48
Disabilities	1,929	1,947	+19	+1.0%	+124	+124
Older People	1,032	1,029	-3	-0.3%	+54	+54
CHO 3	4,544	4,610	+65	+1.4%	+253	+253
Community Health & Wellbeing	35	35	+0	+0.2%	+35	+35
Mental Health	1,562	1,564	+1	+0.1%	+78	+78
Primary Care	1,458	1,517	+60	+4.1%	+172	+172
Disabilities	2,546	2,556	+9	+0.4%	+117	+117
Older People	2,902	2,930	+28	+1.0%	+11	+11
CHO 4	8,504	8,602	+98	+1.2%	+413	+413
Community Health & Wellbeing	14	14	+0	+2.6%	+14	+14
Mental Health	1,191	1,188	-3	-0.2%	+11	+11
Primary Care	1,017	1,061	+44	+4.3%	+109	+109
Disabilities	1,541	1,563	+22	+1.4%	+58	+58
Older People	1,686	1,650	-36	-2.1%	+3	+3
CHO 5	5,449	5,477	+28	+0.5%	+195	+195
Community Health & Wellbeing	8	8	-1	-7.1%	+8	+8
Mental Health	626	626	+1	+0.1%	+34	+34
Primary Care	802	811	+8	+1.0%	+46	+46
Disabilities	1,233	1,217	-17	-1.4%	+19	+19
Older People	803	804	+1	+0.1%	-20	-20
CHO 6	3,473	3,465	-8	-0.2%	+87	+87
Community Health & Wellbeing	12	8	-4	-35.3%	+8	+8
Mental Health	861	861	+0	+0.0%	+26	+26
Primary Care	1,745	1,789	+44	+2.5%	+87	+87
Disabilities	3,077	3,103	+26	+0.9%	+122	+122
Older People	1,027	1,021	-5	-0.5%	+26	+26
CHO 7	6,722	6,783	+61	+0.9%	+268	+268
Community Health & Wellbeing	30	30	+0	+0.0%	+30	+30

Dec 2020 (Dec 2019 figure: 52,089)	WTE Nov 2020	WTE Dec 2020	WTE change since Nov 20	% change since Nov 20	WTE change since Dec 19	WTE change since Dec 19
Community Services	53,830	54,377	+547	+1.0%	+2,288	+2,288
Mental Health	1,114	1,112	-2	-0.2%	+14	+14
Primary Care	1,456	1,506	+49	+3.4%	+119	+119
Disabilities	2,194	2,205	+12	+0.5%	+43	+43
Older People	1,481	1,484	+2	+0.2%	-5	-5
CHO 8	6,275	6,337	+62	+1.0%	+202	+202
Community Health & Wellbeing	8	8	+0	+4.9%	+8	+8
Mental Health	1,316	1,331	+15	+1.1%	+59	+59
Primary Care	1,366	1,412	+46	+3.4%	+165	+165
Disabilities	3,285	3,285	-1	-0.0%	+91	+91
Older People	914	914	+1	+0.1%	+45	+45
CHO 9	6,889	6,950	+61	+0.9%	+367	+367
Mental Health	490	494	+4	+0.9%	+57	+57
Primary Care	132	134	+2	+1.3%	+11	+11
Disabilities	6	6			+1	+1
Older People	67	75	+8	+11.8%	+2	+2
other Community Services	695	709	+14	+2.0%	+71	+71

Community Services Employment Report: Division December 2020

Community Health & Wellbeing

Dec 2020 (figure:)	WTE Nov 2020	WTE Dec 2020	WTE change since Nov 20	% change since Nov 20	WTE change since	WTE change since
Community Services	148	144	-4	-2.7%	+144	+144
Nurse/ Midwife Manager	3	3			+3	+3
Staff Nurse/ Staff Midwife	2	2	+1	+32.2%	+2	+2
Public Health Nurse	0		-0	-100.0%		
Nursing & Midwifery	5	5	+0	+2.9%	+5	+5
Therapy Professions	13	12	-1	-4.5%	+12	+12
Health & Social Care Professionals	13	12	-1	-4.5%	+12	+12
Management (VIII & above)	13	12	-1	-6.1%	+12	+12
Administrative/ Supervisory (V to VII)	64	63	-1	-1.5%	+63	+63
Clerical (III & IV)	22	22	-0	-1.9%	+22	+22
Management & Administrative	99	97	-2	-2.2%	+97	+97
Care, other	31	30	-1	-4.8%	+30	+30
Patient & Client Care	31	30	-1	-4.8%	+30	+30

Mental Health

Dec 2020 (Dec 2019 figure: 9,954)	WTE Nov 2020	WTE Dec 2020	WTE change since Nov 20	% change since Nov 20	WTE change since Dec 19	WTE change since Dec 19
Community Services	10,283	10,301	+18	+0.2%	+347	+347
Consultants	368	370	+1	+0.4%	+17	+17
Registrars	281	281	+0	+0.1%	+12	+12
SHO/ Interns	272	276	+4	+1.4%	+15	+15
Medical/ Dental, other	6	5	-1	-12.7%		
Medical & Dental	927	932	+5	+0.5%	+44	+44
Nurse/ Midwife Manager	1,229	1,240	+10	+0.9%	+47	+47
Nurse/ Midwife Specialist & AN/MP	523	529	+5	+1.0%	+70	+70
Staff Nurse/ Staff Midwife	3,069	3,076	+7	+0.2%	+73	+73
<i>Pre-registration Nurse/ Midwife Intern</i>	10	11	+1	+8.6%	-17	-17
<i>Pre-registration Nurse Intern (COVID-19)</i>	68	42	-25	-37.4%	+42	+42
<i>Post-registration Nurse/ Midwife Student</i>	1	1				
<i>Nursing/ Midwifery awaiting registration</i>	5	5	-0	-1.6%	-54	-54
Nursing/ Midwifery Student	84	59	-25	-29.5%	-28	-28
Nursing/ Midwifery other	34	32	-3	-7.6%	+0	+0
Nursing & Midwifery	4,940	4,935	-4	-0.1%	+162	+162
Therapy Professions	434	439	+5	+1.2%	+17	+17
Social Care	81	80	-1	-1.1%	+6	+6
Social Workers	373	373	-0	-0.1%	+23	+23
Psychologists	423	424	+1	+0.1%	+29	+29
Pharmacy	20	21	+1	+5.8%	+2	+2
H&SC, Other	109	108	-1	-0.7%	+0	+0
Health & Social Care Professionals	1,439	1,444	+5	+0.3%	+78	+78
Management (VIII & above)	65	67	+3	+3.9%	+10	+10
Administrative/ Supervisory (V to VII)	248	245	-3	-1.4%	+8	+8
Clerical (III & IV)	715	722	+7	+1.0%	+5	+5
Management & Administrative	1,028	1,034	+6	+0.6%	+22	+22
Support	591	594	+3	+0.6%	+14	+14
Maintenance/ Technical	137	137	+0	+0.2%	+6	+6
General Support	728	732	+4	+0.5%	+20	+20
Health Care Assistants	1,017	1,022	+4	+0.4%	+34	+34
Care, other	205	203	-2	-0.7%	-12	-12
Patient & Client Care	1,222	1,225	+3	+0.2%	+21	+21

Primary Care

Dec 2020 (Dec 2019 figure: 10,599)	WTE Nov 2020	WTE Dec 2020	WTE change since Nov 20	% change since Nov 20	WTE change since Dec 19	WTE change since Dec 19
Community Services	11,198	11,572	+374	+3.3%	+973	+973
Consultants	44	42	-2	-4.1%	-2	-2
Registrars	404	403	-1	-0.3%	+9	+9
SHO/ Interns	42	42	-0	-0.0%	+5	+5
Medical/ Dental, other	524	519	-5	-1.0%	-0	-0
Medical & Dental	1,014	1,006	-8	-0.8%	+11	+11
Nurse/ Midwife Manager	396	404	+9	+2.3%	+45	+45
Nurse/ Midwife Specialist & AN/MP	179	184	+5	+2.7%	+41	+41
Staff Nurse/ Staff Midwife	910	927	+17	+1.9%	+65	+65
Public Health Nurse	1,538	1,533	-5	-0.3%	+20	+20
<i>Post-registration Nurse/ Midwife Student</i>	104	106	+2	+1.8%	+10	+10
Nursing/ Midwifery Student	104	106	+2	+1.8%	+10	+10
Nursing/ Midwifery other	7	7	-1	-8.5%	+3	+3
Nursing & Midwifery	3,134	3,161	+27	+0.9%	+185	+185
Therapy Professions	1,793	1,792	-1	-0.1%	+61	+61
Health Science/ Diagnostics	118	121	+3	+2.4%	+12	+12
Social Care	31	33	+1	+3.9%	-3	-3
Social Workers	148	151	+3	+2.3%	+12	+12
Psychologists	296	300	+3	+1.2%	-1	-1
Pharmacy	63	63	-0	-0.5%	+5	+5
H&SC, Other	181	182	+1	+0.5%	-1	-1
Health & Social Care Professionals	2,631	2,641	+10	+0.4%	+86	+86
Management (VIII & above)	298	299	+1	+0.3%	-7	-7
Administrative/ Supervisory (V to VII)	658	685	+27	+4.1%	+66	+66
Clerical (III & IV)	1,811	1,838	+26	+1.5%	+91	+91
Management & Administrative	2,767	2,821	+55	+2.0%	+150	+150
Support	351	351	+0	+0.1%	+5	+5
Maintenance/ Technical	57	56	-1	-1.8%	-3	-3
General Support	408	407	-1	-0.2%	+2	+2
Health Care Assistants	491	779	+288	+58.8%	+526	+526
Home Help	18	18	+0	+2.3%	-0	-0
Care, other	736	737	+2	+0.2%	+14	+14
Patient & Client Care	1,245	1,535	+291	+23.3%	+539	+539

Disabilities

Dec 2020 (Dec 2019 figure: 18,303)	WTE Nov 2020	WTE Dec 2020	WTE change since Nov 20	% change since Nov 20	WTE change since Dec 19	WTE change since Dec 19
Community Services	18,873	18,944	+71	+0.4%	+642	+642
Consultants	24	24	+1	+3.5%	+1	+1
Registrars	8	8	+0	+0.4%	-5	-5
SHO/ Interns	9	9	+0	+1.6%	+2	+2
Medical/ Dental, other	14	14	-0	-0.7%	-0	-0
Medical & Dental	55	56	+1	+1.6%	-3	-3
Nurse/ Midwife Manager	896	897	+2	+0.2%	+3	+3
Nurse/ Midwife Specialist & AN/MP	65	64	-1	-2.0%	+2	+2
Staff Nurse/ Staff Midwife	2,576	2,593	+17	+0.6%	+21	+21
Public Health Nurse	7	7	+0	+4.2%	+1	+1
<i>Pre-registration Nurse/ Midwife Intern</i>	4	3	-1	-30.4%	-26	-26
<i>Pre-registration Nurse Intern (COVID-19)</i>	41	32	-9	-22.2%	+32	+32
<i>Post-registration Nurse/ Midwife Student</i>	2		-2	-100.0%		
<i>Nursing/ Midwifery awaiting registration</i>	13	13			-1	-1
Nursing/ Midwifery Student	59	47	-12	-20.3%	+5	+5
Nursing/ Midwifery other	24	24	-0	-0.8%	+2	+2
Nursing & Midwifery	3,627	3,632	+5	+0.1%	+34	+34
Therapy Professions	794	795	+1	+0.2%	+31	+31
Health Science/ Diagnostics	21	20	-1	-4.8%	-0	-0
Social Care	2,781	2,789	+8	+0.3%	+194	+194
Social Workers	227	228	+2	+0.7%	+9	+9
Psychologists	233	229	-4	-1.6%	+25	+25
Pharmacy	6	6	+0	+2.0%	-1	-1
H&SC, Other	80	76	-4	-5.5%	-9	-9
Health & Social Care Professionals	4,141	4,144	+2	+0.1%	+249	+249
Management (VIII & above)	204	204	+0	+0.2%	+24	+24
Administrative/ Supervisory (V to VII)	519	527	+8	+1.5%	+48	+48
Clerical (III & IV)	685	685	+0	+0.1%	+25	+25
Management & Administrative	1,407	1,416	+9	+0.6%	+97	+97
Support	675	663	-12	-1.8%	-71	-71
Maintenance/ Technical	132	132	+0	+0.3%	+8	+8
General Support	807	795	-12	-1.4%	-63	-63
Health Care Assistants	7,042	7,102	+60	+0.9%	+276	+276
Home Help	98	94	-4	-4.3%	-15	-15
Care, other	1,696	1,706	+10	+0.6%	+66	+66
Patient & Client Care	8,836	8,902	+66	+0.7%	+327	+327

Older People

Dec 2020 (Dec 2019 figure: 13,233)	WTE Nov 2020	WTE Dec 2020	WTE change since Nov 20	% change since Nov 20	WTE change since Dec 19	WTE change since Dec 19
Community Services	13,327	13,415	+87	+0.7%	+182	+182
Consultants	5	4	-0	-3.9%	+1	+1
Registrars	10	9	-1	-7.0%	-1	-1
SHO/ Interns	14	14	-0	-2.4%	-1	-1
Medical/ Dental, other	91	104	+13	+14.0%	+7	+7
Medical & Dental	119	131	+12	+9.7%	+6	+6
Nurse/ Midwife Manager	743	746	+4	+0.5%	+37	+37
Nurse/ Midwife Specialist & AN/MP	40	38	-2	-4.0%	+12	+12
Staff Nurse/ Staff Midwife	2,624	2,624	-0	-0.0%	+48	+48
Public Health Nurse	13	13	+0	+0.3%	+0	+0
<i>Post-registration Nurse/ Midwife Student</i>				-100.0%	-1	-1
<i>Nursing/ Midwifery awaiting registration</i>	2	1	-0	-10.0%	+0	+0
Nursing/ Midwifery Student	2	1	-0	-10.0%	-1	-1
Nursing/ Midwifery other	3	4	+1	+22.5%	+3	+3
Nursing & Midwifery	3,425	3,427	+3	+0.1%	+99	+99
Therapy Professions	297	295	-1	-0.4%	+7	+7
Health Science/ Diagnostics	5	5	+0	+0.0%	-1	-1
Social Care	3	3	+0	+0.0%		
Social Workers	102	100	-2	-2.3%	+1	+1
Psychologists	1	1			-1	-1
Pharmacy	17	17	+0	+0.9%	+2	+2
H&SC, Other	2	2			+0	+0
Health & Social Care Professionals	426	423	-3	-0.8%	+9	+9
Management (VIII & above)	79	79	-0	-0.5%	+4	+4
Administrative/ Supervisory (V to VII)	176	176	-0	-0.1%	+11	+11
Clerical (III & IV)	572	587	+15	+2.7%	+16	+16
Management & Administrative	827	842	+15	+1.8%	+31	+31
Support	803	801	-2	-0.3%	-28	-28
Maintenance/ Technical	94	95	+1	+0.9%	-4	-4
General Support	897	896	-1	-0.2%	-32	-32
Health Care Assistants	4,123	4,118	-4	-0.1%	+75	+75
Home Help	3,358	3,431	+73	+2.2%	-11	-11
Care, other	151	147	-5	-3.2%	+5	+5
Patient & Client Care	7,632	7,696	+63	+0.8%	+69	+69

Community Services Employment Report: HSE & Section 38 December 2020

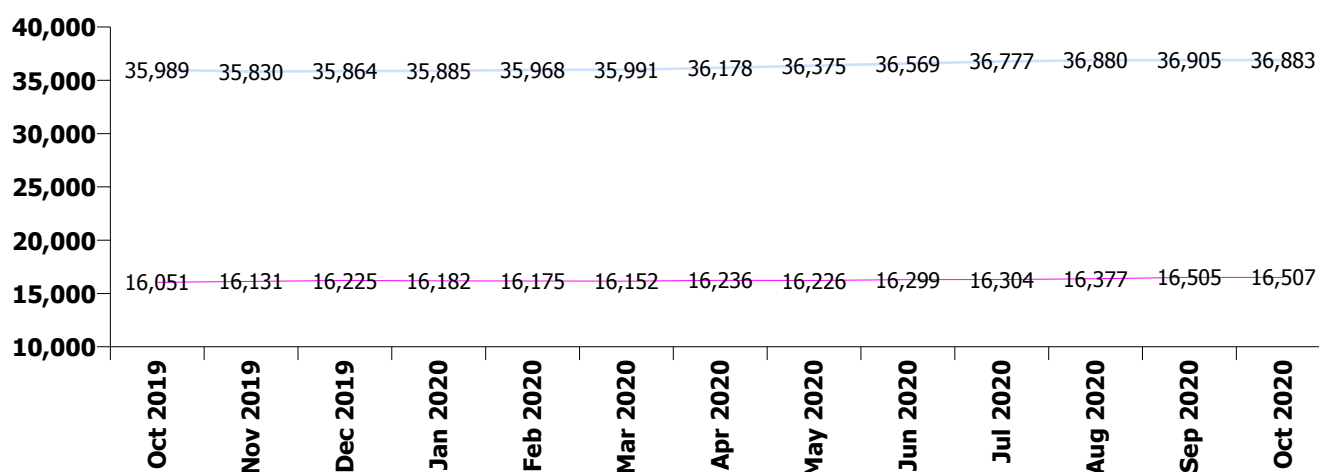
Dec 2020 (Dec 2019 figure: 52,089)	WTE Nov 2020	WTE Dec 2020	WTE change since Nov 20	% change since Nov 20	WTE change since Dec 19	WTE change since Dec 19
Overall	53,830	54,377	+547	+1.0%	+2,288	+2,288
HSE	37,169	37,629	+459	+1.2%	+1,765	+1,765
Section 38 Voluntary Agencies	16,660	16,748	+88	+0.5%	+523	+523

Health Service Executive

Dec 2020 (Dec 2019 figure: 35,864)	WTE Nov 2020	WTE Dec 2020	WTE change since Nov 20	% change since Nov 20	WTE change since Dec 19	WTE change since Dec 19
HSE	37,169	37,629	+459	+1.2%	+1,765	+1,765
Consultants	390	390	-0	-0.1%	+14	+14
Registrars	665	663	-2	-0.4%	+19	+19
SHO/ Interns	297	301	+3	+1.1%	+16	+16
Medical/ Dental, other	611	618	+7	+1.1%	+7	+7
Medical & Dental	1,964	1,971	+7	+0.4%	+56	+56
Nurse/ Midwife Manager	2,499	2,519	+19	+0.8%	+140	+140
Nurse/ Midwife Specialist & AN/MP	714	719	+6	+0.8%	+113	+113
Staff Nurse/ Staff Midwife	6,957	6,986	+28	+0.4%	+162	+162
Public Health Nurse	1,558	1,553	-5	-0.3%	+21	+21
<i>Pre-registration Nurse/ Midwife Intern</i>	13	3	-10	-76.1%	-29	-21
<i>Pre-registration Nurse Intern (COVID-19)</i>	83	50	-33	-39.7%	+50	+50
<i>Post-registration Nurse/ Midwife Student</i>	105	107	+2	+1.8%	+14	+9
<i>Nursing/ Midwifery awaiting registration</i>	19	19	-0	-1.2%	-1	-55
Nursing/ Midwifery Student	221	180	-41	-18.8%	-16	-16
Nursing/ Midwifery other	48	45	-4	-7.6%	+5	+5
Nursing & Midwifery	11,998	12,001	+3	+0.0%	+425	+425
Therapy Professions	2,774	2,777	+3	+0.1%	+130	+130
Health Science/ Diagnostics	121	124	+3	+2.3%	+12	+12
Social Care	185	188	+3	+1.8%	+13	+13
Social Workers	644	646	+2	+0.2%	+45	+45
Psychologists	785	784	-1	-0.1%	+28	+28
Pharmacy	83	84	+1	+1.0%	+9	+9
H&SC, Other	311	312	+1	+0.2%	-0	-0
Health & Social Care Professionals	4,904	4,915	+11	+0.2%	+237	+237
Management (VIII & above)	500	500	-0	-0.0%	+30	+30
Administrative/ Supervisory (V to VII)	1,238	1,266	+28	+2.3%	+178	+178
Clerical (III & IV)	3,176	3,225	+50	+1.6%	+148	+148
Management & Administrative	4,914	4,992	+78	+1.6%	+356	+356
Support	1,591	1,594	+3	+0.2%	-16	-16
Maintenance/ Technical	285	287	+1	+0.5%	+2	+2
General Support	1,876	1,880	+4	+0.2%	-14	-14
Health Care Assistants	6,841	7,137	+295	+4.3%	+665	+665
Home Help	3,474	3,543	+69	+2.0%	-26	-26
Care, other	1,199	1,191	-8	-0.7%	+65	+65
Patient & Client Care	11,514	11,870	+356	+3.1%	+704	+704

Section 38 Voluntary Agencies

Dec 2020 (Dec 2019 figure: 16,225)	WTE Nov 2020	WTE Dec 2020	WTE change since Nov 20	% change since Nov 20	WTE change since Dec 19	WTE change since Dec 19
Section 38 Voluntary Agencies	16,660	16,748	+88	+0.5%	+523	+523
Consultants	50	51	+1	+1.1%	+3	+3
Registrars	38	39	+1	+2.4%	-4	-4
SHO/ Interns	39	40	+0	+0.5%	+4	+4
Medical/ Dental, other	24	24	+0	+1.3%	+0	+0
Medical & Dental	151	153	+2	+1.3%	+2	+2
Nurse/ Midwife Manager	767	772	+5	+0.7%	-4	-4
Nurse/ Midwife Specialist & AN/MP	94	95	+1	+1.4%	+12	+12
Staff Nurse/ Staff Midwife	2,224	2,237	+13	+0.6%	+47	+47
Nursing/ Midwifery Student	28	34	+7	+23.7%	+2	+2
Nursing/ Midwifery other	21	22	+1	+4.6%	+3	+3
Nursing & Midwifery	3,133	3,160	+27	+0.9%	+60	+60
Therapy Professions	556	558	+1	+0.2%	-2	-2
Health Science/ Diagnostics	23	22	-1	-4.4%	-1	-1
Social Care	2,711	2,716	+6	+0.2%	+185	+185
Social Workers	205	206	+1	+0.4%	+0	+0
Psychologists	169	170	+1	+0.7%	+25	+25
Pharmacy	22	23	+0	+1.1%	-0	-0
H&SC, Other	60	55	-5	-8.0%	-10	-10
Health & Social Care Professionals	3,746	3,749	+3	+0.1%	+197	+197
Management (VIII & above)	158	161	+3	+1.7%	+13	+13
Administrative/ Supervisory (V to VII)	427	429	+3	+0.6%	+17	+17
Clerical (III & IV)	629	628	-1	-0.1%	+11	+11
Management & Administrative	1,213	1,218	+5	+0.4%	+41	+41
Support	829	816	-13	-1.6%	-65	-65
Maintenance/ Technical	135	134	-1	-0.7%	+6	+6
General Support	964	950	-14	-1.5%	-59	-59
Health Care Assistants	5,832	5,885	+53	+0.9%	+245	+245
Care, other	1,620	1,632	+12	+0.7%	+37	+37
Patient & Client Care	7,452	7,517	+65	+0.9%	+282	+282



Community Services Employment Report: CHO & Staff Group December 2020

Dec 2020 (Dec 2019 figure: 5,468)	WTE Nov 2020	WTE Dec 2020	WTE change since Nov 20	% change since Nov 20	WTE change since Dec 19	WTE change since Dec 19
CHO 1	5,667	5,755	+88	+1.5%	+287	+287
Consultants	38	38	-0	-0.7%	+4	+4
Registrars	71	71	+1	+0.9%	+6	+6
SHO/ Interns	24	24	+0	+1.6%	-2	-2
Medical/ Dental, other	64	80	+16	+25.2%	+0	+0
Medical & Dental	196	213	+17	+8.6%	+8	+8
Nurse/ Midwife Manager	357	354	-3	-0.9%	+5	+5
Nurse/ Midwife Specialist & AN/MP	119	118	-1	-0.8%	+16	+16
Staff Nurse/ Staff Midwife	1,018	1,029	+10	+1.0%	+15	+15
Public Health Nurse	153	153	-1	-0.4%	-3	-3
<i>Pre-registration Nurse/ Midwife Intern</i>	1		-1	-100.0%	-11	-3
<i>Pre-registration Nurse Intern (COVID-19)</i>	20	9	-11	-53.1%	+9	+9
<i>Post-registration Nurse/ Midwife Student</i>	3	3			-4	-4
<i>Nursing/ Midwifery awaiting registration</i>	11	11			+10	
Nursing/ Midwifery Student	36	23	-12	-34.2%	+3	+3
Nursing/ Midwifery other	8	7	-1	-12.3%	+1	+1
Nursing & Midwifery	1,691	1,684	-8	-0.4%	+35	+35
Therapy Professions	327	323	-4	-1.1%	+7	+7
Health Science/ Diagnostics	7	7	-0	-2.1%	+0	+0
Social Care	13	15	+2	+11.4%	+4	+4
Social Workers	91	92	+1	+1.2%	+8	+8
Psychologists	62	62	+0	+0.6%	+2	+2
Pharmacy	3	3	-0	-3.1%	+1	+1
H&SC, Other	31	31	+0	+0.5%	-1	-1
Health & Social Care Professionals	534	533	-1	-0.1%	+20	+20
Management (VIII & above)	62	63	+1	+1.4%	+4	+4
Administrative/ Supervisory (V to VII)	163	166	+3	+1.8%	+31	+31
Clerical (III & IV)	477	478	+1	+0.3%	+23	+23
Management & Administrative	703	708	+5	+0.8%	+57	+57
Support	309	310	+1	+0.2%	+4	+4
Maintenance/ Technical	36	36	-0	-0.1%	+1	+1
General Support	346	346	+1	+0.2%	+5	+5
Health Care Assistants	1,487	1,519	+31	+2.1%	+96	+96
Home Help	572	619	+47	+8.1%	+63	+63
Care, other	138	133	-5	-3.6%	+2	+2
Patient & Client Care	2,197	2,270	+73	+3.3%	+161	+161

Dec 2020 (Dec 2019 figure: 5,545)	WTE Nov 2020	WTE Dec 2020	WTE change since Nov 20	% change since Nov 20	WTE change since Dec 19	WTE change since Dec 19
CHO 2	5,612	5,690	+78	+1.4%	+145	+145
Consultants	42	42	-0	-0.5%	-0	-0
Registrars	89	86	-3	-3.0%	+11	+11
SHO/ Interns	43	43	+0	+0.3%	+7	+7
Medical/ Dental, other	63	62	-1	-1.1%	+3	+3
Medical & Dental	236	232	-3	-1.4%	+20	+20
Nurse/ Midwife Manager	322	323	+1	+0.4%	+15	+15
Nurse/ Midwife Specialist & AN/MP	107	108	+1	+1.2%	+15	+15
Staff Nurse/ Staff Midwife	902	908	+6	+0.7%	+10	+10
Public Health Nurse	199	199	-0	-0.2%	+7	+7
<i>Pre-registration Nurse/ Midwife Intern</i>				-100.0%		-0
<i>Pre-registration Nurse Intern (COVID-19)</i>	16	11	-5	-31.8%	+11	+11
<i>Post-registration Nurse/ Midwife Student</i>				-100.0%	-13	-4
<i>Nursing/ Midwifery awaiting registration</i>				-100.0%	-11	-5
Nursing/ Midwifery Student	16	11	-5	-31.8%	+2	+2
Nursing/ Midwifery other	3	2	-1	-40.5%	-0	-0
Nursing & Midwifery	1,548	1,550	+2	+0.1%	+48	+48
Therapy Professions	360	362	+2	+0.6%	+24	+24
Health Science/ Diagnostics	34	35	+1	+1.8%	+2	+2
Social Care	265	268	+3	+1.0%	+23	+23
Social Workers	84	84	-0	-0.4%	-0	-0
Psychologists	78	78	-0	-0.4%	+4	+4
Pharmacy	4	4	-0	-1.0%	-1	-1
H&SC, Other	31	29	-2	-6.0%	-3	-3
Health & Social Care Professionals	857	859	+3	+0.3%	+49	+49
Management (VIII & above)	58	58	-0	-0.1%	+2	+2
Administrative/ Supervisory (V to VII)	157	160	+3	+2.2%	+27	+27
Clerical (III & IV)	445	448	+3	+0.7%	-20	-20
Management & Administrative	660	666	+6	+1.0%	+9	+9
Support	154	152	-2	-1.1%	-5	-5
Maintenance/ Technical	73	74	+1	+0.7%	+6	+6
General Support	227	226	-1	-0.5%	+0	+0
Health Care Assistants	1,378	1,419	+41	+3.0%	+51	+51
Home Help	428	456	+28	+6.6%	-43	-43
Care, other	280	281	+2	+0.7%	+11	+11
Patient & Client Care	2,085	2,156	+71	+3.4%	+19	+19

Dec 2020 (Dec 2019 figure: 4,357)	WTE Nov 2020	WTE Dec 2020	WTE change since Nov 20	% change since Nov 20	WTE change since Dec 19	WTE change since Dec 19
CHO 3	4,544	4,610	+65	+1.4%	+253	+253
Consultants	29	28	-1	-2.5%	+1	+1
Registrars	40	40	+0	+0.6%	-1	-1
SHO/ Interns	22	22	+0	+1.6%	-3	-3
Medical/ Dental, other	59	59	-0	-0.7%	+1	+1
Medical & Dental	150	150	-1	-0.4%	-2	-2
Nurse/ Midwife Manager	241	250	+9	+3.6%	+3	+3
Nurse/ Midwife Specialist & AN/MP	51	54	+3	+6.6%	-2	-2
Staff Nurse/ Staff Midwife	826	831	+5	+0.5%	+43	+43
Public Health Nurse	127	127	-0	-0.3%	-0	-0
<i>Pre-registration Nurse/ Midwife Intern</i>				-100.0%	-16	-20
<i>Pre-registration Nurse Intern (COVID-19)</i>	12	5	-7	-59.9%	+5	+5
<i>Post-registration Nurse/ Midwife Student</i>	4	4				+4
Nursing/ Midwifery Student	16	9	-7	-45.2%	-11	-11
Nursing/ Midwifery other	4	4				
Nursing & Midwifery	1,265	1,274	+9	+0.7%	+33	+33
Therapy Professions	223	223	+1	+0.3%	+9	+9
Health Science/ Diagnostics	9	9	+0	+0.6%	+3	+3
Social Care	280	288	+8	+2.9%	+43	+43
Social Workers	57	58	+1	+1.1%	-2	-2
Psychologists	126	126	-0	-0.1%	+2	+2
Pharmacy	5	5				
H&SC, Other	34	34	-0	-0.1%	+1	+1
Health & Social Care Professionals	733	742	+9	+1.3%	+58	+58
Management (VIII & above)	42	42	-0	-0.7%	+4	+4
Administrative/ Supervisory (V to VII)	146	149	+3	+2.0%	+17	+17
Clerical (III & IV)	303	308	+6	+1.8%	-12	-12
Management & Administrative	491	499	+8	+1.7%	+8	+8
Support	161	160	-1	-0.7%	-3	-3
Maintenance/ Technical	76	76	+0	+0.5%	-1	-1
General Support	237	236	-1	-0.3%	-4	-4
Health Care Assistants	1,208	1,247	+39	+3.2%	+107	+107
Home Help	216	217	+1	+0.7%	+41	+41
Care, other	245	245	-0	-0.2%	+11	+11
Patient & Client Care	1,669	1,709	+40	+2.4%	+159	+159

Dec 2020 (Dec 2019 figure: 8,189)	WTE Nov 2020	WTE Dec 2020	WTE change since Nov 20	% change since Nov 20	WTE change since Dec 19	WTE change since Dec 19
CHO 4	8,504	8,602	+98	+1.2%	+413	+413
Consultants	60	60	+1	+1.0%	+5	+5
Registrars	101	103	+2	+1.8%	-1	-1
SHO/ Interns	51	51	+0	+0.1%	+13	+13
Medical/ Dental, other	116	116	+0	+0.0%	+5	+5
Medical & Dental	328	330	+3	+0.8%	+23	+23
Nurse/ Midwife Manager	460	467	+7	+1.5%	+34	+34
Nurse/ Midwife Specialist & AN/MP	98	98	+0	+0.4%	+17	+17
Staff Nurse/ Staff Midwife	1,469	1,498	+30	+2.0%	+53	+53
Public Health Nurse	232	228	-5	-2.1%	+12	+12
<i>Pre-registration Nurse/ Midwife Intern</i>				-100.0%	-9	-9
<i>Pre-registration Nurse Intern (COVID-19)</i>	22	11	-11	-50.9%	+11	+11
<i>Post-registration Nurse/ Midwife Student</i>	15	15	+0	+1.0%	+1	-4
<i>Nursing/ Midwifery awaiting registration</i>	3	3			+3	-29
Nursing/ Midwifery Student	39	28	-11	-27.5%	-31	-31
Nursing/ Midwifery other				-100.0%	-1	-1
Nursing & Midwifery	2,298	2,319	+21	+0.9%	+84	+84
Therapy Professions	461	464	+3	+0.8%	+16	+16
Health Science/ Diagnostics	13	13	+0	+0.1%	+1	+1
Social Care	257	252	-5	-2.0%	+12	+12
Social Workers	131	132	+1	+0.4%	+17	+17
Psychologists	150	152	+2	+1.2%	+14	+14
Pharmacy	10	11	+1	+10.4%	+3	+3
H&SC, Other	65	64	-1	-1.7%	+3	+3
Health & Social Care Professionals	1,087	1,087	+1	+0.1%	+66	+66
Management (VIII & above)	75	75	+0	+0.2%	+2	+2
Administrative/ Supervisory (V to VII)	175	177	+3	+1.6%	+16	+16
Clerical (III & IV)	540	546	+5	+1.0%	+41	+41
Management & Administrative	790	798	+8	+1.1%	+60	+60
Support	358	352	-6	-1.6%	+15	+15
Maintenance/ Technical	24	23	-1	-3.1%	+1	+1
General Support	382	375	-7	-1.7%	+16	+16
Health Care Assistants	2,075	2,121	+46	+2.2%	+167	+167
Home Help	1,059	1,076	+17	+1.6%	-48	-48
Care, other	485	494	+9	+1.9%	+44	+44
Patient & Client Care	3,619	3,691	+72	+2.0%	+163	+163

Dec 2020 (Dec 2019 figure: 5,282)	WTE Nov 2020	WTE Dec 2020	WTE change since Nov 20	% change since Nov 20	WTE change since Dec 19	WTE change since Dec 19
CHO 5	5,449	5,477	+28	+0.5%	+195	+195
Consultants	29	29			-1	-1
Registrars	28	30	+2	+6.9%	+2	+2
SHO/ Interns	37	38	+1	+2.3%	+0	+0
Medical/ Dental, other	71	71	+0	+0.7%	+5	+5
Medical & Dental	165	168	+3	+2.0%	+6	+6
Nurse/ Midwife Manager	367	365	-2	-0.7%	+27	+27
Nurse/ Midwife Specialist & AN/MP	77	78	+1	+1.4%	+26	+26
Staff Nurse/ Staff Midwife	968	972	+4	+0.4%	+4	+4
Public Health Nurse	174	176	+2	+1.1%	+2	+2
<i>Pre-registration Nurse/ Midwife Intern</i>				-100.0%	-1	-4
<i>Pre-registration Nurse Intern (COVID-19)</i>	19	14	-5	-25.1%	+14	+14
<i>Post-registration Nurse/ Midwife Student</i>	5	3	-2	-31.8%	-4	-2
<i>Nursing/ Midwifery awaiting registration</i>				-100.0%		-4
Nursing/ Midwifery Student	23	17	-6	-26.5%	+5	+5
Nursing/ Midwifery other	4	4	+0	+1.6%	-0	-0
Nursing & Midwifery	1,613	1,612	-2	-0.1%	+63	+63
Therapy Professions	320	325	+5	+1.5%	-2	-2
Health Science/ Diagnostics	7	8	+1	+7.6%	+4	+4
Social Care	153	153	-1	-0.4%	-11	-11
Social Workers	64	63	-1	-1.1%	+3	+3
Psychologists	78	79	+0	+0.3%	-0	-0
Pharmacy	2	2	+0	+5.9%	+1	+1
H&SC, Other	32	32	+0	+0.8%	-3	-3
Health & Social Care Professionals	656	661	+5	+0.7%	-9	-9
Management (VIII & above)	48	47	-1	-2.8%	+4	+4
Administrative/ Supervisory (V to VII)	136	138	+2	+1.5%	+13	+13
Clerical (III & IV)	325	324	-1	-0.2%	-6	-6
Management & Administrative	509	510	+0	+0.0%	+11	+11
Support	300	300	+0	+0.0%	-32	-32
Maintenance/ Technical	32	31	-0	-1.4%	-8	-8
General Support	332	331	-0	-0.1%	-40	-40
Health Care Assistants	1,269	1,317	+48	+3.8%	+175	+175
Home Help	674	646	-28	-4.1%	-22	-22
Care, other	230	232	+1	+0.6%	+10	+10
Patient & Client Care	2,173	2,195	+22	+1.0%	+162	+162

Dec 2020 (Dec 2019 figure: 3,378)	WTE Nov 2020	WTE Dec 2020	WTE change since Nov 20	% change since Nov 20	WTE change since Dec 19	WTE change since Dec 19
CHO 6	3,473	3,465	-8	-0.2%	+87	+87
Consultants	50	51	+1	+2.2%	+3	+3
Registrars	43	44	+1	+1.5%	-5	-5
SHO/ Interns	20	20	-1	-3.7%	+4	+4
Medical/ Dental, other	50	45	-5	-9.7%	-6	-6
Medical & Dental	164	160	-4	-2.4%	-4	-4
Nurse/ Midwife Manager	206	206	-0	-0.2%	-5	-5
Nurse/ Midwife Specialist & AN/MP	25	24	-1	-5.7%	+3	+3
Staff Nurse/ Staff Midwife	558	554	-4	-0.7%	+13	+13
Public Health Nurse	115	112	-3	-2.4%	-5	-5
Post-registration Nurse/ Midwife Student	14	15	+1	+6.4%	+4	+1
Nursing/ Midwifery awaiting registration	1	1			+1	+1
Nursing/ Midwifery Student	15	16	+1	+6.0%	+2	+2
Nursing/ Midwifery other	4	3	-1	-14.3%	+1	+1
Nursing & Midwifery	923	915	-8	-0.9%	+10	+10
Therapy Professions	237	238	+1	+0.3%	-1	-1
Health Science/ Diagnostics	19	20	+1	+6.2%	+2	+2
Social Care	395	392	-3	-0.7%	+28	+28
Social Workers	55	54	-1	-1.0%	-3	-3
Psychologists	66	66	+0	+0.6%	+10	+10
Pharmacy	4	4	+0	+1.3%	+0	+0
H&SC, Other	11	10	-0	-4.3%	-4	-4
Health & Social Care Professionals	786	785	-1	-0.2%	+33	+33
Management (VIII & above)	71	69	-1	-1.8%	+2	+2
Administrative/ Supervisory (V to VII)	167	166	-0	-0.2%	-4	-4
Clerical (III & IV)	258	260	+3	+1.0%	+23	+23
Management & Administrative	495	496	+1	+0.2%	+21	+21
Support	191	192	+1	+0.6%	+1	+1
Maintenance/ Technical	23	22	-1	-4.3%	-1	-1
General Support	214	214	+0	+0.1%	+0	+0
Health Care Assistants	558	566	+8	+1.5%	+27	+27
Care, other	334	330	-4	-1.1%	+0	+0
Patient & Client Care	892	896	+5	+0.5%	+28	+28

Dec 2020 (Dec 2019 figure: 6,515)	WTE Nov 2020	WTE Dec 2020	WTE change since Nov 20	% change since Nov 20	WTE change since Dec 19	WTE change since Dec 19
CHO 7	6,722	6,783	+61	+0.9%	+268	+268
Consultants	66	66	+1	+0.9%	+6	+6
Registrars	100	100	-0	-0.1%	+5	+5
SHO/ Interns	37	38	+1	+2.8%	+3	+3
Medical/ Dental, other	83	80	-4	-4.3%	-1	-1
Medical & Dental	286	284	-2	-0.7%	+13	+13
Nurse/ Midwife Manager	400	407	+7	+1.8%	+11	+11
Nurse/ Midwife Specialist & AN/MP	110	110	-1	-0.7%	+16	+16
Staff Nurse/ Staff Midwife	1,019	1,021	+2	+0.2%	+28	+28
Public Health Nurse	175	177	+1	+0.6%	+1	+1
<i>Pre-registration Nurse/ Midwife Intern</i>		1	+1	-100.0%	-5	-1
<i>Pre-registration Nurse Intern (COVID-19)</i>	5	3	-2	-37.3%	+3	+3
<i>Post-registration Nurse/ Midwife Student</i>	23	24	+1	+4.3%	+17	+3
<i>Nursing/ Midwifery awaiting registration</i>	4	4	-0	-5.2%	+0	-6
Nursing/ Midwifery Student	33	32	-1	-2.3%	-0	-0
Nursing/ Midwifery other	11	9	-2	-18.6%	-1	-1
Nursing & Midwifery	1,749	1,756	+6	+0.4%	+56	+56
Therapy Professions	460	463	+3	+0.7%	+13	+13
Health Science/ Diagnostics	4	4	-0	-0.2%	+1	+1
Social Care	394	400	+5	+1.4%	+29	+29
Social Workers	109	108	-1	-1.1%	+3	+3
Psychologists	86	87	+0	+0.4%	+6	+6
Pharmacy	38	38	-0	-0.4%	-2	-2
H&SC, Other	42	41	-1	-1.8%	-3	-3
Health & Social Care Professionals	1,133	1,140	+7	+0.6%	+46	+46
Management (VIII & above)	84	85	+1	+0.7%	+12	+12
Administrative/ Supervisory (V to VII)	206	214	+8	+3.8%	+32	+32
Clerical (III & IV)	380	380	+0	+0.1%	+30	+30
Management & Administrative	670	679	+9	+1.3%	+73	+73
Support	402	402	-0	-0.1%	-9	-9
Maintenance/ Technical	45	46	+1	+2.3%	+5	+5
General Support	447	448	+1	+0.1%	-4	-4
Health Care Assistants	1,684	1,723	+39	+2.3%	+68	+68
Home Help	132	132	-0	-0.1%	+5	+5
Care, other	619	621	+2	+0.3%	+11	+11
Patient & Client Care	2,435	2,476	+41	+1.7%	+84	+84

Dec 2020 (Dec 2019 figure: 6,135)	WTE Nov 2020	WTE Dec 2020	WTE change since Nov 20	% change since Nov 20	WTE change since Dec 19	WTE change since Dec 19
CHO 8	6,275	6,337	+62	+1.0%	+202	+202
Consultants	44	44	-0	-0.2%	+1	+1
Registrars	118	114	-4	-3.4%	+8	+8
SHO/ Interns	26	27	+1	+4.4%	-11	-11
Medical/ Dental, other	72	73	+0	+0.2%	+0	+0
Medical & Dental	260	257	-3	-1.1%	-1	-1
Nurse/ Midwife Manager	377	379	+3	+0.7%	+8	+8
Nurse/ Midwife Specialist & AN/MP	108	111	+3	+2.6%	+12	+12
Staff Nurse/ Staff Midwife	1,024	1,013	-11	-1.1%	+15	+15
Public Health Nurse	199	201	+2	+0.9%	+2	+2
<i>Pre-registration Nurse/ Midwife Intern</i>	1		-1	-100.0%	-1	-1
<i>Pre-registration Nurse Intern (COVID-19)</i>	10	5	-5	-51.2%	+5	+5
<i>Post-registration Nurse/ Midwife Student</i>	12	12	+0	+1.0%	+4	+10
<i>Nursing/ Midwifery awaiting registration</i>				-100.0%	-1	-2
Nursing/ Midwifery Student	23	17	-6	-26.6%	+13	+13
Nursing/ Midwifery other	11	12	+2	+15.1%	+3	+3
Nursing & Midwifery	1,743	1,734	-8	-0.5%	+52	+52
Therapy Professions	394	395	+1	+0.2%	+18	+18
Health Science/ Diagnostics	9	9			+2	+2
Social Care	386	388	+2	+0.6%	+20	+20
Social Workers	93	89	-4	-4.4%	+1	+1
Psychologists	118	115	-2	-2.1%	-5	-5
Pharmacy	8	8			+1	+1
H&SC, Other	53	54	+0	+0.7%	+1	+1
Health & Social Care Professionals	1,061	1,058	-3	-0.3%	+38	+38
Management (VIII & above)	67	67	-0	-0.3%	+5	+5
Administrative/ Supervisory (V to VII)	197	204	+6	+3.2%	+27	+27
Clerical (III & IV)	532	533	+0	+0.1%	+26	+26
Management & Administrative	797	803	+6	+0.8%	+58	+58
Support	121	118	-3	-2.5%	-9	-9
Maintenance/ Technical	68	69	+1	+1.1%	-0	-0
General Support	189	187	-2	-1.2%	-9	-9
Health Care Assistants	1,591	1,663	+71	+4.5%	+85	+85
Home Help	394	397	+3	+0.8%	-21	-21
Care, other	241	238	-3	-1.1%	+1	+1
Patient & Client Care	2,226	2,298	+72	+3.2%	+65	+65

Dec 2020 (Dec 2019 figure: 6,582)	WTE Nov 2020	WTE Dec 2020	WTE change since Nov 20	% change since Nov 20	WTE change since Dec 19	WTE change since Dec 19
CHO 9	6,889	6,950	+61	+0.9%	+367	+367
Consultants	65	64	-1	-0.9%	-4	-4
Registrars	90	91	+1	+1.5%	-7	-7
SHO/ Interns	71	71	+0	+0.5%	+5	+5
Medical/ Dental, other	56	56	-0	-0.5%	-1	-1
Medical & Dental	282	283	+1	+0.3%	-7	-7
Nurse/ Midwife Manager	455	457	+2	+0.4%	+22	+22
Nurse/ Midwife Specialist & AN/MP	101	101	+1	+0.7%	+17	+17
Staff Nurse/ Staff Midwife	1,221	1,223	+3	+0.2%	+28	+28
Public Health Nurse	183	182	-1	-0.6%	+6	+6
<i>Pre-registration Nurse/ Midwife Intern</i>	11	13	+2	+15.7%	-8	-5
<i>Pre-registration Nurse Intern (COVID-19)</i>	4	16	+12	+264.1%	+16	+16
<i>Post-registration Nurse/ Midwife Student</i>	32	31	-1	-1.9%	+9	+5
<i>Nursing/ Midwifery awaiting registration</i>				-100.0%	-3	-11
Nursing/ Midwifery Student	47	60	+13	+27.1%	+5	+5
Nursing/ Midwifery other	23	23	+0	+1.5%	+3	+3
Nursing & Midwifery	2,029	2,046	+17	+0.9%	+81	+81
Therapy Professions	538	530	-8	-1.5%	+44	+44
Health Science/ Diagnostics	34	34	-0	-1.4%	-3	-3
Social Care	748	745	-3	-0.4%	+50	+50
Social Workers	134	139	+4	+3.0%	+13	+13
Psychologists	183	183	-0	-0.1%	+19	+19
Pharmacy	29	29	+0	+0.8%	+5	+5
H&SC, Other	70	69	-1	-1.1%	-2	-2
Health & Social Care Professionals	1,736	1,728	-8	-0.5%	+125	+125
Management (VIII & above)	82	85	+3	+3.6%	+6	+6
Administrative/ Supervisory (V to VII)	240	243	+3	+1.1%	+35	+35
Clerical (III & IV)	486	507	+21	+4.3%	+55	+55
Management & Administrative	808	835	+26	+3.3%	+96	+96
Support	404	403	-1	-0.3%	-49	-49
Maintenance/ Technical	36	36			+1	+1
General Support	440	439	-1	-0.2%	-48	-48
Health Care Assistants	1,361	1,385	+24	+1.8%	+108	+108
Care, other	232	233	+2	+0.7%	+12	+12
Patient & Client Care	1,593	1,618	+25	+1.6%	+120	+120

Dec 2020 (Dec 2019 figure: 638)	WTE Nov 2020	WTE Dec 2020	WTE change since Nov 20	% change since Nov 20	WTE change since Dec 19	WTE change since Dec 19
other Community Services	695	709	+14	+2.0%	+71	+71
Consultants	18	18	-0	-1.1%	+1	+1
Registrars	24	23	-1	-5.1%	-2	-2
SHO/ Interns	6	6			+4	+4
<i>Other Medical</i>	0	0	-0	-52.6%	-0	-0
Medical/ Dental, other	0	0	-0	-52.6%	-0	-0
Medical & Dental	48	46	-2	-3.2%	+3	+3
Nurse/ Midwife Manager	80	82	+2	+2.1%	+16	+16
Nurse/ Midwife Specialist & AN/MP	12	13	+1	+6.0%	+4	+4
Staff Nurse/ Staff Midwife	176	174	-2	-1.2%	+0	+0
Nursing/ Midwifery other	2	2	-0	-2.0%	+1	+1
Nursing & Midwifery	271	271	+0	+0.1%	+22	+22
Therapy Professions	12	12	+0	+0.3%	+1	+1
Health Science/ Diagnostics	8	8	+0	+0.4%	-1	-1
Social Care	4	4	-0	-2.3%	+0	+0
Social Workers	30	33	+3	+9.0%	+5	+5
Psychologists	7	7			-0	-0
Pharmacy	4	4			+1	+1
H&SC, Other	4	4			+1	+1
Health & Social Care Professionals	68	71	+3	+4.0%	+7	+7
Management (VIII & above)	68	69	+1	+1.8%	+4	+4
Administrative/ Supervisory (V to VII)	77	77	+0	+0.1%	+2	+2
Clerical (III & IV)	59	69	+10	+17.5%	-1	-1
Management & Administrative	204	216	+12	+5.7%	+4	+4
Support	20	20	+1	+2.7%	+6	+6
Maintenance/ Technical	7	7			+4	+4
General Support	27	27	+1	+2.0%	+10	+10
Health Care Assistants	62	62	+0	+0.5%	+25	+25
Care, other	16	16			+0	+0
Patient & Client Care	78	78	+0	+0.4%	+26	+26

Community Services Employment Report: HSE Staff only December 2020

Dec 2020 (Dec 2019 figure: 35,864)	WTE Nov 2020	WTE Dec 2020	WTE change since Nov 20	% change since Nov 20	WTE change since Dec 19	WTE change since Dec 19
Community Health & Wellbeing	148	144	-4	-2.7%	+144	+144
Mental Health	9,843	9,855	+12	+0.1%	+342	+342
Primary Care	10,505	10,872	+367	+3.5%	+949	+949
Social Care	16,674	16,758	+84	+0.5%	+330	+330

Dec 2020 (Dec 2019 figure: 5,468)	WTE Nov 2020	WTE Dec 2020	WTE change since Nov 20	% change since Nov 20	WTE change since Dec 19	WTE change since Dec 19
CHO 1	5,667	5,755	+88	+1.5%	+287	+287
Consultants	38	38	-0	-0.7%	+4	+4
Registrars	71	71	+1	+0.9%	+6	+6
SHO/ Interns	24	24	+0	+1.6%	-2	-2
Medical/ Dental, other	64	80	+16	+25.2%	+0	+0
Medical & Dental	196	213	+17	+8.6%	+8	+8
Nurse/ Midwife Manager	357	354	-3	-0.9%	+5	+5
Nurse/ Midwife Specialist & AN/MP	119	118	-1	-0.8%	+16	+16
Staff Nurse/ Staff Midwife	1,018	1,029	+10	+1.0%	+15	+15
Public Health Nurse	153	153	-1	-0.4%	-3	-3
Pre-registration Nurse/ Midwife Intern	1		-1	-100.0%	-11	-3
Pre-registration Nurse Intern (COVID-19)	20	9	-11	-53.1%	+9	+9
Post-registration Nurse/ Midwife Student	3	3			-4	-4
Nursing/ Midwifery awaiting registration	11	11			+10	
Nursing/ Midwifery Student	36	23	-12	-34.2%	+3	+3
Nursing/ Midwifery other	8	7	-1	-12.3%	+1	+1
Nursing & Midwifery	1,691	1,684	-8	-0.4%	+35	+35
Therapy Professions	327	323	-4	-1.1%	+7	+7
Health Science/ Diagnostics	7	7	-0	-2.1%	+0	+0
Social Care	13	15	+2	+11.4%	+4	+4
Social Workers	91	92	+1	+1.2%	+8	+8
Psychologists	62	62	+0	+0.6%	+2	+2
Pharmacy	3	3	-0	-3.1%	+1	+1
H&SC, Other	31	31	+0	+0.5%	-1	-1
Health & Social Care Professionals	534	533	-1	-0.1%	+20	+20
Management (VIII & above)	62	63	+1	+1.4%	+4	+4
Administrative/ Supervisory (V to VII)	163	166	+3	+1.8%	+31	+31
Clerical (III & IV)	477	478	+1	+0.3%	+23	+23
Management & Administrative	703	708	+5	+0.8%	+57	+57
Support	309	310	+1	+0.2%	+4	+4
Maintenance/ Technical	36	36	-0	-0.1%	+1	+1
General Support	346	346	+1	+0.2%	+5	+5
Health Care Assistants	1,487	1,519	+31	+2.1%	+96	+96
Home Help	572	619	+47	+8.1%	+63	+63
Care, other	138	133	-5	-3.6%	+2	+2
Patient & Client Care	2,197	2,270	+73	+3.3%	+161	+161

Dec 2020 (Dec 2019 figure: 4,256)	WTE Nov 2020	WTE Dec 2020	WTE change since Nov 20	% change since Nov 20	WTE change since Dec 19	WTE change since Dec 19
CHO 2	4,323	4,393	+70	+1.6%	+136	+136
Consultants	40	39	-0	-0.5%	-0	-0
Registrars	87	84	-3	-3.0%	+11	+11
SHO/ Interns	43	43	+0	+0.3%	+7	+7
Medical/ Dental, other	63	62	-1	-1.1%	+3	+3
Medical & Dental	231	228	-3	-1.5%	+20	+20
Nurse/ Midwife Manager	254	255	+0	+0.2%	+14	+14
Nurse/ Midwife Specialist & AN/MP	102	103	+1	+1.3%	+15	+15
Staff Nurse/ Staff Midwife	783	784	+1	+0.1%	+6	+6
Public Health Nurse	199	199	-0	-0.2%	+7	+7
<i>Pre-registration Nurse/ Midwife Intern</i>				-100.0%		-0
<i>Pre-registration Nurse Intern (COVID-19)</i>	15	10	-5	-33.8%	+10	+10
<i>Post-registration Nurse/ Midwife Student</i>				-100.0%	-13	-4
<i>Nursing/ Midwifery awaiting registration</i>				-100.0%	-11	-5
Nursing/ Midwifery Student	15	10	-5	-33.8%	+1	+1
Nursing/ Midwifery other	3	2	-1	-40.5%	-0	-0
Nursing & Midwifery	1,357	1,353	-4	-0.3%	+43	+43
Therapy Professions	330	333	+3	+0.9%	+29	+29
Health Science/ Diagnostics	34	35	+1	+1.8%	+2	+2
Social Care	56	57	+1	+1.3%	+8	+8
Social Workers	59	58	-1	-1.4%	-1	-1
Psychologists	65	66	+0	+0.4%	+6	+6
Pharmacy	4	4	-0	-1.0%	-1	-1
H&SC, Other	15	17	+2	+15.5%	+1	+1
Health & Social Care Professionals	564	570	+6	+1.1%	+44	+44
Management (VIII & above)	45	45	-0	-0.1%	+2	+2
Administrative/ Supervisory (V to VII)	120	124	+4	+3.2%	+25	+25
Clerical (III & IV)	407	410	+3	+0.7%	-21	-21
Management & Administrative	573	579	+6	+1.1%	+6	+6
Support	111	109	-2	-1.6%	-4	-4
Maintenance/ Technical	68	68	+1	+0.7%	+6	+6
General Support	179	178	-1	-0.7%	+2	+2
Health Care Assistants	834	870	+36	+4.3%	+49	+49
Home Help	428	456	+28	+6.6%	-43	-43
Care, other	157	159	+2	+1.0%	+14	+14
Patient & Client Care	1,419	1,485	+66	+4.6%	+20	+20

Dec 2020 (Dec 2019 figure: 2,655)	WTE Nov 2020	WTE Dec 2020	WTE change since Nov 20	% change since Nov 20	WTE change since Dec 19	WTE change since Dec 19
CHO 3	2,758	2,807	+49	+1.8%	+152	+152
Consultants	28	26	-2	-5.6%	+0	+0
Registrars	40	40	+0	+0.6%	-1	-1
SHO/ Interns	22	22	+0	+1.6%	-3	-3
Medical/ Dental, other	58	58	-0	-0.7%	+1	+1
Medical & Dental	148	147	-1	-1.0%	-3	-3
Nurse/ Midwife Manager	168	175	+7	+4.2%	+4	+4
Nurse/ Midwife Specialist & AN/MP	40	44	+4	+10.4%	+1	+1
Staff Nurse/ Staff Midwife	556	560	+4	+0.7%	+20	+20
Public Health Nurse	127	127	-0	-0.3%	-0	-0
<i>Pre-registration Nurse/ Midwife Intern</i>				-100.0%	-9	-9
<i>Pre-registration Nurse Intern (COVID-19)</i>	11	3	-7	-68.5%	+3	+3
<i>Post-registration Nurse/ Midwife Student</i>	4	4				+4
Nursing/ Midwifery Student	15	7	-7	-50.2%	-1	-1
Nursing & Midwifery	906	913	+7	+0.8%	+23	+23
Therapy Professions	190	190	+1	+0.3%	+5	+5
Health Science/ Diagnostics	9	9	+0	+0.6%	+3	+3
Social Care	6	6			+1	+1
Social Workers	44	44	-1	-1.4%	-1	-1
Psychologists	110	110	-0	-0.0%	-2	-2
Pharmacy	5	5				
H&SC, Other	24	24	-0	-0.2%	+2	+2
Health & Social Care Professionals	387	387	-0	-0.0%	+8	+8
Management (VIII & above)	36	36	-0	-0.8%	+4	+4
Administrative/ Supervisory (V to VII)	116	120	+3	+2.6%	+15	+15
Clerical (III & IV)	266	272	+7	+2.4%	-10	-10
Management & Administrative	418	428	+9	+2.2%	+9	+9
Support	107	106	-1	-0.5%	-4	-4
Maintenance/ Technical	65	65	+0	+0.6%	+0	+0
General Support	172	172	-0	-0.1%	-3	-3
Health Care Assistants	420	454	+34	+8.0%	+74	+74
Home Help	216	217	+1	+0.7%	+41	+41
Care, other	91	90	-1	-1.5%	+3	+3
Patient & Client Care	727	761	+34	+4.7%	+118	+118

Dec 2020 (Dec 2019 figure: 5,940)	WTE Nov 2020	WTE Dec 2020	WTE change since Nov 20	% change since Nov 20	WTE change since Dec 19	WTE change since Dec 19
CHO 4	6,154	6,247	+94	+1.5%	+307	+307
Consultants	60	60	+1	+1.0%	+5	+5
Registrars	95	96	+2	+1.6%	-2	-2
SHO/ Interns	44	44	+0	+0.1%	+12	+12
Medical/ Dental, other	104	103	-0	-0.3%	+5	+5
Medical & Dental	302	304	+2	+0.6%	+20	+20
Nurse/ Midwife Manager	385	392	+7	+1.9%	+34	+34
Nurse/ Midwife Specialist & AN/MP	84	85	+0	+0.5%	+16	+16
Staff Nurse/ Staff Midwife	1,195	1,212	+17	+1.5%	+51	+51
Public Health Nurse	232	228	-5	-2.1%	+12	+12
<i>Pre-registration Nurse/ Midwife Intern</i>				-100.0%	-1	-3
<i>Pre-registration Nurse Intern (COVID-19)</i>	5	3	-2	-33.3%	+3	+3
<i>Post-registration Nurse/ Midwife Student</i>	15	15	+0	+1.0%	+1	-4
<i>Nursing/ Midwifery awaiting registration</i>	3	3			+3	-29
Nursing/ Midwifery Student	22	21	-1	-6.1%	-33	-33
Nursing & Midwifery	1,919	1,937	+19	+1.0%	+80	+80
Therapy Professions	375	378	+2	+0.6%	+18	+18
Health Science/ Diagnostics	11	11	+0	+0.1%	+1	+1
Social Care	41	41	-0	-0.8%	+2	+2
Social Workers	105	105	+0	+0.1%	+17	+17
Psychologists	117	119	+2	+1.6%	+12	+12
Pharmacy	10	11	+1	+10.4%	+3	+3
H&SC, Other	59	58	-1	-1.9%	+1	+1
Health & Social Care Professionals	718	722	+4	+0.5%	+55	+55
Management (VIII & above)	60	59	-1	-1.4%	+1	+1
Administrative/ Supervisory (V to VII)	132	135	+3	+2.6%	+12	+12
Clerical (III & IV)	446	452	+6	+1.3%	+37	+37
Management & Administrative	637	646	+8	+1.3%	+50	+50
Support	218	219	+0	+0.1%	+12	+12
Maintenance/ Technical	12	12	+0	+2.1%	-1	-1
General Support	230	231	+0	+0.2%	+11	+11
Health Care Assistants	1,154	1,200	+46	+4.0%	+121	+121
Home Help	1,059	1,076	+17	+1.6%	-48	-48
Care, other	134	132	-3	-1.9%	+18	+18
Patient & Client Care	2,347	2,407	+60	+2.6%	+91	+91

Dec 2020 (Dec 2019 figure: 4,158)	WTE Nov 2020	WTE Dec 2020	WTE change since Nov 20	% change since Nov 20	WTE change since Dec 19	WTE change since Dec 19
CHO 5	4,302	4,308	+6	+0.1%	+150	+150
Consultants	28	28	-0	-0.0%	-1	-1
Registrars	28	30	+2	+6.9%	+2	+2
SHO/ Interns	37	38	+1	+2.3%	+0	+0
Medical/ Dental, other	71	71	+0	+0.7%	+5	+5
Medical & Dental	164	168	+3	+2.0%	+6	+6
Nurse/ Midwife Manager	319	318	-1	-0.4%	+26	+26
Nurse/ Midwife Specialist & AN/MP	77	78	+1	+1.4%	+26	+26
Staff Nurse/ Staff Midwife	869	868	-1	-0.1%	+0	+0
Public Health Nurse	174	176	+2	+1.1%	+2	+2
<i>Pre-registration Nurse/ Midwife Intern</i>				-100.0%	-1	-4
<i>Pre-registration Nurse Intern (COVID-19)</i>	19	14	-5	-25.1%	+14	+14
<i>Post-registration Nurse/ Midwife Student</i>	3	3	+0	+11.0%	-4	-2
<i>Nursing/ Midwifery awaiting registration</i>				-100.0%		-4
Nursing/ Midwifery Student	22	17	-4	-20.1%	+5	+5
Nursing/ Midwifery other	4	4	+0	+1.6%	-0	-0
Nursing & Midwifery	1,465	1,461	-4	-0.3%	+59	+59
Therapy Professions	319	324	+5	+1.5%	-1	-1
Health Science/ Diagnostics	7	8	+1	+7.6%	+4	+4
Social Care	23	24	+1	+2.5%	-3	-3
Social Workers	55	54	-1	-1.3%	+5	+5
Psychologists	74	74	+0	+0.3%	+0	+0
Pharmacy	2	2	+0	+5.9%	+1	+1
H&SC, Other	27	27	+0	+0.0%	-2	-2
Health & Social Care Professionals	506	512	+6	+1.1%	+5	+5
Management (VIII & above)	41	39	-1	-3.5%	+3	+3
Administrative/ Supervisory (V to VII)	111	113	+2	+1.7%	+10	+10
Clerical (III & IV)	280	279	-1	-0.2%	-5	-5
Management & Administrative	431	431	-0	-0.0%	+9	+9
Support	290	291	+1	+0.4%	-29	-29
Maintenance/ Technical	24	24	-0	-1.9%	-8	-8
General Support	314	315	+1	+0.2%	-36	-36
Health Care Assistants	657	682	+26	+3.9%	+118	+118
Home Help	674	646	-28	-4.1%	-22	-22
Care, other	91	93	+2	+2.3%	+11	+11
Patient & Client Care	1,421	1,422	+0	+0.0%	+107	+107

Dec 2020 (Dec 2019 figure: 1,605)	WTE Nov 2020	WTE Dec 2020	WTE change since Nov 20	% change since Nov 20	WTE change since Dec 19	WTE change since Dec 19
CHO 6	1,684	1,689	+5	+0.3%	+84	+84
Consultants	25	26	+1	+4.1%	+3	+3
Registrars	28	28	+0	+0.4%	-2	-2
SHO/ Interns	6	5	-1	-12.9%	+1	+1
Medical/ Dental, other	48	43	-5	-10.2%	-6	-6
Medical & Dental	106	102	-4	-4.2%	-4	-4
Nurse/ Midwife Manager	137	136	-1	-0.7%	-1	-1
Nurse/ Midwife Specialist & AN/MP	18	17	-1	-8.1%	+1	+1
Staff Nurse/ Staff Midwife	305	304	-1	-0.2%	+19	+19
Public Health Nurse	115	112	-3	-2.4%	-5	-5
<i>Post-registration Nurse/ Midwife Student</i>	14	15	+1	+6.4%	+4	+1
<i>Nursing/ Midwifery awaiting registration</i>	1	1			+1	+1
Nursing/ Midwifery Student	15	16	+1	+6.0%	+2	+2
Nursing/ Midwifery other	4	3	-1	-14.3%	+1	+1
Nursing & Midwifery	594	588	-6	-0.9%	+17	+17
Therapy Professions	163	160	-3	-1.9%	+2	+2
Health Science/ Diagnostics	17	19	+1	+6.7%	+2	+2
Social Care	10	11	+0	+2.6%	-1	-1
Social Workers	25	25	+0	+1.2%	-1	-1
Psychologists	40	41	+1	+2.7%	+3	+3
Pharmacy	2	2			+0	+0
H&SC, Other	9	9	-0	-5.0%	+0	+0
Health & Social Care Professionals	267	266	-1	-0.3%	+6	+6
Management (VIII & above)	36	37	+0	+0.5%	+2	+2
Administrative/ Supervisory (V to VII)	91	90	-1	-1.3%	-1	-1
Clerical (III & IV)	153	156	+3	+2.2%	+22	+22
Management & Administrative	280	282	+2	+0.8%	+22	+22
Support	81	82	+2	+1.9%	-3	-3
Maintenance/ Technical	2	2			-1	-1
General Support	83	84	+2	+1.9%	-4	-4
Health Care Assistants	296	307	+11	+3.6%	+40	+40
Care, other	59	60	+1	+1.9%	+6	+6
Patient & Client Care	355	367	+12	+3.3%	+46	+46

Dec 2020 (Dec 2019 figure: 3,151)	WTE Nov 2020	WTE Dec 2020	WTE change since Nov 20	% change since Nov 20	WTE change since Dec 19	WTE change since Dec 19
CHO 7	3,285	3,319	+33	+1.0%	+167	+167
Consultants	57	58	+1	+1.6%	+5	+5
Registrars	91	91	-0	-0.1%	+4	+4
SHO/ Interns	24	25	+1	+3.5%	+1	+1
Medical/ Dental, other	81	77	-4	-4.4%	-1	-1
Medical & Dental	254	252	-2	-0.7%	+9	+9
Nurse/ Midwife Manager	243	248	+5	+2.2%	+16	+16
Nurse/ Midwife Specialist & AN/MP	72	68	-4	-5.0%	+7	+7
Staff Nurse/ Staff Midwife	546	545	-1	-0.2%	+26	+26
Public Health Nurse	175	177	+1	+0.6%	+1	+1
<i>Pre-registration Nurse/ Midwife Intern</i>		1	+1	-100.0%	-5	-1
<i>Pre-registration Nurse Intern (COVID-19)</i>	5	3	-2	-37.3%	+3	+3
<i>Post-registration Nurse/ Midwife Student</i>	23	24	+1	+4.3%	+17	+3
<i>Nursing/ Midwifery awaiting registration</i>	4	4	-0	-5.2%	+0	-6
Nursing/ Midwifery Student	33	32	-1	-2.3%	-0	-0
Nursing/ Midwifery other	8	6	-2	-26.8%	-2	-2
Nursing & Midwifery	1,077	1,076	-1	-0.1%	+49	+49
Therapy Professions	338	340	+2	+0.4%	+15	+15
Social Care	11	11	-0	-2.8%	+0	+0
Social Workers	73	73	+0	+0.2%	+6	+6
Psychologists	64	64	+0	+0.3%	+2	+2
Pharmacy	24	24	-0	-1.5%	-1	-1
H&SC, Other	41	40	-1	-1.9%	-3	-3
Health & Social Care Professionals	551	551	+0	+0.1%	+18	+18
Management (VIII & above)	46	47	+1	+1.7%	+7	+7
Administrative/ Supervisory (V to VII)	117	123	+6	+4.8%	+27	+27
Clerical (III & IV)	264	263	-1	-0.4%	+21	+21
Management & Administrative	427	432	+5	+1.2%	+55	+55
Support	176	177	+2	+1.1%	+7	+7
Maintenance/ Technical	5	5			-0	-0
General Support	181	183	+2	+1.1%	+7	+7
Health Care Assistants	439	470	+31	+7.1%	+28	+28
Home Help	132	132	-0	-0.1%	+5	+5
Care, other	225	223	-2	-0.9%	-4	-4
Patient & Client Care	796	825	+29	+3.6%	+29	+29

Dec 2020 (Dec 2019 figure: 4,583)	WTE Nov 2020	WTE Dec 2020	WTE change since Nov 20	% change since Nov 20	WTE change since Dec 19	WTE change since Dec 19
CHO 8	4,692	4,742	+50	+1.1%	+159	+159
Consultants	44	44	-0	-0.2%	+1	+1
Registrars	117	113	-4	-3.5%	+8	+8
SHO/ Interns	26	27	+1	+4.4%	-11	-11
Medical/ Dental, other	72	73	+0	+0.2%	+0	+0
Medical & Dental	259	256	-3	-1.1%	-1	-1
Nurse/ Midwife Manager	292	293	+1	+0.2%	+8	+8
Nurse/ Midwife Specialist & AN/MP	103	107	+4	+3.4%	+12	+12
Staff Nurse/ Staff Midwife	813	806	-8	-0.9%	+15	+15
Public Health Nurse	199	201	+2	+0.9%	+2	+2
<i>Pre-registration Nurse/ Midwife Intern</i>	1		-1	-100.0%		-1
<i>Pre-registration Nurse Intern (COVID-19)</i>	5	1	-4	-81.1%	+1	+1
<i>Post-registration Nurse/ Midwife Student</i>	12	12	+0	+1.0%	+4	+10
<i>Nursing/ Midwifery awaiting registration</i>				-100.0%	-1	-2
Nursing/ Midwifery Student	18	13	-5	-28.9%	+9	+9
Nursing/ Midwifery other	5	6	+1	+13.2%	+2	+2
Nursing & Midwifery	1,431	1,425	-6	-0.4%	+48	+48
Therapy Professions	380	381	+1	+0.4%	+18	+18
Health Science/ Diagnostics	9	9			+2	+2
Social Care	13	13	-0	-0.8%	+1	+1
Social Workers	81	76	-4	-5.2%	+1	+1
Psychologists	112	110	-2	-2.2%	-5	-5
Pharmacy	8	8			+1	+1
H&SC, Other	47	48	+1	+2.7%	+2	+2
Health & Social Care Professionals	650	646	-4	-0.6%	+20	+20
Management (VIII & above)	59	59	-1	-1.2%	+1	+1
Administrative/ Supervisory (V to VII)	170	177	+7	+4.0%	+28	+28
Clerical (III & IV)	486	487	+0	+0.1%	+26	+26
Management & Administrative	715	722	+7	+0.9%	+56	+56
Support	84	83	-1	-1.1%	-4	-4
Maintenance/ Technical	56	57	+1	+1.4%	+1	+1
General Support	140	140	-0	-0.1%	-3	-3
Health Care Assistants	948	1,003	+54	+5.7%	+53	+53
Home Help	394	397	+3	+0.8%	-21	-21
Care, other	154	154	-0	-0.3%	+7	+7
Patient & Client Care	1,496	1,553	+57	+3.8%	+39	+39

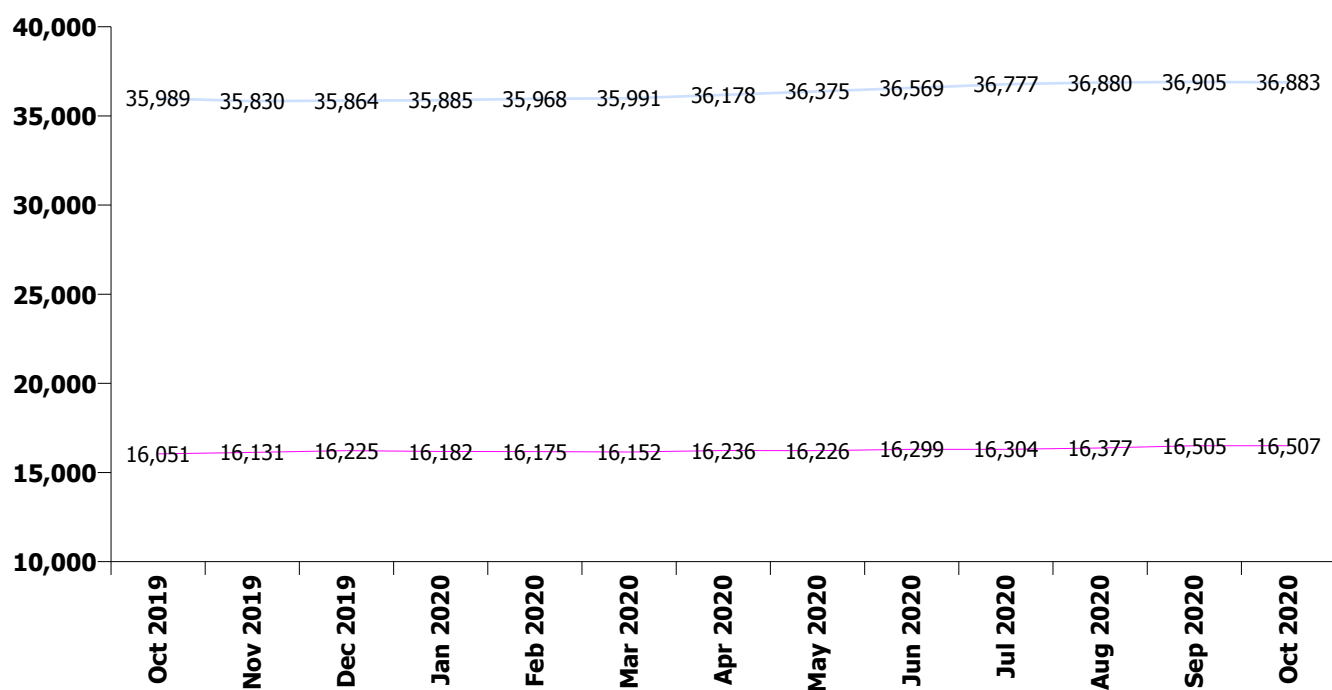
Dec 2020 (Dec 2019 figure: 3,407)	WTE Nov 2020	WTE Dec 2020	WTE change since Nov 20	% change since Nov 20	WTE change since Dec 19	WTE change since Dec 19
CHO 9	3,608	3,660	+51	+1.4%	+252	+252
Consultants	53	52	-1	-1.1%	-4	-4
Registrars	86	87	+1	+1.5%	-3	-3
SHO/ Interns	66	66	+0	+0.5%	+6	+6
Medical/ Dental, other	50	50	-0	-0.5%	-1	-1
Medical & Dental	255	256	+1	+0.3%	-2	-2
Nurse/ Midwife Manager	263	266	+3	+1.0%	+18	+18
Nurse/ Midwife Specialist & AN/MP	87	88	+1	+0.8%	+13	+13
Staff Nurse/ Staff Midwife	695	703	+8	+1.2%	+10	+10
Public Health Nurse	183	182	-1	-0.6%	+6	+6
<i>Pre-registration Nurse/ Midwife Intern</i>	11	3	-8	-75.3%	-3	-1
<i>Pre-registration Nurse Intern (COVID-19)</i>	2	6	+3	+130.0%	+6	+6
<i>Post-registration Nurse/ Midwife Student</i>	32	31	-1	-1.9%	+9	+5
<i>Nursing/ Midwifery awaiting registration</i>				-100.0%	-3	-11
Nursing/ Midwifery Student	45	39	-6	-12.8%	-1	-1
Nursing/ Midwifery other	15	15	+0	+2.2%	+2	+2
Nursing & Midwifery	1,288	1,293	+5	+0.4%	+49	+49
Therapy Professions	340	336	-4	-1.2%	+36	+36
Health Science/ Diagnostics	19	20	+1	+2.7%	-1	-1
Social Care	7	8	+1	+14.8%	+0	+0
Social Workers	82	85	+3	+4.2%	+7	+7
Psychologists	134	132	-2	-1.8%	+8	+8
Pharmacy	22	22	+0	+1.1%	+4	+4
H&SC, Other	56	55	-1	-1.4%	-2	-2
Health & Social Care Professionals	659	657	-2	-0.3%	+52	+52
Management (VIII & above)	46	46	+0	+0.3%	+2	+2
Administrative/ Supervisory (V to VII)	140	142	+2	+1.2%	+30	+30
Clerical (III & IV)	338	358	+21	+6.1%	+55	+55
Management & Administrative	524	547	+23	+4.3%	+88	+88
Support	196	195	-0	-0.0%	-2	-2
Maintenance/ Technical	9	9	+0	+0.0%	+0	+0
General Support	205	205	-0	-0.0%	-2	-2
Health Care Assistants	544	570	+26	+4.9%	+60	+60
Care, other	133	132	-1	-0.9%	+8	+8
Patient & Client Care	677	702	+25	+3.7%	+68	+68

Dec 2020 (Dec 2019 figure: 638)	WTE Nov 2020	WTE Dec 2020	WTE change since Nov 20	% change since Nov 20	WTE change since Dec 19	WTE change since Dec 19
other Community Services	695	709	+14	+2.0%	+71	+71
Consultants	18	18	-0	-1.1%	+1	+1
Registrars	24	23	-1	-5.1%	-2	-2
SHO/ Interns	6	6			+4	+4
Medical/ Dental, other	0	0	-0	-52.6%	-0	-0
Medical & Dental	48	46	-2	-3.2%	+3	+3
Nurse/ Midwife Manager	80	82	+2	+2.1%	+16	+16
Nurse/ Midwife Specialist & AN/MP	12	13	+1	+6.0%	+4	+4
Staff Nurse/ Staff Midwife	176	174	-2	-1.2%	+0	+0
Nursing/ Midwifery other	2	2	-0	-2.0%	+1	+1
Nursing & Midwifery	271	271	+0	+0.1%	+22	+22
Therapy Professions	12	12	+0	+0.3%	+1	+1
Health Science/ Diagnostics	8	8	+0	+0.4%	-1	-1
Social Care	4	4	-0	-2.3%	+0	+0
Social Workers	30	33	+3	+9.0%	+5	+5
Psychologists	7	7			-0	-0
Pharmacy	4	4			+1	+1
H&SC, Other	4	4			+1	+1
Health & Social Care Professionals	68	71	+3	+4.0%	+7	+7
Management (VIII & above)	68	69	+1	+1.8%	+4	+4
Administrative/ Supervisory (V to VII)	77	77	+0	+0.1%	+2	+2
Clerical (III & IV)	59	69	+10	+17.5%	-1	-1
Management & Administrative	204	216	+12	+5.7%	+4	+4
Support	20	20	+1	+2.7%	+6	+6
Maintenance/ Technical	7	7			+4	+4
General Support	27	27	+1	+2.0%	+10	+10
Health Care Assistants	62	62	+0	+0.5%	+25	+25
Care, other	16	16			+0	+0
Patient & Client Care	78	78	+0	+0.4%	+26	+26

Community Services Employment Report: HSE & Section 38 December 2020

Dec 2020 (Dec 2019 figure: 52,089)	WTE Nov 2020	WTE Dec 2020	WTE change since Nov 20	% change since Nov 20	WTE change since Dec 19	WTE change since Dec 19
Community Services	53,830	54,377	+547	+1.0%	+2,288	+2,288
CHO 1	5,667	5,755	+88	+1.5%	+287	+287
HSE	4,323	4,393	+70	+1.6%	+136	+136
Bros. of Charity, West Region	1,289	1,298	+8	+0.6%	+9	+9
Section 38 Voluntary Agencies	1,289	1,298	+8	+0.6%	+9	+9
CHO 2	5,612	5,690	+78	+1.4%	+145	+145
HSE	2,758	2,807	+49	+1.8%	+152	+152
Bros. of Charity, Clare	368	372	+4	+1.0%	+24	+24
Bros. of Charity, Limerick	580	592	+12	+2.1%	+72	+72
Daughters of Charity, Limerick	548	549	+1	+0.2%	+6	+6
Daughters of Charity, Roscrea	290	289	-1	-0.3%	-1	-1
Section 38 Voluntary Agencies	1,786	1,802	+16	+0.9%	+101	+101
CHO 3	4,544	4,610	+65	+1.4%	+253	+253
HSE	6,154	6,247	+94	+1.5%	+307	+307
Bros. of Charity, Southern	770	776	+5	+0.7%	+35	+35
Cope Foundation	1,146	1,147	+0	+0.0%	+56	+56
Cork Dental Hospital	110	112	+2	+1.8%	+9	+9
St. John of God, Kerry	323	320	-3	-1.0%	+5	+5
Section 38 Voluntary Agencies	2,350	2,354	+5	+0.2%	+105	+105
CHO 4	8,504	8,602	+98	+1.2%	+413	+413
HSE	4,302	4,308	+6	+0.1%	+150	+150
Bros. of Charity, Waterford	650	668	+18	+2.7%	+38	+38
Carriglea Cairde Services	208	214	+5	+2.6%	-1	-1
St. Patrick's, Kilkenny	288	287	-1	-0.3%	+8	+8
Section 38 Voluntary Agencies	1,146	1,169	+22	+1.9%	+45	+45
CHO 5	5,449	5,477	+28	+0.5%	+195	+195
HSE	1,684	1,689	+5	+0.3%	+84	+84
Children's Sunshine Home	57	56	-1	-1.8%	-3	-3
Dublin Dental Hospital	93	93			+2	+2
Leopardstown Park Hospital	205	207	+2	+0.7%	-4	-4
Royal Hospital, Donnybrook, Dublin	268	268			-4	-4
St. John of God (IDS)	467	468	+1	+0.2%	+11	+11
St. John of God (MHS)	235	236	+1	+0.3%	+1	+1
Sunbeam House Services	464	450	-14	-3.1%	+0	+0
Section 38 Voluntary Agencies	1,789	1,776	-12	-0.7%	+4	+4
CHO 6	3,473	3,465	-8	-0.2%	+87	+87
HSE	3,285	3,319	+33	+1.0%	+167	+167
Cheeverstown House	390	395	+5	+1.3%	-2	-2
Kare, Newbridge, Co Kildare	372	377	+5	+1.2%	+17	+17
Our Lady's Hospice & Care Services	491	496	+5	+1.0%	+14	+14
Peamount Hospital (Newcastle)	477	483	+6	+1.2%	-4	-4
Stewart's Hospital, (Palmerstown)	913	914	+1	+0.1%	+62	+62
St. John of God Liffey Services	794	801	+6	+0.8%	+13	+13
Section 38 Voluntary Agencies	3,436	3,464	+28	+0.8%	+101	+101
CHO 7	6,722	6,783	+61	+0.9%	+268	+268

HSE	4,692	4,742	+50	+1.1%	+159	+159
Muiriosa Foundation, Laois/Offaly	313	320	+7	+2.4%	+19	+19
Muiriosa Foundation, Longford/Westmeath	281	284	+3	+0.9%	+14	+14
Muiriosa Foundation, South Kildare	342	342	+0	+0.1%	+8	+8
St. John of God, Drumcar	647	648	+1	+0.2%	+2	+2
Section 38 Voluntary Agencies	1,583	1,595	+12	+0.7%	+43	+43
CHO 8	6,275	6,337	+62	+1.0%	+202	+202
HSE	3,608	3,660	+51	+1.4%	+252	+252
Central Remedial Clinic	297	296	-1	-0.4%	+17	+17
Daughters of Charity, Dublin	1,064	1,063	-1	-0.1%	+29	+29
Incorporated Orthopaedic Hospital	266	267	+1	+0.4%	+41	+41
St. Michael's House, Dublin	1,449	1,453	+4	+0.3%	+23	+23
St. Vincent's, Fairview	204	210	+6	+2.9%	+4	+4
Section 38 Voluntary Agencies	3,280	3,290	+9	+0.3%	+115	+115
CHO 9	6,889	6,950	+61	+0.9%	+367	+367
other Community Services	695	709	+14	+2.0%	+71	+71



Community Services Employment Report: Staff Groups December 2020

Dec 2020 (Dec 2019 figure: 52,089)	WTE Nov 2020	WTE Dec 2020	WTE change since Nov 20	% change since Nov 20	WTE change since Dec 19	WTE change since Dec 19
Community Services	53,830	54,377	+547	+1.0%	+2,288	+2,288
Consultant Dentistry	10	10			-1	-1
Consultant Medicine	27	26	-1	-4.8%	+3	+3
Consultant Paediatrics	5	5				
Consultant Psychiatry	396	398	+2	+0.5%	+18	+18
Consultant Radiology	1	1				
Consultant Surgery	1	1	-1	-53.1%	-3	-3
Consultants	440	440	+0	+0.0%	+17	+17
Registrar	568	567	-2	-0.3%	+2	+2
Senior Registrar	116	117	+1	+0.9%	+14	+14
Specialist Registrar	18	17	-1	-3.7%	-1	-1
Registrars	703	701	-1	-0.2%	+15	+15
Interns	5	5			-3	-3
Senior House Officer	332	335	+4	+1.1%	+23	+23
SHO/ Interns	337	340	+4	+1.1%	+20	+20
Dentists	301	302	+1	+0.4%	+1	+1
Other Medical	335	340	+6	+1.7%	+6	+6
Medical/ Dental, other	635	642	+7	+1.1%	+7	+7
Medical & Dental	2,115	2,124	+9	+0.4%	+59	+59
Clinical Nurse/ Midwife Manager	2,569	2,584	+15	+0.6%	+98	+98
Director Nursing/Midwifery, Assistant	487	497	+11	+2.2%	+35	+35
Director of Nursing/Midwifery	211	210	-1	-0.5%	+3	+3
Nurse/ Midwife Manager	3,266	3,291	+24	+0.7%	+136	+136
Advanced Nurse/ Midwife Practitioner	74	77	+3	+3.8%	+31	+31
Clinical Nurse/ Midwife Specialist	733	738	+4	+0.6%	+93	+93
Nurse/ Midwife Specialist & AN/MP	808	815	+7	+0.9%	+125	+125
Staff Midwives	7	7	+1	+13.2%	-1	-1
Staff Nurse [Intellectual Disability]	1,665	1,794	+129	+7.7%	+192	+192
Staff Nurse [Psychiatric]	3,027	3,037	+10	+0.3%	+47	+47
Staff Nurses [General/ Children's]	4,483	4,385	-98	-2.2%	-29	-29
Staff Nurse/ Staff Midwife	9,181	9,223	+42	+0.5%	+209	+209
Public Health Nurse	1,558	1,553	-5	-0.3%	+21	+21
Pre-registration Nurse/ Midwife Intern	13	13	-0	-1.8%	-43	-43
Pre-registration Nurse Intern (COVID-19)	109	74	-34	-31.7%	+74	+74
Post-registration Nurse/ Midwife Student	107	107	+0	+0.0%	+9	+9
Nursing/ Midwifery awaiting registration	19	19	-0	-1.2%	-55	-55
Nursing/ Midwifery Student	249	214	-35	-14.0%	-13	-13
Nursing Education/Clinical	68	65	-3	-4.0%	+8	+8
Other Nursing/ Midwifery	1	1				
Nursing/ Midwifery other	69	66	-3	-3.9%	+8	+8
Nursing & Midwifery	15,131	15,161	+30	+0.2%	+485	+485
Dietitians	187	191	+4	+2.3%	+28	+28
Occupational Therapists	1,284	1,280	-3	-0.3%	+49	+49
Orthoptists	17	18	+0	+0.6%	+4	+4
Physiotherapists	888	890	+1	+0.2%	+32	+32
Podiatrists & Chiropodists	44	43	-1	-1.3%	+6	+6
Speech & Language Therapists	910	913	+2	+0.2%	+9	+9
Therapy Professions	3,330	3,334	+4	+0.1%	+128	+128
Audiology	51	52	+2	+3.0%	+8	+8
Biochemists	8	8	+0	+0.4%	+0	+0
Clinical Engineering	22	21	-1	-4.6%	-0	-0
Clinical Measurement	2	2			+1	+1

Dec 2020 (Dec 2019 figure: 52,089)	WTE Nov 2020	WTE Dec 2020	WTE change since Nov 20	% change since Nov 20	WTE change since Dec 19	WTE change since Dec 19
Community Services	53,830	54,377	+547	+1.0%	+2,288	+2,288
Medical Laboratory	48	49	+1	+2.6%	+3	+3
Phlebotomists	1	1	-0	-0.8%		
Physicists	2	2				
Radiographers	10	10	-0	-0.0%	-1	-1
Health Science/ Diagnostics	144	146	+2	+1.2%	+11	+11
Social Care	2,896	2,905	+9	+0.3%	+198	+198
Social Workers	849	852	+2	+0.3%	+46	+46
Psychologists	954	954	+0	+0.0%	+53	+53
Pharmacy	106	107	+1	+1.1%	+9	+9
Counsellor Therapists	232	233	+1	+0.5%	+4	+4
Dental Hygienists	61	61	-0	-0.1%	+4	+4
Environmental Health Officers				-100.0%	-1	-1
Other Health & Social Care	63	57	-5	-8.2%	-13	-13
Play Therapists/ Specialists	16	15	-0	-0.8%	-5	-5
H&SC, Other	371	367	-4	-1.1%	-10	-10
Health & Social Care Professionals	8,651	8,664	+14	+0.2%	+434	+434
Executive Management	145	142	-3	-2.1%	+17	+17
Senior Management (VIII & GM)	513	519	+6	+1.1%	+26	+26
Management (VIII & above)	658	660	+3	+0.4%	+43	+43
Middle Management (V-VII)	1,646	1,677	+31	+1.9%	+197	+197
Other Administrative	18	18	-0	-0.2%	-1	-1
Administrative/ Supervisory (V to VII)	1,665	1,696	+31	+1.8%	+196	+196
Clerical (III & IV)	3,805	3,854	+49	+1.3%	+159	+159
Management & Administrative	6,127	6,210	+82	+1.3%	+397	+397
Catering	403	398	-5	-1.3%	-9	-9
Household Services	1,464	1,463	-1	-0.0%	-8	-8
Other Labs & Associated	6	6	+0	+6.6%	+2	+2
Other Support	322	320	-2	-0.7%	-58	-58
Portering	226	223	-3	-1.4%	-9	-9
Support	2,420	2,409	-11	-0.4%	-81	-81
Maintenance	408	409	+0	+0.1%	+7	+7
Technical Services	12	12			+1	+1
Maintenance/ Technical	420	421	+0	+0.1%	+8	+8
General Support	2,840	2,830	-10	-0.4%	-73	-73
HCA, Nurse's Aide, etc.	12,525	12,870	+345	+2.8%	+868	+868
Health & Social Care Assistants	147	151	+4	+2.7%	+42	+42
Health Care Assistants	12,673	13,022	+349	+2.8%	+911	+911
Home Help	3,474	3,543	+69	+2.0%	-26	-26
Community Welfare Officers	1	1			-1	-1
Other Care Grades	2,818	2,822	+4	+0.1%	+102	+102
Care, other	2,819	2,823	+4	+0.1%	+102	+102
Patient & Client Care	18,966	19,387	+422	+2.2%	+986	+986

Employment by WTE, Headcount, Gender, Full-Time /Part-Time etc.: Dec 2020

Community Services Staff Group	WTE	Headcount	WTE: no.	% Male	% female	Male WTE: no.	Female WTE: no.	% Total Perm	% Male Perm	% Female Perm	% Total Full Time	% Total Part Time	% Male FT	% Female FT
Community Services	54,377	64,208	1.18	17.8%	82.2%	1.09	1.20	82.6%	80.0%	83.2%	64.1%	35.9%	80.4%	60.6%
Consultant Dentistry	10	12	1.18	50.0%	50.0%	1.17	1.18	100.0%	100.0%	100.0%	66.7%	33.3%	66.7%	66.7%
Consultant Medicine	26	33	1.28	27.3%	72.7%	1.10	1.37	66.7%	66.7%	62.5%	63.6%	36.4%	77.8%	58.3%
Consultant Paediatrics	5	8	1.76	12.5%	87.5%	1.82	1.75	75.0%	75.0%	85.7%	37.5%	62.5%	100.0%	28.6%
Consultant Psychiatry	398	438	1.10	40.0%	60.0%	1.07	1.12	66.7%	66.7%	66.2%	83.6%	16.4%	90.9%	78.7%
Consultant Radiology	1	1	1.00	100.0%		1.00		100.0%	100.0%		100.0%	0.0%	100.0%	
Consultant Surgery	1	2	3.33		100.0%		3.33	50.0%	50.0%	50.0%	0.0%	100.0%		0.0%
Consultants	440	494	1.12	38.9%	61.1%	1.07	1.15	67.6%	68.8%	66.9%	80.8%	19.2%	89.6%	75.2%
Registrar	567	584	1.03	36.1%	63.9%	1.01	1.04	2.7%	2.7%	1.6%	98.3%	1.7%	99.1%	97.9%
Senior Registrar	117	124	1.06	41.1%	58.9%	1.01	1.09	2.4%	2.4%	4.1%	93.5%	6.5%	98.0%	90.4%
Specialist Registrar	17	18	1.04	38.9%	61.1%	1.11	1.00	22.2%	22.2%	18.2%	94.4%	5.6%	85.7%	100.0%
Registrars	701	726	1.04	37.1%	62.9%	1.01	1.05	3.2%	4.5%	2.4%	97.4%	2.6%	98.5%	96.7%
Interns	5	5	1.00	20.0%	80.0%	1.00	1.00	0.0%	0.0%	0.0%	100.0%	0.0%	100.0%	100.0%
Senior House Officer	335	348	1.04	36.2%	63.8%	1.02	1.05	0.3%	0.3%	0.0%	98.9%	1.1%	100.0%	98.2%
SHO/ Interns	340	353	1.04	36.0%	64.0%	1.02	1.04	0.3%	0.8%	0.0%	98.9%	1.1%	100.0%	98.2%
Dentists	302	388	1.28	26.0%	74.0%	1.26	1.30	90.2%	90.2%	90.2%	53.4%	46.6%	63.4%	49.8%
Other Medical	340	494	1.45	40.9%	59.1%	1.51	1.42	56.7%	56.7%	61.3%	39.5%	60.5%	40.1%	39.0%
Medical/ Dental, other	642	882	1.37	34.4%	65.6%	1.41	1.35	71.4%	63.4%	75.6%	45.6%	54.4%	47.9%	44.4%
Medical & Dental	2,124	2,455	1.16	36.3%	63.7%	1.14	1.17	40.2%	37.8%	41.6%	75.6%	24.4%	79.6%	73.4%
Clinical Nurse/ Midwife Manager	2,584	2,764	1.07	19.4%	80.6%	1.01	1.08	96.4%	96.4%	96.6%	84.4%	15.6%	97.6%	81.2%
Director Nursing/Midwifery, Assistant	497	526	1.06	18.3%	81.7%	1.02	1.07	98.5%	98.5%	98.1%	88.2%	11.8%	99.0%	85.8%
Director of Nursing/Midwifery	209	215	1.03	12.1%	87.9%	1.00	1.03	96.7%	96.7%	96.3%	94.9%	5.1%	100.0%	94.2%
Nurse/ Midwife Manager	3,291	3,505	1.07	18.8%	81.2%	1.01	1.08	96.7%	96.4%	96.8%	85.6%	14.4%	97.9%	82.8%
Advanced Nurse/ Midwife Practitioner	77	80	1.03	15.0%	85.0%	1.00	1.04	98.8%	98.8%	98.5%	92.5%	7.5%	100.0%	91.2%
Clinical Nurse/ Midwife Specialist	738	804	1.09	14.4%	85.6%	1.02	1.10	98.5%	98.5%	98.4%	82.6%	17.4%	98.3%	79.9%
Nurse/ Midwife Specialist & AN/MP	815	884	1.08	14.5%	85.5%	1.02	1.10	98.5%	99.2%	98.4%	83.5%	16.5%	98.4%	81.0%
Staff Midwives	7	10	1.36		100.0%		1.36	90.0%	90.0%	90.0%	20.0%	80.0%		20.0%
Staff Nurse [Intellectual Disability]	1,794	2,075	1.16	8.3%	91.7%	1.08	1.16	94.8%	94.8%	94.6%	64.1%	35.9%	85.5%	62.1%
Staff Nurse [Psychiatric]	3,037	3,311	1.09	26.2%	73.8%	1.06	1.10	90.7%	90.7%	91.7%	86.4%	13.6%	91.2%	84.7%
Staff Nurses [General/ Children's]	4,385	5,274	1.20	7.5%	92.5%	1.05	1.22	88.4%	88.4%	88.5%	58.2%	41.8%	88.4%	55.7%
Staff Nurse/ Staff Midwife	9,223	10,670	1.16	13.5%	86.5%	1.06	1.17	90.3%	88.7%	90.6%	68.1%	31.9%	89.8%	64.7%

Public Health Nurse	1,553	1,858	1.20	0.4%	99.6%	1.06	1.20	94.4%	94.4%	94.4%	70.3%	29.7%	87.5%	70.2%
Public Health Nurse	1,553	1,858	1.20	0.4%	99.6%	1.06	1.20	94.4%	100.0%	94.4%	70.3%	29.7%	87.5%	70.2%
Pre-registration Nurse/ Midwife Intern	13	27	2.04	25.9%	74.1%	2.18	2.00	3.7%	3.7%	0.0%	100.0%	0.0%	100.0%	100.0%
Pre-registration Nurse Intern (COVID-19)	74	96	1.29	11.5%	88.5%	1.11	1.32	20.8%	20.8%	23.5%	77.1%	22.9%	100.0%	74.1%
Post-registration Nurse/ Midwife Student	107	108	1.01	1.9%	98.1%	1.00	1.01	24.1%	24.1%	24.5%	98.1%	1.9%	100.0%	98.1%
Nursing/ Midwifery awaiting registration	19	20	1.04		100.0%		1.04	30.0%	30.0%	30.0%	95.0%	5.0%		95.0%
Nursing/ Midwifery Student	214	251	1.17	8.0%	92.0%	1.32	1.16	21.1%	5.0%	22.5%	90.0%	10.0%	100.0%	89.2%
Nursing Education/Clinical	65	73	1.12	9.6%	90.4%	1.00	1.14	97.3%	97.3%	97.0%	84.9%	15.1%	100.0%	83.3%
Other Nursing/ Midwifery	1	1	1.00	100.0%		1.00		100.0%	100.0%		100.0%	0.0%	100.0%	
Nursing/ Midwifery other	66	74	1.12	10.8%	89.2%	1.00	1.14	97.3%	100.0%	97.0%	85.1%	14.9%	100.0%	83.3%
Nursing & Midwifery	15,161	17,242	1.14	13.1%	86.9%	1.05	1.15	91.5%	90.9%	91.6%	73.0%	27.0%	92.7%	70.1%
Dietitians	191	233	1.22	1.7%	98.3%	1.00	1.22	89.7%	89.7%	89.5%	66.1%	33.9%	100.0%	65.5%
Occupational Therapists	1,280	1,471	1.15	8.6%	91.4%	1.08	1.16	91.6%	91.6%	91.5%	75.7%	24.3%	92.1%	74.2%
Orthoptists	18	21	1.20	23.8%	76.2%	1.12	1.23	76.2%	76.2%	81.3%	61.9%	38.1%	100.0%	50.0%
Physiotherapists	890	1,064	1.20	17.5%	82.5%	1.06	1.23	90.8%	90.8%	90.9%	64.8%	35.2%	85.5%	60.4%
Podiatrists & Chiropodists	43	57	1.33	14.0%	86.0%	1.07	1.38	73.7%	73.7%	73.5%	56.1%	43.9%	87.5%	51.0%
Speech & Language Therapists	913	1,058	1.16	1.6%	98.4%	1.04	1.16	90.5%	90.5%	90.7%	74.5%	25.5%	88.2%	74.3%
Therapy Professions	3,334	3,904	1.17	8.9%	91.1%	1.07	1.18	90.6%	89.9%	90.7%	71.5%	28.5%	88.5%	69.8%
Audiology	52	56	1.07	19.6%	80.4%	1.01	1.08	96.4%	96.4%	95.6%	82.1%	17.9%	90.9%	80.0%
Biochemists	8	8	1.03	12.5%	87.5%	1.00	1.04	87.5%	87.5%	100.0%	87.5%	12.5%	100.0%	85.7%
Clinical Engineering	21	21	1.00	95.2%	4.8%	1.00	1.00	95.2%	95.2%	100.0%	95.2%	4.8%	95.0%	100.0%
Clinical Measurement	2	3	1.39	66.7%	33.3%	1.00	6.25	66.7%	66.7%	0.0%	66.7%	33.3%	100.0%	0.0%
Medical Laboratory	49	52	1.06	25.0%	75.0%	1.06	1.06	92.3%	92.3%	92.3%	88.5%	11.5%	92.3%	87.2%
Phlebotomists	1	2	1.64		100.0%		1.64	100.0%	100.0%	100.0%	0.0%	100.0%		0.0%
Physicists	2	2	1.00		100.0%		1.00	100.0%	100.0%	100.0%	100.0%	0.0%		100.0%
Radiographers	10	16	1.55	12.5%	87.5%	2.00	1.50	93.8%	93.8%	92.9%	43.8%	56.3%	50.0%	42.9%
Health Science/ Diagnostics	146	160	1.10	30.6%	69.4%	1.04	1.12	93.8%	93.9%	93.7%	81.3%	18.8%	91.8%	76.6%
Social Care	2,905	3,422	1.18	16.4%	83.6%	1.10	1.20	90.0%	89.5%	90.1%	49.9%	50.1%	65.1%	46.9%
Social Workers	852	963	1.13	16.2%	83.8%	1.05	1.15	92.6%	91.0%	92.9%	80.2%	19.8%	91.0%	78.1%
Psychologists	954	1,066	1.12	20.9%	79.1%	1.04	1.14	78.0%	77.6%	78.1%	79.5%	20.5%	93.3%	75.9%
Pharmacy	107	130	1.22	18.5%	81.5%	1.12	1.24	65.4%	54.2%	67.9%	56.9%	43.1%	58.3%	56.6%
Counsellor Therapists	233	258	1.11	31.4%	68.6%	1.05	1.14	93.8%	93.8%	94.4%	74.4%	25.6%	86.4%	68.9%
Dental Hygienists	61	77	1.26	1.3%	98.7%	1.00	1.26	97.4%	97.4%	97.4%	44.2%	55.8%	100.0%	43.4%
Other Health & Social Care	57	80	1.39	22.5%	77.5%	1.25	1.44	81.3%	81.3%	82.3%	45.0%	55.0%	61.1%	40.3%
Play Therapists/ Specialists	15	20	1.29	20.0%	80.0%	1.00	1.39	100.0%	100.0%	100.0%	55.0%	45.0%	100.0%	43.8%

H&SC, Other	367	435	1.19	23.9%	76.1%	1.08	1.22	92.4%	90.4%	93.1%	62.8%	37.2%	82.7%	56.5%
Health & Social Care	8,664	10,080	1.16	14.5%	85.5%	1.07	1.18	89.1%	87.6%	89.3%	65.4%	34.6%	79.7%	63.0%
Executive Management	142	146	1.03	43.2%	56.8%	1.04	1.02	91.8%	91.8%	92.8%	97.3%	2.7%	95.2%	98.8%
Senior Management (VIII & GM)	519	540	1.04	28.0%	72.0%	1.04	1.04	94.3%	94.3%	94.9%	93.0%	7.0%	95.4%	92.0%
Management (VIII & above)	660	686	1.04	31.2%	68.8%	1.04	1.04	93.7%	92.1%	94.5%	93.9%	6.1%	95.3%	93.2%
Middle Management (V-VII)	1,677	1,816	1.08	18.6%	81.4%	1.04	1.09	93.3%	93.3%	94.4%	82.4%	17.6%	95.5%	79.4%
Other Administrative	18	19	1.03	15.8%	84.2%	1.00	1.04	100.0%	100.0%	100.0%	84.2%	15.8%	100.0%	81.3%
Administrative/ Supervisory (V to VII)	1,696	1,835	1.08	18.5%	81.5%	1.04	1.09	93.4%	88.5%	94.4%	82.5%	17.5%	95.6%	79.5%
General Administrative (III & IV)	3,854	4,535	1.18	8.5%	91.5%	1.08	1.19	83.6%	83.6%	84.4%	64.7%	35.3%	84.6%	62.8%
Clerical (III & IV)	3,854	4,535	1.18	8.5%	91.5%	1.08	1.19	83.6%	74.5%	84.4%	64.7%	35.3%	84.6%	62.8%
Management & Administrative	6,210	7,056	1.14	13.3%	86.7%	1.06	1.15	87.1%	83.6%	87.6%	72.1%	27.9%	91.0%	69.2%
Catering	398	449	1.13	31.8%	68.2%	1.05	1.17	94.4%	94.4%	95.4%	67.9%	32.1%	90.2%	57.5%
Household Services	1,463	1,815	1.24	18.7%	81.3%	1.16	1.26	85.0%	85.0%	87.2%	50.2%	49.8%	74.0%	44.7%
Other Labs & Associated	6	6	1.00	16.7%	83.3%	1.00	1.00	100.0%	100.0%	100.0%	100.0%	0.0%	100.0%	100.0%
Other Support	320	553	1.73	40.7%	59.3%	1.27	2.29	72.0%	72.0%	64.3%	34.5%	65.5%	56.4%	19.5%
Portering	223	241	1.08	95.4%	4.6%	1.08	1.22	83.4%	83.4%	72.7%	84.6%	15.4%	86.1%	54.5%
Support	2,409	3,064	1.27	30.6%	69.4%	1.14	1.34	83.9%	81.9%	84.8%	52.8%	47.2%	75.3%	42.9%
Maintenance	409	433	1.06	97.0%	3.0%	1.05	1.22	93.3%	93.3%	100.0%	89.6%	10.4%	91.0%	46.2%
Technical Services	12	12	0.99	75.0%	25.0%	0.99	1.00	91.7%	91.7%	100.0%	100.0%	0.0%	100.0%	100.0%
Maintenance/ Technical	421	445	1.06	96.4%	3.6%	1.05	1.17	93.3%	93.0%	100.0%	89.9%	10.1%	91.1%	56.3%
General Support	2,830	3,509	1.24	39.0%	61.0%	1.11	1.34	85.1%	85.4%	84.9%	57.5%	42.5%	80.2%	43.0%
HCA, Nurse's Aide, etc.	12,870	15,042	1.17	22.7%	77.3%	1.10	1.19	81.1%	81.1%	81.5%	58.4%	41.6%	73.7%	53.9%
Health & Social Care Assistants	151	163	1.08	17.2%	82.8%	1.05	1.08	39.3%	39.3%	37.8%	84.7%	15.3%	96.4%	82.2%
Health Care Assistants	13,022	15,205	1.17	22.6%	77.4%	1.10	1.19	80.7%	79.5%	81.0%	58.7%	41.3%	73.9%	54.2%
Home Help	3,543	5,268	1.49	3.6%	96.4%	1.48	1.49	54.8%	25.4%	55.9%	38.8%	61.2%	49.7%	38.4%
Community Welfare Officers	1	1	1.12		100.0%		1.12	100.0%	100.0%	100.0%	0.0%	100.0%		0.0%
Other Care Grades	2,822	3,392	1.20	25.6%	74.4%	1.16	1.22	88.8%	88.8%	90.5%	60.6%	39.4%	71.8%	56.7%
Care, other	2,823	3,393	1.20	25.6%	74.4%	1.16	1.22	88.8%	83.8%	90.5%	60.6%	39.4%	71.8%	56.7%
Patient & Client Care	19,387	23,866	1.23	18.9%	81.1%	1.12	1.26	76.1%	78.0%	75.7%	54.5%	45.5%	72.5%	50.4%

Employment by WTE, Headcount, Gender, Full-Time /Part-Time etc.: Dec 2020

Community Services	WTE	Headcount	WTE: no.	% Male	% female	Male WTE: no.	Female WTE: no.	% Total Perm	% Male Perm	% Female Perm	% Total Full Time	% Total Part Time	% Male FT	% Female FT
Community Services	54,377	64,208	1.18	17.8%	82.2%	1.09	1.20	82.6%	80.0%	83.2%	64.1%	35.9%	80.4%	60.6%
Consultants	38	42	1.12	40.5%	59.5%	1.06	1.16	69.0%	69.0%	72.0%	88.1%	11.9%	94.1%	94.1%
Registrars	71	73	1.03	42.5%	57.5%	1.01	1.04	9.6%	9.6%	7.1%	95.9%	4.1%	96.8%	96.8%
SHO/ Interns	24	24	1.00	58.3%	41.7%	1.01	1.00	0.0%	0.0%	0.0%	100.0%	0.0%	100.0%	100.0%
Medical/ Dental, other	80	104	1.29	49.0%	51.0%	1.22	1.38	83.7%	83.7%	83.0%	41.3%	58.7%	43.1%	43.1%
Medical & Dental	213	243	1.14	46.5%	53.5%	1.10	1.18	50.6%	50.6%	50.0%	71.6%	28.4%	72.6%	72.6%
Nurse/ Midwife Manager	354	378	1.07	18.0%	82.0%	1.01	1.08	99.5%	99.5%	99.7%	87.3%	12.7%	98.5%	98.5%
Nurse/ Midwife Specialist & AN/MP	118	125	1.06	18.4%	81.6%	1.01	1.07	97.6%	97.6%	97.1%	88.8%	11.2%	100.0%	100.0%
Staff Nurse/ Staff Midwife	1,029	1,189	1.16	13.1%	86.9%	1.05	1.17	93.0%	93.0%	92.4%	71.2%	28.8%	92.9%	92.9%
Public Health Nurse	153	178	1.17		100.0%		1.17	94.9%	94.9%	94.9%	74.2%	25.8%		
Nursing/ Midwifery Student	23	28	1.19	7.1%	92.9%	1.00	1.21	7.1%	7.1%	7.7%	100.0%	0.0%	100.0%	100.0%
Nursing/ Midwifery other	7	7	1.03		100.0%		1.03	100.0%	100.0%	100.0%	100.0%	0.0%		
Nursing & Midwifery	1,684	1,905	1.13	13.1%	86.9%	1.03	1.15	93.5%	93.5%	93.1%	76.3%	23.7%	95.2%	95.2%
Therapy Professions	323	376	1.16	8.5%	91.5%	1.05	1.17	94.4%	94.4%	95.1%	69.4%	30.6%	90.6%	90.6%
Health Science/ Diagnostics	7	9	1.36		100.0%		1.36	100.0%	100.0%	100.0%	44.4%	55.6%		
Social Care	15	19	1.27	5.3%	94.7%	1.01	1.29	100.0%	100.0%	100.0%	47.4%	52.6%	100.0%	100.0%
Social Workers	92	102	1.10	17.6%	82.4%	1.05	1.12	93.1%	93.1%	91.7%	85.3%	14.7%	94.4%	94.4%
Psychologists	62	70	1.13	27.1%	72.9%	1.02	1.17	95.7%	95.7%	96.1%	80.0%	20.0%	94.7%	94.7%
Pharmacy	3	3	1.20	33.3%	66.7%	1.43	1.11	100.0%	100.0%	100.0%	66.7%	33.3%	0.0%	0.0%
H&SC, Other	31	35	1.13	22.9%	77.1%	1.11	1.14	100.0%	100.0%	100.0%	65.7%	34.3%	75.0%	75.0%
Health & Social Care Professionals	533	614	1.15	12.9%	87.1%	1.05	1.17	95.0%	95.0%	95.1%	72.0%	28.0%	89.9%	89.9%
Management (VIII & above)	63	65	1.03	23.1%	76.9%	1.03	1.02	95.4%	95.4%	94.0%	92.3%	7.7%	93.3%	93.3%
Administrative/ Supervisory (V to VII)	166	177	1.06	15.8%	84.2%	1.04	1.07	92.7%	92.7%	94.0%	81.9%	18.1%	96.4%	96.4%
Clerical (III & IV)	478	551	1.15	8.5%	91.5%	1.07	1.16	91.8%	91.8%	92.7%	68.4%	31.6%	91.5%	91.5%
Management & Administrative	708	793	1.12	11.3%	88.7%	1.05	1.13	92.3%	92.3%	93.0%	73.4%	26.6%	93.3%	93.3%
Support	310	374	1.21	24.6%	75.4%	1.07	1.26	94.7%	94.7%	96.8%	56.4%	43.6%	79.3%	79.3%
Maintenance/ Technical	36	37	1.02	100.0%		1.02		100.0%	100.0%	#DIV/0	100.0%	0.0%	100.0%	100.0%
General Support	346	411	1.19	31.4%	68.6%	1.05	1.26	95.1%	95.1%	96.8%	60.3%	39.7%	85.3%	85.3%
Health Care Assistants	1,519	1,703	1.12	23.4%	76.6%	1.06	1.14	89.4%	89.4%	90.2%	71.2%	28.8%	88.7%	88.7%

Home Help	619	788	1.27	4.3%	95.7%	1.24	1.27	28.2%	28.2%	28.6%	2.5%	97.5%	2.9%	2.9%
Care, other	133	158	1.19	33.5%	66.5%	1.24	1.17	89.2%	89.2%	96.2%	69.6%	30.4%	71.7%	71.7%
Patient & Client Care	2,270	2,649	1.17	18.3%	81.7%	1.09	1.19	71.2%	71.2%	69.0%	50.7%	49.3%	80.8%	80.8%
CHO 1	5,755	6,615	1.15	17.3%	82.7%	1.07	1.17	83.1%	83.1%	82.9%	64.1%	35.9%	85.2%	59.7%
Consultants	42	46	1.10	37.0%	63.0%	1.08	1.12	67.4%	67.4%	65.5%	80.4%	19.6%	88.2%	88.2%
Registrars	86	88	1.02	34.1%	65.9%	1.00	1.04	1.1%	1.1%	1.7%	100.0%	0.0%	100.0%	100.0%
SHO/ Interns	43	43	1.00	37.2%	62.8%	1.00	1.00	0.0%	0.0%	0.0%	100.0%	0.0%	100.0%	100.0%
Medical/ Dental, other	62	73	1.18	27.4%	72.6%	1.14	1.20	74.0%	74.0%	79.2%	56.2%	43.8%	65.0%	65.0%
Medical & Dental	232	250	1.08	33.2%	66.8%	1.05	1.09	34.4%	34.4%	37.1%	83.6%	16.4%	89.2%	89.2%
Nurse/ Midwife Manager	323	345	1.07	24.9%	75.1%	1.01	1.09	96.8%	96.8%	96.5%	87.0%	13.0%	98.8%	98.8%
Nurse/ Midwife Specialist & AN/MP	108	115	1.07	13.9%	86.1%	1.01	1.08	100.0%	100.0%	100.0%	94.8%	5.2%	100.0%	100.0%
Staff Nurse/ Staff Midwife	908	1,055	1.16	13.0%	87.0%	1.10	1.17	93.3%	93.3%	94.0%	65.1%	34.9%	82.5%	82.5%
Public Health Nurse	199	228	1.15		100.0%		1.15	97.4%	97.4%	97.4%	73.7%	26.3%		
Nursing/ Midwifery Student	11	12	1.11	8.3%	91.7%	1.00	1.12	0.0%	0.0%	0.0%	91.7%	8.3%	100.0%	100.0%
Nursing/ Midwifery other	2	3	1.88		100.0%		1.88	100.0%	100.0%	100.0%	66.7%	33.3%		
Nursing & Midwifery	1,550	1,758	1.13	13.7%	86.3%	1.06	1.15	94.3%	94.3%	94.7%	72.6%	27.4%	89.6%	89.6%
Therapy Professions	362	416	1.15	7.5%	92.5%	1.03	1.16	88.9%	88.9%	88.6%	71.2%	28.8%	90.3%	90.3%
Health Science/ Diagnostics	35	37	1.06	16.2%	83.8%	1.04	1.06	100.0%	100.0%	100.0%	83.8%	16.2%	100.0%	100.0%
Social Care	268	329	1.23	17.0%	83.0%	1.21	1.23	86.3%	86.3%	85.0%	51.1%	48.9%	51.8%	51.8%
Social Workers	84	95	1.14	17.9%	82.1%	1.04	1.16	94.7%	94.7%	94.9%	69.5%	30.5%	82.4%	82.4%
Psychologists	78	92	1.18	15.2%	84.8%	1.10	1.20	95.7%	95.7%	94.9%	68.5%	31.5%	92.9%	92.9%
Pharmacy	4	5	1.33	20.0%	80.0%	1.00	1.44	80.0%	80.0%	75.0%	40.0%	60.0%	100.0%	100.0%
H&SC, Other	29	38	1.32	18.4%	81.6%	1.17	1.35	86.8%	86.8%	90.3%	44.7%	55.3%	42.9%	42.9%
Health & Social Care Professionals	859	1,012	1.18	13.0%	87.0%	1.12	1.19	89.5%	89.5%	89.0%	63.5%	36.5%	71.2%	71.2%
Management (VIII & above)	58	60	1.03	50.0%	50.0%	1.05	1.02	90.0%	90.0%	93.3%	91.7%	8.3%	93.3%	93.3%
Administrative/ Supervisory (V to VII)	160	172	1.07	18.6%	81.4%	1.06	1.08	96.5%	96.5%	97.1%	80.2%	19.8%	84.4%	84.4%
Clerical (III & IV)	448	513	1.15	5.8%	94.2%	1.13	1.15	88.1%	88.1%	88.8%	66.7%	33.3%	73.3%	73.3%
Management & Administrative	666	745	1.12	12.3%	87.7%	1.08	1.12	90.2%	90.2%	90.8%	71.8%	28.2%	83.7%	83.7%
Support	152	218	1.43	40.8%	59.2%	1.31	1.53	81.2%	81.2%	79.1%	37.6%	62.4%	43.8%	43.8%
Maintenance/ Technical	74	76	1.03	98.7%	1.3%	1.03	1.00	97.4%	97.4%	100.0%	93.4%	6.6%	93.3%	93.3%
General Support	226	294	1.30	55.8%	44.2%	1.17	1.52	85.4%	85.4%	79.2%	52.0%	48.0%	66.5%	66.5%
Health Care Assistants	1,419	1,638	1.15	25.3%	74.7%	1.10	1.18	76.3%	76.3%	75.8%	53.8%	46.2%	69.3%	69.3%
Home Help	456	605	1.33	0.7%	99.3%	1.14	1.33	91.7%	91.7%	92.0%	4.8%	95.2%	0.0%	0.0%
Care, other	281	342	1.22	33.9%	66.1%	1.15	1.25	86.0%	86.0%	87.6%	53.2%	46.8%	62.9%	62.9%
Patient & Client Care	2,156	2,585	1.20	20.7%	79.3%	1.11	1.22	81.2%	81.2%	81.9%	42.2%	57.8%	67.4%	67.4%
CHO 2	5,690	6,644	1.17	18.7%	81.3%	1.10	1.18	85.4%	85.4%	86.3%	58.8%	41.2%	74.6%	55.2%

Consultants	28	33	1.16	45.5%	54.5%	1.09	1.23	81.8%	81.8%	77.8%	75.8%	24.2%	80.0%	80.0%
Registrars	40	42	1.05	28.6%	71.4%	1.00	1.07	4.8%	4.8%	3.3%	92.9%	7.1%	100.0%	100.0%
SHO/ Interns	22	23	1.03	13.0%	87.0%	1.00	1.03	4.3%	4.3%	0.0%	95.7%	4.3%	100.0%	100.0%
Medical/ Dental, other	59	68	1.16	32.4%	67.6%	1.11	1.18	75.0%	75.0%	82.6%	66.2%	33.8%	81.8%	81.8%
Medical & Dental	150	166	1.11	31.3%	68.7%	1.07	1.13	48.8%	48.8%	46.5%	78.9%	21.1%	86.5%	86.5%
Nurse/ Midwife Manager	250	263	1.05	12.9%	87.1%	1.01	1.06	95.1%	95.1%	94.8%	87.1%	12.9%	100.0%	100.0%
Nurse/ Midwife Specialist & AN/MP	54	59	1.09	8.5%	91.5%	1.02	1.10	98.3%	98.3%	98.1%	72.9%	27.1%	80.0%	80.0%
Staff Nurse/ Staff Midwife	831	952	1.15	10.2%	89.8%	1.06	1.16	94.5%	94.5%	94.5%	63.3%	36.7%	83.5%	83.5%
Public Health Nurse	127	158	1.24	0.6%	99.4%	1.25	1.24	89.2%	89.2%	89.2%	63.3%	36.7%	0.0%	0.0%
Nursing/ Midwifery Student	9	10	1.12	20.0%	80.0%	1.00	1.15	10.0%	10.0%	12.5%	80.0%	20.0%	100.0%	100.0%
Nursing/ Midwifery other	4	4	1.08	25.0%	75.0%	1.00	1.10	100.0%	100.0%	100.0%	75.0%	25.0%	100.0%	100.0%
Nursing & Midwifery	1,274	1,446	1.13	9.7%	90.3%	1.05	1.15	93.6%	93.6%	93.6%	68.2%	31.8%	87.1%	87.1%
Therapy Professions	223	254	1.14	7.5%	92.5%	1.04	1.15	91.3%	91.3%	90.6%	75.6%	24.4%	89.5%	89.5%
Health Science/ Diagnostics	9	10	1.17	30.0%	70.0%	1.22	1.15	70.0%	70.0%	71.4%	70.0%	30.0%	33.3%	33.3%
Social Care	288	328	1.14	10.1%	89.9%	1.07	1.15	74.4%	74.4%	74.6%	36.0%	64.0%	39.4%	39.4%
Social Workers	58	66	1.14	13.6%	86.4%	1.09	1.15	95.5%	95.5%	94.7%	80.3%	19.7%	77.8%	77.8%
Psychologists	126	132	1.05	20.5%	79.5%	1.00	1.06	47.0%	47.0%	47.6%	93.2%	6.8%	100.0%	100.0%
Pharmacy	5	5	1.04	40.0%	60.0%	1.00	1.07	100.0%	100.0%	100.0%	80.0%	20.0%	100.0%	100.0%
H&SC, Other	34	41	1.22	2.4%	97.6%	1.23	1.22	100.0%	100.0%	100.0%	53.7%	46.3%	100.0%	100.0%
Health & Social Care Professionals	742	836	1.13	11.2%	88.8%	1.05	1.14	78.2%	78.2%	78.8%	62.1%	37.9%	72.3%	72.3%
Management (VIII & above)	42	43	1.03	23.3%	76.7%	1.00	1.04	95.3%	95.3%	93.9%	95.3%	4.7%	100.0%	100.0%
Administrative/ Supervisory (V to VII)	149	158	1.06	10.8%	89.2%	1.00	1.07	96.2%	96.2%	96.5%	85.4%	14.6%	100.0%	100.0%
Clerical (III & IV)	308	354	1.15	6.2%	93.8%	1.02	1.16	80.5%	80.5%	81.6%	69.8%	30.2%	90.9%	90.9%
Management & Administrative	499	555	1.11	8.8%	91.2%	1.01	1.12	86.1%	86.1%	86.6%	76.2%	23.8%	95.9%	95.9%
Support	160	196	1.23	29.6%	70.4%	1.13	1.28	85.7%	85.7%	85.5%	68.9%	31.1%	79.3%	79.3%
Maintenance/ Technical	76	80	1.05	100.0%		1.05		86.3%	86.3%	#DIV/0	93.8%	6.3%	93.8%	93.8%
General Support	236	276	1.17	50.0%	50.0%	1.08	1.28	85.9%	85.9%	85.5%	76.1%	23.9%	87.7%	87.7%
Health Care Assistants	1,247	1,570	1.26	16.2%	83.8%	1.21	1.27	78.2%	78.2%	79.0%	35.9%	64.1%	48.0%	48.0%
Home Help	217	425	1.96	0.7%	99.3%	1.46	1.96	97.9%	97.9%	97.9%	9.4%	90.6%	0.0%	0.0%
Care, other	245	275	1.12	15.3%	84.7%	1.06	1.14	88.7%	88.7%	88.0%	62.9%	37.1%	85.7%	85.7%
Patient & Client Care	1,709	2,270	1.33	13.2%	86.8%	1.18	1.35	83.2%	83.2%	84.1%	34.2%	65.8%	52.8%	52.8%
CHO 3	4,610	5,549	1.20	13.9%	86.1%	1.10	1.22	84.6%	84.6%	85.3%	54.9%	45.1%	72.7%	52.0%
Consultants	60	70	1.16	25.7%	74.3%	1.10	1.18	40.0%	40.0%	44.2%	72.9%	27.1%	83.3%	83.3%
Registrars	103	107	1.04	42.1%	57.9%	1.03	1.05	3.7%	3.7%	1.6%	94.4%	5.6%	95.6%	95.6%
SHO/ Interns	51	52	1.02	38.5%	61.5%	1.00	1.03	0.0%	0.0%	0.0%	94.2%	5.8%	100.0%	100.0%
Medical/ Dental, other	116	202	1.74	33.7%	66.3%	1.99	1.63	60.9%	60.9%	63.4%	32.7%	67.3%	35.3%	35.3%

Medical & Dental	330	431	1.30	35.0%	65.0%	1.32	1.29	36.0%	36.0%	38.9%	61.9%	38.1%	67.5%	67.5%
Nurse/ Midwife Manager	467	501	1.07	16.6%	83.4%	1.01	1.09	95.6%	95.6%	95.5%	80.6%	19.4%	98.8%	98.8%
Nurse/ Midwife Specialist & AN/MP	98	104	1.06	14.4%	85.6%	1.00	1.07	97.1%	97.1%	97.8%	81.7%	18.3%	100.0%	100.0%
Staff Nurse/ Staff Midwife	1,498	1,778	1.19	12.5%	87.5%	1.05	1.21	78.2%	78.2%	78.8%	60.7%	39.3%	92.3%	92.3%
Public Health Nurse	228	278	1.22	0.4%	99.6%	1.00	1.22	87.1%	87.1%	87.0%	68.3%	31.7%	100.0%	100.0%
Nursing/ Midwifery Student	28	29	1.02	6.9%	93.1%	1.00	1.02	31.0%	31.0%	33.3%	93.1%	6.9%	100.0%	100.0%
Nursing & Midwifery	2,319	2,690	1.16	12.0%	88.0%	1.04	1.18	82.6%	82.6%	82.9%	66.4%	33.6%	94.4%	94.4%
Therapy Professions	464	557	1.20	8.3%	91.7%	1.11	1.21	81.7%	81.7%	82.2%	68.8%	31.2%	78.3%	78.3%
Health Science/ Diagnostics	13	14	1.05	21.4%	78.6%	1.00	1.07	85.7%	85.7%	81.8%	92.9%	7.1%	100.0%	100.0%
Social Care	252	291	1.15	14.4%	85.6%	1.04	1.18	89.0%	89.0%	89.6%	67.4%	32.6%	90.5%	90.5%
Social Workers	132	151	1.14	17.2%	82.8%	1.01	1.18	80.8%	80.8%	82.4%	83.4%	16.6%	96.2%	96.2%
Psychologists	152	172	1.13	23.8%	76.2%	1.04	1.17	72.7%	72.7%	74.0%	76.2%	23.8%	92.7%	92.7%
Pharmacy	11	16	1.50	12.5%	87.5%	2.44	1.43	50.0%	50.0%	50.0%	37.5%	62.5%	0.0%	0.0%
H&SC, Other	64	75	1.18	41.3%	58.7%	1.08	1.27	89.3%	89.3%	88.6%	73.3%	26.7%	90.3%	90.3%
Health & Social Care Professionals	1,087	1,276	1.17	15.0%	85.0%	1.06	1.20	82.1%	82.1%	82.8%	71.3%	28.7%	88.0%	88.0%
Management (VIII & above)	75	78	1.04	28.2%	71.8%	1.03	1.04	92.3%	92.3%	96.4%	91.0%	9.0%	95.5%	95.5%
Administrative/ Supervisory (V to VII)	177	194	1.09	17.5%	82.5%	1.05	1.10	86.6%	86.6%	89.4%	77.8%	22.2%	88.2%	88.2%
Clerical (III & IV)	546	672	1.23	7.3%	92.7%	1.14	1.24	71.9%	71.9%	72.1%	55.1%	44.9%	71.4%	71.4%
Management & Administrative	798	944	1.18	11.1%	88.9%	1.09	1.20	76.6%	76.6%	77.0%	62.7%	37.3%	81.9%	81.9%
Support	352	510	1.45	28.8%	71.2%	1.25	1.55	75.7%	75.7%	76.9%	52.0%	48.0%	78.2%	78.2%
Maintenance/ Technical	23	29	1.24	86.2%	13.8%	1.22	1.37	89.7%	89.7%	100.0%	69.0%	31.0%	76.0%	76.0%
General Support	375	539	1.44	31.9%	68.1%	1.25	1.55	76.4%	76.4%	77.1%	52.9%	47.1%	77.9%	77.9%
Health Care Assistants	2,121	2,421	1.14	21.9%	78.1%	1.10	1.15	70.8%	70.8%	71.9%	69.4%	30.6%	77.7%	77.7%
Home Help	1,076	1,636	1.52	5.7%	94.3%	1.30	1.54	62.3%	62.3%	64.9%	98.8%	1.2%	91.4%	91.4%
Care, other	494	605	1.22	20.3%	79.7%	1.23	1.22	79.3%	79.3%	83.4%	55.0%	45.0%	63.4%	63.4%
Patient & Client Care	3,691	4,662	1.26	16.0%	84.0%	1.14	1.29	68.9%	68.9%	70.6%	77.9%	22.1%	77.0%	77.0%
CHO 4	8,602	10,542	1.23	16.0%	84.0%	1.13	1.25	73.7%	73.7%	75.2%	70.8%	29.2%	81.1%	68.9%
Consultants	29	30	1.03	66.7%	33.3%	1.00	1.10	80.0%	80.0%	80.0%	93.3%	6.7%	100.0%	100.0%
Registrars	30	30	1.01	50.0%	50.0%	1.00	1.02	0.0%	0.0%	0.0%	100.0%	0.0%	100.0%	100.0%
SHO/ Interns	38	39	1.02	48.7%	51.3%	1.01	1.04	0.0%	0.0%	0.0%	100.0%	0.0%	100.0%	100.0%
Medical/ Dental, other	71	92	1.29	34.8%	65.2%	1.38	1.25	72.8%	72.8%	80.0%	56.5%	43.5%	59.4%	59.4%
Medical & Dental	168	191	1.13	45.0%	55.0%	1.12	1.15	47.6%	47.6%	53.3%	78.0%	22.0%	84.9%	84.9%
Nurse/ Midwife Manager	365	384	1.05	17.2%	82.8%	1.02	1.06	98.4%	98.4%	98.7%	85.7%	14.3%	95.5%	95.5%
Nurse/ Midwife Specialist & AN/MP	78	85	1.09	17.6%	82.4%	1.03	1.11	98.8%	98.8%	98.6%	87.1%	12.9%	100.0%	100.0%
Staff Nurse/ Staff Midwife	972	1,137	1.17	15.5%	84.5%	1.07	1.19	89.3%	89.3%	89.7%	64.5%	35.5%	88.1%	88.1%
Public Health Nurse	176	213	1.21	1.4%	98.6%	1.00	1.21	96.7%	96.7%	96.7%	71.8%	28.2%	100.0%	100.0%

Nursing/ Midwifery Student	17	18	1.04	11.1%	88.9%	1.04	1.04	16.7%	16.7%	18.8%	100.0%	0.0%	100.0%	100.0%
Nursing/ Midwifery other	4	5	1.14	20.0%	80.0%	1.00	1.18	100.0%	100.0%	100.0%	80.0%	20.0%	100.0%	100.0%
Nursing & Midwifery	1,612	1,842	1.14	14.3%	85.7%	1.05	1.16	91.8%	91.8%	92.1%	71.2%	28.8%	90.9%	90.9%
Therapy Professions	325	377	1.16	11.1%	88.9%	1.07	1.17	95.2%	95.2%	94.9%	74.5%	25.5%	88.1%	88.1%
Health Science/ Diagnostics	8	8	1.05	25.0%	75.0%	1.04	1.05	100.0%	100.0%	100.0%	100.0%	0.0%	100.0%	100.0%
Social Care	153	186	1.22	17.7%	82.3%	1.18	1.23	95.7%	95.7%	96.1%	45.2%	54.8%	57.6%	57.6%
Social Workers	63	72	1.14	16.7%	83.3%	1.01	1.17	94.4%	94.4%	93.3%	81.9%	18.1%	100.0%	100.0%
Psychologists	79	88	1.12	14.8%	85.2%	1.04	1.13	89.8%	89.8%	90.7%	72.7%	27.3%	92.3%	92.3%
Pharmacy	2	2	1.02	50.0%	50.0%	1.00	1.03	100.0%	100.0%	100.0%	100.0%	0.0%	100.0%	100.0%
H&SC, Other	32	36	1.13	30.6%	69.4%	1.00	1.19	97.2%	97.2%	96.0%	69.4%	30.6%	100.0%	100.0%
Health & Social Care Professionals	661	769	1.16	14.8%	85.2%	1.08	1.18	94.8%	94.8%	94.7%	68.0%	32.0%	82.5%	82.5%
Management (VIII & above)	47	49	1.04	22.4%	77.6%	1.02	1.05	87.8%	87.8%	89.5%	91.8%	8.2%	90.9%	90.9%
Administrative/ Supervisory (V to VII)	138	148	1.07	18.2%	81.8%	1.02	1.08	94.6%	94.6%	95.9%	80.4%	19.6%	100.0%	100.0%
Clerical (III & IV)	324	379	1.17	4.5%	95.5%	1.00	1.18	91.3%	91.3%	91.2%	62.0%	38.0%	100.0%	100.0%
Management & Administrative	510	576	1.13	9.5%	90.5%	1.01	1.14	91.8%	91.8%	92.1%	69.3%	30.7%	98.2%	98.2%
Support	300	373	1.24	20.1%	79.9%	1.12	1.28	80.7%	80.7%	80.5%	43.4%	56.6%	68.0%	68.0%
Maintenance/ Technical	31	34	1.09	97.1%	2.9%	1.10	1.00	85.3%	85.3%	100.0%	85.3%	14.7%	84.8%	84.8%
General Support	331	407	1.23	26.5%	73.5%	1.11	1.28	81.1%	81.1%	80.6%	46.9%	53.1%	73.1%	73.1%
Health Care Assistants	1,317	1,489	1.13	22.2%	77.8%	1.10	1.14	79.1%	79.1%	78.8%	57.4%	42.6%	72.1%	72.1%
Home Help	646	887	1.37	1.7%	98.3%	1.40	1.37	16.7%	16.7%	16.2%	22.8%	77.2%	33.3%	33.3%
Care, other	232	282	1.22	19.5%	80.5%	1.13	1.24	87.2%	87.2%	90.3%	39.7%	60.3%	60.0%	60.0%
Patient & Client Care	2,195	2,658	1.21	15.0%	85.0%	1.11	1.23	59.1%	59.1%	55.8%	44.0%	56.0%	69.0%	69.0%
CHO 5	5,477	6,443	1.18	15.9%	84.1%	1.09	1.19	76.7%	76.7%	75.9%	58.1%	41.9%	79.4%	54.0%
Consultants	51	57	1.11	40.4%	59.6%	1.04	1.16	80.7%	80.7%	73.5%	78.9%	21.1%	91.3%	91.3%
Registrars	44	46	1.05	19.6%	80.4%	1.00	1.06	10.9%	10.9%	13.5%	91.3%	8.7%	100.0%	100.0%
SHO/ Interns	20	26	1.33	26.9%	73.1%	1.56	1.27	0.0%	0.0%	0.0%	100.0%	0.0%	100.0%	100.0%
Medical/ Dental, other	45	68	1.51	19.1%	80.9%	1.56	1.50	73.5%	73.5%	76.4%	35.3%	64.7%	46.2%	46.2%
Medical & Dental	160	197	1.23	26.4%	73.6%	1.18	1.25	51.3%	51.3%	49.7%	69.5%	30.5%	82.7%	82.7%
Nurse/ Midwife Manager	206	219	1.06	21.9%	78.1%	1.01	1.08	97.7%	97.7%	97.7%	90.9%	9.1%	100.0%	100.0%
Nurse/ Midwife Specialist & AN/MP	24	28	1.16	21.4%	78.6%	1.01	1.22	96.4%	96.4%	95.5%	75.0%	25.0%	100.0%	100.0%
Staff Nurse/ Staff Midwife	554	619	1.12	16.0%	84.0%	1.07	1.12	89.3%	89.3%	89.0%	78.2%	21.8%	86.9%	86.9%
Public Health Nurse	112	132	1.18	0.8%	99.2%	1.19	1.18	95.5%	95.5%	95.4%	70.5%	29.5%	100.0%	100.0%
Nursing/ Midwifery Student	16	16	1.01		100.0%		1.01	6.3%	6.3%	6.3%	100.0%	0.0%		
Nursing/ Midwifery other	3	3	1.00	33.3%	66.7%	1.00	1.00	100.0%	100.0%	100.0%	100.0%	0.0%	100.0%	100.0%
Nursing & Midwifery	915	1,017	1.11	15.2%	84.8%	1.05	1.12	90.9%	90.9%	90.4%	80.2%	19.8%	91.6%	91.6%
Therapy Professions	238	288	1.21	7.3%	92.7%	1.16	1.22	91.3%	91.3%	92.1%	64.6%	35.4%	76.2%	76.2%

Health Science/ Diagnostics	20	23	1.15	26.1%	73.9%	1.19	1.14	82.6%	82.6%	82.4%	87.0%	13.0%	83.3%	83.3%
Social Care	392	454	1.16	22.0%	78.0%	1.07	1.18	90.7%	90.7%	92.1%	61.5%	38.5%	74.0%	74.0%
Social Workers	54	60	1.11	11.7%	88.3%	1.05	1.11	96.7%	96.7%	96.2%	81.7%	18.3%	85.7%	85.7%
Psychologists	66	81	1.22	22.2%	77.8%	1.01	1.29	90.1%	90.1%	95.2%	67.9%	32.1%	100.0%	100.0%
Pharmacy	4	6	1.54		100.0%		1.54	83.3%	83.3%	83.3%	50.0%	50.0%		
H&SC, Other	10	14	1.35	14.3%	85.7%	1.67	1.31	92.9%	92.9%	91.7%	42.9%	57.1%	50.0%	50.0%
Health & Social Care Professionals	785	926	1.18	16.6%	83.4%	1.09	1.20	91.0%	91.0%	92.4%	64.6%	35.4%	77.9%	77.9%
Management (VIII & above)	69	76	1.10	35.5%	64.5%	1.14	1.07	94.7%	94.7%	91.8%	100.0%	0.0%	100.0%	100.0%
Administrative/ Supervisory (V to VII)	166	189	1.14	26.5%	73.5%	1.14	1.14	95.8%	95.8%	97.8%	87.8%	12.2%	96.0%	96.0%
Clerical (III & IV)	260	316	1.21	12.7%	87.3%	1.10	1.23	74.7%	74.7%	74.6%	69.0%	31.0%	87.5%	87.5%
Management & Administrative	496	581	1.17	20.1%	79.9%	1.13	1.18	84.2%	84.2%	83.4%	79.2%	20.8%	94.0%	94.0%
Support	192	230	1.20	40.4%	59.6%	1.13	1.25	78.7%	78.7%	79.6%	70.0%	30.0%	88.2%	88.2%
Maintenance/ Technical	22	24	1.09	100.0%		1.09		95.8%	95.8%	#DIV/0	100.0%	0.0%	100.0%	100.0%
General Support	214	254	1.19	46.1%	53.9%	1.12	1.25	80.3%	80.3%	79.6%	72.8%	27.2%	90.6%	90.6%
Health Care Assistants	566	643	1.14	28.0%	72.0%	1.06	1.17	79.3%	79.3%	78.0%	68.9%	31.1%	91.1%	91.1%
Care, other	330	443	1.34	21.0%	79.0%	1.36	1.34	93.2%	93.2%	93.4%	63.9%	36.1%	64.5%	64.5%
Patient & Client Care	896	1,086	1.21	25.1%	74.9%	1.15	1.23	85.0%	85.0%	84.6%	66.9%	33.1%	82.1%	82.1%
CHO 6	3,465	4,061	1.17	21.4%	78.6%	1.11	1.19	85.8%	85.8%	86.1%	72.0%	28.0%	85.8%	68.2%
Consultants	66	76	1.15	32.9%	67.1%	1.14	1.16	56.6%	56.6%	52.9%	78.9%	21.1%	92.0%	92.0%
Registrars	100	103	1.03	35.0%	65.0%	1.00	1.05	1.0%	1.0%	0.0%	100.0%	0.0%	100.0%	100.0%
SHO/ Interns	38	40	1.04	22.5%	77.5%	1.00	1.06	0.0%	0.0%	0.0%	100.0%	0.0%	100.0%	100.0%
Medical/ Dental, other	80	108	1.36	32.4%	67.6%	1.37	1.35	59.3%	59.3%	72.6%	38.9%	61.1%	31.4%	31.4%
Medical & Dental	284	327	1.15	32.1%	67.9%	1.13	1.16	33.0%	33.0%	36.0%	74.9%	25.1%	75.2%	75.2%
Nurse/ Midwife Manager	407	431	1.06	14.8%	85.2%	1.01	1.07	97.0%	97.0%	97.5%	87.2%	12.8%	96.9%	96.9%
Nurse/ Midwife Specialist & AN/MP	110	124	1.13	8.9%	91.1%	1.06	1.14	99.2%	99.2%	99.1%	75.0%	25.0%	100.0%	100.0%
Staff Nurse/ Staff Midwife	1,021	1,196	1.17	12.2%	87.8%	1.06	1.19	93.7%	93.7%	93.7%	69.9%	30.1%	91.8%	91.8%
Public Health Nurse	177	214	1.21	0.5%	99.5%	1.11	1.21	95.3%	95.3%	95.3%	65.4%	34.6%	100.0%	100.0%
Nursing/ Midwifery Student	32	35	1.09	2.9%	97.1%	50.00	1.06	17.1%	17.1%	17.6%	97.1%	2.9%	100.0%	100.0%
Nursing/ Midwifery other	9	11	1.18		100.0%		1.18	100.0%	100.0%	100.0%	72.7%	27.3%		
Nursing & Midwifery	1,756	2,011	1.15	11.1%	88.9%	1.05	1.16	93.6%	93.6%	93.6%	73.9%	26.1%	93.7%	93.7%
Therapy Professions	463	530	1.15	10.6%	89.4%	1.06	1.16	90.6%	90.6%	90.7%	80.2%	19.8%	94.6%	94.6%
Health Science/ Diagnostics	4	5	1.18	40.0%	60.0%	1.00	1.35	100.0%	100.0%	100.0%	60.0%	40.0%	100.0%	100.0%
Social Care	400	452	1.13	26.3%	73.7%	1.08	1.15	97.8%	97.8%	97.6%	71.9%	28.1%	83.2%	83.2%
Social Workers	108	121	1.12	16.5%	83.5%	1.09	1.13	95.0%	95.0%	96.0%	82.6%	17.4%	90.0%	90.0%
Psychologists	87	99	1.14	23.2%	76.8%	1.10	1.16	97.0%	97.0%	96.1%	85.9%	14.1%	87.0%	87.0%
Pharmacy	38	45	1.20	22.2%	77.8%	1.07	1.24	60.0%	60.0%	65.7%	46.7%	53.3%	40.0%	40.0%

H&SC, Other	41	50	1.21	28.0%	72.0%	1.09	1.26	92.0%	92.0%	91.7%	56.0%	44.0%	71.4%	71.4%
Health & Social Care Professionals	1,140	1,302	1.14	18.7%	81.3%	1.08	1.16	93.0%	93.0%	93.0%	75.8%	24.2%	84.4%	84.4%
Management (VIII & above)	85	88	1.04	30.7%	69.3%	1.02	1.05	90.9%	90.9%	91.8%	95.5%	4.5%	96.3%	96.3%
Administrative/ Supervisory (V to VII)	214	228	1.06	23.2%	76.8%	1.01	1.08	89.5%	89.5%	92.0%	88.6%	11.4%	98.1%	98.1%
Clerical (III & IV)	380	444	1.17	11.0%	89.0%	1.06	1.18	84.0%	84.0%	84.3%	70.9%	29.1%	85.7%	85.7%
Management & Administrative	679	760	1.12	17.0%	83.0%	1.03	1.14	86.4%	86.4%	87.2%	79.1%	20.9%	93.0%	93.0%
Support	402	495	1.23	29.7%	70.3%	1.08	1.31	86.1%	86.1%	88.5%	50.5%	49.5%	79.6%	79.6%
Maintenance/ Technical	46	50	1.08	88.0%	12.0%	1.07	1.22	90.0%	90.0%	100.0%	82.0%	18.0%	86.4%	86.4%
General Support	448	545	1.22	35.0%	65.0%	1.08	1.31	86.4%	86.4%	88.7%	53.4%	46.6%	81.2%	81.2%
Health Care Assistants	1,723	2,033	1.18	24.6%	75.4%	1.09	1.21	83.6%	83.6%	83.7%	64.7%	35.3%	78.6%	78.6%
Home Help	132	268	2.03	6.7%	93.3%	4.40	1.96	82.1%	82.1%	84.4%	16.4%	83.6%	11.1%	11.1%
Care, other	621	722	1.16	27.7%	72.3%	1.08	1.20	94.5%	94.5%	94.6%	73.4%	26.6%	86.5%	86.5%
Patient & Client Care	2,476	3,023	1.22	23.8%	76.2%	1.11	1.26	86.0%	86.0%	86.2%	62.5%	37.5%	79.1%	79.1%
CHO 7	6,783	7,968	1.17	20.2%	79.8%	1.09	1.20	87.0%	87.0%	87.9%	69.0%	31.0%	83.0%	65.5%
Consultants	44	46	1.06	45.7%	54.3%	1.04	1.07	80.4%	80.4%	88.0%	91.3%	8.7%	90.5%	90.5%
Registrars	114	119	1.04	39.5%	60.5%	1.00	1.07	0.0%	0.0%	0.0%	99.2%	0.8%	100.0%	100.0%
SHO/ Interns	27	28	1.04	35.7%	64.3%	1.00	1.06	0.0%	0.0%	0.0%	100.0%	0.0%	100.0%	100.0%
Medical/ Dental, other	73	94	1.30	47.9%	52.1%	1.42	1.20	78.7%	78.7%	81.6%	50.0%	50.0%	48.9%	48.9%
Medical & Dental	257	287	1.12	42.9%	57.1%	1.13	1.11	38.7%	38.7%	37.8%	81.9%	18.1%	79.7%	79.7%
Nurse/ Midwife Manager	379	410	1.08	17.3%	82.7%	1.01	1.10	94.9%	94.9%	95.6%	81.7%	18.3%	100.0%	100.0%
Nurse/ Midwife Specialist & AN/MP	111	123	1.11	16.3%	83.7%	1.03	1.12	100.0%	100.0%	100.0%	76.4%	23.6%	95.0%	95.0%
Staff Nurse/ Staff Midwife	1,013	1,178	1.16	12.1%	87.9%	1.05	1.18	96.8%	96.8%	96.6%	65.5%	34.5%	93.7%	93.7%
Public Health Nurse	201	242	1.20		100.0%		1.20	98.8%	98.8%	98.8%	72.7%	27.3%		
Nursing/ Midwifery Student	17	18	1.06		100.0%		1.06	33.3%	33.3%	33.3%	100.0%	0.0%		
Nursing/ Midwifery other	12	14	1.13	14.3%	85.7%	1.00	1.15	92.9%	92.9%	91.7%	85.7%	14.3%	100.0%	100.0%
Nursing & Midwifery	1,734	1,985	1.14	11.9%	88.1%	1.03	1.16	96.2%	96.2%	96.2%	70.9%	29.1%	95.8%	95.8%
Therapy Professions	395	478	1.21	7.7%	92.3%	1.07	1.22	97.5%	97.5%	97.5%	65.7%	34.3%	86.5%	86.5%
Health Science/ Diagnostics	9	10	1.07	60.0%	40.0%	1.02	1.17	100.0%	100.0%	100.0%	70.0%	30.0%	83.3%	83.3%
Social Care	388	467	1.20	14.3%	85.7%	1.13	1.22	98.7%	98.7%	98.8%	24.6%	75.4%	22.4%	22.4%
Social Workers	89	102	1.15	13.7%	86.3%	1.05	1.17	98.0%	98.0%	98.9%	81.4%	18.6%	92.9%	92.9%
Psychologists	115	124	1.08	27.4%	72.6%	1.01	1.11	79.0%	79.0%	73.3%	85.5%	14.5%	97.1%	97.1%
Pharmacy	8	10	1.20	20.0%	80.0%	1.00	1.27	100.0%	100.0%	100.0%	60.0%	40.0%	100.0%	100.0%
H&SC, Other	54	61	1.14	16.4%	83.6%	1.04	1.16	91.8%	91.8%	92.2%	67.2%	32.8%	80.0%	80.0%
Health & Social Care Professionals	1,058	1,252	1.18	13.6%	86.4%	1.07	1.20	95.9%	95.9%	95.8%	53.7%	46.3%	63.5%	63.5%
Management (VIII & above)	67	70	1.04	27.1%	72.9%	1.05	1.04	97.1%	97.1%	96.1%	85.7%	14.3%	84.2%	84.2%
Administrative/ Supervisory (V to VII)	204	219	1.08	15.1%	84.9%	1.02	1.09	96.8%	96.8%	96.8%	78.5%	21.5%	97.0%	97.0%

Clerical (III & IV)	533	636	1.19	4.7%	95.3%	1.07	1.20	91.2%	91.2%	91.6%	58.8%	41.2%	83.3%	83.3%
Management & Administrative	803	925	1.15	8.9%	91.1%	1.04	1.16	93.0%	93.0%	93.0%	65.5%	34.5%	89.0%	89.0%
Support	118	155	1.31	34.8%	65.2%	1.11	1.45	82.6%	82.6%	77.2%	52.9%	47.1%	77.8%	77.8%
Maintenance/ Technical	69	70	1.02	97.1%	2.9%	1.02	1.04	98.6%	98.6%	100.0%	97.1%	2.9%	97.1%	97.1%
General Support	187	225	1.20	54.2%	45.8%	1.06	1.44	87.6%	87.6%	77.7%	66.7%	33.3%	88.5%	88.5%
Health Care Assistants	1,663	1,959	1.18	23.4%	76.6%	1.11	1.20	89.7%	89.7%	91.0%	50.0%	50.0%	61.8%	61.8%
Home Help	397	659	1.66	3.3%	96.7%	2.63	1.64	46.9%	46.9%	47.9%	14.0%	86.0%	4.5%	4.5%
Care, other	238	284	1.19	31.3%	68.7%	1.21	1.18	95.1%	95.1%	98.5%	54.9%	45.1%	59.6%	59.6%
Patient & Client Care	2,298	2,902	1.26	19.6%	80.4%	1.15	1.29	80.5%	80.5%	79.9%	42.3%	57.7%	59.2%	59.2%
CHO 8	6,337	7,576	1.20	17.2%	82.8%	1.10	1.22	87.3%	87.3%	87.8%	56.7%	43.3%	73.0%	53.3%
Consultants	64	75	1.16	33.3%	66.7%	1.16	1.17	77.3%	77.3%	82.0%	77.3%	22.7%	84.0%	84.0%
Registrars	91	94	1.03	35.1%	64.9%	1.02	1.04	3.2%	3.2%	0.0%	97.9%	2.1%	97.0%	97.0%
SHO/ Interns	71	72	1.01	34.7%	65.3%	1.01	1.01	0.0%	0.0%	0.0%	100.0%	0.0%	100.0%	100.0%
Medical/ Dental, other	56	72	1.28	22.2%	77.8%	1.32	1.27	81.9%	81.9%	82.1%	58.3%	41.7%	62.5%	62.5%
Medical & Dental	283	313	1.11	31.6%	68.4%	1.09	1.12	38.3%	38.3%	40.7%	84.3%	15.7%	88.9%	88.9%
Nurse/ Midwife Manager	457	488	1.07	17.8%	82.2%	1.01	1.08	96.9%	96.9%	96.3%	86.1%	13.9%	97.7%	97.7%
Nurse/ Midwife Specialist & AN/MP	101	107	1.06	11.2%	88.8%	1.01	1.06	99.1%	99.1%	98.9%	88.8%	11.2%	100.0%	100.0%
Staff Nurse/ Staff Midwife	1,223	1,385	1.13	14.1%	85.9%	1.07	1.14	92.7%	92.7%	93.4%	75.8%	24.2%	90.3%	90.3%
Public Health Nurse	182	215	1.18	0.5%	99.5%	1.00	1.18	95.3%	95.3%	95.3%	71.6%	28.4%	100.0%	100.0%
Nursing/ Midwifery Student	60	85	1.42	11.8%	88.2%	1.61	1.40	29.4%	29.4%	32.0%	77.6%	22.4%	100.0%	100.0%
Nursing/ Midwifery other	23	25	1.09	8.0%	92.0%	1.01	1.10	96.0%	96.0%	95.7%	88.0%	12.0%	100.0%	100.0%
Nursing & Midwifery	2,046	2,305	1.13	13.3%	86.7%	1.06	1.14	91.8%	91.8%	92.2%	78.4%	21.6%	93.2%	93.2%
Therapy Professions	530	616	1.16	9.6%	90.4%	1.05	1.18	88.6%	88.6%	88.5%	71.4%	28.6%	93.2%	93.2%
Health Science/ Diagnostics	34	36	1.07	55.6%	44.4%	1.00	1.18	100.0%	100.0%	100.0%	83.3%	16.7%	100.0%	100.0%
Social Care	745	892	1.20	12.3%	87.7%	1.07	1.22	87.1%	87.1%	88.0%	45.7%	54.3%	70.0%	70.0%
Social Workers	139	155	1.12	14.2%	85.8%	1.00	1.14	94.8%	94.8%	94.7%	75.5%	24.5%	100.0%	100.0%
Psychologists	183	201	1.10	15.4%	84.6%	1.06	1.11	67.7%	67.7%	68.8%	78.6%	21.4%	83.9%	83.9%
Pharmacy	29	34	1.16	11.8%	88.2%	1.11	1.17	58.8%	58.8%	63.3%	70.6%	29.4%	75.0%	75.0%
H&SC, Other	69	81	1.18	23.5%	76.5%	1.07	1.22	90.1%	90.1%	91.9%	65.4%	34.6%	89.5%	89.5%
Health & Social Care Professionals	1,728	2,015	1.17	13.2%	86.8%	1.05	1.19	86.1%	86.1%	86.6%	61.0%	39.0%	83.0%	83.0%
Management (VIII & above)	85	87	1.02	26.4%	73.6%	1.00	1.03	96.6%	96.6%	98.4%	96.6%	3.4%	100.0%	100.0%
Administrative/ Supervisory (V to VII)	243	268	1.10	17.2%	82.8%	1.00	1.13	93.3%	93.3%	92.3%	78.0%	22.0%	100.0%	100.0%
Clerical (III & IV)	507	594	1.17	13.8%	86.2%	1.08	1.19	79.8%	79.8%	82.0%	65.7%	34.3%	85.4%	85.4%
Management & Administrative	835	949	1.14	15.9%	84.1%	1.04	1.16	85.1%	85.1%	86.2%	72.0%	28.0%	92.1%	92.1%
Support	403	492	1.22	35.4%	64.6%	1.12	1.28	87.8%	87.8%	89.6%	51.6%	48.4%	75.9%	75.9%
Maintenance/ Technical	36	38	1.04	94.7%	5.3%	1.04	1.06	94.7%	94.7%	100.0%	73.7%	26.3%	75.0%	75.0%

General Support	439	530	1.21	39.6%	60.4%	1.11	1.28	88.3%	88.3%	89.7%	53.2%	46.8%	75.7%	75.7%
Health Care Assistants	1,385	1,679	1.21	19.7%	80.3%	1.10	1.24	80.7%	80.7%	80.3%	55.6%	44.4%	77.6%	77.6%
Care, other	233	263	1.13	31.9%	68.1%	1.07	1.16	85.6%	85.6%	87.7%	62.4%	37.6%	81.0%	81.0%
Patient & Client Care	1,618	1,942	1.20	21.4%	78.6%	1.09	1.23	81.4%	81.4%	81.2%	56.5%	43.5%	78.3%	78.3%
CHO 9	6,950	8,054	1.16	18.0%	82.0%	1.07	1.18	84.8%	84.8%	85.7%	66.6%	33.4%	84.1%	62.8%
Consultants	18	19	1.08	57.9%	42.1%	1.02	1.17	57.9%	57.9%	62.5%	84.2%	15.8%	90.9%	90.9%
Registrars	23	24	1.05	45.8%	54.2%	1.02	1.09	0.0%	0.0%	0.0%	100.0%	0.0%	100.0%	100.0%
SHO/ Interns	6	6	1.00	66.7%	33.3%	1.00	1.00	0.0%	0.0%	0.0%	100.0%	0.0%	100.0%	100.0%
Medical/ Dental, other	0	1	11.11	100.0%		11.11		100.0%	100.0%	#DIV/0	0.0%	100.0%	0.0%	0.0%
Medical & Dental	46	50	1.08	54.0%	46.0%	1.05	1.11	24.0%	24.0%	21.7%	92.0%	8.0%	92.6%	92.6%
Nurse/ Midwife Manager	82	86	1.05	59.3%	40.7%	1.05	1.05	93.0%	93.0%	94.3%	90.7%	9.3%	92.2%	92.2%
Nurse/ Midwife Specialist & AN/MP	13	14	1.10	35.7%	64.3%	1.01	1.17	85.7%	85.7%	77.8%	92.9%	7.1%	100.0%	100.0%
Staff Nurse/ Staff Midwife	174	181	1.04	36.5%	63.5%	1.04	1.04	81.2%	81.2%	80.0%	94.5%	5.5%	92.4%	92.4%
Nursing/ Midwifery other	2	2	1.02	50.0%	50.0%	1.00	1.04	100.0%	100.0%	100.0%	100.0%	0.0%	100.0%	100.0%
Nursing & Midwifery	271	283	1.04	43.5%	56.5%	1.04	1.05	85.2%	85.2%	83.1%	93.3%	6.7%	92.7%	92.7%
Therapy Professions	12	12	1.04	33.3%	66.7%	1.00	1.05	100.0%	100.0%	100.0%	100.0%	0.0%	100.0%	100.0%
Health Science/ Diagnostics	8	8	1.03	12.5%	87.5%	1.00	1.04	87.5%	87.5%	100.0%	87.5%	12.5%	100.0%	100.0%
Social Care	4	4	1.06	25.0%	75.0%	1.00	1.09	100.0%	100.0%	100.0%	100.0%	0.0%	100.0%	100.0%
Social Workers	33	39	1.17	28.2%	71.8%	1.18	1.17	87.2%	87.2%	89.3%	82.1%	17.9%	72.7%	72.7%
Psychologists	7	7	1.01	42.9%	57.1%	1.00	1.01	100.0%	100.0%	100.0%	100.0%	0.0%	100.0%	100.0%
Pharmacy	4	4	1.00	25.0%	75.0%	1.00	1.00	25.0%	25.0%	33.3%	100.0%	0.0%	100.0%	100.0%
H&SC, Other	4	4	1.05	25.0%	75.0%	1.00	1.07	75.0%	75.0%	66.7%	75.0%	25.0%	100.0%	100.0%
Health & Social Care Professionals	71	78	1.10	28.2%	71.8%	1.08	1.10	87.2%	87.2%	89.3%	88.5%	11.5%	86.4%	86.4%
Management (VIII & above)	69	70	1.01	42.9%	57.1%	1.02	1.01	95.7%	95.7%	97.5%	97.1%	2.9%	96.7%	96.7%
Administrative/ Supervisory (V to VII)	77	82	1.06	24.4%	75.6%	1.01	1.08	92.7%	92.7%	95.2%	92.7%	7.3%	95.0%	95.0%
Clerical (III & IV)	69	76	1.09	23.7%	76.3%	1.09	1.09	71.1%	71.1%	74.1%	84.2%	15.8%	88.9%	88.9%
Management & Administrative	216	228	1.06	29.8%	70.2%	1.03	1.07	86.4%	86.4%	88.1%	91.2%	8.8%	94.1%	94.1%
Support	20	21	1.05	42.9%	57.1%	1.00	1.09	85.7%	85.7%	91.7%	71.4%	28.6%	100.0%	100.0%
Maintenance/ Technical	7	7	1.00	100.0%		1.00		100.0%	100.0%	#DIV/0	100.0%	0.0%	100.0%	100.0%
General Support	27	28	1.04	57.1%	42.9%	1.00	1.09	89.3%	89.3%	91.7%	78.6%	21.4%	100.0%	100.0%
Health Care Assistants	62	70	1.12	70.0%	30.0%	1.18	1.01	74.3%	74.3%	90.5%	80.0%	20.0%	73.5%	73.5%
Care, other	16	19	1.22	68.4%	31.6%	1.07	1.74	89.5%	89.5%	66.7%	63.2%	36.8%	84.6%	84.6%
Patient & Client Care	78	89	1.14	69.7%	30.3%	1.16	1.11	77.5%	77.5%	85.2%	76.4%	23.6%	75.8%	75.8%
other Community Services	709	756	1.07	42.1%	57.9%	1.06	1.07	81.0%	81.0%	82.9%	89.6%	10.4%	89.6%	89.5%

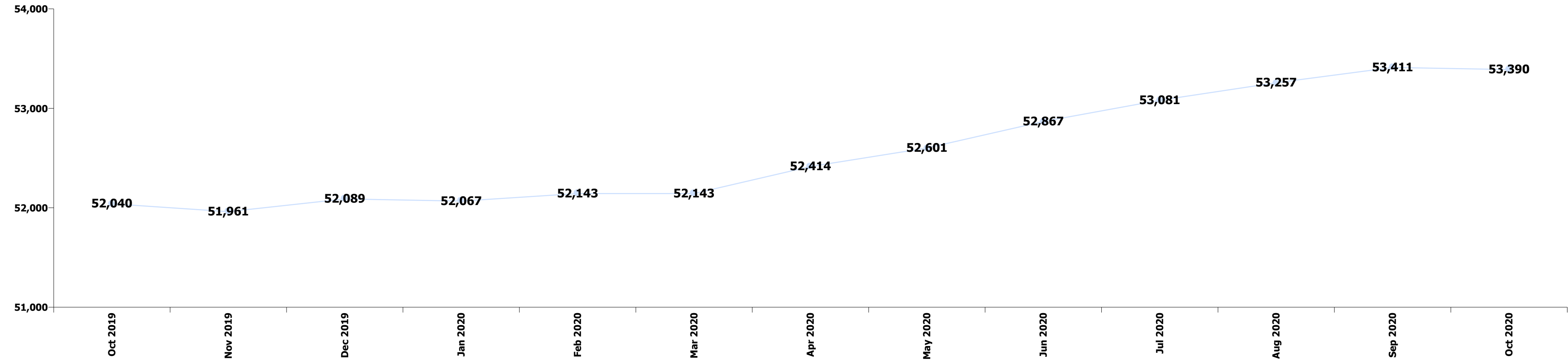
Summary Staff Movement: December 2020

Month-on-month Summary

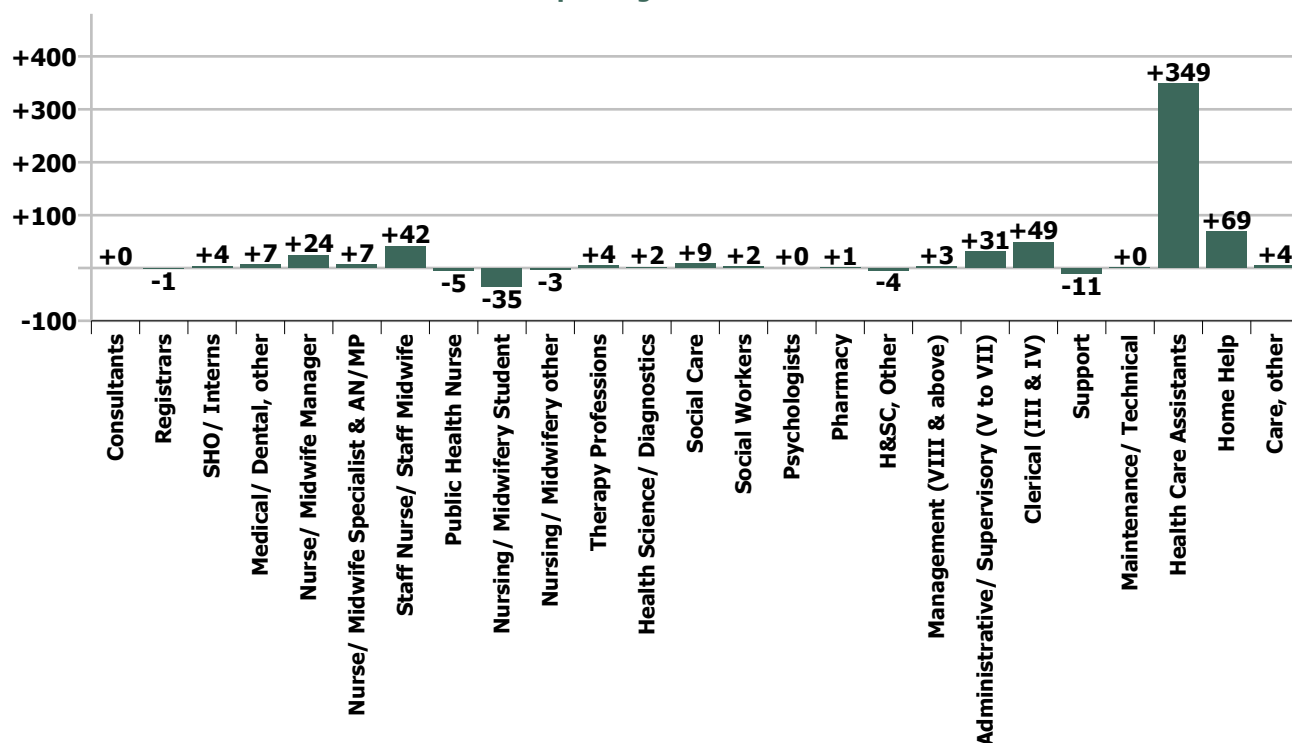
WTE change since Nov 20	% change since Nov 20	overall	Consultants	Registrars	SHO/ Interns	Medical/ Dental, other	Medical & Dental	Nurse/ Midwife Manager	Nurse/ Midwife Specialist & AN/MP	Staff Nurse/ Staff Midwife	Public Health Nurse	Nursing/ Midwifery Student	Nursing/ Midwifery other	Nursing & Midwifery	Therapy Professions	Health Science/ Diagnostics	Social Care	Social Workers	Psychologist s	Pharmacy	H&SC, Other	Health & Social Care Professionals	Management (VIII & above)	Administrati ve/ Supervisory (V to VII)	Clerical (III & IV)	Manageme nt & Administra tive	General Support	Health Care Assistants	Home Help	Care, other	Patient & Client Care	
Overall	+1.0%	+547	+0	-1	+4	+7	+9	+24	+7	+42	-5	-35	-3	+30	+4	+2	+9	+2	+0	+1	-4	+14	+3	+31	+49	+82	-10	+349	+69	+4	+422	
CHO 1	+1.5%	+88	-0	+1	+0	+16	+17	-3	-1	+10	-1	-12	-1	-8	-4	-0	+2	+1	+0	-0	+0	-1	+1	+3	+1	+5	+1	+31	+47	-5	+73	
CHO 2	+1.4%	+78	-0	-3	+0	-1	-3	+1	+1	+6	-0	-5	-1	+2	+2	+1	+3	-0	-0	-0	-2	+3	-0	+3	+3	+6	-1	+41	+28	+2	+71	
CHO 3	+1.4%	+65	-1	+0	+0	-0	-1	+9	+3	+5	-0	-7		+9	+1	+0	+8	+1	-0		-0	+9	-0	+3	+6	+8	-1	+39	+1	-0	+40	
CHO 4	+1.2%	+98	+1	+2	+0	+0	+3	+7	+0	+30	-5	-11		+21	+3	+0	-5	+1	+2	+1	-1	+1	+0	+3	+5	+8	-7	+46	+17	+9	+72	
CHO 5	+0.5%	+28		+2	+1	+0	+3	-2	+1	+4	+2	-6	+0	-2	+5	+1	-1	-1	+0	+0	+0	+5	-1	+2	-1	+0	-0	+48	-28	+1	+22	
CHO 6	-0.2%	-8	+1	+1	-1	-5	-4	-0	-1	-4	-3	+1	-1	-8	+1	+1	-3	-1	+0	+0	-0	-1	-1	-0	+3	+1	+0	+8		-4	+5	
CHO 7	+0.9%	+61	+1	-0	+1	-4	-2	+7	-1	+2	+1	-1	-2	+6	+3	-0	+5	-1	+0	-0	-1	+7	+1	+8	+0	+9	+1	+39	-0	+2	+41	
CHO 8	+1.0%	+62	-0	-4	+1	+0	-3	+3	+3	-11	+2	-6	+2	-8	+1		+2	-4	-2		+0	-3	-0	+6	+0	+6	-2	+71	+3	-3	+72	
CHO 9	+0.9%	+61	-1	+1	+0	-0	+1	+2	+1	+3	-1	+13	+0	+17	-8	-0	-3	+4	-0	+0	-1	-8	+3	+3	+21	+26	-1	+24		+2	+25	
Community Services	+1.0%	+533	+0	-0	+4	+7	+11	+23	+6	+44	-5	-35	-3	+30	+4	+2	+9	-0	+0	+1	-4	+11	+1	+31	+39	+71	-11	+349	+69	+4	+421	
other Community Services	+2.0%	+14	-0	-1		-0	-2	+2	+1	-2			-0	+0	+0	+0	-0	+3				+3	+1	+0	+10	+12	+1	+0				+0
			+0.0%	-0.2%	+1.1%	+1.1%	+0.4%	+0.7%	+0.9%	+0.5%	-0.3%	-14.0%	-3.9%	+0.2%	+0.1%	+1.2%	+0.3%	+0.3%	+0.0%	+1.1%	-1.1%	+0.2%	+0.4%	+1.8%	+1.3%	+1.3%	-0.4%	+2.8%	+2.0%	+0.1%	+2.2%	

Year-on-year Summary

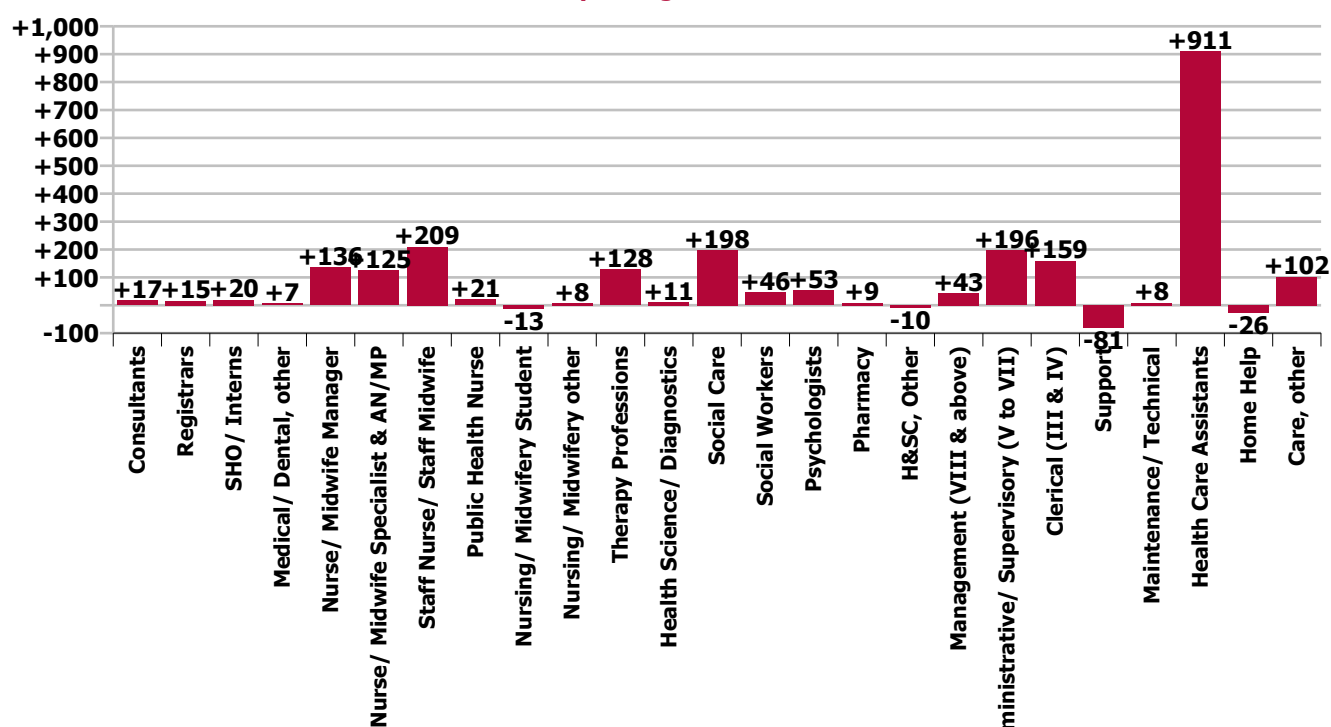
WTE change since Dec 19	% change since Dec 19	overall	Consultants	Registrars	SHO/ Interns	Medical/ Dental, other	Medical & Dental	Nurse/ Midwife Manager	Nurse/ Midwife Specialist & AN/MP	Staff Nurse/ Staff Midwife	Public Health Nurse	Nursing/ Midwifery Student	Nursing/ Midwifery other	Nursing & Midwifery	Therapy Professions	Health Science/ Diagnostics	Social Care	Social Workers	Psychologists	Pharmacy	H&SC, Other	Health & Social Care Professionals	Management (VIII & above)	Administrative/ Supervisory (V to VII)	Clerical (III & IV)	Management & Administrative	General Support	Health Care Assistants	Home Help	Care, other	Patient & Client Care
Community Services	+4.4%	+2,288	+17	+15	+20	+7	+59	+136	+125	+209	+21	-13	+8	+485	+128	+11	+198	+46	+53	+9	-10	+434	+43	+196	+159	+397	-73	+911	-26	+102	+986
CHO 1	+5.2%	+287	+4	+6	-2	+0	+8	+5	+16	+15	-3	+3	+1	+35	+7	+0	+4	+8	+2	+1	-1	+20	+4	+31	+23	+57	+5	+96	+63	+2	+161
CHO 2	+2.6%	+145	-0	+11	+7	+3	+20	+15	+15	+10	+7	+2	-0	+48	+24	+2	+23	-0	+4	-1	-3	+49	+2	+27	-20	+9	+0	+51	-43	+11	+19
CHO 3	+5.8%	+253	+1	-1	-3	+1	-2	+3	-2	+43	-0	-11		+33	+9	+3	+43	-2	+2		+1	+58	+4	+17	-12	+8	-4	+107	+41	+11	+159
CHO 4	+5.0%	+413	+5	-1	+13	+5	+23	+34	+17	+53	+12	-31	-1	+84	+16	+1	+12	+17	+14	+3	+3	+66	+2	+16	+41	+60	+16	+167	-48	+44	+163
CHO 5	+3.7%	+195	-1	+2	+0	+5	+6	+27	+26	+4	+2	+5	-0	+63	-2	+4	-11	+3	-0	+1	-3	-9	+4	+13	-6	+11	-40	+175	-22	+10	+162
CHO 6	+2.6%	+87	+3	-5	+4	-6	-4	-5	+3	+13	-5	+2	+1	+10	-1	+2	+28	-3	+10	+0	-4	+33	+2	-4	+23	+21	+1	+27		+0	+28
CHO 7	+4.1%	+268	+6	+5	+3	-1	+13	+11	+16	+28	+1	-0	-1	+56	+13	+1	+29	+3	+6	-2	-3	+46	+12	+32	+30	+73	-4	+68	+5	+11	+84
CHO 8	+3.3%	+202	+1	+8	-11	+0	-1	+8	+12	+15	+2	+13	+3	+52	+18	+2	+20	+1	-5	+1	+1	+38	+5	+27	+26	+58	-9	+85	-21	+1	+65
CHO 9	+5.6%	+367	-4	-7	+5	-1	-7	+22	+17	+28	+6	+5	+3	+81	+44	-3	+50	+13	+19	+5	-2	+125	+6	+35	+55	+96	-48	+108		+12	+120
Community Services	+4.3%	+2,217	+15	+17	+16	+7	+56	+120	+120	+209	+21	-13	+7	+463	+127	+12	+198	+41	+53	+7	-11	+428	+39	+194	+159	+393	-83	+885	-26	+101	+961
other Community Services	+11.1%	+71	+1	-2	+4	-0	+3	+16	+4	+0		+1	+22	+1	-1	+0	+5	-0	+1	+1	+1	+7	+4	+2	-1	+4	+10	+25		+0	+26
			+3.9%	+2.2%	+6.3%	+1.1%	+2.8%	+4.3%	+18.1%	+2.3%	+1.4%	-5.9%	+12.9%	+3.3%	+4.0%	+8.4%	+7.3%	+5.7%	+5.8%	+8.7%	-2.7%	+5.3%	+7.0%	+13.0%	+4.3%	+6.8%	-2.5%	+7.5%	-0.7%	+3.7%	+5.4%



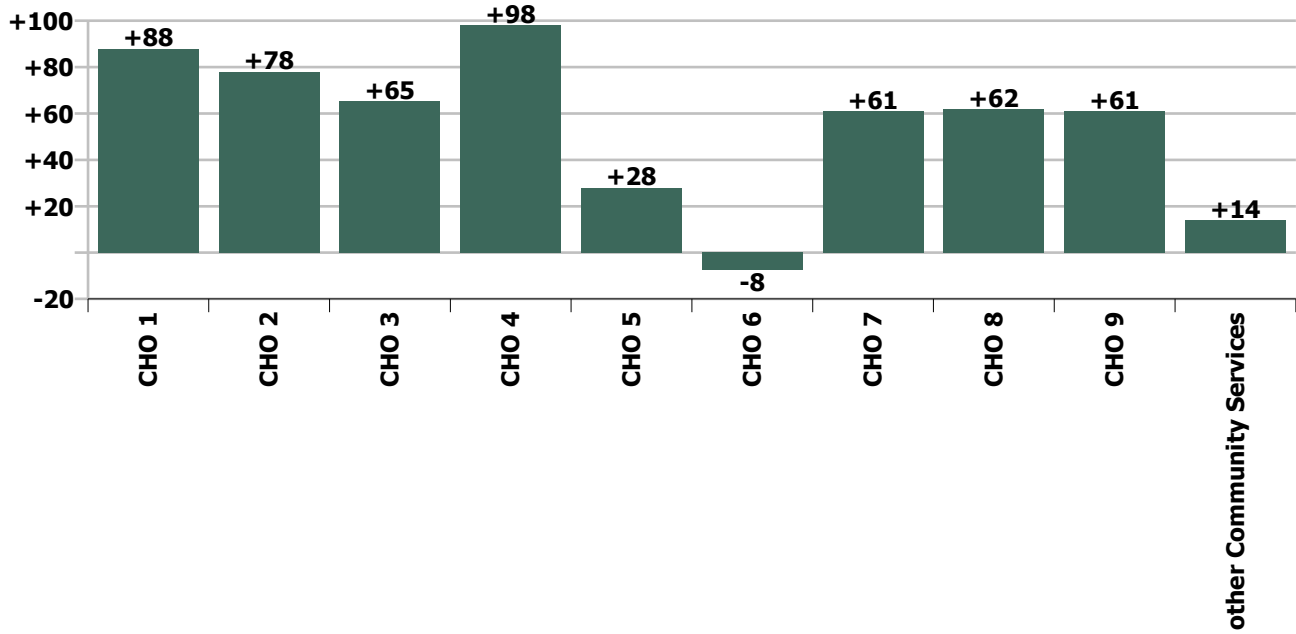
Staff Group change since: Nov 2020



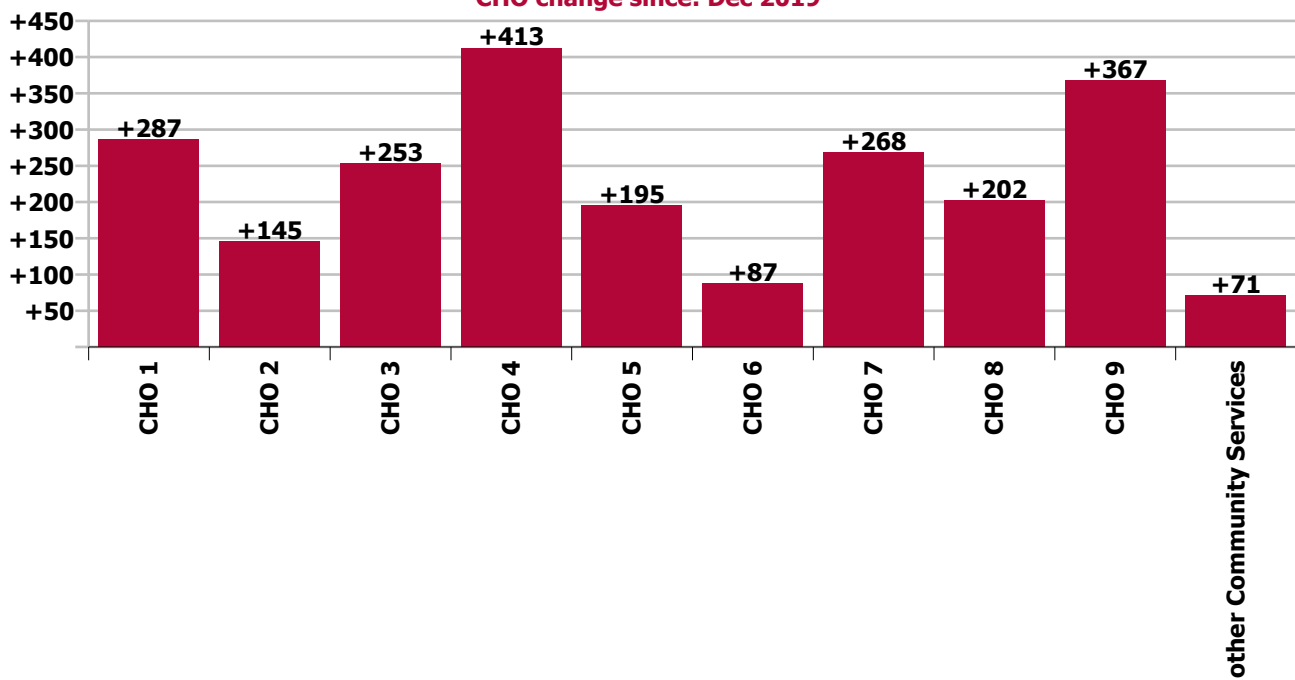
Staff Group change since: Dec 2019



CHO change since: Nov 2020



CHO change since: Dec 2019



Longitudinal Employment Levels by Grade Group - Oct 2013 to Dec 2020

Dec 2020 (Oct 2013 figure: 46,288)	WTE Dec 2020	WTE change since Oct 13	WTE change since Dec 14	WTE change since Dec 16	WTE change since Dec 17	WTE change since Dec 18	WTE change since Dec 19	% change since Oct 13	% change since Dec 14	% change since Dec 16	% change since Dec 17	% change since Dec 18	% change since Dec 19
Community Services	54,377	+8,089	+7,339	+5,073	+3,568	+2,424	+2,288	+17.5%	+15.6%	+10.3%	+7.0%	+4.7%	+4.4%
Consultant Anaesthesia		-0						-100.0%	-100.0%	-100.0%	-100.0%	-100.0%	-100.0%
Consultant Dentistry	10	+0	-0	-0	-1	-1	-1	+0.9%	-3.8%	-3.8%	-12.1%	-12.1%	-8.4%
Consultant Medicine	26	+5	+1	-4	-4	+4	+3	+26.6%	+4.6%	-14.6%	-14.7%	+18.5%	+15.0%
Consultant Paediatrics	5	+1	+1	+0	-0			+17.9%	+17.9%	+8.1%	-1.9%		
Consultant Psychiatry	398	+74	+64	+54	+53	+44	+18	+22.8%	+19.2%	+15.8%	+15.3%	+12.5%	+4.6%
Consultant Radiology	1	-0	-0					-14.5%	-5.7%				
Consultant Surgery	1	-7	-6	-5	-4	-4	-3	-91.9%	-90.8%	-89.8%	-87.7%	-87.0%	-85.2%
Consultant, Other		-1	-1	-1				-100.0%	-100.0%	-100.0%	-100.0%	-100.0%	-100.0%
Consultants	440	+72	+59	+44	+43	+43	+17	+19.5%	+15.4%	+11.0%	+10.8%	+10.8%	+3.9%
Registrar	567	+105	+109	+93	+66	+40	+2	+22.7%	+23.7%	+19.7%	+13.1%	+7.5%	+0.4%
Senior Registrar	117	+45	+50	+43	+44	+23	+14	+62.8%	+75.0%	+58.6%	+59.3%	+24.7%	+13.8%
Specialist Registrar	17	+2	+5	+4	+1	+5	-1	+16.3%	+44.4%	+34.4%	+3.9%	+36.5%	-6.3%
Registrars	701	+152	+164	+141	+110	+67	+15	+27.7%	+30.6%	+25.2%	+18.6%	+10.6%	+2.2%
Interns	5	-4	-5	-7	-5	-3	-3	-44.4%	-50.0%	-58.3%	-50.0%	-37.5%	-37.5%
Senior House Officer	335	+63	+60	+32	+16	+10	+23	+22.9%	+22.0%	+10.7%	+5.2%	+3.1%	+7.4%
SHO/ Interns	340	+59	+55	+25	+11	+7	+20	+20.8%	+19.5%	+8.1%	+3.5%	+2.2%	+6.3%
Dentists	302	-8	+5	-2	-0	-3	+1	-2.5%	+1.5%	-0.7%	-0.1%	-1.1%	+0.2%
Other Medical	340	+7	+7	+14	-5	-3	+6	+2.0%	+2.1%	+4.2%	-1.4%	-1.0%	+1.9%
Medical/ Dental, other	642	-1	+12	+12	-5	-7	+7	-0.2%	+1.9%	+1.8%	-0.8%	-1.0%	+1.1%
Medical & Dental	2,124	+282	+290	+222	+159	+111	+59	+15.3%	+15.8%	+11.6%	+8.1%	+5.5%	+2.8%
Clinical Nurse/ Midwife Manager	2,584	+377	+253	+82	+105	+75	+98	+17.1%	+10.9%	+3.3%	+4.2%	+3.0%	+4.0%
Director Nursing/Midwifery, Assistant	497	+152	+104	+60	+67	+58	+35	+44.1%	+26.6%	+13.6%	+15.6%	+13.2%	+7.6%
Director of Nursing/Midwifery	209	+46	+31	+16	+19	+29	+3	+28.4%	+17.4%	+8.4%	+10.2%	+16.3%	+1.3%
Nurse/ Midwife Manager	3,291	+576	+389	+158	+192	+162	+136	+21.2%	+13.4%	+5.0%	+6.2%	+5.2%	+4.3%
Advanced Nurse/ Midwife Practitioner	77	+62	+66	+63	+60	+46	+31	+419.5%	+569.3%	+441.7%	+334.5%	+144.2%	+68.1%
Clinical Nurse/ Midwife Specialist	738	+333	+289	+200	+136	+116	+93	+82.2%	+64.3%	+37.2%	+22.5%	+18.7%	+14.5%
Nurse/ Midwife Specialist & AN/MP	815	+395	+354	+263	+195	+162	+125	+94.2%	+76.9%	+47.7%	+31.5%	+24.8%	+18.1%
Graduate Nursing/ Midwifery		-58	-179					-100.0%	-100.0%	-100.0%	-100.0%	-100.0%	-100.0%
Staff Midwives	7	+6	+6	+4	+0	+1	-1	+310.0%	+316.9%	+132.1%	+4.5%	+13.7%	-9.1%
Staff Nurse [Intellectual Disability]	1,794	+34	+22	+64	+86	+102	+192	+1.9%	+1.2%	+3.7%	+5.1%	+6.0%	+12.0%
Staff Nurse [Psychiatric]	3,037	-255	-88	-115	-80	-3	+47	-7.8%	-2.8%	-3.7%	-2.6%	-0.1%	+1.6%
Staff Nurses [General/ Children's]	4,385	-223	+84	-61	-56	-71	-29	-4.8%	+2.0%	-1.4%	-1.3%	-1.6%	-0.6%
Staff Nurse/ Staff Midwife	9,223	-497	-155	-108	-49	+29	+209	-5.1%	-1.7%	-1.2%	-0.5%	+0.3%	+2.3%
Public Health Nurse	1,553	+70	+96	+59	+44	+18	+21	+4.8%	+6.6%	+3.9%	+2.9%	+1.1%	+1.4%
Pre-registration Nurse/ Midwife Intern	13	-67	-21	-7	-15	-49	-43	-83.4%	-61.6%	-36.1%	-53.9%	-78.9%	-76.3%
Pre-registration Nurse Intern (COVID-19)	74	+74	+74	+74	+74	+74	+74	-100.0%	-100.0%	-100.0%	-100.0%	-100.0%	-100.0%
Post-registration Nurse/ Midwife Student	107	+87	-9	-5	-22	+14	+9	+429.8%	-7.6%	-4.3%	-17.0%	+15.2%	+9.7%
Nursing/ Midwifery awaiting registration	19	+19	+12	+17	-3	-1	-55	-100.0%	+176.7%	+860.0%	-15.2%	-3.2%	-74.0%
Nursing/ Midwifery Student	214	+114	+56	+79	+33	+38	-13	+113.8%	+35.9%	+58.8%	+18.5%	+21.8%	-5.9%
Nursing Education/Clinical	65	+17	+22	+15	+9	+9	+8	+34.4%	+52.5%	+29.2%	+16.0%	+15.9%	+13.2%
Other Nursing/ Midwifery	1	-9	-7	-6	-4	-1		-89.8%	-87.4%	-85.7%	-81.7%	-50.0%	
Nursing/ Midwifery other	66	+8	+15	+9	+5	+8	+8	+13.6%	+30.5%	+15.2%	+7.3%	+13.7%	+12.9%

Dec 2020 (Oct 2013 figure: 46,288)	WTE Dec 2020	WTE change since Oct 13	WTE change since Dec 14	WTE change since Dec 16	WTE change since Dec 17	WTE change since Dec 18	WTE change since Dec 19	% change since Oct 13	% change since Dec 14	% change since Dec 16	% change since Dec 17	% change since Dec 18	% change since Dec 19
Community Services	54,377	+8,089	+7,339	+5,073	+3,568	+2,424	+2,288	+17.5%	+15.6%	+10.3%	+7.0%	+4.7%	+4.4%
Nursing & Midwifery	15,161	+666	+756	+459	+419	+417	+485	+4.6%	+5.2%	+3.1%	+2.8%	+2.8%	+3.3%
Dietitians	191	+105	+90	+59	+40	+23	+28	+120.8%	+89.1%	+44.2%	+26.8%	+13.9%	+17.2%
Occupational Therapists	1,280	+307	+243	+138	+95	+56	+49	+31.5%	+23.4%	+12.1%	+8.0%	+4.5%	+4.0%
Orthoptists	18	+12	+12	+12	+11	+8	+4	+210.5%	+224.3%	+199.3%	+174.9%	+77.0%	+32.2%
Physiotherapists	890	+147	+102	+43	+20	+16	+32	+19.7%	+12.9%	+5.1%	+2.3%	+1.9%	+3.7%
Podiatrists & Chiropodists	43	+9	+9	+7	+3	+3	+6	+27.2%	+27.8%	+19.7%	+7.5%	+8.2%	+15.0%
Speech & Language Therapists	913	+246	+196	+60	-1	+1	+9	+37.0%	+27.3%	+7.0%	-0.1%	+0.1%	+1.0%
Therapy Professions	3,334	+825	+652	+318	+168	+107	+128	+32.9%	+24.3%	+10.5%	+5.3%	+3.3%	+4.0%
Audiology	52	+24	+12	+11	+5	+4	+8	+87.6%	+28.1%	+25.3%	+9.8%	+8.8%	+19.2%
Biochemists	8	+1	+0	+0	+0	-0	+0	+23.8%	+2.6%	+1.8%	+1.8%	-3.0%	+1.7%
Clinical Engineering	21	+2	+3	-0	+1	+2	-0	+10.8%	+18.7%	-1.6%	+4.7%	+10.3%	-0.2%
Clinical Measurement	2	+1	+1	+1	+1	+1	+1	+116.0%	+116.0%	+116.0%	+116.0%	+100.0%	+78.5%
Medical Laboratory	49	-36	-32	-1	-0	-2	+3	-42.3%	-39.5%	-1.1%	-0.2%	-3.9%	+6.3%
Phlebotomists	1	-0	-0	-0	-0			-28.2%	-14.7%	-26.1%	-25.2%		
Physicists	2	+0	-2	-1	+0			+11.1%	-48.7%	-33.3%	+12.4%		
Radiographers	10	-5	-3	-3	-4	-2	-1	-32.5%	-23.1%	-23.5%	-27.2%	-14.7%	-9.1%
Health Science/ Diagnostics	146	-12	-21	+6	+3	+3	+11	-7.7%	-12.6%	+4.6%	+1.9%	+2.3%	+8.4%
Social Care	2,905	+964	+1,001	+588	+440	+300	+198	+49.7%	+52.6%	+25.4%	+17.9%	+11.5%	+7.3%
Social Workers	852	+201	+171	+49	+37	+27	+46	+30.8%	+25.1%	+6.1%	+4.5%	+3.2%	+5.7%
Psychologists	954	+318	+207	+117	+76	+61	+53	+50.1%	+27.7%	+14.0%	+8.7%	+6.8%	+5.8%
Pharmacy	107	+10	+6	+4	+3	+6	+9	+10.6%	+6.5%	+4.4%	+3.0%	+5.7%	+8.7%
Counsellor Therapists	233	+31	+45	+16	+6	+14	+4	+15.6%	+24.2%	+7.4%	+2.9%	+6.5%	+1.8%
Dental Hygienists	61	+7	+6	+6	+7	+4	+4	+12.2%	+11.0%	+11.4%	+12.6%	+6.7%	+6.7%
Environmental Health Officers							-1	-100.0%	-100.0%	-100.0%	-100.0%	-100.0%	-100.0%
Other Health & Social Care	57	-33	-38	-18	-20	-13	-13	-36.5%	-39.5%	-24.0%	-25.4%	-19.0%	-18.3%
Play Therapists/ Specialists	15	-7	-3	-4	-3	-4	-5	-29.7%	-14.8%	-21.2%	-14.8%	-20.8%	-23.4%
HSCP Trainees/ Students		-10	-2	-2	-1			-100.0%	-100.0%	-100.0%	-100.0%	-100.0%	-100.0%
H&SC, Other	367	-11	+9	-2	-9	+0	-10	-2.9%	+2.6%	-0.6%	-2.5%	+0.1%	-2.7%
Health & Social Care Professionals	8,664	+2,295	+2,025	+1,080	+718	+504	+434	+36.0%	+30.5%	+14.2%	+9.0%	+6.2%	+5.3%
Executive Management	142	+86	+78	+34	+17	+16	+17	+156.0%	+123.8%	+31.0%	+13.3%	+12.6%	+13.9%
Senior Management (VIII & GM)	519	+206	+155	+122	+88	+59	+26	+65.6%	+42.5%	+30.8%	+20.6%	+12.7%	+5.3%
Management (VIII & above)	660	+292	+233	+156	+105	+74	+43	+79.2%	+54.5%	+30.9%	+18.9%	+12.7%	+7.0%
Middle Management (V-VII)	1,677	+630	+648	+525	+416	+262	+197	+60.2%	+63.0%	+45.6%	+33.0%	+18.5%	+13.3%
Other Administrative	18	-2	-5	+1	-2	-3	-1	-10.7%	-20.0%	+8.7%	-8.3%	-14.2%	-6.0%
Administrative/ Supervisory (V to VII)	1,696	+628	+644	+527	+415	+259	+196	+58.8%	+61.2%	+45.1%	+32.4%	+18.0%	+13.0%
Clerical (III & IV)	3,854	+379	+475	+330	+232	+111	+159	+10.9%	+14.1%	+9.4%	+6.4%	+3.0%	+4.3%
Management & Administrative	6,210	+1,299	+1,352	+1,012	+752	+445	+397	+26.4%	+27.8%	+19.5%	+13.8%	+7.7%	+6.8%
Catering	398	-24	-27	-16	-11	-17	-9	-5.8%	-6.4%	-3.8%	-2.6%	-4.1%	-2.2%
Household Services	1,463	-535	-403	-247	-165	-99	-8	-26.8%	-21.6%	-14.4%	-10.1%	-6.3%	-0.5%
Other Labs & Associated	6	+1	+0	+3	+0	+0	+2	+23.5%	+3.4%	+95.4%	+2.4%	+3.8%	+46.0%
Other Support	320	-104	-89	-94	-95	-94	-58	-24.5%	-21.7%	-22.7%	-22.9%	-22.6%	-15.3%
Portering	223	-75	-44	-34	-19	-10	-9	-25.1%	-16.5%	-13.3%	-7.9%	-4.4%	-3.8%
Support	2,409	-736	-563	-388	-290	-220	-81	-23.4%	-18.9%	-13.9%	-10.7%	-8.4%	-3.3%
Maintenance	409	-59	-43	-20	-18	-5	+7	-12.6%	-9.4%	-4.6%	-4.3%	-1.2%	+1.7%

Dec 2020 (Oct 2013 figure: 46,288)	WTE Dec 2020	WTE change since Oct 13	WTE change since Dec 14	WTE change since Dec 16	WTE change since Dec 17	WTE change since Dec 18	WTE change since Dec 19	% change since Oct 13	% change since Dec 14	% change since Dec 16	% change since Dec 17	% change since Dec 18	% change since Dec 19
Community Services	54,377	+8,089	+7,339	+5,073	+3,568	+2,424	+2,288	+17.5%	+15.6%	+10.3%	+7.0%	+4.7%	+4.4%
Technical Services	12	+5	+4	+4	+4	+3	+1	+70.4%	+49.4%	+49.4%	+49.4%	+34.4%	+9.0%
Maintenance/ Technical	421	-54	-39	-16	-14	-2	+8	-11.4%	-8.4%	-3.6%	-3.3%	-0.5%	+1.9%
General Support	2,830	-790	-601	-404	-304	-222	-73	-21.8%	-17.5%	-12.5%	-9.7%	-7.3%	-2.5%
HCA, Nurse's Aide, etc.	12,870	+3,888	+3,199	+1,972	+1,485	+1,036	+868	+43.3%	+33.1%	+18.1%	+13.0%	+8.8%	+7.2%
Health & Social Care Assistants	151	+94	+94	+90	+89	-14	+42	+163.1%	+164.0%	+148.5%	+141.3%	-8.6%	+38.8%
Health Care Assistants	13,022	+3,982	+3,293	+2,062	+1,573	+1,021	+911	+44.1%	+33.9%	+18.8%	+13.7%	+8.5%	+7.5%
Home Help	3,543	+5	-160	+370	+41	-9	-26	+0.1%	-4.3%	+11.6%	+1.2%	-0.2%	-0.7%
Ambulance Officers		-1						-100.0%	-100.0%	-100.0%	-100.0%	-100.0%	-100.0%
Pre-Hospital Care (Ambulance)		-9	-10					-100.0%	-100.0%	-100.0%	-100.0%	-100.0%	-100.0%
Ambulance Staff		-10	-10					-100.0%	-100.0%	-100.0%	-100.0%	-100.0%	-100.0%
Community Welfare Officers	1	-12	-6	-4	-3	-2	-1	-93.1%	-87.3%	-82.2%	-77.1%	-69.2%	-45.7%
Other Care Grades	2,822	+371	+400	+276	+212	+159	+102	+15.1%	+16.5%	+10.9%	+8.1%	+6.0%	+3.8%
Care, other	2,823	+359	+394	+272	+209	+157	+102	+14.6%	+16.2%	+10.7%	+8.0%	+5.9%	+3.7%
Patient & Client Care	19,387	+4,337	+3,518	+2,704	+1,824	+1,169	+986	+28.8%	+22.2%	+16.2%	+10.4%	+6.4%	+5.4%

Source: Health Service Personnel Census