

Community Services Employment Report: Staff Groups May 2020

Employment by Staff Group

May 2020 (Dec 2019 figure: 52,089)	WTE Apr 2020	WTE May 2020	WTE change since Apr 20	% change since Apr 20	WTE change since Dec 19	WTE change since May 19
Community Services	52,414	52,601	+187	+0.4%	+512	+70
Consultants	432	438	+6	+1.3%	+14	+32
Registrars	668	662	-6	-0.9%	-24	+47
SHO/ Interns	308	295	-13	-4.3%	-25	-41
Medical/ Dental, other	627	628	+0	+0.0%	-8	-22
Medical & Dental	2,036	2,023	-13	-0.6%	-43	+15
Nurse/ Midwife Manager	3,225	3,251	+26	+0.8%	+97	+97
Nurse/ Midwife Specialist & AN/MP	731	739	+7	+1.0%	+48	+60
Staff Nurse/ Staff Midwife	9,057	9,025	-32	-0.4%	+11	-163
Public Health Nurse	1,520	1,519	-1	-0.0%	-13	+3
Pre-registration Nurse/ Midwife Intern	148	34	-114	-77.0%	-29	-159
Pre-registration Nurse Intern (COVID-19)	131	337	+206	+158.0%	+337	+337
Post-registration Nurse/ Midwife Student	97	100	+3	+3.1%	+7	+14
Nursing/ Midwifery awaiting registration	37	26	-11	-29.1%	+6	+24
Nursing/ Midwifery Student	413	497	+84	+20.5%	+270	+216
Nursing/ Midwifery other	67	67	-0	-0.6%	+8	+10
Nursing & Midwifery	15,013	15,098	+85	+0.6%	+421	+224
Therapy Professions	3,248	3,285	+37	+1.1%	+78	-4
Health Science/ Diagnostics	135	139	+4	+2.7%	+4	+3
Social Care	2,709	2,697	-12	-0.5%	-10	+36
Social Workers	822	833	+11	+1.3%	+27	+5
Psychologists	905	910	+5	+0.5%	+8	-6
Pharmacy	99	99	+0	+0.2%	+1	-1
H&SC, Other	370	375	+5	+1.3%	-2	+1
Health & Social Care Professionals	8,288	8,337	+49	+0.6%	+107	+34
Management (VIII & above)	628	629	+0	+0.1%	+12	+30
Administrative/ Supervisory (V to VII)	1,598	1,595	-3	-0.2%	+95	+98
Clerical (III & IV)	3,718	3,710	-9	-0.2%	+15	-64
Management & Administrative	5,945	5,934	-11	-0.2%	+122	+65
Support	2,508	2,505	-3	-0.1%	+15	-61
Maintenance/ Technical	418	417	-1	-0.3%	+4	-8
General Support	2,926	2,922	-4	-0.1%	+19	-70
Health Care Assistants	12,055	12,308	+253	+2.1%	+197	+126
Home Help	3,445	3,274	-170	-4.9%	-295	-332
Care, other	2,707	2,706	-1	-0.0%	-16	+7
Patient & Client Care	18,207	18,288	+81	+0.4%	-113	-199

Community Services Employment Report: CHO by Division May 2020

May 2020 (Dec 2019 figure: 52,089)	WTE Apr 2020	WTE May 2020	WTE change since Apr 20	% change since Apr 20	WTE change since Dec 19	WTE change since May 19
Community Services	52,414	52,601	+187	+0.4%	+512	+70
Community Health & Wellbeing	14	14	+0	+0.4%	+14	+14
Mental Health	967	965	-3	-0.3%	+12	+6
Primary Care	1,199	1,217	+18	+1.5%	+35	+7
Disabilities	1,526	1,522	-3	-0.2%	+24	+23
Older People	1,828	1,836	+8	+0.4%	-0	-32
CHO 1	5,534	5,554	+20	+0.4%	+85	+18
Community Health & Wellbeing	9	9	-0	-3.1%	+9	+9
Mental Health	1,330	1,336	+7	+0.5%	+28	-3
Primary Care	1,151	1,150	-1	-0.1%	+16	-9
Disabilities	1,439	1,464	+24	+1.7%	-33	+16
Older People	1,544	1,569	+26	+1.7%	-36	-36
CHO 2	5,473	5,528	+55	+1.0%	-17	-23
Community Health & Wellbeing	10	11	+0	+3.3%	+11	+11
Mental Health	805	809	+4	+0.5%	+14	+2
Primary Care	763	755	-8	-1.0%	-8	-51
Disabilities	1,836	1,873	+36	+2.0%	+49	+63
Older People	973	965	-8	-0.8%	-9	+3
CHO 3	4,388	4,413	+25	+0.6%	+56	+28
Community Health & Wellbeing	10	28	+18	+179.0%	+28	+28
Mental Health	1,535	1,559	+24	+1.5%	+73	+30
Primary Care	1,352	1,374	+22	+1.6%	+28	+30
Disabilities	2,438	2,458	+20	+0.8%	+20	+17
Older People	2,955	2,957	+2	+0.1%	+37	-17
CHO 4	8,290	8,375	+85	+1.0%	+186	+88
Community Health & Wellbeing	14	17	+3	+22.9%	+17	+17
Mental Health	1,200	1,173	-27	-2.2%	-4	-12
Primary Care	941	955	+14	+1.5%	+3	-20
Disabilities	1,494	1,485	-8	-0.6%	-20	+42
Older People	1,632	1,594	-37	-2.3%	-53	-101
CHO 5	5,280	5,225	-55	-1.0%	-57	-75
Community Health & Wellbeing	8	8			+8	+8
Mental Health	603	599	-4	-0.7%	+6	+20
Primary Care	756	756	-0	-0.1%	-9	-67
Disabilities	1,159	1,148	-11	-0.9%	-50	-14
Older People	817	849	+31	+3.8%	+25	+24
CHO 6	3,344	3,360	+16	+0.5%	-18	-28
Community Health & Wellbeing	8	9	+1	+12.3%	+9	+9
Mental Health	846	866	+20	+2.3%	+31	+3
Primary Care	1,731	1,701	-30	-1.7%	-1	-74
Disabilities	2,977	2,970	-8	-0.3%	-12	+33
Older People	1,016	1,017	+1	+0.1%	+21	-17
CHO 7	6,580	6,563	-16	-0.2%	+49	-46
Community Health & Wellbeing	25	25	+0	+0.6%	+25	+25

May 2020 (Dec 2019 figure: 52,089)	WTE Apr 2020	WTE May 2020	WTE change since Apr 20	% change since Apr 20	WTE change since Dec 19	WTE change since May 19
Community Services	52,414	52,601	+187	+0.4%	+512	+70
Mental Health	1,123	1,118	-5	-0.4%	+20	-1
Primary Care	1,414	1,419	+6	+0.4%	+33	+8
Disabilities	2,167	2,176	+9	+0.4%	+14	+38
Older People	1,487	1,510	+23	+1.6%	+22	-12
CHO 8	6,215	6,249	+33	+0.5%	+114	+58
Community Health & Wellbeing	8	8	+0	+2.7%	+8	+8
Mental Health	1,288	1,300	+12	+0.9%	+29	-17
Primary Care	1,242	1,249	+8	+0.6%	+2	-63
Disabilities	3,217	3,200	-18	-0.5%	+6	+63
Older People	896	912	+16	+1.8%	+42	+4
CHO 9	6,651	6,670	+19	+0.3%	+87	-5
Mental Health	464	468	+4	+0.9%	+30	+62
Primary Care	122	125	+2	+2.0%	+2	-1
Disabilities	5	5				
Older People	69	67	-1	-2.2%	-6	-6
other Community Services	660	665	+5	+0.8%	+27	+55

Community Services Employment Report: Division May 2020

Community Health & Wellbeing

May 2020 (figure:)	WTE Apr 2020	WTE May 2020	WTE change since Apr 20	% change since Apr 20	WTE change since	WTE change since
Community Services	107	130	+23	+21.2%	+130	+130
Nurse/ Midwife Manager	1	1	+0	+29.9%	+1	+1
Public Health Nurse	2	1	-1	-51.0%	+1	+1
Nursing & Midwifery	3	2	-1	-28.2%	+2	+2
Therapy Professions	8	11	+3	+40.5%	+11	+11
Health & Social Care Professionals	8	11	+3	+40.5%	+11	+11
Management (VIII & above)	9	9			+9	+9
Administrative/ Supervisory (V to VII)	49	52	+4	+7.2%	+52	+52
Clerical (III & IV)	15	19	+5	+32.4%	+19	+19
Management & Administrative	72	81	+8	+11.4%	+81	+81
<i>HCA, Nurse's Aide, etc.</i>		1	+1	-100.0%	+1	+1
Health Care Assistants		1	+1	-100.0%	+1	+1
Care, other	24	35	+11	+45.7%	+35	+35
Patient & Client Care	24	36	+12	+49.9%	+36	+36

Mental Health

May 2020 (Dec 2019 figure: 9,954)	WTE Apr 2020	WTE May 2020	WTE change since Apr 20	% change since Apr 20	WTE change since Dec 19	WTE change since May 19
Community Services	10,161	10,193	+32	+0.3%	+239	+90
Consultants	361	366	+5	+1.4%	+14	+30
Registrars	260	261	+1	+0.4%	-8	+29
SHO/ Interns	252	243	-10	-3.9%	-19	-42
Medical/ Dental, other	5	5	+0	+0.6%		-2
Medical & Dental	878	875	-3	-0.4%	-13	+15
Nurse/ Midwife Manager	1,223	1,233	+10	+0.8%	+41	+38
Nurse/ Midwife Specialist & AN/MP	485	492	+7	+1.5%	+33	+46
Staff Nurse/ Staff Midwife	3,041	3,007	-34	-1.1%	+4	-101
Pre-registration Nurse/ Midwife Intern	96	27	-69	-71.8%	-0	-96
Pre-registration Nurse Intern (COVID-19)	68	164	+96	+141.6%	+164	+164
Post-registration Nurse/ Midwife Student				-100.0%	-1	
Nursing/ Midwifery awaiting registration	13	12	-1	-6.8%	-47	+10
Nursing/ Midwifery Student	177	204	+26	+14.9%	+116	+79
Nursing/ Midwifery other	33	33	-1	-2.3%	+1	+4
Nursing & Midwifery	4,961	4,969	+8	+0.2%	+196	+66
Therapy Professions	435	437	+2	+0.5%	+15	-1
Social Care	77	76	-1	-0.7%	+2	-2
Social Workers	359	366	+7	+2.0%	+17	+16
Psychologists	394	401	+6	+1.6%	+6	+6
Pharmacy	20	19	-0	-1.3%	+1	+1
H&SC, Other	109	112	+3	+2.3%	+4	+13
Health & Social Care Professionals	1,394	1,411	+17	+1.3%	+45	+33
Management (VIII & above)	61	60	-1	-1.2%	+3	+13
Administrative/ Supervisory (V to VII)	236	239	+3	+1.3%	+2	+15
Clerical (III & IV)	707	707	+0	+0.0%	-10	-11
Management & Administrative	1,004	1,007	+2	+0.2%	-5	+16
Support	577	570	-7	-1.2%	-10	-29
Maintenance/ Technical	131	134	+2	+1.8%	+3	-3
General Support	709	704	-5	-0.6%	-7	-32
Health Care Assistants	1,003	1,017	+14	+1.4%	+29	+10
Care, other	212	211	-2	-0.8%	-5	-18
Patient & Client Care	1,215	1,227	+12	+1.0%	+23	-8

Primary Care

May 2020 (Dec 2019 figure: 10,599)	WTE Apr 2020	WTE May 2020	WTE change since Apr 20	% change since Apr 20	WTE change since Dec 19	WTE change since May 19
Community Services	10,671	10,701	+30	+0.3%	+101	-241
Consultants	43	44	+1	+1.8%	+0	+1
Registrars	388	381	-6	-1.6%	-13	+21
SHO/ Interns	36	34	-2	-5.5%	-4	+2
Medical/ Dental, other	523	523	+0	+0.1%	+4	-22
Medical & Dental	989	982	-7	-0.7%	-13	+1
Nurse/ Midwife Manager	384	398	+14	+3.6%	+39	+38
Nurse/ Midwife Specialist & AN/MP	153	152	-2	-1.2%	+9	+6
Staff Nurse/ Staff Midwife	860	864	+4	+0.5%	+2	-23
Public Health Nurse	1,499	1,498	-0	-0.0%	-14	+4
<i>Pre-registration Nurse Intern (COVID-19)</i>		14	+14	-100.0%	+14	+14
<i>Post-registration Nurse/ Midwife Student</i>	96	95	-1	-1.0%	-1	+9
Nursing/ Midwifery Student	96	109	+13	+13.6%	+13	+23
Nursing/ Midwifery other	6	6	+0	+2.6%	+2	+2
Nursing & Midwifery	2,997	3,026	+29	+1.0%	+50	+49
Therapy Professions	1,738	1,757	+19	+1.1%	+26	-65
Health Science/ Diagnostics	111	115	+3	+3.0%	+6	+4
Social Care	34	34	+0	+0.1%	-2	-3
Social Workers	138	143	+4	+3.0%	+4	-3
Psychologists	294	294	+0	+0.0%	-7	-23
Pharmacy	55	55	+0	+0.0%	-2	-5
H&SC, Other	180	182	+2	+1.2%	-1	-7
Health & Social Care Professionals	2,551	2,579	+29	+1.1%	+24	-102
Management (VIII & above)	299	297	-2	-0.8%	-9	-17
Administrative/ Supervisory (V to VII)	644	635	-9	-1.4%	+16	-9
Clerical (III & IV)	1,747	1,731	-16	-0.9%	-15	-98
Management & Administrative	2,690	2,663	-27	-1.0%	-8	-124
Support	368	371	+3	+0.8%	+25	+6
Maintenance/ Technical	60	59	-1	-1.7%	-0	-1
General Support	428	430	+2	+0.5%	+24	+5
Health Care Assistants	267	273	+6	+2.3%	+19	-52
Home Help	19	19	-0	-0.1%	+1	+0
Care, other	730	728	-2	-0.3%	+4	-19
Patient & Client Care	1,016	1,020	+4	+0.4%	+24	-71

Disabilities

May 2020 (Dec 2019 figure: 18,303)	WTE Apr 2020	WTE May 2020	WTE change since Apr 20	% change since Apr 20	WTE change since Dec 19	WTE change since May 19
Community Services	18,258	18,300	+42	+0.2%	-2	+282
Consultants	23	23	-0	-1.0%	-1	+0
Registrars	10	10	-1	-8.4%	-3	-3
SHO/ Interns	8	6	-2	-23.8%	-1	+0
Medical/ Dental, other	15	15	+0	+1.8%	+1	+0
Medical & Dental	56	53	-3	-4.9%	-5	-2
Nurse/ Midwife Manager	889	890	+0	+0.0%	-4	+0
Nurse/ Midwife Specialist & AN/MP	62	62	+1	+0.9%	+0	+1
Staff Nurse/ Staff Midwife	2,536	2,532	-4	-0.2%	-40	-27
Public Health Nurse	6	6	+1	+9.9%	-0	
<i>Pre-registration Nurse/ Midwife Intern</i>	52	7	-45	-86.6%	-21	-64
<i>Pre-registration Nurse Intern (COVID-19)</i>	63	159	+96	+153.5%	+159	+159
<i>Post-registration Nurse/ Midwife Student</i>		4	+4	-100.0%	+4	+4
<i>Nursing/ Midwifery awaiting registration</i>	15	11	-4	-26.7%	-3	+11
Nursing/ Midwifery Student	130	181	+51	+39.3%	+139	+110
Nursing/ Midwifery other	26	26	+0	+0.9%	+4	+5
Nursing & Midwifery	3,648	3,697	+49	+1.3%	+98	+88
Therapy Professions	769	778	+9	+1.2%	+14	+48
Health Science/ Diagnostics	19	19	+0	+1.7%	-1	-1
Social Care	2,596	2,584	-12	-0.5%	-11	+41
Social Workers	226	227	+1	+0.6%	+8	+2
Psychologists	215	213	-1	-0.6%	+9	+9
Pharmacy	6	7	+0	+4.2%	-0	+1
H&SC, Other	80	80	+0	+0.3%	-5	-5
Health & Social Care Professionals	3,910	3,909	-2	-0.0%	+14	+96
Management (VIII & above)	184	191	+6	+3.4%	+11	+16
Administrative/ Supervisory (V to VII)	501	501	-0	-0.1%	+22	+32
Clerical (III & IV)	677	678	+1	+0.1%	+18	+26
Management & Administrative	1,362	1,369	+7	+0.5%	+50	+75
Support	737	731	-6	-0.8%	-3	-27
Maintenance/ Technical	128	127	-2	-1.4%	+2	-3
General Support	865	858	-7	-0.9%	-1	-30
Health Care Assistants	6,717	6,731	+14	+0.2%	-95	+57
Home Help	100	96	-4	-3.8%	-12	-17
Care, other	1,599	1,587	-11	-0.7%	-52	+14
Patient & Client Care	8,416	8,415	-1	-0.0%	-160	+54

Older People

May 2020 (Dec 2019 figure: 13,233)	WTE Apr 2020	WTE May 2020	WTE change since Apr 20	% change since Apr 20	WTE change since Dec 19	WTE change since May 19
Community Services	13,217	13,277	+60	+0.5%	+45	-190
Consultants	4	4			+1	+1
Registrars	11	11			+1	+0
SHO/ Interns	13	13	+0	+2.8%	-2	-1
Medical/ Dental, other	85	85	-0	-0.6%	-12	+2
Medical & Dental	112	112	-0	-0.1%	-12	+1
Nurse/ Midwife Manager	728	730	+2	+0.2%	+21	+19
Nurse/ Midwife Specialist & AN/MP	31	32	+1	+4.4%	+6	+8
Staff Nurse/ Staff Midwife	2,620	2,622	+2	+0.1%	+46	-12
Public Health Nurse	13	13	+0	+0.1%	-0	-1
<i>Post-registration Nurse/ Midwife Student</i>	1	1				+1
<i>Nursing/ Midwifery awaiting registration</i>	9	3	-6	-64.1%	+2	+3
Nursing/ Midwifery Student	10	4	-6	-57.9%	+2	+4
Nursing/ Midwifery other	2	2			+1	
Nursing & Midwifery	3,404	3,404	-0	-0.0%	+75	+18
Therapy Professions	299	302	+3	+1.0%	+13	+3
Health Science/ Diagnostics	5	5	-0	-0.2%	-1	-0
Social Care	3	3	-0	-1.8%		+0
Social Workers	98	97	-2	-1.6%	-2	-10
Psychologists	2	2	-0	-2.4%	-0	+2
Pharmacy	18	18	+0	+1.2%	+3	+3
H&SC, Other	1	1				-1
Health & Social Care Professionals	426	427	+2	+0.4%	+13	-3
Management (VIII & above)	75	72	-3	-3.8%	-3	+9
Administrative/ Supervisory (V to VII)	168	168	-0	-0.2%	+3	+8
Clerical (III & IV)	573	574	+1	+0.2%	+3	+0
Management & Administrative	816	814	-2	-0.2%	+3	+18
Support	826	832	+7	+0.8%	+3	-11
Maintenance/ Technical	99	98	-1	-0.9%	-1	-2
General Support	924	930	+6	+0.6%	+3	-13
Health Care Assistants	4,068	4,286	+219	+5.4%	+243	+110
Home Help	3,325	3,159	-167	-5.0%	-283	-315
Care, other	142	145	+3	+1.9%	+3	-6
Patient & Client Care	7,535	7,590	+55	+0.7%	-37	-211

Community Services Employment Report: HSE & Section 38 May 2020

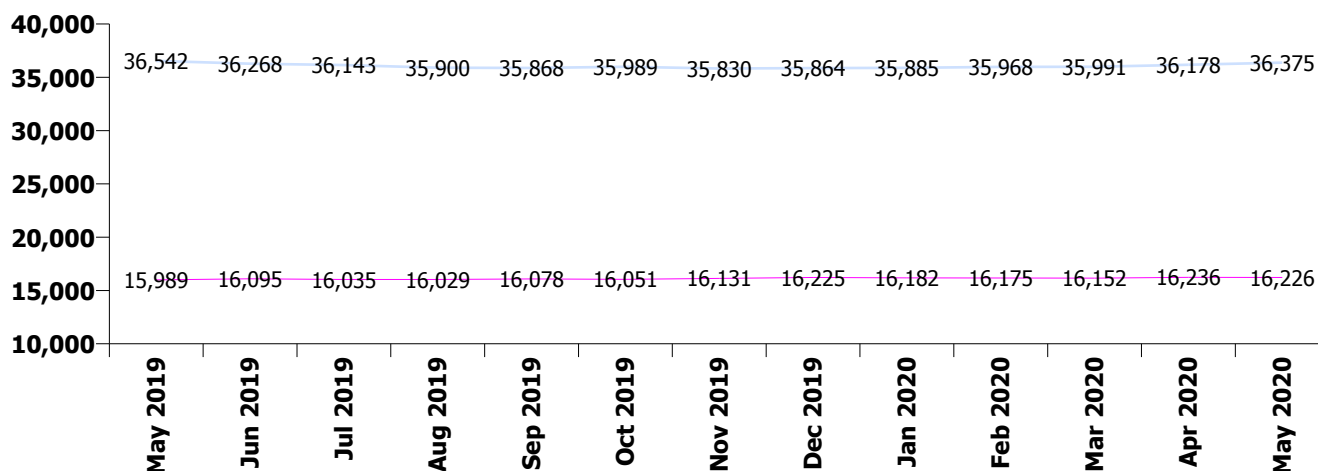
May 2020 (Dec 2019 figure: 52,089)	WTE Apr 2020	WTE May 2020	WTE change since Apr 20	% change since Apr 20	WTE change since Dec 19	WTE change since May 19
Overall	52,414	52,601	+187	+0.4%	+512	+70
HSE	36,178	36,375	+197	+0.5%	+511	-167
Section 38 Voluntary Agencies	16,236	16,226	-10	-0.1%	+1	+237

Health Service Executive

May 2020 (Dec 2019 figure: 35,864)	WTE Apr 2020	WTE May 2020	WTE change since Apr 20	% change since Apr 20	WTE change since Dec 19	WTE change since May 19
HSE	36,178	36,375	+197	+0.5%	+511	-167
Consultants	383	389	+6	+1.6%	+14	+31
Registrars	630	624	-5	-0.9%	-19	+48
SHO/ Interns	272	262	-9	-3.4%	-22	-33
Medical/ Dental, other	602	602	-0	-0.0%	-9	-26
Medical & Dental	1,886	1,878	-9	-0.5%	-37	+20
Nurse/ Midwife Manager	2,445	2,472	+27	+1.1%	+93	+97
Nurse/ Midwife Specialist & AN/MP	646	653	+6	+1.0%	+46	+56
Staff Nurse/ Staff Midwife	6,878	6,850	-29	-0.4%	+26	-164
Public Health Nurse	1,520	1,519	-1	-0.0%	-13	+3
<i>Pre-registration Nurse/ Midwife Intern</i>	128	34	-93	-73.2%	+2	-102
<i>Pre-registration Nurse Intern (COVID-19)</i>	60	207	+146	+242.6%	+207	+207
<i>Post-registration Nurse/ Midwife Student</i>	97	96	-1	-1.0%	+3	+10
<i>Nursing/ Midwifery awaiting registration</i>	37	26	-11	-29.1%	+6	+24
Nursing/ Midwifery Student	322	363	+41	+12.8%	+168	+139
Nursing/ Midwifery other	45	45	-0	-0.9%	+5	+7
Nursing & Midwifery	11,855	11,900	+45	+0.4%	+324	+138
Therapy Professions	2,684	2,718	+34	+1.3%	+71	-26
Health Science/ Diagnostics	114	118	+4	+3.8%	+6	+5
Social Care	174	175	+1	+0.7%	-0	-4
Social Workers	613	622	+10	+1.6%	+22	+5
Psychologists	746	752	+6	+0.8%	-4	-18
Pharmacy	78	77	-0	-0.5%	+2	-1
H&SC, Other	310	313	+3	+1.1%	+1	+1
Health & Social Care Professionals	4,718	4,776	+58	+1.2%	+98	-40
Management (VIII & above)	482	481	-1	-0.1%	+11	+29
Administrative/ Supervisory (V to VII)	1,164	1,177	+13	+1.1%	+89	+89
Clerical (III & IV)	3,083	3,083	+0	+0.0%	+6	-73
Management & Administrative	4,728	4,741	+13	+0.3%	+106	+46
Support	1,603	1,612	+9	+0.5%	+3	-50
Maintenance/ Technical	283	286	+3	+0.9%	+1	-7
General Support	1,887	1,898	+11	+0.6%	+4	-57
Health Care Assistants	6,506	6,745	+239	+3.7%	+274	+70
Home Help	3,445	3,274	-170	-4.9%	-295	-332
Care, other	1,152	1,163	+11	+1.0%	+37	-12
Patient & Client Care	11,103	11,182	+79	+0.7%	+16	-273

Section 38 Voluntary Agencies

May 2020 (Dec 2019 figure: 16,225)	WTE Apr 2020	WTE May 2020	WTE change since Apr 20	% change since Apr 20	WTE change since Dec 19	WTE change since May 19
Section 38 Voluntary Agencies	16,236	16,226	-10	-0.1%	+1	+237
Consultants	49	48	-1	-1.1%	+0	+1
Registrars	39	38	-0	-1.2%	-5	-1
SHO/ Interns	37	33	-4	-10.6%	-3	-8
Medical/ Dental, other	25	26	+0	+1.7%	+1	+4
Medical & Dental	150	145	-4	-3.0%	-6	-5
Nurse/ Midwife Manager	781	780	-1	-0.1%	+4	+0
Nurse/ Midwife Specialist & AN/MP	85	86	+1	+1.1%	+2	+4
Staff Nurse/ Staff Midwife	2,179	2,176	-3	-0.1%	-14	+1
Nursing/ Midwifery Student	91	134	+43	+47.5%	+102	+77
Nursing/ Midwifery other	22	22	+0	+0.1%	+3	+4
Nursing & Midwifery	3,158	3,198	+40	+1.3%	+97	+86
Therapy Professions	564	566	+3	+0.5%	+7	+22
Health Science/ Diagnostics	21	21	-1	-3.0%	-2	-2
Social Care	2,535	2,522	-14	-0.5%	-10	+40
Social Workers	209	211	+1	+0.6%	+5	+1
Psychologists	159	158	-1	-0.4%	+13	+12
Pharmacy	21	22	+1	+3.1%	-1	+1
H&SC, Other	60	62	+2	+2.7%	-3	+0
Health & Social Care Professionals	3,570	3,561	-9	-0.2%	+9	+74
Management (VIII & above)	147	148	+1	+0.6%	+0	+2
Administrative/ Supervisory (V to VII)	434	418	-16	-3.7%	+7	+9
Clerical (III & IV)	635	627	-9	-1.4%	+9	+9
Management & Administrative	1,217	1,193	-24	-2.0%	+16	+19
Support	905	893	-12	-1.3%	+12	-11
Maintenance/ Technical	135	131	-4	-2.8%	+3	-1
General Support	1,039	1,024	-15	-1.5%	+15	-13
Health Care Assistants	5,549	5,563	+14	+0.3%	-77	+56
Care, other	1,555	1,543	-12	-0.8%	-53	+19
Patient & Client Care	7,103	7,105	+2	+0.0%	-130	+74



Community Services Employment Report: CHO & Staff Group May 2020

May 2020 (Dec 2019 figure: 5,468)	WTE Apr 2020	WTE May 2020	WTE change since Apr 20	% change since Apr 20	WTE change since Dec 19	WTE change since May 19
CHO 1	5,534	5,554	+20	+0.4%	+85	+18
Consultants	34	35	+1	+3.0%	+2	+2
Registrars	61	60	-1	-2.1%	-5	-1
SHO/ Interns	26	24	-2	-7.4%	-3	-3
Medical/ Dental, other	66	66	+0	+0.1%	-14	+2
Medical & Dental	187	185	-2	-1.1%	-20	-0
Nurse/ Midwife Manager	355	357	+2	+0.5%	+8	+3
Nurse/ Midwife Specialist & AN/MP	108	108	+0	+0.4%	+6	+11
Staff Nurse/ Staff Midwife	1,013	1,009	-3	-0.3%	-5	-23
Public Health Nurse	152	152	+0	+0.3%	-4	-1
Pre-registration Nurse/ Midwife Intern	40	7	-33	-82.7%	-4	-13
Pre-registration Nurse Intern (COVID-19)		37	+37	-100.0%	+37	+37
Post-registration Nurse/ Midwife Student	7	7			-0	+0
Nursing/ Midwifery awaiting registration	11	11			+10	+11
Nursing/ Midwifery Student	58	62	+4	+6.4%	+41	+36
Nursing/ Midwifery other	7	7	+0	+1.7%	+1	+1
Nursing & Midwifery	1,693	1,696	+3	+0.2%	+48	+27
Therapy Professions	321	322	+1	+0.3%	+6	-5
Health Science/ Diagnostics	6	6	+1	+16.1%	-0	-0
Social Care	12	12	-0	-1.5%	+1	+0
Social Workers	90	91	+1	+0.8%	+6	+10
Psychologists	59	60	+1	+1.7%	-0	-1
Pharmacy	2	2	+0	+3.3%	+0	+0
H&SC, Other	30	29	-1	-3.4%	-3	-4
Health & Social Care Professionals	520	523	+2	+0.5%	+10	+1
Management (VIII & above)	61	61	+0	+0.2%	+1	+2
Administrative/ Supervisory (V to VII)	159	163	+4	+2.5%	+27	+34
Clerical (III & IV)	454	450	-4	-0.9%	-5	-4
Management & Administrative	674	674	+0	+0.0%	+23	+33
Support	310	313	+3	+1.0%	+7	+3
Maintenance/ Technical	37	37	-0	-0.2%	+1	+2
General Support	347	350	+3	+0.9%	+8	+5
Health Care Assistants	1,428	1,453	+25	+1.7%	+30	-6
Home Help	550	539	-11	-2.0%	-17	-38
Care, other	135	134	-1	-0.7%	+3	-3
Patient & Client Care	2,113	2,125	+13	+0.6%	+16	-47

May 2020 (Dec 2019 figure: 5,545)	WTE Apr 2020	WTE May 2020	WTE change since Apr 20	% change since Apr 20	WTE change since Dec 19	WTE change since May 19
CHO 2	5,473	5,528	+55	+1.0%	-17	-23
Consultants	43	44	+2	+3.7%	+2	+7
Registrars	78	76	-2	-2.5%	+1	+19
SHO/ Interns	34	35	+1	+1.9%	-1	-3
Medical/ Dental, other	60	61	+0	+0.2%	+2	+0
Medical & Dental	215	216	+0	+0.2%	+3	+23
Nurse/ Midwife Manager	311	315	+4	+1.4%	+6	-4
Nurse/ Midwife Specialist & AN/MP	98	98	-0	-0.1%	+5	+7
Staff Nurse/ Staff Midwife	900	891	-9	-1.0%	-7	-23
Public Health Nurse	196	198	+2	+1.2%	+6	+12
<i>Pre-registration Nurse/ Midwife Intern</i>				-100.0%		-12
<i>Pre-registration Nurse Intern (COVID-19)</i>	24	31	+7	+30.3%	+31	+31
<i>Post-registration Nurse/ Midwife Student</i>	4	4			-9	-10
<i>Nursing/ Midwifery awaiting registration</i>				-100.0%	-11	
Nursing/ Midwifery Student	28	35	+7	+25.9%	+26	+8
Nursing/ Midwifery other	2	3	+0	+0.8%	+1	+1
Nursing & Midwifery	1,534	1,539	+5	+0.3%	+38	+1
Therapy Professions	347	347	-0	-0.0%	+8	-2
Health Science/ Diagnostics	33	34	+1	+2.1%	+1	-0
Social Care	255	257	+1	+0.6%	+12	+19
Social Workers	84	83	-1	-1.5%	-1	-0
Psychologists	75	76	+1	+1.0%	+2	-5
Pharmacy	4	4	+0	+1.9%	-1	-0
H&SC, Other	30	29	-1	-2.0%	-3	-6
Health & Social Care Professionals	828	829	+1	+0.1%	+18	+6
Management (VIII & above)	56	56	+0	+0.1%	-0	+0
Administrative/ Supervisory (V to VII)	142	140	-2	-1.4%	+7	+8
Clerical (III & IV)	462	463	+1	+0.2%	-5	-19
Management & Administrative	660	659	-1	-0.1%	+2	-11
Support	151	150	-0	-0.3%	-8	-13
Maintenance/ Technical	68	68	-0	-0.1%	+0	-4
General Support	219	218	-0	-0.2%	-7	-16
Health Care Assistants	1,331	1,374	+43	+3.2%	+7	+3
Home Help	424	429	+5	+1.1%	-71	-25
Care, other	262	264	+2	+0.9%	-7	-3
Patient & Client Care	2,017	2,067	+50	+2.5%	-70	-25

May 2020 (Dec 2019 figure: 4,357)	WTE Apr 2020	WTE May 2020	WTE change since Apr 20	% change since Apr 20	WTE change since Dec 19	WTE change since May 19
CHO 3	4,388	4,413	+25	+0.6%	+56	+28
Consultants	26	27	+1	+2.9%	-0	-0
Registrars	39	38	-2	-3.8%	-4	+3
SHO/ Interns	26	26	-0	-0.1%	+1	-4
Medical/ Dental, other	59	57	-1	-2.1%	-1	-2
Medical & Dental	150	148	-2	-1.3%	-4	-4
Nurse/ Midwife Manager	251	256	+5	+1.9%	+10	+11
Nurse/ Midwife Specialist & AN/MP	51	49	-2	-4.0%	-6	-0
Staff Nurse/ Staff Midwife	802	793	-9	-1.1%	+6	-18
Public Health Nurse	131	128	-3	-2.2%	+0	+4
Pre-registration Nurse/ Midwife Intern	10		-10	-100.0%	-16	-17
Pre-registration Nurse Intern (COVID-19)	24	39	+15	+64.2%	+39	+39
Post-registration Nurse/ Midwife Student				-100.0%	-4	-4
Nursing/ Midwifery Student	34	39	+5	+15.5%	+18	+18
Nursing/ Midwifery other	4	4				-0
Nursing & Midwifery	1,273	1,269	-4	-0.3%	+28	+14
Therapy Professions	215	218	+2	+1.1%	+4	-5
Health Science/ Diagnostics	6	7	+0	+4.2%	+1	+1
Social Care	244	258	+14	+5.7%	+13	+10
Social Workers	59	58	-0	-0.7%	-1	-4
Psychologists	122	123	+1	+1.2%	-1	+1
Pharmacy	5	5				
H&SC, Other	34	36	+2	+6.8%	+4	+1
Health & Social Care Professionals	685	705	+20	+2.9%	+21	+5
Management (VIII & above)	41	40	-0	-1.0%	+2	+4
Administrative/ Supervisory (V to VII)	142	140	-2	-1.5%	+7	-8
Clerical (III & IV)	315	311	-4	-1.2%	-9	-14
Management & Administrative	497	491	-6	-1.2%	+0	-18
Support	163	161	-2	-1.4%	-2	-6
Maintenance/ Technical	75	74	-0	-0.7%	-3	-3
General Support	238	235	-3	-1.2%	-5	-10
Health Care Assistants	1,128	1,175	+47	+4.2%	+35	+38
Home Help	178	155	-23	-12.8%	-21	+0
Care, other	239	235	-4	-1.7%	+1	+3
Patient & Client Care	1,545	1,565	+20	+1.3%	+16	+41

May 2020 (Dec 2019 figure: 8,189)	WTE Apr 2020	WTE May 2020	WTE change since Apr 20	% change since Apr 20	WTE change since Dec 19	WTE change since May 19
CHO 4	8,290	8,375	+85	+1.0%	+186	+88
Consultants	60	61	+1	+2.0%	+6	+8
Registrars	102	105	+3	+2.5%	+1	+17
SHO/ Interns	38	35	-3	-7.0%	-3	-9
Medical/ Dental, other	117	117	-0	-0.1%	+5	-1
Medical & Dental	316	317	+1	+0.3%	+10	+16
Nurse/ Midwife Manager	457	466	+10	+2.1%	+34	+78
Nurse/ Midwife Specialist & AN/MP	89	94	+5	+5.7%	+13	+15
Staff Nurse/ Staff Midwife	1,467	1,462	-5	-0.3%	+17	-96
Public Health Nurse	216	217	+2	+0.9%	+1	-1
Pre-registration Nurse/ Midwife Intern	27	12	-15	-55.6%	+4	-18
Pre-registration Nurse Intern (COVID-19)		27	+27	-100.0%	+27	+27
Post-registration Nurse/ Midwife Student	20	20			+6	+7
Nursing/ Midwifery awaiting registration	9	8	-1	-11.1%	+8	+8
Nursing/ Midwifery Student	56	67	+11	+20.3%	+8	+25
Nursing/ Midwifery other	1	1				
Nursing & Midwifery	2,285	2,308	+23	+1.0%	+73	+21
Therapy Professions	446	453	+7	+1.6%	+5	-8
Health Science/ Diagnostics	13	13			+1	+3
Social Care	243	238	-5	-2.0%	-2	-1
Social Workers	120	126	+6	+5.4%	+12	+8
Psychologists	141	144	+3	+2.3%	+6	+8
Pharmacy	10	10	+0	+3.2%	+2	+3
H&SC, Other	63	68	+5	+7.6%	+7	+8
Health & Social Care Professionals	1,034	1,052	+17	+1.7%	+31	+22
Management (VIII & above)	74	74	+0	+0.4%	+1	+11
Administrative/ Supervisory (V to VII)	162	168	+6	+4.0%	+7	+32
Clerical (III & IV)	509	517	+8	+1.6%	+13	-17
Management & Administrative	745	759	+15	+2.0%	+21	+26
Support	342	353	+11	+3.3%	+16	+14
Maintenance/ Technical	22	22	-0	-0.0%		-1
General Support	364	376	+11	+3.1%	+16	+13
Health Care Assistants	1,975	2,037	+63	+3.2%	+83	+39
Home Help	1,124	1,072	-52	-4.6%	-52	-70
Care, other	448	454	+6	+1.4%	+4	+21
Patient & Client Care	3,546	3,563	+17	+0.5%	+36	-9

May 2020 (Dec 2019 figure: 5,282)	WTE Apr 2020	WTE May 2020	WTE change since Apr 20	% change since Apr 20	WTE change since Dec 19	WTE change since May 19
CHO 5	5,280	5,225	-55	-1.0%	-57	-75
Consultants	30	30	+0	+0.2%	+0	-0
Registrars	35	34	-1	-2.3%	+6	+2
SHO/ Interns	25	23	-2	-7.2%	-15	-9
Medical/ Dental, other	65	65	+0	+0.1%	-1	-1
Medical & Dental	155	152	-2	-1.6%	-10	-8
Nurse/ Midwife Manager	347	340	-8	-2.2%	+2	-9
Nurse/ Midwife Specialist & AN/MP	60	60	+0	+0.3%	+8	+0
Staff Nurse/ Staff Midwife	970	960	-10	-1.0%	-7	+33
Public Health Nurse	171	170	-1	-0.4%	-5	+3
Pre-registration Nurse/ Midwife Intern	18	4	-14	-77.8%	+4	-26
Pre-registration Nurse Intern (COVID-19)	11	41	+31	+288.0%	+41	+41
Post-registration Nurse/ Midwife Student	5	9	+4	+80.0%	+2	+3
Nursing/ Midwifery awaiting registration	4		-4	-100.0%		
Nursing/ Midwifery Student	38	54	+17	+44.0%	+42	+18
Nursing/ Midwifery other	4	5	+0	+2.3%	+0	+1
Nursing & Midwifery	1,590	1,589	-1	-0.1%	+40	+47
Therapy Professions	324	328	+4	+1.2%	+1	-9
Audiology	5	7	+2	+32.7%	+3	+6
Health Science/ Diagnostics	5	7	+2	+32.7%	+3	+6
Social Care	150	148	-2	-1.6%	-16	-16
Social Workers	62	62	+0	+0.2%	+2	+1
Psychologists	74	73	-1	-1.6%	-6	-6
Pharmacy	2	2	-0	-5.2%	+1	+1
H&SC, Other	35	35	+0	+0.8%	-0	-0
Health & Social Care Professionals	652	654	+2	+0.3%	-16	-25
Management (VIII & above)	46	45	-0	-0.7%	+2	-1
Administrative/ Supervisory (V to VII)	124	126	+2	+1.5%	+1	-0
Clerical (III & IV)	327	324	-2	-0.7%	-6	-6
Management & Administrative	497	496	-1	-0.2%	-2	-6
Support	330	327	-3	-0.9%	-5	-17
Maintenance/ Technical	40	39	-0	-0.8%	+1	-0
General Support	370	367	-3	-0.9%	-4	-17
Health Care Assistants	1,153	1,183	+30	+2.6%	+41	+77
Home Help	635	554	-80	-12.7%	-114	-159
Care, other	229	230	+1	+0.4%	+8	+16
Patient & Client Care	2,017	1,967	-49	-2.4%	-65	-66

May 2020 (Dec 2019 figure: 3,378)	WTE Apr 2020	WTE May 2020	WTE change since Apr 20	% change since Apr 20	WTE change since Dec 19	WTE change since May 19
CHO 6	3,344	3,360	+16	+0.5%	-18	-28
Consultants	51	50	-1	-2.5%	+2	+4
Registrars	42	42	-0	-0.8%	-7	-4
SHO/ Interns	19	19	-0	-0.5%	+3	-5
Medical/ Dental, other	49	48	-1	-3.0%	-4	-5
Medical & Dental	161	158	-3	-2.0%	-6	-10
Nurse/ Midwife Manager	208	210	+2	+1.0%	-1	-4
Nurse/ Midwife Specialist & AN/MP	22	22	+0	+0.0%	+2	+4
Staff Nurse/ Staff Midwife	541	538	-3	-0.6%	-4	-5
Public Health Nurse	113	113	+0	+0.0%	-4	-4
<i>Post-registration Nurse/ Midwife Student</i>	13	13			+2	+2
Nursing/ Midwifery Student	13	13			-1	+2
Nursing/ Midwifery other	4	3	-1	-21.3%	+1	+1
Nursing & Midwifery	901	899	-2	-0.2%	-6	-6
Therapy Professions	234	234	-1	-0.3%	-4	-12
Health Science/ Diagnostics	17	18	+1	+4.7%	+0	-3
Social Care	348	338	-10	-2.7%	-26	-21
Social Workers	55	58	+3	+5.7%	+1	-2
Psychologists	60	59	-1	-2.4%	+2	+3
Pharmacy	4	4	-0	-1.5%	+0	-0
H&SC, Other	10	9	-1	-10.9%	-5	-1
Health & Social Care Professionals	729	720	-9	-1.2%	-32	-36
Management (VIII & above)	69	69	-0	-0.7%	+1	-1
Administrative/ Supervisory (V to VII)	170	169	-1	-0.4%	-1	-1
Clerical (III & IV)	245	246	+2	+0.6%	+9	+15
Management & Administrative	484	484	+0	+0.1%	+9	+13
Support	209	205	-3	-1.6%	+14	+6
Maintenance/ Technical	24	24	+0	+1.1%	+2	+5
General Support	233	230	-3	-1.3%	+16	+10
Health Care Assistants	521	554	+33	+6.4%	+16	+13
Care, other	316	315	-1	-0.2%	-15	-12
Patient & Client Care	836	869	+33	+3.9%	+0	+1

May 2020 (Dec 2019 figure: 6,515)	WTE Apr 2020	WTE May 2020	WTE change since Apr 20	% change since Apr 20	WTE change since Dec 19	WTE change since May 19
CHO 7	6,580	6,563	-16	-0.2%	+49	-46
Consultants	60	62	+2	+3.0%	+2	+5
Registrars	89	85	-4	-4.7%	-10	+2
SHO/ Interns	37	35	-3	-6.9%	-1	+1
Medical/ Dental, other	82	82	+0	+0.2%	+2	-8
Medical & Dental	269	264	-5	-1.8%	-6	-0
Nurse/ Midwife Manager	405	405	+0	+0.1%	+9	+1
Nurse/ Midwife Specialist & AN/MP	100	101	+1	+1.5%	+8	+10
Staff Nurse/ Staff Midwife	997	1,009	+11	+1.1%	+16	-1
Public Health Nurse	163	164	+1	+0.4%	-12	-25
Pre-registration Nurse/ Midwife Intern	1		-1	-100.0%	-6	-21
Pre-registration Nurse Intern (COVID-19)	22	44	+22	+101.2%	+44	+44
Post-registration Nurse/ Midwife Student	21	20	-1	-4.8%	+13	+15
Nursing/ Midwifery awaiting registration	13	7	-6	-44.3%	+3	+6
Nursing/ Midwifery Student	56	71	+15	+26.1%	+39	+44
Nursing/ Midwifery other	10	10			-1	
Nursing & Midwifery	1,731	1,759	+29	+1.7%	+59	+30
Therapy Professions	456	472	+16	+3.5%	+22	+6
Health Science/ Diagnostics	4	3	-1	-16.1%	+0	+0
Social Care	370	367	-3	-0.9%	-4	+8
Social Workers	111	111	+0	+0.4%	+7	+3
Psychologists	80	81	+1	+0.9%	+0	-7
Pharmacy	38	38	+0	+0.3%	-2	+0
H&SC, Other	43	42	-1	-1.9%	-2	-2
Health & Social Care Professionals	1,102	1,115	+13	+1.1%	+21	+8
Management (VIII & above)	77	77	+0	+0.3%	+4	+7
Administrative/ Supervisory (V to VII)	201	196	-6	-2.7%	+14	+6
Clerical (III & IV)	372	362	-10	-2.7%	+11	-14
Management & Administrative	650	635	-15	-2.3%	+29	-1
Support	413	406	-7	-1.8%	-5	-25
Maintenance/ Technical	45	42	-3	-6.8%	+1	-2
General Support	458	448	-10	-2.3%	-4	-27
Health Care Assistants	1,629	1,608	-21	-1.3%	-47	-63
Home Help	136	133	-3	-2.1%	+6	+6
Care, other	604	601	-3	-0.5%	-9	+2
Patient & Client Care	2,369	2,343	-27	-1.1%	-49	-55

May 2020 (Dec 2019 figure: 6,135)	WTE Apr 2020	WTE May 2020	WTE change since Apr 20	% change since Apr 20	WTE change since Dec 19	WTE change since May 19
CHO 8	6,215	6,249	+33	+0.5%	+114	+58
Consultants	43	42	-0	-0.6%	+0	+1
Registrars	98	102	+4	+3.7%	-4	+1
SHO/ Interns	41	37	-4	-10.8%	-1	+3
Medical/ Dental, other	73	73			+1	+4
Medical & Dental	255	254	-1	-0.4%	-4	+9
Nurse/ Midwife Manager	377	377	+0	+0.0%	+5	-1
Nurse/ Midwife Specialist & AN/MP	103	105	+2	+1.5%	+5	+4
Staff Nurse/ Staff Midwife	999	1,002	+3	+0.3%	+5	-1
Public Health Nurse	210	209	-1	-0.6%	+9	+12
Pre-registration Nurse/ Midwife Intern	32	11	-22	-66.9%	+10	-20
Pre-registration Nurse Intern (COVID-19)	8	41	+33	+403.6%	+41	+41
Post-registration Nurse/ Midwife Student	2	2			-6	-6
Nursing/ Midwifery awaiting registration				-100.0%	-1	-1
Nursing/ Midwifery Student	42	53	+11	+26.1%	+48	+14
Nursing/ Midwifery other	13	13	+0	+0.2%	+4	+5
Nursing & Midwifery	1,744	1,759	+15	+0.8%	+77	+32
Therapy Professions	386	389	+3	+0.7%	+12	+13
Health Science/ Diagnostics	8	8	+0	+0.7%	+1	+1
Social Care	375	375	+0	+0.0%	+7	+2
Social Workers	88	90	+2	+2.4%	+3	+1
Psychologists	117	115	-2	-1.5%	-4	-1
Pharmacy	8	8	+0	+1.7%	+1	+1
H&SC, Other	52	52	-0	-0.8%	-0	+0
Health & Social Care Professionals	1,035	1,038	+3	+0.3%	+18	+18
Management (VIII & above)	63	64	+2	+2.4%	+2	+0
Administrative/ Supervisory (V to VII)	201	200	-1	-0.4%	+24	+28
Clerical (III & IV)	530	528	-2	-0.3%	+21	+30
Management & Administrative	794	793	-1	-0.1%	+47	+58
Support	127	128	+1	+0.9%	+1	-4
Maintenance/ Technical	69	69	+0	+0.6%	+0	-3
General Support	196	198	+2	+0.8%	+1	-7
Health Care Assistants	1,554	1,576	+22	+1.4%	-1	-2
Home Help	399	392	-6	-1.6%	-26	-46
Care, other	239	239	+0	+0.0%	+2	-2
Patient & Client Care	2,192	2,208	+16	+0.7%	-25	-50

May 2020 (Dec 2019 figure: 6,582)	WTE Apr 2020	WTE May 2020	WTE change since Apr 20	% change since Apr 20	WTE change since Dec 19	WTE change since May 19
CHO 9	6,651	6,670	+19	+0.3%	+87	-5
Consultants	66	67	+1	+0.8%	-2	+2
Registrars	97	95	-2	-2.1%	-3	+6
SHO/ Interns	62	61	-0	-0.6%	-5	-10
Medical/ Dental, other	56	58	+2	+4.4%	+1	-11
Medical & Dental	281	282	+1	+0.2%	-8	-14
Nurse/ Midwife Manager	441	445	+4	+1.0%	+10	+6
Nurse/ Midwife Specialist & AN/MP	90	91	+1	+0.6%	+6	+7
Staff Nurse/ Staff Midwife	1,186	1,184	-2	-0.2%	-12	-40
Public Health Nurse	170	169	-1	-0.7%	-7	+3
Pre-registration Nurse/ Midwife Intern	20	1	-20	-97.5%	-20	-34
Pre-registration Nurse Intern (COVID-19)	43	77	+34	+80.3%	+77	+77
Post-registration Nurse/ Midwife Student	25	25			+3	+7
Nursing/ Midwifery awaiting registration				-100.0%	-3	
Nursing/ Midwifery Student	88	103	+15	+16.7%	+48	+51
Nursing/ Midwifery other	22	22	+0	+0.6%	+2	+2
Nursing & Midwifery	1,997	2,014	+17	+0.8%	+48	+29
Therapy Professions	505	509	+4	+0.8%	+23	+17
Health Science/ Diagnostics	34	34	+0	+0.2%	-2	-5
Social Care	708	700	-8	-1.1%	+5	+35
Social Workers	127	128	+1	+0.7%	+2	-6
Psychologists	170	172	+2	+0.9%	+8	-0
Pharmacy	25	25	+0	+0.8%	+1	-5
H&SC, Other	70	71	+2	+2.3%	+1	+2
Health & Social Care Professionals	1,639	1,640	+1	+0.0%	+37	+37
Management (VIII & above)	81	80	-0	-0.3%	+1	+5
Administrative/ Supervisory (V to VII)	221	217	-4	-1.9%	+9	-0
Clerical (III & IV)	442	445	+4	+0.9%	-6	-28
Management & Administrative	744	743	-1	-0.1%	+4	-23
Support	447	444	-3	-0.7%	-8	-20
Maintenance/ Technical	35	35	+0	+0.7%	+0	-3
General Support	482	479	-3	-0.6%	-8	-22
Health Care Assistants	1,288	1,295	+7	+0.5%	+17	+3
Care, other	220	217	-3	-1.2%	-4	-15
Patient & Client Care	1,508	1,512	+4	+0.3%	+13	-12

May 2020 (Dec 2019 figure: 638)	WTE Apr 2020	WTE May 2020	WTE change since Apr 20	% change since Apr 20	WTE change since Dec 19	WTE change since May 19
other Community Services	660	665	+5	+0.8%	+27	+55
Consultants	18	18	+0	+1.5%	+1	+4
Registrars	26	26	-0	-0.0%	+1	+2
SHO/ Interns	1	1			-1	-2
Other Medical	0	0	+0	+89.5%		
Medical/ Dental, other	0	0	+0	+89.5%		
Medical & Dental	45	45	+0	+1.0%	+2	+4
Nurse/ Midwife Manager	74	79	+6	+8.0%	+13	+16
Nurse/ Midwife Specialist & AN/MP	9	9	+0	+0.8%	+1	+2
Staff Nurse/ Staff Midwife	182	176	-6	-3.1%	+3	+12
Nursing/ Midwifery other	1	1	+0	+3.1%		+0
Nursing & Midwifery	266	266	+0	+0.1%	+17	+30
Therapy Professions	13	13			+2	+1
Health Science/ Diagnostics	8	8	-0	-1.9%	-1	-0
Social Care	4	4	+0	+2.1%	+0	+0
Social Workers	26	25	-1	-4.2%	-4	-4
Psychologists	7	8	+1	+8.8%	+1	+2
Pharmacy	3	2	-0	-16.8%	-0	+1
H&SC, Other	4	4			+1	+2
Health & Social Care Professionals	64	63	-1	-1.6%	-1	+0
Management (VIII & above)	63	62	-0	-0.5%	-3	+2
Administrative/ Supervisory (V to VII)	75	76	+0	+0.3%	-0	-1
Clerical (III & IV)	64	63	-1	-2.0%	-8	-7
Management & Administrative	202	201	-1	-0.7%	-11	-6
Support	15	17	+1	+8.1%	+2	+1
Maintenance/ Technical	3	5	+2	+54.8%	+2	+2
General Support	19	22	+3	+16.2%	+4	+3
Health Care Assistants	49	52	+3	+6.8%	+15	+24
Care, other	15	16	+1	+3.2%	+0	-0
Patient & Client Care	64	68	+4	+5.9%	+16	+24

Community Services Employment Report: HSE Staff only May 2020

May 2020 (Dec 2019 figure: 35,864)	WTE Apr 2020	WTE May 2020	WTE change since Apr 20	% change since Apr 20	WTE change since Dec 19	WTE change since May 19
Community Health & Wellbeing	107	130	+23	+21.2%	+130	+130
Mental Health	9,712	9,747	+35	+0.4%	+234	+94
Primary Care	9,944	10,014	+70	+0.7%	+90	-248
Social Care	16,415	16,485	+70	+0.4%	+57	-141

May 2020 (Dec 2019 figure: 5,468)	WTE Apr 2020	WTE May 2020	WTE change since Apr 20	% change since Apr 20	WTE change since Dec 19	WTE change since May 19
CHO 1	5,534	5,554	+20	+0.4%	+85	+18
Consultants	34	35	+1	+3.0%	+2	+2
Registrars	61	60	-1	-2.1%	-5	-1
SHO/ Interns	26	24	-2	-7.4%	-3	-3
Medical/ Dental, other	66	66	+0	+0.1%	-14	+2
Medical & Dental	187	185	-2	-1.1%	-20	-0
Nurse/ Midwife Manager	355	357	+2	+0.5%	+8	+3
Nurse/ Midwife Specialist & AN/MP	108	108	+0	+0.4%	+6	+11
Staff Nurse/ Staff Midwife	1,013	1,009	-3	-0.3%	-5	-23
Public Health Nurse	152	152	+0	+0.3%	-4	-1
Pre-registration Nurse/ Midwife Intern	40	7	-33	-82.7%	-4	-13
Pre-registration Nurse Intern (COVID-19)		37	+37	-100.0%	+37	+37
Post-registration Nurse/ Midwife Student	7	7			-0	+0
Nursing/ Midwifery awaiting registration	11	11			+10	+11
Nursing/ Midwifery Student	58	62	+4	+6.4%	+41	+36
Nursing/ Midwifery other	7	7	+0	+1.7%	+1	+1
Nursing & Midwifery	1,693	1,696	+3	+0.2%	+48	+27
Therapy Professions	321	322	+1	+0.3%	+6	-5
Health Science/ Diagnostics	6	6	+1	+16.1%	-0	-0
Social Care	12	12	-0	-1.5%	+1	+0
Social Workers	90	91	+1	+0.8%	+6	+10
Psychologists	59	60	+1	+1.7%	-0	-1
Pharmacy	2	2	+0	+3.3%	+0	+0
H&SC, Other	30	29	-1	-3.4%	-3	-4
Health & Social Care Professionals	520	523	+2	+0.5%	+10	+1
Management (VIII & above)	61	61	+0	+0.2%	+1	+2
Administrative/ Supervisory (V to VII)	159	163	+4	+2.5%	+27	+34
Clerical (III & IV)	454	450	-4	-0.9%	-5	-4
Management & Administrative	674	674	+0	+0.0%	+23	+33
Support	310	313	+3	+1.0%	+7	+3
Maintenance/ Technical	37	37	-0	-0.2%	+1	+2
General Support	347	350	+3	+0.9%	+8	+5
Health Care Assistants	1,428	1,453	+25	+1.7%	+30	-6
Home Help	550	539	-11	-2.0%	-17	-38
Care, other	135	134	-1	-0.7%	+3	-3
Patient & Client Care	2,113	2,125	+13	+0.6%	+16	-47

May 2020 (Dec 2019 figure: 4,256)	WTE Apr 2020	WTE May 2020	WTE change since Apr 20	% change since Apr 20	WTE change since Dec 19	WTE change since May 19
CHO 2	4,239	4,274	+34	+0.8%	+17	-41
Consultants	40	42	+2	+3.9%	+2	+7
Registrars	76	74	-2	-2.6%	+1	+19
SHO/ Interns	34	35	+1	+1.9%	-1	-3
Medical/ Dental, other	60	61	+0	+0.2%	+2	+0
Medical & Dental	210	211	+0	+0.2%	+3	+23
Nurse/ Midwife Manager	244	249	+5	+2.0%	+7	-3
Nurse/ Midwife Specialist & AN/MP	94	93	-0	-0.4%	+6	+7
Staff Nurse/ Staff Midwife	779	770	-9	-1.1%	-8	-21
Public Health Nurse	196	198	+2	+1.2%	+6	+12
<i>Pre-registration Nurse/ Midwife Intern</i>				-100.0%		-12
<i>Pre-registration Nurse Intern (COVID-19)</i>	24	31	+7	+30.3%	+31	+31
<i>Post-registration Nurse/ Midwife Student</i>	4	4			-9	-10
<i>Nursing/ Midwifery awaiting registration</i>				-100.0%	-11	
Nursing/ Midwifery Student	28	35	+7	+25.9%	+26	+8
Nursing/ Midwifery other	2	3	+0	+0.8%	+1	+1
Nursing & Midwifery	1,342	1,347	+5	+0.4%	+38	+3
Therapy Professions	316	317	+2	+0.5%	+13	+2
Health Science/ Diagnostics	33	34	+1	+2.1%	+1	-0
Social Care	52	54	+2	+3.7%	+4	+3
Social Workers	58	57	-1	-2.3%	-2	-1
Psychologists	61	62	+1	+1.3%	+2	-3
Pharmacy	4	4	+0	+1.9%	-1	-0
H&SC, Other	16	15	-1	-3.9%	-2	-3
Health & Social Care Professionals	539	542	+3	+0.6%	+17	-3
Management (VIII & above)	43	42	-1	-2.2%	-1	-2
Administrative/ Supervisory (V to VII)	108	107	-1	-0.9%	+8	+8
Clerical (III & IV)	426	426	-0	-0.0%	-4	-17
Management & Administrative	577	575	-2	-0.3%	+2	-10
Support	112	111	-1	-1.1%	-3	-7
Maintenance/ Technical	63	63	-0	-0.1%	+0	-4
General Support	175	174	-1	-0.7%	-2	-11
Health Care Assistants	825	849	+23	+2.8%	+27	-11
Home Help	424	429	+5	+1.1%	-71	-25
Care, other	146	147	+1	+0.8%	+3	-7
Patient & Client Care	1,395	1,424	+29	+2.1%	-41	-42

May 2020 (Dec 2019 figure: 2,655)	WTE Apr 2020	WTE May 2020	WTE change since Apr 20	% change since Apr 20	WTE change since Dec 19	WTE change since May 19
CHO 3	2,678	2,668	-10	-0.4%	+12	-30
Consultants	25	26	+1	+2.7%	-0	-0
Registrars	39	38	-2	-3.8%	-4	+3
SHO/ Interns	26	26	-0	-0.1%	+1	-4
Medical/ Dental, other	58	57	-1	-2.1%	-1	-2
Medical & Dental	148	146	-2	-1.4%	-4	-4
Nurse/ Midwife Manager	175	175	+0	+0.0%	+5	+4
Nurse/ Midwife Specialist & AN/MP	40	38	-2	-5.1%	-5	-1
Staff Nurse/ Staff Midwife	552	544	-8	-1.4%	+4	-12
Public Health Nurse	131	128	-3	-2.2%	+0	+4
<i>Pre-registration Nurse/ Midwife Intern</i>	10		-10	-100.0%	-9	-10
<i>Pre-registration Nurse Intern (COVID-19)</i>		15	+15	-100.0%	+15	+15
<i>Post-registration Nurse/ Midwife Student</i>				-100.0%	-4	-4
Nursing/ Midwifery Student	10	15	+5	+51.3%	+6	+1
Nursing & Midwifery	908	900	-8	-0.8%	+11	-5
Therapy Professions	186	187	+1	+0.7%	+1	-6
Health Science/ Diagnostics	6	7	+0	+4.2%	+1	+1
Social Care	6	6	+0	+2.9%	+1	+1
Social Workers	44	45	+1	+1.4%	-0	-3
Psychologists	106	106	+0	+0.4%	-5	-3
Pharmacy	5	5				
H&SC, Other	23	25	+2	+7.7%	+4	+1
Health & Social Care Professionals	376	381	+5	+1.2%	+2	-8
Management (VIII & above)	35	35	-0	-1.2%	+2	+4
Administrative/ Supervisory (V to VII)	113	112	-1	-1.0%	+7	-8
Clerical (III & IV)	277	274	-3	-0.9%	-7	-12
Management & Administrative	425	421	-4	-1.0%	+2	-15
Support	108	106	-1	-1.3%	-3	-5
Maintenance/ Technical	63	63	+1	+0.8%	-2	-2
General Support	170	169	-1	-0.5%	-5	-7
Health Care Assistants	384	405	+21	+5.5%	+24	+7
Home Help	178	155	-23	-12.8%	-21	+0
Care, other	89	91	+2	+2.5%	+3	+1
Patient & Client Care	650	650	+0	+0.1%	+6	+8

May 2020 (Dec 2019 figure: 5,940)	WTE Apr 2020	WTE May 2020	WTE change since Apr 20	% change since Apr 20	WTE change since Dec 19	WTE change since May 19
CHO 4	6,053	6,111	+59	+1.0%	+171	+74
Consultants	60	61	+1	+2.0%	+6	+8
Registrars	97	98	+1	+0.6%	-1	+14
SHO/ Interns	32	30	-1	-4.5%	-2	-7
Medical/ Dental, other	103	103	-0	-0.3%	+4	-4
Medical & Dental	292	292	+0	+0.0%	+8	+11
Nurse/ Midwife Manager	383	392	+8	+2.2%	+34	+80
Nurse/ Midwife Specialist & AN/MP	76	81	+5	+6.7%	+13	+17
Staff Nurse/ Staff Midwife	1,186	1,184	-2	-0.2%	+23	-87
Public Health Nurse	216	217	+2	+0.9%	+1	-1
<i>Pre-registration Nurse/ Midwife Intern</i>	21	12	-9	-41.5%	+12	-9
<i>Pre-registration Nurse Intern (COVID-19)</i>		2	+2	-100.0%	+2	+2
<i>Post-registration Nurse/ Midwife Student</i>	20	20			+6	+7
<i>Nursing/ Midwifery awaiting registration</i>	9	8	-1	-11.1%	+8	+8
Nursing/ Midwifery Student	50	42	-8	-15.2%	-12	+8
Nursing & Midwifery	1,911	1,917	+6	+0.3%	+59	+17
Therapy Professions	360	368	+7	+2.0%	+8	-10
Health Science/ Diagnostics	11	11			+1	+3
Social Care	36	34	-2	-4.4%	-4	-2
Social Workers	93	99	+6	+6.6%	+11	+8
Psychologists	111	114	+3	+3.0%	+7	+9
Pharmacy	10	10	+0	+3.2%	+2	+3
H&SC, Other	59	62	+3	+5.0%	+5	+6
Health & Social Care Professionals	679	698	+18	+2.7%	+31	+17
Management (VIII & above)	58	57	-1	-1.2%	-0	+9
Administrative/ Supervisory (V to VII)	123	129	+7	+5.4%	+6	+29
Clerical (III & IV)	416	424	+8	+1.9%	+9	-17
Management & Administrative	597	611	+14	+2.3%	+14	+21
Support	213	223	+10	+4.5%	+16	+9
Maintenance/ Technical	13	13				-0
General Support	227	236	+10	+4.2%	+16	+9
Health Care Assistants	1,100	1,154	+55	+5.0%	+76	+57
Home Help	1,124	1,072	-52	-4.6%	-52	-70
Care, other	123	132	+8	+6.8%	+18	+12
Patient & Client Care	2,347	2,358	+11	+0.5%	+42	-1

May 2020 (Dec 2019 figure: 4,158)	WTE Apr 2020	WTE May 2020	WTE change since Apr 20	% change since Apr 20	WTE change since Dec 19	WTE change since May 19
CHO 5	4,167	4,119	-48	-1.1%	-39	-94
Consultants	29	29	+0	+0.2%	+0	-0
Registrars	35	34	-1	-2.3%	+6	+2
SHO/ Interns	25	23	-2	-7.2%	-15	-9
Medical/ Dental, other	65	65	+0	+0.1%	-1	-1
Medical & Dental	154	151	-2	-1.6%	-10	-8
Nurse/ Midwife Manager	299	294	-5	-1.7%	+3	-7
Nurse/ Midwife Specialist & AN/MP	60	60	+0	+0.3%	+8	+0
Staff Nurse/ Staff Midwife	871	864	-6	-0.7%	-4	+28
Public Health Nurse	171	170	-1	-0.4%	-5	+3
<i>Pre-registration Nurse/ Midwife Intern</i>	16	4	-12	-75.0%	+4	-18
<i>Pre-registration Nurse Intern (COVID-19)</i>	7	34	+27	+385.7%	+34	+34
<i>Post-registration Nurse/ Midwife Student</i>	5	5			-2	-1
<i>Nursing/ Midwifery awaiting registration</i>	4		-4	-100.0%		
Nursing/ Midwifery Student	32	43	+11	+34.4%	+31	+15
Nursing/ Midwifery other	4	5	+0	+2.3%	+0	+1
Nursing & Midwifery	1,437	1,436	-1	-0.1%	+34	+40
Therapy Professions	322	326	+4	+1.2%	+1	-9
<i>Audiology</i>	5	7	+2	+32.7%	+3	+6
Health Science/ Diagnostics	5	7	+2	+32.7%	+3	+6
Social Care	23	23	+0	+0.6%	-3	-7
Social Workers	52	52	+0	+0.3%	+3	+2
Psychologists	70	69	-1	-1.7%	-6	-7
Pharmacy	2	2	-0	-5.2%	+1	+1
H&SC, Other	28	28	+0	+1.0%	+0	-0
Health & Social Care Professionals	501	506	+5	+0.9%	-1	-17
Management (VIII & above)	38	37	-0	-0.8%	+1	-3
Administrative/ Supervisory (V to VII)	100	103	+3	+2.9%	-0	-1
Clerical (III & IV)	284	282	-3	-0.9%	-2	-3
Management & Administrative	422	421	-0	-0.0%	-1	-7
Support	321	318	-3	-1.0%	-1	-7
Maintenance/ Technical	32	32	-0	-0.9%	+1	+1
General Support	354	350	-3	-1.0%	-1	-6
Health Care Assistants	574	609	+35	+6.1%	+45	+53
Home Help	635	554	-80	-12.7%	-114	-159
Care, other	91	91	+0	+0.1%	+9	+9
Patient & Client Care	1,300	1,255	-45	-3.5%	-60	-97

May 2020 (Dec 2019 figure: 1,605)	WTE Apr 2020	WTE May 2020	WTE change since Apr 20	% change since Apr 20	WTE change since Dec 19	WTE change since May 19
CHO 6	1,608	1,636	+28	+1.8%	+31	+7
Consultants	25	25	+0	+0.1%	+2	+5
Registrars	27	26	-1	-2.7%	-4	-3
SHO/ Interns	5	5	-0	-2.0%	+1	-1
Medical/ Dental, other	47	46	-1	-3.2%	-4	-5
Medical & Dental	104	102	-2	-2.2%	-4	-4
Nurse/ Midwife Manager	134	137	+2	+1.8%	-1	-2
Nurse/ Midwife Specialist & AN/MP	15	15	+0	+0.1%	+0	+2
Staff Nurse/ Staff Midwife	292	289	-3	-0.9%	+4	+5
Public Health Nurse	113	113	+0	+0.0%	-4	-4
<i>Post-registration Nurse/ Midwife Student</i>	13	13			+2	+2
Nursing/ Midwifery Student	13	13			-1	+2
Nursing/ Midwifery other	4	3	-1	-21.3%	+1	+1
Nursing & Midwifery	571	570	-1	-0.2%	-1	+4
Therapy Professions	159	159	+0	+0.2%	+1	-6
Health Science/ Diagnostics	16	17	+1	+5.2%	+0	-3
Social Care	11	10	-0	-1.0%	-1	+2
Social Workers	26	27	+1	+5.8%	+1	-2
Psychologists	38	36	-2	-4.6%	-2	-1
Pharmacy	2	2			+0	
H&SC, Other	8	8	-0	-1.7%	-1	-1
Health & Social Care Professionals	259	259	+1	+0.2%	-1	-10
Management (VIII & above)	37	37	-0	-1.1%	+2	+1
Administrative/ Supervisory (V to VII)	91	91	+0	+0.2%	-0	-0
Clerical (III & IV)	137	138	+1	+1.0%	+4	+4
Management & Administrative	265	266	+1	+0.4%	+6	+5
Support	83	82	-1	-0.9%	-3	-6
Maintenance/ Technical	2	2			-1	-2
General Support	85	84	-1	-0.9%	-4	-8
Health Care Assistants	270	300	+31	+11.4%	+34	+27
Care, other	54	54	+0	+0.4%	+0	-8
Patient & Client Care	324	355	+31	+9.6%	+34	+20

May 2020 (Dec 2019 figure: 3,151)	WTE Apr 2020	WTE May 2020	WTE change since Apr 20	% change since Apr 20	WTE change since Dec 19	WTE change since May 19
CHO 7	3,184	3,227	+43	+1.3%	+75	-51
Consultants	54	55	+1	+2.1%	+1	+4
Registrars	80	79	-1	-1.7%	-8	+5
SHO/ Interns	25	25	+0	+0.3%	+1	+3
Medical/ Dental, other	80	80	+0	+0.3%	+2	-8
Medical & Dental	239	239	+0	+0.0%	-3	+4
Nurse/ Midwife Manager	238	242	+4	+1.5%	+10	+10
Nurse/ Midwife Specialist & AN/MP	66	67	+1	+1.5%	+6	+8
Staff Nurse/ Staff Midwife	530	539	+10	+1.8%	+20	-11
Public Health Nurse	163	164	+1	+0.4%	-12	-25
<i>Pre-registration Nurse/ Midwife Intern</i>				-100.0%	-6	-13
<i>Pre-registration Nurse Intern (COVID-19)</i>	15	29	+14	+95.0%	+29	+29
<i>Post-registration Nurse/ Midwife Student</i>	21	20	-1	-4.8%	+13	+15
<i>Nursing/ Midwifery awaiting registration</i>	13	7	-6	-44.3%	+3	+6
Nursing/ Midwifery Student	49	56	+7	+14.8%	+24	+37
Nursing/ Midwifery other	7	7			-1	
Nursing & Midwifery	1,053	1,075	+22	+2.1%	+48	+20
Therapy Professions	329	340	+11	+3.4%	+15	-0
Social Care	10	11	+1	+9.9%	+1	-2
Social Workers	71	72	+0	+0.4%	+4	+2
Psychologists	58	59	+1	+1.4%	-3	-9
Pharmacy	25	25	-0	-1.5%	-1	-0
H&SC, Other	41	40	-1	-1.9%	-2	-2
Health & Social Care Professionals	535	548	+12	+2.3%	+14	-11
Management (VIII & above)	44	45	+1	+2.8%	+5	+8
Administrative/ Supervisory (V to VII)	99	106	+7	+6.6%	+10	+8
Clerical (III & IV)	248	247	-1	-0.5%	+5	-18
Management & Administrative	391	398	+6	+1.7%	+20	-2
Support	166	164	-2	-1.2%	-7	-21
Maintenance/ Technical	5	5			-1	-2
General Support	171	169	-2	-1.2%	-8	-23
Health Care Assistants	433	442	+9	+2.2%	+1	-36
Home Help	136	133	-3	-2.1%	+6	+6
Care, other	226	224	-3	-1.1%	-4	-9
Patient & Client Care	795	799	+4	+0.5%	+4	-39

May 2020 (Dec 2019 figure: 4,583)	WTE Apr 2020	WTE May 2020	WTE change since Apr 20	% change since Apr 20	WTE change since Dec 19	WTE change since May 19
CHO 8	4,654	4,678	+24	+0.5%	+95	+26
Consultants	43	42	-0	-0.6%	+0	+1
Registrars	97	101	+4	+3.7%	-4	+1
SHO/ Interns	41	37	-4	-10.8%	-1	+3
Medical/ Dental, other	73	73			+1	+4
Medical & Dental	254	253	-1	-0.4%	-4	+9
Nurse/ Midwife Manager	290	290	+0	+0.1%	+5	-3
Nurse/ Midwife Specialist & AN/MP	98	99	+1	+1.5%	+5	+3
Staff Nurse/ Staff Midwife	795	797	+2	+0.2%	+7	-5
Public Health Nurse	210	209	-1	-0.6%	+9	+12
<i>Pre-registration Nurse/ Midwife Intern</i>	20	11	-10	-47.9%	+11	-8
<i>Pre-registration Nurse Intern (COVID-19)</i>		10	+10	-100.0%	+10	+10
<i>Post-registration Nurse/ Midwife Student</i>	2	2			-6	-6
<i>Nursing/ Midwifery awaiting registration</i>				-100.0%	-1	-1
Nursing/ Midwifery Student	22	22	-0	-1.4%	+17	-6
Nursing/ Midwifery other	6	6	+0	+0.2%	+2	+3
Nursing & Midwifery	1,421	1,423	+2	+0.2%	+46	+4
Therapy Professions	373	376	+2	+0.6%	+12	+13
Health Science/ Diagnostics	8	8	+0	+0.7%	+1	+1
Social Care	13	13	-0	-1.6%	+1	+0
Social Workers	76	78	+2	+2.5%	+2	+2
Psychologists	111	110	-1	-1.2%	-4	-1
Pharmacy	8	8	+0	+1.7%	+1	+1
H&SC, Other	46	46	-0	-1.0%	-0	-0
Health & Social Care Professionals	636	638	+2	+0.4%	+12	+16
Management (VIII & above)	58	59	+2	+2.6%	+2	+1
Administrative/ Supervisory (V to VII)	172	172	-1	-0.4%	+23	+24
Clerical (III & IV)	482	480	-2	-0.3%	+19	+30
Management & Administrative	712	711	-1	-0.1%	+45	+55
Support	89	90	+1	+0.9%	+3	+0
Maintenance/ Technical	56	56	+0	+0.7%	+0	-3
General Support	144	146	+1	+0.8%	+3	-3
Health Care Assistants	940	964	+24	+2.5%	+14	-13
Home Help	399	392	-6	-1.6%	-26	-46
Care, other	148	151	+3	+2.1%	+5	+5
Patient & Client Care	1,487	1,507	+20	+1.4%	-6	-55

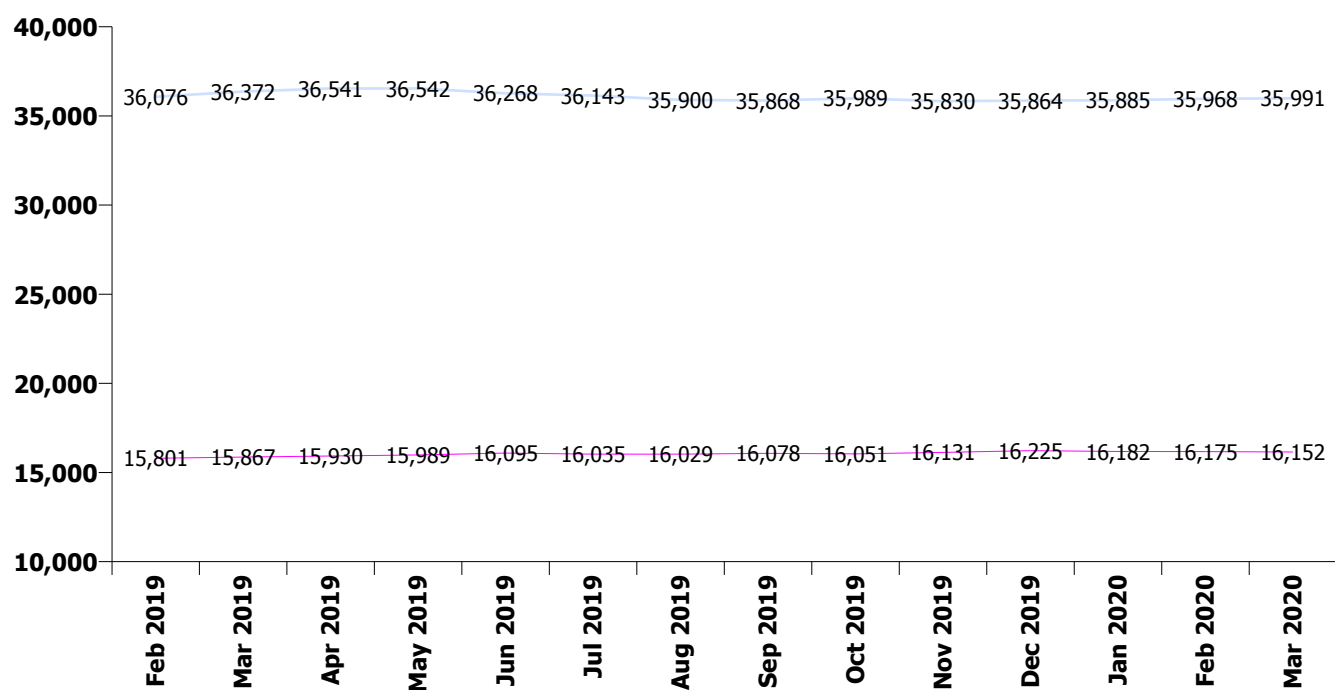
May 2020 (Dec 2019 figure: 3,407)	WTE Apr 2020	WTE May 2020	WTE change since Apr 20	% change since Apr 20	WTE change since Dec 19	WTE change since May 19
CHO 9	3,402	3,444	+42	+1.2%	+37	-131
Consultants	55	55	+1	+1.0%	-1	+0
Registrars	91	89	-2	-2.2%	-1	+6
SHO/ Interns	57	56	-0	-0.7%	-4	-9
Medical/ Dental, other	49	52	+2	+4.4%	+1	-12
Medical & Dental	252	253	+0	+0.1%	-5	-15
Nurse/ Midwife Manager	252	256	+5	+1.8%	+9	-0
Nurse/ Midwife Specialist & AN/MP	79	80	+1	+0.7%	+5	+7
Staff Nurse/ Staff Midwife	678	675	-3	-0.5%	-18	-50
Public Health Nurse	170	169	-1	-0.7%	-7	+3
<i>Pre-registration Nurse/ Midwife Intern</i>	20	1	-20	-97.5%	-5	-19
<i>Pre-registration Nurse Intern (COVID-19)</i>	15	49	+34	+230.5%	+49	+49
<i>Post-registration Nurse/ Midwife Student</i>	25	25			+3	+7
<i>Nursing/ Midwifery awaiting registration</i>				-100.0%	-3	
Nursing/ Midwifery Student	60	75	+15	+24.5%	+35	+38
Nursing/ Midwifery other	14	14	+0	+1.0%	+1	+0
Nursing & Midwifery	1,253	1,269	+16	+1.2%	+25	-3
Therapy Professions	306	312	+5	+1.7%	+12	-4
Health Science/ Diagnostics	20	20	+0	+0.4%	-0	-3
Social Care	8	8	-0	-1.1%	+0	+1
Social Workers	76	77	+1	+1.3%	-1	-10
Psychologists	125	128	+3	+2.5%	+4	-5
Pharmacy	19	19	-0	-0.2%	+0	-6
H&SC, Other	55	56	+1	+2.3%	-0	+1
Health & Social Care Professionals	609	619	+11	+1.8%	+14	-26
Management (VIII & above)	46	46	-0	-0.6%	+2	+4
Administrative/ Supervisory (V to VII)	125	120	-4	-3.4%	+8	-4
Clerical (III & IV)	294	298	+5	+1.6%	-5	-29
Management & Administrative	464	464	+0	+0.0%	+5	-28
Support	186	189	+3	+1.4%	-9	-16
Maintenance/ Technical	9	9	+0	+2.5%	+0	-0
General Support	196	198	+3	+1.5%	-9	-16
Health Care Assistants	504	517	+13	+2.6%	+7	-32
Care, other	124	123	-1	-1.0%	-2	-11
Patient & Client Care	628	640	+12	+1.9%	+6	-44

May 2020 (Dec 2019 figure: 638)	WTE Apr 2020	WTE May 2020	WTE change since Apr 20	% change since Apr 20	WTE change since Dec 19	WTE change since May 19
other Community Services	660	665	+5	+0.8%	+27	+55
Consultants	18	18	+0	+1.5%	+1	+4
Registrars	26	26	-0	-0.0%	+1	+2
SHO/ Interns	1	1			-1	-2
<i>Other Medical</i>	0	0	+0	+89.5%		
Medical/ Dental, other	0	0	+0	+89.5%		
Medical & Dental	45	45	+0	+1.0%	+2	+4
Nurse/ Midwife Manager	74	79	+6	+8.0%	+13	+16
Nurse/ Midwife Specialist & AN/MP	9	9	+0	+0.8%	+1	+2
Staff Nurse/ Staff Midwife	182	176	-6	-3.1%	+3	+12
Nursing/ Midwifery other	1	1	+0	+3.1%		+0
Nursing & Midwifery	266	266	+0	+0.1%	+17	+30
Therapy Professions	13	13			+2	+1
Health Science/ Diagnostics	8	8	-0	-1.9%	-1	-0
Social Care	4	4	+0	+2.1%	+0	+0
Social Workers	26	25	-1	-4.2%	-4	-4
Psychologists	7	8	+1	+8.8%	+1	+2
Pharmacy	3	2	-0	-16.8%	-0	+1
H&SC, Other	4	4			+1	+2
Health & Social Care Professionals	64	63	-1	-1.6%	-1	+0
Management (VIII & above)	63	62	-0	-0.5%	-3	+2
Administrative/ Supervisory (V to VII)	75	76	+0	+0.3%	-0	-1
Clerical (III & IV)	64	63	-1	-2.0%	-8	-7
Management & Administrative	202	201	-1	-0.7%	-11	-6
Support	15	17	+1	+8.1%	+2	+1
Maintenance/ Technical	3	5	+2	+54.8%	+2	+2
General Support	19	22	+3	+16.2%	+4	+3
Health Care Assistants	49	52	+3	+6.8%	+15	+24
Care, other	15	16	+1	+3.2%	+0	-0
Patient & Client Care	64	68	+4	+5.9%	+16	+24

Community Services Employment Report: HSE & Section 38 May 2020

May 2020 (Dec 2019 figure: 52,089)	WTE Apr 2020	WTE May 2020	WTE change since Apr 20	% change since Apr 20	WTE change since Dec 19	WTE change since May 19
Community Services	52,414	52,601	+187	+0.4%	+512	+70
CHO 1	5,534	5,554	+20	+0.4%	+85	+18
HSE	4,239	4,274	+34	+0.8%	+17	-41
Bros. of Charity, West Region	1,234	1,254	+21	+1.7%	-34	+18
Section 38 Voluntary Agencies	1,234	1,254	+21	+1.7%	-34	+18
CHO 2	5,473	5,528	+55	+1.0%	-17	-23
HSE	2,678	2,668	-10	-0.4%	+12	-30
Bros. of Charity, Clare	322	327	+4	+1.4%	-21	+1
Bros. of Charity, Limerick	528	555	+27	+5.2%	+35	+35
Daughters of Charity, Limerick	569	570	+1	+0.3%	+27	+23
Daughters of Charity, Roscrea	291	293	+2	+0.7%	+3	-0
Section 38 Voluntary Agencies	1,710	1,745	+35	+2.1%	+44	+59
CHO 3	4,388	4,413	+25	+0.6%	+56	+28
HSE	6,053	6,111	+59	+1.0%	+171	+74
Bros. of Charity, Southern	736	730	-6	-0.8%	-10	-7
Cope Foundation	1,091	1,118	+26	+2.4%	+27	+7
Cork Dental Hospital	102	107	+5	+5.3%	+4	+8
St. John of God, Kerry	309	309	+1	+0.2%	-6	+6
Section 38 Voluntary Agencies	2,238	2,264	+26	+1.2%	+15	+14
CHO 4	8,290	8,375	+85	+1.0%	+186	+88
HSE	4,167	4,119	-48	-1.1%	-39	-94
Bros. of Charity, Waterford	615	610	-5	-0.7%	-20	+9
Carriglea Cairde Services	212	210	-1	-0.5%	-4	+5
St. Patrick's, Kilkenny	287	285	-1	-0.5%	+6	+5
Section 38 Voluntary Agencies	1,113	1,106	-7	-0.6%	-18	+18
CHO 5	5,280	5,225	-55	-1.0%	-57	-75
HSE	1,608	1,636	+28	+1.8%	+31	+7
Children's Sunshine Home	58	57	-1	-1.7%	-2	-2
Dublin Dental Hospital	93	93			+2	+1
Leopardstown Park Hospital	205	205	+0	+0.1%	-6	-6
Royal Hospital, Donnybrook, Dublin	276	277	+1	+0.4%	+5	-5
St. John of God (IDS)	449	447	-1	-0.3%	-9	+4
St. John of God (MHS)	235	233	-2	-1.0%	-2	+3
Sunbeam House Services	422	413	-9	-2.1%	-36	-29
Section 38 Voluntary Agencies	1,736	1,724	-13	-0.7%	-49	-35
CHO 6	3,344	3,360	+16	+0.5%	-18	-28
HSE	3,184	3,227	+43	+1.3%	+75	-51
Cheeverstown House	399	395	-4	-0.9%	-1	-11
Kare, Newbridge, Co Kildare	362	352	-11	-2.9%	-8	+15
Our Lady's Hospice & Care Services	533	487	-46	-8.6%	+5	-2
Peamount Hospital (Newcastle)	485	486	+1	+0.3%	-0	+8
Stewart's Hospital, (Palmerstown)	863	871	+7	+0.9%	+19	-12
St. John of God Liffey Services	754	746	-8	-1.0%	-41	+9
Section 38 Voluntary Agencies	3,396	3,337	-59	-1.7%	-26	+5
CHO 7	6,580	6,563	-16	-0.2%	+49	-46

HSE	4,654	4,678	+24	+0.5%	+95	+26
Muiriosa Foundation, Laois/Offaly	300	299	-1	-0.2%	-2	+2
Muiriosa Foundation, Longford/Westmeath	272	274	+2	+0.7%	+4	+3
Muiriosa Foundation, South Kildare	348	352	+4	+1.1%	+19	+19
St. John of God, Drumcar	641	645	+4	+0.6%	-1	+8
Section 38 Voluntary Agencies	1,561	1,570	+9	+0.6%	+19	+32
CHO 8	6,215	6,249	+33	+0.5%	+114	+58
HSE	3,402	3,444	+42	+1.2%	+37	-131
Central Remedial Clinic	286	284	-2	-0.6%	+5	+8
Daughters of Charity, Dublin	1,072	1,073	+1	+0.1%	+39	+70
Incorporated Orthopaedic Hospital	264	258	-6	-2.2%	+32	+33
St. Michael's House, Dublin	1,414	1,398	-16	-1.1%	-33	+21
St. Vincent's, Fairview	213	213			+7	-6
Section 38 Voluntary Agencies	3,249	3,226	-23	-0.7%	+51	+125
CHO 9	6,651	6,669	+19	+0.3%	+87	-5
other Community Services	660	665	+5	+0.8%	+27	+55



Community Services Employment Report: Staff Groups May 2020

May 2020 (Dec 2019 figure: 52,089)	WTE Apr 2020	WTE May 2020	WTE change since Apr 20	% change since Apr 20	WTE change since Dec 19	WTE change since May 19
Community Services	52,414	52,601	+187	+0.4%	+512	+70
Consultant Dentistry	10	10	+0	+0.3%	-1	-1
Consultant Medicine	23	24	+1	+2.8%	+2	+1
Consultant Paediatrics	5	5				
Consultant Psychiatry	389	394	+5	+1.3%	+13	+33
Consultant Radiology	1	1				
Consultant Surgery	4	4	+0	+2.5%	+0	-0
Consultants	432	438	+6	+1.3%	+14	+32
Registrar	557	549	-8	-1.4%	-16	+36
Senior Registrar	93	94	+1	+1.1%	-9	+6
Specialist Registrar	18	19	+1	+4.6%	+1	+5
Registrars	668	662	-6	-0.9%	-24	+47
Interns	6	1	-5	-84.0%	-7	-6
Senior House Officer	302	294	-8	-2.6%	-18	-35
SHO/ Interns	308	295	-13	-4.3%	-25	-41
Dentists	305	303	-2	-0.5%	+2	-3
Other Medical	323	325	+2	+0.6%	-9	-20
Medical/ Dental, other	627	628	+0	+0.0%	-8	-22
Medical & Dental	2,036	2,023	-13	-0.6%	-43	+15
Clinical Nurse/ Midwife Manager	2,542	2,560	+18	+0.7%	+74	+45
Director Nursing/Midwifery, Assistant	477	476	-1	-0.3%	+13	+25
Director of Nursing/Midwifery	207	216	+10	+4.7%	+9	+27
Nurse/ Midwife Manager	3,225	3,251	+26	+0.8%	+97	+97
Advanced Nurse/ Midwife Practitioner	53	53	+0	+0.7%	+7	+15
Clinical Nurse/ Midwife Specialist	679	685	+7	+1.0%	+41	+45
Nurse/ Midwife Specialist & AN/MP	731	739	+7	+1.0%	+48	+60
Staff Midwives	7	7	-0	-3.2%	-1	+0
Staff Nurse [Intellectual Disability]	1,591	1,589	-2	-0.1%	-13	-55
Staff Nurse [Psychiatric]	2,978	2,953	-26	-0.9%	-38	-122
Staff Nurses [General/ Children's]	4,480	4,477	-4	-0.1%	+63	+14
Staff Nurse/ Staff Midwife	9,057	9,025	-32	-0.4%	+11	-163
Public Health Nurse	1,520	1,519	-1	-0.0%	-13	+3
Pre-registration Nurse/ Midwife Intern	148	34	-114	-77.0%	-22	-159
Pre-registration Nurse Intern (COVID-19)	131	337	+206	+158.0%	+337	+337
Post-registration Nurse/ Midwife Student	97	100	+3	+3.1%	+2	+14
Nursing/ Midwifery awaiting registration	37	26	-11	-29.1%	-47	+24
Nursing/ Midwifery Student	413	497	+84	+20.5%	+270	+216
Nursing Education/Clinical	66	66	-0	-0.6%	+8	+10
Other Nursing/ Midwifery	1	1				
Nursing/ Midwifery other	67	67	-0	-0.6%	+8	+10
Nursing & Midwifery	15,013	15,098	+85	+0.6%	+421	+224
Dietitians	178	186	+8	+4.6%	+23	+17
Occupational Therapists	1,241	1,265	+24	+2.0%	+34	+16
Orthoptists	13	12	-1	-7.5%	-2	-1
Physiotherapists	872	879	+6	+0.7%	+21	-9
Podiatrists & Chiropodists	43	43	+0	+0.5%	+6	+2
Speech & Language Therapists	901	900	-2	-0.2%	-4	-29
Therapy Professions	3,248	3,285	+37	+1.1%	+78	-4
Audiology	47	49	+3	+5.6%	+5	+5
Biochemists	8	8	-0	-1.9%	-0	-0
Clinical Engineering	20	20	+0	+1.5%	-1	-1
Clinical Measurement	1	1	-0	-0.7%	+0	+0

May 2020 (Dec 2019 figure: 52,089)	WTE Apr 2020	WTE May 2020	WTE change since Apr 20	% change since Apr 20	WTE change since Dec 19	WTE change since May 19
Community Services	52,414	52,601	+187	+0.4%	+512	+70
Medical Laboratory	46	47	+2	+3.3%	+1	-1
Phlebotomists	2	1	-1	-32.3%	+0	-0
Physicists	2	2				+1
Radiographers	10	10	-0	-0.0%	-1	-2
Health Science/ Diagnostics	135	139	+4	+2.7%	+4	+3
Social Care	2,709	2,697	-12	-0.5%	-10	+36
Social Workers	822	833	+11	+1.3%	+27	+5
Psychologists	905	910	+5	+0.5%	+8	-6
Pharmacy	99	99	+0	+0.2%	+1	-1
Counsellor Therapists	233	234	+1	+0.4%	+6	+10
Dental Hygienists	58	61	+3	+4.7%	+4	+3
Environmental Health Officers	0	0		#DIV/0	-1	
Other Health & Social Care	62	63	+1	+2.2%	-7	-7
Play Therapists/ Specialists	17	17	-0	-0.5%	-4	-4
H&SC, Other	370	375	+5	+1.3%	-2	+1
Health & Social Care Professionals	8,288	8,337	+49	+0.6%	+107	+34
Executive Management	127	133	+6	+4.5%	+9	+4
Senior Management (VIII & GM)	501	496	-5	-1.1%	+3	+26
Management (VIII & above)	628	629	+0	+0.1%	+12	+30
Middle Management (V-VII)	1,574	1,572	-2	-0.1%	+92	+100
Other Administrative	24	23	-1	-4.1%	+4	-2
Administrative/ Supervisory (V to VII)	1,598	1,595	-3	-0.2%	+95	+98
Clerical (III & IV)	3,718	3,710	-9	-0.2%	+15	-64
Management & Administrative	5,945	5,934	-11	-0.2%	+122	+65
Catering	411	410	-0	-0.1%	+4	+2
Household Services	1,494	1,496	+2	+0.1%	+25	-38
Other Labs & Associated	5	6	+1	+11.8%	+2	+0
Other Support	371	365	-6	-1.7%	-13	-22
Portering	226	228	+2	+0.7%	-3	-3
Support	2,508	2,505	-3	-0.1%	+15	-61
Maintenance	407	406	-1	-0.3%	+4	-8
Technical Services	11	11				
Maintenance/ Technical	418	417	-1	-0.3%	+4	-8
General Support	2,926	2,922	-4	-0.1%	+19	-70
HCA, Nurse's Aide, etc.	11,939	12,182	+243	+2.0%	+180	+168
Health & Social Care Assistants	116	126	+10	+8.6%	+17	-42
Health Care Assistants	12,055	12,308	+253	+2.1%	+197	+126
Home Help	3,445	3,274	-170	-4.9%	-295	-332
Community Welfare Officers	2	2			+0	-1
Other Care Grades	2,705	2,704	-1	-0.0%	-16	+8
Care, other	2,707	2,706	-1	-0.0%	-16	+7
Patient & Client Care	18,207	18,288	+81	+0.4%	-113	-199

Employment by WTE, Headcount, Gender, Full-Time /Part-Time etc.: May 2020

Community Services Staff Group	WTE	Headcount	WTE: no.	% Male	% female	Male WTE: no.	Female WTE: no.	% Total Perm	% Male Perm	% Female Perm	% Total Full Time	% Total Part Time	% Male FT	% Female FT
Community Services	52,601	62,765	1.19	17.4%	82.6%	1.10	1.22	88.0%	85.2%	88.6%	59.4%	40.6%	78.7%	55.3%
Consultant Dentistry	10	12	1.18	50.0%	50.0%	1.17	1.18	100.0%	100.0%	100.0%	66.7%	33.3%	66.7%	66.7%
Consultant Medicine	24	28	1.17	28.6%	71.4%	1.11	1.20	85.7%	85.7%	85.0%	75.0%	25.0%	75.0%	75.0%
Consultant Paediatrics	5	8	1.76	12.5%	87.5%	1.82	1.75	75.0%	75.0%	85.7%	37.5%	62.5%	100.0%	28.6%
Consultant Psychiatry	394	428	1.09	41.1%	58.9%	1.05	1.12	78.5%	78.5%	77.8%	83.6%	16.4%	91.5%	78.2%
Consultant Radiology	1	1	1.00	100.0%		1.00		100.0%	100.0%		100.0%	0.0%	100.0%	
Consultant Surgery	4	5	1.21		100.0%		1.21	60.0%	60.0%	60.0%	40.0%	60.0%		40.0%
Consultants	438	482	1.10	39.8%	60.2%	1.05	1.13	79.3%	80.2%	78.6%	81.5%	18.5%	90.1%	75.9%
Registrar	549	566	1.03	37.8%	62.2%	1.01	1.04	3.9%	3.9%	2.0%	97.0%	3.0%	98.1%	96.3%
Senior Registrar	94	101	1.07	39.6%	60.4%	1.05	1.09	5.0%	5.0%	8.2%	91.1%	8.9%	95.0%	88.5%
Specialist Registrar	19	20	1.04	15.0%	85.0%	1.00	1.04	20.0%	20.0%	17.6%	95.0%	5.0%	100.0%	94.1%
Registrars	662	687	1.04	37.4%	62.6%	1.02	1.05	4.5%	6.2%	3.5%	96.1%	3.9%	97.7%	95.1%
Interns	1	1	1.00		100.0%		1.00	0.0%	0.0%	0.0%	100.0%	0.0%		100.0%
Senior House Officer	294	315	1.07	37.8%	62.2%	1.08	1.07	5.1%	5.1%	2.6%	93.7%	6.3%	94.1%	93.4%
SHO/ Interns	295	316	1.07	37.7%	62.3%	1.08	1.07	5.1%	9.2%	2.5%	93.7%	6.3%	94.1%	93.4%
Dentists	303	388	1.28	26.3%	73.7%	1.28	1.28	91.5%	91.5%	91.3%	51.0%	49.0%	60.8%	47.6%
Other Medical	325	480	1.48	40.8%	59.2%	1.61	1.40	73.3%	73.3%	75.0%	34.2%	65.8%	32.1%	35.6%
Medical/ Dental, other	628	868	1.38	34.3%	65.7%	1.48	1.34	81.5%	78.2%	83.2%	41.7%	58.3%	41.9%	41.6%
Medical & Dental	2,023	2,353	1.16	36.8%	63.2%	1.16	1.17	48.3%	47.8%	48.6%	72.7%	27.3%	76.3%	70.6%
Clinical Nurse/ Midwife Manager	2,560	2,739	1.07	19.3%	80.7%	1.02	1.08	97.0%	97.0%	97.0%	81.4%	18.6%	97.0%	77.7%
Director Nursing/Midwifery, Assistant	476	501	1.05	18.8%	81.2%	1.01	1.06	98.8%	98.8%	98.5%	87.0%	13.0%	98.9%	84.3%
Director of Nursing/Midwifery	216	221	1.02	12.2%	87.8%	1.01	1.02	96.8%	96.8%	96.4%	94.6%	5.4%	96.3%	94.3%
Nurse/ Midwife Manager	3,251	3,461	1.06	18.8%	81.2%	1.01	1.08	97.2%	97.5%	97.2%	83.1%	16.9%	97.2%	79.8%
Advanced Nurse/ Midwife Practitioner	53	56	1.05	17.9%	82.1%	1.00	1.06	100.0%	100.0%	100.0%	85.7%	14.3%	100.0%	82.6%
Clinical Nurse/ Midwife Specialist	685	750	1.09	14.7%	85.3%	1.01	1.11	99.1%	99.1%	98.9%	77.2%	22.8%	94.5%	74.2%
Nurse/ Midwife Specialist & AN/MP	739	806	1.09	14.9%	85.1%	1.01	1.11	99.1%	100.0%	99.0%	77.8%	22.2%	95.0%	74.8%
Staff Midwives	7	9	1.34		100.0%		1.34	88.9%	88.9%	88.9%	22.2%	77.8%		22.2%
Staff Nurse [Intellectual Disability]	1,589	1,868	1.18	8.5%	91.5%	1.12	1.18	95.3%	95.3%	95.1%	63.0%	37.0%	81.8%	61.3%
Staff Nurse [Psychiatric]	2,953	3,200	1.08	26.1%	73.9%	1.06	1.09	95.1%	95.1%	95.5%	83.2%	16.8%	89.4%	81.0%
Staff Nurses [General/ Children's]	4,477	5,364	1.20	7.4%	92.6%	1.06	1.21	94.9%	94.9%	95.1%	56.4%	43.6%	86.6%	54.0%
Staff Nurse/ Staff Midwife	9,025	10,441	1.16	13.3%	86.7%	1.06	1.17	95.0%	93.9%	95.2%	65.8%	34.2%	87.8%	62.4%

Public Health Nursing	1,519	1,793	1.18	0.4%	99.6%	1.03	1.18	97.5%	97.5%	97.5%	64.0%	36.0%	87.5%	63.9%
Public Health Nurse	1,519	1,793	1.18	0.4%	99.6%	1.03	1.18	97.5%	100.0%	97.5%	64.0%	36.0%	87.5%	63.9%
Pre-registration Nurse/ Midwife Intern	34	69	2.02	18.8%	81.2%	2.11	2.00	0.0%	0.0%	0.0%	53.6%	46.4%	30.8%	58.9%
Pre-registration Nurse Intern (COVID-19)	337	375	1.11	13.9%	86.1%	1.14	1.11	20.3%	20.3%	21.7%	85.3%	14.7%	100.0%	83.0%
Post-registration Nurse/ Midwife Student	100	100	1.00	1.0%	99.0%	1.00	1.00	31.0%	31.0%	30.3%	100.0%	0.0%	100.0%	100.0%
Nursing/ Midwifery awaiting registration	26	29	1.10	20.7%	79.3%	1.38	1.05	44.8%	44.8%	43.5%	96.6%	3.4%	100.0%	95.7%
Nursing/ Midwifery Student	497	573	1.15	12.6%	87.4%	1.26	1.14	20.9%	13.9%	22.0%	84.6%	15.4%	87.5%	84.2%
Nursing Education/Clinical	66	70	1.07	7.1%	92.9%	1.00	1.07	95.7%	95.7%	95.4%	81.4%	18.6%	100.0%	80.0%
Other Nursing/ Midwifery	1	1	1.00	100.0%		1.00		100.0%	100.0%		100.0%	0.0%	100.0%	
Nursing/ Midwifery other	67	71	1.07	8.5%	91.5%	1.00	1.07	95.8%	100.0%	95.4%	81.7%	18.3%	100.0%	80.0%
Nursing & Midwifery	15,098	17,145	1.14	13.1%	86.9%	1.05	1.15	93.5%	92.8%	93.6%	70.3%	29.7%	90.9%	67.2%
Dietitians	186	224	1.20	1.8%	98.2%	1.00	1.21	94.2%	94.2%	94.1%	57.6%	42.4%	100.0%	56.8%
Occupational Therapists	1,265	1,436	1.13	8.5%	91.5%	1.06	1.14	94.4%	94.4%	94.3%	72.4%	27.6%	89.3%	70.9%
Orthoptists	12	14	1.20	21.4%	78.6%	1.00	1.27	92.9%	92.9%	90.9%	64.3%	35.7%	100.0%	54.5%
Physiotherapists	879	1,036	1.18	17.9%	82.1%	1.06	1.21	95.0%	95.0%	94.8%	62.2%	37.8%	84.9%	57.2%
Podiatrists & Chiropodists	43	56	1.30	14.3%	85.7%	1.13	1.33	89.3%	89.3%	87.5%	50.0%	50.0%	87.5%	43.8%
Speech & Language Therapists	900	1,030	1.14	1.5%	98.5%	1.08	1.15	92.1%	92.1%	92.2%	70.4%	29.6%	80.0%	70.2%
Therapy Professions	3,285	3,796	1.16	8.9%	91.1%	1.06	1.17	93.8%	95.3%	93.7%	67.8%	32.2%	86.6%	66.0%
Audiology	49	53	1.08	18.9%	81.1%	1.01	1.10	100.0%	100.0%	100.0%	77.4%	22.6%	90.0%	74.4%
Biochemists	8	8	1.05	12.5%	87.5%	1.00	1.06	87.5%	87.5%	100.0%	87.5%	12.5%	100.0%	85.7%
Clinical Engineering	20	20	1.00	90.0%	10.0%	1.00	1.00	90.0%	90.0%	50.0%	95.0%	5.0%	94.4%	100.0%
Clinical Measurement	1	2	1.40	50.0%	50.0%	1.00	2.33	50.0%	50.0%	0.0%	50.0%	50.0%	100.0%	0.0%
Medical Laboratory	47	51	1.08	25.5%	74.5%	1.11	1.07	90.2%	90.2%	89.5%	86.3%	13.7%	92.3%	84.2%
Phlebotomists	1	2	1.49	50.0%	50.0%	1.00	2.94	50.0%	50.0%	100.0%	50.0%	50.0%	100.0%	0.0%
Physicists	2	2	1.00		100.0%		1.00	100.0%	100.0%	100.0%	100.0%	0.0%		100.0%
Radiographers	10	15	1.51	13.3%	86.7%	2.00	1.46	93.3%	93.3%	92.3%	53.3%	46.7%	50.0%	53.8%
Health Science/ Diagnostics	139	153	1.10	30.1%	69.9%	1.06	1.12	92.8%	91.3%	93.5%	80.4%	19.6%	91.3%	75.7%
Social Care	2,697	3,213	1.19	15.6%	84.4%	1.09	1.21	90.6%	91.0%	90.6%	49.3%	50.7%	67.0%	46.1%
Social Workers	833	933	1.12	16.4%	83.6%	1.05	1.14	95.4%	94.1%	95.6%	75.7%	24.3%	90.2%	72.8%
Psychologists	910	1,016	1.12	19.5%	80.5%	1.02	1.14	80.8%	80.8%	80.8%	76.6%	23.4%	92.4%	72.7%
Pharmacy	99	122	1.23	20.5%	79.5%	1.13	1.26	68.9%	60.0%	71.1%	54.9%	45.1%	60.0%	53.6%
Counsellor Therapists	234	261	1.11	32.2%	67.8%	1.07	1.14	94.6%	94.6%	95.5%	70.5%	29.5%	81.0%	65.5%
Dental Hygienists	61	78	1.28	1.3%	98.7%	1.00	1.28	98.7%	98.7%	98.7%	43.6%	56.4%	100.0%	42.9%
Environmental Health Officers	0	0	#DIV/0											
Other Health & Social Care	63	81	1.28	24.7%	75.3%	1.28	1.28	88.9%	88.9%	86.9%	49.4%	50.6%	65.0%	44.3%

Play Therapists/ Specialists	17	21	1.27	14.3%	85.7%	1.00	1.33	95.2%	95.2%	94.4%	57.1%	42.9%	100.0%	50.0%
H&SC, Other	375	441	1.18	24.5%	75.5%	1.10	1.20	94.3%	93.5%	94.6%	61.2%	38.8%	78.7%	55.6%
Health & Social Care	8,337	9,674	1.16	14.1%	85.9%	1.07	1.18	91.2%	90.6%	91.4%	63.1%	36.9%	79.7%	60.4%
Executive Management	133	136	1.02	44.1%	55.9%	1.04	1.01	91.2%	91.2%	89.5%	97.1%	2.9%	96.7%	97.4%
Senior Management (VIII & GM)	496	512	1.03	27.3%	72.7%	1.03	1.03	96.7%	96.7%	97.0%	92.8%	7.2%	95.7%	91.7%
Management (VIII & above)	629	648	1.03	30.9%	69.1%	1.03	1.03	95.5%	95.0%	95.8%	93.7%	6.3%	96.0%	92.6%
Middle Management (V-VII)	1,572	1,699	1.08	19.1%	80.9%	1.05	1.09	94.6%	94.6%	95.4%	80.6%	19.4%	93.8%	77.5%
Other Administrative	23	24	1.03	33.3%	66.7%	1.00	1.04	75.0%	75.0%	93.8%	87.5%	12.5%	100.0%	81.3%
Administrative/ Supervisory (V to VII)	1,595	1,723	1.08	19.3%	80.7%	1.04	1.09	94.4%	90.1%	95.4%	80.7%	19.3%	94.0%	77.6%
General Administrative (III & IV)	3,710	4,350	1.17	8.1%	91.9%	1.08	1.18	89.6%	89.6%	90.4%	62.7%	37.3%	83.1%	60.9%
Clerical (III & IV)	3,710	4,350	1.17	8.1%	91.9%	1.08	1.18	89.6%	80.5%	90.4%	62.7%	37.3%	83.1%	60.9%
Management & Administrative	5,934	6,721	1.13	13.2%	86.8%	1.06	1.15	91.4%	87.4%	92.0%	70.3%	29.7%	90.1%	67.3%
Catering	410	469	1.14	31.8%	68.2%	1.08	1.17	97.7%	97.7%	98.1%	65.7%	34.3%	89.9%	54.4%
Household Services	1,496	1,857	1.24	17.8%	82.2%	1.15	1.26	89.8%	89.8%	91.2%	46.9%	53.1%	70.7%	41.7%
Other Labs & Associated	6	6	1.00	16.7%	83.3%	1.00	1.00	100.0%	100.0%	100.0%	100.0%	0.0%	100.0%	100.0%
Other Support	365	665	1.82	34.1%	65.9%	1.29	2.32	78.5%	78.5%	74.2%	28.7%	71.3%	55.5%	14.8%
Portering	228	247	1.08	95.1%	4.9%	1.08	1.19	86.6%	86.6%	75.0%	84.2%	15.8%	85.5%	58.3%
Support	2,505	3,244	1.29	29.1%	70.9%	1.15	1.37	88.4%	87.3%	88.9%	48.8%	51.2%	73.8%	38.6%
Maintenance	406	428	1.06	97.0%	3.0%	1.05	1.29	94.6%	94.6%	100.0%	89.3%	10.7%	90.6%	46.2%
Technical Services	11	11	0.99	72.7%	27.3%	0.99	1.00	100.0%	100.0%	100.0%	100.0%	0.0%	100.0%	100.0%
Maintenance/ Technical	417	439	1.05	96.4%	3.6%	1.05	1.22	94.8%	94.6%	100.0%	89.5%	10.5%	90.8%	56.3%
General Support	2,922	3,683	1.26	37.1%	62.9%	1.12	1.37	89.2%	89.5%	89.0%	53.7%	46.3%	79.1%	38.7%
HCA, Nurse's Aide, etc.	12,182	14,306	1.17	22.1%	77.9%	1.10	1.20	86.2%	86.2%	86.4%	56.6%	43.4%	72.1%	52.2%
Health & Social Care Assistants	126	141	1.12	17.7%	82.3%	1.09	1.13	54.6%	54.6%	53.4%	81.6%	18.4%	96.0%	78.4%
Health Care Assistants	12,308	14,447	1.17	22.0%	78.0%	1.10	1.20	85.9%	85.3%	86.1%	56.9%	43.1%	72.3%	52.5%
Home Help	3,274	5,493	1.68	3.6%	96.4%	1.66	1.68	81.2%	70.6%	81.6%	9.4%	90.6%	10.2%	9.3%
Community Welfare Officers	2	2	1.06	50.0%	50.0%	1.00	1.12	100.0%	100.0%	100.0%	50.0%	50.0%	100.0%	0.0%
Other Care Grades	2,704	3,247	1.20	25.9%	74.1%	1.14	1.22	90.8%	90.8%	91.8%	60.4%	39.6%	74.0%	55.7%
Care, other	2,706	3,249	1.20	25.9%	74.1%	1.14	1.22	90.8%	88.1%	91.8%	60.4%	39.6%	74.1%	55.6%
Patient & Client Care	18,288	23,189	1.27	18.2%	81.8%	1.12	1.31	85.5%	85.2%	85.6%	46.1%	53.9%	69.8%	40.9%

Employment by WTE, Headcount, Gender, Full-Time /Part-Time etc.: May 2020

Community Services	WTE	Headcount	WTE: no.	% Male	% female	Male WTE: no.	Female WTE: no.	% Total Perm	% Male Perm	% Female Perm	% Total Full Time	% Total Part Time	% Male FT	% Female FT
Community Services	52,601	62,765	1.19	17.4%	82.6%	1.10	1.22	88.0%	85.2%	88.6%	59.4%	40.6%	78.7%	55.3%
Consultants	35	39	1.10	41.0%	59.0%	1.05	1.14	71.8%	71.8%	73.9%	89.7%	10.3%	93.8%	93.8%
Registrars	60	63	1.05	44.4%	55.6%	1.00	1.09	9.5%	9.5%	5.7%	95.2%	4.8%	96.4%	96.4%
SHO/ Interns	24	26	1.09	46.2%	53.8%	1.16	1.04	0.0%	0.0%	0.0%	96.2%	3.8%	100.0%	100.0%
Medical/ Dental, other	66	103	1.55	46.6%	53.4%	1.58	1.53	82.5%	82.5%	78.2%	39.8%	60.2%	39.6%	39.6%
Medical & Dental	185	231	1.25	45.0%	55.0%	1.24	1.25	51.5%	51.5%	48.8%	69.7%	30.3%	70.2%	70.2%
Nurse/ Midwife Manager	357	378	1.06	18.5%	81.5%	1.01	1.07	98.9%	98.9%	99.0%	86.8%	13.2%	100.0%	100.0%
Nurse/ Midwife Specialist & AN/MP	108	116	1.07	20.7%	79.3%	1.01	1.09	98.3%	98.3%	97.8%	86.2%	13.8%	100.0%	100.0%
Staff Nurse/ Staff Midwife	1,009	1,160	1.15	13.2%	86.8%	1.03	1.17	94.3%	94.3%	93.9%	71.8%	28.2%	93.5%	93.5%
Public Health Nurse	152	172	1.13		100.0%		1.13	97.7%	97.7%	97.7%	76.7%	23.3%		
Nursing/ Midwifery Student	62	75	1.21	13.3%	86.7%	1.26	1.20	8.0%	8.0%	9.2%	100.0%	0.0%	100.0%	100.0%
Nursing/ Midwifery other	7	7	1.05		100.0%		1.05	100.0%	100.0%	100.0%	100.0%	0.0%		
Nursing & Midwifery	1,696	1,908	1.12	13.5%	86.5%	1.03	1.14	92.4%	92.4%	92.2%	77.3%	22.7%	96.1%	96.1%
Therapy Professions	322	369	1.15	8.1%	91.9%	1.05	1.15	94.6%	94.6%	94.7%	68.6%	31.4%	90.0%	90.0%
Health Science/ Diagnostics	6	9	1.40		100.0%		1.40	88.9%	88.9%	88.9%	55.6%	44.4%		
Social Care	12	17	1.41		100.0%		1.41	100.0%	100.0%	100.0%	35.3%	64.7%		
Social Workers	91	98	1.08	17.3%	82.7%	1.00	1.09	93.9%	93.9%	93.8%	84.7%	15.3%	94.1%	94.1%
Psychologists	60	67	1.12	28.4%	71.6%	1.02	1.17	94.0%	94.0%	95.8%	77.6%	22.4%	94.7%	94.7%
Pharmacy	2	2	1.29	50.0%	50.0%	1.43	1.18	100.0%	100.0%	100.0%	50.0%	50.0%	0.0%	0.0%
H&SC, Other	29	33	1.13	24.2%	75.8%	1.12	1.13	97.0%	97.0%	96.0%	63.6%	36.4%	75.0%	75.0%
Health & Social Care Professionals	523	595	1.14	12.6%	87.4%	1.04	1.15	94.6%	94.6%	94.8%	70.8%	29.2%	89.3%	89.3%
Management (VIII & above)	61	62	1.02	22.6%	77.4%	1.02	1.02	96.8%	96.8%	95.8%	93.5%	6.5%	92.9%	92.9%
Administrative/ Supervisory (V to VII)	163	172	1.06	16.3%	83.7%	1.06	1.06	91.3%	91.3%	93.1%	82.6%	17.4%	92.9%	92.9%
Clerical (III & IV)	450	520	1.15	7.9%	92.1%	1.06	1.16	95.4%	95.4%	95.8%	67.3%	32.7%	92.7%	92.7%
Management & Administrative	674	754	1.12	11.0%	89.0%	1.05	1.13	94.6%	94.6%	95.2%	72.9%	27.1%	92.8%	92.8%
Support	313	383	1.22	25.3%	74.7%	1.13	1.26	93.2%	93.2%	95.5%	55.9%	44.1%	76.3%	76.3%
Maintenance/ Technical	37	37	1.00	100.0%		1.00		100.0%	100.0%	#DIV/0	100.0%	0.0%	100.0%	100.0%
General Support	350	420	1.20	31.9%	68.1%	1.09	1.26	93.8%	93.8%	95.5%	59.8%	40.2%	82.8%	82.8%
Health Care Assistants	1,453	1,633	1.12	23.3%	76.7%	1.05	1.15	89.4%	89.4%	90.1%	69.1%	30.9%	87.6%	87.6%

Home Help	539	768	1.42	4.0%	96.0%	1.38	1.43	25.9%	25.9%	26.6%	2.6%	97.4%	3.2%	3.2%
Care, other	134	150	1.12	33.3%	66.7%	1.08	1.14	89.3%	89.3%	96.0%	72.0%	28.0%	76.0%	76.0%
Patient & Client Care	2,125	2,551	1.20	18.1%	81.9%	1.07	1.23	70.3%	70.3%	68.0%	49.3%	50.7%	80.7%	80.7%
CHO 1	5,554	6,459	1.16	17.2%	82.8%	1.08	1.18	82.8%	82.8%	82.5%	63.7%	36.3%	85.0%	59.3%
Consultants	44	49	1.11	34.7%	65.3%	1.06	1.13	71.4%	71.4%	68.8%	79.6%	20.4%	88.2%	88.2%
Registrars	76	79	1.04	34.2%	65.8%	1.00	1.06	1.3%	1.3%	1.9%	98.7%	1.3%	100.0%	100.0%
SHO/ Interns	35	36	1.04	33.3%	66.7%	1.08	1.01	0.0%	0.0%	0.0%	100.0%	0.0%	100.0%	100.0%
Medical/ Dental, other	61	69	1.14	26.1%	73.9%	1.12	1.14	78.3%	78.3%	82.4%	58.0%	42.0%	66.7%	66.7%
Medical & Dental	216	233	1.08	31.8%	68.2%	1.06	1.09	38.6%	38.6%	40.9%	82.8%	17.2%	89.2%	89.2%
Nurse/ Midwife Manager	315	336	1.07	25.3%	74.7%	1.01	1.09	96.4%	96.4%	96.0%	86.3%	13.7%	98.8%	98.8%
Nurse/ Midwife Specialist & AN/MP	98	104	1.06	15.4%	84.6%	1.00	1.07	98.1%	98.1%	97.7%	94.2%	5.8%	100.0%	100.0%
Staff Nurse/ Staff Midwife	891	1,031	1.16	13.6%	86.4%	1.11	1.17	94.0%	94.0%	94.7%	64.4%	35.6%	81.4%	81.4%
Public Health Nurse	198	224	1.13		100.0%		1.13	96.9%	96.9%	96.9%	74.6%	25.4%		
Nursing/ Midwifery Student	35	35	1.01	17.1%	82.9%	1.01	1.01	5.7%	5.7%	6.9%	100.0%	0.0%	100.0%	100.0%
Nursing/ Midwifery other	3	3	1.20		100.0%		1.20	100.0%	100.0%	100.0%	66.7%	33.3%		
Nursing & Midwifery	1,539	1,733	1.13	14.3%	85.7%	1.06	1.14	93.3%	93.3%	93.7%	72.5%	27.5%	89.1%	89.1%
Therapy Professions	347	399	1.15	7.5%	92.5%	1.03	1.16	93.0%	93.0%	93.0%	68.2%	31.8%	90.0%	90.0%
Health Science/ Diagnostics	34	36	1.06	16.7%	83.3%	1.00	1.07	94.4%	94.4%	93.3%	83.3%	16.7%	100.0%	100.0%
Social Care	257	321	1.25	14.6%	85.4%	1.09	1.28	86.0%	86.0%	85.4%	48.9%	51.1%	57.4%	57.4%
Social Workers	83	94	1.13	17.0%	83.0%	1.07	1.15	91.5%	91.5%	91.0%	69.1%	30.9%	81.3%	81.3%
Psychologists	76	89	1.17	14.6%	85.4%	1.01	1.21	96.6%	96.6%	96.1%	67.4%	32.6%	92.3%	92.3%
Pharmacy	4	5	1.34	20.0%	80.0%	1.00	1.47	80.0%	80.0%	75.0%	40.0%	60.0%	100.0%	100.0%
H&SC, Other	29	37	1.27	24.3%	75.7%	1.28	1.27	89.2%	89.2%	92.9%	43.2%	56.8%	44.4%	44.4%
Health & Social Care Professionals	829	981	1.18	12.4%	87.6%	1.07	1.20	90.7%	90.7%	90.6%	61.4%	38.6%	73.8%	73.8%
Management (VIII & above)	56	57	1.02	52.6%	47.4%	1.03	1.02	93.0%	93.0%	96.3%	93.0%	7.0%	96.7%	96.7%
Administrative/ Supervisory (V to VII)	140	148	1.05	20.3%	79.7%	1.04	1.06	97.3%	97.3%	98.3%	79.1%	20.9%	83.3%	83.3%
Clerical (III & IV)	463	525	1.13	6.9%	93.1%	1.05	1.14	90.7%	90.7%	91.0%	67.4%	32.6%	80.6%	80.6%
Management & Administrative	659	730	1.11	13.2%	86.8%	1.04	1.12	92.2%	92.2%	92.6%	71.8%	28.2%	86.5%	86.5%
Support	150	214	1.42	37.9%	62.1%	1.23	1.57	82.7%	82.7%	79.7%	39.3%	60.7%	50.6%	50.6%
Maintenance/ Technical	68	70	1.03	98.6%	1.4%	1.03	1.00	97.1%	97.1%	100.0%	94.3%	5.7%	94.2%	94.2%
General Support	218	284	1.30	52.8%	47.2%	1.13	1.57	86.3%	86.3%	79.9%	52.8%	47.2%	70.7%	70.7%
Health Care Assistants	1,374	1,614	1.17	24.8%	75.2%	1.09	1.21	76.9%	76.9%	76.8%	51.7%	48.3%	68.3%	68.3%
Home Help	429	613	1.43	0.7%	99.3%	1.54	1.43	92.2%	92.2%	92.4%	4.9%	95.1%	0.0%	0.0%
Care, other	264	320	1.21	34.7%	65.3%	1.13	1.26	86.9%	86.9%	89.0%	53.1%	46.9%	65.8%	65.8%
Patient & Client Care	2,067	2,547	1.23	20.2%	79.8%	1.10	1.27	81.8%	81.8%	82.7%	40.6%	59.4%	67.2%	67.2%
CHO 2	5,528	6,508	1.18	18.5%	81.5%	1.08	1.20	86.0%	86.0%	86.9%	57.8%	42.2%	75.7%	53.7%

Consultants	27	30	1.10	43.3%	56.7%	1.05	1.15	86.7%	86.7%	82.4%	73.3%	26.7%	76.9%	76.9%
Registrars	38	40	1.06	27.5%	72.5%	1.00	1.08	7.5%	7.5%	3.4%	92.5%	7.5%	100.0%	100.0%
SHO/ Interns	26	26	1.00	19.2%	80.8%	1.00	1.00	0.0%	0.0%	0.0%	100.0%	0.0%	100.0%	100.0%
Medical/ Dental, other	57	68	1.18	32.4%	67.6%	1.12	1.22	76.5%	76.5%	84.8%	67.6%	32.4%	81.8%	81.8%
Medical & Dental	148	164	1.11	31.1%	68.9%	1.06	1.13	49.4%	49.4%	47.8%	79.9%	20.1%	86.3%	86.3%
Nurse/ Midwife Manager	256	266	1.04	13.5%	86.5%	1.01	1.04	92.9%	92.9%	92.2%	87.6%	12.4%	97.2%	97.2%
Nurse/ Midwife Specialist & AN/MP	49	55	1.11	7.3%	92.7%	1.02	1.12	100.0%	100.0%	100.0%	69.1%	30.9%	75.0%	75.0%
Staff Nurse/ Staff Midwife	793	907	1.14	9.6%	90.4%	1.05	1.16	94.9%	94.9%	95.0%	62.7%	37.3%	82.8%	82.8%
Public Health Nurse	128	157	1.23	0.6%	99.4%	1.25	1.23	95.5%	95.5%	95.5%	58.6%	41.4%	0.0%	0.0%
Nursing/ Midwifery Student	39	44	1.13	18.2%	81.8%	1.32	1.10	52.3%	52.3%	63.9%	45.5%	54.5%	100.0%	100.0%
Nursing/ Midwifery other	4	4	1.08	25.0%	75.0%	1.00	1.10	100.0%	100.0%	100.0%	75.0%	25.0%	100.0%	100.0%
Nursing & Midwifery	1,269	1,433	1.13	9.6%	90.4%	1.05	1.14	93.5%	93.5%	93.9%	66.6%	33.4%	86.9%	86.9%
Therapy Professions	218	247	1.13	7.7%	92.3%	1.03	1.14	89.5%	89.5%	89.0%	76.5%	23.5%	89.5%	89.5%
Health Science/ Diagnostics	7	8	1.20	25.0%	75.0%	1.38	1.15	75.0%	75.0%	83.3%	62.5%	37.5%	0.0%	0.0%
Social Care	258	296	1.15	9.5%	90.5%	1.07	1.16	79.7%	79.7%	79.9%	38.9%	61.1%	46.4%	46.4%
Social Workers	58	66	1.13	13.6%	86.4%	1.08	1.14	95.5%	95.5%	94.7%	77.3%	22.7%	77.8%	77.8%
Psychologists	123	129	1.05	20.9%	79.1%	1.00	1.06	43.4%	43.4%	44.1%	92.2%	7.8%	100.0%	100.0%
Pharmacy	5	5	1.04	40.0%	60.0%	1.00	1.07	100.0%	100.0%	100.0%	80.0%	20.0%	100.0%	100.0%
H&SC, Other	36	43	1.19	4.7%	95.3%	1.00	1.20	100.0%	100.0%	100.0%	55.8%	44.2%	100.0%	100.0%
Health & Social Care Professionals	705	794	1.13	11.2%	88.8%	1.04	1.14	79.3%	79.3%	80.1%	63.9%	36.1%	76.4%	76.4%
Management (VIII & above)	40	42	1.04	26.2%	73.8%	1.05	1.04	90.5%	90.5%	93.5%	92.9%	7.1%	100.0%	100.0%
Administrative/ Supervisory (V to VII)	140	149	1.07	14.8%	85.2%	1.05	1.07	93.3%	93.3%	97.6%	86.6%	13.4%	100.0%	100.0%
Clerical (III & IV)	311	354	1.14	6.5%	93.5%	1.02	1.15	83.9%	83.9%	85.8%	68.6%	31.4%	91.3%	91.3%
Management & Administrative	491	545	1.11	10.3%	89.7%	1.03	1.12	87.0%	87.0%	89.4%	75.4%	24.6%	96.4%	96.4%
Support	161	202	1.25	29.2%	70.8%	1.14	1.31	86.6%	86.6%	85.3%	70.3%	29.7%	83.1%	83.1%
Maintenance/ Technical	74	77	1.04	100.0%		1.04		88.3%	88.3%	#DIV/0	93.5%	6.5%	93.5%	93.5%
General Support	235	279	1.19	48.7%	51.3%	1.08	1.31	87.1%	87.1%	85.3%	76.7%	23.3%	89.0%	89.0%
Health Care Assistants	1,175	1,474	1.25	15.6%	84.4%	1.19	1.27	81.1%	81.1%	81.8%	34.1%	65.9%	45.2%	45.2%
Home Help	155	440	2.84	0.7%	99.3%	2.26	2.85	99.8%	99.8%	99.8%	8.4%	91.6%	0.0%	0.0%
Care, other	235	267	1.14	16.9%	83.1%	1.05	1.15	89.5%	89.5%	89.6%	62.9%	37.1%	82.2%	82.2%
Patient & Client Care	1,565	2,181	1.39	12.7%	87.3%	1.17	1.43	85.9%	85.9%	86.9%	32.4%	67.6%	50.7%	50.7%
CHO 3	4,413	5,396	1.22	13.8%	86.2%	1.10	1.25	86.0%	86.0%	87.1%	54.2%	45.8%	73.2%	51.2%
Consultants	61	70	1.15	31.4%	68.6%	1.05	1.20	100.0%	100.0%	100.0%	74.3%	25.7%	90.9%	90.9%
Registrars	105	107	1.02	45.8%	54.2%	1.01	1.04	3.7%	3.7%	3.4%	93.5%	6.5%	98.0%	98.0%
SHO/ Interns	35	37	1.05	43.2%	56.8%	1.03	1.06	0.0%	0.0%	0.0%	89.2%	10.8%	93.8%	93.8%
Medical/ Dental, other	117	201	1.72	35.3%	64.7%	2.06	1.58	92.0%	92.0%	90.0%	21.9%	78.1%	19.7%	19.7%

Medical & Dental	317	415	1.31	38.1%	61.9%	1.32	1.30	62.4%	62.4%	65.0%	55.2%	44.8%	61.4%	61.4%
Nurse/ Midwife Manager	466	500	1.07	16.4%	83.6%	1.02	1.08	100.0%	100.0%	100.0%	73.0%	27.0%	93.9%	93.9%
Nurse/ Midwife Specialist & AN/MP	94	99	1.05	15.2%	84.8%	1.00	1.06	100.0%	100.0%	100.0%	72.7%	27.3%	100.0%	100.0%
Staff Nurse/ Staff Midwife	1,462	1,739	1.19	12.1%	87.9%	1.05	1.21	97.9%	97.9%	97.9%	51.4%	48.6%	86.2%	86.2%
Public Health Nurse	217	261	1.20	0.4%	99.6%	1.00	1.20	100.0%	100.0%	100.0%	51.7%	48.3%	100.0%	100.0%
Nursing/ Midwifery Student	67	86	1.28	12.8%	87.2%	1.47	1.25	27.9%	27.9%	28.0%	72.1%	27.9%	36.4%	36.4%
Nursing/ Midwifery other	1	1	1.96		100.0%		1.96	100.0%	100.0%	100.0%	0.0%	100.0%		
Nursing & Midwifery	2,308	2,686	1.16	11.9%	88.1%	1.05	1.18	96.4%	96.4%	96.4%	56.9%	43.1%	87.1%	87.1%
Therapy Professions	453	539	1.19	8.0%	92.0%	1.05	1.20	98.3%	98.3%	98.2%	54.0%	46.0%	79.1%	79.1%
Health Science/ Diagnostics	13	14	1.05	21.4%	78.6%	1.00	1.07	100.0%	100.0%	100.0%	92.9%	7.1%	100.0%	100.0%
Social Care	238	267	1.12	14.2%	85.8%	1.04	1.14	93.6%	93.6%	93.4%	63.7%	36.3%	92.1%	92.1%
Social Workers	126	143	1.13	18.9%	81.1%	1.03	1.16	98.6%	98.6%	98.3%	69.2%	30.8%	92.6%	92.6%
Psychologists	144	162	1.13	21.6%	78.4%	1.02	1.16	87.7%	87.7%	89.0%	66.7%	33.3%	88.6%	88.6%
Pharmacy	10	14	1.40	14.3%	85.7%	1.87	1.34	100.0%	100.0%	100.0%	35.7%	64.3%	0.0%	0.0%
H&SC, Other	68	82	1.21	41.5%	58.5%	1.10	1.31	100.0%	100.0%	100.0%	58.5%	41.5%	76.5%	76.5%
Health & Social Care Professionals	1,052	1,221	1.16	14.9%	85.1%	1.05	1.18	96.1%	96.1%	96.2%	60.1%	39.9%	84.6%	84.6%
Management (VIII & above)	74	77	1.04	27.3%	72.7%	1.03	1.05	97.4%	97.4%	96.4%	87.0%	13.0%	95.2%	95.2%
Administrative/ Supervisory (V to VII)	168	186	1.11	18.8%	81.2%	1.06	1.12	97.8%	97.8%	98.0%	70.4%	29.6%	80.0%	80.0%
Clerical (III & IV)	517	629	1.22	6.7%	93.3%	1.13	1.22	96.7%	96.7%	97.3%	49.3%	50.7%	64.3%	64.3%
Management & Administrative	759	892	1.17	11.0%	89.0%	1.08	1.19	97.0%	97.0%	97.4%	57.0%	43.0%	76.5%	76.5%
Support	353	502	1.42	29.5%	70.5%	1.26	1.50	93.2%	93.2%	94.9%	44.0%	56.0%	74.3%	74.3%
Maintenance/ Technical	22	27	1.21	85.2%	14.8%	1.19	1.37	100.0%	100.0%	100.0%	66.7%	33.3%	73.9%	73.9%
General Support	376	529	1.41	32.3%	67.7%	1.25	1.50	93.6%	93.6%	95.0%	45.2%	54.8%	74.3%	74.3%
Health Care Assistants	2,037	2,352	1.15	21.3%	78.7%	1.10	1.17	90.7%	90.7%	91.8%	63.2%	36.8%	73.3%	73.3%
Home Help	1,072	1,752	1.63	5.5%	94.5%	1.42	1.65	100.0%	100.0%	100.0%	9.1%	90.9%	12.4%	12.4%
Care, other	454	560	1.23	19.6%	80.4%	1.22	1.24	88.4%	88.4%	89.1%	55.5%	44.5%	68.2%	68.2%
Patient & Client Care	3,563	4,664	1.31	15.2%	84.8%	1.15	1.34	93.9%	93.9%	94.9%	42.0%	58.0%	64.2%	64.2%
CHO 4	8,375	10,407	1.24	15.7%	84.3%	1.14	1.26	93.8%	93.8%	94.8%	49.9%	50.1%	72.4%	45.7%
Consultants	30	31	1.02	61.3%	38.7%	1.00	1.05	100.0%	100.0%	100.0%	96.8%	3.2%	100.0%	100.0%
Registrars	34	34	1.01	35.3%	64.7%	1.02	1.00	26.5%	26.5%	18.2%	91.2%	8.8%	83.3%	83.3%
SHO/ Interns	23	25	1.08	60.0%	40.0%	1.04	1.14	64.0%	64.0%	50.0%	56.0%	44.0%	60.0%	60.0%
Medical/ Dental, other	65	90	1.39	36.7%	63.3%	1.65	1.27	100.0%	100.0%	100.0%	43.3%	56.7%	39.4%	39.4%
Medical & Dental	152	180	1.18	43.9%	56.1%	1.21	1.16	81.1%	81.1%	77.2%	63.3%	36.7%	64.6%	64.6%
Nurse/ Midwife Manager	340	354	1.04	17.8%	82.2%	1.01	1.05	98.6%	98.6%	98.3%	77.7%	22.3%	93.7%	93.7%
Nurse/ Midwife Specialist & AN/MP	60	64	1.06	18.8%	81.3%	1.03	1.07	100.0%	100.0%	100.0%	56.3%	43.8%	66.7%	66.7%
Staff Nurse/ Staff Midwife	960	1,103	1.15	15.6%	84.4%	1.08	1.16	98.4%	98.4%	98.3%	60.5%	39.5%	82.0%	82.0%

Public Health Nurse	170	203	1.19	2.0%	98.0%	1.00	1.20	100.0%	100.0%	100.0%	37.4%	62.6%	100.0%	100.0%
Nursing/ Midwifery Student	54	59	1.09	13.6%	86.4%	1.14	1.08	57.6%	57.6%	54.9%	84.7%	15.3%	75.0%	75.0%
Nursing/ Midwifery other	5	5	1.10	20.0%	80.0%	1.00	1.13	100.0%	100.0%	100.0%	60.0%	40.0%	100.0%	100.0%
Nursing & Midwifery	1,589	1,788	1.13	14.5%	85.5%	1.06	1.14	97.3%	97.3%	97.1%	61.9%	38.1%	84.2%	84.2%
Therapy Professions	328	369	1.12	11.9%	88.1%	1.07	1.13	100.0%	100.0%	100.0%	60.2%	39.8%	79.5%	79.5%
Health Science/ Diagnostics	7	7	1.08	14.3%	85.7%	1.00	1.09	100.0%	100.0%	100.0%	71.4%	28.6%	100.0%	100.0%
Social Care	148	186	1.26	14.5%	85.5%	1.17	1.28	97.3%	97.3%	96.9%	38.7%	61.3%	59.3%	59.3%
Social Workers	62	68	1.09	14.7%	85.3%	1.01	1.11	98.5%	98.5%	98.3%	64.7%	35.3%	90.0%	90.0%
Psychologists	73	82	1.13	15.9%	84.1%	1.04	1.15	91.5%	91.5%	91.3%	59.8%	40.2%	92.3%	92.3%
Pharmacy	2	2	1.10	50.0%	50.0%	1.00	1.23	100.0%	100.0%	100.0%	50.0%	50.0%	100.0%	100.0%
H&SC, Other	35	38	1.09	28.9%	71.1%	1.00	1.13	97.4%	97.4%	96.3%	71.1%	28.9%	100.0%	100.0%
Health & Social Care Professionals	654	752	1.15	14.2%	85.8%	1.07	1.16	98.1%	98.1%	98.0%	55.9%	44.1%	79.4%	79.4%
Management (VIII & above)	45	46	1.01	21.7%	78.3%	1.02	1.01	97.8%	97.8%	97.2%	93.5%	6.5%	90.0%	90.0%
Administrative/ Supervisory (V to VII)	126	133	1.05	17.3%	82.7%	1.01	1.06	97.0%	97.0%	96.4%	75.2%	24.8%	95.7%	95.7%
Clerical (III & IV)	324	372	1.15	4.3%	95.7%	1.10	1.15	98.4%	98.4%	98.3%	60.2%	39.8%	87.5%	87.5%
Management & Administrative	496	551	1.11	8.9%	91.1%	1.04	1.12	98.0%	98.0%	97.8%	66.6%	33.4%	91.8%	91.8%
Support	327	413	1.26	18.2%	81.8%	1.11	1.30	98.8%	98.8%	98.5%	37.3%	62.7%	57.3%	57.3%
Maintenance/ Technical	39	42	1.06	95.2%	4.8%	1.07	1.00	97.6%	97.6%	100.0%	83.3%	16.7%	82.5%	82.5%
General Support	367	455	1.24	25.3%	74.7%	1.10	1.30	98.7%	98.7%	98.5%	41.5%	58.5%	66.1%	66.1%
Health Care Assistants	1,183	1,341	1.13	21.3%	78.7%	1.08	1.15	89.1%	89.1%	89.8%	56.5%	43.5%	68.4%	68.4%
Home Help	554	961	1.73	1.9%	98.1%	1.84	1.73	99.4%	99.4%	99.4%	13.7%	86.3%	16.7%	16.7%
Care, other	230	281	1.22	20.6%	79.4%	1.14	1.25	92.9%	92.9%	91.9%	38.1%	61.9%	60.3%	60.3%
Patient & Client Care	1,967	2,583	1.31	14.0%	86.0%	1.11	1.35	93.3%	93.3%	94.1%	38.6%	61.4%	64.5%	64.5%
CHO 5	5,225	6,309	1.21	15.4%	84.6%	1.10	1.23	95.5%	95.5%	95.7%	50.6%	49.4%	73.0%	46.5%
Consultants	50	55	1.10	43.6%	56.4%	1.03	1.16	76.4%	76.4%	71.0%	83.6%	16.4%	95.8%	95.8%
Registrars	42	47	1.12	29.8%	70.2%	1.20	1.08	10.6%	10.6%	15.2%	89.4%	10.6%	92.9%	92.9%
SHO/ Interns	19	25	1.35	40.0%	60.0%	1.33	1.36	0.0%	0.0%	0.0%	100.0%	0.0%	100.0%	100.0%
Medical/ Dental, other	48	63	1.32	19.0%	81.0%	1.16	1.37	74.6%	74.6%	74.5%	39.7%	60.3%	58.3%	58.3%
Medical & Dental	158	190	1.20	31.6%	68.4%	1.14	1.23	49.5%	49.5%	50.0%	72.6%	27.4%	88.3%	88.3%
Nurse/ Midwife Manager	210	224	1.07	21.4%	78.6%	1.00	1.09	97.3%	97.3%	97.2%	90.2%	9.8%	100.0%	100.0%
Nurse/ Midwife Specialist & AN/MP	22	25	1.11	16.0%	84.0%	1.01	1.14	100.0%	100.0%	100.0%	76.0%	24.0%	100.0%	100.0%
Staff Nurse/ Staff Midwife	538	603	1.12	16.6%	83.4%	1.11	1.12	89.7%	89.7%	90.1%	77.3%	22.7%	83.0%	83.0%
Public Health Nurse	113	129	1.14	0.8%	99.2%	1.00	1.15	96.9%	96.9%	96.9%	72.9%	27.1%	100.0%	100.0%
Nursing/ Midwifery Student	13	13	1.00		100.0%		1.00	7.7%	7.7%	7.7%	100.0%	0.0%		
Nursing/ Midwifery other	3	3	1.00	33.3%	66.7%	1.00	1.00	100.0%	100.0%	100.0%	100.0%	0.0%	100.0%	100.0%
Nursing & Midwifery	899	997	1.11	15.4%	84.6%	1.07	1.12	91.6%	91.6%	91.6%	79.9%	20.1%	89.0%	89.0%

Therapy Professions	234	285	1.22	7.7%	92.3%	1.21	1.22	92.6%	92.6%	93.5%	63.5%	36.5%	72.7%	72.7%
Health Science/ Diagnostics	18	22	1.21	27.3%	72.7%	1.42	1.15	90.9%	90.9%	93.8%	81.8%	18.2%	83.3%	83.3%
Social Care	338	402	1.19	21.4%	78.6%	1.10	1.22	91.0%	91.0%	91.5%	63.9%	36.1%	76.7%	76.7%
Social Workers	58	65	1.12	15.4%	84.6%	1.17	1.11	93.8%	93.8%	92.7%	80.0%	20.0%	90.0%	90.0%
Psychologists	59	75	1.27	13.3%	86.7%	1.00	1.33	94.7%	94.7%	95.4%	64.0%	36.0%	90.0%	90.0%
Pharmacy	4	6	1.56		100.0%		1.56	83.3%	83.3%	83.3%	50.0%	50.0%		
H&SC, Other	9	13	1.41	15.4%	84.6%	1.03	1.52	92.3%	92.3%	90.9%	46.2%	53.8%	100.0%	100.0%
Health & Social Care Professionals	720	868	1.21	15.7%	84.3%	1.12	1.22	92.1%	92.1%	92.6%	65.1%	34.9%	78.7%	78.7%
Management (VIII & above)	69	73	1.06	34.2%	65.8%	1.11	1.04	94.5%	94.5%	91.7%	100.0%	0.0%	100.0%	100.0%
Administrative/ Supervisory (V to VII)	169	191	1.13	25.7%	74.3%	1.13	1.13	96.3%	96.3%	97.9%	86.9%	13.1%	95.9%	95.9%
Clerical (III & IV)	246	296	1.20	13.2%	86.8%	1.10	1.22	79.4%	79.4%	79.8%	69.3%	30.7%	84.6%	84.6%
Management & Administrative	484	560	1.16	20.2%	79.8%	1.12	1.17	87.1%	87.1%	86.8%	79.3%	20.7%	92.9%	92.9%
Support	205	250	1.22	39.6%	60.4%	1.13	1.28	79.2%	79.2%	78.8%	65.2%	34.8%	84.8%	84.8%
Maintenance/ Technical	24	27	1.11	100.0%		1.11		81.5%	81.5%	#DIV/0	100.0%	0.0%	100.0%	100.0%
General Support	230	277	1.21	45.5%	54.5%	1.13	1.28	79.4%	79.4%	78.8%	68.6%	31.4%	88.1%	88.1%
Health Care Assistants	554	626	1.13	27.2%	72.8%	1.04	1.17	78.1%	78.1%	75.2%	70.9%	29.1%	91.8%	91.8%
Care, other	315	415	1.32	22.2%	77.8%	1.36	1.31	93.3%	93.3%	93.8%	65.3%	34.7%	64.1%	64.1%
Patient & Client Care	869	1,041	1.20	25.2%	74.8%	1.13	1.22	84.1%	84.1%	82.9%	68.7%	31.3%	82.1%	82.1%
CHO 6	3,360	3,933	1.17	21.6%	78.4%	1.12	1.19	86.2%	86.2%	86.6%	72.4%	27.6%	85.5%	68.8%
Consultants	62	68	1.09	35.3%	64.7%	1.07	1.11	63.2%	63.2%	56.8%	80.9%	19.1%	91.7%	91.7%
Registrars	85	88	1.03	33.0%	67.0%	1.03	1.04	1.1%	1.1%	0.0%	97.7%	2.3%	100.0%	100.0%
SHO/ Interns	35	40	1.15	27.5%	72.5%	1.12	1.17	0.0%	0.0%	0.0%	90.0%	10.0%	100.0%	100.0%
Medical/ Dental, other	82	110	1.33	30.0%	70.0%	1.30	1.35	59.1%	59.1%	71.4%	37.3%	62.7%	30.3%	30.3%
Medical & Dental	264	306	1.16	31.7%	68.3%	1.13	1.17	35.6%	35.6%	38.3%	71.2%	28.8%	74.2%	74.2%
Nurse/ Midwife Manager	405	433	1.07	14.5%	85.5%	1.01	1.08	97.2%	97.2%	97.6%	85.7%	14.3%	96.8%	96.8%
Nurse/ Midwife Specialist & AN/MP	101	118	1.16	8.5%	91.5%	1.02	1.18	99.2%	99.2%	99.1%	72.0%	28.0%	100.0%	100.0%
Staff Nurse/ Staff Midwife	1,009	1,190	1.18	11.6%	88.4%	1.06	1.20	94.6%	94.6%	94.5%	70.3%	29.7%	92.0%	92.0%
Public Health Nurse	164	200	1.22	0.5%	99.5%	1.00	1.22	97.0%	97.0%	97.0%	64.5%	35.5%	100.0%	100.0%
Nursing/ Midwifery Student	71	74	1.04	12.2%	87.8%	1.22	1.02	8.1%	8.1%	9.2%	78.4%	21.6%	100.0%	100.0%
Nursing/ Midwifery other	10	10	1.05		100.0%		1.05	100.0%	100.0%	100.0%	70.0%	30.0%		
Nursing & Midwifery	1,759	2,025	1.15	10.9%	89.1%	1.05	1.16	92.5%	92.5%	92.6%	73.4%	26.6%	94.1%	94.1%
Therapy Professions	472	530	1.12	9.8%	90.2%	1.03	1.13	87.5%	87.5%	86.8%	81.7%	18.3%	96.2%	96.2%
Health Science/ Diagnostics	3	4	1.20	50.0%	50.0%	1.00	1.49	75.0%	75.0%	100.0%	75.0%	25.0%	100.0%	100.0%
Social Care	367	416	1.13	25.2%	74.8%	1.10	1.15	96.4%	96.4%	96.1%	74.5%	25.5%	82.9%	82.9%
Social Workers	111	122	1.10	16.4%	83.6%	1.01	1.11	95.9%	95.9%	97.1%	83.6%	16.4%	100.0%	100.0%
Psychologists	81	90	1.11	18.9%	81.1%	1.02	1.13	100.0%	100.0%	100.0%	85.6%	14.4%	94.1%	94.1%

Pharmacy	38	46	1.21	21.7%	78.3%	1.07	1.25	56.5%	56.5%	58.3%	45.7%	54.3%	40.0%	40.0%
H&SC, Other	42	50	1.19	26.0%	74.0%	1.09	1.23	92.0%	92.0%	91.9%	62.0%	38.0%	76.9%	76.9%
Health & Social Care Professionals	1,115	1,258	1.13	17.4%	82.6%	1.06	1.14	91.2%	91.2%	90.8%	77.7%	22.3%	86.3%	86.3%
Management (VIII & above)	77	78	1.01	25.6%	74.4%	1.00	1.02	94.9%	94.9%	94.8%	97.4%	2.6%	100.0%	100.0%
Administrative/ Supervisory (V to VII)	196	211	1.08	25.1%	74.9%	1.03	1.09	88.6%	88.6%	92.4%	86.3%	13.7%	98.1%	98.1%
Clerical (III & IV)	362	428	1.18	10.7%	89.3%	1.07	1.20	85.0%	85.0%	85.6%	68.9%	31.1%	87.0%	87.0%
Management & Administrative	635	717	1.13	16.6%	83.4%	1.04	1.15	87.2%	87.2%	88.3%	77.1%	22.9%	94.1%	94.1%
Support	406	503	1.24	28.8%	71.2%	1.09	1.31	88.7%	88.7%	89.9%	50.7%	49.3%	80.7%	80.7%
Maintenance/ Technical	42	47	1.12	87.2%	12.8%	1.08	1.40	89.4%	89.4%	100.0%	80.9%	19.1%	85.4%	85.4%
General Support	448	550	1.23	33.8%	66.2%	1.09	1.31	88.7%	88.7%	90.1%	53.3%	46.7%	81.7%	81.7%
Health Care Assistants	1,608	1,932	1.20	24.2%	75.8%	1.11	1.23	85.3%	85.3%	84.9%	64.5%	35.5%	78.6%	78.6%
Home Help	133	278	2.08	6.8%	93.2%	4.49	2.00	82.7%	82.7%	84.9%	15.8%	84.2%	10.5%	10.5%
Care, other	601	702	1.17	28.5%	71.5%	1.07	1.21	93.6%	93.6%	93.4%	72.1%	27.9%	88.5%	88.5%
Patient & Client Care	2,343	2,912	1.24	23.6%	76.4%	1.12	1.29	87.1%	87.1%	86.8%	61.7%	38.3%	79.6%	79.6%
CHO 7	6,563	7,768	1.18	19.7%	80.3%	1.09	1.21	87.3%	87.3%	87.9%	68.5%	31.5%	83.7%	64.8%
Consultants	42	44	1.04	47.7%	52.3%	1.05	1.04	86.4%	86.4%	95.7%	88.6%	11.4%	85.7%	85.7%
Registrars	102	105	1.03	41.0%	59.0%	1.00	1.05	0.0%	0.0%	0.0%	99.0%	1.0%	100.0%	100.0%
SHO/ Interns	37	38	1.04	42.1%	57.9%	1.08	1.01	0.0%	0.0%	0.0%	100.0%	0.0%	100.0%	100.0%
Medical/ Dental, other	73	94	1.28	47.9%	52.1%	1.38	1.21	76.6%	76.6%	79.6%	46.8%	53.2%	46.7%	46.7%
Medical & Dental	254	281	1.10	44.5%	55.5%	1.13	1.09	39.1%	39.1%	39.1%	80.1%	19.9%	78.4%	78.4%
Nurse/ Midwife Manager	377	412	1.09	16.0%	84.0%	1.01	1.11	95.4%	95.4%	96.0%	79.1%	20.9%	100.0%	100.0%
Nurse/ Midwife Specialist & AN/MP	105	119	1.14	16.0%	84.0%	1.01	1.17	100.0%	100.0%	100.0%	73.9%	26.1%	94.7%	94.7%
Staff Nurse/ Staff Midwife	1,002	1,186	1.18	12.1%	87.9%	1.06	1.20	95.8%	95.8%	95.9%	63.0%	37.0%	91.6%	91.6%
Public Health Nurse	209	245	1.17		100.0%		1.17	98.4%	98.4%	98.4%	73.9%	26.1%		
Nursing/ Midwifery Student	53	76	1.44	11.8%	88.2%	1.93	1.39	1.3%	1.3%	1.5%	100.0%	0.0%	100.0%	100.0%
Nursing/ Midwifery other	13	14	1.06	7.1%	92.9%	1.00	1.06	85.7%	85.7%	84.6%	85.7%	14.3%	100.0%	100.0%
Nursing & Midwifery	1,759	2,052	1.17	11.6%	88.4%	1.06	1.18	92.7%	92.7%	92.9%	69.7%	30.3%	94.5%	94.5%
Therapy Professions	389	460	1.18	8.0%	92.0%	1.08	1.19	97.8%	97.8%	97.6%	66.5%	33.5%	86.5%	86.5%
Health Science/ Diagnostics	8	9	1.08	66.7%	33.3%	1.02	1.24	100.0%	100.0%	100.0%	66.7%	33.3%	83.3%	83.3%
Social Care	375	459	1.22	13.9%	86.1%	1.15	1.24	98.9%	98.9%	99.0%	25.3%	74.7%	23.4%	23.4%
Social Workers	90	104	1.15	14.4%	85.6%	1.07	1.17	98.1%	98.1%	98.9%	78.8%	21.2%	86.7%	86.7%
Psychologists	115	125	1.08	26.4%	73.6%	1.03	1.10	80.0%	80.0%	76.1%	86.4%	13.6%	97.0%	97.0%
Pharmacy	8	9	1.16	33.3%	66.7%	1.01	1.25	88.9%	88.9%	100.0%	66.7%	33.3%	100.0%	100.0%
H&SC, Other	52	59	1.14	16.9%	83.1%	1.20	1.12	91.5%	91.5%	91.8%	67.8%	32.2%	70.0%	70.0%
Health & Social Care Professionals	1,038	1,225	1.18	13.7%	86.3%	1.10	1.20	96.1%	96.1%	96.1%	54.2%	45.8%	63.7%	63.7%
Management (VIII & above)	64	67	1.04	26.9%	73.1%	1.01	1.05	97.0%	97.0%	95.9%	88.1%	11.9%	88.9%	88.9%

Administrative/ Supervisory (V to VII)	200	215	1.07	15.8%	84.2%	1.02	1.08	96.7%	96.7%	96.7%	79.5%	20.5%	97.1%	97.1%
Clerical (III & IV)	528	632	1.20	5.4%	94.6%	1.09	1.20	88.4%	88.4%	89.3%	57.9%	42.1%	82.4%	82.4%
Management & Administrative	793	914	1.15	9.4%	90.6%	1.05	1.17	91.0%	91.0%	91.3%	65.2%	34.8%	89.5%	89.5%
Support	128	166	1.29	33.7%	66.3%	1.09	1.43	82.5%	82.5%	76.4%	52.4%	47.6%	78.6%	78.6%
Maintenance/ Technical	69	70	1.01	98.6%	1.4%	1.01	1.00	100.0%	100.0%	100.0%	98.6%	1.4%	98.6%	98.6%
General Support	197	236	1.19	53.0%	47.0%	1.04	1.43	87.7%	87.7%	76.6%	66.1%	33.9%	89.6%	89.6%
Health Care Assistants	1,576	1,879	1.19	21.7%	78.3%	1.12	1.22	92.2%	92.2%	91.8%	47.8%	52.2%	59.5%	59.5%
Home Help	392	681	1.74	3.7%	96.3%	2.49	1.72	47.3%	47.3%	48.2%	13.4%	86.6%	8.0%	8.0%
Care, other	239	287	1.20	30.0%	70.0%	1.23	1.19	94.4%	94.4%	98.0%	53.7%	46.3%	61.6%	61.6%
Patient & Client Care	2,208	2,847	1.29	18.2%	81.8%	1.16	1.32	81.7%	81.7%	80.1%	40.1%	59.9%	57.3%	57.3%
CHO 8	6,249	7,555	1.21	16.7%	83.3%	1.11	1.23	86.7%	86.7%	86.9%	55.8%	44.2%	72.7%	52.4%
Consultants	67	77	1.15	32.5%	67.5%	1.13	1.17	76.6%	76.6%	80.8%	76.6%	23.4%	84.0%	84.0%
Registrars	95	98	1.03	35.7%	64.3%	1.01	1.04	2.0%	2.0%	0.0%	98.0%	2.0%	97.1%	97.1%
SHO/ Interns	61	62	1.01	33.9%	66.1%	1.01	1.01	0.0%	0.0%	0.0%	100.0%	0.0%	100.0%	100.0%
Medical/ Dental, other	58	69	1.18	21.7%	78.3%	1.23	1.17	81.2%	81.2%	81.5%	60.9%	39.1%	73.3%	73.3%
Medical & Dental	282	306	1.09	31.4%	68.6%	1.07	1.09	38.2%	38.2%	41.0%	84.6%	15.4%	90.6%	90.6%
Nurse/ Midwife Manager	445	474	1.06	17.9%	82.1%	1.01	1.08	96.8%	96.8%	96.1%	85.7%	14.3%	97.6%	97.6%
Nurse/ Midwife Specialist & AN/MP	91	96	1.06	12.5%	87.5%	1.00	1.07	100.0%	100.0%	100.0%	85.4%	14.6%	100.0%	100.0%
Staff Nurse/ Staff Midwife	1,184	1,337	1.13	13.6%	86.4%	1.05	1.14	94.4%	94.4%	95.2%	75.8%	24.2%	91.2%	91.2%
Public Health Nurse	169	202	1.20		100.0%		1.20	94.1%	94.1%	94.1%	70.3%	29.7%		
Nursing/ Midwifery Student	103	111	1.08	9.9%	90.1%	1.04	1.08	20.7%	20.7%	22.0%	86.5%	13.5%	100.0%	100.0%
Nursing/ Midwifery other	22	23	1.05	4.3%	95.7%	1.00	1.06	95.7%	95.7%	95.5%	87.0%	13.0%	100.0%	100.0%
Nursing & Midwifery	2,014	2,243	1.11	13.0%	87.0%	1.04	1.13	91.5%	91.5%	91.7%	78.4%	21.6%	93.8%	93.8%
Therapy Professions	509	585	1.15	9.6%	90.4%	1.06	1.16	90.8%	90.8%	90.5%	70.9%	29.1%	89.3%	89.3%
Health Science/ Diagnostics	34	36	1.05	52.8%	47.2%	1.00	1.11	94.4%	94.4%	88.2%	86.1%	13.9%	100.0%	100.0%
Social Care	700	845	1.21	12.3%	87.7%	1.05	1.23	86.0%	86.0%	86.6%	44.7%	55.3%	72.1%	72.1%
Social Workers	128	144	1.13	13.9%	86.1%	1.00	1.15	94.4%	94.4%	95.2%	74.3%	25.7%	100.0%	100.0%
Psychologists	172	189	1.10	14.8%	85.2%	1.07	1.11	68.8%	68.8%	68.9%	78.8%	21.2%	82.1%	82.1%
Pharmacy	25	29	1.15	13.8%	86.2%	1.11	1.15	55.2%	55.2%	60.0%	72.4%	27.6%	75.0%	75.0%
H&SC, Other	71	82	1.15	22.0%	78.0%	1.06	1.18	90.2%	90.2%	92.2%	65.9%	34.1%	88.9%	88.9%
Health & Social Care Professionals	1,640	1,910	1.16	13.0%	87.0%	1.05	1.18	86.3%	86.3%	86.6%	60.5%	39.5%	82.7%	82.7%
Management (VIII & above)	80	82	1.02	26.8%	73.2%	1.00	1.03	96.3%	96.3%	96.7%	95.1%	4.9%	100.0%	100.0%
Administrative/ Supervisory (V to VII)	217	239	1.10	16.7%	83.3%	1.01	1.12	93.3%	93.3%	92.0%	75.7%	24.3%	100.0%	100.0%
Clerical (III & IV)	445	524	1.18	11.3%	88.7%	1.09	1.19	85.1%	85.1%	86.0%	61.6%	38.4%	81.4%	81.4%
Management & Administrative	743	845	1.14	14.3%	85.7%	1.04	1.15	88.5%	88.5%	88.5%	68.9%	31.1%	90.9%	90.9%
Support	444	593	1.34	29.7%	70.3%	1.14	1.44	82.1%	82.1%	81.5%	42.5%	57.5%	72.2%	72.2%

Maintenance/ Technical	35	37	1.05	94.6%	5.4%	1.05	1.06	97.3%	97.3%	100.0%	70.3%	29.7%	71.4%	71.4%
General Support	479	630	1.31	33.5%	66.5%	1.13	1.43	83.0%	83.0%	81.6%	44.1%	55.9%	72.0%	72.0%
Health Care Assistants	1,295	1,534	1.18	19.2%	80.8%	1.08	1.21	83.1%	83.1%	82.3%	56.8%	43.2%	78.2%	78.2%
Care, other	217	248	1.14	30.6%	69.4%	1.06	1.18	85.5%	85.5%	87.2%	62.5%	37.5%	85.5%	85.5%
Patient & Client Care	1,512	1,782	1.18	20.8%	79.2%	1.07	1.21	83.4%	83.4%	82.9%	57.6%	42.4%	79.7%	79.7%
CHO 9	6,670	7,716	1.16	17.3%	82.7%	1.07	1.18	85.2%	85.2%	85.7%	65.6%	34.4%	83.9%	61.7%
Consultants	18	19	1.05	57.9%	42.1%	1.02	1.09	52.6%	52.6%	50.0%	84.2%	15.8%	90.9%	90.9%
Registrars	26	26	1.00	34.6%	65.4%	1.01	1.00	0.0%	0.0%	0.0%	100.0%	0.0%	100.0%	100.0%
SHO/ Interns	1	1	1.00	100.0%		1.00		0.0%	0.0%	#DIV/0	100.0%	0.0%	100.0%	100.0%
Medical/ Dental, other	0	1	2.78	100.0%		2.78		100.0%	100.0%	#DIV/0	0.0%	100.0%	0.0%	0.0%
Medical & Dental	45	47	1.04	46.8%	53.2%	1.04	1.03	23.4%	23.4%	16.0%	91.5%	8.5%	90.9%	90.9%
Nurse/ Midwife Manager	79	84	1.06	60.7%	39.3%	1.06	1.06	95.2%	95.2%	97.0%	94.0%	6.0%	94.1%	94.1%
Nurse/ Midwife Specialist & AN/MP	9	10	1.07	40.0%	60.0%	1.01	1.11	80.0%	80.0%	66.7%	90.0%	10.0%	100.0%	100.0%
Staff Nurse/ Staff Midwife	176	185	1.05	34.1%	65.9%	1.03	1.06	79.5%	79.5%	76.2%	94.6%	5.4%	95.2%	95.2%
Nursing/ Midwifery other	1	1	1.00	100.0%		1.00		100.0%	100.0%	#DIV/0	100.0%	0.0%	100.0%	100.0%
Nursing & Midwifery	266	280	1.05	42.5%	57.5%	1.04	1.06	84.3%	84.3%	80.1%	94.3%	5.7%	95.0%	95.0%
Therapy Professions	13	13	1.03	30.8%	69.2%	1.00	1.05	100.0%	100.0%	100.0%	100.0%	0.0%	100.0%	100.0%
Health Science/ Diagnostics	8	8	1.05	12.5%	87.5%	1.00	1.06	87.5%	87.5%	100.0%	87.5%	12.5%	100.0%	100.0%
Social Care	4	4	1.04	25.0%	75.0%	1.00	1.05	100.0%	100.0%	100.0%	100.0%	0.0%	100.0%	100.0%
Social Workers	25	29	1.15	31.0%	69.0%	1.17	1.14	86.2%	86.2%	90.0%	72.4%	27.6%	66.7%	66.7%
Psychologists	8	8	1.03	37.5%	62.5%	1.00	1.05	100.0%	100.0%	100.0%	100.0%	0.0%	100.0%	100.0%
Pharmacy	2	4	1.72	25.0%	75.0%	2.22	1.60	50.0%	50.0%	66.7%	75.0%	25.0%	100.0%	100.0%
H&SC, Other	4	4	1.05	25.0%	75.0%	1.00	1.07	75.0%	75.0%	66.7%	75.0%	25.0%	100.0%	100.0%
Health & Social Care Professionals	63	70	1.11	28.6%	71.4%	1.10	1.11	88.6%	88.6%	92.0%	84.3%	15.7%	85.0%	85.0%
Management (VIII & above)	62	64	1.03	45.3%	54.7%	1.04	1.02	95.3%	95.3%	100.0%	95.3%	4.7%	93.1%	93.1%
Administrative/ Supervisory (V to VII)	76	79	1.04	24.1%	75.9%	1.01	1.06	92.4%	92.4%	91.7%	91.1%	8.9%	94.7%	94.7%
Clerical (III & IV)	63	70	1.12	25.7%	74.3%	1.11	1.12	70.0%	70.0%	69.2%	82.9%	17.1%	88.9%	88.9%
Management & Administrative	201	213	1.06	31.0%	69.0%	1.05	1.07	85.9%	85.9%	85.7%	89.7%	10.3%	92.4%	92.4%
Support	17	18	1.08	38.9%	61.1%	1.08	1.08	83.3%	83.3%	90.9%	66.7%	33.3%	100.0%	100.0%
Maintenance/ Technical	5	5	1.00	100.0%		1.00		100.0%	100.0%	#DIV/0	100.0%	0.0%	100.0%	100.0%
General Support	22	23	1.06	52.2%	47.8%	1.04	1.08	87.0%	87.0%	90.9%	73.9%	26.1%	100.0%	100.0%
Health Care Assistants	52	62	1.19	72.6%	27.4%	1.28	1.00	71.0%	71.0%	88.2%	79.0%	21.0%	71.1%	71.1%
Care, other	16	19	1.19	68.4%	31.6%	1.05	1.68	89.5%	89.5%	66.7%	68.4%	31.6%	84.6%	84.6%
Patient & Client Care	68	81	1.19	71.6%	28.4%	1.22	1.12	75.3%	75.3%	82.6%	76.5%	23.5%	74.1%	74.1%
other Community Services	665	714	1.07	41.6%	58.4%	1.08	1.07	80.3%	80.3%	80.1%	89.1%	10.9%	89.6%	88.7%

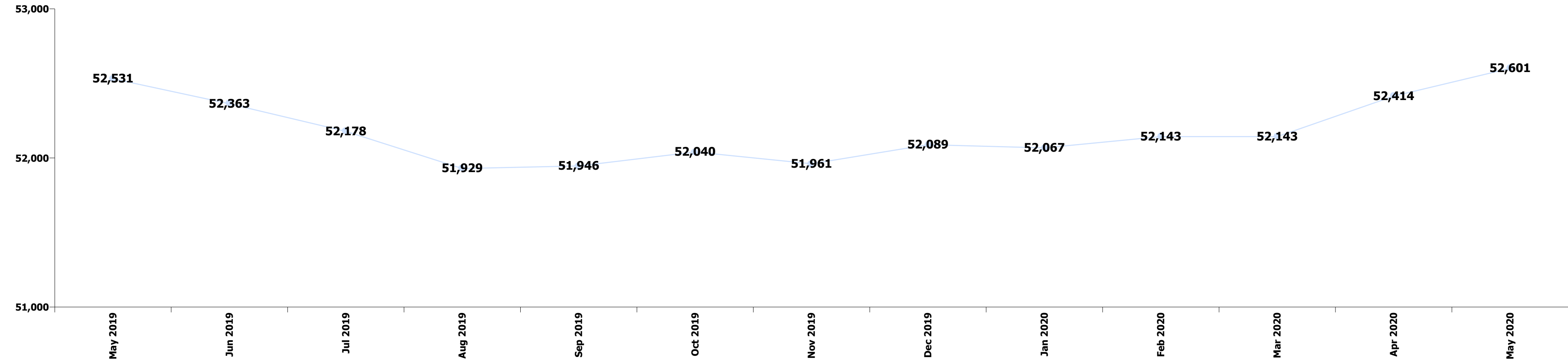
Summary Staff Movement: May 2020

Month-on-month Summary

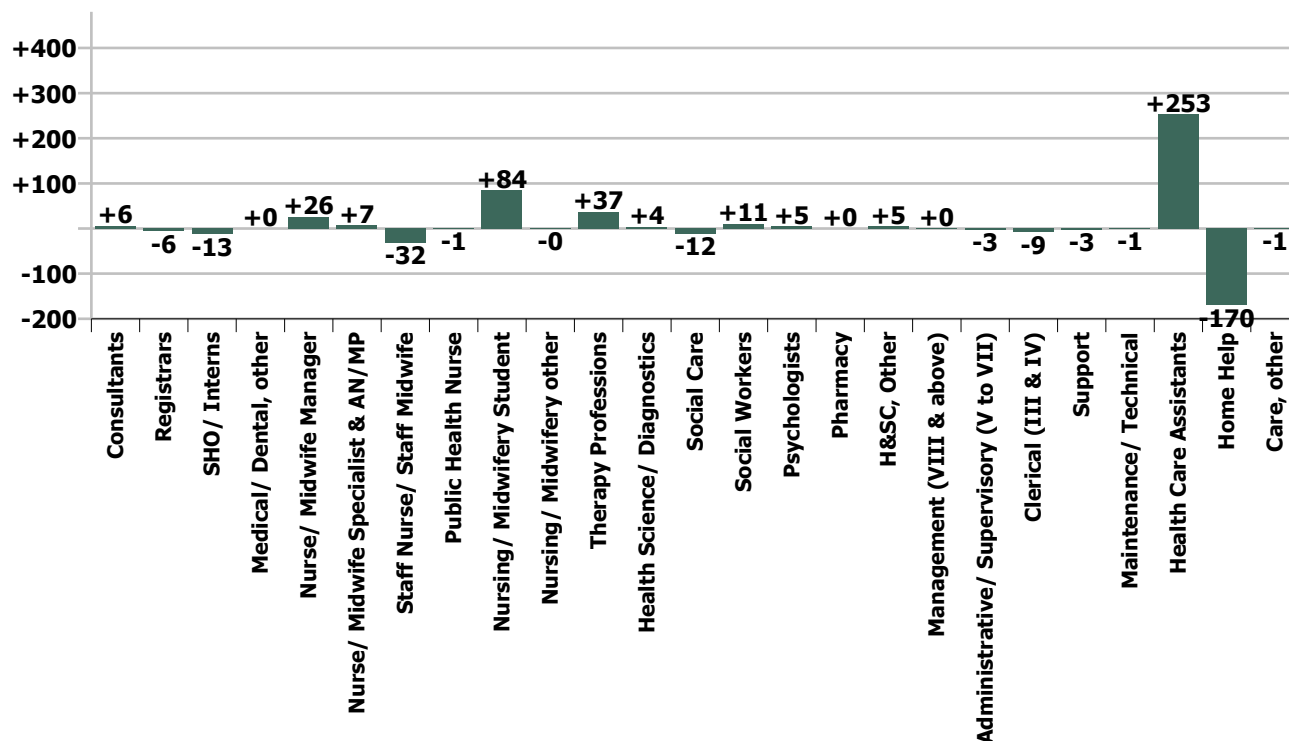
WTE change since Apr 20	% change since Apr 20	overall	Consultants	Registrars	SHO/ Interns	Medical/ Dental, other	Medical & Dental	Nurse/ Midwife Manager	Nurse/ Midwife Specialist & AN/MP	Staff Nurse/ Staff Midwife	Public Health Nurse	Nursing/ Midwifery Student	Nursing/ Midwifery other	Nursing & Midwifery	Therapy Professions	Health Science/ Diagnostics	Social Care	Social Workers	Psychologist s	Pharmacy	H&SC, Other	Health & Social Care Professionals	Management (VIII & above)	Administrati ve/ Supervisory (V to VII)	Clerical (III & IV)	Manageme nt & Administra tive	General Support	Health Care Assistants	Home Help	Care, other	Patient & Client Care
Overall	+0.4%	+187	+6	-6	-13	+0	-13	+26	+7	-32	-1	+84	-0	+85	+37	+4	-12	+11	+5	+0	+5	+49	+0	-3	-9	-11	-4	+253	-170	-1	+81
CHO 1	+0.4%	+20	+1	-1	-2	+0	-2	+2	+0	-3	+0	+4	+0	+3	+1	+1	-0	+1	+1	+0	-1	+2	+0	+4	-4	+0	+3	+25	-11	-1	+13
CHO 2	+1.0%	+55	+2	-2	+1	+0	+0	+4	-0	-9	+2	+7	+0	+5	-0	+1	+1	-1	+1	+0	-1	+1	+0	-2	+1	-1	-0	+43	+5	+2	+50
CHO 3	+0.6%	+25	+1	-2	-0	-1	-2	+5	-2	-9	-3	+5		-4	+2	+0	+14	-0	+1		+2	+20	-0	-2	-4	-6	-3	+47	-23	-4	+20
CHO 4	+1.0%	+85	+1	+3	-3	-0	+1	+10	+5	-5	+2	+11		+23	+7		-5	+6	+3	+0	+5	+17	+0	+6	+8	+15	+11	+63	-52	+6	+17
CHO 5	-1.0%	-55	+0	-1	-2	+0	-2	-8	+0	-10	-1	+17	+0	-1	+4	+2	-2	+0	-1	-0	+0	+2	-0	+2	-2	-1	-3	+30	-80	+1	-49
CHO 6	+0.5%	+16	-1	-0	-0	-1	-3	+2	+0	-3	+0		-1	-2	-1	+1	-10	+3	-1	-0	-1	-9	-0	-1	+2	+0	-3	+33		-1	+33
CHO 7	-0.2%	-16	+2	-4	-3	+0	-5	+0	+1	+11	+1	+15		+29	+16	-1	-3	+0	+1	+0	-1	+13	+0	-6	-10	-15	-10	-21	-3	-3	-27
CHO 8	+0.5%	+33	-0	+4	-4	+0	-1	+0	+2	+3	-1	+11	+0	+15	+3	+0	+0	+2	-2	+0	-0	+3	+1	-1	-2	-1	+2	+22	-6	+0	+16
CHO 9	+0.3%	+19	+1	-2	-0	+2	+1	+4	+1	-2	-1	+15	+0	+17	+4	+0	-8	+1	+2	+0	+2	+1	-0	-4	+4	-1	-3	+7		-3	+4
Community Services	+0.4%	+181	+5	-6	-13	+0	-14	+20	+7	-26	-1	+84	-0	+84	+37	+4	-13	+12	+4	+1	+5	+50	+1	-3	-7	-10	-7	+250	-170	-2	+78
other Community Services	+0.8%	+5	+0	-0		+0	+0	+6	+0	-6			+0	+0		-0	+0	-1	+1	-0		-1	-0	+0	-1	-1	+3	+3		+1	+4
			+1.3%	-0.9%	-4.3%	+0.0%	-0.6%	+0.8%	+1.0%	-0.4%	-0.0%	+20.5%	-0.6%	+0.6%	+1.1%	+2.7%	-0.5%	+1.3%	+0.5%	+0.2%	+1.3%	+0.6%	+0.1%	-0.2%	-0.2%	-0.2%	-0.1%	+2.1%	-4.9%	-0.0%	+0.4%

Year-on-year Summary

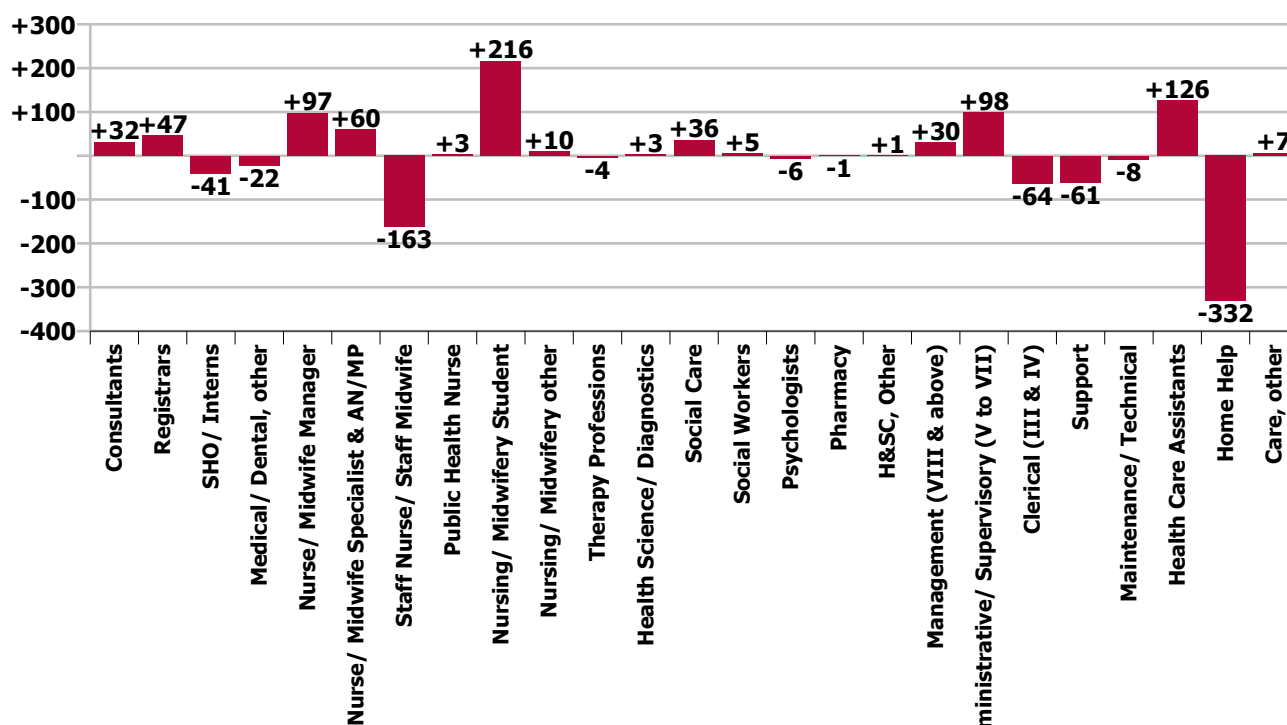
WTE change since May 19	% change since May 19	overall	Consultants	Registrars	SHO/ Interns	Medical/ Dental, other	Medical & Dental	Nurse/ Midwife Manager	Nurse/ Midwife Specialist & AN/MP	Staff Nurse/ Staff Midwife	Public Health Nurse	Nursing/ Midwifery Student	Nursing/ Midwifery other	Nursing & Midwifery	Therapy Professions	Health Science/ Diagnostics	Social Care	Social Workers	Psychologist s	Pharmacy	H&SC, Other	Health & Social Care Professionals	Management (VII & above)	Administrati ve/ Supervisory (V to VII)	Clerical (III & IV)	Manageme nt & Administra tive	General Support	Health Care Assistants	Home Help	Care, other	Patient & Client Care
Community Services	+0.1%	+70	+32	+47	-41	-22	+15	+97	+60	-163	+3	+216	+10	+224	-4	+3	+36	+5	-6	-1	+1	+34	+30	+98	-64	+65	-70	+126	-332	+7	-199
CHO 1	+0.3%	+18	+2	-1	-3	+2	-0	+3	+11	-23	-1	+36	+1	+27	-5	-0	+0	+10	-1	+0	-4	+1	+2	+34	-4	+33	+5	-6	-38	-3	-47
CHO 2	-0.4%	-23	+7	+19	-3	+0	+23	-4	+7	-23	+12	+8	+1	+1	-2	-0	+19	-0	-5	-0	-6	+6	+0	+8	-19	-11	-16	+3	-25	-3	-25
CHO 3	+0.6%	+28	-0	+3	-4	-2	-4	+11	-0	-18	+4	+18	-0	+14	-5	+1	+10	-4	+1		+1	+5	+4	-8	-14	-18	-10	+38	+0	+3	+41
CHO 4	+1.1%	+88	+8	+17	-9	-1	+16	+79	+15	-96	-1	+25		+21	-8	+3	-1	+8	+8	+3	+8	+22	+11	+32	-17	+26	+13	+39	-70	+21	-9
CHO 5	-1.4%	-75	-1	+2	-9	-1	-8	-9	+0	+33	+3	+18	+1	+47	-9	+6	-16	+1	-6	+1	-0	-25	-1	-0	-6	-17	+77	-159	+16	-66	
CHO 6	-0.8%	-28	+4	-4	-5	-5	-10	-4	+4	-5	-4	+2	+1	-6	-12	-3	-21	-2	+3	-0	-1	-36	-1	-1	+15	+13	+10	+13		-12	+1
CHO 7	-0.7%	-46	+5	+2	+1	-8	-0	+1	+10	-1	-25	+44		+30	+6	+0	+8	+3	-7	+0	-2	+8	+7	+6	-14	-1	-27	-63	+6	+2	-55
CHO 8	+0.9%	+58	+1	+1	+3	+4	+9	-1	+4	-1	+12	+14	+5	+31	+13	+1	+2	+1	-1	+1	-0	+18	+0	+28	+30	+58	-7	-2	-46	-2	-50
CHO 9	-0.1%	-5	+2	+6	-10	-11	-14	+6	+7	-40	+3	+51	+2	+29	+17	-5	+35	-6	-0	-5	+2	+37	+5	-0	-27	-23	-22	+3		-15	-12
Community Services	+0.0%	+15	+28	+45	-39	-22	+11	+82	+58	-175	+3	+216	+10	+194	-5	+3	+36	+9	-8	-1	-1	+34	+28	+100	-57	+71	-72	+102	-332	+7	-223
other Community Services	+9.0%	+55	+4	+2	-2		+4	+16	+2	+12			+0	+30	+1	-0	+0	-4	+2	+1	+2	+0	+2	-1	-7	-6	+3	+24		-0	+24
			+7.8%	+7.6%	-12.2%	-3.5%	+0.8%	+3.1%	+8.9%	-1.8%	+0.2%	+76.8%	+18.4%	+1.5%	-0.1%	+2.0%	+1.4%	+0.6%	-0.7%	-0.6%	+0.2%	+0.4%	+5.1%	+6.6%	-1.7%	+1.1%	-2.3%	+1.0%	-9.2%	+0.3%	-1.1%



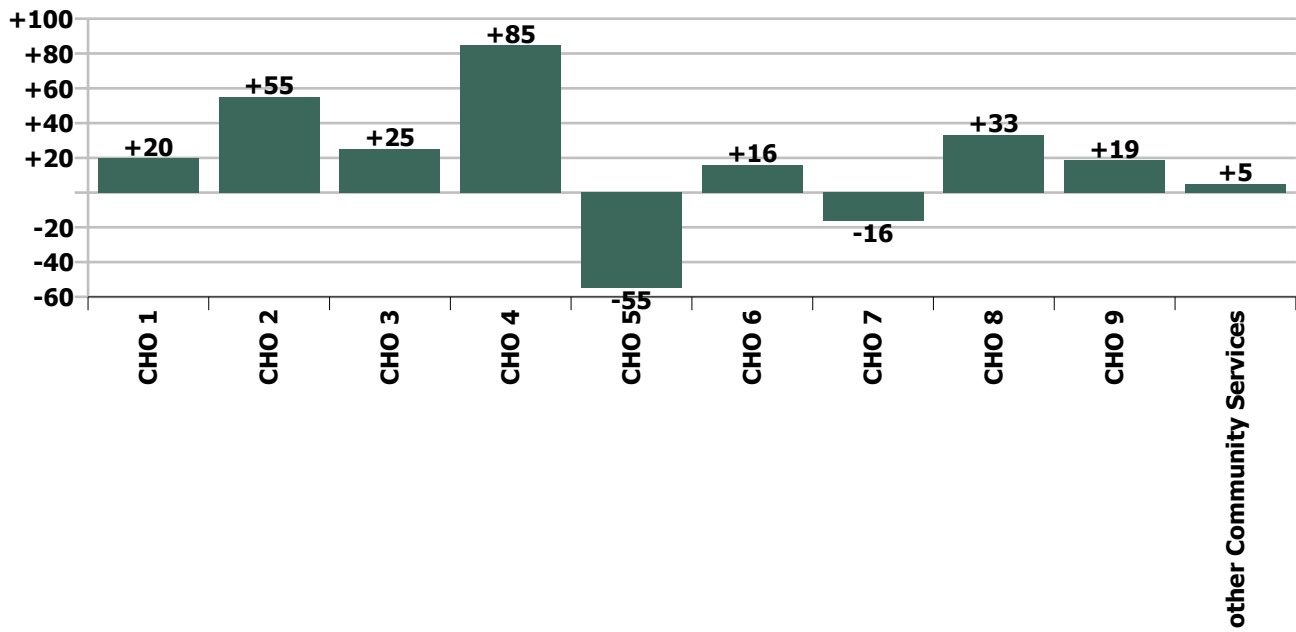
Staff Group change since: Apr 2020



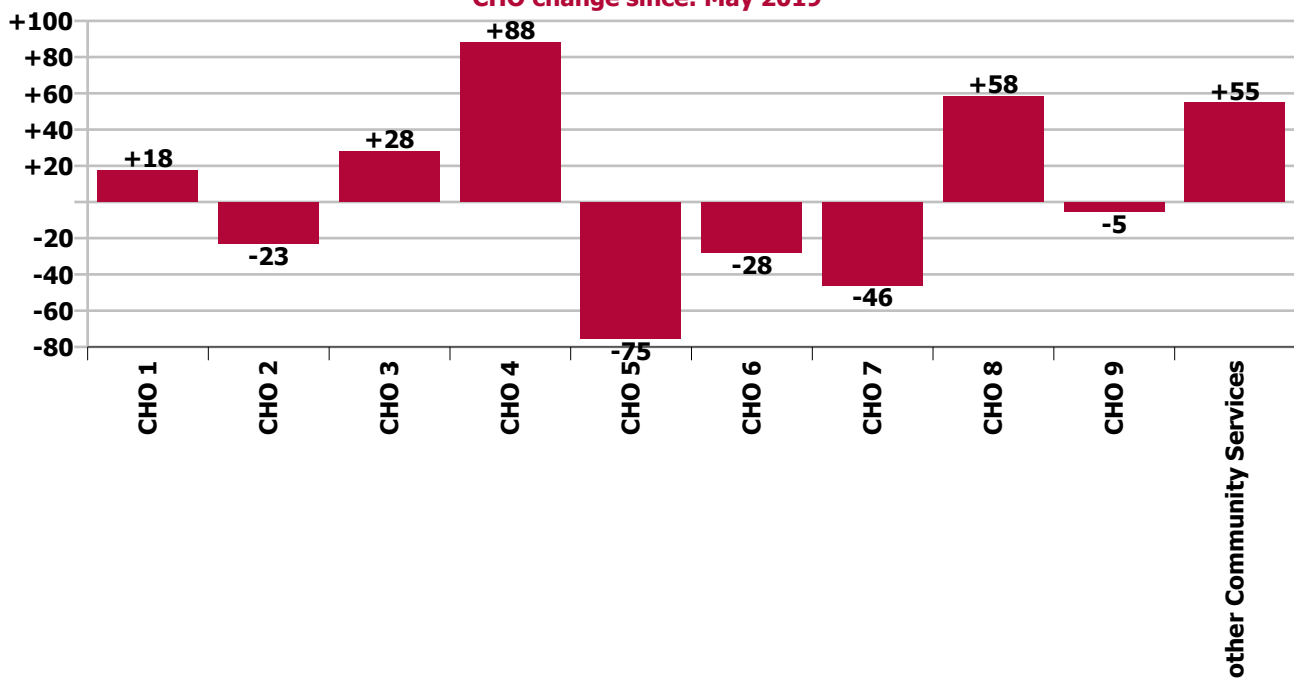
Staff Group change since: May 2019



CHO change since: Apr 2020



CHO change since: May 2019



Longitudinal Employment Levels by Grade Group - Oct 2013 to May 2020

May 2020 (Oct 2013 figure: 46,288)	WTE May 2020	WTE change since Oct 13	WTE change since Dec 14	WTE change since Dec 16	WTE change since Dec 17	WTE change since Dec 18	WTE change since Dec 19	% change since Oct 13	% change since Dec 14	% change since Dec 16	% change since Dec 17	% change since Dec 18	% change since Dec 19
Community Services	52,601	+6,313	+5,563	+3,298	+1,792	+648	+512	+13.6%	+11.8%	+6.7%	+3.5%	+1.2%	+1.0%
Consultant Anaesthesia		-0						-100.0%	-100.0%	-100.0%	-100.0%	-100.0%	-100.0%
Consultant Dentistry	10	+0	-0	-0	-1	-1	-1	+0.9%	-3.8%	-3.8%	-12.1%	-12.1%	-8.4%
Consultant Medicine	24	+4	-1	-6	-6	+2	+2	+17.7%	-2.8%	-20.6%	-20.6%	+10.2%	+6.9%
Consultant Paediatrics	5	+1	+1	+0	-0			+17.9%	+17.9%	+8.1%	-1.9%		
Consultant Psychiatry	394	+70	+60	+50	+48	+40	+13	+21.4%	+17.9%	+14.5%	+14.0%	+11.2%	+3.4%
Consultant Radiology	1	-0	-0					-14.5%	-5.7%				
Consultant Surgery	4	-3	-2	-2	-1	-0	+0	-44.2%	-36.9%	-29.8%	-15.5%	-10.6%	+2.0%
Consultant, Other		-1	-1	-1				-100.0%	-100.0%	-100.0%	-100.0%	-100.0%	-100.0%
Consultants	438	+69	+56	+41	+40	+40	+14	+18.8%	+14.6%	+10.3%	+10.1%	+10.1%	+3.2%
Registrar	549	+87	+91	+75	+48	+22	-16	+18.8%	+19.8%	+15.9%	+9.6%	+4.1%	-2.8%
Senior Registrar	94	+22	+27	+20	+21	+0	-9	+31.2%	+41.0%	+27.8%	+28.3%	+0.4%	-8.4%
Specialist Registrar	19	+4	+7	+6	+3	+7	+1	+29.5%	+60.7%	+49.7%	+15.6%	+51.9%	+4.3%
Registrars	662	+114	+125	+102	+71	+29	-24	+20.7%	+23.3%	+18.2%	+12.1%	+4.5%	-3.5%
Interns	1	-8	-9	-11	-9	-7	-7	-88.9%	-90.0%	-91.7%	-90.0%	-87.5%	-87.5%
Senior House Officer	294	+21	+19	-9	-25	-31	-18	+7.9%	+7.0%	-2.9%	-7.7%	-9.5%	-5.8%
SHO/ Interns	295	+13	+10	-20	-34	-38	-25	+4.8%	+3.6%	-6.3%	-10.2%	-11.4%	-7.8%
Dentists	303	-7	+6	-1	+1	-2	+2	-2.1%	+1.9%	-0.3%	+0.3%	-0.8%	+0.6%
Other Medical	325	-9	-9	-2	-21	-19	-9	-2.7%	-2.6%	-0.7%	-6.0%	-5.6%	-2.8%
Medical/ Dental, other	628	-16	-3	-3	-20	-21	-8	-2.4%	-0.5%	-0.5%	-3.1%	-3.3%	-1.2%
Medical & Dental	2,023	+180	+189	+120	+58	+9	-43	+9.8%	+10.3%	+6.3%	+2.9%	+0.5%	-2.1%
Clinical Nurse/ Midwife Manager	2,560	+353	+229	+58	+81	+50	+74	+16.0%	+9.8%	+2.3%	+3.3%	+2.0%	+3.0%
Director Nursing/Midwifery, Assistant	476	+131	+83	+38	+46	+37	+13	+37.9%	+21.1%	+8.7%	+10.6%	+8.3%	+2.9%
Director of Nursing/Midwifery	216	+53	+38	+23	+26	+36	+9	+32.6%	+21.1%	+11.8%	+13.7%	+20.0%	+4.5%
Nurse/ Midwife Manager	3,251	+537	+350	+119	+153	+123	+97	+19.8%	+12.0%	+3.8%	+4.9%	+3.9%	+3.1%
Advanced Nurse/ Midwife Practitioner	53	+38	+42	+39	+35	+21	+7	+257.3%	+360.3%	+272.5%	+198.8%	+67.9%	+15.6%
Clinical Nurse/ Midwife Specialist	685	+281	+236	+148	+83	+64	+41	+69.3%	+52.6%	+27.5%	+13.9%	+10.3%	+6.4%
Nurse/ Midwife Specialist & AN/MP	739	+319	+278	+187	+119	+85	+48	+76.0%	+60.4%	+33.9%	+19.2%	+13.1%	+7.0%
Graduate Nursing/ Midwifery		-58	-179					-100.0%	-100.0%	-100.0%	-100.0%	-100.0%	-100.0%
Staff Midwives	7	+5	+5	+4	-0	+0	-1	+272.2%	+278.5%	+110.7%	-5.1%	+3.2%	-17.5%
Staff Nurse [Intellectual Disability]	1,589	-170	-182	-140	-118	-102	-13	-9.7%	-10.3%	-8.1%	-6.9%	-6.0%	-0.8%
Staff Nurse [Psychiatric]	2,953	-340	-172	-200	-165	-87	-38	-10.3%	-5.5%	-6.3%	-5.3%	-2.9%	-1.3%
Staff Nurses [General/ Children's]	4,477	-131	+176	+31	+36	+21	+63	-2.9%	+4.1%	+0.7%	+0.8%	+0.5%	+1.4%
Staff Nurse/ Staff Midwife	9,025	-695	-353	-306	-247	-168	+11	-7.1%	-3.8%	-3.3%	-2.7%	-1.8%	+0.1%
Public Health Nurse	1,519	+36	+62	+25	+10	-17	-13	+2.5%	+4.3%	+1.6%	+0.6%	-1.1%	-0.9%
Pre-registration Nurse/ Midwife Intern	34	-46	-0	+14	+6	-29	-22	-57.2%	-0.6%	+65.4%	+19.4%	-45.5%	-38.7%
Pre-registration Nurse Intern (COVID-19)	337	+337	+337	+337	+337	+337	+337	-100.0%	-100.0%	-100.0%	-100.0%	-100.0%	-100.0%
Post-registration Nurse/ Midwife Student	100	+79	-16	-12	-30	+7	+2	+392.3%	-14.1%	-11.1%	-22.9%	+7.1%	+1.9%
Nursing/ Midwifery awaiting registration	26	+26	+19	+24	+4	+6	-47	-100.0%	+279.4%	+1216.5%	+16.2%	+32.7%	-64.3%
Nursing/ Midwifery Student	497	+397	+340	+363	+317	+322	+270	+397.1%	+216.0%	+269.2%	+175.5%	+183.2%	+118.8%
Nursing Education/Clinical	66	+17	+23	+15	+9	+9	+8	+35.2%	+53.4%	+29.9%	+16.7%	+16.6%	+13.8%
Other Nursing/ Midwifery	1	-9	-7	-6	-4	-1		-89.8%	-87.4%	-85.7%	-81.7%	-50.0%	
Nursing/ Midwifery other	67	+8	+16	+9	+5	+8	+8	+14.2%	+31.3%	+15.8%	+8.0%	+14.3%	+13.6%

May 2020 (Oct 2013 figure: 46,288)	WTE May 2020	WTE change since Oct 13	WTE change since Dec 14	WTE change since Dec 16	WTE change since Dec 17	WTE change since Dec 18	WTE change since Dec 19	% change since Oct 13	% change since Dec 14	% change since Dec 16	% change since Dec 17	% change since Dec 18	% change since Dec 19
Community Services	52,601	+6,313	+5,563	+3,298	+1,792	+648	+512	+13.6%	+11.8%	+6.7%	+3.5%	+1.2%	+1.0%
Nursing & Midwifery	15,098	+603	+692	+396	+356	+353	+421	+4.2%	+4.8%	+2.7%	+2.4%	+2.4%	+2.9%
Dietitians	186	+100	+85	+54	+35	+18	+23	+114.9%	+84.1%	+40.4%	+23.4%	+10.9%	+14.1%
Occupational Therapists	1,265	+291	+228	+123	+80	+41	+34	+29.9%	+21.9%	+10.7%	+6.7%	+3.3%	+2.8%
Orthoptists	12	+6	+6	+6	+5	+2	-2	+106.9%	+116.1%	+99.5%	+83.2%	+18.0%	-11.9%
Physiotherapists	879	+136	+91	+32	+9	+5	+21	+18.3%	+11.5%	+3.8%	+1.0%	+0.6%	+2.4%
Podiatrists & Chiropodists	43	+9	+9	+7	+3	+3	+6	+27.6%	+28.2%	+20.1%	+7.8%	+8.6%	+15.3%
Speech & Language Therapists	900	+234	+183	+47	-14	-12	-4	+35.1%	+25.5%	+5.5%	-1.5%	-1.3%	-0.4%
Therapy Professions	3,285	+776	+602	+268	+118	+57	+78	+30.9%	+22.4%	+8.9%	+3.7%	+1.8%	+2.4%
Audiology	49	+21	+8	+7	+1	+1	+5	+76.1%	+20.2%	+17.6%	+3.0%	+2.1%	+11.9%
Biochemists	8	+1	+0	-0	-0	-0	-0	+21.4%	+0.7%	-0.1%	-0.1%	-4.9%	-0.3%
Clinical Engineering	20	+1	+2	-1	-0	+1	-1	+5.4%	+12.9%	-6.4%	-0.4%	+4.9%	-5.1%
Clinical Measurement	1	+0	+0	+0	+0	+0	+0	+43.0%	+43.0%	+43.0%	+43.0%	+32.4%	+18.2%
Medical Laboratory	47	-38	-34	-2	-2	-4	+1	-44.5%	-41.7%	-4.7%	-3.9%	-7.4%	+2.4%
Phlebotomists	1	-0	-0	-0	-0	+0	+0	-21.2%	-6.3%	-18.8%	-17.8%	+9.8%	+9.8%
Physicists	2	+0	-2	-1	+0			+11.1%	-48.7%	-33.3%	+12.4%		
Radiographers	10	-5	-4	-4	-4	-2	-1	-35.3%	-26.3%	-26.6%	-30.3%	-18.2%	-12.8%
Health Science/ Diagnostics	139	-19	-28	-1	-4	-4	+4	-12.3%	-17.0%	-0.6%	-3.1%	-2.8%	+3.1%
Social Care	2,697	+756	+793	+380	+233	+93	-10	+39.0%	+41.7%	+16.4%	+9.4%	+3.6%	-0.4%
Social Workers	833	+182	+152	+30	+18	+8	+27	+27.9%	+22.3%	+3.8%	+2.2%	+1.0%	+3.4%
Psychologists	910	+274	+162	+73	+32	+17	+8	+43.1%	+21.7%	+8.7%	+3.7%	+1.9%	+0.9%
Pharmacy	99	+3	-1	-3	-4	-2	+1	+2.7%	-1.1%	-3.0%	-4.3%	-1.8%	+1.0%
Counsellor Therapists	234	+33	+47	+18	+8	+16	+6	+16.4%	+25.0%	+8.1%	+3.5%	+7.2%	+2.5%
Dental Hygienists	61	+6	+6	+6	+7	+4	+4	+11.8%	+10.6%	+11.0%	+12.2%	+6.3%	+6.3%
Environmental Health Officers	0						-1	-100.0%	-100.0%	-100.0%	-100.0%	#DIV/0	-100.0%
Other Health & Social Care	63	-27	-32	-12	-14	-8	-7	-30.1%	-33.4%	-16.3%	-17.8%	-10.8%	-10.0%
Play Therapists/ Specialists	17	-5	-2	-3	-2	-3	-4	-24.9%	-8.9%	-15.7%	-9.0%	-15.3%	-18.1%
HSCP Trainees/ Students		-10	-2	-2	-1			-100.0%	-100.0%	-100.0%	-100.0%	-100.0%	-100.0%
H&SC, Other	375	-3	+18	+6	-1	+9	-2	-0.8%	+4.9%	+1.6%	-0.3%	+2.4%	-0.5%
Health & Social Care Professionals	8,337	+1,968	+1,698	+753	+391	+177	+107	+30.9%	+25.6%	+9.9%	+4.9%	+2.2%	+1.3%
Executive Management	133	+78	+70	+25	+8	+7	+9	+140.1%	+109.9%	+22.9%	+6.3%	+5.7%	+6.9%
Senior Management (VIII & GM)	496	+183	+132	+99	+66	+36	+3	+58.3%	+36.2%	+25.1%	+15.2%	+7.7%	+0.6%
Management (VIII & above)	629	+260	+201	+124	+73	+43	+12	+70.6%	+47.1%	+24.6%	+13.2%	+7.3%	+1.9%
Middle Management (V-VII)	1,572	+525	+543	+420	+311	+157	+92	+50.1%	+52.8%	+36.5%	+24.7%	+11.1%	+6.2%
Other Administrative	23	+3	+0	+7	+3	+2	+4	+13.8%	+2.0%	+38.5%	+16.8%	+9.4%	+19.8%
Administrative/ Supervisory (V to VII)	1,595	+528	+543	+426	+314	+159	+95	+49.4%	+51.7%	+36.5%	+24.5%	+11.1%	+6.4%
Clerical (III & IV)	3,710	+235	+331	+186	+88	-33	+15	+6.8%	+9.8%	+5.3%	+2.4%	-0.9%	+0.4%
Management & Administrative	5,934	+1,023	+1,076	+736	+476	+169	+122	+20.8%	+22.2%	+14.2%	+8.7%	+2.9%	+2.1%
Catering	410	-12	-15	-3	+2	-5	+4	-2.8%	-3.4%	-0.8%	+0.5%	-1.1%	+0.9%
Household Services	1,496	-502	-370	-214	-132	-66	+25	-25.1%	-19.8%	-12.5%	-8.1%	-4.2%	+1.7%
Other Labs & Associated	6	+1	+0	+3	+0	+0	+2	+23.3%	+3.3%	+95.1%	+2.2%	+3.6%	+45.7%
Other Support	365	-59	-44	-49	-50	-48	-13	-13.9%	-10.7%	-11.8%	-12.1%	-11.7%	-3.3%
Portering	228	-69	-38	-29	-14	-5	-3	-23.3%	-14.4%	-11.2%	-5.6%	-2.1%	-1.5%
Support	2,505	-640	-467	-292	-194	-124	+15	-20.4%	-15.7%	-10.4%	-7.2%	-4.7%	+0.6%
Maintenance	406	-62	-46	-23	-22	-8	+4	-13.3%	-10.2%	-5.4%	-5.1%	-2.0%	+0.9%

May 2020 (Oct 2013 figure: 46,288)	WTE May 2020	WTE change since Oct 13	WTE change since Dec 14	WTE change since Dec 16	WTE change since Dec 17	WTE change since Dec 18	WTE change since Dec 19	% change since Oct 13	% change since Dec 14	% change since Dec 16	% change since Dec 17	% change since Dec 18	% change since Dec 19
Community Services	52,601	+6,313	+5,563	+3,298	+1,792	+648	+512	+13.6%	+11.8%	+6.7%	+3.5%	+1.2%	+1.0%
Technical Services	11	+4	+3	+3	+3	+2		+56.3%	+37.0%	+37.0%	+37.0%	+23.3%	
Maintenance/ Technical	417	-58	-43	-20	-19	-6	+4	-12.3%	-9.3%	-4.6%	-4.3%	-1.5%	+0.9%
General Support	2,922	-699	-510	-312	-212	-130	+19	-19.3%	-14.9%	-9.6%	-6.8%	-4.3%	+0.6%
HCA, Nurse's Aide, etc.	12,182	+3,201	+2,511	+1,284	+797	+348	+180	+35.6%	+26.0%	+11.8%	+7.0%	+2.9%	+1.5%
Health & Social Care Assistants	126	+68	+68	+65	+63	-40	+17	+118.4%	+119.1%	+106.3%	+100.3%	-24.2%	+15.3%
Health Care Assistants	12,308	+3,269	+2,580	+1,348	+860	+308	+197	+36.2%	+26.5%	+12.3%	+7.5%	+2.6%	+1.6%
Home Help	3,274	-264	-429	+101	-228	-278	-295	-7.5%	-11.6%	+3.2%	-6.5%	-7.8%	-8.3%
Ambulance Officers		-1						-100.0%	-100.0%	-100.0%	-100.0%	-100.0%	-100.0%
Pre-Hospital Care (Ambulance)		-9	-10					-100.0%	-100.0%	-100.0%	-100.0%	-100.0%	-100.0%
Ambulance Staff		-10	-10					-100.0%	-100.0%	-100.0%	-100.0%	-100.0%	-100.0%
Community Welfare Officers	2	-11	-5	-3	-2	-1	+0	-85.3%	-73.0%	-62.2%	-51.4%	-34.6%	+15.2%
Other Care Grades	2,704	+253	+281	+158	+94	+41	-16	+10.3%	+11.6%	+6.2%	+3.6%	+1.5%	-0.6%
Care, other	2,706	+242	+276	+155	+92	+40	-16	+9.8%	+11.4%	+6.1%	+3.5%	+1.5%	-0.6%
Patient & Client Care	18,288	+3,237	+2,418	+1,604	+724	+70	-113	+21.5%	+15.2%	+9.6%	+4.1%	+0.4%	-0.6%

Source: Health Service Personnel Census