

Community Services Employment Report: Staff Groups November 2020

Employment by Staff Group

Nov 2020 (Dec 2019 figure: 52,089)	WTE Oct 2020	WTE Nov 2020	WTE change since Oct 20	% change since Oct 20	WTE change since Dec 19	WTE change since Nov 19
Community Services	53,390	53,830	+440	+0.8%	+1,741	+1,869
Consultants	446	440	-6	-1.3%	+16	+23
Registrars	706	703	-3	-0.4%	+16	+18
SHO/ Interns	339	337	-2	-0.6%	+17	+15
Medical/ Dental, other	652	635	-16	-2.5%	+0	+14
Medical & Dental	2,142	2,115	-27	-1.3%	+49	+69
Nurse/ Midwife Manager	3,272	3,266	-6	-0.2%	+111	+108
Nurse/ Midwife Specialist & AN/MP	785	808	+22	+2.9%	+117	+120
Staff Nurse/ Staff Midwife	9,040	9,181	+142	+1.6%	+168	+194
Public Health Nurse	1,543	1,558	+15	+1.0%	+26	+24
<i>Pre-registration Nurse/ Midwife Intern</i>	27	13	-13	-50.1%	-49	-31
<i>Pre-registration Nurse Intern (COVID-19)</i>	171	109	-63	-36.6%	+109	+109
<i>Post-registration Nurse/ Midwife Student</i>	101	107	+6	+5.6%	+14	+10
<i>Nursing/ Midwifery awaiting registration</i>	19	19	-0	-0.1%	-0	-54
Nursing/ Midwifery Student	319	249	-71	-22.1%	+21	+33
Nursing/ Midwifery other	91	69	-22	-24.0%	+10	+13
Nursing & Midwifery	15,049	15,131	+81	+0.5%	+454	+493
Therapy Professions	3,314	3,330	+17	+0.5%	+124	+129
Health Science/ Diagnostics	141	144	+3	+2.4%	+10	+10
Social Care	2,834	2,896	+62	+2.2%	+189	+210
Social Workers	839	849	+10	+1.2%	+44	+47
Psychologists	940	954	+14	+1.5%	+53	+55
Pharmacy	109	106	-3	-2.6%	+7	+9
H&SC, Other	372	371	-1	-0.2%	-6	+0
Health & Social Care Professionals	8,548	8,651	+103	+1.2%	+421	+460
Management (VIII & above)	650	658	+8	+1.2%	+40	+42
Administrative/ Supervisory (V to VII)	1,650	1,665	+15	+0.9%	+165	+159
Clerical (III & IV)	3,766	3,805	+38	+1.0%	+110	+109
Management & Administrative	6,066	6,127	+61	+1.0%	+315	+310
Support	2,407	2,420	+13	+0.5%	-70	-92
Maintenance/ Technical	416	420	+5	+1.1%	+8	+4
General Support	2,823	2,840	+18	+0.6%	-63	-88
Health Care Assistants	12,501	12,673	+171	+1.4%	+562	+574
Home Help	3,480	3,474	-5	-0.1%	-95	-64
Care, other	2,781	2,819	+38	+1.4%	+98	+114
Patient & Client Care	18,761	18,966	+204	+1.1%	+565	+625

Community Services Employment Report: CHO by Division November 2020

Nov 2020 (Dec 2019 figure: 52,089)	WTE Oct 2020	WTE Nov 2020	WTE change since Oct 20	% change since Oct 20	WTE change since Dec 19	WTE change since Nov 19
Community Services	53,390	53,830	+440	+0.8%	+1,741	+1,869
Community Health & Wellbeing	13	18	+5	+37.4%	+18	+18
Mental Health	977	972	-5	-0.5%	+19	+18
Primary Care	1,244	1,267	+23	+1.8%	+85	+85
Disabilities	1,553	1,557	+4	+0.2%	+58	+63
Older People	1,854	1,854	+0	+0.0%	+18	+18
CHO 1	5,641	5,667	+26	+0.5%	+199	+202
Community Health & Wellbeing	10	10	+0	+0.7%	+10	+10
Mental Health	1,353	1,345	-7	-0.5%	+37	+30
Primary Care	1,170	1,191	+21	+1.8%	+58	+55
Disabilities	1,491	1,505	+13	+0.9%	+8	+14
Older People	1,578	1,561	-17	-1.1%	-44	-2
CHO 2	5,602	5,612	+10	+0.2%	+67	+108
Community Health & Wellbeing	17	14	-3	-18.9%	+14	+14
Mental Health	791	807	+16	+2.0%	+12	+11
Primary Care	748	763	+16	+2.1%	-0	-4
Disabilities	1,904	1,929	+25	+1.3%	+105	+108
Older People	1,026	1,032	+6	+0.6%	+58	+60
CHO 3	4,485	4,544	+59	+1.3%	+188	+189
Community Health & Wellbeing	35	35	+0	+0.2%	+35	+35
Mental Health	1,559	1,562	+3	+0.2%	+77	+90
Primary Care	1,404	1,458	+54	+3.8%	+112	+113
Disabilities	2,547	2,546	-0	-0.0%	+108	+109
Older People	2,923	2,902	-20	-0.7%	-17	-39
CHO 4	8,468	8,504	+36	+0.4%	+315	+307
Community Health & Wellbeing	14	14	-0	-1.4%	+14	+14
Mental Health	1,190	1,191	+1	+0.0%	+13	+15
Primary Care	985	1,017	+32	+3.2%	+65	+58
Disabilities	1,537	1,541	+4	+0.3%	+36	+54
Older People	1,673	1,686	+13	+0.8%	+39	+34
CHO 5	5,399	5,449	+50	+0.9%	+167	+175
Community Health & Wellbeing	8	8	+0	+0.1%	+8	+8
Mental Health	616	626	+10	+1.6%	+33	+40
Primary Care	792	802	+10	+1.3%	+38	+28
Disabilities	1,204	1,233	+29	+2.4%	+36	+42
Older People	810	803	-7	-0.9%	-20	-20
CHO 6	3,430	3,473	+42	+1.2%	+95	+98
Community Health & Wellbeing	10	12	+2	+26.1%	+12	+12
Mental Health	866	861	-4	-0.5%	+26	+30
Primary Care	1,734	1,745	+11	+0.6%	+43	+26
Disabilities	3,028	3,077	+49	+1.6%	+96	+137
Older People	1,026	1,027	+1	+0.1%	+31	+27
CHO 7	6,662	6,722	+60	+0.9%	+207	+232
Community Health & Wellbeing	27	30	+2	+8.9%	+30	+30

Nov 2020 (Dec 2019 figure: 52,089)	WTE Oct 2020	WTE Nov 2020	WTE change since Oct 20	% change since Oct 20	WTE change since Dec 19	WTE change since Nov 19
Community Services	53,390	53,830	+440	+0.8%	+1,741	+1,869
Mental Health	1,116	1,114	-2	-0.2%	+16	+15
Primary Care	1,429	1,456	+27	+1.9%	+70	+62
Disabilities	2,171	2,194	+23	+1.1%	+31	+55
Older People	1,477	1,481	+5	+0.3%	-7	-3
CHO 8	6,220	6,275	+55	+0.9%	+140	+160
Community Health & Wellbeing	8	8	-1	-6.8%	+8	+8
Mental Health	1,315	1,316	+1	+0.1%	+44	+53
Primary Care	1,313	1,366	+53	+4.0%	+119	+112
Disabilities	3,251	3,285	+35	+1.1%	+92	+121
Older People	910	914	+3	+0.4%	+44	+42
CHO 9	6,797	6,889	+92	+1.3%	+306	+336
Mental Health	483	490	+7	+1.4%	+53	+53
Primary Care	130	132	+2	+1.2%	+10	+12
Disabilities	6	6			+1	+1
Older People	66	67	+1	+2.2%	-6	-5
other Community Services	685	695	+10	+1.5%	+57	+62

Community Services Employment Report: Division November 2020

Community Health & Wellbeing

Nov 2020 (figure:)	WTE Oct 2020	WTE Nov 2020	WTE change since Oct 20	% change since Oct 20	WTE change since	WTE change since
Community Services	142	148	+6	+4.3%	+148	+148
Nurse/ Midwife Manager	1	3	+2	+200.0%	+3	+3
Staff Nurse/ Staff Midwife		2	+2	-100.0%	+2	+2
Public Health Nurse	1	0	-1	-70.1%	+0	+0
Nursing & Midwifery	2	5	+3	+117.3%	+5	+5
Therapy Professions	13	13	-0	-3.3%	+13	+13
Health & Social Care Professionals	13	13	-0	-3.3%	+13	+13
Management (VIII & above)	10	13	+3	+27.2%	+13	+13
Administrative/ Supervisory (V to VII)	63	64	+1	+0.9%	+64	+64
Clerical (III & IV)	21	22	+1	+5.5%	+22	+22
Management & Administrative	94	99	+4	+4.7%	+99	+99
Care, other	32	31	-1	-2.0%	+31	+31
Patient & Client Care	32	31	-1	-2.0%	+31	+31

Mental Health

Nov 2020 (Dec 2019 figure: 9,954)	WTE Oct 2020	WTE Nov 2020	WTE change since Oct 20	% change since Oct 20	WTE change since Dec 19	WTE change since Nov 19
Community Services	10,265	10,283	+18	+0.2%	+329	+355
Consultants	372	368	-4	-1.1%	+16	+22
Registrars	285	281	-4	-1.4%	+12	+14
SHO/ Interns	270	272	+2	+0.7%	+11	+11
Medical/ Dental, other	10	6	-4	-43.7%	+1	+1
Medical & Dental	937	927	-11	-1.1%	+39	+47
Nurse/ Midwife Manager	1,248	1,229	-19	-1.5%	+37	+45
Nurse/ Midwife Specialist & AN/MP	512	523	+11	+2.2%	+64	+67
Staff Nurse/ Staff Midwife	2,986	3,069	+84	+2.8%	+66	+70
<i>Pre-registration Nurse/ Midwife Intern</i>	20	10	-10	-50.6%	-18	-18
<i>Pre-registration Nurse Intern (COVID-19)</i>	125	68	-57	-45.7%	+68	+68
<i>Post-registration Nurse/ Midwife Student</i>	1	1				
<i>Nursing/ Midwifery awaiting registration</i>	5	5	-0	-5.2%	-54	-63
Nursing/ Midwifery Student	151	84	-67	-44.7%	-4	-13
Nursing/ Midwifery other	36	34	-2	-5.8%	+3	+6
Nursing & Midwifery	4,934	4,940	+6	+0.1%	+166	+175
Therapy Professions	426	434	+8	+1.9%	+12	+13
Social Care	81	81	-0	-0.1%	+7	+8
Social Workers	373	373	-1	-0.2%	+23	+27
Psychologists	420	423	+4	+0.9%	+29	+29
Pharmacy	19	20	+0	+1.3%	+1	+1
H&SC, Other	110	109	-1	-0.9%	+1	+5
Health & Social Care Professionals	1,429	1,439	+11	+0.7%	+73	+82
Management (VIII & above)	59	65	+6	+10.0%	+7	+7
Administrative/ Supervisory (V to VII)	251	248	-2	-1.0%	+11	+13
Clerical (III & IV)	709	715	+6	+0.8%	-3	-1
Management & Administrative	1,018	1,028	+9	+0.9%	+16	+18
Support	589	591	+2	+0.3%	+10	+10
Maintenance/ Technical	133	137	+4	+2.9%	+6	+5
General Support	723	728	+5	+0.7%	+16	+15
Health Care Assistants	1,019	1,017	-2	-0.2%	+29	+31
Care, other	205	205	-0	-0.1%	-11	-12
Patient & Client Care	1,224	1,222	-2	-0.2%	+18	+19

Primary Care

Nov 2020 (Dec 2019 figure: 10,599)	WTE Oct 2020	WTE Nov 2020	WTE change since Oct 20	% change since Oct 20	WTE change since Dec 19	WTE change since Nov 19
Community Services	10,950	11,198	+248	+2.3%	+599	+549
Consultants	45	44	-2	-3.5%	-0	+1
Registrars	404	404	+1	+0.1%	+10	+9
SHO/ Interns	45	42	-4	-8.1%	+5	+3
Medical/ Dental, other	527	524	-3	-0.6%	+5	+6
Medical & Dental	1,022	1,014	-8	-0.8%	+19	+18
Nurse/ Midwife Manager	402	396	-7	-1.6%	+36	+31
Nurse/ Midwife Specialist & AN/MP	173	179	+6	+3.5%	+37	+36
Staff Nurse/ Staff Midwife	902	910	+8	+0.9%	+48	+39
Public Health Nurse	1,522	1,538	+16	+1.0%	+25	+22
<i>Post-registration Nurse/ Midwife Student</i>	99	104	+6	+5.7%	+9	+9
Nursing/ Midwifery Student	99	104	+6	+5.7%	+9	+9
Nursing/ Midwifery other	6	7	+1	+18.0%	+3	+2
Nursing & Midwifery	3,104	3,134	+30	+1.0%	+158	+140
Therapy Professions	1,790	1,793	+3	+0.2%	+62	+54
Health Science/ Diagnostics	116	118	+2	+2.1%	+10	+10
Social Care	32	31	-1	-2.9%	-4	-4
Social Workers	144	148	+4	+2.5%	+9	+8
Psychologists	292	296	+5	+1.7%	-4	-5
Pharmacy	64	63	-1	-1.6%	+5	+7
H&SC, Other	180	181	+1	+0.4%	-2	-1
Health & Social Care Professionals	2,618	2,631	+13	+0.5%	+75	+69
Management (VIII & above)	302	298	-4	-1.4%	-8	-5
Administrative/ Supervisory (V to VII)	654	658	+4	+0.6%	+39	+30
Clerical (III & IV)	1,782	1,811	+29	+1.6%	+65	+54
Management & Administrative	2,737	2,767	+29	+1.1%	+96	+79
Support	350	351	+1	+0.3%	+4	+1
Maintenance/ Technical	58	57	-1	-1.4%	-2	-2
General Support	408	408	+0	+0.1%	+2	-1
Health Care Assistants	311	491	+179	+57.6%	+237	+235
Home Help	19	18	-1	-6.6%	-0	+0
Care, other	730	736	+6	+0.8%	+12	+9
Patient & Client Care	1,061	1,245	+184	+17.3%	+249	+244

Disabilities

Nov 2020 (Dec 2019 figure: 18,303)	WTE Oct 2020	WTE Nov 2020	WTE change since Oct 20	% change since Oct 20	WTE change since Dec 19	WTE change since Nov 19
Community Services	18,691	18,873	+182	+1.0%	+570	+704
Consultants	24	24	-0	-1.7%	-0	-0
Registrars	7	8	+0	+6.4%	-5	-5
SHO/ Interns	9	9	-0	-4.1%	+2	+2
Medical/ Dental, other	15	14	-1	-4.4%	+0	+0
Medical & Dental	56	55	-1	-1.8%	-3	-3
Nurse/ Midwife Manager	873	896	+22	+2.6%	+2	+3
Nurse/ Midwife Specialist & AN/MP	62	65	+3	+5.1%	+3	+3
Staff Nurse/ Staff Midwife	2,532	2,576	+44	+1.8%	+4	+27
Public Health Nurse	6	7	+1	+8.5%	+0	+1
<i>Pre-registration Nurse/ Midwife Intern</i>	7	4	-3	-48.6%	-25	-13
<i>Pre-registration Nurse Intern (COVID-19)</i>	47	41	-6	-12.1%	+41	+41
<i>Post-registration Nurse/ Midwife Student</i>	2	2	+0	+1.6%	+2	+2
<i>Nursing/ Midwifery awaiting registration</i>	13	13	+0	+2.0%	-1	+8
Nursing/ Midwifery Student	68	59	-9	-12.9%	+17	+38
Nursing/ Midwifery other	45	24	-21	-46.6%	+2	+2
Nursing & Midwifery	3,586	3,627	+41	+1.1%	+29	+73
Therapy Professions	785	794	+9	+1.1%	+29	+38
Health Science/ Diagnostics	20	21	+1	+5.0%	+1	+1
Social Care	2,718	2,781	+63	+2.3%	+186	+206
Social Workers	223	227	+3	+1.5%	+8	+9
Psychologists	227	233	+6	+2.5%	+29	+32
Pharmacy	7	6	-1	-13.9%	-1	-1
H&SC, Other	81	80	-0	-0.5%	-5	-4
Health & Social Care Professionals	4,061	4,141	+80	+2.0%	+247	+281
Management (VIII & above)	200	204	+4	+1.8%	+24	+21
Administrative/ Supervisory (V to VII)	514	519	+5	+1.0%	+40	+43
Clerical (III & IV)	679	685	+5	+0.8%	+25	+33
Management & Administrative	1,393	1,407	+14	+1.0%	+88	+96
Support	669	675	+6	+0.9%	-59	-71
Maintenance/ Technical	129	132	+3	+2.7%	+8	+7
General Support	797	807	+9	+1.2%	-52	-64
Health Care Assistants	7,028	7,042	+14	+0.2%	+216	+251
Home Help	105	98	-7	-6.9%	-11	-9
Care, other	1,664	1,696	+31	+1.9%	+56	+79
Patient & Client Care	8,798	8,836	+38	+0.4%	+261	+321

Older People

Nov 2020 (Dec 2019 figure: 13,233)	WTE Oct 2020	WTE Nov 2020	WTE change since Oct 20	% change since Oct 20	WTE change since Dec 19	WTE change since Nov 19
Community Services	13,342	13,327	-15	-0.1%	+95	+113
Consultants	5	5	+0	+0.4%	+1	+1
Registrars	10	10				
SHO/ Interns	14	14			-1	-1
Medical/ Dental, other	99	91	-8	-7.9%	-5	+7
Medical & Dental	127	119	-8	-6.2%	-5	+7
Nurse/ Midwife Manager	748	743	-5	-0.6%	+34	+27
Nurse/ Midwife Specialist & AN/MP	38	40	+2	+5.7%	+13	+14
Staff Nurse/ Staff Midwife	2,620	2,624	+4	+0.2%	+48	+56
Public Health Nurse	14	13	-0	-1.8%	-0	+1
<i>Post-registration Nurse/ Midwife Student</i>				-100.0%	-1	-1
<i>Nursing/ Midwifery awaiting registration</i>	2	2			+1	+1
Nursing/ Midwifery Student	2	2			-1	-1
Nursing/ Midwifery other	3	3	+0	+8.3%	+2	+2
Nursing & Midwifery	3,423	3,425	+2	+0.0%	+96	+100
Therapy Professions	300	297	-3	-1.0%	+8	+12
Health Science/ Diagnostics	5	5	-0	-1.5%	-1	-1
Social Care	3	3	+0	+1.1%	-0	-0
Social Workers	99	102	+4	+3.7%	+4	+4
Psychologists	1	1	-0	-24.1%	-1	-1
Pharmacy	18	17	-1	-5.9%	+2	+2
H&SC, Other	2	2	+0	+2.7%	+0	+0
Health & Social Care Professionals	427	426	-1	-0.2%	+12	+16
Management (VIII & above)	79	79	+0	+0.0%	+5	+6
Administrative/ Supervisory (V to VII)	169	176	+7	+4.2%	+11	+10
Clerical (III & IV)	575	572	-3	-0.5%	+1	+1
Management & Administrative	823	827	+4	+0.5%	+16	+18
Support	799	803	+5	+0.6%	-26	-32
Maintenance/ Technical	96	94	-2	-2.0%	-4	-5
General Support	895	897	+3	+0.3%	-30	-38
Health Care Assistants	4,142	4,123	-20	-0.5%	+79	+57
Home Help	3,355	3,358	+3	+0.1%	-83	-54
Care, other	150	151	+2	+1.3%	+9	+7
Patient & Client Care	7,647	7,632	-15	-0.2%	+5	+10

Community Services Employment Report: HSE & Section 38 November 2020

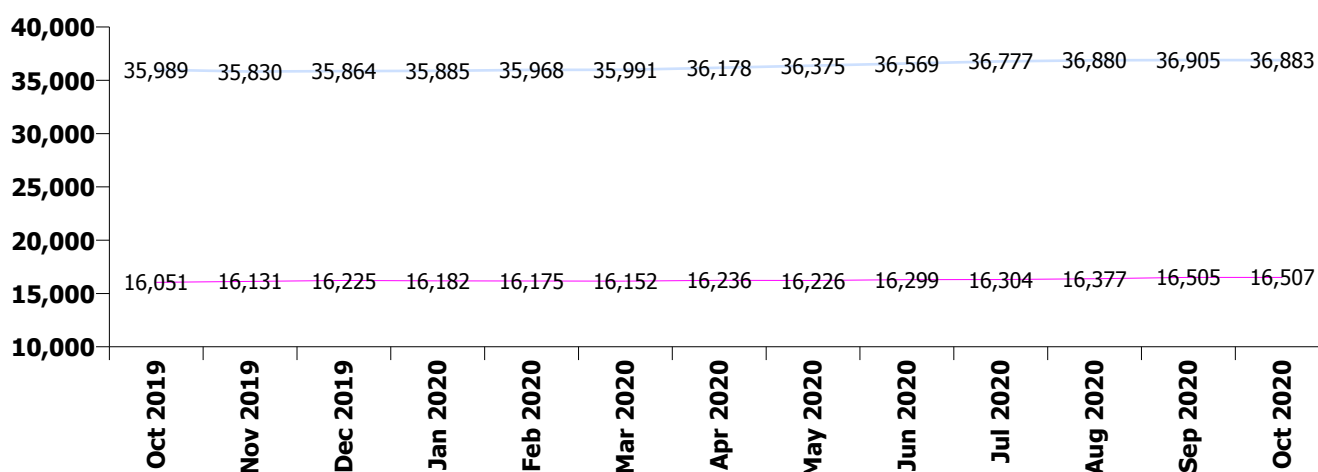
Nov 2020 (Dec 2019 figure: 52,089)	WTE Oct 2020	WTE Nov 2020	WTE change since Oct 20	% change since Oct 20	WTE change since Dec 19	WTE change since Nov 19
Overall	53,390	53,830	+440	+0.8%	+1,741	+1,869
HSE	36,883	37,169	+287	+0.8%	+1,306	+1,340
Section 38 Voluntary Agencies	16,507	16,660	+153	+0.9%	+435	+529

Health Service Executive

Nov 2020 (Dec 2019 figure: 35,864)	WTE Oct 2020	WTE Nov 2020	WTE change since Oct 20	% change since Oct 20	WTE change since Dec 19	WTE change since Nov 19
HSE	36,883	37,169	+287	+0.8%	+1,306	+1,340
Consultants	395	390	-5	-1.3%	+14	+20
Registrars	669	665	-4	-0.6%	+22	+24
SHO/ Interns	299	297	-1	-0.4%	+13	+12
Medical/ Dental, other	625	611	-13	-2.1%	+0	+15
Medical & Dental	1,987	1,964	-24	-1.2%	+49	+71
Nurse/ Midwife Manager	2,521	2,499	-22	-0.9%	+121	+123
Nurse/ Midwife Specialist & AN/MP	699	714	+15	+2.1%	+107	+109
Staff Nurse/ Staff Midwife	6,855	6,957	+103	+1.5%	+134	+143
Public Health Nurse	1,543	1,558	+15	+1.0%	+26	+24
Pre-registration Nurse/ Midwife Intern	26	13	-12	-48.1%	-19	-25
Pre-registration Nurse Intern (COVID-19)	148	83	-65	-43.9%	+83	+83
Post-registration Nurse/ Midwife Student	100	105	+6	+5.7%	+12	+8
Nursing/ Midwifery awaiting registration	19	19	-0	-0.1%	-0	-54
Nursing/ Midwifery Student	293	221	-72	-24.5%	+26	+12
Nursing/ Midwifery other	49	48	-1	-1.3%	+9	+11
Nursing & Midwifery	11,959	11,998	+38	+0.3%	+422	+421
Therapy Professions	2,767	2,774	+7	+0.3%	+127	+129
Health Science/ Diagnostics	119	121	+2	+1.9%	+10	+10
Social Care	180	185	+5	+2.9%	+10	+14
Social Workers	638	644	+7	+1.0%	+44	+47
Psychologists	774	785	+11	+1.5%	+29	+31
Pharmacy	85	83	-2	-2.0%	+8	+8
H&SC, Other	311	311	-0	-0.0%	-1	+2
Health & Social Care Professionals	4,873	4,904	+31	+0.6%	+226	+241
Management (VIII & above)	494	500	+6	+1.2%	+30	+34
Administrative/ Supervisory (V to VII)	1,226	1,238	+12	+1.0%	+150	+145
Clerical (III & IV)	3,138	3,176	+38	+1.2%	+98	+94
Management & Administrative	4,858	4,914	+56	+1.2%	+279	+273
Support	1,583	1,591	+8	+0.5%	-18	-27
Maintenance/ Technical	284	285	+1	+0.4%	+1	-2
General Support	1,867	1,876	+9	+0.5%	-18	-30
Health Care Assistants	6,672	6,841	+169	+2.5%	+370	+359
Home Help	3,480	3,474	-5	-0.1%	-95	-64
Care, other	1,186	1,199	+12	+1.0%	+73	+68
Patient & Client Care	11,338	11,514	+176	+1.6%	+348	+363

Section 38 Voluntary Agencies

Nov 2020 (Dec 2019 figure: 16,225)	WTE Oct 2020	WTE Nov 2020	WTE change since Oct 20	% change since Oct 20	WTE change since Dec 19	WTE change since Nov 19
Section 38 Voluntary Agencies	16,507	16,660	+153	+0.9%	+435	+529
Consultants	51	50	-1	-1.7%	+2	+3
Registrars	37	38	+1	+2.7%	-5	-6
SHO/ Interns	40	39	-1	-2.4%	+4	+3
Medical/ Dental, other	27	24	-3	-10.1%	-0	-2
Medical & Dental	155	151	-4	-2.3%	+0	-2
Nurse/ Midwife Manager	750	767	+16	+2.2%	-9	-14
Nurse/ Midwife Specialist & AN/MP	86	94	+8	+9.0%	+10	+11
Staff Nurse/ Staff Midwife	2,185	2,224	+39	+1.8%	+34	+52
Nursing/ Midwifery Student	26	28	+1	+4.5%	-4	+21
Nursing/ Midwifery other	42	21	-21	-50.5%	+2	+2
Nursing & Midwifery	3,090	3,133	+43	+1.4%	+32	+72
Therapy Professions	547	556	+9	+1.7%	-3	+0
Health Science/ Diagnostics	22	23	+1	+4.7%	+0	-0
Social Care	2,654	2,711	+57	+2.1%	+179	+196
Social Workers	202	205	+3	+1.7%	-0	+0
Psychologists	166	169	+3	+1.7%	+24	+24
Pharmacy	24	22	-1	-4.6%	-0	+0
H&SC, Other	60	60	-1	-1.2%	-5	-2
Health & Social Care Professionals	3,675	3,746	+71	+1.9%	+194	+219
Management (VIII & above)	155	158	+2	+1.5%	+10	+8
Administrative/ Supervisory (V to VII)	424	427	+2	+0.5%	+15	+14
Clerical (III & IV)	629	629	+0	+0.1%	+11	+14
Management & Administrative	1,209	1,213	+5	+0.4%	+37	+37
Support	823	829	+5	+0.7%	-52	-65
Maintenance/ Technical	132	135	+3	+2.6%	+7	+7
General Support	955	964	+9	+0.9%	-45	-58
Health Care Assistants	5,829	5,832	+3	+0.0%	+192	+216
Care, other	1,595	1,620	+26	+1.6%	+25	+46
Patient & Client Care	7,424	7,452	+28	+0.4%	+217	+262



Community Services Employment Report: CHO & Staff Group November 2020

Nov 2020 (Dec 2019 figure: 5,468)	WTE Oct 2020	WTE Nov 2020	WTE change since Oct 20	% change since Oct 20	WTE change since Dec 19	WTE change since Nov 19
CHO 1	5,641	5,667	+26	+0.5%	+199	+202
Consultants	38	38	+0	+0.3%	+4	+5
Registrars	73	71	-3	-3.5%	+5	+3
SHO/ Interns	24	24	-0	-1.5%	-3	-2
Medical/ Dental, other	66	64	-2	-2.9%	-16	-3
Medical & Dental	201	196	-5	-2.3%	-9	+3
Nurse/ Midwife Manager	361	357	-3	-1.0%	+8	+6
Nurse/ Midwife Specialist & AN/MP	115	119	+4	+3.1%	+17	+18
Staff Nurse/ Staff Midwife	1,019	1,018	-1	-0.1%	+4	+4
Public Health Nurse	151	153	+2	+1.6%	-3	-1
<i>Pre-registration Nurse/ Midwife Intern</i>	1	1	+1	+192.0%	-9	-9
<i>Pre-registration Nurse Intern (COVID-19)</i>	32	20	-11	-36.2%	+20	+20
<i>Post-registration Nurse/ Midwife Student</i>	3	3	-0	-11.8%	-4	-3
<i>Nursing/ Midwifery awaiting registration</i>	11	11			+10	+11
Nursing/ Midwifery Student	47	36	-11	-23.4%	+15	+19
Nursing/ Midwifery other	8	8	+0	+2.0%	+2	+2
Nursing & Midwifery	1,700	1,691	-9	-0.5%	+43	+49
Therapy Professions	329	327	-2	-0.6%	+11	+6
Health Science/ Diagnostics	7	7	-0	-1.7%	+0	+0
Social Care	12	13	+1	+9.3%	+2	+2
Social Workers	90	91	+2	+1.8%	+6	+7
Psychologists	62	62	+0	+0.5%	+2	+2
Pharmacy	3	3	+0	+2.0%	+1	+1
H&SC, Other	31	31	+0	+0.3%	-2	-3
Health & Social Care Professionals	533	534	+1	+0.2%	+21	+16
Management (VIII & above)	63	62	-0	-0.4%	+3	+3
Administrative/ Supervisory (V to VII)	161	163	+2	+1.2%	+28	+30
Clerical (III & IV)	470	477	+7	+1.4%	+21	+23
Management & Administrative	695	703	+8	+1.2%	+52	+55
Support	308	309	+2	+0.6%	+4	+1
Maintenance/ Technical	36	36	-0	-0.0%	+1	-0
General Support	344	346	+2	+0.5%	+4	+0
Health Care Assistants	1,472	1,487	+15	+1.0%	+65	+61
Home Help	561	572	+12	+2.1%	+16	+12
Care, other	136	138	+2	+1.2%	+7	+7
Patient & Client Care	2,169	2,197	+28	+1.3%	+88	+79

Nov 2020 (Dec 2019 figure: 5,545)	WTE Oct 2020	WTE Nov 2020	WTE change since Oct 20	% change since Oct 20	WTE change since Dec 19	WTE change since Nov 19
CHO 2	5,602	5,612	+10	+0.2%	+67	+108
Consultants	44	42	-2	-4.8%	-0	+1
Registrars	89	89	-0	-0.3%	+13	+13
SHO/ Interns	42	43	+0	+0.9%	+7	+8
Medical/ Dental, other	61	63	+2	+3.4%	+4	+4
Medical & Dental	236	236	+0	+0.0%	+24	+25
Nurse/ Midwife Manager	326	322	-5	-1.4%	+13	+16
Nurse/ Midwife Specialist & AN/MP	106	107	+1	+0.9%	+14	+13
Staff Nurse/ Staff Midwife	890	902	+11	+1.3%	+4	+2
Public Health Nurse	198	199	+1	+0.6%	+7	+7
<i>Pre-registration Nurse/ Midwife Intern</i>				-100.0%		-1
<i>Pre-registration Nurse Intern (COVID-19)</i>	26	16	-10	-39.3%	+16	+16
<i>Post-registration Nurse/ Midwife Student</i>				-100.0%	-13	-4
<i>Nursing/ Midwifery awaiting registration</i>				-100.0%	-11	-11
Nursing/ Midwifery Student	26	16	-10	-39.3%	+7	+0
Nursing/ Midwifery other	3	3	-0	-5.6%	+1	+1
Nursing & Midwifery	1,550	1,548	-2	-0.1%	+46	+39
Therapy Professions	360	360	+0	+0.1%	+22	+25
Health Science/ Diagnostics	34	34	+0	+0.8%	+1	+2
Social Care	261	265	+4	+1.6%	+20	+18
Social Workers	84	84	-0	-0.0%	+0	+0
Psychologists	81	78	-3	-3.2%	+5	+5
Pharmacy	4	4	+0	+2.4%	-1	-1
H&SC, Other	29	31	+2	+5.4%	-2	-1
Health & Social Care Professionals	853	857	+4	+0.5%	+46	+48
Management (VIII & above)	59	58	-1	-1.8%	+2	+1
Administrative/ Supervisory (V to VII)	151	157	+6	+4.0%	+23	+22
Clerical (III & IV)	448	445	-3	-0.7%	-23	-22
Management & Administrative	658	660	+2	+0.3%	+2	+2
Support	154	154	+0	+0.1%	-4	-7
Maintenance/ Technical	71	73	+2	+2.6%	+5	+3
General Support	225	227	+2	+0.9%	+1	-4
Health Care Assistants	1,383	1,378	-5	-0.4%	+11	+15
Home Help	426	428	+2	+0.4%	-72	-25
Care, other	272	280	+7	+2.6%	+9	+9
Patient & Client Care	2,081	2,085	+4	+0.2%	-52	-1

Nov 2020 (Dec 2019 figure: 4,357)	WTE Oct 2020	WTE Nov 2020	WTE change since Oct 20	% change since Oct 20	WTE change since Dec 19	WTE change since Nov 19
CHO 3	4,485	4,544	+59	+1.3%	+188	+189
Consultants	29	29	-0	-0.8%	+2	+1
Registrars	40	40	+0	+0.6%	-2	-0
SHO/ Interns	21	22	+1	+3.3%	-3	-3
Medical/ Dental, other	59	59	-0	-0.1%	+1	+1
Medical & Dental	150	150	+1	+0.4%	-2	-2
Nurse/ Midwife Manager	252	241	-11	-4.5%	-5	-3
Nurse/ Midwife Specialist & AN/MP	53	51	-2	-3.6%	-5	-6
Staff Nurse/ Staff Midwife	791	826	+35	+4.4%	+39	+39
Public Health Nurse	129	127	-2	-1.5%	-0	-2
<i>Pre-registration Nurse/ Midwife Intern</i>				-100.0%	-16	-10
<i>Pre-registration Nurse Intern (COVID-19)</i>	20	12	-8	-38.1%	+12	+12
<i>Post-registration Nurse/ Midwife Student</i>	3	4	+1	+19.4%		+4
Nursing/ Midwifery Student	23	16	-7	-29.8%	-4	+7
Nursing/ Midwifery other	4	4				
Nursing & Midwifery	1,253	1,265	+12	+1.0%	+24	+36
Therapy Professions	216	223	+6	+2.9%	+9	+8
Health Science/ Diagnostics	9	9			+3	+3
Social Care	273	280	+7	+2.5%	+35	+30
Social Workers	55	57	+2	+3.2%	-2	-3
Psychologists	116	126	+10	+8.8%	+3	+2
Pharmacy	5	5				
H&SC, Other	35	34	-2	-4.7%	+2	+1
Health & Social Care Professionals	709	733	+23	+3.3%	+49	+42
Management (VIII & above)	41	42	+1	+2.6%	+4	+5
Administrative/ Supervisory (V to VII)	148	146	-2	-1.1%	+14	+12
Clerical (III & IV)	299	303	+4	+1.3%	-18	-18
Management & Administrative	487	491	+3	+0.7%	+0	-1
Support	162	161	-1	-0.6%	-2	-3
Maintenance/ Technical	76	76	-0	-0.2%	-1	-1
General Support	238	237	-1	-0.5%	-3	-4
Health Care Assistants	1,193	1,208	+15	+1.3%	+68	+66
Home Help	214	216	+2	+0.8%	+40	+43
Care, other	242	245	+4	+1.5%	+11	+10
Patient & Client Care	1,648	1,669	+21	+1.2%	+119	+118

Nov 2020 (Dec 2019 figure: 8,189)	WTE Oct 2020	WTE Nov 2020	WTE change since Oct 20	% change since Oct 20	WTE change since Dec 19	WTE change since Nov 19
CHO 4	8,468	8,504	+36	+0.4%	+315	+307
Consultants	61	60	-1	-2.2%	+5	+6
Registrars	102	101	-1	-1.4%	-3	-3
SHO/ Interns	50	51	+2	+3.0%	+13	+12
Medical/ Dental, other	128	116	-11	-8.7%	+5	+4
Medical & Dental	340	328	-12	-3.6%	+20	+19
Nurse/ Midwife Manager	470	460	-10	-2.1%	+27	+24
Nurse/ Midwife Specialist & AN/MP	94	98	+4	+4.6%	+17	+19
Staff Nurse/ Staff Midwife	1,456	1,469	+13	+0.9%	+23	+46
Public Health Nurse	220	232	+12	+5.4%	+16	+20
<i>Pre-registration Nurse/ Midwife Intern</i>				-100.0%	-9	-16
<i>Pre-registration Nurse Intern (COVID-19)</i>	28	22	-7	-23.7%	+22	+22
<i>Post-registration Nurse/ Midwife Student</i>	14	15	+1	+9.6%	+1	-4
<i>Nursing/ Midwifery awaiting registration</i>	3	3	+0	+9.1%	+3	-29
Nursing/ Midwifery Student	44	39	-5	-11.6%	-20	-28
Nursing/ Midwifery other				-100.0%	-1	-1
Nursing & Midwifery	2,284	2,298	+14	+0.6%	+63	+81
Therapy Professions	460	461	+0	+0.1%	+12	+11
Health Science/ Diagnostics	13	13	+1	+5.1%	+1	+2
Social Care	253	257	+5	+1.8%	+17	+17
Social Workers	131	131	+1	+0.5%	+17	+18
Psychologists	151	150	-1	-0.5%	+12	+14
Pharmacy	10	10	-0	-2.1%	+2	+2
H&SC, Other	65	65	-1	-1.0%	+4	+5
Health & Social Care Professionals	1,082	1,087	+5	+0.5%	+66	+70
Management (VIII & above)	77	75	-2	-2.2%	+2	+3
Administrative/ Supervisory (V to VII)	175	175	-0	-0.0%	+14	+12
Clerical (III & IV)	533	540	+8	+1.5%	+36	+32
Management & Administrative	784	790	+6	+0.8%	+52	+48
Support	350	358	+8	+2.2%	+21	+22
Maintenance/ Technical	22	24	+2	+9.0%	+2	+2
General Support	372	382	+10	+2.6%	+23	+24
Health Care Assistants	2,033	2,075	+42	+2.1%	+121	+119
Home Help	1,087	1,059	-28	-2.6%	-65	-89
Care, other	485	485	-1	-0.1%	+35	+35
Patient & Client Care	3,606	3,619	+14	+0.4%	+91	+66

Nov 2020 (Dec 2019 figure: 5,282)	WTE Oct 2020	WTE Nov 2020	WTE change since Oct 20	% change since Oct 20	WTE change since Dec 19	WTE change since Nov 19
CHO 5	5,399	5,449	+50	+0.9%	+167	+175
Consultants	29	29	-0	-0.4%	-1	-1
Registrars	27	28	+1	+2.1%	-0	+2
SHO/ Interns	39	37	-2	-5.6%	-1	-2
Medical/ Dental, other	74	71	-3	-3.8%	+5	+6
Medical & Dental	170	165	-5	-2.7%	+3	+4
Nurse/ Midwife Manager	367	367	+0	+0.0%	+29	+25
Nurse/ Midwife Specialist & AN/MP	74	77	+2	+3.1%	+25	+25
Staff Nurse/ Staff Midwife	955	968	+13	+1.3%	+0	+8
Public Health Nurse	171	174	+3	+1.9%	-0	+1
<i>Pre-registration Nurse/ Midwife Intern</i>				-100.0%	-1	-4
<i>Pre-registration Nurse Intern (COVID-19)</i>	28	19	-10	-33.9%	+19	+19
<i>Post-registration Nurse/ Midwife Student</i>	5	5	-0	-6.2%	-2	-0
<i>Nursing/ Midwifery awaiting registration</i>				-100.0%		-7
Nursing/ Midwifery Student	33	23	-10	-29.6%	+11	+8
Nursing/ Midwifery other	4	4	-0	-2.9%	-0	+0
Nursing & Midwifery	1,605	1,613	+8	+0.5%	+65	+68
Therapy Professions	315	320	+5	+1.6%	-7	-4
Health Science/ Diagnostics	7	7	+0	+7.4%	+3	+3
Social Care	153	153	+0	+0.1%	-10	-9
Social Workers	62	64	+2	+3.4%	+4	+3
Psychologists	78	78	+0	+0.6%	-0	-1
Pharmacy	2	2	+0	+2.2%	+1	+1
H&SC, Other	33	32	-1	-4.1%	-3	-3
Health & Social Care Professionals	649	656	+7	+1.1%	-13	-9
Management (VIII & above)	47	48	+1	+2.8%	+5	+7
Administrative/ Supervisory (V to VII)	136	136	+0	+0.0%	+11	+11
Clerical (III & IV)	320	325	+5	+1.6%	-5	-4
Management & Administrative	503	509	+6	+1.3%	+11	+14
Support	301	300	-1	-0.3%	-32	-36
Maintenance/ Technical	32	32	-1	-2.6%	-7	-7
General Support	333	332	-2	-0.5%	-39	-43
Health Care Assistants	1,248	1,269	+21	+1.7%	+127	+124
Home Help	663	674	+11	+1.7%	+5	+6
Care, other	229	230	+2	+0.7%	+8	+12
Patient & Client Care	2,139	2,173	+34	+1.6%	+140	+142

Nov 2020 (Dec 2019 figure: 3,378)	WTE Oct 2020	WTE Nov 2020	WTE change since Oct 20	% change since Oct 20	WTE change since Dec 19	WTE change since Nov 19
CHO 6	3,430	3,473	+42	+1.2%	+95	+98
Consultants	49	50	+1	+2.1%	+2	+4
Registrars	44	43	-0	-0.9%	-6	-5
SHO/ Interns	21	20	-0	-1.3%	+5	+5
Medical/ Dental, other	50	50	+0	+0.1%	-1	-1
Medical & Dental	163	164	+0	+0.3%	-0	+2
Nurse/ Midwife Manager	209	206	-3	-1.5%	-4	-5
Nurse/ Midwife Specialist & AN/MP	26	25	-1	-2.0%	+5	+6
Staff Nurse/ Staff Midwife	545	558	+14	+2.5%	+17	+21
Public Health Nurse	114	115	+1	+0.6%	-2	-6
<i>Post-registration Nurse/ Midwife Student</i>	14	14	+0	+2.4%	+3	
<i>Nursing/ Midwifery awaiting registration</i>	0	1	+1	+177.8%	+1	+1
Nursing/ Midwifery Student	14	15	+1	+6.9%	+2	+1
Nursing/ Midwifery other	4	4	-1	-12.5%	+2	+3
Nursing & Midwifery	912	923	+11	+1.2%	+18	+19
Therapy Professions	241	237	-4	-1.6%	-1	-6
Health Science/ Diagnostics	18	19	+0	+2.3%	+1	+1
Social Care	383	395	+12	+3.1%	+30	+31
Social Workers	54	55	+0	+0.8%	-2	-4
Psychologists	64	66	+2	+2.8%	+10	+9
Pharmacy	4	4	-0	-1.0%	+0	+0
H&SC, Other	10	11	+0	+3.5%	-3	-0
Health & Social Care Professionals	775	786	+11	+1.4%	+34	+30
Management (VIII & above)	70	71	+0	+0.4%	+3	+2
Administrative/ Supervisory (V to VII)	168	167	-2	-1.1%	-4	-1
Clerical (III & IV)	259	258	-1	-0.4%	+20	+19
Management & Administrative	497	495	-3	-0.5%	+20	+20
Support	191	191	-0	-0.2%	+0	-11
Maintenance/ Technical	22	23	+1	+4.5%	+0	+1
General Support	213	214	+1	+0.3%	+0	-9
Health Care Assistants	548	558	+10	+1.8%	+19	+27
Care, other	322	334	+12	+3.7%	+4	+8
Patient & Client Care	870	892	+22	+2.5%	+23	+36

Nov 2020 (Dec 2019 figure: 6,515)	WTE Oct 2020	WTE Nov 2020	WTE change since Oct 20	% change since Oct 20	WTE change since Dec 19	WTE change since Nov 19
CHO 7	6,662	6,722	+60	+0.9%	+207	+232
Consultants	69	66	-4	-5.1%	+6	+8
Registrars	100	100	+0	+0.2%	+5	+5
SHO/ Interns	38	37	-0	-0.9%	+1	+2
Medical/ Dental, other	85	83	-2	-2.2%	+3	+2
Medical & Dental	292	286	-6	-1.9%	+15	+17
Nurse/ Midwife Manager	403	400	-3	-0.6%	+4	+5
Nurse/ Midwife Specialist & AN/MP	106	110	+4	+3.8%	+17	+18
Staff Nurse/ Staff Midwife	1,012	1,019	+8	+0.8%	+26	+21
Public Health Nurse	177	175	-1	-0.8%	+0	-2
<i>Pre-registration Nurse/ Midwife Intern</i>				-100.0%	-6	-2
<i>Pre-registration Nurse Intern (COVID-19)</i>	10	5	-5	-47.8%	+5	+5
<i>Post-registration Nurse/ Midwife Student</i>	21	23	+2	+12.1%	+16	+2
<i>Nursing/ Midwifery awaiting registration</i>	5	4	-1	-17.0%	+0	-4
Nursing/ Midwifery Student	36	33	-3	-9.4%	+1	+2
Nursing/ Midwifery other	12	11	-1	-6.4%	+1	+2
Nursing & Midwifery	1,746	1,749	+3	+0.2%	+49	+45
Therapy Professions	456	460	+4	+0.8%	+10	+14
Health Science/ Diagnostics	4	4	+0	+0.2%	+1	+1
Social Care	385	394	+9	+2.4%	+23	+31
Social Workers	107	109	+2	+1.8%	+5	+6
Psychologists	88	86	-1	-1.4%	+6	+8
Pharmacy	41	38	-3	-7.2%	-2	-1
H&SC, Other	42	42	+1	+1.2%	-2	-2
Health & Social Care Professionals	1,123	1,133	+11	+1.0%	+39	+57
Management (VIII & above)	79	84	+5	+6.6%	+11	+10
Administrative/ Supervisory (V to VII)	202	206	+4	+1.9%	+24	+18
Clerical (III & IV)	376	380	+4	+1.0%	+30	+31
Management & Administrative	657	670	+13	+2.0%	+65	+59
Support	396	402	+6	+1.5%	-8	-11
Maintenance/ Technical	45	45	-0	-0.7%	+4	+3
General Support	442	447	+6	+1.3%	-4	-8
Health Care Assistants	1,660	1,684	+24	+1.4%	+29	+34
Home Help	132	132	-0	-0.4%	+5	+12
Care, other	610	619	+9	+1.5%	+9	+15
Patient & Client Care	2,403	2,435	+32	+1.3%	+43	+62

Nov 2020 (Dec 2019 figure: 6,135)	WTE Oct 2020	WTE Nov 2020	WTE change since Oct 20	% change since Oct 20	WTE change since Dec 19	WTE change since Nov 19
CHO 8	6,220	6,275	+55	+0.9%	+140	+160
Consultants	42	44	+1	+2.8%	+1	+2
Registrars	116	118	+2	+1.8%	+12	+12
SHO/ Interns	30	26	-4	-12.8%	-12	-11
Medical/ Dental, other	73	72	-1	-1.1%	-0	+1
Medical & Dental	261	260	-1	-0.5%	+1	+3
Nurse/ Midwife Manager	354	377	+23	+6.5%	+5	+4
Nurse/ Midwife Specialist & AN/MP	103	108	+5	+4.9%	+9	+9
Staff Nurse/ Staff Midwife	999	1,024	+25	+2.5%	+26	+27
Public Health Nurse	199	199	-0	-0.1%	+0	-1
<i>Pre-registration Nurse/ Midwife Intern</i>	1	1			+1	+1
<i>Pre-registration Nurse Intern (COVID-19)</i>	20	10	-10	-48.9%	+10	+10
<i>Post-registration Nurse/ Midwife Student</i>	9	12	+3	+27.5%	+4	+10
<i>Nursing/ Midwifery awaiting registration</i>				-100.0%	-1	-3
Nursing/ Midwifery Student	31	23	-7	-24.0%	+19	+18
Nursing/ Midwifery other	32	11	-21	-65.8%	+1	+2
Nursing & Midwifery	1,718	1,743	+25	+1.5%	+60	+60
Therapy Professions	391	394	+3	+0.7%	+17	+21
Health Science/ Diagnostics	9	9	-0	-0.2%	+2	+2
Social Care	383	386	+3	+0.8%	+18	+21
Social Workers	93	93	+0	+0.0%	+5	+5
Psychologists	117	118	+0	+0.1%	-2	-1
Pharmacy	8	8	+0	+4.3%	+1	+1
H&SC, Other	53	53	+1	+1.4%	+1	+1
Health & Social Care Professionals	1,054	1,061	+7	+0.7%	+41	+51
Management (VIII & above)	68	67	-1	-1.5%	+5	+5
Administrative/ Supervisory (V to VII)	198	197	-1	-0.3%	+21	+24
Clerical (III & IV)	530	532	+3	+0.5%	+25	+24
Management & Administrative	796	797	+1	+0.1%	+51	+53
Support	120	121	+1	+1.2%	-6	-5
Maintenance/ Technical	68	68	-1	-0.9%	-1	-1
General Support	188	189	+1	+0.4%	-7	-6
Health Care Assistants	1,567	1,591	+24	+1.5%	+14	+17
Home Help	397	394	-3	-0.9%	-24	-22
Care, other	238	241	+2	+1.0%	+3	+5
Patient & Client Care	2,203	2,226	+23	+1.0%	-7	-0

Nov 2020 (Dec 2019 figure: 6,582)	WTE Oct 2020	WTE Nov 2020	WTE change since Oct 20	% change since Oct 20	WTE change since Dec 19	WTE change since Nov 19
CHO 9	6,797	6,889	+92	+1.3%	+306	+336
Consultants	66	65	-1	-1.6%	-3	-3
Registrars	92	90	-3	-2.8%	-8	-6
SHO/ Interns	68	71	+3	+4.8%	+5	+2
Medical/ Dental, other	56	56	+0	+0.7%	-0	-0
Medical & Dental	282	282	-0	-0.0%	-8	-7
Nurse/ Midwife Manager	448	455	+7	+1.5%	+20	+24
Nurse/ Midwife Specialist & AN/MP	97	101	+4	+4.1%	+16	+15
Staff Nurse/ Staff Midwife	1,197	1,221	+23	+1.9%	+25	+22
Public Health Nurse	184	183	-1	-0.5%	+7	+8
<i>Pre-registration Nurse/ Midwife Intern</i>	25	11	-14	-56.8%	-10	+8
<i>Pre-registration Nurse Intern (COVID-19)</i>	7	4	-2	-34.8%	+4	+4
<i>Post-registration Nurse/ Midwife Student</i>	33	32	-1	-2.8%	+10	+6
<i>Nursing/ Midwifery awaiting registration</i>				-100.0%	-3	-12
Nursing/ Midwifery Student	65	47	-18	-27.4%	-8	+7
Nursing/ Midwifery other	22	23	+0	+2.0%	+3	+3
Nursing & Midwifery	2,013	2,029	+16	+0.8%	+64	+78
Therapy Professions	534	538	+4	+0.8%	+52	+53
Health Science/ Diagnostics	32	34	+2	+5.0%	-3	-3
Social Care	728	748	+21	+2.8%	+53	+68
Social Workers	135	134	-0	-0.1%	+9	+11
Psychologists	176	183	+7	+3.7%	+19	+18
Pharmacy	29	29	-0	-0.5%	+4	+4
H&SC, Other	70	70	-1	-0.8%	-1	-0
Health & Social Care Professionals	1,704	1,736	+32	+1.9%	+133	+150
Management (VIII & above)	81	82	+1	+1.1%	+3	+2
Administrative/ Supervisory (V to VII)	237	240	+4	+1.6%	+33	+29
Clerical (III & IV)	472	486	+14	+2.9%	+34	+33
Management & Administrative	790	808	+18	+2.3%	+70	+64
Support	407	404	-3	-0.7%	-48	-48
Maintenance/ Technical	35	36	+1	+3.2%	+1	+1
General Support	442	440	-2	-0.4%	-47	-47
Health Care Assistants	1,336	1,361	+26	+1.9%	+84	+86
Care, other	230	232	+1	+0.6%	+11	+13
Patient & Client Care	1,566	1,593	+27	+1.7%	+94	+98

Nov 2020 (Dec 2019 figure: 638)	WTE Oct 2020	WTE Nov 2020	WTE change since Oct 20	% change since Oct 20	WTE change since Dec 19	WTE change since Nov 19
other Community Services	685	695	+10	+1.5%	+57	+62
Consultants	18	18	+0	+0.3%	+1	+1
Registrars	23	24	+1	+4.7%	-1	-1
SHO/ Interns	7	6	-1	-14.3%	+4	+4
<i>Other Medical</i>	0	0	+0	+11.8%	-0	-0
Medical/ Dental, other	0	0	+0	+11.8%	-0	-0
Medical & Dental	48	48	+0	+0.3%	+4	+4
Nurse/ Midwife Manager	81	80	-1	-0.7%	+14	+12
Nurse/ Midwife Specialist & AN/MP	11	12	+1	+7.0%	+4	+4
Staff Nurse/ Staff Midwife	175	176	+1	+0.7%	+2	+3
Nursing/ Midwifery other	2	2	+0	+1.0%	+1	+1
Nursing & Midwifery	269	271	+1	+0.5%	+21	+19
Therapy Professions	12	12			+1	+1
Health Science/ Diagnostics	8	8	+0	+0.1%	-1	-1
Social Care	4	4	+0	+6.9%	+0	+0
Social Workers	29	30	+2	+5.7%	+2	+2
Psychologists	8	7	-1	-10.2%	-0	-0
Pharmacy	4	4			+1	+1
H&SC, Other	4	4	+0	+6.4%	+1	+1
Health & Social Care Professionals	67	68	+1	+2.0%	+4	+5
Management (VIII & above)	65	68	+3	+5.2%	+3	+4
Administrative/ Supervisory (V to VII)	74	77	+3	+4.2%	+2	+2
Clerical (III & IV)	60	59	-1	-1.4%	-11	-10
Management & Administrative	199	204	+6	+2.8%	-7	-4
Support	18	20	+1	+7.1%	+5	+6
Maintenance/ Technical	7	7	+1	+7.7%	+4	+4
General Support	25	27	+2	+7.2%	+9	+10
Health Care Assistants	62	62	-0	-0.2%	+25	+26
Care, other	16	16	-0	-1.6%	+0	+0
Patient & Client Care	78	78	-0	-0.5%	+25	+27

Community Services Employment Report: HSE Staff only November 2020

Nov 2020 (Dec 2019 figure: 35,864)	WTE Oct 2020	WTE Nov 2020	WTE change since Oct 20	% change since Oct 20	WTE change since Dec 19	WTE change since Nov 19
Community Health & Wellbeing	142	148	+6	+4.3%	+148	+148
Mental Health	9,825	9,843	+18	+0.2%	+331	+349
Primary Care	10,256	10,505	+249	+2.4%	+581	+533
Social Care	16,660	16,674	+13	+0.1%	+246	+310

Nov 2020 (Dec 2019 figure: 5,468)	WTE Oct 2020	WTE Nov 2020	WTE change since Oct 20	% change since Oct 20	WTE change since Dec 19	WTE change since Nov 19
CHO 1	5,641	5,667	+26	+0.5%	+199	+202
Consultants	38	38	+0	+0.3%	+4	+5
Registrars	73	71	-3	-3.5%	+5	+3
SHO/ Interns	24	24	-0	-1.5%	-3	-2
Medical/ Dental, other	66	64	-2	-2.9%	-16	-3
Medical & Dental	201	196	-5	-2.3%	-9	+3
Nurse/ Midwife Manager	361	357	-3	-1.0%	+8	+6
Nurse/ Midwife Specialist & AN/MP	115	119	+4	+3.1%	+17	+18
Staff Nurse/ Staff Midwife	1,019	1,018	-1	-0.1%	+4	+4
Public Health Nurse	151	153	+2	+1.6%	-3	-1
<i>Pre-registration Nurse/ Midwife Intern</i>	1	1	+1	+192.0%	-9	-9
<i>Pre-registration Nurse Intern (COVID-19)</i>	32	20	-11	-36.2%	+20	+20
<i>Post-registration Nurse/ Midwife Student</i>	3	3	-0	-11.8%	-4	-3
<i>Nursing/ Midwifery awaiting registration</i>	11	11			+10	+11
Nursing/ Midwifery Student	47	36	-11	-23.4%	+15	+19
Nursing/ Midwifery other	8	8	+0	+2.0%	+2	+2
Nursing & Midwifery	1,700	1,691	-9	-0.5%	+43	+49
Therapy Professions	329	327	-2	-0.6%	+11	+6
Health Science/ Diagnostics	7	7	-0	-1.7%	+0	+0
Social Care	12	13	+1	+9.3%	+2	+2
Social Workers	90	91	+2	+1.8%	+6	+7
Psychologists	62	62	+0	+0.5%	+2	+2
Pharmacy	3	3	+0	+2.0%	+1	+1
H&SC, Other	31	31	+0	+0.3%	-2	-3
Health & Social Care Professionals	533	534	+1	+0.2%	+21	+16
Management (VIII & above)	63	62	-0	-0.4%	+3	+3
Administrative/ Supervisory (V to VII)	161	163	+2	+1.2%	+28	+30
Clerical (III & IV)	470	477	+7	+1.4%	+21	+23
Management & Administrative	695	703	+8	+1.2%	+52	+55
Support	308	309	+2	+0.6%	+4	+1
Maintenance/ Technical	36	36	-0	-0.0%	+1	-0
General Support	344	346	+2	+0.5%	+4	+0
Health Care Assistants	1,472	1,487	+15	+1.0%	+65	+61
Home Help	561	572	+12	+2.1%	+16	+12
Care, other	136	138	+2	+1.2%	+7	+7
Patient & Client Care	2,169	2,197	+28	+1.3%	+88	+79

Nov 2020 (Dec 2019 figure: 4,256)	WTE Oct 2020	WTE Nov 2020	WTE change since Oct 20	% change since Oct 20	WTE change since Dec 19	WTE change since Nov 19
CHO 2	4,328	4,323	-5	-0.1%	+66	+99
Consultants	42	40	-2	-5.1%	-0	+1
Registrars	87	87	-0	-0.3%	+13	+13
SHO/ Interns	42	43	+0	+0.9%	+7	+8
Medical/ Dental, other	61	63	+2	+3.4%	+4	+4
Medical & Dental	231	231	+0	+0.0%	+24	+25
Nurse/ Midwife Manager	259	254	-5	-1.8%	+13	+16
Nurse/ Midwife Specialist & AN/MP	101	102	+1	+0.8%	+14	+13
Staff Nurse/ Staff Midwife	775	783	+8	+1.0%	+5	+2
Public Health Nurse	198	199	+1	+0.6%	+7	+7
<i>Pre-registration Nurse/ Midwife Intern</i>				-100.0%		-1
<i>Pre-registration Nurse Intern (COVID-19)</i>	26	15	-11	-40.9%	+15	+15
<i>Post-registration Nurse/ Midwife Student</i>				-100.0%	-13	-4
<i>Nursing/ Midwifery awaiting registration</i>				-100.0%	-11	-11
Nursing/ Midwifery Student	26	15	-11	-40.9%	+7	-0
Nursing/ Midwifery other	3	3	-0	-5.6%	+1	+1
Nursing & Midwifery	1,362	1,357	-5	-0.4%	+47	+37
Therapy Professions	332	330	-2	-0.5%	+26	+29
Health Science/ Diagnostics	34	34	+0	+0.8%	+1	+2
Social Care	56	56	+1	+1.6%	+7	+9
Social Workers	58	59	+0	+0.7%	+0	+1
Psychologists	68	65	-3	-4.5%	+6	+6
Pharmacy	4	4	+0	+2.4%	-1	-1
H&SC, Other	15	15	+0	+0.5%	-2	-1
Health & Social Care Professionals	567	564	-3	-0.5%	+38	+44
Management (VIII & above)	45	45	-0	-0.2%	+2	+1
Administrative/ Supervisory (V to VII)	115	120	+5	+4.7%	+21	+20
Clerical (III & IV)	411	407	-3	-0.8%	-23	-23
Management & Administrative	570	573	+2	+0.4%	+0	-1
Support	112	111	-1	-0.9%	-2	-4
Maintenance/ Technical	67	68	+1	+1.7%	+5	+3
General Support	179	179	+0	+0.1%	+3	-1
Health Care Assistants	839	834	-4	-0.5%	+13	+11
Home Help	426	428	+2	+0.4%	-72	-25
Care, other	153	157	+4	+2.5%	+13	+9
Patient & Client Care	1,418	1,419	+1	+0.1%	-46	-5

Nov 2020 (Dec 2019 figure: 2,655)	WTE Oct 2020	WTE Nov 2020	WTE change since Oct 20	% change since Oct 20	WTE change since Dec 19	WTE change since Nov 19
CHO 3	2,720	2,758	+39	+1.4%	+103	+101
Consultants	28	28	+0	+0.6%	+2	+1
Registrars	40	40	+0	+0.6%	-2	-0
SHO/ Interns	21	22	+1	+3.3%	-3	-3
Medical/ Dental, other	58	58	-0	-0.1%	+1	+1
Medical & Dental	147	148	+1	+0.7%	-2	-2
Nurse/ Midwife Manager	176	168	-8	-4.6%	-3	-1
Nurse/ Midwife Specialist & AN/MP	42	40	-2	-4.6%	-3	-6
Staff Nurse/ Staff Midwife	533	556	+23	+4.4%	+16	+19
Public Health Nurse	129	127	-2	-1.5%	-0	-2
<i>Pre-registration Nurse/ Midwife Intern</i>				-100.0%	-9	-10
<i>Pre-registration Nurse Intern (COVID-19)</i>	17	11	-6	-37.1%	+11	+11
<i>Post-registration Nurse/ Midwife Student</i>	3	4	+1	+19.4%		+4
Nursing/ Midwifery Student	21	15	-6	-28.0%	+6	+5
Nursing & Midwifery	900	906	+6	+0.6%	+16	+16
Therapy Professions	186	190	+4	+2.3%	+4	+3
Health Science/ Diagnostics	9	9			+3	+3
Social Care	6	6			+1	+1
Social Workers	43	44	+1	+3.2%	-1	-1
Psychologists	99	110	+10	+10.3%	-2	-2
Pharmacy	5	5				
H&SC, Other	25	24	-2	-6.6%	+2	+1
Health & Social Care Professionals	373	387	+14	+3.8%	+8	+6
Management (VIII & above)	35	36	+1	+3.0%	+4	+5
Administrative/ Supervisory (V to VII)	119	116	-3	-2.2%	+12	+10
Clerical (III & IV)	263	266	+3	+1.2%	-16	-16
Management & Administrative	417	418	+2	+0.4%	-0	-1
Support	106	107	+1	+0.5%	-3	-3
Maintenance/ Technical	65	65	-0	-0.3%	+0	-0
General Support	172	172	+0	+0.2%	-3	-3
Health Care Assistants	406	420	+14	+3.5%	+40	+39
Home Help	214	216	+2	+0.8%	+40	+43
Care, other	91	91	-0	-0.0%	+4	+3
Patient & Client Care	711	727	+16	+2.2%	+84	+85

Nov 2020 (Dec 2019 figure: 5,940)	WTE Oct 2020	WTE Nov 2020	WTE change since Oct 20	% change since Oct 20	WTE change since Dec 19	WTE change since Nov 19
CHO 4	6,110	6,154	+43	+0.7%	+214	+208
Consultants	61	60	-1	-2.2%	+5	+6
Registrars	96	95	-1	-1.5%	-4	-4
SHO/ Interns	42	44	+2	+4.4%	+12	+12
Medical/ Dental, other	112	104	-8	-7.5%	+5	+6
Medical & Dental	311	302	-9	-3.0%	+19	+19
Nurse/ Midwife Manager	394	385	-9	-2.4%	+27	+24
Nurse/ Midwife Specialist & AN/MP	80	84	+4	+5.3%	+16	+18
Staff Nurse/ Staff Midwife	1,187	1,195	+8	+0.7%	+34	+56
Public Health Nurse	220	232	+12	+5.4%	+16	+20
<i>Pre-registration Nurse/ Midwife Intern</i>				-100.0%	-1	-10
<i>Pre-registration Nurse Intern (COVID-19)</i>	11	5	-7	-59.7%	+5	+5
<i>Post-registration Nurse/ Midwife Student</i>	14	15	+1	+9.6%	+1	-4
<i>Nursing/ Midwifery awaiting registration</i>	3	3	+0	+9.1%	+3	-29
Nursing/ Midwifery Student	27	22	-5	-18.7%	-31	-39
Nursing & Midwifery	1,909	1,919	+10	+0.5%	+61	+80
Therapy Professions	375	375	+1	+0.2%	+16	+16
Health Science/ Diagnostics	11	11	+1	+6.1%	+1	+2
Social Care	37	41	+4	+11.4%	+2	+3
Social Workers	104	105	+1	+0.6%	+17	+19
Psychologists	118	117	-1	-0.9%	+10	+12
Pharmacy	10	10	-0	-2.1%	+2	+2
H&SC, Other	59	59	-1	-1.1%	+2	+4
Health & Social Care Professionals	714	718	+4	+0.6%	+51	+58
Management (VIII & above)	60	60	-1	-1.1%	+2	+3
Administrative/ Supervisory (V to VII)	132	132	-1	-0.5%	+8	+8
Clerical (III & IV)	437	446	+10	+2.2%	+31	+29
Management & Administrative	629	637	+8	+1.3%	+41	+40
Support	214	218	+4	+1.8%	+12	+12
Maintenance/ Technical	12	12	-0	-0.1%	-1	-1
General Support	227	230	+4	+1.7%	+11	+11
Health Care Assistants	1,102	1,154	+51	+4.6%	+75	+70
Home Help	1,087	1,059	-28	-2.6%	-65	-89
Care, other	131	134	+3	+2.4%	+21	+19
Patient & Client Care	2,320	2,347	+27	+1.1%	+31	-1

Nov 2020 (Dec 2019 figure: 4,158)	WTE Oct 2020	WTE Nov 2020	WTE change since Oct 20	% change since Oct 20	WTE change since Dec 19	WTE change since Nov 19
CHO 5	4,259	4,302	+43	+1.0%	+144	+156
Consultants	29	28	-0	-0.4%	-1	-1
Registrars	27	28	+1	+2.1%	-0	+2
SHO/ Interns	39	37	-2	-5.6%	-1	-2
Medical/ Dental, other	74	71	-3	-3.8%	+5	+6
Medical & Dental	169	164	-5	-2.7%	+3	+4
Nurse/ Midwife Manager	321	319	-2	-0.7%	+28	+28
Nurse/ Midwife Specialist & AN/MP	74	77	+2	+3.1%	+25	+25
Staff Nurse/ Staff Midwife	858	869	+11	+1.3%	+1	+7
Public Health Nurse	171	174	+3	+1.9%	-0	+1
<i>Pre-registration Nurse/ Midwife Intern</i>				-100.0%	-1	-4
<i>Pre-registration Nurse Intern (COVID-19)</i>	27	19	-9	-31.5%	+19	+19
<i>Post-registration Nurse/ Midwife Student</i>	3	3	-0	-10.4%	-4	-2
<i>Nursing/ Midwifery awaiting registration</i>				-100.0%		-7
Nursing/ Midwifery Student	30	22	-9	-29.2%	+9	+6
Nursing/ Midwifery other	4	4	-0	-2.9%	-0	+0
Nursing & Midwifery	1,459	1,465	+6	+0.4%	+63	+68
Therapy Professions	313	319	+6	+1.8%	-6	-2
Health Science/ Diagnostics	7	7	+0	+7.4%	+3	+3
Social Care	24	23	-1	-2.6%	-3	-1
Social Workers	54	55	+1	+1.5%	+6	+5
Psychologists	74	74	+0	+0.7%	+0	-1
Pharmacy	2	2	+0	+2.2%	+1	+1
H&SC, Other	26	27	+0	+1.0%	-2	-1
Health & Social Care Professionals	499	506	+7	+1.4%	-0	+4
Management (VIII & above)	39	41	+1	+3.4%	+4	+6
Administrative/ Supervisory (V to VII)	110	111	+1	+1.1%	+9	+9
Clerical (III & IV)	276	280	+4	+1.4%	-4	-4
Management & Administrative	425	431	+7	+1.5%	+9	+11
Support	291	290	-1	-0.2%	-30	-30
Maintenance/ Technical	25	24	-1	-3.3%	-7	-7
General Support	316	314	-2	-0.5%	-37	-37
Health Care Assistants	636	657	+21	+3.2%	+93	+91
Home Help	663	674	+11	+1.7%	+5	+6
Care, other	93	91	-2	-1.9%	+9	+8
Patient & Client Care	1,391	1,421	+30	+2.2%	+107	+106

Nov 2020 (Dec 2019 figure: 1,605)	WTE Oct 2020	WTE Nov 2020	WTE change since Oct 20	% change since Oct 20	WTE change since Dec 19	WTE change since Nov 19
CHO 6	1,662	1,684	+22	+1.3%	+79	+68
Consultants	25	25	+0	+0.1%	+2	+3
Registrars	27	28	+0	+0.4%	-2	-2
SHO/ Interns	6	6	-0	-4.3%	+2	+2
Medical/ Dental, other	48	48	+0	+0.1%	-1	-1
Medical & Dental	106	106	-0	-0.1%	+0	+2
Nurse/ Midwife Manager	137	137	+1	+0.5%	-0	-0
Nurse/ Midwife Specialist & AN/MP	19	18	-1	-4.6%	+3	+3
Staff Nurse/ Staff Midwife	298	305	+7	+2.4%	+20	+20
Public Health Nurse	114	115	+1	+0.6%	-2	-6
<i>Post-registration Nurse/ Midwife Student</i>	14	14	+0	+2.4%	+3	
<i>Nursing/ Midwifery awaiting registration</i>	0	1	+1	+177.8%	+1	+1
Nursing/ Midwifery Student	14	15	+1	+6.9%	+2	+1
Nursing/ Midwifery other	4	4	-1	-12.5%	+2	+3
Nursing & Midwifery	586	594	+8	+1.4%	+23	+21
Therapy Professions	169	163	-6	-3.7%	+5	-1
Health Science/ Diagnostics	17	17	+0	+2.5%	+1	+1
Social Care	10	10	+1	+5.5%	-1	-1
Social Workers	25	25	-0	-1.5%	-1	-3
Psychologists	38	40	+2	+4.0%	+2	+2
Pharmacy	2	2			+0	+0
H&SC, Other	9	9	+0	+4.1%	+1	+1
Health & Social Care Professionals	270	267	-4	-1.4%	+7	-2
Management (VIII & above)	36	36	+0	+0.6%	+2	+2
Administrative/ Supervisory (V to VII)	91	91	-1	-0.7%	-0	+1
Clerical (III & IV)	151	153	+2	+1.2%	+18	+17
Management & Administrative	279	280	+1	+0.5%	+20	+19
Support	79	81	+1	+1.6%	-4	-6
Maintenance/ Technical	2	2			-1	-1
General Support	81	83	+1	+1.6%	-5	-7
Health Care Assistants	284	296	+12	+4.2%	+30	+32
Care, other	56	59	+3	+5.9%	+5	+3
Patient & Client Care	340	355	+15	+4.5%	+34	+35

Nov 2020 (Dec 2019 figure: 3,151)	WTE Oct 2020	WTE Nov 2020	WTE change since Oct 20	% change since Oct 20	WTE change since Dec 19	WTE change since Nov 19
CHO 7	3,274	3,285	+11	+0.3%	+134	+135
Consultants	59	57	-2	-3.5%	+4	+6
Registrars	93	91	-1	-1.4%	+4	+5
SHO/ Interns	24	24	+0	+1.0%	+1	+1
Medical/ Dental, other	83	81	-2	-2.3%	+3	+2
Medical & Dental	259	254	-5	-1.9%	+11	+14
Nurse/ Midwife Manager	243	243	-0	-0.2%	+11	+15
Nurse/ Midwife Specialist & AN/MP	71	72	+1	+0.9%	+11	+11
Staff Nurse/ Staff Midwife	541	546	+6	+1.0%	+27	+17
Public Health Nurse	177	175	-1	-0.8%	+0	-2
<i>Pre-registration Nurse/ Midwife Intern</i>				-100.0%	-6	-2
<i>Pre-registration Nurse Intern (COVID-19)</i>	10	5	-5	-47.8%	+5	+5
<i>Post-registration Nurse/ Midwife Student</i>	21	23	+2	+12.1%	+16	+2
<i>Nursing/ Midwifery awaiting registration</i>	5	4	-1	-17.0%	+0	-4
Nursing/ Midwifery Student	36	33	-3	-9.4%	+1	+2
Nursing/ Midwifery other	9	8	-1	-9.0%	+0	+1
Nursing & Midwifery	1,076	1,077	+0	+0.0%	+50	+43
Therapy Professions	337	338	+1	+0.4%	+13	+18
Social Care	12	11	-0	-3.6%	+0	-0
Social Workers	71	73	+1	+1.8%	+5	+8
Psychologists	65	64	-1	-2.3%	+2	+3
Pharmacy	26	24	-2	-7.1%	-1	-0
H&SC, Other	40	41	+1	+1.3%	-2	-2
Health & Social Care Professionals	552	551	-1	-0.2%	+18	+26
Management (VIII & above)	45	46	+1	+1.9%	+6	+6
Administrative/ Supervisory (V to VII)	115	117	+2	+2.1%	+21	+18
Clerical (III & IV)	263	264	+1	+0.2%	+23	+22
Management & Administrative	423	427	+4	+0.9%	+50	+46
Support	173	176	+2	+1.2%	+5	+3
Maintenance/ Technical	5	5			-0	-0
General Support	179	181	+2	+1.2%	+5	+2
Health Care Assistants	426	439	+13	+3.0%	-3	-7
Home Help	132	132	-0	-0.4%	+5	+12
Care, other	227	225	-2	-0.8%	-2	-0
Patient & Client Care	785	796	+11	+1.3%	+0	+5

Nov 2020 (Dec 2019 figure: 4,583)	WTE Oct 2020	WTE Nov 2020	WTE change since Oct 20	% change since Oct 20	WTE change since Dec 19	WTE change since Nov 19
CHO 8	4,655	4,692	+37	+0.8%	+109	+116
Consultants	42	44	+1	+2.8%	+1	+2
Registrars	115	117	+2	+1.8%	+12	+12
SHO/ Interns	30	26	-4	-12.8%	-12	-11
Medical/ Dental, other	73	72	-1	-1.1%	-0	+1
Medical & Dental	260	259	-1	-0.5%	+1	+3
Nurse/ Midwife Manager	289	292	+4	+1.3%	+7	+6
Nurse/ Midwife Specialist & AN/MP	101	103	+2	+2.0%	+9	+9
Staff Nurse/ Staff Midwife	791	813	+22	+2.8%	+23	+15
Public Health Nurse	199	199	-0	-0.1%	+0	-1
<i>Pre-registration Nurse/ Midwife Intern</i>		1	+1	-100.0%	+1	+1
<i>Pre-registration Nurse Intern (COVID-19)</i>	19	5	-14	-71.7%	+5	+5
<i>Post-registration Nurse/ Midwife Student</i>	9	12	+3	+27.5%	+4	+10
<i>Nursing/ Midwifery awaiting registration</i>				-100.0%	-1	-3
Nursing/ Midwifery Student	29	18	-10	-35.9%	+14	+13
Nursing/ Midwifery other	5	5	+0	+6.8%	+1	+2
Nursing & Midwifery	1,413	1,431	+18	+1.3%	+54	+43
Therapy Professions	377	380	+3	+0.7%	+16	+20
Health Science/ Diagnostics	9	9	-0	-0.2%	+2	+2
Social Care	13	13	-0	-0.6%	+1	+1
Social Workers	80	81	+0	+0.4%	+5	+5
Psychologists	112	112	+0	+0.1%	-2	-1
Pharmacy	8	8	+0	+4.3%	+1	+1
H&SC, Other	46	47	+1	+1.3%	+1	+1
Health & Social Care Professionals	646	650	+4	+0.6%	+25	+30
Management (VIII & above)	60	59	-1	-1.6%	+2	+2
Administrative/ Supervisory (V to VII)	170	170	+0	+0.0%	+21	+24
Clerical (III & IV)	484	486	+3	+0.5%	+26	+25
Management & Administrative	714	715	+2	+0.2%	+49	+51
Support	84	84	-0	-0.3%	-3	-3
Maintenance/ Technical	55	56	+0	+0.7%	+0	+0
General Support	140	140	+0	+0.1%	-3	-3
Health Care Assistants	930	948	+18	+2.0%	-1	+2
Home Help	397	394	-3	-0.9%	-24	-22
Care, other	154	154	-0	-0.3%	+8	+10
Patient & Client Care	1,482	1,496	+14	+1.0%	-17	-10

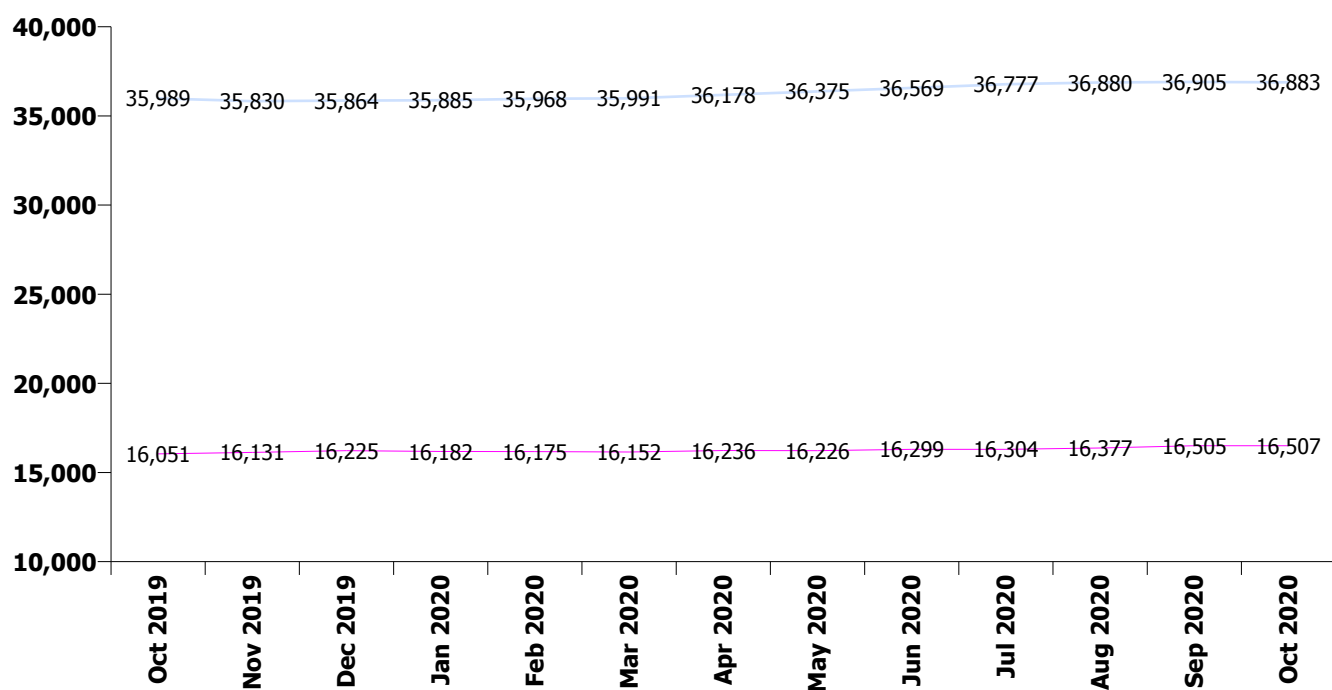
Nov 2020 (Dec 2019 figure: 3,407)	WTE Oct 2020	WTE Nov 2020	WTE change since Oct 20	% change since Oct 20	WTE change since Dec 19	WTE change since Nov 19
CHO 9	3,548	3,608	+60	+1.7%	+201	+194
Consultants	54	53	-1	-2.0%	-3	-3
Registrars	88	86	-3	-3.0%	-4	-2
SHO/ Interns	63	66	+3	+5.2%	+6	+3
Medical/ Dental, other	50	50	+0	+0.8%	-0	-0
Medical & Dental	255	255	-0	-0.0%	-2	-2
Nurse/ Midwife Manager	261	263	+2	+0.8%	+16	+17
Nurse/ Midwife Specialist & AN/MP	84	87	+3	+3.6%	+13	+13
Staff Nurse/ Staff Midwife	679	695	+16	+2.3%	+1	+1
Public Health Nurse	184	183	-1	-0.5%	+7	+8
<i>Pre-registration Nurse/ Midwife Intern</i>	25	11	-14	-56.8%	+5	+9
<i>Pre-registration Nurse Intern (COVID-19)</i>	5	2	-2	-49.5%	+2	+2
<i>Post-registration Nurse/ Midwife Student</i>	33	32	-1	-2.8%	+10	+6
<i>Nursing/ Midwifery awaiting registration</i>				-100.0%	-3	-12
Nursing/ Midwifery Student	63	45	-18	-28.2%	+5	+5
Nursing/ Midwifery other	14	15	+0	+3.1%	+2	+2
Nursing & Midwifery	1,285	1,288	+3	+0.2%	+44	+46
Therapy Professions	337	340	+3	+0.9%	+40	+38
Health Science/ Diagnostics	18	19	+1	+3.4%	-2	-2
Social Care	7	7	-1	-8.7%	-1	-0
Social Workers	83	82	-1	-1.3%	+3	+4
Psychologists	129	134	+5	+3.9%	+10	+9
Pharmacy	22	22	-0	-0.7%	+3	+3
H&SC, Other	56	56	+0	+0.3%	-1	-0
Health & Social Care Professionals	652	659	+7	+1.1%	+55	+52
Management (VIII & above)	45	46	+1	+2.0%	+2	+2
Administrative/ Supervisory (V to VII)	138	140	+2	+1.7%	+28	+24
Clerical (III & IV)	324	338	+14	+4.3%	+34	+31
Management & Administrative	507	524	+17	+3.4%	+65	+57
Support	197	196	-1	-0.7%	-2	-3
Maintenance/ Technical	9	9	+0	+1.5%	+0	+0
General Support	206	205	-1	-0.6%	-2	-3
Health Care Assistants	514	544	+29	+5.7%	+34	+34
Care, other	129	133	+5	+3.7%	+9	+10
Patient & Client Care	643	677	+34	+5.3%	+42	+44

Nov 2020 (Dec 2019 figure: 638)	WTE Oct 2020	WTE Nov 2020	WTE change since Oct 20	% change since Oct 20	WTE change since Dec 19	WTE change since Nov 19
other Community Services	685	695	+10	+1.5%	+57	+62
Consultants	18	18	+0	+0.3%	+1	+1
Registrars	23	24	+1	+4.7%	-1	-1
SHO/ Interns	7	6	-1	-14.3%	+4	+4
Medical/ Dental, other	0	0	+0	+11.8%	-0	-0
Medical & Dental	48	48	+0	+0.3%	+4	+4
Nurse/ Midwife Manager	81	80	-1	-0.7%	+14	+12
Nurse/ Midwife Specialist & AN/MP	11	12	+1	+7.0%	+4	+4
Staff Nurse/ Staff Midwife	175	176	+1	+0.7%	+2	+3
Nursing/ Midwifery other	2	2	+0	+1.0%	+1	+1
Nursing & Midwifery	269	271	+1	+0.5%	+21	+19
Therapy Professions	12	12			+1	+1
Health Science/ Diagnostics	8	8	+0	+0.1%	-1	-1
Social Care	4	4	+0	+6.9%	+0	+0
Social Workers	29	30	+2	+5.7%	+2	+2
Psychologists	8	7	-1	-10.2%	-0	-0
Pharmacy	4	4			+1	+1
H&SC, Other	4	4	+0	+6.4%	+1	+1
Health & Social Care Professionals	67	68	+1	+2.0%	+4	+5
Management (VIII & above)	65	68	+3	+5.2%	+3	+4
Administrative/ Supervisory (V to VII)	74	77	+3	+4.2%	+2	+2
Clerical (III & IV)	60	59	-1	-1.4%	-11	-10
Management & Administrative	199	204	+6	+2.8%	-7	-4
Support	18	20	+1	+7.1%	+5	+6
Maintenance/ Technical	7	7	+1	+7.7%	+4	+4
General Support	25	27	+2	+7.2%	+9	+10
Health Care Assistants	62	62	-0	-0.2%	+25	+26
Care, other	16	16	-0	-1.6%	+0	+0
Patient & Client Care	78	78	-0	-0.5%	+25	+27

Community Services Employment Report: HSE & Section 38 November 2020

Nov 2020 (Dec 2019 figure: 52,089)	WTE Oct 2020	WTE Nov 2020	WTE change since Oct 20	% change since Oct 20	WTE change since Dec 19	WTE change since Nov 19
Community Services	53,390	53,830	+440	+0.8%	+1,741	+1,869
CHO 1	5,641	5,667	+26	+0.5%	+199	+202
HSE	4,328	4,323	-5	-0.1%	+66	+99
Bros. of Charity, West Region	1,274	1,289	+15	+1.2%	+1	+8
Section 38 Voluntary Agencies	1,274	1,289	+15	+1.2%	+1	+8
CHO 2	5,602	5,612	+10	+0.2%	+67	+108
HSE	2,720	2,758	+39	+1.4%	+103	+101
Bros. of Charity, Clare	357	368	+11	+3.2%	+20	+18
Bros. of Charity, Limerick	578	580	+2	+0.3%	+60	+56
Daughters of Charity, Limerick	543	548	+5	+0.9%	+5	+12
Daughters of Charity, Roscrea	287	290	+2	+0.8%	-0	+1
Section 38 Voluntary Agencies	1,765	1,786	+21	+1.2%	+85	+88
CHO 3	4,485	4,544	+59	+1.3%	+188	+189
HSE	6,110	6,154	+43	+0.7%	+214	+208
Bros. of Charity, Southern	777	770	-7	-0.9%	+30	+28
Cope Foundation	1,150	1,146	-3	-0.3%	+56	+54
Cork Dental Hospital	112	110	-2	-1.8%	+7	+5
St. John of God, Kerry	319	323	+5	+1.4%	+8	+12
Section 38 Voluntary Agencies	2,357	2,350	-7	-0.3%	+101	+99
CHO 4	8,468	8,504	+36	+0.4%	+315	+307
HSE	4,259	4,302	+43	+1.0%	+144	+156
Bros. of Charity, Waterford	645	650	+6	+0.9%	+20	+26
Carriglea Cairde Services	208	208	+0	+0.1%	-6	-5
St. Patrick's, Kilkenny	287	288	+0	+0.1%	+9	-1
Section 38 Voluntary Agencies	1,140	1,146	+6	+0.6%	+23	+20
CHO 5	5,399	5,449	+50	+0.9%	+167	+175
HSE	1,662	1,684	+22	+1.3%	+79	+68
Children's Sunshine Home	56	57	+1	+1.8%	-2	-1
Dublin Dental Hospital	93	93			+2	+2
Leopardstown Park Hospital	207	205	-2	-1.1%	-6	-7
Royal Hospital, Donnybrook, Dublin	271	268	-3	-0.9%	-4	-4
St. John of God (IDS)	462	467	+4	+0.9%	+10	+21
St. John of God (MHS)	235	235	+0	+0.1%	+0	+5
Sunbeam House Services	445	464	+19	+4.4%	+15	+14
Section 38 Voluntary Agencies	1,768	1,789	+20	+1.1%	+16	+30
CHO 6	3,430	3,473	+42	+1.2%	+95	+98
HSE	3,274	3,285	+11	+0.3%	+134	+135
Cheeverstown House	389	390	+1	+0.2%	-7	-8
Kare, Newbridge, Co Kildare	362	372	+10	+2.8%	+13	+18
Our Lady's Hospice & Care Services	490	491	+1	+0.3%	+9	+9
Peamount Hospital (Newcastle)	476	477	+1	+0.1%	-9	-9
Stewart's Hospital, (Palmerstown)	892	913	+20	+2.3%	+61	+57
St. John of God Liffey Services	779	794	+16	+2.0%	+7	+30
Section 38 Voluntary Agencies	3,388	3,436	+49	+1.4%	+73	+97
CHO 7	6,662	6,722	+60	+0.9%	+207	+232

HSE	4,655	4,692	+37	+0.8%	+109	+116
Muiriosa Foundation, Laois/Offaly	314	313	-1	-0.2%	+11	+10
Muiriosa Foundation, Longford/Westmeath	280	281	+1	+0.5%	+11	+10
Muiriosa Foundation, South Kildare	335	342	+6	+1.9%	+8	+10
St. John of God, Drumcar	636	647	+11	+1.8%	+0	+15
Section 38 Voluntary Agencies	1,565	1,583	+18	+1.2%	+31	+45
CHO 8	6,220	6,275	+55	+0.9%	+140	+160
HSE	3,548	3,608	+60	+1.7%	+201	+194
Central Remedial Clinic	295	297	+2	+0.6%	+18	+21
Daughters of Charity, Dublin	1,051	1,064	+13	+1.3%	+30	+45
Incorporated Orthopaedic Hospital	266	266	+0	+0.1%	+40	+40
St. Michael's House, Dublin	1,433	1,449	+16	+1.1%	+19	+34
St. Vincent's, Fairview	204	204	-0	-0.0%	-2	+2
Section 38 Voluntary Agencies	3,249	3,280	+32	+1.0%	+105	+142
CHO 9	6,797	6,889	+92	+1.3%	+306	+336
other Community Services	685	695	+10	+1.5%	+57	+62



Community Services Employment Report: Staff Groups November 2020

Nov 2020 (Dec 2019 figure: 52,089)	WTE Oct 2020	WTE Nov 2020	WTE change since Oct 20	% change since Oct 20	WTE change since Dec 19	WTE change since Nov 19
Community Services	53,390	53,830	+440	+0.8%	+1,741	+1,869
Consultant Dentistry	10	10	-0	-0.1%	-1	-1
Consultant Medicine	28	27	-1	-4.0%	+5	+5
Consultant Paediatrics	5	5	+0	+0.4%		
Consultant Psychiatry	401	396	-4	-1.1%	+15	+22
Consultant Radiology	1	1				
Consultant Surgery	2	1	-0	-25.6%	-3	-3
Consultants	446	440	-6	-1.3%	+16	+23
Registrar	570	568	-2	-0.3%	+4	+7
Senior Registrar	118	116	-2	-2.0%	+13	+12
Specialist Registrar	17	18	+1	+5.9%	-1	-1
Registrars	706	703	-3	-0.4%	+16	+18
Interns	5	5	-0	-7.1%	-3	-3
Senior House Officer	334	332	-2	-0.5%	+20	+18
SHO/ Interns	339	337	-2	-0.6%	+17	+15
Dentists	300	301	+0	+0.1%	-1	-1
Other Medical	351	335	-16	-4.6%	+1	+14
Medical/ Dental, other	652	635	-16	-2.5%	+0	+14
Medical & Dental	2,142	2,115	-27	-1.3%	+49	+69
Clinical Nurse/ Midwife Manager	2,568	2,569	+1	+0.0%	+83	+85
Director Nursing/Midwifery, Assistant	491	487	-4	-0.8%	+24	+19
Director of Nursing/Midwifery	214	211	-3	-1.5%	+4	+4
Nurse/ Midwife Manager	3,272	3,266	-6	-0.2%	+111	+108
Advanced Nurse/ Midwife Practitioner	72	74	+3	+4.0%	+28	+30
Clinical Nurse/ Midwife Specialist	714	733	+20	+2.7%	+89	+91
Nurse/ Midwife Specialist & AN/MP	785	808	+22	+2.9%	+117	+120
Staff Midwives	9	7	-3	-28.4%	-2	-2
Staff Nurse [Intellectual Disability]	1,490	1,665	+175	+11.7%	+63	+63
Staff Nurse [Psychiatric]	2,954	3,027	+73	+2.5%	+37	+42
Staff Nurses [General/ Children's]	4,587	4,483	-104	-2.3%	+70	+91
Staff Nurse/ Staff Midwife	9,040	9,181	+142	+1.6%	+168	+194
Public Health Nurse	1,543	1,558	+15	+1.0%	+26	+24
Pre-registration Nurse/ Midwife Intern	27	13	-13	-50.1%	-42	-31
Pre-registration Nurse Intern (COVID-19)	171	109	-63	-36.6%	+109	+109
Post-registration Nurse/ Midwife Student	101	107	+6	+5.6%	+9	+10
Nursing/ Midwifery awaiting registration	19	19	-0	-0.1%	-54	-54
Nursing/ Midwifery Student	319	249	-71	-22.1%	+21	+33
Nursing Education/Clinical	90	68	-22	-24.3%	+10	+14
Other Nursing/ Midwifery	1	1				-1
Nursing/ Midwifery other	91	69	-22	-24.0%	+10	+13
Nursing & Midwifery	15,049	15,131	+81	+0.5%	+454	+493
Dietitians	183	187	+4	+2.1%	+24	+23
Occupational Therapists	1,274	1,284	+10	+0.8%	+53	+65
Orthoptists	16	17	+2	+10.7%	+4	+4
Physiotherapists	888	888	+0	+0.0%	+30	+25
Podiatrists & Chiropodists	44	44	-0	-0.5%	+6	+8
Speech & Language Therapists	909	910	+2	+0.2%	+7	+4
Therapy Professions	3,314	3,330	+17	+0.5%	+124	+129
Audiology	49	51	+1	+3.0%	+7	+7
Biochemists	8	8	+0	+0.1%	+0	+0
Clinical Engineering	21	22	+1	+4.8%	+1	+1
Clinical Measurement	2	2	-0	-4.0%	+1	+1

Nov 2020 (Dec 2019 figure: 52,089)	WTE Oct 2020	WTE Nov 2020	WTE change since Oct 20	% change since Oct 20	WTE change since Dec 19	WTE change since Nov 19
Community Services	53,390	53,830	+440	+0.8%	+1,741	+1,869
Medical Laboratory	48	48	+0	+0.6%	+2	+2
Phlebotomists	1	1	+0	+0.8%	+0	-0
Physicists	1	2	+1	+49.3%		
Radiographers	10	10	+0	+0.1%	-1	-1
Health Science/ Diagnostics	141	144	+3	+2.4%	+10	+10
Social Care	2,834	2,896	+62	+2.2%	+189	+210
Social Workers	839	849	+10	+1.2%	+44	+47
Psychologists	940	954	+14	+1.5%	+53	+55
Pharmacy	109	106	-3	-2.6%	+7	+9
Counsellor Therapists	232	232	+0	+0.0%	+3	+5
Dental Hygienists	61	61	+0	+0.0%	+4	+4
Environmental Health Officers				-100.0%	-1	
Other Health & Social Care	62	63	+0	+0.4%	-8	-4
Play Therapists/ Specialists	17	16	-1	-6.1%	-5	-4
H&SC, Other	372	371	-1	-0.2%	-6	+0
Health & Social Care Professionals	8,548	8,651	+103	+1.2%	+421	+460
Executive Management	138	145	+7	+4.8%	+20	+20
Senior Management (VIII & GM)	512	513	+1	+0.3%	+20	+22
Management (VIII & above)	650	658	+8	+1.2%	+40	+42
Middle Management (V-VII)	1,632	1,646	+14	+0.9%	+166	+161
Other Administrative	18	18	+1	+2.8%	-1	-2
Administrative/ Supervisory (V to VII)	1,650	1,665	+15	+0.9%	+165	+159
Clerical (III & IV)	3,766	3,805	+38	+1.0%	+110	+109
Management & Administrative	6,066	6,127	+61	+1.0%	+315	+310
Catering	404	403	-1	-0.4%	-4	-11
Household Services	1,452	1,464	+11	+0.8%	-7	-16
Other Labs & Associated	5	6	+1	+12.6%	+2	+2
Other Support	319	322	+3	+1.0%	-56	-62
Portering	226	226	-1	-0.3%	-6	-5
Support	2,407	2,420	+13	+0.5%	-70	-92
Maintenance	406	408	+3	+0.6%	+7	+3
Technical Services	10	12	+2	+19.8%	+1	+1
Maintenance/ Technical	416	420	+5	+1.1%	+8	+4
General Support	2,823	2,840	+18	+0.6%	-63	-88
HCA, Nurse's Aide, etc.	12,357	12,525	+169	+1.4%	+523	+537
Health & Social Care Assistants	145	147	+3	+2.0%	+38	+37
Health Care Assistants	12,501	12,673	+171	+1.4%	+562	+574
Home Help	3,480	3,474	-5	-0.1%	-95	-64
Community Welfare Officers	1	1			-1	-1
Other Care Grades	2,780	2,818	+38	+1.4%	+98	+115
Care, other	2,781	2,819	+38	+1.4%	+98	+114
Patient & Client Care	18,761	18,966	+204	+1.1%	+565	+625

Employment by WTE, Headcount, Gender, Full-Time /Part-Time etc.: Nov 2020

Community Services Staff Group	WTE	Headcount	WTE: no.	% Male	% female	Male WTE: no.	Female WTE: no.	% Total Perm	% Male Perm	% Female Perm	% Total Full Time	% Total Part Time	% Male FT	% Female FT
Community Services	53,830	63,577	1.18	17.7%	82.3%	1.09	1.20	83.1%	80.7%	83.6%	64.0%	36.0%	80.3%	60.5%
Consultant Dentistry	10	12	1.18	50.0%	50.0%	1.17	1.18	100.0%	100.0%	100.0%	66.7%	33.3%	66.7%	66.7%
Consultant Medicine	27	33	1.22	27.3%	72.7%	1.10	1.27	66.7%	66.7%	62.5%	63.6%	36.4%	77.8%	58.3%
Consultant Paediatrics	5	8	1.76	12.5%	87.5%	1.82	1.75	75.0%	75.0%	85.7%	37.5%	62.5%	100.0%	28.6%
Consultant Psychiatry	396	433	1.09	39.3%	60.7%	1.04	1.13	66.5%	66.5%	65.0%	83.4%	16.6%	91.2%	78.3%
Consultant Radiology	1	1	1.00	100.0%		1.00		100.0%	100.0%		100.0%	0.0%	100.0%	
Consultant Surgery	1	2	1.56		100.0%		1.56	50.0%	50.0%	50.0%	0.0%	100.0%		0.0%
Consultants	440	489	1.11	38.2%	61.8%	1.05	1.15	67.5%	70.1%	65.9%	80.6%	19.4%	89.8%	74.8%
Registrar	568	587	1.03	36.6%	63.4%	1.02	1.04	2.7%	2.7%	1.6%	98.3%	1.7%	99.1%	97.8%
Senior Registrar	116	124	1.07	41.1%	58.9%	1.02	1.10	2.4%	2.4%	4.1%	93.5%	6.5%	98.0%	90.4%
Specialist Registrar	18	18	1.00	33.3%	66.7%	1.00	1.00	16.7%	16.7%	16.7%	100.0%	0.0%	100.0%	100.0%
Registrars	703	729	1.04	37.3%	62.7%	1.02	1.05	3.0%	4.0%	2.4%	97.5%	2.5%	98.9%	96.7%
Interns	5	5	1.00	20.0%	80.0%	1.00	1.00	0.0%	0.0%	0.0%	100.0%	0.0%	100.0%	100.0%
Senior House Officer	332	353	1.06	35.7%	64.3%	1.05	1.07	0.3%	0.3%	0.0%	98.9%	1.1%	100.0%	98.2%
SHO/ Interns	337	358	1.06	35.5%	64.5%	1.05	1.07	0.3%	0.8%	0.0%	98.9%	1.1%	100.0%	98.3%
Dentists	301	389	1.29	26.0%	74.0%	1.25	1.31	90.0%	90.0%	89.9%	52.2%	47.8%	62.4%	48.6%
Other Medical	335	496	1.48	40.3%	59.7%	1.58	1.42	56.5%	56.5%	61.5%	38.9%	61.1%	39.5%	38.5%
Medical/ Dental, other	635	885	1.39	34.0%	66.0%	1.45	1.36	71.2%	62.8%	75.5%	44.7%	55.3%	47.2%	43.5%
Medical & Dental	2,115	2,461	1.16	36.0%	64.0%	1.15	1.17	39.9%	37.4%	41.4%	75.4%	24.6%	79.6%	73.0%
Clinical Nurse/ Midwife Manager	2,569	2,741	1.07	19.5%	80.5%	1.01	1.08	96.6%	96.6%	96.9%	84.0%	16.0%	97.6%	80.7%
Director Nursing/Midwifery, Assistant	487	518	1.06	18.3%	81.7%	1.03	1.07	98.5%	98.5%	98.1%	87.8%	12.2%	98.9%	85.3%
Director of Nursing/Midwifery	211	215	1.02	12.1%	87.9%	1.02	1.02	97.2%	97.2%	96.8%	96.3%	3.7%	100.0%	95.8%
Nurse/ Midwife Manager	3,266	3,474	1.06	18.9%	81.1%	1.02	1.08	96.9%	96.3%	97.1%	85.3%	14.7%	97.9%	82.4%
Advanced Nurse/ Midwife Practitioner	74	77	1.03	15.6%	84.4%	1.00	1.04	98.7%	98.7%	98.5%	92.2%	7.8%	100.0%	90.8%
Clinical Nurse/ Midwife Specialist	733	801	1.09	14.4%	85.6%	1.02	1.11	98.5%	98.5%	98.4%	82.1%	17.9%	98.3%	79.4%
Nurse/ Midwife Specialist & AN/MP	808	878	1.09	14.5%	85.5%	1.01	1.10	98.5%	99.2%	98.4%	83.0%	17.0%	98.4%	80.4%
Staff Midwives	7	9	1.38		100.0%		1.38	88.9%	88.9%	88.9%	22.2%	77.8%		22.2%
Staff Nurse [Intellectual Disability]	1,665	1,935	1.16	8.2%	91.8%	1.09	1.17	94.5%	94.5%	94.4%	62.9%	37.1%	83.6%	61.0%
Staff Nurse [Psychiatric]	3,027	3,288	1.09	26.2%	73.8%	1.06	1.10	91.1%	91.1%	92.1%	86.3%	13.7%	91.0%	84.7%
Staff Nurses [General/ Children's]	4,483	5,384	1.20	7.5%	92.5%	1.06	1.21	88.8%	88.8%	89.0%	58.8%	41.2%	88.1%	56.4%
Staff Nurse/ Staff Midwife	9,181	10,616	1.16	13.4%	86.6%	1.06	1.17	90.6%	88.6%	90.9%	68.0%	32.0%	89.3%	64.7%

Public Health Nurse	1,558	1,857	1.19	0.4%	99.6%	1.07	1.19	94.6%	94.6%	94.6%	70.0%	30.0%	87.5%	69.9%
Public Health Nurse	1,558	1,857	1.19	0.4%	99.6%	1.07	1.19	94.6%	100.0%	94.6%	70.0%	30.0%	87.5%	69.9%
Pre-registration Nurse/ Midwife Intern	13	21	1.56	23.8%	76.2%	1.64	1.54	4.8%	4.8%	6.3%	100.0%	0.0%	100.0%	100.0%
Pre-registration Nurse Intern (COVID-19)	109	124	1.14	15.3%	84.7%	1.09	1.15	1.6%	1.6%	1.9%	96.0%	4.0%	100.0%	95.2%
Post-registration Nurse/ Midwife Student	107	108	1.01	1.9%	98.1%	1.00	1.01	24.1%	24.1%	24.5%	96.3%	3.7%	100.0%	96.2%
Nursing/ Midwifery awaiting registration	19	20	1.03		100.0%		1.03	30.0%	30.0%	30.0%	95.0%	5.0%		95.0%
Nursing/ Midwifery Student	249	273	1.10	9.5%	90.5%	1.16	1.09	12.8%	0.0%	14.2%	96.3%	3.7%	100.0%	96.0%
Nursing Education/Clinical	68	76	1.12	7.9%	92.1%	1.14	1.12	97.4%	97.4%	97.1%	84.2%	15.8%	100.0%	82.9%
Other Nursing/ Midwifery	1	1	1.00	100.0%		1.00		100.0%	100.0%		100.0%	0.0%	100.0%	
Nursing/ Midwifery other	69	77	1.12	9.1%	90.9%	1.12	1.12	97.4%	100.0%	97.1%	84.4%	15.6%	100.0%	82.9%
Nursing & Midwifery	15,131	17,175	1.14	13.1%	86.9%	1.05	1.15	91.5%	90.5%	91.6%	73.0%	27.0%	92.5%	70.1%
Dietitians	187	228	1.22	1.8%	98.2%	1.00	1.22	89.9%	89.9%	89.7%	64.0%	36.0%	100.0%	63.4%
Occupational Therapists	1,284	1,476	1.15	8.3%	91.7%	1.06	1.16	91.6%	91.6%	91.5%	75.4%	24.6%	91.1%	74.0%
Orthoptists	17	20	1.15	20.0%	80.0%	1.02	1.19	80.0%	80.0%	81.3%	60.0%	40.0%	100.0%	50.0%
Physiotherapists	888	1,059	1.19	17.8%	82.2%	1.06	1.23	91.1%	91.1%	91.3%	64.5%	35.5%	85.1%	60.0%
Podiatrists & Chiropodists	44	57	1.31	14.0%	86.0%	1.19	1.33	73.7%	73.7%	73.5%	56.1%	43.9%	87.5%	51.0%
Speech & Language Therapists	910	1,061	1.17	1.5%	98.5%	1.03	1.17	91.3%	91.3%	91.5%	74.1%	25.9%	87.5%	73.9%
Therapy Professions	3,330	3,901	1.17	8.8%	91.2%	1.06	1.18	91.0%	90.4%	91.0%	71.1%	28.9%	87.8%	69.4%
Audiology	51	56	1.10	19.6%	80.4%	1.01	1.13	96.4%	96.4%	95.6%	82.1%	17.9%	90.9%	80.0%
Biochemists	8	8	1.03	12.5%	87.5%	1.00	1.04	87.5%	87.5%	100.0%	87.5%	12.5%	100.0%	85.7%
Clinical Engineering	22	22	1.00	90.9%	9.1%	1.00	1.00	90.9%	90.9%	50.0%	95.5%	4.5%	95.0%	100.0%
Clinical Measurement	2	3	1.39	66.7%	33.3%	1.00	6.25	66.7%	66.7%	0.0%	66.7%	33.3%	100.0%	0.0%
Medical Laboratory	48	51	1.06	25.5%	74.5%	1.04	1.08	90.2%	90.2%	89.5%	88.2%	11.8%	92.3%	86.8%
Phlebotomists	1	2	1.63		100.0%		1.63	100.0%	100.0%	100.0%	0.0%	100.0%		0.0%
Physicists	2	2	1.00		100.0%		1.00	100.0%	100.0%	100.0%	100.0%	0.0%		100.0%
Radiographers	10	16	1.55	12.5%	87.5%	2.00	1.50	93.8%	93.8%	92.9%	43.8%	56.3%	50.0%	42.9%
Health Science/ Diagnostics	144	160	1.11	30.6%	69.4%	1.03	1.15	92.5%	93.9%	91.9%	81.3%	18.8%	91.8%	76.6%
Social Care	2,896	3,389	1.17	16.3%	83.7%	1.09	1.19	90.1%	89.8%	90.1%	50.0%	50.0%	64.4%	47.3%
Social Workers	849	958	1.13	16.2%	83.8%	1.05	1.14	92.8%	91.0%	93.2%	79.4%	20.6%	90.3%	77.3%
Psychologists	954	1,067	1.12	21.1%	78.9%	1.04	1.14	77.9%	77.8%	77.9%	79.4%	20.6%	93.3%	75.7%
Pharmacy	106	129	1.22	18.6%	81.4%	1.12	1.25	64.3%	54.2%	66.7%	56.6%	43.4%	58.3%	56.2%
Counsellor Therapists	232	254	1.10	31.9%	68.1%	1.05	1.12	93.7%	93.7%	94.2%	75.2%	24.8%	86.4%	69.9%
Dental Hygienists	61	78	1.27	1.3%	98.7%	1.00	1.28	97.4%	97.4%	97.4%	44.9%	55.1%	100.0%	44.2%
Other Health & Social Care	63	84	1.34	21.4%	78.6%	1.30	1.35	83.3%	83.3%	84.8%	44.0%	56.0%	61.1%	39.4%
Play Therapists/ Specialists	16	20	1.28	20.0%	80.0%	1.00	1.38	100.0%	100.0%	100.0%	55.0%	45.0%	100.0%	43.8%

H&SC, Other	371	436	1.17	23.9%	76.1%	1.08	1.21	92.7%	90.4%	93.4%	62.8%	37.2%	82.7%	56.6%
Health & Social Care	8,651	10,040	1.16	14.5%	85.5%	1.07	1.18	89.2%	87.8%	89.4%	65.3%	34.7%	79.3%	62.9%
Executive Management	145	149	1.03	43.6%	56.4%	1.06	1.01	91.3%	91.3%	91.7%	97.3%	2.7%	95.4%	98.8%
Senior Management (VIII & GM)	513	533	1.04	27.4%	72.6%	1.03	1.04	94.7%	94.7%	95.1%	93.2%	6.8%	95.2%	92.5%
Management (VIII & above)	658	682	1.04	30.9%	69.1%	1.04	1.04	94.0%	92.9%	94.5%	94.1%	5.9%	95.3%	93.6%
Middle Management (V-VII)	1,646	1,780	1.08	18.7%	81.3%	1.04	1.09	93.3%	93.3%	94.3%	82.1%	17.9%	95.8%	78.9%
Other Administrative	18	19	1.03	15.8%	84.2%	1.00	1.04	100.0%	100.0%	100.0%	84.2%	15.8%	100.0%	81.3%
Administrative/ Supervisory (V to VII)	1,665	1,799	1.08	18.6%	81.4%	1.04	1.09	93.3%	88.7%	94.4%	82.1%	17.9%	95.8%	79.0%
General Administrative (III & IV)	3,805	4,475	1.18	8.4%	91.6%	1.09	1.18	84.4%	84.4%	85.3%	64.1%	35.9%	83.9%	62.3%
Clerical (III & IV)	3,805	4,475	1.18	8.4%	91.6%	1.09	1.18	84.4%	74.9%	85.3%	64.1%	35.9%	83.9%	62.3%
Management & Administrative	6,127	6,956	1.14	13.3%	86.7%	1.06	1.15	87.7%	84.0%	88.2%	71.7%	28.3%	90.8%	68.8%
Catering	403	455	1.13	32.1%	67.9%	1.07	1.16	95.2%	95.2%	95.8%	68.1%	31.9%	91.1%	57.3%
Household Services	1,464	1,804	1.23	18.6%	81.4%	1.14	1.26	84.8%	84.8%	87.0%	49.9%	50.1%	74.3%	44.4%
Other Labs & Associated	6	6	1.07	16.7%	83.3%	1.00	1.08	100.0%	100.0%	100.0%	100.0%	0.0%	100.0%	100.0%
Other Support	322	557	1.73	40.8%	59.2%	1.28	2.27	72.0%	72.0%	64.2%	34.6%	65.4%	56.8%	19.4%
Portering	226	244	1.08	95.5%	4.5%	1.08	1.21	83.6%	83.6%	72.7%	84.4%	15.6%	85.8%	54.5%
Support	2,420	3,066	1.27	30.7%	69.3%	1.14	1.33	84.0%	82.3%	84.7%	52.7%	47.3%	75.6%	42.6%
Maintenance	408	432	1.06	97.2%	2.8%	1.05	1.23	93.8%	93.8%	100.0%	89.4%	10.6%	90.7%	41.7%
Technical Services	12	12	0.99	75.0%	25.0%	0.99	1.00	91.7%	91.7%	100.0%	100.0%	0.0%	100.0%	100.0%
Maintenance/ Technical	420	444	1.06	96.6%	3.4%	1.05	1.18	93.7%	93.5%	100.0%	89.6%	10.4%	90.9%	53.3%
General Support	2,840	3,510	1.24	39.1%	60.9%	1.11	1.33	85.2%	85.8%	84.8%	57.4%	42.6%	80.4%	42.6%
HCA, Nurse's Aide, etc.	12,525	14,657	1.17	22.5%	77.5%	1.10	1.19	82.8%	82.8%	83.0%	58.0%	42.0%	73.5%	53.5%
Health & Social Care Assistants	147	166	1.13	17.5%	82.5%	1.12	1.13	39.2%	39.2%	38.0%	83.7%	16.3%	96.6%	81.0%
Health Care Assistants	12,673	14,823	1.17	22.4%	77.6%	1.10	1.19	82.3%	81.9%	82.4%	58.3%	41.7%	73.7%	53.9%
Home Help	3,474	5,248	1.51	3.6%	96.4%	1.52	1.51	54.6%	25.3%	55.7%	39.0%	61.0%	51.1%	38.6%
Community Welfare Officers	1	1	1.12		100.0%		1.12	100.0%	100.0%	100.0%	0.0%	100.0%		0.0%
Other Care Grades	2,818	3,363	1.19	25.6%	74.4%	1.14	1.21	89.1%	89.1%	90.9%	60.6%	39.4%	72.2%	56.6%
Care, other	2,819	3,364	1.19	25.6%	74.4%	1.14	1.21	89.1%	84.0%	90.9%	60.6%	39.4%	72.2%	56.6%
Patient & Client Care	18,966	23,435	1.24	18.7%	81.3%	1.12	1.27	77.1%	79.8%	76.5%	54.3%	45.7%	72.4%	50.2%

Employment by WTE, Headcount, Gender, Full-Time /Part-Time etc.: Nov 2020

Community Services	WTE	Headcount	WTE: no.	% Male	% female	Male WTE: no.	Female WTE: no.	% Total Perm	% Male Perm	% Female Perm	% Total Full Time	% Total Part Time	% Male FT	% Female FT
Community Services	53,830	63,577	1.18	17.7%	82.3%	1.09	1.20	83.1%	80.7%	83.6%	64.0%	36.0%	80.3%	60.5%
Consultants	38	42	1.11	40.5%	59.5%	1.06	1.15	66.7%	66.7%	68.0%	88.1%	11.9%	94.1%	94.1%
Registrars	71	75	1.06	42.7%	57.3%	1.03	1.09	9.3%	9.3%	7.0%	96.0%	4.0%	96.9%	96.9%
SHO/ Interns	24	24	1.02	58.3%	41.7%	1.01	1.04	0.0%	0.0%	0.0%	100.0%	0.0%	100.0%	100.0%
Medical/ Dental, other	64	105	1.64	47.6%	52.4%	1.59	1.67	81.9%	81.9%	80.0%	39.0%	61.0%	40.0%	40.0%
Medical & Dental	196	246	1.25	45.9%	54.1%	1.22	1.28	49.2%	49.2%	48.1%	70.7%	29.3%	71.7%	71.7%
Nurse/ Midwife Manager	357	377	1.05	18.0%	82.0%	1.01	1.07	99.5%	99.5%	99.7%	86.7%	13.3%	98.5%	98.5%
Nurse/ Midwife Specialist & AN/MP	119	127	1.07	18.1%	81.9%	1.01	1.08	97.6%	97.6%	97.1%	88.2%	11.8%	100.0%	100.0%
Staff Nurse/ Staff Midwife	1,018	1,185	1.16	13.0%	87.0%	1.04	1.19	93.6%	93.6%	93.1%	71.2%	28.8%	92.9%	92.9%
Public Health Nurse	153	178	1.16		100.0%		1.16	95.5%	95.5%	95.5%	74.7%	25.3%		
Nursing/ Midwifery Student	36	43	1.20	9.3%	90.7%	1.00	1.23	4.7%	4.7%	5.1%	100.0%	0.0%	100.0%	100.0%
Nursing/ Midwifery other	8	8	1.03		100.0%		1.03	100.0%	100.0%	100.0%	100.0%	0.0%		
Nursing & Midwifery	1,691	1,918	1.13	13.0%	87.0%	1.03	1.15	93.2%	93.2%	92.8%	76.5%	23.5%	95.2%	95.2%
Therapy Professions	327	375	1.15	8.5%	91.5%	1.05	1.16	93.9%	93.9%	94.5%	68.8%	31.2%	90.6%	90.6%
Health Science/ Diagnostics	7	9	1.33		100.0%		1.33	100.0%	100.0%	100.0%	44.4%	55.6%		
Social Care	13	17	1.26	5.9%	94.1%	1.00	1.28	100.0%	100.0%	100.0%	41.2%	58.8%	100.0%	100.0%
Social Workers	91	100	1.09	17.0%	83.0%	1.01	1.11	94.0%	94.0%	92.8%	83.0%	17.0%	94.1%	94.1%
Psychologists	62	68	1.10	27.9%	72.1%	1.02	1.13	95.6%	95.6%	95.9%	79.4%	20.6%	94.7%	94.7%
Pharmacy	3	3	1.16	33.3%	66.7%	1.43	1.06	100.0%	100.0%	100.0%	66.7%	33.3%	0.0%	0.0%
H&SC, Other	31	34	1.10	23.5%	76.5%	1.11	1.10	100.0%	100.0%	100.0%	67.6%	32.4%	75.0%	75.0%
Health & Social Care Professionals	534	606	1.14	12.9%	87.1%	1.04	1.15	94.7%	94.7%	94.9%	71.1%	28.9%	89.7%	89.7%
Management (VIII & above)	62	64	1.02	23.4%	76.6%	1.04	1.02	95.3%	95.3%	93.9%	92.2%	7.8%	93.3%	93.3%
Administrative/ Supervisory (V to VII)	163	173	1.06	15.6%	84.4%	1.02	1.07	92.5%	92.5%	93.8%	81.5%	18.5%	96.3%	96.3%
Clerical (III & IV)	477	550	1.15	8.2%	91.8%	1.06	1.16	92.0%	92.0%	92.5%	69.1%	30.9%	93.3%	93.3%
Management & Administrative	703	787	1.12	11.1%	88.9%	1.04	1.13	92.4%	92.4%	92.9%	73.7%	26.3%	94.3%	94.3%
Support	309	374	1.21	25.4%	74.6%	1.11	1.25	94.4%	94.4%	96.8%	56.4%	43.6%	78.9%	78.9%
Maintenance/ Technical	36	37	1.02	100.0%		1.02		100.0%	100.0%	#DIV/0	100.0%	0.0%	100.0%	100.0%
General Support	346	411	1.19	32.1%	67.9%	1.08	1.25	94.9%	94.9%	96.8%	60.3%	39.7%	84.8%	84.8%
Health Care Assistants	1,487	1,672	1.12	23.4%	76.6%	1.06	1.15	90.4%	90.4%	91.3%	71.1%	28.9%	88.5%	88.5%

Home Help	572	768	1.34	4.0%	96.0%	1.21	1.35	27.9%	27.9%	28.4%	2.6%	97.4%	3.2%	3.2%
Care, other	138	158	1.15	32.9%	67.1%	1.11	1.17	89.2%	89.2%	96.2%	69.6%	30.4%	73.1%	73.1%
Patient & Client Care	2,197	2,598	1.18	18.2%	81.8%	1.07	1.21	71.9%	71.9%	69.7%	50.8%	49.2%	81.2%	81.2%
CHO 1	5,667	6,566	1.16	17.3%	82.7%	1.07	1.18	83.3%	83.3%	83.1%	64.3%	35.7%	85.3%	59.9%
Consultants	42	47	1.12	36.2%	63.8%	1.08	1.15	68.1%	68.1%	66.7%	78.7%	21.3%	88.2%	88.2%
Registrars	89	89	1.01	33.7%	66.3%	1.00	1.01	1.1%	1.1%	1.7%	100.0%	0.0%	100.0%	100.0%
SHO/ Interns	43	43	1.01	37.2%	62.8%	1.01	1.00	0.0%	0.0%	0.0%	100.0%	0.0%	100.0%	100.0%
Medical/ Dental, other	63	73	1.17	27.4%	72.6%	1.19	1.16	75.3%	75.3%	81.1%	56.2%	43.8%	65.0%	65.0%
Medical & Dental	236	252	1.07	32.9%	67.1%	1.06	1.07	34.9%	34.9%	37.9%	83.3%	16.7%	89.2%	89.2%
Nurse/ Midwife Manager	322	342	1.06	25.1%	74.9%	1.01	1.08	97.1%	97.1%	96.9%	86.8%	13.2%	98.8%	98.8%
Nurse/ Midwife Specialist & AN/MP	107	112	1.05	13.4%	86.6%	1.00	1.06	99.1%	99.1%	99.0%	94.6%	5.4%	100.0%	100.0%
Staff Nurse/ Staff Midwife	902	1,043	1.16	13.1%	86.9%	1.09	1.17	93.4%	93.4%	94.0%	65.1%	34.9%	82.5%	82.5%
Public Health Nurse	199	226	1.14		100.0%		1.14	97.3%	97.3%	97.3%	73.5%	26.5%		
Nursing/ Midwifery Student	16	17	1.07	5.9%	94.1%	1.00	1.07	0.0%	0.0%	0.0%	94.1%	5.9%	100.0%	100.0%
Nursing/ Midwifery other	3	3	1.12		100.0%		1.12	100.0%	100.0%	100.0%	66.7%	33.3%		
Nursing & Midwifery	1,548	1,743	1.13	13.7%	86.3%	1.06	1.14	94.1%	94.1%	94.3%	72.6%	27.4%	89.5%	89.5%
Therapy Professions	360	415	1.15	7.5%	92.5%	1.02	1.16	89.4%	89.4%	89.1%	70.8%	29.2%	90.3%	90.3%
Health Science/ Diagnostics	34	37	1.08	16.2%	83.8%	1.00	1.09	100.0%	100.0%	100.0%	83.8%	16.2%	100.0%	100.0%
Social Care	265	329	1.24	17.3%	82.7%	1.24	1.24	86.3%	86.3%	84.9%	50.8%	49.2%	50.9%	50.9%
Social Workers	84	96	1.14	17.7%	82.3%	1.04	1.17	92.7%	92.7%	92.4%	69.8%	30.2%	82.4%	82.4%
Psychologists	78	94	1.20	16.0%	84.0%	1.16	1.21	94.7%	94.7%	93.7%	68.1%	31.9%	93.3%	93.3%
Pharmacy	4	5	1.31	20.0%	80.0%	1.00	1.42	80.0%	80.0%	75.0%	40.0%	60.0%	100.0%	100.0%
H&SC, Other	31	40	1.30	17.5%	82.5%	1.17	1.33	90.0%	90.0%	93.9%	40.0%	60.0%	42.9%	42.9%
Health & Social Care Professionals	857	1,016	1.19	13.2%	86.8%	1.13	1.19	89.6%	89.6%	89.0%	63.1%	36.9%	70.9%	70.9%
Management (VIII & above)	58	60	1.03	50.0%	50.0%	1.05	1.02	90.0%	90.0%	93.3%	91.7%	8.3%	93.3%	93.3%
Administrative/ Supervisory (V to VII)	157	166	1.06	19.3%	80.7%	1.05	1.06	96.4%	96.4%	97.0%	79.5%	20.5%	84.4%	84.4%
Clerical (III & IV)	445	508	1.14	5.7%	94.3%	1.13	1.14	89.4%	89.4%	90.0%	66.1%	33.9%	72.4%	72.4%
Management & Administrative	660	734	1.11	12.4%	87.6%	1.07	1.12	91.0%	91.0%	91.6%	71.3%	28.7%	83.5%	83.5%
Support	154	217	1.41	40.1%	59.9%	1.27	1.52	82.0%	82.0%	80.0%	37.8%	62.2%	44.8%	44.8%
Maintenance/ Technical	73	75	1.03	98.7%	1.3%	1.03	1.01	97.3%	97.3%	100.0%	93.3%	6.7%	93.2%	93.2%
General Support	227	292	1.29	55.1%	44.9%	1.15	1.51	86.0%	86.0%	80.2%	52.1%	47.9%	67.1%	67.1%
Health Care Assistants	1,378	1,613	1.17	25.4%	74.6%	1.13	1.19	77.1%	77.1%	76.6%	52.4%	47.6%	67.8%	67.8%
Home Help	428	601	1.40	0.7%	99.3%	1.63	1.40	91.7%	91.7%	92.0%	5.0%	95.0%	0.0%	0.0%
Care, other	280	336	1.20	34.5%	65.5%	1.14	1.24	87.2%	87.2%	89.1%	53.9%	46.1%	63.8%	63.8%
Patient & Client Care	2,085	2,550	1.22	20.8%	79.2%	1.13	1.25	81.8%	81.8%	82.5%	41.4%	58.6%	66.4%	66.4%
CHO 2	5,612	6,587	1.17	18.8%	81.2%	1.11	1.19	85.7%	85.7%	86.5%	58.4%	41.6%	74.2%	54.8%

Consultants	29	32	1.10	43.8%	56.3%	1.04	1.15	84.4%	84.4%	77.8%	75.0%	25.0%	78.6%	78.6%
Registrars	40	42	1.05	28.6%	71.4%	1.01	1.07	4.8%	4.8%	3.3%	92.9%	7.1%	100.0%	100.0%
SHO/ Interns	22	23	1.04	13.0%	87.0%	1.00	1.05	4.3%	4.3%	0.0%	95.7%	4.3%	100.0%	100.0%
Medical/ Dental, other	59	68	1.15	32.4%	67.6%	1.07	1.19	75.0%	75.0%	82.6%	66.2%	33.8%	81.8%	81.8%
Medical & Dental	150	165	1.10	30.9%	69.1%	1.04	1.13	49.1%	49.1%	46.5%	78.8%	21.2%	86.3%	86.3%
Nurse/ Midwife Manager	241	252	1.05	13.1%	86.9%	1.01	1.05	95.6%	95.6%	95.4%	87.3%	12.7%	100.0%	100.0%
Nurse/ Midwife Specialist & AN/MP	51	56	1.10	10.7%	89.3%	1.01	1.12	98.2%	98.2%	98.0%	69.6%	30.4%	83.3%	83.3%
Staff Nurse/ Staff Midwife	826	940	1.14	9.8%	90.2%	1.04	1.15	94.5%	94.5%	94.5%	63.2%	36.8%	83.7%	83.7%
Public Health Nurse	127	159	1.25	0.6%	99.4%	1.25	1.25	89.9%	89.9%	89.9%	62.9%	37.1%	0.0%	0.0%
Nursing/ Midwifery Student	16	17	1.04	29.4%	70.6%	1.00	1.06	5.9%	5.9%	8.3%	88.2%	11.8%	100.0%	100.0%
Nursing/ Midwifery other	4	4	1.08	25.0%	75.0%	1.00	1.10	100.0%	100.0%	100.0%	75.0%	25.0%	100.0%	100.0%
Nursing & Midwifery	1,265	1,428	1.13	9.7%	90.3%	1.03	1.14	93.3%	93.3%	93.4%	68.0%	32.0%	87.7%	87.7%
Therapy Professions	223	255	1.14	7.5%	92.5%	1.04	1.15	91.8%	91.8%	91.1%	75.7%	24.3%	89.5%	89.5%
Health Science/ Diagnostics	9	10	1.18	30.0%	70.0%	1.22	1.16	70.0%	70.0%	71.4%	70.0%	30.0%	33.3%	33.3%
Social Care	280	322	1.15	10.2%	89.8%	1.07	1.16	75.2%	75.2%	75.4%	36.3%	63.7%	39.4%	39.4%
Social Workers	57	65	1.14	13.8%	86.2%	1.08	1.14	95.4%	95.4%	94.6%	80.0%	20.0%	77.8%	77.8%
Psychologists	126	133	1.05	20.3%	79.7%	1.00	1.07	45.9%	45.9%	46.2%	92.5%	7.5%	100.0%	100.0%
Pharmacy	5	5	1.04	40.0%	60.0%	1.00	1.07	100.0%	100.0%	100.0%	80.0%	20.0%	100.0%	100.0%
H&SC, Other	34	41	1.22	2.4%	97.6%	1.19	1.22	100.0%	100.0%	100.0%	53.7%	46.3%	100.0%	100.0%
Health & Social Care Professionals	733	831	1.13	11.3%	88.7%	1.05	1.15	78.5%	78.5%	79.1%	62.3%	37.7%	72.3%	72.3%
Management (VIII & above)	42	43	1.02	23.3%	76.7%	1.00	1.03	95.3%	95.3%	93.9%	95.3%	4.7%	100.0%	100.0%
Administrative/ Supervisory (V to VII)	146	154	1.05	11.0%	89.0%	1.00	1.06	96.8%	96.8%	97.8%	85.7%	14.3%	100.0%	100.0%
Clerical (III & IV)	303	345	1.14	6.4%	93.6%	1.03	1.15	82.6%	82.6%	83.9%	68.4%	31.6%	90.9%	90.9%
Management & Administrative	491	542	1.10	9.0%	91.0%	1.02	1.11	87.6%	87.6%	88.4%	75.5%	24.5%	95.9%	95.9%
Support	161	199	1.24	30.2%	69.8%	1.13	1.29	85.4%	85.4%	84.9%	69.8%	30.2%	80.0%	80.0%
Maintenance/ Technical	76	79	1.04	100.0%		1.04		87.3%	87.3%	#DIV/0	93.7%	6.3%	93.7%	93.7%
General Support	237	278	1.17	50.0%	50.0%	1.08	1.29	86.0%	86.0%	84.9%	76.6%	23.4%	87.8%	87.8%
Health Care Assistants	1,208	1,506	1.25	15.7%	84.3%	1.17	1.26	80.9%	80.9%	81.3%	34.3%	65.7%	46.2%	46.2%
Home Help	216	422	1.96	0.7%	99.3%	1.46	1.96	98.1%	98.1%	98.1%	9.0%	91.0%	0.0%	0.0%
Care, other	245	280	1.14	16.1%	83.9%	1.07	1.16	89.3%	89.3%	88.5%	62.5%	37.5%	82.2%	82.2%
Patient & Client Care	1,669	2,208	1.32	12.9%	87.1%	1.16	1.35	85.2%	85.2%	85.9%	33.0%	67.0%	51.4%	51.4%
CHO 3	4,544	5,452	1.20	13.8%	86.2%	1.09	1.22	85.5%	85.5%	86.2%	54.5%	45.5%	72.6%	51.6%
Consultants	60	70	1.17	25.7%	74.3%	1.10	1.20	40.0%	40.0%	44.2%	71.4%	28.6%	83.3%	83.3%
Registrars	101	105	1.04	42.9%	57.1%	1.03	1.05	2.9%	2.9%	1.7%	95.2%	4.8%	97.8%	97.8%
SHO/ Interns	51	52	1.02	38.5%	61.5%	1.00	1.03	0.0%	0.0%	0.0%	94.2%	5.8%	100.0%	100.0%
Medical/ Dental, other	116	204	1.75	33.3%	66.7%	1.95	1.67	59.8%	59.8%	62.5%	32.4%	67.6%	36.8%	36.8%

Medical & Dental	328	431	1.31	35.0%	65.0%	1.32	1.31	35.5%	35.5%	38.9%	61.5%	38.5%	68.9%	68.9%
Nurse/ Midwife Manager	460	495	1.08	16.8%	83.2%	1.01	1.09	96.0%	96.0%	95.9%	80.2%	19.8%	98.8%	98.8%
Nurse/ Midwife Specialist & AN/MP	98	103	1.05	14.6%	85.4%	1.00	1.06	97.1%	97.1%	97.7%	81.6%	18.4%	100.0%	100.0%
Staff Nurse/ Staff Midwife	1,469	1,755	1.19	12.4%	87.6%	1.05	1.22	78.3%	78.3%	79.0%	60.4%	39.6%	91.7%	91.7%
Public Health Nurse	232	281	1.21	0.4%	99.6%	1.00	1.21	87.2%	87.2%	87.1%	68.3%	31.7%	100.0%	100.0%
Nursing/ Midwifery Student	39	40	1.02	7.5%	92.5%	1.00	1.02	22.5%	22.5%	24.3%	92.5%	7.5%	100.0%	100.0%
Nursing & Midwifery	2,298	2,674	1.16	12.0%	88.0%	1.04	1.18	82.4%	82.4%	82.8%	66.2%	33.8%	94.1%	94.1%
Therapy Professions	461	547	1.19	8.2%	91.8%	1.08	1.20	83.4%	83.4%	83.9%	68.6%	31.4%	77.8%	77.8%
Health Science/ Diagnostics	13	14	1.05	21.4%	78.6%	1.00	1.07	85.7%	85.7%	81.8%	92.9%	7.1%	100.0%	100.0%
Social Care	257	291	1.13	14.4%	85.6%	1.04	1.15	89.3%	89.3%	90.0%	67.4%	32.6%	90.5%	90.5%
Social Workers	131	149	1.13	17.4%	82.6%	1.01	1.16	81.9%	81.9%	83.7%	83.2%	16.8%	96.2%	96.2%
Psychologists	150	169	1.13	23.7%	76.3%	1.03	1.16	73.4%	73.4%	75.2%	76.3%	23.7%	95.0%	95.0%
Pharmacy	10	15	1.56	13.3%	86.7%	2.44	1.47	46.7%	46.7%	46.2%	33.3%	66.7%	0.0%	0.0%
H&SC, Other	65	76	1.18	40.8%	59.2%	1.08	1.25	89.5%	89.5%	88.9%	73.7%	26.3%	90.3%	90.3%
Health & Social Care Professionals	1,087	1,261	1.16	15.0%	85.0%	1.05	1.18	83.2%	83.2%	84.0%	71.2%	28.8%	88.4%	88.4%
Management (VIII & above)	75	78	1.04	29.5%	70.5%	1.04	1.04	92.3%	92.3%	96.4%	91.0%	9.0%	95.7%	95.7%
Administrative/ Supervisory (V to VII)	175	194	1.11	17.5%	82.5%	1.04	1.13	86.1%	86.1%	88.8%	76.3%	23.7%	88.2%	88.2%
Clerical (III & IV)	540	664	1.23	7.5%	92.5%	1.16	1.23	72.7%	72.7%	73.3%	54.5%	45.5%	70.0%	70.0%
Management & Administrative	790	936	1.18	11.4%	88.6%	1.10	1.20	77.1%	77.1%	77.8%	62.1%	37.9%	81.3%	81.3%
Support	358	505	1.41	29.7%	70.3%	1.25	1.49	75.8%	75.8%	76.9%	51.5%	48.5%	78.7%	78.7%
Maintenance/ Technical	24	29	1.20	86.2%	13.8%	1.18	1.37	93.1%	93.1%	100.0%	69.0%	31.0%	76.0%	76.0%
General Support	382	534	1.40	32.8%	67.2%	1.24	1.49	76.8%	76.8%	77.2%	52.4%	47.6%	78.3%	78.3%
Health Care Assistants	2,075	2,369	1.14	21.3%	78.7%	1.08	1.16	72.5%	72.5%	73.1%	69.1%	30.9%	78.2%	78.2%
Home Help	1,059	1,638	1.55	5.8%	94.2%	1.33	1.56	62.2%	62.2%	64.9%	98.8%	1.2%	91.6%	91.6%
Care, other	485	596	1.23	20.1%	79.9%	1.21	1.23	80.5%	80.5%	84.9%	54.7%	45.3%	63.3%	63.3%
Patient & Client Care	3,619	4,603	1.27	15.6%	84.4%	1.13	1.30	69.9%	69.9%	71.3%	77.8%	22.2%	77.5%	77.5%
CHO 4	8,504	10,439	1.23	15.9%	84.1%	1.12	1.25	74.3%	74.3%	75.7%	70.6%	29.4%	81.5%	68.6%
Consultants	29	30	1.03	66.7%	33.3%	1.00	1.10	80.0%	80.0%	80.0%	93.3%	6.7%	100.0%	100.0%
Registrars	28	30	1.08	50.0%	50.0%	1.03	1.13	0.0%	0.0%	0.0%	100.0%	0.0%	100.0%	100.0%
SHO/ Interns	37	38	1.02	47.4%	52.6%	1.03	1.01	0.0%	0.0%	0.0%	100.0%	0.0%	100.0%	100.0%
Medical/ Dental, other	71	94	1.33	34.0%	66.0%	1.38	1.30	74.5%	74.5%	82.3%	54.3%	45.7%	56.3%	56.3%
Medical & Dental	165	192	1.16	44.3%	55.7%	1.13	1.19	49.0%	49.0%	55.1%	76.6%	23.4%	83.5%	83.5%
Nurse/ Midwife Manager	367	385	1.05	17.1%	82.9%	1.02	1.05	98.4%	98.4%	98.7%	85.5%	14.5%	95.5%	95.5%
Nurse/ Midwife Specialist & AN/MP	77	83	1.08	18.1%	81.9%	1.02	1.10	98.8%	98.8%	98.5%	86.7%	13.3%	100.0%	100.0%
Staff Nurse/ Staff Midwife	968	1,128	1.17	15.4%	84.6%	1.07	1.19	89.5%	89.5%	90.1%	64.1%	35.9%	86.8%	86.8%
Public Health Nurse	174	211	1.21	1.4%	98.6%	1.00	1.22	97.2%	97.2%	97.1%	71.1%	28.9%	100.0%	100.0%

Nursing/ Midwifery Student	23	24	1.02	12.5%	87.5%	1.00	1.03	8.3%	8.3%	9.5%	91.7%	8.3%	100.0%	100.0%
Nursing/ Midwifery other	4	5	1.16	20.0%	80.0%	1.00	1.21	100.0%	100.0%	100.0%	80.0%	20.0%	100.0%	100.0%
Nursing & Midwifery	1,613	1,836	1.14	14.3%	85.7%	1.05	1.15	91.7%	91.7%	92.1%	70.8%	29.2%	90.1%	90.1%
Therapy Professions	320	375	1.17	10.9%	89.1%	1.07	1.19	95.5%	95.5%	95.2%	73.9%	26.1%	87.8%	87.8%
Health Science/ Diagnostics	7	8	1.13	25.0%	75.0%	1.00	1.18	100.0%	100.0%	100.0%	100.0%	0.0%	100.0%	100.0%
Social Care	153	190	1.24	17.4%	82.6%	1.17	1.25	95.8%	95.8%	96.2%	43.2%	56.8%	57.6%	57.6%
Social Workers	64	72	1.13	16.7%	83.3%	1.02	1.15	94.4%	94.4%	93.3%	81.9%	18.1%	100.0%	100.0%
Psychologists	78	88	1.12	14.8%	85.2%	1.04	1.14	89.8%	89.8%	90.7%	72.7%	27.3%	92.3%	92.3%
Pharmacy	2	2	1.08	50.0%	50.0%	1.00	1.16	100.0%	100.0%	100.0%	100.0%	0.0%	100.0%	100.0%
H&SC, Other	32	36	1.14	30.6%	69.4%	1.00	1.21	97.2%	97.2%	96.0%	69.4%	30.6%	100.0%	100.0%
Health & Social Care Professionals	656	771	1.17	14.7%	85.3%	1.08	1.19	94.9%	94.9%	94.8%	67.1%	32.9%	82.3%	82.3%
Management (VIII & above)	48	50	1.03	22.0%	78.0%	1.02	1.04	86.0%	86.0%	87.2%	92.0%	8.0%	90.9%	90.9%
Administrative/ Supervisory (V to VII)	136	145	1.07	17.9%	82.1%	1.01	1.08	95.2%	95.2%	95.8%	80.0%	20.0%	100.0%	100.0%
Clerical (III & IV)	325	378	1.16	4.5%	95.5%	1.08	1.17	91.5%	91.5%	91.4%	61.9%	38.1%	94.1%	94.1%
Management & Administrative	509	573	1.12	9.4%	90.6%	1.03	1.14	92.0%	92.0%	92.1%	69.1%	30.9%	96.3%	96.3%
Support	300	371	1.24	20.2%	79.8%	1.12	1.27	80.9%	80.9%	80.7%	43.4%	56.6%	68.0%	68.0%
Maintenance/ Technical	32	34	1.08	97.1%	2.9%	1.08	1.00	85.3%	85.3%	100.0%	85.3%	14.7%	84.8%	84.8%
General Support	332	405	1.22	26.7%	73.3%	1.10	1.27	81.2%	81.2%	80.8%	46.9%	53.1%	73.1%	73.1%
Health Care Assistants	1,269	1,444	1.14	21.4%	78.6%	1.09	1.15	81.1%	81.1%	80.5%	56.8%	43.2%	71.8%	71.8%
Home Help	674	891	1.32	1.7%	98.3%	1.37	1.32	15.6%	15.6%	15.2%	23.0%	77.0%	33.3%	33.3%
Care, other	230	280	1.22	18.9%	81.1%	1.15	1.23	86.8%	86.8%	89.9%	38.6%	61.4%	56.6%	56.6%
Patient & Client Care	2,173	2,615	1.20	14.4%	85.6%	1.11	1.22	59.4%	59.4%	55.9%	43.3%	56.7%	68.2%	68.2%
CHO 5	5,449	6,392	1.17	15.6%	84.4%	1.08	1.19	76.9%	76.9%	76.1%	57.6%	42.4%	78.9%	53.7%
Consultants	50	56	1.11	41.1%	58.9%	1.04	1.17	76.8%	76.8%	69.7%	82.1%	17.9%	95.7%	95.7%
Registrars	43	46	1.07	19.6%	80.4%	1.05	1.07	10.9%	10.9%	13.5%	91.3%	8.7%	100.0%	100.0%
SHO/ Interns	20	29	1.43	27.6%	72.4%	1.45	1.42	0.0%	0.0%	0.0%	100.0%	0.0%	100.0%	100.0%
Medical/ Dental, other	50	66	1.32	19.7%	80.3%	1.23	1.35	72.7%	72.7%	75.5%	36.4%	63.6%	46.2%	46.2%
Medical & Dental	164	197	1.20	26.9%	73.1%	1.13	1.23	48.7%	48.7%	47.2%	71.6%	28.4%	84.9%	84.9%
Nurse/ Midwife Manager	206	219	1.06	21.5%	78.5%	1.02	1.07	98.2%	98.2%	98.3%	90.9%	9.1%	100.0%	100.0%
Nurse/ Midwife Specialist & AN/MP	25	29	1.14	20.7%	79.3%	1.01	1.18	100.0%	100.0%	100.0%	75.9%	24.1%	100.0%	100.0%
Staff Nurse/ Staff Midwife	558	617	1.11	16.5%	83.5%	1.07	1.11	89.8%	89.8%	89.7%	78.8%	21.2%	86.3%	86.3%
Public Health Nurse	115	134	1.17	0.7%	99.3%	1.25	1.17	95.5%	95.5%	95.5%	70.9%	29.1%	100.0%	100.0%
Nursing/ Midwifery Student	15	15	1.00		100.0%		1.00	6.7%	6.7%	6.7%	100.0%	0.0%		
Nursing/ Midwifery other	4	4	1.14	25.0%	75.0%	1.00	1.20	100.0%	100.0%	100.0%	75.0%	25.0%	100.0%	100.0%
Nursing & Midwifery	923	1,018	1.10	15.4%	84.6%	1.05	1.11	91.5%	91.5%	91.2%	80.6%	19.4%	91.1%	91.1%
Therapy Professions	237	292	1.23	6.5%	93.5%	1.18	1.24	91.8%	91.8%	92.7%	64.0%	36.0%	68.4%	68.4%

Health Science/ Diagnostics	19	22	1.17	27.3%	72.7%	1.19	1.16	81.8%	81.8%	81.3%	86.4%	13.6%	83.3%	83.3%
Social Care	395	446	1.13	21.5%	78.5%	1.06	1.15	90.8%	90.8%	91.7%	62.3%	37.7%	71.9%	71.9%
Social Workers	55	60	1.09	11.7%	88.3%	1.03	1.10	96.7%	96.7%	96.2%	81.7%	18.3%	85.7%	85.7%
Psychologists	66	81	1.23	23.5%	76.5%	1.03	1.30	90.1%	90.1%	95.2%	69.1%	30.9%	100.0%	100.0%
Pharmacy	4	6	1.56		100.0%		1.56	83.3%	83.3%	83.3%	50.0%	50.0%		
H&SC, Other	11	14	1.29	14.3%	85.7%	1.43	1.27	92.9%	92.9%	91.7%	42.9%	57.1%	50.0%	50.0%
Health & Social Care Professionals	786	921	1.17	16.2%	83.8%	1.08	1.19	91.2%	91.2%	92.4%	64.9%	35.1%	75.8%	75.8%
Management (VIII & above)	71	75	1.06	36.0%	64.0%	1.10	1.04	94.7%	94.7%	91.7%	100.0%	0.0%	100.0%	100.0%
Administrative/ Supervisory (V to VII)	167	190	1.14	25.8%	74.2%	1.14	1.14	95.8%	95.8%	97.9%	87.4%	12.6%	98.0%	98.0%
Clerical (III & IV)	258	305	1.18	12.8%	87.2%	1.07	1.20	76.7%	76.7%	76.7%	68.2%	31.8%	87.2%	87.2%
Management & Administrative	495	570	1.15	20.2%	79.8%	1.11	1.16	85.4%	85.4%	84.8%	78.8%	21.2%	94.8%	94.8%
Support	191	229	1.20	40.6%	59.4%	1.14	1.24	77.7%	77.7%	78.7%	70.3%	29.7%	88.2%	88.2%
Maintenance/ Technical	23	25	1.09	100.0%		1.09		96.0%	96.0%	#DIV/0	100.0%	0.0%	100.0%	100.0%
General Support	214	254	1.19	46.5%	53.5%	1.13	1.24	79.5%	79.5%	78.7%	73.2%	26.8%	90.7%	90.7%
Health Care Assistants	558	631	1.13	27.9%	72.1%	1.05	1.17	79.9%	79.9%	78.0%	70.0%	30.0%	90.9%	90.9%
Care, other	334	437	1.31	21.5%	78.5%	1.33	1.30	93.6%	93.6%	93.6%	64.1%	35.9%	64.9%	64.9%
Patient & Client Care	892	1,068	1.20	25.3%	74.7%	1.14	1.22	85.5%	85.5%	84.7%	67.6%	32.4%	81.9%	81.9%
CHO 6	3,473	4,028	1.16	21.4%	78.6%	1.10	1.18	86.1%	86.1%	86.4%	72.4%	27.6%	85.6%	68.8%
Consultants	66	73	1.11	30.1%	69.9%	1.05	1.14	58.9%	58.9%	52.9%	78.1%	21.9%	90.9%	90.9%
Registrars	100	102	1.02	36.3%	63.7%	1.03	1.01	1.0%	1.0%	0.0%	100.0%	0.0%	100.0%	100.0%
SHO/ Interns	37	44	1.18	20.5%	79.5%	1.21	1.17	0.0%	0.0%	0.0%	100.0%	0.0%	100.0%	100.0%
Medical/ Dental, other	83	109	1.31	32.1%	67.9%	1.33	1.30	59.6%	59.6%	73.0%	38.5%	61.5%	31.4%	31.4%
Medical & Dental	286	328	1.15	31.4%	68.6%	1.14	1.15	33.2%	33.2%	36.0%	74.7%	25.3%	74.8%	74.8%
Nurse/ Midwife Manager	400	426	1.06	15.0%	85.0%	1.02	1.07	96.9%	96.9%	97.5%	87.3%	12.7%	96.9%	96.9%
Nurse/ Midwife Specialist & AN/MP	110	128	1.16	8.6%	91.4%	1.05	1.17	99.2%	99.2%	99.1%	75.0%	25.0%	100.0%	100.0%
Staff Nurse/ Staff Midwife	1,019	1,184	1.16	12.0%	88.0%	1.07	1.18	93.7%	93.7%	93.7%	70.4%	29.6%	90.8%	90.8%
Public Health Nurse	175	213	1.21	0.5%	99.5%	1.11	1.21	95.8%	95.8%	95.8%	64.8%	35.2%	100.0%	100.0%
Nursing/ Midwifery Student	33	35	1.07	2.9%	97.1%	3.03	1.05	17.1%	17.1%	17.6%	97.1%	2.9%	100.0%	100.0%
Nursing/ Midwifery other	11	13	1.13		100.0%		1.13	100.0%	100.0%	100.0%	76.9%	23.1%		
Nursing & Midwifery	1,749	1,999	1.14	11.0%	89.0%	1.06	1.15	93.6%	93.6%	93.7%	74.2%	25.8%	93.2%	93.2%
Therapy Professions	460	528	1.15	10.2%	89.8%	1.04	1.16	90.9%	90.9%	90.7%	79.4%	20.6%	94.4%	94.4%
Health Science/ Diagnostics	4	5	1.18	40.0%	60.0%	1.00	1.35	100.0%	100.0%	100.0%	60.0%	40.0%	100.0%	100.0%
Social Care	394	434	1.10	26.5%	73.5%	1.07	1.11	97.7%	97.7%	97.5%	74.0%	26.0%	84.3%	84.3%
Social Workers	109	122	1.12	16.4%	83.6%	1.09	1.12	95.1%	95.1%	96.1%	82.0%	18.0%	90.0%	90.0%
Psychologists	86	97	1.12	23.7%	76.3%	1.10	1.13	96.9%	96.9%	95.9%	86.6%	13.4%	87.0%	87.0%
Pharmacy	38	45	1.19	22.2%	77.8%	1.07	1.23	60.0%	60.0%	65.7%	46.7%	53.3%	40.0%	40.0%

H&SC, Other	42	51	1.21	27.5%	72.5%	1.13	1.24	92.2%	92.2%	91.9%	56.9%	43.1%	71.4%	71.4%
Health & Social Care Professionals	1,133	1,282	1.13	18.6%	81.4%	1.07	1.15	93.1%	93.1%	92.9%	76.2%	23.8%	84.9%	84.9%
Management (VIII & above)	84	87	1.03	29.9%	70.1%	1.02	1.04	92.0%	92.0%	93.4%	96.6%	3.4%	96.2%	96.2%
Administrative/ Supervisory (V to VII)	206	220	1.07	23.2%	76.8%	1.02	1.08	89.5%	89.5%	91.7%	89.1%	10.9%	98.0%	98.0%
Clerical (III & IV)	380	443	1.17	11.1%	88.9%	1.07	1.18	84.4%	84.4%	84.8%	70.7%	29.3%	85.7%	85.7%
Management & Administrative	670	750	1.12	16.8%	83.2%	1.04	1.14	86.8%	86.8%	87.5%	79.1%	20.9%	92.9%	92.9%
Support	402	496	1.23	29.2%	70.8%	1.09	1.31	86.7%	86.7%	88.6%	50.8%	49.2%	80.7%	80.7%
Maintenance/ Technical	45	50	1.11	88.0%	12.0%	1.10	1.22	90.0%	90.0%	100.0%	82.0%	18.0%	86.4%	86.4%
General Support	447	546	1.22	34.6%	65.4%	1.09	1.30	87.0%	87.0%	88.8%	53.7%	46.3%	82.0%	82.0%
Health Care Assistants	1,684	1,970	1.17	24.7%	75.3%	1.09	1.20	84.8%	84.8%	84.6%	65.1%	34.9%	79.1%	79.1%
Home Help	132	268	2.03	7.1%	92.9%	4.60	1.95	82.1%	82.1%	84.3%	16.4%	83.6%	10.5%	10.5%
Care, other	619	712	1.15	27.8%	72.2%	1.07	1.18	94.5%	94.5%	94.6%	74.2%	25.8%	87.4%	87.4%
Patient & Client Care	2,435	2,950	1.21	23.9%	76.1%	1.11	1.25	86.9%	86.9%	86.9%	62.9%	37.1%	79.5%	79.5%
CHO 7	6,722	7,855	1.17	20.1%	79.9%	1.09	1.19	87.4%	87.4%	88.1%	69.3%	30.7%	83.3%	65.8%
Consultants	44	45	1.03	44.4%	55.6%	1.01	1.05	82.2%	82.2%	88.0%	91.1%	8.9%	90.0%	90.0%
Registrars	118	123	1.04	39.0%	61.0%	1.00	1.07	0.0%	0.0%	0.0%	99.2%	0.8%	100.0%	100.0%
SHO/ Interns	26	27	1.04	37.0%	63.0%	1.09	1.02	0.0%	0.0%	0.0%	100.0%	0.0%	100.0%	100.0%
Medical/ Dental, other	72	93	1.28	47.3%	52.7%	1.37	1.22	78.5%	78.5%	81.6%	48.4%	51.6%	47.7%	47.7%
Medical & Dental	260	288	1.11	42.4%	57.6%	1.12	1.10	38.2%	38.2%	37.3%	81.6%	18.4%	79.5%	79.5%
Nurse/ Midwife Manager	377	407	1.08	17.0%	83.0%	1.00	1.10	94.3%	94.3%	95.0%	80.8%	19.2%	100.0%	100.0%
Nurse/ Midwife Specialist & AN/MP	108	121	1.12	15.7%	84.3%	1.02	1.13	100.0%	100.0%	100.0%	76.0%	24.0%	94.7%	94.7%
Staff Nurse/ Staff Midwife	1,024	1,195	1.17	12.1%	87.9%	1.07	1.18	96.7%	96.7%	96.6%	65.9%	34.1%	94.4%	94.4%
Public Health Nurse	199	239	1.20		100.0%		1.20	98.7%	98.7%	98.7%	72.4%	27.6%		
Nursing/ Midwifery Student	23	26	1.12	3.8%	96.2%	7.69	1.08	26.9%	26.9%	28.0%	96.2%	3.8%	100.0%	100.0%
Nursing/ Midwifery other	11	14	1.30	14.3%	85.7%	1.60	1.26	92.9%	92.9%	91.7%	85.7%	14.3%	100.0%	100.0%
Nursing & Midwifery	1,743	2,002	1.15	11.7%	88.3%	1.05	1.16	95.8%	95.8%	95.8%	70.9%	29.1%	96.2%	96.2%
Therapy Professions	394	474	1.20	7.8%	92.2%	1.05	1.22	97.5%	97.5%	97.5%	65.6%	34.4%	86.5%	86.5%
Health Science/ Diagnostics	9	10	1.07	60.0%	40.0%	1.02	1.17	100.0%	100.0%	100.0%	70.0%	30.0%	83.3%	83.3%
Social Care	386	464	1.20	14.0%	86.0%	1.13	1.22	98.7%	98.7%	98.7%	24.8%	75.2%	23.1%	23.1%
Social Workers	93	107	1.15	14.0%	86.0%	1.08	1.17	98.1%	98.1%	98.9%	80.4%	19.6%	86.7%	86.7%
Psychologists	118	128	1.09	26.6%	73.4%	1.01	1.12	79.7%	79.7%	74.5%	85.9%	14.1%	97.1%	97.1%
Pharmacy	8	10	1.20	20.0%	80.0%	1.00	1.27	100.0%	100.0%	100.0%	60.0%	40.0%	100.0%	100.0%
H&SC, Other	53	59	1.11	16.9%	83.1%	1.02	1.13	91.5%	91.5%	91.8%	69.5%	30.5%	80.0%	80.0%
Health & Social Care Professionals	1,061	1,252	1.18	13.5%	86.5%	1.07	1.20	95.9%	95.9%	95.8%	54.0%	46.0%	63.9%	63.9%
Management (VIII & above)	67	72	1.07	26.4%	73.6%	1.04	1.08	97.2%	97.2%	96.2%	86.1%	13.9%	84.2%	84.2%
Administrative/ Supervisory (V to VII)	197	213	1.08	15.5%	84.5%	1.02	1.09	96.7%	96.7%	96.7%	77.9%	22.1%	97.0%	97.0%

Clerical (III & IV)	532	640	1.20	4.8%	95.2%	1.09	1.21	90.8%	90.8%	91.3%	58.8%	41.3%	80.6%	80.6%
Management & Administrative	797	925	1.16	9.0%	91.0%	1.05	1.17	92.6%	92.6%	92.8%	65.3%	34.7%	88.0%	88.0%
Support	121	160	1.32	34.4%	65.6%	1.10	1.48	82.5%	82.5%	76.2%	52.5%	47.5%	78.2%	78.2%
Maintenance/ Technical	68	70	1.03	98.6%	1.4%	1.03	1.00	98.6%	98.6%	100.0%	97.1%	2.9%	97.1%	97.1%
General Support	189	230	1.22	53.9%	46.1%	1.06	1.47	87.4%	87.4%	76.4%	66.1%	33.9%	88.7%	88.7%
Health Care Assistants	1,591	1,893	1.19	22.9%	77.1%	1.12	1.21	93.1%	93.1%	94.0%	49.2%	50.8%	60.7%	60.7%
Home Help	394	660	1.68	3.5%	96.5%	2.73	1.65	47.0%	47.0%	48.0%	13.9%	86.1%	8.7%	8.7%
Care, other	241	284	1.18	29.9%	70.1%	1.20	1.17	95.1%	95.1%	98.5%	54.9%	45.1%	62.4%	62.4%
Patient & Client Care	2,226	2,837	1.27	19.1%	80.9%	1.16	1.30	82.6%	82.6%	81.6%	41.6%	58.4%	58.8%	58.8%
CHO 8	6,275	7,534	1.20	16.9%	83.1%	1.11	1.22	88.0%	88.0%	88.3%	56.6%	43.4%	73.2%	53.2%
Consultants	65	75	1.15	33.3%	66.7%	1.13	1.16	76.0%	76.0%	80.0%	77.3%	22.7%	84.0%	84.0%
Registrars	90	93	1.04	35.5%	64.5%	1.02	1.05	3.2%	3.2%	0.0%	97.8%	2.2%	97.0%	97.0%
SHO/ Interns	71	71	1.00	35.2%	64.8%	1.00	1.00	0.0%	0.0%	0.0%	100.0%	0.0%	100.0%	100.0%
Medical/ Dental, other	56	72	1.28	22.2%	77.8%	1.40	1.24	81.9%	81.9%	82.1%	56.9%	43.1%	62.5%	62.5%
Medical & Dental	282	311	1.10	31.8%	68.2%	1.09	1.11	38.3%	38.3%	40.6%	83.9%	16.1%	88.9%	88.9%
Nurse/ Midwife Manager	455	487	1.07	18.1%	81.9%	1.02	1.08	97.3%	97.3%	96.7%	85.6%	14.4%	97.7%	97.7%
Nurse/ Midwife Specialist & AN/MP	101	106	1.05	11.3%	88.7%	1.01	1.06	99.1%	99.1%	98.9%	88.7%	11.3%	100.0%	100.0%
Staff Nurse/ Staff Midwife	1,221	1,384	1.13	14.1%	85.9%	1.07	1.15	93.2%	93.2%	94.0%	75.4%	24.6%	89.2%	89.2%
Public Health Nurse	183	216	1.18	0.5%	99.5%	1.00	1.18	95.4%	95.4%	95.3%	70.8%	29.2%	100.0%	100.0%
Nursing/ Midwifery Student	47	56	1.19	14.3%	85.7%	1.32	1.17	12.5%	12.5%	14.6%	100.0%	0.0%	100.0%	100.0%
Nursing/ Midwifery other	23	24	1.06	4.2%	95.8%	1.00	1.07	95.8%	95.8%	95.7%	87.5%	12.5%	100.0%	100.0%
Nursing & Midwifery	2,029	2,273	1.12	13.4%	86.6%	1.06	1.13	92.6%	92.6%	93.0%	78.5%	21.5%	92.5%	92.5%
Therapy Professions	538	628	1.17	9.7%	90.3%	1.07	1.18	88.5%	88.5%	88.5%	71.0%	29.0%	91.8%	91.8%
Health Science/ Diagnostics	34	37	1.09	54.1%	45.9%	1.00	1.21	94.6%	94.6%	88.2%	83.8%	16.2%	100.0%	100.0%
Social Care	748	892	1.19	12.1%	87.9%	1.07	1.21	87.0%	87.0%	87.8%	45.9%	54.1%	67.6%	67.6%
Social Workers	134	153	1.14	14.4%	85.6%	1.04	1.16	94.8%	94.8%	94.7%	74.5%	25.5%	100.0%	100.0%
Psychologists	183	202	1.11	15.8%	84.2%	1.06	1.11	67.8%	67.8%	68.8%	77.2%	22.8%	81.3%	81.3%
Pharmacy	29	34	1.17	11.8%	88.2%	1.11	1.18	55.9%	55.9%	60.0%	70.6%	29.4%	75.0%	75.0%
H&SC, Other	70	81	1.17	23.5%	76.5%	1.06	1.20	90.1%	90.1%	91.9%	65.4%	34.6%	89.5%	89.5%
Health & Social Care Professionals	1,736	2,027	1.17	13.1%	86.9%	1.06	1.19	85.9%	85.9%	86.4%	60.8%	39.2%	81.6%	81.6%
Management (VIII & above)	82	83	1.01	25.3%	74.7%	1.00	1.02	98.8%	98.8%	98.4%	97.6%	2.4%	100.0%	100.0%
Administrative/ Supervisory (V to VII)	240	263	1.09	17.5%	82.5%	1.00	1.12	93.2%	93.2%	92.2%	77.9%	22.1%	100.0%	100.0%
Clerical (III & IV)	486	576	1.19	13.5%	86.5%	1.09	1.20	81.4%	81.4%	83.7%	64.2%	35.8%	84.6%	84.6%
Management & Administrative	808	922	1.14	15.7%	84.3%	1.05	1.16	86.3%	86.3%	87.3%	71.1%	28.9%	91.7%	91.7%
Support	404	494	1.22	35.0%	65.0%	1.11	1.29	87.4%	87.4%	89.1%	50.8%	49.2%	75.1%	75.1%
Maintenance/ Technical	36	38	1.04	94.7%	5.3%	1.04	1.06	94.7%	94.7%	100.0%	71.1%	28.9%	72.2%	72.2%

General Support	440	532	1.21	39.3%	60.7%	1.10	1.29	88.0%	88.0%	89.2%	52.3%	47.7%	74.6%	74.6%
Health Care Assistants	1,361	1,656	1.22	19.7%	80.3%	1.11	1.25	81.7%	81.7%	81.4%	55.7%	44.3%	77.6%	77.6%
Care, other	232	262	1.13	32.1%	67.9%	1.07	1.16	85.1%	85.1%	87.6%	61.8%	38.2%	81.0%	81.0%
Patient & Client Care	1,593	1,918	1.20	21.4%	78.6%	1.10	1.24	82.2%	82.2%	82.1%	56.6%	43.4%	78.3%	78.3%
CHO 9	6,889	7,983	1.16	18.0%	82.0%	1.08	1.18	85.2%	85.2%	86.2%	66.4%	33.6%	83.5%	62.6%
Consultants	18	19	1.07	57.9%	42.1%	1.00	1.17	57.9%	57.9%	62.5%	84.2%	15.8%	90.9%	90.9%
Registrars	24	24	1.00	45.8%	54.2%	1.00	1.00	0.0%	0.0%	0.0%	100.0%	0.0%	100.0%	100.0%
SHO/ Interns	6	7	1.17	57.1%	42.9%	1.00	1.50	0.0%	0.0%	0.0%	100.0%	0.0%	100.0%	100.0%
Medical/ Dental, other	0	1	5.26	100.0%		5.26		100.0%	100.0%	#DIV/0	0.0%	100.0%	0.0%	0.0%
Medical & Dental	48	51	1.06	52.9%	47.1%	1.03	1.10	23.5%	23.5%	20.8%	92.2%	7.8%	92.6%	92.6%
Nurse/ Midwife Manager	80	84	1.04	60.7%	39.3%	1.05	1.03	94.0%	94.0%	97.0%	91.7%	8.3%	92.2%	92.2%
Nurse/ Midwife Specialist & AN/MP	12	13	1.09	38.5%	61.5%	1.05	1.11	84.6%	84.6%	75.0%	92.3%	7.7%	100.0%	100.0%
Staff Nurse/ Staff Midwife	176	185	1.05	35.7%	64.3%	1.05	1.05	81.1%	81.1%	79.8%	93.5%	6.5%	92.4%	92.4%
Nursing/ Midwifery other	2	2	1.00	50.0%	50.0%	1.00	1.00	100.0%	100.0%	100.0%	100.0%	0.0%	100.0%	100.0%
Nursing & Midwifery	271	284	1.05	43.3%	56.7%	1.05	1.05	85.2%	85.2%	83.2%	93.0%	7.0%	92.7%	92.7%
Therapy Professions	12	12	1.04	33.3%	66.7%	1.00	1.06	100.0%	100.0%	100.0%	100.0%	0.0%	100.0%	100.0%
Health Science/ Diagnostics	8	8	1.03	12.5%	87.5%	1.00	1.04	87.5%	87.5%	100.0%	87.5%	12.5%	100.0%	100.0%
Social Care	4	4	1.04	25.0%	75.0%	1.00	1.05	100.0%	100.0%	100.0%	100.0%	0.0%	100.0%	100.0%
Social Workers	30	34	1.12	29.4%	70.6%	1.17	1.09	88.2%	88.2%	91.7%	79.4%	20.6%	70.0%	70.0%
Psychologists	7	7	1.01	42.9%	57.1%	1.00	1.01	100.0%	100.0%	100.0%	100.0%	0.0%	100.0%	100.0%
Pharmacy	4	4	1.00	25.0%	75.0%	1.00	1.00	25.0%	25.0%	33.3%	100.0%	0.0%	100.0%	100.0%
H&SC, Other	4	4	1.05	25.0%	75.0%	1.00	1.07	75.0%	75.0%	66.7%	75.0%	25.0%	100.0%	100.0%
Health & Social Care Professionals	68	73	1.07	28.8%	71.2%	1.07	1.06	87.7%	87.7%	90.4%	87.7%	12.3%	85.7%	85.7%
Management (VIII & above)	68	70	1.03	41.4%	58.6%	1.04	1.03	95.7%	95.7%	97.6%	97.1%	2.9%	96.6%	96.6%
Administrative/ Supervisory (V to VII)	77	81	1.05	24.7%	75.3%	1.01	1.06	92.6%	92.6%	95.1%	92.6%	7.4%	95.0%	95.0%
Clerical (III & IV)	59	66	1.12	27.3%	72.7%	1.09	1.13	69.7%	69.7%	72.9%	81.8%	18.2%	88.9%	88.9%
Management & Administrative	204	217	1.06	30.9%	69.1%	1.04	1.07	86.6%	86.6%	88.7%	90.8%	9.2%	94.0%	94.0%
Support	20	21	1.08	42.9%	57.1%	1.00	1.14	85.7%	85.7%	91.7%	71.4%	28.6%	100.0%	100.0%
Maintenance/ Technical	7	7	1.00	100.0%		1.00		100.0%	100.0%	#DIV/0	100.0%	0.0%	100.0%	100.0%
General Support	27	28	1.06	57.1%	42.9%	1.00	1.14	89.3%	89.3%	91.7%	78.6%	21.4%	100.0%	100.0%
Health Care Assistants	62	69	1.11	69.6%	30.4%	1.17	1.00	73.9%	73.9%	90.5%	79.7%	20.3%	72.9%	72.9%
Care, other	16	19	1.22	68.4%	31.6%	1.08	1.71	89.5%	89.5%	66.7%	63.2%	36.8%	84.6%	84.6%
Patient & Client Care	78	88	1.14	69.3%	30.7%	1.15	1.10	77.3%	77.3%	85.2%	76.1%	23.9%	75.4%	75.4%
other Community Services	695	741	1.07	42.5%	57.5%	1.06	1.07	80.8%	80.8%	82.9%	89.2%	10.8%	89.5%	89.0%

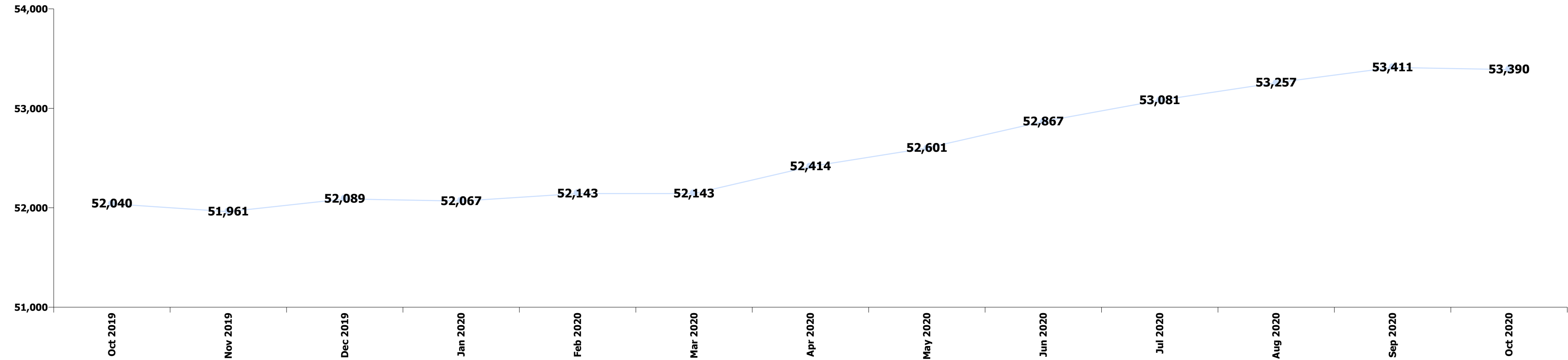
Summary Staff Movement: November 2020

Month-on-month Summary

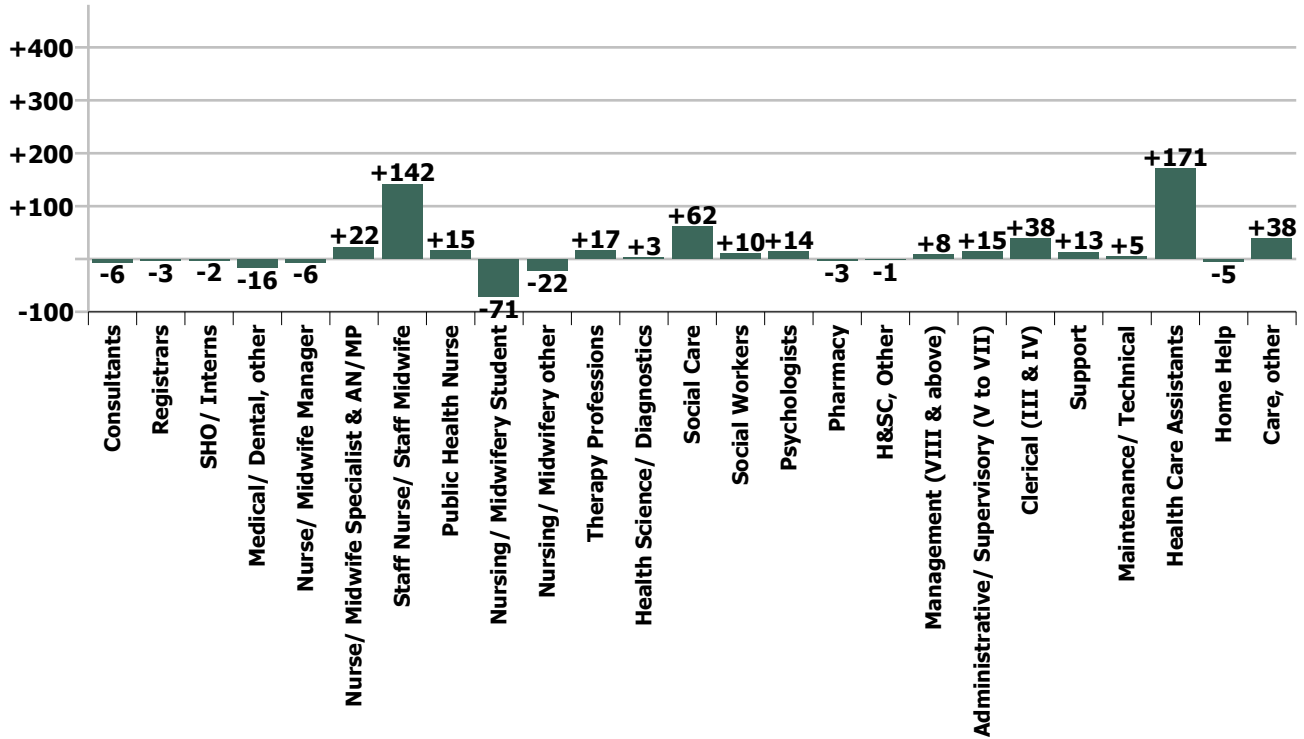
WTE change since Oct 20	% change since Oct 20	overall	Consultants	Registrars	SHO/ Interns	Medical/ Dental, other	Medical & Dental	Nurse/ Midwife Manager	Nurse/ Midwife Specialist & AN/MP	Staff Nurse/ Staff Midwife	Public Health Nurse	Nursing/ Midwifery Student	Nursing/ Midwifery other	Nursing & Midwifery	Therapy Professions	Health Science/ Diagnostics	Social Care	Social Workers	Psychologist s	Pharmacy	H&SC, Other	Health & Social Care Professionals	Management (VIII & above)	Administrati ve/ Supervisory (V to VII)	Clerical (III & IV)	Manageme nt & Administra tive	General Support	Health Care Assistants	Home Help	Care, other	Patient & Client Care
Overall	+0.8%	+440	-6	-3	-2	-16	-27	-6	+22	+142	+15	-71	-22	+81	+17	+3	+62	+10	+14	-3	-1	+103	+8	+15	+38	+61	+18	+171	-5	+38	+204
CHO 1	+0.5%	+26	+0	-3	-0	-2	-5	-3	+4	-1	+2	-11	+0	-9	-2	-0	+1	+2	+0	+0	+0	+1	-0	+2	+7	+8	+2	+15	+12	+2	+28
CHO 2	+0.2%	+10	-2	-0	+0	+2	+0	-5	+1	+11	+1	-10	-0	-2	+0	+0	+4	-0	-3	+0	+2	+4	-1	+6	-3	+2	+2	-5	+2	+7	+4
CHO 3	+1.3%	+59	-0	+0	+1	-0	+1	-11	-2	+35	-2	-7		+12	+6		+7	+2	+10		-2	+23	+1	-2	+4	+3	-1	+15	+2	+4	+21
CHO 4	+0.4%	+36	-1	-1	+2	-11	-12	-10	+4	+13	+12	-5		+14	+0	+1	+5	+1	-1	-0	-1	+5	-2	-0	+8	+6	+10	+42	-28	-1	+14
CHO 5	+0.9%	+50	-0	+1	-2	-3	-5	+0	+2	+13	+3	-10	-0	+8	+5	+0	+0	+2	+0	+0	+0	+7	+1	+0	+5	+6	-2	+21	+11	+2	+34
CHO 6	+1.2%	+42	+1	-0	-0	+0	+0	-3	-1	+14	+1	+1	-1	+11	-4	+0	+12	+0	+2	-0	-1	+11	+0	-2	-1	-3	+1	+10		+12	+22
CHO 7	+0.9%	+60	-4	+0	-0	-2	-6	-3	+4	+8	-1	-3	-1	+3	+4	+0	+9	+2	-1	-3	+1	+11	+5	+4	+4	+13	+6	+24	-0	+9	+32
CHO 8	+0.9%	+55	+1	+2	-4	-1	-1	+23	+5	+25	-0	-7	-21	+25	+3	-0	+3	+0	+0	+0	+1	+7	-1	-1	+3	+1	+1	+24	-3	+2	+23
CHO 9	+1.3%	+92	-1	-3	+3	+0	-0	+7	+4	+23	-1	-18	+0	+16	+4	+2	+21	-0	+7	-0	-1	+32	+1	+4	+14	+18	-2	+26		+1	+27
Community Services	+0.8%	+430	-6	-4	-1	-16	-27	-5	+22	+140	+15	-71	-22	+80	+17	+3	+62	+8	+15	-3	-1	+101	+5	+11	+39	+56	+16	+172	-5	+38	+205
other Community Services	+1.5%	+10	+0	+1	-1	+0	+0	-1	+1	+1			+0	+1		+0	+0	+2	-1		+0	+1	+3	+3	-1	+6	+2	-0		-0	-0
			-1.3%	-0.4%	-0.6%	-2.5%	-1.3%	-0.2%	+2.9%	+1.6%	+1.0%	-22.1%	-24.0%	+0.5%	+0.5%	+2.4%	+2.2%	+1.2%	+1.5%	-2.6%	-0.2%	+1.2%	+1.2%	+0.9%	+1.0%	+1.0%	+0.6%	+1.4%	-0.1%	+1.4%	+1.1%

Year-on-year Summary

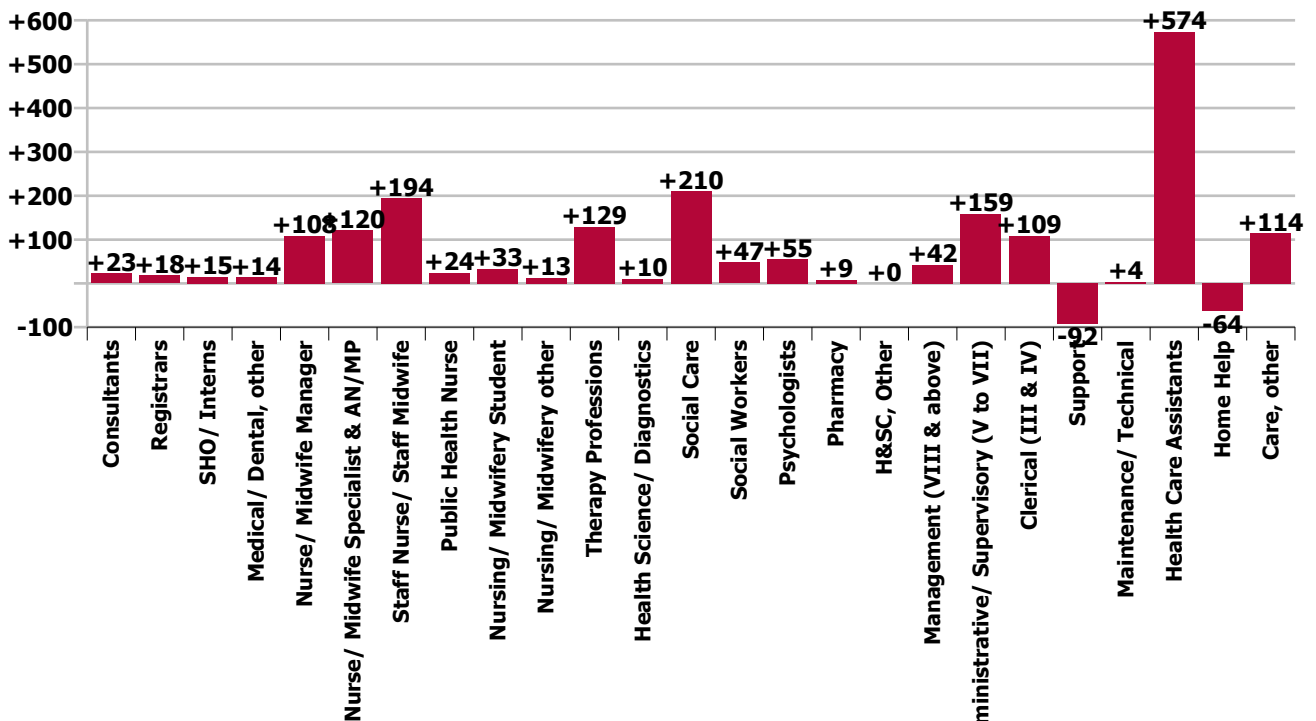
WTE change since Nov 19	% change since Nov 19	overall	Consultants	Registrars	SHO/ Interns	Medical/ Dental, other	Medical & Dental	Nurse/ Midwife Manager	Nurse/ Midwife Specialist & AN/MP	Staff Nurse/ Staff Midwife	Public Health Nurse	Nursing/ Midwifery Student	Nursing/ Midwifery other	Nursing & Midwifery	Therapy Professions	Health Science/ Diagnostics	Social Care	Social Workers	Psychologist s	Pharmacy	H&SC, Other	Health & Social Care Professionals	Management (VIII & above)	Administrati ve/ Supervisory (V to VII)	Clerical (III & IV)	Manageme nt & Administra tive	General Support	Health Care Assistants	Home Help	Care, other	Patient & Client Care
Community Services	+3.6%	+1,869	+23	+18	+15	+14	+69	+108	+120	+194	+24	+33	+13	+493	+129	+10	+210	+47	+55	+9	+0	+460	+42	+159	+109	+310	-88	+574	-64	+114	+625
CHO 1	+3.7%	+202	+5	+3	-2	-3	+3	+6	+18	+4	-1	+19	+2	+49	+6	+0	+2	+7	+2	+1	-3	+16	+3	+30	+23	+55	+0	+61	+12	+7	+79
CHO 2	+2.0%	+108	+1	+13	+8	+4	+25	+16	+13	+2	+7	+0	+1	+39	+25	+2	+18	+0	+5	-1	-1	+48	+1	+22	-22	+2	-4	+15	-25	+9	-1
CHO 3	+4.3%	+189	+1	-0	-3	+1	-2	-3	-6	+39	-2	+7		+36	+8	+3	+30	-3	+2		+1	+42	+5	+12	-18	-1	-4	+66	+43	+10	+118
CHO 4	+3.7%	+307	+6	-3	+12	+4	+19	+24	+19	+46	+20	-28	-1	+81	+11	+2	+17	+18	+14	+2	+5	+70	+3	+12	+32	+48	+24	+119	-89	+35	+66
CHO 5	+3.3%	+175	-1	+2	-2	+6	+4	+25	+25	+8	+1	+8	+0	+68	-4	+3	-9	+3	-1	+1	-3	-9	+7	+11	-4	+14	-43	+124	+6	+12	+142
CHO 6	+2.9%	+98	+4	-5	+5	-1	+2	-5	+6	+21	-6	+1	+3	+19	-6	+1	+31	-4	+9	+0	-0	+30	+2	-1	+19	+20	-9	+27		+8	+36
CHO 7	+3.6%	+232	+8	+5	+2	+2	+17	+5	+18	+21	-2	+2	+2	+45	+14	+1	+31	+6	+8	-1	-2	+57	+10	+18	+31	+59	-8	+34	+12	+15	+62
CHO 8	+2.6%	+160	+2	+12	-11	+1	+3	+4	+9	+27	-1	+18	+2	+60	+21	+2	+21	+5	-1	+1	+1	+51	+5	+24	+24	+53	-6	+17	-22	+5	-0
CHO 9	+5.1%	+336	-3	-6	+2	-0	-7	+24	+15	+22	+8	+7	+3	+78	+53	-3	+68	+11	+18	+4	-0	+150	+2	+29	+33	+64	-47	+86		+13	+98
Community Services	+3.5%	+1,807	+22	+20	+10	+14	+65	+96	+117	+191	+24	+33	+12	+473	+128	+11	+210	+45	+55	+7	-1	+455	+38	+157	+119	+314	-98	+548	-64	+114	+598
other Community Services	+9.7%	+62	+1	-1	+4	-0	+4	+12	+4	+3		+1	+19	+1	-1	+0	+2	-0	+1	+1	+1	+5	+4	+2	-10	-4	+10	+26		+0	+27
			+5.5%	+2.7%	+4.6%	+2.2%	+3.4%	+3.4%	+17.5%	+2.2%	+1.6%	+15.3%	+22.7%	+3.4%	+4.0%	+7.4%	+7.8%	+5.9%	+6.1%	+8.9%	+0.0%	+5.6%	+6.8%	+10.6%	+2.9%	+5.3%	-3.0%	+4.7%	-1.8%	+4.2%	+3.4%



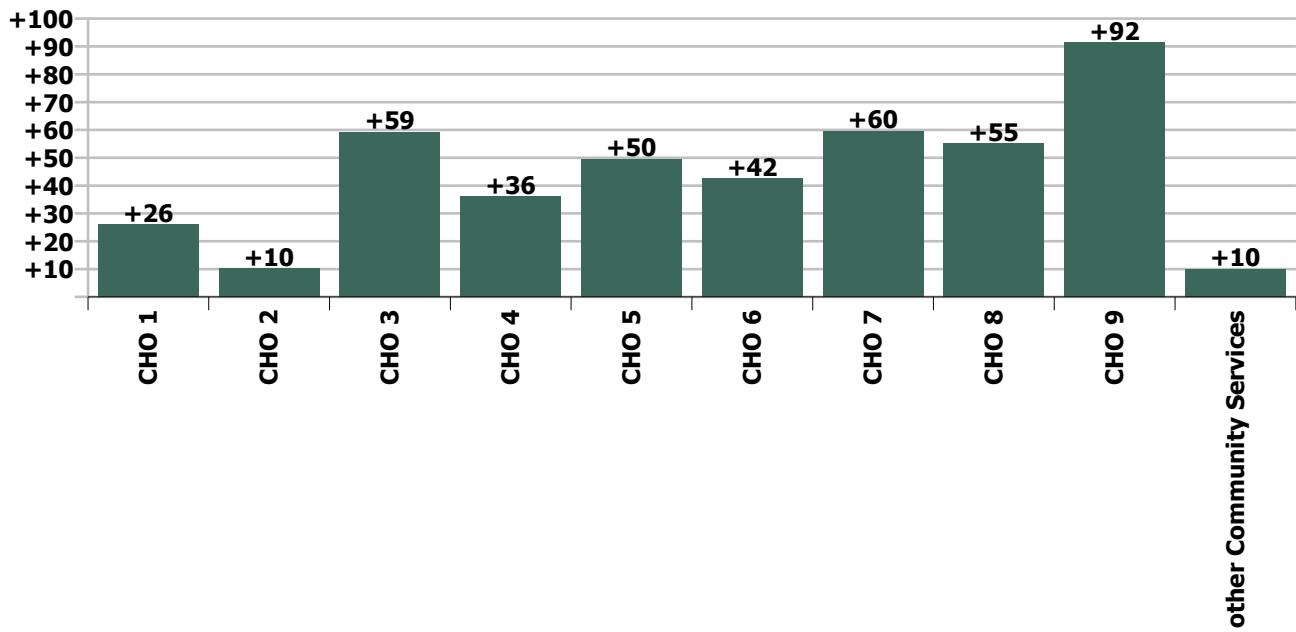
Staff Group change since: Oct 2020



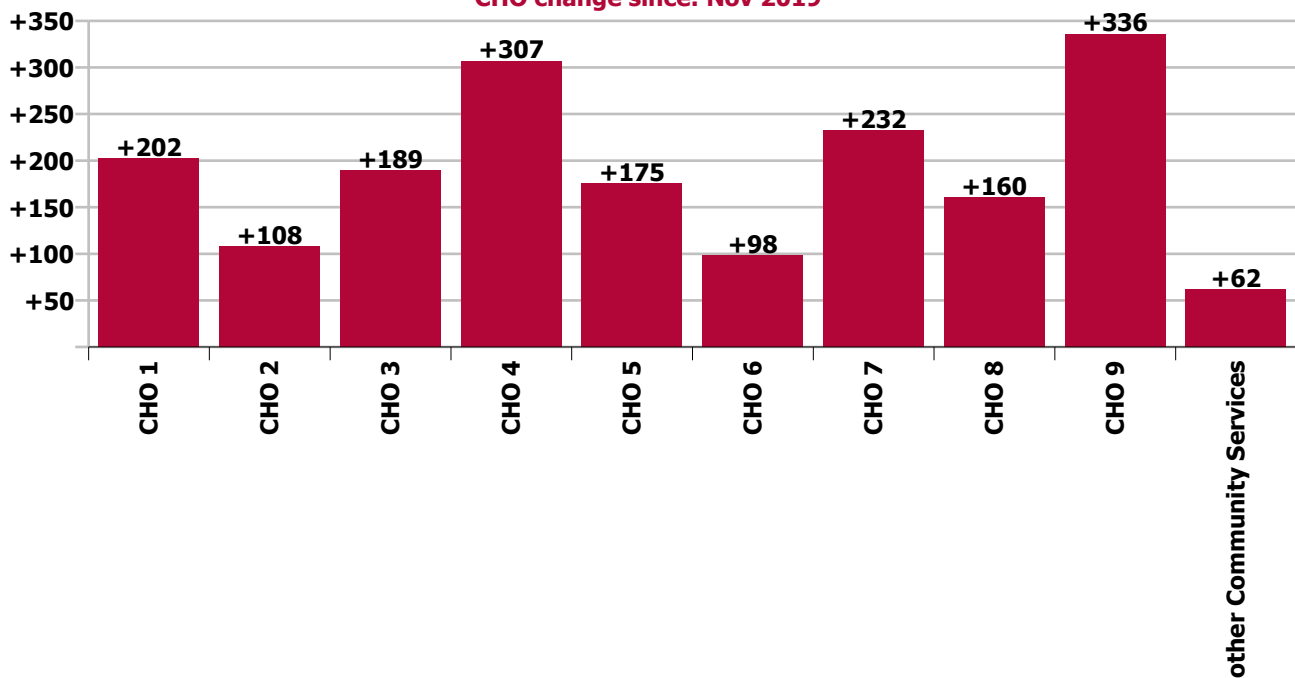
Staff Group change since: Nov 2019



CHO change since: Oct 2020



CHO change since: Nov 2019



Longitudinal Employment Levels by Grade Group - Oct 2013 to Nov 2020

Nov 2020 (Oct 2013 figure: 46,288)	WTE Nov 2020	WTE change since Oct 13	WTE change since Dec 14	WTE change since Dec 16	WTE change since Dec 17	WTE change since Dec 18	WTE change since Dec 19	% change since Oct 13	% change since Dec 14	% change since Dec 16	% change since Dec 17	% change since Dec 18	% change since Dec 19
Community Services	53,830	+7,542	+6,792	+4,526	+3,021	+1,877	+1,741	+16.3%	+14.4%	+9.2%	+5.9%	+3.6%	+3.3%
Consultant Anaesthesia		-0						-100.0%	-100.0%	-100.0%	-100.0%	-100.0%	-100.0%
Consultant Dentistry	10	+0	-0	-0	-1	-1	-1	+0.9%	-3.8%	-3.8%	-12.1%	-12.1%	-8.4%
Consultant Medicine	27	+7	+2	-3	-3	+5	+5	+32.9%	+9.8%	-10.3%	-10.4%	+24.5%	+20.8%
Consultant Paediatrics	5	+1	+1	+0	-0			+17.9%	+17.9%	+8.1%	-1.9%		
Consultant Psychiatry	396	+72	+62	+52	+51	+42	+15	+22.2%	+18.6%	+15.2%	+14.7%	+11.9%	+4.0%
Consultant Radiology	1	-0	-0					-14.5%	-5.7%				
Consultant Surgery	1	-6	-5	-5	-4	-3	-3	-82.7%	-80.4%	-78.2%	-73.8%	-72.3%	-68.4%
Consultant, Other		-1	-1	-1				-100.0%	-100.0%	-100.0%	-100.0%	-100.0%	-100.0%
Consultants	440	+72	+58	+43	+43	+43	+16	+19.5%	+15.3%	+11.0%	+10.7%	+10.7%	+3.8%
Registrar	568	+106	+110	+95	+68	+41	+4	+23.0%	+24.1%	+20.1%	+13.5%	+7.8%	+0.7%
Senior Registrar	116	+44	+49	+42	+43	+22	+13	+61.4%	+73.5%	+57.2%	+57.9%	+23.6%	+12.8%
Specialist Registrar	18	+3	+6	+5	+1	+5	-1	+20.8%	+50.0%	+39.6%	+7.9%	+41.7%	-2.7%
Registrars	703	+154	+166	+142	+111	+69	+16	+28.0%	+30.8%	+25.4%	+18.9%	+10.9%	+2.4%
Interns	5	-4	-5	-7	-5	-3	-3	-44.4%	-50.0%	-58.3%	-50.0%	-37.5%	-37.5%
Senior House Officer	332	+59	+57	+29	+13	+7	+20	+21.6%	+20.7%	+9.5%	+4.0%	+2.0%	+6.2%
SHO/ Interns	337	+55	+52	+22	+8	+4	+17	+19.5%	+18.2%	+6.9%	+2.4%	+1.1%	+5.2%
Dentists	301	-9	+3	-3	-2	-5	-1	-2.9%	+1.1%	-1.1%	-0.5%	-1.5%	-0.2%
Other Medical	335	+1	+2	+8	-10	-9	+1	+0.3%	+0.5%	+2.5%	-3.0%	-2.6%	+0.2%
Medical/ Dental, other	635	-8	+5	+5	-12	-14	+0	-1.2%	+0.8%	+0.8%	-1.9%	-2.1%	+0.0%
Medical & Dental	2,115	+273	+281	+212	+150	+101	+49	+14.8%	+15.3%	+11.2%	+7.6%	+5.0%	+2.4%
Clinical Nurse/ Midwife Manager	2,569	+363	+238	+67	+90	+60	+83	+16.4%	+10.2%	+2.7%	+3.6%	+2.4%	+3.4%
Director Nursing/Midwifery, Assistant	487	+142	+94	+49	+56	+47	+24	+41.1%	+23.9%	+11.2%	+13.1%	+10.8%	+5.3%
Director of Nursing/Midwifery	211	+47	+32	+17	+20	+30	+4	+29.1%	+18.0%	+8.9%	+10.8%	+16.9%	+1.8%
Nurse/ Midwife Manager	3,266	+552	+364	+133	+167	+138	+111	+20.3%	+12.5%	+4.3%	+5.4%	+4.4%	+3.5%
Advanced Nurse/ Midwife Practitioner	74	+60	+63	+60	+57	+43	+28	+400.3%	+544.6%	+421.7%	+318.5%	+135.2%	+61.9%
Clinical Nurse/ Midwife Specialist	733	+328	+284	+196	+131	+112	+89	+81.1%	+63.3%	+36.4%	+21.8%	+18.0%	+13.8%
Nurse/ Midwife Specialist & AN/MP	808	+388	+347	+256	+188	+155	+117	+92.4%	+75.4%	+46.4%	+30.3%	+23.7%	+17.0%
Graduate Nursing/ Midwifery		-58	-179					-100.0%	-100.0%	-100.0%	-100.0%	-100.0%	-100.0%
Staff Midwives	7	+5	+5	+3	-1	+0	-2	+262.2%	+268.4%	+105.0%	-7.6%	+0.5%	-19.7%
Staff Nurse [Intellectual Disability]	1,665	-95	-107	-65	-43	-27	+63	-5.4%	-6.0%	-3.7%	-2.5%	-1.6%	+3.9%
Staff Nurse [Psychiatric]	3,027	-265	-98	-125	-90	-13	+37	-8.1%	-3.1%	-4.0%	-2.9%	-0.4%	+1.2%
Staff Nurses [General/ Children's]	4,483	-125	+182	+37	+43	+27	+70	-2.7%	+4.2%	+0.8%	+1.0%	+0.6%	+1.6%
Staff Nurse/ Staff Midwife	9,181	-539	-197	-149	-91	-12	+168	-5.5%	-2.1%	-1.6%	-1.0%	-0.1%	+1.9%
Public Health Nurse	1,558	+76	+101	+64	+49	+23	+26	+5.1%	+7.0%	+4.3%	+3.2%	+1.5%	+1.7%
Pre-registration Nurse/ Midwife Intern	13	-66	-21	-7	-15	-49	-42	-83.1%	-60.9%	-34.9%	-53.0%	-78.5%	-75.9%
Pre-registration Nurse Intern (COVID-19)	109	+109	+109	+109	+109	+109	+109	-100.0%	-100.0%	-100.0%	-100.0%	-100.0%	-100.0%
Post-registration Nurse/ Midwife Student	107	+87	-9	-5	-22	+14	+9	+429.7%	-7.6%	-4.3%	-17.0%	+15.2%	+9.7%
Nursing/ Midwifery awaiting registration	19	+19	+12	+17	-3	-0	-54	-100.0%	+180.0%	+871.5%	-14.2%	-2.1%	-73.7%
Nursing/ Midwifery Student	249	+149	+91	+114	+68	+73	+21	+148.7%	+58.1%	+84.7%	+37.8%	+41.7%	+9.4%
Nursing Education/Clinical	68	+19	+25	+17	+12	+12	+10	+40.0%	+58.8%	+34.5%	+20.8%	+20.7%	+17.8%
Other Nursing/ Midwifery	1	-9	-7	-6	-4	-1		-89.8%	-87.4%	-85.7%	-81.7%	-50.0%	
Nursing/ Midwifery other	69	+11	+18	+11	+7	+11	+10	+18.2%	+35.9%	+19.8%	+11.7%	+18.3%	+17.5%

Nov 2020 (Oct 2013 figure: 46,288)	WTE Nov 2020	WTE change since Oct 13	WTE change since Dec 14	WTE change since Dec 16	WTE change since Dec 17	WTE change since Dec 18	WTE change since Dec 19	% change since Oct 13	% change since Dec 14	% change since Dec 16	% change since Dec 17	% change since Dec 18	% change since Dec 19
Community Services	53,830	+7,542	+6,792	+4,526	+3,021	+1,877	+1,741	+16.3%	+14.4%	+9.2%	+5.9%	+3.6%	+3.3%
Nursing & Midwifery	15,131	+636	+725	+429	+389	+386	+454	+4.4%	+5.0%	+2.9%	+2.6%	+2.6%	+3.1%
Dietitians	187	+100	+86	+54	+36	+19	+24	+115.8%	+84.8%	+41.0%	+23.9%	+11.3%	+14.5%
Occupational Therapists	1,284	+310	+246	+141	+98	+59	+53	+31.8%	+23.7%	+12.4%	+8.3%	+4.8%	+4.3%
Orthoptists	17	+12	+12	+12	+11	+8	+4	+208.5%	+222.2%	+197.4%	+173.2%	+75.9%	+31.3%
Physiotherapists	888	+145	+100	+42	+18	+15	+30	+19.6%	+12.7%	+4.9%	+2.1%	+1.7%	+3.5%
Podiatrists & Chiropodists	44	+10	+10	+8	+4	+4	+6	+28.9%	+29.5%	+21.2%	+8.9%	+9.6%	+16.5%
Speech & Language Therapists	910	+244	+194	+58	-3	-1	+7	+36.7%	+27.0%	+6.8%	-0.3%	-0.2%	+0.8%
Therapy Professions	3,330	+822	+648	+314	+164	+103	+124	+32.7%	+24.1%	+10.4%	+5.2%	+3.2%	+3.9%
Audiology	51	+23	+10	+9	+3	+3	+7	+82.1%	+24.4%	+21.6%	+6.6%	+5.6%	+15.7%
Biochemists	8	+1	+0	+0	+0	-0	+0	+23.3%	+2.2%	+1.4%	+1.4%	-3.4%	+1.3%
Clinical Engineering	22	+3	+4	+1	+2	+3	+1	+16.1%	+24.4%	+3.1%	+9.7%	+15.5%	+4.5%
Clinical Measurement	2	+1	+1	+1	+1	+1	+1	+116.0%	+116.0%	+116.0%	+116.0%	+100.0%	+78.5%
Medical Laboratory	48	-37	-33	-2	-1	-3	+2	-43.8%	-41.0%	-3.6%	-2.7%	-6.3%	+3.6%
Phlebotomists	1	-0	-0	-0	-0	+0	+0	-27.6%	-14.0%	-25.5%	-24.5%	+0.8%	+0.8%
Physicists	2	+0	-2	-1	+0			+11.1%	-48.7%	-33.3%	+12.4%		
Radiographers	10	-5	-3	-3	-4	-2	-1	-32.5%	-23.1%	-23.5%	-27.2%	-14.7%	-9.1%
Health Science/ Diagnostics	144	-14	-23	+5	+1	+1	+10	-8.8%	-13.7%	+3.3%	+0.7%	+1.0%	+7.1%
Social Care	2,896	+955	+992	+579	+432	+292	+189	+49.2%	+52.1%	+25.0%	+17.5%	+11.2%	+7.0%
Social Workers	849	+198	+169	+47	+35	+24	+44	+30.5%	+24.8%	+5.8%	+4.2%	+3.0%	+5.4%
Psychologists	954	+318	+207	+117	+76	+61	+53	+50.1%	+27.6%	+14.0%	+8.7%	+6.8%	+5.8%
Pharmacy	106	+9	+5	+3	+2	+5	+7	+9.5%	+5.4%	+3.3%	+1.9%	+4.6%	+7.6%
Counsellor Therapists	232	+30	+44	+15	+5	+13	+3	+15.1%	+23.6%	+6.9%	+2.4%	+6.0%	+1.4%
Dental Hygienists	61	+7	+6	+6	+7	+4	+4	+12.3%	+11.1%	+11.5%	+12.8%	+6.8%	+6.8%
Environmental Health Officers							-1	-100.0%	-100.0%	-100.0%	-100.0%	-100.0%	-100.0%
Other Health & Social Care	63	-28	-32	-13	-14	-8	-8	-30.8%	-34.1%	-17.2%	-18.7%	-11.7%	-11.0%
Play Therapists/ Specialists	16	-6	-3	-4	-3	-4	-5	-29.1%	-14.1%	-20.5%	-14.1%	-20.1%	-22.7%
HSCP Trainees/ Students		-10	-2	-2	-1			-100.0%	-100.0%	-100.0%	-100.0%	-100.0%	-100.0%
H&SC, Other	371	-7	+14	+2	-5	+5	-6	-1.8%	+3.8%	+0.5%	-1.4%	+1.3%	-1.5%
Health & Social Care Professionals	8,651	+2,282	+2,011	+1,066	+704	+491	+421	+35.8%	+30.3%	+14.1%	+8.9%	+6.0%	+5.1%
Executive Management	145	+89	+81	+37	+20	+19	+20	+161.3%	+128.5%	+33.8%	+15.7%	+15.0%	+16.3%
Senior Management (VIII & GM)	513	+200	+149	+117	+83	+53	+20	+63.8%	+40.9%	+29.4%	+19.2%	+11.5%	+4.1%
Management (VIII & above)	658	+289	+230	+153	+102	+72	+40	+78.5%	+53.9%	+30.3%	+18.4%	+12.2%	+6.6%
Middle Management (V-VII)	1,646	+600	+617	+494	+386	+231	+166	+57.3%	+60.0%	+42.9%	+30.6%	+16.4%	+11.2%
Other Administrative	18	-2	-5	+2	-2	-3	-1	-10.5%	-19.8%	+8.9%	-8.2%	-14.0%	-5.8%
Administrative/ Supervisory (V to VII)	1,665	+597	+613	+496	+384	+228	+165	+56.0%	+58.3%	+42.4%	+30.0%	+15.9%	+11.0%
Clerical (III & IV)	3,805	+330	+427	+281	+183	+62	+110	+9.5%	+12.6%	+8.0%	+5.1%	+1.7%	+3.0%
Management & Administrative	6,127	+1,216	+1,270	+930	+670	+362	+315	+24.8%	+26.1%	+17.9%	+12.3%	+6.3%	+5.4%
Catering	403	-19	-22	-11	-5	-12	-4	-4.5%	-5.2%	-2.6%	-1.3%	-2.9%	-0.9%
Household Services	1,464	-534	-403	-246	-164	-98	-7	-26.7%	-21.6%	-14.4%	-10.1%	-6.3%	-0.5%
Other Labs & Associated	6	+1	-0	+3	-0	-0	+2	+15.8%	-2.9%	+83.4%	-3.9%	-2.6%	+37.0%
Other Support	322	-102	-87	-92	-93	-91	-56	-24.0%	-21.2%	-22.2%	-22.4%	-22.1%	-14.7%
Portering	226	-72	-41	-31	-16	-7	-6	-24.1%	-15.3%	-12.1%	-6.6%	-3.1%	-2.5%
Support	2,420	-726	-552	-377	-279	-209	-70	-23.1%	-18.6%	-13.5%	-10.3%	-8.0%	-2.8%
Maintenance	408	-59	-43	-20	-19	-6	+7	-12.7%	-9.5%	-4.7%	-4.4%	-1.4%	+1.6%

Nov 2020 (Oct 2013 figure: 46,288)	WTE Nov 2020	WTE change since Oct 13	WTE change since Dec 14	WTE change since Dec 16	WTE change since Dec 17	WTE change since Dec 18	WTE change since Dec 19	% change since Oct 13	% change since Dec 14	% change since Dec 16	% change since Dec 17	% change since Dec 18	% change since Dec 19
Community Services	53,830	+7,542	+6,792	+4,526	+3,021	+1,877	+1,741	+16.3%	+14.4%	+9.2%	+5.9%	+3.6%	+3.3%
Technical Services	12	+5	+4	+4	+4	+3	+1	+70.4%	+49.4%	+49.4%	+49.4%	+34.4%	+9.0%
Maintenance/ Technical	420	-54	-39	-16	-15	-3	+8	-11.5%	-8.5%	-3.7%	-3.4%	-0.6%	+1.8%
General Support	2,840	-780	-591	-394	-294	-212	-63	-21.6%	-17.2%	-12.2%	-9.4%	-6.9%	-2.2%
HCA, Nurse's Aide, etc.	12,525	+3,543	+2,854	+1,627	+1,140	+691	+523	+39.5%	+29.5%	+14.9%	+10.0%	+5.8%	+4.4%
Health & Social Care Assistants	147	+90	+90	+87	+85	-18	+38	+156.2%	+157.1%	+142.0%	+135.0%	-11.0%	+35.2%
Health Care Assistants	12,673	+3,633	+2,944	+1,713	+1,224	+673	+562	+40.2%	+30.3%	+15.6%	+10.7%	+5.6%	+4.6%
Home Help	3,474	-64	-229	+301	-27	-77	-95	-1.8%	-6.2%	+9.5%	-0.8%	-2.2%	-2.6%
Ambulance Officers		-1						-100.0%	-100.0%	-100.0%	-100.0%	-100.0%	-100.0%
Pre-Hospital Care (Ambulance)		-9	-10					-100.0%	-100.0%	-100.0%	-100.0%	-100.0%	-100.0%
Ambulance Staff		-10	-10					-100.0%	-100.0%	-100.0%	-100.0%	-100.0%	-100.0%
Community Welfare Officers	1	-12	-6	-4	-3	-2	-1	-93.1%	-87.3%	-82.2%	-77.1%	-69.2%	-45.7%
Other Care Grades	2,818	+367	+396	+272	+208	+155	+98	+15.0%	+16.3%	+10.7%	+8.0%	+5.8%	+3.6%
Care, other	2,819	+355	+390	+268	+205	+153	+98	+14.4%	+16.0%	+10.5%	+7.9%	+5.7%	+3.6%
Patient & Client Care	18,966	+3,915	+3,096	+2,282	+1,402	+748	+565	+26.0%	+19.5%	+13.7%	+8.0%	+4.1%	+3.1%

Source: Health Service Personnel Census