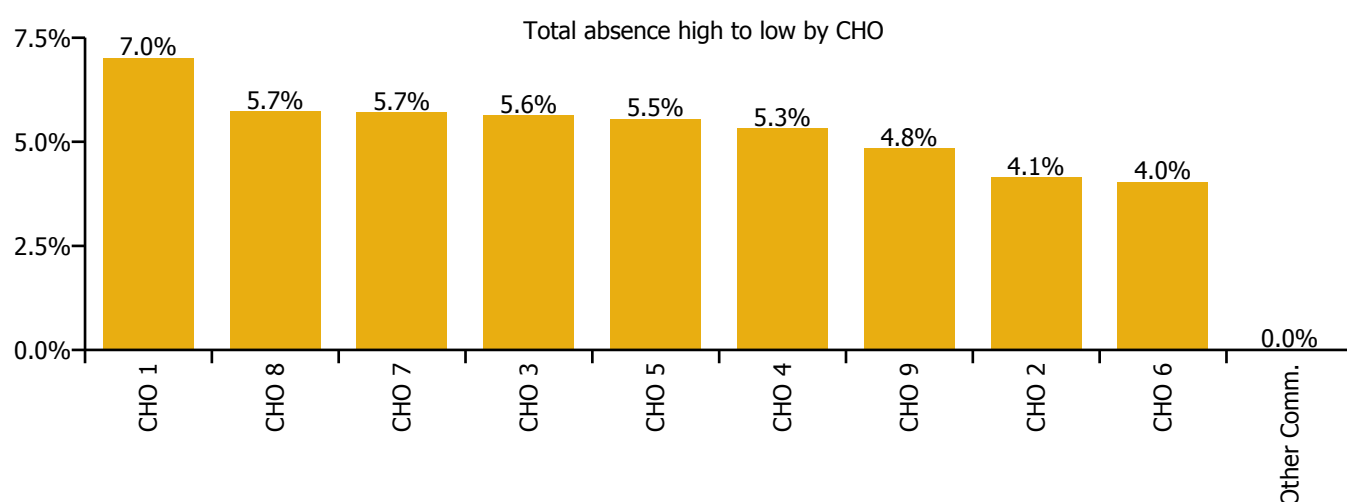
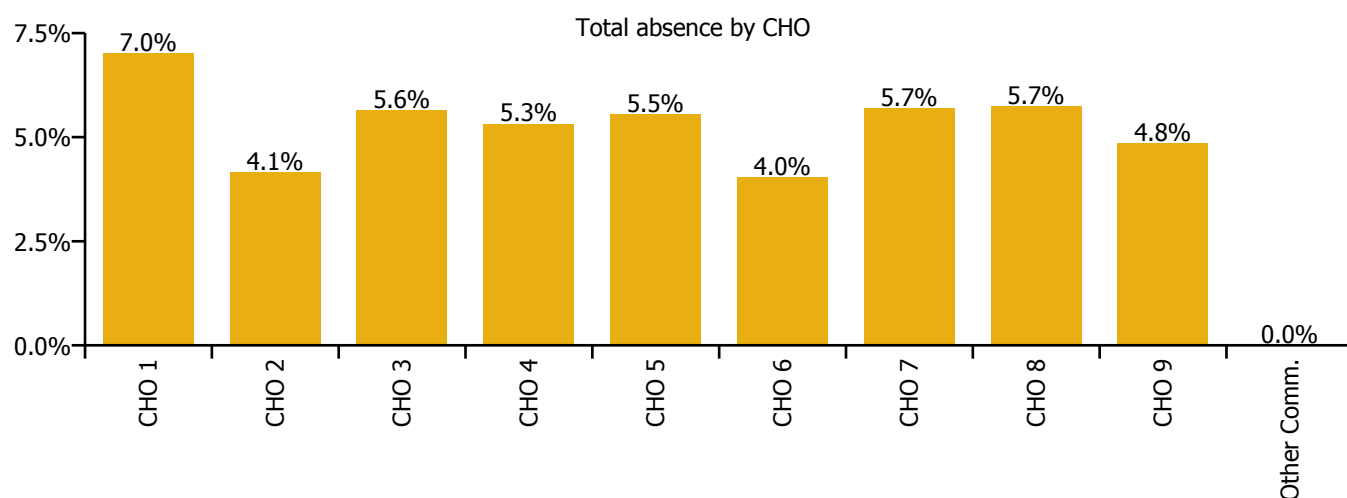


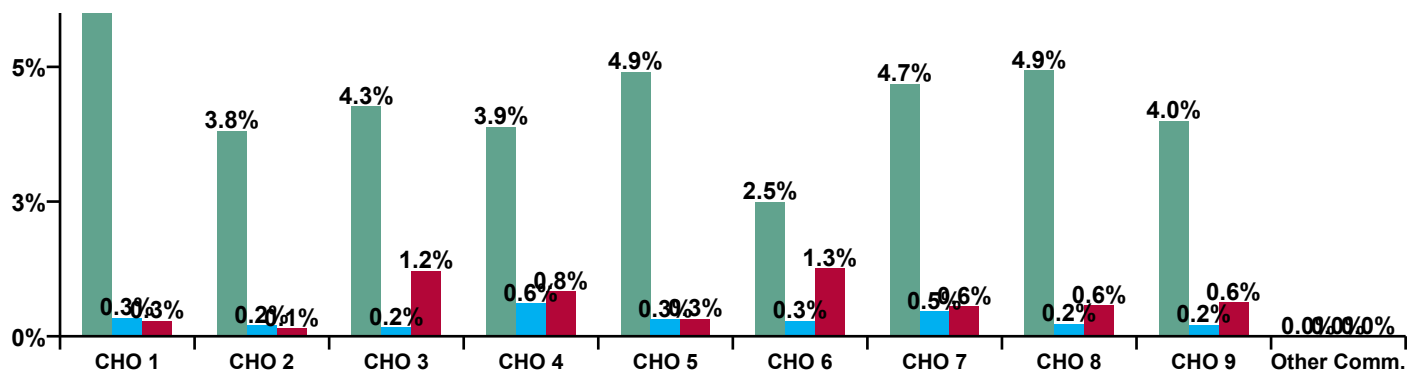
## August 2020

Disabilities Absence Rate - by Staff Category: Aug 2020	Certified absence	Self-certified absence	COVID-19 absence	Total absence rate	Certified	Self-certified	COVID-19
<b>Disabilities</b>	<b>4.4%</b>	<b>0.3%</b>	<b>0.6%</b>	<b>5.3%</b>	<b>82.1%</b>	<b>5.9%</b>	<b>11.9%</b>
Medical & Dental	3.5%	0.2%	0.0%	3.7%	95.7%	4.3%	0.0%
Nursing & Midwifery	5.3%	0.3%	0.6%	6.3%	84.2%	5.5%	10.3%
Health & Social Care Professionals	3.5%	0.2%	0.9%	4.4%	81.5%	4.4%	19.9%
Management & Administrative	2.2%	0.1%	0.3%	2.5%	88.3%	5.4%	10.5%
General Support	3.4%	0.3%	1.3%	4.8%	70.3%	6.1%	26.3%
Patient & Client Care	4.8%	0.4%	0.7%	5.9%	81.9%	6.7%	11.4%



Disabilities Absence Rate - by Care Group: Aug 2020	Certified absence	Self-certified absence	COVID-19 absence	Total absence rate	Certified	Self-certified	COVID-19
<b>Disabilities</b>	<b>4.4%</b>	<b>0.3%</b>	<b>0.6%</b>	<b>5.3%</b>	<b>82.1%</b>	<b>5.9%</b>	<b>11.9%</b>
CHO 1	6.4%	0.3%	0.3%	7.0%	91.1%	4.9%	4.1%
Health Service Executive	2.1%	0.3%	0.3%	2.7%	75.9%	11.9%	12.2%
Section 38 Voluntary Agencies	4.0%	0.2%	0.1%	4.3%	93.1%	4.1%	2.8%
CHO 2	3.8%	0.2%	0.1%	4.1%	91.8%	4.7%	3.5%
Health Service Executive	3.7%	0.0%		3.8%	98.8%	1.2%	0.0%
Section 38 Voluntary Agencies	4.3%	0.2%	1.3%	5.8%	74.5%	3.0%	22.5%
CHO 3	4.3%	0.2%	1.2%	5.6%	75.6%	2.9%	21.6%
Health Service Executive	3.0%	0.4%		3.4%	87.9%	12.1%	0.0%
Section 38 Voluntary Agencies	4.0%	0.6%	0.9%	5.6%	71.9%	11.3%	16.8%
CHO 4	3.9%	0.6%	0.8%	5.3%	73.0%	11.4%	15.6%
CHO 5	4.9%	0.3%	0.3%	5.5%	88.6%	5.7%	5.8%
Health Service Executive	3.9%	0.5%	3.1%	7.5%	52.1%	6.1%	41.7%
Section 38 Voluntary Agencies	2.2%	0.2%	0.8%	3.2%	66.8%	7.5%	25.7%
CHO 6	2.5%	0.3%	1.3%	4.0%	61.8%	7.0%	31.2%
Health Service Executive	1.2%	0.3%	0.8%	2.3%	53.6%	11.5%	34.9%
Section 38 Voluntary Agencies	4.8%	0.5%	0.6%	5.8%	82.4%	8.0%	9.6%
CHO 7	4.7%	0.5%	0.6%	5.7%	82.2%	8.0%	9.8%
Health Service Executive	9.1%	0.3%	1.7%	11.2%	81.3%	3.1%	15.6%
Section 38 Voluntary Agencies	3.8%	0.2%	0.2%	4.2%	89.7%	4.6%	5.8%
CHO 8	4.9%	0.2%	0.6%	5.7%	86.1%	3.9%	9.9%
Health Service Executive	7.6%	0.4%	0.2%	8.3%	92.4%	5.3%	2.3%
Section 38 Voluntary Agencies	3.5%	0.2%	0.7%	4.4%	79.9%	4.2%	15.9%
CHO 9	4.0%	0.2%	0.6%	4.8%	82.5%	4.4%	13.0%
Other Community Services							

Certified, self-certified & COVID-19: Aug 2020

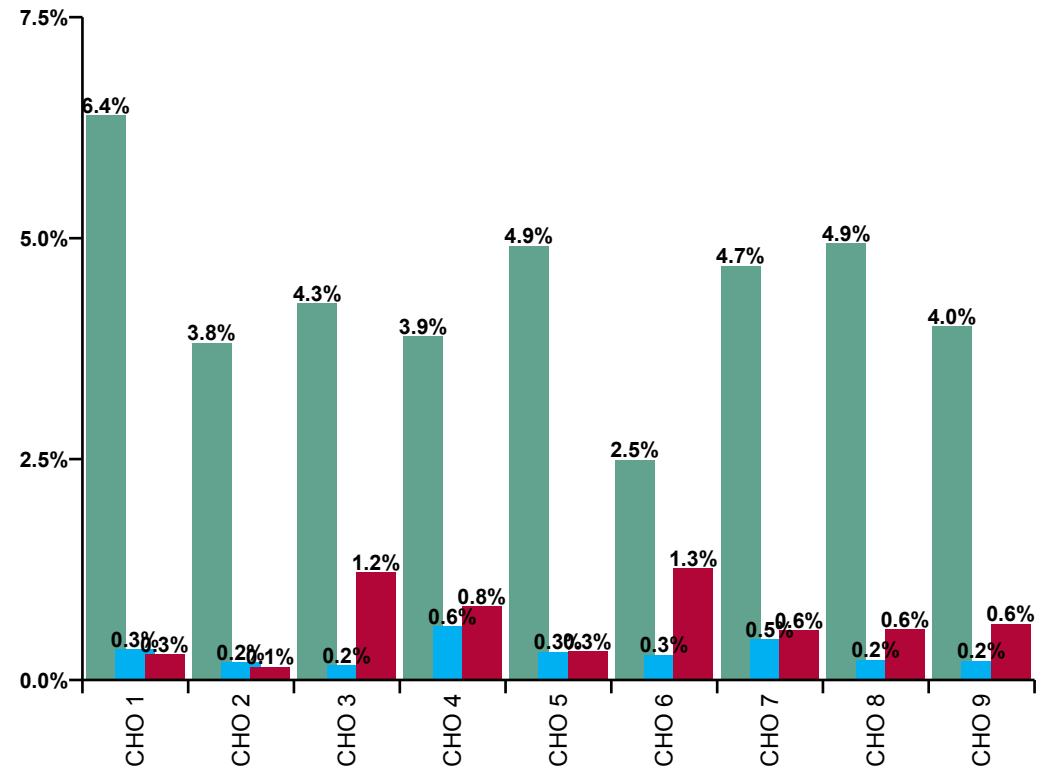
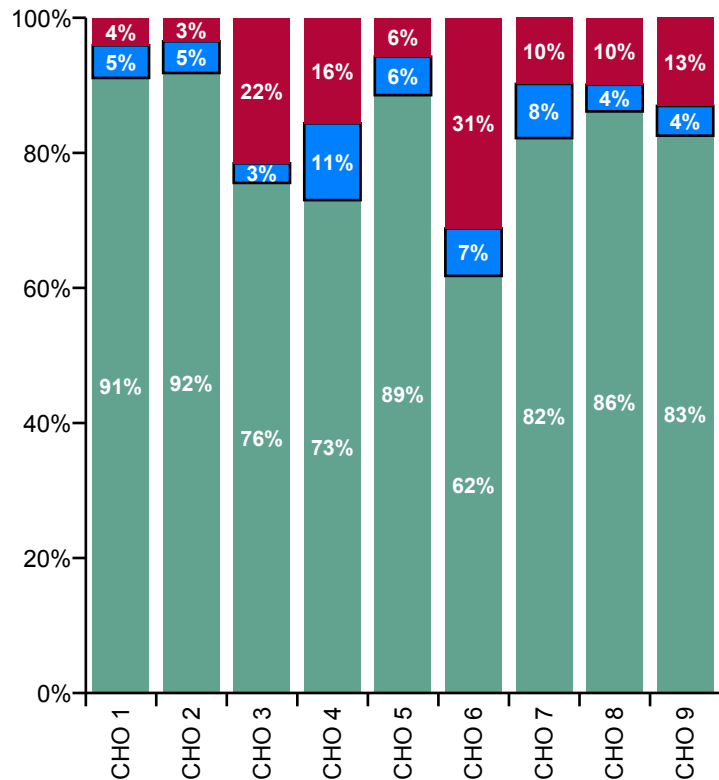


Legend

Certified absence
Self-certified absence
COVID-19 absence

Disabilities Overall Absence Rate - by Care Group & Staff Category: Aug 2020	Medical & Dental	Nursing & Midwifery	Health & Social Care Professionals	Management & Administrative	General Support	Patient & Client Care	Certified absence	Self-certified absence	COVID-19 absence	Total absence
<b>Disabilities</b>	<b>3.7%</b>	<b>6.3%</b>	<b>4.4%</b>	<b>2.5%</b>	<b>4.8%</b>	<b>5.9%</b>	<b>4.4%</b>	<b>0.3%</b>	<b>0.6%</b>	<b>5.3%</b>
Health Service Executive	0.0%	7.9%	4.6%	2.8%	7.3%	7.1%	6.4%	0.3%	0.3%	7.0%
<b>CHO 1</b>	<b>0.0%</b>	<b>7.9%</b>	<b>4.6%</b>	<b>2.8%</b>	<b>7.3%</b>	<b>7.1%</b>	<b>6.4%</b>	<b>0.3%</b>	<b>0.3%</b>	<b>7.0%</b>
Health Service Executive	0.0%	2.6%	4.6%	0.0%	0.0%	3.0%	2.1%	0.3%	0.3%	2.7%
Section 38 Voluntary Agencies	0.0%	4.4%	4.4%	1.3%	3.7%	4.7%	4.0%	0.2%	0.1%	4.3%
<b>CHO 2</b>	<b>0.0%</b>	<b>4.0%</b>	<b>4.4%</b>	<b>1.1%</b>	<b>3.2%</b>	<b>4.5%</b>	<b>3.8%</b>	<b>0.2%</b>	<b>0.1%</b>	<b>4.1%</b>
Health Service Executive			1.5%	2.9%	14.4%	5.8%	3.7%	0.0%		3.8%
Section 38 Voluntary Agencies	0.0%	7.6%	5.0%	1.4%	1.8%	5.7%	4.3%	0.2%	1.3%	5.8%
<b>CHO 3</b>	<b>0.0%</b>	<b>7.6%</b>	<b>4.6%</b>	<b>2.4%</b>	<b>2.9%</b>	<b>5.7%</b>	<b>4.3%</b>	<b>0.2%</b>	<b>1.2%</b>	<b>5.6%</b>
Health Service Executive	0.0%	4.3%	4.6%	0.0%	0.0%	4.3%	3.0%	0.4%		3.4%
Section 38 Voluntary Agencies		5.6%	4.3%	1.3%	5.3%	6.3%	4.0%	0.6%	0.9%	5.6%
<b>CHO 4</b>	<b>0.0%</b>	<b>5.4%</b>	<b>4.3%</b>	<b>1.0%</b>	<b>4.6%</b>	<b>6.1%</b>	<b>3.9%</b>	<b>0.6%</b>	<b>0.8%</b>	<b>5.3%</b>
<b>CHO 5</b>	<b>0.0%</b>	<b>6.2%</b>	<b>5.5%</b>	<b>3.5%</b>	<b>1.6%</b>	<b>5.7%</b>	<b>4.9%</b>	<b>0.3%</b>	<b>0.3%</b>	<b>5.5%</b>
Health Service Executive	0.0%	8.1%	6.0%	5.4%	19.4%	8.3%	3.9%	0.5%	3.1%	7.5%
Section 38 Voluntary Agencies	0.0%	2.1%	3.5%	1.0%	2.8%	4.2%	2.2%	0.2%	0.8%	3.2%
<b>CHO 6</b>	<b>0.0%</b>	<b>4.2%</b>	<b>3.7%</b>	<b>1.9%</b>	<b>3.6%</b>	<b>5.1%</b>	<b>2.5%</b>	<b>0.3%</b>	<b>1.3%</b>	<b>4.0%</b>
Health Service Executive			3.2%	0.7%		0.0%	1.2%	0.3%	0.8%	2.3%
Section 38 Voluntary Agencies	0.0%	7.3%	4.1%	3.1%	6.6%	6.1%	4.8%	0.5%	0.6%	5.8%
<b>CHO 7</b>	<b>0.0%</b>	<b>7.3%</b>	<b>4.1%</b>	<b>2.9%</b>	<b>6.6%</b>	<b>6.1%</b>	<b>4.7%</b>	<b>0.5%</b>	<b>0.6%</b>	<b>5.7%</b>
Health Service Executive	0.0%	11.7%	4.8%	3.4%	34.9%	15.1%	9.1%	0.3%	1.7%	11.2%
Section 38 Voluntary Agencies	0.0%	3.7%	5.3%	3.1%	0.8%	4.2%	3.8%	0.2%	0.2%	4.2%
<b>CHO 8</b>	<b>0.0%</b>	<b>5.9%</b>	<b>5.2%</b>	<b>3.2%</b>	<b>4.3%</b>	<b>6.4%</b>	<b>4.9%</b>	<b>0.2%</b>	<b>0.6%</b>	<b>5.7%</b>

Disabilities Overall Absence Rate - by Care Group & Staff Category: Aug 2020	Medical & Dental	Nursing & Midwifery	Health & Social Care Professionals	Management & Administrative	General Support	Patient & Client Care	Certified absence	Self-certified absence	COVID-19 absence	Total absence
<b>Disabilities</b>	<b>3.7%</b>	<b>6.3%</b>	<b>4.4%</b>	<b>2.5%</b>	<b>4.8%</b>	<b>5.9%</b>	<b>4.4%</b>	<b>0.3%</b>	<b>0.6%</b>	<b>5.3%</b>
Health Service Executive	0.0%	8.6%	2.4%	3.9%	14.0%	9.7%	7.6%	0.4%	0.2%	8.3%
Section 38 Voluntary Agencies	4.1%	4.7%	4.0%	3.3%	4.6%	4.9%	3.5%	0.2%	0.7%	4.4%
<b>CHO 9</b>	<b>4.0%</b>	<b>5.9%</b>	<b>3.9%</b>	<b>3.4%</b>	<b>4.7%</b>	<b>5.7%</b>	<b>4.0%</b>	<b>0.2%</b>	<b>0.6%</b>	<b>4.8%</b>
<b>Other Community Services</b>				<b>0.0%</b>						<b>0.0%</b>



Certified absence

Self-certified absence

COVID-19 absence

## Social Care Absence Rate - by Care Group, Staff Category & Absence type: Aug 2020

CHO 1 by Staff Category Aug 2020	Certified absence	Self-certified absence	COVID-19 absence	Total absence	Certified	Self-certified	COVID-19
<b>Disabilities</b>	<b>6.4%</b>	<b>0.3%</b>	<b>0.3%</b>	<b>7.0%</b>	<b>91.1%</b>	<b>4.9%</b>	<b>4.1%</b>
Medical & Dental							
Nursing & Midwifery	7.4%	0.2%	0.3%	7.9%	92.9%	3.0%	4.1%
Health & Social Care Professionals	4.4%	0.3%		4.6%	94.3%	5.7%	0.0%
Management & Administrative	2.6%	0.2%		2.8%	93.1%	6.9%	0.0%
General Support	6.9%	0.3%		7.3%	95.2%	4.8%	0.0%
Patient & Client Care	6.3%	0.4%	0.3%	7.1%	89.3%	6.0%	4.7%

CHO 2 by Staff Category Aug 2020	Certified absence	Self-certified absence	COVID-19 absence	Total absence	Certified	Self-certified	COVID-19
<b>Disabilities</b>	<b>3.8%</b>	<b>0.2%</b>	<b>0.1%</b>	<b>4.1%</b>	<b>91.8%</b>	<b>4.7%</b>	<b>3.5%</b>
Medical & Dental							
Nursing & Midwifery	3.8%	0.1%	0.1%	4.0%	93.1%	3.4%	3.5%
Health & Social Care Professionals	4.1%	0.2%	0.1%	4.4%	92.9%	3.8%	3.3%
Management & Administrative	1.0%	0.1%		1.1%	90.4%	9.6%	0.0%
General Support	2.9%	0.1%	0.2%	3.2%	90.5%	2.4%	7.1%
Patient & Client Care	4.1%	0.2%	0.2%	4.5%	91.1%	5.4%	3.5%

CHO 3 by Staff Category Aug 2020	Certified absence	Self-certified absence	COVID-19 absence	Total absence	Certified	Self-certified	COVID-19
<b>Disabilities</b>	<b>4.3%</b>	<b>0.2%</b>	<b>1.2%</b>	<b>5.6%</b>	<b>75.6%</b>	<b>2.9%</b>	<b>21.6%</b>
Medical & Dental							
Nursing & Midwifery	6.2%	0.1%	1.3%	7.6%	80.7%	1.6%	17.6%
Health & Social Care Professionals	3.2%	0.1%	1.2%	4.6%	70.9%	2.9%	26.2%
Management & Administrative	2.0%		0.4%	2.4%	84.8%	0.0%	15.2%
General Support	2.2%	0.1%	0.7%	2.9%	74.0%	3.2%	22.8%
Patient & Client Care	4.2%	0.2%	1.3%	5.7%	74.1%	3.6%	22.3%

CHO 4 by Staff Category Aug 2020	Certified absence	Self-certified absence	COVID-19 absence	Total absence	Certified	Self-certified	COVID-19
<b>Disabilities</b>	<b>3.9%</b>	<b>0.6%</b>	<b>0.8%</b>	<b>5.3%</b>	<b>73.0%</b>	<b>11.4%</b>	<b>15.6%</b>
Medical & Dental							
Nursing & Midwifery	4.1%	0.5%	0.8%	5.4%	75.3%	9.1%	15.6%
Health & Social Care Professionals	3.8%	0.4%	0.2%	4.3%	87.2%	8.4%	4.5%
Management & Administrative	0.9%	0.1%		1.0%	88.7%	11.3%	0.0%
General Support	1.9%	0.3%	2.3%	4.6%	41.9%	7.1%	51.0%
Patient & Client Care	4.4%	0.8%	0.9%	6.1%	71.8%	12.9%	15.3%

CHO 5 by Staff Category Aug 2020	Certified absence	Self-certified absence	COVID-19 absence	Total absence	Certified	Self-certified	COVID-19
<b>Disabilities</b>	<b>4.9%</b>	<b>0.3%</b>	<b>0.3%</b>	<b>5.5%</b>	<b>88.6%</b>	<b>5.7%</b>	<b>5.8%</b>
Medical & Dental							
Nursing & Midwifery	5.4%	0.5%	0.4%	6.2%	86.3%	7.5%	6.1%
Health & Social Care Professionals	5.0%	0.2%	0.3%	5.5%	90.9%	3.0%	6.1%
Management & Administrative	2.8%	0.3%	0.5%	3.5%	78.5%	8.6%	12.9%
General Support	1.2%	0.5%		1.6%	72.0%	28.0%	0.0%
Patient & Client Care	5.1%	0.3%	0.3%	5.7%	89.4%	5.4%	5.2%

CHO 6 by Staff Category Aug 2020	Certified absence	Self-certified absence	COVID-19 absence	Total absence	Certified	Self-certified	COVID-19
<b>Disabilities</b>	<b>2.5%</b>	<b>0.3%</b>	<b>1.3%</b>	<b>4.0%</b>	<b>61.8%</b>	<b>7.0%</b>	<b>31.2%</b>
Medical & Dental							
Nursing & Midwifery	1.8%	0.5%	1.9%	4.2%	43.5%	11.9%	44.6%
Health & Social Care Professionals	2.3%	0.3%	1.2%	3.7%	61.8%	7.2%	31.0%
Management & Administrative	1.7%	0.1%	0.0%	1.9%	94.0%	3.8%	2.2%
General Support	3.6%			3.6%	100.0%	0.0%	0.0%
Patient & Client Care	3.2%	0.3%	1.6%	5.1%	62.2%	5.9%	31.9%

CHO 7 by Staff Category Aug 2020	Certified absence	Self-certified absence	COVID-19 absence	Total absence	Certified	Self-certified	COVID-19
<b>Disabilities</b>	<b>4.7%</b>	<b>0.5%</b>	<b>0.6%</b>	<b>5.7%</b>	<b>82.2%</b>	<b>8.0%</b>	<b>9.8%</b>
Medical & Dental							
Nursing & Midwifery	6.0%	0.7%	0.5%	7.3%	82.8%	9.9%	7.3%
Health & Social Care Professionals	3.2%	0.2%	2.4%	4.1%	78.6%	5.7%	60.4%
Management & Administrative	2.3%	0.2%	1.1%	2.9%	79.4%	7.7%	36.2%
General Support	4.9%	0.4%	2.1%	6.6%	73.9%	5.7%	32.1%
Patient & Client Care	5.1%	0.5%	0.5%	6.1%	84.3%	8.2%	7.6%

CHO 8 by Staff Category Aug 2020	Certified absence	Self-certified absence	COVID-19 absence	Total absence	Certified	Self-certified	COVID-19
<b>Disabilities</b>	<b>4.9%</b>	<b>0.2%</b>	<b>0.6%</b>	<b>5.7%</b>	<b>86.1%</b>	<b>3.9%</b>	<b>9.9%</b>
Medical & Dental							
Nursing & Midwifery	5.3%	0.2%	0.3%	5.9%	90.4%	3.8%	5.9%
Health & Social Care Professionals	5.0%	0.1%	0.1%	5.2%	95.9%	2.4%	1.7%
Management & Administrative	2.9%	0.1%	0.1%	3.2%	91.2%	4.3%	4.5%
General Support	1.0%	0.8%	2.5%	4.3%	23.0%	17.7%	59.3%
Patient & Client Care	5.3%	0.3%	0.9%	6.4%	82.0%	4.1%	13.8%

CHO 9 by Staff Category Aug 2020	Certified absence	Self-certified absence	COVID-19 absence	Total absence	Certified	Self-certified	COVID-19
<b>Disabilities</b>	<b>4.0%</b>	<b>0.2%</b>	<b>0.6%</b>	<b>4.8%</b>	<b>82.5%</b>	<b>4.4%</b>	<b>13.0%</b>
Medical & Dental	3.9%	0.2%		<b>4.0%</b>	95.7%	4.3%	0.0%
Nursing & Midwifery	5.0%	0.3%	0.6%	<b>5.9%</b>	84.6%	4.3%	11.0%
Health & Social Care Professionals	2.8%	0.2%	0.9%	<b>3.9%</b>	72.0%	3.9%	24.1%
Management & Administrative	3.1%	0.1%	0.1%	<b>3.4%</b>	93.0%	2.7%	4.3%
General Support	3.5%	0.3%	1.0%	<b>4.7%</b>	73.6%	5.5%	20.9%
Patient & Client Care	4.9%	0.3%	0.5%	<b>5.7%</b>	86.6%	4.6%	8.8%

Other Community Services by Staff Category Aug 2020	Certified absence	Self-certified absence	COVID-19 absence	Total absence	Certified	Self-certified	COVID-19
<b>Disabilities</b>	<b>0.0%</b>	<b>0.0%</b>	<b>0.0%</b>	<b>0.0%</b>			
Medical & Dental							
Nursing & Midwifery							#DIV/0
Health & Social Care Professionals	#DIV/0	#DIV/0	#DIV/0				
Management & Administrative							
General Support	#DIV/0	#DIV/0	#DIV/0				
Patient & Client Care	#DIV/0	#DIV/0	#DIV/0				



Disabilities Absence Rate - by Staff Category & Care Group	CHO 1	CHO 2	CHO 3	CHO 4	CHO 5	CHO 6	CHO 7	CHO 8	HSE	S38	CHO 9	Other Comm.	Total absence	Certified absence	Self-certified absence	COVID-19 absence
<b>Disabilities: 2020 overall</b>	<b>6.8%</b>	<b>5.7%</b>	<b>5.3%</b>	<b>6.6%</b>	<b>6.9%</b>	<b>5.2%</b>	<b>7.8%</b>	<b>7.1%</b>	<b>9.0%</b>	<b>5.8%</b>	<b>6.3%</b>	<b>0.0%</b>	<b>6.5%</b>	<b>4.6%</b>	<b>0.4%</b>	<b>1.5%</b>
Medical & Dental	0.0%	0.0%	1.4%	13.2%	0.0%	0.0%	6.2%	0.0%	2.4%	3.0%	3.0%		3.1%	2.4%	0.1%	0.6%
Nursing & Midwifery	7.8%	6.3%	6.6%	7.6%	8.5%	5.6%	9.9%	7.7%	10.3%	6.1%	7.2%		7.7%	5.4%	0.4%	1.8%
Health & Social Care Professionals	3.4%	5.4%	3.9%	4.8%	6.0%	5.9%	5.4%	5.6%	6.4%	5.5%	5.5%		5.3%	3.7%	0.3%	1.4%
Management & Administrative	2.8%	1.9%	2.3%	2.8%	5.0%	2.4%	2.7%	4.2%	5.0%	3.0%	3.1%	0.0%	3.0%	2.3%	0.2%	0.6%
General Support	5.3%	3.5%	6.0%	7.2%	9.7%	3.7%	7.8%	8.8%	19.4%	7.2%	7.5%		7.0%	4.8%	0.3%	2.0%
Patient & Client Care	7.2%	6.3%	5.5%	7.1%	6.8%	5.4%	8.6%	8.0%	8.1%	6.7%	6.9%		7.1%	4.8%	0.3%	2.0%
<b>Total August:</b>	<b>7.0%</b>	<b>4.1%</b>	<b>5.6%</b>	<b>5.3%</b>	<b>5.5%</b>	<b>4.0%</b>	<b>5.7%</b>	<b>5.7%</b>	<b>8.3%</b>	<b>4.4%</b>	<b>4.8%</b>	<b>0.0%</b>	<b>5.3%</b>	<b>4.4%</b>	<b>0.3%</b>	<b>0.6%</b>
Medical & Dental	0.0%	0.0%	0.0%	0.0%	0.0%	0.0%	0.0%	0.0%	0.0%	4.1%	4.0%		3.7%	3.5%	0.2%	
Nursing & Midwifery	7.9%	4.0%	7.6%	5.4%	6.2%	4.2%	7.3%	5.9%	8.6%	4.7%	5.9%		6.3%	5.3%	0.3%	0.6%
Health & Social Care Professionals	4.6%	4.4%	4.6%	4.3%	5.5%	3.7%	4.1%	5.2%	2.4%	4.0%	3.9%		4.4%	3.5%	0.2%	0.9%
Management & Administrative	2.8%	1.1%	2.4%	1.0%	3.5%	1.9%	2.9%	3.2%	3.9%	3.3%	3.4%	0.0%	2.5%	2.2%	0.1%	0.3%
General Support	7.3%	3.2%	2.9%	4.6%	1.6%	3.6%	6.6%	4.3%	14.0%	4.6%	4.7%		4.8%	3.4%	0.3%	1.3%
Patient & Client Care	7.1%	4.5%	5.7%	6.1%	5.7%	5.1%	6.1%	6.4%	9.7%	4.9%	5.7%		5.9%	4.8%	0.4%	0.7%
<b>Total July:</b>	<b>6.1%</b>	<b>4.1%</b>	<b>3.9%</b>	<b>4.6%</b>	<b>6.3%</b>	<b>4.4%</b>	<b>6.1%</b>	<b>6.2%</b>	<b>7.7%</b>	<b>4.7%</b>	<b>5.2%</b>	<b>0.0%</b>	<b>5.3%</b>	<b>4.4%</b>	<b>0.4%</b>	<b>0.5%</b>
Medical & Dental	0.0%	0.0%	10.7%	0.0%	0.0%	0.0%	0.0%	0.0%	0.0%	3.5%	2.6%		1.1%	1.1%		
Nursing & Midwifery	6.9%	4.5%	4.3%	5.6%	8.0%	7.4%	5.6%	5.9%	9.9%	4.2%	5.7%		6.1%	5.5%	0.3%	0.3%
Health & Social Care Professionals	2.1%	4.2%	2.2%	3.4%	4.9%	3.8%	4.0%	5.2%	5.4%	4.1%	4.1%		4.0%	3.3%	0.2%	0.4%
Management & Administrative	1.8%	1.0%	0.7%	1.9%	6.8%	0.1%	1.9%	3.2%	7.8%	2.0%	2.4%	0.0%	2.1%	1.9%	0.2%	0.1%
General Support	6.1%	4.0%	6.9%	1.7%	6.3%	1.3%	6.6%	6.1%	15.6%	8.4%	8.6%		5.9%	3.8%	0.2%	1.8%
Patient & Client Care	6.5%	4.4%	4.4%	5.1%	6.2%	5.4%	7.0%	7.5%	5.4%	5.9%	5.8%		5.9%	4.9%	0.5%	0.5%
<b>Total June:</b>	<b>5.6%</b>	<b>4.3%</b>	<b>4.8%</b>	<b>4.9%</b>	<b>5.4%</b>	<b>3.7%</b>	<b>5.5%</b>	<b>5.4%</b>	<b>5.8%</b>	<b>4.5%</b>	<b>4.7%</b>	<b>0.0%</b>	<b>5.0%</b>	<b>4.0%</b>	<b>0.3%</b>	<b>0.7%</b>
Medical & Dental	0.0%	0.0%	0.0%	0.0%	0.0%	0.0%	3.4%	0.0%	0.0%	0.2%	0.2%		0.9%	0.1%		0.8%
Nursing & Midwifery	5.5%	5.4%	6.0%	6.3%	8.5%	2.2%	8.0%	4.8%	8.2%	5.0%	5.8%		6.0%	5.0%	0.3%	0.8%
Health & Social Care Professionals	1.8%	3.4%	2.7%	3.5%	3.8%	4.4%	3.4%	4.5%	4.5%	3.9%	3.9%		3.7%	3.0%	0.2%	0.6%
Management & Administrative	1.5%	1.6%	2.5%	1.8%	4.8%	2.0%	0.9%	1.9%	2.8%	1.8%	1.9%	0.0%	1.9%	1.6%	0.1%	0.2%
General Support	4.3%	2.6%	8.7%	4.8%	5.9%	3.0%	6.7%	5.6%	15.5%	7.0%	7.2%		6.1%	4.4%	0.2%	1.5%
Patient & Client Care	6.8%	4.8%	4.7%	5.2%	5.0%	4.0%	5.9%	6.9%	3.2%	5.1%	4.8%		5.5%	4.3%	0.4%	0.8%
<b>Total May:</b>	<b>6.2%</b>	<b>6.2%</b>	<b>5.9%</b>	<b>7.7%</b>	<b>6.9%</b>	<b>5.4%</b>	<b>9.2%</b>	<b>8.4%</b>	<b>6.8%</b>	<b>6.4%</b>	<b>6.5%</b>	<b>0.0%</b>	<b>7.2%</b>	<b>4.5%</b>	<b>0.2%</b>	<b>2.5%</b>
Medical & Dental	0.0%	0.0%	0.0%	0.0%	0.0%	0.0%	8.1%	0.0%	0.0%	0.0%	0.0%		2.1%	1.6%		0.4%
Nursing & Midwifery	6.6%	7.3%	7.6%	9.2%	9.0%	4.8%	14.2%	8.7%	8.8%	7.2%	7.7%		8.7%	5.5%	0.3%	2.9%
Health & Social Care Professionals	2.0%	4.4%	3.3%	5.9%	4.4%	7.5%	6.3%	5.8%	4.9%	6.0%	5.9%		5.6%	3.1%	0.1%	2.3%
Management & Administrative	2.4%	1.9%	2.4%	1.2%	3.8%	3.8%	2.0%	2.9%	0.0%	3.4%	3.2%	0.0%	2.6%	1.8%	0.1%	0.7%
General Support	4.8%	3.4%	8.1%	9.5%	21.9%	4.3%	7.6%	12.4%	26.9%	5.8%	6.4%		7.6%	5.3%	0.1%	2.3%
Patient & Client Care	7.0%	7.6%	6.2%	8.3%	7.1%	4.1%	9.6%	10.2%	4.5%	7.6%	7.0%		7.9%	4.9%	0.3%	2.6%
<b>Total April:</b>	<b>8.8%</b>	<b>9.0%</b>	<b>6.0%</b>	<b>11.9%</b>	<b>10.2%</b>	<b>10.9%</b>	<b>15.8%</b>	<b>12.1%</b>	<b>15.3%</b>	<b>9.1%</b>	<b>9.9%</b>	<b>0.0%</b>	<b>10.9%</b>	<b>5.2%</b>	<b>0.4%</b>	<b>5.3%</b>
Medical & Dental	0.0%	0.0%	0.0%	0.0%	0.0%	0.0%	42.0%	0.0%	3.5%	0.2%	0.3%		2.6%	0.4%		2.2%
Nursing & Midwifery	9.7%	10.7%	7.9%	15.4%	12.0%	13.6%	22.3%	15.6%	16.6%	10.5%	12.2%		13.6%	5.8%	0.6%	7.1%
Health & Social Care Professionals	4.1%	6.6%	3.7%	6.8%	9.4%	13.1%	11.4%	6.7%	12.9%	8.0%	8.2%		8.3%	3.7%	0.5%	4.1%
Management & Administrative	3.2%	1.6%	2.6%	2.6%	4.9%	3.2%	3.3%	5.3%	2.9%	3.3%	3.2%	0.0%	3.4%	1.8%	0.1%	1.5%
General Support	5.3%	4.9%	6.3%	18.1%	17.2%	6.3%	13.7%	17.5%	37.6%	13.2%	14.0%		12.8%	6.0%	0.2%	6.6%
Patient & Client Care	9.7%	10.9%	6.2%	12.7%	10.4%	10.8%	16.9%	13.9%	14.5%	11.3%	11.9%		12.0%	6.2%	0.4%	5.4%
<b>Total March:</b>	<b>9.2%</b>	<b>6.8%</b>	<b>6.8%</b>	<b>8.1%</b>	<b>7.7%</b>	<b>6.0%</b>	<b>9.6%</b>	<b>7.2%</b>	<b>11.3%</b>	<b>8.1%</b>	<b>8.5%</b>	<b>0.0%</b>	<b>8.0%</b>	<b>5.1%</b>	<b>0.4%</b>	<b>2.6%</b>
Medical & Dental	0.0%	0.0%	0.0%	0.0%	0.0%	0.0%	4.7%	0.0%	9.3%	3.7%	4.9%		3.1%	1.2%		1.9%
Nursing & Midwifery	10.7%	7.3%	8.2%	8.9%	9.9%	6.1%	11.0%	8.1%	12.1%	7.0%	8.4%		9.0%	5.8%	0.4%	2.8%
Health & Social Care Professionals	7.0%	6.1%	5.9%	5.9%	7.3%	7.6%	6.2%	6.1%	13.5%	9.0%	9.1%		7.1%	4.3%	0.3%	2.5%
Management & Administrative	5.3%	2.0%	3.8%	5.5%	4.9%	2.6%	5.0%	6.8%	5.5%	4.3%	4.4%	0.0%	4.7%	2.7%	0.2%	1.7%
General Support	5.0%	5.1%	5.0%	9.3%	11.2%	3.3%	9.3%	7.9%	16.2%	8.4%	8.7%		7.9%	5.1%	0.3%	2.5%
Patient & Client Care	9.3%	7.8%	7.0%	8.6%	7.5%	5.7%	11.1%	7.5%	10.1%	8.8%	9.0%		8.5%	5.5%	0.4%	2.6%
<b>Total February:</b>	<b>5.5%</b>	<b>5.3%</b>	<b>4.4%</b>	<b>4.9%</b>	<b>6.0%</b>	<b>3.7%</b>	<b>4.9%</b>	<b>5.3%</b>	<b>8.4%</b>	<b>4.7%</b>	<b>5.2%</b>	<b>0.0%</b>	<b>5.0%</b>	<b>4.6%</b>	<b>0.5%</b>	
Medical & Dental	0.0%	0.0%	0.0%	42.9%	0.0%	0.0%	0.0%	0.0%	8.3%	5.2%	5.7%		4.3%	4.3%		
Nursing & Midwifery	7.2%	5.5%	5.3%	4.8%	6.6%	3.0%	4.4%	5.8%	8.8%	4.6%	5.8%		5.6%	5.1%	0.5%	
Health & Social Care Professionals	2.8%	6.2%	3.8%	3.5%	6.2%	3.6%	3.7%	4.7%	3.3%	4.5%	4.4%		4.4%	4.0%	0.5%	
Management & Administrative	4.0%	2.4%	1.5%	3.7%	5.7%	3.5%	2.3%	5.2%	8.9%	3.2%	3.5%	0.0%	3.5%	3.2%	0.3%	
General Support	3.6%	2.1%	5.5%	3.6%	6.0%	3.6%	5.6%	6.3%	15.7%	6.1%	6.4%		5.0%	4.6%	0.4%	
Patient & Client Care	4.9%	5.5%	4.4%	5.5%	5.9%	4.0%	5.8%	5.2%	8.6%	5.0%	5.6%		5.3%	4.8%	0.5%	
<b>Total January:</b>	<b>6.2%</b>	<b>6.3%</b>	<b>5.1%</b>	<b>5.3%</b>	<b>6.9%</b>	<b>4.0%</b>	<b>5.5%</b>	<b>6.4%</b>	<b>8.5%</b>	<b>4.6%</b>	<b>5.2%</b>	<b>0.0%</b>	<b>5.6%</b>	<b>5.0%</b>	<b>0.6%</b>	
Medical & Dental	0.0%	0.0%	0.0%	34.6%	0.0%	0.0%	0.0%	0.0%	0.0%	8.6%	7.1%		4.6%	4.6%		
Nursing & Midwifery	7.6%	6.3%	5.8%	5.6%	8.1%	2.8%	4.2%	6.5%	8.8%	5.0%	6.1%		6.0%	5.4%	0.6%	
Health & Social Care Professionals	3.6%	8.0%	5.2%	4.6%	6.4%	4.2%	4.4%	6.2%	4.9%	4.0%	4.1%		5.0%	4.4%	0.5%	
Management & Administrative	1.6%	3.6%	2.7%	4.3%	5.0%	3.4%	3.5%	4.5%	7.1%	2.7%	3.0%	0.0%	3.5%	3.1%	0.4%	
General Support	6.4%	3.8%	4.7%	5.2%	11.5%	4.2%	5.8%	10.7%	13.1%	6.7%	6.9%		6.2%	5.7%	0.5%	
Patient & Client Care	6.0%	6.2%	5.0%	5.5%	6.8%	4.4%	6.7%	6.3%	9.2%	4.9%	5.6%		5.9%	5.3%	0.6%	
<b>Disabilities: 2019 overall</b>	<b>7.2%</b>	<b>4.8%</b>	<b>4.4%</b>	<b>4.9%</b>	<b>5.4%</b>	<b>4.0%</b>	<b>4.6%</b>	<b>5.0%</b>	<b>6.6%</b>	<b>4.3%</b>	<b>4.6%</b>		<b>4.9%</b>	<b>4.4%</b>	<b>0.5%</b>	
Medical & Dental	0.6%	1.6%	0.4%	9.4%	0.1%	0.0%	0.3%	0.5%	0.0%	1.7%	1.6%		1.3%	1.2%	0.1%	
Nursing & Midwifery	9.7%	5.9%	5.1%	6.0%	5.8%	4.0%	4.3%	5.2%	7.3%	4.3%	4.9%		5.6%	5.2%	0.5%	
Health & Social Care Professionals	3.1%	4.2%	4.2%	4.3%	5.7%	4.0%	3.5%	4.9%	3.1%	4.0%	4.0%		4.2%	3.8%	0.4%	
Management & Administrative	1.5%	2.3%	3.9%	2.8%	4.8%	2.9%	3.6%	3.5%	4.1%	3.8%	3.8%		3.3%	3.0%	0.3%	
General Support	4.7%	3.6%	5.9%	4.5%	7.0%	7.4%	4.8%	5.2%	6.4%	4.3%	4.4%		4.8%	4.5%	0.3%	
Patient & Client Care	7.2%	5.1%	4.1%	5.0%	5.2%	4.1%	5.5%	5.2%	7.6%	5.0%	5.3%		5.2%	4.5%	0.3%	



Disabilities Absence Rate - by Staff Category & SS3 Agency	Bros. of Charity, Cate	Bros. of Charity, Southern	Bros. of Charity, Watford	Bros. of Charity, West Herts	Carpenter's Cards Services	Central Herts Social Care	Greenhouse Home	Children's Sunshine Home	Gate Foundation	Daughters of Charity, Dunbar	Daughters of Charity, Lendock	Daughters of Charity, Ross	Kate's Hospice, Gossage, Gossage	Maria's Hospice, Loughborough	Maria's Hospice, Loughborough	Maria's Hospice, South Lincoln	Pleasant Hospital, Newark	St. John of God, Druridge	St. John of God, Easingwold (SS3)	St. John of God, Easingwold	St. John of God, Easingwold	St. Michael's Hospice, Duxbury	St. Patrick's Hospice, Duxbury	Surrey Hospice Services	Total Absence	Certified absence	Self-certified absence	COVID-19 absence					
<b>Disabilities: SS3 2020 overall</b>	<b>4.5%</b>	<b>6.0%</b>	<b>6.5%</b>	<b>7.0%</b>	<b>5.7%</b>	<b>6.3%</b>	<b>4.5%</b>	<b>8.7%</b>	<b>4.0%</b>	<b>7.3%</b>	<b>5.4%</b>	<b>5.4%</b>	<b>4.8%</b>	<b>6.1%</b>	<b>5.7%</b>	<b>4.0%</b>	<b>6.2%</b>	<b>7.6%</b>	<b>8.4%</b>	<b>6.7%</b>	<b>5.5%</b>	<b>5.2%</b>	<b>7.7%</b>	<b>6.4%</b>	<b>6.4%</b>	<b>4.9%</b>	<b>6.3%</b>	<b>4.3%</b>	<b>0.4%</b>	<b>1.6%</b>			
Medical & Dental	0.0%	1.5%	0.0%	0.0%	0.0%	0.0%	0.0%	0.0%	0.0%	0.0%	0.0%	0.0%	0.0%	0.0%	0.0%	0.0%	0.0%	0.0%	0.0%	0.0%	0.0%	2.6%	1.6%	0.0%	0.0%	3.2%	2.4%	0.1%	0.7%				
Nursing & Midwifery	0.0%	6.8%	8.1%	11.2%	5.8%	6.0%	1.0%	9.8%	0.0%	3.9%	7.4%	4.1%	5.6%	6.2%	4.5%	6.0%	3.1%	5.5%	9.8%	12.7%	6.1%	0.1%	8.8%	8.3%	6.6%	4.6%	7.2%	4.7%	0.4%	2.1%			
Health & Social Care Professionals	4.1%	6.0%	6.1%	6.5%	3.3%	6.0%	0.5%	5.8%	0.0%	2.4%	4.2%	1.7%	2.6%	3.1%	2.6%	3.8%	2.8%	3.1%	5.9%	7.6%	4.4%	5.3%	7.6%	6.4%	6.7%	4.6%	4.4%	2.9%	0.4%	0.8%			
Management & Administrative	1.1%	1.5%	4.7%	3.1%	2.0%	4.0%	4.9%	3.3%	1.7%	2.0%	3.3%	1.6%	4.7%	2.0%	5.4%	2.5%	2.5%	3.6%	2.5%	3.0%	1.9%	3.7%	3.0%	2.1%	10.3%	3.3%	2.2%	0.2%	0.6%				
General Support	3.4%	3.9%	7.7%	7.4%	4.0%	9.7%	7.7%	7.1%	4.2%	8.6%	5.3%	5.4%	2.0%	0.0%	0.8%	6.4%	5.1%	5.9%	9.1%	9.0%	1.8%	7.6%	8.7%	9.9%	15.6%	5.2%	6.9%	4.6%	0.3%	2.1%			
Patient & Client Care	4.6%	6.7%	6.6%	6.7%	6.6%	6.5%	8.8%	11.2%	6.2%	8.1%	5.4%	4.7%	4.9%	7.8%	6.2%	3.8%	7.4%	7.3%	6.4%	7.5%	4.9%	4.0%	9.5%	7.7%	5.1%	5.5%	6.8%	4.9%	0.4%	0.6%			
Total August	4.7%	6.0%	6.5%	7.0%	4.3%	6.2%	4.6%	7.1%	4.5%	6.5%	4.3%	4.1%	5.5%	4.8%	5.5%	4.4%	4.4%	7.2%	8.4%	6.7%	5.2%	7.2%	6.1%	6.3%	3.2%	3.8%	4.3%	95.7%	3.8%	0.4%	0.6%		
Medical & Dental	0.0%	0.0%	0.0%	0.0%	0.0%	0.0%	0.0%	0.0%	0.0%	0.0%	0.0%	0.0%	0.0%	0.0%	0.0%	0.0%	0.0%	0.0%	0.0%	0.0%	0.0%	0.0%	0.0%	0.0%	0.0%	0.0%	0.0%	0.0%	0.0%	0.0%			
Nursing & Midwifery	0.0%	10.3%	8.1%	7.5%	4.4%	4.4%	0.0%	7.1%	2.2%	5.1%	4.1%	6.8%	4.6%	2.5%	6.0%	0.0%	3.2%	3.0%	17.8%	3.4%	2.4%	4.4%	1.9%	5.4%	9.5%	1.8%	5.6%	4.9%	0.3%	0.7%	0.7%		
Health & Social Care Professionals	4.1%	6.0%	6.1%	6.5%	3.3%	6.0%	0.5%	5.8%	0.0%	2.4%	4.2%	1.7%	2.6%	3.1%	2.6%	3.8%	2.8%	3.1%	5.9%	7.6%	4.4%	5.3%	7.6%	6.4%	6.7%	4.6%	4.4%	2.9%	0.4%	0.8%			
Management & Administrative	0.0%	0.0%	0.8%	0.5%	1.3%	4.0%	5.1%	3.5%	1.0%	1.4%	1.6%	1.3%	4.0%	1.3%	1.7%	1.9%	2.3%	2.7%	0.5%	2.3%	4.2%	0.4%	0.0%	0.4%	0.0%	0.4%	2.4%	2.1%	0.1%	0.1%			
General Support	3.1%	2.1%	0.4%	0.0%	0.0%	3.7%	1.8%	1.6%	8.8%	17.5%	7.0%	3.7%	1.7%	2.0%	0.0%	6.2%	5.6%	1.9%	0.0%	3.1%	7.8%	9.4%	3.0%	2.4%	4.9%	3.1%	4.9%	3.1%	0.2%	0.2%			
Patient & Client Care	4.4%	4.5%	5.5%	5.5%	4.3%	6.3%	4.1%	9.2%	5.4%	5.2%	2.9%	6.3%	3.1%	2.9%	5.3%	4.3%	6.9%	7.6%	4.4%	4.8%	5.5%	6.8%	7.7%	4.8%	4.5%	5.5%	5.4%	4.0%	0.4%	0.4%			
Total June	5.6%	6.4%	4.7%	5.0%	4.2%	4.3%	2.9%	6.1%	3.0%	5.5%	4.2%	5.4%	2.2%	4.1%	3.5%	6.1%	3.7%	7.5%	3.8%	6.6%	3.7%	4.8%	5.1%	5.9%	2.9%	1.1%	3.7%	3.0%	0.5%	0.5%			
Medical & Dental	0.0%	0.0%	0.0%	0.0%	0.0%	0.0%	0.0%	0.0%	0.0%	0.0%	0.0%	0.0%	0.0%	0.0%	0.0%	0.0%	0.0%	0.0%	0.0%	0.0%	0.0%	0.0%	0.0%	0.0%	0.0%	0.0%	0.0%	0.0%	0.0%	0.0%			
Nursing & Midwifery	0.0%	5.4%	7.7%	10.2%	5.0%	5.2%	0.0%	7.8%	3.9%	5.8%	5.5%	7.0%	1.7%	2.0%	3.3%	0.0%	3.7%	5.4%	16.1%	2.9%	0.9%	5.5%	4.4%	10.7%	2.4%	5.7%	4.9%	0.3%	0.1%	0.1%			
Health & Social Care Professionals	0.0%	2.8%	1.5%	1.2%	0.3%	1.2%	2.0%	1.0%	4.0%	1.0%	1.7%	0.2%	0.0%	3.7%	4.0%	6.2%	0.2%	3.1%	4.0%	6.8%	2.3%	3.1%	6.4%	6.8%	2.3%	3.7%	2.9%	0.2%	0.3%	0.3%			
Management & Administrative	0.0%	1.5%	2.3%	1.8%	2.0%	0.0%	3.1%	0.0%	1.9%	2.1%	1.2%	0.5%	1.2%	0.5%	0.0%	1.9%	0.0%	2.1%	0.9%	0.0%	2.9%	0.8%	0.2%	1.1%	12.8%	1.1%	1.8%	1.5%	0.1%	0.2%	0.1%		
General Support	3.4%	2.1%	2.2%	3.0%	2.4%	10.1%	5.0%	1.6%	7.2%	4.2%	10.3%	1.5%	0.0%	19.6%	1.1%	5.1%	0.4%	3.6%	3.9%	2.3%	6.2%	9.9%	16.4%	2.3%	6.1%	4.2%	0.2%	0.2%	0.7%	0.7%			
Patient & Client Care	5.3%	7.2%	4.6%	4.8%	4.0%	7.2%	3.1%	12.6%	3.8%	7.4%	4.3%	3.6%	4.0%	1.1%	2.0%	4.0%	4.1%	2.4%	4.0%	4.1%	4.0%	4.1%	4.0%	4.1%	4.0%	4.1%	4.0%	4.1%	4.0%	4.1%	4.0%		
Total May	4.9%	6.5%	7.8%	8.4%	6.1%	6.2%	4.7%	12.4%	4.0%	6.1%	5.8%	5.2%	4.0%	6.2%	5.9%	5.6%	9.5%	10.6%	8.5%	7.4%	6.5%	3.4%	9.5%	6.5%	5.5%	5.5%	7.3%	4.2%	0.2%	2.8%			
Medical & Dental	0.0%	0.0%	0.0%	0.0%	0.0%	0.0%	0.0%	0.0%	0.0%	0.0%	0.0%	0.0%	0.0%	0.0%	0.0%	0.0%	0.0%	0.0%	0.0%	0.0%	0.0%	0.0%	0.0%	0.0%	0.0%	0.0%	0.0%	0.0%	0.0%	0.0%	0.0%		
Nursing & Midwifery	0.0%	9.7%	10.2%	0.0%	0.0%	6.1%	0.0%	0.0%	8.5%	7.6%	6.5%	9.0%	3.5%	8.8%	4.8%	10.3%	0.0%	10.3%	0.0%	10.3%	9.9%	0.0%	6.5%	7.7%	2.7%	2.7%	7.8%	2.1%	0.0%	0.0%	0.0%		
Health & Social Care Professionals	0.0%	5.1%	7.1%	5.1%	0.3%	5.3%	0.1%	4.2%	0.0%	4.4%	7.4%	1.3%	1.6%	2.9%	7.5%	5.8%	5.6%	14.2%	1.7%	10.6%	9.0%	1.6%	7.0%	6.5%	9.2%	6.3%	6.8%	3.1%	0.1%	2.5%	0.1%		
Management & Administrative	1.5%	0.8%	1.3%	1.8%	1.6%	0.0%	5.3%	3.0%	0.0%	2.1%	5.0%	0.0%	3.2%	4.2%	1.5%	0.0%	4.6%	1.0%	3.8%	3.4%	0.0%	1.5%	1.8%	12.3%	5.0%	2.8%	1.9%	0.1%	0.8%	0.0%	0.0%		
General Support	0.0%	28.5%	4.0%	34.1%	0.0%	0.0%	28.5%	0.0%	34.1%	8.0%	8.0%	0.0%	0.0%	0.0%	0.0%	14.1%	0.0%	23.8%	0.0%	14.1%	0.0%	0.0%	16.4%	8.0%	7.2%	7.2%	7.2%	7.2%	7.2%	7.2%	7.2%		
Patient & Client Care	5.0%	10.1%	8.8%	8.5%	7.6%	5.7%	12.8%	15.5%	5.9%	9.9%	6.3%	4.2%	3.4%	7.1%	11.6%	5.3%	13.5%	9.5%	8.5%	8.1%	2.7%	1.1%	11.1%	8.1%	5.1%	7.9%	4.7%	0.3%	2.9%	0.2%	0.2%		
Total April	5.4%	6.7%	9.7%	11.7%	6.0%	6.1%	4.5%	13.1%	5.1%	6.6%	8.3%	8.2%	9.1%	5.2%	5.9%	9.9%	12.7%	15.4%	14.0%	13.3%	10.6%	12.3%	7.6%	9.0%	6.7%	5.0%	0.1%	0.5%	0.1%	0.1%			
Medical & Dental	0.0%	0.0%	0.0%	0.0%	0.0%	0.0%	0.0%	0.0%	0.0%	0.0%	0.0%	0.0%	0.0%	0.0%	0.0%	0.0%	0.0%	0.0%	0.0%	0.0%	0.0%	0.0%	0.0%	0.0%	0.0%	0.0%	0.0%	0.0%	0.0%	0.0%	0.0%		
Nursing & Midwifery	0.0%	4.8%	13.8%	17.1%	8.5%	8.5%	0.0%	17.2%	5.9%	15.6%	11.6%	8.8%	11.1%	12.4%	8.5%	5.5%	13.3%	33.0%	17.7%	16.6%	21.5%	17.9%	27.3%	9.4%	10.6%	9.9%	13.9%	5.2%	0.8%	7.9%	0.4%		
Health & Social Care Professionals	0.0%	3.2%	1.5%	2.0%	0.1%	11.0%	0.0%	11.0%	0.0%	11.0%	0.0%	11.0%	0.0%	11.0%	0.0%	4.8%	0.0%	11.0%	0.0%	11.0%	0.0%	7.5%	0.0%	11.0%	0.0%	11.0%	0.0%	11.0%	0.0%	11.0%	0.0%	11.0%	
Management & Administrative	0.0%	0.8%	3.3%	1.7%	0.0%	5.5%	4.5%	0.0%	3.3%	2.8%	0.0%	0.0%	8.9%	1.0%	2.9%	7.8%	5.5%	3.7%	0.8%	4.5%	2.9%	1.0%	0.0%	0.0%	0.0%	3.6%	1.8%	0.2%	1.7%	0.0%	0.0%		
General Support	0.0%	12.6%	8.2%	5.7%	39.3%	10.7%	15.4%	0.0%	19.6%	0.5%	6.9%	0.4%	0.0%	14.4%	7.1%	10.8%	0.0%	14.4%	7.1%	10.8%	0.0%	18.9%	16.0%	11.4%	8.4%	13.2%	5.9%	0.2%	1.7%	0.0%	0.0%		
Patient & Client Care	3.4%	7.0%	6.1%	11.0%	7.8%	11.0%	7.8%	11.0%	7.8%	11.0%	7.8%	11.0%	7.8%	11.0%	7.8%	11.0%	7.8%	11.0%	7.8%	11.0%	7.8%	11.0%	7.8%	11.0%	7.8%	11.0%	7.8%	11.0%	7.8%	11.0%	7.8%	11.0%	
Total March:	5.1%	7.6%	8.4%	8.2%	7.2%	9.3%	4.7%	12.0%	5.9%	9.4%	6.8%	6.7%	7.1%	6.3%	4.9%	5.8%	8.4%	13.3%	6.2%	25.1%	5.2%	26.1%	18.9%	16.0%	11.4%	8.4%	13.2%	5.9%	0.2%	1.7%	0.0%		
Medical & Dental	0.0%	0.0%	0.0%	0.0%	0.0%	0.0%	0.0%	0.0%	0.0%	0.0%	0.0%	0.0%	0.0%	0.0%	0.0%	0.0%	0.0%	0.0%	0.0%	0.0%	0.0%	0.0%	0.0%	0.0%	0.0%	0.0%	0.0%	0.0%	0.0%	0.0%	0.0%		
Nursing & Midwifery	0.0%	8.4%	8.1%	0.0%	0.0%	8.5%	0.0%	0.0%	2.4%	10.4%	5.4%	7.6%	11.4%	8.9%	4.9%	1.9%	6.0%	6.1%	0.0%	0.0%	0.0%	0.0%	0.0%	0.0%	0.0%	0.0%	0.0%	0.0%	0.0%	0.0%	0.0%	0.0%	
Health & Social Care Professionals	6.9%	7.0%	7.0%	6.8%	6.1%	13.7%	2.1%	6.3%	17.5%	5.1%	5.8%	4.8%	2.3%	6.0%	6.9%	5.9%	5.5%	8.5%	1.1%	3.9%	6.5%	5.5%	4.5%	10.3%	4.7%	8.4%	7.1%	4.3%	0.3%	2.5%	0.1%		
Management & Administrative	1.4%	0.1%	0.1%	3.2%	1.9%	7.8%	6.8%	0.0%	9.4%	1.1%	8.8%	9.4%	4.1%	4.1%	4.1%	4.1%	4.1%	4.1%	4.1%	4.1%	4.1%	4.1%	4.1%	4.1%	4.1%	4.1%	4.1%	4.1%	4.1%	4.1%	4.1%	4.1%	
General Support	0.0%	6.8%	10.4%	15.2%	8.9%	10.4%	15.2%	8.9%	10.4%	15.2%	8.9%	10.4%	15.2%	8.9%	10.4%	15.2%	8.9%	10.4%	15.2%	8.9%	10.4%	15.2%	8.9%	10.4%	15.2%	8.9%	10.4%	15.2%	8.9%	10.4%	15.2%	8.9%	10.4%
Patient & Client Care	4.0%	8.1%	9.1%	7.7%	8.2%	8.3%	7.9%	15.3%	11.3%	9.8%	6.9%	7.1%	7.8%	13.1%	6.0%	4.8%	6.4%	8.8%	13.4%	7.1%	4.0%	3.3%	4.7%	11.7%	4.4%	6.5%	8.3%	5.2%	0.4%	2.7%	0.4%	2.7%	
Total February	3.9%	4.2%	4.7%	0.0%	0.0%	5.3%	1.9%	4.4%	4.9%	4.3%	4.4%	5.1%	4.8%	3.1%	3.1%	4.0%	5.3%	4.1%	5.3%	4.9%	4.8%	6.1%	3.7%	2.0%	4.2%	4.7%	4.2%	4.7%	4.2%	4.7%	4.2%	4.7%	
Medical & Dental	0.0%	0.0%	0.0%	0.0%	0.0%	0.0%	0.0%	0.0%	0.0%	0.0%	0.0%	0.0%	0.0%	0.0%	0.0%	0.0%	0.0%	0.0%	0.0%	0.0%	0.0%	0.0%	0.0%	0.0%	0.0%	0.0%	0.0%	0.0%	0.0%	0.0%	0.0%		
Nursing & Midwifery	0.0%	4.2%	5.3%	7.8%	4.8%	2.7%	5.4%	5.6%	1.9%	4.3%	4.0%	5.2%	9.7%	2.6%	2.4%	3.9%	3.9%	4.5%	2.9%	4.4%	4.0%	7.0%	4.8%	5.3%	4.4%	2.6%	4.7%	2.0%	0.0%	0.0%	0.0%		
Health & Social Care Professionals	0.0%	2.4%	2.8%	3.0%	3.0%	0.0%	0																										