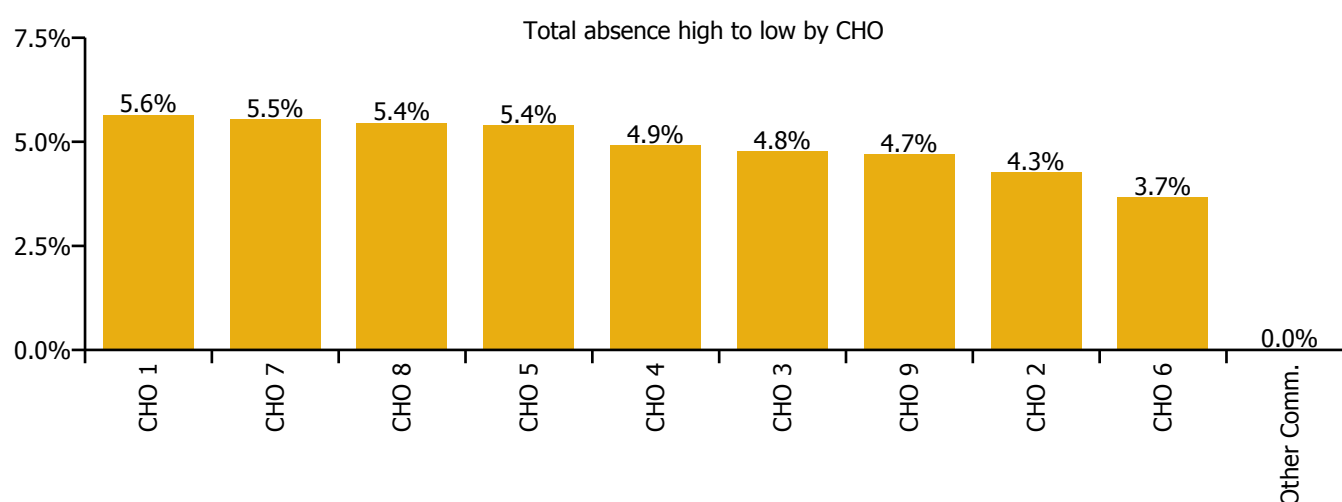
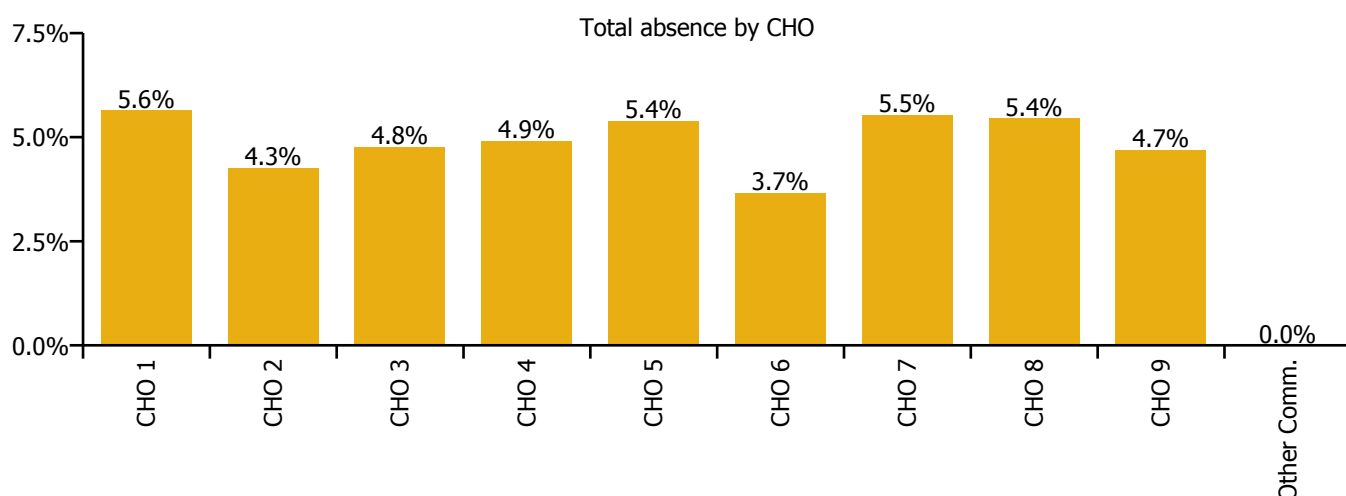


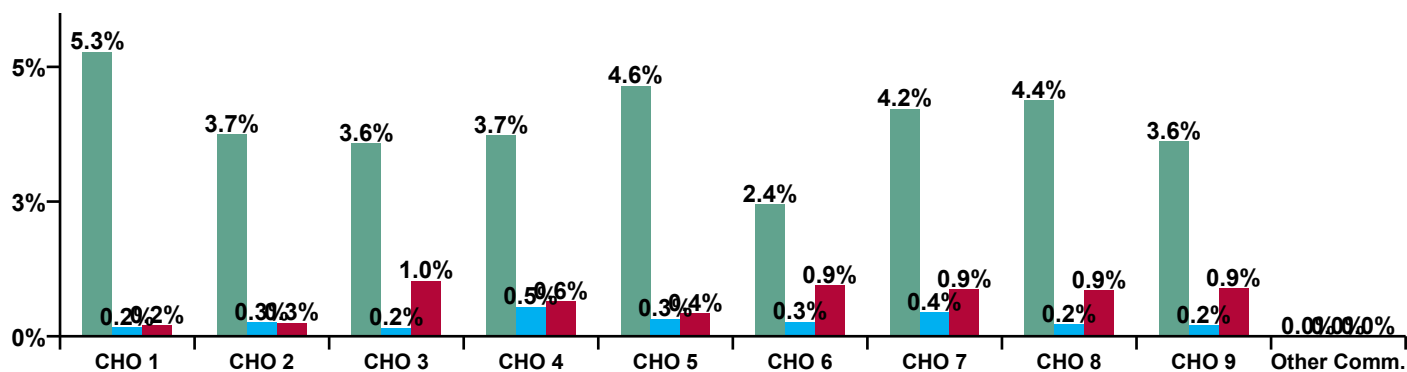
June 2020

Disabilities Absence Rate - by Staff Category: Jun 2020	Certified absence	Self-certified absence	COVID-19 absence	Total absence rate	Certified	Self-certified	COVID-19
Disabilities	4.0%	0.3%	0.7%	5.0%	79.6%	5.9%	14.5%
Medical & Dental	0.1%	0.0%	0.8%	0.9%	9.4%	0.0%	90.6%
Nursing & Midwifery	5.0%	0.3%	0.8%	6.0%	82.4%	4.7%	12.9%
Health & Social Care Professionals	3.0%	0.2%	0.6%	3.7%	79.6%	5.6%	14.8%
Management & Administrative	1.6%	0.1%	0.2%	1.9%	82.7%	5.8%	11.5%
General Support	4.4%	0.2%	1.5%	6.1%	72.0%	2.6%	25.3%
Patient & Client Care	4.3%	0.4%	0.8%	5.5%	78.9%	7.0%	14.0%



Disabilities Absence Rate - by Care Group: Jun 2020	Certified absence	Self-certified absence	COVID-19 absence	Total absence rate	Certified	Self-certified	COVID-19
Disabilities	4.0%	0.3%	0.7%	5.0%	79.6%	5.9%	14.5%
CHO 1	5.3%	0.2%	0.2%	5.6%	93.5%	3.0%	3.6%
Health Service Executive	3.7%	0.4%	0.5%	4.6%	81.9%	7.7%	10.4%
Section 38 Voluntary Agencies	3.8%	0.2%	0.2%	4.2%	89.2%	5.8%	5.0%
CHO 2	3.7%	0.3%	0.3%	4.3%	88.0%	6.1%	5.9%
Health Service Executive	3.3%	0.2%	0.2%	3.6%	91.0%	4.7%	4.3%
Section 38 Voluntary Agencies	3.6%	0.2%	1.1%	4.8%	74.3%	3.2%	22.5%
CHO 3	3.6%	0.2%	1.0%	4.8%	75.2%	3.2%	21.6%
Health Service Executive	3.7%	0.2%	0.9%	4.8%	76.0%	4.8%	19.2%
Section 38 Voluntary Agencies	3.7%	0.6%	0.6%	4.9%	75.8%	11.7%	12.5%
CHO 4	3.7%	0.5%	0.6%	4.9%	75.8%	11.1%	13.1%
CHO 5	4.6%	0.3%	0.4%	5.4%	86.1%	6.0%	7.9%
Health Service Executive							
Section 38 Voluntary Agencies	2.4%	0.3%	0.9%	3.7%	66.8%	7.3%	25.9%
CHO 6	2.4%	0.3%	0.9%	3.7%	66.8%	7.3%	25.9%
Health Service Executive	4.5%	0.2%	0.4%	5.0%	89.1%	3.1%	7.8%
Section 38 Voluntary Agencies	4.2%	0.5%	0.9%	5.6%	75.9%	8.2%	16.0%
CHO 7	4.2%	0.4%	0.9%	5.5%	76.1%	8.1%	15.8%
Health Service Executive	6.7%	0.4%	1.5%	8.6%	77.8%	4.4%	17.8%
Section 38 Voluntary Agencies	3.6%	0.2%	0.6%	4.3%	82.1%	3.7%	14.2%
CHO 8	4.4%	0.2%	0.9%	5.4%	80.3%	4.0%	15.7%
Health Service Executive	5.4%	0.4%		5.8%	92.7%	7.3%	0.0%
Section 38 Voluntary Agencies	3.3%	0.2%	1.0%	4.5%	73.7%	3.5%	22.8%
CHO 9	3.6%	0.2%	0.9%	4.7%	76.9%	4.2%	18.9%
Other Community Services							

Certified, self-certified & COVID-19: Jun 2020

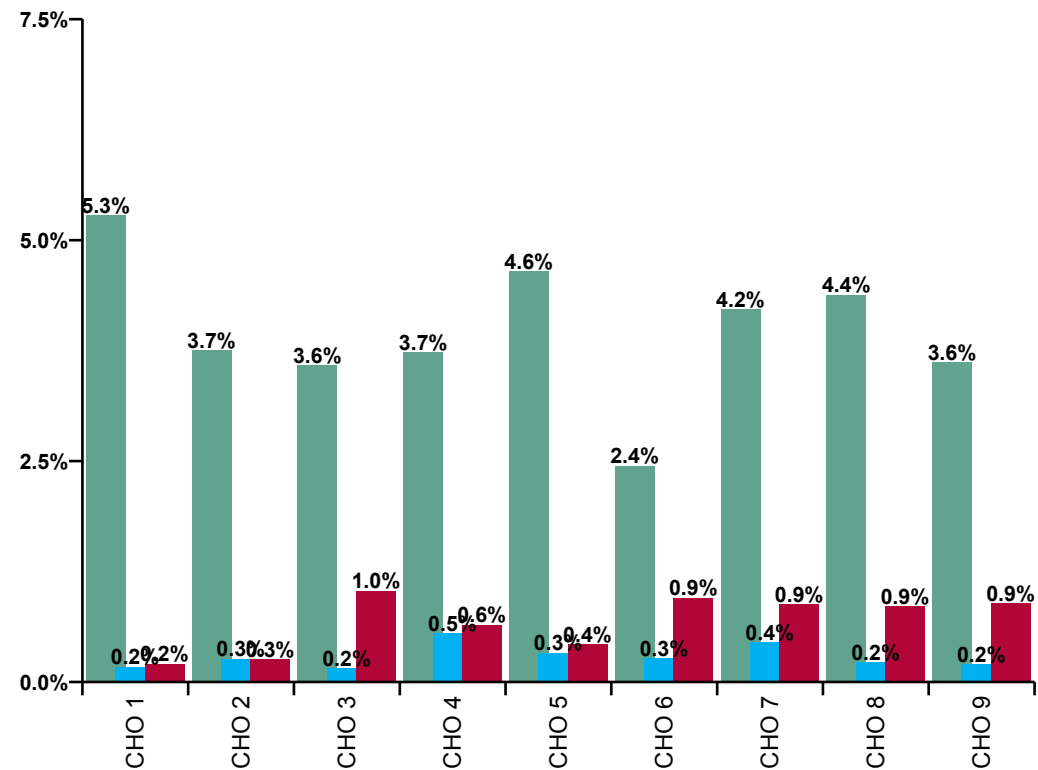
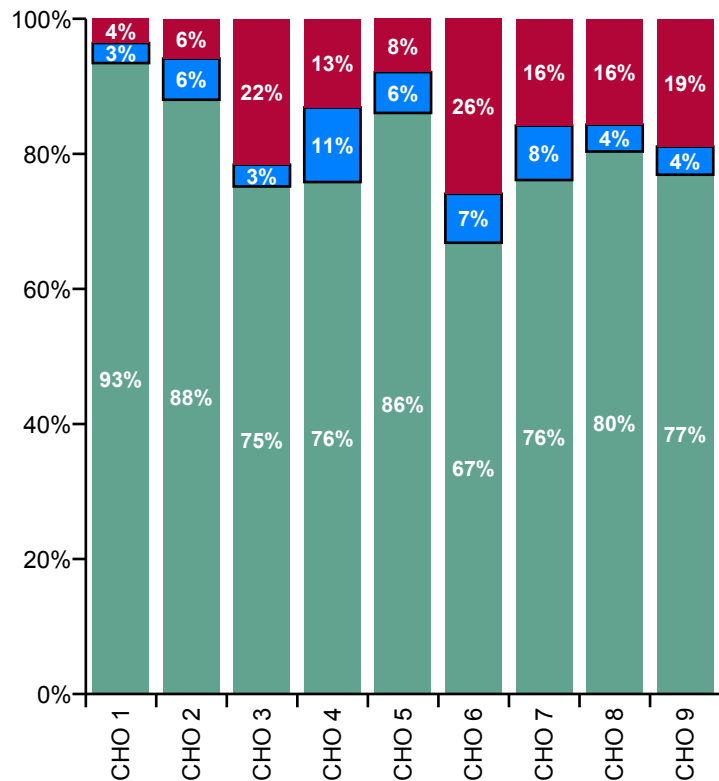


Legend

Certified absence
Self-certified absence
COVID-19 absence

Disabilities Overall Absence Rate - by Care Group & Staff Category: Jun 2020	Medical & Dental	Nursing & Midwifery	Health & Social Care Professionals	Management & Administrative	General Support	Patient & Client Care	Certified absence	Self-certified absence	COVID-19 absence	Total absence
Disabilities	0.9%	6.0%	3.7%	1.9%	6.1%	5.5%	4.0%	0.3%	0.7%	5.0%
Health Service Executive	0.0%	5.5%	1.8%	1.5%	4.3%	6.8%	5.3%	0.2%	0.2%	5.6%
CHO 1	0.0%	5.5%	1.8%	1.5%	4.3%	6.8%	5.3%	0.2%	0.2%	5.6%
Health Service Executive	0.0%	6.5%	4.4%	0.0%	0.0%	4.9%	3.7%	0.4%	0.5%	4.6%
Section 38 Voluntary Agencies	0.0%	5.0%	3.3%	2.0%	3.0%	4.8%	3.8%	0.2%	0.2%	4.2%
CHO 2	0.0%	5.4%	3.4%	1.6%	2.6%	4.8%	3.7%	0.3%	0.3%	4.3%
Health Service Executive			2.7%	2.2%	12.0%	4.2%	3.3%	0.2%	0.2%	3.6%
Section 38 Voluntary Agencies	0.0%	6.0%	2.7%	2.9%	8.3%	4.8%	3.6%	0.2%	1.1%	4.8%
CHO 3	0.0%	6.0%	2.7%	2.5%	8.7%	4.7%	3.6%	0.2%	1.0%	4.8%
Health Service Executive	0.0%	7.2%	3.1%	0.7%	2.2%	5.3%	3.7%	0.2%	0.9%	4.8%
Section 38 Voluntary Agencies		6.1%	3.6%	1.9%	5.2%	5.2%	3.7%	0.6%	0.6%	4.9%
CHO 4	0.0%	6.3%	3.5%	1.8%	4.8%	5.2%	3.7%	0.5%	0.6%	4.9%
CHO 5	0.0%	8.5%	3.8%	4.8%	5.9%	5.0%	4.6%	0.3%	0.4%	5.4%
Health Service Executive										
Section 38 Voluntary Agencies	0.0%	2.2%	4.4%	2.0%	3.0%	4.0%	2.4%	0.3%	0.9%	3.7%
CHO 6	0.0%	2.2%	4.4%	2.0%	3.0%	4.0%	2.4%	0.3%	0.9%	3.7%
Health Service Executive			7.5%	0.0%		0.0%	4.5%	0.2%	0.4%	5.0%
Section 38 Voluntary Agencies	3.4%	8.0%	3.1%	1.0%	6.7%	5.9%	4.2%	0.5%	0.9%	5.6%
CHO 7	3.4%	8.0%	3.4%	0.9%	6.7%	5.9%	4.2%	0.4%	0.9%	5.5%
Health Service Executive	0.0%	9.2%	4.8%	3.4%	18.2%	11.3%	6.7%	0.4%	1.5%	8.6%
Section 38 Voluntary Agencies	0.0%	2.9%	4.4%	0.4%	3.7%	5.4%	3.6%	0.2%	0.6%	4.3%
CHO 8	0.0%	4.8%	4.5%	1.9%	5.6%	6.9%	4.4%	0.2%	0.9%	5.4%

Disabilities Overall Absence Rate - by Care Group & Staff Category: Jun 2020	Medical & Dental	Nursing & Midwifery	Health & Social Care Professionals	Management & Administrative	General Support	Patient & Client Care	Certified absence	Self-certified absence	COVID-19 absence	Total absence
Disabilities	0.9%	6.0%	3.7%	1.9%	6.1%	5.5%	4.0%	0.3%	0.7%	5.0%
Health Service Executive	0.0%	8.2%	4.5%	2.8%	15.5%	3.2%	5.4%	0.4%		5.8%
Section 38 Voluntary Agencies	0.2%	5.0%	3.9%	1.8%	7.0%	5.1%	3.3%	0.2%	1.0%	4.5%
CHO 9	0.2%	5.8%	3.9%	1.9%	7.2%	4.8%	3.6%	0.2%	0.9%	4.7%
Other Community Services				0.0%						0.0%



Certified absence

Self-certified absence

COVID-19 absence

Social Care Absence Rate - by Care Group, Staff Category & Absence type: Jun 2020

CHO 1 by Staff Category Jun 2020	Certified absence	Self-certified absence	COVID-19 absence	Total absence	Certified	Self-certified	COVID-19
Disabilities	5.3%	0.2%	0.2%	5.6%	93.5%	3.0%	3.6%
Medical & Dental							
Nursing & Midwifery	5.1%	0.2%	0.2%	5.5%	93.8%	3.4%	2.8%
Health & Social Care Professionals	1.2%	0.3%	0.3%	1.8%	69.5%	14.0%	16.5%
Management & Administrative	1.5%	0.1%		1.5%	96.5%	3.5%	0.0%
General Support	4.2%	0.1%		4.3%	97.8%	2.2%	0.0%
Patient & Client Care	6.3%	0.2%	0.3%	6.8%	93.7%	2.5%	3.9%

CHO 2 by Staff Category Jun 2020	Certified absence	Self-certified absence	COVID-19 absence	Total absence	Certified	Self-certified	COVID-19
Disabilities	3.7%	0.3%	0.3%	4.3%	88.0%	6.1%	5.9%
Medical & Dental							
Nursing & Midwifery	5.2%	0.1%	0.0%	5.4%	97.2%	2.2%	0.7%
Health & Social Care Professionals	2.8%	0.3%	0.3%	3.4%	83.2%	9.0%	7.9%
Management & Administrative	1.5%	0.1%		1.6%	93.7%	6.3%	0.0%
General Support	1.6%	0.1%	0.8%	2.6%	64.2%	3.0%	32.8%
Patient & Client Care	4.1%	0.3%	0.3%	4.8%	86.6%	6.9%	6.5%

CHO 3 by Staff Category Jun 2020	Certified absence	Self-certified absence	COVID-19 absence	Total absence	Certified	Self-certified	COVID-19
Disabilities	3.6%	0.2%	1.0%	4.8%	75.2%	3.2%	21.6%
Medical & Dental							
Nursing & Midwifery	5.1%	0.0%	0.9%	6.0%	84.3%	0.3%	15.4%
Health & Social Care Professionals	1.9%	0.1%	0.7%	2.7%	70.2%	5.4%	24.4%
Management & Administrative	1.5%	0.2%	0.8%	2.5%	58.1%	8.7%	33.2%
General Support	7.6%	0.1%	1.0%	8.7%	87.6%	0.7%	11.7%
Patient & Client Care	3.3%	0.2%	1.2%	4.7%	69.6%	4.7%	25.7%

CHO 4 by Staff Category Jun 2020	Certified absence	Self-certified absence	COVID-19 absence	Total absence	Certified	Self-certified	COVID-19
Disabilities	3.7%	0.5%	0.6%	4.9%	75.8%	11.1%	13.1%
Medical & Dental							
Nursing & Midwifery	4.9%	0.3%	1.1%	6.3%	77.7%	5.4%	17.0%
Health & Social Care Professionals	3.2%	0.2%	0.1%	3.5%	91.7%	6.7%	1.6%
Management & Administrative	1.5%	0.2%	0.1%	1.8%	86.3%	9.0%	4.7%
General Support	3.3%	0.4%	1.1%	4.8%	68.9%	8.3%	22.7%
Patient & Client Care	3.8%	0.8%	0.7%	5.2%	72.3%	14.4%	13.3%

CHO 5 by Staff Category Jun 2020	Certified absence	Self-certified absence	COVID-19 absence	Total absence	Certified	Self-certified	COVID-19
Disabilities	4.6%	0.3%	0.4%	5.4%	86.1%	6.0%	7.9%
Medical & Dental							
Nursing & Midwifery	7.6%	0.5%	0.3%	8.5%	90.1%	6.2%	3.7%
Health & Social Care Professionals	3.0%	0.2%	0.5%	3.8%	80.7%	5.1%	14.2%
Management & Administrative	4.4%	0.0%	0.3%	4.8%	92.9%	0.9%	6.2%
General Support	5.5%	0.4%		5.9%	92.8%	7.2%	0.0%
Patient & Client Care	4.2%	0.3%	0.5%	5.0%	84.2%	6.7%	9.1%

CHO 6 by Staff Category Jun 2020	Certified absence	Self-certified absence	COVID-19 absence	Total absence	Certified	Self-certified	COVID-19
Disabilities	2.4%	0.3%	0.9%	3.7%	66.8%	7.3%	25.9%
Medical & Dental							
Nursing & Midwifery	1.6%	0.2%	0.3%	2.2%	75.1%	11.0%	13.9%
Health & Social Care Professionals	2.7%	0.3%	1.3%	4.4%	62.7%	6.8%	30.5%
Management & Administrative	1.6%	0.1%	0.3%	2.0%	79.4%	5.1%	15.5%
General Support	2.7%	0.3%		3.0%	91.0%	9.0%	0.0%
Patient & Client Care	2.7%	0.3%	1.1%	4.0%	66.1%	7.3%	26.7%

CHO 7 by Staff Category Jun 2020	Certified absence	Self-certified absence	COVID-19 absence	Total absence	Certified	Self-certified	COVID-19
Disabilities	4.2%	0.4%	0.9%	5.5%	76.1%	8.1%	15.8%
Medical & Dental			3.4%	3.4%	0.0%	0.0%	100.0%
Nursing & Midwifery	5.8%	0.6%	1.6%	8.0%	72.9%	6.9%	20.1%
Health & Social Care Professionals	2.4%	0.3%	0.7%	3.4%	70.1%	8.5%	21.4%
Management & Administrative	0.7%	0.2%		0.9%	75.3%	24.7%	0.0%
General Support	5.2%	0.2%	1.3%	6.7%	77.8%	2.6%	19.5%
Patient & Client Care	4.7%	0.5%	0.7%	5.9%	79.1%	9.1%	11.9%

CHO 8 by Staff Category Jun 2020	Certified absence	Self-certified absence	COVID-19 absence	Total absence	Certified	Self-certified	COVID-19
Disabilities	4.4%	0.2%	0.9%	5.4%	80.3%	4.0%	15.7%
Medical & Dental							
Nursing & Midwifery	4.2%	0.3%	0.3%	4.8%	86.9%	6.0%	7.1%
Health & Social Care Professionals	3.9%	0.1%	0.5%	4.5%	86.3%	2.9%	10.8%
Management & Administrative	1.4%	0.1%	0.3%	1.9%	76.9%	4.6%	18.5%
General Support	4.8%		0.7%	5.6%	86.7%	0.0%	13.3%
Patient & Client Care	5.2%	0.3%	1.4%	6.9%	75.7%	3.8%	20.5%

CHO 9 by Staff Category Jun 2020	Certified absence	Self-certified absence	COVID-19 absence	Total absence	Certified	Self-certified	COVID-19
Disabilities	3.6%	0.2%	0.9%	4.7%	76.9%	4.2%	18.9%
Medical & Dental	0.2%			0.2%	100.0%	0.0%	0.0%
Nursing & Midwifery	4.5%	0.3%	1.1%	5.8%	76.9%	4.6%	18.5%
Health & Social Care Professionals	3.3%	0.2%	0.5%	3.9%	84.4%	4.0%	11.6%
Management & Administrative	1.5%	0.0%	0.4%	1.9%	78.7%	2.4%	18.9%
General Support	3.8%	0.1%	3.3%	7.2%	52.9%	1.2%	46.0%
Patient & Client Care	3.8%	0.2%	0.8%	4.8%	78.4%	5.1%	16.5%

Other Community Services by Staff Category Jun 2020	Certified absence	Self-certified absence	COVID-19 absence	Total absence	Certified	Self-certified	COVID-19
Disabilities	0.0%	0.0%	0.0%	0.0%			
Medical & Dental							
Nursing & Midwifery							#DIV/0
Health & Social Care Professionals	#DIV/0	#DIV/0	#DIV/0				
Management & Administrative							
General Support	#DIV/0	#DIV/0	#DIV/0				
Patient & Client Care	#DIV/0	#DIV/0	#DIV/0				

Disabilities Absence Rate - by Staff Category & Care Group	CHO 1	CHO 2	CHO 3	CHO 4	CHO 5	CHO 6	CHO 7	CHO 8	HSE	S38	CHO 9	Other Comm.	Total absence	Certified absence	Self-certified absence	COVID-19 absence
Disabilities: 2020 overall	6.9%	6.2%	5.5%	7.1%	7.2%	5.6%	8.4%	7.5%	9.4%	6.3%	6.7%	0.0%	7.0%	4.7%	0.4%	1.8%
Medical & Dental	0.0%	0.0%	0.0%	17.1%	0.0%	0.0%	8.3%	0.0%	3.1%	1.4%	1.6%		2.8%	1.6%		1.3%
Nursing & Midwifery	7.9%	7.0%	6.8%	8.3%	9.0%	5.5%	10.7%	8.3%	10.6%	6.6%	7.7%		8.2%	5.4%	0.4%	2.3%
Health & Social Care Professionals	3.5%	5.8%	4.1%	5.0%	6.3%	6.7%	5.9%	5.7%	7.3%	5.9%	6.0%		5.7%	3.8%	0.4%	1.6%
Management & Administrative	3.0%	2.2%	2.6%	3.3%	4.9%	3.1%	2.8%	4.5%	4.7%	3.1%	3.2%	0.0%	3.3%	2.4%	0.2%	0.7%
General Support	4.9%	3.5%	6.4%	8.5%	11.8%	4.1%	8.1%	10.0%	20.9%	7.9%	8.3%		7.6%	5.2%	0.3%	2.2%
Patient & Client Care	7.3%	7.0%	5.6%	7.6%	7.1%	5.5%	9.3%	8.3%	8.3%	7.1%	7.3%		7.5%	5.2%	0.3%	2.2%
Total June:	5.6%	4.3%	4.8%	4.9%	5.4%	3.7%	5.5%	5.4%	5.8%	4.5%	4.7%	0.0%	5.0%	4.0%	0.3%	0.7%
Medical & Dental	0.0%	0.0%	0.0%	0.0%	0.0%	0.0%	3.4%	0.0%	0.0%	0.2%	0.2%		0.9%	0.1%		0.8%
Nursing & Midwifery	5.5%	5.4%	6.0%	6.3%	8.5%	2.2%	8.0%	4.8%	8.2%	5.0%	5.8%		6.0%	5.0%	0.3%	0.8%
Health & Social Care Professionals	1.8%	3.4%	2.7%	3.5%	3.8%	4.4%	3.4%	4.5%	4.5%	3.9%	3.9%		3.7%	3.0%	0.2%	0.6%
Management & Administrative	1.5%	1.6%	2.5%	1.8%	4.8%	2.0%	0.9%	1.9%	2.8%	1.8%	1.9%	0.0%	1.9%	1.6%	0.1%	0.2%
General Support	4.3%	2.6%	8.7%	4.8%	5.9%	3.0%	6.7%	5.6%	15.5%	7.0%	7.2%		6.1%	4.4%	0.2%	1.5%
Patient & Client Care	6.8%	4.8%	4.7%	5.2%	5.0%	4.0%	5.9%	6.9%	3.2%	5.1%	4.8%		5.5%	4.3%	0.4%	0.8%
Total May:	6.2%	6.2%	5.9%	7.7%	6.9%	5.4%	9.2%	8.4%	6.8%	6.4%	6.5%	0.0%	7.2%	4.5%	0.2%	2.5%
Medical & Dental	0.0%	0.0%	0.0%	0.0%	0.0%	0.0%	8.1%	0.0%	0.0%	0.0%	0.0%		2.1%	1.6%		0.4%
Nursing & Midwifery	6.6%	7.3%	7.6%	9.2%	9.0%	4.8%	14.2%	8.7%	8.8%	7.2%	7.7%		8.7%	5.5%	0.3%	2.9%
Health & Social Care Professionals	2.0%	4.4%	3.3%	5.9%	4.4%	7.5%	6.3%	5.8%	4.9%	6.0%	5.9%		5.6%	3.1%	0.1%	2.3%
Management & Administrative	2.4%	1.9%	2.4%	1.2%	3.8%	3.8%	2.0%	2.9%	0.0%	3.4%	3.2%	0.0%	2.6%	1.8%	0.1%	0.7%
General Support	4.8%	3.4%	8.1%	9.5%	21.9%	4.3%	7.6%	12.4%	26.9%	5.8%	6.4%		7.6%	5.3%	0.1%	2.3%
Patient & Client Care	7.0%	7.6%	6.2%	8.3%	7.1%	4.1%	9.6%	10.2%	4.5%	7.6%	7.0%		7.9%	4.9%	0.3%	2.6%
Total April:	8.8%	9.0%	6.0%	11.9%	10.2%	10.9%	15.8%	12.1%	15.3%	9.1%	9.9%	0.0%	10.9%	5.2%	0.4%	5.3%
Medical & Dental	0.0%	0.0%	0.0%	0.0%	0.0%	0.0%	42.0%	0.0%	3.5%	0.2%	0.3%		2.6%	0.4%		2.2%
Nursing & Midwifery	9.7%	10.7%	7.9%	15.4%	12.0%	13.6%	22.3%	15.6%	16.6%	10.5%	12.2%		13.6%	5.8%	0.6%	7.1%
Health & Social Care Professionals	4.1%	6.6%	3.7%	6.8%	9.4%	13.1%	11.4%	6.7%	12.9%	8.0%	8.2%		8.3%	3.7%	0.5%	4.1%
Management & Administrative	3.2%	1.6%	2.6%	2.6%	4.9%	3.2%	3.3%	5.3%	2.9%	3.3%	3.2%	0.0%	3.4%	1.8%	0.1%	1.5%
General Support	5.3%	4.9%	6.3%	18.1%	17.2%	6.3%	13.7%	17.5%	37.6%	13.2%	14.0%		12.8%	6.0%	0.2%	6.6%
Patient & Client Care	9.7%	10.9%	6.2%	12.7%	10.4%	10.8%	16.9%	13.9%	14.5%	11.3%	11.9%		12.0%	6.2%	0.4%	5.4%
Total March:	9.2%	6.8%	6.8%	8.1%	7.7%	6.0%	9.6%	7.2%	11.3%	8.1%	8.5%	0.0%	8.0%	5.1%	0.4%	2.6%
Medical & Dental	0.0%	0.0%	0.0%	0.0%	0.0%	0.0%	4.7%	0.0%	9.3%	3.7%	4.9%		3.1%	1.2%		1.9%
Nursing & Midwifery	10.7%	7.3%	8.2%	8.9%	9.9%	6.1%	11.0%	8.1%	12.1%	7.0%	8.4%		9.0%	5.8%	0.4%	2.8%
Health & Social Care Professionals	7.0%	6.1%	5.9%	5.9%	7.3%	7.6%	6.2%	6.1%	13.5%	9.0%	9.1%		7.1%	4.3%	0.3%	2.5%
Management & Administrative	5.3%	2.0%	3.8%	5.5%	4.9%	2.6%	5.0%	6.8%	5.5%	4.3%	4.4%	0.0%	4.7%	2.7%	0.2%	1.7%
General Support	5.0%	5.1%	5.0%	9.3%	11.2%	3.3%	9.3%	7.9%	16.2%	8.4%	8.7%		7.9%	5.1%	0.3%	2.5%
Patient & Client Care	9.3%	7.8%	7.0%	8.6%	7.5%	5.7%	11.1%	7.5%	10.1%	8.8%	9.0%		8.5%	5.5%	0.4%	2.6%
Total February:	5.5%	5.3%	4.4%	4.9%	6.0%	3.7%	4.9%	5.3%	8.4%	4.7%	5.2%	0.0%	5.0%	4.6%	0.5%	
Medical & Dental	0.0%	0.0%	0.0%	42.9%	0.0%	0.0%	0.0%	0.0%	8.3%	5.2%	5.7%		4.3%	4.3%		
Nursing & Midwifery	7.2%	5.5%	5.3%	4.8%	6.6%	3.0%	4.4%	5.8%	8.8%	4.6%	5.8%		5.6%	5.1%	0.5%	
Health & Social Care Professionals	2.8%	6.2%	3.8%	3.5%	6.2%	3.6%	3.7%	4.7%	3.3%	4.5%	4.4%		4.4%	4.0%	0.5%	
Management & Administrative	4.0%	2.4%	1.5%	3.7%	5.7%	3.5%	2.3%	5.2%	8.9%	3.2%	3.5%	0.0%	3.5%	3.2%	0.3%	
General Support	3.6%	2.1%	5.5%	3.6%	6.0%	3.6%	5.6%	6.3%	15.7%	6.1%	6.4%		5.0%	4.6%	0.4%	
Patient & Client Care	4.9%	5.5%	4.4%	5.5%	5.9%	4.0%	5.8%	5.2%	8.6%	5.0%	5.6%		5.3%	4.8%	0.5%	
Total January:	6.2%	6.3%	5.1%	5.3%	6.9%	4.0%	5.5%	6.4%	8.5%	4.6%	5.2%	0.0%	5.6%	5.0%	0.6%	
Medical & Dental	0.0%	0.0%	0.0%	34.6%	0.0%	0.0%	0.0%	0.0%	0.0%	8.6%	7.1%		4.6%	4.6%		
Nursing & Midwifery	7.6%	6.3%	5.8%	5.6%	8.1%	2.8%	4.2%	6.5%	8.8%	5.0%	6.1%		6.0%	5.4%	0.6%	
Health & Social Care Professionals	3.6%	8.0%	5.2%	4.6%	6.4%	4.2%	4.4%	6.2%	4.9%	4.0%	4.1%		5.0%	4.4%	0.5%	
Management & Administrative	1.6%	3.6%	2.7%	4.3%	5.0%	3.4%	3.5%	4.5%	7.1%	2.7%	3.0%	0.0%	3.5%	3.1%	0.4%	
General Support	6.4%	3.8%	4.7%	5.2%	11.5%	4.2%	5.8%	10.7%	13.1%	6.7%	6.9%		6.2%	5.7%	0.5%	
Patient & Client Care	6.0%	6.2%	5.0%	5.5%	6.8%	4.4%	6.7%	6.3%	9.2%	4.9%	5.6%		5.9%	5.3%	0.6%	
Disabilities: 2019 overall	7.2%	4.8%	4.4%	4.9%	5.4%	4.0%	4.6%	5.0%	6.6%	4.3%	4.6%		4.9%	4.4%	0.5%	
Medical & Dental	0.6%	1.6%	0.4%	9.4%	0.1%	0.0%	0.3%	0.5%	0.0%	1.7%	1.6%		1.3%	1.2%	0.1%	
Nursing & Midwifery	9.7%	5.9%	5.1%	6.0%	5.8%	4.0%	4.3%	5.2%	7.3%	4.3%	4.9%		5.6%	5.2%	0.5%	
Health & Social Care Professionals	3.1%	4.2%	4.2%	4.3%	5.7%	4.0%	3.5%	4.9%	3.1%	4.0%	4.0%		4.2%	3.8%	0.4%	
Management & Administrative	1.5%	2.3%	3.9%	2.8%	4.8%	2.9%	3.6%	3.5%	4.1%	3.8%	3.8%		3.3%	3.0%	0.3%	
General Support	4.7%	3.6%	5.9%	4.5%	7.0%	7.4%	4.8%	5.2%	6.4%	4.3%	4.4%		4.8%	4.5%	0.3%	
Patient & Client Care	7.2%	5.1%	4.1%	5.0%	5.2%	4.1%	5.5%	5.2%	7.6%	5.0%	5.3%		5.2%	4.5%	0.3%	

Disabilities Absence Rate - by Staff Category & S33 Agency	Bios. of Charity, Clare	Bios. of Charity, Limerick	Bios. of Charity, Southern	Bios. of Charity, Waterford	Bios. of Charity, West Region	Campden Grange Services	Central Remedial Clinic	Cheswestown House	Children's Sunshine Home	Co.ie Foundation	Daughters of Charity, Dublin	Daughters of Charity, Limerick	Daughters of Charity, Roscrea	Kate, Newbridge, Co. Kildare	Mulrossa Foundation, Laois/Carlow	Mulrossa Foundation, Longford/Westmeath	Mulrossa Foundation, Sligo/Wexford	Pearson's Hospital (Newcastle)	Stewart's Hospital (Fallowfieldstown)	St. John of God, Drumcar	St. John of God, (IDS)	St. John of God, Kesh	St. John of God, Liffey Services	St. Michael's House, Dublin	St. Patrick's, Kilsenny	Sunderland House Services	Total absence	Verified absence	Self-certified absence	COVID-19 absence
Disabilities: S38 2020 overall	4.6%	6.1%	6.6%	7.5%	6.2%	6.6%	4.9%	8.3%	3.6%	7.9%	5.9%	5.5%	5.3%	6.4%	5.9%	4.4%	6.6%	8.6%	8.6%	7.2%	6.1%	5.9%	8.5%	6.6%	6.4%	5.4%	6.6%	4.4%	0.4%	2.0%
Medical & Dental	0.0%	0.0%	0.0%	0.0%	0.0%	0.0%	0.0%	0.0%	0.0%	0.0%	0.0%	0.0%	0.0%	0.0%	0.0%	0.0%	0.0%	0.0%	0.0%	0.0%	0.0%	0.0%	0.0%	0.0%	0.0%	0.0%	0.0%	0.0%	0.0%	0.0%
Nursing & Midwifery	0.0%	6.6%	8.2%	12.2%	6.4%	5.3%	1.9%	10.6%	3.3%	8.3%	6.4%	6.9%	7.3%	5.2%	5.7%	3.8%	6.6%	11.9%	11.6%	6.9%	6.9%	9.4%	9.9%	7.0%	5.2%	7.6%	5.2%	7.4%	0.0%	2.6%
Health & Social Care Professionals	5.7%	4.0%	6.0%	6.7%	5.7%	8.7%	1.9%	4.1%	4.3%	3.7%	6.4%	3.8%	2.1%	3.9%	4.9%	4.9%	6.3%	9.3%	3.3%	5.3%	8.5%	4.2%	6.5%	6.9%	7.3%	5.4%	5.7%	3.7%	0.4%	1.7%
Management & Administrative	1.4%	1.8%	5.5%	3.4%	2.2%	4.2%	5.0%	3.8%	0.7%	2.0%	2.9%	1.7%	5.7%	1.5%	5.2%	3.2%	3.0%	3.9%	2.5%	3.6%	2.4%	4.0%	3.2%	2.5%	10.7%	4.4%	3.3%	2.3%	0.2%	0.7%
General Support	4.0%	4.9%	9.4%	3.0%	12.7%	9.8%	7.1%	2.8%	9.9%	6.6%	5.8%	2.0%	0.0%	1.0%	8.7%	6.7%	6.6%	10.1%	11.4%	2.3%	9.6%	9.0%	6.8%	17.8%	6.1%	7.7%	5.1%	0.3%	2.3%	
Patient & Client Care	4.4%	7.1%	7.3%	7.1%	7.1%	6.6%	9.7%	12.0%	5.4%	8.6%	5.6%	4.6%	5.3%	8.5%	7.0%	4.1%	8.2%	8.3%	8.6%	7.9%	5.2%	4.5%	10.4%	8.9%	5.1%	5.7%	7.3%	4.9%	0.4%	2.0%
Total June:	4.9%	5.6%	4.7%	5.0%	4.2%	4.3%	2.9%	6.1%	3.0%	5.5%	4.2%	5.4%	2.2%	4.1%	4.1%	3.5%	6.7%	3.7%	7.6%	3.6%	4.6%	3.7%	4.8%	5.1%	5.9%	2.9%	4.6%	3.7%	0.3%	0.8%
Medical & Dental	0.0%	0.0%	0.0%	0.0%	0.0%	0.0%	0.0%	0.0%	0.0%	0.0%	0.0%	0.0%	0.0%	0.0%	0.0%	0.0%	0.0%	0.0%	0.0%	0.0%	0.0%	0.0%	0.0%	0.0%	0.0%	0.0%	0.0%	0.0%	0.0%	0.0%
Nursing & Midwifery	0.0%	5.4%	7.7%	10.2%	5.0%	5.2%	0.0%	7.8%	3.9%	5.8%	5.5%	7.0%	1.7%	2.0%	3.4%	0.0%	3.7%	5.4%	16.1%	2.9%	0.9%	5.5%	4.3%	4.6%	10.7%	2.4%	5.7%	4.8%	0.3%	1.0%
Health & Social Care Professionals	3.9%	2.6%	5.1%	4.2%	3.3%	3.1%	1.2%	2.6%	0.0%	1.0%	4.0%	1.7%	4.0%	8.2%	6.2%	0.0%	1.3%	7.0%	2.1%	3.1%	4.4%	6.8%	2.3%	3.7%	2.9%	0.2%	0.6%			
Management & Administrative	4.3%	1.5%	2.3%	1.8%	2.0%	0.0%	3.1%	0.0%	0.0%	1.9%	2.1%	0.0%	1.2%	0.6%	0.0%	0.0%	0.7%	2.1%	0.9%	0.0%	2.9%	0.8%	0.2%	1.1%	12.4%	1.1%	1.8%	1.9%	0.1%	0.2%
General Support	2.2%	1.8%	2.2%	3.0%	2.4%	10.1%	5.0%	1.6%	7.2%	10.2%	5.0%	1.6%	2.2%	0.0%	0.0%	16.6%	1.1%	5.1%	6.4%	3.6%	2.3%	2.8%	6.2%	9.2%	16.8%	2.3%	6.1%	4.2%	0.2%	1.7%
Patient & Client Care	5.3%	7.2%	4.4%	4.5%	4.6%	4.9%	4.8%	7.2%	5.1%	6.9%	3.6%	3.3%	2.2%	5.7%	5.3%	3.3%	8.7%	2.2%	6.8%	4.9%	4.1%	4.0%	8.7%	7.3%	4.0%	4.1%	6.1%	4.0%	0.4%	0.6%
Total May:	4.9%	8.6%	7.8%	8.4%	6.1%	6.2%	4.7%	12.4%	4.0%	9.1%	6.8%	5.2%	4.0%	5.2%	9.0%	5.6%	9.5%	10.6%	8.5%	7.4%	5.6%	3.4%	9.5%	6.5%	5.5%	5.5%	7.3%	4.2%	0.2%	2.8%
Medical & Dental	0.0%	0.0%	0.0%	0.0%	0.0%	0.0%	0.0%	0.0%	0.0%	0.0%	0.0%	0.0%	0.0%	0.0%	0.0%	0.0%	0.0%	0.0%	0.0%	0.0%	0.0%	0.0%	0.0%	0.0%	0.0%	0.0%	0.0%	0.0%	0.0%	0.0%
Nursing & Midwifery	0.0%	9.7%	10.2%	13.6%	6.5%	6.1%	0.0%	15.6%	4.6%	8.5%	7.6%	6.5%	9.0%	3.5%	8.6%	4.8%	9.0%	15.7%	14.3%	7.1%	6.5%	9.9%	13.5%	7.2%	7.7%	2.7%	9.6%	5.0%	0.3%	3.6%
Health & Social Care Professionals	5.3%	5.1%	7.1%	5.1%	4.3%	5.3%	0.1%	4.2%	0.0%	4.4%	7.4%	1.3%	1.6%	2.9%	7.0%	5.8%	5.6%	14.2%	1.7%	4.6%	9.0%	1.6%	7.0%	6.5%	9.2%	6.3%	5.8%	3.1%	0.1%	2.9%
Management & Administrative	1.5%	0.0%	1.3%	1.8%	1.6%	0.0%	5.3%	3.5%	0.0%	2.1%	5.0%	0.0%	1.5%	0.0%	0.3%	4.2%	4.6%	4.0%	1.0%	3.8%	3.4%	0.6%	1.5%	4.8%	12.3%	5.0%	2.8%	1.9%	0.1%	0.6%
General Support	0.0%	0.0%	0.7%	26.9%	4.0%	34.1%	5.3%	6.3%	0.0%	14.5%	6.1%	8.0%	0.0%	0.0%	23.2%	10.7%	5.0%	8.6%	14.1%	0.8%	4.3%	10.3%	5.6%	16.4%	8.6%	7.7%	6.2%	0.1%	2.4%	
Patient & Client Care	5.0%	10.1%	8.8%	8.5%	7.6%	5.7%	12.8%	15.5%	5.8%	9.9%	6.3%	4.2%	3.4%	7.1%	11.8%	5.3%	13.5%	9.5%	8.5%	8.1%	2.7%	1.5%	11.1%	8.1%	3.8%	5.1%	7.9%	4.7%	0.3%	2.9%
Total April:	3.8%	5.4%	10.5%	11.2%	9.6%	11.7%	7.7%	12.2%	6.0%	13.1%	9.1%	6.6%	8.3%	8.2%	9.1%	5.2%	9.9%	20.4%	12.7%	15.4%	14.9%	13.3%	22.3%	9.3%	7.6%	9.0%	11.0%	5.0%	0.5%	5.6%
Medical & Dental	0.0%	0.0%	0.0%	0.0%	0.0%	0.0%	0.0%	0.0%	0.0%	0.0%	0.0%	0.0%	0.0%	0.0%	0.0%	0.0%	0.0%	0.0%	0.0%	0.0%	0.0%	0.0%	0.0%	0.0%	0.0%	0.0%	0.0%	0.0%	0.0%	0.0%
Nursing & Midwifery	0.0%	4.8%	13.8%	17.1%	9.6%	8.5%	0.0%	17.2%	5.9%	15.6%	11.8%	8.8%	11.1%	12.4%	8.6%	5.5%	13.3%	33.0%	17.7%	16.5%	21.5%	17.9%	27.3%	9.4%	10.9%	9.9%	13.9%	5.2%	0.8%	7.9%
Health & Social Care Professionals	5.4%	3.2%	8.2%	9.6%	6.6%	20.7%	0.9%	6.1%	11.5%	4.3%	10.7%	2.7%	8.9%	3.9%	4.1%	4.8%	6.3%	19.4%	2.6%	11.5%	16.4%	9.2%	15.2%	8.4%	7.3%	6.6%	8.6%	3.7%	0.0%	4.3%
Management & Administrative	0.0%	0.3%	6.8%	3.3%	1.7%	0.0%	5.5%	4.5%	0.0%	0.3%	2.6%	0.0%	8.9%	1.0%	2.9%	7.8%	5.5%	3.7%	0.8%	4.5%	2.9%	1.0%	10.7%	2.8%	20.6%	4.1%	3.8%	1.8%	0.2%	1.7%
General Support	0.0%	12.6%	8.2%	5.7%	39.3%	10.7%	15.4%	0.0%	19.6%	9.5%	6.9%	0.4%	0.0%	0.0%	14.4%	7.1%	10.8%	12.6%	25.1%	5.2%	26.1%	18.9%	16.6%	11.4%	8.4%	13.2%	5.9%	0.2%	7.1%	
Patient & Client Care	3.4%	7.0%	11.5%	11.3%	11.0%	10.0%	20.9%	10.3%	8.4%	13.1%	7.2%	5.1%	7.9%	10.5%	14.1%	5.0%	12.4%	18.3%	13.6%	15.7%	11.9%	11.9%	30.4%	14.5%	5.8%	10.2%	12.8%	6.0%	0.4%	6.6%
Total March:	5.1%	7.6%	8.4%	8.2%	7.2%	9.3%	4.7%	12.0%	5.9%	9.4%	6.8%	6.7%	7.6%	10.1%	6.3%	4.9%	5.6%	8.4%	13.3%	6.2%	4.5%	5.0%	4.4%	9.7%	5.8%	7.4%	7.7%	4.6%	0.4%	2.6%
Medical & Dental	0.0%	0.0%	0.0%	0.0%	0.0%	0.0%	0.0%	0.0%	0.0%	0.0%	0.0%	0.0%	0.0%	0.0%	0.0%	0.0%	0.0%	0.0%	0.0%	0.0%	0.0%	0.0%	0.0%	0.0%	0.0%	0.0%	0.0%	0.0%	0.0%	0.0%
Nursing & Midwifery	0.0%	6.4%	8.1%	14.8%	7.8%	8.5%	3.3%	12.5%	2.4%	10.4%	5.4%	7.6%	11.4%	8.9%	4.9%	1.9%	6.0%	10.3%	16.7%	5.5%	4.2%	7.4%	4.1%	9.1%	5.7%	11.1%	8.3%	5.0%	0.4%	2.9%
Health & Social Care Professionals	6.9%	7.0%	7.0%	6.8%	6.1%	13.7%	2.1%	6.3%	17.5%	5.5%	8.8%	4.8%	2.3%	6.0%	6.6%	5.9%	5.5%	8.5%	8.1%	3.9%	6.5%	5.5%	4.5%	10.3%	9.4%	8.4%	7.1%	4.3%	0.3%	2.5%
Management & Administrative	1.0%	4.1%	9.1%	3.2%	1.9%	7.8%	6.8%	7.6%	0.0%	4.1%	2.4%	4.9%	4.9%	3.4%	12.8%	2.3%	4.2%	4.0%	6.6%	5.0%	1.5%	6.2%	2.3%	4.6%	11.6%	4.5%	4.8%	2.6%	0.2%	1.7%
General Support	0.1%	8.5%	16.8%	5.0%	9.4%	6.8%	10.4%	15.2%	11.1%	8.8%	4.1%	0.0%	0.0%	0.0%	0.0%	5.6%	6.0%	15.1%	8.8%	0.0%	7.5%	4.9%	8.3%	14.7%	4.2%	7.5%	5.0%	0.2%	2.7%	
Patient & Client Care	4.6%	8.1%	9.1%	7.7%	8.2%	6.3%	7.9%	15.3%	11.3%	9.8%	6.9%	7.1%	7.8%	13.1%	6.0%	4.8%	6.4%	8.8%	13.4%	7.1%	4.0%	3.3%	4.7%	11.7%	4.4%	6.5%	8.3%	5.2%	0.4%	2.7%
Total February:	4.2%	3.9%	4.7%	5.7%	5.2%	5.0%	5.3%	6.5%	1.5%	4.9%	4.3%	4.4%	5.1%	4.6%	3.1%	3.1%	4.0%	5.2%	4.9%	4.7%	4.0%	4.9%	4.0%	4.8%	6.1%	3.7%	4.7%	4.2%	0.5%	
Medical & Dental	0.0%	0.0%	0.0%	0.0%	0.0%	0.0%	0.0%	0.0%	0.0%	0.0%	0.0%	0.0%	0.0%	0.0%	0.0%	0.0%	0.0%	0.0%	0.0%	0.0%	0.0%	0.0%	0.0%	0.0%	0.0%	0.0%	0.0%	0.0%	0.0%	0.0%
Nursing & Midwifery	0.0%	4.2%	5.3%	7.8%	4.8%	2.7%	5.4%	5.6%	1.9%	4.3%	4.0%	5.2%	9.7%	2.6%	2.4%	5.9%	3.6%	4.5%	2.9%	4.4%	4.0%	7.0%	4.6%	5.3%	5.4%	2.6%	4.7%	4.2%	0.5%	
Health & Social Care Professionals	4.3%	2.4%	3.8%	7.9%	6.1%	5.9%	3.6%	2.6%	0.0%	2.1%	4.2%	6.0%	1.8%	4.5%	3.3%	4.3%	5.7%	4.7%	3.2%	2.8%	4.7%	4.4%	3.7%	4.7%	5.5%	2.8%	4.4%	3.9%	0.4%	
Management & Administrative	0.8%	1.1%	6.2%	4.7%	2.2%	9.8%	6.0%	1.0%	0.0%	0.8%	3.5%	1.4%	0.5%	8.9%	1.7%	0.8%	5.4%	0.2%	6.6%	1.4%	9.0%	2.3%	5.6%	4.5%	7.7%	3.3%	3.0%	0.3%	0.0%	
General Support	8.9%	1.7%	2.5%	2.3%	6.9%	16.0%	3.6%	0.0%	3.4%	4.9%	3.0%	0.0%	0.0%	1.4%	0.0%	8.0%	5.1%	8.1%	4.3%	1.5%	6.8%	4.2%	6.8%	6.2%	11.8%	6.3%	5.6%	4.6%	0.4%	
Patient & Client Care	4.3%	4.4%	5.1%	5.6%	5.0%	6.4%	11.1%	2.5%	5.9%	4.6%	3.7%	4.7%	5.6%	2.8%	2.1%	2.8%	5.9%	5.4%	5.4%	4.5%	3.4%	4.2%	5.1%	6.1%	3.9%	5.1%	4.9%	0.5%		
Total January:	5.6%	5.5%	4.8%	6.3%	6.5%	5.1%	4.4%	6.7%	1.2%	5.7%	4.4%	4.8%	4.5%	6.8%	3.4%	4.0%	5.1%	4.6%	5.3%	6.1%	4.4%	5.0%	5.6%	4.8%	7.6%	4.1%	5.2%	4.7%	0.6%	
Medical & Dental	0.0%	0.0%	0.0%	0.0%	0.0%	0.0%	0.0%	0.0%	0.0%	0.0%	0.0%	0.0%	0.0%	0.0%	0.0%	0.0%	0.0%	0.0%	0.0%	0.0%	0.0%	0.0%	0.0%	0.0%	0.0%	0.0%	0.0%	0.0%	0.0%	0.0%
Nursing & Midwifery	0.0%	6.9%	4.4%	9.9%	5.6%	1.6%	3.6%	5.0%	1.2%	5.5%	4.2%	6.0%	1.8%	1.5%	7.9%	5.9%	2.1%	3.7%	2.9%	5.0%	4.5%	8.5%	5.9%	6.1%	12.1%	2.0%	5.2%	4.6%	0.6%	
Health & Social Care Professionals	9.1%	3.6%	4.7%	6.4%	4.8%	3.2%	2.4%	4.8%	4.8%	3.2%	6.7%	1.5%	1.5%	3.5%	3.1%	3.5%	6.7%	2.0%	4.4%	7.9%	5.1%	2.5%	5.6%	4.5%	5.3%	3.7%	4.8%	4.2%	0.5%	
Management & Administrative	0.8%	2.6%	6.9%	5.7%	4.8%	5.1%	3.2%	5.9%	4.0%	2.8%	2.1%	1.5%	2.6%	1.6%	1.6%	4.9%	1.7%	3.5%	3.9%	1.8%	6.7%	1.9%	3.5%	2.9%	6.3%	4.8%	3.8%	3.0%	0.5%	
General Support	8.8%	1.4%	0.0%																											