

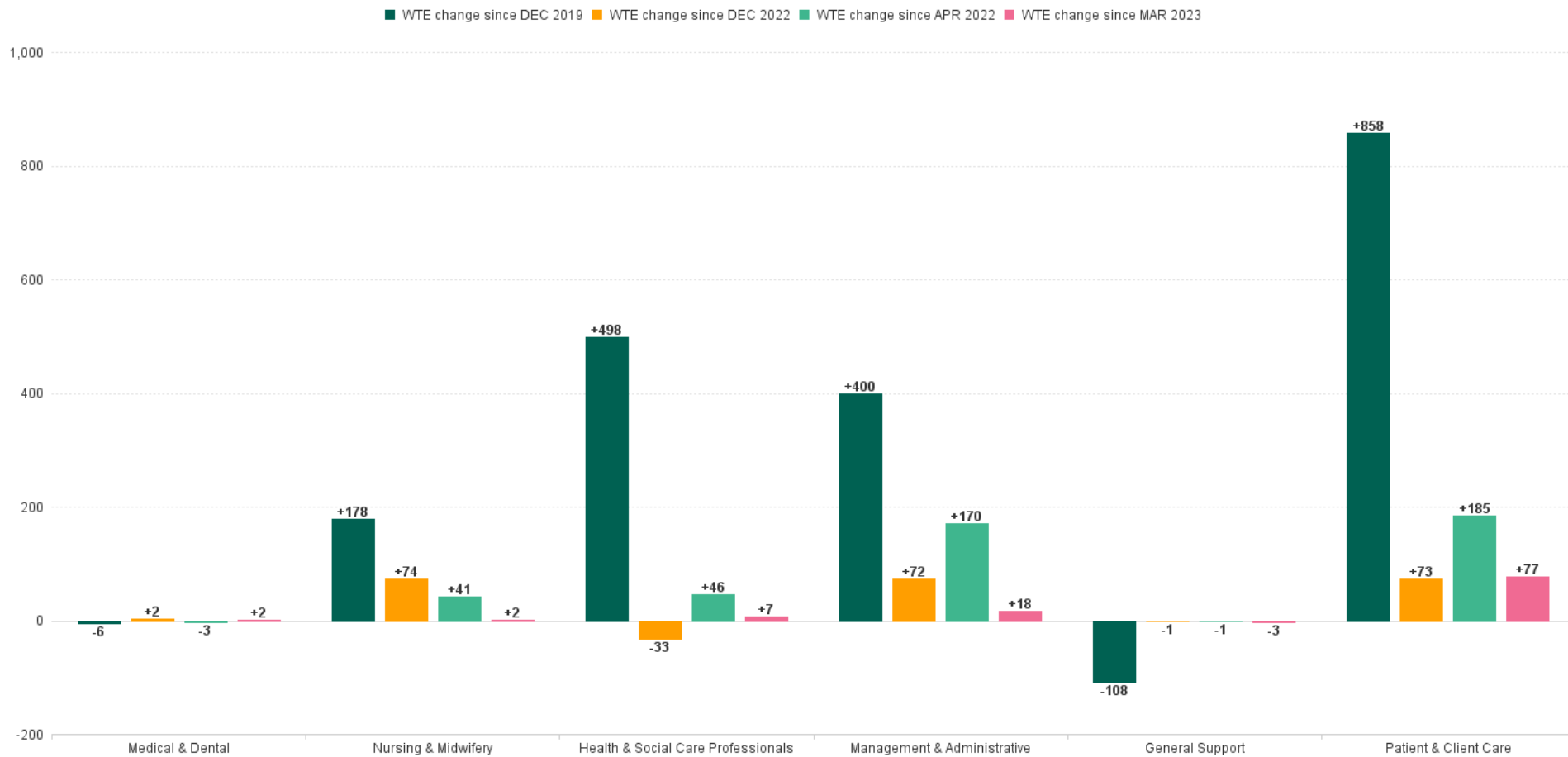
# Disabilities Employment Report : APR 2023

## Employment Report by Staff Group

APR 2023	WTE DEC 2019	WTE DEC 2022	WTE MAR 2023	WTE APR 2023	WTE change since DEC 2019	WTE change since DEC 2022	WTE change since MAR 2023	No. APR 2023
<b>Overall</b>	<b>18,273</b>	<b>19,903</b>	<b>19,990</b>	<b>20,092</b>	<b>+1,820</b>	<b>+189</b>	<b>+102</b>	<b>23,776</b>
Consultants	24	18	19	20	-4	+2	+1	25
Registrars	13	10	10	11	-2	+1	+1	12
SHO/ Interns	7	9	10	10	+3	+1	+0	15
Medical/ Dental, other	14	13	12	12	-3	-1	+0	18
<b>Medical &amp; Dental</b>	<b>58</b>	<b>50</b>	<b>51</b>	<b>53</b>	<b>-6</b>	<b>+2</b>	<b>+2</b>	<b>70</b>
Nurse/ Midwife Manager	892	959	976	976	+84	+17	+0	1,049
Nurse/ Midwife Specialist & AN/MP	62	70	77	77	+16	+8	-0	84
Staff Nurse/ Staff Midwife	2,569	2,618	2,608	2,604	+35	-14	-4	2,986
Public Health Nurse	6	12	12	12	+6	+0	+0	14
<i>Pre-registration Nurse/ Midwife Intern</i>	28	7	72	77	+49	+70	+5	147
<i>Nursing/ Midwifery awaiting registration</i>	14	4	1	1	-13	-3	-0	1
Nursing/ Midwifery Student	42	11	73	78	+36	+67	+5	148
Nursing/ Midwifery other	22	28	24	24	+2	-4	+0	28
<b>Nursing &amp; Midwifery</b>	<b>3,593</b>	<b>3,697</b>	<b>3,769</b>	<b>3,771</b>	<b>+178</b>	<b>+74</b>	<b>+2</b>	<b>4,309</b>
Therapy Professions	763	790	782	776	+13	-15	-6	906
Health Science/ Diagnostics	20	21	21	24	+4	+3	+3	25
Social Care	2,595	3,055	2,992	2,994	+399	-60	+2	3,518
Social Workers	219	239	233	235	+17	-4	+2	273
Psychologists	202	239	241	239	+37	-0	-2	263
Pharmacy	7	8	8	7	+0	-1	-1	10
H&SC, Other	85	68	104	113	+28	+45	+9	134
<b>Health &amp; Social Care Professionals</b>	<b>3,890</b>	<b>4,421</b>	<b>4,381</b>	<b>4,388</b>	<b>+498</b>	<b>-33</b>	<b>+7</b>	<b>5,129</b>
Management (VIII & above)	180	236	235	235	+55	-1	-0	241
Administrative/ Supervisory (V to VII)	477	665	696	706	+229	+41	+11	748
Clerical (III & IV)	660	744	769	776	+116	+32	+7	916
<b>Management &amp; Administrative</b>	<b>1,317</b>	<b>1,645</b>	<b>1,699</b>	<b>1,717</b>	<b>+400</b>	<b>+72</b>	<b>+18</b>	<b>1,905</b>
Support	733	624	614	610	-124	-14	-5	872
Maintenance/ Technical	124	126	138	140	+15	+14	+2	152
<b>General Support</b>	<b>857</b>	<b>750</b>	<b>752</b>	<b>749</b>	<b>-108</b>	<b>-1</b>	<b>-3</b>	<b>1,024</b>
Health Care Assistants	6,818	7,495	7,500	7,574	+756	+79	+74	9,048
Home Help	99	80	77	72	-27	-8	-6	216
Care, other	1,638	1,766	1,759	1,769	+130	+2	+9	2,075
<b>Patient &amp; Client Care</b>	<b>8,556</b>	<b>9,341</b>	<b>9,337</b>	<b>9,414</b>	<b>+858</b>	<b>+73</b>	<b>+77</b>	<b>11,339</b>



## WTE Change by Staff Category



## Disabilities Report by CHO: APR 2023

APR 2023	WTE DEC 2019	WTE DEC 2022	WTE MAR 2023	WTE APR 2023	WTE change since DEC 2019	WTE change since DEC 2022	WTE change since MAR 2023	No. APR 2023
<b>Overall</b>	<b>18,273</b>	<b>19,903</b>	<b>19,990</b>	<b>20,092</b>	<b>+1,820</b>	<b>+189</b>	<b>+102</b>	<b>23,776</b>
CHO 1	1,498	1,698	1,735	1,740	+242	+42	+5	1,929
CHO 2	1,497	1,607	1,641	1,650	+154	+44	+10	2,021
CHO 3	1,823	1,989	2,007	2,005	+181	+16	-2	2,386
CHO 4	2,425	2,640	2,639	2,655	+230	+15	+17	3,205
CHO 5	1,488	1,656	1,670	1,695	+208	+39	+25	1,996
CHO 6	1,198	1,216	1,204	1,203	+6	-13	-1	1,381
CHO 7	2,982	3,410	3,407	3,420	+438	+10	+13	4,035
CHO 8	2,162	2,345	2,344	2,371	+209	+25	+26	2,860
CHO 9	3,194	3,336	3,337	3,346	+152	+10	+9	3,957
other Community Services	6	6	6	6	+0	+0	+0	6





## Disabilities Employment Report by HSE/S38: APR 2023

APR 2023	WTE DEC 2019	WTE DEC 2022	WTE MAR 2023	WTE APR 2023	WTE change since DEC 2019	WTE change since DEC 2022	WTE change since MAR 2023	No. APR 2023
<b>Overall</b>	<b>18,273</b>	<b>19,903</b>	<b>19,990</b>	<b>20,092</b>	<b>+1,820</b>	<b>+189</b>	<b>+102</b>	<b>23,776</b>
Health Service Executive	3,873	4,200	4,283	4,308	+435	+108	+25	4,890
Section 38 Voluntary Agencies	14,399	15,703	15,707	15,784	+1,384	+81	+77	18,886



# Disabilities Employment Report by HSE: APR 2023

APR 2023	WTE DEC 2019	WTE DEC 2022	WTE MAR 2023	WTE APR 2023	WTE change since DEC 2019	WTE change since DEC 2022	WTE change since MAR 2023	No. APR 2023
<b>Total HSE</b>	<b>3,873</b>	<b>4,200</b>	<b>4,283</b>	<b>4,308</b>	<b>+435</b>	<b>+108</b>	<b>+25</b>	<b>4,890</b>
Consultants	8	6	6	7	-1	+1	+1	7
Registrars	3	2	1	2	-1	-0	+1	2
SHO/ Interns		1	1	2	+2	+1	+1	2
Medical/ Dental, other	6	6	5	5	-1	-1	+0	9
<b>Medical &amp; Dental</b>	<b>17</b>	<b>15</b>	<b>13</b>	<b>15</b>	<b>-1</b>	<b>+1</b>	<b>+2</b>	<b>20</b>
Nurse/ Midwife Manager	257	267	278	276	+19	+8	-2	290
Nurse/ Midwife Specialist & AN/MP	14	18	24	25	+11	+7	+1	26
Staff Nurse/ Staff Midwife	788	782	792	791	+4	+9	-1	870
Public Health Nurse	6	12	12	12	+6	+0	+0	14
Nursing/ Midwifery awaiting registration	14	2	1	1	-9	-0	-0	1
Pre-registration Nurse/ Midwife Intern	3	7	18	19	+1	-11	+1	38
Nursing/ Midwifery Student	17	9	19	20	+3	+11	+1	39
Nursing/ Midwifery other	8	8	9	9	+1	+0	+0	10
<b>Nursing &amp; Midwifery</b>	<b>1,089</b>	<b>1,096</b>	<b>1,133</b>	<b>1,132</b>	<b>+44</b>	<b>+36</b>	<b>-1</b>	<b>1,249</b>
Therapy Professions	330	322	319	319	-11	-2	-0	377
Health Science/ Diagnostics	2	6	6	6	+4	+0	+0	6
Social Care	89	109	113	113	+24	+3	-0	123
Social Workers	58	62	61	61	+3	-1	+0	69
Psychologists	74	95	97	96	+22	+1	-1	105
H&SC, Other	26	19	18	18	-8	-1	-0	21
<b>Health &amp; Social Care Professionals</b>	<b>579</b>	<b>612</b>	<b>614</b>	<b>613</b>	<b>+34</b>	<b>+1</b>	<b>-1</b>	<b>701</b>
Management (VIII & above)	45	69	71	73	+28	+4	+1	74
Administrative/ Supervisory (V to VII)	140	231	234	241	+102	+11	+8	258
Clerical (III & IV)	178	227	239	244	+66	+17	+4	275
<b>Management &amp; Administrative</b>	<b>363</b>	<b>526</b>	<b>544</b>	<b>558</b>	<b>+195</b>	<b>+31</b>	<b>+14</b>	<b>607</b>
Support	87	67	68	66	-21	-1	-1	78
Maintenance/ Technical	21	21	23	24	+3	+3	+0	25
<b>General Support</b>	<b>108</b>	<b>88</b>	<b>91</b>	<b>90</b>	<b>-18</b>	<b>+2</b>	<b>-1</b>	<b>103</b>
Health Care Assistants	1,510	1,616	1,632	1,646	+135	+29	+13	1,801
Home Help	99	80	77	72	-27	-8	-6	216
Care, other	108	166	177	182	+74	+17	+5	193
<b>Patient &amp; Client Care</b>	<b>1,717</b>	<b>1,862</b>	<b>1,887</b>	<b>1,900</b>	<b>+182</b>	<b>+38</b>	<b>+13</b>	<b>2,210</b>



## Disabilities Employment Report by S38 Hospitals: APR 2023

APR 2023	WTE DEC 2019	WTE DEC 2022	WTE MAR 2023	WTE APR 2023	WTE change since DEC 2019	WTE change since DEC 2022	WTE change since MAR 2023	No. APR 2023
<b>Total S38 Vols</b>	<b>14,399</b>	<b>15,703</b>	<b>15,707</b>	<b>15,784</b>	<b>+1,384</b>	<b>+81</b>	<b>+77</b>	<b>18,886</b>
Consultants	16	13	13	14	-3	+1	+0	18
Registrars	10	8	9	9	-1	+1	-0	10
SHO/ Interns	7	8	9	8	+1	+0	-0	13
Medical/ Dental, other	8	7	6	6	-2	-0	+0	9
<b>Medical &amp; Dental</b>	<b>41</b>	<b>35</b>	<b>37</b>	<b>37</b>	<b>-4</b>	<b>+2</b>	<b>-0</b>	<b>50</b>
Nurse/ Midwife Manager	635	692	697	700	+65	+9	+3	759
Nurse/ Midwife Specialist & AN/MP	48	52	53	52	+4	+1	-1	58
Staff Nurse/ Staff Midwife	1,781	1,836	1,816	1,813	+32	-23	-3	2,116
Pre-registration Nurse/ Midwife Intern	25		54	58	-8	+2	+4	109
Nursing/ Midwifery awaiting registration		2						
Nursing/ Midwifery Student	25	2	54	58	+33	+56	+4	109
Nursing/ Midwifery other	14	19	15	15	+1	-4	+0	18
<b>Nursing &amp; Midwifery</b>	<b>2,504</b>	<b>2,601</b>	<b>2,636</b>	<b>2,639</b>	<b>+134</b>	<b>+38</b>	<b>+3</b>	<b>3,060</b>
Therapy Professions	433	469	463	457	+24	-12	-6	529
Health Science/ Diagnostics	18	15	15	18	+0	+3	+3	19
Social Care	2,506	2,946	2,879	2,882	+376	-64	+2	3,395
Social Workers	161	177	173	175	+13	-3	+2	204
Psychologists	128	144	143	143	+15	-1	-1	158
Pharmacy	7	8	8	7	+0	-1	-1	10
H&SC, Other	59	49	86	95	+36	+45	+9	113
<b>Health &amp; Social Care Professionals</b>	<b>3,312</b>	<b>3,808</b>	<b>3,767</b>	<b>3,775</b>	<b>+463</b>	<b>-33</b>	<b>+8</b>	<b>4,428</b>
Management (VIII & above)	135	167	164	162	+27	-5	-2	167
Administrative/ Supervisory (V to VII)	338	435	462	465	+127	+30	+3	490
Clerical (III & IV)	482	517	529	532	+50	+15	+3	641
<b>Management &amp; Administrative</b>	<b>955</b>	<b>1,118</b>	<b>1,155</b>	<b>1,159</b>	<b>+205</b>	<b>+41</b>	<b>+4</b>	<b>1,298</b>
Support	646	557	547	543	-102	-14	-3	794
Maintenance/ Technical	103	105	114	116	+13	+11	+1	127
<b>General Support</b>	<b>749</b>	<b>662</b>	<b>661</b>	<b>659</b>	<b>-90</b>	<b>-3</b>	<b>-2</b>	<b>921</b>
Health Care Assistants	5,308	5,878	5,868	5,928	+620	+50	+60	7,247
Care, other	1,530	1,600	1,582	1,586	+56	-14	+4	1,882
<b>Patient &amp; Client Care</b>	<b>6,839</b>	<b>7,479</b>	<b>7,450</b>	<b>7,515</b>	<b>+676</b>	<b>+36</b>	<b>+64</b>	<b>9,129</b>

# Disabilities Employment Report by Grade Group: APR 2023

## CHO 1

APR 2023	WTE DEC 2019	WTE DEC 2022	WTE MAR 2023	WTE APR 2023	WTE change since DEC 2019	WTE change since DEC 2022	WTE change since MAR 2023	No. APR 2023
<b>Overall</b>	<b>1,498</b>	<b>1,698</b>	<b>1,735</b>	<b>1,740</b>	<b>+242</b>	<b>+42</b>	<b>+5</b>	<b>1,929</b>
Other Medical	3	3	2	2	-1	-1	+0	5
<b>Medical/ Dental, other</b>	<b>3</b>	<b>3</b>	<b>2</b>	<b>2</b>	<b>-1</b>	<b>-1</b>	<b>+0</b>	<b>5</b>
<b>Medical &amp; Dental</b>	<b>3</b>	<b>3</b>	<b>2</b>	<b>2</b>	<b>-1</b>	<b>-1</b>	<b>+0</b>	<b>5</b>
Clinical Nurse/ Midwife Manager	91	100	107	108	+17	+8	+1	113
Director Nursing/Midwifery, Assistant	6	5	6	5	-1	+0	-0	6
Director of Nursing/Midwifery	8	7	7	7	-1	+0	+0	7
<b>Nurse/ Midwife Manager</b>	<b>105</b>	<b>112</b>	<b>120</b>	<b>120</b>	<b>+15</b>	<b>+8</b>	<b>+0</b>	<b>126</b>
Advanced Nurse/ Midwife Practitioner		2	3	3	+3	+1	+0	3
Clinical Nurse/ Midwife Specialist	7	6	9	9	+2	+3	+0	10
<b>Nurse/ Midwife Specialist &amp; AN/MP</b>	<b>7</b>	<b>8</b>	<b>12</b>	<b>12</b>	<b>+5</b>	<b>+4</b>	<b>+0</b>	<b>13</b>
Staff Nurse [Intellectual Disability]	205	273	268	263	+58	-10	-5	289
Staff Nurse [Psychiatric]	2	3	3	3	+1	+0	+0	3
Staff Nurses [General/ Children's]	117	59	61	60	-57	+1	-1	68
<b>Staff Nurse/ Staff Midwife</b>	<b>324</b>	<b>335</b>	<b>331</b>	<b>326</b>	<b>+2</b>	<b>-9</b>	<b>-5</b>	<b>360</b>
Public Health Nurse		1	1	1	+1	-0	+0	1
<b>Public Health Nurse</b>		<b>1</b>	<b>1</b>	<b>1</b>	<b>+1</b>	<b>-0</b>	<b>+0</b>	<b>1</b>
Nursing/ Midwifery awaiting registration	11				-11			
Pre-registration Nurse/ Midwife Intern	3	6	12	13	+10	+7	+1	25
<b>Nursing/ Midwifery Student</b>	<b>14</b>	<b>6</b>	<b>12</b>	<b>13</b>	<b>-1</b>	<b>+7</b>	<b>+1</b>	<b>25</b>
Nursing Education/Clinical	5	4	4	4	-0	+0	+0	5
<b>Nursing/ Midwifery other</b>	<b>5</b>	<b>4</b>	<b>4</b>	<b>4</b>	<b>-0</b>	<b>+0</b>	<b>+0</b>	<b>5</b>
<b>Nursing &amp; Midwifery</b>	<b>455</b>	<b>467</b>	<b>481</b>	<b>476</b>	<b>+22</b>	<b>+9</b>	<b>-5</b>	<b>530</b>
Dietitians		2	2	2	+2	+0	+0	2
Occupational Therapists	13	22	20	19	+6	-3	-1	22
Physiotherapists	9	17	16	17	+8	+0	+0	19
Speech & Language Therapists	21	18	18	18	-2	+0	+0	21
<b>Therapy Professions</b>	<b>42</b>	<b>58</b>	<b>56</b>	<b>56</b>	<b>+13</b>	<b>-3</b>	<b>-0</b>	<b>64</b>
Social Care	8	17	19	20	+12	+3	+1	22
<b>Social Care</b>	<b>8</b>	<b>17</b>	<b>19</b>	<b>20</b>	<b>+12</b>	<b>+3</b>	<b>+1</b>	<b>22</b>
Social Workers	16	17	17	17	+2	+0	+0	18
<b>Social Workers</b>	<b>16</b>	<b>17</b>	<b>17</b>	<b>17</b>	<b>+2</b>	<b>+0</b>	<b>+0</b>	<b>18</b>
Psychologists	5	12	12	12	+7	+1	-0	13
<b>Psychologists</b>	<b>5</b>	<b>12</b>	<b>12</b>	<b>12</b>	<b>+7</b>	<b>+1</b>	<b>-0</b>	<b>13</b>
Counsellor Therapists	6	8	7	7	+2	-1	+0	8





## Disabilities Employment Report by Grade Group: APR 2023

APR 2023	WTE DEC 2019	WTE DEC 2022	WTE MAR 2023	WTE APR 2023	WTE change since DEC 2019	WTE change since DEC 2022	WTE change since MAR 2023	No. APR 2023
<b>Overall</b>	<b>1,498</b>	<b>1,698</b>	<b>1,735</b>	<b>1,740</b>	<b>+242</b>	<b>+42</b>	<b>+5</b>	<b>1,929</b>
Other Health & Social Care	7				-7			
<b>H&amp;SC, Other</b>	<b>12</b>	<b>8</b>	<b>7</b>	<b>7</b>	<b>-5</b>	<b>-1</b>	<b>+0</b>	<b>8</b>
<b>Health &amp; Social Care Professionals</b>	<b>82</b>	<b>112</b>	<b>112</b>	<b>112</b>	<b>+30</b>	<b>+1</b>	<b>+0</b>	<b>125</b>
Executive Management		1	1	1	+1	+0	+0	1
Senior Management (VIII & GM)	14	14	14	14	-0	+0	+0	14
<b>Management (VIII &amp; above)</b>	<b>14</b>	<b>15</b>	<b>15</b>	<b>15</b>	<b>+1</b>	<b>+0</b>	<b>+0</b>	<b>15</b>
Middle Management (V-VII)	28	55	53	55	+27	+0	+1	57
<b>Administrative/ Supervisory (V to VII)</b>	<b>28</b>	<b>55</b>	<b>53</b>	<b>55</b>	<b>+27</b>	<b>+0</b>	<b>+1</b>	<b>57</b>
General Administrative (III & IV)	50	63	62	62	+12	-1	-0	69
<b>Clerical (III &amp; IV)</b>	<b>50</b>	<b>63</b>	<b>62</b>	<b>62</b>	<b>+12</b>	<b>-1</b>	<b>-0</b>	<b>69</b>
<b>Management &amp; Administrative</b>	<b>91</b>	<b>133</b>	<b>130</b>	<b>131</b>	<b>+40</b>	<b>-1</b>	<b>+1</b>	<b>141</b>
Catering	12	9	10	10	-3	+0	-0	13
Household Services	31	18	18	17	-14	-0	-1	22
Other Support	5	3	4	4	-1	+1	+0	4
Portering	1	0	0	0	-1	+0	+0	1
<b>Support</b>	<b>49</b>	<b>30</b>	<b>32</b>	<b>31</b>	<b>-18</b>	<b>+1</b>	<b>-1</b>	<b>40</b>
Maintenance	6	4	4	4	-2	+0	+0	4
<b>Maintenance/ Technical</b>	<b>6</b>	<b>4</b>	<b>4</b>	<b>4</b>	<b>-2</b>	<b>+0</b>	<b>+0</b>	<b>4</b>
<b>General Support</b>	<b>55</b>	<b>34</b>	<b>36</b>	<b>35</b>	<b>-20</b>	<b>+1</b>	<b>-1</b>	<b>44</b>
Attendant/ Aide	17	17	16	17	-0	-0	+0	19
Health Care Assistant/ Care Assistant	744	868	881	887	+143	+19	+6	969
<b>Health Care Assistants</b>	<b>761</b>	<b>884</b>	<b>898</b>	<b>904</b>	<b>+142</b>	<b>+19</b>	<b>+6</b>	<b>988</b>
Home Helps	13	16	16	14	+0	-2	-2	28
<b>Home Help</b>	<b>13</b>	<b>16</b>	<b>16</b>	<b>14</b>	<b>+0</b>	<b>-2</b>	<b>-2</b>	<b>28</b>
Home Care Services	3	2	2	2	-1	+0	+0	2
Other Care Grades	9	13	15	14	+5	+1	-1	14
Pastoral Care	1	2	2	2	+1	+0	+0	2
Workshop Services	24	32	42	48	+24	+16	+6	50
<b>Care, other</b>	<b>37</b>	<b>49</b>	<b>61</b>	<b>66</b>	<b>+29</b>	<b>+16</b>	<b>+5</b>	<b>68</b>
<b>Patient &amp; Client Care</b>	<b>812</b>	<b>949</b>	<b>974</b>	<b>983</b>	<b>+171</b>	<b>+34</b>	<b>+9</b>	<b>1,084</b>



# Disabilities Employment Report by Grade Group: APR 2023

## CHO 2

APR 2023	WTE DEC 2019	WTE DEC 2022	WTE MAR 2023	WTE APR 2023	WTE change since DEC 2019	WTE change since DEC 2022	WTE change since MAR 2023	No. APR 2023
<b>Overall</b>	<b>1,497</b>	<b>1,607</b>	<b>1,641</b>	<b>1,650</b>	<b>+154</b>	<b>+44</b>	<b>+10</b>	<b>2,021</b>
Consultant Paediatrics	1	1	1	1	+0	+0	+0	1
Consultant Psychiatry	2	2	2	2	+0	+0	+0	3
<b>Consultants</b>	<b>3</b>	<b>3</b>	<b>3</b>	<b>3</b>	<b>+0</b>	<b>+0</b>	<b>+0</b>	<b>4</b>
Registrar	1		1	1	+0	+1	+0	1
Senior Registrar	1	1	1	1	+0	+0	+0	1
<b>Registrars</b>	<b>2</b>	<b>1</b>	<b>2</b>	<b>2</b>	<b>+0</b>	<b>+1</b>	<b>+0</b>	<b>2</b>
Senior House Officer		1				-1		
<b>SHO/ Interns</b>		<b>1</b>				<b>-1</b>		
Other Medical	1	1	1	1	+0	+0	+0	1
<b>Medical/ Dental, other</b>	<b>1</b>	<b>1</b>	<b>1</b>	<b>1</b>	<b>+0</b>	<b>+0</b>	<b>+0</b>	<b>1</b>
<b>Medical &amp; Dental</b>	<b>6</b>	<b>6</b>	<b>6</b>	<b>6</b>	<b>+0</b>	<b>+0</b>	<b>+0</b>	<b>7</b>
Clinical Nurse/ Midwife Manager	75	73	70	71	-4	-2	+0	79
Director Nursing/Midwifery, Assistant		1	1			-1	-1	
Director of Nursing/Midwifery	3	2	2	2	-1	-0	+0	2
<b>Nurse/ Midwife Manager</b>	<b>77</b>	<b>76</b>	<b>73</b>	<b>72</b>	<b>-5</b>	<b>-3</b>	<b>-1</b>	<b>81</b>
Advanced Nurse/ Midwife Practitioner	1	1	1	1	-0	-0	+0	1
Clinical Nurse/ Midwife Specialist	5	5	5	4	-0	-1	-1	5
<b>Nurse/ Midwife Specialist &amp; AN/MP</b>	<b>6</b>	<b>6</b>	<b>6</b>	<b>5</b>	<b>-1</b>	<b>-1</b>	<b>-1</b>	<b>6</b>
Staff Nurse [Intellectual Disability]	90	124	121	122	+32	-2	+1	150
Staff Nurse [Psychiatric]	19	16	16	15	-4	-0	-1	17
Staff Nurses [General/ Children's]	57	26	27	28	-29	+2	+1	33
<b>Staff Nurse/ Staff Midwife</b>	<b>165</b>	<b>166</b>	<b>164</b>	<b>165</b>	<b>-1</b>	<b>-1</b>	<b>+1</b>	<b>200</b>
<b>Nursing &amp; Midwifery</b>	<b>249</b>	<b>248</b>	<b>243</b>	<b>242</b>	<b>-6</b>	<b>-5</b>	<b>-1</b>	<b>287</b>
Dietitians	1	2	2	2	+1	+0	+0	2
Occupational Therapists	11	15	15	14	+3	-1	-1	17
Physiotherapists	13	13	14	14	+2	+2	+1	17
Speech & Language Therapists	16	18	18	19	+3	+1	+1	23
<b>Therapy Professions</b>	<b>41</b>	<b>48</b>	<b>48</b>	<b>49</b>	<b>+8</b>	<b>+1</b>	<b>+1</b>	<b>59</b>
Social Care	222	279	285	288	+66	+9	+3	345
<b>Social Care</b>	<b>222</b>	<b>279</b>	<b>285</b>	<b>288</b>	<b>+66</b>	<b>+9</b>	<b>+3</b>	<b>345</b>
Social Workers	26	27	26	28	+2	+1	+2	37
<b>Social Workers</b>	<b>26</b>	<b>27</b>	<b>26</b>	<b>28</b>	<b>+2</b>	<b>+1</b>	<b>+2</b>	<b>37</b>
Psychologists	16	19	22	22	+6	+3	+0	25
<b>Psychologists</b>	<b>16</b>	<b>19</b>	<b>22</b>	<b>22</b>	<b>+6</b>	<b>+3</b>	<b>+0</b>	<b>25</b>
Counsellor Therapists	3	6	5	5	+2	-1	+0	5
Other Health & Social Care	10	5	7	6	-4	+1	-1	10
Play Therapists/ Specialists	3	1	1	1	-2	+0	+0	1



## Disabilities Employment Report by Grade Group: APR 2023

APR 2023	WTE DEC 2019	WTE DEC 2022	WTE MAR 2023	WTE APR 2023	WTE change since DEC 2019	WTE change since DEC 2022	WTE change since MAR 2023	No. APR 2023
<b>Overall</b>	<b>1,497</b>	<b>1,607</b>	<b>1,641</b>	<b>1,650</b>	<b>+154</b>	<b>+44</b>	<b>+10</b>	<b>2,021</b>
<b>H&amp;SC, Other</b>	<b>16</b>	<b>11</b>	<b>12</b>	<b>11</b>	<b>-5</b>	<b>-0</b>	<b>-1</b>	<b>16</b>
<b>Health &amp; Social Care Professionals</b>	<b>321</b>	<b>385</b>	<b>393</b>	<b>399</b>	<b>+78</b>	<b>+14</b>	<b>+5</b>	<b>482</b>
Executive Management	2	2	2	2	+0	+0	+0	2
Senior Management (VIII & GM)	14	15	17	16	+2	+1	-1	16
<b>Management (VIII &amp; above)</b>	<b>16</b>	<b>17</b>	<b>19</b>	<b>18</b>	<b>+2</b>	<b>+1</b>	<b>-1</b>	<b>18</b>
Middle Management (V-VII)	40	64	70	70	+30	+6	+0	72
<b>Administrative/ Supervisory (V to VII)</b>	<b>40</b>	<b>64</b>	<b>70</b>	<b>70</b>	<b>+30</b>	<b>+6</b>	<b>+0</b>	<b>72</b>
General Administrative (III & IV)	50	54	58	60	+11	+6	+2	73
<b>Clerical (III &amp; IV)</b>	<b>50</b>	<b>54</b>	<b>58</b>	<b>60</b>	<b>+11</b>	<b>+6</b>	<b>+2</b>	<b>73</b>
<b>Management &amp; Administrative</b>	<b>106</b>	<b>135</b>	<b>146</b>	<b>148</b>	<b>+42</b>	<b>+14</b>	<b>+2</b>	<b>163</b>
Catering	1	1	1	1	-0	+0	+0	1
Household Services	19	19	19	20	+1	+0	+0	38
Other Support	25	26	26	26	+1	+1	+0	39
<b>Support</b>	<b>45</b>	<b>46</b>	<b>46</b>	<b>47</b>	<b>+2</b>	<b>+1</b>	<b>+1</b>	<b>78</b>
Maintenance	13	11	10	10	-3	-0	-0	11
Technical Services		1	1	1	+1	+0	+0	1
<b>Maintenance/ Technical</b>	<b>13</b>	<b>12</b>	<b>11</b>	<b>11</b>	<b>-2</b>	<b>-0</b>	<b>-0</b>	<b>12</b>
<b>General Support</b>	<b>58</b>	<b>58</b>	<b>57</b>	<b>58</b>	<b>+0</b>	<b>+1</b>	<b>+1</b>	<b>90</b>
Attendant/ Aide	3	4	4	4	+0	-0	+0	4
Health Care Assistant/ Care Assistant	620	638	651	654	+34	+16	+2	811
<b>Health Care Assistants</b>	<b>623</b>	<b>641</b>	<b>655</b>	<b>657</b>	<b>+34</b>	<b>+16</b>	<b>+2</b>	<b>815</b>
Home Care Services	5	1	1	1	-4	+0	+0	2
Other Care Grades	15	33	36	36	+21	+3	-0	37
Pastoral Care	2				-2			
Workshop Services	112	100	102	102	-9	+2	+0	138
<b>Care, other</b>	<b>134</b>	<b>134</b>	<b>139</b>	<b>139</b>	<b>+5</b>	<b>+5</b>	<b>+0</b>	<b>177</b>
<b>Patient &amp; Client Care</b>	<b>757</b>	<b>776</b>	<b>794</b>	<b>797</b>	<b>+39</b>	<b>+21</b>	<b>+3</b>	<b>992</b>



# Disabilities Employment Report by Grade Group: APR 2023

## CHO 3

APR 2023	WTE DEC 2019	WTE DEC 2022	WTE MAR 2023	WTE APR 2023	WTE change since DEC 2019	WTE change since DEC 2022	WTE change since MAR 2023	No. APR 2023
<b>Overall</b>	<b>1,823</b>	<b>1,989</b>	<b>2,007</b>	<b>2,005</b>	<b>+181</b>	<b>+16</b>	<b>-2</b>	<b>2,386</b>
Consultant Psychiatry	1	0	0	0	-1	-0	+0	1
<b>Consultants</b>	<b>1</b>	<b>0</b>	<b>0</b>	<b>0</b>	<b>-1</b>	<b>-0</b>	<b>+0</b>	<b>1</b>
Other Medical	1	0	0	0	-0	+0	+0	1
<b>Medical/ Dental, other</b>	<b>1</b>	<b>0</b>	<b>0</b>	<b>0</b>	<b>-0</b>	<b>+0</b>	<b>+0</b>	<b>1</b>
<b>Medical &amp; Dental</b>	<b>2</b>	<b>1</b>	<b>1</b>	<b>1</b>	<b>-1</b>	<b>-0</b>	<b>+0</b>	<b>2</b>
Clinical Nurse/ Midwife Manager	75	80	79	79	+4	-1	-0	81
Director Nursing/Midwifery, Assistant	1	1	1	1	+0	+0	+0	1
<b>Nurse/ Midwife Manager</b>	<b>76</b>	<b>81</b>	<b>80</b>	<b>80</b>	<b>+4</b>	<b>-1</b>	<b>-0</b>	<b>82</b>
Clinical Nurse/ Midwife Specialist	13	11	12	13	+0	+2	+1	14
<b>Nurse/ Midwife Specialist &amp; AN/MP</b>	<b>13</b>	<b>11</b>	<b>12</b>	<b>13</b>	<b>+0</b>	<b>+2</b>	<b>+1</b>	<b>14</b>
Staff Nurse [Intellectual Disability]	208	195	196	195	-13	+0	-1	218
Staff Nurses [General/ Children's]	39	63	63	63	+23	-0	-1	66
<b>Staff Nurse/ Staff Midwife</b>	<b>247</b>	<b>258</b>	<b>260</b>	<b>258</b>	<b>+10</b>	<b>+0</b>	<b>-2</b>	<b>284</b>
Pre-registration Nurse/ Midwife Intern	12		6	6	-6	+6	+0	11
<b>Nursing/ Midwifery Student</b>	<b>12</b>		<b>6</b>	<b>6</b>	<b>-6</b>	<b>+6</b>	<b>+0</b>	<b>11</b>
Nursing Education/Clinical	3	3	3	3	+0	+0	+0	3
Other Nursing/ Midwifery	1				-1			
<b>Nursing/ Midwifery other</b>	<b>4</b>	<b>3</b>	<b>3</b>	<b>3</b>	<b>-1</b>	<b>+0</b>	<b>+0</b>	<b>3</b>
<b>Nursing &amp; Midwifery</b>	<b>351</b>	<b>353</b>	<b>360</b>	<b>359</b>	<b>+8</b>	<b>+6</b>	<b>-1</b>	<b>394</b>
Occupational Therapists	24	13	13	14	-9	+1	+1	15
Physiotherapists	20	9	10	10	-10	+1	-0	11
Speech & Language Therapists	31	18	17	16	-15	-2	-1	19
<b>Therapy Professions</b>	<b>74</b>	<b>41</b>	<b>40</b>	<b>41</b>	<b>-33</b>	<b>+0</b>	<b>+0</b>	<b>45</b>
Clinical Engineering		4	4	4	+4	+0	+0	4
<b>Health Science/ Diagnostics</b>		<b>4</b>	<b>4</b>	<b>4</b>	<b>+4</b>	<b>+0</b>	<b>+0</b>	<b>4</b>
Social Care	241	280	275	272	+32	-8	-3	317
<b>Social Care</b>	<b>241</b>	<b>280</b>	<b>275</b>	<b>272</b>	<b>+32</b>	<b>-8</b>	<b>-3</b>	<b>317</b>
Social Workers	17	19	19	18	+1	-1	-1	21
<b>Social Workers</b>	<b>17</b>	<b>19</b>	<b>19</b>	<b>18</b>	<b>+1</b>	<b>-1</b>	<b>-1</b>	<b>21</b>
Psychologists	16	19	17	17	+1	-1	-0	19
<b>Psychologists</b>	<b>16</b>	<b>19</b>	<b>17</b>	<b>17</b>	<b>+1</b>	<b>-1</b>	<b>-0</b>	<b>19</b>
Other Health & Social Care	7	5	5	5	-3	-0	+0	7
Play Therapists/ Specialists	5	6	6	6	+2	-0	+0	8
<b>H&amp;SC, Other</b>	<b>12</b>	<b>11</b>	<b>11</b>	<b>11</b>	<b>-1</b>	<b>-0</b>	<b>+0</b>	<b>15</b>
<b>Health &amp; Social Care Professionals</b>	<b>359</b>	<b>374</b>	<b>366</b>	<b>363</b>	<b>+4</b>	<b>-11</b>	<b>-3</b>	<b>421</b>
Executive Management	2	3	3	3	+1	+0	+0	3
Senior Management (VIII & GM)	5	9	13	12	+7	+3	-1	13



## Disabilities Employment Report by Grade Group: APR 2023

APR 2023	WTE DEC 2019	WTE DEC 2022	WTE MAR 2023	WTE APR 2023	WTE change since DEC 2019	WTE change since DEC 2022	WTE change since MAR 2023	No. APR 2023
<b>Overall</b>	<b>1,823</b>	<b>1,989</b>	<b>2,007</b>	<b>2,005</b>	<b>+181</b>	<b>+16</b>	<b>-2</b>	<b>2,386</b>
<b>Management (VIII &amp; above)</b>	<b>7</b>	<b>12</b>	<b>16</b>	<b>15</b>	<b>+8</b>	<b>+3</b>	<b>-1</b>	<b>16</b>
Middle Management (V-VII)	34	55	52	52	+18	-3	+0	54
Other Administrative	7	5	7	8	+1	+3	+1	8
<b>Administrative/ Supervisory (V to VII)</b>	<b>41</b>	<b>60</b>	<b>59</b>	<b>60</b>	<b>+19</b>	<b>+0</b>	<b>+2</b>	<b>62</b>
General Administrative (III & IV)	59	54	57	57	-2	+3	+0	63
<b>Clerical (III &amp; IV)</b>	<b>59</b>	<b>54</b>	<b>57</b>	<b>57</b>	<b>-2</b>	<b>+3</b>	<b>+0</b>	<b>63</b>
<b>Management &amp; Administrative</b>	<b>107</b>	<b>126</b>	<b>131</b>	<b>132</b>	<b>+26</b>	<b>+7</b>	<b>+1</b>	<b>141</b>
Catering	5	4	4	4	-1	+0	+0	5
Household Services	39	42	42	42	+3	-0	-0	48
Other Support	4	7	7	6	+2	-1	-1	7
Portering	4		0		-4		-0	
<b>Support</b>	<b>53</b>	<b>54</b>	<b>54</b>	<b>52</b>	<b>-0</b>	<b>-1</b>	<b>-2</b>	<b>60</b>
Maintenance	13	16	18	18	+5	+2	+0	21
Technical Services	1	2	2	2	+1	+0	+0	2
<b>Maintenance/ Technical</b>	<b>14</b>	<b>18</b>	<b>20</b>	<b>20</b>	<b>+6</b>	<b>+2</b>	<b>+0</b>	<b>23</b>
<b>General Support</b>	<b>67</b>	<b>72</b>	<b>74</b>	<b>73</b>	<b>+5</b>	<b>+1</b>	<b>-1</b>	<b>83</b>
Attendant/ Aide	86	35	36	26	-61	-9	-10	31
Health Care Assistant/ Care Assistant	677	821	822	838	+160	+17	+16	1,071
Health & Social Care Assistants	1	2	5	5	+4	+3	-0	5
<b>Health Care Assistants</b>	<b>764</b>	<b>857</b>	<b>863</b>	<b>868</b>	<b>+104</b>	<b>+11</b>	<b>+6</b>	<b>1,107</b>
Home Care Services	4	6	6	7	+3	+0	+0	7
Other Care Grades	20	33	34	33	+13	+0	-1	38
Pastoral Care	1	0	0	0	-0	+0	+0	1
Workshop Services	149	167	172	169	+20	+3	-2	192
<b>Care, other</b>	<b>173</b>	<b>206</b>	<b>213</b>	<b>209</b>	<b>+36</b>	<b>+3</b>	<b>-3</b>	<b>238</b>
<b>Patient &amp; Client Care</b>	<b>937</b>	<b>1064</b>	<b>1075</b>	<b>1077</b>	<b>+140</b>	<b>+14</b>	<b>+2</b>	<b>1,345</b>



# Disabilities Employment Report by Grade Group: APR 2023

## CHO 4

APR 2023	WTE DEC 2019	WTE DEC 2022	WTE MAR 2023	WTE APR 2023	WTE change since DEC 2019	WTE change since DEC 2022	WTE change since MAR 2023	No. APR 2023
<b>Overall</b>	<b>2,425</b>	<b>2,640</b>	<b>2,639</b>	<b>2,655</b>	<b>+230</b>	<b>+15</b>	<b>+17</b>	<b>3,205</b>
Consultant Paediatrics	1	1	1	1	+0	+0	+0	1
Consultant Psychiatry	1	1	1	1	+0	+0	+0	1
<b>Consultants</b>	<b>2</b>	<b>2</b>	<b>2</b>	<b>2</b>	<b>+0</b>	<b>+0</b>	<b>+0</b>	<b>2</b>
Other Medical	0	0	0	0	+0	+0	+0	1
<b>Medical/ Dental, other</b>	<b>0</b>	<b>0</b>	<b>0</b>	<b>0</b>	<b>+0</b>	<b>+0</b>	<b>+0</b>	<b>1</b>
<b>Medical &amp; Dental</b>	<b>2</b>	<b>2</b>	<b>2</b>	<b>2</b>	<b>+0</b>	<b>+0</b>	<b>+0</b>	<b>3</b>
Clinical Nurse/ Midwife Manager	79	90	91	90	+11	+1	-1	103
Director Nursing/Midwifery, Assistant	5	4	4	4	-1	+0	+0	4
Director of Nursing/Midwifery	3	4	4	4	+1	+0	+0	5
<b>Nurse/ Midwife Manager</b>	<b>87</b>	<b>98</b>	<b>100</b>	<b>99</b>	<b>+11</b>	<b>+1</b>	<b>-1</b>	<b>112</b>
Advanced Nurse/ Midwife Practitioner	1	2	2	2	+1	+0	+0	2
Clinical Nurse/ Midwife Specialist	12	11	11	11	-1	+0	+0	12
<b>Nurse/ Midwife Specialist &amp; AN/MP</b>	<b>13</b>	<b>13</b>	<b>13</b>	<b>13</b>	<b>-0</b>	<b>+0</b>	<b>+0</b>	<b>14</b>
Staff Nurse [Intellectual Disability]	86	152	154	156	+70	+4	+2	193
Staff Nurse [Psychiatric]	2	1	1	1	-1	+0	+0	1
Staff Nurses [General/ Children's]	218	149	147	150	-68	+1	+3	177
<b>Staff Nurse/ Staff Midwife</b>	<b>306</b>	<b>301</b>	<b>302</b>	<b>306</b>	<b>+0</b>	<b>+5</b>	<b>+5</b>	<b>371</b>
Nursing/ Midwifery awaiting registration	1				-1			
Pre-registration Nurse/ Midwife Intern	6	1	10	10	+4	+9	+0	20
<b>Nursing/ Midwifery Student</b>	<b>7</b>	<b>1</b>	<b>10</b>	<b>10</b>	<b>+3</b>	<b>+9</b>	<b>+0</b>	<b>20</b>
Nursing Education/Clinical	1	1	1	1	+0	+0	+0	1
<b>Nursing/ Midwifery other</b>	<b>1</b>	<b>1</b>	<b>1</b>	<b>1</b>	<b>+0</b>	<b>+0</b>	<b>+0</b>	<b>1</b>
<b>Nursing &amp; Midwifery</b>	<b>414</b>	<b>414</b>	<b>425</b>	<b>429</b>	<b>+15</b>	<b>+15</b>	<b>+4</b>	<b>518</b>
Dietitians	3	2	2	2	-1	+0	+0	2
Occupational Therapists	38	44	45	38	+0	-5	-7	50
Physiotherapists	18	18	19	19	+1	+2	-0	22
Speech & Language Therapists	49	42	38	38	-12	-4	-1	48
<b>Therapy Professions</b>	<b>108</b>	<b>105</b>	<b>105</b>	<b>97</b>	<b>-11</b>	<b>-8</b>	<b>-8</b>	<b>122</b>
Social Care	227	259	257	258	+32	-0	+1	297
<b>Social Care</b>	<b>227</b>	<b>259</b>	<b>257</b>	<b>258</b>	<b>+32</b>	<b>-0</b>	<b>+1</b>	<b>297</b>
Social Workers	27	28	27	28	+1	+0	+1	33
<b>Social Workers</b>	<b>27</b>	<b>28</b>	<b>27</b>	<b>28</b>	<b>+1</b>	<b>+0</b>	<b>+1</b>	<b>33</b>
Psychologists	35	37	35	34	-1	-3	-1	38
<b>Psychologists</b>	<b>35</b>	<b>37</b>	<b>35</b>	<b>34</b>	<b>-1</b>	<b>-3</b>	<b>-1</b>	<b>38</b>
Counsellor Therapists	2	1	1	1	-1	+0	+0	1
Other Health & Social Care	6	5	6	6	-0	+0	-0	6
Play Therapists/ Specialists	1	1	1	1	+0	+0	+0	1



## Disabilities Employment Report by Grade Group: APR 2023

APR 2023	WTE DEC 2019	WTE DEC 2022	WTE MAR 2023	WTE APR 2023	WTE change since DEC 2019	WTE change since DEC 2022	WTE change since MAR 2023	No. APR 2023
<b>Overall</b>	<b>2,425</b>	<b>2,640</b>	<b>2,639</b>	<b>2,655</b>	<b>+230</b>	<b>+15</b>	<b>+17</b>	<b>3,205</b>
<b>H&amp;SC, Other</b>	<b>8</b>	<b>7</b>	<b>8</b>	<b>8</b>	<b>-1</b>	<b>+0</b>	<b>-0</b>	<b>8</b>
<b>Health &amp; Social Care Professionals</b>	<b>405</b>	<b>435</b>	<b>431</b>	<b>424</b>	<b>+20</b>	<b>-11</b>	<b>-7</b>	<b>498</b>
Executive Management	2	4	4	4	+2	-0	-0	4
Senior Management (VIII & GM)	20	19	18	20	+0	+2	+2	21
<b>Management (VIII &amp; above)</b>	<b>22</b>	<b>23</b>	<b>22</b>	<b>24</b>	<b>+2</b>	<b>+1</b>	<b>+2</b>	<b>25</b>
Middle Management (V-VII)	53	72	76	79	+25	+6	+3	85
<b>Administrative/ Supervisory (V to VII)</b>	<b>53</b>	<b>72</b>	<b>76</b>	<b>79</b>	<b>+25</b>	<b>+6</b>	<b>+3</b>	<b>85</b>
General Administrative (III & IV)	84	93	93	93	+9	-0	+0	122
<b>Clerical (III &amp; IV)</b>	<b>84</b>	<b>93</b>	<b>93</b>	<b>93</b>	<b>+9</b>	<b>-0</b>	<b>+0</b>	<b>122</b>
<b>Management &amp; Administrative</b>	<b>160</b>	<b>189</b>	<b>191</b>	<b>196</b>	<b>+37</b>	<b>+8</b>	<b>+5</b>	<b>232</b>
Catering	18	15	15	15	-4	+0	+0	16
Household Services	67	66	64	63	-4	-3	-1	105
Other Support	50	52	52	52	+2	+0	+0	97
Portering	5	5	4	5	+0	+0	+1	10
<b>Support</b>	<b>140</b>	<b>138</b>	<b>135</b>	<b>135</b>	<b>-5</b>	<b>-3</b>	<b>+0</b>	<b>228</b>
Maintenance	9	8	10	9	-0	+1	-1	12
Technical Services	1	2	2	2	+1	+0	+0	2
<b>Maintenance/ Technical</b>	<b>10</b>	<b>10</b>	<b>12</b>	<b>11</b>	<b>+1</b>	<b>+1</b>	<b>-1</b>	<b>14</b>
<b>General Support</b>	<b>150</b>	<b>148</b>	<b>147</b>	<b>146</b>	<b>-4</b>	<b>-2</b>	<b>-1</b>	<b>242</b>
Attendant/ Aide	3	1	1		-3	-1	-1	
Health Care Assistant/ Care Assistant	984	1,110	1,103	1,109	+125	-0	+7	1,307
<b>Health Care Assistants</b>	<b>987</b>	<b>1,111</b>	<b>1,103</b>	<b>1,109</b>	<b>+122</b>	<b>-1</b>	<b>+6</b>	<b>1,307</b>
Home Care Services	2	1	1	1	-1	+0	+0	2
Other Care Grades	22	32	29	28	+7	-4	-1	33
Pastoral Care	1	0	0	0	-0	+0	+0	1
Workshop Services	283	308	308	318	+35	+10	+11	369
<b>Care, other</b>	<b>307</b>	<b>342</b>	<b>338</b>	<b>348</b>	<b>+41</b>	<b>+6</b>	<b>+10</b>	<b>405</b>
<b>Patient &amp; Client Care</b>	<b>1295</b>	<b>1453</b>	<b>1441</b>	<b>1458</b>	<b>+163</b>	<b>+5</b>	<b>+16</b>	<b>1,712</b>



# Disabilities Employment Report by Grade Group: APR 2023

CHO 5

APR 2023	WTE DEC 2019	WTE DEC 2022	WTE MAR 2023	WTE APR 2023	WTE change since DEC 2019	WTE change since DEC 2022	WTE change since MAR 2023	No. APR 2023
<b>Overall</b>	<b>1,488</b>	<b>1,656</b>	<b>1,670</b>	<b>1,695</b>	<b>+208</b>	<b>+39</b>	<b>+25</b>	<b>1,996</b>
Consultant Psychiatry	1	1	1	1	+0	+0	+0	1
<b>Consultants</b>	<b>1</b>	<b>1</b>	<b>1</b>	<b>1</b>	<b>+0</b>	<b>+0</b>	<b>+0</b>	<b>1</b>
<b>Medical &amp; Dental</b>	<b>1</b>	<b>1</b>	<b>1</b>	<b>1</b>	<b>+0</b>	<b>+0</b>	<b>+0</b>	<b>1</b>
Clinical Nurse/ Midwife Manager	62	69	70	70	+8	+1	+0	72
Director Nursing/Midwifery, Assistant	2	4	4	4	+2	+0	+0	4
Director of Nursing/Midwifery	2	2	2	2	+0	+0	+0	2
<b>Nurse/ Midwife Manager</b>	<b>66</b>	<b>74</b>	<b>76</b>	<b>76</b>	<b>+10</b>	<b>+1</b>	<b>+0</b>	<b>78</b>
Advanced Nurse/ Midwife Practitioner		2	2	2	+2	+0	+0	2
Clinical Nurse/ Midwife Specialist	2	2	2	2	-0	+0	+0	2
<b>Nurse/ Midwife Specialist &amp; AN/MP</b>	<b>2</b>	<b>4</b>	<b>4</b>	<b>4</b>	<b>+2</b>	<b>+0</b>	<b>+0</b>	<b>4</b>
Staff Nurse [Intellectual Disability]	115	120	116	117	+1	-3	+1	130
Staff Nurse [Psychiatric]	3	3	3	3	-0	-0	-0	4
Staff Nurses [General/ Children's]	51	46	45	46	-5	+0	+1	52
<b>Staff Nurse/ Staff Midwife</b>	<b>170</b>	<b>169</b>	<b>164</b>	<b>166</b>	<b>-4</b>	<b>-3</b>	<b>+2</b>	<b>186</b>
Public Health Nurse	5	10	10	10	+5	+0	+0	12
<b>Public Health Nurse</b>	<b>5</b>	<b>10</b>	<b>10</b>	<b>10</b>	<b>+5</b>	<b>+0</b>	<b>+0</b>	<b>12</b>
Nursing/ Midwifery awaiting registration	2				-2			
Pre-registration Nurse/ Midwife Intern		0	7	7	+7	+7	+0	14
<b>Nursing/ Midwifery Student</b>	<b>2</b>	<b>0</b>	<b>7</b>	<b>7</b>	<b>+5</b>	<b>+7</b>	<b>+0</b>	<b>14</b>
Nursing Education/Clinical		1	1	1	+1	+0	+0	1
<b>Nursing/ Midwifery other</b>		<b>1</b>	<b>1</b>	<b>1</b>	<b>+1</b>	<b>+0</b>	<b>+0</b>	<b>1</b>
<b>Nursing &amp; Midwifery</b>	<b>244</b>	<b>258</b>	<b>261</b>	<b>263</b>	<b>+19</b>	<b>+6</b>	<b>+2</b>	<b>295</b>
Dietitians	2	2	2	2	-0	-0	-0	2
Occupational Therapists	21	22	22	24	+2	+2	+1	27
Physiotherapists	14	12	12	12	-2	+0	-0	14
Speech & Language Therapists	24	23	23	23	-1	-0	-1	26
<b>Therapy Professions</b>	<b>61</b>	<b>59</b>	<b>60</b>	<b>60</b>	<b>-1</b>	<b>+1</b>	<b>+0</b>	<b>69</b>
Social Care	154	161	160	161	+7	-0	+1	190
<b>Social Care</b>	<b>154</b>	<b>161</b>	<b>160</b>	<b>161</b>	<b>+7</b>	<b>-0</b>	<b>+1</b>	<b>190</b>
Social Workers	21	20	18	19	-2	-1	+1	21
<b>Social Workers</b>	<b>21</b>	<b>20</b>	<b>18</b>	<b>19</b>	<b>-2</b>	<b>-1</b>	<b>+1</b>	<b>21</b>
Psychologists	12	17	17	16	+4	-1	-1	19
<b>Psychologists</b>	<b>12</b>	<b>17</b>	<b>17</b>	<b>16</b>	<b>+4</b>	<b>-1</b>	<b>-1</b>	<b>19</b>
Counsellor Therapists	1				-1			
Other Health & Social Care		1				-1		
Play Therapists/ Specialists	6	5	4	5	-1	-1	+0	7
<b>H&amp;SC, Other</b>	<b>7</b>	<b>6</b>	<b>4</b>	<b>5</b>	<b>-2</b>	<b>-1</b>	<b>+0</b>	<b>7</b>





## Disabilities Employment Report by Grade Group: APR 2023

APR 2023	WTE DEC 2019	WTE DEC 2022	WTE MAR 2023	WTE APR 2023	WTE change since DEC 2019	WTE change since DEC 2022	WTE change since MAR 2023	No. APR 2023
<b>Overall</b>	<b>1,488</b>	<b>1,656</b>	<b>1,670</b>	<b>1,695</b>	<b>+208</b>	<b>+39</b>	<b>+25</b>	<b>1,996</b>
<b>Health &amp; Social Care Professionals</b>	<b>255</b>	<b>263</b>	<b>260</b>	<b>261</b>	<b>+7</b>	<b>-2</b>	<b>+2</b>	<b>306</b>
Executive Management	2	4	4	4	+2	+0	+0	4
Senior Management (VIII & GM)	9	15	16	16	+7	+1	-0	17
<b>Management (VIII &amp; above)</b>	<b>11</b>	<b>19</b>	<b>20</b>	<b>20</b>	<b>+9</b>	<b>+1</b>	<b>-0</b>	<b>21</b>
Middle Management (V-VII)	36	55	61	62	+25	+7	+0	65
<b>Administrative/ Supervisory (V to VII)</b>	<b>36</b>	<b>55</b>	<b>61</b>	<b>62</b>	<b>+25</b>	<b>+7</b>	<b>+0</b>	<b>65</b>
General Administrative (III & IV)	61	74	80	80	+20	+6	+0	95
<b>Clerical (III &amp; IV)</b>	<b>61</b>	<b>74</b>	<b>80</b>	<b>80</b>	<b>+20</b>	<b>+6</b>	<b>+0</b>	<b>95</b>
<b>Management &amp; Administrative</b>	<b>108</b>	<b>147</b>	<b>161</b>	<b>162</b>	<b>+54</b>	<b>+15</b>	<b>+1</b>	<b>181</b>
Catering	4	3	3	3	-1	+0	-0	4
Household Services	10	4	4	3	-7	-0	-0	5
Other Support	1	1	1	1	-0	-1	-0	1
Portering	1				-1			
<b>Support</b>	<b>15</b>	<b>8</b>	<b>8</b>	<b>7</b>	<b>-8</b>	<b>-1</b>	<b>-1</b>	<b>10</b>
Maintenance	6	8	8	8	+2	+0	+0	9
Technical Services	1	1	1	1	-0	-0	-0	1
<b>Maintenance/ Technical</b>	<b>7</b>	<b>9</b>	<b>9</b>	<b>9</b>	<b>+2</b>	<b>-0</b>	<b>-0</b>	<b>10</b>
<b>General Support</b>	<b>23</b>	<b>17</b>	<b>17</b>	<b>16</b>	<b>-6</b>	<b>-1</b>	<b>-1</b>	<b>20</b>
Attendant/ Aide	67	73	77	79	+12	+6	+2	85
Health Care Assistant/ Care Assistant	604	680	677	697	+93	+17	+21	809
<b>Health Care Assistants</b>	<b>671</b>	<b>753</b>	<b>754</b>	<b>776</b>	<b>+105</b>	<b>+23</b>	<b>+23</b>	<b>894</b>
Home Helps	44	29	28	27	-17	-2	-0	73
<b>Home Help</b>	<b>44</b>	<b>29</b>	<b>28</b>	<b>27</b>	<b>-17</b>	<b>-2</b>	<b>-0</b>	<b>73</b>
Home Care Services		1	1	1	+1	+0	+0	1
Other Care Grades	8	20	19	20	+12	+0	+1	23
Workshop Services	135	167	170	167	+32	+1	-3	202
<b>Care, other</b>	<b>143</b>	<b>187</b>	<b>190</b>	<b>188</b>	<b>+45</b>	<b>+1</b>	<b>-1</b>	<b>226</b>
<b>Patient &amp; Client Care</b>	<b>858</b>	<b>970</b>	<b>971</b>	<b>992</b>	<b>+134</b>	<b>+22</b>	<b>+21</b>	<b>1,193</b>



# Disabilities Employment Report by Grade Group: APR 2023

CHO 6

APR 2023	WTE DEC 2019	WTE DEC 2022	WTE MAR 2023	WTE APR 2023	WTE change since DEC 2019	WTE change since DEC 2022	WTE change since MAR 2023	No. APR 2023
<b>Overall</b>	<b>1,198</b>	<b>1,216</b>	<b>1,204</b>	<b>1,203</b>	<b>+6</b>	<b>-13</b>	<b>-1</b>	<b>1,381</b>
Consultant Psychiatry	3	3	3	3	+0	+0	+0	3
<b>Consultants</b>	<b>3</b>	<b>3</b>	<b>3</b>	<b>3</b>	<b>+0</b>	<b>+0</b>	<b>+0</b>	<b>3</b>
Registrar		1	1	1	+1	+0	+0	1
<b>Registrars</b>		<b>1</b>	<b>1</b>	<b>1</b>	<b>+1</b>	<b>+0</b>	<b>+0</b>	<b>1</b>
Other Medical	1	1	1	1	+0	+0	+0	1
<b>Medical/ Dental, other</b>	<b>1</b>	<b>1</b>	<b>1</b>	<b>1</b>	<b>+0</b>	<b>+0</b>	<b>+0</b>	<b>1</b>
<b>Medical &amp; Dental</b>	<b>4</b>	<b>5</b>	<b>5</b>	<b>5</b>	<b>+1</b>	<b>+0</b>	<b>+0</b>	<b>5</b>
Clinical Nurse/ Midwife Manager	40	37	38	36	-3	-1	-1	39
Director Nursing/Midwifery, Assistant	1	1	1	1	-0	+0	+0	1
Director of Nursing/Midwifery	3	2	2	2	-1	+0	+0	3
<b>Nurse/ Midwife Manager</b>	<b>44</b>	<b>40</b>	<b>41</b>	<b>39</b>	<b>-4</b>	<b>-0</b>	<b>-1</b>	<b>43</b>
Clinical Nurse/ Midwife Specialist			1	1	+1	+1	+0	1
<b>Nurse/ Midwife Specialist &amp; AN/MP</b>			<b>1</b>	<b>1</b>	<b>+1</b>	<b>+1</b>	<b>+0</b>	<b>1</b>
Staff Nurse [Intellectual Disability]	49	76	85	84	+35	+8	-1	92
Staff Nurse [Psychiatric]	18	5	5	5	-13	+0	+0	6
Staff Nurses [General/ Children's]	81	56	56	58	-23	+1	+2	66
<b>Staff Nurse/ Staff Midwife</b>	<b>147</b>	<b>138</b>	<b>146</b>	<b>147</b>	<b>-0</b>	<b>+9</b>	<b>+2</b>	<b>164</b>
Nursing Education/Clinical		1	1	1	+1	+0	+0	1
<b>Nursing/ Midwifery other</b>		<b>1</b>	<b>1</b>	<b>1</b>	<b>+1</b>	<b>+0</b>	<b>+0</b>	<b>1</b>
<b>Nursing &amp; Midwifery</b>	<b>191</b>	<b>178</b>	<b>188</b>	<b>188</b>	<b>-2</b>	<b>+10</b>	<b>+0</b>	<b>209</b>
Dietitians	0	0	0	0	+0	+0	+0	1
Occupational Therapists	15	11	11	10	-5	-1	-1	12
Physiotherapists	6	4	4	5	-1	+1	+1	6
Speech & Language Therapists	21	10	10	10	-11	-0	+0	13
<b>Therapy Professions</b>	<b>42</b>	<b>26</b>	<b>25</b>	<b>25</b>	<b>-16</b>	<b>-0</b>	<b>-0</b>	<b>32</b>
Social Care	334	381	380	383	+48	+1	+2	435
<b>Social Care</b>	<b>334</b>	<b>381</b>	<b>380</b>	<b>383</b>	<b>+48</b>	<b>+1</b>	<b>+2</b>	<b>435</b>
Social Workers	11	8	9	9	-2	+1	+0	10
<b>Social Workers</b>	<b>11</b>	<b>8</b>	<b>9</b>	<b>9</b>	<b>-2</b>	<b>+1</b>	<b>+0</b>	<b>10</b>
Psychologists	14	14	13	13	-1	-1	-0	15
<b>Psychologists</b>	<b>14</b>	<b>14</b>	<b>13</b>	<b>13</b>	<b>-1</b>	<b>-1</b>	<b>-0</b>	<b>15</b>
Counsellor Therapists	1				-1			
Other Health & Social Care	1	1	1	1	+0	+0	+0	2
<b>H&amp;SC, Other</b>	<b>2</b>	<b>1</b>	<b>1</b>	<b>1</b>	<b>-0</b>	<b>+0</b>	<b>+0</b>	<b>2</b>
<b>Health &amp; Social Care Professionals</b>	<b>403</b>	<b>431</b>	<b>429</b>	<b>432</b>	<b>+29</b>	<b>+1</b>	<b>+2</b>	<b>494</b>
Executive Management	14	22	13	13	-1	-9	+0	13
Senior Management (VIII & GM)	17	18	19	19	+2	+1	+0	19



## Disabilities Employment Report by Grade Group: APR 2023

APR 2023	WTE DEC 2019	WTE DEC 2022	WTE MAR 2023	WTE APR 2023	WTE change since DEC 2019	WTE change since DEC 2022	WTE change since MAR 2023	No. APR 2023
<b>Overall</b>	<b>1,198</b>	<b>1,216</b>	<b>1,204</b>	<b>1,203</b>	<b>+6</b>	<b>-13</b>	<b>-1</b>	<b>1,381</b>
<b>Management (VIII &amp; above)</b>	<b>31</b>	<b>39</b>	<b>32</b>	<b>32</b>	<b>+1</b>	<b>-7</b>	<b>+0</b>	<b>32</b>
Middle Management (V-VII)	53	64	63	63	+10	-1	+0	68
<b>Administrative/ Supervisory (V to VII)</b>	<b>53</b>	<b>64</b>	<b>63</b>	<b>63</b>	<b>+10</b>	<b>-1</b>	<b>+0</b>	<b>68</b>
General Administrative (III & IV)	54	52	53	53	-1	+1	-0	59
<b>Clerical (III &amp; IV)</b>	<b>54</b>	<b>52</b>	<b>53</b>	<b>53</b>	<b>-1</b>	<b>+1</b>	<b>-0</b>	<b>59</b>
<b>Management &amp; Administrative</b>	<b>138</b>	<b>156</b>	<b>148</b>	<b>148</b>	<b>+10</b>	<b>-8</b>	<b>+0</b>	<b>159</b>
Catering	4	2	2	1	-3	-1	-1	1
Household Services	14	15	15	15	+2	+0	-0	18
Other Support	5	6	5	5	-0	-1	-0	9
<b>Support</b>	<b>23</b>	<b>23</b>	<b>22</b>	<b>21</b>	<b>-2</b>	<b>-2</b>	<b>-2</b>	<b>28</b>
Maintenance	7	7	7	8	+1	+1	+1	8
Technical Services		1	1	1	+1	+0	+0	1
<b>Maintenance/ Technical</b>	<b>7</b>	<b>8</b>	<b>8</b>	<b>9</b>	<b>+2</b>	<b>+1</b>	<b>+1</b>	<b>9</b>
<b>General Support</b>	<b>29</b>	<b>31</b>	<b>30</b>	<b>30</b>	<b>+0</b>	<b>-1</b>	<b>-1</b>	<b>37</b>
Attendant/ Aide	10	7	7	7	-3	-1	+0	10
Health Care Assistant/ Care Assistant	177	180	181	178	+2	-2	-3	207
<b>Health Care Assistants</b>	<b>187</b>	<b>188</b>	<b>187</b>	<b>185</b>	<b>-2</b>	<b>-3</b>	<b>-3</b>	<b>217</b>
Other Care Grades	26	24	23	23	-3	-2	-0	27
Pastoral Care	1				-1			
Workshop Services	220	204	193	193	-27	-11	+0	233
<b>Care, other</b>	<b>246</b>	<b>229</b>	<b>216</b>	<b>216</b>	<b>-31</b>	<b>-13</b>	<b>-0</b>	<b>260</b>
<b>Patient &amp; Client Care</b>	<b>433</b>	<b>416</b>	<b>404</b>	<b>401</b>	<b>-32</b>	<b>-16</b>	<b>-3</b>	<b>477</b>



# Disabilities Employment Report by Grade Group: APR 2023

CHO 7

APR 2023	WTE DEC 2019	WTE DEC 2022	WTE MAR 2023	WTE APR 2023	WTE change since DEC 2019	WTE change since DEC 2022	WTE change since MAR 2023	No. APR 2023
<b>Overall</b>	<b>2,982</b>	<b>3,410</b>	<b>3,407</b>	<b>3,420</b>	<b>+438</b>	<b>+10</b>	<b>+13</b>	<b>4,035</b>
Consultant Paediatrics	0				-0			
Consultant Psychiatry	0				-0			
<b>Consultants</b>	<b>1</b>				<b>-1</b>			
Registrar	3	4	3	3	+0	-1	+0	4
Specialist Registrar			1	1	+1	+1	-0	1
<b>Registrars</b>	<b>3</b>	<b>4</b>	<b>4</b>	<b>4</b>	<b>+1</b>	<b>+0</b>	<b>-0</b>	<b>5</b>
Senior House Officer	7	7	9	8	+1	+1	-0	13
<b>SHO/ Interns</b>	<b>7</b>	<b>7</b>	<b>9</b>	<b>8</b>	<b>+1</b>	<b>+1</b>	<b>-0</b>	<b>13</b>
Other Medical	1				-1			
<b>Medical/ Dental, other</b>	<b>1</b>				<b>-1</b>			
<b>Medical &amp; Dental</b>	<b>12</b>	<b>11</b>	<b>13</b>	<b>12</b>	<b>+1</b>	<b>+1</b>	<b>-0</b>	<b>18</b>
Clinical Nurse/ Midwife Manager	113	142	144	146	+34	+5	+3	158
Director Nursing/Midwifery, Assistant	5	6	7	7	+1	+0	+0	7
Director of Nursing/Midwifery	4	5	6	6	+2	+1	+0	6
<b>Nurse/ Midwife Manager</b>	<b>122</b>	<b>153</b>	<b>156</b>	<b>159</b>	<b>+37</b>	<b>+6</b>	<b>+3</b>	<b>171</b>
Advanced Nurse/ Midwife Practitioner		3	3	3	+3	+0	+0	3
Clinical Nurse/ Midwife Specialist	5	3	4	4	-1	+1	+0	5
<b>Nurse/ Midwife Specialist &amp; AN/MP</b>	<b>5</b>	<b>6</b>	<b>7</b>	<b>7</b>	<b>+2</b>	<b>+1</b>	<b>+0</b>	<b>8</b>
Staff Nurse [Intellectual Disability]	194	226	222	221	+27	-5	-1	253
Staff Nurses [General/ Children's]	180	191	192	196	+15	+5	+4	224
<b>Staff Nurse/ Staff Midwife</b>	<b>374</b>	<b>416</b>	<b>414</b>	<b>417</b>	<b>+42</b>	<b>+0</b>	<b>+3</b>	<b>477</b>
Nursing/ Midwifery awaiting registration		1				-1		
Pre-registration Nurse/ Midwife Intern			8	8	+8	+8	+0	16
<b>Nursing/ Midwifery Student</b>		<b>1</b>	<b>8</b>	<b>8</b>	<b>+8</b>	<b>+7</b>	<b>+0</b>	<b>16</b>
Nursing Education/Clinical	1	3	2	2	+1	-1	+0	2
Other Nursing/ Midwifery		1				-1		
<b>Nursing/ Midwifery other</b>	<b>1</b>	<b>4</b>	<b>2</b>	<b>2</b>	<b>+1</b>	<b>-2</b>	<b>+0</b>	<b>2</b>
<b>Nursing &amp; Midwifery</b>	<b>502</b>	<b>581</b>	<b>587</b>	<b>592</b>	<b>+90</b>	<b>+11</b>	<b>+6</b>	<b>674</b>
Dietitians	7	3	8	8	+1	+5	+0	12
Occupational Therapists	42	56	54	53	+11	-2	-0	59
Physiotherapists	30	43	42	43	+12	+0	+1	48
Speech & Language Therapists	42	53	50	48	+6	-5	-1	53
<b>Therapy Professions</b>	<b>122</b>	<b>155</b>	<b>153</b>	<b>152</b>	<b>+31</b>	<b>-2</b>	<b>-1</b>	<b>172</b>
Phlebotomists	1				-1			
Radiographers	1	1	1	3	+2	+2	+2	4
Respiratory Physiologists	1	2	1	1	+0	-1	+0	1
<b>Health Science/ Diagnostics</b>	<b>3</b>	<b>3</b>	<b>2</b>	<b>4</b>	<b>+1</b>	<b>+1</b>	<b>+2</b>	<b>5</b>



## Disabilities Employment Report by Grade Group: APR 2023

APR 2023	WTE DEC 2019	WTE DEC 2022	WTE MAR 2023	WTE APR 2023	WTE change since DEC 2019	WTE change since DEC 2022	WTE change since MAR 2023	No. APR 2023
<b>Overall</b>	<b>2,982</b>	<b>3,410</b>	<b>3,407</b>	<b>3,420</b>	<b>+438</b>	<b>+10</b>	<b>+13</b>	<b>4,035</b>
Social Care	360	467	460	464	+103	-3	+3	504
<b>Social Care</b>	<b>360</b>	<b>467</b>	<b>460</b>	<b>464</b>	<b>+103</b>	<b>-3</b>	<b>+3</b>	<b>504</b>
Social Workers	33	42	39	38	+5	-4	-1	45
<b>Social Workers</b>	<b>33</b>	<b>42</b>	<b>39</b>	<b>38</b>	<b>+5</b>	<b>-4</b>	<b>-1</b>	<b>45</b>
Psychologists	28	36	36	36	+8	+0	+0	39
<b>Psychologists</b>	<b>28</b>	<b>36</b>	<b>36</b>	<b>36</b>	<b>+8</b>	<b>+0</b>	<b>+0</b>	<b>39</b>
Pharmacists	3	5	5	5	+1	+0	+0	7
Pharmacy Technicians	2	2	1	0	-1	-2	-1	1
<b>Pharmacy</b>	<b>5</b>	<b>6</b>	<b>6</b>	<b>5</b>	<b>+0</b>	<b>-1</b>	<b>-1</b>	<b>8</b>
Counsellor Therapists	2	2	2	2	+0	+0	+0	2
Play Therapists/ Specialists			1	1	+1	+1	+0	1
<b>H&amp;SC, Other</b>	<b>2</b>	<b>2</b>	<b>3</b>	<b>3</b>	<b>+1</b>	<b>+1</b>	<b>+0</b>	<b>3</b>
<b>Health &amp; Social Care Professionals</b>	<b>553</b>	<b>710</b>	<b>699</b>	<b>702</b>	<b>+149</b>	<b>-8</b>	<b>+3</b>	<b>776</b>
Executive Management	5	8	8	8	+3	+0	+0	8
Senior Management (VIII & GM)	27	39	36	36	+9	-2	-0	38
<b>Management (VIII &amp; above)</b>	<b>32</b>	<b>47</b>	<b>44</b>	<b>44</b>	<b>+12</b>	<b>-2</b>	<b>-0</b>	<b>46</b>
Middle Management (V-VII)	78	109	113	112	+34	+3	-1	119
Other Administrative	1				-1			
<b>Administrative/ Supervisory (V to VII)</b>	<b>79</b>	<b>109</b>	<b>113</b>	<b>112</b>	<b>+33</b>	<b>+3</b>	<b>-1</b>	<b>119</b>
General Administrative (III & IV)	92	120	119	123	+31	+3	+4	145
<b>Clerical (III &amp; IV)</b>	<b>92</b>	<b>120</b>	<b>119</b>	<b>123</b>	<b>+31</b>	<b>+3</b>	<b>+4</b>	<b>145</b>
<b>Management &amp; Administrative</b>	<b>203</b>	<b>276</b>	<b>276</b>	<b>279</b>	<b>+77</b>	<b>+4</b>	<b>+3</b>	<b>310</b>
Catering	21	11	11	11	-11	+0	+0	12
Household Services	125	127	119	119	-6	-8	-1	181
Other Labs & Associated	1	1	1	1	+0	+0	+0	1
Other Support	9	13	13	13	+4	+0	+0	15
Portering	11	6	6	6	-5	+0	+0	6
<b>Support</b>	<b>167</b>	<b>156</b>	<b>149</b>	<b>149</b>	<b>-18</b>	<b>-8</b>	<b>-1</b>	<b>215</b>
Maintenance	25	26	33	34	+9	+8	+1	38
Technical Services	3	6	4	4	+1	-2	+0	4
<b>Maintenance/ Technical</b>	<b>28</b>	<b>32</b>	<b>37</b>	<b>38</b>	<b>+10</b>	<b>+6</b>	<b>+1</b>	<b>42</b>
<b>General Support</b>	<b>195</b>	<b>188</b>	<b>186</b>	<b>187</b>	<b>-9</b>	<b>-2</b>	<b>+0</b>	<b>257</b>
Attendant/ Aide	18	13	13	12	-6	-1	-1	25
Health Care Assistant/ Care Assistant	1,089	1,206	1,206	1,213	+124	+7	+8	1,419
Health & Social Care Assistants	5	9	11	11	+6	+2	+0	12
<b>Health Care Assistants</b>	<b>1,112</b>	<b>1,228</b>	<b>1,230</b>	<b>1,237</b>	<b>+124</b>	<b>+8</b>	<b>+7</b>	<b>1,456</b>
Home Helps	19	14	14	12	-8	-2	-2	76
<b>Home Help</b>	<b>19</b>	<b>14</b>	<b>14</b>	<b>12</b>	<b>-8</b>	<b>-2</b>	<b>-2</b>	<b>76</b>
Home Care Services	4	0	0	0	-3	+0	+0	2



## Disabilities Employment Report by Grade Group: APR 2023

APR 2023	WTE DEC 2019	WTE DEC 2022	WTE MAR 2023	WTE APR 2023	WTE change since DEC 2019	WTE change since DEC 2022	WTE change since MAR 2023	No. APR 2023
<b>Overall</b>	<b>2,982</b>	<b>3,410</b>	<b>3,407</b>	<b>3,420</b>	<b>+438</b>	<b>+10</b>	<b>+13</b>	<b>4,035</b>
Other Care Grades	34	28	32	33	-1	+5	+1	40
Pastoral Care	3	1	2	2	-1	+1	+0	2
Workshop Services	346	372	369	365	+20	-7	-4	424
<b>Care, other</b>	<b>386</b>	<b>402</b>	<b>403</b>	<b>400</b>	<b>+14</b>	<b>-2</b>	<b>-3</b>	<b>468</b>
<b>Patient &amp; Client Care</b>	<b>1518</b>	<b>1644</b>	<b>1647</b>	<b>1648</b>	<b>+130</b>	<b>+4</b>	<b>+1</b>	<b>2,000</b>



# Disabilities Employment Report by Grade Group: APR 2023

CHO 8

APR 2023	WTE DEC 2019	WTE DEC 2022	WTE MAR 2023	WTE APR 2023	WTE change since DEC 2019	WTE change since DEC 2022	WTE change since MAR 2023	No. APR 2023
<b>Overall</b>	<b>2,162</b>	<b>2,345</b>	<b>2,344</b>	<b>2,371</b>	<b>+209</b>	<b>+25</b>	<b>+26</b>	<b>2,860</b>
Consultant Psychiatry	1				-1			
<b>Consultants</b>	<b>1</b>				<b>-1</b>			
Registrar	2	1	1	1	-1	+0	+0	1
<b>Registrars</b>	<b>2</b>	<b>1</b>	<b>1</b>	<b>1</b>	<b>-1</b>	<b>+0</b>	<b>+0</b>	<b>1</b>
Other Medical	1	1	1	1	+0	+0	+0	1
<b>Medical/ Dental, other</b>	<b>1</b>	<b>1</b>	<b>1</b>	<b>1</b>	<b>+0</b>	<b>+0</b>	<b>+0</b>	<b>1</b>
<b>Medical &amp; Dental</b>	<b>4</b>	<b>2</b>	<b>2</b>	<b>2</b>	<b>-2</b>	<b>+0</b>	<b>+0</b>	<b>2</b>
Clinical Nurse/ Midwife Manager	107	99	95	95	-12	-4	+0	105
Director Nursing/Midwifery, Assistant	11	10	12	12	+1	+2	-0	12
Director of Nursing/Midwifery	5	5	5	5	-1	-0	+0	5
<b>Nurse/ Midwife Manager</b>	<b>123</b>	<b>114</b>	<b>112</b>	<b>112</b>	<b>-11</b>	<b>-2</b>	<b>+0</b>	<b>122</b>
Advanced Nurse/ Midwife Practitioner		1	2	2	+2	+1	-0	2
Clinical Nurse/ Midwife Specialist	7	3	3	3	-4	-0	-0	4
<b>Nurse/ Midwife Specialist &amp; AN/MP</b>	<b>7</b>	<b>4</b>	<b>5</b>	<b>5</b>	<b>-2</b>	<b>+1</b>	<b>-0</b>	<b>6</b>
Staff Nurse [Intellectual Disability]	232	290	293	292	+60	+1	-1	337
Staff Nurse [Psychiatric]	7	5	5	5	-2	-0	+0	5
Staff Nurses [General/ Children's]	80	39	39	38	-43	-2	-2	44
<b>Staff Nurse/ Staff Midwife</b>	<b>319</b>	<b>335</b>	<b>336</b>	<b>334</b>	<b>+15</b>	<b>-1</b>	<b>-3</b>	<b>386</b>
Public Health Nurse	1	1	1	1	+0	-0	-0	1
<b>Public Health Nurse</b>	<b>1</b>	<b>1</b>	<b>1</b>	<b>1</b>	<b>+0</b>	<b>-0</b>	<b>-0</b>	<b>1</b>
Nursing/ Midwifery awaiting registration		1				-1		
Pre-registration Nurse/ Midwife Intern			15	19	+19	+19	+4	31
<b>Nursing/ Midwifery Student</b>		<b>1</b>	<b>15</b>	<b>19</b>	<b>+19</b>	<b>+18</b>	<b>+4</b>	<b>31</b>
Nursing Education/Clinical	5	5	4	4	-1	-1	+0	6
<b>Nursing/ Midwifery other</b>	<b>5</b>	<b>5</b>	<b>4</b>	<b>4</b>	<b>-1</b>	<b>-1</b>	<b>+0</b>	<b>6</b>
<b>Nursing &amp; Midwifery</b>	<b>455</b>	<b>460</b>	<b>474</b>	<b>476</b>	<b>+21</b>	<b>+16</b>	<b>+2</b>	<b>552</b>
Dietitians		1	1	1	+1	-0	+0	1
Occupational Therapists	37	38	37	39	+2	+1	+1	45
Physiotherapists	22	19	20	19	-3	-0	-1	24
Speech & Language Therapists	33	34	35	36	+3	+2	+1	45
<b>Therapy Professions</b>	<b>92</b>	<b>92</b>	<b>94</b>	<b>95</b>	<b>+3</b>	<b>+2</b>	<b>+0</b>	<b>115</b>
Clinical Engineering	2	2	2	2	+0	+0	+0	2
<b>Health Science/ Diagnostics</b>	<b>2</b>	<b>2</b>	<b>2</b>	<b>2</b>	<b>+0</b>	<b>+0</b>	<b>+0</b>	<b>2</b>
Social Care	361	414	374	363	+2	-51	-12	457
<b>Social Care</b>	<b>361</b>	<b>414</b>	<b>374</b>	<b>363</b>	<b>+2</b>	<b>-51</b>	<b>-12</b>	<b>457</b>
Social Workers	24	24	23	23	-1	-1	-0	26
<b>Social Workers</b>	<b>24</b>	<b>24</b>	<b>23</b>	<b>23</b>	<b>-1</b>	<b>-1</b>	<b>-0</b>	<b>26</b>



## Disabilities Employment Report by Grade Group: APR 2023

APR 2023	WTE DEC 2019	WTE DEC 2022	WTE MAR 2023	WTE APR 2023	WTE change since DEC 2019	WTE change since DEC 2022	WTE change since MAR 2023	No. APR 2023
<b>Overall</b>	<b>2,162</b>	<b>2,345</b>	<b>2,344</b>	<b>2,371</b>	<b>+209</b>	<b>+25</b>	<b>+26</b>	<b>2,860</b>
Psychologists	25	29	27	28	+3	-1	+0	30
<b>Psychologists</b>	<b>25</b>	<b>29</b>	<b>27</b>	<b>28</b>	<b>+3</b>	<b>-1</b>	<b>+0</b>	<b>30</b>
Counsellor Therapists	5	6	5	5	+0	-1	+0	7
Other Health & Social Care	1		39	48	+48	+48	+9	51
Play Therapists/ Specialists	1	2	1	1	+0	-1	+0	1
<b>H&amp;SC, Other</b>	<b>7</b>	<b>8</b>	<b>45</b>	<b>55</b>	<b>+48</b>	<b>+46</b>	<b>+9</b>	<b>59</b>
<b>Health &amp; Social Care Professionals</b>	<b>510</b>	<b>569</b>	<b>566</b>	<b>564</b>	<b>+54</b>	<b>-5</b>	<b>-2</b>	<b>689</b>
Executive Management	1	2	2	2	+1	+0	+0	2
Senior Management (VIII & GM)	8	16	17	17	+9	+0	-0	17
<b>Management (VIII &amp; above)</b>	<b>9</b>	<b>18</b>	<b>19</b>	<b>19</b>	<b>+10</b>	<b>+0</b>	<b>-0</b>	<b>19</b>
Middle Management (V-VII)	56	55	54	56	+0	+1	+2	59
<b>Administrative/ Supervisory (V to VII)</b>	<b>56</b>	<b>55</b>	<b>54</b>	<b>56</b>	<b>+0</b>	<b>+1</b>	<b>+2</b>	<b>59</b>
General Administrative (III & IV)	84	94	99	101	+17	+7	+2	119
<b>Clerical (III &amp; IV)</b>	<b>84</b>	<b>94</b>	<b>99</b>	<b>101</b>	<b>+17</b>	<b>+7</b>	<b>+2</b>	<b>119</b>
<b>Management &amp; Administrative</b>	<b>149</b>	<b>168</b>	<b>172</b>	<b>176</b>	<b>+27</b>	<b>+9</b>	<b>+4</b>	<b>197</b>
Catering	8	6	6	6	-2	-1	-0	6
Household Services	28	17	17	16	-12	-1	-1	23
Other Support	8	7	7	7	-2	-1	+0	7
Portering	2	2	2	2	+0	+0	+0	2
<b>Support</b>	<b>46</b>	<b>33</b>	<b>31</b>	<b>30</b>	<b>-16</b>	<b>-3</b>	<b>-1</b>	<b>38</b>
Maintenance	16	11	13	13	-3	+2	+0	13
Technical Services	0	1	3	3	+3	+2	+0	3
<b>Maintenance/ Technical</b>	<b>16</b>	<b>12</b>	<b>16</b>	<b>16</b>	<b>-0</b>	<b>+4</b>	<b>+0</b>	<b>16</b>
<b>General Support</b>	<b>62</b>	<b>45</b>	<b>47</b>	<b>46</b>	<b>-16</b>	<b>+1</b>	<b>-1</b>	<b>54</b>
Attendant/ Aide	24	11	11	11	-13	+0	+0	17
Health Care Assistant/ Care Assistant	819	955	940	962	+143	+7	+21	1,178
Health & Social Care Assistants	1				-1			
<b>Health Care Assistants</b>	<b>844</b>	<b>965</b>	<b>951</b>	<b>973</b>	<b>+129</b>	<b>+8</b>	<b>+22</b>	<b>1,195</b>
Home Helps	22	21	20	19	-3	-2	-1	39
<b>Home Help</b>	<b>22</b>	<b>21</b>	<b>20</b>	<b>19</b>	<b>-3</b>	<b>-2</b>	<b>-1</b>	<b>39</b>
Home Care Services	1	1	1	1	+0	+0	+0	1
Other Care Grades	24	33	32	32	+9	-1	+0	37
Pastoral Care	1	1	1	1	+0	+0	+0	1
Workshop Services	89	80	78	80	-10	+0	+2	93
<b>Care, other</b>	<b>115</b>	<b>115</b>	<b>112</b>	<b>114</b>	<b>-1</b>	<b>-1</b>	<b>+2</b>	<b>132</b>
<b>Patient &amp; Client Care</b>	<b>981</b>	<b>1101</b>	<b>1083</b>	<b>1106</b>	<b>+125</b>	<b>+5</b>	<b>+23</b>	<b>1,366</b>





# Disabilities Employment Report by Grade Group: APR 2023

CHO 9

APR 2023	WTE DEC 2019	WTE DEC 2022	WTE MAR 2023	WTE APR 2023	WTE change since DEC 2019	WTE change since DEC 2022	WTE change since MAR 2023	No. APR 2023
<b>Overall</b>	<b>3,194</b>	<b>3,336</b>	<b>3,337</b>	<b>3,346</b>	<b>+152</b>	<b>+10</b>	<b>+9</b>	<b>3,957</b>
Consultant Paediatrics	1	1	1	1	-0	+0	+0	1
Consultant Psychiatry	11	8	10	10	-1	+2	+1	13
<b>Consultants</b>	<b>13</b>	<b>9</b>	<b>11</b>	<b>11</b>	<b>-1</b>	<b>+2</b>	<b>+1</b>	<b>14</b>
Registrar	1	1			-1	-1		
Senior Registrar	1	1	1	2	+1	+1	+1	2
Specialist Registrar	4	1	1	1	-3	+0	+0	1
<b>Registrars</b>	<b>6</b>	<b>3</b>	<b>2</b>	<b>3</b>	<b>-3</b>	<b>-0</b>	<b>+1</b>	<b>3</b>
Senior House Officer		1	1	2	+2	+1	+1	2
<b>SHO/ Interns</b>		<b>1</b>	<b>1</b>	<b>2</b>	<b>+2</b>	<b>+1</b>	<b>+1</b>	<b>2</b>
Other Medical	6	6	6	6	-0	-0	+0	8
<b>Medical/ Dental, other</b>	<b>6</b>	<b>6</b>	<b>6</b>	<b>6</b>	<b>-0</b>	<b>-0</b>	<b>+0</b>	<b>8</b>
<b>Medical &amp; Dental</b>	<b>25</b>	<b>20</b>	<b>20</b>	<b>22</b>	<b>-3</b>	<b>+2</b>	<b>+2</b>	<b>27</b>
Clinical Nurse/ Midwife Manager	168	179	185	185	+18	+6	+0	200
Director Nursing/Midwifery, Assistant	10	12	13	13	+3	+1	+0	13
Director of Nursing/Midwifery	14	19	21	21	+7	+1	+0	21
<b>Nurse/ Midwife Manager</b>	<b>192</b>	<b>211</b>	<b>218</b>	<b>219</b>	<b>+27</b>	<b>+8</b>	<b>+0</b>	<b>234</b>
Advanced Nurse/ Midwife Practitioner		1	2	2	+2	+1	+0	2
Clinical Nurse/ Midwife Specialist	9	15	15	15	+6	-1	+0	16
<b>Nurse/ Midwife Specialist &amp; AN/MP</b>	<b>9</b>	<b>16</b>	<b>17</b>	<b>17</b>	<b>+8</b>	<b>+0</b>	<b>+0</b>	<b>18</b>
Staff Nurse [Intellectual Disability]	419	311	303	296	-123	-16	-7	351
Staff Nurse [Psychiatric]	32	27	28	29	-3	+1	+1	37
Staff Nurses [General/ Children's]	66	162	161	161	+95	-0	+0	170
<b>Staff Nurse/ Staff Midwife</b>	<b>517</b>	<b>501</b>	<b>492</b>	<b>486</b>	<b>-31</b>	<b>-15</b>	<b>-6</b>	<b>558</b>
Nursing/ Midwifery awaiting registration		2	1	1	+1	-1	-0	1
Pre-registration Nurse/ Midwife Intern	8		14	15	+7	+15	+0	30
<b>Nursing/ Midwifery Student</b>	<b>8</b>	<b>2</b>	<b>15</b>	<b>16</b>	<b>+8</b>	<b>+14</b>	<b>+0</b>	<b>31</b>
Nursing Education/Clinical	7	9	8	8	+1	-1	-0	9
<b>Nursing/ Midwifery other</b>	<b>7</b>	<b>9</b>	<b>8</b>	<b>8</b>	<b>+1</b>	<b>-1</b>	<b>-0</b>	<b>9</b>
<b>Nursing &amp; Midwifery</b>	<b>732</b>	<b>739</b>	<b>750</b>	<b>745</b>	<b>+13</b>	<b>+7</b>	<b>-5</b>	<b>850</b>
Dietitians	6	8	10	9	+3	+1	-0	11
Occupational Therapists	62	83	81	80	+18	-3	-2	87
Physiotherapists	58	60	58	58	+0	-2	-0	69
Speech & Language Therapists	55	57	51	54	-1	-3	+3	61
<b>Therapy Professions</b>	<b>181</b>	<b>208</b>	<b>201</b>	<b>201</b>	<b>+20</b>	<b>-6</b>	<b>+1</b>	<b>228</b>
Clinical Engineering	11	8	9	10	-1	+2	+1	10
Medical Science	4	4	4	4	+0	+0	+0	4
<b>Health Science/ Diagnostics</b>	<b>15</b>	<b>12</b>	<b>13</b>	<b>14</b>	<b>-1</b>	<b>+2</b>	<b>+1</b>	<b>14</b>



## Disabilities Employment Report by Grade Group: APR 2023

APR 2023	WTE DEC 2019	WTE DEC 2022	WTE MAR 2023	WTE APR 2023	WTE change since DEC 2019	WTE change since DEC 2022	WTE change since MAR 2023	No. APR 2023
<b>Overall</b>	<b>3,194</b>	<b>3,336</b>	<b>3,337</b>	<b>3,346</b>	<b>+152</b>	<b>+10</b>	<b>+9</b>	<b>3,957</b>
Social Care	689	796	780	786	+97	-10	+6	951
<b>Social Care</b>	<b>689</b>	<b>796</b>	<b>780</b>	<b>786</b>	<b>+97</b>	<b>-10</b>	<b>+6</b>	<b>951</b>
Social Workers	44	54	55	55	+11	+1	-0	62
<b>Social Workers</b>	<b>44</b>	<b>54</b>	<b>55</b>	<b>55</b>	<b>+11</b>	<b>+1</b>	<b>-0</b>	<b>62</b>
Psychologists	53	57	60	60	+7	+3	-0	65
<b>Psychologists</b>	<b>53</b>	<b>57</b>	<b>60</b>	<b>60</b>	<b>+7</b>	<b>+3</b>	<b>-0</b>	<b>65</b>
Pharmacists	2	2	2	2	+0	+0	+0	2
<b>Pharmacy</b>	<b>2</b>	<b>2</b>	<b>2</b>	<b>2</b>	<b>+0</b>	<b>+0</b>	<b>+0</b>	<b>2</b>
Other Health & Social Care	19	13	12	12	-7	-1	+0	15
Play Therapists/ Specialists	0	1	1	1	+1	+1	-0	1
<b>H&amp;SC, Other</b>	<b>19</b>	<b>13</b>	<b>13</b>	<b>13</b>	<b>-6</b>	<b>-0</b>	<b>-0</b>	<b>16</b>
<b>Health &amp; Social Care Professionals</b>	<b>1003</b>	<b>1142</b>	<b>1124</b>	<b>1131</b>	<b>+128</b>	<b>-11</b>	<b>+7</b>	<b>1,338</b>
Executive Management	3	4	4	4	+1	+0	+0	4
Senior Management (VIII & GM)	35	41	43	42	+7	+1	-1	43
<b>Management (VIII &amp; above)</b>	<b>37</b>	<b>45</b>	<b>47</b>	<b>46</b>	<b>+8</b>	<b>+1</b>	<b>-1</b>	<b>47</b>
Middle Management (V-VII)	81	122	140	141	+61	+20	+2	153
Other Administrative	7	7	6	6	-1	-1	+0	6
<b>Administrative/ Supervisory (V to VII)</b>	<b>88</b>	<b>129</b>	<b>146</b>	<b>147</b>	<b>+60</b>	<b>+19</b>	<b>+2</b>	<b>159</b>
General Administrative (III & IV)	125	137	144	144	+19	+7	-1	169
<b>Clerical (III &amp; IV)</b>	<b>125</b>	<b>137</b>	<b>144</b>	<b>144</b>	<b>+19</b>	<b>+7</b>	<b>-1</b>	<b>169</b>
<b>Management &amp; Administrative</b>	<b>250</b>	<b>311</b>	<b>337</b>	<b>337</b>	<b>+87</b>	<b>+26</b>	<b>-0</b>	<b>375</b>
Catering	24	24	25	25	+0	+1	+0	31
Household Services	86	78	78	79	-7	+1	+0	104
Other Support	81	30	30	30	-51	-0	-0	35
Portering	4	4	4	4	+0	+0	+0	5
<b>Support</b>	<b>196</b>	<b>136</b>	<b>137</b>	<b>138</b>	<b>-58</b>	<b>+1</b>	<b>+0</b>	<b>175</b>
Maintenance	20	17	17	18	-2	+0	+1	19
Technical Services	2	3	3	3	+1	+0	+0	3
<b>Maintenance/ Technical</b>	<b>22</b>	<b>20</b>	<b>20</b>	<b>21</b>	<b>-1</b>	<b>+0</b>	<b>+1</b>	<b>22</b>
<b>General Support</b>	<b>218</b>	<b>156</b>	<b>157</b>	<b>158</b>	<b>-59</b>	<b>+2</b>	<b>+1</b>	<b>197</b>
Attendant/ Aide	3	19	17	18	+15	-1	+1	28
Health Care Assistant/ Care Assistant	864	837	831	833	-30	-4	+2	1,024
Health & Social Care Assistants	2	11	12	14	+11	+3	+2	17
<b>Health Care Assistants</b>	<b>869</b>	<b>866</b>	<b>860</b>	<b>865</b>	<b>-4</b>	<b>-2</b>	<b>+5</b>	<b>1,069</b>
Home Care Services	11	5	5	5	-6	+0	+0	5
Other Care Grades	17	41	34	35	+17	-7	+1	38
Pastoral Care	1				-1			
Workshop Services	68	56	50	49	-19	-7	-1	58
<b>Care, other</b>	<b>97</b>	<b>102</b>	<b>88</b>	<b>89</b>	<b>-8</b>	<b>-13</b>	<b>+0</b>	<b>101</b>



## Disabilities Employment Report by Grade Group: APR 2023

APR 2023	WTE DEC 2019	WTE DEC 2022	WTE MAR 2023	WTE APR 2023	WTE change since DEC 2019	WTE change since DEC 2022	WTE change since MAR 2023	No. APR 2023
Overall	3,194	3,336	3,337	3,346	+152	+10	+9	3,957
Patient & Client Care	966	968	948	953	-13	-15	+5	1,170



# Disabilities Employment Report by Grade Group: APR 2023

## other Community Services

APR 2023	WTE DEC 2019	WTE DEC 2022	WTE MAR 2023	WTE APR 2023	WTE change since DEC 2019	WTE change since DEC 2022	WTE change since MAR 2023	No. APR 2023
<b>Overall</b>	<b>6</b>	<b>6</b>	<b>6</b>	<b>6</b>	<b>+0</b>	<b>+0</b>	<b>+0</b>	<b>6</b>
Senior Management (VIII & GM)	1	2	2	2	+1	+0	+0	2
<b>Management (VIII &amp; above)</b>	<b>1</b>	<b>2</b>	<b>2</b>	<b>2</b>	<b>+1</b>	<b>+0</b>	<b>+0</b>	<b>2</b>
Middle Management (V-VII)	3	2	2	2	-1	+0	+0	2
<b>Administrative/ Supervisory (V to VII)</b>	<b>3</b>	<b>2</b>	<b>2</b>	<b>2</b>	<b>-1</b>	<b>+0</b>	<b>+0</b>	<b>2</b>
General Administrative (III & IV)	2	2	2	2	+0	+0	+0	2
<b>Clerical (III &amp; IV)</b>	<b>2</b>	<b>2</b>	<b>2</b>	<b>2</b>	<b>+0</b>	<b>+0</b>	<b>+0</b>	<b>2</b>
<b>Management &amp; Administrative</b>	<b>6</b>	<b>6</b>	<b>6</b>	<b>6</b>	<b>+0</b>	<b>+0</b>	<b>+0</b>	<b>6</b>



# Disabilities Employment Report by Grade Group: APR 2023

APR 2023	WTE DEC 2019	WTE DEC 2022	WTE MAR 2023	WTE APR 2023	WTE change since DEC 2019	WTE change since DEC 2022	WTE change since MAR 2023	No. APR 2023
<b>Overall</b>	<b>18,273</b>	<b>19,903</b>	<b>19,990</b>	<b>20,092</b>	<b>+1,820</b>	<b>+189</b>	<b>+102</b>	<b>23,776</b>
Consultant Paediatrics	3	3	3	3	-1	+0	+0	3
Consultant Psychiatry	21	16	17	18	-3	+2	+1	22
<b>Consultants</b>	<b>24</b>	<b>18</b>	<b>19</b>	<b>20</b>	<b>-4</b>	<b>+2</b>	<b>+1</b>	<b>25</b>
Registrar	7	7	6	6	-1	-1	+0	7
Senior Registrar	2	2	2	3	+1	+1	+1	3
Specialist Registrar	4	1	2	2	-2	+1	-0	2
<b>Registrars</b>	<b>13</b>	<b>10</b>	<b>10</b>	<b>11</b>	<b>-2</b>	<b>+1</b>	<b>+1</b>	<b>12</b>
Senior House Officer	7	9	10	10	+3	+1	+0	15
<b>SHO/ Interns</b>	<b>7</b>	<b>9</b>	<b>10</b>	<b>10</b>	<b>+3</b>	<b>+1</b>	<b>+0</b>	<b>15</b>
Other Medical	14	13	12	12	-3	-1	+0	18
<b>Medical/ Dental, other</b>	<b>14</b>	<b>13</b>	<b>12</b>	<b>12</b>	<b>-3</b>	<b>-1</b>	<b>+0</b>	<b>18</b>
<b>Medical &amp; Dental</b>	<b>58</b>	<b>50</b>	<b>51</b>	<b>53</b>	<b>-6</b>	<b>+2</b>	<b>+2</b>	<b>70</b>
Clinical Nurse/ Midwife Manager	809	869	880	881	+72	+12	+2	950
Director Nursing/Midwifery, Assistant	41	43	47	46	+5	+2	-1	48
Director of Nursing/Midwifery	42	47	49	49	+7	+2	+0	51
<b>Nurse/ Midwife Manager</b>	<b>892</b>	<b>959</b>	<b>976</b>	<b>976</b>	<b>+84</b>	<b>+17</b>	<b>+0</b>	<b>1,049</b>
Advanced Nurse/ Midwife Practitioner	2	12	15	15	+13	+3	-0	15
Clinical Nurse/ Midwife Specialist	60	58	63	63	+3	+5	+0	69
<b>Nurse/ Midwife Specialist &amp; AN/MP</b>	<b>62</b>	<b>70</b>	<b>77</b>	<b>77</b>	<b>+16</b>	<b>+8</b>	<b>-0</b>	<b>84</b>
Staff Nurse [Intellectual Disability]	1,597	1,767	1,756	1,745	+147	-22	-11	2,013
Staff Nurse [Psychiatric]	82	60	61	61	-22	+1	-0	73
Staff Nurses [General/ Children's]	889	792	791	799	-90	+7	+8	900
<b>Staff Nurse/ Staff Midwife</b>	<b>2,569</b>	<b>2,618</b>	<b>2,608</b>	<b>2,604</b>	<b>+35</b>	<b>-14</b>	<b>-4</b>	<b>2,986</b>
Public Health Nurse	6	12	12	12	+6	+0	+0	14
<b>Public Health Nurse</b>	<b>6</b>	<b>12</b>	<b>12</b>	<b>12</b>	<b>+6</b>	<b>+0</b>	<b>+0</b>	<b>14</b>
Nursing/ Midwifery awaiting registration	14	4	1	1	-13	-3	-0	1
Pre-registration Nurse/ Midwife Intern	28	7	72	77	+49	+70	+5	147
<b>Nursing/ Midwifery Student</b>	<b>42</b>	<b>11</b>	<b>73</b>	<b>78</b>	<b>+36</b>	<b>+67</b>	<b>+5</b>	<b>148</b>
Nursing Education/Clinical	21	27	24	24	+3	-3	+0	28
Other Nursing/ Midwifery	1	1			-1	-1		
<b>Nursing/ Midwifery other</b>	<b>22</b>	<b>28</b>	<b>24</b>	<b>24</b>	<b>+2</b>	<b>-4</b>	<b>+0</b>	<b>28</b>
<b>Nursing &amp; Midwifery</b>	<b>3593</b>	<b>3697</b>	<b>3769</b>	<b>3771</b>	<b>+178</b>	<b>+74</b>	<b>+2</b>	<b>4,309</b>
Dietitians	18	20	27	26	+8	+6	-0	33
Occupational Therapists	263	304	299	291	+28	-13	-8	334
Physiotherapists	189	193	196	197	+7	+3	+1	230
Speech & Language Therapists	292	273	260	262	-30	-11	+2	309
<b>Therapy Professions</b>	<b>763</b>	<b>790</b>	<b>782</b>	<b>776</b>	<b>+13</b>	<b>-15</b>	<b>-6</b>	<b>906</b>



APR 2023	WTE DEC 2019	WTE DEC 2022	WTE MAR 2023	WTE APR 2023	WTE change since DEC 2019	WTE change since DEC 2022	WTE change since MAR 2023	No. APR 2023
<b>Overall</b>	<b>18,273</b>	<b>19,903</b>	<b>19,990</b>	<b>20,092</b>	<b>+1,820</b>	<b>+189</b>	<b>+102</b>	<b>23,776</b>
Clinical Engineering	13	14	15	16	+3	+2	+1	16
Medical Science	4	4	4	4	+0	+0	+0	4
Phlebotomists	1				-1			
Radiographers	1	1	1	3	+2	+2	+2	4
Respiratory Physiologists	1	2	1	1	+0	-1	+0	1
<b>Health Science/ Diagnostics</b>	<b>20</b>	<b>21</b>	<b>21</b>	<b>24</b>	<b>+4</b>	<b>+3</b>	<b>+3</b>	<b>25</b>
Social Care	2,595	3,055	2,992	2,994	+399	-60	+2	3,518
<b>Social Care</b>	<b>2,595</b>	<b>3,055</b>	<b>2,992</b>	<b>2,994</b>	<b>+399</b>	<b>-60</b>	<b>+2</b>	<b>3,518</b>
Social Workers	219	239	233	235	+17	-4	+2	273
<b>Social Workers</b>	<b>219</b>	<b>239</b>	<b>233</b>	<b>235</b>	<b>+17</b>	<b>-4</b>	<b>+2</b>	<b>273</b>
Psychologists	202	239	241	239	+37	-0	-2	263
<b>Psychologists</b>	<b>202</b>	<b>239</b>	<b>241</b>	<b>239</b>	<b>+37</b>	<b>-0</b>	<b>-2</b>	<b>263</b>
Pharmacists	5	7	7	7	+1	+0	+0	9
Pharmacy Technicians	2	2	1	0	-1	-2	-1	1
<b>Pharmacy</b>	<b>7</b>	<b>8</b>	<b>8</b>	<b>7</b>	<b>+0</b>	<b>-1</b>	<b>-1</b>	<b>10</b>
Counsellor Therapists	19	23	19	20	+1	-3	+0	23
Other Health & Social Care	51	30	70	78	+27	+48	+8	91
Play Therapists/ Specialists	15	15	15	15	-0	-0	+0	20
<b>H&amp;SC, Other</b>	<b>85</b>	<b>68</b>	<b>104</b>	<b>113</b>	<b>+28</b>	<b>+45</b>	<b>+9</b>	<b>134</b>
<b>Health &amp; Social Care Professionals</b>	<b>3890</b>	<b>4421</b>	<b>4381</b>	<b>4388</b>	<b>+498</b>	<b>-33</b>	<b>+7</b>	<b>5,129</b>
Executive Management	31	50	41	41	+10	-9	+0	41
Senior Management (VIII & GM)	149	186	194	194	+45	+8	-0	200
<b>Management (VIII &amp; above)</b>	<b>180</b>	<b>236</b>	<b>235</b>	<b>235</b>	<b>+55</b>	<b>-1</b>	<b>-0</b>	<b>241</b>
Middle Management (V-VII)	463	653	683	692	+230	+39	+9	734
Other Administrative	15	12	13	14	-1	+2	+1	14
<b>Administrative/ Supervisory (V to VII)</b>	<b>477</b>	<b>665</b>	<b>696</b>	<b>706</b>	<b>+229</b>	<b>+41</b>	<b>+11</b>	<b>748</b>
General Administrative (III & IV)	660	744	769	776	+116	+32	+7	916
<b>Clerical (III &amp; IV)</b>	<b>660</b>	<b>744</b>	<b>769</b>	<b>776</b>	<b>+116</b>	<b>+32</b>	<b>+7</b>	<b>916</b>
<b>Management &amp; Administrative</b>	<b>1317</b>	<b>1645</b>	<b>1699</b>	<b>1717</b>	<b>+400</b>	<b>+72</b>	<b>+18</b>	<b>1,905</b>
Catering	98	75	76	74	-24	-1	-1	89
Household Services	419	385	377	374	-45	-11	-3	544
Other Labs & Associated	1	1	1	1	+0	+0	+0	1
Other Support	188	145	144	143	-45	-3	-1	214
Portering	28	18	17	18	-10	+0	+1	24
<b>Support</b>	<b>733</b>	<b>624</b>	<b>614</b>	<b>610</b>	<b>-124</b>	<b>-14</b>	<b>-5</b>	<b>872</b>
Maintenance	116	109	121	123	+7	+14	+2	135
Technical Services	8	17	17	17	+9	-0	-0	17
<b>Maintenance/ Technical</b>	<b>124</b>	<b>126</b>	<b>138</b>	<b>140</b>	<b>+15</b>	<b>+14</b>	<b>+2</b>	<b>152</b>
<b>General Support</b>	<b>857</b>	<b>750</b>	<b>752</b>	<b>749</b>	<b>-108</b>	<b>-1</b>	<b>-3</b>	<b>1,024</b>
Attendant/ Aide	230	179	181	172	-58	-7	-9	219

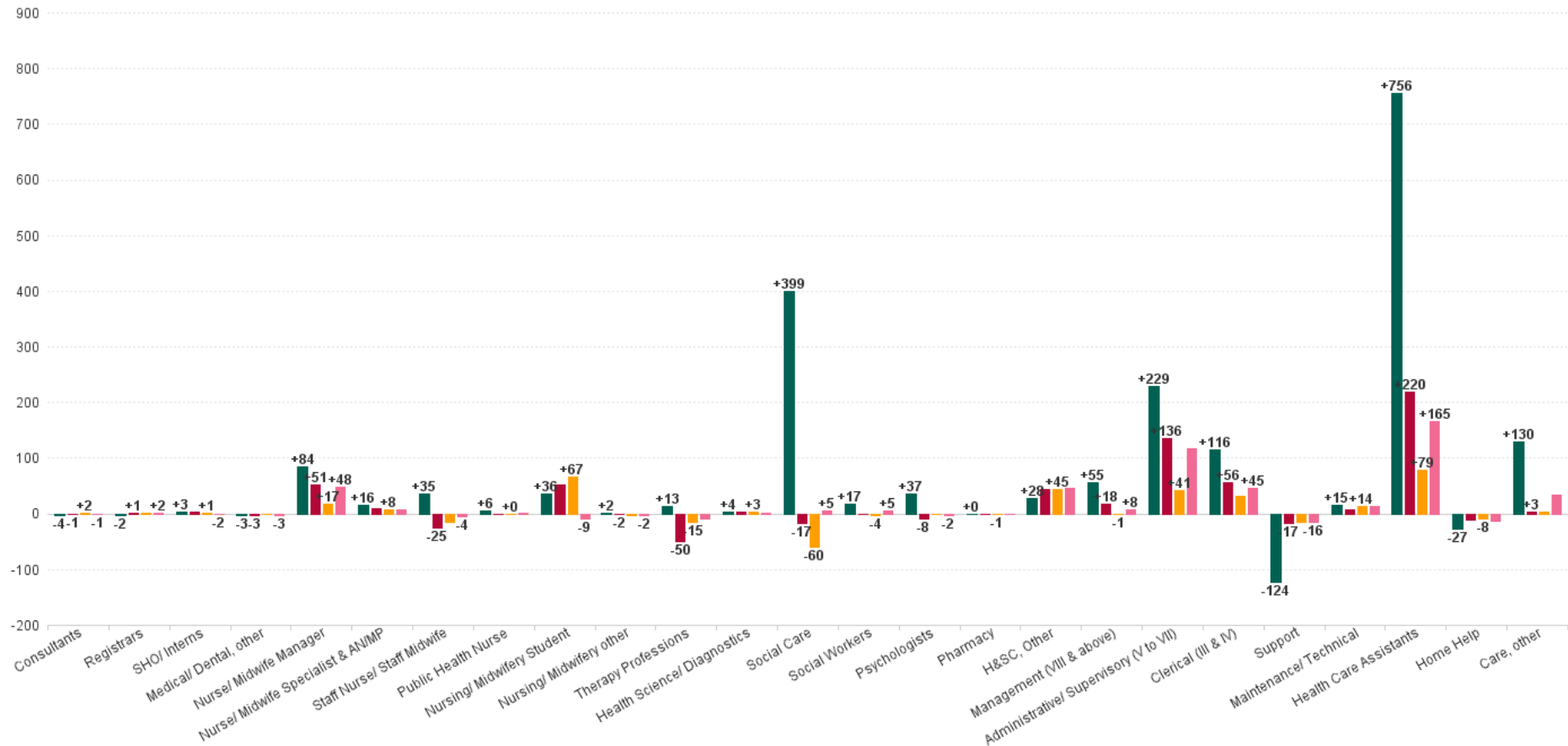


APR 2023	WTE DEC 2019	WTE DEC 2022	WTE MAR 2023	WTE APR 2023	WTE change since DEC 2019	WTE change since DEC 2022	WTE change since MAR 2023	No. APR 2023
<b>Overall</b>	<b>18,273</b>	<b>19,903</b>	<b>19,990</b>	<b>20,092</b>	<b>+1,820</b>	<b>+189</b>	<b>+102</b>	<b>23,776</b>
Health Care Assistant/ Care Assistant	6,578	7,294	7,292	7,372	+794	+78	+80	8,795
Health & Social Care Assistants	10	22	28	30	+20	+8	+2	34
<b>Health Care Assistants</b>	<b>6,818</b>	<b>7,495</b>	<b>7,500</b>	<b>7,574</b>	<b>+756</b>	<b>+79</b>	<b>+74</b>	<b>9,048</b>
Home Helps	99	80	77	72	-27	-8	-6	216
<b>Home Help</b>	<b>99</b>	<b>80</b>	<b>77</b>	<b>72</b>	<b>-27</b>	<b>-8</b>	<b>-6</b>	<b>216</b>
Home Care Services	28	17	18	18	-10	+1	+1	22
Other Care Grades	174	259	253	253	+80	-5	+0	287
Pastoral Care	10	5	5	5	-5	+1	+0	7
Workshop Services	1,426	1,485	1,484	1,492	+66	+6	+8	1,759
<b>Care, other</b>	<b>1,638</b>	<b>1,766</b>	<b>1,759</b>	<b>1,769</b>	<b>+130</b>	<b>+2</b>	<b>+9</b>	<b>2,075</b>
<b>Patient &amp; Client Care</b>	<b>8556</b>	<b>9341</b>	<b>9337</b>	<b>9414</b>	<b>+858</b>	<b>+73</b>	<b>+77</b>	<b>11,339</b>



## WTE Change by Staff Category

■ WTE change since DEC 2019 ■ WTE change since DEC 2021 ■ WTE change since DEC 2022 ■ WTE change since APR 2022





## Disabilities Employment Report by WTE, Headcount, Gender, Full-Time / Part-Time etc. APR 2023

APR 2023	WTE APR 2023	No. APR 2023	WTE : No	% Male	% Female	Male WTE : No.	Female WTE : No	Perm Count %	Perm Count Male %	Perm Count Female %	Fulltime Count %	Part time Count %	FT Count Male %	FT Count Female %
<b>Total</b>	<b>20,092</b>	<b>23,776</b>	<b>1:0.8</b>	<b>19.66%</b>	<b>80.34%</b>	<b>1:0.9</b>	<b>1:0.8</b>	<b>88.54%</b>	<b>17.23%</b>	<b>71.31%</b>	<b>58.64%</b>	<b>41.36%</b>	<b>69.16%</b>	<b>56.07%</b>
Consultant Paediatrics	2.53	3	1:0.8		100.00%	1:	1:0.8	100.00%		100.00%	66.67%	33.33%		66.67%
Consultant Psychiatry	17.7	22	1:0.8	27.27%	72.73%	1:1	1:0.7	77.27%	13.64%	63.64%	63.64%	36.36%	100.00%	50.00%
<b>Consultants</b>	<b>20.23</b>	<b>25</b>	<b>1:0.8</b>	<b>24.00%</b>	<b>76.00%</b>	<b>1:1</b>	<b>1:0.7</b>	<b>80.00%</b>	<b>12.00%</b>	<b>68.00%</b>	<b>64.00%</b>	<b>36.00%</b>	<b>100.00%</b>	<b>52.63%</b>
Other Medical	11.78	18	1:0.7	33.33%	66.67%	1:0.9	1:0.5	88.89%	22.22%	66.67%	33.33%	66.67%	50.00%	25.00%
<b>Medical/ Dental, other</b>	<b>11.78</b>	<b>18</b>	<b>1:0.7</b>	<b>33.33%</b>	<b>66.67%</b>	<b>1:0.9</b>	<b>1:0.5</b>	<b>88.89%</b>	<b>22.22%</b>	<b>66.67%</b>	<b>33.33%</b>	<b>66.67%</b>	<b>50.00%</b>	<b>25.00%</b>
Registrar	6	7	1:0.9	42.86%	57.14%	1:1	1:0.8	14.29%	14.29%		100.00%		100.00%	100.00%
<b>Registrars</b>	<b>6</b>	<b>7</b>	<b>1:0.9</b>	<b>57.14%</b>	<b>114.29%</b>	<b>1:1</b>	<b>1:0.9</b>	<b>14.29%</b>	<b>14.29%</b>		<b>171.43%</b>		<b>100.00%</b>	<b>100.00%</b>
Senior House Officer	9.63	15	1:0.6	53.33%	46.67%	1:0.7	1:0.6				100.00%		100.00%	100.00%
<b>SHO/ Interns</b>	<b>9.63</b>	<b>15</b>	<b>1:0.6</b>	<b>53.33%</b>	<b>46.67%</b>	<b>1:0.7</b>	<b>1:0.6</b>				<b>100.00%</b>		<b>100.00%</b>	<b>100.00%</b>
Senior Registrar	2.96	3	1:1	33.33%	66.67%	1:1	1:1				100.00%		100.00%	100.00%
Specialist Registrar	2	2	1:1		100.00%	1:	1:1				100.00%			100.00%
<b>Registrars</b>	<b>4.96</b>	<b>5</b>	<b>1:0.9</b>	<b>80.00%</b>	<b>160.00%</b>	<b>1:1</b>	<b>1:0.9</b>	<b>20.00%</b>	<b>20.00%</b>		<b>240.00%</b>		<b>100.00%</b>	<b>100.00%</b>
<b>Medical &amp; Dental</b>	<b>53</b>	<b>70</b>	<b>1:0.8</b>	<b>34.29%</b>	<b>65.71%</b>	<b>1:0.9</b>	<b>1:0.7</b>	<b>52.86%</b>	<b>11.43%</b>	<b>41.43%</b>	<b>70.00%</b>	<b>30.00%</b>	<b>87.50%</b>	<b>60.87%</b>
Advanced Nurse/ Midwife Practitioner	14.62	15	1:1	20.00%	80.00%	1:0.9	1:1	93.33%	20.00%	73.33%	93.33%	6.67%	66.67%	100.00%
<b>Nurse/ Midwife Specialist &amp; AN/MP</b>	<b>14.62</b>	<b>15</b>	<b>1:0.9</b>	<b>40.00%</b>	<b>520.00%</b>	<b>1:1</b>	<b>1:0.9</b>	<b>540.00%</b>	<b>40.00%</b>	<b>500.00%</b>	<b>393.33%</b>	<b>166.67%</b>	<b>83.33%</b>	<b>69.23%</b>
Clinical Nurse/ Midwife Manager	881.2	950	1:0.9	12.95%	87.05%	1:1	1:0.9	93.58%	12.11%	81.47%	83.05%	16.95%	95.93%	81.14%
<b>Nurse/ Midwife Manager</b>	<b>881.2</b>	<b>950</b>	<b>1:0.9</b>	<b>14.63%</b>	<b>95.79%</b>	<b>1:1</b>	<b>1:0.9</b>	<b>103.47%</b>	<b>13.79%</b>	<b>89.68%</b>	<b>92.84%</b>	<b>17.58%</b>	<b>96.40%</b>	<b>82.20%</b>
Clinical Nurse/ Midwife Specialist	62.83	69	1:0.9	4.36%	95.65%	1:1	1:0.9	97.10%	4.35%	92.75%	65.22%	34.78%	100.00%	63.64%
<b>Nurse/ Midwife Specialist &amp; AN/MP</b>	<b>62.83</b>	<b>69</b>	<b>1:0.9</b>	<b>8.70%</b>	<b>113.04%</b>	<b>1:1</b>	<b>1:0.9</b>	<b>117.39%</b>	<b>8.70%</b>	<b>108.70%</b>	<b>85.51%</b>	<b>36.23%</b>	<b>83.33%</b>	<b>69.23%</b>
Director Nursing/Midwifery, Assistant	45.83	48	1:1	20.83%	79.17%	1:0.9	1:1	97.92%	20.83%	77.08%	93.75%	6.25%	100.00%	92.11%
Director of Nursing/Midwifery	48.8	51	1:1	11.76%	88.24%	1:1	1:1	92.16%	11.76%	80.39%	94.12%	5.88%	100.00%	93.33%
<b>Nurse/ Midwife Manager</b>	<b>94.63</b>	<b>99</b>	<b>1:0.9</b>	<b>140.40%</b>	<b>919.19%</b>	<b>1:1</b>	<b>1:0.9</b>	<b>992.93%</b>	<b>132.32%</b>	<b>860.61%</b>	<b>890.91%</b>	<b>168.69%</b>	<b>96.40%</b>	<b>82.20%</b>
Nursing Education/Clinical	23.92	28	1:0.9	3.57%	96.43%	1:1	1:0.8	100.00%	3.57%	96.43%	64.29%	35.71%	100.00%	62.96%
<b>Nursing/ Midwifery other</b>	<b>23.92</b>	<b>28</b>	<b>1:0.9</b>	<b>3.57%</b>	<b>96.43%</b>	<b>1:1</b>	<b>1:0.8</b>	<b>100.00%</b>	<b>3.57%</b>	<b>96.43%</b>	<b>64.29%</b>	<b>35.71%</b>	<b>100.00%</b>	<b>62.96%</b>
Nursing/ Midwifery awaiting registration	0.99	1	1:1	100.00%		1:1	1:				100.00%		100.00%	
Pre-registration Nurse/ Midwife Intern	76.87	147	1:0.5	9.52%	90.48%	1:0.6	1:0.5	35.37%	2.04%	33.33%	64.63%	35.37%	71.43%	63.91%
<b>Nursing/ Midwifery Student</b>	<b>77.86</b>	<b>148</b>	<b>1:0.5</b>	<b>10.14%</b>	<b>89.86%</b>	<b>1:0.6</b>	<b>1:0.5</b>	<b>35.14%</b>	<b>2.03%</b>	<b>33.11%</b>	<b>64.86%</b>	<b>35.14%</b>	<b>73.33%</b>	<b>63.91%</b>
Public Health Nurse	12	14	1:0.9		100.00%	1:	1:0.9	100.00%		100.00%	64.29%	35.71%		64.29%
<b>Public Health Nurse</b>	<b>12</b>	<b>14</b>	<b>1:0.9</b>		<b>100.00%</b>	<b>1:</b>	<b>1:0.9</b>	<b>100.00%</b>		<b>100.00%</b>	<b>64.29%</b>	<b>35.71%</b>		<b>64.29%</b>
Staff Nurse [Intellectual Disability]	1,744.6	2,013	1:0.9	10.08%	89.92%	1:0.9	1:0.9	95.68%	9.74%	85.94%	67.41%	32.59%	86.21%	65.30%
Staff Nurse [Psychiatric]	60.57	73	1:0.8	17.81%	82.19%	1:0.8	1:0.8	75.34%	12.33%	63.01%	61.64%	38.36%	69.23%	60.00%
Staff Nurses [General/ Children's]	798.88	900	1:0.9	15.33%	84.67%	1:0.9	1:0.9	93.78%	14.33%	79.44%	71.22%	28.78%	84.78%	68.77%
<b>Staff Nurse/ Staff Midwife</b>	<b>2,604.05</b>	<b>2,986</b>	<b>1:0.9</b>	<b>11.86%</b>	<b>88.14%</b>	<b>1:0.9</b>	<b>1:0.9</b>	<b>94.61%</b>	<b>11.19%</b>	<b>83.42%</b>	<b>68.42%</b>	<b>31.58%</b>	<b>85.03%</b>	<b>66.19%</b>
<b>Nursing &amp; Midwifery</b>	<b>3,771</b>	<b>4,309</b>	<b>1:0.9</b>	<b>11.98%</b>	<b>88.05%</b>	<b>1:0.9</b>	<b>1:0.9</b>	<b>92.43%</b>	<b>11.02%</b>	<b>81.41%</b>	<b>72.10%</b>	<b>27.90%</b>	<b>87.77%</b>	<b>69.98%</b>
Clinical Engineering	16	16	1:1	93.75%	6.25%	1:1	1:1	87.50%	81.25%	6.25%	93.75%	6.25%	93.33%	100.00%
<b>Health Science/ Diagnostics</b>	<b>16</b>	<b>16</b>	<b>1:1</b>	<b>112.50%</b>	<b>43.75%</b>	<b>1:1</b>	<b>1:0.9</b>	<b>118.75%</b>	<b>93.75%</b>	<b>25.00%</b>	<b>137.50%</b>	<b>18.75%</b>	<b>94.44%</b>	<b>71.43%</b>
Counsellor Therapists	19.54	23	1:0.8	4.35%	95.65%	1:1	1:0.8	100.00%	4.35%	95.65%	69.57%	30.43%	100.00%	68.18%
<b>H&amp;SC, Other</b>	<b>19.54</b>	<b>23</b>	<b>1:0.8</b>	<b>69.57%</b>	<b>513.04%</b>	<b>1:1</b>	<b>1:0.8</b>	<b>560.87%</b>	<b>69.57%</b>	<b>491.30%</b>	<b>382.61%</b>	<b>200.00%</b>	<b>93.75%</b>	<b>61.86%</b>
Dietitians	26.31	33	1:0.8		100.00%	1:	1:0.8	84.85%			66.67%	33.33%		66.67%
<b>Therapy Professions</b>	<b>26.31</b>	<b>33</b>	<b>1:0.9</b>	<b>221.21%</b>	<b>2,524.24%</b>	<b>1:0.9</b>	<b>1:0.8</b>	<b>2,603.03%</b>	<b>203.03%</b>	<b>2,400.00%</b>	<b>1,969.70%</b>	<b>775.76%</b>	<b>86.30%</b>	<b>70.47%</b>
Medical Science	4	4	1:1	50.00%	50.00%	1:1	1:1	50.00%	25.00%	25.00%	100.00%		100.00%	100.00%
<b>Health Science/ Diagnostics</b>	<b>4</b>	<b>4</b>	<b>1:1</b>	<b>450.00%</b>	<b>175.00%</b>	<b>1:1</b>	<b>1:0.9</b>	<b>475.00%</b>	<b>375.00%</b>	<b>100.00%</b>	<b>550.00%</b>	<b>75.00%</b>	<b>94.44%</b>	<b>71.43%</b>
Occupational Therapists	290.83	334	1:0.9	7.19%	92.81%	1:0.9	1:0.9	95.21%	6.59%	88.62%	78.74%	21.26%	87.50%	78.06%
<b>Therapy Professions</b>	<b>290.83</b>	<b>334</b>	<b>1:0.9</b>	<b>21.86%</b>	<b>249.40%</b>	<b>1:0.9</b>	<b>1:0.8</b>	<b>257.19%</b>	<b>20.06%</b>	<b>237.13%</b>	<b>194.61%</b>	<b>76.65%</b>	<b>86.30%</b>	<b>70.47%</b>
Other Health & Social Care	77.98	91	1:0.9	13.19%	86.81%	1:1	1:0.8	96.70%	13.19%	83.52%	68.13%	31.87%	91.67%	64.56%
<b>H&amp;SC, Other</b>	<b>77.98</b>	<b>91</b>	<b>1:0.8</b>	<b>17.58%</b>	<b>129.67%</b>	<b>1:1</b>	<b>1:0.8</b>	<b>141.76%</b>	<b>17.58%</b>	<b>124.18%</b>	<b>96.70%</b>	<b>50.55%</b>	<b>93.75%</b>	<b>61.86%</b>
Pharmacists	6.75	9	1:0.8	11.11%	88.89%	1:1	1:0.7	100.00%	11.11%	88.89%	44.44%	55.56%	100.00%	37.50%
Pharmacy Technicians	0.05	1	1:0.1		100.00%	1:	1:0.1					100.00%		
<b>Pharmacy</b>	<b>6.8</b>	<b>10</b>	<b>1:0.7</b>	<b>10.00%</b>	<b>90.00%</b>	<b>1:1</b>	<b>1:0.6</b>	<b>90.00%</b>	<b>10.00%</b>	<b>80.00%</b>	<b>40.00%</b>	<b>60.00%</b>	<b>100.00%</b>	<b>33.33%</b>
Physiotherapists	196.61	230	1:0.9	19.13%	80.87%	1:0.9	1:0.8	94.78%	17.39%	77.39%	64.78%	35.22%	84.09%	60.22%
<b>Therapy Professions</b>	<b>196.61</b>	<b>230</b>	<b>1:0.9</b>	<b>31.74%</b>	<b>362.17%</b>	<b>1:0.9</b>	<b>1:0.8</b>	<b>373.48%</b>	<b>29.13%</b>	<b>344.35%</b>	<b>282.61%</b>	<b>111.30%</b>	<b>86.30%</b>	<b>70.47%</b>
Play Therapists/ Specialists	15.26	20	1:0.8	15.00%	85.00%	1:0.8	1:0.8	90.00%	15.00%	75.00%	50.00%	50.00%	100.00%	41.18%
<b>H&amp;SC, Other</b>	<b>15.26</b>	<b>20</b>	<b>1:0.8</b>	<b>80.00%</b>	<b>590.00%</b>	<b>1:1</b>	<b>1:0.8</b>	<b>645.00%</b>	<b>80.00%</b>	<b>565.00%</b>	<b>440.00%</b>	<b>230.00%</b>	<b>93.75%</b>	<b>61.86%</b>
Psychologists	238.77	263	1:0.9	15.97%	84.03%	1:1	1:0.9	96.96%	15.59%	81.37%	78.71%	21.29%	92.86%	76.02%
<b>Psychologists</b>	<b>238.77</b>	<b>263</b>	<b>1:0.9</b>	<b>15.97%</b>	<b>84.03%</b>	<b>1:1</b>	<b>1:0.9</b>	<b>96.96%</b>	<b>15.59%</b>	<b>81.37%</b>	<b>78.71%</b>	<b>21.29%</b>	<b>92.86%</b>	<b>76.02%</b>
Radiographers	3.08	4	1:0.8		100.00%	1:	1:0.8	50.00%		50.00%	50.00%	50.00%		50.00%
Respiratory Physiologists	1	1	1:1	100.00%		1:1	1:	100.00%	100.00%		100.00%		100.00%	
<b>Health Science/ Diagnostics</b>	<b>4.08</b>	<b>5</b>	<b>1:1</b>	<b>360.00%</b>	<b>140.00%</b>	<b>1:1</b>	<b>1:0.9</b>	<b>380.00%</b>	<b>300.00%</b>	<b>80.00%</b>	<b>440.00%</b>	<b>60.00%</b>	<b>94.44%</b>	<b>71.43%</b>
Social Care	2,994.43	3,518	1:0.9	16.77%	83.23%	1:0.9	1:0.8	91.50%	15.46%	76.04%	48.86%	51.14%	63.56%	45.90%
<b>Social Care</b>	<b>2,994.43</b>	<b>3,518</b>	<b>1:0.9</b>	<b>16.77%</b>	<b>83.23%</b>	<b>1:0.9</b>	<b>1:0.8</b>	<b>91.50%</b>	<b>15.46%</b>	<b>76.04%</b>	<b>48.86%</b>	<b>51.14%</b>	<b>63.56%</b>	<b>45.90%</b>
Social Workers	235.4	273	1:0.9	17.22%	82.78%	1:0.9	1:0.8	91.94%	15.38%	76.56%	71.43%	28.57%	87.23%	68.14%
<b>Social Workers</b>	<b>235.4</b>	<b>273</b>	<b>1:0.9</b>	<b>17.22%</b>	<b>82.78%</b>	<b>1:0.9</b>	<b>1:0.8</b>	<b>91.94%</b>	<b>15.38%</b>	<b>76.56%</b>	<b>71.43%</b>	<b>28.57%</b>	<b>87.23%</b>	<b>68.14%</b>



APR 2023	WTE APR 2023	No. APR 2023	WTE : No	% Male	% Female	Male WTE : No.	Female WTE : No	Perm Count Male %	Perm Count Male %	Perm Count Female %	Fulltime Count %	Part time Count %	FT Count Male %	FT Count Female %
Total	20,092	23,776	1:0.8	19.66%	80.34%	1:0.9	1:0.8	88.54%	17.23%	71.31%	58.64%	41.36%	69.16%	56.07%
Speech & Language Therapists	261.94	309	1:0.8	1.62%	98.38%	1:1	1:0.8	95.47%	1.62%	93.85%	69.90%	30.10%	100.00%	69.41%
Therapy Professions	261.94	309	1:0.9	23.62%	269.58%	1:0.9	1:0.8	277.99%	21.68%	256.31%	210.36%	82.85%	86.30%	70.47%
Health & Social Care Professionals	4,388	5,129	1:0.9	15.34%	84.66%	1:0.9	1:0.8	92.44%	14.15%	78.28%	56.25%	43.75%	70.01%	53.75%
Executive Management	40.96	41	1:1	43.90%	56.10%	1:1	1:1	97.56%	43.90%	53.66%	100.00%		100.00%	100.00%
Management (VIII & above)	40.96	41	1:1	197.56%	390.24%	1:1	1:1	553.66%	190.24%	363.41%	570.73%	17.07%	98.77%	96.25%
General Administrative (III & IV)	775.71	916	1:0.8	9.93%	90.07%	1:0.9	1:0.8	87.45%	8.08%	79.37%	61.57%	38.43%	81.32%	59.39%
Clerical (III & IV)	775.71	916	1:0.8	9.93%	90.07%	1:0.9	1:0.8	87.45%	8.08%	79.37%	61.57%	38.43%	81.32%	59.39%
Middle Management (V-VII)	692.36	734	1:0.9	22.07%	77.93%	1:1	1:0.9	93.46%	20.84%	72.62%	86.78%	13.22%	95.68%	84.27%
Other Administrative	14	14	1:1	7.14%	92.86%	1:1	1:1	78.57%		78.57%	100.00%		100.00%	100.00%
Administrative/ Supervisory (V to VII)	706.36	748	1:0.9	21.79%	78.21%	1:1	1:0.9	93.18%	20.45%	72.73%	87.03%	12.97%	95.71%	84.62%
Senior Management (VIII & GM)	193.98	200	1:1	31.50%	68.50%	1:1	1:1	93.50%	30.00%	63.50%	96.50%	3.50%	98.41%	95.62%
Management (VIII & above)	193.98	200	1:1	40.50%	80.00%	1:1	1:1	113.50%	39.00%	74.50%	117.00%	3.50%	98.77%	96.25%
Management & Administrative	1,717	1,905	1:0.9	17.59%	82.41%	1:1	1:0.9	90.55%	16.01%	74.54%	76.06%	23.94%	92.54%	72.55%
Catering	74.29	89	1:0.8	25.84%	74.16%	1:1	1:0.8	100.00%	25.84%	74.16%	56.18%	43.82%	86.96%	45.45%
Household Services	373.78	544	1:0.7	16.73%	83.27%	1:0.7	1:0.7	85.85%	11.76%	74.08%	35.48%	64.52%	50.55%	32.45%
Support	448.07	633	1:0.7	39.81%	97.95%	1:0.8	1:0.7	121.33%	31.44%	89.89%	48.82%	88.94%	48.41%	30.16%
Maintenance	122.74	135	1:0.9	89.63%	10.37%	1:0.9	1:0.8	94.07%	83.70%	10.37%	73.33%	26.67%	78.51%	28.57%
Maintenance/ Technical	122.74	135	1:0.9	100.00%	12.59%	1:0.9	1:0.8	105.93%	93.33%	12.59%	84.44%	28.15%	80.00%	35.29%
Other Labs & Associated	1	1	1:1		100.00%	1:	1:1	100.00%		100.00%	100.00%			100.00%
Other Support	142.96	214	1:0.7	55.14%	44.86%	1:0.8	1:0.5	88.79%	44.39%	44.39%	26.64%	73.36%	40.68%	9.38%
Portering	17.61	24	1:0.7	83.33%	16.67%	1:0.7	1:1	87.50%	70.83%	16.67%	33.33%	66.67%	40.00%	
Support	161.57	239	1:0.7	105.44%	259.41%	1:0.8	1:0.7	321.34%	83.26%	238.08%	129.29%	235.56%	48.41%	30.16%
Technical Services	16.76	17	1:1	82.35%	17.65%	1:1	1:1	94.12%	76.47%	17.65%	88.24%	11.76%	92.86%	66.67%
Maintenance/ Technical	16.76	17	1:0.9	794.12%	100.00%	1:0.9	1:0.8	841.18%	741.18%	100.00%	670.59%	223.53%	80.00%	35.29%
General Support	749	1,024	1:0.7	37.79%	62.21%	1:0.8	1:0.7	88.96%	31.74%	57.23%	41.31%	58.69%	59.43%	30.30%
Attendant/ Aide	171.99	219	1:0.8	21.00%	79.00%	1:0.8	1:0.8	87.21%	16.89%	70.32%	52.05%	47.95%	71.74%	46.82%
Health Care Assistant/ Care Assistant	7,372.12	8,795	1:0.8	23.30%	76.70%	1:0.9	1:0.8	84.97%	20.14%	64.83%	52.13%	47.87%	61.40%	49.32%
Health & Social Care Assistants	29.78	34	1:0.9	11.76%	88.24%	1:1	1:0.9	64.71%	8.82%	55.88%	64.71%	35.29%	100.00%	60.00%
Health Care Assistants	7,573.89	9,048	1:0.8	23.20%	76.80%	1:0.9	1:0.8	84.95%	20.02%	64.93%	52.18%	47.82%	61.70%	49.30%
Home Care Services	18.16	22	1:0.8	13.64%	86.36%	1:1	1:0.8	68.18%	4.55%	63.64%	50.00%	50.00%	66.67%	47.37%
Care, other	18.16	22	1:0.9	2,331.82%	7,100.00%	1:0.9	1:0.8	8,290.91%	1,986.36%	6,304.55%	5,922.73%	3,509.09%	72.90%	59.48%
Home Helps	71.93	216	1:0.3	6.94%	93.06%	1:0.3	1:0.3	66.67%	4.17%	62.50%	2.31%	97.69%		2.49%
Home Help	71.93	216	1:0.3	6.94%	93.06%	1:0.3	1:0.3	66.67%	4.17%	62.50%	2.31%	97.69%		2.49%
Other Care Grades	253.18	287	1:0.9	28.57%	71.43%	1:0.9	1:0.9	89.20%	22.30%	66.90%	73.17%	26.83%	79.27%	70.73%
Pastoral Care	5.34	7	1:0.8	57.14%	42.86%	1:0.7	1:0.8	71.43%	28.57%	42.86%	42.86%	57.14%	25.00%	66.67%
Workshop Services	1,491.85	1,759	1:0.8	24.10%	75.90%	1:0.9	1:0.8	88.00%	21.03%	66.97%	61.34%	38.66%	72.17%	57.90%
Care, other	1,750.37	2,053	1:0.9	24.99%	75.08%	1:0.9	1:0.8	88.85%	21.29%	67.56%	63.47%	37.60%	72.90%	59.48%
Patient & Client Care	9,414	11,339	1:0.8	23.17%	76.83%	1:0.9	1:0.8	85.14%	19.90%	65.24%	53.17%	46.83%	63.53%	50.05%



## Disabilities Employment Report by CHO : WTE, Headcount, Gender, Full-Time / Part-Time etc. APR 2023

APR 2023	WTE APR 2023	No. APR 2023	WTE : No	Number Male	Number Female	Male WTE : No.	Female WTE : No	Perm Count %	Number Male %	Number Female %	Fulltime Count %	Part time Count %	FT Count Male %	FT Count Female %
<b>Total</b>	<b>20,092</b>	<b>23,776</b>	<b>1:0.8</b>	<b>19.66%</b>	<b>80.34%</b>	<b>1:0.9</b>	<b>1:0.8</b>	<b>88.54%</b>	<b>17.23%</b>	<b>71.31%</b>	<b>58.64%</b>	<b>41.36%</b>	<b>69.16%</b>	<b>56.07%</b>
CHO 1	1,740	1,929	1:0.9	20.17%	79.83%	1:1	1:0.9	92.85%	18.61%	74.24%	78.85%	21.15%	89.46%	76.17%
CHO 2	1,650	2,021	1:0.8	23.50%	76.50%	1:0.8	1:0.8	82.19%	18.75%	63.43%	47.75%	52.25%	50.95%	46.77%
CHO 3	2,005	2,386	1:0.8	13.79%	86.21%	1:0.9	1:0.8	86.04%	11.61%	74.43%	40.78%	59.22%	44.07%	40.25%
CHO 4	2,655	3,205	1:0.8	20.25%	79.75%	1:0.9	1:0.8	83.09%	16.29%	66.80%	68.36%	31.64%	74.42%	66.82%
CHO 5	1,695	1,996	1:0.8	20.49%	79.51%	1:0.9	1:0.8	87.32%	17.69%	69.64%	54.26%	45.74%	64.79%	51.54%
CHO 6	1,203	1,381	1:0.9	23.17%	76.83%	1:0.9	1:0.9	91.89%	20.78%	71.11%	66.11%	33.89%	81.25%	61.55%
CHO 7	3,420	4,035	1:0.8	22.30%	77.70%	1:0.9	1:0.8	88.13%	19.65%	68.48%	67.88%	32.12%	80.22%	64.34%
CHO 8	2,371	2,860	1:0.8	20.63%	79.37%	1:0.9	1:0.8	96.12%	19.86%	76.26%	47.69%	52.31%	53.22%	46.26%
CHO 9	3,346	3,957	1:0.8	15.49%	84.51%	1:0.9	1:0.8	89.97%	14.08%	75.89%	55.29%	44.71%	73.90%	51.88%
other Community Services	6	6	1:1	16.67%	83.33%	1:1	1:1	100.00%	16.67%	83.33%	83.33%	16.67%	100.00%	80.00%

Previous Month Summary

WTE change since MAR 2023	% WTE change since MAR 2023	Overall	Consultants	Registrars	SHO/ Interns	Medical/ Dental, other	Medical & Dental	Nurse/ Midwife Manager	Nurse/ Midwife Specialist & AN/MP	Staff Nurse/ Staff Midwife	Public Health Nurse	Nursing/ Midwifery Student	Nursing/ Midwifery other	Nursing & Midwifery	Therapy Professions	Health Science/ Diagnostics	Social Care	Social Workers	Psychologists	Pharmacy	NHSC, Other	Health & Social Care Professionals	Management (VIII & above)	Administrative / Supervisory (V to VII)	Clerical (III & IV)	Management & Administrative	Support	Maintenance/ Technical	General Support	Health Care Assistants	Home Help	Care, other	Patient & Client Care
Overall	+0.51%	+102.2	+0.8	+1.0	+0.1	+0.0	+1.9	+0.2	-0.0	-4.0	+0.3	+5.1	+0.1	+1.8	-6.2	+2.7	+2.4	+2.0	-2.0	-0.8	+8.8	+6.9	-0.2	+10.6	+7.2	+17.5	-4.7	+1.7	-3.0	+73.6	-5.6	+9.1	+77.2
CHO 1	+0.29%	+5.0				+0.0	+0.0	+0.2	+0.1	-5.4	+0.0	+0.6	+0.1	-4.5	-0.3		+0.6	+0.2	-0.4		+0.0	+0.2	+0.1	+1.5	-0.4	+1.2	-0.9	+0.0	-0.9	+5.9	-1.9	+5.0	+9.1
CHO 2	+0.60%	+9.9	+0.0	+0.0		+0.0	+0.0	-0.6	-1.0	+0.8				-0.9	+1.1		+2.6	+2.2	+0.0		-0.6	+8.4	-0.6	+0.5	+2.2	+2.1	+0.8	-0.0	+6.8	+2.5		+0.1	+2.5
CHO 3	-0.08%	-1.7	+0.0			+0.0	+0.0	-0.3	+1.0	-2.0		+0.0	+0.0	-1.3	+0.4	+0.0	-2.7	-0.8	-0.0		+0.2	-2.9	-0.5	+1.6	+0.3	+1.3	-1.5	+0.3	-1.3	+5.6		-3.1	+2.4
CHO 4	+0.64%	+16.8	+0.0			+0.0	+0.0	-0.8	+0.0	+4.7		+0.0	+0.0	+3.8	-8.0		+1.2	+1.0	-1.2		-0.3	-7.3	+2.3	+2.6	+0.2	+5.0	+0.1	-1.0	-0.9	+6.3		+9.8	+16.1
CHO 5	+1.50%	+25.1	+0.2				+0.2	+0.1	+0.0	+1.9	+0.3	+0.1	+0.0	+2.4	+0.3		+1.1	+0.8	-0.9		+0.5	+1.7	-0.1	+0.5	+0.2	+0.6	-0.6	-0.1	-0.7	+22.6	-0.3	-1.4	+20.9
CHO 6	-0.09%	-1.1	+0.0	+0.0		+0.0	+0.0	-1.4	+0.0	+1.5			+0.0	+0.2	-0.2		+2.4	+0.0	-0.1		+0.0	+2.2	+0.0	+0.2	-0.2	+0.1	-1.7	+1.0	-0.7	-2.6		-0.3	-2.9
CHO 7	+0.37%	+12.7		-0.0	-0.4		-0.5	+2.6	+0.0	+3.0		+0.0	+0.0	+5.6	-0.5	+1.7	+3.1	-0.8	+0.2	-0.8	+0.0	+2.9	-0.1	-0.5	+3.6	+3.0	-0.5	+1.0	+0.5	+7.0	-2.4	-3.3	+1.3
CHO 8	+1.12%	+26.2		+0.0		+0.0	+0.0	+0.1	-0.1	-2.6	-0.0	+4.2	+0.0	+1.6	+0.4	+0.0	-11.7	-0.3	+0.5		+9.2	-1.9	-0.0	+2.5	+2.0	+4.4	-0.7	+0.1	-0.6	+21.5	-1.0	+2.1	+22.7
CHO 9	+0.28%	+9.3	+0.6	+1.0	+0.5	+0.0	+2.1	+0.3	+0.0	-5.8		+0.3	-0.0	-5.2	+0.6	+1.0	+5.9	-0.3	-0.1	+0.0	-0.3	+6.7	-1.4	+1.8	-0.6	-0.1	+0.2	+0.6	+0.8	+4.9		+0.2	+5.1
other Community Services	+0.00%	+0.0																					+0.0	+0.0	+0.0	+0.0							



Year on Year Summary

WTE change since APR 2022	% WTE change since APR 2022	Overall	Consultants	Registrars	SHO/ Interns	Medical/ Dental, other	Medical & Dental	Nurse/ Midwife Manager	Nurse/ Midwife Specialist & AN/M/P	Staff Nurse/ Staff Midwife	Public Health Nurse	Nursing/ Midwifery Student	Nursing/ Midwifery other	Nursing & Midwifery	Therapy Professions	Health Science/ Diagnostics	Social Care	Social Workers	Psychologists	Pharmacy	H&SC, Other	Health & Social Care Professionals	Management (VIII & above)	Administrative / Supervisory (V to VII)	Clerical (III & IV)	Management & Administrative	Support	Maintenance/ Technical	General Support	Health Care Assistants	Home Help	Care, other	Patient & Client Care
Overall	+2.23%	+438	-1	+2	-2	-3	-3	+48	+7	-4	+1	-9	-2	+41	-9	+1	+5	+5	-2	-0	+45	+46	+8	+117	+45	+170	-16	+14	-1	+165	-13	+33	+185
CHO 1	+3.33%	+56		-1		-1	-2	+6	+3	-23	-0	-5	+1	-18	-6		+11	+1	-3		-1	+2	-1	+8	+6	+13	-0	+0	-0	+45	-1	+16	+61
CHO 2	+5.01%	+79	+0	+2	-2	+0	+0	-1	-1	-4				-6	+10		+26	+1	+3		-0	+39	+1	+15	+8	+24	+5	-1	+4	+12		+5	+18
CHO 3	+3.24%	+63	-1			-0	-1	+3	+2	+5		-2	+0	+9	-5	+0	-3	+1	-2		+1	-8	+5	+14	-2	+17	-1	+3	+3	+33		+11	+43
CHO 4	+1.27%	+33	+1			+0	+1	+4	-0	+6		-2	+0	+8	-11		+3	-0	-1		-1	-10	+1	+21	+3	+24	-4	-1	-4	+11		+4	+14
CHO 5	+2.26%	+38	+0				+0	+2	+1	-3	+1	-1	+0	+0	-1		+10	-5	-7		-0	-3	+4	+5	+13	+22	-1	+0	-1	+9	-3	+14	+19
CHO 6	-1.40%	-17	+0	+0		+0	+0	-1	+1	+11			+0	+11	-5		-10	+3	+0		+0	-12	-1	+6	-2	+3	+3	+2	+5	-8		-16	-23
CHO 7	+3.56%	+118		+1	+1	-1	+1	+20	+2	+2		+1	-1	+24	+1	+1	+29	+0	+3	-0	+1	+34	-5	+15	+15	+26	-11	+8	-2	+35	-3	+3	+35
CHO 8	+2.54%	+59		+0		+0	+0	+2	-1	+16	+0	+5	-2	+20	+7	+0	-46	-0	+3		+47	+11	+0	-4	+7	+3	-5	+3	-2	+29	-6	+3	+26
CHO 9	+0.30%	+10	-1	-0	-1	-0	-2	+11	+0	-14		-5	+0	-8	+1	+0	-13	+3	+1	+0	-1	-8	+2	+38	-3	+37	-2	+0	-2	-1		-8	-9
other Community Services	+0.84%	+0																					+1	-1	+0	+0							

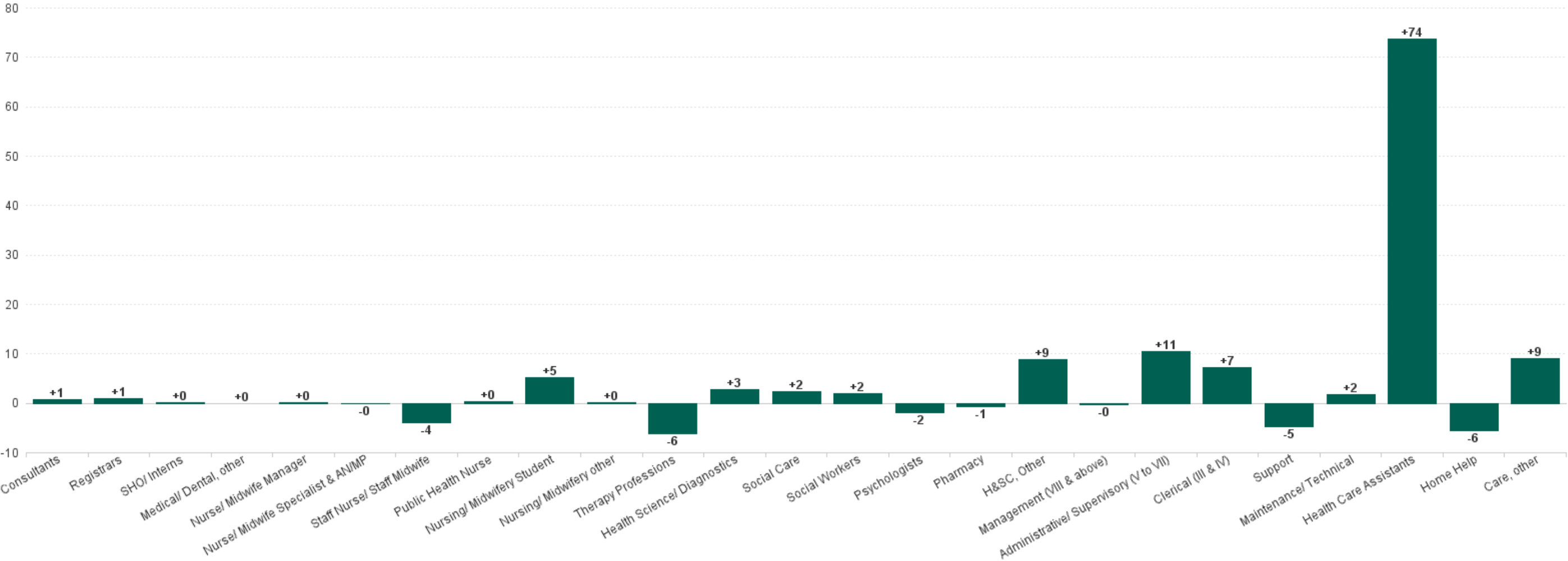


Year to Date Summary

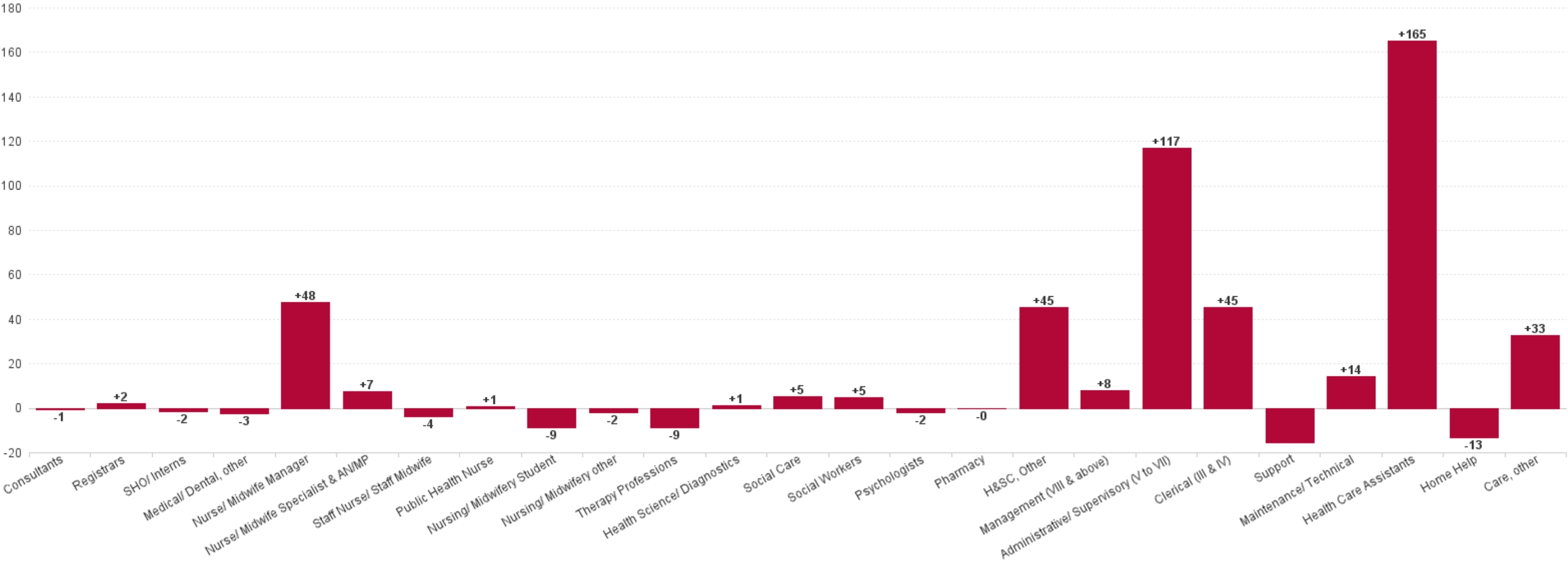
WTE change since DEC 2022	% WTE change since DEC 2022	Overall	Consultants	Registrars	SHO/ Interns	Medical/ Dental, other	Medical & Dental	Nurse/ Midwife Manager	Nurse/ Midwife Specialist & AN/MP	Staff Nurse/ Staff Midwife	Public Health Nurse	Nursing/ Midwifery Student	Nursing/ Midwifery other	Nursing & Midwifery	Therapy Professions	Health Science/ Diagnostics	Social Care	Social Workers	Psychologists	Pharmacy	H&SC, Other	Health & Social Care Professionals	Management (VIII & above)	Administrative / Supervisory (V to VII)	Clinical (III & IV)	Management & Administrative	Support	Maintenance/ Technical	General Support	Health Care Assistants	Home Help	Care, other	Patient & Client Care
Overall	+0.95%	+189	+2	+1	+1	-1	+2	+17	+8	-14	+0	+67	-4	+74	-15	+3	-60	-4	-0	-1	+45	-33	-1	+41	+32	+72	-14	+14	-1	+79	-8	+2	+73
CHO 1	+2.50%	+42				-1	-1	+8	+4	-9	-0	+7	+0	+9	-3		+3	+0	+1		-1	+1	+0	+0	-1	-1	+1	+0	+1	+19	-2	+16	+34
CHO 2	+2.72%	+44	+0	+1	-1	+0	+0	-3	-1	-1				-5	+1		+9	+1	+3		-0	+14	+1	+6	+6	+14	+1	-0	+1	+16		+5	+21
CHO 3	+0.82%	+16	-0			+0	-0	-1	+2	+0		+6	+0	+6	+0	+0	-8	-1	-1		-0	-11	+3	+0	+3	+7	-1	+2	+1	+11		+3	+14
CHO 4	+0.57%	+15	+0			+0	+0	+1	+0	+5		+9	+0	+15	-8		-0	+0	-3		+0	-11	+1	+6	-0	+8	-3	+1	-2	-1		+6	+5
CHO 5	+2.37%	+39	+0				+0	+1	+0	-3	+0	+7	+0	+6	+1		-0	-1	-1		-1	-2	+1	+7	+6	+15	-1	-0	-1	+23	-2	+1	+22
CHO 6	-1.09%	-13	+0	+0		+0	+0	-0	+1	+9			+0	+10	-0		+1	+1	-1		+0	+1	-7	-1	+1	-8	-2	+1	-1	-3		-13	-16
CHO 7	+0.29%	+10		+0	+1		+1	+6	+1	+0		+7	-2	+11	-2	+1	-3	-4	+0	-1	+1	-8	-2	+3	+3	+4	-8	+6	-2	+8	-2	-2	+4
CHO 8	+1.08%	+25		+0		+0	+0	-2	+1	-1	-0	+18	-1	+16	+2	+0	-51	-1	-1		+46	-5	+0	+1	+7	+9	-3	+4	+1	+8	-2	-1	+5
CHO 9	+0.30%	+10	+2	-0	+1	-0	+2	+8	+0	-15		+14	-1	+7	-6	+2	-10	+1	+3	+0	-0	-11	+1	+19	+7	+26	+1	+0	+2	-2		-13	-15
other Community Services	+1.18%	+0																					+0	+0	+0	+0							



Previous Month Summary Chart: Change since MAR 2023



Previous Year Summary Chart: Change since APR 2022





YTD Summary Chart: Change since DEC 2022

