

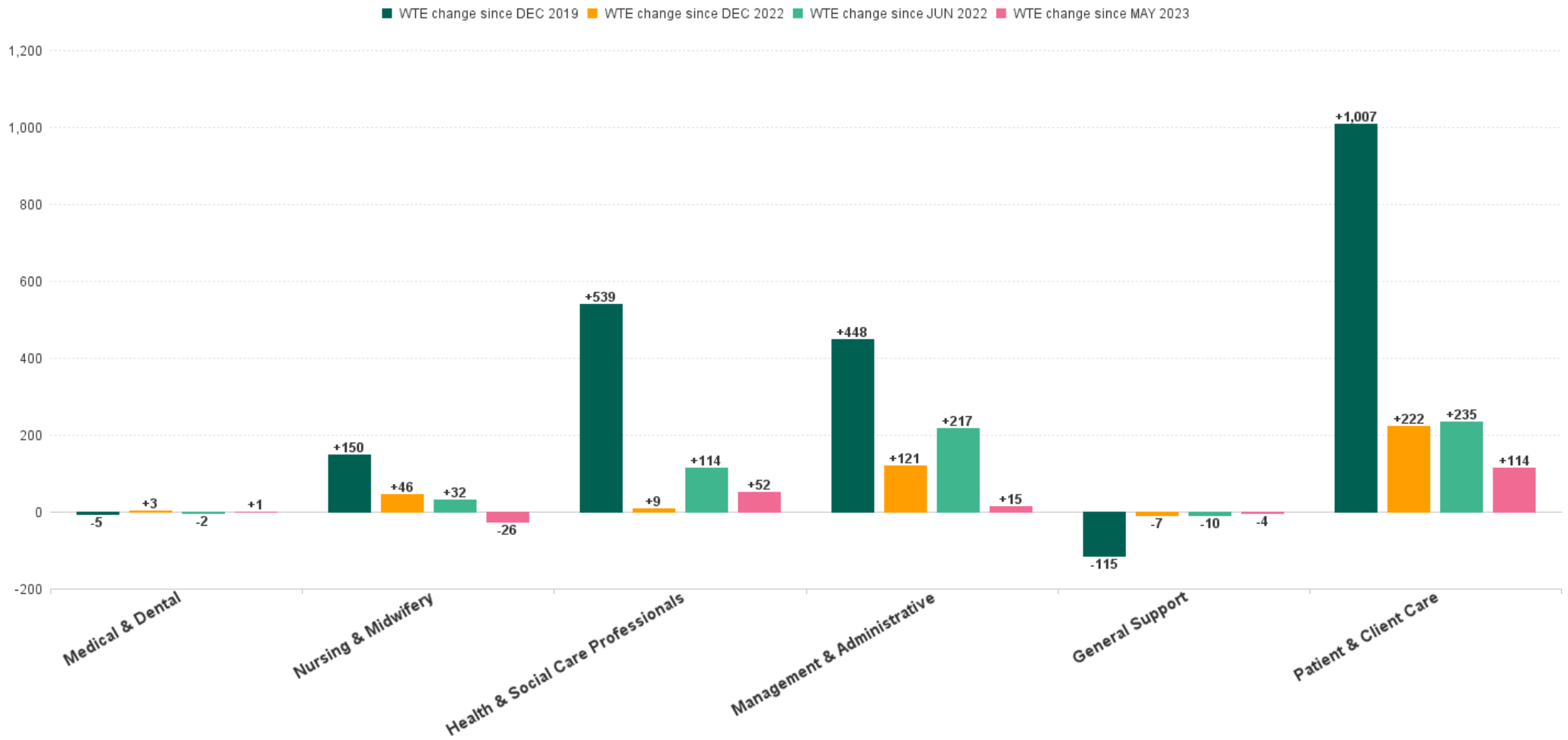
Disabilities Employment Report : JUN 2023

Employment Report by Staff Group

JUN 2023	WTE DEC 2019	WTE DEC 2022	WTE MAY 2023	WTE JUN 2023	WTE change since DEC 2019	% WTE Change since Dec 2019	WTE change since DEC 2022	% WTE Change since Dec 2022	WTE change since MAY 2023	No. JUN 2023
Overall	18,273	19,903	20,145	20,297	+2,025	+11.08%	+394	+1.98%	+152	23,969
Consultants	24	18	20	20	-4	-17.92%	+1	+6.52%	-0	24
Registrars	13	10	10	11	-2	-15.46%	+1	+10.12%	+1	11
SHO/ Interns	7	9	11	11	+4	+57.61%	+2	+22.71%	+0	11
Medical/ Dental, other	14	13	12	12	-3	-18.25%	-1	-8.89%	-1	18
Medical & Dental	58	50	53	53	-5	-8.43%	+3	+6.15%	+1	64
Nurse/ Midwife Manager	892	959	972	972	+80	+8.99%	+13	+1.36%	-0	1,045
Nurse/ Midwife Specialist & AN/MP	62	70	78	78	+16	+26.61%	+9	+12.52%	+0	85
Staff Nurse/ Staff Midwife	2,569	2,618	2,603	2,578	+9	+0.36%	-40	-1.53%	-25	2,974
Public Health Nurse	6	12	12	12	+6	+88.85%	+0	+0.85%	-0	14
Pre-registration Nurse/ Midwife Intern	28	7	78	74	+46	+163.08%	+67	+951.20%	-3	147
Nursing/ Midwifery awaiting registration	14	4	2	2	-12	-85.55%	-2	-46.95%	+0	2
Nursing/ Midwifery Student	42	11	79	76	+34	+81.33%	+65	+604.06%	-3	149
Nursing/ Midwifery other	22	28	24	26	+4	+17.93%	-1	-4.94%	+2	30
Nursing & Midwifery	3,593	3,697	3,769	3,743	+150	+4.16%	+46	+1.24%	-26	4,297
Therapy Professions	763	790	775	795	+32	+4.24%	+5	+0.61%	+20	916
Health Science/ Diagnostics	20	21	23	21	+1	+5.00%	-0	-1.36%	-2	21
Social Care	2,595	3,055	3,039	3,061	+466	+17.96%	+6	+0.21%	+22	3,585
Social Workers	219	239	237	241	+22	+10.05%	+2	+0.75%	+4	279
Psychologists	202	239	233	238	+36	+17.87%	-1	-0.31%	+5	265
Pharmacy	7	8	7	9	+2	+29.10%	+1	+6.85%	+2	12
H&SC, Other	85	68	65	65	-20	-23.87%	-4	-5.30%	+0	82
Health & Social Care Professionals	3,890	4,421	4,378	4,430	+539	+13.86%	+9	+0.20%	+52	5,160
Management (VIII & above)	180	236	237	238	+58	+32.24%	+1	+0.62%	+1	242
Administrative/ Supervisory (V to VII)	477	665	722	725	+248	+51.85%	+60	+9.01%	+3	766
Clerical (III & IV)	660	744	791	803	+143	+21.62%	+59	+7.99%	+12	951
Management & Administrative	1,317	1,645	1,750	1,766	+448	+34.03%	+121	+7.35%	+15	1,959
Support	733	624	609	607	-126	-17.22%	-17	-2.73%	-2	869
Maintenance/ Technical	124	126	138	136	+11	+9.17%	+10	+7.82%	-2	148
General Support	857	750	747	743	-115	-13.40%	-7	-0.96%	-4	1,017
Health Care Assistants	6,818	7,495	7,616	7,712	+894	+13.11%	+217	+2.90%	+96	9,168
Home Help	99	80	74	74	-25	-25.27%	-6	-7.37%	+0	216
Care, other	1,638	1,766	1,760	1,777	+139	+8.46%	+11	+0.61%	+17	2,088
Patient & Client Care	8,556	9,341	9,450	9,563	+1,007	+11.77%	+222	+2.38%	+114	11,472



WTE Change by Staff Category

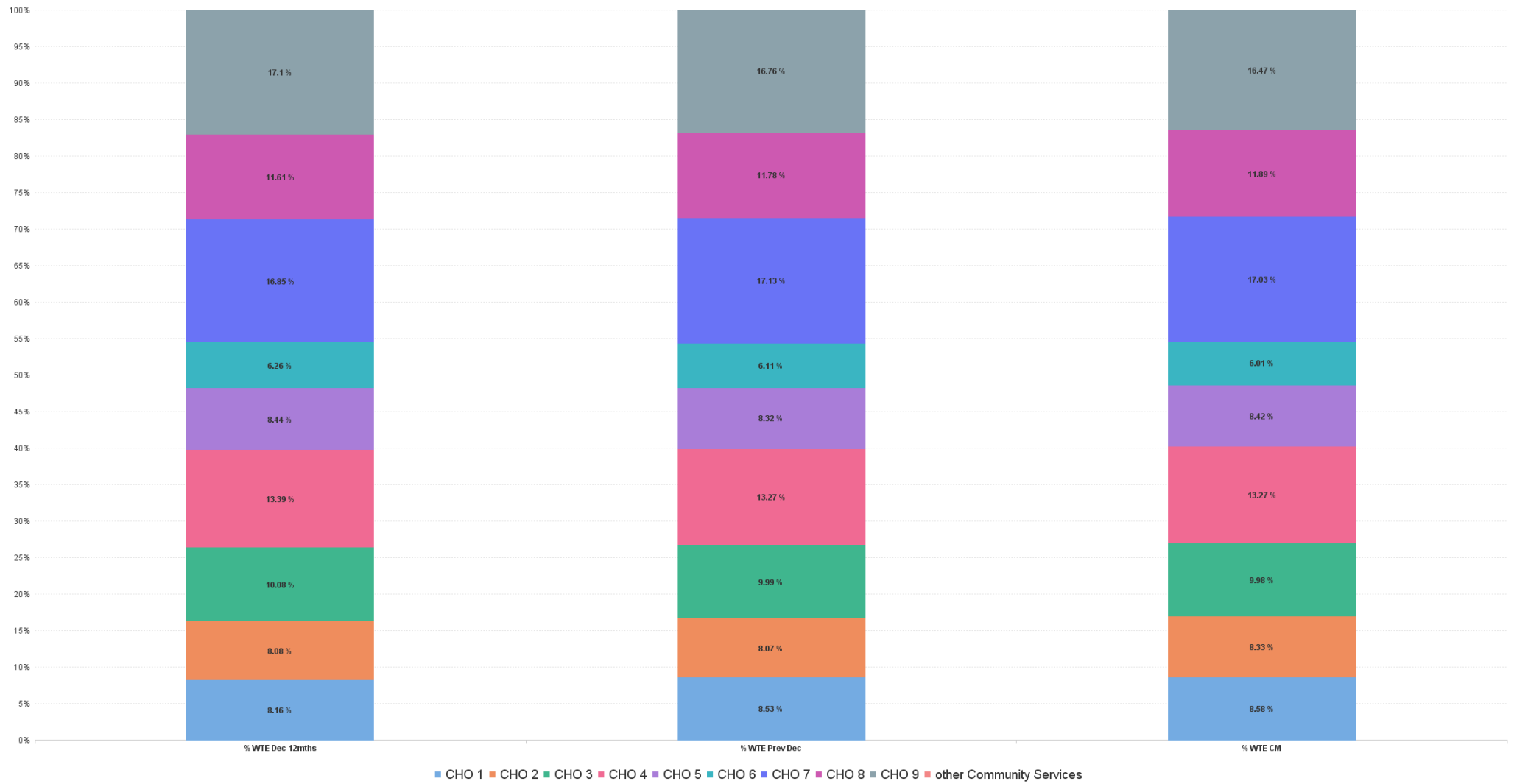


Disabilities Report by CHO: JUN 2023

JUN 2023	WTE DEC 2019	WTE DEC 2022	WTE MAY 2023	WTE JUN 2023	WTE change since DEC 2019	% WTE Change since Dec 2019	WTE change since DEC 2022	% WTE Change since Dec 2022	WTE change since MAY 2023	No. JUN 2023
Overall	18,273	19,903	20,145	20,297	+2,025	+11.08%	+394	+1.98%	+152	23,969
CHO 1	1,498	1,698	1,736	1,742	+243	+16.25%	+44	+2.57%	+6	1,932
CHO 2	1,497	1,607	1,664	1,690	+193	+12.90%	+83	+5.18%	+26	2,060
CHO 3	1,823	1,989	2,013	2,025	+201	+11.04%	+36	+1.82%	+12	2,401
CHO 4	2,425	2,640	2,684	2,693	+268	+11.05%	+53	+2.00%	+9	3,238
CHO 5	1,488	1,656	1,700	1,708	+220	+14.81%	+52	+3.15%	+9	2,013
CHO 6	1,198	1,216	1,206	1,220	+22	+1.88%	+4	+0.31%	+14	1,397
CHO 7	2,982	3,410	3,414	3,457	+476	+15.96%	+48	+1.40%	+44	4,076
CHO 8	2,162	2,345	2,370	2,413	+251	+11.59%	+67	+2.87%	+43	2,897
CHO 9	3,194	3,336	3,353	3,343	+149	+4.67%	+7	+0.21%	-10	3,949
other Community Services	6	6	6	6	+0	+0.84%	+0	+1.18%	+0	6



% Total by CHO



Disabilities Employment Report by HSE/S38: JUN 2023

JUN 2023	WTE DEC 2019	WTE DEC 2022	WTE MAY 2023	WTE JUN 2023	WTE change since DEC 2019	% WTE Change since Dec 2019	WTE change since DEC 2022	% WTE Change since Dec 2022	WTE change since MAY 2023	No. JUN 2023
Overall	18,273	19,903	20,145	20,297	+2,025	+11.08%	+394	+1.98%	+152	23,969
Health Service Executive	3,873	4,200	4,316	4,337	+464	+11.97%	+137	+3.26%	+21	4,929
Section 38 Voluntary Agencies	14,399	15,703	15,830	15,960	+1,561	+10.84%	+257	+1.64%	+130	19,040



Disabilities Employment Report by HSE: JUN 2023

JUN 2023	WTE DEC 2019	WTE DEC 2022	WTE MAY 2023	WTE JUN 2023	WTE change since DEC 2019	% WTE Change since Dec 2019	WTE change since DEC 2022	% WTE Change since Dec 2022	WTE change since MAY 2023	No. JUN 2023
Total HSE	3,873	4,200	4,316	4,337	+464	+11.97%	+137	+3.26%	+21	4,929
Consultants	8	6	7	7	-1	-12.93%	+1	+18.08%	+0	7
Registrars	3	2	2	2	-1	-33.67%	+0	+0.51%	-0	2
SHO/ Interns		1	2	2	+2		+1	+101.01%	+0	2
Medical/ Dental, other	6	6	6	5	-1	-15.03%	-1	-14.35%	-1	9
Medical & Dental	17	15	16	16	-1	-5.59%	+1	+7.52%	-1	20
Nurse/ Midwife Manager	257	267	270	271	+15	+5.69%	+4	+1.35%	+1	288
Nurse/ Midwife Specialist & AN/MP	14	18	26	26	+12	+89.97%	+8	+45.52%	+0	27
Staff Nurse/ Staff Midwife	788	782	783	770	-18	-2.25%	-12	-1.55%	-13	855
Public Health Nurse	6	12	12	12	+6	+88.85%	+0	+0.85%	-0	14
Nursing/ Midwifery awaiting registration	14	2	2	2	-10	-85.55%	+2	+1.01%	+0	2
Pre-registration Nurse/ Midwife Intern	3	7	20	20	+1	+513.23%	-10	+181.90%	-0	38
Nursing/ Midwifery Student	17	9	22	22	+5	+28.32%	+13	+142.32%	+0	40
Nursing/ Midwifery other	8	8	9	9	+2	+20.27%	+1	+11.00%	+1	11
Nursing & Midwifery	1,089	1,096	1,120	1,110	+21	+1.94%	+14	+1.23%	-10	1,235
Therapy Professions	330	322	322	332	+3	+0.83%	+11	+3.37%	+11	392
Health Science/ Diagnostics	2	6	6	6	+4	+200.00%	+0	+0.67%	+0	6
Social Care	89	109	114	118	+29	+32.85%	+9	+8.24%	+4	131
Social Workers	58	62	64	65	+7	+12.94%	+3	+5.12%	+1	73
Psychologists	74	95	92	95	+21	+28.62%	+1	+0.66%	+3	106
H&SC, Other	26	19	18	18	-9	-32.63%	-1	-6.50%	-1	20
Health & Social Care Professionals	579	612	617	635	+56	+9.69%	+22	+3.67%	+18	728
Management (VIII & above)	45	69	72	72	+28	+61.94%	+3	+4.91%	+0	74
Administrative/ Supervisory (V to VII)	140	231	248	246	+106	+75.94%	+15	+6.69%	-2	262
Clerical (III & IV)	178	227	248	252	+74	+41.32%	+25	+11.05%	+4	287
Management & Administrative	363	526	568	570	+208	+57.20%	+44	+8.34%	+2	623
Support	87	67	64	63	-24	-27.62%	-4	-5.59%	-1	74
Maintenance/ Technical	21	21	24	24	+3	+14.48%	+3	+15.47%	+0	25
General Support	108	88	88	87	-21	-19.47%	-1	-0.60%	-1	99
Health Care Assistants	1,510	1,616	1,651	1,655	+145	+9.60%	+39	+2.40%	+4	1,804
Home Help	99	80	74	74	-25	-25.27%	-6	-7.37%	+0	216
Care, other	108	166	181	189	+81	+75.03%	+24	+14.21%	+8	204
Patient & Client Care	1,717	1,862	1,906	1,918	+201	+11.71%	+56	+3.03%	+13	2,224



Disabilities Employment Report by S38 Hospitals: JUN 2023

JUN 2023	WTE DEC 2019	WTE DEC 2022	WTE MAY 2023	WTE JUN 2023	WTE change since DEC 2019	% WTE Change since Dec 2019	WTE change since DEC 2022	% WTE Change since Dec 2022	WTE change since MAY 2023	No. JUN 2023
Total S38 Vols	14,399	15,703	15,830	15,960	+1,561	+10.84%	+257	+1.64%	+130	19,040
Consultants	16	13	13	13	-3	-20.20%	+0	+1.55%	-0	17
Registrars	10	8	8	9	-1	-10.00%	+1	+12.50%	+1	9
SHO/ Interns	7	8	9	9	+2	+29.02%	+1	+12.96%	+0	9
Medical/ Dental, other	8	7	6	6	-2	-20.77%	-0	-3.75%	+0	9
Medical & Dental	41	35	36	37	-4	-9.58%	+2	+5.58%	+1	44
Nurse/ Midwife Manager	635	692	702	701	+66	+10.32%	+9	+1.36%	-1	757
Nurse/ Midwife Specialist & AN/MP	48	52	52	52	+4	+8.64%	+1	+1.14%	+0	58
Staff Nurse/ Staff Midwife	1,781	1,836	1,820	1,808	+27	+1.51%	-28	-1.53%	-12	2,119
Pre-registration Nurse/ Midwife Intern	25		58	54	-8	+117.56%	-2		-3	109
Nursing/ Midwifery awaiting registration		2						-100.00%		
Nursing/ Midwifery Student	25	2	58	54	+29	+117.56%	+53	+2,938.55%	-3	109
Nursing/ Midwifery other	14	19	15	17	+2	+16.69%	-2	-11.89%	+2	19
Nursing & Midwifery	2,504	2,601	2,648	2,633	+128	+5.13%	+32	+1.24%	-15	3,062
Therapy Professions	433	469	453	463	+30	+6.84%	-6	-1.29%	+9	524
Health Science/ Diagnostics	18	15	17	15	-3	-16.67%	-0	-2.15%	-2	15
Social Care	2,506	2,946	2,924	2,943	+437	+17.43%	-3	-0.09%	+19	3,454
Social Workers	161	177	173	176	+15	+9.02%	-1	-0.78%	+3	206
Psychologists	128	144	141	143	+15	+11.64%	-1	-0.95%	+2	159
Pharmacy	7	8	7	9	+2	+29.10%	+1	+6.85%	+2	12
H&SC, Other	59	49	46	47	-12	-19.94%	-2	-4.85%	+1	62
Health & Social Care Professionals	3,312	3,808	3,761	3,795	+483	+14.59%	-14	-0.36%	+34	4,432
Management (VIII & above)	135	167	165	165	+30	+22.39%	-2	-1.16%	+0	168
Administrative/ Supervisory (V to VII)	338	435	474	479	+141	+41.87%	+45	+10.24%	+5	504
Clerical (III & IV)	482	517	543	551	+69	+14.34%	+34	+6.65%	+8	664
Management & Administrative	955	1,118	1,182	1,195	+241	+25.22%	+77	+6.88%	+13	1,336
Support	646	557	545	544	-102	-15.81%	-13	-2.38%	-1	795
Maintenance/ Technical	103	105	114	112	+8	+8.09%	+7	+6.31%	-2	123
General Support	749	662	659	655	-94	-12.52%	-7	-1.01%	-3	918
Health Care Assistants	5,308	5,878	5,965	6,057	+749	+14.11%	+179	+3.04%	+92	7,364
Care, other	1,530	1,600	1,579	1,588	+57	+3.75%	-13	-0.79%	+9	1,884
Patient & Client Care	6,839	7,479	7,544	7,645	+806	+11.79%	+166	+2.22%	+101	9,248

Disabilities Employment Report by Grade Group: JUN 2023

CHO 1

JUN 2023	WTE DEC 2019	WTE DEC 2022	WTE MAY 2023	WTE JUN 2023	WTE change since DEC 2019	% WTE Change since Dec 2019	WTE change since DEC 2022	% WTE Change since Dec 2022	WTE change since MAY 2023	No. JUN 2023
Overall	1,498	1,698	1,736	1,742	+243	+16.25%	+44	+2.57%	+6	1,932
Medical/ Dental, other	3	3	2	2	-1	-33.11%	-1	-31.03%	+0	5
Medical & Dental	3	3	2	2	-1	-33.11%	-1	-31.03%	+0	5
Nurse/ Midwife Manager	105	112	116	117	+12	+11.73%	+5	+4.77%	+2	123
Nurse/ Midwife Specialist & AN/MP	7	8	12	12	+5	+76.69%	+4	+47.61%	+0	13
Staff Nurse/ Staff Midwife	324	335	323	313	-11	-3.32%	-22	-6.67%	-10	349
Public Health Nurse		1	1	1	+1		-0	-3.03%	+0	1
Nursing/ Midwifery Student	14	6	14	13	-1	-3.79%	+7	+116.56%	-0	25
Nursing/ Midwifery other	5	4	4	5	+0	+6.45%	+1	+18.96%	+1	6
Nursing & Midwifery	455	467	469	462	+8	+1.69%	-5	-1.07%	-7	517
Therapy Professions	42	58	56	56	+14	+32.55%	-2	-3.97%	-0	67
Social Care	8	17	22	22	+15	+193.38%	+5	+32.71%	+0	25
Social Workers	16	17	18	19	+3	+22.07%	+2	+13.07%	+1	21
Psychologists	5	12	14	14	+9	+202.17%	+2	+21.03%	+0	15
H&SC, Other	12	8	7	6	-6	-48.21%	-2	-20.30%	-0	7
Health & Social Care Professionals	82	112	116	118	+35	+42.67%	+6	+5.50%	+1	135
Management (VIII & above)	14	15	15	15	+2	+11.02%	+1	+6.32%	+1	16
Administrative/ Supervisory (V to VII)	28	55	56	56	+28	+101.96%	+1	+2.01%	-1	58
Clerical (III & IV)	50	63	62	63	+13	+26.04%	-1	-1.03%	+1	70
Management & Administrative	91	133	133	134	+43	+46.70%	+1	+1.03%	+1	144
Support	49	30	31	30	-19	-38.41%	-0	-0.72%	-1	38
Maintenance/ Technical	6	4	4	4	-2	-33.33%	+0	+0.76%	+0	4
General Support	55	34	35	34	-21	-37.86%	-0	-0.55%	-1	42
Health Care Assistants	761	884	900	909	+147	+19.36%	+24	+2.75%	+9	993
Home Help	13	16	14	15	+2	+11.82%	-1	-3.67%	+1	25
Care, other	37	49	66	68	+31	+83.55%	+19	+37.58%	+2	71
Patient & Client Care	812	949	981	992	+180	+22.16%	+42	+4.45%	+11	1,089



Disabilities Employment Report by Grade Group: JUN 2023

CHO 2

JUN 2023	WTE DEC 2019	WTE DEC 2022	WTE MAY 2023	WTE JUN 2023	WTE change since DEC 2019	% WTE Change since Dec 2019	WTE change since DEC 2022	% WTE Change since Dec 2022	WTE change since MAY 2023	No. JUN 2023
Overall	1,497	1,607	1,664	1,690	+193	+12.90%	+83	+5.18%	+26	2,060
Consultants	3	3	3	3	+0	+0.59%	+0	+0.00%	+0	4
Registrars	2	1	2	2	+0	+0.00%	+1	+100.00%	+0	2
SHO/ Interns		1					-1	-100.00%		
Medical/ Dental, other	1	1	1	1	+0	+0.00%	+0	+0.00%	+0	1
Medical & Dental	6	6	6	6	+0	+0.31%	+0	+0.00%	+0	7
Nurse/ Midwife Manager	77	76	76	76	-1	-1.52%	+1	+0.95%	+0	84
Nurse/ Midwife Specialist & AN/MP	6	6	5	5	-1	-10.39%	-1	-18.58%	+0	6
Staff Nurse/ Staff Midwife	165	166	162	159	-6	-3.59%	-6	-3.80%	-3	193
Nursing & Midwifery	249	248	243	241	-8	-3.11%	-7	-2.74%	-3	283
Therapy Professions	41	48	55	70	+29	+69.05%	+22	+45.97%	+15	82
Social Care	222	279	280	288	+66	+29.86%	+9	+3.11%	+8	345
Social Workers	26	27	27	28	+2	+6.84%	+1	+4.04%	+0	38
Psychologists	16	19	24	25	+10	+60.28%	+6	+30.42%	+2	29
H&SC, Other	16	11	12	11	-4	-27.81%	+0	+1.15%	-0	16
Health & Social Care Professionals	321	385	398	423	+102	+31.69%	+38	+9.83%	+25	510
Management (VIII & above)	16	17	18	18	+2	+12.96%	+1	+6.52%	+0	18
Administrative/ Supervisory (V to VII)	40	64	72	74	+33	+82.18%	+10	+15.09%	+2	76
Clerical (III & IV)	50	54	61	63	+13	+27.18%	+9	+16.93%	+2	75
Management & Administrative	106	135	151	155	+49	+46.03%	+20	+14.75%	+4	169
Support	45	46	48	47	+3	+6.00%	+2	+3.66%	-0	78
Maintenance/ Technical	13	12	11	11	-2	-11.92%	-0	-3.21%	+0	12
General Support	58	58	59	59	+1	+1.96%	+1	+2.24%	-0	90
Health Care Assistants	623	641	666	670	+47	+7.49%	+29	+4.45%	+4	826
Care, other	134	134	140	137	+3	+1.91%	+2	+1.83%	-4	175
Patient & Client Care	757	776	807	807	+49	+6.50%	+31	+4.00%	-0	1,001



Disabilities Employment Report by Grade Group: JUN 2023

CHO 3

JUN 2023	WTE DEC 2019	WTE DEC 2022	WTE MAY 2023	WTE JUN 2023	WTE change since DEC 2019	% WTE Change since Dec 2019	WTE change since DEC 2022	% WTE Change since Dec 2022	WTE change since MAY 2023	No. JUN 2023
Overall	1,823	1,989	2,013	2,025	+201	+11.04%	+36	+1.82%	+12	2,401
Consultants	1	0	0	0	-1	-90.00%	-0	-23.08%	-0	1
Medical/ Dental, other	1	0	0	0	-0	-51.61%	+0	+0.00%	+0	1
Medical & Dental	2	1	1	1	-1	-71.50%	-0	-5.17%	-0	2
Nurse/ Midwife Manager	76	81	82	80	+4	+5.20%	-1	-1.71%	-2	82
Nurse/ Midwife Specialist & AN/MP	13	11	13	13	+0	+0.63%	+2	+18.66%	+0	14
Staff Nurse/ Staff Midwife	247	258	258	261	+14	+5.49%	+3	+1.22%	+3	287
Nursing/ Midwifery Student	12		6	6	-6	-52.17%	+6		+0	11
Nursing/ Midwifery other	4	3	3	3	-1	-26.08%	+0	+0.00%	+0	3
Nursing & Midwifery	351	353	361	362	+11	+3.03%	+9	+2.62%	+1	397
Therapy Professions	74	41	41	41	-33	-44.00%	+1	+2.42%	+1	46
Health Science/ Diagnostics		4	4	4	+4		+0	+1.01%	+0	4
Social Care	241	280	275	275	+34	+14.31%	-5	-1.84%	-0	317
Social Workers	17	19	18	18	+2	+11.26%	-1	-5.26%	+1	20
Psychologists	16	19	16	17	+1	+6.91%	-2	-8.55%	+1	19
H&SC, Other	12	11	11	11	-1	-8.54%	-0	-2.06%	-0	15
Health & Social Care Professionals	359	374	365	367	+8	+2.17%	-7	-1.86%	+2	421
Management (VIII & above)	7	12	15	16	+9	+138.24%	+4	+37.29%	+1	17
Administrative/ Supervisory (V to VII)	41	60	61	60	+20	+48.12%	+0	+0.45%	-0	62
Clerical (III & IV)	59	54	59	59	-0	-0.42%	+5	+9.36%	+0	65
Management & Administrative	107	126	134	135	+29	+26.99%	+10	+7.72%	+1	144
Support	53	54	52	52	-1	-1.93%	-2	-4.05%	-0	60
Maintenance/ Technical	14	18	21	21	+7	+45.40%	+3	+16.76%	-0	23
General Support	67	72	73	73	+6	+8.26%	+1	+1.17%	-0	83
Health Care Assistants	764	857	871	879	+114	+14.97%	+21	+2.47%	+7	1,115
Care, other	173	206	208	209	+36	+20.58%	+2	+1.09%	+1	239
Patient & Client Care	937	1064	1079	1087	+150	+16.00%	+23	+2.20%	+8	1,354



Disabilities Employment Report by Grade Group: JUN 2023

CHO 4

JUN 2023	WTE DEC 2019	WTE DEC 2022	WTE MAY 2023	WTE JUN 2023	WTE change since DEC 2019	% WTE Change since Dec 2019	WTE change since DEC 2022	% WTE Change since Dec 2022	WTE change since MAY 2023	No. JUN 2023
Overall	2,425	2,640	2,684	2,693	+268	+11.05%	+53	+2.00%	+9	3,238
Consultants	2	2	2	2	+0	+2.00%	+0	+0.00%	+0	2
Medical/ Dental, other	0	0	1	0	+0	+12.12%	+0	+0.00%	-1	1
Medical & Dental	2	2	3	2	+0	+3.83%	+0	+0.00%	-1	3
Nurse/ Midwife Manager	87	98	99	100	+12	+13.90%	+2	+1.53%	+1	113
Nurse/ Midwife Specialist & AN/MP	13	13	13	13	-0	-3.56%	+0	+0.00%	+0	14
Staff Nurse/ Staff Midwife	306	301	309	308	+2	+0.73%	+7	+2.26%	-1	375
Nursing/ Midwifery Student	7	1	10	10	+3	+42.86%	+9	+1,349.28%	+0	20
Nursing/ Midwifery other	1	1	1	1	+0	+96.08%	+0	+0.00%	+0	1
Nursing & Midwifery	414	414	432	432	+17	+4.20%	+18	+4.25%	-0	523
Therapy Professions	108	105	99	101	-7	-6.82%	-4	-4.01%	+2	118
Social Care	227	259	263	258	+31	+13.78%	-1	-0.32%	-6	298
Social Workers	27	28	26	26	-1	-1.86%	-1	-4.65%	+1	32
Psychologists	35	37	34	34	-1	-2.22%	-3	-7.01%	+0	38
H&SC, Other	8	7	8	8	-1	-10.14%	+1	+7.32%	-0	8
Health & Social Care Professionals	405	435	430	426	+22	+5.37%	-8	-1.93%	-3	494
Management (VIII & above)	22	23	25	28	+6	+24.82%	+5	+21.11%	+3	28
Administrative/ Supervisory (V to VII)	53	72	76	76	+23	+42.37%	+4	+5.13%	+0	82
Clerical (III & IV)	84	93	94	96	+12	+14.37%	+3	+2.91%	+2	127
Management & Administrative	160	189	195	200	+40	+25.19%	+11	+5.97%	+5	237
Support	140	138	134	135	-5	-3.62%	-3	-2.38%	+1	227
Maintenance/ Technical	10	10	11	11	+0	+3.33%	+1	+6.04%	-1	14
General Support	150	148	146	146	-5	-3.15%	-3	-1.81%	-0	241
Health Care Assistants	987	1,111	1,125	1,131	+144	+14.63%	+21	+1.86%	+6	1,327
Care, other	307	342	354	356	+49	+15.89%	+14	+4.17%	+2	413
Patient & Client Care	1295	1453	1479	1488	+193	+14.93%	+35	+2.41%	+9	1,740



Disabilities Employment Report by Grade Group: JUN 2023

CHO 5

JUN 2023	WTE DEC 2019	WTE DEC 2022	WTE MAY 2023	WTE JUN 2023	WTE change since DEC 2019	% WTE Change since Dec 2019	WTE change since DEC 2022	% WTE Change since Dec 2022	WTE change since MAY 2023	No. JUN 2023
Overall	1,488	1,656	1,700	1,708	+220	+14.81%	+52	+3.15%	+9	2,013
Consultants	1	1	1	1	+0	+5.26%	+0	+12.36%	+0	1
Medical & Dental	1	1	1	1	+0	+5.26%	+0	+12.36%	+0	1
Nurse/ Midwife Manager	66	74	77	78	+13	+19.71%	+4	+5.37%	+2	81
Nurse/ Midwife Specialist & AN/MP	2	4	4	4	+2	+93.50%	+0	+0.00%	-0	4
Staff Nurse/ Staff Midwife	170	169	163	164	-6	-3.29%	-5	-2.76%	+1	186
Public Health Nurse	5	10	10	10	+5	+86.65%	+0	+1.64%	-0	12
Nursing/ Midwifery Student	2	0	7	7	+5	+278.26%	+7	+4,250.00%	-0	14
Nursing/ Midwifery other		1	1	1	+1		+0	+1.22%	+0	1
Nursing & Midwifery	244	258	261	264	+20	+8.10%	+6	+2.45%	+3	298
Therapy Professions	61	59	61	59	-2	-2.95%	+1	+1.01%	-2	68
Social Care	154	161	164	165	+11	+7.21%	+4	+2.17%	+1	195
Social Workers	21	20	21	20	-1	-4.95%	-0	-0.84%	-1	22
Psychologists	12	17	14	14	+2	+15.48%	-3	-18.44%	+0	16
H&SC, Other	7	6	4	4	-3	-36.96%	-2	-26.54%	+0	6
Health & Social Care Professionals	255	263	263	262	+8	+2.95%	-1	-0.30%	-1	307
Management (VIII & above)	11	19	19	19	+8	+74.22%	+0	+0.53%	-0	20
Administrative/ Supervisory (V to VII)	36	55	61	62	+26	+70.87%	+7	+13.64%	+1	65
Clerical (III & IV)	61	74	82	83	+23	+37.20%	+9	+12.55%	+1	100
Management & Administrative	108	147	162	164	+56	+52.28%	+17	+11.41%	+2	185
Support	15	8	7	7	-8	-53.92%	-1	-12.09%	+0	10
Maintenance/ Technical	7	9	9	9	+2	+25.38%	-0	-1.50%	+0	10
General Support	23	17	16	16	-6	-28.24%	-1	-6.40%	+0	20
Health Care Assistants	671	753	787	790	+119	+17.81%	+37	+4.94%	+4	909
Home Help	44	29	28	28	-16	-36.67%	-2	-5.70%	+0	75
Care, other	143	187	182	182	+40	+27.86%	-5	-2.54%	+1	218
Patient & Client Care	858	970	996	1001	+143	+16.69%	+31	+3.17%	+5	1,202



Disabilities Employment Report by Grade Group: JUN 2023

CHO 6

JUN 2023	WTE DEC 2019	WTE DEC 2022	WTE MAY 2023	WTE JUN 2023	WTE change since DEC 2019	% WTE Change since Dec 2019	WTE change since DEC 2022	% WTE Change since Dec 2022	WTE change since MAY 2023	No. JUN 2023
Overall	1,198	1,216	1,206	1,220	+22	+1.88%	+4	+0.31%	+14	1,397
Consultants	3	3	3	3	+0	+0.00%	+0	+0.00%	+0	3
Registrars		1	1	1	+1		+0	+1.01%	+0	1
Medical/ Dental, other	1	1	1	1	+0	+0.00%	+0	+0.00%	+0	1
Medical & Dental	4	5	5	5	+1	+25.00%	+0	+0.20%	+0	5
Nurse/ Midwife Manager	44	40	38	37	-7	-15.86%	-3	-7.35%	-1	40
Nurse/ Midwife Specialist & AN/MP			2	2	+2		+2		-0	2
Staff Nurse/ Staff Midwife	147	138	152	138	-9	-6.10%	+1	+0.42%	-13	153
Nursing/ Midwifery other		1	1	1	+1		+0	+0.00%	+0	1
Nursing & Midwifery	191	178	193	178	-13	-6.85%	-1	-0.28%	-15	196
Therapy Professions	42	26	25	25	-17	-40.54%	-1	-3.10%	-0	30
Social Care	334	381	362	377	+42	+12.66%	-5	-1.21%	+14	431
Social Workers	11	8	9	9	-2	-15.43%	+1	+12.72%	+0	10
Psychologists	14	14	13	14	+0	+1.11%	-0	-2.35%	+1	16
H&SC, Other	2	1	1	1	-1	-30.05%	-0	-10.49%	-0	2
Health & Social Care Professionals	403	431	411	426	+23	+5.80%	-5	-1.11%	+15	489
Management (VIII & above)	31	39	35	32	+1	+3.48%	-7	-19.01%	-3	32
Administrative/ Supervisory (V to VII)	53	64	70	72	+18	+34.32%	+7	+11.69%	+2	77
Clerical (III & IV)	54	52	54	58	+4	+7.56%	+6	+10.99%	+4	64
Management & Administrative	138	156	159	161	+23	+16.99%	+6	+3.70%	+3	173
Support	23	23	22	20	-2	-10.49%	-2	-10.37%	-2	27
Maintenance/ Technical	7	8	8	9	+2	+33.33%	+1	+12.50%	+1	9
General Support	29	31	30	29	-0	-0.41%	-1	-4.38%	-1	36
Health Care Assistants	187	188	192	200	+13	+7.07%	+12	+6.45%	+8	228
Care, other	246	229	216	221	-25	-10.27%	-8	-3.28%	+5	270
Patient & Client Care	433	416	408	421	-12	-2.80%	+5	+1.10%	+13	498



Disabilities Employment Report by Grade Group: JUN 2023

CHO 7

JUN 2023	WTE DEC 2019	WTE DEC 2022	WTE MAY 2023	WTE JUN 2023	WTE change since DEC 2019	% WTE Change since Dec 2019	WTE change since DEC 2022	% WTE Change since Dec 2022	WTE change since MAY 2023	No. JUN 2023
Overall	2,982	3,410	3,414	3,457	+476	+15.96%	+48	+1.40%	+44	4,076
Consultants	1				-1	-100.00%				
Registrars	3	4	3	4	+1	+33.33%	+0	+0.00%	+1	4
SHO/ Interns	7	7	9	9	+2	+29.02%	+2	+29.21%	+0	9
Medical/ Dental, other	1				-1	-100.00%				
Medical & Dental	12	11	12	13	+1	+12.87%	+2	+18.54%	+1	13
Nurse/ Midwife Manager	122	153	156	157	+35	+28.44%	+3	+2.24%	+0	169
Nurse/ Midwife Specialist & AN/MP	5	6	7	7	+2	+38.52%	+1	+12.66%	+0	8
Staff Nurse/ Staff Midwife	374	416	423	418	+44	+11.75%	+2	+0.40%	-5	481
Nursing/ Midwifery Student		1	8	8	+8		+7	+700.00%	+0	16
Nursing/ Midwifery other	1	4	2	2	+1	+204.00%	-2	-56.82%	+0	2
Nursing & Midwifery	502	581	596	592	+90	+17.87%	+11	+1.88%	-5	676
Therapy Professions	122	155	146	150	+28	+23.27%	-4	-2.86%	+4	168
Health Science/ Diagnostics	3	3	3	2	-1	-33.33%	-1	-39.94%	-1	2
Social Care	360	467	462	463	+103	+28.58%	-3	-0.75%	+2	506
Social Workers	33	42	39	40	+7	+19.56%	-2	-4.41%	+1	46
Psychologists	28	36	34	35	+7	+24.70%	-1	-3.38%	+0	40
Pharmacy	5	6	5	7	+2	+41.30%	+1	+9.06%	+2	10
H&SC, Other	2	2	3	4	+2	+133.33%	+2	+133.33%	+1	4
Health & Social Care Professionals	553	710	692	700	+148	+26.73%	-10	-1.37%	+9	776
Management (VIII & above)	32	47	45	44	+12	+38.43%	-2	-5.19%	-0	45
Administrative/ Supervisory (V to VII)	79	109	113	115	+36	+45.05%	+5	+4.83%	+2	122
Clerical (III & IV)	92	120	126	126	+35	+37.74%	+7	+5.56%	+0	148
Management & Administrative	203	276	283	285	+82	+40.70%	+10	+3.45%	+2	315
Support	167	156	151	149	-18	-10.71%	-7	-4.78%	-2	216
Maintenance/ Technical	28	32	36	34	+6	+19.40%	+2	+5.92%	-2	38
General Support	195	188	187	183	-12	-6.32%	-6	-2.96%	-4	254
Health Care Assistants	1,112	1,228	1,236	1,273	+161	+14.45%	+45	+3.65%	+37	1,499
Home Help	19	14	12	12	-8	-40.08%	-2	-15.01%	-1	77
Care, other	386	402	396	400	+14	+3.58%	-2	-0.56%	+4	466
Patient & Client Care	1518	1644	1644	1685	+167	+10.99%	+41	+2.47%	+41	2,042

Disabilities Employment Report by Grade Group: JUN 2023

CHO 8

JUN 2023	WTE DEC 2019	WTE DEC 2022	WTE MAY 2023	WTE JUN 2023	WTE change since DEC 2019	% WTE Change since Dec 2019	WTE change since DEC 2022	% WTE Change since Dec 2022	WTE change since MAY 2023	No. JUN 2023
Overall	2,162	2,345	2,370	2,413	+251	+11.59%	+67	+2.87%	+43	2,897
Consultants	1				-1	-100.00%				
Registrars	2	1	1	1	-1	-50.00%	+0	+0.00%	+0	1
Medical/ Dental, other	1	1	1	1	+0	+0.00%	+0	+0.00%	+0	1
Medical & Dental	4	2	2	2	-2	-50.00%	+0	+0.00%	+0	2
Nurse/ Midwife Manager	123	114	112	111	-12	-10.10%	-3	-2.84%	-2	120
Nurse/ Midwife Specialist & AN/MP	7	4	5	5	-2	-23.13%	+1	+22.15%	+0	6
Staff Nurse/ Staff Midwife	319	335	333	338	+20	+6.24%	+4	+1.15%	+6	397
Public Health Nurse	1	1	1	1	+0	+1.04%	-0	-3.00%	+0	1
Nursing/ Midwifery Student		1	19	15	+15		+15	+1,848.10%	-3	31
Nursing/ Midwifery other	5	5	4	6	+1	+12.30%	+1	+13.41%	+2	7
Nursing & Midwifery	455	460	475	477	+22	+4.80%	+17	+3.67%	+2	562
Therapy Professions	92	92	94	93	+2	+2.04%	+1	+1.20%	-0	112
Health Science/ Diagnostics	2	2	2	2	+0	+0.00%	+0	+0.00%	+0	2
Social Care	361	414	416	421	+61	+16.79%	+7	+1.73%	+5	510
Social Workers	24	24	22	24	-0	-0.95%	-0	-0.83%	+1	27
Psychologists	25	29	27	28	+3	+13.40%	-0	-1.54%	+1	30
H&SC, Other	7	8	6	6	-1	-11.79%	-2	-26.44%	-0	8
Health & Social Care Professionals	510	569	567	575	+65	+12.69%	+5	+0.95%	+8	689
Management (VIII & above)	9	18	19	18	+9	+107.50%	-0	-1.08%	-0	19
Administrative/ Supervisory (V to VII)	56	55	59	60	+4	+7.41%	+5	+9.18%	+1	64
Clerical (III & IV)	84	94	103	106	+22	+26.17%	+12	+13.13%	+3	126
Management & Administrative	149	168	181	185	+36	+23.91%	+17	+10.27%	+4	209
Support	46	33	30	31	-15	-32.96%	-1	-4.27%	+1	39
Maintenance/ Technical	16	12	16	16	-0	-0.58%	+4	+28.76%	+0	16
General Support	62	45	46	47	-15	-24.65%	+2	+4.83%	+1	55
Health Care Assistants	844	965	969	996	+153	+18.09%	+31	+3.21%	+27	1,211
Home Help	22	21	19	20	-3	-12.24%	-2	-7.46%	+0	39
Care, other	115	115	111	111	-4	-3.54%	-4	-3.32%	-0	130
Patient & Client Care	981	1101	1100	1127	+146	+14.86%	+26	+2.33%	+27	1,380



Disabilities Employment Report by Grade Group: JUN 2023

CHO 9

JUN 2023	WTE DEC 2019	WTE DEC 2022	WTE MAY 2023	WTE JUN 2023	WTE change since DEC 2019	% WTE Change since Dec 2019	WTE change since DEC 2022	% WTE Change since Dec 2022	WTE change since MAY 2023	No. JUN 2023
Overall	3,194	3,336	3,353	3,343	+149	+4.67%	+7	+0.21%	-10	3,949
Consultants	13	9	11	11	-2	-15.52%	+1	+11.86%	+0	13
Registrars	6	3	3	3	-3	-50.17%	+0	+0.00%	-0	3
SHO/ Interns		1	2	2	+2		+1	+101.01%	+0	2
Medical/ Dental, other	6	6	6	6	-0	-3.25%	-0	-4.03%	+0	8
Medical & Dental	25	20	21	22	-3	-12.81%	+2	+9.53%	+0	26
Nurse/ Midwife Manager	192	211	216	216	+25	+12.85%	+6	+2.63%	+0	233
Nurse/ Midwife Specialist & AN/MP	9	16	17	17	+8	+93.19%	+0	+1.89%	-0	18
Staff Nurse/ Staff Midwife	517	501	480	478	-39	-7.60%	-23	-4.57%	-3	553
Nursing/ Midwifery Student	8	2	17	17	+9	+119.35%	+15	+758.59%	+0	32
Nursing/ Midwifery other	7	9	8	8	+1	+8.73%	-1	-10.05%	-0	9
Nursing & Midwifery	732	739	738	736	+3	+0.45%	-3	-0.39%	-2	845
Therapy Professions	181	208	199	199	+18	+10.16%	-8	-3.93%	+1	225
Health Science/ Diagnostics	15	12	14	13	-2	-13.33%	+1	+8.33%	-1	13
Social Care	689	796	794	792	+103	+14.90%	-4	-0.55%	-2	958
Social Workers	44	54	56	56	+12	+26.92%	+2	+3.63%	-0	63
Psychologists	53	57	58	58	+5	+8.96%	+0	+0.31%	+0	62
Pharmacy	2	2	2	2	+0	+0.00%	+0	+0.00%	+0	2
H&SC, Other	19	13	13	13	-6	-31.93%	-0	-3.51%	+0	16
Health & Social Care Professionals	1003	1142	1136	1133	+130	+12.92%	-10	-0.86%	-3	1,339
Management (VIII & above)	37	45	45	45	+8	+20.09%	+0	+0.36%	+0	45
Administrative/ Supervisory (V to VII)	88	129	153	149	+61	+69.90%	+20	+15.45%	-5	158
Clerical (III & IV)	125	137	147	146	+21	+16.87%	+9	+6.69%	-1	174
Management & Administrative	250	311	346	340	+90	+35.90%	+29	+9.41%	-5	377
Support	196	136	136	135	-60	-30.80%	-1	-0.62%	-0	174
Maintenance/ Technical	22	20	21	21	-2	-6.82%	+0	+1.23%	+0	22
General Support	218	156	156	156	-62	-28.37%	-1	-0.38%	-0	196
Health Care Assistants	869	866	871	864	-5	-0.59%	-3	-0.29%	-7	1,060
Care, other	97	102	85	93	-4	-3.74%	-8	-8.24%	+8	106
Patient & Client Care	966	968	956	957	-9	-0.90%	-11	-1.13%	+1	1,166

Disabilities Employment Report by Grade Group: JUN 2023

other Community Services

JUN 2023	WTE DEC 2019	WTE DEC 2022	WTE MAY 2023	WTE JUN 2023	WTE change since DEC 2019	% WTE Change since Dec 2019	WTE change since DEC 2022	% WTE Change since Dec 2022	WTE change since MAY 2023	No. JUN 2023
Overall	6	6	6	6	+0	+0.84%	+0	+1.18%	+0	6
Management (VIII & above)	1	2	2	2	+1	+100.00%	+0	+2.04%	+0	2
Administrative/ Supervisory (V to VII)	3	2	2	2	-1	-33.33%	+0	+0.50%	+0	2
Clerical (III & IV)	2	2	2	2	+0	+2.56%	+0	+1.01%	+0	2
Management & Administrative	6	6	6	6	+0	+0.84%	+0	+1.18%	+0	6



Disabilities Employment Report by Grade Group: JUN 2023

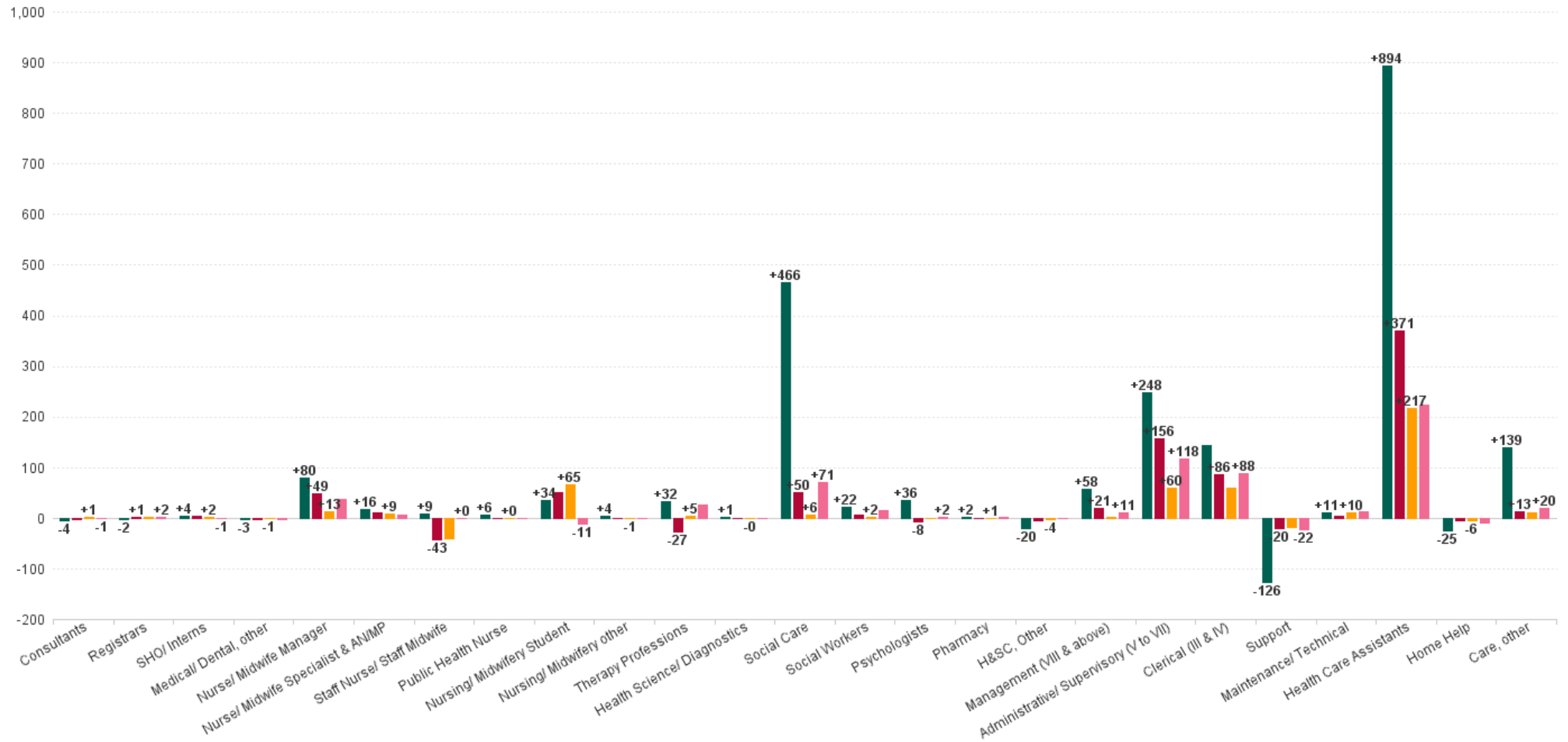
JUN 2023	WTE DEC 2019	WTE DEC 2022	WTE MAY 2023	WTE JUN 2023	WTE change since DEC 2019	% WTE Change since Dec 2019	WTE change since DEC 2022	% WTE Change since Dec 2022	WTE change since MAY 2023	No. JUN 2023
Overall	18,273	19,903	20,145	20,297	+2,025	+11.08%	+394	+1.98%	+152	23,969
Consultant Paediatrics	3	3	3	3	-1	-17.05%	+0	+0.00%	+0	3
Consultant Psychiatry	21	16	17	17	-4	-18.04%	+1	+7.56%	-0	21
Consultants	24	18	20	20	-4	-17.92%	+1	+6.52%	-0	24
Registrar	7	7	6	6	-1	-14.29%	-1	-14.04%	+0	6
Senior Registrar	2	2	3	3	+1	+49.50%	+1	+49.50%	-0	3
Specialist Registrar	4	1	1	2	-2	-50.00%	+1	+100.00%	+1	2
Registrars	13	10	10	11	-2	-15.46%	+1	+10.12%	+1	11
Senior House Officer	7	9	11	11	+4	+57.61%	+2	+22.71%	+0	11
SHO/ Interns	7	9	11	11	+4	+57.61%	+2	+22.71%	+0	11
Other Medical	14	13	12	12	-3	-18.25%	-1	-8.89%	-1	18
Medical/ Dental, other	14	13	12	12	-3	-18.25%	-1	-8.89%	-1	18
Medical & Dental	58	50	53	53	-5	-8.43%	+3	+6.15%	+1	64
Clinical Nurse/ Midwife Manager	809	869	878	879	+70	+8.60%	+10	+1.11%	+1	948
Director Nursing/Midwifery, Assistant	41	43	46	47	+6	+14.66%	+3	+7.76%	+1	48
Director of Nursing/Midwifery	42	47	49	47	+5	+10.93%	-0	-0.06%	-2	49
Nurse/ Midwife Manager	892	959	972	972	+80	+8.99%	+13	+1.36%	-0	1,045
Advanced Nurse/ Midwife Practitioner	2	12	16	16	+14	+689.00%	+4	+31.72%	+0	16
Clinical Nurse/ Midwife Specialist	60	58	63	63	+3	+4.50%	+5	+8.53%	+0	69
Nurse/ Midwife Specialist & AN/MP	62	70	78	78	+16	+26.61%	+9	+12.52%	+0	85
Staff Nurse [Intellectual Disability]	1,597	1,767	1,738	1,612	+15	+0.95%	-155	-8.75%	-125	1,867
Staff Nurse [Psychiatric]	82	60	57	102	+20	+24.20%	+43	+71.83%	+45	123
Staff Nurses [General/ Children's]	889	792	808	863	-26	-2.92%	+72	+9.05%	+55	984
Staff Nurse/ Staff Midwife	2,569	2,618	2,603	2,578	+9	+0.36%	-40	-1.53%	-25	2,974
Public Health Nurse	6	12	12	12	+6	+88.85%	+0	+0.85%	-0	14
Public Health Nurse	6	12	12	12	+6	+88.85%	+0	+0.85%	-0	14
Nursing/ Midwifery awaiting registration	14	4	2	2	-12	-85.55%	-2	-46.95%	+0	2
Pre-registration Nurse/ Midwife Intern	28	7	78	74	+46	+163.08%	+67	+951.20%	-3	147
Nursing/ Midwifery Student	42	11	79	76	+34	+81.33%	+65	+604.06%	-3	149
Nursing Education/Clinical	21	27	24	26	+5	+23.50%	-0	-1.36%	+2	30
Other Nursing/ Midwifery	1	1			-1	-100.00%	-1	-100.00%		
Nursing/ Midwifery other	22	28	24	26	+4	+17.93%	-1	-4.94%	+2	30
Nursing & Midwifery	3593	3697	3769	3743	+150	+4.16%	+46	+1.24%	-26	4,297
Dietitians	18	20	26	29	+10	+54.92%	+8	+40.21%	+3	35
Occupational Therapists	263	304	288	297	+33	+12.67%	-7	-2.39%	+8	331
Physiotherapists	189	193	196	200	+11	+5.91%	+7	+3.72%	+5	233
Speech & Language Therapists	292	273	265	269	-22	-7.66%	-3	-1.22%	+4	317
Therapy Professions	763	790	775	795	+32	+4.24%	+5	+0.61%	+20	916
Clinical Engineering	13	14	16	16	+3	+23.08%	+2	+14.61%	+0	16
Medical Science	4	4	4	3	-1	-25.00%	-1	-25.00%	-1	3
Phlebotomists	1				-1	-100.00%				
Radiographers	1	1	2	1	+0	+0.00%	-0	-24.81%	-1	1
Respiratory Physiologists	1	2	1	1	+0	+0.00%	-1	-50.00%	+0	1
Health Science/ Diagnostics	20	21	23	21	+1	+5.00%	-0	-1.36%	-2	21

JUN 2023	WTE DEC 2019	WTE DEC 2022	WTE MAY 2023	WTE JUN 2023	WTE change since DEC 2019	% WTE Change since Dec 2019	WTE change since DEC 2022	% WTE Change since Dec 2022	WTE change since MAY 2023	No. JUN 2023
Overall	18,273	19,903	20,145	20,297	+2,025	+11.08%	+394	+1.98%	+152	23,969
Other Health & Social Care			65	66	+66		+66		+2	71
Social Care	2,595	3,055	2,974	2,995	+400	+15.41%	-60	-1.96%	+21	3,514
Social Care	2,595	3,055	3,039	3,061	+466	+17.96%	+6	+0.21%	+22	3,585
Social Workers	219	239	237	241	+22	+10.05%	+2	+0.75%	+4	279
Social Workers	219	239	237	241	+22	+10.05%	+2	+0.75%	+4	279
Psychologists	202	239	233	238	+36	+17.87%	-1	-0.31%	+5	265
Psychologists	202	239	233	238	+36	+17.87%	-1	-0.31%	+5	265
Pharmacists	5	7	6	7	+2	+37.19%	+1	+9.55%	+1	10
Pharmacy Technicians	2	2	1	2	+0	+0.67%	-0	-4.43%	+1	2
Pharmacy	7	8	7	9	+2	+29.10%	+1	+6.85%	+2	12
Counsellor Therapists	19	23	20	19	+1	+2.76%	-3	-14.26%	-0	23
Environmental Health Officers				1	+1		+1		+1	1
Other Health & Social Care	51	30	30	29	-21	-41.79%	-1	-2.55%	-1	39
Play Therapists/ Specialists	15	15	15	15	-1	-4.27%	-1	-4.02%	-0	19
H&SC, Other	85	68	65	65	-20	-23.87%	-4	-5.30%	+0	82
Health & Social Care Professionals	3890	4421	4378	4430	+539	+13.86%	+9	+0.20%	+52	5,160
Executive Management	31	50	34	32	+1	+3.48%	-18	-35.85%	-2	32
Senior Management (VIII & GM)	149	186	203	206	+57	+38.18%	+19	+10.32%	+3	210
Management (VIII & above)	180	236	237	238	+58	+32.24%	+1	+0.62%	+1	242
Middle Management (V-VII)	463	653	707	710	+248	+53.52%	+57	+8.72%	+3	751
Other Administrative	15	12	15	15	+0	+0.27%	+3	+25.00%	+0	15
Administrative/ Supervisory (V to VII)	477	665	722	725	+248	+51.85%	+60	+9.01%	+3	766
General Administrative (III & IV)	660	744	791	803	+143	+21.62%	+59	+7.99%	+12	951
Clerical (III & IV)	660	744	791	803	+143	+21.62%	+59	+7.99%	+12	951
Management & Administrative	1317	1645	1750	1766	+448	+34.03%	+121	+7.35%	+15	1,959
Catering	98	75	74	75	-23	-23.48%	+0	+0.12%	+1	90
Household Services	419	385	373	370	-49	-11.68%	-15	-4.01%	-4	541
Other Labs & Associated	1	1	1	1	+0	+0.00%	+0	+0.00%	+0	1
Other Support	188	145	144	142	-46	-24.57%	-4	-2.50%	-2	210
Portering	28	18	17	19	-8	-29.55%	+2	+11.08%	+3	27
Support	733	624	609	607	-126	-17.22%	-17	-2.73%	-2	869
Maintenance	116	109	121	119	+3	+2.36%	+10	+9.16%	-2	131
Technical Services	8	17	17	17	+9	+106.84%	-0	-0.83%	+0	17
Maintenance/ Technical	124	126	138	136	+11	+9.17%	+10	+7.82%	-2	148
General Support	857	750	747	743	-115	-13.40%	-7	-0.96%	-4	1,017
Attendant/ Aide	230	179	167	166	-65	-28.00%	-13	-7.07%	-1	213
Health Care Assistant/ Care Assistant	6,578	7,294	7,416	7,508	+930	+14.13%	+214	+2.93%	+92	8,911
Health & Social Care Assistants	10	22	34	38	+29	+299.58%	+17	+76.36%	+4	44
Health Care Assistants	6,818	7,495	7,616	7,712	+894	+13.11%	+217	+2.90%	+96	9,168
Home Helps	99	80	74	74	-25	-25.27%	-6	-7.37%	+0	216
Home Help	99	80	74	74	-25	-25.27%	-6	-7.37%	+0	216
Home Care Services	28	17	18	17	-11	-40.23%	-0	-2.02%	-1	22
Other Care Grades	174	259	249	248	+74	+42.71%	-11	-4.14%	-1	280
Pastoral Care	10	5	5	6	-4	-43.51%	+1	+20.91%	+1	8
Workshop Services	1,426	1,485	1,488	1,506	+80	+5.63%	+21	+1.40%	+19	1,778
Care, other	1,638	1,766	1,760	1,777	+139	+8.46%	+11	+0.61%	+17	2,088
Patient & Client Care	8556	9341	9450	9563	+1,007	+11.77%	+222	+2.38%	+114	11,472



WTE Change by Staff Category

■ WTE change since DEC 2019 ■ WTE change since DEC 2021 ■ WTE change since DEC 2022 ■ WTE change since JUN 2022



Disabilities Employment Report by WTE, Headcount, Gender, Full-Time / Part-Time etc. JUN 2023

JUN 2023	WTE JUN 2023	No. JUN 2023	WTE : No	% Male	% Female	Male WTE : No.	Female WTE : No	Perm Count %	Perm Count Male %	Perm Count Female %	Fulltime Count %	Part time Count %	FT Count Male %	FT Count Female %
Total	20,297	23,969	1:0.8	19.74%	80.26%	1:0.9	1:0.8	88.42%	17.29%	71.13%	58.67%	41.33%	69.14%	56.10%
Consultants	19.61	24	1:0.8	25.00%	75.00%	1:1	1:0.8	79.17%	12.50%	66.67%	66.67%	33.33%	100.00%	55.56%
Medical/ Dental, other	11.78	18	1:0.7	33.33%	66.67%	1:0.9	1:0.5	88.89%	22.22%	66.67%	33.33%	66.67%	50.00%	25.00%
Registrars	6	6	1:1	83.33%	100.00%	1:1	1:1	16.67%	16.67%		183.33%		100.00%	100.00%
SHO/ Interns	10.97	11	1:1	63.64%	36.36%	1:1	1:1				100.00%		100.00%	100.00%
Registrars	4.99	5	1:1	100.00%	120.00%	1:1	1:1	20.00%	20.00%		220.00%		100.00%	100.00%
Medical & Dental	53	64	1:0.8	37.50%	62.50%	1:1	1:0.8	56.25%	12.50%	43.75%	68.75%	31.25%	87.50%	57.50%
Nurse/ Midwife Specialist & AN/MP	15.78	16	1:0.9	37.50%	493.75%	1:1	1:0.9	512.50%	37.50%	475.00%	375.00%	156.25%	83.33%	69.62%
Nurse/ Midwife Manager	878.53	948	1:0.9	14.03%	96.20%	1:1	1:0.9	103.27%	13.29%	89.98%	93.35%	16.88%	97.74%	82.79%
Nurse/ Midwife Specialist & AN/MP	62.61	69	1:0.9	8.70%	114.49%	1:1	1:0.9	118.84%	8.70%	110.14%	86.96%	36.23%	83.33%	69.62%
Nurse/ Midwife Manager	93.57	97	1:0.9	137.11%	940.21%	1:1	1:0.9	1,009.28%	129.90%	879.38%	912.37%	164.95%	97.74%	82.79%
Nursing/ Midwifery other	26.18	30	1:0.9	3.33%	96.67%	1:1	1:0.9	100.00%	3.33%	96.67%	63.33%	36.67%	100.00%	62.07%
Nursing/ Midwifery Student	76.32	149	1:0.5	10.07%	89.93%	1:0.6	1:0.5	22.82%		22.82%	65.10%	34.90%	73.33%	64.18%
Public Health Nurse	11.86	14	1:0.8		100.00%	1:	1:0.8	100.00%		100.00%	64.29%	35.71%		64.29%
Staff Nurse/ Staff Midwife	2,577.98	2,974	1:0.9	12.00%	88.00%	1:0.9	1:0.9	94.55%	11.33%	83.22%	67.89%	32.11%	84.03%	65.69%
Nursing & Midwifery	3,743	4,297	1:0.9	11.92%	88.08%	1:0.9	1:0.9	91.95%	10.94%	81.01%	71.89%	28.11%	87.30%	69.80%
Health Science/ Diagnostics	16	16	1:1	112.50%	18.75%	1:1	1:1	112.50%	93.75%	18.75%	125.00%	6.25%	94.44%	100.00%
H&SC, Other	19.42	23	1:0.8	39.13%	317.39%	1:1	1:0.8	339.13%	39.13%	300.00%	191.30%	165.22%	88.89%	49.32%
Therapy Professions	28.63	35	1:0.9	214.29%	2,402.86%	1:0.9	1:0.9	2,502.86%	200.00%	2,302.86%	1,928.57%	688.57%	89.33%	72.29%
H&SC, Other	1	1	1:0.8	900.00%	7,300.00%	1:1	1:0.8	7,800.00%	900.00%	6,900.00%	4,400.00%	3,800.00%	88.89%	49.32%
Health Science/ Diagnostics	3	3	1:1	600.00%	100.00%	1:1	1:1	600.00%	500.00%	100.00%	666.67%	33.33%	94.44%	100.00%
Therapy Professions	296.61	331	1:0.9	22.66%	254.08%	1:0.9	1:0.9	264.65%	21.15%	243.50%	203.93%	72.81%	89.33%	72.29%
Social Care	66.18	71	1:0.9	840.85%	4,208.45%	1:0.9	1:0.8	4,642.25%	773.24%	3,869.01%	2,516.90%	2,532.39%	63.82%	47.05%
H&SC, Other	29.41	39	1:0.8	23.08%	187.18%	1:1	1:0.8	200.00%	23.08%	176.92%	112.82%	97.44%	88.89%	49.32%
Pharmacy	8.74	12	1:0.7	8.33%	91.67%	1:1	1:0.7	83.33%	8.33%	75.00%	41.67%	58.33%	100.00%	36.36%
Therapy Professions	200.41	233	1:0.9	32.19%	360.94%	1:0.9	1:0.9	375.97%	30.04%	345.92%	289.70%	103.43%	89.33%	72.29%
H&SC, Other	14.79	19	1:0.8	47.37%	384.21%	1:1	1:0.8	410.53%	47.37%	363.16%	231.58%	200.00%	88.89%	49.32%
Psychologists	238.24	265	1:0.9	15.47%	84.53%	1:1	1:0.9	97.74%	15.47%	82.26%	77.74%	22.26%	92.68%	75.00%
Health Science/ Diagnostics	2	2	1:1	900.00%	150.00%	1:1	1:1	900.00%	750.00%	150.00%	1,000.00%	50.00%	94.44%	100.00%
Social Care	2,994.98	3,514	1:0.9	16.99%	85.03%	1:0.9	1:0.8	93.80%	15.62%	78.17%	50.85%	51.17%	63.82%	47.05%



JUN 2023	WTE JUN 2023	No. JUN 2023	WTE : No	% Male	% Female	Male WTE : No.	Female WTE : No	Perm Count %	Perm Count Male %	Perm Count Female %	Fulltime Count %	Part time Count %	FT Count Male %	FT Count Female %
Total	20,297	23,969	1:0.8	19.74%	80.26%	1:0.9	1:0.8	88.42%	17.29%	71.13%	58.67%	41.33%	69.14%	56.10%
Social Workers	240.83	279	1:0.9	16.49%	83.51%	1:0.9	1:0.8	92.83%	15.05%	77.78%	70.25%	29.75%	84.78%	67.38%
Therapy Professions	269.36	317	1:0.9	23.66%	265.30%	1:0.9	1:0.9	276.34%	22.08%	254.26%	212.93%	76.03%	89.33%	72.29%
Health & Social Care Professionals	4,430	5,160	1:0.9	15.25%	84.75%	1:0.9	1:0.8	92.95%	14.09%	78.86%	56.84%	43.16%	70.01%	54.47%
Management (VIII & above)	31.84	32	1:1	240.63%	515.63%	1:1	1:1	700.00%	225.00%	475.00%	740.63%	15.63%	100.00%	96.97%
Clerical (III & IV)	802.94	951	1:0.8	10.83%	89.17%	1:0.9	1:0.8	86.33%	8.20%	78.13%	61.72%	38.28%	78.64%	59.67%
Administrative/ Supervisory (V to VII)	725.03	766	1:0.9	21.80%	78.20%	1:1	1:0.9	92.69%	20.50%	72.19%	86.95%	13.05%	95.81%	84.47%
Management (VIII & above)	205.72	210	1:1	36.67%	78.57%	1:1	1:1	106.67%	34.29%	72.38%	112.86%	2.38%	100.00%	96.97%
Management & Administrative	1,766	1,959	1:0.9	17.71%	82.29%	1:1	1:0.9	89.59%	15.67%	73.92%	76.06%	23.94%	91.64%	72.70%
Support	444.63	631	1:0.7	40.41%	97.31%	1:0.8	1:0.7	120.44%	31.54%	88.91%	48.18%	89.54%	49.41%	28.99%
Maintenance/ Technical	118.88	131	1:0.9	101.53%	11.45%	1:0.9	1:0.8	105.34%	93.89%	11.45%	84.73%	28.24%	78.20%	46.67%
Support	162.3	238	1:0.7	107.14%	257.98%	1:0.8	1:0.7	319.33%	83.61%	235.71%	127.73%	237.39%	49.41%	28.99%
Maintenance/ Technical	16.76	17	1:0.9	782.35%	88.24%	1:0.9	1:0.8	811.76%	723.53%	88.24%	652.94%	217.65%	78.20%	46.67%
General Support	743	1,017	1:0.7	38.15%	61.85%	1:0.8	1:0.7	88.30%	31.66%	56.64%	40.81%	59.19%	59.28%	29.41%
Health Care Assistants	7,712.12	9,168	1:0.8	23.45%	76.55%	1:0.9	1:0.8	84.88%	20.33%	64.55%	52.11%	47.89%	61.63%	49.19%
Care, other	17.01	22	1:0.9	2,304.55%	7,186.36%	1:0.9	1:0.8	8,322.73%	1,986.36%	6,336.36%	5,954.55%	3,536.36%	74.75%	58.89%
Home Help	74.12	216	1:0.3	7.41%	92.59%	1:0.3	1:0.3	66.67%	4.17%	62.50%	2.31%	97.69%		2.50%
Care, other	1,760	2,066	1:0.9	24.54%	76.52%	1:0.9	1:0.8	88.63%	21.15%	67.47%	63.41%	37.66%	74.75%	58.89%
Patient & Client Care	9,563	11,472	1:0.8	23.30%	76.70%	1:0.9	1:0.8	85.05%	20.14%	64.91%	53.10%	46.90%	63.75%	49.87%



Disabilities Employment Report by CHO : WTE, Headcount, Gender, Full-Time / Part-Time etc. JUN 2023

JUN 2023	WTE JUN 2023	No. JUN 2023	WTE : No	Number Male	Number Female	Male WTE : No.	Female WTE : No	Perm Count %	Number Male %	Number Female %	Fulltime Count %	Part time Count %	FT Count Male %	FT Count Female %
Total	20,297	23,969	1:0.8	19.74%	80.26%	1:0.9	1:0.8	88.42%	17.29%	71.13%	58.67%	41.33%	69.14%	56.10%
CHO 1	1,742	1,932	1:0.9	20.39%	79.61%	1:1	1:0.9	93.06%	18.89%	74.17%	79.81%	20.19%	89.85%	77.24%
CHO 2	1,690	2,060	1:0.8	23.25%	76.75%	1:0.9	1:0.8	82.82%	18.64%	64.17%	48.69%	51.31%	51.15%	47.94%
CHO 3	2,025	2,401	1:0.8	13.70%	86.30%	1:0.9	1:0.8	86.51%	11.79%	74.72%	40.82%	59.18%	45.29%	40.11%
CHO 4	2,693	3,238	1:0.8	20.44%	79.56%	1:0.9	1:0.8	83.42%	16.46%	66.95%	68.53%	31.47%	74.77%	66.93%
CHO 5	1,708	2,013	1:0.8	20.72%	79.28%	1:0.9	1:0.8	86.54%	17.83%	68.70%	53.90%	46.10%	64.75%	51.07%
CHO 6	1,220	1,397	1:0.9	22.98%	77.02%	1:0.9	1:0.9	90.84%	20.54%	70.29%	66.28%	33.72%	81.93%	61.62%
CHO 7	3,457	4,076	1:0.8	22.47%	77.53%	1:0.9	1:0.8	87.81%	19.60%	68.20%	67.98%	32.02%	79.91%	64.53%
CHO 8	2,413	2,897	1:0.8	20.88%	79.12%	1:0.9	1:0.8	95.20%	19.88%	75.32%	46.53%	53.47%	52.07%	45.07%
CHO 9	3,343	3,949	1:0.8	15.37%	84.63%	1:0.9	1:0.8	90.07%	14.10%	75.97%	55.31%	44.69%	73.64%	51.97%
other Community Services	6	6	1:1	16.67%	83.33%	1:1	1:1	100.00%	16.67%	83.33%	83.33%	16.67%	100.00%	80.00%



Previous Month Summary

	% WTE change since MAY 2023	WTE change since MAY 2023	CHO 1	CHO 2	CHO 3	CHO 4	CHO 5	CHO 6	CHO 7	CHO 8	CHO 9	other Commu
Total	+0.75%	+151.7	+5.7	+25.6	+11.8	+9.2	+8.6	+14.5	+43.6	+42.6	-10.0	+0.0
Consultants	-0.15%	-0.0		+0.0	-0.0	+0.0	+0.0	+0.0			+0.0	
Registrars	+7.43%	+0.8		+0.0				+0.0	+0.8	+0.0	-0.0	
SHO/ Interns	+4.38%	+0.5							+0.4		+0.0	
Medical/ Dental, other	-5.08%	-0.6	+0.0	+0.0	+0.0	-0.6		+0.0		+0.0	+0.0	
Medical & Dental	+1.06%	+0.6	+0.0	+0.0	-0.0	-0.6	+0.0	+0.0	+1.2	+0.0	+0.0	
Nurse/ Midwife Manager	-0.00%	-0.0	+1.7	+0.5	-2.0	+0.6	+1.7	-1.3	+0.4	-1.8	+0.1	
Nurse/ Midwife Specialist & AN/MP	+0.19%	+0.2	+0.3	+0.0	+0.0	+0.0	-0.1	-0.1	+0.0	+0.1	-0.0	
Staff Nurse/ Staff Midwife	-0.96%	-25.1	-9.7	-3.0	+2.8	-0.9	+1.5	-13.4	-5.3	+5.6	-2.7	
Public Health Nurse	-1.25%	-0.2	+0.0				-0.2			+0.0		
Nursing/ Midwifery Student	-3.72%	-3.0	-0.0		+0.0	+0.0	-0.0		+0.0	-3.3	+0.4	
Nursing/ Midwifery other	+10.00%	+2.4	+0.9		+0.0	+0.0	+0.0	+0.0	+0.0	+1.7	-0.2	
Nursing & Midwifery	-0.68%	-25.7	-6.9	-2.5	+0.9	-0.3	+2.9	-14.8	-4.9	+2.3	-2.5	
Therapy Professions	+2.59%	+20.1	-0.1	+15.0	+0.8	+1.7	-1.5	-0.4	+3.7	-0.0	+0.9	
Health Science/ Diagnostics	-7.20%	-1.6			+0.0				-0.6	+0.0	-1.0	
Social Care	+0.74%	+22.4	+0.5	+7.8	-0.1	-5.6	+1.2	+14.3	+1.6	+5.1	-2.4	
Social Workers	+1.78%	+4.2	+1.1	+0.5	+0.8	+0.5	-0.9	+0.1	+1.1	+1.4	-0.4	
Psychologists	+2.28%	+5.3	+0.1	+1.6	+0.9	+0.1	+0.1	+0.7	+0.3	+1.5	+0.0	
Pharmacy	+22.24%	+1.6							+1.6		+0.0	
H&SC, Other	+0.11%	+0.1	-0.1	-0.3	-0.1	-0.2	+0.0	-0.2	+1.0	-0.1	+0.0	
Health & Social Care Professionals	+1.19%	+52.0	+1.5	+24.6	+2.3	-3.5	-1.0	+14.5	+8.7	+7.8	-2.9	
Management (VIII & above)	+0.24%	+0.6	+0.9	+0.0	+0.9	+3.2	-0.2	-3.3	-0.5	-0.5	+0.0	+0.0
Administrative/ Supervisory (V to VII)	+0.39%	+2.9	-0.7	+1.8	-0.3	+0.1	+1.3	+1.9	+2.0	+1.4	-4.7	+0.0



Clerical (III & IV)	+1.51%	+12.0	+0.5	+2.0	+0.2	+1.9	+0.6	+4.0	+0.5	+3.0	-0.7	+0.0
Management & Administrative	+0.88%	+15.4	+0.7	+3.9	+0.8	+5.2	+1.7	+2.6	+2.0	+4.0	-5.4	+0.0
Support	-0.34%	-2.1	-0.5	-0.2	-0.1	+0.7	+0.3	-1.6	-1.8	+1.5	-0.3	
Maintenance/ Technical	-1.52%	-2.1	+0.0	+0.0	-0.1	-0.9	+0.0	+1.0	-2.1	+0.0	+0.0	
General Support	-0.56%	-4.2	-0.5	-0.2	-0.1	-0.3	+0.3	-0.6	-3.9	+1.5	-0.3	
Health Care Assistants	+1.26%	+95.8	+8.8	+3.7	+7.3	+6.3	+3.8	+8.0	+37.4	+27.2	-6.8	
Home Help	+0.58%	+0.4	+0.5				+0.2		-0.5	+0.3		
Care, other	+0.99%	+17.5	+1.6	-3.8	+0.7	+2.4	+0.8	+4.8	+3.6	-0.4	+7.9	
Patient & Client Care	+1.20%	+113.6	+10.9	-0.1	+8.0	+8.7	+4.7	+12.8	+40.5	+27.1	+1.1	



Year on Year Summary

	% WTE change since JUN 2022	WTE change since JUN 2022	CHO 1	CHO 2	CHO 3	CHO 4	CHO 5	CHO 6	CHO 7	CHO 8	CHO 9	other Communi ty Services
Total	+2.98%	+586.8	+55.0	+101.1	+40.3	+45.9	+28.3	+0.4	+138.1	+130.0	+47.7	+0.1
Consultants	-6.44%	-1.4		+0.0	-1.1	+1.0	+0.1	+0.0			-1.4	
Registrars	+22.11%	+2.0	-1.0	+2.0				+0.0	+1.0	+0.0	-0.0	
SHO/ Interns	-8.58%	-1.0		-2.0					+1.0		-0.0	
Medical/ Dental, other	-11.89%	-1.6	-0.9	+0.0	-0.5	+0.0		+0.0		+0.0	-0.3	
Medical & Dental	-3.58%	-2.0	-1.9	+0.0	-1.6	+1.1	+0.1	+0.0	+2.0	+0.0	-1.7	
Nurse/ Midwife Manager	+4.03%	+37.7	+6.7	+0.8	+0.3	-0.9	+4.3	-2.2	+18.7	+0.8	+9.1	
Nurse/ Midwife Specialist & AN/MP	+9.10%	+6.5	+2.4	-1.2	+2.2	+0.5	+0.9	+1.8	+1.4	-0.9	-0.5	
Staff Nurse/ Staff Midwife	+0.01%	+0.3	-24.6	-6.5	+8.1	+1.5	-4.0	-2.0	+8.2	+22.3	-2.7	
Public Health Nurse	+0.08%	+0.0	-0.0				+0.0			+0.0		
Nursing/ Midwifery Student	-12.43%	-10.8	-5.0		-1.5	-2.0	-1.0		+1.0	+0.5	-2.8	
Nursing/ Midwifery other	-5.04%	-1.4	-0.2		+0.0	+0.0	+0.0	+0.0	-1.0	-0.1	-0.2	
Nursing & Midwifery	+0.87%	+32.3	-20.7	-6.9	+9.2	-0.9	+0.2	-2.4	+28.3	+22.6	+2.9	
Therapy Professions	+3.31%	+25.5	-6.5	+27.3	-1.3	-2.2	-7.3	-3.5	-0.5	+15.0	+4.5	
Health Science/ Diagnostics	-4.63%	-1.0			+0.1				-1.1	+0.0	+0.0	
Social Care	+2.36%	+70.7	+12.7	+21.1	-7.8	+5.1	+18.0	-9.9	+23.2	+9.3	-1.0	
Social Workers	+7.24%	+16.3	+4.1	+0.8	+1.7	-0.3	-2.6	+2.8	+0.6	+2.5	+6.8	
Psychologists	+0.90%	+2.1	-0.4	+7.0	-2.5	+0.7	-9.8	-0.5	+1.8	+4.5	+1.5	
Pharmacy	+24.32%	+1.7							+1.7		+0.0	
H&SC, Other	-2.06%	-1.4	-2.1	-0.4	+1.2	-1.0	-0.3	-0.0	+2.0	-0.1	-0.5	
Health & Social Care Professionals	+2.64%	+113.9	+7.7	+55.8	-8.6	+2.2	-2.1	-11.0	+27.7	+31.1	+11.1	
Management (VIII & above)	+4.98%	+11.3	+1.9	+1.1	+6.4	+5.6	+1.3	+0.2	-5.1	+0.5	-1.5	+1.0
Administrative/ Supervisory (V to VII)	+19.40%	+117.8	+7.5	+14.3	+10.3	+13.9	+2.6	+14.4	+18.3	+3.4	+34.1	-1.0



Clerical (III & IV)	+12.35%	+88.3	+10.2	+11.0	+0.4	+9.0	+15.2	+1.2	+22.2	+15.4	+3.6	+0.1
Management & Administrative	+14.04%	+217.3	+19.6	+26.4	+17.1	+28.5	+19.1	+15.8	+35.3	+19.3	+36.2	+0.1
Support	-3.52%	-22.2	-1.6	+1.7	+1.2	-3.8	-1.4	+2.4	-12.8	-3.6	-4.2	
Maintenance/ Technical	+10.30%	+12.7	+0.0	-1.0	+4.1	-0.3	+0.1	+3.0	+3.2	+2.9	+0.7	
General Support	-1.26%	-9.5	-1.6	+0.7	+5.3	-4.1	-1.4	+5.4	-9.6	-0.7	-3.5	
Health Care Assistants	+2.99%	+223.6	+35.9	+18.5	+13.5	+7.3	+13.8	+8.3	+53.5	+58.7	+14.2	
Home Help	-10.27%	-8.5	+0.3				-3.1		-2.3	-3.4		
Care, other	+1.12%	+19.7	+15.7	+6.6	+5.5	+11.8	+1.7	-15.6	+3.3	+2.4	-11.7	
Patient & Client Care	+2.52%	+234.7	+51.9	+25.1	+18.9	+19.1	+12.4	-7.4	+54.5	+57.7	+2.5	



Year to Date Summary

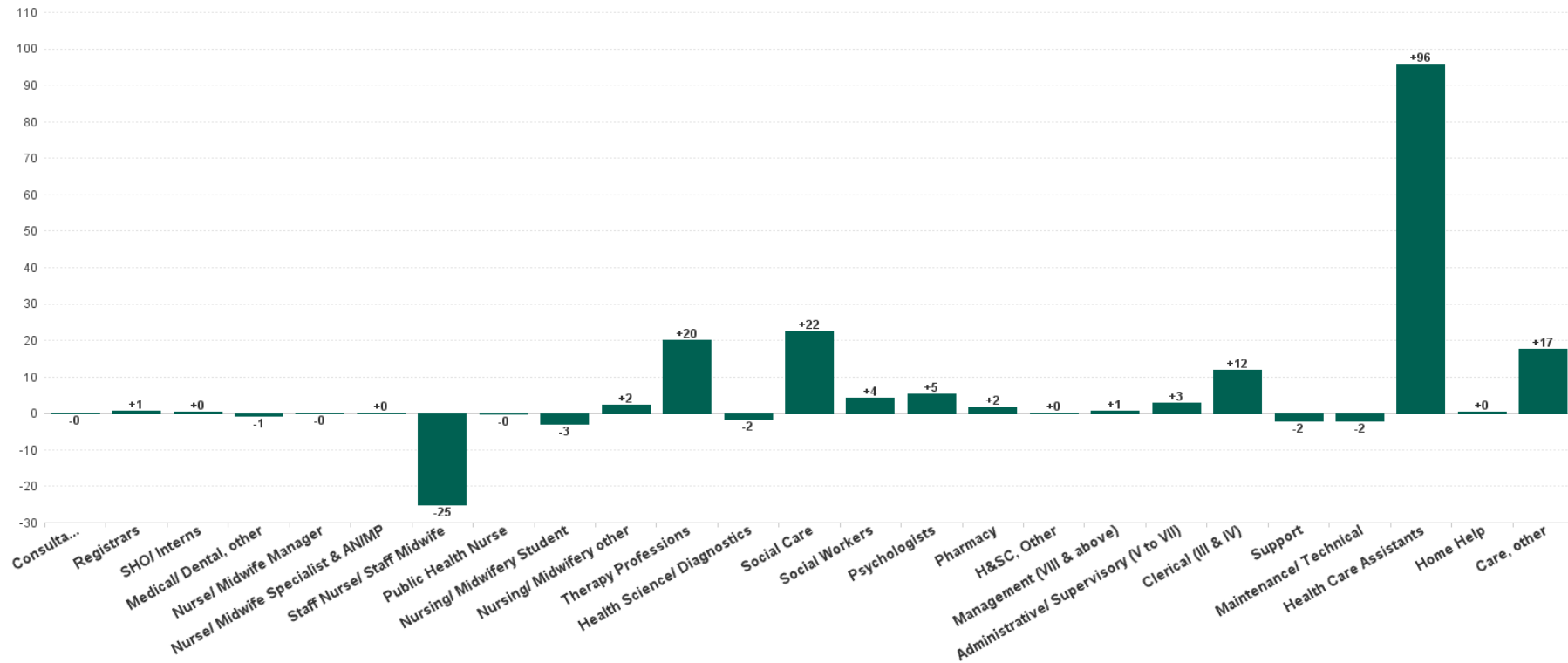
	% WTE change since DEC 2022	WTE change since DEC 2022	CHO 1	CHO 2	CHO 3	CHO 4	CHO 5	CHO 6	CHO 7	CHO 8	CHO 9	other Communi ty Services
Total	+1.98%	+393.8	+43.7	+83.3	+36.2	+52.8	+52.1	+3.7	+47.7	+67.3	+6.9	+0.1
Consultants	+6.52%	+1.2		+0.0	-0.0	+0.0	+0.1	+0.0			+1.1	
Registrars	+10.12%	+1.0		+1.0				+0.0	+0.0	+0.0	+0.0	
SHO/ Interns	+22.71%	+2.0		-1.0					+2.0		+1.0	
Medical/ Dental, other	-8.89%	-1.2	-0.9	+0.0	+0.0	+0.0		+0.0		+0.0	-0.3	
Medical & Dental	+6.15%	+3.1	-0.9	+0.0	-0.0	+0.0	+0.1	+0.0	+2.0	+0.0	+1.9	
Nurse/ Midwife Manager	+1.36%	+13.0	+5.4	+0.7	-1.4	+1.5	+4.0	-2.9	+3.4	-3.2	+5.5	
Nurse/ Midwife Specialist & AN/MP	+12.52%	+8.7	+4.0	-1.2	+2.0	+0.0	+0.0	+1.8	+0.8	+1.0	+0.3	
Staff Nurse/ Staff Midwife	-1.53%	-40.2	-22.4	-6.3	+3.1	+6.8	-4.7	+0.6	+1.7	+3.8	-22.9	
Public Health Nurse	+0.85%	+0.1	-0.0				+0.2			-0.0		
Nursing/ Midwifery Student	+604.06%	+65.5	+7.3		+5.5	+9.3	+6.8		+7.0	+14.6	+15.0	
Nursing/ Midwifery other	-4.94%	-1.4	+0.8		+0.0	+0.0	+0.0	+0.0	-2.0	+0.7	-0.9	
Nursing & Midwifery	+1.24%	+45.8	-5.0	-6.8	+9.3	+17.6	+6.3	-0.5	+10.9	+16.9	-2.9	
Therapy Professions	+0.61%	+4.8	-2.3	+22.0	+1.0	-4.2	+0.6	-0.8	-4.4	+1.1	-8.2	
Health Science/ Diagnostics	-1.36%	-0.3			+0.0				-1.3	+0.0	+1.0	
Social Care	+0.21%	+6.4	+5.5	+8.7	-5.2	-0.8	+3.5	-4.6	-3.5	+7.2	-4.4	
Social Workers	+0.75%	+1.8	+2.2	+1.1	-1.0	-1.3	-0.2	+1.1	-1.8	-0.2	+2.0	
Psychologists	-0.31%	-0.7	+2.4	+5.9	-1.6	-2.6	-3.1	-0.3	-1.2	-0.4	+0.2	
Pharmacy	+6.85%	+0.6							+0.6		+0.0	
H&SC, Other	-5.30%	-3.6	-1.6	+0.1	-0.2	+0.5	-1.6	-0.2	+2.0	-2.2	-0.5	
Health & Social Care Professionals	+0.20%	+8.9	+6.1	+37.8	-7.0	-8.4	-0.8	-4.8	-9.7	+5.4	-9.9	
Management (VIII & above)	+0.62%	+1.5	+0.9	+1.1	+4.4	+4.8	+0.1	-7.5	-2.4	-0.2	+0.2	+0.0
Administrative/ Supervisory (V to VII)	+9.01%	+59.9	+1.1	+9.7	+0.3	+3.7	+7.4	+7.5	+5.3	+5.1	+19.9	+0.0
Clerical (III & IV)	+7.99%	+59.4	-0.7	+9.1	+5.0	+2.7	+9.3	+5.7	+6.7	+12.4	+9.2	+0.0
Management & Administrative	+7.35%	+120.8	+1.4	+19.9	+9.7	+11.3	+16.8	+5.8	+9.5	+17.2	+29.3	+0.1
Support	-2.73%	-17.0	-0.2	+1.7	-2.2	-3.3	-1.0	-2.3	-7.5	-1.4	-0.8	
Maintenance/ Technical	+7.82%	+9.8	+0.0	-0.4	+3.0	+0.6	-0.1	+1.0	+1.9	+3.6	+0.3	
General Support	-0.96%	-7.2	-0.2	+1.3	+0.8	-2.7	-1.1	-1.3	-5.6	+2.2	-0.6	



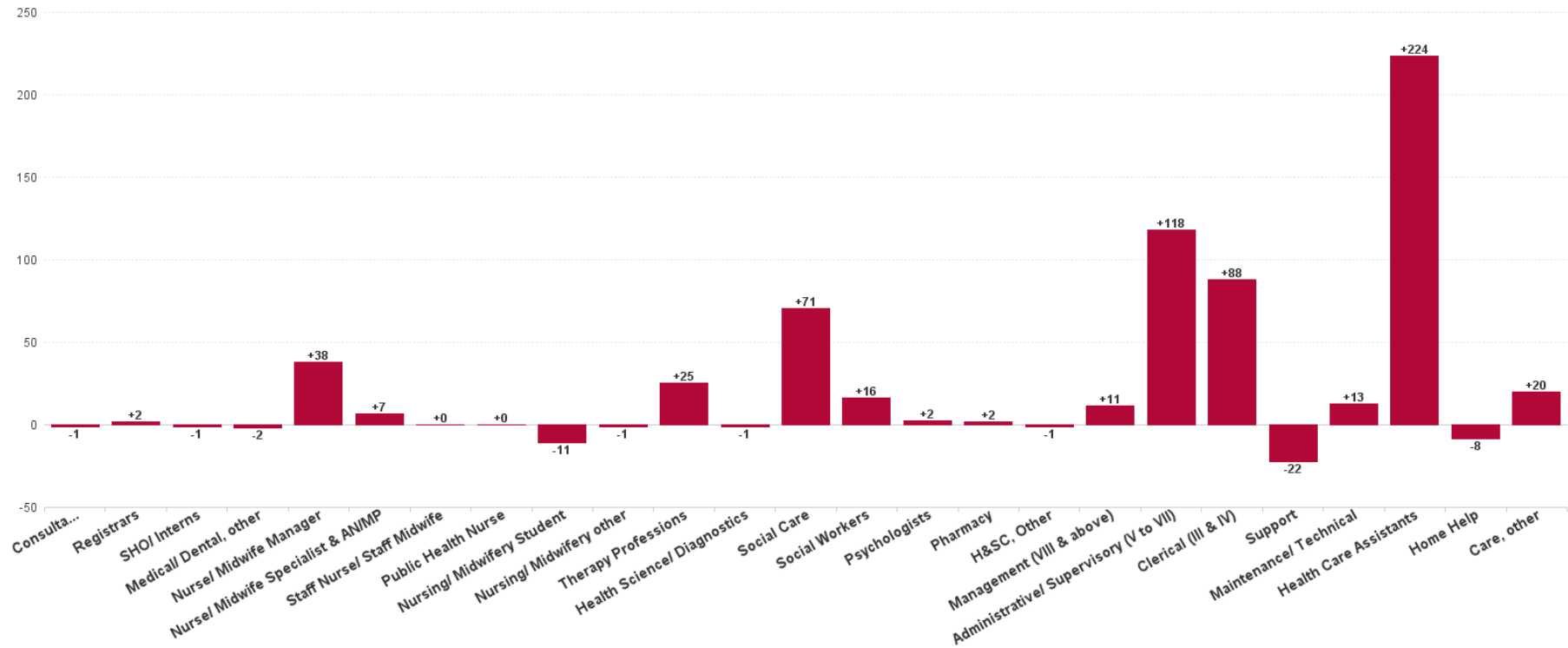
Health Care Assistants	+2.90%	+217.4	+24.3	+28.6	+21.2	+20.7	+37.2	+12.1	+44.9	+31.0	-2.5	
Home Help	-7.37%	-5.9	-0.6				-1.7		-2.1	-1.6		
Care, other	+0.61%	+10.8	+18.6	+2.5	+2.3	+14.3	-4.8	-7.5	-2.3	-3.8	-8.4	
Patient & Client Care	+2.38%	+222.4	+42.3	+31.0	+23.4	+35.0	+30.8	+4.6	+40.6	+25.6	-10.9	



Previous Month Summary Chart: Change since MAY 2023



Previous Year Summary Chart: Change since JUN 2022



YTD Summary Chart: Change since DEC 2022

