

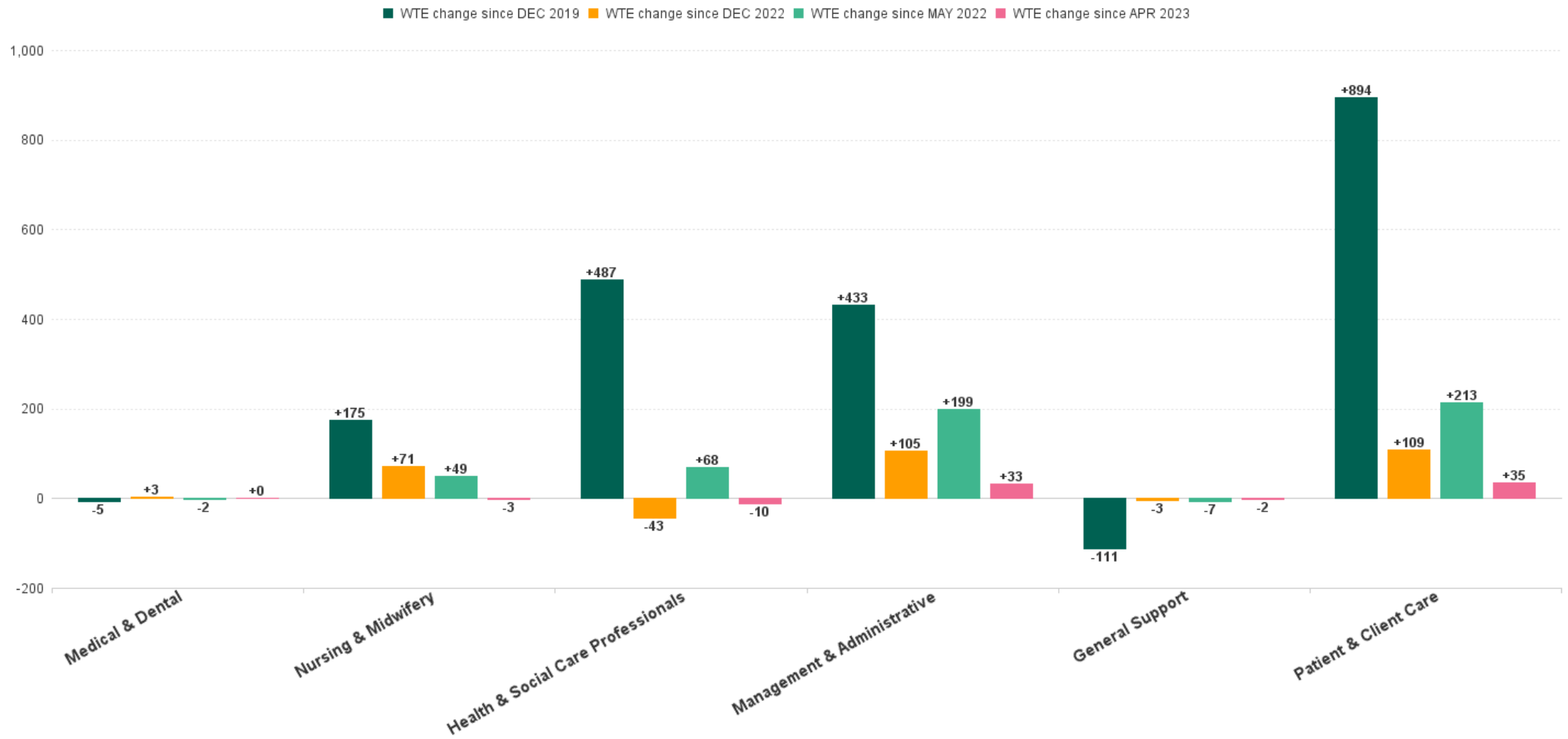
# Disabilities Employment Report : MAY 2023

## Employment Report by Staff Group

MAY 2023	WTE DEC 2019	WTE DEC 2022	WTE APR 2023	WTE MAY 2023	WTE change since DEC 2019	% WTE Change since Dec 2019	WTE change since DEC 2022	% WTE Change since Dec 2022	WTE change since APR 2023	No. MAY 2023
<b>Overall</b>	<b>18,273</b>	<b>19,903</b>	<b>20,092</b>	<b>20,145</b>	<b>+1,873</b>	<b>+10.25%</b>	<b>+242</b>	<b>+1.22%</b>	<b>+53</b>	<b>23,814</b>
Consultants	24	18	20	20	-4	-17.79%	+1	+6.68%	-1	24
Registrars	13	10	11	10	-3	-21.31%	+0	+2.51%	-1	11
SHO/ Interns	7	9	10	11	+4	+51.01%	+2	+17.56%	+1	11
Medical/ Dental, other	14	13	12	12	-2	-13.88%	-1	-4.02%	+1	18
<b>Medical &amp; Dental</b>	<b>58</b>	<b>50</b>	<b>53</b>	<b>53</b>	<b>-5</b>	<b>-9.39%</b>	<b>+3</b>	<b>+5.03%</b>	<b>+0</b>	<b>64</b>
Nurse/ Midwife Manager	892	959	976	972	+80	+8.99%	+13	+1.36%	-4	1,043
Nurse/ Midwife Specialist & AN/MP	62	70	77	78	+16	+26.37%	+9	+12.30%	+1	85
Staff Nurse/ Staff Midwife	2,569	2,618	2,604	2,603	+34	+1.33%	-15	-0.58%	-1	2,987
Public Health Nurse	6	12	12	12	+6	+91.24%	+0	+2.13%	+0	14
Pre-registration Nurse/ Midwife Intern	28	7	77	78	+49	+174.94%	+71	+998.59%	+1	147
Nursing/ Midwifery awaiting registration	14	4	1	2	-12	-88.44%	-2	-57.56%	+1	2
Nursing/ Midwifery Student	42	11	78	79	+37	+88.33%	+68	+631.27%	+1	149
Nursing/ Midwifery other	22	28	24	24	+2	+7.21%	-4	-13.58%	-0	28
<b>Nursing &amp; Midwifery</b>	<b>3,593</b>	<b>3,697</b>	<b>3,771</b>	<b>3,769</b>	<b>+175</b>	<b>+4.88%</b>	<b>+71</b>	<b>+1.93%</b>	<b>-3</b>	<b>4,306</b>
Therapy Professions	763	790	776	775	+12	+1.61%	-15	-1.93%	-1	905
Health Science/ Diagnostics	20	21	24	23	+3	+13.15%	+1	+6.29%	-1	23
Social Care	2,595	3,055	2,994	2,974	+379	+14.61%	-81	-2.64%	-20	3,499
Social Workers	219	239	235	237	+18	+8.13%	-2	-1.01%	+1	277
Psychologists	202	239	239	233	+31	+15.24%	-6	-2.53%	-6	260
Pharmacy	7	8	7	7	+0	+5.61%	-1	-12.59%	+0	11
H&SC, Other	85	68	113	129	+44	+52.23%	+61	+89.35%	+16	152
<b>Health &amp; Social Care Professionals</b>	<b>3,890</b>	<b>4,421</b>	<b>4,388</b>	<b>4,378</b>	<b>+487</b>	<b>+12.53%</b>	<b>-43</b>	<b>-0.97%</b>	<b>-10</b>	<b>5,127</b>
Management (VIII & above)	180	236	235	237	+57	+31.92%	+1	+0.38%	+2	241
Administrative/ Supervisory (V to VII)	477	665	706	722	+245	+51.25%	+57	+8.58%	+16	765
Clerical (III & IV)	660	744	776	791	+131	+19.81%	+47	+6.38%	+15	930
<b>Management &amp; Administrative</b>	<b>1,317</b>	<b>1,645</b>	<b>1,717</b>	<b>1,750</b>	<b>+433</b>	<b>+32.86%</b>	<b>+105</b>	<b>+6.41%</b>	<b>+33</b>	<b>1,936</b>
Support	733	624	610	609	-124	-16.94%	-15	-2.39%	-1	872
Maintenance/ Technical	124	126	140	138	+13	+10.86%	+12	+9.48%	-2	151
<b>General Support</b>	<b>857</b>	<b>750</b>	<b>749</b>	<b>747</b>	<b>-111</b>	<b>-12.91%</b>	<b>-3</b>	<b>-0.40%</b>	<b>-2</b>	<b>1,023</b>
Health Care Assistants	6,818	7,495	7,574	7,616	+798	+11.70%	+122	+1.62%	+42	9,071
Home Help	99	80	72	74	-26	-25.71%	-6	-7.91%	+2	218
Care, other	1,638	1,766	1,769	1,760	+121	+7.39%	-7	-0.37%	-9	2,069
<b>Patient &amp; Client Care</b>	<b>8,556</b>	<b>9,341</b>	<b>9,414</b>	<b>9,450</b>	<b>+894</b>	<b>+10.44%</b>	<b>+109</b>	<b>+1.16%</b>	<b>+35</b>	<b>11,358</b>



## WTE Change by Staff Category

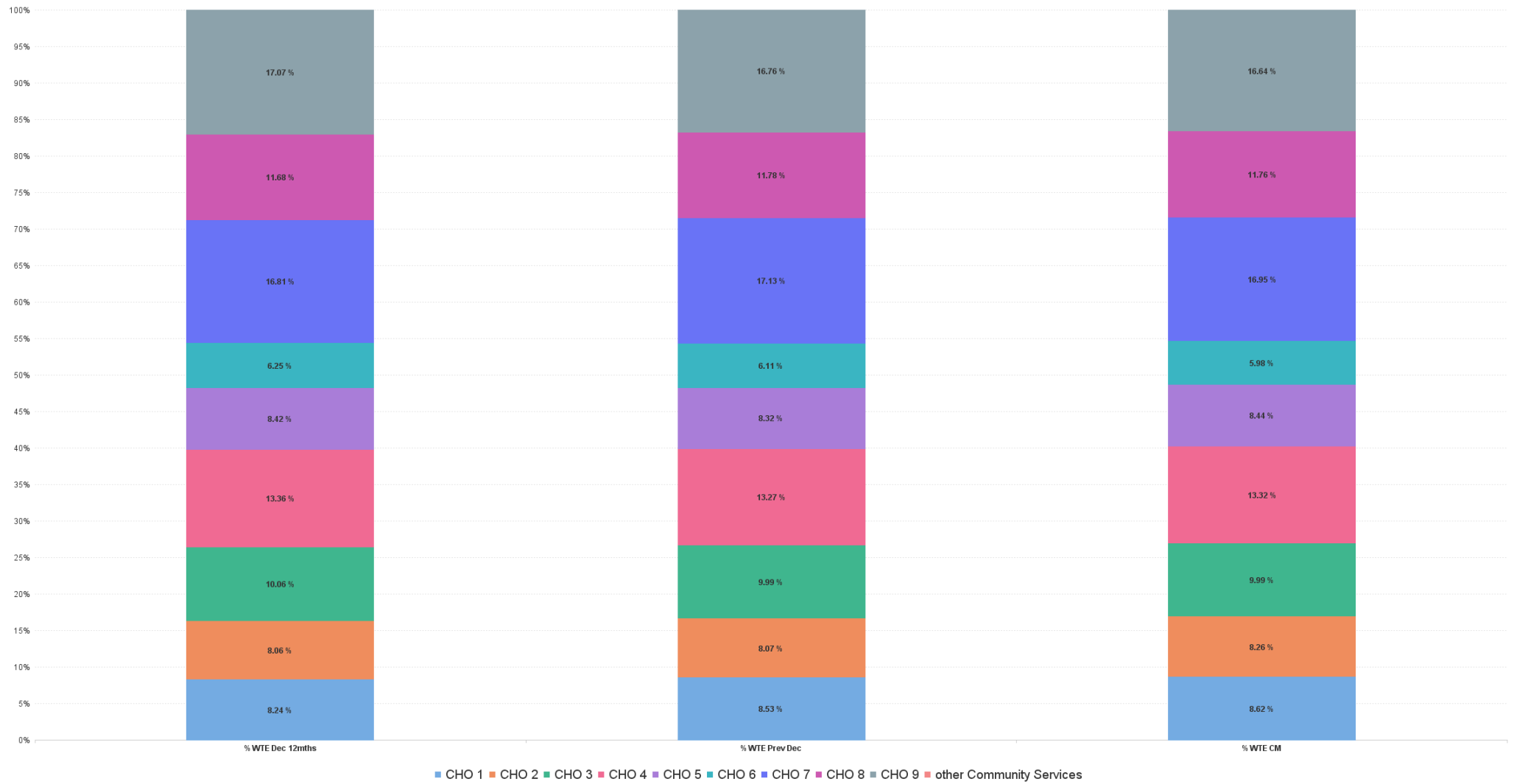


## Disabilities Report by CHO: MAY 2023

MAY 2023	WTE DEC 2019	WTE DEC 2022	WTE APR 2023	WTE MAY 2023	WTE change since DEC 2019	% WTE Change since Dec 2019	WTE change since DEC 2022	% WTE Change since Dec 2022	WTE change since APR 2023	No. MAY 2023
<b>Overall</b>	<b>18,273</b>	<b>19,903</b>	<b>20,092</b>	<b>20,145</b>	<b>+1,873</b>	<b>+10.25%</b>	<b>+242</b>	<b>+1.22%</b>	<b>+53</b>	<b>23,814</b>
CHO 1	1,498	1,698	1,740	1,736	+238	+15.87%	+38	+2.24%	-4	1,926
CHO 2	1,497	1,607	1,650	1,664	+168	+11.19%	+58	+3.59%	+14	2,023
CHO 3	1,823	1,989	2,005	2,013	+190	+10.39%	+24	+1.23%	+8	2,390
CHO 4	2,425	2,640	2,655	2,684	+259	+10.67%	+44	+1.65%	+29	3,236
CHO 5	1,488	1,656	1,695	1,700	+212	+14.24%	+44	+2.63%	+4	1,990
CHO 6	1,198	1,216	1,203	1,206	+8	+0.67%	-11	-0.88%	+2	1,381
CHO 7	2,982	3,410	3,420	3,414	+432	+14.50%	+4	+0.12%	-6	4,038
CHO 8	2,162	2,345	2,371	2,370	+208	+9.62%	+25	+1.05%	-1	2,864
CHO 9	3,194	3,336	3,346	3,353	+159	+4.98%	+17	+0.51%	+7	3,960
other Community Services	6	6	6	6	+0	+0.34%	+0	+0.67%	-0	6



## % Total by CHO



## Disabilities Employment Report by HSE/S38: MAY 2023

MAY 2023	WTE DEC 2019	WTE DEC 2022	WTE APR 2023	WTE MAY 2023	WTE change since DEC 2019	% WTE Change since Dec 2019	WTE change since DEC 2022	% WTE Change since Dec 2022	WTE change since APR 2023	No. MAY 2023
<b>Overall</b>	<b>18,273</b>	<b>19,903</b>	<b>20,092</b>	<b>20,145</b>	<b>+1,873</b>	<b>+10.25%</b>	<b>+242</b>	<b>+1.22%</b>	<b>+53</b>	<b>23,814</b>
Health Service Executive	3,873	4,200	4,308	4,316	+443	+11.43%	+116	+2.75%	+7	4,902
Section 38 Voluntary Agencies	14,399	15,703	15,784	15,830	+1,430	+9.93%	+126	+0.80%	+46	18,912



## Disabilities Employment Report by HSE: MAY 2023

MAY 2023	WTE DEC 2019	WTE DEC 2022	WTE APR 2023	WTE MAY 2023	WTE change since DEC 2019	% WTE Change since Dec 2019	WTE change since DEC 2022	% WTE Change since Dec 2022	WTE change since APR 2023	No. MAY 2023
<b>Total HSE</b>	<b>3,873</b>	<b>4,200</b>	<b>4,308</b>	<b>4,316</b>	<b>+443</b>	<b>+11.43%</b>	<b>+116</b>	<b>+2.75%</b>	<b>+7</b>	<b>4,902</b>
Consultants	8	6	7	7	-1	-12.93%	+1	+18.08%	+0	7
Registrars	3	2	2	2	-1	-33.33%	+0	+1.01%	+0	2
SHO/ Interns		1	2	2	+2		+1	+97.98%	+0	2
Medical/ Dental, other	6	6	5	6	-0	-5.06%	-0	-4.31%	+1	9
<b>Medical &amp; Dental</b>	<b>17</b>	<b>15</b>	<b>15</b>	<b>16</b>	<b>-0</b>	<b>-1.96%</b>	<b>+2</b>	<b>+11.65%</b>	<b>+1</b>	<b>20</b>
Nurse/ Midwife Manager	257	267	276	270	+13	+5.13%	+2	+0.82%	-6	284
Nurse/ Midwife Specialist & AN/MP	14	18	25	26	+12	+89.31%	+8	+45.02%	+1	27
Staff Nurse/ Staff Midwife	788	782	791	783	-5	-0.64%	+1	+0.08%	-9	864
Public Health Nurse	6	12	12	12	+6	+91.24%	+0	+2.13%	+0	14
Nursing/ Midwifery awaiting registration	14	2	1	2	-9	-88.44%	+1	-19.19%	+1	2
Pre-registration Nurse/ Midwife Intern	3	7	19	20	+1	+515.38%	-10	+182.89%	+1	38
Nursing/ Midwifery Student	17	9	20	22	+5	+26.39%	+13	+138.67%	+2	40
Nursing/ Midwifery other	8	8	9	9	+1	+11.20%	+0	+2.63%	-0	10
<b>Nursing &amp; Midwifery</b>	<b>1,089</b>	<b>1,096</b>	<b>1,132</b>	<b>1,120</b>	<b>+31</b>	<b>+2.89%</b>	<b>+24</b>	<b>+2.18%</b>	<b>-12</b>	<b>1,239</b>
Therapy Professions	330	322	319	322	-8	-2.39%	+0	+0.07%	+3	383
Health Science/ Diagnostics	2	6	6	6	+4	+200.00%	+0	+0.67%	+0	6
Social Care	89	109	113	114	+25	+28.50%	+5	+4.70%	+2	125
Social Workers	58	62	61	64	+6	+11.13%	+2	+3.44%	+3	73
Psychologists	74	95	96	92	+18	+24.54%	-2	-2.52%	-4	105
H&SC, Other	26	19	18	18	-8	-30.73%	-1	-3.86%	-0	21
<b>Health &amp; Social Care Professionals</b>	<b>579</b>	<b>612</b>	<b>613</b>	<b>617</b>	<b>+38</b>	<b>+6.57%</b>	<b>+4</b>	<b>+0.72%</b>	<b>+4</b>	<b>713</b>
Management (VIII & above)	45	69	73	72	+27	+60.89%	+3	+4.23%	-1	73
Administrative/ Supervisory (V to VII)	140	231	241	248	+108	+77.17%	+17	+7.44%	+6	262
Clerical (III & IV)	178	227	244	248	+70	+39.28%	+21	+9.45%	+4	279
<b>Management &amp; Administrative</b>	<b>363</b>	<b>526</b>	<b>558</b>	<b>568</b>	<b>+205</b>	<b>+56.55%</b>	<b>+42</b>	<b>+7.88%</b>	<b>+10</b>	<b>614</b>
Support	87	67	66	64	-23	-26.61%	-3	-4.28%	-2	75
Maintenance/ Technical	21	21	24	24	+3	+14.33%	+3	+15.32%	+0	25
<b>General Support</b>	<b>108</b>	<b>88</b>	<b>90</b>	<b>88</b>	<b>-20</b>	<b>-18.69%</b>	<b>+0</b>	<b>+0.36%</b>	<b>-2</b>	<b>100</b>
Health Care Assistants	1,510	1,616	1,646	1,651	+141	+9.35%	+35	+2.16%	+6	1,803
Home Help	99	80	72	74	-26	-25.71%	-6	-7.91%	+2	218
Care, other	108	166	182	181	+73	+67.39%	+15	+9.22%	-1	195
<b>Patient &amp; Client Care</b>	<b>1,717</b>	<b>1,862</b>	<b>1,900</b>	<b>1,906</b>	<b>+188</b>	<b>+10.97%</b>	<b>+44</b>	<b>+2.35%</b>	<b>+6</b>	<b>2,216</b>



## Disabilities Employment Report by S38 Hospitals: MAY 2023

MAY 2023	WTE DEC 2019	WTE DEC 2022	WTE APR 2023	WTE MAY 2023	WTE change since DEC 2019	% WTE Change since Dec 2019	WTE change since DEC 2022	% WTE Change since Dec 2022	WTE change since APR 2023	No. MAY 2023
<b>Total S38 Vols</b>	<b>14,399</b>	<b>15,703</b>	<b>15,784</b>	<b>15,830</b>	<b>+1,430</b>	<b>+9.93%</b>	<b>+126</b>	<b>+0.80%</b>	<b>+46</b>	<b>18,912</b>
Consultants	16	13	14	13	-3	-20.01%	+0	+1.79%	-1	17
Registrars	10	8	9	8	-2	-17.70%	+0	+2.88%	-1	9
SHO/ Interns	7	8	8	9	+2	+22.84%	+1	+7.55%	+0	9
Medical/ Dental, other	8	7	6	6	-2	-20.77%	-0	-3.75%	+0	9
<b>Medical &amp; Dental</b>	<b>41</b>	<b>35</b>	<b>37</b>	<b>36</b>	<b>-5</b>	<b>-12.40%</b>	<b>+1</b>	<b>+2.28%</b>	<b>-1</b>	<b>44</b>
Nurse/ Midwife Manager	635	692	700	702	+67	+10.55%	+11	+1.57%	+2	759
Nurse/ Midwife Specialist & AN/MP	48	52	52	52	+4	+8.51%	+1	+1.02%	-0	58
Staff Nurse/ Staff Midwife	1,781	1,836	1,813	1,820	+39	+2.20%	-16	-0.86%	+8	2,123
Pre-registration Nurse/ Midwife Intern	25		58	58	-8	+130.68%	+1		-0	109
Nursing/ Midwifery awaiting registration		2						-100.00%		
Nursing/ Midwifery Student	25	2	58	58	+33	+130.68%	+56	+3,121.79%	-0	109
Nursing/ Midwifery other	14	19	15	15	+1	+5.09%	-4	-20.65%	+0	18
<b>Nursing &amp; Midwifery</b>	<b>2,504</b>	<b>2,601</b>	<b>2,639</b>	<b>2,648</b>	<b>+144</b>	<b>+5.74%</b>	<b>+48</b>	<b>+1.83%</b>	<b>+9</b>	<b>3,067</b>
Therapy Professions	433	469	457	453	+20	+4.66%	-15	-3.30%	-3	522
Health Science/ Diagnostics	18	15	18	17	-1	-7.61%	+1	+8.48%	-1	17
Social Care	2,506	2,946	2,882	2,860	+354	+14.11%	-86	-2.91%	-22	3,374
Social Workers	161	177	175	173	+11	+7.05%	-5	-2.57%	-2	204
Psychologists	128	144	143	141	+13	+9.86%	-4	-2.53%	-2	155
Pharmacy	7	8	7	7	+0	+5.61%	-1	-12.59%	+0	11
H&SC, Other	59	49	95	111	+52	+89.40%	+62	+125.10%	+17	131
<b>Health &amp; Social Care Professionals</b>	<b>3,312</b>	<b>3,808</b>	<b>3,775</b>	<b>3,761</b>	<b>+449</b>	<b>+13.57%</b>	<b>-47</b>	<b>-1.25%</b>	<b>-14</b>	<b>4,414</b>
Management (VIII & above)	135	167	162	165	+30	+22.31%	-2	-1.22%	+3	168
Administrative/ Supervisory (V to VII)	338	435	465	474	+137	+40.52%	+40	+9.19%	+9	503
Clerical (III & IV)	482	517	532	543	+61	+12.61%	+26	+5.04%	+11	651
<b>Management &amp; Administrative</b>	<b>955</b>	<b>1,118</b>	<b>1,159</b>	<b>1,182</b>	<b>+228</b>	<b>+23.86%</b>	<b>+64</b>	<b>+5.72%</b>	<b>+23</b>	<b>1,322</b>
Support	646	557	543	545	-101	-15.62%	-12	-2.17%	+2	797
Maintenance/ Technical	103	105	116	114	+10	+10.15%	+9	+8.33%	-2	126
<b>General Support</b>	<b>749</b>	<b>662</b>	<b>659</b>	<b>659</b>	<b>-90</b>	<b>-12.07%</b>	<b>-3</b>	<b>-0.50%</b>	<b>-1</b>	<b>923</b>
Health Care Assistants	5,308	5,878	5,928	5,965	+657	+12.38%	+87	+1.48%	+37	7,268
Care, other	1,530	1,600	1,586	1,579	+48	+3.15%	-22	-1.37%	-8	1,874
<b>Patient &amp; Client Care</b>	<b>6,839</b>	<b>7,479</b>	<b>7,515</b>	<b>7,544</b>	<b>+705</b>	<b>+10.31%</b>	<b>+65</b>	<b>+0.87%</b>	<b>+29</b>	<b>9,142</b>

## Disabilities Employment Report by Grade Group: MAY 2023

CHO 1

MAY 2023	WTE DEC 2019	WTE DEC 2022	WTE APR 2023	WTE MAY 2023	WTE change since DEC 2019	% WTE Change since Dec 2019	WTE change since DEC 2022	% WTE Change since Dec 2022	WTE change since APR 2023	No. MAY 2023
<b>Overall</b>	<b>1,498</b>	<b>1,698</b>	<b>1,740</b>	<b>1,736</b>	<b>+238</b>	<b>+15.87%</b>	<b>+38</b>	<b>+2.24%</b>	<b>-4</b>	<b>1,926</b>
Medical/ Dental, other	3	3	2	2	-1	-33.11%	-1	-31.03%	+0	5
<b>Medical &amp; Dental</b>	<b>3</b>	<b>3</b>	<b>2</b>	<b>2</b>	<b>-1</b>	<b>-33.11%</b>	<b>-1</b>	<b>-31.03%</b>	<b>+0</b>	<b>5</b>
Nurse/ Midwife Manager	105	112	120	116	+11	+10.14%	+4	+3.28%	-4	121
Nurse/ Midwife Specialist & AN/MP	7	8	12	12	+5	+73.12%	+4	+44.63%	-0	13
Staff Nurse/ Staff Midwife	324	335	326	323	-1	-0.34%	-13	-3.78%	-3	358
Public Health Nurse		1	1	1	+1		-0	-3.03%	+0	1
Nursing/ Midwifery Student	14	6	13	14	-1	-3.57%	+7	+117.04%	+1	25
Nursing/ Midwifery other	5	4	4	4	-1	-12.43%	-0	-2.13%	-0	5
<b>Nursing &amp; Midwifery</b>	<b>455</b>	<b>467</b>	<b>476</b>	<b>469</b>	<b>+15</b>	<b>+3.21%</b>	<b>+2</b>	<b>+0.40%</b>	<b>-7</b>	<b>523</b>
Therapy Professions	42	58	56	56	+14	+32.74%	-2	-3.83%	+1	66
Social Care	8	17	20	22	+14	+186.89%	+5	+29.78%	+2	24
Social Workers	16	17	17	18	+2	+14.82%	+1	+6.36%	+1	19
Psychologists	5	12	12	14	+9	+201.08%	+2	+20.59%	+2	15
H&SC, Other	12	8	7	7	-6	-47.24%	-2	-18.80%	-1	8
<b>Health &amp; Social Care Professionals</b>	<b>82</b>	<b>112</b>	<b>112</b>	<b>116</b>	<b>+34</b>	<b>+40.89%</b>	<b>+5</b>	<b>+4.18%</b>	<b>+4</b>	<b>132</b>
Management (VIII & above)	14	15	15	15	+1	+4.71%	+0	+0.27%	-0	15
Administrative/ Supervisory (V to VII)	28	55	55	56	+29	+104.46%	+2	+3.28%	+2	59
Clerical (III & IV)	50	63	62	62	+12	+24.97%	-1	-1.86%	+0	69
<b>Management &amp; Administrative</b>	<b>91</b>	<b>133</b>	<b>131</b>	<b>133</b>	<b>+42</b>	<b>+45.91%</b>	<b>+1</b>	<b>+0.49%</b>	<b>+2</b>	<b>143</b>
Support	49	30	31	31	-18	-37.37%	+0	+0.95%	-1	39
Maintenance/ Technical	6	4	4	4	-2	-33.33%	+0	+0.76%	+0	4
<b>General Support</b>	<b>55</b>	<b>34</b>	<b>35</b>	<b>35</b>	<b>-20</b>	<b>-36.93%</b>	<b>+0</b>	<b>+0.93%</b>	<b>-1</b>	<b>43</b>
Health Care Assistants	761	884	904	900	+139	+18.20%	+15	+1.75%	-4	985
Home Help	13	16	14	14	+1	+7.93%	-1	-7.02%	+1	25
Care, other	37	49	66	66	+29	+79.28%	+17	+34.38%	+1	70
<b>Patient &amp; Client Care</b>	<b>812</b>	<b>949</b>	<b>983</b>	<b>981</b>	<b>+169</b>	<b>+20.81%</b>	<b>+31</b>	<b>+3.30%</b>	<b>-2</b>	<b>1,080</b>





## Disabilities Employment Report by Grade Group: MAY 2023

CHO 2

MAY 2023	WTE DEC 2019	WTE DEC 2022	WTE APR 2023	WTE MAY 2023	WTE change since DEC 2019	% WTE Change since Dec 2019	WTE change since DEC 2022	% WTE Change since Dec 2022	WTE change since APR 2023	No. MAY 2023
<b>Overall</b>	<b>1,497</b>	<b>1,607</b>	<b>1,650</b>	<b>1,664</b>	<b>+168</b>	<b>+11.19%</b>	<b>+58</b>	<b>+3.59%</b>	<b>+14</b>	<b>2,023</b>
Consultants	3	3	3	3	+0	+0.59%	+0	+0.00%	+0	4
Registrars	2	1	2	2	+0	+0.00%	+1	+100.00%	+0	2
SHO/ Interns		1					-1	-100.00%		
Medical/ Dental, other	1	1	1	1	+0	+0.00%	+0	+0.00%	+0	1
<b>Medical &amp; Dental</b>	<b>6</b>	<b>6</b>	<b>6</b>	<b>6</b>	<b>+0</b>	<b>+0.31%</b>	<b>+0</b>	<b>+0.00%</b>	<b>+0</b>	<b>7</b>
Nurse/ Midwife Manager	77	76	72	76	-2	-2.13%	+0	+0.33%	+3	84
Nurse/ Midwife Specialist & AN/MP	6	6	5	5	-1	-10.39%	-1	-18.58%	+0	6
Staff Nurse/ Staff Midwife	165	166	165	162	-3	-1.78%	-3	-2.00%	-2	195
<b>Nursing &amp; Midwifery</b>	<b>249</b>	<b>248</b>	<b>242</b>	<b>243</b>	<b>-5</b>	<b>-2.10%</b>	<b>-4</b>	<b>-1.72%</b>	<b>+1</b>	<b>285</b>
Therapy Professions	41	48	49	55	+14	+32.69%	+7	+14.57%	+6	68
Social Care	222	279	288	280	+58	+26.37%	+1	+0.34%	-8	340
Social Workers	26	27	28	27	+1	+5.03%	+1	+2.28%	-1	38
Psychologists	16	19	22	24	+8	+50.03%	+4	+22.08%	+2	27
H&SC, Other	16	11	11	12	-4	-25.79%	+0	+3.98%	+1	16
<b>Health &amp; Social Care Professionals</b>	<b>321</b>	<b>385</b>	<b>399</b>	<b>398</b>	<b>+77</b>	<b>+24.04%</b>	<b>+13</b>	<b>+3.45%</b>	<b>-1</b>	<b>489</b>
Management (VIII & above)	16	17	18	18	+2	+12.77%	+1	+6.35%	-0	18
Administrative/ Supervisory (V to VII)	40	64	70	72	+31	+77.70%	+8	+12.26%	+2	74
Clerical (III & IV)	50	54	60	61	+11	+23.09%	+7	+13.17%	+1	73
<b>Management &amp; Administrative</b>	<b>106</b>	<b>135</b>	<b>148</b>	<b>151</b>	<b>+45</b>	<b>+42.38%</b>	<b>+16</b>	<b>+11.88%</b>	<b>+2</b>	<b>165</b>
Support	45	46	47	48	+3	+6.47%	+2	+4.11%	+1	79
Maintenance/ Technical	13	12	11	11	-2	-12.08%	-0	-3.38%	+0	12
<b>General Support</b>	<b>58</b>	<b>58</b>	<b>58</b>	<b>59</b>	<b>+1</b>	<b>+2.29%</b>	<b>+1</b>	<b>+2.57%</b>	<b>+1</b>	<b>91</b>
Health Care Assistants	623	641	657	666	+43	+6.89%	+25	+3.88%	+9	808
Care, other	134	134	139	140	+6	+4.74%	+6	+4.66%	+1	178
<b>Patient &amp; Client Care</b>	<b>757</b>	<b>776</b>	<b>797</b>	<b>807</b>	<b>+49</b>	<b>+6.51%</b>	<b>+31</b>	<b>+4.01%</b>	<b>+10</b>	<b>986</b>



## Disabilities Employment Report by Grade Group: MAY 2023

CHO 3

MAY 2023	WTE DEC 2019	WTE DEC 2022	WTE APR 2023	WTE MAY 2023	WTE change since DEC 2019	% WTE Change since Dec 2019	WTE change since DEC 2022	% WTE Change since Dec 2022	WTE change since APR 2023	No. MAY 2023
<b>Overall</b>	<b>1,823</b>	<b>1,989</b>	<b>2,005</b>	<b>2,013</b>	<b>+190</b>	<b>+10.39%</b>	<b>+24</b>	<b>+1.23%</b>	<b>+8</b>	<b>2,390</b>
Consultants	1	0	0	0	-1	-87.00%	+0	+0.00%	+0	1
Medical/ Dental, other	1	0	0	0	-0	-51.61%	+0	+0.00%	+0	1
<b>Medical &amp; Dental</b>	<b>2</b>	<b>1</b>	<b>1</b>	<b>1</b>	<b>-1</b>	<b>-69.95%</b>	<b>+0</b>	<b>+0.00%</b>	<b>+0</b>	<b>2</b>
Nurse/ Midwife Manager	76	81	80	82	+6	+7.76%	+1	+0.69%	+2	83
Nurse/ Midwife Specialist & AN/MP	13	11	13	13	+0	+0.63%	+2	+18.66%	+0	14
Staff Nurse/ Staff Midwife	247	258	258	258	+11	+4.35%	+0	+0.12%	+0	285
Nursing/ Midwifery Student	12		6	6	-6	-52.17%	+6		+0	11
Nursing/ Midwifery other	4	3	3	3	-1	-26.08%	+0	+0.00%	+0	3
<b>Nursing &amp; Midwifery</b>	<b>351</b>	<b>353</b>	<b>359</b>	<b>361</b>	<b>+10</b>	<b>+2.78%</b>	<b>+8</b>	<b>+2.37%</b>	<b>+2</b>	<b>396</b>
Therapy Professions	74	41	41	41	-33	-45.01%	+0	+0.57%	+0	47
Health Science/ Diagnostics		4	4	4	+4		+0	+1.01%	+0	4
Social Care	241	280	272	275	+35	+14.35%	-5	-1.80%	+3	319
Social Workers	17	19	18	18	+1	+6.23%	-2	-9.54%	-0	20
Psychologists	16	19	17	16	+0	+1.26%	-2	-13.39%	-1	18
H&SC, Other	12	11	11	11	-1	-8.03%	-0	-1.52%	+0	15
<b>Health &amp; Social Care Professionals</b>	<b>359</b>	<b>374</b>	<b>363</b>	<b>365</b>	<b>+5</b>	<b>+1.53%</b>	<b>-9</b>	<b>-2.48%</b>	<b>+2</b>	<b>423</b>
Management (VIII & above)	7	12	15	15	+8	+124.56%	+3	+29.41%	+0	16
Administrative/ Supervisory (V to VII)	41	60	60	61	+20	+48.86%	+1	+0.95%	+1	61
Clerical (III & IV)	59	54	57	59	-0	-0.75%	+5	+9.01%	+1	64
<b>Management &amp; Administrative</b>	<b>107</b>	<b>126</b>	<b>132</b>	<b>134</b>	<b>+28</b>	<b>+26.22%</b>	<b>+9</b>	<b>+7.07%</b>	<b>+2</b>	<b>141</b>
Support	53	54	52	52	-1	-1.78%	-2	-3.90%	-1	60
Maintenance/ Technical	14	18	20	21	+7	+45.75%	+3	+17.04%	+1	23
<b>General Support</b>	<b>67</b>	<b>72</b>	<b>73</b>	<b>73</b>	<b>+6</b>	<b>+8.45%</b>	<b>+1</b>	<b>+1.35%</b>	<b>+0</b>	<b>83</b>
Health Care Assistants	764	857	868	871	+107	+14.01%	+14	+1.61%	+3	1,107
Care, other	173	206	209	208	+35	+20.21%	+2	+0.77%	-1	238
<b>Patient &amp; Client Care</b>	<b>937</b>	<b>1064</b>	<b>1077</b>	<b>1079</b>	<b>+142</b>	<b>+15.15%</b>	<b>+15</b>	<b>+1.45%</b>	<b>+2</b>	<b>1,345</b>



## Disabilities Employment Report by Grade Group: MAY 2023

CHO 4

MAY 2023	WTE DEC 2019	WTE DEC 2022	WTE APR 2023	WTE MAY 2023	WTE change since DEC 2019	% WTE Change since Dec 2019	WTE change since DEC 2022	% WTE Change since Dec 2022	WTE change since APR 2023	No. MAY 2023
<b>Overall</b>	<b>2,425</b>	<b>2,640</b>	<b>2,655</b>	<b>2,684</b>	<b>+259</b>	<b>+10.67%</b>	<b>+44</b>	<b>+1.65%</b>	<b>+29</b>	<b>3,236</b>
Consultants	2	2	2	2	+0	+2.00%	+0	+0.00%	+0	2
Medical/ Dental, other	0	0	0	1	+1	+203.03%	+1	+170.27%	+1	1
<b>Medical &amp; Dental</b>	<b>2</b>	<b>2</b>	<b>2</b>	<b>3</b>	<b>+1</b>	<b>+38.25%</b>	<b>+1</b>	<b>+33.16%</b>	<b>+1</b>	<b>3</b>
Nurse/ Midwife Manager	87	98	99	99	+12	+13.21%	+1	+0.91%	+0	112
Nurse/ Midwife Specialist & AN/MP	13	13	13	13	-0	-3.56%	+0	+0.00%	+0	14
Staff Nurse/ Staff Midwife	306	301	306	309	+3	+1.02%	+8	+2.56%	+3	374
Nursing/ Midwifery Student	7	1	10	10	+3	+42.86%	+9	+1,349.28%	+0	20
Nursing/ Midwifery other	1	1	1	1	+0	+96.08%	+0	+0.00%	+0	1
<b>Nursing &amp; Midwifery</b>	<b>414</b>	<b>414</b>	<b>429</b>	<b>432</b>	<b>+18</b>	<b>+4.27%</b>	<b>+18</b>	<b>+4.32%</b>	<b>+3</b>	<b>521</b>
Therapy Professions	108	105	97	99	-9	-8.40%	-6	-5.63%	+2	119
Social Care	227	259	258	263	+37	+16.24%	+5	+1.83%	+5	302
Social Workers	27	28	28	26	-1	-3.71%	-2	-6.46%	-2	32
Psychologists	35	37	34	34	-1	-2.36%	-3	-7.15%	+0	38
H&SC, Other	8	7	8	8	-1	-8.14%	+1	+9.72%	+0	8
<b>Health &amp; Social Care Professionals</b>	<b>405</b>	<b>435</b>	<b>424</b>	<b>430</b>	<b>+25</b>	<b>+6.23%</b>	<b>-5</b>	<b>-1.12%</b>	<b>+6</b>	<b>499</b>
Management (VIII & above)	22	23	24	25	+2	+10.41%	+2	+7.12%	+0	25
Administrative/ Supervisory (V to VII)	53	72	79	76	+23	+42.15%	+4	+4.96%	-3	86
Clerical (III & IV)	84	93	93	94	+10	+12.17%	+1	+0.93%	+1	124
<b>Management &amp; Administrative</b>	<b>160</b>	<b>189</b>	<b>196</b>	<b>195</b>	<b>+35</b>	<b>+21.95%</b>	<b>+6</b>	<b>+3.23%</b>	<b>-2</b>	<b>235</b>
Support	140	138	135	134	-6	-4.09%	-4	-2.86%	-1	227
Maintenance/ Technical	10	10	11	11	+1	+12.55%	+2	+15.49%	+1	15
<b>General Support</b>	<b>150</b>	<b>148</b>	<b>146</b>	<b>146</b>	<b>-4</b>	<b>-2.96%</b>	<b>-2</b>	<b>-1.63%</b>	<b>-1</b>	<b>242</b>
Health Care Assistants	987	1,111	1,109	1,125	+138	+13.99%	+14	+1.29%	+16	1,323
Care, other	307	342	348	354	+46	+15.12%	+12	+3.48%	+6	413
<b>Patient &amp; Client Care</b>	<b>1295</b>	<b>1453</b>	<b>1458</b>	<b>1479</b>	<b>+185</b>	<b>+14.26%</b>	<b>+26</b>	<b>+1.81%</b>	<b>+22</b>	<b>1,736</b>



## Disabilities Employment Report by Grade Group: MAY 2023

CHO 5

MAY 2023	WTE DEC 2019	WTE DEC 2022	WTE APR 2023	WTE MAY 2023	WTE change since DEC 2019	% WTE Change since Dec 2019	WTE change since DEC 2022	% WTE Change since Dec 2022	WTE change since APR 2023	No. MAY 2023
<b>Overall</b>	<b>1,488</b>	<b>1,656</b>	<b>1,695</b>	<b>1,700</b>	<b>+212</b>	<b>+14.24%</b>	<b>+44</b>	<b>+2.63%</b>	<b>+4</b>	<b>1,990</b>
Consultants	1	1	1	1	+0	+5.26%	+0	+12.36%	+0	1
<b>Medical &amp; Dental</b>	<b>1</b>	<b>1</b>	<b>1</b>	<b>1</b>	<b>+0</b>	<b>+5.26%</b>	<b>+0</b>	<b>+12.36%</b>	<b>+0</b>	<b>1</b>
Nurse/ Midwife Manager	66	74	76	77	+11	+17.05%	+2	+3.03%	+1	79
Nurse/ Midwife Specialist & AN/MP	2	4	4	4	+2	+97.00%	+0	+1.81%	-0	4
Staff Nurse/ Staff Midwife	170	169	166	163	-7	-4.14%	-6	-3.62%	-3	182
Public Health Nurse	5	10	10	10	+5	+89.66%	+0	+3.28%	+0	12
Nursing/ Midwifery Student	2	0	7	7	+5	+279.35%	+7	+4,262.50%	+0	14
Nursing/ Midwifery other		1	1	1	+1		+0	+1.22%	+0	1
<b>Nursing &amp; Midwifery</b>	<b>244</b>	<b>258</b>	<b>263</b>	<b>261</b>	<b>+17</b>	<b>+6.89%</b>	<b>+3</b>	<b>+1.31%</b>	<b>-2</b>	<b>292</b>
Therapy Professions	61	59	60	61	-0	-0.49%	+2	+3.57%	+1	70
Social Care	154	161	161	163	+9	+5.76%	+1	+0.79%	+1	190
Social Workers	21	20	19	21	-0	-0.90%	+1	+3.37%	+2	23
Psychologists	12	17	16	14	+2	+14.48%	-3	-19.15%	-3	16
H&SC, Other	7	6	5	5	-2	-22.64%	-1	-9.85%	+1	7
<b>Health &amp; Social Care Professionals</b>	<b>255</b>	<b>263</b>	<b>261</b>	<b>263</b>	<b>+9</b>	<b>+3.34%</b>	<b>+0</b>	<b>+0.08%</b>	<b>+2</b>	<b>306</b>
Management (VIII & above)	11	19	20	19	+8	+76.06%	+0	+1.59%	-1	20
Administrative/ Supervisory (V to VII)	36	55	62	61	+24	+67.34%	+6	+11.29%	-1	63
Clerical (III & IV)	61	74	80	82	+22	+36.19%	+9	+11.72%	+2	98
<b>Management &amp; Administrative</b>	<b>108</b>	<b>147</b>	<b>162</b>	<b>162</b>	<b>+55</b>	<b>+50.71%</b>	<b>+15</b>	<b>+10.26%</b>	<b>+1</b>	<b>181</b>
Support	15	8	7	7	-9	-55.82%	-1	-15.71%	-0	9
Maintenance/ Technical	7	9	9	9	+2	+25.38%	-0	-1.50%	+0	10
<b>General Support</b>	<b>23</b>	<b>17</b>	<b>16</b>	<b>16</b>	<b>-7</b>	<b>-29.52%</b>	<b>-1</b>	<b>-8.07%</b>	<b>-0</b>	<b>19</b>
Health Care Assistants	671	753	776	787	+116	+17.24%	+33	+4.44%	+10	900
Home Help	44	29	27	28	-16	-37.02%	-2	-6.21%	+0	75
Care, other	143	187	188	182	+39	+27.33%	-6	-2.94%	-6	216
<b>Patient &amp; Client Care</b>	<b>858</b>	<b>970</b>	<b>992</b>	<b>996</b>	<b>+138</b>	<b>+16.14%</b>	<b>+26</b>	<b>+2.69%</b>	<b>+4</b>	<b>1,191</b>



## Disabilities Employment Report by Grade Group: MAY 2023

CHO 6

MAY 2023	WTE DEC 2019	WTE DEC 2022	WTE APR 2023	WTE MAY 2023	WTE change since DEC 2019	% WTE Change since Dec 2019	WTE change since DEC 2022	% WTE Change since Dec 2022	WTE change since APR 2023	No. MAY 2023
<b>Overall</b>	<b>1,198</b>	<b>1,216</b>	<b>1,203</b>	<b>1,206</b>	<b>+8</b>	<b>+0.67%</b>	<b>-11</b>	<b>-0.88%</b>	<b>+2</b>	<b>1,381</b>
Consultants	3	3	3	3	+0	+0.00%	+0	+0.00%	+0	3
Registrars		1	1	1	+1		+0	+1.01%	+0	1
Medical/ Dental, other	1	1	1	1	+0	+0.00%	+0	+0.00%	+0	1
<b>Medical &amp; Dental</b>	<b>4</b>	<b>5</b>	<b>5</b>	<b>5</b>	<b>+1</b>	<b>+25.00%</b>	<b>+0</b>	<b>+0.20%</b>	<b>+0</b>	<b>5</b>
Nurse/ Midwife Manager	44	40	39	38	-6	-12.94%	-2	-4.14%	-1	42
Nurse/ Midwife Specialist & AN/MP			1	2	+2		+2		+1	2
Staff Nurse/ Staff Midwife	147	138	147	152	+4	+3.02%	+14	+10.18%	+5	167
Nursing/ Midwifery other		1	1	1	+1		+0	+0.00%	+0	1
<b>Nursing &amp; Midwifery</b>	<b>191</b>	<b>178</b>	<b>188</b>	<b>193</b>	<b>+2</b>	<b>+0.90%</b>	<b>+14</b>	<b>+8.01%</b>	<b>+4</b>	<b>212</b>
Therapy Professions	42	26	25	25	-16	-39.49%	-0	-1.37%	+0	32
Social Care	334	381	383	362	+28	+8.38%	-19	-4.96%	-20	414
Social Workers	11	8	9	9	-2	-16.06%	+1	+11.89%	-0	10
Psychologists	14	14	13	13	-1	-4.35%	-1	-7.62%	+0	15
H&SC, Other	2	1	1	1	-0	-21.31%	+0	+0.70%	+0	2
<b>Health &amp; Social Care Professionals</b>	<b>403</b>	<b>431</b>	<b>432</b>	<b>411</b>	<b>+9</b>	<b>+2.19%</b>	<b>-19</b>	<b>-4.49%</b>	<b>-20</b>	<b>473</b>
Management (VIII & above)	31	39	32	35	+4	+14.34%	-4	-10.51%	+3	36
Administrative/ Supervisory (V to VII)	53	64	63	70	+16	+30.67%	+6	+8.66%	+7	76
Clerical (III & IV)	54	52	53	54	+0	+0.19%	+2	+3.37%	+1	60
<b>Management &amp; Administrative</b>	<b>138</b>	<b>156</b>	<b>148</b>	<b>159</b>	<b>+21</b>	<b>+15.13%</b>	<b>+3</b>	<b>+2.05%</b>	<b>+11</b>	<b>172</b>
Support	23	23	21	22	-1	-3.23%	-1	-3.10%	+1	29
Maintenance/ Technical	7	8	9	8	+1	+18.52%	+0	+0.00%	-1	8
<b>General Support</b>	<b>29</b>	<b>31</b>	<b>30</b>	<b>30</b>	<b>+1</b>	<b>+1.77%</b>	<b>-1</b>	<b>-2.29%</b>	<b>+0</b>	<b>37</b>
Health Care Assistants	187	188	185	192	+5	+2.78%	+4	+2.19%	+7	220
Care, other	246	229	216	216	-30	-12.21%	-12	-5.37%	+1	262
<b>Patient &amp; Client Care</b>	<b>433</b>	<b>416</b>	<b>401</b>	<b>408</b>	<b>-25</b>	<b>-5.75%</b>	<b>-8</b>	<b>-1.96%</b>	<b>+7</b>	<b>482</b>



## Disabilities Employment Report by Grade Group: MAY 2023

CHO 7

MAY 2023	WTE DEC 2019	WTE DEC 2022	WTE APR 2023	WTE MAY 2023	WTE change since DEC 2019	% WTE Change since Dec 2019	WTE change since DEC 2022	% WTE Change since Dec 2022	WTE change since APR 2023	No. MAY 2023
<b>Overall</b>	<b>2,982</b>	<b>3,410</b>	<b>3,420</b>	<b>3,414</b>	<b>+432</b>	<b>+14.50%</b>	<b>+4</b>	<b>+0.12%</b>	<b>-6</b>	<b>4,038</b>
Consultants	1				-1	-100.00%				
Registrars	3	4	4	3	+0	+7.67%	-1	-19.25%	-1	4
SHO/ Interns	7	7	8	9	+2	+22.84%	+2	+23.02%	+0	9
Medical/ Dental, other	1				-1	-100.00%				
<b>Medical &amp; Dental</b>	<b>12</b>	<b>11</b>	<b>12</b>	<b>12</b>	<b>+0</b>	<b>+2.43%</b>	<b>+1</b>	<b>+7.58%</b>	<b>-0</b>	<b>13</b>
Nurse/ Midwife Manager	122	153	159	156	+34	+28.09%	+3	+1.97%	-3	168
Nurse/ Midwife Specialist & AN/MP	5	6	7	7	+2	+38.52%	+1	+12.66%	+0	8
Staff Nurse/ Staff Midwife	374	416	417	423	+49	+13.17%	+7	+1.67%	+7	480
Nursing/ Midwifery Student		1	8	8	+8		+7	+700.00%	+0	16
Nursing/ Midwifery other	1	4	2	2	+1	+204.00%	-2	-56.82%	+0	2
<b>Nursing &amp; Midwifery</b>	<b>502</b>	<b>581</b>	<b>592</b>	<b>596</b>	<b>+95</b>	<b>+18.84%</b>	<b>+16</b>	<b>+2.71%</b>	<b>+4</b>	<b>674</b>
Therapy Professions	122	155	152	146	+25	+20.22%	-8	-5.26%	-6	167
Health Science/ Diagnostics	3	3	4	3	-0	-12.33%	-1	-21.02%	-1	3
Social Care	360	467	464	448	+88	+24.36%	-19	-4.00%	-15	491
Social Workers	33	42	38	39	+5	+16.38%	-3	-6.95%	+1	45
Psychologists	28	36	36	34	+7	+23.47%	-2	-4.32%	-2	38
Pharmacy	5	6	5	5	+0	+7.97%	-1	-16.67%	+0	9
H&SC, Other	2	2	3	16	+15	+974.00%	+15	+974.00%	+14	19
<b>Health &amp; Social Care Professionals</b>	<b>553</b>	<b>710</b>	<b>702</b>	<b>692</b>	<b>+139</b>	<b>+25.16%</b>	<b>-18</b>	<b>-2.59%</b>	<b>-10</b>	<b>772</b>
Management (VIII & above)	32	47	44	45	+13	+39.90%	-2	-4.18%	+0	45
Administrative/ Supervisory (V to VII)	79	109	112	113	+34	+42.55%	+3	+3.02%	+0	120
Clerical (III & IV)	92	120	123	126	+34	+37.24%	+6	+5.17%	+3	147
<b>Management &amp; Administrative</b>	<b>203</b>	<b>276</b>	<b>279</b>	<b>283</b>	<b>+81</b>	<b>+39.73%</b>	<b>+8</b>	<b>+2.73%</b>	<b>+4</b>	<b>312</b>
Support	167	156	149	151	-16	-9.66%	-6	-3.66%	+2	218
Maintenance/ Technical	28	32	38	36	+8	+26.84%	+4	+12.53%	-2	41
<b>General Support</b>	<b>195</b>	<b>188</b>	<b>187</b>	<b>187</b>	<b>-8</b>	<b>-4.34%</b>	<b>-2</b>	<b>-0.90%</b>	<b>+0</b>	<b>259</b>
Health Care Assistants	1,112	1,228	1,237	1,236	+123	+11.09%	+8	+0.61%	-1	1,466
Home Help	19	14	12	12	-7	-37.51%	-2	-11.37%	+0	78
Care, other	386	402	400	396	+10	+2.65%	-6	-1.46%	-4	464
<b>Patient &amp; Client Care</b>	<b>1518</b>	<b>1644</b>	<b>1648</b>	<b>1644</b>	<b>+126</b>	<b>+8.32%</b>	<b>+0</b>	<b>+0.00%</b>	<b>-4</b>	<b>2,008</b>

## Disabilities Employment Report by Grade Group: MAY 2023

CHO 8

MAY 2023	WTE DEC 2019	WTE DEC 2022	WTE APR 2023	WTE MAY 2023	WTE change since DEC 2019	% WTE Change since Dec 2019	WTE change since DEC 2022	% WTE Change since Dec 2022	WTE change since APR 2023	No. MAY 2023
<b>Overall</b>	<b>2,162</b>	<b>2,345</b>	<b>2,371</b>	<b>2,370</b>	<b>+208</b>	<b>+9.62%</b>	<b>+25</b>	<b>+1.05%</b>	<b>-1</b>	<b>2,864</b>
Consultants	1				-1	-100.00%				
Registrars	2	1	1	1	-1	-50.00%	+0	+0.00%	+0	1
Medical/ Dental, other	1	1	1	1	+0	+0.00%	+0	+0.00%	+0	1
<b>Medical &amp; Dental</b>	<b>4</b>	<b>2</b>	<b>2</b>	<b>2</b>	<b>-2</b>	<b>-50.00%</b>	<b>+0</b>	<b>+0.00%</b>	<b>+0</b>	<b>2</b>
Nurse/ Midwife Manager	123	114	112	112	-11	-8.67%	-1	-1.30%	+0	122
Nurse/ Midwife Specialist & AN/MP	7	4	5	5	-2	-24.12%	+1	+20.58%	+0	6
Staff Nurse/ Staff Midwife	319	335	334	333	+14	+4.48%	-2	-0.53%	-1	391
Public Health Nurse	1	1	1	1	+0	+0.00%	-0	-4.00%	+0	1
Nursing/ Midwifery Student		1	19	19	+19		+18	+2,265.82%	-0	31
Nursing/ Midwifery other	5	5	4	4	-1	-18.68%	-1	-17.88%	+0	6
<b>Nursing &amp; Midwifery</b>	<b>455</b>	<b>460</b>	<b>476</b>	<b>475</b>	<b>+20</b>	<b>+4.29%</b>	<b>+15</b>	<b>+3.17%</b>	<b>-1</b>	<b>557</b>
Therapy Professions	92	92	95	94	+2	+2.08%	+1	+1.23%	-1	113
Health Science/ Diagnostics	2	2	2	2	+0	+0.00%	+0	+0.00%	+0	2
Social Care	361	414	363	366	+5	+1.50%	-48	-11.59%	+3	458
Social Workers	24	24	23	22	-2	-6.90%	-2	-6.79%	-0	26
Psychologists	25	29	28	27	+2	+7.57%	-2	-6.60%	-1	30
H&SC, Other	7	8	55	56	+49	+711.04%	+48	+576.32%	+2	61
<b>Health &amp; Social Care Professionals</b>	<b>510</b>	<b>569</b>	<b>564</b>	<b>567</b>	<b>+57</b>	<b>+11.15%</b>	<b>-2</b>	<b>-0.42%</b>	<b>+3</b>	<b>690</b>
Management (VIII & above)	9	18	19	19	+10	+112.73%	+0	+1.41%	-0	19
Administrative/ Supervisory (V to VII)	56	55	56	59	+3	+4.88%	+4	+6.61%	+2	61
Clerical (III & IV)	84	94	101	103	+19	+22.63%	+9	+9.95%	+2	120
<b>Management &amp; Administrative</b>	<b>149</b>	<b>168</b>	<b>176</b>	<b>181</b>	<b>+32</b>	<b>+21.26%</b>	<b>+13</b>	<b>+7.91%</b>	<b>+5</b>	<b>200</b>
Support	46	33	30	30	-17	-36.11%	-3	-8.76%	-0	37
Maintenance/ Technical	16	12	16	16	-0	-0.58%	+4	+28.76%	-0	16
<b>General Support</b>	<b>62</b>	<b>45</b>	<b>46</b>	<b>46</b>	<b>-17</b>	<b>-26.99%</b>	<b>+1</b>	<b>+1.58%</b>	<b>-0</b>	<b>53</b>
Health Care Assistants	844	965	973	969	+125	+14.86%	+4	+0.40%	-4	1,192
Home Help	22	21	19	19	-3	-13.40%	-2	-8.69%	+0	40
Care, other	115	115	114	111	-4	-3.23%	-3	-3.01%	-3	130
<b>Patient &amp; Client Care</b>	<b>981</b>	<b>1101</b>	<b>1106</b>	<b>1100</b>	<b>+119</b>	<b>+12.10%</b>	<b>-1</b>	<b>-0.13%</b>	<b>-6</b>	<b>1,362</b>



## Disabilities Employment Report by Grade Group: MAY 2023

CHO 9

MAY 2023	WTE DEC 2019	WTE DEC 2022	WTE APR 2023	WTE MAY 2023	WTE change since DEC 2019	% WTE Change since Dec 2019	WTE change since DEC 2022	% WTE Change since Dec 2022	WTE change since APR 2023	No. MAY 2023
<b>Overall</b>	<b>3,194</b>	<b>3,336</b>	<b>3,346</b>	<b>3,353</b>	<b>+159</b>	<b>+4.98%</b>	<b>+17</b>	<b>+0.51%</b>	<b>+7</b>	<b>3,960</b>
Consultants	13	9	11	11	-2	-15.52%	+1	+11.86%	-1	13
Registrars	6	3	3	3	-3	-50.00%	+0	+0.33%	+0	3
SHO/ Interns		1	2	2	+2		+1	+97.98%	+0	2
Medical/ Dental, other	6	6	6	6	-0	-3.25%	-0	-4.03%	+0	8
<b>Medical &amp; Dental</b>	<b>25</b>	<b>20</b>	<b>22</b>	<b>21</b>	<b>-3</b>	<b>-12.90%</b>	<b>+2</b>	<b>+9.42%</b>	<b>-0</b>	<b>26</b>
Nurse/ Midwife Manager	192	211	219	216	+25	+12.83%	+5	+2.61%	-2	232
Nurse/ Midwife Specialist & AN/MP	9	16	17	17	+8	+93.43%	+0	+2.01%	+0	18
Staff Nurse/ Staff Midwife	517	501	486	480	-37	-7.07%	-20	-4.03%	-5	555
Nursing/ Midwifery Student	8	2	16	17	+9	+114.19%	+15	+738.38%	+1	32
Nursing/ Midwifery other	7	9	8	8	+1	+11.32%	-1	-7.90%	+0	9
<b>Nursing &amp; Midwifery</b>	<b>732</b>	<b>739</b>	<b>745</b>	<b>738</b>	<b>+6</b>	<b>+0.79%</b>	<b>-0</b>	<b>-0.06%</b>	<b>-7</b>	<b>846</b>
Therapy Professions	181	208	201	199	+18	+9.66%	-9	-4.37%	-3	223
Health Science/ Diagnostics	15	12	14	14	-1	-6.67%	+2	+16.67%	+0	14
Social Care	689	796	786	794	+105	+15.25%	-2	-0.24%	+8	961
Social Workers	44	54	55	56	+12	+27.89%	+2	+4.42%	+2	64
Psychologists	53	57	60	58	+5	+8.90%	+0	+0.26%	-3	63
Pharmacy	2	2	2	2	+0	+0.00%	+0	+0.00%	+0	2
H&SC, Other	19	13	13	13	-6	-31.93%	-0	-3.51%	+0	16
<b>Health &amp; Social Care Professionals</b>	<b>1003</b>	<b>1142</b>	<b>1131</b>	<b>1136</b>	<b>+132</b>	<b>+13.21%</b>	<b>-7</b>	<b>-0.61%</b>	<b>+5</b>	<b>1,343</b>
Management (VIII & above)	37	45	46	45	+8	+20.09%	+0	+0.36%	-1	45
Administrative/ Supervisory (V to VII)	88	129	147	153	+66	+75.32%	+25	+19.13%	+6	163
Clerical (III & IV)	125	137	144	147	+22	+17.40%	+10	+7.17%	+3	173
<b>Management &amp; Administrative</b>	<b>250</b>	<b>311</b>	<b>337</b>	<b>346</b>	<b>+95</b>	<b>+38.06%</b>	<b>+35</b>	<b>+11.14%</b>	<b>+9</b>	<b>381</b>
Support	196	136	138	136	-60	-30.63%	-1	-0.38%	-2	174
Maintenance/ Technical	22	20	21	21	-2	-6.82%	+0	+1.23%	-0	22
<b>General Support</b>	<b>218</b>	<b>156</b>	<b>158</b>	<b>156</b>	<b>-61</b>	<b>-28.23%</b>	<b>-0</b>	<b>-0.17%</b>	<b>-2</b>	<b>196</b>
Health Care Assistants	869	866	865	871	+2	+0.19%	+4	+0.49%	+6	1,070
Care, other	97	102	89	85	-11	-11.86%	-16	-15.98%	-3	98
<b>Patient &amp; Client Care</b>	<b>966</b>	<b>968</b>	<b>953</b>	<b>956</b>	<b>-10</b>	<b>-1.02%</b>	<b>-12</b>	<b>-1.24%</b>	<b>+3</b>	<b>1,168</b>



## Disabilities Employment Report by Grade Group: MAY 2023

### other Community Services

MAY 2023	WTE DEC 2019	WTE DEC 2022	WTE APR 2023	WTE MAY 2023	WTE change since DEC 2019	% WTE Change since Dec 2019	WTE change since DEC 2022	% WTE Change since Dec 2022	WTE change since APR 2023	No. MAY 2023
<b>Overall</b>	<b>6</b>	<b>6</b>	<b>6</b>	<b>6</b>	<b>+0</b>	<b>+0.34%</b>	<b>+0</b>	<b>+0.67%</b>	<b>-0</b>	<b>6</b>
Management (VIII & above)	1	2	2	2	+1	+100.00%	+0	+2.04%	+0	2
Administrative/ Supervisory (V to VII)	3	2	2	2	-1	-34.33%	-0	-1.01%	-0	2
Clerical (III & IV)	2	2	2	2	+0	+2.56%	+0	+1.01%	+0	2
<b>Management &amp; Administrative</b>	<b>6</b>	<b>6</b>	<b>6</b>	<b>6</b>	<b>+0</b>	<b>+0.34%</b>	<b>+0</b>	<b>+0.67%</b>	<b>-0</b>	<b>6</b>



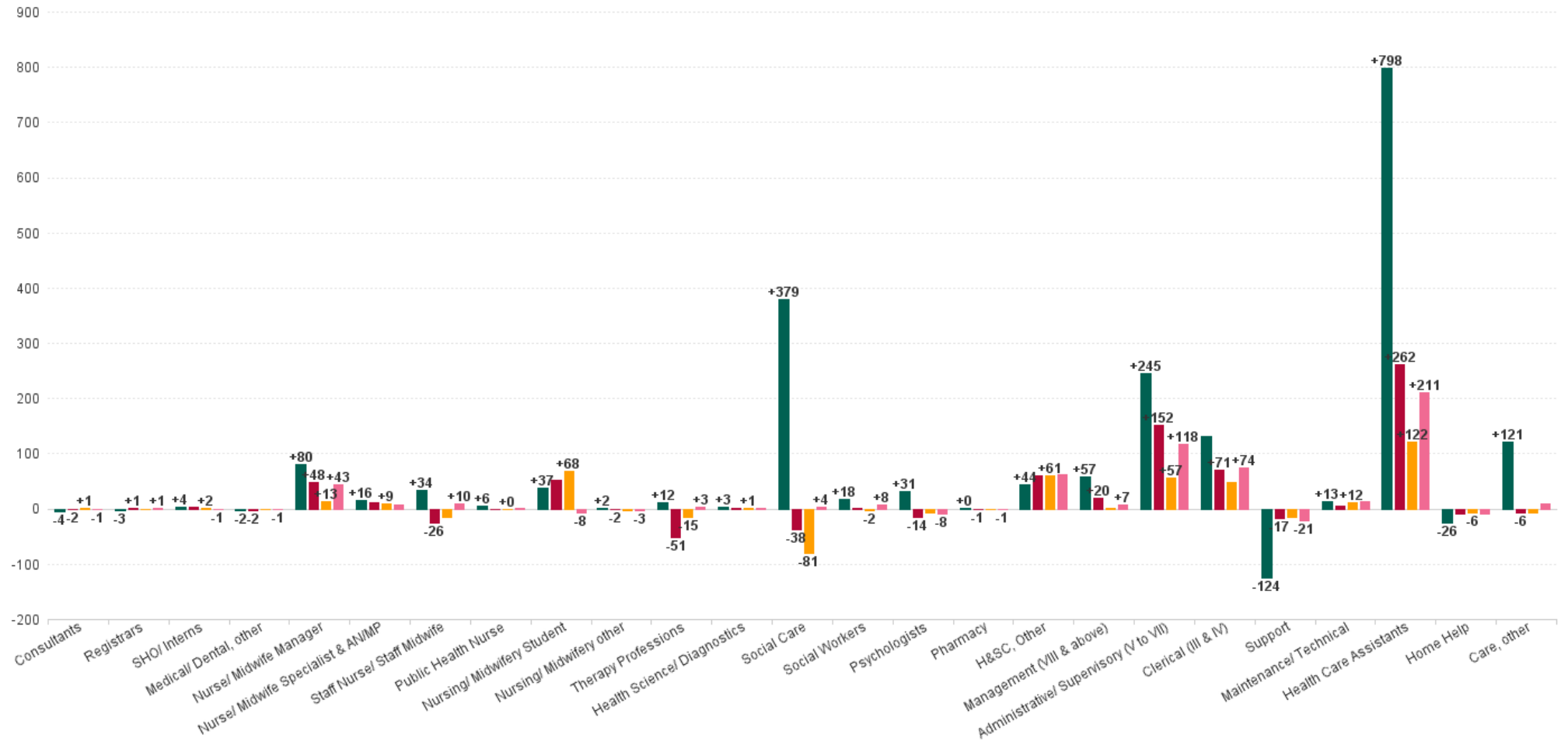
## Disabilities Employment Report by Grade Group: MAY 2023

MAY 2023	WTE DEC 2019	WTE DEC 2022	WTE APR 2023	WTE MAY 2023	WTE change since DEC 2019	% WTE Change since Dec 2019	WTE change since DEC 2022	% WTE Change since Dec 2022	WTE change since APR 2023	No. MAY 2023
<b>Overall</b>	<b>18,273</b>	<b>19,903</b>	<b>20,092</b>	<b>20,145</b>	<b>+1,873</b>	<b>+10.25%</b>	<b>+242</b>	<b>+1.22%</b>	<b>+53</b>	<b>23,814</b>
Consultant Paediatrics	3	3	3	3	-1	-17.05%	+0	+0.00%	+0	3
Consultant Psychiatry	21	16	18	17	-4	-17.90%	+1	+7.75%	-1	21
<b>Consultants</b>	<b>24</b>	<b>18</b>	<b>20</b>	<b>20</b>	<b>-4</b>	<b>-17.79%</b>	<b>+1</b>	<b>+6.68%</b>	<b>-1</b>	<b>24</b>
Registrar	7	7	6	6	-1	-14.29%	-1	-14.04%	+0	6
Senior Registrar	2	2	3	3	+1	+50.00%	+1	+50.00%	+0	3
Specialist Registrar	4	1	2	1	-3	-69.25%	+0	+23.00%	-1	2
<b>Registrars</b>	<b>13</b>	<b>10</b>	<b>11</b>	<b>10</b>	<b>-3</b>	<b>-21.31%</b>	<b>+0</b>	<b>+2.51%</b>	<b>-1</b>	<b>11</b>
Senior House Officer	7	9	10	11	+4	+51.01%	+2	+17.56%	+1	11
<b>SHO/ Interns</b>	<b>7</b>	<b>9</b>	<b>10</b>	<b>11</b>	<b>+4</b>	<b>+51.01%</b>	<b>+2</b>	<b>+17.56%</b>	<b>+1</b>	<b>11</b>
Other Medical	14	13	12	12	-2	-13.88%	-1	-4.02%	+1	18
<b>Medical/ Dental, other</b>	<b>14</b>	<b>13</b>	<b>12</b>	<b>12</b>	<b>-2</b>	<b>-13.88%</b>	<b>-1</b>	<b>-4.02%</b>	<b>+1</b>	<b>18</b>
<b>Medical &amp; Dental</b>	<b>58</b>	<b>50</b>	<b>53</b>	<b>53</b>	<b>-5</b>	<b>-9.39%</b>	<b>+3</b>	<b>+5.03%</b>	<b>+0</b>	<b>64</b>
Clinical Nurse/ Midwife Manager	809	869	881	878	+69	+8.50%	+9	+1.02%	-4	945
Director Nursing/Midwifery, Assistant	41	43	46	46	+5	+11.84%	+2	+5.11%	-0	47
Director of Nursing/Midwifery	42	47	49	49	+7	+15.69%	+2	+4.23%	+0	51
<b>Nurse/ Midwife Manager</b>	<b>892</b>	<b>959</b>	<b>976</b>	<b>972</b>	<b>+80</b>	<b>+8.99%</b>	<b>+13</b>	<b>+1.36%</b>	<b>-4</b>	<b>1,043</b>
Advanced Nurse/ Midwife Practitioner	2	12	15	16	+14	+685.50%	+4	+31.14%	+1	16
Clinical Nurse/ Midwife Specialist	60	58	63	63	+3	+4.37%	+5	+8.39%	-0	69
<b>Nurse/ Midwife Specialist &amp; AN/MP</b>	<b>62</b>	<b>70</b>	<b>77</b>	<b>78</b>	<b>+16</b>	<b>+26.37%</b>	<b>+9</b>	<b>+12.30%</b>	<b>+1</b>	<b>85</b>
Staff Nurse [Intellectual Disability]	1,597	1,767	1,745	1,738	+141	+8.80%	-29	-1.65%	-7	2,008
Staff Nurse [Psychiatric]	82	60	61	57	-25	-30.48%	-2	-3.82%	-3	71
Staff Nurses [General/ Children's]	889	792	799	808	-81	-9.14%	+16	+2.07%	+9	908
<b>Staff Nurse/ Staff Midwife</b>	<b>2,569</b>	<b>2,618</b>	<b>2,604</b>	<b>2,603</b>	<b>+34</b>	<b>+1.33%</b>	<b>-15</b>	<b>-0.58%</b>	<b>-1</b>	<b>2,987</b>
Public Health Nurse	6	12	12	12	+6	+91.24%	+0	+2.13%	+0	14
<b>Public Health Nurse</b>	<b>6</b>	<b>12</b>	<b>12</b>	<b>12</b>	<b>+6</b>	<b>+91.24%</b>	<b>+0</b>	<b>+2.13%</b>	<b>+0</b>	<b>14</b>
Nursing/ Midwifery awaiting registration	14	4	1	2	-12	-88.44%	-2	-57.56%	+1	2
Pre-registration Nurse/ Midwife Intern	28	7	77	78	+49	+174.94%	+71	+998.59%	+1	147
<b>Nursing/ Midwifery Student</b>	<b>42</b>	<b>11</b>	<b>78</b>	<b>79</b>	<b>+37</b>	<b>+88.33%</b>	<b>+68</b>	<b>+631.27%</b>	<b>+1</b>	<b>149</b>
Nursing Education/Clinical	21	27	24	24	+3	+12.27%	-3	-10.32%	-0	28
Other Nursing/ Midwifery	1	1			-1	-100.00%	-1	-100.00%		
<b>Nursing/ Midwifery other</b>	<b>22</b>	<b>28</b>	<b>24</b>	<b>24</b>	<b>+2</b>	<b>+7.21%</b>	<b>-4</b>	<b>-13.58%</b>	<b>-0</b>	<b>28</b>
<b>Nursing &amp; Midwifery</b>	<b>3593</b>	<b>3697</b>	<b>3771</b>	<b>3769</b>	<b>+175</b>	<b>+4.88%</b>	<b>+71</b>	<b>+1.93%</b>	<b>-3</b>	<b>4,306</b>
Dietitians	18	20	26	26	+7	+38.20%	+5	+25.07%	-1	32
Occupational Therapists	263	304	291	288	+25	+9.53%	-16	-5.11%	-2	325
Physiotherapists	189	193	197	196	+7	+3.53%	+3	+1.38%	-1	232
Speech & Language Therapists	292	273	262	265	-27	-9.09%	-8	-2.76%	+3	316
<b>Therapy Professions</b>	<b>763</b>	<b>790</b>	<b>776</b>	<b>775</b>	<b>+12</b>	<b>+1.61%</b>	<b>-15</b>	<b>-1.93%</b>	<b>-1</b>	<b>905</b>
Clinical Engineering	13	14	16	16	+3	+23.08%	+2	+14.61%	+0	16
Medical Science	4	4	4	4	+0	+0.00%	+0	+0.00%	+0	4
Phlebotomists	1				-1	-100.00%				
Radiographers	1	1	3	2	+1	+63.00%	+0	+22.56%	-1	2
Respiratory Physiologists	1	2	1	1	+0	+0.00%	-1	-50.00%	+0	1
<b>Health Science/ Diagnostics</b>	<b>20</b>	<b>21</b>	<b>24</b>	<b>23</b>	<b>+3</b>	<b>+13.15%</b>	<b>+1</b>	<b>+6.29%</b>	<b>-1</b>	<b>23</b>

MAY 2023	WTE DEC 2019	WTE DEC 2022	WTE APR 2023	WTE MAY 2023	WTE change since DEC 2019	% WTE Change since Dec 2019	WTE change since DEC 2022	% WTE Change since Dec 2022	WTE change since APR 2023	No. MAY 2023
<b>Overall</b>	<b>18,273</b>	<b>19,903</b>	<b>20,092</b>	<b>20,145</b>	<b>+1,873</b>	<b>+10.25%</b>	<b>+242</b>	<b>+1.22%</b>	<b>+53</b>	<b>23,814</b>
Social Care	2,595	3,055	2,994	2,974	+379	+14.61%	-81	-2.64%	-20	3,499
<b>Social Care</b>	<b>2,595</b>	<b>3,055</b>	<b>2,994</b>	<b>2,974</b>	<b>+379</b>	<b>+14.61%</b>	<b>-81</b>	<b>-2.64%</b>	<b>-20</b>	<b>3,499</b>
Social Workers	219	239	235	237	+18	+8.13%	-2	-1.01%	+1	277
<b>Social Workers</b>	<b>219</b>	<b>239</b>	<b>235</b>	<b>237</b>	<b>+18</b>	<b>+8.13%</b>	<b>-2</b>	<b>-1.01%</b>	<b>+1</b>	<b>277</b>
Psychologists	202	239	239	233	+31	+15.24%	-6	-2.53%	-6	260
<b>Psychologists</b>	<b>202</b>	<b>239</b>	<b>239</b>	<b>233</b>	<b>+31</b>	<b>+15.24%</b>	<b>-6</b>	<b>-2.53%</b>	<b>-6</b>	<b>260</b>
Pharmacists	5	7	7	6	+1	+22.58%	-0	-2.12%	-0	9
Pharmacy Technicians	2	2	0	1	-1	-54.00%	-1	-56.33%	+1	2
<b>Pharmacy</b>	<b>7</b>	<b>8</b>	<b>7</b>	<b>7</b>	<b>+0</b>	<b>+5.61%</b>	<b>-1</b>	<b>-12.59%</b>	<b>+0</b>	<b>11</b>
Counsellor Therapists	19	23	20	20	+1	+4.98%	-3	-12.41%	+0	24
Other Health & Social Care	51	30	78	95	+44	+87.16%	+64	+213.35%	+17	109
Play Therapists/ Specialists	15	15	15	15	-1	-4.21%	-1	-3.96%	-0	19
<b>H&amp;SC, Other</b>	<b>85</b>	<b>68</b>	<b>113</b>	<b>129</b>	<b>+44</b>	<b>+52.23%</b>	<b>+61</b>	<b>+89.35%</b>	<b>+16</b>	<b>152</b>
<b>Health &amp; Social Care Professionals</b>	<b>3890</b>	<b>4421</b>	<b>4388</b>	<b>4378</b>	<b>+487</b>	<b>+12.53%</b>	<b>-43</b>	<b>-0.97%</b>	<b>-10</b>	<b>5,127</b>
Executive Management	31	50	41	34	+3	+10.50%	-16	-31.49%	-7	34
Senior Management (VIII & GM)	149	186	194	203	+54	+36.35%	+17	+8.86%	+9	207
<b>Management (VIII &amp; above)</b>	<b>180</b>	<b>236</b>	<b>235</b>	<b>237</b>	<b>+57</b>	<b>+31.92%</b>	<b>+1</b>	<b>+0.38%</b>	<b>+2</b>	<b>241</b>
Middle Management (V-VII)	463	653	692	707	+245	+52.90%	+54	+8.28%	+15	750
Other Administrative	15	12	14	15	+0	+0.27%	+3	+25.00%	+1	15
<b>Administrative/ Supervisory (V to VII)</b>	<b>477</b>	<b>665</b>	<b>706</b>	<b>722</b>	<b>+245</b>	<b>+51.25%</b>	<b>+57</b>	<b>+8.58%</b>	<b>+16</b>	<b>765</b>
General Administrative (III & IV)	660	744	776	791	+131	+19.81%	+47	+6.38%	+15	930
<b>Clerical (III &amp; IV)</b>	<b>660</b>	<b>744</b>	<b>776</b>	<b>791</b>	<b>+131</b>	<b>+19.81%</b>	<b>+47</b>	<b>+6.38%</b>	<b>+15</b>	<b>930</b>
<b>Management &amp; Administrative</b>	<b>1317</b>	<b>1645</b>	<b>1717</b>	<b>1750</b>	<b>+433</b>	<b>+32.86%</b>	<b>+105</b>	<b>+6.41%</b>	<b>+33</b>	<b>1,936</b>
Catering	98	75	74	74	-24	-24.22%	-1	-0.86%	-0	89
Household Services	419	385	374	373	-45	-10.80%	-12	-3.05%	-0	547
Other Labs & Associated	1	1	1	1	+0	+0.00%	+0	+0.00%	+0	1
Other Support	188	145	143	144	-44	-23.53%	-2	-1.14%	+1	212
Portering	28	18	18	17	-11	-39.84%	-1	-5.14%	-1	23
<b>Support</b>	<b>733</b>	<b>624</b>	<b>610</b>	<b>609</b>	<b>-124</b>	<b>-16.94%</b>	<b>-15</b>	<b>-2.39%</b>	<b>-1</b>	<b>872</b>
Maintenance	116	109	123	121	+5	+4.16%	+12	+11.08%	-2	134
Technical Services	8	17	17	17	+9	+106.84%	-0	-0.83%	+0	17
<b>Maintenance/ Technical</b>	<b>124</b>	<b>126</b>	<b>140</b>	<b>138</b>	<b>+13</b>	<b>+10.86%</b>	<b>+12</b>	<b>+9.48%</b>	<b>-2</b>	<b>151</b>
<b>General Support</b>	<b>857</b>	<b>750</b>	<b>749</b>	<b>747</b>	<b>-111</b>	<b>-12.91%</b>	<b>-3</b>	<b>-0.40%</b>	<b>-2</b>	<b>1,023</b>
Attendant/ Aide	230	179	172	167	-63	-27.54%	-12	-6.47%	-5	214
Health Care Assistant/ Care Assistant	6,578	7,294	7,372	7,416	+837	+12.73%	+121	+1.66%	+43	8,818
Health & Social Care Assistants	10	22	30	34	+24	+253.56%	+12	+56.05%	+4	39
<b>Health Care Assistants</b>	<b>6,818</b>	<b>7,495</b>	<b>7,574</b>	<b>7,616</b>	<b>+798</b>	<b>+11.70%</b>	<b>+122</b>	<b>+1.62%</b>	<b>+42</b>	<b>9,071</b>
Home Helps	99	80	72	74	-26	-25.71%	-6	-7.91%	+2	218
<b>Home Help</b>	<b>99</b>	<b>80</b>	<b>72</b>	<b>74</b>	<b>-26</b>	<b>-25.71%</b>	<b>-6</b>	<b>-7.91%</b>	<b>+2</b>	<b>218</b>
Home Care Services	28	17	18	18	-11	-37.84%	+0	+1.90%	-0	22
Other Care Grades	174	259	253	249	+75	+43.37%	-10	-3.70%	-4	281
Pastoral Care	10	5	5	5	-5	-48.35%	+1	+10.56%	+0	7
Workshop Services	1,426	1,485	1,492	1,488	+62	+4.32%	+2	+0.14%	-4	1,759
<b>Care, other</b>	<b>1,638</b>	<b>1,766</b>	<b>1,769</b>	<b>1,760</b>	<b>+121</b>	<b>+7.39%</b>	<b>-7</b>	<b>-0.37%</b>	<b>-9</b>	<b>2,069</b>
<b>Patient &amp; Client Care</b>	<b>8556</b>	<b>9341</b>	<b>9414</b>	<b>9450</b>	<b>+894</b>	<b>+10.44%</b>	<b>+109</b>	<b>+1.16%</b>	<b>+35</b>	<b>11,358</b>

## WTE Change by Staff Category

■ WTE change since DEC 2019 ■ WTE change since DEC 2021 ■ WTE change since DEC 2022 ■ WTE change since MAY 2022



## Disabilities Employment Report by WTE, Headcount, Gender, Full-Time / Part-Time etc. MAY 2023

MAY 2023	WTE MAY 2023	No. MAY 2023	WTE : No	% Male	% Female	Male WTE : No.	Female WTE : No	Perm Count %	Perm Count Male %	Perm Count Female %	Fulltime Count %	Part time Count %	FT Count Male %	FT Count Female %
<b>Total</b>	<b>20,145</b>	<b>23,814</b>	<b>1:0.8</b>	<b>19.69%</b>	<b>80.31%</b>	<b>1:0.9</b>	<b>1:0.8</b>	<b>88.53%</b>	<b>17.27%</b>	<b>71.26%</b>	<b>58.80%</b>	<b>41.20%</b>	<b>69.08%</b>	<b>56.28%</b>
<b>Consultants</b>	<b>19.64</b>	<b>24</b>	<b>1:0.8</b>	<b>25.00%</b>	<b>75.00%</b>	<b>1:1</b>	<b>1:0.8</b>	<b>79.17%</b>	<b>12.50%</b>	<b>66.67%</b>	<b>66.67%</b>	<b>33.33%</b>	<b>100.00%</b>	<b>55.56%</b>
Medical/ Dental, other	12.41	18	1:0.7	33.33%	66.67%	1:0.9	1:0.6	88.89%	22.22%	66.67%	33.33%	66.67%	50.00%	25.00%
Registrars	6	6	1:0.9	66.67%	116.67%	1:1	1:0.9				183.33%		100.00%	100.00%
SHO/ Interns	10.51	11	1:1	63.64%	36.36%	1:0.9	1:1				100.00%		100.00%	100.00%
Registrars	4.23	5	1:0.9	80.00%	140.00%	1:1	1:0.9				220.00%		100.00%	100.00%
<b>Medical &amp; Dental</b>	<b>53</b>	<b>64</b>	<b>1:0.8</b>	<b>35.94%</b>	<b>64.06%</b>	<b>1:0.9</b>	<b>1:0.8</b>	<b>54.69%</b>	<b>10.94%</b>	<b>43.75%</b>	<b>68.75%</b>	<b>31.25%</b>	<b>86.96%</b>	<b>58.54%</b>
Nurse/ Midwife Specialist & AN/MP	15.71	16	1:0.9	37.50%	493.75%	1:1	1:0.9	512.50%	37.50%	475.00%	375.00%	156.25%	83.33%	69.62%
Nurse/ Midwife Manager	877.69	945	1:0.9	14.60%	95.77%	1:1	1:0.9	104.02%	13.97%	90.05%	93.65%	16.72%	97.83%	82.87%
Nurse/ Midwife Specialist & AN/MP	62.53	69	1:0.9	8.70%	114.49%	1:1	1:0.9	118.84%	8.70%	110.14%	86.96%	36.23%	83.33%	69.62%
Nurse/ Midwife Manager	94.43	98	1:0.9	140.82%	923.47%	1:1	1:0.9	1,003.06%	134.69%	868.37%	903.06%	161.22%	97.83%	82.87%
Nursing/ Midwifery other	23.8	28	1:0.9	3.57%	96.43%	1:1	1:0.8	100.00%	3.57%	96.43%	60.71%	39.29%		62.96%
Nursing/ Midwifery Student	79.27	149	1:0.5	10.07%	89.93%	1:0.6	1:0.5	22.82%		22.82%	65.10%	34.90%	73.33%	64.18%
Public Health Nurse	12.01	14	1:0.9		100.00%	1:	1:0.9	100.00%		100.00%	64.29%	35.71%		64.29%
Staff Nurse/ Staff Midwife	2,603.07	2,987	1:0.9	12.02%	87.98%	1:0.9	1:0.9	94.81%	11.35%	83.46%	68.13%	31.87%	83.57%	66.02%
<b>Nursing &amp; Midwifery</b>	<b>3,769</b>	<b>4,306</b>	<b>1:0.9</b>	<b>12.05%</b>	<b>87.95%</b>	<b>1:0.9</b>	<b>1:0.9</b>	<b>92.27%</b>	<b>11.10%</b>	<b>81.17%</b>	<b>72.06%</b>	<b>27.94%</b>	<b>86.90%</b>	<b>70.03%</b>
Health Science/ Diagnostics	16	16	1:1	112.50%	31.25%	1:1	1:0.9	118.75%	93.75%	25.00%	137.50%	6.25%	94.44%	100.00%
H&SC, Other	19.84	24	1:0.9	79.17%	554.17%	1:1	1:0.8	608.33%	79.17%	529.17%	445.83%	187.50%	94.74%	66.92%
Therapy Professions	25.54	32	1:0.9	225.00%	2,603.13%	1:0.9	1:0.8	2,690.63%	209.38%	2,481.25%	2,056.25%	771.88%	88.89%	71.31%
Health Science/ Diagnostics	4	4	1:1	450.00%	125.00%	1:1	1:0.9	475.00%	375.00%	100.00%	550.00%	25.00%	94.44%	100.00%
Therapy Professions	288.35	325	1:0.9	22.15%	256.31%	1:0.9	1:0.8	264.92%	20.62%	244.31%	202.46%	76.00%	88.89%	71.31%
H&SC, Other	94.57	109	1:0.9	17.43%	122.02%	1:1	1:0.8	133.94%	17.43%	116.51%	98.17%	41.28%	94.74%	66.92%
Pharmacy	7.15	11	1:0.7	9.09%	90.91%	1:1	1:0.6	90.91%	9.09%	81.82%	45.45%	54.55%	100.00%	40.00%
Therapy Professions	195.89	232	1:0.9	31.03%	359.05%	1:0.9	1:0.8	371.12%	28.88%	342.24%	283.62%	106.47%	88.89%	71.31%
H&SC, Other	14.8	19	1:0.9	100.00%	700.00%	1:1	1:0.8	768.42%	100.00%	668.42%	563.16%	236.84%	94.74%	66.92%
Psychologists	232.94	260	1:0.9	15.77%	84.23%	1:1	1:0.9	97.69%	15.77%	81.92%	78.85%	21.15%	92.68%	76.26%
Health Science/ Diagnostics	2.63	3	1:1	600.00%	166.67%	1:1	1:0.9	633.33%	500.00%	133.33%	733.33%	33.33%	94.44%	100.00%
Social Care	2,974.13	3,499	1:0.8	16.55%	83.45%	1:0.9	1:0.8	91.51%	15.15%	76.36%	48.96%	51.04%	63.04%	46.16%
Social Workers	236.62	277	1:0.9	16.97%	83.03%	1:0.9	1:0.8	92.42%	15.16%	77.26%	70.04%	29.96%	85.11%	66.96%
Therapy Professions	265.18	316	1:0.9	22.78%	263.61%	1:0.9	1:0.8	272.47%	21.20%	251.27%	208.23%	78.16%	88.89%	71.31%



MAY 2023	WTE MAY 2023	No. MAY 2023	WTE : No	% Male	% Female	Male WTE : No.	Female WTE : No	Perm Count %	Perm Count Male %	Perm Count Female %	Fulltime Count %	Part time Count %	FT Count Male %	FT Count Female %
<b>Total</b>	<b>20,145</b>	<b>23,814</b>	<b>1:0.8</b>	<b>19.69%</b>	<b>80.31%</b>	<b>1:0.9</b>	<b>1:0.8</b>	<b>88.53%</b>	<b>17.27%</b>	<b>71.26%</b>	<b>58.80%</b>	<b>41.20%</b>	<b>69.08%</b>	<b>56.28%</b>
Health & Social Care Professionals	4,378	5,127	1:0.9	15.16%	84.84%	1:0.9	1:0.8	92.61%	13.95%	78.66%	56.64%	43.36%	69.88%	54.28%
<b>Management (VIII &amp; above)</b>	<b>34</b>	<b>34</b>	<b>1:1</b>	<b>220.59%</b>	<b>488.24%</b>	<b>1:1</b>	<b>1:1</b>	<b>652.94%</b>	<b>205.88%</b>	<b>447.06%</b>	<b>685.29%</b>	<b>23.53%</b>	<b>100.00%</b>	<b>95.18%</b>
<b>Clerical (III &amp; IV)</b>	<b>790.97</b>	<b>930</b>	<b>1:0.9</b>	<b>10.54%</b>	<b>89.46%</b>	<b>1:0.9</b>	<b>1:0.8</b>	<b>86.99%</b>	<b>8.49%</b>	<b>78.49%</b>	<b>61.83%</b>	<b>38.17%</b>	<b>79.59%</b>	<b>59.74%</b>
<b>Administrative/ Supervisory (V to VII)</b>	<b>722.18</b>	<b>765</b>	<b>1:0.9</b>	<b>22.22%</b>	<b>77.78%</b>	<b>1:1</b>	<b>1:0.9</b>	<b>92.68%</b>	<b>20.78%</b>	<b>71.90%</b>	<b>87.19%</b>	<b>12.81%</b>	<b>94.71%</b>	<b>85.04%</b>
<b>Management (VIII &amp; above)</b>	<b>202.99</b>	<b>207</b>	<b>1:1</b>	<b>36.23%</b>	<b>80.19%</b>	<b>1:1</b>	<b>1:1</b>	<b>107.25%</b>	<b>33.82%</b>	<b>73.43%</b>	<b>112.56%</b>	<b>3.86%</b>	<b>100.00%</b>	<b>95.18%</b>
Management & Administrative	1,750	1,936	1:0.9	17.72%	82.28%	1:1	1:0.9	89.88%	15.91%	73.97%	76.19%	23.81%	91.55%	72.88%
<b>Support</b>	<b>447.6</b>	<b>636</b>	<b>1:0.7</b>	<b>40.25%</b>	<b>96.86%</b>	<b>1:0.8</b>	<b>1:0.7</b>	<b>120.28%</b>	<b>31.76%</b>	<b>88.52%</b>	<b>48.43%</b>	<b>88.68%</b>	<b>48.83%</b>	<b>29.71%</b>
<b>Maintenance/ Technical</b>	<b>120.97</b>	<b>134</b>	<b>1:0.9</b>	<b>100.00%</b>	<b>12.69%</b>	<b>1:0.9</b>	<b>1:0.8</b>	<b>105.97%</b>	<b>93.28%</b>	<b>12.69%</b>	<b>85.07%</b>	<b>27.61%</b>	<b>78.36%</b>	<b>52.94%</b>
<b>Support</b>	<b>161.43</b>	<b>236</b>	<b>1:0.7</b>	<b>108.47%</b>	<b>261.02%</b>	<b>1:0.8</b>	<b>1:0.7</b>	<b>324.15%</b>	<b>85.59%</b>	<b>238.56%</b>	<b>130.51%</b>	<b>238.98%</b>	<b>48.83%</b>	<b>29.71%</b>
<b>Maintenance/ Technical</b>	<b>16.76</b>	<b>17</b>	<b>1:0.9</b>	<b>788.24%</b>	<b>100.00%</b>	<b>1:0.9</b>	<b>1:0.8</b>	<b>835.29%</b>	<b>735.29%</b>	<b>100.00%</b>	<b>670.59%</b>	<b>217.65%</b>	<b>78.36%</b>	<b>52.94%</b>
General Support	747	1,023	1:0.7	38.12%	61.88%	1:0.8	1:0.7	88.66%	31.96%	56.70%	41.25%	58.75%	58.97%	30.33%
<b>Health Care Assistants</b>	<b>7,616.37</b>	<b>9,071</b>	<b>1:0.8</b>	<b>23.35%</b>	<b>76.65%</b>	<b>1:0.9</b>	<b>1:0.8</b>	<b>85.05%</b>	<b>20.21%</b>	<b>64.84%</b>	<b>52.41%</b>	<b>47.59%</b>	<b>61.85%</b>	<b>49.53%</b>
<b>Care, other</b>	<b>17.69</b>	<b>22</b>	<b>1:0.9</b>	<b>2,286.36%</b>	<b>7,118.18%</b>	<b>1:0.9</b>	<b>1:0.8</b>	<b>8,268.18%</b>	<b>1,981.82%</b>	<b>6,286.36%</b>	<b>5,886.36%</b>	<b>3,518.18%</b>	<b>73.76%</b>	<b>59.00%</b>
<b>Home Help</b>	<b>73.69</b>	<b>218</b>	<b>1:0.3</b>	<b>7.34%</b>	<b>92.66%</b>	<b>1:0.3</b>	<b>1:0.3</b>	<b>66.97%</b>	<b>4.13%</b>	<b>62.84%</b>	<b>2.29%</b>	<b>97.71%</b>		<b>2.48%</b>
<b>Care, other</b>	<b>1,741.87</b>	<b>2,047</b>	<b>1:0.9</b>	<b>24.57%</b>	<b>76.50%</b>	<b>1:0.9</b>	<b>1:0.8</b>	<b>88.86%</b>	<b>21.30%</b>	<b>67.56%</b>	<b>63.26%</b>	<b>37.81%</b>	<b>73.76%</b>	<b>59.00%</b>
Patient & Client Care	9,450	11,358	1:0.8	23.22%	76.78%	1:0.9	1:0.8	85.23%	20.06%	65.17%	53.30%	46.70%	63.75%	50.14%



## Disabilities Employment Report by CHO : WTE, Headcount, Gender, Full-Time / Part-Time etc. MAY 2023

MAY 2023	WTE MAY 2023	No. MAY 2023	WTE : No	Number Male	Number Female	Male WTE : No.	Female WTE : No	Perm Count %	Number Male %	Number Female %	Fulltime Count %	Part time Count %	FT Count Male %	FT Count Female %
<b>Total</b>	<b>20,145</b>	<b>23,814</b>	<b>1:0.8</b>	<b>19.69%</b>	<b>80.31%</b>	<b>1:0.9</b>	<b>1:0.8</b>	<b>88.53%</b>	<b>17.27%</b>	<b>71.26%</b>	<b>58.80%</b>	<b>41.20%</b>	<b>69.08%</b>	<b>56.28%</b>
CHO 1	1,736	1,926	1:0.9	20.40%	79.60%	1:0.9	1:0.9	93.09%	18.90%	74.20%	79.54%	20.46%	89.82%	76.91%
CHO 2	1,664	2,023	1:0.8	23.58%	76.42%	1:0.9	1:0.8	82.80%	18.83%	63.96%	48.34%	51.66%	50.52%	47.67%
CHO 3	2,013	2,390	1:0.8	13.72%	86.28%	1:0.9	1:0.8	85.98%	11.67%	74.31%	40.59%	59.41%	44.21%	40.01%
CHO 4	2,684	3,236	1:0.8	20.40%	79.60%	1:0.9	1:0.8	83.31%	16.44%	66.87%	68.51%	31.49%	75.00%	66.85%
CHO 5	1,700	1,990	1:0.9	20.45%	79.55%	1:0.9	1:0.8	87.09%	17.74%	69.35%	54.47%	45.53%	64.86%	51.80%
CHO 6	1,206	1,381	1:0.9	22.59%	77.41%	1:0.9	1:0.9	91.38%	20.20%	71.18%	66.26%	33.74%	79.17%	62.49%
CHO 7	3,414	4,038	1:0.8	22.46%	77.54%	1:0.9	1:0.8	88.29%	19.71%	68.57%	68.10%	31.90%	80.26%	64.58%
CHO 8	2,370	2,864	1:0.8	20.57%	79.43%	1:0.9	1:0.8	95.74%	19.87%	75.87%	47.52%	52.48%	53.31%	46.02%
CHO 9	3,353	3,960	1:0.8	15.53%	84.47%	1:0.9	1:0.8	89.80%	14.12%	75.68%	55.30%	44.70%	73.33%	51.99%
other Community Services	6	6	1:1	16.67%	83.33%	1:1	1:1	100.00%	16.67%	83.33%	83.33%	16.67%	100.00%	80.00%



## Previous Month Summary

	% WTE change since APR 2023	WTE change since APR 2023	CHO 1	CHO 2	CHO 3	CHO 4	CHO 5	CHO 6	CHO 7	CHO 8	CHO 9	other Commu
<b>Total</b>	<b>+0.27%</b>	<b>+53.3</b>	<b>-4.4</b>	<b>+14.0</b>	<b>+8.1</b>	<b>+28.5</b>	<b>+4.2</b>	<b>+2.5</b>	<b>-5.8</b>	<b>-0.5</b>	<b>+6.8</b>	<b>-0.0</b>
Consultants	-2.92%	-0.6		+0.0	+0.0	+0.0	+0.0	+0.0			-0.6	
Registrars	-6.66%	-0.7		+0.0				+0.0	-0.8	+0.0	+0.0	
SHO/ Interns	+9.14%	+0.9							+0.4		+0.5	
Medical/ Dental, other	+5.35%	+0.6	+0.0	+0.0	+0.0	+0.6		+0.0		+0.0	+0.0	
<b>Medical &amp; Dental</b>	<b>+0.36%</b>	<b>+0.2</b>	<b>+0.0</b>	<b>+0.0</b>	<b>+0.0</b>	<b>+0.6</b>	<b>+0.0</b>	<b>+0.0</b>	<b>-0.4</b>	<b>+0.0</b>	<b>-0.1</b>	
Nurse/ Midwife Manager	-0.38%	-3.7	-4.2	+3.4	+1.9	+0.2	+1.0	-1.3	-2.5	+0.3	-2.4	
Nurse/ Midwife Specialist & AN/MP	+1.02%	+0.8	-0.2	+0.0	+0.0	+0.0	-0.0	+0.9	+0.0	+0.1	+0.0	
Staff Nurse/ Staff Midwife	-0.04%	-1.0	-3.3	-2.2	+0.3	+2.7	-3.3	+4.6	+6.9	-1.1	-5.5	
Public Health Nurse	+0.08%	+0.0	+0.0				+0.0			+0.0		
Nursing/ Midwifery Student	+1.81%	+1.4	+0.7		+0.0	+0.0	+0.1		+0.0	-0.3	+0.9	
Nursing/ Midwifery other	-0.50%	-0.1	-0.1		+0.0	+0.0	+0.0	+0.0	+0.0	+0.0	+0.0	
<b>Nursing &amp; Midwifery</b>	<b>-0.07%</b>	<b>-2.6</b>	<b>-7.2</b>	<b>+1.2</b>	<b>+2.2</b>	<b>+2.9</b>	<b>-2.2</b>	<b>+4.2</b>	<b>+4.4</b>	<b>-1.0</b>	<b>-7.0</b>	
Therapy Professions	-0.09%	-0.7	+0.5	+5.6	+0.1	+2.0	+0.7	+0.1	-5.9	-1.1	-2.7	
Health Science/ Diagnostics	-6.02%	-1.5			+0.0				-1.5	+0.0	+0.0	
Social Care	-0.68%	-20.3	+1.7	-7.6	+3.0	+5.1	+1.5	-20.3	-15.4	+3.5	+8.3	
Social Workers	+0.52%	+1.2	+0.6	-0.7	-0.5	-1.9	+1.8	-0.0	+0.7	-0.3	+1.5	
Psychologists	-2.44%	-5.8	+1.8	+1.5	-1.0	+0.2	-2.7	+0.1	-1.9	-1.2	-2.7	
Pharmacy	+5.15%	+0.4							+0.4		+0.0	
H&SC, Other	+14.57%	+16.4	-0.6	+0.7	+0.2	+0.3	+0.6	+0.0	+13.6	+1.7	+0.0	
<b>Health &amp; Social Care Professionals</b>	<b>-0.23%</b>	<b>-10.3</b>	<b>+4.0</b>	<b>-0.5</b>	<b>+1.8</b>	<b>+5.7</b>	<b>+1.9</b>	<b>-20.2</b>	<b>-10.1</b>	<b>+2.6</b>	<b>+4.5</b>	
Management (VIII & above)	+0.87%	+2.1	-0.0	-0.0	+0.0	+0.2	-0.9	+3.2	+0.3	-0.0	-0.6	+0.0
Administrative/ Supervisory (V to VII)	+2.24%	+15.8	+1.8	+1.6	+0.6	-2.7	-1.0	+6.6	+0.5	+2.5	+6.1	-0.0





Clerical (III & IV)	+1.97%	+15.3	+0.0	+0.8	+1.4	+0.9	+2.4	+1.1	+3.1	+2.2	+3.3	+0.0
<b>Management &amp; Administrative</b>	<b>+1.93%</b>	<b>+33.1</b>	<b>+1.8</b>	<b>+2.4</b>	<b>+2.0</b>	<b>-1.7</b>	<b>+0.6</b>	<b>+10.9</b>	<b>+3.8</b>	<b>+4.7</b>	<b>+8.7</b>	<b>-0.0</b>
Support	-0.10%	-0.6	-0.6	+0.9	-0.6	-1.1	-0.2	+1.2	+2.1	-0.4	-2.0	
Maintenance/ Technical	-1.27%	-1.8	+0.0	+0.0	+0.8	+0.5	+0.0	-1.0	-1.9	-0.1	-0.2	
<b>General Support</b>	<b>-0.32%</b>	<b>-2.4</b>	<b>-0.6</b>	<b>+0.9</b>	<b>+0.2</b>	<b>-0.5</b>	<b>-0.2</b>	<b>+0.2</b>	<b>+0.2</b>	<b>-0.4</b>	<b>-2.1</b>	
Health Care Assistants	+0.56%	+42.5	-3.8	+8.8	+3.2	+15.7	+10.2	+6.9	-0.7	-3.9	+6.0	
Home Help	+2.45%	+1.8	+0.7				+0.5		+0.5	+0.1		
Care, other	-0.51%	-9.0	+0.7	+1.1	-1.3	+5.8	-6.4	+0.5	-3.5	-2.7	-3.2	
<b>Patient &amp; Client Care</b>	<b>+0.37%</b>	<b>+35.3</b>	<b>-2.4</b>	<b>+10.0</b>	<b>+1.9</b>	<b>+21.5</b>	<b>+4.3</b>	<b>+7.4</b>	<b>-3.7</b>	<b>-6.4</b>	<b>+2.8</b>	



## Year on Year Summary

	% WTE change since MAY 2022	WTE change since MAY 2022	CHO 1	CHO 2	CHO 3	CHO 4	CHO 5	CHO 6	CHO 7	CHO 8	CHO 9	other Communi ty Services
<b>Total</b>	<b>+2.65%</b>	<b>+520.2</b>	<b>+49.1</b>	<b>+83.2</b>	<b>+59.0</b>	<b>+60.4</b>	<b>+39.5</b>	<b>-16.0</b>	<b>+122.4</b>	<b>+89.8</b>	<b>+32.8</b>	<b>+0.0</b>
Consultants	-6.61%	-1.4		+0.0	-1.1	+1.0	+0.1	+0.0			-1.4	
Registrars	+15.46%	+1.4	-0.5	+2.0				+0.0	-0.1	+0.0	+0.0	
SHO/ Interns	-11.83%	-1.4		-2.0					+0.6		-0.0	
Medical/ Dental, other	-6.76%	-0.9	-0.9	+0.0	-0.5	+0.7		+0.0		+0.0	-0.2	
<b>Medical &amp; Dental</b>	<b>-4.23%</b>	<b>-2.3</b>	<b>-1.4</b>	<b>+0.0</b>	<b>-1.6</b>	<b>+1.7</b>	<b>+0.1</b>	<b>+0.0</b>	<b>+0.5</b>	<b>+0.0</b>	<b>-1.6</b>	
Nurse/ Midwife Manager	+4.64%	+43.1	+4.9	+3.7	+2.8	-1.2	+5.0	-1.7	+17.3	+5.2	+7.0	
Nurse/ Midwife Specialist & AN/MP	+10.00%	+7.1	+2.1	-1.1	+2.2	-0.5	+1.0	+1.9	+2.8	-1.0	-0.3	
Staff Nurse/ Staff Midwife	+0.37%	+9.7	-22.9	-5.0	+8.6	+4.7	-6.4	+13.5	+11.2	+16.7	-10.8	
Public Health Nurse	+5.07%	+0.6	-0.0				+0.6			+0.0		
Nursing/ Midwifery Student	-8.93%	-7.8	-5.0		-1.5	-2.0	-0.6		+1.0	+4.2	-3.9	
Nursing/ Midwifery other	-12.69%	-3.5	-0.8		+0.0	+0.0	+0.0	+0.0	-1.0	-1.9	+0.1	
<b>Nursing &amp; Midwifery</b>	<b>+1.33%</b>	<b>+49.3</b>	<b>-21.6</b>	<b>-2.4</b>	<b>+12.1</b>	<b>+1.1</b>	<b>-0.4</b>	<b>+13.7</b>	<b>+31.4</b>	<b>+23.3</b>	<b>-7.9</b>	
Therapy Professions	+0.40%	+3.1	-6.5	+12.4	-3.1	-6.7	-0.3	-2.6	-4.7	+9.7	+4.9	
Health Science/ Diagnostics	+3.33%	+0.7			+0.1				-0.4	+0.0	+1.0	
Social Care	+0.12%	+3.6	+13.1	+13.4	-2.4	+12.6	+20.5	-28.2	+14.8	-38.4	-1.9	
Social Workers	+3.68%	+8.4	+1.7	+0.1	+1.5	-1.5	-2.2	+2.6	+0.8	-0.8	+6.1	
Psychologists	-3.46%	-8.4	-2.4	+5.4	-3.2	+0.5	-10.6	-0.7	+0.3	+2.2	+0.2	
Pharmacy	-10.96%	-0.9							-0.9		+0.0	
H&SC, Other	+91.56%	+61.8	-2.0	-0.2	+1.1	-0.5	+0.2	+0.1	+14.6	+49.2	-0.6	
<b>Health &amp; Social Care Professionals</b>	<b>+1.59%</b>	<b>+68.4</b>	<b>+3.9</b>	<b>+31.2</b>	<b>-6.0</b>	<b>+4.3</b>	<b>+7.6</b>	<b>-28.8</b>	<b>+24.6</b>	<b>+21.9</b>	<b>+9.7</b>	
Management (VIII & above)	+3.05%	+7.0	+0.0	+1.1	+5.5	+1.0	+1.3	+5.2	-6.1	-0.1	-1.8	+1.0



Administrative/ Supervisory (V to VII)	+19.50%	+117.8	+8.8	+11.2	+11.1	+16.0	+3.1	+10.1	+16.2	-0.7	+43.1	-1.0
Clerical (III & IV)	+10.35%	+74.2	+7.6	+7.7	+1.8	+7.5	+16.7	-2.7	+22.2	+12.1	+1.3	+0.1
<b>Management &amp; Administrative</b>	<b>+12.83%</b>	<b>+199.0</b>	<b>+16.4</b>	<b>+20.0</b>	<b>+18.3</b>	<b>+24.4</b>	<b>+21.1</b>	<b>+12.6</b>	<b>+32.3</b>	<b>+11.2</b>	<b>+42.6</b>	<b>+0.0</b>
Support	-3.29%	-20.7	-1.1	+1.4	-1.2	-4.8	-1.7	+3.9	-7.9	-5.2	-4.3	
Maintenance/ Technical	+10.80%	+13.4	+0.0	-1.3	+4.0	+0.6	+0.0	+1.0	+6.0	+3.0	+0.1	
<b>General Support</b>	<b>-0.97%</b>	<b>-7.3</b>	<b>-1.1</b>	<b>+0.1</b>	<b>+2.9</b>	<b>-4.2</b>	<b>-1.7</b>	<b>+4.9</b>	<b>-1.9</b>	<b>-2.2</b>	<b>-4.2</b>	
Health Care Assistants	+2.85%	+211.0	+37.5	+26.6	+28.3	+23.6	+9.5	+1.2	+35.0	+37.2	+12.3	
Home Help	-9.95%	-8.1	+0.3				-3.1		-2.0	-3.3		
Care, other	+0.59%	+10.3	+15.2	+7.7	+5.1	+9.6	+6.4	-19.6	+2.6	+1.7	-18.2	
<b>Patient &amp; Client Care</b>	<b>+2.31%</b>	<b>+213.2</b>	<b>+52.9</b>	<b>+34.2</b>	<b>+33.4</b>	<b>+33.1</b>	<b>+12.8</b>	<b>-18.5</b>	<b>+35.6</b>	<b>+35.6</b>	<b>-5.9</b>	



Year to Date Summary

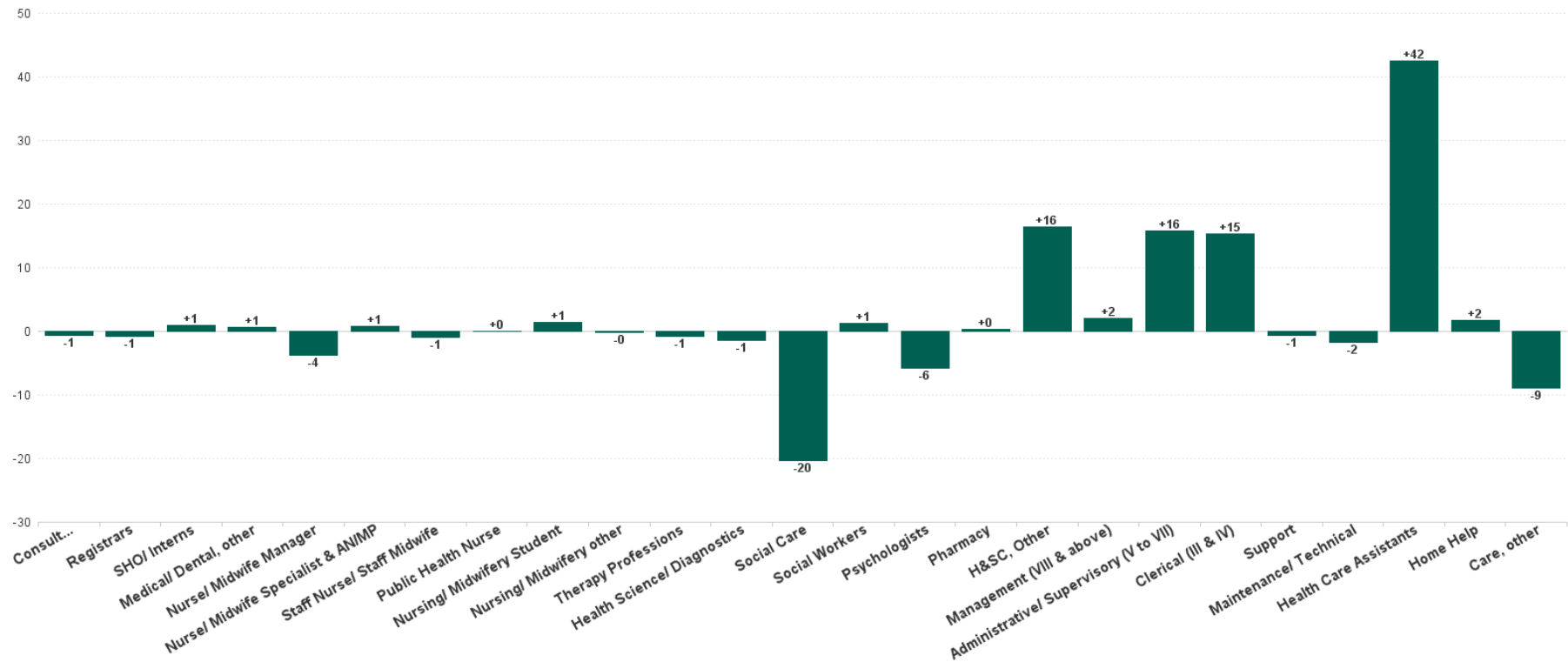
	% WTE change since DEC 2022	WTE change since DEC 2022	CHO 1	CHO 2	CHO 3	CHO 4	CHO 5	CHO 6	CHO 7	CHO 8	CHO 9	other Communi ty Services
Total	+1.22%	+242.1	+38.0	+57.7	+24.4	+43.6	+43.5	-10.7	+4.1	+24.7	+16.9	+0.0
Consultants	+6.68%	+1.2		+0.0	+0.0	+0.0	+0.1	+0.0			+1.1	
Registrars	+2.51%	+0.3		+1.0				+0.0	-0.8	+0.0	+0.0	
SHO/ Interns	+17.56%	+1.6		-1.0					+1.6		+1.0	
Medical/ Dental, other	-4.02%	-0.5	-0.9	+0.0	+0.0	+0.6		+0.0		+0.0	-0.3	
Medical & Dental	+5.03%	+2.5	-0.9	+0.0	+0.0	+0.6	+0.1	+0.0	+0.8	+0.0	+1.9	
Nurse/ Midwife Manager	+1.36%	+13.0	+3.7	+0.3	+0.6	+0.9	+2.3	-1.6	+3.0	-1.5	+5.5	
Nurse/ Midwife Specialist & AN/MP	+12.30%	+8.6	+3.7	-1.2	+2.0	+0.0	+0.1	+1.9	+0.8	+0.9	+0.3	
Staff Nurse/ Staff Midwife	-0.58%	-15.1	-12.7	-3.3	+0.3	+7.7	-6.1	+14.0	+6.9	-1.8	-20.2	
Public Health Nurse	+2.13%	+0.3	-0.0				+0.3			-0.0		
Nursing/ Midwifery Student	+631.27%	+68.4	+7.3		+5.5	+9.3	+6.8		+7.0	+17.9	+14.6	
Nursing/ Midwifery other	-13.58%	-3.7	-0.1		+0.0	+0.0	+0.0	+0.0	-2.0	-1.0	-0.7	
Nursing & Midwifery	+1.93%	+71.5	+1.9	-4.3	+8.4	+17.9	+3.4	+14.3	+15.8	+14.6	-0.4	
Therapy Professions	-1.93%	-15.3	-2.2	+7.0	+0.2	-5.9	+2.1	-0.4	-8.1	+1.1	-9.1	
Health Science/ Diagnostics	+6.29%	+1.3			+0.0				-0.7	+0.0	+2.0	
Social Care	-2.64%	-80.6	+5.0	+1.0	-5.0	+4.7	+1.3	-18.9	-18.7	-48.0	-1.9	
Social Workers	-1.01%	-2.4	+1.1	+0.6	-1.9	-1.8	+0.7	+1.0	-2.9	-1.6	+2.4	
Psychologists	-2.53%	-6.0	+2.4	+4.3	-2.5	-2.6	-3.2	-1.1	-1.6	-1.9	+0.2	
Pharmacy	-12.59%	-1.0							-1.0		+0.0	
H&SC, Other	+89.35%	+61.0	-1.5	+0.5	-0.2	+0.7	-0.6	+0.0	+14.6	+48.0	-0.5	
Health & Social Care Professionals	-0.97%	-43.1	+4.7	+13.3	-9.3	-4.9	+0.2	-19.3	-18.4	-2.4	-6.9	
Management (VIII & above)	+0.38%	+0.9	+0.0	+1.1	+3.5	+1.6	+0.3	-4.1	-2.0	+0.3	+0.2	+0.0
Administrative/ Supervisory (V to VII)	+8.58%	+57.1	+1.8	+7.9	+0.6	+3.6	+6.2	+5.6	+3.3	+3.7	+24.7	-0.0
Clerical (III & IV)	+6.38%	+47.5	-1.2	+7.1	+4.8	+0.9	+8.7	+1.8	+6.2	+9.4	+9.8	+0.0
Management & Administrative	+6.41%	+105.4	+0.7	+16.0	+8.9	+6.1	+15.1	+3.2	+7.5	+13.3	+34.7	+0.0
Support	-2.39%	-14.9	+0.3	+1.9	-2.1	-4.0	-1.3	-0.7	-5.7	-2.9	-0.5	
Maintenance/ Technical	+9.48%	+11.9	+0.0	-0.4	+3.1	+1.5	-0.1	+0.0	+4.0	+3.6	+0.3	
General Support	-0.40%	-3.0	+0.3	+1.5	+1.0	-2.4	-1.4	-0.7	-1.7	+0.7	-0.3	



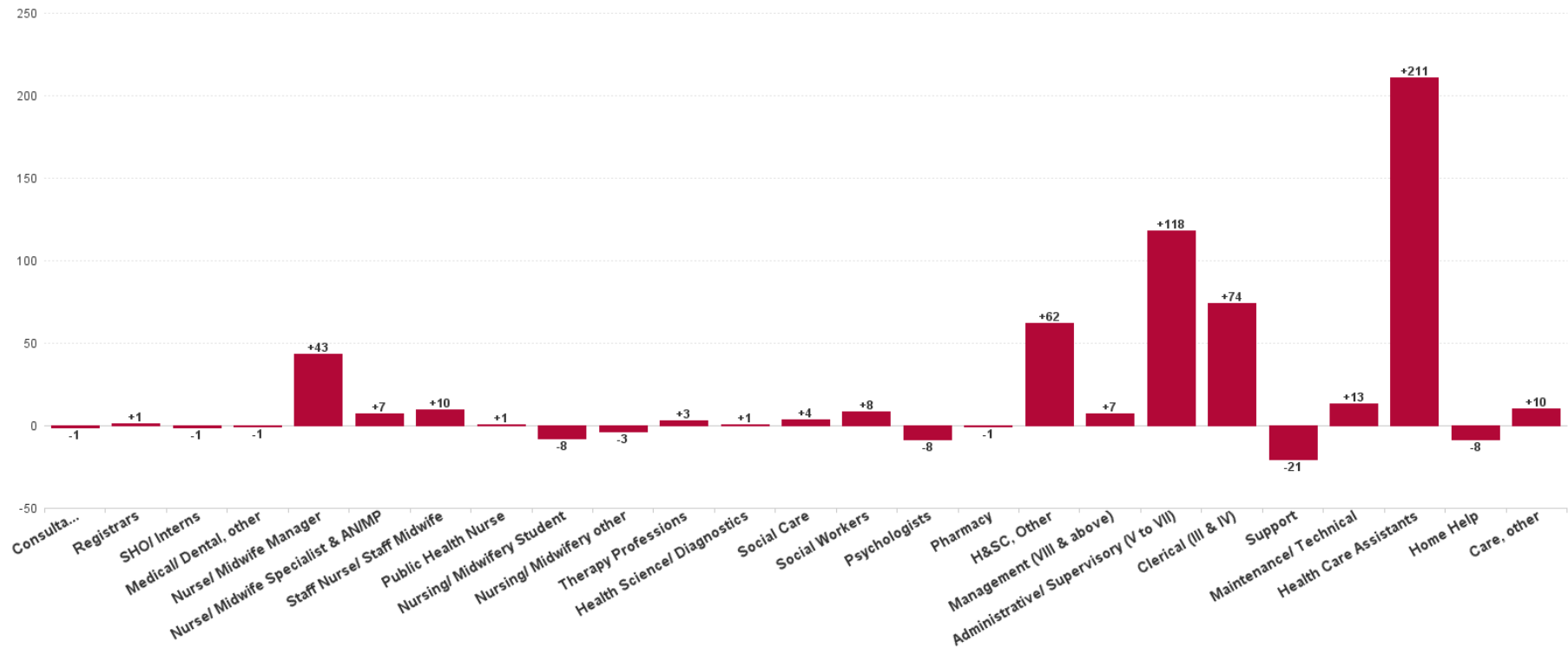
Health Care Assistants	+1.62%	+121.7	+15.5	+24.9	+13.8	+14.4	+33.4	+4.1	+7.5	+3.8	+4.2	
Home Help	-7.91%	-6.3	-1.1				-1.8		-1.6	-1.9		
Care, other	-0.37%	-6.6	+17.0	+6.3	+1.6	+11.9	-5.5	-12.3	-5.9	-3.5	-16.2	
Patient & Client Care	+1.16%	+108.7	+31.4	+31.1	+15.4	+26.3	+26.1	-8.2	+0.1	-1.5	-12.0	



Previous Month Summary Chart: Change since APR 2023



Previous Year Summary Chart: Change since MAY 2022



YTD Summary Chart: Change since DEC 2022

