

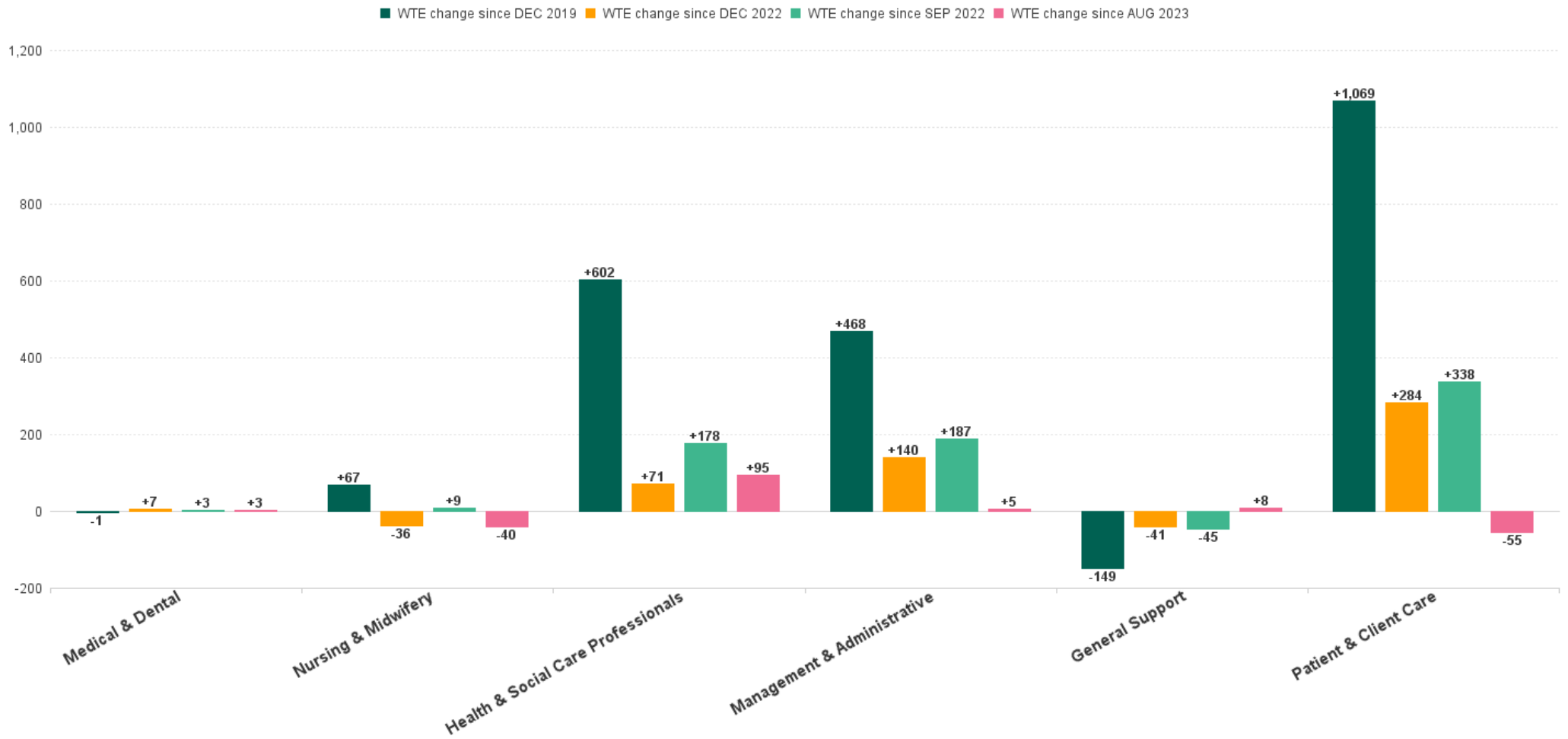
# Disabilities Employment Report : SEP 2023

## Employment Report by Staff Group

SEP 2023	WTE DEC 2019	WTE DEC 2022	WTE AUG 2023	WTE SEP 2023	WTE change since DEC 2019	% WTE Change since Dec 2019	WTE change since DEC 2022	% WTE Change since Dec 2022	WTE change since AUG 2023	No. SEP 2023
<b>Overall</b>	<b>18,273</b>	<b>19,903</b>	<b>20,311</b>	<b>20,328</b>	<b>+2,055</b>	<b>+11.25%</b>	<b>+424</b>	<b>+2.13%</b>	<b>+16</b>	<b>24,064</b>
Consultants	24	18	19	21	-2	-10.05%	+3	+16.73%	+3	27
Registrars	13	10	9	10	-3	-23.31%	-0	-0.10%	+0	11
SHO/ Interns	7	9	14	14	+7	+101.15%	+5	+56.60%	+0	14
Medical/ Dental, other	14	13	12	11	-3	-21.44%	-2	-12.45%	-0	17
<b>Medical &amp; Dental</b>	<b>58</b>	<b>50</b>	<b>54</b>	<b>57</b>	<b>-1</b>	<b>-2.54%</b>	<b>+7</b>	<b>+12.97%</b>	<b>+3</b>	<b>69</b>
Nurse/ Midwife Manager	892	959	967	961	+69	+7.78%	+2	+0.23%	-6	1,038
Nurse/ Midwife Specialist & AN/MP	62	70	79	79	+17	+27.31%	+9	+13.13%	-0	87
Staff Nurse/ Staff Midwife	2,569	2,618	2,540	2,527	-41	-1.61%	-91	-3.47%	-12	2,918
Public Health Nurse	6	12	12	11	+5	+81.21%	-0	-3.23%	-1	14
Pre-registration Nurse/ Midwife Intern	28	7	77	46	+18	+62.90%	+39	+550.92%	-31	94
Nursing/ Midwifery awaiting registration	14	4		8	-6	-42.63%	+4	+110.61%	+8	10
Nursing/ Midwifery Student	42	11	77	54	+12	+28.20%	+43	+397.79%	-23	104
Nursing/ Midwifery other	22	28	26	28	+6	+25.14%	+0	+0.87%	+2	31
<b>Nursing &amp; Midwifery</b>	<b>3,593</b>	<b>3,697</b>	<b>3,701</b>	<b>3,661</b>	<b>+67</b>	<b>+1.88%</b>	<b>-36</b>	<b>-0.98%</b>	<b>-40</b>	<b>4,192</b>
Therapy Professions	763	790	805	822	+59	+7.77%	+32	+4.01%	+17	956
Health Science/ Diagnostics	20	21	21	23	+3	+13.45%	+1	+6.58%	+2	23
Social Care	2,595	3,055	3,045	3,105	+510	+19.66%	+50	+1.65%	+60	3,642
Social Workers	219	239	231	239	+20	+9.32%	+0	+0.08%	+8	278
Psychologists	202	239	228	229	+27	+13.26%	-10	-4.21%	+1	260
Pharmacy	7	8	8	8	+2	+22.45%	+0	+1.34%	+0	11
H&SC, Other	85	68	58	66	-19	-22.69%	-3	-3.84%	+8	84
<b>Health &amp; Social Care Professionals</b>	<b>3,890</b>	<b>4,421</b>	<b>4,397</b>	<b>4,492</b>	<b>+602</b>	<b>+15.46%</b>	<b>+71</b>	<b>+1.61%</b>	<b>+95</b>	<b>5,254</b>
Management (VIII & above)	180	236	232	231	+52	+28.75%	-5	-2.04%	-1	238
Administrative/ Supervisory (V to VII)	477	665	751	749	+271	+56.82%	+84	+12.58%	-2	794
Clerical (III & IV)	660	744	797	805	+145	+21.90%	+61	+8.24%	+8	952
<b>Management &amp; Administrative</b>	<b>1,317</b>	<b>1,645</b>	<b>1,780</b>	<b>1,785</b>	<b>+468</b>	<b>+35.49%</b>	<b>+140</b>	<b>+8.52%</b>	<b>+5</b>	<b>1,984</b>
Support	733	624	560	566	-167	-22.80%	-58	-9.29%	+6	786
Maintenance/ Technical	124	126	140	143	+19	+14.94%	+17	+13.51%	+2	156
<b>General Support</b>	<b>857</b>	<b>750</b>	<b>700</b>	<b>709</b>	<b>-149</b>	<b>-17.34%</b>	<b>-41</b>	<b>-5.46%</b>	<b>+8</b>	<b>942</b>
Health Care Assistants	6,818	7,495	7,871	7,810	+992	+14.55%	+316	+4.21%	-61	9,352
Home Help	99	80	73	70	-30	-29.88%	-10	-13.08%	-4	206
Care, other	1,638	1,766	1,735	1,745	+106	+6.49%	-21	-1.21%	+10	2,065
<b>Patient &amp; Client Care</b>	<b>8,556</b>	<b>9,341</b>	<b>9,680</b>	<b>9,625</b>	<b>+1,069</b>	<b>+12.49%</b>	<b>+284</b>	<b>+3.04%</b>	<b>-55</b>	<b>11,623</b>



## WTE Change by Staff Category



## Disabilities Report by CHO: SEP 2023

SEP 2023	WTE DEC 2019	WTE DEC 2022	WTE AUG 2023	WTE SEP 2023	WTE change since DEC 2019	% WTE Change since Dec 2019	WTE change since DEC 2022	% WTE Change since Dec 2022	WTE change since AUG 2023	No. SEP 2023
<b>Overall</b>	<b>18,273</b>	<b>19,903</b>	<b>20,311</b>	<b>20,328</b>	<b>+2,055</b>	<b>+11.25%</b>	<b>+424</b>	<b>+2.13%</b>	<b>+16</b>	<b>24,064</b>
CHO 1	1,498	1,698	1,755	1,755	+256	+17.11%	+57	+3.33%	-0	1,946
CHO 2	1,497	1,607	1,720	1,730	+233	+15.58%	+123	+7.68%	+10	2,119
CHO 3	1,823	1,989	2,031	2,036	+212	+11.65%	+47	+2.38%	+5	2,436
CHO 4	2,425	2,640	2,678	2,659	+234	+9.64%	+19	+0.71%	-19	3,151
CHO 5	1,488	1,656	1,696	1,705	+217	+14.61%	+49	+2.96%	+10	2,032
CHO 6	1,198	1,216	1,207	1,199	+1	+0.12%	-17	-1.42%	-7	1,385
CHO 7	2,982	3,410	3,475	3,511	+529	+17.74%	+101	+2.96%	+35	4,133
CHO 8	2,162	2,345	2,425	2,413	+251	+11.61%	+68	+2.88%	-12	2,933
CHO 9	3,194	3,336	3,318	3,313	+119	+3.73%	-23	-0.69%	-5	3,922
other Community Services	6	6	7	7	+1	+17.65%	+1	+18.04%	+0	7



## % Total by CHO



## Disabilities Employment Report by HSE/S38: SEP 2023

SEP 2023	WTE DEC 2019	WTE DEC 2022	WTE AUG 2023	WTE SEP 2023	WTE change since DEC 2019	% WTE Change since Dec 2019	WTE change since DEC 2022	% WTE Change since Dec 2022	WTE change since AUG 2023	No. SEP 2023
<b>Overall</b>	<b>18,273</b>	<b>19,903</b>	<b>20,311</b>	<b>20,328</b>	<b>+2,055</b>	<b>+11.25%</b>	<b>+424</b>	<b>+2.13%</b>	<b>+16</b>	<b>24,064</b>
Health Service Executive	3,873	4,200	4,332	4,352	+479	+12.37%	+152	+3.63%	+21	4,953
Section 38 Voluntary Agencies	14,399	15,703	15,980	15,975	+1,576	+10.94%	+272	+1.73%	-4	19,111



## Disabilities Employment Report by HSE: SEP 2023

SEP 2023	WTE DEC 2019	WTE DEC 2022	WTE AUG 2023	WTE SEP 2023	WTE change since DEC 2019	% WTE Change since Dec 2019	WTE change since DEC 2022	% WTE Change since Dec 2022	WTE change since AUG 2023	No. SEP 2023
<b>Total HSE</b>	<b>3,873</b>	<b>4,200</b>	<b>4,332</b>	<b>4,352</b>	<b>+479</b>	<b>+12.37%</b>	<b>+152</b>	<b>+3.63%</b>	<b>+21</b>	<b>4,953</b>
Consultants	8	6	6	6	-1	-14.67%	+1	+15.73%	+1	7
Registrars	3	2	2	2	-1	-33.33%	+0	+1.01%	+0	2
SHO/ Interns		1	2	2	+2		+1	+102.02%	+0	2
Medical/ Dental, other	6	6	5	5	-1	-15.03%	-1	-14.35%	+0	9
<b>Medical &amp; Dental</b>	<b>17</b>	<b>15</b>	<b>15</b>	<b>16</b>	<b>-1</b>	<b>-6.24%</b>	<b>+1</b>	<b>+6.77%</b>	<b>+1</b>	<b>20</b>
Nurse/ Midwife Manager	257	267	271	275	+18	+7.10%	+7	+2.70%	+3	289
Nurse/ Midwife Specialist & AN/MP	14	18	27	26	+12	+89.24%	+8	+44.96%	-1	27
Staff Nurse/ Staff Midwife	788	782	776	780	-7	-0.94%	-2	-0.23%	+5	865
Public Health Nurse	6	12	12	11	+5	+81.21%	-0	-3.23%	-1	14
Nursing/ Midwifery awaiting registration	14	2		3	-9	-75.65%	-3	+70.20%	+3	5
Pre-registration Nurse/ Midwife Intern	3	7	19	17	+1	+432.62%	-3	+144.84%	-2	33
Nursing/ Midwifery Student	17	9	19	21	+4	+21.01%	+12	+128.51%	+2	38
Nursing/ Midwifery other	8	8	9	11	+3	+36.21%	+2	+25.72%	+2	12
<b>Nursing &amp; Midwifery</b>	<b>1,089</b>	<b>1,096</b>	<b>1,114</b>	<b>1,123</b>	<b>+34</b>	<b>+3.17%</b>	<b>+27</b>	<b>+2.45%</b>	<b>+9</b>	<b>1,245</b>
Therapy Professions	330	322	338	343	+13	+4.06%	+21	+6.68%	+5	414
Health Science/ Diagnostics	2	6	6	6	+4	+200.00%	+0	+0.67%	+0	6
Social Care	89	109	114	121	+32	+36.23%	+12	+11.00%	+8	136
Social Workers	58	62	68	72	+14	+24.93%	+10	+16.28%	+4	81
Psychologists	74	95	91	91	+17	+22.66%	-4	-4.00%	-0	104
H&SC, Other	26	19	15	15	-11	-41.62%	-4	-18.97%	+0	18
<b>Health &amp; Social Care Professionals</b>	<b>579</b>	<b>612</b>	<b>632</b>	<b>649</b>	<b>+70</b>	<b>+12.07%</b>	<b>+36</b>	<b>+5.92%</b>	<b>+16</b>	<b>759</b>
Management (VIII & above)	45	69	67	66	+21	+46.72%	-3	-4.95%	-2	69
Administrative/ Supervisory (V to VII)	140	231	257	262	+123	+87.63%	+32	+13.78%	+6	278
Clerical (III & IV)	178	227	243	252	+74	+41.38%	+25	+11.10%	+8	286
<b>Management &amp; Administrative</b>	<b>363</b>	<b>526</b>	<b>567</b>	<b>580</b>	<b>+217</b>	<b>+59.86%</b>	<b>+54</b>	<b>+10.17%</b>	<b>+13</b>	<b>633</b>
Support	87	67	61	60	-27	-31.02%	-7	-10.02%	-1	70
Maintenance/ Technical	21	21	24	24	+3	+15.43%	+3	+16.43%	+0	25
<b>General Support</b>	<b>108</b>	<b>88</b>	<b>85</b>	<b>85</b>	<b>-24</b>	<b>-22.02%</b>	<b>-3</b>	<b>-3.75%</b>	<b>-1</b>	<b>95</b>
Health Care Assistants	1,510	1,616	1,655	1,642	+132	+8.72%	+25	+1.57%	-14	1,792
Home Help	99	80	73	70	-30	-29.88%	-10	-13.08%	-4	206
Care, other	108	166	189	189	+81	+74.63%	+23	+13.95%	-0	203
<b>Patient &amp; Client Care</b>	<b>1,717</b>	<b>1,862</b>	<b>1,918</b>	<b>1,900</b>	<b>+183</b>	<b>+10.64%</b>	<b>+38</b>	<b>+2.05%</b>	<b>-18</b>	<b>2,201</b>



## Disabilities Employment Report by S38 Hospitals: SEP 2023

SEP 2023	WTE DEC 2019	WTE DEC 2022	WTE AUG 2023	WTE SEP 2023	WTE change since DEC 2019	% WTE Change since Dec 2019	WTE change since DEC 2022	% WTE Change since Dec 2022	WTE change since AUG 2023	No. SEP 2023
<b>Total S38 Vols</b>	<b>14,399</b>	<b>15,703</b>	<b>15,980</b>	<b>15,975</b>	<b>+1,576</b>	<b>+10.94%</b>	<b>+272</b>	<b>+1.73%</b>	<b>-4</b>	<b>19,111</b>
Consultants	16	13	13	15	-1	-7.93%	+2	+17.16%	+2	20
Registrars	10	8	8	8	-2	-20.30%	-0	-0.38%	+0	9
SHO/ Interns	7	8	12	12	+5	+72.41%	+4	+50.94%	+0	12
Medical/ Dental, other	8	7	6	6	-2	-26.45%	-1	-10.66%	-0	8
<b>Medical &amp; Dental</b>	<b>41</b>	<b>35</b>	<b>39</b>	<b>41</b>	<b>-0</b>	<b>-1.04%</b>	<b>+6</b>	<b>+15.55%</b>	<b>+2</b>	<b>49</b>
Nurse/ Midwife Manager	635	692	696	687	+51	+8.06%	-5	-0.72%	-9	749
Nurse/ Midwife Specialist & AN/MP	48	52	52	53	+5	+9.74%	+1	+2.16%	+1	60
Staff Nurse/ Staff Midwife	1,781	1,836	1,764	1,747	-34	-1.91%	-89	-4.85%	-17	2,053
Pre-registration Nurse/ Midwife Intern	25		58	29	-8	+14.84%	-6		-29	61
Nursing/ Midwifery awaiting registration		2		5			+1	+155.31%	+5	5
Nursing/ Midwifery Student	25	2	58	33	+8	+33.12%	+31	+1,759.22%	-24	66
Nursing/ Midwifery other	14	19	17	17	+3	+19.24%	-2	-9.96%	+0	19
<b>Nursing &amp; Midwifery</b>	<b>2,504</b>	<b>2,601</b>	<b>2,586</b>	<b>2,537</b>	<b>+33</b>	<b>+1.31%</b>	<b>-63</b>	<b>-2.43%</b>	<b>-49</b>	<b>2,947</b>
Therapy Professions	433	469	467	479	+46	+10.60%	+10	+2.18%	+12	542
Health Science/ Diagnostics	18	15	15	17	-1	-7.28%	+1	+8.87%	+2	17
Social Care	2,506	2,946	2,932	2,984	+478	+19.07%	+38	+1.31%	+53	3,506
Social Workers	161	177	164	167	+6	+3.74%	-10	-5.59%	+4	197
Psychologists	128	144	137	138	+10	+7.82%	-6	-4.34%	+1	156
Pharmacy	7	8	8	8	+2	+22.45%	+0	+1.34%	+0	11
H&SC, Other	59	49	43	50	-8	-14.21%	+1	+1.97%	+8	66
<b>Health &amp; Social Care Professionals</b>	<b>3,312</b>	<b>3,808</b>	<b>3,764</b>	<b>3,843</b>	<b>+532</b>	<b>+16.06%</b>	<b>+35</b>	<b>+0.92%</b>	<b>+79</b>	<b>4,495</b>
Management (VIII & above)	135	167	165	166	+31	+22.79%	-1	-0.83%	+1	169
Administrative/ Supervisory (V to VII)	338	435	494	486	+149	+44.06%	+52	+11.94%	-8	516
Clerical (III & IV)	482	517	554	553	+71	+14.70%	+36	+6.98%	-1	666
<b>Management &amp; Administrative</b>	<b>955</b>	<b>1,118</b>	<b>1,213</b>	<b>1,205</b>	<b>+250</b>	<b>+26.23%</b>	<b>+87</b>	<b>+7.74%</b>	<b>-8</b>	<b>1,351</b>
Support	646	557	499	506	-140	-21.69%	-51	-9.20%	+7	716
Maintenance/ Technical	103	105	116	119	+15	+14.84%	+14	+12.94%	+2	131
<b>General Support</b>	<b>749</b>	<b>662</b>	<b>615</b>	<b>624</b>	<b>-125</b>	<b>-16.66%</b>	<b>-38</b>	<b>-5.69%</b>	<b>+9</b>	<b>847</b>
Health Care Assistants	5,308	5,878	6,216	6,169	+860	+16.21%	+290	+4.94%	-48	7,560
Care, other	1,530	1,600	1,546	1,556	+26	+1.67%	-45	-2.78%	+10	1,862
<b>Patient &amp; Client Care</b>	<b>6,839</b>	<b>7,479</b>	<b>7,762</b>	<b>7,724</b>	<b>+886</b>	<b>+12.95%</b>	<b>+246</b>	<b>+3.28%</b>	<b>-38</b>	<b>9,422</b>

## Disabilities Employment Report by Grade Group: SEP 2023

CHO 1

SEP 2023	WTE DEC 2019	WTE DEC 2022	WTE AUG 2023	WTE SEP 2023	WTE change since DEC 2019	% WTE Change since Dec 2019	WTE change since DEC 2022	% WTE Change since Dec 2022	WTE change since AUG 2023	No. SEP 2023
<b>Overall</b>	<b>1,498</b>	<b>1,698</b>	<b>1,755</b>	<b>1,755</b>	<b>+256</b>	<b>+17.11%</b>	<b>+57</b>	<b>+3.33%</b>	<b>-0</b>	<b>1,946</b>
Medical/ Dental, other	3	3	2	2	-1	-33.11%	-1	-31.03%	+0	5
<b>Medical &amp; Dental</b>	<b>3</b>	<b>3</b>	<b>2</b>	<b>2</b>	<b>-1</b>	<b>-33.11%</b>	<b>-1</b>	<b>-31.03%</b>	<b>+0</b>	<b>5</b>
Nurse/ Midwife Manager	105	112	116	118	+13	+12.12%	+6	+5.14%	+2	124
Nurse/ Midwife Specialist & AN/MP	7	8	13	12	+5	+76.26%	+4	+47.26%	-1	13
Staff Nurse/ Staff Midwife	324	335	315	317	-6	-1.98%	-18	-5.37%	+2	354
Public Health Nurse		1	1	1	+1		-0	-3.03%	+0	1
Nursing/ Midwifery Student	14	6	12	14	-0	-1.07%	+8	+122.67%	+1	24
Nursing/ Midwifery other	5	4	5	6	+1	+28.71%	+2	+43.84%	+1	7
<b>Nursing &amp; Midwifery</b>	<b>455</b>	<b>467</b>	<b>463</b>	<b>468</b>	<b>+14</b>	<b>+3.04%</b>	<b>+1</b>	<b>+0.25%</b>	<b>+5</b>	<b>523</b>
Therapy Professions	42	58	57	57	+15	+34.40%	-2	-2.63%	+0	67
Social Care	8	17	25	24	+17	+223.97%	+8	+46.55%	-0	28
Social Workers	16	17	21	22	+6	+41.50%	+5	+31.08%	+1	23
Psychologists	5	12	14	13	+8	+183.51%	+2	+13.55%	-1	14
H&SC, Other	12	8	6	6	-6	-48.21%	-2	-20.30%	+0	7
<b>Health &amp; Social Care Professionals</b>	<b>82</b>	<b>112</b>	<b>123</b>	<b>123</b>	<b>+40</b>	<b>+49.05%</b>	<b>+11</b>	<b>+10.21%</b>	<b>+0</b>	<b>139</b>
Management (VIII & above)	14	15	14	14	+0	+2.41%	-0	-1.92%	-0	15
Administrative/ Supervisory (V to VII)	28	55	61	61	+33	+120.22%	+6	+11.24%	-0	64
Clerical (III & IV)	50	63	60	61	+11	+22.84%	-2	-3.54%	+1	67
<b>Management &amp; Administrative</b>	<b>91</b>	<b>133</b>	<b>135</b>	<b>136</b>	<b>+45</b>	<b>+49.17%</b>	<b>+4</b>	<b>+2.73%</b>	<b>+1</b>	<b>146</b>
Support	49	30	31	31	-18	-37.37%	+0	+0.95%	-0	38
Maintenance/ Technical	6	4	4	4	-2	-33.33%	+0	+0.76%	+0	4
<b>General Support</b>	<b>55</b>	<b>34</b>	<b>35</b>	<b>35</b>	<b>-20</b>	<b>-36.93%</b>	<b>+0</b>	<b>+0.93%</b>	<b>-0</b>	<b>42</b>
Health Care Assistants	761	884	916	912	+151	+19.79%	+28	+3.12%	-4	997
Home Help	13	16	15	12	-1	-8.15%	-3	-20.88%	-2	25
Care, other	37	49	65	66	+29	+78.33%	+17	+33.67%	+1	69
<b>Patient &amp; Client Care</b>	<b>812</b>	<b>949</b>	<b>997</b>	<b>990</b>	<b>+179</b>	<b>+22.00%</b>	<b>+41</b>	<b>+4.32%</b>	<b>-6</b>	<b>1,091</b>



## Disabilities Employment Report by Grade Group: SEP 2023

### CHO 2

SEP 2023	WTE DEC 2019	WTE DEC 2022	WTE AUG 2023	WTE SEP 2023	WTE change since DEC 2019	% WTE Change since Dec 2019	WTE change since DEC 2022	% WTE Change since Dec 2022	WTE change since AUG 2023	No. SEP 2023
<b>Overall</b>	<b>1,497</b>	<b>1,607</b>	<b>1,720</b>	<b>1,730</b>	<b>+233</b>	<b>+15.58%</b>	<b>+123</b>	<b>+7.68%</b>	<b>+10</b>	<b>2,119</b>
Consultants	3	3	3	3	+0	+0.59%	+0	+0.00%	+0	4
Registrars	2	1	1	1	-1	-50.00%	+0	+0.00%	+0	1
SHO/ Interns		1	1	1	+1		+0	+0.00%	+0	1
Medical/ Dental, other	1	1	1	1	+0	+0.00%	+0	+0.00%	+0	1
<b>Medical &amp; Dental</b>	<b>6</b>	<b>6</b>	<b>6</b>	<b>6</b>	<b>+0</b>	<b>+0.31%</b>	<b>+0</b>	<b>+0.00%</b>	<b>+0</b>	<b>7</b>
Nurse/ Midwife Manager	77	76	76	66	-12	-15.39%	-10	-13.26%	-10	74
Nurse/ Midwife Specialist & AN/MP	6	6	5	6	-0	-4.77%	-1	-13.47%	+0	7
Staff Nurse/ Staff Midwife	165	166	154	159	-6	-3.88%	-7	-4.09%	+5	193
<b>Nursing &amp; Midwifery</b>	<b>249</b>	<b>248</b>	<b>235</b>	<b>230</b>	<b>-19</b>	<b>-7.49%</b>	<b>-18</b>	<b>-7.13%</b>	<b>-5</b>	<b>274</b>
Therapy Professions	41	48	74	79	+37	+90.26%	+31	+64.28%	+5	93
Social Care	222	279	295	319	+97	+43.75%	+40	+14.14%	+24	383
Social Workers	26	27	26	27	+1	+3.80%	+0	+1.09%	+1	38
Psychologists	16	19	25	27	+11	+71.66%	+8	+39.68%	+2	31
H&SC, Other	16	11	8	13	-2	-15.26%	+2	+18.73%	+5	19
<b>Health &amp; Social Care Professionals</b>	<b>321</b>	<b>385</b>	<b>428</b>	<b>465</b>	<b>+144</b>	<b>+44.96%</b>	<b>+80</b>	<b>+20.90%</b>	<b>+37</b>	<b>564</b>
Management (VIII & above)	16	17	18	18	+2	+10.94%	+1	+4.63%	-0	18
Administrative/ Supervisory (V to VII)	40	64	75	71	+31	+76.27%	+7	+11.35%	-4	74
Clerical (III & IV)	50	54	65	63	+13	+26.73%	+9	+16.52%	-2	75
<b>Management &amp; Administrative</b>	<b>106</b>	<b>135</b>	<b>158</b>	<b>152</b>	<b>+46</b>	<b>+43.27%</b>	<b>+17</b>	<b>+12.58%</b>	<b>-6</b>	<b>167</b>
Support	45	46	41	45	+1	+1.21%	-0	-1.03%	+4	79
Maintenance/ Technical	13	12	12	13	-0	-1.62%	+1	+8.11%	+0	14
<b>General Support</b>	<b>58</b>	<b>58</b>	<b>54</b>	<b>58</b>	<b>+0</b>	<b>+0.57%</b>	<b>+0</b>	<b>+0.85%</b>	<b>+4</b>	<b>93</b>
Health Care Assistants	623	641	701	676	+53	+8.44%	+35	+5.38%	-25	830
Care, other	134	134	138	143	+9	+6.59%	+9	+6.52%	+5	184
<b>Patient &amp; Client Care</b>	<b>757</b>	<b>776</b>	<b>839</b>	<b>819</b>	<b>+61</b>	<b>+8.11%</b>	<b>+43</b>	<b>+5.58%</b>	<b>-20</b>	<b>1,014</b>

## Disabilities Employment Report by Grade Group: SEP 2023

CHO 3

SEP 2023	WTE DEC 2019	WTE DEC 2022	WTE AUG 2023	WTE SEP 2023	WTE change since DEC 2019	% WTE Change since Dec 2019	WTE change since DEC 2022	% WTE Change since Dec 2022	WTE change since AUG 2023	No. SEP 2023
<b>Overall</b>	<b>1,823</b>	<b>1,989</b>	<b>2,031</b>	<b>2,036</b>	<b>+212</b>	<b>+11.65%</b>	<b>+47</b>	<b>+2.38%</b>	<b>+5</b>	<b>2,436</b>
Consultants	1	0	0	0	-1	-90.00%	-0	-23.08%	+0	1
Medical/ Dental, other	1	0	0	0	-0	-51.61%	+0	+0.00%	+0	1
<b>Medical &amp; Dental</b>	<b>2</b>	<b>1</b>	<b>1</b>	<b>1</b>	<b>-1</b>	<b>-71.50%</b>	<b>-0</b>	<b>-5.17%</b>	<b>+0</b>	<b>2</b>
Nurse/ Midwife Manager	76	81	79	80	+4	+4.70%	-2	-2.18%	+1	82
Nurse/ Midwife Specialist & AN/MP	13	11	13	14	+1	+9.34%	+3	+28.92%	+1	15
Staff Nurse/ Staff Midwife	247	258	256	253	+5	+2.22%	-5	-1.93%	-3	281
Nursing/ Midwifery Student	12		6	6	-6	-52.17%	+6		+0	11
Nursing/ Midwifery other	4	3	3	3	-1	-19.35%	+0	+9.09%	+0	3
<b>Nursing &amp; Midwifery</b>	<b>351</b>	<b>353</b>	<b>356</b>	<b>355</b>	<b>+4</b>	<b>+1.00%</b>	<b>+2</b>	<b>+0.60%</b>	<b>-2</b>	<b>392</b>
Therapy Professions	74	41	44	47	-27	-36.37%	+7	+16.37%	+3	53
Health Science/ Diagnostics		4	4	4	+4		+0	+1.01%	+0	4
Social Care	241	280	275	276	+35	+14.50%	-5	-1.67%	+1	320
Social Workers	17	19	17	18	+1	+6.42%	-2	-9.38%	+0	20
Psychologists	16	19	16	16	-0	-0.06%	-3	-14.52%	-0	18
H&SC, Other	12	11	11	11	-1	-11.88%	-1	-5.65%	-0	15
<b>Health &amp; Social Care Professionals</b>	<b>359</b>	<b>374</b>	<b>367</b>	<b>371</b>	<b>+12</b>	<b>+3.23%</b>	<b>-3</b>	<b>-0.84%</b>	<b>+4</b>	<b>430</b>
Management (VIII & above)	7	12	17	16	+9	+131.32%	+4	+33.31%	-1	16
Administrative/ Supervisory (V to VII)	41	60	61	60	+19	+47.41%	-0	-0.03%	-1	62
Clerical (III & IV)	59	54	60	60	+1	+1.17%	+6	+11.11%	-0	66
<b>Management &amp; Administrative</b>	<b>107</b>	<b>126</b>	<b>138</b>	<b>135</b>	<b>+29</b>	<b>+27.16%</b>	<b>+10</b>	<b>+7.87%</b>	<b>-3</b>	<b>144</b>
Support	53	54	51	51	-2	-3.74%	-3	-5.81%	+0	57
Maintenance/ Technical	14	18	21	21	+7	+45.75%	+3	+17.04%	+0	23
<b>General Support</b>	<b>67</b>	<b>72</b>	<b>72</b>	<b>72</b>	<b>+5</b>	<b>+6.92%</b>	<b>-0</b>	<b>-0.08%</b>	<b>+0</b>	<b>80</b>
Health Care Assistants	764	857	892	893	+128	+16.79%	+35	+4.10%	+0	1,146
Care, other	173	206	205	210	+37	+21.24%	+3	+1.64%	+5	242
<b>Patient &amp; Client Care</b>	<b>937</b>	<b>1064</b>	<b>1097</b>	<b>1102</b>	<b>+165</b>	<b>+17.61%</b>	<b>+39</b>	<b>+3.62%</b>	<b>+6</b>	<b>1,388</b>



## Disabilities Employment Report by Grade Group: SEP 2023

CHO 4

SEP 2023	WTE DEC 2019	WTE DEC 2022	WTE AUG 2023	WTE SEP 2023	WTE change since DEC 2019	% WTE Change since Dec 2019	WTE change since DEC 2022	% WTE Change since Dec 2022	WTE change since AUG 2023	No. SEP 2023
<b>Overall</b>	<b>2,425</b>	<b>2,640</b>	<b>2,678</b>	<b>2,659</b>	<b>+234</b>	<b>+9.64%</b>	<b>+19</b>	<b>+0.71%</b>	<b>-19</b>	<b>3,151</b>
Consultants	2	2	2	2	+0	+2.00%	+0	+0.00%	+0	2
Medical/ Dental, other	0	0	0	0	+0	+12.12%	+0	+0.00%	+0	1
<b>Medical &amp; Dental</b>	<b>2</b>	<b>2</b>	<b>2</b>	<b>2</b>	<b>+0</b>	<b>+3.83%</b>	<b>+0</b>	<b>+0.00%</b>	<b>+0</b>	<b>3</b>
Nurse/ Midwife Manager	87	98	101	102	+15	+16.84%	+4	+4.15%	+1	117
Nurse/ Midwife Specialist & AN/MP	13	13	13	13	-1	-3.71%	-0	-0.15%	-0	14
Staff Nurse/ Staff Midwife	306	301	301	292	-14	-4.56%	-9	-3.11%	-9	350
Nursing/ Midwifery Student	7	1	10	8	+1	+14.29%	+7	+1,059.42%	-2	16
Nursing/ Midwifery other	1	1	1	1	+0	+96.08%	+0	+0.00%	+0	1
<b>Nursing &amp; Midwifery</b>	<b>414</b>	<b>414</b>	<b>426</b>	<b>416</b>	<b>+2</b>	<b>+0.43%</b>	<b>+2</b>	<b>+0.48%</b>	<b>-10</b>	<b>498</b>
Therapy Professions	108	105	104	111	+3	+2.91%	+6	+6.01%	+7	131
Social Care	227	259	248	271	+45	+19.77%	+13	+4.92%	+24	307
Social Workers	27	28	26	27	+0	+1.08%	-1	-1.80%	+1	32
Psychologists	35	37	34	34	-1	-2.02%	-2	-6.82%	-0	37
H&SC, Other	8	7	6	6	-2	-24.17%	-1	-9.44%	-0	7
<b>Health &amp; Social Care Professionals</b>	<b>405</b>	<b>435</b>	<b>419</b>	<b>450</b>	<b>+45</b>	<b>+11.24%</b>	<b>+15</b>	<b>+3.53%</b>	<b>+31</b>	<b>514</b>
Management (VIII & above)	22	23	26	26	+4	+16.22%	+3	+12.76%	-0	27
Administrative/ Supervisory (V to VII)	53	72	80	77	+24	+44.04%	+5	+6.36%	-3	83
Clerical (III & IV)	84	93	94	93	+9	+10.17%	-1	-0.88%	-2	123
<b>Management &amp; Administrative</b>	<b>160</b>	<b>189</b>	<b>201</b>	<b>195</b>	<b>+36</b>	<b>+22.33%</b>	<b>+7</b>	<b>+3.55%</b>	<b>-5</b>	<b>233</b>
Support	140	138	95	94	-46	-32.70%	-44	-31.83%	-1	144
Maintenance/ Technical	10	10	11	11	+1	+11.18%	+1	+14.08%	+1	14
<b>General Support</b>	<b>150</b>	<b>148</b>	<b>106</b>	<b>106</b>	<b>-45</b>	<b>-29.72%</b>	<b>-43</b>	<b>-28.75%</b>	<b>-0</b>	<b>158</b>
Health Care Assistants	987	1,111	1,170	1,138	+151	+15.34%	+28	+2.49%	-32	1,340
Care, other	307	342	355	352	+44	+14.36%	+10	+2.80%	-3	405
<b>Patient &amp; Client Care</b>	<b>1295</b>	<b>1453</b>	<b>1525</b>	<b>1490</b>	<b>+196</b>	<b>+15.10%</b>	<b>+37</b>	<b>+2.56%</b>	<b>-35</b>	<b>1,745</b>



## Disabilities Employment Report by Grade Group: SEP 2023

CHO 5

SEP 2023	WTE DEC 2019	WTE DEC 2022	WTE AUG 2023	WTE SEP 2023	WTE change since DEC 2019	% WTE Change since Dec 2019	WTE change since DEC 2022	% WTE Change since Dec 2022	WTE change since AUG 2023	No. SEP 2023
<b>Overall</b>	<b>1,488</b>	<b>1,656</b>	<b>1,696</b>	<b>1,705</b>	<b>+217</b>	<b>+14.61%</b>	<b>+49</b>	<b>+2.96%</b>	<b>+10</b>	<b>2,032</b>
Consultants	1	1		1	+0	+5.26%	+0	+12.36%	+1	1
<b>Medical &amp; Dental</b>	<b>1</b>	<b>1</b>		<b>1</b>	<b>+0</b>	<b>+5.26%</b>	<b>+0</b>	<b>+12.36%</b>	<b>+1</b>	<b>1</b>
Nurse/ Midwife Manager	66	74	76	75	+9	+14.02%	+0	+0.36%	-1	78
Nurse/ Midwife Specialist & AN/MP	2	4	4	4	+2	+97.50%	+0	+2.07%	-0	4
Staff Nurse/ Staff Midwife	170	169	162	160	-9	-5.41%	-8	-4.90%	-1	183
Public Health Nurse	5	10	10	9	+4	+77.82%	-0	-3.17%	-1	12
Nursing/ Midwifery Student	2	0	7	7	+5	+275.54%	+7	+4,218.75%	-0	14
Nursing/ Midwifery other		1	1	1	+1		+0	+1.22%	+0	1
<b>Nursing &amp; Midwifery</b>	<b>244</b>	<b>258</b>	<b>259</b>	<b>256</b>	<b>+12</b>	<b>+4.92%</b>	<b>-1</b>	<b>-0.57%</b>	<b>-3</b>	<b>292</b>
Therapy Professions	61	59	59	55	-6	-9.17%	-3	-5.46%	-4	69
Social Care	154	161	159	161	+7	+4.81%	-0	-0.11%	+2	197
Social Workers	21	20	21	25	+4	+16.69%	+4	+21.73%	+3	27
Psychologists	12	17	14	13	+1	+10.71%	-4	-21.81%	-1	18
H&SC, Other	7	6	5	6	-1	-8.02%	+0	+7.18%	+1	8
<b>Health &amp; Social Care Professionals</b>	<b>255</b>	<b>263</b>	<b>259</b>	<b>261</b>	<b>+6</b>	<b>+2.37%</b>	<b>-2</b>	<b>-0.86%</b>	<b>+2</b>	<b>319</b>
Management (VIII & above)	11	19	19	19	+8	+70.83%	-0	-1.43%	-1	19
Administrative/ Supervisory (V to VII)	36	55	61	63	+27	+74.70%	+9	+16.19%	+2	66
Clerical (III & IV)	61	74	86	85	+25	+41.08%	+12	+15.73%	-1	101
<b>Management &amp; Administrative</b>	<b>108</b>	<b>147</b>	<b>167</b>	<b>167</b>	<b>+60</b>	<b>+55.41%</b>	<b>+20</b>	<b>+13.70%</b>	<b>+0</b>	<b>186</b>
Support	15	8	7	6	-9	-61.05%	-2	-25.69%	-1	9
Maintenance/ Technical	7	9	9	9	+1	+20.19%	-1	-5.57%	+0	10
<b>General Support</b>	<b>23</b>	<b>17</b>	<b>15</b>	<b>15</b>	<b>-8</b>	<b>-34.73%</b>	<b>-3</b>	<b>-14.87%</b>	<b>-1</b>	<b>19</b>
Health Care Assistants	671	753	792	792	+121	+18.10%	+39	+5.20%	-0	922
Home Help	44	29	28	28	-16	-35.99%	-1	-4.68%	-0	71
Care, other	143	187	175	185	+42	+29.29%	-3	-1.45%	+10	222
<b>Patient &amp; Client Care</b>	<b>858</b>	<b>970</b>	<b>995</b>	<b>1005</b>	<b>+147</b>	<b>+17.19%</b>	<b>+35</b>	<b>+3.62%</b>	<b>+10</b>	<b>1,215</b>



## Disabilities Employment Report by Grade Group: SEP 2023

CHO 6

SEP 2023	WTE DEC 2019	WTE DEC 2022	WTE AUG 2023	WTE SEP 2023	WTE change since DEC 2019	% WTE Change since Dec 2019	WTE change since DEC 2022	% WTE Change since Dec 2022	WTE change since AUG 2023	No. SEP 2023
<b>Overall</b>	<b>1,198</b>	<b>1,216</b>	<b>1,207</b>	<b>1,199</b>	<b>+1</b>	<b>+0.12%</b>	<b>-17</b>	<b>-1.42%</b>	<b>-7</b>	<b>1,385</b>
Consultants	3	3	3	3	+0	+0.00%	+0	+0.00%	+0	3
Registrars		1	1	1	+1		+0	+1.01%	+0	1
Medical/ Dental, other	1	1	1	1	+0	+0.00%	+0	+0.00%	+0	1
<b>Medical &amp; Dental</b>	<b>4</b>	<b>5</b>	<b>5</b>	<b>5</b>	<b>+1</b>	<b>+25.00%</b>	<b>+0</b>	<b>+0.20%</b>	<b>+0</b>	<b>5</b>
Nurse/ Midwife Manager	44	40	35	36	-8	-17.81%	-4	-9.50%	+1	39
Nurse/ Midwife Specialist & AN/MP			2	2	+2		+2		-0	2
Staff Nurse/ Staff Midwife	147	138	140	139	-8	-5.35%	+2	+1.23%	-1	154
Nursing/ Midwifery other		1	1	1	+1		+0	+0.00%	+0	1
<b>Nursing &amp; Midwifery</b>	<b>191</b>	<b>178</b>	<b>178</b>	<b>178</b>	<b>-13</b>	<b>-6.79%</b>	<b>-0</b>	<b>-0.21%</b>	<b>-0</b>	<b>196</b>
Therapy Professions	42	26	23	24	-18	-42.54%	-2	-6.35%	+1	31
Social Care	334	381	380	378	+43	+12.91%	-4	-0.99%	-2	427
Social Workers	11	8	9	10	-1	-6.96%	+2	+24.02%	+1	11
Psychologists	14	14	13	13	-0	-1.11%	-1	-4.48%	+0	15
H&SC, Other	2	1	1	1	-1	-72.13%	-1	-64.34%	+0	1
<b>Health &amp; Social Care Professionals</b>	<b>403</b>	<b>431</b>	<b>426</b>	<b>426</b>	<b>+23</b>	<b>+5.77%</b>	<b>-5</b>	<b>-1.14%</b>	<b>+0</b>	<b>485</b>
Management (VIII & above)	31	39	30	29	-1	-4.78%	-10	-25.48%	-1	31
Administrative/ Supervisory (V to VII)	53	64	72	74	+20	+38.13%	+10	+14.86%	+2	81
Clerical (III & IV)	54	52	53	54	+1	+1.17%	+2	+4.39%	+1	62
<b>Management &amp; Administrative</b>	<b>138</b>	<b>156</b>	<b>156</b>	<b>157</b>	<b>+19</b>	<b>+14.13%</b>	<b>+2</b>	<b>+1.16%</b>	<b>+2</b>	<b>174</b>
Support	23	23	20	19	-4	-18.14%	-4	-18.03%	-2	26
Maintenance/ Technical	7	8	8	7	+0	+3.70%	-1	-12.50%	-1	7
<b>General Support</b>	<b>29</b>	<b>31</b>	<b>28</b>	<b>26</b>	<b>-4</b>	<b>-13.12%</b>	<b>-5</b>	<b>-16.58%</b>	<b>-3</b>	<b>33</b>
Health Care Assistants	187	188	200	200	+13	+7.00%	+12	+6.38%	-0	233
Care, other	246	229	214	208	-38	-15.61%	-21	-9.04%	-6	259
<b>Patient &amp; Client Care</b>	<b>433</b>	<b>416</b>	<b>414</b>	<b>408</b>	<b>-25</b>	<b>-5.87%</b>	<b>-9</b>	<b>-2.09%</b>	<b>-6</b>	<b>492</b>



## Disabilities Employment Report by Grade Group: SEP 2023

CHO 7

SEP 2023	WTE DEC 2019	WTE DEC 2022	WTE AUG 2023	WTE SEP 2023	WTE change since DEC 2019	% WTE Change since Dec 2019	WTE change since DEC 2022	% WTE Change since Dec 2022	WTE change since AUG 2023	No. SEP 2023
<b>Overall</b>	<b>2,982</b>	<b>3,410</b>	<b>3,475</b>	<b>3,511</b>	<b>+529</b>	<b>+17.74%</b>	<b>+101</b>	<b>+2.96%</b>	<b>+35</b>	<b>4,133</b>
Consultants	1				-1	-100.00%				
Registrars	3	4	4	4	+1	+32.33%	-0	-0.75%	+0	5
SHO/ Interns	7	7	11	11	+4	+58.05%	+4	+58.27%	+0	11
Medical/ Dental, other	1				-1	-100.00%				
<b>Medical &amp; Dental</b>	<b>12</b>	<b>11</b>	<b>15</b>	<b>15</b>	<b>+3</b>	<b>+30.17%</b>	<b>+4</b>	<b>+36.71%</b>	<b>+0</b>	<b>16</b>
Nurse/ Midwife Manager	122	153	158	159	+37	+30.55%	+6	+3.93%	+1	171
Nurse/ Midwife Specialist & AN/MP	5	6	7	7	+2	+38.52%	+1	+12.66%	-0	8
Staff Nurse/ Staff Midwife	374	416	403	404	+30	+7.93%	-13	-3.04%	+1	468
Nursing/ Midwifery Student		1	8	10	+10		+9	+857.00%	+2	12
Nursing/ Midwifery other	1	4	2	2	+1	+204.00%	-2	-56.82%	+0	2
<b>Nursing &amp; Midwifery</b>	<b>502</b>	<b>581</b>	<b>579</b>	<b>581</b>	<b>+80</b>	<b>+15.85%</b>	<b>+1</b>	<b>+0.12%</b>	<b>+3</b>	<b>661</b>
Therapy Professions	122	155	150	151	+29	+24.16%	-3	-2.16%	+1	171
Health Science/ Diagnostics	3	3	2	3	-0	-10.33%	-1	-19.22%	+1	3
Social Care	360	467	461	478	+117	+32.59%	+11	+2.34%	+17	520
Social Workers	33	42	37	37	+3	+10.18%	-5	-11.90%	+0	43
Psychologists	28	36	31	33	+5	+18.22%	-3	-8.40%	+2	39
Pharmacy	5	6	6	6	+2	+31.87%	+0	+1.78%	+0	9
H&SC, Other	2	2	2	2	+1	+33.33%	+1	+33.33%	+0	2
<b>Health &amp; Social Care Professionals</b>	<b>553</b>	<b>710</b>	<b>689</b>	<b>709</b>	<b>+157</b>	<b>+28.41%</b>	<b>-0</b>	<b>-0.06%</b>	<b>+20</b>	<b>787</b>
Management (VIII & above)	32	47	43	45	+13	+39.46%	-2	-4.48%	+1	45
Administrative/ Supervisory (V to VII)	79	109	123	126	+47	+59.61%	+17	+15.35%	+3	134
Clerical (III & IV)	92	120	126	125	+33	+35.94%	+5	+4.18%	-2	144
<b>Management &amp; Administrative</b>	<b>203</b>	<b>276</b>	<b>293</b>	<b>295</b>	<b>+93</b>	<b>+45.73%</b>	<b>+20</b>	<b>+7.15%</b>	<b>+2</b>	<b>323</b>
Support	167	156	152	154	-12	-7.49%	-2	-1.34%	+2	220
Maintenance/ Technical	28	32	39	41	+13	+44.98%	+9	+28.62%	+2	46
<b>General Support</b>	<b>195</b>	<b>188</b>	<b>191</b>	<b>196</b>	<b>+0</b>	<b>+0.16%</b>	<b>+7</b>	<b>+3.76%</b>	<b>+4</b>	<b>266</b>
Health Care Assistants	1,112	1,228	1,315	1,315	+203	+18.22%	+87	+7.06%	+0	1,552
Home Help	19	14	12	11	-8	-42.14%	-2	-17.93%	-0	73
Care, other	386	402	383	387	+1	+0.38%	-15	-3.64%	+5	455
<b>Patient &amp; Client Care</b>	<b>1518</b>	<b>1644</b>	<b>1709</b>	<b>1714</b>	<b>+196</b>	<b>+12.91%</b>	<b>+70</b>	<b>+4.24%</b>	<b>+5</b>	<b>2,080</b>



## Disabilities Employment Report by Grade Group: SEP 2023

CHO 8

SEP 2023	WTE DEC 2019	WTE DEC 2022	WTE AUG 2023	WTE SEP 2023	WTE change since DEC 2019	% WTE Change since Dec 2019	WTE change since DEC 2022	% WTE Change since Dec 2022	WTE change since AUG 2023	No. SEP 2023
<b>Overall</b>	<b>2,162</b>	<b>2,345</b>	<b>2,425</b>	<b>2,413</b>	<b>+251</b>	<b>+11.61%</b>	<b>+68</b>	<b>+2.88%</b>	<b>-12</b>	<b>2,933</b>
Consultants	1				-1	-100.00%				
Registrars	2	1	1	1	-1	-50.00%	+0	+0.00%	+0	1
Medical/ Dental, other	1	1	1	1	+0	+0.00%	+0	+0.00%	+0	1
<b>Medical &amp; Dental</b>	<b>4</b>	<b>2</b>	<b>2</b>	<b>2</b>	<b>-2</b>	<b>-50.00%</b>	<b>+0</b>	<b>+0.00%</b>	<b>+0</b>	<b>2</b>
Nurse/ Midwife Manager	123	114	112	113	-10	-8.25%	-1	-0.84%	+1	123
Nurse/ Midwife Specialist & AN/MP	7	4	5	5	-2	-24.12%	+1	+20.58%	-0	6
Staff Nurse/ Staff Midwife	319	335	328	327	+9	+2.76%	-7	-2.17%	-1	380
Public Health Nurse	1	1	1	1	+0	+0.00%	-0	-4.00%	+0	1
Nursing/ Midwifery Student		1	19	6	+6		+5	+630.38%	-13	17
Nursing/ Midwifery other	5	5	6	6	+1	+14.51%	+1	+15.64%	+0	7
<b>Nursing &amp; Midwifery</b>	<b>455</b>	<b>460</b>	<b>472</b>	<b>459</b>	<b>+3</b>	<b>+0.76%</b>	<b>-2</b>	<b>-0.33%</b>	<b>-13</b>	<b>534</b>
Therapy Professions	92	92	96	98	+7	+7.45%	+6	+6.56%	+3	118
Health Science/ Diagnostics	2	2	2	2	+0	+0.00%	+0	+0.00%	+0	2
Social Care	361	414	420	419	+58	+16.03%	+4	+1.06%	-1	507
Social Workers	24	24	23	23	-1	-4.69%	-1	-4.59%	-0	28
Psychologists	25	29	25	26	+1	+3.51%	-3	-10.13%	+0	30
H&SC, Other	7	8	6	6	-1	-9.63%	-2	-24.64%	+0	8
<b>Health &amp; Social Care Professionals</b>	<b>510</b>	<b>569</b>	<b>572</b>	<b>574</b>	<b>+64</b>	<b>+12.49%</b>	<b>+4</b>	<b>+0.77%</b>	<b>+2</b>	<b>693</b>
Management (VIII & above)	9	18	19	17	+9	+98.52%	-1	-5.36%	-1	19
Administrative/ Supervisory (V to VII)	56	55	62	66	+10	+17.12%	+11	+19.05%	+3	69
Clerical (III & IV)	84	94	110	111	+26	+31.07%	+16	+17.52%	+1	130
<b>Management &amp; Administrative</b>	<b>149</b>	<b>168</b>	<b>191</b>	<b>194</b>	<b>+44</b>	<b>+29.80%</b>	<b>+26</b>	<b>+15.51%</b>	<b>+3</b>	<b>218</b>
Support	46	33	30	27	-19	-40.89%	-5	-15.59%	-2	36
Maintenance/ Technical	16	12	16	16	-0	-0.58%	+4	+28.76%	+0	16
<b>General Support</b>	<b>62</b>	<b>45</b>	<b>46</b>	<b>43</b>	<b>-19</b>	<b>-30.54%</b>	<b>-2</b>	<b>-3.36%</b>	<b>-2</b>	<b>52</b>
Health Care Assistants	844	965	1,011	1,013	+169	+20.09%	+48	+4.96%	+2	1,268
Home Help	22	21	19	18	-5	-20.26%	-3	-15.92%	-1	37
Care, other	115	115	113	110	-5	-3.94%	-4	-3.72%	-2	129
<b>Patient &amp; Client Care</b>	<b>981</b>	<b>1101</b>	<b>1142</b>	<b>1141</b>	<b>+160</b>	<b>+16.35%</b>	<b>+40</b>	<b>+3.66%</b>	<b>-1</b>	<b>1,434</b>



## Disabilities Employment Report by Grade Group: SEP 2023

CHO 9

SEP 2023	WTE DEC 2019	WTE DEC 2022	WTE AUG 2023	WTE SEP 2023	WTE change since DEC 2019	% WTE Change since Dec 2019	WTE change since DEC 2022	% WTE Change since Dec 2022	WTE change since AUG 2023	No. SEP 2023
<b>Overall</b>	<b>3,194</b>	<b>3,336</b>	<b>3,318</b>	<b>3,313</b>	<b>+119</b>	<b>+3.73%</b>	<b>-23</b>	<b>-0.69%</b>	<b>-5</b>	<b>3,922</b>
Consultants	13	9	11	12	-0	-0.48%	+3	+31.78%	+2	16
Registrars	6	3	3	3	-3	-50.00%	+0	+0.33%	+0	3
SHO/ Interns		1	2	2	+2		+1	+102.02%	+0	2
Medical/ Dental, other	6	6	6	6	-1	-10.71%	-1	-11.43%	-0	7
<b>Medical &amp; Dental</b>	<b>25</b>	<b>20</b>	<b>21</b>	<b>23</b>	<b>-2</b>	<b>-6.97%</b>	<b>+3</b>	<b>+16.86%</b>	<b>+2</b>	<b>28</b>
Nurse/ Midwife Manager	192	211	214	213	+22	+11.34%	+3	+1.25%	-0	230
Nurse/ Midwife Specialist & AN/MP	9	16	16	16	+7	+83.74%	-1	-3.10%	+0	18
Staff Nurse/ Staff Midwife	517	501	479	475	-42	-8.04%	-25	-5.03%	-4	555
Nursing/ Midwifery Student	8	2	15	4	-3	-43.74%	+2	+120.20%	-11	10
Nursing/ Midwifery other	7	9	7	8	+1	+11.19%	-1	-8.01%	+1	9
<b>Nursing &amp; Midwifery</b>	<b>732</b>	<b>739</b>	<b>731</b>	<b>717</b>	<b>-15</b>	<b>-2.07%</b>	<b>-21</b>	<b>-2.89%</b>	<b>-14</b>	<b>822</b>
Therapy Professions	181	208	198	199	+18	+10.06%	-8	-4.03%	+1	223
Health Science/ Diagnostics	15	12	13	14	-1	-6.67%	+2	+16.67%	+1	14
Social Care	689	796	783	780	+91	+13.17%	-16	-2.04%	-3	953
Social Workers	44	54	51	51	+7	+14.93%	-3	-6.16%	+0	56
Psychologists	53	57	55	54	+1	+1.25%	-4	-6.79%	-1	58
Pharmacy	2	2	2	2	+0	+0.00%	+0	+0.00%	+0	2
H&SC, Other	19	13	13	14	-5	-28.24%	+0	+1.72%	+1	17
<b>Health &amp; Social Care Professionals</b>	<b>1003</b>	<b>1142</b>	<b>1114</b>	<b>1113</b>	<b>+110</b>	<b>+10.95%</b>	<b>-30</b>	<b>-2.59%</b>	<b>-1</b>	<b>1,323</b>
Management (VIII & above)	37	45	43	46	+9	+22.76%	+1	+2.59%	+3	46
Administrative/ Supervisory (V to VII)	88	129	153	149	+61	+70.02%	+20	+15.53%	-4	159
Clerical (III & IV)	125	137	140	150	+25	+19.93%	+13	+9.47%	+11	181
<b>Management &amp; Administrative</b>	<b>250</b>	<b>311</b>	<b>335</b>	<b>345</b>	<b>+95</b>	<b>+37.87%</b>	<b>+34</b>	<b>+10.99%</b>	<b>+10</b>	<b>386</b>
Support	196	136	134	139	-57	-29.00%	+3	+1.96%	+5	177
Maintenance/ Technical	22	20	21	21	-1	-6.50%	+0	+1.58%	+0	22
<b>General Support</b>	<b>218</b>	<b>156</b>	<b>154</b>	<b>159</b>	<b>-58</b>	<b>-26.73%</b>	<b>+3</b>	<b>+1.91%</b>	<b>+5</b>	<b>199</b>
Health Care Assistants	869	866	874	871	+2	+0.26%	+5	+0.56%	-3	1,064
Care, other	97	102	88	84	-13	-13.14%	-17	-17.20%	-4	100
<b>Patient &amp; Client Care</b>	<b>966</b>	<b>968</b>	<b>962</b>	<b>955</b>	<b>-10</b>	<b>-1.08%</b>	<b>-13</b>	<b>-1.31%</b>	<b>-7</b>	<b>1,164</b>



## Disabilities Employment Report by Grade Group: SEP 2023

### other Community Services

SEP 2023	WTE DEC 2019	WTE DEC 2022	WTE AUG 2023	WTE SEP 2023	WTE change since DEC 2019	% WTE Change since Dec 2019	WTE change since DEC 2022	% WTE Change since Dec 2022	WTE change since AUG 2023	No. SEP 2023
<b>Overall</b>	<b>6</b>	<b>6</b>	<b>7</b>	<b>7</b>	<b>+1</b>	<b>+17.65%</b>	<b>+1</b>	<b>+18.04%</b>	<b>+0</b>	<b>7</b>
Management (VIII & above)	1	2	2	2	+1	+100.00%	+0	+2.04%	+0	2
Administrative/ Supervisory (V to VII)	3	2	2	2	-1	-33.33%	+0	+0.50%	+0	2
Clerical (III & IV)	2	2	3	3	+1	+53.85%	+1	+51.52%	+0	3
<b>Management &amp; Administrative</b>	<b>6</b>	<b>6</b>	<b>7</b>	<b>7</b>	<b>+1</b>	<b>+17.65%</b>	<b>+1</b>	<b>+18.04%</b>	<b>+0</b>	<b>7</b>



## Disabilities Employment Report by Grade Group: SEP 2023

SEP 2023	WTE DEC 2019	WTE DEC 2022	WTE AUG 2023	WTE SEP 2023	WTE change since DEC 2019	% WTE Change since Dec 2019	WTE change since DEC 2022	% WTE Change since Dec 2022	WTE change since AUG 2023	No. SEP 2023
<b>Overall</b>	<b>18,273</b>	<b>19,903</b>	<b>20,311</b>	<b>20,328</b>	<b>+2,055</b>	<b>+11.25%</b>	<b>+424</b>	<b>+2.13%</b>	<b>+16</b>	<b>24,064</b>
Consultant Paediatrics	3	3	3	4	+0	+15.74%	+1	+39.53%	+1	4
Consultant Psychiatry	21	16	16	18	-3	-13.82%	+2	+13.10%	+2	23
<b>Consultants</b>	<b>24</b>	<b>18</b>	<b>19</b>	<b>21</b>	<b>-2</b>	<b>-10.05%</b>	<b>+3</b>	<b>+16.73%</b>	<b>+3</b>	<b>27</b>
Registrar	7	7	5	5	-2	-29.00%	-2	-28.80%	+0	6
Senior Registrar	2	2	2	2	+0	+0.00%	+0	+0.00%	+0	2
Specialist Registrar	4	1	3	3	-1	-25.00%	+2	+200.00%	+0	3
<b>Registrars</b>	<b>13</b>	<b>10</b>	<b>9</b>	<b>10</b>	<b>-3</b>	<b>-23.31%</b>	<b>-0</b>	<b>-0.10%</b>	<b>+0</b>	<b>11</b>
Senior House Officer	7	9	14	14	+7	+101.15%	+5	+56.60%	+0	14
<b>SHO/ Interns</b>	<b>7</b>	<b>9</b>	<b>14</b>	<b>14</b>	<b>+7</b>	<b>+101.15%</b>	<b>+5</b>	<b>+56.60%</b>	<b>+0</b>	<b>14</b>
Other Medical	14	13	12	11	-3	-21.44%	-2	-12.45%	-0	17
<b>Medical/ Dental, other</b>	<b>14</b>	<b>13</b>	<b>12</b>	<b>11</b>	<b>-3</b>	<b>-21.44%</b>	<b>-2</b>	<b>-12.45%</b>	<b>-0</b>	<b>17</b>
<b>Medical &amp; Dental</b>	<b>58</b>	<b>50</b>	<b>54</b>	<b>57</b>	<b>-1</b>	<b>-2.54%</b>	<b>+7</b>	<b>+12.97%</b>	<b>+3</b>	<b>69</b>
Clinical Nurse/ Midwife Manager 1	283	304	293	292	+9	+3.18%	-12	-4.10%	-1	322
Clinical Nurse/ Midwife Manager 2	424	440	454	455	+31	+7.31%	+16	+3.53%	+1	491
Clinical Nurse/ Midwife Manager 3	102	125	126	120	+18	+17.96%	-5	-3.76%	-6	128
Director Nursing/Midwifery, Assistant	41	43	48	49	+8	+20.32%	+6	+13.08%	+1	50
Director of Nursing/Midwifery	42	47	46	45	+3	+6.73%	-2	-3.84%	-1	47
<b>Nurse/ Midwife Manager</b>	<b>892</b>	<b>959</b>	<b>967</b>	<b>961</b>	<b>+69</b>	<b>+7.78%</b>	<b>+2</b>	<b>+0.23%</b>	<b>-6</b>	<b>1,038</b>
Advanced Nurse/ Midwife Practitioner	2	6	8	8	+6	+290.00%	+2	+30.00%	+0	8
Adv. Nurse/ Midwife, Candidate		6	9	9	+9		+3	+49.67%	-0	9
Clinical Nurse/ Midwife Specialist	60	58	62	62	+2	+3.60%	+4	+7.59%	-0	70
<b>Nurse/ Midwife Specialist &amp; AN/MP</b>	<b>62</b>	<b>70</b>	<b>79</b>	<b>79</b>	<b>+17</b>	<b>+27.31%</b>	<b>+9</b>	<b>+13.13%</b>	<b>-0</b>	<b>87</b>
Staff Nurse [Intellectual Disability]	1,597	1,767	1,692	1,711	+113	+7.10%	-56	-3.19%	+19	1,998
Staff Nurse [Psychiatric]	82	60	55	55	-27	-33.04%	-4	-7.36%	-0	67
Staff Nurses [General/ Children's]	889	792	792	762	-128	-14.36%	-30	-3.79%	-31	853
<b>Staff Nurse/ Staff Midwife</b>	<b>2,569</b>	<b>2,618</b>	<b>2,540</b>	<b>2,527</b>	<b>-41</b>	<b>-1.61%</b>	<b>-91</b>	<b>-3.47%</b>	<b>-12</b>	<b>2,918</b>
Public Health Nurse	6	12	12	11	+5	+81.21%	-0	-3.23%	-1	14
<b>Public Health Nurse</b>	<b>6</b>	<b>12</b>	<b>12</b>	<b>11</b>	<b>+5</b>	<b>+81.21%</b>	<b>-0</b>	<b>-3.23%</b>	<b>-1</b>	<b>14</b>
Nursing/ Midwifery awaiting registration	14	4		8	-6	-42.63%	+4	+110.61%	+8	10
Pre-registration Nurse/ Midwife Intern	28	7	77	46	+18	+62.90%	+39	+550.92%	-31	94
<b>Nursing/ Midwifery Student</b>	<b>42</b>	<b>11</b>	<b>77</b>	<b>54</b>	<b>+12</b>	<b>+28.20%</b>	<b>+43</b>	<b>+397.79%</b>	<b>-23</b>	<b>104</b>
Nursing Education/Clinical	21	27	26	28	+7	+31.04%	+1	+4.67%	+2	31
Other Nursing/ Midwifery	1	1			-1	-100.00%	-1	-100.00%		
<b>Nursing/ Midwifery other</b>	<b>22</b>	<b>28</b>	<b>26</b>	<b>28</b>	<b>+6</b>	<b>+25.14%</b>	<b>+0</b>	<b>+0.87%</b>	<b>+2</b>	<b>31</b>
<b>Nursing &amp; Midwifery</b>	<b>3593</b>	<b>3697</b>	<b>3701</b>	<b>3661</b>	<b>+67</b>	<b>+1.88%</b>	<b>-36</b>	<b>-0.98%</b>	<b>-40</b>	<b>4,192</b>
Dietitians	18	20	27	28	+10	+52.00%	+8	+37.56%	+1	33
Occupational Therapists	263	304	311	324	+61	+23.10%	+20	+6.65%	+13	369
Physiotherapists	189	193	195	199	+10	+5.25%	+6	+3.07%	+4	232
Speech & Language Therapists	292	273	271	271	-21	-7.22%	-2	-0.76%	-0	322
<b>Therapy Professions</b>	<b>763</b>	<b>790</b>	<b>805</b>	<b>822</b>	<b>+59</b>	<b>+7.77%</b>	<b>+32</b>	<b>+4.01%</b>	<b>+17</b>	<b>956</b>
Clinical Engineering	13	14	16	16	+3	+23.08%	+2	+14.61%	+0	16
Medical Science	4	4	3	4	+0	+0.00%	+0	+0.00%	+1	4
Phlebotomists	1				-1	-100.00%				

SEP 2023	WTE DEC 2019	WTE DEC 2022	WTE AUG 2023	WTE SEP 2023	WTE change since DEC 2019	% WTE Change since Dec 2019	WTE change since DEC 2022	% WTE Change since Dec 2022	WTE change since AUG 2023	No. SEP 2023
<b>Overall</b>	<b>18,273</b>	<b>19,903</b>	<b>20,311</b>	<b>20,328</b>	<b>+2,055</b>	<b>+11.25%</b>	<b>+424</b>	<b>+2.13%</b>	<b>+16</b>	<b>24,064</b>
Radiographers	1	1	1	2	+1	+69.00%	+0	+27.07%	+1	2
Respiratory Physiologists	1	2	1	1	+0	+0.00%	-1	-50.00%	+0	1
<b>Health Science/ Diagnostics</b>	<b>20</b>	<b>21</b>	<b>21</b>	<b>23</b>	<b>+3</b>	<b>+13.45%</b>	<b>+1</b>	<b>+6.58%</b>	<b>+2</b>	<b>23</b>
Other Health & Social Care			80	107	+107		+107		+27	113
Social Care	2,595	3,055	2,965	2,998	+403	+15.54%	-57	-1.85%	+33	3,529
<b>Social Care</b>	<b>2,595</b>	<b>3,055</b>	<b>3,045</b>	<b>3,105</b>	<b>+510</b>	<b>+19.66%</b>	<b>+50</b>	<b>+1.65%</b>	<b>+60</b>	<b>3,642</b>
Social Workers	219	239	231	239	+20	+9.32%	+0	+0.08%	+8	278
<b>Social Workers</b>	<b>219</b>	<b>239</b>	<b>231</b>	<b>239</b>	<b>+20</b>	<b>+9.32%</b>	<b>+0</b>	<b>+0.08%</b>	<b>+8</b>	<b>278</b>
Psychologists	202	239	228	229	+27	+13.26%	-10	-4.21%	+1	260
<b>Psychologists</b>	<b>202</b>	<b>239</b>	<b>228</b>	<b>229</b>	<b>+27</b>	<b>+13.26%</b>	<b>-10</b>	<b>-4.21%</b>	<b>+1</b>	<b>260</b>
Pharmacists	5	7	7	7	+1	+26.00%	+0	+0.61%	+0	9
Pharmacy Technicians	2	2	2	2	+0	+10.00%	+0	+4.43%	+0	2
<b>Pharmacy</b>	<b>7</b>	<b>8</b>	<b>8</b>	<b>8</b>	<b>+2</b>	<b>+22.45%</b>	<b>+0</b>	<b>+1.34%</b>	<b>+0</b>	<b>11</b>
Counsellor Therapists	19	23	15	14	-5	-27.66%	-9	-39.65%	-2	16
Environmental Health Officers			1	1	+1		+1		+0	1
Other Health & Social Care	51	30	26	28	-23	-44.90%	-2	-7.75%	+2	38
Play Therapists/ Specialists	15	15	16	23	+8	+49.58%	+8	+49.97%	+7	29
<b>H&amp;SC, Other</b>	<b>85</b>	<b>68</b>	<b>58</b>	<b>66</b>	<b>-19</b>	<b>-22.69%</b>	<b>-3</b>	<b>-3.84%</b>	<b>+8</b>	<b>84</b>
<b>Health &amp; Social Care Professionals</b>	<b>3890</b>	<b>4421</b>	<b>4397</b>	<b>4492</b>	<b>+602</b>	<b>+15.46%</b>	<b>+71</b>	<b>+1.61%</b>	<b>+95</b>	<b>5,254</b>
Executive Management	31	50	31	32	+1	+3.51%	-18	-35.83%	+1	32
Senior Management (VIII & GM)	149	186	201	199	+51	+33.97%	+13	+6.96%	-2	206
<b>Management (VIII &amp; above)</b>	<b>180</b>	<b>236</b>	<b>232</b>	<b>231</b>	<b>+52</b>	<b>+28.75%</b>	<b>-5</b>	<b>-2.04%</b>	<b>-1</b>	<b>238</b>
Middle Management (V-VII)	463	653	736	736	+274	+59.19%	+83	+12.73%	+0	781
Other Administrative	15	12	15	13	-2	-16.44%	+1	+4.17%	-3	13
<b>Administrative/ Supervisory (V to VII)</b>	<b>477</b>	<b>665</b>	<b>751</b>	<b>749</b>	<b>+271</b>	<b>+56.82%</b>	<b>+84</b>	<b>+12.58%</b>	<b>-2</b>	<b>794</b>
General Administrative (III & IV)	660	744	797	805	+145	+21.90%	+61	+8.24%	+8	952
<b>Clerical (III &amp; IV)</b>	<b>660</b>	<b>744</b>	<b>797</b>	<b>805</b>	<b>+145</b>	<b>+21.90%</b>	<b>+61</b>	<b>+8.24%</b>	<b>+8</b>	<b>952</b>
<b>Management &amp; Administrative</b>	<b>1317</b>	<b>1645</b>	<b>1780</b>	<b>1785</b>	<b>+468</b>	<b>+35.49%</b>	<b>+140</b>	<b>+8.52%</b>	<b>+5</b>	<b>1,984</b>
Catering	98	75	77	79	-19	-19.26%	+4	+5.64%	+3	93
Household Services	419	385	366	371	-48	-11.44%	-14	-3.74%	+4	544
Other Labs & Associated	1	1	1	1	+0	+0.00%	+0	+0.00%	+0	1
Other Support	188	145	96	97	-91	-48.62%	-49	-33.58%	+1	122
Portering	28	18	20	19	-9	-32.63%	+1	+6.23%	-2	26
<b>Support</b>	<b>733</b>	<b>624</b>	<b>560</b>	<b>566</b>	<b>-167</b>	<b>-22.80%</b>	<b>-58</b>	<b>-9.29%</b>	<b>+6</b>	<b>786</b>
Maintenance	116	109	121	121	+5	+4.31%	+12	+11.24%	+0	134
Technical Services	8	17	20	22	+14	+167.31%	+5	+28.17%	+2	22
<b>Maintenance/ Technical</b>	<b>124</b>	<b>126</b>	<b>140</b>	<b>143</b>	<b>+19</b>	<b>+14.94%</b>	<b>+17</b>	<b>+13.51%</b>	<b>+2</b>	<b>156</b>
<b>General Support</b>	<b>857</b>	<b>750</b>	<b>700</b>	<b>709</b>	<b>-149</b>	<b>-17.34%</b>	<b>-41</b>	<b>-5.46%</b>	<b>+8</b>	<b>942</b>
Attendant/ Aide	230	179	167	162	-68	-29.51%	-16	-9.02%	-5	216
Health Care Assistant/ Care Assistant	6,578	7,294	7,666	7,609	+1,031	+15.67%	+315	+4.32%	-57	9,092
Health & Social Care Assistants	10	22	38	39	+29	+303.35%	+17	+78.02%	+1	44
<b>Health Care Assistants</b>	<b>6,818</b>	<b>7,495</b>	<b>7,871</b>	<b>7,810</b>	<b>+992</b>	<b>+14.55%</b>	<b>+316</b>	<b>+4.21%</b>	<b>-61</b>	<b>9,352</b>
Home Helps	99	80	73	70	-30	-29.88%	-10	-13.08%	-4	206
<b>Home Help</b>	<b>99</b>	<b>80</b>	<b>73</b>	<b>70</b>	<b>-30</b>	<b>-29.88%</b>	<b>-10</b>	<b>-13.08%</b>	<b>-4</b>	<b>206</b>
Home Care Services	28	17	15	16	-13	-44.06%	-1	-8.29%	+1	21
Other Care Grades	174	259	252	246	+73	+41.77%	-12	-4.77%	-6	284
Pastoral Care	10	5	6	6	-4	-43.51%	+1	+20.91%	+0	8

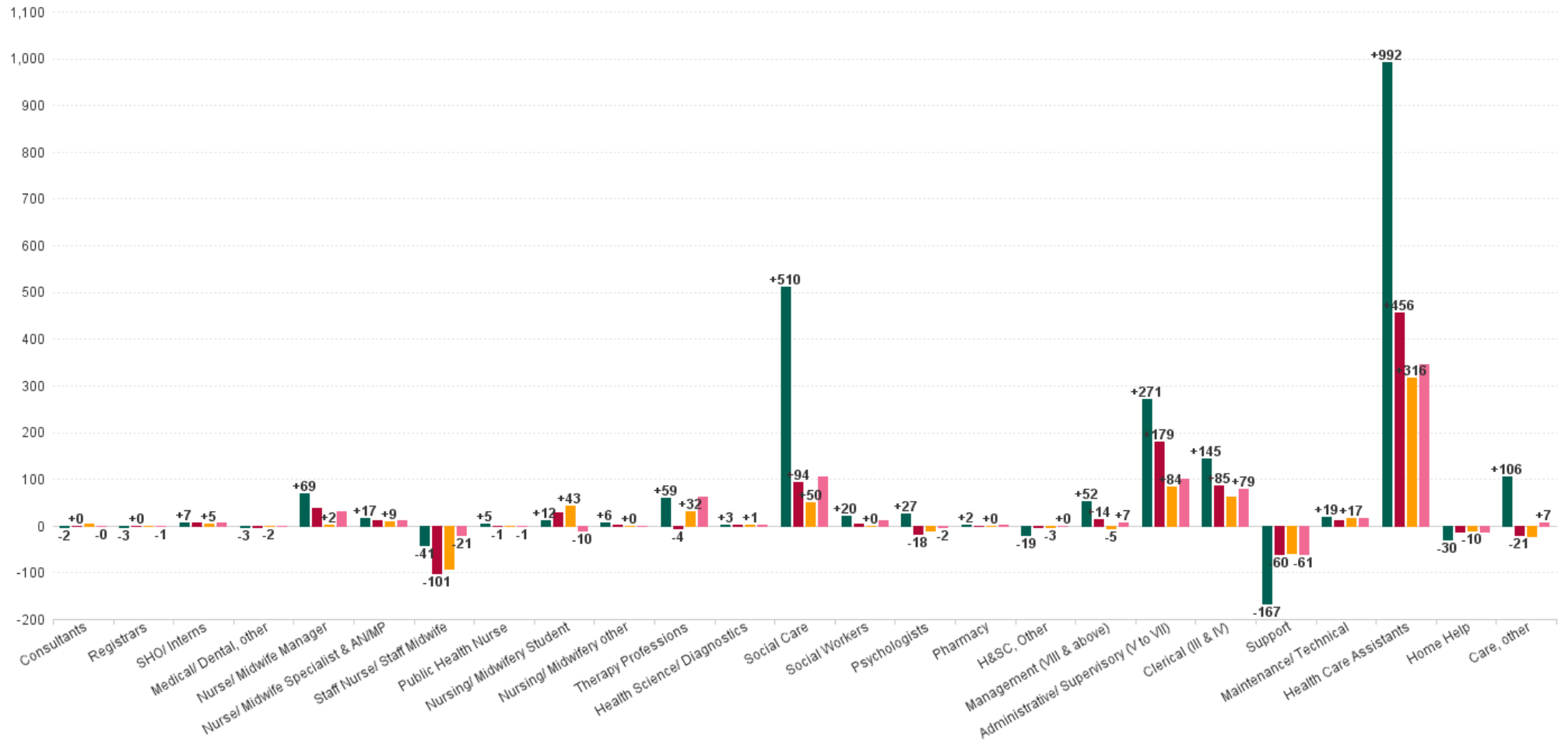


SEP 2023	WTE DEC 2019	WTE DEC 2022	WTE AUG 2023	WTE SEP 2023	WTE change since DEC 2019	% WTE Change since Dec 2019	WTE change since DEC 2022	% WTE Change since Dec 2022	WTE change since AUG 2023	No. SEP 2023
Overall	18,273	19,903	20,311	20,328	+2,055	+11.25%	+424	+2.13%	+16	24,064
Workshop Services	1,426	1,485	1,462	1,477	+51	+3.56%	-9	-0.58%	+15	1,752
Care, other	1,638	1,766	1,735	1,745	+106	+6.49%	-21	-1.21%	+10	2,065
Patient & Client Care	8556	9341	9680	9625	+1,069	+12.49%	+284	+3.04%	-55	11,623



## WTE Change by Staff Category

■ WTE change since DEC 2019 ■ WTE change since DEC 2021 ■ WTE change since DEC 2022 ■ WTE change since SEP 2022



## Disabilities Employment Report by WTE, Headcount, Gender, Full-Time / Part-Time etc. SEP 2023

SEP 2023	WTE SEP 2023	No. SEP 2023	WTE : No	% Male	% Female	Male WTE : No.	Female WTE : No	Perm Count %	Perm Count Male %	Perm Count Female %	Fulltime Count %	Part time Count %	FT Count Male %	FT Count Female %
<b>Total</b>	<b>20,328</b>	<b>24,064</b>	<b>1:0.8</b>	<b>19.94%</b>	<b>80.06%</b>	<b>1:0.9</b>	<b>1:0.8</b>	<b>88.73%</b>	<b>17.56%</b>	<b>71.16%</b>	<b>58.81%</b>	<b>41.19%</b>	<b>69.24%</b>	<b>56.22%</b>
<b>Consultants</b>	<b>21.49</b>	<b>27</b>	<b>1:0.8</b>	<b>25.93%</b>	<b>74.07%</b>	<b>1:1</b>	<b>1:0.7</b>	<b>77.78%</b>	<b>11.11%</b>	<b>66.67%</b>	<b>62.96%</b>	<b>37.04%</b>	<b>100.00%</b>	<b>50.00%</b>
<b>Medical/ Dental, other</b>	<b>11.32</b>	<b>17</b>	<b>1:0.7</b>	<b>35.29%</b>	<b>64.71%</b>	<b>1:0.9</b>	<b>1:0.6</b>	<b>88.24%</b>	<b>23.53%</b>	<b>64.71%</b>	<b>35.29%</b>	<b>64.71%</b>	<b>50.00%</b>	<b>27.27%</b>
<b>Registrars</b>	<b>4.97</b>	<b>6</b>	<b>1:0.9</b>	<b>50.00%</b>	<b>133.33%</b>	<b>1:0.9</b>	<b>1:0.9</b>				<b>183.33%</b>		<b>100.00%</b>	<b>100.00%</b>
<b>SHO/ Interns</b>	<b>14</b>	<b>14</b>	<b>1:1</b>	<b>57.14%</b>	<b>42.86%</b>	<b>1:1</b>	<b>1:1</b>				<b>100.00%</b>		<b>100.00%</b>	<b>100.00%</b>
<b>Registrars</b>	<b>5</b>	<b>5</b>	<b>1:0.9</b>	<b>60.00%</b>	<b>160.00%</b>	<b>1:0.9</b>	<b>1:0.9</b>				<b>220.00%</b>		<b>100.00%</b>	<b>100.00%</b>
<b>Medical &amp; Dental</b>	<b>57</b>	<b>69</b>	<b>1:0.8</b>	<b>34.78%</b>	<b>65.22%</b>	<b>1:1</b>	<b>1:0.8</b>	<b>52.17%</b>	<b>10.14%</b>	<b>42.03%</b>	<b>69.57%</b>	<b>30.43%</b>	<b>87.50%</b>	<b>60.00%</b>
<b>Nurse/ Midwife Specialist &amp; AN/MP</b>	<b>16.75</b>	<b>17</b>	<b>1:0.9</b>	<b>29.41%</b>	<b>482.35%</b>	<b>1:1</b>	<b>1:0.9</b>	<b>482.35%</b>	<b>29.41%</b>	<b>452.94%</b>	<b>358.82%</b>	<b>152.94%</b>	<b>80.00%</b>	<b>69.51%</b>
<b>Nurse/ Midwife Manager</b>	<b>867.22</b>	<b>941</b>	<b>1:0.9</b>	<b>14.35%</b>	<b>95.96%</b>	<b>1:1</b>	<b>1:0.9</b>	<b>102.13%</b>	<b>13.71%</b>	<b>88.42%</b>	<b>93.30%</b>	<b>17.00%</b>	<b>97.04%</b>	<b>82.72%</b>
<b>Nurse/ Midwife Specialist &amp; AN/MP</b>	<b>62.07</b>	<b>70</b>	<b>1:0.9</b>	<b>7.14%</b>	<b>117.14%</b>	<b>1:1</b>	<b>1:0.9</b>	<b>117.14%</b>	<b>7.14%</b>	<b>110.00%</b>	<b>87.14%</b>	<b>37.14%</b>	<b>80.00%</b>	<b>69.51%</b>
<b>Nurse/ Midwife Manager</b>	<b>94.11</b>	<b>97</b>	<b>1:0.9</b>	<b>139.18%</b>	<b>930.93%</b>	<b>1:1</b>	<b>1:0.9</b>	<b>990.72%</b>	<b>132.99%</b>	<b>857.73%</b>	<b>905.15%</b>	<b>164.95%</b>	<b>97.04%</b>	<b>82.72%</b>
<b>Nursing/ Midwifery other</b>	<b>27.78</b>	<b>31</b>	<b>1:0.9</b>	<b>3.23%</b>	<b>96.77%</b>	<b>1:1</b>	<b>1:0.9</b>	<b>100.00%</b>	<b>3.23%</b>	<b>96.77%</b>	<b>67.74%</b>	<b>32.26%</b>	<b>100.00%</b>	<b>66.67%</b>
<b>Nursing/ Midwifery Student</b>	<b>53.96</b>	<b>104</b>	<b>1:0.5</b>	<b>10.58%</b>	<b>89.42%</b>	<b>1:0.5</b>	<b>1:0.5</b>	<b>17.31%</b>	<b>0.96%</b>	<b>16.35%</b>	<b>53.85%</b>	<b>46.15%</b>	<b>36.36%</b>	<b>55.91%</b>
<b>Public Health Nurse</b>	<b>11.38</b>	<b>14</b>	<b>1:0.8</b>		<b>100.00%</b>	<b>1:</b>	<b>1:0.8</b>	<b>100.00%</b>		<b>100.00%</b>	<b>64.29%</b>	<b>35.71%</b>		<b>64.29%</b>
<b>Staff Nurse/ Staff Midwife</b>	<b>2,527.38</b>	<b>2,918</b>	<b>1:0.9</b>	<b>12.44%</b>	<b>87.56%</b>	<b>1:0.9</b>	<b>1:0.9</b>	<b>95.37%</b>	<b>11.65%</b>	<b>83.72%</b>	<b>67.96%</b>	<b>32.04%</b>	<b>85.40%</b>	<b>65.48%</b>
<b>Nursing &amp; Midwifery</b>	<b>3,661</b>	<b>4,192</b>	<b>1:0.9</b>	<b>12.29%</b>	<b>87.71%</b>	<b>1:0.9</b>	<b>1:0.9</b>	<b>92.77%</b>	<b>11.35%</b>	<b>81.42%</b>	<b>71.76%</b>	<b>28.24%</b>	<b>87.38%</b>	<b>69.57%</b>
<b>Health Science/ Diagnostics</b>	<b>16</b>	<b>16</b>	<b>1:1</b>	<b>112.50%</b>	<b>31.25%</b>	<b>1:1</b>	<b>1:0.9</b>	<b>118.75%</b>	<b>93.75%</b>	<b>25.00%</b>	<b>137.50%</b>	<b>6.25%</b>	<b>94.44%</b>	<b>100.00%</b>
<b>H&amp;SC, Other</b>	<b>13.67</b>	<b>16</b>	<b>1:0.8</b>	<b>62.50%</b>	<b>462.50%</b>	<b>1:0.9</b>	<b>1:0.8</b>	<b>487.50%</b>	<b>62.50%</b>	<b>425.00%</b>	<b>287.50%</b>	<b>237.50%</b>	<b>70.00%</b>	<b>52.70%</b>
<b>Therapy Professions</b>	<b>28.09</b>	<b>33</b>	<b>1:0.9</b>	<b>233.33%</b>	<b>2,663.64%</b>	<b>1:0.9</b>	<b>1:0.9</b>	<b>2,781.82%</b>	<b>215.15%</b>	<b>2,566.67%</b>	<b>2,169.70%</b>	<b>727.27%</b>	<b>90.91%</b>	<b>73.49%</b>
<b>H&amp;SC, Other</b>	<b>1</b>	<b>1</b>	<b>1:0.8</b>	<b>1,000.00%</b>	<b>7,400.00%</b>	<b>1:0.9</b>	<b>1:0.8</b>	<b>7,800.00%</b>	<b>1,000.00%</b>	<b>6,800.00%</b>	<b>4,600.00%</b>	<b>3,800.00%</b>	<b>70.00%</b>	<b>52.70%</b>
<b>Health Science/ Diagnostics</b>	<b>4</b>	<b>4</b>	<b>1:1</b>	<b>450.00%</b>	<b>125.00%</b>	<b>1:1</b>	<b>1:0.9</b>	<b>475.00%</b>	<b>375.00%</b>	<b>100.00%</b>	<b>550.00%</b>	<b>25.00%</b>	<b>94.44%</b>	<b>100.00%</b>
<b>Therapy Professions</b>	<b>324.07</b>	<b>369</b>	<b>1:0.9</b>	<b>20.87%</b>	<b>238.21%</b>	<b>1:0.9</b>	<b>1:0.9</b>	<b>248.78%</b>	<b>19.24%</b>	<b>229.54%</b>	<b>194.04%</b>	<b>65.04%</b>	<b>90.91%</b>	<b>73.49%</b>
<b>Social Care</b>	<b>107</b>	<b>113</b>	<b>1:0.9</b>	<b>541.59%</b>	<b>2,681.42%</b>	<b>1:0.9</b>	<b>1:0.8</b>	<b>2,983.19%</b>	<b>504.42%</b>	<b>2,478.76%</b>	<b>1,619.47%</b>	<b>1,603.54%</b>	<b>63.89%</b>	<b>47.49%</b>
<b>H&amp;SC, Other</b>	<b>27.84</b>	<b>38</b>	<b>1:0.8</b>	<b>26.32%</b>	<b>194.74%</b>	<b>1:0.9</b>	<b>1:0.8</b>	<b>205.26%</b>	<b>26.32%</b>	<b>178.95%</b>	<b>121.05%</b>	<b>100.00%</b>	<b>70.00%</b>	<b>52.70%</b>
<b>Pharmacy</b>	<b>8.29</b>	<b>11</b>	<b>1:0.8</b>	<b>9.09%</b>	<b>90.91%</b>	<b>1:1</b>	<b>1:0.7</b>	<b>81.82%</b>	<b>9.09%</b>	<b>72.73%</b>	<b>81.82%</b>	<b>18.18%</b>	<b>100.00%</b>	<b>80.00%</b>
<b>Therapy Professions</b>	<b>199.15</b>	<b>232</b>	<b>1:0.9</b>	<b>33.19%</b>	<b>378.88%</b>	<b>1:0.9</b>	<b>1:0.9</b>	<b>395.69%</b>	<b>30.60%</b>	<b>365.09%</b>	<b>308.62%</b>	<b>103.45%</b>	<b>90.91%</b>	<b>73.49%</b>
<b>H&amp;SC, Other</b>	<b>23.11</b>	<b>29</b>	<b>1:0.8</b>	<b>34.48%</b>	<b>255.17%</b>	<b>1:0.9</b>	<b>1:0.8</b>	<b>268.97%</b>	<b>34.48%</b>	<b>234.48%</b>	<b>158.62%</b>	<b>131.03%</b>	<b>70.00%</b>	<b>52.70%</b>
<b>Psychologists</b>	<b>228.93</b>	<b>260</b>	<b>1:0.9</b>	<b>15.77%</b>	<b>84.23%</b>	<b>1:1</b>	<b>1:0.9</b>	<b>97.31%</b>	<b>15.77%</b>	<b>81.54%</b>	<b>75.77%</b>	<b>24.23%</b>	<b>90.24%</b>	<b>73.06%</b>
<b>Health Science/ Diagnostics</b>	<b>2.69</b>	<b>3</b>	<b>1:1</b>	<b>600.00%</b>	<b>166.67%</b>	<b>1:1</b>	<b>1:0.9</b>	<b>633.33%</b>	<b>500.00%</b>	<b>133.33%</b>	<b>733.33%</b>	<b>33.33%</b>	<b>94.44%</b>	<b>100.00%</b>
<b>Social Care</b>	<b>2,998.25</b>	<b>3,529</b>	<b>1:0.9</b>	<b>17.34%</b>	<b>85.86%</b>	<b>1:0.9</b>	<b>1:0.8</b>	<b>95.52%</b>	<b>16.15%</b>	<b>79.37%</b>	<b>51.86%</b>	<b>51.35%</b>	<b>63.89%</b>	<b>47.49%</b>



SEP 2023	WTE SEP 2023	No. SEP 2023	WTE : No	% Male	% Female	Male WTE : No.	Female WTE : No	Perm Count %	Perm Count Male %	Perm Count Female %	Fulltime Count %	Part time Count %	FT Count Male %	FT Count Female %
<b>Total</b>	<b>20,328</b>	<b>24,064</b>	<b>1:0.8</b>	<b>19.94%</b>	<b>80.06%</b>	<b>1:0.9</b>	<b>1:0.8</b>	<b>88.73%</b>	<b>17.56%</b>	<b>71.16%</b>	<b>58.81%</b>	<b>41.19%</b>	<b>69.24%</b>	<b>56.22%</b>
<b>Social Workers</b>	<b>239.24</b>	<b>278</b>	<b>1:0.9</b>	<b>16.55%</b>	<b>83.45%</b>	<b>1:1</b>	<b>1:0.8</b>	<b>94.24%</b>	<b>15.11%</b>	<b>79.14%</b>	<b>72.66%</b>	<b>27.34%</b>	<b>86.96%</b>	<b>69.83%</b>
<b>Therapy Professions</b>	<b>270.62</b>	<b>322</b>	<b>1:0.9</b>	<b>23.91%</b>	<b>272.98%</b>	<b>1:0.9</b>	<b>1:0.9</b>	<b>285.09%</b>	<b>22.05%</b>	<b>263.04%</b>	<b>222.36%</b>	<b>74.53%</b>	<b>90.91%</b>	<b>73.49%</b>
<b>Health &amp; Social Care Professionals</b>	<b>4,492</b>	<b>5,254</b>	<b>1:0.9</b>	<b>15.32%</b>	<b>84.68%</b>	<b>1:0.9</b>	<b>1:0.8</b>	<b>93.45%</b>	<b>14.27%</b>	<b>79.18%</b>	<b>57.52%</b>	<b>42.48%</b>	<b>69.94%</b>	<b>55.27%</b>
<b>Management (VIII &amp; above)</b>	<b>31.85</b>	<b>32</b>	<b>1:1</b>	<b>237.50%</b>	<b>506.25%</b>	<b>1:1</b>	<b>1:1</b>	<b>684.38%</b>	<b>218.75%</b>	<b>465.63%</b>	<b>725.00%</b>	<b>18.75%</b>	<b>100.00%</b>	<b>96.30%</b>
<b>Clerical (III &amp; IV)</b>	<b>804.75</b>	<b>952</b>	<b>1:0.8</b>	<b>11.13%</b>	<b>88.87%</b>	<b>1:0.9</b>	<b>1:0.8</b>	<b>87.50%</b>	<b>8.61%</b>	<b>78.89%</b>	<b>62.61%</b>	<b>37.39%</b>	<b>81.13%</b>	<b>60.28%</b>
<b>Administrative/ Supervisory (V to VII)</b>	<b>748.76</b>	<b>794</b>	<b>1:0.9</b>	<b>21.16%</b>	<b>78.84%</b>	<b>1:1</b>	<b>1:0.9</b>	<b>93.45%</b>	<b>20.15%</b>	<b>73.30%</b>	<b>86.65%</b>	<b>13.35%</b>	<b>96.43%</b>	<b>84.03%</b>
<b>Management (VIII &amp; above)</b>	<b>199.44</b>	<b>206</b>	<b>1:1</b>	<b>36.89%</b>	<b>78.64%</b>	<b>1:1</b>	<b>1:1</b>	<b>106.31%</b>	<b>33.98%</b>	<b>72.33%</b>	<b>112.62%</b>	<b>2.91%</b>	<b>100.00%</b>	<b>96.30%</b>
<b>Management &amp; Administrative</b>	<b>1,785</b>	<b>1,984</b>	<b>1:0.9</b>	<b>17.64%</b>	<b>82.36%</b>	<b>1:1</b>	<b>1:0.9</b>	<b>90.42%</b>	<b>15.73%</b>	<b>74.70%</b>	<b>76.41%</b>	<b>23.59%</b>	<b>92.57%</b>	<b>72.95%</b>
<b>Support</b>	<b>449.77</b>	<b>637</b>	<b>1:0.7</b>	<b>38.30%</b>	<b>85.09%</b>	<b>1:0.8</b>	<b>1:0.7</b>	<b>108.16%</b>	<b>30.46%</b>	<b>77.71%</b>	<b>48.51%</b>	<b>74.88%</b>	<b>54.10%</b>	<b>32.66%</b>
<b>Maintenance/ Technical</b>	<b>121.14</b>	<b>134</b>	<b>1:0.9</b>	<b>102.24%</b>	<b>14.18%</b>	<b>1:0.9</b>	<b>1:0.8</b>	<b>105.97%</b>	<b>92.54%</b>	<b>13.43%</b>	<b>85.82%</b>	<b>30.60%</b>	<b>78.83%</b>	<b>36.84%</b>
<b>Support</b>	<b>116.23</b>	<b>149</b>	<b>1:0.7</b>	<b>163.76%</b>	<b>363.76%</b>	<b>1:0.8</b>	<b>1:0.7</b>	<b>462.42%</b>	<b>130.20%</b>	<b>332.21%</b>	<b>207.38%</b>	<b>320.13%</b>	<b>54.10%</b>	<b>32.66%</b>
<b>Maintenance/ Technical</b>	<b>21.66</b>	<b>22</b>	<b>1:0.9</b>	<b>622.73%</b>	<b>86.36%</b>	<b>1:0.9</b>	<b>1:0.8</b>	<b>645.45%</b>	<b>563.64%</b>	<b>81.82%</b>	<b>522.73%</b>	<b>186.36%</b>	<b>78.83%</b>	<b>36.84%</b>
<b>General Support</b>	<b>709</b>	<b>942</b>	<b>1:0.8</b>	<b>40.45%</b>	<b>59.55%</b>	<b>1:0.8</b>	<b>1:0.7</b>	<b>88.22%</b>	<b>33.76%</b>	<b>54.46%</b>	<b>45.01%</b>	<b>54.99%</b>	<b>62.99%</b>	<b>32.80%</b>
<b>Health Care Assistants</b>	<b>7,810.29</b>	<b>9,352</b>	<b>1:0.8</b>	<b>23.51%</b>	<b>76.49%</b>	<b>1:0.9</b>	<b>1:0.8</b>	<b>84.88%</b>	<b>20.51%</b>	<b>64.37%</b>	<b>51.72%</b>	<b>48.28%</b>	<b>61.30%</b>	<b>48.78%</b>
<b>Care, other</b>	<b>15.92</b>	<b>21</b>	<b>1:0.8</b>	<b>2,433.33%</b>	<b>7,400.00%</b>	<b>1:0.9</b>	<b>1:0.8</b>	<b>8,652.38%</b>	<b>2,080.95%</b>	<b>6,571.43%</b>	<b>6,157.14%</b>	<b>3,676.19%</b>	<b>73.78%</b>	<b>58.94%</b>
<b>Home Help</b>	<b>69.55</b>	<b>206</b>	<b>1:0.3</b>	<b>6.80%</b>	<b>93.20%</b>	<b>1:0.3</b>	<b>1:0.3</b>	<b>66.02%</b>	<b>3.88%</b>	<b>62.14%</b>	<b>2.43%</b>	<b>97.57%</b>		<b>2.60%</b>
<b>Care, other</b>	<b>1,728.81</b>	<b>2,044</b>	<b>1:0.8</b>	<b>25.00%</b>	<b>76.03%</b>	<b>1:0.9</b>	<b>1:0.8</b>	<b>88.89%</b>	<b>21.38%</b>	<b>67.51%</b>	<b>63.26%</b>	<b>37.77%</b>	<b>73.78%</b>	<b>58.94%</b>
<b>Patient &amp; Client Care</b>	<b>9,625</b>	<b>11,623</b>	<b>1:0.8</b>	<b>23.44%</b>	<b>76.56%</b>	<b>1:0.9</b>	<b>1:0.8</b>	<b>85.10%</b>	<b>20.33%</b>	<b>64.77%</b>	<b>52.78%</b>	<b>47.22%</b>	<b>63.33%</b>	<b>49.56%</b>



## Disabilities Employment Report by CHO : WTE, Headcount, Gender, Full-Time / Part-Time etc. SEP 2023

SEP 2023	WTE SEP 2023	No. SEP 2023	WTE : No	Number Male	Number Female	Male WTE : No.	Female WTE : No	Perm Count %	Number Male %	Number Female %	Fulltime Count %	Part time Count %	FT Count Male %	FT Count Female %
<b>Total</b>	<b>20,328</b>	<b>24,064</b>	<b>1:0.8</b>	<b>19.94%</b>	<b>80.06%</b>	<b>1:0.9</b>	<b>1:0.8</b>	<b>88.73%</b>	<b>17.56%</b>	<b>71.16%</b>	<b>58.81%</b>	<b>41.19%</b>	<b>69.24%</b>	<b>56.22%</b>
CHO 1	1,755	1,946	1:0.9	20.66%	79.34%	1:1	1:0.9	92.91%	19.12%	73.79%	79.24%	20.76%	90.30%	76.36%
CHO 2	1,730	2,119	1:0.8	23.41%	76.59%	1:0.8	1:0.8	82.35%	18.88%	63.47%	49.32%	50.68%	53.23%	48.12%
CHO 3	2,036	2,436	1:0.8	13.88%	86.12%	1:0.9	1:0.8	86.08%	11.82%	74.26%	41.30%	58.70%	44.67%	40.75%
CHO 4	2,659	3,151	1:0.8	20.63%	79.37%	1:0.9	1:0.8	83.88%	16.85%	67.03%	70.77%	29.23%	76.77%	69.21%
CHO 5	1,705	2,032	1:0.8	20.82%	79.18%	1:0.9	1:0.8	85.83%	17.62%	68.21%	53.30%	46.70%	65.01%	50.22%
CHO 6	1,199	1,385	1:0.9	23.32%	76.68%	1:0.9	1:0.8	91.12%	20.94%	70.18%	66.93%	33.07%	83.28%	61.96%
CHO 7	3,511	4,133	1:0.8	22.74%	77.26%	1:0.9	1:0.8	89.33%	20.35%	68.98%	68.06%	31.94%	80.53%	64.39%
CHO 8	2,413	2,933	1:0.8	21.10%	78.90%	1:0.9	1:0.8	96.28%	20.29%	76.00%	45.69%	54.31%	49.60%	44.64%
CHO 9	3,313	3,922	1:0.8	15.48%	84.52%	1:0.9	1:0.8	89.98%	14.02%	75.96%	55.10%	44.90%	71.99%	52.01%
other Community Services	7	7	1:1	14.29%	85.71%	1:1	1:1	100.00%	14.29%	85.71%	85.71%	14.29%	100.00%	83.33%



## Previous Month Summary

	% WTE change since AUG 2023	WTE change since AUG 2023	CHO 1	CHO 2	CHO 3	CHO 4	CHO 5	CHO 6	CHO 7	CHO 8	CHO 9	other Commu
<b>Total</b>	<b>+0.08%</b>	<b>+16.3</b>	<b>-0.4</b>	<b>+10.0</b>	<b>+5.2</b>	<b>-18.7</b>	<b>+9.5</b>	<b>-7.5</b>	<b>+35.3</b>	<b>-11.6</b>	<b>-5.4</b>	<b>+0.1</b>
Consultants	+15.35%	+2.9		+0.0	+0.0	+0.0	+1.0	+0.0			+1.9	
Registrars	+5.06%	+0.5		+0.0				+0.1	+0.3	+0.0	+0.2	
SHO/ Interns	+0.00%	+0.0		+0.0					+0.0		+0.0	
Medical/ Dental, other	-3.90%	-0.5	+0.0	+0.0	+0.0	+0.0		+0.0		+0.0	-0.5	
<b>Medical &amp; Dental</b>	<b>+5.34%</b>	<b>+2.9</b>	<b>+0.0</b>	<b>+0.0</b>	<b>+0.0</b>	<b>+0.0</b>	<b>+1.0</b>	<b>+0.1</b>	<b>+0.3</b>	<b>+0.0</b>	<b>+1.6</b>	
Nurse/ Midwife Manager	-0.60%	-5.8	+1.8	-10.5	+0.7	+1.1	-1.0	+0.9	+1.1	+0.5	-0.4	
Nurse/ Midwife Specialist & AN/MP	-0.37%	-0.3	-1.0	+0.4	+0.9	-0.0	-0.0	-0.3	-0.4	-0.0	+0.2	
Staff Nurse/ Staff Midwife	-0.48%	-12.2	+1.9	+4.9	-3.3	-9.2	-1.3	-1.0	+0.6	-0.9	-3.9	
Public Health Nurse	-6.18%	-0.8	+0.0				-0.8			+0.0		
Nursing/ Midwifery Student	-29.49%	-22.6	+1.4		+0.0	-2.0	-0.1		+1.6	-12.8	-10.6	
Nursing/ Midwifery other	+6.19%	+1.6	+0.9		+0.0	+0.0	+0.0	+0.0	+0.0	+0.0	+0.7	
<b>Nursing &amp; Midwifery</b>	<b>-1.08%</b>	<b>-40.0</b>	<b>+5.0</b>	<b>-5.2</b>	<b>-1.7</b>	<b>-10.2</b>	<b>-3.2</b>	<b>-0.5</b>	<b>+2.9</b>	<b>-13.2</b>	<b>-14.0</b>	
Therapy Professions	+2.10%	+16.9	+0.2	+5.0	+3.2	+6.8	-4.0	+1.2	+1.0	+2.7	+1.2	
Health Science/ Diagnostics	+8.05%	+1.7			+0.0				+0.7	+0.0	+1.0	
Social Care	+1.97%	+60.0	-0.1	+23.6	+0.6	+23.6	+1.8	-2.4	+17.0	-1.2	-2.8	
Social Workers	+3.36%	+7.8	+0.6	+1.1	+0.2	+1.3	+3.4	+1.0	+0.1	-0.1	+0.2	
Psychologists	+0.45%	+1.0	-0.9	+2.0	-0.3	-0.3	-0.6	+0.3	+1.6	+0.4	-1.2	
Pharmacy	+2.73%	+0.2							+0.2		+0.0	
H&SC, Other	+13.29%	+7.7	+0.2	+5.2	-0.1	-0.1	+1.5	+0.0	+0.0	+0.0	+1.0	
<b>Health &amp; Social Care Professionals</b>	<b>+2.17%</b>	<b>+95.4</b>	<b>+0.0</b>	<b>+36.8</b>	<b>+3.6</b>	<b>+31.3</b>	<b>+2.1</b>	<b>+0.1</b>	<b>+20.5</b>	<b>+1.7</b>	<b>-0.7</b>	
Management (VIII & above)	-0.27%	-0.6	-0.2	-0.5	-1.0	-0.3	-0.6	-1.1	+1.2	-1.1	+3.0	+0.1
Administrative/ Supervisory (V to VII)	-0.28%	-2.1	-0.2	-3.6	-1.2	-3.1	+1.9	+1.6	+3.1	+3.5	-4.0	+0.0



Clerical (III & IV)	+0.95%	+7.6	+1.2	-1.8	-0.3	-1.7	-0.9	+1.2	-1.8	+0.9	+10.8	+0.0
<b>Management &amp; Administrative</b>	<b>+0.27%</b>	<b>+4.8</b>	<b>+0.8</b>	<b>-5.8</b>	<b>-2.6</b>	<b>-5.1</b>	<b>+0.5</b>	<b>+1.6</b>	<b>+2.5</b>	<b>+3.2</b>	<b>+9.7</b>	<b>+0.1</b>
Support	+1.08%	+6.1	-0.2	+4.0	+0.2	-0.8	-0.6	-1.7	+2.4	-2.3	+5.0	
Maintenance/ Technical	+1.67%	+2.3	+0.0	+0.4	+0.0	+0.8	+0.0	-1.0	+2.1	+0.0	+0.0	
<b>General Support</b>	<b>+1.20%</b>	<b>+8.4</b>	<b>-0.2</b>	<b>+4.5</b>	<b>+0.2</b>	<b>-0.0</b>	<b>-0.6</b>	<b>-2.7</b>	<b>+4.5</b>	<b>-2.3</b>	<b>+5.0</b>	
Health Care Assistants	-0.78%	-61.2	-4.4	-25.4	+0.4	-31.7	-0.1	-0.2	+0.5	+2.5	-2.7	
Home Help	-5.36%	-3.9	-2.3				-0.1		-0.3	-1.2		
Care, other	+0.57%	+9.9	+0.5	+5.1	+5.3	-3.0	+10.0	-6.0	+4.5	-2.3	-4.3	
<b>Patient &amp; Client Care</b>	<b>-0.57%</b>	<b>-55.2</b>	<b>-6.2</b>	<b>-20.3</b>	<b>+5.7</b>	<b>-34.7</b>	<b>+9.8</b>	<b>-6.2</b>	<b>+4.7</b>	<b>-1.0</b>	<b>-7.0</b>	



## Year on Year Summary

	% WTE change since SEP 2022	WTE change since SEP 2022	CHO 1	CHO 2	CHO 3	CHO 4	CHO 5	CHO 6	CHO 7	CHO 8	CHO 9	other Communi ty Services
<b>Total</b>	<b>+3.41%</b>	<b>+671.2</b>	<b>+76.1</b>	<b>+148.3</b>	<b>+56.0</b>	<b>+12.4</b>	<b>+40.0</b>	<b>-12.9</b>	<b>+166.3</b>	<b>+146.0</b>	<b>+37.9</b>	<b>+1.0</b>
Consultants	-2.23%	-0.5		+0.0	-0.1	+0.0	+0.0	+0.0			-0.4	
Registrars	-9.45%	-1.0		+0.0				+0.0	-0.0	+0.0	-1.0	
SHO/ Interns	+82.53%	+6.3		+0.0					+4.3		+2.0	
Medical/ Dental, other	-11.15%	-1.4	-0.8	+0.1	+0.0	+0.0		+0.0		+0.0	-0.7	
<b>Medical &amp; Dental</b>	<b>+6.33%</b>	<b>+3.4</b>	<b>-0.8</b>	<b>+0.1</b>	<b>-0.1</b>	<b>+0.0</b>	<b>+0.0</b>	<b>+0.0</b>	<b>+4.3</b>	<b>+0.0</b>	<b>-0.1</b>	
Nurse/ Midwife Manager	+3.21%	+29.9	+9.3	-9.8	+1.7	+2.2	+0.4	-4.0	+17.4	+5.9	+6.8	
Nurse/ Midwife Specialist & AN/MP	+15.39%	+10.5	+4.5	-0.9	+2.8	+0.5	+1.0	+1.7	+1.8	+0.7	-1.5	
Staff Nurse/ Staff Midwife	-0.81%	-20.6	-12.1	-5.9	-3.3	-15.1	+4.8	+2.6	+2.6	+4.6	+1.2	
Public Health Nurse	-6.49%	-0.8	-0.0				-0.8			+0.0		
Nursing/ Midwifery Student	-15.74%	-10.1	-2.5		+2.5	-4.0	-1.1		+5.1	-8.3	-1.7	
Nursing/ Midwifery other	+2.06%	+0.6	+2.1		+0.3	+0.0	+0.0	+0.0	-2.0	+0.0	+0.2	
<b>Nursing &amp; Midwifery</b>	<b>+0.26%</b>	<b>+9.5</b>	<b>+1.2</b>	<b>-16.5</b>	<b>+3.9</b>	<b>-16.5</b>	<b>+4.4</b>	<b>+0.4</b>	<b>+24.8</b>	<b>+2.9</b>	<b>+4.9</b>	
Therapy Professions	+8.04%	+61.2	-4.2	+37.8	+4.3	+11.8	-8.6	-3.0	-1.0	+26.0	-1.9	
Health Science/ Diagnostics	+8.05%	+1.7			+0.0				-0.3	+0.0	+2.0	
Social Care	+3.52%	+105.5	+13.6	+44.9	+2.2	+21.7	+2.8	-5.9	+25.7	+11.7	-11.3	
Social Workers	+4.70%	+10.7	+7.2	-0.5	-0.7	-1.1	+5.5	+3.8	-4.5	+0.5	+0.5	
Psychologists	-0.96%	-2.2	-1.2	+9.1	-3.8	+1.3	-6.9	-0.7	-2.4	+1.5	+0.9	
Pharmacy	+9.95%	+0.8							+0.8		+0.0	
H&SC, Other	+0.08%	+0.0	-1.3	+1.7	+0.1	+0.0	+0.1	-0.9	+0.5	-0.7	+0.6	
<b>Health &amp; Social Care Professionals</b>	<b>+4.12%</b>	<b>+177.7</b>	<b>+14.0</b>	<b>+93.0</b>	<b>+2.2</b>	<b>+33.7</b>	<b>-7.2</b>	<b>-6.7</b>	<b>+18.8</b>	<b>+38.9</b>	<b>-9.2</b>	
Management (VIII & above)	+3.01%	+6.8	+0.8	+0.8	+4.1	+3.4	+1.2	-2.7	-2.6	-0.2	+1.0	+1.0
Administrative/ Supervisory (V to VII)	+15.67%	+101.4	+8.8	+9.3	+7.0	+13.8	+3.5	+9.2	+20.9	+7.2	+22.7	-1.0



Clerical (III & IV)	+10.89%	+79.0	+10.0	+14.0	+3.6	-2.8	+14.0	-3.6	+16.5	+14.7	+11.7	+1.0
<b>Management &amp; Administrative</b>	<b>+11.72%</b>	<b>+187.2</b>	<b>+19.6</b>	<b>+24.1</b>	<b>+14.6</b>	<b>+14.4</b>	<b>+18.7</b>	<b>+3.0</b>	<b>+34.8</b>	<b>+21.7</b>	<b>+35.4</b>	<b>+1.0</b>
Support	-9.78%	-61.3	-1.0	-0.7	-1.8	-44.8	-2.4	-0.8	-3.4	-6.2	-0.4	
Maintenance/ Technical	+13.31%	+16.8	+0.0	-0.5	+3.0	-1.4	-0.4	+0.0	+11.8	+3.6	+0.8	
<b>General Support</b>	<b>-5.91%</b>	<b>-44.6</b>	<b>-1.0</b>	<b>-1.2</b>	<b>+1.2</b>	<b>-46.2</b>	<b>-2.8</b>	<b>-0.8</b>	<b>+8.4</b>	<b>-2.7</b>	<b>+0.4</b>	
Health Care Assistants	+4.61%	+344.4	+29.1	+39.7	+28.7	+6.5	+30.7	+11.4	+87.9	+87.0	+23.5	
Home Help	-15.98%	-13.2	-1.7				-2.5		-4.8	-4.3		
Care, other	+0.39%	+6.8	+15.6	+9.1	+5.5	+20.5	-1.3	-20.2	-7.8	+2.5	-17.0	
<b>Patient &amp; Client Care</b>	<b>+3.64%</b>	<b>+338.0</b>	<b>+43.0</b>	<b>+48.9</b>	<b>+34.2</b>	<b>+27.0</b>	<b>+26.9</b>	<b>-8.8</b>	<b>+75.2</b>	<b>+85.2</b>	<b>+6.5</b>	



Year to Date Summary

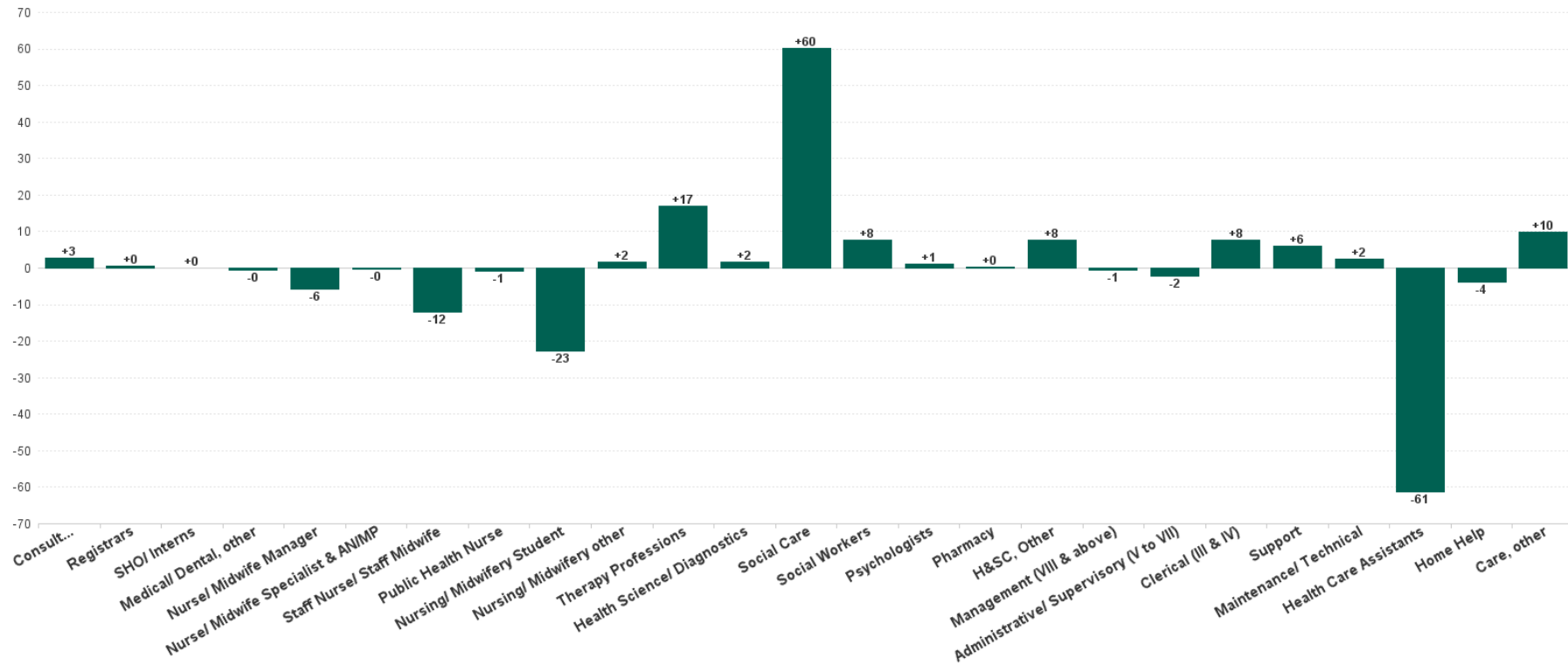
	% WTE change since DEC 2022	WTE change since DEC 2022	CHO 1	CHO 2	CHO 3	CHO 4	CHO 5	CHO 6	CHO 7	CHO 8	CHO 9	other Communi ty Services
Total	+2.13%	+424.2	+56.6	+123.5	+47.3	+18.7	+49.1	-17.3	+100.8	+67.7	-23.1	+1.1
Consultants	+16.73%	+3.1		+0.0	-0.0	+0.0	+0.1	+0.0			+3.0	
Registrars	-0.10%	-0.0		+0.0				+0.0	-0.0	+0.0	+0.0	
SHO/ Interns	+56.60%	+5.1		+0.0					+4.1		+1.0	
Medical/ Dental, other	-12.45%	-1.6	-0.9	+0.0	+0.0	+0.0		+0.0		+0.0	-0.7	
Medical & Dental	+12.97%	+6.5	-0.9	+0.0	-0.0	+0.0	+0.1	+0.0	+4.0	+0.0	+3.3	
Nurse/ Midwife Manager	+0.23%	+2.2	+5.8	-10.0	-1.8	+4.1	+0.3	-3.8	+6.0	-1.0	+2.6	
Nurse/ Midwife Specialist & AN/MP	+13.13%	+9.2	+4.0	-0.9	+3.1	-0.0	+0.1	+1.7	+0.8	+0.9	-0.5	
Staff Nurse/ Staff Midwife	-3.47%	-90.8	-18.0	-6.8	-5.0	-9.4	-8.3	+1.7	-12.7	-7.3	-25.2	
Public Health Nurse	-3.23%	-0.4	-0.0				-0.3			-0.0		
Nursing/ Midwifery Student	+397.79%	+43.1	+7.6		+5.5	+7.3	+6.8		+8.6	+5.0	+2.4	
Nursing/ Midwifery other	+0.87%	+0.2	+1.9		+0.3	+0.0	+0.0	+0.0	-2.0	+0.8	-0.7	
Nursing & Midwifery	-0.98%	-36.4	+1.2	-17.7	+2.1	+2.0	-1.5	-0.4	+0.7	-1.5	-21.4	
Therapy Professions	+4.01%	+31.7	-1.5	+30.8	+6.6	+6.3	-3.2	-1.6	-3.3	+6.1	-8.4	
Health Science/ Diagnostics	+6.58%	+1.4			+0.0				-0.6	+0.0	+2.0	
Social Care	+1.65%	+50.5	+7.8	+39.5	-4.7	+12.7	-0.2	-3.8	+10.9	+4.4	-16.2	
Social Workers	+0.08%	+0.2	+5.2	+0.3	-1.8	-0.5	+4.4	+2.0	-5.0	-1.1	-3.3	
Psychologists	-4.21%	-10.1	+1.6	+7.7	-2.7	-2.5	-3.7	-0.6	-3.0	-2.9	-3.9	
Pharmacy	+1.34%	+0.1							+0.1		+0.0	
H&SC, Other	-3.84%	-2.6	-1.6	+2.1	-0.6	-0.7	+0.4	-0.9	+0.5	-2.1	+0.2	
Health & Social Care Professionals	+1.61%	+71.3	+11.4	+80.4	-3.2	+15.4	-2.3	-4.9	-0.4	+4.4	-29.6	
Management (VIII & above)	-2.04%	-4.8	-0.3	+0.8	+3.9	+2.9	-0.3	-10.0	-2.1	-1.0	+1.2	+0.0
Administrative/ Supervisory (V to VII)	+12.58%	+83.7	+6.1	+7.3	-0.0	+4.6	+8.8	+9.5	+16.8	+10.5	+20.0	+0.0
Clerical (III & IV)	+8.24%	+61.2	-2.2	+8.9	+6.0	-0.8	+11.6	+2.3	+5.0	+16.5	+13.0	+1.0
Management & Administrative	+8.52%	+140.1	+3.6	+17.0	+9.9	+6.7	+20.2	+1.8	+19.7	+26.0	+34.2	+1.1
Support	-9.29%	-58.0	+0.3	-0.5	-3.1	-44.0	-2.1	-4.1	-2.1	-5.1	+2.7	
Maintenance/ Technical	+13.51%	+17.0	+0.0	+1.0	+3.1	+1.4	-0.5	-1.0	+9.2	+3.6	+0.3	
General Support	-5.46%	-41.0	+0.3	+0.5	-0.1	-42.6	-2.6	-5.1	+7.1	-1.5	+3.0	



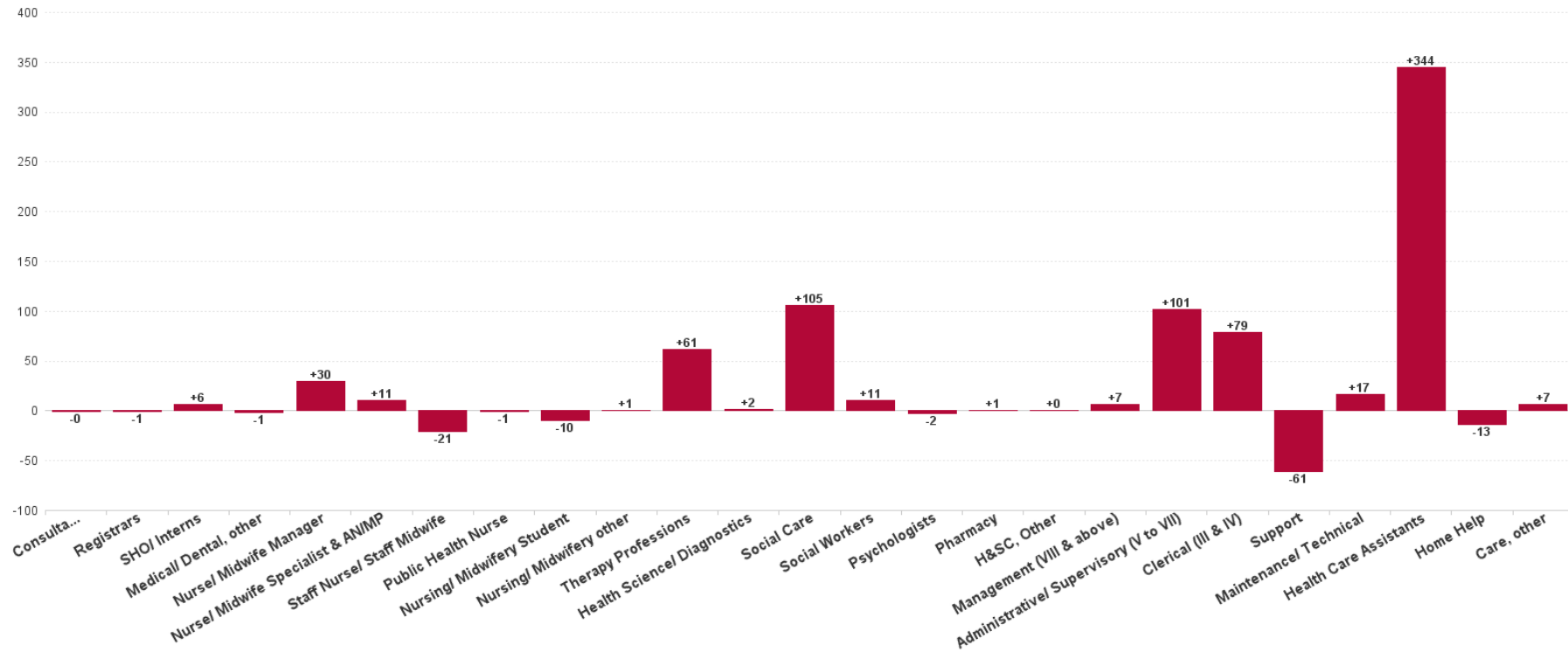
Health Care Assistants	+4.21%	+315.6	+27.6	+34.5	+35.1	+27.6	+39.2	+12.0	+86.8	+47.9	+4.8	
Home Help	-13.08%	-10.5	-3.2				-1.4		-2.5	-3.4		
Care, other	-1.21%	-21.5	+16.6	+8.7	+3.4	+9.6	-2.7	-20.7	-14.6	-4.3	-17.5	
Patient & Client Care	+3.04%	+283.7	+41.0	+43.2	+38.5	+37.2	+35.1	-8.7	+69.7	+40.3	-12.6	



Previous Month Summary Chart: Change since AUG 2023



Previous Year Summary Chart: Change since SEP 2022



YTD Summary Chart: Change since DEC 2022

