

# Disabilities Employment Report : MAR 2023

## Employment Report by Staff Group

MAR 2023	WTE DEC 2019	WTE DEC 2022	WTE FEB 2023	WTE MAR 2023	WTE change since DEC 2019	WTE change since DEC 2022	WTE change since FEB 2023	No. MAR 2023
<b>Overall</b>	<b>18,273</b>	<b>19,903</b>	<b>19,999</b>	<b>19,990</b>	<b>+1,717</b>	<b>+87</b>	<b>-9</b>	<b>23,693</b>
Consultants	24	18	19	19	-5	+1	+0	25
Registrars	13	10	9	10	-3	+0	+1	11
SHO/ Interns	7	9	9	10	+3	+1	+1	11
Medical/ Dental, other	14	13	13	12	-3	-1	-1	18
<b>Medical &amp; Dental</b>	<b>58</b>	<b>50</b>	<b>50</b>	<b>51</b>	<b>-8</b>	<b>+0</b>	<b>+1</b>	<b>65</b>
Nurse/ Midwife Manager	892	959	975	976	+84	+17	+0	1,053
Nurse/ Midwife Specialist & AN/MP	62	70	77	77	+16	+8	+0	84
Staff Nurse/ Staff Midwife	2,569	2,618	2,607	2,608	+39	-10	+1	2,991
Public Health Nurse	6	12	12	12	+5	-0	+0	14
<i>Pre-registration Nurse/ Midwife Intern</i>	28	7	76	72	+43	+65	-4	147
<i>Nursing/ Midwifery awaiting registration</i>	14	4	1	1	-13	-3	+0	1
Nursing/ Midwifery Student	42	11	77	73	+31	+62	-4	148
Nursing/ Midwifery other	22	28	24	24	+2	-4	-0	28
<b>Nursing &amp; Midwifery</b>	<b>3,593</b>	<b>3,697</b>	<b>3,772</b>	<b>3,769</b>	<b>+176</b>	<b>+72</b>	<b>-3</b>	<b>4,318</b>
Therapy Professions	763	790	783	782	+19	-8	-1	909
Health Science/ Diagnostics	20	21	22	21	+1	+0	-0	23
Social Care	2,595	3,055	3,025	2,992	+397	-63	-32	3,524
Social Workers	219	239	232	233	+15	-6	+2	270
Psychologists	202	239	240	241	+39	+2	+0	267
Pharmacy	7	8	8	8	+1	-1	-0	10
H&SC, Other	85	68	67	104	+19	+36	+37	124
<b>Health &amp; Social Care Professionals</b>	<b>3,890</b>	<b>4,421</b>	<b>4,375</b>	<b>4,381</b>	<b>+491</b>	<b>-40</b>	<b>+6</b>	<b>5,127</b>
Management (VIII & above)	180	236	237	235	+56	-1	-2	239
Administrative/ Supervisory (V to VII)	477	665	686	696	+218	+31	+10	740
Clerical (III & IV)	660	744	756	769	+108	+25	+13	906
<b>Management &amp; Administrative</b>	<b>1,317</b>	<b>1,645</b>	<b>1,679</b>	<b>1,699</b>	<b>+382</b>	<b>+55</b>	<b>+20</b>	<b>1,885</b>
Support	733	624	621	614	-119	-10	-6	872
Maintenance/ Technical	124	126	132	138	+14	+12	+5	150
<b>General Support</b>	<b>857</b>	<b>750</b>	<b>753</b>	<b>752</b>	<b>-105</b>	<b>+2</b>	<b>-1</b>	<b>1,022</b>
Health Care Assistants	6,818	7,495	7,526	7,500	+682	+6	-26	8,991
Home Help	99	80	77	77	-22	-3	+0	215
Care, other	1,638	1,766	1,766	1,759	+121	-7	-7	2,070
<b>Patient &amp; Client Care</b>	<b>8,556</b>	<b>9,341</b>	<b>9,370</b>	<b>9,337</b>	<b>+781</b>	<b>-4</b>	<b>-32</b>	<b>11,276</b>



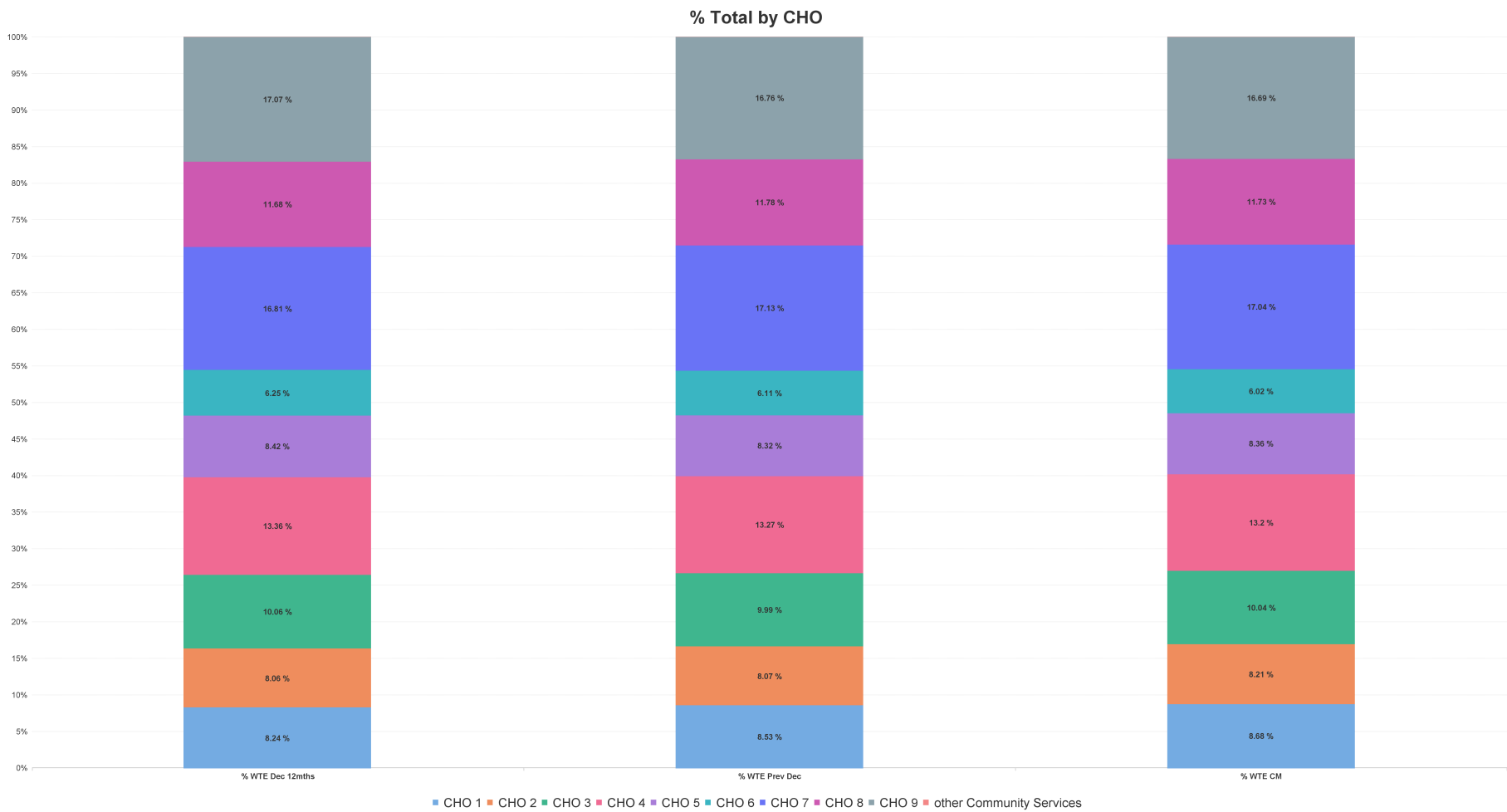
## WTE Change by Staff Category



## Disabilities Report by CHO: MAR 2023

MAR 2023	WTE DEC 2019	WTE DEC 2022	WTE FEB 2023	WTE MAR 2023	WTE change since DEC 2019	WTE change since DEC 2022	WTE change since FEB 2023	No. MAR 2023
<b>Overall</b>	<b>18,273</b>	<b>19,903</b>	<b>19,999</b>	<b>19,990</b>	<b>+1,717</b>	<b>+87</b>	<b>-9</b>	<b>23,693</b>
CHO 1	1,498	1,698	1,727	1,735	+237	+37	+9	1,935
CHO 2	1,497	1,607	1,638	1,641	+144	+34	+3	2,010
CHO 3	1,823	1,989	2,008	2,007	+183	+18	-1	2,388
CHO 4	2,425	2,640	2,636	2,639	+213	-2	+3	3,185
CHO 5	1,488	1,656	1,674	1,670	+182	+14	-3	1,965
CHO 6	1,198	1,216	1,212	1,204	+7	-12	-8	1,390
CHO 7	2,982	3,410	3,418	3,407	+425	-3	-11	4,034
CHO 8	2,162	2,345	2,335	2,344	+182	-1	+9	2,825
CHO 9	3,194	3,336	3,346	3,337	+143	+1	-9	3,955
other Community Services	6	6	6	6	+0	+0	+0	6





## Disabilities Employment Report by HSE/S38: MAR 2023

MAR 2023	WTE DEC 2019	WTE DEC 2022	WTE FEB 2023	WTE MAR 2023	WTE change since DEC 2019	WTE change since DEC 2022	WTE change since FEB 2023	No. MAR 2023
<b>Overall</b>	<b>18,273</b>	<b>19,903</b>	<b>19,999</b>	<b>19,990</b>	<b>+1,717</b>	<b>+87</b>	<b>-9</b>	<b>23,693</b>
Health Service Executive	3,873	4,200	4,254	4,283	+410	+83	+29	4,873
Section 38 Voluntary Agencies	14,399	15,703	15,745	15,707	+1,307	+3	-38	18,820



# Disabilities Employment Report by HSE: MAR 2023

MAR 2023	WTE DEC 2019	WTE DEC 2022	WTE FEB 2023	WTE MAR 2023	WTE change since DEC 2019	WTE change since DEC 2022	WTE change since FEB 2023	No. MAR 2023
<b>Total HSE</b>	<b>3,873</b>	<b>4,200</b>	<b>4,254</b>	<b>4,283</b>	<b>+410</b>	<b>+83</b>	<b>+29</b>	<b>4,873</b>
Consultants	8	6	5	6	-1	+1	+1	7
Registrars	3	2	1	1	-2	-1	+0	1
SHO/ Interns		1		1	+1	+0	+1	1
Medical/ Dental, other	6	6	6	5	-1	-1	-1	9
<b>Medical &amp; Dental</b>	<b>17</b>	<b>15</b>	<b>13</b>	<b>13</b>	<b>-3</b>	<b>-1</b>	<b>+1</b>	<b>18</b>
Nurse/ Midwife Manager	257	267	273	278	+22	+11	+5	294
Nurse/ Midwife Specialist & AN/MP	14	18	23	24	+10	+6	+1	25
Staff Nurse/ Staff Midwife	788	782	790	792	+4	+10	+2	869
Public Health Nurse	6	12	12	12	+5	-0	+0	14
Nursing/ Midwifery awaiting registration	14	2	1	1	-9	+0	+0	1
Pre-registration Nurse/ Midwife Intern	3	7	20	18	+1	-12	-2	38
Nursing/ Midwifery Student	17	9	21	19	+2	+10	-2	39
Nursing/ Midwifery other	8	8	9	9	+1	+0	+0	10
<b>Nursing &amp; Midwifery</b>	<b>1,089</b>	<b>1,096</b>	<b>1,127</b>	<b>1,133</b>	<b>+45</b>	<b>+37</b>	<b>+6</b>	<b>1,251</b>
Therapy Professions	330	322	319	319	-10	-2	-0	378
Health Science/ Diagnostics	2	6	6	6	+4	+0	+0	6
Social Care	89	109	112	113	+24	+3	+0	126
Social Workers	58	62	59	61	+3	-1	+2	69
Psychologists	74	95	96	97	+23	+3	+1	109
H&SC, Other	26	19	20	18	-8	-1	-1	21
<b>Health &amp; Social Care Professionals</b>	<b>579</b>	<b>612</b>	<b>612</b>	<b>614</b>	<b>+36</b>	<b>+2</b>	<b>+2</b>	<b>709</b>
Management (VIII & above)	45	69	73	71	+26	+2	-2	73
Administrative/ Supervisory (V to VII)	140	231	230	234	+94	+3	+3	250
Clerical (III & IV)	178	227	233	239	+61	+13	+6	270
<b>Management &amp; Administrative</b>	<b>363</b>	<b>526</b>	<b>536</b>	<b>544</b>	<b>+181</b>	<b>+18</b>	<b>+8</b>	<b>593</b>
Support	87	67	67	68	-20	+1	+1	79
Maintenance/ Technical	21	21	23	23	+2	+3	+0	24
<b>General Support</b>	<b>108</b>	<b>88</b>	<b>90</b>	<b>91</b>	<b>-17</b>	<b>+3</b>	<b>+1</b>	<b>103</b>
Health Care Assistants	1,510	1,616	1,625	1,632	+122	+16	+8	1,791
Home Help	99	80	77	77	-22	-3	+0	215
Care, other	108	166	175	177	+69	+11	+2	193
<b>Patient &amp; Client Care</b>	<b>1,717</b>	<b>1,862</b>	<b>1,876</b>	<b>1,887</b>	<b>+169</b>	<b>+25</b>	<b>+10</b>	<b>2,199</b>



## Disabilities Employment Report by S38 Hospitals: MAR 2023

MAR 2023	WTE DEC 2019	WTE DEC 2022	WTE FEB 2023	WTE MAR 2023	WTE change since DEC 2019	WTE change since DEC 2022	WTE change since FEB 2023	No. MAR 2023
<b>Total S38 Vols</b>	<b>14,399</b>	<b>15,703</b>	<b>15,745</b>	<b>15,707</b>	<b>+1,307</b>	<b>+3</b>	<b>-38</b>	<b>18,820</b>
Consultants	16	13	14	13	-3	+0	-0	18
Registrars	10	8	8	9	-1	+1	+1	10
SHO/ Interns	7	8	9	9	+2	+1	-0	10
Medical/ Dental, other	8	7	7	6	-2	-0	-0	9
<b>Medical &amp; Dental</b>	<b>41</b>	<b>35</b>	<b>37</b>	<b>37</b>	<b>-4</b>	<b>+2</b>	<b>-0</b>	<b>47</b>
Nurse/ Midwife Manager	635	692	702	697	+62	+6	-5	759
Nurse/ Midwife Specialist & AN/MP	48	52	54	53	+5	+2	-1	59
Staff Nurse/ Staff Midwife	1,781	1,836	1,817	1,816	+35	-20	-1	2,122
Pre-registration Nurse/ Midwife Intern	25		56	54	-8	-2	-2	109
Nursing/ Midwifery awaiting registration		2						
Nursing/ Midwifery Student	25	2	56	54	+29	+52	-2	109
Nursing/ Midwifery other	14	19	15	15	+1	-4	-0	18
<b>Nursing &amp; Midwifery</b>	<b>2,504</b>	<b>2,601</b>	<b>2,645</b>	<b>2,636</b>	<b>+132</b>	<b>+35</b>	<b>-9</b>	<b>3,067</b>
Therapy Professions	433	469	463	463	+30	-6	-1	531
Health Science/ Diagnostics	18	15	16	15	-3	+0	-0	17
Social Care	2,506	2,946	2,912	2,879	+373	-66	-33	3,398
Social Workers	161	177	173	173	+11	-4	-0	201
Psychologists	128	144	144	143	+15	-1	-0	158
Pharmacy	7	8	8	8	+1	-1	-0	10
H&SC, Other	59	49	47	86	+27	+36	+39	103
<b>Health &amp; Social Care Professionals</b>	<b>3,312</b>	<b>3,808</b>	<b>3,763</b>	<b>3,767</b>	<b>+455</b>	<b>-42</b>	<b>+4</b>	<b>4,418</b>
Management (VIII & above)	135	167	164	164	+29	-3	-0	166
Administrative/ Supervisory (V to VII)	338	435	456	462	+125	+28	+6	490
Clerical (III & IV)	482	517	523	529	+47	+12	+6	636
<b>Management &amp; Administrative</b>	<b>955</b>	<b>1,118</b>	<b>1,143</b>	<b>1,155</b>	<b>+201</b>	<b>+37</b>	<b>+12</b>	<b>1,292</b>
Support	646	557	554	547	-99	-10	-7	793
Maintenance/ Technical	103	105	109	114	+11	+9	+5	126
<b>General Support</b>	<b>749</b>	<b>662</b>	<b>663</b>	<b>661</b>	<b>-88</b>	<b>-1</b>	<b>-2</b>	<b>919</b>
Health Care Assistants	5,308	5,878	5,902	5,868	+560	-10	-34	7,200
Care, other	1,530	1,600	1,592	1,582	+52	-18	-9	1,877
<b>Patient &amp; Client Care</b>	<b>6,839</b>	<b>7,479</b>	<b>7,493</b>	<b>7,450</b>	<b>+612</b>	<b>-28</b>	<b>-43</b>	<b>9,077</b>

# Disabilities Employment Report by Grade Group: MAR 2023

## CHO 1

MAR 2023	WTE DEC 2019	WTE DEC 2022	WTE FEB 2023	WTE MAR 2023	WTE change since DEC 2019	WTE change since DEC 2022	WTE change since FEB 2023	No. MAR 2023
<b>Overall</b>	<b>1,498</b>	<b>1,698</b>	<b>1,727</b>	<b>1,735</b>	<b>+237</b>	<b>+37</b>	<b>+9</b>	<b>1,935</b>
Other Medical	3	3	3	2	-1	-1	-1	5
<b>Medical/ Dental, other</b>	<b>3</b>	<b>3</b>	<b>3</b>	<b>2</b>	<b>-1</b>	<b>-1</b>	<b>-1</b>	<b>5</b>
<b>Medical &amp; Dental</b>	<b>3</b>	<b>3</b>	<b>3</b>	<b>2</b>	<b>-1</b>	<b>-1</b>	<b>-1</b>	<b>5</b>
Clinical Nurse/ Midwife Manager	91	100	102	107	+16	+7	+6	114
Director Nursing/Midwifery, Assistant	6	5	6	6	-0	+1	-0	6
Director of Nursing/Midwifery	8	7	7	7	-1	+0	+0	7
<b>Nurse/ Midwife Manager</b>	<b>105</b>	<b>112</b>	<b>115</b>	<b>120</b>	<b>+15</b>	<b>+8</b>	<b>+5</b>	<b>127</b>
Advanced Nurse/ Midwife Practitioner		2	3	3	+3	+1	+0	3
Clinical Nurse/ Midwife Specialist	7	6	9	9	+2	+3	+1	10
<b>Nurse/ Midwife Specialist &amp; AN/MP</b>	<b>7</b>	<b>8</b>	<b>12</b>	<b>12</b>	<b>+5</b>	<b>+4</b>	<b>+1</b>	<b>13</b>
Staff Nurse [Intellectual Disability]	205	273	269	268	+62	-5	-1	292
Staff Nurse [Psychiatric]	2	3	3	3	+1	-0	-0	3
Staff Nurses [General/ Children's]	117	59	64	61	-56	+1	-3	70
<b>Staff Nurse/ Staff Midwife</b>	<b>324</b>	<b>335</b>	<b>336</b>	<b>331</b>	<b>+8</b>	<b>-4</b>	<b>-4</b>	<b>365</b>
Public Health Nurse		1	1	1	+1	-0	+0	1
<b>Public Health Nurse</b>		<b>1</b>	<b>1</b>	<b>1</b>	<b>+1</b>	<b>-0</b>	<b>+0</b>	<b>1</b>
Nursing/ Midwifery awaiting registration	11				-11			
Pre-registration Nurse/ Midwife Intern	3	6	13	12	+9	+6	-1	25
<b>Nursing/ Midwifery Student</b>	<b>14</b>	<b>6</b>	<b>13</b>	<b>12</b>	<b>-2</b>	<b>+6</b>	<b>-1</b>	<b>25</b>
Nursing Education/Clinical	5	4	4	4	-1	-0	-0	5
<b>Nursing/ Midwifery other</b>	<b>5</b>	<b>4</b>	<b>4</b>	<b>4</b>	<b>-1</b>	<b>-0</b>	<b>-0</b>	<b>5</b>
<b>Nursing &amp; Midwifery</b>	<b>455</b>	<b>467</b>	<b>481</b>	<b>481</b>	<b>+26</b>	<b>+14</b>	<b>+0</b>	<b>536</b>
Dietitians		2	2	2	+2	+0	+0	2
Occupational Therapists	13	22	20	20	+7	-2	+0	23
Physiotherapists	9	17	17	16	+8	-0	-0	19
Speech & Language Therapists	21	18	19	18	-3	-0	-1	21
<b>Therapy Professions</b>	<b>42</b>	<b>58</b>	<b>57</b>	<b>56</b>	<b>+14</b>	<b>-2</b>	<b>-1</b>	<b>65</b>
Social Care	8	17	19	19	+12	+3	+1	23
<b>Social Care</b>	<b>8</b>	<b>17</b>	<b>19</b>	<b>19</b>	<b>+12</b>	<b>+3</b>	<b>+1</b>	<b>23</b>
Social Workers	16	17	17	17	+2	+0	+0	18
<b>Social Workers</b>	<b>16</b>	<b>17</b>	<b>17</b>	<b>17</b>	<b>+2</b>	<b>+0</b>	<b>+0</b>	<b>18</b>
Psychologists	5	12	13	12	+8	+1	-0	14
<b>Psychologists</b>	<b>5</b>	<b>12</b>	<b>13</b>	<b>12</b>	<b>+8</b>	<b>+1</b>	<b>-0</b>	<b>14</b>
Counsellor Therapists	6	8	8	7	+2	-1	-1	8





## Disabilities Employment Report by Grade Group: MAR 2023

MAR 2023	WTE DEC 2019	WTE DEC 2022	WTE FEB 2023	WTE MAR 2023	WTE change since DEC 2019	WTE change since DEC 2022	WTE change since FEB 2023	No. MAR 2023
<b>Overall</b>	<b>1,498</b>	<b>1,698</b>	<b>1,727</b>	<b>1,735</b>	<b>+237</b>	<b>+37</b>	<b>+9</b>	<b>1,935</b>
Other Health & Social Care	7				-7			
<b>H&amp;SC, Other</b>	<b>12</b>	<b>8</b>	<b>8</b>	<b>7</b>	<b>-5</b>	<b>-1</b>	<b>-1</b>	<b>8</b>
<b>Health &amp; Social Care Professionals</b>	<b>82</b>	<b>112</b>	<b>113</b>	<b>112</b>	<b>+30</b>	<b>+0</b>	<b>-1</b>	<b>128</b>
Executive Management		1	1	1	+1	+0	+0	1
Senior Management (VIII & GM)	14	14	14	14	-0	-0	-0	14
<b>Management (VIII &amp; above)</b>	<b>14</b>	<b>15</b>	<b>15</b>	<b>15</b>	<b>+1</b>	<b>-0</b>	<b>-0</b>	<b>15</b>
Middle Management (V-VII)	28	55	54	53	+26	-1	-1	57
<b>Administrative/ Supervisory (V to VII)</b>	<b>28</b>	<b>55</b>	<b>54</b>	<b>53</b>	<b>+26</b>	<b>-1</b>	<b>-1</b>	<b>57</b>
General Administrative (III & IV)	50	63	64	62	+13	-1	-2	69
<b>Clerical (III &amp; IV)</b>	<b>50</b>	<b>63</b>	<b>64</b>	<b>62</b>	<b>+13</b>	<b>-1</b>	<b>-2</b>	<b>69</b>
<b>Management &amp; Administrative</b>	<b>91</b>	<b>133</b>	<b>133</b>	<b>130</b>	<b>+39</b>	<b>-2</b>	<b>-3</b>	<b>141</b>
Catering	12	9	9	10	-2	+1	+1	13
Household Services	31	18	18	18	-13	+0	-0	22
Other Support	5	3	4	4	-1	+1	+0	4
Portering	1	0	0	0	-1	+0	+0	1
<b>Support</b>	<b>49</b>	<b>30</b>	<b>32</b>	<b>32</b>	<b>-17</b>	<b>+2</b>	<b>+1</b>	<b>40</b>
Maintenance	6	4	4	4	-2	+0	+0	4
<b>Maintenance/ Technical</b>	<b>6</b>	<b>4</b>	<b>4</b>	<b>4</b>	<b>-2</b>	<b>+0</b>	<b>+0</b>	<b>4</b>
<b>General Support</b>	<b>55</b>	<b>34</b>	<b>36</b>	<b>36</b>	<b>-19</b>	<b>+2</b>	<b>+1</b>	<b>44</b>
Attendant/ Aide	17	17	17	16	-0	-0	-0	19
Health Care Assistant/ Care Assistant	744	868	872	881	+137	+14	+9	967
<b>Health Care Assistants</b>	<b>761</b>	<b>884</b>	<b>889</b>	<b>898</b>	<b>+136</b>	<b>+13</b>	<b>+9</b>	<b>986</b>
Home Helps	13	16	15	16	+2	+0	+1	28
<b>Home Help</b>	<b>13</b>	<b>16</b>	<b>15</b>	<b>16</b>	<b>+2</b>	<b>+0</b>	<b>+1</b>	<b>28</b>
Home Care Services	3	2	2	2	-1	+0	+0	2
Other Care Grades	9	13	14	15	+6	+1	+1	15
Pastoral Care	1	2	2	2	+1	+0	+0	2
Workshop Services	24	32	40	42	+18	+10	+2	48
<b>Care, other</b>	<b>37</b>	<b>49</b>	<b>58</b>	<b>61</b>	<b>+24</b>	<b>+11</b>	<b>+3</b>	<b>67</b>
<b>Patient &amp; Client Care</b>	<b>812</b>	<b>949</b>	<b>961</b>	<b>974</b>	<b>+162</b>	<b>+25</b>	<b>+13</b>	<b>1,081</b>



# Disabilities Employment Report by Grade Group: MAR 2023

CHO 2

MAR 2023	WTE DEC 2019	WTE DEC 2022	WTE FEB 2023	WTE MAR 2023	WTE change since DEC 2019	WTE change since DEC 2022	WTE change since FEB 2023	No. MAR 2023
<b>Overall</b>	<b>1,497</b>	<b>1,607</b>	<b>1,638</b>	<b>1,641</b>	<b>+144</b>	<b>+34</b>	<b>+3</b>	<b>2,010</b>
Consultant Paediatrics	1	1	1	1	+0	+0	+0	1
Consultant Psychiatry	2	2	2	2	+0	+0	+0	3
<b>Consultants</b>	<b>3</b>	<b>3</b>	<b>3</b>	<b>3</b>	<b>+0</b>	<b>+0</b>	<b>+0</b>	<b>4</b>
Registrar	1			1	+0	+1	+1	1
Senior Registrar	1	1	1	1	+0	+0	+0	1
<b>Registrars</b>	<b>2</b>	<b>1</b>	<b>1</b>	<b>2</b>	<b>+0</b>	<b>+1</b>	<b>+1</b>	<b>2</b>
Senior House Officer		1	1			-1	-1	
<b>SHO/ Interns</b>		<b>1</b>	<b>1</b>			<b>-1</b>	<b>-1</b>	
Other Medical	1	1	1	1	+0	+0	+0	1
<b>Medical/ Dental, other</b>	<b>1</b>	<b>1</b>	<b>1</b>	<b>1</b>	<b>+0</b>	<b>+0</b>	<b>+0</b>	<b>1</b>
<b>Medical &amp; Dental</b>	<b>6</b>	<b>6</b>	<b>6</b>	<b>6</b>	<b>+0</b>	<b>+0</b>	<b>+0</b>	<b>7</b>
Clinical Nurse/ Midwife Manager	75	73	72	70	-5	-3	-2	80
Director Nursing/Midwifery, Assistant		1	1	1	+1	+0	+0	1
Director of Nursing/Midwifery	3	2	2	2	-1	-0	+0	2
<b>Nurse/ Midwife Manager</b>	<b>77</b>	<b>76</b>	<b>75</b>	<b>73</b>	<b>-4</b>	<b>-3</b>	<b>-2</b>	<b>83</b>
Advanced Nurse/ Midwife Practitioner	1	1	1	1	-0	-0	+0	1
Clinical Nurse/ Midwife Specialist	5	5	5	5	+1	+0	+0	6
<b>Nurse/ Midwife Specialist &amp; AN/MP</b>	<b>6</b>	<b>6</b>	<b>6</b>	<b>6</b>	<b>+0</b>	<b>-0</b>	<b>+0</b>	<b>7</b>
Staff Nurse [Intellectual Disability]	90	124	123	121	+31	-3	-2	149
Staff Nurse [Psychiatric]	19	16	16	16	-3	+0	+0	19
Staff Nurses [General/ Children's]	57	26	27	27	-30	+1	-0	33
<b>Staff Nurse/ Staff Midwife</b>	<b>165</b>	<b>166</b>	<b>166</b>	<b>164</b>	<b>-2</b>	<b>-2</b>	<b>-2</b>	<b>201</b>
<b>Nursing &amp; Midwifery</b>	<b>249</b>	<b>248</b>	<b>247</b>	<b>243</b>	<b>-6</b>	<b>-5</b>	<b>-4</b>	<b>291</b>
Dietitians	1	2	2	2	+1	+0	+0	2
Occupational Therapists	11	15	15	15	+3	-0	-0	18
Physiotherapists	13	13	14	14	+1	+1	-0	16
Speech & Language Therapists	16	18	17	18	+1	-0	+1	22
<b>Therapy Professions</b>	<b>41</b>	<b>48</b>	<b>48</b>	<b>48</b>	<b>+7</b>	<b>+0</b>	<b>+1</b>	<b>58</b>
Social Care	222	279	284	285	+64	+6	+2	346
<b>Social Care</b>	<b>222</b>	<b>279</b>	<b>284</b>	<b>285</b>	<b>+64</b>	<b>+6</b>	<b>+2</b>	<b>346</b>
Social Workers	26	27	27	26	-0	-1	-1	34
<b>Social Workers</b>	<b>26</b>	<b>27</b>	<b>27</b>	<b>26</b>	<b>-0</b>	<b>-1</b>	<b>-1</b>	<b>34</b>
Psychologists	16	19	21	22	+6	+3	+1	25
<b>Psychologists</b>	<b>16</b>	<b>19</b>	<b>21</b>	<b>22</b>	<b>+6</b>	<b>+3</b>	<b>+1</b>	<b>25</b>
Counsellor Therapists	3	6	5	5	+2	-1	+0	5
Other Health & Social Care	10	5	5	7	-4	+2	+1	11
Play Therapists/ Specialists	3	1	1	1	-2	+0	+0	1



## Disabilities Employment Report by Grade Group: MAR 2023

MAR 2023	WTE DEC 2019	WTE DEC 2022	WTE FEB 2023	WTE MAR 2023	WTE change since DEC 2019	WTE change since DEC 2022	WTE change since FEB 2023	No. MAR 2023
<b>Overall</b>	<b>1,497</b>	<b>1,607</b>	<b>1,638</b>	<b>1,641</b>	<b>+144</b>	<b>+34</b>	<b>+3</b>	<b>2,010</b>
<b>H&amp;SC, Other</b>	<b>16</b>	<b>11</b>	<b>11</b>	<b>12</b>	<b>-4</b>	<b>+0</b>	<b>+1</b>	<b>17</b>
<b>Health &amp; Social Care Professionals</b>	<b>321</b>	<b>385</b>	<b>390</b>	<b>393</b>	<b>+72</b>	<b>+8</b>	<b>+3</b>	<b>480</b>
Executive Management	2	2	2	2	-0	-0	-0	2
Senior Management (VIII & GM)	14	15	16	17	+3	+2	+0	17
<b>Management (VIII &amp; above)</b>	<b>16</b>	<b>17</b>	<b>18</b>	<b>19</b>	<b>+3</b>	<b>+2</b>	<b>+0</b>	<b>19</b>
Middle Management (V-VII)	40	64	67	70	+29	+6	+2	72
<b>Administrative/ Supervisory (V to VII)</b>	<b>40</b>	<b>64</b>	<b>67</b>	<b>70</b>	<b>+29</b>	<b>+6</b>	<b>+2</b>	<b>72</b>
General Administrative (III & IV)	50	54	55	58	+8	+4	+3	71
<b>Clerical (III &amp; IV)</b>	<b>50</b>	<b>54</b>	<b>55</b>	<b>58</b>	<b>+8</b>	<b>+4</b>	<b>+3</b>	<b>71</b>
<b>Management &amp; Administrative</b>	<b>106</b>	<b>135</b>	<b>141</b>	<b>146</b>	<b>+40</b>	<b>+11</b>	<b>+6</b>	<b>162</b>
Catering	1	1	1	1	-0	+0	+0	1
Household Services	19	19	20	19	+0	+0	-1	38
Other Support	25	26	29	26	+1	+0	-3	35
<b>Support</b>	<b>45</b>	<b>46</b>	<b>50</b>	<b>46</b>	<b>+1</b>	<b>+0</b>	<b>-4</b>	<b>74</b>
Maintenance	13	11	10	10	-3	-0	+0	11
Technical Services		1	1	1	+1	+0	+0	1
<b>Maintenance/ Technical</b>	<b>13</b>	<b>12</b>	<b>11</b>	<b>11</b>	<b>-2</b>	<b>-0</b>	<b>+0</b>	<b>12</b>
<b>General Support</b>	<b>58</b>	<b>58</b>	<b>61</b>	<b>57</b>	<b>-0</b>	<b>-0</b>	<b>-4</b>	<b>86</b>
Attendant/ Aide	3	4	4	4	+0	-0	-1	4
Health Care Assistant/ Care Assistant	620	638	646	651	+31	+14	+5	807
<b>Health Care Assistants</b>	<b>623</b>	<b>641</b>	<b>651</b>	<b>655</b>	<b>+32</b>	<b>+14</b>	<b>+4</b>	<b>811</b>
Home Care Services	5	1	1	1	-4	+0	-0	2
Other Care Grades	15	33	36	36	+21	+3	+0	37
Pastoral Care	2				-2			
Workshop Services	112	100	104	102	-9	+2	-2	134
<b>Care, other</b>	<b>134</b>	<b>134</b>	<b>141</b>	<b>139</b>	<b>+5</b>	<b>+5</b>	<b>-2</b>	<b>173</b>
<b>Patient &amp; Client Care</b>	<b>757</b>	<b>776</b>	<b>792</b>	<b>794</b>	<b>+37</b>	<b>+19</b>	<b>+2</b>	<b>984</b>



# Disabilities Employment Report by Grade Group: MAR 2023

CHO 3

MAR 2023	WTE DEC 2019	WTE DEC 2022	WTE FEB 2023	WTE MAR 2023	WTE change since DEC 2019	WTE change since DEC 2022	WTE change since FEB 2023	No. MAR 2023
<b>Overall</b>	<b>1,823</b>	<b>1,989</b>	<b>2,008</b>	<b>2,007</b>	<b>+183</b>	<b>+18</b>	<b>-1</b>	<b>2,388</b>
Consultant Psychiatry	1	0	0	0	-1	-0	-0	1
<b>Consultants</b>	<b>1</b>	<b>0</b>	<b>0</b>	<b>0</b>	<b>-1</b>	<b>-0</b>	<b>-0</b>	<b>1</b>
Other Medical	1	0	0	0	-0	+0	+0	1
<b>Medical/ Dental, other</b>	<b>1</b>	<b>0</b>	<b>0</b>	<b>0</b>	<b>-0</b>	<b>+0</b>	<b>+0</b>	<b>1</b>
<b>Medical &amp; Dental</b>	<b>2</b>	<b>1</b>	<b>1</b>	<b>1</b>	<b>-1</b>	<b>-0</b>	<b>-0</b>	<b>2</b>
Clinical Nurse/ Midwife Manager	75	80	81	79	+4	-1	-2	81
Director Nursing/Midwifery, Assistant	1	1	1	1	+0	+0	+0	1
<b>Nurse/ Midwife Manager</b>	<b>76</b>	<b>81</b>	<b>82</b>	<b>80</b>	<b>+4</b>	<b>-1</b>	<b>-2</b>	<b>82</b>
Clinical Nurse/ Midwife Specialist	13	11	12	12	-1	+1	+0	13
<b>Nurse/ Midwife Specialist &amp; AN/MP</b>	<b>13</b>	<b>11</b>	<b>12</b>	<b>12</b>	<b>-1</b>	<b>+1</b>	<b>+0</b>	<b>13</b>
Staff Nurse [Intellectual Disability]	208	195	196	196	-12	+2	+0	219
Staff Nurses [General/ Children's]	39	63	63	63	+24	+0	+0	67
<b>Staff Nurse/ Staff Midwife</b>	<b>247</b>	<b>258</b>	<b>259</b>	<b>260</b>	<b>+13</b>	<b>+2</b>	<b>+0</b>	<b>286</b>
Pre-registration Nurse/ Midwife Intern	12		6	6	-6	+6	+0	11
<b>Nursing/ Midwifery Student</b>	<b>12</b>		<b>6</b>	<b>6</b>	<b>-6</b>	<b>+6</b>	<b>+0</b>	<b>11</b>
Nursing Education/Clinical	3	3	3	3	+0	+0	+0	3
Other Nursing/ Midwifery	1				-1			
<b>Nursing/ Midwifery other</b>	<b>4</b>	<b>3</b>	<b>3</b>	<b>3</b>	<b>-1</b>	<b>+0</b>	<b>+0</b>	<b>3</b>
<b>Nursing &amp; Midwifery</b>	<b>351</b>	<b>353</b>	<b>361</b>	<b>360</b>	<b>+9</b>	<b>+7</b>	<b>-1</b>	<b>395</b>
Occupational Therapists	24	13	13	13	-10	-0	+1	14
Physiotherapists	20	9	9	10	-10	+1	+1	11
Speech & Language Therapists	31	18	18	17	-14	-1	-0	20
<b>Therapy Professions</b>	<b>74</b>	<b>41</b>	<b>39</b>	<b>40</b>	<b>-34</b>	<b>-0</b>	<b>+1</b>	<b>45</b>
Clinical Engineering		4	4	4	+4	+0	+0	4
<b>Health Science/ Diagnostics</b>		<b>4</b>	<b>4</b>	<b>4</b>	<b>+4</b>	<b>+0</b>	<b>+0</b>	<b>4</b>
Social Care	241	280	275	275	+34	-5	-0	319
<b>Social Care</b>	<b>241</b>	<b>280</b>	<b>275</b>	<b>275</b>	<b>+34</b>	<b>-5</b>	<b>-0</b>	<b>319</b>
Social Workers	17	19	19	19	+2	-1	+0	21
<b>Social Workers</b>	<b>17</b>	<b>19</b>	<b>19</b>	<b>19</b>	<b>+2</b>	<b>-1</b>	<b>+0</b>	<b>21</b>
Psychologists	16	19	17	17	+1	-1	+0	19
<b>Psychologists</b>	<b>16</b>	<b>19</b>	<b>17</b>	<b>17</b>	<b>+1</b>	<b>-1</b>	<b>+0</b>	<b>19</b>
Other Health & Social Care	7	5	5	5	-3	-0	-0	7
Play Therapists/ Specialists	5	6	6	6	+1	-0	+0	8
<b>H&amp;SC, Other</b>	<b>12</b>	<b>11</b>	<b>11</b>	<b>11</b>	<b>-1</b>	<b>-1</b>	<b>-0</b>	<b>15</b>
<b>Health &amp; Social Care Professionals</b>	<b>359</b>	<b>374</b>	<b>365</b>	<b>366</b>	<b>+7</b>	<b>-8</b>	<b>+1</b>	<b>423</b>
Executive Management	2	3	3	3	+1	+0	+0	3
Senior Management (VIII & GM)	5	9	12	13	+8	+4	+1	13



## Disabilities Employment Report by Grade Group: MAR 2023

MAR 2023	WTE DEC 2019	WTE DEC 2022	WTE FEB 2023	WTE MAR 2023	WTE change since DEC 2019	WTE change since DEC 2022	WTE change since FEB 2023	No. MAR 2023
<b>Overall</b>	<b>1,823</b>	<b>1,989</b>	<b>2,008</b>	<b>2,007</b>	<b>+183</b>	<b>+18</b>	<b>-1</b>	<b>2,388</b>
<b>Management (VIII &amp; above)</b>	<b>7</b>	<b>12</b>	<b>15</b>	<b>16</b>	<b>+9</b>	<b>+4</b>	<b>+1</b>	<b>16</b>
Middle Management (V-VII)	34	55	51	52	+18	-3	+0	54
Other Administrative	7	5	5	7	-0	+2	+2	7
<b>Administrative/ Supervisory (V to VII)</b>	<b>41</b>	<b>60</b>	<b>56</b>	<b>59</b>	<b>+18</b>	<b>-2</b>	<b>+2</b>	<b>61</b>
General Administrative (III & IV)	59	54	55	57	-2	+3	+2	62
<b>Clerical (III &amp; IV)</b>	<b>59</b>	<b>54</b>	<b>55</b>	<b>57</b>	<b>-2</b>	<b>+3</b>	<b>+2</b>	<b>62</b>
<b>Management &amp; Administrative</b>	<b>107</b>	<b>126</b>	<b>127</b>	<b>131</b>	<b>+25</b>	<b>+6</b>	<b>+5</b>	<b>139</b>
Catering	5	4	4	4	-1	+0	+0	5
Household Services	39	42	42	42	+3	-0	-0	49
Other Support	4	7	7	7	+3	-0	+0	8
Portering	4			0	-4	+0	+0	1
<b>Support</b>	<b>53</b>	<b>54</b>	<b>54</b>	<b>54</b>	<b>+1</b>	<b>+0</b>	<b>-0</b>	<b>63</b>
Maintenance	13	16	18	18	+5	+2	+0	20
Technical Services	1	2	2	2	+1	+0	+0	2
<b>Maintenance/ Technical</b>	<b>14</b>	<b>18</b>	<b>20</b>	<b>20</b>	<b>+6</b>	<b>+2</b>	<b>+0</b>	<b>22</b>
<b>General Support</b>	<b>67</b>	<b>72</b>	<b>74</b>	<b>74</b>	<b>+7</b>	<b>+2</b>	<b>+0</b>	<b>85</b>
Attendant/ Aide	86	35	35	36	-50	+1	+1	44
Health Care Assistant/ Care Assistant	677	821	833	822	+145	+1	-11	1,053
Health & Social Care Assistants	1	2	3	5	+4	+3	+1	5
<b>Health Care Assistants</b>	<b>764</b>	<b>857</b>	<b>871</b>	<b>863</b>	<b>+98</b>	<b>+5</b>	<b>-8</b>	<b>1,102</b>
Home Care Services	4	6	7	6	+3	+0	-0	7
Other Care Grades	20	33	32	34	+14	+1	+1	39
Pastoral Care	1	0	0	0	-0	+0	+0	1
Workshop Services	149	167	170	172	+23	+5	+2	195
<b>Care, other</b>	<b>173</b>	<b>206</b>	<b>210</b>	<b>213</b>	<b>+39</b>	<b>+6</b>	<b>+3</b>	<b>242</b>
<b>Patient &amp; Client Care</b>	<b>937</b>	<b>1064</b>	<b>1081</b>	<b>1075</b>	<b>+138</b>	<b>+11</b>	<b>-5</b>	<b>1,344</b>



# Disabilities Employment Report by Grade Group: MAR 2023

## CHO 4

MAR 2023	WTE DEC 2019	WTE DEC 2022	WTE FEB 2023	WTE MAR 2023	WTE change since DEC 2019	WTE change since DEC 2022	WTE change since FEB 2023	No. MAR 2023
<b>Overall</b>	<b>2,425</b>	<b>2,640</b>	<b>2,636</b>	<b>2,639</b>	<b>+213</b>	<b>-2</b>	<b>+3</b>	<b>3,185</b>
Consultant Paediatrics	1	1	1	1	+0	+0	+0	1
Consultant Psychiatry	1	1	1	1	+0	+0	+0	1
<b>Consultants</b>	<b>2</b>	<b>2</b>	<b>1</b>	<b>2</b>	<b>+0</b>	<b>+0</b>	<b>+0</b>	<b>2</b>
Other Medical	0	0	0	0	+0	+0	+0	1
<b>Medical/ Dental, other</b>	<b>0</b>	<b>0</b>	<b>0</b>	<b>0</b>	<b>+0</b>	<b>+0</b>	<b>+0</b>	<b>1</b>
<b>Medical &amp; Dental</b>	<b>2</b>	<b>2</b>	<b>2</b>	<b>2</b>	<b>+0</b>	<b>+0</b>	<b>+0</b>	<b>3</b>
Clinical Nurse/ Midwife Manager	79	90	91	91	+12	+1	-0	105
Director Nursing/Midwifery, Assistant	5	4	4	4	-1	+0	+0	4
Director of Nursing/Midwifery	3	4	4	4	+1	+0	+0	5
<b>Nurse/ Midwife Manager</b>	<b>87</b>	<b>98</b>	<b>100</b>	<b>100</b>	<b>+12</b>	<b>+1</b>	<b>-0</b>	<b>114</b>
Advanced Nurse/ Midwife Practitioner	1	2	2	2	+1	+0	+0	2
Clinical Nurse/ Midwife Specialist	12	11	11	11	-1	+0	+0	12
<b>Nurse/ Midwife Specialist &amp; AN/MP</b>	<b>13</b>	<b>13</b>	<b>13</b>	<b>13</b>	<b>-0</b>	<b>+0</b>	<b>+0</b>	<b>14</b>
Staff Nurse [Intellectual Disability]	86	152	154	154	+68	+2	-0	190
Staff Nurse [Psychiatric]	2	1	1	1	-1	+0	+0	1
Staff Nurses [General/ Children's]	218	149	145	147	-71	-2	+2	175
<b>Staff Nurse/ Staff Midwife</b>	<b>306</b>	<b>301</b>	<b>300</b>	<b>302</b>	<b>-4</b>	<b>+0</b>	<b>+1</b>	<b>366</b>
Nursing/ Midwifery awaiting registration	1				-1			
Pre-registration Nurse/ Midwife Intern	6	1	10	10	+4	+9	+0	20
<b>Nursing/ Midwifery Student</b>	<b>7</b>	<b>1</b>	<b>10</b>	<b>10</b>	<b>+3</b>	<b>+9</b>	<b>+0</b>	<b>20</b>
Nursing Education/Clinical	1	1	1	1	+0	+0	+0	1
<b>Nursing/ Midwifery other</b>	<b>1</b>	<b>1</b>	<b>1</b>	<b>1</b>	<b>+0</b>	<b>+0</b>	<b>+0</b>	<b>1</b>
<b>Nursing &amp; Midwifery</b>	<b>414</b>	<b>414</b>	<b>424</b>	<b>425</b>	<b>+11</b>	<b>+11</b>	<b>+1</b>	<b>515</b>
Dietitians	3	2	2	2	-1	+0	+0	2
Occupational Therapists	38	44	46	45	+7	+2	-0	53
Physiotherapists	18	18	18	19	+1	+2	+1	23
Speech & Language Therapists	49	42	39	38	-11	-3	-1	49
<b>Therapy Professions</b>	<b>108</b>	<b>105</b>	<b>105</b>	<b>105</b>	<b>-3</b>	<b>+0</b>	<b>+0</b>	<b>127</b>
Social Care	227	259	258	257	+31	-2	-1	294
<b>Social Care</b>	<b>227</b>	<b>259</b>	<b>258</b>	<b>257</b>	<b>+31</b>	<b>-2</b>	<b>-1</b>	<b>294</b>
Social Workers	27	28	27	27	-0	-1	+0	32
<b>Social Workers</b>	<b>27</b>	<b>28</b>	<b>27</b>	<b>27</b>	<b>-0</b>	<b>-1</b>	<b>+0</b>	<b>32</b>
Psychologists	35	37	35	35	+0	-2	+0	40
<b>Psychologists</b>	<b>35</b>	<b>37</b>	<b>35</b>	<b>35</b>	<b>+0</b>	<b>-2</b>	<b>+0</b>	<b>40</b>
Counsellor Therapists	2	1	1	1	-1	+0	+0	1
Other Health & Social Care	6	5	6	6	+0	+1	+0	6
Play Therapists/ Specialists	1	1	1	1	+0	+0	+0	1



## Disabilities Employment Report by Grade Group: MAR 2023

MAR 2023	WTE DEC 2019	WTE DEC 2022	WTE FEB 2023	WTE MAR 2023	WTE change since DEC 2019	WTE change since DEC 2022	WTE change since FEB 2023	No. MAR 2023
<b>Overall</b>	<b>2,425</b>	<b>2,640</b>	<b>2,636</b>	<b>2,639</b>	<b>+213</b>	<b>-2</b>	<b>+3</b>	<b>3,185</b>
<b>H&amp;SC, Other</b>	<b>8</b>	<b>7</b>	<b>8</b>	<b>8</b>	<b>-1</b>	<b>+1</b>	<b>+0</b>	<b>8</b>
<b>Health &amp; Social Care Professionals</b>	<b>405</b>	<b>435</b>	<b>432</b>	<b>431</b>	<b>+27</b>	<b>-3</b>	<b>-0</b>	<b>501</b>
Executive Management	2	4	4	4	+2	+0	+0	4
Senior Management (VIII & GM)	20	19	19	18	-2	-1	-1	19
<b>Management (VIII &amp; above)</b>	<b>22</b>	<b>23</b>	<b>23</b>	<b>22</b>	<b>-0</b>	<b>-1</b>	<b>-1</b>	<b>23</b>
Middle Management (V-VII)	53	72	75	76	+23	+4	+1	81
<b>Administrative/ Supervisory (V to VII)</b>	<b>53</b>	<b>72</b>	<b>75</b>	<b>76</b>	<b>+23</b>	<b>+4</b>	<b>+1</b>	<b>81</b>
General Administrative (III & IV)	84	93	91	93	+9	-0	+2	122
<b>Clerical (III &amp; IV)</b>	<b>84</b>	<b>93</b>	<b>91</b>	<b>93</b>	<b>+9</b>	<b>-0</b>	<b>+2</b>	<b>122</b>
<b>Management &amp; Administrative</b>	<b>160</b>	<b>189</b>	<b>190</b>	<b>191</b>	<b>+32</b>	<b>+3</b>	<b>+2</b>	<b>226</b>
Catering	18	15	15	15	-4	+0	+0	16
Household Services	67	66	64	64	-3	-2	+0	104
Other Support	50	52	52	52	+2	+0	+0	97
Portering	5	5	4	4	-1	-1	+0	9
<b>Support</b>	<b>140</b>	<b>138</b>	<b>135</b>	<b>135</b>	<b>-5</b>	<b>-3</b>	<b>+0</b>	<b>226</b>
Maintenance	9	8	10	10	+1	+2	+0	13
Technical Services	1	2	2	2	+1	+0	+0	2
<b>Maintenance/ Technical</b>	<b>10</b>	<b>10</b>	<b>12</b>	<b>12</b>	<b>+2</b>	<b>+2</b>	<b>+0</b>	<b>15</b>
<b>General Support</b>	<b>150</b>	<b>148</b>	<b>147</b>	<b>147</b>	<b>-3</b>	<b>-1</b>	<b>+0</b>	<b>241</b>
Attendant/ Aide	3	1	1	1	-2	-1	+0	1
Health Care Assistant/ Care Assistant	984	1,110	1,102	1,103	+118	-7	+1	1,304
<b>Health Care Assistants</b>	<b>987</b>	<b>1,111</b>	<b>1,102</b>	<b>1,103</b>	<b>+116</b>	<b>-8</b>	<b>+1</b>	<b>1,305</b>
Home Care Services	2	1	1	1	-1	-0	+0	2
Other Care Grades	22	32	30	29	+7	-3	-1	32
Pastoral Care	1	0	0	0	-0	+0	+0	1
Workshop Services	283	308	307	308	+24	-0	+1	359
<b>Care, other</b>	<b>307</b>	<b>342</b>	<b>339</b>	<b>338</b>	<b>+31</b>	<b>-4</b>	<b>-1</b>	<b>394</b>
<b>Patient &amp; Client Care</b>	<b>1295</b>	<b>1453</b>	<b>1441</b>	<b>1441</b>	<b>+147</b>	<b>-11</b>	<b>+0</b>	<b>1,699</b>



# Disabilities Employment Report by Grade Group: MAR 2023

CHO 5

MAR 2023	WTE DEC 2019	WTE DEC 2022	WTE FEB 2023	WTE MAR 2023	WTE change since DEC 2019	WTE change since DEC 2022	WTE change since FEB 2023	No. MAR 2023
<b>Overall</b>	<b>1,488</b>	<b>1,656</b>	<b>1,674</b>	<b>1,670</b>	<b>+182</b>	<b>+14</b>	<b>-3</b>	<b>1,965</b>
Consultant Psychiatry	1	1	1	1	-0	-0	-0	1
<b>Consultants</b>	<b>1</b>	<b>1</b>	<b>1</b>	<b>1</b>	<b>-0</b>	<b>-0</b>	<b>-0</b>	<b>1</b>
<b>Medical &amp; Dental</b>	<b>1</b>	<b>1</b>	<b>1</b>	<b>1</b>	<b>-0</b>	<b>-0</b>	<b>-0</b>	<b>1</b>
Clinical Nurse/ Midwife Manager	62	69	69	70	+8	+1	+1	72
Director Nursing/Midwifery, Assistant	2	4	4	4	+2	+0	+0	4
Director of Nursing/Midwifery	2	2	2	2	+0	+0	+0	2
<b>Nurse/ Midwife Manager</b>	<b>66</b>	<b>74</b>	<b>75</b>	<b>76</b>	<b>+10</b>	<b>+1</b>	<b>+1</b>	<b>78</b>
Advanced Nurse/ Midwife Practitioner		2	2	2	+2	+0	+0	2
Clinical Nurse/ Midwife Specialist	2	2	2	2	-0	+0	+0	2
<b>Nurse/ Midwife Specialist &amp; AN/MP</b>	<b>2</b>	<b>4</b>	<b>4</b>	<b>4</b>	<b>+2</b>	<b>+0</b>	<b>+0</b>	<b>4</b>
Staff Nurse [Intellectual Disability]	115	120	116	116	+1	-3	+1	128
Staff Nurse [Psychiatric]	3	3	3	3	-0	-0	+0	4
Staff Nurses [General/ Children's]	51	46	47	45	-6	-1	-2	50
<b>Staff Nurse/ Staff Midwife</b>	<b>170</b>	<b>169</b>	<b>165</b>	<b>164</b>	<b>-6</b>	<b>-5</b>	<b>-1</b>	<b>182</b>
Public Health Nurse	5	10	10	10	+4	+0	+0	12
<b>Public Health Nurse</b>	<b>5</b>	<b>10</b>	<b>10</b>	<b>10</b>	<b>+4</b>	<b>+0</b>	<b>+0</b>	<b>12</b>
Nursing/ Midwifery awaiting registration	2				-2			
Pre-registration Nurse/ Midwife Intern		0	9	7	+7	+7	-3	14
<b>Nursing/ Midwifery Student</b>	<b>2</b>	<b>0</b>	<b>9</b>	<b>7</b>	<b>+5</b>	<b>+7</b>	<b>-3</b>	<b>14</b>
Nursing Education/Clinical		1	1	1	+1	+0	+0	1
<b>Nursing/ Midwifery other</b>		<b>1</b>	<b>1</b>	<b>1</b>	<b>+1</b>	<b>+0</b>	<b>+0</b>	<b>1</b>
<b>Nursing &amp; Midwifery</b>	<b>244</b>	<b>258</b>	<b>264</b>	<b>261</b>	<b>+17</b>	<b>+3</b>	<b>-3</b>	<b>291</b>
Dietitians	2	2	2	2	+0	+0	+0	2
Occupational Therapists	21	22	22	22	+1	+0	-0	27
Physiotherapists	14	12	13	12	-2	+0	-2	14
Speech & Language Therapists	24	23	24	23	-0	+0	-0	28
<b>Therapy Professions</b>	<b>61</b>	<b>59</b>	<b>62</b>	<b>60</b>	<b>-1</b>	<b>+1</b>	<b>-2</b>	<b>71</b>
Social Care	154	161	160	160	+6	-1	+1	189
<b>Social Care</b>	<b>154</b>	<b>161</b>	<b>160</b>	<b>160</b>	<b>+6</b>	<b>-1</b>	<b>+1</b>	<b>189</b>
Social Workers	21	20	18	18	-3	-2	+1	21
<b>Social Workers</b>	<b>21</b>	<b>20</b>	<b>18</b>	<b>18</b>	<b>-3</b>	<b>-2</b>	<b>+1</b>	<b>21</b>
Psychologists	12	17	18	17	+5	+0	-0	20
<b>Psychologists</b>	<b>12</b>	<b>17</b>	<b>18</b>	<b>17</b>	<b>+5</b>	<b>+0</b>	<b>-0</b>	<b>20</b>
Counsellor Therapists	1				-1			
Other Health & Social Care		1				-1		
Play Therapists/ Specialists	6	5	5	4	-2	-1	-1	5
<b>H&amp;SC, Other</b>	<b>7</b>	<b>6</b>	<b>5</b>	<b>4</b>	<b>-3</b>	<b>-2</b>	<b>-1</b>	<b>5</b>





## Disabilities Employment Report by Grade Group: MAR 2023

MAR 2023	WTE DEC 2019	WTE DEC 2022	WTE FEB 2023	WTE MAR 2023	WTE change since DEC 2019	WTE change since DEC 2022	WTE change since FEB 2023	No. MAR 2023
<b>Overall</b>	<b>1,488</b>	<b>1,656</b>	<b>1,674</b>	<b>1,670</b>	<b>+182</b>	<b>+14</b>	<b>-3</b>	<b>1,965</b>
<b>Health &amp; Social Care Professionals</b>	<b>255</b>	<b>263</b>	<b>262</b>	<b>260</b>	<b>+5</b>	<b>-3</b>	<b>-2</b>	<b>306</b>
Executive Management	2	4	4	4	+2	-0	-0	4
Senior Management (VIII & GM)	9	15	17	16	+7	+1	-0	17
<b>Management (VIII &amp; above)</b>	<b>11</b>	<b>19</b>	<b>21</b>	<b>20</b>	<b>+9</b>	<b>+1</b>	<b>-0</b>	<b>21</b>
Middle Management (V-VII)	36	55	62	61	+25	+7	-1	65
<b>Administrative/ Supervisory (V to VII)</b>	<b>36</b>	<b>55</b>	<b>62</b>	<b>61</b>	<b>+25</b>	<b>+7</b>	<b>-1</b>	<b>65</b>
General Administrative (III & IV)	61	74	78	80	+19	+6	+2	93
<b>Clerical (III &amp; IV)</b>	<b>61</b>	<b>74</b>	<b>78</b>	<b>80</b>	<b>+19</b>	<b>+6</b>	<b>+2</b>	<b>93</b>
<b>Management &amp; Administrative</b>	<b>108</b>	<b>147</b>	<b>160</b>	<b>161</b>	<b>+54</b>	<b>+14</b>	<b>+1</b>	<b>179</b>
Catering	4	3	3	3	-1	+0	+0	4
Household Services	10	4	4	4	-6	+0	+0	5
Other Support	1	1	1	1	-0	-1	-0	1
Portering	1				-1			
<b>Support</b>	<b>15</b>	<b>8</b>	<b>7</b>	<b>8</b>	<b>-8</b>	<b>-0</b>	<b>+0</b>	<b>10</b>
Maintenance	6	8	8	8	+2	+0	+0	9
Technical Services	1	1	1	1	-0	-0	+0	1
<b>Maintenance/ Technical</b>	<b>7</b>	<b>9</b>	<b>9</b>	<b>9</b>	<b>+2</b>	<b>-0</b>	<b>+0</b>	<b>10</b>
<b>General Support</b>	<b>23</b>	<b>17</b>	<b>17</b>	<b>17</b>	<b>-6</b>	<b>-0</b>	<b>+0</b>	<b>20</b>
Attendant/ Aide	67	73	77	77	+10	+4	-0	83
Health Care Assistant/ Care Assistant	604	680	674	677	+72	-4	+2	789
<b>Health Care Assistants</b>	<b>671</b>	<b>753</b>	<b>752</b>	<b>754</b>	<b>+83</b>	<b>+1</b>	<b>+2</b>	<b>872</b>
Home Helps	44	29	29	28	-16	-2	-1	71
<b>Home Help</b>	<b>44</b>	<b>29</b>	<b>29</b>	<b>28</b>	<b>-16</b>	<b>-2</b>	<b>-1</b>	<b>71</b>
Home Care Services		1	1	1	+1	+0	+0	1
Other Care Grades	8	20	18	19	+11	-1	+0	21
Workshop Services	135	167	170	170	+35	+3	-0	203
<b>Care, other</b>	<b>143</b>	<b>187</b>	<b>189</b>	<b>190</b>	<b>+47</b>	<b>+2</b>	<b>+0</b>	<b>225</b>
<b>Patient &amp; Client Care</b>	<b>858</b>	<b>970</b>	<b>970</b>	<b>971</b>	<b>+113</b>	<b>+1</b>	<b>+1</b>	<b>1,168</b>



# Disabilities Employment Report by Grade Group: MAR 2023

CHO 6

MAR 2023	WTE DEC 2019	WTE DEC 2022	WTE FEB 2023	WTE MAR 2023	WTE change since DEC 2019	WTE change since DEC 2022	WTE change since FEB 2023	No. MAR 2023
<b>Overall</b>	<b>1,198</b>	<b>1,216</b>	<b>1,212</b>	<b>1,204</b>	<b>+7</b>	<b>-12</b>	<b>-8</b>	<b>1,390</b>
Consultant Psychiatry	3	3	3	3	+0	+0	+0	3
<b>Consultants</b>	<b>3</b>	<b>3</b>	<b>3</b>	<b>3</b>	<b>+0</b>	<b>+0</b>	<b>+0</b>	<b>3</b>
Registrar		1	1	1	+1	+0	+0	1
<b>Registrars</b>		<b>1</b>	<b>1</b>	<b>1</b>	<b>+1</b>	<b>+0</b>	<b>+0</b>	<b>1</b>
Other Medical	1	1	1	1	+0	+0	+0	1
<b>Medical/ Dental, other</b>	<b>1</b>	<b>1</b>	<b>1</b>	<b>1</b>	<b>+0</b>	<b>+0</b>	<b>+0</b>	<b>1</b>
<b>Medical &amp; Dental</b>	<b>4</b>	<b>5</b>	<b>5</b>	<b>5</b>	<b>+1</b>	<b>+0</b>	<b>+0</b>	<b>5</b>
Clinical Nurse/ Midwife Manager	40	37	38	38	-2	+1	-0	40
Director Nursing/Midwifery, Assistant	1	1	1	1	-0	+0	+0	1
Director of Nursing/Midwifery	3	2	2	2	-1	+0	+0	3
<b>Nurse/ Midwife Manager</b>	<b>44</b>	<b>40</b>	<b>41</b>	<b>41</b>	<b>-3</b>	<b>+1</b>	<b>-0</b>	<b>44</b>
Clinical Nurse/ Midwife Specialist			1	1	+1	+1	-0	1
<b>Nurse/ Midwife Specialist &amp; AN/MP</b>			<b>1</b>	<b>1</b>	<b>+1</b>	<b>+1</b>	<b>-0</b>	<b>1</b>
Staff Nurse [Intellectual Disability]	49	76	85	85	+36	+9	+0	91
Staff Nurse [Psychiatric]	18	5	5	5	-13	+0	+0	6
Staff Nurses [General/ Children's]	81	56	55	56	-25	-1	+0	63
<b>Staff Nurse/ Staff Midwife</b>	<b>147</b>	<b>138</b>	<b>145</b>	<b>146</b>	<b>-2</b>	<b>+8</b>	<b>+0</b>	<b>160</b>
Nursing Education/Clinical		1	1	1	+1	+0	+0	1
<b>Nursing/ Midwifery other</b>		<b>1</b>	<b>1</b>	<b>1</b>	<b>+1</b>	<b>+0</b>	<b>+0</b>	<b>1</b>
<b>Nursing &amp; Midwifery</b>	<b>191</b>	<b>178</b>	<b>188</b>	<b>188</b>	<b>-3</b>	<b>+10</b>	<b>+0</b>	<b>206</b>
Dietitians	0	0	0	0	+0	+0	+0	1
Occupational Therapists	15	11	11	11	-4	+0	-0	14
Physiotherapists	6	4	4	4	-2	+0	+0	5
Speech & Language Therapists	21	10	10	10	-11	-0	-1	13
<b>Therapy Professions</b>	<b>42</b>	<b>26</b>	<b>26</b>	<b>25</b>	<b>-16</b>	<b>-0</b>	<b>-1</b>	<b>33</b>
Social Care	334	381	378	380	+46	-1	+3	435
<b>Social Care</b>	<b>334</b>	<b>381</b>	<b>378</b>	<b>380</b>	<b>+46</b>	<b>-1</b>	<b>+3</b>	<b>435</b>
Social Workers	11	8	8	9	-2	+1	+1	10
<b>Social Workers</b>	<b>11</b>	<b>8</b>	<b>8</b>	<b>9</b>	<b>-2</b>	<b>+1</b>	<b>+1</b>	<b>10</b>
Psychologists	14	14	13	13	-1	-1	+0	15
<b>Psychologists</b>	<b>14</b>	<b>14</b>	<b>13</b>	<b>13</b>	<b>-1</b>	<b>-1</b>	<b>+0</b>	<b>15</b>
Counsellor Therapists	1				-1			
Other Health & Social Care	1	1	1	1	+0	+0	+0	2
<b>H&amp;SC, Other</b>	<b>2</b>	<b>1</b>	<b>1</b>	<b>1</b>	<b>-0</b>	<b>+0</b>	<b>+0</b>	<b>2</b>
<b>Health &amp; Social Care Professionals</b>	<b>403</b>	<b>431</b>	<b>427</b>	<b>429</b>	<b>+27</b>	<b>-1</b>	<b>+3</b>	<b>495</b>
Executive Management	14	22	13	13	-1	-9	+0	13
Senior Management (VIII & GM)	17	18	19	19	+2	+1	-0	19



## Disabilities Employment Report by Grade Group: MAR 2023

MAR 2023	WTE DEC 2019	WTE DEC 2022	WTE FEB 2023	WTE MAR 2023	WTE change since DEC 2019	WTE change since DEC 2022	WTE change since FEB 2023	No. MAR 2023
<b>Overall</b>	<b>1,198</b>	<b>1,216</b>	<b>1,212</b>	<b>1,204</b>	<b>+7</b>	<b>-12</b>	<b>-8</b>	<b>1,390</b>
<b>Management (VIII &amp; above)</b>	<b>31</b>	<b>39</b>	<b>32</b>	<b>32</b>	<b>+1</b>	<b>-7</b>	<b>-0</b>	<b>32</b>
Middle Management (V-VII)	53	64	64	63	+10	-1	-1	71
<b>Administrative/ Supervisory (V to VII)</b>	<b>53</b>	<b>64</b>	<b>64</b>	<b>63</b>	<b>+10</b>	<b>-1</b>	<b>-1</b>	<b>71</b>
General Administrative (III & IV)	54	52	56	53	-1	+1	-3	59
<b>Clerical (III &amp; IV)</b>	<b>54</b>	<b>52</b>	<b>56</b>	<b>53</b>	<b>-1</b>	<b>+1</b>	<b>-3</b>	<b>59</b>
<b>Management &amp; Administrative</b>	<b>138</b>	<b>156</b>	<b>152</b>	<b>148</b>	<b>+10</b>	<b>-8</b>	<b>-4</b>	<b>162</b>
Catering	4	2	2	2	-2	+0	+0	2
Household Services	14	15	16	15	+2	+1	-0	19
Other Support	5	6	5	5	-0	-1	+0	9
<b>Support</b>	<b>23</b>	<b>23</b>	<b>23</b>	<b>22</b>	<b>-0</b>	<b>-0</b>	<b>-0</b>	<b>30</b>
Maintenance	7	7	7	7	+0	+0	+0	7
Technical Services		1	1	1	+1	+0	+0	1
<b>Maintenance/ Technical</b>	<b>7</b>	<b>8</b>	<b>8</b>	<b>8</b>	<b>+1</b>	<b>+0</b>	<b>+0</b>	<b>8</b>
<b>General Support</b>	<b>29</b>	<b>31</b>	<b>31</b>	<b>30</b>	<b>+1</b>	<b>-0</b>	<b>-0</b>	<b>38</b>
Attendant/ Aide	10	7	7	7	-3	-1	+0	10
Health Care Assistant/ Care Assistant	177	180	182	181	+4	+0	-1	210
<b>Health Care Assistants</b>	<b>187</b>	<b>188</b>	<b>189</b>	<b>187</b>	<b>+1</b>	<b>-0</b>	<b>-1</b>	<b>220</b>
Other Care Grades	26	24	23	23	-2	-1	-0	28
Pastoral Care	1				-1			
Workshop Services	220	204	198	193	-27	-11	-5	236
<b>Care, other</b>	<b>246</b>	<b>229</b>	<b>222</b>	<b>216</b>	<b>-30</b>	<b>-13</b>	<b>-6</b>	<b>264</b>
<b>Patient &amp; Client Care</b>	<b>433</b>	<b>416</b>	<b>411</b>	<b>404</b>	<b>-29</b>	<b>-13</b>	<b>-7</b>	<b>484</b>



# Disabilities Employment Report by Grade Group: MAR 2023

CHO 7

MAR 2023	WTE DEC 2019	WTE DEC 2022	WTE FEB 2023	WTE MAR 2023	WTE change since DEC 2019	WTE change since DEC 2022	WTE change since FEB 2023	No. MAR 2023
<b>Overall</b>	<b>2,982</b>	<b>3,410</b>	<b>3,418</b>	<b>3,407</b>	<b>+425</b>	<b>-3</b>	<b>-11</b>	<b>4,034</b>
Consultant Paediatrics	0				-0			
Consultant Psychiatry	0				-0			
<b>Consultants</b>	<b>1</b>				<b>-1</b>			
Registrar	3	4	3	3	+0	-1	-0	3
Specialist Registrar			1	1	+1	+1	+0	2
<b>Registrars</b>	<b>3</b>	<b>4</b>	<b>4</b>	<b>4</b>	<b>+1</b>	<b>+0</b>	<b>-0</b>	<b>5</b>
Senior House Officer	7	7	8	9	+2	+2	+1	10
<b>SHO/ Interns</b>	<b>7</b>	<b>7</b>	<b>8</b>	<b>9</b>	<b>+2</b>	<b>+2</b>	<b>+1</b>	<b>10</b>
Other Medical	1				-1			
<b>Medical/ Dental, other</b>	<b>1</b>				<b>-1</b>			
<b>Medical &amp; Dental</b>	<b>12</b>	<b>11</b>	<b>12</b>	<b>13</b>	<b>+1</b>	<b>+2</b>	<b>+0</b>	<b>15</b>
Clinical Nurse/ Midwife Manager	113	142	144	144	+31	+2	+0	155
Director Nursing/Midwifery, Assistant	5	6	7	7	+1	+0	+0	7
Director of Nursing/Midwifery	4	5	5	6	+2	+1	+1	6
<b>Nurse/ Midwife Manager</b>	<b>122</b>	<b>153</b>	<b>155</b>	<b>156</b>	<b>+34</b>	<b>+3</b>	<b>+1</b>	<b>168</b>
Advanced Nurse/ Midwife Practitioner		3	3	3	+3	+0	+0	3
Clinical Nurse/ Midwife Specialist	5	3	4	4	-1	+1	+0	5
<b>Nurse/ Midwife Specialist &amp; AN/MP</b>	<b>5</b>	<b>6</b>	<b>7</b>	<b>7</b>	<b>+2</b>	<b>+1</b>	<b>+0</b>	<b>8</b>
Staff Nurse [Intellectual Disability]	194	226	220	222	+28	-4	+1	257
Staff Nurses [General/ Children's]	180	191	194	192	+12	+1	-2	220
<b>Staff Nurse/ Staff Midwife</b>	<b>374</b>	<b>416</b>	<b>414</b>	<b>414</b>	<b>+39</b>	<b>-3</b>	<b>-0</b>	<b>477</b>
Nursing/ Midwifery awaiting registration		1				-1		
Pre-registration Nurse/ Midwife Intern			8	8	+8	+8	+1	16
<b>Nursing/ Midwifery Student</b>		<b>1</b>	<b>8</b>	<b>8</b>	<b>+8</b>	<b>+7</b>	<b>+1</b>	<b>16</b>
Nursing Education/Clinical	1	3	2	2	+1	-1	+0	2
Other Nursing/ Midwifery		1				-1		
<b>Nursing/ Midwifery other</b>	<b>1</b>	<b>4</b>	<b>2</b>	<b>2</b>	<b>+1</b>	<b>-2</b>	<b>+0</b>	<b>2</b>
<b>Nursing &amp; Midwifery</b>	<b>502</b>	<b>581</b>	<b>585</b>	<b>587</b>	<b>+85</b>	<b>+6</b>	<b>+1</b>	<b>671</b>
Dietitians	7	3	8	8	+1	+5	+0	11
Occupational Therapists	42	56	54	54	+12	-2	+0	59
Physiotherapists	30	43	39	42	+11	-1	+2	47
Speech & Language Therapists	42	53	49	50	+7	-3	+0	54
<b>Therapy Professions</b>	<b>122</b>	<b>155</b>	<b>150</b>	<b>153</b>	<b>+31</b>	<b>-2</b>	<b>+3</b>	<b>171</b>
Phlebotomists	1				-1			
Radiographers	1	1	2	1	+0	+0	-0	3
Respiratory Physiologists	1	2	1	1	+0	-1	-0	1
<b>Health Science/ Diagnostics</b>	<b>3</b>	<b>3</b>	<b>3</b>	<b>2</b>	<b>-1</b>	<b>-1</b>	<b>-0</b>	<b>4</b>



## Disabilities Employment Report by Grade Group: MAR 2023

MAR 2023	WTE DEC 2019	WTE DEC 2022	WTE FEB 2023	WTE MAR 2023	WTE change since DEC 2019	WTE change since DEC 2022	WTE change since FEB 2023	No. MAR 2023
<b>Overall</b>	<b>2,982</b>	<b>3,410</b>	<b>3,418</b>	<b>3,407</b>	<b>+425</b>	<b>-3</b>	<b>-11</b>	<b>4,034</b>
Social Care	360	467	467	460	+100	-6	-7	511
<b>Social Care</b>	<b>360</b>	<b>467</b>	<b>467</b>	<b>460</b>	<b>+100</b>	<b>-6</b>	<b>-7</b>	<b>511</b>
Social Workers	33	42	39	39	+6	-3	-0	45
<b>Social Workers</b>	<b>33</b>	<b>42</b>	<b>39</b>	<b>39</b>	<b>+6</b>	<b>-3</b>	<b>-0</b>	<b>45</b>
Psychologists	28	36	36	36	+8	+0	-0	39
<b>Psychologists</b>	<b>28</b>	<b>36</b>	<b>36</b>	<b>36</b>	<b>+8</b>	<b>+0</b>	<b>-0</b>	<b>39</b>
Pharmacists	3	5	5	5	+1	+0	-0	7
Pharmacy Technicians	2	2	1	1	-1	-1	-0	1
<b>Pharmacy</b>	<b>5</b>	<b>6</b>	<b>6</b>	<b>6</b>	<b>+1</b>	<b>-1</b>	<b>-0</b>	<b>8</b>
Counsellor Therapists	2	2	2	2	+0	+0	+0	2
Play Therapists/ Specialists			1	1	+1	+1	+0	1
<b>H&amp;SC, Other</b>	<b>2</b>	<b>2</b>	<b>3</b>	<b>3</b>	<b>+1</b>	<b>+1</b>	<b>+0</b>	<b>3</b>
<b>Health &amp; Social Care Professionals</b>	<b>553</b>	<b>710</b>	<b>703</b>	<b>699</b>	<b>+146</b>	<b>-11</b>	<b>-4</b>	<b>781</b>
Executive Management	5	8	8	8	+3	-0	-0	8
Senior Management (VIII & GM)	27	39	39	36	+10	-2	-2	37
<b>Management (VIII &amp; above)</b>	<b>32</b>	<b>47</b>	<b>47</b>	<b>44</b>	<b>+13</b>	<b>-2</b>	<b>-2</b>	<b>45</b>
Middle Management (V-VII)	78	109	110	113	+35	+3	+2	119
Other Administrative	1				-1			
<b>Administrative/ Supervisory (V to VII)</b>	<b>79</b>	<b>109</b>	<b>110</b>	<b>113</b>	<b>+34</b>	<b>+3</b>	<b>+2</b>	<b>119</b>
General Administrative (III & IV)	92	120	115	119	+27	-0	+5	139
<b>Clerical (III &amp; IV)</b>	<b>92</b>	<b>120</b>	<b>115</b>	<b>119</b>	<b>+27</b>	<b>-0</b>	<b>+5</b>	<b>139</b>
<b>Management &amp; Administrative</b>	<b>203</b>	<b>276</b>	<b>272</b>	<b>276</b>	<b>+74</b>	<b>+1</b>	<b>+5</b>	<b>303</b>
Catering	21	11	11	11	-11	+0	+0	12
Household Services	125	127	123	119	-6	-7	-4	182
Other Labs & Associated	1	1	1	1	+0	+0	+0	1
Other Support	9	13	13	13	+4	+0	+0	15
Portering	11	6	6	6	-5	+0	+0	6
<b>Support</b>	<b>167</b>	<b>156</b>	<b>153</b>	<b>149</b>	<b>-18</b>	<b>-7</b>	<b>-4</b>	<b>216</b>
Maintenance	25	26	28	33	+8	+7	+5	37
Technical Services	3	6	4	4	+1	-2	+0	4
<b>Maintenance/ Technical</b>	<b>28</b>	<b>32</b>	<b>32</b>	<b>37</b>	<b>+9</b>	<b>+5</b>	<b>+5</b>	<b>41</b>
<b>General Support</b>	<b>195</b>	<b>188</b>	<b>185</b>	<b>186</b>	<b>-9</b>	<b>-2</b>	<b>+1</b>	<b>257</b>
Attendant/ Aide	18	13	13	13	-5	+0	+0	26
Health Care Assistant/ Care Assistant	1,089	1,206	1,215	1,206	+117	-1	-10	1,421
Health & Social Care Assistants	5	9	11	11	+6	+2	-0	12
<b>Health Care Assistants</b>	<b>1,112</b>	<b>1,228</b>	<b>1,240</b>	<b>1,230</b>	<b>+117</b>	<b>+1</b>	<b>-10</b>	<b>1,459</b>
Home Helps	19	14	14	14	-5	+0	-0	77
<b>Home Help</b>	<b>19</b>	<b>14</b>	<b>14</b>	<b>14</b>	<b>-5</b>	<b>+0</b>	<b>-0</b>	<b>77</b>
Home Care Services	4	0	0	0	-3	+0	+0	2



## Disabilities Employment Report by Grade Group: MAR 2023

MAR 2023	WTE DEC 2019	WTE DEC 2022	WTE FEB 2023	WTE MAR 2023	WTE change since DEC 2019	WTE change since DEC 2022	WTE change since FEB 2023	No. MAR 2023
<b>Overall</b>	<b>2,982</b>	<b>3,410</b>	<b>3,418</b>	<b>3,407</b>	<b>+425</b>	<b>-3</b>	<b>-11</b>	<b>4,034</b>
Other Care Grades	34	28	32	32	-2	+4	-1	40
Pastoral Care	3	1	2	2	-1	+1	-0	2
Workshop Services	346	372	372	369	+24	-3	-3	427
<b>Care, other</b>	<b>386</b>	<b>402</b>	<b>406</b>	<b>403</b>	<b>+17</b>	<b>+1</b>	<b>-3</b>	<b>471</b>
<b>Patient &amp; Client Care</b>	<b>1518</b>	<b>1644</b>	<b>1660</b>	<b>1647</b>	<b>+129</b>	<b>+3</b>	<b>-14</b>	<b>2,007</b>



# Disabilities Employment Report by Grade Group: MAR 2023

CHO 8

MAR 2023	WTE DEC 2019	WTE DEC 2022	WTE FEB 2023	WTE MAR 2023	WTE change since DEC 2019	WTE change since DEC 2022	WTE change since FEB 2023	No. MAR 2023
<b>Overall</b>	<b>2,162</b>	<b>2,345</b>	<b>2,335</b>	<b>2,344</b>	<b>+182</b>	<b>-1</b>	<b>+9</b>	<b>2,825</b>
Consultant Psychiatry	1				-1			
<b>Consultants</b>	<b>1</b>				<b>-1</b>			
Registrar	2	1	1	1	-1	+0	+0	1
<b>Registrars</b>	<b>2</b>	<b>1</b>	<b>1</b>	<b>1</b>	<b>-1</b>	<b>+0</b>	<b>+0</b>	<b>1</b>
Other Medical	1	1	1	1	+0	+0	+0	1
<b>Medical/ Dental, other</b>	<b>1</b>	<b>1</b>	<b>1</b>	<b>1</b>	<b>+0</b>	<b>+0</b>	<b>+0</b>	<b>1</b>
<b>Medical &amp; Dental</b>	<b>4</b>	<b>2</b>	<b>2</b>	<b>2</b>	<b>-2</b>	<b>+0</b>	<b>+0</b>	<b>2</b>
Clinical Nurse/ Midwife Manager	107	99	96	95	-12	-4	-1	105
Director Nursing/Midwifery, Assistant	11	10	12	12	+1	+2	+0	12
Director of Nursing/Midwifery	5	5	5	5	-1	-0	+0	5
<b>Nurse/ Midwife Manager</b>	<b>123</b>	<b>114</b>	<b>112</b>	<b>112</b>	<b>-11</b>	<b>-2</b>	<b>-0</b>	<b>122</b>
Advanced Nurse/ Midwife Practitioner		1	2	2	+2	+1	+0	2
Clinical Nurse/ Midwife Specialist	7	3	3	3	-4	-0	+0	4
<b>Nurse/ Midwife Specialist &amp; AN/MP</b>	<b>7</b>	<b>4</b>	<b>5</b>	<b>5</b>	<b>-2</b>	<b>+1</b>	<b>+0</b>	<b>6</b>
Staff Nurse [Intellectual Disability]	232	290	287	293	+61	+2	+5	336
Staff Nurse [Psychiatric]	7	5	5	5	-2	-0	+0	5
Staff Nurses [General/ Children's]	80	39	38	39	-41	-0	+2	48
<b>Staff Nurse/ Staff Midwife</b>	<b>319</b>	<b>335</b>	<b>330</b>	<b>336</b>	<b>+18</b>	<b>+2</b>	<b>+7</b>	<b>389</b>
Public Health Nurse	1	1	1	1	+0	-0	+0	1
<b>Public Health Nurse</b>	<b>1</b>	<b>1</b>	<b>1</b>	<b>1</b>	<b>+0</b>	<b>-0</b>	<b>+0</b>	<b>1</b>
Nursing/ Midwifery awaiting registration		1				-1		
Pre-registration Nurse/ Midwife Intern			15	15	+15	+15	+0	31
<b>Nursing/ Midwifery Student</b>		<b>1</b>	<b>15</b>	<b>15</b>	<b>+15</b>	<b>+14</b>	<b>+0</b>	<b>31</b>
Nursing Education/Clinical	5	5	4	4	-1	-1	-0	6
<b>Nursing/ Midwifery other</b>	<b>5</b>	<b>5</b>	<b>4</b>	<b>4</b>	<b>-1</b>	<b>-1</b>	<b>-0</b>	<b>6</b>
<b>Nursing &amp; Midwifery</b>	<b>455</b>	<b>460</b>	<b>468</b>	<b>474</b>	<b>+19</b>	<b>+14</b>	<b>+7</b>	<b>555</b>
Dietitians		1	1	1	+1	-1	-0	1
Occupational Therapists	37	38	37	37	+1	-0	+0	41
Physiotherapists	22	19	20	20	-1	+1	+0	25
Speech & Language Therapists	33	34	33	35	+2	+2	+2	44
<b>Therapy Professions</b>	<b>92</b>	<b>92</b>	<b>91</b>	<b>94</b>	<b>+3</b>	<b>+2</b>	<b>+3</b>	<b>111</b>
Clinical Engineering	2	2	2	2	+0	+0	+0	2
<b>Health Science/ Diagnostics</b>	<b>2</b>	<b>2</b>	<b>2</b>	<b>2</b>	<b>+0</b>	<b>+0</b>	<b>+0</b>	<b>2</b>
Social Care	361	414	403	374	+14	-40	-29	462
<b>Social Care</b>	<b>361</b>	<b>414</b>	<b>403</b>	<b>374</b>	<b>+14</b>	<b>-40</b>	<b>-29</b>	<b>462</b>
Social Workers	24	24	23	23	-1	-1	-0	26
<b>Social Workers</b>	<b>24</b>	<b>24</b>	<b>23</b>	<b>23</b>	<b>-1</b>	<b>-1</b>	<b>-0</b>	<b>26</b>



## Disabilities Employment Report by Grade Group: MAR 2023

MAR 2023	WTE DEC 2019	WTE DEC 2022	WTE FEB 2023	WTE MAR 2023	WTE change since DEC 2019	WTE change since DEC 2022	WTE change since FEB 2023	No. MAR 2023
<b>Overall</b>	<b>2,162</b>	<b>2,345</b>	<b>2,335</b>	<b>2,344</b>	<b>+182</b>	<b>-1</b>	<b>+9</b>	<b>2,825</b>
Psychologists	25	29	27	27	+3	-1	+0	31
<b>Psychologists</b>	<b>25</b>	<b>29</b>	<b>27</b>	<b>27</b>	<b>+3</b>	<b>-1</b>	<b>+0</b>	<b>31</b>
Counsellor Therapists	5	6	6	5	-0	-1	-0	7
Other Health & Social Care	1			39	+39	+39	+39	41
Play Therapists/ Specialists	1	2	1	1	+0	-1	+0	1
<b>H&amp;SC, Other</b>	<b>7</b>	<b>8</b>	<b>7</b>	<b>45</b>	<b>+38</b>	<b>+37</b>	<b>+39</b>	<b>49</b>
<b>Health &amp; Social Care Professionals</b>	<b>510</b>	<b>569</b>	<b>554</b>	<b>566</b>	<b>+56</b>	<b>-3</b>	<b>+12</b>	<b>681</b>
Executive Management	1	2	2	2	+1	+0	+0	2
Senior Management (VIII & GM)	8	16	17	17	+9	+0	+0	17
<b>Management (VIII &amp; above)</b>	<b>9</b>	<b>18</b>	<b>19</b>	<b>19</b>	<b>+10</b>	<b>+0</b>	<b>+0</b>	<b>19</b>
Middle Management (V-VII)	56	55	55	54	-2	-1	-1	56
<b>Administrative/ Supervisory (V to VII)</b>	<b>56</b>	<b>55</b>	<b>55</b>	<b>54</b>	<b>-2</b>	<b>-1</b>	<b>-1</b>	<b>56</b>
General Administrative (III & IV)	84	94	99	99	+15	+5	+0	117
<b>Clerical (III &amp; IV)</b>	<b>84</b>	<b>94</b>	<b>99</b>	<b>99</b>	<b>+15</b>	<b>+5</b>	<b>+0</b>	<b>117</b>
<b>Management &amp; Administrative</b>	<b>149</b>	<b>168</b>	<b>173</b>	<b>172</b>	<b>+23</b>	<b>+4</b>	<b>-1</b>	<b>192</b>
Catering	8	6	6	6	-2	-1	-1	6
Household Services	28	17	17	17	-11	-0	-0	23
Other Support	8	7	7	7	-2	-1	+0	7
Portering	2	2	2	2	+0	+0	+0	2
<b>Support</b>	<b>46</b>	<b>33</b>	<b>32</b>	<b>31</b>	<b>-16</b>	<b>-2</b>	<b>-1</b>	<b>38</b>
Maintenance	16	11	13	13	-3	+2	+0	13
Technical Services	0	1	3	3	+3	+2	+0	3
<b>Maintenance/ Technical</b>	<b>16</b>	<b>12</b>	<b>16</b>	<b>16</b>	<b>-0</b>	<b>+4</b>	<b>+0</b>	<b>16</b>
<b>General Support</b>	<b>62</b>	<b>45</b>	<b>48</b>	<b>47</b>	<b>-16</b>	<b>+2</b>	<b>-1</b>	<b>54</b>
Attendant/ Aide	24	11	11	11	-13	+0	+0	18
Health Care Assistant/ Care Assistant	819	955	950	940	+122	-14	-10	1,152
Health & Social Care Assistants	1				-1			
<b>Health Care Assistants</b>	<b>844</b>	<b>965</b>	<b>961</b>	<b>951</b>	<b>+108</b>	<b>-14</b>	<b>-10</b>	<b>1,170</b>
Home Helps	22	21	19	20	-2	-1	+1	39
<b>Home Help</b>	<b>22</b>	<b>21</b>	<b>19</b>	<b>20</b>	<b>-2</b>	<b>-1</b>	<b>+1</b>	<b>39</b>
Home Care Services	1	1	1	1	+0	+0	+0	1
Other Care Grades	24	33	32	32	+8	-1	-0	37
Pastoral Care	1	1	1	1	+0	+0	+0	1
Workshop Services	89	80	77	78	-12	-2	+1	93
<b>Care, other</b>	<b>115</b>	<b>115</b>	<b>111</b>	<b>112</b>	<b>-3</b>	<b>-3</b>	<b>+1</b>	<b>132</b>
<b>Patient &amp; Client Care</b>	<b>981</b>	<b>1101</b>	<b>1091</b>	<b>1083</b>	<b>+102</b>	<b>-18</b>	<b>-8</b>	<b>1,341</b>





# Disabilities Employment Report by Grade Group: MAR 2023

CHO 9

MAR 2023	WTE DEC 2019	WTE DEC 2022	WTE FEB 2023	WTE MAR 2023	WTE change since DEC 2019	WTE change since DEC 2022	WTE change since FEB 2023	No. MAR 2023
<b>Overall</b>	<b>3,194</b>	<b>3,336</b>	<b>3,346</b>	<b>3,337</b>	<b>+143</b>	<b>+1</b>	<b>-9</b>	<b>3,955</b>
Consultant Paediatrics	1	1	1	1	-0	+0	+0	1
Consultant Psychiatry	11	8	9	10	-2	+1	+1	13
<b>Consultants</b>	<b>13</b>	<b>9</b>	<b>10</b>	<b>11</b>	<b>-2</b>	<b>+1</b>	<b>+1</b>	<b>14</b>
Registrar	1	1			-1	-1		
Senior Registrar	1	1	1	1	+0	+0	+0	1
Specialist Registrar	4	1	1	1	-3	+0	+0	1
<b>Registrars</b>	<b>6</b>	<b>3</b>	<b>2</b>	<b>2</b>	<b>-4</b>	<b>-1</b>	<b>+0</b>	<b>2</b>
Senior House Officer		1		1	+1	+0	+1	1
<b>SHO/ Interns</b>		<b>1</b>		<b>1</b>	<b>+1</b>	<b>+0</b>	<b>+1</b>	<b>1</b>
Other Medical	6	6	6	6	-0	-0	-0	8
<b>Medical/ Dental, other</b>	<b>6</b>	<b>6</b>	<b>6</b>	<b>6</b>	<b>-0</b>	<b>-0</b>	<b>-0</b>	<b>8</b>
<b>Medical &amp; Dental</b>	<b>25</b>	<b>20</b>	<b>18</b>	<b>20</b>	<b>-5</b>	<b>-0</b>	<b>+1</b>	<b>25</b>
Clinical Nurse/ Midwife Manager	168	179	186	185	+17	+6	-2	201
Director Nursing/Midwifery, Assistant	10	12	13	13	+3	+1	+0	13
Director of Nursing/Midwifery	14	19	20	21	+7	+1	+0	21
<b>Nurse/ Midwife Manager</b>	<b>192</b>	<b>211</b>	<b>220</b>	<b>218</b>	<b>+27</b>	<b>+8</b>	<b>-1</b>	<b>235</b>
Advanced Nurse/ Midwife Practitioner		1	1	2	+2	+1	+1	2
Clinical Nurse/ Midwife Specialist	9	15	17	15	+6	-1	-2	16
<b>Nurse/ Midwife Specialist &amp; AN/MP</b>	<b>9</b>	<b>16</b>	<b>18</b>	<b>17</b>	<b>+8</b>	<b>+0</b>	<b>-1</b>	<b>18</b>
Staff Nurse [Intellectual Disability]	419	311	302	303	-116	-9	+1	361
Staff Nurse [Psychiatric]	32	27	27	28	-4	+1	+1	34
Staff Nurses [General/ Children's]	66	162	163	161	+95	-1	-2	170
<b>Staff Nurse/ Staff Midwife</b>	<b>517</b>	<b>501</b>	<b>492</b>	<b>492</b>	<b>-25</b>	<b>-9</b>	<b>+0</b>	<b>565</b>
Nursing/ Midwifery awaiting registration		2	1	1	+1	-1	+0	1
Pre-registration Nurse/ Midwife Intern	8		16	14	+7	+14	-1	30
<b>Nursing/ Midwifery Student</b>	<b>8</b>	<b>2</b>	<b>17</b>	<b>15</b>	<b>+8</b>	<b>+13</b>	<b>-1</b>	<b>31</b>
Nursing Education/Clinical	7	9	8	8	+1	-1	+0	9
<b>Nursing/ Midwifery other</b>	<b>7</b>	<b>9</b>	<b>8</b>	<b>8</b>	<b>+1</b>	<b>-1</b>	<b>+0</b>	<b>9</b>
<b>Nursing &amp; Midwifery</b>	<b>732</b>	<b>739</b>	<b>754</b>	<b>750</b>	<b>+18</b>	<b>+12</b>	<b>-3</b>	<b>858</b>
Dietitians	6	8	9	10	+4	+2	+1	12
Occupational Therapists	62	83	82	81	+19	-2	-1	88
Physiotherapists	58	60	59	58	+1	-2	-1	70
Speech & Language Therapists	55	57	56	51	-4	-6	-4	58
<b>Therapy Professions</b>	<b>181</b>	<b>208</b>	<b>205</b>	<b>201</b>	<b>+20</b>	<b>-7</b>	<b>-5</b>	<b>228</b>
Clinical Engineering	11	8	9	9	-2	+1	+0	9
Medical Science	4	4	4	4	+0	+0	+0	4
<b>Health Science/ Diagnostics</b>	<b>15</b>	<b>12</b>	<b>13</b>	<b>13</b>	<b>-2</b>	<b>+1</b>	<b>+0</b>	<b>13</b>



## Disabilities Employment Report by Grade Group: MAR 2023

MAR 2023	WTE DEC 2019	WTE DEC 2022	WTE FEB 2023	WTE MAR 2023	WTE change since DEC 2019	WTE change since DEC 2022	WTE change since FEB 2023	No. MAR 2023
<b>Overall</b>	<b>3,194</b>	<b>3,336</b>	<b>3,346</b>	<b>3,337</b>	<b>+143</b>	<b>+1</b>	<b>-9</b>	<b>3,955</b>
Social Care	689	796	781	780	+91	-16	-2	945
<b>Social Care</b>	<b>689</b>	<b>796</b>	<b>781</b>	<b>780</b>	<b>+91</b>	<b>-16</b>	<b>-2</b>	<b>945</b>
Social Workers	44	54	54	55	+11	+1	+1	63
<b>Social Workers</b>	<b>44</b>	<b>54</b>	<b>54</b>	<b>55</b>	<b>+11</b>	<b>+1</b>	<b>+1</b>	<b>63</b>
Psychologists	53	57	60	60	+7	+3	+0	64
<b>Psychologists</b>	<b>53</b>	<b>57</b>	<b>60</b>	<b>60</b>	<b>+7</b>	<b>+3</b>	<b>+0</b>	<b>64</b>
Pharmacists	2	2	2	2	+0	+0	+0	2
<b>Pharmacy</b>	<b>2</b>	<b>2</b>	<b>2</b>	<b>2</b>	<b>+0</b>	<b>+0</b>	<b>+0</b>	<b>2</b>
Other Health & Social Care	19	13	13	12	-7	-1	-1	15
Play Therapists/ Specialists	0	1	1	1	+1	+1	+1	2
<b>H&amp;SC, Other</b>	<b>19</b>	<b>13</b>	<b>13</b>	<b>13</b>	<b>-6</b>	<b>-0</b>	<b>-0</b>	<b>17</b>
<b>Health &amp; Social Care Professionals</b>	<b>1003</b>	<b>1142</b>	<b>1130</b>	<b>1124</b>	<b>+121</b>	<b>-18</b>	<b>-6</b>	<b>1,332</b>
Executive Management	3	4	4	4	+1	+0	+0	4
Senior Management (VIII & GM)	35	41	42	43	+8	+2	+1	43
<b>Management (VIII &amp; above)</b>	<b>37</b>	<b>45</b>	<b>46</b>	<b>47</b>	<b>+10</b>	<b>+2</b>	<b>+1</b>	<b>47</b>
Middle Management (V-VII)	81	122	134	140	+59	+18	+6	150
Other Administrative	7	7	6	6	-1	-1	+0	6
<b>Administrative/ Supervisory (V to VII)</b>	<b>88</b>	<b>129</b>	<b>140</b>	<b>146</b>	<b>+58</b>	<b>+17</b>	<b>+6</b>	<b>156</b>
General Administrative (III & IV)	125	137	141	144	+19	+7	+4	172
<b>Clerical (III &amp; IV)</b>	<b>125</b>	<b>137</b>	<b>141</b>	<b>144</b>	<b>+19</b>	<b>+7</b>	<b>+4</b>	<b>172</b>
<b>Management &amp; Administrative</b>	<b>250</b>	<b>311</b>	<b>327</b>	<b>337</b>	<b>+87</b>	<b>+26</b>	<b>+10</b>	<b>375</b>
Catering	24	24	23	25	+0	+1	+1	31
Household Services	86	78	77	78	-8	+1	+1	104
Other Support	81	30	30	30	-51	-0	+0	35
Portering	4	4	4	4	+0	+0	+0	5
<b>Support</b>	<b>196</b>	<b>136</b>	<b>135</b>	<b>137</b>	<b>-58</b>	<b>+1</b>	<b>+2</b>	<b>175</b>
Maintenance	20	17	17	17	-3	-0	-0	19
Technical Services	2	3	3	3	+1	+0	+0	3
<b>Maintenance/ Technical</b>	<b>22</b>	<b>20</b>	<b>20</b>	<b>20</b>	<b>-2</b>	<b>-0</b>	<b>-0</b>	<b>22</b>
<b>General Support</b>	<b>218</b>	<b>156</b>	<b>155</b>	<b>157</b>	<b>-60</b>	<b>+1</b>	<b>+2</b>	<b>197</b>
Attendant/ Aide	3	19	18	17	+14	-2	-1	28
Health Care Assistant/ Care Assistant	864	837	843	831	-33	-6	-12	1,023
Health & Social Care Assistants	2	11	12	12	+9	+1	-0	15
<b>Health Care Assistants</b>	<b>869</b>	<b>866</b>	<b>873</b>	<b>860</b>	<b>-9</b>	<b>-7</b>	<b>-13</b>	<b>1,066</b>
Home Care Services	11	5	5	5	-6	+0	+0	5
Other Care Grades	17	41	34	34	+17	-8	+0	38
Pastoral Care	1				-1			
Workshop Services	68	56	52	50	-18	-6	-2	59
<b>Care, other</b>	<b>97</b>	<b>102</b>	<b>90</b>	<b>88</b>	<b>-9</b>	<b>-13</b>	<b>-1</b>	<b>102</b>



## Disabilities Employment Report by Grade Group: MAR 2023

MAR 2023	WTE DEC 2019	WTE DEC 2022	WTE FEB 2023	WTE MAR 2023	WTE change since DEC 2019	WTE change since DEC 2022	WTE change since FEB 2023	No. MAR 2023
Overall	3,194	3,336	3,346	3,337	+143	+1	-9	3,955
Patient & Client Care	966	968	962	948	-18	-20	-14	1,168



# Disabilities Employment Report by Grade Group: MAR 2023

## other Community Services

MAR 2023	WTE DEC 2019	WTE DEC 2022	WTE FEB 2023	WTE MAR 2023	WTE change since DEC 2019	WTE change since DEC 2022	WTE change since FEB 2023	No. MAR 2023
<b>Overall</b>	<b>6</b>	<b>6</b>	<b>6</b>	<b>6</b>	<b>+0</b>	<b>+0</b>	<b>+0</b>	<b>6</b>
Senior Management (VIII & GM)	1	2	2	2	+1	+0	+0	2
<b>Management (VIII &amp; above)</b>	<b>1</b>	<b>2</b>	<b>2</b>	<b>2</b>	<b>+1</b>	<b>+0</b>	<b>+0</b>	<b>2</b>
Middle Management (V-VII)	3	2	2	2	-1	+0	+0	2
<b>Administrative/ Supervisory (V to VII)</b>	<b>3</b>	<b>2</b>	<b>2</b>	<b>2</b>	<b>-1</b>	<b>+0</b>	<b>+0</b>	<b>2</b>
General Administrative (III & IV)	2	2	2	2	+0	+0	+0	2
<b>Clerical (III &amp; IV)</b>	<b>2</b>	<b>2</b>	<b>2</b>	<b>2</b>	<b>+0</b>	<b>+0</b>	<b>+0</b>	<b>2</b>
<b>Management &amp; Administrative</b>	<b>6</b>	<b>6</b>	<b>6</b>	<b>6</b>	<b>+0</b>	<b>+0</b>	<b>+0</b>	<b>6</b>



# Disabilities Employment Report by Grade Group: MAR 2023

MAR 2023	WTE DEC 2019	WTE DEC 2022	WTE FEB 2023	WTE MAR 2023	WTE change since DEC 2019	WTE change since DEC 2022	WTE change since FEB 2023	No. MAR 2023
<b>Overall</b>	<b>18,273</b>	<b>19,903</b>	<b>19,999</b>	<b>19,990</b>	<b>+1,717</b>	<b>+87</b>	<b>-9</b>	<b>23,693</b>
Consultant Paediatrics	3	3	3	3	-1	+0	+0	3
Consultant Psychiatry	21	16	16	17	-4	+1	+0	22
<b>Consultants</b>	<b>24</b>	<b>18</b>	<b>19</b>	<b>19</b>	<b>-5</b>	<b>+1</b>	<b>+0</b>	<b>25</b>
Registrar	7	7	5	6	-1	-1	+1	6
Senior Registrar	2	2	2	2	+0	+0	+0	2
Specialist Registrar	4	1	2	2	-2	+1	+0	3
<b>Registrars</b>	<b>13</b>	<b>10</b>	<b>9</b>	<b>10</b>	<b>-3</b>	<b>+0</b>	<b>+1</b>	<b>11</b>
Senior House Officer	7	9	9	10	+3	+1	+1	11
<b>SHO/ Interns</b>	<b>7</b>	<b>9</b>	<b>9</b>	<b>10</b>	<b>+3</b>	<b>+1</b>	<b>+1</b>	<b>11</b>
Other Medical	14	13	13	12	-3	-1	-1	18
<b>Medical/ Dental, other</b>	<b>14</b>	<b>13</b>	<b>13</b>	<b>12</b>	<b>-3</b>	<b>-1</b>	<b>-1</b>	<b>18</b>
<b>Medical &amp; Dental</b>	<b>58</b>	<b>50</b>	<b>50</b>	<b>51</b>	<b>-8</b>	<b>+0</b>	<b>+1</b>	<b>65</b>
Clinical Nurse/ Midwife Manager	809	869	880	880	+71	+11	-0	953
Director Nursing/Midwifery, Assistant	41	43	48	47	+6	+4	-0	49
Director of Nursing/Midwifery	42	47	48	49	+7	+2	+1	51
<b>Nurse/ Midwife Manager</b>	<b>892</b>	<b>959</b>	<b>975</b>	<b>976</b>	<b>+84</b>	<b>+17</b>	<b>+0</b>	<b>1,053</b>
Advanced Nurse/ Midwife Practitioner	2	12	13	15	+13	+3	+1	15
Clinical Nurse/ Midwife Specialist	60	58	64	63	+3	+5	-1	69
<b>Nurse/ Midwife Specialist &amp; AN/MP</b>	<b>62</b>	<b>70</b>	<b>77</b>	<b>77</b>	<b>+16</b>	<b>+8</b>	<b>+0</b>	<b>84</b>
Staff Nurse [Intellectual Disability]	1,597	1,767	1,752	1,756	+159	-11	+4	2,023
Staff Nurse [Psychiatric]	82	60	59	61	-22	+1	+2	72
Staff Nurses [General/ Children's]	889	792	796	791	-98	-0	-5	896
<b>Staff Nurse/ Staff Midwife</b>	<b>2,569</b>	<b>2,618</b>	<b>2,607</b>	<b>2,608</b>	<b>+39</b>	<b>-10</b>	<b>+1</b>	<b>2,991</b>
Public Health Nurse	6	12	12	12	+5	-0	+0	14
<b>Public Health Nurse</b>	<b>6</b>	<b>12</b>	<b>12</b>	<b>12</b>	<b>+5</b>	<b>-0</b>	<b>+0</b>	<b>14</b>
Nursing/ Midwifery awaiting registration	14	4	1	1	-13	-3	+0	1
Pre-registration Nurse/ Midwife Intern	28	7	76	72	+43	+65	-4	147
<b>Nursing/ Midwifery Student</b>	<b>42</b>	<b>11</b>	<b>77</b>	<b>73</b>	<b>+31</b>	<b>+62</b>	<b>-4</b>	<b>148</b>
Nursing Education/Clinical	21	27	24	24	+3	-3	-0	28
Other Nursing/ Midwifery	1	1			-1	-1		
<b>Nursing/ Midwifery other</b>	<b>22</b>	<b>28</b>	<b>24</b>	<b>24</b>	<b>+2</b>	<b>-4</b>	<b>-0</b>	<b>28</b>
<b>Nursing &amp; Midwifery</b>	<b>3593</b>	<b>3697</b>	<b>3772</b>	<b>3769</b>	<b>+176</b>	<b>+72</b>	<b>-3</b>	<b>4,318</b>
Dietitians	18	20	26	27	+8	+6	+1	33
Occupational Therapists	263	304	299	299	+36	-5	-0	337
Physiotherapists	189	193	193	196	+6	+2	+3	230
Speech & Language Therapists	292	273	265	260	-31	-12	-4	309
<b>Therapy Professions</b>	<b>763</b>	<b>790</b>	<b>783</b>	<b>782</b>	<b>+19</b>	<b>-8</b>	<b>-1</b>	<b>909</b>



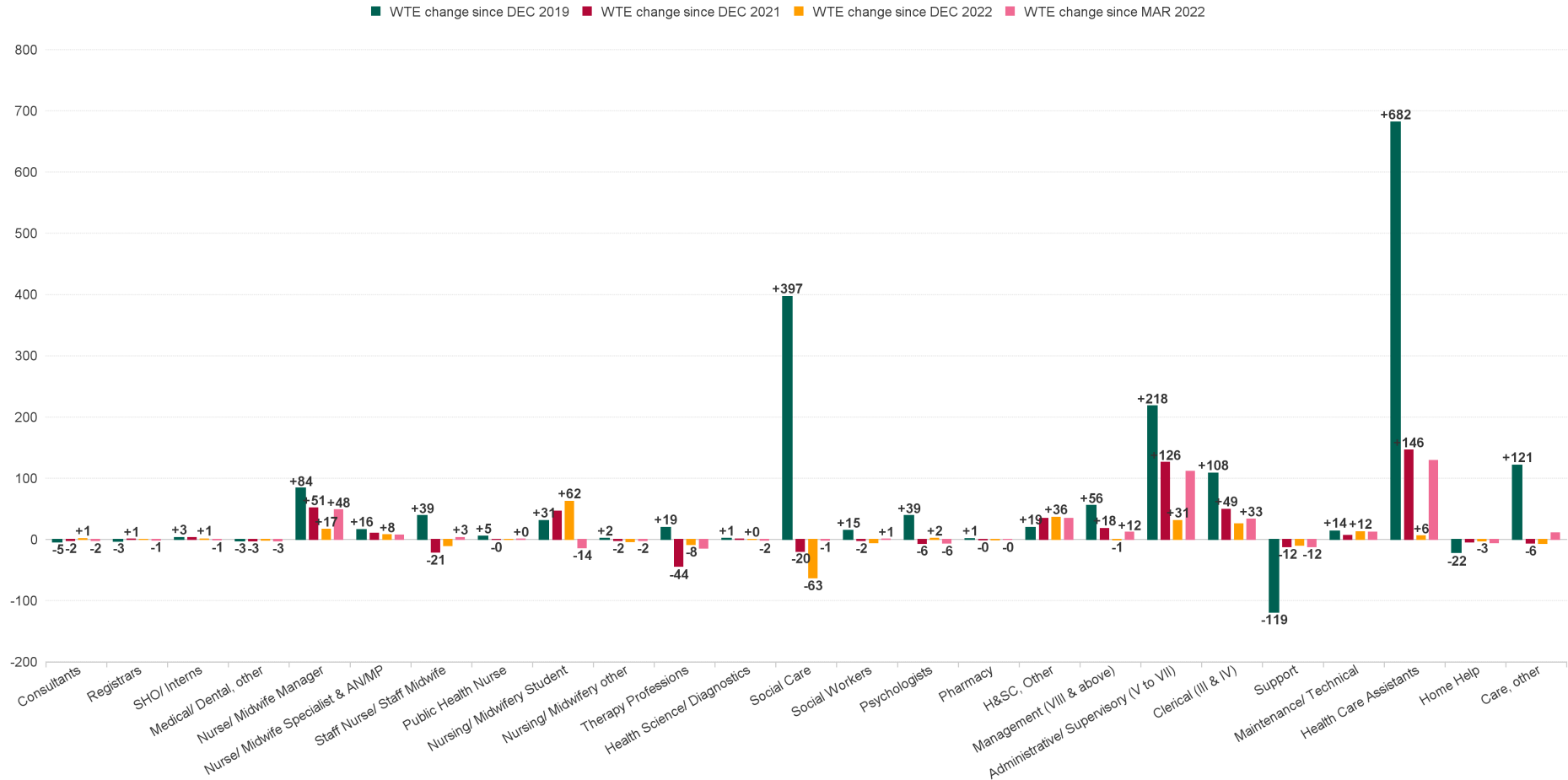
MAR 2023	WTE DEC 2019	WTE DEC 2022	WTE FEB 2023	WTE MAR 2023	WTE change since DEC 2019	WTE change since DEC 2022	WTE change since FEB 2023	No. MAR 2023
<b>Overall</b>	<b>18,273</b>	<b>19,903</b>	<b>19,999</b>	<b>19,990</b>	<b>+1,717</b>	<b>+87</b>	<b>-9</b>	<b>23,693</b>
Clinical Engineering	13	14	15	15	+2	+1	+0	15
Medical Science	4	4	4	4	+0	+0	+0	4
Phlebotomists	1				-1			
Radiographers	1	1	2	1	+0	+0	-0	3
Respiratory Physiologists	1	2	1	1	+0	-1	-0	1
<b>Health Science/ Diagnostics</b>	<b>20</b>	<b>21</b>	<b>22</b>	<b>21</b>	<b>+1</b>	<b>+0</b>	<b>-0</b>	<b>23</b>
Social Care	2,595	3,055	3,025	2,992	+397	-63	-32	3,524
<b>Social Care</b>	<b>2,595</b>	<b>3,055</b>	<b>3,025</b>	<b>2,992</b>	<b>+397</b>	<b>-63</b>	<b>-32</b>	<b>3,524</b>
Social Workers	219	239	232	233	+15	-6	+2	270
<b>Social Workers</b>	<b>219</b>	<b>239</b>	<b>232</b>	<b>233</b>	<b>+15</b>	<b>-6</b>	<b>+2</b>	<b>270</b>
Psychologists	202	239	240	241	+39	+2	+0	267
<b>Psychologists</b>	<b>202</b>	<b>239</b>	<b>240</b>	<b>241</b>	<b>+39</b>	<b>+2</b>	<b>+0</b>	<b>267</b>
Pharmacists	5	7	7	7	+1	+0	-0	9
Pharmacy Technicians	2	2	1	1	-1	-1	-0	1
<b>Pharmacy</b>	<b>7</b>	<b>8</b>	<b>8</b>	<b>8</b>	<b>+1</b>	<b>-1</b>	<b>-0</b>	<b>10</b>
Counsellor Therapists	19	23	21	19	+0	-3	-1	23
Other Health & Social Care	51	30	31	70	+19	+40	+39	82
Play Therapists/ Specialists	15	15	15	15	-0	-0	-0	19
<b>H&amp;SC, Other</b>	<b>85</b>	<b>68</b>	<b>67</b>	<b>104</b>	<b>+19</b>	<b>+36</b>	<b>+37</b>	<b>124</b>
<b>Health &amp; Social Care Professionals</b>	<b>3890</b>	<b>4421</b>	<b>4375</b>	<b>4381</b>	<b>+491</b>	<b>-40</b>	<b>+6</b>	<b>5,127</b>
Executive Management	31	50	41	41	+10	-9	-0	41
Senior Management (VIII & GM)	149	186	196	194	+45	+8	-2	198
<b>Management (VIII &amp; above)</b>	<b>180</b>	<b>236</b>	<b>237</b>	<b>235</b>	<b>+56</b>	<b>-1</b>	<b>-2</b>	<b>239</b>
Middle Management (V-VII)	463	653	675	683	+221	+30	+8	727
Other Administrative	15	12	11	13	-2	+1	+2	13
<b>Administrative/ Supervisory (V to VII)</b>	<b>477</b>	<b>665</b>	<b>686</b>	<b>696</b>	<b>+218</b>	<b>+31</b>	<b>+10</b>	<b>740</b>
General Administrative (III & IV)	660	744	756	769	+108	+25	+13	906
<b>Clerical (III &amp; IV)</b>	<b>660</b>	<b>744</b>	<b>756</b>	<b>769</b>	<b>+108</b>	<b>+25</b>	<b>+13</b>	<b>906</b>
<b>Management &amp; Administrative</b>	<b>1317</b>	<b>1645</b>	<b>1679</b>	<b>1699</b>	<b>+382</b>	<b>+55</b>	<b>+20</b>	<b>1,885</b>
Catering	98	75	74	76	-22	+1	+1	90
Household Services	419	385	381	377	-42	-8	-5	546
Other Labs & Associated	1	1	1	1	+0	+0	+0	1
Other Support	188	145	147	144	-44	-1	-3	211
Portering	28	18	17	17	-11	-1	+0	24
<b>Support</b>	<b>733</b>	<b>624</b>	<b>621</b>	<b>614</b>	<b>-119</b>	<b>-10</b>	<b>-6</b>	<b>872</b>
Maintenance	116	109	116	121	+5	+12	+5	133
Technical Services	8	17	17	17	+9	-0	+0	17
<b>Maintenance/ Technical</b>	<b>124</b>	<b>126</b>	<b>132</b>	<b>138</b>	<b>+14</b>	<b>+12</b>	<b>+5</b>	<b>150</b>
<b>General Support</b>	<b>857</b>	<b>750</b>	<b>753</b>	<b>752</b>	<b>-105</b>	<b>+2</b>	<b>-1</b>	<b>1,022</b>
Attendant/ Aide	230	179	182	181	-49	+2	-1	233



MAR 2023	WTE DEC 2019	WTE DEC 2022	WTE FEB 2023	WTE MAR 2023	WTE change since DEC 2019	WTE change since DEC 2022	WTE change since FEB 2023	No. MAR 2023
<b>Overall</b>	<b>18,273</b>	<b>19,903</b>	<b>19,999</b>	<b>19,990</b>	<b>+1,717</b>	<b>+87</b>	<b>-9</b>	<b>23,693</b>
Health Care Assistant/ Care Assistant	6,578	7,294	7,318	7,292	+713	-3	-27	8,726
Health & Social Care Assistants	10	22	27	28	+18	+6	+1	32
<b>Health Care Assistants</b>	<b>6,818</b>	<b>7,495</b>	<b>7,526</b>	<b>7,500</b>	<b>+682</b>	<b>+6</b>	<b>-26</b>	<b>8,991</b>
Home Helps	99	80	77	77	-22	-3	+0	215
<b>Home Help</b>	<b>99</b>	<b>80</b>	<b>77</b>	<b>77</b>	<b>-22</b>	<b>-3</b>	<b>+0</b>	<b>215</b>
Home Care Services	28	17	18	18	-11	+0	-0	22
Other Care Grades	174	259	252	253	+79	-6	+1	287
Pastoral Care	10	5	5	5	-5	+1	-0	7
Workshop Services	1,426	1,485	1,490	1,484	+58	-2	-7	1,754
<b>Care, other</b>	<b>1,638</b>	<b>1,766</b>	<b>1,766</b>	<b>1,759</b>	<b>+121</b>	<b>-7</b>	<b>-7</b>	<b>2,070</b>
<b>Patient &amp; Client Care</b>	<b>8556</b>	<b>9341</b>	<b>9370</b>	<b>9337</b>	<b>+781</b>	<b>-4</b>	<b>-32</b>	<b>11,276</b>



## WTE Change by Staff Category





## Disabilities Employment Report by WTE, Headcount, Gender, Full-Time / Part-Time etc. MAR 2023

MAR 2023	WTE MAR 2023	No. MAR 2023	WTE : No	% Male	% Female	Male WTE : No.	Female WTE : No	Perm Count %	Perm Count Male %	Perm Count Female %	Fulltime Count %	Part time Count %	FT Count Male %	FT Count Female %
<b>Total</b>	<b>19,990</b>	<b>23,693</b>	<b>1:0.8</b>	<b>19.65%</b>	<b>80.35%</b>	<b>1:0.9</b>	<b>1:0.8</b>	<b>88.61%</b>	<b>17.28%</b>	<b>71.33%</b>	<b>58.82%</b>	<b>41.18%</b>	<b>69.54%</b>	<b>56.20%</b>
Consultant Paediatrics	2.53	3	1:0.8		100.00%	1:	1:0.8	100.00%		100.00%	66.67%	33.33%		66.67%
Consultant Psychiatry	16.86	22	1:0.8	27.27%	72.73%	1:0.9	1:0.7	77.27%	13.64%	63.64%	63.64%	36.36%	100.00%	50.00%
<b>Consultants</b>	<b>19.39</b>	<b>25</b>	<b>1:0.8</b>	<b>24.00%</b>	<b>76.00%</b>	<b>1:0.9</b>	<b>1:0.7</b>	<b>80.00%</b>	<b>12.00%</b>	<b>68.00%</b>	<b>64.00%</b>	<b>36.00%</b>	<b>100.00%</b>	<b>52.63%</b>
Other Medical	11.78	18	1:0.7	33.33%	66.67%	1:0.9	1:0.5	88.89%	22.22%	66.67%	33.33%	66.67%	50.00%	25.00%
<b>Medical/ Dental, other</b>	<b>11.78</b>	<b>18</b>	<b>1:0.7</b>	<b>33.33%</b>	<b>66.67%</b>	<b>1:0.9</b>	<b>1:0.5</b>	<b>88.89%</b>	<b>22.22%</b>	<b>66.67%</b>	<b>33.33%</b>	<b>66.67%</b>	<b>50.00%</b>	<b>25.00%</b>
Registrar	6	6	1:1	50.00%	50.00%	1:1	1:1				100.00%		100.00%	100.00%
<b>Registrars</b>	<b>6</b>	<b>6</b>	<b>1:0.9</b>	<b>66.67%</b>	<b>116.67%</b>	<b>1:1</b>	<b>1:0.9</b>				<b>183.33%</b>		<b>100.00%</b>	<b>100.00%</b>
Senior House Officer	9.56	11	1:0.9	54.55%	45.45%	1:0.9	1:0.8				100.00%		100.00%	100.00%
<b>SHO/ Interns</b>	<b>9.56</b>	<b>11</b>	<b>1:0.9</b>	<b>54.55%</b>	<b>45.45%</b>	<b>1:0.9</b>	<b>1:0.8</b>				<b>100.00%</b>		<b>100.00%</b>	<b>100.00%</b>
Senior Registrar	2	2	1:1	50.00%	50.00%	1:1	1:1				100.00%		100.00%	100.00%
Specialist Registrar	2.01	3	1:0.7		100.00%	1:	1:0.7				100.00%			100.00%
<b>Registrars</b>	<b>4.01</b>	<b>5</b>	<b>1:0.9</b>	<b>80.00%</b>	<b>140.00%</b>	<b>1:1</b>	<b>1:0.9</b>				<b>220.00%</b>		<b>100.00%</b>	<b>100.00%</b>
<b>Medical &amp; Dental</b>	<b>51</b>	<b>65</b>	<b>1:0.8</b>	<b>33.85%</b>	<b>66.15%</b>	<b>1:0.9</b>	<b>1:0.7</b>	<b>55.38%</b>	<b>10.77%</b>	<b>44.62%</b>	<b>67.69%</b>	<b>32.31%</b>	<b>86.36%</b>	<b>58.14%</b>
Advanced Nurse/ Midwife Practitioner	14.75	15	1:1	20.00%	80.00%	1:0.9	1:1	93.33%	20.00%	73.33%	93.33%	6.67%	66.67%	100.00%
<b>Nurse/ Midwife Specialist &amp; AN/MP</b>	<b>14.75</b>	<b>15</b>	<b>1:0.9</b>	<b>40.00%</b>	<b>520.00%</b>	<b>1:1</b>	<b>1:0.9</b>	<b>540.00%</b>	<b>40.00%</b>	<b>500.00%</b>	<b>393.33%</b>	<b>166.67%</b>	<b>83.33%</b>	<b>69.23%</b>
Clinical Nurse/ Midwife Manager	879.54	953	1:0.9	13.12%	86.88%	1:1	1:0.9	93.49%	12.38%	81.11%	83.00%	17.00%	95.20%	81.16%
<b>Nurse/ Midwife Manager</b>	<b>879.54</b>	<b>953</b>	<b>1:0.9</b>	<b>14.80%</b>	<b>95.70%</b>	<b>1:1</b>	<b>1:0.9</b>	<b>103.46%</b>	<b>14.06%</b>	<b>89.40%</b>	<b>92.86%</b>	<b>17.63%</b>	<b>95.74%</b>	<b>82.24%</b>
Clinical Nurse/ Midwife Specialist	62.73	69	1:0.9	4.35%	95.65%	1:1	1:0.9	97.10%	4.35%	92.75%	65.22%	34.78%	100.00%	63.64%
<b>Nurse/ Midwife Specialist &amp; AN/MP</b>	<b>62.73</b>	<b>69</b>	<b>1:0.9</b>	<b>8.70%</b>	<b>113.04%</b>	<b>1:1</b>	<b>1:0.9</b>	<b>117.39%</b>	<b>8.70%</b>	<b>108.70%</b>	<b>85.51%</b>	<b>36.23%</b>	<b>83.33%</b>	<b>69.23%</b>
Director Nursing/Midwifery, Assistant	47.27	49	1:1	20.41%	79.59%	1:1	1:1	97.96%	20.41%	77.55%	93.88%	6.12%	100.00%	92.31%
Director of Nursing/Midwifery	48.8	51	1:1	11.76%	88.24%	1:1	1:1	92.16%	11.76%	80.39%	94.12%	5.88%	100.00%	93.33%
<b>Nurse/ Midwife Manager</b>	<b>96.07</b>	<b>100</b>	<b>1:0.9</b>	<b>141.00%</b>	<b>912.00%</b>	<b>1:1</b>	<b>1:0.9</b>	<b>986.00%</b>	<b>134.00%</b>	<b>852.00%</b>	<b>885.00%</b>	<b>168.00%</b>	<b>95.74%</b>	<b>82.24%</b>
Nursing Education/Clinical	23.82	28	1:0.9	3.57%	96.43%	1:1	1:0.8	100.00%	3.57%	96.43%	64.29%	35.71%	100.00%	62.96%
<b>Nursing/ Midwifery other</b>	<b>23.82</b>	<b>28</b>	<b>1:0.9</b>	<b>3.57%</b>	<b>96.43%</b>	<b>1:1</b>	<b>1:0.8</b>	<b>100.00%</b>	<b>3.57%</b>	<b>96.43%</b>	<b>64.29%</b>	<b>35.71%</b>	<b>100.00%</b>	<b>62.96%</b>
Nursing/ Midwifery awaiting registration	1	1	1:1	100.00%		1:1	1:				100.00%		100.00%	
Pre-registration Nurse/ Midwife Intern	71.72	147	1:0.5	9.52%	90.48%	1:0.5	1:0.5	23.13%		23.13%	64.63%	35.37%	71.43%	63.91%
<b>Nursing/ Midwifery Student</b>	<b>72.72</b>	<b>148</b>	<b>1:0.5</b>	<b>10.14%</b>	<b>89.86%</b>	<b>1:0.5</b>	<b>1:0.5</b>	<b>22.97%</b>		<b>22.97%</b>	<b>64.86%</b>	<b>35.14%</b>	<b>73.33%</b>	<b>63.91%</b>
Public Health Nurse	11.72	14	1:0.8		100.00%	1:	1:0.8	100.00%		100.00%	64.29%	35.71%		64.29%
<b>Public Health Nurse</b>	<b>11.72</b>	<b>14</b>	<b>1:0.8</b>		<b>100.00%</b>	<b>1:</b>	<b>1:0.8</b>	<b>100.00%</b>		<b>100.00%</b>	<b>64.29%</b>	<b>35.71%</b>		<b>64.29%</b>
Staff Nurse [Intellectual Disability]	1,756.09	2,023	1:0.9	10.08%	89.92%	1:0.9	1:0.9	95.70%	9.69%	86.01%	67.52%	32.48%	86.27%	65.42%
Staff Nurse [Psychiatric]	60.59	72	1:0.8	19.44%	80.56%	1:0.9	1:0.8	76.39%	13.89%	62.50%	59.72%	40.28%	64.29%	58.62%
Staff Nurses [General/ Children's]	791.33	896	1:0.9	15.18%	84.82%	1:0.9	1:0.9	93.97%	14.29%	79.69%	71.54%	28.46%	85.29%	69.08%
<b>Staff Nurse/ Staff Midwife</b>	<b>2,608.01</b>	<b>2,991</b>	<b>1:0.9</b>	<b>11.84%</b>	<b>88.16%</b>	<b>1:0.9</b>	<b>1:0.9</b>	<b>94.72%</b>	<b>11.17%</b>	<b>83.55%</b>	<b>68.54%</b>	<b>31.46%</b>	<b>85.03%</b>	<b>66.33%</b>
<b>Nursing &amp; Midwifery</b>	<b>3,769</b>	<b>4,318</b>	<b>1:0.9</b>	<b>11.97%</b>	<b>88.03%</b>	<b>1:0.9</b>	<b>1:0.9</b>	<b>92.08%</b>	<b>11.00%</b>	<b>81.08%</b>	<b>72.19%</b>	<b>27.81%</b>	<b>87.62%</b>	<b>70.09%</b>
Clinical Engineering	14.99	15	1:1	93.33%	6.67%	1:1	1:1	86.67%	80.00%	6.67%	93.33%	6.67%	92.86%	100.00%
<b>Health Science/ Diagnostics</b>	<b>14.99</b>	<b>15</b>	<b>1:0.9</b>	<b>113.33%</b>	<b>40.00%</b>	<b>1:1</b>	<b>1:0.7</b>	<b>120.00%</b>	<b>93.33%</b>	<b>26.67%</b>	<b>140.00%</b>	<b>13.33%</b>	<b>94.12%</b>	<b>83.33%</b>
Counsellor Therapists	19.34	23	1:0.8	4.35%	95.65%	1:1	1:0.8	100.00%	4.35%	95.65%	69.57%	30.43%	100.00%	68.18%
<b>H&amp;SC, Other</b>	<b>19.34</b>	<b>23</b>	<b>1:0.8</b>	<b>56.52%</b>	<b>482.61%</b>	<b>1:1</b>	<b>1:0.8</b>	<b>517.39%</b>	<b>56.52%</b>	<b>460.87%</b>	<b>334.78%</b>	<b>204.35%</b>	<b>92.31%</b>	<b>58.56%</b>
Dietitians	26.68	33	1:0.8		100.00%	1:	1:0.8	84.85%		84.85%	60.61%	39.39%		60.61%
<b>Therapy Professions</b>	<b>26.68</b>	<b>33</b>	<b>1:0.9</b>	<b>215.15%</b>	<b>2,539.39%</b>	<b>1:0.9</b>	<b>1:0.9</b>	<b>2,590.91%</b>	<b>196.97%</b>	<b>2,393.94%</b>	<b>1,981.82%</b>	<b>772.73%</b>	<b>87.32%</b>	<b>70.64%</b>
Medical Science	4	4	1:1	50.00%	50.00%	1:1	1:1	50.00%	25.00%	25.00%	100.00%		100.00%	100.00%
<b>Health Science/ Diagnostics</b>	<b>4</b>	<b>4</b>	<b>1:0.9</b>	<b>425.00%</b>	<b>150.00%</b>	<b>1:1</b>	<b>1:0.7</b>	<b>450.00%</b>	<b>350.00%</b>	<b>100.00%</b>	<b>525.00%</b>	<b>50.00%</b>	<b>94.12%</b>	<b>83.33%</b>
Occupational Therapists	299.15	337	1:0.9	7.12%	92.88%	1:0.9	1:0.9	94.96%	6.53%	88.43%	79.53%	20.47%	87.50%	78.91%
<b>Therapy Professions</b>	<b>299.15</b>	<b>337</b>	<b>1:0.9</b>	<b>21.07%</b>	<b>248.66%</b>	<b>1:0.9</b>	<b>1:0.9</b>	<b>253.71%</b>	<b>19.29%</b>	<b>234.42%</b>	<b>194.07%</b>	<b>75.67%</b>	<b>87.32%</b>	<b>70.64%</b>
Other Health & Social Care	69.69	82	1:0.8	12.20%	87.80%	1:1	1:0.8	96.34%	12.20%	84.15%	63.41%	36.59%	90.00%	59.72%
<b>H&amp;SC, Other</b>	<b>69.69</b>	<b>82</b>	<b>1:0.8</b>	<b>15.85%</b>	<b>135.37%</b>	<b>1:1</b>	<b>1:0.8</b>	<b>145.12%</b>	<b>15.85%</b>	<b>129.27%</b>	<b>93.90%</b>	<b>57.32%</b>	<b>92.31%</b>	<b>58.56%</b>
Pharmacists	6.73	9	1:0.7	11.11%	88.89%	1:1	1:0.7	100.00%	11.11%	88.89%	44.44%	55.56%	100.00%	37.50%
Pharmacy Technicians	0.82	1	1:0.8		100.00%	1:	1:0.8	100.00%		100.00%	100.00%			100.00%
<b>Pharmacy</b>	<b>7.55</b>	<b>10</b>	<b>1:0.8</b>	<b>10.00%</b>	<b>90.00%</b>	<b>1:1</b>	<b>1:0.7</b>	<b>100.00%</b>	<b>10.00%</b>	<b>90.00%</b>	<b>50.00%</b>	<b>50.00%</b>	<b>100.00%</b>	<b>44.44%</b>
Physiotherapists	195.69	230	1:0.9	18.26%	81.74%	1:0.9	1:0.8	94.35%	16.52%	77.83%	65.22%	34.78%	85.71%	60.64%
<b>Therapy Professions</b>	<b>195.69</b>	<b>230</b>	<b>1:0.9</b>	<b>30.87%</b>	<b>364.35%</b>	<b>1:0.9</b>	<b>1:0.9</b>	<b>371.74%</b>	<b>28.26%</b>	<b>343.48%</b>	<b>284.35%</b>	<b>110.87%</b>	<b>87.32%</b>	<b>70.64%</b>
Play Therapists/ Specialists	14.97	19	1:0.8	10.53%	89.47%	1:1	1:0.8	89.47%	10.53%	78.95%	47.37%	52.63%	100.00%	41.18%
<b>H&amp;SC, Other</b>	<b>14.97</b>	<b>19</b>	<b>1:0.8</b>	<b>68.42%</b>	<b>584.21%</b>	<b>1:1</b>	<b>1:0.8</b>	<b>626.32%</b>	<b>68.42%</b>	<b>557.89%</b>	<b>405.26%</b>	<b>247.37%</b>	<b>92.31%</b>	<b>58.56%</b>
Psychologists	240.74	267	1:0.9	16.85%	83.15%	1:1	1:0.9	97.00%	16.48%	80.52%	79.03%	20.97%	88.89%	77.03%
<b>Psychologists</b>	<b>240.74</b>	<b>267</b>	<b>1:0.9</b>	<b>16.85%</b>	<b>83.15%</b>	<b>1:1</b>	<b>1:0.9</b>	<b>97.00%</b>	<b>16.48%</b>	<b>80.52%</b>	<b>79.03%</b>	<b>20.97%</b>	<b>88.89%</b>	<b>77.03%</b>
Radiographers	1.4	3	1:0.5		100.00%	1:	1:0.5	66.67%		66.67%	66.67%	33.33%		66.67%
Respiratory Physiologists	1	1	1:1	100.00%		1:1	1:	100.00%	100.00%		100.00%		100.00%	
<b>Health Science/ Diagnostics</b>	<b>2.4</b>	<b>4</b>	<b>1:0.9</b>	<b>425.00%</b>	<b>150.00%</b>	<b>1:1</b>	<b>1:0.7</b>	<b>450.00%</b>	<b>350.00%</b>	<b>100.00%</b>	<b>525.00%</b>	<b>50.00%</b>	<b>94.12%</b>	<b>83.33%</b>
Social Care	2,992.07	3,524	1:0.8	16.83%	83.17%	1:0.9	1:0.8	91.71%	15.55%	76.16%	49.18%	50.82%	64.42%	46.09%
<b>Social Care</b>	<b>2,992.07</b>	<b>3,524</b>	<b>1:0.8</b>	<b>16.83%</b>	<b>83.17%</b>	<b>1:0.9</b>	<b>1:0.8</b>	<b>91.71%</b>	<b>15.55%</b>	<b>76.16%</b>	<b>49.18%</b>	<b>50.82%</b>	<b>64.42%</b>	<b>46.09%</b>
Social Workers	233.41	270	1:0.9	17.78%	82.22%	1:0.9	1:0.8	91.85%	15.93%	75.93%	71.48%	28.52%	87.50%	68.02%
<b>Social Workers</b>	<b>233.41</b>	<b>270</b>	<b>1:0.9</b>	<b>17.78%</b>	<b>82.22%</b>	<b>1:0.9</b>	<b>1:0.8</b>	<b>91.85%</b>	<b>15.93%</b>	<b>75.93%</b>	<b>71.48%</b>	<b>28.52%</b>	<b>87.50%</b>	<b>68.02%</b>



MAR 2023	WTE MAR 2023	No. MAR 2023	WTE : No	% Male	% Female	Male WTE : No.	Female WTE : No	Perm Count Male %	Perm Count Male %	Perm Count Female %	Fulltime Count %	Part time Count %	FT Count Male %	FT Count Female %
<b>Total</b>	<b>19,990</b>	<b>23,693</b>	<b>1:0.8</b>	<b>19.65%</b>	<b>80.35%</b>	<b>1:0.9</b>	<b>1:0.8</b>	<b>88.61%</b>	<b>17.28%</b>	<b>71.33%</b>	<b>58.82%</b>	<b>41.18%</b>	<b>69.54%</b>	<b>56.20%</b>
Speech & Language Therapists	260.38	309	1:0.8	1.62%	98.38%	1:1	1:0.8	93.85%	1.62%	92.23%	69.90%	30.10%	100.00%	69.41%
<b>Therapy Professions</b>	<b>260.38</b>	<b>309</b>	<b>1:0.9</b>	<b>22.98%</b>	<b>271.20%</b>	<b>1:0.9</b>	<b>1:0.9</b>	<b>276.70%</b>	<b>21.04%</b>	<b>255.66%</b>	<b>211.65%</b>	<b>82.52%</b>	<b>87.32%</b>	<b>70.64%</b>
<b>Health &amp; Social Care Professionals</b>	<b>4,381</b>	<b>5,127</b>	<b>1:0.9</b>	<b>15.37%</b>	<b>84.63%</b>	<b>1:0.9</b>	<b>1:0.8</b>	<b>92.47%</b>	<b>14.20%</b>	<b>78.27%</b>	<b>56.45%</b>	<b>43.55%</b>	<b>70.43%</b>	<b>53.91%</b>
Executive Management	40.83	41	1:1	43.90%	56.10%	1:1	1:1	97.56%	43.90%	53.66%	100.00%		100.00%	100.00%
<b>Management (VIII &amp; above)</b>	<b>40.83</b>	<b>41</b>	<b>1:1</b>	<b>195.12%</b>	<b>387.80%</b>	<b>1:1</b>	<b>1:1</b>	<b>546.34%</b>	<b>187.80%</b>	<b>358.54%</b>	<b>568.29%</b>	<b>14.63%</b>	<b>100.00%</b>	<b>96.23%</b>
General Administrative (III & IV)	768.51	906	1:0.8	10.04%	89.96%	1:0.9	1:0.8	87.86%	8.39%	79.47%	61.37%	38.63%	82.42%	59.02%
<b>Clerical (III &amp; IV)</b>	<b>768.51</b>	<b>906</b>	<b>1:0.8</b>	<b>10.04%</b>	<b>89.96%</b>	<b>1:0.9</b>	<b>1:0.8</b>	<b>87.86%</b>	<b>8.39%</b>	<b>79.47%</b>	<b>61.37%</b>	<b>38.63%</b>	<b>82.42%</b>	<b>59.02%</b>
Middle Management (V-VII)	683.05	727	1:0.9	22.28%	77.72%	1:1	1:0.9	92.71%	21.05%	71.66%	86.11%	13.89%	95.68%	83.36%
Other Administrative	12.75	13	1:1	7.69%	92.31%	1:1	1:1	76.92%		76.92%	100.00%		100.00%	100.00%
<b>Administrative/ Supervisory (V to VII)</b>	<b>695.8</b>	<b>740</b>	<b>1:0.9</b>	<b>22.03%</b>	<b>77.97%</b>	<b>1:1</b>	<b>1:0.9</b>	<b>92.43%</b>	<b>20.68%</b>	<b>71.76%</b>	<b>86.35%</b>	<b>13.65%</b>	<b>95.71%</b>	<b>83.71%</b>
Senior Management (VIII & GM)	194.33	198	1:1	31.31%	68.69%	1:1	1:1	92.93%	29.80%	63.13%	96.97%	3.03%	100.00%	95.59%
<b>Management (VIII &amp; above)</b>	<b>194.33</b>	<b>198</b>	<b>1:1</b>	<b>40.40%</b>	<b>80.30%</b>	<b>1:1</b>	<b>1:1</b>	<b>113.13%</b>	<b>38.89%</b>	<b>74.24%</b>	<b>117.68%</b>	<b>3.03%</b>	<b>100.00%</b>	<b>96.23%</b>
<b>Management &amp; Administrative</b>	<b>1,699</b>	<b>1,885</b>	<b>1:0.9</b>	<b>17.72%</b>	<b>82.28%</b>	<b>1:1</b>	<b>1:0.9</b>	<b>90.40%</b>	<b>16.23%</b>	<b>74.16%</b>	<b>75.76%</b>	<b>24.24%</b>	<b>93.11%</b>	<b>72.02%</b>
Catering	75.61	90	1:0.8	26.67%	73.33%	1:1	1:0.8	100.00%	26.67%	73.33%	56.67%	43.33%	87.50%	45.45%
Household Services	376.68	546	1:0.7	16.67%	83.33%	1:0.7	1:0.7	86.26%	11.90%	74.36%	35.71%	64.29%	51.65%	32.53%
<b>Support</b>	<b>452.29</b>	<b>636</b>	<b>1:0.7</b>	<b>39.78%</b>	<b>97.33%</b>	<b>1:0.8</b>	<b>1:0.7</b>	<b>421.70%</b>	<b>32.23%</b>	<b>89.47%</b>	<b>50.00%</b>	<b>87.11%</b>	<b>50.99%</b>	<b>30.53%</b>
Maintenance	120.92	133	1:0.9	90.23%	9.77%	1:0.9	1:0.8	93.98%	84.21%	9.77%	72.18%	27.82%	77.50%	23.08%
<b>Maintenance/ Technical</b>	<b>120.92</b>	<b>133</b>	<b>1:0.9</b>	<b>100.75%</b>	<b>12.03%</b>	<b>1:0.9</b>	<b>1:0.8</b>	<b>106.02%</b>	<b>93.98%</b>	<b>12.03%</b>	<b>83.46%</b>	<b>29.32%</b>	<b>79.10%</b>	<b>31.25%</b>
Other Labs & Associated	1	1	1:1		100.00%	1:	1:1	100.00%		100.00%	100.00%			100.00%
Other Support	144.37	211	1:0.7	54.50%	45.50%	1:0.8	1:0.5	90.52%	45.50%	45.02%	28.44%	71.56%	43.48%	10.42%
Portering	16.72	24	1:0.7	95.83%	4.17%	1:0.7	1:0.9	87.50%	83.33%	4.17%	45.83%	54.17%	47.83%	
<b>Support</b>	<b>162.09</b>	<b>236</b>	<b>1:0.7</b>	<b>107.20%</b>	<b>262.29%</b>	<b>1:0.8</b>	<b>1:0.7</b>	<b>327.97%</b>	<b>86.86%</b>	<b>241.10%</b>	<b>134.75%</b>	<b>234.75%</b>	<b>50.99%</b>	<b>30.53%</b>
Technical Services	16.86	17	1:1	82.35%	17.65%	1:1	1:1	94.12%	76.47%	17.65%	88.24%	11.76%	92.86%	66.67%
<b>Maintenance/ Technical</b>	<b>16.86</b>	<b>17</b>	<b>1:0.9</b>	<b>788.24%</b>	<b>94.12%</b>	<b>1:0.9</b>	<b>1:0.8</b>	<b>829.41%</b>	<b>735.29%</b>	<b>94.12%</b>	<b>652.94%</b>	<b>229.41%</b>	<b>79.10%</b>	<b>31.25%</b>
<b>General Support</b>	<b>752</b>	<b>1,022</b>	<b>1:0.7</b>	<b>37.87%</b>	<b>62.13%</b>	<b>1:0.8</b>	<b>1:0.7</b>	<b>89.53%</b>	<b>32.29%</b>	<b>57.24%</b>	<b>41.98%</b>	<b>58.02%</b>	<b>60.72%</b>	<b>30.55%</b>
Attendant/ Aide	181	233	1:0.8	20.60%	79.40%	1:0.8	1:0.8	86.27%	16.74%	69.53%	49.36%	50.64%	66.67%	44.86%
Health Care Assistant/ Care Assistant	7,291.67	8,726	1:0.8	23.26%	76.74%	1:0.9	1:0.8	85.16%	20.16%	65.00%	52.46%	47.54%	61.82%	49.63%
Health & Social Care Assistants	27.59	32	1:0.9	12.50%	87.50%	1:1	1:0.8	68.75%	9.38%	59.38%	65.63%	34.38%	100.00%	60.71%
<b>Health Care Assistants</b>	<b>7,500.26</b>	<b>8,991</b>	<b>1:0.8</b>	<b>23.16%</b>	<b>76.84%</b>	<b>1:0.9</b>	<b>1:0.8</b>	<b>85.13%</b>	<b>20.03%</b>	<b>65.10%</b>	<b>52.43%</b>	<b>47.57%</b>	<b>62.01%</b>	<b>49.54%</b>
Home Care Services	17.56	22	1:0.8	13.64%	86.36%	1:1	1:0.8	68.18%	4.55%	63.64%	50.00%	50.00%	66.67%	47.37%
<b>Care, other</b>	<b>17.56</b>	<b>22</b>	<b>1:0.8</b>	<b>2,318.18%</b>	<b>7,090.91%</b>	<b>1:0.9</b>	<b>1:0.8</b>	<b>8,309.09%</b>	<b>1,995.45%</b>	<b>6,313.64%</b>	<b>5,936.36%</b>	<b>3,472.73%</b>	<b>73.33%</b>	<b>59.74%</b>
Home Helps	77.48	215	1:0.4	7.44%	92.56%	1:0.3	1:0.4	65.58%	4.19%	61.40%	2.33%	97.67%		2.51%
<b>Home Help</b>	<b>77.48</b>	<b>215</b>	<b>1:0.4</b>	<b>7.44%</b>	<b>92.56%</b>	<b>1:0.3</b>	<b>1:0.4</b>	<b>65.58%</b>	<b>4.19%</b>	<b>61.40%</b>	<b>2.33%</b>	<b>97.67%</b>		<b>2.51%</b>
Other Care Grades	252.94	287	1:0.9	28.92%	71.08%	1:0.9	1:0.9	89.20%	22.65%	66.55%	74.56%	25.44%	80.72%	72.06%
Pastoral Care	5.34	7	1:0.8	57.14%	42.86%	1:0.7	1:0.8	71.43%	28.57%	42.86%	42.86%	57.14%	25.00%	66.67%
Workshop Services	1,483.58	1,754	1:0.8	23.95%	76.05%	1:0.9	1:0.8	88.48%	21.15%	67.33%	61.46%	38.54%	72.38%	58.02%
<b>Care, other</b>	<b>1,741.86</b>	<b>2,048</b>	<b>1:0.8</b>	<b>24.90%</b>	<b>76.17%</b>	<b>1:0.9</b>	<b>1:0.8</b>	<b>89.26%</b>	<b>21.44%</b>	<b>67.82%</b>	<b>63.77%</b>	<b>37.30%</b>	<b>73.33%</b>	<b>59.74%</b>
<b>Patient &amp; Client Care</b>	<b>9,337</b>	<b>11,276</b>	<b>1:0.8</b>	<b>23.13%</b>	<b>76.87%</b>	<b>1:0.9</b>	<b>1:0.8</b>	<b>85.34%</b>	<b>19.95%</b>	<b>65.40%</b>	<b>53.43%</b>	<b>46.57%</b>	<b>63.84%</b>	<b>50.30%</b>



Disabilities Employment Report by CHO : WTE, Headcount, Gender, Full-Time / Part-Time etc. MAR 2023

MAR 2023	WTE MAR 2023	No. MAR 2023	WTE : No	Number Male	Number Female	Male WTE : No.	Female WTE : No	Perm Count %	Number Male %	Number Female %	Fulltime Count %	Part time Count %	FT Count Male %	FT Count Female %
Total	19,990	23,693	1:0.8	19.65%	80.35%	1:0.9	1:0.8	88.61%	17.28%	71.33%	58.82%	41.18%	69.54%	56.20%
CHO 1	1,735	1,935	1:0.9	20.10%	79.90%	1:0.9	1:0.9	92.82%	18.55%	74.26%	78.71%	21.29%	88.95%	76.13%
CHO 2	1,641	2,010	1:0.8	23.13%	76.87%	1:0.9	1:0.8	82.34%	18.71%	63.63%	48.16%	51.84%	51.83%	47.06%
CHO 3	2,007	2,388	1:0.8	13.69%	86.31%	1:0.9	1:0.8	86.26%	11.73%	74.54%	41.08%	58.92%	45.26%	40.42%
CHO 4	2,639	3,185	1:0.8	20.53%	79.47%	1:0.9	1:0.8	83.61%	16.70%	66.91%	68.67%	31.33%	75.23%	66.97%
CHO 5	1,670	1,965	1:0.9	20.56%	79.44%	1:0.9	1:0.8	87.38%	17.76%	69.62%	54.86%	45.14%	64.36%	52.40%
CHO 6	1,204	1,390	1:0.9	22.73%	77.27%	1:0.9	1:0.8	92.52%	20.65%	71.87%	66.47%	33.53%	82.59%	61.73%
CHO 7	3,407	4,034	1:0.8	22.41%	77.59%	1:0.9	1:0.8	88.18%	19.73%	68.44%	68.05%	31.95%	80.20%	64.54%
CHO 8	2,344	2,825	1:0.8	20.53%	79.47%	1:0.9	1:0.8	95.43%	19.65%	75.79%	47.43%	52.57%	53.97%	45.75%
CHO 9	3,337	3,955	1:0.8	15.58%	84.42%	1:0.9	1:0.8	89.99%	14.16%	75.83%	55.27%	44.73%	73.21%	51.96%
other Community Services	6	6	1:1	16.67%	83.33%	1:1	1:1	100.00%	16.67%	83.33%	83.33%	16.67%	100.00%	80.00%



Previous Month Summary

WTE change since FEB 2023	% WTE change since FEB 2023	Overall	Consultants	Registrars	SHO/ Interns	Medical/ Dental, other	Medical & Dental	Nurse/ Midwife Manager	Nurse/ Midwife Specialist & ANMP	Staff Nurse/ Staff Midwife	Public Health Nurse	Nursing/ Midwifery Student	Nursing/ Midwifery other	Nursing & Midwifery	Therapy Professions	Health Science/ Diagnostics	Social Care	Social Workers	Psychologists	Pharmacy	H&SC, Other	Health & Social Care Professionals	Management (VII & above)	Administrative / Supervisory (V to VI)	Clerical (III & IV)	Management & Administrative	Support	Maintenance/ Technical	General Support	Health Care Assistants	Home Help	Care, other	Patient & Client Care
Overall	-0.65%	-8.0	+0.5	+0.8	+0.6	-1.2	+0.7	+0.4	+0.0	+1.0	+0.0	-4.4	-0.0	-3.0	-0.9	-0.1	-32.5	+1.9	+0.5	-0.2	+37.4	+6.1	-2.0	+9.6	+12.7	+20.3	-6.3	+5.4	-0.9	-26.1	+0.4	-6.6	-32.4
CHO 1	+0.51%	+8.8				-0.9	-0.9	+5.2	+0.6	-4.4	+0.0	-1.2	-0.1	+0.1	-1.0		+0.8	+0.4	-0.3		-0.9	-1.1	-0.1	-0.9	-1.6	-2.6	+0.5	+0.0	+0.5	+9.3	+0.7	+2.8	+12.7
CHO 2	+0.16%	+2.8	+0.0	+1.0	-1.0	+0.0	+0.0	-2.2	+0.0	-2.0				-4.1	+0.5		+1.7	-1.0	+0.7		+1.2	+3.1	+0.1	+2.4	+3.1	+5.5	-4.0	+0.0	-4.0	+4.3		-2.3	+2.0
CHO 3	-0.05%	-1.0	-0.0			+0.0	-0.0	-1.9	+0.0	+0.5		+0.0	+0.0	-1.4	+1.3	+0.1	-0.2	+0.2	+0.1		-0.4	+1.2	+1.0	+2.1	+1.6	+4.7	-0.1	+0.2	+0.1	-8.3		+2.8	-5.5
CHO 4	+0.11%	+2.8	+0.1			+0.0	+0.1	-0.3	+0.0	+1.4		+0.0	+0.0	+1.1	+0.2		-0.8	+0.0	+0.2		+0.0	-0.3	-1.4	+0.6	+2.4	+1.7	+0.1	+0.0	+0.1	+0.7		-0.6	+0.1
CHO 5	-0.20%	-3.4	-0.2				-0.2	+0.7	+0.0	-1.3	+0.0	-2.7	+0.0	-3.3	-2.0		+0.6	+0.8	-0.3		-1.1	-2.1	-0.4	-0.6	+1.7	+0.8	+0.1	+0.1	+0.2	+1.9	-1.1	+0.3	+1.2
CHO 6	-0.68%	-8.2	+0.1	+0.0		+0.0	+0.1	-0.3	-0.0	+0.4			+0.0	+0.1	-1.0		+2.8	+1.0	+0.1		+0.0	+2.9	-0.0	-1.3	-2.6	-3.9	-0.2	+0.0	-0.2	-1.4		-5.7	-7.1
CHO 7	-0.32%	-10.8		-0.2	+0.6		+0.4	+1.0	+0.0	-0.4		+0.5	+0.0	+1.2	+2.9	-0.3	-6.7	-0.1	-0.1	-0.2	+0.0	-4.4	-2.3	+2.4	+4.5	+4.7	-4.1	+5.1	+1.0	-9.9	-0.2	-3.4	-13.6
CHO 8	+0.40%	+9.5		+0.0		+0.0	+0.0	-0.4	+0.4	+6.6	+0.0	+0.1	-0.1	+6.6	+2.8	+0.0	-29.1	-0.2	+0.1		+38.8	+12.4	+0.1	-0.9	+0.1	-0.7	-0.9	+0.0	-0.9	-9.7	+1.0	+0.8	-7.9
CHO 9	-0.28%	-9.2	+0.5	+0.0	+1.0	-0.3	+1.3	-1.5	-1.0	+0.2		-1.0	+0.1	-3.2	-4.5	+0.0	-1.6	+0.8	+0.0	+0.0	-0.2	-5.5	+1.0	+5.7	+3.5	+10.2	+2.4	-0.1	+2.3	-12.9		-1.4	-14.3
other Community Services	+0.17%	+0.0																					+0.0	+0.0	+0.0	+0.0							



Year on Year Summary

WTE change since MAR 2022	% WTE change since MAR 2022	Overall	Consultants	Registrars	SHO/ Interns	Medical/ Dental/ other	Medical & Dental	Nurse/ Midwife Manager	Nurse/ Midwife Specialist & AN/MP	Staff Nurse/ Staff Midwife	Public Health Nurse	Nursing/ Midwifery Student/	Nursing/ Midwifery other	Nursing & Midwifery	Therapy Professions	Health Science/ Diagnostics	Social Care	Social Workers	Psychologists	Pharmacy	H&SC, Other	Health & Social Care Professionals	Management (VIII & above)	Administrative /Supervisory (V to VII)	Clerical (III & IV)	Management & Administrative	Support	Maintenance/ Technical	General Support	Health Care Assistants	Home Help	Care, other	Patient & Client Care
Overall	+1.71%	+336	-2	-1	-1	-3	-6	+48	+7	+3	+0	-14	-2	+43	-15	-2	-1	+1	-6	-0	+34	+11	+12	+111	+33	+155	-12	+12	+0	+129	-5	+10	+134
CHO 1	+3.32%	+56		-1		-1	-2	+7	+3	-16	-0	-6	+0	-11	-5		+10	-0	-3		-1	+1	-1	+7	+6	+12	-0	+0	-0	+43	+1	+12	+57
CHO 2	+4.86%	+76	+0	+0		+0	+0	-1	-0	-2				-4	+11		+24	-2	+4		+0	+37	+3	+13	+6	+21	+2	-1	+0	+15		+6	+21
CHO 3	+3.00%	+58	-1			-0	-1	+2	+2	+8		-2	-1	+10	-8	+0	-3	+2	-3		-0	-12	+6	+14	-2	+18	+0	+3	+3	+27		+14	+41
CHO 4	+0.44%	+12	+1			+0	+1	+6	-1	+1		-2	+0	+4	-8		+3	-1	-1		-1	-8	-0	+17	+0	+17	-2	+0	-2	+3		-3	-1
CHO 5	+0.22%	+4	-0				-0	+2	+1	-3	+0	-1	+0	-1	-5		+6	-7	-6		-1	-13	+4	+5	+14	+23	-1	+0	-1	-13	-3	+11	-5
CHO 6	-1.98%	-24	+0	+0		+0	+0	-2	+1	+5			+1	+5	-8		-13	+3	-1		+0	-18	+0	+5	+2	+7	+5	+1	+6	-4		-20	-24
CHO 7	+3.49%	+115		+1	+0	-1	+0	+20	+2	+3		+1	-1	+24	+2	-1	+24	+2	+1	-0	+1	+28	-4	+18	+11	+24	-10	+6	-3	+40	-0	-0	+40
CHO 8	+1.90%	+44		+0		+0	+0	+1	-1	+17	+0	+1	-2	+16	+8	+0	-31	+1	+1		+38	+17	-0	-7	+5	-2	-5	+3	-2	+19	-4	-0	+15
CHO 9	-0.10%	-3	-2	-1	-1	-0	-4	+14	-1	-10		-5	+0	-2	-1	-1	-22	+4	+2	+0	-2	-21	+3	+38	-7	+34	-0	-1	-1	-1		-9	-10
other Community Services	+0.84%	+0																					+1	-1	+0	+0							

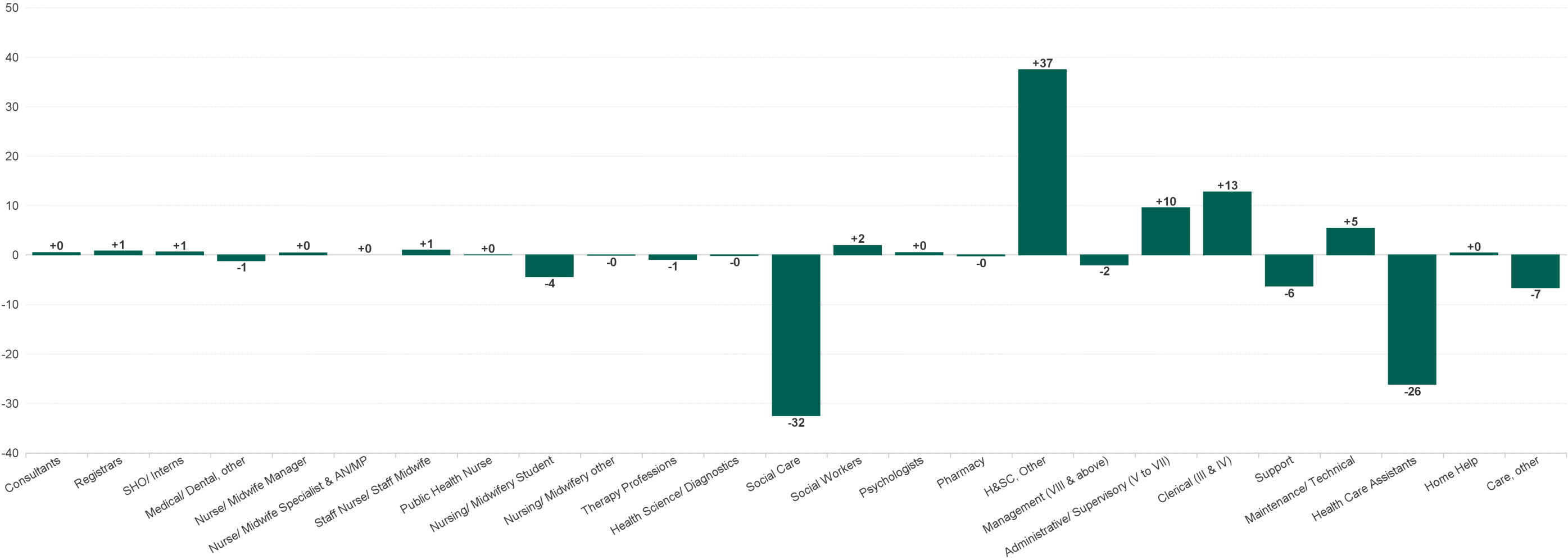


Year to Date Summary

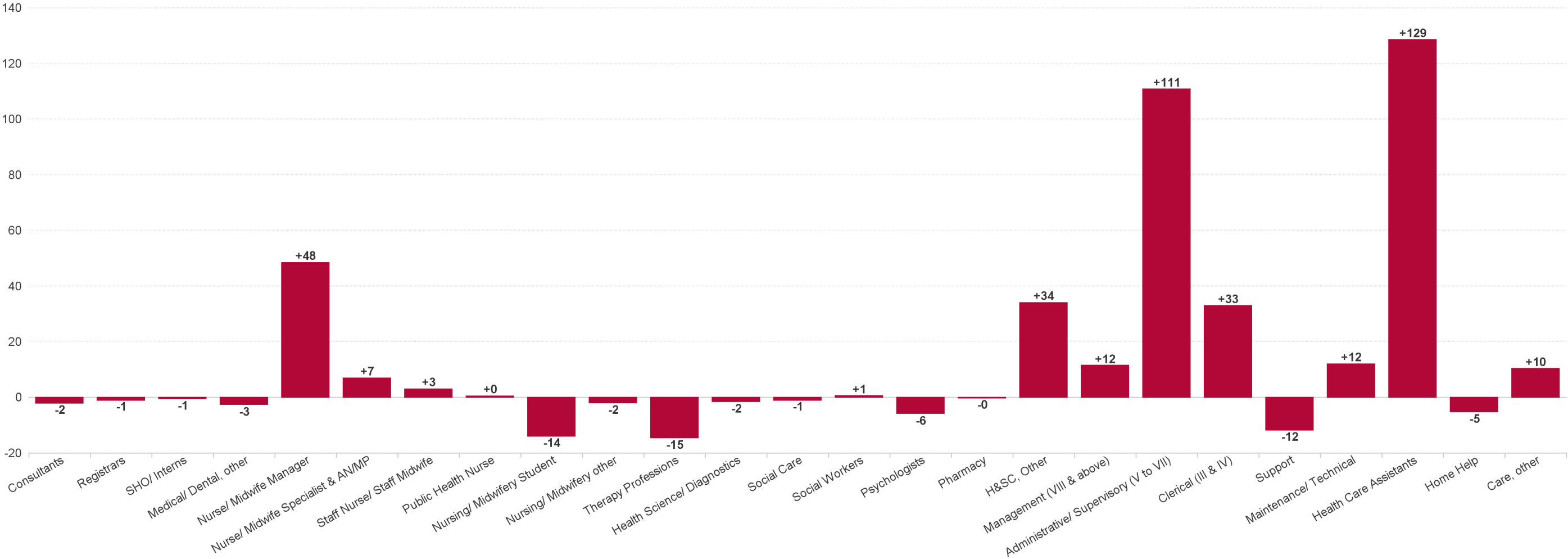
WTE change since DEC 2022	% WTE change since DEC 2022	Overall	Consultants	Registrars	SHO/ Interns	Medical/ Dental, other	Medical & Dental	Nurse/ Midwife Manager	Nurse/ Midwife Specialist & AN/MP	Staff Nurse/ Staff Midwife	Public Health Nurse	Nursing/ Midwifery Student	Nursing/ Midwifery other	Nursing & Midwifery	Therapy Professions	Health Science/ Diagnostics	Social Care	Social Workers	Psychologists	Pharmacy	H&SC, Other	Health & Social Care Professionals	Management (VIII & above)	Administrative / Supervisory (V to VII)	Clerical (III & IV)	Management & Administrative	Support	Maintenance/ Technical	General Support	Health Care Assistants	Home Help	Care, other	Patient & Client Care
Overall	+0.43%	+87	+1	+0	+1	-1	+0	+17	+8	-10	-0	+62	-4	+72	-8	+0	-63	-6	+2	-1	+36	-40	-1	+31	+25	+55	-10	+12	+2	+6	-3	-7	-4
CHO 1	+2.20%	+37				-1	-1	+8	+4	-4	-0	+6	-0	+14	-2		+3	+0	+1		-1	+0	-0	-1	-1	-2	+2	+0	+2	+13	+0	+11	+25
CHO 2	+2.10%	+34	+0	+1	-1	+0	+0	-3	-0	-2				-5	+0		+6	-1	+3		+0	+8	+2	+6	+4	+11	+0	-0	-0	+14		+5	+19
CHO 3	+0.91%	+18	-0			+0	-0	-1	+1	+2		+6	+0	+7	-0	+0	-5	-1	-1		-1	-8	+4	-2	+3	+6	+0	+2	+2	+5		+6	+11
CHO 4	-0.06%	-2	+0			+0	+0	+1	+0	+0		+9	+0	+11	+0		-2	-1	-2		+1	-3	-1	+4	-0	+3	-3	+2	-1	-8		-4	-11
CHO 5	+0.85%	+14	-0				-0	+1	+0	-5	+0	+7	+0	+3	+1		-1	-2	+0		-2	-3	+1	+7	+6	+14	-0	-0	-0	+1	-2	+2	+1
CHO 6	-1.00%	-12	+0	+0		+0	+0	+1	+1	+8			+0	+10	-0		-1	+1	-1		+0	-1	-7	-1	+1	-8	-0	+0	+0	-0		-13	-13
CHO 7	-0.08%	-3		+0	+2		+2	+3	+1	-3		+7	-2	+6	-2	-1	-6	-3	+0	-1	+1	-11	-2	+3	-0	+1	-7	+5	-2	+1	+0	+1	+3
CHO 8	-0.04%	-1		+0		+0	+0	-2	+1	+2	-0	+14	-1	+14	+2	+0	-40	-1	-1		+37	-3	+0	-1	+5	+4	-2	+4	+2	-14	-1	-3	-18
CHO 9	+0.02%	+1	+1	-1	+0	-0	-0	+8	+0	-9		+13	-1	+12	-7	+1	-16	+1	+3	+0	-0	-18	+2	+17	+7	+26	+1	-0	+1	-7		-13	-20
other Community Services	+1.18%	+0																					+0	+0	+0	+0							



Previous Month Summary Chart: Change since FEB 2023



Previous Year Summary Chart: Change since MAR 2022





YTD Summary Chart: Change since DEC 2022

