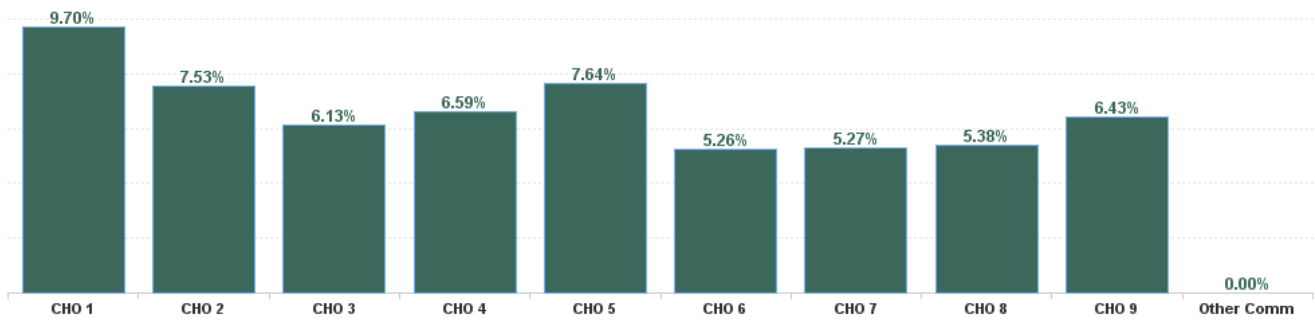


December 2024

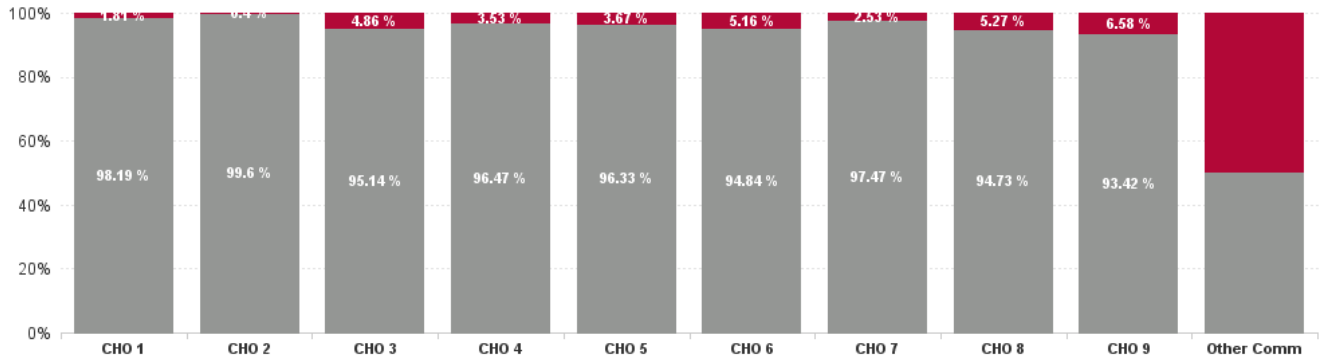
Health Service Absence Rate - by Staff Category: Dec 2024	Certified absence	Self-certified absence	Non Covid-19 absence	Covid-19 Absence	Total absence rate	% Non Covid-19 absence	% Covid-19 absence
Disabilities	5.52%	0.68%	6.19%	0.25%	6.44%	96.18%	3.82%
Medical & Dental	1.56%	0.20%	1.76%	0.23%	1.99%	88.22%	11.78%
Nursing & Midwifery	6.07%	0.73%	6.79%	0.18%	6.97%	97.44%	2.56%
Health & Social Care Professionals	4.77%	0.56%	5.32%	0.39%	5.71%	93.23%	6.77%
Management & Administrative	5.38%	0.36%	5.74%	0.10%	5.84%	98.31%	1.69%
General Support	4.41%	0.57%	4.98%	0.19%	5.17%	96.42%	3.58%
Patient & Client Care	5.80%	0.78%	6.57%	0.23%	6.80%	96.60%	3.40%

Health Service Absence Rate - by Hospital Group: Dec 2024	Certified absence	Self-certified absence	Non Covid-19 absence	Covid-19 Absence	Total absence rate	% Non Covid-19 absence	% Covid-19 absence
Disabilities	5.52%	0.68%	6.19%	0.25%	6.44%	96.18%	3.82%
CHO 1	8.83%	0.70%	9.53%	0.18%	9.70%	98.19%	1.81%
CHO 2	6.77%	0.73%	7.50%	0.03%	7.53%	99.60%	0.40%
CHO 3	5.32%	0.52%	5.84%	0.30%	6.13%	95.14%	4.86%
CHO 4	5.23%	1.13%	6.36%	0.23%	6.59%	96.47%	3.53%
CHO 5	6.57%	0.78%	7.36%	0.28%	7.64%	96.33%	3.67%
CHO 6	4.29%	0.70%	4.98%	0.27%	5.26%	94.84%	5.16%
CHO 7	4.42%	0.71%	5.13%	0.13%	5.27%	97.47%	2.53%
CHO 8	4.64%	0.45%	5.09%	0.28%	5.38%	94.73%	5.27%
CHO 9	5.51%	0.50%	6.01%	0.42%	6.43%	93.42%	6.58%
Other Community Services	0.00%	0.00%	0.00%	0.00%	0.00%	#DIV/0	#DIV/0

Total Absence Rate

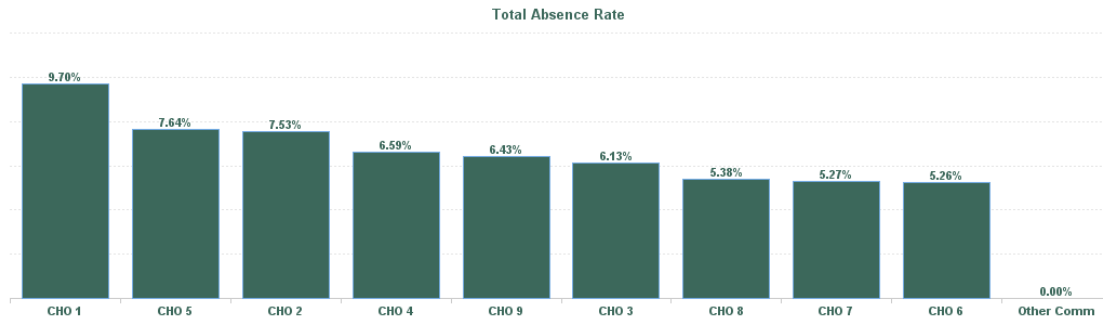


% of Absence Non Covid-19 / Covid-19



December 2024

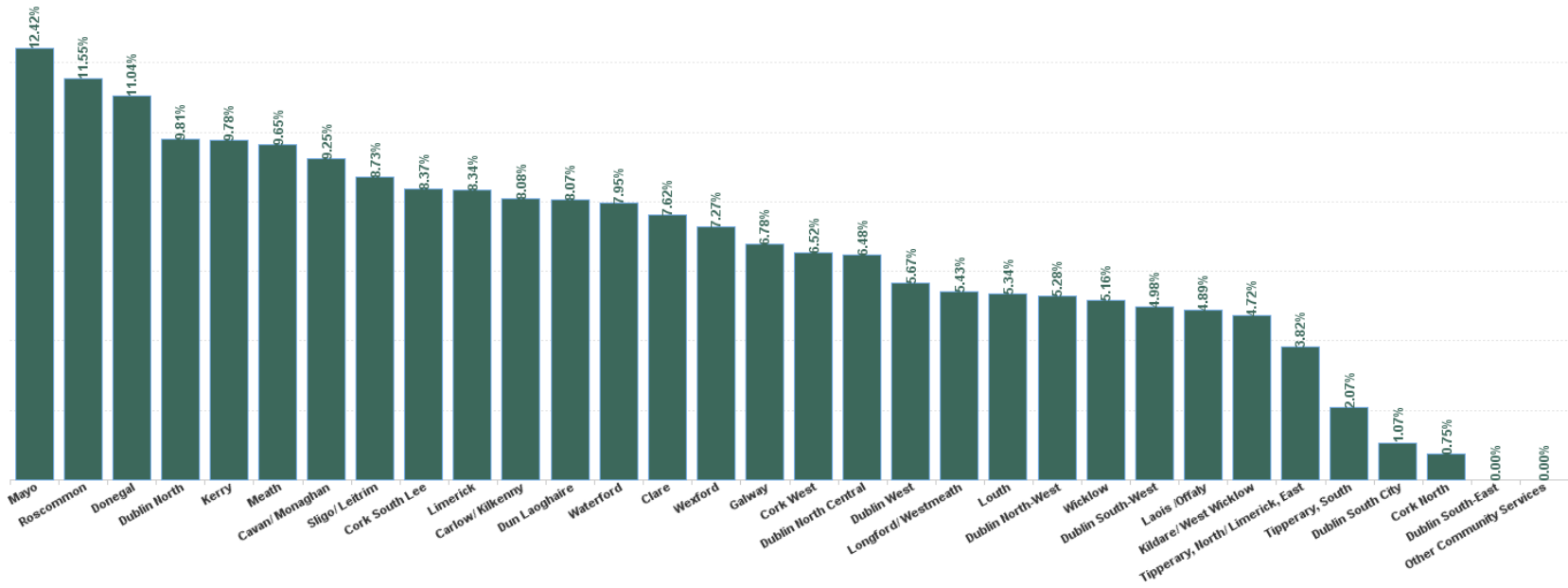
Health Service Absence Rate - by HG, CHO/Care Group & Staff Category : Dec 2024	Certified absence	Self-certified absence	Non Covid-19 absence	Covid-19 Absence	Total absence rate	Medical & Dental	Nursing & Midwifery	Health & Social Care Professionals	Management & Administrative	General Support	Patient & Client Care
Disabilities	5.52%	0.68%	6.19%	0.25%	6.44%	1.99%	6.97%	5.71%	5.84%	5.17%	6.80%
CHO 1	8.83%	0.70%	9.53%	0.18%	9.70%	0.00%	12.14%	4.10%	7.62%	4.31%	9.71%
CHO 2	6.77%	0.73%	7.50%	0.03%	7.53%	0.00%	10.81%	7.01%	5.57%	7.43%	7.29%
CHO 3	5.32%	0.52%	5.84%	0.30%	6.13%	0.00%	5.35%	4.89%	5.75%	2.51%	7.09%
CHO 4	5.23%	1.13%	6.36%	0.23%	6.59%	0.00%	7.06%	5.69%	7.67%	5.13%	6.70%
CHO 5	6.57%	0.78%	7.36%	0.28%	7.64%	1.42%	9.26%	9.53%	6.51%	10.13%	6.85%
CHO 6	4.29%	0.70%	4.98%	0.27%	5.26%	0.00%	4.88%	5.78%	1.86%	3.58%	6.07%
CHO 7	4.42%	0.71%	5.13%	0.13%	5.27%	0.81%	6.00%	3.74%	6.25%	5.90%	5.62%
CHO 8	4.64%	0.45%	5.09%	0.28%	5.38%	0.00%	5.56%	5.59%	2.85%	1.73%	5.66%
CHO 9	5.51%	0.50%	6.01%	0.42%	6.43%	5.65%	5.22%	6.16%	7.75%	5.76%	7.49%
Other Community Services	0.00%	0.00%	0.00%	0.00%	0.00%				0.00%		



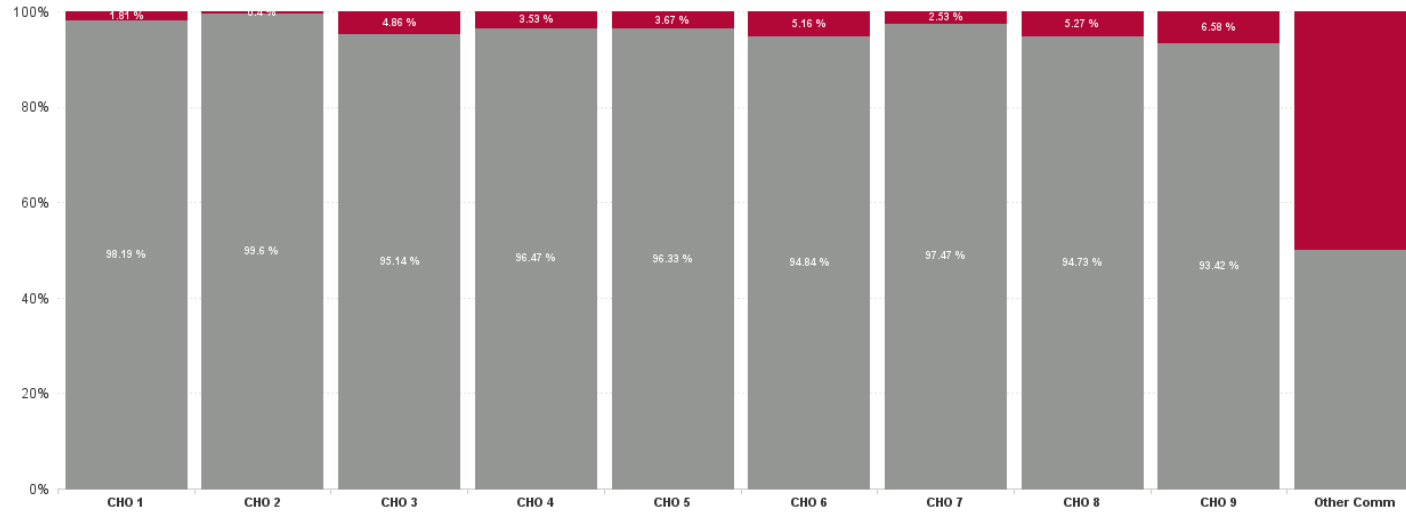
December 2024

Health Service Absence Rate - by HG, CHO/Care Group & Staff Category: Dec 2024	Certified absence	Self-certified absence	Non Covid-19 absence	Covid-19 Absence	Total absence rate	Medical & Dental	Nursing & Midwifery	Health & Social Care Professionals	Management & Administrative	General Support	Patient & Client Care
Total	5.52%	0.68%	6.19%	0.25%	6.44%	1.99%	6.97%	5.71%	5.84%	5.17%	6.80%
Cavan/ Monaghan	8.14%	0.99%	9.12%	0.13%	9.25%	0.00%	6.79%	7.51%	12.28%		10.29%
Donegal	9.92%	0.77%	10.69%	0.35%	11.04%	0.00%	19.02%	4.60%	8.50%	1.77%	9.23%
Sligo/ Leitrim	8.15%	0.53%	8.68%	0.05%	8.73%	0.00%	8.63%	0.96%	4.07%	5.27%	9.90%
CHO 1	8.83%	0.70%	9.53%	0.18%	9.70%	0.00%	12.14%	4.10%	7.62%	4.31%	9.71%
Galway	6.01%	0.74%	6.75%	0.03%	6.78%	0.00%	8.65%	6.61%	4.96%	8.36%	6.62%
Mayo	11.69%	0.69%	12.39%	0.04%	12.42%	0.00%	19.00%	7.95%	11.86%	0.00%	13.20%
Roscommon	11.18%	0.37%	11.55%	0.00%	11.55%		0.00%	18.12%	1.37%		0.00%
CHO 2	6.77%	0.73%	7.50%	0.03%	7.53%	0.00%	10.81%	7.01%	5.57%	7.43%	7.29%
Clare	6.71%	0.69%	7.40%	0.22%	7.62%	0.00%	0.00%	6.40%	0.63%		8.51%
Limerick	7.14%	0.75%	7.89%	0.44%	8.34%		11.22%	6.19%	7.74%	4.02%	8.48%
Tipperary, North/ Limerick, East	3.32%	0.26%	3.59%	0.23%	3.82%		2.61%	2.61%	6.16%	2.01%	4.84%
CHO 3	5.32%	0.52%	5.84%	0.30%	6.13%	0.00%	5.35%	4.89%	5.75%	2.51%	7.09%
Cork North	0.00%	0.75%	0.75%	0.00%	0.75%			1.31%	0.00%		0.00%
Cork South Lee	6.90%	1.17%	8.08%	0.29%	8.37%		10.69%	14.80%	3.61%		7.26%
Cork West	5.15%	1.14%	6.29%	0.23%	6.52%	0.00%	6.94%	5.47%	7.73%	5.13%	6.68%
Kerry	9.32%	0.46%	9.78%	0.00%	9.78%				9.78%		
CHO 4	5.23%	1.13%	6.36%	0.23%	6.59%	0.00%	7.06%	5.69%	7.67%	5.13%	6.70%
Carlow/ Kilkenny	7.27%	0.81%	8.08%	0.00%	8.08%		9.56%	7.46%	7.04%	8.15%	8.39%
Tipperary, South	1.24%	0.63%	1.87%	0.20%	2.07%		3.33%	2.89%	0.00%		1.01%
Waterford	6.67%	0.84%	7.51%	0.44%	7.95%	4.50%	10.22%	11.82%	6.61%	11.18%	6.83%
Wexford	6.73%	0.42%	7.15%	0.11%	7.27%	0.00%	10.44%	0.00%	6.99%		4.88%
CHO 5	6.57%	0.78%	7.36%	0.28%	7.64%	1.42%	9.26%	9.53%	6.51%	10.13%	6.85%
Dublin South-East	0.00%	0.00%	0.00%	0.00%	0.00%			0.00%			
Dun Laoghaire	6.81%	1.26%	8.07%	0.00%	8.07%		9.73%	0.00%	0.00%	24.18%	5.85%
Wicklow	4.20%	0.68%	4.88%	0.28%	5.16%	0.00%	4.19%	5.79%	1.94%	1.91%	6.07%
CHO 6	4.29%	0.70%	4.98%	0.27%	5.26%	0.00%	4.88%	5.78%	1.86%	3.58%	6.07%
Dublin South City	0.71%	0.36%	1.07%	0.00%	1.07%			1.13%			0.00%
Dublin South-West	4.10%	0.78%	4.87%	0.10%	4.98%	0.00%	6.26%	3.13%	4.07%	7.63%	5.49%
Dublin West	4.76%	0.73%	5.48%	0.19%	5.67%	0.83%	5.93%	5.72%	7.45%	5.01%	5.77%
Kildare/ West Wicklow	4.18%	0.51%	4.69%	0.02%	4.72%		4.42%	2.83%	6.96%	0.00%	5.31%
CHO 7	4.42%	0.71%	5.13%	0.13%	5.27%	0.81%	6.00%	3.74%	6.25%	5.90%	5.62%
Laois /Offaly	4.12%	0.41%	4.53%	0.36%	4.89%		4.31%	6.56%	2.66%	1.26%	4.45%
Longford/ Westmeath	4.75%	0.56%	5.31%	0.12%	5.43%	0.00%	7.82%	3.20%	4.46%	0.45%	6.27%
Louth	4.62%	0.35%	4.97%	0.37%	5.34%	0.00%	5.25%	7.15%	0.98%	3.59%	5.33%
Meath	8.85%	0.81%	9.65%	0.00%	9.65%		6.41%	5.10%	2.48%		16.43%
CHO 8	4.64%	0.45%	5.09%	0.28%	5.38%	0.00%	5.56%	5.59%	2.85%	1.73%	5.66%
Dublin North	9.08%	0.51%	9.59%	0.22%	9.81%	6.23%	6.69%	1.20%	7.72%	13.07%	14.66%
Dublin North Central	5.64%	0.39%	6.03%	0.45%	6.48%	8.18%	5.16%	6.61%	8.98%	7.61%	5.92%
Dublin North-West	4.17%	0.65%	4.82%	0.46%	5.28%	0.00%	4.39%	5.03%	5.76%	3.43%	6.44%
CHO 9	5.51%	0.50%	6.01%	0.42%	6.43%	5.65%	5.22%	6.16%	7.75%	5.76%	7.49%
Other Community Services	0.00%	0.00%	0.00%	0.00%	0.00%				0.00%		
Other Community Services	0.00%	0.00%	0.00%	0.00%	0.00%				0.00%		
Community Services	5.52%	0.68%	6.19%	0.25%	6.44%	1.99%	6.97%	5.71%	5.84%	5.17%	6.80%

Total Absence Rate



% of Absence Non Covid-19 / Covid-19



December 2024

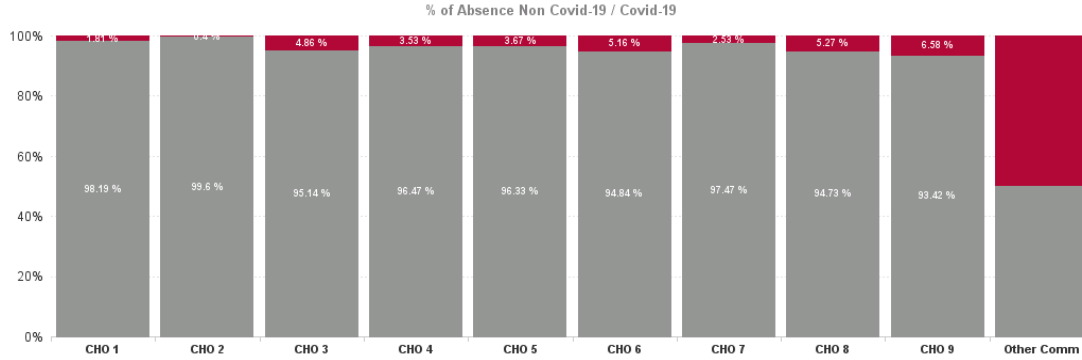
Health Service Covid 19 Absence Rate - by Hospital & Staff Category: Dec 2024	Non Covid-19 absence	Covid-19 absence	Total absence rate	Medical & Dental	Nursing & Midwifery	Health & Social Care Professionals	Management & Administrative	General Support	Patient & Client Care
Disabilities	6.19%	0.25%	6.44%	0.23%	0.18%	0.39%	0.10%	0.19%	0.23%
Cavan/ Monaghan	9.12%	0.13%	9.25%	0.00%	0.28%	0.00%	0.00%		0.10%
Donegal	10.69%	0.35%	11.04%	0.00%	0.00%	0.00%	1.91%	0.00%	0.34%
Sligo/ Leitrim	8.68%	0.05%	8.73%	0.00%	0.08%	0.00%	0.00%	0.88%	0.00%
CHO 1	9.53%	0.18%	9.70%	0.00%	0.08%	0.00%	0.91%	0.64%	0.14%
Galway	6.75%	0.03%	6.78%	0.00%	0.00%	0.08%	0.00%	0.25%	0.00%
Mayo	12.39%	0.04%	12.42%	0.00%	0.17%	0.00%	0.00%	0.00%	0.00%
Roscommon	11.55%	0.00%	11.55%		0.00%	0.00%	0.00%		0.00%
CHO 2	7.50%	0.03%	7.53%	0.00%	0.04%	0.07%	0.00%	0.22%	0.00%
Clare	7.40%	0.22%	7.62%	0.00%	0.00%	0.29%	0.00%		0.21%
Limerick	7.89%	0.44%	8.34%		1.25%	0.00%	0.83%	0.00%	0.31%
Tipperary, North/ Limerick, East	3.59%	0.23%	3.82%		0.27%	0.00%	0.00%	0.41%	0.30%
CHO 3	5.84%	0.30%	6.13%	0.00%	0.58%	0.07%	0.30%	0.31%	0.28%
Cork North	0.75%	0.00%	0.75%			0.00%	0.00%		0.00%
Cork South Lee	8.08%	0.29%	8.37%		0.00%	0.00%	0.00%		0.39%
Cork West	6.29%	0.23%	6.52%	0.00%	0.37%	0.07%	0.00%	0.27%	0.26%
Kerry	9.78%	0.00%	9.78%				0.00%		
CHO 4	6.36%	0.23%	6.59%	0.00%	0.36%	0.07%	0.00%	0.27%	0.27%
Carlow/ Kilkenny	8.08%	0.00%	8.08%		0.00%	0.00%	0.00%	0.00%	0.00%
Tipperary, South	1.87%	0.20%	2.07%		0.48%	0.00%	0.00%		0.00%
Waterford	7.51%	0.44%	7.95%	0.00%	1.04%	1.80%	0.00%	4.97%	0.04%
Wexford	7.15%	0.11%	7.27%	0.00%	0.26%	0.00%	0.00%		0.00%
CHO 5	7.36%	0.28%	7.64%	0.00%	0.59%	0.93%	0.00%	3.24%	0.02%
Dublin South-East	0.00%	0.00%	0.00%			0.00%			
Dun Laoghaire	8.07%	0.00%	8.07%		0.00%	0.00%	0.00%	0.00%	0.00%
Wicklow	4.88%	0.28%	5.16%	0.00%	0.00%	0.24%	0.00%	0.00%	0.52%
CHO 6	4.98%	0.27%	5.26%	0.00%	0.00%	0.23%	0.00%	0.00%	0.50%
Dublin South City	1.07%	0.00%	1.07%			0.00%			0.00%
Dublin South-West	4.87%	0.10%	4.98%	0.00%	0.04%	0.00%	0.00%	0.00%	0.25%
Dublin West	5.48%	0.19%	5.67%	0.00%	0.06%	0.10%	0.00%	0.08%	0.28%
Kildare/ West Wicklow	4.69%	0.02%	4.72%		0.37%	0.00%	0.00%	0.00%	0.00%
CHO 7	5.13%	0.13%	5.27%	0.00%	0.07%	0.03%	0.00%	0.05%	0.23%
Laois /Offaly	4.53%	0.36%	4.89%		0.00%	1.03%	0.00%	0.00%	0.09%
Longford/ Westmeath	5.31%	0.12%	5.43%	0.00%	0.00%	0.08%	0.00%	0.00%	0.18%
Louth	4.97%	0.37%	5.34%	0.00%	0.15%	0.50%	0.00%	0.00%	0.51%
Meath	9.65%	0.00%	9.65%		0.00%	0.00%	0.00%		0.00%
CHO 8	5.09%	0.28%	5.38%	0.00%	0.08%	0.63%	0.00%	0.00%	0.23%
Dublin North	9.59%	0.22%	9.81%	6.23%	0.08%	0.00%	0.37%	0.00%	0.25%
Dublin North Central	6.03%	0.45%	6.48%	0.00%	0.00%	0.91%	0.02%	0.00%	0.01%
Dublin North-West	4.82%	0.46%	5.28%	0.00%	0.05%	0.42%	0.00%	0.00%	0.98%
CHO 9	6.01%	0.42%	6.43%	0.88%	0.04%	0.78%	0.05%	0.00%	0.47%

Other Community Services	0.00%	0.00%	0.00%
Other Community Services	0.00%	0.00%	0.00%
Community Services	6.19%	0.25%	6.44%

			0.00%		
			0.00%		
0.23%	0.18%	0.39%	0.10%	0.19%	0.23%

December 2024

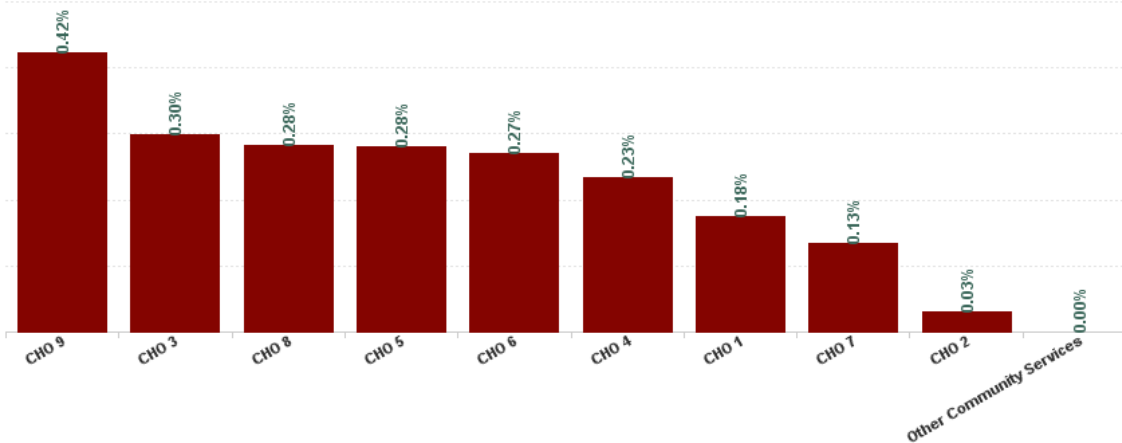
Health Service Absence Rate - by HG, CHO/Care Group & Staff Category: Dec 2024	Certified absence	Self-certified absence	Non Covid-19 absence	Covid-19 Absence	Total absence rate	Medical & Dental	Nursing & Midwifery	Health & Social Care Professionals	Management & Administrative	General Support	Patient & Client Care
Total	5.52%	0.68%	6.19%	0.25%	6.44%	1.99%	6.97%	5.71%	5.84%	5.17%	6.80%
Health Service Executive	8.83%	0.70%	9.53%	0.18%	9.70%	0.00%	12.14%	4.10%	7.62%	4.31%	9.71%
CHO 1	8.83%	0.70%	9.53%	0.18%	9.70%	0.00%	12.14%	4.10%	7.62%	4.31%	9.71%
Health Service Executive	10.01%	0.66%	10.66%	0.03%	10.69%	0.00%	18.80%	7.59%	8.63%	0.00%	11.71%
Section 38 Voluntary Agencies	6.09%	0.75%	6.84%	0.03%	6.87%	0.00%	8.65%	6.82%	4.32%	8.36%	6.71%
CHO 2	6.77%	0.73%	7.50%	0.03%	7.53%	0.00%	10.81%	7.01%	5.57%	7.43%	7.29%
Health Service Executive	11.71%	1.35%	13.06%	0.32%	13.39%		0.00%	11.88%	10.85%	3.62%	19.95%
Section 38 Voluntary Agencies	4.92%	0.47%	5.39%	0.30%	5.69%	0.00%	5.36%	4.32%	3.11%	2.34%	6.63%
CHO 3	5.32%	0.52%	5.84%	0.30%	6.13%	0.00%	5.35%	4.89%	5.75%	2.51%	7.09%
Health Service Executive	5.89%	1.32%	7.21%	0.15%	7.36%	0.00%	7.19%	9.58%	6.75%	2.52%	7.68%
Section 38 Voluntary Agencies	5.14%	1.11%	6.25%	0.24%	6.49%		7.04%	5.30%	8.02%	5.75%	6.60%
CHO 4	5.23%	1.13%	6.36%	0.23%	6.59%	0.00%	7.06%	5.69%	7.67%	5.13%	6.70%
Health Service Executive	6.20%	0.66%	6.86%	0.08%	6.94%	0.00%	8.81%	9.12%	6.32%		4.20%
Section 38 Voluntary Agencies	6.69%	0.82%	7.52%	0.34%	7.86%	4.50%	9.61%	9.75%	6.66%	10.13%	7.26%
CHO 5	6.57%	0.78%	7.36%	0.28%	7.64%	1.42%	9.26%	9.53%	6.51%	10.13%	6.85%
Health Service Executive	9.24%	0.77%	10.01%	1.03%	11.05%	0.00%	5.55%	12.17%	8.07%		15.60%
Section 38 Voluntary Agencies	3.37%	0.68%	4.06%	0.13%	4.19%	0.00%	4.50%	5.39%	0.69%	3.58%	3.97%
CHO 6	4.29%	0.70%	4.98%	0.27%	5.26%	0.00%	4.88%	5.78%	1.86%	3.58%	6.07%
Health Service Executive	5.78%	0.53%	6.31%	0.00%	6.31%		0.00%	3.02%	12.37%		0.00%
Section 38 Voluntary Agencies	4.39%	0.72%	5.11%	0.14%	5.24%	0.81%	6.02%	3.78%	5.28%	5.90%	5.64%
CHO 7	4.42%	0.71%	5.13%	0.13%	5.27%	0.81%	6.00%	3.74%	6.25%	5.90%	5.62%
Health Service Executive	8.62%	0.68%	9.31%	0.08%	9.39%	0.00%	9.47%	6.86%	3.73%	0.00%	12.92%
Section 38 Voluntary Agencies	3.75%	0.40%	4.15%	0.33%	4.48%	0.00%	4.02%	5.37%	2.25%	1.88%	4.49%
CHO 8	4.64%	0.45%	5.09%	0.28%	5.38%	0.00%	5.56%	5.59%	2.85%	1.73%	5.66%
Health Service Executive	8.56%	0.49%	9.06%	0.20%	9.25%	6.23%	6.75%	3.45%	6.50%	13.07%	14.35%
Section 38 Voluntary Agencies	5.07%	0.50%	5.56%	0.46%	6.02%	5.55%	4.74%	6.25%	7.94%	5.28%	6.21%
CHO 9	5.51%	0.50%	6.01%	0.42%	6.43%	5.65%	5.22%	6.16%	7.75%	5.76%	7.49%
Health Service Executive	0.00%	0.00%	0.00%	0.00%	0.00%				0.00%		
Other Community Services	0.00%	0.00%	0.00%	0.00%	0.00%				0.00%		
Community Services	5.52%	0.68%	6.19%	0.25%	6.44%	1.99%	6.97%	5.71%	5.84%	5.17%	6.80%



December 2024

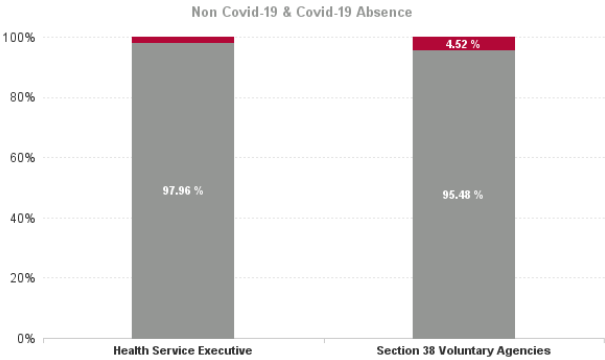
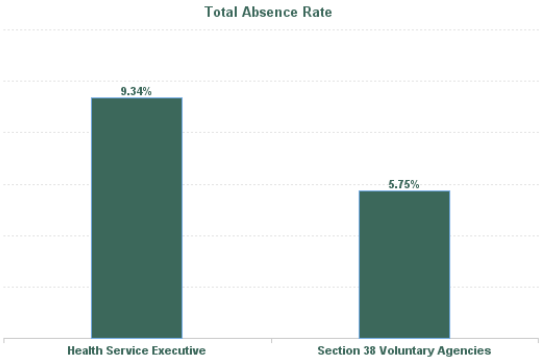
Health Service Covid 19 Absence Rate - by Hospital & Staff Category: Dec 2024	Non Covid-19 absence	Covid-19 Absence	Total absence rate	Professional Categories					
				Medical & Dental	Nursing & Midwifery	Health & Social Care Professionals	Management & Administrative	General Support	Patient & Client Care
Disabilities	6.19%	0.25%	6.44%	0.23%	0.18%	0.39%	0.10%	0.19%	0.23%
Health Service Executive	9.53%	0.18%	9.70%	0.00%	0.08%	0.00%	0.91%	0.64%	0.14%
CHO 1	9.53%	0.18%	9.70%	0.00%	0.08%	0.00%	0.91%	0.64%	0.14%
Health Service Executive	10.66%	0.03%	10.69%	0.00%	0.17%	0.00%	0.00%	0.00%	0.00%
Section 38 Voluntary Agencies	6.84%	0.03%	6.87%	0.00%	0.00%	0.09%	0.00%	0.25%	0.00%
CHO 2	7.50%	0.03%	7.53%	0.00%	0.04%	0.07%	0.00%	0.22%	0.00%
Health Service Executive	13.06%	0.32%	13.39%		0.00%	0.00%	0.89%	0.00%	0.00%
Section 38 Voluntary Agencies	5.39%	0.30%	5.69%	0.00%	0.58%	0.08%	0.00%	0.35%	0.29%
CHO 3	5.84%	0.30%	6.13%	0.00%	0.58%	0.07%	0.30%	0.31%	0.28%
Health Service Executive	7.21%	0.15%	7.36%	0.00%	0.00%	0.00%	0.00%	0.44%	0.26%
Section 38 Voluntary Agencies	6.25%	0.24%	6.49%		0.42%	0.08%	0.00%	0.23%	0.27%
CHO 4	6.36%	0.23%	6.59%	0.00%	0.36%	0.07%	0.00%	0.27%	0.27%
Health Service Executive	6.86%	0.08%	6.94%	0.00%	0.29%	0.00%	0.00%		0.00%
Section 38 Voluntary Agencies	7.52%	0.34%	7.86%	0.00%	0.82%	1.45%	0.00%	3.24%	0.03%
CHO 5	7.36%	0.28%	7.64%	0.00%	0.59%	0.93%	0.00%	3.24%	0.02%
Health Service Executive	10.01%	1.03%	11.05%	0.00%	0.00%	3.48%	0.00%		1.36%
Section 38 Voluntary Agencies	4.06%	0.13%	4.19%	0.00%	0.00%	0.04%	0.00%	0.00%	0.31%
CHO 6	4.98%	0.27%	5.26%	0.00%	0.00%	0.23%	0.00%	0.00%	0.50%
Health Service Executive	6.31%	0.00%	6.31%		0.00%	0.00%	0.00%		0.00%
Section 38 Voluntary Agencies	5.11%	0.14%	5.24%	0.00%	0.07%	0.03%	0.00%	0.05%	0.23%
CHO 7	5.13%	0.13%	5.27%	0.00%	0.07%	0.03%	0.00%	0.05%	0.23%
Health Service Executive	9.31%	0.08%	9.39%	0.00%	0.00%	0.00%	0.00%	0.00%	0.21%
Section 38 Voluntary Agencies	4.15%	0.33%	4.48%	0.00%	0.10%	0.75%	0.00%	0.00%	0.24%
CHO 8	5.09%	0.28%	5.38%	0.00%	0.08%	0.63%	0.00%	0.00%	0.23%
Health Service Executive	9.06%	0.20%	9.25%	6.23%	0.08%	0.00%	0.30%	0.00%	0.24%
Section 38 Voluntary Agencies	5.56%	0.46%	6.02%	0.00%	0.03%	0.80%	0.01%	0.00%	0.51%
CHO 9	6.01%	0.42%	6.43%	0.88%	0.04%	0.78%	0.05%	0.00%	0.47%
Health Service Executive	0.00%	0.00%	0.00%				0.00%		
Other Community Services	0.00%	0.00%	0.00%				0.00%		
Community Services	6.19%	0.25%	6.44%	0.23%	0.18%	0.39%	0.10%	0.19%	0.23%

Covid 19 Absence Rate



December 2024

Health Service Absence Rate - by Admin : Dec 2024	Certified absence	Self-certified absence	Non Covid-19 absence	Covid-19 Absence	Total absence rate	Medical & Dental	Nursing & Midwifery	Health & Social Care Professionals	Management & Administrative	General Support	Patient & Client Care
Total	5.52%	0.68%	6.19%	0.25%	6.44%	1.99%	6.97%	5.71%	5.84%	5.17%	6.80%
Health Service Executive	8.42%	0.73%	9.15%	0.19%	9.34%	1.72%	10.00%	6.96%	7.27%	4.39%	10.48%
Section 38 Voluntary Agencies	4.82%	0.67%	5.49%	0.26%	5.75%	2.04%	5.79%	5.53%	5.21%	5.26%	5.98%



Health Service Absence Rate - by Staff Category: Dec 2024	Certified absence	Self-certified absence	Non Covid-19 absence	Covid-19 Absence	Total absence rate	% Non Covid-19 absence	% Covid-19 absence
CHO 1	8.83%	0.70%	9.53%	0.18%	9.70%	98.19%	1.81%
Medical & Dental	0.00%	0.00%	0.00%	0.00%	0.00%		
Nursing & Midwifery	11.26%	0.79%	12.05%	0.08%	12.14%	99.32%	0.68%
Health & Social Care Professionals	3.40%	0.71%	4.10%	0.00%	4.10%	100.00%	0.00%
Management & Administrative	6.51%	0.21%	6.71%	0.91%	7.62%	88.04%	11.96%
General Support	3.37%	0.30%	3.67%	0.64%	4.31%	85.22%	14.78%
Patient & Client Care	8.85%	0.72%	9.57%	0.14%	9.71%	98.51%	1.49%

Health Service Absence Rate - by Staff Category: Dec 2024	Certified absence	Self-certified absence	Non Covid-19 absence	Covid-19 Absence	Total absence rate	% Non Covid-19 absence	% Covid-19 absence
CHO 2	6.77%	0.73%	7.50%	0.03%	7.53%	99.60%	0.40%
Medical & Dental	0.00%	0.00%	0.00%	0.00%	0.00%		
Nursing & Midwifery	10.06%	0.72%	10.78%	0.04%	10.81%	99.67%	0.33%
Health & Social Care Professionals	6.25%	0.69%	6.94%	0.07%	7.01%	99.00%	1.00%
Management & Administrative	4.95%	0.63%	5.57%	0.00%	5.57%	100.00%	0.00%
General Support	6.68%	0.53%	7.21%	0.22%	7.43%	97.05%	2.95%
Patient & Client Care	6.50%	0.79%	7.29%	0.00%	7.29%	100.00%	0.00%

Health Service Absence Rate - by Staff Category: Dec 2024	Certified absence	Self- certified absence	Non Covid-19 absence	Covid-19 Absence	Total absence rate	% Non Covid-19 absence	% Covid-19 absence
CHO 3	5.32%	0.52%	5.84%	0.30%	6.13%	95.14%	4.86%
Medical & Dental	0.00%	0.00%	0.00%	0.00%	0.00%		
Nursing & Midwifery	4.44%	0.32%	4.77%	0.58%	5.35%	89.15%	10.85%
Health & Social Care Professionals	4.34%	0.48%	4.82%	0.07%	4.89%	98.52%	1.48%
Management & Administrative	4.62%	0.83%	5.45%	0.30%	5.75%	94.74%	5.26%
General Support	1.69%	0.50%	2.20%	0.31%	2.51%	87.68%	12.32%
Patient & Client Care	6.25%	0.56%	6.81%	0.28%	7.09%	96.11%	3.89%

Health Service Absence Rate - by Staff Category: Dec 2024	Certified absence	Self- certified absence	Non Covid-19 absence	Covid-19 Absence	Total absence rate	% Non Covid-19 absence	% Covid-19 absence
CHO 4	5.23%	1.13%	6.36%	0.23%	6.59%	96.47%	3.53%
Medical & Dental	0.00%	0.00%	0.00%	0.00%	0.00%		
Nursing & Midwifery	5.68%	1.02%	6.70%	0.36%	7.06%	94.86%	5.14%
Health & Social Care Professionals	5.06%	0.56%	5.62%	0.07%	5.69%	98.79%	1.21%
Management & Administrative	7.43%	0.24%	7.67%	0.00%	7.67%	100.00%	0.00%
General Support	4.24%	0.62%	4.86%	0.27%	5.13%	94.78%	5.22%
Patient & Client Care	4.98%	1.46%	6.43%	0.27%	6.70%	95.99%	4.01%

Health Service Absence Rate - by Staff Category: Dec 2024	Certified absence	Self-certified absence	Non Covid-19 absence	Covid-19 Absence	Total absence rate	% Non Covid-19 absence	% Covid-19 absence
CHO 5	6.57%	0.78%	7.36%	0.28%	7.64%	96.33%	3.67%
Medical & Dental	0.00%	1.42%	1.42%	0.00%	1.42%	100.00%	0.00%
Nursing & Midwifery	7.95%	0.72%	8.67%	0.59%	9.26%	93.64%	6.36%
Health & Social Care Professionals	7.82%	0.78%	8.59%	0.93%	9.53%	90.23%	9.77%
Management & Administrative	6.24%	0.27%	6.51%	0.00%	6.51%	100.00%	0.00%
General Support	6.15%	0.74%	6.89%	3.24%	10.13%	68.03%	31.97%
Patient & Client Care	5.95%	0.87%	6.82%	0.02%	6.85%	99.65%	0.35%

Health Service Absence Rate - by Staff Category: Dec 2024	Certified absence	Self-certified absence	Non Covid-19 absence	Covid-19 Absence	Total absence rate	% Non Covid-19 absence	% Covid-19 absence
CHO 6	4.29%	0.70%	4.98%	0.27%	5.26%	94.84%	5.16%
Medical & Dental	0.00%	0.00%	0.00%	0.00%	0.00%		
Nursing & Midwifery	4.09%	0.78%	4.88%	0.00%	4.88%	100.00%	0.00%
Health & Social Care Professionals	4.72%	0.83%	5.54%	0.23%	5.78%	95.94%	4.06%
Management & Administrative	1.48%	0.38%	1.86%	0.00%	1.86%	100.00%	0.00%
General Support	2.96%	0.62%	3.58%	0.00%	3.58%	100.00%	0.00%
Patient & Client Care	4.92%	0.65%	5.57%	0.50%	6.07%	91.72%	8.28%

Health Service Absence Rate - by Staff Category: Dec 2024	Certified absence	Self-certified absence	Non Covid-19 absence	Covid-19 Absence	Total absence rate	% Non Covid-19 absence	% Covid-19 absence
CHO 7	4.42%	0.71%	5.13%	0.13%	5.27%	97.47%	2.53%
Medical & Dental	0.51%	0.29%	0.81%	0.00%	0.81%	100.00%	0.00%
Nursing & Midwifery	4.84%	1.09%	5.93%	0.07%	6.00%	98.88%	1.12%
Health & Social Care Professionals	3.07%	0.64%	3.71%	0.03%	3.74%	99.26%	0.74%
Management & Administrative	5.88%	0.37%	6.25%	0.00%	6.25%	100.00%	0.00%
General Support	5.14%	0.71%	5.86%	0.05%	5.90%	99.18%	0.82%
Patient & Client Care	4.71%	0.68%	5.39%	0.23%	5.62%	95.95%	4.05%

Health Service Absence Rate - by Staff Category: Dec 2024	Certified absence	Self-certified absence	Non Covid-19 absence	Covid-19 Absence	Total absence rate	% Non Covid-19 absence	% Covid-19 absence
CHO 8	4.64%	0.45%	5.09%	0.28%	5.38%	94.73%	5.27%
Medical & Dental	0.00%	0.00%	0.00%	0.00%	0.00%		
Nursing & Midwifery	4.98%	0.50%	5.49%	0.08%	5.56%	98.65%	1.35%
Health & Social Care Professionals	4.67%	0.29%	4.96%	0.63%	5.59%	88.68%	11.32%
Management & Administrative	2.51%	0.34%	2.85%	0.00%	2.85%	100.00%	0.00%
General Support	1.59%	0.14%	1.73%	0.00%	1.73%	100.00%	0.00%
Patient & Client Care	4.89%	0.54%	5.43%	0.23%	5.66%	95.88%	4.12%

Health Service Absence Rate - by Staff Category: Dec 2024	Certified absence	Self-certified absence	Non Covid-19 absence	Covid-19 Absence	Total absence rate	% Non Covid-19 absence	% Covid-19 absence
CHO 9	5.51%	0.50%	6.01%	0.42%	6.43%	93.42%	6.58%
Medical & Dental	4.76%	0.00%	4.76%	0.88%	5.65%	84.37%	15.63%
Nursing & Midwifery	4.56%	0.63%	5.18%	0.04%	5.22%	99.22%	0.78%
Health & Social Care Professionals	4.91%	0.47%	5.38%	0.78%	6.16%	87.37%	12.63%
Management & Administrative	7.48%	0.21%	7.69%	0.05%	7.75%	99.31%	0.69%
General Support	5.18%	0.58%	5.76%	0.00%	5.76%	100.00%	0.00%
Patient & Client Care	6.52%	0.51%	7.02%	0.47%	7.49%	93.72%	6.28%

Health Service Absence Rate - by Staff Category: Dec 2024	Certified absence	Self-certified absence	Non Covid-19 absence	Covid-19 Absence	Total absence rate	% Non Covid-19 absence	% Covid-19 absence
Other Comm	0.00%	0.00%	0.00%	0.00%	0.00%		
Medical & Dental							
Nursing & Midwifery							
Health & Social Care Professionals							
Management & Administrative	0.00%	0.00%	0.00%	0.00%	0.00%		
General Support							
Patient & Client Care							

Health Service Absence Rate - by Staff Category: Dec 2024	Certified absence	Self-certified absence	Non Covid-19 absence	Covid-19 Absence	Total absence rate	% Non Covid-19 absence	% Covid-19 absence
Aurora	6.54%	0.77%	7.31%	0.00%	7.31%	100.00%	0.00%
Medical & Dental							
Nursing & Midwifery	6.86%	0.20%	7.06%	0.00%	7.06%	100.00%	0.00%
Health & Social Care Professionals	0.32%	0.99%	1.31%	0.00%	1.31%	100.00%	0.00%
Management & Administrative	5.23%	0.00%	5.23%	0.00%	5.23%	100.00%	0.00%
General Support	7.07%	1.09%	8.15%	0.00%	8.15%	100.00%	0.00%
Patient & Client Care	7.74%	0.92%	8.66%	0.00%	8.66%	100.00%	0.00%

Health Service Absence Rate - by Staff Category: Dec 2024	Certified absence	Self-certified absence	Non Covid-19 absence	Covid-19 Absence	Total absence rate	% Non Covid-19 absence	% Covid-19 absence
Avista Dublin	4.17%	0.65%	4.82%	0.46%	5.28%	91.31%	8.69%
Medical & Dental	0.00%	0.00%	0.00%	0.00%	0.00%		
Nursing & Midwifery	3.48%	0.86%	4.33%	0.05%	4.39%	98.79%	1.21%
Health & Social Care Professionals	4.17%	0.44%	4.61%	0.42%	5.03%	91.70%	8.30%
Management & Administrative	5.64%	0.13%	5.76%	0.00%	5.76%	100.00%	0.00%
General Support	2.85%	0.59%	3.43%	0.00%	3.43%	100.00%	0.00%
Patient & Client Care	4.67%	0.79%	5.45%	0.98%	6.44%	84.73%	15.27%

Health Service Absence Rate - by Staff Category: Dec 2024	Certified absence	Self-certified absence	Non Covid-19 absence	Covid-19 Absence	Total absence rate	% Non Covid-19 absence	% Covid-19 absence
Avista Limerick	2.31%	0.12%	2.43%	0.18%	2.61%	92.95%	7.05%
Medical & Dental							
Nursing & Midwifery	1.77%	0.03%	1.80%	0.32%	2.12%	84.90%	15.10%
Health & Social Care Professionals	1.86%	0.32%	2.18%	0.00%	2.18%	100.00%	0.00%
Management & Administrative	4.11%	0.00%	4.11%	0.00%	4.11%	100.00%	0.00%
General Support	1.39%	0.21%	1.60%	0.41%	2.01%	79.54%	20.46%
Patient & Client Care	3.06%	0.12%	3.18%	0.11%	3.29%	96.80%	3.20%

Health Service Absence Rate - by Staff Category: Dec 2024	Certified absence	Self-certified absence	Non Covid-19 absence	Covid-19 Absence	Total absence rate	% Non Covid-19 absence	% Covid-19 absence
Avista Roscrea	4.88%	0.51%	5.39%	0.32%	5.71%	94.35%	5.65%
Medical & Dental							
Nursing & Midwifery	4.54%	0.54%	5.07%	0.00%	5.07%	100.00%	0.00%
Health & Social Care Professionals	3.97%	0.00%	3.97%	0.00%	3.97%	100.00%	0.00%
Management & Administrative	6.07%	0.00%	6.07%	0.00%	6.07%	100.00%	0.00%
General Support							
Patient & Client Care	4.99%	0.61%	5.60%	0.45%	6.05%	92.57%	7.43%

Health Service Absence Rate - by Staff Category: Dec 2024	Certified absence	Self-certified absence	Non Covid-19 absence	Covid-19 Absence	Total absence rate	% Non Covid-19 absence	% Covid-19 absence
Bros. of Charity, Clare	6.08%	0.70%	6.79%	0.23%	7.02%	96.68%	3.32%
Medical & Dental	0.00%	0.00%	0.00%	0.00%	0.00%		
Nursing & Midwifery	0.00%	0.00%	0.00%	0.00%	0.00%		
Health & Social Care Professionals	3.41%	0.75%	4.16%	0.34%	4.50%	92.37%	7.63%
Management & Administrative	0.00%	0.00%	0.00%	0.00%	0.00%		
General Support							
Patient & Client Care	7.06%	0.73%	7.79%	0.22%	8.01%	97.26%	2.74%

Health Service Absence Rate - by Staff Category: Dec 2024	Certified absence	Self-certified absence	Non Covid-19 absence	Covid-19 Absence	Total absence rate	% Non Covid-19 absence	% Covid-19 absence
Bros. of Charity, Limerick	6.73%	0.62%	7.35%	0.44%	7.79%	94.37%	5.63%
Medical & Dental							
Nursing & Midwifery	9.27%	0.77%	10.03%	1.26%	11.29%	88.86%	11.14%
Health & Social Care Professionals	5.53%	0.51%	6.04%	0.00%	6.04%	100.00%	0.00%
Management & Administrative	0.00%	0.00%	0.00%	0.00%	0.00%		
General Support	2.23%	2.23%	4.46%	0.00%	4.46%	100.00%	0.00%
Patient & Client Care	6.68%	0.59%	7.27%	0.33%	7.60%	95.60%	4.40%

Health Service Absence Rate - by Staff Category: Dec 2024	Certified absence	Self- certified absence	Non Covid-19 absence	Covid-19 Absence	Total absence rate	% Non Covid-19 absence	% Covid-19 absence
Bros. of Charity, Southern	5.88%	0.71%	6.59%	0.03%	6.62%	99.52%	0.48%
Medical & Dental							
Nursing & Midwifery	6.33%	1.21%	7.53%	0.00%	7.53%	100.00%	0.00%
Health & Social Care Professionals	6.46%	0.68%	7.14%	0.00%	7.14%	100.00%	0.00%
Management & Administrative	11.76%	0.11%	11.87%	0.00%	11.87%	100.00%	0.00%
General Support	14.38%	0.22%	14.60%	0.00%	14.60%	100.00%	0.00%
Patient & Client Care	4.80%	0.72%	5.52%	0.05%	5.57%	99.02%	0.98%

Health Service Absence Rate - by Staff Category: Dec 2024	Certified absence	Self- certified absence	Non Covid-19 absence	Covid-19 Absence	Total absence rate	% Non Covid-19 absence	% Covid-19 absence
Bros. of Charity, Waterford	7.36%	0.94%	8.30%	0.32%	8.62%	96.32%	3.68%
Medical & Dental	0.00%	4.50%	4.50%	0.00%	4.50%	100.00%	0.00%
Nursing & Midwifery	8.00%	0.66%	8.67%	0.29%	8.96%	96.78%	3.22%
Health & Social Care Professionals	10.00%	0.60%	10.59%	2.15%	12.74%	83.14%	16.86%
Management & Administrative	8.60%	0.34%	8.94%	0.00%	8.94%	100.00%	0.00%
General Support	13.42%	0.00%	13.42%	0.00%	13.42%	100.00%	0.00%
Patient & Client Care	6.63%	1.10%	7.72%	0.00%	7.72%	100.00%	0.00%

Health Service Absence Rate - by Staff Category: Dec 2024	Certified absence	Self-certified absence	Non Covid-19 absence	Covid-19 Absence	Total absence rate	% Non Covid-19 absence	% Covid-19 absence
Bros. of Charity, West Region	6.09%	0.75%	6.84%	0.03%	6.87%	99.55%	0.45%
Medical & Dental	0.00%	0.00%	0.00%	0.00%	0.00%		
Nursing & Midwifery	7.83%	0.82%	8.65%	0.00%	8.65%	100.00%	0.00%
Health & Social Care Professionals	6.04%	0.69%	6.73%	0.09%	6.82%	98.65%	1.35%
Management & Administrative	3.59%	0.73%	4.32%	0.00%	4.32%	100.00%	0.00%
General Support	7.52%	0.60%	8.11%	0.25%	8.36%	97.05%	2.95%
Patient & Client Care	5.93%	0.77%	6.71%	0.00%	6.71%	100.00%	0.00%

Health Service Absence Rate - by Staff Category: Dec 2024	Certified absence	Self-certified absence	Non Covid-19 absence	Covid-19 Absence	Total absence rate	% Non Covid-19 absence	% Covid-19 absence
Carriglea Cairde Services	3.94%	0.36%	4.31%	1.06%	5.36%	80.29%	19.71%
Medical & Dental							
Nursing & Midwifery	9.36%	1.48%	10.84%	3.01%	13.85%	78.27%	21.73%
Health & Social Care Professionals	8.70%	0.00%	8.70%	0.53%	9.23%	94.21%	5.79%
Management & Administrative	0.00%	0.00%	0.00%	0.00%	0.00%		
General Support	0.00%	0.97%	0.97%	8.58%	9.56%	10.16%	89.84%
Patient & Client Care	1.68%	0.08%	1.76%	0.23%	2.00%	88.27%	11.73%

Health Service Absence Rate - by Staff Category: Dec 2024	Certified absence	Self- certified absence	Non Covid-19 absence	Covid-19 Absence	Total absence rate	% Non Covid-19 absence	% Covid-19 absence
Central Remedial Clinic	8.05%	0.60%	8.65%	0.00%	8.65%	100.00%	0.00%
Medical & Dental	0.00%	0.00%	0.00%	0.00%	0.00%		
Nursing & Midwifery	10.61%	1.96%	12.57%	0.00%	12.57%	100.00%	0.00%
Health & Social Care Professionals	5.49%	0.66%	6.15%	0.00%	6.15%	100.00%	0.00%
Management & Administrative	15.89%	0.28%	16.17%	0.00%	16.17%	100.00%	0.00%
General Support	4.88%	0.00%	4.88%	0.00%	4.88%	100.00%	0.00%
Patient & Client Care	8.94%	0.48%	9.42%	0.00%	9.42%	100.00%	0.00%

Health Service Absence Rate - by Staff Category: Dec 2024	Certified absence	Self- certified absence	Non Covid-19 absence	Covid-19 Absence	Total absence rate	% Non Covid-19 absence	% Covid-19 absence
Cheeverstown House	5.22%	1.41%	6.63%	0.14%	6.77%	97.98%	2.02%
Medical & Dental							
Nursing & Midwifery	5.15%	1.54%	6.69%	0.08%	6.77%	98.86%	1.14%
Health & Social Care Professionals	3.36%	1.87%	5.22%	0.00%	5.22%	100.00%	0.00%
Management & Administrative	5.37%	0.42%	5.79%	0.00%	5.79%	100.00%	0.00%
General Support	11.47%	0.30%	11.77%	0.00%	11.77%	100.00%	0.00%
Patient & Client Care	4.99%	1.51%	6.51%	0.26%	6.76%	96.21%	3.79%

Health Service Absence Rate - by Staff Category: Dec 2024	Certified absence	Self- certified absence	Non Covid-19 absence	Covid-19 Absence	Total absence rate	% Non Covid-19 absence	% Covid-19 absence
Children's Sunshine Home	6.81%	1.26%	8.07%	0.00%	8.07%	100.00%	0.00%
Medical & Dental							
Nursing & Midwifery	8.57%	1.16%	9.73%	0.00%	9.73%	100.00%	0.00%
Health & Social Care Professionals	0.00%	0.00%	0.00%	0.00%	0.00%		
Management & Administrative	0.00%	0.00%	0.00%	0.00%	0.00%		
General Support	20.56%	3.63%	24.18%	0.00%	24.18%	100.00%	0.00%
Patient & Client Care	4.29%	1.56%	5.85%	0.00%	5.85%	100.00%	0.00%

Health Service Absence Rate - by Staff Category: Dec 2024	Certified absence	Self- certified absence	Non Covid-19 absence	Covid-19 Absence	Total absence rate	% Non Covid-19 absence	% Covid-19 absence
Cope Foundation	5.27%	1.56%	6.83%	0.42%	7.25%	94.16%	5.84%
Medical & Dental							
Nursing & Midwifery	5.95%	1.15%	7.10%	0.64%	7.74%	91.69%	8.31%
Health & Social Care Professionals	2.67%	0.39%	3.06%	0.22%	3.27%	93.39%	6.61%
Management & Administrative	6.99%	0.00%	6.99%	0.00%	6.99%	100.00%	0.00%
General Support	3.94%	0.90%	4.84%	0.00%	4.84%	100.00%	0.00%
Patient & Client Care	5.46%	2.05%	7.51%	0.45%	7.96%	94.38%	5.62%

Health Service Absence Rate - by Staff Category: Dec 2024	Certified absence	Self-certified absence	Non Covid-19 absence	Covid-19 Absence	Total absence rate	% Non Covid-19 absence	% Covid-19 absence
Kare, Newbridge, Co Kildare	3.76%	0.51%	4.27%	0.03%	4.30%	99.40%	0.60%
Medical & Dental							
Nursing & Midwifery	4.12%	0.15%	4.27%	0.39%	4.66%	91.66%	8.34%
Health & Social Care Professionals	2.18%	0.61%	2.78%	0.00%	2.78%	100.00%	0.00%
Management & Administrative	1.58%	0.37%	1.94%	0.00%	1.94%	100.00%	0.00%
General Support	0.00%	0.00%	0.00%	0.00%	0.00%		
Patient & Client Care	4.85%	0.52%	5.38%	0.00%	5.38%	100.00%	0.00%

Health Service Absence Rate - by Staff Category: Dec 2024	Certified absence	Self-certified absence	Non Covid-19 absence	Covid-19 Absence	Total absence rate	% Non Covid-19 absence	% Covid-19 absence
Muiriosa Foundation, Laois/Offaly	3.54%	0.43%	3.96%	0.65%	4.61%	85.90%	14.10%
Medical & Dental							
Nursing & Midwifery	1.59%	0.69%	2.28%	0.00%	2.28%	100.00%	0.00%
Health & Social Care Professionals	4.01%	0.25%	4.26%	1.75%	6.01%	70.83%	29.17%
Management & Administrative	0.00%	0.30%	0.30%	0.00%	0.30%	100.00%	0.00%
General Support	0.00%	0.34%	0.34%	0.00%	0.34%	100.00%	0.00%
Patient & Client Care	3.86%	0.50%	4.37%	0.10%	4.46%	97.84%	2.16%

Health Service Absence Rate - by Staff Category: Dec 2024	Certified absence	Self-certified absence	Non Covid-19 absence	Covid-19 Absence	Total absence rate	% Non Covid-19 absence	% Covid-19 absence
Muiriosa Foundation, Longford/W	3.69%	0.49%	4.18%	0.09%	4.27%	97.92%	2.08%
Medical & Dental							
Nursing & Midwifery	8.49%	0.33%	8.81%	0.00%	8.81%	100.00%	0.00%
Health & Social Care Professionals	2.38%	0.34%	2.71%	0.09%	2.81%	96.73%	3.27%
Management & Administrative	0.86%	0.86%	1.71%	0.00%	1.71%	100.00%	0.00%
General Support	0.73%	0.00%	0.73%	0.00%	0.73%	100.00%	0.00%
Patient & Client Care	4.40%	0.57%	4.98%	0.10%	5.08%	97.95%	2.05%

Health Service Absence Rate - by Staff Category: Dec 2024	Certified absence	Self-certified absence	Non Covid-19 absence	Covid-19 Absence	Total absence rate	% Non Covid-19 absence	% Covid-19 absence
Muiriosa Foundation, South Kilda	4.50%	0.35%	4.85%	0.05%	4.90%	99.05%	0.95%
Medical & Dental							
Nursing & Midwifery	4.16%	0.10%	4.26%	0.00%	4.26%	100.00%	0.00%
Health & Social Care Professionals	7.51%	0.29%	7.80%	0.00%	7.80%	100.00%	0.00%
Management & Administrative	4.29%	0.00%	4.29%	0.00%	4.29%	100.00%	0.00%
General Support	1.53%	0.00%	1.53%	0.00%	1.53%	100.00%	0.00%
Patient & Client Care	3.20%	0.54%	3.74%	0.10%	3.84%	97.49%	2.51%

Health Service Absence Rate - by Staff Category: Dec 2024	Certified absence	Self- certified absence	Non Covid-19 absence	Covid-19 Absence	Total absence rate	% Non Covid-19 absence	% Covid-19 absence
Peamount Hospital (Newcastle)	4.56%	1.21%	5.77%	0.23%	5.99%	96.20%	3.80%
Medical & Dental	0.53%	0.30%	0.83%	0.00%	0.83%	100.00%	0.00%
Nursing & Midwifery	4.44%	1.55%	5.99%	0.00%	5.99%	100.00%	0.00%
Health & Social Care Professionals	3.91%	0.90%	4.81%	0.00%	4.81%	100.00%	0.00%
Management & Administrative	10.43%	1.97%	12.40%	0.00%	12.40%	100.00%	0.00%
General Support	7.01%	1.02%	8.04%	0.00%	8.04%	100.00%	0.00%
Patient & Client Care	4.83%	1.28%	6.11%	0.54%	6.65%	91.91%	8.09%

Health Service Absence Rate - by Staff Category: Dec 2024	Certified absence	Self- certified absence	Non Covid-19 absence	Covid-19 Absence	Total absence rate	% Non Covid-19 absence	% Covid-19 absence
Stewart's Hospital, (Palmerstown)	4.87%	0.49%	5.37%	0.17%	5.54%	96.92%	3.08%
Medical & Dental							
Nursing & Midwifery	4.85%	0.87%	5.72%	0.13%	5.85%	97.76%	2.24%
Health & Social Care Professionals	5.46%	0.65%	6.11%	0.15%	6.26%	97.53%	2.47%
Management & Administrative	6.53%	0.23%	6.76%	0.00%	6.76%	100.00%	0.00%
General Support	2.27%	0.57%	2.85%	0.13%	2.97%	95.74%	4.26%
Patient & Client Care	4.88%	0.43%	5.31%	0.20%	5.51%	96.37%	3.63%

Health Service Absence Rate - by Staff Category: Dec 2024	Certified absence	Self- certified absence	Non Covid-19 absence	Covid-19 Absence	Total absence rate	% Non Covid-19 absence	% Covid-19 absence
St. John of God, Drumcar	3.52%	0.34%	3.86%	0.41%	4.27%	90.41%	9.59%
Medical & Dental	0.00%	0.00%	0.00%	0.00%	0.00%		
Nursing & Midwifery	3.36%	0.36%	3.72%	0.17%	3.89%	95.72%	4.28%
Health & Social Care Professionals	4.68%	0.33%	5.01%	0.71%	5.72%	87.59%	12.41%
Management & Administrative	1.00%	0.00%	1.00%	0.00%	1.00%	100.00%	0.00%
General Support	3.23%	0.36%	3.59%	0.00%	3.59%	100.00%	0.00%
Patient & Client Care	3.54%	0.35%	3.89%	0.53%	4.42%	87.99%	12.01%

Health Service Absence Rate - by Staff Category: Dec 2024	Certified absence	Self- certified absence	Non Covid-19 absence	Covid-19 Absence	Total absence rate	% Non Covid-19 absence	% Covid-19 absence
St John of God HQ	0.62%	0.22%	0.85%	0.00%	0.85%	100.00%	0.00%
Medical & Dental							
Nursing & Midwifery	0.00%	0.00%	0.00%	0.00%	0.00%		
Health & Social Care Professionals	8.14%	0.00%	8.14%	0.00%	8.14%	100.00%	0.00%
Management & Administrative	0.07%	0.25%	0.32%	0.00%	0.32%	100.00%	0.00%
General Support	0.00%	0.00%	0.00%	0.00%	0.00%		
Patient & Client Care							

Health Service Absence Rate - by Staff Category: Dec 2024	Certified absence	Self-certified absence	Non Covid-19 absence	Covid-19 Absence	Total absence rate	% Non Covid-19 absence	% Covid-19 absence
St. John of God (IDS)	2.90%	0.48%	3.38%	0.22%	3.61%	93.86%	6.14%
Medical & Dental	0.00%	0.00%	0.00%	0.00%	0.00%		
Nursing & Midwifery	4.29%	0.56%	4.85%	0.00%	4.85%	100.00%	0.00%
Health & Social Care Professionals	3.62%	0.68%	4.30%	0.00%	4.30%	100.00%	0.00%
Management & Administrative	0.08%	0.10%	0.18%	0.00%	0.18%	100.00%	0.00%
General Support	2.36%	0.58%	2.94%	0.00%	2.94%	100.00%	0.00%
Patient & Client Care	2.16%	0.29%	2.45%	0.59%	3.04%	80.44%	19.56%

Health Service Absence Rate - by Staff Category: Dec 2024	Certified absence	Self-certified absence	Non Covid-19 absence	Covid-19 Absence	Total absence rate	% Non Covid-19 absence	% Covid-19 absence
St. John of God, Kerry	2.79%	0.35%	3.14%	0.08%	3.22%	97.57%	2.43%
Medical & Dental							
Nursing & Midwifery	3.72%	-0.09%	3.62%	0.00%	3.62%	100.00%	0.00%
Health & Social Care Professionals	2.68%	0.52%	3.21%	0.00%	3.21%	100.00%	0.00%
Management & Administrative	2.62%	0.77%	3.39%	0.00%	3.39%	100.00%	0.00%
General Support	1.53%	0.55%	2.07%	0.64%	2.71%	76.47%	23.53%
Patient & Client Care	2.73%	0.36%	3.08%	0.05%	3.13%	98.39%	1.61%

Health Service Absence Rate - by Staff Category: Dec 2024	Certified absence	Self- certified absence	Non Covid-19 absence	Covid-19 Absence	Total absence rate	% Non Covid-19 absence	% Covid-19 absence
St. John of God Liffey Services	3.56%	0.48%	4.04%	0.09%	4.13%	97.81%	2.19%
Medical & Dental	0.00%	0.00%	0.00%	0.00%	0.00%		
Nursing & Midwifery	5.20%	0.56%	5.76%	0.00%	5.76%	100.00%	0.00%
Health & Social Care Professionals	2.34%	0.40%	2.75%	0.00%	2.75%	100.00%	0.00%
Management & Administrative	2.45%	0.00%	2.45%	0.00%	2.45%	100.00%	0.00%
General Support	5.03%	0.81%	5.84%	0.00%	5.84%	100.00%	0.00%
Patient & Client Care	4.02%	0.53%	4.55%	0.24%	4.79%	94.97%	5.03%

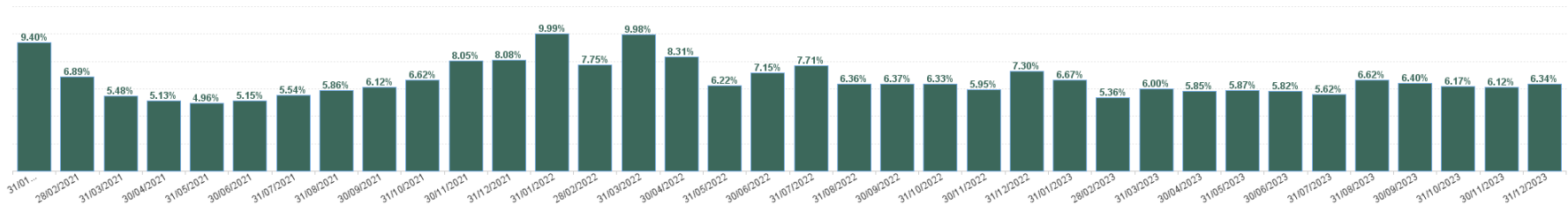
Health Service Absence Rate - by Staff Category: Dec 2024	Certified absence	Self- certified absence	Non Covid-19 absence	Covid-19 Absence	Total absence rate	% Non Covid-19 absence	% Covid-19 absence
St. Michael's House, Dublin	5.36%	0.36%	5.72%	0.52%	6.24%	91.67%	8.33%
Medical & Dental	8.76%	0.00%	8.76%	0.00%	8.76%	100.00%	0.00%
Nursing & Midwifery	4.58%	0.25%	4.83%	0.00%	4.83%	100.00%	0.00%
Health & Social Care Professionals	5.22%	0.46%	5.68%	1.08%	6.76%	83.96%	16.04%
Management & Administrative	7.39%	0.18%	7.57%	0.03%	7.60%	99.61%	0.39%
General Support	7.68%	0.30%	7.98%	0.00%	7.98%	100.00%	0.00%
Patient & Client Care	5.06%	0.32%	5.38%	0.01%	5.39%	99.80%	0.20%

Health Service Absence Rate - by Staff Category: Dec 2024	Certified absence	Self- certified absence	Non Covid-19 absence	Covid-19 Absence	Total absence rate	% Non Covid-19 absence	% Covid-19 absence
Sunbeam House Services	3.68%	0.83%	4.51%	0.08%	4.59%	98.32%	1.68%
Medical & Dental							
Nursing & Midwifery	0.42%	0.45%	0.86%	0.00%	0.86%	100.00%	0.00%
Health & Social Care Professionals	5.16%	0.96%	6.12%	0.07%	6.19%	98.87%	1.13%
Management & Administrative	0.77%	0.46%	1.23%	0.00%	1.23%	100.00%	0.00%
General Support	0.00%	0.00%	0.00%	0.00%	0.00%		
Patient & Client Care	3.54%	0.89%	4.44%	0.12%	4.56%	97.36%	2.64%

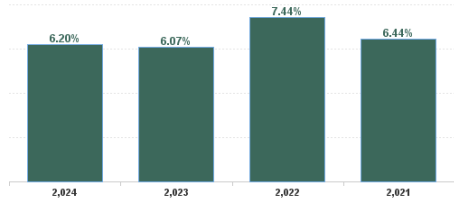
Year / Month	Certified absence	Self-certified absence	Non Covid-19 absence	Covid-19 Absence	Total absence rate	Medical & Dental	Nursing & Midwifery	Health & Social Care Professionals	Management & Administrative	General Support	Patient & Client Care
Dec 2024	5.52%	0.68%	6.19%	0.25%	6.44%	1.99%	6.97%	5.71%	5.84%	5.17%	6.80%
Nov 2024	5.07%	0.58%	5.65%	0.21%	5.87%	1.55%	6.27%	4.87%	5.07%	5.49%	6.37%
Oct 2024	5.38%	0.60%	5.98%	0.36%	6.34%	2.38%	6.93%	5.10%	5.51%	6.42%	6.86%
Sep 2024	4.99%	0.52%	5.51%	0.44%	5.95%	2.61%	6.92%	4.97%	4.59%	5.97%	6.28%
Aug 2024	5.02%	0.52%	5.54%	0.62%	6.16%	3.49%	6.63%	5.11%	5.01%	6.43%	6.68%
Jul 2024	5.33%	0.58%	5.91%	0.97%	6.88%	4.03%	7.04%	5.94%	5.38%	6.51%	7.56%
Jun 2024	5.20%	0.56%	5.75%	0.62%	6.37%	3.63%	6.69%	5.23%	4.72%	6.45%	7.04%
May 2024	5.19%	0.57%	5.76%	0.21%	5.97%	3.19%	6.49%	4.80%	4.15%	6.31%	6.60%
Apr 2024	5.12%	0.54%	5.66%	0.18%	5.85%	4.70%	6.14%	5.16%	3.76%	6.37%	6.37%
Mar 2024	5.11%	0.55%	5.66%	0.19%	5.84%	1.04%	6.10%	4.80%	4.11%	5.88%	6.54%
Feb 2024	5.11%	0.61%	5.72%	0.34%	6.06%	3.49%	6.27%	5.11%	3.92%	6.69%	6.74%
Jan 2024	5.30%	0.70%	5.99%	0.64%	6.63%	2.95%	7.04%	5.64%	3.86%	7.12%	7.40%
2024	5.20%	0.58%	5.78%	0.42%	6.20%	2.87%	6.63%	5.20%	4.65%	6.24%	6.77%
Dec 2023	5.04%	0.70%	5.74%	0.60%	6.34%	3.87%	6.71%	5.58%	4.39%	7.36%	6.79%
Nov 2023	5.07%	0.65%	5.72%	0.40%	6.12%	0.52%	6.83%	5.17%	4.19%	6.37%	6.65%
Oct 2023	5.00%	0.61%	5.60%	0.57%	6.17%	1.25%	6.78%	5.15%	4.32%	7.05%	6.69%
Sep 2023	5.02%	0.57%	5.59%	0.81%	6.40%	0.66%	6.85%	5.44%	3.92%	6.27%	7.13%
Aug 2023	5.27%	0.58%	5.84%	0.78%	6.62%	1.95%	7.10%	5.38%	4.50%	7.29%	7.35%
Jul 2023	4.69%	0.55%	5.24%	0.38%	5.62%	0.59%	6.09%	4.49%	3.59%	7.20%	6.20%
Jun 2023	4.96%	0.56%	5.52%	0.30%	5.82%	2.28%	6.50%	4.87%	4.21%	5.97%	6.25%
May 2023	4.97%	0.51%	5.48%	0.39%	5.87%	1.41%	5.99%	5.15%	4.00%	6.85%	6.41%
Apr 2023	4.86%	0.54%	5.40%	0.45%	5.85%	1.00%	6.08%	5.15%	3.78%	6.88%	6.35%
Mar 2023	4.87%	0.58%	5.45%	0.55%	6.00%	0.83%	5.85%	5.57%	4.28%	7.22%	6.47%
Feb 2023	4.39%	0.53%	4.91%	0.45%	5.36%	3.87%	5.61%	4.43%	4.03%	6.53%	5.88%
Jan 2023	5.10%	0.66%	5.77%	0.90%	6.67%	3.33%	7.07%	5.68%	3.94%	7.18%	7.38%
2023	4.94%	0.59%	5.52%	0.55%	6.07%	1.75%	6.45%	5.17%	4.10%	6.84%	6.63%
Dec 2022	5.37%	0.74%	6.11%	1.19%	7.30%	0.90%	7.26%	6.63%	4.38%	7.01%	8.13%
Nov 2022	4.66%	0.56%	5.22%	0.73%	5.95%	1.46%	6.47%	4.83%	3.64%	6.19%	6.73%
Oct 2022	4.92%	0.61%	5.52%	0.80%	6.33%	1.83%	6.25%	5.27%	3.70%	6.77%	7.31%
Sep 2022	5.06%	0.60%	5.66%	0.71%	6.37%	1.58%	6.74%	4.97%	4.16%	6.40%	7.26%
Aug 2022	4.98%	0.47%	5.45%	0.91%	6.36%	3.43%	6.35%	5.40%	3.75%	6.27%	7.38%
Jul 2022	5.21%	0.47%	5.69%	2.02%	7.71%	3.32%	7.88%	6.30%	4.70%	7.61%	8.79%
Jun 2022	4.73%	0.65%	5.38%	1.77%	7.15%	3.41%	7.17%	6.27%	4.93%	6.55%	7.97%
May 2022	4.56%	0.61%	5.17%	1.05%	6.22%	3.56%	6.74%	4.19%	4.51%	6.56%	7.44%
Apr 2022	4.79%	0.67%	5.46%	2.85%	8.31%	1.64%	9.11%	6.97%	5.10%	8.60%	9.11%
Mar 2022	4.83%	0.70%	5.53%	4.45%	9.98%	3.16%	11.46%	8.09%	7.17%	9.99%	10.72%
Feb 2022	4.18%	0.64%	4.83%	2.92%	7.75%	1.40%	8.51%	6.74%	5.06%	6.78%	8.46%
Jan 2022	4.26%	0.64%	4.90%	5.09%	9.99%	1.46%	10.96%	8.37%	6.01%	8.31%	11.16%
2022	4.79%	0.61%	5.41%	2.04%	7.44%	2.49%	7.93%	6.12%	4.74%	7.19%	8.38%
Dec 2021	4.64%	0.67%	5.30%	2.77%	8.08%	3.03%	8.69%	6.92%	4.87%	7.74%	8.89%
Nov 2021	4.87%	0.73%	5.61%	2.45%	8.05%	3.69%	9.12%	6.90%	5.86%	7.16%	8.63%
Oct 2021	4.78%	0.55%	5.33%	1.29%	6.62%	2.97%	7.65%	5.70%	4.64%	6.63%	6.97%
Sep 2021	4.62%	0.51%	5.14%	0.98%	6.12%	7.70%	6.87%	5.19%	4.18%	5.48%	6.59%
Aug 2021	4.60%	0.38%	4.98%	0.88%	5.86%	10.75%	6.05%	4.80%	3.98%	4.96%	6.62%
Jul 2021	4.53%	0.42%	4.94%	0.59%	5.54%	5.18%	5.84%	4.71%	3.46%	6.24%	6.04%
Jun 2021	4.10%	0.51%	4.61%	0.54%	5.15%	3.20%	5.39%	4.28%	3.04%	5.23%	5.79%
May 2021	3.87%	0.41%	4.28%	0.67%	4.96%	2.52%	5.19%	4.20%	2.32%	4.47%	5.67%
Apr 2021	3.90%	0.38%	4.29%	0.84%	5.13%	2.01%	5.81%	4.54%	2.66%	5.36%	5.49%
Mar 2021	3.96%	0.49%	4.46%	1.02%	5.48%	2.20%	5.72%	4.88%	3.13%	5.29%	6.06%
Feb 2021	4.35%	0.55%	4.90%	1.99%	6.89%	1.33%	7.54%	6.11%	2.94%	6.11%	7.70%
Jan 2021	4.57%	0.35%	4.92%	4.48%	9.40%	0.92%	10.46%	8.06%	3.52%	9.46%	10.50%
2021	4.40%	0.50%	4.90%	1.55%	6.44%	3.86%	7.02%	5.53%	3.72%	6.16%	7.09%

Year / Month	Certified absence	Self-certified absence	Non Covid-19 absence	Covid-19 Absence	Total absence rate	CHO 1	CHO 2	CHO 3	CHO 4	CHO 5	CHO 6	CHO 7	CHO 8	CHO 9	Other Comm	Social Care
Dec 2024	5.52%	0.68%	6.19%	0.25%	6.44%	9.70%	7.53%	6.13%	6.59%	7.64%	5.26%	5.27%	5.38%	6.43%	0.00%	6.44%
Nov 2024	5.07%	0.58%	5.65%	0.21%	5.87%	8.43%	6.31%	5.59%	5.95%	7.65%	4.73%	5.01%	5.51%	5.20%	0.00%	5.87%
Oct 2024	5.38%	0.60%	5.98%	0.36%	6.34%	9.61%	6.19%	6.31%	6.43%	7.74%	5.63%	5.39%	6.16%	5.46%	0.00%	6.34%
Sep 2024	4.99%	0.52%	5.51%	0.44%	5.95%	9.11%	5.56%	5.54%	5.86%	8.12%	4.26%	5.27%	5.55%	5.47%	0.00%	5.95%
Aug 2024	5.02%	0.52%	5.54%	0.62%	6.16%	9.36%	6.31%	5.59%	6.19%	7.70%	5.26%	5.85%	5.22%	5.42%	0.00%	6.16%
Jul 2024	5.33%	0.58%	5.91%	0.97%	6.88%	10.91%	6.51%	6.62%	7.42%	7.76%	6.12%	6.24%	6.68%	5.56%	0.00%	6.88%
Jun 2024	5.20%	0.56%	5.75%	0.62%	6.37%	10.37%	6.39%	5.96%	6.14%	7.54%	5.37%	5.61%	6.19%	5.35%	0.00%	6.37%
May 2024	5.19%	0.57%	5.76%	0.21%	5.97%	9.79%	5.59%	5.97%	5.44%	7.06%	5.62%	5.70%	5.74%	4.76%	0.00%	5.97%
Apr 2024	5.12%	0.54%	5.66%	0.18%	5.85%	9.11%	6.37%	5.90%	5.91%	6.70%	4.53%	5.10%	5.27%	5.12%	0.00%	5.85%
Mar 2024	5.11%	0.55%	5.66%	0.19%	5.84%	9.90%	6.16%	5.25%	5.88%	7.26%	4.84%	5.13%	5.58%	4.78%	0.00%	5.84%
Feb 2024	5.11%	0.61%	5.72%	0.34%	6.06%	9.69%	5.77%	5.38%	6.09%	6.47%	5.88%	5.40%	6.37%	5.15%	0.00%	6.06%
Jan 2024	5.30%	0.70%	5.99%	0.64%	6.63%	10.84%	7.26%	6.01%	6.72%	7.24%	5.91%	5.80%	6.64%	5.34%	0.00%	6.63%
2024	5.20%	0.58%	5.78%	0.42%	6.20%	9.74%	6.29%	5.85%	6.23%	7.40%	5.28%	5.47%	5.87%	5.33%	0.00%	6.20%
Dec 2023	5.04%	0.70%	5.74%	0.60%	6.34%	9.89%	6.75%	5.25%	6.45%	7.10%	6.32%	5.20%	6.03%	6.02%	3.53%	6.34%
Nov 2023	5.07%	0.65%	5.72%	0.40%	6.12%	9.25%	6.15%	5.44%	6.18%	6.52%	5.86%	5.48%	6.21%	5.44%	0.00%	6.12%
Oct 2023	5.00%	0.61%	5.60%	0.57%	6.17%	9.05%	5.76%	5.88%	6.42%	6.79%	5.30%	5.68%	5.96%	5.69%	0.00%	6.17%
Sep 2023	5.02%	0.57%	5.59%	0.81%	6.40%	8.71%	5.81%	6.18%	6.84%	7.88%	5.00%	6.00%	6.20%	5.68%	0.00%	6.40%
Aug 2023	5.27%	0.58%	5.84%	0.78%	6.62%	9.37%	6.75%	6.04%	6.92%	8.43%	5.68%	6.03%	7.04%	5.29%	0.00%	6.62%
Jul 2023	4.69%	0.55%	5.24%	0.38%	5.62%	7.82%	5.25%	5.58%	5.52%	6.89%	5.27%	4.99%	5.55%	5.13%	2.98%	5.62%
Jun 2023	4.96%	0.56%	5.52%	0.30%	5.82%	7.72%	5.88%	5.29%	5.61%	7.71%	5.28%	5.06%	6.01%	5.27%	3.16%	5.82%
May 2023	4.97%	0.51%	5.48%	0.39%	5.87%	7.97%	5.64%	5.57%	5.71%	7.23%	5.18%	5.64%	5.86%	5.15%	0.00%	5.87%
Apr 2023	4.86%	0.54%	5.40%	0.45%	5.85%	7.82%	5.97%	5.50%	6.15%	7.22%	5.23%	5.43%	5.70%	5.01%	0.00%	5.85%
Mar 2023	4.87%	0.58%	5.45%	0.55%	6.00%	8.55%	5.23%	4.92%	5.62%	7.65%	6.11%	6.13%	5.80%	5.28%	0.00%	6.00%
Feb 2023	4.39%	0.53%	4.91%	0.45%	5.36%	8.14%	5.11%	5.01%	5.42%	7.48%	4.65%	4.87%	5.01%	4.50%	11.15%	5.36%
Jan 2023	5.10%	0.66%	5.77%	0.90%	6.67%	9.92%	6.34%	6.15%	6.60%	8.30%	5.63%	6.20%	7.51%	5.10%	11.94%	6.67%
2023	4.94%	0.59%	5.52%	0.55%	6.07%	8.69%	5.87%	5.57%	6.12%	7.43%	5.45%	5.56%	6.06%	5.29%	2.46%	6.07%
Dec 2022	5.37%	0.74%	6.11%	1.19%	7.30%	11.01%	6.50%	6.74%	7.15%	9.88%	6.82%	6.74%	7.09%	6.03%	0.00%	7.30%
Nov 2022	4.66%	0.56%	5.22%	0.73%	5.95%	8.32%	5.64%	5.36%	6.53%	7.89%	4.77%	5.65%	6.96%	4.37%	0.00%	5.95%
Oct 2022	4.92%	0.61%	5.52%	0.80%	6.33%	9.67%	5.90%	5.51%	7.08%	8.35%	5.84%	5.53%	6.90%	4.77%	0.00%	6.33%
Sep 2022	5.06%	0.60%	5.66%	0.71%	6.37%	9.19%	6.01%	4.95%	6.29%	8.29%	5.16%	6.33%	7.01%	5.18%	0.00%	6.37%
Aug 2022	4.98%	0.47%	5.45%	0.91%	6.36%	10.34%	6.20%	4.65%	6.50%	8.67%	4.40%	5.93%	7.24%	4.93%	2.21%	6.36%
Jul 2022	5.21%	0.47%	5.69%	2.02%	7.71%	10.59%	7.00%	7.06%	7.69%	9.80%	6.03%	7.30%	8.97%	6.11%	0.00%	7.71%
Jun 2022	4.73%	0.65%	5.38%	1.77%	7.15%	8.56%	7.86%	5.63%	7.66%	8.62%	7.26%	7.17%	7.74%	5.48%	0.73%	7.15%
May 2022	4.56%	0.61%	5.17%	1.05%	6.22%	8.08%	5.97%	5.37%	6.20%	7.88%	5.05%	6.27%	6.99%	5.14%	0.00%	6.22%
Apr 2022	4.79%	0.67%	5.46%	2.85%	8.31%	9.72%	7.79%	8.35%	10.71%	9.49%	6.61%	7.97%	8.71%	6.21%	0.00%	8.31%
Mar 2022	4.83%	0.70%	5.53%	4.45%	9.98%	13.34%	8.93%	8.45%	11.19%	11.57%	9.34%	9.99%	10.96%	7.75%	0.00%	9.98%
Feb 2022	4.18%	0.64%	4.83%	2.92%	7.75%	10.20%	7.00%	7.75%	8.41%	9.02%	7.99%	7.34%	8.07%	6.09%	0.00%	7.75%
Jan 2022	4.26%	0.64%	4.90%	5.09%	9.99%	11.55%	10.36%	9.58%	12.16%	12.28%	8.23%	8.44%	11.04%	7.99%	1.50%	9.99%
2022	4.79%	0.61%	5.41%	2.04%	7.44%	10.04%	7.04%	6.62%	8.13%	9.32%	6.45%	7.05%	8.16%	5.81%	0.37%	7.44%
Dec 2021	4.64%	0.67%	5.30%	8.08%	10.17%	7.70%	7.69%	10.20%	9.23%	6.27%	8.38%	7.05%	6.53%	0.68%	8.08%	
Nov 2021	4.87%	0.73%	5.61%	2.45%	8.05%	9.83%	6.71%	7.63%	10.32%	8.22%	6.75%	7.91%	7.98%	7.06%	0.00%	8.05%
Oct 2021	4.78%	0.55%	5.33%	1.29%	6.62%	8.71%	5.36%	6.37%	8.10%	6.68%	5.24%	6.58%	6.88%	5.90%	0.00%	6.62%
Sep 2021	4.62%	0.51%	5.14%	0.98%	6.12%	8.30%	4.60%	5.35%	6.89%	5.96%	6.28%	6.34%	6.85%	5.02%	1.91%	6.12%
Aug 2021	4.60%	0.38%	4.98%	0.88%	5.86%	8.92%	4.60%	4.80%	6.04%	6.41%	5.69%	6.18%	6.12%	4.88%	0.00%	5.86%
Jul 2021	4.53%	0.42%	4.94%	0.59%	5.54%	8.25%	4.40%	4.06%	5.35%	5.80%	6.10%	5.78%	6.33%	4.88%	0.00%	5.54%
Jun 2021	4.10%	0.51%	4.61%	0.54%	5.15%	7.13%	4.79%	4.47%	5.65%	5.26%	4.98%	5.06%	5.33%	4.49%	0.00%	5.15%
May 2021	3.87%	0.41%	4.28%	0.67%	4.96%	6.58%	4.59%	4.71%	5.48%	4.84%	4.34%	5.09%	5.04%	4.33%	0.00%	4.96%
Apr 2021	3.90%	0.38%	4.29%	0.84%	5.13%	6.16%	4.55%	3.91%	5.14%	5.29%	4.97%	5.85%	5.61%	4.63%	0.00%	5.13%
Mar 2021	3.96%	0.49%	4.46%	1.02%	5.48%	7.09%	6.17%	4.47%	5.44%	6.38%	4.50%	5.53%	5.93%	4.72%	0.00%	5.48%
Feb 2021	4.35%	0.55%	4.90%	1.99%	6.89%	8.50%	7.63%	5.86%	6.73%	8.99%	6.21%	6.62%	7.66%	5.56%	0.00%	6.89%

Total Absence Rate



Total Absence Rate



% of Absence Non Covid-19 / Covid-19

