

# Social Care Disability Services Employment Report: December 2022

## Employment by Staff Group

Dec 2022	WTE Dec 2019	WTE Dec 2020	WTE Nov 2022	WTE Dec 2022	WTE change since Nov 22	WTE change since Dec 20	% change since Dec 20	WTE change since Dec 19	% change since Dec 19	No. Dec 2022
<b>Overall</b>	<b>18,303</b>	<b>18,944</b>	<b>19,845</b>	<b>19,903</b>	<b>+58</b>	<b>+959</b>	<b>+5.1%</b>	<b>+1,601</b>	<b>+8.7%</b>	<b>23,586</b>
Consultants	24	24	20	18	-1	-6	-24.5%	-5	-22.9%	24
Registrars	13	8	10	10	-0	+2	+24.8%	-3	-23.2%	10
SHO/ Interns	7	9	7	9	+2	-0	-0.7%	+2	+28.4%	9
Medical/ Dental, other	14	14	13	13		-1	-9.7%	-1	-10.3%	20
<b>Medical &amp; Dental</b>	<b>58</b>	<b>56</b>	<b>50</b>	<b>50</b>	<b>+0</b>	<b>-5</b>	<b>-9.8%</b>	<b>-8</b>	<b>-13.7%</b>	<b>63</b>
Nurse/ Midwife Manager	894	897	956	959	+3	+62	+6.9%	+65	+7.3%	1,037
Nurse/ Midwife Specialist & AN/MP	62	64	70	70	-0	+6	+8.9%	+8	+12.5%	76
Staff Nurse/ Staff Midwife	2,572	2,593	2,594	2,618	+24	+25	+1.0%	+46	+1.8%	3,044
Public Health Nurse	6	7	11	12	+0	+5	+70.7%	+5	+87.3%	14
<i>Pre-registration Nurse Intern (COVID-19)</i>		32				-32	-100.0%		-100.0%	
<i>Pre-registration Nurse/ Midwife Intern</i>	28	3	18	7	-10	+5	+182.8%	-21	-75.0%	10
<i>Nursing/ Midwifery awaiting registration</i>	14	13	4	4	-0	-9	-71.0%	-10	-72.8%	4
Nursing/ Midwifery Student	42	47	22	11	-11	-36	-77.1%	-31	-74.2%	14
Nursing/ Midwifery other	22	24	28	28	-0	+4	+15.6%	+5	+24.1%	31
<b>Nursing &amp; Midwifery</b>	<b>3,599</b>	<b>3,632</b>	<b>3,681</b>	<b>3,697</b>	<b>+16</b>	<b>+65</b>	<b>+1.8%</b>	<b>+98</b>	<b>+2.7%</b>	<b>4,216</b>
Therapy Professions	765	795	782	790	+9	-5	-0.6%	+26	+3.4%	917
Health Science/ Diagnostics	20	20	21	21	-0	+1	+6.7%	+1	+6.5%	23
Social Care	2,595	2,789	3,031	3,055	+24	+266	+9.5%	+460	+17.7%	3,583
Social Workers	219	228	237	239	+2	+11	+4.7%	+20	+9.2%	277
Psychologists	204	229	236	239	+3	+10	+4.3%	+35	+17.1%	268
Pharmacy	7	6	8	8	-0	+2	+35.9%	+1	+20.8%	11
H&SC, Other	85	76	69	68	-1	-7	-9.9%	-17	-19.6%	86
<b>Health &amp; Social Care Professionals</b>	<b>3,894</b>	<b>4,144</b>	<b>4,383</b>	<b>4,421</b>	<b>+37</b>	<b>+277</b>	<b>+6.7%</b>	<b>+526</b>	<b>+13.5%</b>	<b>5,165</b>
Management (VIII & above)	180	204	223	236	+13	+32	+15.8%	+56	+31.4%	240
Administrative/ Supervisory (V to VII)	479	527	664	665	+1	+138	+26.2%	+186	+38.8%	712
Clerical (III & IV)	660	685	740	744	+4	+58	+8.5%	+83	+12.6%	886
<b>Management &amp; Administrative</b>	<b>1,319</b>	<b>1,416</b>	<b>1,626</b>	<b>1,645</b>	<b>+19</b>	<b>+229</b>	<b>+16.2%</b>	<b>+326</b>	<b>+24.7%</b>	<b>1,838</b>
Support	734	663	632	624	-8	-39	-5.8%	-110	-15.0%	888
Maintenance/ Technical	124	132	126	126	-0	-7	-5.0%	+2	+1.3%	140
<b>General Support</b>	<b>858</b>	<b>795</b>	<b>758</b>	<b>750</b>	<b>-8</b>	<b>-45</b>	<b>-5.7%</b>	<b>-109</b>	<b>-12.7%</b>	<b>1,028</b>
Health Care Assistants	6,826	7,102	7,500	7,495	-5	+392	+5.5%	+669	+9.8%	8,991
Home Help	109	94	80	80	-0	-14	-14.6%	-29	-26.4%	220
Care, other	1,639	1,706	1,767	1,766	-0	+60	+3.5%	+127	+7.7%	2,065
<b>Patient &amp; Client Care</b>	<b>8,574</b>	<b>8,902</b>	<b>9,347</b>	<b>9,341</b>	<b>-6</b>	<b>+439</b>	<b>+4.9%</b>	<b>+767</b>	<b>+8.9%</b>	<b>11,276</b>

## Social Care Disability Services Employment by Administration (HSE / S38): December 2022

Dec 2022	WTE Dec 2019	WTE Dec 2020	WTE Nov 2022	WTE Dec 2022	WTE change since Nov 22	WTE change since Dec 20	% change since Dec 20	WTE change since Dec 19	% change since Dec 19	No. Dec 2022
<b>Total</b>	<b>18,303</b>	<b>18,944</b>	<b>19,845</b>	<b>19,903</b>	<b>+58</b>	<b>+959</b>	<b>+5.1%</b>	<b>+1,601</b>	<b>+8.7%</b>	<b>23,586</b>
HSE	3,903	4,085	4,200	4,200	+0	+115	+2.8%	+297	+7.6%	4,818
Section 38 Voluntary Agencies	14,400	14,860	15,646	15,703	+58	+844	+5.7%	+1,304	+9.1%	18,768

### Employment by Staff Group

Dec 2022	WTE Dec 2019	WTE Dec 2020	WTE Nov 2022	WTE Dec 2022	WTE change since Nov 22	WTE change since Dec 20	% change since Dec 20	WTE change since Dec 19	% change since Dec 19	No. Dec 2022
<b>Health Service Executive</b>	<b>3,903</b>	<b>4,085</b>	<b>4,200</b>	<b>4,200</b>	<b>+0</b>	<b>+115</b>	<b>+2.8%</b>	<b>+297</b>	<b>+7.6%</b>	<b>4,818</b>
Consultants	8	9	6	6		-3	-34.9%	-2	-26.3%	6
Registrars	3	1	2	2	-0	+1	+98.0%	-1	-34.0%	2
SHO/ Interns		2		1	+1	-1	-50.5%	+1	-100.0%	1
Medical/ Dental, other	6	6	6	6	-0	+0	+0.6%	-0	-0.8%	10
<b>Medical &amp; Dental</b>	<b>17</b>	<b>18</b>	<b>14</b>	<b>15</b>	<b>+1</b>	<b>-3</b>	<b>-16.7%</b>	<b>-2</b>	<b>-12.2%</b>	<b>19</b>
Nurse/ Midwife Manager	258	261	265	267	+3	+6	+2.5%	+9	+3.5%	284
Nurse/ Midwife Specialist & AN/MP	14	15	18	18	+0	+3	+21.0%	+4	+30.6%	19
Staff Nurse/ Staff Midwife	791	772	776	782	+6	+10	+1.3%	-9	-1.2%	881
Public Health Nurse	6	7	11	12	+0	+5	+70.7%	+5	+87.3%	14
Pre-registration Nurse Intern (COVID-19)		9				-9	-100.0%		-100.0%	
Pre-registration Nurse/ Midwife Intern	3	3	7	7	+1	+5	+182.8%	+4	+117.5%	10
Nursing/ Midwifery awaiting registration	14	13	2	2	-0	-11	-84.8%	-12	-85.7%	2
Nursing/ Midwifery Student	17	24	9	9	+0	-15	-62.4%	-8	-47.0%	12
Nursing/ Midwifery other	8	7	9	8	-0	+2	+24.6%	+1	+8.3%	10
<b>Nursing &amp; Midwifery</b>	<b>1,094</b>	<b>1,086</b>	<b>1,088</b>	<b>1,096</b>	<b>+9</b>	<b>+11</b>	<b>+1.0%</b>	<b>+2</b>	<b>+0.2%</b>	<b>1,220</b>
Therapy Professions	332	373	323	322	-1	-51	-13.7%	-10	-3.0%	383
Health Science/ Diagnostics	2	4	6	6	-0	+2	+50.9%	+4	+198.0%	6
Social Care	89	101	108	109	+1	+9	+8.5%	+20	+22.7%	121
Social Workers	58	67	61	62	+1	-5	-7.0%	+4	+7.4%	72
Psychologists	76	83	97	95	-3	+12	+14.8%	+19	+24.4%	108
H&SC, Other	26	25	19	19	+0	-6	-24.7%	-7	-28.0%	23
<b>Health &amp; Social Care Professionals</b>	<b>583</b>	<b>652</b>	<b>614</b>	<b>612</b>	<b>-2</b>	<b>-39</b>	<b>-6.0%</b>	<b>+30</b>	<b>+5.1%</b>	<b>713</b>
Management (VIII & above)	45	58	66	69	+3	+11	+19.3%	+24	+54.4%	71
Administrative/ Supervisory (V to VII)	141	168	233	231	-2	+62	+36.9%	+89	+63.1%	246
Clerical (III & IV)	178	199	223	227	+4	+28	+14.2%	+49	+27.3%	261
<b>Management &amp; Administrative</b>	<b>364</b>	<b>425</b>	<b>521</b>	<b>526</b>	<b>+5</b>	<b>+102</b>	<b>+23.9%</b>	<b>+162</b>	<b>+44.5%</b>	<b>578</b>
Support	88	88	67	67	-0	-21	-23.6%	-21	-24.1%	77
Maintenance/ Technical	21	26	21	21	-0	-5	-20.4%	-0	-0.9%	22
<b>General Support</b>	<b>109</b>	<b>114</b>	<b>88</b>	<b>88</b>	<b>-0</b>	<b>-26</b>	<b>-22.9%</b>	<b>-22</b>	<b>-19.7%</b>	<b>99</b>
Health Care Assistants	1,518	1,557	1,627	1,616	-11	+59	+3.8%	+99	+6.5%	1,790

Home Help	109	94	80	80	-0	-14	-14.6%	-29	-26.4%	220
Care, other	109	140	167	166	-1	+26	+18.3%	+57	+51.9%	179
<b>Patient &amp; Client Care</b>	<b>1,736</b>	<b>1,791</b>	<b>1,874</b>	<b>1,862</b>	<b>-12</b>	<b>+71</b>	<b>+4.0%</b>	<b>+126</b>	<b>+7.3%</b>	<b>2,189</b>

## Employment by Staff Group

Dec 2022	WTE Dec 2019	WTE Dec 2020	WTE Nov 2022	WTE Dec 2022	WTE change since Nov 22	WTE change since Dec 20	% change since Dec 20	WTE change since Dec 19	% change since Dec 19	No. Dec 2022
<b>Section 38 Voluntary Agencies</b>	<b>14,400</b>	<b>14,860</b>	<b>15,646</b>	<b>15,703</b>	<b>+58</b>	<b>+844</b>	<b>+5.7%</b>	<b>+1,304</b>	<b>+9.1%</b>	<b>18,768</b>
Consultants	16	16	14	13	-1	-3	-19.0%	-4	-21.4%	18
Registrars	10	7	8	8	-0	+1	+14.3%	-2	-20.0%	8
SHO/ Interns	7	7	7	8	+1	+1	+13.6%	+1	+14.2%	8
Medical/ Dental, other	8	8	7	7		-1	-17.7%	-1	-17.7%	10
<b>Medical &amp; Dental</b>	<b>41</b>	<b>38</b>	<b>36</b>	<b>35</b>	<b>-1</b>	<b>-2</b>	<b>-6.6%</b>	<b>-6</b>	<b>-14.4%</b>	<b>44</b>
Nurse/ Midwife Manager	635	636	691	692	+0	+56	+8.7%	+56	+8.8%	753
Nurse/ Midwife Specialist & AN/MP	48	49	52	52	-0	+3	+5.2%	+4	+7.4%	57
Staff Nurse/ Staff Midwife	1,781	1,821	1,817	1,836	+19	+15	+0.8%	+55	+3.1%	2,163
Pre-registration Nurse Intern (COVID-19)		23				-23	-100.0%		-100.0%	
Pre-registration Nurse/ Midwife Intern	25		11		-11		-100.0%	-25	-100.0%	
Nursing/ Midwifery awaiting registration			2	2	-0	+2	-100.0%	+2	-100.0%	2
Nursing/ Midwifery Student	25	23	13	2	-11	-21	-92.3%	-23	-92.8%	2
Nursing/ Midwifery other	14	17	19	19		+2	+12.1%	+5	+32.5%	21
<b>Nursing &amp; Midwifery</b>	<b>2,504</b>	<b>2,546</b>	<b>2,593</b>	<b>2,601</b>	<b>+7</b>	<b>+54</b>	<b>+2.1%</b>	<b>+96</b>	<b>+3.8%</b>	<b>2,996</b>
Therapy Professions	433	423	459	469	+10	+46	+10.9%	+36	+8.2%	534
Health Science/ Diagnostics	18	16	15	15		-1	-4.2%	-3	-14.8%	17
Social Care	2,506	2,689	2,923	2,946	+23	+257	+9.6%	+439	+17.5%	3,462
Social Workers	161	162	176	177	+1	+15	+9.6%	+16	+9.9%	205
Psychologists	128	147	138	144	+6	-2	-1.6%	+16	+12.7%	160
Pharmacy	7	6	8	8	-0	+2	+35.9%	+1	+20.8%	11
H&SC, Other	59	51	50	49	-1	-1	-2.5%	-9	-15.9%	63
<b>Health &amp; Social Care Professionals</b>	<b>3,312</b>	<b>3,492</b>	<b>3,769</b>	<b>3,808</b>	<b>+39</b>	<b>+316</b>	<b>+9.1%</b>	<b>+497</b>	<b>+15.0%</b>	<b>4,452</b>
Management (VIII & above)	135	146	157	167	+10	+21	+14.4%	+32	+23.8%	169
Administrative/ Supervisory (V to VII)	338	358	431	435	+4	+76	+21.2%	+97	+28.7%	466
Clerical (III & IV)	482	487	517	517	-0	+30	+6.2%	+35	+7.2%	625
<b>Management &amp; Administrative</b>	<b>955</b>	<b>991</b>	<b>1,105</b>	<b>1,118</b>	<b>+14</b>	<b>+127</b>	<b>+12.8%</b>	<b>+164</b>	<b>+17.2%</b>	<b>1,260</b>
Support	646	575	565	557	-8	-18	-3.1%	-89	-13.8%	811
Maintenance/ Technical	103	106	105	105	-0	-1	-1.2%	+2	+1.7%	118
<b>General Support</b>	<b>749</b>	<b>681</b>	<b>670</b>	<b>662</b>	<b>-8</b>	<b>-19</b>	<b>-2.8%</b>	<b>-87</b>	<b>-11.6%</b>	<b>929</b>
Health Care Assistants	5,308	5,545	5,873	5,878	+6	+333	+6.0%	+570	+10.7%	7,201
Care, other	1,530	1,566	1,600	1,600	+1	+35	+2.2%	+70	+4.6%	1,886
<b>Patient &amp; Client Care</b>	<b>6,839</b>	<b>7,111</b>	<b>7,472</b>	<b>7,479</b>	<b>+7</b>	<b>+368</b>	<b>+5.2%</b>	<b>+640</b>	<b>+9.4%</b>	<b>9,087</b>

## Social Care Disability Services Employment by CHO: Dec 2022

Dec 2022	WTE Dec 2019	WTE Dec 2020	WTE Nov 2022	WTE Dec 2022	WTE change since Nov 22	WTE change since Dec 20	% change since Dec 20	WTE change since Dec 19	% change since Dec 19	No. Dec 2022
<b>Overall</b>	<b>18,303</b>	<b>18,944</b>	<b>19,845</b>	<b>19,903</b>	<b>+58</b>	<b>+959</b>	<b>+5.1%</b>	<b>+1,601</b>	<b>+8.7%</b>	<b>23,586</b>
CHO 1	1,498	1,547	1,693	1,698	+5	+151	+9.8%	+200	+13.3%	1,902
CHO 2	1,497	1,516	1,606	1,607	+1	+91	+6.0%	+110	+7.3%	1,965
CHO 3	1,823	1,947	1,987	1,989	+1	+41	+2.1%	+165	+9.1%	2,363
CHO 4	2,439	2,556	2,631	2,640	+10	+85	+3.3%	+202	+8.3%	3,199
CHO 5	1,505	1,563	1,657	1,656	-1	+93	+6.0%	+151	+10.0%	1,956
CHO 6	1,198	1,217	1,220	1,216	-4	-0	-0.0%	+19	+1.6%	1,395
CHO 7	2,982	3,103	3,386	3,410	+23	+306	+9.9%	+428	+14.4%	4,053
CHO 8	2,162	2,205	2,313	2,345	+32	+140	+6.3%	+183	+8.5%	2,824
CHO 9	3,194	3,285	3,345	3,336	-9	+51	+1.6%	+142	+4.5%	3,923
other Community Services	5	6	6	6	-0	-0	-0.3%	+1	+19.8%	6

## Social Care Disability Services Employment by CHO etc. Dec 2022

### CHO 1

Dec 2022	WTE Dec 2019	WTE Dec 2020	WTE Nov 2022	WTE Dec 2022	WTE change since Nov 22	WTE change since Dec 20	% change since Dec 20	WTE change since Dec 19	% change since Dec 19	No. Dec 2022
<b>Overall</b>	<b>1,498</b>	<b>1,547</b>	<b>1,693</b>	<b>1,698</b>	<b>+5</b>	<b>+151</b>	<b>+9.8%</b>	<b>+200</b>	<b>+13.3%</b>	<b>1,902</b>
Medical/ Dental, other	3	3	3	3	0			-0	-3.0%	6
<b>Medical &amp; Dental</b>	<b>3</b>	<b>3</b>	<b>3</b>	<b>3</b>				<b>-0</b>	<b>-3.0%</b>	<b>6</b>
Nurse/ Midwife Manager	105	106	110	112	+2	+6	+5.4%	+7	+6.6%	119
Nurse/ Midwife Specialist & AN/MP	7	9	8	8	+0	-1	-6.5%	+1	+19.7%	9
Staff Nurse/ Staff Midwife	324	328	333	335	+3	+7	+2.2%	+12	+3.6%	375
Public Health Nurse			1	1	-0	+1	-100.0%	+1	-100.0%	1
Pre-registration Nurse Intern (COVID-19)		6				-6	-100.0%		-100.0%	
Pre-registration Nurse/ Midwife Intern	3		6	6	+0	+6	-100.0%	+3	+107.3%	8
Nursing/ Midwifery awaiting registration	11	11				-11	-100.0%	-11	-100.0%	
Nursing/ Midwifery Student	14	17	6	6	+0	-11	-64.4%	-8	-55.6%	8
Nursing/ Midwifery other	5	4	4	4	-0	+0	+8.8%	-0	-10.6%	5
<b>Nursing &amp; Midwifery</b>	<b>455</b>	<b>465</b>	<b>462</b>	<b>467</b>	<b>+5</b>	<b>+2</b>	<b>+0.5%</b>	<b>+13</b>	<b>+2.8%</b>	<b>517</b>
Therapy Professions	42	44	58	58	+0	+15	+34.3%	+16	+38.0%	67
Social Care	8	11	14	17	+3	+5	+48.1%	+9	+121.1%	20
Social Workers	16	19	16	17	+0	-2	-9.4%	+1	+8.0%	19
Psychologists	5	7	14	12	-3	+4	+54.7%	+7	+149.7%	13
H&SC, Other	12	10	8	8	-0	-2	-17.6%	-4	-35.0%	10
<b>Health &amp; Social Care Professionals</b>	<b>82</b>	<b>91</b>	<b>112</b>	<b>112</b>	<b>+0</b>	<b>+21</b>	<b>+23.1%</b>	<b>+29</b>	<b>+35.2%</b>	<b>129</b>
Management (VIII & above)	14	17	14	15	+1	-2	-12.0%	+1	+4.5%	15
Administrative/ Supervisory (V to VII)	28	34	54	55	+0	+20	+59.8%	+27	+98.0%	58
Clerical (III & IV)	50	53	59	63	+4	+11	+20.2%	+14	+27.3%	71
<b>Management &amp; Administrative</b>	<b>91</b>	<b>103</b>	<b>127</b>	<b>132</b>	<b>+5</b>	<b>+29</b>	<b>+28.1%</b>	<b>+41</b>	<b>+45.2%</b>	<b>144</b>
Support	49	49	31	30	-1	-18	-37.8%	-19	-38.0%	38
Maintenance/ Technical	6	6	4	4	-0	-2	-33.8%	-2	-33.8%	4
<b>General Support</b>	<b>55</b>	<b>55</b>	<b>35</b>	<b>34</b>	<b>-1</b>	<b>-21</b>	<b>-37.3%</b>	<b>-21</b>	<b>-37.5%</b>	<b>42</b>
Health Care Assistants	761	775	888	884	-3	+109	+14.1%	+123	+16.2%	983
Home Help	13	14	16	16	-1	+2	+11.9%	+2	+16.1%	27
Care, other	37	41	51	49	-1	+9	+21.1%	+12	+33.4%	54
<b>Patient &amp; Client Care</b>	<b>812</b>	<b>830</b>	<b>954</b>	<b>949</b>	<b>-5</b>	<b>+120</b>	<b>+14.4%</b>	<b>+138</b>	<b>+17.0%</b>	<b>1,064</b>

## CHO 2

Dec 2022	WTE Dec 2019	WTE Dec 2020	WTE Nov 2022	WTE Dec 2022	WTE change since Nov 22	WTE change since Dec 20	% change since Dec 20	WTE change since Dec 19	% change since Dec 19	No. Dec 2022
<b>Overall</b>	<b>1,497</b>	<b>1,516</b>	<b>1,606</b>	<b>1,607</b>	<b>+1</b>	<b>+91</b>	<b>+6.0%</b>	<b>+110</b>	<b>+7.3%</b>	<b>1,965</b>
Consultants	3	3	3	3	0	+0	+0.6%	+0	+0.6%	4
Registrars	2	2	1	1	0	-1	-50.0%	-1	-50.0%	1
SHO/ Interns			1	1	0	+1	-100.0%	+1	-100.0%	1
Medical/ Dental, other	1	1	1	1	0					1
<b>Medical &amp; Dental</b>	<b>6</b>	<b>6</b>	<b>6</b>	<b>6</b>		<b>+0</b>	<b>+0.3%</b>	<b>+0</b>	<b>+0.3%</b>	<b>7</b>
Nurse/ Midwife Manager	77	78	78	76	-3	-2	-3.1%	-2	-2.5%	83
Nurse/ Midwife Specialist & AN/MP	6	6	6	6	+0	+1	+13.1%	+1	+10.1%	7
Staff Nurse/ Staff Midwife	165	169	165	166	+1	-3	-2.0%	+0	+0.2%	202
<i>Pre-registration Nurse Intern (COVID-19)</i>		1				-1	-100.0%		-100.0%	
Nursing/ Midwifery Student		1				-1	-100.0%		-100.0%	
<b>Nursing &amp; Midwifery</b>	<b>249</b>	<b>253</b>	<b>250</b>	<b>248</b>	<b>-2</b>	<b>-6</b>	<b>-2.2%</b>	<b>-1</b>	<b>-0.4%</b>	<b>292</b>
Therapy Professions	41	34	48	48	-0	+14	+41.0%	+7	+15.8%	58
Social Care	222	243	271	279	+8	+36	+14.8%	+58	+25.9%	333
Social Workers	26	26	26	27	+0	+1	+3.6%	+1	+2.7%	34
Psychologists	16	14	18	19	+1	+5	+36.3%	+4	+22.9%	22
H&SC, Other	16	12	12	11	-0	-0	-2.7%	-5	-28.6%	16
<b>Health &amp; Social Care Professionals</b>	<b>321</b>	<b>329</b>	<b>376</b>	<b>385</b>	<b>+9</b>	<b>+56</b>	<b>+16.9%</b>	<b>+64</b>	<b>+19.9%</b>	<b>463</b>
Management (VIII & above)	16	16	17	17	0	+1	+6.7%	+1	+6.0%	17
Administrative/ Supervisory (V to VII)	40	44	64	64	-0	+20	+44.0%	+24	+58.3%	68
Clerical (III & IV)	50	50	51	54	+3	+4	+7.8%	+4	+8.8%	65
<b>Management &amp; Administrative</b>	<b>106</b>	<b>110</b>	<b>132</b>	<b>135</b>	<b>+3</b>	<b>+25</b>	<b>+22.2%</b>	<b>+29</b>	<b>+27.3%</b>	<b>150</b>
Support	45	43	49	46	-3	+3	+6.2%	+1	+2.3%	74
Maintenance/ Technical	13	13	12	12	+0	-1	-8.1%	-1	-9.0%	14
<b>General Support</b>	<b>58</b>	<b>56</b>	<b>60</b>	<b>58</b>	<b>-3</b>	<b>+2</b>	<b>+2.9%</b>	<b>-0</b>	<b>-0.3%</b>	<b>88</b>
Health Care Assistants	623	625	643	641	-1	+16	+2.6%	+18	+2.9%	794
Care, other	134	136	139	134	-5	-1	-1.1%	+0	+0.1%	171
<b>Patient &amp; Client Care</b>	<b>757</b>	<b>761</b>	<b>782</b>	<b>776</b>	<b>-7</b>	<b>+15</b>	<b>+2.0%</b>	<b>+18</b>	<b>+2.4%</b>	<b>965</b>

### CHO 3

Dec 2022	WTE Dec 2019	WTE Dec 2020	WTE Nov 2022	WTE Dec 2022	WTE change since Nov 22	WTE change since Dec 20	% change since Dec 20	WTE change since Dec 19	% change since Dec 19	No. Dec 2022
<b>Overall</b>	<b>1,823</b>	<b>1,947</b>	<b>1,987</b>	<b>1,989</b>	<b>+1</b>	<b>+41</b>	<b>+2.1%</b>	<b>+165</b>	<b>+9.1%</b>	<b>2,363</b>
Consultants	1	2	0	0	-0	-2	-93.2%	-1	-87.0%	1
Medical/ Dental, other	1	1	0	0	0	-0	-51.6%	-0	-51.6%	1
<b>Medical &amp; Dental</b>	<b>2</b>	<b>3</b>	<b>1</b>	<b>1</b>	<b>-0</b>	<b>-2</b>	<b>-79.6%</b>	<b>-1</b>	<b>-69.9%</b>	<b>2</b>
Nurse/ Midwife Manager	76	75	79	81	+2	+6	+8.4%	+5	+7.0%	83
Nurse/ Midwife Specialist & AN/MP	13	10	11	11	0	+0	+3.4%	-2	-15.2%	12
Staff Nurse/ Staff Midwife	247	271	261	258	-3	-13	-4.7%	+10	+4.2%	284
<i>Pre-registration Nurse Intern (COVID-19)</i>		2				-2	-100.0%		-100.0%	
<i>Pre-registration Nurse/ Midwife Intern</i>	12						-100.0%	-12	-100.0%	
Nursing/ Midwifery Student	12	2				-2	-100.0%	-12	-100.0%	
Nursing/ Midwifery other	4	4	3	3	0	-1	-26.1%	-1	-26.1%	3
<b>Nursing &amp; Midwifery</b>	<b>351</b>	<b>361</b>	<b>353</b>	<b>353</b>	<b>-1</b>	<b>-9</b>	<b>-2.4%</b>	<b>+1</b>	<b>+0.4%</b>	<b>382</b>
Therapy Professions	74	84	41	41	-0	-43	-51.7%	-34	-45.3%	45
Health Science/ Diagnostics		2	4	4	-0	+2	+103.1%	+4	-100.0%	4
Social Care	241	284	274	280	+7	-3	-1.2%	+40	+16.4%	323
Social Workers	17	17	20	19	-0	+2	+12.5%	+3	+17.4%	22
Psychologists	16	20	19	19	-1	-2	-8.4%	+3	+16.9%	20
H&SC, Other	12	11	11	11	+0	-0	-1.8%	-1	-6.6%	15
<b>Health &amp; Social Care Professionals</b>	<b>359</b>	<b>419</b>	<b>368</b>	<b>374</b>	<b>+6</b>	<b>-45</b>	<b>-10.6%</b>	<b>+15</b>	<b>+4.1%</b>	<b>429</b>
Management (VIII & above)	7	8	12	12	-0	+4	+51.3%	+5	+73.5%	12
Administrative/ Supervisory (V to VII)	41	45	58	60	+2	+15	+34.2%	+19	+47.5%	61
Clerical (III & IV)	59	59	55	54	-1	-5	-8.3%	-5	-8.9%	59
<b>Management &amp; Administrative</b>	<b>107</b>	<b>111</b>	<b>125</b>	<b>126</b>	<b>+1</b>	<b>+14</b>	<b>+13.0%</b>	<b>+19</b>	<b>+17.9%</b>	<b>132</b>
Support	53	53	55	54	-1	+1	+1.2%	+1	+2.2%	62
Maintenance/ Technical	14	19	18	18	-0	-1	-7.2%	+4	+24.5%	20
<b>General Support</b>	<b>67</b>	<b>73</b>	<b>73</b>	<b>72</b>	<b>-1</b>	<b>-1</b>	<b>-1.1%</b>	<b>+5</b>	<b>+7.0%</b>	<b>82</b>
Health Care Assistants	764	800	862	857	-4	+58	+7.2%	+93	+12.2%	1,105
Care, other	173	181	207	206	-0	+25	+13.9%	+33	+19.3%	231
<b>Patient &amp; Client Care</b>	<b>937</b>	<b>981</b>	<b>1,068</b>	<b>1,064</b>	<b>-4</b>	<b>+83</b>	<b>+8.5%</b>	<b>+127</b>	<b>+13.5%</b>	<b>1,336</b>

## CHO 4

Dec 2022	WTE Dec 2019	WTE Dec 2020	WTE Nov 2022	WTE Dec 2022	WTE change since Nov 22	WTE change since Dec 20	% change since Dec 20	WTE change since Dec 19	% change since Dec 19	No. Dec 2022
<b>Overall</b>	<b>2,439</b>	<b>2,556</b>	<b>2,631</b>	<b>2,640</b>	<b>+10</b>	<b>+85</b>	<b>+3.3%</b>	<b>+202</b>	<b>+8.3%</b>	<b>3,199</b>
Consultants	2	3	2	2	0	-1	-38.8%	+0	+2.0%	2
Medical/ Dental, other	0	0	0	0	0	+0	+12.1%	+0	+12.1%	1
<b>Medical &amp; Dental</b>	<b>2</b>	<b>3</b>	<b>2</b>	<b>2</b>		<b>-1</b>	<b>-32.9%</b>	<b>+0</b>	<b>+3.8%</b>	<b>3</b>
Nurse/ Midwife Manager	89	91	102	98	-4	+7	+8.1%	+9	+9.8%	113
Nurse/ Midwife Specialist & AN/MP	13	14	13	13	+0	-1	-10.2%	-0	-3.6%	14
Staff Nurse/ Staff Midwife	309	312	300	301	+1	-11	-3.5%	-8	-2.5%	370
<i>Pre-registration Nurse Intern (COVID-19)</i>		8				-8	-100.0%		-100.0%	
<i>Pre-registration Nurse/ Midwife Intern</i>	6		11	1	-11	+1	-100.0%	-5	-88.5%	1
<i>Nursing/ Midwifery awaiting registration</i>	1	2				-2	-100.0%	-1	-100.0%	
Nursing/ Midwifery Student	7	10	11	1	-11	-9	-92.8%	-6	-90.1%	1
Nursing/ Midwifery other	1		1	1	0	+1	-100.0%	+0	+96.1%	1
<b>Nursing &amp; Midwifery</b>	<b>419</b>	<b>427</b>	<b>427</b>	<b>414</b>	<b>-13</b>	<b>-13</b>	<b>-3.0%</b>	<b>-5</b>	<b>-1.2%</b>	<b>499</b>
Therapy Professions	108	104	102	105	+2	+1	+1.1%	-3	-2.9%	129
Social Care	227	238	252	259	+7	+20	+8.5%	+32	+14.2%	291
Social Workers	27	27	29	28	-1	+1	+2.9%	+1	+2.9%	34
Psychologists	35	36	33	37	+4	+1	+1.5%	+2	+5.2%	41
H&SC, Other	8	10	8	7	-1	-3	-31.1%	-1	-16.3%	8
<b>Health &amp; Social Care Professionals</b>	<b>405</b>	<b>415</b>	<b>424</b>	<b>435</b>	<b>+11</b>	<b>+19</b>	<b>+4.7%</b>	<b>+30</b>	<b>+7.4%</b>	<b>503</b>
Management (VIII & above)	22	22	22	23	+0	+0	+2.2%	+1	+3.1%	23
Administrative/ Supervisory (V to VII)	53	58	66	72	+6	+15	+25.6%	+19	+35.4%	79
Clerical (III & IV)	84	90	94	93	-1	+4	+4.4%	+9	+11.1%	125
<b>Management &amp; Administrative</b>	<b>160</b>	<b>170</b>	<b>183</b>	<b>189</b>	<b>+6</b>	<b>+19</b>	<b>+11.3%</b>	<b>+29</b>	<b>+18.1%</b>	<b>227</b>
Support	141	139	137	138	+1	-0	-0.2%	-3	-1.9%	230
Maintenance/ Technical	10	12	12	10	-2	-2	-17.9%	-0	-2.5%	13
<b>General Support</b>	<b>151</b>	<b>151</b>	<b>149</b>	<b>148</b>	<b>-1</b>	<b>-2</b>	<b>-1.6%</b>	<b>-3</b>	<b>-2.0%</b>	<b>243</b>
Health Care Assistants	995	1,058	1,108	1,111	+3	+53	+5.0%	+116	+11.7%	1,327
Care, other	307	332	338	342	+4	+10	+3.0%	+35	+11.2%	397
<b>Patient &amp; Client Care</b>	<b>1,302</b>	<b>1,390</b>	<b>1,446</b>	<b>1,453</b>	<b>+7</b>	<b>+62</b>	<b>+4.5%</b>	<b>+151</b>	<b>+11.6%</b>	<b>1,724</b>



## CHO 5

Dec 2022	WTE Dec 2019	WTE Dec 2020	WTE Nov 2022	WTE Dec 2022	WTE change since Nov 22	WTE change since Dec 20	% change since Dec 20	WTE change since Dec 19	% change since Dec 19	No. Dec 2022
<b>Overall</b>	<b>1,505</b>	<b>1,563</b>	<b>1,657</b>	<b>1,656</b>	<b>-1</b>	<b>+93</b>	<b>+6.0%</b>	<b>+151</b>	<b>+10.0%</b>	<b>1,956</b>
Consultants	1	1	1	1	-0	+0	+20.3%	-0	-6.3%	1
<b>Medical &amp; Dental</b>	<b>1</b>	<b>1</b>	<b>1</b>	<b>1</b>	<b>-0</b>	<b>+0</b>	<b>+20.3%</b>	<b>-0</b>	<b>-6.3%</b>	<b>1</b>
Nurse/ Midwife Manager	66	70	73	74	+1	+5	+6.6%	+9	+13.6%	77
Nurse/ Midwife Specialist & AN/MP	2	2	4	4	+0	+2	+78.3%	+2	+93.5%	4
Staff Nurse/ Staff Midwife	170	168	163	169	+6	+0	+0.3%	-1	-0.8%	191
Public Health Nurse	5	6	9	10	+0	+4	+65.0%	+4	+83.6%	12
<i>Pre-registration Nurse Intern (COVID-19)</i>		1				-1	-100.0%		-100.0%	
<i>Pre-registration Nurse/ Midwife Intern</i>				0	+0	+0	-100.0%	+0	-100.0%	1
<i>Nursing/ Midwifery awaiting registration</i>	2						-100.0%	-2	-100.0%	
Nursing/ Midwifery Student	2	1		0	+0	-1	-84.0%	-2	-91.3%	1
Nursing/ Midwifery other			1	1	-0	+1	-100.0%	+1	-100.0%	1
<b>Nursing &amp; Midwifery</b>	<b>245</b>	<b>247</b>	<b>250</b>	<b>258</b>	<b>+8</b>	<b>+11</b>	<b>+4.3%</b>	<b>+13</b>	<b>+5.3%</b>	<b>286</b>
Therapy Professions	63	65	59	59	-0	-6	-9.8%	-4	-6.8%	70
Social Care	154	143	160	161	+1	+19	+13.0%	+8	+4.9%	190
Social Workers	21	24	19	20	+1	-4	-16.9%	-1	-4.1%	23
Psychologists	14	19	19	17	-2	-2	-10.7%	+3	+21.3%	21
H&SC, Other	7	5	6	6	-0	+1	+11.1%	-1	-14.2%	7
<b>Health &amp; Social Care Professionals</b>	<b>259</b>	<b>256</b>	<b>263</b>	<b>263</b>	<b>+0</b>	<b>+7</b>	<b>+2.6%</b>	<b>+4</b>	<b>+1.7%</b>	<b>311</b>
Management (VIII & above)	11	13	18	19	+1	+6	+48.2%	+8	+73.3%	19
Administrative/ Supervisory (V to VII)	39	41	61	55	-6	+14	+34.1%	+16	+40.4%	63
Clerical (III & IV)	61	62	72	74	+2	+12	+19.6%	+13	+21.9%	91
<b>Management &amp; Administrative</b>	<b>110</b>	<b>115</b>	<b>151</b>	<b>147</b>	<b>-4</b>	<b>+32</b>	<b>+27.9%</b>	<b>+37</b>	<b>+33.5%</b>	<b>173</b>
Support	15	12	8	8	-0	-4	-32.9%	-7	-47.6%	11
Maintenance/ Technical	7	7	9	9	0	+2	+27.3%	+2	+27.3%	10
<b>General Support</b>	<b>23</b>	<b>19</b>	<b>18</b>	<b>17</b>	<b>-0</b>	<b>-2</b>	<b>-10.1%</b>	<b>-5</b>	<b>-23.3%</b>	<b>21</b>
Health Care Assistants	671	732	754	753	-1	+22	+3.0%	+82	+12.3%	867
Home Help	53	40	29	29	+1	-10	-25.9%	-24	-44.8%	73
Care, other	144	153	191	187	-4	+34	+22.3%	+44	+30.3%	224
<b>Patient &amp; Client Care</b>	<b>868</b>	<b>924</b>	<b>974</b>	<b>970</b>	<b>-5</b>	<b>+46</b>	<b>+4.9%</b>	<b>+102</b>	<b>+11.7%</b>	<b>1,164</b>

## CHO 6

Dec 2022	WTE Dec 2019	WTE Dec 2020	WTE Nov 2022	WTE Dec 2022	WTE change since Nov 22	WTE change since Dec 20	% change since Dec 20	WTE change since Dec 19	% change since Dec 19	No. Dec 2022
<b>Overall</b>	<b>1,198</b>	<b>1,217</b>	<b>1,220</b>	<b>1,216</b>	<b>-4</b>	<b>-0</b>	<b>-0.0%</b>	<b>+19</b>	<b>+1.6%</b>	<b>1,395</b>
Consultants	3	3	3	3	0					3
Registrars			1	1	-0	+1	-100.0%	+1	-100.0%	1
Medical/ Dental, other	1	1	1	1	0					1
<b>Medical &amp; Dental</b>	<b>4</b>	<b>4</b>	<b>5</b>	<b>5</b>	<b>-0</b>	<b>+1</b>	<b>+24.8%</b>	<b>+1</b>	<b>+24.8%</b>	<b>5</b>
Nurse/ Midwife Manager	44	43	38	40	+1	-4	-8.8%	-4	-9.2%	43
Staff Nurse/ Staff Midwife	147	142	138	138	-0	-5	-3.3%	-10	-6.5%	161
<i>Nursing Education/Clinical</i>			1	1	0	+1	-100.0%	+1	-100.0%	1
Nursing/ Midwifery other			1	1	0	+1	-100.0%	+1	-100.0%	1
<b>Nursing &amp; Midwifery</b>	<b>191</b>	<b>186</b>	<b>177</b>	<b>178</b>	<b>+1</b>	<b>-7</b>	<b>-4.0%</b>	<b>-13</b>	<b>-6.6%</b>	<b>205</b>
Therapy Professions	42	42	23	26	+2	-17	-39.8%	-16	-38.6%	32
Social Care	334	361	386	381	-4	+20	+5.7%	+47	+14.0%	438
Social Workers	11	10	8	8	+0	-2	-15.2%	-3	-25.0%	9
Psychologists	14	14	14	14	-0	+1	+3.8%	+0	+3.5%	17
H&SC, Other	2	1	1	1	-0	+0	+11.7%	-0	-21.9%	2
<b>Health &amp; Social Care Professionals</b>	<b>403</b>	<b>428</b>	<b>433</b>	<b>431</b>	<b>-2</b>	<b>+3</b>	<b>+0.6%</b>	<b>+28</b>	<b>+7.0%</b>	<b>498</b>
Management (VIII & above)	31	30	30	39	+9	+9	+30.3%	+9	+27.8%	41
Administrative/ Supervisory (V to VII)	53	54	64	64	+0	+10	+18.7%	+11	+20.3%	68
Clerical (III & IV)	54	56	58	52	-6	-3	-6.3%	-2	-3.1%	56
<b>Management &amp; Administrative</b>	<b>138</b>	<b>140</b>	<b>152</b>	<b>156</b>	<b>+3</b>	<b>+16</b>	<b>+11.3%</b>	<b>+18</b>	<b>+12.8%</b>	<b>165</b>
Support	23	26	21	23	+1	-3	-11.6%	-0	-0.1%	30
Maintenance/ Technical	7	5	9	8	-1	+3	+60.0%	+1	+18.5%	8
<b>General Support</b>	<b>29</b>	<b>31</b>	<b>30</b>	<b>31</b>	<b>+0</b>	<b>+0</b>	<b>+0.1%</b>	<b>+1</b>	<b>+4.2%</b>	<b>38</b>
Health Care Assistants	187	184	190	188	-2	+4	+2.2%	+1	+0.6%	215
Care, other	246	245	233	229	-4	-16	-6.6%	-18	-7.2%	269
<b>Patient &amp; Client Care</b>	<b>433</b>	<b>428</b>	<b>423</b>	<b>416</b>	<b>-6</b>	<b>-12</b>	<b>-2.8%</b>	<b>-17</b>	<b>-3.9%</b>	<b>484</b>

## CHO 7

Dec 2022	WTE Dec 2019	WTE Dec 2020	WTE Nov 2022	WTE Dec 2022	WTE change since Nov 22	WTE change since Dec 20	% change since Dec 20	WTE change since Dec 19	% change since Dec 19	No. Dec 2022
<b>Overall</b>	<b>2,982</b>	<b>3,103</b>	<b>3,386</b>	<b>3,410</b>	<b>+23</b>	<b>+306</b>	<b>+9.9%</b>	<b>+428</b>	<b>+14.4%</b>	<b>4,053</b>
Consultants	1	1				-1	-100.0%	-1	-100.0%	
Registrars	3	3	4	4	-0	+1	+33.3%	+1	+33.3%	4
SHO/ Interns	7	7	6	7	+1	-0	-0.7%	-0	-0.1%	7
Medical/ Dental, other	1	1				-1	-100.0%	-1	-100.0%	
<b>Medical &amp; Dental</b>	<b>12</b>	<b>12</b>	<b>10</b>	<b>11</b>	<b>+1</b>	<b>-1</b>	<b>-5.1%</b>	<b>-1</b>	<b>-4.8%</b>	<b>11</b>
Nurse/ Midwife Manager	122	118	152	153	+1	+35	+29.4%	+31	+25.6%	166
Nurse/ Midwife Specialist & AN/MP	5	4	6	6	0	+2	+46.3%	+1	+23.0%	7
Staff Nurse/ Staff Midwife	374	378	410	416	+6	+39	+10.2%	+42	+11.3%	484
<i>Nursing/ Midwifery awaiting registration</i>			1	1	0	+1	-100.0%	+1	-100.0%	1
Nursing/ Midwifery Student			1	1	0	+1	-100.0%	+1	-100.0%	1
Nursing/ Midwifery other	1	2	4	4	0	+2	+134.7%	+3	+604.0%	4
<b>Nursing &amp; Midwifery</b>	<b>502</b>	<b>502</b>	<b>573</b>	<b>581</b>	<b>+7</b>	<b>+78</b>	<b>+15.6%</b>	<b>+79</b>	<b>+15.7%</b>	<b>662</b>
Therapy Professions	122	138	152	155	+3	+16	+11.6%	+33	+26.9%	170
Health Science/ Diagnostics	3	3	3	3	0	+0	+11.0%	+0	+11.0%	5
Social Care	360	389	464	467	+2	+78	+20.0%	+106	+29.6%	525
Social Workers	33	32	42	42	-0	+10	+31.4%	+8	+25.1%	47
Psychologists	28	32	36	36	+0	+4	+11.8%	+8	+29.0%	41
Pharmacy	5	4	6	6	-0	+2	+53.7%	+1	+29.6%	9
H&SC, Other	2	2	2	2	0					2
<b>Health &amp; Social Care Professionals</b>	<b>553</b>	<b>600</b>	<b>705</b>	<b>710</b>	<b>+5</b>	<b>+110</b>	<b>+18.4%</b>	<b>+157</b>	<b>+28.5%</b>	<b>799</b>
Management (VIII & above)	32	43	48	47	-1	+4	+9.4%	+15	+46.0%	47
Administrative/ Supervisory (V to VII)	79	92	106	109	+4	+18	+19.1%	+30	+38.4%	116
Clerical (III & IV)	92	101	116	120	+3	+19	+18.4%	+28	+30.5%	140
<b>Management &amp; Administrative</b>	<b>203</b>	<b>236</b>	<b>270</b>	<b>276</b>	<b>+6</b>	<b>+40</b>	<b>+17.1%</b>	<b>+73</b>	<b>+36.0%</b>	<b>303</b>
Support	167	155	161	156	-4	+1	+0.7%	-10	-6.2%	227
Maintenance/ Technical	28	33	29	32	+3	-1	-2.1%	+4	+12.7%	36
<b>General Support</b>	<b>195</b>	<b>188</b>	<b>189</b>	<b>188</b>	<b>-1</b>	<b>+0</b>	<b>+0.2%</b>	<b>-7</b>	<b>-3.5%</b>	<b>263</b>
Health Care Assistants	1,112	1,146	1,231	1,228	-2	+82	+7.1%	+116	+10.4%	1,470
Home Help	19	17	14	14	-0	-3	-20.3%	-6	-29.5%	78
Care, other	386	403	394	402	+7	-1	-0.2%	+16	+4.2%	467
<b>Patient &amp; Client Care</b>	<b>1,518</b>	<b>1,566</b>	<b>1,639</b>	<b>1,644</b>	<b>+5</b>	<b>+78</b>	<b>+5.0%</b>	<b>+126</b>	<b>+8.3%</b>	<b>2,015</b>

## CHO 8

Dec 2022	WTE Dec 2019	WTE Dec 2020	WTE Nov 2022	WTE Dec 2022	WTE change since Nov 22	WTE change since Dec 20	% change since Dec 20	WTE change since Dec 19	% change since Dec 19	No. Dec 2022
<b>Overall</b>	<b>2,162</b>	<b>2,205</b>	<b>2,313</b>	<b>2,345</b>	<b>+32</b>	<b>+140</b>	<b>+6.3%</b>	<b>+183</b>	<b>+8.5%</b>	<b>2,824</b>
Consultants	1	1				-1	-100.0%	-1	-100.0%	
Registrars	2	1	1	1	0			-1	-50.0%	1
Medical/ Dental, other	1	1	1	1	0					1
<b>Medical &amp; Dental</b>	<b>4</b>	<b>3</b>	<b>2</b>	<b>2</b>		<b>-1</b>	<b>-33.3%</b>	<b>-2</b>	<b>-50.0%</b>	<b>2</b>
Nurse/ Midwife Manager	123	119	111	114	+3	-5	-4.5%	-9	-7.5%	126
Nurse/ Midwife Specialist & AN/MP	7	6	5	4	-1	-2	-27.8%	-3	-37.0%	5
Staff Nurse/ Staff Midwife	319	312	325	335	+10	+23	+7.2%	+16	+5.0%	395
Public Health Nurse	1	1	1	1	+0	+0	+3.1%	+0	+4.2%	1
<i>Pre-registration Nurse Intern (COVID-19)</i>		4				-4	-100.0%		-100.0%	
<i>Nursing/ Midwifery awaiting registration</i>			1	1	-0	+1	-100.0%	+1	-100.0%	1
Nursing/ Midwifery Student		4	1	1	-0	-3	-80.3%	+1	-100.0%	1
Nursing/ Midwifery other	5	7	5	5	0	-1	-18.1%	-0	-0.9%	6
<b>Nursing &amp; Midwifery</b>	<b>455</b>	<b>449</b>	<b>449</b>	<b>460</b>	<b>+12</b>	<b>+11</b>	<b>+2.5%</b>	<b>+5</b>	<b>+1.1%</b>	<b>534</b>
Therapy Professions	92	98	95	92	-2	-6	-5.8%	+1	+0.8%	113
Health Science/ Diagnostics	2	2	2	2	0					2
Social Care	361	380	404	414	+10	+34	+9.0%	+53	+14.8%	503
Social Workers	24	24	24	24	-0	-0	-0.7%	-0	-0.1%	27
Psychologists	25	22	28	29	+1	+6	+27.5%	+4	+15.1%	31
H&SC, Other	7	6	8	8	+0	+2	+34.8%	+1	+19.9%	9
<b>Health &amp; Social Care Professionals</b>	<b>510</b>	<b>533</b>	<b>561</b>	<b>569</b>	<b>+9</b>	<b>+37</b>	<b>+6.9%</b>	<b>+59</b>	<b>+11.6%</b>	<b>685</b>
Management (VIII & above)	9	13	18	18	+1	+5	+37.7%	+10	+109.8%	19
Administrative/ Supervisory (V to VII)	56	56	56	55	-1	-1	-1.9%	-1	-1.6%	59
Clerical (III & IV)	84	88	93	94	+1	+6	+7.4%	+10	+11.5%	113
<b>Management &amp; Administrative</b>	<b>149</b>	<b>157</b>	<b>167</b>	<b>168</b>	<b>+1</b>	<b>+10</b>	<b>+6.6%</b>	<b>+18</b>	<b>+12.4%</b>	<b>191</b>
Support	46	41	32	33	+0	-9	-21.3%	-14	-30.0%	41
Maintenance/ Technical	16	14	12	12	-0	-2	-11.3%	-4	-22.8%	13
<b>General Support</b>	<b>62</b>	<b>55</b>	<b>45</b>	<b>45</b>	<b>+0</b>	<b>-10</b>	<b>-18.8%</b>	<b>-18</b>	<b>-28.1%</b>	<b>54</b>
Health Care Assistants	844	872	957	965	+8	+93	+10.7%	+122	+14.4%	1,179
Home Help	22	23	21	21	-0	-2	-7.0%	-1	-5.2%	42
Care, other	115	113	112	115	+3	+1	+1.0%	-0	-0.2%	137
<b>Patient &amp; Client Care</b>	<b>981</b>	<b>1,008</b>	<b>1,090</b>	<b>1,101</b>	<b>+11</b>	<b>+93</b>	<b>+9.2%</b>	<b>+120</b>	<b>+12.2%</b>	<b>1,358</b>

## CHO 9

Dec 2022	WTE Dec 2019	WTE Dec 2020	WTE Nov 2022	WTE Dec 2022	WTE change since Nov 22	WTE change since Dec 20	% change since Dec 20	WTE change since Dec 19	% change since Dec 19	No. Dec 2022
<b>Overall</b>	<b>3,194</b>	<b>3,285</b>	<b>3,345</b>	<b>3,336</b>	<b>-9</b>	<b>+51</b>	<b>+1.6%</b>	<b>+142</b>	<b>+4.5%</b>	<b>3,923</b>
Consultants	13	11	11	9	-1	-2	-16.5%	-3	-24.5%	13
Registrars	6	2	3	3	-0	+1	+49.5%	-3	-50.2%	3
SHO/ Interns		2		1	+1	-1	-50.5%	+1	-100.0%	1
Medical/ Dental, other	6	6	6	6	0	+0	+0.8%	+0	+0.8%	9
<b>Medical &amp; Dental</b>	<b>25</b>	<b>21</b>	<b>20</b>	<b>20</b>	<b>-0</b>	<b>-2</b>	<b>-8.5%</b>	<b>-5</b>	<b>-20.4%</b>	<b>26</b>
Nurse/ Midwife Manager	192	196	213	211	-2	+15	+7.6%	+19	+10.0%	227
Nurse/ Midwife Specialist & AN/MP	9	12	16	16	+0	+5	+39.6%	+8	+89.6%	18
Staff Nurse/ Staff Midwife	517	513	499	501	+1	-12	-2.3%	-16	-3.2%	582
<i>Pre-registration Nurse Intern (COVID-19)</i>		11				-11	-100.0%		-100.0%	
<i>Pre-registration Nurse/ Midwife Intern</i>	8	3				-3	-100.0%	-8	-100.0%	
<i>Nursing/ Midwifery awaiting registration</i>			2	2	-0	+2	-100.0%	+2	-100.0%	2
Nursing/ Midwifery Student	8	13	2	2	-0	-11	-84.9%	-6	-74.5%	2
Nursing/ Midwifery other	7	8	9	9	-0	+1	+8.6%	+2	+20.9%	10
<b>Nursing &amp; Midwifery</b>	<b>732</b>	<b>741</b>	<b>740</b>	<b>739</b>	<b>-1</b>	<b>-3</b>	<b>-0.4%</b>	<b>+6</b>	<b>+0.8%</b>	<b>839</b>
Therapy Professions	181	187	204	208	+3	+21	+11.3%	+27	+14.7%	233
Health Science/ Diagnostics	15	13	12	12	0	-1	-7.7%	-3	-20.0%	12
Social Care	689	740	806	796	-10	+56	+7.6%	+107	+15.5%	960
Social Workers	44	50	51	54	+3	+5	+9.1%	+10	+22.5%	62
Psychologists	53	64	55	57	+3	-7	-10.5%	+5	+8.6%	62
Pharmacy	2	2	2	2	0					2
H&SC, Other	19	18	13	13	+0	-5	-27.0%	-6	-29.5%	17
<b>Health &amp; Social Care Professionals</b>	<b>1,003</b>	<b>1,073</b>	<b>1,143</b>	<b>1,142</b>	<b>-1</b>	<b>+69</b>	<b>+6.4%</b>	<b>+139</b>	<b>+13.9%</b>	<b>1,348</b>
Management (VIII & above)	37	41	44	45	+1	+3	+8.0%	+7	+19.7%	45
Administrative/ Supervisory (V to VII)	88	100	131	129	-2	+29	+28.7%	+41	+47.2%	138
Clerical (III & IV)	125	126	139	137	-2	+11	+8.7%	+12	+9.6%	164
<b>Management &amp; Administrative</b>	<b>250</b>	<b>268</b>	<b>314</b>	<b>311</b>	<b>-3</b>	<b>+43</b>	<b>+16.1%</b>	<b>+61</b>	<b>+24.2%</b>	<b>347</b>
Support	196	145	138	136	-1	-9	-6.0%	-59	-30.4%	175
Maintenance/ Technical	22	23	21	20	-0	-3	-11.9%	-2	-8.0%	22
<b>General Support</b>	<b>218</b>	<b>168</b>	<b>158</b>	<b>156</b>	<b>-2</b>	<b>-11</b>	<b>-6.8%</b>	<b>-61</b>	<b>-28.1%</b>	<b>197</b>
Health Care Assistants	869	911	869	866	-2	-45	-4.9%	-3	-0.3%	1,051
Care, other	97	102	101	102	+1	-0	-0.0%	+5	+4.9%	115
<b>Patient &amp; Client Care</b>	<b>966</b>	<b>1,013</b>	<b>970</b>	<b>968</b>	<b>-2</b>	<b>-45</b>	<b>-4.4%</b>	<b>+2</b>	<b>+0.2%</b>	<b>1,166</b>

## other Community Services

Dec 2022	WTE Dec 2019	WTE Dec 2020	WTE Nov 2022	WTE Dec 2022	WTE change since Nov 22	WTE change since Dec 20	% change since Dec 20	WTE change since Dec 19	% change since Dec 19	No. Dec 2022
<b>Overall</b>	<b>5</b>	<b>6</b>	<b>6</b>	<b>6</b>	<b>-0</b>	<b>-0</b>	<b>-0.3%</b>	<b>+1</b>	<b>+19.8%</b>	<b>6</b>
Management (VIII & above)	1	1	1	2	+1	+1	+96.0%	+1	+96.0%	2
Administrative/ Supervisory (V to VII)	2	3	3	2	-1	-1	-33.7%	-0	-0.5%	2
Clerical (III & IV)	2	2	2	2	-0	+0	+1.5%	+0	+1.5%	2
<b>Management &amp; Administrative</b>	<b>5</b>	<b>6</b>	<b>6</b>	<b>6</b>	<b>-0</b>	<b>-0</b>	<b>-0.3%</b>	<b>+1</b>	<b>+19.8%</b>	<b>6</b>

## Social Care Disability Services Employment by Grade Group: Dec 2022

Dec 2022	WTE Dec 2019	WTE Dec 2020	WTE Nov 2022	WTE Dec 2022	WTE change since Nov 22	WTE change since Dec 20	% change since Dec 20	WTE change since Dec 19	% change since Dec 19	No. Dec 2022
<b>Overall</b>	<b>18,303</b>	<b>18,944</b>	<b>19,845</b>	<b>19,903</b>	<b>+58</b>	<b>+959</b>	<b>+5.1%</b>	<b>+1,601</b>	<b>+8.7%</b>	<b>23,586</b>
Consultant Paediatrics	3	3	3	3		-1	-17.0%	-1	-17.0%	3
Consultant Psychiatry	21	21	17	16	-1	-5	-25.6%	-5	-23.8%	21
<b>Consultants</b>	<b>24</b>	<b>24</b>	<b>20</b>	<b>18</b>	<b>-1</b>	<b>-6</b>	<b>-24.5%</b>	<b>-5</b>	<b>-22.9%</b>	<b>24</b>
Registrar	7	3	7	7	-0	+4	+132.7%	-0	-0.3%	7
Senior Registrar	2	3	2	2		-1	-33.3%			2
Specialist Registrar	4	2	1	1		-1	-50.0%	-3	-75.0%	1
<b>Registrars</b>	<b>13</b>	<b>8</b>	<b>10</b>	<b>10</b>	<b>-0</b>	<b>+2</b>	<b>+24.8%</b>	<b>-3</b>	<b>-23.2%</b>	<b>10</b>
Senior House Officer	7	9	7	9	+2	-0	-0.7%	+2	+28.4%	9
<b>SHO/ Interns</b>	<b>7</b>	<b>9</b>	<b>7</b>	<b>9</b>	<b>+2</b>	<b>-0</b>	<b>-0.7%</b>	<b>+2</b>	<b>+28.4%</b>	<b>9</b>
Other Medical	14	14	13	13		-1	-9.7%	-1	-10.3%	20
<b>Medical/ Dental, other</b>	<b>14</b>	<b>14</b>	<b>13</b>	<b>13</b>		<b>-1</b>	<b>-9.7%</b>	<b>-1</b>	<b>-10.3%</b>	<b>20</b>
<b>Medical &amp; Dental</b>	<b>58</b>	<b>56</b>	<b>50</b>	<b>50</b>	<b>+0</b>	<b>-5</b>	<b>-9.8%</b>	<b>-8</b>	<b>-13.7%</b>	<b>63</b>
Clinical Nurse/ Midwife Manager	811	814	866	869	+3	+54	+6.7%	+58	+7.2%	943
Director Nursing/Midwifery, Assistant	41	46	43	43	-0	-2	-4.9%	+3	+6.4%	45
Director of Nursing/Midwifery	42	37	47	47	-0	+10	+26.8%	+5	+11.0%	49
<b>Nurse/ Midwife Manager</b>	<b>894</b>	<b>897</b>	<b>956</b>	<b>959</b>	<b>+3</b>	<b>+62</b>	<b>+6.9%</b>	<b>+65</b>	<b>+7.3%</b>	<b>1,037</b>
Advanced Nurse/ Midwife Practitioner	2	8	12	12	+0	+4	+49.8%	+10	+499.0%	12
Clinical Nurse/ Midwife Specialist	60	56	58	58	-0	+2	+3.0%	-2	-3.7%	64
<b>Nurse/ Midwife Specialist &amp; AN/MP</b>	<b>62</b>	<b>64</b>	<b>70</b>	<b>70</b>	<b>-0</b>	<b>+6</b>	<b>+8.9%</b>	<b>+8</b>	<b>+12.5%</b>	<b>76</b>
Staff Nurse [Psychiatric]	83	53	87	60	-28	+7	+13.3%	-24	-28.6%	75
Staff Nurses [General/ Children's]	892	752	791	792	+1	+39	+5.2%	-100	-11.2%	912
Staff Nurse [Intellectual Disability]	1,597	1,788	1,716	1,767	+51	-21	-1.2%	+170	+10.6%	2,057
<b>Staff Nurse/ Staff Midwife</b>	<b>2,572</b>	<b>2,593</b>	<b>2,594</b>	<b>2,618</b>	<b>+24</b>	<b>+25</b>	<b>+1.0%</b>	<b>+46</b>	<b>+1.8%</b>	<b>3,044</b>
<b>Public Health Nurse</b>	<b>6</b>	<b>7</b>	<b>11</b>	<b>12</b>	<b>+0</b>	<b>+5</b>	<b>+70.7%</b>	<b>+5</b>	<b>+87.3%</b>	<b>14</b>
Pre-registration Nurse Intern (COVID-19)		32				-32	-100.0%		-100.0%	
Pre-registration Nurse/ Midwife Intern	28	3	18	7	-10	+5	+182.8%	-21	-75.0%	10
Nursing/ Midwifery awaiting registration	14	13	4	4	-0	-9	-71.0%	-10	-72.8%	4
<b>Nursing/ Midwifery Student</b>	<b>42</b>	<b>47</b>	<b>22</b>	<b>11</b>	<b>-11</b>	<b>-36</b>	<b>-77.1%</b>	<b>-31</b>	<b>-74.2%</b>	<b>14</b>
Nursing Education/Clinical	21	23	27	27	-0	+4	+16.3%	+5	+25.2%	30
Other Nursing/ Midwifery	1	1	1	1						1
<b>Nursing/ Midwifery other</b>	<b>22</b>	<b>24</b>	<b>28</b>	<b>28</b>	<b>-0</b>	<b>+4</b>	<b>+15.6%</b>	<b>+5</b>	<b>+24.1%</b>	<b>31</b>
<b>Nursing &amp; Midwifery</b>	<b>3,599</b>	<b>3,632</b>	<b>3,681</b>	<b>3,697</b>	<b>+16</b>	<b>+65</b>	<b>+1.8%</b>	<b>+98</b>	<b>+2.7%</b>	<b>4,216</b>
Dietitians	18	16	23	20	-2	+4	+24.3%	+2	+10.5%	25
Occupational Therapists	264	279	293	304	+11	+25	+9.1%	+40	+15.0%	340
Physiotherapists	189	193	194	193	-1	+0	+0.1%	+4	+2.1%	228
Speech & Language Therapists	293	307	272	273	+0	-35	-11.3%	-20	-6.8%	324
<b>Therapy Professions</b>	<b>765</b>	<b>795</b>	<b>782</b>	<b>790</b>	<b>+9</b>	<b>-5</b>	<b>-0.6%</b>	<b>+26</b>	<b>+3.4%</b>	<b>917</b>
Clinical Engineering	13	13	14	14	-0	+1	+7.8%	+1	+7.4%	14
Medical Science	4	4	4	4						4
Phlebotomists	1						-100.0%	-1	-100.0%	
Radiographers	1	1	1	1		+0	+33.0%	+0	+33.0%	3
Respiratory Physiologists	1	2	2	2				+1	+100.0%	2
<b>Health Science/ Diagnostics</b>	<b>20</b>	<b>20</b>	<b>21</b>	<b>21</b>	<b>-0</b>	<b>+1</b>	<b>+6.7%</b>	<b>+1</b>	<b>+6.5%</b>	<b>23</b>
<b>Social Care</b>	<b>2,595</b>	<b>2,789</b>	<b>3,031</b>	<b>3,055</b>	<b>+24</b>	<b>+266</b>	<b>+9.5%</b>	<b>+460</b>	<b>+17.7%</b>	<b>3,583</b>
<b>Social Workers</b>	<b>219</b>	<b>228</b>	<b>237</b>	<b>239</b>	<b>+2</b>	<b>+11</b>	<b>+4.7%</b>	<b>+20</b>	<b>+9.2%</b>	<b>277</b>

Dec 2022	WTE Dec 2019	WTE Dec 2020	WTE Nov 2022	WTE Dec 2022	WTE change since Nov 22	WTE change since Dec 20	% change since Dec 20	WTE change since Dec 19	% change since Dec 19	No. Dec 2022
<b>Overall</b>	<b>18,303</b>	<b>18,944</b>	<b>19,845</b>	<b>19,903</b>	<b>+58</b>	<b>+959</b>	<b>+5.1%</b>	<b>+1,601</b>	<b>+8.7%</b>	<b>23,586</b>
<b>Psychologists</b>	<b>204</b>	<b>229</b>	<b>236</b>	<b>239</b>	<b>+3</b>	<b>+10</b>	<b>+4.3%</b>	<b>+35</b>	<b>+17.1%</b>	<b>268</b>
Pharmacists	5	5	7	7	+0	+2	+31.5%	+1	+25.2%	9
Pharmacy Technicians	2	1	2	2	-0	+1	+58.0%	+0	+5.3%	2
<b>Pharmacy</b>	<b>7</b>	<b>6</b>	<b>8</b>	<b>8</b>	<b>-0</b>	<b>+2</b>	<b>+35.9%</b>	<b>+1</b>	<b>+20.8%</b>	<b>11</b>
Counsellor Therapists	19	20	23	23	-1	+3	+14.6%	+4	+19.8%	26
Other Health & Social Care	51	45	30	30	+0	-15	-33.0%	-20	-40.3%	41
Play Therapists/ Specialists	15	11	15	15	+0	+5	+41.8%	-0	-0.3%	19
<b>H&amp;SC, Other</b>	<b>85</b>	<b>76</b>	<b>69</b>	<b>68</b>	<b>-1</b>	<b>-7</b>	<b>-9.9%</b>	<b>-17</b>	<b>-19.6%</b>	<b>86</b>
<b>Health &amp; Social Care Professionals</b>	<b>3,894</b>	<b>4,144</b>	<b>4,383</b>	<b>4,421</b>	<b>+37</b>	<b>+277</b>	<b>+6.7%</b>	<b>+526</b>	<b>+13.5%</b>	<b>5,165</b>
Executive Management	31	36	41	50	+9	+14	+37.9%	+19	+61.3%	51
Senior Management (VIII & GM)	149	168	182	186	+5	+19	+11.0%	+38	+25.3%	189
<b>Management (VIII &amp; above)</b>	<b>180</b>	<b>204</b>	<b>223</b>	<b>236</b>	<b>+13</b>	<b>+32</b>	<b>+15.8%</b>	<b>+56</b>	<b>+31.4%</b>	<b>240</b>
Middle Management (V-VII)	464	511	652	653	+1	+142	+27.8%	+189	+40.7%	700
Other Administrative	15	16	12	12		-4	-24.1%	-3	-19.8%	12
<b>Administrative/ Supervisory (V to VII)</b>	<b>479</b>	<b>527</b>	<b>664</b>	<b>665</b>	<b>+1</b>	<b>+138</b>	<b>+26.2%</b>	<b>+186</b>	<b>+38.8%</b>	<b>712</b>
General Administrative (III & IV)	660	685	740	744	+4	+58	+8.5%	+83	+12.6%	886
<b>Clerical (III &amp; IV)</b>	<b>660</b>	<b>685</b>	<b>740</b>	<b>744</b>	<b>+4</b>	<b>+58</b>	<b>+8.5%</b>	<b>+83</b>	<b>+12.6%</b>	<b>886</b>
<b>Management &amp; Administrative</b>	<b>1,319</b>	<b>1,416</b>	<b>1,626</b>	<b>1,645</b>	<b>+19</b>	<b>+229</b>	<b>+16.2%</b>	<b>+326</b>	<b>+24.7%</b>	<b>1,838</b>
Catering	98	96	82	75	-7	-21	-22.1%	-23	-23.6%	90
Household Services	420	406	383	385	+2	-21	-5.1%	-34	-8.2%	559
Other Labs & Associated	1	1	1	1						1
Other Support	188	136	149	145	-3	+10	+7.2%	-43	-22.6%	214
Portering	28	24	17	18	+0	-7	-28.1%	-10	-36.6%	24
<b>Support</b>	<b>734</b>	<b>663</b>	<b>632</b>	<b>624</b>	<b>-8</b>	<b>-39</b>	<b>-5.8%</b>	<b>-110</b>	<b>-15.0%</b>	<b>888</b>
Maintenance	116	121	109	109	-0	-12	-10.3%	-7	-6.2%	123
Technical Services	8	11	17	17		+6	+52.3%	+9	+108.6%	17
<b>Maintenance/ Technical</b>	<b>124</b>	<b>132</b>	<b>126</b>	<b>126</b>	<b>-0</b>	<b>-7</b>	<b>-5.0%</b>	<b>+2</b>	<b>+1.3%</b>	<b>140</b>
<b>General Support</b>	<b>858</b>	<b>795</b>	<b>758</b>	<b>750</b>	<b>-8</b>	<b>-45</b>	<b>-5.7%</b>	<b>-109</b>	<b>-12.7%</b>	<b>1,028</b>
Attendant/ Aide	230	247	181	179	-2	-68	-27.7%	-52	-22.5%	234
Health & Social Care Assistants	10	11	21	22	+0	+11	+96.2%	+12	+126.6%	26
Health Care Assistant/ Care Assistant	6,586	6,844	7,298	7,294	-3	+450	+6.6%	+708	+10.8%	8,731
<b>Health Care Assistants</b>	<b>6,826</b>	<b>7,102</b>	<b>7,500</b>	<b>7,495</b>	<b>-5</b>	<b>+392</b>	<b>+5.5%</b>	<b>+669</b>	<b>+9.8%</b>	<b>8,991</b>
<b>Home Help</b>	<b>109</b>	<b>94</b>	<b>80</b>	<b>80</b>	<b>-0</b>	<b>-14</b>	<b>-14.6%</b>	<b>-29</b>	<b>-26.4%</b>	<b>220</b>
Home Care Services	28	19	18	17	-1	-1	-6.4%	-11	-39.0%	22
Other Care Grades	175	221	262	259	-4	+37	+16.8%	+84	+48.0%	291
Pastoral Care	10	10	5	5	-0	-5	-52.5%	-6	-53.3%	6
Workshop Services	1,426	1,456	1,481	1,485	+4	+30	+2.1%	+59	+4.2%	1,746
<b>Care, other</b>	<b>1,639</b>	<b>1,706</b>	<b>1,767</b>	<b>1,766</b>	<b>-0</b>	<b>+60</b>	<b>+3.5%</b>	<b>+127</b>	<b>+7.7%</b>	<b>2,065</b>
<b>Patient &amp; Client Care</b>	<b>8,574</b>	<b>8,902</b>	<b>9,347</b>	<b>9,341</b>	<b>-6</b>	<b>+439</b>	<b>+4.9%</b>	<b>+767</b>	<b>+8.9%</b>	<b>11,276</b>



## Employment by WTE, Headcount, Gender, Full-Time /Part-Time etc.: Dec 2022

Social Care Disability Services Staff Group	WTE	Headcount	WTE: no.	% Male	% female	Male WTE: no.	Female WTE: no.	% Total Perm	% Male Perm	% Female Perm	% Total Full Time	% Total Part Time	% Male FT	% Female FT
<b>Overall</b>	<b>19,903</b>	<b>23,586</b>	<b>1.19</b>	<b>19.5%</b>	<b>80.5%</b>	<b>1.11</b>	<b>1.21</b>	<b>88.7%</b>	<b>88.1%</b>	<b>88.9%</b>	<b>58.3%</b>	<b>41.7%</b>	<b>68.8%</b>	<b>55.8%</b>
Consultant Paediatrics	3	3	1.19		100.0%		1.19	100.0%	100.0%	100.0%	66.7%	33.3%		66.7%
Consultant Psychiatry	16	21	1.32	23.8%	76.2%	1.14	1.39	81.0%	81.0%	87.5%	61.9%	38.1%	100.0%	50.0%
<b>Consultants</b>	<b>18</b>	<b>24</b>	<b>1.30</b>	<b>20.8%</b>	<b>79.2%</b>	<b>1.14</b>	<b>1.35</b>	<b>83.3%</b>	<b>60.0%</b>	<b>89.5%</b>	<b>62.5%</b>	<b>37.5%</b>	<b>100.0%</b>	<b>52.6%</b>
Registrar	7	7	1.00	42.9%	57.1%	1.00	1.01	14.3%	14.3%	25.0%	100.0%	0.0%	100.0%	100.0%
Senior Registrar	2	2	1.00	50.0%	50.0%	1.00	1.00	0.0%	0.0%	0.0%	100.0%	0.0%	100.0%	100.0%
Specialist Registrar	1	1	1.00		100.0%		1.00	0.0%	0.0%	0.0%	100.0%	0.0%		100.0%
<b>Registrars</b>	<b>10</b>	<b>10</b>	<b>1.00</b>	<b>40.0%</b>	<b>60.0%</b>	<b>1.00</b>	<b>1.00</b>	<b>10.0%</b>	<b>0.0%</b>	<b>16.7%</b>	<b>100.0%</b>	<b>0.0%</b>	<b>100.0%</b>	<b>100.0%</b>
<b>SHO/ Interns</b>	<b>9</b>	<b>9</b>	<b>1.01</b>	<b>44.4%</b>	<b>55.6%</b>	<b>1.00</b>	<b>1.01</b>	<b>0.0%</b>	<b>0.0%</b>	<b>0.0%</b>	<b>100.0%</b>	<b>0.0%</b>	<b>100.0%</b>	<b>100.0%</b>
<b>Medical/ Dental, other</b>	<b>13</b>	<b>20</b>	<b>1.55</b>	<b>40.0%</b>	<b>60.0%</b>	<b>1.25</b>	<b>1.84</b>	<b>90.0%</b>	<b>75.0%</b>	<b>100.0%</b>	<b>30.0%</b>	<b>70.0%</b>	<b>37.5%</b>	<b>25.0%</b>
<b>Medical &amp; Dental</b>	<b>50</b>	<b>63</b>	<b>1.25</b>	<b>33.3%</b>	<b>66.7%</b>	<b>1.12</b>	<b>1.33</b>	<b>61.9%</b>	<b>42.9%</b>	<b>71.4%</b>	<b>63.5%</b>	<b>36.5%</b>	<b>76.2%</b>	<b>57.1%</b>
Clinical Nurse/ Midwife Manager	869	943	1.09	13.1%	86.9%	1.02	1.10	93.8%	93.8%	93.8%	82.5%	17.5%	96.8%	80.3%
Director Nursing/Midwifery, Assistant	43	45	1.04	17.8%	82.2%	1.01	1.04	97.8%	97.8%	97.3%	95.6%	4.4%	100.0%	94.6%
Director of Nursing/Midwifery	47	49	1.05	12.2%	87.8%	1.00	1.05	93.9%	93.9%	93.0%	93.9%	6.1%	100.0%	93.0%
<b>Nurse/ Midwife Manager</b>	<b>959</b>	<b>1,037</b>	<b>1.08</b>	<b>13.3%</b>	<b>86.7%</b>	<b>1.02</b>	<b>1.09</b>	<b>94.0%</b>	<b>94.9%</b>	<b>93.9%</b>	<b>83.6%</b>	<b>16.4%</b>	<b>97.1%</b>	<b>81.5%</b>
Advanced Nurse/ Midwife Practitioner	12	12	1.00	25.0%	75.0%	1.00	1.00	91.7%	91.7%	88.9%	100.0%	0.0%	100.0%	100.0%
Clinical Nurse/ Midwife Specialist	58	64	1.11	4.7%	95.3%	1.00	1.12	98.4%	98.4%	98.4%	62.5%	37.5%	100.0%	60.7%
<b>Nurse/ Midwife Specialist &amp; AN/MP</b>	<b>70</b>	<b>76</b>	<b>1.09</b>	<b>7.9%</b>	<b>92.1%</b>	<b>1.00</b>	<b>1.10</b>	<b>97.4%</b>	<b>100.0%</b>	<b>97.1%</b>	<b>68.4%</b>	<b>31.6%</b>	<b>100.0%</b>	<b>65.7%</b>
Staff Nurse [Psychiatric]	60	75	1.26	20.0%	80.0%	1.30	1.25	74.7%	74.7%	76.7%	58.7%	41.3%	60.0%	58.3%
Staff Nurses [General/ Children's]	792	912	1.15	15.4%	84.6%	1.09	1.16	95.4%	95.4%	95.2%	70.7%	29.3%	80.7%	68.9%
Staff Nurse [Intellectual Disability]	1,767	2,057	1.16	9.6%	90.4%	1.08	1.17	94.9%	94.9%	94.9%	67.0%	33.0%	85.4%	65.0%
<b>Staff Nurse/ Staff Midwife</b>	<b>2,618</b>	<b>3,044</b>	<b>1.16</b>	<b>11.6%</b>	<b>88.4%</b>	<b>1.09</b>	<b>1.17</b>	<b>94.5%</b>	<b>94.3%</b>	<b>94.6%</b>	<b>67.9%</b>	<b>32.1%</b>	<b>82.4%</b>	<b>66.0%</b>
<b>Public Health Nurse</b>	<b>12</b>	<b>14</b>	<b>1.19</b>		<b>100.0%</b>		<b>1.19</b>	<b>100.0%</b>		<b>100.0%</b>	<b>64.3%</b>	<b>35.7%</b>		<b>64.3%</b>
Pre-registration Nurse/ Midwife Intern	7	10	1.41	10.0%	90.0%	1.00	1.48	10.0%	10.0%	11.1%	70.0%	30.0%	100.0%	66.7%
Nursing/ Midwifery awaiting registration	4	4	1.06	75.0%	25.0%	1.08	1.00	25.0%	25.0%	0.0%	75.0%	25.0%	66.7%	100.0%
<b>Nursing/ Midwifery Student</b>	<b>11</b>	<b>14</b>	<b>1.29</b>	<b>28.6%</b>	<b>71.4%</b>	<b>1.06</b>	<b>1.41</b>	<b>14.3%</b>	<b>25.0%</b>	<b>10.0%</b>	<b>71.4%</b>	<b>28.6%</b>	<b>75.0%</b>	<b>70.0%</b>
Nursing Education/Clinical	27	30	1.13	3.3%	96.7%	1.00	1.14	96.7%	96.7%	96.6%	66.7%	33.3%	100.0%	65.5%
Other Nursing/ Midwifery	1	1	1.00		100.0%		1.00	100.0%	100.0%	100.0%	100.0%	0.0%		100.0%
<b>Nursing/ Midwifery other</b>	<b>28</b>	<b>31</b>	<b>1.13</b>	<b>3.2%</b>	<b>96.8%</b>	<b>1.00</b>	<b>1.13</b>	<b>96.8%</b>	<b>100.0%</b>	<b>96.7%</b>	<b>67.7%</b>	<b>32.3%</b>	<b>100.0%</b>	<b>66.7%</b>

<b>Nursing &amp; Midwifery</b>	<b>3,697</b>	<b>4,216</b>	<b>1.14</b>	<b>11.9%</b>	<b>88.1%</b>	<b>1.07</b>	<b>1.15</b>	<b>94.2%</b>	<b>94.0%</b>	<b>94.3%</b>	<b>71.8%</b>	<b>28.2%</b>	<b>86.7%</b>	<b>69.8%</b>
Dietitians	20	25	1.22		100.0%		1.22	100.0%	100.0%	100.0%	60.0%	40.0%		60.0%
Occupational Therapists	304	340	1.12	7.4%	92.6%	1.08	1.12	95.0%	95.0%	95.2%	79.7%	20.3%	88.0%	79.0%
Physiotherapists	193	228	1.18	17.5%	82.5%	1.04	1.21	93.4%	93.4%	94.7%	63.6%	36.4%	82.5%	59.6%
Speech & Language Therapists	273	324	1.19	1.2%	98.8%	1.00	1.19	91.7%	91.7%	91.6%	71.0%	29.0%	100.0%	70.6%
<b>Therapy Professions</b>	<b>790</b>	<b>917</b>	<b>1.16</b>	<b>7.5%</b>	<b>92.5%</b>	<b>1.05</b>	<b>1.17</b>	<b>93.6%</b>	<b>89.9%</b>	<b>93.9%</b>	<b>72.1%</b>	<b>27.9%</b>	<b>85.5%</b>	<b>71.0%</b>
Clinical Engineering	14	14	1.00	92.9%	7.1%	1.00	1.00	78.6%	78.6%	100.0%	92.9%	7.1%	92.3%	100.0%
Medical Science	4	4	1.00	50.0%	50.0%	1.00	1.00	50.0%	50.0%	50.0%	100.0%	0.0%	100.0%	100.0%
Radiographers	1	3	2.26		100.0%		2.26	33.3%	33.3%	33.3%	33.3%	66.7%		33.3%
Respiratory Physiologists	2	2	1.00	100.0%		1.00		100.0%	100.0%		100.0%	0.0%	100.0%	
<b>Health Science/ Diagnostics</b>	<b>21</b>	<b>23</b>	<b>1.08</b>	<b>73.9%</b>	<b>26.1%</b>	<b>1.00</b>	<b>1.39</b>	<b>69.6%</b>	<b>76.5%</b>	<b>50.0%</b>	<b>87.0%</b>	<b>13.0%</b>	<b>94.1%</b>	<b>66.7%</b>
<b>Social Care</b>	<b>3,055</b>	<b>3,583</b>	<b>1.17</b>	<b>16.5%</b>	<b>83.5%</b>	<b>1.10</b>	<b>1.19</b>	<b>91.5%</b>	<b>92.5%</b>	<b>91.3%</b>	<b>49.0%</b>	<b>51.0%</b>	<b>62.7%</b>	<b>46.3%</b>
<b>Social Workers</b>	<b>239</b>	<b>277</b>	<b>1.16</b>	<b>16.6%</b>	<b>83.4%</b>	<b>1.06</b>	<b>1.18</b>	<b>93.5%</b>	<b>91.3%</b>	<b>93.9%</b>	<b>70.0%</b>	<b>30.0%</b>	<b>82.6%</b>	<b>67.5%</b>
<b>Psychologists</b>	<b>239</b>	<b>268</b>	<b>1.12</b>	<b>18.7%</b>	<b>81.3%</b>	<b>1.06</b>	<b>1.14</b>	<b>97.4%</b>	<b>98.0%</b>	<b>97.2%</b>	<b>79.1%</b>	<b>20.9%</b>	<b>92.0%</b>	<b>76.1%</b>
Pharmacists	7	9	1.36	11.1%	88.9%	1.00	1.43	100.0%	100.0%	100.0%	44.4%	55.6%	100.0%	37.5%
Pharmacy Technicians	2	2	1.27		100.0%		1.27	50.0%	50.0%	50.0%	50.0%	50.0%		50.0%
<b>Pharmacy</b>	<b>8</b>	<b>11</b>	<b>1.34</b>	<b>9.1%</b>	<b>90.9%</b>	<b>1.00</b>	<b>1.39</b>	<b>90.9%</b>	<b>100.0%</b>	<b>90.0%</b>	<b>45.5%</b>	<b>54.5%</b>	<b>100.0%</b>	<b>40.0%</b>
Counsellor Therapists	23	26	1.15	3.8%	96.2%	1.00	1.15	100.0%	100.0%	100.0%	69.2%	30.8%	100.0%	68.0%
Other Health & Social Care	30	41	1.36	12.2%	87.8%	1.04	1.42	92.7%	92.7%	91.7%	39.0%	61.0%	80.0%	33.3%
Play Therapists/ Specialists	15	19	1.23	15.8%	84.2%	1.00	1.29	84.2%	84.2%	81.3%	47.4%	52.6%	100.0%	37.5%
<b>H&amp;SC, Other</b>	<b>68</b>	<b>86</b>	<b>1.26</b>	<b>10.5%</b>	<b>89.5%</b>	<b>1.02</b>	<b>1.30</b>	<b>93.0%</b>	<b>100.0%</b>	<b>92.2%</b>	<b>50.0%</b>	<b>50.0%</b>	<b>88.9%</b>	<b>45.5%</b>
<b>Health &amp; Social Care</b>	<b>4,421</b>	<b>5,165</b>	<b>1.17</b>	<b>15.1%</b>	<b>84.9%</b>	<b>1.09</b>	<b>1.18</b>	<b>92.2%</b>	<b>92.3%</b>	<b>92.2%</b>	<b>56.0%</b>	<b>44.0%</b>	<b>68.8%</b>	<b>53.7%</b>
Executive Management	50	51	1.03	37.3%	62.7%	1.02	1.03	94.1%	94.1%	96.9%	94.1%	5.9%	94.7%	93.8%
Senior Management (VIII & GM)	186	189	1.01	32.8%	67.2%	1.00	1.02	93.1%	93.1%	92.1%	97.9%	2.1%	100.0%	96.9%
<b>Management (VIII &amp; above)</b>	<b>236</b>	<b>240</b>	<b>1.02</b>	<b>33.8%</b>	<b>66.3%</b>	<b>1.01</b>	<b>1.02</b>	<b>93.3%</b>	<b>93.8%</b>	<b>93.1%</b>	<b>97.1%</b>	<b>2.9%</b>	<b>98.8%</b>	<b>96.2%</b>
Middle Management (V-VII)	653	700	1.07	21.1%	78.9%	1.02	1.09	93.3%	93.3%	92.9%	86.3%	13.7%	96.6%	83.5%
Other Administrative	12	12	1.00	8.3%	91.7%	1.00	1.00	91.7%	91.7%	90.9%	100.0%	0.0%	100.0%	100.0%
<b>Administrative/ Supervisory (V to VII)</b>	<b>665</b>	<b>712</b>	<b>1.07</b>	<b>20.9%</b>	<b>79.1%</b>	<b>1.02</b>	<b>1.08</b>	<b>93.3%</b>	<b>94.6%</b>	<b>92.9%</b>	<b>86.5%</b>	<b>13.5%</b>	<b>96.6%</b>	<b>83.8%</b>
General Administrative (III & IV)	744	886	1.19	10.8%	89.2%	1.12	1.20	86.9%	86.9%	87.3%	61.1%	38.9%	79.2%	58.9%
<b>Clerical (III &amp; IV)</b>	<b>744</b>	<b>886</b>	<b>1.19</b>	<b>10.8%</b>	<b>89.2%</b>	<b>1.12</b>	<b>1.20</b>	<b>86.9%</b>	<b>83.3%</b>	<b>87.3%</b>	<b>61.1%</b>	<b>38.9%</b>	<b>79.2%</b>	<b>58.9%</b>
<b>Management &amp; Administrative</b>	<b>1,645</b>	<b>1,838</b>	<b>1.12</b>	<b>17.7%</b>	<b>82.3%</b>	<b>1.05</b>	<b>1.13</b>	<b>90.2%</b>	<b>91.1%</b>	<b>90.0%</b>	<b>75.6%</b>	<b>24.4%</b>	<b>92.0%</b>	<b>72.1%</b>
Catering	75	90	1.20	26.7%	73.3%	1.03	1.28	100.0%	100.0%	100.0%	54.4%	45.6%	87.5%	42.4%
Household Services	385	559	1.45	16.1%	83.9%	1.38	1.47	86.0%	86.0%	88.1%	34.5%	65.5%	56.7%	30.3%
Other Labs & Associated	1	1	1.00		100.0%		1.00	100.0%	100.0%	100.0%	100.0%	0.0%		100.0%
Other Support	145	214	1.47	54.7%	45.3%	1.21	2.00	90.2%	90.2%	96.9%	27.1%	72.9%	42.7%	8.2%

Portering	18	24	1.37	95.8%	4.2%	1.38	1.25	75.0%	75.0%	100.0%	33.3%	66.7%	34.8%	0.0%
<b>Support</b>	<b>624</b>	<b>888</b>	<b>1.42</b>	<b>28.6%</b>	<b>71.4%</b>	<b>1.26</b>	<b>1.50</b>	<b>88.2%</b>	<b>81.9%</b>	<b>90.7%</b>	<b>34.8%</b>	<b>65.2%</b>	<b>51.2%</b>	<b>28.2%</b>
Maintenance	109	123	1.13	91.9%	8.1%	1.12	1.19	94.3%	94.3%	100.0%	70.7%	29.3%	74.3%	30.0%
Technical Services	17	17	1.01	82.4%	17.6%	1.01	1.00	94.1%	94.1%	100.0%	88.2%	11.8%	92.9%	66.7%
<b>Maintenance/ Technical</b>	<b>126</b>	<b>140</b>	<b>1.11</b>	<b>90.7%</b>	<b>9.3%</b>	<b>1.11</b>	<b>1.14</b>	<b>94.3%</b>	<b>93.7%</b>	<b>100.0%</b>	<b>72.9%</b>	<b>27.1%</b>	<b>76.4%</b>	<b>38.5%</b>
<b>General Support</b>	<b>750</b>	<b>1,028</b>	<b>1.37</b>	<b>37.1%</b>	<b>62.9%</b>	<b>1.20</b>	<b>1.49</b>	<b>89.0%</b>	<b>85.8%</b>	<b>90.9%</b>	<b>40.0%</b>	<b>60.0%</b>	<b>59.6%</b>	<b>28.4%</b>
Attendant/ Aide	179	234	1.31	19.7%	80.3%	1.17	1.35	87.6%	87.6%	88.8%	48.3%	51.7%	67.4%	43.6%
Health & Social Care Assistants	22	26	1.20	15.4%	84.6%	1.00	1.25	73.1%	73.1%	72.7%	61.5%	38.5%	100.0%	54.5%
Health Care Assistant/ Care Assistant	7,294	8,731	1.20	23.0%	77.0%	1.11	1.23	84.7%	84.7%	84.2%	52.4%	47.6%	62.1%	49.5%
<b>Health Care Assistants</b>	<b>7,495</b>	<b>8,991</b>	<b>1.20</b>	<b>22.9%</b>	<b>77.1%</b>	<b>1.11</b>	<b>1.23</b>	<b>84.8%</b>	<b>86.3%</b>	<b>84.3%</b>	<b>52.4%</b>	<b>47.6%</b>	<b>62.3%</b>	<b>49.4%</b>
<b>Home Help</b>	<b>80</b>	<b>220</b>	<b>2.75</b>	<b>7.7%</b>	<b>92.3%</b>	<b>3.33</b>	<b>2.71</b>	<b>65.9%</b>	<b>58.8%</b>	<b>66.5%</b>	<b>2.7%</b>	<b>97.3%</b>	<b>0.0%</b>	<b>3.0%</b>
Home Care Services	17	22	1.27	13.6%	86.4%	1.05	1.31	68.2%	68.2%	73.7%	54.5%	45.5%	66.7%	52.6%
Other Care Grades	259	291	1.13	29.2%	70.8%	1.15	1.12	88.7%	88.7%	92.2%	74.6%	25.4%	77.6%	73.3%
Pastoral Care	5	6	1.24	50.0%	50.0%	1.27	1.21	66.7%	66.7%	100.0%	50.0%	50.0%	33.3%	66.7%
Workshop Services	1,485	1,746	1.18	23.7%	76.3%	1.10	1.20	88.3%	88.3%	88.5%	60.5%	39.5%	71.0%	57.2%
<b>Care, other</b>	<b>1,766</b>	<b>2,065</b>	<b>1.17</b>	<b>24.5%</b>	<b>75.5%</b>	<b>1.11</b>	<b>1.19</b>	<b>88.0%</b>	<b>85.5%</b>	<b>88.8%</b>	<b>62.4%</b>	<b>37.6%</b>	<b>71.9%</b>	<b>59.3%</b>
<b>Patient &amp; Client Care</b>	<b>9,341</b>	<b>11,276</b>	<b>1.21</b>	<b>22.9%</b>	<b>77.1%</b>	<b>1.11</b>	<b>1.24</b>	<b>85.0%</b>	<b>85.9%</b>	<b>84.7%</b>	<b>53.2%</b>	<b>46.8%</b>	<b>63.8%</b>	<b>50.1%</b>

## Employment by WTE, Headcount, Gender, Full-Time /Part-Time etc.: Dec 2022

Social Care Disability Services CHO	WTE	Headcount	WTE: no.	% Male	% female	Male WTE: no.	Female WTE: no.	% Total Perm	% Male Perm	% Female Perm	% Total Full Time	% Total Part Time	% Male FT	% Female FT
<b>Overall</b>	<b>19,903</b>	<b>23,586</b>	<b>1.19</b>	<b>19.5%</b>	<b>80.5%</b>	<b>1.11</b>	<b>1.21</b>	<b>88.7%</b>	<b>88.1%</b>	<b>88.9%</b>	<b>58.3%</b>	<b>41.7%</b>	<b>68.8%</b>	<b>55.8%</b>
CHO 1	1,698	1,902	1.12	20.3%	79.7%	1.07	1.13	93.2%	93.2%	93.4%	77.8%	22.2%	88.4%	75.1%
CHO 2	1,607	1,965	1.22	22.8%	77.2%	1.17	1.24	82.1%	82.1%	82.1%	46.8%	53.2%	52.8%	45.0%
CHO 3	1,989	2,363	1.19	13.6%	86.4%	1.14	1.20	85.4%	85.4%	85.6%	40.5%	59.5%	43.9%	40.0%
CHO 4	2,640	3,199	1.21	20.4%	79.6%	1.09	1.25	83.4%	83.4%	84.6%	68.5%	31.5%	74.3%	67.0%
CHO 5	1,656	1,956	1.18	19.9%	80.1%	1.11	1.20	87.5%	87.5%	87.9%	54.3%	45.7%	62.8%	52.2%
CHO 6	1,216	1,395	1.15	22.3%	77.7%	1.08	1.17	92.8%	92.8%	93.4%	65.2%	34.8%	79.7%	61.1%
CHO 7	3,410	4,053	1.19	22.1%	77.9%	1.11	1.21	88.9%	88.9%	88.7%	67.7%	32.3%	80.0%	64.2%
CHO 8	2,345	2,824	1.20	20.7%	79.3%	1.13	1.23	96.5%	96.5%	96.6%	45.8%	54.2%	51.4%	44.3%
CHO 9	3,336	3,923	1.18	15.4%	84.6%	1.09	1.19	89.7%	89.7%	89.4%	56.0%	44.0%	74.0%	52.7%
other Community Services	6	6	1.01	16.7%	83.3%	1.01	1.01	100.0%	100.0%	100.0%	83.3%	16.7%	100.0%	80.0%

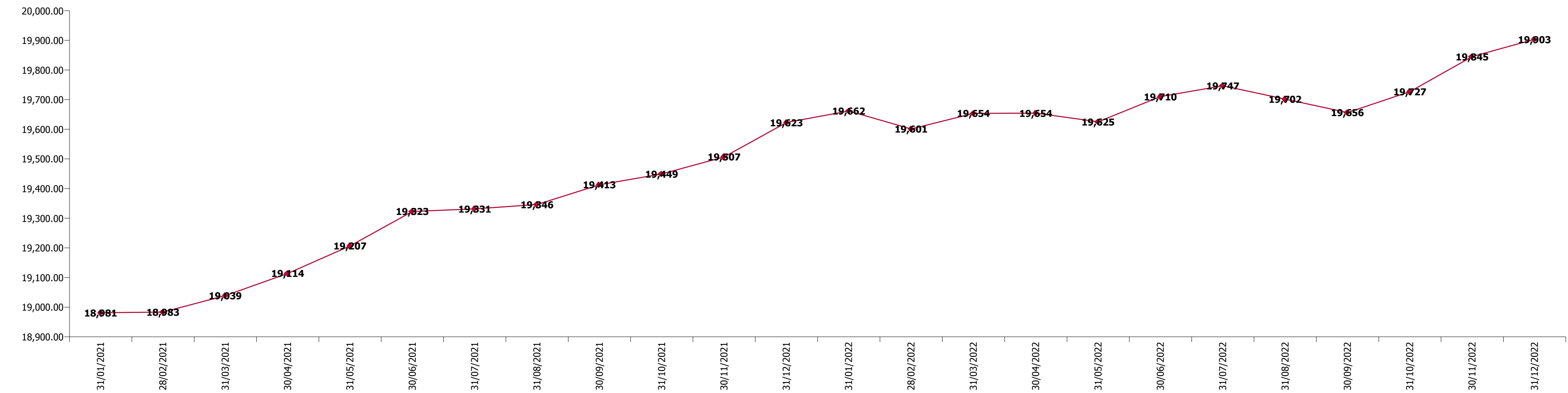
Summary Staff Movement: December 2022

Month-on-month  
Summary

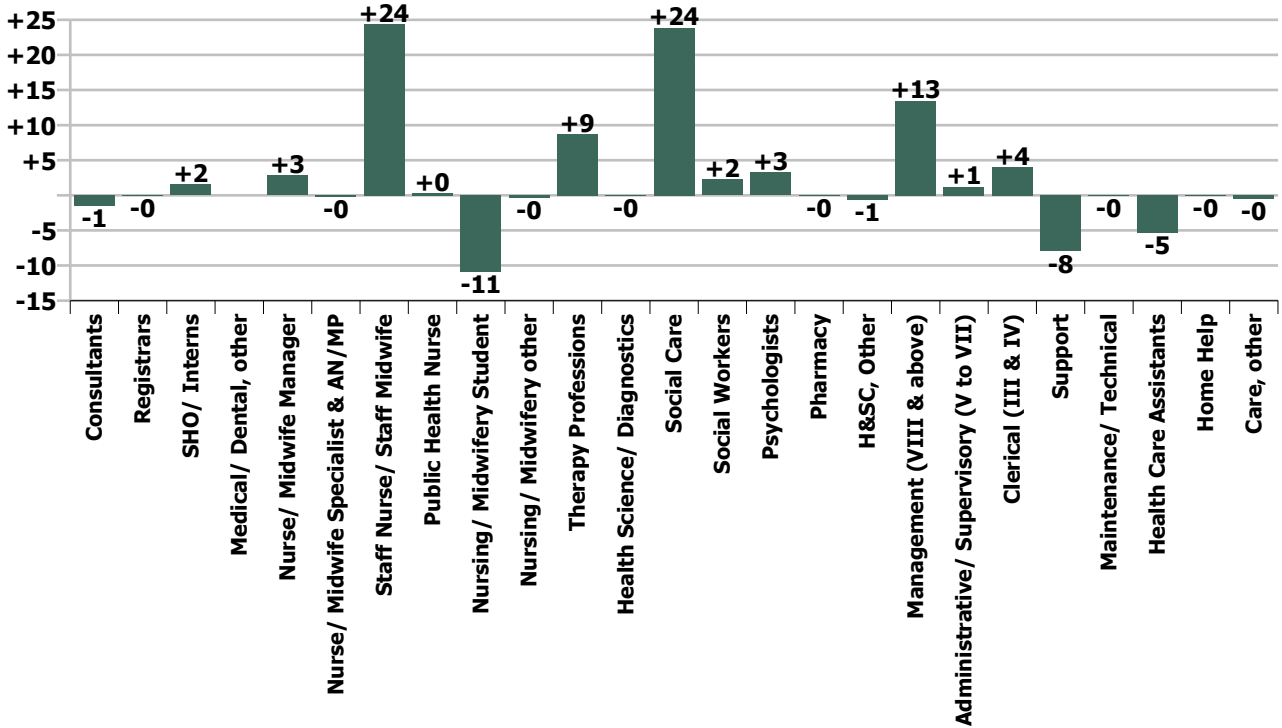
WTE change since Nov 22	% change since Nov 22	overall	Consultants	Registrars	SHO/ Interns	Medical/ Dental, other	Medical & Dental	Nurse/ Midwife Manager	Nurse/ Midwife Specialist & AN/MP	Staff Nurse/ Staff Midwife	Public Health Nurse	Nursing/ Midwifery Student	Nursing/ Midwifery other	Nursing & Midwifery	Therapy Professions	Health Science/ Diagnostics	Social Care	Social Workers	Psychologists	Pharmacy	H&SC, Other	Health & Social Care Professionals	Management (VIII & above)	Administrative/ Supervisory (V to VII)	Clerical (III & IV)	Management & Administrative	General Support	Health Care Assistants	Home Help	Care, other	Patient & Client Care	
Overall	+0.3%	+58	-1	-0	+2		+0	+3	-0	+24	+0	-11	-0	+16	+9	-0	+24	+2	+3	-0	-1	+37	+13	+1	+4	+19	-8	-5	-0	-0	-6	
CHO 1	+0.3%	+5						+2	+0	+3	-0	+0	-0	+5	+0		+3	+0	-3		-0	+0	+1	+0	+4	+5	-1	-3	-1	-1	-5	
CHO 2	+0.0%	+1						-3	+0	+1				-2	-0		+8	+0	+1		-0	+9	-0	+3	+3	-3	-1			-5	-7	
CHO 3	+0.1%	+1	-0				-0	+2		-3				-1	-0	-0	+7	-0	-1		+0	+6	-0	+2	-1	+1	-1	-4			-0	-4
CHO 4	+0.4%	+10						-4	+0	+1		-11		-13	+2		+7	-1	+4		-1	+11	+0	+6	-1	+6	-1	+3		+4	+7	
CHO 5	-0.0%	-1	-0				-0	+1	+0	+6	+0	+0	-0	+8	-0		+1	+1	-2		-0	+0	+1	-6	+2	-4	-0	-1	+1	-4	-5	
CHO 6	-0.3%	-4		-0			-0	+1		-0				+1	+2		-4	+0	-0		-0	+2	+9	+0	-6	+3	+0	-2		-4	-6	
CHO 7	+0.7%	+23		-0	+1		+1	+1		+6				+7	+3		+2	-0	+0	-0	-0	+5	-1	+4	+3	+6	-1	-2	-0	+7	+5	
CHO 8	+1.4%	+32						+3	-1	+10	+0	-0		+12	-2		+10	-0	+1		+0	+9	+1	-1	+1	+1	+0	+8	-0	+3	+11	
CHO 9	-0.3%	-9	-1	-0	+1		-0	-2	+0	+1		-0	-0	-1	+3		-10	+3	+3		+0	-1	+1	-2	-2	-3	-2	-2		+1	-2	
other Community Services	-1.2%	-0																				+1	-1	-0	-0							
		+0.3%	-7.2%	-0.3%	+21.0%		+0.2%	+0.3%	-0.3%	+0.9%	+2.8%	-50.1%	-1.1%	+0.4%	+1.1%	-0.2%	+0.8%	+1.0%	+1.4%	-1.4%	-0.9%	+0.8%	+6.1%	+0.2%	+0.5%	+1.1%	-1.1%	-0.1%	-0.2%	-0.0%	-0.1%	

Year-on-year Summary

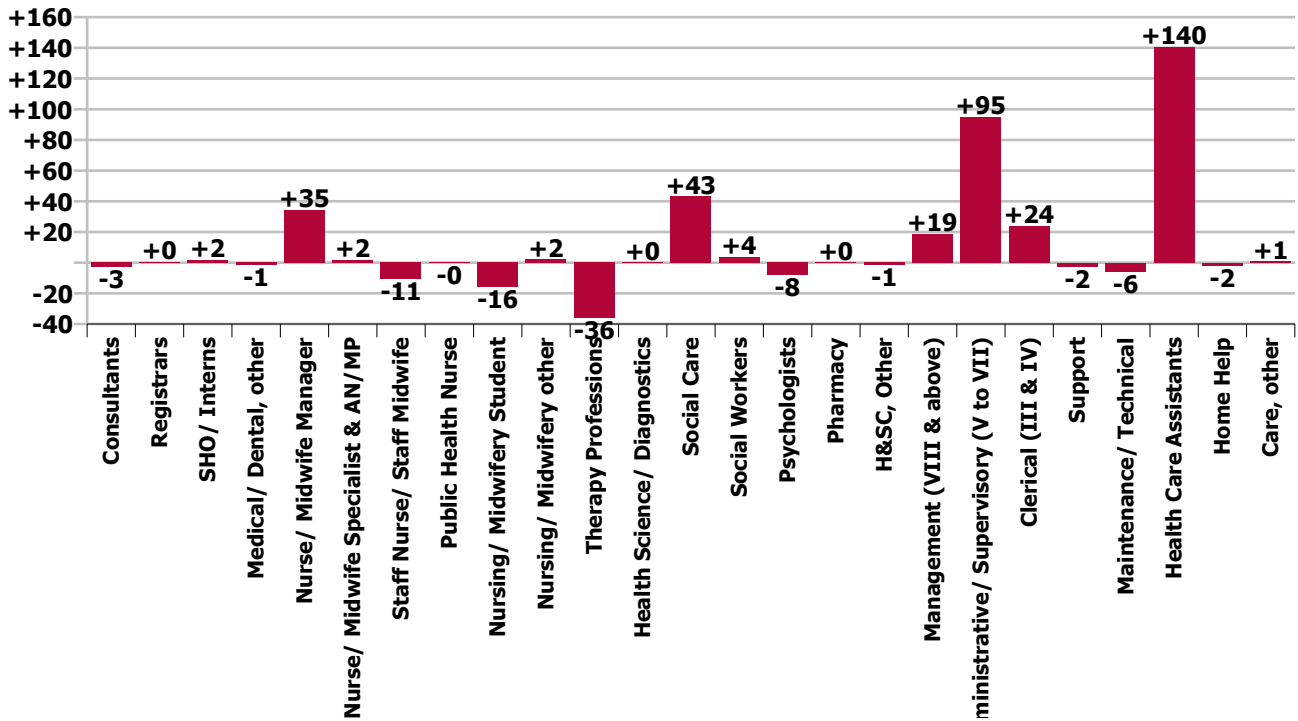
WTE change since Dec 21	% change since Dec 21	overall	Consultants	Registrars	SHO/ Interns	Medical/ Dental, other	Medical & Dental	Nurse/ Midwife Manager	Nurse/ Midwife Specialist & AN/MP	Staff Nurse/ Staff Midwife	Public Health Nurse	Nursing/ Midwifery Student	Nursing/ Midwifery other	Nursing & Midwifery	Therapy Professions	Health Science/ Diagnostics	Social Care	Social Workers	Psychologists	Pharmacy	H&SC, Other	Health & Social Care Professionals	Management (VIII & above)	Administrative/ Supervisory (V to VII)	Clerical (III & IV)	Management & Administrative	General Support	Health Care Assistants	Home Help	Care, other	Patient & Client Care
Overall	+1.4%	+281	-3	+0	+2	-1	-2	+35	+2	-11	-0	-16	+2	+12	-36	+0	+43	+4	-8	+0	-1	+2	+19	+95	+24	+138	-8	+140	-2	+1	+139
CHO 1	+5.0%	+81		-1	+1		-1	-2	-0	-17	-1	+1	+2	-16	+12		+7	-2	-3		+0	+14	-1	+10	+10	+19	-4	+69	+1	-1	+69
CHO 2	+1.5%	+24	+0	-1	+1		+0	+2	+1	-6				-3	+9		+1	-3	+5		+1	+14	+1	+14	+4	+19	+2	-9		+1	-7
CHO 3	+0.7%	+14	-1			-0	-1	+2	+3	+1			-1	+5	-35	+1	-4	+3	-1		+0	-36	+4	+16	-5	+15	-1	+25		+6	+31
CHO 4	+0.7%	+18	+0			+0	+0	+1	-0	-1		-4		-5	-13		+8	-2	+2		-2	-6	+1	+13	+0	+14	-3	+13		+5	+18
CHO 5	+0.3%	+4	-0				-0	+3	+1	+0	+1	+0	+0	+6	-10		+4	-3	-5		+0	-13	+4	+3	+6	+13	-0	-6	-2	+7	-1
CHO 6	-0.8%	-10		+1	-1		-0	-2		-3			+1	-4	-9		-16	+1	+0		+0	-24	+10	+10	+3	+24	+6	-2		-9	-11
CHO 7	+3.4%	+111		+2	+1	-1	+2	+20	+1	-0		+1	+1	+22	-2	+0	+43	+5	+0	+0		+47	-1	+12	+12	+23	+4	+22	-2	-7	+12
CHO 8	+2.3%	+53						+4	-2	+13	+0	-1	-2	+13	+4		+13	-1	+1		+1	+17	+2	-2	+1	+0	-5	+27	+1	-0	+27
CHO 9	-0.4%	-14	-2	-1	+1	+0	-2	+5	-1	+3		-13	+1	-5	+9	-1	-13	+5	-8		-3	-12	-2	+19	-7	+10	-6	+2		-1	+1
other Community Services	-0.3%	-0																				+1	-1	+0	-0						
	+1.4%		-13.6%	+5.1%	+27.7%	-9.7%	-3.6%	+3.7%	+2.9%	-0.4%	-1.3%	-59.4%	+7.9%	+0.3%	-4.3%	+1.6%	+1.4%	+1.6%	-3.3%	+2.1%	-1.9%	+0.0%	+8.6%	+16.7%	+3.3%	+9.1%	-1.1%	+1.9%	-2.4%	+0.0%	+1.5%



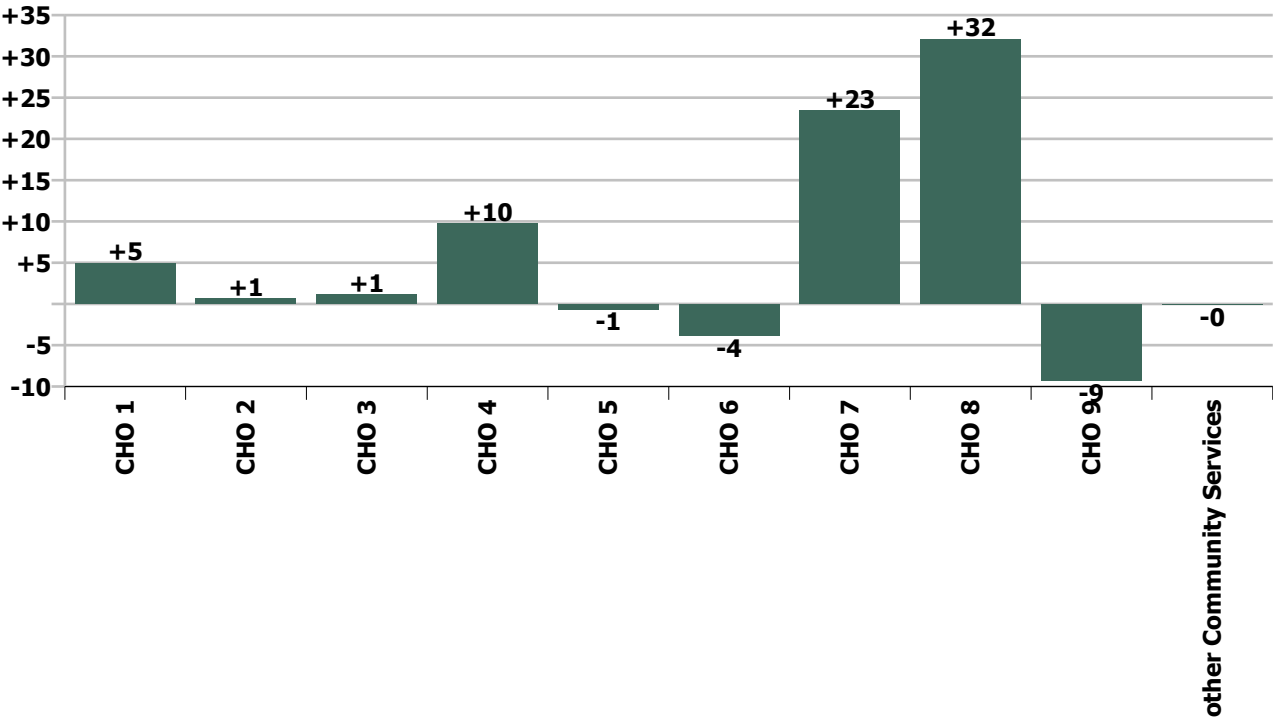
Staff Group change since: Nov 2022



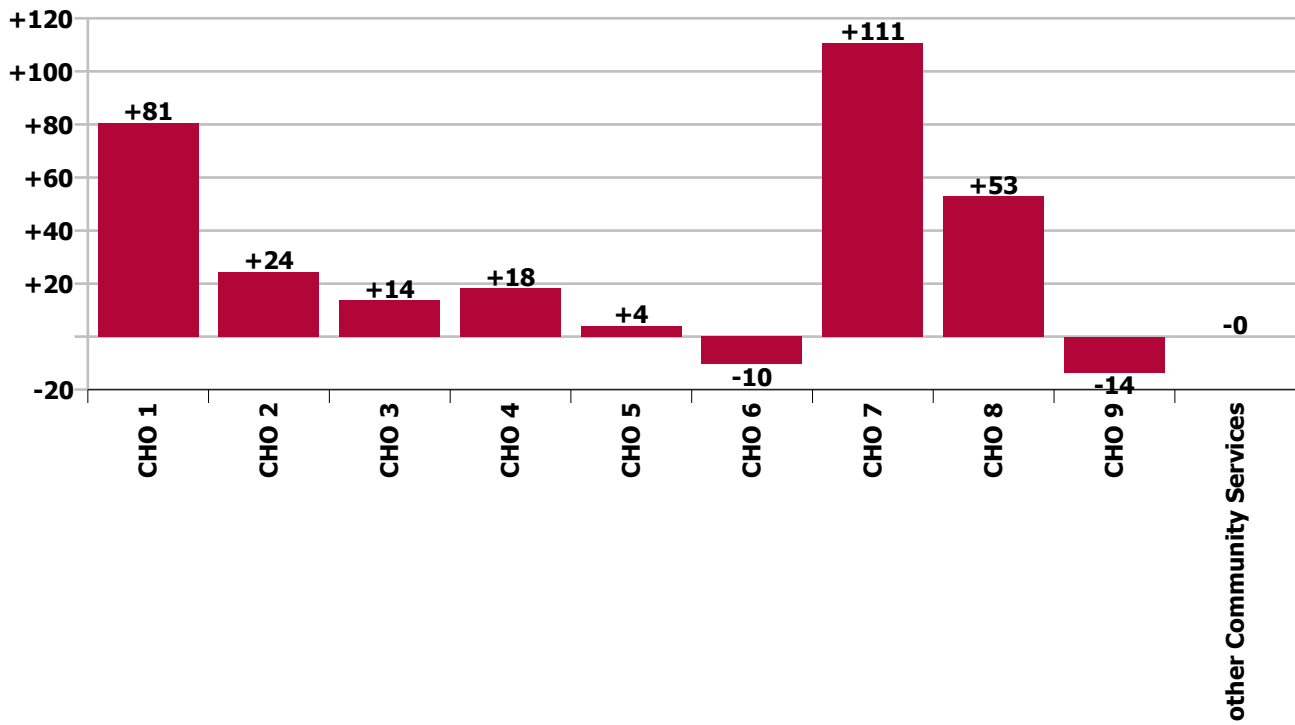
Staff Group change since: Dec 2021



CHO change since: Nov 2022



**CHO change since: Dec 2021**





## Longitudinal Employment Levels by Grade Group - Dec 2016 to Dec 2022

Dec 2022 (Dec 2015 figure: 15,715)	WTE Dec 2022	WTE change since Dec 16	WTE change since Dec 17	WTE change since Dec 18	WTE change since Dec 19	WTE change since Dec 20	WTE change since Nov 22	% change since Dec 16	% change since Dec 17	% change since Dec 18	% change since Dec 19	% change since Dec 20	% change since Nov 22
<b>Overall</b>	<b>19,903</b>	<b>+3,149</b>	<b>+2,506</b>	<b>+2,084</b>	<b>+1,601</b>	<b>+959</b>	<b>+58</b>	<b>+18.8%</b>	<b>+14.4%</b>	<b>+11.7%</b>	<b>+8.7%</b>	<b>+5.1%</b>	<b>+0.3%</b>
Consultant Medicine		-2						-100.0%	-100.0%	-100.0%	-100.0%	-100.0%	-100.0%
Consultant Paediatrics	3	-1	-1	-1	-1	-1		-21.2%	-19.4%	-17.0%	-17.0%	-17.0%	
Consultant Psychiatry	16	-5	-7	-2	-5	-5	-1	-24.8%	-30.5%	-11.3%	-23.8%	-25.6%	-8.3%
Consultant Surgery		-0						-100.0%	-100.0%	-100.0%	-100.0%	-100.0%	-100.0%
<b>Consultants</b>	<b>18</b>	<b>-8</b>	<b>-8</b>	<b>-3</b>	<b>-5</b>	<b>-6</b>	<b>-1</b>	<b>-29.3%</b>	<b>-29.2%</b>	<b>-12.2%</b>	<b>-22.9%</b>	<b>-24.5%</b>	<b>-7.2%</b>
Registrar	7	+1	+1	+2	-0	+4	-0	+16.3%	+16.3%	+31.2%	-0.3%	+132.7%	-0.4%
Senior Registrar	2		-1			-1			-33.3%			-33.3%	
Specialist Registrar	1	-1	-3		-3	-1		-50.0%	-75.0%		-75.0%	-50.0%	
<b>Registrars</b>	<b>10</b>	<b>-0</b>	<b>-3</b>	<b>+2</b>	<b>-3</b>	<b>+2</b>	<b>-0</b>	<b>-0.2%</b>	<b>-23.2%</b>	<b>+20.0%</b>	<b>-23.2%</b>	<b>+24.8%</b>	<b>-0.3%</b>
Senior House Officer	9	+3	+2	+2	+2	-0	+2	+49.0%	+27.7%	+28.6%	+28.4%	-0.7%	+21.0%
<b>SHO/ Interns</b>	<b>9</b>	<b>+3</b>	<b>+2</b>	<b>+2</b>	<b>+2</b>	<b>-0</b>	<b>+2</b>	<b>+49.0%</b>	<b>+27.7%</b>	<b>+28.6%</b>	<b>+28.4%</b>	<b>-0.7%</b>	<b>+21.0%</b>
Dentists								-100.0%	-100.0%	-100.0%	-100.0%	-100.0%	-100.0%
Other Medical	13	-2	-1	-1	-1	-1		-13.2%	-9.5%	-8.8%	-10.3%	-9.7%	
<b>Medical/ Dental, other</b>	<b>13</b>	<b>-2</b>	<b>-1</b>	<b>-1</b>	<b>-1</b>	<b>-1</b>		<b>-13.2%</b>	<b>-9.5%</b>	<b>-8.8%</b>	<b>-10.3%</b>	<b>-9.7%</b>	
<b>Medical &amp; Dental</b>	<b>50</b>	<b>-7</b>	<b>-10</b>	<b>-0</b>	<b>-8</b>	<b>-5</b>	<b>+0</b>	<b>-11.7%</b>	<b>-16.6%</b>	<b>-0.3%</b>	<b>-13.7%</b>	<b>-9.8%</b>	<b>+0.2%</b>
Clinical Nurse/ Midwife Manager	869	+57	+60	+60	+58	+54	+3	+7.1%	+7.5%	+7.5%	+7.2%	+6.7%	+0.4%
Director Nursing/Midwifery, Assistant	43	+1	+6	+5	+3	-2	-0	+2.6%	+17.1%	+14.2%	+6.4%	-4.9%	-0.0%
Director of Nursing/Midwifery	47	+3	+1	+9	+5	+10	-0	+7.2%	+2.9%	+23.3%	+11.0%	+26.8%	-0.7%
<b>Nurse/ Midwife Manager</b>	<b>959</b>	<b>+62</b>	<b>+68</b>	<b>+75</b>	<b>+65</b>	<b>+62</b>	<b>+3</b>	<b>+6.9%</b>	<b>+7.6%</b>	<b>+8.4%</b>	<b>+7.3%</b>	<b>+6.9%</b>	<b>+0.3%</b>
Advanced Nurse/ Midwife Practitioner	12	+11	+10	+10	+10	+4	+0	+1098.0%	+499.0%	+499.0%	+499.0%	+49.8%	+1.1%
Clinical Nurse/ Midwife Specialist	58	-13	-10	-9	-2	+2	-0	-18.7%	-15.1%	-12.9%	-3.7%	+3.0%	-0.5%
<b>Nurse/ Midwife Specialist &amp; AN/MP</b>	<b>70</b>	<b>-2</b>	<b>-0</b>	<b>+1</b>	<b>+8</b>	<b>+6</b>	<b>-0</b>	<b>-3.1%</b>	<b>-0.4%</b>	<b>+2.1%</b>	<b>+12.5%</b>	<b>+8.9%</b>	<b>-0.3%</b>
Graduate Nursing/ Midwifery								-100.0%	-100.0%	-100.0%	-100.0%	-100.0%	-100.0%
Staff Nurse [Psychiatric]	60	-25	-11	-11	-24	+7	-28	-29.7%	-15.4%	-15.9%	-28.6%	+13.3%	-31.6%
Staff Nurses [General/ Children's]	792	-142	-133	-77	-100	+39	+1	-15.2%	-14.4%	-8.8%	-11.2%	+5.2%	+0.1%

Dec 2022 (Dec 2015 figure: 15,715)	WTE Dec 2022	WTE change since Dec 16	WTE change since Dec 17	WTE change since Dec 18	WTE change since Dec 19	WTE change since Dec 20	WTE change since Nov 22	% change since Dec 16	% change since Dec 17	% change since Dec 18	% change since Dec 19	% change since Dec 20	% change since Nov 22
<b>Overall</b>	<b>19,903</b>	<b>+3,149</b>	<b>+2,506</b>	<b>+2,084</b>	<b>+1,601</b>	<b>+959</b>	<b>+58</b>	<b>+18.8%</b>	<b>+14.4%</b>	<b>+11.7%</b>	<b>+8.7%</b>	<b>+5.1%</b>	<b>+0.3%</b>
Staff Nurse [Intellectual Disability]	1,767	+42	+64	+83	+170	-21	+51	+2.4%	+3.8%	+4.9%	+10.6%	-1.2%	+3.0%
<b>Staff Nurse/ Staff Midwife</b>	<b>2,618</b>	<b>-125</b>	<b>-79</b>	<b>-5</b>	<b>+46</b>	<b>+25</b>	<b>+24</b>	<b>-4.6%</b>	<b>-2.9%</b>	<b>-0.2%</b>	<b>+1.8%</b>	<b>+1.0%</b>	<b>+0.9%</b>
<b>Public Health Nurse</b>	<b>12</b>	<b>+5</b>	<b>+6</b>	<b>+5</b>	<b>+5</b>	<b>+5</b>	<b>+0</b>	<b>+80.6%</b>	<b>+92.5%</b>	<b>+75.3%</b>	<b>+87.3%</b>	<b>+70.7%</b>	<b>+2.8%</b>
Pre-registration Nurse Intern (COVID-19)						-32		-100.0%	-100.0%	-100.0%	-100.0%	-100.0%	-100.0%
Pre-registration Nurse/ Midwife Intern	7	-5	-5	-28	-21	+5	-10	-41.1%	-40.0%	-79.7%	-75.0%	+182.8%	-59.7%
Nursing/ Midwifery awaiting registration	4	+4	+4	+4	-10	-9	-0	-100.0%	-100.0%	-100.0%	-72.8%	-71.0%	-10.2%
<b>Nursing/ Midwifery Student</b>	<b>11</b>	<b>-1</b>	<b>-1</b>	<b>-24</b>	<b>-31</b>	<b>-36</b>	<b>-11</b>	<b>-9.7%</b>	<b>-8.1%</b>	<b>-68.9%</b>	<b>-74.2%</b>	<b>-77.1%</b>	<b>-50.1%</b>
Nursing Education/Clinical	27	+5	+5	+5	+5	+4	-0	+24.8%	+25.7%	+25.3%	+25.2%	+16.3%	-1.2%
Other Nursing/ Midwifery	1	-4	-4					-80.0%	-80.0%				
<b>Nursing/ Midwifery other</b>	<b>28</b>	<b>+1</b>	<b>+1</b>	<b>+5</b>	<b>+5</b>	<b>+4</b>	<b>-0</b>	<b>+4.8%</b>	<b>+5.5%</b>	<b>+24.2%</b>	<b>+24.1%</b>	<b>+15.6%</b>	<b>-1.1%</b>
<b>Nursing &amp; Midwifery</b>	<b>3,697</b>	<b>-60</b>	<b>-6</b>	<b>+57</b>	<b>+98</b>	<b>+65</b>	<b>+16</b>	<b>-1.6%</b>	<b>-0.2%</b>	<b>+1.6%</b>	<b>+2.7%</b>	<b>+1.8%</b>	<b>+0.4%</b>
Dietitians	20	+7	+8	+7	+2	+4	-2	+54.9%	+71.0%	+48.7%	+10.5%	+24.3%	-9.5%
Occupational Therapists	304	+53	+55	+63	+40	+25	+11	+21.0%	+22.2%	+26.1%	+15.0%	+9.1%	+3.8%
Physiotherapists	193	+8	+9	+12	+4	+0	-1	+4.5%	+4.6%	+6.8%	+2.1%	+0.1%	-0.3%
Podiatrists & Chiropodists		-0	-0					-100.0%	-100.0%	-100.0%	-100.0%	-100.0%	-100.0%
Speech & Language Therapists	273	+2	-10	-6	-20	-35	+0	+0.7%	-3.5%	-2.3%	-6.8%	-11.3%	+0.1%
<b>Therapy Professions</b>	<b>790</b>	<b>+70</b>	<b>+62</b>	<b>+76</b>	<b>+26</b>	<b>-5</b>	<b>+9</b>	<b>+9.7%</b>	<b>+8.5%</b>	<b>+10.6%</b>	<b>+3.4%</b>	<b>-0.6%</b>	<b>+1.1%</b>
Audiology		-13	-18					-100.0%	-100.0%	-100.0%	-100.0%	-100.0%	-100.0%
Clinical Engineering	14	-4	-4	+2	+1	+1	-0	-23.7%	-22.4%	+16.3%	+7.4%	+7.8%	-0.3%
Medical Science	4	+1	+1					+33.3%	+33.3%				
Phlebotomists				-1	-1			-100.0%	-100.0%	-100.0%	-100.0%	-100.0%	-100.0%
Radiographers	1	+0	+0	+0	+0	+0		+33.0%	+33.0%	+33.0%	+33.0%	+33.0%	
Respiratory Physiologists	2	+1	+1	+1	+1			+100.0%	+100.0%	+100.0%	+100.0%		
<b>Health Science/ Diagnostics</b>	<b>21</b>	<b>-15</b>	<b>-20</b>	<b>+2</b>	<b>+1</b>	<b>+1</b>	<b>-0</b>	<b>-40.8%</b>	<b>-47.9%</b>	<b>+12.1%</b>	<b>+6.5%</b>	<b>+6.7%</b>	<b>-0.2%</b>
<b>Social Care</b>	<b>3,055</b>	<b>+863</b>	<b>+709</b>	<b>+566</b>	<b>+460</b>	<b>+266</b>	<b>+24</b>	<b>+39.4%</b>	<b>+30.2%</b>	<b>+22.7%</b>	<b>+17.7%</b>	<b>+9.5%</b>	<b>+0.8%</b>
<b>Social Workers</b>	<b>239</b>	<b>+23</b>	<b>+18</b>	<b>+20</b>	<b>+20</b>	<b>+11</b>	<b>+2</b>	<b>+10.9%</b>	<b>+8.3%</b>	<b>+9.0%</b>	<b>+9.2%</b>	<b>+4.7%</b>	<b>+1.0%</b>
<b>Psychologists</b>	<b>239</b>	<b>+29</b>	<b>+15</b>	<b>+32</b>	<b>+35</b>	<b>+10</b>	<b>+3</b>	<b>+13.9%</b>	<b>+6.8%</b>	<b>+15.7%</b>	<b>+17.1%</b>	<b>+4.3%</b>	<b>+1.4%</b>

Dec 2022 (Dec 2015 figure: 15,715)	WTE Dec 2022	WTE change since Dec 16	WTE change since Dec 17	WTE change since Dec 18	WTE change since Dec 19	WTE change since Dec 20	WTE change since Nov 22	% change since Dec 16	% change since Dec 17	% change since Dec 18	% change since Dec 19	% change since Dec 20	% change since Nov 22
<b>Overall</b>	<b>19,903</b>	<b>+3,149</b>	<b>+2,506</b>	<b>+2,084</b>	<b>+1,601</b>	<b>+959</b>	<b>+58</b>	<b>+18.8%</b>	<b>+14.4%</b>	<b>+11.7%</b>	<b>+8.7%</b>	<b>+5.1%</b>	<b>+0.3%</b>
Pharmacists	7	+1	+1	+1	+1	+2	+0	+28.9%	+28.9%	+10.2%	+25.2%	+31.5%	+0.5%
Pharmacy Technicians	2	+1	+1	+1	+0	+1	-0	+58.0%	+64.6%	+58.0%	+5.3%	+58.0%	-8.7%
<b>Pharmacy</b>	<b>8</b>	<b>+2</b>	<b>+2</b>	<b>+1</b>	<b>+1</b>	<b>+2</b>	<b>-0</b>	<b>+33.7%</b>	<b>+34.5%</b>	<b>+17.0%</b>	<b>+20.8%</b>	<b>+35.9%</b>	<b>-1.4%</b>
Counsellor Therapists	23	+6	+3	+5	+4	+3	-1	+34.5%	+16.6%	+27.5%	+19.8%	+14.6%	-3.0%
HSCP Trainees/ Students		-2	-1					-100.0%	-100.0%	-100.0%	-100.0%	-100.0%	-100.0%
Other Health & Social Care	30	-28	-29	-22	-20	-15	+0	-48.2%	-48.6%	-41.8%	-40.3%	-33.0%	+0.0%
Play Therapists/ Specialists	15	+2	+2	+1	-0	+5	+0	+12.9%	+17.0%	+5.8%	-0.3%	+41.8%	+0.3%
<b>H&amp;SC, Other</b>	<b>68</b>	<b>-23</b>	<b>-24</b>	<b>-16</b>	<b>-17</b>	<b>-7</b>	<b>-1</b>	<b>-25.1%</b>	<b>-25.7%</b>	<b>-19.0%</b>	<b>-19.6%</b>	<b>-9.9%</b>	<b>-0.9%</b>
<b>Health &amp; Social Care Professionals</b>	<b>4,421</b>	<b>+951</b>	<b>+764</b>	<b>+681</b>	<b>+526</b>	<b>+277</b>	<b>+37</b>	<b>+27.4%</b>	<b>+20.9%</b>	<b>+18.2%</b>	<b>+13.5%</b>	<b>+6.7%</b>	<b>+0.8%</b>
Executive Management	50	+21	+12	+18	+19	+14	+9	+71.1%	+30.6%	+56.1%	+61.3%	+37.9%	+21.2%
Senior Management (VIII & GM)	186	+49	+46	+42	+38	+19	+5	+35.7%	+32.5%	+29.1%	+25.3%	+11.0%	+2.6%
<b>Management (VIII &amp; above)</b>	<b>236</b>	<b>+70</b>	<b>+57</b>	<b>+60</b>	<b>+56</b>	<b>+32</b>	<b>+13</b>	<b>+41.8%</b>	<b>+32.1%</b>	<b>+34.0%</b>	<b>+31.4%</b>	<b>+15.8%</b>	<b>+6.1%</b>
Middle Management (V-VII)	653	+274	+261	+225	+189	+142	+1	+72.2%	+66.4%	+52.6%	+40.7%	+27.8%	+0.2%
Other Administrative	12	-2	-4	-4	-3	-4		-13.2%	-24.8%	-24.1%	-19.8%	-24.1%	
<b>Administrative/ Supervisory (V to VII)</b>	<b>665</b>	<b>+272</b>	<b>+257</b>	<b>+221</b>	<b>+186</b>	<b>+138</b>	<b>+1</b>	<b>+69.2%</b>	<b>+62.8%</b>	<b>+49.9%</b>	<b>+38.8%</b>	<b>+26.2%</b>	<b>+0.2%</b>
<b>Clerical (III &amp; IV)</b>	<b>744</b>	<b>+137</b>	<b>+112</b>	<b>+90</b>	<b>+83</b>	<b>+58</b>	<b>+4</b>	<b>+22.5%</b>	<b>+17.7%</b>	<b>+13.8%</b>	<b>+12.6%</b>	<b>+8.5%</b>	<b>+0.5%</b>
<b>Management &amp; Administrative</b>	<b>1,645</b>	<b>+478</b>	<b>+426</b>	<b>+371</b>	<b>+326</b>	<b>+229</b>	<b>+19</b>	<b>+41.0%</b>	<b>+34.9%</b>	<b>+29.2%</b>	<b>+24.7%</b>	<b>+16.2%</b>	<b>+1.1%</b>
Catering	75	-38	-31	-29	-23	-21	-7	-33.9%	-29.1%	-28.2%	-23.6%	-22.1%	-8.5%
Household Services	385	-122	-81	-67	-34	-21	+2	-24.1%	-17.4%	-14.7%	-8.2%	-5.1%	+0.5%
Other Labs & Associated	1	-0		-0				-6.5%		-3.8%			
Other Support	145	-48	-44	-46	-43	+10	-3	-24.9%	-23.2%	-23.8%	-22.6%	+7.2%	-2.1%
Portering	18	-9	-9	-8	-10	-7	+0	-34.4%	-33.9%	-31.9%	-36.6%	-28.1%	+1.4%
<b>Support</b>	<b>624</b>	<b>-218</b>	<b>-165</b>	<b>-150</b>	<b>-110</b>	<b>-39</b>	<b>-8</b>	<b>-25.9%</b>	<b>-20.9%</b>	<b>-19.3%</b>	<b>-15.0%</b>	<b>-5.8%</b>	<b>-1.3%</b>
Maintenance	109	-16	-22	-11	-7	-12	-0	-12.7%	-16.9%	-9.2%	-6.2%	-10.3%	-0.1%
Technical Services	17	+12	+12	+11	+9	+6		+231.4%	+231.4%	+177.0%	+108.6%	+52.3%	
<b>Maintenance/ Technical</b>	<b>126</b>	<b>-4</b>	<b>-10</b>	<b>-0</b>	<b>+2</b>	<b>-7</b>	<b>-0</b>	<b>-3.1%</b>	<b>-7.6%</b>	<b>-0.2%</b>	<b>+1.3%</b>	<b>-5.0%</b>	<b>-0.1%</b>
<b>General Support</b>	<b>750</b>	<b>-222</b>	<b>-175</b>	<b>-150</b>	<b>-109</b>	<b>-45</b>	<b>-8</b>	<b>-22.8%</b>	<b>-19.0%</b>	<b>-16.7%</b>	<b>-12.7%</b>	<b>-5.7%</b>	<b>-1.1%</b>

Dec 2022 (Dec 2015 figure: 15,715)	WTE Dec 2022	WTE change since Dec 16	WTE change since Dec 17	WTE change since Dec 18	WTE change since Dec 19	WTE change since Dec 20	WTE change since Nov 22	% change since Dec 16	% change since Dec 17	% change since Dec 18	% change since Dec 19	% change since Dec 20	% change since Nov 22
<b>Overall</b>	<b>19,903</b>	<b>+3,149</b>	<b>+2,506</b>	<b>+2,084</b>	<b>+1,601</b>	<b>+959</b>	<b>+58</b>	<b>+18.8%</b>	<b>+14.4%</b>	<b>+11.7%</b>	<b>+8.7%</b>	<b>+5.1%</b>	<b>+0.3%</b>
Attendant/ Aide	179	-194	-118	-44	-52	-68	-2	-52.1%	-39.8%	-19.9%	-22.5%	-27.7%	-1.2%
Health & Social Care Assistants	22	+11	+13	+11	+12	+11	+0	+102.1%	+138.3%	+98.9%	+126.6%	+96.2%	+1.8%
Health Care Assistant/ Care Assistant	7,294	+1,914	+1,416	+987	+708	+450	-3	+35.6%	+24.1%	+15.6%	+10.8%	+6.6%	-0.0%
<b>Health Care Assistants</b>	<b>7,495</b>	<b>+1,731</b>	<b>+1,310</b>	<b>+953</b>	<b>+669</b>	<b>+392</b>	<b>-5</b>	<b>+30.0%</b>	<b>+21.2%</b>	<b>+14.6%</b>	<b>+9.8%</b>	<b>+5.5%</b>	<b>-0.1%</b>
<b>Home Help</b>	<b>80</b>	<b>-15</b>	<b>-44</b>	<b>-33</b>	<b>-29</b>	<b>-14</b>	<b>-0</b>	<b>-16.1%</b>	<b>-35.3%</b>	<b>-29.0%</b>	<b>-26.4%</b>	<b>-14.6%</b>	<b>-0.2%</b>
Home Care Services	17	-4	-6	-6	-11	-1	-1	-18.2%	-24.7%	-24.8%	-39.0%	-6.4%	-4.7%
Other Care Grades	259	+61	+74	+74	+84	+37	-4	+30.8%	+40.0%	+39.9%	+48.0%	+16.8%	-1.4%
Pastoral Care	5	-8	-8	-5	-6	-5	-0	-61.3%	-63.1%	-52.5%	-53.3%	-52.5%	-0.2%
Workshop Services	1,485	+244	+182	+141	+59	+30	+4	+19.7%	+14.0%	+10.5%	+4.2%	+2.1%	+0.3%
<b>Care, other</b>	<b>1,766</b>	<b>+294</b>	<b>+242</b>	<b>+203</b>	<b>+127</b>	<b>+60</b>	<b>-0</b>	<b>+20.0%</b>	<b>+15.9%</b>	<b>+13.0%</b>	<b>+7.7%</b>	<b>+3.5%</b>	<b>-0.0%</b>
<b>Patient &amp; Client Care</b>	<b>9,341</b>	<b>+2,009</b>	<b>+1,508</b>	<b>+1,124</b>	<b>+767</b>	<b>+439</b>	<b>-6</b>	<b>+27.4%</b>	<b>+19.3%</b>	<b>+13.7%</b>	<b>+8.9%</b>	<b>+4.9%</b>	<b>-0.1%</b>

Source: Health Service Personnel Census

Longitudinal Employment Levels by Grade Group - Dec 2016 to Dec 2022

Dec 2022 (Dec 2015 figure: 15,715)	WTE Dec 2022	WTE change since Dec 16	WTE change since Dec 17	WTE change since Dec 18	WTE change since Dec 19	WTE change since Dec 20	WTE change since Nov 22	% change since Dec 16	% change since Dec 17	% change since Dec 18	% change since Dec 19	% change since Dec 20	% change since Nov 22
Overall	19,903	+3,149	+2,506	+2,084	+1,601	+959	+58	+18.8%	+14.4%	+11.7%	+8.7%	+5.1%	+0.3%
Consultant Medicine		-2						-100.0%	-100.0%	-100.0%	-100.0%	-100.0%	-100.0%
Consultant Paediatrics	3	-1	-1	-1	-1	-1		-21.2%	-19.4%	-17.0%	-17.0%	-17.0%	
Consultant Psychiatry	16	-5	-7	-2	-5	-5	-1	-24.8%	-30.5%	-11.3%	-23.8%	-25.6%	-8.3%
Consultant Surgery		-0						-100.0%	-100.0%	-100.0%	-100.0%	-100.0%	-100.0%
Consultants	18	-8	-8	-3	-5	-6	-1	-29.3%	-29.2%	-12.2%	-22.9%	-24.5%	-7.2%
Registrar	7	+1	+1	+2	-0	+4	-0	+16.3%	+16.3%	+31.2%	-0.3%	+132.7%	-0.4%
Senior Registrar	2		-1			-1			-33.3%			-33.3%	
Specialist Registrar	1	-1	-3		-3	-1		-50.0%	-75.0%		-75.0%	-50.0%	
Registrars	10	-0	-3	+2	-3	+2	-0	-0.2%	-23.2%	+20.0%	-23.2%	+24.8%	-0.3%
SHO/ Interns	9	+3	+2	+2	+2	-0	+2	+49.0%	+27.7%	+28.6%	+28.4%	-0.7%	+21.0%
Dentists								-100.0%	-100.0%	-100.0%	-100.0%	-100.0%	-100.0%
Other Medical	13	-2	-1	-1	-1	-1		-13.2%	-9.5%	-8.8%	-10.3%	-9.7%	
Medical/ Dental, other	13	-2	-1	-1	-1	-1		-13.2%	-9.5%	-8.8%	-10.3%	-9.7%	
Medical & Dental	50	-7	-10	-0	-8	-5	+0	-11.7%	-16.6%	-0.3%	-13.7%	-9.8%	+0.2%
Clinical Nurse/ Midwife Manager	869	+57	+60	+60	+58	+54	+3	+7.1%	+7.5%	+7.5%	+7.2%	+6.7%	+0.4%
Director Nursing/Midwifery, Assistant	43	+1	+6	+5	+3	-2	-0	+2.6%	+17.1%	+14.2%	+6.4%	-4.9%	-0.0%
Director of Nursing/Midwifery	47	+3	+1	+9	+5	+10	-0	+7.2%	+2.9%	+23.3%	+11.0%	+26.8%	-0.7%
Nurse/ Midwife Manager	959	+62	+68	+75	+65	+62	+3	+6.9%	+7.6%	+8.4%	+7.3%	+6.9%	+0.3%
Advanced Nurse/ Midwife Practitioner	12	+11	+10	+10	+10	+4	+0	+1098.0%	+499.0%	+499.0%	+499.0%	+49.8%	+1.1%
Clinical Nurse/ Midwife Specialist	58	-13	-10	-9	-2	+2	-0	-18.7%	-15.1%	-12.9%	-3.7%	+3.0%	-0.5%
Nurse/ Midwife Specialist & AN/MP	70	-2	-0	+1	+8	+6	-0	-3.1%	-0.4%	+2.1%	+12.5%	+8.9%	-0.3%
Graduate Nursing/ Midwifery								-100.0%	-100.0%	-100.0%	-100.0%	-100.0%	-100.0%
Staff Nurse [Psychiatric]	60	-25	-11	-11	-24	+7	-28	-29.7%	-15.4%	-15.9%	-28.6%	+13.3%	-31.6%
Staff Nurses [General/ Children's]	792	-142	-133	-77	-100	+39	+1	-15.2%	-14.4%	-8.8%	-11.2%	+5.2%	+0.1%
Staff Nurse [Intellectual Disability]	1,767	+42	+64	+83	+170	-21	+51	+2.4%	+3.8%	+4.9%	+10.6%	-1.2%	+3.0%
Staff Nurse/ Staff Midwife	2,618	-125	-79	-5	+46	+25	+24	-4.6%	-2.9%	-0.2%	+1.8%	+1.0%	+0.9%
Public Health Nurse	12	+5	+6	+5	+5	+5	+0	+80.6%	+92.5%	+75.3%	+87.3%	+70.7%	+2.8%
Pre-registration Nurse Intern (COVID-19)						-32		-100.0%	-100.0%	-100.0%	-100.0%	-100.0%	-100.0%
Pre-registration Nurse/ Midwife Intern	7	-5	-5	-28	-21	+5	-10	-41.1%	-40.0%	-79.7%	-75.0%	+182.8%	-59.7%
Nursing/ Midwifery awaiting registration	4	+4	+4	+4	-10	-9	-0	-100.0%	-100.0%	-100.0%	-72.8%	-71.0%	-10.2%
Nursing/ Midwifery Student	11	-1	-1	-24	-31	-36	-11	-9.7%	-8.1%	-68.9%	-74.2%	-77.1%	-50.1%
Nursing Education/Clinical	27	+5	+5	+5	+5	+4	-0	+24.8%	+25.7%	+25.3%	+25.2%	+16.3%	-1.2%
Other Nursing/ Midwifery	1	-4	-4					-80.0%	-80.0%				
Nursing/ Midwifery other	28	+1	+1	+5	+5	+4	-0	+4.8%	+5.5%	+24.2%	+24.1%	+15.6%	-1.1%
Nursing & Midwifery	3,697	-60	-6	+57	+98	+65	+16	-1.6%	-0.2%	+1.6%	+2.7%	+1.8%	+0.4%
Dietitians	20	+7	+8	+7	+2	+4	-2	+54.9%	+71.0%	+48.7%	+10.5%	+24.3%	-9.5%
Occupational Therapists	304	+53	+55	+63	+40	+25	+11	+21.0%	+22.2%	+26.1%	+15.0%	+9.1%	+3.8%
Physiotherapists	193	+8	+9	+12	+4	+0	-1	+4.5%	+4.6%	+6.8%	+2.1%	+0.1%	-0.3%
Podiatrists & Chiropodists		-0	-0					-100.0%	-100.0%	-100.0%	-100.0%	-100.0%	-100.0%
Speech & Language Therapists	273	+2	-10	-6	-20	-35	+0	+0.7%	-3.5%	-2.3%	-6.8%	-11.3%	+0.1%
Therapy Professions	790	+70	+62	+76	+26	-5	+9	+9.7%	+8.5%	+10.6%	+3.4%	-0.6%	+1.1%
Audiology		-13	-18					-100.0%	-100.0%	-100.0%	-100.0%	-100.0%	-100.0%
Clinical Engineering	14	-4	-4	+2	+1	+1	-0	-23.7%	-22.4%	+16.3%	+7.4%	+7.8%	-0.3%
Medical Science	4	+1	+1					+33.3%	+33.3%				
Phlebotomists				-1	-1			-100.0%	-100.0%	-100.0%	-100.0%	-100.0%	-100.0%
Radiographers	1	+0	+0	+0	+0	+0		+33.0%	+33.0%	+33.0%	+33.0%	+33.0%	
Respiratory Physiologists	2	+1	+1	+1	+1			+100.0%	+100.0%	+100.0%	+100.0%		
Health Science/ Diagnostics	21	-15	-20	+2	+1	+1	-0	-40.8%	-47.9%	+12.1%	+6.5%	+6.7%	-0.2%
Social Care	3,055	+863	+709	+566	+460	+266	+24	+39.4%	+30.2%	+22.7%	+17.7%	+9.5%	+0.8%
Social Workers	239	+23	+18	+20	+20	+11	+2	+10.9%	+8.3%	+9.0%	+9.2%	+4.7%	+1.0%
Psychologists	239	+29	+15	+32	+35	+10	+3	+13.9%	+6.8%	+15.7%	+17.1%	+4.3%	+1.4%
Pharmacists	7	+1	+1	+1	+1	+2	+0	+28.9%	+28.9%	+10.2%	+25.2%	+31.5%	+0.5%
Pharmacy Technicians	2	+1	+1	+1	+0	+1	-0	+58.0%	+64.6%	+58.0%	+5.3%	+58.0%	-8.7%
Pharmacy	8	+2	+2	+1	+1	+2	-0	+33.7%	+34.5%	+17.0%	+20.8%	+35.9%	-1.4%
Counsellor Therapists	23	+6	+3	+5	+4	+3	-1	+34.5%	+16.6%	+27.5%	+19.8%	+14.6%	-3.0%
HSCP Trainees/ Students		-2	-1					-100.0%	-100.0%	-100.0%	-100.0%	-100.0%	-100.0%
Other Health & Social Care	30	-28	-29	-22	-20	-15	+0	-48.2%	-48.6%	-41.8%	-40.3%	-33.0%	+0.0%
Play Therapists/ Specialists	15	+2	+2	+1	-0	+5	+0	+12.9%	+17.0%	+5.8%	-0.3%	+41.8%	+0.3%
H&SC, Other	68	-23	-24	-16	-17	-7	-1	-25.1%	-25.7%	-19.0%	-19.6%	-9.9%	-0.9%
Health & Social Care Professionals	4,421	+951	+764	+681	+526	+277	+37	+27.4%	+20.9%	+18.2%	+13.5%	+6.7%	+0.8%
Executive Management	50	+21	+12	+18	+19	+14	+9	+71.1%	+30.6%	+56.1%	+61.3%	+37.9%	+21.2%
Senior Management (VIII & GM)	186	+49	+46	+42	+38	+19	+5	+35.7%	+32.5%	+29.1%	+25.3%	+11.0%	+2.6%
Management (VIII & above)	236	+70	+57	+60	+56	+32	+13	+41.8%	+32.1%	+34.0%	+31.4%	+15.8%	+6.1%
Middle Management (V-VII)	653	+274	+261	+225	+189	+142	+1	+72.2%	+66.4%	+52.6%	+40.7%	+27.8%	+0.2%
Other Administrative	12	-2	-4	-4	-3	-4		-13.2%	-24.8%	-24.1%	-19.8%	-24.1%	
Administrative/ Supervisory (V to VII)	665	+272	+257	+221	+186	+138	+1	+69.2%	+62.8%	+49.9%	+38.8%	+26.2%	+0.2%
Clerical (III & IV)	744	+137	+112	+90	+83	+58	+4	+22.5%	+17.7%	+13.8%	+12.6%	+8.5%	+0.5%
Management & Administrative	1,645	+478	+426	+371	+326	+229	+19	+41.0%	+34.9%	+29.2%	+24.7%	+16.2%	+1.1%
Support	624	-218	-165	-150	-110	-39	-8	-25.9%	-20.9%	-19.3%	-15.0%	-5.8%	-1.3%
Maintenance	109	-16	-22	-11	-7	-12	-0	-12.7%	-16.9%	-9.2%	-6.2%	-10.3%	-0.1%
Technical Services	17	+12	+12	+11	+9	+6		+231.4%	+231.4%	+177.0%	+108.6%	+52.3%	
Maintenance/ Technical	126	-4	-10	-0	+2	-7	-0	-3.1%	-7.6%	-0.2%	+1.3%	-5.0%	-0.1%
General Support	750	-222	-175	-150	-109	-45	-8	-22.8%	-19.0%	-16.7%	-12.7%	-5.7%	-1.1%
Attendant/ Aide	179	-194	-118	-44	-52	-68	-2	-52.1%	-39.8%	-19.9%	-22.5%	-27.7%	-1.2%
Health & Social Care Assistants	22	+11	+13	+11	+12	+11	+0	+102.1%	+138.3%	+98.9%	+126.6%	+96.2%	+1.8%
Health Care Assistant/ Care Assistant	7,294	+1,914	+1,416	+987	+708	+450	-3	+35.6%	+24.1%	+15.6%	+10.8%	+6.6%	-0.0%
Health Care Assistants	7,495	+1,731	+1,310	+953	+669	+392	-5	+30.0%	+21.2%	+14.6%	+9.8%	+5.5%	-0.1%
Home Help	80	-15	-44	-33	-29	-14	-0	-16.1%	-35.3%	-29.0%	-26.4%	-14.6%	-0.2%

Dec 2022 (Dec 2015 figure: 15,715)	WTE Dec 2022	WTE change since Dec 16	WTE change since Dec 17	WTE change since Dec 18	WTE change since Dec 19	WTE change since Dec 20	WTE change since Nov 22	% change since Dec 16	% change since Dec 17	% change since Dec 18	% change since Dec 19	% change since Dec 20	% change since Nov 22
Overall	19,903	+3,149	+2,506	+2,084	+1,601	+959	+58	+18.8%	+14.4%	+11.7%	+8.7%	+5.1%	+0.3%
Home Care Services	17	-4	-6	-6	-11	-1	-1	-18.2%	-24.7%	-24.8%	-39.0%	-6.4%	-4.7%
Other Care Grades	259	+61	+74	+74	+84	+37	-4	+30.8%	+40.0%	+39.9%	+48.0%	+16.8%	-1.4%
Pastoral Care	5	-8	-8	-5	-6	-5	-0	-61.3%	-63.1%	-52.5%	-53.3%	-52.5%	-0.2%
Workshop Services	1,485	+244	+182	+141	+59	+30	+4	+19.7%	+14.0%	+10.5%	+4.2%	+2.1%	+0.3%
Care, other	1,766	+294	+242	+203	+127	+60	-0	+20.0%	+15.9%	+13.0%	+7.7%	+3.5%	-0.0%
Patient & Client Care	9,341	+2,009	+1,508	+1,124	+767	+439	-6	+27.4%	+19.3%	+13.7%	+8.9%	+4.9%	-0.1%

Source: Health Service Personnel Census