

Social Care Disability Services Employment Report: January 2023

Employment by Staff Group

Jan 2023	WTE Dec 2020	WTE Dec 2021	WTE Dec 2022	WTE Jan 2023	WTE change since Dec 22	WTE change since Dec 21	% change since Dec 21	WTE change since Dec 20	% change since Dec 20	No. Jan 2023
Overall	18,944	19,623	19,903	19,891	-12	+268	+1.4%	+947	+5.0%	23,624
Consultants	24	21	18	19	+1	-2	-10.2%	-5	-21.6%	24
Registrars	8	10	10	9	-1	-1	-9.6%	+1	+7.4%	12
SHO/ Interns	9	7	9	9	+0	+2	+28.6%			14
Medical/ Dental, other	14	14	13	13	-0	-1	-9.9%	-1	-9.9%	20
Medical & Dental	56	52	50	50	-1	-2	-4.8%	-6	-10.9%	70
Nurse/ Midwife Manager	897	925	959	970	+11	+45	+4.9%	+73	+8.1%	1,043
Nurse/ Midwife Specialist & AN/MP	64	68	70	74	+5	+7	+9.7%	+10	+16.0%	81
Staff Nurse/ Staff Midwife	2,593	2,629	2,618	2,612	-6	-17	-0.6%	+19	+0.7%	3,008
Public Health Nurse	7	12	12	12	+0	-0	-0.8%	+5	+71.6%	14
<i>Pre-registration Nurse Intern (COVID-19)</i>	32						-100.0%	-32	-100.0%	
<i>Pre-registration Nurse/ Midwife Intern</i>	3	21	7	56	+49	+34	+161.1%	+53	+2134.8%	136
<i>Nursing/ Midwifery awaiting registration</i>	13	5	4	1	-3	-4	-81.0%	-12	-92.3%	1
Nursing/ Midwifery Student	47	27	11	57	+46	+30	+113.2%	+10	+20.3%	137
Nursing/ Midwifery other	24	26	28	26	-2	+0	+1.7%	+2	+9.0%	29
Nursing & Midwifery	3,632	3,685	3,697	3,751	+54	+65	+1.8%	+118	+3.3%	4,312
Therapy Professions	795	826	790	783	-7	-43	-5.2%	-12	-1.5%	914
Health Science/ Diagnostics	20	21	21	22	+1	+1	+6.0%	+2	+11.3%	24
Social Care	2,789	3,012	3,055	3,029	-25	+18	+0.6%	+240	+8.6%	3,577
Social Workers	228	235	239	237	-2	+2	+0.7%	+9	+3.8%	272
Psychologists	229	247	239	238	-1	-9	-3.5%	+9	+4.0%	268
Pharmacy	6	8	8	8	-0	-0	-3.2%	+2	+28.7%	10
H&SC, Other	76	70	68	66	-3	-4	-5.8%	-10	-13.4%	82
Health & Social Care Professionals	4,144	4,419	4,421	4,383	-37	-35	-0.8%	+240	+5.8%	5,147
Management (VIII & above)	204	217	236	233	-3	+16	+7.4%	+29	+14.5%	239
Administrative/ Supervisory (V to VII)	527	570	665	685	+20	+115	+20.1%	+158	+30.0%	720
Clerical (III & IV)	685	720	744	755	+11	+35	+4.9%	+70	+10.2%	895
Management & Administrative	1,416	1,507	1,645	1,673	+28	+166	+11.0%	+257	+18.2%	1,854
Support	663	626	624	623	-1	-3	-0.5%	-40	-6.0%	884
Maintenance/ Technical	132	132	126	131	+5	-0	-0.3%	-1	-0.9%	144
General Support	795	758	750	754	+5	-4	-0.5%	-41	-5.1%	1,028
Health Care Assistants	7,102	7,354	7,495	7,449	-46	+95	+1.3%	+347	+4.9%	8,887
Home Help	94	82	80	79	-1	-3	-3.9%	-15	-16.0%	219
Care, other	1,706	1,765	1,766	1,752	-14	-13	-0.7%	+47	+2.7%	2,107
Patient & Client Care	8,902	9,202	9,341	9,280	-61	+79	+0.9%	+378	+4.3%	11,213

Social Care Disability Services Employment by Administration (HSE / S38): January 2023

Jan 2023	WTE Dec 2020	WTE Dec 2021	WTE Dec 2022	WTE Jan 2023	WTE change since Dec 22	WTE change since Dec 21	% change since Dec 21	WTE change since Dec 20	% change since Dec 20	No. Jan 2023
Total	18,944	19,623	19,903	19,891	-12	+268	+1.4%	+947	+5.0%	23,624
HSE	4,085	4,192	4,200	4,225	+25	+33	+0.8%	+140	+3.4%	4,848
Section 38 Voluntary Agencies	14,860	15,430	15,703	15,666	-37	+236	+1.5%	+806	+5.4%	18,776

Employment by Staff Group

Jan 2023	WTE Dec 2020	WTE Dec 2021	WTE Dec 2022	WTE Jan 2023	WTE change since Dec 22	WTE change since Dec 21	% change since Dec 21	WTE change since Dec 20	% change since Dec 20	No. Jan 2023
Health Service Executive	4,085	4,192	4,200	4,225	+25	+33	+0.8%	+140	+3.4%	4,848
Consultants	9	7	6	5	-0	-1	-17.1%	-3	-36.6%	6
Registrars	1	3	2	1	-1	-2	-60.0%			1
SHO/ Interns	2	1	1	1	+0			-1	-50.0%	1
Medical/ Dental, other	6	6	6	6	-0	+0	+0.2%	+0	+0.2%	10
Medical & Dental	18	16	15	14	-1	-3	-16.0%	-4	-23.1%	18
Nurse/ Midwife Manager	261	260	267	268	+1	+9	+3.3%	+7	+2.8%	284
Nurse/ Midwife Specialist & AN/MP	15	16	18	20	+2	+4	+21.6%	+5	+34.6%	21
Staff Nurse/ Staff Midwife	772	804	782	785	+3	-19	-2.3%	+13	+1.6%	880
Public Health Nurse	7	12	12	12	+0	-0	-0.8%	+5	+71.6%	14
Pre-registration Nurse Intern (COVID-19)	9						-100.0%	-9	-100.0%	
Pre-registration Nurse/ Midwife Intern	3	5	7	12	+5	+8	+164.7%	+10	+382.8%	36
Nursing/ Midwifery awaiting registration	13	5	2	1	-1	-4	-81.0%	-12	-92.3%	1
Nursing/ Midwifery Student	24	10	9	13	+4	+3	+33.0%	-11	-45.7%	37
Nursing/ Midwifery other	7	6	8	9	+0	+3	+50.0%	+2	+29.7%	10
Nursing & Midwifery	1,086	1,107	1,096	1,107	+10	-1	-0.0%	+21	+1.9%	1,246
Therapy Professions	373	366	322	321	-0	-44	-12.1%	-51	-13.8%	389
Health Science/ Diagnostics	4	5	6	6	+0	+1	+21.2%	+2	+51.9%	6
Social Care	101	102	109	108	-1	+7	+6.7%	+8	+7.7%	121
Social Workers	67	66	62	62	-0	-4	-5.6%	-5	-7.0%	70
Psychologists	83	102	95	96	+1	-6	-5.8%	+13	+16.3%	111
H&SC, Other	25	23	19	19	+0	-4	-16.7%	-6	-24.5%	22
Health & Social Care Professionals	652	662	612	613	+0	-50	-7.5%	-39	-6.0%	719
Management (VIII & above)	58	62	69	70	+1	+8	+12.8%	+12	+21.5%	73
Administrative/ Supervisory (V to VII)	168	199	231	231	+1	+32	+16.1%	+63	+37.3%	245
Clerical (III & IV)	199	214	227	231	+4	+17	+7.9%	+32	+16.3%	262
Management & Administrative	425	476	526	532	+6	+57	+12.0%	+108	+25.3%	580
Support	88	69	67	68	+1	-2	-2.6%	-20	-23.0%	79
Maintenance/ Technical	26	25	21	21	+1	-3	-13.5%	-5	-18.0%	22
General Support	114	94	88	89	+1	-5	-5.5%	-25	-21.8%	101
Health Care Assistants	1,557	1,589	1,616	1,617	+1	+28	+1.8%	+60	+3.9%	1,777

Home Help	94	82	80	79	-1	-3	-3.9%	-15	-16.0%	219
Care, other	140	166	166	175	+9	+9	+5.3%	+35	+24.8%	188
Patient & Client Care	1,791	1,837	1,862	1,871	+9	+34	+1.9%	+80	+4.5%	2,184

Employment by Staff Group

Jan 2023	WTE Dec 2020	WTE Dec 2021	WTE Dec 2022	WTE Jan 2023	WTE change since Dec 22	WTE change since Dec 21	% change since Dec 21	WTE change since Dec 20	% change since Dec 20	No. Jan 2023
Section 38 Voluntary Agencies	14,860	15,430	15,703	15,666	-37	+236	+1.5%	+806	+5.4%	18,776
Consultants	16	15	13	14	+1	-1	-7.2%	-2	-13.6%	18
Registrars	7	7	8	8	-0	+1	+8.4%	+1	+8.4%	11
SHO/ Interns	7	6	8	8	+0	+2	+33.3%	+1	+14.3%	13
Medical/ Dental, other	8	8	7	7		-1	-17.7%	-1	-17.7%	10
Medical & Dental	38	36	35	36	+0	+0	+0.3%	-2	-5.3%	52
Nurse/ Midwife Manager	636	665	692	701	+10	+36	+5.5%	+65	+10.3%	759
Nurse/ Midwife Specialist & AN/MP	49	51	52	54	+3	+3	+5.9%	+5	+10.5%	60
Staff Nurse/ Staff Midwife	1,821	1,825	1,836	1,827	-9	+2	+0.1%	+6	+0.3%	2,128
Pre-registration Nurse Intern (COVID-19)	23						-100.0%	-23	-100.0%	
Pre-registration Nurse/ Midwife Intern		17		44	+44	+27	+160.1%	+44	-100.0%	100
Nursing/ Midwifery awaiting registration			2		-2		-100.0%		-100.0%	
Nursing/ Midwifery Student	23	17	2	44	+42	+27	+160.1%	+21	+88.6%	100
Nursing/ Midwifery other	17	20	19	17	-2	-2	-12.5%	+0	+0.9%	19
Nursing & Midwifery	2,546	2,578	2,601	2,644	+43	+66	+2.6%	+98	+3.8%	3,066
Therapy Professions	423	461	469	462	-7	+1	+0.3%	+39	+9.3%	525
Health Science/ Diagnostics	16	16	15	16	+1	+0	+1.2%	+0	+1.2%	18
Social Care	2,689	2,910	2,946	2,921	-25	+11	+0.4%	+232	+8.6%	3,456
Social Workers	162	170	177	175	-2	+5	+3.1%	+13	+8.3%	202
Psychologists	147	145	144	142	-2	-3	-1.9%	-4	-2.9%	157
Pharmacy	6	8	8	8	-0	-0	-3.2%	+2	+28.7%	10
H&SC, Other	51	47	49	47	-3	-0	-0.5%	-4	-7.9%	60
Health & Social Care Professionals	3,492	3,756	3,808	3,771	-38	+14	+0.4%	+279	+8.0%	4,428
Management (VIII & above)	146	155	167	163	-4	+8	+5.2%	+17	+11.7%	166
Administrative/ Supervisory (V to VII)	358	371	435	454	+19	+83	+22.3%	+95	+26.5%	475
Clerical (III & IV)	487	506	517	524	+7	+18	+3.6%	+37	+7.7%	633
Management & Administrative	991	1,031	1,118	1,141	+22	+109	+10.6%	+149	+15.1%	1,274
Support	575	557	557	555	-1	-2	-0.3%	-19	-3.4%	805
Maintenance/ Technical	106	107	105	110	+5	+3	+2.7%	+3	+3.3%	122
General Support	681	664	662	665	+3	+1	+0.2%	-16	-2.3%	927
Health Care Assistants	5,545	5,766	5,878	5,832	-46	+66	+1.2%	+287	+5.2%	7,110
Care, other	1,566	1,599	1,600	1,578	-23	-22	-1.4%	+12	+0.8%	1,919
Patient & Client Care	7,111	7,365	7,479	7,410	-69	+45	+0.6%	+299	+4.2%	9,029

Social Care Disability Services Employment by CHO: Jan 2023

Jan 2023	WTE Dec 2020	WTE Dec 2021	WTE Dec 2022	WTE Jan 2023	WTE change since Dec 22	WTE change since Dec 21	% change since Dec 21	WTE change since Dec 20	% change since Dec 20	No. Jan 2023
Overall	18,944	19,623	19,903	19,891	-12	+268	+1.4%	+947	+5.0%	23,624
CHO 1	1,547	1,617	1,698	1,708	+10	+91	+5.6%	+161	+10.4%	1,915
CHO 2	1,516	1,582	1,607	1,625	+18	+42	+2.7%	+109	+7.2%	1,980
CHO 3	1,947	1,975	1,989	2,004	+15	+29	+1.5%	+56	+2.9%	2,389
CHO 4	2,556	2,622	2,640	2,596	-44	-26	-1.0%	+40	+1.6%	3,193
CHO 5	1,563	1,652	1,656	1,670	+14	+18	+1.1%	+107	+6.8%	1,958
CHO 6	1,217	1,227	1,216	1,210	-7	-17	-1.4%	-7	-0.6%	1,381
CHO 7	3,103	3,299	3,410	3,394	-16	+95	+2.9%	+290	+9.4%	4,004
CHO 8	2,205	2,293	2,345	2,341	-4	+49	+2.1%	+136	+6.2%	2,835
CHO 9	3,285	3,350	3,336	3,339	+3	-10	-0.3%	+55	+1.7%	3,964
other Community Services	6	6	6	5	-1	-1	-16.5%	-1	-16.5%	5

Social Care Disability Services Employment by CHO etc. Jan 2023

CHO 1

Jan 2023	WTE Dec 2020	WTE Dec 2021	WTE Dec 2022	WTE Jan 2023	WTE change since Dec 22	WTE change since Dec 21	% change since Dec 21	WTE change since Dec 20	% change since Dec 20	No. Jan 2023
Overall	1,547	1,617	1,698	1,708	+10	+91	+5.6%	+161	+10.4%	1,915
Registrars		1				-1	-100.0%		-100.0%	
Medical/ Dental, other	3	3	3	3	0					6
Medical & Dental	3	3	3	3		-1	-14.7%			6
Nurse/ Midwife Manager	106	114	112	114	+2	+0	+0.1%	+7	+7.0%	120
Nurse/ Midwife Specialist & AN/MP	9	9	8	9	+1	+0	+4.3%	+0	+2.2%	10
Staff Nurse/ Staff Midwife	328	352	335	335	-1	-18	-5.0%	+6	+1.9%	373
Public Health Nurse		2	1	1	-0	-1	-52.0%	+1	-100.0%	1
<i>Pre-registration Nurse Intern (COVID-19)</i>	6						-100.0%	-6	-100.0%	
<i>Pre-registration Nurse/ Midwife Intern</i>		4	6	8	+2	+4	+106.0%	+8	-100.0%	23
<i>Nursing/ Midwifery awaiting registration</i>	11	1				-1	-100.0%	-11	-100.0%	
Nursing/ Midwifery Student	17	5	6	8	+2	+3	+64.9%	-9	-52.8%	23
Nursing/ Midwifery other	4	2	4	4	+0	+2	+112.5%	+0	+9.5%	5
Nursing & Midwifery	465	484	467	471	+4	-13	-2.6%	+6	+1.3%	532
Therapy Professions	44	47	58	56	-2	+10	+20.9%	+13	+29.6%	66
Social Care	11	10	17	14	-2	+4	+45.6%	+3	+26.7%	18
Social Workers	19	18	17	17	+0	-1	-7.3%	-1	-7.9%	19
Psychologists	7	15	12	11	-0	-4	-23.8%	+4	+52.0%	13
H&SC, Other	10	8	8	8	+0	+0	+4.0%	-2	-17.5%	9
Health & Social Care Professionals	91	98	112	107	-4	+10	+9.9%	+17	+18.3%	125
Management (VIII & above)	17	15	15	14	-0	-1	-5.6%	-2	-12.8%	16
Administrative/ Supervisory (V to VII)	34	45	55	53	-2	+8	+17.2%	+19	+54.2%	56
Clerical (III & IV)	53	54	63	67	+3	+13	+24.3%	+14	+26.3%	73
Management & Administrative	103	114	132	134	+1	+20	+17.5%	+30	+29.3%	145
Support	49	34	30	31	+1	-2	-6.6%	-18	-35.9%	39
Maintenance/ Technical	6	5	4	4	+0	-1	-19.5%	-2	-33.3%	4
General Support	55	39	34	35	+1	-3	-8.3%	-20	-35.6%	43
Health Care Assistants	775	815	884	885	+1	+70	+8.6%	+110	+14.2%	974
Home Help	14	14	16	15	-0	+1	+4.8%	+1	+8.4%	27
Care, other	41	51	49	57	+8	+7	+13.3%	+17	+41.1%	63
Patient & Client Care	830	880	949	958	+9	+78	+8.8%	+128	+15.4%	1,064

CHO 2

Jan 2023	WTE Dec 2020	WTE Dec 2021	WTE Dec 2022	WTE Jan 2023	WTE change since Dec 22	WTE change since Dec 21	% change since Dec 21	WTE change since Dec 20	% change since Dec 20	No. Jan 2023
Overall	1,516	1,582	1,607	1,625	+18	+42	+2.7%	+109	+7.2%	1,980
Consultants	3	3	3	3	0	+0	+0.6%	+0	+0.6%	4
Registrars	2	2	1	1	0	-1	-50.0%	-1	-50.0%	1
SHO/ Interns			1	1	0	+1	-100.0%	+1	-100.0%	1
Medical/ Dental, other	1	1	1	1	-0	-0	-3.0%	-0	-3.0%	1
Medical & Dental	6	6	6	6	-0	-0	-0.2%	-0	-0.2%	7
Nurse/ Midwife Manager	78	73	76	74	-2	+1	+0.7%	-4	-5.4%	82
Nurse/ Midwife Specialist & AN/MP	6	6	6	6	-0	+0	+6.6%	+1	+9.6%	7
Staff Nurse/ Staff Midwife	169	172	166	165	-1	-7	-4.0%	-4	-2.5%	198
<i>Pre-registration Nurse Intern (COVID-19)</i>	<i>1</i>						<i>-100.0%</i>	<i>-1</i>	<i>-100.0%</i>	
Nursing/ Midwifery Student	1						-100.0%	-1	-100.0%	
Nursing & Midwifery	253	251	248	245	-3	-6	-2.4%	-9	-3.4%	287
Therapy Professions	34	39	48	48	-0	+9	+21.9%	+14	+40.0%	59
Social Care	243	278	279	283	+3	+5	+1.7%	+39	+16.2%	346
Social Workers	26	29	27	28	+1	-2	-5.9%	+2	+6.6%	35
Psychologists	14	14	19	20	+1	+6	+42.2%	+6	+41.7%	24
H&SC, Other	12	10	11	11	-0	+1	+13.8%	-0	-3.7%	16
Health & Social Care Professionals	329	370	385	389	+5	+19	+5.1%	+60	+18.3%	480
Management (VIII & above)	16	16	17	17	+0	+1	+4.6%	+1	+7.3%	17
Administrative/ Supervisory (V to VII)	44	50	64	68	+4	+18	+35.8%	+24	+53.0%	71
Clerical (III & IV)	50	50	54	56	+2	+7	+13.4%	+6	+12.8%	68
Management & Administrative	110	116	135	141	+7	+25	+21.8%	+31	+28.2%	156
Support	43	43	46	49	+3	+5	+12.3%	+6	+13.2%	77
Maintenance/ Technical	13	13	12	12	+0	-0	-3.1%	-1	-5.8%	14
General Support	56	56	58	61	+3	+5	+8.9%	+5	+8.8%	91
Health Care Assistants	625	650	641	642	+1	-8	-1.2%	+17	+2.8%	785
Care, other	136	133	134	140	+5	+7	+5.1%	+4	+2.9%	174
Patient & Client Care	761	783	776	782	+6	-1	-0.1%	+21	+2.8%	959

CHO 3

Jan 2023	WTE Dec 2020	WTE Dec 2021	WTE Dec 2022	WTE Jan 2023	WTE change since Dec 22	WTE change since Dec 21	% change since Dec 21	WTE change since Dec 20	% change since Dec 20	No. Jan 2023
Overall	1,947	1,975	1,989	2,004	+15	+29	+1.5%	+56	+2.9%	2,389
Consultants	2	1	0	0	+0	-1	-73.7%	-2	-86.5%	1
Medical/ Dental, other	1	1	0	0	0	-0	-51.6%	-0	-51.6%	1
Medical & Dental	3	2	1	1	+0	-1	-63.0%	-2	-75.1%	2
Nurse/ Midwife Manager	75	79	81	82	+1	+3	+4.2%	+7	+9.6%	84
Nurse/ Midwife Specialist & AN/MP	10	8	11	12	+1	+4	+50.6%	+1	+13.0%	13
Staff Nurse/ Staff Midwife	271	257	258	261	+3	+4	+1.6%	-10	-3.6%	287
<i>Pre-registration Nurse Intern (COVID-19)</i>	2						-100.0%	-2	-100.0%	
<i>Pre-registration Nurse/ Midwife Intern</i>				6	+6	+6	-100.0%	+6	-100.0%	11
Nursing/ Midwifery Student	2			6	+6	+6	-100.0%	+4	+266.7%	11
Nursing/ Midwifery other	4	4	3	3	0	-1	-26.1%	-1	-26.1%	3
Nursing & Midwifery	361	347	353	363	+11	+16	+4.5%	+2	+0.5%	398
Therapy Professions	84	75	41	40	-0	-35	-46.5%	-44	-51.9%	44
Health Science/ Diagnostics	2	3	4	4	+0	+1	+35.6%	+2	+105.1%	4
Social Care	284	285	280	280	-1	-5	-1.8%	-4	-1.5%	325
Social Workers	17	16	19	20	+0	+3	+19.3%	+2	+13.4%	22
Psychologists	20	19	19	19	+0	-0	-2.0%	-1	-6.4%	21
H&SC, Other	11	11	11	10	-1	-1	-5.6%	-1	-8.8%	14
Health & Social Care Professionals	419	410	374	373	-1	-37	-9.0%	-46	-10.9%	430
Management (VIII & above)	8	8	12	15	+3	+7	+89.4%	+7	+89.4%	15
Administrative/ Supervisory (V to VII)	45	44	60	55	-5	+11	+25.1%	+10	+23.3%	56
Clerical (III & IV)	59	59	54	56	+2	-3	-5.1%	-3	-4.8%	61
Management & Administrative	111	111	126	126	+0	+15	+13.6%	+15	+13.1%	132
Support	53	52	54	54	+0	+2	+3.4%	+1	+1.8%	63
Maintenance/ Technical	19	20	18	18	+0	-2	-10.0%	-1	-6.8%	20
General Support	73	73	72	72	+0	-0	-0.3%	-0	-0.5%	83
Health Care Assistants	800	832	857	839	-19	+7	+0.8%	+39	+4.9%	1,067
Care, other	181	201	206	230	+24	+30	+14.8%	+49	+27.0%	277
Patient & Client Care	981	1,033	1,064	1,069	+5	+36	+3.5%	+88	+9.0%	1,344

CHO 4

Jan 2023	WTE Dec 2020	WTE Dec 2021	WTE Dec 2022	WTE Jan 2023	WTE change since Dec 22	WTE change since Dec 21	% change since Dec 21	WTE change since Dec 20	% change since Dec 20	No. Jan 2023
Overall	2,556	2,622	2,640	2,596	-44	-26	-1.0%	+40	+1.6%	3,193
Consultants	3	2	2	1	-0	-0	-7.3%	-1	-44.4%	2
Medical/ Dental, other	0	0	0	0	0	+0	+12.1%	+0	+12.1%	1
Medical & Dental	3	2	2	2	-0	-0	-3.8%	-1	-37.8%	3
Nurse/ Midwife Manager	91	97	98	98	-0	+1	+0.9%	+7	+7.9%	113
Nurse/ Midwife Specialist & AN/MP	14	13	13	13	-0	-1	-3.7%	-2	-10.4%	14
Staff Nurse/ Staff Midwife	312	302	301	301	+0	-1	-0.3%	-11	-3.5%	369
<i>Pre-registration Nurse Intern (COVID-19)</i>	8						-100.0%	-8	-100.0%	
<i>Pre-registration Nurse/ Midwife Intern</i>		5	1	10	+9	+5	+100.0%	+10	-100.0%	20
<i>Nursing/ Midwifery awaiting registration</i>	2						-100.0%	-2	-100.0%	
Nursing/ Midwifery Student	10	5	1	10	+9	+5	+100.0%	+0	+4.7%	20
Nursing/ Midwifery other		1	1	1	0			+1	-100.0%	1
Nursing & Midwifery	427	419	414	423	+9	+4	+1.1%	-4	-0.9%	517
Therapy Professions	104	118	105	106	+1	-12	-10.1%	+3	+2.5%	129
Social Care	238	250	259	258	-0	+8	+3.3%	+20	+8.4%	294
Social Workers	27	29	28	27	-1	-3	-8.7%	-0	-0.4%	32
Psychologists	36	35	37	35	-1	+0	+0.7%	-1	-2.4%	40
H&SC, Other	10	9	7	7	-0	-2	-18.2%	-3	-31.7%	8
Health & Social Care Professionals	415	441	435	434	-1	-8	-1.7%	+18	+4.4%	503
Management (VIII & above)	22	22	23	22	-1	+0	+0.4%	-0	-1.4%	23
Administrative/ Supervisory (V to VII)	58	59	72	76	+4	+17	+29.1%	+18	+31.9%	81
Clerical (III & IV)	90	93	93	91	-2	-2	-2.5%	+2	+1.8%	119
Management & Administrative	170	174	189	189	+1	+15	+8.5%	+20	+11.6%	223
Support	139	141	138	136	-2	-5	-3.4%	-3	-1.9%	228
Maintenance/ Technical	12	11	10	12	+2	+1	+10.6%	-0	-0.9%	15
General Support	151	151	148	148	-0	-4	-2.4%	-3	-1.8%	243
Health Care Assistants	1,058	1,098	1,111	1,105	-6	+7	+0.7%	+47	+4.4%	1,311
Care, other	332	337	342	295	-47	-42	-12.4%	-37	-11.2%	393
Patient & Client Care	1,390	1,434	1,453	1,400	-53	-34	-2.4%	+10	+0.7%	1,704

CHO 5

Jan 2023	WTE Dec 2020	WTE Dec 2021	WTE Dec 2022	WTE Jan 2023	WTE change since Dec 22	WTE change since Dec 21	% change since Dec 21	WTE change since Dec 20	% change since Dec 20	No. Jan 2023
Overall	1,563	1,652	1,656	1,670	+14	+18	+1.1%	+107	+6.8%	1,958
Consultants	1	1	1	1	+0	+0	+5.3%	+0	+35.1%	1
Medical & Dental	1	1	1	1	+0	+0	+5.3%	+0	+35.1%	1
Nurse/ Midwife Manager	70	71	74	76	+2	+5	+7.2%	+7	+9.4%	80
Nurse/ Midwife Specialist & AN/MP	2	3	4	4	+0	+1	+47.7%	+2	+81.1%	4
Staff Nurse/ Staff Midwife	168	168	169	172	+3	+4	+2.3%	+4	+2.2%	192
Public Health Nurse	6	9	10	10	+0	+1	+10.4%	+4	+67.2%	12
Pre-registration Nurse Intern (COVID-19)	1						-100.0%	-1	-100.0%	
Pre-registration Nurse/ Midwife Intern			0	2	+2	+2	-100.0%	+2	-100.0%	8
Nursing/ Midwifery Student	1		0	2	+2	+2	-100.0%	+1	+68.0%	8
Nursing/ Midwifery other		1	1	1	+0	+0	+3.8%	+1	-100.0%	1
Nursing & Midwifery	247	252	258	265	+7	+13	+5.1%	+18	+7.1%	297
Therapy Professions	65	69	59	60	+1	-9	-12.7%	-5	-7.9%	72
Social Care	143	158	161	160	-1	+2	+1.5%	+17	+12.0%	189
Social Workers	24	23	20	20	-0	-3	-14.4%	-5	-18.8%	22
Psychologists	19	21	17	17	+0	-4	-20.2%	-2	-9.7%	20
H&SC, Other	5	6	6	5	-1	-0	-4.3%	-0	-1.5%	6
Health & Social Care Professionals	256	276	263	262	-1	-14	-5.1%	+6	+2.2%	309
Management (VIII & above)	13	15	19	20	+1	+5	+36.0%	+7	+55.8%	20
Administrative/ Supervisory (V to VII)	41	51	55	62	+7	+11	+20.7%	+21	+51.8%	65
Clerical (III & IV)	62	68	74	78	+4	+10	+14.2%	+16	+26.5%	92
Management & Administrative	115	134	147	160	+12	+26	+19.1%	+45	+38.7%	177
Support	12	8	8	8	-0	-0	-4.1%	-4	-33.6%	11
Maintenance/ Technical	7	9	9	9	-0	-0	-1.5%	+2	+25.4%	10
General Support	19	18	17	17	-0	-0	-2.7%	-2	-11.2%	21
Health Care Assistants	732	759	753	749	-4	-10	-1.4%	+18	+2.4%	858
Home Help	40	31	29	30	+0	-2	-5.3%	-10	-25.0%	74
Care, other	153	180	187	186	-1	+6	+3.3%	+33	+21.8%	221
Patient & Client Care	924	971	970	965	-5	-6	-0.6%	+41	+4.4%	1,153

CHO 6

Jan 2023	WTE Dec 2020	WTE Dec 2021	WTE Dec 2022	WTE Jan 2023	WTE change since Dec 22	WTE change since Dec 21	% change since Dec 21	WTE change since Dec 20	% change since Dec 20	No. Jan 2023
Overall	1,217	1,227	1,216	1,210	-7	-17	-1.4%	-7	-0.6%	1,381
Consultants	3	3	3	3	0					3
Registrars			1	1	+0	+1	-100.0%	+1	-100.0%	1
SHO/ Interns		1				-1	-100.0%		-100.0%	
Medical/ Dental, other	1	1	1	1	0					1
Medical & Dental	4	5	5	5	+0			+1	+25.0%	5
Nurse/ Midwife Manager	43	42	40	39	-0	-2	-5.7%	-4	-9.5%	43
Nurse/ Midwife Specialist & AN/MP				1	+1	+1	-100.0%	+1	-100.0%	1
Staff Nurse/ Staff Midwife	142	141	138	143	+5	+2	+1.2%	+0	+0.3%	159
<i>Nursing Education/Clinical</i>			1	1	0	+1	-100.0%	+1	-100.0%	1
Nursing/ Midwifery other			1	1	0	+1	-100.0%	+1	-100.0%	1
Nursing & Midwifery	186	183	178	184	+6	+1	+0.8%	-2	-0.9%	204
Therapy Professions	42	35	26	25	-1	-10	-28.4%	-18	-41.3%	32
Social Care	361	397	381	371	-11	-27	-6.7%	+10	+2.7%	427
Social Workers	10	8	8	9	+0	+1	+10.0%	-1	-13.2%	9
Psychologists	14	14	14	13	-1	-1	-6.0%	-0	-3.3%	16
H&SC, Other	1	1	1	1	+0	+0	+13.4%	+0	+12.5%	2
Health & Social Care Professionals	428	455	431	419	-12	-36	-8.0%	-9	-2.1%	486
Management (VIII & above)	30	29	39	33	-6	+4	+14.1%	+3	+9.3%	33
Administrative/ Supervisory (V to VII)	54	54	64	66	+2	+12	+23.2%	+12	+22.6%	69
Clerical (III & IV)	56	49	52	56	+4	+7	+13.6%	+0	+0.4%	61
Management & Administrative	140	132	156	155	-1	+23	+17.6%	+15	+10.9%	163
Support	26	18	23	22	-0	+4	+24.5%	-3	-12.2%	31
Maintenance/ Technical	5	7	8	8	0	+1	+14.3%	+3	+60.0%	8
General Support	31	25	31	30	-0	+5	+21.6%	-0	-0.4%	39
Health Care Assistants	184	190	188	189	+1	-1	-0.6%	+5	+2.9%	216
Care, other	245	237	229	227	-1	-10	-4.2%	-17	-7.1%	268
Patient & Client Care	428	427	416	416		-11	-2.6%	-12	-2.8%	484

CHO 7

Jan 2023	WTE Dec 2020	WTE Dec 2021	WTE Dec 2022	WTE Jan 2023	WTE change since Dec 22	WTE change since Dec 21	% change since Dec 21	WTE change since Dec 20	% change since Dec 20	No. Jan 2023
Overall	3,103	3,299	3,410	3,394	-16	+95	+2.9%	+290	+9.4%	4,004
Consultants	1						-100.0%	-1	-100.0%	
Registrars	3	2	4	4	-0	+2	+79.5%	+1	+19.7%	7
SHO/ Interns	7	6	7	7	+0	+1	+16.7%			12
Medical/ Dental, other	1	1				-1	-100.0%	-1	-100.0%	
Medical & Dental	12	9	11	11	-0	+2	+17.7%	-1	-8.2%	19
Nurse/ Midwife Manager	118	134	153	156	+3	+22	+16.5%	+37	+31.6%	167
Nurse/ Midwife Specialist & AN/MP	4	5	6	7	+1	+2	+33.8%	+3	+64.8%	8
Staff Nurse/ Staff Midwife	378	417	416	410	-6	-7	-1.6%	+32	+8.5%	466
<i>Pre-registration Nurse/ Midwife Intern</i>				8	+8	+8	-100.0%	+8	-100.0%	15
<i>Nursing/ Midwifery awaiting registration</i>			1		-1		-100.0%		-100.0%	
Nursing/ Midwifery Student			1	8	+7	+8	-100.0%	+8	-100.0%	15
Nursing/ Midwifery other	2	3	4	3	-1	+0	+0.8%	+1	+68.0%	3
Nursing & Midwifery	502	559	581	583	+3	+25	+4.4%	+81	+16.1%	659
Therapy Professions	138	156	155	154	-1	-3	-1.8%	+15	+10.9%	171
Health Science/ Diagnostics	3	3	3	3	-0	+0	+6.7%	+0	+6.7%	5
Social Care	389	423	467	465	-2	+41	+9.8%	+76	+19.6%	517
Social Workers	32	36	42	40	-2	+4	+10.3%	+8	+26.5%	45
Psychologists	32	36	36	34	-1	-1	-3.9%	+2	+7.4%	38
Pharmacy	4	6	6	6	-0	-0	-4.3%	+2	+43.0%	8
H&SC, Other	2	2	2	2	0					2
Health & Social Care Professionals	600	663	710	704	-6	+41	+6.2%	+104	+17.3%	786
Management (VIII & above)	43	48	47	46	-1	-2	-4.3%	+3	+7.3%	46
Administrative/ Supervisory (V to VII)	92	97	109	111	+2	+14	+14.3%	+19	+20.9%	117
Clerical (III & IV)	101	107	120	116	-3	+9	+8.3%	+15	+15.2%	139
Management & Administrative	236	252	276	273	-3	+21	+8.2%	+38	+16.0%	302
Support	155	151	156	156	-0	+5	+3.2%	+1	+0.5%	223
Maintenance/ Technical	33	34	32	32	+0	-2	-5.1%	-1	-2.0%	35
General Support	188	185	188	188	-0	+3	+1.7%	+0	+0.0%	258
Health Care Assistants	1,146	1,207	1,228	1,213	-15	+6	+0.5%	+67	+5.8%	1,434
Home Help	17	15	14	14	+0	-2	-9.7%	-3	-19.2%	77
Care, other	403	409	402	408	+6	-1	-0.3%	+5	+1.3%	469
Patient & Client Care	1,566	1,632	1,644	1,635	-9	+3	+0.2%	+69	+4.4%	1,980

CHO 8

Jan 2023	WTE Dec 2020	WTE Dec 2021	WTE Dec 2022	WTE Jan 2023	WTE change since Dec 22	WTE change since Dec 21	% change since Dec 21	WTE change since Dec 20	% change since Dec 20	No. Jan 2023
Overall	2,205	2,293	2,345	2,341	-4	+49	+2.1%	+136	+6.2%	2,835
Consultants	1						-100.0%	-1	-100.0%	
Registrars	1	1	1	1	0					1
Medical/ Dental, other	1	1	1	1	0					1
Medical & Dental	3	2	2	2				-1	-33.3%	2
Nurse/ Midwife Manager	119	110	114	112	-2	+3	+2.4%	-7	-5.9%	121
Nurse/ Midwife Specialist & AN/MP	6	6	4	4	-0	-2	-30.5%	-2	-28.1%	5
Staff Nurse/ Staff Midwife	312	322	335	333	-2	+11	+3.4%	+21	+6.7%	391
Public Health Nurse	1	1	1	1	-0	+0	+1.1%	-0	-1.0%	1
Pre-registration Nurse Intern (COVID-19)	4						-100.0%	-4	-100.0%	
Pre-registration Nurse/ Midwife Intern		1		9	+9	+7	+541.8%	+9	-100.0%	28
Nursing/ Midwifery awaiting registration			1		-1		-100.0%		-100.0%	
Nursing/ Midwifery Student	4	1	1	9	+8	+7	+541.8%	+5	+115.0%	28
Nursing/ Midwifery other	7	7	5	5	+0	-2	-24.0%	-1	-16.9%	6
Nursing & Midwifery	449	447	460	465	+4	+17	+3.8%	+16	+3.5%	552
Therapy Professions	98	89	92	95	+3	+6	+7.3%	-3	-2.8%	117
Health Science/ Diagnostics	2	2	2	2	0					2
Social Care	380	401	414	409	-5	+7	+1.8%	+29	+7.7%	498
Social Workers	24	25	24	24	+0	-1	-5.2%	-0	-0.6%	27
Psychologists	22	27	29	29	+1	+2	+7.4%	+7	+29.7%	32
H&SC, Other	6	7	8	7	-1	-0	-0.8%	+1	+17.0%	8
Health & Social Care Professionals	533	552	569	567	-3	+15	+2.6%	+34	+6.4%	684
Management (VIII & above)	13	17	18	19	+0	+2	+10.6%	+5	+39.4%	21
Administrative/ Supervisory (V to VII)	56	57	55	54	-1	-3	-5.6%	-2	-3.7%	57
Clerical (III & IV)	88	93	94	95	+1	+2	+2.4%	+8	+8.9%	116
Management & Administrative	157	168	168	168	+1	+1	+0.5%	+11	+7.0%	194
Support	41	38	33	32	-1	-6	-16.4%	-10	-23.6%	39
Maintenance/ Technical	14	12	12	16	+3	+4	+29.4%	+2	+11.7%	16
General Support	55	50	45	47	+2	-3	-5.3%	-8	-14.7%	55
Health Care Assistants	872	938	965	958	-7	+20	+2.1%	+86	+9.9%	1,172
Home Help	23	21	21	20	-1	-1	-3.7%	-3	-12.8%	41
Care, other	113	115	115	115	+0	-0	-0.2%	+1	+1.2%	135
Patient & Client Care	1,008	1,074	1,101	1,093	-8	+19	+1.8%	+84	+8.4%	1,348

CHO 9

Jan 2023	WTE Dec 2020	WTE Dec 2021	WTE Dec 2022	WTE Jan 2023	WTE change since Dec 22	WTE change since Dec 21	% change since Dec 21	WTE change since Dec 20	% change since Dec 20	No. Jan 2023
Overall	3,285	3,350	3,336	3,340	+3	-10	-0.3%	+55	+1.7%	3,964
Consultants	11	11	9	10	+1	-1	-12.2%	-1	-11.0%	13
Registrars	2	4	3	2	-1	-2	-50.0%			2
SHO/ Interns	2		1	1	+0	+1	-100.0%	-1	-50.0%	1
Medical/ Dental, other	6	6	6	6	0	+0	+0.8%	+0	+0.8%	9
Medical & Dental	21	22	20	19	-0	-2	-10.9%	-2	-10.2%	25
Nurse/ Midwife Manager	196	205	211	218	+7	+13	+6.2%	+22	+11.3%	233
Nurse/ Midwife Specialist & AN/MP	12	17	16	18	+1	+0	+1.3%	+6	+49.6%	19
Staff Nurse/ Staff Midwife	513	498	501	493	-8	-5	-1.0%	-20	-3.8%	573
<i>Pre-registration Nurse Intern (COVID-19)</i>	<i>11</i>						<i>-100.0%</i>	<i>-11</i>	<i>-100.0%</i>	
<i>Pre-registration Nurse/ Midwife Intern</i>	<i>3</i>	<i>11</i>		<i>14</i>	<i>+14</i>	<i>+3</i>	<i>+29.7%</i>	<i>+12</i>	<i>+473.2%</i>	<i>31</i>
<i>Nursing/ Midwifery awaiting registration</i>		<i>4</i>	<i>2</i>	<i>1</i>	<i>-1</i>	<i>-3</i>	<i>-76.6%</i>	<i>+1</i>	<i>-100.0%</i>	<i>1</i>
Nursing/ Midwifery Student	13	15	2	15	+13	+0	+0.1%	+2	+17.2%	32
Nursing/ Midwifery other	8	8	9	8	-1	-0	-2.0%			9
Nursing & Midwifery	741	744	739	752	+13	+8	+1.0%	+10	+1.4%	866
Therapy Professions	187	199	208	199	-9	+1	+0.3%	+12	+6.7%	224
Health Science/ Diagnostics	13	13	12	13	+1					13
Social Care	740	809	796	790	-6	-19	-2.4%	+50	+6.7%	963
Social Workers	50	49	54	53	-1	+4	+8.4%	+4	+7.9%	61
Psychologists	64	65	57	59	+2	-6	-9.8%	-5	-8.1%	64
Pharmacy	2	2	2	2	0					2
H&SC, Other	18	17	13	13	+0	-3	-20.1%	-5	-26.8%	17
Health & Social Care Professionals	1,073	1,154	1,142	1,130	-13	-25	-2.1%	+56	+5.2%	1,344
Management (VIII & above)	41	47	45	46	+1	-1	-1.9%	+4	+10.8%	46
Administrative/ Supervisory (V to VII)	100	110	129	139	+10	+29	+26.5%	+39	+38.5%	147
Clerical (III & IV)	126	144	137	137	-0	-7	-4.7%	+11	+8.7%	164
Management & Administrative	268	301	311	322	+11	+21	+7.1%	+54	+20.2%	357
Support	145	141	136	135	-1	-6	-4.4%	-10	-6.8%	173
Maintenance/ Technical	23	21	20	20	-0	-1	-4.2%	-3	-12.5%	22
General Support	168	162	156	155	-1	-7	-4.4%	-13	-7.6%	195
Health Care Assistants	911	865	866	868	+2	+4	+0.4%	-43	-4.7%	1,070
Care, other	102	102	102	94	-8	-9	-8.6%	-8	-8.0%	107
Patient & Client Care	1,013	967	968	962	-6	-5	-0.5%	-51	-5.0%	1,177

other Community Services

Jan 2023	WTE Dec 2020	WTE Dec 2021	WTE Dec 2022	WTE Jan 2023	WTE change since Dec 22	WTE change since Dec 21	% change since Dec 21	WTE change since Dec 20	% change since Dec 20	No. Jan 2023
Overall	6	6	6	5	-1	-1	-16.5%	-1	-16.5%	5
Management (VIII & above)	1	1	2	2	+0	+1	+100.0%	+1	+100.0%	2
Administrative/ Supervisory (V to VII)	3	3	2	1	-1	-2	-66.7%	-2	-66.7%	1
Clerical (III & IV)	2	2	2	2	-0	+0	+1.0%	+0	+1.0%	2
Management & Administrative	6	6	6	5	-1	-1	-16.5%	-1	-16.5%	5

Social Care Disability Services Employment by Grade Group: Jan 2023

Jan 2023	WTE Dec 2020	WTE Dec 2021	WTE Dec 2022	WTE Jan 2023	WTE change since Dec 22	WTE change since Dec 21	% change since Dec 21	WTE change since Dec 20	% change since Dec 20	No. Jan 2023
Overall	18,944	19,623	19,903	19,891	-12	+268	+1.4%	+947	+5.0%	23,624
Consultant Paediatrics	3	2	3	2	-0	+0	+14.8%	-1	-18.7%	3
Consultant Psychiatry	21	19	16	17	+1	-2	-13.0%	-5	-22.0%	21
Consultants	24	21	18	19	+1	-2	-10.2%	-5	-21.6%	24
Registrar	3	7	7	5	-2	-2	-25.8%	+2	+60.7%	8
Senior Registrar	3	2	2	2				-1	-33.3%	2
Specialist Registrar	2	1	1	2	+1	+1	+77.0%	-0	-11.5%	2
Registrars	8	10	10	9	-1	-1	-9.6%	+1	+7.4%	12
Senior House Officer	9	7	9	9	+0	+2	+28.6%			14
SHO/ Interns	9	7	9	9	+0	+2	+28.6%			14
Other Medical	14	14	13	13	-0	-1	-9.9%	-1	-9.9%	20
Medical/ Dental, other	14	14	13	13	-0	-1	-9.9%	-1	-9.9%	20
Medical & Dental	56	52	50	50	-1	-2	-4.8%	-6	-10.9%	70
Clinical Nurse/ Midwife Manager	814	835	869	877	+9	+42	+5.1%	+63	+7.7%	947
Director Nursing/Midwifery, Assistant	46	40	43	45	+1	+5	+11.4%	-1	-2.5%	46
Director of Nursing/Midwifery	37	49	47	48	+1	-2	-3.5%	+11	+29.3%	50
Nurse/ Midwife Manager	897	925	959	970	+11	+45	+4.9%	+73	+8.1%	1,043
Advanced Nurse/ Midwife Practitioner	8	9	12	13	+1	+4	+40.6%	+5	+58.0%	13
Clinical Nurse/ Midwife Specialist	56	59	58	62	+4	+3	+5.0%	+6	+10.0%	68
Nurse/ Midwife Specialist & AN/MP	64	68	70	74	+5	+7	+9.7%	+10	+16.0%	81
Staff Nurse [Psychiatric]	53	172	60	61	+1	-111	-64.5%	+8	+15.9%	77
Staff Nurses [General/ Children's]	752	638	792	797	+5	+158	+24.8%	+45	+5.9%	903
Staff Nurse [Intellectual Disability]	1,788	1,818	1,767	1,754	-13	-64	-3.5%	-34	-1.9%	2,028
Staff Nurse/ Staff Midwife	2,593	2,629	2,618	2,612	-6	-17	-0.6%	+19	+0.7%	3,008
Public Health Nurse	7	12	12	12	+0	-0	-0.8%	+5	+71.6%	14
Pre-registration Nurse Intern (COVID-19)	32						-100.0%	-32	-100.0%	
Pre-registration Nurse/ Midwife Intern	3	21	7	56	+49	+34	+161.1%	+53	+2134.8%	136
Nursing/ Midwifery awaiting registration	13	5	4	1	-3	-4	-81.0%	-12	-92.3%	1
Nursing/ Midwifery Student	47	27	11	57	+46	+30	+113.2%	+10	+20.3%	137
Nursing Education/Clinical	23	24	27	25	-2	+1	+6.1%	+2	+9.4%	28
Other Nursing/ Midwifery	1	2	1	1		-1	-50.0%			1
Nursing/ Midwifery other	24	26	28	26	-2	+0	+1.7%	+2	+9.0%	29
Nursing & Midwifery	3,632	3,685	3,697	3,751	+54	+65	+1.8%	+118	+3.3%	4,312
Dietitians	16	21	20	23	+2	+2	+7.3%	+6	+38.2%	29
Occupational Therapists	279	297	304	297	-7	-1	-0.2%	+18	+6.6%	336
Physiotherapists	193	195	193	193	-0	-2	-0.9%	+0	+0.0%	230
Speech & Language Therapists	307	313	273	270	-2	-42	-13.5%	-37	-12.0%	319
Therapy Professions	795	826	790	783	-7	-43	-5.2%	-12	-1.5%	914
Clinical Engineering	13	15	14	15	+1	+0	+0.3%	+2	+15.8%	15
Medical Science	4	3	4	4		+1	+33.3%			4
Radiographers	1	1	1	1	-0	+0	+20.0%	+0	+20.0%	3
Respiratory Physiologists	2	2	2	2						2
Health Science/ Diagnostics	20	21	21	22	+1	+1	+6.0%	+2	+11.3%	24
Social Care	2,789	3,012	3,055	3,029	-25	+18	+0.6%	+240	+8.6%	3,577
Social Workers	228	235	239	237	-2	+2	+0.7%	+9	+3.8%	272
Psychologists	229	247	239	238	-1	-9	-3.5%	+9	+4.0%	268

Jan 2023	WTE Dec 2020	WTE Dec 2021	WTE Dec 2022	WTE Jan 2023	WTE change since Dec 22	WTE change since Dec 21	% change since Dec 21	WTE change since Dec 20	% change since Dec 20	No. Jan 2023
Overall	18,944	19,623	19,903	19,891	-12	+268	+1.4%	+947	+5.0%	23,624
Pharmacists	5	7	7	7	+0	-0	-6.6%	+2	+34.5%	9
Pharmacy Technicians	1	1	2	1	-1	+0	+28.2%			1
Pharmacy	6	8	8	8	-0	-0	-3.2%	+2	+28.7%	10
Counsellor Therapists	20	21	23	22	-1	+1	+4.1%	+2	+10.1%	24
Other Health & Social Care	45	39	30	30	+0	-8	-21.9%	-15	-33.0%	41
Play Therapists/ Specialists	11	10	15	14	-2	+4	+35.8%	+3	+24.9%	17
H&SC, Other	76	70	68	66	-3	-4	-5.8%	-10	-13.4%	82
Health & Social Care Professionals	4,144	4,419	4,421	4,383	-37	-35	-0.8%	+240	+5.8%	5,147
Executive Management	36	39	50	42	-8	+3	+8.0%	+6	+16.7%	42
Senior Management (VIII & GM)	168	178	186	191	+5	+13	+7.3%	+23	+14.0%	197
Management (VIII & above)	204	217	236	233	-3	+16	+7.4%	+29	+14.5%	239
Middle Management (V-VII)	511	556	653	674	+21	+118	+21.2%	+163	+31.8%	709
Other Administrative	16	14	12	11	-1	-3	-21.4%	-5	-30.5%	11
Administrative/ Supervisory (V to VII)	527	570	665	685	+20	+115	+20.1%	+158	+30.0%	720
General Administrative (III & IV)	685	720	744	755	+11	+35	+4.9%	+70	+10.2%	895
Clerical (III & IV)	685	720	744	755	+11	+35	+4.9%	+70	+10.2%	895
Management & Administrative	1,416	1,507	1,645	1,673	+28	+166	+11.0%	+257	+18.2%	1,854
Catering	96	81	75	75	+0	-7	-8.0%	-21	-22.0%	90
Household Services	406	382	385	383	-3	+1	+0.2%	-23	-5.7%	553
Other Labs & Associated	1	1	1	1						1
Other Support	136	145	145	147	+2	+2	+1.5%	+11	+8.4%	215
Portering	24	17	18	18	+0	+0	+1.9%	-7	-27.8%	25
Support	663	626	624	623	-1	-3	-0.5%	-40	-6.0%	884
Maintenance	121	117	109	114	+5	-3	-2.4%	-8	-6.2%	126
Technical Services	11	15	17	17	+1	+2	+16.0%	+6	+56.8%	18
Maintenance/ Technical	132	132	126	131	+5	-0	-0.3%	-1	-0.9%	144
General Support	795	758	750	754	+5	-4	-0.5%	-41	-5.1%	1,028
Attendant/ Aide	247	212	179	178	-1	-34	-16.1%	-69	-27.9%	229
Health & Social Care Assistants	11	12	22	23	+2	+11	+93.6%	+12	+111.3%	28
Health Care Assistant/ Care Assistant	6,844	7,130	7,294	7,248	-47	+118	+1.7%	+403	+5.9%	8,630
Health Care Assistants	7,102	7,354	7,495	7,449	-46	+95	+1.3%	+347	+4.9%	8,887
Home Help	94	82	80	79	-1	-3	-3.9%	-15	-16.0%	219
Home Care Services	19	20	17	17	+0	-3	-13.9%	-1	-5.8%	22
Other Care Grades	221	251	259	249	-9	-2	-0.7%	+28	+12.7%	283
Pastoral Care	10	10	5	6	+1	-4	-40.9%	-4	-42.7%	7
Workshop Services	1,456	1,484	1,485	1,480	-6	-4	-0.3%	+24	+1.7%	1,795
Care, other	1,706	1,765	1,766	1,752	-14	-13	-0.7%	+47	+2.7%	2,107
Patient & Client Care	8,902	9,202	9,341	9,280	-61	+79	+0.9%	+378	+4.3%	11,213

Employment by WTE, Headcount, Gender, Full-Time /Part-Time etc.: Jan 2023

Social Care Disability Services Staff Group	WTE	Headcount	WTE: no.	% Male	% female	Male WTE: no.	Female WTE: no.	% Total Perm	% Male Perm	% Female Perm	% Total Full Time	% Total Part Time	% Male FT	% Female FT
Overall	19,891	23,624	1.19	19.4%	80.6%	1.10	1.21	88.6%	88.3%	88.7%	58.6%	41.4%	69.5%	56.0%
Consultant Paediatrics	2	3	1.21		100.0%		1.21	100.0%	100.0%	100.0%	66.7%	33.3%		66.7%
Consultant Psychiatry	17	21	1.26	23.8%	76.2%	1.02	1.36	76.2%	76.2%	87.5%	57.1%	42.9%	80.0%	50.0%
Consultants	19	24	1.25	20.8%	79.2%	1.02	1.34	79.2%	40.0%	89.5%	58.3%	41.7%	80.0%	52.6%
Registrar	5	8	1.66	62.5%	37.5%	1.69	1.61	0.0%	0.0%	0.0%	100.0%	0.0%	100.0%	100.0%
Senior Registrar	2	2	1.00	50.0%	50.0%	1.00	1.00	0.0%	0.0%	0.0%	100.0%	0.0%	100.0%	100.0%
Specialist Registrar	2	2	1.13		100.0%		1.13	0.0%	0.0%	0.0%	100.0%	0.0%		100.0%
Registrars	9	12	1.40	50.0%	50.0%	1.52	1.30	0.0%	0.0%	0.0%	100.0%	0.0%	100.0%	100.0%
SHO/ Interns	9	14	1.56	35.7%	64.3%	1.33	1.72	0.0%	0.0%	0.0%	100.0%	0.0%	100.0%	100.0%
Medical/ Dental, other	13	20	1.55	40.0%	60.0%	1.26	1.84	90.0%	75.0%	100.0%	30.0%	70.0%	37.5%	25.0%
Medical & Dental	50	70	1.41	34.3%	65.7%	1.26	1.50	52.9%	33.3%	63.0%	65.7%	34.3%	75.0%	60.9%
Clinical Nurse/ Midwife Manager	877	947	1.08	13.1%	86.9%	1.02	1.09	93.1%	93.1%	92.8%	83.4%	16.6%	96.0%	81.5%
Director Nursing/Midwifery, Assistant	45	46	1.03	17.4%	82.6%	1.00	1.04	97.8%	97.8%	97.4%	93.5%	6.5%	100.0%	92.1%
Director of Nursing/Midwifery	48	50	1.05	12.0%	88.0%	1.01	1.05	92.0%	92.0%	90.9%	94.0%	6.0%	100.0%	93.2%
Nurse/ Midwife Manager	970	1,043	1.08	13.2%	86.8%	1.02	1.09	93.3%	95.7%	92.9%	84.4%	15.6%	96.4%	82.5%
Advanced Nurse/ Midwife Practitioner	13	13	1.03	23.1%	76.9%	1.07	1.02	92.3%	92.3%	90.0%	92.3%	7.7%	66.7%	100.0%
Clinical Nurse/ Midwife Specialist	62	68	1.10	4.4%	95.6%	1.00	1.11	97.1%	97.1%	96.9%	64.7%	35.3%	100.0%	63.1%
Nurse/ Midwife Specialist & AN/MP	74	81	1.09	7.4%	92.6%	1.03	1.10	96.3%	100.0%	96.0%	69.1%	30.9%	83.3%	68.0%
Staff Nurse [Psychiatric]	61	77	1.26	19.5%	80.5%	1.23	1.27	75.3%	75.3%	75.8%	61.0%	39.0%	66.7%	59.7%
Staff Nurses [General/ Children's]	797	903	1.13	15.5%	84.5%	1.08	1.14	93.6%	93.6%	93.7%	71.2%	28.8%	85.0%	68.7%
Staff Nurse [Intellectual Disability]	1,754	2,028	1.16	9.7%	90.3%	1.06	1.17	95.6%	95.6%	95.4%	67.0%	33.0%	88.8%	64.7%
Staff Nurse/ Staff Midwife	2,612	3,008	1.15	11.7%	88.3%	1.07	1.16	94.5%	94.9%	94.4%	68.1%	31.9%	86.3%	65.7%
Public Health Nurse	12	14	1.18		100.0%		1.18	100.0%		100.0%	64.3%	35.7%		64.3%
Pre-registration Nurse/ Midwife Intern	56	136	2.43	8.8%	91.2%	3.10	2.38	25.7%	25.7%	28.2%	61.0%	39.0%	58.3%	61.3%
Nursing/ Midwifery awaiting registration	1	1	1.00	100.0%		1.00		0.0%	0.0%		100.0%	0.0%	100.0%	
Nursing/ Midwifery Student	57	137	2.41	9.5%	90.5%	2.67	2.38	25.5%	0.0%	28.2%	61.3%	38.7%	61.5%	61.3%
Nursing Education/Clinical	25	28	1.12	3.6%	96.4%	1.00	1.13	100.0%	100.0%	100.0%	60.7%	39.3%	0.0%	63.0%
Other Nursing/ Midwifery	1	1	1.00		100.0%		1.00	100.0%	100.0%	100.0%	100.0%	0.0%		100.0%
Nursing/ Midwifery other	26	29	1.12	3.4%	96.6%	1.00	1.12	100.0%	100.0%	100.0%	62.1%	37.9%	0.0%	64.3%

Nursing & Midwifery	3,751	4,312	1.15	11.8%	88.2%	1.07	1.16	92.1%	92.7%	92.0%	71.8%	28.2%	88.2%	69.6%
Dietitians	23	29	1.28		100.0%		1.28	89.7%	89.7%	89.7%	58.6%	41.4%		58.6%
Occupational Therapists	297	336	1.13	7.4%	92.6%	1.08	1.14	95.2%	95.2%	95.5%	79.5%	20.5%	88.0%	78.8%
Physiotherapists	193	230	1.19	17.8%	82.2%	1.07	1.22	93.9%	93.9%	94.7%	65.7%	34.3%	85.4%	61.4%
Speech & Language Therapists	270	319	1.18	1.3%	98.7%	1.00	1.18	92.8%	92.8%	92.7%	70.8%	29.2%	100.0%	70.5%
Therapy Professions	783	914	1.17	7.7%	92.3%	1.07	1.18	93.9%	91.4%	94.1%	72.3%	27.7%	87.1%	71.1%
Clinical Engineering	15	15	1.00	93.3%	6.7%	1.00	1.00	80.0%	80.0%	100.0%	93.3%	6.7%	92.9%	100.0%
Medical Science	4	4	1.00	50.0%	50.0%	1.00	1.00	50.0%	50.0%	50.0%	100.0%	0.0%	100.0%	100.0%
Radiographers	1	3	2.50		100.0%		2.50	33.3%	33.3%	33.3%	33.3%	66.7%		33.3%
Respiratory Physiologists	2	2	1.00	100.0%		1.00		100.0%	100.0%		100.0%	0.0%	100.0%	
Health Science/ Diagnostics	22	24	1.08	75.0%	25.0%	1.00	1.43	70.8%	77.8%	50.0%	87.5%	12.5%	94.4%	66.7%
Social Care	3,029	3,577	1.18	16.4%	83.6%	1.09	1.20	91.8%	92.8%	91.6%	49.0%	51.0%	63.6%	46.1%
Social Workers	237	272	1.15	16.9%	83.1%	1.05	1.17	94.5%	93.5%	94.7%	71.7%	28.3%	87.0%	68.6%
Psychologists	238	268	1.12	17.2%	82.8%	1.03	1.15	97.4%	97.8%	97.3%	78.7%	21.3%	91.3%	76.1%
Pharmacists	7	9	1.33	11.1%	88.9%	1.00	1.39	100.0%	100.0%	100.0%	44.4%	55.6%	100.0%	37.5%
Pharmacy Technicians	1	1	1.00		100.0%		1.00	100.0%	100.0%	100.0%	100.0%	0.0%		100.0%
Pharmacy	8	10	1.29	10.0%	90.0%	1.00	1.33	100.0%	100.0%	100.0%	50.0%	50.0%	100.0%	44.4%
Counsellor Therapists	22	24	1.10	4.2%	95.8%	1.00	1.11	100.0%	100.0%	100.0%	70.8%	29.2%	100.0%	69.6%
Other Health & Social Care	30	41	1.36	12.2%	87.8%	1.00	1.43	92.7%	92.7%	91.7%	36.6%	63.4%	80.0%	30.6%
Play Therapists/ Specialists	14	17	1.25	11.8%	88.2%	1.00	1.30	88.2%	88.2%	86.7%	47.1%	52.9%	100.0%	40.0%
H&SC, Other	66	82	1.25	9.8%	90.2%	1.00	1.29	93.9%	100.0%	93.2%	48.8%	51.2%	87.5%	44.6%
Health & Social Care	4,383	5,147	1.17	15.0%	85.0%	1.08	1.19	92.6%	92.8%	92.5%	56.0%	44.0%	69.8%	53.6%
Executive Management	42	42	1.00	42.9%	57.1%	1.00	1.00	97.6%	97.6%	95.8%	100.0%	0.0%	100.0%	100.0%
Senior Management (VIII & GM)	191	197	1.03	32.0%	68.0%	1.00	1.04	94.4%	94.4%	94.0%	96.4%	3.6%	98.4%	95.5%
Management (VIII & above)	233	239	1.02	33.9%	66.1%	1.00	1.04	95.0%	96.3%	94.3%	97.1%	2.9%	98.8%	96.2%
Middle Management (V-VII)	674	709	1.05	21.4%	78.6%	1.02	1.06	93.1%	93.1%	92.5%	86.6%	13.4%	96.1%	84.0%
Other Administrative	11	11	1.00	9.1%	90.9%	1.00	1.00	90.9%	90.9%	90.0%	100.0%	0.0%	100.0%	100.0%
Administrative/ Supervisory (V to VII)	685	720	1.05	21.3%	78.8%	1.02	1.06	93.1%	95.4%	92.4%	86.8%	13.2%	96.1%	84.3%
General Administrative (III & IV)	755	895	1.19	10.5%	89.5%	1.11	1.20	88.0%	88.0%	88.4%	60.6%	39.4%	81.9%	58.1%
Clerical (III & IV)	755	895	1.19	10.5%	89.5%	1.11	1.20	88.0%	85.1%	88.4%	60.6%	39.4%	81.9%	58.1%
Management & Administrative	1,673	1,854	1.11	17.7%	82.3%	1.04	1.12	90.9%	92.7%	90.5%	75.5%	24.5%	92.7%	71.8%
Catering	75	90	1.20	26.7%	73.3%	1.03	1.28	100.0%	100.0%	100.0%	57.8%	42.2%	87.5%	47.0%
Household Services	383	553	1.45	16.5%	83.5%	1.38	1.46	87.2%	87.2%	89.6%	34.9%	65.1%	54.9%	31.0%
Other Labs & Associated	1	1	1.00		100.0%		1.00	100.0%	100.0%	100.0%	100.0%	0.0%		100.0%
Other Support	147	215	1.46	54.4%	45.6%	1.19	1.99	89.3%	89.3%	96.9%	27.0%	73.0%	41.9%	9.2%

Portering	18	25	1.42	96.0%	4.0%	1.43	1.25	88.0%	88.0%	100.0%	48.0%	52.0%	50.0%	0.0%
Support	623	884	1.42	29.0%	71.0%	1.25	1.50	89.0%	82.0%	91.9%	35.7%	64.3%	51.6%	29.3%
Maintenance	114	126	1.11	89.7%	10.3%	1.10	1.14	92.9%	92.9%	92.3%	71.4%	28.6%	75.2%	38.5%
Technical Services	17	18	1.03	83.3%	16.7%	1.03	1.05	94.4%	94.4%	100.0%	88.9%	11.1%	93.3%	66.7%
Maintenance/ Technical	131	144	1.10	88.9%	11.1%	1.09	1.12	93.1%	93.0%	93.8%	73.6%	26.4%	77.3%	43.8%
General Support	754	1,028	1.36	37.4%	62.6%	1.20	1.49	89.6%	85.7%	91.9%	41.1%	58.9%	60.2%	29.7%
Attendant/ Aide	178	229	1.29	19.2%	80.8%	1.17	1.32	86.9%	86.9%	87.6%	48.0%	52.0%	68.2%	43.2%
Health & Social Care Assistants	23	28	1.20	14.3%	85.7%	1.00	1.24	67.9%	67.9%	66.7%	67.9%	32.1%	100.0%	62.5%
Health Care Assistant/ Care Assistant	7,248	8,630	1.19	23.2%	76.8%	1.10	1.22	85.4%	85.4%	85.1%	53.0%	47.0%	62.3%	50.2%
Health Care Assistants	7,449	8,887	1.19	23.0%	77.0%	1.10	1.22	85.4%	86.6%	85.1%	52.9%	47.1%	62.5%	50.0%
Home Help	79	219	2.78	7.8%	92.2%	3.31	2.75	66.7%	58.8%	67.3%	2.3%	97.7%	0.0%	2.5%
Home Care Services	17	22	1.26	13.6%	86.4%	1.08	1.29	68.2%	68.2%	73.7%	54.5%	45.5%	66.7%	52.6%
Other Care Grades	249	283	1.13	29.0%	71.0%	1.14	1.13	90.5%	90.5%	93.5%	74.6%	25.4%	78.0%	73.1%
Pastoral Care	6	7	1.20	42.9%	57.1%	1.27	1.15	71.4%	71.4%	100.0%	57.1%	42.9%	33.3%	75.0%
Workshop Services	1,480	1,795	1.21	23.1%	76.9%	1.09	1.25	86.4%	86.4%	85.9%	59.8%	40.2%	72.5%	55.9%
Care, other	1,752	2,107	1.20	23.9%	76.1%	1.10	1.24	86.7%	86.7%	86.7%	61.7%	38.3%	73.2%	58.1%
Patient & Client Care	9,280	11,213	1.21	22.9%	77.1%	1.11	1.24	85.3%	86.4%	85.0%	53.6%	46.4%	64.1%	50.4%

Employment by WTE, Headcount, Gender, Full-Time /Part-Time etc.: Jan 2023

Social Care Disability Services CHO	WTE	Headcount	WTE: no.	% Male	% female	Male WTE: no.	Female WTE: no.	% Total Perm	% Male Perm	% Female Perm	% Total Full Time	% Total Part Time	% Male FT	% Female FT
Overall	19,891	23,624	1.19	19.4%	80.6%	1.10	1.21	88.6%	88.3%	88.7%	58.6%	41.4%	69.5%	56.0%
CHO 1	1,708	1,915	1.12	20.1%	79.9%	1.06	1.14	92.6%	92.6%	92.6%	78.6%	21.4%	88.8%	76.0%
CHO 2	1,625	1,980	1.22	23.0%	77.0%	1.16	1.24	82.5%	82.5%	82.7%	47.9%	52.1%	52.6%	46.5%
CHO 3	2,004	2,389	1.19	13.5%	86.5%	1.13	1.20	85.6%	85.6%	85.8%	40.4%	59.6%	44.0%	39.8%
CHO 4	2,596	3,193	1.23	20.4%	79.6%	1.08	1.28	83.2%	83.2%	83.8%	68.2%	31.8%	74.8%	66.5%
CHO 5	1,670	1,958	1.17	19.9%	80.1%	1.12	1.19	87.4%	87.4%	87.7%	54.6%	45.4%	63.5%	52.5%
CHO 6	1,210	1,381	1.14	22.0%	78.0%	1.05	1.17	92.8%	92.8%	93.0%	66.0%	34.0%	81.6%	61.6%
CHO 7	3,394	4,004	1.18	22.3%	77.7%	1.10	1.20	89.3%	89.3%	89.2%	68.8%	31.2%	80.7%	65.4%
CHO 8	2,341	2,835	1.21	20.5%	79.5%	1.13	1.23	95.4%	95.4%	95.2%	47.1%	52.9%	53.1%	45.5%
CHO 9	3,340	3,964	1.19	15.3%	84.7%	1.08	1.21	89.8%	89.8%	89.5%	55.0%	45.0%	75.0%	51.4%
other Community Services	5	5	1.01	20.0%	80.0%	1.00	1.01	100.0%	100.0%	100.0%	80.0%	20.0%	100.0%	75.0%

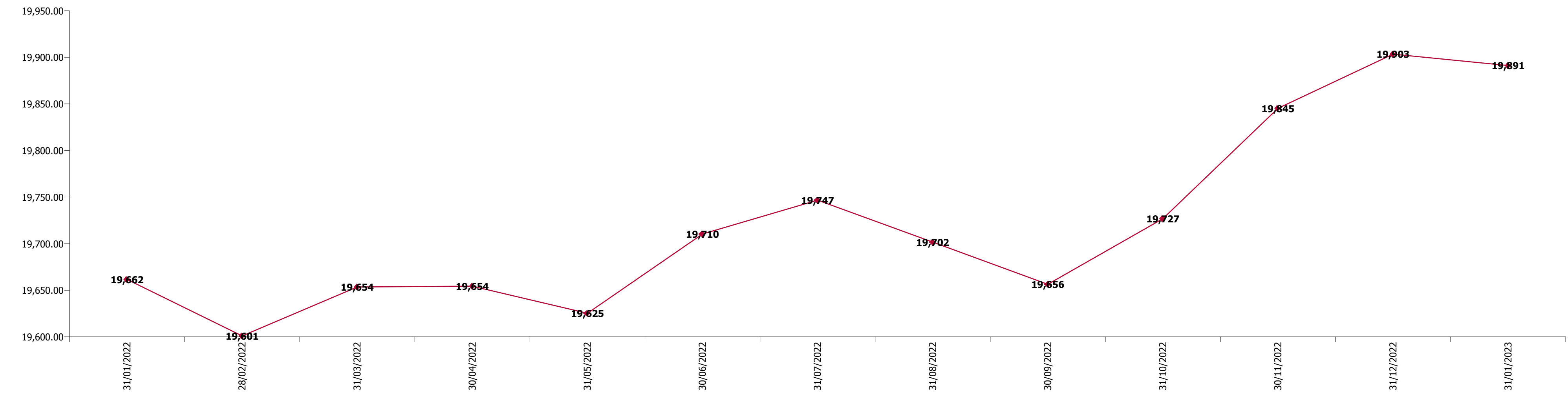
Summary Staff Movement: January 2023

Month-on-month
Summary

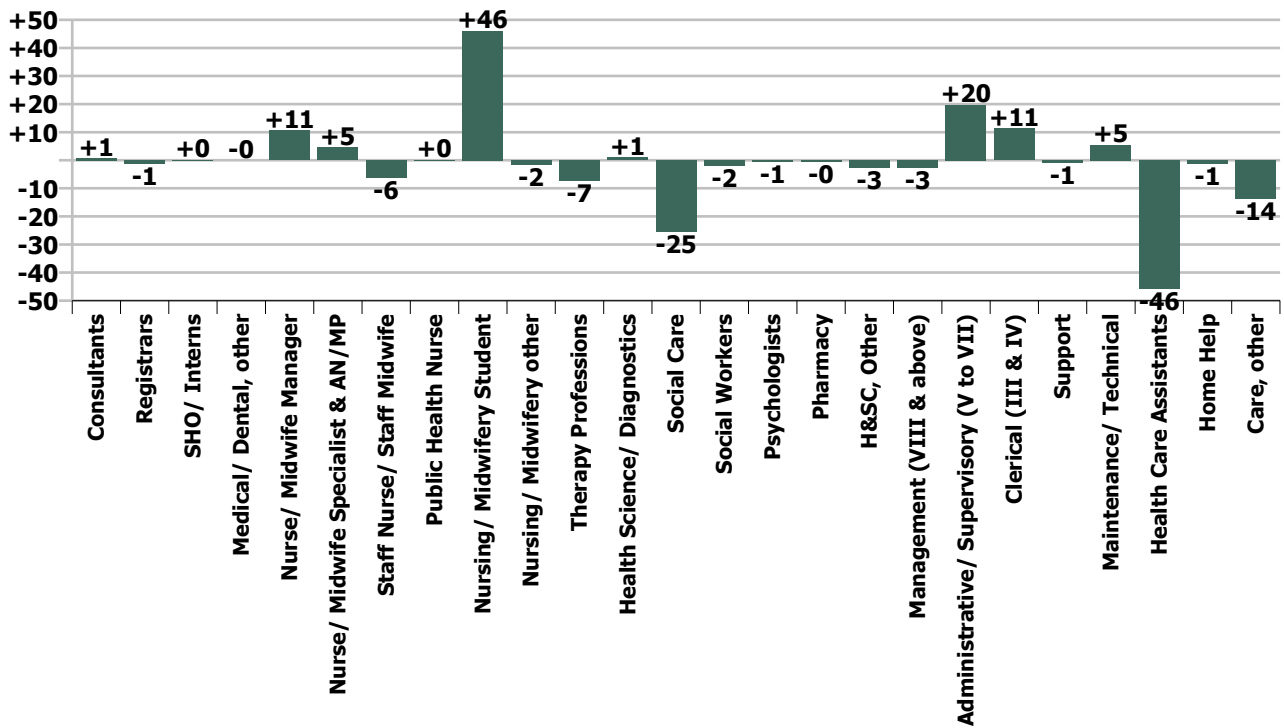
WTE change since Dec 22	% change since Dec 22	overall	Consultants	Registrars	SHO/ Interns	Medical/ Dental, other	Medical & Dental	Nurse/ Midwife Manager	Nurse/ Midwife Specialist & AN/MP	Staff Nurse/ Staff Midwife	Public Health Nurse	Nursing/ Midwifery Student	Nursing/ Midwifery other	Nursing & Midwifery	Therapy Professions	Health Science/ Diagnostics	Social Care	Social Workers	Psychologists	Pharmacy	H&SC, Other	Health & Social Care Professionals	Management (VIII & above)	Administrativ e/ Supervisory (V to VII)	Clerical (III & IV)	Management & Administrative	General Support	Health Care Assistants	Home Help	Care, other	Patient & Client Care
Overall	-0.1%	-12	+1	-1	+0	-0	-1	+11	+5	-6	+0	+46	-2	+54	-7	+1	-25	-2	-1	-0	-3	-37	-3	+20	+11	+28	+5	-46	-1	-14	-61
CHO 1	+0.6%	+10						+2	+1	-1	-0	+2	+0	+4	-2		-2	+0	-0		+0	-4	-0	-2	+3	+1	+1	+1	-0	+8	+9
CHO 2	+1.1%	+18				-0	-0	-2	-0	-1				-3	-0		+3	+1	+1		-0	+5	+0	+4	+2	+7	+3	+1		+5	+6
CHO 3	+0.8%	+15	+0				+0	+1	+1	+3		+6		+11	-0	+0	-1	+0	+0		-1	-1	+3	-5	+2	+0	+0	-19		+24	+5
CHO 4	-1.7%	-44	-0				-0	-0	-0	+0		+9		+9	+1		-0	-1	-1		-0	-1	-1	+4	-2	+1	-0	-6		-47	-53
CHO 5	+0.8%	+14	+0				+0	+2	+0	+3	+0	+2	+0	+7	+1		-1	-0	+0		-1	-1	+1	+7	+4	+12	-0	-4	+0	-1	-5
CHO 6	-0.6%	-7		+0			+0	-0	+1	+5				+6	-1		-11	+0	-1		+0	-12	-6	+2	+4	-1	-0	+1		-1	
CHO 7	-0.5%	-16		-0	+0		-0	+3	+1	-6		+7	-1	+3	-1	-0	-2	-2	-1	-0		-6	-1	+2	-3	-3	-0	-15	+0	+6	-9
CHO 8	-0.2%	-4						-2	-0	-2	-0	+8	+0	+4	+3		-5	+0	+1		-1	-3	+0	-1	+1	+1	+2	-7	-1	+0	-8
CHO 9	+0.1%	+4	+1	-1	+0		-0	+7	+1	-8		+13	-1	+13	-9	+1	-6	-1	+2		+0	-13	+1	+10	-0	+11	-1	+2		-8	-6
other Community Services	-16.2%	-1																				+0	-1	-0	-1						
		-0.1%	+3.9%	-13.9%	+0.7%	-0.2%	-1.3%	+1.1%	+6.6%	-0.2%	+0.5%	+424.6%	-5.7%	+1.4%	-0.9%	+4.3%	-0.8%	-0.9%	-0.2%	-5.3%	-4.0%	-0.8%	-1.1%	+3.0%	+1.5%	+1.7%	+0.6%	-0.6%	-1.6%	-0.8%	-0.6%

Year-on-year Summary

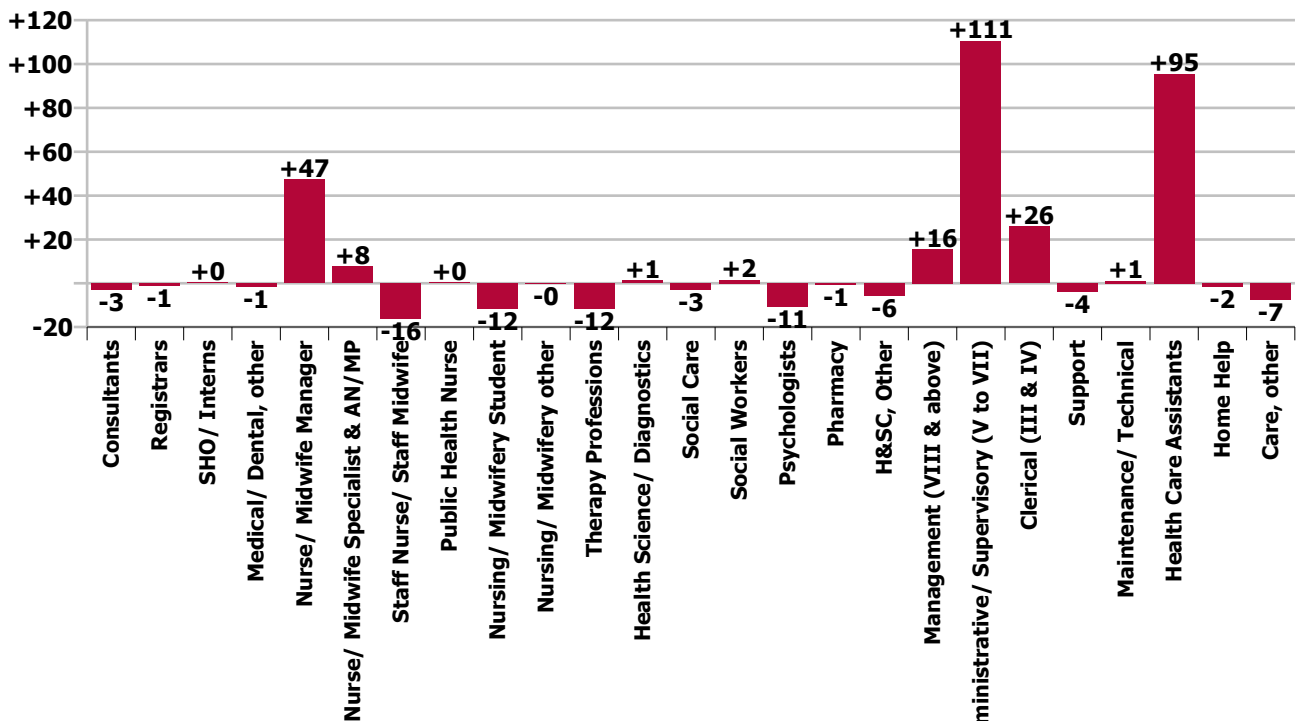
WTE change since Jan 22	% change since Jan 22	overall	Consultants	Registrars	SHO/ Interns	Medical/ Dental, other	Medical & Dental	Nurse/ Midwife Manager	Nurse/ Midwife Specialist & AN/MP	Staff Nurse/ Staff Midwife	Public Health Nurse	Nursing/ Midwifery Student	Nursing/ Midwifery other	Nursing & Midwifery	Therapy Professions	Health Science/ Diagnostics	Social Care	Social Workers	Psychologists	Pharmacy	H&SC, Other	Health & Social Care Professionals	Management (VIII & above)	Administrative/ Supervisory (V to VII)	Clerical (III & IV)	Management & Administrative	General Support	Health Care Assistants	Home Help	Care, other	Patient & Client Care
Overall	+1.2%	+230	-3	-1	+0	-1	-5	+47	+8	-16	+0	-12	-0	+28	-12	+1	-3	+2	-11	-1	-6	-29	+16	+111	+26	+152	-3	+95	-2	-7	+86
CHO 1	+4.0%	+66		-1	+1	-0	-1	-2	+0	-15	-0	-1	+1	-17	+3		+4	-0	-5		-0	+1	-0	+8	+10	+17	+2	+59	+1	+8	+67
CHO 2	+4.2%	+66	+0	-1	+1	-0	-0	+2	+0	-5				-2	+10		+14	-1	+4		-1	+26	+1	+17	+6	+24	+4	+13		+2	+15
CHO 3	+3.7%	+71	-1			-0	-1	+2	+4	+10		-1	-1	+14	-3	+1	-1	+3	+0		-1	-1	+5	+11	-2	+14	+0	+13		+31	+44
CHO 4	-1.6%	-43	-0			+0	-0	+3	-1	-5		-2		-5	-8		+8	-2	+1		-2	-3	-0	+17	-3	+13	-4	-6		-39	-44
CHO 5	+1.6%	+26	+0				+0	+4	+1	+4	+0	-3	+0	+6	-6		+8	-4	-5		+0	-7	+4	+8	+11	+23	-1	-0	-1	+5	+4
CHO 6	-3.3%	-42		+1			+1	-3	+1	+0			+1	-1	-11		-40	+1	-1		+0	-51	+2	+10	+7	+18	+5	-3		-11	-14
CHO 7	+2.3%	+75		+1	+0	-1	+1	+24	+2	-4		+1	+0	+22	-2	+0	+27	+2	+0	-1		+28	-1	+15	+7	+21	+1	+4	-2	+1	+3
CHO 8	+0.8%	+18						+3	-2	+12		-4	-1	+9	+9		-4	-0	+1		+0	+5	+2	-4	-0	-3	-1	+8	-0	+0	+8
CHO 9	-0.2%	-7	-2	-1	-1	+0	-4	+15	+1	-14		-1		+1	-3		-19	+3	-6		-3	-27	+2	+32	-9	+25	-5	+9		-5	+4
other Community Services	-16.5%	-1																				+1	-2	+0	-1						
		+1.2%	-12.5%	-10.9%	+4.3%	-9.9%	-8.9%	+5.1%	+11.6%	-0.6%	+3.2%	-16.8%	-0.6%	+0.7%	-1.4%	+6.0%	-0.1%	+0.6%	-4.3%	-7.1%	-8.0%	-0.7%	+7.1%	+19.3%	+3.6%	+10.0%	-0.4%	+1.3%	-1.9%	-0.4%	+0.9%



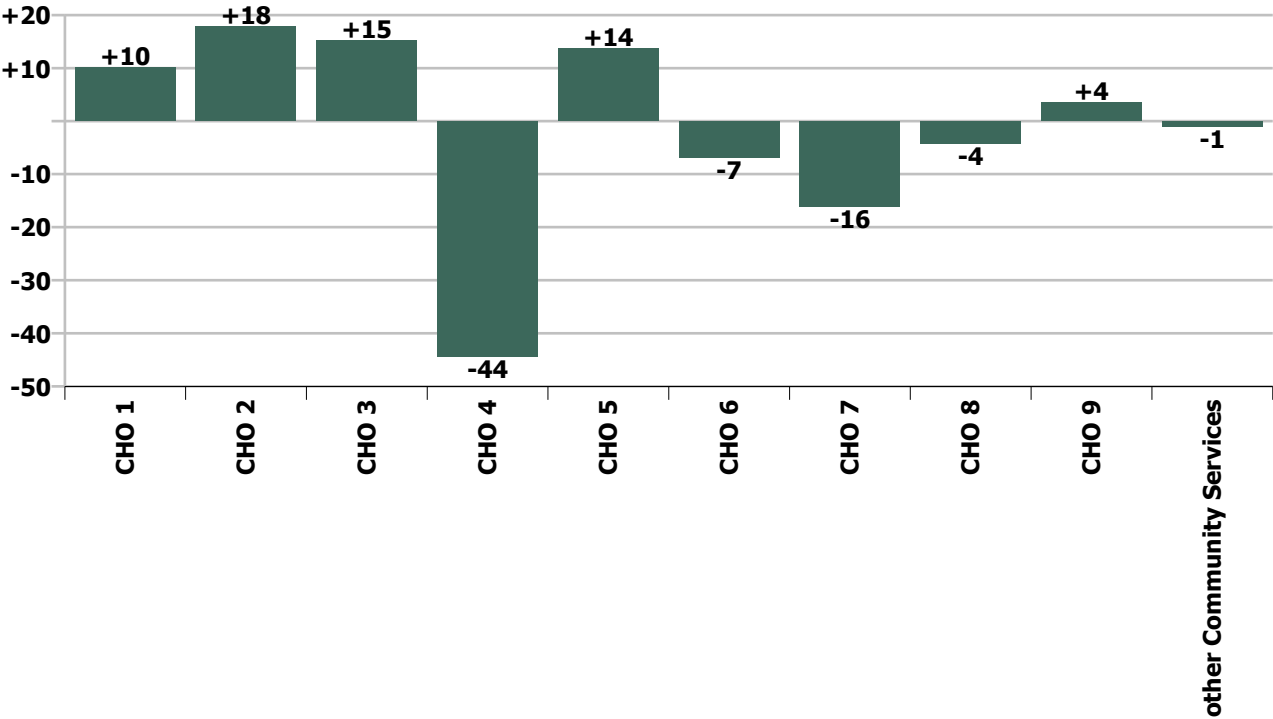
Staff Group change since: Dec 2022



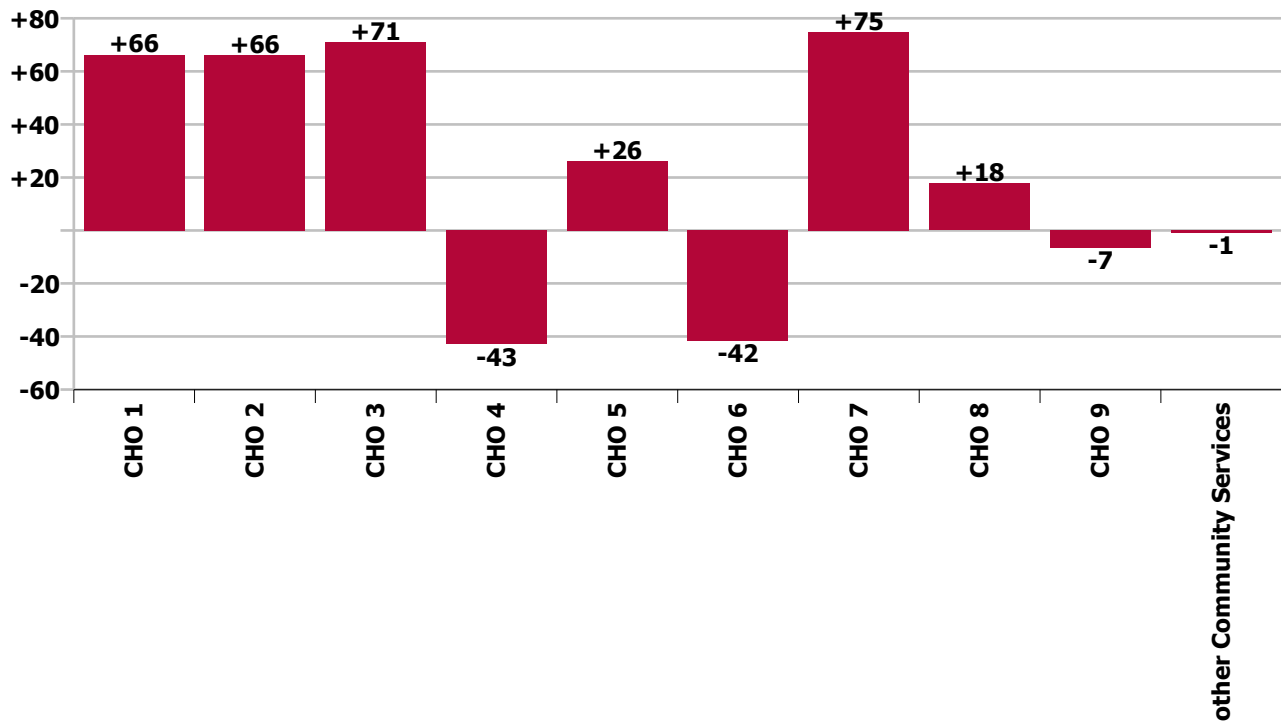
Staff Group change since: Jan 2022



CHO change since: Dec 2022



CHO change since: Jan 2022



Longitudinal Employment Levels by Grade Group - Dec 2017 to Jan 2023

Jan 2023 (Dec 2015 figure: 15,715)	WTE Jan 2023	WTE change since Dec 17	WTE change since Dec 18	WTE change since Dec 19	WTE change since Dec 20	WTE change since Dec 21	WTE change since Dec 22	% change since Dec 17	% change since Dec 18	% change since Dec 19	% change since Dec 20	% change since Dec 21	% change since Dec 22
Overall	19,891	+2,494	+2,072	+1,589	+947	+268	-12	+14.3%	+11.6%	+8.7%	+5.0%	+1.4%	-0.1%
Consultant Medicine								-100.0%	-100.0%	-100.0%	-100.0%	-100.0%	-100.0%
Consultant Paediatrics	2	-1	-1	-1	-1	+0	-0	-21.0%	-18.7%	-18.7%	-18.7%	+14.8%	-2.0%
Consultant Psychiatry	17	-6	-1	-4	-5	-2	+1	-27.1%	-7.0%	-20.1%	-22.0%	-13.0%	+4.8%
Consultant Surgery								-100.0%	-100.0%	-100.0%	-100.0%	-100.0%	-100.0%
Consultants	19	-7	-2	-5	-5	-2	+1	-26.4%	-8.7%	-19.9%	-21.6%	-10.2%	+3.9%
Registrar	5	-1	-1	-2	+2	-2	-2	-19.7%	-9.4%	-31.1%	+60.7%	-25.8%	-30.9%
Senior Registrar	2	-1			-1			-33.3%			-33.3%		
Specialist Registrar	2	-2	+1	-2	-0	+1	+1	-55.8%	+77.0%	-55.8%	-11.5%	+77.0%	+77.0%
Registrars	9	-4	+0	-4	+1	-1	-1	-33.9%	+3.2%	-33.9%	+7.4%	-9.6%	-13.9%
Senior House Officer	9	+2	+2	+2		+2	+0	+28.6%	+29.5%	+29.3%		+28.6%	+0.7%
SHO/ Interns	9	+2	+2	+2		+2	+0	+28.6%	+29.5%	+29.3%		+28.6%	+0.7%
Dentists								-100.0%	-100.0%	-100.0%	-100.0%	-100.0%	-100.0%
Other Medical	13	-1	-1	-2	-1	-1	-0	-9.7%	-9.0%	-10.5%	-9.9%	-9.9%	-0.2%
Medical/ Dental, other	13	-1	-1	-2	-1	-1	-0	-9.7%	-9.0%	-10.5%	-9.9%	-9.9%	-0.2%
Medical & Dental	50	-11	-1	-9	-6	-2	-1	-17.7%	-1.5%	-14.8%	-10.9%	-4.8%	-1.3%
Clinical Nurse/ Midwife Manager	877	+69	+69	+67	+63	+42	+9	+8.5%	+8.5%	+8.2%	+7.7%	+5.1%	+1.0%
Director Nursing/Midwifery, Assistant	45	+7	+7	+4	-1	+5	+1	+20.1%	+17.2%	+9.1%	-2.5%	+11.4%	+2.6%
Director of Nursing/Midwifery	48	+2	+10	+6	+11	-2	+1	+4.8%	+25.7%	+13.1%	+29.3%	-3.5%	+1.9%
Nurse/ Midwife Manager	970	+79	+85	+76	+73	+45	+11	+8.8%	+9.6%	+8.5%	+8.1%	+4.9%	+1.1%
Advanced Nurse/ Midwife Practitioner	13	+11	+11	+11	+5	+4	+1	+532.0%	+532.0%	+532.0%	+58.0%	+40.6%	+5.5%
Clinical Nurse/ Midwife Specialist	62	-6	-5	+2	+6	+3	+4	-9.3%	-7.0%	+2.8%	+10.0%	+5.0%	+6.8%
Nurse/ Midwife Specialist & AN/MP	74	+4	+6	+12	+10	+7	+5	+6.2%	+8.8%	+19.9%	+16.0%	+9.7%	+6.6%
Graduate Nursing/ Midwifery								-100.0%	-100.0%	-100.0%	-100.0%	-100.0%	-100.0%
Staff Nurse [Psychiatric]	61	-9	-10	-22	+8	-111	+1	-13.4%	-14.0%	-26.9%	+15.9%	-64.5%	+2.3%
Staff Nurses [General/ Children's]	797	-127	-72	-95	+45	+158	+5	-13.8%	-8.2%	-10.6%	+5.9%	+24.8%	+0.7%

Jan 2023 (Dec 2015 figure: 15,715)	WTE Jan 2023	WTE change since Dec 17	WTE change since Dec 18	WTE change since Dec 19	WTE change since Dec 20	WTE change since Dec 21	WTE change since Dec 22	% change since Dec 17	% change since Dec 18	% change since Dec 19	% change since Dec 20	% change since Dec 21	% change since Dec 22
Overall	19,891	+2,494	+2,072	+1,589	+947	+268	-12	+14.3%	+11.6%	+8.7%	+5.0%	+1.4%	-0.1%
Staff Nurse [Intellectual Disability]	1,754	+51	+70	+157	-34	-64	-13	+3.0%	+4.2%	+9.8%	-1.9%	-3.5%	-0.7%
Staff Nurse/ Staff Midwife	2,612	-86	-11	+40	+19	-17	-6	-3.2%	-0.4%	+1.5%	+0.7%	-0.6%	-0.2%
Public Health Nurse	12	+6	+5	+6	+5	-0	+0	+93.5%	+76.2%	+88.2%	+71.6%	-0.8%	+0.5%
Pre-registration Nurse Intern (COVID-19)					-32			-100.0%	-100.0%	-100.0%	-100.0%	-100.0%	-100.0%
Pre-registration Nurse/ Midwife Intern	56	+44	+21	+28	+53	+34	+49	+373.9%	+60.5%	+97.8%	+2134.8%	+161.1%	+690.2%
Nursing/ Midwifery awaiting registration	1	+1	+1	-13	-12	-4	-3	-100.0%	-100.0%	-92.8%	-92.3%	-81.0%	-73.5%
Nursing/ Midwifery Student	57	+45	+22	+15	+10	+30	+46	+382.4%	+63.3%	+35.1%	+20.3%	+113.2%	+424.6%
Nursing Education/Clinical	25	+4	+4	+4	+2	+1	-2	+18.2%	+17.8%	+17.7%	+9.4%	+6.1%	-6.0%
Other Nursing/ Midwifery	1	-4				-1		-80.0%				-50.0%	
Nursing/ Midwifery other	26	-0	+4	+4	+2	+0	-2	-0.6%	+17.0%	+16.9%	+9.0%	+1.7%	-5.7%
Nursing & Midwifery	3,751	+48	+111	+152	+118	+65	+54	+1.3%	+3.0%	+4.2%	+3.3%	+1.8%	+1.4%
Dietitians	23	+11	+9	+4	+6	+2	+2	+90.2%	+65.4%	+22.9%	+38.2%	+7.3%	+11.2%
Occupational Therapists	297	+48	+56	+33	+18	-1	-7	+19.4%	+23.2%	+12.4%	+6.6%	-0.2%	-2.3%
Physiotherapists	193	+8	+12	+4	+0	-2	-0	+4.5%	+6.7%	+2.0%	+0.0%	-0.9%	-0.1%
Podiatrists & Chiropodists		-0						-100.0%	-100.0%	-100.0%	-100.0%	-100.0%	-100.0%
Speech & Language Therapists	270	-12	-9	-22	-37	-42	-2	-4.3%	-3.1%	-7.6%	-12.0%	-13.5%	-0.8%
Therapy Professions	783	+55	+68	+18	-12	-43	-7	+7.6%	+9.6%	+2.4%	-1.5%	-5.2%	-0.9%
Audiology		-18						-100.0%	-100.0%	-100.0%	-100.0%	-100.0%	-100.0%
Clinical Engineering	15	-3	+3	+2	+2	+0	+1	-16.7%	+25.0%	+15.4%	+15.8%	+0.3%	+7.4%
Medical Science	4	+1				+1		+33.3%				+33.3%	
Phlebotomists			-1	-1				-100.0%	-100.0%	-100.0%	-100.0%	-100.0%	-100.0%
Radiographers	1	+0	+0	+0	+0	+0	-0	+20.0%	+20.0%	+20.0%	+20.0%	+20.0%	-9.8%
Respiratory Physiologists	2	+1	+1	+1				+100.0%	+100.0%	+100.0%			
Health Science/ Diagnostics	22	-19	+3	+2	+2	+1	+1	-45.7%	+16.8%	+11.0%	+11.3%	+6.0%	+4.3%
Social Care	3,029	+683	+541	+434	+240	+18	-25	+29.1%	+21.7%	+16.7%	+8.6%	+0.6%	-0.8%
Social Workers	237	+16	+18	+18	+9	+2	-2	+7.4%	+8.0%	+8.3%	+3.8%	+0.7%	-0.9%
Psychologists	238	+15	+32	+34	+9	-9	-1	+6.6%	+15.4%	+16.8%	+4.0%	-3.5%	-0.2%

Jan 2023 (Dec 2015 figure: 15,715)	WTE Jan 2023	WTE change since Dec 17	WTE change since Dec 18	WTE change since Dec 19	WTE change since Dec 20	WTE change since Dec 21	WTE change since Dec 22	% change since Dec 17	% change since Dec 18	% change since Dec 19	% change since Dec 20	% change since Dec 21	% change since Dec 22
Overall	19,891	+2,494	+2,072	+1,589	+947	+268	-12	+14.3%	+11.6%	+8.7%	+5.0%	+1.4%	-0.1%
Pharmacists	7	+2	+1	+1	+2	-0	+0	+31.8%	+12.7%	+28.1%	+34.5%	-6.6%	+2.3%
Pharmacy Technicians	1	+0		-1		+0	-1	+4.2%		-33.3%		+28.2%	-36.7%
Pharmacy	8	+2	+1	+1	+2	-0	-0	+27.5%	+10.9%	+14.5%	+28.7%	-3.2%	-5.3%
Counsellor Therapists	22	+2	+4	+3	+2	+1	-1	+12.0%	+22.5%	+15.1%	+10.1%	+4.1%	-3.9%
HSCP Trainees/ Students		-1						-100.0%	-100.0%	-100.0%	-100.0%	-100.0%	-100.0%
Other Health & Social Care	30	-29	-22	-20	-15	-8	+0	-48.6%	-41.8%	-40.3%	-33.0%	-21.9%	+0.0%
Play Therapists/ Specialists	14	+0	-1	-2	+3	+4	-2	+3.1%	-6.8%	-12.1%	+24.9%	+35.8%	-11.9%
H&SC, Other	66	-26	-19	-19	-10	-4	-3	-28.7%	-22.2%	-22.8%	-13.4%	-5.8%	-4.0%
Health & Social Care Professionals	4,383	+726	+644	+489	+240	-35	-37	+19.9%	+17.2%	+12.6%	+5.8%	-0.8%	-0.8%
Executive Management	42	+4	+10	+11	+6	+3	-8	+10.5%	+32.1%	+36.5%	+16.7%	+8.0%	-15.4%
Senior Management (VIII & GM)	191	+51	+47	+43	+23	+13	+5	+36.0%	+32.5%	+28.6%	+14.0%	+7.3%	+2.7%
Management (VIII & above)	233	+55	+57	+54	+29	+16	-3	+30.6%	+32.4%	+29.9%	+14.5%	+7.4%	-1.1%
Middle Management (V-VII)	674	+281	+246	+210	+163	+118	+21	+71.7%	+57.5%	+45.2%	+31.8%	+21.2%	+3.2%
Other Administrative	11	-5	-5	-4	-5	-3	-1	-31.1%	-30.5%	-26.5%	-30.5%	-21.4%	-8.3%
Administrative/ Supervisory (V to VII)	685	+276	+241	+206	+158	+115	+20	+67.6%	+54.3%	+42.9%	+30.0%	+20.1%	+3.0%
Clerical (III & IV)	755	+123	+102	+95	+70	+35	+11	+19.5%	+15.5%	+14.3%	+10.2%	+4.9%	+1.5%
Management & Administrative	1,673	+454	+400	+354	+257	+166	+28	+37.2%	+31.4%	+26.9%	+18.2%	+11.0%	+1.7%
Catering	75	-31	-29	-23	-21	-7	+0	-29.0%	-28.1%	-23.5%	-22.0%	-8.0%	+0.1%
Household Services	383	-84	-69	-37	-23	+1	-3	-18.0%	-15.3%	-8.8%	-5.7%	+0.2%	-0.7%
Other Labs & Associated	1		-0						-3.8%				
Other Support	147	-42	-44	-41	+11	+2	+2	-22.4%	-23.0%	-21.8%	+8.4%	+1.5%	+1.1%
Portering	18	-9	-8	-10	-7	+0	+0	-33.6%	-31.6%	-36.3%	-27.8%	+1.9%	+0.5%
Support	623	-166	-151	-111	-40	-3	-1	-21.0%	-19.5%	-15.1%	-6.0%	-0.5%	-0.1%
Maintenance	114	-17	-6	-2	-8	-3	+5	-13.1%	-5.1%	-2.0%	-6.2%	-2.4%	+4.5%
Technical Services	17	+12	+11	+9	+6	+2	+1	+241.2%	+185.2%	+114.8%	+56.8%	+16.0%	+3.0%
Maintenance/ Technical	131	-5	+5	+7	-1	-0	+5	-3.6%	+4.1%	+5.6%	-0.9%	-0.3%	+4.3%
General Support	754	-171	-145	-104	-41	-4	+5	-18.5%	-16.2%	-12.1%	-5.1%	-0.5%	+0.6%

Jan 2023 (Dec 2015 figure: 15,715)	WTE Jan 2023	WTE change since Dec 17	WTE change since Dec 18	WTE change since Dec 19	WTE change since Dec 20	WTE change since Dec 21	WTE change since Dec 22	% change since Dec 17	% change since Dec 18	% change since Dec 19	% change since Dec 20	% change since Dec 21	% change since Dec 22
Overall	19,891	+2,494	+2,072	+1,589	+947	+268	-12	+14.3%	+11.6%	+8.7%	+5.0%	+1.4%	-0.1%
Attendant/ Aide	178	-119	-45	-52	-69	-34	-1	-40.0%	-20.2%	-22.8%	-27.9%	-16.1%	-0.3%
Health & Social Care Assistants	23	+14	+12	+14	+12	+11	+2	+156.7%	+114.2%	+144.0%	+111.3%	+93.6%	+7.7%
Health Care Assistant/ Care Assistant	7,248	+1,369	+940	+662	+403	+118	-47	+23.3%	+14.9%	+10.0%	+5.9%	+1.7%	-0.6%
Health Care Assistants	7,449	+1,264	+908	+623	+347	+95	-46	+20.4%	+13.9%	+9.1%	+4.9%	+1.3%	-0.6%
Home Help	79	-45	-34	-30	-15	-3	-1	-36.3%	-30.1%	-27.6%	-16.0%	-3.9%	-1.6%
Home Care Services	17	-6	-6	-11	-1	-3	+0	-24.2%	-24.4%	-38.7%	-5.8%	-13.9%	+0.6%
Other Care Grades	249	+65	+65	+75	+28	-2	-9	+35.1%	+35.1%	+42.9%	+12.7%	-0.7%	-3.5%
Pastoral Care	6	-7	-4	-5	-4	-4	+1	-55.5%	-42.6%	-43.6%	-42.7%	-40.9%	+20.7%
Workshop Services	1,480	+176	+135	+54	+24	-4	-6	+13.5%	+10.0%	+3.8%	+1.7%	-0.3%	-0.4%
Care, other	1,752	+228	+190	+113	+47	-13	-14	+15.0%	+12.1%	+6.9%	+2.7%	-0.7%	-0.8%
Patient & Client Care	9,280	+1,448	+1,063	+706	+378	+79	-61	+18.5%	+12.9%	+8.2%	+4.3%	+0.9%	-0.6%

Source: Health Service Personnel Census

Longitudinal Employment Levels by Grade Group - Dec 2017 to Jan 2023

Jan 2023 (Dec 2015 figure: 15,715)	WTE Jan 2023	WTE change since Dec 17	WTE change since Dec 18	WTE change since Dec 19	WTE change since Dec 20	WTE change since Dec 21	WTE change since Dec 22	% change since Dec 17	% change since Dec 18	% change since Dec 19	% change since Dec 20	% change since Dec 21	% change since Dec 22
Overall	19,891	+2,494	+2,072	+1,589	+947	+268	-12	+14.3%	+11.6%	+8.7%	+5.0%	+1.4%	-0.1%
Consultant Medicine								-100.0%	-100.0%	-100.0%	-100.0%	-100.0%	-100.0%
Consultant Paediatrics	2	-1	-1	-1	-1	+0	-0	-21.0%	-18.7%	-18.7%	-18.7%	+14.8%	-2.0%
Consultant Psychiatry	17	-6	-1	-4	-5	-2	+1	-27.1%	-7.0%	-20.1%	-22.0%	-13.0%	+4.8%
Consultant Surgery								-100.0%	-100.0%	-100.0%	-100.0%	-100.0%	-100.0%
Consultants	19	-7	-2	-5	-5	-2	+1	-26.4%	-8.7%	-19.9%	-21.6%	-10.2%	+3.9%
Registrar	5	-1	-1	-2	+2	-2	-2	-19.7%	-9.4%	-31.1%	+60.7%	-25.8%	-30.9%
Senior Registrar	2	-1			-1			-33.3%			-33.3%		
Specialist Registrar	2	-2	+1	-2	-0	+1	+1	-55.8%	+77.0%	-55.8%	-11.5%	+77.0%	+77.0%
Registrars	9	-4	+0	-4	+1	-1	-1	-33.9%	+3.2%	-33.9%	+7.4%	-9.6%	-13.9%
SHO/ Interns	9	+2	+2	+2		+2	+0	+28.6%	+29.5%	+29.3%		+28.6%	+0.7%
Dentists								-100.0%	-100.0%	-100.0%	-100.0%	-100.0%	-100.0%
Other Medical	13	-1	-1	-2	-1	-1	-0	-9.7%	-9.0%	-10.5%	-9.9%	-9.9%	-0.2%
Medical/ Dental, other	13	-1	-1	-2	-1	-1	-0	-9.7%	-9.0%	-10.5%	-9.9%	-9.9%	-0.2%
Medical & Dental	50	-11	-1	-9	-6	-2	-1	-17.7%	-1.5%	-14.8%	-10.9%	-4.8%	-1.3%
Clinical Nurse/ Midwife Manager	877	+69	+69	+67	+63	+42	+9	+8.5%	+8.5%	+8.2%	+7.7%	+5.1%	+1.0%
Director Nursing/Midwifery, Assistant	45	+7	+7	+4	-1	+5	+1	+20.1%	+17.2%	+9.1%	-2.5%	+11.4%	+2.6%
Director of Nursing/Midwifery	48	+2	+10	+6	+11	-2	+1	+4.8%	+25.7%	+13.1%	+29.3%	-3.5%	+1.9%
Nurse/ Midwife Manager	970	+79	+85	+76	+73	+45	+11	+8.8%	+9.6%	+8.5%	+8.1%	+4.9%	+1.1%
Advanced Nurse/ Midwife Practitioner	13	+11	+11	+11	+5	+4	+1	+532.0%	+532.0%	+532.0%	+58.0%	+40.6%	+5.5%
Clinical Nurse/ Midwife Specialist	62	-6	-5	+2	+6	+3	+4	-9.3%	-7.0%	+2.8%	+10.0%	+5.0%	+6.8%
Nurse/ Midwife Specialist & AN/MP	74	+4	+6	+12	+10	+7	+5	+6.2%	+8.8%	+19.9%	+16.0%	+9.7%	+6.6%
Graduate Nursing/ Midwifery								-100.0%	-100.0%	-100.0%	-100.0%	-100.0%	-100.0%
Staff Nurse [Psychiatric]	61	-9	-10	-22	+8	-111	+1	-13.4%	-14.0%	-26.9%	+15.9%	-64.5%	+2.3%
Staff Nurses [General/ Children's]	797	-127	-72	-95	+45	+158	+5	-13.8%	-8.2%	-10.6%	+5.9%	+24.8%	+0.7%
Staff Nurse [Intellectual Disability]	1,754	+51	+70	+157	-34	-64	-13	+3.0%	+4.2%	+9.8%	-1.9%	-3.5%	-0.7%
Staff Nurse/ Staff Midwife	2,612	-86	-11	+40	+19	-17	-6	-3.2%	-0.4%	+1.5%	+0.7%	-0.6%	-0.2%
Public Health Nurse	12	+6	+5	+6	+5	-0	+0	+93.5%	+76.2%	+88.2%	+71.6%	-0.8%	+0.5%
Pre-registration Nurse Intern (COVID-19)					-32			-100.0%	-100.0%	-100.0%	-100.0%	-100.0%	-100.0%
Pre-registration Nurse/ Midwife Intern	56	+44	+21	+28	+53	+34	+49	+373.9%	+60.5%	+97.8%	+2134.8%	+161.1%	+690.2%
Nursing/ Midwifery awaiting registration	1	+1	+1	-13	-12	-4	-3	-100.0%	-100.0%	-92.8%	-92.3%	-81.0%	-73.5%
Nursing/ Midwifery Student	57	+45	+22	+15	+10	+30	+46	+382.4%	+63.3%	+35.1%	+20.3%	+113.2%	+424.6%
Nursing Education/Clinical	25	+4	+4	+4	+2	+1	-2	+18.2%	+17.8%	+17.7%	+9.4%	+6.1%	-6.0%
Other Nursing/ Midwifery	1	-4				-1		-80.0%				-50.0%	
Nursing/ Midwifery other	26	-0	+4	+4	+2	+0	-2	-0.6%	+17.0%	+16.9%	+9.0%	+1.7%	-5.7%
Nursing & Midwifery	3,751	+48	+111	+152	+118	+65	+54	+1.3%	+3.0%	+4.2%	+3.3%	+1.8%	+1.4%
Dietitians	23	+11	+9	+4	+6	+2	+2	+90.2%	+65.4%	+22.9%	+38.2%	+7.3%	+11.2%
Occupational Therapists	297	+48	+56	+33	+18	-1	-7	+19.4%	+23.2%	+12.4%	+6.6%	-0.2%	-2.3%
Physiotherapists	193	+8	+12	+4	+0	-2	-0	+4.5%	+6.7%	+2.0%	+0.0%	-0.9%	-0.1%
Podiatrists & Chiropodists		-0						-100.0%	-100.0%	-100.0%	-100.0%	-100.0%	-100.0%
Speech & Language Therapists	270	-12	-9	-22	-37	-42	-2	-4.3%	-3.1%	-7.6%	-12.0%	-13.5%	-0.8%
Therapy Professions	783	+55	+68	+18	-12	-43	-7	+7.6%	+9.6%	+2.4%	-1.5%	-5.2%	-0.9%
Audiology		-18						-100.0%	-100.0%	-100.0%	-100.0%	-100.0%	-100.0%
Clinical Engineering	15	-3	+3	+2	+2	+0	+1	-16.7%	+25.0%	+15.4%	+15.8%	+0.3%	+7.4%
Medical Science	4	+1				+1		+33.3%				+33.3%	
Phlebotomists			-1	-1				-100.0%	-100.0%	-100.0%	-100.0%	-100.0%	-100.0%
Radiographers	1	+0	+0	+0	+0	+0	-0	+20.0%	+20.0%	+20.0%	+20.0%	+20.0%	-9.8%
Respiratory Physiologists	2	+1	+1	+1				+100.0%	+100.0%	+100.0%			
Health Science/ Diagnostics	22	-19	+3	+2	+2	+1	+1	-45.7%	+16.8%	+11.0%	+11.3%	+6.0%	+4.3%
Social Care	3,029	+683	+541	+434	+240	+18	-25	+29.1%	+21.7%	+16.7%	+8.6%	+0.6%	-0.8%
Social Workers	237	+16	+18	+18	+9	+2	-2	+7.4%	+8.0%	+8.3%	+3.8%	+0.7%	-0.9%
Psychologists	238	+15	+32	+34	+9	-9	-1	+6.6%	+15.4%	+16.8%	+4.0%	-3.5%	-0.2%
Pharmacists	7	+2	+1	+1	+2	-0	+0	+31.8%	+12.7%	+28.1%	+34.5%	-6.6%	+2.3%
Pharmacy Technicians	1	+0		-1		+0	-1	+4.2%		-33.3%		+28.2%	-36.7%
Pharmacy	8	+2	+1	+1	+2	-0	-0	+27.5%	+10.9%	+14.5%	+28.7%	-3.2%	-5.3%
Counsellor Therapists	22	+2	+4	+3	+2	+1	-1	+12.0%	+22.5%	+15.1%	+10.1%	+4.1%	-3.9%
HSCP Trainees/ Students		-1						-100.0%	-100.0%	-100.0%	-100.0%	-100.0%	-100.0%
Other Health & Social Care	30	-29	-22	-20	-15	-8	+0	-48.6%	-41.8%	-40.3%	-33.0%	-21.9%	+0.0%
Play Therapists/ Specialists	14	+0	-1	-2	+3	+4	-2	+3.1%	-6.8%	-12.1%	+24.9%	+35.8%	-11.9%
H&SC, Other	66	-26	-19	-19	-10	-4	-3	-28.7%	-22.2%	-22.8%	-13.4%	-5.8%	-4.0%
Health & Social Care Professionals	4,383	+726	+644	+489	+240	-35	-37	+19.9%	+17.2%	+12.6%	+5.8%	-0.8%	-0.8%
Executive Management	42	+4	+10	+11	+6	+3	-8	+10.5%	+32.1%	+36.5%	+16.7%	+8.0%	-15.4%
Senior Management (VIII & GM)	191	+51	+47	+43	+23	+13	+5	+36.0%	+32.5%	+28.6%	+14.0%	+7.3%	+2.7%
Management (VIII & above)	233	+55	+57	+54	+29	+16	-3	+30.6%	+32.4%	+29.9%	+14.5%	+7.4%	-1.1%
Middle Management (V-VII)	674	+281	+246	+210	+163	+118	+21	+71.7%	+57.5%	+45.2%	+31.8%	+21.2%	+3.2%
Other Administrative	11	-5	-5	-4	-5	-3	-1	-31.1%	-30.5%	-26.5%	-30.5%	-21.4%	-8.3%
Administrative/ Supervisory (V to VII)	685	+276	+241	+206	+158	+115	+20	+67.6%	+54.3%	+42.9%	+30.0%	+20.1%	+3.0%
Clerical (III & IV)	755	+123	+102	+95	+70	+35	+11	+19.5%	+15.5%	+14.3%	+10.2%	+4.9%	+1.5%
Management & Administrative	1,673	+454	+400	+354	+257	+166	+28	+37.2%	+31.4%	+26.9%	+18.2%	+11.0%	+1.7%
Support	623	-166	-151	-111	-40	-3	-1	-21.0%	-19.5%	-15.1%	-6.0%	-0.5%	-0.1%
Maintenance	114	-17	-6	-2	-8	-3	+5	-13.1%	-5.1%	-2.0%	-6.2%	-2.4%	+4.5%
Technical Services	17	+12	+11	+9	+6	+2	+1	+241.2%	+185.2%	+114.8%	+56.8%	+16.0%	+3.0%
Maintenance/ Technical	131	-5	+5	+7	-1	-0	+5	-3.6%	+4.1%	+5.6%	-0.9%	-0.3%	+4.3%
General Support	754	-171	-145	-104	-41	-4	+5	-18.5%	-16.2%	-12.1%	-5.1%	-0.5%	+0.6%
Attendant/ Aide	178	-119	-45	-52	-69	-34	-1	-40.0%	-20.2%	-22.8%	-27.9%	-16.1%	-0.3%
Health & Social Care Assistants	23	+14	+12	+14	+12	+11	+2	+156.7%	+114.2%	+144.0%	+111.3%	+93.6%	+7.7%
Health Care Assistant/ Care Assistant	7,248	+1,369	+940	+662	+403	+118	-47	+23.3%	+14.9%	+10.0%	+5.9%	+1.7%	-0.6%
Health Care Assistants	7,449	+1,264	+908	+623	+347	+95	-46	+20.4%	+13.9%	+9.1%	+4.9%	+1.3%	-0.6%
Home Help	79	-45	-34	-30	-15	-3	-1	-36.3%	-30.1%	-27.6%	-16.0%	-3.9%	-1.6%

Jan 2023 (Dec 2015 figure: 15,715)	WTE Jan 2023	WTE change since Dec 17	WTE change since Dec 18	WTE change since Dec 19	WTE change since Dec 20	WTE change since Dec 21	WTE change since Dec 22	% change since Dec 17	% change since Dec 18	% change since Dec 19	% change since Dec 20	% change since Dec 21	% change since Dec 22
Overall	19,891	+2,494	+2,072	+1,589	+947	+268	-12	+14.3%	+11.6%	+8.7%	+5.0%	+1.4%	-0.1%
Home Care Services	17	-6	-6	-11	-1	-3	+0	-24.2%	-24.4%	-38.7%	-5.8%	-13.9%	+0.6%
Other Care Grades	249	+65	+65	+75	+28	-2	-9	+35.1%	+35.1%	+42.9%	+12.7%	-0.7%	-3.5%
Pastoral Care	6	-7	-4	-5	-4	-4	+1	-55.5%	-42.6%	-43.6%	-42.7%	-40.9%	+20.7%
Workshop Services	1,480	+176	+135	+54	+24	-4	-6	+13.5%	+10.0%	+3.8%	+1.7%	-0.3%	-0.4%
Care, other	1,752	+228	+190	+113	+47	-13	-14	+15.0%	+12.1%	+6.9%	+2.7%	-0.7%	-0.8%
Patient & Client Care	9,280	+1,448	+1,063	+706	+378	+79	-61	+18.5%	+12.9%	+8.2%	+4.3%	+0.9%	-0.6%

Source: Health Service Personnel Census