

Social Care Disability Services Employment Report: June 2022

Employment by Staff Group

Jun 2022	WTE Dec 2019	WTE Dec 2020	WTE May 2022	WTE Jun 2022	WTE change since May 22	WTE change since Dec 20	% change since Dec 20	WTE change since Dec 19	% change since Dec 19	No. Jun 2022
Overall	18,303	18,944	19,625	19,710	+85	+766	+4.0%	+1,408	+7.7%	23,291
Consultants	24	24	21	21	-0	-3	-14.1%	-3	-12.3%	27
Registrars	13	8	9	9	+0	+1	+12.5%	-4	-30.8%	9
SHO/ Interns	7	9	12	12	+0	+3	+33.3%	+5	+72.4%	12
Medical/ Dental, other	14	14	13	13	+0	-1	-6.6%	-1	-7.2%	21
Medical & Dental	58	56	55	55	+0	-0	-0.7%	-3	-5.0%	69
Nurse/ Midwife Manager	894	897	929	934	+5	+37	+4.2%	+41	+4.5%	1,007
Nurse/ Midwife Specialist & AN/MP	62	64	71	72	+1	+8	+12.3%	+10	+16.1%	79
Staff Nurse/ Staff Midwife	2,572	2,593	2,593	2,578	-16	-15	-0.6%	+5	+0.2%	2,975
Public Health Nurse	6	7	11	12	+0	+5	+72.0%	+6	+88.7%	14
<i>Pre-registration Nurse Intern (COVID-19)</i>		32				-32	-100.0%		-100.0%	
<i>Pre-registration Nurse/ Midwife Intern</i>	28	3	86	87	+1	+84	+3372.8%	+59	+207.3%	173
<i>Nursing/ Midwifery awaiting registration</i>	14	13	1	0	-1	-13	-97.5%	-14	-97.6%	1
Nursing/ Midwifery Student	42	47	87	87	+0	+40	+84.3%	+45	+107.1%	174
Nursing/ Midwifery other	22	24	27	28	+0	+4	+15.7%	+5	+24.2%	31
Nursing & Midwifery	3,599	3,632	3,719	3,711	-9	+78	+2.2%	+112	+3.1%	4,280
Therapy Professions	765	795	772	770	-2	-26	-3.2%	+5	+0.7%	899
Health Science/ Diagnostics	20	20	22	22	+0	+2	+10.4%	+2	+10.1%	23
Social Care	2,595	2,789	2,971	2,990	+20	+201	+7.2%	+395	+15.2%	3,508
Social Workers	219	228	228	225	-4	-4	-1.6%	+6	+2.6%	265
Psychologists	204	229	241	236	-5	+7	+3.0%	+32	+15.7%	269
Pharmacy	7	6	8	7	-1	+1	+16.8%	+0	+3.8%	9
H&SC, Other	85	76	67	66	-1	-10	-12.8%	-19	-22.3%	87
Health & Social Care Professionals	3,894	4,144	4,309	4,316	+6	+172	+4.2%	+421	+10.8%	5,060
Management (VIII & above)	180	204	230	226	-4	+22	+11.0%	+47	+26.0%	232
Administrative/ Supervisory (V to VII)	479	527	604	607	+3	+80	+15.2%	+128	+26.8%	656
Clerical (III & IV)	660	685	717	715	-2	+29	+4.3%	+55	+8.3%	874
Management & Administrative	1,319	1,416	1,551	1,548	-3	+132	+9.3%	+229	+17.4%	1,762
Support	734	663	630	629	-1	-34	-5.1%	-105	-14.3%	904
Maintenance/ Technical	124	132	124	123	-1	-9	-7.2%	-1	-1.0%	133
General Support	858	795	754	752	-2	-43	-5.4%	-106	-12.4%	1,037
Health Care Assistants	6,826	7,102	7,405	7,489	+83	+386	+5.4%	+662	+9.7%	8,804
Home Help	109	94	82	83	+1	-11	-11.9%	-26	-24.0%	225
Care, other	1,639	1,706	1,749	1,757	+8	+52	+3.0%	+118	+7.2%	2,054
Patient & Client Care	8,574	8,902	9,236	9,329	+92	+427	+4.8%	+754	+8.8%	11,083

Social Care Disability Services Employment by Administration (HSE / S38): June 2022

Jun 2022	WTE Dec 2019	WTE Dec 2020	WTE May 2022	WTE Jun 2022	WTE change since May 22	WTE change since Dec 20	% change since Dec 20	WTE change since Dec 19	% change since Dec 19	No. Jun 2022
Total	18,303	18,944	19,625	19,710	+85	+766	+4.0%	+1,408	+7.7%	23,291
HSE	3,903	4,085	4,167	4,165	-2	+80	+2.0%	+262	+6.7%	4,791
Section 38 Voluntary Agencies	14,400	14,860	15,459	15,546	+87	+686	+4.6%	+1,146	+8.0%	18,500

Employment by Staff Group

Jun 2022	WTE Dec 2019	WTE Dec 2020	WTE May 2022	WTE Jun 2022	WTE change since May 22	WTE change since Dec 20	% change since Dec 20	WTE change since Dec 19	% change since Dec 19	No. Jun 2022
Health Service Executive	3,903	4,085	4,167	4,165	-2	+80	+2.0%	+262	+6.7%	4,791
Consultants	8	9	6	6		-3	-35.3%	-2	-26.7%	6
Registrars	3	1	3	3	+1	+2	+200.0%			3
SHO/ Interns		2	2	2				+2	-100.0%	2
Medical/ Dental, other	6	6	6	6	+0			-0	-1.4%	10
Medical & Dental	17	18	16	17	+1	-1	-5.6%	-0	-0.5%	21
Nurse/ Midwife Manager	258	261	258	262	+4	+1	+0.3%	+3	+1.4%	277
Nurse/ Midwife Specialist & AN/MP	14	15	19	19		+4	+25.7%	+5	+35.6%	20
Staff Nurse/ Staff Midwife	791	772	787	774	-13	+2	+0.3%	-17	-2.1%	866
Public Health Nurse	6	7	11	12	+0	+5	+72.0%	+6	+88.7%	14
Pre-registration Nurse Intern (COVID-19)		9				-9	-100.0%		-100.0%	
Pre-registration Nurse/ Midwife Intern	3	3	30	30	+0	+27	+1098.8%	+27	+822.2%	58
Nursing/ Midwifery awaiting registration	14	13	1	0	-1	-13	-97.5%	-14	-97.6%	1
Nursing/ Midwifery Student	17	24	31	30	-1	+6	+25.9%	+13	+77.3%	59
Nursing/ Midwifery other	8	7	8	9	+0	+2	+28.8%	+1	+11.9%	10
Nursing & Midwifery	1,094	1,086	1,114	1,106	-9	+20	+1.8%	+11	+1.0%	1,246
Therapy Professions	332	373	323	322	-1	-50	-13.5%	-9	-2.8%	381
Health Science/ Diagnostics	2	4	6	6	+0	+2	+50.6%	+4	+197.5%	6
Social Care	89	101	97	98	+1	-2	-2.2%	+9	+10.6%	110
Social Workers	58	67	61	57	-4	-9	-14.0%	-0	-0.6%	67
Psychologists	76	83	97	95	-2	+12	+14.9%	+19	+24.6%	109
H&SC, Other	26	25	22	21	-1	-4	-17.0%	-5	-20.6%	24
Health & Social Care Professionals	583	652	606	600	-6	-52	-8.0%	+17	+2.9%	697
Management (VIII & above)	45	58	68	66	-1	+9	+14.8%	+22	+48.6%	69
Administrative/ Supervisory (V to VII)	141	168	201	205	+4	+37	+21.8%	+64	+45.0%	223
Clerical (III & IV)	178	199	208	207	-2	+8	+4.1%	+28	+16.0%	243
Management & Administrative	364	425	477	478	+1	+53	+12.6%	+114	+31.3%	535
Support	88	88	67	67	+0	-21	-23.7%	-21	-24.3%	77
Maintenance/ Technical	21	26	22	21	-0	-5	-18.6%	+0	+1.4%	22
General Support	109	114	88	88	-0	-26	-22.6%	-21	-19.3%	99
Health Care Assistants	1,518	1,557	1,618	1,627	+8	+70	+4.5%	+109	+7.2%	1,790
Home Help	109	94	82	83	+1	-11	-11.9%	-26	-24.0%	225
Care, other	109	140	165	167	+2	+27	+19.2%	+58	+53.0%	178
Patient & Client Care	1,736	1,791	1,865	1,876	+11	+85	+4.8%	+140	+8.1%	2,193

Employment by Staff Group

Jun 2022	WTE Dec 2019	WTE Dec 2020	WTE May 2022	WTE Jun 2022	WTE change since May 22	WTE change since Dec 20	% change since Dec 20	WTE change since Dec 19	% change since Dec 19	No. Jun 2022
Section 38 Voluntary Agencies	14,400	14,860	15,459	15,546	+87	+686	+4.6%	+1,146	+8.0%	18,500
Consultants	16	16	16	15	-0	-0	-2.8%	-1	-5.7%	21
Registrars	10	7	6	6	-0	-1	-14.3%	-4	-40.0%	6
SHO/ Interns	7	7	10	10	+0	+3	+42.9%	+3	+43.7%	10
Medical/ Dental, other	8	8	7	7	+0	-1	-11.7%	-1	-11.7%	11
Medical & Dental	41	38	39	39	-0	+1	+1.6%	-3	-6.9%	48
Nurse/ Midwife Manager	635	636	671	673	+2	+37	+5.8%	+37	+5.8%	730
Nurse/ Midwife Specialist & AN/MP	48	49	53	53	+1	+4	+8.3%	+5	+10.5%	59
Staff Nurse/ Staff Midwife	1,781	1,821	1,806	1,803	-3	-18	-1.0%	+22	+1.2%	2,109
Pre-registration Nurse Intern (COVID-19)		23				-23	-100.0%		-100.0%	
Pre-registration Nurse/ Midwife Intern	25		56	57	+1	+57	-100.0%	+32	+127.4%	115
Nursing/ Midwifery Student	25	23	56	57	+1	+34	+144.8%	+32	+127.4%	115
Nursing/ Midwifery other	14	17	19	19	+0	+2	+10.6%	+4	+30.7%	21
Nursing & Midwifery	2,504	2,546	2,605	2,605	-0	+59	+2.3%	+101	+4.0%	3,034
Therapy Professions	433	423	449	447	-2	+25	+5.8%	+14	+3.3%	518
Health Science/ Diagnostics	18	16	16	16	+0	+0	+0.4%	-2	-10.7%	17
Social Care	2,506	2,689	2,873	2,892	+19	+203	+7.6%	+386	+15.4%	3,398
Social Workers	161	162	167	167	+0	+6	+3.5%	+6	+3.8%	198
Psychologists	128	147	145	141	-3	-5	-3.7%	+13	+10.4%	160
Pharmacy	7	6	8	7	-1	+1	+16.8%	+0	+3.8%	9
H&SC, Other	59	51	46	45	-1	-5	-10.8%	-13	-23.0%	63
Health & Social Care Professionals	3,312	3,492	3,704	3,716	+12	+224	+6.4%	+404	+12.2%	4,363
Management (VIII & above)	135	146	162	160	-2	+14	+9.4%	+25	+18.5%	163
Administrative/ Supervisory (V to VII)	338	358	403	402	-1	+44	+12.2%	+64	+19.1%	433
Clerical (III & IV)	482	487	508	508	-0	+21	+4.4%	+26	+5.4%	631
Management & Administrative	955	991	1,074	1,070	-4	+79	+8.0%	+115	+12.1%	1,227
Support	646	575	563	562	-1	-13	-2.2%	-84	-12.9%	827
Maintenance/ Technical	103	106	103	102	-1	-5	-4.3%	-2	-1.5%	111
General Support	749	681	666	664	-2	-17	-2.5%	-85	-11.4%	938
Health Care Assistants	5,308	5,545	5,787	5,862	+75	+317	+5.7%	+554	+10.4%	7,014
Care, other	1,530	1,566	1,585	1,590	+6	+25	+1.6%	+60	+3.9%	1,876
Patient & Client Care	6,839	7,111	7,372	7,452	+81	+341	+4.8%	+614	+9.0%	8,890

Social Care Disability Services Employment by CHO: Jun 2022

Jun 2022	WTE Dec 2019	WTE Dec 2020	WTE May 2022	WTE Jun 2022	WTE change since May 22	WTE change since Dec 20	% change since Dec 20	WTE change since Dec 19	% change since Dec 19	No. Jun 2022
Overall	18,303	18,944	19,625	19,710	+85	+766	+4.0%	+1,408	+7.7%	23,291
CHO 1	1,498	1,547	1,687	1,687	-0	+140	+9.1%	+188	+12.6%	1,890
CHO 2	1,497	1,516	1,581	1,589	+8	+73	+4.8%	+92	+6.1%	1,946
CHO 3	1,823	1,947	1,954	1,985	+31	+37	+1.9%	+161	+8.8%	2,333
CHO 4	2,439	2,556	2,623	2,647	+24	+92	+3.6%	+209	+8.6%	3,161
CHO 5	1,505	1,563	1,660	1,680	+20	+117	+7.5%	+175	+11.6%	1,989
CHO 6	1,198	1,217	1,222	1,220	-2	+3	+0.3%	+22	+1.8%	1,404
CHO 7	2,982	3,103	3,291	3,319	+28	+216	+7.0%	+338	+11.3%	3,943
CHO 8	2,162	2,205	2,280	2,283	+3	+77	+3.5%	+121	+5.6%	2,733
CHO 9	3,194	3,285	3,320	3,295	-25	+11	+0.3%	+102	+3.2%	3,886
other Community Services	5	6	6	6				+1	+20.2%	6

Social Care Disability Services Employment by CHO etc. Jun 2022

CHO 1

Jun 2022	WTE Dec 2019	WTE Dec 2020	WTE May 2022	WTE Jun 2022	WTE change since May 22	WTE change since Dec 20	% change since Dec 20	WTE change since Dec 19	% change since Dec 19	No. Jun 2022
Overall	1,498	1,547	1,687	1,687	-0	+140	+9.1%	+188	+12.6%	1,890
Registrars			1	1	+1	+1	-100.0%	+1	-100.0%	1
Medical/ Dental, other	3	3	3	3	0			-0	-3.0%	6
Medical & Dental	3	3	3	4	+1	+1	+34.5%	+1	+30.4%	7
Nurse/ Midwife Manager	105	106	111	111	-0	+4	+4.1%	+6	+5.4%	117
Nurse/ Midwife Specialist & AN/MP	7	9	10	10	+0	+1	+11.5%	+3	+42.7%	11
Staff Nurse/ Staff Midwife	324	328	346	338	-8	+9	+2.8%	+14	+4.3%	374
Public Health Nurse			1	1	0	+1	-100.0%	+1	-100.0%	1
Pre-registration Nurse Intern (COVID-19)		6				-6	-100.0%		-100.0%	
Pre-registration Nurse/ Midwife Intern	3		18	18	+0	+18	-100.0%	+15	+515.7%	35
Nursing/ Midwifery awaiting registration	11	11				-11	-100.0%	-11	-100.0%	
Nursing/ Midwifery Student	14	17	18	18	+0	+1	+5.6%	+4	+31.9%	35
Nursing/ Midwifery other	5	4	5	5	+0	+1	+34.0%	+0	+10.2%	6
Nursing & Midwifery	455	465	491	483	-8	+18	+3.9%	+28	+6.2%	544
Therapy Professions	42	44	63	63	-0	+19	+43.9%	+20	+47.9%	71
Social Care	8	11	9	9	+1	-2	-16.1%	+2	+25.2%	11
Social Workers	16	19	16	15	-1	-4	-19.4%	-1	-4.0%	16
Psychologists	5	7	16	14	-2	+7	+93.1%	+10	+211.7%	15
H&SC, Other	12	10	9	9	-0	-1	-12.3%	-4	-30.9%	10
Health & Social Care Professionals	82	91	112	110	-2	+19	+21.4%	+28	+33.3%	123
Management (VIII & above)	14	17	15	14	-1	-3	-17.8%	-0	-2.4%	15
Administrative/ Supervisory (V to VII)	28	34	48	48	+1	+14	+41.0%	+21	+74.7%	52
Clerical (III & IV)	50	53	55	52	-2	-0	-0.5%	+3	+5.4%	61
Management & Administrative	91	103	117	114	-3	+11	+10.5%	+23	+25.2%	128
Support	49	49	32	32	-0	-17	-35.0%	-17	-35.2%	38
Maintenance/ Technical	6	6	4	4	0	-2	-33.3%	-2	-33.3%	4
General Support	55	55	36	36	-0	-19	-34.8%	-19	-35.0%	42
Health Care Assistants	761	775	862	873	+10	+98	+12.6%	+111	+14.6%	963
Home Help	13	14	14	15	+0	+1	+5.4%	+1	+9.3%	28
Care, other	37	41	51	52	+1	+12	+28.2%	+15	+41.2%	55
Patient & Client Care	812	830	928	940	+12	+110	+13.2%	+128	+15.8%	1,046

CHO 2

Jun 2022	WTE Dec 2019	WTE Dec 2020	WTE May 2022	WTE Jun 2022	WTE change since May 22	WTE change since Dec 20	% change since Dec 20	WTE change since Dec 19	% change since Dec 19	No. Jun 2022
Overall	1,497	1,516	1,581	1,589	+8	+73	+4.8%	+92	+6.1%	1,946
Consultants	3	3	3	3	0					4
Registrars	2	2				-2	-100.0%	-2	-100.0%	
SHO/ Interns			2	2	0	+2	-100.0%	+2	-100.0%	2
Medical/ Dental, other	1	1	1	1	+0					1
Medical & Dental	6	6	6	6	+0					7
Nurse/ Midwife Manager	77	78	72	75	+3	-2	-3.1%	-2	-2.5%	84
Nurse/ Midwife Specialist & AN/MP	6	6	6	6	+0	+1	+13.1%	+1	+10.1%	7
Staff Nurse/ Staff Midwife	165	169	167	166	-1	-3	-1.9%	+1	+0.3%	203
<i>Pre-registration Nurse Intern (COVID-19)</i>		1				-1	-100.0%		-100.0%	
Nursing/ Midwifery Student		1				-1	-100.0%		-100.0%	
Nursing & Midwifery	249	253	246	248	+2	-6	-2.2%	-1	-0.3%	294
Therapy Professions	41	34	43	43	+0	+9	+25.5%	+1	+3.1%	52
Social Care	222	243	267	267	+0	+24	+9.7%	+45	+20.4%	326
Social Workers	26	26	27	27	-0	+1	+4.6%	+1	+3.7%	35
Psychologists	16	14	18	18	+0	+4	+28.8%	+3	+16.2%	21
H&SC, Other	16	12	12	12	-0	+0	+1.5%	-4	-25.5%	18
Health & Social Care Professionals	321	329	367	367	-0	+38	+11.5%	+46	+14.3%	452
Management (VIII & above)	16	16	17	17	+0	+1	+6.7%	+1	+6.0%	17
Administrative/ Supervisory (V to VII)	40	44	61	59	-1	+15	+33.6%	+19	+46.9%	62
Clerical (III & IV)	50	50	53	52	-1	+2	+4.1%	+2	+5.0%	65
Management & Administrative	106	110	131	128	-3	+18	+16.3%	+22	+21.1%	144
Support	45	43	46	46	-1	+3	+6.2%	+1	+2.2%	78
Maintenance/ Technical	13	13	13	12	-0	-0	-3.2%	-1	-4.2%	14
General Support	58	56	59	58	-1	+2	+4.0%	+0	+0.8%	92
Health Care Assistants	623	625	640	651	+12	+27	+4.3%	+28	+4.5%	791
Care, other	134	136	133	130	-3	-6	-4.2%	-4	-3.0%	166
Patient & Client Care	757	761	772	781	+9	+21	+2.8%	+24	+3.2%	957

CHO 3

Jun 2022	WTE Dec 2019	WTE Dec 2020	WTE May 2022	WTE Jun 2022	WTE change since May 22	WTE change since Dec 20	% change since Dec 20	WTE change since Dec 19	% change since Dec 19	No. Jun 2022
Overall	1,823	1,947	1,954	1,985	+31	+37	+1.9%	+161	+8.8%	2,333
Consultants	1	2	1	1	-0	-1	-39.1%	+0	+17.0%	2
Medical/ Dental, other	1	1	1	1	0					2
Medical & Dental	2	3	2	2	-0	-1	-26.3%	+0	+8.8%	4
Nurse/ Midwife Manager	76	75	79	80	+1	+5	+6.1%	+4	+4.8%	82
Nurse/ Midwife Specialist & AN/MP	13	10	11	11	0	+0	+1.7%	-2	-16.5%	12
Staff Nurse/ Staff Midwife	247	271	250	253	+3	-18	-6.6%	+5	+2.2%	279
<i>Pre-registration Nurse Intern (COVID-19)</i>		2				-2	-100.0%		-100.0%	
<i>Pre-registration Nurse/ Midwife Intern</i>	12		7	7	0	+7	-100.0%	-5	-39.1%	14
Nursing/ Midwifery Student	12	2	7	7	0	+6	+366.7%	-5	-39.1%	14
Nursing/ Midwifery other	4	4	3	3	0	-1	-26.9%	-1	-26.9%	3
Nursing & Midwifery	351	361	349	353	+4	-9	-2.4%	+1	+0.4%	390
Therapy Professions	74	84	44	43	-1	-41	-49.0%	-31	-42.3%	47
Health Science/ Diagnostics		2	4	4	+0	+2	+102.6%	+4	-100.0%	4
Social Care	241	284	278	283	+5	-1	-0.3%	+42	+17.5%	326
Social Workers	17	17	16	17	+1	-1	-3.1%	+0	+1.2%	19
Psychologists	16	20	19	19	+0	-1	-4.1%	+4	+22.4%	22
H&SC, Other	12	11	10	10	-0	-2	-14.2%	-2	-18.4%	14
Health & Social Care Professionals	359	419	371	376	+5	-43	-10.3%	+16	+4.6%	432
Management (VIII & above)	7	8	10	10	0	+2	+25.6%	+3	+44.1%	10
Administrative/ Supervisory (V to VII)	41	45	50	50	+0	+5	+11.8%	+9	+22.8%	51
Clerical (III & IV)	59	59	57	58	+2	-0	-0.3%	-1	-1.1%	65
Management & Administrative	107	111	116	118	+2	+7	+6.4%	+12	+11.0%	126
Support	53	53	53	50	-2	-3	-5.2%	-2	-4.2%	59
Maintenance/ Technical	14	19	17	17	-0	-2	-12.7%	+2	+17.1%	19
General Support	67	73	70	67	-3	-5	-7.2%	+0	+0.4%	78
Health Care Assistants	764	800	843	865	+22	+66	+8.2%	+101	+13.2%	1,074
Care, other	173	181	203	203	+0	+22	+12.1%	+30	+17.4%	229
Patient & Client Care	937	981	1,046	1,068	+22	+87	+8.9%	+131	+14.0%	1,303

CHO 4

Jun 2022	WTE Dec 2019	WTE Dec 2020	WTE May 2022	WTE Jun 2022	WTE change since May 22	WTE change since Dec 20	% change since Dec 20	WTE change since Dec 19	% change since Dec 19	No. Jun 2022
Overall	2,439	2,556	2,623	2,647	+24	+92	+3.6%	+209	+8.6%	3,161
Consultants	2	3	1	1	0	-2	-80.0%	-1	-66.7%	1
Medical/ Dental, other	0	0	0	0	0					1
Medical & Dental	2	3	1	1		-2	-70.7%	-1	-54.6%	2
Nurse/ Midwife Manager	89	91	100	100	+0	+10	+10.7%	+11	+12.5%	116
Nurse/ Midwife Specialist & AN/MP	13	14	13	12	-1	-2	-13.8%	-1	-7.4%	14
Staff Nurse/ Staff Midwife	309	312	304	307	+2	-6	-1.8%	-2	-0.7%	368
<i>Pre-registration Nurse Intern (COVID-19)</i>		8				-8	-100.0%		-100.0%	
<i>Pre-registration Nurse/ Midwife Intern</i>	6		12	12	0	+12	-100.0%	+6	+100.0%	24
<i>Nursing/ Midwifery awaiting registration</i>	1	2				-2	-100.0%	-1	-100.0%	
Nursing/ Midwifery Student	7	10	12	12	0	+2	+25.7%	+5	+71.4%	24
Nursing/ Midwifery other	1		1	1	0	+1	-100.0%	+0	+96.1%	1
Nursing & Midwifery	419	427	431	432	+2	+6	+1.3%	+13	+3.2%	523
Therapy Professions	108	104	106	103	-3	-1	-0.8%	-5	-4.8%	127
Social Care	227	238	251	253	+2	+14	+6.0%	+26	+11.5%	287
Social Workers	27	27	27	27	-1	-0	-0.7%	-0	-0.7%	34
Psychologists	35	36	33	33	-0	-3	-7.4%	-1	-4.1%	40
H&SC, Other	8	10	8	9	+0	-2	-16.3%	+0	+1.7%	9
Health & Social Care Professionals	405	415	426	424	-1	+9	+2.1%	+19	+4.8%	497
Management (VIII & above)	22	22	24	22	-1	-0	-1.3%	-0	-0.4%	24
Administrative/ Supervisory (V to VII)	53	58	60	62	+2	+5	+7.9%	+9	+16.3%	68
Clerical (III & IV)	84	90	87	87	+0	-2	-2.6%	+3	+3.7%	116
Management & Administrative	160	170	170	171	+1	+2	+1.1%	+12	+7.4%	208
Support	141	139	139	139	-0	+0	+0.2%	-2	-1.5%	241
Maintenance/ Technical	10	12	11	11	-0	-1	-10.4%	+1	+6.3%	14
General Support	151	151	150	150	-0	-1	-0.6%	-2	-1.0%	255
Health Care Assistants	995	1,058	1,102	1,124	+23	+66	+6.2%	+129	+13.0%	1,280
Care, other	307	332	344	345	+0	+12	+3.7%	+37	+12.1%	396
Patient & Client Care	1,302	1,390	1,446	1,469	+23	+78	+5.6%	+166	+12.8%	1,676

CHO 5

Jun 2022	WTE Dec 2019	WTE Dec 2020	WTE May 2022	WTE Jun 2022	WTE change since May 22	WTE change since Dec 20	% change since Dec 20	WTE change since Dec 19	% change since Dec 19	No. Jun 2022
Overall	1,505	1,563	1,660	1,680	+20	+117	+7.5%	+175	+11.6%	1,989
Consultants	1	1	1	1	0	+0	+28.4%			1
Medical & Dental	1	1	1	1		+0	+28.4%			1
Nurse/ Midwife Manager	66	70	72	74	+2	+4	+6.1%	+9	+13.1%	76
Nurse/ Midwife Specialist & AN/MP	2	2	3	3	+0	+1	+38.2%	+1	+50.0%	3
Staff Nurse/ Staff Midwife	170	168	169	168	-1	-0	-0.1%	-2	-1.2%	195
Public Health Nurse	5	6	9	10	+0	+4	+67.1%	+5	+85.9%	12
<i>Pre-registration Nurse Intern (COVID-19)</i>		1				-1	-100.0%		-100.0%	
<i>Pre-registration Nurse/ Midwife Intern</i>			8	8	+0	+8	-100.0%	+8	-100.0%	16
<i>Nursing/ Midwifery awaiting registration</i>	2						-100.0%	-2	-100.0%	
Nursing/ Midwifery Student	2	1	8	8	+0	+7	+697.0%	+6	+333.2%	16
Nursing/ Midwifery other			1	1	0	+1	-100.0%	+1	-100.0%	1
Nursing & Midwifery	245	247	261	264	+2	+17	+6.7%	+19	+7.8%	303
Therapy Professions	63	65	61	66	+5	+2	+2.3%	+4	+5.7%	80
Social Care	154	143	142	147	+5	+4	+2.9%	-7	-4.5%	180
Social Workers	21	24	23	23	-0	-2	-6.7%	+2	+7.6%	25
Psychologists	14	19	24	24	-1	+5	+24.6%	+10	+69.3%	27
H&SC, Other	7	5	5	5	-1	-1	-12.1%	-2	-32.1%	7
Health & Social Care Professionals	259	256	256	264	+9	+8	+3.1%	+6	+2.2%	319
Management (VIII & above)	11	13	18	18	-0	+5	+38.8%	+7	+62.4%	18
Administrative/ Supervisory (V to VII)	39	41	58	59	+2	+19	+45.9%	+21	+52.8%	64
Clerical (III & IV)	61	62	66	68	+2	+6	+10.0%	+7	+12.1%	84
Management & Administrative	110	115	141	145	+4	+30	+25.9%	+35	+31.4%	166
Support	15	12	8	8	+0	-3	-29.2%	-7	-44.6%	12
Maintenance/ Technical	7	7	9	9	-0	+2	+24.6%	+2	+24.6%	10
General Support	23	19	18	18	+0	-2	-8.8%	-5	-22.2%	22
Health Care Assistants	671	732	777	777	-0	+45	+6.2%	+106	+15.8%	885
Home Help	53	40	31	31	+0	-9	-22.3%	-23	-42.2%	79
Care, other	144	153	175	181	+5	+28	+18.1%	+37	+25.8%	214
Patient & Client Care	868	924	983	988	+5	+64	+6.9%	+120	+13.8%	1,178

CHO 6

Jun 2022	WTE Dec 2019	WTE Dec 2020	WTE May 2022	WTE Jun 2022	WTE change since May 22	WTE change since Dec 20	% change since Dec 20	WTE change since Dec 19	% change since Dec 19	No. Jun 2022
Overall	1,198	1,217	1,222	1,220	-2	+3	+0.3%	+22	+1.8%	1,404
Consultants	3	3	3	3	0					3
Registrars			1	1	0	+1	-100.0%	+1	-100.0%	1
Medical/ Dental, other	1	1	1	1	0					1
Medical & Dental	4	4	5	5		+1	+25.0%	+1	+25.0%	5
Nurse/ Midwife Manager	44	43	40	39	-1	-5	-10.6%	-5	-10.9%	42
Staff Nurse/ Staff Midwife	147	142	138	140	+2	-2	-1.4%	-7	-4.7%	156
<i>Nursing Education/Clinical</i>			1	1	0	+1	-100.0%	+1	-100.0%	1
Nursing/ Midwifery other			1	1	0	+1	-100.0%	+1	-100.0%	1
Nursing & Midwifery	191	186	179	180	+1	-6	-3.0%	-11	-5.6%	199
Therapy Professions	42	42	28	28	+0	-14	-33.5%	-13	-32.1%	36
Social Care	334	361	391	387	-4	+26	+7.1%	+52	+15.6%	447
Social Workers	11	10	7	7	-0	-3	-32.7%	-5	-40.4%	7
Psychologists	14	14	14	14	+1	+1	+4.8%	+1	+4.5%	18
H&SC, Other	2	1	1	1	0	+0	+2.3%	-1	-28.4%	2
Health & Social Care Professionals	403	428	440	437	-3	+9	+2.1%	+34	+8.5%	510
Management (VIII & above)	31	30	30	32	+2	+2	+5.0%	+1	+3.0%	32
Administrative/ Supervisory (V to VII)	53	54	59	57	-2	+3	+5.9%	+4	+7.2%	61
Clerical (III & IV)	54	56	57	57	+0	+1	+1.8%	+3	+5.3%	65
Management & Administrative	138	140	146	145	-1	+6	+4.1%	+8	+5.5%	158
Support	23	26	18	18	-0	-8	-30.0%	-5	-20.9%	23
Maintenance/ Technical	7	5	7	6	-1	+1	+20.0%	-1	-11.1%	6
General Support	29	31	25	24	-1	-7	-21.8%	-5	-18.7%	29
Health Care Assistants	187	184	191	191	+1	+8	+4.3%	+5	+2.6%	220
Care, other	246	245	236	237	+1	-8	-3.3%	-10	-3.9%	283
Patient & Client Care	433	428	427	428	+2	-0	-0.0%	-5	-1.1%	503

CHO 7

Jun 2022	WTE Dec 2019	WTE Dec 2020	WTE May 2022	WTE Jun 2022	WTE change since May 22	WTE change since Dec 20	% change since Dec 20	WTE change since Dec 19	% change since Dec 19	No. Jun 2022
Overall	2,982	3,103	3,291	3,319	+28	+216	+7.0%	+338	+11.3%	3,943
Consultants	1	1				-1	-100.0%	-1	-100.0%	
Registrars	3	3	3	3	-0					3
SHO/ Interns	7	7	8	8	+0	+1	+14.3%	+1	+14.9%	8
Medical/ Dental, other	1	1				-1	-100.0%	-1	-100.0%	
Medical & Dental	12	12	11	11	-0	-1	-4.7%	-1	-4.3%	11
Nurse/ Midwife Manager	122	118	139	138	-1	+20	+16.6%	+16	+13.1%	150
Nurse/ Midwife Specialist & AN/MP	5	4	4	6	+1	+1	+32.6%	+1	+11.5%	7
Staff Nurse/ Staff Midwife	374	378	412	410	-2	+32	+8.5%	+36	+9.6%	467
<i>Pre-registration Nurse/ Midwife Intern</i>			7	7	0	+7	-100.0%	+7	-100.0%	14
Nursing/ Midwifery Student			7	7	0	+7	-100.0%	+7	-100.0%	14
Nursing/ Midwifery other	1	2	3	3	0	+1	+66.7%	+2	+400.0%	3
Nursing & Midwifery	502	502	565	563	-2	+61	+12.2%	+61	+12.2%	641
Therapy Professions	122	138	151	151	-0	+12	+8.8%	+29	+23.7%	169
Health Science/ Diagnostics	3	3	3	3	+0	+0	+2.3%	+0	+2.3%	4
Social Care	360	389	433	440	+7	+51	+13.2%	+80	+22.1%	491
Social Workers	33	32	38	39	+1	+7	+23.6%	+6	+17.6%	45
Psychologists	28	32	34	33	-1	+1	+2.6%	+5	+18.4%	36
Pharmacy	5	4	6	5	-1	+1	+25.1%	+0	+5.5%	7
H&SC, Other	2	2	2	2	0					2
Health & Social Care Professionals	553	600	667	672	+5	+73	+12.1%	+120	+21.7%	754
Management (VIII & above)	32	43	51	49	-1	+7	+15.8%	+17	+54.5%	50
Administrative/ Supervisory (V to VII)	79	92	96	96	-0	+5	+5.0%	+17	+21.9%	107
Clerical (III & IV)	92	101	104	104	+1	+3	+3.0%	+12	+13.6%	129
Management & Administrative	203	236	251	250	-1	+14	+6.1%	+47	+23.3%	286
Support	167	155	159	162	+3	+6	+4.1%	-5	-3.0%	232
Maintenance/ Technical	28	33	30	31	+1	-2	-6.0%	+2	+8.2%	32
General Support	195	188	189	192	+4	+4	+2.4%	-3	-1.4%	264
Health Care Assistants	1,112	1,146	1,201	1,220	+19	+73	+6.4%	+107	+9.6%	1,443
Home Help	19	17	14	14	-0	-3	-18.8%	-5	-28.2%	77
Care, other	386	403	393	396	+3	-6	-1.6%	+11	+2.7%	467
Patient & Client Care	1,518	1,566	1,609	1,630	+22	+64	+4.1%	+112	+7.4%	1,987

CHO 8

Jun 2022	WTE Dec 2019	WTE Dec 2020	WTE May 2022	WTE Jun 2022	WTE change since May 22	WTE change since Dec 20	% change since Dec 20	WTE change since Dec 19	% change since Dec 19	No. Jun 2022
Overall	2,162	2,205	2,280	2,283	+3	+77	+3.5%	+121	+5.6%	2,733
Consultants	1	1				-1	-100.0%	-1	-100.0%	
Registrars	2	1	1	1	0			-1	-50.0%	1
Medical/ Dental, other	1	1	1	1	0					1
Medical & Dental	4	3	2	2		-1	-33.3%	-2	-50.0%	2
Nurse/ Midwife Manager	123	119	107	110	+3	-9	-7.9%	-13	-10.7%	119
Nurse/ Midwife Specialist & AN/MP	7	6	6	6	+0	+0	+3.4%	-1	-9.9%	7
Staff Nurse/ Staff Midwife	319	312	316	316	0	+4	+1.3%	-2	-0.8%	370
Public Health Nurse	1	1	1	1	0	-0	-1.0%			1
Pre-registration Nurse Intern (COVID-19)		4				-4	-100.0%		-100.0%	
Pre-registration Nurse/ Midwife Intern			14	15	+0	+15	-100.0%	+15	-100.0%	31
Nursing/ Midwifery Student		4	14	15	+0	+11	+272.0%	+15	-100.0%	31
Nursing/ Midwifery other	5	7	6	6	-0	-0	-5.0%	+1	+14.9%	7
Nursing & Midwifery	455	449	451	455	+3	+5	+1.2%	-1	-0.2%	535
Therapy Professions	92	98	84	78	-5	-20	-19.9%	-13	-14.3%	97
Health Science/ Diagnostics	2	2	2	2	0					2
Social Care	361	380	405	412	+7	+32	+8.5%	+51	+14.2%	493
Social Workers	24	24	23	21	-2	-3	-11.8%	-3	-11.2%	26
Psychologists	25	22	25	24	-1	+1	+5.7%	-1	-4.6%	28
H&SC, Other	7	6	7	6	-1	+0	+1.5%	-1	-9.8%	7
Health & Social Care Professionals	510	533	545	544	-1	+11	+2.1%	+34	+6.6%	653
Management (VIII & above)	9	13	19	18	-1	+4	+32.7%	+9	+102.3%	18
Administrative/ Supervisory (V to VII)	56	56	60	57	-3	+1	+1.1%	+1	+1.4%	62
Clerical (III & IV)	84	88	91	91	-0	+3	+3.9%	+7	+7.9%	112
Management & Administrative	149	157	170	166	-4	+8	+5.3%	+16	+11.0%	192
Support	46	41	35	35	-0	-7	-15.9%	-12	-25.2%	43
Maintenance/ Technical	16	14	13	13	+0	-1	-6.7%	-3	-18.7%	13
General Support	62	55	48	48	+0	-8	-13.6%	-15	-23.5%	56
Health Care Assistants	844	872	932	937	+6	+66	+7.5%	+94	+11.1%	1,127
Home Help	22	23	23	23	+0	+0	+0.9%	+1	+2.9%	41
Care, other	115	114	110	108	-1	-5	-4.4%	-6	-5.6%	127
Patient & Client Care	981	1,008	1,064	1,069	+5	+61	+6.0%	+88	+9.0%	1,295

CHO 9

Jun 2022	WTE Dec 2019	WTE Dec 2020	WTE May 2022	WTE Jun 2022	WTE change since May 22	WTE change since Dec 20	% change since Dec 20	WTE change since Dec 19	% change since Dec 19	No. Jun 2022
Overall	3,194	3,285	3,320	3,295	-25	+11	+0.3%	+101	+3.2%	3,886
Consultants	13	11	12	12	-0	+1	+5.7%	-1	-4.5%	16
Registrars	6	2	3	3	0	+1	+50.0%	-3	-50.0%	3
SHO/ Interns		2	2	2	0			+2	-100.0%	2
Medical/ Dental, other	6	6	6	6	+0	+0	+0.8%	+0	+0.8%	9
Medical & Dental	25	21	23	23	+0	+2	+7.9%	-2	-6.1%	30
Nurse/ Midwife Manager	192	196	209	207	-2	+11	+5.7%	+16	+8.1%	221
Nurse/ Midwife Specialist & AN/MP	9	12	17	17	+0	+5	+46.3%	+9	+98.7%	18
Staff Nurse/ Staff Midwife	517	513	491	481	-11	-32	-6.2%	-37	-7.1%	563
Pre-registration Nurse Intern (COVID-19)		11				-11	-100.0%		-100.0%	
Pre-registration Nurse/ Midwife Intern	8	3	20	20	0	+17	+680.0%	+12	+151.6%	39
Nursing/ Midwifery awaiting registration			1	0	-1	+0	-100.0%	+0	-100.0%	1
Nursing/ Midwifery Student	8	13	21	20	-1	+7	+51.6%	+12	+155.9%	40
Nursing/ Midwifery other	7	8	8	8	+0	-0	-0.5%	+1	+10.8%	9
Nursing & Midwifery	732	741	746	733	-13	-9	-1.2%	+0	+0.1%	851
Therapy Professions	181	187	194	195	+1	+8	+4.5%	+14	+7.7%	220
Health Science/ Diagnostics	15	13	13	13	0			-2	-13.3%	13
Social Care	689	740	796	793	-3	+53	+7.1%	+104	+15.0%	947
Social Workers	44	50	50	49	-1	-0	-0.6%	+5	+11.6%	58
Psychologists	53	64	57	56	-1	-8	-12.5%	+3	+6.2%	62
Pharmacy	2	2	2	2	0					2
H&SC, Other	19	18	14	13	-0	-5	-26.6%	-6	-29.1%	18
Health & Social Care Professionals	1,003	1,073	1,126	1,121	-4	+48	+4.5%	+118	+11.8%	1,320
Management (VIII & above)	37	41	47	46	-0	+5	+11.9%	+9	+24.0%	47
Administrative/ Supervisory (V to VII)	88	100	110	115	+4	+15	+14.5%	+27	+31.0%	126
Clerical (III & IV)	125	126	146	143	-3	+17	+13.2%	+18	+14.0%	175
Management & Administrative	250	268	303	304	+1	+36	+13.5%	+54	+21.4%	348
Support	196	145	140	139	-0	-5	-3.7%	-56	-28.6%	178
Maintenance/ Technical	22	23	20	20	-1	-3	-14.0%	-2	-10.2%	21
General Support	218	168	160	159	-1	-9	-5.1%	-58	-26.8%	199
Health Care Assistants	869	911	858	850	-9	-61	-6.7%	-19	-2.2%	1,021
Care, other	97	102	104	105	+1	+3	+3.2%	+8	+8.3%	117
Patient & Client Care	966	1,013	962	955	-7	-58	-5.7%	-11	-1.2%	1,138

other Community Services

Jun 2022	WTE Dec 2019	WTE Dec 2020	WTE May 2022	WTE Jun 2022	WTE change since May 22	WTE change since Dec 20	% change since Dec 20	WTE change since Dec 19	% change since Dec 19	No. Jun 2022
Overall	5	6	6	6				+1	+20.2%	6
Management (VIII & above)	1	1	1	1	0					1
Administrative/ Supervisory (V to VII)	2	3	3	3	0			+1	+50.0%	3
Clerical (III & IV)	2	2	2	2	0	-0	-0.0%	-0	-0.0%	2
Management & Administrative	5	6	6	6				+1	+20.2%	6

Social Care Disability Services Employment by Grade Group: Jun 2022

Jun 2022	WTE Dec 2019	WTE Dec 2020	WTE May 2022	WTE Jun 2022	WTE change since May 22	WTE change since Dec 20	% change since Dec 20	WTE change since Dec 19	% change since Dec 19	No. Jun 2022
Overall	18,303	18,944	19,625	19,710	+85	+766	+4.0%	+1,408	+7.7%	23,291
Consultant Paediatrics	3	3	2	2		-1	-34.4%	-1	-34.4%	3
Consultant Psychiatry	21	21	19	19	-0	-2	-11.2%	-2	-9.0%	24
Consultants	24	24	21	21	-0	-3	-14.1%	-3	-12.3%	27
Registrar	7	3	6	5	-1	+2	+66.7%	-2	-28.6%	5
Senior Registrar	2	3	2	2		-1	-33.3%			2
Specialist Registrar	4	2	1	2	+1			-2	-50.0%	2
Registrars	13	8	9	9	+0	+1	+12.5%	-4	-30.8%	9
Senior House Officer	7	9	12	12	+0	+3	+33.3%	+5	+72.4%	12
SHO/ Interns	7	9	12	12	+0	+3	+33.3%	+5	+72.4%	12
Other Medical	14	14	13	13	+0	-1	-6.6%	-1	-7.2%	21
Medical/ Dental, other	14	14	13	13	+0	-1	-6.6%	-1	-7.2%	21
Medical & Dental	58	56	55	55	+0	-0	-0.7%	-3	-5.0%	69
Clinical Nurse/ Midwife Manager	811	814	842	845	+3	+31	+3.8%	+34	+4.2%	914
Director Nursing/Midwifery, Assistant	41	46	40	41	+1	-5	-10.1%	+0	+0.7%	42
Director of Nursing/Midwifery	42	37	46	48	+2	+11	+30.4%	+6	+14.1%	51
Nurse/ Midwife Manager	894	897	929	934	+5	+37	+4.2%	+41	+4.5%	1,007
Advanced Nurse/ Midwife Practitioner	2	8	8	9	+1	+1	+17.6%	+7	+370.5%	10
Clinical Nurse/ Midwife Specialist	60	56	63	62	-1	+6	+11.5%	+3	+4.2%	69
Nurse/ Midwife Specialist & AN/MP	62	64	71	72	+1	+8	+12.3%	+10	+16.1%	79
Staff Nurse [Psychiatric]	83	53	59	58	-1	+5	+9.5%	-26	-31.0%	74
Staff Nurses [General/ Children's]	892	752	798	784	-14	+32	+4.3%	-107	-12.0%	888
Staff Nurse [Intellectual Disability]	1,597	1,788	1,736	1,736	-0	-53	-2.9%	+138	+8.7%	2,013
Staff Nurse/ Staff Midwife	2,572	2,593	2,593	2,578	-16	-15	-0.6%	+5	+0.2%	2,975
Public Health Nurse	6	7	11	12	+0	+5	+72.0%	+6	+88.7%	14
Pre-registration Nurse Intern (COVID-19)		32				-32	-100.0%		-100.0%	
Pre-registration Nurse/ Midwife Intern	28	3	86	87	+1	+84	+3372.8%	+59	+207.3%	173
Nursing/ Midwifery awaiting registration	14	13	1	0	-1	-13	-97.5%	-14	-97.6%	1
Nursing/ Midwifery Student	42	47	87	87	+0	+40	+84.3%	+45	+107.1%	174
Nursing Education/Clinical	21	23	26	27	+0	+4	+16.4%	+5	+25.3%	30
Other Nursing/ Midwifery	1	1	1	1						1
Nursing/ Midwifery other	22	24	27	28	+0	+4	+15.7%	+5	+24.2%	31
Nursing & Midwifery	3,599	3,632	3,719	3,711	-9	+78	+2.2%	+112	+3.1%	4,280
Dietitians	18	16	21	22	+2	+6	+35.5%	+4	+20.5%	28
Occupational Therapists	264	279	282	280	-2	+2	+0.5%	+16	+6.0%	325
Physiotherapists	189	193	188	187	-1	-6	-3.3%	-3	-1.4%	222
Speech & Language Therapists	293	307	281	281	-1	-27	-8.7%	-12	-4.1%	324
Therapy Professions	765	795	772	770	-2	-26	-3.2%	+5	+0.7%	899
Clinical Engineering	13	13	15	15	+0	+2	+15.4%	+2	+15.0%	15
Medical Science	4	4	4	4						4
Phlebotomists	1						-100.0%	-1	-100.0%	
Radiographers	1	1	1	1	+0	+0	+7.0%	+0	+7.0%	2
Respiratory Physiologists	1	2	2	2				+1	+100.0%	2
Health Science/ Diagnostics	20	20	22	22	+0	+2	+10.4%	+2	+10.1%	23
Social Care	2,595	2,789	2,971	2,990	+20	+201	+7.2%	+395	+15.2%	3,508
Social Workers	219	228	228	225	-4	-4	-1.6%	+6	+2.6%	265
Psychologists	204	229	241	236	-5	+7	+3.0%	+32	+15.7%	269
Pharmacists	5	5	7	6	-1	+1	+21.7%	+1	+15.9%	8
Pharmacy Technicians	2	1	1	1	-0	-0	-8.0%	-1	-38.7%	1
Pharmacy	7	6	8	7	-1	+1	+16.8%	+0	+3.8%	9
Counsellor Therapists	19	20	24	23	-1	+3	+15.4%	+4	+20.6%	27

Jun 2022	WTE Dec 2019	WTE Dec 2020	WTE May 2022	WTE Jun 2022	WTE change since May 22	WTE change since Dec 20	% change since Dec 20	WTE change since Dec 19	% change since Dec 19	No. Jun 2022
Overall	18,303	18,944	19,625	19,710	+85	+766	+4.0%	+1,408	+7.7%	23,291
HSCP Trainees/ Students			0				-100.0%		-100.0%	
Other Health & Social Care	51	45	34	33	-1	-12	-26.8%	-18	-34.7%	46
Play Therapists/ Specialists	15	11	10	10	+0	-1	-6.3%	-5	-34.0%	14
H&SC, Other	85	76	67	66	-1	-10	-12.8%	-19	-22.3%	87
Health & Social Care Professionals	3,894	4,144	4,309	4,316	+6	+172	+4.2%	+421	+10.8%	5,060
Executive Management	31	36	43	41	-2	+5	+13.6%	+10	+32.9%	41
Senior Management (VIII & GM)	149	168	187	185	-2	+17	+10.4%	+37	+24.5%	191
Management (VIII & above)	180	204	230	226	-4	+22	+11.0%	+47	+26.0%	232
Middle Management (V-VII)	464	511	590	594	+4	+83	+16.3%	+130	+28.0%	643
Other Administrative	15	16	14	13	-1	-3	-17.8%	-2	-13.1%	13
Administrative/ Supervisory (V to VII)	479	527	604	607	+3	+80	+15.2%	+128	+26.8%	656
General Administrative (III & IV)	660	685	717	715	-2	+30	+4.3%	+55	+8.3%	874
Clerical (III & IV)	660	685	717	715	-2	+30	+4.3%	+55	+8.3%	874
Management & Administrative	1,319	1,416	1,551	1,548	-3	+132	+9.3%	+229	+17.4%	1,762
Catering	98	96	82	82	+0	-14	-14.5%	-16	-16.1%	97
Household Services	420	406	383	382	-1	-23	-5.8%	-37	-8.9%	555
Other Labs & Associated	1	1	1	1						1
Other Support	188	136	145	145	-0	+10	+7.2%	-43	-22.7%	226
Portering	28	24	18	18	-0	-6	-25.0%	-9	-33.9%	25
Support	734	663	630	629	-1	-34	-5.1%	-105	-14.3%	904
Maintenance	116	121	110	108	-1	-13	-10.9%	-8	-6.9%	118
Technical Services	8	11	15	15	+0	+4	+34.2%	+7	+84.0%	15
Maintenance/ Technical	124	132	124	123	-1	-9	-7.2%	-1	-1.0%	133
General Support	858	795	754	752	-2	-43	-5.4%	-106	-12.4%	1,037
Attendant/ Aide	230	247	197	195	-2	-52	-21.2%	-36	-15.5%	250
Health & Social Care Assistants	10	11	16	16	-0	+5	+40.9%	+6	+62.7%	20
Health Care Assistant/ Care Assistant	6,586	6,844	7,193	7,278	+85	+434	+6.3%	+692	+10.5%	8,534
Health Care Assistants	6,826	7,102	7,405	7,489	+83	+386	+5.4%	+662	+9.7%	8,804
Home Help	109	94	82	83	+1	-11	-11.9%	-26	-24.0%	225
Home Care Services	28	19	19	19	+0	+0	+2.6%	-9	-33.1%	24
Other Care Grades	175	221	256	258	+2	+36	+16.4%	+83	+47.5%	294
Pastoral Care	10	10	8	7	-1	-3	-32.5%	-3	-33.7%	8
Workshop Services	1,426	1,456	1,466	1,474	+8	+18	+1.3%	+48	+3.4%	1,728
Health Promotion			1		-1		-100.0%		-100.0%	
Care, other	1,639	1,706	1,749	1,757	+8	+52	+3.0%	+118	+7.2%	2,054
Patient & Client Care	8,574	8,902	9,236	9,329	+92	+427	+4.8%	+754	+8.8%	11,083

Employment by WTE, Headcount, Gender, Full-Time /Part-Time etc.: Jun 2022

Social Care Disability Services Staff Group	WTE	Headcount	WTE: no.	% Male	% female	Male WTE: no.	Female WTE: no.	% Total Perm	% Male Perm	% Female Perm	% Total Full Time	% Total Part Time	% Male FT	% Female FT
Overall	19,710	23,291	1.18	19.6%	80.4%	1.11	1.20	88.3%	87.5%	88.6%	58.2%	41.8%	69.0%	55.6%
Consultant Paediatrics	2	3	1.50		100.0%		1.50	100.0%	100.0%	100.0%	33.3%	66.7%		33.3%
Consultant Psychiatry	19	24	1.27	29.2%	70.8%	1.06	1.38	79.2%	79.2%	88.2%	54.2%	45.8%	71.4%	47.1%
Consultants	21	27	1.29	25.9%	74.1%	1.06	1.39	81.5%	57.1%	90.0%	51.9%	48.1%	71.4%	45.0%
Registrar	5	5	1.00	40.0%	60.0%	1.00	1.00	40.0%	40.0%	33.3%	100.0%	0.0%	100.0%	100.0%
Senior Registrar	2	2	1.00		100.0%		1.00	0.0%	0.0%	0.0%	100.0%	0.0%		100.0%
Specialist Registrar	2	2	1.00	50.0%	50.0%	1.00	1.00	0.0%	0.0%	0.0%	100.0%	0.0%	100.0%	100.0%
Registrars	9	9	1.00	33.3%	66.7%	1.00	1.00	22.2%	33.3%	16.7%	100.0%	0.0%	100.0%	100.0%
Senior House Officer	12	12	1.00	33.3%	66.7%	1.00	1.00	8.3%	8.3%	12.5%	100.0%	0.0%	100.0%	100.0%
SHO/ Interns	12	12	1.00	33.3%	66.7%	1.00	1.00	8.3%	0.0%	12.5%	100.0%	0.0%	100.0%	100.0%
Other Medical	13	21	1.57	38.1%	61.9%	1.25	1.86	90.5%	90.5%	100.0%	38.1%	61.9%	50.0%	30.8%
Medical/ Dental, other	13	21	1.57	38.1%	61.9%	1.25	1.86	90.5%	75.0%	100.0%	38.1%	61.9%	50.0%	30.8%
Medical & Dental	55	69	1.25	31.9%	68.1%	1.10	1.33	63.8%	50.0%	70.2%	62.3%	37.7%	72.7%	57.4%
Clinical Nurse/ Midwife Manager	845	914	1.08	13.0%	87.0%	1.02	1.09	94.6%	94.6%	94.5%	81.7%	18.3%	94.1%	79.9%
Director Nursing/Midwifery, Assistant	41	42	1.02	16.7%	83.3%	1.00	1.03	97.6%	97.6%	97.1%	95.2%	4.8%	100.0%	94.3%
Director of Nursing/Midwifery	48	51	1.06	13.7%	86.3%	1.03	1.06	90.2%	90.2%	90.9%	92.2%	7.8%	85.7%	93.2%
Nurse/ Midwife Manager	934	1,007	1.08	13.2%	86.8%	1.02	1.09	94.5%	95.5%	94.4%	82.8%	17.2%	94.0%	81.1%
Advanced Nurse/ Midwife Practitioner	9	10	1.06	20.0%	80.0%	1.00	1.08	90.0%	90.0%	87.5%	100.0%	0.0%	100.0%	100.0%
Clinical Nurse/ Midwife Specialist	62	69	1.11	7.2%	92.8%	1.00	1.11	100.0%	100.0%	100.0%	62.3%	37.7%	100.0%	59.4%
Nurse/ Midwife Specialist & AN/MP	72	79	1.10	8.9%	91.1%	1.00	1.11	98.7%	100.0%	98.6%	67.1%	32.9%	100.0%	63.9%
Staff Nurse [Psychiatric]	58	74	1.28	20.3%	79.7%	1.26	1.29	74.3%	74.3%	78.0%	54.1%	45.9%	53.3%	54.2%
Staff Nurses [General/ Children's]	784	888	1.13	16.4%	83.6%	1.06	1.15	94.7%	94.7%	95.0%	71.5%	28.5%	83.6%	69.1%
Staff Nurse [Intellectual Disability]	1,736	2,013	1.16	9.3%	90.7%	1.06	1.17	95.3%	95.3%	95.2%	65.5%	34.5%	86.2%	63.3%
Staff Nurse/ Staff Midwife	2,578	2,975	1.15	11.7%	88.3%	1.07	1.17	94.6%	93.7%	94.7%	67.0%	33.0%	83.7%	64.8%
Public Health Nurse	12	14	1.18		100.0%		1.18	100.0%	100.0%	100.0%	64.3%	35.7%		64.3%
Public Health Nurse	12	14	1.18		100.0%		1.18	100.0%		100.0%	64.3%	35.7%		64.3%
Pre-registration Nurse/ Midwife Intern	87	173	1.99	7.5%	92.5%	1.88	2.00	34.7%	34.7%	36.9%	67.6%	32.4%	76.9%	66.9%
Nursing/ Midwifery awaiting registration	0	1	3.03		100.0%		3.03	0.0%	0.0%	0.0%	100.0%	0.0%		100.0%
Nursing/ Midwifery Student	87	174	2.00	7.5%	92.5%	1.88	2.01	34.5%	7.7%	36.6%	67.8%	32.2%	76.9%	67.1%
Nursing Education/Clinical	27	30	1.13	3.3%	96.7%	1.00	1.13	96.7%	96.7%	96.6%	66.7%	33.3%	100.0%	65.5%

Other Nursing/ Midwifery	1	1	1.00		100.0%		1.00	100.0%	100.0%	100.0%	100.0%	0.0%		100.0%	
Nursing/ Midwifery other	28	31	1.12	3.2%	96.8%	1.00	1.13	96.8%	100.0%	96.7%		67.7%	32.3%	100.0%	66.7%
Nursing & Midwifery	3,711	4,280	1.15	11.8%	88.2%	1.07	1.17	92.3%	92.0%	92.3%		70.7%	29.3%	86.5%	68.7%
Dietitians	22	28	1.26		100.0%		1.26	89.3%	89.3%	89.3%		64.3%	35.7%		64.3%
Occupational Therapists	280	325	1.16	6.2%	93.8%	1.06	1.17	93.5%	93.5%	93.4%		77.8%	22.2%	90.0%	77.0%
Physiotherapists	187	222	1.19	16.7%	83.3%	1.06	1.22	95.0%	95.0%	95.7%		68.9%	31.1%	86.5%	65.4%
Speech & Language Therapists	281	324	1.15	1.9%	98.1%	1.13	1.16	88.0%	88.0%	88.1%		74.7%	25.3%	83.3%	74.5%
Therapy Professions	770	899	1.17	7.0%	93.0%	1.06	1.18	91.8%	92.1%	91.7%		74.1%	25.9%	87.3%	73.1%
Clinical Engineering	15	15	1.00	93.3%	6.7%	1.00	1.00	80.0%	80.0%	100.0%		93.3%	6.7%	92.9%	100.0%
Medical Science	4	4	1.00	50.0%	50.0%	1.00	1.00	50.0%	50.0%	50.0%		100.0%	0.0%	100.0%	100.0%
Radiographers	1	2	1.87		100.0%		1.87	50.0%	50.0%	50.0%		50.0%	50.0%		50.0%
Respiratory Physiologists	2	2	1.00	100.0%		1.00		100.0%	100.0%			100.0%	0.0%	100.0%	
Health Science/ Diagnostics	22	23	1.04	78.3%	21.7%	1.00	1.23	73.9%	77.8%	60.0%		91.3%	8.7%	94.4%	80.0%
Social Care	2,990	3,508	1.17	16.6%	83.4%	1.09	1.19	91.0%	91.4%	90.9%		49.7%	50.3%	64.0%	46.9%
Social Workers	225	265	1.18	17.4%	82.6%	1.07	1.20	94.3%	95.7%	94.1%		70.6%	29.4%	82.6%	68.0%
Psychologists	236	269	1.14	19.0%	81.0%	1.05	1.16	96.7%	98.0%	96.3%		76.6%	23.4%	90.2%	73.4%
Pharmacists	6	8	1.31	12.5%	87.5%	1.00	1.37	87.5%	87.5%	100.0%		87.5%	12.5%	100.0%	85.7%
Pharmacy Technicians	1	1	1.09		100.0%		1.09	100.0%	100.0%	100.0%		100.0%	0.0%		100.0%
Pharmacy	7	9	1.28	11.1%	88.9%	1.00	1.33	88.9%	0.0%	100.0%		88.9%	11.1%	100.0%	87.5%
Counsellor Therapists	23	27	1.18	3.7%	96.3%	1.00	1.19	96.3%	96.3%	96.2%		55.6%	44.4%	100.0%	53.8%
Other Health & Social Care	33	46	1.39	13.0%	87.0%	1.05	1.47	93.5%	93.5%	92.5%		41.3%	58.7%	83.3%	35.0%
Play Therapists/ Specialists	10	14	1.37	28.6%	71.4%	1.00	1.62	92.9%	92.9%	90.0%		57.1%	42.9%	100.0%	40.0%
H&SC, Other	66	87	1.32	12.6%	87.4%	1.03	1.38	94.3%	100.0%	93.4%		48.3%	51.7%	90.9%	42.1%
Health & Social Care	4,316	5,060	1.17	15.2%	84.8%	1.08	1.19	91.6%	91.8%	91.5%		56.8%	43.2%	69.9%	54.4%
Executive Management	41	41	1.00	36.6%	63.4%	1.00	1.00	92.7%	92.7%	96.2%		100.0%	0.0%	100.0%	100.0%
Senior Management (VIII & GM)	185	191	1.03	33.0%	67.0%	1.01	1.04	96.3%	96.3%	96.9%		96.9%	3.1%	100.0%	95.3%
Management (VIII & above)	226	232	1.03	33.6%	66.4%	1.01	1.03	95.7%	93.6%	96.8%		97.4%	2.6%	100.0%	96.1%
Middle Management (V-VII)	594	643	1.08	22.4%	77.6%	1.03	1.10	93.6%	93.6%	93.8%		81.3%	18.7%	90.3%	78.8%
Other Administrative	13	13	1.00	7.7%	92.3%	1.00	1.00	92.3%	92.3%	91.7%		100.0%	0.0%	100.0%	100.0%
Administrative/ Supervisory (V to VII)	607	656	1.08	22.1%	77.9%	1.03	1.10	93.6%	93.1%	93.7%		81.7%	18.3%	90.3%	79.3%
General Administrative (III & IV)	715	874	1.22	11.1%	88.9%	1.18	1.23	89.2%	89.2%	89.8%		56.8%	43.2%	71.1%	55.0%
Clerical (III & IV)	715	874	1.22	11.1%	88.9%	1.18	1.23	89.2%	84.5%	89.8%		56.8%	43.2%	71.1%	55.0%
Management & Administrative	1,548	1,762	1.14	18.2%	81.8%	1.06	1.16	91.7%	90.6%	92.0%		71.4%	28.6%	86.9%	68.0%
Catering	82	97	1.18	27.8%	72.2%	1.05	1.24	99.0%	99.0%	100.0%		55.7%	44.3%	85.2%	44.3%
Household Services	382	555	1.45	17.7%	82.3%	1.46	1.45	85.9%	85.9%	88.0%		35.3%	64.7%	53.1%	31.5%

Other Labs & Associated	1	1	1.00		100.0%		1.00	100.0%	100.0%	100.0%	100.0%	0.0%		100.0%
Other Support	145	226	1.55	52.2%	47.8%	1.31	1.94	91.2%	91.2%	100.0%	27.4%	72.6%	45.8%	7.4%
Portering	18	25	1.37	96.0%	4.0%	1.37	1.25	88.0%	88.0%	100.0%	44.0%	56.0%	45.8%	0.0%
Support	629	904	1.44	29.5%	70.5%	1.33	1.49	88.7%	82.4%	91.4%	35.8%	64.2%	52.4%	28.9%
Maintenance	108	118	1.09	95.8%	4.2%	1.09	1.10	95.8%	95.8%	100.0%	75.4%	24.6%	76.1%	60.0%
Technical Services	15	15	1.01	80.0%	20.0%	0.99	1.07	93.3%	93.3%	100.0%	93.3%	6.7%	100.0%	66.7%
Maintenance/ Technical	123	133	1.08	94.0%	6.0%	1.08	1.09	95.5%	95.2%	100.0%	77.4%	22.6%	78.4%	62.5%
General Support	752	1,037	1.38	37.8%	62.2%	1.24	1.48	89.6%	86.5%	91.5%	41.2%	58.8%	60.7%	29.3%
Attendant/ Aide	195	250	1.28	22.0%	78.0%	1.16	1.32	85.2%	85.2%	85.6%	47.6%	52.4%	63.6%	43.1%
Health & Social Care Assistants	16	20	1.29	5.0%	95.0%	1.00	1.31	90.0%	90.0%	89.5%	50.0%	50.0%	100.0%	47.4%
Health Care Assistant/ Care Assistant	7,278	8,534	1.17	23.3%	76.7%	1.10	1.20	84.9%	84.9%	84.6%	52.8%	47.2%	62.9%	49.7%
Health Care Assistants	7,489	8,804	1.18	23.2%	76.8%	1.10	1.20	84.9%	85.7%	84.6%	52.6%	47.4%	62.9%	49.5%
Home Help	83	225	2.72	7.6%	92.4%	4.05	2.65	66.2%	58.8%	66.8%	2.7%	97.3%	0.0%	2.9%
Home Care Services	19	24	1.26	12.5%	87.5%	1.03	1.30	70.8%	70.8%	76.2%	45.8%	54.2%	66.7%	42.9%
Other Care Grades	258	294	1.14	27.6%	72.4%	1.11	1.15	89.1%	89.1%	90.1%	76.9%	23.1%	85.2%	73.7%
Pastoral Care	7	8	1.17	50.0%	50.0%	1.19	1.14	75.0%	75.0%	100.0%	62.5%	37.5%	50.0%	75.0%
Workshop Services	1,474	1,728	1.17	23.9%	76.1%	1.10	1.20	86.7%	86.7%	87.2%	60.8%	39.2%	70.0%	57.9%
Care, other	1,757	2,054	1.17	24.4%	75.6%	1.10	1.19	86.8%	84.6%	87.5%	62.9%	37.1%	72.3%	59.9%
Patient & Client Care	9,329	11,083	1.19	23.1%	76.9%	1.11	1.21	84.9%	85.3%	84.7%	53.5%	46.5%	64.3%	50.3%

Employment by WTE, Headcount, Gender, Full-Time /Part-Time etc.: Jun 2022

Social Care Disability Services CHO	WTE	Headcount	WTE: no.	% Male	% female	Male WTE: no.	Female WTE: no.	% Total Perm	% Male Perm	% Female Perm	% Total Full Time	% Total Part Time	% Male FT	% Female FT
Overall	19,710	23,291	1.18	19.6%	80.4%	1.11	1.20	88.3%	87.5%	88.6%	58.2%	41.8%	69.0%	55.6%
CHO 1	1,687	1,890	1.12	20.3%	79.7%	1.05	1.14	91.4%	91.4%	91.4%	78.9%	21.1%	90.1%	76.1%
CHO 2	1,589	1,946	1.22	23.2%	76.8%	1.17	1.24	82.3%	82.3%	82.5%	46.6%	53.4%	50.8%	45.4%
CHO 3	1,985	2,333	1.18	13.5%	86.5%	1.11	1.19	85.0%	85.0%	85.4%	39.0%	61.0%	44.3%	38.2%
CHO 4	2,647	3,161	1.19	21.2%	78.8%	1.11	1.22	83.2%	83.2%	84.3%	68.2%	31.8%	75.3%	66.3%
CHO 5	1,680	1,989	1.18	19.9%	80.1%	1.11	1.20	86.3%	86.3%	86.6%	52.6%	47.4%	62.1%	50.3%
CHO 6	1,220	1,404	1.15	22.2%	77.8%	1.08	1.17	92.7%	92.7%	93.3%	66.6%	33.4%	80.8%	62.5%
CHO 7	3,319	3,943	1.19	22.4%	77.6%	1.11	1.21	88.0%	88.0%	87.9%	67.4%	32.6%	79.1%	64.0%
CHO 8	2,283	2,733	1.20	20.2%	79.8%	1.12	1.22	96.2%	96.2%	95.9%	46.6%	53.4%	53.1%	45.0%
CHO 9	3,295	3,886	1.18	15.5%	84.5%	1.08	1.20	90.4%	90.4%	90.3%	56.0%	44.0%	73.6%	52.8%
other Community Services	6	6	1.01	16.7%	83.3%	1.00	1.01	83.3%	83.3%	80.0%	83.3%	16.7%	100.0%	80.0%

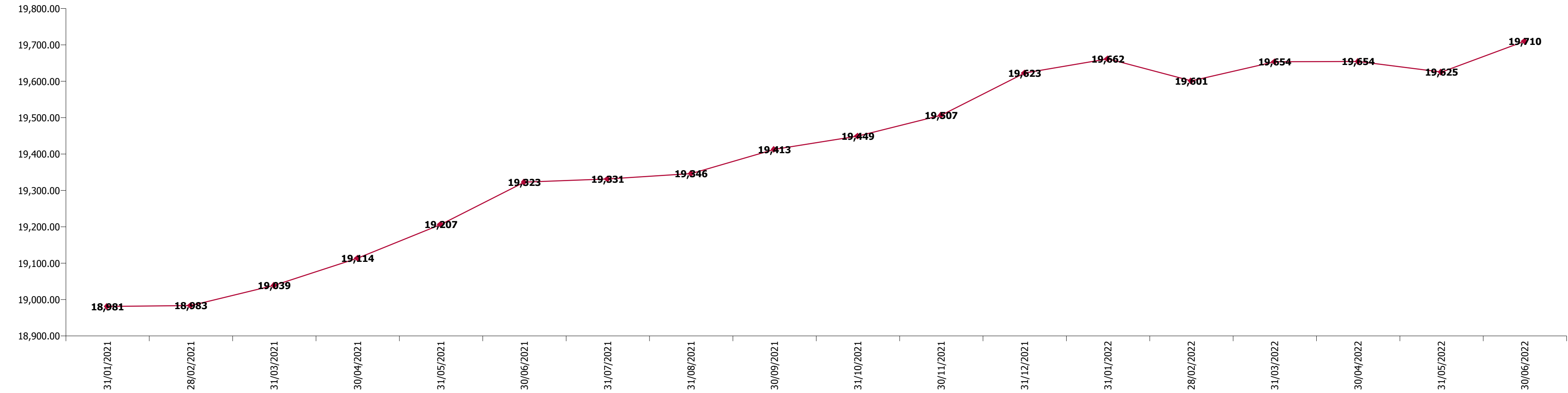
Summary Staff Movement: June 2022

Month-on-month
Summary

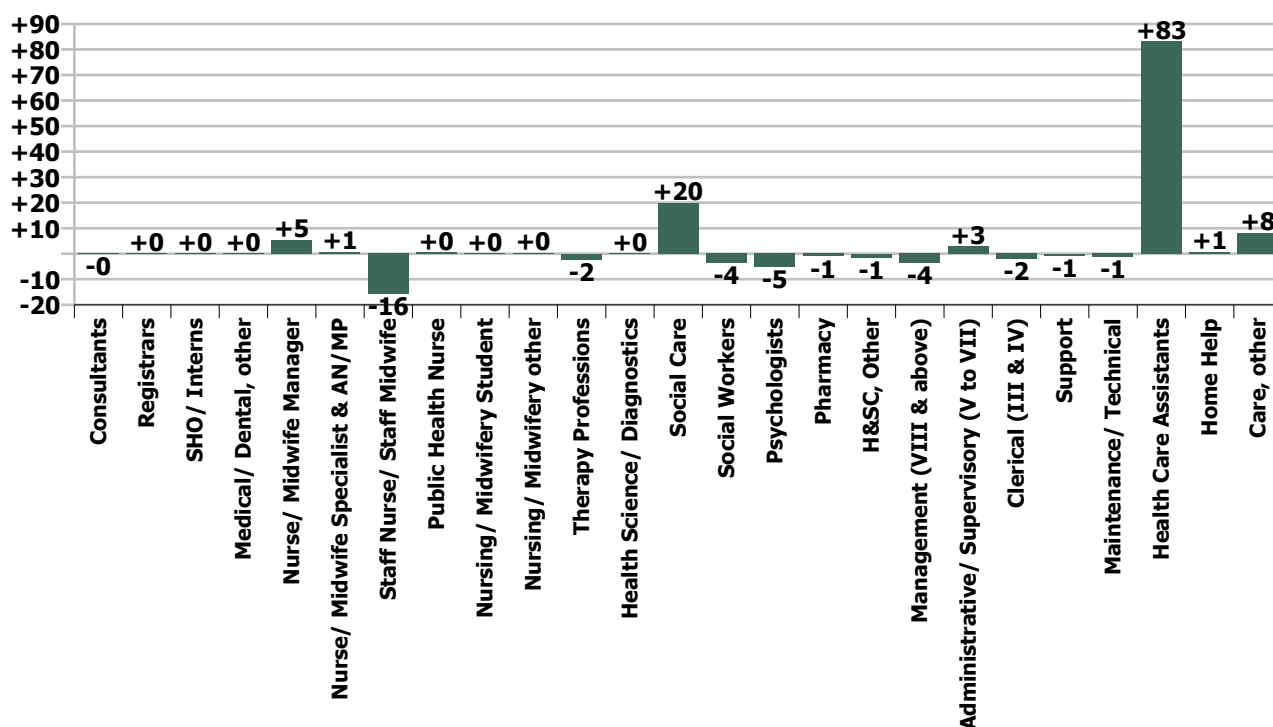
WTE change since May 22	% change since May 22	overall	Consultants	Registrars	SHO/ Interns	Medical/ Dental, other	Medical & Dental	Nurse/ Midwife Manager	Nurse/ Midwife Specialist & AN/MP	Staff Nurse/ Staff Midwife	Public Health Nurse	Nursing/ Midwifery Student	Nursing/ Midwifery other	Nursing & Midwifery	Therapy Professions	Health Science/ Diagnostics	Social Care	Social Workers	Psychologists	Pharmacy	H&SC, Other	Health & Social Care Professionals	Management (VIII & above)	Administrativ e/ Supervisory (V to VII)	Clerical (III & IV)	Management & Administrative	General Support	Health Care Assistants	Home Help	Care, other	Patient & Client Care
Overall	+0.4%	+85	-0	+0	+0	+0	+0	+5	+1	-16	+0	+0	+0	-9	-2	+0	+20	-4	-5	-1	-1	+6	-4	+3	-2	-3	-2	+83	+1	+8	+92
CHO 1	-0.0%	-0		+1			+1	-0	+0	-8		+0	+0	-8	-0		+1	-1	-2		-0	-2	-1	+1	-2	-3	-0	+10	+0	+1	+12
CHO 2	+0.5%	+8				+0	+0	+3	+0	-1				+2	+0		+0	-0	+0		-0	-0	+0	-1	-1	-3	-1	+12		-3	+9
CHO 3	+1.6%	+31	-0				-0	+1		+3				+4	-1	+0	+5	+1	+0		-0	+5	+0	+0	+2	+2	-3	+22		+0	+22
CHO 4	+0.9%	+24						+0	-1	+2				+2	-3		+2	-1	-0		+0	-1	-1	+2	+0	+1	-0	+23		+0	+23
CHO 5	+1.2%	+20						+2	+0	-1	+0	+0		+2	+5		+5	-0	-1		-1	+9	-0	+2	+2	+4	+0	-0	+0	+5	+5
CHO 6	-0.2%	-2						-1		+2				+1	+0		-4	-0	+1			-3	+2	-2	+0	-1	-1	+1		+1	+2
CHO 7	+0.8%	+28		-0	+0		-0	-1	+1	-2				-2	-0	+0	+7	+1	-1	-1	-1	+5	-1	-0	+1	-1	+4	+19	-0	+3	+22
CHO 8	+0.1%	+3						+3	+0			+0	-0	+3	-5		+7	-2	-1		-1	-1	-1	-3	-0	-4	+0	+6	+0	-1	+5
CHO 9	-0.7%	-25	-0			+0	+0	-2	+0	-11		-1	+0	-13	+1		-3	-1	-1		-0	-4	-0	+4	-3	+1	-1	-9		+1	-7
other Community Services																															
		+0.4%	-0.3%	+1.6%	+0.7%	+0.5%	+0.4%	+0.6%	+1.0%	-0.6%	+3.7%	+0.1%	+1.1%	-0.2%	-0.3%	+0.5%	+0.7%	-1.6%	-2.1%	-12.5%	-2.2%	+0.1%	-1.6%	+0.5%	-0.3%	-0.2%	-0.3%	+1.1%	+0.9%	+0.5%	+1.0%

Year-on-year Summary

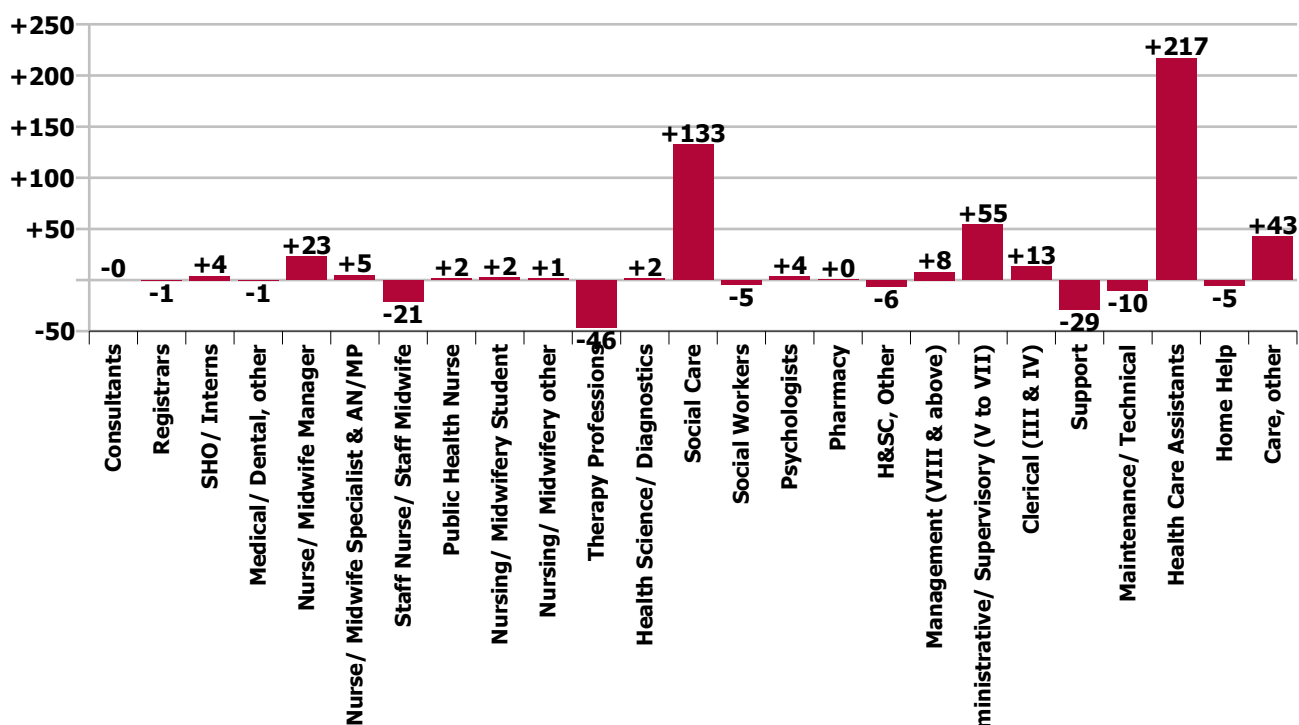
WTE change since Jun 21	% change since Jun 21	overall	Consultants	Registrars	SHO/ Interns	Medical/ Dental, other	Medical & Dental	Nurse/ Midwife Manager	Nurse/ Midwife Specialist & AN/MP	Staff Nurse/ Staff Midwife	Public Health Nurse	Nursing/ Midwifery Student	Nursing/ Midwifery other	Nursing & Midwifery	Therapy Professions	Health Science/ Diagnostics	Social Care	Social Workers	Psychologists	Pharmacy	H&SC, Other	Health & Social Care Professionals	Management (VIII & above)	Administrative/ Supervisory (V to VII)	Clerical (III & IV)	Management & Administrative	General Support	Health Care Assistants	Home Help	Care, other	Patient & Client Care	
Overall	+2.0%	+388	-0	-1	+4	-1	+2	+23	+5	-21	+2	+2	+1	+12	-46	+2	+133	-5	+4	+0	-6	+81	+8	+55	+13	+76	-38	+217	-5	+43	+254	
CHO 1	+5.5%	+88		+1			+1	+1	+0	-8			-5	+1	+19		-2	-3	+2		+1	+16	-3	+11	-1	+7	-18	+83	+1	+8	+92	
CHO 2	+2.5%	+39		-2	+2				-5	-0	+6			+0	+8		+7	-0	+3			-1	+18	-1	+14	+5	+18	+1	+6		-4	+2
CHO 3	+1.2%	+24	+0				+0	+4	+2	-1			-1	-1	+2	-35	+2	+4	-1	+0		-1	-30	+2	+5	+0	+7	-6	+36		+15	+52
CHO 4	+1.0%	+27	-2				-2	+16	-1	-3				+1	+13	-13		+7	-1	-2		-1	-9	-2	+8	-5	+1	-5	+23		+7	+30
CHO 5	+3.4%	+56	+0				+0	+3		+2	+2	-1		+5	-10		+9	-3	+2			-1	-3	+3	+10	+3	+17	-0	+25	-5	+17	+37
CHO 6	-0.8%	-10		+0			+0	-7		+1				+1	-5	-14		+15	-3	+1		+0	-2	+1	-1	+3	+3	-3	+0		-3	-3
CHO 7	+4.4%	+141	-0			-1	-1	+7	+1	+21			-1	+28	+11	+0	+46	+7	+3	+0		+67	+3	+3	-6	+1	+6	+37	-3	+6	+40	
CHO 8	+1.9%	+43						-7	+0	-5		+8	-1	-4	-15	+0	+34	-5	-2			-1	+12	+3	+4	-3	+5	-6	+43	+2	-8	+37
CHO 9	-0.6%	-21	+2		+2	+0	+4	+12	+3	-34			+2	-0	-17	+2	-1	+12	+4	-3		-3	+11	+1	+1	+16	+18	-6	-37		+6	-31
other Community Services	+1.9%	+0																								+0	+0					
		+2.0%	-0.6%	-8.2%	+50.0%	-6.6%	+4.0%	+2.6%	+7.4%	-0.8%	+15.7%	+2.6%	+5.6%	+0.3%	-5.7%	+8.2%	+4.6%	-2.0%	+1.6%	+3.4%	-8.5%	+1.9%	+3.6%	+9.9%	+1.9%	+5.1%	-4.9%	+3.0%	-6.0%	+2.5%	+2.8%	



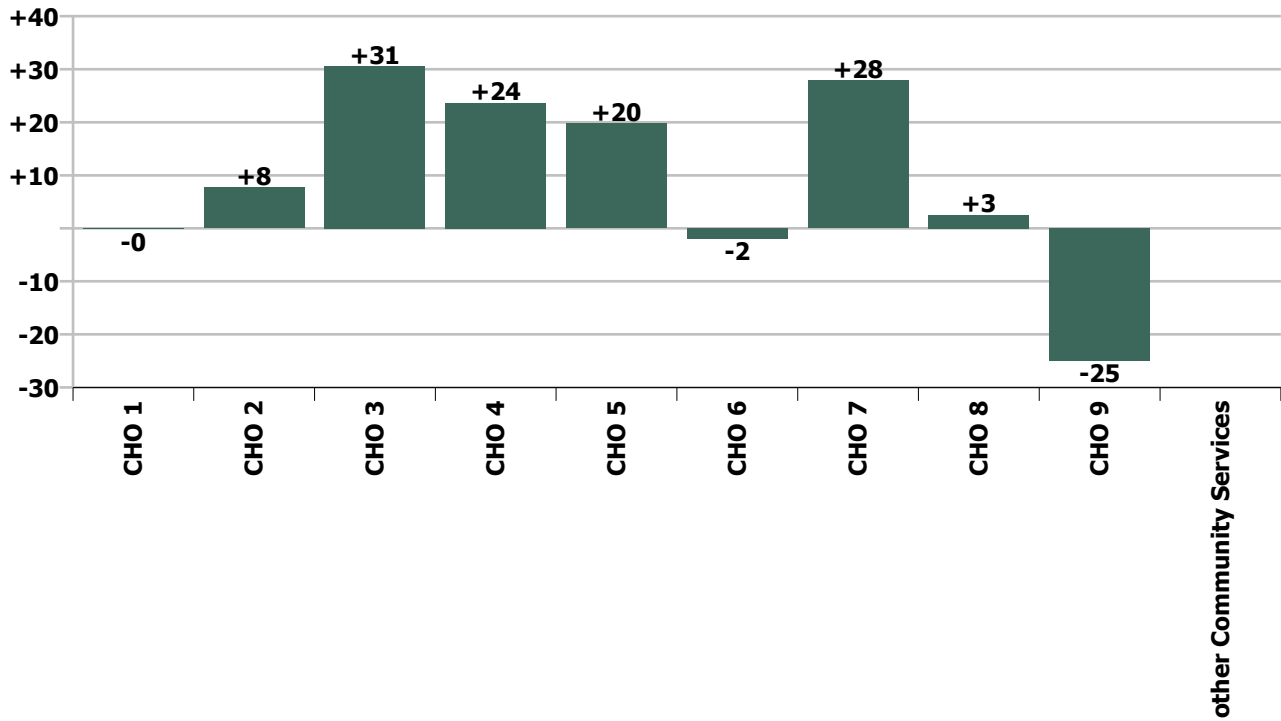
Staff Group change since: May 2022



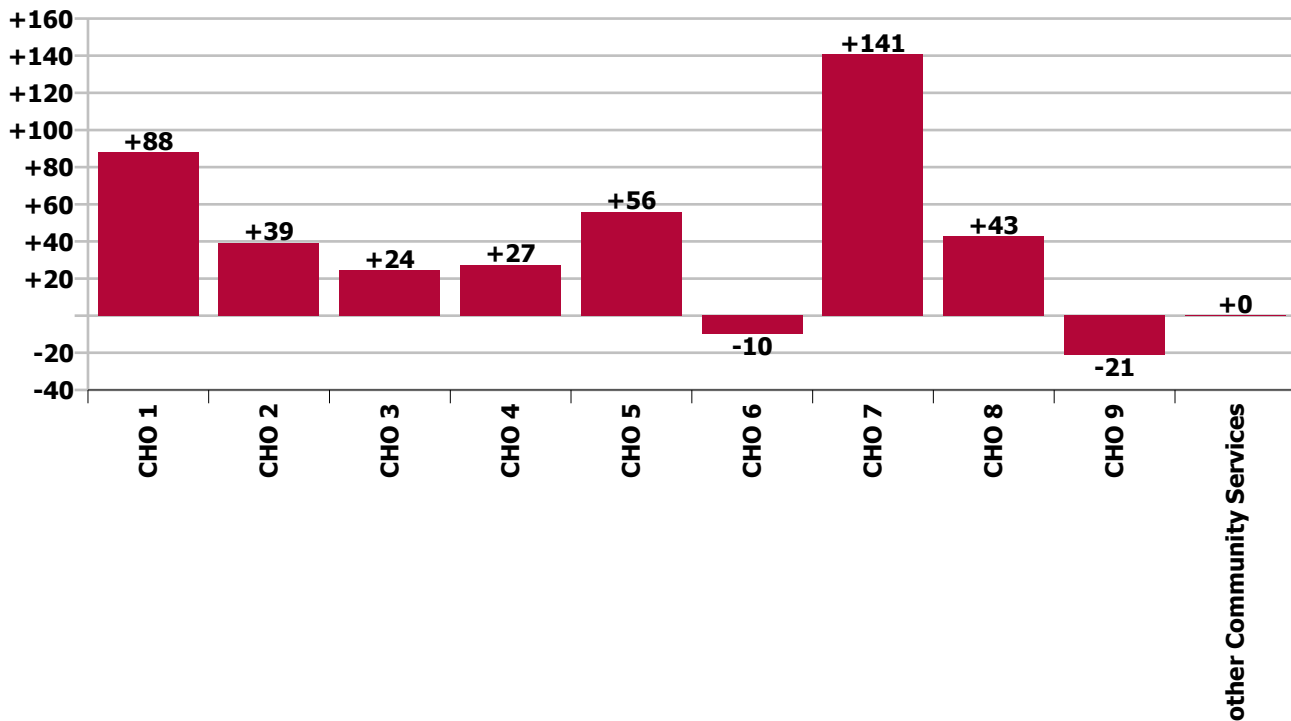
Staff Group change since: Jun 2021



CHO change since: May 2022



CHO change since: Jun 2021



Longitudinal Employment Levels by Grade Group - Dec 2016 to Jun 2022

Jun 2022 (Dec 2015 figure: 15,715)	WTE Jun 2022	WTE change since Dec 16	WTE change since Dec 17	WTE change since Dec 18	WTE change since Dec 19	WTE change since Dec 20	WTE change since May 22	% change since Dec 16	% change since Dec 17	% change since Dec 18	% change since Dec 19	% change since Dec 20	% change since May 22
Overall	19,710	+2,956	+2,313	+1,891	+1,408	+766	+85	+17.6%	+13.3%	+10.6%	+7.7%	+4.0%	+0.4%
Consultant Medicine		-2						-100.0%	-100.0%	-100.0%	-100.0%	-100.0%	-100.0%
Consultant Paediatrics	2	-1	-1	-1	-1	-1		-37.7%	-36.3%	-34.4%	-34.4%	-34.4%	
Consultant Psychiatry	19	-2	-4	+1	-2	-2	-0	-10.3%	-17.0%	+5.9%	-9.0%	-11.2%	-0.4%
Consultant Surgery		-0						-100.0%	-100.0%	-100.0%	-100.0%	-100.0%	-100.0%
Consultants	21	-5	-5		-3	-3	-0	-19.5%	-19.4%		-12.3%	-14.1%	-0.3%
Registrar	5	-1	-1	-0	-2	+2	-1	-16.7%	-16.7%	-6.0%	-28.6%	+66.7%	-9.1%
Senior Registrar	2		-1			-1			-33.3%			-33.3%	
Specialist Registrar	2		-2	+1	-2		+1		-50.0%	+100.0%	-50.0%		+47.1%
Registrars	9	-1	-4	+1	-4	+1	+0	-10.0%	-30.8%	+8.2%	-30.8%	+12.5%	+1.6%
Senior House Officer	12	+6	+5	+5	+5	+3	+0	+100.0%	+71.4%	+72.7%	+72.4%	+33.3%	+0.7%
SHO/ Interns	12	+6	+5	+5	+5	+3	+0	+100.0%	+71.4%	+72.7%	+72.4%	+33.3%	+0.7%
Dentists								-100.0%	-100.0%	-100.0%	-100.0%	-100.0%	-100.0%
Other Medical	13	-2	-1	-1	-1	-1	+0	-10.2%	-6.4%	-5.6%	-7.2%	-6.6%	+0.5%
Medical/ Dental, other	13	-2	-1	-1	-1	-1	+0	-10.2%	-6.4%	-5.6%	-7.2%	-6.6%	+0.5%
Medical & Dental	55	-2	-5	+5	-3	-0	+0	-2.8%	-8.2%	+9.8%	-5.0%	-0.7%	+0.4%
Clinical Nurse/ Midwife Manager	845	+34	+37	+37	+34	+31	+3	+4.2%	+4.5%	+4.6%	+4.2%	+3.8%	+0.3%
Director Nursing/Midwifery, Assistant	41	-1	+4	+3	+0	-5	+1	-2.9%	+10.8%	+8.1%	+0.7%	-10.1%	+1.8%
Director of Nursing/Midwifery	48	+4	+3	+10	+6	+11	+2	+10.2%	+5.7%	+26.7%	+14.1%	+30.4%	+4.0%
Nurse/ Midwife Manager	934	+37	+43	+50	+41	+37	+5	+4.1%	+4.9%	+5.7%	+4.5%	+4.2%	+0.6%
Advanced Nurse/ Midwife Practitioner	9	+8	+7	+7	+7	+1	+1	+841.0%	+370.5%	+370.5%	+370.5%	+17.6%	+17.6%
Clinical Nurse/ Midwife Specialist	62	-8	-5	-4	+3	+6	-1	-12.0%	-8.1%	-5.8%	+4.2%	+11.5%	-1.1%
Nurse/ Midwife Specialist & AN/MP	72	-0	+2	+4	+10	+8	+1	-0.1%	+2.7%	+5.3%	+16.1%	+12.3%	+1.0%
Graduate Nursing/ Midwifery								-100.0%	-100.0%	-100.0%	-100.0%	-100.0%	-100.0%
Staff Nurse [Psychiatric]	58	-27	-13	-13	-26	+5	-1	-32.0%	-18.2%	-18.7%	-31.0%	+9.5%	-2.3%
Staff Nurses [General/ Children's]	784	-149	-140	-84	-107	+32	-14	-16.0%	-15.1%	-9.7%	-12.0%	+4.3%	-1.7%
Staff Nurse [Intellectual Disability]	1,736	+11	+33	+51	+138	-53	-0	+0.6%	+1.9%	+3.1%	+8.7%	-2.9%	-0.0%
Staff Nurse/ Staff Midwife	2,578	-165	-120	-46	+5	-15	-16	-6.0%	-4.4%	-1.7%	+0.2%	-0.6%	-0.6%

Jun 2022 (Dec 2015 figure: 15,715)	WTE Jun 2022	WTE change since Dec 16	WTE change since Dec 17	WTE change since Dec 18	WTE change since Dec 19	WTE change since Dec 20	WTE change since May 22	% change since Dec 16	% change since Dec 17	% change since Dec 18	% change since Dec 19	% change since Dec 20	% change since May 22
Overall	19,710	+2,956	+2,313	+1,891	+1,408	+766	+85	+17.6%	+13.3%	+10.6%	+7.7%	+4.0%	+0.4%
Public Health Nurse	12	+5	+6	+5	+6	+5	+0	+82.0%	+93.9%	+76.6%	+88.7%	+72.0%	+3.7%
Pre-registration Nurse Intern (COVID-19)						-32		-100.0%	-100.0%	-100.0%	-100.0%	-100.0%	-100.0%
Pre-registration Nurse/ Midwife Intern	87	+75	+75	+52	+59	+84	+1	+623.5%	+636.4%	+149.3%	+207.3%	+3372.8%	+0.9%
Nursing/ Midwifery awaiting registration	0	+0	+0	+0	-14	-13	-1	-100.0%	-100.0%	-100.0%	-97.6%	-97.5%	-67.0%
Nursing/ Midwifery Student	87	+75	+75	+52	+45	+40	+0	+626.2%	+639.2%	+150.3%	+107.1%	+84.3%	+0.1%
Nursing Education/Clinical	27	+5	+5	+5	+5	+4	+0	+24.9%	+25.9%	+25.4%	+25.3%	+16.4%	+1.2%
Other Nursing/ Midwifery	1	-4	-4					-80.0%	-80.0%				
Nursing/ Midwifery other	28	+1	+1	+5	+5	+4	+0	+4.9%	+5.6%	+24.3%	+24.2%	+15.7%	+1.1%
Nursing & Midwifery	3,711	-47	+8	+71	+112	+78	-9	-1.2%	+0.2%	+1.9%	+3.1%	+2.2%	-0.2%
Dietitians	22	+9	+10	+9	+4	+6	+2	+69.0%	+86.5%	+62.2%	+20.5%	+35.5%	+7.7%
Occupational Therapists	280	+29	+31	+39	+16	+2	-2	+11.5%	+12.6%	+16.3%	+6.0%	+0.5%	-0.7%
Physiotherapists	187	+2	+2	+6	-3	-6	-1	+1.0%	+1.0%	+3.2%	-1.4%	-3.3%	-0.7%
Podiatrists & Chiropodists		-0	-0					-100.0%	-100.0%	-100.0%	-100.0%	-100.0%	-100.0%
Speech & Language Therapists	281	+10	-2	+2	-12	-27	-1	+3.6%	-0.7%	+0.6%	-4.1%	-8.7%	-0.2%
Therapy Professions	770	+50	+42	+55	+5	-26	-2	+6.9%	+5.7%	+7.7%	+0.7%	-3.2%	-0.3%
Audiology		-13	-18					-100.0%	-100.0%	-100.0%	-100.0%	-100.0%	-100.0%
Clinical Engineering	15	-3	-3	+3	+2	+2	+0	-18.3%	-16.9%	+24.6%	+15.0%	+15.4%	+0.3%
Medical Science	4	+1	+1					+33.3%	+33.3%				
Phlebotomists				-1	-1			-100.0%	-100.0%	-100.0%	-100.0%	-100.0%	-100.0%
Radiographers	1	+0	+0	+0	+0	+0	+0	+7.0%	+7.0%	+7.0%	+7.0%	+7.0%	+7.0%
Respiratory Physiologists	2	+1	+1	+1	+1			+100.0%	+100.0%	+100.0%	+100.0%		
Health Science/ Diagnostics	22	-14	-19	+3	+2	+2	+0	-38.8%	-46.1%	+15.9%	+10.1%	+10.4%	+0.5%
Social Care	2,990	+799	+645	+502	+395	+201	+20	+36.5%	+27.5%	+20.2%	+15.2%	+7.2%	+0.7%
Social Workers	225	+9	+4	+5	+6	-4	-4	+4.2%	+1.8%	+2.4%	+2.6%	-1.6%	-1.6%
Psychologists	236	+26	+12	+30	+32	+7	-5	+12.5%	+5.5%	+14.3%	+15.7%	+3.0%	-2.1%
Pharmacists	6	+1	+1	+0	+1	+1	-1	+19.3%	+19.3%	+2.0%	+15.9%	+21.7%	-13.7%
Pharmacy Technicians	1	-0	-0	-0	-1	-0	-0	-8.0%	-4.2%	-8.0%	-38.7%	-8.0%	-3.2%
Pharmacy	7	+1	+1	+0	+0	+1	-1	+14.9%	+15.6%	+0.6%	+3.8%	+16.8%	-12.5%
Counsellor Therapists	23	+6	+3	+5	+4	+3	-1	+35.4%	+17.3%	+28.4%	+20.6%	+15.4%	-3.7%

Jun 2022 (Dec 2015 figure: 15,715)	WTE Jun 2022	WTE change since Dec 16	WTE change since Dec 17	WTE change since Dec 18	WTE change since Dec 19	WTE change since Dec 20	WTE change since May 22	% change since Dec 16	% change since Dec 17	% change since Dec 18	% change since Dec 19	% change since Dec 20	% change since May 22
Overall	19,710	+2,956	+2,313	+1,891	+1,408	+766	+85	+17.6%	+13.3%	+10.6%	+7.7%	+4.0%	+0.4%
HSCP Trainees/ Students		-2	-1					-100.0%	-100.0%	-100.0%	-100.0%	-100.0%	-100.0%
Other Health & Social Care	33	-25	-26	-19	-18	-12	-1	-43.4%	-43.8%	-36.4%	-34.7%	-26.8%	-2.7%
Play Therapists/ Specialists	10	-3	-3	-4	-5	-1	+0	-25.3%	-22.6%	-30.1%	-34.0%	-6.3%	+3.0%
H&SC, Other	66	-25	-26	-18	-19	-10	-1	-27.6%	-28.2%	-21.6%	-22.3%	-12.8%	-2.2%
Health & Social Care Professionals	4,316	+846	+659	+576	+421	+172	+6	+24.4%	+18.0%	+15.4%	+10.8%	+4.2%	+0.1%
Executive Management	41	+12	+3	+9	+10	+5	-2	+41.0%	+7.6%	+28.6%	+32.9%	+13.6%	-4.4%
Senior Management (VIII & GM)	185	+48	+45	+41	+37	+17	-2	+34.9%	+31.7%	+28.3%	+24.5%	+10.4%	-1.0%
Management (VIII & above)	226	+60	+48	+50	+47	+22	-4	+35.9%	+26.6%	+28.4%	+26.0%	+11.0%	-1.6%
Middle Management (V-VII)	594	+215	+202	+166	+130	+83	+4	+56.7%	+51.4%	+38.9%	+28.0%	+16.3%	+0.7%
Other Administrative	13	-1	-3	-3	-2	-3	-1	-5.9%	-18.5%	-17.8%	-13.1%	-17.8%	-7.1%
Administrative/ Supervisory (V to VII)	607	+214	+199	+164	+128	+80	+3	+54.5%	+48.7%	+36.9%	+26.8%	+15.2%	+0.5%
General Administrative (III & IV)	715	+108	+83	+61	+55	+29	-2	+17.8%	+13.1%	+9.4%	+8.3%	+4.3%	-0.3%
Clerical (III & IV)	715	+108	+83	+61	+55	+29	-2	+17.8%	+13.1%	+9.4%	+8.3%	+4.3%	-0.3%
Management & Administrative	1,548	+382	+329	+275	+229	+132	-3	+32.7%	+27.0%	+21.6%	+17.4%	+9.3%	-0.2%
Catering	82	-31	-23	-22	-16	-14	+0	-27.4%	-22.2%	-21.2%	-16.1%	-14.5%	+0.6%
Household Services	382	-125	-84	-69	-37	-23	-1	-24.7%	-18.1%	-15.4%	-8.9%	-5.8%	-0.3%
Other Labs & Associated	1	-0		-0				-6.5%		-3.8%			
Other Support	145	-48	-44	-46	-43	+10	-0	-24.9%	-23.2%	-23.9%	-22.7%	+7.2%	-0.0%
Portering	18	-8	-8	-7	-9	-6		-31.6%	-31.1%	-29.0%	-33.9%	-25.0%	
Support	629	-213	-160	-145	-105	-34	-1	-25.3%	-20.3%	-18.7%	-14.3%	-5.1%	-0.1%
Maintenance	108	-17	-23	-12	-8	-13	-1	-13.4%	-17.5%	-9.9%	-6.9%	-10.9%	-1.3%
Technical Services	15	+10	+10	+9	+7	+4	+0	+192.2%	+192.2%	+144.3%	+84.0%	+34.2%	+0.7%
Maintenance/ Technical	123	-7	-13	-3	-1	-9	-1	-5.3%	-9.7%	-2.4%	-1.0%	-7.2%	-1.1%
General Support	752	-220	-173	-148	-106	-43	-2	-22.6%	-18.7%	-16.4%	-12.4%	-5.4%	-0.3%
Attendant/ Aide	195	-178	-102	-28	-36	-52	-2	-47.8%	-34.4%	-12.7%	-15.5%	-21.2%	-1.1%
Health & Social Care Assistants	16	+5	+6	+5	+6	+5	-0	+45.1%	+71.1%	+42.8%	+62.7%	+40.9%	-0.3%
Health Care Assistant/ Care Assistant	7,278	+1,898	+1,399	+971	+692	+434	+85	+35.3%	+23.8%	+15.4%	+10.5%	+6.3%	+1.2%
Health Care Assistants	7,489	+1,725	+1,304	+947	+662	+386	+83	+29.9%	+21.1%	+14.5%	+9.7%	+5.4%	+1.1%
Home Help	83	-13	-41	-30	-26	-11	+1	-13.4%	-33.2%	-26.7%	-24.0%	-11.9%	+0.9%

Jun 2022 (Dec 2015 figure: 15,715)	WTE Jun 2022	WTE change since Dec 16	WTE change since Dec 17	WTE change since Dec 18	WTE change since Dec 19	WTE change since Dec 20	WTE change since May 22	% change since Dec 16	% change since Dec 17	% change since Dec 18	% change since Dec 19	% change since Dec 20	% change since May 22
Overall	19,710	+2,956	+2,313	+1,891	+1,408	+766	+85	+17.6%	+13.3%	+10.6%	+7.7%	+4.0%	+0.4%
Home Care Services	19	-2	-4	-4	-9	+0	+0	-10.3%	-17.4%	-17.5%	-33.1%	+2.6%	+2.5%
Other Care Grades	258	+60	+73	+73	+83	+36	+2	+30.4%	+39.5%	+39.5%	+47.5%	+16.4%	+0.6%
Pastoral Care	7	-6	-6	-3	-3	-3	-1	-45.0%	-47.6%	-32.5%	-33.7%	-32.5%	-12.7%
Workshop Services	1,474	+233	+170	+129	+48	+18	+8	+18.8%	+13.1%	+9.6%	+3.4%	+1.3%	+0.5%
Health Promotion							-1	-100.0%	-100.0%	-100.0%	-100.0%	-100.0%	-100.0%
Care, other	1,757	+285	+233	+195	+118	+52	+8	+19.4%	+15.3%	+12.5%	+7.2%	+3.0%	+0.5%
Patient & Client Care	9,329	+1,997	+1,496	+1,112	+754	+427	+92	+27.2%	+19.1%	+13.5%	+8.8%	+4.8%	+1.0%

Source: Health Service Personnel Census

Longitudinal Employment Levels by Grade Group - Dec 2016 to Jun 2022

Jun 2022 (Dec 2015 figure: 15,715)	WTE Jun 2022	WTE change since Dec 16	WTE change since Dec 17	WTE change since Dec 18	WTE change since Dec 19	WTE change since Dec 20	WTE change since May 22	% change since Dec 16	% change since Dec 17	% change since Dec 18	% change since Dec 19	% change since Dec 20	% change since May 22
Overall	19,710	+2,956	+2,313	+1,891	+1,408	+766	+85	+17.6%	+13.3%	+10.6%	+7.7%	+4.0%	+0.4%
Consultant Medicine		-2						-100.0%	-100.0%	-100.0%	-100.0%	-100.0%	-100.0%
Consultant Paediatrics	2	-1	-1	-1	-1	-1	-1	-37.7%	-36.3%	-34.4%	-34.4%	-34.4%	
Consultant Psychiatry	19	-2	-4	+1	-2	-2	-0	-10.3%	-17.0%	+5.9%	-9.0%	-11.2%	-0.4%
Consultant Surgery		-0						-100.0%	-100.0%	-100.0%	-100.0%	-100.0%	-100.0%
Consultants	21	-5	-5		-3	-3	-0	-19.5%	-19.4%		-12.3%	-14.1%	-0.3%
Registrar	5	-1	-1	-0	-2	+2	-1	-16.7%	-16.7%	-6.0%	-28.6%	+66.7%	-9.1%
Senior Registrar	2		-1			-1			-33.3%			-33.3%	
Specialist Registrar	2		-2	+1	-2		+1		-50.0%	+100.0%	-50.0%		+47.1%
Registrars	9	-1	-4	+1	-4	+1	+0	-10.0%	-30.8%	+8.2%	-30.8%	+12.5%	+1.6%
Senior House Officer	12	+6	+5	+5	+5	+3	+0	+100.0%	+71.4%	+72.7%	+72.4%	+33.3%	+0.7%
SHO/ Interns	12	+6	+5	+5	+5	+3	+0	+100.0%	+71.4%	+72.7%	+72.4%	+33.3%	+0.7%
Dentists								-100.0%	-100.0%	-100.0%	-100.0%	-100.0%	-100.0%
Other Medical	13	-2	-1	-1	-1	-1	+0	-10.2%	-6.4%	-5.6%	-7.2%	-6.6%	+0.5%
Medical/ Dental, other	13	-2	-1	-1	-1	-1	+0	-10.2%	-6.4%	-5.6%	-7.2%	-6.6%	+0.5%
Medical & Dental	55	-2	-5	+5	-3	-0	+0	-2.8%	-8.2%	+9.8%	-5.0%	-0.7%	+0.4%
Clinical Nurse/ Midwife Manager	845	+34	+37	+37	+34	+31	+3	+4.2%	+4.5%	+4.6%	+4.2%	+3.8%	+0.3%
Director Nursing/Midwifery, Assistant	41	-1	+4	+3	+0	-5	+1	-2.9%	+10.8%	+8.1%	+0.7%	-10.1%	+1.8%
Director of Nursing/Midwifery	48	+4	+3	+10	+6	+11	+2	+10.2%	+5.7%	+26.7%	+14.1%	+30.4%	+4.0%
Nurse/ Midwife Manager	934	+37	+43	+50	+41	+37	+5	+4.1%	+4.9%	+5.7%	+4.5%	+4.2%	+0.6%
Advanced Nurse/ Midwife Practitioner	9	+8	+7	+7	+7	+1	+1	+841.0%	+370.5%	+370.5%	+370.5%	+17.6%	+17.6%
Clinical Nurse/ Midwife Specialist	62	-8	-5	-4	+3	+6	-1	-12.0%	-8.1%	-5.8%	+4.2%	+11.5%	-1.1%
Nurse/ Midwife Specialist & AN/MP	72	-0	+2	+4	+10	+8	+1	-0.1%	+2.7%	+5.3%	+16.1%	+12.3%	+1.0%
Graduate Nursing/ Midwifery								-100.0%	-100.0%	-100.0%	-100.0%	-100.0%	-100.0%
Staff Nurse [Psychiatric]	58	-27	-13	-13	-26	+5	-1	-32.0%	-18.2%	-18.7%	-31.0%	+9.5%	-2.3%
Staff Nurses [General/ Children's]	784	-149	-140	-84	-107	+32	-14	-16.0%	-15.1%	-9.7%	-12.0%	+4.3%	-1.7%
Staff Nurse [Intellectual Disability]	1,736	+11	+33	+51	+138	-53	-0	+0.6%	+1.9%	+3.1%	+8.7%	-2.9%	-0.0%
Staff Nurse/ Staff Midwife	2,578	-165	-120	-46	+5	-15	-16	-6.0%	-4.4%	-1.7%	+0.2%	-0.6%	-0.6%
Public Health Nurse	12	+5	+6	+5	+6	+5	+0	+82.0%	+93.9%	+76.6%	+88.7%	+72.0%	+3.7%
Pre-registration Nurse Intern (COVID-19)						-32		-100.0%	-100.0%	-100.0%	-100.0%	-100.0%	-100.0%
Pre-registration Nurse/ Midwife Intern	87	+75	+75	+52	+59	+84	+1	+623.5%	+636.4%	+149.3%	+207.3%	+3372.8%	+0.9%
Nursing/ Midwifery awaiting registration	0	+0	+0	+0	-14	-13	-1	-100.0%	-100.0%	-100.0%	-97.6%	-97.5%	-67.0%
Nursing/ Midwifery Student	87	+75	+75	+52	+45	+40	+0	+626.2%	+639.2%	+150.3%	+107.1%	+84.3%	+0.1%
Nursing Education/Clinical	27	+5	+5	+5	+5	+4	+0	+24.9%	+25.9%	+25.4%	+25.3%	+16.4%	+1.2%
Other Nursing/ Midwifery	1	-4	-4					-80.0%	-80.0%				
Nursing/ Midwifery other	28	+1	+1	+5	+5	+4	+0	+4.9%	+5.6%	+24.3%	+24.2%	+15.7%	+1.1%
Nursing & Midwifery	3,711	-47	+8	+71	+112	+78	-9	-1.2%	+0.2%	+1.9%	+3.1%	+2.2%	-0.2%
Dietitians	22	+9	+10	+9	+4	+6	+2	+69.0%	+86.5%	+62.2%	+20.5%	+35.5%	+7.7%
Occupational Therapists	280	+29	+31	+39	+16	+2	-2	+11.5%	+12.6%	+16.3%	+6.0%	+0.5%	-0.7%
Physiotherapists	187	+2	+2	+6	-3	-6	-1	+1.0%	+1.0%	+3.2%	-1.4%	-3.3%	-0.7%
Podiatrists & Chiropodists		-0	-0					-100.0%	-100.0%	-100.0%	-100.0%	-100.0%	-100.0%
Speech & Language Therapists	281	+10	-2	+2	-12	-27	-1	+3.6%	-0.7%	+0.6%	-4.1%	-8.7%	-0.2%
Therapy Professions	770	+50	+42	+55	+5	-26	-2	+6.9%	+5.7%	+7.7%	+0.7%	-3.2%	-0.3%
Audiology		-13	-18					-100.0%	-100.0%	-100.0%	-100.0%	-100.0%	-100.0%
Clinical Engineering	15	-3	-3	+3	+2	+2	+0	-18.3%	-16.9%	+24.6%	+15.0%	+15.4%	+0.3%
Medical Science	4	+1	+1					+33.3%	+33.3%				
Phlebotomists				-1	-1			-100.0%	-100.0%	-100.0%	-100.0%	-100.0%	-100.0%
Radiographers	1	+0	+0	+0	+0	+0	+0	+7.0%	+7.0%	+7.0%	+7.0%	+7.0%	+7.0%
Respiratory Physiologists	2	+1	+1	+1	+1			+100.0%	+100.0%	+100.0%	+100.0%		
Health Science/ Diagnostics	22	-14	-19	+3	+2	+2	+0	-38.8%	-46.1%	+15.9%	+10.1%	+10.4%	+0.5%
Social Care	2,990	+799	+645	+502	+395	+201	+20	+36.5%	+27.5%	+20.2%	+15.2%	+7.2%	+0.7%
Social Workers	225	+9	+4	+5	+6	-4	-4	+4.2%	+1.8%	+2.4%	+2.6%	-1.6%	-1.6%
Psychologists	236	+26	+12	+30	+32	+7	-5	+12.5%	+5.5%	+14.3%	+15.7%	+3.0%	-2.1%
Pharmacists	6	+1	+1	+0	+1	+1	-1	+19.3%	+19.3%	+2.0%	+15.9%	+21.7%	-13.7%
Pharmacy Technicians	1	-0	-0	-0	-1	-0	-0	-8.0%	-4.2%	-8.0%	-38.7%	-8.0%	-3.2%
Pharmacy	7	+1	+1	+0	+0	+1	-1	+14.9%	+15.6%	+0.6%	+3.8%	+16.8%	-12.5%
Counsellor Therapists	23	+6	+3	+5	+4	+3	-1	+35.4%	+17.3%	+28.4%	+20.6%	+15.4%	-3.7%
HSCP Trainees/ Students		-2	-1					-100.0%	-100.0%	-100.0%	-100.0%	-100.0%	-100.0%
Other Health & Social Care	33	-25	-26	-19	-18	-12	-1	-43.4%	-43.8%	-36.4%	-34.7%	-26.8%	-2.7%
Play Therapists/ Specialists	10	-3	-3	-4	-5	-1	+0	-25.3%	-22.6%	-30.1%	-34.0%	-6.3%	+3.0%
H&SC, Other	66	-25	-26	-18	-19	-10	-1	-27.6%	-28.2%	-21.6%	-22.3%	-12.8%	-2.2%
Health & Social Care Professionals	4,316	+846	+659	+576	+421	+172	+6	+24.4%	+18.0%	+15.4%	+10.8%	+4.2%	+0.1%
Executive Management	41	+12	+3	+9	+10	+5	-2	+41.0%	+7.6%	+28.6%	+32.9%	+13.6%	-4.4%
Senior Management (VIII & GM)	185	+48	+45	+41	+37	+17	-2	+34.9%	+31.7%	+28.3%	+24.5%	+10.4%	-1.0%
Management (VIII & above)	226	+60	+48	+50	+47	+22	-4	+35.9%	+26.6%	+28.4%	+26.0%	+11.0%	-1.6%
Middle Management (V-VII)	594	+215	+202	+166	+130	+83	+4	+56.7%	+51.4%	+38.9%	+28.0%	+16.3%	+0.7%
Other Administrative	13	-1	-3	-3	-2	-3	-1	-5.9%	-18.5%	-17.8%	-13.1%	-17.8%	-7.1%
Administrative/ Supervisory (V to VII)	607	+214	+199	+164	+128	+80	+3	+54.5%	+48.7%	+36.9%	+26.8%	+15.2%	+0.5%
General Administrative (III & IV)	715	+108	+83	+61	+55	+30	-2	+17.8%	+13.1%	+9.4%	+8.3%	+4.3%	-0.3%
Clerical (III & IV)	715	+108	+83	+61	+55	+30	-2	+17.8%	+13.1%	+9.4%	+8.3%	+4.3%	-0.3%
Management & Administrative	1,548	+382	+329	+275	+229	+132	-3	+32.7%	+27.0%	+21.6%	+17.4%	+9.3%	-0.2%
Support	629	-213	-160	-145	-105	-34	-1	-25.3%	-20.3%	-18.7%	-14.3%	-5.1%	-0.1%
Maintenance	108	-17	-23	-12	-8	-13	-1	-13.4%	-17.5%	-9.9%	-6.9%	-10.9%	-1.3%
Technical Services	15	+10	+10	+9	+7	+4	+0	+192.2%	+192.2%	+144.3%	+84.0%	+34.2%	+0.7%
Maintenance/ Technical	123	-7	-13	-3	-1	-9	-1	-5.3%	-9.7%	-2.4%	-1.0%	-7.2%	-1.1%
General Support	752	-220	-173	-148	-106	-43	-2	-22.6%	-18.7%	-16.4%	-12.4%	-5.4%	-0.3%
Attendant/ Aide	195	-178	-102	-28	-36	-52	-2	-47.8%	-34.4%	-12.7%	-15.5%	-21.2%	-1.1%
Health & Social Care Assistants	16	+5	+6	+5	+6	+5	-0	+45.1%	+71.1%	+42.8%	+62.7%	+40.9%	-0.3%
Health Care Assistant/ Care Assistant	7,278	+1,898	+1,399	+971	+692	+434	+85	+35.3%	+23.8%	+15.4%	+10.5%	+6.3%	+1.2%
Health Care Assistants	7,489	+1,725	+1,304	+947	+662	+386	+83	+29.9%	+21.1%	+14.5%	+9.7%	+5.4%	+1.1%
Home Help	83	-13	-41	-30	-26	-11	+1	-13.4%	-33.2%	-26.7%	-24.0%	-11.9%	+0.9%
Home Care Services	19	-2	-4	-4	-9	+0	+0	-10.3%	-17.4%	-17.5%	-33.1%	+2.6%	+2.5%
Other Care Grades	258	+60	+73	+73	+83	+36	+2	+30.4%	+39.5%	+39.5%	+47.5%	+16.4%	+0.6%
Pastoral Care	7	-6	-6	-3	-3	-3	-1	-45.0%	-47.6%	-32.5%	-33.7%	-32.5%	-12.7%

Jun 2022 (Dec 2015 figure: 15,715)	WTE Jun 2022	WTE change since Dec 16	WTE change since Dec 17	WTE change since Dec 18	WTE change since Dec 19	WTE change since Dec 20	WTE change since May 22	% change since Dec 16	% change since Dec 17	% change since Dec 18	% change since Dec 19	% change since Dec 20	% change since May 22
Overall	19,710	+2,956	+2,313	+1,891	+1,408	+766	+85	+17.6%	+13.3%	+10.6%	+7.7%	+4.0%	+0.4%
Workshop Services	1,474	+233	+170	+129	+48	+18	+8	+18.8%	+13.1%	+9.6%	+3.4%	+1.3%	+0.5%
Health Promotion							-1	-100.0%	-100.0%	-100.0%	-100.0%	-100.0%	-100.0%
Care, other	1,757	+285	+233	+195	+118	+52	+8	+19.4%	+15.3%	+12.5%	+7.2%	+3.0%	+0.5%
Patient & Client Care	9,329	+1,997	+1,496	+1,112	+754	+427	+92	+27.2%	+19.1%	+13.5%	+8.8%	+4.8%	+1.0%

Source: Health Service Personnel Census