

Social Care Disability Services Employment Report: May 2022

Employment by Staff Group

May 2022	WTE Dec 2019	WTE Dec 2020	WTE Apr 2022	WTE May 2022	WTE change since Apr 22	WTE change since Dec 20	% change since Dec 20	WTE change since Dec 19	% change since Dec 19	No. May 2022
Overall	18,303	18,944	19,654	19,625	-29	+681	+3.6%	+1,323	+7.2%	23,202
Consultants	24	24	21	21	+0	-3	-13.8%	-3	-12.0%	27
Registrars	13	8	9	9	-0	+1	+10.7%	-4	-31.8%	11
SHO/ Interns	7	9	11	12	+1	+3	+32.4%	+5	+71.3%	12
Medical/ Dental, other	14	14	14	13	-1	-1	-7.1%	-1	-7.6%	21
Medical & Dental	58	56	55	55	-0	-1	-1.1%	-3	-5.4%	71
Nurse/ Midwife Manager	894	897	928	929	+1	+32	+3.6%	+35	+3.9%	1,008
Nurse/ Midwife Specialist & AN/MP	62	64	70	71	+1	+7	+11.2%	+9	+14.9%	78
Staff Nurse/ Staff Midwife	2,572	2,593	2,608	2,593	-15	+0	+0.0%	+21	+0.8%	2,997
Public Health Nurse	6	7	11	11	+0	+5	+65.9%	+5	+82.0%	13
<i>Pre-registration Nurse Intern (COVID-19)</i>		32				-32	-100.0%		-100.0%	
<i>Pre-registration Nurse/ Midwife Intern</i>	28	3	86	86	+0	+84	+3341.6%	+58	+204.6%	173
<i>Nursing/ Midwifery awaiting registration</i>	14	13	1	1		-12	-92.3%	-13	-92.8%	1
Nursing/ Midwifery Student	42	47	87	87	+0	+40	+84.1%	+45	+106.8%	174
Nursing/ Midwifery other	22	24	26	27	+1	+3	+14.4%	+5	+22.8%	31
Nursing & Midwifery	3,599	3,632	3,730	3,719	-11	+87	+2.4%	+121	+3.4%	4,301
Therapy Professions	765	795	785	772	-13	-23	-2.9%	+7	+1.0%	892
Health Science/ Diagnostics	20	20	23	22	-1	+2	+9.8%	+2	+9.5%	22
Social Care	2,595	2,789	2,989	2,971	-19	+181	+6.5%	+375	+14.5%	3,489
Social Workers	219	228	230	228	-2	+0	+0.0%	+9	+4.3%	267
Psychologists	204	229	241	241	+1	+12	+5.3%	+37	+18.2%	269
Pharmacy	7	6	7	8	+1	+2	+33.4%	+1	+18.6%	10
H&SC, Other	85	76	67	67	+0	-8	-10.9%	-17	-20.5%	88
Health & Social Care Professionals	3,894	4,144	4,342	4,309	-33	+166	+4.0%	+415	+10.7%	5,037
Management (VIII & above)	180	204	227	230	+3	+26	+12.8%	+50	+28.0%	234
Administrative/ Supervisory (V to VII)	479	527	590	604	+15	+77	+14.7%	+125	+26.2%	648
Clerical (III & IV)	660	685	730	717	-14	+32	+4.6%	+57	+8.6%	871
Management & Administrative	1,319	1,416	1,547	1,551	+4	+135	+9.5%	+232	+17.6%	1,753
Support	734	663	625	630	+5	-33	-5.0%	-104	-14.2%	904
Maintenance/ Technical	124	132	125	124	-1	-8	-6.1%	+0	+0.1%	135
General Support	858	795	750	754	+4	-41	-5.2%	-104	-12.2%	1,039
Health Care Assistants	6,826	7,102	7,409	7,405	-3	+303	+4.3%	+579	+8.5%	8,742
Home Help	109	94	85	82	-3	-12	-12.7%	-27	-24.7%	227
Care, other	1,639	1,706	1,736	1,749	+14	+44	+2.6%	+110	+6.7%	2,032
Patient & Client Care	8,574	8,902	9,229	9,236	+7	+335	+3.8%	+662	+7.7%	11,001

Social Care Disability Services Employment by Administration (HSE / S38): May 2022

May 2022	WTE Dec 2019	WTE Dec 2020	WTE Apr 2022	WTE May 2022	WTE change since Apr 22	WTE change since Dec 20	% change since Dec 20	WTE change since Dec 19	% change since Dec 19	No. May 2022
Total	18,303	18,944	19,654	19,625	-29	+681	+3.6%	+1,323	+7.2%	23,202
HSE	3,903	4,085	4,191	4,167	-24	+82	+2.0%	+264	+6.8%	4,760
Section 38 Voluntary Agencies	14,400	14,860	15,463	15,459	-5	+599	+4.0%	+1,059	+7.4%	18,442

Employment by Staff Group

May 2022	WTE Dec 2019	WTE Dec 2020	WTE Apr 2022	WTE May 2022	WTE change since Apr 22	WTE change since Dec 20	% change since Dec 20	WTE change since Dec 19	% change since Dec 19	No. May 2022
Health Service Executive	3,903	4,085	4,191	4,167	-24	+82	+2.0%	+264	+6.8%	4,760
Consultants	8	9	6	6		-3	-35.3%	-2	-26.7%	6
Registrars	3	1	3	3	-1	+2	+150.0%	-1	-16.7%	3
SHO/ Interns		2	2	2				+2	-100.0%	2
Medical/ Dental, other	6	6	6	6	-0	-0	-0.2%	-0	-1.6%	10
Medical & Dental	17	18	17	16	-1	-2	-8.5%	-1	-3.6%	21
Nurse/ Midwife Manager	258	261	262	258	-4	-3	-1.2%	-0	-0.2%	274
Nurse/ Midwife Specialist & AN/MP	14	15	17	19	+2	+4	+25.7%	+5	+35.6%	20
Staff Nurse/ Staff Midwife	791	772	799	787	-12	+15	+1.9%	-4	-0.5%	875
Public Health Nurse	6	7	11	11	+0	+5	+65.9%	+5	+82.0%	13
Pre-registration Nurse Intern (COVID-19)		9				-9	-100.0%		-100.0%	
Pre-registration Nurse/ Midwife Intern	3	3	29	30	+0	+27	+1093.6%	+27	+818.2%	58
Nursing/ Midwifery awaiting registration	14	13	1	1		-12	-92.3%	-13	-92.8%	1
Nursing/ Midwifery Student	17	24	30	31	+0	+7	+28.1%	+14	+80.5%	59
Nursing/ Midwifery other	8	7	7	8	+1	+2	+25.6%	+1	+9.2%	10
Nursing & Midwifery	1,094	1,086	1,126	1,114	-12	+29	+2.6%	+20	+1.8%	1,251
Therapy Professions	332	373	332	323	-9	-50	-13.4%	-9	-2.6%	373
Health Science/ Diagnostics	2	4	6	6	-0	+2	+49.4%	+4	+195.0%	6
Social Care	89	101	98	97	-0	-3	-3.3%	+8	+9.4%	107
Social Workers	58	67	62	61	-1	-5	-8.0%	+4	+6.3%	69
Psychologists	76	83	95	97	+1	+14	+17.1%	+21	+27.0%	108
H&SC, Other	26	25	22	22	-0	-4	-14.3%	-5	-18.0%	25
Health & Social Care Professionals	583	652	615	606	-9	-46	-7.1%	+23	+3.9%	688
Management (VIII & above)	45	58	68	68	+0	+10	+17.2%	+23	+51.6%	69
Administrative/ Supervisory (V to VII)	141	168	198	201	+3	+33	+19.4%	+60	+42.2%	215
Clerical (III & IV)	178	199	217	208	-9	+10	+5.0%	+30	+16.9%	241
Management & Administrative	364	425	483	477	-6	+52	+12.4%	+113	+31.0%	525
Support	88	88	67	67	+0	-21	-23.9%	-22	-24.4%	77
Maintenance/ Technical	21	26	22	22	-0	-5	-17.3%	+1	+3.0%	22
General Support	109	114	88	88	-0	-26	-22.4%	-21	-19.2%	99
Health Care Assistants	1,518	1,557	1,617	1,618	+1	+61	+3.9%	+101	+6.6%	1,773
Home Help	109	94	85	82	-3	-12	-12.7%	-27	-24.7%	227
Care, other	109	140	159	165	+5	+25	+17.6%	+56	+50.9%	176
Patient & Client Care	1,736	1,791	1,862	1,865	+3	+74	+4.1%	+129	+7.4%	2,176

Employment by Staff Group

May 2022	WTE Dec 2019	WTE Dec 2020	WTE Apr 2022	WTE May 2022	WTE change since Apr 22	WTE change since Dec 20	% change since Dec 20	WTE change since Dec 19	% change since Dec 19	No. May 2022
Section 38 Voluntary Agencies	14,400	14,860	15,463	15,459	-5	+599	+4.0%	+1,059	+7.4%	18,442
Consultants	16	16	15	16	+0	-0	-2.3%	-1	-5.2%	21
Registrars	10	7	6	6	+0	-1	-9.1%	-4	-36.4%	8
SHO/ Interns	7	7	9	10	+1	+3	+41.7%	+3	+42.5%	10
Medical/ Dental, other	8	8	8	7	-1	-1	-12.4%	-1	-12.4%	11
Medical & Dental	41	38	39	39	+0	+1	+2.4%	-3	-6.1%	50
Nurse/ Midwife Manager	635	636	666	671	+5	+35	+5.5%	+36	+5.6%	734
Nurse/ Midwife Specialist & AN/MP	48	49	53	53	-1	+3	+6.8%	+4	+9.0%	58
Staff Nurse/ Staff Midwife	1,781	1,821	1,809	1,806	-3	-15	-0.8%	+25	+1.4%	2,122
Pre-registration Nurse Intern (COVID-19)		23				-23	-100.0%		-100.0%	
Pre-registration Nurse/ Midwife Intern	25		56	56	-0	+56	-100.0%	+31	+124.8%	115
Nursing/ Midwifery Student	25	23	56	56	-0	+33	+142.0%	+31	+124.8%	115
Nursing/ Midwifery other	14	17	19	19	+0	+2	+10.1%	+4	+30.0%	21
Nursing & Midwifery	2,504	2,546	2,604	2,605	+1	+59	+2.3%	+101	+4.0%	3,050
Therapy Professions	433	423	452	449	-3	+26	+6.3%	+16	+3.7%	519
Health Science/ Diagnostics	18	16	17	16	-1			-2	-11.1%	16
Social Care	2,506	2,689	2,891	2,873	-18	+185	+6.9%	+367	+14.6%	3,382
Social Workers	161	162	169	167	-2	+5	+3.3%	+6	+3.6%	198
Psychologists	128	147	145	145	-1	-2	-1.4%	+17	+13.0%	161
Pharmacy	7	6	7	8	+1	+2	+33.4%	+1	+18.6%	10
H&SC, Other	59	51	46	46	+0	-5	-9.2%	-13	-21.7%	63
Health & Social Care Professionals	3,312	3,492	3,728	3,704	-24	+212	+6.1%	+392	+11.8%	4,349
Management (VIII & above)	135	146	159	162	+3	+16	+11.0%	+27	+20.2%	165
Administrative/ Supervisory (V to VII)	338	358	391	403	+12	+45	+12.5%	+66	+19.4%	433
Clerical (III & IV)	482	487	514	508	-5	+22	+4.5%	+26	+5.5%	630
Management & Administrative	955	991	1,064	1,074	+10	+83	+8.3%	+119	+12.5%	1,228
Support	646	575	559	563	+4	-12	-2.1%	-83	-12.8%	827
Maintenance/ Technical	103	106	103	103	-1	-4	-3.4%	-1	-0.5%	113
General Support	749	681	662	666	+4	-16	-2.3%	-83	-11.1%	940
Health Care Assistants	5,308	5,545	5,792	5,787	-5	+242	+4.4%	+479	+9.0%	6,969
Care, other	1,530	1,566	1,576	1,585	+8	+19	+1.2%	+54	+3.5%	1,856
Patient & Client Care	6,839	7,111	7,368	7,372	+4	+261	+3.7%	+533	+7.8%	8,825

Social Care Disability Services Employment by CHO: May 2022

May 2022	WTE Dec 2019	WTE Dec 2020	WTE Apr 2022	WTE May 2022	WTE change since Apr 22	WTE change since Dec 20	% change since Dec 20	WTE change since Dec 19	% change since Dec 19	No. May 2022
Overall	18,303	18,944	19,654	19,625	-29	+681	+3.6%	+1,323	+7.2%	23,202
CHO 1	1,498	1,547	1,684	1,687	+3	+140	+9.1%	+189	+12.6%	1,882
CHO 2	1,497	1,516	1,572	1,581	+9	+66	+4.3%	+84	+5.6%	1,930
CHO 3	1,823	1,947	1,942	1,954	+12	+6	+0.3%	+130	+7.2%	2,318
CHO 4	2,439	2,556	2,622	2,623	+1	+68	+2.7%	+185	+7.6%	3,162
CHO 5	1,505	1,563	1,658	1,660	+2	+97	+6.2%	+155	+10.3%	1,971
CHO 6	1,198	1,217	1,220	1,222	+1	+5	+0.4%	+24	+2.0%	1,376
CHO 7	2,982	3,103	3,302	3,291	-11	+188	+6.1%	+310	+10.4%	3,912
CHO 8	2,162	2,205	2,312	2,280	-32	+75	+3.4%	+118	+5.5%	2,731
CHO 9	3,194	3,285	3,336	3,320	-16	+35	+1.1%	+126	+4.0%	3,914
other Community Services	5	6	6	6				+1	+20.2%	6

Social Care Disability Services Employment by CHO etc. May 2022

CHO 1

May 2022	WTE Dec 2019	WTE Dec 2020	WTE Apr 2022	WTE May 2022	WTE change since Apr 22	WTE change since Dec 20	% change since Dec 20	WTE change since Dec 19	% change since Dec 19	No. May 2022
Overall	1,498	1,547	1,684	1,687	+3	+140	+9.1%	+189	+12.6%	1,882
Registrars			1	1	-1	+1	-100.0%	+1	-100.0%	1
Medical/ Dental, other	3	3	3	3	0			-0	-3.0%	6
Medical & Dental	3	3	4	3	-1	+1	+17.2%	+0	+13.7%	7
Nurse/ Midwife Manager	105	106	114	111	-3	+4	+4.2%	+6	+5.4%	118
Nurse/ Midwife Specialist & AN/MP	7	9	9	10	+1	+1	+11.4%	+3	+42.6%	11
Staff Nurse/ Staff Midwife	324	328	349	346	-3	+17	+5.3%	+22	+6.7%	380
Public Health Nurse			1	1	0	+1	-100.0%	+1	-100.0%	1
Pre-registration Nurse Intern (COVID-19)		6				-6	-100.0%		-100.0%	
Pre-registration Nurse/ Midwife Intern	3		18	18	+0	+18	-100.0%	+15	+515.3%	35
Nursing/ Midwifery awaiting registration	11	11				-11	-100.0%	-11	-100.0%	
Nursing/ Midwifery Student	14	17	18	18	+0	+1	+5.5%	+4	+31.9%	35
Nursing/ Midwifery other	5	4	4	5	+1	+1	+25.8%	+0	+3.4%	6
Nursing & Midwifery	455	465	494	491	-3	+26	+5.5%	+36	+7.9%	551
Therapy Professions	42	44	62	63	+1	+19	+44.1%	+20	+48.1%	70
Social Care	8	11	9	9	+0	-3	-23.7%	+1	+13.9%	10
Social Workers	16	19	16	16	+0	-2	-13.0%	+1	+3.7%	17
Psychologists	5	7	15	16	+1	+9	+119.0%	+12	+253.4%	17
H&SC, Other	12	10	9	9	+0	-1	-12.2%	-4	-30.8%	10
Health & Social Care Professionals	82	91	110	112	+2	+22	+24.0%	+30	+36.2%	124
Management (VIII & above)	14	17	16	15	-1	-2	-11.8%	+1	+4.7%	15
Administrative/ Supervisory (V to VII)	28	34	47	48	+1	+13	+39.4%	+20	+72.7%	50
Clerical (III & IV)	50	53	56	55	-1	+2	+3.5%	+5	+9.7%	62
Management & Administrative	91	103	118	117	-1	+13	+12.9%	+26	+28.0%	127
Support	49	49	32	32	+0	-17	-35.0%	-17	-35.2%	39
Maintenance/ Technical	6	6	4	4	0	-2	-33.3%	-2	-33.3%	4
General Support	55	55	36	36	+0	-19	-34.8%	-19	-35.0%	43
Health Care Assistants	761	775	859	862	+4	+87	+11.3%	+101	+13.3%	947
Home Help	13	14	15	14	-1	+0	+2.2%	+1	+6.0%	28
Care, other	37	41	49	51	+2	+10	+25.6%	+14	+38.3%	55
Patient & Client Care	812	830	922	928	+5	+98	+11.8%	+116	+14.3%	1,030

CHO 2

May 2022	WTE Dec 2019	WTE Dec 2020	WTE Apr 2022	WTE May 2022	WTE change since Apr 22	WTE change since Dec 20	% change since Dec 20	WTE change since Dec 19	% change since Dec 19	No. May 2022
Overall	1,497	1,516	1,572	1,581	+9	+66	+4.3%	+84	+5.6%	1,930
Consultants	3	3	3	3	0					4
Registrars	2	2				-2	-100.0%	-2	-100.0%	
SHO/ Interns			2	2	0	+2	-100.0%	+2	-100.0%	2
Medical/ Dental, other	1	1	1	1	-0	-0	-1.0%	-0	-1.0%	1
Medical & Dental	6	6	6	6	-0	-0	-0.2%	-0	-0.2%	7
Nurse/ Midwife Manager	77	78	73	72	-1	-6	-7.4%	-5	-6.8%	80
Nurse/ Midwife Specialist & AN/MP	6	6	6	6	0	+1	+11.4%	+0	+8.3%	7
Staff Nurse/ Staff Midwife	165	169	169	167	-1	-2	-1.0%	+2	+1.2%	204
<i>Pre-registration Nurse Intern (COVID-19)</i>		1				-1	-100.0%		-100.0%	
Nursing/ Midwifery Student		1				-1	-100.0%		-100.0%	
Nursing & Midwifery	249	253	248	246	-2	-8	-3.0%	-3	-1.1%	291
Therapy Professions	41	34	40	43	+3	+9	+25.1%	+1	+2.8%	51
Social Care	222	243	262	267	+5	+24	+9.7%	+45	+20.3%	321
Social Workers	26	26	27	27	+1	+1	+5.4%	+1	+4.5%	35
Psychologists	16	14	19	18	-1	+4	+28.3%	+2	+15.7%	21
H&SC, Other	16	12	12	12	+0	+0	+2.8%	-4	-24.6%	18
Health & Social Care Professionals	321	329	359	367	+8	+38	+11.5%	+46	+14.3%	446
Management (VIII & above)	16	16	17	17	+0	+1	+6.5%	+1	+5.8%	17
Administrative/ Supervisory (V to VII)	40	44	55	61	+5	+16	+36.4%	+20	+49.9%	63
Clerical (III & IV)	50	50	52	53	+1	+3	+6.7%	+4	+7.6%	66
Management & Administrative	106	110	125	131	+6	+21	+18.6%	+25	+23.5%	146
Support	45	43	42	46	+5	+3	+7.3%	+2	+3.4%	78
Maintenance/ Technical	13	13	13	13	-0	-0	-1.5%	-0	-2.5%	14
General Support	58	56	55	59	+4	+3	+5.3%	+1	+2.0%	92
Health Care Assistants	623	625	645	640	-5	+15	+2.4%	+16	+2.6%	778
Care, other	134	136	134	133	-1	-3	-2.1%	-1	-1.0%	170
Patient & Client Care	757	761	779	772	-7	+12	+1.6%	+15	+2.0%	948

CHO 3

May 2022	WTE Dec 2019	WTE Dec 2020	WTE Apr 2022	WTE May 2022	WTE change since Apr 22	WTE change since Dec 20	% change since Dec 20	WTE change since Dec 19	% change since Dec 19	No. May 2022
Overall	1,823	1,947	1,942	1,954	+12	+6	+0.3%	+131	+7.2%	2,318
Consultants	1	2	1	1	+0	-1	-35.4%	+0	+24.0%	2
Medical/ Dental, other	1	1	1	1	0					2
Medical & Dental	2	3	2	2	+0	-1	-23.9%	+0	+12.4%	4
Nurse/ Midwife Manager	76	75	77	79	+2	+4	+5.4%	+3	+4.0%	81
Nurse/ Midwife Specialist & AN/MP	13	10	11	11	0	+0	+1.7%	-2	-16.5%	12
Staff Nurse/ Staff Midwife	247	271	253	250	-3	-21	-7.8%	+2	+0.9%	278
<i>Pre-registration Nurse Intern (COVID-19)</i>		2				-2	-100.0%		-100.0%	
<i>Pre-registration Nurse/ Midwife Intern</i>	12		7	7	0	+7	-100.0%	-5	-39.1%	14
Nursing/ Midwifery Student	12	2	7	7	0	+6	+366.7%	-5	-39.1%	14
Nursing/ Midwifery other	4	4	3	3	0	-1	-26.9%	-1	-26.9%	3
Nursing & Midwifery	351	361	350	349	-1	-12	-3.4%	-2	-0.7%	388
Therapy Professions	74	84	45	44	-1	-40	-47.7%	-30	-40.8%	48
Health Science/ Diagnostics		2	4	4	-0	+2	+100.0%	+4	-100.0%	4
Social Care	241	284	275	278	+2	-6	-2.2%	+37	+15.3%	324
Social Workers	17	17	17	16	-1	-1	-7.1%	-1	-3.0%	20
Psychologists	16	20	19	19	+0	-1	-4.8%	+3	+21.5%	21
H&SC, Other	12	11	10	10	-0	-1	-12.6%	-2	-16.9%	14
Health & Social Care Professionals	359	419	371	371	+0	-48	-11.4%	+12	+3.2%	431
Management (VIII & above)	7	8	10	10	0	+2	+25.6%	+3	+44.1%	10
Administrative/ Supervisory (V to VII)	41	45	46	50	+4	+5	+10.7%	+9	+21.7%	51
Clerical (III & IV)	59	59	59	57	-2	-2	-3.1%	-2	-3.7%	63
Management & Administrative	107	111	115	116	+1	+5	+4.5%	+10	+9.0%	124
Support	53	53	53	53	-0	-0	-0.6%	+0	+0.4%	62
Maintenance/ Technical	14	19	17	17	0	-2	-12.0%	+3	+18.1%	19
General Support	67	73	70	70	-0	-3	-3.7%	+3	+4.2%	81
Health Care Assistants	764	800	836	843	+7	+43	+5.4%	+79	+10.3%	1,060
Care, other	173	181	199	203	+4	+22	+11.9%	+30	+17.3%	230
Patient & Client Care	937	981	1,034	1,046	+12	+65	+6.6%	+109	+11.6%	1,290

CHO 4

May 2022	WTE Dec 2019	WTE Dec 2020	WTE Apr 2022	WTE May 2022	WTE change since Apr 22	WTE change since Dec 20	% change since Dec 20	WTE change since Dec 19	% change since Dec 19	No. May 2022
Overall	2,439	2,556	2,622	2,624	+1	+68	+2.7%	+185	+7.6%	3,162
Consultants	2	3	1	1	0	-2	-80.0%	-1	-66.7%	1
Medical/ Dental, other	0	0	0	0	0					1
Medical & Dental	2	3	1	1		-2	-70.7%	-1	-54.6%	2
Nurse/ Midwife Manager	89	91	94	100	+6	+9	+10.3%	+11	+12.1%	117
Nurse/ Midwife Specialist & AN/MP	13	14	13	13	0	-1	-6.9%			15
Staff Nurse/ Staff Midwife	309	312	300	304	+4	-8	-2.5%	-5	-1.5%	369
<i>Pre-registration Nurse Intern (COVID-19)</i>		8				-8	-100.0%		-100.0%	
<i>Pre-registration Nurse/ Midwife Intern</i>	6		12	12	0	+12	-100.0%	+6	+100.0%	24
<i>Nursing/ Midwifery awaiting registration</i>	1	2				-2	-100.0%	-1	-100.0%	
Nursing/ Midwifery Student	7	10	12	12	0	+2	+25.7%	+5	+71.4%	24
Nursing/ Midwifery other	1		1	1	0	+1	-100.0%	+0	+96.1%	1
Nursing & Midwifery	419	427	421	431	+10	+4	+0.9%	+12	+2.8%	526
Therapy Professions	108	104	108	106	-2	+2	+1.9%	-2	-2.2%	132
Social Care	227	238	256	251	-5	+12	+5.2%	+24	+10.7%	288
Social Workers	27	27	28	27	-1	+0	+1.7%	+0	+1.8%	34
Psychologists	35	36	35	33	-1	-3	-7.0%	-1	-3.7%	40
H&SC, Other	8	10	9	8	-0	-2	-19.2%	-0	-1.9%	9
Health & Social Care Professionals	405	415	435	425	-9	+10	+2.5%	+21	+5.2%	503
Management (VIII & above)	22	22	23	24	+0	+1	+5.0%	+1	+5.9%	25
Administrative/ Supervisory (V to VII)	53	58	58	60	+2	+2	+4.1%	+7	+12.3%	64
Clerical (III & IV)	84	90	91	87	-4	-3	-3.0%	+3	+3.3%	116
Management & Administrative	160	170	172	170	-2	+1	+0.5%	+11	+6.7%	205
Support	141	139	139	139	+0	+1	+0.4%	-2	-1.3%	238
Maintenance/ Technical	10	12	12	11	-1	-1	-9.8%	+1	+7.0%	14
General Support	151	151	151	150	-1	-1	-0.4%	-1	-0.8%	252
Health Care Assistants	995	1,058	1,099	1,102	+3	+43	+4.1%	+107	+10.7%	1,277
Care, other	307	332	344	344	+0	+12	+3.7%	+37	+12.0%	397
Patient & Client Care	1,302	1,390	1,443	1,446	+3	+56	+4.0%	+144	+11.0%	1,674

CHO 5

May 2022	WTE Dec 2019	WTE Dec 2020	WTE Apr 2022	WTE May 2022	WTE change since Apr 22	WTE change since Dec 20	% change since Dec 20	WTE change since Dec 19	% change since Dec 19	No. May 2022
Overall	1,505	1,563	1,658	1,660	+2	+97	+6.2%	+155	+10.3%	1,971
Consultants	1	1	1	1	0	+0	+28.4%			1
Medical & Dental	1	1	1	1		+0	+28.4%			1
Nurse/ Midwife Manager	66	70	74	72	-2	+2	+2.7%	+6	+9.5%	74
Nurse/ Midwife Specialist & AN/MP	2	2	3	3	-0	+1	+36.4%	+1	+48.0%	3
Staff Nurse/ Staff Midwife	170	168	169	169	+0	+1	+0.4%	-1	-0.7%	193
Public Health Nurse	5	6	9	9	+0	+4	+60.0%	+4	+78.0%	11
<i>Pre-registration Nurse Intern (COVID-19)</i>		1				-1	-100.0%		-100.0%	
<i>Pre-registration Nurse/ Midwife Intern</i>			8	8	+0	+8	-100.0%	+8	-100.0%	16
<i>Nursing/ Midwifery awaiting registration</i>	2						-100.0%	-2	-100.0%	
Nursing/ Midwifery Student	2	1	8	8	+0	+7	+662.0%	+6	+314.1%	16
Nursing/ Midwifery other			1	1	0	+1	-100.0%	+1	-100.0%	1
Nursing & Midwifery	245	247	263	261	-2	+14	+5.8%	+17	+6.8%	298
Therapy Professions	63	65	61	61	-0	-4	-6.1%	-2	-3.0%	71
Social Care	154	143	152	142	-9	-1	-0.5%	-12	-7.6%	183
Social Workers	21	24	24	23	-1	-1	-5.0%	+2	+9.6%	26
Psychologists	14	19	23	24	+1	+5	+28.0%	+10	+73.8%	27
H&SC, Other	7	5	5	5	+0	-0	-2.6%	-2	-24.8%	7
Health & Social Care Professionals	259	256	264	256	-9	-1	-0.3%	-3	-1.1%	314
Management (VIII & above)	11	13	16	18	+2	+5	+40.5%	+7	+64.4%	18
Administrative/ Supervisory (V to VII)	39	41	57	58	+1	+17	+41.5%	+19	+48.2%	62
Clerical (III & IV)	61	62	67	66	-1	+4	+6.6%	+5	+8.6%	80
Management & Administrative	110	115	139	141	+2	+26	+22.7%	+31	+28.1%	160
Support	15	12	8	8	+0	-4	-29.4%	-7	-44.8%	12
Maintenance/ Technical	7	7	9	9	+0	+2	+25.0%	+2	+25.0%	10
General Support	23	19	18	18	+0	-2	-8.8%	-5	-22.2%	22
Health Care Assistants	671	732	767	777	+10	+46	+6.2%	+106	+15.8%	890
Home Help	53	40	31	31	+0	-9	-22.6%	-23	-42.5%	79
Care, other	144	153	175	175	+1	+22	+14.5%	+32	+22.0%	207
Patient & Client Care	868	924	972	983	+11	+59	+6.4%	+115	+13.3%	1,176

CHO 6

May 2022	WTE Dec 2019	WTE Dec 2020	WTE Apr 2022	WTE May 2022	WTE change since Apr 22	WTE change since Dec 20	% change since Dec 20	WTE change since Dec 19	% change since Dec 19	No. May 2022
Overall	1,198	1,217	1,220	1,222	+1	+5	+0.4%	+24	+2.0%	1,376
Consultants	3	3	3	3	0					3
Registrars			1	1	0	+1	-100.0%	+1	-100.0%	1
Medical/ Dental, other	1	1	1	1	0					1
Medical & Dental	4	4	5	5		+1	+25.0%	+1	+25.0%	5
Nurse/ Midwife Manager	44	43	40	40	-0	-4	-8.8%	-4	-9.2%	43
Staff Nurse/ Staff Midwife	147	142	136	138	+2	-4	-2.9%	-9	-6.1%	151
<i>Nursing Education/Clinical</i>			1	1	0	+1	-100.0%	+1	-100.0%	1
Nursing/ Midwifery other			1	1	0	+1	-100.0%	+1	-100.0%	1
Nursing & Midwifery	191	186	177	179	+2	-7	-3.7%	-12	-6.3%	195
Therapy Professions	42	42	30	28	-2	-15	-34.6%	-14	-33.3%	34
Social Care	334	361	393	391	-3	+30	+8.2%	+56	+16.8%	441
Social Workers	11	10	7	7	0	-3	-31.1%	-4	-39.1%	7
Psychologists	14	14	13	14	+1	+0	+1.0%	+0	+0.7%	17
H&SC, Other	2	1	1	1	0	+0	+2.3%	-1	-28.4%	2
Health & Social Care Professionals	403	428	444	440	-4	+12	+2.8%	+38	+9.3%	501
Management (VIII & above)	31	30	33	30	-3	-0	-0.5%	-1	-2.4%	30
Administrative/ Supervisory (V to VII)	53	54	57	59	+2	+6	+10.2%	+6	+11.6%	65
Clerical (III & IV)	54	56	55	57	+2	+1	+1.7%	+3	+5.2%	64
Management & Administrative	138	140	145	146	+1	+6	+4.5%	+8	+6.0%	159
Support	23	26	18	18	+0	-8	-29.7%	-5	-20.5%	23
Maintenance/ Technical	7	5	7	7	0	+2	+40.0%	+0	+3.7%	7
General Support	29	31	25	25	+0	-6	-18.3%	-4	-15.0%	30
Health Care Assistants	187	184	193	191	-2	+7	+3.8%	+4	+2.2%	215
Care, other	246	245	231	236	+5	-9	-3.6%	-10	-4.2%	271
Patient & Client Care	433	428	424	427	+2	-2	-0.4%	-6	-1.5%	486

CHO 7

May 2022	WTE Dec 2019	WTE Dec 2020	WTE Apr 2022	WTE May 2022	WTE change since Apr 22	WTE change since Dec 20	% change since Dec 20	WTE change since Dec 19	% change since Dec 19	No. May 2022
Overall	2,982	3,103	3,302	3,291	-11	+188	+6.1%	+310	+10.4%	3,912
Consultants	1	1				-1	-100.0%	-1	-100.0%	
Registrars	3	3	3	3	+0	+0	+12.0%	+0	+12.0%	5
SHO/ Interns	7	7	7	8	+1	+1	+13.1%	+1	+13.8%	8
Medical/ Dental, other	1	1	1		-1	-1	-100.0%	-1	-100.0%	
Medical & Dental	12	12	11	11	+0	-0	-2.3%	-0	-1.9%	13
Nurse/ Midwife Manager	122	118	139	139	+0	+21	+17.4%	+17	+13.9%	152
Nurse/ Midwife Specialist & AN/MP	5	4	5	4	-1			-1	-16.0%	5
Staff Nurse/ Staff Midwife	374	378	414	412	-2	+34	+9.1%	+38	+10.2%	475
<i>Pre-registration Nurse/ Midwife Intern</i>			7	7	0	+7	-100.0%	+7	-100.0%	14
Nursing/ Midwifery Student			7	7	0	+7	-100.0%	+7	-100.0%	14
Nursing/ Midwifery other	1	2	3	3	0	+1	+66.7%	+2	+400.0%	3
Nursing & Midwifery	502	502	568	565	-3	+63	+12.5%	+63	+12.6%	649
Therapy Professions	122	138	152	151	-1	+13	+9.1%	+29	+24.0%	165
Health Science/ Diagnostics	3	3	3	3	0					3
Social Care	360	389	435	433	-2	+44	+11.4%	+73	+20.3%	478
Social Workers	33	32	38	38	+0	+6	+19.8%	+5	+14.1%	43
Psychologists	28	32	33	34	+1	+2	+6.0%	+6	+22.3%	37
Pharmacy	5	4	5	6	+1	+2	+50.0%	+1	+26.4%	8
H&SC, Other	2	2	2	2	0					2
Health & Social Care Professionals	553	600	668	667	-1	+67	+11.2%	+114	+20.7%	736
Management (VIII & above)	32	43	49	51	+2	+8	+19.2%	+19	+59.0%	52
Administrative/ Supervisory (V to VII)	79	92	97	96	-1	+5	+5.1%	+17	+22.0%	106
Clerical (III & IV)	92	101	108	104	-4	+3	+2.5%	+12	+13.0%	128
Management & Administrative	203	236	254	251	-3	+15	+6.5%	+48	+23.8%	286
Support	167	155	159	159	-1	+3	+2.1%	-8	-4.9%	231
Maintenance/ Technical	28	33	30	30	+1	-3	-8.1%	+2	+5.9%	32
General Support	195	188	189	189	-0	+1	+0.3%	-7	-3.4%	263
Health Care Assistants	1,112	1,146	1,202	1,201	-1	+54	+4.7%	+88	+7.9%	1,427
Home Help	19	17	14	14	-0	-3	-17.5%	-5	-27.0%	78
Care, other	386	403	397	393	-3	-9	-2.3%	+8	+2.0%	460
Patient & Client Care	1,518	1,566	1,613	1,609	-4	+42	+2.7%	+91	+6.0%	1,965

CHO 8

May 2022	WTE Dec 2019	WTE Dec 2020	WTE Apr 2022	WTE May 2022	WTE change since Apr 22	WTE change since Dec 20	% change since Dec 20	WTE change since Dec 19	% change since Dec 19	No. May 2022
Overall	2,162	2,205	2,312	2,280	-32	+75	+3.4%	+118	+5.5%	2,731
Consultants	1	1				-1	-100.0%	-1	-100.0%	
Registrars	2	1	1	1	0			-1	-50.0%	1
Medical/ Dental, other	1	1	1	1	0					1
Medical & Dental	4	3	2	2		-1	-33.3%	-2	-50.0%	2
Nurse/ Midwife Manager	123	119	110	107	-2	-12	-10.1%	-16	-12.9%	119
Nurse/ Midwife Specialist & AN/MP	7	6	6	6	-0	+0	+2.9%	-1	-10.3%	7
Staff Nurse/ Staff Midwife	319	312	318	316	-2	+4	+1.3%	-2	-0.8%	375
Public Health Nurse	1	1	1	1	0	-0	-1.0%			1
Pre-registration Nurse Intern (COVID-19)		4				-4	-100.0%		-100.0%	
Pre-registration Nurse/ Midwife Intern			14	14	+0	+14	-100.0%	+14	-100.0%	31
Nursing/ Midwifery Student		4	14	14	+0	+10	+261.5%	+14	-100.0%	31
Nursing/ Midwifery other	5	7	6	6	+0	-0	-4.3%	+1	+15.9%	7
Nursing & Midwifery	455	449	456	451	-5	+2	+0.5%	-4	-0.8%	540
Therapy Professions	92	98	88	84	-4	-14	-14.5%	-8	-8.5%	101
Health Science/ Diagnostics	2	2	2	2	0					2
Social Care	361	380	409	405	-4	+25	+6.5%	+44	+12.1%	492
Social Workers	24	24	23	23	+0	-1	-4.3%	-1	-3.7%	27
Psychologists	25	22	25	25	-0	+2	+9.4%	-0	-1.2%	27
H&SC, Other	7	6	7	7	-0	+1	+15.4%	+0	+2.6%	8
Health & Social Care Professionals	510	533	553	545	-8	+13	+2.4%	+35	+6.9%	657
Management (VIII & above)	9	13	19	19	+0	+5	+40.6%	+10	+114.2%	19
Administrative/ Supervisory (V to VII)	56	56	61	60	-1	+3	+5.9%	+3	+6.2%	63
Clerical (III & IV)	84	88	94	91	-3	+4	+4.3%	+7	+8.3%	111
Management & Administrative	149	157	173	170	-4	+13	+8.0%	+21	+13.8%	193
Support	46	41	35	35	+0	-7	-15.7%	-12	-25.0%	43
Maintenance/ Technical	16	14	13	13	0	-1	-7.4%	-3	-19.3%	13
General Support	62	55	48	48	+0	-8	-13.6%	-15	-23.5%	56
Health Care Assistants	844	872	944	932	-12	+60	+6.9%	+88	+10.5%	1,115
Home Help	22	23	26	23	-3	-0	-0.9%	+0	+1.1%	42
Care, other	115	114	111	110	-1	-4	-3.5%	-5	-4.7%	126
Patient & Client Care	981	1,008	1,080	1,064	-16	+56	+5.5%	+83	+8.5%	1,283

CHO 9

May 2022	WTE Dec 2019	WTE Dec 2020	WTE Apr 2022	WTE May 2022	WTE change since Apr 22	WTE change since Dec 20	% change since Dec 20	WTE change since Dec 19	% change since Dec 19	No. May 2022
Overall	3,194	3,285	3,336	3,320	-16	+35	+1.1%	+126	+4.0%	3,914
Consultants	13	11	12	12	+0	+1	+5.7%	-1	-4.5%	16
Registrars	6	2	3	3	0	+1	+50.0%	-3	-50.0%	3
SHO/ Interns		2	2	2	0			+2	-100.0%	2
Medical/ Dental, other	6	6	6	6	0					9
Medical & Dental	25	21	23	23		+2	+7.6%	-2	-6.3%	30
Nurse/ Midwife Manager	192	196	208	209	+2	+13	+6.8%	+18	+9.2%	224
Nurse/ Midwife Specialist & AN/MP	9	12	16	17	+1	+5	+45.2%	+8	+97.2%	18
Staff Nurse/ Staff Midwife	517	513	500	491	-9	-21	-4.1%	-26	-5.0%	572
Pre-registration Nurse Intern (COVID-19)		11				-11	-100.0%		-100.0%	
Pre-registration Nurse/ Midwife Intern	8	3	20	20	0	+17	+680.0%	+12	+151.6%	39
Nursing/ Midwifery awaiting registration			1	1	0	+1	-100.0%	+1	-100.0%	1
Nursing/ Midwifery Student	8	13	21	21	0	+7	+56.7%	+13	+164.5%	40
Nursing/ Midwifery other	7	8	8	8	+0	-0	-1.0%	+1	+10.2%	9
Nursing & Midwifery	732	741	753	746	-7	+5	+0.6%	+14	+1.9%	863
Therapy Professions	181	187	200	194	-6	+7	+3.8%	+13	+7.0%	220
Health Science/ Diagnostics	15	13	14	13	-1			-2	-13.3%	13
Social Care	689	740	799	796	-3	+56	+7.6%	+107	+15.5%	952
Social Workers	44	50	52	50	-1	+1	+1.7%	+6	+14.1%	58
Psychologists	53	64	59	57	-1	-7	-10.6%	+5	+8.6%	62
Pharmacy	2	2	2	2	0					2
H&SC, Other	19	18	14	14	0	-5	-26.3%	-5	-28.8%	18
Health & Social Care Professionals	1,003	1,073	1,139	1,126	-13	+52	+4.9%	+123	+12.2%	1,325
Management (VIII & above)	37	41	44	47	+3	+5	+12.6%	+9	+24.8%	47
Administrative/ Supervisory (V to VII)	88	100	109	110	+1	+10	+10.3%	+23	+26.1%	121
Clerical (III & IV)	125	126	147	146	-1	+20	+15.5%	+20	+16.4%	179
Management & Administrative	250	268	299	303	+3	+35	+13.1%	+53	+21.0%	347
Support	196	145	140	140	+0	-5	-3.4%	-56	-28.4%	178
Maintenance/ Technical	22	23	21	20	-0	-3	-11.2%	-2	-7.2%	22
General Support	218	168	161	160	-0	-7	-4.5%	-57	-26.3%	200
Health Care Assistants	869	911	865	858	-7	-53	-5.8%	-11	-1.2%	1,033
Care, other	97	102	96	104	+7	+2	+1.9%	+7	+6.9%	116
Patient & Client Care	966	1,013	962	962	+0	-51	-5.0%	-4	-0.4%	1,149

other Community Services

May 2022	WTE Dec 2019	WTE Dec 2020	WTE Apr 2022	WTE May 2022	WTE change since Apr 22	WTE change since Dec 20	% change since Dec 20	WTE change since Dec 19	% change since Dec 19	No. May 2022
Overall	5	6	6	6				+1	+20.2%	6
Management (VIII & above)	1	1	1	1	0					1
Administrative/ Supervisory (V to VII)	2	3	3	3	0			+1	+50.0%	3
Clerical (III & IV)	2	2	2	2	0	-0	-0.0%	-0	-0.0%	2
Management & Administrative	5	6	6	6				+1	+20.2%	6

Social Care Disability Services Employment by Grade Group: May 2022

May 2022	WTE Dec 2019	WTE Dec 2020	WTE Apr 2022	WTE May 2022	WTE change since Apr 22	WTE change since Dec 20	% change since Dec 20	WTE change since Dec 19	% change since Dec 19	No. May 2022
Overall	18,303	18,944	19,654	19,625	-29	+681	+3.6%	+1,323	+7.2%	23,202
Consultant Paediatrics	3	3	2	2		-1	-34.4%	-1	-34.4%	3
Consultant Psychiatry	21	21	19	19	+0	-2	-10.9%	-2	-8.7%	24
Consultants	24	24	21	21	+0	-3	-13.8%	-3	-12.0%	27
Registrar	7	3	5	6	+1	+3	+83.3%	-2	-21.4%	6
Senior Registrar	2	3	2	2		-1	-33.3%			2
Specialist Registrar	4	2	2	1	-1	-1	-32.0%	-3	-66.0%	3
Registrars	13	8	9	9	-0	+1	+10.7%	-4	-31.8%	11
Senior House Officer	7	9	11	12	+1	+3	+32.4%	+5	+71.3%	12
SHO/ Interns	7	9	11	12	+1	+3	+32.4%	+5	+71.3%	12
Other Medical	14	14	14	13	-1	-1	-7.1%	-1	-7.6%	21
Medical/ Dental, other	14	14	14	13	-1	-1	-7.1%	-1	-7.6%	21
Medical & Dental	58	56	55	55	-0	-1	-1.1%	-3	-5.4%	71
Clinical Nurse/ Midwife Manager	811	814	838	842	+5	+28	+3.4%	+32	+3.9%	918
Director Nursing/Midwifery, Assistant	41	46	43	40	-3	-5	-11.6%	-0	-1.1%	42
Director of Nursing/Midwifery	42	37	47	46	-1	+9	+25.4%	+4	+9.7%	48
Nurse/ Midwife Manager	894	897	928	929	+1	+32	+3.6%	+35	+3.9%	1,008
Advanced Nurse/ Midwife Practitioner	2	8	9	8	-1			+6	+300.0%	8
Clinical Nurse/ Midwife Specialist	60	56	62	63	+2	+7	+12.8%	+3	+5.4%	70
Nurse/ Midwife Specialist & AN/MP	62	64	70	71	+1	+7	+11.2%	+9	+14.9%	78
Staff Nurse [Psychiatric]	83	53	108	59	-49	+6	+12.1%	-24	-29.3%	74
Staff Nurses [General/ Children's]	892	752	855	798	-57	+46	+6.1%	-93	-10.5%	904
Staff Nurse [Intellectual Disability]	1,597	1,788	1,645	1,736	+91	-52	-2.9%	+139	+8.7%	2,019
Staff Nurse/ Staff Midwife	2,572	2,593	2,608	2,593	-15	+0	+0.0%	+21	+0.8%	2,997
Public Health Nurse	6	7	11	11	+0	+5	+65.9%	+5	+82.0%	13
Pre-registration Nurse Intern (COVID-19)		32				-32	-100.0%		-100.0%	
Pre-registration Nurse/ Midwife Intern	28	3	86	86	+0	+84	+3341.6%	+58	+204.6%	173
Nursing/ Midwifery awaiting registration	14	13	1	1		-12	-92.3%	-13	-92.8%	1
Nursing/ Midwifery Student	42	47	87	87	+0	+40	+84.1%	+45	+106.8%	174
Nursing Education/Clinical	21	23	25	26	+1	+3	+15.1%	+5	+23.9%	30
Other Nursing/ Midwifery	1	1	1	1						1
Nursing/ Midwifery other	22	24	26	27	+1	+3	+14.4%	+5	+22.8%	31
Nursing & Midwifery	3,599	3,632	3,730	3,719	-11	+87	+2.4%	+121	+3.4%	4,301
Dietitians	18	16	22	21	-2	+4	+25.8%	+2	+11.9%	26
Occupational Therapists	264	279	290	282	-8	+3	+1.2%	+18	+6.8%	318
Physiotherapists	189	193	186	188	+2	-5	-2.6%	-1	-0.7%	220
Speech & Language Therapists	293	307	286	281	-4	-26	-8.5%	-11	-3.9%	328
Therapy Professions	765	795	785	772	-13	-23	-2.9%	+7	+1.0%	892
Clinical Engineering	13	13	16	15	-1	+2	+15.1%	+2	+14.6%	15
Medical Science	4	4	4	4						4
Phlebotomists	1						-100.0%	-1	-100.0%	
Radiographers	1	1	1	1						1
Respiratory Physiologists	1	2	2	2				+1	+100.0%	2
Health Science/ Diagnostics	20	20	23	22	-1	+2	+9.8%	+2	+9.5%	22
Social Care	2,595	2,789	2,989	2,971	-19	+181	+6.5%	+375	+14.5%	3,489
Social Workers	219	228	230	228	-2	+0	+0.0%	+9	+4.3%	267
Psychologists	204	229	241	241	+1	+12	+5.3%	+37	+18.2%	269
Pharmacists	5	5	6	7	+1	+2	+41.0%	+2	+34.3%	9
Pharmacy Technicians	2	1	1	1	+0	-0	-5.0%	-1	-36.7%	1
Pharmacy	7	6	7	8	+1	+2	+33.4%	+1	+18.6%	10
Counsellor Therapists	19	20	23	24	+0	+4	+19.8%	+5	+25.2%	28

May 2022	WTE Dec 2019	WTE Dec 2020	WTE Apr 2022	WTE May 2022	WTE change since Apr 22	WTE change since Dec 20	% change since Dec 20	WTE change since Dec 19	% change since Dec 19	No. May 2022
Overall	18,303	18,944	19,654	19,625	-29	+681	+3.6%	+1,323	+7.2%	23,202
HSCP Trainees/ Students				0			-100.0%		-100.0%	0
Other Health & Social Care	51	45	34	34	-0	-11	-24.8%	-17	-32.9%	47
Play Therapists/ Specialists	15	11	10	10	+0	-1	-9.0%	-6	-36.0%	13
H&SC, Other	85	76	67	67	+0	-8	-10.9%	-17	-20.5%	88
Health & Social Care Professionals	3,894	4,144	4,342	4,309	-33	+166	+4.0%	+415	+10.7%	5,037
Executive Management	31	36	42	43	+1	+7	+18.8%	+12	+38.9%	43
Senior Management (VIII & GM)	149	168	185	187	+2	+19	+11.5%	+38	+25.8%	191
Management (VIII & above)	180	204	227	230	+3	+26	+12.8%	+50	+28.0%	234
Middle Management (V-VII)	464	511	577	590	+14	+79	+15.5%	+126	+27.2%	634
Other Administrative	15	16	13	14	+1	-2	-11.5%	-1	-6.4%	14
Administrative/ Supervisory (V to VII)	479	527	590	604	+15	+77	+14.7%	+125	+26.2%	648
General Administrative (III & IV)	660	685	730	717	-14	+32	+4.6%	+57	+8.6%	871
Clerical (III & IV)	660	685	730	717	-14	+32	+4.6%	+57	+8.6%	871
Management & Administrative	1,319	1,416	1,547	1,551	+4	+135	+9.5%	+232	+17.6%	1,753
Catering	98	96	83	82	-1	-14	-15.0%	-16	-16.6%	97
Household Services	420	406	380	383	+3	-22	-5.5%	-36	-8.6%	556
Other Labs & Associated	1	1	1	1						1
Other Support	188	136	143	145	+2	+10	+7.2%	-43	-22.7%	225
Portering	28	24	18	18		-6	-25.0%	-9	-33.9%	25
Support	734	663	625	630	+5	-33	-5.0%	-104	-14.2%	904
Maintenance	116	121	110	110	-1	-12	-9.7%	-7	-5.7%	120
Technical Services	8	11	15	15		+4	+33.3%	+7	+82.7%	15
Maintenance/ Technical	124	132	125	124	-1	-8	-6.1%	+0	+0.1%	135
General Support	858	795	750	754	+4	-41	-5.2%	-104	-12.2%	1,039
Attendant/ Aide	230	247	198	197	-2	-50	-20.3%	-34	-14.6%	250
Health & Social Care Assistants	10	11	13	16	+3	+5	+41.2%	+6	+63.1%	20
Health Care Assistant/ Care Assistant	6,586	6,844	7,198	7,193	-5	+349	+5.1%	+607	+9.2%	8,472
Health Care Assistants	6,826	7,102	7,409	7,405	-3	+303	+4.3%	+579	+8.5%	8,742
Home Help	109	94	85	82	-3	-12	-12.7%	-27	-24.7%	227
Home Care Services	28	19	20	19	-1	+0	+0.1%	-10	-34.8%	24
Other Care Grades	175	221	248	256	+8	+35	+15.6%	+81	+46.6%	292
Pastoral Care	10	10	9	8	-1	-2	-22.7%	-2	-24.0%	9
Workshop Services	1,426	1,456	1,458	1,466	+8	+11	+0.7%	+40	+2.8%	1,706
Health Promotion			1	1		+1	-100.0%	+1	-100.0%	1
Care, other	1,639	1,706	1,736	1,749	+14	+44	+2.6%	+110	+6.7%	2,032
Patient & Client Care	8,574	8,902	9,229	9,236	+7	+335	+3.8%	+662	+7.7%	11,001

Employment by WTE, Headcount, Gender, Full-Time /Part-Time etc.: May 2022

Social Care Disability Services Staff Group	WTE	Headcount	WTE: no.	% Male	% female	Male WTE: no.	Female WTE: no.	% Total Perm	% Male Perm	% Female Perm	% Total Full Time	% Total Part Time	% Male FT	% Female FT
Overall	19,625	23,202	1.18	19.5%	80.5%	1.11	1.20	88.2%	87.2%	88.5%	58.3%	41.7%	69.4%	55.6%
Consultant Paediatrics	2	3	1.50		100.0%		1.50	100.0%	100.0%	100.0%	33.3%	66.7%		33.3%
Consultant Psychiatry	19	24	1.26	29.2%	70.8%	1.06	1.37	79.2%	79.2%	88.2%	54.2%	45.8%	71.4%	47.1%
Consultants	21	27	1.28	25.9%	74.1%	1.06	1.39	81.5%	57.1%	90.0%	51.9%	48.1%	71.4%	45.0%
Registrar	6	6	1.09	33.3%	66.7%	1.00	1.14	16.7%	16.7%	25.0%	100.0%	0.0%	100.0%	100.0%
Senior Registrar	2	2	1.00		100.0%		1.00	0.0%	0.0%	0.0%	100.0%	0.0%		100.0%
Specialist Registrar	1	3	2.21	33.3%	66.7%	5.56	1.69	0.0%	0.0%	0.0%	100.0%	0.0%	100.0%	100.0%
Registrars	9	11	1.24	27.3%	72.7%	1.38	1.20	9.1%	0.0%	12.5%	100.0%	0.0%	100.0%	100.0%
Senior House Officer	12	12	1.01	33.3%	66.7%	1.00	1.01	8.3%	8.3%	12.5%	100.0%	0.0%	100.0%	100.0%
SHO/ Interns	12	12	1.01	33.3%	66.7%	1.00	1.01	8.3%	0.0%	12.5%	100.0%	0.0%	100.0%	100.0%
Other Medical	13	21	1.58	42.9%	57.1%	1.33	1.84	90.5%	90.5%	100.0%	38.1%	61.9%	44.4%	33.3%
Medical/ Dental, other	13	21	1.58	42.9%	57.1%	1.33	1.84	90.5%	77.8%	100.0%	38.1%	61.9%	44.4%	33.3%
Medical & Dental	55	71	1.29	32.4%	67.6%	1.17	1.35	60.6%	47.8%	66.7%	63.4%	36.6%	69.6%	60.4%
Clinical Nurse/ Midwife Manager	842	918	1.09	13.1%	86.9%	1.03	1.10	94.3%	94.3%	94.0%	81.4%	18.6%	96.7%	79.1%
Director Nursing/Midwifery, Assistant	40	42	1.04	14.3%	85.7%	1.00	1.05	97.6%	97.6%	97.2%	95.2%	4.8%	100.0%	94.4%
Director of Nursing/Midwifery	46	48	1.04	12.5%	87.5%	1.00	1.04	91.7%	91.7%	90.5%	93.8%	6.3%	100.0%	92.9%
Nurse/ Midwife Manager	929	1,008	1.09	13.1%	86.9%	1.03	1.09	94.3%	97.0%	93.9%	82.5%	17.5%	97.0%	80.4%
Advanced Nurse/ Midwife Practitioner	8	8	1.00	25.0%	75.0%	1.00	1.00	87.5%	87.5%	83.3%	100.0%	0.0%	100.0%	100.0%
Clinical Nurse/ Midwife Specialist	63	70	1.11	7.1%	92.9%	1.00	1.12	100.0%	100.0%	100.0%	61.4%	38.6%	100.0%	58.5%
Nurse/ Midwife Specialist & AN/MP	71	78	1.10	9.0%	91.0%	1.00	1.11	98.7%	100.0%	98.6%	65.4%	34.6%	100.0%	62.0%
Staff Nurse [Psychiatric]	59	74	1.25	18.9%	81.1%	1.17	1.27	74.3%	74.3%	76.7%	55.4%	44.6%	57.1%	55.0%
Staff Nurses [General/ Children's]	798	904	1.13	16.2%	83.8%	1.06	1.15	95.0%	95.0%	95.3%	70.9%	29.1%	84.9%	68.2%
Staff Nurse [Intellectual Disability]	1,736	2,019	1.16	9.2%	90.8%	1.07	1.17	95.2%	95.2%	95.0%	66.1%	33.9%	86.5%	64.0%
Staff Nurse/ Staff Midwife	2,593	2,997	1.16	11.5%	88.5%	1.07	1.17	94.6%	94.2%	94.7%	67.3%	32.7%	84.6%	65.0%
Public Health Nurse	11	13	1.14		100.0%		1.14	100.0%	100.0%	100.0%	69.2%	30.8%		69.2%
Public Health Nurse	11	13	1.14		100.0%		1.14	100.0%		100.0%	69.2%	30.8%		69.2%
Pre-registration Nurse/ Midwife Intern	86	173	2.01	7.5%	92.5%	1.97	2.01	34.7%	34.7%	36.9%	67.6%	32.4%	76.9%	66.9%
Nursing/ Midwifery awaiting registration	1	1	1.00		100.0%		1.00	0.0%	0.0%	0.0%	100.0%	0.0%		100.0%
Nursing/ Midwifery Student	87	174	2.00	7.5%	92.5%	1.97	2.00	34.5%	7.7%	36.6%	67.8%	32.2%	76.9%	67.1%
Nursing Education/Clinical	26	30	1.14	3.3%	96.7%	1.00	1.15	93.3%	93.3%	96.6%	66.7%	33.3%	100.0%	65.5%

Other Nursing/ Midwifery	1	1	1.00		100.0%		1.00	100.0%	100.0%	100.0%	100.0%	0.0%		100.0%
Nursing/ Midwifery other	27	31	1.14	3.2%	96.8%	1.00	1.14	93.5%	0.0%	96.7%	67.7%	32.3%	100.0%	66.7%
Nursing & Midwifery	3,719	4,301	1.16	11.6%	88.4%	1.07	1.17	92.2%	92.6%	92.2%	70.8%	29.2%	88.0%	68.6%
Dietitians	21	26	1.26		100.0%		1.26	92.3%	92.3%	92.3%	57.7%	42.3%		57.7%
Occupational Therapists	282	318	1.13	5.7%	94.3%	1.07	1.13	93.1%	93.1%	93.0%	78.0%	22.0%	88.9%	77.3%
Physiotherapists	188	220	1.17	17.7%	82.3%	1.05	1.20	94.5%	94.5%	95.0%	68.2%	31.8%	84.6%	64.6%
Speech & Language Therapists	281	328	1.17	1.8%	98.2%	1.13	1.17	88.4%	88.4%	88.5%	72.9%	27.1%	83.3%	72.7%
Therapy Professions	772	892	1.16	7.1%	92.9%	1.06	1.16	91.7%	92.1%	91.7%	73.1%	26.9%	85.7%	72.1%
Clinical Engineering	15	15	1.01	93.3%	6.7%	1.01	1.00	80.0%	80.0%	100.0%	93.3%	6.7%	92.9%	100.0%
Medical Science	4	4	1.00	50.0%	50.0%	1.00	1.00	50.0%	50.0%	50.0%	100.0%	0.0%	100.0%	100.0%
Radiographers	1	1	1.00		100.0%		1.00	100.0%	100.0%	100.0%	100.0%	0.0%		100.0%
Respiratory Physiologists	2	2	1.00	100.0%		1.00		100.0%	100.0%		100.0%	0.0%	100.0%	
Health Science/ Diagnostics	22	22	1.00	81.8%	18.2%	1.01	1.00	77.3%	77.8%	75.0%	95.5%	4.5%	94.4%	100.0%
Social Care	2,971	3,489	1.17	16.5%	83.5%	1.10	1.19	90.5%	90.8%	90.4%	49.6%	50.4%	64.6%	46.7%
Social Workers	228	267	1.17	17.2%	82.8%	1.07	1.19	94.0%	95.7%	93.7%	70.4%	29.6%	82.6%	67.9%
Psychologists	241	269	1.11	19.0%	81.0%	1.04	1.13	95.5%	96.1%	95.4%	77.7%	22.3%	90.2%	74.8%
Pharmacists	7	9	1.27	11.1%	88.9%	1.00	1.32	77.8%	77.8%	87.5%	88.9%	11.1%	100.0%	87.5%
Pharmacy Technicians	1	1	1.05		100.0%		1.05	100.0%	100.0%	100.0%	100.0%	0.0%		100.0%
Pharmacy	8	10	1.25	10.0%	90.0%	1.00	1.28	80.0%	0.0%	88.9%	90.0%	10.0%	100.0%	88.9%
Counsellor Therapists	24	28	1.18	3.6%	96.4%	1.00	1.19	96.4%	96.4%	96.3%	57.1%	42.9%	100.0%	55.6%
HSCP Trainees/ Students	0	0	#DIV/0					#DIV/0	#DIV/0		#DIV/0	#DIV/0		
Other Health & Social Care	34	47	1.39	12.8%	87.2%	1.04	1.46	93.6%	93.6%	92.7%	42.6%	57.4%	83.3%	36.6%
Play Therapists/ Specialists	10	13	1.31	23.1%	76.9%	1.00	1.45	92.3%	92.3%	90.0%	53.8%	46.2%	100.0%	40.0%
H&SC, Other	67	88	1.30	11.4%	88.6%	1.02	1.35	94.3%	100.0%	93.6%	48.9%	51.1%	90.0%	43.6%
Health & Social Care	4,309	5,037	1.17	15.1%	84.9%	1.09	1.19	91.1%	91.2%	91.1%	56.6%	43.4%	70.2%	54.2%
Executive Management	43	43	1.01	39.5%	60.5%	1.00	1.01	95.3%	95.3%	100.0%	100.0%	0.0%	100.0%	100.0%
Senior Management (VIII & GM)	187	191	1.02	34.0%	66.0%	1.01	1.03	96.3%	96.3%	96.8%	97.4%	2.6%	100.0%	96.0%
Management (VIII & above)	230	234	1.02	35.0%	65.0%	1.01	1.02	96.2%	93.9%	97.4%	97.9%	2.1%	100.0%	96.7%
Middle Management (V-VII)	590	634	1.07	21.3%	78.7%	1.02	1.09	93.2%	93.2%	93.2%	80.3%	19.7%	88.9%	78.0%
Other Administrative	14	14	1.00	14.3%	85.7%	1.00	1.00	92.9%	92.9%	91.7%	100.0%	0.0%	100.0%	100.0%
Administrative/ Supervisory (V to VII)	604	648	1.07	21.1%	78.9%	1.02	1.09	93.2%	93.4%	93.2%	80.7%	19.3%	89.1%	78.5%
General Administrative (III & IV)	717	871	1.22	10.4%	89.6%	1.13	1.23	89.6%	89.6%	90.1%	57.2%	42.8%	75.8%	55.0%
Clerical (III & IV)	717	871	1.22	10.4%	89.6%	1.13	1.23	89.6%	84.6%	90.1%	57.2%	42.8%	75.8%	55.0%
Management & Administrative	1,551	1,753	1.13	17.7%	82.3%	1.04	1.15	91.8%	91.0%	92.0%	71.3%	28.7%	88.1%	67.7%
Catering	82	97	1.19	27.8%	72.2%	1.06	1.25	99.0%	99.0%	100.0%	56.7%	43.3%	85.2%	45.7%

Household Services	383	556	1.45	16.5%	83.5%	1.46	1.45	86.7%	86.7%	89.0%	35.4%	64.6%	54.3%	31.7%
Other Labs & Associated	1	1	1.00		100.0%		1.00	100.0%	100.0%	100.0%	100.0%	0.0%		100.0%
Other Support	145	225	1.55	52.0%	48.0%	1.31	1.93	91.1%	91.1%	100.0%	27.6%	72.4%	46.2%	7.4%
Portering	18	25	1.37	96.0%	4.0%	1.37	1.25	88.0%	88.0%	100.0%	44.0%	56.0%	45.8%	0.0%
Support	630	904	1.44	28.8%	71.2%	1.33	1.48	89.2%	81.9%	92.1%	36.1%	63.9%	53.1%	29.2%
Maintenance	110	120	1.10	95.8%	4.2%	1.10	1.10	95.8%	95.8%	100.0%	75.0%	25.0%	75.7%	60.0%
Technical Services	15	15	1.01	80.0%	20.0%	1.00	1.07	93.3%	93.3%	100.0%	93.3%	6.7%	100.0%	66.7%
Maintenance/ Technical	124	135	1.09	94.1%	5.9%	1.09	1.09	95.6%	95.3%	100.0%	77.0%	23.0%	78.0%	62.5%
General Support	754	1,039	1.38	37.2%	62.8%	1.24	1.48	90.0%	86.3%	92.2%	41.4%	58.6%	61.2%	29.6%
Attendant/ Aide	197	250	1.27	22.4%	77.6%	1.18	1.30	84.0%	84.0%	84.5%	48.4%	51.6%	60.7%	44.8%
Health & Social Care Assistants	16	20	1.28	5.0%	95.0%	1.00	1.30	90.0%	90.0%	89.5%	50.0%	50.0%	100.0%	47.4%
Health Care Assistant/ Care Assistant	7,193	8,472	1.18	23.3%	76.7%	1.10	1.20	85.0%	85.0%	84.7%	53.0%	47.0%	63.4%	49.9%
Health Care Assistants	7,405	8,742	1.18	23.2%	76.8%	1.10	1.21	85.0%	85.8%	84.7%	52.9%	47.1%	63.3%	49.7%
Home Help	82	227	2.77	7.0%	93.0%	4.01	2.71	65.6%	62.5%	65.9%	2.2%	97.8%	0.0%	2.4%
Home Care Services	19	24	1.29	12.5%	87.5%	1.03	1.34	70.8%	70.8%	76.2%	45.8%	54.2%	66.7%	42.9%
Other Care Grades	256	292	1.14	29.1%	70.9%	1.15	1.14	88.4%	88.4%	91.8%	75.7%	24.3%	80.0%	73.9%
Pastoral Care	8	9	1.15	44.4%	55.6%	1.19	1.11	77.8%	77.8%	100.0%	66.7%	33.3%	50.0%	80.0%
Workshop Services	1,466	1,706	1.16	23.9%	76.1%	1.09	1.19	86.1%	86.1%	86.9%	60.8%	39.2%	69.9%	57.9%
Health Promotion	1	1	2.00		100.0%		2.00	100.0%	100.0%	100.0%	0.0%	100.0%		0.0%
Care, other	1,749	2,032	1.16	24.6%	75.4%	1.10	1.18	86.2%	82.4%	87.5%	62.7%	37.3%	71.4%	59.9%
Patient & Client Care	9,236	11,001	1.19	23.1%	76.9%	1.11	1.22	84.8%	85.0%	84.7%	53.6%	46.4%	64.5%	50.4%

Employment by WTE, Headcount, Gender, Full-Time /Part-Time etc.: May 2022

Social Care Disability Services CHO	WTE	Headcount	WTE: no.	% Male	% female	Male WTE: no.	Female WTE: no.	% Total Perm	% Male Perm	% Female Perm	% Total Full Time	% Total Part Time	% Male FT	% Female FT
Overall	19,625	23,202	1.18	19.5%	80.5%	1.11	1.20	88.2%	87.2%	88.5%	58.3%	41.7%	69.4%	55.6%
CHO 1	1,687	1,882	1.12	20.4%	79.6%	1.05	1.13	91.2%	91.2%	91.1%	78.9%	21.1%	89.8%	76.1%
CHO 2	1,581	1,930	1.22	23.1%	76.9%	1.17	1.24	83.1%	83.1%	83.3%	46.6%	53.4%	51.8%	45.0%
CHO 3	1,954	2,318	1.19	13.6%	86.4%	1.13	1.20	84.9%	84.9%	85.2%	39.3%	60.7%	44.9%	38.4%
CHO 4	2,624	3,162	1.21	21.0%	79.0%	1.11	1.23	83.6%	83.6%	84.7%	68.0%	32.0%	76.2%	65.9%
CHO 5	1,660	1,971	1.19	19.9%	80.1%	1.13	1.20	85.3%	85.3%	85.4%	52.7%	47.3%	61.2%	50.5%
CHO 6	1,222	1,376	1.13	21.9%	78.1%	1.07	1.14	91.0%	91.0%	91.9%	67.6%	32.4%	81.8%	63.6%
CHO 7	3,291	3,912	1.19	22.4%	77.6%	1.10	1.22	88.2%	88.2%	88.2%	67.4%	32.6%	79.0%	64.1%
CHO 8	2,280	2,731	1.20	20.0%	80.0%	1.12	1.22	96.2%	96.2%	96.2%	47.2%	52.8%	54.9%	45.3%
CHO 9	3,320	3,914	1.18	15.4%	84.6%	1.08	1.20	90.1%	90.1%	89.9%	55.7%	44.3%	73.0%	52.6%
other Community Services	6	6	1.01	16.7%	83.3%	1.00	1.01	83.3%	83.3%	80.0%	83.3%	16.7%	100.0%	80.0%

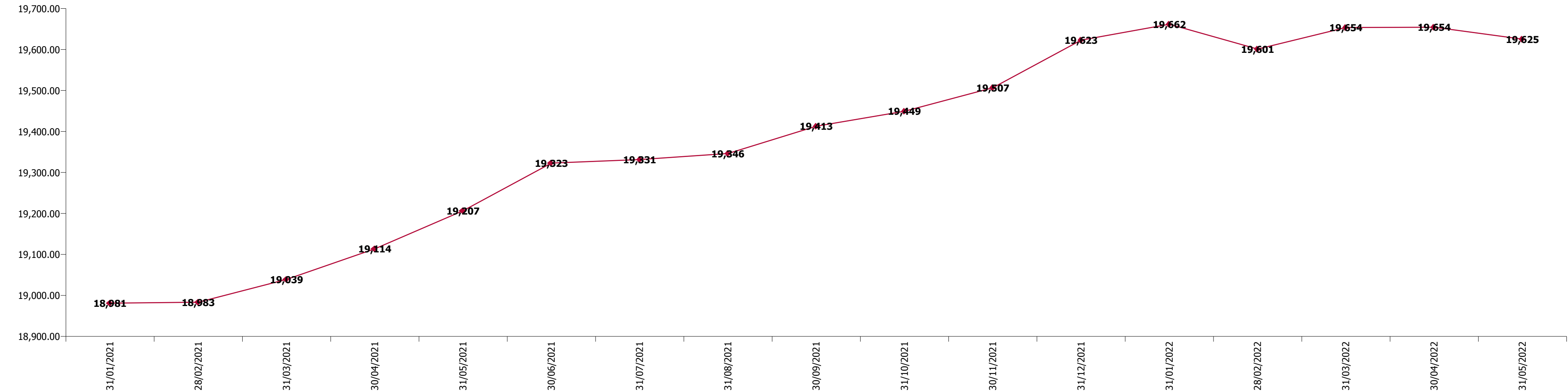
Summary Staff Movement: May 2022

Month-on-month
Summary

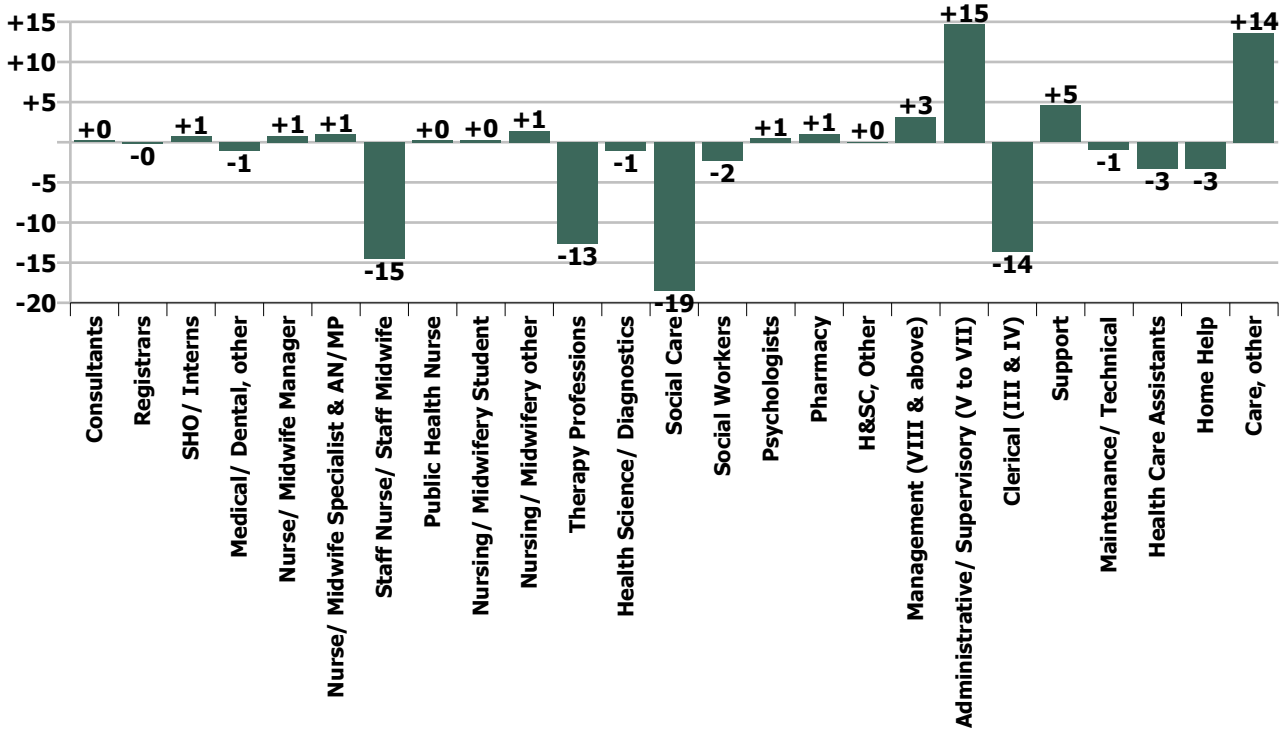
WTE change since Apr 22	% change since Apr 22	overall	Consultants	Registrars	SHO/ Interns	Medical/ Dental, other	Medical & Dental	Nurse/ Midwife Manager	Nurse/ Midwife Specialist & AN/MP	Staff Nurse/ Staff Midwife	Public Health Nurse	Nursing/ Midwifery Student	Nursing/ Midwifery other	Nursing & Midwifery	Therapy Professions	Health Science/ Diagnostics	Social Care	Social Workers	Psychologists	Pharmacy	H&SC, Other	Health & Social Care Professionals	Management (VIII & above)	Administrativ e/ Supervisory (V to VII)	Clerical (III & IV)	Management & Administrative	General Support	Health Care Assistants	Home Help	Care, other	Patient & Client Care
Overall	-0.1%	-29	+0	-0	+1	-1	-0	+1	+1	-15	+0	+0	+1	-11	-13	-1	-19	-2	+1	+1	+0	-33	+3	+15	-14	+4	+4	-3	-3	+14	+7
CHO 1	+0.2%	+3		-1			-1	-3	+1	-3		+0	+1	-3	+1		+0	+0	+1		+0	+2	-1	+1	-1	-1	+0	+4	-1	+2	+5
CHO 2	+0.6%	+9				-0	-0	-1		-1				-2	+3		+5	+1	-1		+0	+8	+0	+5	+1	+6	+4	-5		-1	-7
CHO 3	+0.6%	+12	+0				+0	+2		-3				-1	-1	-0	+2	-1	+0		-0	+0		+4	-2	+1	-0	+7		+4	+12
CHO 4	+0.1%	+1						+6		+4				+10	-2		-5	-1	-1		-0	-9	+0	+2	-4	-2	-1	+3		+0	+3
CHO 5	+0.1%	+2						-2	-0	+0	+0	+0		-2	-0		-9	-1	+1		+0	-9	+2	+1	-1	+2	+0	+10	+0	+1	+11
CHO 6	+0.1%	+1						-0		+2				+2	-2		-3		+1			-4	-3	+2	+2	+1	+0	-2		+5	+2
CHO 7	-0.3%	-11		+0	+1	-1	+0	+0	-1	-2				-3	-1		-2	+0	+1	+1		-1	+2	-1	-4	-3	-0	-1	-0	-3	-4
CHO 8	-1.4%	-32						-2	-0	-2		+0	+0	-5	-4		-4	+0	-0		-0	-8	+0	-1	-3	-4	+0	-12	-3	-1	-16
CHO 9	-0.5%	-16	+0					+2	+1	-9			+0	-7	-6	-1	-3	-1	-1			-13	+3	+1	-1	+3	-0	-7		+7	+0
other Community Services																															
		-0.1%	+1.1%	-1.6%	+6.2%	-7.1%	-0.4%	+0.1%	+1.4%	-0.6%	+2.2%	+0.3%	+5.4%	-0.3%	-1.6%	-4.6%	-0.6%	-1.0%	+0.2%	+14.9%	+0.0%	-0.8%	+1.4%	+2.5%	-1.9%	+0.3%	+0.5%	-0.0%	-3.9%	+0.8%	+0.1%

Year-on-year Summary

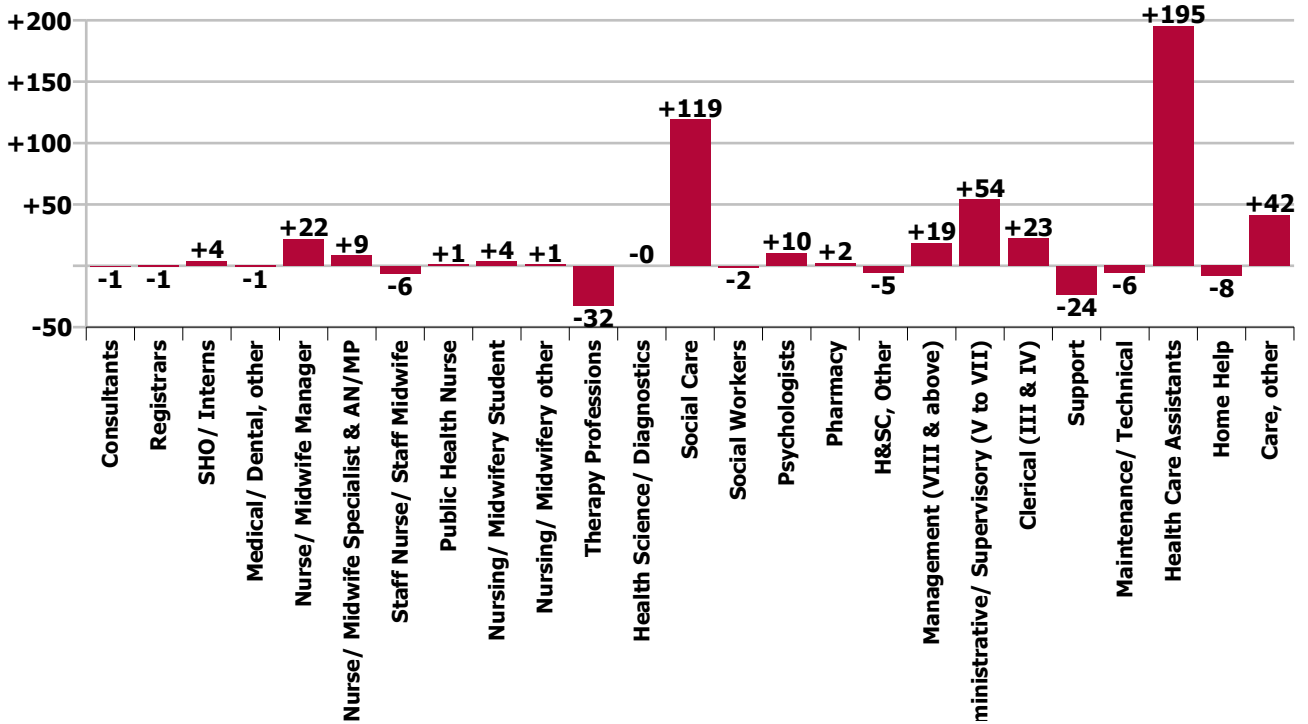
WTE change since May 21	% change since May 21	overall	Consultants	Registrars	SHO/ Interns	Medical/ Dental, other	Medical & Dental	Nurse/ Midwife Manager	Nurse/ Midwife Specialist & AN/MP	Staff Nurse/ Staff Midwife	Public Health Nurse	Nursing/ Midwifery Student	Nursing/ Midwifery other	Nursing & Midwifery	Therapy Professions	Health Science/ Diagnostics	Social Care	Social Workers	Psychologists	Pharmacy	H&SC, Other	Health & Social Care Professionals	Management (VIII & above)	Administrative/ Supervisory (V to VII)	Clerical (III & IV)	Management & Administrative	General Support	Health Care Assistants	Home Help	Care, other	Patient & Client Care	
Overall	+2.2%	+419	-1	-1	+4	-1	+1	+22	+9	-6	+1	+4	+1	+31	-32	-0	+119	-2	+10	+2	-5	+93	+19	+54	+23	+95	-30	+195	-8	+42	+229	
CHO 1	+5.4%	+87		+1			+1	+4	+0	-7			-5	+1	-7	+19		-2	-1	+4		-0	+19	-1	+10	+2	+11	-19	+73	+0	+8	+82
CHO 2	+2.9%	+45		-2	+2	-0	-0	-7	-0	+4				-3	+9		+9	-0	+3		-0	+19	+2	+17	+4	+22	+3	+5		-2	+4	
CHO 3	-0.2%	-3	-1				-1	+3	+1	-9			-1	-1	-7	-34	+1	-2	-1	+0		-0	-36	+2	+3	-2	+3	-4	+23		+19	+42
CHO 4	+0.6%	+16	-2				-2	+12	+0	-5				+1	+8	-8		+1	-1	-0		-1	-9	+1	+5	-6	+1	-5	+17		+6	+23
CHO 5	+2.5%	+41	+0				+0	-2	-0	+4	+1	-1	-0	+1	-16		+4	-3	+3		-0	-11	+3	+7	+1	+12	+1	+30	-6	+15	+38	
CHO 6	-0.3%	-4		+0			+0	-6		-2				+1	-7	-15		+22	-3	-0		+0	+3	+0	+4	-1	+3	-2	+3	+0	-2	-2
CHO 7	+6.3%	+194	-1	+0	-0	-1	-1	+16		+37		-1		+52	+22		+41	+7	+6	+2		+77	+6	+5	+2	+13	+10	+46	-3	-0	+42	
CHO 8	+1.6%	+35						-14	+4	-5		+9	-1	-6	-12		+25	-3	-2		+0	+9	+4	+6	+3	+13	-6	+34	+1	-8	+26	
CHO 9	+0.2%	+7	+3		+2		+5	+15	+4	-23		+3	-0	-1	+2	-1	+21	+4	-3			-3	+20	+1	-3	+19	+17	-6	-31		+4	-27
other Community Services																																
		+2.2%	-3.0%	-9.6%	+49.0%	-7.1%	+2.4%	+2.4%	+13.9%	-0.2%	+12.6%	+4.4%	+4.2%	+0.8%	-4.0%	-0.2%	+4.2%	-0.7%	+4.5%	+40.1%	-7.5%	+2.2%	+8.8%	+9.8%	+3.2%	+6.5%	-3.8%	+2.7%	-9.1%	+2.4%	+2.5%	



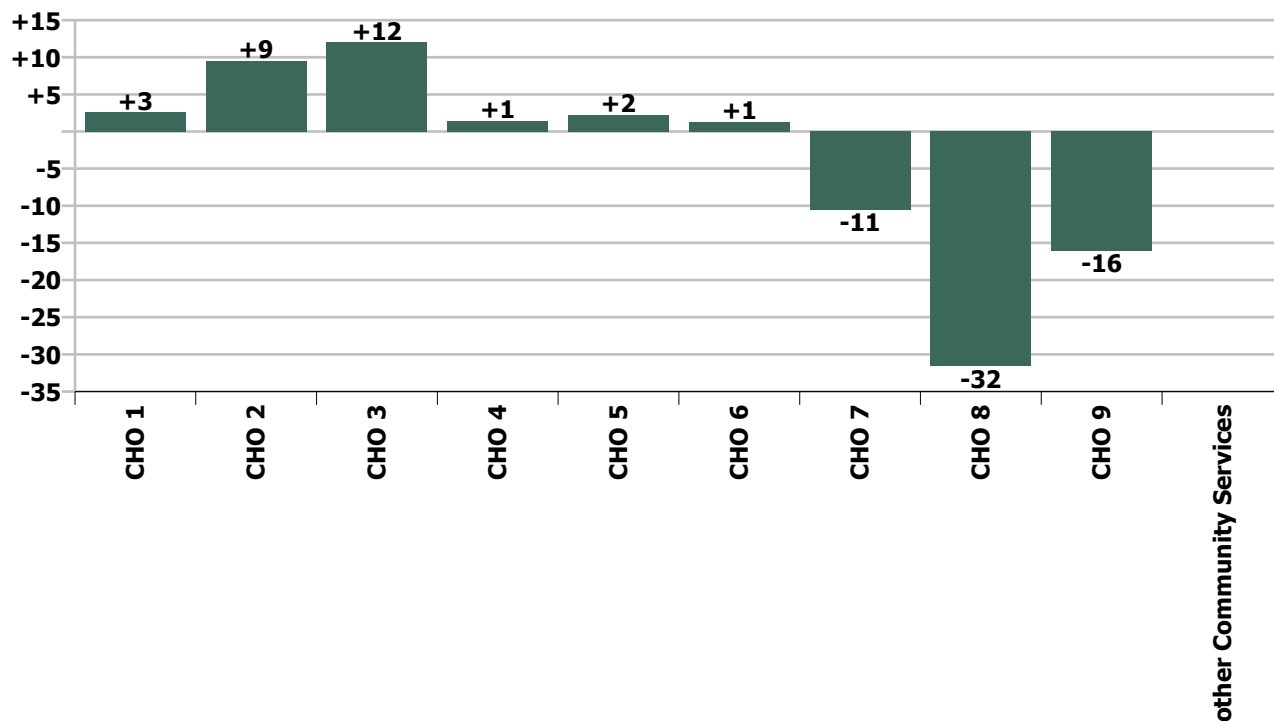
Staff Group change since: Apr 2022



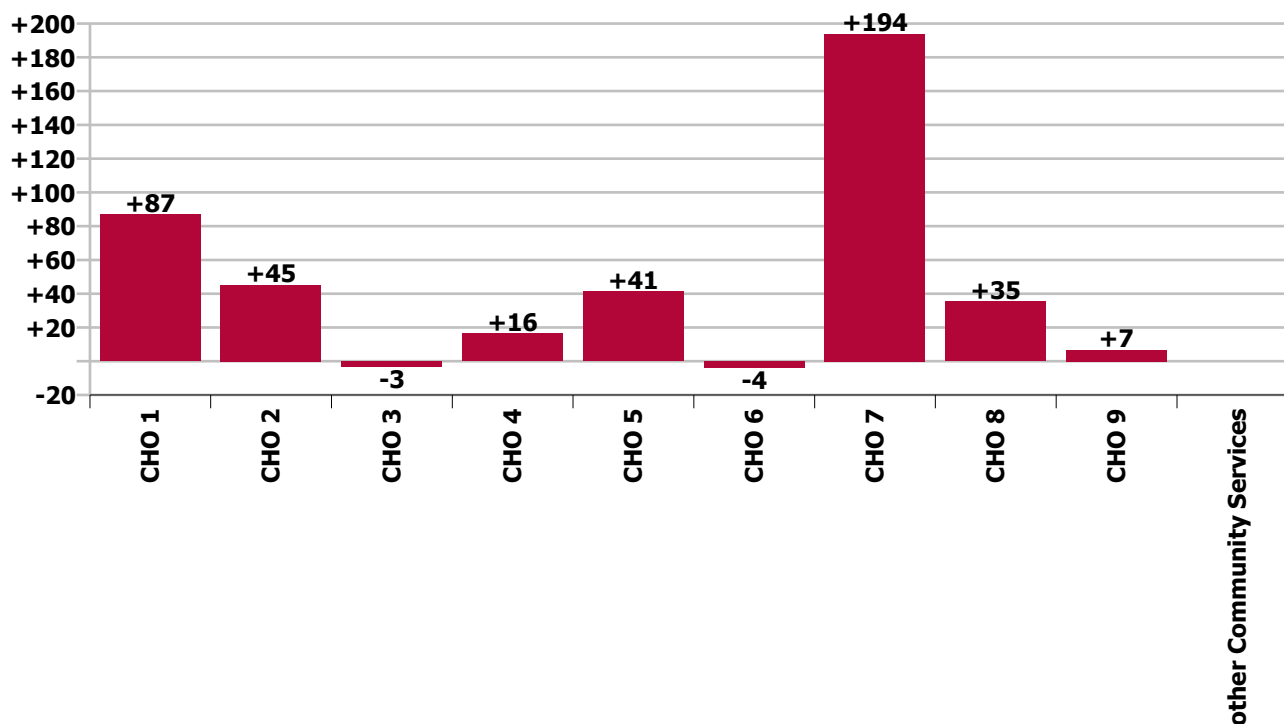
Staff Group change since: May 2021



CHO change since: Apr 2022



CHO change since: May 2021



Longitudinal Employment Levels by Grade Group - Dec 2016 to May 2022

May 2022 (Dec 2015 figure: 15,715)	WTE May 2022	WTE change since Dec 16	WTE change since Dec 17	WTE change since Dec 18	WTE change since Dec 19	WTE change since Dec 20	WTE change since Apr 22	% change since Dec 16	% change since Dec 17	% change since Dec 18	% change since Dec 19	% change since Dec 20	% change since Apr 22
Overall	19,625	+2,871	+2,228	+1,806	+1,323	+681	-29	+17.1%	+12.8%	+10.1%	+7.2%	+3.6%	-0.1%
Consultant Medicine		-2						-100.0%	-100.0%	-100.0%	-100.0%	-100.0%	-100.0%
Consultant Paediatrics	2	-1	-1	-1	-1	-1		-37.7%	-36.3%	-34.4%	-34.4%	-34.4%	
Consultant Psychiatry	19	-2	-4	+1	-2	-2	+0	-9.9%	-16.7%	+6.3%	-8.7%	-10.9%	+1.2%
Consultant Surgery		-0						-100.0%	-100.0%	-100.0%	-100.0%	-100.0%	-100.0%
Consultants	21	-5	-5	+0	-3	-3	+0	-19.2%	-19.1%	+0.3%	-12.0%	-13.8%	+1.1%
Registrar	6	-1	-1	+0	-2	+3	+1	-8.3%	-8.3%	+3.4%	-21.4%	+83.3%	+10.0%
Senior Registrar	2		-1			-1			-33.3%			-33.3%	
Specialist Registrar	1	-1	-3	+0	-3	-1	-1	-32.0%	-66.0%	+36.0%	-66.0%	-32.0%	-32.0%
Registrars	9	-1	-4	+1	-4	+1	-0	-11.4%	-31.8%	+6.5%	-31.8%	+10.7%	-1.6%
Senior House Officer	12	+6	+5	+5	+5	+3	+1	+98.7%	+70.3%	+71.5%	+71.3%	+32.4%	+6.2%
SHO/ Interns	12	+6	+5	+5	+5	+3	+1	+98.7%	+70.3%	+71.5%	+71.3%	+32.4%	+6.2%
Dentists								-100.0%	-100.0%	-100.0%	-100.0%	-100.0%	-100.0%
Other Medical	13	-2	-1	-1	-1	-1	-1	-10.6%	-6.9%	-6.1%	-7.6%	-7.1%	-7.1%
Medical/ Dental, other	13	-2	-1	-1	-1	-1	-1	-10.6%	-6.9%	-6.1%	-7.6%	-7.1%	-7.1%
Medical & Dental	55	-2	-5	+5	-3	-1	-0	-3.2%	-8.6%	+9.4%	-5.4%	-1.1%	-0.4%
Clinical Nurse/ Midwife Manager	842	+31	+34	+34	+32	+28	+5	+3.8%	+4.2%	+4.2%	+3.9%	+3.4%	+0.6%
Director Nursing/Midwifery, Assistant	40	-2	+3	+2	-0	-5	-3	-4.6%	+8.8%	+6.2%	-1.1%	-11.6%	-6.7%
Director of Nursing/Midwifery	46	+3	+1	+8	+4	+9	-1	+5.9%	+1.6%	+21.9%	+9.7%	+25.4%	-2.0%
Nurse/ Midwife Manager	929	+32	+38	+45	+35	+32	+1	+3.5%	+4.2%	+5.0%	+3.9%	+3.6%	+0.1%
Advanced Nurse/ Midwife Practitioner	8	+7	+6	+6	+6		-1	+700.0%	+300.0%	+300.0%	+300.0%		-7.5%
Clinical Nurse/ Midwife Specialist	63	-8	-5	-3	+3	+7	+2	-11.0%	-7.1%	-4.7%	+5.4%	+12.8%	+2.6%
Nurse/ Midwife Specialist & AN/MP	71	-1	+1	+3	+9	+7	+1	-1.1%	+1.7%	+4.2%	+14.9%	+11.2%	+1.4%
Graduate Nursing/ Midwifery								-100.0%	-100.0%	-100.0%	-100.0%	-100.0%	-100.0%
Staff Nurse [Psychiatric]	59	-26	-11	-12	-24	+6	-49	-30.4%	-16.2%	-16.7%	-29.3%	+12.1%	-45.6%
Staff Nurses [General/ Children's]	798	-135	-126	-70	-93	+46	-57	-14.5%	-13.6%	-8.1%	-10.5%	+6.1%	-6.6%
Staff Nurse [Intellectual Disability]	1,736	+11	+33	+52	+139	-52	+91	+0.7%	+2.0%	+3.1%	+8.7%	-2.9%	+5.6%
Staff Nurse/ Staff Midwife	2,593	-150	-104	-30	+21	+0	-15	-5.5%	-3.9%	-1.1%	+0.8%	+0.0%	-0.6%

May 2022 (Dec 2015 figure: 15,715)	WTE May 2022	WTE change since Dec 16	WTE change since Dec 17	WTE change since Dec 18	WTE change since Dec 19	WTE change since Dec 20	WTE change since Apr 22	% change since Dec 16	% change since Dec 17	% change since Dec 18	% change since Dec 19	% change since Dec 20	% change since Apr 22
Overall	19,625	+2,871	+2,228	+1,806	+1,323	+681	-29	+17.1%	+12.8%	+10.1%	+7.2%	+3.6%	-0.1%
Public Health Nurse	11	+5	+5	+5	+5	+5	+0	+75.6%	+87.1%	+70.3%	+82.0%	+65.9%	+2.2%
Pre-registration Nurse Intern (COVID-19)						-32		-100.0%	-100.0%	-100.0%	-100.0%	-100.0%	-100.0%
Pre-registration Nurse/ Midwife Intern	86	+74	+74	+51	+58	+84	+0	+617.0%	+629.8%	+147.1%	+204.6%	+3341.6%	+0.3%
Nursing/ Midwifery awaiting registration	1	+1	+1	+1	-13	-12		-100.0%	-100.0%	-100.0%	-92.8%	-92.3%	
Nursing/ Midwifery Student	87	+75	+75	+52	+45	+40	+0	+625.3%	+638.3%	+150.0%	+106.8%	+84.1%	+0.3%
Nursing Education/Clinical	26	+5	+5	+5	+5	+3	+1	+23.5%	+24.4%	+24.0%	+23.9%	+15.1%	+5.6%
Other Nursing/ Midwifery	1	-4	-4					-80.0%	-80.0%				
Nursing/ Midwifery other	27	+1	+1	+5	+5	+3	+1	+3.8%	+4.4%	+22.9%	+22.8%	+14.4%	+5.4%
Nursing & Midwifery	3,719	-38	+17	+79	+121	+87	-11	-1.0%	+0.4%	+2.2%	+3.4%	+2.4%	-0.3%
Dietitians	21	+7	+9	+7	+2	+4	-2	+56.8%	+73.1%	+50.5%	+11.9%	+25.8%	-7.9%
Occupational Therapists	282	+31	+33	+41	+18	+3	-8	+12.3%	+13.4%	+17.1%	+6.8%	+1.2%	-2.9%
Physiotherapists	188	+3	+3	+7	-1	-5	+2	+1.7%	+1.7%	+3.9%	-0.7%	-2.6%	+0.9%
Podiatrists & Chiropodists		-0	-0					-100.0%	-100.0%	-100.0%	-100.0%	-100.0%	-100.0%
Speech & Language Therapists	281	+11	-1	+2	-11	-26	-4	+3.9%	-0.5%	+0.8%	-3.9%	-8.5%	-1.5%
Therapy Professions	772	+52	+44	+57	+7	-23	-13	+7.2%	+6.0%	+8.0%	+1.0%	-2.9%	-1.6%
Audiology		-13	-18					-100.0%	-100.0%	-100.0%	-100.0%	-100.0%	-100.0%
Clinical Engineering	15	-3	-3	+3	+2	+2	-1	-18.6%	-17.2%	+24.2%	+14.6%	+15.1%	-6.6%
Medical Science	4	+1	+1					+33.3%	+33.3%				
Phlebotomists				-1	-1			-100.0%	-100.0%	-100.0%	-100.0%	-100.0%	-100.0%
Radiographers	1												
Respiratory Physiologists	2	+1	+1	+1	+1			+100.0%	+100.0%	+100.0%	+100.0%		
Health Science/ Diagnostics	22	-14	-19	+3	+2	+2	-1	-39.1%	-46.4%	+15.3%	+9.5%	+9.8%	-4.6%
Social Care	2,971	+779	+625	+482	+375	+181	-19	+35.6%	+26.6%	+19.4%	+14.5%	+6.5%	-0.6%
Social Workers	228	+13	+8	+9	+9	+0	-2	+5.8%	+3.4%	+4.0%	+4.3%	+0.0%	-1.0%
Psychologists	241	+31	+18	+35	+37	+12	+1	+15.0%	+7.9%	+16.8%	+18.2%	+5.3%	+0.2%
Pharmacists	7	+2	+2	+1	+2	+2	+1	+38.3%	+38.3%	+18.2%	+34.3%	+41.0%	+17.0%
Pharmacy Technicians	1	-0	-0	-0	-1	-0	+0	-5.0%	-1.0%	-5.0%	-36.7%	-5.0%	+1.1%
Pharmacy	8	+2	+2	+1	+1	+2	+1	+31.2%	+32.1%	+14.9%	+18.6%	+33.4%	+14.9%
Counsellor Therapists	24	+7	+4	+6	+5	+4	+0	+40.6%	+21.8%	+33.3%	+25.2%	+19.8%	+1.2%

May 2022 (Dec 2015 figure: 15,715)	WTE May 2022	WTE change since Dec 16	WTE change since Dec 17	WTE change since Dec 18	WTE change since Dec 19	WTE change since Dec 20	WTE change since Apr 22	% change since Dec 16	% change since Dec 17	% change since Dec 18	% change since Dec 19	% change since Dec 20	% change since Apr 22
Overall	19,625	+2,871	+2,228	+1,806	+1,323	+681	-29	+17.1%	+12.8%	+10.1%	+7.2%	+3.6%	-0.1%
HSCP Trainees/ Students	0	-2	-1					-100.0%	-100.0%	-100.0%	-100.0%	-100.0%	-100.0%
Other Health & Social Care	34	-24	-25	-18	-17	-11	-0	-41.8%	-42.3%	-34.7%	-32.9%	-24.8%	-1.2%
Play Therapists/ Specialists	10	-4	-3	-5	-6	-1	+0	-27.5%	-24.9%	-32.1%	-36.0%	-9.0%	+1.7%
H&SC, Other	67	-24	-24	-17	-17	-8	+0	-26.0%	-26.6%	-19.9%	-20.5%	-10.9%	+0.0%
Health & Social Care Professionals	4,309	+839	+652	+570	+415	+166	-33	+24.2%	+17.8%	+15.2%	+10.7%	+4.0%	-0.8%
Executive Management	43	+14	+5	+11	+12	+7	+1	+47.4%	+12.5%	+34.4%	+38.9%	+18.8%	+2.0%
Senior Management (VIII & GM)	187	+50	+46	+43	+38	+19	+2	+36.2%	+33.0%	+29.6%	+25.8%	+11.5%	+1.3%
Management (VIII & above)	230	+64	+51	+54	+50	+26	+3	+38.2%	+28.7%	+30.5%	+28.0%	+12.8%	+1.4%
Middle Management (V-VII)	590	+211	+198	+163	+126	+79	+14	+55.6%	+50.4%	+38.0%	+27.2%	+15.5%	+2.4%
Other Administrative	14	+0	-2	-2	-1	-2	+1	+1.3%	-12.3%	-11.5%	-6.4%	-11.5%	+7.7%
Administrative/ Supervisory (V to VII)	604	+211	+196	+161	+125	+77	+15	+53.7%	+48.0%	+36.2%	+26.2%	+14.7%	+2.5%
General Administrative (III & IV)	717	+110	+85	+63	+57	+32	-14	+18.1%	+13.4%	+9.7%	+8.6%	+4.6%	-1.9%
Clerical (III & IV)	717	+110	+85	+63	+57	+32	-14	+18.1%	+13.4%	+9.7%	+8.6%	+4.6%	-1.9%
Management & Administrative	1,551	+385	+332	+278	+232	+135	+4	+33.0%	+27.2%	+21.8%	+17.6%	+9.5%	+0.3%
Catering	82	-31	-24	-23	-16	-14	-1	-27.8%	-22.7%	-21.7%	-16.6%	-15.0%	-1.3%
Household Services	383	-124	-83	-68	-36	-22	+3	-24.4%	-17.8%	-15.1%	-8.6%	-5.5%	+0.9%
Other Labs & Associated	1	-0		-0				-6.5%		-3.8%			
Other Support	145	-48	-44	-46	-43	+10	+2	-24.9%	-23.2%	-23.9%	-22.7%	+7.2%	+1.5%
Portering	18	-8	-8	-7	-9	-6		-31.6%	-31.1%	-29.0%	-33.9%	-25.0%	
Support	630	-212	-159	-144	-104	-33	+5	-25.2%	-20.2%	-18.6%	-14.2%	-5.0%	+0.7%
Maintenance	110	-15	-22	-10	-7	-12	-1	-12.2%	-16.4%	-8.7%	-5.7%	-9.7%	-0.8%
Technical Services	15	+10	+10	+9	+7	+4		+190.2%	+190.2%	+142.6%	+82.7%	+33.3%	
Maintenance/ Technical	124	-6	-12	-2	+0	-8	-1	-4.3%	-8.7%	-1.3%	+0.1%	-6.1%	-0.7%
General Support	754	-218	-171	-146	-104	-41	+4	-22.4%	-18.5%	-16.2%	-12.2%	-5.2%	+0.5%
Attendant/ Aide	197	-176	-100	-26	-34	-50	-2	-47.2%	-33.7%	-11.8%	-14.6%	-20.3%	-0.9%
Health & Social Care Assistants	16	+5	+7	+5	+6	+5	+3	+45.4%	+71.5%	+43.2%	+63.1%	+41.2%	+23.7%
Health Care Assistant/ Care Assistant	7,193	+1,813	+1,314	+885	+607	+349	-5	+33.7%	+22.4%	+14.0%	+9.2%	+5.1%	-0.1%
Health Care Assistants	7,405	+1,641	+1,220	+864	+579	+303	-3	+28.5%	+19.7%	+13.2%	+8.5%	+4.3%	-0.0%
Home Help	82	-14	-42	-31	-27	-12	-3	-14.2%	-33.8%	-27.4%	-24.7%	-12.7%	-3.9%

May 2022 (Dec 2015 figure: 15,715)	WTE May 2022	WTE change since Dec 16	WTE change since Dec 17	WTE change since Dec 18	WTE change since Dec 19	WTE change since Dec 20	WTE change since Apr 22	% change since Dec 16	% change since Dec 17	% change since Dec 18	% change since Dec 19	% change since Dec 20	% change since Apr 22
Overall	19,625	+2,871	+2,228	+1,806	+1,323	+681	-29	+17.1%	+12.8%	+10.1%	+7.2%	+3.6%	-0.1%
Home Care Services	19	-3	-4	-5	-10	+0	-1	-12.5%	-19.4%	-19.6%	-34.8%	+0.1%	-6.1%
Other Care Grades	256	+58	+71	+71	+81	+35	+8	+29.6%	+38.6%	+38.6%	+46.6%	+15.6%	+3.2%
Pastoral Care	8	-5	-5	-2	-2	-2	-1	-37.0%	-40.0%	-22.6%	-24.0%	-22.7%	-11.3%
Workshop Services	1,466	+225	+163	+122	+40	+11	+8	+18.2%	+12.5%	+9.0%	+2.8%	+0.7%	+0.5%
Health Promotion	1	+1	+1	+1	+1	+1		-100.0%	-100.0%	-100.0%	-100.0%	-100.0%	
Care, other	1,749	+277	+225	+187	+110	+44	+14	+18.8%	+14.8%	+11.9%	+6.7%	+2.6%	+0.8%
Patient & Client Care	9,236	+1,905	+1,404	+1,020	+662	+335	+7	+26.0%	+17.9%	+12.4%	+7.7%	+3.8%	+0.1%

Source: Health Service Personnel Census

Longitudinal Employment Levels by Grade Group - Dec 2016 to May 2022

May 2022 (Dec 2015 figure: 15,715)	WTE May 2022	WTE change since Dec 16	WTE change since Dec 17	WTE change since Dec 18	WTE change since Dec 19	WTE change since Dec 20	WTE change since Apr 22	% change since Dec 16	% change since Dec 17	% change since Dec 18	% change since Dec 19	% change since Dec 20	% change since Apr 22
Overall	19,625	+2,871	+2,228	+1,806	+1,323	+681	-29	+17.1%	+12.8%	+10.1%	+7.2%	+3.6%	-0.1%
Consultant Medicine		-2						-100.0%	-100.0%	-100.0%	-100.0%	-100.0%	-100.0%
Consultant Paediatrics	2	-1	-1	-1	-1	-1		-37.7%	-36.3%	-34.4%	-34.4%	-34.4%	
Consultant Psychiatry	19	-2	-4	+1	-2	-2	+0	-9.9%	-16.7%	+6.3%	-8.7%	-10.9%	+1.2%
Consultant Surgery		-0						-100.0%	-100.0%	-100.0%	-100.0%	-100.0%	-100.0%
Consultants	21	-5	-5	+0	-3	-3	+0	-19.2%	-19.1%	+0.3%	-12.0%	-13.8%	+1.1%
Registrar	6	-1	-1	+0	-2	+3	+1	-8.3%	-8.3%	+3.4%	-21.4%	+83.3%	+10.0%
Senior Registrar	2		-1			-1			-33.3%			-33.3%	
Specialist Registrar	1	-1	-3	+0	-3	-1	-1	-32.0%	-66.0%	+36.0%	-66.0%	-32.0%	-32.0%
Registrars	9	-1	-4	+1	-4	+1	-0	-11.4%	-31.8%	+6.5%	-31.8%	+10.7%	-1.6%
Senior House Officer	12	+6	+5	+5	+5	+3	+1	+98.7%	+70.3%	+71.5%	+71.3%	+32.4%	+6.2%
SHO/ Interns	12	+6	+5	+5	+5	+3	+1	+98.7%	+70.3%	+71.5%	+71.3%	+32.4%	+6.2%
Dentists								-100.0%	-100.0%	-100.0%	-100.0%	-100.0%	-100.0%
Other Medical	13	-2	-1	-1	-1	-1	-1	-10.6%	-6.9%	-6.1%	-7.6%	-7.1%	-7.1%
Medical/ Dental, other	13	-2	-1	-1	-1	-1	-1	-10.6%	-6.9%	-6.1%	-7.6%	-7.1%	-7.1%
Medical & Dental	55	-2	-5	+5	-3	-1	-0	-3.2%	-8.6%	+9.4%	-5.4%	-1.1%	-0.4%
Clinical Nurse/ Midwife Manager	842	+31	+34	+34	+32	+28	+5	+3.8%	+4.2%	+4.2%	+3.9%	+3.4%	+0.6%
Director Nursing/Midwifery, Assistant	40	-2	+3	+2	-0	-5	-3	-4.6%	+8.8%	+6.2%	-1.1%	-11.6%	-6.7%
Director of Nursing/Midwifery	46	+3	+1	+8	+4	+9	-1	+5.9%	+1.6%	+21.9%	+9.7%	+25.4%	-2.0%
Nurse/ Midwife Manager	929	+32	+38	+45	+35	+32	+1	+3.5%	+4.2%	+5.0%	+3.9%	+3.6%	+0.1%
Advanced Nurse/ Midwife Practitioner	8	+7	+6	+6	+6		-1	+700.0%	+300.0%	+300.0%	+300.0%		-7.5%
Clinical Nurse/ Midwife Specialist	63	-8	-5	-3	+3		+2	-11.0%	-7.1%	-4.7%	+5.4%		+2.6%
Nurse/ Midwife Specialist & AN/MP	71	-1	+1	+3	+9	+7	+1	-1.1%	+1.7%	+4.2%	+14.9%	+11.2%	+1.4%
Graduate Nursing/ Midwifery								-100.0%	-100.0%	-100.0%	-100.0%	-100.0%	-100.0%
Staff Nurse [Psychiatric]	59	-26	-11	-12	-24	+6	-49	-30.4%	-16.2%	-16.7%	-29.3%	+12.1%	-45.6%
Staff Nurses [General/ Children's]	798	-135	-126	-70	-93	+46	-57	-14.5%	-13.6%	-8.1%	-10.5%	+6.1%	-6.6%
Staff Nurse [Intellectual Disability]	1,736	+11	+33	+52	+139	-52	+91	+0.7%	+2.0%	+3.1%	+8.7%	-2.9%	+5.6%
Staff Nurse/ Staff Midwife	2,593	-150	-104	-30	+21	+0	-15	-5.5%	-3.9%	-1.1%	+0.8%	+0.0%	-0.6%
Public Health Nurse	11	+5	+5	+5	+5	+5	+0	+75.6%	+87.1%	+70.3%	+82.0%	+65.9%	+2.2%
Pre-registration Nurse Intern (COVID-19)						-32		-100.0%	-100.0%	-100.0%	-100.0%	-100.0%	-100.0%
Pre-registration Nurse/ Midwife Intern	86	+74	+74	+51	+58	+84	+0	+617.0%	+629.8%	+147.1%	+204.6%	+3341.6%	+0.3%
Nursing/ Midwifery awaiting registration	1	+1	+1	+1	-13	-12		-100.0%	-100.0%	-100.0%	-92.8%	-92.3%	
Nursing/ Midwifery Student	87	+75	+75	+52	+45	+40	+0	+625.3%	+638.3%	+150.0%	+106.8%	+84.1%	+0.3%
Nursing Education/Clinical	26	+5	+5	+5	+5	+3	+1	+23.5%	+24.4%	+24.0%	+23.9%	+15.1%	+5.6%
Other Nursing/ Midwifery	1	-4	-4					-80.0%	-80.0%				
Nursing/ Midwifery other	27	+1	+1	+5	+5	+3	+1	+3.8%	+4.4%	+22.9%	+22.8%	+14.4%	+5.4%
Nursing & Midwifery	3,719	-38	+17	+79	+121	+87	-11	-1.0%	+0.4%	+2.2%	+3.4%	+2.4%	-0.3%
Dietitians	21	+7	+9	+7	+2	+4	-2	+56.8%	+73.1%	+50.5%	+11.9%	+25.8%	-7.9%
Occupational Therapists	282	+31	+33	+41	+18	+3	-8	+12.3%	+13.4%	+17.1%	+6.8%	+1.2%	-2.9%
Physiotherapists	188	+3	+3	+7	-1	-5	+2	+1.7%	+1.7%	+3.9%	-0.7%	-2.6%	+0.9%
Podiatrists & Chiropodists		-0	-0					-100.0%	-100.0%	-100.0%	-100.0%	-100.0%	-100.0%
Speech & Language Therapists	281	+11	-1	+2	-11	-26	-4	+3.9%	-0.5%	+0.8%	-3.9%	-8.5%	-1.5%
Therapy Professions	772	+52	+44	+57	+7	-23	-13	+7.2%	+6.0%	+8.0%	+1.0%	-2.9%	-1.6%
Audiology		-13	-18					-100.0%	-100.0%	-100.0%	-100.0%	-100.0%	-100.0%
Clinical Engineering	15	-3	-3	+3	+2	+2	-1	-18.6%	-17.2%	+24.2%	+14.6%	+15.1%	-6.6%
Medical Science	4	+1	+1					+33.3%	+33.3%				
Phlebotomists				-1	-1			-100.0%	-100.0%	-100.0%	-100.0%	-100.0%	-100.0%
Radiographers	1												
Respiratory Physiologists	2	+1	+1	+1	+1			+100.0%	+100.0%	+100.0%	+100.0%		
Health Science/ Diagnostics	22	-14	-19	+3	+2	+2	-1	-39.1%	-46.4%	+15.3%	+9.5%	+9.8%	-4.6%
Social Care	2,971	+779	+625	+482	+375	+181	-19	+35.6%	+26.6%	+19.4%	+14.5%	+6.5%	-0.6%
Social Workers	228	+13	+8	+9	+9	+0	-2	+5.8%	+3.4%	+4.0%	+4.3%	+0.0%	-1.0%
Psychologists	241	+31	+18	+35	+37	+12	+1	+15.0%	+7.9%	+16.8%	+18.2%	+5.3%	+0.2%
Pharmacists	7	+2	+2	+1	+2	+2	+1	+38.3%	+38.3%	+18.2%	+34.3%	+41.0%	+17.0%
Pharmacy Technicians	1	-0	-0	-0	-1	-0	+0	-5.0%	-1.0%	-5.0%	-36.7%	-5.0%	+1.1%
Pharmacy	8	+2	+2	+1	+1	+2	+1	+31.2%	+32.1%	+14.9%	+18.6%	+33.4%	+14.9%
Counsellor Therapists	24	+7	+4	+6	+5	+4	+0	+40.6%	+21.8%	+33.3%	+25.2%	+19.8%	+1.2%
HSCP Trainees/ Students	0	-2	-1					-100.0%	-100.0%	-100.0%	-100.0%	-100.0%	-100.0%
Other Health & Social Care	34	-24	-25	-18	-17	-11	-0	-41.8%	-42.3%	-34.7%	-32.9%	-24.8%	-1.2%
Play Therapists/ Specialists	10	-4	-3	-5	-6	-1	+0	-27.5%	-24.9%	-32.1%	-36.0%	-9.0%	+1.7%
H&SC, Other	67	-24	-24	-17	-17	-8	+0	-26.0%	-26.6%	-19.9%	-20.5%	-10.9%	+0.0%
Health & Social Care Professionals	4,309	+839	+652	+570	+415	+166	-33	+24.2%	+17.8%	+15.2%	+10.7%	+4.0%	-0.8%
Executive Management	43	+14	+5	+11	+12	+7	+1	+47.4%	+12.5%	+34.4%	+38.9%	+18.8%	+2.0%
Senior Management (VIII & GM)	187	+50	+46	+43	+38	+19	+2	+36.2%	+33.0%	+29.6%	+25.8%	+11.5%	+1.3%
Management (VIII & above)	230	+64	+51	+54	+50	+26	+3	+38.2%	+28.7%	+30.5%	+28.0%	+12.8%	+1.4%
Middle Management (V-VII)	590	+211	+198	+162	+126	+79	+14	+55.6%	+50.4%	+38.0%	+27.2%	+15.5%	+2.4%
Other Administrative	14	+0	-2	-2	-1	-2	+1	+1.3%	-12.3%	-11.5%	-6.4%	-11.5%	+7.7%
Administrative/ Supervisory (V to VII)	604	+211	+196	+161	+125	+77	+15	+53.7%	+48.0%	+36.2%	+26.2%	+14.7%	+2.5%
General Administrative (III & IV)	717	+110	+85	+64	+57	+32	-14	+18.1%	+13.4%	+9.7%	+8.6%	+4.6%	-1.9%
Clerical (III & IV)	717	+110	+85	+64	+57	+32	-14	+18.1%	+13.4%	+9.7%	+8.6%	+4.6%	-1.9%
Management & Administrative	1,551	+385	+332	+278	+232	+135	+4	+33.0%	+27.2%	+21.8%	+17.6%	+9.5%	+0.3%
Support	630	-212	-159	-144	-104	-33	+5	-25.2%	-20.2%	-18.6%	-14.2%	-5.0%	+0.7%
Maintenance	110	-15	-22	-10	-7	-12	-1	-12.2%	-16.4%	-8.7%	-5.7%	-9.7%	-0.8%
Technical Services	15	+10	+10	+9	+7	+4		+190.2%	+190.2%	+142.6%	+82.7%	+33.3%	
Maintenance/ Technical	124	-6	-12	-2	+0	-8	-1	-4.3%	-8.7%	-1.3%	+0.1%	-6.1%	-0.7%
General Support	754	-218	-171	-146	-104	-41	+4	-22.4%	-18.5%	-16.2%	-12.2%	-5.2%	+0.5%
Attendant/ Aide	197	-176	-100	-26	-34	-50	-2	-47.2%	-33.7%	-11.8%	-14.6%	-20.3%	-0.9%
Health & Social Care Assistants	16	+5	+7	+5	+6	+5	+3	+45.4%	+71.5%	+43.2%	+63.1%	+41.2%	+23.7%
Health Care Assistant/ Care Assistant	7,193	+1,813	+1,314	+885	+607	+349	-5	+33.7%	+22.4%	+14.0%	+9.2%	+5.1%	-0.1%
Health Care Assistants	7,405	+1,641	+1,220	+864	+579	+303	-3	+28.5%	+19.7%	+13.2%	+8.5%	+4.3%	-0.0%
Home Help	82	-14	-42	-31	-27	-12	-3	-14.2%	-33.8%	-27.4%	-24.7%	-12.7%	-3.9%
Home Care Services	19	-3	-4	-5	-10	+0	-1	-12.5%	-19.4%	-19.6%	-34.8%	+0.1%	-6.1%
Other Care Grades	256	+58	+71	+71	+81	+35	+8	+29.6%	+38.6%	+38.6%	+46.6%	+15.6%	+3.2%
Pastoral Care	8	-5	-5	-2	-2	-2	-1	-37.0%	-40.0%	-22.6%	-24.0%	-22.7%	-11.3%

May 2022 (Dec 2015 figure: 15,715)	WTE May 2022	WTE change since Dec 16	WTE change since Dec 17	WTE change since Dec 18	WTE change since Dec 19	WTE change since Dec 20	WTE change since Apr 22	% change since Dec 16	% change since Dec 17	% change since Dec 18	% change since Dec 19	% change since Dec 20	% change since Apr 22
Overall	19,625	+2,871	+2,228	+1,806	+1,323	+681	-29	+17.1%	+12.8%	+10.1%	+7.2%	+3.6%	-0.1%
Workshop Services	1,466	+225	+163	+122	+40	+11	+8	+18.2%	+12.5%	+9.0%	+2.8%	+0.7%	+0.5%
Health Promotion	1	+1	+1	+1	+1	+1		-100.0%	-100.0%	-100.0%	-100.0%	-100.0%	
Care, other	1,749	+277	+225	+187	+110	+44	+14	+18.8%	+14.8%	+11.9%	+6.7%	+2.6%	+0.8%
Patient & Client Care	9,236	+1,905	+1,404	+1,020	+662	+335	+7	+26.0%	+17.9%	+12.4%	+7.7%	+3.8%	+0.1%

Source: Health Service Personnel Census