

# Social Care Disability Services Employment Report: October 2022

## Employment by Staff Group

Oct 2022	WTE Dec 2019	WTE Dec 2020	WTE Sep 2022	WTE Oct 2022	WTE change since Sep 22	WTE change since Dec 20	% change since Dec 20	WTE change since Dec 19	% change since Dec 19	No. Oct 2022
<b>Overall</b>	<b>18,303</b>	<b>18,944</b>	<b>19,656</b>	<b>19,727</b>	<b>+70</b>	<b>+782</b>	<b>+4.1%</b>	<b>+1,424</b>	<b>+7.8%</b>	<b>23,406</b>
Consultants	24	24	22	22	-0	-3	-11.0%	-2	-9.1%	27
Registrars	13	8	11	11	-0	+3	+33.3%	-2	-18.0%	13
SHO/ Interns	7	9	8	6	-2	-3	-33.3%	-1	-13.8%	11
Medical/ Dental, other	14	14	13	13	+0	-1	-10.1%	-2	-10.6%	20
<b>Medical &amp; Dental</b>	<b>58</b>	<b>56</b>	<b>53</b>	<b>51</b>	<b>-2</b>	<b>-4</b>	<b>-8.0%</b>	<b>-7</b>	<b>-12.0%</b>	<b>71</b>
Nurse/ Midwife Manager	894	897	931	944	+13	+47	+5.3%	+50	+5.7%	1,024
Nurse/ Midwife Specialist & AN/MP	62	64	68	68	+0	+4	+6.9%	+6	+10.5%	75
Staff Nurse/ Staff Midwife	2,572	2,593	2,548	2,559	+11	-34	-1.3%	-14	-0.5%	2,957
Public Health Nurse	6	7	12	12	-1	+5	+67.9%	+5	+84.2%	14
<i>Pre-registration Nurse Intern (COVID-19)</i>		32				-32	-100.0%		-100.0%	
<i>Pre-registration Nurse/ Midwife Intern</i>	28	3	54	21	-34	+18	+732.4%	-7	-26.3%	53
<i>Nursing/ Midwifery awaiting registration</i>	14	13	10	6	-4	-7	-56.8%	-8	-59.5%	12
Nursing/ Midwifery Student	42	47	64	26	-38	-21	-44.1%	-16	-37.2%	65
Nursing/ Midwifery other	22	24	27	28	+1	+4	+17.0%	+6	+25.6%	31
<b>Nursing &amp; Midwifery</b>	<b>3,599</b>	<b>3,632</b>	<b>3,651</b>	<b>3,637</b>	<b>-14</b>	<b>+5</b>	<b>+0.1%</b>	<b>+39</b>	<b>+1.1%</b>	<b>4,166</b>
Therapy Professions	765	795	761	787	+26	-8	-1.0%	+22	+2.9%	915
Health Science/ Diagnostics	20	20	21	21	+0	+1	+6.1%	+1	+5.8%	22
Social Care	2,595	2,789	3,000	3,006	+6	+217	+7.8%	+411	+15.8%	3,540
Social Workers	219	228	229	234	+5	+5	+2.3%	+15	+6.7%	271
Psychologists	204	229	231	233	+2	+4	+1.6%	+29	+14.0%	260
Pharmacy	7	6	8	7	-0	+1	+17.8%	+0	+4.7%	10
H&SC, Other	85	76	66	68	+2	-8	-10.5%	-17	-20.2%	87
<b>Health &amp; Social Care Professionals</b>	<b>3,894</b>	<b>4,144</b>	<b>4,314</b>	<b>4,355</b>	<b>+41</b>	<b>+212</b>	<b>+5.1%</b>	<b>+461</b>	<b>+11.8%</b>	<b>5,105</b>
Management (VIII & above)	180	204	225	224	-1	+20	+9.7%	+44	+24.6%	228
Administrative/ Supervisory (V to VII)	479	527	647	661	+14	+134	+25.5%	+182	+38.0%	702
Clerical (III & IV)	660	685	726	734	+8	+49	+7.1%	+74	+11.2%	876
<b>Management &amp; Administrative</b>	<b>1,319</b>	<b>1,416</b>	<b>1,598</b>	<b>1,619</b>	<b>+21</b>	<b>+203</b>	<b>+14.3%</b>	<b>+300</b>	<b>+22.7%</b>	<b>1,806</b>
Support	734	663	627	637	+10	-26	-3.9%	-97	-13.3%	924
Maintenance/ Technical	124	132	126	118	-8	-14	-10.8%	-6	-4.9%	130
<b>General Support</b>	<b>858</b>	<b>795</b>	<b>753</b>	<b>755</b>	<b>+2</b>	<b>-40</b>	<b>-5.0%</b>	<b>-103</b>	<b>-12.0%</b>	<b>1,054</b>
Health Care Assistants	6,826	7,102	7,466	7,465	-1	+362	+5.1%	+638	+9.4%	8,918
Home Help	109	94	83	79	-4	-15	-15.5%	-30	-27.1%	223
Care, other	1,639	1,706	1,738	1,766	+28	+60	+3.5%	+126	+7.7%	2,063
<b>Patient &amp; Client Care</b>	<b>8,574</b>	<b>8,902</b>	<b>9,287</b>	<b>9,309</b>	<b>+23</b>	<b>+408</b>	<b>+4.6%</b>	<b>+735</b>	<b>+8.6%</b>	<b>11,204</b>

## Social Care Disability Services Employment by Administration (HSE / S38): October 2022

Oct 2022	WTE Dec 2019	WTE Dec 2020	WTE Sep 2022	WTE Oct 2022	WTE change since Sep 22	WTE change since Dec 20	% change since Dec 20	WTE change since Dec 19	% change since Dec 19	No. Oct 2022
<b>Total</b>	<b>18,303</b>	<b>18,944</b>	<b>19,656</b>	<b>19,727</b>	<b>+70</b>	<b>+782</b>	<b>+4.1%</b>	<b>+1,424</b>	<b>+7.8%</b>	<b>23,406</b>
HSE	3,903	4,085	4,160	4,195	+35	+111	+2.7%	+292	+7.5%	4,805
Section 38 Voluntary Agencies	14,400	14,860	15,496	15,531	+35	+672	+4.5%	+1,132	+7.9%	18,601

### Employment by Staff Group

Oct 2022	WTE Dec 2019	WTE Dec 2020	WTE Sep 2022	WTE Oct 2022	WTE change since Sep 22	WTE change since Dec 20	% change since Dec 20	WTE change since Dec 19	% change since Dec 19	No. Oct 2022
<b>Health Service Executive</b>	<b>3,903</b>	<b>4,085</b>	<b>4,160</b>	<b>4,195</b>	<b>+35</b>	<b>+111</b>	<b>+2.7%</b>	<b>+292</b>	<b>+7.5%</b>	<b>4,805</b>
Consultants	8	9	7	7		-2	-23.2%	-1	-12.9%	7
Registrars	3	1	3	3	-0	+2	+166.0%	-0	-11.3%	3
SHO/ Interns		2				-2	-100.0%		-100.0%	
Medical/ Dental, other	6	6	6	6	+0	-0	-0.2%	-0	-1.6%	10
<b>Medical &amp; Dental</b>	<b>17</b>	<b>18</b>	<b>16</b>	<b>15</b>	<b>-0</b>	<b>-2</b>	<b>-13.1%</b>	<b>-1</b>	<b>-8.4%</b>	<b>20</b>
Nurse/ Midwife Manager	258	261	265	264	-1	+3	+1.1%	+6	+2.1%	280
Nurse/ Midwife Specialist & AN/MP	14	15	16	17	+0	+2	+14.6%	+3	+23.6%	18
Staff Nurse/ Staff Midwife	791	772	765	770	+5	-2	-0.3%	-21	-2.7%	859
Public Health Nurse	6	7	12	12	-1	+5	+67.9%	+5	+84.2%	14
Pre-registration Nurse Intern (COVID-19)		9				-9	-100.0%		-100.0%	
Pre-registration Nurse/ Midwife Intern	3	3	20	9	-11	+7	+267.6%	+6	+182.8%	29
Nursing/ Midwifery awaiting registration	14	13	6	3	-3	-10	-75.2%	-11	-76.7%	9
Nursing/ Midwifery Student	17	24	26	12	-14	-12	-48.4%	-5	-27.3%	38
Nursing/ Midwifery other	8	7	8	9	+1	+2	+29.7%	+1	+12.7%	10
<b>Nursing &amp; Midwifery</b>	<b>1,094</b>	<b>1,086</b>	<b>1,093</b>	<b>1,083</b>	<b>-10</b>	<b>-2</b>	<b>-0.2%</b>	<b>-11</b>	<b>-1.0%</b>	<b>1,219</b>
Therapy Professions	332	373	308	328	+20	-45	-12.1%	-4	-1.2%	388
Health Science/ Diagnostics	2	4	6	6		+2	+51.9%	+4	+200.0%	6
Social Care	89	101	101	104	+3	+3	+3.0%	+15	+16.6%	116
Social Workers	58	67	56	58	+2	-8	-12.3%	+1	+1.3%	67
Psychologists	76	83	92	97	+5	+15	+17.7%	+21	+27.6%	108
H&SC, Other	26	25	18	19	+1	-6	-23.7%	-7	-27.0%	22
<b>Health &amp; Social Care Professionals</b>	<b>583</b>	<b>652</b>	<b>581</b>	<b>612</b>	<b>+31</b>	<b>-40</b>	<b>-6.1%</b>	<b>+30</b>	<b>+5.1%</b>	<b>707</b>
Management (VIII & above)	45	58	66	67	+1	+9	+15.5%	+22	+49.4%	68
Administrative/ Supervisory (V to VII)	141	168	225	231	+5	+62	+37.0%	+89	+63.1%	246
Clerical (III & IV)	178	199	211	221	+10	+22	+11.1%	+42	+23.8%	252
<b>Management &amp; Administrative</b>	<b>364</b>	<b>425</b>	<b>502</b>	<b>518</b>	<b>+16</b>	<b>+93</b>	<b>+22.0%</b>	<b>+154</b>	<b>+42.2%</b>	<b>566</b>
Support	88	88	66	67	+0	-21	-24.2%	-22	-24.7%	77
Maintenance/ Technical	21	26	21	21	-0	-5	-20.4%	-0	-0.9%	22
<b>General Support</b>	<b>109</b>	<b>114</b>	<b>87</b>	<b>87</b>	<b>+0</b>	<b>-27</b>	<b>-23.3%</b>	<b>-22</b>	<b>-20.1%</b>	<b>99</b>
Health Care Assistants	1,518	1,557	1,631	1,630	-1	+73	+4.7%	+112	+7.4%	1,791

Home Help	109	94	83	79	-4	-15	-15.5%	-30	-27.1%	223
Care, other	109	140	167	170	+3	+30	+21.2%	+61	+55.5%	180
<b>Patient &amp; Client Care</b>	<b>1,736</b>	<b>1,791</b>	<b>1,881</b>	<b>1,879</b>	<b>-2</b>	<b>+88</b>	<b>+4.9%</b>	<b>+143</b>	<b>+8.3%</b>	<b>2,194</b>

## Employment by Staff Group

Oct 2022	WTE Dec 2019	WTE Dec 2020	WTE Sep 2022	WTE Oct 2022	WTE change since Sep 22	WTE change since Dec 20	% change since Dec 20	WTE change since Dec 19	% change since Dec 19	No. Oct 2022
<b>Section 38 Voluntary Agencies</b>	<b>14,400</b>	<b>14,860</b>	<b>15,496</b>	<b>15,531</b>	<b>+35</b>	<b>+672</b>	<b>+4.5%</b>	<b>+1,132</b>	<b>+7.9%</b>	<b>18,601</b>
Consultants	16	16	15	15	-0	-1	-4.5%	-1	-7.3%	20
Registrars	10	7	8	8	-0	+1	+14.3%	-2	-20.0%	10
SHO/ Interns	7	7	8	6	-2	-1	-14.3%	-1	-13.8%	11
Medical/ Dental, other	8	8	7	7		-1	-17.7%	-1	-17.7%	10
<b>Medical &amp; Dental</b>	<b>41</b>	<b>38</b>	<b>38</b>	<b>36</b>	<b>-2</b>	<b>-2</b>	<b>-5.6%</b>	<b>-6</b>	<b>-13.5%</b>	<b>51</b>
Nurse/ Midwife Manager	635	636	666	680	+14	+44	+7.0%	+45	+7.1%	744
Nurse/ Midwife Specialist & AN/MP	48	49	52	52	-0	+2	+4.6%	+3	+6.8%	57
Staff Nurse/ Staff Midwife	1,781	1,821	1,783	1,789	+6	-32	-1.8%	+8	+0.4%	2,098
Pre-registration Nurse Intern (COVID-19)		23				-23	-100.0%		-100.0%	
Pre-registration Nurse/ Midwife Intern	25		34	12	-23	+12	-100.0%	-13	-53.5%	24
Nursing/ Midwifery awaiting registration			4	2	-1	+2	-100.0%	+2	-100.0%	3
Nursing/ Midwifery Student	25	23	38	14	-24	-9	-39.7%	-11	-44.0%	27
Nursing/ Midwifery other	14	17	19	19	-0	+2	+12.1%	+5	+32.5%	21
<b>Nursing &amp; Midwifery</b>	<b>2,504</b>	<b>2,546</b>	<b>2,558</b>	<b>2,554</b>	<b>-4</b>	<b>+8</b>	<b>+0.3%</b>	<b>+50</b>	<b>+2.0%</b>	<b>2,947</b>
Therapy Professions	433	423	453	459	+6	+37	+8.7%	+26	+6.1%	527
Health Science/ Diagnostics	18	16	15	15	+0	-1	-5.2%	-3	-15.8%	16
Social Care	2,506	2,689	2,899	2,902	+3	+214	+7.9%	+396	+15.8%	3,424
Social Workers	161	162	172	175	+3	+14	+8.4%	+14	+8.7%	204
Psychologists	128	147	139	136	-3	-11	-7.5%	+8	+6.0%	152
Pharmacy	7	6	8	7	-0	+1	+17.8%	+0	+4.7%	10
H&SC, Other	59	51	47	49	+1	-2	-4.0%	-10	-17.2%	65
<b>Health &amp; Social Care Professionals</b>	<b>3,312</b>	<b>3,492</b>	<b>3,733</b>	<b>3,743</b>	<b>+10</b>	<b>+251</b>	<b>+7.2%</b>	<b>+431</b>	<b>+13.0%</b>	<b>4,398</b>
Management (VIII & above)	135	146	159	157	-2	+11	+7.4%	+22	+16.3%	160
Administrative/ Supervisory (V to VII)	338	358	422	430	+8	+72	+20.1%	+93	+27.5%	456
Clerical (III & IV)	482	487	515	513	-2	+27	+5.5%	+31	+6.5%	624
<b>Management &amp; Administrative</b>	<b>955</b>	<b>991</b>	<b>1,096</b>	<b>1,100</b>	<b>+5</b>	<b>+109</b>	<b>+11.0%</b>	<b>+146</b>	<b>+15.3%</b>	<b>1,240</b>
Support	646	575	561	570	+9	-5	-0.8%	-75	-11.7%	847
Maintenance/ Technical	103	106	105	97	-8	-9	-8.4%	-6	-5.7%	108
<b>General Support</b>	<b>749</b>	<b>681</b>	<b>666</b>	<b>668</b>	<b>+2</b>	<b>-14</b>	<b>-2.0%</b>	<b>-81</b>	<b>-10.9%</b>	<b>955</b>
Health Care Assistants	5,308	5,545	5,835	5,834	-0	+289	+5.2%	+526	+9.9%	7,127
Care, other	1,530	1,566	1,571	1,596	+25	+30	+1.9%	+66	+4.3%	1,883
<b>Patient &amp; Client Care</b>	<b>6,839</b>	<b>7,111</b>	<b>7,406</b>	<b>7,430</b>	<b>+25</b>	<b>+319</b>	<b>+4.5%</b>	<b>+592</b>	<b>+8.7%</b>	<b>9,010</b>

## Social Care Disability Services Employment by CHO: Oct 2022

Oct 2022	WTE Dec 2019	WTE Dec 2020	WTE Sep 2022	WTE Oct 2022	WTE change since Sep 22	WTE change since Dec 20	% change since Dec 20	WTE change since Dec 19	% change since Dec 19	No. Oct 2022
<b>Overall</b>	<b>18,303</b>	<b>18,944</b>	<b>19,656</b>	<b>19,727</b>	<b>+70</b>	<b>+782</b>	<b>+4.1%</b>	<b>+1,424</b>	<b>+7.8%</b>	<b>23,406</b>
CHO 1	1,498	1,547	1,678	1,684	+6	+138	+8.9%	+186	+12.4%	1,887
CHO 2	1,497	1,516	1,582	1,606	+24	+90	+6.0%	+109	+7.3%	1,969
CHO 3	1,823	1,947	1,980	1,979	-1	+31	+1.6%	+155	+8.5%	2,346
CHO 4	2,439	2,556	2,646	2,632	-14	+77	+3.0%	+194	+7.9%	3,181
CHO 5	1,505	1,563	1,665	1,653	-12	+90	+5.8%	+148	+9.8%	1,965
CHO 6	1,198	1,217	1,212	1,218	+6	+2	+0.1%	+20	+1.7%	1,387
CHO 7	2,982	3,103	3,344	3,356	+12	+253	+8.2%	+375	+12.6%	3,993
CHO 8	2,162	2,205	2,267	2,304	+37	+99	+4.5%	+142	+6.6%	2,792
CHO 9	3,194	3,285	3,275	3,287	+12	+3	+0.1%	+94	+2.9%	3,880
other Community Services	5	6	6	6		+0	+0.8%	+1	+21.2%	6

# Social Care Disability Services Employment by CHO etc. Oct 2022

## CHO 1

Oct 2022	WTE Dec 2019	WTE Dec 2020	WTE Sep 2022	WTE Oct 2022	WTE change since Sep 22	WTE change since Dec 20	% change since Dec 20	WTE change since Dec 19	% change since Dec 19	No. Oct 2022
<b>Overall</b>	<b>1,498</b>	<b>1,547</b>	<b>1,678</b>	<b>1,684</b>	<b>+6</b>	<b>+138</b>	<b>+8.9%</b>	<b>+186</b>	<b>+12.4%</b>	<b>1,887</b>
Medical/ Dental, other	3	3	3	3	+0			-0	-3.0%	6
<b>Medical &amp; Dental</b>	<b>3</b>	<b>3</b>	<b>3</b>	<b>3</b>	<b>+0</b>			<b>-0</b>	<b>-3.0%</b>	<b>6</b>
Nurse/ Midwife Manager	105	106	109	109	+0	+2	+2.1%	+4	+3.3%	115
Nurse/ Midwife Specialist & AN/MP	7	9	8	8	+0	-1	-6.8%	+1	+19.3%	9
Staff Nurse/ Staff Midwife	324	328	329	332	+3	+4	+1.1%	+8	+2.5%	373
Public Health Nurse			1	1	0	+1	-100.0%	+1	-100.0%	1
Pre-registration Nurse Intern (COVID-19)		6				-6	-100.0%		-100.0%	
Pre-registration Nurse/ Midwife Intern	3		16	6	-10	+6	-100.0%	+3	+112.3%	22
Nursing/ Midwifery awaiting registration	11	11				-11	-100.0%	-11	-100.0%	
Nursing/ Midwifery Student	14	17	16	6	-10	-11	-63.6%	-8	-54.5%	22
Nursing/ Midwifery other	5	4	4	4	+0	+0	+9.5%	-0	-10.0%	5
<b>Nursing &amp; Midwifery</b>	<b>455</b>	<b>465</b>	<b>467</b>	<b>461</b>	<b>-7</b>	<b>-4</b>	<b>-0.9%</b>	<b>+6</b>	<b>+1.3%</b>	<b>525</b>
Therapy Professions	42	44	61	60	-1	+17	+38.2%	+18	+42.0%	68
Social Care	8	11	11	13	+2	+2	+17.3%	+6	+75.1%	16
Social Workers	16	19	15	15	+0	-3	-18.0%	-0	-2.3%	17
Psychologists	5	7	14	15	+0	+7	+96.8%	+10	+217.6%	15
H&SC, Other	12	10	8	9	+1	-1	-10.9%	-4	-29.8%	10
<b>Health &amp; Social Care Professionals</b>	<b>82</b>	<b>91</b>	<b>109</b>	<b>112</b>	<b>+3</b>	<b>+21</b>	<b>+23.6%</b>	<b>+29</b>	<b>+35.7%</b>	<b>126</b>
Management (VIII & above)	14	17	13	15	+1	-2	-11.5%	+1	+5.0%	15
Administrative/ Supervisory (V to VII)	28	34	52	54	+2	+20	+57.3%	+26	+94.8%	57
Clerical (III & IV)	50	53	51	57	+6	+4	+8.4%	+7	+14.9%	65
<b>Management &amp; Administrative</b>	<b>91</b>	<b>103</b>	<b>116</b>	<b>126</b>	<b>+9</b>	<b>+22</b>	<b>+21.4%</b>	<b>+34</b>	<b>+37.5%</b>	<b>137</b>
Support	49	49	32	31	-0	-18	-36.0%	-18	-36.3%	39
Maintenance/ Technical	6	6	4	4	0	-2	-33.3%	-2	-33.3%	4
<b>General Support</b>	<b>55</b>	<b>55</b>	<b>36</b>	<b>35</b>	<b>-0</b>	<b>-20</b>	<b>-35.7%</b>	<b>-20</b>	<b>-35.9%</b>	<b>43</b>
Health Care Assistants	761	775	883	882	-1	+107	+13.8%	+120	+15.8%	968
Home Help	13	14	14	15	+1	+1	+4.9%	+1	+8.8%	27
Care, other	37	41	50	52	+1	+11	+26.9%	+15	+39.8%	55
<b>Patient &amp; Client Care</b>	<b>812</b>	<b>830</b>	<b>947</b>	<b>948</b>	<b>+1</b>	<b>+118</b>	<b>+14.3%</b>	<b>+136</b>	<b>+16.8%</b>	<b>1,050</b>

## CHO 2

Oct 2022	WTE Dec 2019	WTE Dec 2020	WTE Sep 2022	WTE Oct 2022	WTE change since Sep 22	WTE change since Dec 20	% change since Dec 20	WTE change since Dec 19	% change since Dec 19	No. Oct 2022
<b>Overall</b>	<b>1,497</b>	<b>1,516</b>	<b>1,582</b>	<b>1,606</b>	<b>+24</b>	<b>+90</b>	<b>+6.0%</b>	<b>+109</b>	<b>+7.3%</b>	<b>1,969</b>
Consultants	3	3	3	3	0					4
Registrars	2	2	1	1	0	-1	-50.0%	-1	-50.0%	1
SHO/ Interns			1	1	0	+1	-100.0%	+1	-100.0%	1
Medical/ Dental, other	1	1	1	1	0	-0	-5.0%	-0	-5.0%	1
<b>Medical &amp; Dental</b>	<b>6</b>	<b>6</b>	<b>6</b>	<b>6</b>		<b>-0</b>	<b>-0.8%</b>	<b>-0</b>	<b>-0.8%</b>	<b>7</b>
Nurse/ Midwife Manager	77	78	75	74	-1	-4	-4.5%	-3	-3.9%	84
Nurse/ Midwife Specialist & AN/MP	6	6	6	6	0	+1	+13.1%	+1	+10.1%	7
Staff Nurse/ Staff Midwife	165	169	165	166	+1	-3	-1.9%	+1	+0.3%	199
<i>Pre-registration Nurse Intern (COVID-19)</i>		1				-1	-100.0%		-100.0%	
Nursing/ Midwifery Student		1				-1	-100.0%		-100.0%	
<b>Nursing &amp; Midwifery</b>	<b>249</b>	<b>253</b>	<b>247</b>	<b>247</b>	<b>+0</b>	<b>-7</b>	<b>-2.6%</b>	<b>-2</b>	<b>-0.8%</b>	<b>290</b>
Therapy Professions	41	34	41	47	+6	+13	+38.0%	+6	+13.3%	58
Social Care	222	243	274	275	+1	+31	+12.8%	+53	+23.7%	335
Social Workers	26	26	28	27	-1	+1	+2.9%	+1	+2.1%	33
Psychologists	16	14	18	18	-1	+3	+22.7%	+2	+10.7%	21
H&SC, Other	16	12	12	12	+0	+0	+1.1%	-4	-25.9%	17
<b>Health &amp; Social Care Professionals</b>	<b>321</b>	<b>329</b>	<b>372</b>	<b>377</b>	<b>+5</b>	<b>+48</b>	<b>+14.6%</b>	<b>+56</b>	<b>+17.6%</b>	<b>464</b>
Management (VIII & above)	16	16	17	17	+0	+1	+6.7%	+1	+6.0%	17
Administrative/ Supervisory (V to VII)	40	44	62	62	+0	+18	+39.8%	+22	+53.7%	66
Clerical (III & IV)	50	50	49	53	+4	+3	+6.5%	+4	+7.4%	65
<b>Management &amp; Administrative</b>	<b>106</b>	<b>110</b>	<b>128</b>	<b>132</b>	<b>+5</b>	<b>+22</b>	<b>+19.9%</b>	<b>+26</b>	<b>+24.9%</b>	<b>148</b>
Support	45	43	46	49	+4	+6	+14.8%	+5	+10.5%	83
Maintenance/ Technical	13	13	13	13	0	+0	+3.5%	+0	+2.5%	15
<b>General Support</b>	<b>58</b>	<b>56</b>	<b>59</b>	<b>63</b>	<b>+4</b>	<b>+7</b>	<b>+12.2%</b>	<b>+5</b>	<b>+8.7%</b>	<b>98</b>
Health Care Assistants	623	625	636	643	+7	+18	+2.8%	+19	+3.1%	792
Care, other	134	136	134	138	+4	+2	+1.8%	+4	+2.9%	170
<b>Patient &amp; Client Care</b>	<b>757</b>	<b>761</b>	<b>770</b>	<b>781</b>	<b>+11</b>	<b>+20</b>	<b>+2.7%</b>	<b>+23</b>	<b>+3.1%</b>	<b>962</b>

### CHO 3

Oct 2022	WTE Dec 2019	WTE Dec 2020	WTE Sep 2022	WTE Oct 2022	WTE change since Sep 22	WTE change since Dec 20	% change since Dec 20	WTE change since Dec 19	% change since Dec 19	No. Oct 2022
<b>Overall</b>	<b>1,823</b>	<b>1,947</b>	<b>1,980</b>	<b>1,979</b>	<b>-1</b>	<b>+31</b>	<b>+1.6%</b>	<b>+155</b>	<b>+8.5%</b>	<b>2,346</b>
Consultants	1	2	0	0	+0	-2	-88.5%	-1	-78.0%	1
Medical/ Dental, other	1	1	0	0	0	-0	-51.6%	-0	-51.6%	1
<b>Medical &amp; Dental</b>	<b>2</b>	<b>3</b>	<b>1</b>	<b>1</b>	<b>+0</b>	<b>-2</b>	<b>-76.5%</b>	<b>-1</b>	<b>-65.3%</b>	<b>2</b>
Nurse/ Midwife Manager	76	75	78	79	+1	+4	+5.0%	+3	+3.7%	81
Nurse/ Midwife Specialist & AN/MP	13	10	11	11	-0	+0	+3.4%	-2	-15.2%	12
Staff Nurse/ Staff Midwife	247	271	256	256	-1	-15	-5.6%	+8	+3.3%	281
Pre-registration Nurse Intern (COVID-19)		2				-2	-100.0%		-100.0%	
Pre-registration Nurse/ Midwife Intern	12		3		-3		-100.0%	-12	-100.0%	
Nursing/ Midwifery Student	12	2	3		-3	-2	-100.0%	-12	-100.0%	
Nursing/ Midwifery other	4	4	3	3	0	-1	-26.1%	-1	-26.1%	3
<b>Nursing &amp; Midwifery</b>	<b>351</b>	<b>361</b>	<b>351</b>	<b>348</b>	<b>-3</b>	<b>-13</b>	<b>-3.7%</b>	<b>-3</b>	<b>-1.0%</b>	<b>377</b>
Therapy Professions	74	84	43	42	-1	-42	-50.2%	-32	-43.6%	46
Health Science/ Diagnostics		2	4	4	0	+2	+105.1%	+4	-100.0%	4
Social Care	241	284	274	271	-3	-13	-4.6%	+30	+12.5%	316
Social Workers	17	17	18	20	+2	+3	+16.3%	+4	+21.4%	23
Psychologists	16	20	20	20	-0	-1	-3.5%	+4	+23.2%	21
H&SC, Other	12	11	10	10	-1	-1	-12.3%	-2	-16.7%	14
<b>Health &amp; Social Care Professionals</b>	<b>359</b>	<b>419</b>	<b>369</b>	<b>366</b>	<b>-2</b>	<b>-52</b>	<b>-12.5%</b>	<b>+7</b>	<b>+2.0%</b>	<b>424</b>
Management (VIII & above)	7	8	12	12	+0	+4	+51.9%	+5	+74.3%	12
Administrative/ Supervisory (V to VII)	41	45	53	56	+3	+12	+25.7%	+16	+38.2%	58
Clerical (III & IV)	59	59	56	56	-0	-3	-4.4%	-3	-5.1%	61
<b>Management &amp; Administrative</b>	<b>107</b>	<b>111</b>	<b>121</b>	<b>124</b>	<b>+3</b>	<b>+13</b>	<b>+11.7%</b>	<b>+18</b>	<b>+16.5%</b>	<b>131</b>
Support	53	53	53	54	+2	+1	+1.7%	+1	+2.8%	63
Maintenance/ Technical	14	19	18	18	-0	-1	-7.3%	+4	+24.4%	20
<b>General Support</b>	<b>67</b>	<b>73</b>	<b>71</b>	<b>72</b>	<b>+2</b>	<b>-1</b>	<b>-0.7%</b>	<b>+5</b>	<b>+7.4%</b>	<b>83</b>
Health Care Assistants	764	800	864	861	-3	+61	+7.7%	+97	+12.6%	1,096
Care, other	173	181	204	207	+2	+25	+13.9%	+33	+19.3%	233
<b>Patient &amp; Client Care</b>	<b>937</b>	<b>981</b>	<b>1,068</b>	<b>1,068</b>	<b>-1</b>	<b>+87</b>	<b>+8.8%</b>	<b>+130</b>	<b>+13.9%</b>	<b>1,329</b>

## CHO 4

Oct 2022	WTE Dec 2019	WTE Dec 2020	WTE Sep 2022	WTE Oct 2022	WTE change since Sep 22	WTE change since Dec 20	% change since Dec 20	WTE change since Dec 19	% change since Dec 19	No. Oct 2022
<b>Overall</b>	<b>2,439</b>	<b>2,556</b>	<b>2,646</b>	<b>2,632</b>	<b>-14</b>	<b>+77</b>	<b>+3.0%</b>	<b>+194</b>	<b>+7.9%</b>	<b>3,181</b>
Consultants	2	3	2	2	0	-1	-38.8%	+0	+2.0%	2
Medical/ Dental, other	0	0	0	0	0	+0	+12.1%	+0	+12.1%	1
<b>Medical &amp; Dental</b>	<b>2</b>	<b>3</b>	<b>2</b>	<b>2</b>		<b>-1</b>	<b>-32.9%</b>	<b>+0</b>	<b>+3.8%</b>	<b>3</b>
Nurse/ Midwife Manager	89	91	100	100	+0	+9	+10.2%	+11	+12.0%	117
Nurse/ Midwife Specialist & AN/MP	13	14	13	13	+0	-2	-12.8%	-1	-6.4%	14
Staff Nurse/ Staff Midwife	309	312	307	298	-9	-14	-4.5%	-11	-3.5%	362
<i>Pre-registration Nurse Intern (COVID-19)</i>		8				-8	-100.0%		-100.0%	
<i>Pre-registration Nurse/ Midwife Intern</i>	6		12	12	-0	+12	-100.0%	+6	+92.8%	24
<i>Nursing/ Midwifery awaiting registration</i>	1	2				-2	-100.0%	-1	-100.0%	
Nursing/ Midwifery Student	7	10	12	12	-0	+2	+21.2%	+5	+65.3%	24
Nursing/ Midwifery other	1		1	1	0	+1	-100.0%	+0	+96.1%	1
<b>Nursing &amp; Midwifery</b>	<b>419</b>	<b>427</b>	<b>432</b>	<b>423</b>	<b>-9</b>	<b>-4</b>	<b>-0.8%</b>	<b>+4</b>	<b>+1.0%</b>	<b>518</b>
Therapy Professions	108	104	99	103	+4	-0	-0.1%	-4	-4.1%	127
Social Care	227	238	250	252	+3	+14	+5.8%	+26	+11.4%	291
Social Workers	27	27	28	30	+2	+3	+11.2%	+3	+11.2%	36
Psychologists	35	36	33	32	-1	-4	-12.2%	-3	-9.1%	37
H&SC, Other	8	10	6	7	+0	-4	-35.0%	-2	-21.0%	7
<b>Health &amp; Social Care Professionals</b>	<b>405</b>	<b>415</b>	<b>416</b>	<b>424</b>	<b>+8</b>	<b>+9</b>	<b>+2.1%</b>	<b>+19</b>	<b>+4.8%</b>	<b>498</b>
Management (VIII & above)	22	22	22	22	-0	+0	+0.2%	+0	+1.0%	24
Administrative/ Supervisory (V to VII)	53	58	63	69	+5	+11	+18.9%	+15	+28.3%	73
Clerical (III & IV)	84	90	95	93	-3	+3	+3.7%	+9	+10.4%	122
<b>Management &amp; Administrative</b>	<b>160</b>	<b>170</b>	<b>181</b>	<b>184</b>	<b>+3</b>	<b>+14</b>	<b>+8.4%</b>	<b>+24</b>	<b>+15.1%</b>	<b>219</b>
Support	141	139	139	140	+1	+1	+0.8%	-1	-1.0%	245
Maintenance/ Technical	10	12	13	10	-3	-2	-18.5%	-0	-3.3%	13
<b>General Support</b>	<b>151</b>	<b>151</b>	<b>152</b>	<b>149</b>	<b>-2</b>	<b>-1</b>	<b>-0.8%</b>	<b>-2</b>	<b>-1.1%</b>	<b>258</b>
Health Care Assistants	995	1,058	1,132	1,106	-26	+48	+4.5%	+111	+11.2%	1,288
Care, other	307	332	331	344	+13	+12	+3.5%	+36	+11.9%	397
<b>Patient &amp; Client Care</b>	<b>1,302</b>	<b>1,390</b>	<b>1,463</b>	<b>1,450</b>	<b>-13</b>	<b>+59</b>	<b>+4.3%</b>	<b>+148</b>	<b>+11.3%</b>	<b>1,685</b>



## CHO 5

Oct 2022	WTE Dec 2019	WTE Dec 2020	WTE Sep 2022	WTE Oct 2022	WTE change since Sep 22	WTE change since Dec 20	% change since Dec 20	WTE change since Dec 19	% change since Dec 19	No. Oct 2022
<b>Overall</b>	<b>1,505</b>	<b>1,563</b>	<b>1,665</b>	<b>1,653</b>	<b>-12</b>	<b>+90</b>	<b>+5.8%</b>	<b>+148</b>	<b>+9.8%</b>	<b>1,965</b>
Consultants	1	1	1	1	-0	+0	+20.3%	-0	-6.3%	1
<b>Medical &amp; Dental</b>	<b>1</b>	<b>1</b>	<b>1</b>	<b>1</b>	<b>-0</b>	<b>+0</b>	<b>+20.3%</b>	<b>-0</b>	<b>-6.3%</b>	<b>1</b>
Nurse/ Midwife Manager	66	70	74	72	-2	+2	+3.2%	+7	+10.0%	75
Nurse/ Midwife Specialist & AN/MP	2	2	3	3	-0	+1	+35.0%	+1	+46.5%	3
Staff Nurse/ Staff Midwife	170	168	156	156	+1	-12	-7.1%	-14	-8.1%	179
Public Health Nurse	5	6	10	10	-1	+4	+62.3%	+4	+80.6%	12
<i>Pre-registration Nurse Intern (COVID-19)</i>		1				-1	-100.0%		-100.0%	
<i>Pre-registration Nurse/ Midwife Intern</i>			8	2	-6	+2	-100.0%	+2	-100.0%	6
<i>Nursing/ Midwifery awaiting registration</i>	2						-100.0%	-2	-100.0%	
Nursing/ Midwifery Student	2	1	8	2	-6	+1	+137.0%	+1	+28.8%	6
Nursing/ Midwifery other			1	1	0	+1	-100.0%	+1	-100.0%	1
<b>Nursing &amp; Midwifery</b>	<b>245</b>	<b>247</b>	<b>252</b>	<b>244</b>	<b>-8</b>	<b>-3</b>	<b>-1.3%</b>	<b>-1</b>	<b>-0.3%</b>	<b>276</b>
Therapy Professions	63	65	64	62	-2	-3	-4.5%	-1	-1.3%	75
Social Care	154	143	159	156	-3	+13	+9.1%	+2	+1.3%	186
Social Workers	21	24	19	19	+0	-5	-20.7%	-2	-8.5%	21
Psychologists	14	19	20	20	-0	+1	+5.3%	+6	+43.1%	23
H&SC, Other	7	5	6	6	+0	+1	+19.3%	-1	-7.9%	9
<b>Health &amp; Social Care Professionals</b>	<b>259</b>	<b>256</b>	<b>268</b>	<b>264</b>	<b>-4</b>	<b>+7</b>	<b>+2.8%</b>	<b>+5</b>	<b>+1.9%</b>	<b>314</b>
Management (VIII & above)	11	13	17	18	+0	+5	+37.3%	+7	+60.6%	18
Administrative/ Supervisory (V to VII)	39	41	60	62	+2	+21	+51.4%	+23	+58.5%	64
Clerical (III & IV)	61	62	71	73	+1	+11	+17.6%	+12	+19.8%	87
<b>Management &amp; Administrative</b>	<b>110</b>	<b>115</b>	<b>149</b>	<b>152</b>	<b>+3</b>	<b>+37</b>	<b>+31.7%</b>	<b>+41</b>	<b>+37.5%</b>	<b>169</b>
Support	15	12	8	8	-0	-4	-30.6%	-7	-45.8%	12
Maintenance/ Technical	7	7	9	9	+0	+2	+27.3%	+2	+27.3%	10
<b>General Support</b>	<b>23</b>	<b>19</b>	<b>18</b>	<b>18</b>	<b>+0</b>	<b>-2</b>	<b>-8.6%</b>	<b>-5</b>	<b>-22.1%</b>	<b>22</b>
Health Care Assistants	671	732	762	757	-5	+25	+3.4%	+86	+12.8%	883
Home Help	53	40	31	29	-2	-11	-27.1%	-24	-45.7%	73
Care, other	144	153	186	190	+4	+37	+24.1%	+46	+32.1%	227
<b>Patient &amp; Client Care</b>	<b>868</b>	<b>924</b>	<b>978</b>	<b>976</b>	<b>-3</b>	<b>+51</b>	<b>+5.5%</b>	<b>+108</b>	<b>+12.4%</b>	<b>1,183</b>

## CHO 6

Oct 2022	WTE Dec 2019	WTE Dec 2020	WTE Sep 2022	WTE Oct 2022	WTE change since Sep 22	WTE change since Dec 20	% change since Dec 20	WTE change since Dec 19	% change since Dec 19	No. Oct 2022
<b>Overall</b>	<b>1,198</b>	<b>1,217</b>	<b>1,212</b>	<b>1,218</b>	<b>+6</b>	<b>+2</b>	<b>+0.1%</b>	<b>+20</b>	<b>+1.7%</b>	<b>1,387</b>
Consultants	3	3	3	3	0					3
Registrars			1	1	0	+1	-100.0%	+1	-100.0%	1
Medical/ Dental, other	1	1	1	1	0					1
<b>Medical &amp; Dental</b>	<b>4</b>	<b>4</b>	<b>5</b>	<b>5</b>		<b>+1</b>	<b>+25.0%</b>	<b>+1</b>	<b>+25.0%</b>	<b>5</b>
Nurse/ Midwife Manager	44	43	40	39	-0	-4	-9.2%	-4	-9.5%	43
Staff Nurse/ Staff Midwife	147	142	137	139	+2	-3	-2.3%	-8	-5.6%	154
<i>Nursing Education/Clinical</i>			1	1	0	+1	-100.0%	+1	-100.0%	1
Nursing/ Midwifery other			1	1	0	+1	-100.0%	+1	-100.0%	1
<b>Nursing &amp; Midwifery</b>	<b>191</b>	<b>186</b>	<b>177</b>	<b>179</b>	<b>+2</b>	<b>-6</b>	<b>-3.4%</b>	<b>-11</b>	<b>-6.0%</b>	<b>198</b>
Therapy Professions	42	42	27	26	-1	-16	-38.1%	-15	-36.9%	33
Social Care	334	361	383	390	+7	+29	+8.1%	+56	+16.6%	442
Social Workers	11	10	7	7	0	-3	-33.2%	-5	-40.9%	7
Psychologists	14	14	14	14	-0	+1	+4.3%	+1	+4.0%	17
H&SC, Other	2	1	1	1	+0	+0	+9.4%	-0	-23.5%	2
<b>Health &amp; Social Care Professionals</b>	<b>403</b>	<b>428</b>	<b>432</b>	<b>438</b>	<b>+6</b>	<b>+10</b>	<b>+2.4%</b>	<b>+36</b>	<b>+8.9%</b>	<b>501</b>
Management (VIII & above)	31	30	32	29	-3	-1	-2.5%	-1	-4.4%	30
Administrative/ Supervisory (V to VII)	53	54	64	62	-2	+8	+15.2%	+9	+16.7%	67
Clerical (III & IV)	54	56	58	59	+1	+3	+5.3%	+5	+8.9%	64
<b>Management &amp; Administrative</b>	<b>138</b>	<b>140</b>	<b>154</b>	<b>150</b>	<b>-4</b>	<b>+10</b>	<b>+7.4%</b>	<b>+12</b>	<b>+8.9%</b>	<b>161</b>
Support	23	26	19	19	-0	-6	-25.1%	-3	-15.4%	29
Maintenance/ Technical	7	5	7	8	+1	+3	+60.0%	+1	+18.5%	8
<b>General Support</b>	<b>29</b>	<b>31</b>	<b>26</b>	<b>27</b>	<b>+1</b>	<b>-3</b>	<b>-11.2%</b>	<b>-2</b>	<b>-7.6%</b>	<b>37</b>
Health Care Assistants	187	184	188	188	-1	+4	+2.2%	+1	+0.6%	216
Care, other	246	245	228	230	+2	-15	-5.9%	-16	-6.5%	269
<b>Patient &amp; Client Care</b>	<b>433</b>	<b>428</b>	<b>416</b>	<b>418</b>	<b>+2</b>	<b>-10</b>	<b>-2.4%</b>	<b>-15</b>	<b>-3.5%</b>	<b>485</b>

## CHO 7

Oct 2022	WTE Dec 2019	WTE Dec 2020	WTE Sep 2022	WTE Oct 2022	WTE change since Sep 22	WTE change since Dec 20	% change since Dec 20	WTE change since Dec 19	% change since Dec 19	No. Oct 2022
<b>Overall</b>	<b>2,982</b>	<b>3,103</b>	<b>3,344</b>	<b>3,356</b>	<b>+12</b>	<b>+253</b>	<b>+8.2%</b>	<b>+375</b>	<b>+12.6%</b>	<b>3,993</b>
Consultants	1	1				-1	-100.0%	-1	-100.0%	
Registrars	3	3	4	4	-0	+1	+33.3%	+1	+33.3%	6
SHO/ Interns	7	7	7	5	-2	-2	-28.6%	-2	-28.2%	10
Medical/ Dental, other	1	1				-1	-100.0%	-1	-100.0%	
<b>Medical &amp; Dental</b>	<b>12</b>	<b>12</b>	<b>11</b>	<b>9</b>	<b>-2</b>	<b>-3</b>	<b>-22.0%</b>	<b>-3</b>	<b>-21.7%</b>	<b>16</b>
Nurse/ Midwife Manager	122	118	142	149	+7	+30	+25.4%	+26	+21.7%	160
Nurse/ Midwife Specialist & AN/MP	5	4	5	6	+1	+2	+46.3%	+1	+23.0%	7
Staff Nurse/ Staff Midwife	374	378	401	409	+8	+31	+8.2%	+35	+9.3%	471
<i>Pre-registration Nurse/ Midwife Intern</i>			2	1	-1	+1	-100.0%	+1	-100.0%	1
<i>Nursing/ Midwifery awaiting registration</i>			3		-3		-100.0%		-100.0%	
Nursing/ Midwifery Student			5	1	-4	+1	-100.0%	+1	-100.0%	1
Nursing/ Midwifery other	1	2	4	4	+0	+2	+134.7%	+3	+604.0%	4
<b>Nursing &amp; Midwifery</b>	<b>502</b>	<b>502</b>	<b>557</b>	<b>568</b>	<b>+11</b>	<b>+66</b>	<b>+13.1%</b>	<b>+66</b>	<b>+13.1%</b>	<b>643</b>
Therapy Professions	122	138	152	154	+2	+15	+11.2%	+32	+26.4%	169
Health Science/ Diagnostics	3	3	3	3	+0	+0	+5.3%	+0	+5.3%	4
Social Care	360	389	452	452	-0	+63	+16.1%	+91	+25.3%	505
Social Workers	33	32	41	42	+0	+10	+31.2%	+8	+24.8%	48
Psychologists	28	32	35	35	-0	+3	+8.8%	+7	+25.6%	39
Pharmacy	5	4	6	5	-0	+1	+26.6%	+0	+6.7%	8
H&SC, Other	2	2	2	2	0					2
<b>Health &amp; Social Care Professionals</b>	<b>553</b>	<b>600</b>	<b>691</b>	<b>692</b>	<b>+1</b>	<b>+92</b>	<b>+15.4%</b>	<b>+139</b>	<b>+25.2%</b>	<b>775</b>
Management (VIII & above)	32	43	47	49	+2	+6	+14.6%	+17	+52.9%	49
Administrative/ Supervisory (V to VII)	79	92	105	105	-1	+13	+14.1%	+26	+32.6%	112
Clerical (III & IV)	92	101	108	112	+3	+11	+10.4%	+20	+21.7%	133
<b>Management &amp; Administrative</b>	<b>203</b>	<b>236</b>	<b>261</b>	<b>265</b>	<b>+5</b>	<b>+30</b>	<b>+12.6%</b>	<b>+63</b>	<b>+30.9%</b>	<b>294</b>
Support	167	155	158	162	+4	+7	+4.4%	-5	-2.8%	231
Maintenance/ Technical	28	33	29	23	-6	-9	-28.5%	-5	-17.7%	26
<b>General Support</b>	<b>195</b>	<b>188</b>	<b>187</b>	<b>186</b>	<b>-2</b>	<b>-2</b>	<b>-1.3%</b>	<b>-10</b>	<b>-4.9%</b>	<b>257</b>
Health Care Assistants	1,112	1,146	1,227	1,227	-0	+80	+7.0%	+114	+10.3%	1,461
Home Help	19	17	16	15	-1	-2	-13.8%	-5	-23.8%	81
Care, other	386	403	395	395	+0	-7	-1.8%	+9	+2.4%	466
<b>Patient &amp; Client Care</b>	<b>1,518</b>	<b>1,566</b>	<b>1,638</b>	<b>1,637</b>	<b>-2</b>	<b>+71</b>	<b>+4.5%</b>	<b>+119</b>	<b>+7.9%</b>	<b>2,008</b>

## CHO 8

Oct 2022	WTE Dec 2019	WTE Dec 2020	WTE Sep 2022	WTE Oct 2022	WTE change since Sep 22	WTE change since Dec 20	% change since Dec 20	WTE change since Dec 19	% change since Dec 19	No. Oct 2022
<b>Overall</b>	<b>2,162</b>	<b>2,205</b>	<b>2,267</b>	<b>2,304</b>	<b>+37</b>	<b>+99</b>	<b>+4.5%</b>	<b>+142</b>	<b>+6.6%</b>	<b>2,792</b>
Consultants	1	1				-1	-100.0%	-1	-100.0%	
Registrars	2	1	1	1	0			-1	-50.0%	1
Medical/ Dental, other	1	1	1	1	0					1
<b>Medical &amp; Dental</b>	<b>4</b>	<b>3</b>	<b>2</b>	<b>2</b>		<b>-1</b>	<b>-33.3%</b>	<b>-2</b>	<b>-50.0%</b>	<b>2</b>
Nurse/ Midwife Manager	123	119	107	112	+5	-7	-6.2%	-11	-9.1%	123
Nurse/ Midwife Specialist & AN/MP	7	6	5	5	-0	-2	-26.8%	-3	-36.2%	5
Staff Nurse/ Staff Midwife	319	312	323	325	+2	+13	+4.1%	+6	+1.9%	378
Public Health Nurse	1	1	1	1	0	-0	-1.0%			1
<i>Pre-registration Nurse Intern (COVID-19)</i>		4				-4	-100.0%		-100.0%	
<i>Pre-registration Nurse/ Midwife Intern</i>			13		-13		-100.0%		-100.0%	
<i>Nursing/ Midwifery awaiting registration</i>			1	2	+2	+2	-100.0%	+2	-100.0%	3
Nursing/ Midwifery Student		4	14	2	-12	-2	-40.5%	+2	-100.0%	3
Nursing/ Midwifery other	5	7	6	5	-1	-1	-18.1%	-0	-0.9%	6
<b>Nursing &amp; Midwifery</b>	<b>455</b>	<b>449</b>	<b>456</b>	<b>450</b>	<b>-6</b>	<b>+1</b>	<b>+0.2%</b>	<b>-5</b>	<b>-1.2%</b>	<b>516</b>
Therapy Professions	92	98	72	93	+20	-5	-5.6%	+1	+1.0%	113
Health Science/ Diagnostics	2	2	2	2	0					2
Social Care	361	380	407	406	-0	+27	+7.0%	+46	+12.6%	493
Social Workers	24	24	22	23	+1	-1	-3.4%	-1	-2.7%	27
Psychologists	25	22	24	29	+4	+6	+26.9%	+4	+14.6%	31
H&SC, Other	7	6	7	8	+1	+2	+33.2%	+1	+18.4%	9
<b>Health &amp; Social Care Professionals</b>	<b>510</b>	<b>533</b>	<b>535</b>	<b>561</b>	<b>+26</b>	<b>+28</b>	<b>+5.3%</b>	<b>+51</b>	<b>+10.0%</b>	<b>675</b>
Management (VIII & above)	9	13	18	18	-0	+4	+31.5%	+9	+100.3%	18
Administrative/ Supervisory (V to VII)	56	56	59	57	-1	+1	+1.5%	+1	+1.7%	61
Clerical (III & IV)	84	88	96	93	-3	+5	+5.7%	+8	+9.8%	113
<b>Management &amp; Administrative</b>	<b>149</b>	<b>157</b>	<b>172</b>	<b>167</b>	<b>-5</b>	<b>+10</b>	<b>+6.4%</b>	<b>+18</b>	<b>+12.1%</b>	<b>192</b>
Support	46	41	34	34	-0	-8	-18.9%	-13	-27.8%	43
Maintenance/ Technical	16	14	12	12	+0	-1	-10.7%	-4	-22.3%	13
<b>General Support</b>	<b>62</b>	<b>55</b>	<b>46</b>	<b>46</b>	<b>-0</b>	<b>-9</b>	<b>-16.9%</b>	<b>-16</b>	<b>-26.4%</b>	<b>56</b>
Health Care Assistants	844	872	926	947	+21	+75	+8.7%	+104	+12.3%	1,176
Home Help	22	23	22	21	-1	-2	-8.9%	-2	-7.1%	42
Care, other	115	113	108	110	+2	-4	-3.1%	-5	-4.3%	133
<b>Patient &amp; Client Care</b>	<b>981</b>	<b>1,008</b>	<b>1,056</b>	<b>1,078</b>	<b>+22</b>	<b>+70</b>	<b>+6.9%</b>	<b>+97</b>	<b>+9.9%</b>	<b>1,351</b>

## CHO 9

Oct 2022	WTE Dec 2019	WTE Dec 2020	WTE Sep 2022	WTE Oct 2022	WTE change since Sep 22	WTE change since Dec 20	% change since Dec 20	WTE change since Dec 19	% change since Dec 19	No. Oct 2022
<b>Overall</b>	<b>3,194</b>	<b>3,285</b>	<b>3,275</b>	<b>3,287</b>	<b>+12</b>	<b>+3</b>	<b>+0.1%</b>	<b>+94</b>	<b>+2.9%</b>	<b>3,880</b>
Consultants	13	11	13	13	-0	+1	+12.2%	+0	+1.4%	16
Registrars	6	2	4	4	-0	+2	+83.0%	-2	-39.0%	4
SHO/ Interns		2				-2	-100.0%		-100.0%	
Medical/ Dental, other	6	6	6	6	0	+0	+0.8%	+0	+0.8%	9
<b>Medical &amp; Dental</b>	<b>25</b>	<b>21</b>	<b>23</b>	<b>23</b>	<b>-1</b>	<b>+1</b>	<b>+5.1%</b>	<b>-2</b>	<b>-8.6%</b>	<b>29</b>
Nurse/ Midwife Manager	192	196	207	211	+4	+15	+7.5%	+19	+9.9%	226
Nurse/ Midwife Specialist & AN/MP	9	12	17	16	-1	+5	+39.8%	+8	+90.0%	18
Staff Nurse/ Staff Midwife	517	513	474	478	+4	-34	-6.7%	-39	-7.5%	560
<i>Pre-registration Nurse Intern (COVID-19)</i>		11				-11	-100.0%		-100.0%	
<i>Pre-registration Nurse/ Midwife Intern</i>	8	3				-3	-100.0%	-8	-100.0%	
<i>Nursing/ Midwifery awaiting registration</i>			6	3	-3	+3	-100.0%	+3	-100.0%	9
Nursing/ Midwifery Student	8	13	6	3	-3	-10	-75.3%	-5	-58.3%	9
Nursing/ Midwifery other	7	8	8	9	+1	+1	+12.3%	+2	+25.0%	10
<b>Nursing &amp; Midwifery</b>	<b>732</b>	<b>741</b>	<b>712</b>	<b>718</b>	<b>+5</b>	<b>-24</b>	<b>-3.2%</b>	<b>-15</b>	<b>-2.0%</b>	<b>823</b>
Therapy Professions	181	187	201	200	-1	+13	+7.2%	+19	+10.5%	226
Health Science/ Diagnostics	15	13	12	12	0	-1	-7.7%	-3	-20.0%	12
Social Care	689	740	791	791	-0	+51	+6.9%	+102	+14.8%	956
Social Workers	44	50	50	51	+1	+1	+2.7%	+7	+15.3%	59
Psychologists	53	64	53	52	-1	-12	-19.0%	-1	-1.7%	56
Pharmacy	2	2	2	2	0					2
H&SC, Other	19	18	13	13	+0	-5	-28.6%	-6	-31.1%	17
<b>Health &amp; Social Care Professionals</b>	<b>1,003</b>	<b>1,073</b>	<b>1,122</b>	<b>1,121</b>	<b>-1</b>	<b>+47</b>	<b>+4.4%</b>	<b>+118</b>	<b>+11.7%</b>	<b>1,328</b>
Management (VIII & above)	37	41	45	44	-1	+2	+5.2%	+6	+16.6%	44
Administrative/ Supervisory (V to VII)	88	100	126	132	+6	+32	+31.5%	+44	+50.5%	141
Clerical (III & IV)	125	126	139	137	-1	+11	+8.7%	+12	+9.5%	164
<b>Management &amp; Administrative</b>	<b>250</b>	<b>268</b>	<b>310</b>	<b>313</b>	<b>+3</b>	<b>+45</b>	<b>+16.7%</b>	<b>+62</b>	<b>+24.9%</b>	<b>349</b>
Support	196	145	139	139	+0	-6	-3.8%	-56	-28.8%	179
Maintenance/ Technical	22	23	20	20	-0	-3	-14.0%	-2	-10.1%	21
<b>General Support</b>	<b>218</b>	<b>168</b>	<b>159</b>	<b>159</b>	<b>+0</b>	<b>-9</b>	<b>-5.2%</b>	<b>-58</b>	<b>-26.9%</b>	<b>200</b>
Health Care Assistants	869	911	848	855	+7	-56	-6.2%	-14	-1.6%	1,038
Care, other	97	102	101	100	-1	-2	-1.6%	+3	+3.3%	113
<b>Patient &amp; Client Care</b>	<b>966</b>	<b>1,013</b>	<b>949</b>	<b>955</b>	<b>+6</b>	<b>-58</b>	<b>-5.7%</b>	<b>-11</b>	<b>-1.1%</b>	<b>1,151</b>

## other Community Services

Oct 2022	WTE Dec 2019	WTE Dec 2020	WTE Sep 2022	WTE Oct 2022	WTE change since Sep 22	WTE change since Dec 20	% change since Dec 20	WTE change since Dec 19	% change since Dec 19	No. Oct 2022
<b>Overall</b>	<b>5</b>	<b>6</b>	<b>6</b>	<b>6</b>		<b>+0</b>	<b>+0.8%</b>	<b>+1</b>	<b>+21.2%</b>	<b>6</b>
Management (VIII & above)	1	1	1	1	0					1
Administrative/ Supervisory (V to VII)	2	3	3	3	0			+1	+50.0%	3
Clerical (III & IV)	2	2	2	2	0	+0	+2.6%	+0	+2.6%	2
<b>Management &amp; Administrative</b>	<b>5</b>	<b>6</b>	<b>6</b>	<b>6</b>		<b>+0</b>	<b>+0.8%</b>	<b>+1</b>	<b>+21.2%</b>	<b>6</b>

## Social Care Disability Services Employment by Grade Group: Oct 2022

Oct 2022	WTE Dec 2019	WTE Dec 2020	WTE Sep 2022	WTE Oct 2022	WTE change since Sep 22	WTE change since Dec 20	% change since Dec 20	WTE change since Dec 19	% change since Dec 19	No. Oct 2022
<b>Overall</b>	<b>18,303</b>	<b>18,944</b>	<b>19,656</b>	<b>19,727</b>	<b>+70</b>	<b>+782</b>	<b>+4.1%</b>	<b>+1,424</b>	<b>+7.8%</b>	<b>23,406</b>
Consultant Paediatrics	3	3	3	3	-1	-1	-17.0%	-1	-17.0%	3
Consultant Psychiatry	21	21	19	19	+0	-2	-10.1%	-2	-7.9%	24
<b>Consultants</b>	<b>24</b>	<b>24</b>	<b>22</b>	<b>22</b>	<b>-0</b>	<b>-3</b>	<b>-11.0%</b>	<b>-2</b>	<b>-9.1%</b>	<b>27</b>
Registrar	7	3	6	7	+1	+4	+125.0%	-0	-3.6%	8
Senior Registrar	2	3	3	3	-0	-0	-10.7%	+1	+34.0%	3
Specialist Registrar	4	2	2	1	-1	-1	-38.5%	-3	-69.3%	2
<b>Registrars</b>	<b>13</b>	<b>8</b>	<b>11</b>	<b>11</b>	<b>-0</b>	<b>+3</b>	<b>+33.3%</b>	<b>-2</b>	<b>-18.0%</b>	<b>13</b>
Senior House Officer	7	9	8	6	-2	-3	-33.3%	-1	-13.8%	11
<b>SHO/ Interns</b>	<b>7</b>	<b>9</b>	<b>8</b>	<b>6</b>	<b>-2</b>	<b>-3</b>	<b>-33.3%</b>	<b>-1</b>	<b>-13.8%</b>	<b>11</b>
Other Medical	14	14	13	13	+0	-1	-10.1%	-2	-10.6%	20
<b>Medical/ Dental, other</b>	<b>14</b>	<b>14</b>	<b>13</b>	<b>13</b>	<b>+0</b>	<b>-1</b>	<b>-10.1%</b>	<b>-2</b>	<b>-10.6%</b>	<b>20</b>
<b>Medical &amp; Dental</b>	<b>58</b>	<b>56</b>	<b>53</b>	<b>51</b>	<b>-2</b>	<b>-4</b>	<b>-8.0%</b>	<b>-7</b>	<b>-12.0%</b>	<b>71</b>
Clinical Nurse/ Midwife Manager	811	814	842	854	+12	+40	+4.9%	+43	+5.3%	930
Director Nursing/Midwifery, Assistant	41	46	44	43	-1	-3	-6.6%	+2	+4.6%	44
Director of Nursing/Midwifery	42	37	46	47	+2	+11	+28.7%	+5	+12.6%	50
<b>Nurse/ Midwife Manager</b>	<b>894</b>	<b>897</b>	<b>931</b>	<b>944</b>	<b>+13</b>	<b>+47</b>	<b>+5.3%</b>	<b>+50</b>	<b>+5.7%</b>	<b>1,024</b>
Advanced Nurse/ Midwife Practitioner	2	8	9	10	+1	+2	+24.8%	+8	+399.0%	10
Clinical Nurse/ Midwife Specialist	60	56	60	58	-1	+2	+4.4%	-1	-2.5%	65
<b>Nurse/ Midwife Specialist &amp; AN/MP</b>	<b>62</b>	<b>64</b>	<b>68</b>	<b>68</b>	<b>+0</b>	<b>+4</b>	<b>+6.9%</b>	<b>+6</b>	<b>+10.5%</b>	<b>75</b>
Staff Nurse [Psychiatric]	83	53	107	61	-46	+8	+15.6%	-23	-27.1%	74
Staff Nurses [General/ Children's]	892	752	846	778	-68	+26	+3.4%	-114	-12.8%	886
Staff Nurse [Intellectual Disability]	1,597	1,788	1,595	1,720	+125	-68	-3.8%	+123	+7.7%	1,997
<b>Staff Nurse/ Staff Midwife</b>	<b>2,572</b>	<b>2,593</b>	<b>2,548</b>	<b>2,559</b>	<b>+11</b>	<b>-34</b>	<b>-1.3%</b>	<b>-14</b>	<b>-0.5%</b>	<b>2,957</b>
<b>Public Health Nurse</b>	<b>6</b>	<b>7</b>	<b>12</b>	<b>12</b>	<b>-1</b>	<b>+5</b>	<b>+67.9%</b>	<b>+5</b>	<b>+84.2%</b>	<b>14</b>
Pre-registration Nurse Intern (COVID-19)		32				-32	-100.0%		-100.0%	
Pre-registration Nurse/ Midwife Intern	28	3	54	21	-34	+18	+732.4%	-7	-26.3%	53
Nursing/ Midwifery awaiting registration	14	13	10	6	-4	-7	-56.8%	-8	-59.5%	12
<b>Nursing/ Midwifery Student</b>	<b>42</b>	<b>47</b>	<b>64</b>	<b>26</b>	<b>-38</b>	<b>-21</b>	<b>-44.1%</b>	<b>-16</b>	<b>-37.2%</b>	<b>65</b>
Nursing Education/Clinical	21	23	26	27	+1	+4	+17.8%	+6	+26.8%	30
Other Nursing/ Midwifery	1	1	1	1						1
<b>Nursing/ Midwifery other</b>	<b>22</b>	<b>24</b>	<b>27</b>	<b>28</b>	<b>+1</b>	<b>+4</b>	<b>+17.0%</b>	<b>+6</b>	<b>+25.6%</b>	<b>31</b>
<b>Nursing &amp; Midwifery</b>	<b>3,599</b>	<b>3,632</b>	<b>3,651</b>	<b>3,637</b>	<b>-14</b>	<b>+5</b>	<b>+0.1%</b>	<b>+39</b>	<b>+1.1%</b>	<b>4,166</b>
Dietitians	18	16	18	22	+4	+6	+35.9%	+4	+20.8%	27
Occupational Therapists	264	279	282	295	+13	+16	+5.8%	+31	+11.6%	335
Physiotherapists	189	193	188	195	+7	+2	+1.2%	+6	+3.2%	231
Speech & Language Therapists	293	307	273	275	+2	-33	-10.6%	-18	-6.2%	322
<b>Therapy Professions</b>	<b>765</b>	<b>795</b>	<b>761</b>	<b>787</b>	<b>+26</b>	<b>-8</b>	<b>-1.0%</b>	<b>+22</b>	<b>+2.9%</b>	<b>915</b>
Clinical Engineering	13	13	14	14		+1	+8.1%	+1	+7.7%	14
Medical Science	4	4	4	4						4
Phlebotomists	1						-100.0%	-1	-100.0%	
Radiographers	1	1	1	1	+0	+0	+16.0%	+0	+16.0%	2
Respiratory Physiologists	1	2	2	2				+1	+100.0%	2
<b>Health Science/ Diagnostics</b>	<b>20</b>	<b>20</b>	<b>21</b>	<b>21</b>	<b>+0</b>	<b>+1</b>	<b>+6.1%</b>	<b>+1</b>	<b>+5.8%</b>	<b>22</b>
<b>Social Care</b>	<b>2,595</b>	<b>2,789</b>	<b>3,000</b>	<b>3,006</b>	<b>+6</b>	<b>+217</b>	<b>+7.8%</b>	<b>+411</b>	<b>+15.8%</b>	<b>3,540</b>
<b>Social Workers</b>	<b>219</b>	<b>228</b>	<b>229</b>	<b>234</b>	<b>+5</b>	<b>+5</b>	<b>+2.3%</b>	<b>+15</b>	<b>+6.7%</b>	<b>271</b>

Oct 2022	WTE Dec 2019	WTE Dec 2020	WTE Sep 2022	WTE Oct 2022	WTE change since Sep 22	WTE change since Dec 20	% change since Dec 20	WTE change since Dec 19	% change since Dec 19	No. Oct 2022
<b>Overall</b>	<b>18,303</b>	<b>18,944</b>	<b>19,656</b>	<b>19,727</b>	<b>+70</b>	<b>+782</b>	<b>+4.1%</b>	<b>+1,424</b>	<b>+7.8%</b>	<b>23,406</b>
<b>Psychologists</b>	<b>204</b>	<b>229</b>	<b>231</b>	<b>233</b>	<b>+2</b>	<b>+4</b>	<b>+1.6%</b>	<b>+29</b>	<b>+14.0%</b>	<b>260</b>
Pharmacists	5	5	7	6	-0	+1	+24.3%	+1	+18.4%	9
Pharmacy Technicians	2	1	1	1	-0	-0	-15.0%	-1	-43.3%	1
<b>Pharmacy</b>	<b>7</b>	<b>6</b>	<b>8</b>	<b>7</b>	<b>-0</b>	<b>+1</b>	<b>+17.8%</b>	<b>+0</b>	<b>+4.7%</b>	<b>10</b>
Counsellor Therapists	19	20	23	25	+2	+5	+27.1%	+6	+32.9%	29
Other Health & Social Care	51	45	29	30	+0	-15	-34.0%	-21	-41.1%	41
Play Therapists/ Specialists	15	11	13	13	-0	+2	+18.2%	-3	-16.8%	17
<b>H&amp;SC, Other</b>	<b>85</b>	<b>76</b>	<b>66</b>	<b>68</b>	<b>+2</b>	<b>-8</b>	<b>-10.5%</b>	<b>-17</b>	<b>-20.2%</b>	<b>87</b>
<b>Health &amp; Social Care Professionals</b>	<b>3,894</b>	<b>4,144</b>	<b>4,314</b>	<b>4,355</b>	<b>+41</b>	<b>+212</b>	<b>+5.1%</b>	<b>+461</b>	<b>+11.8%</b>	<b>5,105</b>
Executive Management	31	36	40	40	+0	+4	+12.2%	+10	+31.3%	41
Senior Management (VIII & GM)	149	168	185	183	-1	+15	+9.2%	+34	+23.2%	187
<b>Management (VIII &amp; above)</b>	<b>180</b>	<b>204</b>	<b>225</b>	<b>224</b>	<b>-1</b>	<b>+20</b>	<b>+9.7%</b>	<b>+44</b>	<b>+24.6%</b>	<b>228</b>
Middle Management (V-VII)	464	511	635	649	+14	+138	+27.0%	+185	+39.9%	690
Other Administrative	15	16	12	12	-0	-4	-24.1%	-3	-19.8%	12
<b>Administrative/ Supervisory (V to VII)</b>	<b>479</b>	<b>527</b>	<b>647</b>	<b>661</b>	<b>+14</b>	<b>+134</b>	<b>+25.5%</b>	<b>+182</b>	<b>+38.0%</b>	<b>702</b>
General Administrative (III & IV)	660	685	726	734	+8	+49	+7.1%	+74	+11.2%	876
<b>Clerical (III &amp; IV)</b>	<b>660</b>	<b>685</b>	<b>726</b>	<b>734</b>	<b>+8</b>	<b>+49</b>	<b>+7.1%</b>	<b>+74</b>	<b>+11.2%</b>	<b>876</b>
<b>Management &amp; Administrative</b>	<b>1,319</b>	<b>1,416</b>	<b>1,598</b>	<b>1,619</b>	<b>+21</b>	<b>+203</b>	<b>+14.3%</b>	<b>+300</b>	<b>+22.7%</b>	<b>1,806</b>
Catering	98	96	81	85	+4	-11	-11.8%	-13	-13.5%	102
Household Services	420	406	380	383	+4	-23	-5.6%	-36	-8.7%	563
Other Labs & Associated	1	1	1	1						1
Other Support	188	136	147	150	+2	+14	+10.4%	-38	-20.4%	233
Portering	28	24	18	18	+0	-6	-25.0%	-9	-33.9%	25
<b>Support</b>	<b>734</b>	<b>663</b>	<b>627</b>	<b>637</b>	<b>+10</b>	<b>-26</b>	<b>-3.9%</b>	<b>-97</b>	<b>-13.3%</b>	<b>924</b>
Maintenance	116	121	109	101	-8	-20	-16.5%	-15	-12.7%	113
Technical Services	8	11	17	17	+0	+6	+51.4%	+9	+107.4%	17
<b>Maintenance/ Technical</b>	<b>124</b>	<b>132</b>	<b>126</b>	<b>118</b>	<b>-8</b>	<b>-14</b>	<b>-10.8%</b>	<b>-6</b>	<b>-4.9%</b>	<b>130</b>
<b>General Support</b>	<b>858</b>	<b>795</b>	<b>753</b>	<b>755</b>	<b>+2</b>	<b>-40</b>	<b>-5.0%</b>	<b>-103</b>	<b>-12.0%</b>	<b>1,054</b>
Attendant/ Aide	230	247	186	181	-6	-66	-26.9%	-50	-21.7%	234
Health & Social Care Assistants	10	11	19	22	+3	+11	+100.4%	+13	+131.4%	27
Health Care Assistant/ Care Assistant	6,586	6,844	7,261	7,262	+1	+418	+6.1%	+676	+10.3%	8,657
<b>Health Care Assistants</b>	<b>6,826</b>	<b>7,102</b>	<b>7,466</b>	<b>7,465</b>	<b>-1</b>	<b>+362</b>	<b>+5.1%</b>	<b>+638</b>	<b>+9.4%</b>	<b>8,918</b>
<b>Home Help</b>	<b>109</b>	<b>94</b>	<b>83</b>	<b>79</b>	<b>-4</b>	<b>-15</b>	<b>-15.5%</b>	<b>-30</b>	<b>-27.1%</b>	<b>223</b>
Home Care Services	28	19	18	18	+0	-0	-0.5%	-10	-35.2%	24
Other Care Grades	175	221	263	266	+4	+45	+20.2%	+92	+52.4%	298
Pastoral Care	10	10	6	5	-1	-5	-52.5%	-6	-53.3%	6
Workshop Services	1,426	1,456	1,451	1,476	+25	+21	+1.4%	+50	+3.5%	1,735
<b>Care, other</b>	<b>1,639</b>	<b>1,706</b>	<b>1,738</b>	<b>1,766</b>	<b>+28</b>	<b>+60</b>	<b>+3.5%</b>	<b>+126</b>	<b>+7.7%</b>	<b>2,063</b>
<b>Patient &amp; Client Care</b>	<b>8,574</b>	<b>8,902</b>	<b>9,287</b>	<b>9,309</b>	<b>+23</b>	<b>+408</b>	<b>+4.6%</b>	<b>+735</b>	<b>+8.6%</b>	<b>11,204</b>



## Employment by WTE, Headcount, Gender, Full-Time /Part-Time etc.: Oct 2022

Social Care Disability Services Staff Group	WTE	Headcount	WTE: no.	% Male	% female	Male WTE: no.	Female WTE: no.	% Total Perm	% Male Perm	% Female Perm	% Total Full Time	% Total Part Time	% Male FT	% Female FT
<b>Overall</b>	<b>19,727</b>	<b>23,406</b>	<b>1.19</b>	<b>19.7%</b>	<b>80.3%</b>	<b>1.11</b>	<b>1.21</b>	<b>88.4%</b>	<b>87.2%</b>	<b>88.6%</b>	<b>58.3%</b>	<b>41.7%</b>	<b>69.0%</b>	<b>55.7%</b>
Consultant Paediatrics	3	3	1.19		100.0%		1.19	100.0%	100.0%	100.0%	66.7%	33.3%		66.7%
Consultant Psychiatry	19	24	1.25	29.2%	70.8%	1.06	1.35	79.2%	79.2%	88.2%	62.5%	37.5%	85.7%	52.9%
<b>Consultants</b>	<b>22</b>	<b>27</b>	<b>1.24</b>	<b>25.9%</b>	<b>74.1%</b>	<b>1.06</b>	<b>1.32</b>	<b>81.5%</b>	<b>57.1%</b>	<b>90.0%</b>	<b>63.0%</b>	<b>37.0%</b>	<b>85.7%</b>	<b>55.0%</b>
Registrar	7	8	1.19	50.0%	50.0%	1.13	1.25	12.5%	12.5%	0.0%	100.0%	0.0%	100.0%	100.0%
Senior Registrar	3	3	1.12	33.3%	66.7%	1.00	1.19	0.0%	0.0%	0.0%	100.0%	0.0%	100.0%	100.0%
Specialist Registrar	1	2	1.63	50.0%	50.0%	4.35	1.00	50.0%	50.0%	0.0%	100.0%	0.0%	100.0%	100.0%
<b>Registrars</b>	<b>11</b>	<b>13</b>	<b>1.22</b>	<b>46.2%</b>	<b>53.8%</b>	<b>1.26</b>	<b>1.19</b>	<b>15.4%</b>	<b>33.3%</b>	<b>0.0%</b>	<b>100.0%</b>	<b>0.0%</b>	<b>100.0%</b>	<b>100.0%</b>
<b>SHO/ Interns</b>	<b>6</b>	<b>11</b>	<b>1.83</b>	<b>18.2%</b>	<b>81.8%</b>	<b>1.13</b>	<b>2.13</b>	<b>54.5%</b>	<b>0.0%</b>	<b>66.7%</b>	<b>100.0%</b>	<b>0.0%</b>	<b>100.0%</b>	<b>100.0%</b>
<b>Medical/ Dental, other</b>	<b>13</b>	<b>20</b>	<b>1.55</b>	<b>40.0%</b>	<b>60.0%</b>	<b>1.26</b>	<b>1.84</b>	<b>90.0%</b>	<b>75.0%</b>	<b>100.0%</b>	<b>30.0%</b>	<b>70.0%</b>	<b>37.5%</b>	<b>25.0%</b>
<b>Medical &amp; Dental</b>	<b>51</b>	<b>71</b>	<b>1.39</b>	<b>32.4%</b>	<b>67.6%</b>	<b>1.18</b>	<b>1.51</b>	<b>67.6%</b>	<b>52.2%</b>	<b>75.0%</b>	<b>66.2%</b>	<b>33.8%</b>	<b>73.9%</b>	<b>62.5%</b>
Clinical Nurse/ Midwife Manager	854	930	1.09	13.4%	86.6%	1.03	1.10	93.1%	93.1%	93.0%	82.3%	17.7%	96.8%	80.0%
Director Nursing/Midwifery, Assistant	43	44	1.03	15.9%	84.1%	1.00	1.04	97.7%	97.7%	97.3%	95.5%	4.5%	100.0%	94.6%
Director of Nursing/Midwifery	47	50	1.05	12.0%	88.0%	1.00	1.06	92.0%	92.0%	90.9%	92.0%	8.0%	100.0%	90.9%
<b>Nurse/ Midwife Manager</b>	<b>944</b>	<b>1,024</b>	<b>1.08</b>	<b>13.5%</b>	<b>86.5%</b>	<b>1.02</b>	<b>1.09</b>	<b>93.3%</b>	<b>94.2%</b>	<b>93.1%</b>	<b>83.3%</b>	<b>16.7%</b>	<b>97.1%</b>	<b>81.2%</b>
Advanced Nurse/ Midwife Practitioner	10	10	1.00	20.0%	80.0%	1.00	1.00	90.0%	90.0%	87.5%	100.0%	0.0%	100.0%	100.0%
Clinical Nurse/ Midwife Specialist	58	65	1.11	4.6%	95.4%	1.00	1.12	98.5%	98.5%	98.4%	63.1%	36.9%	100.0%	61.3%
<b>Nurse/ Midwife Specialist &amp; AN/MP</b>	<b>68</b>	<b>75</b>	<b>1.10</b>	<b>6.7%</b>	<b>93.3%</b>	<b>1.00</b>	<b>1.10</b>	<b>97.3%</b>	<b>100.0%</b>	<b>97.1%</b>	<b>68.0%</b>	<b>32.0%</b>	<b>100.0%</b>	<b>65.7%</b>
Staff Nurse [Psychiatric]	61	74	1.22	20.3%	79.7%	1.19	1.22	77.0%	77.0%	78.0%	58.1%	41.9%	66.7%	55.9%
Staff Nurses [General/ Children's]	778	886	1.14	15.3%	84.7%	1.06	1.15	94.9%	94.9%	94.8%	71.0%	29.0%	86.0%	68.3%
Staff Nurse [Intellectual Disability]	1,720	1,997	1.16	9.8%	90.2%	1.08	1.17	95.5%	95.5%	95.4%	66.2%	33.8%	85.2%	64.1%
<b>Staff Nurse/ Staff Midwife</b>	<b>2,559</b>	<b>2,957</b>	<b>1.16</b>	<b>11.7%</b>	<b>88.3%</b>	<b>1.08</b>	<b>1.17</b>	<b>94.9%</b>	<b>95.1%</b>	<b>94.8%</b>	<b>67.4%</b>	<b>32.6%</b>	<b>84.7%</b>	<b>65.1%</b>
<b>Public Health Nurse</b>	<b>12</b>	<b>14</b>	<b>1.21</b>		<b>100.0%</b>		<b>1.21</b>	<b>100.0%</b>		<b>100.0%</b>	<b>64.3%</b>	<b>35.7%</b>		<b>64.3%</b>
Pre-registration Nurse/ Midwife Intern	21	53	2.55	1.9%	98.1%	2.00	2.56	0.0%	0.0%	0.0%	81.1%	18.9%	0.0%	82.7%
Nursing/ Midwifery awaiting registration	6	12	2.14	25.0%	75.0%	1.78	2.30	25.0%	25.0%	22.2%	83.3%	16.7%	66.7%	88.9%
<b>Nursing/ Midwifery Student</b>	<b>26</b>	<b>65</b>	<b>2.46</b>	<b>6.2%</b>	<b>93.8%</b>	<b>1.83</b>	<b>2.52</b>	<b>4.6%</b>	<b>25.0%</b>	<b>3.3%</b>	<b>81.5%</b>	<b>18.5%</b>	<b>50.0%</b>	<b>83.6%</b>
Nursing Education/Clinical	27	30	1.12	3.3%	96.7%	1.00	1.12	96.7%	96.7%	96.6%	66.7%	33.3%	100.0%	65.5%
Other Nursing/ Midwifery	1	1	1.00		100.0%		1.00	100.0%	100.0%	100.0%	100.0%	0.0%		100.0%
<b>Nursing/ Midwifery other</b>	<b>28</b>	<b>31</b>	<b>1.11</b>	<b>3.2%</b>	<b>96.8%</b>	<b>1.00</b>	<b>1.12</b>	<b>96.8%</b>	<b>100.0%</b>	<b>96.7%</b>	<b>67.7%</b>	<b>32.3%</b>	<b>100.0%</b>	<b>66.7%</b>

<b>Nursing &amp; Midwifery</b>	<b>3,637</b>	<b>4,166</b>	<b>1.15</b>	<b>11.9%</b>	<b>88.1%</b>	<b>1.06</b>	<b>1.16</b>	<b>93.1%</b>	<b>94.3%</b>	<b>93.0%</b>	<b>71.6%</b>	<b>28.4%</b>	<b>88.1%</b>	<b>69.3%</b>
Dietitians	22	27	1.21		100.0%		1.21	92.6%	92.6%	92.6%	63.0%	37.0%		63.0%
Occupational Therapists	295	335	1.14	6.9%	93.1%	1.08	1.14	94.9%	94.9%	95.2%	78.8%	21.2%	87.0%	78.2%
Physiotherapists	195	231	1.18	17.3%	82.7%	1.05	1.21	93.1%	93.1%	93.7%	65.8%	34.2%	87.5%	61.3%
Speech & Language Therapists	275	322	1.17	1.2%	98.8%	1.32	1.17	90.4%	90.4%	90.3%	71.1%	28.9%	75.0%	71.1%
<b>Therapy Professions</b>	<b>787</b>	<b>915</b>	<b>1.16</b>	<b>7.3%</b>	<b>92.7%</b>	<b>1.08</b>	<b>1.17</b>	<b>92.8%</b>	<b>91.0%</b>	<b>92.9%</b>	<b>72.3%</b>	<b>27.7%</b>	<b>86.6%</b>	<b>71.2%</b>
Clinical Engineering	14	14	1.00	92.9%	7.1%	1.00	1.00	78.6%	78.6%	100.0%	92.9%	7.1%	92.3%	100.0%
Medical Science	4	4	1.00	50.0%	50.0%	1.00	1.00	50.0%	50.0%	50.0%	100.0%	0.0%	100.0%	100.0%
Radiographers	1	2	1.72		100.0%		1.72	50.0%	50.0%	50.0%	50.0%	50.0%		50.0%
Respiratory Physiologists	2	2	1.00	100.0%		1.00		100.0%	100.0%		100.0%	0.0%	100.0%	
<b>Health Science/ Diagnostics</b>	<b>21</b>	<b>22</b>	<b>1.04</b>	<b>77.3%</b>	<b>22.7%</b>	<b>1.00</b>	<b>1.20</b>	<b>72.7%</b>	<b>76.5%</b>	<b>60.0%</b>	<b>90.9%</b>	<b>9.1%</b>	<b>94.1%</b>	<b>80.0%</b>
<b>Social Care</b>	<b>3,006</b>	<b>3,540</b>	<b>1.18</b>	<b>16.7%</b>	<b>83.3%</b>	<b>1.11</b>	<b>1.19</b>	<b>91.5%</b>	<b>90.4%</b>	<b>91.7%</b>	<b>49.2%</b>	<b>50.8%</b>	<b>62.4%</b>	<b>46.5%</b>
<b>Social Workers</b>	<b>234</b>	<b>271</b>	<b>1.16</b>	<b>16.6%</b>	<b>83.4%</b>	<b>1.09</b>	<b>1.18</b>	<b>94.1%</b>	<b>91.1%</b>	<b>94.7%</b>	<b>70.8%</b>	<b>29.2%</b>	<b>82.2%</b>	<b>68.6%</b>
<b>Psychologists</b>	<b>233</b>	<b>260</b>	<b>1.12</b>	<b>18.5%</b>	<b>81.5%</b>	<b>1.03</b>	<b>1.14</b>	<b>96.9%</b>	<b>97.9%</b>	<b>96.7%</b>	<b>78.1%</b>	<b>21.9%</b>	<b>89.6%</b>	<b>75.5%</b>
Pharmacists	6	9	1.44	11.1%	88.9%	2.04	1.39	100.0%	100.0%	100.0%	44.4%	55.6%	100.0%	37.5%
Pharmacy Technicians	1	1	1.18		100.0%		1.18	100.0%	100.0%	100.0%	100.0%	0.0%		100.0%
<b>Pharmacy</b>	<b>7</b>	<b>10</b>	<b>1.41</b>	<b>10.0%</b>	<b>90.0%</b>	<b>2.04</b>	<b>1.36</b>	<b>100.0%</b>	<b>100.0%</b>	<b>100.0%</b>	<b>50.0%</b>	<b>50.0%</b>	<b>100.0%</b>	<b>44.4%</b>
Counsellor Therapists	25	29	1.15	3.4%	96.6%	1.00	1.16	100.0%	100.0%	100.0%	58.6%	41.4%	100.0%	57.1%
Other Health & Social Care	30	41	1.38	12.2%	87.8%	1.05	1.44	92.7%	92.7%	91.7%	36.6%	63.4%	80.0%	30.6%
Play Therapists/ Specialists	13	17	1.32	17.6%	82.4%	1.42	1.30	82.4%	82.4%	78.6%	47.1%	52.9%	66.7%	42.9%
<b>H&amp;SC, Other</b>	<b>68</b>	<b>87</b>	<b>1.28</b>	<b>10.3%</b>	<b>89.7%</b>	<b>1.14</b>	<b>1.30</b>	<b>93.1%</b>	<b>100.0%</b>	<b>92.3%</b>	<b>46.0%</b>	<b>54.0%</b>	<b>77.8%</b>	<b>42.3%</b>
<b>Health &amp; Social Care</b>	<b>4,355</b>	<b>5,105</b>	<b>1.17</b>	<b>15.2%</b>	<b>84.8%</b>	<b>1.10</b>	<b>1.19</b>	<b>92.1%</b>	<b>90.7%</b>	<b>92.3%</b>	<b>56.1%</b>	<b>43.9%</b>	<b>68.3%</b>	<b>53.9%</b>
Executive Management	40	41	1.01	36.6%	63.4%	1.00	1.02	97.6%	97.6%	96.2%	100.0%	0.0%	100.0%	100.0%
Senior Management (VIII & GM)	183	187	1.02	32.6%	67.4%	1.00	1.03	94.7%	94.7%	94.4%	97.9%	2.1%	100.0%	96.8%
<b>Management (VIII &amp; above)</b>	<b>224</b>	<b>228</b>	<b>1.02</b>	<b>33.3%</b>	<b>66.7%</b>	<b>1.00</b>	<b>1.03</b>	<b>95.2%</b>	<b>96.1%</b>	<b>94.7%</b>	<b>98.2%</b>	<b>1.8%</b>	<b>100.0%</b>	<b>97.4%</b>
Middle Management (V-VII)	649	690	1.06	22.9%	77.1%	1.04	1.07	93.0%	93.0%	93.4%	84.9%	15.1%	94.9%	82.0%
Other Administrative	12	12	1.00	8.3%	91.7%	1.00	1.00	91.7%	91.7%	90.9%	100.0%	0.0%	100.0%	100.0%
<b>Administrative/ Supervisory (V to VII)</b>	<b>661</b>	<b>702</b>	<b>1.06</b>	<b>22.6%</b>	<b>77.4%</b>	<b>1.03</b>	<b>1.07</b>	<b>93.0%</b>	<b>91.8%</b>	<b>93.4%</b>	<b>85.2%</b>	<b>14.8%</b>	<b>95.0%</b>	<b>82.3%</b>
General Administrative (III & IV)	734	876	1.19	10.8%	89.2%	1.14	1.20	86.9%	86.9%	87.3%	59.2%	40.8%	76.8%	57.1%
<b>Clerical (III &amp; IV)</b>	<b>734</b>	<b>876</b>	<b>1.19</b>	<b>10.8%</b>	<b>89.2%</b>	<b>1.14</b>	<b>1.20</b>	<b>86.9%</b>	<b>83.2%</b>	<b>87.3%</b>	<b>59.2%</b>	<b>40.8%</b>	<b>76.8%</b>	<b>57.1%</b>
<b>Management &amp; Administrative</b>	<b>1,619</b>	<b>1,806</b>	<b>1.12</b>	<b>18.3%</b>	<b>81.7%</b>	<b>1.06</b>	<b>1.13</b>	<b>90.3%</b>	<b>90.3%</b>	<b>90.3%</b>	<b>74.3%</b>	<b>25.7%</b>	<b>90.9%</b>	<b>70.5%</b>
Catering	85	102	1.20	33.3%	66.7%	1.12	1.25	98.0%	98.0%	100.0%	57.8%	42.2%	82.4%	45.6%
Household Services	383	563	1.47	17.6%	82.4%	1.53	1.46	85.8%	85.8%	88.6%	35.3%	64.7%	56.6%	30.8%
Other Labs & Associated	1	1	1.00		100.0%		1.00	100.0%	100.0%	100.0%	100.0%	0.0%		100.0%
Other Support	150	233	1.56	54.5%	45.5%	1.33	1.96	88.8%	88.8%	100.0%	27.9%	72.1%	44.9%	7.5%

Portering	18	25	1.37	96.0%	4.0%	1.37	1.25	88.0%	88.0%	100.0%	44.0%	56.0%	45.8%	0.0%
<b>Support</b>	<b>637</b>	<b>924</b>	<b>1.45</b>	<b>30.7%</b>	<b>69.3%</b>	<b>1.36</b>	<b>1.49</b>	<b>88.0%</b>	<b>79.6%</b>	<b>91.7%</b>	<b>36.3%</b>	<b>63.7%</b>	<b>53.5%</b>	<b>28.6%</b>
Maintenance	101	113	1.11	95.6%	4.4%	1.12	1.10	95.6%	95.6%	100.0%	74.3%	25.7%	75.0%	60.0%
Technical Services	17	17	1.01	76.5%	23.5%	1.00	1.05	94.1%	94.1%	100.0%	94.1%	5.9%	100.0%	75.0%
<b>Maintenance/ Technical</b>	<b>118</b>	<b>130</b>	<b>1.10</b>	<b>93.1%</b>	<b>6.9%</b>	<b>1.10</b>	<b>1.08</b>	<b>95.4%</b>	<b>95.0%</b>	<b>100.0%</b>	<b>76.9%</b>	<b>23.1%</b>	<b>77.7%</b>	<b>66.7%</b>
<b>General Support</b>	<b>755</b>	<b>1,054</b>	<b>1.40</b>	<b>38.4%</b>	<b>61.6%</b>	<b>1.27</b>	<b>1.49</b>	<b>88.9%</b>	<b>84.2%</b>	<b>91.8%</b>	<b>41.3%</b>	<b>58.7%</b>	<b>60.7%</b>	<b>29.1%</b>
Attendant/ Aide	181	234	1.30	20.5%	79.5%	1.20	1.32	86.3%	86.3%	88.7%	49.6%	50.4%	68.8%	44.6%
Health & Social Care Assistants	22	27	1.22	14.8%	85.2%	1.07	1.25	77.8%	77.8%	78.3%	63.0%	37.0%	100.0%	56.5%
Health Care Assistant/ Care Assistant	7,262	8,657	1.19	23.3%	76.7%	1.11	1.22	84.5%	84.5%	84.1%	52.7%	47.3%	62.4%	49.8%
<b>Health Care Assistants</b>	<b>7,465</b>	<b>8,918</b>	<b>1.19</b>	<b>23.2%</b>	<b>76.8%</b>	<b>1.11</b>	<b>1.22</b>	<b>84.5%</b>	<b>85.4%</b>	<b>84.2%</b>	<b>52.7%</b>	<b>47.3%</b>	<b>62.7%</b>	<b>49.7%</b>
<b>Home Help</b>	<b>79</b>	<b>223</b>	<b>2.81</b>	<b>8.1%</b>	<b>91.9%</b>	<b>3.57</b>	<b>2.76</b>	<b>65.9%</b>	<b>61.1%</b>	<b>66.3%</b>	<b>2.7%</b>	<b>97.3%</b>	<b>0.0%</b>	<b>2.9%</b>
Home Care Services	18	24	1.30	12.5%	87.5%	1.03	1.35	70.8%	70.8%	76.2%	50.0%	50.0%	66.7%	47.6%
Other Care Grades	266	298	1.12	28.9%	71.1%	1.14	1.11	87.6%	87.6%	91.0%	75.8%	24.2%	79.1%	74.5%
Pastoral Care	5	6	1.24	50.0%	50.0%	1.27	1.21	66.7%	66.7%	100.0%	50.0%	50.0%	33.3%	66.7%
Workshop Services	1,476	1,735	1.18	23.3%	76.7%	1.10	1.20	87.6%	87.6%	87.7%	60.1%	39.9%	70.4%	56.9%
<b>Care, other</b>	<b>1,766</b>	<b>2,063</b>	<b>1.17</b>	<b>24.1%</b>	<b>75.9%</b>	<b>1.10</b>	<b>1.19</b>	<b>87.3%</b>	<b>85.1%</b>	<b>88.0%</b>	<b>62.2%</b>	<b>37.8%</b>	<b>71.6%</b>	<b>59.2%</b>
<b>Patient &amp; Client Care</b>	<b>9,309</b>	<b>11,204</b>	<b>1.20</b>	<b>23.1%</b>	<b>76.9%</b>	<b>1.11</b>	<b>1.23</b>	<b>84.6%</b>	<b>85.2%</b>	<b>84.5%</b>	<b>53.4%</b>	<b>46.6%</b>	<b>63.9%</b>	<b>50.3%</b>

## Employment by WTE, Headcount, Gender, Full-Time /Part-Time etc.: Oct 2022

Social Care Disability Services CHO	WTE	Headcount	WTE: no.	% Male	% female	Male WTE: no.	Female WTE: no.	% Total Perm	% Male Perm	% Female Perm	% Total Full Time	% Total Part Time	% Male FT	% Female FT
<b>Overall</b>	<b>19,727</b>	<b>23,406</b>	<b>1.19</b>	<b>19.7%</b>	<b>80.3%</b>	<b>1.11</b>	<b>1.21</b>	<b>88.4%</b>	<b>87.2%</b>	<b>88.6%</b>	<b>58.3%</b>	<b>41.7%</b>	<b>69.0%</b>	<b>55.7%</b>
CHO 1	1,684	1,887	1.12	20.5%	79.5%	1.06	1.14	92.1%	92.1%	92.3%	77.6%	22.4%	88.9%	74.7%
CHO 2	1,606	1,969	1.23	23.2%	76.8%	1.18	1.24	82.0%	82.0%	82.7%	46.8%	53.2%	52.1%	45.2%
CHO 3	1,979	2,346	1.19	13.6%	86.4%	1.13	1.19	85.3%	85.3%	85.7%	40.6%	59.4%	44.7%	39.9%
CHO 4	2,632	3,181	1.21	21.0%	79.0%	1.11	1.24	82.8%	82.8%	83.8%	68.6%	31.4%	76.0%	66.7%
CHO 5	1,653	1,965	1.19	20.4%	79.6%	1.14	1.20	86.9%	86.9%	87.1%	53.9%	46.1%	62.3%	51.7%
CHO 6	1,218	1,387	1.14	22.7%	77.3%	1.09	1.15	92.8%	92.8%	93.6%	65.6%	34.4%	78.7%	61.8%
CHO 7	3,356	3,993	1.19	22.5%	77.5%	1.11	1.21	88.4%	88.4%	88.4%	68.0%	32.0%	79.7%	64.6%
CHO 8	2,304	2,792	1.21	20.5%	79.5%	1.14	1.23	95.7%	95.7%	95.7%	46.5%	53.5%	51.7%	45.2%
CHO 9	3,287	3,880	1.18	15.4%	84.6%	1.08	1.20	89.9%	89.9%	89.7%	55.3%	44.7%	73.6%	52.0%
other Community Services	6	6	1.00	16.7%	83.3%	1.00	1.00	100.0%	100.0%	100.0%	83.3%	16.7%	100.0%	80.0%

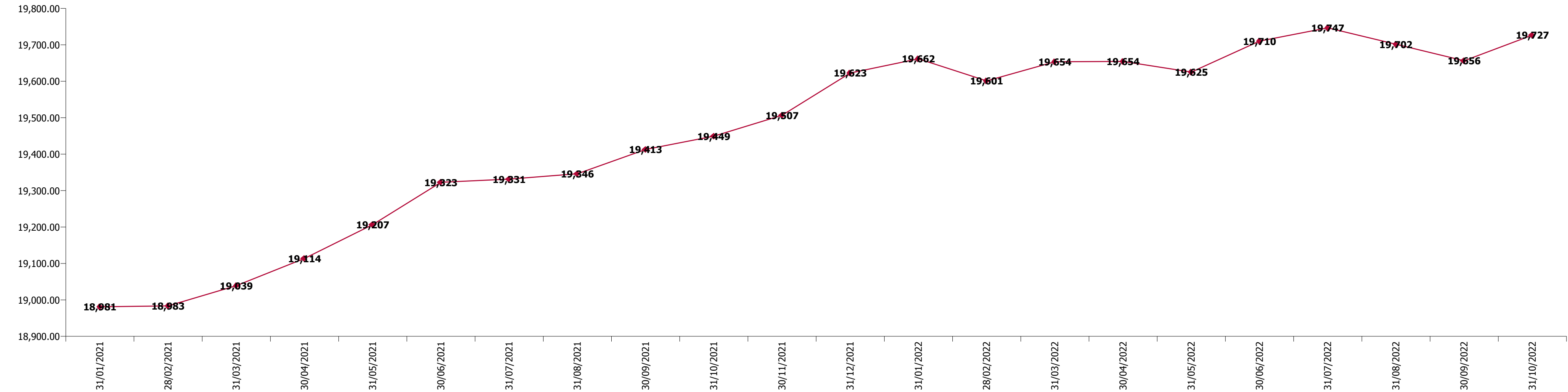
Summary Staff Movement: October 2022

Month-on-month  
Summary

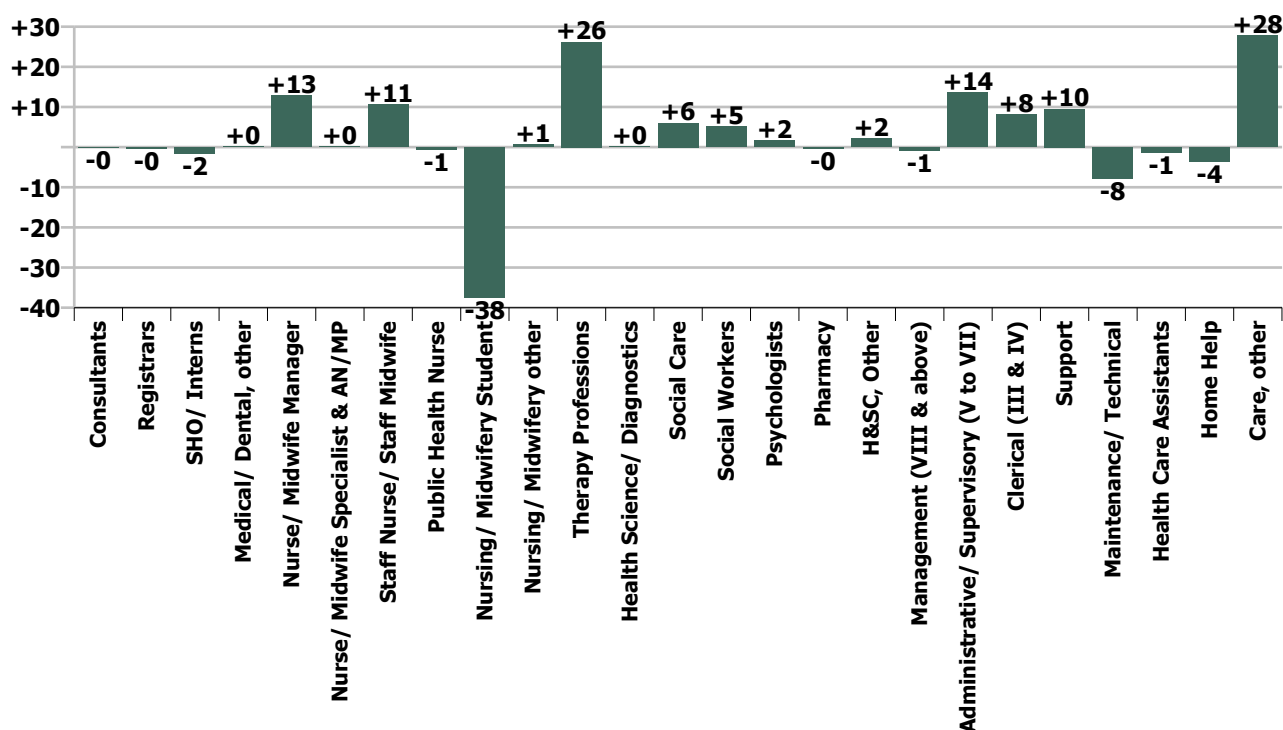
WTE change since Sep 22	% change since Sep 22	overall	Consultants	Registrars	SHO/ Interns	Medical/ Dental, other	Medical & Dental	Nurse/ Midwife Manager	Nurse/ Midwife Specialist & AN/MP	Staff Nurse/ Staff Midwife	Public Health Nurse	Nursing/ Midwifery Student	Nursing/ Midwifery other	Nursing & Midwifery	Therapy Professions	Health Science/ Diagnostics	Social Care	Social Workers	Psychologists	Pharmacy	H&SC, Other	Health & Social Care Professionals	Management (VIII & above)	Administrativ e/ Supervisory (V to VII)	Clerical (III & IV)	Management & Administrative	General Support	Health Care Assistants	Home Help	Care, other	Patient & Client Care
Overall	+0.4%	+70	-0	-0	-2	+0	-2	+13	+0	+11	-1	-38	+1	-14	+26	+0	+6	+5	+2	-0	+2	+41	-1	+14	+8	+21	+2	-1	-4	+28	+23
CHO 1	+0.4%	+6				+0	+0	+0	+0	+3		-10	+0	-7	-1		+2	+0	+0		+1	+3	+1	+2	+6	+9	-0	-1	+1	+1	+1
CHO 2	+1.5%	+24						-1		+1				+0	+6		+1	-1	-1		+0	+5	+0	+0	+4	+5	+4	+7		+4	+11
CHO 3	-0.1%	-1	+0				+0	+1	-0	-1		-3		-3	-1		-3	+2	-0		-1	-2	+0	+3	-0	+3	+2	-3		+2	-1
CHO 4	-0.5%	-14						+0	+0	-9		-0		-9	+4		+3	+2	-1		+0	+8	-0	+5	-3	+3	-2	-26		+13	-13
CHO 5	-0.7%	-12	-0				-0	-2	-0	+1	-1	-6		-8	-2		-3	+0	-0		+0	-4	+0	+2	+1	+3	+0	-5	-2	+4	-3
CHO 6	+0.5%	+6						-0		+2				+2	-1		+7		-0		+0	+6	-3	-2	+1	-4	+1	-1		+2	+2
CHO 7	+0.4%	+12		-0	-2		-2	+7	+1	+8		-4	+0	+11	+2	+0	-0	+0	-0	-0		+1	+2	-1	+3	+5	-2	-0	-1	+0	-2
CHO 8	+1.6%	+37						+5	-0	+2		-12	-1	-6	+20		-0	+1	+4		+1	+26	-0	-1	-3	-5	-0	+21	-1	+2	+22
CHO 9	+0.4%	+12	-0	-0			-1	+4	-1	+4		-3	+1	+5	-1		-0	+1	-1		+0	-1	-1	+6	-1	+3	+0	+7		-1	+6
other Community Services																															
	+0.4%		-1.2%	-3.2%	-21.8%	+1.1%	-4.0%	+1.4%	+0.1%	+0.4%	-4.9%	-58.7%	+2.4%	-0.4%	+3.4%	+0.8%	+0.2%	+2.2%	+0.7%	-6.0%	+3.3%	+0.9%	-0.4%	+2.1%	+1.1%	+1.3%	+0.2%	-0.0%	-4.3%	+1.6%	+0.2%

Year-on-year Summary

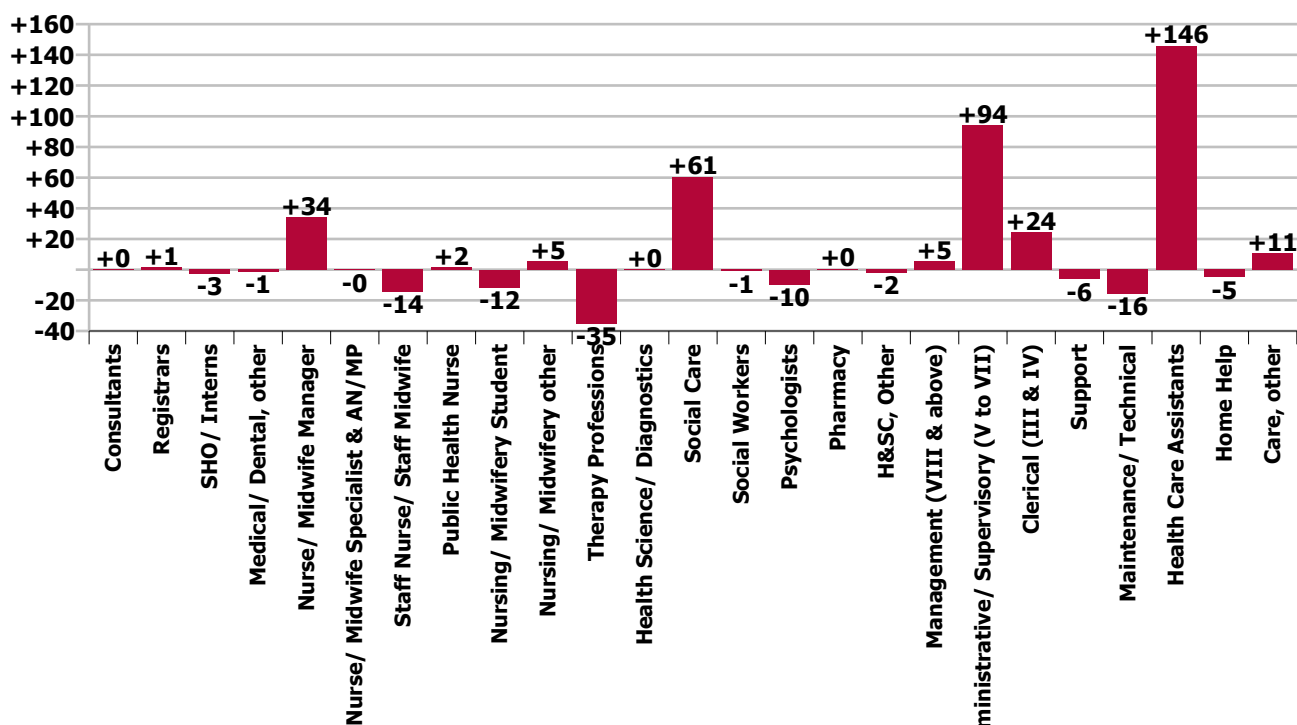
WTE change since Oct 21	% change since Oct 21	overall	Consultants	Registrars	SHO/ Interns	Medical/ Dental, other	Medical & Dental	Nurse/ Midwife Manager	Nurse/ Midwife Specialist & AN/MP	Staff Nurse/ Staff Midwife	Public Health Nurse	Nursing/ Midwifery Student	Nursing/ Midwifery other	Nursing & Midwifery	Therapy Professions	Health Science/ Diagnostics	Social Care	Social Workers	Psychologists	Pharmacy	H&SC, Other	Health & Social Care Professionals	Management (VIII & above)	Administrative/ Supervisory (V to VII)	Clerical (III & IV)	Management & Administrative	General Support	Health Care Assistants	Home Help	Care, other	Patient & Client Care
Overall	+1.4%	+278	+0	+1	-3	-1	-3	+34	-0	-14	+2	-12	+5	+14	-35	+0	+61	-1	-10	+0	-2	+13	+5	+94	+24	+124	-22	+146	-5	+11	+151
CHO 1	+6.4%	+101			-1	+1	-0	-0	+1	-0	+7		+2	-24	+13		+3	-3	+0		+1	+14	-1	+8	+7	+15	-4	+100	+1	+0	+101
CHO 2	+3.9%	+60		-1	+1	-0	-0	+1	-0	+7				+8	+14		+10	-1	+3		+2	+28	-1	+16	+4	+19	+6	-3		+2	-0
CHO 3	-0.1%	-2	-1			-0	-1	-1	+3	+2		-2	-1	+2	-36	+1	-13	+3	+0		-1	-46	+3	+14	-3	+13	-2	+24		+8	+32
CHO 4	+1.0%	+27	-1			+0	-1	+9	-1	+4		+2	+1	+15	-14		+4	+2	-3		-2	-13	-0	+17	+2	+19	-4	-0		+11	+10
CHO 5	+0.5%	+9	-0				-0	-1	-0	-2	+1	-0	+0	-3	-7		+4	-7	-0		+1	-10	+4	+6	+7	+16	-2	-4	-3	+14	+7
CHO 6	-0.7%	-9		+1	-1			-3		-5			+1	-7	-12		+11	-3	-2		+0	-6	-0	+5	+8	+12	-1	+4		-12	-8
CHO 7	+3.3%	+107		+2	-3	-1	-2	+17	+2	-1		-1	+1	+18	+14	+1	+36	+7	+1	+0		+59	+2	+12	+7	+21	-3	+33	-2	-17	+14
CHO 8	+1.2%	+26						-1	-2	+22		-1	-2	+16	-2		+11	-3	+2		+1	+10	+2	-0	+3	+4	-7	+6	-1	-3	+2
CHO 9	-1.3%	-43	+2	-0		+0	+2	+16	-1	-29		-1	+3	-12	-5	-2	-6	+5	-11		-4	-23	-3	+18	-11	+4	-6	-14		+6	-8
other Community Services	+0.8%	+0																							+0	+0					
	+1.4%		+1.0%	+14.1%	-32.7%	-10.1%	-5.2%	+3.7%	-0.7%	-0.6%	+15.1%	-30.6%	+23.6%	+0.4%	-4.3%	+1.0%	+2.1%	-0.4%	-4.0%	+6.9%	-3.2%	+0.3%	+2.5%	+16.6%	+3.4%	+8.3%	-2.8%	+2.0%	-5.9%	+0.6%	+1.7%



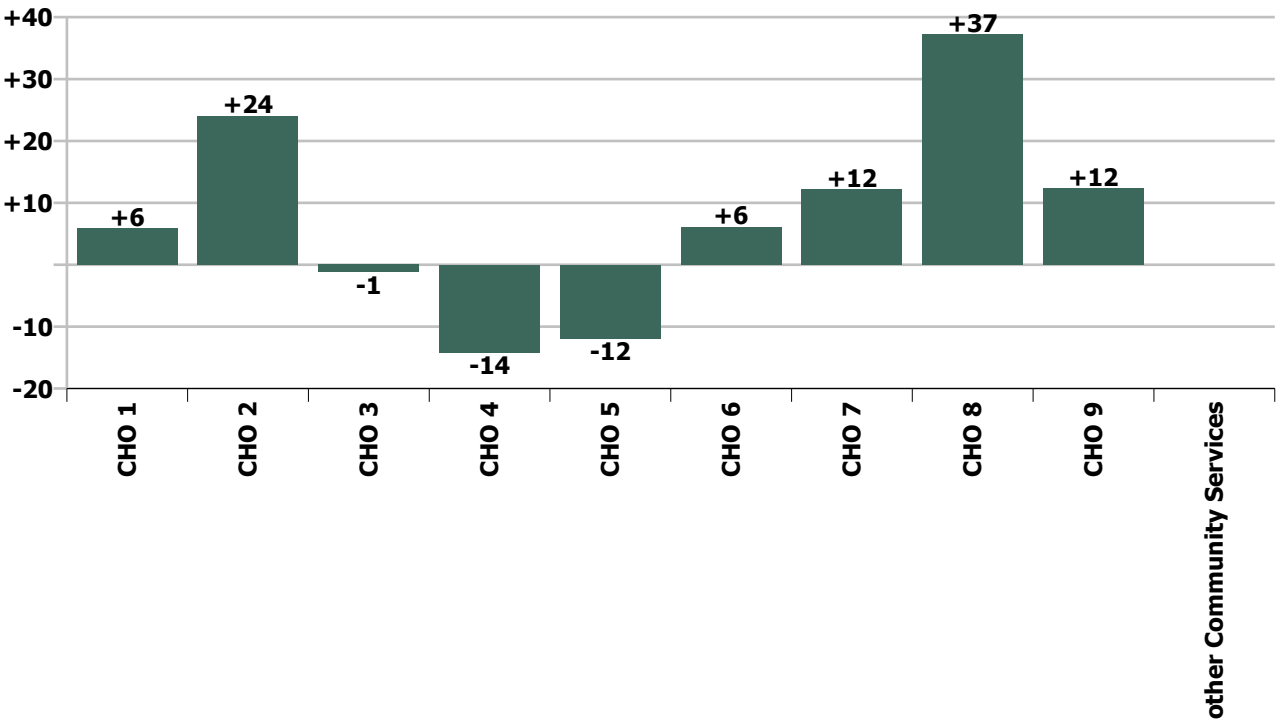
Staff Group change since: Sep 2022



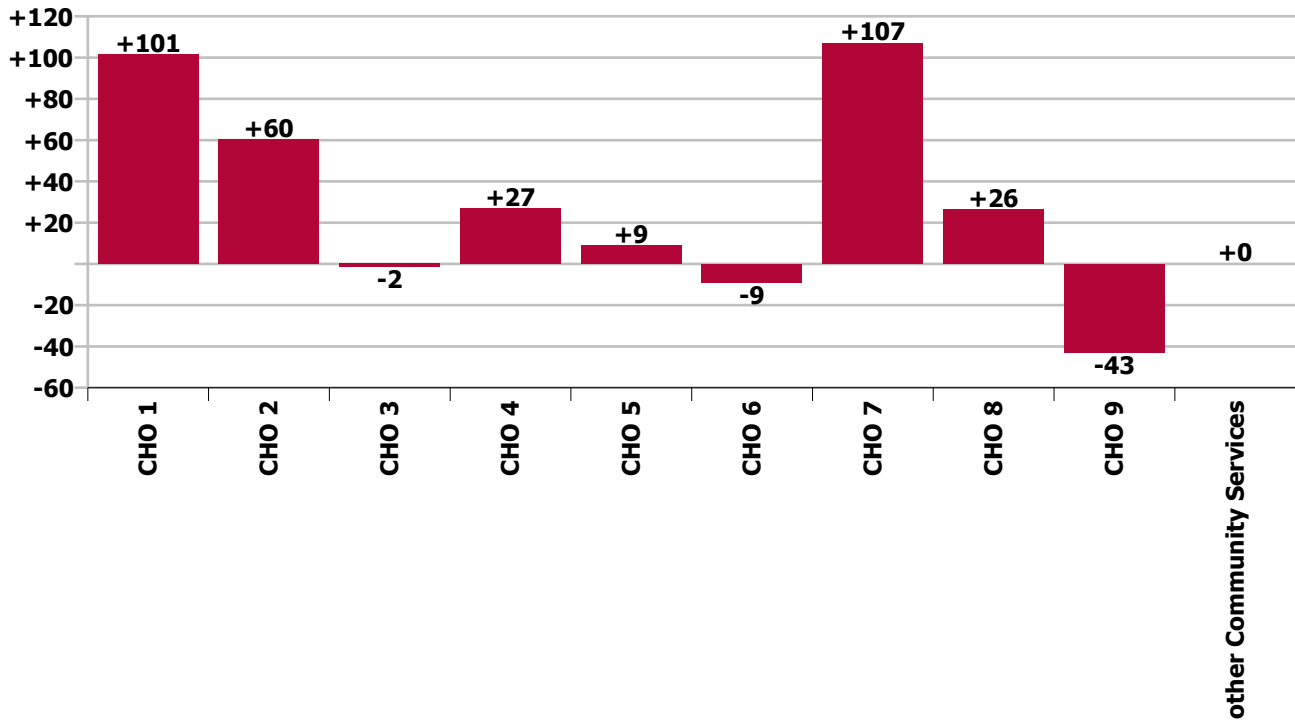
Staff Group change since: Oct 2021



CHO change since: Sep 2022



**CHO change since: Oct 2021**





## Longitudinal Employment Levels by Grade Group - Dec 2016 to Oct 2022

Oct 2022 (Dec 2015 figure: 15,715)	WTE Oct 2022	WTE change since Dec 16	WTE change since Dec 17	WTE change since Dec 18	WTE change since Dec 19	WTE change since Dec 20	WTE change since Sep 22	% change since Dec 16	% change since Dec 17	% change since Dec 18	% change since Dec 19	% change since Dec 20	% change since Sep 22
<b>Overall</b>	<b>19,727</b>	<b>+2,973</b>	<b>+2,330</b>	<b>+1,908</b>	<b>+1,424</b>	<b>+782</b>	<b>+70</b>	<b>+17.7%</b>	<b>+13.4%</b>	<b>+10.7%</b>	<b>+7.8%</b>	<b>+4.1%</b>	<b>+0.4%</b>
Consultant Medicine		-2						-100.0%	-100.0%	-100.0%	-100.0%	-100.0%	-100.0%
Consultant Paediatrics	3	-1	-1	-1	-1	-1	-1	-21.2%	-19.4%	-17.0%	-17.0%	-17.0%	-17.3%
Consultant Psychiatry	19	-2	-4	+1	-2	-2	+0	-9.2%	-16.0%	+7.1%	-7.9%	-10.1%	+1.4%
Consultant Surgery		-0						-100.0%	-100.0%	-100.0%	-100.0%	-100.0%	-100.0%
<b>Consultants</b>	<b>22</b>	<b>-4</b>	<b>-4</b>	<b>+1</b>	<b>-2</b>	<b>-3</b>	<b>-0</b>	<b>-16.6%</b>	<b>-16.4%</b>	<b>+3.6%</b>	<b>-9.1%</b>	<b>-11.0%</b>	<b>-1.2%</b>
Registrar	7	+1	+1	+1	-0	+4	+1	+12.5%	+12.5%	+26.9%	-3.6%	+125.0%	+12.3%
Senior Registrar	3	+1	-0	+1	+1	-0	-0	+34.0%	-10.7%	+34.0%	+34.0%	-10.7%	-10.7%
Specialist Registrar	1	-1	-3	+0	-3	-1	-1	-38.5%	-69.3%	+23.0%	-69.3%	-38.5%	-38.5%
<b>Registrars</b>	<b>11</b>	<b>+1</b>	<b>-2</b>	<b>+2</b>	<b>-2</b>	<b>+3</b>	<b>-0</b>	<b>+6.6%</b>	<b>-18.0%</b>	<b>+28.1%</b>	<b>-18.0%</b>	<b>+33.3%</b>	<b>-3.2%</b>
Senior House Officer	6		-1	-1	-1	-3	-2		-14.3%	-13.7%	-13.8%	-33.3%	-21.8%
<b>SHO/ Interns</b>	<b>6</b>		<b>-1</b>	<b>-1</b>	<b>-1</b>	<b>-3</b>	<b>-2</b>		<b>-14.3%</b>	<b>-13.7%</b>	<b>-13.8%</b>	<b>-33.3%</b>	<b>-21.8%</b>
Dentists								-100.0%	-100.0%	-100.0%	-100.0%	-100.0%	-100.0%
Other Medical	13	-2	-1	-1	-2	-1	+0	-13.5%	-9.9%	-9.1%	-10.6%	-10.1%	+1.1%
<b>Medical/ Dental, other</b>	<b>13</b>	<b>-2</b>	<b>-1</b>	<b>-1</b>	<b>-2</b>	<b>-1</b>	<b>+0</b>	<b>-13.5%</b>	<b>-9.9%</b>	<b>-9.1%</b>	<b>-10.6%</b>	<b>-10.1%</b>	<b>+1.1%</b>
<b>Medical &amp; Dental</b>	<b>51</b>	<b>-6</b>	<b>-9</b>	<b>+1</b>	<b>-7</b>	<b>-4</b>	<b>-2</b>	<b>-9.9%</b>	<b>-15.0%</b>	<b>+1.7%</b>	<b>-12.0%</b>	<b>-8.0%</b>	<b>-4.0%</b>
Clinical Nurse/ Midwife Manager	854	+43	+46	+46	+43	+40	+12	+5.3%	+5.6%	+5.7%	+5.3%	+4.9%	+1.4%
Director Nursing/Midwifery, Assistant	43	+0	+6	+5	+2	-3	-1	+0.8%	+15.0%	+12.3%	+4.6%	-6.6%	-2.2%
Director of Nursing/Midwifery	47	+4	+2	+10	+5	+11	+2	+8.7%	+4.3%	+25.1%	+12.6%	+28.7%	+3.6%
<b>Nurse/ Midwife Manager</b>	<b>944</b>	<b>+47</b>	<b>+53</b>	<b>+60</b>	<b>+51</b>	<b>+47</b>	<b>+13</b>	<b>+5.2%</b>	<b>+6.0%</b>	<b>+6.8%</b>	<b>+5.7%</b>	<b>+5.3%</b>	<b>+1.4%</b>
Advanced Nurse/ Midwife Practitioner	10	+9	+8	+8	+8	+2	+1	+898.0%	+399.0%	+399.0%	+399.0%	+24.8%	+15.4%
Clinical Nurse/ Midwife Specialist	58	-13	-9	-8	-1	+2	-1	-17.6%	-14.0%	-11.8%	-2.5%	+4.4%	-2.1%
<b>Nurse/ Midwife Specialist &amp; AN/MP</b>	<b>68</b>	<b>-4</b>	<b>-2</b>	<b>+0</b>	<b>+6</b>	<b>+4</b>	<b>+0</b>	<b>-4.9%</b>	<b>-2.2%</b>	<b>+0.2%</b>	<b>+10.5%</b>	<b>+6.9%</b>	<b>+0.1%</b>
Graduate Nursing/ Midwifery								-100.0%	-100.0%	-100.0%	-100.0%	-100.0%	-100.0%
Staff Nurse [Psychiatric]	61	-24	-10	-10	-23	+8	-46	-28.2%	-13.6%	-14.2%	-27.1%	+15.6%	-43.2%
Staff Nurses [General/ Children's]	778	-156	-146	-91	-114	+26	-68	-16.7%	-15.8%	-10.4%	-12.8%	+3.4%	-8.1%

Oct 2022 (Dec 2015 figure: 15,715)	WTE Oct 2022	WTE change since Dec 16	WTE change since Dec 17	WTE change since Dec 18	WTE change since Dec 19	WTE change since Dec 20	WTE change since Sep 22	% change since Dec 16	% change since Dec 17	% change since Dec 18	% change since Dec 19	% change since Dec 20	% change since Sep 22
<b>Overall</b>	<b>19,727</b>	<b>+2,973</b>	<b>+2,330</b>	<b>+1,908</b>	<b>+1,424</b>	<b>+782</b>	<b>+70</b>	<b>+17.7%</b>	<b>+13.4%</b>	<b>+10.7%</b>	<b>+7.8%</b>	<b>+4.1%</b>	<b>+0.4%</b>
Staff Nurse [Intellectual Disability]	1,720	-5	+17	+36	+123	-68	+125	-0.3%	+1.0%	+2.1%	+7.7%	-3.8%	+7.8%
<b>Staff Nurse/ Staff Midwife</b>	<b>2,559</b>	<b>-184</b>	<b>-139</b>	<b>-65</b>	<b>-14</b>	<b>-34</b>	<b>+11</b>	<b>-6.7%</b>	<b>-5.1%</b>	<b>-2.5%</b>	<b>-0.5%</b>	<b>-1.3%</b>	<b>+0.4%</b>
<b>Public Health Nurse</b>	<b>12</b>	<b>+5</b>	<b>+5</b>	<b>+5</b>	<b>+5</b>	<b>+5</b>	<b>-1</b>	<b>+77.7%</b>	<b>+89.4%</b>	<b>+72.4%</b>	<b>+84.2%</b>	<b>+67.9%</b>	<b>-4.9%</b>
Pre-registration Nurse Intern (COVID-19)						-32		-100.0%	-100.0%	-100.0%	-100.0%	-100.0%	-100.0%
Pre-registration Nurse/ Midwife Intern	21	+9	+9	-14	-7	+18	-34	+73.4%	+76.5%	-40.2%	-26.3%	+732.4%	-61.7%
Nursing/ Midwifery awaiting registration	6	+6	+6	+6	-8	-7	-4	-100.0%	-100.0%	-100.0%	-59.5%	-56.8%	-42.1%
<b>Nursing/ Midwifery Student</b>	<b>26</b>	<b>+14</b>	<b>+15</b>	<b>-8</b>	<b>-16</b>	<b>-21</b>	<b>-38</b>	<b>+120.2%</b>	<b>+124.1%</b>	<b>-24.1%</b>	<b>-37.2%</b>	<b>-44.1%</b>	<b>-58.7%</b>
Nursing Education/Clinical	27	+6	+6	+6	+6	+4	+1	+26.4%	+27.3%	+26.9%	+26.8%	+17.8%	+2.5%
Other Nursing/ Midwifery	1	-4	-4					-80.0%	-80.0%				
<b>Nursing/ Midwifery other</b>	<b>28</b>	<b>+2</b>	<b>+2</b>	<b>+6</b>	<b>+6</b>	<b>+4</b>	<b>+1</b>	<b>+6.1%</b>	<b>+6.8%</b>	<b>+25.7%</b>	<b>+25.6%</b>	<b>+17.0%</b>	<b>+2.4%</b>
<b>Nursing &amp; Midwifery</b>	<b>3,637</b>	<b>-120</b>	<b>-65</b>	<b>-3</b>	<b>+39</b>	<b>+5</b>	<b>-14</b>	<b>-3.2%</b>	<b>-1.8%</b>	<b>-0.1%</b>	<b>+1.1%</b>	<b>+0.1%</b>	<b>-0.4%</b>
Dietitians	22	+9	+10	+9	+4	+6	+4	+69.4%	+87.0%	+62.6%	+20.8%	+35.9%	+21.8%
Occupational Therapists	295	+44	+46	+54	+31	+16	+13	+17.3%	+18.5%	+22.3%	+11.6%	+5.8%	+4.7%
Physiotherapists	195	+10	+11	+14	+6	+2	+7	+5.7%	+5.7%	+7.9%	+3.2%	+1.2%	+3.7%
Podiatrists & Chiropodists		-0	-0					-100.0%	-100.0%	-100.0%	-100.0%	-100.0%	-100.0%
Speech & Language Therapists	275	+4	-8	-4	-18	-33	+2	+1.5%	-2.8%	-1.6%	-6.2%	-10.6%	+0.8%
<b>Therapy Professions</b>	<b>787</b>	<b>+67</b>	<b>+59</b>	<b>+72</b>	<b>+22</b>	<b>-8</b>	<b>+26</b>	<b>+9.3%</b>	<b>+8.1%</b>	<b>+10.1%</b>	<b>+2.9%</b>	<b>-1.0%</b>	<b>+3.4%</b>
Audiology		-13	-18					-100.0%	-100.0%	-100.0%	-100.0%	-100.0%	-100.0%
Clinical Engineering	14	-4	-4	+2	+1	+1		-23.5%	-22.2%	+16.7%	+7.7%	+8.1%	
Medical Science	4	+1	+1					+33.3%	+33.3%				
Phlebotomists				-1	-1			-100.0%	-100.0%	-100.0%	-100.0%	-100.0%	-100.0%
Radiographers	1	+0	+0	+0	+0	+0	+0	+16.0%	+16.0%	+16.0%	+16.0%	+16.0%	+16.0%
Respiratory Physiologists	2	+1	+1	+1	+1			+100.0%	+100.0%	+100.0%	+100.0%		
<b>Health Science/ Diagnostics</b>	<b>21</b>	<b>-15</b>	<b>-20</b>	<b>+2</b>	<b>+1</b>	<b>+1</b>	<b>+0</b>	<b>-41.2%</b>	<b>-48.2%</b>	<b>+11.4%</b>	<b>+5.8%</b>	<b>+6.1%</b>	<b>+0.8%</b>
<b>Social Care</b>	<b>3,006</b>	<b>+814</b>	<b>+660</b>	<b>+517</b>	<b>+411</b>	<b>+217</b>	<b>+6</b>	<b>+37.2%</b>	<b>+28.1%</b>	<b>+20.8%</b>	<b>+15.8%</b>	<b>+7.8%</b>	<b>+0.2%</b>
<b>Social Workers</b>	<b>234</b>	<b>+18</b>	<b>+13</b>	<b>+14</b>	<b>+15</b>	<b>+5</b>	<b>+5</b>	<b>+8.3%</b>	<b>+5.9%</b>	<b>+6.5%</b>	<b>+6.7%</b>	<b>+2.3%</b>	<b>+2.2%</b>
<b>Psychologists</b>	<b>233</b>	<b>+23</b>	<b>+9</b>	<b>+26</b>	<b>+29</b>	<b>+4</b>	<b>+2</b>	<b>+10.9%</b>	<b>+4.1%</b>	<b>+12.7%</b>	<b>+14.0%</b>	<b>+1.6%</b>	<b>+0.7%</b>

Oct 2022 (Dec 2015 figure: 15,715)	WTE Oct 2022	WTE change since Dec 16	WTE change since Dec 17	WTE change since Dec 18	WTE change since Dec 19	WTE change since Dec 20	WTE change since Sep 22	% change since Dec 16	% change since Dec 17	% change since Dec 18	% change since Dec 19	% change since Dec 20	% change since Sep 22
<b>Overall</b>	<b>19,727</b>	<b>+2,973</b>	<b>+2,330</b>	<b>+1,908</b>	<b>+1,424</b>	<b>+782</b>	<b>+70</b>	<b>+17.7%</b>	<b>+13.4%</b>	<b>+10.7%</b>	<b>+7.8%</b>	<b>+4.1%</b>	<b>+0.4%</b>
Pharmacists	6	+1	+1	+0	+1	+1	-0	+21.9%	+21.9%	+4.2%	+18.4%	+24.3%	-5.5%
Pharmacy Technicians	1	-0	-0	-0	-1	-0	-0	-15.0%	-11.5%	-15.0%	-43.3%	-15.0%	-9.6%
<b>Pharmacy</b>	<b>7</b>	<b>+1</b>	<b>+1</b>	<b>+0</b>	<b>+0</b>	<b>+1</b>	<b>-0</b>	<b>+15.8%</b>	<b>+16.6%</b>	<b>+1.4%</b>	<b>+4.7%</b>	<b>+17.8%</b>	<b>-6.0%</b>
Counsellor Therapists	25	+8	+6	+7	+6	+5	+2	+49.2%	+29.3%	+41.4%	+32.9%	+27.1%	+9.6%
HSCP Trainees/ Students		-2	-1					-100.0%	-100.0%	-100.0%	-100.0%	-100.0%	-100.0%
Other Health & Social Care	30	-29	-29	-22	-21	-15	+0	-48.9%	-49.3%	-42.6%	-41.1%	-34.0%	+1.3%
Play Therapists/ Specialists	13	-1	-0	-2	-3	+2	-0	-5.9%	-2.4%	-11.8%	-16.8%	+18.2%	-3.1%
<b>H&amp;SC, Other</b>	<b>68</b>	<b>-23</b>	<b>-24</b>	<b>-16</b>	<b>-17</b>	<b>-8</b>	<b>+2</b>	<b>-25.7%</b>	<b>-26.3%</b>	<b>-19.6%</b>	<b>-20.2%</b>	<b>-10.5%</b>	<b>+3.3%</b>
<b>Health &amp; Social Care Professionals</b>	<b>4,355</b>	<b>+885</b>	<b>+698</b>	<b>+616</b>	<b>+461</b>	<b>+212</b>	<b>+41</b>	<b>+25.5%</b>	<b>+19.1%</b>	<b>+16.5%</b>	<b>+11.8%</b>	<b>+5.1%</b>	<b>+0.9%</b>
Executive Management	40	+11	+2	+9	+10	+4	+0	+39.3%	+6.3%	+27.1%	+31.3%	+12.2%	+1.2%
Senior Management (VIII & GM)	183	+46	+43	+39	+34	+15	-1	+33.4%	+30.3%	+26.9%	+23.2%	+9.2%	-0.7%
<b>Management (VIII &amp; above)</b>	<b>224</b>	<b>+57</b>	<b>+45</b>	<b>+47</b>	<b>+44</b>	<b>+20</b>	<b>-1</b>	<b>+34.4%</b>	<b>+25.2%</b>	<b>+27.0%</b>	<b>+24.6%</b>	<b>+9.7%</b>	<b>-0.4%</b>
Middle Management (V-VII)	649	+270	+257	+221	+185	+138	+14	+71.1%	+65.4%	+51.7%	+39.9%	+27.0%	+2.2%
Other Administrative	12	-2	-4	-4	-3	-4	-0	-13.2%	-24.8%	-24.1%	-19.8%	-24.1%	-3.8%
<b>Administrative/ Supervisory (V to VII)</b>	<b>661</b>	<b>+268</b>	<b>+253</b>	<b>+217</b>	<b>+182</b>	<b>+134</b>	<b>+14</b>	<b>+68.1%</b>	<b>+61.8%</b>	<b>+49.0%</b>	<b>+38.0%</b>	<b>+25.5%</b>	<b>+2.1%</b>
<b>Clerical (III &amp; IV)</b>	<b>734</b>	<b>+127</b>	<b>+102</b>	<b>+81</b>	<b>+74</b>	<b>+49</b>	<b>+8</b>	<b>+21.0%</b>	<b>+16.1%</b>	<b>+12.3%</b>	<b>+11.2%</b>	<b>+7.1%</b>	<b>+1.1%</b>
<b>Management &amp; Administrative</b>	<b>1,619</b>	<b>+452</b>	<b>+400</b>	<b>+345</b>	<b>+300</b>	<b>+203</b>	<b>+21</b>	<b>+38.8%</b>	<b>+32.8%</b>	<b>+27.1%</b>	<b>+22.7%</b>	<b>+14.3%</b>	<b>+1.3%</b>
Catering	85	-28	-21	-20	-13	-11	+4	-25.2%	-19.8%	-18.7%	-13.5%	-11.8%	+4.5%
Household Services	383	-124	-83	-69	-36	-23	+4	-24.5%	-17.9%	-15.2%	-8.7%	-5.6%	+0.9%
Other Labs & Associated	1	-0		-0				-6.5%		-3.8%			
Other Support	150	-44	-40	-41	-38	+14	+2	-22.7%	-20.9%	-21.6%	-20.4%	+10.4%	+1.5%
Portering	18	-8	-8	-7	-9	-6	+0	-31.6%	-31.1%	-29.0%	-33.9%	-25.0%	+0.0%
<b>Support</b>	<b>637</b>	<b>-205</b>	<b>-152</b>	<b>-137</b>	<b>-97</b>	<b>-26</b>	<b>+10</b>	<b>-24.4%</b>	<b>-19.3%</b>	<b>-17.7%</b>	<b>-13.3%</b>	<b>-3.9%</b>	<b>+1.5%</b>
Maintenance	101	-23	-30	-19	-15	-20	-8	-18.7%	-22.6%	-15.5%	-12.7%	-16.5%	-7.3%
Technical Services	17	+12	+12	+11	+9	+6	+0	+229.4%	+229.4%	+175.4%	+107.4%	+51.4%	+0.8%
<b>Maintenance/ Technical</b>	<b>118</b>	<b>-12</b>	<b>-18</b>	<b>-8</b>	<b>-6</b>	<b>-14</b>	<b>-8</b>	<b>-9.0%</b>	<b>-13.2%</b>	<b>-6.2%</b>	<b>-4.9%</b>	<b>-10.8%</b>	<b>-6.2%</b>
<b>General Support</b>	<b>755</b>	<b>-217</b>	<b>-170</b>	<b>-145</b>	<b>-103</b>	<b>-40</b>	<b>+2</b>	<b>-22.3%</b>	<b>-18.4%</b>	<b>-16.1%</b>	<b>-12.0%</b>	<b>-5.0%</b>	<b>+0.2%</b>

Oct 2022 (Dec 2015 figure: 15,715)	WTE Oct 2022	WTE change since Dec 16	WTE change since Dec 17	WTE change since Dec 18	WTE change since Dec 19	WTE change since Dec 20	WTE change since Sep 22	% change since Dec 16	% change since Dec 17	% change since Dec 18	% change since Dec 19	% change since Dec 20	% change since Sep 22
<b>Overall</b>	<b>19,727</b>	<b>+2,973</b>	<b>+2,330</b>	<b>+1,908</b>	<b>+1,424</b>	<b>+782</b>	<b>+70</b>	<b>+17.7%</b>	<b>+13.4%</b>	<b>+10.7%</b>	<b>+7.8%</b>	<b>+4.1%</b>	<b>+0.4%</b>
Attendant/ Aide	181	-192	-116	-42	-50	-66	-6	-51.6%	-39.2%	-19.0%	-21.7%	-26.9%	-3.1%
Health & Social Care Assistants	22	+11	+13	+11	+13	+11	+3	+106.3%	+143.3%	+103.1%	+131.4%	+100.4%	+18.3%
Health Care Assistant/ Care Assistant	7,262	+1,881	+1,383	+954	+676	+418	+1	+35.0%	+23.5%	+15.1%	+10.3%	+6.1%	+0.0%
<b>Health Care Assistants</b>	<b>7,465</b>	<b>+1,701</b>	<b>+1,280</b>	<b>+923</b>	<b>+638</b>	<b>+362</b>	<b>-1</b>	<b>+29.5%</b>	<b>+20.7%</b>	<b>+14.1%</b>	<b>+9.4%</b>	<b>+5.1%</b>	<b>-0.0%</b>
<b>Home Help</b>	<b>79</b>	<b>-16</b>	<b>-44</b>	<b>-33</b>	<b>-30</b>	<b>-15</b>	<b>-4</b>	<b>-16.9%</b>	<b>-35.9%</b>	<b>-29.7%</b>	<b>-27.1%</b>	<b>-15.5%</b>	<b>-4.3%</b>
Home Care Services	18	-3	-5	-5	-10	-0	+0	-13.1%	-20.0%	-20.1%	-35.2%	-0.5%	+0.8%
Other Care Grades	266	+69	+81	+81	+92	+45	+4	+34.7%	+44.1%	+44.1%	+52.4%	+20.2%	+1.3%
Pastoral Care	5	-8	-8	-5	-6	-5	-1	-61.3%	-63.1%	-52.5%	-53.3%	-52.5%	-18.5%
Workshop Services	1,476	+235	+173	+132	+50	+21	+25	+18.9%	+13.3%	+9.8%	+3.5%	+1.4%	+1.7%
<b>Care, other</b>	<b>1,766</b>	<b>+293</b>	<b>+242</b>	<b>+203</b>	<b>+126</b>	<b>+60</b>	<b>+28</b>	<b>+19.9%</b>	<b>+15.8%</b>	<b>+13.0%</b>	<b>+7.7%</b>	<b>+3.5%</b>	<b>+1.6%</b>
<b>Patient &amp; Client Care</b>	<b>9,309</b>	<b>+1,978</b>	<b>+1,477</b>	<b>+1,093</b>	<b>+735</b>	<b>+408</b>	<b>+23</b>	<b>+27.0%</b>	<b>+18.9%</b>	<b>+13.3%</b>	<b>+8.6%</b>	<b>+4.6%</b>	<b>+0.2%</b>

Source: Health Service Personnel Census

Longitudinal Employment Levels by Grade Group - Dec 2016 to Oct 2022

Oct 2022 (Dec 2015 figure: 15,715)	WTE Oct 2022	WTE change since Dec 16	WTE change since Dec 17	WTE change since Dec 18	WTE change since Dec 19	WTE change since Dec 20	WTE change since Sep 22	% change since Dec 16	% change since Dec 17	% change since Dec 18	% change since Dec 19	% change since Dec 20	% change since Sep 22
Overall	19,727	+2,973	+2,330	+1,908	+1,424	+782	+70	+17.7%	+13.4%	+10.7%	+7.8%	+4.1%	+0.4%
Consultant Medicine		-2						-100.0%	-100.0%	-100.0%	-100.0%	-100.0%	-100.0%
Consultant Paediatrics	3	-1	-1	-1	-1	-1	-1	-21.2%	-19.4%	-17.0%	-17.0%	-17.0%	-17.3%
Consultant Psychiatry	19	-2	-4	+1	-2	-2	+0	-9.2%	-16.0%	+7.1%	-7.9%	-10.1%	+1.4%
Consultant Surgery		-0						-100.0%	-100.0%	-100.0%	-100.0%	-100.0%	-100.0%
Consultants	22	-4	-4	+1	-2	-3	-0	-16.6%	-16.4%	+3.6%	-9.1%	-11.0%	-1.2%
Registrar	7	+1	+1	+1	-0	+4	+1	+12.5%	+12.5%	+26.9%	-3.6%	+125.0%	+12.3%
Senior Registrar	3	+1	-0	+1	+1	-0	-0	+34.0%	-10.7%	+34.0%	+34.0%	-10.7%	-10.7%
Specialist Registrar	1	-1	-3	+0	-3	-1	-1	-38.5%	-69.3%	+23.0%	-69.3%	-38.5%	-38.5%
Registrars	11	+1	-2	+2	-2	+3	-0	+6.6%	-18.0%	+28.1%	-18.0%	+33.3%	-3.2%
SHO/ Interns	6		-1	-1	-1	-3	-2		-14.3%	-13.7%	-13.8%	-33.3%	-21.8%
Dentists								-100.0%	-100.0%	-100.0%	-100.0%	-100.0%	-100.0%
Other Medical	13	-2	-1	-1	-2	-1	+0	-13.5%	-9.9%	-9.1%	-10.6%	-10.1%	+1.1%
Medical/ Dental, other	13	-2	-1	-1	-2	-1	+0	-13.5%	-9.9%	-9.1%	-10.6%	-10.1%	+1.1%
Medical & Dental	51	-6	-9	+1	-7	-4	-2	-9.9%	-15.0%	+1.7%	-12.0%	-8.0%	-4.0%
Clinical Nurse/ Midwife Manager	854	+43	+46	+46	+43	+40	+12	+5.3%	+5.6%	+5.7%	+5.3%	+4.9%	+1.4%
Director Nursing/Midwifery, Assistant	43	+0	+6	+5	+2	-3	-1	+0.8%	+15.0%	+12.3%	+4.6%	-6.6%	-2.2%
Director of Nursing/Midwifery	47	+4	+2	+10	+5	+11	+2	+8.7%	+4.3%	+25.1%	+12.6%	+28.7%	+3.6%
Nurse/ Midwife Manager	944	+47	+53	+60	+50	+47	+13	+5.2%	+6.0%	+6.8%	+5.7%	+5.3%	+1.4%
Advanced Nurse/ Midwife Practitioner	10	+9	+8	+8	+8	+2	+1	+898.0%	+399.0%	+399.0%	+399.0%	+24.8%	+15.4%
Clinical Nurse/ Midwife Specialist	58	-13	-9	-8	-1	+2	-1	-17.6%	-14.0%	-11.8%	-2.5%	+4.4%	-2.1%
Nurse/ Midwife Specialist & AN/MP	68	-4	-2	+0	+6	+4	+0	-4.9%	-2.2%	+0.2%	+10.5%	+6.9%	+0.1%
Graduate Nursing/ Midwifery								-100.0%	-100.0%	-100.0%	-100.0%	-100.0%	-100.0%
Staff Nurse [Psychiatric]	61	-24	-10	-10	-23	+8	-46	-28.2%	-13.6%	-14.2%	-27.1%	+15.6%	-43.2%
Staff Nurses [General/ Children's]	778	-156	-146	-91	-114	+26	-68	-16.7%	-15.8%	-10.4%	-12.8%	+3.4%	-8.1%
Staff Nurse [Intellectual Disability]	1,720	-5	+17	+36	+123	-68	+125	-0.3%	+1.0%	+2.1%	+7.7%	-3.8%	+7.8%
Staff Nurse/ Staff Midwife	2,559	-184	-139	-65	-14	-34	+11	-6.7%	-5.1%	-2.5%	-0.5%	-1.3%	+0.4%
Public Health Nurse	12	+5	+5	+5	+5	+5	-1	+77.7%	+89.4%	+72.4%	+84.2%	+67.9%	-4.9%
Pre-registration Nurse Intern (COVID-19)						-32		-100.0%	-100.0%	-100.0%	-100.0%	-100.0%	-100.0%
Pre-registration Nurse/ Midwife Intern	21	+9	+9	-14	-7	+18	-34	+73.4%	+76.5%	-40.2%	-26.3%	+732.4%	-61.7%
Nursing/ Midwifery awaiting registration	6	+6	+6	+6	-8	-7	-4	-100.0%	-100.0%	-100.0%	-59.5%	-56.8%	-42.1%
Nursing/ Midwifery Student	26	+14	+15	-8	-16	-21	-38	+120.2%	+124.1%	-24.1%	-37.2%	-44.1%	-58.7%
Nursing Education/Clinical	27	+6	+6	+6	+6	+4	+1	+26.4%	+27.3%	+26.9%	+26.8%	+17.8%	+2.5%
Other Nursing/ Midwifery	1	-4	-4					-80.0%	-80.0%				
Nursing/ Midwifery other	28	+2	+2	+6	+6	+4	+1	+6.1%	+6.8%	+25.7%	+25.6%	+17.0%	+2.4%
Nursing & Midwifery	3,637	-120	-65	-3	+39	+5	-14	-3.2%	-1.8%	-0.1%	+1.1%	+0.1%	-0.4%
Dietitians	22	+9	+10	+9	+4	+6	+4	+69.4%	+87.0%	+62.6%	+20.8%	+35.9%	+21.8%
Occupational Therapists	295	+44	+46	+54	+31	+16	+13	+17.3%	+18.5%	+22.3%	+11.6%	+5.8%	+4.7%
Physiotherapists	195	+10	+11	+14	+6	+2	+7	+5.7%	+5.7%	+7.9%	+3.2%	+1.2%	+3.7%
Podiatrists & Chiropodists		-0	-0					-100.0%	-100.0%	-100.0%	-100.0%	-100.0%	-100.0%
Speech & Language Therapists	275	+4	-8	-4	-18	-33	+2	+1.5%	-2.8%	-1.6%	-6.2%	-10.6%	+0.8%
Therapy Professions	787	+67	+59	+72	+22	-8	+26	+9.3%	+8.1%	+10.1%	+2.9%	-1.0%	+3.4%
Audiology		-13	-18					-100.0%	-100.0%	-100.0%	-100.0%	-100.0%	-100.0%
Clinical Engineering	14	-4	-4	+2	+1	+1		-23.5%	-22.2%	+16.7%	+7.7%	+8.1%	
Medical Science	4	+1	+1					+33.3%	+33.3%				
Phlebotomists				-1	-1			-100.0%	-100.0%	-100.0%	-100.0%	-100.0%	-100.0%
Radiographers	1	+0	+0	+0	+0	+0	+0	+16.0%	+16.0%	+16.0%	+16.0%	+16.0%	+16.0%
Respiratory Physiologists	2	+1	+1	+1	+1			+100.0%	+100.0%	+100.0%	+100.0%		
Health Science/ Diagnostics	21	-15	-20	+2	+1	+1	+0	-41.2%	-48.2%	+11.4%	+5.8%	+6.1%	+0.8%
Social Care	3,006	+814	+660	+517	+411	+217	+6	+37.2%	+28.1%	+20.8%	+15.8%	+7.8%	+0.2%
Social Workers	234	+18	+13	+14	+15	+5	+5	+8.3%	+5.9%	+6.5%	+6.7%	+2.3%	+2.2%
Psychologists	233	+23	+9	+26	+29	+4	+2	+10.9%	+4.1%	+12.7%	+14.0%	+1.6%	+0.7%
Pharmacists	6	+1	+1	+0	+1	+1	-0	+21.9%	+21.9%	+4.2%	+18.4%	+24.3%	-5.5%
Pharmacy Technicians	1	-0	-0	-0	-1	-0	-0	-15.0%	-11.5%	-15.0%	-43.3%	-15.0%	-9.6%
Pharmacy	7	+1	+1	+0	+0	+1	-0	+15.8%	+16.6%	+1.4%	+4.7%	+17.8%	-6.0%
Counsellor Therapists	25	+8	+6	+7	+6	+5	+2	+49.2%	+29.3%	+41.4%	+32.9%	+27.1%	+9.6%
HSCP Trainees/ Students		-2	-1					-100.0%	-100.0%	-100.0%	-100.0%	-100.0%	-100.0%
Other Health & Social Care	30	-29	-29	-22	-21	-15	+0	-48.9%	-49.3%	-42.6%	-41.1%	-34.0%	+1.3%
Play Therapists/ Specialists	13	-1	-0	-2	-3	+2	-0	-5.9%	-2.4%	-11.8%	-16.8%	+18.2%	-3.1%
H&SC, Other	68	-23	-24	-16	-17	-8	+2	-25.7%	-26.3%	-19.6%	-20.2%	-10.5%	+3.3%
Health & Social Care Professionals	4,355	+885	+698	+616	+461	+212	+41	+25.5%	+19.1%	+16.5%	+11.8%	+5.1%	+0.9%
Executive Management	40	+11	+2	+9	+10	+4	+0	+39.3%	+6.3%	+27.1%	+31.3%	+12.2%	+1.2%
Senior Management (VIII & GM)	183	+46	+43	+39	+34	+15	-1	+33.4%	+30.3%	+26.9%	+23.2%	+9.2%	-0.7%
Management (VIII & above)	224	+57	+45	+47	+44	+20	-1	+34.4%	+25.2%	+27.0%	+24.6%	+9.7%	-0.4%
Middle Management (V-VII)	649	+270	+257	+221	+185	+138	+14	+71.1%	+65.4%	+51.7%	+39.9%	+27.0%	+2.2%
Other Administrative	12	-2	-4	-4	-3	-4	-0	-13.2%	-24.8%	-24.1%	-19.8%	-24.1%	-3.8%
Administrative/ Supervisory (V to VII)	661	+268	+253	+217	+182	+134	+14	+68.1%	+61.8%	+49.0%	+38.0%	+25.5%	+2.1%
Clerical (III & IV)	734	+127	+102	+81	+74	+49	+8	+21.0%	+16.1%	+12.3%	+11.2%	+7.1%	+1.1%
Management & Administrative	1,619	+452	+400	+345	+300	+203	+21	+38.8%	+32.8%	+27.1%	+22.7%	+14.3%	+1.3%
Support	637	-205	-152	-137	-97	-26	+10	-24.4%	-19.3%	-17.7%	-13.3%	-3.9%	+1.5%
Maintenance	101	-23	-30	-19	-15	-20	-8	-18.7%	-22.6%	-15.5%	-12.7%	-16.5%	-7.3%
Technical Services	17	+12	+12	+11	+9	+6	+0	+229.4%	+229.4%	+175.4%	+107.4%	+51.4%	+0.8%
Maintenance/ Technical	118	-12	-18	-8	-6	-14	-8	-9.0%	-13.2%	-6.2%	-4.9%	-10.8%	-6.2%
General Support	755	-217	-170	-145	-103	-40	+2	-22.3%	-18.4%	-16.1%	-12.0%	-5.0%	+0.2%
Attendant/ Aide	181	-192	-116	-42	-50	-66	-6	-51.6%	-39.2%	-19.0%	-21.7%	-26.9%	-3.1%
Health & Social Care Assistants	22	+11	+13	+11	+13	+11	+3	+106.3%	+143.3%	+103.1%	+131.4%	+100.4%	+18.3%
Health Care Assistant/ Care Assistant	7,262	+1,881	+1,383	+954	+676	+418	+1	+35.0%	+23.5%	+15.1%	+10.3%	+6.1%	+0.0%
Health Care Assistants	7,465	+1,701	+1,280	+923	+638	+362	-1	+29.5%	+20.7%	+14.1%	+9.4%	+5.1%	-0.0%
Home Help	79	-16	-44	-33	-30	-15	-4	-16.9%	-35.9%	-29.7%	-27.1%	-15.5%	-4.3%

Oct 2022 (Dec 2015 figure: 15,715)	WTE Oct 2022	WTE change since Dec 16	WTE change since Dec 17	WTE change since Dec 18	WTE change since Dec 19	WTE change since Dec 20	WTE change since Sep 22	% change since Dec 16	% change since Dec 17	% change since Dec 18	% change since Dec 19	% change since Dec 20	% change since Sep 22
Overall	19,727	+2,973	+2,330	+1,908	+1,424	+782	+70	+17.7%	+13.4%	+10.7%	+7.8%	+4.1%	+0.4%
Home Care Services	18	-3	-5	-5	-10	-0	+0	-13.1%	-20.0%	-20.1%	-35.2%	-0.5%	+0.8%
Other Care Grades	266	+69	+81	+81	+92	+45	+4	+34.7%	+44.1%	+44.1%	+52.4%	+20.2%	+1.3%
Pastoral Care	5	-8	-8	-5	-6	-5	-1	-61.3%	-63.1%	-52.5%	-53.3%	-52.5%	-18.5%
Workshop Services	1,476	+235	+173	+132	+50	+21	+25	+18.9%	+13.3%	+9.8%	+3.5%	+1.4%	+1.7%
Care, other	1,766	+293	+242	+203	+126	+60	+28	+19.9%	+15.8%	+13.0%	+7.7%	+3.5%	+1.6%
Patient & Client Care	9,309	+1,978	+1,477	+1,093	+735	+408	+23	+27.0%	+18.9%	+13.3%	+8.6%	+4.6%	+0.2%

Source: Health Service Personnel Census