

Dublin Midlands Hospital Group Employment Report: August 2022

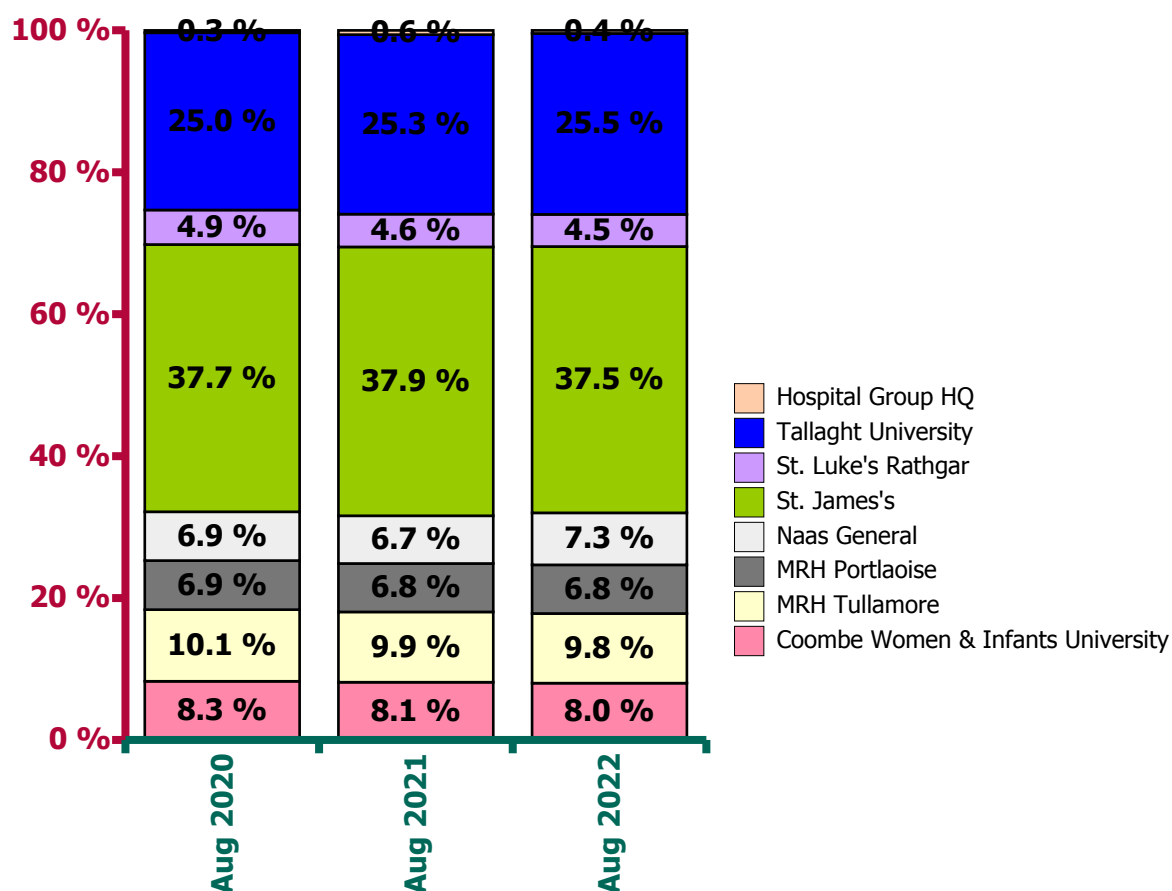
Employment by Staff Group

Aug 2022	WTE Dec 2019	WTE Dec 2020	WTE Jul 2022	WTE Aug 2022	WTE change since Jul 22	WTE change since Dec 20	% change since Dec 20	WTE change since Dec 19	% change since Dec 19	No. Aug 2022
Overall	10,819	11,288	12,066	12,044	-22	+756	+6.7%	+1,226	+11.3%	13,459
Consultants	464	499	544	545	+1	+46	+9.2%	+81	+17.5%	585
Registrars	490	522	561	581	+20	+59	+11.3%	+91	+18.6%	629
SHO/ Interns	424	460	465	454	-11	-6	-1.3%	+31	+7.3%	499
Medical/ Dental, other	7	7	11	9	-1	+2	+26.0%	+2	+35.4%	13
Medical & Dental	1,384	1,489	1,581	1,590	+9	+101	+6.8%	+206	+14.9%	1,726
Nurse/ Midwife Manager	877	908	982	982	-1	+73	+8.1%	+104	+11.9%	1,084
Nurse/ Midwife Specialist & AN/MP	205	236	276	281	+5	+44	+18.8%	+76	+37.2%	318
Staff Nurse/ Staff Midwife	2,835	2,950	2,993	2,973	-20	+23	+0.8%	+138	+4.9%	3,302
<i>Pre-registration Nurse/ Midwife Intern</i>	8	0	94	93	-0	+93	+310933.3%	+86	+1097.8%	187
<i>Pre-registration Nurse Intern (COVID-19)</i>		28				-28	-100.0%		-100.0%	
<i>Post-registration Nurse/ Midwife Student</i>	13	12	11	11		-1	-8.3%	-2	-15.4%	22
<i>Nursing/ Midwifery awaiting registration</i>	21	4	63	59	-4	+55	+1288.2%	+38	+181.0%	59
Nursing/ Midwifery Student	42	44	168	163	-5	+119	+270.9%	+122	+290.8%	268
Nursing/ Midwifery other	36	38	39	39	-0	+1	+2.8%	+3	+8.3%	45
Nursing & Midwifery	3,994	4,177	4,458	4,437	-21	+261	+6.2%	+443	+11.1%	5,017
Therapy Professions	367	397	428	429	+1	+32	+8.0%	+62	+16.9%	479
Health Science/ Diagnostics	979	1,001	1,004	1,009	+5	+8	+0.8%	+30	+3.1%	1,093
Social Workers	79	87	91	87	-5	-1	-0.9%	+7	+9.1%	95
Psychologists	13	13	15	17	+2	+4	+26.2%	+4	+34.4%	18
Pharmacy	220	243	239	240	+1	-4	-1.6%	+19	+8.7%	262
H&SC, Other	34	46	43	43	-1	-3	-7.4%	+9	+25.6%	46
Health & Social Care Professionals	1,692	1,788	1,821	1,823	+3	+35	+2.0%	+132	+7.8%	1,993
Management (VIII & above)	117	126	144	144	+0	+18	+14.1%	+27	+22.8%	148
Administrative/ Supervisory (V to VII)	494	523	606	605	-1	+83	+15.8%	+111	+22.5%	642
Clerical (III & IV)	1,055	1,046	1,116	1,110	-6	+64	+6.1%	+55	+5.2%	1,298
Management & Administrative	1,667	1,695	1,866	1,859	-7	+165	+9.7%	+193	+11.6%	2,088
Support	764	771	815	804	-11	+33	+4.3%	+40	+5.2%	914
Maintenance/ Technical	130	130	131	133	+1	+3	+2.3%	+2	+1.9%	134
General Support	894	901	947	937	-10	+36	+4.0%	+42	+4.7%	1,048
Health Care Assistants	1,167	1,217	1,364	1,368	+4	+151	+12.4%	+202	+17.3%	1,549
Care, other	21	21	29	29	-0	+8	+37.1%	+9	+41.1%	38
Patient & Client Care	1,187	1,239	1,394	1,398	+4	+159	+12.8%	+210	+17.7%	1,587

Dublin Midlands Hospital Group Employment by Hospital: Aug 2022

Aug 2022	WTE Dec 2019	WTE Dec 2020	WTE Jul 2022	WTE Aug 2022	WTE change since Jul 22	WTE change since Dec 20	% change since Dec 20	WTE change since Dec 19	% change since Dec 19	No. Aug 2022
Overall	10,819	11,288	12,066	12,044	-22	+756	+6.7%	+1,226	+11.3%	13,459
Coombe Women & Infants University	890	925	974	965	-9	+40	+4.3%	+75	+8.5%	1,079
MRH Tullamore	1,101	1,146	1,192	1,182	-10	+36	+3.1%	+81	+7.3%	1,356
MRH Portlaoise	750	780	824	825	+1	+45	+5.7%	+75	+10.0%	946
Naas General	759	777	877	883	+5	+106	+13.6%	+124	+16.3%	979
St. James's	4,058	4,266	4,526	4,520	-7	+254	+6.0%	+462	+11.4%	5,035
St. Luke's Rathgar	544	542	542	546	+4	+3	+0.6%	+1	+0.2%	579
Tallaght University	2,683	2,812	3,074	3,070	-5	+258	+9.2%	+387	+14.4%	3,427
Hospital Group HQ	33	40	57	54	-3	+14	+36.2%	+21	+61.8%	58

Dublin Midlands Hospital Group



Dublin Midlands Hospital Group Employment by Administration (HSE / S38): August 2022

Aug 2022	WTE Dec 2019	WTE Dec 2020	WTE Jul 2022	WTE Aug 2022	WTE change since Jul 22	WTE change since Dec 20	% change since Dec 20	WTE change since Dec 19	% change since Dec 19	No. Aug 2022
Overall	10,819	11,288	12,066	12,044	-22	+756	+6.7%	+1,226	+11.3%	13,459
HSE	3,187	3,285	3,491	3,489	-2	+204	+6.2%	+302	+9.5%	3,918
Section 38 Hospitals	7,631	8,003	8,575	8,555	-20	+552	+6.9%	+924	+12.1%	9,541

HSE

Aug 2022	WTE Dec 2019	WTE Dec 2020	WTE Jul 2022	WTE Aug 2022	WTE change since Jul 22	WTE change since Dec 20	% change since Dec 20	WTE change since Dec 19	% change since Dec 19	No. Aug 2022
Overall	3,187	3,285	3,491	3,489	-2	+204	+6.2%	+302	+9.5%	3,918
Consultants	120	117	127	127	+0	+10	+8.8%	+7	+6%	135
Registrars	121	129	141	139	-2	+10	+7.5%	+17	+14%	176
SHO/ Interns	135	137	139	145	+6	+8	+5.7%	+10	+7%	186
Medical/ Dental, other	2	2	2	2	-0	-0	-15.5%	-0	-16%	2
Medical & Dental	378	385	409	412	+4	+27	+7.1%	+34	+8.9%	499
Nurse/ Midwife Manager	237	249	277	276	-0	+27	+10.9%	+40	+17%	309
Nurse/ Midwife Specialist & AN/MP	71	75	86	89	+2	+14	+18.3%	+18	+25%	101
Staff Nurse/ Staff Midwife	741	774	821	816	-5	+43	+5.5%	+76	+10%	937
Pre-registration Nurse/ Midwife Intern	0		12	12	+0	+12	-100.0%	+12	+29500.0%	24
Pre-registration Nurse Intern (COVID-19)		2					-100.0%		-100.0%	
Nursing/ Midwifery awaiting registration	15		11	14	+3	-1	-100.0%	-1	-6.7%	14
Nursing/ Midwifery Student	15	2	23	26	+3	+24	+1192.0%	+11	+72%	38
Nursing/ Midwifery other	4	5	7	7	-0	+2	+31.5%	+3	+59%	8
Nursing & Midwifery	1,067	1,105	1,214	1,214	-0	+109	+9.9%	+146	+13.7%	1,393
Therapy Professions	93	106	110	112	+1	+5	+5.0%	+18	+20%	121
Health Science/ Diagnostics	381	407	389	392	+3	-15	-3.7%	+11	+3%	425
Social Workers	7	8	11	10	-1	+2	+26.2%	+3	+43%	10
Psychologists	3	3	4	5	+1	+2	+66.7%	+2	+67%	5
Pharmacy	51	61	63	63	-0	+2	+3.0%	+12	+24%	72
H&SC, Other	2	4	8	8	-0	+4	+104.0%	+7	+410%	9
Health & Social Care Professionals	536	589	586	590	+3	+0	+0.0%	+53	+9.9%	642
Management (VIII & above)	34	36	36	36	-0	+0	+0.2%	+2	+7%	37
Administrative/ Supervisory (V to VII)	98	116	145	142	-3	+26	+22.4%	+44	+44%	152
Clerical (III & IV)	315	287	293	291	-2	+5	+1.6%	-24	-8%	327
Management & Administrative	447	438	474	469	-5	+31	+7.0%	+22	+4.9%	516
Support	132	134	138	135	-3	+1	+0.6%	+3	+2%	144
Maintenance/ Technical	43	47	48	50	+2	+3	+6.4%	+8	+18%	51
General Support	175	181	186	185	-1	+4	+2.1%	+10	+5.8%	195
Health Care Assistants	579	583	618	615	-3	+32	+5.5%	+36	+6%	667
Care, other	4	4	4	4	+0	+1	+20.0%	+0	+10%	6
Patient & Client Care	583	587	622	620	-3	+33	+5.6%	+37	+6.3%	673

Section 38 Hospitals

Aug 2022	WTE Dec 2019	WTE Dec 2020	WTE Jul 2022	WTE Aug 2022	WTE change since Jul 22	WTE change since Dec 20	% change since Dec 20	WTE change since Dec 19	% change since Dec 19	No. Aug 2022
Overall	7,631	8,003	8,575	8,555	-20	+552	+6.9%	+924	+12.1%	9,541
Consultants	344	382	416	418	+1	+35	+9.3%	+74	+21%	450
Registrars	368	393	421	442	+22	+49	+12.6%	+74	+20%	453
SHO/ Interns	288	323	326	310	-17	-14	-4.2%	+21	+7%	313
Medical/ Dental, other	5	6	9	8	-1	+2	+39.6%	+3	+54%	11
Medical & Dental	1,006	1,104	1,172	1,178	+5	+73	+6.6%	+172	+17.1%	1,227
Nurse/ Midwife Manager	641	659	706	705	-0	+46	+7.0%	+65	+10%	775
Nurse/ Midwife Specialist & AN/MP	134	161	190	192	+2	+31	+19.1%	+58	+44%	217
Staff Nurse/ Staff Midwife	2,095	2,177	2,172	2,157	-15	-20	-0.9%	+62	+3%	2,365
Pre-registration Nurse/ Midwife Intern	8	0	82	81	-1	+74	+271466.7%	+74	+951.2%	163
Pre-registration Nurse Intern (COVID-19)		26					-100.0%		-100.0%	
Post-registration Nurse/ Midwife Student	13	12	11	11		-2	-8.3%	-2	-15.4%	22
Nursing/ Midwifery awaiting registration	6	4	52	45	-7	+39	+958.8%	+39	+650.0%	45
Nursing/ Midwifery Student	27	42	145	137	-8	+95	+227.1%	+111	+414%	230
Nursing/ Midwifery other	31	32	32	32	+0	-1	-1.7%	+0	+2%	37
Nursing & Midwifery	2,927	3,072	3,244	3,224	-21	+152	+4.9%	+296	+10.1%	3,624
Therapy Professions	274	291	318	317	-0	+27	+9.1%	+44	+16%	358
Health Science/ Diagnostics	598	594	615	617	+2	+23	+3.9%	+19	+3%	668
Social Workers	73	80	80	77	-4	-3	-3.6%	+4	+6%	85
Psychologists	10	10	11	12	+1	+2	+14.6%	+2	+24%	13
Pharmacy	169	182	175	176	+1	-6	-3.1%	+7	+4%	190
H&SC, Other	32	42	35	34	-1	-8	-18.0%	+2	+7%	37
Health & Social Care Professionals	1,155	1,199	1,234	1,234	-1	+35	+2.9%	+79	+6.8%	1,351
Management (VIII & above)	84	90	108	108	+1	+18	+19.7%	+25	+29%	111
Administrative/ Supervisory (V to VII)	396	407	461	464	+2	+57	+13.9%	+68	+17%	490
Clerical (III & IV)	740	759	823	819	-5	+59	+7.8%	+79	+11%	971
Management & Administrative	1,219	1,256	1,392	1,390	-2	+134	+10.7%	+171	+14.0%	1,572
Support	632	637	677	669	-8	+32	+5.0%	+37	+6%	770
Maintenance/ Technical	88	83	84	82	-1	-0	-0.1%	-5	-6%	83
General Support	719	720	761	752	-9	+32	+4.4%	+32	+4.5%	853
Health Care Assistants	588	635	746	753	+7	+119	+18.7%	+166	+28%	882
Care, other	17	18	25	25	-1	+7	+40.7%	+8	+49%	32
Patient & Client Care	604	652	771	778	+7	+126	+19.3%	+174	+28.7%	914

Dublin Midlands Hospital Group Employment by Hospital & Staff Category: August 2022

Coombe Women & Infants

Aug 2022	WTE Dec 2019	WTE Dec 2020	WTE Jul 2022	WTE Aug 2022	WTE change since Jul 22	WTE change since Dec 20	% change since Dec 20	WTE change since Dec 19	% change since Dec 19	No. Aug 2022
Overall	890	925	974	965	-9	+40	+4.3%	+75	+8.5%	1,079
Consultants	32	38	40	40	0	+2	+5.8%	+8	+25.6%	43
Registrars	39	42	49	51	+2	+9	+22.0%	+12	+29.8%	51
SHO/ Interns	28	28	27	27	0	-1	-3.6%	-1	-3.6%	27
Medical & Dental	99	108	116	118	+2	+10	+9.7%	+19	+19.0%	121
Nurse/ Midwife Manager	73	80	89	87	-2	+6	+8.1%	+13	+18.5%	96
Nurse/ Midwife Specialist & AN/MP	11	12	17	17	0	+5	+41.3%	+6	+52.8%	19
Staff Nurse/ Staff Midwife	261	257	237	229	-7	-28	-10.9%	-31	-12.0%	251
Pre-registration Nurse/ Midwife Intern			6	6	0	+6	-100.0%	+6	-100.0%	11
Post-registration Nurse/ Midwife Student	13	12	11	11	0	-1	-8.3%	-2	-15.4%	22
Nursing/ Midwifery Student	13	12	17	17	0	+5	+37.5%	+4	+26.9%	33
Nursing/ Midwifery other	16	16	17	17	0	+0	+2.9%	+0	+1.3%	20
Nursing & Midwifery	374	378	376	366	-10	-11	-3.0%	-8	-2.1%	419
Therapy Professions	8	8	12	12	+0	+4	+44.0%	+4	+50.5%	15
Health Science/ Diagnostics	52	55	55	55	0	+1	+0.9%	+4	+6.8%	59
Social Workers	7	10	9	9	0	-1	-10.0%	+2	+28.6%	9
Psychologists	1	1	1	1	0		0.0	+0	+78.6%	1
Pharmacy	7	8	8	8	0		0.0	+1	+14.3%	8
H&SC, Other			1		-1		-100.0%		-100.0%	
Health & Social Care Professionals	74	82	86	85	-1	+3	+3.9%	+11	+14.8%	92
Management (VIII & above)	7	6	8	8	0	+2	+33.3%	+1	+14.3%	8
Administrative/ Supervisory (V to VII)	47	48	56	57	+1	+9	+19.8%	+10	+22.4%	60
Clerical (III & IV)	93	100	105	104	-1	+4	+4.3%	+11	+11.8%	128
Management & Administrative	147	153	169	169	-0	+16	+10.3%	+22	+15.3%	196
Support	137	143	148	148	+0	+5	+3.7%	+11	+7.9%	162
Maintenance/ Technical	9	7	8	8	0	+1	+14.3%	-1	-11.1%	8
General Support	146	150	156	156	+0	+6	+4.2%	+10	+6.7%	170
Health Care Assistants	48	54	68	69	+1	+15	+27.7%	+21	+43.5%	79
Care, other	2	1	3	2	-1	+1	+100.0%	+0	+24.2%	2
Patient & Client Care	49	55	71	71	-0	+16	+29.0%	+21	+42.9%	81

MRH Tullamore

Aug 2022	WTE Dec 2019	WTE Dec 2020	WTE Jul 2022	WTE Aug 2022	WTE change since Jul 22	WTE change since Dec 20	% change since Dec 20	WTE change since Dec 19	% change since Dec 19	No. Aug 2022
Overall	1,101	1,146	1,192	1,182	-10	+36	+3.1%	+81	+7.3%	1,356
Consultants	47	46	57	56	-1	+10	+21.1%	+8	+17.8%	60
Registrars	41	48	53	54	+1	+6	+11.5%	+12	+29.8%	77
SHO/ Interns	46	47	50	49	-1	+1	+2.6%	+3	+6.2%	72
Medical/ Dental, other	2	2	2	2	-0	-0	-15.5%	-0	-15.9%	2
Medical & Dental	136	143	162	160	-2	+16	+11.3%	+23	+17.1%	211
Nurse/ Midwife Manager	86	87	91	92	+1	+4	+5.1%	+6	+6.5%	104
Nurse/ Midwife Specialist & AN/MP	23	25	27	27	+0	+2	+8.2%	+5	+20.6%	31
Staff Nurse/ Staff Midwife	294	306	315	309	-6	+2	+0.7%	+15	+5.0%	362
Pre-registration Nurse/ Midwife Intern	0		7	7	+0	+7	-100.0%	+7	+17200.0%	14
Pre-registration Nurse Intern (COVID-19)		2				-2	-100.0%		-100.0%	
Nursing/ Midwifery awaiting registration	6		1	1	0	+1	-100.0%	-5	-83.3%	1
Nursing/ Midwifery Student	6	2	8	8	+0	+6	+296.0%	+2	+31.1%	15
Nursing/ Midwifery other	1	2	2	2	-0	+0	+1.6%	+1	+85.0%	2
Nursing & Midwifery	410	423	443	437	-6	+15	+3.4%	+28	+6.8%	514
Therapy Professions	32	38	39	40	+1	+1	+3.5%	+7	+21.9%	43
Health Science/ Diagnostics	83	91	88	87	-1	-4	-4.5%	+3	+4.0%	95
Social Workers			2	2	-0	+2	-100.0%	+2	-100.0%	2
Pharmacy	24	32	35	34	-1	+2	+6.0%	+10	+40.0%	37
H&SC, Other	1		2	2	-0	+2	-100.0%	+1	+233.3%	2
Health & Social Care Professionals	141	161	167	164	-3	+3	+2.0%	+23	+16.7%	179
Management (VIII & above)	5	5	4	4	+0	-1	-21.0%	-1	-21.8%	4
Administrative/ Supervisory (V to VII)	24	29	33	31	-1	+3	+9.9%	+8	+33.4%	33
Clerical (III & IV)	99	95	79	78	-1	-17	-18.0%	-21	-21.4%	87
Management & Administrative	128	129	115	113	-2	-15	-11.9%	-14	-11.3%	124
Support	28	29	32	31	-0	+3	+9.4%	+3	+11.9%	32
Maintenance/ Technical	27	27	27	28	+1	+1	+2.8%	+1	+2.7%	29
General Support	55	56	59	59	+1	+3	+6.2%	+4	+7.4%	61
Health Care Assistants	230	233	245	247	+2	+14	+5.9%	+17	+7.2%	265
Care, other	1	1	1	1	+0	+0	+1.6%	+0	+1.6%	2
Patient & Client Care	232	234	246	248	+2	+14	+5.9%	+17	+7.2%	267

MRH Portlaoise

Aug 2022	WTE Dec 2019	WTE Dec 2020	WTE Jul 2022	WTE Aug 2022	WTE change since Jul 22	WTE change since Dec 20	% change since Dec 20	WTE change since Dec 19	% change since Dec 19	No. Aug 2022
Overall	750	780	824	825	+1	+45	+5.7%	+75	+10.0%	946
Consultants	23	24	23	23	+0	-0	-2.1%	+1	+2.7%	24
Registrars	35	37	38	37	-1	+1	+1.7%	+2	+6.4%	50
SHO/ Interns	38	41	35	43	+8	+2	+5.1%	+5	+13.3%	59
Medical & Dental	96	101	96	104	+8	+2	+2.2%	+8	+8.2%	133
Nurse/ Midwife Manager	61	62	76	74	-3	+11	+18.3%	+13	+21.2%	85
Nurse/ Midwife Specialist & AN/MP	16	19	26	26	+0	+7	+34.8%	+10	+59.3%	30
Staff Nurse/ Staff Midwife	202	220	244	238	-6	+18	+8.1%	+36	+17.6%	272
Pre-registration Nurse/ Midwife Intern			5	5	+0	+5	-100.0%	+5	-100.0%	10
Nursing/ Midwifery awaiting registration	9		10	13	+3	+13	-100.0%	+4	+44.4%	13
Nursing/ Midwifery Student	9		15	18	+3	+18	-100.0%	+9	+99.1%	23
Nursing/ Midwifery other	2	2	3	2	-0	+0	+6.9%	+0	+1.2%	3
Nursing & Midwifery	291	304	364	358	-5	+54	+17.8%	+67	+23.0%	413
Therapy Professions	14	19	15	15	-1	-4	-21.7%	+0	+2.6%	16
Health Science/ Diagnostics	38	43	43	46	+3	+3	+7.7%	+8	+22.2%	51
Social Workers			1	1	0	+1	-100.0%	+1	-100.0%	1
Pharmacy	13	13	10	11	+0	-3	-18.9%	-2	-13.6%	13
Health & Social Care Professionals	65	75	69	73	+3	-2	-3.2%	+8	+12.4%	81
Management (VIII & above)	3	4	5	5	0	+1	+24.0%	+2	+65.3%	5
Administrative/ Supervisory (V to VII)	13	16	19	19	-0	+3	+17.3%	+6	+42.8%	20
Clerical (III & IV)	81	73	70	70	-0	-3	-4.1%	-11	-13.6%	77
Management & Administrative	97	93	94	94	-0	+1	+0.8%	-3	-3.5%	102
Support	17	20	20	20	-0	+0	+2.0%	+3	+20.3%	23
Maintenance/ Technical	8	9	8	9	+2		0.0	+1	+12.5%	9
General Support	25	29	28	29	+1	+0	+1.4%	+4	+17.8%	32
Health Care Assistants	175	177	172	166	-6	-10	-5.8%	-9	-5.0%	184
Care, other	1	1	1	1	0		0.0			1
Patient & Client Care	176	178	173	167	-6	-10	-5.8%	-9	-4.9%	185

Naas General

Aug 2022	WTE Dec 2019	WTE Dec 2020	WTE Jul 2022	WTE Aug 2022	WTE change since Jul 22	WTE change since Dec 20	% change since Dec 20	WTE change since Dec 19	% change since Dec 19	No. Aug 2022
Overall	759	777	877	883	+5	+106	+13.6%	+124	+16.3%	979
Consultants	26	25	24	25	+0	+0	+0.1%	-1	-3.2%	26
Registrars	26	28	37	36	-2	+8	+26.8%	+10	+37.4%	37
SHO/ Interns	39	37	38	36	-2	-0	-1.3%	-2	-5.9%	38
Medical & Dental	90	90	100	97	-3	+7	+7.9%	+7	+7.3%	101
Nurse/ Midwife Manager	65	69	79	80	+1	+10	+15.2%	+14	+22.0%	88
Nurse/ Midwife Specialist & AN/MP	19	16	20	22	+2	+6	+36.1%	+3	+17.6%	27
Staff Nurse/ Staff Midwife	201	208	226	231	+5	+24	+11.4%	+30	+15.0%	259
Nursing/ Midwifery other	1	1	3	2	-0	+1	+143.0%	+2	+200.0%	3
Nursing & Midwifery	286	294	328	336	+8	+41	+14.1%	+49	+17.3%	377
Therapy Professions	38	40	46	45	-0	+6	+13.9%	+8	+20.0%	49
Health Science/ Diagnostics	65	68	66	67	+1	-2	-2.4%	+1	+2.1%	74
Social Workers	2	3	3	3	0	+0	+3.4%	+1	+53.8%	3
Pharmacy	12	15	15	15	+1	+0	+3.1%	+3	+27.2%	19
Health & Social Care Professionals	117	126	129	130	+1	+4	+3.6%	+13	+11.3%	145
Management (VIII & above)	5	6	5	5	-0	-1	-18.1%	-0	-4.4%	5
Administrative/ Supervisory (V to VII)	12	18	32	33	+1	+15	+81.0%	+20	+166.2%	37
Clerical (III & IV)	71	58	67	66	-0	+8	+13.8%	-5	-6.4%	76
Management & Administrative	88	82	103	104	+0	+22	+26.2%	+16	+17.6%	118
Support	28	28	33	31	-2	+3	+10.6%	+4	+13.7%	36
Maintenance/ Technical	2	6	7	7	0	+1	+21.7%	+5	+213.9%	7
General Support	30	34	40	38	-2	+4	+12.5%	+9	+28.7%	43
Health Care Assistants	146	150	177	178	+1	+27	+18.2%	+31	+21.4%	194
Care, other	1	1		0	+0	-0	-41.8%	-1	-61.0%	1
Patient & Client Care	147	151	177	178	+1	+27	+17.9%	+31	+20.8%	195

St. James's

Aug 2022	WTE Dec 2019	WTE Dec 2020	WTE Jul 2022	WTE Aug 2022	WTE change since Jul 22	WTE change since Dec 20	% change since Dec 20	WTE change since Dec 19	% change since Dec 19	No. Aug 2022
Overall	4,058	4,266	4,526	4,520	-7	+254	+6.0%	+462	+11.4%	5,035
Consultants	195	212	227	229	+2	+17	+7.9%	+34	+17.2%	245
Registrars	184	205	204	218	+13	+13	+6.2%	+34	+18.3%	224
SHO/ Interns	157	176	182	174	-8	-2	-1.0%	+18	+11.3%	177
Medical/ Dental, other	5	6	9	8	-1	+2	+39.6%	+3	+54.2%	11
Medical & Dental	541	598	622	628	+7	+30	+5.0%	+88	+16.2%	657
Nurse/ Midwife Manager	345	348	364	364	-1	+16	+4.6%	+19	+5.6%	405
Nurse/ Midwife Specialist & AN/MP	80	95	115	117	+2	+22	+23.0%	+38	+47.2%	135
Staff Nurse/ Staff Midwife	1,125	1,179	1,178	1,169	-9	-11	-0.9%	+44	+3.9%	1,270
Pre-registration Nurse/ Midwife Intern			34	34	-0	+34	-100.0%	+34	-100.0%	69
Pre-registration Nurse Intern (COVID-19)		7				-7	-100.0%		-100.0%	
Nursing/ Midwifery awaiting registration	1						-100.0%	-1	-100.0%	
Nursing/ Midwifery Student	1	7	34	34	-0	+27	+393.8%	+33	+3297.0%	69
Nursing/ Midwifery other	12	13	11	11	+0	-2	-14.7%	-1	-5.4%	12
Nursing & Midwifery	1,562	1,643	1,702	1,695	-7	+53	+3.2%	+133	+8.5%	1,891
Therapy Professions	151	164	171	170	-0	+6	+3.9%	+19	+12.5%	193
Health Science/ Diagnostics	339	323	333	337	+3	+14	+4.3%	-2	-0.7%	363
Social Workers	43	46	44	42	-2	-4	-7.7%	-1	-2.4%	48
Psychologists	5	5	6	7	+1	+2	+34.0%	+2	+30.8%	7
Pharmacy	97	109	105	105	+0	-4	-3.6%	+8	+8.3%	114
H&SC, Other	26	36	32	32	+0	-4	-9.9%	+6	+23.3%	35
Health & Social Care Professionals	662	682	691	693	+2	+11	+1.6%	+31	+4.7%	760
Management (VIII & above)	40	43	57	57	+1	+14	+32.8%	+17	+42.1%	60
Administrative/ Supervisory (V to VII)	176	185	211	211	+0	+26	+14.1%	+36	+20.2%	223
Clerical (III & IV)	371	378	411	411	0	+33	+8.6%	+40	+10.9%	486
Management & Administrative	587	607	679	680	+1	+73	+12.0%	+93	+15.9%	769
Support	278	277	295	287	-8	+11	+3.8%	+10	+3.5%	344
Maintenance/ Technical	59	56	55	54	-1	-2	-3.9%	-5	-8.4%	54
General Support	336	332	350	341	-9	+8	+2.5%	+5	+1.4%	398
Health Care Assistants	360	392	465	464	-1	+72	+18.3%	+104	+28.8%	537
Care, other	9	10	18	18	+0	+7	+73.1%	+8	+89.8%	23
Patient & Client Care	370	403	483	482	-1	+79	+19.7%	+112	+30.3%	560

St. Luke's Rathgar

Aug 2022	WTE Dec 2019	WTE Dec 2020	WTE Jul 2022	WTE Aug 2022	WTE change since Jul 22	WTE change since Dec 20	% change since Dec 20	WTE change since Dec 19	% change since Dec 19	No. Aug 2022
Overall	544	542	542	546	+4	+3	+0.6%	+1	+0.2%	579
Consultants	24	22	22	23	+1	+1	+4.5%	-1	-4.1%	25
Registrars	19	16	12	12	0	-4	-25.0%	-7	-36.8%	12
SHO/ Interns	13	12	17	17	+0	+5	+41.7%	+4	+30.8%	17
Medical & Dental	56	50	51	52	+1	+2	+4.0%	-4	-7.1%	54
Nurse/ Midwife Manager	21	27	25	26	+1	-2	-6.2%	+4	+20.2%	26
Nurse/ Midwife Specialist & AN/MP	13	14	13	13	0	-1	-7.1%			13
Staff Nurse/ Staff Midwife	43	39	36	38	+2	-1	-2.2%	-5	-10.6%	44
Nursing & Midwifery	77	81	74	77	+3	-4	-4.4%	-0	-0.3%	83
Therapy Professions	9	9	10	12	+2	+3	+26.9%	+3	+37.7%	13
Health Science/ Diagnostics	195	205	193	193	0	-13	-6.2%	-2	-1.0%	205
Social Workers	5	5	5	4	-1	-1	-20.0%	-1	-20.0%	4
Psychologists	3	3	4	5	+1	+2	+66.7%	+2	+66.7%	5
Pharmacy	2	1	3	3	0	+2	+200.0%	+1	+50.0%	3
H&SC, Other	1	4	6	6	0	+2	+50.0%	+5	+500.0%	6
Health & Social Care Professionals	214	228	221	222	+2	-5	-2.3%	+8	+3.9%	236
Management (VIII & above)	6	5	6	6	0	+1	+20.0%			6
Administrative/ Supervisory (V to VII)	34	36	34	33	-1	-2	-6.5%	-0	-0.9%	35
Clerical (III & IV)	64	57	71	71	0	+13	+23.2%	+6	+9.8%	80
Management & Administrative	104	98	111	110	-1	+12	+12.3%	+6	+5.8%	121
Support	60	57	53	52	-1	-5	-9.1%	-8	-13.1%	53
Maintenance/ Technical	5	5	6	6	0	+1	+20.0%	+1	+20.0%	6
General Support	65	62	59	58	-1	-4	-6.8%	-7	-10.6%	59
Health Care Assistants	27	23	24	24	0	+1	+6.3%	-3	-11.5%	24
Care, other	1	1	2	2	0	+1	+128.2%	+1	+128.2%	2
Patient & Client Care	28	23	26	26		+2	+10.4%	-2	-7.6%	26

Tallaght University

Aug 2022	WTE Dec 2019	WTE Dec 2020	WTE Jul 2022	WTE Aug 2022	WTE change since Jul 22	WTE change since Dec 20	% change since Dec 20	WTE change since Dec 19	% change since Dec 19	No. Aug 2022
Overall	2,683	2,812	3,074	3,070	-5	+258	+9.2%	+387	+14.4%	3,427
Consultants	117	132	150	149	-1	+17	+12.5%	+32	+27.5%	162
Registrars	145	146	167	174	+7	+28	+18.8%	+29	+19.8%	178
SHO/ Interns	104	119	118	108	-9	-11	-9.2%	+4	+4.3%	109
Medical & Dental	366	398	435	431	-4	+33	+8.3%	+65	+17.9%	449
Nurse/ Midwife Manager	223	232	252	255	+3	+24	+10.2%	+32	+14.4%	274
Nurse/ Midwife Specialist & AN/MP	42	54	57	57	+0	+4	+6.9%	+15	+34.6%	63
Staff Nurse/ Staff Midwife	709	740	758	759	+1	+18	+2.5%	+50	+7.0%	844
Pre-registration Nurse/ Midwife Intern	8	0	43	42	-1	+42	+139900.0%	+34	+441.9%	83
Pre-registration Nurse Intern (COVID-19)		19				-19	-100.0%		-100.0%	
Nursing/ Midwifery awaiting registration	5	4	52	45	-7	+41	+958.8%	+40	+800.0%	45
Nursing/ Midwifery Student	13	23	95	87	-8	+64	+275.8%	+74	+582.4%	128
Nursing/ Midwifery other	3	3	4	4	0	+1	+29.5%	+1	+29.5%	5
Nursing & Midwifery	990	1,051	1,166	1,162	-4	+110	+10.5%	+172	+17.3%	1,314
Therapy Professions	114	119	135	135	-0	+16	+13.8%	+21	+18.3%	150
Health Science/ Diagnostics	207	217	227	225	-1	+9	+4.0%	+18	+8.6%	246
Social Workers	22	24	27	25	-2	+2	+7.3%	+3	+14.5%	28
Psychologists	4	5	4	4	0	-0	-3.1%	+0	+8.9%	5
Pharmacy	65	65	62	63	+1	-2	-2.5%	-2	-3.3%	68
H&SC, Other	6	6	2	2	0	-4	-66.7%	-4	-66.7%	2
Health & Social Care Professionals	419	434	458	455	-2	+21	+4.8%	+36	+8.7%	499
Management (VIII & above)	36	41	43	43	0	+2	+3.9%	+7	+18.1%	43
Administrative/ Supervisory (V to VII)	174	174	194	195	+1	+21	+12.2%	+21	+12.4%	207
Clerical (III & IV)	276	281	307	304	-3	+23	+8.1%	+28	+10.0%	357
Management & Administrative	486	496	544	541	-2	+45	+9.2%	+56	+11.4%	607
Support	217	217	234	234	-0	+16	+7.5%	+17	+7.7%	264
Maintenance/ Technical	20	20	21	21	-0	+1	+5.3%	+1	+4.6%	21
General Support	237	237	255	254	-0	+17	+7.3%	+18	+7.4%	285
Health Care Assistants	180	188	213	221	+8	+32	+17.0%	+41	+22.8%	266
Care, other	6	6	5	5	+0	-1	-21.2%	-1	-12.1%	7
Patient & Client Care	185	195	218	226	+8	+31	+15.8%	+40	+21.8%	273

Hospital Group HQ

Aug 2022	WTE Dec 2019	WTE Dec 2020	WTE Jul 2022	WTE Aug 2022	WTE change since Jul 22	WTE change since Dec 20	% change since Dec 20	WTE change since Dec 19	% change since Dec 19	No. Aug 2022
Overall	33	40	57	54	-3	+14	+36.2%	+21	+61.8%	58
Nurse/ Midwife Manager	3	3	6	5	-0	+2	+82.7%	+2	+83.3%	6
Nursing & Midwifery	3	3	6	5	-0	+2	+82.7%	+2	+83.3%	6
H&SC, Other			0	0	+0	+0	-100.0%	+0	-100.0%	1
Health & Social Care Professionals			0	0	+0	+0	-100.0%	+0	-100.0%	1
Management (VIII & above)	15	16	17	16	-0	+0	+1.2%	+2	+10.7%	17
Administrative/ Supervisory (V to VII)	16	18	27	26	-2	+8	+45.7%	+10	+64.2%	27
Clerical (III & IV)		3	7	6	-1	+3	+118.4%	+6	-100.0%	7
Management & Administrative	30	37	51	48	-2	+12	+31.9%	+18	+59.2%	51

Dublin Midlands Hospital Group Employment by Grade Group & Staff Category: August 2022

Aug 2022	WTE Dec 2019	WTE Dec 2020	WTE Jul 2022	WTE Aug 2022	WTE change since Jul 22	WTE change since Dec 20	% change since Dec 20	WTE change since Dec 19	% change since Dec 19	No. Aug 2022
Overall	10,819	11,288	12,066	12,044	-22	+756	+6.7%	+6.7%	+11.3%	13,459
Consultant Anaesthesia	67	71	82	81	-0	+10	+13.8%	+0	+21.4%	+91
Consultant Dentistry	2	2	1	2	+0	-0	-9.9%	-0	-13.5%	+2
Consultant Emergency Medicine	19	20	22	23	+1	+3	+14.0%	+0	+23.5%	+24
Consultant Intensive Care Medicine	2	2	2	2			0.0		0.0	+2
Consultant Medicine	145	161	184	180	-4	+19	+11.7%	+0	+23.8%	+193
Consultant Obstetrics & Gynaecology	26	31	31	31	+0	+0	+0.4%	+0	+16.3%	+32
Consultant Paediatrics	9	10	10	10			0.0		+9.3%	+11
Consultant Pathology	49	52	53	53	+1	+1	+1.9%	+0	+8.7%	+57
Consultant Psychiatry	7	7	7	7		+0	+0.1%	+0	0.0	+8
Consultant Radiology	61	64	66	68	+1	+4	+6.0%	+0	+11.2%	+71
Consultant Surgery	76	79	86	88	+2	+9	+12.0%	+0	+15.7%	+94
Consultants	464	499	544	545	+1	+46	+9.2%	+0	+17.5%	+585
Registrar	244	277	300	309	+9	+32	+11.7%	+0	+27.0%	+336
Senior Registrar	19	20	17	16	-1	-4	-20.9%	-0	-16.4%	+18
Specialist Registrar	227	225	244	256	+12	+31	+13.7%	+0	+12.6%	+275
Registrars	490	522	561	581	+20	+59	+11.3%	+0	+18.6%	+629
Interns	121	152	161	143	-19	-9	-5.9%	-0	+18.4%	+154
Senior House Officer	303	309	304	312	+8	+3	+1.0%	+0	+2.8%	+345
SHO/ Interns	424	460	465	454	-11	-6	-1.3%	-0	+7.3%	+499
Dentists	1	1	1	1		-0	-31.0%	-0	0.0	+1
Other Medical	6	6	10	8	-1	+2	+40.1%	+0	+41.6%	+12
Medical/ Dental, other	7	7	11	9	-1	+2	+26.0%	+0	+35.4%	+13
Medical & Dental	1,384	1,489	1,581	1,590	+9	+101	+6.8%	+0	+14.9%	+1,726
Clinical Nurse/ Midwife Manager	794	823	890	889	-1	+67	+8.1%	+0	+12.1%	+985
Director Nursing/Midwifery, Assistant	73	76	82	81	-0	+5	+7.2%	+0	+12.1%	+88
Director of Nursing/Midwifery	11	10	11	11	+0	+1	+12.4%	+0	-0.2%	+11
Nurse/ Midwife Manager	877	908	982	982	-1	+73	+8.1%	+0	+11.9%	+1,084
Advanced Nurse/ Midwife Practitioner	62	82	103	104	+1	+22	+27.0%	+0	+67.9%	+111
Clinical Nurse/ Midwife Specialist	143	154	173	176	+3	+22	+14.5%	+0	+23.8%	+207
Nurse/ Midwife Specialist & AN/MP	205	236	276	281	+5	+44	+18.8%	+0	+37.2%	+318
Nursing Bank	22	17	5	8	+3	-9	-54.4%	-1	-65.3%	+14
Staff Midwives	196	189	172	165	-8	-24	-12.7%	-0	-16.1%	+188
Staff Nurses [General/ Children's]	2,595	2,720	2,797	2,782	-15	+62	+2.3%	+0	+7.2%	+3,079
Staff Nurse [Psychiatric]	21	25	19	19	+0	-6	-24.9%	-0	-12.3%	+21
Staff Nurse/ Staff Midwife	2,835	2,950	2,993	2,973	-20	+23	+0.8%	+0	+4.9%	+3,302
Pre-registration Nurse/ Midwife Intern	8	0	94	93	-0	+93	+310933.3%	+3,109	+1097.8%	+187
Pre-registration Nurse Intern (COVID-19)		28				-28	-100.0%	-1	-100.0%	
Post-registration Nurse/ Midwife Student	13	12	11	11		-1	-8.3%	-0	-15.4%	+22
Nursing/ Midwifery awaiting registration	21	4	63	59	-4	+55	+1288.2%	+13	+181.0%	+59
Nursing/ Midwifery Student	42	44	168	163	-5	+119	+270.9%	+3	+290.8%	+268

Aug 2022	WTE Dec 2019	WTE Dec 2020	WTE Jul 2022	WTE Aug 2022	WTE change since Jul 22	WTE change since Dec 20	% change since Dec 20	WTE change since Dec 19	% change since Dec 19	No. Aug 2022
Overall	10,819	11,288	12,066	12,044	-22	+756	+6.7%	+6.7%	+11.3%	13,459
Nursing Education/Clinical	31	33	33	33	-0	+0	+0.7%	+0	+7.2%	+38
Other Nursing/ Midwifery	5	5	6	6		+1	+18.0%	+0	+16.0%	+7
Nursing/ Midwifery other	36	38	39	39	-0	+1	+2.8%	+0	+8.3%	+45
Nursing & Midwifery	3,994	4,177	4,458	4,437	-21	+261	+6.2%	+0	+11.1%	+5,017
Dietitians	94	98	100	102	+2	+4	+3.9%	+0	+8.5%	+115
Occupational Therapists	68	75	80	81	+1	+6	+7.5%	+0	+19.0%	+87
Orthoptists	2	2	2	1	-0	-0	-16.3%	-0	-30.9%	+2
Physiotherapists	160	174	194	193	-2	+19	+11.0%	+0	+20.4%	+215
Podiatrists & Chiropodists	4	3	3	3	+0	-0	-3.7%	-0	-10.7%	+5
Speech & Language Therapists	39	45	48	48	+0	+4	+8.3%	+0	+24.5%	+55
Therapy Professions	367	397	428	429	+1	+32	+8.0%	+0	+16.9%	+479
Audiology	3	3	5	5	+0	+2	+63.8%	+1	+56.0%	+6
Biochemists	9	9	7	8	+1	-1	-12.4%	-0	-8.3%	+9
Cardiac Physiologists	40	46	42	42	-1	-4	-8.6%	-0	+3.2%	+44
Clinical Engineering	43	40	40	42	+2	+2	+3.8%	+0	-3.5%	+42
Dosimetrists	2	2	1	1		-1	-50.0%	-1	-50.0%	+1
E.C.G. Technicians	2	1		1	+1	-0	-23.0%	-0	-61.5%	+1
Gastrointestinal Physiologists	2	2	4	4		+2	+125.9%	+1	+125.9%	+4
Medical Science	388	390	398	402	+4	+12	+3.2%	+0	+3.6%	+440
Neuro-Physiologists	8	11	10	10	+0	-1	-6.3%	-0	+24.2%	+11
Perfusionists	4	4	4	4	+0	-1	-14.0%	-0	-14.0%	+4
Phlebotomists	41	46	56	54	-2	+8	+16.9%	+0	+29.9%	+62
Physicists	70	61	61	61	+0	-1	-0.9%	-0	-13.2%	+63
Radiation Therapists	138	147	138	136	-2	-11	-7.8%	-0	-1.7%	+146
Radiographers	209	221	218	220	+2	-2	-0.8%	-0	+5.4%	+237
Respiratory Physiologists	9	9	10	10	-0	+2	+17.1%	+0	+16.6%	+11
Vascular Physiologists	10	9	11	11	-0	+2	+21.4%	+0	+7.0%	+12
Health Science/ Diagnostics	979	1,001	1,004	1,009	+5	+8	+0.8%	+0	+3.1%	+1,093
Social Workers	79	87	91	87	-5	-1	-0.9%	-0	+9.1%	+95
Psychologists	13	13	15	17	+2	+4	+26.2%	+0	+34.4%	+18
Pharmacists	136	151	141	141	+0	-10	-6.5%	-0	+3.8%	+153
Pharmacy Technicians	84	92	98	98	+0	+6	+6.5%	+0	+16.7%	+109
Pharmacy	220	243	239	240	+1	-4	-1.6%	-0	+8.7%	+262
Dental Hygienists	0	0	0	0			0.0		+12.5%	+1
HSCP Trainees/ Students	15	14	13	12	-1	-2	-14.6%	-0	-18.1%	+12
Other Health & Social Care	19	32	31	30	-0	-1	-4.7%	-0	+58.1%	+32
Vaccinators			0	0	+0	+0	-100.0%	-1	-100.0%	+1
H&SC, Other	34	46	43	43	-1	-3	-7.4%	-0	+25.6%	+46
Health & Social Care Professionals	1,692	1,788	1,821	1,823	+3	+35	+2.0%	+0	+7.8%	+1,993
Executive Management	20	23	23	23	-0	+0	+1.8%	+0	+14.9%	+23
Senior Management (VIII & GM)	97	104	121	121	+0	+17	+16.8%	+0	+24.5%	+125
Management (VIII & above)	117	126	144	144	+0	+18	+14.1%	+0	+22.8%	+148
Administrative/ Supervisory (V to VII)	494	523	606	605	-1	+83	+15.8%	+0	+22.5%	+642

Aug 2022	WTE Dec 2019	WTE Dec 2020	WTE Jul 2022	WTE Aug 2022	WTE change since Jul 22	WTE change since Dec 20	% change since Dec 20	WTE change since Dec 19	% change since Dec 19	No. Aug 2022
Overall	10,819	11,288	12,066	12,044	-22	+756	+6.7%	+6.7%	+11.3%	13,459
Clerical (III & IV)	1,055	1,046	1,116	1,110	-6	+64	+6.1%	+0	+5.2%	+1,298
Management & Administrative	1,667	1,695	1,866	1,859	-7	+165	+9.7%	+0	+11.6%	+2,088
Catering	88	91	86	83	-2	-7	-7.9%	-0	-5.3%	+90
Household Services	355	351	347	341	-6	-11	-3.1%	-0	-3.9%	+420
Other Labs & Associated	88	95	135	133	-2	+38	+40.1%	+0	+51.6%	+140
Other Support	97	94	91	91	-1	-3	-3.6%	-0	-6.1%	+98
Portering	137	140	155	156	+1	+16	+11.5%	+0	+14.0%	+166
Support	764	771	815	804	-11	+33	+4.3%	+0	+5.2%	+914
Maintenance	127	124	124	126	+1	+2	+1.6%	+0	-1.2%	+127
Technical Services	3	6	7	7		+1	+16.7%	+0	+133.3%	+7
Maintenance/ Technical	130	130	131	133	+1	+3	+2.3%	+0	+1.9%	+134
General Support	894	901	947	937	-10	+36	+4.0%	+0	+4.7%	+1,048
Attendant/ Aide	679	716	384	384	+0	-332	-46.4%	-0	-43.4%	+423
Health & Social Care Assistants	10	13	24	26	+1	+13	+104.1%	+1	+165.0%	+27
Health Care Assistant/ Care Assistant	478	489	956	959	+3	+470	+96.2%	+1	+100.6%	+1,099
HCA (Student Nurse/Midwife COVID-19)		0				-0	-100.0%	-1	-100.0%	
Health Care Assistants	1,167	1,217	1,364	1,368	+4	+151	+12.4%	+0	+17.3%	+1,549
Other Care Grades	5	5	14	14	+0	+9	+180.3%	+2	+213.7%	+16
Pastoral Care	16	16	14	14	-1	-2	-14.0%	-0	-13.6%	+21
Workshop Services			1	1		+1	-100.0%	-1	-100.0%	+1
Care, other	21	21	29	29	-0	+8	+37.1%	+0	+41.1%	+38
Patient & Client Care	1,187	1,239	1,394	1,398	+4	+159	+12.8%	+0	+17.7%	+1,587

Employment by WTE, Headcount, Gender, Full-Time /Part-Time etc.: Aug 2022

Dublin Midlands Hospital Group	WTE	Headcount	WTE: no.	% Male	% female	Male WTE: no.	Female WTE: no.	% Total Perm	% Male Perm	% Female Perm	% Total Full Time	% Total Part Time	% Male FT	% Female FT
Overall	12,044	13,459	1.12	23.4%	76.6%	1.06	1.14	82.4%	73.7%	85.1%	80.4%	19.6%	93.3%	76.4%
Consultant Anaesthesia	81	91	1.12	51.6%	48.4%	1.10	1.15	80.2%	80.2%	79.5%	80.2%	19.8%	83.0%	77.3%
Consultant Dentistry	2	2	1.16	50.0%	50.0%	1.00	1.37	100.0%	100.0%	100.0%	100.0%	0.0%	100.0%	100.0%
Consultant Emergency Medicine	23	24	1.05	58.3%	41.7%	1.05	1.04	70.8%	70.8%	80.0%	83.3%	16.7%	78.6%	90.0%
Consultant Intensive Care Medicine	2	2	1.00	100.0%		1.00		100.0%	100.0%		100.0%	0.0%	100.0%	
Consultant Medicine	180	193	1.07	53.4%	46.6%	1.03	1.12	78.2%	78.2%	73.3%	91.2%	8.8%	95.1%	86.7%
Consultant Obstetrics & Gynaecology	31	32	1.04	43.8%	56.3%	1.00	1.08	90.6%	90.6%	88.9%	93.8%	6.3%	100.0%	88.9%
Consultant Paediatrics	10	11	1.10	63.6%	36.4%	1.08	1.14	81.8%	81.8%	75.0%	81.8%	18.2%	85.7%	75.0%
Consultant Pathology	53	57	1.07	50.9%	49.1%	1.04	1.10	91.2%	91.2%	89.3%	89.5%	10.5%	89.7%	89.3%
Consultant Psychiatry	7	8	1.09	12.5%	87.5%	1.00	1.11	62.5%	62.5%	57.1%	87.5%	12.5%	100.0%	85.7%
Consultant Radiology	68	71	1.05	63.4%	36.6%	1.06	1.02	88.7%	88.7%	84.6%	91.5%	8.5%	88.9%	96.2%
Consultant Surgery	88	94	1.07	83.0%	17.0%	1.07	1.03	76.6%	76.6%	81.3%	88.3%	11.7%	87.2%	93.8%
Consultants	545	585	1.07	58.3%	41.7%	1.05	1.10	81.2%	82.7%	79.1%	88.5%	11.5%	89.7%	86.9%
Registrar	309	336	1.09	55.4%	44.6%	1.07	1.11	2.4%	2.4%	2.0%	98.8%	1.2%	98.4%	99.3%
Senior Registrar	16	18	1.14	66.7%	33.3%	1.13	1.17	16.7%	16.7%	16.7%	94.4%	5.6%	100.0%	83.3%
Specialist Registrar	256	275	1.07	46.2%	53.8%	1.09	1.06	0.0%	0.0%	0.0%	98.5%	1.5%	98.4%	98.6%
Registrars	581	629	1.08	51.7%	48.3%	1.08	1.08	1.7%	2.2%	1.3%	98.6%	1.4%	98.5%	98.7%
Interns	143	154	1.08	46.1%	53.9%	1.12	1.05	0.0%	0.0%	0.0%	100.0%	0.0%	100.0%	100.0%
Senior House Officer	312	345	1.11	42.0%	58.0%	1.12	1.10	0.0%	0.0%	0.0%	99.7%	0.3%	100.0%	99.5%
SHO/ Interns	454	499	1.10	43.3%	56.7%	1.12	1.08	0.0%	0.0%	0.0%	99.8%	0.2%	100.0%	99.6%
Dentists	1	1	1.00	100.0%		1.00		100.0%	100.0%		100.0%	0.0%	100.0%	
Other Medical	8	12	1.46	25.0%	75.0%	2.21	1.31	33.3%	33.3%	33.3%	50.0%	50.0%	33.3%	55.6%
Medical/ Dental, other	9	13	1.41	30.8%	69.2%	1.69	1.31	38.5%	50.0%	33.3%	53.8%	46.2%	50.0%	55.6%
Medical & Dental	1,590	1,726	1.09	51.3%	48.7%	1.08	1.09	28.4%	32.8%	23.8%	95.2%	4.8%	95.3%	95.1%

Clinical Nurse/ Midwife Manager	889	985	1.11	6.3%	93.7%	1.02	1.11	98.6%	98.6%	98.7%	78.0%	22.0%	96.8%	76.7%
Director Nursing/Midwifery, Assistant	81	88	1.08	10.2%	89.8%	1.00	1.09	96.6%	96.6%	98.7%	88.6%	11.4%	100.0%	87.3%
Director of Nursing/Midwifery	11	11	1.00		100.0%		1.00	100.0%	100.0%	100.0%	100.0%	0.0%		100.0%
Nurse/ Midwife Manager	982	1,084	1.10	6.5%	93.5%	1.02	1.11	98.4%	94.4%	98.7%	79.1%	20.9%	97.2%	77.8%
Advanced Nurse/ Midwife Practitioner	104	111	1.07	6.3%	93.7%	1.03	1.07	98.2%	98.2%	99.0%	89.2%	10.8%	85.7%	89.4%
Clinical Nurse/ Midwife Specialist	176	207	1.17	4.8%	95.2%	1.00	1.18	99.0%	99.0%	99.0%	66.7%	33.3%	100.0%	65.0%
Nurse/ Midwife Specialist & AN/MP	281	318	1.13	5.3%	94.7%	1.01	1.14	98.7%	94.1%	99.0%	74.5%	25.5%	94.1%	73.4%
Nursing Bank	8	14	1.80		100.0%		1.80	100.0%	100.0%	100.0%	0.0%	100.0%		0.0%
Staff Midwives	165	188	1.14	0.5%	99.5%	1.00	1.14	95.7%	95.7%	95.7%	59.0%	41.0%	100.0%	58.8%
Staff Nurses [General/ Children's]	2,782	3,079	1.11	11.8%	88.2%	1.04	1.12	92.5%	92.5%	93.0%	80.6%	19.4%	95.3%	78.7%
Staff Nurse [Psychiatric]	19	21	1.12	33.3%	66.7%	1.12	1.12	100.0%	100.0%	100.0%	81.0%	19.0%	85.7%	78.6%
Staff Nurse/ Staff Midwife	2,973	3,302	1.11	11.2%	88.8%	1.05	1.12	92.7%	88.6%	93.2%	79.1%	20.9%	95.1%	77.0%
Pre-registration Nurse/ Midwife Intern	93	187	2.00	8.6%	91.4%	2.02	2.00	1.6%	1.6%	1.8%	100.0%	0.0%	100.0%	100.0%
Post-registration Nurse/ Midwife Student	11	22	2.00		100.0%		2.00	0.0%	0.0%	0.0%	100.0%	0.0%		100.0%
Nursing/ Midwifery awaiting registration	59	59	1.00	1.7%	98.3%	1.00	1.00	76.3%	76.3%	77.6%	100.0%	0.0%	100.0%	100.0%
Nursing/ Midwifery Student	163	268	1.64	6.3%	93.7%	1.91	1.63	17.9%	0.0%	19.1%	100.0%	0.0%	100.0%	100.0%
Nursing Education/Clinical	33	38	1.15	5.3%	94.7%	1.00	1.15	100.0%	100.0%	100.0%	71.1%	28.9%	100.0%	69.4%
Other Nursing/ Midwifery	6	7	1.27		100.0%		1.27	100.0%	100.0%	100.0%	57.1%	42.9%		57.1%
Nursing/ Midwifery other	39	45	1.16	4.4%	95.6%	1.00	1.17	100.0%	100.0%	100.0%	68.9%	31.1%	100.0%	67.4%
Nursing & Midwifery	4,437	5,017	1.13	9.5%	90.5%	1.06	1.14	90.4%	86.6%	90.8%	79.8%	20.2%	95.6%	78.1%
Dietitians	102	115	1.13	1.7%	98.3%	1.14	1.13	86.1%	86.1%	86.7%	85.2%	14.8%	100.0%	85.0%
Occupational Therapists	81	87	1.07	11.5%	88.5%	1.14	1.07	87.4%	87.4%	88.3%	87.4%	12.6%	90.0%	87.0%
Orthoptists	1	2	1.49		100.0%		1.49	100.0%	100.0%	100.0%	50.0%	50.0%		50.0%
Physiotherapists	193	215	1.12	16.7%	83.3%	1.08	1.12	85.1%	85.1%	86.0%	83.7%	16.3%	97.2%	81.0%
Podiatrists & Chiropodists	3	5	1.49	40.0%	60.0%	1.32	1.63	100.0%	100.0%	100.0%	40.0%	60.0%	50.0%	33.3%
Speech & Language Therapists	48	55	1.14		100.0%		1.14	83.6%	83.6%	83.6%	80.0%	20.0%		80.0%
Therapy Professions	429	479	1.12	10.4%	89.6%	1.10	1.12	85.8%	80.0%	86.5%	83.7%	16.3%	94.0%	82.5%
Audiology	5	6	1.22		100.0%		1.22	100.0%	100.0%	100.0%	66.7%	33.3%		66.7%
Biochemists	8	9	1.12	44.4%	55.6%	1.00	1.24	88.9%	88.9%	100.0%	77.8%	22.2%	100.0%	60.0%

Cardiac Physiologists	42	44	1.06	27.3%	72.7%	1.04	1.06	97.7%	97.7%	100.0%	88.6%	11.4%	100.0%	84.4%
Clinical Engineering	42	42	1.01	76.2%	23.8%	1.00	1.03	92.9%	92.9%	80.0%	95.2%	4.8%	100.0%	80.0%
Dosimetrists	1	1	1.00		100.0%		1.00	100.0%	100.0%	100.0%	100.0%	0.0%		100.0%
E.C.G. Technicians	1	1	1.30		100.0%		1.30	0.0%	0.0%	0.0%	100.0%	0.0%		100.0%
Gastrointestinal Physiologists	4	4	1.09	50.0%	50.0%	1.20	1.00	100.0%	100.0%	100.0%	75.0%	25.0%	50.0%	100.0%
Medical Science	402	440	1.09	20.5%	79.5%	1.04	1.11	98.4%	98.4%	98.6%	81.1%	18.9%	94.4%	77.7%
Neuro-Physiologists	10	11	1.05	27.3%	72.7%	1.00	1.08	81.8%	81.8%	87.5%	90.9%	9.1%	100.0%	87.5%
Perfusionists	4	4	1.09	75.0%	25.0%	1.00	1.47	100.0%	100.0%	100.0%	75.0%	25.0%	100.0%	0.0%
Phlebotomists	54	62	1.15	29.0%	71.0%	1.10	1.18	85.5%	85.5%	88.6%	66.1%	33.9%	83.3%	59.1%
Physicists	61	63	1.04	57.1%	42.9%	1.01	1.07	95.2%	95.2%	96.3%	90.5%	9.5%	97.2%	81.5%
Radiation Therapists	136	146	1.08	13.0%	87.0%	1.02	1.09	79.5%	79.5%	80.3%	78.1%	21.9%	94.7%	75.6%
Radiographers	220	237	1.08	23.6%	76.4%	1.02	1.10	98.3%	98.3%	98.9%	89.0%	11.0%	98.2%	86.2%
Respiratory Physiologists	10	11	1.06	36.4%	63.6%	1.15	1.01	100.0%	100.0%	100.0%	90.9%	9.1%	75.0%	100.0%
Vascular Physiologists	11	12	1.13	16.7%	83.3%	1.00	1.16	91.7%	91.7%	90.0%	66.7%	33.3%	100.0%	60.0%
Health Science/ Diagnostics	1,009	1,093	1.08	25.7%	74.3%	1.03	1.10	94.3%	93.2%	94.7%	82.9%	17.1%	95.4%	78.6%
Social Workers	87	95	1.10	14.7%	85.3%	1.03	1.11	93.7%	92.9%	93.8%	88.4%	11.6%	92.9%	87.7%
Psychologists	17	18	1.06	22.2%	77.8%	1.02	1.07	94.4%	100.0%	92.9%	77.8%	22.2%	75.0%	78.6%
Pharmacists	141	153	1.08	12.4%	87.6%	1.00	1.09	86.9%	86.9%	85.8%	90.8%	9.2%	100.0%	89.6%
Pharmacy Technicians	98	109	1.11	8.3%	91.7%	1.04	1.12	83.5%	83.5%	83.0%	75.2%	24.8%	88.9%	74.0%
Pharmacy	240	262	1.09	10.7%	89.3%	1.01	1.10	85.5%	92.9%	84.6%	84.4%	15.6%	96.4%	82.9%
Dental Hygienists	0	1	11.11		100.0%		11.11	100.0%	100.0%	100.0%	0.0%	100.0%		0.0%
HSCP Trainees/ Students	12	12	1.00	25.0%	75.0%	1.01	1.00	0.0%	0.0%	0.0%	100.0%	0.0%	100.0%	100.0%
Other Health & Social Care	30	32	1.05	28.1%	71.9%	1.00	1.08	96.9%	96.9%	95.7%	84.4%	15.6%	100.0%	78.3%
Vaccinators	0	1	6.25		100.0%		6.25	0.0%	0.0%	0.0%	0.0%	100.0%		0.0%
H&SC, Other	43	46	1.08	26.1%	73.9%	1.00	1.11	69.6%	75.0%	67.6%	84.8%	15.2%	100.0%	79.4%
Health & Social Care	1,823	1,993	1.09	19.5%	80.5%	1.04	1.11	90.5%	91.0%	90.4%	83.5%	16.5%	95.1%	80.7%
Executive Management	23	23	1.00	56.5%	43.5%	1.00	1.00	95.7%	95.7%	90.0%	100.0%	0.0%	100.0%	100.0%
Senior Management (VIII & GM)	121	125	1.03	29.6%	70.4%	1.00	1.05	96.8%	96.8%	96.6%	93.6%	6.4%	100.0%	90.9%
Management (VIII & above)	144	148	1.03	33.8%	66.2%	1.00	1.04	96.6%	98.0%	95.9%	94.6%	5.4%	100.0%	91.8%

Administrative/ Supervisory (V to VII)	605	642	1.06	24.6%	75.4%	1.02	1.08	96.3%	93.7%	97.1%	86.1%	13.9%	98.7%	82.0%
Clerical (III & IV)	1,110	1,298	1.17	14.6%	85.4%	1.07	1.19	85.7%	80.0%	86.6%	65.5%	34.5%	90.5%	61.2%
Management & Administrative	1,859	2,088	1.12	19.1%	80.9%	1.04	1.14	89.7%	87.7%	90.2%	73.9%	26.1%	95.0%	68.9%
Catering	83	90	1.08	34.4%	65.6%	1.05	1.09	97.8%	97.8%	98.3%	86.7%	13.3%	96.8%	81.4%
Household Services	341	420	1.23	20.2%	79.8%	1.13	1.26	92.6%	92.6%	96.1%	44.3%	55.7%	44.7%	44.2%
Other Labs & Associated	133	140	1.05	33.6%	66.4%	1.01	1.07	71.4%	71.4%	74.2%	90.7%	9.3%	97.9%	87.1%
Other Support	91	98	1.08	48.0%	52.0%	1.01	1.16	99.0%	99.0%	100.0%	81.6%	18.4%	97.9%	66.7%
Portering	156	166	1.06	86.1%	13.9%	1.05	1.18	81.3%	81.3%	78.3%	92.2%	7.8%	95.1%	73.9%
Support	804	914	1.14	38.6%	61.4%	1.06	1.19	88.5%	82.4%	92.3%	68.3%	31.7%	83.9%	58.5%
Maintenance	126	127	1.01	98.4%	1.6%	1.01	1.00	97.6%	97.6%	100.0%	99.2%	0.8%	99.2%	100.0%
Technical Services	7	7	1.00	100.0%		1.00		100.0%	100.0%		100.0%	0.0%	100.0%	
Maintenance/ Technical	133	134	1.01	98.5%	1.5%	1.01	1.00	97.8%	97.7%	100.0%	99.3%	0.7%	99.2%	100.0%
General Support	937	1,048	1.12	46.3%	53.7%	1.04	1.19	89.7%	86.6%	92.4%	72.2%	27.8%	88.0%	58.6%
Attendant/ Aide	384	423	1.10	36.6%	63.4%	1.04	1.14	96.2%	96.2%	95.9%	82.5%	17.5%	99.4%	72.8%
Health & Social Care Assistants	26	27	1.05	29.6%	70.4%	1.01	1.07	81.5%	81.5%	73.7%	100.0%	0.0%	100.0%	100.0%
Health Care Assistant/ Care Assistant	959	1,099	1.15	30.2%	69.8%	1.07	1.18	89.9%	89.9%	87.2%	73.3%	26.7%	87.0%	67.4%
Health Care Assistants	1,368	1,549	1.13	32.0%	68.0%	1.06	1.17	91.5%	96.4%	89.2%	76.3%	23.7%	91.1%	69.4%
Other Care Grades	14	16	1.12	43.8%	56.3%	1.00	1.24	87.5%	87.5%	77.8%	87.5%	12.5%	100.0%	77.8%
Pastoral Care	14	21	1.51	66.7%	33.3%	1.56	1.42	76.2%	76.2%	85.7%	47.6%	52.4%	42.9%	57.1%
Workshop Services	1	1	1.00	100.0%		1.00		100.0%	100.0%		100.0%	0.0%	100.0%	
Care, other	29	38	1.30	57.9%	42.1%	1.30	1.31	81.6%	81.8%	81.3%	65.8%	34.2%	63.6%	68.8%
Patient & Client Care	1,398	1,587	1.14	32.6%	67.4%	1.07	1.17	91.2%	95.7%	89.1%	76.1%	23.9%	89.9%	69.3%

Employment by WTE, Headcount, Gender, Full-Time /Part-Time etc.: Aug 2022

Dublin Midlands Hospital Group	WTE	Headcount	WTE: no.	% Male	% female	Male WTE: no.	Female WTE: no.	% Total Perm	% Male Perm	% Female Perm	% Total Full Time	% Total Part Time	% Male FT	% Female FT
Overall	12,044	13,459	1.12	23.4%	76.6%	1.06	1.14	82.4%	73.7%	85.1%	80.4%	19.6%	93.3%	76.4%
Coombe Women & Infants University	965	1,079	1.12	15.0%	85.0%	1.01	1.14	82.5%	82.5%	84.4%	71.4%	28.6%	93.2%	93.2%
MRH Tullamore	1,182	1,356	1.15	23.5%	76.5%	1.13	1.15	82.6%	82.6%	87.6%	81.6%	18.4%	96.2%	96.2%
MRH Portlaoise	825	946	1.15	20.5%	79.5%	1.10	1.16	79.5%	79.5%	83.6%	78.8%	21.2%	97.9%	97.9%
Naas General	883	979	1.11	19.7%	80.3%	1.05	1.12	89.5%	89.5%	90.8%	82.1%	17.9%	94.8%	94.8%
St. James's	4,520	5,035	1.11	24.7%	75.3%	1.05	1.14	84.3%	84.3%	86.5%	83.0%	17.0%	94.1%	94.1%
St. Luke's Rathgar	546	579	1.06	27.1%	72.9%	1.02	1.08	78.4%	78.4%	80.6%	84.8%	15.2%	96.2%	96.2%
Tallaght University	3,070	3,427	1.12	25.5%	74.5%	1.05	1.14	78.9%	78.9%	81.5%	77.9%	22.1%	89.0%	89.0%
Hospital Group HQ	54	58	1.07	15.5%	84.5%	1.06	1.07	86.2%	86.2%	91.8%	94.8%	5.2%	100.0%	100.0%

Dublin Midlands Hospital Group Employment by Grade Group & Staff Category: August 2022

Aug 2022 (Dec 2019 figure: 10,819)	WTE Dec 2016	WTE Dec 2017	WTE Dec 2018	WTE Dec 2019	WTE Dec 2020	WTE Jul 2022	WTE Aug 2022
Overall	10,072	10,301	10,424	10,819	11,288	12,066	12,044
Consultant Anaesthesia	5.0%	4.9%	4.8%	4.8%	4.8%	5.2%	5.1%
Consultant Dentistry	0.2%	0.2%	0.1%	0.1%	0.1%	0.1%	0.1%
Consultant Emergency Medicine	1.4%	1.4%	1.4%	1.3%	1.3%	1.4%	1.4%
Consultant Intensive Care Medicine			0.2%	0.1%	0.1%	0.1%	0.1%
Consultant Medicine	10.2%	10.4%	10.4%	10.5%	10.8%	11.6%	11.3%
Consultant Obstetrics & Gynaecology	1.8%	1.8%	1.9%	1.9%	2.1%	1.9%	1.9%
Consultant Paediatrics	0.5%	0.7%	0.8%	0.7%	0.7%	0.6%	0.6%
Consultant Pathology	3.6%	3.7%	3.6%	3.5%	3.5%	3.3%	3.3%
Consultant Psychiatry	0.3%	0.3%	0.3%	0.5%	0.5%	0.5%	0.5%
Consultant Radiology	3.9%	4.2%	4.4%	4.4%	4.3%	4.2%	4.3%
Consultant Surgery	5.6%	5.5%	5.6%	5.5%	5.3%	5.4%	5.5%
Consultants	32.4%	33.1%	33.5%	33.5%	33.5%	34.3%	34.3%
Registrar	17.6%	16.7%	17.5%	17.6%	18.6%	19.0%	19.4%
Senior Registrar	2.4%	1.4%	1.5%	1.4%	1.3%	1.1%	1.0%
Specialist Registrar	15.1%	16.3%	16.1%	16.4%	15.1%	15.5%	16.1%
Registrars	35.0%	34.4%	35.1%	35.4%	35.1%	36.6%	36.6%
Interns	9.4%	9.3%	8.9%	8.7%	10.2%	10.2%	9.0%
Senior House Officer	22.6%	22.6%	22.0%	21.9%	20.7%	19.2%	19.6%
SHO/ Interns	32.0%	31.9%	30.9%	30.6%	30.9%	28.6%	28.6%
Dentists		0.1%	0.1%	0.1%	0.1%	0.1%	0.1%
Other Medical	0.5%	0.5%	0.4%	0.4%	0.4%	0.6%	0.5%
Medical/ Dental, other	0.5%	0.6%	0.5%	0.5%	0.5%	0.6%	0.6%
Medical & Dental	12.4%	12.4%	12.8%	12.8%	13.2%	13.2%	13.2%
Clinical Nurse/ Midwife Manager	19.5%	20.1%	20.6%	19.9%	19.7%	20.0%	20.0%
Director Nursing/Midwifery, Assistant	1.8%	2.0%	2.0%	1.8%	1.8%	1.8%	1.8%
Director of Nursing/Midwifery	0.2%	0.2%	0.3%	0.3%	0.2%	0.2%	0.2%
Nurse/ Midwife Manager	21.5%	22.3%	22.9%	22.0%	21.7%	22.1%	22.1%
Advanced Nurse/ Midwife Practitioner	0.9%	0.8%	1.2%	1.6%	2.0%	2.3%	2.3%
Clinical Nurse/ Midwife Specialist	3.9%	3.3%	3.7%	3.6%	3.7%	3.9%	4.0%
Nurse/ Midwife Specialist & AN/MP	4.8%	4.2%	4.9%	5.1%	5.7%	6.3%	6.3%
Nursing Bank	1.1%	1.1%	0.6%	0.6%	0.4%	0.1%	0.2%
Staff Midwives	5.0%	5.5%	5.5%	4.9%	4.5%	3.9%	3.7%
Staff Nurses [General/ Children's]	65.2%	65.2%	64.2%	65.0%	65.1%	62.7%	62.7%
Staff Nurse [Psychiatric]	0.7%	0.6%	0.6%	0.5%	0.6%	0.4%	0.4%
Staff Nurse/ Staff Midwife	72.0%	72.3%	70.9%	71.0%	70.6%	67.0%	67.0%
Pre-registration Nurse/ Midwife Intern	0.2%	0.2%	0.3%	0.2%	0.0%	2.1%	2.1%
Pre-registration Nurse Intern (COVID-19)					0.7%		
Post-registration Nurse/ Midwife Student	0.3%	0.3%	0.2%	0.3%	0.3%	0.2%	0.2%
Nursing/ Midwifery awaiting registration	0.5%	0.1%	0.2%	0.5%	0.1%	1.4%	1.3%
Nursing/ Midwifery Student	1.0%	0.6%	0.6%	1.0%	1.1%	3.7%	3.7%
Nursing Education/Clinical	0.7%	0.6%	0.6%	0.8%	0.8%	0.7%	0.7%
Other Nursing/ Midwifery	0.1%	0.1%	0.1%	0.1%	0.1%	0.1%	0.1%
Nursing/ Midwifery other	0.8%	0.7%	0.7%	0.9%	0.9%	0.9%	0.9%
Nursing & Midwifery	36.3%	36.8%	36.5%	36.9%	37.0%	36.8%	36.8%
Dietitians	5.4%	5.2%	5.5%	5.6%	5.5%	5.5%	5.6%
Occupational Therapists	3.7%	4.1%	3.9%	4.0%	4.2%	4.4%	4.4%
Orthoptists	0.1%	0.1%	0.1%	0.1%	0.1%	0.1%	0.1%
Physiotherapists	9.7%	10.2%	9.8%	9.5%	9.7%	10.7%	10.6%
Podiatrists & Chiropodists	0.2%	0.2%	0.2%	0.2%	0.2%	0.2%	0.2%
Speech & Language Therapists	2.3%	2.4%	2.4%	2.3%	2.5%	2.7%	2.7%
Therapy Professions	21.5%	22.2%	21.8%	21.7%	22.2%	23.5%	23.5%
Audiology	0.3%	0.2%	0.2%	0.2%	0.2%	0.3%	0.3%

Aug 2022 (Dec 2019 figure: 10,819)	WTE Dec 2016	WTE Dec 2017	WTE Dec 2018	WTE Dec 2019	WTE Dec 2020	WTE Jul 2022	WTE Aug 2022
Overall	10,072	10,301	10,424	10,819	11,288	12,066	12,044
Biochemists	0.4%	0.5%	0.5%	0.5%	0.5%	0.4%	0.4%
Cardiac Physiologists	2.5%	2.2%	2.1%	2.4%	2.5%	2.3%	2.3%
Clinical Engineering	2.3%	2.6%	2.5%	2.6%	2.2%	2.2%	2.3%
Dosimetrists	0.3%	0.1%	0.1%	0.1%	0.1%	0.1%	0.1%
E.C.G. Technicians				0.1%	0.1%		0.0%
Gastrointestinal Physiologists	0.2%	0.3%	0.1%	0.1%	0.1%	0.2%	0.2%
Medical Science	24.7%	23.9%	23.3%	22.9%	21.8%	21.9%	22.0%
Neuro-Physiologists	0.4%	0.5%	0.4%	0.5%	0.6%	0.6%	0.6%
Perfusionists	0.3%	0.3%	0.3%	0.3%	0.2%	0.2%	0.2%
Phlebotomists	2.4%	2.5%	2.4%	2.4%	2.6%	3.1%	3.0%
Physicists	3.4%	3.7%	4.2%	4.1%	3.4%	3.3%	3.3%
Radiation Therapists	8.2%	8.1%	8.0%	8.2%	8.2%	7.6%	7.4%
Radiographers	12.0%	11.4%	12.0%	12.3%	12.4%	12.0%	12.1%
Respiratory Physiologists	0.5%	0.5%	0.4%	0.5%	0.5%	0.6%	0.6%
Vascular Physiologists	0.7%	0.7%	0.5%	0.6%	0.5%	0.6%	0.6%
Health Science/ Diagnostics	58.5%	57.4%	57.1%	57.8%	56.0%	55.3%	55.3%
Social Workers	4.9%	5.1%	5.0%	4.7%	4.9%	4.8%	4.8%
Psychologists	1.1%	1.0%	0.8%	0.7%	0.8%	0.9%	0.9%
Pharmacists	7.3%	7.6%	8.1%	8.1%	8.5%	7.7%	7.8%
Pharmacy Technicians	4.2%	4.2%	4.7%	5.0%	5.2%	5.4%	5.4%
Pharmacy	11.6%	11.9%	12.8%	13.0%	13.6%	13.1%	13.1%
Dental Hygienists	0.0%	0.0%	0.0%	0.0%	0.0%	0.0%	0.0%
HSCP Trainees/ Students	1.2%	1.3%	1.2%	0.9%	0.8%	0.7%	0.7%
Other Health & Social Care	1.2%	1.2%	1.2%	1.1%	1.8%	1.7%	1.7%
Vaccinators						0.0%	0.0%
H&SC, Other	2.4%	2.5%	2.4%	2.0%	2.6%	2.3%	2.3%
Health & Social Care Professionals	15.8%	15.7%	15.9%	15.6%	15.8%	15.1%	15.1%
Executive Management	0.9%	0.9%	1.2%	1.2%	1.3%	1.2%	1.2%
Senior Management (VIII & GM)	4.5%	5.3%	5.7%	5.8%	6.1%	6.5%	6.5%
Management (VIII & above)	5.4%	6.2%	6.9%	7.0%	7.4%	7.8%	7.8%
Administrative/ Supervisory (V to VII)	27.6%	27.9%	28.7%	29.7%	30.8%	32.6%	32.6%
Clerical (III & IV)	67.0%	65.9%	64.4%	63.3%	61.7%	59.7%	59.7%
Management & Administrative	15.4%	15.3%	15.6%	15.4%	15.0%	15.4%	15.4%
Catering	9.5%	9.9%	9.9%	9.9%	10.1%	9.1%	8.9%
Household Services	39.2%	38.9%	39.0%	39.7%	39.0%	36.6%	36.4%
Other Labs & Associated	8.7%	9.4%	9.4%	9.8%	10.6%	14.3%	14.2%
Other Support	11.7%	12.1%	11.3%	10.8%	10.4%	9.7%	9.7%
Portering	16.5%	15.5%	15.9%	15.3%	15.5%	16.4%	16.7%
Support	85.6%	85.7%	85.5%	85.5%	85.6%	85.9%	85.9%
Maintenance	14.2%	14.0%	14.1%	14.2%	13.7%	13.1%	13.4%
Technical Services	0.2%	0.2%	0.3%	0.3%	0.7%	0.7%	0.7%
Maintenance/ Technical	14.4%	14.3%	14.5%	14.5%	14.4%	14.1%	14.1%
General Support	8.8%	8.6%	8.3%	8.3%	8.0%	7.8%	7.8%
Attendant/ Aide	62.0%	64.6%	61.5%	57.2%	57.8%	27.5%	27.5%
Health & Social Care Assistants	0.6%	0.9%	0.8%	0.8%	1.0%	1.8%	1.8%
Health Care Assistant/ Care Assistant	35.5%	32.9%	35.9%	40.3%	39.4%	68.6%	68.6%
HCA (Student Nurse/Midwife COVID-19)					0.0%		
Health Care Assistants	98.2%	98.4%	98.2%	98.3%	98.3%	97.9%	97.9%
Other Care Grades	0.5%	0.4%	0.4%	0.4%	0.4%	1.0%	1.0%
Pastoral Care	1.4%	1.2%	1.4%	1.4%	1.3%	1.0%	1.0%
Workshop Services						0.1%	0.1%
Care, other	1.8%	1.6%	1.8%	1.7%	1.7%	2.1%	2.1%
Patient & Client Care	11.4%	11.1%	11.0%	11.0%	11.0%	11.6%	11.6%
Total	100%	100%	100%	100%	100%	100%	100%

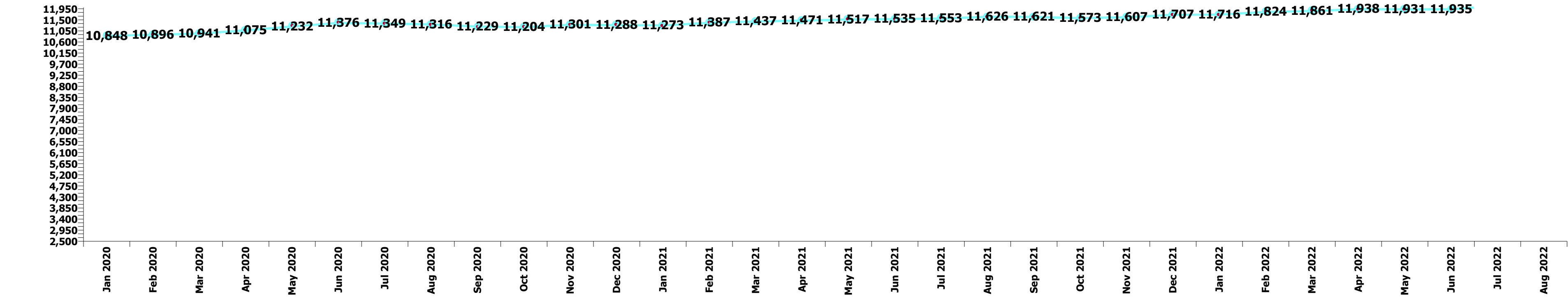
Summary Staff Movement: August 2022

Month-on-month Summary

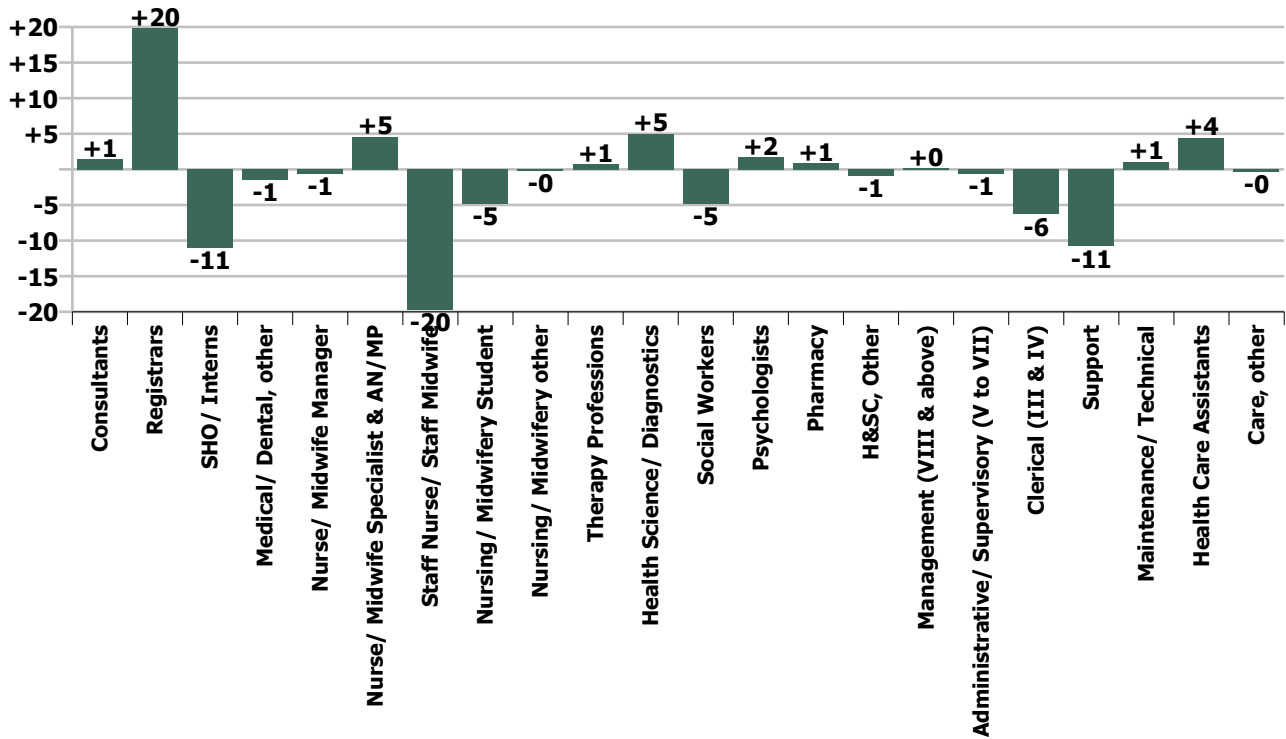
WTE change since Jul 22	% change since Jul 22	overall	Consultants	Registrars	SHO/ Interns	Medical/ Dental, other	Medical & Dental	Nurse/ Midwife Manager	Nurse/ Midwife Specialist & AN/MP	Staff Nurse/ Staff Midwife	Nursing/ Midwifery Student	Nursing/ Midwifery other	Nursing & Midwifery	Therapy Professions	Health Science/ Diagnostics	Social Workers	Psychologists	Pharmacy	H&SC, Other	Health & Social Care Professionals	Management (VIII & above)	Administrative/ Supervisory (V to VII)	Clerical (III & IV)	Management & Administrative	General Support	Health Care Assistants	Care, other	Patient & Client Care	
Overall	-0.2%	-22	+1	+20	-11	-1	+9	-1	+5	-20	-5	-0	-21	+1	+5	-5	+2	+1	-1	+3	+0	-1	-6	-7	-10	+4	-0	+4	
Coombe Women & Infants University	-0.9%	-9		+2			+2	-2		-7			-10	+0					-1	-1		+1	-1	-0	+0	+1	-1	-0	
MRH Tullamore	-0.8%	-10	-1	+1	-1	-0	-2	+1	+0	-6	+0	-0	-6	+1	-1	-0			-1	-0	-3	+0	-1	-1	-2	+1	+2	+0	+2
MRH Portlaoise	+0.1%	+1	+0	-1	+8		+8	-3	+0	-6	+3	-0	-5	-1	+3				+0		+3		-0	-0	-0	+1	-6		-6
Naas General	+0.6%	+5	+0	-2	-2		-3	+1	+2	+5		-0	+8	-0	+1				+1	+1	-0	+1	-0	+0	-2	+1	+0	+1	
St. James's	-0.2%	-7	+2	+13	-8	-1	+7	-1	+2	-9	-0	+0	-7	-0	+3	-2	+1	+0	+0	+2	+1	+0		+1	-9	-1	+0	-1	
St. Luke's Rathgar	+0.7%	+4	+1		+0		+1	+1		+2			+3	+2		-1	+1			+2		-1		-1	-1				
Tallaght University	-0.1%	-5	-1	+7	-9		-4	+3	+0	+1	-8		-4	-0	-1	-2		+1		-2		+1	-3	-2	-0	+8	+0	+8	
Hospital Group HQ	-4.6%	-3						-0					-0						+0	+0	-0	-2	-1	-2					
			+0.3%	+3.5%	-2.4%	-13.8%	+0.6%	-0.1%	+1.6%	-0.7%	-2.9%	-0.6%	-0.5%	+0.2%	+0.5%	-5.2%	+11.1%	+0.4%	-2.0%	+0.1%	+0.1%	-0.1%	-0.6%	-0.4%	-1.0%	+0.3%	-1.1%	+0.3%	

Year-on-year Summary

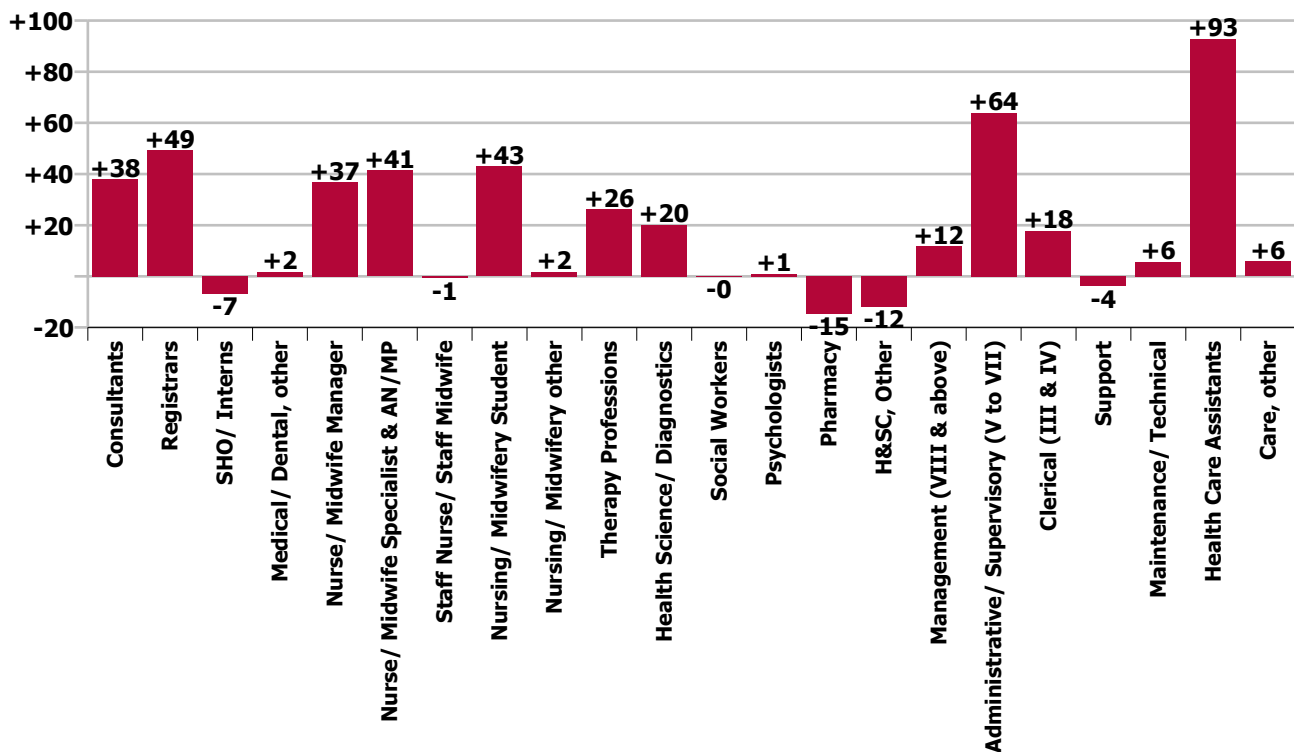
WTE change since Aug 21	% change since Aug 21	overall	Consultants	Registrars	SHO/ Interns	Medical/ Dental, other	Medical & Dental	Nurse/ Midwife Manager	Nurse/ Midwife Specialist & AN/MP	Staff Nurse/ Staff Midwife	Nursing/ Midwifery Student	Nursing/ Midwifery other	Nursing & Midwifery	Therapy Professions	Health Science/ Diagnostics	Social Workers	Psychologists	Pharmacy	H&SC, Other	Health & Social Care Professionals	Management (VIII & above)	Administrative/ Supervisory (V to VII)	Clerical (III & IV)	Management & Administrative	General Support	Health Care Assistants	Care, other	Patient & Client Care
Overall	+3.6%	+418	+38	+49	-7	+2	+82	+37	+41	-1	+43	+2	+122	+26	+20	-0	+1	-15	-12	+20	+12	+64	+18	+94	+2	+93	+6	+99
Coombe Women & Infants University	+2.0%	+19	+6	+15			+21	+6	+3	-38	-4	-1	-34	+4	+2	-1				+6	+1	+6	+3	+10	+4	+14	-1	+13
MRH Tullamore	+2.7%	+31	+7	+5	-2	-0	+9	+9	+3	+3	+0	+0	+16	+3	-3	+2		-4	+1	-1	-1	+6	-19	-14	+6	+14	+0	+14
MRH Portlaoise	+3.9%	+31	-0	+1	+5		+5	+8	+6	+8	+11	+0	+34	-3	+3	+1		-1		+0	+2	+3	-6	-1	+2	-10		-10
Naas General	+12.9%	+101	+2	+3	-1		+4	+7	+5	+24		+0	+37	+11	+2	-1		+2		+14	-0	+13	+2	+15	+2	+28	+0	+28
St. James's	+2.6%	+116	+12	+17	-8	+2	+23	-2	+17	-2	-1	+2	+14	+4	+17	-2	+3	-5	-2	+15	+7	+18	+20	+45	-12	+22	+8	+30
St. Luke's Rathgar	+1.8%	+10	+1	-2	+4		+3	-2		-2			-4	+4	-3	-1				-0	+1	-1	+11		-1	+0		+0
Tallaght University	+4.4%	+128	+11	+11	-4		+18	+11	+7	+6	+35	+1	+60	+4	+1	+1	-2	-6		-1	+3	+12	+14	+29		+24	-2	+23
Hospital Group HQ	-23.1%	-16			-1		-1	+1			-1	-0			-1			-1	-11	-13	-1	+6	-6	-2				
			+7.5%	+9.3%	-1.5%	+22.5%	+5.4%	+3.9%	+17.3%	-0.0%	+35.7%	+4.8%	+2.8%	+6.5%	+2.0%	-0.3%	+5.6%	-5.8%	-21.7%	+1.1%	+8.9%	+11.8%	+1.6%	+5.3%	+0.2%	+7.3%	+25.3%	+7.6%



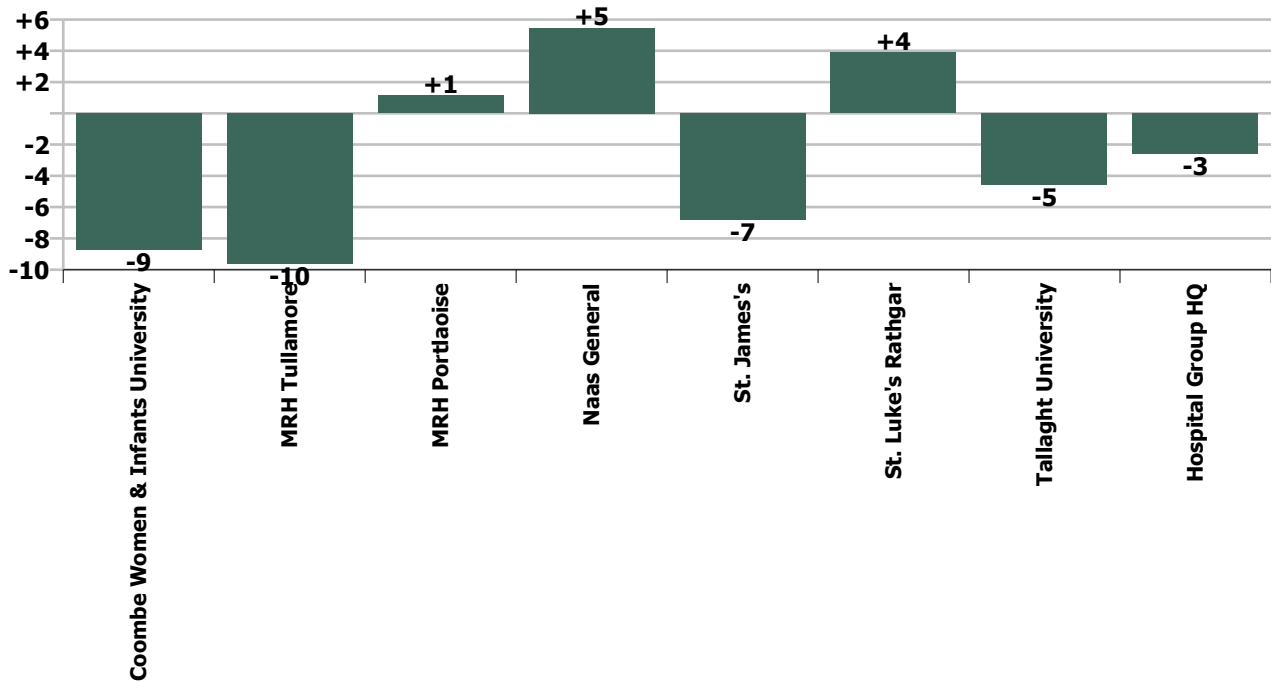
Staff Group change since: Jul 2022



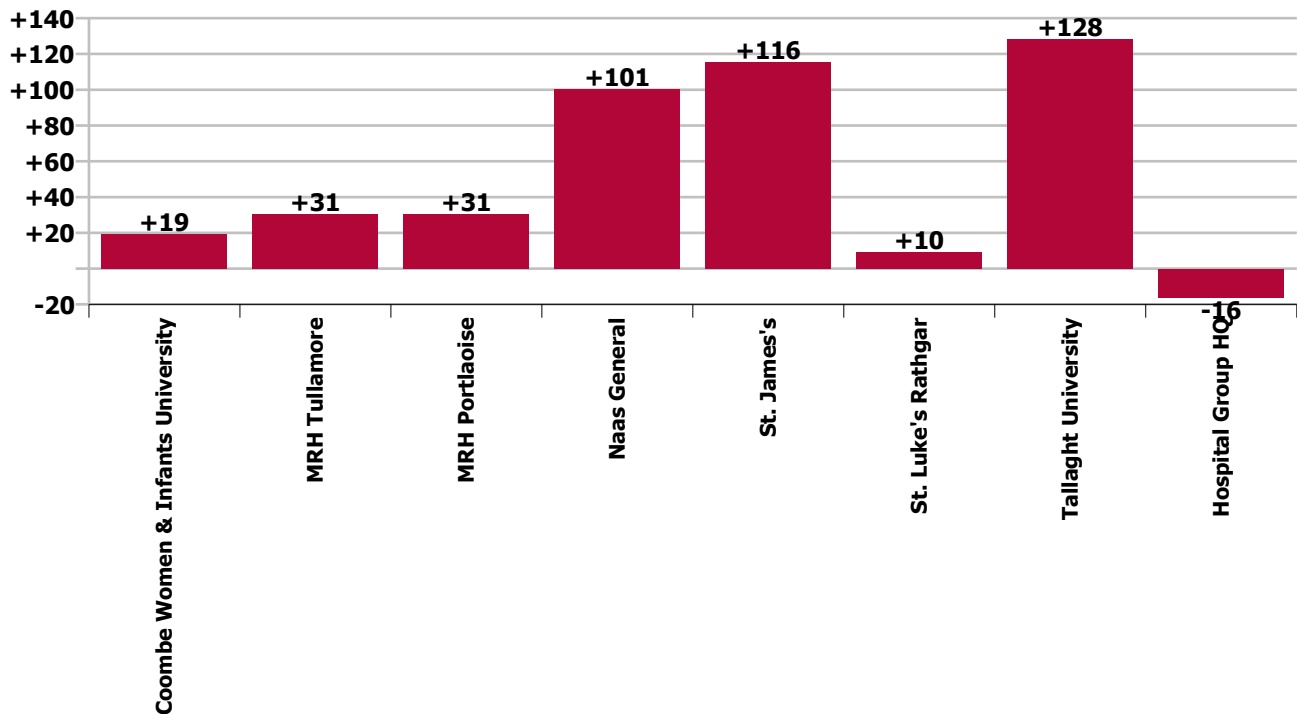
Staff Group change since: Aug 2021



Hospital change since: Jul 2022



Hospital change since: Aug 2021



Longitudinal Employment Levels by Grade Group - Dec 2016 to Aug 2022

Aug 2022	WTE Aug 2022	WTE change since Dec 16	WTE change since Dec 17	WTE change since Dec 18	WTE change since Dec 19	WTE change since Dec 20	WTE change since Jul 22	% change since Dec 16	% change since Dec 17	% change since Dec 18	% change since Dec 19	% change since Dec 20	% change since Jul 22
Overall	12,044	+1,972	+1,743	+1,620	+1,226	+756	-22	+19.6%	+16.9%	+15.5%	+11.3%	+6.7%	-0.2%
Consultant Anaesthesia	81	+18	+18	+17	+14	+10	-0	+29.3%	+29.0%	+26.9%	+21.4%	+13.8%	-0.6%
Consultant Orthodontist	2	-0	-0	+0	-0	-0	+0	-13.5%	-13.5%	+27.2%	-13.5%	-9.9%	+33.1%
Consultant Dentistry	2	-0	-0	+0	-0	-0	+0	-13.5%	-13.5%	+27.2%	-13.5%	-9.9%	+33.1%
Consultant in Emergency Medicine	23	+6	+5	+4	+4	+3	+1	+34.6%	+27.1%	+20.4%	+23.5%	+14.0%	+3.1%
Consultant Emergency Medicine	23	+6	+5	+4	+4	+3	+1	+34.6%	+27.1%	+20.4%	+23.5%	+14.0%	+3.1%
Consultant Intensivist	2	+2	+2					-100.0%	-100.0%				
Consultant Intensive Care Medicine	2	+2	+2					-100.0%	-100.0%				
Consultant Cardiologist	13	-1	-1	-0	+1	-0	-1	-4.3%	-8.3%	-2.8%	+10.2%	-0.2%	-7.1%
Consultant Clinical Neurophysiologist	2												
Consultant Dermatologist	10	+3	+2	+2	+3	+1	-0	+46.6%	+27.1%	+27.1%	+36.1%	+16.1%	-2.6%
Consultant Gastroenterologist & General Physician	15	+5	+4	+3	+4	+0	-0	+54.2%	+34.0%	+28.5%	+40.2%	+2.8%	-1.2%
Consultant General Physician	33	+4	+3	+2	+2	+1	-2	+13.8%	+9.1%	+7.4%	+6.0%	+2.5%	-4.9%
Consultant in Palliative Medicine	3	+1	+1	+1	+1	+1	-1	+50.0%	+50.0%	+50.0%	+50.0%	+50.0%	-18.5%
Consultant in Rehabilitation Medicine	1												
Consultant Medical Oncologist	13	+3	+4	+3	+2	+1	+1	+30.6%	+45.1%	+24.4%	+18.7%	+9.8%	+8.5%
Consultant Nephrologist & General Physician	9	+4	+4	+4	+3	+3		+80.0%	+80.0%	+80.0%	+50.0%	+50.0%	
Consultant Neurologist	13	+6	+5	+4	+3	+2	-1	+96.7%	+57.9%	+41.9%	+29.8%	+18.0%	-4.5%
Consultant Physician in Clinical Pharmacology & Therapeutics		-1	-1	-0				-100.0%	-100.0%	-100.0%	-100.0%	-100.0%	-100.0%
Consultant Physician in Endocrinology	6	+1	+1	-1	-1	-1	-1	+18.4%	+18.4%	-8.9%	-8.9%	-15.4%	-7.8%
Consultant Physician in Genito-Urinary Medicine	4	+3	+3	+3	+2	+3	+1	+638.0%	+269.0%	+269.0%	+84.5%	+269.0%	+35.7%
Consultant Physician in Geriatric Medicine	23	+5	+6	+4	+6	+3	+0	+27.0%	+32.8%	+20.9%	+35.2%	+15.1%	+0.1%
Consultant Physician in Infectious Diseases	15	+11	+11	+11	+3	+1	-1	+293.3%	+298.6%	+279.2%	+25.0%	+6.9%	-7.6%
Consultant Respiratory & General Physician	12	+4	+4	+3	+3	+2	+0	+50.0%	+50.0%	+33.3%	+33.6%	+14.4%	+2.9%
Consultant Rheumatologist & General Physician	9	+3	+2	+3	+3	+2	+0	+42.6%	+32.0%	+42.6%	+39.7%	+32.0%	+0.5%
Consultant Medicine	180	+52	+47	+41	+35	+19	-4	+40.9%	+35.5%	+29.4%	+23.8%	+11.7%	-2.0%
Consultant Obstetrician & Gynaecologist	30	+8	+8	+5	+4	+0	+0	+38.5%	+35.0%	+19.0%	+16.9%	+0.4%	+0.0%
Master (Maternity Hospital)	1												
Consultant Obstetrics & Gynaecology	31	+8	+8	+5	+4	+0	+0	+36.7%	+33.5%	+18.3%	+16.3%	+0.4%	+0.0%
Consultant Neonatologist	7	+3	+1	-1	+1	+1		+75.0%	+16.7%	-8.5%	+13.8%	+7.7%	
Consultant Paediatrician	3	+1				-1		+36.4%				-14.3%	
Consultant Paediatrics	10	+4	+1	-1	+1			+61.3%	+11.1%	-6.1%	+9.3%		
Consultant Chemical Pathologist	3	+1	-0	+0	+0	+0	+0	+24.9%	-13.0%	+4.4%	+4.4%	+4.4%	+0.4%
Consultant Haematologist (Clinical & Laboratory)	18	+3	+3	+2	+1	-1	-0	+18.3%	+22.9%	+10.9%	+3.1%	-7.7%	-1.1%

Aug 2022	WTE Aug 2022	WTE change since Dec 16	WTE change since Dec 17	WTE change since Dec 18	WTE change since Dec 19	WTE change since Dec 20	WTE change since Jul 22	% change since Dec 16	% change since Dec 17	% change since Dec 18	% change since Dec 19	% change since Dec 20	% change since Jul 22
Overall	12,044	+1,972	+1,743	+1,620	+1,226	+756	-22	+19.6%	+16.9%	+15.5%	+11.3%	+6.7%	-0.2%
Consultant Histopathologist	24	+4	+4	+4	+4	+3	+2	+22.3%	+21.5%	+18.7%	+19.4%	+13.7%	+8.3%
Consultant Immunologist (Clinical & Laboratory)	1	-1	-1	-1				-38.7%	-38.7%	-38.7%			
Consultant Microbiologist	8	+1	-0	+1	-0	-1	-1	+14.1%	-0.1%	+8.6%	-3.5%	-6.0%	-11.1%
Consultant Pathology	53	+8	+6	+6	+4	+1	+1	+17.6%	+13.9%	+11.8%	+8.7%	+1.9%	+1.2%
Consultant General Adult Psychiatrist	7	+4	+3	+3		+0		+115.0%	+66.2%	+74.1%		+0.1%	
Consultant Psychiatry	7	+4	+3	+3		+0		+115.0%	+66.2%	+74.1%		+0.1%	
Consultant Radiation Oncologist	19	+12	+3	+1	-1	+1	+1	+153.3%	+18.8%	+5.6%	-5.0%	+5.6%	+5.6%
Consultant Radiologist	49	+7	+10	+8	+8	+3	+0	+17.7%	+27.3%	+20.6%	+19.1%	+6.2%	+0.9%
Consultant Radiology	68	+19	+13	+9	+7	+4	+1	+38.5%	+24.8%	+16.0%	+11.2%	+6.0%	+2.2%
Consultant Cardio-thoracic Surgeon	4	-1		-2			+0	-20.0%		-33.3%			+0.3%
Consultant General Surgeon	25	+6	+6	+5	+0	-1	+1	+32.1%	+32.1%	+26.7%	+1.9%	-3.9%	+4.8%
Consultant General Surgeon Gastro-intestinal	1												
Consultant General Surgeon s.i. vascular surgery	8	+1	+1	+1	+1	+2		+14.3%	+14.3%	+14.3%	+14.3%	+33.3%	
Consultant Ophthalmic Surgeon	1	+0	+0	+1	+0	+0	+0	+152.4%	+152.4%	-100.0%	+26.2%	+26.2%	+6.0%
Consultant Oral & Maxillo Facial Surgeon	5	+4	+4	+5	+5	+3	-0	+398.0%	+398.0%	-100.0%	-100.0%	+149.0%	-0.2%
Consultant Oral Surgeon		-3	-3	-3	-3	-3		-100.0%	-100.0%	-100.0%	-100.0%	-100.0%	-100.0%
Consultant Orthopaedic Surgeon	23	+7	+6	+5	+6	+6	+2	+46.8%	+31.4%	+27.7%	+32.1%	+35.6%	+9.0%
Consultant Otolaryngologist	10	+2	+1	+1	+1	+1	-0	+24.6%	+10.3%	+10.3%	+10.3%	+10.3%	-0.2%
Consultant Plastic Surgeon	5	-1		-1			-1	-18.2%		-18.2%			-10.0%
Consultant Urologist	7	+3	+3	+2	+2	+1	-0	+52.9%	+65.8%	+42.4%	+32.7%	+12.7%	-0.9%
Consultant Surgery	88	+18	+18	+14	+12	+9	+2	+26.0%	+25.1%	+18.7%	+15.7%	+12.0%	+2.9%
Consultants	545	+139		+98	+81		+1	+34.3%		+22.0%	+17.5%		+0.3%
Registrar	0	-66	-67	-8	-5	-1		-99.8%	-99.8%	-98.7%	-98.0%	-90.9%	
Registrar, Anaesthesia	34	+17	+16	+11	+11	+1	+0	+95.5%	+90.0%	+45.1%	+46.4%	+2.4%	+0.6%
Registrar, Emergency Medicine	36	+21	+23	+13	+9	+4	+3	+142.1%	+180.5%	+55.0%	+33.4%	+11.8%	+7.9%
Registrar, General Practice		-2	-2	-2				-100.0%	-100.0%	-100.0%	-100.0%	-100.0%	-100.0%
Registrar, Medicine	152	+92	+92	+48	+41	+26	+2	+154.8%	+153.8%	+46.6%	+36.6%	+20.8%	+1.1%
Registrar, Obstetrics & Gynaecology	19	+6	+10	+6	+5	+3	+2	+48.1%	+109.4%	+47.7%	+33.0%	+20.0%	+11.3%
Registrar, Paediatrics	8	+4	+1	-1	+2	+3	+1	+99.5%	+17.9%	-11.3%	+31.7%	+47.8%	+7.4%
Registrar, Pathology	1	-2	-1	-0	+1	-0	-0	-60.4%	-50.5%	-1.0%	-100.0%	-1.0%	-1.0%
Registrar, Psychiatry	1	+1	+1			+1	+0	-100.0%	-100.0%			-100.0%	+47.1%
Registrar, Radiology	3	+3	+3	+3	+3	+3	+0	-100.0%	-100.0%	-100.0%	-100.0%	-100.0%	+14.9%
Registrar, Surgery	55	+14	+18	+6	-1	-7	+1	+35.8%	+49.4%	+12.0%	-1.0%	-11.5%	+2.7%
Registrar	309	+89	+95	+76	+66	+32	+9	+40.7%	+44.5%	+32.6%	+27.0%	+11.7%	+3.0%
Registrar, Senior	13	-16	-6	-7	-4	-5	-1	-56.4%	-32.0%	-34.2%	-25.5%	-29.9%	-7.7%

Aug 2022	WTE Aug 2022	WTE change since Dec 16	WTE change since Dec 17	WTE change since Dec 18	WTE change since Dec 19	WTE change since Dec 20	WTE change since Jul 22	% change since Dec 16	% change since Dec 17	% change since Dec 18	% change since Dec 19	% change since Dec 20	% change since Jul 22
Overall	12,044	+1,972	+1,743	+1,620	+1,226	+756	-22	+19.6%	+16.9%	+15.5%	+11.3%	+6.7%	-0.2%
Senior Registrar, Psychiatry	3	+2	+3	+2	+1	+1	+0	+220.0%	-100.0%	+220.0%	+60.0%	+60.8%	+0.6%
Senior Registrar	16	-14	-3	-4	-3	-4	-1	-47.1%	-14.6%	-21.6%	-16.4%	-20.9%	-6.1%
Registrar, Specialist	5	-81	-70	-3	-2	+1	+1	-94.2%	-93.3%	-37.7%	-28.9%	+24.5%	+12.7%
Specialist Registrar, Anaesthesia	40	+23	+20	+6	+6	+7	+3	+135.4%	+95.2%	+17.7%	+17.7%	+21.4%	+9.4%
Specialist Registrar, Emergency Medicine	16	+11	+11	+7	+5	+4	+2	+193.0%	+190.9%	+77.8%	+39.1%	+33.3%	+12.1%
Specialist Registrar, Medicine	94	+49	+38	+13	+7	+6	+5	+110.8%	+67.9%	+16.1%	+8.2%	+6.6%	+5.3%
Specialist Registrar, Obstetrics & Gynaecology	22	+14	+10	+9	+6	+7	+1	+174.8%	+83.2%	+69.1%	+37.7%	+51.6%	+6.8%
Specialist Registrar, Paediatrics	11	+6	+5	+4	+3	+1		+120.0%	+83.3%	+57.1%	+37.5%	+10.0%	
Specialist Registrar, Pathology	13	+9	+6	+2	-0	-1	-1	+172.3%	+85.5%	+17.0%	-1.1%	-3.7%	-5.3%
Specialist Registrar, Radiology	26	+18	+14	+3	+3	+1	+1	+225.0%	+116.7%	+13.0%	+10.6%	+5.6%	+4.4%
Specialist Registrar, Surgery	29	+19	+15	+0	+2	+4	-1	+186.8%	+104.9%	+0.6%	+6.2%	+14.7%	-1.9%
Specialist Registrar	256	+68	+48	+41	+29	+31	+12	+35.9%	+23.2%	+19.1%	+12.6%	+13.7%	+4.8%
Registrars	581	+143		+113	+91		+20	+32.7%		+24.1%	+18.6%		+3.5%
Intern	143	+25	+24	+24	+22	-9	-19	+21.1%	+20.3%	+20.1%	+18.4%	-5.9%	-11.5%
Interns	143	+25	+24	+24	+22	-9	-19	+21.1%	+20.3%	+20.1%	+18.4%	-5.9%	-11.5%
House Officer, Senior		-78	-89	-6	-10			-100.0%	-100.0%	-100.0%	-100.0%	-100.0%	-100.0%
Senior House Officer, Anaesthesia	26	+11	+12	+4	-1	+7	+0	+73.9%	+86.8%	+18.6%	-3.4%	+37.3%	+0.7%
Senior House Officer, Emergency Medicine	36	+13	+13	+7	+3	-0	+2	+56.0%	+59.3%	+23.6%	+10.8%	-0.8%	+7.1%
Senior House Officer, Medicine	160	+70	+67	+18	+16	-2	+3	+76.8%	+72.4%	+12.3%	+10.8%	-0.9%	+2.0%
Senior House Officer, Obstetrics & Gynaecology	18	-1	+2	-2	-2	-3	-1	-2.9%	+15.3%	-7.8%	-7.6%	-12.2%	-4.1%
Senior House Officer, Paediatrics	18	-0	-0	-1	-1	-1	+4	-1.3%	-1.3%	-4.9%	-6.5%	-6.4%	+31.3%
Senior House Officer, Pathology	5		-0	+2	+2	+3	+1		-8.6%	+79.2%	+92.3%	+138.1%	+13.4%
Senior House Officer, Surgery	48	+14	+17	-3	+1	-1	-2	+40.7%	+51.9%	-6.5%	+1.1%	-2.7%	-4.2%
Senior House Officer	312	+29	+22	+19	+9	+3	+8	+10.1%	+7.7%	+6.4%	+2.8%	+1.0%	+2.5%
SHO/ Interns	454	+53		+43	+31		-11	+13.3%		+10.4%	+7.3%		-2.4%
Orthodontics, Specialist	1	+1		-0		-0		-100.0%		-21.3%		-31.0%	
Dentists	1	+1		-0		-0		-100.0%		-21.3%		-31.0%	
Associate Specialist	4	+0	+0	+2	+1	+2	-1	+3.9%	+6.5%	+113.6%	+42.6%	+89.7%	-17.3%
Occupational Health Physician	2	+1	+1	+1	+1	+1	-0	+143.0%	+143.0%	+143.0%	+143.0%	+34.3%	-14.4%
Ophthalmic Physician, Community	2	-0	-0	-0	-0	-0	-0	-13.6%	-3.2%	-17.7%	-15.9%	-15.5%	-10.0%
Other Medical	8	+1	+2	+3	+2	+2	-1	+19.7%	+25.0%	+69.3%	+41.6%	+40.1%	-15.2%
Medical/ Dental, other	9	+2		+3	+2		-1	+34.3%		+50.5%	+35.4%		-13.8%
Medical & Dental	1,590	+338		+257	+206		+9	+27.0%		+19.3%	+14.9%		+0.6%
Clinical Midwife Manager 1	11	+1	+3	+4	+0	+1	-1	+5.5%	+31.3%	+63.6%	+1.7%	+11.2%	-8.5%

Aug 2022	WTE Aug 2022	WTE change since Dec 16	WTE change since Dec 17	WTE change since Dec 18	WTE change since Dec 19	WTE change since Dec 20	WTE change since Jul 22	% change since Dec 16	% change since Dec 17	% change since Dec 18	% change since Dec 19	% change since Dec 20	% change since Jul 22
Overall	12,044	+1,972	+1,743	+1,620	+1,226	+756	-22	+19.6%	+16.9%	+15.5%	+11.3%	+6.7%	-0.2%
Clinical Midwife Manager 2	50	+5	-0	+4	+5	+7	-2	+10.5%	-0.1%	+9.4%	+10.1%	+17.4%	-3.1%
Clinical Midwife Manager 3	11	+1	-2	-2	+1	-3	-1	+11.2%	-14.5%	-14.5%	+7.3%	-23.1%	-7.7%
Clinical Nurse Manager 1	178	+19	+25	+2	+12	+12	-1	+12.2%	+16.3%	+1.0%	+7.4%	+7.1%	-0.4%
Clinical Nurse Manager 1 (Mental Health)	2		+0	+0					+4.2%	+7.5%			
Clinical Nurse Manager 2	538	+139	+90	+95	+70	+55	+4	+34.9%	+20.1%	+21.5%	+15.0%	+11.5%	+0.8%
Clinical Nurse Manager 2 (Mental Health)	10	-1	-0	+0	-1	-1	-1	-6.9%	-0.1%	+1.1%	-6.5%	-8.3%	-9.0%
Clinical Nurse Manager 2 - Night	5	-1	+0	+0	+0	-1	+0	-14.4%	+0.2%	+0.2%	+0.2%	-13.0%	+0.7%
Clinical Nurse Manager 2 - Theatre	7	-2	-2	-3	-5	-3	+0	-21.9%	-21.0%	-27.0%	-39.7%	-27.2%	+2.9%
Clinical Nurse Manager 3	72	+16	+13	+1	+12	-1	+1	+28.8%	+22.6%	+2.1%	+19.7%	-2.0%	+1.6%
Clinical Nurse Manager 3 (Mental Health)	1		+1	+1	+1				-100.0%	-100.0%	-100.0%		
Clinical Nurse Manager 3 - Night	2	-1	-1	-1	-1	-1	-1	-33.3%	-33.3%	-33.3%	-29.8%	-31.3%	-30.6%
Clinical Nurse Manager 3 - Theatre	2		+2	+2	+1	+1			-100.0%	-100.0%	+100.0%	+100.0%	
Clinical Nurse/ Midwife Manager	889	+177	+129	+105	+96	+67	-1	+24.8%	+17.0%	+13.3%	+12.1%	+8.1%	-0.1%
Director of Midwifery 1, Assistant	7	+7	+7	+7	+2	+2		-100.0%	-100.0%	-100.0%	+28.1%	+26.4%	
Director of Nursing 1, Assistant	68	+22	+20	+2	+4	+1	+0	+47.7%	+40.8%	+2.2%	+5.7%	+2.2%	+0.3%
Director of Nursing 2, Assistant	4	-13	-20	-4	+3	+2	-0	-74.7%	-81.8%	-49.5%	+348.0%	+124.0%	-9.5%
Director of Nursing 4, Assistant			-1					-100.0%	-100.0%	-100.0%	-100.0%	-100.0%	-100.0%
Director of Nursing (Mental Health), Assistant	1												
Director Nursing/Midwifery, Assistant	81	+16	+6	+5	+9	+5	-0	+25.2%	+8.3%	+6.0%	+12.1%	+7.2%	-0.3%
Director of Midwifery 1	2	+2	+2	+2	+1	+1		-100.0%	-100.0%	-100.0%	+100.0%	+100.0%	
Director of Nursing 1	5	+1	+1	-1	-0	-0	+0	+24.5%	+24.5%	-15.6%	-0.4%	-0.4%	+4.8%
Director of Nursing 2	4	+1		+1		+0		+33.3%		+33.3%		+6.1%	
Director of Nursing (Mental Health)				-1	-1			-100.0%	-100.0%	-100.0%	-100.0%	-100.0%	-100.0%
Director of Nursing/Midwifery	11	+4	+3	+1	-0	+1	+0	+56.9%	+37.3%	+10.9%	-0.2%	+12.4%	+2.1%
Nurse/ Midwife Manager	982	+197		+110	+104		-1	+25.1%		+12.7%	+11.9%		-0.1%
Advanced Midwife Practitioner, Candidate	1	+1	+1	+1	+1	-0	-0	-100.0%	-100.0%	-100.0%	-100.0%	-3.0%	-3.0%
Advanced Nurse Practitioner, Candidate (General)	33	+33	+33	+27	+13	+11	+3	-100.0%	-100.0%	+451.4%	+66.4%	+49.9%	+8.3%
Advanced Nurse Practitioner (General)	70	+38	+39	+30	+28	+11	-1	+116.4%	+124.5%	+74.0%	+66.4%	+19.1%	-1.6%
Advanced Nurse/ Midwife Practitioner	104	+72	+73	+58	+42	+22	+1	+220.3%	+232.2%	+124.5%	+67.9%	+27.0%	+1.3%
Clinical Midwife Specialist	12	+3	+1	-2	+0	+0		+27.7%	+5.8%	-11.8%	+2.1%	+3.4%	
Clinical Nurse Specialist (General)	160	+29	+46	+33	+30	+19	+3	+21.9%	+39.9%	+26.0%	+22.8%	+13.4%	+2.0%
Clinical Nurse Specialist (Mental Health)	5	+4	+4	+4	+4	+3	-0	+399.0%	+399.0%	+399.0%	+399.0%	+149.5%	-0.2%
Clinical Nurse/ Midwife Specialist	176	+35	+50	+35	+34	+22	+3	+24.9%	+39.8%	+25.1%	+23.8%	+14.5%	+1.8%
Nurse/ Midwife Specialist & AN/MP	281	+107		+93	+76		+5	+61.5%		+49.7%	+37.2%		+1.6%
Staff Nurse (Nursing Bank)	7	-28	-29	-12	-12	-9	+3	-79.4%	-79.9%	-62.8%	-62.9%	-56.4%	+55.7%

Aug 2022	WTE Aug 2022	WTE change since Dec 16	WTE change since Dec 17	WTE change since Dec 18	WTE change since Dec 19	WTE change since Dec 20	WTE change since Jul 22	% change since Dec 16	% change since Dec 17	% change since Dec 18	% change since Dec 19	% change since Dec 20	% change since Jul 22
Overall	12,044	+1,972	+1,743	+1,620	+1,226	+756	-22	+19.6%	+16.9%	+15.5%	+11.3%	+6.7%	-0.2%
Staff Nurse, Senior (Nursing Bank)	1	-4	-4	-4	-2	+0		-85.9%	-86.6%	-85.5%	-80.3%	+3.4%	
Nursing Bank	8	-31	-32	-16	-15	-9	+3	-80.1%	-80.6%	-66.9%	-65.3%	-54.4%	+49.2%
Enhanced Midwife	99	+99	+99	+99	+99	+14	-2	-100.0%	-100.0%	-100.0%	-100.0%	+16.0%	-2.3%
Enhanced Midwife, Senior	20	+20	+20	+20	+20	+13	+0	-100.0%	-100.0%	-100.0%	-100.0%	+194.1%	+1.8%
Staff Midwife	46	-50	-82	-76	-83	+1	-6	-52.1%	-63.8%	-62.3%	-64.2%	+1.3%	-11.2%
Staff Midwife (dual qualified)		-61	-51	-61	-45	-27		-100.0%	-100.0%	-100.0%	-100.0%	-100.0%	-100.0%
Staff Midwife, Senior		-7	-10	-6	-5			-100.0%	-100.0%	-100.0%	-100.0%	-100.0%	-100.0%
Staff Midwife, Senior (dual qualified)		-18	-21	-20	-17	-24		-100.0%	-100.0%	-100.0%	-100.0%	-100.0%	-100.0%
Staff Midwives	165	-19	-45	-45	-32	-24	-8	-10.1%	-21.5%	-21.3%	-16.1%	-12.7%	-4.5%
Enhanced Nurse (Children's)	22	+22	+22	+22	+22	+10	-0	-100.0%	-100.0%	-100.0%	-100.0%	+81.7%	-1.5%
Enhanced Nurse (Community/Primary Care)	1	+1	+1	+1	+1			-100.0%	-100.0%	-100.0%	-100.0%		
Enhanced Nurse (General)	1,143	+1,143	+1,143	+1,143	+1,143	-75	-4	-100.0%	-100.0%	-100.0%	-100.0%	-6.2%	-0.4%
Enhanced Nurse, Senior (Children's)	11	+11	+11	+11	+11	+0	-0	-100.0%	-100.0%	-100.0%	-100.0%	+4.0%	-3.5%
Enhanced Nurse, Senior (General)	752	+752	+752	+752	+752	-27	-3	-100.0%	-100.0%	-100.0%	-100.0%	-3.5%	-0.4%
Staff Nurse (Adaptation Placement), General	106	+95	+90	+81	+97	+95	-18	+860.7%	+560.5%	+334.2%	+1074.2%	+884.9%	-14.4%
Staff Nurse (Children's)	2	-33	-22	-21	-19		+0	-94.2%	-91.8%	-91.4%	-90.7%		+0.5%
Staff Nurse, Dual Qualified (Children's)		-8	-8	-9	-9	-8		-100.0%	-100.0%	-100.0%	-100.0%	-100.0%	-100.0%
Staff Nurse, Dual Qualified (General)	1	-5	-5	-3	-2	+0		-79.4%	-79.5%	-72.4%	-60.4%	+4.1%	
Staff Nurse - General	665	-1,105	-1,160	-1,127	-1,274	+101	+11	-62.4%	-63.6%	-62.9%	-65.7%	+17.9%	+1.7%
Staff Nurse, Senior (Children's)		-5	-6	-6	-6	-1		-100.0%	-100.0%	-100.0%	-100.0%	-100.0%	-100.0%
Staff Nurse, Senior (Dual Qualified)	5	-17	-14	-12	-15	-3	+0	-76.6%	-72.3%	-69.7%	-73.4%	-39.0%	+0.2%
Staff Nurse, Senior (Dual Qualified Children's)				-1				-100.0%	-100.0%	-100.0%	-100.0%	-100.0%	-100.0%
Staff Nurse, Senior (General)	74	-450	-490	-487	-513	-29	-0	-85.8%	-86.8%	-86.8%	-87.4%	-28.3%	-0.6%
Staff Nurses [General/ Children's]	2,782	+400	+313	+343	+187	+62	-15	+16.8%	+12.7%	+14.0%	+7.2%	+2.3%	-0.5%
Enhanced Nurse (Mental Health)	8	+8	+8	+8	+8	-2	+0	-100.0%	-100.0%	-100.0%	-100.0%	-15.3%	+0.7%
Enhanced Nurse, Senior (Mental Health)	4	+4	+4	+4	+4	+0	+0	-100.0%	-100.0%	-100.0%	-100.0%	+0.6%	+2.3%
Staff Nurse, Mental Health	6	-11	-9	-10	-10	-3		-66.1%	-61.8%	-63.3%	-62.8%	-36.2%	
Staff Nurse, Senior (Mental Health)	1	-6	-6	-6	-5	-1	+0	-86.1%	-85.1%	-85.1%	-82.5%	-58.4%	+2.0%
Staff Nurse [Psychiatric]	19	-6	-3	-4	-3	-6	+0	-23.3%	-14.9%	-17.2%	-12.3%	-24.9%	+0.9%
Staff Nurse/ Staff Midwife	2,973	+344		+278	+138		-20	+13.1%		+10.3%	+4.9%		-0.7%
Student Children's & General Nursing Intern (pre-registration)	9	+2	+3	+1	+1	+9	-1	+20.0%	+38.5%	+5.9%	+16.1%	-100.0%	-5.3%
Student General Nursing Intern (pre-registration)	79	+78	+76	+77	+79	+79	+0	+15662.0%	+2665.3%	+3840.5%	+196925.0%	+262600.0%	+0.1%
Student Midwifery Intern (pre-registration)	6	+5	+6	+6	+6	+6		+450.0%	-100.0%	-100.0%	-100.0%	-100.0%	
Pre-registration Nurse/ Midwife Intern	93	+84	+84	+83	+86	+93	-0	+936.8%	+898.0%	+788.7%	+1097.8%	+310933.3%	-0.5%
Student Children's & General Nursing Intern (COVID-19 HCA)						-16		-100.0%	-100.0%	-100.0%	-100.0%	-100.0%	-100.0%

Aug 2022	WTE Aug 2022	WTE change since Dec 16	WTE change since Dec 17	WTE change since Dec 18	WTE change since Dec 19	WTE change since Dec 20	WTE change since Jul 22	% change since Dec 16	% change since Dec 17	% change since Dec 18	% change since Dec 19	% change since Dec 20	% change since Jul 22
Overall	12,044	+1,972	+1,743	+1,620	+1,226	+756	-22	+19.6%	+16.9%	+15.5%	+11.3%	+6.7%	-0.2%
Student General Nursing Intern (COVID-19 HCA)						-12		-100.0%	-100.0%	-100.0%	-100.0%	-100.0%	-100.0%
Pre-registration Nurse Intern (COVID-19)						-28		-100.0%	-100.0%	-100.0%	-100.0%	-100.0%	-100.0%
Student Midwifery (post registration)	11		+1	+3	-2	-1			+10.0%	+37.5%	-15.4%	-8.3%	
Post-registration Nurse/ Midwife Student	11		+1	+3	-2	-1			+10.0%	+37.5%	-15.4%	-8.3%	
Staff Nurse, General (awaiting-registration)	59	+41	+56	+53	+38	+55	-4	+232.8%	+1866.7%	+883.3%	+181.0%	+1288.2%	-6.9%
Nursing/ Midwifery awaiting registration	59	+41	+56	+53	+38	+55	-4	+232.8%	+1866.7%	+883.3%	+181.0%	+1288.2%	-6.9%
Nursing/ Midwifery Student	163	+126		+139	+122		-5	+332.8%		+566.6%	+290.8%		-2.9%
Director, Nursing/ Midwifery Education Centre	2	-1						-33.3%					
Nurse Tutor	5	+3	+2	+2	+1	+1	+0	+117.6%	+57.7%	+55.4%	+20.9%	+20.9%	+1.1%
Nurse Tutor (Midwifery)	4	+3	+4	+4				+600.0%	-100.0%	-100.0%			
Nursing/ Midwifery Clinical Placement Co-ordinator	21	+4	+5	+5	+2	-0	-0	+24.5%	+34.0%	+33.4%	+9.3%	-1.8%	-1.4%
Nursing/ Midwifery Practice Development Co-ordinator	2	+1	+1	+1	-0	-0		+52.0%	+52.0%	+52.0%	-24.0%	-18.7%	
Professional Development Nursing Officer		-1						-100.0%	-100.0%	-100.0%	-100.0%	-100.0%	-100.0%
Nursing Education/Clinical	33	+9	+11	+11	+2	+0	-0	+34.7%	+51.5%	+50.6%	+7.2%	+0.7%	-0.7%
Practice Nurse Facilitator	6	+2	+2	+3	+1	+1		+52.4%	+71.9%	+100.7%	+16.0%	+18.0%	
Other Nursing/ Midwifery	6	+2	+2	+3	+1	+1		+52.4%	+71.9%	+100.7%	+16.0%	+18.0%	
Nursing/ Midwifery other	39	+10		+14	+3		-0	+36.9%		+56.2%	+8.3%		-0.6%
Nursing & Midwifery	4,437	+784		+635	+443		-21	+21.5%		+16.7%	+11.1%		-0.5%
Dietitian	29	-1	+3	+4	+0	-0	+2	-2.3%	+11.5%	+16.3%	+1.4%	-0.7%	+8.5%
Dietitian, Clinical Specialist	11	+5	+6	+4	+4	+2	-0	+90.9%	+134.4%	+61.5%	+50.0%	+19.2%	-3.8%
Dietitian Manager	7	+3	+1	+1	+1	+1	-0	+68.0%	+12.9%	+12.1%	+14.2%	+14.4%	-1.9%
Dietitian Manager-in-charge III	2												
Dietitian, Senior	54	+9	+8	+3	+3	+2	+0	+20.1%	+16.4%	+5.6%	+6.4%	+2.9%	+0.0%
Dietitians	102	+16	+17	+12	+8	+4	+2	+18.6%	+20.5%	+12.9%	+8.5%	+3.9%	+1.7%
Occupational Therapist	28	+0	-1	+2	+0	-4	-1	+1.8%	-4.9%	+6.2%	+1.8%	-13.3%	-4.0%
Occupational Therapist, Clinical Specialist	8	+6	+4	+5	+3	+3	-0	+340.4%	+113.4%	+132.6%	+72.1%	+68.0%	-1.7%
Occupational Therapist-in-charge III	2	+0	-2	-0	-1	-1	-1	+1.6%	-45.4%	-4.5%	-33.2%	-33.2%	-34.1%
Occupational Therapist Manager	1	+0	+0	-0	-0	+0	+0	+39.0%	+39.0%	-7.3%	-2.1%	+2.2%	+8.6%
Occupational Therapist, Senior	42	+14	+13	+11	+10	+7	+3	+53.2%	+44.5%	+35.0%	+31.4%	+21.8%	+8.1%
Occupational Therapists	81	+22	+15	+17	+13	+6	+1	+36.8%	+22.0%	+26.5%	+19.0%	+7.5%	+1.2%
Orthoptist, Senior	1	+0	-0	-1	-1	-0	-0	+42.6%	-24.3%	-41.7%	-30.9%	-16.3%	-17.8%
Orthoptists	1	+0	-0	-1	-1	-0	-0	+42.6%	-24.3%	-41.7%	-30.9%	-16.3%	-17.8%
Physiotherapist	72	+10	+8	+5	+8	+2	-3	+16.9%	+12.9%	+8.2%	+13.1%	+2.5%	-4.0%
Physiotherapist, Clinical Specialist	40	+25	+24	+21	+17	+16	+2	+156.4%	+151.9%	+111.4%	+71.3%	+65.6%	+4.2%

Aug 2022	WTE Aug 2022	WTE change since Dec 16	WTE change since Dec 17	WTE change since Dec 18	WTE change since Dec 19	WTE change since Dec 20	WTE change since Jul 22	% change since Dec 16	% change since Dec 17	% change since Dec 18	% change since Dec 19	% change since Dec 20	% change since Jul 22
Overall	12,044	+1,972	+1,743	+1,620	+1,226	+756	-22	+19.6%	+16.9%	+15.5%	+11.3%	+6.7%	-0.2%
Physiotherapist-in-charge (Grade III)	5	-1	-1	-1	-1	-1	-0	-20.9%	-21.2%	-20.1%	-12.0%	-13.8%	-4.5%
Physiotherapist Manager	6	+1	+1	+1	+1	+1	-0	+22.9%	+22.9%	+26.3%	+26.3%	+10.6%	-3.7%
Physiotherapist, Senior	70	+3	-4	+4	+7	+2	+0	+5.0%	-5.4%	+6.2%	+11.2%	+2.2%	+0.0%
Physiotherapists	193	+38	+28	+31	+33	+19	-2	+24.7%	+17.2%	+19.0%	+20.4%	+11.0%	-0.9%
Chiropodist, Clinical Specialist	1	+1	+1	+1	+1	+1		-100.0%	-100.0%	-100.0%	-100.0%	-100.0%	
Chiropodist/ Podiatrist	1	-0	-0	-0	-0	+0	+0	-38.6%	-46.9%	-32.9%	-32.9%	+4.1%	+2.0%
Chiropodist/ Podiatrist, Senior	2	-0	-0	-1	-1	-1		-12.0%	-12.0%	-40.5%	-38.5%	-38.5%	
Podiatrists & Chiropodists	3	+0	+0	-1	-0	-0	+0	+14.7%	+9.8%	-13.0%	-10.7%	-3.7%	+0.3%
Speech & Language Therapist	13	+0	-0	-3	-1	-2	+1	+0.5%	-3.3%	-18.5%	-9.2%	-13.5%	+6.7%
Speech & Language Therapist, Clinical Specialist	5	+2	+2	+3	+2	+2	+0	+53.2%	+92.1%	+201.3%	+76.0%	+76.0%	+1.8%
Speech & Language Therapist Manager	4	+1	-0	-1	+1	+0	+0	+24.3%	-0.5%	-12.9%	+19.8%	+10.0%	+0.3%
Speech & Language Therapist Manager-in-charge III	2	+0	+0	+0	+0	+0	+0	+8.8%	+8.8%	+8.8%	+2.8%	+2.8%	+1.1%
Speech & Language Therapist, Senior	25	+9	+8	+9	+8	+3	-1	+52.6%	+46.6%	+57.5%	+47.9%	+15.2%	-3.2%
Speech & Language Therapists	48	+11	+10	+9	+10	+4	+0	+30.3%	+25.9%	+22.9%	+24.5%	+8.3%	+0.2%
Therapy Professions	429	+88		+67	+62		+1	+25.8%		+18.5%	+16.9%		+0.2%
Audiologist	1		+1	+1	+1	+1			-100.0%	-100.0%	-100.0%	-100.0%	
Audiologist, Chief	3	-0	-0	-0	+0	+0	+0	-0.8%	-2.7%	-2.7%	+1.6%	+2.8%	+6.3%
Audiologist, Senior	1	+0	+0	+1	+1	+1		+40.0%	+1.4%	+197.9%	+109.0%	+154.5%	
Audiology	5	+0	+1	+2	+2	+2	+0	+8.4%	+23.9%	+60.6%	+56.0%	+63.8%	+3.1%
Biochemist	3	+3	+1			-1		-100.0%	+66.7%				-24.9%
Biochemist, Principal	0	-3	-3	-2	-2	-2		-100.0%	-100.0%	-100.0%	-100.0%	-100.0%	#DIV/0
Biochemist, Senior	6	+2	+2	+2	+1	+1	+1	+38.0%	+38.0%	+43.4%	+29.9%	+27.5%	+22.1%
Biochemists	8	+1	-0	-0	-1	-1	+1	+14.6%	-5.6%	-4.0%	-8.3%	-12.4%	+14.2%
Cardiac Physiologist	14	-4	-3	+4	-1	-6	+0	-23.9%	-17.9%	+39.8%	-7.5%	-28.9%	+0.6%
Cardiac Physiologist, Chief I	4	+0	+0	+0	+1	+0		+1.1%	+3.7%	+0.8%	+39.6%	+0.8%	
Cardiac Physiologist, Chief II	3	+1	+1	+1	+1	+1	-1	+20.5%	+50.0%	+50.0%	+50.0%	+66.7%	-14.3%
Cardiac Physiologist, Senior	21	+6	+8	+1	+0	+1	-0	+36.7%	+61.2%	+5.1%	+2.1%	+2.9%	-1.4%
Cardiac Physiologists	42	+2	+6	+6	+1	-4	-1	+4.3%	+16.8%	+17.0%	+3.2%	-8.6%	-1.7%
Clinical Engineering Technician	3		-1		-1	+1	+0		-25.0%		-25.0%	+20.0%	+3.4%
Clinical Engineering Technician, Chief	3	-1	-1	-1	-1			-25.0%	-25.0%	-25.0%	-25.0%		
Clinical Engineering Technician, Principal	12	+1	+2					+9.1%	+20.0%				
Clinical Engineering Technician, Senior	24	+6	-1	+1	+0	+1	+2	+31.5%	-2.1%	+6.6%	+2.1%	+4.5%	+8.2%
Clinical Engineering	42	+6	-1	+0	-2	+2	+2	+15.8%	-1.2%	+1.2%	-3.5%	+3.8%	+4.8%
Dosimetrist, Basic		-3	-1	-1	-1	-1		-100.0%	-100.0%	-100.0%	-100.0%	-100.0%	-100.0%
Dosimetrist, Senior	1	-1						-50.0%					

Aug 2022	WTE Aug 2022	WTE change since Dec 16	WTE change since Dec 17	WTE change since Dec 18	WTE change since Dec 19	WTE change since Dec 20	WTE change since Jul 22	% change since Dec 16	% change since Dec 17	% change since Dec 18	% change since Dec 19	% change since Dec 20	% change since Jul 22
Overall	12,044	+1,972	+1,743	+1,620	+1,226	+756	-22	+19.6%	+16.9%	+15.5%	+11.3%	+6.7%	-0.2%
Dosimetrists	1	-4	-1	-1	-1	-1		-80.0%	-50.0%	-50.0%	-50.0%	-50.0%	
E.C.G. Technician	1	+1	+1	+1	-1	-0	+1	-100.0%	-100.0%	-100.0%	-61.5%	-23.0%	-100.0%
E.C.G. Technicians	1	+1	+1	+1	-1	-0	+1	-100.0%	-100.0%	-100.0%	-61.5%	-23.0%	-100.0%
Gastrointestinal (GI) Physiologist	3	+2	+0	+2	+2	+2		+166.0%	+1.5%	+329.0%	+329.0%	+329.0%	
Gastrointestinal (GI) Physiologist, Chief II	1												
Gastrointestinal (GI) Physiologist, Senior		-1	-1					-100.0%	-100.0%	-100.0%	-100.0%	-100.0%	-100.0%
Gastrointestinal Physiologists	4	+1	-1	+2	+2	+2		+28.0%	-18.3%	+125.9%	+125.9%	+125.9%	
Laboratory Manager	6	+2	+1		+1	+2		+50.0%	+20.0%		+20.0%	+33.3%	
Medical Scientist	182	-41	-28	-26	-30	-16	-0	-18.2%	-13.4%	-12.6%	-14.1%	-8.1%	-0.2%
Medical Scientist, Chief	47	+9	+9	+9	+9	+8	+0	+22.7%	+23.2%	+23.0%	+25.0%	+21.4%	+0.2%
Medical Scientist, Senior	157	+39	+33	+32	+30	+16	+5	+33.3%	+26.5%	+25.5%	+23.3%	+11.4%	+3.0%
Medical Scientist, Specialist	10	+1	+1	+1	+4	+3	-0	+6.2%	+6.2%	+12.2%	+60.4%	+38.0%	-2.4%
Medical Science	402	+10	+15	+16	+14	+12	+4	+2.5%	+3.9%	+4.1%	+3.6%	+3.2%	+1.0%
Neuro-Physiologist	2	-1	-1	-1	+1			-33.3%	-33.3%	-33.3%	+100.0%		
Neuro-Physiologist, Chief II	3	+2	+2	+2	+1	+1	+1	+320.3%	+320.3%	+320.3%	+52.6%	+52.6%	+52.6%
Neuro-Physiologist, Senior	6	+2	+1	+2	+0	-2	-1	+62.6%	+25.7%	+62.6%	+0.5%	-23.5%	-14.8%
Neuro-Physiologists	10	+3	+2	+3	+2	-1	+0	+47.1%	+28.9%	+47.1%	+24.2%	-6.3%	+0.4%
Perfusionist	2	-1	-1	-1	-1	-1	+0	-26.3%	-26.3%	-26.3%	-26.3%	-26.3%	+0.6%
Perfusionist, Senior	2												
Perfusionists	4	-1	-1	-1	-1	-1	+0	-14.0%	-14.0%	-14.0%	-14.0%	-14.0%	+0.3%
Phlebotomist	52	+16	+13	+14	+13	+7	-2	+44.3%	+33.2%	+35.9%	+34.9%	+15.0%	-3.4%
Phlebotomist, Senior	2	+0	+1	-0	-1	+1	+0	+11.8%	+99.0%	-0.5%	-33.7%	+99.0%	+0.5%
Phlebotomists	54	+16	+14	+14	+12	+8	-2	+42.8%	+34.9%	+34.1%	+29.9%	+16.9%	-3.3%
Physicist	13	-5	-10	-14	-14	-6	-1	-27.5%	-43.3%	-51.9%	-52.1%	-31.1%	-6.3%
Physicist, Chief	6	+3	+1	-1	+1			+100.0%	+20.0%	-13.3%	+20.0%		
Physicist, Principal	15	+2	+3	+2	-1	-1	-1	+12.0%	+28.2%	+18.3%	-3.9%	-3.9%	-4.1%
Physicist, Senior	26	+7	+7	+3	+4	+6	+2	+33.2%	+33.3%	+14.0%	+20.5%	+28.7%	+6.4%
Physicists	61	+6	+1	-9	-9	-1	+0	+11.6%	+1.8%	-13.3%	-13.2%	-0.9%	+0.1%
Radiation Therapist	61	-46	+23	+19	+14	+1	-2	-42.9%	+59.5%	+44.3%	+28.9%	+1.0%	-3.2%
Radiation Therapist, Clinical Specialist	48	+31	+10	+10	+12	+5		+176.8%	+26.2%	+26.2%	+31.4%	+10.3%	
Radiation Therapist, Senior	21	+21	-27	-26	-27	-18		-100.0%	-56.0%	-55.1%	-56.0%	-45.7%	
Radiation Therapy Service Manager I	3	-1				+1		-25.0%				+50.0%	
Radiation Therapy Service Manager II	3	+1	-1	-1	-1			+50.0%	-25.0%	-25.0%	-25.0%		
Radiation Therapists	136	+6	+5	+2	-2	-11	-2	+4.6%	+3.9%	+1.6%	-1.7%	-7.8%	-1.5%
Radiographer	94	+1	+9	-3	+8	+2	-1	+1.2%	+11.1%	-3.0%	+9.4%	+2.6%	-1.3%

Aug 2022	WTE Aug 2022	WTE change since Dec 16	WTE change since Dec 17	WTE change since Dec 18	WTE change since Dec 19	WTE change since Dec 20	WTE change since Jul 22	% change since Dec 16	% change since Dec 17	% change since Dec 18	% change since Dec 19	% change since Dec 20	% change since Jul 22
Overall	12,044	+1,972	+1,743	+1,620	+1,226	+756	-22	+19.6%	+16.9%	+15.5%	+11.3%	+6.7%	-0.2%
Radiographer, Clinical Specialist	44	+2	+8	+6	+5	+1	+4	+5.6%	+20.8%	+16.8%	+12.0%	+1.6%	+9.0%
Radiographer, Senior	71	+23	+17	+15	-1	-5	-1	+49.6%	+31.7%	+26.8%	-0.9%	-6.2%	-1.0%
Radiography Service Manager, I	7	+2	+2	+2	+0	+1	-0	+37.0%	+37.0%	+38.4%	+0.0%	+14.9%	-0.3%
Radiography Service Manager, II	4				-1	-1					-20.0%	-20.0%	
Radiographers	220	+29	+36	+20	+11	-2	+2	+15.1%	+19.5%	+10.2%	+5.4%	-0.8%	+0.8%
Respiratory Physiologist	1				-2	-1					-66.7%	-50.0%	
Respiratory Physiologist, Chief I	2	+1	+1	+1	+1	+1	-0	+90.0%	+90.0%	+90.0%	+90.0%	+90.0%	-5.0%
Respiratory Physiologist, Chief II	1	-0	-0	-0	-0	-0		-49.0%	-49.0%	-49.0%	-49.0%	-49.0%	
Respiratory Physiologist, Senior	7	+2	+3	+3	+3	+2	+0	+45.7%	+58.6%	+86.6%	+78.5%	+43.3%	+1.2%
Respiratory Physiologists	10	+3	+3	+4	+1	+2	-0	+33.4%	+40.4%	+54.2%	+16.6%	+17.1%	-0.2%
Vascular Physiologist	3	-3	-3	-0	-0	+1	-0	-48.1%	-47.5%	-9.6%	-5.3%	+43.4%	-0.7%
Vascular Physiologist, Chief II	2	+1	+1	+1	+1	+0	+0	+85.0%	+85.0%	+85.0%	+101.1%	+7.6%	+1.1%
Vascular Physiologist, Senior	6	+1	+1	+2	-0	+1	-0	+26.8%	+9.6%	+47.6%	-1.3%	+17.5%	-0.2%
Vascular Physiologists	11	-1	-1	+2	+1	+2	-0	-4.8%	-10.2%	+30.2%	+7.0%	+21.4%	-0.1%
Health Science/ Diagnostics	1,009	+78		+61	+30		+5	+8.4%		+6.5%	+3.1%		+0.5%
Social Worker	8	-4	-2	-0	-0	+0	-1	-33.1%	-20.5%	-0.6%	-0.6%	+6.0%	-11.2%
Social Worker, Medical	24	-2	-6	-4	+1	-3	+1	-9.1%	-19.4%	-14.5%	+3.3%	-12.0%	+6.7%
Social Worker, Principal	6	+2	+2	+2	+2	+2		+55.8%	+55.8%	+55.8%	+50.0%	+50.0%	
Social Worker, Senior Medical	25	+9	+7	+3	+1	+2	-4	+52.6%	+41.0%	+14.0%	+2.2%	+9.8%	-12.8%
Social Worker, Team Leader	16	+4	+5	+3	+5	+1	-1	+32.3%	+50.1%	+25.9%	+50.1%	+8.5%	-5.0%
Social Work Practitioner, Senior	8	+1	-2	-1	-1	-3	-1	+12.7%	-19.8%	-14.9%	-13.1%	-29.3%	-8.0%
Social Workers	87	+9	+5	+3	+7	-1	-5	+12.0%	+6.0%	+3.5%	+9.1%	-0.9%	-5.2%
Social Workers	87	+9		+3	+7		-5	+12.0%		+3.5%	+9.1%		-5.2%
Psychologist, Clinical	1	-3	-0	-1	-1	-0		-74.9%	-16.7%	-43.2%	-43.2%	-7.4%	
Psychologist, Principal Clinical	7	+3	+3	+3	+2	+2	-0	+80.7%	+84.2%	+82.7%	+38.9%	+38.9%	-4.5%
Psychologist, Senior Clinical	9	-1	-3	+1	+3	+2	+2	-13.5%	-23.2%	+14.5%	+56.5%	+24.1%	+28.6%
Psychologist, Senior Counselling	0	+0	+0	+0	+0	+0		-100.0%	-100.0%	-100.0%	+5.3%	+5.3%	
Psychologists	17	-1	+0	+4	+4	+4	+2	-5.9%	+2.9%	+28.3%	+34.4%	+26.2%	+11.1%
Psychologists	17	-1		+4	+4		+2	-5.9%		+28.3%	+34.4%		+11.1%
Pharmacist	20	-4	-10	-11	-4	-8	-0	-18.4%	-34.6%	-36.7%	-18.5%	-29.9%	-0.6%
Pharmacist, Chief I	8	+1	+1	-1	-1	-1	+0	+20.7%	+17.1%	-7.3%	-7.7%	-7.7%	+0.3%
Pharmacist, Chief II	36	+11	+10	+11	+9	+7	-1	+46.7%	+39.5%	+45.6%	+34.4%	+25.7%	-1.7%
Pharmacist, Senior	78	+17	+17	+8	+1	-8	+1	+27.2%	+28.7%	+11.3%	+1.5%	-9.3%	+1.4%
Pharmacists	141	+25	+18	+7	+5	-10	+0	+21.5%	+14.8%	+5.3%	+3.8%	-6.5%	+0.3%

Aug 2022	WTE Aug 2022	WTE change since Dec 16	WTE change since Dec 17	WTE change since Dec 18	WTE change since Dec 19	WTE change since Dec 20	WTE change since Jul 22	% change since Dec 16	% change since Dec 17	% change since Dec 18	% change since Dec 19	% change since Dec 20	% change since Jul 22
Overall	12,044	+1,972	+1,743	+1,620	+1,226	+756	-22	+19.6%	+16.9%	+15.5%	+11.3%	+6.7%	-0.2%
Pharmaceutical Technician	59	+23	+23	+16	+9	+6	-0	+63.9%	+63.6%	+35.5%	+18.0%	+10.7%	-0.0%
Pharmaceutical Technician, Senior	39	+8	+6	+5	+5	+0	+0	+24.3%	+19.5%	+15.6%	+14.7%	+0.8%	+1.1%
Pharmacy Technicians	98	+31	+29	+21	+14	+6	+0	+45.6%	+42.8%	+26.9%	+16.7%	+6.5%	+0.4%
Pharmacy	240	+56		+28	+19		+1	+30.3%		+13.2%	+8.7%		+0.4%
Dental Hygienist	0				+0						+12.5%		
Dental Hygienists	0				+0						+12.5%		
Medical Scientist, Student	2	-11	-11	-10	-12	-8	-1	-84.5%	-84.9%	-83.8%	-85.3%	-80.0%	-39.9%
Perfusionist, Student	1	+1	+1	+1	+1	+1	-0	-100.0%	-100.0%	-100.0%	-100.0%	-100.0%	-4.0%
Pharmacist, Student		-6	-4	-4				-100.0%	-100.0%	-100.0%	-100.0%	-100.0%	-100.0%
Physicist, Graduate Trainee	6	+6	+2	+2	+5	+2		-100.0%	+50.0%	+50.0%	+500.0%	+50.0%	
Respiratory Technician, Student	3	+3	+3	+3	+3	+3	+1	-100.0%	-100.0%	-100.0%	-100.0%	-100.0%	+33.3%
HSCP Trainees/ Students	12	-7	-9	-8	-3	-2	-1	-36.7%	-43.8%	-41.2%	-18.1%	-14.6%	-4.9%
Clinical Photographer	1	+1				-1		+100.0%				-50.0%	
Clinical Photographer, Senior	4	+1	+1	+1	+1	+1		+33.3%	+33.3%	+33.3%	+33.3%	+33.3%	
Health & Social Care Professionals Unclassified	22	+11	+11	+10	+10	-2	-0	+108.7%	+95.0%	+89.5%	+89.8%	-6.6%	-0.2%
Maxillo Facial Technician	2	-1						-33.3%					
Maxillo Facial Technician, Chief	1												
Mould Room Technician		-1						-100.0%	-100.0%	-100.0%	-100.0%	-100.0%	-100.0%
Social Worker (Non-professionally qualified)	1	-0	-0	-0	-0	+0	-0	-28.0%	-28.0%	-28.0%	-10.0%	+5.9%	-28.0%
Other Health & Social Care	30	+10	+11	+11	+11	-1	-0	+52.8%	+58.9%	+56.3%	+58.1%	-4.7%	-1.0%
Vaccinator - COVID 19 Vaccination Programme	0	+0	+0	+0	+0	+0	+0	-100.0%	-100.0%	-100.0%	-100.0%	-100.0%	+45.5%
Vaccinators	0	+0	+0	+0	+0	+0	+0	-100.0%	-100.0%	-100.0%	-100.0%	-100.0%	+45.5%
H&SC, Other	43	+4		+3	+9		-1	+9.6%		+6.8%	+25.6%		-2.0%
Health & Social Care Professionals	1,823	+234		+166	+132		+3	+14.7%		+10.0%	+7.8%		+0.1%
CEO (Band H3 Hospital)	1												
CEO (Band H5 Hospital)	1	+1	+1	+1	+1	+1		-100.0%	-100.0%	-100.0%	-100.0%	-100.0%	
Chief Executive, Hospital Group	1	+1	+1					-100.0%	-100.0%				
Chief Executive Officer	1	-1	-1	-1	-1	-1		-50.0%	-50.0%	-50.0%	-50.0%	-50.0%	
Director of Finance	1	-1	-1	-1	-1	-1		-50.0%	-50.0%	-50.0%	-50.0%	-47.4%	
Director of HR	1												
Director of ICT		-1						-100.0%	-100.0%	-100.0%	-100.0%	-100.0%	-100.0%
Head of Function /Service, Acute Services	2	+2	+2	+2	+2	+2	+0	-100.0%	-100.0%	-100.0%	-100.0%	-100.0%	+1.0%
Head of Function /Service, Community Services						-1		-100.0%	-100.0%	-100.0%	-100.0%	-100.0%	-100.0%
National Director, Assistant (Services)	3	+2	+2	-2	-1	-1		+200.0%	+200.0%	-40.0%	-25.0%	-24.4%	

Aug 2022	WTE Aug 2022	WTE change since Dec 16	WTE change since Dec 17	WTE change since Dec 18	WTE change since Dec 19	WTE change since Dec 20	WTE change since Jul 22	% change since Dec 16	% change since Dec 17	% change since Dec 18	% change since Dec 19	% change since Dec 20	% change since Jul 22
Overall	12,044	+1,972	+1,743	+1,620	+1,226	+756	-22	+19.6%	+16.9%	+15.5%	+11.3%	+6.7%	-0.2%
National Director, Assistant (Support)	12	+6	+5	+4	+3	+1	-0	+99.2%	+70.7%	+49.4%	+33.1%	+12.0%	-0.9%
Executive Management	23	+9	+9	+3	+3	+0	-0	+63.9%	+63.9%	+14.7%	+14.9%	+1.8%	-0.4%
Chief Executive Officer, Deputy	2				+1	+1					+100.0%	+100.0%	
Functional Officer		-1	-1					-100.0%	-100.0%	-100.0%	-100.0%	-100.0%	-100.0%
General Manager	26	+14	+14	+6	+5	+3	-0	+127.4%	+116.0%	+28.8%	+22.7%	+12.2%	-1.5%
Grade VIII	93	+39	+24	+23	+18	+14	+1	+70.3%	+35.5%	+32.1%	+24.0%	+17.1%	+0.7%
Senior Management (VIII & GM)	121	+52	+37	+28	+24	+17	+0	+75.2%	+44.5%	+30.7%	+24.5%	+16.8%	+0.2%
Management (VIII & above)	144	+61		+31	+27		+0	+73.3%		+27.9%	+22.8%		+0.1%
Accountant	1	-3	-2	-1	+0		+0	-75.0%	-66.7%	-50.0%	+2.0%		+5.3%
Grade V	297	+75	+68	+53	+45	+20	-1	+34.1%	+29.6%	+21.7%	+17.7%	+7.1%	-0.3%
Grade VI	139	+53	+42	+40	+32	+31	+3	+61.0%	+43.7%	+39.8%	+29.5%	+28.9%	+2.3%
Grade VII	156	+51	+57	+47	+37	+33	-2	+48.4%	+58.4%	+43.2%	+30.6%	+26.7%	-1.2%
Supplies Officer Grade A	8		-1	-1	-1				-11.1%	-11.1%	-9.7%		
Supplies Officer Grade B	4	+2	+1	+1	-1	-1	-1	+91.5%	+27.7%	+27.7%	-23.4%	-23.4%	-21.5%
Middle Management (V-VII)	604	+178	+165	+138	+111	+83	-1	+41.7%	+37.7%	+29.7%	+22.5%	+15.8%	-0.1%
Librarian	1				+0						+23.5%		
Other Administrative	1				+0						+23.5%		
Administrative/ Supervisory (V to VII)	605	+178		+138	+111		-1	+41.6%		+29.6%	+22.5%		-0.1%
Clerical Officer	233	-57	-46	-32	-16	-1	-4	-19.7%	-16.3%	-12.1%	-6.3%	-0.3%	-1.6%
Grade IV	803	+136	+127	+103	+71	+63	-2	+20.3%	+18.9%	+14.7%	+9.7%	+8.6%	-0.2%
Supplies Officer Grade C	41	+19	+19	+18	+3	+1	+0	+88.5%	+88.6%	+80.3%	+9.2%	+1.3%	+1.1%
Supplies Officer Grade D	2	-17	-19	-19	-3	-2	-0	-87.5%	-88.6%	-88.6%	-55.1%	-44.9%	-12.3%
Telephonist	23	-10	-11	-10	-2	+2	-0	-31.0%	-33.2%	-31.0%	-8.4%	+8.2%	-0.7%
Telephonist, Night	2	+0	+0	+0	+1	+1	-0	+2.5%	+2.5%	+2.5%	+36.7%	+36.7%	-0.5%
Telephonist, Supervisor	3	+0	+0	+0	+0			+6.4%	+6.4%	+6.4%	+6.4%		
Telephonist, Supervisor, Assistant	2	+0	+0	+1	+0	+1	-1	+24.5%	+24.5%	+149.0%	+24.5%	+25.1%	-16.7%
General Administrative (III & IV)	1,110	+71	+72	+62	+55	+64	-6	+6.9%	+6.9%	+5.9%	+5.2%	+6.1%	-0.6%
Clerical (III & IV)	1,110	+71		+62	+55		-6	+6.9%		+5.9%	+5.2%		-0.6%
Management & Administrative	1,859	+310		+232	+193		-7	+20.0%		+14.2%	+11.6%		-0.4%
Catering Manager	3	-1	-1	-1	+0	+0	+0	-13.0%	-13.0%	-13.0%	+16.0%	+16.0%	+16.0%
Catering Officer Grade I	4	+0	-3	-2	-2	-2		+13.3%	-42.9%	-32.9%	-33.3%	-33.3%	
Catering Officer, Grade II	8	-2	+0	+1	-1	-3	-1	-21.8%	+1.9%	+21.9%	-9.5%	-27.0%	-8.2%
Catering Officer, Grade III	10	+6	+5	+5	+5	+4	-1	+196.3%	+107.4%	+107.4%	+107.4%	+70.4%	-9.6%
Catering Supervisor	9	-2	-4	-3	-7	-6	+0	-17.9%	-33.9%	-26.0%	-46.8%	-40.0%	+3.1%

Aug 2022	WTE Aug 2022	WTE change since Dec 16	WTE change since Dec 17	WTE change since Dec 18	WTE change since Dec 19	WTE change since Dec 20	WTE change since Jul 22	% change since Dec 16	% change since Dec 17	% change since Dec 18	% change since Dec 19	% change since Dec 20	% change since Jul 22
Overall	12,044	+1,972	+1,743	+1,620	+1,226	+756	-22	+19.6%	+16.9%	+15.5%	+11.3%	+6.7%	-0.2%
Chef, Executive	1		+0						+8.7%				
Chef I	11	-2	+1	+3	+1	+0	-0	-13.4%	+13.5%	+35.4%	+14.6%	+3.4%	-0.9%
Chef II	30	+1	-2	-4	-3	-2	-1	+3.1%	-6.8%	-11.2%	-8.4%	-5.9%	-2.8%
Chef, Senior	6	+1	+1	+0	+0	-0	-1	+30.4%	+28.0%	+6.4%	+8.2%	-7.2%	-7.9%
Diningroom/Cafeteria Supervisor	2	-3	-3	-3	+1	+1		-59.3%	-58.1%	-57.8%	+100.0%	+100.0%	
Catering	83	-0	-5	-2	-5	-7	-2	-0.1%	-5.6%	-2.7%	-5.3%	-7.9%	-2.9%
Catering/Cleaner/Assistant	178	+6	-1	+11	-5	-1	-4	+3.2%	-0.8%	+6.6%	-2.9%	-0.7%	-2.3%
Cleaner	41	+1	-5	-5	-7	-7	-1	+3.4%	-10.4%	-10.4%	-14.7%	-15.2%	-1.3%
Domestic	109	+2	+2	+1	+1	+1	-1	+1.4%	+2.3%	+1.3%	+1.0%	+0.5%	-1.1%
Domestic Supervisor	4	-3	+1	+0	-1	-2	+0	-44.3%	+24.8%	+6.0%	-22.8%	-35.2%	+0.6%
Domestic Supervisor, Assistant	3	-3	-2	-2	-2	-2		-43.9%	-32.1%	-32.1%	-32.1%	-32.1%	
Household Attendant/Cleaner/Domestic, Intern		-4						-100.0%	-100.0%	-100.0%	-100.0%	-100.0%	-100.0%
Household Services Manager		-2	-1	-1	-1	-1		-100.0%	-100.0%	-100.0%	-100.0%	-100.0%	-100.0%
Household Services Manager, Deputy	3	+3			+1	+1		-100.0%			+62.2%	+50.0%	
Housekeeper, Assistant	1	-0	-0	-0	-0	-0	-0	-23.0%	-23.0%	-23.0%	-23.0%	-23.0%	-23.0%
Laundry Worker		-1						-100.0%	-100.0%	-100.0%	-100.0%	-100.0%	-100.0%
Linen Room/Laundry Supervisor	2	-4				+1		-66.7%				+100.0%	
Household Services	341	-5	-6	+5	-14	-11	-6	-1.5%	-1.7%	+1.5%	-3.9%	-3.1%	-1.8%
Laboratory Attendant	1	+1	+1	+1	+1	+1		-100.0%	-100.0%	-100.0%	-100.0%	-100.0%	
Medical Laboratory Aide	125	+52	+45	+47	+41	+33	-2	+72.2%	+57.2%	+59.7%	+48.7%	+35.4%	-1.7%
Pathology Technician	1	-2	-2	-2	-2	-1		-66.7%	-66.7%	-66.7%	-66.7%	-50.0%	
Pathology Technician, Senior	7	+6	+6	+7	+6	+6	+0	+600.0%	+600.0%	-100.0%	+600.0%	+600.0%	+0.4%
Other Labs & Associated	133	+57	+50	+52	+45	+38	-2	+74.3%	+59.8%	+64.3%	+51.6%	+40.1%	-1.5%
Clerk of Works	3	+1		+1	+1	+0		+50.0%		+50.0%	+50.0%	+6.4%	
C.S.S.D. Operative	61	+7	+2	+4	-2	-3	-1	+13.5%	+3.5%	+6.3%	-3.4%	-4.4%	-1.1%
C.S.S.D. Supervisor		-1						-100.0%	-100.0%	-100.0%	-100.0%	-100.0%	-100.0%
Dark Room Technician/Porter	1	-1	-1	-1	-1	-1		-66.7%	-68.9%	-66.7%	-66.7%	-66.7%	
Driver	1	-2	-2	-2	-2	-1		-70.2%	-70.2%	-73.1%	-73.1%	-60.6%	
Driver, Minibus	2												
Mortuary Attendant	1												
Pharmacy Aide-Attendant	1	+1	+1	+1	+1	+1		-100.0%	-100.0%	-100.0%	-100.0%	-100.0%	
Pharmacy Assistant		-1	-1	-1				-100.0%	-100.0%	-100.0%	-100.0%	-100.0%	-100.0%
Plaster Technician	2	-1	-1	-1	-1	+0	-0	-34.0%	-31.7%	-28.0%	-27.5%	+5.3%	-1.0%
Support Services Unclassified	19	-1	-2	-1	-2	+0	-0	-6.5%	-9.9%	-4.3%	-8.0%	+2.4%	-0.3%
Ward Clerk		-15	-13	-6				-100.0%	-100.0%	-100.0%	-100.0%	-100.0%	-100.0%
Other Support	91	-13	-17	-6	-6	-3	-1	-12.4%	-15.7%	-6.5%	-6.1%	-3.6%	-0.8%

Aug 2022	WTE Aug 2022	WTE change since Dec 16	WTE change since Dec 17	WTE change since Dec 18	WTE change since Dec 19	WTE change since Dec 20	WTE change since Jul 22	% change since Dec 16	% change since Dec 17	% change since Dec 18	% change since Dec 19	% change since Dec 20	% change since Jul 22
Overall	12,044	+1,972	+1,743	+1,620	+1,226	+756	-22	+19.6%	+16.9%	+15.5%	+11.3%	+6.7%	-0.2%
Laboratory Porter	3	+3	+3	+3	+3			-100.0%	-100.0%	-100.0%	-100.0%		
Pharmacy Porter	2	+2	+2	+2	+2	+0	-0	-100.0%	-100.0%	-100.0%	-100.0%	+20.6%	-5.9%
Porter	101	-14	-6	-8	-6	+4	-2	-12.4%	-5.2%	-7.0%	-5.9%	+3.9%	-1.7%
Porter, Head	12	+2	+0	+1	+1	+1		+19.9%	+0.4%	+14.2%	+7.8%	+9.0%	
Porter, Intern		-0						-100.0%	-100.0%	-100.0%	-100.0%	-100.0%	-100.0%
Porter, Theatre	13	+6	+6	+7	+5	+5	+2	+85.7%	+85.7%	+116.7%	+62.5%	+62.5%	+18.5%
Storeperson	2	+2	+1	+1	+1	+1		+316.7%	+227.9%	+227.9%	+227.9%	+100.0%	
Stores Porter/Assistant/Attendant	1	-1	-1	-1	-1	-1		-47.4%	-47.4%	-47.4%	-47.4%	-47.4%	
Theatre Technician/Porter	22	+11	+12	+12	+14	+6	+0	+95.0%	+122.3%	+126.9%	+170.9%	+36.1%	+1.9%
Portering	156	+10	+18	+19	+19	+16	+1	+7.0%	+13.3%	+13.8%	+14.0%	+11.5%	+0.4%
Support	804	+49		+68	+40		-11	+6.5%		+9.2%	+5.2%		-1.3%
Boilerman	1												
Carpenter		-2						-100.0%	-100.0%	-100.0%	-100.0%	-100.0%	-100.0%
Chargehand	3			+0		+0	+0			+9.1%		+4.2%	+1.4%
Electrician	15	-4	-1	+1	-0	+1	+0	-21.3%	-6.6%	+8.0%	-0.4%	+5.3%	+1.6%
Gardener/ Groundsman	2	-2	-2	-2	-2	-1		-50.0%	-50.0%	-50.0%	-50.0%	-33.3%	
Gardener/ Groundsman, Head	1	+1	+1	+1	+1			-100.0%	-100.0%	-100.0%	-100.0%		
General Operative	24	-1	-0	-0	-2	-1	-1	-4.8%	-1.1%	-1.4%	-7.4%	-4.1%	-4.1%
Labourer	12	+0	-0	-0	+0	-0	+0	+1.5%	-0.4%	-0.1%	+1.4%	-0.1%	+0.2%
Maintenance Craftsman/Technician	24	+10	+5	+8	+5	+5	+1	+74.5%	+25.5%	+45.2%	+22.9%	+24.3%	+5.1%
Maintenance Foreman	13	+3	+1		-1	+3	+0	+32.8%	+9.7%		-7.1%	+24.6%	+0.2%
Maintenance Foreman, Assistant	1				+1						-100.0%		
Maintenance Manager	2	+1	+1		+1	+1		+100.0%	+100.0%		+100.0%	+100.0%	
Maintenance Officer		-3	-3	-3	-3	-3		-100.0%	-100.0%	-100.0%	-100.0%	-100.0%	-100.0%
Maintenance/Technical Unclassified	1	-3	-1	-1	-1	-1		-75.0%	-50.0%	-50.0%	-50.0%	-50.0%	
Painter	9	-1	-1	-1	-0	-1		-12.7%	-12.7%	-12.7%	-3.0%	-12.7%	
Plasterer	1	-1	-1	-1	-1	-1		-50.0%	-50.0%	-50.0%	-50.0%	-50.0%	
Plumber	17	+2	+2	+2	+1	+1	+1	+13.3%	+13.3%	+15.6%	+6.3%	+6.3%	+3.5%
Maintenance	126	+0	+0	+4	-2	+2	+1	+0.3%	+0.4%	+3.0%	-1.2%	+1.6%	+0.8%
Engineer/ Engineering Officer	4	+4	+4	+4	+4			-100.0%	-100.0%	-100.0%	-100.0%		
Fire Prevention Officer	1												
Technical Services Officer, Chief Asst.	1												
Technical Services Officer, Senior Asst.	1	+1	+1			+1		-100.0%	-100.0%			-100.0%	
Technical Services	7	+5	+5	+4	+4	+1		+250.0%	+250.0%	+133.3%	+133.3%	+16.7%	
Maintenance/ Technical	133	+5		+8	+2		+1	+4.2%		+6.1%	+1.9%		+0.8%

Aug 2022	WTE Aug 2022	WTE change since Dec 16	WTE change since Dec 17	WTE change since Dec 18	WTE change since Dec 19	WTE change since Dec 20	WTE change since Jul 22	% change since Dec 16	% change since Dec 17	% change since Dec 18	% change since Dec 19	% change since Dec 20	% change since Jul 22
Overall	12,044	+1,972	+1,743	+1,620	+1,226	+756	-22	+19.6%	+16.9%	+15.5%	+11.3%	+6.7%	-0.2%
General Support	937	+54		+75	+42		-10	+6.2%		+8.7%	+4.7%		-1.0%
Attendant/ Aide	14	-383	-444	-396	-361	-391	+0	-96.4%	-96.9%	-96.5%	-96.2%	-96.5%	+1.1%
Attendant, Multi-Task	369	+95	+87	+78	+66	+59	-0	+34.8%	+31.0%	+26.8%	+21.7%	+18.9%	-0.0%
Attendant, Multi-Task Intern		-2						-100.0%	-100.0%	-100.0%	-100.0%	-100.0%	-100.0%
Nursing Auxiliary/Orderly	1	-36						-97.3%					
Attendant/ Aide	384	-327	-356	-318	-295	-332	+0	-46.0%	-48.1%	-45.3%	-43.4%	-46.4%	+0.0%
Occupational Therapy Assistant	6	+3	+3	+2	+2	+3	+0	+97.7%	+97.7%	+48.2%	+58.1%	+97.7%	+1.0%
Physiotherapy Assistant	16	+14	+14	+13	+13	+8	+0	+677.0%	+740.0%	+418.0%	+418.0%	+97.7%	+2.2%
Radiography Aide	4	+2	-2	+2	+1	+2	+1	+117.0%	-28.4%	+113.7%	+43.2%	+144.8%	+23.5%
Health & Social Care Assistants	26	+19	+15	+17	+16	+13	+1	+270.0%	+139.3%	+186.3%	+165.0%	+104.1%	+4.9%
Health Care Assistant	944	+629	+575	+542	+472	+461	+3	+200.0%	+156.2%	+134.7%	+100.1%	+95.5%	+0.3%
Health Care Assistant (Band 1)/(specific sites only)	9	+9	+9	+9	+9	+9	+0	-100.0%	-100.0%	-100.0%	-100.0%	-100.0%	+0.7%
Health Care Assistant, intern		-92	-1	-1				-100.0%	-100.0%	-100.0%	-100.0%	-100.0%	-100.0%
Team Leader, Support Services	6	+6	-2	-1	-0	+0	+0	-100.0%	-26.1%	-15.6%	-5.0%	+3.1%	+1.4%
Health Care Assistant/ Care Assistant	959	+552	+582	+549	+481	+470	+3	+135.5%	+154.2%	+133.9%	+100.6%	+96.2%	+0.3%
[Health Care Assistant (Student Nurse/Midwife COVID-19)]						-0		-100.0%	-100.0%	-100.0%	-100.0%	-100.0%	-100.0%
HCA (Student Nurse/Midwife COVID-19)						-0		-100.0%	-100.0%	-100.0%	-100.0%	-100.0%	-100.0%
Health Care Assistants	1,368	+244		+248	+202		+4	+21.6%		+22.1%	+17.3%		+0.3%
Dental Nurse	4	+1	+0	+0	+0	+1	+0	+17.4%	+6.3%	+6.3%	+7.3%	+21.4%	+5.2%
Education Officer		-1	-1	-1	-1	-1		-100.0%	-100.0%	-100.0%	-100.0%	-100.0%	-100.0%
Endoscopy Operative (Band 1)	9	+9	+9	+9	+9	+8	-0	-100.0%	-100.0%	-100.0%	-100.0%	+799.0%	-0.1%
Head of Bed Management (Category B)		-1						-100.0%	-100.0%	-100.0%	-100.0%	-100.0%	-100.0%
Welfare Home, Supervisor	1	+1	+1	+1	+1	+1		-100.0%	-100.0%	-100.0%	-100.0%	-100.0%	-100.0%
Other Care Grades	14	+9	+10	+10	+10	+9	+0	+173.8%	+210.9%	+210.9%	+213.7%	+180.3%	+1.4%
Chaplain	14	-1	-0	-3	-2	-2	-1	-4.9%	-1.6%	-15.5%	-13.6%	-14.0%	-3.6%
Pastoral Care Worker		-1						-100.0%	-100.0%	-100.0%	-100.0%	-100.0%	-100.0%
Pastoral Care	14	-2	-0	-3	-2	-2	-1	-12.5%	-1.6%	-15.5%	-13.6%	-14.0%	-3.6%
Workshop Supervisor/ Instructor	1	+1	+1	+1	+1	+1		-100.0%	-100.0%	-100.0%	-100.0%	-100.0%	-100.0%
Workshop Services	1	+1	+1	+1	+1	+1		-100.0%	-100.0%	-100.0%	-100.0%	-100.0%	
Care, other	29	+8		+8	+9		-0	+38.1%		+38.5%	+41.1%		-1.1%
Patient & Client Care	1,398	+252		+256	+210		+4	+22.0%		+22.4%	+17.7%		+0.3%

Source: Health Service Personnel Census

Longitudinal Employment Levels by Staff Group - Dec 2016 to Aug 2022

Aug 2022	WTE Aug 2022	WTE change since Dec 16	WTE change since Dec 17	WTE change since Dec 18	WTE change since Dec 19	WTE change since Dec 20	WTE change since Jul 22	% change since Dec 16	% change since Dec 17	% change since Dec 18	% change since Dec 19	% change since Dec 20	% change since Jul 22
Overall	12,044	+1,972	+1,743	+1,620	+1,226	+756	-22	+19.6%	+16.9%	+15.5%	+11.3%	+6.7%	-0.2%
Consultants	40	+14	+12	+8	+8	+2		+53.6%	+42.6%	+24.9%	+25.6%	+5.8%	
Registrars	51	+19	+12	+13	+12	+9	+2	+59.4%	+30.8%	+34.2%	+29.8%	+22.0%	+4.1%
SHO/ Interns	27	+2	+6	+1	-1	-1		+8.0%	+28.6%	+3.8%	-3.6%	-3.6%	
Nurse/ Midwife Manager	87	+15	+9	+16	+13	+6	-2	+21.1%	+12.3%	+21.9%	+18.5%	+8.1%	-2.8%
Nurse/ Midwife Specialist & AN/MP	17	+7	+7	+4	+6	+5		+65.3%	+73.3%	+31.5%	+52.8%	+41.3%	
Staff Nurse/ Staff Midwife	229	+11	-16	-31	-31	-28	-7	+4.9%	-6.5%	-11.7%	-12.0%	-10.9%	-3.0%
Nursing/ Midwifery Student	17	+5	+7	+9	+4	+5		+37.5%	+65.0%	+106.3%	+26.9%	+37.5%	
Nursing/ Midwifery other	17	+6	+7	+7	+0	+0		+53.9%	+68.2%	+65.5%	+1.3%	+2.9%	
Therapy Professions	12	+6	+3	+5	+4	+4	+0	+115.0%	+40.0%	+75.8%	+50.5%	+44.0%	+0.9%
Health Science/ Diagnostics	55	+10	+8	+6	+4	+1		+22.9%	+17.1%	+11.2%	+6.8%	+0.9%	
Social Workers	9	+3	+2	+2	+2	-1		+50.0%	+28.6%	+28.6%	+28.6%	-10.0%	
Psychologists	1	+1	+1	+0	+0			-100.0%	-100.0%	+78.6%	+78.6%		
Pharmacy	8	+4	+2	+2	+1			+100.0%	+33.3%	+33.3%	+14.3%		
H&SC, Other		-1					-1	-100.0%	-100.0%	-100.0%	-100.0%	-100.0%	-100.0%
Management (VIII & above)	8	+3	+3	+2	+1	+2		+60.0%	+60.0%	+33.3%	+14.3%	+33.3%	
Administrative/ Supervisory (V to VII)	57	+20	+19	+14	+10	+9	+1	+52.2%	+48.9%	+31.8%	+22.4%	+19.8%	+1.8%
Clerical (III & IV)	104	+18	+16	+20	+11	+4	-1	+21.4%	+18.3%	+23.9%	+11.8%	+4.3%	-1.2%
Support	148	+28	+21	+20	+11	+5	+0	+23.7%	+16.1%	+15.5%	+7.9%	+3.7%	+0.1%
Maintenance/ Technical	8	-1	-1	-1	-1	+1		-11.1%	-11.1%	-11.1%	-11.1%	+14.3%	
Health Care Assistants	69	+17	+18	+14	+21	+15	+1	+32.6%	+34.5%	+25.5%	+43.5%	+27.7%	+1.3%
Care, other	2	+0	+1	+0	+0	+1	-1	+9.9%	+100.0%	+9.9%	+24.2%	+100.0%	-33.3%
Coombe Women & Infants University	965	+187	+136	+110	+75	+40	-9	+24.0%	+16.4%	+12.9%	+8.5%	+4.3%	-0.9%
Consultants	56	+16	+10	+10	+8	+10	-1	+40.0%	+22.4%	+23.0%	+17.8%	+21.1%	-2.6%
Registrars	54	+18	+15	+15	+12	+6	+1	+49.6%	+39.7%	+39.3%	+29.8%	+11.5%	+1.0%
SHO/ Interns	49	+5	+2	+4	+3	+1	-1	+10.8%	+4.2%	+8.3%	+6.2%	+2.6%	-2.4%
Medical/ Dental, other	2	-0	-0	-0	-0	-0	-0	-13.6%	-3.2%	-17.7%	-15.9%	-15.5%	-10.0%
Nurse/ Midwife Manager	92	+13	+7	+3	+6	+4	+1	+16.3%	+7.8%	+4.0%	+6.5%	+5.1%	+0.7%
Nurse/ Midwife Specialist & AN/MP	27	+8	+10	+7	+5	+2	+0	+44.1%	+55.0%	+36.8%	+20.6%	+8.2%	+0.2%
Staff Nurse/ Staff Midwife	309	+33	+16	+22	+15	+2	-6	+11.9%	+5.6%	+7.8%	+5.0%	+0.7%	-2.0%

Aug 2022	WTE Aug 2022	WTE change since Dec 16	WTE change since Dec 17	WTE change since Dec 18	WTE change since Dec 19	WTE change since Dec 20	WTE change since Jul 22	% change since Dec 16	% change since Dec 17	% change since Dec 18	% change since Dec 19	% change since Dec 20	% change since Jul 22
Overall	12,044	+1,972	+1,743	+1,620	+1,226	+756	-22	+19.6%	+16.9%	+15.5%	+11.3%	+6.7%	-0.2%
Nursing/ Midwifery Student	8	+8	+7	+8	+2	+6	+0	-100.0%	+1484.0%	-100.0%	+31.1%	+296.0%	+1.0%
Nursing/ Midwifery other	2	+1	+1	+1	+1	+0	-0	+85.0%	+85.0%	+85.0%	+85.0%	+1.6%	-4.1%
Therapy Professions	40	+13	+7	+6	+7	+1	+1	+47.9%	+20.3%	+18.9%	+21.9%	+3.5%	+1.4%
Health Science/ Diagnostics	87	+6	+4	+11	+3	-4	-1	+7.2%	+4.6%	+14.4%	+4.0%	-4.5%	-1.5%
Social Workers	2	+2	+2	+2	+2	+2	-0	-100.0%	-100.0%	-100.0%	-100.0%	-100.0%	-1.5%
Pharmacy	34	+12	+10	+12	+10	+2	-1	+53.8%	+42.7%	+57.2%	+40.0%	+6.0%	-4.1%
H&SC, Other	2	+2	+2	+2	+1	+2	-0	-100.0%	+614.3%	+488.2%	+233.3%	-100.0%	-14.2%
Management (VIII & above)	4	-2	-2	-1	-1	-1	+0	-33.4%	-34.8%	-21.8%	-21.8%	-21.0%	+1.3%
Administrative/ Supervisory (V to VII)	31	+9	+6	+10	+8	+3	-1	+39.1%	+24.4%	+46.2%	+33.4%	+9.9%	-3.2%
Clerical (III & IV)	78	-29	-27	-19	-21	-17	-1	-26.9%	-25.5%	-19.6%	-21.4%	-18.0%	-1.0%
Support	31	+1	+5	+5	+3	+3	-0	+3.1%	+19.1%	+21.0%	+11.9%	+9.4%	-0.7%
Maintenance/ Technical	28	-0	+2	+1	+1	+1	+1	-1.3%	+5.9%	+2.0%	+2.7%	+2.8%	+3.1%
Health Care Assistants	247	+57	+48	+20	+17	+14	+2	+29.9%	+24.1%	+8.7%	+7.2%	+5.9%	+0.8%
Care, other	1	-1	+0	+0	+0	+0	+0	-43.6%	+1.6%	+1.6%	+1.6%	+1.6%	+1.6%
MRH Tullamore	1,182	+170	+125	+119	+81	+36	-10	+16.8%	+11.8%	+11.2%	+7.3%	+3.1%	-0.8%
Consultants	23	+5	+3	+3	+1	-0	+0	+25.0%	+14.7%	+13.1%	+2.7%	-2.1%	+0.2%
Registrars	37	+17	+16	+5	+2	+1	-1	+81.2%	+74.6%	+14.0%	+6.4%	+1.7%	-1.7%
SHO/ Interns	43	+7	+6	+7	+5	+2	+8	+19.2%	+16.1%	+20.5%	+13.3%	+5.1%	+23.7%
Nurse/ Midwife Manager	74	+26	+12	+19	+13	+11	-3	+54.5%	+18.7%	+34.5%	+21.2%	+18.3%	-3.4%
Nurse/ Midwife Specialist & AN/MP	26	+14	+15	+12	+10	+7	+0	+115.2%	+134.2%	+81.5%	+59.3%	+34.8%	+1.0%
Staff Nurse/ Staff Midwife	238	+50	+37	+40	+36	+18	-6	+26.3%	+18.3%	+20.3%	+17.6%	+8.1%	-2.3%
Nursing/ Midwifery Student	18	+18	+18	+18	+9	+18	+3	+5020.0%	-100.0%	-100.0%	+99.1%	-100.0%	+17.8%
Nursing/ Midwifery other	2	+2	+2	+2	+0	+0	-0	+176.7%	+176.7%	+189.5%	+1.2%	+6.9%	-1.2%
Therapy Professions	15	+0	-2	-2	+0	-4	-1	+0.1%	-10.8%	-10.0%	+2.6%	-21.7%	-3.7%
Health Science/ Diagnostics	46	+8	+8	+7	+8	+3	+3	+22.0%	+21.6%	+18.9%	+22.2%	+7.7%	+7.8%
Social Workers	1	+1	+1	+1	+1	+1		-100.0%	-100.0%	-100.0%	-100.0%	-100.0%	
Pharmacy	11	+1	+1	-1	-2	-3	+0	+15.5%	+14.3%	-7.5%	-13.6%	-18.9%	+4.7%
Management (VIII & above)	5	+3	+2	+1	+2	+1		+148.0%	+65.3%	+24.0%	+65.3%	+24.0%	
Administrative/ Supervisory (V to VII)	19	+8	+9	+7	+6	+3	-0	+80.4%	+88.9%	+57.0%	+42.8%	+17.3%	-0.3%
Clerical (III & IV)	70	-15	-15	-16	-11	-3	-0	-17.2%	-17.7%	-18.7%	-13.6%	-4.1%	-0.1%
Support	20	+4	+5	+3	+3	+0	-0	+27.5%	+34.9%	+20.7%	+20.3%	+2.0%	-0.2%

Aug 2022	WTE Aug 2022	WTE change since Dec 16	WTE change since Dec 17	WTE change since Dec 18	WTE change since Dec 19	WTE change since Dec 20	WTE change since Jul 22	% change since Dec 16	% change since Dec 17	% change since Dec 18	% change since Dec 19	% change since Dec 20	% change since Jul 22
Overall	12,044	+1,972	+1,743	+1,620	+1,226	+756	-22	+19.6%	+16.9%	+15.5%	+11.3%	+6.7%	-0.2%
Maintenance/ Technical	9	+2	+2	+2	+1		+2	+28.6%	+28.6%	+28.6%	+12.5%		+20.0%
Health Care Assistants	166	+6	+2	-8	-9	-10	-6	+3.8%	+0.9%	-4.4%	-5.0%	-5.8%	-3.4%
Care, other	1												
MRH Portlaoise	825	+157	+121	+100	+75	+45	+1	+23.5%	+17.2%	+13.8%	+10.0%	+5.7%	+0.1%
Consultants	25	-0	+1	-1	-1	+0	+0	-1.4%	+5.3%	-2.9%	-3.2%	+0.1%	+1.8%
Registrars	36	+10	+12	+8	+10	+8	-2	+38.8%	+48.1%	+29.1%	+37.4%	+26.8%	-5.1%
SHO/ Interns	36	+0	-3	+0	-2	-0	-2	+0.6%	-8.7%	+0.4%	-5.9%	-1.3%	-4.4%
Nurse/ Midwife Manager	80	+21	+10	+6	+14	+10	+1	+36.6%	+15.1%	+7.4%	+22.0%	+15.2%	+1.0%
Nurse/ Midwife Specialist & AN/MP	22	+10	+12	+6	+3	+6	+2	+82.9%	+123.9%	+34.9%	+17.6%	+36.1%	+9.2%
Staff Nurse/ Staff Midwife	231	+61	+26	+45	+30	+24	+5	+36.0%	+12.9%	+23.9%	+15.0%	+11.4%	+2.4%
Nursing/ Midwifery other	2	+0	+1	+2	+2	+1	-0	+21.5%	+143.0%	+200.0%	+200.0%	+143.0%	-7.6%
Therapy Professions	45	+12	+8	+9	+8	+6	-0	+34.6%	+21.7%	+24.5%	+20.0%	+13.9%	-0.9%
Health Science/ Diagnostics	67	+4	+6	+6	+1	-2	+1	+6.8%	+9.0%	+9.0%	+2.1%	-2.4%	+1.2%
Social Workers	3	-1		+1	+1	+0		-23.9%		+50.0%	+53.8%	+3.4%	
Pharmacy	15	+3	+3	+3	+3	+0	+1	+25.7%	+22.9%	+26.9%	+27.2%	+3.1%	+4.4%
Management (VIII & above)	5	+1	+1	-1	-0	-1	-0	+29.4%	+18.8%	-20.8%	-4.4%	-18.1%	-2.1%
Administrative/ Supervisory (V to VII)	33	+18	+17	+18	+20	+15	+1	+129.7%	+108.5%	+129.9%	+166.2%	+81.0%	+2.4%
Clerical (III & IV)	66	-9	-8	-6	-5	+8	-0	-12.4%	-11.1%	-8.0%	-6.4%	+13.8%	-0.6%
Support	31	+2	+3	+3	+4	+3	-2	+7.0%	+10.3%	+12.2%	+13.7%	+10.6%	-4.9%
Maintenance/ Technical	7	+4	+5	+5	+5	+1		+133.3%	+250.0%	+250.0%	+213.9%	+21.7%	
Health Care Assistants	178	+46	+37	+47	+31	+27	+1	+34.7%	+26.2%	+35.7%	+21.4%	+18.2%	+0.4%
Care, other	0	-1	-1	-1	-1	-0	+0	-61.0%	-61.0%	-61.0%	-61.0%	-41.8%	-100.0%
Naas General	883	+182	+130	+149	+124	+106	+5	+26.0%	+17.3%	+20.4%	+16.3%	+13.6%	+0.6%
Consultants	229	+49	+50	+44	+34	+17	+2	+27.4%	+28.1%	+23.9%	+17.2%	+7.9%	+1.0%
Registrars	218	+43	+44	+40	+34	+13	+13	+24.6%	+25.6%	+22.3%	+18.3%	+6.2%	+6.5%
SHO/ Interns	174	+26	+22	+18	+18	-2	-8	+17.2%	+14.5%	+11.6%	+11.3%	-1.0%	-4.1%
Medical/ Dental, other	8	+3	+2	+3	+3	+2	-1	+50.9%	+28.2%	+80.3%	+54.2%	+39.6%	-14.5%
Nurse/ Midwife Manager	364	+53	+47	+26	+19	+16	-1	+17.1%	+14.7%	+7.8%	+5.6%	+4.6%	-0.2%
Nurse/ Midwife Specialist & AN/MP	117	+43	+42	+40	+38	+22	+2	+56.9%	+56.7%	+51.0%	+47.2%	+23.0%	+2.0%
Staff Nurse/ Staff Midwife	1,169	+134	+89	+99	+44	-11	-9	+13.0%	+8.3%	+9.3%	+3.9%	-0.9%	-0.7%
Nursing/ Midwifery Student	34	+16	+32	+33	+33	+27	-0	+90.0%	+1736.2%	+3297.0%	+3297.0%	+393.8%	-0.3%

Aug 2022	WTE Aug 2022	WTE change since Dec 16	WTE change since Dec 17	WTE change since Dec 18	WTE change since Dec 19	WTE change since Dec 20	WTE change since Jul 22	% change since Dec 16	% change since Dec 17	% change since Dec 18	% change since Dec 19	% change since Dec 20	% change since Jul 22
Overall	12,044	+1,972	+1,743	+1,620	+1,226	+756	-22	+19.6%	+16.9%	+15.5%	+11.3%	+6.7%	-0.2%
Nursing/ Midwifery other	11	-0	+1	+1	-1	-2	+0	-1.2%	+10.5%	+13.6%	-5.4%	-14.7%	+0.6%
Therapy Professions	170	+33	+31	+19	+19	+6	-0	+23.7%	+22.5%	+12.6%	+12.5%	+3.9%	-0.2%
Health Science/ Diagnostics	337	+21	+29	+5	-2	+14	+3	+6.7%	+9.4%	+1.6%	-0.7%	+4.3%	+1.0%
Social Workers	42	+5	-0	-4	-1	-4	-2	+14.6%	-0.5%	-9.0%	-2.4%	-7.7%	-4.3%
Psychologists	7	+2	+2	+2	+2	+2	+1	+32.7%	+33.5%	+33.5%	+30.8%	+34.0%	+11.8%
Pharmacy	105	+26	+22	+13	+8	-4	+0	+32.1%	+26.8%	+13.5%	+8.3%	-3.6%	+0.2%
H&SC, Other	32	+4	+4	+5	+6	-4	+0	+15.9%	+14.9%	+17.8%	+23.3%	-9.9%	+1.2%
Management (VIII & above)	57	+25	+21	+18	+17	+14	+1	+78.7%	+56.7%	+46.8%	+42.1%	+32.8%	+1.0%
Administrative/ Supervisory (V to VII)	211	+63	+59	+54	+36	+26	+0	+42.2%	+38.4%	+34.1%	+20.2%	+14.1%	+0.2%
Clerical (III & IV)	411	+54	+50	+38	+40	+33		+15.1%	+13.9%	+10.3%	+10.9%	+8.6%	
Support	287	+15	+15	+24	+10	+11	-8	+5.5%	+5.3%	+9.2%	+3.5%	+3.8%	-2.7%
Maintenance/ Technical	54	-4	-4	-3	-5	-2	-1	-7.3%	-7.2%	-5.5%	-8.4%	-3.9%	-2.3%
Health Care Assistants	464	+109	+102	+139	+104	+72	-1	+30.5%	+28.1%	+42.8%	+28.8%	+18.3%	-0.2%
Care, other	18	+8	+8	+8	+8	+7	+0	+87.8%	+73.8%	+73.8%	+89.8%	+73.1%	+1.3%
St. James's	4,520	+726	+667	+622	+462	+254	-7	+19.1%	+17.3%	+16.0%	+11.4%	+6.0%	-0.2%
Consultants	23	+11	+3	+1	-1	+1	+1	+86.0%	+14.8%	+4.5%	-4.1%	+4.5%	+4.5%
Registrars	12	-8	-6	-6	-7	-4		-40.0%	-33.3%	-33.3%	-36.8%	-25.0%	
SHO/ Interns	17	+9	+8	+5	+4	+5	+0	+102.6%	+88.9%	+41.7%	+30.8%	+41.7%	+2.4%
Nurse/ Midwife Manager	26	+5	-3	+6	+4	-2	+1	+26.7%	-9.5%	+29.3%	+20.2%	-6.2%	+4.1%
Nurse/ Midwife Specialist & AN/MP	13	+2	+13	+1		-1		+19.0%	-100.0%	+8.3%		-7.1%	
Staff Nurse/ Staff Midwife	38	-7	-10	-2	-5	-1	+2	-15.7%	-21.2%	-4.3%	-10.6%	-2.2%	+5.5%
Therapy Professions	12	+3	+4	+3	+3	+3	+2	+29.1%	+42.7%	+37.7%	+37.7%	+26.9%	+14.6%
Health Science/ Diagnostics	193	+4	+4	+4	-2	-13		+2.1%	+1.9%	+1.9%	-1.0%	-6.2%	
Social Workers	4		-2	-1	-1	-1	-1		-33.3%	-20.0%	-20.0%	-20.0%	-20.0%
Psychologists	5		+2	+2	+2	+2	+1		+66.7%	+66.7%	+66.7%	+66.7%	+25.0%
Pharmacy	3	+2	+2	+1	+1	+2		+200.0%	+200.0%	+50.0%	+50.0%	+200.0%	
H&SC, Other	6	+5	+2	+2	+5	+2		+500.0%	+50.0%	+50.0%	+500.0%	+50.0%	
Management (VIII & above)	6	+3	+2	+2		+1		+100.0%	+50.0%	+50.0%		+20.0%	
Administrative/ Supervisory (V to VII)	33	+4		-1	-0	-2	-1	+14.7%		-2.3%	-0.9%	-6.5%	-2.9%
Clerical (III & IV)	71	+8	+11	+4	+6	+13		+13.0%	+19.0%	+5.9%	+9.8%	+23.2%	
Support	52	-8	-8	-1	-8	-5	-1	-12.6%	-13.8%	-1.1%	-13.1%	-9.1%	-1.9%

Aug 2022	WTE Aug 2022	WTE change since Dec 16	WTE change since Dec 17	WTE change since Dec 18	WTE change since Dec 19	WTE change since Dec 20	WTE change since Jul 22	% change since Dec 16	% change since Dec 17	% change since Dec 18	% change since Dec 19	% change since Dec 20	% change since Jul 22
Overall	12,044	+1,972	+1,743	+1,620	+1,226	+756	-22	+19.6%	+16.9%	+15.5%	+11.3%	+6.7%	-0.2%
Maintenance/ Technical	6	+2	+1	+1	+1	+1		+50.0%	+20.0%	+20.0%	+20.0%	+20.0%	
Health Care Assistants	24	-17	-1	-3	-3	+1		-41.6%	-2.6%	-11.5%	-11.5%	+6.3%	
Care, other	2	+1	+1	+1	+1	+1		+39.1%	+128.2%	+128.2%	+128.2%	+128.2%	
St. Luke's Rathgar	546	+19	+22	+19	+1	+3	+4	+3.5%	+4.3%	+3.7%	+0.2%	+0.6%	+0.7%
Consultants	149	+45	+42	+33	+32	+17	-1	+43.3%	+38.8%	+28.3%	+27.5%	+12.5%	-0.6%
Registrars	174	+45	+48	+38	+29	+28	+7	+34.4%	+37.7%	+28.3%	+19.8%	+18.8%	+4.0%
SHO/ Interns	108	+5	+6	+7	+4	-11	-9	+5.2%	+5.5%	+7.3%	+4.3%	-9.2%	-7.8%
Nurse/ Midwife Manager	255	+59	+52	+32	+32	+24	+3	+29.9%	+25.5%	+14.5%	+14.4%	+10.2%	+1.1%
Nurse/ Midwife Specialist & AN/MP	57	+23	+23	+24	+15	+4	+0	+67.0%	+68.6%	+70.3%	+34.6%	+6.9%	+0.0%
Staff Nurse/ Staff Midwife	759	+63	+90	+104	+50	+18	+1	+9.0%	+13.4%	+16.0%	+7.0%	+2.5%	+0.1%
Nursing/ Midwifery Student	87	+80	+77	+72	+74	+64	-8	+1060.0%	+770.0%	+461.3%	+582.4%	+275.8%	-7.9%
Nursing/ Midwifery other	4	+2	+2	+2	+1	+1		+90.6%	+91.5%	+90.6%	+29.5%	+29.5%	
Therapy Professions	135	+22	+19	+26	+21	+16	-0	+19.3%	+16.3%	+23.8%	+18.3%	+13.8%	-0.1%
Health Science/ Diagnostics	225	+25	+22	+23	+18	+9	-1	+12.3%	+10.7%	+11.5%	+8.6%	+4.0%	-0.6%
Social Workers	25	-1	+2	+2	+3	+2	-2	-4.2%	+9.3%	+9.3%	+14.5%	+7.3%	-6.7%
Psychologists	4	-4	-4	-0	+0	-0		-45.5%	-48.7%	-7.2%	+8.9%	-3.1%	
Pharmacy	63	+8	+7	-2	-2	-2	+1	+13.8%	+12.5%	-3.6%	-3.3%	-2.5%	+1.5%
H&SC, Other	2	-7	-6	-6	-4	-4		-77.5%	-75.0%	-75.0%	-66.7%	-66.7%	
Management (VIII & above)	43	+16	+8	+9	+7	+2		+60.9%	+23.9%	+27.0%	+18.1%	+3.9%	
Administrative/ Supervisory (V to VII)	195	+34	+34	+30	+21	+21	+1	+20.9%	+21.4%	+18.2%	+12.4%	+12.2%	+0.4%
Clerical (III & IV)	304	+42	+43	+38	+28	+23	-3	+16.1%	+16.3%	+14.3%	+10.0%	+8.1%	-1.1%
Support	234	+6	+1	+12	+17	+16	-0	+2.6%	+0.3%	+5.2%	+7.7%	+7.5%	-0.0%
Maintenance/ Technical	21	+3	+1	+3	+1	+1	-0	+16.3%	+5.4%	+17.9%	+4.6%	+5.3%	-0.1%
Health Care Assistants	221	+26	+35	+39	+41	+32	+8	+13.6%	+18.8%	+21.6%	+22.8%	+17.0%	+3.6%
Care, other	5	+1	+1	-0	-1	-1	+0	+15.5%	+42.6%	-0.2%	-12.1%	-21.2%	+1.0%
Tallaght University	3,070	+491	+502	+486	+387	+258	-5	+19.0%	+19.5%	+18.8%	+14.4%	+9.2%	-0.1%
Nurse/ Midwife Manager	5	+4	+4	+2	+2	+2	-0	+448.0%	+448.0%	+82.7%	+83.3%	+82.7%	-3.9%
H&SC, Other	0	+0	+0	+0	+0	+0	+0	-100.0%	-100.0%	-100.0%	-100.0%	-100.0%	+45.5%
Management (VIII & above)	16	+11	+12	+1	+2	+0	-0	+230.6%	+246.0%	+9.3%	+10.7%	+1.2%	-1.9%
Administrative/ Supervisory (V to VII)	26	+22	+22	+7	+10	+8	-2	+586.6%	+535.6%	+33.9%	+64.2%	+45.7%	-5.8%
Clerical (III & IV)	6	+2	+2	+3	+6	+3	-1	+34.7%	+37.0%	+83.9%	-100.0%	+118.4%	-7.6%

Aug 2022	WTE Aug 2022	WTE change since Dec 16	WTE change since Dec 17	WTE change since Dec 18	WTE change since Dec 19	WTE change since Dec 20	WTE change since Jul 22	% change since Dec 16	% change since Dec 17	% change since Dec 18	% change since Dec 19	% change since Dec 20	% change since Jul 22
Overall	12,044	+1,972	+1,743	+1,620	+1,226	+756	-22	+19.6%	+16.9%	+15.5%	+11.3%	+6.7%	-0.2%
Hospital Group HQ	54	+40	+40	+13	+21	+14	-3	+274.5%	+274.5%	+33.1%	+61.8%	+36.2%	-4.6%

Source: Health Service Personnel Census