

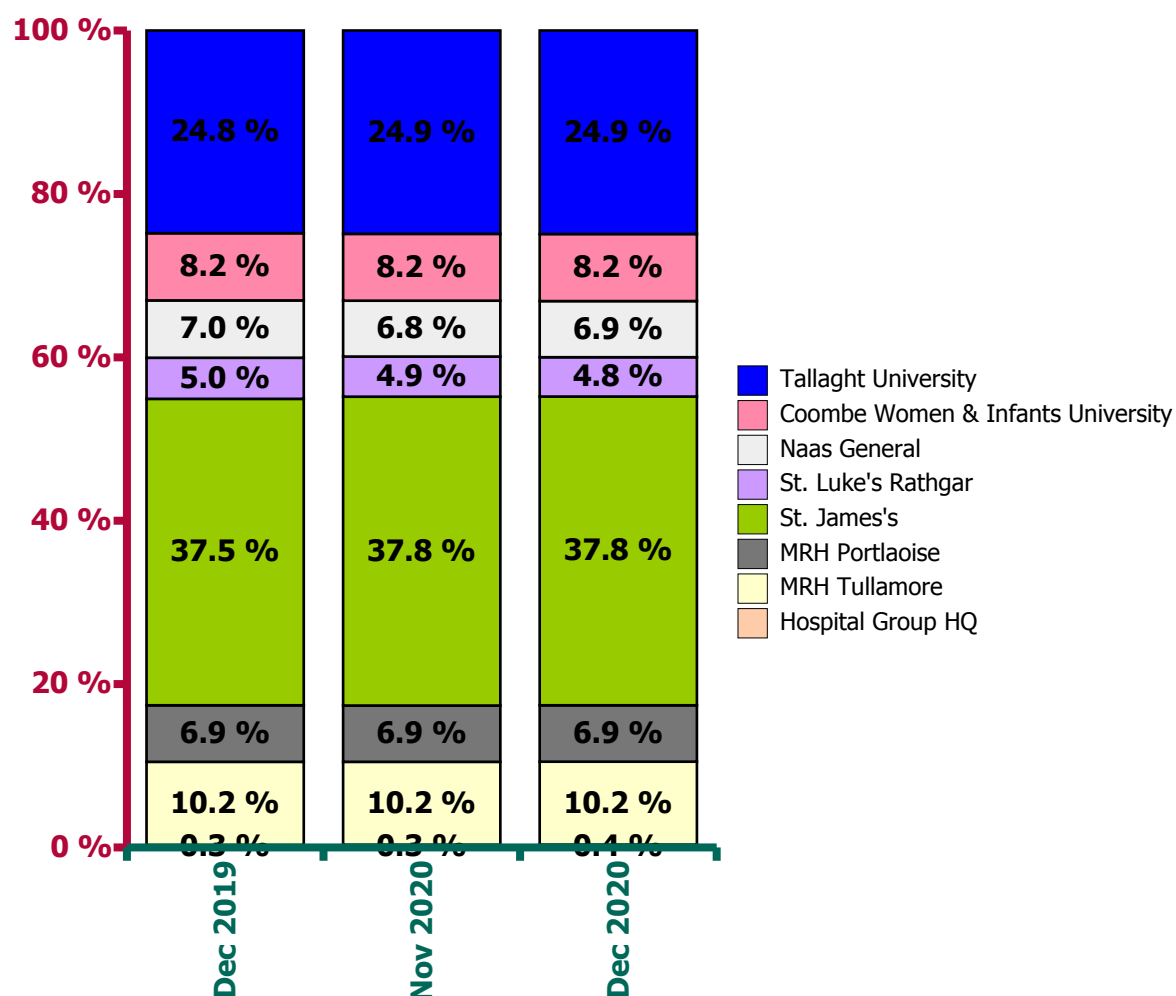
Dublin Midlands Hospital Group Employment Report: January 2021

Employment by Staff Group

Jan 2021 (Dec 2019 figure: 10,819)	WTE Dec 2020	WTE Jan 2021	WTE change since Dec 20	% change since Dec 20	WTE change since Dec 19	WTE change since Jan 20
Overall	11,288	11,273	-14.33	-0.1%	+455	+426
Consultants	499	500	+1	+0.2%	+36	+31
Registrars	522	520	-2	-0.5%	+30	+28
SHO/ Interns	460	461	+0	+0.1%	+37	+43
Medical/ Dental, other	7	7	-0	-2.1%	+0	+0
Medical & Dental	1,489	1,487	-1	-0.1%	+103	+102
Nurse/ Midwife Manager	908	906	-2	-0.2%	+29	+33
Nurse/ Midwife Specialist & AN/MP	236	227	-9	-3.9%	+22	+20
Staff Nurse/ Staff Midwife	2,950	2,943	-8	-0.3%	+108	+110
<i>Pre-registration Nurse/ Midwife Intern</i>	<i>0</i>	<i>31</i>	<i>+31</i>	<i>+102033.3%</i>	<i>+20</i>	<i>-10</i>
<i>Pre-registration Nurse Intern (COVID-19)</i>	<i>28</i>	<i>5</i>	<i>-23</i>	<i>-83.8%</i>	<i>+5</i>	<i>+5</i>
<i>Post-registration Nurse/ Midwife Student</i>	<i>12</i>	<i>12</i>			<i>+4</i>	<i>-1</i>
<i>Nursing/ Midwifery awaiting registration</i>	<i>4</i>	<i>3</i>	<i>-1</i>	<i>-29.9%</i>	<i>-3</i>	<i>-6</i>
Nursing/ Midwifery Student	44	50	+6	+13.8%	+8	-13
Nursing/ Midwifery other	38	38	+0	+1.3%	+2	+4
Nursing & Midwifery	4,177	4,164	-12	-0.3%	+170	+155
Therapy Professions	397	393	-4	-1.1%	+26	+20
Health Science/ Diagnostics	1,001	994	-7	-0.7%	+15	+10
Social Workers	87	86	-1	-1.3%	+7	+6
Psychologists	13	13	-1	-4.2%	+0	+0
Pharmacy	243	245	+2	+0.7%	+25	+22
H&SC, Other	46	48	+2	+5.3%	+15	+12
Health & Social Care Professionals	1,788	1,779	-9	-0.5%	+87	+71
Management (VIII & above)	126	126	-0	-0.2%	+9	+10
Administrative/ Supervisory (V to VII)	523	518	-5	-1.0%	+23	+26
Clerical (III & IV)	1,046	1,055	+9	+0.9%	+0	+2
Management & Administrative	1,695	1,699	+4	+0.2%	+32	+37
Support	771	774	+3	+0.4%	+10	+10
Maintenance/ Technical	130	129	-1	-0.7%	-1	-2
General Support	901	903	+2	+0.2%	+8	+8
Health Care Assistants	1,217	1,220	+3	+0.2%	+54	+53
Care, other	21	21	-0	-2.3%	+0	-1
Patient & Client Care	1,239	1,241	+3	+0.2%	+54	+52

Dublin Midlands Hospital Group Employment by Hospital: Jan 2021

Jan 2021 (Dec 2019 figure: 10,819)	WTE Dec 2020	WTE Jan 2021	WTE change since Dec 20	% change since Dec 20	WTE change since Dec 19	WTE change since Jan 20
Overall	11,288	11,273	-14	-0.1%	+455	+426
Hospital Group HQ	40	42	+2	+5.1%	+8	+7
MRH Tullamore	1,146	1,139	-7	-0.6%	+38	+40
MRH Portlaoise	780	775	-5	-0.7%	+25	+34
St. James's	4,266	4,264	-2	-0.0%	+206	+183
St. Luke's Rathgar	542	539	-4	-0.7%	-6	-7
Naas General	777	781	+4	+0.5%	+22	+24
Coombe Women & Infants University	925	922	-3	-0.4%	+32	+23
Tallaght University	2,812	2,812	+0	+0.0%	+129	+121



**Dublin Midlands Hospital Group Employment by Administration (HSE / S38):
January 2021**

Jan 2021 (Dec 2019 figure: 10,819)	WTE Dec 2020	WTE Jan 2021	WTE change since Dec 20	% change since Dec 20	WTE change since Dec 19	WTE change since Jan 20
Overall	11,288	11,273	-14	-0.1%	+455	+426
HSE	3,285	3,275	-9	-0.3%	+88	+98
Section 38 Hospitals	8,003	7,998	-5	-0.1%	+367	+328

HSE

Jan 2021 (Dec 2019 figure: 3,187)	WTE Dec 2020	WTE Jan 2021	WTE change since Dec 20	% change since Dec 20	WTE change since Dec 19	WTE change since Jan 20
Overall	3,285	3,275	-9	-0.3%	+88	+98
Consultants	117	117	-0	-0.0%	-3	-2
Registrars	129	132	+3	+0.0%	+11	+7
SHO/ Interns	137	133	-4	-0.0%	-3	+2
Medical/ Dental, other	2	2	-0	-0.1%	-0	-0
Medical & Dental	385	383	-2	-0.4%	+5	+7
Nurse/ Midwife Manager	249	248	-1	-0.0%	+12	+13
Nurse/ Midwife Specialist & AN/MP	75	72	-3	-0.0%	+1	+1
Staff Nurse/ Staff Midwife	774	773	-0	-0.0%	+33	+31
<i>Pre-registration Nurse/ Midwife Intern</i>		1	+1	-1.0%	+1	+1
<i>Pre-registration Nurse Intern (COVID-19)</i>	2		-2	-1.0%		
<i>Nursing/ Midwifery awaiting registration</i>				-1.0%		-6
Nursing/ Midwifery Student	2	1	-1	-0.7%	-14	-5
Nursing/ Midwifery other	5	5	-0	-0.0%	+1	+2
Nursing & Midwifery	1,105	1,099	-5	-0.5%	+32	+42
Therapy Professions	106	104	-2	-0.0%	+11	+9
Health Science/ Diagnostics	407	403	-4	-0.0%	+22	+21
Social Workers	8	8	+0	+0.0%	+1	+1
Psychologists	3	3		+0.0%		
Pharmacy	61	60	-1	-0.0%	+10	+9
H&SC, Other	4	6	+2	+0.6%	+5	+2
Health & Social Care Professionals	589	585	-4	-0.7%	+49	+43
Management (VIII & above)	36	36	-0	-0.0%	+2	+3
Administrative/ Supervisory (V to VII)	116	113	-2	-0.0%	+15	+15
Clerical (III & IV)	287	291	+4	+0.0%	-25	-23
Management & Administrative	438	440	+2	+0.3%	-7	-6
Support	134	136	+2	+0.0%	+4	+4
Maintenance/ Technical	47	48	+1	+0.0%	+6	+5
General Support	181	184	+3	+1.7%	+9	+9
Health Care Assistants	583	581	-2	-0.0%	+2	+4
Care, other	4	3	-1	-0.2%	-1	-1
Patient & Client Care	587	584	-3	-0.5%	+1	+3

Section 38 Hospitals

Jan 2021 (Dec 2019 figure: 7,631)	WTE Dec 2020	WTE Jan 2021	WTE change since Dec 20	% change since Dec 20	WTE change since Dec 19	WTE change since Jan 20
Overall	8,003	7,998	-5	-0.1%	+367	+328
Consultants	382	384	+1	+0.0%	+40	+33
Registrars	393	388	-5	-0.0%	+19	+21
SHO/ Interns	323	328	+5	+0.0%	+39	+41
Medical/ Dental, other	6	6	+0	+0.0%	+1	+1
Medical & Dental	1,104	1,105	+0	+0.0%	+99	+96
Nurse/ Midwife Manager	659	658	-1	-0.0%	+17	+20
Nurse/ Midwife Specialist & AN/MP	161	155	-7	-0.0%	+21	+19
Staff Nurse/ Staff Midwife	2,177	2,170	-7	-0.0%	+75	+79
<i>Pre-registration Nurse/ Midwife Intern</i>	0	30	+30	+1000.3%	+20	-11
<i>Pre-registration Nurse Intern (COVID-19)</i>	26	5	-21	-0.8%	+5	+5
<i>Post-registration Nurse/ Midwife Student</i>	12	12		+0.0%	+4	-1
<i>Nursing/ Midwifery awaiting registration</i>	4	3	-1	-0.3%	-3	-0
Nursing/ Midwifery Student	42	50	+7	+0.2%	+23	-7
Nursing/ Midwifery other	32	33	+1	+0.0%	+2	+3
Nursing & Midwifery	3,072	3,065	-7	-0.2%	+138	+113
Therapy Professions	291	289	-2	-0.0%	+15	+11
Health Science/ Diagnostics	594	590	-3	-0.0%	-7	-11
Social Workers	80	78	-1	-0.0%	+6	+5
Psychologists	10	10	-1	-0.1%	+0	+0
Pharmacy	182	185	+3	+0.0%	+15	+13
H&SC, Other	42	42	+0	+0.0%	+10	+9
Health & Social Care Professionals	1,199	1,194	-5	-0.4%	+38	+29
Management (VIII & above)	90	90	-0	-0.0%	+7	+7
Administrative/ Supervisory (V to VII)	407	404	-3	-0.0%	+8	+11
Clerical (III & IV)	759	765	+6	+0.0%	+25	+25
Management & Administrative	1,256	1,259	+3	+0.2%	+40	+43
Support	637	638	+1	+0.0%	+6	+6
Maintenance/ Technical	83	81	-2	-0.0%	-7	-7
General Support	720	718	-1	-0.2%	-1	-2
<i>HCA, Nurse's Aide, etc.</i>	629	633	+4	+0.0%	+74	+46
<i>Health & Social Care Assistants</i>	6	7	+1	+0.2%	+5	+3
Health Care Assistants	635	640	+5	+0.0%	+52	+49
<i>Other Care Grades</i>	18	18	+0	+0.0%	+1	+0
Care, other	18	18	+0	+0.0%	+1	+0
Patient & Client Care	652	658	+5	+0.8%	+53	+49

Dublin Midlands Hospital Group Employment by Hospital & Staff Category: January 2021

Hospital Group HQ

Jan 2021 (Dec 2019 figure: 33)	WTE Dec 2020	WTE Jan 2021	WTE change since Dec 20	% change since Dec 20	WTE change since Dec 19	WTE change since Jan 20
Overall	40	42	+2	+5.1%	+8	+7
<i>Director of Nursing/Midwifery</i>	2	2	0	+0.0%		
<i>Director Nursing/Midwifery, Assistant</i>	1	1	0	+0.0%		
Nurse/ Midwife Manager	3	3	0	+0.0%	+0	
Nursing & Midwifery	3	3			+0	
<i>Senior Management (VIII & GM)</i>	11	12	+1	+0.1%	+3	
<i>Executive Management</i>	5	5	+0	+0.0%	-1	
Management (VIII & above)	16	17	+1	+0.0%	+2	+2
<i>Middle Management (V-VII)</i>	18	18	+0	+0.0%	-2	
Administrative/ Supervisory (V to VII)	18	18	+0	+0.0%	+2	+1
<i>General Administrative (III & IV)</i>	3	4	+1	+0.4%	+1	
Clerical (III & IV)	3	4	+1	+0.4%	+4	+4
Management & Administrative	37	39	+2	+2	+8	+7

MRH Tullamore

Jan 2021 (Dec 2019 figure: 1,101)	WTE Dec 2020	WTE Jan 2021	WTE change since Dec 20	% change since Dec 20	WTE change since Dec 19	WTE change since Jan 20
Overall	1,146	1,139	-7	-0.6%	+38	+40
Consultant Surgery	12	12	+0	+0.0%	-0	
Consultant Radiology	5	5	0	+0.0%	+1	
Consultant Pathology	6	6	-0	-0.0%	+0	
Consultant Medicine	11	11	0	+0.0%	-0	
Consultant Emergency Medicine	3	3	-0	-0.1%	-0	
Consultant Anaesthesia	8	9	+0	+0.0%	-0	
Consultants	46	46	-0	-0.0%	-1	-1
Specialist Registrar	11	11	0	+0.0%		
Registrar	37	38	+1	+0.0%	+10	
Registrars	48	49	+1	+0.0%	+7	+4
Senior House Officer	39	39	-0	-0.0%	+2	
Interns	8	8	0	+0.0%		
SHO/ Interns	47	47	-0	-0.0%	+1	+2
Other Medical	2	2	-0	-0.1%	-0	
Medical/ Dental, other	2	2	-0	-0.1%	-0	-0
Medical & Dental	143	143	-0	-0	+7	+5
Director of Nursing/Midwifery	1	1	0	+0.0%		
Director Nursing/Midwifery, Assistant	13	12	-1	-0.0%	-1	
Clinical Nurse/ Midwife Manager	74	71	-3	-0.0%	-3	
Nurse/ Midwife Manager	87	84	-3	-0.0%	-2	-1
Clinical Nurse/ Midwife Specialist	15	14	-1	-0.1%	-1	
Advanced Nurse/ Midwife Practitioner	10	10	-0	-0.0%	+5	
Nurse/ Midwife Specialist & AN/MP	25	24	-1	-0.0%	+1	+1
Staff Nurses [General/ Children's]	306	304	-2	-0.0%	+19	
Staff Midwives				-1.0%	-1	
Staff Nurse/ Staff Midwife	306	304	-2	-0.0%	+11	+16
Nursing/ Midwifery awaiting registration				-1.0%		
Pre-registration Nurse Intern (COVID-19)	2		-2	-1.0%		
Pre-registration Nurse/ Midwife Intern		0	+0	-1.0%	+0	
Nursing/ Midwifery Student	2	0	-2	-0.8%	-6	-6
Nursing Education/Clinical	2	2	0	+0.0%	+1	
Nursing/ Midwifery other	2	2	0	+0.0%	+1	+1
Nursing & Midwifery	423	415	-8	-8	+5	+11
Speech & Language Therapists	4	3	-1	-0.2%	-1	
Physiotherapists	19	18	-2	-0.1%	-1	
Orthoptists	1	1	-0	-0.0%	-0	
Occupational Therapists	7	7	-0	-0.0%	+3	
Dietitians	7	7	-0	-0.0%	+1	
Therapy Professions	38	35	-3	-0.1%	+3	+0
Radiographers	34	34	-0	-0.0%	+14	
Phlebotomists	3	3	-0	-0.0%	+2	
Medical Laboratory	41	42	+0	+0.0%	-3	
Clinical Measurement	7	7	-0	-0.0%	+2	
Clinical Engineering	5	5	-0	-0.0%	-0	
Audiology	1	1	+0	+0.1%	-0	
Health Science/ Diagnostics	91	91	+0	+0.0%	+8	+7
Pharmacy	32	31	-1	-0.0%	+9	

Pharmacy	32	31	-1	-0.0%	+7	+7
<i>HSCP Trainees/ Students</i>		2	+2	-1.0%	+2	
H&SC, Other		2	+2	-1.0%	+2	-1
Health & Social Care Professionals	161	160	-1	-1	+19	+14
<i>Senior Management (VIII & GM)</i>	4	4	+0	+0.0%	-1	
<i>Executive Management</i>	1	1	0	+0.0%	+1	
Management (VIII & above)	5	5	+0	+0.0%		
<i>Middle Management (V-VII)</i>	29	29	+0	+0.0%	+7	
Administrative/ Supervisory (V to VII)	29	29	+0	+0.0%	+5	+5
<i>General Administrative (III & IV)</i>	95	96	+1	+0.0%	-0	
Clerical (III & IV)	95	96	+1	+0.0%	-3	-0
Management & Administrative	129	130	+2	+2	+3	+5
<i>Other Support</i>	13	12	-1	-0.1%	+1	
<i>Other Labs & Associated</i>	5	5	+1	+0.1%	+2	
<i>Household Services</i>	2	2	0	+0.0%	-1	
<i>Catering</i>	9	9	+0	+0.0%	-0	
Support	29	28	-0	-0.0%	+0	+0
<i>Maintenance</i>	27	28	+0	+0.0%	+0	
Maintenance/ Technical	27	28	+0	+0.0%	+0	+0
General Support	56	56	+0	+0	+1	+1
<i>Health & Social Care Assistants</i>	4	4	0	+0.0%	-1	
<i>HCA, Nurse's Aide, etc.</i>	230	230	+0	+0.0%	+7	
Health Care Assistants	233	233	+0	+0.0%	+3	+4
<i>Other Care Grades</i>	1	1	0	+0.0%		
Care, other	1	1	0	+0.0%		
Patient & Client Care	234	235	+0	+0	+3	+4

MRH Portlaoise

Jan 2021 (Dec 2019 figure: 750)	WTE Dec 2020	WTE Jan 2021	WTE change since Dec 20	% change since Dec 20	WTE change since Dec 19	WTE change since Jan 20
Overall	780	775	-5	-0.7%	+25	+34
Consultant Surgery	2	2	0	+0.0%		
Consultant Radiology	4	4	0	+0.0%	+2	
Consultant Pathology	1	1	0	+0.0%		
Consultant Paediatrics	4	4	0	+0.0%	+1	
Consultant Obstetrics & Gynaecology	3	3	0	+0.0%	-0	
Consultant Medicine	6	6	0	+0.0%	+1	
Consultant Emergency Medicine	1	1	0	+0.0%		
Consultant Anaesthesia	3	3	0	+0.0%		
Consultants	24	24	0	+0.0%	+1	+1
Specialist Registrar	3	3	-0	-0.0%	+1	
Senior Registrar	7	7	-0	-0.0%	-0	
Registrar	27	28	+1	+0.0%	+4	
Registrars	37	38	+1	+0.0%	+2	+2
Senior House Officer	35	31	-4	-0.1%	+1	
Interns	6	6	+0	+0.0%	+0	
SHO/ Interns	41	37	-4	-0.1%	-1	+2
Medical & Dental	101	98	-3	-3	+3	+5
Director of Nursing/Midwifery	1	1	0	+0.0%		
Director Nursing/Midwifery, Assistant	11	11	0	+0.0%	+1	
Clinical Nurse/ Midwife Manager	51	50	-1	-0.0%	+5	
Nurse/ Midwife Manager	62	62	-1	-0.0%	+1	+1
Clinical Nurse/ Midwife Specialist	11	11	-0	-0.0%	+1	
Advanced Nurse/ Midwife Practitioner	8	8	-0	-0.0%	+4	
Nurse/ Midwife Specialist & AN/MP	19	19	-0	-0.0%	+3	+3
Staff Nurses [General/ Children's]	194	195	+0	+0.0%	+28	
Staff Midwives	26	27	+1	+0.0%	-5	
Staff Nurse/ Staff Midwife	220	221	+1	+0.0%	+19	+13
Nursing/ Midwifery awaiting registration				-1.0%		
Pre-registration Nurse/ Midwife Intern		0	+0	-1.0%	+0	
Nursing/ Midwifery Student		0	+0	-1.0%	-9	+0
Nursing Education/Clinical	2	2	-0	-0.0%	+1	
Nursing/ Midwifery other	2	2	-0	-0.0%	-0	-0
Nursing & Midwifery	304	304	+0	+0	+13	+18
Speech & Language Therapists	2	2	0	+0.0%	+1	
Podiatrists & Chiropodists	1	1	0	+0.0%		
Physiotherapists	9	9	+0	+0.0%	-0	
Orthoptists				-1.0%	-0	
Occupational Therapists	3	3	0	+0.0%	+2	
Dietitians	4	4	+0	+0.0%	-0	
Therapy Professions	19	19	+0	+0.0%	+5	+5
Radiographers	14	14	+0	+0.0%	+3	
Physicists				-1.0%	-1	
Medical Laboratory	23	22	-1	-0.0%	+1	
Clinical Measurement	5	4	-0	-0.0%	+1	
Clinical Engineering	1	1	0	+0.0%		
Health Science/ Diagnostics	43	42	-1	-0.0%	+4	+4
Pharmacy	13	14	+0	+0.0%	+2	

Pharmacy	13	14	+0	+0.0%	+1	+1
Health & Social Care Professionals	75	75	-0	-0	+10	+10
<i>Senior Management (VIII & GM)</i>	4	4	0	+0.0%		
Management (VIII & above)	4	4	0	+0.0%	+1	+1
<i>Middle Management (V-VII)</i>	16	14	-2	-0.1%	+2	
Administrative/ Supervisory (V to VII)	16	14	-2	-0.1%	+1	+0
<i>General Administrative (III & IV)</i>	73	73	+0	+0.0%	-13	
Clerical (III & IV)	73	73	+0	+0.0%	-8	-7
Management & Administrative	93	91	-2	-2	-6	-5
<i>Portering</i>	1	1	0	+0.0%		
<i>Other Support</i>	5	5	+0	+0.0%	+0	
<i>Other Labs & Associated</i>	3	3	0	+0.0%		
<i>Household Services</i>	4	4	-0	-0.0%	+1	
<i>Catering</i>	7	8	+1	+0.1%	+3	
Support	20	21	+1	+0.0%	+4	+4
<i>Maintenance</i>	9	9	0	+0.0%	+2	
Maintenance/ Technical	9	9	0	+0.0%	+1	+1
General Support	29	30	+1	+1	+5	+5
<i>Health & Social Care Assistants</i>	1	1	0	+0.0%		
<i>HCA, Nurse's Aide, etc.</i>	176	175	-1	-0.0%	+2	
Health Care Assistants	177	176	-1	-0.0%	+1	+2
<i>Other Care Grades</i>	1	1	0	+0.0%		
Care, other	1	1	0	+0.0%		
Patient & Client Care	178	177	-1	-1	+1	+2

St. James's

Jan 2021 (Dec 2019 figure: 4,058)	WTE Dec 2020	WTE Jan 2021	WTE change since Dec 20	% change since Dec 20	WTE change since Dec 19	WTE change since Jan 20
Overall	4,266	4,264	-2	-0.0%	+206	+183
Consultant Surgery	38	38	-0	-0.0%	+4	
Consultant Radiology	18	18	0	+0.0%	+3	
Consultant Psychiatry	6	6	-0	-0.0%	+2	
Consultant Pathology	31	30	-1	-0.0%	+3	
Consultant Obstetrics & Gynaecology	4	4	+0	+0.0%		
Consultant Medicine	76	77	+1	+0.0%	+11	
Consultant Intensive Care Medicine	2	2	0	+0.0%		
Consultant Emergency Medicine	8	8	0	+0.0%	+1	
Consultant Dentistry	2	2	+0	+0.0%	+1	
Consultant Anaesthesia	28	28	+0	+0.0%	+4	
Consultants	212	212	+0	+0.0%	+17	+15
Specialist Registrar	106	102	-4	-0.0%	+7	
Senior Registrar	1	1	+0	+0.2%	-0	
Registrar	98	99	+0	+0.0%	+18	
Registrars	205	202	-3	-0.0%	+18	+19
Senior House Officer	101	101	-0	-0.0%	+1	
Interns	75	75	0	+0.0%	+19	
SHO/ Interns	176	176	-0	-0.0%	+19	+22
Other Medical	4	4	+0	+0.0%	+1	
Dentists	1	1	0	+0.0%	+0	
Medical/ Dental, other	6	6	+0	+0.0%	+1	+1
Medical & Dental	598	596	-3	-3	+55	+56
Director of Nursing/Midwifery	1	1	0	+0.0%	-1	
Director Nursing/Midwifery, Assistant	21	21	-0	-0.0%	-1	
Clinical Nurse/ Midwife Manager	326	320	-6	-0.0%	+6	
Nurse/ Midwife Manager	348	342	-6	-0.0%	-3	-2
Clinical Nurse/ Midwife Specialist	69	65	-4	-0.1%	+6	
Advanced Nurse/ Midwife Practitioner	26	26	-0	-0.0%	+7	
Nurse/ Midwife Specialist & AN/MP	95	92	-4	-0.0%	+12	+11
Staff Nurses [General/ Children's]	1,142	1,145	+3	+0.0%	+111	
Staff Nurse [Psychiatric]	25	24	-1	-0.0%	+1	
Nursing Bank	12	9	-3	-0.2%	-3	
Staff Nurse/ Staff Midwife	1,179	1,179	-0	-0.0%	+54	+52
Nursing/ Midwifery awaiting registration				-1.0%		
Pre-registration Nurse Intern (COVID-19)	7		-7	-1.0%		
Pre-registration Nurse/ Midwife Intern		7	+7	-1.0%	+6	
Nursing/ Midwifery Student	7	7	-0	-0.0%	+6	-5
Nursing Education/Clinical	13	13	+0	+0.0%	+3	
Nursing/ Midwifery other	13	13	+0	+0.0%	+1	+2
Nursing & Midwifery	1,643	1,632	-11	-11	+70	+58
Speech & Language Therapists	20	19	-1	-0.0%	+2	
Podiatrists & Chiropodists	1	1	0	+0.0%		
Physiotherapists	65	65	-0	-0.0%	+6	
Occupational Therapists	31	30	-1	-0.0%	-1	
Dietitians	46	46	+1	+0.0%	+4	
Therapy Professions	164	163	-1	-0.0%	+11	+13
Radiographers	75	73	-2	-0.0%	-4	

Physicists	19	19	+1	+0.0%	-8	
Phlebotomists	22	22	+0	+0.0%	+0	
Perfusionists	4	4	0	+0.0%		
Medical Laboratory	151	151	+0	+0.0%	-9	
Clinical Measurement	31	31	-0	-0.0%	+8	
Clinical Engineering	14	15	+1	+0.0%	+2	
Biochemists	5	6	+0	+0.1%	+2	
Audiology	1	1	0	+0.0%		
Health Science/ Diagnostics	323	322	-0	-0.0%	-17	-18
Social Workers	46	45	-1	-0.0%	-1	
Social Workers	46	45	-1	-0.0%	+2	+2
Psychologists	5	4	-1	-0.1%	-1	
Psychologists	5	4	-1	-0.1%	-1	-1
Pharmacy	109	111	+1	+0.0%	+18	
Pharmacy	109	111	+1	+0.0%	+13	+13
Other Health & Social Care	30	30	+0	+0.0%	+11	
HSCP Trainees/ Students	6	6	0	+0.0%	-3	
Dental Hygienists	0	0	0	+0.0%		
H&SC, Other	36	36	+0	+0.0%	+10	+9
Health & Social Care Professionals	682	681	-1	-1	+19	+17
Senior Management (VIII & GM)	35	35	+0	+0.0%	+4	
Executive Management	9	8	-1	-0.1%		
Management (VIII & above)	43	43	-0	-0.0%	+3	+2
Middle Management (V-VII)	185	184	-1	-0.0%	+26	
Administrative/ Supervisory (V to VII)	185	184	-1	-0.0%	+8	+9
General Administrative (III & IV)	378	384	+6	+0.0%	+11	
Clerical (III & IV)	378	384	+6	+0.0%	+13	+12
Management & Administrative	607	611	+4	+4	+24	+23
Portering	44	44	-0	-0.0%	+0	
Other Support	38	39	+0	+0.0%	-2	
Other Labs & Associated	47	48	+1	+0.0%	+9	
Household Services	131	131	-0	-0.0%	+6	
Catering	16	16	+0	+0.0%	+1	
Support	277	277	+0	+0.0%	-0	-1
Technical Services	5	5	0	+0.0%	+4	
Maintenance	51	49	-1	-0.0%	-6	
Maintenance/ Technical	56	54	-1	-0.0%	-4	-4
General Support	332	332	-1	-1	-4	-5
HCA, Nurse's Aide, etc.	392	402	+10	+0.0%	+77	
Health Care Assistants	392	402	+10	+0.0%	+42	+34
Other Care Grades	10	10	+0	+0.0%	+0	
Care, other	10	10	+0	+0.0%	+1	+0
Patient & Client Care	403	412	+10	+10	+43	+35

St. Luke's Rathgar

Jan 2021 (Dec 2019 figure: 544)	WTE Dec 2020	WTE Jan 2021	WTE change since Dec 20	% change since Dec 20	WTE change since Dec 19	WTE change since Jan 20
Overall	542	539	-4	-0.7%	-6	-7
Consultant Radiology	19	19	0	+0.0%		
Consultant Pathology	1	1	0	+0.0%		
Consultant Medicine	1	1	0	+0.0%		
Consultant Anaesthesia	1	1	0	+0.0%		
Consultants	22	22	0	+0.0%	-2	-2
Specialist Registrar	9	10	+1	+0.1%	-2	
Senior Registrar	1	1	0	+0.0%		
Registrar	6	7	+1	+0.2%	+2	
Registrars	16	18	+2	+0.1%	-1	-1
Senior House Officer	12	12	0	+0.0%		
SHO/ Interns	12	12	0	+0.0%	-1	-1
Medical & Dental	50	52	+2	+2	-4	-4
Director of Nursing/Midwifery	1	1	0	+0.0%		
Director Nursing/Midwifery, Assistant	2	2	0	+0.0%	+1	
Clinical Nurse/ Midwife Manager	24	24	0	+0.0%	+7	
Nurse/ Midwife Manager	27	27	0	+0.0%	+6	+6
Clinical Nurse/ Midwife Specialist	11	11	0	+0.0%	+2	
Advanced Nurse/ Midwife Practitioner	3	3	0	+0.0%		
Nurse/ Midwife Specialist & AN/MP	14	14	0	+0.0%	+1	+1
Staff Nurses [General/ Children's]	39	39	-0	-0.0%	-1	
Staff Nurse/ Staff Midwife	39	39	-0	-0.0%	-4	-4
Nursing & Midwifery	81	81	-0	-0	+3	+3
Speech & Language Therapists	1	1	0	+0.0%		
Podiatrists & Chiropodists				-1.0%	-0	
Physiotherapists	3	3	0	+0.0%		
Dietitians	5	5	0	+0.0%	+1	
Therapy Professions	9	9	0	+0.0%	+1	+1
Radiographers	5	5	0	+0.0%	+2	
Radiation Therapists	147	143	-4	-0.0%	+9	
Physicists	33	33	0	+0.0%	+2	
Phlebotomists	2	2	0	+0.0%		
Medical Laboratory	4	5	+1	+0.3%	+1	
Dosimetrists	2	2	0	+0.0%		
Clinical Engineering	12	12	+0	+0.0%	-1	
Biochemists	2	2	0	+0.0%		
Health Science/ Diagnostics	205	202	-3	-0.0%	+8	+8
Social Workers	5	5	0	+0.0%		
Social Workers	5	5	0	+0.0%		
Psychologists	3	3	0	+0.0%		
Psychologists	3	3	0	+0.0%		
Pharmacy	1	1	0	+0.0%	-1	
Pharmacy	1	1	0	+0.0%	-1	-1
HSCP Trainees/ Students	4	4	0	+0.0%		
H&SC, Other	4	4	0	+0.0%	+3	+3
Health & Social Care Professionals	228	225	-3	-3	+11	+11
Senior Management (VIII & GM)	5	5	0	+0.0%	+1	

Management (VIII & above)	5	5	0	+0.0%	-1	-1
<i>Middle Management (V-VII)</i>	36	34	-2	-0.1%	-1	
Administrative/ Supervisory (V to VII)	36	34	-2	-0.1%		
<i>General Administrative (III & IV)</i>	57	57	0	+0.0%	-9	
Clerical (III & IV)	57	57	0	+0.0%	-7	-8
Management & Administrative	98	96	-2	-2	-8	-9
<i>Portering</i>	8	8	0	+0.0%	-1	
<i>Other Support</i>	2	2	0	+0.0%		
<i>Other Labs & Associated</i>	2	2	0	+0.0%		
<i>Household Services</i>	30	30	+0	+0.0%	+6	
<i>Catering</i>	16	15	-1	-0.1%	-1	
Support	57	57	-1	-0.0%	-3	-3
<i>Maintenance</i>	5	5	0	+0.0%		
Maintenance/ Technical	5	5	0	+0.0%		
General Support	62	62	-1	-1	-3	-3
<i>HCA, Nurse's Aide, etc.</i>	23	23	0	+0.0%	-5	
Health Care Assistants	23	23	0	+0.0%	-5	-5
<i>Other Care Grades</i>	1	1	0	+0.0%		
Care, other	1	1	0	+0.0%		
Patient & Client Care	23	23			-5	-5

Naas General

Jan 2021 (Dec 2019 figure: 759)	WTE Dec 2020	WTE Jan 2021	WTE change since Dec 20	% change since Dec 20	WTE change since Dec 19	WTE change since Jan 20
Overall	777	781	+4	+0.5%	+22	+24
Consultant Surgery	4	4	0	+0.0%		
Consultant Radiology	5	5	0	+0.0%	-1	
Consultant Pathology	1	1	0	+0.0%	+1	
Consultant Medicine	11	11	0	+0.0%	-0	
Consultant Emergency Medicine	2	2	-0	-0.1%	-0	
Consultant Anaesthesia	3	3	0	+0.0%	-0	
Consultants	25	25	-0	-0.0%	-1	-1
Specialist Registrar	4	4	-0	-0.0%	-0	
Senior Registrar	5	5	0	+0.0%	+1	
Registrar	19	19	-0	-0.0%	-1	
Registrars	28	28	-0	-0.0%	+2	+2
Senior House Officer	27	28	+1	+0.0%	-1	
Interns	10	9	-1	-0.1%	+1	
SHO/ Interns	37	37	+0	+0.0%	-2	-1
Medical & Dental	90	89	-0	-0	-1	+0
Director of Nursing/Midwifery	1	1	0	+0.0%		
Director Nursing/Midwifery, Assistant	10	10	+0	+0.0%	+1	
Clinical Nurse/ Midwife Manager	58	61	+3	+0.0%	-3	
Nurse/ Midwife Manager	69	72	+3	+0.0%	+7	+7
Clinical Nurse/ Midwife Specialist	9	8	-1	-0.1%	-1	
Advanced Nurse/ Midwife Practitioner	7	7	-0	-0.0%	-0	
Nurse/ Midwife Specialist & AN/MP	16	15	-1	-0.1%	-4	-3
Staff Nurses [General/ Children's]	208	208	+1	+0.0%	+22	
Staff Nurse/ Staff Midwife	208	208	+1	+0.0%	+7	+6
Nursing Education/Clinical	1	1	0	+0.0%	+0	
Nursing/ Midwifery other	1	1	0	+0.0%	+0	+1
Nursing & Midwifery	294	296	+2	+2	+10	+10
Speech & Language Therapists	4	5	+1	+0.4%	+1	
Physiotherapists	22	22	+0	+0.0%	+1	
Occupational Therapists	9	8	-1	-0.1%	+1	
Dietitians	6	6	+0	+0.0%	+0	
Therapy Professions	40	41	+1	+0.0%	+3	+3
Radiographers	18	18	-0	-0.0%	-0	
Physicists	2	2	0	+0.0%	+1	
Phlebotomists	2	2	0	+0.0%		
Medical Laboratory	40	40	-0	-0.0%	+5	
Clinical Measurement	5	5	0	+0.0%	+2	
Clinical Engineering	1	1	-0	-0.1%	-1	
Health Science/ Diagnostics	68	68	-0	-0.0%	+2	+2
Social Workers	3	3	+0	+0.0%	+1	
Social Workers	3	3	+0	+0.0%	+1	+1
Pharmacy	15	15	-0	-0.0%	+3	
Pharmacy	15	15	-0	-0.0%	+3	+2
Health & Social Care Professionals	126	126	+0	+0	+9	+8
Senior Management (VIII & GM)	6	5	-1	-0.2%	-1	
Management (VIII & above)	6	5	-1	-0.2%	-0	+0

<i>Middle Management (V-VII)</i>	18	19	+1	+0.1%	+5	
Administrative/ Supervisory (V to VII)	18	19	+1	+0.1%	+7	+9
<i>General Administrative (III & IV)</i>	58	59	+1	+0.0%	-13	
Clerical (III & IV)	58	59	+1	+0.0%	-12	-12
Management & Administrative	82	83	+1	+1	-5	-3
<i>Portering</i>	1	1	0	+0.0%	-1	
<i>Other Support</i>	6	7	+1	+0.1%	+1	
<i>Other Labs & Associated</i>	8	9	+1	+0.1%	+2	
<i>Household Services</i>	3	3	-0	-0.0%		
<i>Catering</i>	10	10	+0	+0.0%	-0	
Support	28	30	+2	+0.1%	+3	+3
<i>Maintenance</i>	6	7	+1	+0.1%	+5	
Maintenance/ Technical	6	7	+1	+0.1%	+4	+4
General Support	34	37	+3	+3	+7	+7
<i>Health & Social Care Assistants</i>	2	2	0	+0.0%	+1	
<i>HCA, Nurse's Aide, etc.</i>	148	147	-1	-0.0%	+17	
Health Care Assistants	150	149	-1	-0.0%	+3	+3
<i>Other Care Grades</i>	1		-1	-1.0%	-1	
Care, other	1		-1	-1.0%	-1	-1
Patient & Client Care	151	149	-2	-2	+2	+2

Coombe Women & Infants Uni

Jan 2021 (Dec 2019 figure: 890)	WTE Dec 2020	WTE Jan 2021	WTE change since Dec 20	% change since Dec 20	WTE change since Dec 19	WTE change since Jan 20
Overall	925	922	-3	-0.4%	+32	+23
Consultants	38	38	+1	+0.0%	+6	+5
Registrars	42	40	-2	-0.0%	+1	+1
SHO/ Interns	28	29	+1	+0.0%	+1	+2
Medical & Dental	108	107	-1	-1	+8	+7
Nurse/ Midwife Manager	80	80	+0	+0.0%	+7	+9
Nurse/ Midwife Specialist & AN/MP	12	13	+0	+0.0%	+1	+1
Staff Nurse/ Staff Midwife	257	255	-2	-0.0%	-6	-4
Post-registration Nurse/ Midwife Student	12	12	0	+0.0%	+4	
Pre-registration Nurse/ Midwife Intern		5	+5	-1.0%	+5	
Nursing/ Midwifery Student	12	17	+5	+0.4%	+4	-4
Nursing/ Midwifery other	16	17	+1	+0.0%	+0	+0
Nursing & Midwifery	378	381	+4	+4	+7	+2
Therapy Professions	8	8	-0	-0.1%	-0	+0
Health Science/ Diagnostics	55	53	-2	-0.0%	+1	-1
Social Workers	10	10	0	+0.0%	+3	+3
Psychologists	1	1	0	+0.0%	+0	+0
Pharmacy	8	8	0	+0.0%	+1	
Health & Social Care Professionals	82	79	-3	-3	+5	+3
Management (VIII & above)	6	7	+1	+0.2%		+1
Administrative/ Supervisory (V to VII)	48	47	-1	-0.0%	-0	-0
Clerical (III & IV)	100	99	-1	-0.0%	+6	+5
Management & Administrative	153	153	-1	-1	+6	+6
Support	143	140	-3	-0.0%	+3	+2
Maintenance/ Technical	7	7	0	+0.0%	-2	-2
General Support	150	147	-3	-3	+1	+0
Health Care Assistants	54	53	-0	-0.0%	+5	+5
Care, other	1	1	0	+0.0%	-1	-1
Patient & Client Care	55	54	-0	-0	+5	+5

Tallaght University

Jan 2021 (Dec 2019 figure: 2,683)	WTE Dec 2020	WTE Jan 2021	WTE change since Dec 20	% change since Dec 20	WTE change since Dec 19	WTE change since Jan 20
Overall	2,812	2,812	+0	+0.0%	+129	+121
Consultant Surgery	22	23	+1	+0.0%	+1	
Consultant Radiology	13	13	0	+0.0%	+1	
Consultant Psychiatry				-1.0%	-0	
Consultant Pathology	13	13	+1	+0.0%	+2	
Consultant Medicine	57	57	-0	-0.0%	+11	
Consultant Emergency Medicine	7	6	-1	-0.1%	-0	
Consultant Anaesthesia	22	22	-0	-0.0%	+2	
Consultants	132	133	+0	+0.0%	+16	+14
Specialist Registrar	72	69	-2	-0.0%	-2	
Senior Registrar	1	1	0	+0.0%	-3	
Registrar	73	75	+2	+0.0%	+15	
Registrars	146	146	-0	-0.0%	+1	+2
Senior House Officer	66	69	+3	+0.0%	+10	
Interns	53	54	+1	+0.0%	+13	
SHO/ Interns	119	123	+4	+0.0%	+19	+17
Medical & Dental	398	402	+4	+4	+36	+33
Director of Nursing/Midwifery	2	2	+1	+0.4%	+1	
Director Nursing/Midwifery, Assistant	13	13	-0	-0.0%	-2	
Clinical Nurse/ Midwife Manager	217	221	+4	+0.0%	+14	
Nurse/ Midwife Manager	232	236	+5	+0.0%	+13	+14
Clinical Nurse/ Midwife Specialist	28	25	-3	-0.1%	-1	
Advanced Nurse/ Midwife Practitioner	25	25	0	+0.0%	+18	
Nurse/ Midwife Specialist & AN/MP	54	51	-3	-0.1%	+8	+7
Staff Nurses [General/ Children's]	735	732	-4	-0.0%	+89	
Nursing Bank	5	4	-1	-0.2%	-7	
Staff Nurse/ Staff Midwife	740	736	-5	-0.0%	+27	+31
Nursing/ Midwifery awaiting registration	4	3	-1	-0.3%	-3	
Pre-registration Nurse Intern (COVID-19)	19	5	-14	-0.8%	+5	
Pre-registration Nurse/ Midwife Intern	0	18	+18	+611.3%	+9	
Nursing/ Midwifery Student	23	26	+3	+0.1%	+13	+2
Nursing Education/Clinical	3	3	0	+0.0%	+1	
Nursing/ Midwifery other	3	3	0	+0.0%		
Nursing & Midwifery	1,051	1,051	-0	-0	+61	+53
Speech & Language Therapists	14	14	+0	+0.0%	+2	
Podiatrists & Chiropodists	1	1	0	+0.0%	-0	
Physiotherapists	50	51	+1	+0.0%	+4	
Orthoptists	1	1	0	+0.0%	-0	
Occupational Therapists	25	24	-1	-0.0%	+3	
Dietitians	28	27	-1	-0.0%	+1	
Therapy Professions	119	118	-1	-0.0%	+4	-2
Radiographers	71	71	-0	-0.0%	+5	
Physicists	7	7	0	+0.0%	-2	
Phlebotomists	15	15	-0	-0.0%	+4	
Medical Laboratory	89	89	+0	+0.0%	+3	
Clinical Measurement	29	29	-1	-0.0%	+5	
Clinical Engineering	4	4	0	+0.0%	-1	
Audiology	1	1	0	+0.0%		

Health Science/ Diagnostics	217	216	-1	-0.0%	+8	+9
<i>Social Workers</i>	24	23	-1	-0.0%	-0	
Social Workers	24	23	-1	-0.0%	+1	+1
<i>Psychologists</i>	5	5	0	+0.0%	-0	
Psychologists	5	5	0	+0.0%	+1	+1
<i>Pharmacy</i>	65	66	+1	+0.0%	+1	
Pharmacy	65	66	+1	+0.0%	+1	+0
<i>Other Health & Social Care</i>	2	2	0	+0.0%	+1	
<i>HSCP Trainees/ Students</i>	4	4	0	+0.0%	-3	
H&SC, Other	6	6	0	+0.0%		
Health & Social Care Professionals	434	433	-1	-1	+14	+8
<i>Senior Management (VIII & GM)</i>	34	33	-1	-0.0%	+5	
<i>Executive Management</i>	7	7	0	+0.0%	+2	
Management (VIII & above)	41	40	-1	-0.0%	+4	+4
<i>Other Administrative</i>	1	1	0	+0.0%		
<i>Middle Management (V-VII)</i>	173	172	-1	-0.0%	+8	
Administrative/ Supervisory (V to VII)	174	173	-1	-0.0%	-0	+3
<i>General Administrative (III & IV)</i>	281	282	+1	+0.0%	+16	
Clerical (III & IV)	281	282	+1	+0.0%	+5	+8
Management & Administrative	496	495	-1	-1	+9	+14
<i>Portering</i>	70	71	+1	+0.0%	+2	
<i>Other Support</i>	20	20	-0	-0.0%	-6	
<i>Other Labs & Associated</i>	21	22	+1	+0.1%	-1	
<i>Household Services</i>	86	87	+1	+0.0%	+1	
<i>Catering</i>	21	21	+0	+0.0%	+3	
Support	217	221	+3	+0.0%	+4	+4
<i>Technical Services</i>	1	1	0	+0.0%		
<i>Maintenance</i>	19	18	-1	-0.0%	+1	
Maintenance/ Technical	20	19	-1	-0.0%	-1	-1
General Support	237	240	+3	+3	+3	+3
<i>Health & Social Care Assistants</i>	6	7	+1	+0.2%	+5	
<i>HCA, Nurse's Aide, etc.</i>	183	177	-5	-0.0%	-2	
Health Care Assistants	188	184	-4	-0.0%	+5	+9
<i>Other Care Grades</i>	6	7	+0	+0.0%	+2	
Care, other	6	7	+0	+0.0%	+1	+1
Patient & Client Care	195	191	-4	-4	+6	+10

Dublin Midlands Hospital Group Employment by Grade Group & Staff Category: January 2021

Jan 2021 (Dec 2019 figure: 10,819)	WTE Dec 2020	WTE Jan 2021	WTE change since Dec 20	% change since Dec 20	WTE change since Dec 19	WTE change since Jan 20
Overall	11,288	11,273	-14	-0.1%	+455	+426
Consultant Anaesthesia	71	72	+0	+0.6%	+5	+5
Consultant Dentistry	2	2	+0	+2.1%	-0	-0
Consultant Emergency Medicine	20	19	-1	-6.3%	+0	-0
Consultant Intensive Care Medicine	2	2				
Consultant Medicine	161	162	+1	+0.7%	+17	+14
Consultant Obstetrics & Gynaecology	31	30	-1	-3.2%	+3	+2
Consultant Paediatrics	10	11	+1	+5.0%	+1	+1
Consultant Pathology	52	53	+1	+1.6%	+4	+4
Consultant Psychiatry	7	7	-0	-0.4%	-0	-0
Consultant Radiology	64	64			+3	+3
Consultant Surgery	79	79	+0	+0.3%	+3	+2
Consultants	499	500	+1	+0.2%	+36	+31
Registrar	277	282	+5	+1.7%	+38	+29
Senior Registrar	20	18	-2	-9.6%	-1	+0
Specialist Registrar	225	220	-5	-2.4%	-8	-1
Registrars	522	520	-2	-0.5%	+30	+28
Interns	152	152	+0	+0.1%	+31	+31
Senior House Officer	309	309	+0	+0.0%	+6	+12
SHO/ Interns	460	461	+0	+0.1%	+37	+43
Dentists	1	1			+0	+0
Other Medical	6	6	-0	-2.6%	-0	-0
Medical/ Dental, other	7	7	-0	-2.1%	+0	+0
Medical & Dental	1,489	1,487	-1	-0.1%	+103	+102
Clinical Nurse/ Midwife Manager	823	820	-2	-0.3%	+27	+33
Director Nursing/Midwifery, Assistant	76	75	-1	-0.8%	+3	+1
Director of Nursing/Midwifery	10	10	+1	+7.1%	-1	-1
Nurse/ Midwife Manager	908	906	-2	-0.2%	+29	+33
Advanced Nurse/ Midwife Practitioner	82	82	-0	-0.3%	+20	+18
Clinical Nurse/ Midwife Specialist	154	145	-9	-5.7%	+3	+2
Nurse/ Midwife Specialist & AN/MP	236	227	-9	-3.9%	+22	+20
Nursing Bank	17	13	-4	-22.4%	-9	-7
Staff Midwives	189	188	-1	-0.3%	-8	-8
Staff Nurse [Psychiatric]	25	24	-1	-3.8%	+3	+2
Staff Nurses [General/ Children's]	2,720	2,718	-2	-0.1%	+122	+123
Staff Nurse/ Staff Midwife	2,950	2,943	-8	-0.3%	+108	+110
Pre-registration Nurse/ Midwife Intern	0	31	+31	#####	+23	-10
Pre-registration Nurse Intern (COVID-19)	28	5	-23	-83.8%	+5	+5
Post-registration Nurse/ Midwife Student	12	12			-1	-1
Nursing/ Midwifery awaiting registration	4	3	-1	-29.9%	-18	-6
Nursing/ Midwifery Student	44	50	+6	+13.8%	+8	-13
Nursing Education/Clinical	33	32	-1	-1.5%	+1	+4

Jan 2021 (Dec 2019 figure: 10,819)	WTE Dec 2020	WTE Jan 2021	WTE change since Dec 20	% change since Dec 20	WTE change since Dec 19	WTE change since Jan 20
Overall	11,288	11,273	-14	-0.1%	+455	+426
Other Nursing/ Midwifery	5	6	+1	+21.5%	+1	+1
Nursing/ Midwifery other	38	38	+0	+1.3%	+2	+5
Nursing & Midwifery	4,177	4,164	-12	-0.3%	+170	+155
Dietitians	98	98	-0	-0.1%	+4	+6
Occupational Therapists	75	72	-3	-3.9%	+4	+3
Orthoptists	2	2	-0	-0.6%	-0	-0
Physiotherapists	174	173	-1	-0.6%	+13	+6
Podiatrists & Chiropodists	3	3			-0	-0
Speech & Language Therapists	45	45	-0	-0.4%	+6	+5
Therapy Professions	397	393	-4	-1.1%	+26	+20
Audiology	3	3	+0	+2.0%	-0	-0
Biochemists	9	10	+0	+3.7%	+1	+0
Clinical Engineering	40	41	+1	+1.7%	-2	-2
Clinical Measurement	77	76	-1	-1.3%	+5	+4
Dosimetrists	2	2				
Medical Laboratory	390	388	-1	-0.3%	+0	-6
Perfusionists	4	4				
Phlebotomists	46	46	-0	-0.3%	+5	+3
Physicists	61	62	+1	+1.0%	-8	-8
Radiation Therapists	147	143	-4	-2.8%	+5	+6
Radiographers	221	219	-3	-1.2%	+10	+13
Health Science/ Diagnostics	1,001	994	-7	-0.7%	+15	+10
Social Workers	87	86	-1	-1.3%	+7	+6
Psychologists	13	13	-1	-4.2%	+0	+0
Pharmacy	243	245	+2	+0.7%	+25	+22
Dental Hygienists	0	0			+0	+0
HSCP Trainees/ Students	14	16	+2	+17.4%	+2	-1
Other Health & Social Care	32	32	+0	+0.0%	+13	+12
H&SC, Other	46	48	+2	+5.3%	+15	+12
Health & Social Care Professionals	1,788	1,779	-9	-0.5%	+87	+71
Executive Management	23	22	-1	-2.4%	+2	+1
Senior Management (VIII & GM)	104	104	+0	+0.2%	+7	+9
Management (VIII & above)	126	126	-0	-0.2%	+9	+10
Administrative/ Supervisory (V to VII)	523	518	-5	-1.0%	+23	+26
Clerical (III & IV)	1,046	1,055	+9	+0.9%	+0	+2
Management & Administrative	1,695	1,699	+4	+0.2%	+32	+37
Catering	91	91	+0	+0.2%	+3	+3
Household Services	351	350	-2	-0.5%	-5	-3
Other Labs & Associated	95	98	+3	+3.3%	+10	+8
Other Support	94	94	+0	+0.2%	-2	-1
Portering	140	141	+1	+0.8%	+4	+3
Support	771	774	+3	+0.4%	+10	+10

Jan 2021 (Dec 2019 figure: 10,819)	WTE Dec 2020	WTE Jan 2021	WTE change since Dec 20	% change since Dec 20	WTE change since Dec 19	WTE change since Jan 20
Overall	11,288	11,273	-14	-0.1%	+455	+426
Maintenance/ Technical	130	129	-1	-0.7%	-1	-2
General Support	901	903	+2	+0.2%	+8	+8
HCA, Nurse's Aide, etc.	1,205	1,207	+2	+0.2%	+50	+49
Health & Social Care Assistants	13	14	+1	+9.1%	+4	+3
Health Care Assistants	1,217	1,220	+3	+0.2%	+54	+53
Care, other	21	21	-0	-2.3%	+0	-1
Patient & Client Care	1,239	1,241	+3	+0.2%	+54	+52

Employment by WTE, Headcount, Gender, Full-Time /Part-Time etc.: Jan 2021

Dublin Midlands Hospital Group	WTE	Headcount	WTE: no.	% Male	% female	Male WTE: no.	Female WTE: no.	% Total Perm	% Male Perm	% Female Perm	% Total Full Time	% Total Part Time	% Male FT	% Female FT
Overall	11,273	12,777	1.13	23.2%	76.8%	1.07	1.15	82.2%	71.8%	85.3%	77.2%	22.8%	92.8%	72.4%
Consultant Anaesthesia	72	80	1.11	60.0%	40.0%	1.08	1.17	78.8%	78.8%	81.3%	83.8%	16.3%	83.3%	84.4%
Consultant Dentistry	2	2	1.02	50.0%	50.0%	1.04	1.00	100.0%	100.0%	100.0%	100.0%	0.0%	100.0%	100.0%
Consultant Emergency Medicine	19	21	1.12	47.6%	52.4%	1.10	1.14	71.4%	71.4%	63.6%	81.0%	19.0%	70.0%	90.9%
Consultant Intensive Care Medicine	2	2	1.00	100.0%		1.00		100.0%	100.0%		100.0%	0.0%	100.0%	
Consultant Medicine	162	171	1.05	55.0%	45.0%	1.02	1.10	75.4%	75.4%	71.4%	89.5%	10.5%	93.6%	84.4%
Consultant Obstetrics & Gynaecology	30	31	1.05	45.2%	54.8%	1.00	1.09	87.1%	87.1%	82.4%	93.5%	6.5%	100.0%	88.2%
Consultant Paediatrics	11	12	1.14	58.3%	41.7%	1.00	1.43	83.3%	83.3%	80.0%	75.0%	25.0%	100.0%	40.0%
Consultant Pathology	53	56	1.05	42.9%	57.1%	1.00	1.10	85.7%	85.7%	75.0%	89.3%	10.7%	100.0%	81.3%
Consultant Psychiatry	7	9	1.23	22.2%	77.8%	1.00	1.32	66.7%	66.7%	57.1%	66.7%	33.3%	100.0%	57.1%
Consultant Radiology	64	65	1.02	64.6%	35.4%	1.03	1.00	87.7%	87.7%	87.0%	96.9%	3.1%	95.2%	100.0%
Consultant Surgery	79	86	1.09	80.2%	19.8%	1.09	1.09	76.7%	76.7%	82.4%	89.5%	10.5%	88.4%	94.1%
Consultants	500	535	1.07	58.5%	41.5%	1.04	1.11	79.4%	81.8%	76.1%	88.8%	11.2%	91.4%	85.1%
Registrar	282	315	1.12	60.0%	40.0%	1.11	1.13	1.0%	1.0%	0.0%	96.5%	3.5%	97.4%	95.2%
Senior Registrar	18	19	1.06	68.4%	31.6%	1.00	1.20	10.5%	10.5%	16.7%	94.7%	5.3%	100.0%	83.3%
Specialist Registrar	220	278	1.26	45.7%	54.3%	1.32	1.22	0.4%	0.4%	0.0%	97.1%	2.9%	98.4%	96.0%
Registrars	520	612	1.18	53.8%	46.2%	1.18	1.18	1.0%	1.5%	0.4%	96.7%	3.3%	97.9%	95.4%
Interns	152	196	1.29	43.9%	56.1%	1.31	1.27	0.0%	0.0%	0.0%	100.0%	0.0%	100.0%	100.0%
Senior House Officer	309	378	1.22	42.6%	57.4%	1.23	1.22	0.0%	0.0%	0.0%	100.0%	0.0%	100.0%	100.0%
SHO/ Interns	461	574	1.25	43.0%	57.0%	1.25	1.24	0.0%	0.0%	0.0%	100.0%	0.0%	100.0%	100.0%
Dentists	1	2	1.38	50.0%	50.0%	1.00	2.22	50.0%	50.0%	0.0%	50.0%	50.0%	100.0%	0.0%
Other Medical	6	8	1.40	25.0%	75.0%	1.39	1.41	50.0%	50.0%	66.7%	37.5%	62.5%	0.0%	50.0%
Medical/ Dental, other	7	10	1.40	30.0%	70.0%	1.23	1.48	50.0%	33.3%	57.1%	40.0%	60.0%	33.3%	42.9%
Medical & Dental	1,487	1,731	1.16	51.5%	48.5%	1.15	1.18	25.2%	29.4%	20.7%	95.0%	5.0%	96.0%	94.0%

Clinical Nurse/ Midwife Manager	820	918	1.12	5.9%	94.1%	1.02	1.13	98.6%	98.6%	98.6%	74.2%	25.8%	96.3%	72.8%
Director Nursing/Midwifery, Assistant	75	78	1.04	7.7%	92.3%	1.01	1.04	100.0%	100.0%	100.0%	89.7%	10.3%	83.3%	90.3%
Director of Nursing/Midwifery	10	11	1.05		100.0%		1.05	81.8%	81.8%	81.8%	90.9%	9.1%		90.9%
Nurse/ Midwife Manager	906	1,007	1.11	6.0%	94.0%	1.02	1.12	98.5%	98.3%	98.5%	75.6%	24.4%	95.0%	74.3%
Advanced Nurse/ Midwife Practitioner	82	87	1.06	8.0%	92.0%	1.05	1.07	96.6%	96.6%	97.5%	86.2%	13.8%	85.7%	86.3%
Clinical Nurse/ Midwife Specialist	145	174	1.20	2.9%	97.1%	1.00	1.21	97.1%	97.1%	97.0%	62.6%	37.4%	100.0%	61.5%
Nurse/ Midwife Specialist & AN/MP	227	261	1.15	4.6%	95.4%	1.03	1.16	96.9%	91.7%	97.2%	70.5%	29.5%	91.7%	69.5%
Nursing Bank	13	21	1.59	9.5%	90.5%	1.92	1.56	100.0%	100.0%	100.0%	33.3%	66.7%	50.0%	31.6%
Staff Midwives	188	218	1.16		100.0%		1.16	93.6%	93.6%	93.6%	51.4%	48.6%		51.4%
Staff Nurse [Psychiatric]	24	26	1.08	26.9%	73.1%	1.10	1.08	100.0%	100.0%	100.0%	92.3%	7.7%	85.7%	94.7%
Staff Nurses [General/ Children's]	2,718	3,034	1.12	10.9%	89.1%	1.03	1.13	95.5%	95.5%	96.0%	74.3%	25.7%	93.7%	71.9%
Staff Nurse/ Staff Midwife	2,943	3,299	1.12	10.3%	89.7%	1.04	1.13	95.4%	90.9%	95.9%	72.7%	27.3%	93.3%	70.3%
Pre-registration Nurse/ Midwife Intern	31	119	3.88	4.2%	95.8%	2.63	3.97	0.0%	0.0%	0.0%	97.5%	2.5%	80.0%	98.2%
Pre-registration Nurse Intern (COVID-19)	5	18	4.00		100.0%		4.00	11.1%	11.1%	11.1%	16.7%	83.3%		16.7%
Post-registration Nurse/ Midwife Student	12	12	1.00		100.0%		1.00	0.0%	0.0%	0.0%	100.0%	0.0%		100.0%
Nursing/ Midwifery awaiting registration	3	3	1.01		100.0%		1.01	100.0%	100.0%	100.0%	100.0%	0.0%		100.0%
Nursing/ Midwifery Student	50	152	3.03	3.3%	96.7%	2.63	3.05	3.3%	0.0%	3.4%	88.2%	11.8%	80.0%	88.4%
Nursing Education/Clinical	32	37	1.14	8.1%	91.9%	1.00	1.15	100.0%	100.0%	100.0%	62.2%	37.8%	100.0%	58.8%
Other Nursing/ Midwifery	6	7	1.24		100.0%		1.24	100.0%	100.0%	100.0%	28.6%	71.4%		28.6%
Nursing/ Midwifery other	38	44	1.15	6.8%	93.2%	1.00	1.17	100.0%	100.0%	100.0%	56.8%	43.2%	100.0%	53.7%
Nursing & Midwifery	4,164	4,763	1.14	8.8%	91.2%	1.04	1.15	93.2%	91.0%	93.5%	73.5%	26.5%	93.3%	71.6%
Dietitians	98	111	1.13		100.0%		1.13	82.0%	82.0%	82.0%	81.1%	18.9%		81.1%
Occupational Therapists	72	79	1.09	8.9%	91.1%	1.00	1.10	79.7%	79.7%	81.9%	82.3%	17.7%	100.0%	80.6%
Orthoptists	2	2	1.26		100.0%		1.26	100.0%	100.0%	100.0%	50.0%	50.0%		50.0%
Physiotherapists	173	196	1.14	15.8%	84.2%	1.10	1.14	82.1%	82.1%	83.6%	78.6%	21.4%	87.1%	77.0%
Podiatrists & Chiropodists	3	5	1.44	40.0%	60.0%	1.34	1.51	100.0%	100.0%	100.0%	40.0%	60.0%	50.0%	33.3%
Speech & Language Therapists	45	54	1.21	1.9%	98.1%	1.59	1.21	72.2%	72.2%	73.6%	72.2%	27.8%	0.0%	73.6%
Therapy Professions	393	447	1.14	9.2%	90.8%	1.10	1.14	80.8%	70.7%	81.8%	78.5%	21.5%	85.4%	77.8%
Audiology	3	5	1.63		100.0%		1.63	100.0%	100.0%	100.0%	60.0%	40.0%		60.0%

Biochemists	10	11	1.16	45.5%	54.5%	1.11	1.20	72.7%	72.7%	100.0%	72.7%	27.3%	80.0%	66.7%
Clinical Engineering	41	42	1.03	78.6%	21.4%	1.00	1.13	97.6%	97.6%	88.9%	95.2%	4.8%	100.0%	77.8%
Clinical Measurement	76	83	1.09	24.1%	75.9%	1.07	1.10	92.8%	92.8%	93.7%	85.5%	14.5%	95.0%	82.5%
Dosimetrists	2	2	1.00		100.0%		1.00	100.0%	100.0%	100.0%	100.0%	0.0%		100.0%
Medical Laboratory	388	427	1.10	20.4%	79.6%	1.06	1.11	97.0%	97.0%	97.9%	81.3%	18.7%	90.8%	78.8%
Perfusionists	4	5	1.17	60.0%	40.0%	1.00	1.56	100.0%	100.0%	100.0%	60.0%	40.0%	100.0%	0.0%
Phlebotomists	46	52	1.13	26.9%	73.1%	1.07	1.16	94.2%	94.2%	92.1%	59.6%	40.4%	71.4%	55.3%
Physicists	62	63	1.02	57.1%	42.9%	1.00	1.04	95.2%	95.2%	96.3%	96.8%	3.2%	100.0%	92.6%
Radiation Therapists	143	152	1.06	13.8%	86.2%	1.00	1.08	75.0%	75.0%	77.9%	81.6%	18.4%	100.0%	78.6%
Radiographers	219	236	1.08	24.2%	75.8%	1.02	1.10	97.9%	97.9%	97.8%	87.7%	12.3%	98.2%	84.4%
Health Science/ Diagnostics	994	1,078	1.08	25.6%	74.4%	1.03	1.10	93.3%	91.7%	93.9%	83.2%	16.8%	94.6%	79.3%
Social Workers	86	93	1.08	11.8%	88.2%	1.01	1.09	86.0%	90.9%	85.4%	88.2%	11.8%	100.0%	86.6%
Psychologists	13	15	1.17	20.0%	80.0%	1.29	1.14	93.3%	100.0%	91.7%	66.7%	33.3%	66.7%	66.7%
Pharmacy	245	264	1.08	12.1%	87.9%	1.03	1.08	78.0%	78.1%	78.0%	84.1%	15.9%	96.9%	82.3%
Dental Hygienists	0	1	11.11		100.0%		11.11	100.0%	100.0%	100.0%	0.0%	100.0%		0.0%
HSCP Trainees/ Students	16	17	1.03	29.4%	70.6%	1.00	1.05	5.9%	5.9%	8.3%	100.0%	0.0%	100.0%	100.0%
Other Health & Social Care	32	34	1.07	29.4%	70.6%	1.00	1.10	88.2%	88.2%	83.3%	85.3%	14.7%	100.0%	79.2%
H&SC, Other	48	52	1.08	28.8%	71.2%	1.00	1.11	61.5%	66.7%	59.5%	88.5%	11.5%	100.0%	83.8%
Health & Social Care	1,779	1,949	1.10	19.4%	80.6%	1.04	1.11	87.2%	87.3%	87.1%	82.5%	17.5%	93.9%	79.8%
Executive Management	22	22	1.00	54.5%	45.5%	1.00	1.00	95.5%	95.5%	90.0%	100.0%	0.0%	100.0%	100.0%
Senior Management (VIII & GM)	104	106	1.02	34.9%	65.1%	1.00	1.03	99.1%	99.1%	98.6%	97.2%	2.8%	100.0%	95.7%
Management (VIII & above)	126	128	1.02	38.3%	61.7%	1.00	1.03	98.4%	100.0%	97.5%	97.7%	2.3%	100.0%	96.2%
Administrative/ Supervisory (V to VII)	518	554	1.07	24.0%	76.0%	1.01	1.09	96.0%	93.2%	96.9%	80.5%	19.5%	97.7%	75.1%
Clerical (III & IV)	1,055	1,246	1.18	14.6%	85.4%	1.06	1.21	87.2%	81.9%	88.1%	63.2%	36.8%	90.7%	58.5%
Management & Administrative	1,699	1,928	1.13	18.9%	81.1%	1.03	1.16	90.5%	88.5%	90.9%	70.4%	29.6%	94.5%	64.8%
Catering	91	96	1.06	27.1%	72.9%	1.01	1.07	96.9%	96.9%	98.6%	82.3%	17.7%	96.2%	77.1%
Household Services	350	436	1.25	19.0%	81.0%	1.15	1.27	89.2%	89.2%	94.9%	43.3%	56.7%	45.8%	42.8%
Other Labs & Associated	98	103	1.05	33.0%	67.0%	1.02	1.06	82.5%	82.5%	85.5%	90.3%	9.7%	100.0%	85.5%
Other Support	94	104	1.10	41.3%	58.7%	1.00	1.18	98.1%	98.1%	98.4%	78.8%	21.2%	97.7%	65.6%
Portering	141	148	1.05	89.2%	10.8%	1.03	1.22	89.9%	89.9%	81.3%	89.2%	10.8%	92.4%	62.5%

Support	774	887	1.15	35.9%	64.1%	1.05	1.21	90.4%	83.6%	94.2%	64.8%	35.2%	82.1%	55.2%
Maintenance	123	125	1.02	98.4%	1.6%	1.02	1.00	99.2%	99.2%	100.0%	99.2%	0.8%	99.2%	100.0%
Technical Services	6	6	1.00	100.0%		1.00		100.0%	100.0%		100.0%	0.0%	100.0%	
Maintenance/ Technical	129	131	1.02	98.5%	1.5%	1.02	1.00	99.2%	99.2%	100.0%	99.2%	0.8%	99.2%	100.0%
General Support	903	1,018	1.13	43.9%	56.1%	1.04	1.20	91.6%	88.1%	94.2%	69.3%	30.7%	87.0%	55.3%
HCA, Nurse's Aide, etc.	1,207	1,347	1.12	33.3%	66.7%	1.05	1.15	90.0%	90.0%	87.5%	75.3%	24.7%	90.4%	67.7%
Health & Social Care Assistants	14	14	1.02	42.9%	57.1%	1.05	1.00	92.9%	92.9%	87.5%	100.0%	0.0%	100.0%	100.0%
Health Care Assistants	1,220	1,361	1.12	33.4%	66.6%	1.05	1.15	90.0%	94.9%	87.5%	75.5%	24.5%	90.5%	68.0%
Other Care Grades	21	27	1.30	48.1%	51.9%	1.40	1.22	81.5%	81.5%	100.0%	55.6%	44.4%	46.2%	64.3%
Care, other	21	27	1.30	48.1%	51.9%	1.40	1.22	81.5%	61.5%	100.0%	55.6%	44.4%	46.2%	64.3%
Patient & Client Care	1,241	1,388	1.12	33.7%	66.3%	1.06	1.15	89.8%	94.0%	87.7%	75.1%	24.9%	89.3%	67.9%

Employment by WTE, Headcount, Gender, Full-Time /Part-Time etc.: Jan 2021

Dublin Midlands Hospital Group	WTE	Headcount	WTE: no.	% Male	% female	Male WTE: no.	Female WTE: no.	% Total Perm	% Male Perm	% Female Perm	% Total Full Time	% Total Part Time	% Male FT	% Female FT
Overall	11,273	12,777	1.13	23.2%	76.8%	1.07	1.15	82.2%	71.8%	85.3%	77.2%	22.8%	92.8%	72.4%
Hospital Group HQ	42	44	1.05	18.2%	81.8%	1.19	1.03	86.4%	86.4%	86.1%	93.2%	6.8%	87.5%	87.5%
MRH Tullamore	1,139	1,266	1.11	22.0%	78.0%	1.04	1.13	82.9%	82.9%	86.6%	78.0%	22.0%	96.4%	96.4%
MRH Portlaoise	775	870	1.12	19.9%	80.1%	1.02	1.15	78.9%	78.9%	83.5%	71.1%	28.9%	98.8%	98.8%
St. James's	4,264	4,861	1.14	24.9%	75.1%	1.08	1.16	83.5%	83.5%	85.9%	80.7%	19.3%	93.7%	93.7%
St. Luke's Rathgar	539	571	1.06	25.7%	74.3%	1.01	1.08	79.5%	79.5%	80.9%	84.8%	15.2%	97.3%	97.3%
Naas General	781	899	1.15	20.2%	79.8%	1.09	1.17	86.0%	86.0%	89.4%	75.1%	24.9%	94.0%	94.0%
Coombe Women & Infants University	922	1,039	1.13	13.2%	86.8%	1.04	1.14	84.3%	84.3%	86.6%	66.5%	33.5%	87.6%	87.6%
Tallaght University	2,812	3,227	1.15	25.8%	74.2%	1.09	1.17	79.5%	79.5%	83.5%	75.6%	24.4%	88.7%	88.7%

Dublin Midlands Hospital Group Employment by Grade Group & Staff Category: January 2021

Jan 2021 (Dec 2018 figure: 10,424)	WTE Dec 2015	WTE Dec 2016	WTE Dec 2017	WTE Dec 2018	WTE Dec 2019	WTE Dec 2020	WTE Jan 2021
Overall	9,663	10,072	10,301	10,424	10,819	11,288	11,273
Consultant Anaesthesia	4.9%	5.0%	4.9%	4.8%	4.8%	4.8%	4.8%
Consultant Dentistry	0.2%	0.2%	0.2%	0.1%	0.1%	0.1%	0.1%
Consultant Emergency Medicine	1.4%	1.4%	1.4%	1.4%	1.3%	1.3%	1.3%
Consultant Intensive Care Medicine				0.2%	0.1%	0.1%	0.1%
Consultant Medicine	9.9%	10.2%	10.4%	10.4%	10.5%	10.8%	10.9%
Consultant Obstetrics & Gynaecology	2.1%	1.8%	1.8%	1.9%	1.9%	2.1%	2.0%
Consultant Paediatrics	0.6%	0.5%	0.7%	0.8%	0.7%	0.7%	0.7%
Consultant Pathology	3.8%	3.6%	3.7%	3.6%	3.5%	3.5%	3.6%
Consultant Psychiatry	0.3%	0.3%	0.3%	0.3%	0.5%	0.5%	0.5%
Consultant Radiology	3.9%	3.9%	4.2%	4.4%	4.4%	4.3%	4.3%
Consultant Surgery	5.8%	5.6%	5.5%	5.6%	5.5%	5.3%	5.3%
Consultants	32.8%	32.4%	33.1%	33.5%	33.5%	33.6%	33.6%
Registrar	16.6%	17.6%	16.7%	17.5%	17.6%	18.6%	18.9%
Senior Registrar	1.9%	2.4%	1.4%	1.5%	1.4%	1.3%	1.2%
Specialist Registrar	15.6%	15.1%	16.3%	16.1%	16.4%	15.1%	14.8%
Registrars	34.0%	35.0%	34.4%	35.1%	35.4%	34.9%	34.9%
Interns	9.8%	9.4%	9.3%	8.9%	8.7%	10.2%	10.2%
Senior House Officer	22.7%	22.6%	22.6%	22.0%	21.9%	20.7%	20.7%
SHO/ Interns	32.5%	32.0%	31.9%	30.9%	30.6%	31.0%	31.0%
Dentists			0.1%	0.1%	0.1%	0.1%	0.1%
Other Medical	0.7%	0.5%	0.5%	0.4%	0.4%	0.4%	0.4%
Medical/ Dental, other	0.7%	0.5%	0.6%	0.5%	0.5%	0.5%	0.5%
Medical & Dental	12.4%	12.4%	12.4%	12.8%	12.8%	13.2%	13.2%
Clinical Nurse/ Midwife Manager	18.6%	19.5%	20.1%	20.6%	19.9%	19.7%	19.7%
Director Nursing/Midwifery, Assistant	1.7%	1.8%	2.0%	2.0%	1.8%	1.8%	1.8%
Director of Nursing/Midwifery	0.2%	0.2%	0.2%	0.3%	0.3%	0.2%	0.3%
Nurse/ Midwife Manager	20.5%	21.5%	22.3%	22.9%	22.0%	21.8%	21.8%
Advanced Nurse/ Midwife Practitioner	0.8%	0.9%	0.8%	1.2%	1.6%	2.0%	2.0%
Clinical Nurse/ Midwife Specialist	3.8%	3.9%	3.3%	3.7%	3.6%	3.7%	3.5%
Nurse/ Midwife Specialist & AN/MP	4.6%	4.8%	4.2%	4.9%	5.1%	5.5%	5.5%
Graduate Nursing/ Midwifery	0.4%						
Nursing Bank	2.4%	1.1%	1.1%	0.6%	0.6%	0.4%	0.3%
Staff Midwives	5.4%	5.0%	5.5%	5.5%	4.9%	4.5%	4.5%
Staff Nurse [Psychiatric]	0.6%	0.7%	0.6%	0.6%	0.5%	0.6%	0.6%
Staff Nurses [General/ Children's]	64.4%	65.2%	65.2%	64.2%	65.0%	65.1%	65.3%
Staff Nurse/ Staff Midwife	73.2%	72.0%	72.3%	70.9%	71.0%	70.7%	70.7%
Pre-registration Nurse/ Midwife Intern	0.3%	0.2%	0.2%	0.3%	0.2%	0.0%	0.7%
Pre-registration Nurse Intern (COVID-19)						0.7%	0.1%
Post-registration Nurse/ Midwife Student	0.3%	0.3%	0.3%	0.2%	0.3%	0.3%	0.3%
Nursing/ Midwifery awaiting registration	0.3%	0.5%	0.1%	0.2%	0.5%	0.1%	0.1%
Nursing/ Midwifery Student	0.9%	1.0%	0.6%	0.6%	1.0%	1.2%	1.2%
Nursing Education/Clinical	0.7%	0.7%	0.6%	0.6%	0.8%	0.8%	0.8%
Other Nursing/ Midwifery	0.1%	0.1%	0.1%	0.1%	0.1%	0.1%	0.1%
Nursing/ Midwifery other	0.8%	0.8%	0.7%	0.7%	0.9%	0.9%	0.9%
Nursing & Midwifery	36.8%	36.3%	36.8%	36.5%	36.9%	36.9%	36.9%
Dietitians	5.4%	5.4%	5.2%	5.5%	5.6%	5.5%	5.5%
Occupational Therapists	3.8%	3.7%	4.1%	3.9%	4.0%	4.2%	4.1%
Orthoptists	0.1%	0.1%	0.1%	0.1%	0.1%	0.1%	0.1%
Physiotherapists	9.9%	9.7%	10.2%	9.8%	9.5%	9.7%	9.7%
Podiatrists & Chiropodists	0.2%	0.2%	0.2%	0.2%	0.2%	0.2%	0.2%
Speech & Language Therapists	2.4%	2.3%	2.4%	2.4%	2.3%	2.5%	2.5%

Jan 2021 (Dec 2018 figure: 10,424)	WTE Dec 2015	WTE Dec 2016	WTE Dec 2017	WTE Dec 2018	WTE Dec 2019	WTE Dec 2020	WTE Jan 2021
Overall	9,663	10,072	10,301	10,424	10,819	11,288	11,273
Therapy Professions	21.8%	21.5%	22.2%	21.8%	21.7%	22.1%	22.1%
Audiology	0.3%	0.3%	0.2%	0.2%	0.2%	0.2%	0.2%
Biochemists	0.5%	0.4%	0.5%	0.5%	0.5%	0.5%	0.5%
Clinical Engineering	2.4%	2.3%	2.6%	2.5%	2.6%	2.2%	2.3%
Clinical Measurement	4.3%	4.3%	4.2%	3.6%	4.2%	4.3%	4.3%
Dosimetrists	0.3%	0.3%	0.1%	0.1%	0.1%	0.1%	0.1%
Medical Laboratory	24.7%	24.7%	23.9%	23.3%	22.9%	21.8%	21.8%
Perfusionists	0.3%	0.3%	0.3%	0.3%	0.3%	0.2%	0.2%
Phlebotomists	2.0%	2.4%	2.5%	2.4%	2.4%	2.6%	2.6%
Physicists	3.2%	3.4%	3.7%	4.2%	4.1%	3.4%	3.5%
Radiation Therapists	8.1%	8.2%	8.1%	8.0%	8.2%	8.2%	8.0%
Radiographers	12.9%	12.0%	11.4%	12.0%	12.3%	12.4%	12.3%
Health Science/ Diagnostics	58.9%	58.5%	57.4%	57.1%	57.8%	55.9%	55.9%
Social Workers	4.6%	4.9%	5.1%	5.0%	4.7%	4.8%	4.8%
Psychologists	1.1%	1.1%	1.0%	0.8%	0.7%	0.7%	0.7%
Pharmacy	11.2%	11.6%	11.9%	12.8%	13.0%	13.8%	13.8%
Dental Hygienists	0.0%	0.0%	0.0%	0.0%	0.0%	0.0%	0.0%
HSCP Trainees/ Students	1.0%	1.2%	1.3%	1.2%	0.9%	0.8%	0.9%
Other Health & Social Care	1.4%	1.2%	1.2%	1.2%	1.1%	1.8%	1.8%
H&SC, Other	2.4%	2.4%	2.5%	2.4%	2.0%	2.7%	2.7%
Health & Social Care Professionals	15.7%	15.8%	15.7%	15.9%	15.6%	15.8%	15.8%
Executive Management	0.8%	0.9%	0.9%	1.2%	1.2%	1.3%	1.3%
Senior Management (VIII & GM)	4.1%	4.5%	5.3%	5.7%	5.8%	6.1%	6.1%
Management (VIII & above)	5.0%	5.4%	6.2%	6.9%	7.0%	7.4%	7.4%
Administrative/ Supervisory (V to VII)	27.2%	27.6%	27.9%	28.7%	29.7%	30.5%	30.5%
General Administrative (III & IV)	67.8%	67.0%	65.9%	64.4%	63.3%	61.7%	62.1%
Clerical (III & IV)	67.8%	67.0%	65.9%	64.4%	63.3%	62.1%	62.1%
Management & Administrative	14.9%	15.4%	15.3%	15.6%	15.4%	15.1%	15.1%
Catering	9.3%	9.5%	9.9%	9.9%	9.9%	10.1%	10.1%
Household Services	38.5%	39.2%	38.9%	39.0%	39.7%	39.0%	38.7%
Other Labs & Associated	8.0%	8.7%	9.4%	9.4%	9.8%	10.6%	10.9%
Other Support	12.0%	11.7%	12.1%	11.3%	10.8%	10.4%	10.4%
Portering	16.4%	16.5%	15.5%	15.9%	15.3%	15.5%	15.6%
Support	84.2%	85.6%	85.7%	85.5%	85.5%	85.7%	85.7%
Maintenance	15.6%	14.2%	14.0%	14.1%	14.2%	13.7%	13.6%
Technical Services	0.2%	0.2%	0.2%	0.3%	0.3%	0.7%	0.7%
Maintenance/ Technical	15.8%	14.4%	14.3%	14.5%	14.5%	14.3%	14.3%
General Support	8.8%	8.8%	8.6%	8.3%	8.3%	8.0%	8.0%
HCA, Nurse's Aide, etc.	97.5%	97.6%	97.4%	97.4%	97.4%	97.3%	97.2%
Health & Social Care Assistants	0.5%	0.6%	0.9%	0.8%	0.8%	1.0%	1.1%
Health Care Assistants	98.1%	98.2%	98.4%	98.2%	98.3%	98.3%	98.3%
Other Care Grades	1.9%	1.8%	1.6%	1.8%	1.7%	1.7%	1.7%
Care, other	1.9%	1.8%	1.6%	1.8%	1.7%	1.7%	1.7%
Patient & Client Care	11.4%	11.4%	11.1%	11.0%	11.0%	11.0%	11.0%
Total	100%	100%	100%	100%	100%	100%	100%

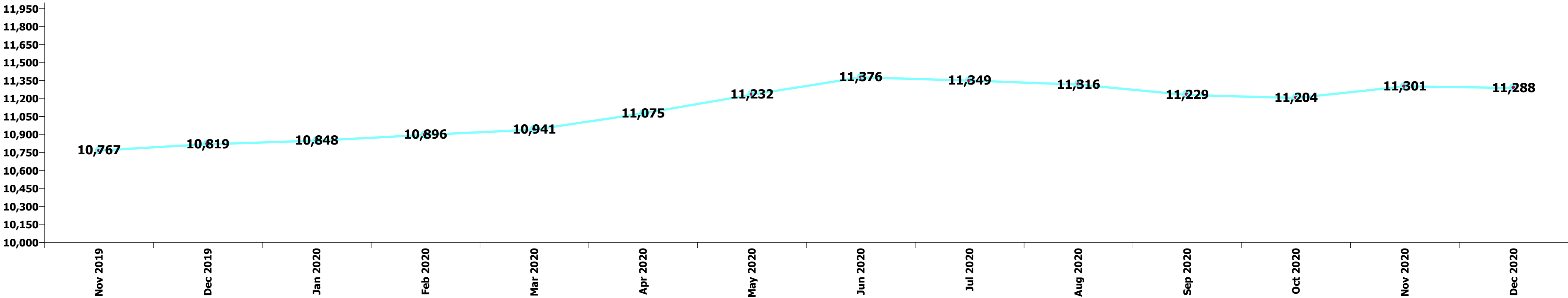
Summary Staff Movement: January 2021

Month-on-month Summary

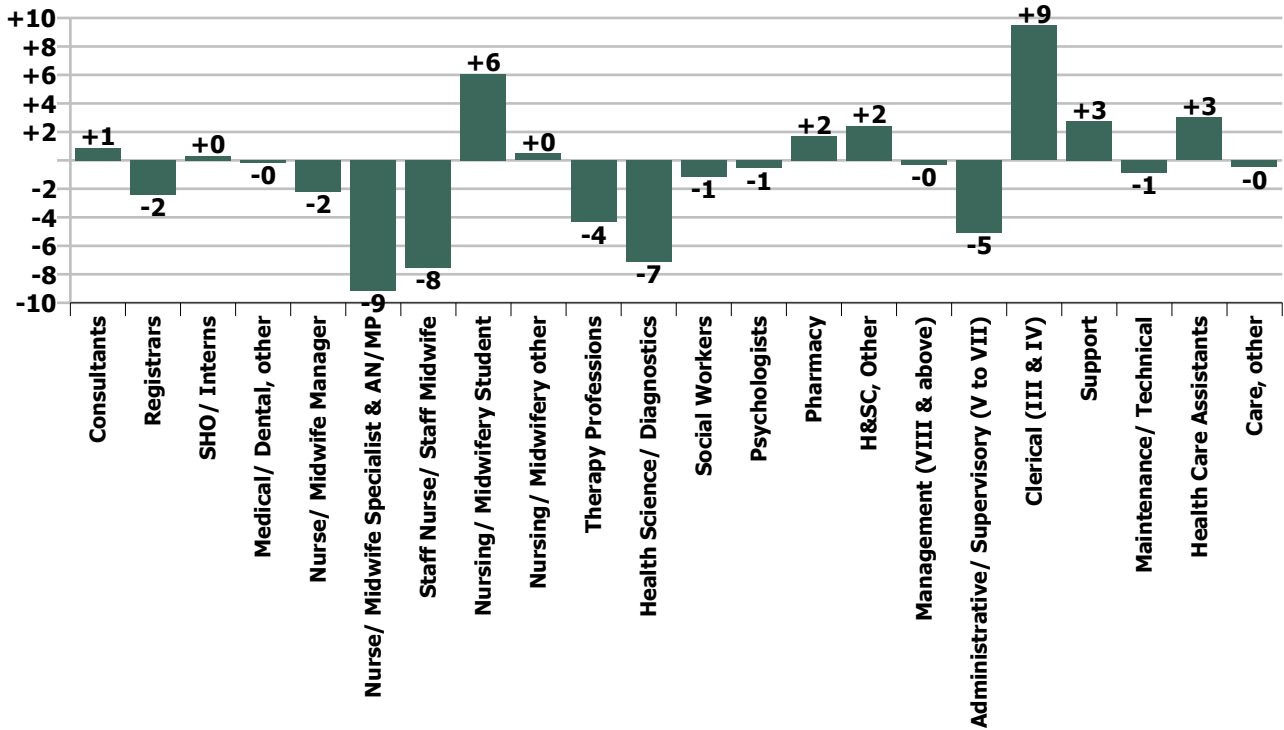
WTE change since Dec 20	% change since Dec 20	overall	Consultants	Registrars	SHO/ Interns	Medical/ Dental, other	Medical & Dental	Nurse/ Midwife Manager	Nurse/ Midwife Specialist & AN/MP	Staff Nurse/ Staff Midwife	Nursing/ Midwifery Student	Nursing/ Midwifery other	Nursing & Midwifery	Therapy Professions	Health Science/ Diagnostics	Social Workers	Psychologists	Pharmacy	H&SC, Other	Health & Social Care Professionals	Management (VIII & above)	Administrativ e/ Supervisory (V to VII)	Clerical (III & IV)	Management & Administrativ e	General Support	Health Care Assistants	Care, other	Patient & Client Care
Overall	-0.1%	-14	+1	-2	+0	-0	-1	-2	-9	-8	+6	+0	-12	-4	-7	-1	-1	+2	+2	-9	-0	-5	+9	+4	+2	+3	-0	+3
Hospital Group HQ	+5.1%	+2																			+1	+0	+1	+2				
MRH Tullamore	-0.6%	-7	-0	+1	-0	-0	-0	-3	-1	-2	-2		-8	-3	+0			-1	+2	-1	+0	+0	+1	+2	+0	+0		+0
MRH Portlaoise	-0.7%	-5	-0	+1	-4		-3	-1	-0	+1	+0	-0	+0	+0	+0	-1		+0		-0		-2	+0	-2	+1	-1		-1
St. James's	-0.0%	-2	+0	-3	-0	+0	-3	-6	-4	-0	-0	+0	-11	-1	-0	-1	-1	+1	+0	-1	-0	-1	+6	+4	-1	+10	+0	+10
St. Luke's Rathgar	-0.7%	-4		+2			+2			-0			-0		-3					-3		-2		-2	-1			
Naas General	+0.5%	+4	-0	-0	+0		-0	+3	-1	+1			+2	+1	-0	+0		-0		+0	-1	+1	+1	+1	+3	-1	-1	-2
Coombe Women & Infants University	-0.4%	-3	+1	-2	+1		-1	+0	+0	-2	+5	+1	+4	-0	-2					-3	+1	-1	-1	-1	-3	-0		-0
Tallaght University	+0.0%	+0	+0	-0	+4		+4	+5	-3	-5	+3		-0	-1	-1	-1		+1		-1	-1	-1	+1	-1	+3	-4	+0	-4
			+0.2%	-0.5%	+0.1%	-2.1%	-0.1%	-0.2%	-3.9%	-0.3%	+13.8%	+1.3%	-0.3%	-1.1%	-0.7%	-1.3%	-4.2%	+0.7%	+5.3%	-0.5%	-0.2%	-1.0%	+0.9%	+0.2%	+0.2%	+0.2%	-2.3%	+0.2%

Year-on-year Summary

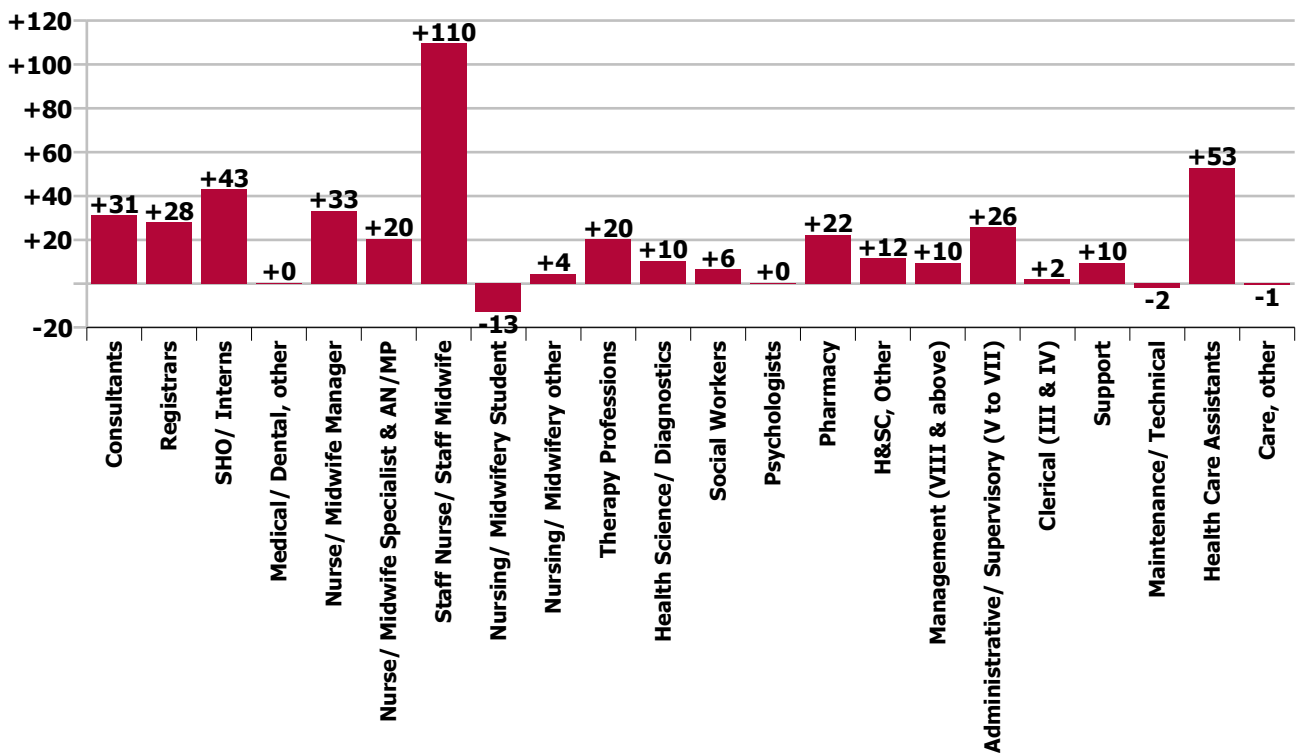
WTE change since Jan 20	% change since Jan 20	overall	Consultants	Registrars	SHO/ Interns	Medical/ Dental, other	Medical & Dental	Nurse/ Midwife Manager	Nurse/ Midwife Specialist & AN/MP	Staff Nurse/ Staff Midwife	Nursing/ Midwifery Student	Nursing/ Midwifery other	Nursing & Midwifery	Therapy Professions	Health Science/ Diagnostics	Social Workers	Psychologists	Pharmacy	H&SC, Other	Health & Social Care Professionals	Management (VIII & above)	Administrativ e/ Supervisory (V to VII)	Clerical (III & IV)	Management & Administrativ e	General Support	Health Care Assistants	Care, other	Patient & Client Care
Overall	+3.9%	+426	+31	+28	+43	+0	+102	+33	+20	+110	-13	+5	+155	+20	+10	+6	+0	+22	+12	+71	+10	+26	+2	+37	+8	+53	-1	+52
Hospital Group HQ	+21.1%	+7																			+2	+1	+4	+7				
MRH Tullamore	+3.6%	+40	-1	+4	+2	-0	+5	-1	+1	+16	-6	+1	+11	+0	+7			+7	-1	+14		+5	-0	+5	+1	+4		+4
MRH Portlaoise	+4.5%	+34	+1	+2	+2		+5	+1	+3	+13	+0	-0	+18	+5	+4			+1	+1	+10	+1	+0	-7	-5	+5	+2		+2
St. James's	+4.5%	+183	+15	+19	+22	+1	+56	-2	+11	+52	-5	+2	+58	+13	-18	+2	-1	+13	+9	+17	+2	+9	+12	+23	-5	+34	+0	+35
St. Luke's Rathgar	-1.3%	-7	-2	-1	-1		-4	+6	+1	-4			+3	+1	+8			-1	+3	+11	-1		-8	-9	-3	-5		-5
Naas General	+3.2%	+24	-1	+2	-1		+0	+7	-3	+6		+1	+10	+3	+2	+1		+2		+8	+0	+9	-12	-3	+7	+3	-1	+2
Coombe Women & Infants University	+2.6%	+23	+5	+1	+2		+7	+9	+1	-4	-4	+0	+2	+0	-1	+3	+0			+3	+1	-0	+5	+6	+0	+5	-1	+5
Tallaght University	+4.5%	+121	+14	+2	+17		+33	+14	+7	+31	+2		+53	-2	+9	+1	+1	+0		+8	+4	+3	+8	+14	+3	+9	+1	+10
			+6.6%	+5.7%	+10.3%	+5.8%	+7.4%	+3.8%	+9.9%	+3.9%	-20.4%	+13.4%	+3.9%	+5.4%	+1.1%	+8.1%	+2.1%	+10.0%	+31.6%	+4.2%	+8.2%	+5.2%	+0.2%	+2.2%	+0.9%	+4.5%	-2.9%	+4.4%



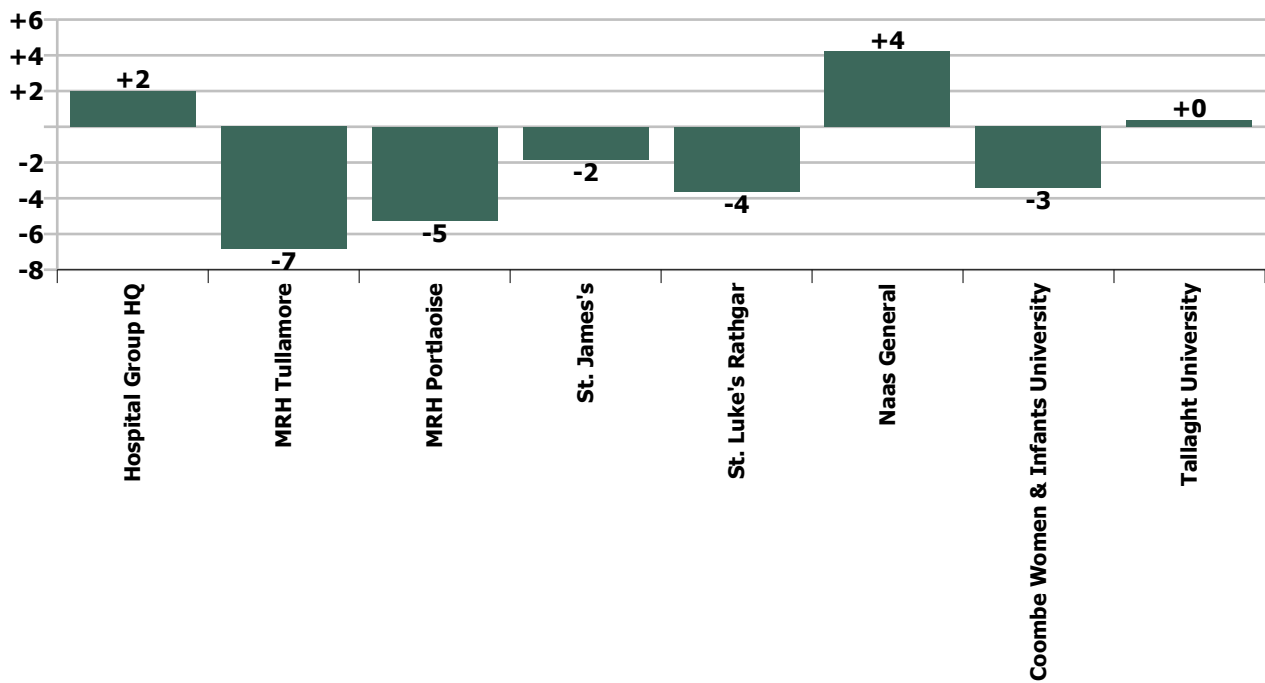
Staff Group change since: Dec 2020



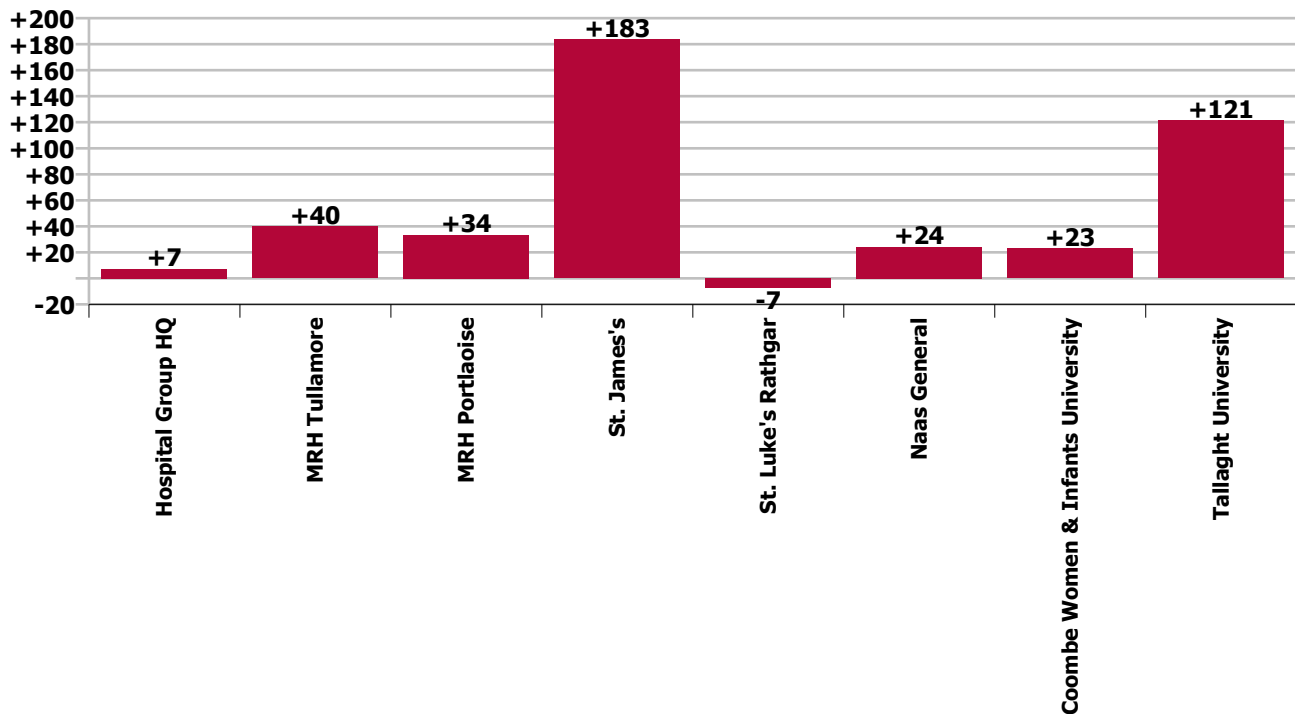
Staff Group change since: Jan 2020



Hospital change since: Dec 2020



Hospital change since: Jan 2020



Longitudinal Employment Levels by Grade Group - Oct 2013 to Jan 2021

Jan 2021 (Dec 2015 figure: 9,663)	WTE Jan 2021	WTE change since Dec 15	WTE change since Dec 17	WTE change since Dec 18	WTE change since Dec 20	% change since Dec 15	% change since Dec 17	% change since Dec 18	% change since Dec 20
Overall	11,273	+1,610	+972	+850	-14	+16.7%	+9.4%	+8.2%	-0.1%
Consultant Anaesthesia	72	+13	+9	+8	+0	+21.6%	+14.0%	+12.2%	+0.6%
Consultant Orthodontist	2	-0	-0	+1	+0	-2.0%	-2.0%	+44.1%	+2.1%
Consultant Dentistry	2	-0	-0	+1	+0	-2.0%	-2.0%	+44.1%	+2.1%
Consultant in Emergency Medicine	19	+3	+1	-0	-1	+15.6%	+4.4%	-1.1%	-6.3%
Consultant Emergency Medicine	19	+3	+1	-0	-1	+15.6%	+4.4%	-1.1%	-6.3%
Consultant Intensivist	2	+2	+2			-100.0%	-100.0%		
Consultant Intensive Care Medicine	2	+2	+2			-100.0%	-100.0%		
Consultant Cardiologist	13	+1	-1	-0	-0	+7.6%	-8.3%	-2.7%	-0.1%
Consultant Clinical Neurophysiologist	2								
Consultant Dermatologist	8	+2	+1	+1		+23.6%	+9.5%	+9.5%	
Consultant Gastroenterologist & General Physician	15	+6	+3	+3		+70.1%	+30.3%	+25.0%	
Consultant General Physician	33	+8	+2	+2	+0	+30.2%	+8.0%	+6.2%	+1.4%
Consultant in Palliative Medicine	2								
Consultant in Rehabilitation Medicine	1								
Consultant Medical Oncologist	13	+4	+4	+2	+1	+40.9%	+40.9%	+20.8%	+6.6%
Consultant Nephrologist & General Physician	6	+1	+1	+1		+20.0%	+20.0%	+20.0%	
Consultant Neurologist	11	+4	+3	+2	-0	+50.1%	+33.7%	+20.1%	-0.1%
Consultant Physician in Clinical Pharmacology & Therapeutics		-1	-1	-0		-100.0%	-100.0%	-100.0%	-100.0%
Consultant Physician in Endocrinology	7	+1	+2	+1		+16.7%	+40.0%	+7.7%	
Consultant Physician in Genito-Urinary Medicine	1	+0				+29.9%			
Consultant Physician in Geriatric Medicine	20	+5	+3	+1	+0	+29.0%	+15.6%	+5.3%	+0.2%
Consultant Physician in Infectious Diseases	14	+10	+10	+10	-0	+264.9%	+267.8%	+249.9%	-1.4%
Consultant Respiratory & General Physician	11	+4	+3	+2	+0	+50.0%	+31.3%	+16.7%	+0.1%
Consultant Rheumatologist & General Physician	7	+1		+1	-0	+8.0%		+8.0%	-0.0%
Consultant Medicine	162	+43	+29	+23	+1	+36.6%	+22.0%	+16.6%	+0.7%
Consultant Obstetrician & Gynaecologist	29	+5	+7	+4	-1	+19.2%	+30.0%	+14.6%	-3.3%
Master (Maternity Hospital)	1								
Consultant Obstetrics & Gynaecology	30	+5	+7	+4	-1	+18.4%	+28.7%	+14.0%	-3.2%
Consultant Neonatologist	7	+3	+1	-1	+1	+75.0%	+16.7%	-8.5%	+7.7%
Consultant Paediatrician	4	+1	+1	+1		+16.7%	+16.7%	+16.7%	
Consultant Paediatrics	11	+4	+2	-0	+1	+50.0%	+16.7%	-1.4%	+5.0%
Consultant Chemical Pathologist	3	+0	-1			+19.6%	-16.7%		
Consultant Haematologist (Clinical & Laboratory)	19	+4	+4	+3	-1	+24.3%	+29.2%	+16.6%	-3.0%

Jan 2021 (Dec 2015 figure: 9,663)	WTE Jan 2021	WTE change since Dec 15	WTE change since Dec 17	WTE change since Dec 18	WTE change since Dec 20	% change since Dec 15	% change since Dec 17	% change since Dec 18	% change since Dec 20
Overall	11,273	+1,610	+972	+850	-14	+16.7%	+9.4%	+8.2%	-0.1%
Consultant Histopathologist	22	+3	+3	+2	+1	+15.2%	+14.1%	+11.5%	+6.9%
Consultant Immunologist (Clinical & Laboratory)	1	-1	-1	-1		-38.7%	-38.7%	-38.7%	
Consultant Microbiologist	9	+2	+1	+1		+21.4%	+6.3%	+15.5%	
Consultant Pathology	53	+8	+6	+5	+1	+17.5%	+13.6%	+11.5%	+1.6%
Consultant General Adult Psychiatrist	7	+4	+3	+3	-0	+113.8%	+65.3%	+73.2%	-0.4%
Consultant Psychiatry	7	+4	+3	+3	-0	+113.8%	+65.3%	+73.2%	-0.4%
Consultant Radiation Oncologist	18	+10	+2			+111.8%	+12.5%		
Consultant Radiologist	46	+8	+8	+6		+21.3%	+19.9%	+13.6%	
Consultant Radiology	64	+18	+10	+6		+37.9%	+17.7%	+9.4%	
Consultant Cardio-thoracic Surgeon	4	-1		-2		-20.0%		-33.3%	
Consultant General Surgeon	26	+8	+8	+7	+1	+43.6%	+40.7%	+35.0%	+2.3%
Consultant General Surgeon Gastro-intestinal	1								
Consultant General Surgeon s.i. vascular surgery	6	-1	-1	-1		-14.3%	-14.3%	-14.3%	
Consultant Ophthalmic Surgeon	0	+0	+0	+0		+147.1%	+100.0%	-100.0%	
Consultant Oral & Maxillo Facial Surgeon	2	+2	+1	+2	-0	-100.0%	+96.0%	-100.0%	-2.0%
Consultant Oral Surgeon	2	-1	-1	-1	-1	-33.3%	-33.3%	-33.3%	-20.0%
Consultant Orthopaedic Surgeon	17	+1	-1	-1	-0	+7.0%	-4.0%	-6.7%	-0.9%
Consultant Otolaryngologist	9								
Consultant Plastic Surgeon	5	-0	+0	-1	+0	-8.3%	+3.3%	-15.5%	+3.3%
Consultant Urologist	7	+1	+2	+2	+0	+22.8%	+52.0%	+30.5%	+3.3%
Consultant Surgery	79	+9	+9	+5	+0	+13.1%	+12.1%	+6.3%	+0.3%
Consultants	500	+107	+76	+54	+1	+27.3%	+18.0%	+12.0%	+0.2%
Registrar	1	-147	-66	-7		-99.3%	-98.3%	-86.0%	
Registrar, Anaesthesia	30	+22	+12	+7	-3	+278.8%	+68.8%	+28.9%	-9.0%
Registrar, Emergency Medicine	34	+32	+21	+11	+2	+1621.0%	+165.8%	+46.9%	+5.9%
Registrar, General Practice		-2	-2	-2		-100.0%	-100.0%	-100.0%	-100.0%
Registrar, Medicine	130	+123	+70	+26	+4	+1751.0%	+116.9%	+25.2%	+3.2%
Registrar, Obstetrics & Gynaecology	15	+7	+6	+2	-1	+91.8%	+67.3%	+18.0%	-4.1%
Registrar, Paediatrics	8	-1	+1	-1	+2	-13.7%	+14.8%	-13.7%	+43.9%
Registrar, Pathology	1	+1	-1			-100.0%	-50.0%		
Registrar, Psychiatry	1	+1	+1	-0	+1	-100.0%	-100.0%	-32.0%	-100.0%
Registrar, Surgery	61	+47	+25	+12	-1	+317.0%	+67.3%	+25.4%	-0.9%
Registrar	282	+83	+68	+48	+5	+41.6%	+31.7%	+20.7%	+1.7%
Registrar, Senior	16	-6	-3	-3	-2	-29.0%	-14.3%	-17.1%	-11.7%
Senior Registrar, Psychiatry	2	+2	+2	+1	+0	-100.0%	-100.0%	+117.0%	+9.0%
Senior Registrar	18	-4	-0	-2	-2	-19.3%	-2.5%	-10.5%	-9.6%

Jan 2021 (Dec 2015 figure: 9,663)	WTE Jan 2021	WTE change since Dec 15	WTE change since Dec 17	WTE change since Dec 18	WTE change since Dec 20	% change since Dec 15	% change since Dec 17	% change since Dec 18	% change since Dec 20
Overall	11,273	+1,610	+972	+850	-14	+16.7%	+9.4%	+8.2%	-0.1%
Registrar, Specialist	4	-165	-71	-4		-97.6%	-94.6%	-50.0%	
Specialist Registrar, Anaesthesia	35	+33	+14	+1	+2	+1628.5%	+68.6%	+1.7%	+4.9%
Specialist Registrar, Emergency Medicine	12	+11	+6	+3	-0	+1069.0%	+112.5%	+29.9%	-2.6%
Specialist Registrar, Medicine	85	+84	+29	+4	-3	+8407.0%	+51.9%	+5.0%	-3.6%
Specialist Registrar, Obstetrics & Gynaecology	14	+8	+2	+1	-0	+137.5%	+18.8%	+9.6%	-1.7%
Specialist Registrar, Paediatrics	10	+4	+4	+3	-0	+64.3%	+64.3%	+40.9%	-1.4%
Specialist Registrar, Pathology	14	+12	+6	+2	-0	+815.3%	+89.4%	+19.4%	-1.7%
Specialist Registrar, Radiology	24	+24	+12	+1	-1	-100.0%	+96.8%	+2.7%	-4.1%
Specialist Registrar, Surgery	23	+23	+9	-5	-2	-100.0%	+65.3%	-18.8%	-7.4%
Specialist Registrar	220	+33	+12	+5	-5	+17.9%	+5.7%	+2.3%	-2.4%
Registrars	520	+112	+79	+51	-2	+27.4%	+18.0%	+10.9%	-0.5%
Intern	152	+35	+33	+33	+0	+29.7%	+28.0%	+27.8%	+0.1%
Interns	152	+35	+33	+33	+0	+29.7%	+28.0%	+27.8%	+0.1%
House Officer, Senior	0	-190	-89	-6	+0	-99.9%	-99.7%	-95.8%	-100.0%
Senior House Officer, Anaesthesia	23	+17	+9	+1	+4	+281.0%	+63.6%	+3.9%	+20.3%
Senior House Officer, Emergency Medicine	36	+30	+14	+7	-0	+499.8%	+60.5%	+24.5%	-0.1%
Senior House Officer, Medicine	158	+132	+65	+16	-3	+492.7%	+70.6%	+11.1%	-2.0%
Senior House Officer, Obstetrics & Gynaecology	19	+6	+3	-1	-2	+49.9%	+20.1%	-3.9%	-8.5%
Senior House Officer, Paediatrics	21	+5	+3	+2	+2	+30.5%	+16.0%	+11.8%	+10.0%
Senior House Officer, Pathology	2	+1	-3	-1	-0	+104.1%	-63.4%	-28.3%	-4.8%
Senior House Officer, Surgery	49	+35	+17	-3	-1	+250.9%	+53.9%	-5.3%	-1.5%
Senior House Officer	309	+36	+19	+16	+0	+13.2%	+6.7%	+5.4%	+0.0%
SHO/ Interns	461	+71	+52	+49	+0	+18.2%	+12.9%	+11.9%	+0.1%
Orthodontics, Specialist	1	+1	+0	+0		-100.0%	+45.0%	+14.2%	
Dentists	1	+1	+0	+0		-100.0%	+45.0%	+14.2%	
Associate Specialist	2	-2	-2	+0	+0	-45.2%	-43.1%	+14.1%	+1.3%
Medical & Dental Unclassified		-1				-100.0%	-100.0%	-100.0%	-100.0%
Occupational Health Physician	2	+1	+1	+1		+81.0%	+81.0%	+81.0%	
Ophthalmic Physician, Community	2	-1	+0	-0	-0	-38.5%	+3.2%	-12.4%	-9.9%
Other Medical	6	-3	-1	+1	-0	-35.0%	-13.1%	+17.7%	-2.6%
Medical/ Dental, other	7	-2	-0	+1	-0	-18.5%	-5.4%	+17.0%	-2.1%
Medical & Dental	1,487	+288	+208	+155	-1	+24.0%	+16.2%	+11.6%	-0.1%
Clinical Midwife Manager 1	9	-5	+1	+2	-1	-36.2%	+9.2%	+36.1%	-7.5%
Clinical Midwife Manager 2	44	-2	-6	-2	+1	-3.7%	-12.1%	-3.8%	+3.3%
Clinical Midwife Manager 3	14	+5	+1	+1	-0	+60.3%	+11.0%	+11.0%	-0.2%

Jan 2021 (Dec 2015 figure: 9,663)	WTE Jan 2021	WTE change since Dec 15	WTE change since Dec 17	WTE change since Dec 18	WTE change since Dec 20	% change since Dec 15	% change since Dec 17	% change since Dec 18	% change since Dec 20
Overall	11,273	+1,610	+972	+850	-14	+16.7%	+9.4%	+8.2%	-0.1%
Clinical Nurse Manager 1	163	+31	+10	-13	-3	+23.4%	+6.7%	-7.3%	-1.7%
Clinical Nurse Manager 1 (Mental Health)	1	-1	-1	-1	-1	-50.0%	-47.9%	-46.2%	-50.0%
Clinical Nurse Manager 2	485	+108	+37	+41	+2	+28.8%	+8.1%	+9.4%	+0.4%
Clinical Nurse Manager 2 (Mental Health)	12	+1	+2	+2	+1	+14.7%	+18.1%	+19.5%	+8.3%
Clinical Nurse Manager 2 - Night	6	+0	+1	+1	+0	+5.9%	+18.3%	+18.3%	+2.7%
Clinical Nurse Manager 2 - Theatre	9	-2	+0	-1	-1	-20.3%	+0.8%	-6.9%	-7.2%
Clinical Nurse Manager 3	72	+24	+13	+2	-1	+51.0%	+22.9%	+2.3%	-1.7%
Clinical Nurse Manager 3 (Mental Health)	1		+1	+1			-100.0%	-100.0%	
Clinical Nurse Manager 3 - Night	3	-0	-0	-0	-0	-4.3%	-4.3%	-4.3%	-1.4%
Clinical Nurse Manager 3 - Theatre	1	-1	+1	+1		-50.0%	-100.0%	-100.0%	
Clinical Nurse/ Midwife Manager	820	+160	+60	+36	-2	+24.2%	+7.9%	+4.5%	-0.3%
Director of Midwifery 1, Assistant	6	+6	+6	+6		-100.0%	-100.0%	-100.0%	
Director of Nursing 1, Assistant	66	+24	+18	-1	-1	+55.7%	+36.7%	-0.8%	-0.9%
Director of Nursing 2, Assistant	2	-13	-23	-7		-86.3%	-91.9%	-77.5%	
Director of Nursing 4, Assistant		-1	-1			-100.0%	-100.0%	-100.0%	-100.0%
Director of Nursing (Mental Health), Assistant	1								
Director Nursing/Midwifery, Assistant	75	+16	+0	-1	-1	+27.2%	+0.3%	-1.9%	-0.8%
Director of Midwifery 1	1	+1	+1	+1		-100.0%	-100.0%	-100.0%	
Director of Nursing 1	5	+1	+1	-1		+25.0%	+25.0%	-15.3%	
Director of Nursing 2	4	+1	+0	+1	+1	+48.7%	+11.5%	+48.7%	+18.3%
Director of Nursing (Mental Health)				-1		-100.0%	-100.0%	-100.0%	-100.0%
Director of Nursing & Midwifery		-1				-100.0%	-100.0%	-100.0%	-100.0%
Director of Nursing/Midwifery	10	+2	+2	+1	+1	+30.8%	+30.8%	+5.7%	+7.1%
Nurse/ Midwife Manager	906	+178	+63	+35	-2	+24.5%	+7.5%	+4.0%	-0.2%
Advanced Midwife Practitioner, Candidate	1	+1	+1	+1		-100.0%	-100.0%	-100.0%	
Advanced Nurse Practitioner, Candidate (General)	21	+21	+21	+15	-1	-100.0%	-100.0%	+251.9%	-4.3%
Advanced Nurse Practitioner (General)	60	+31	+28	+19	+1	+108.4%	+90.7%	+47.8%	+1.1%
Advanced Nurse/ Midwife Practitioner	82	+53	+50	+35	-0	+184.9%	+160.6%	+76.1%	-0.3%
Clinical Midwife Specialist	11	+2	+0	-2	-0	+22.3%	+1.8%	-15.1%	-0.4%
Clinical Nurse Specialist (General)	132	+6	+18	+5	-9	+4.8%	+15.6%	+4.1%	-6.3%
Clinical Nurse Specialist (Mental Health)	2	+1	+1	+1		+100.0%	+100.0%	+100.0%	
Clinical Nurse/ Midwife Specialist	145	+9	+19	+4	-9	+6.7%	+15.1%	+3.0%	-5.7%
Nurse/ Midwife Specialist & AN/MP	227	+62	+69	+40	-9	+37.7%	+44.1%	+21.1%	-3.9%
Staff Nurse, General (Graduate Scheme)		-13				-100.0%	-100.0%	-100.0%	-100.0%
Graduate Nursing/ Midwifery		-13				-100.0%	-100.0%	-100.0%	-100.0%

Jan 2021 (Dec 2015 figure: 9,663)	WTE Jan 2021	WTE change since Dec 15	WTE change since Dec 17	WTE change since Dec 18	WTE change since Dec 20	% change since Dec 15	% change since Dec 17	% change since Dec 18	% change since Dec 20
Overall	11,273	+1,610	+972	+850	-14	+16.7%	+9.4%	+8.2%	-0.1%
Staff Nurse (Nursing Bank)	13	-70	-23	-7	-4	-84.6%	-64.1%	-33.7%	-22.3%
Staff Nurse, Senior (Nursing Bank)	0	-2	-4	-4	-0	-81.1%	-90.3%	-89.6%	-25.4%
Nursing Bank	13	-72	-27	-10	-4	-84.5%	-67.1%	-43.7%	-22.4%
Enhanced Midwife	85	+85	+85	+85	+0	-100.0%	-100.0%	-100.0%	+0.3%
Enhanced Midwife, Senior	7	+7	+7	+7	+0	-100.0%	-100.0%	-100.0%	+0.3%
Staff Midwife	47	-48	-81	-76	+1	-50.6%	-63.5%	-61.9%	+2.2%
Staff Midwife (dual qualified)	25	-48	-25	-35	-1	-65.4%	-49.7%	-58.1%	-5.1%
Staff Midwife, Senior		-9	-10	-6		-100.0%	-100.0%	-100.0%	-100.0%
Staff Midwife, Senior (dual qualified)	24	+8	+3	+4	-1	+49.5%	+13.0%	+19.9%	-2.1%
Staff Midwives	188	-5	-22	-21	-1	-2.6%	-10.3%	-10.1%	-0.3%
Enhanced Nurse (Mental Health)	12	+12	+12	+12	+2	-100.0%	-100.0%	-100.0%	+18.7%
Enhanced Nurse, Senior (Mental Health)	4	+4	+4	+4		-100.0%	-100.0%	-100.0%	
Staff Nurse, Mental Health	7	-9	-8	-9	-2	-56.0%	-54.7%	-56.4%	-24.2%
Staff Nurse, Senior (Mental Health)	2	-6	-5	-5	-1	-75.3%	-73.6%	-73.6%	-26.0%
Staff Nurse [Psychiatric]	24	+1	+2	+1	-1	+4.5%	+9.0%	+6.0%	-3.8%
Enhanced Nurse (Children's)	13	+13	+13	+13	+1	-100.0%	-100.0%	-100.0%	+5.5%
Enhanced Nurse (Community/Primary Care)	1	+1	+1	+1		-100.0%	-100.0%	-100.0%	
Enhanced Nurse (General)	1,222	+1,222	+1,222	+1,222	+4	-100.0%	-100.0%	-100.0%	+0.3%
Enhanced Nurse, Senior (Children's)	11	+11	+11	+11	+1	-100.0%	-100.0%	-100.0%	+5.1%
Enhanced Nurse, Senior (General)	779	+779	+779	+779	-0	-100.0%	-100.0%	-100.0%	-0.1%
Staff Nurse (Adaptation Placement), General	9	+9	-7	-15	-1	-100.0%	-42.2%	-62.0%	-13.8%
Staff Nurse (Children's)	2	-25	-22	-21		-92.7%	-91.8%	-91.4%	
Staff Nurse, Dual Qualified (Children's)	7	-1	-1	-3	-2	-17.1%	-17.1%	-30.4%	-19.9%
Staff Nurse, Dual Qualified (General)	1	-7	-5	-3		-84.5%	-80.4%	-73.5%	
Staff Nurse - General	564	-1,164	-1,261	-1,228	+0	-67.4%	-69.1%	-68.5%	+0.0%
Staff Nurse, Senior (Children's)		-5	-6	-6	-1	-100.0%	-100.0%	-100.0%	-100.0%
Staff Nurse, Senior (Dual Qualified)	9	-16	-11	-9	-0	-65.4%	-55.0%	-50.8%	-0.8%
Staff Nurse, Senior (Dual Qualified Children's)				-1		-100.0%	-100.0%	-100.0%	-100.0%
Staff Nurse, Senior (General)	100	-389	-464	-461	-3	-79.5%	-82.2%	-82.1%	-3.2%
Staff Nurses [General/ Children's]	2,718	+427	+248	+278	-2	+18.7%	+10.1%	+11.4%	-0.1%
Staff Nurse/ Staff Midwife	2,943	+338	+202	+248	-8	+13.0%	+7.4%	+9.2%	-0.3%
Student Children's & General Nursing Intern (pre-registration)		-1	-7	-9		-100.0%	-100.0%	-100.0%	-100.0%
Student General Nursing Intern (pre-registration)	26	+16	+23	+24	+26	+160.6%	+799.6%	+1182.0%	+85366.7%
Student Midwifery Intern (pre-registration)	5	+5	+5	+5	+5	+900.0%	-100.0%	-100.0%	-100.0%
Pre-registration Nurse/ Midwife Intern	31	+20	+21	+20	+31	+182.7%	+227.7%	+191.8%	+102033.3%
Student Children's & General Nursing Intern (COVID-19 HCA)	3	+3	+3	+3	-14	-100.0%	-100.0%	-100.0%	-84.4%

Jan 2021 (Dec 2015 figure: 9,663)	WTE Jan 2021	WTE change since Dec 15	WTE change since Dec 17	WTE change since Dec 18	WTE change since Dec 20	% change since Dec 15	% change since Dec 17	% change since Dec 18	% change since Dec 20
Overall	11,273	+1,610	+972	+850	-14	+16.7%	+9.4%	+8.2%	-0.1%
Student General Nursing Intern (COVID-19 HCA)	2	+2	+2	+2	-10	-100.0%	-100.0%	-100.0%	-83.0%
Pre-registration Nurse Intern (C0VID-19)	5	+5	+5	+5	-23	-100.0%	-100.0%	-100.0%	-83.8%
Student Midwifery (post registration)	12	+3	+2	+4		+33.3%	+20.0%	+50.0%	
Post-registration Nurse/ Midwife Student	12	+3	+2	+4		+33.3%	+20.0%	+50.0%	
Staff Nurse, General (awaiting-registration)	3	-8	-0	-3	-1	-73.9%	-0.7%	-50.3%	-29.9%
Nursing/ Midwifery awaiting registration	3	-8	-0	-3	-1	-73.9%	-0.7%	-50.3%	-29.9%
Nursing/ Midwifery Student	50	+19	+28	+26	+6	+60.3%	+124.3%	+104.6%	+13.8%
Director, Nursing/ Midwifery Education Centre	2								
Nurse Tutor	5	+1	+1	+1		+30.4%	+30.4%	+28.6%	
Nurse Tutor (Midwifery)	4	+3	+4	+4		+600.0%	-100.0%	-100.0%	
Nursing/ Midwifery Clinical Placement Co-ordinator	21	+4	+6	+6	-0	+23.7%	+36.4%	+35.8%	-0.0%
Nursing/ Midwifery Practice Development Co-ordinator	1	+0	+0	+0	-1	+37.0%	+37.0%	+37.0%	-26.7%
Professional Development Nursing Officer		-1				-100.0%	-100.0%	-100.0%	-100.0%
Nursing Education/Clinical	32	+7	+11	+10	-1	+29.8%	+48.1%	+47.3%	-1.5%
Practice Nurse Facilitator	6	+2	+2	+3	+1	+56.8%	+76.9%	+106.6%	+21.5%
Other Nursing/ Midwifery	6	+2	+2	+3	+1	+56.8%	+76.9%	+106.6%	+21.5%
Nursing/ Midwifery other	38	+9	+13	+13	+0	+33.2%	+51.8%	+53.9%	+1.3%
Nursing & Midwifery	4,164	+607	+375	+361	-12	+17.1%	+9.9%	+9.5%	-0.3%
Dietitian	29	+2	+3	+4	-1	+7.5%	+10.0%	+14.8%	-2.0%
Dietitian, Clinical Specialist	9	+4	+4	+2	+0	+76.4%	+96.9%	+35.7%	+0.1%
Dietitian Manager	6	+3	+0	+0	+0	+108.7%	+1.0%	+0.3%	+2.4%
Dietitian Manager-in-charge III	2								
Dietitian, Senior	53	+8	+6	+2	+0	+17.1%	+13.7%	+3.2%	+0.6%
Dietitians	98	+17	+13	+8	-0	+20.4%	+15.8%	+8.4%	-0.1%
Occupational Therapist	30	+6	+1	+4	-2	+23.4%	+3.1%	+15.1%	-6.0%
Occupational Therapist, Clinical Specialist	5	+4	+1	+1	-0	+359.0%	+18.3%	+28.9%	-6.9%
Occupational Therapist-in-charge III	3	-1	-1	+1		-15.1%	-18.3%	+43.0%	
Occupational Therapist Manager	1	+0	+0	-0		+36.0%	+36.0%	-9.3%	
Occupational Therapist, Senior	34	+6	+5	+3	-1	+19.6%	+16.2%	+8.5%	-2.0%
Occupational Therapists	72	+15	+6	+8	-3	+25.3%	+9.0%	+13.0%	-3.9%
Orthoptist, Senior	2	+1	-0	-1	-0	+48.6%	-10.2%	-30.9%	-0.6%
Orthoptists	2	+1	-0	-1	-0	+48.6%	-10.2%	-30.9%	-0.6%
Physiotherapist	64	+3	+0	-2	-6	+5.0%	+0.6%	-3.6%	-8.7%
Physiotherapist, Clinical Specialist	24	+9	+8	+4	-1	+67.0%	+46.9%	+23.3%	-3.4%

Jan 2021 (Dec 2015 figure: 9,663)	WTE Jan 2021	WTE change since Dec 15	WTE change since Dec 17	WTE change since Dec 18	WTE change since Dec 20	% change since Dec 15	% change since Dec 17	% change since Dec 18	% change since Dec 20
Overall	11,273	+1,610	+972	+850	-14	+16.7%	+9.4%	+8.2%	-0.1%
Physiotherapist-in-charge (Grade III)	5	+2	-0	-0	+0	+40.6%	-7.9%	-6.7%	+0.7%
Physiotherapist Manager	5	-0	+0	+0	-0	-6.0%	+4.4%	+7.3%	-6.0%
Physiotherapist, Senior	75	+9	+1	+9	+6	+13.5%	+0.9%	+13.2%	+8.9%
Physiotherapists	173	+23	+8	+11	-1	+15.1%	+5.0%	+6.6%	-0.6%
Chiropracist/ Podiatrist	0	-1	-0	-0		-60.2%	-49.0%	-35.5%	
Chiropracist/ Podiatrist, Senior	3	+1	+1	-0		+43.1%	+43.1%	-3.2%	
Podiatrists & Chiropracists	3	+0	+0	-0		+4.8%	+14.1%	-9.6%	
Speech & Language Therapist	16	+5	+3	+0	+1	+39.2%	+21.5%	+2.4%	+8.7%
Speech & Language Therapist, Clinical Specialist	3	+1	+0	+1		+34.4%	+9.2%	+71.2%	
Speech & Language Therapist Manager	3	+2	-0	-1	+0	+79.2%	-5.8%	-17.5%	+4.2%
Speech & Language Therapist Manager-in-charge III	2	+0	+0	+0		+5.8%	+5.8%	+5.8%	
Speech & Language Therapist, Senior	20	+2	+3	+4	-2	+9.5%	+17.9%	+26.6%	-7.4%
Speech & Language Therapists	45	+9	+6	+5	-0	+24.1%	+15.8%	+13.0%	-0.4%
Therapy Professions	393	+63	+34	+31	-4	+19.2%	+9.5%	+8.5%	-1.1%
Audiologist		-1				-100.0%	-100.0%	-100.0%	-100.0%
Audiologist, Chief	3	-0	-0	-0	+0	-1.5%	-1.5%	-1.5%	+4.1%
Audiologist, Senior	1	-0	-1	+0	-0	-49.0%	-63.0%	+8.5%	-7.3%
Audiology	3	-2	-1		+0	-33.3%	-22.9%		+2.0%
Biochemist	4	+4	+2	+1	+0	-100.0%	+133.3%	+40.0%	+5.1%
Biochemist, Principal	2	-2	-2	-1		-50.0%	-50.0%	-25.0%	
Biochemist, Senior	5	+1	+1	+1	+0	+12.5%	+12.5%	+16.9%	+3.9%
Biochemists	10	+3	+1	+1	+0	+35.7%	+11.8%	+13.8%	+3.7%
Clinical Engineering Technician	3	-1	-1	+0	+1	-19.3%	-19.3%	+7.7%	+29.2%
Clinical Engineering Technician, Chief	3		-1	-1			-25.0%	-25.0%	
Clinical Engineering Technician, Principal	12	+2	+2			+20.0%	+20.0%		
Clinical Engineering Technician, Senior	23	+4	-2	+0	-0	+21.2%	-6.6%	+1.8%	-0.2%
Clinical Engineering	41	+5	-1	-0	+1	+14.6%	-3.2%	-0.9%	+1.7%
Cardiac Physiologist	17	-0	-0	+7	-3	-2.5%	-1.9%	+66.9%	-15.1%
Cardiac Physiologist, Chief I	3	-0	-0	-0	-0	-4.4%	-1.7%	-4.4%	-4.4%
Cardiac Physiologist, Chief II	2		-0	-0			-10.0%	-10.0%	
Cardiac Physiologist, Senior	20	+8	+7	+0	+0	+70.6%	+56.8%	+2.2%	+0.0%
E.C.G. Technician	1	+1	+1	+1		-100.0%	-100.0%	-100.0%	
Gastrointestinal (GI) Physiologist	3	+1		+2	+2	+31.0%		+322.6%	+322.6%
Gastrointestinal (GI) Physiologist, Chief II	1								
Gastrointestinal (GI) Physiologist, Senior		-1	-1			-100.0%	-100.0%	-100.0%	-100.0%
Neuro-Physiologist	2	-1	-1	-1		-33.3%	-33.3%	-33.3%	

Jan 2021 (Dec 2015 figure: 9,663)	WTE Jan 2021	WTE change since Dec 15	WTE change since Dec 17	WTE change since Dec 18	WTE change since Dec 20	% change since Dec 15	% change since Dec 17	% change since Dec 18	% change since Dec 20
Overall	11,273	+1,610	+972	+850	-14	+16.7%	+9.4%	+8.2%	-0.1%
Neuro-Physiologist, Chief II	2	+1	+1	+1		+90.0%	+175.4%	+175.4%	
Neuro-Physiologist, Senior	7	+3	+2	+3	-1	+98.8%	+49.1%	+92.9%	-9.3%
Respiratory Physiologist	2	+1	+1	+1		+100.0%	+100.0%	+100.0%	
Respiratory Physiologist, Chief I	1								
Respiratory Physiologist, Chief II	1								
Respiratory Physiologist, Senior	5	-0	+1	+1	+0	-2.0%	+11.4%	+31.0%	+0.6%
Vascular Physiologist	2	-3	-3	-1	+1	-57.1%	-54.0%	-20.7%	+25.8%
Vascular Physiologist, Chief II	2	+1	+1	+1		+72.0%	+72.0%	+72.0%	
Vascular Physiologist, Senior	5	+1	-0	+1	+0	+16.4%	-1.3%	+32.9%	+5.8%
Clinical Measurement	76	+11	+8	+17	-1	+16.5%	+12.6%	+28.3%	-1.3%
Dosimetrist, Basic	1	-2				-66.7%			
Dosimetrist, Senior	1	-1				-50.0%			
Dosimetrists	2	-3				-60.0%			
Laboratory Manager	5	+1		-1	+1	+25.0%		-16.7%	+11.1%
Medical Scientist	194	-17	-16	-14	-4	-8.1%	-7.6%	-6.7%	-1.9%
Medical Scientist, Chief	40	+1	+1	+1	+1	+2.0%	+3.2%	+3.0%	+1.7%
Medical Scientist, Senior	141	+28	+16	+15	-1	+25.2%	+13.2%	+12.2%	-0.4%
Medical Scientist, Specialist	9	+2		+0	+2	+30.8%		+5.6%	+29.9%
Molecular Microbiologist						-100.0%	-100.0%	-100.0%	-100.0%
Medical Laboratory	388	+15	+2	+2	-1	+4.1%	+0.4%	+0.6%	-0.3%
Perfusionist	2								
Perfusionist, Senior	2								
Perfusionists	4								
Phlebotomist	45	+16	+6	+7	-0	+57.4%	+15.5%	+17.9%	-0.3%
Phlebotomist, Senior	1	-1		-1		-43.8%		-50.0%	
Phlebotomists	46	+16	+6	+6	-0	+51.4%	+15.1%	+14.5%	-0.3%
Physicist	19	+7	-4	-8	+0	+58.3%	-17.0%	-29.6%	+0.9%
Physicist, Chief	6	+3	+1	-1		+116.6%	+20.0%	-13.3%	
Physicist, Principal	16	+4	+4	+3		+34.5%	+33.3%	+23.1%	
Physicist, Senior	21	-0	+1	-2	+0	-1.8%	+5.7%	-9.6%	+2.1%
Physicists	62	+14	+2	-8	+1	+29.1%	+3.8%	-11.6%	+1.0%
Radiation Therapist	61	-37	+23	+19	+1	-37.8%	+60.5%	+45.2%	+1.7%
Radiation Therapist, Clinical Specialist	42	+24	+4	+4	-1	+130.1%	+11.0%	+11.0%	-3.0%
Radiation Therapist, Senior	35	+35	-13	-12	-4	-100.0%	-27.1%	-25.5%	-9.9%
Radiation Therapy Service Manager I	3				+1				+50.0%
Radiation Therapy Service Manager II	2	-1	-2	-2	-1	-33.3%	-50.0%	-50.0%	-33.3%

Jan 2021 (Dec 2015 figure: 9,663)	WTE Jan 2021	WTE change since Dec 15	WTE change since Dec 17	WTE change since Dec 18	WTE change since Dec 20	% change since Dec 15	% change since Dec 17	% change since Dec 18	% change since Dec 20
Overall	11,273	+1,610	+972	+850	-14	+16.7%	+9.4%	+8.2%	-0.1%
Radiation Therapists	143	+20	+12	+9	-4	+16.7%	+9.5%	+7.0%	-2.8%
Radiographer	90	-4	+6	-6	-1	-3.8%	+7.4%	-6.2%	-0.8%
Radiographer, Clinical Specialist	45	+4	+8	+7	+1	+9.8%	+22.3%	+18.3%	+2.9%
Radiographer, Senior	73	+21	+19	+17	-3	+40.5%	+34.9%	+29.8%	-3.9%
Radiography Service Manager, I	6	+1	+1	+1	-0	+14.3%	+16.8%	+18.0%	-2.0%
Radiography Service Manager, II	5	+1	+1	+1		+25.0%	+25.0%	+25.0%	
Radiographers	219	+23	+35	+20	-3	+11.8%	+19.0%	+9.8%	-1.2%
Health Science/ Diagnostics	994	+102	+65	+46	-7	+11.5%	+7.0%	+4.9%	-0.7%
Social Worker	8	-4	-2	+0	+1	-29.8%	-15.7%	+5.4%	+12.4%
Social Worker, Medical	26	+0	-3	-1	-0	+1.8%	-9.6%	-4.1%	-1.3%
Social Worker, Principal	4	-0	+0	+0		-0.2%	+3.9%	+3.9%	
Social Worker, Senior Medical	26	+14	+9	+4	+3	+112.7%	+47.9%	+19.6%	+15.1%
Social Worker, Team Leader	13	+4	+2	+0	-2	+38.1%	+22.2%	+2.5%	-11.7%
Social Work Practitioner, Senior	8	+2	-2	-2	-4	+28.6%	-20.5%	-15.6%	-29.9%
Social Workers	86	+16	+5	+3	-1	+23.2%	+5.5%	+3.0%	-1.3%
Social Workers	86	+16	+5	+3	-1	+23.2%	+5.5%	+3.0%	-1.3%
Psychologist, Clinical	1	-0	-0	-1	-0	-16.7%	-16.7%	-43.2%	-7.4%
Psychologist, Principal Clinical	5	+1	+1	+1		+27.3%	+32.7%	+31.6%	
Psychologist, Senior Clinical	7	-5	-5	-1	-0	-40.8%	-42.2%	-13.9%	-6.6%
Psychologist, Senior Counselling	0	+0	+0	+0		-100.0%	-100.0%	-100.0%	
Psychologists	13	-3	-4	-0	-1	-21.3%	-21.9%	-2.6%	-4.2%
Psychologists	13	-3	-4	-0	-1	-21.3%	-21.9%	-2.6%	-4.2%
Pharmaceutical Technician	53	+15	+17	+9	-1	+41.0%	+46.4%	+21.3%	-1.0%
Pharmaceutical Technician, Senior	39	+13	+7	+6	+1	+50.2%	+21.3%	+17.3%	+2.3%
Pharmacist	30	+2	-0	-1	+2	+8.5%	-0.8%	-4.0%	+6.4%
Pharmacist, Chief I	9	+2	+2	+0		+35.0%	+27.0%	+0.5%	
Pharmacist, Chief II	30	+8	+4	+5	+2	+38.0%	+17.1%	+22.3%	+5.6%
Pharmacist, Senior	84	+34	+23	+14	-2	+66.4%	+38.5%	+19.9%	-2.4%
Pharmacy	245	+75	+53	+33	+2	+44.1%	+27.7%	+15.8%	+0.7%
Pharmacy	245	+75	+53	+33	+2	+44.1%	+27.7%	+15.8%	+0.7%
Dental Hygienist	0								
Dental Hygienists	0								
Medical Scientist, Student	12	+2	-1	+0	+2	+17.9%	-6.4%	+0.7%	+24.3%
Pharmacist, Student		-5	-4	-4		-100.0%	-100.0%	-100.0%	-100.0%
Physicist, Graduate Trainee	4	+4				-100.0%			

Jan 2021 (Dec 2015 figure: 9,663)	WTE Jan 2021	WTE change since Dec 15	WTE change since Dec 17	WTE change since Dec 18	WTE change since Dec 20	% change since Dec 15	% change since Dec 17	% change since Dec 18	% change since Dec 20
Overall	11,273	+1,610	+972	+850	-14	+16.7%	+9.4%	+8.2%	-0.1%
HSCP Trainees/ Students	16	+1	-5	-4	+2	+5.7%	-22.8%	-19.2%	+17.4%
Clinical Photographer	2	+2	+1	+1		-100.0%	+100.0%	+100.0%	
Clinical Photographer, Senior	3	-1				-14.3%			
Health & Social Care Professionals Unclassified	23	+11	+12	+12	-0	+87.2%	+108.1%	+102.3%	-0.3%
Maxillo Facial Technician	2	-1				-23.1%			
Maxillo Facial Technician, Chief	1								
Mould Room Technician		-1				-100.0%	-100.0%	-100.0%	-100.0%
Social Worker (Non-professionally qualified)	1	-0	-0	-0	+0	-23.0%	-23.0%	-23.0%	+13.2%
Other Health & Social Care	32	+10	+13	+12	+0	+48.6%	+66.8%	+64.1%	+0.0%
H&SC, Other	48	+11	+8	+9	+2	+30.5%	+19.6%	+21.4%	+5.3%
Health & Social Care Professionals	1,779	+265	+161	+121	-9	+17.5%	+9.9%	+7.3%	-0.5%
CEO (Band H3 Hospital)	1								
Chief Executive, Hospital Group	1	+1	+1			-100.0%	-100.0%		
Chief Executive Officer	2								
Director of Finance	1	-1	-1	-1	-1	-50.0%	-50.0%	-50.0%	-47.4%
Director of HR	1								
Director of ICT		-1				-100.0%	-100.0%	-100.0%	-100.0%
Head of Function /Service, Community Services	1	+1	+1	+1		-100.0%	-100.0%	-100.0%	
National Director, Assistant (Services)	4	+3	+3	-1	+0	+300.0%	+300.0%	-20.0%	+0.8%
National Director, Assistant (Support)	11	+7	+4	+3	+0	+175.0%	+57.1%	+37.5%	+3.1%
Executive Management	22	+10	+8	+2	-1	+83.3%	+57.1%	+10.0%	-2.4%
Chief Executive Officer, Deputy	1	-1	-1	-1		-50.0%	-50.0%	-50.0%	
Functional Officer		-1	-1			-100.0%	-100.0%	-100.0%	-100.0%
General Manager	24	+10	+12	+4	+1	+71.3%	+101.0%	+19.9%	+4.4%
Grade VIII	79	+37	+10	+8	-1	+86.4%	+14.6%	+11.7%	-1.0%
Senior Management (VIII & GM)	104	+45	+20	+11	+0	+75.1%	+24.0%	+12.1%	+0.2%
Management (VIII & above)	126	+55	+28	+13	-0	+76.5%	+28.7%	+11.7%	-0.2%
Accountant	1	-2	-2	-1		-66.7%	-66.7%	-50.0%	
Grade V	268	+70	+40	+25	-8	+35.5%	+17.3%	+10.1%	-3.1%
Grade VI	109	+29	+12	+9	+1	+37.2%	+12.1%	+9.1%	+0.6%
Grade VII	126	+25	+27	+17	+3	+24.8%	+27.8%	+15.5%	+2.2%
Supplies Officer Grade A	8	-0	-1	-1	-0	-0.2%	-11.3%	-11.3%	-0.2%
Supplies Officer Grade B	5	+3	+2	+2		+150.0%	+66.7%	+66.7%	
Middle Management (V-VII)	517	+126	+78	+51	-5	+32.2%	+17.7%	+10.9%	-1.0%
Librarian	1								

Jan 2021 (Dec 2015 figure: 9,663)	WTE Jan 2021	WTE change since Dec 15	WTE change since Dec 17	WTE change since Dec 18	WTE change since Dec 20	% change since Dec 15	% change since Dec 17	% change since Dec 18	% change since Dec 20
Overall	11,273	+1,610	+972	+850	-14	+16.7%	+9.4%	+8.2%	-0.1%
Other Administrative	1								
Administrative/ Supervisory (V to VII)	518	+126	+78	+51	-5	+32.1%	+17.6%	+10.8%	-1.0%
Clerical Officer	241	-25	-38	-24	+7	-9.5%	-13.6%	-9.2%	+2.9%
Grade IV	741	+115	+66	+41	+2	+18.4%	+9.8%	+5.9%	+0.3%
Supplies Officer Grade C	41	+20	+19	+18	+0	+95.2%	+86.4%	+78.3%	+0.2%
Supplies Officer Grade D	4	-17	-17	-17		-78.9%	-79.3%	-79.4%	
Telephonist	22	-13	-12	-11	+1	-37.0%	-36.4%	-34.3%	+3.0%
Telephonist, Night	2	-1	-1	-1		-25.0%	-25.0%	-25.0%	
Telephonist, Supervisor	3	+0	+0	+0		+6.4%	+6.4%	+6.4%	
Telephonist, Supervisor, Assistant	2	-0		+1	+0	-0.5%		+100.0%	+0.5%
General Administrative (III & IV)	1,055	+80	+17	+7	+9	+8.2%	+1.7%	+0.7%	+0.9%
Clerical (III & IV)	1,055	+80	+17	+7	+9	+8.2%	+1.7%	+0.7%	+0.9%
Management & Administrative	1,699	+261	+123	+71	+4	+18.1%	+7.8%	+4.4%	+0.2%
Catering	91	+11	+2	+5	+0	+13.8%	+2.7%	+5.9%	+0.2%
Household Services	350	+21	+3	+14	-2	+6.3%	+0.9%	+4.2%	-0.5%
Other Labs & Associated	98	+30	+15	+17	+3	+44.8%	+17.9%	+21.2%	+3.3%
Other Support	94	-8	-13	-3	+0	-8.0%	-12.4%	-2.8%	+0.2%
Portering	141	+1	+3	+4	+1	+0.5%	+2.4%	+2.9%	+0.8%
Support	774	+55	+10	+37	+3	+7.6%	+1.4%	+5.1%	+0.4%
Boilerman	1								
Chargehand	3	+1	-0	-0	-0	+32.8%	-12.3%	-4.4%	-8.7%
Electrician	13	-5	-3	-0	-1	-25.2%	-15.8%	-2.7%	-5.1%
Gardener/ Groundsman	3	-1	-1	-1		-25.0%	-25.0%	-25.0%	
Gardener/ Groundsman, Head	1	+1	+1	+1		-100.0%	-100.0%	-100.0%	
General Operative	25	-7	+1	+1	+0	-22.2%	+4.2%	+3.8%	+1.0%
Labourer	12	-1		+0	+0	-7.5%		+0.3%	+0.3%
Maintenance Craftsman/Technician	19	+3	-0	+3	-0	+20.8%	-0.3%	+15.4%	-1.3%
Maintenance Foreman	10	+0	-2	-3	-0	+2.1%	-15.6%	-23.1%	-4.1%
Maintenance Foreman, Assistant	1								
Maintenance Manager	1	-1		-1		-50.0%		-50.0%	
Maintenance Officer	3	-2				-40.0%			
Maintenance/Technical Unclassified	2	-7				-77.8%			
Painter	10	-1	-0	-0	-0	-9.2%	-0.1%	-0.1%	-0.1%
Plasterer	2	+1				+203.0%			

Jan 2021 (Dec 2015 figure: 9,663)	WTE Jan 2021	WTE change since Dec 15	WTE change since Dec 17	WTE change since Dec 18	WTE change since Dec 20	% change since Dec 15	% change since Dec 17	% change since Dec 18	% change since Dec 20
Overall	11,273	+1,610	+972	+850	-14	+16.7%	+9.4%	+8.2%	-0.1%
Plumber	17	+8	+2	+2	+1	+83.3%	+10.0%	+12.2%	+3.1%
Maintenance	123	-11	-2	+1	-1	-7.9%	-1.9%	+0.7%	-0.7%
Engineer/ Engineering Officer	4	+4	+4	+4		-100.0%	-100.0%	-100.0%	
Fire Prevention Officer	1								
Technical Services Officer, Chief Asst.	1								
Technical Services Officer, Senior Asst.				-1		-100.0%	-100.0%	-100.0%	-100.0%
Technical Services	6	+4	+4	+3		+200.0%	+200.0%	+100.0%	
Maintenance/ Technical	129	-7	+2	+4	-1	-4.8%	+1.3%	+3.1%	-0.7%
General Support	903	+48	+12	+41	+2	+5.6%	+1.4%	+4.8%	+0.2%
HCA, Nurse's Aide, etc.	1,207	+134	+89	+95	+2	+12.5%	+8.0%	+8.6%	+0.2%
Occupational Therapy Assistant	3			-1				-25.0%	
Physiotherapy Assistant	8	+7	+6	+5	+0	+700.0%	+332.4%	+166.7%	+1.8%
Radiography Aide	3	+1	-3	+1	+1	+36.0%	-53.7%	+38.1%	+58.1%
Health & Social Care Assistants	14	+8	+3	+5	+1	+128.7%	+27.9%	+53.0%	+9.1%
Health Care Assistants	1,220	+142	+92	+100	+3	+13.2%	+8.2%	+8.9%	+0.2%
Chaplain	16	+1	+2	-1	-0	+3.5%	+11.0%	-4.7%	-3.0%
Dental Nurse	4	+0	-1	-1		+5.7%	-12.5%	-12.5%	
Education Officer	1								
Endoscopy Operative (Band 1)	1	+1	+1	+1		-100.0%	-100.0%	-100.0%	
Head of Bed Management (Category B)		-1				-100.0%	-100.0%	-100.0%	-100.0%
Pastoral Care Worker		-1				-100.0%	-100.0%	-100.0%	-100.0%
Other Care Grades	21	-0	+2	-0	-0	-1.3%	+10.9%	-1.3%	-2.3%
Care, other	21	-0	+2	-0	-0	-1.3%	+10.9%	-1.3%	-2.3%
Patient & Client Care	1,241	+142	+94	+100	+3	+12.9%	+8.2%	+8.7%	+0.2%

Source: Health Service Personnel Census

Longitudinal Employment Levels by Staff Group - Oct 2013 to Jan 2021

Jan 2021 (Dec 2015 figure: 9,663)	WTE Jan 2021	WTE change since Dec 15	WTE change since Dec 16	WTE change since Dec 17	WTE change since Dec 18	WTE change since Dec 20	% change since Dec 15	% change since Dec 16	% change since Dec 17	% change since Dec 18	% change since Dec 20
Overall	11,273	+1,610	+1,201	+972	+850	-14	+16.7%	+11.9%	+9.4%	+8.2%	-0.1%
Nurse/ Midwife Manager	3	+3	+2	+2			-100.0%	+200.0%	+200.0%		
Management (VIII & above)	17	+14	+12	+12	+2	+1	+464.0%	+241.1%	+257.0%	+12.8%	+4.4%
Administrative/ Supervisory (V to VII)	18	+15	+14	+14	-2	+0	+544.5%	+372.2%	+337.1%	-7.9%	+0.2%
Clerical (III & IV)	4	-0	-1	-0	+1	+1	-10.5%	-12.0%	-10.5%	+20.1%	+42.7%
Hospital Group HQ	42	+31	+27	+27	+1	+2	+301.2%	+189.0%	+189.0%	+2.7%	+5.1%
Consultants	46	+7	+6	+0	+1	-0	+16.7%	+15.1%	+0.7%	+1.1%	-0.4%
Registrars	49	+19	+13	+10	+10	+1	+62.3%	+35.7%	+26.7%	+26.4%	+1.1%
SHO/ Interns	47	+3	+3	+0	+2	-0	+7.7%	+7.1%	+0.7%	+4.7%	-0.9%
Medical/ Dental, other	2	+0	-0	+0	-0	-0	+8.7%	-7.9%	+3.2%	-12.4%	-9.9%
Nurse/ Midwife Manager	84	+20	+5	-1	-4	-3	+30.6%	+6.7%	-1.1%	-4.6%	-3.6%
Nurse/ Midwife Specialist & AN/MP	24	+7	+5	+7	+4	-1	+41.3%	+27.5%	+37.1%	+20.9%	-4.3%
Staff Nurse/ Staff Midwife	304	+22	+29	+12	+18	-2	+7.9%	+10.4%	+4.2%	+6.3%	-0.7%
Nursing/ Midwifery Student	0	+0	+0	-0	+0	-2	+44.0%	-100.0%	-28.0%	-100.0%	-82.0%
Nursing/ Midwifery other	2	+1	+1	+1	+1		+82.0%	+82.0%	+82.0%	+82.0%	
Therapy Professions	35	+7	+9	+2	+2	-3	+25.1%	+32.2%	+7.5%	+6.2%	-7.5%
Health Science/ Diagnostics	91	+15	+10	+8	+15	+0	+19.2%	+12.6%	+9.9%	+20.1%	+0.3%
Pharmacy	31	+12	+9	+7	+9	-1	+62.4%	+41.1%	+30.9%	+44.2%	-2.7%
H&SC, Other	2	+2	+2	+2	+2	+2	+350.0%	-100.0%	+767.9%	+614.7%	-100.0%
Management (VIII & above)	5	+2	-1	-1		+0	+66.7%	-14.8%	-16.7%		+1.0%
Administrative/ Supervisory (V to VII)	29	+8	+6	+4	+7	+0	+36.3%	+28.1%	+14.6%	+34.7%	+1.3%
Clerical (III & IV)	96	+12	-10	-8	-0	+1	+13.7%	-9.5%	-7.7%	-0.5%	+1.5%
Support	28	-0	-2	+2	+3	-0	-0.1%	-6.4%	+8.2%	+9.9%	-0.7%
Maintenance/ Technical	28	-4	-1	+1	+0	+0	-12.5%	-2.7%	+4.5%	+0.7%	+1.4%
Health Care Assistants	233	+44	+43	+34	+6	+0	+23.5%	+22.7%	+17.3%	+2.7%	+0.1%
Care, other	1	-1	-1				-44.4%	-44.4%			
MRH Tullamore	1,139	+175	+127	+82	+77	-7	+18.2%	+12.6%	+7.7%	+7.2%	-0.6%
Consultants	24	+2	+5	+3	+3	-0	+6.9%	+27.7%	+17.1%	+15.5%	-0.0%
Registrars	38	+19	+17	+16	+5	+1	+106.1%	+82.0%	+75.4%	+14.5%	+2.2%
SHO/ Interns	37	+6	+1	-0	+1	-4	+20.1%	+2.6%	-0.1%	+3.7%	-9.6%
Medical/ Dental, other		-1					-100.0%	-100.0%	-100.0%	-100.0%	-100.0%
Nurse/ Midwife Manager	62	+20	+14	-0	+7	-1	+46.6%	+29.4%	-0.6%	+12.6%	-0.9%
Nurse/ Midwife Specialist & AN/MP	19	+11	+7	+8	+5	-0	+128.4%	+56.2%	+70.0%	+31.7%	-2.1%

Jan 2021 (Dec 2015 figure: 9,663)	WTE Jan 2021	WTE change since Dec 15	WTE change since Dec 16	WTE change since Dec 17	WTE change since Dec 18	WTE change since Dec 20	% change since Dec 15	% change since Dec 16	% change since Dec 17	% change since Dec 18	% change since Dec 20
Overall	11,273	+1,610	+1,201	+972	+850	-14	+16.7%	+11.9%	+9.4%	+8.2%	-0.1%
Staff Nurse/ Staff Midwife	221	+12	+33	+20	+23	+1	+5.8%	+17.3%	+9.9%	+11.8%	+0.4%
Nursing/ Midwifery Student	0	+0	-0	+0	+0	+0	-100.0%	-31.4%	-100.0%	-100.0%	-100.0%
Nursing/ Midwifery other	2	+2	+1	+1	+1	-0	-100.0%	+156.7%	+156.7%	+168.6%	-0.9%
Therapy Professions	19	+6	+4	+2	+3	+0	+50.2%	+28.4%	+14.4%	+15.5%	+0.5%
Health Science/ Diagnostics	42	+8	+4	+4	+3	-1	+23.3%	+11.7%	+11.2%	+8.8%	-1.5%
Pharmacy	14	+4	+4	+4	+2	+0	+39.4%	+43.1%	+41.6%	+14.6%	+0.4%
Management (VIII & above)	4	+3	+2	+1			+300.0%	+100.0%	+33.3%		
Administrative/ Supervisory (V to VII)	14	+4	+4	+4	+2	-2	+35.9%	+37.1%	+43.5%	+19.3%	-10.9%
Clerical (III & IV)	73	+14	-11	-12	-13	+0	+23.4%	-13.4%	-13.9%	-15.0%	+0.3%
Support	21	+6	+5	+6	+4	+1	+42.9%	+29.9%	+37.5%	+23.0%	+4.0%
Maintenance/ Technical	9	+1	+2	+2	+2		+12.5%	+28.6%	+28.6%	+28.6%	
Health Care Assistants	176	+15	+15	+11	+2	-1	+9.3%	+9.6%	+6.5%	+0.9%	-0.6%
Care, other	1										
MRH Portlaoise	775	+132	+107	+71	+50	-5	+20.5%	+16.0%	+10.1%	+6.9%	-0.7%
Consultants	212	+42	+33	+34	+28	+0	+24.7%	+18.3%	+18.9%	+15.0%	+0.2%
Registrars	202	+38	+27	+29	+24	-3	+23.4%	+15.6%	+16.5%	+13.4%	-1.5%
SHO/ Interns	176	+29	+27	+24	+20	-0	+19.8%	+18.3%	+15.5%	+12.6%	-0.1%
Medical/ Dental, other	6	-1	+0	-0	+1	+0	-9.9%	+8.6%	-7.7%	+29.8%	+0.5%
Nurse/ Midwife Manager	342	+44	+31	+24	+4	-6	+14.7%	+9.9%	+7.7%	+1.2%	-1.7%
Nurse/ Midwife Specialist & AN/MP	92	+17	+17	+17	+14	-4	+23.3%	+22.5%	+22.3%	+17.9%	-4.0%
Staff Nurse/ Staff Midwife	1,179	+145	+144	+99	+109	-0	+14.0%	+13.9%	+9.2%	+10.2%	-0.0%
Nursing/ Midwifery Student	7	-6	-11	+5	+6	-0	-46.7%	-62.7%	+260.5%	+567.0%	-3.1%
Nursing/ Midwifery other	13	-1	+2	+3	+3	+0	-9.8%	+15.8%	+29.6%	+33.2%	+0.1%
Therapy Professions	163	+27	+25	+24	+11	-1	+19.9%	+18.1%	+17.0%	+7.5%	-0.7%
Health Science/ Diagnostics	322	+16	+7	+14	-9	-0	+5.3%	+2.1%	+4.7%	-2.8%	-0.1%
Social Workers	45	+11	+8	+3	-1	-1	+31.3%	+22.9%	+6.7%	-2.5%	-1.1%
Psychologists	4	-2	-1	-1	-1	-1	-26.8%	-12.4%	-11.8%	-11.8%	-11.5%
Pharmacy	111	+40	+31	+28	+18	+1	+57.1%	+38.7%	+33.2%	+19.2%	+1.2%
H&SC, Other	36	+8	+8	+8	+8	+0	+30.6%	+28.6%	+27.5%	+30.7%	+0.0%
Management (VIII & above)	43	+13	+11	+6	+4	-0	+44.4%	+33.7%	+17.2%	+9.8%	-0.7%
Administrative/ Supervisory (V to VII)	184	+49	+35	+31	+26	-1	+35.8%	+23.8%	+20.5%	+16.8%	-0.7%
Clerical (III & IV)	384	+30	+27	+23	+11	+6	+8.4%	+7.5%	+6.4%	+3.0%	+1.5%
Support	277	+7	+5	+4	+14	+0	+2.8%	+1.8%	+1.6%	+5.4%	+0.2%
Maintenance/ Technical	54	-6	-3	-3	-2	-1	-10.2%	-5.8%	-5.7%	-3.9%	-2.3%
Health Care Assistants	402	+76	+47	+40	+77	+10	+23.4%	+13.1%	+11.0%	+23.8%	+2.5%

Jan 2021 (Dec 2015 figure: 9,663)	WTE Jan 2021	WTE change since Dec 15	WTE change since Dec 16	WTE change since Dec 17	WTE change since Dec 18	WTE change since Dec 20	% change since Dec 15	% change since Dec 16	% change since Dec 17	% change since Dec 18	% change since Dec 20
Overall	11,273	+1,610	+1,201	+972	+850	-14	+16.7%	+11.9%	+9.4%	+8.2%	-0.1%
Care, other	10	+1	+1	+0	+0	+0	+12.4%	+8.6%	+0.5%	+0.5%	+0.1%
St. James's	4,264	+578	+471	+412	+366	-2	+15.7%	+12.4%	+10.7%	+9.4%	-0.0%
Consultants	22	+10	+10	+2			+78.0%	+78.0%	+9.9%		
Registrars	18	-3	-2			+2	-12.8%	-10.0%			+12.5%
SHO/ Interns	12	+4	+4	+3			+50.0%	+43.0%	+33.3%		
Nurse/ Midwife Manager	27	+4	+7	-1	+8		+17.6%	+35.0%	-3.5%	+37.8%	
Nurse/ Midwife Specialist & AN/MP	14	+3	+3	+14	+2		+28.2%	+28.2%	-100.0%	+16.7%	
Staff Nurse/ Staff Midwife	39	-8	-6	-10	-1	-0	-16.1%	-13.8%	-19.5%	-2.3%	-0.1%
Therapy Professions	9	+2	+0	+1	+1		+30.3%	+1.8%	+12.5%	+8.5%	
Health Science/ Diagnostics	202	+22	+14	+13	+13	-3	+12.5%	+7.3%	+7.1%	+7.1%	-1.5%
Social Workers	5	+2	+1	-1			+66.7%	+25.0%	-16.7%		
Psychologists	3		-2					-40.0%			
Pharmacy	1				-1					-50.0%	
H&SC, Other	4	+3	+3				+300.0%	+300.0%			
Management (VIII & above)	5	+2	+2	+1	+1		+78.6%	+66.7%	+25.0%	+25.0%	
Administrative/ Supervisory (V to VII)	34	+7	+5	+0	-1	-2	+25.2%	+15.7%	+0.9%	-1.5%	-5.6%
Clerical (III & IV)	57	-3	-5	-2	-9		-4.4%	-8.3%	-3.4%	-14.1%	
Support	57	+1	-3	-4	+4	-1	+2.1%	-4.8%	-6.1%	+7.7%	-1.0%
Maintenance/ Technical	5	+1	+1				+25.0%	+25.0%			
Health Care Assistants	23	-18	-19	-2	-5		-43.7%	-45.1%	-8.4%	-16.8%	
Care, other	1	-0	-1				-22.0%	-39.1%			
St. Luke's Rathgar	539	+31	+12	+15	+12	-4	+6.1%	+2.2%	+2.9%	+2.3%	-0.7%
Consultants	25	+2	-1	+1	-1	-0	+6.5%	-2.1%	+4.6%	-3.6%	-0.6%
Registrars	28	+7	+2	+4	+0	-0	+34.4%	+8.3%	+15.5%	+0.7%	-1.1%
SHO/ Interns	37	+2	+1	-3	+1	+0	+6.1%	+2.0%	-7.3%	+1.9%	+0.1%
Nurse/ Midwife Manager	72	+17	+13	+3	-2	+3	+31.6%	+23.1%	+3.8%	-3.2%	+3.8%
Nurse/ Midwife Specialist & AN/MP	15	+6	+3	+5	-1	-1	+57.0%	+24.9%	+52.9%	-7.9%	-7.0%
Staff Nurse/ Staff Midwife	208	+34	+38	+4	+22	+1	+19.5%	+22.5%	+1.7%	+11.6%	+0.4%
Nursing/ Midwifery other	1	-1	-1		+0		-50.0%	-50.0%		+23.5%	
Therapy Professions	41	+7	+7	+3	+4	+1	+21.2%	+20.6%	+9.1%	+11.6%	+2.1%
Health Science/ Diagnostics	68	+9	+5	+7	+7	-0	+15.8%	+8.6%	+10.9%	+10.9%	-0.7%
Social Workers	3	+1	-1		+1	+0	+53.8%	-23.9%		+50.0%	+3.4%
Pharmacy	15	+0	+3	+2	+3	-0	+2.8%	+21.6%	+18.9%	+22.8%	-0.3%
Management (VIII & above)	5	+1	+1	+1	-1	-1	+33.7%	+30.8%	+20.0%	-20.0%	-17.2%

Jan 2021 (Dec 2015 figure: 9,663)	WTE Jan 2021	WTE change since Dec 15	WTE change since Dec 16	WTE change since Dec 17	WTE change since Dec 18	WTE change since Dec 20	% change since Dec 15	% change since Dec 16	% change since Dec 17	% change since Dec 18	% change since Dec 20
Overall	11,273	+1,610	+1,201	+972	+850	-14	+16.7%	+11.9%	+9.4%	+8.2%	-0.1%
Administrative/ Supervisory (V to VII)	19	+5	+5	+3	+5	+1	+36.4%	+34.7%	+22.3%	+34.8%	+6.2%
Clerical (III & IV)	59	-7	-16	-15	-13	+1	-10.5%	-21.6%	-20.4%	-17.7%	+1.9%
Support	30	+2	+1	+2	+2	+2	+5.9%	+3.4%	+6.7%	+8.5%	+7.0%
Maintenance/ Technical	7	+4	+4	+5	+5	+1	+116.7%	+116.7%	+225.0%	+225.0%	+13.0%
Health Care Assistants	149	+16	+17	+8	+18	-1	+12.4%	+12.9%	+5.8%	+13.8%	-0.9%
Care, other		-1	-1	-1	-1	-1	-100.0%	-100.0%	-100.0%	-100.0%	-100.0%
Naas General	781	+104	+80	+28	+48	+4	+15.4%	+11.5%	+3.8%	+6.5%	+0.5%
Consultants	38	+12	+12	+10	+6	+1	+47.2%	+47.2%	+36.6%	+19.7%	+1.3%
Registrars	40	+6	+8	+1	+2	-2	+18.8%	+24.4%	+2.1%	+4.7%	-4.8%
SHO/ Interns	29	+6	+4	+8	+3	+1	+26.1%	+16.0%	+38.1%	+11.5%	+3.6%
Nurse/ Midwife Manager	80	+2	+9	+3	+9	+0	+2.6%	+12.4%	+4.2%	+13.2%	+0.3%
Nurse/ Midwife Specialist & AN/MP	13	+2	+2	+2	-1	+0	+18.4%	+18.4%	+24.1%	-5.9%	+1.2%
Staff Nurse/ Staff Midwife	255	+36	+36	+10	-5	-2	+16.2%	+16.6%	+3.9%	-1.9%	-0.9%
Nursing/ Midwifery Student	17	+8	+5	+7	+9	+5	+78.9%	+41.7%	+70.0%	+112.5%	+41.7%
Nursing/ Midwifery other	17	+8	+6	+7	+7	+1	+89.6%	+54.2%	+68.5%	+65.8%	+3.1%
Therapy Professions	8	+2	+2	-1	+1	-0	+40.4%	+40.4%	-8.6%	+14.7%	-6.0%
Health Science/ Diagnostics	53	+8	+8	+6	+3	-2	+18.9%	+17.3%	+11.8%	+6.1%	-3.7%
Social Workers	10	+4	+4	+3	+3		+53.8%	+66.7%	+42.9%	+42.9%	
Psychologists	1	+1	+1	+1	+0		-100.0%	-100.0%	-100.0%	+78.6%	
Pharmacy	8	+3	+4	+2	+2		+60.0%	+100.0%	+33.3%	+33.3%	
H&SC, Other		-1	-1				-100.0%	-100.0%	-100.0%	-100.0%	-100.0%
Management (VIII & above)	7	+2	+2	+2	+1	+1	+40.0%	+40.0%	+40.0%	+16.7%	+16.7%
Administrative/ Supervisory (V to VII)	47	+11	+9	+8	+3	-1	+31.4%	+24.4%	+21.6%	+7.7%	-2.1%
Clerical (III & IV)	99	+17	+13	+11	+15	-1	+20.4%	+15.7%	+12.8%	+18.1%	-0.5%
Support	140	+24	+20	+12	+12	-3	+20.5%	+16.8%	+9.6%	+9.1%	-2.1%
Maintenance/ Technical	7	-3	-2	-2	-2		-30.0%	-22.2%	-22.2%	-22.2%	
Health Care Assistants	53	+2	+2	+2	-1	-0	+3.3%	+3.0%	+4.4%	-2.6%	-0.9%
Care, other	1	-1	-1		-1		-45.1%	-45.1%		-45.1%	
Coombe Women & Infants University	922	+148	+144	+93	+67	-3	+19.2%	+18.4%	+11.2%	+7.8%	-0.4%
Consultants	133	+34	+29	+26	+17	+0	+33.9%	+27.8%	+23.8%	+14.5%	+0.3%
Registrars	146	+25	+17	+20	+10	-0	+20.3%	+12.8%	+15.6%	+7.7%	-0.3%
SHO/ Interns	123	+20	+20	+20	+22	+4	+19.5%	+19.5%	+19.9%	+21.9%	+3.2%
Nurse/ Midwife Manager	236	+69	+40	+33	+13	+5	+41.1%	+20.3%	+16.2%	+6.0%	+2.0%
Nurse/ Midwife Specialist & AN/MP	51	+17	+16	+17	+17	-3	+48.6%	+47.8%	+49.2%	+50.7%	-5.4%

Jan 2021 (Dec 2015 figure: 9,663)	WTE Jan 2021	WTE change since Dec 15	WTE change since Dec 16	WTE change since Dec 17	WTE change since Dec 18	WTE change since Dec 20	% change since Dec 15	% change since Dec 16	% change since Dec 17	% change since Dec 18	% change since Dec 20
Overall	11,273	+1,610	+1,201	+972	+850	-14	+16.7%	+11.9%	+9.4%	+8.2%	-0.1%
Staff Nurse/ Staff Midwife	736	+97	+40	+67	+81	-5	+15.2%	+5.7%	+10.0%	+12.4%	-0.6%
Nursing/ Midwifery Student	26	+17	+18	+16	+10	+3	+187.2%	+244.7%	+158.5%	+66.8%	+11.7%
Nursing/ Midwifery other	3	+1	+1	+1	+1		+47.2%	+47.2%	+47.9%	+47.2%	
Therapy Professions	118	+11	+5	+2	+9	-1	+10.6%	+4.2%	+1.5%	+8.1%	-0.6%
Health Science/ Diagnostics	216	+23	+15	+12	+14	-1	+12.1%	+7.5%	+6.0%	+6.8%	-0.4%
Social Workers	23	-1	-4	-0	-0	-1	-4.6%	-13.5%	-1.3%	-1.3%	-3.2%
Psychologists	5	-3	-4	-4	-0		-39.0%	-43.8%	-47.0%	-4.2%	
Pharmacy	66	+16	+11	+10	+1	+1	+31.2%	+19.0%	+17.7%	+0.8%	+2.0%
H&SC, Other	6	-1	-3	-2	-2		-14.3%	-32.4%	-25.0%	-25.0%	
Management (VIII & above)	40	+17	+14	+6	+7	-1	+73.4%	+51.9%	+16.9%	+19.9%	-1.9%
Administrative/ Supervisory (V to VII)	173	+28	+12	+13	+8	-1	+19.1%	+7.4%	+7.8%	+5.0%	-0.4%
Clerical (III & IV)	282	+18	+20	+21	+16	+1	+6.9%	+7.7%	+7.9%	+6.0%	+0.2%
Support	221	+14	-7	-12	-1	+3	+6.9%	-3.1%	-5.3%	-0.6%	+1.5%
Maintenance/ Technical	19	+1	+1	-1	+1	-1	+6.0%	+6.3%	-3.6%	+7.8%	-3.7%
Health Care Assistants	184	+6	-10	-1	+3	-4	+3.3%	-5.0%	-0.7%	+1.6%	-2.2%
Care, other	7	+2	+2	+3	+2	+0	+33.5%	+50.5%	+85.7%	+30.0%	+2.7%
Tallaght University	2,812	+410	+233	+244	+228	+0	+17.1%	+9.1%	+9.5%	+8.8%	+0.0%

Source: Health Service Personnel Census