

Dublin Midlands Hospital Group Employment Report: July 2022

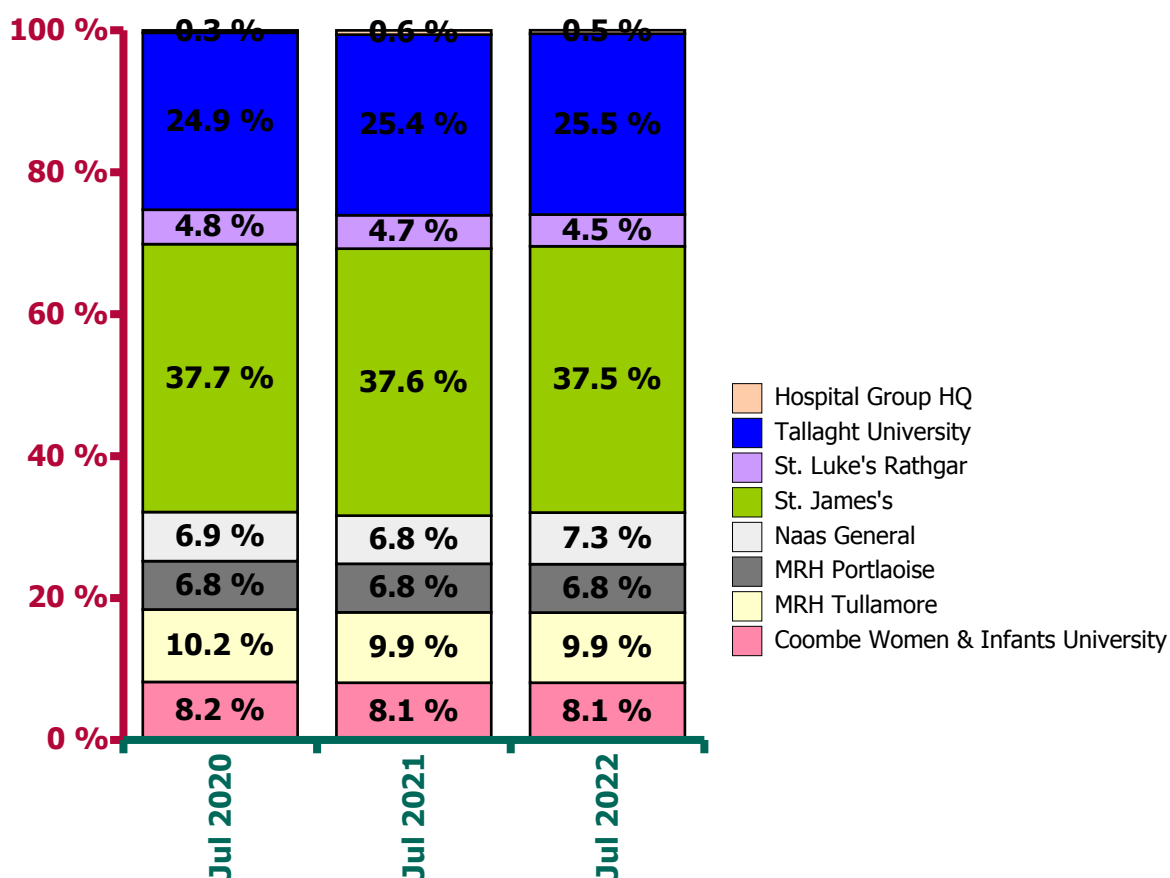
Employment by Staff Group

Jul 2022	WTE Dec 2019	WTE Dec 2020	WTE Jun 2022	WTE Jul 2022	WTE change since Jun 22	WTE change since Dec 20	% change since Dec 20	WTE change since Dec 19	% change since Dec 19	No. Jul 2022
Overall	10,819	11,288	11,935	12,066	+131	+778	+6.9%	+1,247	+11.5%	13,864
Consultants	464	499	536	544	+7	+44	+8.9%	+80	+17.2%	589
Registrars	490	522	537	561	+24	+39	+7.5%	+71	+14.6%	833
SHO/ Interns	424	460	465	465	+1	+5	+1.1%	+42	+9.8%	700
Medical/ Dental, other	7	7	11	11	+0	+3	+46.1%	+4	+57.1%	14
Medical & Dental	1,384	1,489	1,549	1,581	+32	+92	+6.2%	+197	+14.2%	2,136
Nurse/ Midwife Manager	877	908	966	982	+16	+74	+8.1%	+105	+12.0%	1,083
Nurse/ Midwife Specialist & AN/MP	205	236	270	276	+6	+40	+16.9%	+71	+34.9%	314
Staff Nurse/ Staff Midwife	2,835	2,950	3,003	2,993	-10	+43	+1.4%	+158	+5.6%	3,292
<i>Pre-registration Nurse/ Midwife Intern</i>	8	0	93	94	+1	+94	+312366.7%	+86	+1103.3%	188
<i>Pre-registration Nurse Intern (COVID-19)</i>		28				-28	-100.0%		-100.0%	
<i>Post-registration Nurse/ Midwife Student</i>	13	12	11	11		-1	-8.3%	-2	-15.4%	22
<i>Nursing/ Midwifery awaiting registration</i>	21	4	20	63	+43	+59	+1391.1%	+42	+201.8%	66
Nursing/ Midwifery Student	42	44	124	168	+44	+124	+281.8%	+126	+302.3%	276
Nursing/ Midwifery other	36	38	41	39	-2	+1	+3.5%	+3	+9.0%	45
Nursing & Midwifery	3,994	4,177	4,403	4,458	+55	+282	+6.7%	+464	+11.6%	5,010
Therapy Professions	367	397	428	428	+0	+31	+7.8%	+61	+16.7%	478
Health Science/ Diagnostics	979	1,001	998	1,004	+5	+3	+0.3%	+25	+2.6%	1,088
Social Workers	79	87	95	91	-4	+4	+4.6%	+12	+15.1%	99
Psychologists	13	13	15	15	+0	+2	+13.6%	+3	+21.0%	17
Pharmacy	220	243	245	239	-6	-5	-1.9%	+18	+8.3%	263
H&SC, Other	34	46	46	43	-3	-2	-5.4%	+10	+28.3%	48
Health & Social Care Professionals	1,692	1,788	1,827	1,821	-7	+33	+1.8%	+129	+7.6%	1,993
Management (VIII & above)	117	126	143	144	+1	+18	+14.0%	+27	+22.7%	148
Administrative/ Supervisory (V to VII)	494	523	598	606	+8	+83	+15.9%	+112	+22.6%	641
Clerical (III & IV)	1,055	1,046	1,107	1,116	+9	+70	+6.7%	+61	+5.8%	1,299
Management & Administrative	1,667	1,695	1,848	1,866	+18	+171	+10.1%	+199	+12.0%	2,088
Support	764	771	805	815	+10	+44	+5.7%	+51	+6.6%	930
Maintenance/ Technical	130	130	132	131	-0	+2	+1.4%	+1	+1.1%	135
General Support	894	901	936	947	+10	+46	+5.1%	+52	+5.8%	1,065
Health Care Assistants	1,167	1,217	1,343	1,364	+21	+147	+12.0%	+197	+16.9%	1,535
Care, other	21	21	28	29	+1	+8	+38.6%	+9	+42.7%	37
Patient & Client Care	1,187	1,239	1,371	1,394	+22	+155	+12.5%	+206	+17.4%	1,572

Dublin Midlands Hospital Group Employment by Hospital: Jul 2022

Jul 2022	WTE Dec 2019	WTE Dec 2020	WTE Jun 2022	WTE Jul 2022	WTE change since Jun 22	WTE change since Dec 20	% change since Dec 20	WTE change since Dec 19	% change since Dec 19	No. Jul 2022
Overall	10,819	11,288	11,935	12,066	+131	+778	+6.9%	+1,247	+11.5%	13,864
Coombe Women & Infants University	890	925	949	974	+25	+49	+5.3%	+84	+9.4%	1,089
MRH Tullamore	1,101	1,146	1,185	1,192	+7	+46	+4.0%	+91	+8.2%	1,315
MRH Portlaoise	750	780	814	824	+10	+44	+5.6%	+74	+9.9%	915
Naas General	759	777	869	877	+8	+100	+12.9%	+119	+15.6%	1,008
St. James's	4,058	4,266	4,501	4,526	+25	+261	+6.1%	+469	+11.5%	5,291
St. Luke's Rathgar	544	542	543	542	-1	-1	-0.1%	-3	-0.5%	575
Tallaght University	2,683	2,812	3,017	3,074	+57	+263	+9.3%	+391	+14.6%	3,611
Hospital Group HQ	33	40	57	57	-0	+17	+42.7%	+23	+69.6%	60

Dublin Midlands Hospital Group



Dublin Midlands Hospital Group Employment by Administration (HSE / S38): July 2022

Jul 2022	WTE Dec 2019	WTE Dec 2020	WTE Jun 2022	WTE Jul 2022	WTE change since Jun 22	WTE change since Dec 20	% change since Dec 20	WTE change since Dec 19	% change since Dec 19	No. Jul 2022
Overall	10,819	11,288	11,935	12,066	+131	+778	+6.9%	+1,247	+11.5%	13,864
HSE	3,187	3,285	3,467	3,491	+24	+206	+6.3%	+304	+9.5%	3,873
Section 38 Hospitals	7,631	8,003	8,467	8,575	+108	+572	+7.1%	+944	+12.4%	9,991

HSE

Jul 2022	WTE Dec 2019	WTE Dec 2020	WTE Jun 2022	WTE Jul 2022	WTE change since Jun 22	WTE change since Dec 20	% change since Dec 20	WTE change since Dec 19	% change since Dec 19	No. Jul 2022
Overall	3,187	3,285	3,467	3,491	+24	+206	+6.3%	+304	+9.5%	3,873
Consultants	120	117	124	127	+3	+10	+8.8%	+7	+6%	135
Registrars	121	129	138	141	+2	+12	+9.1%	+19	+16%	156
SHO/ Interns	135	137	143	139	-4	+2	+1.5%	+4	+3%	169
Medical/ Dental, other	2	2	2	2	+0	-0	-6.1%	-0	-7%	2
Medical & Dental	378	385	407	409	+1	+24	+6.2%	+30	+8.0%	462
Nurse/ Midwife Manager	237	249	269	277	+8	+28	+11.0%	+40	+17%	307
Nurse/ Midwife Specialist & AN/MP	71	75	83	86	+3	+12	+15.4%	+15	+22%	98
Staff Nurse/ Staff Midwife	741	774	807	821	+14	+47	+6.1%	+80	+11%	933
Pre-registration Nurse/ Midwife Intern	0		12	12	-0	+12	-100.0%	+12	+29100.0%	24
Pre-registration Nurse Intern (COVID-19)		2					-100.0%		-100.0%	
Nursing/ Midwifery awaiting registration	15		11	11	+0	-4	-100.0%	-4	-24.2%	14
Nursing/ Midwifery Student	15	2	23	23	+0	+21	+1052.5%	+8	+53%	38
Nursing/ Midwifery other	4	5	8	7	-1	+2	+37.5%	+3	+66%	8
Nursing & Midwifery	1,067	1,105	1,190	1,214	+24	+109	+9.9%	+147	+13.8%	1,384
Therapy Professions	93	106	110	110	+1	+4	+4.0%	+17	+18%	123
Health Science/ Diagnostics	381	407	393	389	-4	-18	-4.4%	+8	+2%	422
Social Workers	7	8	11	11	+0	+3	+39.2%	+4	+58%	11
Psychologists	3	3	4	4		+1	+33.3%	+1	+33%	4
Pharmacy	51	61	66	63	-2	+2	+3.5%	+13	+25%	74
H&SC, Other	2	4	9	8	-1	+4	+111.0%	+7	+427%	10
Health & Social Care Professionals	536	589	593	586	-7	-3	-0.5%	+50	+9.3%	644
Management (VIII & above)	34	36	36	36	-0	+0	+1.2%	+3	+8%	37
Administrative/ Supervisory (V to VII)	98	116	141	145	+4	+29	+24.9%	+46	+47%	156
Clerical (III & IV)	315	287	298	293	-4	+6	+2.3%	-22	-7%	325
Management & Administrative	447	438	475	474	-1	+36	+8.2%	+27	+6.0%	518
Support	132	134	136	138	+2	+4	+2.8%	+6	+4%	147
Maintenance/ Technical	43	47	46	48	+2	+1	+1.5%	+5	+12%	50
General Support	175	181	181	186	+5	+4	+2.4%	+11	+6.1%	197
Health Care Assistants	579	583	617	618	+1	+35	+6.1%	+39	+7%	663
Care, other	4	4	4	4		+0	+8.9%			5
Patient & Client Care	583	587	621	622	+1	+36	+6.1%	+39	+6.7%	668

Section 38 Hospitals

Jul 2022	WTE Dec 2019	WTE Dec 2020	WTE Jun 2022	WTE Jul 2022	WTE change since Jun 22	WTE change since Dec 20	% change since Dec 20	WTE change since Dec 19	% change since Dec 19	No. Jul 2022
Overall	7,631	8,003	8,467	8,575	+108	+572	+7.1%	+944	+12.4%	9,991
Consultants	344	382	412	416	+4	+34	+8.9%	+73	+21%	454
Registrars	368	393	399	421	+22	+28	+7.0%	+52	+14%	677
SHO/ Interns	288	323	321	326	+5	+3	+0.9%	+38	+13%	531
Medical/ Dental, other	5	6	9	9	+0	+3	+63.3%	+4	+80%	12
Medical & Dental	1,006	1,104	1,141	1,172	+31	+68	+6.2%	+167	+16.6%	1,674
Nurse/ Midwife Manager	641	659	697	706	+8	+46	+7.0%	+65	+10%	776
Nurse/ Midwife Specialist & AN/MP	134	161	186	190	+4	+28	+17.6%	+56	+42%	216
Staff Nurse/ Staff Midwife	2,095	2,177	2,196	2,172	-24	-5	-0.2%	+77	+4%	2,359
Pre-registration Nurse/ Midwife Intern	8	0	81	82	+1	+74	+273433.3%	+74	+958.8%	164
Pre-registration Nurse Intern (COVID-19)		26					-100.0%		-100.0%	
Post-registration Nurse/ Midwife Student	13	12	11	11		-2	-8.3%	-2	-15.4%	22
Nursing/ Midwifery awaiting registration	6	4	9	52	+43	+46	+1123.5%	+46	+766.7%	52
Nursing/ Midwifery Student	27	42	101	145	+44	+103	+245.1%	+118	+442%	238
Nursing/ Midwifery other	31	32	33	32	-1	-1	-1.9%	+0	+1%	37
Nursing & Midwifery	2,927	3,072	3,213	3,244	+31	+172	+5.6%	+317	+10.8%	3,626
Therapy Professions	274	291	318	318	-1	+27	+9.3%	+44	+16%	355
Health Science/ Diagnostics	598	594	605	615	+10	+21	+3.5%	+17	+3%	666
Social Workers	73	80	84	80	-4	+1	+1.2%	+8	+11%	88
Psychologists	10	10	11	11	+0	+1	+8.0%	+2	+17%	13
Pharmacy	169	182	179	175	-4	-7	-3.7%	+6	+3%	189
H&SC, Other	32	42	37	35	-2	-7	-16.5%	+3	+8%	38
Health & Social Care Professionals	1,155	1,199	1,234	1,234	+0	+36	+3.0%	+79	+6.9%	1,349
Management (VIII & above)	84	90	106	108	+1	+17	+19.1%	+24	+29%	111
Administrative/ Supervisory (V to VII)	396	407	457	461	+4	+54	+13.4%	+65	+16%	485
Clerical (III & IV)	740	759	809	823	+14	+64	+8.4%	+83	+11%	974
Management & Administrative	1,219	1,256	1,372	1,392	+19	+136	+10.8%	+173	+14.2%	1,570
Support	632	637	669	677	+8	+40	+6.3%	+45	+7%	783
Maintenance/ Technical	88	83	86	84	-2	+1	+1.4%	-4	-4%	85
General Support	719	720	755	761	+6	+41	+5.7%	+41	+5.8%	868
Health Care Assistants	588	635	726	746	+19	+111	+17.5%	+158	+27%	872
Care, other	17	18	24	25	+1	+8	+44.8%	+9	+53%	32
Patient & Client Care	604	652	751	771	+21	+119	+18.3%	+167	+27.6%	904

Dublin Midlands Hospital Group Employment by Hospital & Staff Category: July 2022

Coombe Women & Infants

Jul 2022	WTE Dec 2019	WTE Dec 2020	WTE Jun 2022	WTE Jul 2022	WTE change since Jun 22	WTE change since Dec 20	% change since Dec 20	WTE change since Dec 19	% change since Dec 19	No. Jul 2022
Overall	890	925	949	974	+25	+49	+5.3%	+84	+9.4%	1,089
Consultants	32	38	38	40	+2	+2	+5.8%	+8	+25.6%	43
Registrars	39	42	38	49	+11	+7	+17.2%	+10	+24.7%	49
SHO/ Interns	28	28	27	27	0	-1	-3.6%	-1	-3.6%	27
Medical & Dental	99	108	103	116	+13	+8	+7.8%	+17	+17.0%	119
Nurse/ Midwife Manager	73	80	89	89	-0	+9	+11.1%	+16	+21.8%	99
Nurse/ Midwife Specialist & AN/MP	11	12	17	17	+0	+5	+41.3%	+6	+52.8%	19
Staff Nurse/ Staff Midwife	261	257	234	237	+2	-21	-8.1%	-24	-9.3%	257
Pre-registration Nurse/ Midwife Intern			6	6	0	+6	-100.0%	+6	-100.0%	11
Post-registration Nurse/ Midwife Student	13	12	11	11	0	-1	-8.3%	-2	-15.4%	22
Nursing/ Midwifery Student	13	12	17	17	0	+5	+37.5%	+4	+26.9%	33
Nursing/ Midwifery other	16	16	16	17	+0	+0	+2.9%	+0	+1.3%	20
Nursing & Midwifery	374	378	373	376	+2	-2	-0.5%	+2	+0.4%	428
Therapy Professions	8	8	11	12	+1	+4	+42.7%	+4	+49.1%	15
Health Science/ Diagnostics	52	55	55	55	+1	+1	+0.9%	+4	+6.8%	59
Social Workers	7	10	10	9	-1	-1	-10.0%	+2	+28.6%	9
Psychologists	1	1	1	1	0		0.0	+0	+78.6%	1
Pharmacy	7	8	8	8	0		0.0	+1	+14.3%	8
H&SC, Other			1	1	0	+1	-100.0%	+1	-100.0%	1
Health & Social Care Professionals	74	82	85	86	+1	+4	+5.0%	+12	+16.0%	93
Management (VIII & above)	7	6	7	8	+1	+2	+33.3%	+1	+14.3%	8
Administrative/ Supervisory (V to VII)	47	48	56	56	+0	+8	+17.7%	+9	+20.2%	59
Clerical (III & IV)	93	100	102	105	+3	+6	+5.6%	+12	+13.2%	129
Management & Administrative	147	153	165	169	+5	+16	+10.4%	+23	+15.5%	196
Support	137	143	150	148	-2	+5	+3.6%	+11	+7.8%	164
Maintenance/ Technical	9	7	8	8	0	+1	+14.3%	-1	-11.1%	8
General Support	146	150	158	156	-2	+6	+4.1%	+10	+6.7%	172
Health Care Assistants	48	54	62	68	+5	+14	+26.0%	+20	+41.6%	78
Care, other	2	1	2	3	+1	+2	+200.0%	+1	+86.3%	3
Patient & Client Care	49	55	64	71	+6	+16	+29.1%	+21	+43.1%	81

MRH Tullamore

Jul 2022	WTE Dec 2019	WTE Dec 2020	WTE Jun 2022	WTE Jul 2022	WTE change since Jun 22	WTE change since Dec 20	% change since Dec 20	WTE change since Dec 19	% change since Dec 19	No. Jul 2022
Overall	1,101	1,146	1,185	1,192	+7	+46	+4.0%	+91	+8.2%	1,315
Consultants	47	46	54	57	+3	+11	+24.3%	+10	+20.9%	62
Registrars	41	48	53	53	-0	+5	+10.4%	+12	+28.5%	54
SHO/ Interns	46	47	50	50	-1	+2	+5.1%	+4	+8.8%	50
Medical/ Dental, other	2	2	2	2	+0	-0	-6.1%	-0	-6.6%	2
Medical & Dental	136	143	159	162	+3	+19	+12.9%	+26	+18.8%	168
Nurse/ Midwife Manager	86	87	89	91	+2	+4	+4.3%	+5	+5.8%	103
Nurse/ Midwife Specialist & AN/MP	23	25	27	27	+0	+2	+8.0%	+5	+20.4%	31
Staff Nurse/ Staff Midwife	294	306	311	315	+4	+8	+2.7%	+21	+7.1%	364
Pre-registration Nurse/ Midwife Intern	0		7	7	+0	+7	-100.0%	+7	+17000.0%	14
Pre-registration Nurse Intern (COVID-19)		2				-2	-100.0%		-100.0%	
Nursing/ Midwifery awaiting registration	6		1	1	0	+1	-100.0%	-5	-83.3%	1
Nursing/ Midwifery Student	6	2	8	8	+0	+6	+292.0%	+2	+29.8%	15
Nursing/ Midwifery other	1	2	2	2	+0	+0	+6.0%	+1	+93.0%	2
Nursing & Midwifery	410	423	437	443	+6	+20	+4.8%	+33	+8.1%	515
Therapy Professions	32	38	39	39	-0	+1	+2.1%	+7	+20.2%	43
Health Science/ Diagnostics	83	91	92	88	-4	-3	-3.0%	+5	+5.6%	96
Social Workers			2	2	+0	+2	-100.0%	+2	-100.0%	2
Pharmacy	24	32	37	35	-2	+3	+10.5%	+11	+45.9%	40
H&SC, Other	1		3	2	-1	+2	-100.0%	+2	+288.3%	3
Health & Social Care Professionals	141	161	173	167	-6	+6	+3.6%	+26	+18.5%	184
Management (VIII & above)	5	5	4	4	-0	-1	-22.0%	-1	-22.8%	4
Administrative/ Supervisory (V to VII)	24	29	31	33	+1	+4	+13.5%	+9	+37.9%	34
Clerical (III & IV)	99	95	81	79	-2	-16	-17.2%	-20	-20.6%	87
Management & Administrative	128	129	116	115	-1	-14	-10.5%	-13	-9.9%	125
Support	28	29	31	32	+1	+3	+10.1%	+4	+12.7%	32
Maintenance/ Technical	27	27	26	27	+2	-0	-0.2%	-0	-0.3%	28
General Support	55	56	56	59	+3	+3	+5.1%	+3	+6.3%	60
Health Care Assistants	230	233	242	245	+3	+12	+5.1%	+15	+6.4%	261
Care, other	1	1	1	1	0		0.0			2
Patient & Client Care	232	234	243	246	+3	+12	+5.1%	+15	+6.4%	263

MRH Portlaoise

Jul 2022	WTE Dec 2019	WTE Dec 2020	WTE Jun 2022	WTE Jul 2022	WTE change since Jun 22	WTE change since Dec 20	% change since Dec 20	WTE change since Dec 19	% change since Dec 19	No. Jul 2022
Overall	750	780	814	824	+10	+44	+5.6%	+74	+9.9%	915
Consultants	23	24	23	23	-0	-1	-2.2%	+1	+2.5%	24
Registrars	35	37	37	38	+1	+1	+3.5%	+3	+8.2%	39
SHO/ Interns	38	41	39	35	-4	-6	-15.0%	-3	-8.4%	36
Medical & Dental	96	101	99	96	-3	-5	-5.3%	+0	+0.3%	99
Nurse/ Midwife Manager	61	62	74	76	+2	+14	+22.4%	+15	+25.4%	86
Nurse/ Midwife Specialist & AN/MP	16	19	24	26	+2	+6	+33.5%	+9	+57.7%	29
Staff Nurse/ Staff Midwife	202	220	233	244	+11	+24	+10.7%	+41	+20.3%	274
Pre-registration Nurse/ Midwife Intern			5	5	-0	+5	-100.0%	+5	-100.0%	10
Nursing/ Midwifery awaiting registration	9		10	10	+0	+10	-100.0%	+1	+15.2%	13
Nursing/ Midwifery Student	9		15	15	+0	+15	-100.0%	+6	+69.0%	23
Nursing/ Midwifery other	2	2	2	3	+0	+0	+8.2%	+0	+2.4%	3
Nursing & Midwifery	291	304	349	364	+15	+59	+19.5%	+72	+24.8%	415
Therapy Professions	14	19	16	15	-1	-4	-18.7%	+1	+6.5%	17
Health Science/ Diagnostics	38	43	43	43	-0	-0	-0.2%	+5	+13.3%	47
Social Workers			1	1	0	+1	-100.0%	+1	-100.0%	1
Pharmacy	13	13	11	10	-0	-3	-22.6%	-2	-17.5%	13
Health & Social Care Professionals	65	75	71	69	-1	-6	-7.5%	+5	+7.3%	78
Management (VIII & above)	3	4	5	5	0	+1	+24.0%	+2	+65.3%	5
Administrative/ Supervisory (V to VII)	13	16	19	19	-0	+3	+17.6%	+6	+43.2%	21
Clerical (III & IV)	81	73	70	70	-0	-3	-4.0%	-11	-13.5%	77
Management & Administrative	97	93	94	94	-0	+1	+0.9%	-3	-3.4%	103
Support	17	20	20	20	+0	+0	+2.2%	+3	+20.5%	23
Maintenance/ Technical	8	9	7	8	+1	-2	-16.7%	-1	-6.3%	9
General Support	25	29	27	28	+1	-1	-3.7%	+3	+11.9%	32
Health Care Assistants	175	177	173	172	-1	-5	-2.6%	-3	-1.7%	187
Care, other	1	1	1	1	0		0.0			1
Patient & Client Care	176	178	174	173	-1	-5	-2.6%	-3	-1.7%	188

Naas General

Jul 2022	WTE Dec 2019	WTE Dec 2020	WTE Jun 2022	WTE Jul 2022	WTE change since Jun 22	WTE change since Dec 20	% change since Dec 20	WTE change since Dec 19	% change since Dec 19	No. Jul 2022
Overall	759	777	869	877	+8	+100	+12.9%	+119	+15.6%	1,008
Consultants	26	25	24	24	-0	-0	-1.7%	-1	-4.9%	25
Registrars	26	28	37	37	+1	+9	+33.6%	+12	+44.8%	51
SHO/ Interns	39	37	39	38	-1	+1	+3.2%	-1	-1.6%	66
Medical & Dental	90	90	100	100	+0	+10	+11.4%	+10	+10.7%	142
Nurse/ Midwife Manager	65	69	76	79	+3	+10	+14.1%	+14	+20.9%	87
Nurse/ Midwife Specialist & AN/MP	19	16	18	20	+2	+4	+24.7%	+1	+7.7%	25
Staff Nurse/ Staff Midwife	201	208	227	226	-1	+18	+8.8%	+25	+12.3%	253
Nursing/ Midwifery other	1	1	3	3	+0	+2	+163.0%	+2	+224.7%	3
Nursing & Midwifery	286	294	324	328	+4	+34	+11.5%	+42	+14.6%	368
Therapy Professions	38	40	44	46	+2	+6	+14.9%	+8	+21.1%	52
Health Science/ Diagnostics	65	68	64	66	+2	-2	-3.6%	+1	+0.8%	74
Social Workers	2	3	3	3	+0	+0	+3.4%	+1	+53.8%	3
Pharmacy	12	15	15	15	-0	-0	-1.3%	+3	+21.9%	18
Health & Social Care Professionals	117	126	126	129	+4	+3	+2.7%	+12	+10.4%	147
Management (VIII & above)	5	6	5	5	+0	-1	-16.4%	-0	-2.4%	5
Administrative/ Supervisory (V to VII)	12	18	29	32	+3	+14	+76.9%	+20	+160.1%	36
Clerical (III & IV)	71	58	69	67	-2	+8	+14.5%	-4	-5.8%	74
Management & Administrative	88	82	103	103	+0	+21	+25.9%	+15	+17.4%	115
Support	28	28	33	33	+0	+5	+16.4%	+5	+19.6%	38
Maintenance/ Technical	2	6	7	7	+0	+1	+21.7%	+5	+213.9%	7
General Support	30	34	40	40	+0	+6	+17.3%	+10	+34.1%	45
Health Care Assistants	146	150	178	177	-1	+27	+17.7%	+31	+20.9%	191
Care, other	1	1				-1	-100.0%	-1	-100.0%	
Patient & Client Care	147	151	178	177	-1	+26	+17.2%	+30	+20.0%	191

St. James's

Jul 2022	WTE Dec 2019	WTE Dec 2020	WTE Jun 2022	WTE Jul 2022	WTE change since Jun 22	WTE change since Dec 20	% change since Dec 20	WTE change since Dec 19	% change since Dec 19	No. Jul 2022
Overall	4,058	4,266	4,501	4,526	+25	+261	+6.1%	+469	+11.5%	5,291
Consultants	195	212	226	227	+0	+14	+6.8%	+31	+16.0%	247
Registrars	184	205	202	204	+2	-1	-0.3%	+20	+11.1%	350
SHO/ Interns	157	176	180	182	+2	+6	+3.3%	+25	+16.1%	301
Medical/ Dental, other	5	6	9	9	+0	+3	+63.3%	+4	+80.3%	12
Medical & Dental	541	598	618	622	+4	+23	+3.9%	+81	+15.0%	910
Nurse/ Midwife Manager	345	348	362	364	+2	+17	+4.8%	+20	+5.7%	405
Nurse/ Midwife Specialist & AN/MP	80	95	114	115	+1	+20	+20.5%	+35	+44.2%	134
Staff Nurse/ Staff Midwife	1,125	1,179	1,175	1,178	+3	-2	-0.2%	+52	+4.7%	1,266
Pre-registration Nurse/ Midwife Intern			34	34	+0	+34	-100.0%	+34	-100.0%	69
Pre-registration Nurse Intern (COVID-19)		7				-7	-100.0%		-100.0%	
Nursing/ Midwifery awaiting registration	1						-100.0%	-1	-100.0%	
Nursing/ Midwifery Student	1	7	34	34	+0	+27	+395.1%	+33	+3306.0%	69
Nursing/ Midwifery other	12	13	11	11	+0	-2	-15.2%	-1	-6.0%	12
Nursing & Midwifery	1,562	1,643	1,696	1,702	+7	+60	+3.6%	+140	+9.0%	1,886
Therapy Professions	151	164	172	171	-1	+7	+4.2%	+19	+12.7%	194
Health Science/ Diagnostics	339	323	331	333	+2	+10	+3.2%	-6	-1.7%	359
Social Workers	43	46	47	44	-3	-2	-3.6%	+1	+2.1%	50
Psychologists	5	5	6	6	+0	+1	+19.9%	+1	+17.0%	7
Pharmacy	97	109	107	105	-2	-4	-3.9%	+8	+8.1%	111
H&SC, Other	26	36	34	32	-2	-4	-10.9%	+6	+21.8%	35
Health & Social Care Professionals	662	682	696	691	-6	+8	+1.2%	+29	+4.3%	756
Management (VIII & above)	40	43	56	57	+1	+14	+31.5%	+16	+40.8%	60
Administrative/ Supervisory (V to VII)	176	185	210	211	+1	+26	+13.8%	+35	+20.0%	221
Clerical (III & IV)	371	378	404	411	+7	+33	+8.6%	+40	+10.9%	487
Management & Administrative	587	607	669	679	+10	+72	+11.8%	+92	+15.7%	768
Support	278	277	291	295	+5	+18	+6.7%	+18	+6.4%	352
Maintenance/ Technical	59	56	57	55	-2	-1	-1.6%	-4	-6.3%	56
General Support	336	332	348	350	+2	+18	+5.3%	+14	+4.2%	408
Health Care Assistants	360	392	457	465	+8	+73	+18.6%	+105	+29.1%	541
Care, other	9	10	18	18	-0	+7	+71.0%	+8	+87.5%	22
Patient & Client Care	370	403	475	483	+8	+80	+19.9%	+113	+30.6%	563

St. Luke's Rathgar

Jul 2022	WTE Dec 2019	WTE Dec 2020	WTE Jun 2022	WTE Jul 2022	WTE change since Jun 22	WTE change since Dec 20	% change since Dec 20	WTE change since Dec 19	% change since Dec 19	No. Jul 2022
Overall	544	542	543	542	-1	-1	-0.1%	-3	-0.5%	575
Consultants	24	22	22	22	0		0.0	-2	-8.2%	24
Registrars	19	16	11	12	+1	-4	-25.0%	-7	-36.8%	12
SHO/ Interns	13	12	16	17	+1	+5	+38.3%	+4	+27.7%	17
Medical & Dental	56	50	49	51	+2	+1	+1.2%	-5	-9.6%	53
Nurse/ Midwife Manager	21	27	25	25	0	-3	-9.8%	+3	+15.5%	25
Nurse/ Midwife Specialist & AN/MP	13	14	14	13	-1	-1	-7.1%			13
Staff Nurse/ Staff Midwife	43	39	36	36	0	-3	-7.3%	-7	-15.3%	42
Nursing & Midwifery	77	81	75	74	-1	-7	-8.1%	-3	-4.2%	80
Therapy Professions	9	9	10	10	0	+1	+10.8%	+2	+20.2%	11
Health Science/ Diagnostics	195	205	195	193	-3	-13	-6.2%	-2	-1.0%	205
Social Workers	5	5	5	5	0		0.0			5
Psychologists	3	3	4	4	0	+1	+33.3%	+1	+33.3%	4
Pharmacy	2	1	3	3	0	+2	+200.0%	+1	+50.0%	3
H&SC, Other	1	4	6	6	0	+2	+50.0%	+5	+500.0%	6
Health & Social Care Professionals	214	228	223	221	-3	-7	-3.0%	+7	+3.2%	234
Management (VIII & above)	6	5	6	6	0	+1	+20.0%			6
Administrative/ Supervisory (V to VII)	34	36	35	34	-1	-1	-3.7%	+1	+2.1%	36
Clerical (III & IV)	64	57	70	71	+1	+13	+23.2%	+6	+9.8%	80
Management & Administrative	104	98	111	111		+13	+13.3%	+7	+6.7%	122
Support	60	57	52	53	+1	-4	-7.4%	-7	-11.4%	54
Maintenance/ Technical	5	5	6	6	0	+1	+20.0%	+1	+20.0%	6
General Support	65	62	58	59	+1	-3	-5.2%	-6	-9.0%	60
Health Care Assistants	27	23	24	24	0	+1	+6.3%	-3	-11.5%	24
Care, other	1	1	2	2	0	+1	+128.2%	+1	+128.2%	2
Patient & Client Care	28	23	26	26		+2	+10.4%	-2	-7.6%	26

Tallaght University

Jul 2022	WTE Dec 2019	WTE Dec 2020	WTE Jun 2022	WTE Jul 2022	WTE change since Jun 22	WTE change since Dec 20	% change since Dec 20	WTE change since Dec 19	% change since Dec 19	No. Jul 2022
Overall	2,683	2,812	3,017	3,074	+57	+263	+9.3%	+391	+14.6%	3,611
Consultants	117	132	148	150	+2	+17	+13.2%	+33	+28.3%	164
Registrars	145	146	158	167	+9	+21	+14.3%	+22	+15.2%	278
SHO/ Interns	104	119	114	118	+3	-2	-1.5%	+14	+13.2%	203
Medical & Dental	366	398	421	435	+14	+37	+9.2%	+69	+18.8%	645
Nurse/ Midwife Manager	223	232	246	252	+6	+21	+8.9%	+29	+13.1%	272
Nurse/ Midwife Specialist & AN/MP	42	54	55	57	+2	+4	+6.9%	+15	+34.6%	63
Staff Nurse/ Staff Midwife	709	740	787	758	-29	+18	+2.4%	+49	+6.9%	836
Pre-registration Nurse/ Midwife Intern	8	0	42	43	+1	+42	+141566.7%	+35	+448.4%	84
Pre-registration Nurse Intern (COVID-19)		19				-19	-100.0%		-100.0%	
Nursing/ Midwifery awaiting registration	5	4	9	52	+43	+48	+1123.5%	+47	+940.0%	52
Nursing/ Midwifery Student	13	23	51	95	+44	+71	+308.2%	+82	+641.2%	136
Nursing/ Midwifery other	3	3	6	4	-1	+1	+29.5%	+1	+29.5%	5
Nursing & Midwifery	990	1,051	1,144	1,166	+22	+114	+10.9%	+176	+17.7%	1,312
Therapy Professions	114	119	135	135	-0	+17	+13.9%	+21	+18.4%	146
Health Science/ Diagnostics	207	217	219	227	+7	+10	+4.6%	+19	+9.3%	248
Social Workers	22	24	27	27	-0	+4	+15.0%	+5	+22.7%	29
Psychologists	4	5	4	4	+0	-0	-3.1%	+0	+8.9%	5
Pharmacy	65	65	64	62	-2	-3	-3.9%	-3	-4.7%	70
H&SC, Other	6	6	2	2	0	-4	-66.7%	-4	-66.7%	2
Health & Social Care Professionals	419	434	453	458	+5	+23	+5.4%	+39	+9.2%	500
Management (VIII & above)	36	41	44	43	-1	+2	+3.9%	+7	+18.1%	43
Administrative/ Supervisory (V to VII)	174	174	191	194	+3	+20	+11.7%	+21	+11.9%	205
Clerical (III & IV)	276	281	304	307	+3	+26	+9.2%	+31	+11.2%	358
Management & Administrative	486	496	539	544	+5	+48	+9.6%	+58	+11.9%	606
Support	217	217	229	234	+5	+16	+7.5%	+17	+7.7%	267
Maintenance/ Technical	20	20	21	21	-0	+1	+5.5%	+1	+4.8%	21
General Support	237	237	250	255	+5	+17	+7.4%	+18	+7.5%	288
Health Care Assistants	180	188	207	213	+6	+24	+12.9%	+33	+18.5%	253
Care, other	6	6	5	5	+0	-1	-22.0%	-1	-13.0%	7
Patient & Client Care	185	195	211	218	+7	+23	+11.8%	+33	+17.6%	260

Hospital Group HQ

Jul 2022	WTE Dec 2019	WTE Dec 2020	WTE Jun 2022	WTE Jul 2022	WTE change since Jun 22	WTE change since Dec 20	% change since Dec 20	WTE change since Dec 19	% change since Dec 19	No. Jul 2022
Overall	33	40	57	57	-0	+17	+42.7%	+23	+69.6%	60
Nurse/ Midwife Manager	3	3	5	6	+1	+3	+90.0%	+3	+90.6%	6
Nursing/ Midwifery other			1		-1		-100.0%		-100.0%	
Nursing & Midwifery	3	3	6	6	-0	+3	+90.0%	+3	+90.6%	6
H&SC, Other			0	0	-0	+0	-100.0%	+0	-100.0%	1
Health & Social Care Professionals			0	0	-0	+0	-100.0%	+0	-100.0%	1
Management (VIII & above)	15	16	17	17	-0	+1	+3.2%	+2	+12.9%	17
Administrative/ Supervisory (V to VII)	16	18	27	27	+1	+10	+54.8%	+12	+74.4%	29
Clerical (III & IV)		3	8	7	-1	+4	+136.5%	+7	-100.0%	7
Management & Administrative	30	37	51	51		+14	+38.6%	+20	+67.2%	53

Dublin Midlands Hospital Group Employment by Grade Group & Staff Category: July 2022

Jul 2022	WTE Dec 2019	WTE Dec 2020	WTE Jun 2022	WTE Jul 2022	WTE change since Jun 22	WTE change since Dec 20	% change since Dec 20	WTE change since Dec 19	% change since Dec 19	No. Jul 2022
Overall	10,819	11,288	11,935	12,066	+131	+778	+6.9%	+6.9%	+11.5%	13,864
Consultant Anaesthesia	67	71	81	82	+0	+10	+14.4%	+0	+22.1%	+91
Consultant Dentistry	2	2	2	1	-1	-1	-32.3%	-0	-35.0%	+2
Consultant Emergency Medicine	19	20	23	22	-0	+2	+10.6%	+0	+19.8%	+25
Consultant Intensive Care Medicine	2	2	2	2			0.0		0.0	+2
Consultant Medicine	145	161	179	184	+4	+23	+14.0%	+0	+26.4%	+198
Consultant Obstetrics & Gynaecology	26	31	30	31	+1	+0	+0.3%	+0	+16.2%	+32
Consultant Paediatrics	9	10	10	10	+0		0.0		+9.3%	+11
Consultant Pathology	49	52	53	53	-0	+0	+0.7%	+0	+7.4%	+56
Consultant Psychiatry	7	7	7	7		+0	+0.1%	+0	0.0	+8
Consultant Radiology	61	64	66	66	+1	+2	+3.8%	+0	+8.9%	+71
Consultant Surgery	76	79	84	86	+2	+7	+8.8%	+0	+12.4%	+93
Consultants	464	499	536	544	+7	+44	+8.9%	+0	+17.2%	+589
Registrar	244	277	282	300	+18	+23	+8.4%	+0	+23.2%	+417
Senior Registrar	19	20	16	17	+1	-3	-15.7%	-0	-10.9%	+21
Specialist Registrar	227	225	239	244	+5	+19	+8.5%	+0	+7.5%	+395
Registrars	490	522	537	561	+24	+39	+7.5%	+0	+14.6%	+833
Interns	121	152	138	161	+24	+10	+6.4%	+0	+33.8%	+249
Senior House Officer	303	309	327	304	-23	-5	-1.5%	-0	+0.3%	+451
SHO/ Interns	424	460	465	465	+1	+5	+1.1%	+0	+9.8%	+700
Dentists	1	1	1	1		-0	-31.0%	-0	0.0	+1
Other Medical	6	6	10	10	+0	+4	+65.2%	+1	+66.9%	+13
Medical/ Dental, other	7	7	11	11	+0	+3	+46.1%	+0	+57.1%	+14
Medical & Dental	1,384	1,489	1,549	1,581	+32	+92	+6.2%	+0	+14.2%	+2,136
Clinical Nurse/ Midwife Manager	794	823	875	890	+15	+67	+8.2%	+0	+12.1%	+984
Director Nursing/Midwifery, Assistant	73	76	80	82	+1	+6	+7.6%	+0	+12.5%	+88
Director of Nursing/Midwifery	11	10	11	11	-0	+1	+10.0%	+0	-2.3%	+11
Nurse/ Midwife Manager	877	908	966	982	+16	+74	+8.1%	+0	+12.0%	+1,083
Advanced Nurse/ Midwife Practitioner	62	82	101	103	+2	+21	+25.4%	+0	+65.8%	+109
Clinical Nurse/ Midwife Specialist	143	154	169	173	+4	+19	+12.4%	+0	+21.5%	+205
Nurse/ Midwife Specialist & AN/MP	205	236	270	276	+6	+40	+16.9%	+0	+34.9%	+314
Nursing Bank	22	17	6	5	-1	-12	-69.4%	-1	-76.7%	+11
Staff Midwives	196	189	172	172	+1	-16	-8.6%	-0	-12.1%	+195
Staff Nurses [General/ Children's]	2,595	2,720	2,804	2,797	-8	+77	+2.8%	+0	+7.8%	+3,065
Staff Nurse [Psychiatric]	21	25	21	19	-2	-6	-25.6%	-0	-13.0%	+21
Staff Nurse/ Staff Midwife	2,835	2,950	3,003	2,993	-10	+43	+1.4%	+0	+5.6%	+3,292
Pre-registration Nurse/ Midwife Intern	8	0	93	94	+1	+94	+312366.7%	+3,124	+1103.3%	+188
Pre-registration Nurse Intern (COVID-19)		28				-28	-100.0%	-1	-100.0%	
Post-registration Nurse/ Midwife Student	13	12	11	11		-1	-8.3%	-0	-15.4%	+22
Nursing/ Midwifery awaiting registration	21	4	20	63	+43	+59	+1391.1%	+14	+201.8%	+66
Nursing/ Midwifery Student	42	44	124	168	+44	+124	+281.8%	+3	+302.3%	+276

Jul 2022	WTE Dec 2019	WTE Dec 2020	WTE Jun 2022	WTE Jul 2022	WTE change since Jun 22	WTE change since Dec 20	% change since Dec 20	WTE change since Dec 19	% change since Dec 19	No. Jul 2022
Overall	10,819	11,288	11,935	12,066	+131	+778	+6.9%	+6.9%	+11.5%	13,864
Nursing Education/Clinical	31	33	35	33	-1	+0	+1.4%	+0	+7.9%	+38
Other Nursing/ Midwifery	5	5	6	6	-1	+1	+18.0%	+0	+16.0%	+7
Nursing/ Midwifery other	36	38	41	39	-2	+1	+3.5%	+0	+9.0%	+45
Nursing & Midwifery	3,994	4,177	4,403	4,458	+55	+282	+6.7%	+0	+11.6%	+5,010
Dietitians	94	98	100	100	+1	+2	+2.2%	+0	+6.6%	+113
Occupational Therapists	68	75	78	80	+2	+5	+6.2%	+0	+17.6%	+86
Orthoptists	2	2	2	2	+0	+0	+1.9%	+0	-16.0%	+2
Physiotherapists	160	174	198	194	-3	+21	+12.0%	+0	+21.5%	+218
Podiatrists & Chiropodists	4	3	3	3	+0	-0	-4.0%	-0	-10.9%	+5
Speech & Language Therapists	39	45	48	48	+1	+4	+8.1%	+0	+24.3%	+54
Therapy Professions	367	397	428	428	+0	+31	+7.8%	+0	+16.7%	+478
Audiology	3	3	5	5	-0	+2	+58.8%	+1	+51.3%	+6
Biochemists	9	9	7	7	+0	-2	-23.4%	-0	-19.8%	+8
Cardiac Physiologists	40	46	43	42	-0	-3	-7.0%	-0	+5.0%	+46
Clinical Engineering	43	40	40	40	-0	-0	-0.9%	-0	-7.9%	+41
Dosimetrists	2	2	1	1		-1	-50.0%	-1	-50.0%	+1
E.C.G. Technicians	2	1				-1	-100.0%	-1	-100.0%	
Gastrointestinal Physiologists	2	2	4	4	+0	+2	+125.9%	+1	+125.9%	+4
Medical Science	388	390	392	398	+6	+9	+2.2%	+0	+2.6%	+435
Neuro-Physiologists	8	11	10	10	+0	-1	-6.6%	-0	+23.7%	+11
Perfusionists	4	4	4	4	+0	-1	-14.3%	-0	-14.3%	+4
Phlebotomists	41	46	53	56	+2	+10	+20.8%	+0	+34.4%	+63
Physicists	70	61	58	61	+2	-1	-1.0%	-0	-13.3%	+63
Radiation Therapists	138	147	140	138	-2	-9	-6.4%	-0	-0.3%	+148
Radiographers	209	221	222	218	-4	-3	-1.5%	-0	+4.5%	+235
Respiratory Physiologists	9	9	10	10	+1	+2	+17.4%	+0	+16.8%	+11
Vascular Physiologists	10	9	11	11		+2	+21.5%	+0	+7.1%	+12
Health Science/ Diagnostics	979	1,001	998	1,004	+5	+3	+0.3%	+0	+2.6%	+1,088
Social Workers	79	87	95	91	-4	+4	+4.6%	+0	+15.1%	+99
Psychologists	13	13	15	15	+0	+2	+13.6%	+0	+21.0%	+17
Pharmacists	136	151	145	141	-4	-10	-6.8%	-0	+3.5%	+153
Pharmacy Technicians	84	92	100	98	-2	+6	+6.1%	+0	+16.2%	+110
Pharmacy	220	243	245	239	-6	-5	-1.9%	-0	+8.3%	+263
Dental Hygienists	0	0	0	0	+0		0.0		+12.5%	+1
HSCP Trainees/ Students	15	14	16	13	-3	-1	-10.1%	-0	-13.8%	+14
Other Health & Social Care	19	32	29	31	+1	-1	-3.7%	-0	+59.8%	+32
Vaccinators			1	0	-1	+0	-100.0%	-1	-100.0%	+1
H&SC, Other	34	46	46	43	-3	-2	-5.4%	-0	+28.3%	+48
Health & Social Care Professionals	1,692	1,788	1,827	1,821	-7	+33	+1.8%	+0	+7.6%	+1,993
Executive Management	20	23	24	23	-1	+1	+2.2%	+0	+15.3%	+24
Senior Management (VIII & GM)	97	104	119	121	+2	+17	+16.6%	+0	+24.2%	+124
Management (VIII & above)	117	126	143	144	+1	+18	+14.0%	+0	+22.7%	+148
Administrative/ Supervisory (V to VII)	494	523	598	606	+8	+83	+15.9%	+0	+22.6%	+641

Jul 2022	WTE Dec 2019	WTE Dec 2020	WTE Jun 2022	WTE Jul 2022	WTE change since Jun 22	WTE change since Dec 20	% change since Dec 20	WTE change since Dec 19	% change since Dec 19	No. Jul 2022
Overall	10,819	11,288	11,935	12,066	+131	+778	+6.9%	+6.9%	+11.5%	13,864
Clerical (III & IV)	1,055	1,046	1,107	1,116	+9	+70	+6.7%	+0	+5.8%	+1,299
Management & Administrative	1,667	1,695	1,848	1,866	+18	+171	+10.1%	+0	+12.0%	+2,088
Catering	88	91	86	86	-1	-5	-5.2%	-0	-2.5%	+92
Household Services	355	351	351	347	-4	-5	-1.3%	-0	-2.2%	+429
Other Labs & Associated	88	95	124	135	+12	+40	+42.2%	+0	+53.9%	+145
Other Support	97	94	90	91	+2	-3	-2.8%	-0	-5.3%	+99
Portering	137	140	154	155	+2	+15	+11.0%	+0	+13.5%	+165
Support	764	771	805	815	+10	+44	+5.7%	+0	+6.6%	+930
Maintenance	127	124	125	124	-0	+1	+0.7%	+0	-2.0%	+128
Technical Services	3	6	7	7		+1	+16.7%	+0	+133.3%	+7
Maintenance/ Technical	130	130	132	131	-0	+2	+1.4%	+0	+1.1%	+135
General Support	894	901	936	947	+10	+46	+5.1%	+0	+5.8%	+1,065
Attendant/ Aide	679	716	377	384	+7	-332	-46.4%	-0	-43.5%	+417
Health & Social Care Assistants	10	13	21	24	+3	+12	+94.7%	+1	+152.7%	+27
Health Care Assistant/ Care Assistant	478	489	945	956	+11	+467	+95.6%	+1	+99.9%	+1,091
HCA (Student Nurse/Midwife COVID-19)		0				-0	-100.0%	-1	-100.0%	
Health Care Assistants	1,167	1,217	1,343	1,364	+21	+147	+12.0%	+0	+16.9%	+1,535
Other Care Grades	5	5	15	14	-1	+9	+176.4%	+2	+209.3%	+15
Pastoral Care	16	16	12	14	+2	-2	-10.8%	-0	-10.4%	+21
Workshop Services			1	1		+1	-100.0%	-1	-100.0%	+1
Care, other	21	21	28	29	+1	+8	+38.6%	+0	+42.7%	+37
Patient & Client Care	1,187	1,239	1,371	1,394	+22	+155	+12.5%	+0	+17.4%	+1,572

Employment by WTE, Headcount, Gender, Full-Time /Part-Time etc.: Jul 2022

Dublin Midlands Hospital Group	WTE	Headcount	WTE: no.	% Male	% female	Male WTE: no.	Female WTE: no.	% Total Perm	% Male Perm	% Female Perm	% Total Full Time	% Total Part Time	% Male FT	% Female FT
Overall	12,066	13,864	1.15	23.9%	76.1%	1.12	1.16	80.0%	69.6%	83.2%	80.8%	19.2%	93.4%	76.8%
Consultant Anaesthesia	82	91	1.11	52.7%	47.3%	1.09	1.15	79.1%	79.1%	81.4%	79.1%	20.9%	81.3%	76.7%
Consultant Dentistry	1	2	1.54	50.0%	50.0%	1.00	3.33	100.0%	100.0%	100.0%	100.0%	0.0%	100.0%	100.0%
Consultant Emergency Medicine	22	25	1.13	56.0%	44.0%	1.17	1.08	72.0%	72.0%	81.8%	80.0%	20.0%	71.4%	90.9%
Consultant Intensive Care Medicine	2	2	1.00	100.0%		1.00		100.0%	100.0%		100.0%	0.0%	100.0%	
Consultant Medicine	184	198	1.08	53.0%	47.0%	1.03	1.13	77.8%	77.8%	74.2%	91.4%	8.6%	95.2%	87.1%
Consultant Obstetrics & Gynaecology	31	32	1.04	43.8%	56.3%	1.00	1.08	90.6%	90.6%	88.9%	93.8%	6.3%	100.0%	88.9%
Consultant Paediatrics	10	11	1.10	63.6%	36.4%	1.08	1.14	81.8%	81.8%	75.0%	81.8%	18.2%	85.7%	75.0%
Consultant Pathology	53	56	1.06	50.0%	50.0%	1.06	1.07	91.1%	91.1%	85.7%	89.3%	10.7%	89.3%	89.3%
Consultant Psychiatry	7	8	1.09	12.5%	87.5%	1.00	1.11	75.0%	75.0%	71.4%	87.5%	12.5%	100.0%	85.7%
Consultant Radiology	66	71	1.07	64.8%	35.2%	1.09	1.03	88.7%	88.7%	88.0%	90.1%	9.9%	89.1%	92.0%
Consultant Surgery	86	93	1.09	81.7%	18.3%	1.09	1.06	76.3%	76.3%	82.4%	89.2%	10.8%	88.2%	94.1%
Consultants	544	589	1.08	58.1%	41.9%	1.07	1.11	81.0%	81.6%	80.2%	88.3%	11.7%	89.5%	86.6%
Registrar	300	417	1.39	57.1%	42.9%	1.39	1.39	2.2%	2.2%	1.7%	97.6%	2.4%	97.9%	97.2%
Senior Registrar	17	21	1.25	66.7%	33.3%	1.16	1.49	14.3%	14.3%	14.3%	95.2%	4.8%	100.0%	85.7%
Specialist Registrar	244	395	1.62	47.3%	52.7%	1.70	1.55	0.0%	0.0%	0.0%	98.7%	1.3%	98.4%	99.0%
Registrars	561	833	1.48	52.7%	47.3%	1.50	1.47	1.4%	1.8%	1.0%	98.1%	1.9%	98.2%	98.0%
Interns	161	249	1.54	36.1%	63.9%	1.47	1.59	0.4%	0.4%	0.6%	99.6%	0.4%	100.0%	99.4%
Senior House Officer	304	451	1.48	41.5%	58.5%	1.41	1.54	0.0%	0.0%	0.0%	99.6%	0.4%	100.0%	99.2%
SHO/ Interns	465	700	1.50	39.6%	60.4%	1.43	1.56	0.1%	0.0%	0.2%	99.6%	0.4%	100.0%	99.3%
Dentists	1	1	1.00	100.0%		1.00		100.0%	100.0%		100.0%	0.0%	100.0%	
Other Medical	10	13	1.34	30.8%	69.2%	1.38	1.33	30.8%	30.8%	33.3%	53.8%	46.2%	50.0%	55.6%
Medical/ Dental, other	11	14	1.31	35.7%	64.3%	1.29	1.33	35.7%	40.0%	33.3%	57.1%	42.9%	60.0%	55.6%
Medical & Dental	1,581	2,136	1.35	49.8%	50.2%	1.31	1.40	23.2%	27.2%	19.2%	95.6%	4.4%	95.7%	95.5%

Clinical Nurse/ Midwife Manager	890	984	1.11	6.2%	93.8%	1.01	1.11	98.5%	98.5%	98.6%	77.7%	22.3%	96.7%	76.5%
Director Nursing/Midwifery, Assistant	82	88	1.08	10.2%	89.8%	1.09	1.08	96.6%	96.6%	98.7%	89.8%	10.2%	100.0%	88.6%
Director of Nursing/Midwifery	11	11	1.02		100.0%		1.02	100.0%	100.0%	100.0%	100.0%	0.0%		100.0%
Nurse/ Midwife Manager	982	1,083	1.10	6.5%	93.5%	1.02	1.11	98.3%	94.3%	98.6%	78.9%	21.1%	97.1%	77.7%
Advanced Nurse/ Midwife Practitioner	103	109	1.06	6.4%	93.6%	1.04	1.06	98.2%	98.2%	99.0%	89.0%	11.0%	85.7%	89.2%
Clinical Nurse/ Midwife Specialist	173	205	1.18	4.9%	95.1%	1.08	1.19	99.0%	99.0%	99.0%	67.3%	32.7%	100.0%	65.6%
Nurse/ Midwife Specialist & AN/MP	276	314	1.14	5.4%	94.6%	1.07	1.14	98.7%	94.1%	99.0%	74.8%	25.2%	94.1%	73.7%
Nursing Bank	5	11	2.11		100.0%		2.11	100.0%	100.0%	100.0%	0.0%	100.0%		0.0%
Staff Midwives	172	195	1.13	0.5%	99.5%	1.00	1.13	95.9%	95.9%	95.9%	59.5%	40.5%	100.0%	59.3%
Staff Nurses [General/ Children's]	2,797	3,065	1.10	11.6%	88.4%	1.03	1.11	92.7%	92.7%	93.2%	80.3%	19.7%	95.2%	78.3%
Staff Nurse [Psychiatric]	19	21	1.13	33.3%	66.7%	1.12	1.13	100.0%	100.0%	100.0%	81.0%	19.0%	85.7%	78.6%
Staff Nurse/ Staff Midwife	2,993	3,292	1.10	11.1%	88.9%	1.03	1.11	92.9%	88.7%	93.4%	78.8%	21.2%	95.1%	76.7%
Pre-registration Nurse/ Midwife Intern	94	188	2.01	8.5%	91.5%	2.01	2.01	1.6%	1.6%	1.7%	100.0%	0.0%	100.0%	100.0%
Post-registration Nurse/ Midwife Student	11	22	2.00		100.0%		2.00	0.0%	0.0%	0.0%	100.0%	0.0%		100.0%
Nursing/ Midwifery awaiting registration	63	66	1.04	3.0%	97.0%	1.11	1.04	78.8%	78.8%	79.7%	100.0%	0.0%	100.0%	100.0%
Nursing/ Midwifery Student	168	276	1.64	6.5%	93.5%	1.84	1.63	19.9%	5.6%	20.9%	100.0%	0.0%	100.0%	100.0%
Nursing Education/Clinical	33	38	1.14	5.3%	94.7%	1.00	1.15	100.0%	100.0%	100.0%	71.1%	28.9%	100.0%	69.4%
Other Nursing/ Midwifery	6	7	1.27		100.0%		1.27	100.0%	100.0%	100.0%	57.1%	42.9%		57.1%
Nursing/ Midwifery other	39	45	1.16	4.4%	95.6%	1.00	1.16	100.0%	100.0%	100.0%	68.9%	31.1%	100.0%	67.4%
Nursing & Midwifery	4,458	5,010	1.12	9.4%	90.6%	1.05	1.13	90.5%	86.6%	90.9%	79.6%	20.4%	95.5%	78.0%
Dietitians	100	113	1.13	1.8%	98.2%	1.00	1.13	88.5%	88.5%	89.2%	85.8%	14.2%	100.0%	85.6%
Occupational Therapists	80	86	1.07	10.5%	89.5%	1.04	1.08	82.6%	82.6%	83.1%	88.4%	11.6%	88.9%	88.3%
Orthoptists	2	2	1.23		100.0%		1.23	100.0%	100.0%	100.0%	50.0%	50.0%		50.0%
Physiotherapists	195	218	1.12	15.6%	84.4%	1.03	1.14	86.2%	86.2%	87.5%	83.0%	17.0%	97.1%	80.4%
Podiatrists & Chiropodists	3	5	1.50	40.0%	60.0%	1.33	1.63	100.0%	100.0%	100.0%	40.0%	60.0%	50.0%	33.3%
Speech & Language Therapists	48	54	1.12		100.0%		1.12	83.3%	83.3%	83.3%	79.6%	20.4%		79.6%
Therapy Professions	428	478	1.12	9.8%	90.2%	1.04	1.13	86.0%	78.7%	86.8%	83.7%	16.3%	93.6%	82.6%
Audiology	5	6	1.26		100.0%		1.26	100.0%	100.0%	100.0%	66.7%	33.3%		66.7%
Biochemists	7	8	1.14	37.5%	62.5%	1.00	1.24	87.5%	87.5%	100.0%	75.0%	25.0%	100.0%	60.0%

Cardiac Physiologists	42	46	1.09	26.1%	73.9%	1.03	1.11	97.8%	97.8%	100.0%	87.0%	13.0%	100.0%	82.4%
Clinical Engineering	40	41	1.03	75.6%	24.4%	1.03	1.04	92.7%	92.7%	80.0%	95.1%	4.9%	100.0%	80.0%
Dosimetrists	1	1	1.00		100.0%		1.00	100.0%	100.0%	100.0%	100.0%	0.0%		100.0%
Gastrointestinal Physiologists	4	4	1.09	50.0%	50.0%	1.20	1.00	100.0%	100.0%	100.0%	75.0%	25.0%	50.0%	100.0%
Medical Science	398	435	1.09	20.7%	79.3%	1.03	1.11	98.4%	98.4%	98.6%	80.9%	19.1%	94.4%	77.4%
Neuro-Physiologists	10	11	1.06	27.3%	72.7%	1.01	1.08	72.7%	72.7%	75.0%	90.9%	9.1%	100.0%	87.5%
Perfusionists	4	4	1.09	75.0%	25.0%	1.00	1.49	100.0%	100.0%	100.0%	75.0%	25.0%	100.0%	0.0%
Phlebotomists	56	63	1.13	28.6%	71.4%	1.02	1.18	85.7%	85.7%	86.7%	66.7%	33.3%	88.9%	57.8%
Physicists	61	63	1.04	57.1%	42.9%	1.00	1.09	95.2%	95.2%	96.3%	90.5%	9.5%	97.2%	81.5%
Radiation Therapists	138	148	1.08	13.5%	86.5%	1.02	1.09	79.7%	79.7%	80.5%	78.4%	21.6%	95.0%	75.8%
Radiographers	218	235	1.08	23.8%	76.2%	1.02	1.10	98.3%	98.3%	98.9%	88.9%	11.1%	98.2%	86.0%
Respiratory Physiologists	10	11	1.06	36.4%	63.6%	1.17	1.00	100.0%	100.0%	100.0%	90.9%	9.1%	75.0%	100.0%
Vascular Physiologists	11	12	1.13	16.7%	83.3%	1.00	1.16	91.7%	91.7%	90.0%	66.7%	33.3%	100.0%	60.0%
Health Science/ Diagnostics	1,004	1,088	1.08	25.7%	74.3%	1.02	1.11	94.3%	93.6%	94.6%	82.7%	17.3%	95.7%	78.2%
Social Workers	91	99	1.08	15.2%	84.8%	1.06	1.09	94.9%	93.3%	95.2%	88.9%	11.1%	93.3%	88.1%
Psychologists	15	17	1.11	17.6%	82.4%	1.35	1.08	94.1%	100.0%	92.9%	76.5%	23.5%	66.7%	78.6%
Pharmacists	141	153	1.09	13.1%	86.9%	1.00	1.10	87.6%	87.6%	86.5%	90.8%	9.2%	100.0%	89.5%
Pharmacy Technicians	98	110	1.13	8.2%	91.8%	1.03	1.13	83.6%	83.6%	83.2%	74.5%	25.5%	88.9%	73.3%
Pharmacy	239	263	1.10	11.0%	89.0%	1.01	1.11	85.9%	93.1%	85.0%	84.0%	16.0%	96.6%	82.5%
Dental Hygienists	0	1	11.11		100.0%		11.11	100.0%	100.0%	100.0%	0.0%	100.0%		0.0%
HSCP Trainees/ Students	13	14	1.11	28.6%	71.4%	1.20	1.08	0.0%	0.0%	0.0%	100.0%	0.0%	100.0%	100.0%
Other Health & Social Care	31	32	1.04	28.1%	71.9%	1.00	1.06	96.9%	96.9%	95.7%	84.4%	15.6%	100.0%	78.3%
Vaccinators	0	1	9.09		100.0%		9.09	0.0%	0.0%	0.0%	0.0%	100.0%		0.0%
H&SC, Other	43	48	1.10	27.1%	72.9%	1.05	1.13	66.7%	69.2%	65.7%	85.4%	14.6%	100.0%	80.0%
Health & Social Care	1,821	1,993	1.09	19.4%	80.6%	1.03	1.11	90.6%	91.0%	90.5%	83.4%	16.6%	95.3%	80.6%
Executive Management	23	24	1.04	54.2%	45.8%	1.00	1.10	95.8%	95.8%	90.9%	100.0%	0.0%	100.0%	100.0%
Senior Management (VIII & GM)	121	124	1.03	29.8%	70.2%	1.00	1.04	96.8%	96.8%	96.6%	94.4%	5.6%	100.0%	92.0%
Management (VIII & above)	144	148	1.03	33.8%	66.2%	1.00	1.04	96.6%	98.0%	95.9%	95.3%	4.7%	100.0%	92.9%
Administrative/ Supervisory (V to VII)	606	641	1.06	24.5%	75.5%	1.01	1.07	95.8%	93.0%	96.7%	86.3%	13.7%	98.7%	82.2%

Clerical (III & IV)	1,116	1,299	1.16	14.5%	85.5%	1.07	1.18	85.9%	79.8%	86.9%	66.5%	33.5%	92.0%	62.2%
Management & Administrative	1,866	2,088	1.12	18.9%	81.1%	1.04	1.14	89.7%	87.3%	90.3%	74.6%	25.4%	95.7%	69.7%
Catering	86	92	1.07	33.7%	66.3%	1.03	1.09	97.8%	97.8%	98.4%	84.8%	15.2%	96.8%	78.7%
Household Services	347	429	1.24	20.3%	79.7%	1.15	1.26	91.8%	91.8%	95.3%	44.8%	55.2%	48.3%	43.9%
Other Labs & Associated	135	145	1.07	32.4%	67.6%	1.01	1.10	69.7%	69.7%	71.4%	89.0%	11.0%	97.9%	84.7%
Other Support	91	99	1.08	47.5%	52.5%	1.01	1.16	99.0%	99.0%	100.0%	81.8%	18.2%	97.9%	67.3%
Portering	155	165	1.06	86.1%	13.9%	1.04	1.20	82.4%	82.4%	78.3%	90.3%	9.7%	93.0%	73.9%
Support	815	930	1.14	38.1%	61.9%	1.06	1.20	88.1%	82.8%	91.3%	67.6%	32.4%	83.6%	57.8%
Maintenance	124	128	1.03	98.4%	1.6%	1.03	1.00	97.7%	97.7%	100.0%	99.2%	0.8%	99.2%	100.0%
Technical Services	7	7	1.00	100.0%		1.00		100.0%	100.0%		100.0%	0.0%	100.0%	
Maintenance/ Technical	131	135	1.03	98.5%	1.5%	1.03	1.00	97.8%	97.7%	100.0%	99.3%	0.7%	99.2%	100.0%
General Support	947	1,065	1.13	45.7%	54.3%	1.05	1.20	89.3%	86.9%	91.3%	71.6%	28.4%	87.9%	58.0%
Attendant/ Aide	384	417	1.09	36.5%	63.5%	1.03	1.12	96.2%	96.2%	95.8%	82.5%	17.5%	99.3%	72.8%
Health & Social Care Assistants	24	27	1.10	33.3%	66.7%	1.09	1.11	85.2%	85.2%	77.8%	96.3%	3.7%	88.9%	100.0%
Health Care Assistant/ Care Assistant	956	1,091	1.14	30.4%	69.6%	1.07	1.18	89.6%	89.6%	86.7%	72.7%	27.3%	85.8%	66.9%
Health Care Assistants	1,364	1,535	1.13	32.1%	67.9%	1.06	1.16	91.3%	96.3%	88.9%	75.8%	24.2%	90.1%	69.0%
Other Care Grades	14	15	1.07	46.7%	53.3%	1.00	1.14	93.3%	93.3%	87.5%	86.7%	13.3%	100.0%	75.0%
Pastoral Care	14	21	1.45	61.9%	38.1%	1.53	1.35	71.4%	71.4%	75.0%	47.6%	52.4%	38.5%	62.5%
Workshop Services	1	1	1.00	100.0%		1.00		100.0%	100.0%		100.0%	0.0%	100.0%	
Care, other	29	37	1.26	56.8%	43.2%	1.27	1.23	81.1%	81.0%	81.3%	64.9%	35.1%	61.9%	68.8%
Patient & Client Care	1,394	1,572	1.13	32.7%	67.3%	1.06	1.16	91.0%	95.7%	88.8%	75.5%	24.5%	88.9%	69.0%

Employment by WTE, Headcount, Gender, Full-Time /Part-Time etc.: Jul 2022

Dublin Midlands Hospital Group	WTE	Headcount	WTE: no.	% Male	% female	Male WTE: no.	Female WTE: no.	% Total Perm	% Male Perm	% Female Perm	% Total Full Time	% Total Part Time	% Male FT	% Female FT
Overall	12,066	13,864	1.15	23.9%	76.1%	1.12	1.16	80.0%	69.6%	83.2%	80.8%	19.2%	93.4%	76.8%
Coombe Women & Infants University	974	1,089	1.12	14.8%	85.2%	1.02	1.14	82.5%	82.5%	84.4%	71.0%	29.0%	92.5%	92.5%
MRH Tullamore	1,192	1,315	1.10	22.6%	77.4%	1.03	1.13	85.2%	85.2%	89.6%	80.8%	19.2%	95.6%	95.6%
MRH Portlaoise	824	915	1.11	19.6%	80.4%	1.03	1.13	81.9%	81.9%	85.1%	78.3%	21.7%	97.8%	97.8%
Naas General	877	1,008	1.15	19.6%	80.4%	1.09	1.17	85.7%	85.7%	87.3%	82.4%	17.6%	94.9%	94.9%
St. James's	4,526	5,291	1.17	25.4%	74.6%	1.15	1.18	80.3%	80.3%	83.3%	83.7%	16.3%	94.6%	94.6%
St. Luke's Rathgar	542	575	1.06	27.1%	72.9%	1.02	1.08	78.6%	78.6%	80.7%	84.9%	15.1%	96.2%	96.2%
Tallaght University	3,074	3,611	1.17	26.9%	73.1%	1.17	1.18	74.9%	74.9%	78.8%	78.9%	21.1%	89.7%	89.7%
Hospital Group HQ	57	60	1.06	16.7%	83.3%	1.00	1.07	86.7%	86.7%	92.0%	95.0%	5.0%	100.0%	100.0%

Dublin Midlands Hospital Group Employment by Grade Group & Staff Category: July 2022

Jul 2022 (Dec 2019 figure: 10,819)	WTE Dec 2016	WTE Dec 2017	WTE Dec 2018	WTE Dec 2019	WTE Dec 2020	WTE Jun 2022	WTE Jul 2022
Overall	10,072	10,301	10,424	10,819	11,288	11,935	12,066
Consultant Anaesthesia	5.0%	4.9%	4.8%	4.8%	4.8%	5.2%	5.2%
Consultant Dentistry	0.2%	0.2%	0.1%	0.1%	0.1%	0.1%	0.1%
Consultant Emergency Medicine	1.4%	1.4%	1.4%	1.3%	1.3%	1.5%	1.4%
Consultant Intensive Care Medicine			0.2%	0.1%	0.1%	0.1%	0.1%
Consultant Medicine	10.2%	10.4%	10.4%	10.5%	10.8%	11.6%	11.6%
Consultant Obstetrics & Gynaecology	1.8%	1.8%	1.9%	1.9%	2.1%	1.9%	1.9%
Consultant Paediatrics	0.5%	0.7%	0.8%	0.7%	0.7%	0.6%	0.6%
Consultant Pathology	3.6%	3.7%	3.6%	3.5%	3.5%	3.4%	3.3%
Consultant Psychiatry	0.3%	0.3%	0.3%	0.5%	0.5%	0.5%	0.5%
Consultant Radiology	3.9%	4.2%	4.4%	4.4%	4.3%	4.2%	4.2%
Consultant Surgery	5.6%	5.5%	5.6%	5.5%	5.3%	5.4%	5.4%
Consultants	32.4%	33.1%	33.5%	33.5%	33.5%	34.4%	34.4%
Registrar	17.6%	16.7%	17.5%	17.6%	18.6%	18.2%	19.0%
Senior Registrar	2.4%	1.4%	1.5%	1.4%	1.3%	1.0%	1.1%
Specialist Registrar	15.1%	16.3%	16.1%	16.4%	15.1%	15.5%	15.5%
Registrars	35.0%	34.4%	35.1%	35.4%	35.1%	35.5%	35.5%
Interns	9.4%	9.3%	8.9%	8.7%	10.2%	8.9%	10.2%
Senior House Officer	22.6%	22.6%	22.0%	21.9%	20.7%	21.1%	19.2%
SHO/ Interns	32.0%	31.9%	30.9%	30.6%	30.9%	29.4%	29.4%
Dentists		0.1%	0.1%	0.1%	0.1%	0.1%	0.1%
Other Medical	0.5%	0.5%	0.4%	0.4%	0.4%	0.6%	0.6%
Medical/ Dental, other	0.5%	0.6%	0.5%	0.5%	0.5%	0.7%	0.7%
Medical & Dental	12.4%	12.4%	12.8%	12.8%	13.2%	13.1%	13.1%
Clinical Nurse/ Midwife Manager	19.5%	20.1%	20.6%	19.9%	19.7%	19.9%	20.0%
Director Nursing/Midwifery, Assistant	1.8%	2.0%	2.0%	1.8%	1.8%	1.8%	1.8%
Director of Nursing/Midwifery	0.2%	0.2%	0.3%	0.3%	0.2%	0.3%	0.2%
Nurse/ Midwife Manager	21.5%	22.3%	22.9%	22.0%	21.7%	22.0%	22.0%
Advanced Nurse/ Midwife Practitioner	0.9%	0.8%	1.2%	1.6%	2.0%	2.3%	2.3%
Clinical Nurse/ Midwife Specialist	3.9%	3.3%	3.7%	3.6%	3.7%	3.8%	3.9%
Nurse/ Midwife Specialist & AN/MP	4.8%	4.2%	4.9%	5.1%	5.7%	6.2%	6.2%
Nursing Bank	1.1%	1.1%	0.6%	0.6%	0.4%	0.1%	0.1%
Staff Midwives	5.0%	5.5%	5.5%	4.9%	4.5%	3.9%	3.9%
Staff Nurses [General/ Children's]	65.2%	65.2%	64.2%	65.0%	65.1%	63.7%	62.7%
Staff Nurse [Psychiatric]	0.7%	0.6%	0.6%	0.5%	0.6%	0.5%	0.4%
Staff Nurse/ Staff Midwife	72.0%	72.3%	70.9%	71.0%	70.6%	67.1%	67.1%
Pre-registration Nurse/ Midwife Intern	0.2%	0.2%	0.3%	0.2%	0.0%	2.1%	2.1%
Pre-registration Nurse Intern (COVID-19)					0.7%		
Post-registration Nurse/ Midwife Student	0.3%	0.3%	0.2%	0.3%	0.3%	0.2%	0.2%
Nursing/ Midwifery awaiting registration	0.5%	0.1%	0.2%	0.5%	0.1%	0.5%	1.4%
Nursing/ Midwifery Student	1.0%	0.6%	0.6%	1.0%	1.1%	3.8%	3.8%
Nursing Education/Clinical	0.7%	0.6%	0.6%	0.8%	0.8%	0.8%	0.7%
Other Nursing/ Midwifery	0.1%	0.1%	0.1%	0.1%	0.1%	0.1%	0.1%
Nursing/ Midwifery other	0.8%	0.7%	0.7%	0.9%	0.9%	0.9%	0.9%
Nursing & Midwifery	36.3%	36.8%	36.5%	36.9%	37.0%	36.9%	36.9%
Dietitians	5.4%	5.2%	5.5%	5.6%	5.5%	5.4%	5.5%
Occupational Therapists	3.7%	4.1%	3.9%	4.0%	4.2%	4.3%	4.4%
Orthoptists	0.1%	0.1%	0.1%	0.1%	0.1%	0.1%	0.1%
Physiotherapists	9.7%	10.2%	9.8%	9.5%	9.7%	10.8%	10.7%
Podiatrists & Chiropodists	0.2%	0.2%	0.2%	0.2%	0.2%	0.2%	0.2%
Speech & Language Therapists	2.3%	2.4%	2.4%	2.3%	2.5%	2.6%	2.7%
Therapy Professions	21.5%	22.2%	21.8%	21.7%	22.2%	23.5%	23.5%

Jul 2022 (Dec 2019 figure: 10,819)	WTE Dec 2016	WTE Dec 2017	WTE Dec 2018	WTE Dec 2019	WTE Dec 2020	WTE Jun 2022	WTE Jul 2022
Overall	10,072	10,301	10,424	10,819	11,288	11,935	12,066
Audiology	0.3%	0.2%	0.2%	0.2%	0.2%	0.3%	0.3%
Biochemists	0.4%	0.5%	0.5%	0.5%	0.5%	0.4%	0.4%
Cardiac Physiologists	2.5%	2.2%	2.1%	2.4%	2.5%	2.3%	2.3%
Clinical Engineering	2.3%	2.6%	2.5%	2.6%	2.2%	2.2%	2.2%
Dosimetrists	0.3%	0.1%	0.1%	0.1%	0.1%	0.1%	0.1%
E.C.G. Technicians				0.1%	0.1%		
Gastrointestinal Physiologists	0.2%	0.3%	0.1%	0.1%	0.1%	0.2%	0.2%
Medical Science	24.7%	23.9%	23.3%	22.9%	21.8%	21.4%	21.9%
Neuro-Physiologists	0.4%	0.5%	0.4%	0.5%	0.6%	0.5%	0.6%
Perfusionists	0.3%	0.3%	0.3%	0.3%	0.2%	0.2%	0.2%
Phlebotomists	2.4%	2.5%	2.4%	2.4%	2.6%	2.9%	3.1%
Physicists	3.4%	3.7%	4.2%	4.1%	3.4%	3.2%	3.3%
Radiation Therapists	8.2%	8.1%	8.0%	8.2%	8.2%	7.6%	7.6%
Radiographers	12.0%	11.4%	12.0%	12.3%	12.4%	12.2%	12.0%
Respiratory Physiologists	0.5%	0.5%	0.4%	0.5%	0.5%	0.5%	0.6%
Vascular Physiologists	0.7%	0.7%	0.5%	0.6%	0.5%	0.6%	0.6%
Health Science/ Diagnostics	58.5%	57.4%	57.1%	57.8%	56.0%	55.1%	55.1%
Social Workers	4.9%	5.1%	5.0%	4.7%	4.9%	5.0%	5.0%
Psychologists	1.1%	1.0%	0.8%	0.7%	0.8%	0.8%	0.8%
Pharmacists	7.3%	7.6%	8.1%	8.1%	8.5%	7.9%	7.7%
Pharmacy Technicians	4.2%	4.2%	4.7%	5.0%	5.2%	5.5%	5.4%
Pharmacy	11.6%	11.9%	12.8%	13.0%	13.6%	13.1%	13.1%
Dental Hygienists	0.0%	0.0%	0.0%	0.0%	0.0%	0.0%	0.0%
HSCP Trainees/ Students	1.2%	1.3%	1.2%	0.9%	0.8%	0.9%	0.7%
Other Health & Social Care	1.2%	1.2%	1.2%	1.1%	1.8%	1.6%	1.7%
Vaccinators						0.0%	0.0%
H&SC, Other	2.4%	2.5%	2.4%	2.0%	2.6%	2.4%	2.4%
Health & Social Care Professionals	15.8%	15.7%	15.9%	15.6%	15.8%	15.1%	15.1%
Executive Management	0.9%	0.9%	1.2%	1.2%	1.3%	1.3%	1.2%
Senior Management (VIII & GM)	4.5%	5.3%	5.7%	5.8%	6.1%	6.4%	6.5%
Management (VIII & above)	5.4%	6.2%	6.9%	7.0%	7.4%	7.7%	7.7%
Administrative/ Supervisory (V to VII)	27.6%	27.9%	28.7%	29.7%	30.8%	32.5%	32.5%
Clerical (III & IV)	67.0%	65.9%	64.4%	63.3%	61.7%	59.8%	59.8%
Management & Administrative	15.4%	15.3%	15.6%	15.4%	15.0%	15.5%	15.5%
Catering	9.5%	9.9%	9.9%	9.9%	10.1%	9.2%	9.1%
Household Services	39.2%	38.9%	39.0%	39.7%	39.0%	37.5%	36.6%
Other Labs & Associated	8.7%	9.4%	9.4%	9.8%	10.6%	13.2%	14.3%
Other Support	11.7%	12.1%	11.3%	10.8%	10.4%	9.6%	9.7%
Portering	16.5%	15.5%	15.9%	15.3%	15.5%	16.4%	16.4%
Support	85.6%	85.7%	85.5%	85.5%	85.6%	86.1%	86.1%
Maintenance	14.2%	14.0%	14.1%	14.2%	13.7%	13.3%	13.1%
Technical Services	0.2%	0.2%	0.3%	0.3%	0.7%	0.7%	0.7%
Maintenance/ Technical	14.4%	14.3%	14.5%	14.5%	14.4%	13.9%	13.9%
General Support	8.8%	8.6%	8.3%	8.3%	8.0%	7.8%	7.8%
Attendant/ Aide	62.0%	64.6%	61.5%	57.2%	57.8%	27.5%	27.5%
Health & Social Care Assistants	0.6%	0.9%	0.8%	0.8%	1.0%	1.6%	1.8%
Health Care Assistant/ Care Assistant	35.5%	32.9%	35.9%	40.3%	39.4%	68.9%	68.6%
HCA (Student Nurse/Midwife COVID-19)					0.0%		
Health Care Assistants	98.2%	98.4%	98.2%	98.3%	98.3%	97.9%	97.9%
Other Care Grades	0.5%	0.4%	0.4%	0.4%	0.4%	1.1%	1.0%
Pastoral Care	1.4%	1.2%	1.4%	1.4%	1.3%	0.9%	1.0%
Workshop Services						0.1%	0.1%
Care, other	1.8%	1.6%	1.8%	1.7%	1.7%	2.1%	2.1%

Jul 2022 (Dec 2019 figure: 10,819)	WTE Dec 2016	WTE Dec 2017	WTE Dec 2018	WTE Dec 2019	WTE Dec 2020	WTE Jun 2022	WTE Jul 2022
Overall	10,072	10,301	10,424	10,819	11,288	11,935	12,066
Patient & Client Care	11.4%	11.1%	11.0%	11.0%	11.0%	11.5%	11.5%
Total	100%	100%	100%	100%	100%	100%	100%

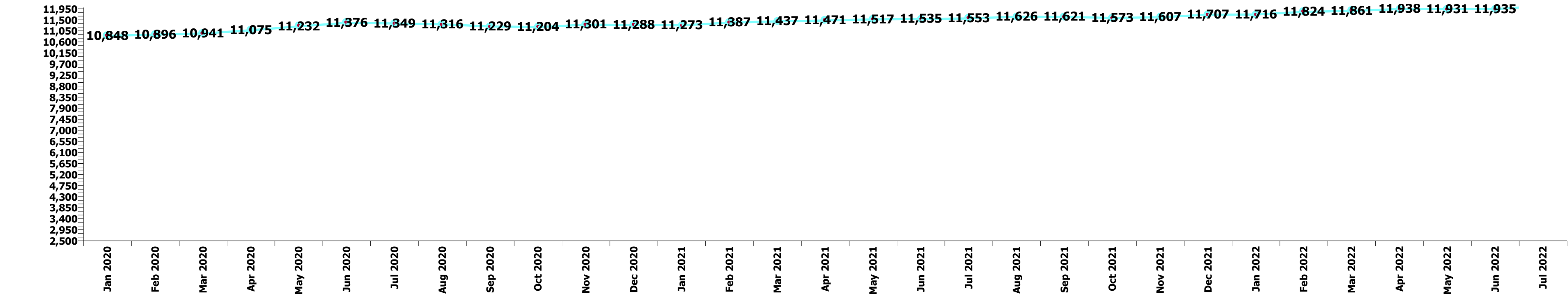
Summary Staff Movement: July 2022

Month-on-month Summary

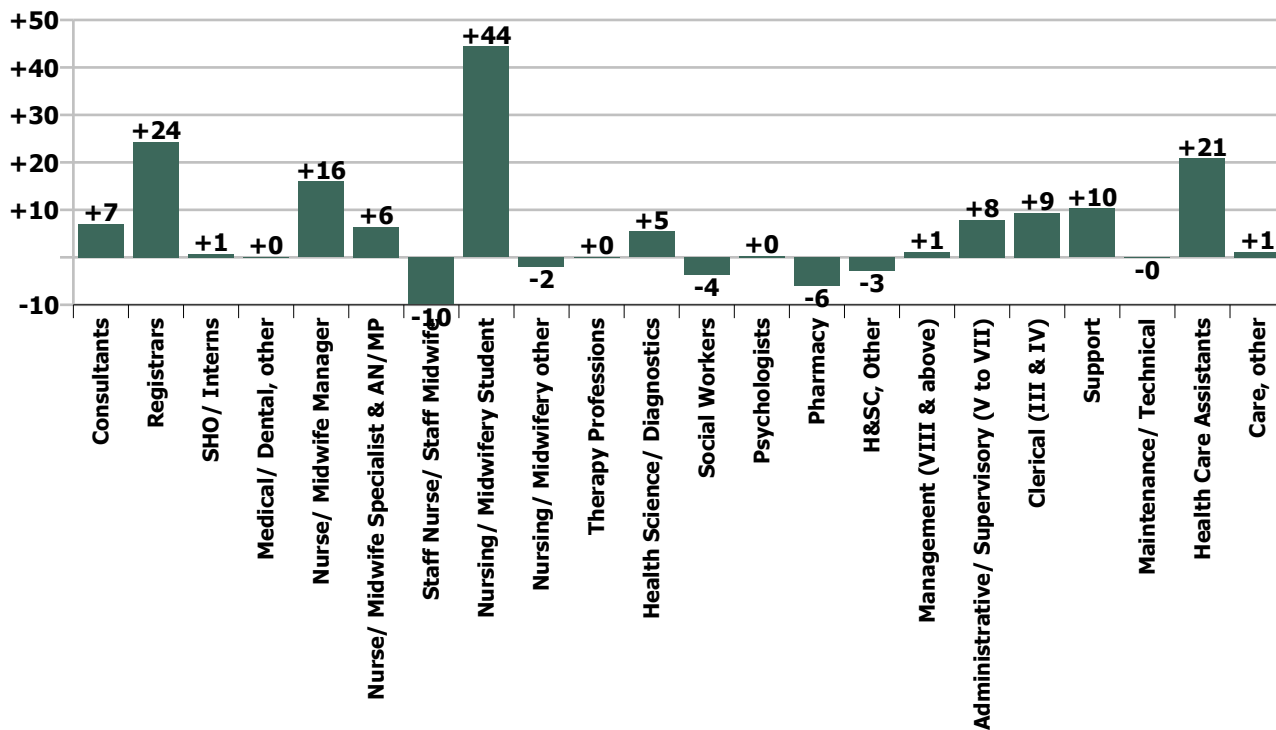
WTE change since Jun 22	% change since Jun 22	overall	Consultants	Registrars	SHO/ Interns	Medical/ Dental, other	Medical & Dental	Nurse/ Midwife Manager	Nurse/ Midwife Specialist & AN/MP	Staff Nurse/ Staff Midwife	Nursing/ Midwifery Student	Nursing/ Midwifery other	Nursing & Midwifery	Therapy Professions	Health Science/ Diagnostics	Social Workers	Psychologists	Pharmacy	H&SC, Other	Health & Social Care Professionals	Management (VIII & above)	Administrative/ Supervisory (V to VII)	Clerical (III & IV)	Management & Administrative	General Support	Health Care Assistants	Care, other	Patient & Client Care
Overall	+1.1%	+131	+7	+24	+1	+0	+32	+16	+6	-10	+44	-2	+55	+0	+5	-4	+0	-6	-3	-7	+1	+8	+9	+18	+10	+21	+1	+22
Coombe Women & Infants University	+2.7%	+25	+2	+11			+13	-0	+0	+2		+0	+2	+1	+1	-1				+1	+1	+0	+3	+5	-2	+5	+1	+6
MRH Tullamore	+0.6%	+7	+3	-0	-1	+0	+3	+2	+0	+4	+0	+0	+6	-0	-4	+0		-2	-1	-6	-0	+1	-2	-1	+3	+3		+3
MRH Portlaoise	+1.2%	+10	-0	+1	-4		-3	+2	+2	+11	+0	+0	+15	-1	-0			-0		-1		-0	-0	-0	+1	-1		-1
Naas General	+0.9%	+8	-0	+1	-1		+0	+3	+2	-1		+0	+4	+2	+2	+0		-0		+4	+0	+3	-2	+0	+0	-1		-1
St. James's	+0.6%	+25	+0	+2	+2	+0	+4	+2	+1	+3	+0	+0	+7	-1	+2	-3	+0	-2	-2	-6	+1	+1	+7	+10	+2	+8	-0	+8
St. Luke's Rathgar	-0.2%	-1		+1	+1		+2			-1			-1		-3					-3		-1	+1		+1			
Tallaght University	+1.9%	+57	+2	+9	+3		+14	+6	+2	-29	+44	-1	+22		-0	+7	-0	+0	-2	+5	-1	+3	+3	+5	+5	+6	+0	+7
Hospital Group HQ	-0.8%	-0						+1				-1	-0						-0	-0	-0	+1	-1					
			+1.3%	+4.5%	+0.2%	+0.9%	+2.1%	+1.7%	+2.4%	-0.3%	+35.9%	-4.7%	+1.2%	+0.0%	+0.5%	-3.8%	+2.1%	-2.5%	-6.0%	-0.4%	+0.8%	+1.3%	+0.8%	+1.0%	+1.1%	+1.6%	+4.2%	+1.6%

Year-on-year Summary

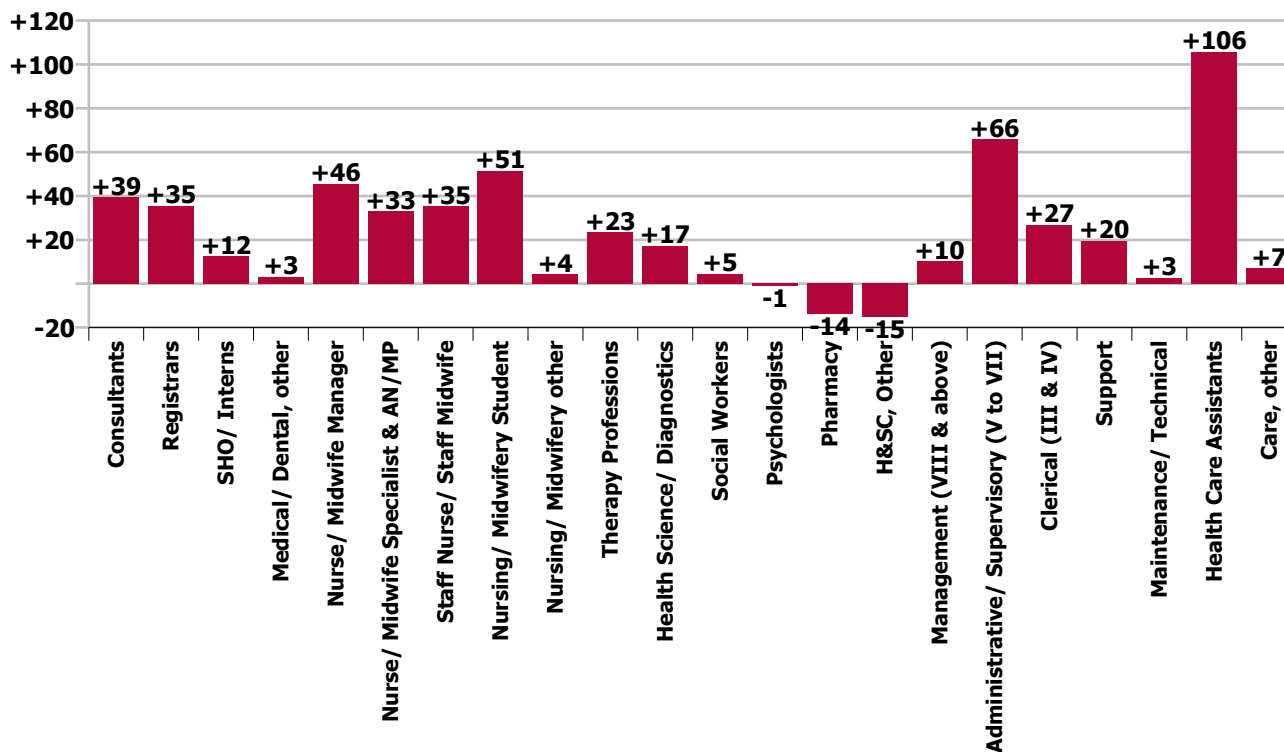
WTE change since Jul 21	% change since Jul 21	overall	Consultants	Registrars	SHO/ Interns	Medical/ Dental, other	Medical & Dental	Nurse/ Midwife Manager	Nurse/ Midwife Specialist & AN/MP	Staff Nurse/ Staff Midwife	Nursing/ Midwifery Student	Nursing/ Midwifery other	Nursing & Midwifery	Therapy Professions	Health Science/ Diagnostics	Social Workers	Psychologists	Pharmacy	H&SC, Other	Health & Social Care Professionals	Management (VIII & above)	Administrative/ Supervisory (V to VII)	Clerical (III & IV)	Management & Administrative	General Support	Health Care Assistants	Care, other	Patient & Client Care
Overall	+4.4%	+513	+39	+35	+12	+3	+90	+46	+33	+35	+51	+4	+170	+23	+17	+5	-1	-14	-15	+15	+10	+66	+27	+103	+22	+106	+7	+113
Coombe Women & Infants University	+4.5%	+42	+5	+12			+16	+10	+3	-25	-5	+0	-17	+4	+2	-1			+1	+5	+1	+7	+4	+12	+10	+14	+1	+15
MRH Tullamore	+3.9%	+45	+9	+2	+5	-0	+16	+6	+4	+14	-2	+0	+21	+2	-1	+2		-1	+1	+3	-1	+6	-17	-12	+4	+13		+13
MRH Portlaoise	+4.4%	+35	-1	+0	+4		+4	+13	+6	+14	+9	+0	+42	-4	-0	+1		-1		-4	+2	+2	-6	-2	-0	-6		-6
Naas General	+11.8%	+92	+1	+9	-2		+7	+9	+3	+15		+1	+28	+10	+1	-1		+1		+12	-0	+13	+1	+14	+3	+28		+28
St. James's	+4.2%	+181	+12	+10	+7	+3	+31	+1	+13	+10	-0	+3	+27	+3	+22	+0	+2	-6	-3	+19	+7	+20	+21	+48	+3	+45	+8	+52
St. Luke's Rathgar	-0.8%	-4		-4	+4		-0	-3	-1	-3			-7	+3	-10		-1			-8	+1	-2	+11	+10	+0	+0		+0
Tallaght University	+4.7%	+137	+14	+7	-4		+17	+8	+5	+10	+49	+1	+73	+5	+5	+3	-2	-6		+6	+2	+10	+18	+30	+1	+11	-2	+9
Hospital Group HQ	-20.7%	-15			-1		-1	+2			-1		+1		-2		-2	-2	-14	-17	-1	+8	-4	+2				
			+7.8%	+6.7%	+2.7%	+42.6%	+6.1%	+4.9%	+13.6%	+1.2%	+44.2%	+12.0%	+4.0%	+5.8%	+1.7%	+5.2%	-6.5%	-5.5%	-25.9%	+0.8%	+7.6%	+12.2%	+2.5%	+5.8%	+2.4%	+8.4%	+31.0%	+8.8%



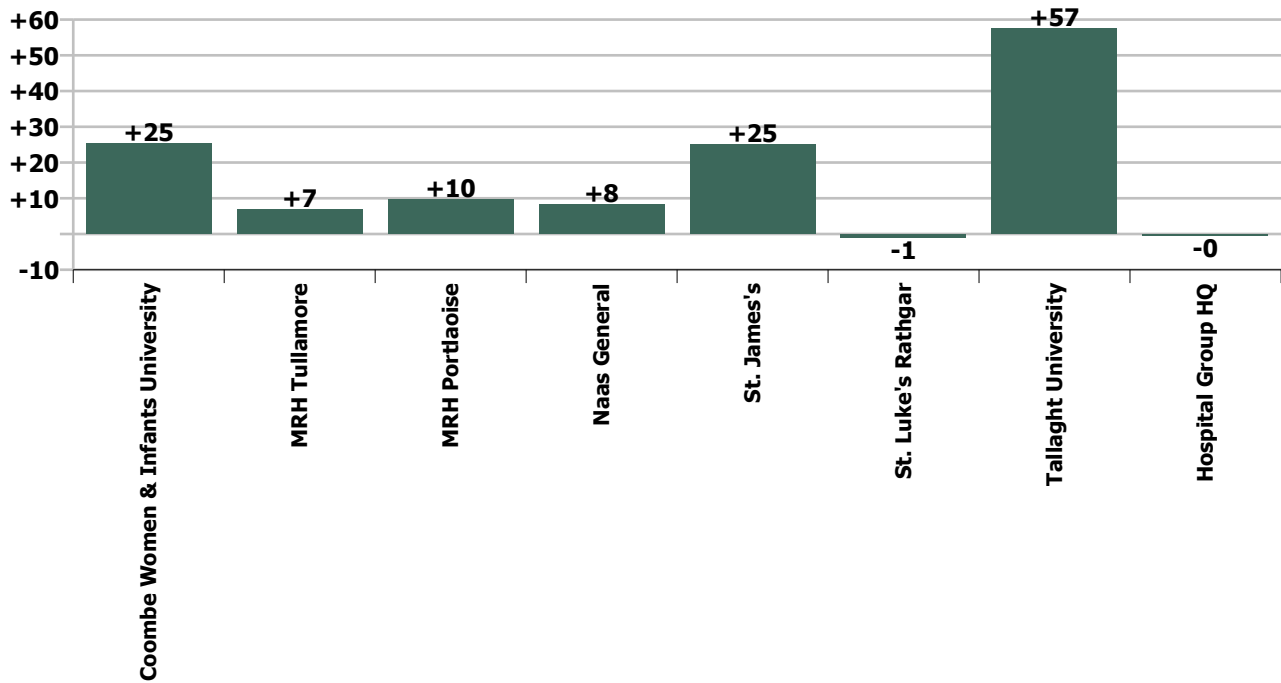
Staff Group change since: Jun 2022



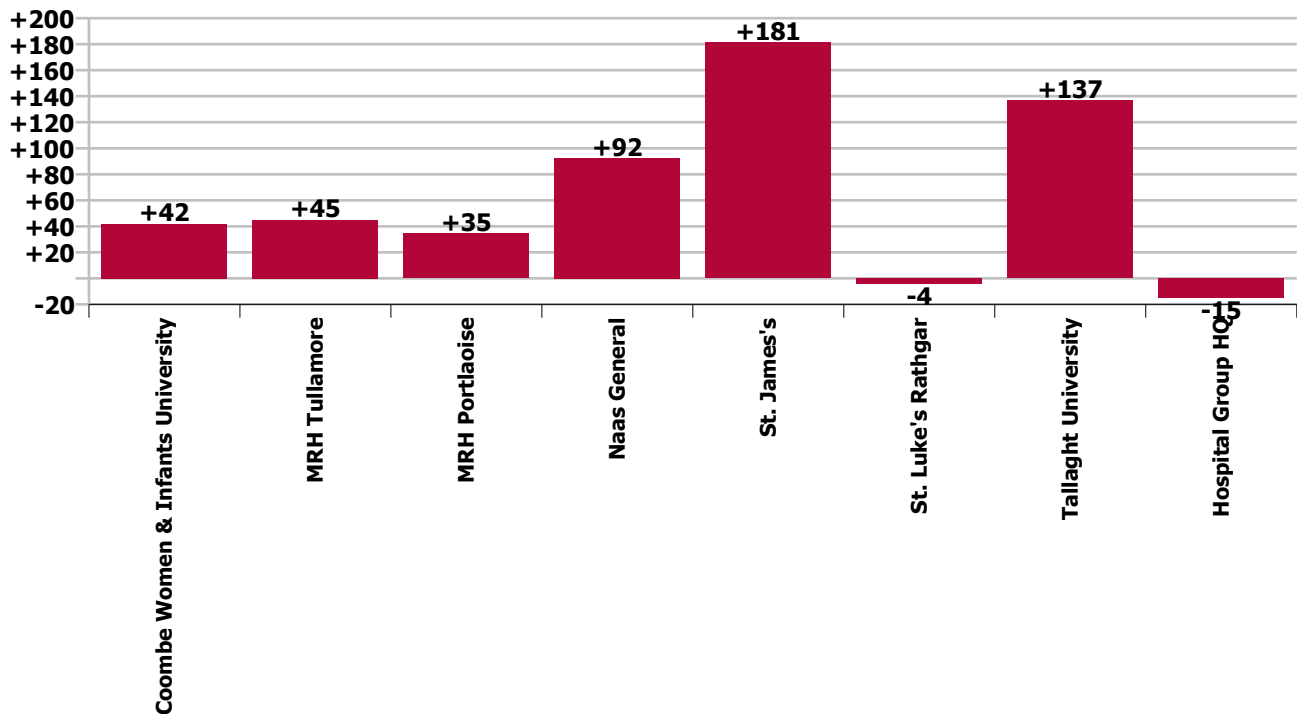
Staff Group change since: Jul 2021



Hospital change since: Jun 2022



Hospital change since: Jul 2021



Longitudinal Employment Levels by Grade Group - Oct 2016 to Jul 2022

Jul 2022	WTE Jul 2022	WTE change since Dec 16	WTE change since Dec 17	WTE change since Dec 18	WTE change since Dec 19	WTE change since Dec 20	WTE change since Jun 22	% change since Dec 16	% change since Dec 17	% change since Dec 18	% change since Dec 19	% change since Dec 20	% change since Jun 22
Overall	12,066	+1,994	+1,765	+1,642	+1,247	+778	+131	+19.8%	+17.1%	+15.8%	+11.5%	+6.9%	+1.1%
Consultant Anaesthesia	82	+19	+19	+18	+15	+10	+0	+30.1%	+29.8%	+27.7%	+22.1%	+14.4%	+0.5%
Consultant Orthodontist	1	-1	-1	-0	-1	-1	-1	-35.0%	-35.0%	-4.4%	-35.0%	-32.3%	-35.0%
Consultant Dentistry	1	-1	-1	-0	-1	-1	-1	-35.0%	-35.0%	-4.4%	-35.0%	-32.3%	-35.0%
Consultant in Emergency Medicine	22	+5	+4	+3	+4	+2	-0	+30.6%	+23.3%	+16.8%	+19.8%	+10.6%	-1.6%
Consultant Emergency Medicine	22	+5	+4	+3	+4	+2	-0	+30.6%	+23.3%	+16.8%	+19.8%	+10.6%	-1.6%
Consultant Intensivist	2	+2	+2					-100.0%	-100.0%				
Consultant Intensive Care Medicine	2	+2	+2					-100.0%	-100.0%				
Consultant Cardiologist	14	+0	-0	+1	+2	+1	-0	+2.9%	-1.4%	+4.6%	+18.6%	+7.4%	-0.4%
Consultant Clinical Neurophysiologist	2												
Consultant Dermatologist	10	+3	+2	+2	+3	+2	+0	+50.5%	+30.4%	+30.4%	+39.7%	+19.1%	+2.0%
Consultant Gastroenterologist & General Physician	16	+6	+4	+4	+5	+1	-0	+56.0%	+35.5%	+30.0%	+41.8%	+4.0%	-0.6%
Consultant General Physician	35	+6	+4	+4	+4	+3	+1	+19.7%	+14.8%	+12.9%	+11.5%	+7.8%	+1.9%
Consultant in Palliative Medicine	4	+2	+2	+2	+2	+2	+1	+84.0%	+84.0%	+84.0%	+84.0%	+84.0%	+59.3%
Consultant in Rehabilitation Medicine	1												
Consultant Medical Oncologist	12	+2	+3	+2	+1	+0	-0	+20.4%	+33.8%	+14.7%	+9.5%	+1.3%	-1.4%
Consultant Nephrologist & General Physician	9	+4	+4	+4	+3	+3		+80.0%	+80.0%	+80.0%	+50.0%	+50.0%	
Consultant Neurologist	14	+7	+5	+4	+4	+3	+1	+105.9%	+65.3%	+48.5%	+35.9%	+23.5%	+4.5%
Consultant Physician in Clinical Pharmacology & Therapeutics		-1	-1	-0				-100.0%	-100.0%	-100.0%	-100.0%	-100.0%	-100.0%
Consultant Physician in Endocrinology	6	+1	+1	-0	-0	-1	-1	+28.4%	+28.4%	-1.2%	-1.2%	-8.3%	-8.3%
Consultant Physician in Genito-Urinary Medicine	3	+2	+2	+2	+1	+2	+1	+444.0%	+172.0%	+172.0%	+36.0%	+172.0%	+23.1%
Consultant Physician in Geriatric Medicine	23	+5	+6	+4	+6	+3	-0	+26.9%	+32.7%	+20.8%	+35.1%	+15.0%	-0.0%
Consultant Physician in Infectious Diseases	16	+12	+12	+12	+4	+2	+1	+325.6%	+331.4%	+310.3%	+35.3%	+15.7%	+7.5%
Consultant Respiratory & General Physician	12	+4	+4	+3	+3	+1	+1	+45.8%	+45.8%	+29.6%	+29.8%	+11.2%	+6.0%
Consultant Rheumatologist & General Physician	9	+3	+2	+3	+2	+2	+0	+42.0%	+31.4%	+42.0%	+39.1%	+31.4%	+1.3%
Consultant Medicine	184	+56	+51	+45	+38	+23	+4	+43.8%	+38.3%	+32.1%	+26.4%	+14.0%	+2.4%
Consultant Obstetrician & Gynaecologist	30	+8	+8	+5	+4	+0	+1	+38.4%	+35.0%	+19.0%	+16.9%	+0.3%	+3.4%
Master (Maternity Hospital)	1												
Consultant Obstetrics & Gynaecology	31	+8	+8	+5	+4	+0	+1	+36.7%	+33.4%	+18.2%	+16.2%	+0.3%	+3.3%
Consultant Neonatologist	7	+3	+1	-1	+1	+1	+0	+75.0%	+16.7%	-8.5%	+13.8%	+7.7%	+4.5%
Consultant Paediatrician	3	+1				-1	-0	+36.4%				-14.3%	-2.6%
Consultant Paediatrics	10	+4	+1	-1	+1		+0	+61.3%	+11.1%	-6.1%	+9.3%		+2.2%
Consultant Chemical Pathologist	3	+1	-0	+0	+0	+0	+0	+24.4%	-13.3%	+4.0%	+4.0%	+4.0%	+0.8%
Consultant Haematologist (Clinical & Laboratory)	18	+3	+3	+2	+1	-1	+1	+19.6%	+24.2%	+12.1%	+4.3%	-6.7%	+3.8%

Jul 2022	WTE Jul 2022	WTE change since Dec 16	WTE change since Dec 17	WTE change since Dec 18	WTE change since Dec 19	WTE change since Dec 20	WTE change since Jun 22	% change since Dec 16	% change since Dec 17	% change since Dec 18	% change since Dec 19	% change since Dec 20	% change since Jun 22
Overall	12,066	+1,994	+1,765	+1,642	+1,247	+778	+131	+19.8%	+17.1%	+15.8%	+11.5%	+6.9%	+1.1%
Consultant Histopathologist	22	+3	+2	+2	+2	+1	-0	+13.0%	+12.2%	+9.6%	+10.3%	+5.0%	-0.6%
Consultant Immunologist (Clinical & Laboratory)	1	-1	-1	-1				-38.7%	-38.7%	-38.7%			
Consultant Microbiologist	9	+2	+1	+2	+1	+0	-1	+28.4%	+12.4%	+22.1%	+8.6%	+5.8%	-10.1%
Consultant Pathology	53	+7	+6	+5	+4	+0	-0	+16.2%	+12.5%	+10.5%	+7.4%	+0.7%	-0.9%
Consultant General Adult Psychiatrist	7	+4	+3	+3		+0		+115.0%	+66.2%	+74.1%		+0.1%	
Consultant Psychiatry	7	+4	+3	+3		+0		+115.0%	+66.2%	+74.1%		+0.1%	
Consultant Radiation Oncologist	18	+11	+2		-2			+140.0%	+12.5%		-10.0%		
Consultant Radiologist	48	+7	+10	+8	+7	+2	+1	+16.7%	+26.2%	+19.5%	+18.1%	+5.2%	+1.5%
Consultant Radiology	66	+17	+12	+8	+5	+2	+1	+35.6%	+22.2%	+13.5%	+8.9%	+3.8%	+1.1%
Consultant Cardio-thoracic Surgeon	4	-1	-0	-2	-0	-0	-0	-20.2%	-0.2%	-33.5%	-0.2%	-0.2%	-0.2%
Consultant General Surgeon	23	+5	+5	+4	-1	-2	+0	+26.0%	+26.0%	+20.9%	-2.7%	-8.3%	+0.7%
Consultant General Surgeon Gastro-intestinal	1												
Consultant General Surgeon s.i. vascular surgery	8	+1	+1	+1	+1	+2	+1	+14.3%	+14.3%	+14.3%	+14.3%	+33.3%	+21.2%
Consultant Ophthalmic Surgeon	1	+0	+0	+1	+0	+0		+138.1%	+138.1%	-100.0%	+19.0%	+19.0%	
Consultant Oral & Maxillo Facial Surgeon	5	+4	+4	+5	+5	+3	-0	+399.0%	+399.0%	-100.0%	-100.0%	+149.5%	-0.2%
Consultant Oral Surgeon		-3	-3	-3	-3	-3		-100.0%	-100.0%	-100.0%	-100.0%	-100.0%	-100.0%
Consultant Orthopaedic Surgeon	21	+5	+4	+3	+4	+4	+1	+34.6%	+20.5%	+17.1%	+21.2%	+24.4%	+6.8%
Consultant Otolaryngologist	10	+2	+1	+1	+1	+1	-0	+24.8%	+10.6%	+10.6%	+10.6%	+10.6%	-0.5%
Consultant Plastic Surgeon	5	-1	+1	-1	+1	+1	-1	-9.1%	+11.1%	-9.1%	+11.1%	+11.1%	-13.3%
Consultant Urologist	8	+3	+3	+2	+2	+1	-0	+54.3%	+67.3%	+43.7%	+34.0%	+13.7%	-1.2%
Consultant Surgery	86	+16	+15	+11	+9	+7	+2	+22.5%	+21.6%	+15.3%	+12.4%	+8.8%	+2.4%
Consultants	544	+138		+97	+80		+7	+34.0%		+21.7%	+17.2%		+1.3%
Registrar	0	-66	-67	-8	-5	-1		-99.8%	-99.8%	-98.7%	-98.0%	-90.9%	
Registrar, Anaesthesia	34	+16	+16	+10	+11	+1	+2	+94.4%	+89.0%	+44.3%	+45.6%	+1.9%	+5.8%
Registrar, Emergency Medicine	34	+19	+21	+10	+6	+1	+1	+124.3%	+159.8%	+43.6%	+23.6%	+3.5%	+3.4%
Registrar, General Practice		-2	-2	-2				-100.0%	-100.0%	-100.0%	-100.0%	-100.0%	-100.0%
Registrar, Medicine	150	+90	+90	+46	+39	+24	+9	+152.0%	+151.0%	+44.9%	+35.1%	+19.5%	+6.6%
Registrar, Obstetrics & Gynaecology	17	+4	+8	+4	+3	+1	+3	+33.1%	+88.1%	+32.7%	+19.5%	+7.8%	+23.2%
Registrar, Paediatrics	7	+3	+1	-2	+1	+2	-0	+85.8%	+9.7%	-17.4%	+22.6%	+37.6%	-0.9%
Registrar, Pathology	1	-2	-1		+1			-60.0%	-50.0%		-100.0%		
Registrar, Psychiatry	1	+1	+1	-0	-0	+1	+1	-100.0%	-100.0%	-32.0%	-32.0%	-100.0%	-100.0%
Registrar, Radiology	3	+3	+3	+3	+3	+3	+3	-100.0%	-100.0%	-100.0%	-100.0%	-100.0%	-100.0%
Registrar, Surgery	53	+13	+17	+4	-2	-9	-0	+32.2%	+45.5%	+9.1%	-3.5%	-13.8%	-0.7%
Registrar	300	+80	+86	+67	+57	+23	+18	+36.6%	+40.3%	+28.6%	+23.2%	+8.4%	+6.5%
Registrar, Senior	14	-15	-5	-5	-3	-4	-0	-52.7%	-26.3%	-28.7%	-19.2%	-24.1%	-1.5%

Jul 2022	WTE Jul 2022	WTE change since Dec 16	WTE change since Dec 17	WTE change since Dec 18	WTE change since Dec 19	WTE change since Dec 20	WTE change since Jun 22	% change since Dec 16	% change since Dec 17	% change since Dec 18	% change since Dec 19	% change since Dec 20	% change since Jun 22
Overall	12,066	+1,994	+1,765	+1,642	+1,247	+778	+131	+19.8%	+17.1%	+15.8%	+11.5%	+6.9%	+1.1%
Senior Registrar, Psychiatry	3	+2	+3	+2	+1	+1	+1	+218.0%	-100.0%	+218.0%	+59.0%	+59.8%	+44.5%
Senior Registrar	17	-13	-2	-3	-2	-3	+1	-43.6%	-9.1%	-16.4%	-10.9%	-15.7%	+4.8%
Registrar, Specialist	4	-81	-70	-4	-3	+0	-0	-94.8%	-94.1%	-44.8%	-36.9%	+10.5%	-4.5%
Specialist Registrar, Anaesthesia	37	+20	+16	+3	+3	+4	+1	+115.1%	+78.3%	+7.5%	+7.5%	+11.0%	+1.6%
Specialist Registrar, Emergency Medicine	14	+9	+9	+5	+3	+2	-0	+161.4%	+159.5%	+58.6%	+24.1%	+18.9%	-1.6%
Specialist Registrar, Medicine	89	+45	+33	+8	+2	+1	+3	+100.1%	+59.4%	+10.2%	+2.7%	+1.2%	+3.7%
Specialist Registrar, Obstetrics & Gynaecology	21	+13	+9	+8	+5	+6	+5	+157.4%	+71.6%	+58.4%	+29.0%	+42.0%	+36.4%
Specialist Registrar, Paediatrics	11	+6	+5	+4	+3	+1	+2	+120.0%	+83.3%	+57.1%	+37.5%	+10.0%	+22.2%
Specialist Registrar, Pathology	14	+9	+7	+3	+1	+0	-2	+187.4%	+95.9%	+23.5%	+4.4%	+1.6%	-11.2%
Specialist Registrar, Radiology	25	+17	+13	+2	+1	+0	-1	+211.2%	+107.5%	+8.3%	+6.0%	+1.2%	-4.2%
Specialist Registrar, Surgery	29	+19	+15	+1	+2	+4	-3	+192.4%	+108.9%	+2.6%	+8.3%	+17.0%	-8.6%
Specialist Registrar	244	+56	+36	+29	+17	+19	+5	+29.7%	+17.5%	+13.7%	+7.5%	+8.5%	+2.2%
Registrars	561	+123		+93	+71		+24	+28.1%		+19.8%	+14.6%		+4.5%
Intern	161	+43	+43	+43	+41	+10	+24	+36.9%	+36.0%	+35.8%	+33.8%	+6.4%	+17.4%
Interns	161	+43	+43	+43	+41	+10	+24	+36.9%	+36.0%	+35.8%	+33.8%	+6.4%	+17.4%
House Officer, Senior		-78	-89	-6	-10			-100.0%	-100.0%	-100.0%	-100.0%	-100.0%	-100.0%
Senior House Officer, Anaesthesia	26	+11	+12	+4	-1	+7	+1	+72.7%	+85.5%	+17.8%	-4.0%	+36.4%	+5.3%
Senior House Officer, Emergency Medicine	33	+10	+11	+4	+1	-3	-2	+45.6%	+48.7%	+15.4%	+3.4%	-7.4%	-5.1%
Senior House Officer, Medicine	157	+66	+64	+14	+12	-5	-14	+73.3%	+69.0%	+10.1%	+8.6%	-2.9%	-8.0%
Senior House Officer, Obstetrics & Gynaecology	19	+0	+3	-1	-1	-2	-2	+1.2%	+20.1%	-3.9%	-3.7%	-8.5%	-7.8%
Senior House Officer, Paediatrics	14	-4	-4	-5	-5	-5	-6	-24.8%	-24.8%	-27.6%	-28.8%	-28.7%	-32.2%
Senior House Officer, Pathology	4	-1	-1	+2	+2	+2	+0	-11.8%	-19.4%	+58.1%	+69.6%	+110.0%	+10.3%
Senior House Officer, Surgery	51	+16	+19	-1	+3	+1	-1	+46.9%	+58.5%	-2.5%	+5.5%	+1.5%	-2.4%
Senior House Officer	304	+21	+14	+11	+1	-5	-23	+7.4%	+5.0%	+3.8%	+0.3%	-1.5%	-7.1%
SHO/ Interns	465	+64		+54	+42		+1	+16.0%		+13.0%	+9.8%		+0.2%
Orthodontics, Specialist	1	+1		-0		-0		-100.0%		-21.3%		-31.0%	
Dentists	1	+1		-0		-0		-100.0%		-21.3%		-31.0%	
Associate Specialist	5	+1	+1	+3	+2	+3	+0	+25.7%	+28.8%	+158.3%	+72.5%	+129.5%	+0.6%
Occupational Health Physician	3	+2	+2	+2	+2	+1	+0	+184.0%	+184.0%	+184.0%	+184.0%	+56.9%	+1.1%
Ophthalmic Physician, Community	2	-0	+0	-0	-0	-0	+0	-4.0%	+7.6%	-8.6%	-6.6%	-6.1%	+2.4%
Other Medical	10	+3	+3	+5	+4	+4	+0	+41.1%	+47.3%	+99.6%	+66.9%	+65.2%	+1.0%
Medical/ Dental, other	11	+4		+5	+4		+0	+55.7%		+74.5%	+57.1%		+0.9%
Medical & Dental	1,581	+329		+248	+197		+32	+26.3%		+18.6%	+14.2%		+2.1%
Clinical Midwife Manager 1	12	+2	+4	+5	+1	+2	+0	+15.3%	+43.5%	+78.8%	+11.2%	+21.5%	+1.6%

Jul 2022	WTE Jul 2022	WTE change since Dec 16	WTE change since Dec 17	WTE change since Dec 18	WTE change since Dec 19	WTE change since Dec 20	WTE change since Jun 22	% change since Dec 16	% change since Dec 17	% change since Dec 18	% change since Dec 19	% change since Dec 20	% change since Jun 22
Overall	12,066	+1,994	+1,765	+1,642	+1,247	+778	+131	+19.8%	+17.1%	+15.8%	+11.5%	+6.9%	+1.1%
Clinical Midwife Manager 2	51	+6	+1	+6	+6	+9	-0	+14.0%	+3.0%	+12.8%	+13.6%	+21.1%	-0.1%
Clinical Midwife Manager 3	12	+2	-1	-1	+2	-2	-0	+20.5%	-7.3%	-7.3%	+16.3%	-16.7%	-3.1%
Clinical Nurse Manager 1	179	+20	+26	+3	+13	+13	+7	+12.6%	+16.8%	+1.5%	+7.9%	+7.5%	+4.2%
Clinical Nurse Manager 1 (Mental Health)	2		+0	+0			+1		+4.2%	+7.5%			+70.9%
Clinical Nurse Manager 2	534	+135	+86	+91	+66	+51	+7	+33.9%	+19.2%	+20.5%	+14.1%	+10.6%	+1.2%
Clinical Nurse Manager 2 (Mental Health)	11	+0	+1	+1	+0	+0	+0	+2.3%	+9.8%	+11.2%	+2.8%	+0.7%	+1.7%
Clinical Nurse Manager 2 - Night	5	-1	-0	-0	-0	-1	+0	-15.0%	-0.5%	-0.5%	-0.5%	-13.7%	+1.1%
Clinical Nurse Manager 2 - Theatre	7	-2	-2	-3	-5	-3	-0	-24.1%	-23.2%	-29.1%	-41.4%	-29.3%	-1.8%
Clinical Nurse Manager 3	71	+15	+12	+0	+11	-3	+0	+26.7%	+20.6%	+0.4%	+17.7%	-3.6%	+0.6%
Clinical Nurse Manager 3 (Mental Health)	1		+1	+1	+1				-100.0%	-100.0%	-100.0%		
Clinical Nurse Manager 3 - Night	3	-0	-0	-0	+0	-0	-0	-4.0%	-4.0%	-4.0%	+1.1%	-1.0%	-1.0%
Clinical Nurse Manager 3 - Theatre	2		+2	+2	+1	+1			-100.0%	-100.0%	+100.0%	+100.0%	
Clinical Nurse/ Midwife Manager	890	+177	+130	+105	+96	+67	+15	+24.8%	+17.1%	+13.4%	+12.1%	+8.2%	+1.7%
Director of Midwifery 1, Assistant	7	+7	+7	+7	+2	+2	+0	-100.0%	-100.0%	-100.0%	+28.1%	+26.4%	+0.8%
Director of Nursing 1, Assistant	68	+22	+20	+1	+3	+1	+1	+47.3%	+40.4%	+1.9%	+5.4%	+1.8%	+2.0%
Director of Nursing 2, Assistant	5	-13	-20	-4	+4	+3	-0	-72.0%	-79.8%	-44.2%	+395.0%	+147.5%	-1.0%
Director of Nursing 4, Assistant			-1					-100.0%	-100.0%	-100.0%	-100.0%	-100.0%	-100.0%
Director of Nursing (Mental Health), Assistant	1												
Director Nursing/Midwifery, Assistant	82	+17	+7	+5	+9	+6	+1	+25.6%	+8.7%	+6.3%	+12.5%	+7.6%	+1.7%
Director of Midwifery 1	2	+2	+2	+2	+1	+1		-100.0%	-100.0%	-100.0%	+100.0%	+100.0%	
Director of Nursing 1	5	+1	+1	-1	-0	-0	-0	+18.8%	+18.8%	-19.5%	-5.0%	-5.0%	-4.4%
Director of Nursing 2	4	+1		+1		+0	-0	+33.3%		+33.3%		+6.1%	-1.7%
Director of Nursing (Mental Health)				-1	-1			-100.0%	-100.0%	-100.0%	-100.0%	-100.0%	-100.0%
Director of Nursing/Midwifery	11	+4	+3	+1	-0	+1	-0	+53.6%	+34.4%	+8.6%	-2.3%	+10.0%	-2.6%
Nurse/ Midwife Manager	982	+197		+111	+105		+16	+25.2%		+12.7%	+12.0%		+1.7%
Advanced Midwife Practitioner, Candidate	1	+1	+1	+1	+1		+0	-100.0%	-100.0%	-100.0%	-100.0%		+16.3%
Advanced Nurse Practitioner, Candidate (General)	30	+30	+30	+24	+11	+8	+0	-100.0%	-100.0%	+409.1%	+53.6%	+38.4%	+1.2%
Advanced Nurse Practitioner (General)	72	+39	+40	+31	+29	+12	+2	+120.0%	+128.2%	+76.9%	+69.1%	+21.0%	+2.4%
Advanced Nurse/ Midwife Practitioner	103	+70	+71	+56	+41	+21	+2	+216.1%	+227.9%	+121.6%	+65.8%	+25.4%	+2.2%
Clinical Midwife Specialist	12	+3	+1	-2	+0	+0	+0	+27.7%	+5.8%	-11.8%	+2.1%	+3.4%	+2.2%
Clinical Nurse Specialist (General)	157	+25	+42	+30	+26	+16	+3	+19.4%	+37.0%	+23.4%	+20.3%	+11.1%	+2.3%
Clinical Nurse Specialist (Mental Health)	5	+4	+4	+4	+4	+3	+1	+400.0%	+400.0%	+400.0%	+400.0%	+150.0%	+11.1%
Clinical Nurse/ Midwife Specialist	173	+32	+47	+32	+31	+19	+4	+22.7%	+37.2%	+22.8%	+21.5%	+12.4%	+2.5%
Nurse/ Midwife Specialist & AN/MP	276	+102		+89	+71		+6	+58.9%		+47.3%	+34.9%		+2.4%
Staff Nurse (Nursing Bank)	5	-30	-31	-15	-15	-12	-1	-86.8%	-87.1%	-76.1%	-76.2%	-72.0%	-15.3%

Jul 2022	WTE Jul 2022	WTE change since Dec 16	WTE change since Dec 17	WTE change since Dec 18	WTE change since Dec 19	WTE change since Dec 20	WTE change since Jun 22	% change since Dec 16	% change since Dec 17	% change since Dec 18	% change since Dec 19	% change since Dec 20	% change since Jun 22
Overall	12,066	+1,994	+1,765	+1,642	+1,247	+778	+131	+19.8%	+17.1%	+15.8%	+11.5%	+6.9%	+1.1%
Staff Nurse, Senior (Nursing Bank)	1	-4	-4	-4	-2	+0	+0	-85.9%	-86.6%	-85.5%	-80.3%	+3.4%	+17.3%
Nursing Bank	5	-34	-35	-18	-17	-12	-1	-86.7%	-87.0%	-77.8%	-76.7%	-69.4%	-12.4%
Enhanced Midwife	101	+101	+101	+101	+101	+16	+1	-100.0%	-100.0%	-100.0%	-100.0%	+18.7%	+0.6%
Enhanced Midwife, Senior	19	+19	+19	+19	+19	+13	+1	-100.0%	-100.0%	-100.0%	-100.0%	+189.0%	+4.4%
Staff Midwife	52	-44	-76	-71	-77	+6	-1	-46.0%	-59.3%	-57.5%	-59.7%	+14.1%	-1.4%
Staff Midwife (dual qualified)		-61	-51	-61	-45	-27		-100.0%	-100.0%	-100.0%	-100.0%	-100.0%	-100.0%
Staff Midwife, Senior		-7	-10	-6	-5			-100.0%	-100.0%	-100.0%	-100.0%	-100.0%	-100.0%
Staff Midwife, Senior (dual qualified)		-18	-21	-20	-17	-24		-100.0%	-100.0%	-100.0%	-100.0%	-100.0%	-100.0%
Staff Midwives	172	-11	-37	-37	-24	-16	+1	-5.9%	-17.8%	-17.6%	-12.1%	-8.6%	+0.4%
Enhanced Nurse (Children's)	22	+22	+22	+22	+22	+10	-0	-100.0%	-100.0%	-100.0%	-100.0%	+84.4%	-2.1%
Enhanced Nurse (Community/Primary Care)	1	+1	+1	+1	+1			-100.0%	-100.0%	-100.0%	-100.0%		
Enhanced Nurse (General)	1,147	+1,147	+1,147	+1,147	+1,147	-71	+16	-100.0%	-100.0%	-100.0%	-100.0%	-5.9%	+1.4%
Enhanced Nurse, Senior (Children's)	11	+11	+11	+11	+11	+1	+0	-100.0%	-100.0%	-100.0%	-100.0%	+7.7%	+0.7%
Enhanced Nurse, Senior (General)	755	+755	+755	+755	+755	-24	+5	-100.0%	-100.0%	-100.0%	-100.0%	-3.1%	+0.6%
Staff Nurse (Adaptation Placement), General	124	+113	+108	+99	+115	+113	+79	+1022.7%	+671.9%	+407.4%	+1272.2%	+1051.0%	+176.8%
Staff Nurse (Children's)	2	-33	-22	-21	-19	-0	-0	-94.2%	-91.9%	-91.4%	-90.7%	-0.5%	-0.5%
Staff Nurse, Dual Qualified (Children's)		-8	-8	-9	-9	-8		-100.0%	-100.0%	-100.0%	-100.0%	-100.0%	-100.0%
Staff Nurse, Dual Qualified (General)	1	-5	-5	-3	-2	+0	+0	-79.4%	-79.5%	-72.4%	-60.4%	+4.1%	+4.1%
Staff Nurse - General	654	-1,117	-1,172	-1,139	-1,285	+90	-107	-63.1%	-64.2%	-63.5%	-66.3%	+15.9%	-14.1%
Staff Nurse, Senior (Children's)		-5	-6	-6	-6	-1		-100.0%	-100.0%	-100.0%	-100.0%	-100.0%	-100.0%
Staff Nurse, Senior (Dual Qualified)	5	-17	-14	-12	-15	-3	+0	-76.7%	-72.4%	-69.8%	-73.4%	-39.1%	+2.5%
Staff Nurse, Senior (Dual Qualified Children's)				-1				-100.0%	-100.0%	-100.0%	-100.0%	-100.0%	-100.0%
Staff Nurse, Senior (General)	75	-450	-490	-486	-513	-29	+0	-85.8%	-86.8%	-86.7%	-87.3%	-27.8%	+0.1%
Staff Nurses [General/ Children's]	2,797	+414	+327	+357	+201	+77	-8	+17.4%	+13.3%	+14.6%	+7.8%	+2.8%	-0.3%
Enhanced Nurse (Mental Health)	8	+8	+8	+8	+8	-2	-1	-100.0%	-100.0%	-100.0%	-100.0%	-15.9%	-11.5%
Enhanced Nurse, Senior (Mental Health)	3	+3	+3	+3	+3	-0	-0	-100.0%	-100.0%	-100.0%	-100.0%	-1.7%	-1.7%
Staff Nurse, Mental Health	6	-11	-9	-10	-10	-3	-1	-66.1%	-61.8%	-63.3%	-62.8%	-36.2%	-15.0%
Staff Nurse, Senior (Mental Health)	1	-6	-6	-6	-5	-1	+0	-86.4%	-85.4%	-85.4%	-82.8%	-59.2%	+2.0%
Staff Nurse [Psychiatric]	19	-6	-3	-4	-3	-6	-2	-23.9%	-15.7%	-17.9%	-13.0%	-25.6%	-10.3%
Staff Nurse/ Staff Midwife	2,993	+364		+298	+158		-10	+13.8%		+11.1%	+5.6%		-0.3%
Student Children's & General Nursing Intern (pre-registration)	10	+2	+3	+1	+2	+10		+26.7%	+46.2%	+11.8%	+22.6%	-100.0%	
Student General Nursing Intern (pre-registration)	79	+78	+76	+77	+79	+79	+1	+15648.0%	+2662.8%	+3837.0%	+196750.0%	+262366.7%	+1.4%
Student Midwifery Intern (pre-registration)	6	+5	+6	+6	+6	+6		+450.0%	-100.0%	-100.0%	-100.0%	-100.0%	
Pre-registration Nurse/ Midwife Intern	94	+85	+84	+83	+86	+94	+1	+941.6%	+902.6%	+792.8%	+1103.3%	+312366.7%	+1.2%
Student Children's & General Nursing Intern (COVID-19 HCA)						-16		-100.0%	-100.0%	-100.0%	-100.0%	-100.0%	-100.0%

Jul 2022	WTE Jul 2022	WTE change since Dec 16	WTE change since Dec 17	WTE change since Dec 18	WTE change since Dec 19	WTE change since Dec 20	WTE change since Jun 22	% change since Dec 16	% change since Dec 17	% change since Dec 18	% change since Dec 19	% change since Dec 20	% change since Jun 22
Overall	12,066	+1,994	+1,765	+1,642	+1,247	+778	+131	+19.8%	+17.1%	+15.8%	+11.5%	+6.9%	+1.1%
Student General Nursing Intern (COVID-19 HCA)						-12		-100.0%	-100.0%	-100.0%	-100.0%	-100.0%	-100.0%
Pre-registration Nurse Intern (COVID-19)						-28		-100.0%	-100.0%	-100.0%	-100.0%	-100.0%	-100.0%
Student Midwifery (post registration)	11		+1	+3	-2	-1			+10.0%	+37.5%	-15.4%	-8.3%	
Post-registration Nurse/ Midwife Student	11		+1	+3	-2	-1			+10.0%	+37.5%	-15.4%	-8.3%	
Staff Nurse, General (awaiting-registration)	63	+46	+60	+57	+42	+59	+43	+257.4%	+2012.3%	+956.2%	+201.8%	+1391.1%	+216.9%
Nursing/ Midwifery awaiting registration	63	+46	+60	+57	+42	+59	+43	+257.4%	#####	+956.2%	+201.8%	+1391.1%	+216.9%
Nursing/ Midwifery Student	168	+130		+144	+126		+44	+345.6%		+586.2%	+302.3%		+35.9%
Director, Nursing/ Midwifery Education Centre	2	-1						-33.3%					
Nurse Tutor	5	+3	+2	+2	+1	+1	-1	+115.2%	+55.9%	+53.7%	+19.6%	+19.6%	-15.1%
Nurse Tutor (Midwifery)	4	+3	+4	+4				+600.0%	-100.0%	-100.0%			
Nursing/ Midwifery Clinical Placement Co-ordinator	21	+4	+6	+5	+2	-0	-0	+26.3%	+36.0%	+35.4%	+10.9%	-0.3%	-0.9%
Nursing/ Midwifery Practice Development Co-ordinator	2	+1	+1	+1	-0	-0	+0	+52.0%	+52.0%	+52.0%	-24.0%	-18.7%	+4.1%
Professional Development Nursing Officer		-1						-100.0%	-100.0%	-100.0%	-100.0%	-100.0%	-100.0%
Nursing Education/Clinical	33	+9	+12	+11	+2	+0	-1	+35.6%	+52.6%	+51.7%	+7.9%	+1.4%	-3.2%
Area Director Nurse & Midwifery Planning & Development							-1	-100.0%	-100.0%	-100.0%	-100.0%	-100.0%	-100.0%
Practice Nurse Facilitator	6	+2	+2	+3	+1	+1	+0	+52.4%	+71.9%	+100.7%	+16.0%	+18.0%	+3.0%
Other Nursing/ Midwifery	6	+2	+2	+3	+1	+1	-1	+52.4%	+71.9%	+100.7%	+16.0%	+18.0%	-13.2%
Nursing/ Midwifery other	39	+11		+14	+3		-2	+37.8%		+57.1%	+9.0%		-4.7%
Nursing & Midwifery	4,458	+805		+655	+464		+55	+22.0%		+17.2%	+11.6%		+1.2%
Dietitian	27	-3	+1	+2	-2	-2	+2	-10.0%	+2.8%	+7.2%	-6.6%	-8.5%	+7.0%
Dietitian, Clinical Specialist	11	+5	+6	+4	+4	+2	+2	+98.5%	+143.8%	+68.0%	+56.0%	+24.0%	+23.1%
Dietitian Manager	7	+3	+1	+1	+1	+1	-0	+71.3%	+15.1%	+14.3%	+16.4%	+16.6%	-0.7%
Dietitian Manager-in-charge III	2												
Dietitian, Senior	54	+9	+8	+3	+3	+2	-3	+20.1%	+16.3%	+5.6%	+6.4%	+2.9%	-5.2%
Dietitians	100	+14	+16	+10	+6	+2	+1	+16.6%	+18.4%	+10.9%	+6.6%	+2.2%	+0.8%
Occupational Therapist	29	+2	-0	+3	+2	-3	+1	+6.0%	-1.0%	+10.6%	+6.0%	-9.7%	+1.8%
Occupational Therapist, Clinical Specialist	8	+7	+5	+5	+4	+3	+1	+347.9%	+117.0%	+136.5%	+75.1%	+70.8%	+13.5%
Occupational Therapist-in-charge III	3	+1	-1	+1	+0	+0	+0	+54.3%	-17.1%	+45.0%	+1.4%	+1.4%	+5.5%
Occupational Therapist Manager	1	+0	+0	-0	-0	-0	+1	+28.0%	+28.0%	-14.7%	-9.9%	-5.9%	+156.0%
Occupational Therapist, Senior	39	+11	+10	+8	+7	+4	-1	+41.7%	+33.6%	+24.9%	+21.6%	+12.7%	-1.5%
Occupational Therapists	80	+21	+14	+16	+12	+5	+2	+35.2%	+20.5%	+25.0%	+17.6%	+6.2%	+2.4%
Orthoptist, Senior	2	+1	-0	-1	-0	+0	+0	+73.4%	-7.9%	-29.1%	-16.0%	+1.9%	+1.9%
Orthoptists	2	+1	-0	-1	-0	+0	+0	+73.4%	-7.9%	-29.1%	-16.0%	+1.9%	+1.9%
Physiotherapist	75	+13	+11	+8	+11	+5	+1	+21.8%	+17.7%	+12.8%	+17.9%	+6.8%	+1.7%

Jul 2022	WTE Jul 2022	WTE change since Dec 16	WTE change since Dec 17	WTE change since Dec 18	WTE change since Dec 19	WTE change since Dec 20	WTE change since Jun 22	% change since Dec 16	% change since Dec 17	% change since Dec 18	% change since Dec 19	% change since Dec 20	% change since Jun 22
Overall	12,066	+1,994	+1,765	+1,642	+1,247	+778	+131	+19.8%	+17.1%	+15.8%	+11.5%	+6.9%	+1.1%
Physiotherapist, Clinical Specialist	39	+23	+23	+20	+15	+14	-0	+145.9%	+141.6%	+102.8%	+64.3%	+58.8%	-0.2%
Physiotherapist-in-charge (Grade III)	5	-1	-1	-1	-0	-1	+0	-17.2%	-17.5%	-16.4%	-7.9%	-9.8%	+0.4%
Physiotherapist Manager	6	+1	+1	+1	+1	+1	+0	+27.6%	+27.6%	+31.1%	+31.1%	+14.8%	+4.4%
Physiotherapist, Senior	70	+3	-4	+4	+7	+2	-5	+5.0%	-5.4%	+6.2%	+11.1%	+2.2%	-6.4%
Physiotherapists	195	+40	+30	+33	+34	+21	-3	+25.8%	+18.3%	+20.1%	+21.5%	+12.0%	-1.7%
Chiropodist, Clinical Specialist	1	+1	+1	+1	+1	+1		-100.0%	-100.0%	-100.0%	-100.0%	-100.0%	
Chiropodist/ Podiatrist	1	-0	-0	-0	-0	+0	+0	-39.8%	-47.9%	-34.2%	-34.2%	+2.0%	+2.0%
Chiropodist/ Podiatrist, Senior	2	-0	-0	-1	-1	-1	+0	-12.0%	-12.0%	-40.5%	-38.5%	-38.5%	+2.8%
Podiatrists & Chiropodists	3	+0	+0	-1	-0	-0	+0	+14.4%	+9.5%	-13.2%	-10.9%	-4.0%	+1.8%
Speech & Language Therapist	12	-1	-1	-4	-2	-3	+1	-5.7%	-9.3%	-23.6%	-14.8%	-18.9%	+4.7%
Speech & Language Therapist, Clinical Specialist	5	+2	+2	+3	+2	+2	+1	+50.5%	+88.7%	+196.1%	+72.9%	+72.9%	+23.1%
Speech & Language Therapist Manager	4	+1	-0	-1	+1	+0	+0	+24.0%	-0.8%	-13.2%	+19.5%	+9.7%	+4.0%
Speech & Language Therapist Manager-in-charge III	2	+0	+0	+0	+0	+0	+0	+7.6%	+7.6%	+7.6%	+1.7%	+1.7%	+1.7%
Speech & Language Therapist, Senior	26	+10	+9	+10	+9	+4	-1	+57.6%	+51.4%	+62.7%	+52.7%	+19.0%	-2.8%
Speech & Language Therapists	48	+11	+10	+9	+9	+4	+1	+30.1%	+25.7%	+22.6%	+24.3%	+8.1%	+1.7%
Therapy Professions	428	+87		+66	+61		+0	+25.6%		+18.3%	+16.7%		+0.0%
Audiologist	1		+1	+1	+1	+1			-100.0%	-100.0%	-100.0%	-100.0%	
Audiologist, Chief	2	-0	-0	-0	-0	-0	-0	-6.7%	-8.5%	-8.5%	-4.4%	-3.3%	-1.7%
Audiologist, Senior	1	+0	+0	+1	+1	+1	+0	+40.0%	+1.4%	+197.9%	+109.0%	+154.5%	+1.4%
Audiology	5	+0	+1	+2	+2	+2	-0	+5.1%	+20.1%	+55.7%	+51.3%	+58.8%	-0.4%
Biochemist	3	+3	+1			-1	+0	-100.0%	+66.7%			-24.9%	+0.8%
Biochemist, Principal	0	-3	-3	-2	-2	-2		-100.0%	-100.0%	-100.0%	-100.0%	-100.0%	#DIV/0
Biochemist, Senior	5	+1	+1	+1	+0	+0	+0	+13.0%	+13.0%	+17.4%	+6.4%	+4.4%	+0.4%
Biochemists	7	+0	-1	-1	-2	-2	+0	+0.3%	-17.4%	-15.9%	-19.8%	-23.4%	+0.6%
Cardiac Physiologist	14	-5	-3	+4	-1	-6	-0	-24.4%	-18.4%	+38.9%	-8.1%	-29.4%	-2.0%
Cardiac Physiologist, Chief I	4	+0	+0	+0	+1	+0	+0	+1.1%	+3.7%	+0.8%	+39.6%	+0.8%	+1.4%
Cardiac Physiologist, Chief II	4	+1	+2	+2	+2	+2	-1	+40.6%	+75.0%	+75.0%	+75.0%	+94.4%	-12.5%
Cardiac Physiologist, Senior	21	+6	+8	+1	+1	+1	+0	+38.7%	+63.6%	+6.6%	+3.5%	+4.4%	+1.6%
Cardiac Physiologists	42	+2	+7	+7	+2	-3	-0	+6.1%	+18.8%	+19.0%	+5.0%	-7.0%	-0.9%
Clinical Engineering Technician	3	-0	-1	-0	-1	+0	-0	-3.3%	-27.5%	-3.3%	-27.5%	+16.0%	-3.3%
Clinical Engineering Technician, Chief	3	-1	-1	-1	-1			-25.0%	-25.0%	-25.0%	-25.0%		
Clinical Engineering Technician, Principal	12	+1	+2				-0	+9.1%	+20.0%				-2.3%
Clinical Engineering Technician, Senior	22	+4	-2	-0	-1	-1	+0	+21.5%	-9.6%	-1.4%	-5.6%	-3.4%	+0.4%
Clinical Engineering	40	+4	-2	-1	-3	-0	-0	+10.5%	-5.7%	-3.4%	-7.9%	-0.9%	-0.7%
Dosimetrist, Basic		-3	-1	-1	-1	-1		-100.0%	-100.0%	-100.0%	-100.0%	-100.0%	-100.0%

Jul 2022	WTE Jul 2022	WTE change since Dec 16	WTE change since Dec 17	WTE change since Dec 18	WTE change since Dec 19	WTE change since Dec 20	WTE change since Jun 22	% change since Dec 16	% change since Dec 17	% change since Dec 18	% change since Dec 19	% change since Dec 20	% change since Jun 22
Overall	12,066	+1,994	+1,765	+1,642	+1,247	+778	+131	+19.8%	+17.1%	+15.8%	+11.5%	+6.9%	+1.1%
Dosimetrist, Senior	1	-1						-50.0%					
Dosimetrists	1	-4	-1	-1	-1	-1		-80.0%	-50.0%	-50.0%	-50.0%	-50.0%	
E.C.G. Technician					-2	-1		-100.0%	-100.0%	-100.0%	-100.0%	-100.0%	-100.0%
E.C.G. Technicians					-2	-1		-100.0%	-100.0%	-100.0%	-100.0%	-100.0%	-100.0%
Gastrointestinal (GI) Physiologist	3	+2	+0	+2	+2	+2	+0	+166.0%	+1.5%	+329.0%	+329.0%	+329.0%	+1.5%
Gastrointestinal (GI) Physiologist, Chief II	1												
Gastrointestinal (GI) Physiologist, Senior		-1	-1					-100.0%	-100.0%	-100.0%	-100.0%	-100.0%	-100.0%
Gastrointestinal Physiologists	4	+1	-1	+2	+2	+2	+0	+28.0%	-18.3%	+125.9%	+125.9%	+125.9%	+1.1%
Laboratory Manager	6	+2	+1		+1	+2	-0	+50.0%	+20.0%		+20.0%	+33.3%	-2.8%
Medical Scientist	182	-40	-28	-26	-29	-16	+1	-18.1%	-13.2%	-12.3%	-13.9%	-7.9%	+0.8%
Medical Scientist, Chief	47	+9	+9	+9	+9	+8	+0	+22.5%	+23.0%	+22.7%	+24.8%	+21.2%	+0.6%
Medical Scientist, Senior	153	+35	+28	+27	+25	+12	+4	+29.4%	+22.9%	+21.9%	+19.7%	+8.2%	+2.4%
Medical Scientist, Specialist	10	+1	+1	+1	+4	+3	+1	+8.9%	+8.9%	+15.0%	+64.4%	+41.4%	+13.7%
Medical Science	398	+6	+11	+12	+10	+9	+6	+1.5%	+2.9%	+3.0%	+2.6%	+2.2%	+1.6%
Neuro-Physiologist	2	-1	-1	-1	+1		-1	-33.3%	-33.3%	-33.3%	+100.0%		-36.9%
Neuro-Physiologist, Chief II	2	+1	+1	+1				+175.4%	+175.4%	+175.4%			
Neuro-Physiologist, Senior	6	+3	+2	+3	+1	-1	+2	+90.9%	+47.5%	+90.9%	+18.0%	-10.2%	+34.4%
Neuro-Physiologists	10	+3	+2	+3	+2	-1	+0	+46.5%	+28.4%	+46.5%	+23.7%	-6.6%	+4.9%
Perfusionist	2	-1	-1	-1	-1	-1	+0	-26.8%	-26.8%	-26.8%	-26.8%	-26.8%	+1.8%
Perfusionist, Senior	2												
Perfusionists	4	-1	-1	-1	-1	-1	+0	-14.3%	-14.3%	-14.3%	-14.3%	-14.3%	+0.8%
Phlebotomist	54	+18	+15	+16	+15	+9	+3	+49.4%	+37.9%	+40.8%	+39.7%	+19.1%	+6.7%
Phlebotomist, Senior	2	+0	+1	-0	-1	+1	-1	+11.2%	+98.0%	-1.0%	-34.0%	+98.0%	-34.0%
Phlebotomists	56	+18	+16	+16	+14	+10	+2	+47.6%	+39.4%	+38.7%	+34.4%	+20.8%	+4.4%
Physicist	14	-4	-9	-13	-13	-5	+0	-22.7%	-39.5%	-48.7%	-48.9%	-26.4%	+0.4%
Physicist, Chief	6	+3	+1	-1	+1			+100.0%	+20.0%	-13.3%	+20.0%		
Physicist, Principal	16	+2	+4	+3	+0	+0	-0	+16.8%	+33.7%	+23.4%	+0.2%	+0.2%	-0.9%
Physicist, Senior	25	+5	+5	+2	+3	+4	+2	+25.3%	+25.3%	+7.1%	+13.2%	+21.0%	+10.2%
Physicists	61	+6	+1	-9	-9	-1	+2	+11.5%	+1.7%	-13.4%	-13.3%	-1.0%	+3.8%
Radiation Therapist	63	-44	+25	+21	+16	+3	-1	-41.1%	+64.7%	+49.0%	+33.2%	+4.3%	-1.6%
Radiation Therapist, Clinical Specialist	48	+31	+10	+10	+12	+5	-1	+176.8%	+26.2%	+26.2%	+31.4%	+10.3%	-2.0%
Radiation Therapist, Senior	21	+21	-27	-26	-27	-18		-100.0%	-56.0%	-55.1%	-56.0%	-45.7%	
Radiation Therapy Service Manager I	3	-1				+1		-25.0%				+50.0%	
Radiation Therapy Service Manager II	3	+1	-1	-1	-1			+50.0%	-25.0%	-25.0%	-25.0%		
Radiation Therapists	138	+8	+7	+4	-0	-9	-2	+6.1%	+5.4%	+3.1%	-0.3%	-6.4%	-1.4%

Jul 2022	WTE Jul 2022	WTE change since Dec 16	WTE change since Dec 17	WTE change since Dec 18	WTE change since Dec 19	WTE change since Dec 20	WTE change since Jun 22	% change since Dec 16	% change since Dec 17	% change since Dec 18	% change since Dec 19	% change since Dec 20	% change since Jun 22
Overall	12,066	+1,994	+1,765	+1,642	+1,247	+778	+131	+19.8%	+17.1%	+15.8%	+11.5%	+6.9%	+1.1%
Radiographer	95	+2	+11	-2	+9	+4	-4	+2.5%	+12.5%	-1.7%	+10.8%	+3.9%	-4.2%
Radiographer, Clinical Specialist	41	-1	+4	+3	+1	-3	-1	-3.2%	+10.8%	+7.2%	+2.8%	-6.8%	-1.9%
Radiographer, Senior	72	+24	+18	+16	+0	-4	+1	+51.2%	+33.1%	+28.1%	+0.1%	-5.2%	+2.1%
Radiography Service Manager, I	7	+2	+2	+2	+0	+1	-1	+37.4%	+37.4%	+38.8%	+0.3%	+15.3%	-8.8%
Radiography Service Manager, II	4				-1	-1					-20.0%	-20.0%	
Radiographers	218	+27	+34	+19	+9	-3	-4	+14.2%	+18.6%	+9.4%	+4.5%	-1.5%	-1.9%
Respiratory Physiologist	1				-2	-1	-0				-66.7%	-50.0%	-31.5%
Respiratory Physiologist, Chief I	2	+1	+1	+1	+1	+1	+0	+100.0%	+100.0%	+100.0%	+100.0%	+100.0%	+20.5%
Respiratory Physiologist, Chief II	1	-0	-0	-0	-0	-0	+0	-49.0%	-49.0%	-49.0%	-49.0%	-49.0%	+2.0%
Respiratory Physiologist, Senior	7	+2	+3	+3	+3	+2	+1	+44.1%	+56.8%	+84.5%	+76.5%	+41.7%	+15.0%
Respiratory Physiologists	10	+3	+3	+4	+2	+2	+1	+33.6%	+40.7%	+54.5%	+16.8%	+17.4%	+8.2%
Vascular Physiologist	3	-3	-3	-0	-0	+1		-47.7%	-47.1%	-8.9%	-4.7%	+44.4%	
Vascular Physiologist, Chief II	2	+1	+1	+1	+1	+0	+0	+83.0%	+83.0%	+83.0%	+98.9%	+6.4%	+1.7%
Vascular Physiologist, Senior	6	+1	+1	+2	-0	+1	-0	+27.0%	+9.8%	+47.9%	-1.2%	+17.7%	-0.5%
Vascular Physiologists	11	-1	-1	+2	+1	+2	+0	-4.7%	-10.1%	+30.3%	+7.1%	+21.5%	+0.0%
Health Science/ Diagnostics	1,004	+73		+56	+25		+5	+7.9%		+5.9%	+2.6%		+0.5%
Social Worker	9	-3	-1	+1	+1	+1	-1	-24.7%	-10.5%	+11.9%	+11.9%	+19.3%	-10.5%
Social Worker, Medical	22	-4	-7	-5	-1	-5	-2	-14.8%	-24.5%	-19.9%	-3.2%	-17.5%	-9.3%
Social Worker, Principal	6	+2	+2	+2	+2	+2		+55.8%	+55.8%	+55.8%	+50.0%	+50.0%	
Social Worker, Senior Medical	29	+12	+11	+7	+4	+6	-1	+75.0%	+61.7%	+30.8%	+17.2%	+25.9%	-1.8%
Social Worker, Team Leader	16	+5	+6	+4	+6	+2	+1	+39.4%	+58.1%	+32.6%	+58.1%	+14.2%	+5.7%
Social Work Practitioner, Senior	9	+2	-1	-1	-1	-3	-1	+22.6%	-12.8%	-7.4%	-5.5%	-23.1%	-7.1%
Social Workers	91	+14	+10	+8	+12	+4	-4	+18.2%	+11.9%	+9.2%	+15.1%	+4.6%	-3.8%
Social Workers	91	+14		+8	+12		-4	+18.2%		+9.2%	+15.1%		-3.8%
Psychologist, Clinical	1	-3	-0	-1	-1	-0		-74.9%	-16.7%	-43.2%	-43.2%	-7.4%	
Psychologist, Principal Clinical	7	+3	+3	+3	+2	+2	+0	+89.2%	+93.0%	+91.3%	+45.4%	+45.4%	+3.8%
Psychologist, Senior Clinical	7	-3	-5	-1	+1	-0	+0	-32.7%	-40.3%	-10.9%	+21.7%	-3.4%	+0.7%
Psychologist, Senior Counselling	0	+0	+0	+0	+0	+0	+0	-100.0%	-100.0%	-100.0%	+5.3%	+5.3%	+5.3%
Psychologists	15	-3	-1	+2	+3	+2	+0	-15.3%	-7.4%	+15.5%	+21.0%	+13.6%	+2.1%
Psychologists	15	-3		+2	+3		+0	-15.3%		+15.5%	+21.0%		+2.1%
Pharmacist	20	-4	-10	-11	-4	-8	-2	-18.0%	-34.2%	-36.3%	-18.1%	-29.5%	-8.7%
Pharmacist, Chief I	8	+1	+1	-1	-1	-1	+0	+20.4%	+16.8%	-7.5%	-8.0%	-8.0%	+0.4%
Pharmacist, Chief II	36	+12	+11	+12	+10	+8	-2	+49.2%	+41.8%	+48.1%	+36.7%	+27.8%	-4.4%
Pharmacist, Senior	77	+16	+16	+7	+0	-9	-0	+25.4%	+26.8%	+9.8%	+0.1%	-10.6%	-0.1%

Jul 2022	WTE Jul 2022	WTE change since Dec 16	WTE change since Dec 17	WTE change since Dec 18	WTE change since Dec 19	WTE change since Dec 20	WTE change since Jun 22	% change since Dec 16	% change since Dec 17	% change since Dec 18	% change since Dec 19	% change since Dec 20	% change since Jun 22
Overall	12,066	+1,994	+1,765	+1,642	+1,247	+778	+131	+19.8%	+17.1%	+15.8%	+11.5%	+6.9%	+1.1%
Pharmacists	141	+25	+18	+7	+5	-10	-4	+21.1%	+14.5%	+5.0%	+3.5%	-6.8%	-2.5%
Pharmaceutical Technician	59	+23	+23	+16	+9	+6	-3	+63.9%	+63.6%	+35.5%	+18.0%	+10.7%	-4.5%
Pharmaceutical Technician, Senior	38	+7	+6	+5	+5	-0	+0	+22.8%	+18.2%	+14.3%	+13.4%	-0.3%	+1.1%
Pharmacy Technicians	98	+30	+29	+20	+14	+6	-2	+44.9%	+42.2%	+26.3%	+16.2%	+6.1%	-2.4%
Pharmacy	239	+55		+27	+18		-6	+29.8%		+12.8%	+8.3%		-2.5%
Dental Hygienist	0				+0	+0					+12.5%		+125.0%
Dental Hygienists	0				+0	+0					+12.5%		+125.0%
Medical Scientist, Student	3	-10	-10	-9	-10	-7	-5	-74.1%	-74.9%	-73.0%	-75.5%	-66.7%	-58.5%
Perfusionist, Student	1	+1	+1	+1	+1	+1		-100.0%	-100.0%	-100.0%	-100.0%	-100.0%	
Pharmacist, Student		-6	-4	-4				-100.0%	-100.0%	-100.0%	-100.0%	-100.0%	-100.0%
Physicist, Graduate Trainee	6	+6	+2	+2	+5	+2		-100.0%	+50.0%	+50.0%	+500.0%	+50.0%	
Respiratory Technician, Student	2	+2	+2	+2	+2	+2	+1	-100.0%	-100.0%	-100.0%	-100.0%	-100.0%	+125.0%
HSCP Trainees/ Students	13	-6	-9	-8	-2	-1	-3	-33.4%	-40.9%	-38.2%	-13.8%	-10.1%	-21.5%
Clinical Photographer	1	+1				-1		+100.0%				-50.0%	
Clinical Photographer, Senior	4	+1	+1	+1	+1	+1		+33.3%	+33.3%	+33.3%	+33.3%	+33.3%	
Health & Social Care Professionals Unclassified	22	+11	+11	+10	+10	-2	+1	+109.1%	+95.3%	+89.8%	+90.2%	-6.5%	+4.4%
Maxillo Facial Technician	2	-1						-33.3%					
Maxillo Facial Technician, Chief	1												
Mould Room Technician		-1						-100.0%	-100.0%	-100.0%	-100.0%	-100.0%	-100.0%
Social Worker (Non-professionally qualified)	1				+0	+0	+0				+25.0%	+47.1%	+49.3%
Other Health & Social Care	31	+11	+12	+11	+11	-1	+1	+54.4%	+60.6%	+58.0%	+59.8%	-3.7%	+4.2%
Vaccinator - COVID 19 Vaccination Programme	0	+0	+0	+0	+0	+0	-1	-100.0%	-100.0%	-100.0%	-100.0%	-100.0%	-85.3%
Vaccinators	0	+0	+0	+0	+0	+0	-1	-100.0%	-100.0%	-100.0%	-100.0%	-100.0%	-85.3%
H&SC, Other	43	+5		+4	+10		-3	+11.9%		+9.0%	+28.3%		-6.0%
Health & Social Care Professionals	1,821	+231		+163	+129		-7	+14.6%		+9.8%	+7.6%		-0.4%
CEO (Band H3 Hospital)	1												
CEO (Band H5 Hospital)	1	+1	+1	+1	+1	+1	+1	-100.0%	-100.0%	-100.0%	-100.0%	-100.0%	-100.0%
Chief Executive, Hospital Group	1	+1	+1					-100.0%	-100.0%				
Chief Executive Officer	1	-1	-1	-1	-1	-1	-1	-50.0%	-50.0%	-50.0%	-50.0%	-50.0%	-50.0%
Director of Finance	1	-1	-1	-1	-1	-1	+0	-50.0%	-50.0%	-50.0%	-50.0%	-47.4%	+7.5%
Director of HR	1												
Director of ICT		-1						-100.0%	-100.0%	-100.0%	-100.0%	-100.0%	-100.0%
Head of Function /Service, Acute Services	2	+2	+2	+2	+2	+2	-0	-100.0%	-100.0%	-100.0%	-100.0%	-100.0%	-1.0%
Head of Function /Service, Community Services						-1		-100.0%	-100.0%	-100.0%	-100.0%	-100.0%	-100.0%

Jul 2022	WTE Jul 2022	WTE change since Dec 16	WTE change since Dec 17	WTE change since Dec 18	WTE change since Dec 19	WTE change since Dec 20	WTE change since Jun 22	% change since Dec 16	% change since Dec 17	% change since Dec 18	% change since Dec 19	% change since Dec 20	% change since Jun 22
Overall	12,066	+1,994	+1,765	+1,642	+1,247	+778	+131	+19.8%	+17.1%	+15.8%	+11.5%	+6.9%	+1.1%
National Director, Assistant (Services)	3	+2	+2	-2	-1	-1	+0	+200.0%	+200.0%	-40.0%	-25.0%	-24.4%	+0.3%
National Director, Assistant (Support)	12	+6	+5	+4	+3	+1	-1	+101.0%	+72.3%	+50.8%	+34.3%	+13.0%	-7.4%
Executive Management	23	+9	+9	+3	+3	+1	-1	+64.6%	+64.6%	+15.2%	+15.3%	+2.2%	-3.8%
Chief Executive Officer, Deputy	2				+1	+1	+1				+100.0%	+100.0%	+100.0%
Functional Officer		-1	-1					-100.0%	-100.0%	-100.0%	-100.0%	-100.0%	-100.0%
General Manager	26	+15	+14	+6	+5	+3	+2	+131.0%	+119.4%	+30.9%	+24.6%	+14.0%	+7.5%
Grade VIII	93	+38	+24	+22	+17	+13	-1	+69.1%	+34.6%	+31.1%	+23.1%	+16.3%	-0.8%
Senior Management (VIII & GM)	121	+52	+37	+28	+24	+17	+2	+74.8%	+44.2%	+30.4%	+24.2%	+16.6%	+1.8%
Management (VIII & above)	144	+61		+31	+27		+1	+73.1%		+27.7%	+22.7%		+0.8%
Accountant	1	-3	-2	-1	-0	-0	-0	-76.3%	-68.3%	-52.5%	-3.1%	-5.0%	-5.0%
Grade V	297	+76	+69	+54	+46	+21	+0	+34.5%	+30.0%	+22.1%	+18.1%	+7.5%	+0.0%
Grade VI	136	+50	+39	+36	+29	+28	+7	+57.4%	+40.4%	+36.6%	+26.6%	+25.9%	+5.1%
Grade VII	158	+53	+59	+49	+38	+35	+1	+50.2%	+60.3%	+44.9%	+32.2%	+28.3%	+0.8%
Supplies Officer Grade A	8		-1	-1	-1		+0		-11.1%	-11.1%	-9.7%		+0.1%
Supplies Officer Grade B	5	+3	+2	+2	-0	-0		+144.0%	+62.7%	+62.7%	-2.4%	-2.4%	
Middle Management (V-VII)	605	+178	+166	+139	+111	+83	+8	+41.8%	+37.8%	+29.8%	+22.6%	+16.0%	+1.3%
Librarian	1				+0		+0				+23.5%		+1.0%
Other Administrative	1				+0		+0				+23.5%		+1.0%
Administrative/ Supervisory (V to VII)	606	+178		+139	+112		+8	+41.7%		+29.8%	+22.6%		+1.3%
Clerical Officer	237	-53	-42	-28	-12	+3	-5	-18.4%	-15.0%	-10.6%	-4.7%	+1.3%	-2.0%
Grade IV	805	+138	+129	+105	+73	+65	+12	+20.6%	+19.2%	+15.0%	+9.9%	+8.9%	+1.5%
Supplies Officer Grade C	41	+19	+19	+18	+3	+0	+2	+86.5%	+86.6%	+78.4%	+8.0%	+0.2%	+4.6%
Supplies Officer Grade D	3	-17	-19	-19	-3	-2	-1	-85.7%	-87.0%	-87.1%	-48.8%	-37.2%	-32.4%
Telephonist	23	-10	-11	-10	-2	+2	+0	-30.5%	-32.7%	-30.4%	-7.8%	+9.0%	+1.7%
Telephonist, Night	2	+0	+0	+0	+1	+1	+1	+3.0%	+3.0%	+3.0%	+37.3%	+37.3%	+37.3%
Telephonist, Supervisor	3	+0	+0	+0	+0			+6.4%	+6.4%	+6.4%	+6.4%		
Telephonist, Supervisor, Assistant	3	+1	+1	+2	+1	+1	+1	+49.5%	+49.5%	+199.0%	+49.5%	+50.3%	+49.5%
General Administrative (III & IV)	1,116	+78	+78	+68	+61	+70	+9	+7.5%	+7.5%	+6.5%	+5.8%	+6.7%	+0.8%
Clerical (III & IV)	1,116	+78		+68	+61		+9	+7.5%		+6.5%	+5.8%		+0.8%
Management & Administrative	1,866	+317		+239	+199		+18	+20.5%		+14.7%	+12.0%		+1.0%
Catering Manager	3	-1	-1	-1				-25.0%	-25.0%	-25.0%			
Catering Officer Grade I	4	+0	-3	-2	-2	-2		+13.3%	-42.9%	-32.9%	-33.3%	-33.3%	
Catering Officer, Grade II	9	-1	+1	+2	-0	-2	-0	-14.8%	+11.0%	+32.8%	-1.4%	-20.5%	-1.8%
Catering Officer, Grade III	11	+7	+6	+6	+6	+5	+0	+227.6%	+129.3%	+129.3%	+129.3%	+88.4%	+0.3%

Jul 2022	WTE Jul 2022	WTE change since Dec 16	WTE change since Dec 17	WTE change since Dec 18	WTE change since Dec 19	WTE change since Dec 20	WTE change since Jun 22	% change since Dec 16	% change since Dec 17	% change since Dec 18	% change since Dec 19	% change since Dec 20	% change since Jun 22
Overall	12,066	+1,994	+1,765	+1,642	+1,247	+778	+131	+19.8%	+17.1%	+15.8%	+11.5%	+6.9%	+1.1%
Catering Supervisor	8	-2	-5	-3	-8	-6	-0	-20.4%	-35.9%	-28.3%	-48.4%	-41.8%	-2.4%
Chef, Executive	1		+0						+8.7%				
Chef I	11	-2	+1	+3	+2	+0	+0	-12.6%	+14.5%	+36.6%	+15.6%	+4.3%	+0.9%
Chef II	30	+2	-1	-3	-2	-1	-0	+6.0%	-4.1%	-8.6%	-5.8%	-3.2%	-0.7%
Chef, Senior	7	+2	+2	+1	+1	+0	-0	+41.6%	+39.0%	+15.5%	+17.5%	+0.7%	-0.7%
Diningroom/Cafeteria Supervisor	2	-3	-3	-3	+1	+1		-59.3%	-58.1%	-57.8%	+100.0%	+100.0%	
Catering	86	+2	-2	+0	-2	-5	-1	+2.9%	-2.8%	+0.2%	-2.5%	-5.2%	-0.6%
Catering/Cleaner/Assistant	182	+10	+3	+15	-1	+3	+1	+5.7%	+1.5%	+9.1%	-0.6%	+1.6%	+0.3%
Cleaner	42	+2	-4	-4	-7	-7	-6	+4.8%	-9.3%	-9.3%	-13.6%	-14.1%	-12.1%
Domestic	111	+3	+4	+3	+2	+2	+1	+2.5%	+3.4%	+2.4%	+2.1%	+1.6%	+0.6%
Domestic Supervisor	4	-3	+1	+0	-1	-2	+0	-44.6%	+24.1%	+5.4%	-23.2%	-35.5%	+2.3%
Domestic Supervisor, Assistant	3	-3	-2	-2	-2	-2		-43.9%	-32.1%	-32.1%	-32.1%	-32.1%	
Household Attendant/Cleaner/Domestic, Intern		-4						-100.0%	-100.0%	-100.0%	-100.0%	-100.0%	-100.0%
Household Services Manager		-2	-1	-1	-1	-1		-100.0%	-100.0%	-100.0%	-100.0%	-100.0%	-100.0%
Household Services Manager, Deputy	3	+3			+1	+1		-100.0%			+62.2%	+50.0%	
Housekeeper, Assistant	1												
Laundry Worker		-1						-100.0%	-100.0%	-100.0%	-100.0%	-100.0%	-100.0%
Linen Room/Laundry Supervisor	2	-4				+1		-66.7%				+100.0%	
Household Services	347	+1	+0	+11	-8	-5	-4	+0.3%	+0.1%	+3.3%	-2.2%	-1.3%	-1.3%
Laboratory Attendant	1	+1	+1	+1	+1	+1		-100.0%	-100.0%	-100.0%	-100.0%	-100.0%	
Medical Laboratory Aide	127	+54	+48	+49	+43	+35	+12	+75.1%	+59.8%	+62.4%	+51.2%	+37.7%	+10.4%
Pathology Technician	1	-2	-2	-2	-2	-1	-1	-66.7%	-66.7%	-66.7%	-66.7%	-50.0%	-50.0%
Pathology Technician, Senior	7	+6	+6	+7	+6	+6	+1	+597.0%	+597.0%	-100.0%	+597.0%	+597.0%	+16.4%
Other Labs & Associated	135	+59	+52	+54	+47	+40	+12	+77.0%	+62.3%	+66.8%	+53.9%	+42.2%	+9.7%
Clerk of Works	3	+1		+1	+1	+0		+50.0%		+50.0%	+50.0%	+6.4%	
C.S.S.D. Operative	62	+8	+3	+4	-2	-2	+2	+14.7%	+4.6%	+7.5%	-2.4%	-3.3%	+2.6%
C.S.S.D. Supervisor		-1						-100.0%	-100.0%	-100.0%	-100.0%	-100.0%	-100.0%
Dark Room Technician/Porter	1	-1	-1	-1	-1	-1		-66.7%	-68.9%	-66.7%	-66.7%	-66.7%	
Driver	1	-2	-2	-2	-2	-1		-70.2%	-70.2%	-73.1%	-73.1%	-60.6%	
Driver, Minibus	2												
Mortuary Attendant	1												
Pharmacy Aide-Attendant	1	+1	+1	+1	+1	+1		-100.0%	-100.0%	-100.0%	-100.0%	-100.0%	
Pharmacy Assistant		-1	-1	-1				-100.0%	-100.0%	-100.0%	-100.0%	-100.0%	-100.0%
Plaster Technician	2	-1	-1	-1	-1	+0	+0	-33.3%	-31.0%	-27.3%	-26.7%	+6.4%	+1.0%
Support Services Unclassified	19	-1	-2	-1	-2	+1	+0	-6.2%	-9.6%	-4.1%	-7.8%	+2.7%	+0.2%
Ward Clerk		-15	-13	-6				-100.0%	-100.0%	-100.0%	-100.0%	-100.0%	-100.0%

Jul 2022	WTE Jul 2022	WTE change since Dec 16	WTE change since Dec 17	WTE change since Dec 18	WTE change since Dec 19	WTE change since Dec 20	WTE change since Jun 22	% change since Dec 16	% change since Dec 17	% change since Dec 18	% change since Dec 19	% change since Dec 20	% change since Jun 22
Overall	12,066	+1,994	+1,765	+1,642	+1,247	+778	+131	+19.8%	+17.1%	+15.8%	+11.5%	+6.9%	+1.1%
Other Support	91	-12	-16	-6	-5	-3	+2	-11.7%	-15.0%	-5.7%	-5.3%	-2.8%	+1.8%
Laboratory Porter	3	+3	+3	+3	+3		+0	-100.0%	-100.0%	-100.0%	-100.0%		+1.0%
Pharmacy Porter	3	+3	+3	+3	+3	+1	+0	-100.0%	-100.0%	-100.0%	-100.0%	+28.1%	+2.0%
Porter	103	-13	-4	-6	-5	+6	+0	-10.9%	-3.6%	-5.4%	-4.3%	+5.7%	+0.4%
Porter, Head	12	+2	+0	+1	+1	+1	+1	+19.9%	+0.4%	+14.2%	+7.8%	+9.0%	+6.8%
Porter, Intern		-0						-100.0%	-100.0%	-100.0%	-100.0%	-100.0%	-100.0%
Porter, Theatre	11	+4	+4	+5	+3	+3	+0	+56.7%	+56.7%	+82.8%	+37.1%	+37.1%	+3.9%
Storeperson	2	+2	+1	+1	+1	+1		+316.7%	+227.9%	+227.9%	+227.9%	+100.0%	
Stores Porter/Assistant/Attendant	1	-1	-1	-1	-1	-1		-47.4%	-47.4%	-47.4%	-47.4%	-47.4%	
Theatre Technician/Porter	21	+10	+12	+12	+13	+5	+0	+91.4%	+118.1%	+122.6%	+165.8%	+33.5%	+0.2%
Portering	155	+10	+18	+18	+19	+15	+2	+6.6%	+12.8%	+13.3%	+13.5%	+11.0%	+1.1%
Support	815	+60		+78	+51		+10	+7.9%		+10.6%	+6.6%		+1.3%
Boilerman	1												
Carpenter		-2						-100.0%	-100.0%	-100.0%	-100.0%	-100.0%	-100.0%
Chargehand	3	-0	-0	+0	-0	+0	-0	-1.3%	-1.3%	+7.6%	-1.3%	+2.8%	-1.3%
Electrician	15	-4	-1	+1	-0	+1	+1	-22.6%	-8.1%	+6.3%	-2.0%	+3.6%	+10.3%
Gardener/ Groundsman	2	-2	-2	-2	-2	-1		-50.0%	-50.0%	-50.0%	-50.0%	-33.3%	
Gardener/ Groundsman, Head	1	+1	+1	+1	+1			-100.0%	-100.0%	-100.0%	-100.0%		
General Operative	25	-0	+1	+1	-1	+0	-1	-0.6%	+3.2%	+2.8%	-3.4%	+0.0%	-3.0%
Labourer	12	+0	-0	-0	+0	-0	-0	+1.4%	-0.6%	-0.3%	+1.2%	-0.3%	-0.2%
Maintenance Craftsman/Technician	23	+9	+4	+6	+3	+4	+1	+66.1%	+19.4%	+38.2%	+17.0%	+18.3%	+3.3%
Maintenance Foreman	13	+3	+1	-0	-1	+3	-0	+32.6%	+9.5%	-0.2%	-7.3%	+24.4%	-0.2%
Maintenance Foreman, Assistant	1				+1						-100.0%		
Maintenance Manager	2	+1	+1		+1	+1		+100.0%	+100.0%		+100.0%	+100.0%	
Maintenance Officer		-3	-3	-3	-3	-3		-100.0%	-100.0%	-100.0%	-100.0%	-100.0%	-100.0%
Maintenance/Technical Unclassified	1	-3	-1	-1	-1	-1		-75.0%	-50.0%	-50.0%	-50.0%	-50.0%	
Painter	9	-1	-1	-1	-0	-1	-0	-12.7%	-12.7%	-12.7%	-3.0%	-12.7%	-3.0%
Plasterer	1	-1	-1	-1	-1	-1	-1	-50.0%	-50.0%	-50.0%	-50.0%	-50.0%	-39.4%
Plumber	16	+1	+1	+2	+0	+0	-1	+9.5%	+9.5%	+11.7%	+2.7%	+2.7%	-3.0%
Maintenance	124	-1	-1	+3	-3	+1	-0	-0.6%	-0.5%	+2.1%	-2.0%	+0.7%	-0.1%
Engineer/ Engineering Officer	4	+4	+4	+4	+4			-100.0%	-100.0%	-100.0%	-100.0%		
Fire Prevention Officer	1												
Technical Services Officer, Chief Asst.	1												
Technical Services Officer, Senior Asst.	1	+1	+1			+1		-100.0%	-100.0%			-100.0%	
Technical Services	7	+5	+5	+4	+4	+1		+250.0%	+250.0%	+133.3%	+133.3%	+16.7%	

Jul 2022	WTE Jul 2022	WTE change since Dec 16	WTE change since Dec 17	WTE change since Dec 18	WTE change since Dec 19	WTE change since Dec 20	WTE change since Jun 22	% change since Dec 16	% change since Dec 17	% change since Dec 18	% change since Dec 19	% change since Dec 20	% change since Jun 22
Overall	12,066	+1,994	+1,765	+1,642	+1,247	+778	+131	+19.8%	+17.1%	+15.8%	+11.5%	+6.9%	+1.1%
Maintenance/ Technical	131	+4		+7	+1		-0	+3.4%		+5.3%	+1.1%		-0.1%
General Support	947	+64		+85	+52		+10	+7.3%		+9.9%	+5.8%		+1.1%
Attendant/ Aide	14	-383	-444	-396	-361	-391	+0	-96.4%	-96.9%	-96.5%	-96.2%	-96.5%	+1.4%
Attendant, Multi-Task	369	+95	+87	+78	+66	+59	+7	+34.8%	+31.0%	+26.8%	+21.7%	+18.9%	+1.9%
Attendant, Multi-Task Intern		-2						-100.0%	-100.0%	-100.0%	-100.0%	-100.0%	-100.0%
Nursing Auxiliary/Orderly	1	-36						-97.3%					
Attendant/ Aide	384	-327	-357	-318	-295	-332	+7	-46.0%	-48.2%	-45.3%	-43.5%	-46.4%	+1.9%
Occupational Therapy Assistant	6	+3	+3	+2	+2	+3	+1	+95.7%	+95.7%	+46.8%	+56.5%	+95.7%	+18.1%
Physiotherapy Assistant	15	+13	+13	+12	+12	+7	+2	+660.5%	+722.2%	+407.0%	+407.0%	+93.5%	+12.8%
Radiography Aide	3	+1	-2	+1	+0	+2	+0	+75.8%	-42.0%	+73.1%	+16.0%	+98.3%	+16.0%
Health & Social Care Assistants	24	+18	+14	+16	+15	+12	+3	+252.9%	+128.2%	+173.0%	+152.7%	+94.7%	+14.5%
Health Care Assistant	941	+626	+573	+539	+469	+458	+10	+199.0%	+155.4%	+134.0%	+99.4%	+94.9%	+1.0%
Health Care Assistant (Band 1)/(specific sites only)	9	+9	+9	+9	+9	+9	+1	-100.0%	-100.0%	-100.0%	-100.0%	-100.0%	+11.7%
Health Care Assistant, intern		-92	-1	-1				-100.0%	-100.0%	-100.0%	-100.0%	-100.0%	-100.0%
Team Leader, Support Services	6	+6	-2	-1	-0	+0	-0	-100.0%	-27.1%	-16.7%	-6.3%	+1.7%	-1.9%
Health Care Assistant/ Care Assistant	956	+549	+579	+546	+478	+467	+11	+134.7%	+153.4%	+133.2%	+99.9%	+95.6%	+1.1%
[Health Care Assistant (Student Nurse/Midwife COVID-19)]						-0		-100.0%	-100.0%	-100.0%	-100.0%	-100.0%	-100.0%
HCA (Student Nurse/Midwife COVID-19)						-0		-100.0%	-100.0%	-100.0%	-100.0%	-100.0%	-100.0%
Health Care Assistants	1,364	+239		+244	+197		+21	+21.3%		+21.7%	+16.9%		+1.6%
Dental Nurse	4	+0	+0	+0	+0	+1	+0	+11.6%	+1.0%	+1.0%	+2.0%	+15.4%	+1.0%
Education Officer		-1	-1	-1	-1	-1	-1	-100.0%	-100.0%	-100.0%	-100.0%	-100.0%	-100.0%
Endoscopy Operative (Band 1)	9	+9	+9	+9	+9	+8		-100.0%	-100.0%	-100.0%	-100.0%	+800.0%	
Head of Bed Management (Category B)		-1						-100.0%	-100.0%	-100.0%	-100.0%	-100.0%	-100.0%
Welfare Home, Supervisor	1	+1	+1	+1	+1	+1		-100.0%	-100.0%	-100.0%	-100.0%	-100.0%	
Other Care Grades	14	+9	+9	+9	+10	+9	-1	+170.0%	+206.6%	+206.6%	+209.3%	+176.4%	-6.4%
Chaplain	14	-0	+0	-2	-2	-2	+2	-1.3%	+2.0%	-12.3%	-10.4%	-10.8%	+17.5%
Pastoral Care Worker		-1						-100.0%	-100.0%	-100.0%	-100.0%	-100.0%	-100.0%
Pastoral Care	14	-1	+0	-2	-2	-2	+2	-9.2%	+2.0%	-12.3%	-10.4%	-10.8%	+17.5%
Workshop Supervisor/ Instructor	1	+1	+1	+1	+1	+1		-100.0%	-100.0%	-100.0%	-100.0%	-100.0%	
Workshop Services	1	+1	+1	+1	+1	+1		-100.0%	-100.0%	-100.0%	-100.0%	-100.0%	
Care, other	29	+8		+8	+9		+1	+39.6%		+40.0%	+42.7%		+4.2%
Patient & Client Care	1,394	+247		+252	+206		+22	+21.6%		+22.1%	+17.4%		+1.6%

Source: Health Service Personnel Census

Longitudinal Employment Levels by Staff Group - Oct 2016 to Jul 2022

Jul 2022	WTE Jul 2022	WTE change since Dec 16	WTE change since Dec 17	WTE change since Dec 18	WTE change since Dec 19	WTE change since Dec 20	WTE change since Jun 22	% change since Dec 16	% change since Dec 17	% change since Dec 18	% change since Dec 19	% change since Dec 20	% change since Jun 22
Overall	12,066	+1,994	+1,765	+1,642	+1,247	+778	+131	+19.8%	+17.1%	+15.8%	+11.5%	+6.9%	+1.1%
Consultants	40	+14	+12	+8	+8	+2	+2	+53.6%	+42.6%	+24.9%	+25.6%	+5.8%	+6.1%
Registrars	49	+17	+10	+11	+10	+7	+11	+53.1%	+25.6%	+28.9%	+24.7%	+17.2%	+28.6%
SHO/ Interns	27	+2	+6	+1	-1	-1		+8.0%	+28.6%	+3.8%	-3.6%	-3.6%	
Nurse/ Midwife Manager	89	+18	+12	+18	+16	+9	-0	+24.5%	+15.5%	+25.4%	+21.8%	+11.1%	-0.3%
Nurse/ Midwife Specialist & AN/MP	17	+7	+7	+4	+6	+5	+0	+65.3%	+73.3%	+31.5%	+52.8%	+41.3%	+1.9%
Staff Nurse/ Staff Midwife	237	+18	-9	-23	-24	-21	+2	+8.1%	-3.7%	-9.0%	-9.3%	-8.1%	+0.9%
Nursing/ Midwifery Student	17	+5	+7	+9	+4	+5		+37.5%	+65.0%	+106.3%	+26.9%	+37.5%	
Nursing/ Midwifery other	17	+6	+7	+7	+0	+0	+0	+53.9%	+68.2%	+65.5%	+1.3%	+2.9%	+1.2%
Therapy Professions	12	+6	+3	+5	+4	+4	+1	+113.0%	+38.7%	+74.2%	+49.1%	+42.7%	+9.9%
Health Science/ Diagnostics	55	+10	+8	+6	+4	+1	+1	+22.9%	+17.1%	+11.2%	+6.8%	+0.9%	+1.0%
Social Workers	9	+3	+2	+2	+2	-1	-1	+50.0%	+28.6%	+28.6%	+28.6%	-10.0%	-10.0%
Psychologists	1	+1	+1	+0	+0			-100.0%	-100.0%	+78.6%	+78.6%		
Pharmacy	8	+4	+2	+2	+1			+100.0%	+33.3%	+33.3%	+14.3%		
H&SC, Other	1		+1	+1	+1	+1			-100.0%	-100.0%	-100.0%	-100.0%	
Management (VIII & above)	8	+3	+3	+2	+1	+2	+1	+60.0%	+60.0%	+33.3%	+14.3%	+33.3%	+14.3%
Administrative/ Supervisory (V to VII)	56	+19	+18	+13	+9	+8	+0	+49.6%	+46.3%	+29.5%	+20.2%	+17.7%	+0.1%
Clerical (III & IV)	105	+20	+17	+21	+12	+6	+3	+22.8%	+19.7%	+25.4%	+13.2%	+5.6%	+3.4%
Support	148	+28	+20	+20	+11	+5	-2	+23.6%	+16.0%	+15.5%	+7.8%	+3.6%	-1.2%
Maintenance/ Technical	8	-1	-1	-1	-1	+1		-11.1%	-11.1%	-11.1%	-11.1%	+14.3%	
Health Care Assistants	68	+16	+17	+13	+20	+14	+5	+30.9%	+32.7%	+23.8%	+41.6%	+26.0%	+8.5%
Care, other	3	+1	+2	+1	+1	+2	+1	+64.8%	+200.0%	+64.8%	+86.3%	+200.0%	+50.0%
Coombe Women & Infants University	974	+196	+145	+119	+84	+49	+25	+25.1%	+17.5%	+13.9%	+9.4%	+5.3%	+2.7%
Consultants	57	+17	+12	+12	+10	+11	+3	+43.6%	+25.6%	+26.2%	+20.9%	+24.3%	+6.3%
Registrars	53	+17	+15	+15	+12	+5	-0	+48.1%	+38.3%	+37.9%	+28.5%	+10.4%	-0.5%
SHO/ Interns	50	+6	+3	+5	+4	+2	-1	+13.5%	+6.8%	+11.0%	+8.8%	+5.1%	-1.0%
Medical/ Dental, other	2	-0	+0	-0	-0	-0	+0	-4.0%	+7.6%	-8.6%	-6.6%	-6.1%	+2.4%
Nurse/ Midwife Manager	91	+12	+6	+3	+5	+4	+2	+15.5%	+7.0%	+3.2%	+5.8%	+4.3%	+1.9%
Nurse/ Midwife Specialist & AN/MP	27	+8	+10	+7	+5	+2	+0	+43.9%	+54.7%	+36.5%	+20.4%	+8.0%	+0.6%
Staff Nurse/ Staff Midwife	315	+39	+23	+28	+21	+8	+4	+14.2%	+7.7%	+9.9%	+7.1%	+2.7%	+1.4%
Nursing/ Midwifery Student	8	+8	+7	+8	+2	+6	+0	-100.0%	+1468.0%	-100.0%	+29.8%	+292.0%	+0.4%
Nursing/ Midwifery other	2	+1	+1	+1	+1	+0	+0	+93.0%	+93.0%	+93.0%	+93.0%	+6.0%	+3.8%
Therapy Professions	39	+12	+6	+6	+7	+1	-0	+45.9%	+18.7%	+17.2%	+20.2%	+2.1%	-0.7%

Jul 2022	WTE Jul 2022	WTE change since Dec 16	WTE change since Dec 17	WTE change since Dec 18	WTE change since Dec 19	WTE change since Dec 20	WTE change since Jun 22	% change since Dec 16	% change since Dec 17	% change since Dec 18	% change since Dec 19	% change since Dec 20	% change since Jun 22
Overall	12,066	+1,994	+1,765	+1,642	+1,247	+778	+131	+19.8%	+17.1%	+15.8%	+11.5%	+6.9%	+1.1%
Health Science/ Diagnostics	88	+7	+5	+12	+5	-3	-4	+8.9%	+6.2%	+16.1%	+5.6%	-3.0%	-4.1%
Social Workers	2	+2	+2	+2	+2	+2	+0	-100.0%	-100.0%	-100.0%	-100.0%	-100.0%	+9.9%
Pharmacy	35	+13	+12	+14	+11	+3	-2	+60.3%	+48.8%	+63.9%	+45.9%	+10.5%	-4.7%
H&SC, Other	2	+2	+2	+2	+2	+2	-1	-100.0%	+732.1%	+585.3%	+288.3%	-100.0%	-22.3%
Management (VIII & above)	4	-2	-2	-1	-1	-1	-0	-34.2%	-35.7%	-22.8%	-22.8%	-22.0%	-5.4%
Administrative/ Supervisory (V to VII)	33	+10	+7	+11	+9	+4	+1	+43.7%	+28.5%	+51.0%	+37.9%	+13.5%	+4.2%
Clerical (III & IV)	79	-28	-26	-18	-20	-16	-2	-26.2%	-24.7%	-18.8%	-20.6%	-17.2%	-2.9%
Support	32	+1	+5	+6	+4	+3	+1	+3.8%	+19.9%	+21.8%	+12.7%	+10.1%	+3.1%
Maintenance/ Technical	27	-1	+1	-0	-0	-0	+2	-4.3%	+2.8%	-1.0%	-0.3%	-0.2%	+6.1%
Health Care Assistants	245	+55	+46	+18	+15	+12	+3	+28.8%	+23.1%	+7.8%	+6.4%	+5.1%	+1.2%
Care, other	1	-1						-44.4%					
MRH Tullamore	1,192	+180	+134	+129	+91	+46	+7	+17.8%	+12.7%	+12.1%	+8.2%	+4.0%	+0.6%
Consultants	23	+5	+3	+3	+1	-1	-0	+24.8%	+14.5%	+13.0%	+2.5%	-2.2%	-0.5%
Registrars	38	+17	+17	+5	+3	+1	+1	+84.4%	+77.6%	+16.0%	+8.2%	+3.5%	+2.2%
SHO/ Interns	35	-1	-2	-1	-3	-6	-4	-3.6%	-6.1%	-2.5%	-8.4%	-15.0%	-10.0%
Nurse/ Midwife Manager	76	+29	+14	+22	+15	+14	+2	+60.0%	+22.8%	+39.2%	+25.4%	+22.4%	+2.8%
Nurse/ Midwife Specialist & AN/MP	26	+14	+15	+11	+9	+6	+2	+113.1%	+132.0%	+79.7%	+57.7%	+33.5%	+6.9%
Staff Nurse/ Staff Midwife	244	+55	+42	+46	+41	+24	+11	+29.3%	+21.1%	+23.2%	+20.3%	+10.7%	+4.5%
Nursing/ Midwifery Student	15	+15	+15	+15	+6	+15	+0	+4245.7%	-100.0%	-100.0%	+69.0%	-100.0%	+1.9%
Nursing/ Midwifery other	3	+2	+2	+2	+0	+0	+0	+180.0%	+180.0%	+193.0%	+2.4%	+8.2%	+5.4%
Therapy Professions	15	+1	-1	-1	+1	-4	-1	+3.9%	-7.4%	-6.6%	+6.5%	-18.7%	-5.8%
Health Science/ Diagnostics	43	+5	+5	+4	+5	-0	-0	+13.2%	+12.7%	+10.3%	+13.3%	-0.2%	-0.8%
Social Workers	1	+1	+1	+1	+1	+1		-100.0%	-100.0%	-100.0%	-100.0%	-100.0%	
Pharmacy	10	+1	+1	-1	-2	-3	-0	+10.4%	+9.2%	-11.6%	-17.5%	-22.6%	-1.2%
Management (VIII & above)	5	+3	+2	+1	+2	+1		+148.0%	+65.3%	+24.0%	+65.3%	+24.0%	
Administrative/ Supervisory (V to VII)	19	+8	+9	+7	+6	+3	-0	+80.9%	+89.4%	+57.5%	+43.2%	+17.6%	-0.6%
Clerical (III & IV)	70	-14	-15	-16	-11	-3	-0	-17.1%	-17.6%	-18.7%	-13.5%	-4.0%	-0.2%
Support	20	+4	+5	+4	+3	+0	+0	+27.7%	+35.2%	+21.0%	+20.5%	+2.2%	+0.8%
Maintenance/ Technical	8	+1	+1	+1	-1	-2	+1	+7.1%	+7.1%	+7.1%	-6.3%	-16.7%	+7.1%
Health Care Assistants	172	+12	+7	-2	-3	-5	-1	+7.4%	+4.4%	-1.0%	-1.7%	-2.6%	-0.5%
Care, other	1												
MRH Portlaoise	824	+156	+120	+99	+74	+44	+10	+23.3%	+17.0%	+13.7%	+9.9%	+5.6%	+1.2%
Consultants	24	-1	+1	-1	-1	-0	-0	-3.1%	+3.4%	-4.7%	-4.9%	-1.7%	-0.7%
Registrars	37	+12	+13	+10	+12	+9	+1	+46.2%	+56.0%	+36.0%	+44.8%	+33.6%	+2.2%

Jul 2022	WTE Jul 2022	WTE change since Dec 16	WTE change since Dec 17	WTE change since Dec 18	WTE change since Dec 19	WTE change since Dec 20	WTE change since Jun 22	% change since Dec 16	% change since Dec 17	% change since Dec 18	% change since Dec 19	% change since Dec 20	% change since Jun 22
Overall	12,066	+1,994	+1,765	+1,642	+1,247	+778	+131	+19.8%	+17.1%	+15.8%	+11.5%	+6.9%	+1.1%
SHO/ Interns	38	+2	-2	+2	-1	+1	-1	+5.2%	-4.5%	+5.0%	-1.6%	+3.2%	-1.4%
Nurse/ Midwife Manager	79	+21	+10	+5	+14	+10	+3	+35.3%	+14.0%	+6.4%	+20.9%	+14.1%	+4.0%
Nurse/ Midwife Specialist & AN/MP	20	+8	+10	+4	+1	+4	+2	+67.6%	+105.1%	+23.6%	+7.7%	+24.7%	+11.6%
Staff Nurse/ Staff Midwife	226	+56	+21	+39	+25	+18	-1	+32.9%	+10.3%	+21.0%	+12.3%	+8.8%	-0.4%
Nursing/ Midwifery other	3	+1	+2	+2	+2	+2	+0	+31.5%	+163.0%	+224.7%	+224.7%	+163.0%	+0.4%
Therapy Professions	46	+12	+8	+9	+8	+6	+2	+35.7%	+22.8%	+25.6%	+21.1%	+14.9%	+4.3%
Health Science/ Diagnostics	66	+3	+5	+5	+1	-2	+2	+5.5%	+7.7%	+7.7%	+0.8%	-3.6%	+3.5%
Social Workers	3	-1		+1	+1	+0	+0	-23.9%		+50.0%	+53.8%	+3.4%	+0.7%
Pharmacy	15	+3	+2	+3	+3	-0	-0	+20.4%	+17.7%	+21.6%	+21.9%	-1.3%	-2.9%
Management (VIII & above)	5	+1	+1	-1	-0	-1	+0	+32.2%	+21.2%	-19.2%	-2.4%	-16.4%	+3.0%
Administrative/ Supervisory (V to VII)	32	+18	+16	+18	+20	+14	+3	+124.4%	+103.7%	+124.6%	+160.1%	+76.9%	+9.2%
Clerical (III & IV)	67	-9	-8	-5	-4	+8	-2	-11.8%	-10.5%	-7.4%	-5.8%	+14.5%	-3.4%
Support	33	+4	+5	+5	+5	+5	+0	+12.5%	+16.0%	+18.0%	+19.6%	+16.4%	+1.0%
Maintenance/ Technical	7	+4	+5	+5	+5	+1	+0	+133.3%	+250.0%	+250.0%	+213.9%	+21.7%	+0.1%
Health Care Assistants	177	+45	+36	+46	+31	+27	-1	+34.1%	+25.7%	+35.1%	+20.9%	+17.7%	-0.4%
Care, other		-1	-1	-1	-1	-1		-100.0%	-100.0%	-100.0%	-100.0%	-100.0%	-100.0%
Naas General	877	+177	+125	+144	+119	+100	+8	+25.2%	+16.5%	+19.6%	+15.6%	+12.9%	+0.9%
Consultants	227	+47	+48	+42	+31	+14	+0	+26.1%	+26.8%	+22.6%	+16.0%	+6.8%	+0.0%
Registrars	204	+30	+31	+26	+20	-1	+2	+17.1%	+18.0%	+14.9%	+11.1%	-0.3%	+0.9%
SHO/ Interns	182	+33	+30	+26	+25	+6	+2	+22.3%	+19.5%	+16.4%	+16.1%	+3.3%	+1.0%
Medical/ Dental, other	9	+4	+3	+5	+4	+3	+0	+76.4%	+49.9%	+110.8%	+80.3%	+63.3%	+0.7%
Nurse/ Midwife Manager	364	+54	+47	+27	+20	+17	+2	+17.3%	+14.9%	+7.9%	+5.7%	+4.8%	+0.7%
Nurse/ Midwife Specialist & AN/MP	115	+40	+40	+37	+35	+20	+1	+53.8%	+53.5%	+48.0%	+44.2%	+20.5%	+1.2%
Staff Nurse/ Staff Midwife	1,178	+143	+98	+108	+52	-2	+3	+13.8%	+9.1%	+10.1%	+4.7%	-0.2%	+0.2%
Nursing/ Midwifery Student	34	+16	+32	+33	+33	+27	+0	+90.5%	+1741.1%	+3306.0%	+3306.0%	+395.1%	+0.4%
Nursing/ Midwifery other	11	-0	+1	+1	-1	-2	+0	-1.8%	+9.8%	+12.9%	-6.0%	-15.2%	+1.3%
Therapy Professions	171	+33	+32	+19	+19	+7	-1	+24.0%	+22.8%	+12.8%	+12.7%	+4.2%	-0.8%
Health Science/ Diagnostics	333	+18	+25	+2	-6	+10	+2	+5.6%	+8.2%	+0.5%	-1.7%	+3.2%	+0.6%
Social Workers	44	+7	+2	-2	+1	-2	-3	+19.8%	+4.0%	-4.9%	+2.1%	-3.6%	-5.8%
Psychologists	6	+1	+1	+1	+1	+1	+0	+18.7%	+19.4%	+19.4%	+17.0%	+19.9%	+4.5%
Pharmacy	105	+25	+22	+12	+8	-4	-2	+31.8%	+26.6%	+13.3%	+8.1%	-3.9%	-1.5%
H&SC, Other	32	+4	+4	+5	+6	-4	-2	+14.5%	+13.6%	+16.4%	+21.8%	-10.9%	-5.8%
Management (VIII & above)	57	+25	+20	+18	+16	+14	+1	+77.0%	+55.2%	+45.4%	+40.8%	+31.5%	+2.2%
Administrative/ Supervisory (V to VII)	211	+62	+58	+53	+35	+26	+1	+41.8%	+38.1%	+33.8%	+20.0%	+13.8%	+0.6%

Jul 2022	WTE Jul 2022	WTE change since Dec 16	WTE change since Dec 17	WTE change since Dec 18	WTE change since Dec 19	WTE change since Dec 20	WTE change since Jun 22	% change since Dec 16	% change since Dec 17	% change since Dec 18	% change since Dec 19	% change since Dec 20	% change since Jun 22
Overall	12,066	+1,994	+1,765	+1,642	+1,247	+778	+131	+19.8%	+17.1%	+15.8%	+11.5%	+6.9%	+1.1%
Clerical (III & IV)	411	+54	+50	+38	+40	+33	+7	+15.1%	+13.9%	+10.3%	+10.9%	+8.6%	+1.8%
Support	295	+23	+22	+32	+18	+18	+5	+8.4%	+8.2%	+12.2%	+6.4%	+6.7%	+1.6%
Maintenance/ Technical	55	-3	-3	-2	-4	-1	-2	-5.2%	-5.0%	-3.3%	-6.3%	-1.6%	-3.8%
Health Care Assistants	465	+110	+103	+140	+105	+73	+8	+30.9%	+28.4%	+43.2%	+29.1%	+18.6%	+1.7%
Care, other	18	+8	+7	+7	+8	+7	-0	+85.5%	+71.7%	+71.7%	+87.5%	+71.0%	-1.4%
St. James's	4,526	+733	+674	+629	+469	+261	+25	+19.3%	+17.5%	+16.1%	+11.5%	+6.1%	+0.6%
Consultants	22	+10	+2		-2			+78.0%	+9.9%		-8.2%		
Registrars	12	-8	-6	-6	-7	-4	+1	-40.0%	-33.3%	-33.3%	-36.8%	-25.0%	+9.1%
SHO/ Interns	17	+8	+8	+5	+4	+5	+1	+97.9%	+84.4%	+38.3%	+27.7%	+38.3%	+3.8%
Nurse/ Midwife Manager	25	+4	-4	+5	+3	-3		+21.7%	-13.0%	+24.3%	+15.5%	-9.8%	
Nurse/ Midwife Specialist & AN/MP	13	+2	+13	+1		-1	-1	+19.0%	-100.0%	+8.3%		-7.1%	-7.1%
Staff Nurse/ Staff Midwife	36	-9	-12	-4	-7	-3		-20.0%	-25.3%	-9.3%	-15.3%	-7.3%	
Therapy Professions	10	+1	+2	+2	+2	+1		+12.7%	+24.5%	+20.2%	+20.2%	+10.8%	
Health Science/ Diagnostics	193	+4	+4	+4	-2	-13	-3	+2.1%	+1.9%	+1.9%	-1.0%	-6.2%	-1.3%
Social Workers	5	+1	-1					+25.0%	-16.7%				
Psychologists	4	-1	+1	+1	+1	+1		-20.0%	+33.3%	+33.3%	+33.3%	+33.3%	
Pharmacy	3	+2	+2	+1	+1	+2		+200.0%	+200.0%	+50.0%	+50.0%	+200.0%	
H&SC, Other	6	+5	+2	+2	+5	+2		+500.0%	+50.0%	+50.0%	+500.0%	+50.0%	
Management (VIII & above)	6	+3	+2	+2		+1		+100.0%	+50.0%	+50.0%		+20.0%	
Administrative/ Supervisory (V to VII)	34	+5	+1	+0	+1	-1	-1	+18.1%	+3.0%	+0.6%	+2.1%	-3.7%	-2.8%
Clerical (III & IV)	71	+8	+11	+4	+6	+13	+1	+13.0%	+19.0%	+5.9%	+9.8%	+23.2%	+1.4%
Support	53	-7	-7	+0	-7	-4	+1	-10.9%	-12.1%	+0.8%	-11.4%	-7.4%	+1.9%
Maintenance/ Technical	6	+2	+1	+1	+1	+1		+50.0%	+20.0%	+20.0%	+20.0%	+20.0%	
Health Care Assistants	24	-17	-1	-3	-3	+1		-41.6%	-2.6%	-11.5%	-11.5%	+6.3%	
Care, other	2	+1	+1	+1	+1	+1		+39.1%	+128.2%	+128.2%	+128.2%	+128.2%	
St. Luke's Rathgar	542	+15	+18	+15	-3	-1	-1	+2.8%	+3.5%	+2.9%	-0.5%	-0.1%	-0.2%
Consultants	150	+46	+43	+34	+33	+17	+2	+44.2%	+39.6%	+29.1%	+28.3%	+13.2%	+1.0%
Registrars	167	+38	+41	+32	+22	+21	+9	+29.3%	+32.5%	+23.4%	+15.2%	+14.3%	+5.8%
SHO/ Interns	118	+15	+15	+17	+14	-2	+3	+14.1%	+14.5%	+16.4%	+13.2%	-1.5%	+2.8%
Nurse/ Midwife Manager	252	+56	+49	+29	+29	+21	+6	+28.4%	+24.1%	+13.2%	+13.1%	+8.9%	+2.5%
Nurse/ Midwife Specialist & AN/MP	57	+23	+23	+24	+15	+4	+2	+67.0%	+68.6%	+70.2%	+34.6%	+6.9%	+3.3%
Staff Nurse/ Staff Midwife	758	+62	+89	+104	+49	+18	-29	+8.9%	+13.3%	+15.9%	+6.9%	+2.4%	-3.6%
Nursing/ Midwifery Student	95	+87	+85	+79	+82	+71	+44	+1160.0%	+845.0%	+509.7%	+641.2%	+308.2%	+87.1%
Nursing/ Midwifery other	4	+2	+2	+2	+1	+1	-1	+90.6%	+91.5%	+90.6%	+29.5%	+29.5%	-26.7%

Jul 2022	WTE Jul 2022	WTE change since Dec 16	WTE change since Dec 17	WTE change since Dec 18	WTE change since Dec 19	WTE change since Dec 20	WTE change since Jun 22	% change since Dec 16	% change since Dec 17	% change since Dec 18	% change since Dec 19	% change since Dec 20	% change since Jun 22
Overall	12,066	+1,994	+1,765	+1,642	+1,247	+778	+131	+19.8%	+17.1%	+15.8%	+11.5%	+6.9%	+1.1%
Therapy Professions	135	+22	+19	+26	+21	+17	-0	+19.4%	+16.3%	+23.9%	+18.4%	+13.9%	-0.1%
Health Science/ Diagnostics	227	+26	+23	+25	+19	+10	+7	+12.9%	+11.3%	+12.2%	+9.3%	+4.6%	+3.4%
Social Workers	27	+1	+4	+4	+5	+4	-0	+2.7%	+17.2%	+17.2%	+22.7%	+15.0%	-0.4%
Psychologists	4	-4	-4	-0	+0	-0	+0	-45.5%	-48.7%	-7.2%	+8.9%	-3.1%	+1.6%
Pharmacy	62	+7	+6	-3	-3	-3	-2	+12.2%	+10.9%	-5.0%	-4.7%	-3.9%	-3.3%
H&SC, Other	2	-7	-6	-6	-4	-4		-77.5%	-75.0%	-75.0%	-66.7%	-66.7%	
Management (VIII & above)	43	+16	+8	+9	+7	+2	-1	+60.9%	+23.9%	+27.0%	+18.1%	+3.9%	-2.2%
Administrative/ Supervisory (V to VII)	194	+33	+34	+29	+21	+20	+3	+20.4%	+20.9%	+17.7%	+11.9%	+11.7%	+1.6%
Clerical (III & IV)	307	+45	+46	+41	+31	+26	+3	+17.3%	+17.6%	+15.5%	+11.2%	+9.2%	+1.0%
Support	234	+6	+1	+12	+17	+16	+5	+2.6%	+0.3%	+5.3%	+7.7%	+7.5%	+2.2%
Maintenance/ Technical	21	+3	+1	+3	+1	+1	-0	+16.4%	+5.6%	+18.1%	+4.8%	+5.5%	-0.2%
Health Care Assistants	213	+19	+27	+31	+33	+24	+6	+9.7%	+14.6%	+17.3%	+18.5%	+12.9%	+3.0%
Care, other	5	+1	+1	-0	-1	-1	+0	+14.4%	+41.1%	-1.2%	-13.0%	-22.0%	+9.8%
Tallaght University	3,074	+496	+506	+490	+391	+263	+57	+19.2%	+19.7%	+19.0%	+14.6%	+9.3%	+1.9%
Nurse/ Midwife Manager	6	+5	+5	+3	+3	+3	+1	+470.0%	+470.0%	+90.0%	+90.6%	+90.0%	+14.0%
Nursing/ Midwifery other							-1	-100.0%	-100.0%	-100.0%	-100.0%	-100.0%	-100.0%
H&SC, Other	0	+0	+0	+0	+0	+0	-0	-100.0%	-100.0%	-100.0%	-100.0%	-100.0%	-57.7%
Management (VIII & above)	17	+12	+12	+2	+2	+1	-0	+237.1%	+252.7%	+11.5%	+12.9%	+3.2%	-0.1%
Administrative/ Supervisory (V to VII)	27	+24	+23	+8	+12	+10	+1	+629.1%	+575.0%	+42.2%	+74.4%	+54.8%	+2.5%
Clerical (III & IV)	7	+2	+2	+3	+7	+4	-1	+45.9%	+48.4%	+99.1%	-100.0%	+136.5%	-8.6%
Hospital Group HQ	57	+42	+42	+16	+23	+17	-0	+292.6%	+292.6%	+39.5%	+69.6%	+42.7%	-0.8%

Source: Health Service Personnel Census