

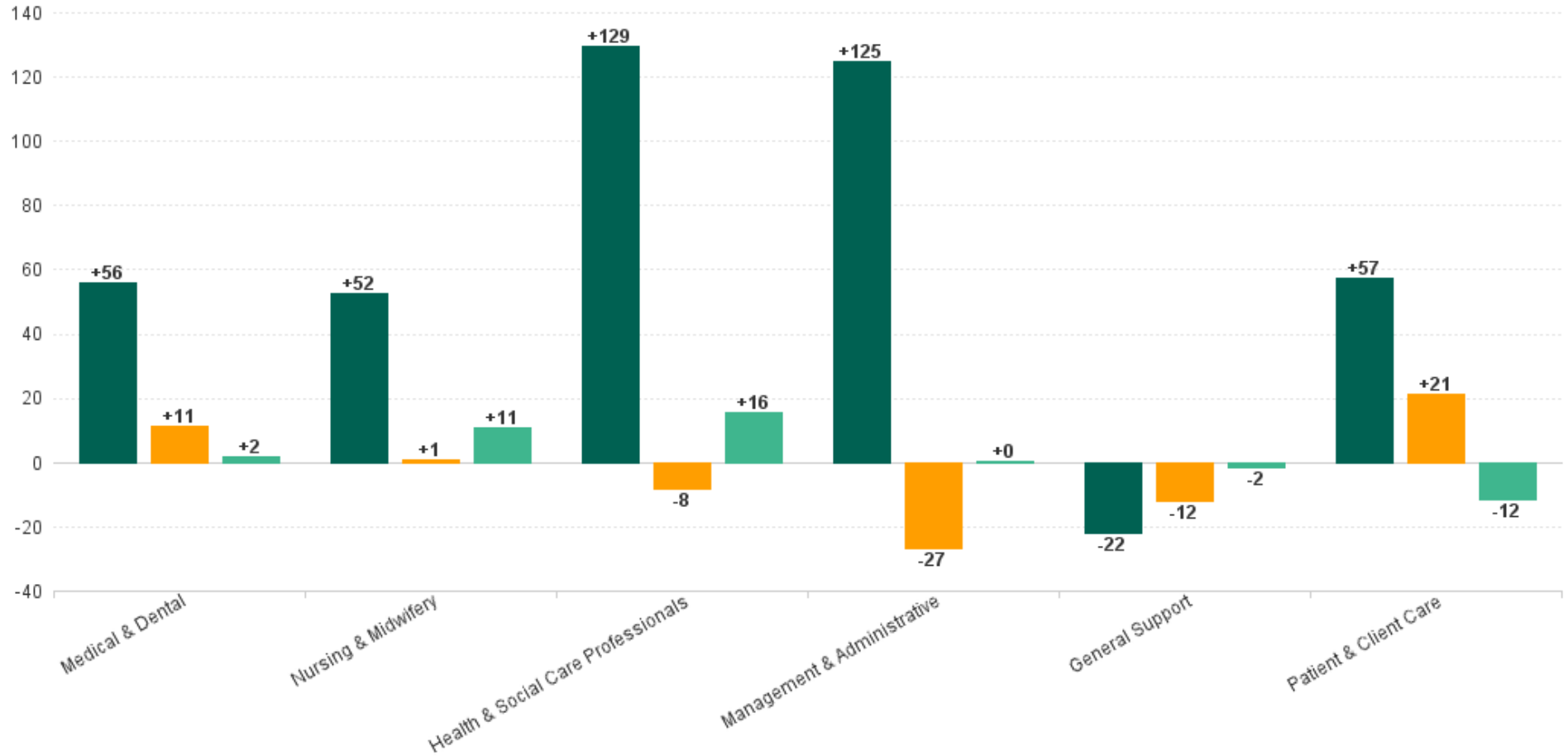
Employment Report : OCT 2024

Employment by Staff Group OCT 2024	WTE DEC 2019	WTE DEC 2022	WTE DEC 2023	WTE SEP 2024	WTE OCT 2024	WTE Change 2023	WTE Change 2024	WTE Change SEP 2024	WTE Change Dec 2022 to OCT 2024	WTE Change Dec 2019 to OCT 2024	% WTE Change Dec 2022 to OCT 2024	No. OCT 2024
Overall	3,378	3,620	3,789	3,760	3,776	+169	-13	+16	+156	+398	+4.3%	4,339
Consultants	48	58	65	65	64	+7	-1	-1	+6	+16	+9.9%	77
Registrars	49	63	76	89	89	+12	+13	0	+26	+40	+40.4%	92
SHO/ Interns	16	16	20	22	23	+4	+3	+0	+6	+7	+40.1%	30
Medical/ Dental, other	51	49	47	41	44	-1	-3	+3	-4	-7	-9.0%	65
Medical & Dental	164	186	208	218	219	+22	+11	+2	+33	+56	+17.9%	264
Nurse/ Midwife Manager	211	210	221	207	207	+11	-13	+0	-3	-3	-1.3%	217
Nurse/ Midwife Specialist & AN/MP	21	37	61	82	81	+25	+20	0	+45	+61	+121.8%	91
Staff Nurse/ Staff Midwife	542	556	567	547	554	+11	-13	+7	-1	+12	-0.3%	606
Public Health Nurse	117	99	98	96	99	-1	+1	+3	0	-18	0.0%	116
Nursing/ Midwifery awaiting registration				1	2		2.44	+1	+2	+2	-100.0%	4
Post-registration Nurse/ Midwife Student	14	7	6	5	8	-1	2.1	+3	+1	-6	+9.4%	8
Pre-registration Nurse/ Midwife Intern				4	2		1.5	-3	+2	+2	-100.0%	3
Nursing/ Midwifery Student	14	7	6	10	12	-1	+6	+2	+5	-2	+63.3%	15
Nursing/ Midwifery other	2	5	4	4	4	-1	+0	+0	0	+2	-9.7%	5
Nursing & Midwifery	905	913	957	947	958	+43	+1	+11	+45	+52	+4.9%	1,050
Therapy Professions	238	252	283	266	275	+31	-8	+9	+23	+37	+8.9%	331
Health Science/ Diagnostics	18	17	17	17	17	+0	0	0	+0	-1	+1.2%	20
Social Care	364	413	406	408	405	-8	-1	-3	-9	+41	-2.1%	465
Pharmacy	4	9	7	7	7	-1	+0	+0	-1	+4	-14.7%	9
Psychologists	56	68	80	78	85	+13	+5	+8	+17	+29	+25.6%	97
Social Workers	57	71	70	62	66	-1	-5	+3	-6	+8	-7.9%	74
H&SC, Other	14	17	26	28	27	+9	+1	-1	+10	+12	+58.8%	30
Health & Social Care Professionals	752	847	889	866	881	+43	-8	+16	+34	+129	+4.1%	1,026
Management (VIII & above)	68	95	89	85	84	-6	-5	-1	-11	+17	-11.5%	91
Administrative/ Supervisory (V to VII)	170	241	251	245	248	+10	-3	+3	+7	+78	+2.8%	274
Clerical (III & IV)	237	259	286	270	268	+27	-19	-2	+9	+31	+3.3%	310
Management & Administrative	475	596	627	600	600	+31	-27	+0	+4	+125	+0.7%	675
Support	191	177	180	171	171	+3	-9	-1	-6	-20	-3.3%	204
Maintenance/ Technical	23	22	24	22	21	+2	-3	-1	-1	-1	-5.3%	24
General Support	214	199	204	193	192	+5	-12	-2	-7	-22	-3.6%	228
Health Care Assistants	538	556	585	623	620	+29	+35	-3	+64	+82	+11.5%	700
Care, other	330	324	319	314	306	-4	-14	-8	-18	-24	-5.5%	396
Patient & Client Care	869	880	904	937	926	+25	+21	-12	+46	+57	+5.2%	1,096



WTE Change by Staff Category

■ WTE change since DEC 2019 ■ WTE change since DEC 2023 ■ WTE change since SEP 2024



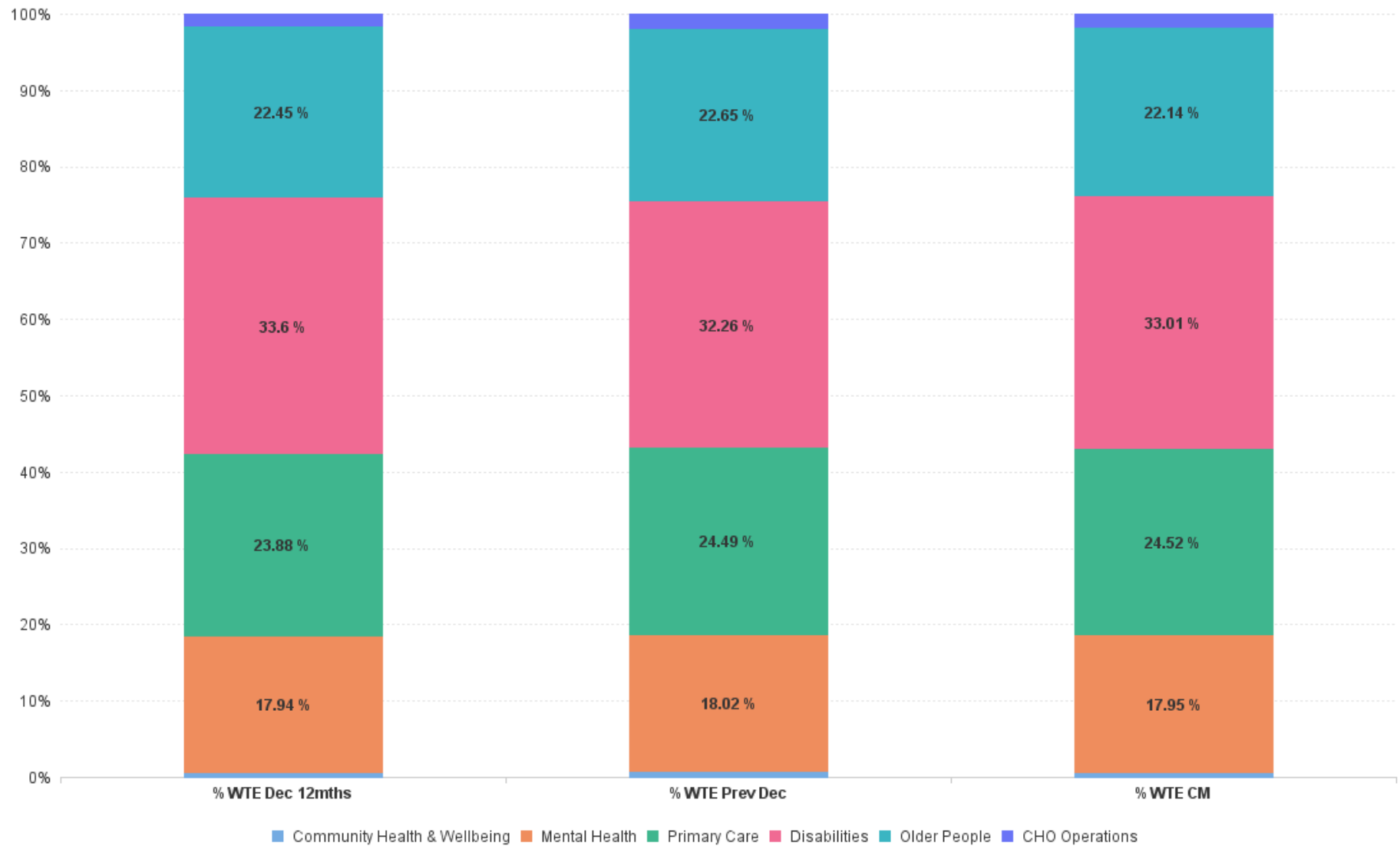
Employment Report by Care Group : OCT 2024

CHO 6 OCT 2024

Care Group OCT 2024	WTE DEC 2019	WTE DEC 2022	WTE DEC 2023	WTE SEP 2024	WTE OCT 2024	WTE Change 2023	WTE Change 2024	WTE Change SEP 2024	WTE Change Dec 2022 to OCT 2024	WTE Change Dec 2019 to OCT 2024	% WTE Change Dec 2022 to OCT 2024	No. OCT 2024
Overall	3,378	3,620	3,789	3,760	3,776	+169	-13	+16	+156	+398	+4.3%	4,339
Community Health & Wellbeing		17	22	21	21	+6	-1	+0	+4	+21	+24.7%	22
Mental Health	593	650	683	671	678	+33	-5	+7	+28	+85	+4.4%	754
Primary Care	765	864	928	907	926	+63	-2	+19	+61	+161	+7.1%	1,148
Disabilities	1,198	1,216	1,222	1,252	1,247	+6	+24	-6	+30	+49	+2.5%	1,435
Older People	823	813	858	841	836	+46	-22	-5	+23	+13	+2.9%	909
CHO Operations		60	75	68	69	+15	-6	+1	+8	+69	+13.9%	71
Community Services	3,378	3,620	3,789	3,760	3,776	+169	-13	+16	+156	+398	+4.3%	4,339



% Total by Care Group



Employment Report by HSE/S38 : OCT 2024

CHO 6 OCT 2024

Administration OCT 2024	WTE DEC 2019	WTE DEC 2022	WTE DEC 2023	WTE SEP 2024	WTE OCT 2024	WTE Change 2023	WTE Change 2024	WTE Change SEP 2024	WTE Change Dec 2022 to OCT 2024	WTE Change Dec 2019 to OCT 2024	% WTE Change Dec 2022 to OCT 2024	No. OCT 2024
Overall	3,378	3,620	3,789	3,760	3,776	+169	-13	+16	+156	+398	+4.3%	4,339
Health Service Executive	1,605	1,772	1,909	1,862	1,884	+137	-24	+22	+112	+279	+6.3%	2,121
Section 38 Voluntary Agencies	1,773	1,848	1,880	1,898	1,892	+32	+12	-7	+44	+119	+2.4%	2,218



Employment Report by HSE.S38: OCT 2024

Health Service Executive

HSE&S38 OCT 2024	WTE DEC 2019	WTE DEC 2022	WTE DEC 2023	WTE SEP 2024	WTE OCT 2024	WTE Change 2023	WTE Change 2024	WTE Change SEP 2024	WTE Change Dec 2022 to OCT 2024	WTE Change Dec 2019 to OCT 2024	% WTE Change Dec 2022 to OCT 2024	No. OCT 2024
Total Health Service Executive	1,605	1,772	1,909	1,862	1,884	+137	-24	+22	+112	+279	+6.3%	2,121
Consultants	23	27	29	28	27	+2	-2	-1	-0	+4	-0.6%	31
Registrars	30	41	57	64	64	+16	+7	-0	+23	+34	+57.2%	65
SHO/ Interns	4	3	4	8	8	+1	+4	-0	+5	+4	+168.4%	8
Medical/ Dental, other	49	48	45	40	43	-2	-2	+3	-4	-6	-9.2%	64
Medical & Dental	106	118	135	140	142	+17	+7	+2	+24	+36	+20.2%	168
Nurse/ Midwife Manager	138	138	142	133	133	+4	-9	+0	-5	-4	-3.7%	137
Nurse/ Midwife Specialist & AN/MP	15	20	40	61	60	+20	+20	-1	+40	+45	+205.6%	64
Staff Nurse/ Staff Midwife	286	303	313	291	293	+10	-21	+1	-10	+7	-3.4%	326
Public Health Nurse	117	99	98	96	99	-1	+1	+3	-0	-18	0.0%	116
<i>Nursing/ Midwifery awaiting registration</i>				1	2		+2	+1	+2	+2	-1	4
<i>Post-registration Nurse/ Midwife Student</i>	14	7	6	5	8	-1	+2	+3	+1	-6	0.09	8
<i>Pre-registration Nurse/ Midwife Intern</i>				4	2		+2	-3	+2	+2	-1	3
Nursing/ Midwifery Student	14	7	6	10	12	-1	+6	+2	+5	-2	+63.3%	15
Nursing/ Midwifery other	2	4	3	3	3	-1	+0	+0	-0	+1	-12.2%	4
Nursing & Midwifery	571	571	603	595	600	+32	-3	+5	+29	+29	+5.1%	662
<i>Dietitians</i>	12	19	24	24	25	+5	+1	+1	+6	+14	0.31	30
<i>Occupational Therapists</i>	61	63	68	59	64	+5	-4	+5	+0	+3	0.01	76
<i>Orthoptists</i>		2	2	2	2	+0	+0	+0	+0	+2	0.01	2
<i>Physiotherapists</i>	39	46	61	60	62	+15	+0	+1	+15	+23	0.33	76
<i>Podiatrists & Chiropodists</i>	1	2	1	2	2	-1	+1	+0	+0	+1	0.01	2
<i>Speech & Language Therapists</i>	45	40	51	45	47	+11	-4	+2	+7	+2	0.18	57
Therapy Professions	158	173	208	192	202	+35	-6	+10	+29	+44	+16.5%	243
Health Science/ Diagnostics	17	15	16	16	16	+0	-0	-0	+0	-1	+1.3%	17
Social Care	11	11	14	15	15	+3	+1	+0	+4	+4	+35.6%	16
Pharmacy	2	7	5	5	5	-1	+0	+0	-1	+4	-17.4%	6
Psychologists	38	39	48	48	55	+9	+7	+7	+16	+17	+40.1%	64
Social Workers	26	39	38	35	38	-1	-0	+2	-1	+11	-2.8%	42
H&SC, Other	8	16	18	24	24	+2	+6	-0	+8	+15	+49.7%	26
Health & Social Care Professionals	260	300	347	335	354	+47	+8	+19	+54	+94	+18.1%	414
Management (VIII & above)	35	53	54	50	50	+1	-4	-0	-3	+15	-6.1%	51
Administrative/ Supervisory (V to VII)	91	145	146	139	139	+1	-7	+1	-6	+49	-4.2%	147
Clerical (III & IV)	134	162	179	173	171	+17	-9	-2	+9	+36	+5.3%	188
Management & Administrative	260	361	379	362	360	+18	-19	-1	-1	+100	-0.2%	386
Support	85	73	73	65	64	-0	-8	-1	-9	-20	-11.7%	75
Maintenance/ Technical	3	2	1	1	1	-1	+0	+0	-1	-2	-49.5%	1
General Support	88	75	74	66	65	-1	-8	-1	-10	-22	-12.7%	76
Health Care Assistants	267	279	290	284	283	+11	-7	-1	+4	+17	+1.6%	321
Care, other	54	68	81	80	79	+13	-2	-1	+11	+25	+15.7%	94
Patient & Client Care	321	347	371	364	362	+24	-9	-2	+15	+41	+4.4%	415

Section 38 Voluntary Agencies

HSE&S38 OCT 2024	WTE DEC 2019	WTE DEC 2022	WTE DEC 2023	WTE SEP 2024	WTE OCT 2024	WTE Change 2023	WTE Change 2024	WTE Change SEP 2024	WTE Change Dec 2022 to OCT 2024	WTE Change Dec 2019 to OCT 2024	% WTE Change Dec 2022 to OCT 2024	No. OCT 2024
Total Section 38 Voluntary Agencies	1,773	1,848	1,880	1,898	1,892	+32	+12	-7	+44	+119	+2.4%	2,218
Consultants	25	31	36	37	37	+5	+1	-0	+6	+12	+18.8%	46
Registrars	19	22	19	25	25	-4	+6	+0	+2	+6	+9.6%	27
SHO/ Interns	12	13	16	15	15	+3	-1	+0	+1	+3	+11.0%	22
Medical/ Dental, other	2	1	2	1	1	+1	-1	+0	+0	-1	+0.0%	1
Medical & Dental	58	68	73	77	77	+5	+5	-0	+9	+20	+14.0%	96
Nurse/ Midwife Manager	73	71	78	74	74	+7	-4	+0	+2	+1	+3.4%	80
Nurse/ Midwife Specialist & AN/MP	5	17	21	21	21	+4	+0	+0	+4	+16	+25.3%	27
Staff Nurse/ Staff Midwife	256	253	253	256	261	+1	+8	+5	+9	+5	+3.4%	280
Nursing/ Midwifery other		1	1	1	1	+0	+0	+0	+0	+1	+0.0%	1
Nursing & Midwifery	334	342	354	352	358	+12	+4	+6	+15	+23	+4.5%	388
Dietitians	3	3	3	4	4	+1	+0	+0	+1	+1	0.52	5
Occupational Therapists	31	35	33	34	34	-3	+2	-0	-1	+4	-0.03	40
Physiotherapists	22	21	22	18	17	+0	-4	-1	-4	-4	-0.18	20
Podiatrists & Chiropodists	1	0	0	0	0	+0	+0	+0	+0	-0	0	1
Speech & Language Therapists	25	19	17	18	17	-2	-0	-0	-2	-7	-0.12	22
Therapy Professions	80	79	75	74	73	-4	-2	-1	-6	-7	-7.7%	88
Health Science/ Diagnostics	2	2	2	2	2	+0	+0	+0	+0	+0	+0.0%	3
Social Care	353	402	391	392	389	-11	-2	-3	-13	+36	-3.1%	449
Pharmacy	2	2	2	2	2	+0	-0	-0	-0	+0	-6.8%	3
Psychologists	18	28	32	30	30	+4	-2	+0	+2	+12	+5.5%	33
Social Workers	31	33	32	27	28	-0	-4	+1	-5	-3	-13.9%	32
H&SC, Other	6	1	8	4	3	+7	-5	-1	+2	-3	+204.1%	4
Health & Social Care Professionals	492	547	543	531	527	-4	-16	-4	-20	+35	-3.6%	612
Management (VIII & above)	33	42	35	35	34	-7	-1	-0	-8	+1	-18.3%	40
Administrative/ Supervisory (V to VII)	79	96	105	106	109	+9	+4	+3	+13	+29	+13.5%	127
Clerical (III & IV)	103	97	107	97	97	+10	-10	-1	-0	-6	-0.1%	122
Management & Administrative	215	235	247	238	240	+13	-7	+2	+5	+25	+2.2%	289
Support	106	104	107	106	106	+3	-1	+0	+3	+0	+2.5%	129
Maintenance/ Technical	20	20	23	21	20	+3	-3	-1	-0	+0	-1.0%	23
General Support	126	124	130	127	126	+6	-4	-1	+2	+1	+2.0%	152
Health Care Assistants	272	278	295	339	337	+18	+42	-2	+59	+65	+21.4%	379
Care, other	276	255	238	234	227	-17	-12	-7	-29	-49	-11.2%	302
Patient & Client Care	548	533	534	573	564	+1	+30	-9	+31	+16	+5.8%	681

CHO 6 by S38 Agency: OCT 2024

Children's Sunshine Home

Grade Group (KD)	WTE DEC 2019	WTE DEC 2022	WTE DEC 2023	WTE SEP 2024	WTE OCT 2024	WTE Change 2023	WTE Change 2024	WTE Change SEP 2024	WTE Change Dec 2022 to OCT 2024	WTE Change Dec 2019 to OCT 2024	% WTE Change Dec 2022 to OCT 2024	No. OCT 2024
Total Children's Sunshine Home	58	53	52	51	50	-0.57	-2.17	-0.64	-2.7	-8.2	-5.2%	57
Nurse/ Midwife Manager	7	9	7	9	9	-2	+2	+0	+0	+2	+5.5%	9
Staff Nurse/ Staff Midwife	21	18	20	16	16	+3	-5	-1	-2	-5	-10.8%	16
Nursing & Midwifery	28	26	27	25	25	+1	-3	-1	-1	-3	-5.5%	25
Therapy Professions	2	0	0	0	0	+0	+0	+0	+0	-1	+0.0%	1
Social Workers	1									-1	-100.0%	
Health & Social Care Professionals	3	0	0	0	0	+0	+0	+0	+0	-2	+0.0%	1
Management (VIII & above)	3	3	3	3	3	+0	+0	+0	+0	+0	+0.0%	3
Administrative/ Supervisory (V to VII)	4	4	4	4	4	+0	+0	+0	+0	-0	+0.0%	4
Clerical (III & IV)	1	1	1	1	1	+0	+0	+0	+0	+0	+0.0%	1
Management & Administrative	8	8	8	8	8	+0	+0	+0	+0	-0	+0.0%	8
Support	3	3	3	3	3	+0	+0	+0	+0	+0	+0.0%	3
General Support	3	3	3	3	3	+0	+0	+0	+0	+0	+0.0%	3
Health Care Assistants	14	12	11	12	12	-1	+1	+0	-0	-2	-1.5%	15
Care, other	4	4	3	3	3	-1	-1	+0	-1	-1	-28.1%	5
Patient & Client Care	18	16	14	15	15	-2	+0	+0	-1	-3	-8.2%	20

Dublin Dental Hospital

Grade Group (KD)	WTE DEC 2019	WTE DEC 2022	WTE DEC 2023	WTE SEP 2024	WTE OCT 2024	WTE Change 2023	WTE Change 2024	WTE Change SEP 2024	WTE Change Dec 2022 to OCT 2024	WTE Change Dec 2019 to OCT 2024	% WTE Change Dec 2022 to OCT 2024	No. OCT 2024
Total Dublin Dental Hospital	91	92	93	93	93	1.5	-0.5	0	+1.0	+1.5	+1.1%	169
Consultants	6	5	6	6	6	+1	+0	+0	+1	+0	+21.3%	7
Registrars	1	2	2	2	2	+0	+0	+0	+0	+1	+0.0%	2
SHO/ Interns	7	6	7	7	7	+1	-1	+0	+1	+0	+8.3%	13
Medical & Dental	13	12	14	14	14	+2	-1	+0	+2	+1	+12.3%	22
Nurse/ Midwife Manager	2	2	2	2	2	+0	+0	+0	+0	-1	+0.0%	3
Staff Nurse/ Staff Midwife	4	3	3	3	3	+0	+0	+0	+0	-2	+0.0%	3
Nursing & Midwifery	6	4	4	4	4	+0	+0	+0	+0	-2	+0.0%	6
Health Science/ Diagnostics	2	2	2	2	2	+0	+0	+0	+0	+0	+0.0%	3
H&SC, Other	1	1	1	1	1	+0	+0	+0	+0	+0	+0.0%	1
Health & Social Care Professionals	2	2	2	2	2	+0	+0	+0	+0	+0	+0.0%	4
Management (VIII & above)	4	4	5	4	4	+1	-1	+0	+1	+1	+14.3%	8
Administrative/ Supervisory (V to VII)	11	12	12	12	12	+0	+0	+0	+0	+1	+0.0%	24
Clerical (III & IV)	15	15	15	15	15	-1	+0	+0	-1	-1	-3.3%	24
Management & Administrative	30	31	31	31	31	+1	-1	+0	+0	+1	+0.0%	56
Support	11	13	13	13	13	-1	+1	+0	+0	+3	+0.0%	21
Maintenance/ Technical	2	2	2	2	2	+0	+0	+0	+0	+0	+0.0%	4
General Support	13	15	15	15	15	-1	+1	+0	+0	+3	+0.0%	25
Health Care Assistants	1									-1	-100.0%	
Care, other	27	27	27	27	27	-1	+0	+0	-1	+0	-1.8%	56
Patient & Client Care	27	27	27	27	27	-1	+0	+0	-1	-1	-1.8%	56

Leopardstown Park Hospital

Grade Group (KD)	WTE DEC 2019	WTE DEC 2022	WTE DEC 2023	WTE SEP 2024	WTE OCT 2024	WTE Change 2023	WTE Change 2024	WTE Change SEP 2024	WTE Change Dec 2022 to OCT 2024	WTE Change Dec 2019 to OCT 2024	% WTE Change Dec 2022 to OCT 2024	No. OCT 2024
------------------	--------------	--------------	--------------	--------------	--------------	-----------------	-----------------	---------------------	---------------------------------	---------------------------------	-----------------------------------	--------------

Total Leopardstown Park Hospital	211	187	191	203	208	3.88	17.21	5.29	+21.1	-2.3	+11.3%	227
Medical/ Dental, other	1		1	1	1	+1	+0	+0	+1	+0	-100.0%	1
Medical & Dental	1		1	1	1	+1	+0	+0	+1	+0	-100.0%	1
Nurse/ Midwife Manager	15	12	14	14	15	+2	+1	+0	+3	-1	+25.3%	15
Staff Nurse/ Staff Midwife	43	34	36	40	41	+2	+4	+1	+6	-2	+18.7%	45
Nursing & Midwifery	58	46	50	54	55	+4	+5	+1	+9	-3	+20.4%	60
Therapy Professions	7	9	9	10	10	+0	+1	-0	+1	+2	+7.8%	12
Pharmacy	2	2	2	2	2	-0	-0	-0	-0	-0	-19.9%	2
Social Workers	1	1		1	1	-1	+1	+0	+0	+0	+0.0%	1
Health & Social Care Professionals	10	12	11	12	12	-1	+1	-0	+0	+2	+2.1%	15
Management (VIII & above)	1	1	1	1	1	+0	+0	+0	+0	+0	+0.0%	1
Administrative/ Supervisory (V to VII)	7	7	6	8	8	-0	+1	+0	+1	+1	+13.8%	8
Clerical (III & IV)	10	12	10	10	10	-2	-1	-0	-3	-1	-21.6%	12
Management & Administrative	19	20	18	19	19	-2	+1	-0	-2	-0	-8.5%	21
Support	33	33	37	36	37	+4	+1	+1	+5	+4	+15.3%	40
Maintenance/ Technical	4	3	3	4	4	-0	+1	+0	+1	+0	+17.3%	4
General Support	37	36	40	40	41	+4	+2	+1	+6	+4	+15.5%	44
Health Care Assistants	81	70	69	73	76	-1	+7	+3	+6	-5	+8.6%	81
Care, other	5	3	3	4	4	-0	+1	+0	+1	-1	+20.0%	5
Patient & Client Care	86	73	72	77	80	-1	+8	+3	+7	-6	+9.1%	86

Our Lady's Hospice & Care, Wicklow

Grade Group (KD)	WTE DEC 2019	WTE DEC 2022	WTE DEC 2023	WTE SEP 2024	WTE OCT 2024	WTE Change 2023	WTE Change 2024	WTE Change SEP 2024	WTE Change Dec 2022 to OCT 2024	WTE Change Dec 2019 to OCT 2024	% WTE Change Dec 2022 to OCT 2024	No. OCT 2024
Total Our Lady's Hospice & Care, Wicklow		45	42	43	43	-3.67	1.54	0.4	-2.1	+43.4	-4.7%	50
Consultants		2	2	2	2	-0	+0	+0	-0	+2	-1.3%	2
Registrars		1	1	2	2	-0	+1	+0	+1	+2	+100.0%	2
SHO/ Interns		1	1	1	1	-0	+0	+0	-0	+1	-11.5%	1
Medical & Dental		4	4	5	5	-0	+1	+0	+1	+5	+23.1%	5
Nurse/ Midwife Manager		4	4	3	3	+0	-1	-0	-1	+3	-25.0%	3
Nurse/ Midwife Specialist & AN/MP		7	7	7	7	-0	+0	-0	-0	+7	-4.8%	9
Staff Nurse/ Staff Midwife		16	13	15	15	-2	+2	+0	-0	+15	-2.8%	17
Nursing & Midwifery		27	24	25	25	-2	+1	-0	-2	+25	-6.6%	29
Therapy Professions		3	1	1	1	-2	-0	+0	-2	+1	-70.5%	1
Pharmacy			0	0	0	+0	-0	+0	+0	+0	-100.0%	1
Social Workers		2	2	2	2	-0	+0	+0	+0	+2	+0.0%	2
Health & Social Care Professionals		5	3	3	3	-2	-0	+0	-2	+3	-34.4%	4
Administrative/ Supervisory (V to VII)		1	1	1	1	+0	+0	+0	+0	+1	+0.0%	1
Clerical (III & IV)		2	2	2	2	+0	+0	+0	+0	+2	+0.0%	2
Management & Administrative		3	3	3	3	+0	+0	+0	+0	+3	+0.0%	3
Health Care Assistants		7	8	7	8	+1	-0	+1	+0	+8	+5.8%	9
Patient & Client Care		7	8	7	8	+1	-0	+1	+0	+8	+5.8%	9

Royal Hospital Donnybrook, Dublin

Grade Group (KD)	WTE DEC 2019	WTE DEC 2022	WTE DEC 2023	WTE SEP 2024	WTE OCT 2024	WTE Change 2023	WTE Change 2024	WTE Change SEP 2024	WTE Change Dec 2022 to OCT 2024	WTE Change Dec 2019 to OCT 2024	% WTE Change Dec 2022 to OCT 2024	No. OCT 2024
Total Royal Hospital Donnybrook, Dublin	272	270	284	270	266	13.83	-18.08	-4	-4.3	-5.9	-1.6%	275
Consultants				1	1		+1	+0	+1	+1	-100.0%	1
Registrars	1	1	1		1	+0	+0	+0	+0	+0	+0.0%	1
Medical/ Dental, other	1	1	1			+0	-1		-1	-1	-100.0%	
Medical & Dental	2	2	2	2	2	+0	+0	+0	+0	+0	+0.0%	2
Nurse/ Midwife Manager	20	21	25	25	25	+4	+0	+0	+4	+4	+21.0%	25
Nurse/ Midwife Specialist & AN/MP			1	1	1	+1	+0	+0	+1	+1	-100.0%	1
Staff Nurse/ Staff Midwife	74	69	71	68	67	+2	-4	-1	-2	-7	-2.9%	67

Nursing & Midwifery	94	89	96	93	92	+7	-4	-1	+3	-2	+3.7%	93
Therapy Professions	31	30	29	28	28	-1	-1	+0	-2	-2	-5.8%	30
Psychologists	1		1	1	1	+1	+0	+0	+1	+0	-100.0%	1
Social Workers	6	6	6	6	5	-0	-1	-1	-1	-1	-20.9%	6
Health & Social Care Professionals	37	36	35	34	33	-1	-2	-1	-2	-3	-6.8%	37
Management (VIII & above)		1	1	2	2	+0	+1	+0	+1	+2	+100.0%	2
Administrative/ Supervisory (V to VII)	6	9	14	7	7	+5	-7	+0	-2	+1	-22.2%	7
Clerical (III & IV)	7	7	7	6	6	+0	-1	+0	-1	-1	-9.1%	7
Management & Administrative	13	17	22	15	15	+5	-7	+0	-2	+2	-9.6%	16
Support	36	33	36	34	34	+3	-2	+0	+1	-1	+2.9%	37
Maintenance/ Technical	4	4	5	5	5	+1	+0	+0	+1	+1	+25.0%	5
General Support	40	37	41	39	39	+4	-2	+0	+2	-0	+5.2%	42
Health Care Assistants	86	88	86	85	83	-2	-4	-2	-5	-3	-6.2%	84
Care, other	1	1	1	1	1	+0	+0	+0	+0	+0	+0.0%	1
Patient & Client Care	86	89	87	85	83	-2	-4	-2	-5	-3	-6.1%	85

St John of God HQ

Grade Group (KD)	WTE DEC 2019	WTE DEC 2022	WTE DEC 2023	WTE SEP 2024	WTE OCT 2024	WTE Change 2023	WTE Change 2024	WTE Change SEP 2024	WTE Change Dec 2022 to OCT 2024	WTE Change Dec 2019 to OCT 2024	% WTE Change Dec 2022 to OCT 2024	No. OCT 2024
Total St John of God HQ		50	49	45	45	-0.38	-4.63	-0.5	-5.0	+44.5	-10.1%	50
Nurse/ Midwife Manager		1	0	0	0	-1	-0	+0	-1	+0	-53.0%	1
Nursing & Midwifery		1	0	0	0	-1	-0	+0	-1	+0	-53.0%	1
Social Care		1	1	1	1	+0	+0	+0	+0	+1	+4.2%	1
Psychologists		2	3	2	2	+1	-1	+0	+1	+2	+33.3%	2
Health & Social Care Professionals		2	4	3	3	+1	-1	+0	+1	+3	+22.0%	3
Management (VIII & above)		13	12	10	9	-1	-3	-1	-4	+9	-27.3%	11
Administrative/ Supervisory (V to VII)		26	25	27	27	-1	+1	-0	+1	+27	+3.4%	28
Clerical (III & IV)		7	7	4	4	+1	-3	+0	-2	+4	-35.8%	6
Management & Administrative		46	45	41	41	-1	-4	-1	-5	+41	-11.0%	45
Support		1	1	1	1	+0	+0	+0	+0	+1	+1.8%	1
General Support		1	1	1	1	+0	+0	+0	+0	+1	+1.8%	1

St. John of God (IDS)

Grade Group (KD)	WTE DEC 2019	WTE DEC 2022	WTE DEC 2023	WTE SEP 2024	WTE OCT 2024	WTE Change 2023	WTE Change 2024	WTE Change SEP 2024	WTE Change Dec 2022 to OCT 2024	WTE Change Dec 2019 to OCT 2024	% WTE Change Dec 2022 to OCT 2024	No. OCT 2024
Total St. John of God (IDS)	456	425	420	439	434	-5.69	14.69	-5.07	+9.0	-22.0	+2.1%	528
Consultants	1	1	1	1	1	+0	-1	+0	-1	-1	-50.0%	1
Medical & Dental	1	1	1	1	1	+0	-1	+0	-1	-1	-50.0%	1
Nurse/ Midwife Manager	8	7	8	3	3	+1	-4	+0	-4	-5	-52.6%	4
Staff Nurse/ Staff Midwife	46	50	51	55	57	+1	+6	+3	+7	+11	+14.4%	64
Nursing & Midwifery	54	57	59	58	61	+2	+2	+3	+4	+7	+6.4%	68
Therapy Professions	12	9	9	9	8	+0	-0	-1	-0	-4	-3.0%	11
Social Care	146	160	165	158	155	+5	-10	-3	-5	+9	-3.1%	182
Psychologists	5	5	5	5	5	+0	+0	+0	+0	+0	+4.4%	5
Social Workers	4	3	3	3	3	+0	+0	+0	+0	-1	+0.0%	3
Health & Social Care Professionals	167	176	181	175	171	+5	-10	-4	-5	+4	-2.8%	201
Management (VIII & above)	15	9	3	4	4	-6	+1	+0	-5	-11	-53.8%	4
Administrative/ Supervisory (V to VII)	28	8	11	9	10	+3	-1	+1	+2	-18	+28.3%	12
Clerical (III & IV)	19	7	14	12	12	+7	-2	-0	+5	-7	+80.2%	17
Management & Administrative	62	23	28	25	26	+4	-1	+1	+3	-36	+12.7%	33
Support	12	15	13	15	14	-2	+1	-1	-1	+2	-9.5%	21
Maintenance/ Technical	5	5	6	5	4	+1	-2	-1	-1	-1	-20.0%	4
General Support	17	20	19	20	18	-1	-1	-2	-2	+1	-12.1%	25
Health Care Assistants	19	24	29	55	54	+5	+25	-1	+30	+35	+121.3%	69

Care, other	136	123	104	106	104	-20	+1	-2	-19	-32	-15.6%	131
Patient & Client Care	155	148	133	161	158	-15	+26	-3	+10	+3	+7.0%	200

St. John of God (MHS)

Grade Group (KD)	WTE DEC 2019	WTE DEC 2022	WTE DEC 2023	WTE SEP 2024	WTE OCT 2024	WTE Change 2023	WTE Change 2024	WTE Change SEP 2024	WTE Change Dec 2022 to OCT 2024	WTE Change Dec 2019 to OCT 2024	% WTE Change Dec 2022 to OCT 2024	No. OCT 2024
Total St. John of God (MHS)	235	246	261	253	258	15.54	-3.5	4.23	+12.0	+22.4	+4.9%	302
Consultants	19	24	28	29	28	+4	+1	-0	+4	+10	+18.3%	35
Registrars	17	19	15	20	20	-4	+5	+0	+1	+3	+6.1%	22
SHO/ Interns	5	6	8	7	7	+2	-1	+0	+1	+2	+18.0%	8
Medical & Dental	41	49	51	56	56	+2	+5	-0	+7	+15	+13.6%	65
Nurse/ Midwife Manager	16	15	17	16	15	+2	-2	-0	-0	-1	-0.9%	18
Nurse/ Midwife Specialist & AN/MP	5	10	13	13	13	+3	+0	+0	+4	+8	+37.5%	17
Staff Nurse/ Staff Midwife	32	31	31	31	34	-0	+3	+3	+3	+2	+9.7%	36
Nursing & Midwifery	53	56	61	60	63	+5	+1	+3	+7	+9	+11.6%	71
Therapy Professions	27	24	23	21	22	-1	-1	+1	-2	-5	-9.1%	28
Social Care	25	28	24	22	24	-4	-0	+1	-4	-2	-15.7%	27
Psychologists	12	22	24	22	22	+2	-2	+0	+0	+10	+1.6%	25
Social Workers	18	18	19	16	17	+1	-3	+1	-1	-1	-7.7%	19
H&SC, Other	5	0	7	3	2	+7	-5	-1	+2	-2	+416.7%	3
Health & Social Care Professionals	87	93	98	85	87	+5	-11	+2	-6	-0	-6.1%	102
Management (VIII & above)	2	2	2	2	2	+0	+0	+0	+0	+0	+0.0%	2
Administrative/ Supervisory (V to VII)	15	16	13	15	15	-3	+2	+0	-1	-0	-9.0%	17
Clerical (III & IV)	26	20	25	26	26	+5	+1	+0	+6	+0	+29.3%	31
Management & Administrative	43	38	40	43	43	+2	+3	+0	+4	+0	+11.5%	50
Support	6	4	3	2	2	-1	-1	+0	-2	-5	-49.7%	4
Maintenance/ Technical	3	3	5	3	3	+2	-2	+0	+0	+0	+7.0%	4
General Support	9	7	8	5	5	+1	-3	+0	-2	-4	-24.6%	8
Health Care Assistants				3	2		+2	-1	+2	+2	-100.0%	3
Care, other	2	2	3	2	2	+0	-1	-0	-0	+0	-14.3%	3
Patient & Client Care	2	2	3	5	4	+0	+1	-1	+2	+2	+75.5%	6

Sunbeam House Services

Grade Group (KD)	WTE DEC 2019	WTE DEC 2022	WTE DEC 2023	WTE SEP 2024	WTE OCT 2024	WTE Change 2023	WTE Change 2024	WTE Change SEP 2024	WTE Change Dec 2022 to OCT 2024	WTE Change Dec 2019 to OCT 2024	% WTE Change Dec 2022 to OCT 2024	No. OCT 2024
Total Sunbeam House Services	449	480	488	501	495	7.55	7.09	-6.34	+14.6	+45.6	+3.0%	560
Nurse/ Midwife Manager	4	2	2	2	2	+0	+0	+0	+0	-2	+0.0%	2
Staff Nurse/ Staff Midwife	37	33	28	29	29	-5	+1	+0	-4	-7	-10.9%	32
Nursing/ Midwifery other		1	1	1	1	+0	+0	+0	+0	+1	+0.0%	1
Nursing & Midwifery	41	36	31	32	32	-5	+1	+0	-4	-8	-10.0%	35
Therapy Professions	1	4	5	5	4	+0	-1	-1	-1	+2	-15.1%	5
Social Care	182	213	202	211	210	-11	+8	-1	-3	+28	-1.5%	239
Psychologists	1									-1	-100.0%	
Social Workers	2	3	3		1	-0	-2	+1	-2	-1	-68.8%	1
H&SC, Other	1									-1	-100.0%	
Health & Social Care Professionals	186	220	209	216	215	-11	+5	-1	-6	+29	-2.6%	245
Management (VIII & above)	9	10	9	9	9	-1	+0	+0	-1	+0	-10.0%	9
Administrative/ Supervisory (V to VII)	9	13	18	24	25	+6	+7	+2	+12	+16	+95.4%	26
Clerical (III & IV)	24	26	25	21	21	-1	-5	-1	-5	-3	-19.8%	22
Management & Administrative	41	49	53	54	55	+4	+2	+1	+6	+14	+12.5%	57
Support	5	2	2	2	2	+0	+0	+0	+0	-3	+0.0%	2
Maintenance/ Technical	2	3	2	2	2	-1	+0	+0	-1	+0	-33.3%	2
General Support	7	5	4	4	4	-1	+0	+0	-1	-3	-20.0%	4
Health Care Assistants	71	75	92	104	102	+17	+10	-2	+27	+31	+35.8%	118

Care, other	103	95	99	91	87	+4	-12	-5	-8	-16	-8.5%	101
Patient & Client Care	174	170	190	195	189	+21	-2	-6	+19	+15	+11.1%	219

CHO 6 Employment Report: OCT 2024

Community Health & Wellbeing OCT 2024	WTE DEC 2019	WTE DEC 2022	WTE DEC 2023	WTE SEP 2024	WTE OCT 2024	WTE Change 2023	WTE Change 2024	WTE Change SEP 2024	WTE Change Dec 2022 to OCT 2024	WTE Change Dec 2019 to OCT 2024	% WTE Change Dec 2022 to OCT 2024	No. OCT 2024
Total Community Health & Wellbeing		17	22	21	21	+6	-1	+0	+4	+21	+24.7%	22
Medical/ Dental, other		1				-1			-1		-100.0%	
Medical & Dental		1				-1			-1		-100.0%	
Dietitians			1	1	1	+1	0	+0	+1	+1	-100.0%	1
Therapy Professions			1	1	1	+1	0	+0	+1	+1	-100.0%	1
H&SC, Other		3				-3			-3		-100.0%	
Health & Social Care Professionals		3	1	1	1	-2	0	+0	-2	+1	-66.2%	1
Management (VIII & above)		3	3	3	3	+0	+0	+0	+0	+3	+14.7%	3
Administrative/ Supervisory (V to VII)		9	7	4	4	-2	-2	+0	-4	+4	-50.1%	5
Clerical (III & IV)		1	3	3	3	+2	0	0	+2	+3	+122.7%	3
Management & Administrative		13	13	10	10	0	-2	+0	-2	+10	-19.1%	11
Care, other		1	9	10	10	+8	+1	+0	+9	+10	+1,886.0%	10
Patient & Client Care		1	9	10	10	+8	+1	+0	+9	+10	+1,886.0%	10

Mental Health OCT 2024	WTE DEC 2019	WTE DEC 2022	WTE DEC 2023	WTE SEP 2024	WTE OCT 2024	WTE Change 2023	WTE Change 2024	WTE Change SEP 2024	WTE Change Dec 2022 to OCT 2024	WTE Change Dec 2019 to OCT 2024	% WTE Change Dec 2022 to OCT 2024	No. OCT 2024
Total Mental Health	593	650	683	671	678	+33	-5	+7	+28	+85	+4.4%	754
Consultants	36	45	51	52	50	+5	0	-1	+5	+14	+11.7%	61
Registrars	22	30	28	31	31	-2	+2	+0	+1	+9	+3.1%	33
SHO/ Interns	9	9	11	11	11	+2	+0	+0	+2	+2	+23.2%	12
Medical & Dental	67	84	90	93	92	+6	+2	-1	+8	+25	+9.9%	106
Nurse/ Midwife Manager	76	75	73	61	61	-2	-12	0	-14	-15	-18.3%	64
Nurse/ Midwife Specialist & AN/MP	14	27	34	54	55	+7	+22	+1	+28	+42	+106.0%	61
Staff Nurse/ Staff Midwife	139	151	144	137	141	-7	-3	+5	-10	+2	-6.7%	149
Nursing/ Midwifery awaiting registration				1	2		+2	+1	+2	+2	-100.0%	4
Pre-registration Nurse/ Midwife Intern				4	2		+2	-3	+2	+2	-100.0%	3
Nursing/ Midwifery Student				5	4		+4	-1	+4	+4	-100.0%	7
Nursing/ Midwifery other	2	4	3	3	3	-1	+0	+0	0	+1	-12.2%	4
Nursing & Midwifery	231	257	254	261	265	-3	+11	+4	+8	+34	+3.2%	285
Dietitians	2	2	6	6	7	+5	+0	+1	+5	+5	+309.9%	7
Occupational Therapists	25	28	27	24	25	-1	-2	+1	-2	0	-8.8%	30
Physiotherapists	1	2	1	1	1	-1	0	0	-1	0	-63.9%	1
Speech & Language Therapists	15	10	9	9	9	-1	0	+0	-1	-6	-14.6%	11
Therapy Professions	43	41	43	39	41	+2	-2	+2	0	-2	-0.2%	49
Social Care	26	28	24	22	24	-4	0	+1	-4	-2	-15.7%	27
Psychologists	22	38	43	40	40	+6	-3	+0	+3	+18	+6.8%	46
Social Workers	30	36	37	32	34	+0	-3	+2	-2	+4	-6.3%	38
H&SC, Other	9	6	16	15	14	+10	-2	-1	+8	+6	+121.3%	16
Health & Social Care Professionals	130	150	163	149	153	+13	-10	+4	+4	+24	+2.4%	176
Management (VIII & above)	3	5	5	5	5	+0	0	0	0	+2	-0.4%	5
Administrative/ Supervisory (V to VII)	27	31	27	25	27	-4	-1	+1	-4	0	-13.9%	29
Clerical (III & IV)	42	29	41	40	40	+12	-1	0	+11	-2	+36.9%	47
Management & Administrative	72	65	73	70	71	+8	-2	+1	+6	-1	+9.9%	81
Support	36	29	28	23	23	-1	-6	0	-7	-14	-23.0%	27
Maintenance/ Technical	6	5	6	4	4	+1	-2	+0	-1	-2	-15.5%	5
General Support	42	34	34	27	27	+0	-8	0	-7	-16	-21.9%	32
Health Care Assistants	46	54	62	65	64	+8	+3	-1	+11	+19	+19.9%	67
Care, other	5	7	7	6	6	+1	-2	0	-1	+0	-19.2%	7
Patient & Client Care	51	60	69	71	70	+9	+1	-1	+9	+19	+15.5%	74



Primary Care OCT 2024	WTE DEC 2019	WTE DEC 2022	WTE DEC 2023	WTE SEP 2024	WTE OCT 2024	WTE Change 2023	WTE Change 2024	WTE Change SEP 2024	WTE Change Dec 2022 to OCT 2024	WTE Change Dec 2019 to OCT 2024	% WTE Change Dec 2022 to OCT 2024	No. OCT 2024
Total Primary Care	765	864	928	907	926	+63	-2	+19	+61	+161	+7.1%	1,148
Consultants	9	10	12	12	12	+2	+0	+0	+2	+3	+19.6%	14
Registrars	26	32	46	57	57	+14	+12	0	+26	+31	+80.9%	58
SHO/ Interns	7	7	9	11	12	+2	+3	+0	+4	+5	+61.3%	18
Medical/ Dental, other	46	45	43	40	42	-1	-1	+3	-2	-4	-5.1%	62
Medical & Dental	88	93	110	120	123	+16	+14	+3	+30	+35	+31.8%	152
Nurse/ Midwife Manager	22	31	36	37	37	+5	+1	-1	+5	+14	+17.5%	40
Nurse/ Midwife Specialist & AN/MP	6	10	17	16	17	+7	0	+0	+7	+11	+71.1%	19
Staff Nurse/ Staff Midwife	52	61	72	59	61	+11	-11	+1	0	+9	-0.5%	82
Public Health Nurse	117	99	98	96	99	-1	+1	+3	0	-18	0.0%	116
Post-registration Nurse/ Midwife Student	14	7	6	5	8	-1	+2	+3	+1	-6	+9.4%	8
Nursing/ Midwifery Student	14	7	6	5	8	-1	+2	+3	+1	-6	+9.4%	8
Nursing & Midwifery	210	208	228	214	221	+20	-7	+7	+13	+11	+6.1%	265
Dietitians	10	18	17	17	18	0	+0	+0	+0	+8	+0.8%	21
Occupational Therapists	33	43	45	41	44	+2	-1	+3	+1	+11	+1.3%	53
Orthoptists		2	2	2	2	+0	+0	+0	+0	+2	+1.0%	2
Physiotherapists	32	43	51	48	50	+8	-1	+2	+7	+18	+15.5%	63
Podiatrists & Chiropodists	1	2	1	2	2	-1	+1	+0	+0	+1	+1.0%	2
Speech & Language Therapists	28	35	43	40	41	+8	-2	+2	+7	+13	+19.1%	50
Therapy Professions	104	143	160	150	157	+17	-3	+7	+14	+53	+9.8%	191
Health Science/ Diagnostics	18	17	17	17	17	+0	0	0	+0	-1	+1.2%	20
Social Care	4	4	4	5	5	+0	+1	+0	+1	+1	+26.7%	5
Pharmacy	1	3	2	2	2	-1	0	+0	-1	+1	-31.5%	3
Psychologists	19	16	22	23	28	+6	+5	+5	+11	+9	+70.1%	32
Social Workers	5	10	8	7	8	-2	0	+1	-2	+3	-22.0%	10
H&Sc, Other	4	6	8	11	11	+2	+3	+0	+5	+7	+78.3%	12
Health & Social Care Professionals	154	199	222	214	227	+23	+6	+13	+28	+74	+14.3%	273
Management (VIII & above)	30	29	20	22	21	-8	+1	-1	-8	-9	-26.2%	26
Administrative/ Supervisory (V to VII)	68	78	69	69	69	-9	0	0	-9	+1	-11.6%	83
Clerical (III & IV)	112	136	143	138	137	+7	-6	-1	+1	+25	+0.8%	160
Management & Administrative	210	242	233	229	227	-10	-6	-2	-15	+17	-6.4%	269
Support	24	23	23	22	22	+0	-1	+0	0	-1	-0.5%	35
Maintenance/ Technical	2	2	2	2	2	+0	+0	+0	+0	+0	+0.0%	4
General Support	26	25	25	24	24	+0	-1	+0	0	-1	-0.5%	39
Health Care Assistants	6	16	21	18	18	+5	-3	+0	+2	+12	+15.5%	22
Care, other	71	81	90	87	85	+8	-4	-2	+4	+14	+4.7%	128
Patient & Client Care	77	97	111	105	104	+14	-7	-2	+6	+26	+6.4%	150

Disabilities OCT 2024	WTE DEC 2019	WTE DEC 2022	WTE DEC 2023	WTE SEP 2024	WTE OCT 2024	WTE Change 2023	WTE Change 2024	WTE Change SEP 2024	WTE Change Dec 2022 to OCT 2024	WTE Change Dec 2019 to OCT 2024	% WTE Change Dec 2022 to OCT 2024	No. OCT 2024
Total Disabilities	1,198	1,216	1,222	1,252	1,247	+6	+24	-6	+30	+49	+2.5%	1,435
Consultants	3	3	3	1	1	+0	-3	+0	-3	-3	-83.3%	1
Registrars		1	1			+0	-1		-1		-100.0%	
Medical/ Dental, other	1	1	1			+0	-1		-1	-1	-100.0%	
Medical & Dental	4	5	5	1	1	+0	-5	+0	-4	-4	-90.0%	1
Nurse/ Midwife Manager	44	40	35	34	35	-5	+0	+1	-4	-8	-11.1%	37
Nurse/ Midwife Specialist & AN/MP			2	3	3	+2	+1	+1	+3	+3	-100.0%	4
Staff Nurse/ Staff Midwife	147	138	146	145	148	+8	+2	+3	+10	+0	+7.2%	160
Nursing/ Midwifery other		1	1	1	1	+0	+0	+0	+0	+1	+0.0%	1
Nursing & Midwifery	191	178	183	182	187	+5	+3	+5	+9	-4	+4.9%	202
Dietitians	0	0	0	0	0	+0	+0	+0	+0	+0	+0.0%	1
Occupational Therapists	15	11	10	8	8	-2	-1	+0	-3	-6	-24.7%	10
Physiotherapists	6	4	5	8	7	+1	+1	-1	+3	+1	+70.7%	9
Speech & Language Therapists	21	10	10	9	9	0	-1	+0	-1	-12	-12.9%	12
Therapy Professions	42	26	25	25	24	0	-1	-1	-1	-17	-4.7%	32
Social Care	334	381	378	380	376	-4	-2	-4	-5	+42	-1.3%	433
Psychologists	14	14	15	14	17	+1	+2	+3	+3	+3	+21.3%	18



Disabilities OCT 2024	WTE DEC 2019	WTE DEC 2022	WTE DEC 2023	WTE SEP 2024	WTE OCT 2024	WTE Change 2023	WTE Change 2024	WTE Change SEP 2024	WTE Change Dec 2022 to OCT 2024	WTE Change Dec 2019 to OCT 2024	% WTE Change Dec 2022 to OCT 2024	No. OCT 2024
Total Disabilities	1,198	1,216	1,222	1,252	1,247	+6	+24	-6	+30	+49	+2.5%	1,435
Social Workers	11	8	10	9	10	+2	-1	+1	+1	-2	+13.2%	10
H&SC, Other	2	1	1	1	0	-1	0	0	-1	-1	-69.9%	1
Health & Social Care Professionals	403	431	429	429	428	-2	-1	-1	-3	+25	-0.8%	494
Management (VIII & above)	31	39	31	30	29	-8	-1	0	-10	-1	-25.0%	31
Administrative/ Supervisory (V to VII)	53	64	75	80	82	+11	+7	+2	+18	+28	+27.5%	87
Clerical (III & IV)	54	52	57	48	48	+5	-9	0	-4	-6	-7.8%	56
Management & Administrative	138	156	163	158	159	+7	-4	+1	+4	+21	+2.4%	174
Support	23	23	19	20	19	-3	+0	-1	-3	-3	-15.1%	27
Maintenance/ Technical	7	8	8	7	6	+0	-2	-1	-2	-1	-25.0%	6
General Support	29	31	27	27	25	-3	-2	-2	-5	-4	-17.7%	33
Health Care Assistants	187	188	207	250	247	+19	+40	-3	+59	+61	+31.7%	287
Care, other	246	229	209	206	200	-20	-8	-6	-28	-46	-12.4%	244
Patient & Client Care	433	416	415	456	447	-1	+32	-9	+31	+14	+7.4%	531

Older People OCT 2024	WTE DEC 2019	WTE DEC 2022	WTE DEC 2023	WTE SEP 2024	WTE OCT 2024	WTE Change 2023	WTE Change 2024	WTE Change SEP 2024	WTE Change Dec 2022 to OCT 2024	WTE Change Dec 2019 to OCT 2024	% WTE Change Dec 2022 to OCT 2024	No. OCT 2024
Total Older People	823	813	858	841	836	+46	-22	-5	+23	+13	+2.9%	909
Consultants				1	1		+1	+0	+1	+1	-100.0%	1
Registrars	1	1	1	1	1	+0	+0	+0	+0	+0	+0.0%	1
Medical/ Dental, other	4	2	3	2	2	+1	-1	+0	0	-2	-6.9%	3
Medical & Dental	5	3	4	4	4	+1	+0	+0	+1	-1	+30.1%	5
Nurse/ Midwife Manager	68	64	76	73	73	+12	-2	+0	+10	+5	+15.6%	75
Nurse/ Midwife Specialist & AN/MP	1		9	9	6	+9	-3	-3	+6	+5	-100.0%	7
Staff Nurse/ Staff Midwife	204	206	205	207	205	0	-1	-2	-1	+1	-0.5%	215
Nursing & Midwifery	273	269	290	289	284	+21	-6	-5	+15	+11	+5.6%	297
Dietitians	3	2	3	3	4	+0	+1	+0	+1	+1	+50.0%	5
Occupational Therapists	19	17	19	20	21	+2	+2	+0	+4	+2	+22.6%	23
Physiotherapists	21	19	26	22	21	+7	-4	0	+3	0	+15.0%	23
Podiatrists & Chiropodists	1	0	0	0	0	+0	+0	+0	+0	0	+0.0%	1
Speech & Language Therapists	6	4	6	5	5	+2	-1	+0	+1	-1	+22.3%	6
Therapy Professions	50	42	54	51	51	+11	-2	+0	+9	+1	+20.7%	58
Pharmacy	3	4	4	5	5	+0	+0	0	+1	+2	+13.8%	5
Psychologists	2		1	1	1	+1	+0	+0	+1	-2	-100.0%	1
Social Workers	11	7	6	7	6	-1	+0	-1	-1	-6	-17.8%	7
H&SC, Other			1	1	1	+1	+0	+0	+1	+1	-100.0%	1
Health & Social Care Professionals	66	53	65	64	63	+12	-2	-1	+10	-3	+18.2%	72
Management (VIII & above)	4	8	12	12	13	+4	+1	+1	+5	+9	+65.5%	13
Administrative/ Supervisory (V to VII)	22	32	39	33	33	+7	-5	+0	+1	+11	+4.7%	35
Clerical (III & IV)	30	33	31	29	28	-2	-3	-1	-5	-1	-14.6%	32
Management & Administrative	56	72	82	74	74	+9	-7	+0	+2	+19	+2.5%	80
Support	108	102	109	106	107	+7	-3	+0	+4	-2	+4.3%	115
Maintenance/ Technical	8	7	8	9	9	+1	+1	+0	+2	+1	+21.5%	9
General Support	116	110	117	115	116	+8	-2	+0	+6	-1	+5.4%	124
Health Care Assistants	300	299	296	291	291	-4	-5	0	-9	-9	-2.9%	324
Care, other	7	6	5	5	5	-1	+0	+0	-1	-3	-22.5%	7
Patient & Client Care	307	305	300	295	295	-5	-5	0	-10	-12	-3.3%	331

CHO Operations OCT 2024	WTE DEC 2019	WTE DEC 2022	WTE DEC 2023	WTE SEP 2024	WTE OCT 2024	WTE Change 2023	WTE Change 2024	WTE Change SEP 2024	WTE Change Dec 2022 to OCT 2024	WTE Change Dec 2019 to OCT 2024	% WTE Change Dec 2022 to OCT 2024	No. OCT 2024
Total CHO Operations		60	75	68	69	+15	-6	+1	+8	+69	+13.9%	71
Nurse/ Midwife Manager		1	1	1	1	+0	+0	+0	+0	+1	+1.0%	1
Nursing & Midwifery		1	1	1	1	+0	+0	+0	+0	+1	+1.0%	1



CHO Operations OCT 2024	WTE DEC 2019	WTE DEC 2022	WTE DEC 2023	WTE SEP 2024	WTE OCT 2024	WTE Change 2023	WTE Change 2024	WTE Change SEP 2024	WTE Change Dec 2022 to OCT 2024	WTE Change Dec 2019 to OCT 2024	% WTE Change Dec 2022 to OCT 2024	No. OCT 2024
Total CHO Operations		60	75	68	69	+15	-6	+1	+8	+69	+13.9%	71
Pharmacy		2	1	1	1	-1	+0	+0	-1	+1	-51.9%	1
Social Workers		9	9	8	8	0	-1	+0	-1	+8	-10.3%	9
Health & Social Care Professionals		12	10	9	9	-1	-1	+0	-2	+9	-17.8%	10
Management (VIII & above)		12	18	13	13	+6	-5	0	+1	+13	+7.7%	13
Administrative/ Supervisory (V to VII)		28	35	34	34	+7	-2	+0	+5	+34	+19.4%	35
Clerical (III & IV)		8	11	11	12	+3	+1	+0	+4	+12	+52.5%	12
Management & Administrative		48	64	58	58	+16	-6	+0	+10	+58	+21.8%	60

Employment Report by Care Group (HSE Only) OCT 2024

CHO 6 OCT 2024

Community Health & Wellbeing

Community Health & Wellbeing HSE Only OCT 2024	WTE DEC 2019	WTE DEC 2022	WTE DEC 2023	WTE SEP 2024	WTE OCT 2024	WTE Change 2023	WTE Change 2024	WTE Change SEP 2024	WTE Change Dec 2022 to OCT 2024	WTE Change Dec 2019 to OCT 2024	% WTE Change Dec 2022 to OCT 2024	No. OCT 2024
Overall		17	22	21	21	+6	-1	+0	+4	+21	+24.7%	22
Medical/ Dental, other		1				-1			-1		-100.0%	
Medical & Dental		1				-1			-1		-100.0%	
Dietitians			1	1	1	+1	0	0	+1	+1	-7.0%	1
Therapy Professions			1	1	1	+1	0	+0	+1	+1	-100.0%	1
H&SC, Other		3				-3			-3		-100.0%	
Health & Social Care Professionals		3	1	1	1	-2	0	+0	-2	+1	-66.2%	1
Management (VIII & above)		3	3	3	3	+0	+0	+0	+0	+3	+14.7%	3
Administrative/ Supervisory (V to VII)		9	7	4	4	-2	-2	+0	-4	+4	-50.1%	5
Clerical (III & IV)		1	3	3	3	+2	0	0	+2	+3	+122.7%	3
Management & Administrative		13	13	10	10	0	-2	+0	-2	+10	-19.1%	11
Care, other		1	9	10	10	+8	+1	+0	+9	+10	+1,886.0%	10
Patient & Client Care		1	9	10	10	+8	+1	+0	+9	+10	+1,886.0%	10



Mental Health

	WTE DEC 2019	WTE DEC 2022	WTE DEC 2023	WTE SEP 2024	WTE OCT 2024	WTE Change 2023	WTE Change 2024	WTE Change SEP 2024	WTE Change Dec 2022 to OCT 2024	WTE Change Dec 2019 to OCT 2024	% WTE Change Dec 2022 to OCT 2024	No. OCT 2024
Mental Health HSE Only OCT 2024												
Overall	357	404	422	417	420	+18	-1	+3	+16	+63	+4.0%	452
Consultants	17	21	23	23	22	+2	-1	-1	+1	+5	+4.2%	26
Registrars	5	11	13	11	11	+2	-3	+0	0	+6	-2.1%	11
SHO/ Interns	4	3	3	4	4	+0	+1	0	+1	0	+33.7%	4
Medical & Dental	26	35	39	37	37	+4	-2	-1	+2	+10	+4.8%	41
Nurse/ Midwife Manager	60	59	56	46	46	-4	-10	0	-14	-14	-22.8%	46
Nurse/ Midwife Specialist & AN/MP	8	17	20	41	42	+3	+22	+1	+25	+33	+145.1%	44
Staff Nurse/ Staff Midwife	107	120	113	105	107	-7	-6	+2	-13	0	-10.9%	113
Nursing/ Midwifery awaiting registration				1	2	+2	+2	+2	+2	+2		4
Pre-registration Nurse/ Midwife Intern				4	2	+2	+2	+2	+2	+2		3
Nursing/ Midwifery Student				5	4		+4	-1	+4	+4	-100.0%	7
Nursing/ Midwifery other	2	4	3	3	3	-1	+0	+0	0	+1	-12.2%	4
Nursing & Midwifery	178	200	192	201	202	-8	+10	+1	+2	+24	+0.8%	214
Dietitians	2	2	5	5	6	+4	+0	+0	+4	+4	+3.9%	6
Occupational Therapists	13	13	14	13	13	0	-1	-1	-1	0	-6.6%	14
Physiotherapists	1	2	1	1	1	0	0	0	-1	0	-12.0%	1
Therapy Professions	16	17	20	18	19	+3	-1	+1	+2	+3	+12.5%	21
Social Care	1									-1	-100.0%	
Psychologists	10	16	19	18	18	+3	-1	+0	+2	+8	+14.3%	21
Social Workers	12	18	17	17	17	-1	0	+1	-1	+5	-4.9%	19
H&SC, Other	4	6	9	12	12	+3	+3	0	+6	+8	+97.5%	13
Health & Social Care Professionals	42	57	65	64	66	+8	+1	+2	+9	+24	+16.3%	74
Management (VIII & above)	1	3	3	3	3	+0	0	0	0	+2	-0.7%	3
Administrative/ Supervisory (V to VII)	12	14	14	10	12	-1	-2	+1	-3	0	-19.4%	12
Clerical (III & IV)	16	9	16	14	14	+7	-2	-1	+5	-3	+53.8%	16
Management & Administrative	29	26	33	28	28	+6	-4	+1	+2	-1	+7.6%	31
Support	30	25	25	21	21	0	-5	0	-5	-9	-19.0%	23
Maintenance/ Technical	3	2	1	1	1	-1	+0	+0	-1	-2	-49.5%	1
General Support	33	27	26	22	22	-1	-5	0	-6	-11	-21.2%	24
Health Care Assistants	46	54	62	62	62	+8	+1	+0	+9	+17	+15.9%	64
Care, other	4	4	5	4	4	+0	-1	+0	-1	+0	-21.7%	4
Patient & Client Care	49	58	66	66	66	+8	0	+0	+8	+17	+13.0%	68



Primary Care

Primary Care HSE Only OCT 2024	WTE DEC 2019	WTE DEC 2022	WTE DEC 2023	WTE SEP 2024	WTE OCT 2024	WTE Change 2023	WTE Change 2024	WTE Change SEP 2024	WTE Change Dec 2022 to OCT 2024	WTE Change Dec 2019 to OCT 2024	% WTE Change Dec 2022 to OCT 2024	No. OCT 2024
Overall	674	727	793	772	790	+66	-3	+18	+63	+117	+8.6%	929
Consultants	4	4	4	5	5	+1	+0	+0	+1	+1	+26.4%	5
Registrars	25	29	43	54	54	+14	+11	0	+25	+29	+84.4%	54
SHO/ Interns			1	4	4	+1	+3	+0	+4	+4	-100.0%	4
Medical/ Dental, other	46	45	43	40	42	-1	-1	+3	-2	-4	-5.1%	62
Medical & Dental	75	77	92	102	105	+14	+13	+3	+27	+30	+35.3%	125
Nurse/ Midwife Manager	20	26	30	32	32	+5	+2	0	+6	+12	+25.2%	34
Nurse/ Midwife Specialist & AN/MP	6	3	10	9	10	+7	0	+1	+7	+4	+290.5%	10
Staff Nurse/ Staff Midwife	48	43	55	42	43	+13	-13	+1	+0	-5	+0.2%	62
Public Health Nurse	117	99	98	96	99	-1	+1	+3	0	-18	0.0%	116
Post-registration Nurse/ Midwife Student	14	7	6	5	8	-6	+2	+2	+1	-6	+35.6%	8
Nursing/ Midwifery Student	14	7	6	5	8	-1	+2	+3	+1	-6	+9.4%	8
Nursing & Midwifery	204	177	200	185	192	+23	-8	+7	+15	-12	+8.2%	230
Dietitians	10	17	17	17	18	+8	+1	+1	+1	+8	+5.8%	21
Occupational Therapists	33	43	45	41	44	+11	-1	-1	+1	+11	-3.2%	53
Orthoptists		2	2	2	2	+2	+0	+0	+0	+2	+0.0%	2
Physiotherapists	32	43	51	48	50	+18	0	0	+7	+18	-0.9%	63
Podiatrists & Chiropodists	1	2	1	2	2	+1	+1	+1	+0	+1	+100.0%	2
Speech & Language Therapists	28	34	43	39	40	+12	-3	-3	+7	+12	-6.2%	49
Therapy Professions	104	140	159	149	156	+19	-3	+7	+16	+52	+11.4%	190
Health Science/ Diagnostics	17	15	16	16	16	+0	0	0	+0	-1	+1.3%	17
Social Care	4	4	4	5	5	+0	+1	+0	+1	+1	+26.7%	5
Pharmacy	1	3	2	1	1	-1	0	+0	-1	+1	-43.0%	2
Psychologists	19	16	22	23	28	+6	+5	+5	+11	+9	+70.1%	32
Social Workers	5	8	7	5	6	-2	-1	+1	-2	+1	-27.3%	8
H&SC, Other	3	6	8	10	10	+2	+3	+0	+5	+7	+85.3%	11
Health & Social Care Professionals	152	192	216	209	222	+24	+6	+13	+30	+71	+15.6%	265
Management (VIII & above)	27	25	16	18	17	-9	+1	-1	-8	-9	-31.8%	18
Administrative/ Supervisory (V to VII)	57	65	56	56	56	-9	0	0	-9	-1	-13.9%	58
Clerical (III & IV)	96	119	127	121	120	+8	-6	-1	+2	+24	+1.3%	134
Management & Administrative	180	208	198	195	193	-10	-5	-2	-15	+13	-7.4%	210
Support	13	9	10	9	9	+1	-1	+0	0	-4	-1.3%	14
General Support	13	9	10	9	9	+1	-1	+0	0	-4	-1.3%	14
Health Care Assistants	6	9	13	11	11	+5	-3	0	+2	+5	+23.8%	13
Care, other	45	54	63	61	59	+9	-4	-2	+4	+14	+7.9%	72
Patient & Client Care	50	63	76	71	69	+14	-7	-2	+6	+19	+10.1%	85



Disabilities

Disabilities HSE Only OCT 2024	WTE DEC 2019	WTE DEC 2022	WTE DEC 2023	WTE SEP 2024	WTE OCT 2024	WTE Change 2023	WTE Change 2024	WTE Change SEP 2024	WTE Change Dec 2022 to OCT 2024	WTE Change Dec 2019 to OCT 2024	% WTE Change Dec 2022 to OCT 2024	No. OCT 2024
Overall	234	208	213	216	223	+5	+9	+7	+14	-11	+6.9%	240
Consultants	2	2	2			+0	-2		-2	-2	-100.0%	
Registrars		1	1			+0	-1		-1		-100.0%	
Medical/ Dental, other	1	1	1			+0	-1		-1	-1	-100.0%	
Medical & Dental	3	4	4			+0	-4		-4	-3	-100.0%	
Nurse/ Midwife Manager	25	21	18	20	20	-3	+3	+1	-1	-4	-3.5%	21
Nurse/ Midwife Specialist & AN/MP			2	3	3	+2	+1	+1	+3	+3	-100.0%	4
Staff Nurse/ Staff Midwife	43	37	46	44	45	+9	-1	+1	+8	+2	+22.3%	48
Nursing & Midwifery	68	58	66	66	69	+8	+3	+2	+11	+1	+18.3%	73
Occupational Therapists	11	6	5	3	4	-7	-1	-1	-3	-7	-20.5%	5
Physiotherapists			1	3	3	+3	+2	+2	+3	+3	+167.0%	3
Speech & Language Therapists	15	6	6	5	6	-10	0	0	0	-10	-6.9%	7
Therapy Professions	26	12	12	10	12	-1	+0	+2	0	-14	-2.4%	15
Social Care	7	7	10	10	10	+3	+0	+0	+3	+4	+40.2%	11
Psychologists	8	8	7	8	10	-1	+3	+2	+2	+2	+29.4%	11
Social Workers	4	3	5	6	6	+2	+1	+0	+3	+1	+117.8%	6
H&SC, Other	1	1	1	1	0	-1	0	0	-1	-1	-69.9%	1
Health & Social Care Professionals	47	31	34	35	38	+3	+4	+4	+7	-8	+22.2%	44
Management (VIII & above)	4	5	4	4	4	-1	+0	+0	-1	+0	-13.6%	4
Administrative/ Supervisory (V to VII)	13	14	16	17	16	+3	-1	-1	+2	+3	+16.0%	17
Clerical (III & IV)	10	12	10	10	10	-2	0	+0	-2	+0	-16.0%	10
Management & Administrative	27	30	30	30	30	+0	-1	-1	0	+3	-1.2%	31
Support	3	2	1			-1	-1		-2	-3	-100.0%	
General Support	3	2	1			-1	-1		-2	-3	-100.0%	
Health Care Assistants	82	76	75	79	79	-1	+4	+0	+3	-3	+4.1%	85
Care, other	4	7	3	6	7	-4	+4	+1	0	+2	-0.3%	7
Patient & Client Care	87	83	78	85	86	-5	+8	+1	+3	-1	+3.7%	92



Older People

	WTE DEC 2019	WTE DEC 2022	WTE DEC 2023	WTE SEP 2024	WTE OCT 2024	WTE Change 2023	WTE Change 2024	WTE Change SEP 2024	WTE Change Dec 2022 to OCT 2024	WTE Change Dec 2019 to OCT 2024	% WTE Change Dec 2022 to OCT 2024	No. OCT 2024
Older People HSE Only OCT 2024												
Overall	341	355	383	368	362	+28	-22	-7	+6	+21	+1.8%	407
Medical/ Dental, other	2	1	1	1	1	0	+0	+0	0	-1	-14.6%	2
Medical & Dental	2	1	1	1	1	0	+0	+0	0	-1	-14.6%	2
Nurse/ Midwife Manager	33	31	38	34	34	+6	-3	0	+3	+2	+8.5%	35
Nurse/ Midwife Specialist & AN/MP	1		8	8	5	+8	-3	-3	+5	+4	-100.0%	6
Staff Nurse/ Staff Midwife	88	103	98	100	97	-4	-1	-2	-5	+10	-5.2%	103
Nursing & Midwifery	121	134	144	142	137	+10	-7	-6	+2	+16	+1.7%	144
Dietitians		1	1	1	1	+1	+0	+0	+0	+1	+0.0%	2
Occupational Therapists	4	1	4	3	3	-1	-1	-1	+2	-1	-22.6%	4
Physiotherapists	6	2	9	8	8	+2	-1	-1	+6	+2	-7.8%	9
Speech & Language Therapists	2		2	1	1	-1	-1	-1	+1	-1	-50.0%	1
Therapy Professions	12	4	16	13	13	+13	-3	+0	+10	+1	+274.2%	16
Pharmacy	1	2	3	3	3	+1	+1	+0	+1	+2	+51.5%	3
Psychologists	2									-2	-100.0%	
Social Workers	5									-5	-100.0%	
H&SC, Other			1	1	1	+1	+0	+0	+1	+1	-100.0%	1
Health & Social Care Professionals	19	6	20	17	17	+14	-2	+0	+12	-2	+213.1%	20
Management (VIII & above)	3	6	10	9	10	+4	0	+1	+4	+7	+70.8%	10
Administrative/ Supervisory (V to VII)	9	16	18	18	18	+2	+0	+0	+3	+9	+16.1%	20
Clerical (III & IV)	12	14	13	13	12	-1	-1	-1	-2	+0	-11.1%	13
Management & Administrative	24	35	41	40	41	+6	-1	+0	+5	+16	+14.5%	43
Support	39	36	36	35	35	+0	-2	-1	-2	-5	-4.4%	38
General Support	39	36	36	35	35	+0	-2	-1	-2	-5	-4.4%	38
Health Care Assistants	133	141	140	132	131	-1	-9	-1	-9	-1	-6.5%	159
Care, other	2	3	2	1	1	-1	-1	+0	-2	-2	-79.6%	1
Patient & Client Care	135	143	141	133	132	-2	-10	-1	-11	-3	-7.8%	160



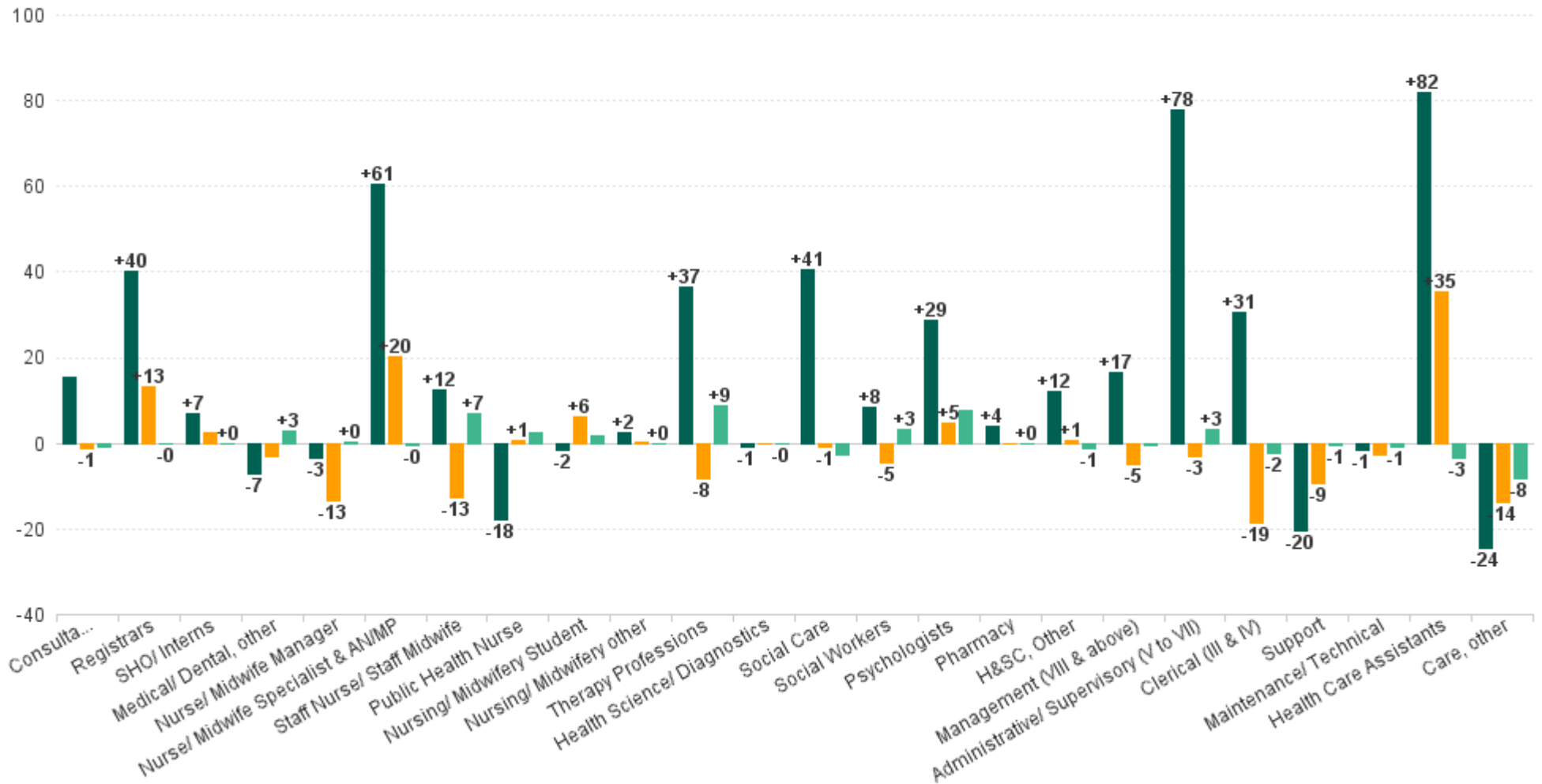
CHO Operations

CHO Operations HSE Only OCT 2024	WTE DEC 2019	WTE DEC 2022	WTE DEC 2023	WTE SEP 2024	WTE OCT 2024	WTE Change 2023	WTE Change 2024	WTE Change SEP 2024	WTE Change Dec 2022 to OCT 2024	WTE Change Dec 2019 to OCT 2024	% WTE Change Dec 2022 to OCT 2024	No. OCT 2024
Overall		60	75	68	69	+15	-6	+1	+8	+69	+13.9%	71
Nurse/ Midwife Manager		1	1	1	1	+0	+0	+0	+0	+1	+1.0%	1
Nursing & Midwifery		1	1	1	1	+0	+0	+0	+0	+1	+1.0%	1
Pharmacy		2	1	1	1	-1	+0	+0	-1	+1	-51.9%	1
Social Workers		9	9	8	8	0	-1	+0	-1	+8	-10.3%	9
Health & Social Care Professionals		12	10	9	9	-1	-1	+0	-2	+9	-17.8%	10
Management (VIII & above)		12	18	13	13	+6	-5	0	+1	+13	+7.7%	13
Administrative/ Supervisory (V to VII)		28	35	34	34	+7	-2	+0	+5	+34	+19.4%	35
Clerical (III & IV)		8	11	11	12	+3	+1	+0	+4	+12	+52.5%	12
Management & Administrative		48	64	58	58	+16	-6	+0	+10	+58	+21.8%	60



WTE Change by Staff Group

■ WTE change since DEC 2019 ■ WTE change since DEC 2023 ■ WTE change since SEP 2024



Employment Report by WTE, Headcount, Gender, Full-Time / Part-Time etc. OCT 2024

CHO 6 OCT 2024

OCT 2024	WTE OCT 2024	No. OCT 2024	WTE : No	Number Male %	Number Female %	Male WTE : No.	Female WTE : No	Perm Count %	Perm Count Male %	Perm Count Female %	Fulltime Count %	Part time Count %	FT Count Male %	FT Count Female %
Total	3,776	4,339	1:0.9	22.72%	77.28%	1:0.9	1:0.9	89.63%	20.12%	69.51%	74.93%	25.07%	86.61%	71.49%
Consultant Dentistry	8	10	1:0.8	50.00%	50.00%	1:0.8	1:0.9	100.00%	50.00%	50.00%	70.00%	30.00%	80.00%	60.00%
Consultant Medicine	3	3	1:0.8		100.00%	1:	1:0.8	100.00%		100.00%	66.67%	33.33%		66.67%
Consultant Pathology	1	1	1:1		100.00%	1:	1:1	100.00%		100.00%	100.00%			100.00%
Consultant Psychiatry	51	62	1:0.8	40.32%	59.68%	1:0.9	1:0.8	83.87%	37.10%	46.77%	77.42%	22.58%	88.00%	70.27%
Consultant Radiology	1	1	1:1	100.00%		1:1	1:	100.00%	100.00%		100.00%		100.00%	
Dentists	25	35	1:0.7	25.71%	74.29%	1:0.6	1:0.8	100.00%	25.71%	74.29%	40.00%	60.00%	44.44%	38.46%
Other Medical	19	30	1:0.6	10.00%	90.00%	1:0.3	1:0.7	83.33%	10.00%	73.33%	26.67%	73.33%		29.63%
Registrar	72	74	1:1	22.97%	77.03%	1:1	1:1	2.70%		2.70%	95.95%	4.05%	100.00%	94.74%
Senior House Officer	23	30	1:0.8	23.33%	76.67%	1:0.8	1:0.7				100.00%		100.00%	100.00%
Senior Registrar	14	15	1:0.9	26.67%	73.33%	1:1	1:0.9	13.33%		13.33%	93.33%	6.67%	100.00%	90.91%
Specialist Registrar	3	3	1:1	33.33%	66.67%	1:1	1:1	33.33%		33.33%	100.00%		100.00%	100.00%
Medical & Dental	219	264	1:0.8	27.27%	72.73%	1:0.9	1:0.8	50.00%	15.53%	34.47%	75.38%	24.62%	83.33%	72.40%
Advanced Nurse/ Midwife Practitioner	6	6	1:1		100.00%	1:	1:1	83.33%		83.33%	100.00%			100.00%
Adv. Nurse/ Midwife, Candidate	8	10	1:0.8	10.00%	90.00%	1:0.1	1:0.9	70.00%		70.00%	90.00%	10.00%	100.00%	88.89%
Clinical Nurse/ Midwife Manager 1	48	49	1:1	22.45%	77.55%	1:1	1:1	97.96%	22.45%	75.51%	95.92%	4.08%	100.00%	94.74%
Clinical Nurse/ Midwife Manager 2	78	81	1:1	23.46%	76.54%	1:1	1:1	98.77%	23.46%	75.31%	96.30%	3.70%	94.74%	96.77%
Clinical Nurse/ Midwife Manager 3	21	22	1:0.9	22.73%	77.27%	1:1	1:0.9	90.91%	22.73%	68.18%	90.91%	9.09%	100.00%	88.24%
Clinical Nurse/ Midwife Spec., Candidate	1	3	1:0.3		100.00%	1:	1:0.3	66.67%		66.67%	100.00%			100.00%
Clinical Nurse/ Midwife Specialist	66	72	1:0.9	11.11%	88.89%	1:1	1:0.9	100.00%	11.11%	88.89%	81.94%	18.06%	100.00%	79.69%
Director Nursing/Midwifery, Assistant	44	48	1:0.9	16.67%	83.33%	1:0.8	1:0.9	97.92%	16.67%	81.25%	89.58%	10.42%	100.00%	87.50%
Director of Nursing/Midwifery	17	17	1:1	11.76%	88.24%	1:1	1:1	100.00%	11.76%	88.24%	100.00%		100.00%	100.00%
Nursing Education/Clinical	4	5	1:0.9	40.00%	60.00%	1:1	1:0.8	100.00%	40.00%	60.00%	100.00%		100.00%	100.00%
Nursing/ Midwifery awaiting registration	2	4	1:0.6		100.00%	1:	1:0.6				100.00%			100.00%
Post-registration Nurse/ Midwife Student	8	8	1:1		100.00%	1:	1:1	37.50%		37.50%	100.00%			100.00%
Pre-registration Nurse/ Midwife Intern	2	3	1:0.5		100.00%	1:	1:0.5				100.00%			100.00%
Public Health Nurse	99	116	1:0.9		100.00%	1:	1:0.9	98.28%		98.28%	75.86%	24.14%		75.86%
Staff Midwives	1	1	1:1		100.00%	1:	1:1	100.00%		100.00%	100.00%			100.00%
Staff Nurse [Intellectual Disability]	84	90	1:0.9	23.33%	76.67%	1:1	1:0.9	91.11%	20.00%	71.11%	82.22%	17.78%	95.24%	78.26%
Staff Nurse [Psychiatric]	111	119	1:0.9	26.89%	73.11%	1:0.9	1:0.9	95.80%	25.21%	70.59%	89.08%	10.92%	90.63%	88.51%
Staff Nurses [General/ Children's]	358	396	1:0.9	14.90%	85.10%	1:0.9	1:0.9	92.42%	12.63%	79.80%	79.80%	20.20%	84.75%	78.93%
Nursing & Midwifery	958	1,050	1:0.9	16.00%	84.00%	1:0.9	1:0.9	93.62%	14.57%	79.05%	84.48%	15.52%	91.67%	83.11%
Counsellor Therapists	16	17	1:0.9	23.53%	76.47%	1:1	1:0.9	100.00%	23.53%	76.47%	94.12%	5.88%	100.00%	92.31%
Dental Hygienists	5	6	1:0.8		100.00%	1:	1:0.8	66.67%		66.67%	66.67%	33.33%		66.67%
Dietitians	29	35	1:0.8	5.71%	94.29%	1:1	1:0.8	100.00%	5.71%	94.29%	74.29%	25.71%	100.00%	72.73%
Medical Science	15	16	1:0.9	37.50%	62.50%	1:0.9	1:0.9	93.75%	31.25%	62.50%	87.50%	12.50%	83.33%	90.00%
Occupational Therapists	98	116	1:0.8	6.03%	93.97%	1:0.9	1:0.8	98.28%	6.03%	92.24%	70.69%	29.31%	85.71%	69.72%
Orthoptists	2	2	1:1		100.00%	1:	1:1	100.00%		100.00%	100.00%			100.00%
Other Health & Social Care	5	6	1:0.9	33.33%	66.67%	1:1	1:0.9	100.00%	33.33%	66.67%	83.33%	16.67%	100.00%	75.00%
Pharmacists	6	8	1:0.8	12.50%	87.50%	1:1	1:0.8	100.00%	12.50%	87.50%	75.00%	25.00%	100.00%	71.43%
Pharmacy Technicians	1	1	1:1		100.00%	1:	1:1	100.00%		100.00%	100.00%			100.00%
Physiotherapists	79	96	1:0.8	22.92%	77.08%	1:0.9	1:0.8	94.79%	19.79%	75.00%	65.63%	34.38%	77.27%	62.16%
Play Therapists/ Specialists	0	1	1:0.5		100.00%	1:	1:0.5	100.00%		100.00%		100.00%		
Podiatrists & Chiropodists	2	3	1:0.7		100.00%	1:	1:0.7	100.00%		100.00%	66.67%	33.33%		66.67%
Psychologists	85	97	1:0.9	13.40%	86.60%	1:0.9	1:0.9	80.41%	10.31%	70.10%	79.38%	20.62%	76.92%	79.76%
Radiographers	3	4	1:0.6	50.00%	50.00%	1:0.8	1:0.5	100.00%	50.00%	50.00%	100.00%		100.00%	100.00%
Social Care	405	465	1:0.9	24.73%	75.27%	1:0.9	1:0.9	90.54%	23.01%	67.53%	61.72%	38.28%	73.91%	57.71%
Social Workers	66	74	1:0.9	9.46%	90.54%	1:1	1:0.9	98.65%	9.46%	89.19%	83.78%	16.22%	100.00%	82.09%
Speech & Language Therapists	64	79	1:0.8	3.80%	96.20%	1:1	1:0.8	94.94%	3.80%	91.14%	64.56%	35.44%	100.00%	63.16%
Health & Social Care Professionals	881	1,026	1:0.9	17.93%	82.07%	1:0.9	1:0.8	92.40%	16.47%	75.93%	68.42%	31.58%	78.26%	66.27%
CEO/Chief Officer	1	2	1:0.6		100.00%	1:	1:0.6	100.00%		100.00%	100.00%			100.00%
General Administrative (III & IV)	268	310	1:0.9	18.71%	81.29%	1:0.9	1:0.9	88.06%	16.13%	71.94%	75.16%	24.84%	82.76%	73.41%
General Managers	19	19	1:1	47.37%	52.63%	1:1	1:1	94.74%	42.11%	52.63%	100.00%		100.00%	100.00%
Middle Management (V-VII)	248	274	1:0.9	25.55%	74.45%	1:0.9	1:0.9	94.89%	24.82%	70.07%	89.05%	10.95%	98.57%	85.78%
National Director, Assistant	1	1	1:1	100.00%		1:1	1:	100.00%	100.00%		100.00%		100.00%	
Other Executives	9	10	1:0.9	30.00%	70.00%	1:1	1:0.9	100.00%	30.00%	70.00%	100.00%		100.00%	100.00%
VIII	54	59	1:0.9	33.90%	66.10%	1:0.9	1:0.9	96.61%	32.20%	64.41%	98.31%	1.69%	100.00%	97.44%



OCT 2024	WTE OCT 2024	No. OCT 2024	WTE : No	Number Male %	Number Female %	Male WTE : No.	Female WTE : No	Perm Count %	Perm Count Male %	Perm Count Female %	Fulltime Count %	Part time Count %	FT Count Male %	FT Count Female %
Total	3,776	4,339	1:0.9	22.72%	77.28%	1:0.9	1:0.9	89.63%	20.12%	69.51%	74.93%	25.07%	86.61%	71.49%
Management & Administrative	600	675	1:0.9	23.85%	76.15%	1:0.9	1:0.9	92.00%	22.07%	69.93%	84.00%	16.00%	93.17%	81.13%
Catering	28	31	1:0.9	58.06%	41.94%	1:0.9	1:0.8	87.10%	48.39%	38.71%	77.42%	22.58%	88.89%	61.54%
Household Services	94	111	1:0.8	33.33%	66.67%	1:0.9	1:0.8	91.89%	31.53%	60.36%	63.96%	36.04%	83.78%	54.05%
Maintenance	17	20	1:0.9	100.00%		1:0.9	1:	90.00%	90.00%		100.00%		100.00%	
Other Labs & Associated	3	3	1:1		100.00%	1:	1:1	100.00%		100.00%	100.00%			100.00%
Other Support	21	31	1:0.7	58.06%	41.94%	1:0.7	1:0.7	90.32%	51.61%	38.71%	64.52%	35.48%	72.22%	53.85%
Portering	25	28	1:0.9	100.00%		1:0.9	1:	92.86%	92.86%		96.43%	3.57%	96.43%	
Technical Services	4	4	1:1	100.00%		1:1	1:	100.00%	100.00%		100.00%		100.00%	
General Support	192	228	1:0.8	54.82%	45.18%	1:0.9	1:0.8	91.23%	50.00%	41.23%	74.12%	25.88%	88.80%	56.31%
Attendant/ Aide	25	36	1:0.7	11.11%	88.89%	1:0.8	1:0.7	69.44%	2.78%	66.67%	25.00%	75.00%	50.00%	21.88%
Health Care Assistant/ Care Assistant	570	637	1:0.9	29.51%	70.49%	1:1	1:0.9	91.84%	27.00%	64.84%	67.82%	32.18%	86.70%	59.91%
Health Promotion	17	17	1:1	29.41%	70.59%	1:1	1:1	100.00%	29.41%	70.59%	100.00%		100.00%	100.00%
Health & Social Care Assistants	25	27	1:0.9	33.33%	66.67%	1:1	1:0.9	62.96%	18.52%	44.44%	92.59%	7.41%	100.00%	88.89%
Home Care Services	1	1	1:1	100.00%		1:1	1:	100.00%	100.00%		100.00%		100.00%	
Other Care Grades	101	149	1:0.7	6.04%	93.96%	1:1	1:0.7	98.66%	6.04%	92.62%	67.79%	32.21%	100.00%	65.71%
Pastoral Care	2	5	1:0.4	80.00%	20.00%	1:0.4	1:0.5	100.00%	80.00%	20.00%		100.00%		
Workshop Services	185	224	1:0.8	25.00%	75.00%	1:0.9	1:0.8	89.29%	22.32%	66.96%	63.39%	36.61%	82.14%	57.14%
Patient & Client Care	926	1,096	1:0.8	25.18%	74.82%	1:0.9	1:0.8	90.97%	22.54%	68.43%	66.33%	33.67%	85.14%	60.00%

Employment Report by WTE, Headcount, Gender, Full-Time / Part-Time etc. OCT 2024

CHO 6 OCT 2024

OCT 2024	WTE OCT 2024	No. OCT 2024	WTE : No	Number Male %	Number Female %	Male WTE : No.	Female WTE : No	Perm Count %	Number Male %	Number Female %	Fulltime Count %	Part time Count %	FT Count Male %	FT Count Female %
Total	3,776	4,339	1:0.9	22.72%	77.28%	1:0.9	1:0.9	89.63%	20.12%	69.51%	74.93%	25.07%	86.61%	71.49%
Disabilities	1,247	1,435	1:0.9	24.74%	75.26%	1:0.9	1:0.9	89.27%	22.16%	67.11%	65.78%	34.22%	80.56%	60.93%
Mental Health	678	754	1:0.9	28.25%	71.75%	1:0.9	1:0.9	87.53%	24.54%	63.00%	84.48%	15.52%	90.61%	82.07%
Older People	836	909	1:0.9	25.96%	74.04%	1:0.9	1:0.9	94.39%	24.09%	70.30%	80.64%	19.36%	88.14%	78.01%
Primary Care	926	1,148	1:0.8	14.11%	85.89%	1:0.8	1:0.8	87.11%	11.41%	75.70%	73.95%	26.05%	91.36%	71.10%
CHO Operations	69	71	1:1	21.13%	78.87%	1:1	1:1	97.18%	21.13%	76.06%	97.18%	2.82%	100.00%	96.43%
Community Health & Wellbeing	21	22	1:1	22.73%	77.27%	1:1	1:1	95.45%	22.73%	72.73%	86.36%	13.64%	80.00%	88.24%



Employment by Grade Group OCT 2024	WTE DEC 2019	WTE DEC 2022	WTE DEC 2023	WTE SEP 2024	WTE OCT 2024	WTE Change 2023	WTE Change 2024	WTE Change SEP 2024	WTE Change Dec 2022 to OCT 2024	WTE Change Dec 2019 to OCT 2024	% WTE Change Dec 2022 to OCT 2024	No. OCT 2024
Overall	3,378	3,620	3,789	3,760	3,776	+169	-13	+16	+156	+398	+4.3%	4,339
Consultant Dentistry	7	6	8	8	8	+2	+0	+0	+2	+1	+30.9%	10
Consultant Medicine	1	3	2	3	3	-1	+1	+0	0	+2	-0.8%	3
Consultant Pathology			1	1	1	+1	+0	+0	+1	+1	-100.0%	1
Consultant Psychiatry	39	48	54	52	51	+5	-3	-1	+3	+12	+5.8%	62
Consultant Radiology	1	1	1	1	1	+0	+0	+0	+0	+0	+0.0%	1
Consultants	48	58	65	65	64	+7	-1	-1	+6	+16	+9.9%	77
Registrar	40	51	62	72	72	+11	+10	0	+21	+31	+41.2%	74
Senior Registrar	7	12	12	14	14	+0	+2	+0	+3	+7	+23.0%	15
Specialist Registrar	1	1	2	3	3	+1	+1	+0	+2	+2	+200.0%	3
Registrars	49	63	76	89	89	+12	+13	0	+26	+40	+40.4%	92
Senior House Officer	16	16	20	22	23	+4	+3	+0	+6	+7	+40.1%	30
SHO/ Interns	16	16	20	22	23	+4	+3	+0	+6	+7	+40.1%	30
Dentists	27	26	25	25	25	-1	+0	+0	-1	-1	-3.5%	35
Other Medical	25	22	22	16	19	0	-3	+3	-3	-6	-15.6%	30
Medical/ Dental, other	51	49	47	41	44	-1	-3	+3	-4	-7	-9.0%	65
Medical & Dental	164	186		218	219	+22	+11	+2	+33	+56	+17.9%	+264
Clinical Nurse/ Midwife Manager 1	52	47	45	47	48	-2	+3	+0	+1	-4	+1.9%	49
Clinical Nurse/ Midwife Manager 2	91	87	88	78	78	+1	-10	+0	-9	-13	-10.2%	81
Clinical Nurse/ Midwife Manager 3	18	23	24	20	21	+1	-4	+0	-2	+3	-10.2%	22
Director Nursing/Midwifery, Assistant	35	37	46	44	44	+8	-2	0	+7	+9	+17.9%	48
Director of Nursing/Midwifery	14	16	18	17	17	+2	-1	+0	+1	+3	+5.6%	17
Nurse/ Midwife Manager	211	210	221	207	207	+11	-13	+0	-3	-3	-1.3%	217
Adv. Nurse/ Midwife, Candidate	0	3	11	10	8	+8	-2	-1	+6	+8	+217.7%	10
Advanced Nurse/ Midwife Practitioner	1	2	4	7	6	+1	+2	-1	+4	+5	+151.5%	6
Clinical Nurse/ Midwife Spec., Candidate			1		1	+1	0	+1	+1	+1	-100.0%	3
Clinical Nurse/ Midwife Specialist	20	32	46	65	66	+14	+20	+1	+34	+46	+109.0%	72
Nurse/ Midwife Specialist & AN/MP	21	37	61	82	81	+25	+20	0	+45	+61	+121.8%	91
Staff Midwives			1	1	1	+1	+0	+0	+1	+1	-100.0%	1
Staff Nurse [Intellectual Disability]	50	78	79	86	84	+2	+5	-2	+6	+34	+8.2%	90
Staff Nurse [Psychiatric]	133	125	125	106	111	-1	-13	+6	-14	-21	-11.0%	119
Staff Nurses [General/ Children's]	359	353	362	355	358	+9	-4	+3	+5	-2	+1.4%	396
Staff Nurse/ Staff Midwife	542	556	567	547	554	+11	-13	+7	-1	+12	-0.3%	606
Public Health Nurse	117	99	98	96	99	-1	+1	+3	0	-18	0.0%	116
Public Health Nurse	117	99	98	96	99	-1	+1	+3	0	-18	0.0%	116
Nursing/ Midwifery awaiting registration				1	2		+2	+1	+2	+2	-100.0%	4
Post-registration Nurse/ Midwife Student	14	7	6	5	8	-1	+2	+3	+1	-6	+9.4%	8
Pre-registration Nurse/ Midwife Intern				4	2		+2	-3	+2	+2	-100.0%	3
Nursing/ Midwifery Student	14	7	6	10	12	-1	+6	+2	+5	-2	+63.3%	15
Nursing Education/Clinical	2	5	4	4	4	-1	+0	+0	0	+2	-9.7%	5
Nursing/ Midwifery other	2	5	4	4	4	-1	+0	+0	0	+2	-9.7%	5
Nursing & Midwifery	905	913		947	958	+43	+1	+11	+45	+52	+4.9%	+1,050
Dietitians	15	22	28	28	29	+6	+2	+1	+7	+15	+33.3%	35
Occupational Therapists	92	99	101	93	98	+2	-3	+5	-1	+6	-0.9%	116
Orthoptists		2	2	2	2	+0	+0	+0	+0	+2	+1.0%	2
Physiotherapists	60	68	83	78	79	+15	-4	+1	+11	+19	+16.5%	96
Podiatrists & Chiropodists	2	2	1	2	2	-1	+1	+0	+0	+1	+0.9%	3
Speech & Language Therapists	70	59	68	62	64	+9	-4	+2	+5	-6	+8.1%	79
Therapy Professions	238	252	283	266	275	+31	-8	+9	+23	+37	+8.9%	331
Medical Science	16	14	15	15	15	+0	0	0	+0	-1	+1.3%	16
Radiographers	2	2	3	3	3	+0	+0	+0	+0	+0	+0.4%	4
Health Science/ Diagnostics	18	17	17	17	17	+0	0	0	+0	-1	+1.2%	20
Social Care	364	413	406	408	405	-8	-1	-3	-9	+41	-2.1%	465
Social Care	364	413	406	408	405	-8	-1	-3	-9	+41	-2.1%	465

Employment by Grade Group OCT 2024	WTE DEC 2019	WTE DEC 2022	WTE DEC 2023	WTE SEP 2024	WTE OCT 2024	WTE Change 2023	WTE Change 2024	WTE Change SEP 2024	WTE Change Dec 2022 to OCT 2024	WTE Change Dec 2019 to OCT 2024	% WTE Change Dec 2022 to OCT 2024	No. OCT 2024
Overall	3,378	3,620	3,789	3,760	3,776	+169	-13	+16	+156	+398	+4.3%	4,339
Pharmacists	3	8	6	6	6	-1	+0	+0	-1	+4	-16.7%	8
Pharmacy Technicians	1	1	1	1	1	+0	+0	+0	+0	+0	+1.0%	1
Pharmacy	4	9	7	7	7	-1	+0	+0	-1	+4	-14.7%	9
Psychologists	56	68	80	78	85	+13	+5	+8	+17	+29	+25.6%	97
Psychologists	56	68	80	78	85	+13	+5	+8	+17	+29	+25.6%	97
Social Workers	57	71	70	62	66	-1	-5	+3	-6	+8	-7.9%	74
Social Workers	57	71	70	62	66	-1	-5	+3	-6	+8	-7.9%	74
Counsellor Therapists	4	6	13	17	16	+7	+3	-1	+10	+11	+164.8%	17
Dental Hygienists	4	5	5	5	5	0	0	+0	0	+1	-4.7%	6
Other Health & Social Care	6	5	4	6	5	-2	+2	0	+0	0	+5.0%	6
HSCP Trainees/Students			4			+4	-4				-100.0%	
Play Therapists/ Specialists	0	0	1	0	0	+0	0	+0	+0	+0	+0.0%	1
H&SC, Other	14	17	26	28	27	+9	+1	-1	+10	+12	+58.8%	30
Health & Social Care Professionals	752	847		866	881	+43	-8	+16	+34	+129	+4.1%	+1,026
General Managers	11	17	20	19	19	+3	-1	-1	+1	+8	+8.4%	19
National Director, Assistant	3	10	2	1	1	-8	-1	+0	-9	-2	-89.7%	1
Other Executives	19	22	12	9	9	-10	-2	+0	-12	-10	-56.8%	10
VIII	32	44	51	53	54	+7	+3	+1	+10	+22	+22.7%	59
CEO/Chief Officer	3	3	4	2	1	+2	-3	-1	-1	-1	-49.2%	2
Management (VIII & above)	68	95	89	85	84	-6	-5	-1	-11	+17	-11.5%	91
Middle Management (V-VII)	169	241	251	245	248	+10	-3	+3	+7	+79	+2.8%	274
Other Administrative	1									-1	-100.0%	
Administrative/ Supervisory (V to VII)	170	241	251	245	248	+10	-3	+3	+7	+78	+2.8%	274
General Administrative (III & IV)	237	259	286	270	268	+27	-19	-2	+9	+31	+3.3%	310
Clerical (III & IV)	237	259	286	270	268	+27	-19	-2	+9	+31	+3.3%	310
Management & Administrative	475	596		600	600	+31	-27	+0	+4	+125	+0.7%	+675
Catering	26	24	30	29	28	+6	-2	-1	+4	+2	+16.3%	31
Household Services	121	107	98	93	94	-9	-5	+0	-14	-28	-12.9%	111
Other Labs & Associated	1	1	4	3	3	+3	-1	0	+2	+2	+260.8%	3
Other Support	19	24	22	21	21	-2	-1	+0	-3	+2	-10.6%	31
Portering	24	21	25	26	25	+5	0	0	+5	+2	+22.1%	28
Support	191	177	180	171	171	+3	-9	-1	-6	-20	-3.3%	204
Maintenance	23	17	19	18	17	+2	-2	-1	0	-5	-1.0%	20
Technical Services		5	5	4	4	+0	-1	+0	-1	+4	-20.0%	4
Maintenance/ Technical	23	22	24	22	21	+2	-3	-1	-1	-1	-5.3%	24
General Support	214	199		193	192	+5	-12	-2	-7	-22	-3.6%	+228
Attendant/ Aide	138	26	27	28	25	+1	-1	-3	0	-113	-1.3%	36
Health & Social Care Assistants	11	12	22	25	25	+10	+3	0	+13	+14	+114.2%	27
Health Care Assistant/ Care Assistant	389	519	536	570	570	+18	+33	0	+51	+181	+9.8%	637
Health Care Assistants	538	556	585	623	620	+29	+35	-3	+64	+82	+11.5%	700
Health Promotion		1	16	17	17	+15	+1	+0	+16	+17	+3,286.0%	17
Home Care Services		1	1	1	1	+0	+0	+0	+0	+1	+1.0%	1
Other Care Grades	104	112	105	102	101	-7	-4	-1	-11	-3	-9.7%	149
Pastoral Care	5	4	4	2	2	+0	-2	+0	-2	-3	-45.5%	5
Workshop Services	221	206	193	192	185	-13	-9	-7	-22	-37	-10.5%	224
Care, other	330	324	319	314	306	-4	-14	-8	-18	-24	-5.5%	396
Patient & Client Care	869	880		937	926	+25	+21	-12	+46	+57	+5.2%	+1,096



CHO 6 Employment Report: OCT 2024

Month-on-Month Summary

Month-on-Month Summary	% WTE change since SEP 2024	WTE change since SEP 2024	Community Health & Wellbeing	Mental Health	Primary Care	Disabilities	Older People	CHO Operations
Consultants	-1.6%	-1.0		-1.0	+0.0	+0.0	+0.0	
Registrars	-0.1%	-0.1		+0.0	-0.1		+0.0	
SHO/ Interns	+0.3%	+0.1		+0.1	+0.0			
Medical/ Dental, other	+6.8%	+2.8			+2.8		+0.0	
Medical & Dental	+0.8%	+1.7		-1.0	+2.7	+0.0	+0.0	
Nurse/ Midwife Manager	+0.2%	+0.4		-0.4	-0.7	+1.3	+0.3	+0.0
Nurse/ Midwife Specialist & AN/MP	-0.6%	-0.5		+1.3	+0.5	+0.6	-2.9	
Staff Nurse/ Staff Midwife	+1.2%	+6.8		+4.7	+1.4	+3.2	-2.4	
Public Health Nurse	+2.7%	+2.6			+2.6			
Nursing/ Midwifery Student	+15.0%	+1.6		-1.4	+3.0			
Nursing/ Midwifery other	+1.2%	+0.1		+0.1		+0.0		
Nursing & Midwifery	+1.2%	+11.0		+4.3	+6.7	+5.1	-5.1	+0.0
Therapy Professions	+3.3%	+8.9	+0.0	+1.8	+7.0	-0.5	+0.5	
Health Science/ Diagnostics	-1.2%	-0.2			-0.2			
Social Care	-0.7%	-2.8		+1.2	+0.0	-4.0		
Pharmacy	+0.9%	+0.1			+0.1		-0.0	+0.0
Psychologists	+9.8%	+7.6		+0.2	+4.8	+2.6	+0.0	
Social Workers	+5.2%	+3.2		+1.8	+1.1	+0.9	-1.0	+0.5



H&SC, Other	-4.0%	-1.1		-1.1	+0.0	-0.1	+0.0	
Health & Social Care Professionals	+1.8%	+15.7	+0.0	+4.1	+12.8	-1.2	-0.6	+0.5
Management (VIII & above)	-0.6%	-0.6	+0.1	-0.1	-0.9	-0.3	+0.8	-0.2
Administrative/ Supervisory (V to VII)	+1.4%	+3.3	+0.1	+1.4	-0.1	+1.6	+0.2	+0.1
Clerical (III & IV)	-0.9%	-2.4	-0.0	-0.5	-1.2	-0.2	-1.0	+0.5
Management & Administrative	+0.1%	+0.4	+0.1	+0.9	-2.1	+1.0	+0.1	+0.4
Support	-0.3%	-0.6		-0.1	+0.0	-0.9	+0.4	
Maintenance/ Technical	-4.5%	-1.0		+0.0	+0.0	-1.0	+0.0	
General Support	-0.8%	-1.6		-0.1	+0.0	-1.9	+0.4	
Health Care Assistants	-0.5%	-3.3		-0.8	+0.4	-2.7	-0.1	
Care, other	-2.6%	-8.3	+0.0	-0.4	-2.0	-6.0	+0.0	
Patient & Client Care	-1.2%	-11.6	+0.0	-1.2	-1.5	-8.7	-0.1	



CHO 6 Employment Report: OCT 2024

Year-to-Date Summary

Year-to-Date Summary	% WTE change since DEC 2023	WTE change since DEC 2023	Community Health & Wellbeing	Mental Health	Primary Care	Disabilities	Older People	CHO Operations
Consultants	-2.1%	-1.4		-0.2	+0.3	-2.5	+1.0	
Registrars	+17.6%	+13.3		+2.5	+11.8	-1.0	+0.0	
SHO/ Interns	+12.8%	+2.6		+0.0	+2.5			
Medical/ Dental, other	-6.5%	-3.1			-1.1	-1.0	-1.0	
Medical & Dental	+5.5%	+11.4		+2.3	+13.5	-4.5	+0.0	
Nurse/ Midwife Manager	-6.1%	-13.4		-12.1	+0.9	+0.1	-2.4	+0.0
Nurse/ Midwife Specialist & AN/MP	+32.8%	+20.1		+21.7	-0.1	+1.4	-2.9	
Staff Nurse/ Staff Midwife	-2.2%	-12.6		-2.9	-10.9	+2.0	-0.8	
Public Health Nurse	+0.7%	+0.7			+0.7			
Nursing/ Midwifery Student	+102.4%	+6.0		+3.9	+2.1			
Nursing/ Midwifery other	+7.5%	+0.3		+0.3		+0.0		
Nursing & Midwifery	+0.1%	+1.1		+11.0	-7.3	+3.5	-6.1	+0.0
Therapy Professions	-2.9%	-8.1	-0.1	-1.8	-2.9	-0.9	-2.5	
Health Science/ Diagnostics	-0.6%	-0.1			-0.1			
Social Care	-0.2%	-0.8		-0.1	+1.0	-1.6		
Pharmacy	+0.8%	+0.1			-0.3		+0.3	+0.0



Psychologists	+5.9%	+4.8		-3.2	+5.4	+2.5	+0.0	
Social Workers	-6.6%	-4.6		-2.6	-0.4	-0.9	+0.0	-0.7
H&SC, Other	+2.3%	+0.6		-2.1	+2.8	-0.1	+0.0	
Health & Social Care Professionals	-0.9%	-8.1	-0.1	-9.8	+5.6	-1.0	-2.2	-0.7
Management (VIII & above)	-5.5%	-4.9	+0.0	-0.1	+0.7	-1.4	+1.0	-5.1
Administrative/ Supervisory (V to VII)	-1.2%	-3.1	-2.1	-0.5	-0.2	+6.9	-5.5	-1.7
Clerical (III & IV)	-6.5%	-18.6	-0.1	-1.2	-6.4	-9.2	-2.8	+1.0
Management & Administrative	-4.2%	-26.6	-2.2	-1.7	-5.9	-3.7	-7.3	-5.8
Support	-5.1%	-9.2		-5.8	-0.5	+0.0	-2.9	
Maintenance/ Technical	-11.6%	-2.8		-1.8	+0.0	-2.0	+1.0	
General Support	-5.9%	-12.0		-7.6	-0.5	-2.0	-1.9	
Health Care Assistants	+6.0%	+35.2		+2.6	-2.8	+40.4	-5.0	
Care, other	-4.3%	-13.8	+1.0	-1.8	-4.5	-8.4	+0.0	
Patient & Client Care	+2.4%	+21.5	+1.0	+0.8	-7.3	+32.0	-5.0	



CHO 6 Employment Report: OCT 2024

Year-on-Year Summary

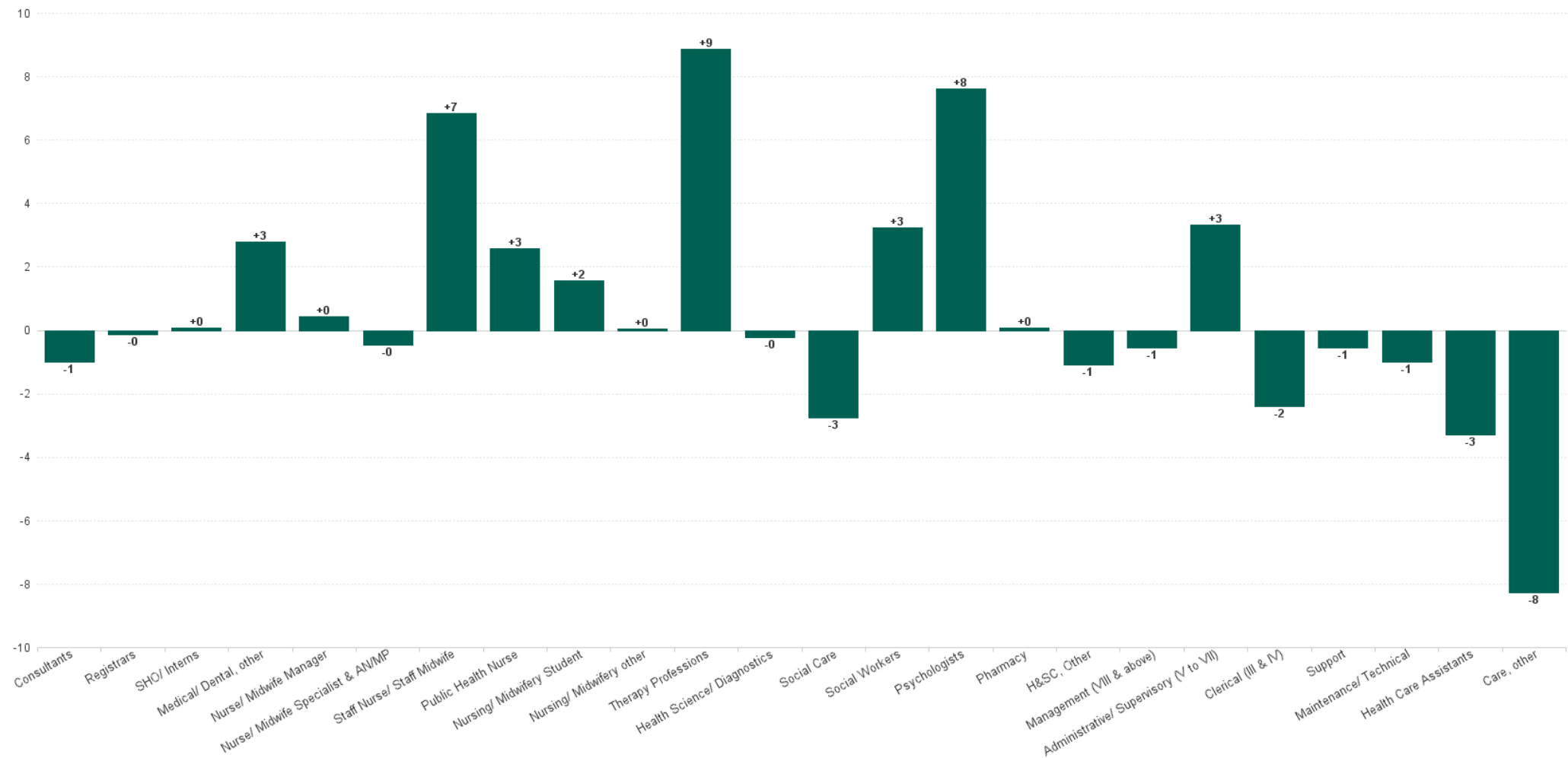
Year-on-Year Summary	% WTE change since OCT 2023	WTE change since OCT 2023	Community Health & Wellbeing	Mental Health	Primary Care	Disabilities	Older People	CHO Operations
Consultants	+42.4%	+19.0		+20.2	+0.4	-2.5	+1.0	
Registrars	+7.4%	+6.1		-6.1	+13.2	-1.0	+0.0	
SHO/ Interns	+12.8%	+2.6		+0.0	+2.5			
Medical/ Dental, other	-5.3%	-2.5			-0.5	-1.0	-1.0	
Medical & Dental	+13.0%	+25.2		+14.1	+15.6	-4.5	+0.0	
Nurse/ Midwife Manager	-5.4%	-11.9		-9.9	+2.7	-1.9	-1.8	-1.0
Nurse/ Midwife Specialist & AN/MP	+52.8%	+28.1		+28.5	+1.2	+1.4	-2.9	
Staff Nurse/ Staff Midwife	-0.5%	-2.7		-6.1	-4.3	+7.4	+0.3	
Public Health Nurse	+1.0%	+1.0			+1.0			
Nursing/ Midwifery Student	+83.7%	+5.4		+3.4	+2.0			
Nursing/ Midwifery other	+7.5%	+0.3		+0.3		+0.0		
Nursing & Midwifery	+2.2%	+20.2		+16.3	+2.5	+6.9	-4.5	-1.0
Therapy Professions	+1.1%	+2.9	-0.1	+1.6	+4.3	-1.0	-2.0	
Health Science/ Diagnostics	-1.4%	-0.3			-0.3			
Social Care	+3.9%	+15.1		+13.4	+1.0	+0.8		
Pharmacy	+6.4%	+0.5			-0.3		+0.8	+0.0
Psychologists	+13.1%	+9.8		+0.2	+6.0	+3.6	+0.0	
Social Workers	-11.0%	-8.1		-4.4	-0.8	-0.9	-1.0	-1.1



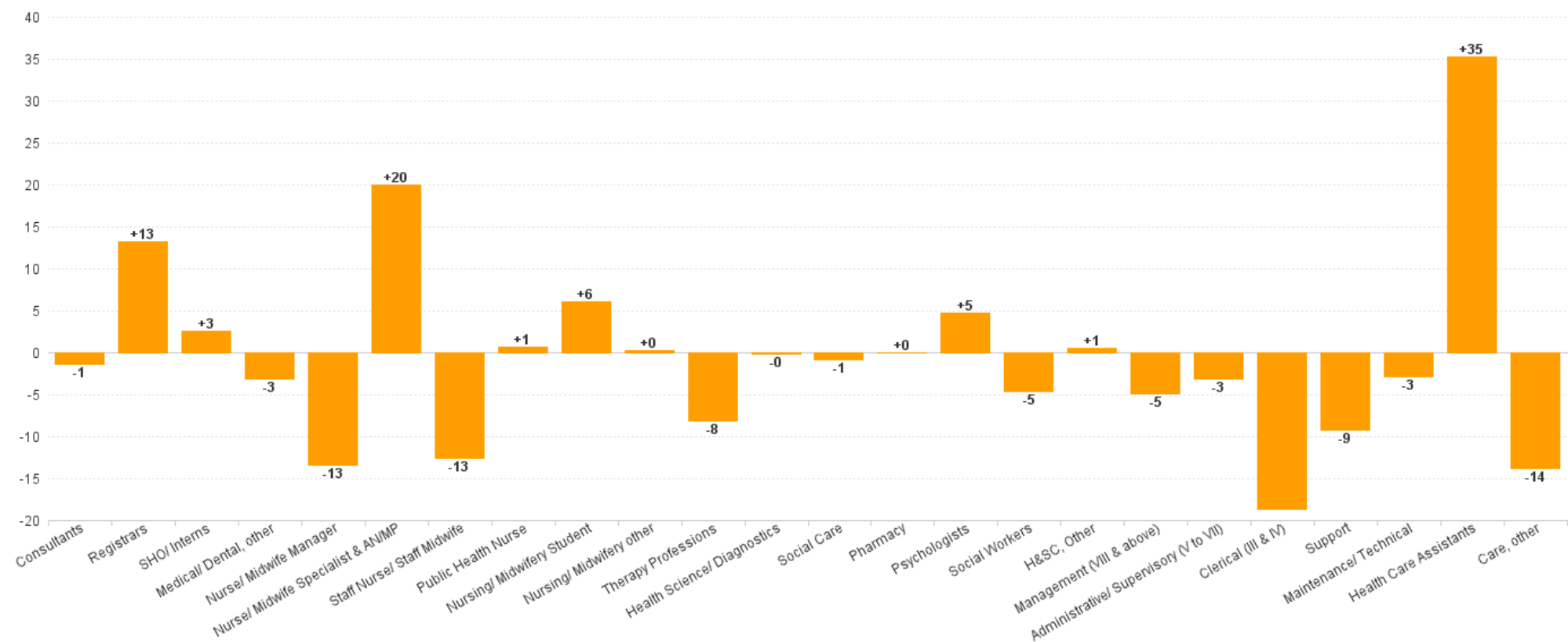
H&SC, Other	+8.8%	+2.2		-0.6	+2.8	-0.1	+0.0	
Health & Social Care Professionals	+2.6%	+22.1	-0.1	+10.1	+12.8	+2.5	-2.2	-1.1
Management (VIII & above)	+1.1%	+0.9	+2.0	-0.0	-1.3	+1.5	+2.0	-3.2
Administrative/ Supervisory (V to VII)	-4.3%	-11.1	-1.2	-11.5	+4.0	+2.8	-4.2	-1.1
Clerical (III & IV)	-4.9%	-13.9	+0.2	+0.4	-5.6	-6.7	-2.0	-0.2
Management & Administrative	-3.9%	-24.1	+1.0	-11.1	-2.9	-2.4	-4.2	-4.6
Support	-5.7%	-10.3		-8.3	-0.5	+0.3	-1.8	
Maintenance/ Technical	-9.6%	-2.3		-1.8	+0.0	-1.5	+1.0	
General Support	-6.1%	-12.5		-10.1	-0.5	-1.1	-0.8	
Health Care Assistants	+7.8%	+45.0		+5.3	-1.6	+52.2	-10.9	
Care, other	-5.4%	-17.5	+2.9	-1.8	-7.6	-10.9	+0.0	
Patient & Client Care	+3.1%	+27.6	+2.9	+3.5	-9.2	+41.2	-10.9	



Month-on-Month Summary Chart: Change since SEP 2024



Year-to-Date Summary Chart: Change since DEC 2023



CHO 6 Employment Report: OCT 2024

Year-on-Year Summary Chart: Change since OCT 2023

