

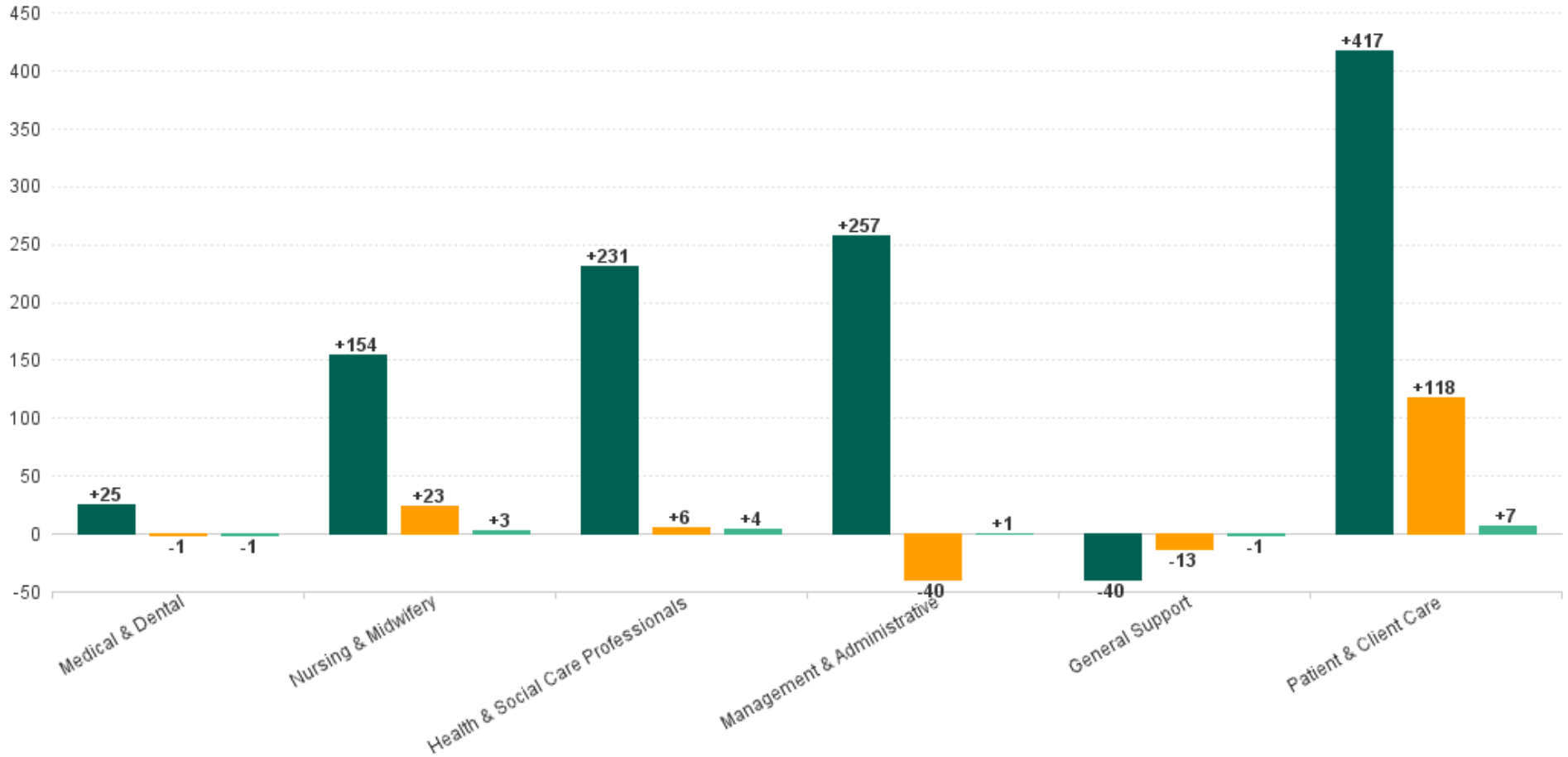
Employment Report : DEC 2024

Employment by Staff Group DEC 2024	WTE DEC 2019	WTE DEC 2022	WTE DEC 2023(1)	WTE NOV 2024	WTE DEC 2024	WTE Change 2023	WTE Change 2024	WTE Change NOV 2024	WTE Change Dec 2022 to DEC 2024	WTE Change Dec 2019 to DEC 2024	% WTE Change Dec 2022 to DEC 2024	No. DEC 2024
Overall	6,514	7,215	7,466	7,548	7,559	+251	+94	+12	+345	+1,045	+4.8%	8,674
Consultants	60	63	69	75	75	+6	+6	+0	+12	+16	+19.5%	79
Registrars	95	104	105	100	100	+1	-5	+0	-4	+5	-3.6%	103
SHO/ Interns	36	47	56	59	58	+10	+2	-1	+12	+22	+25.1%	59
Medical/ Dental, other	80	63	67	63	63	+3	-4	-1	0	-18	-0.6%	93
Medical & Dental	271	276	297	298	296	+20	-1	-1	+20	+25	+7.2%	334
Nurse/ Midwife Manager	396	455	460	466	465	+6	+4	-1	+10	+69	+2.2%	491
Nurse/ Midwife Specialist & AN/MP	94	133	155	160	159	+22	+4	-1	+26	+65	+19.6%	175
Staff Nurse/ Staff Midwife	993	1,060	1,031	1,036	1,046	-28	+15	+10	-14	+53	-1.3%	1,199
Public Health Nurse	175	164	158	148	150	-6	-8	+2	-15	-26	-8.8%	178
Nursing/ Midwifery awaiting registration	10	3	7	12	5	+5	-2.06	-7	+2	-4	+82.8%	6
Post-registration Nurse/ Midwife Student	21	25	10	20	20	-15	9.95	+0	-5	-1	-19.4%	20
Pre-registration Nurse/ Midwife Intern	1	0	1	0		+1	-1	0	0	-1	-100.0%	
Nursing/ Midwifery Student	32	28	18	32	25	-9	+7	-7	-2	-7	-8.8%	26
Nursing/ Midwifery other	10	11	8	10	10	-3	+2	0	-1	+0	-11.2%	13
Nursing & Midwifery	1,700	1,851	1,831	1,852	1,855	-20	+23	+3	+4	+154	+0.2%	2,082
Therapy Professions	450	490	480	490	495	-10	+15	+5	+5	+45	+0.9%	565
Health Science/ Diagnostics	3	11	9	9	8	-2	-1	-1	-3	+5	-24.4%	11
Social Care	371	477	498	502	503	+20	+5	+1	+26	+132	+5.4%	550
Pharmacy	40	41	45	44	43	+4	-2	-1	+2	+3	+6.0%	50
Psychologists	81	96	109	109	108	+13	-2	-2	+11	+27	+11.9%	122
Social Workers	105	123	127	115	116	+5	-12	+0	-7	+11	-5.6%	128
H&SC, Other	44	45	51	51	52	+5	+1	+1	+7	+7	+14.5%	60
Health & Social Care Professionals	1,094	1,284	1,320	1,321	1,325	+35	+6	+4	+41	+231	+3.2%	1,486
Management (VIII & above)	73	109	98	91	91	-11	-7	0	-18	+18	-16.3%	93
Administrative/ Supervisory (V to VII)	182	287	323	312	312	+36	-10	+1	+26	+130	+9.0%	327
Clerical (III & IV)	351	439	482	459	459	+43	-23	+0	+20	+109	+4.6%	512
Management & Administrative	606	834	903	862	863	+68	-40	+1	+28	+257	+3.4%	932
Support	410	382	372	367	365	-10	-7	-2	-17	-46	-4.5%	464
Maintenance/ Technical	41	46	52	46	47	+6	-5	+1	+1	+6	+1.8%	54
General Support	452	428	424	413	412	-4	-13	-1	-16	-40	-3.8%	518
Health Care Assistants	1,782	1,882	2,022	2,146	2,150	+139	+129	+4	+268	+368	+14.2%	2,575
Care, other	610	659	670	656	659	+11	-11	+3	+0	+49	+0.1%	747
Patient & Client Care	2,392	2,541	2,691	2,802	2,809	+150	+118	+7	+268	+417	+10.5%	3,322



WTE Change by Staff Category

■ WTE change since DEC 2019 ■ WTE change since DEC 2023 ■ WTE change since NOV 2024



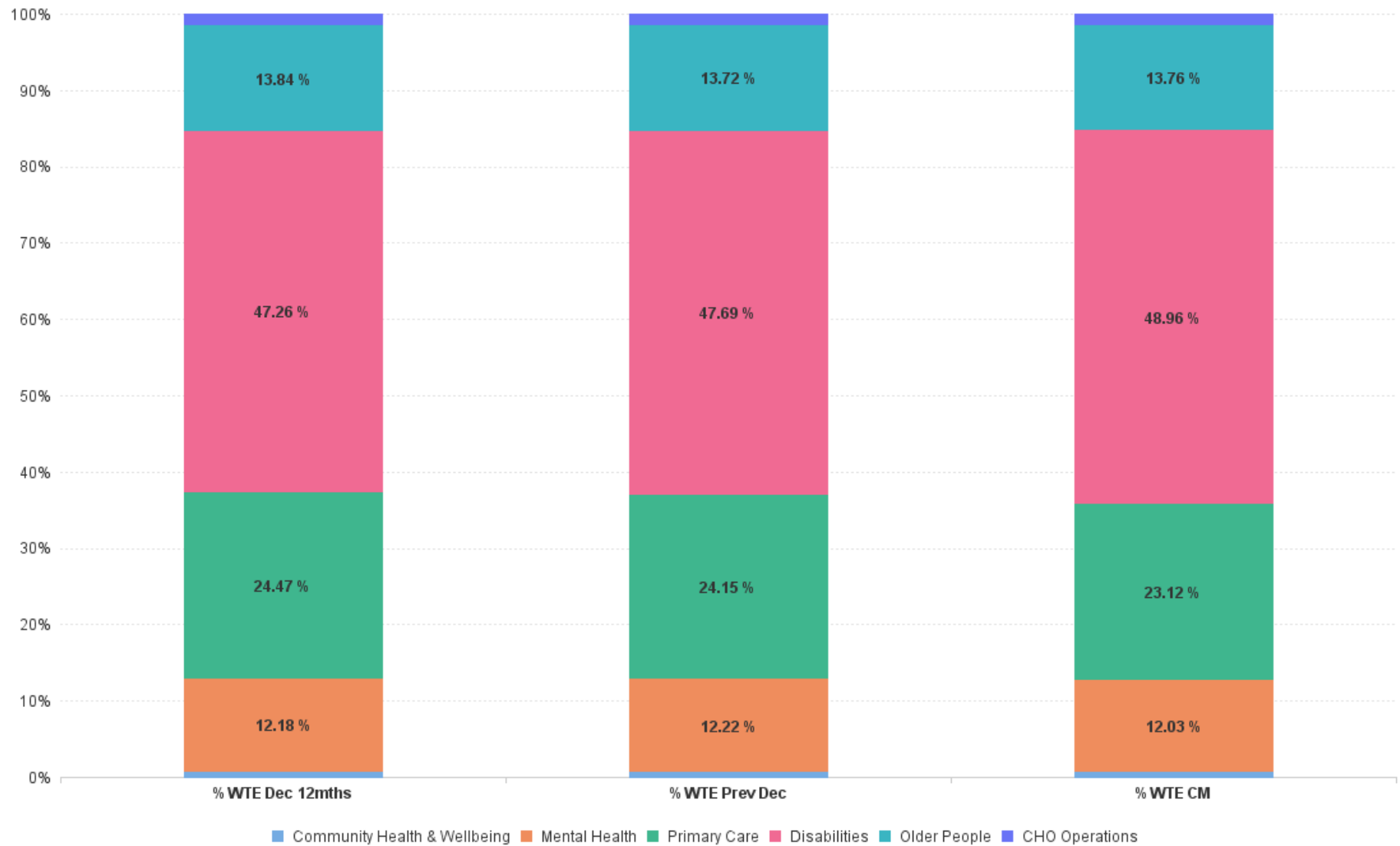
Employment Report by Care Group : DEC 2024

CHO 7 DEC 2024

Care Group DEC 2024	WTE DEC 2019	WTE DEC 2022	WTE DEC 2023(1)	WTE NOV 2024	WTE DEC 2024	WTE Change 2023	WTE Change 2024	WTE Change NOV 2024	WTE Change Dec 2022 to DEC 2024	WTE Change Dec 2019 to DEC 2024	% WTE Change Dec 2022 to DEC 2024	No. DEC 2024
Overall	6,514	7,215	7,466	7,548	7,559	+251	+94	+12	+345	+1,045	+4.8%	8,674
Community Health & Wellbeing		49	48	48	48	-2	+0	0	-1	+48	-2.8%	51
Mental Health	835	879	912	906	909	+34	-3	+4	+31	+74	+3.5%	980
Primary Care	1,702	1,765	1,803	1,757	1,748	+38	-55	-9	-17	+46	-1.0%	2,014
Disabilities	2,982	3,410	3,561	3,678	3,701	+151	+141	+24	+292	+720	+8.6%	4,351
Older People	996	999	1,025	1,045	1,040	+26	+16	-5	+42	+44	+4.2%	1,159
CHO Operations		113	118	114	113	+5	-5	-1	0	+113	-0.4%	119
Community Services	6,514	7,215	7,466	7,548	7,559	+251	+94	+12	+345	+1,045	+4.8%	8,674



% Total by Care Group



Employment Report by HSE/S38 : DEC 2024

CHO 7 DEC 2024

Administration DEC 2024	WTE DEC 2019	WTE DEC 2022	WTE DEC 2023(1)	WTE NOV 2024	WTE DEC 2024	WTE Change 2023	WTE Change 2024	WTE Change NOV 2024	WTE Change Dec 2022 to DEC 2024	WTE Change Dec 2019 to DEC 2024	% WTE Change Dec 2022 to DEC 2024	No. DEC 2024
Overall	6,514	7,215	7,466	7,548	7,559	+251	+94	+12	+345	+1,045	+4.8%	8,674
Health Service Executive	3,151	3,411	3,513	3,472	3,461	+101	-52	-11	+49	+309	+1.4%	3,911
Section 38 Voluntary Agencies	3,363	3,803	3,953	4,075	4,099	+150	+145	+23	+295	+736	+7.8%	4,763



Employment Report by HSE.S38: DEC 2024

Health Service Executive

HSE&S38 DEC 2024	WTE DEC 2019	WTE DEC 2022	WTE DEC 2023(1)	WTE NOV 2024	WTE DEC 2024	WTE Change 2023	WTE Change 2024	WTE Change NOV 2024	WTE Change Dec 2022 to DEC 2024	WTE Change Dec 2019 to DEC 2024	% WTE Change Dec 2022 to DEC 2024	No. DEC 2024
Total Health Service Executive	3,151	3,411	3,513	3,472	3,461	+101	-52	-11	+49	+309	+1.4%	3,911
Consultants	54	57	63	69	69	+6	+7	+0	+12	+16	+21.4%	71
Registrars	87	94	94	90	90	+0	-4	-0	-4	+3	-4.0%	93
SHO/ Interns	24	33	39	42	41	+6	+2	-1	+8	+17	+23.7%	42
Medical/ Dental, other	78	61	66	62	62	+5	-4	+0	+1	-16	+1.4%	92
Medical & Dental	242	245	262	263	262	+16	+1	-1	+17	+20	+7.0%	298
Nurse/ Midwife Manager	231	256	263	273	271	+7	+8	-1	+16	+40	+6.1%	282
Nurse/ Midwife Specialist & AN/MP	61	90	108	113	112	+18	+3	-1	+21	+51	+23.6%	119
Staff Nurse/ Staff Midwife	520	537	508	514	518	-29	+10	+4	-19	-1	-3.5%	583
Public Health Nurse	175	164	158	148	150	-6	-8	+2	-15	-26	-8.8%	178
<i>Nursing/ Midwifery awaiting registration</i>	10	2	7	12	5	+6	-2	-7	+3	-4	1.76	6
<i>Post-registration Nurse/ Midwife Student</i>	21	25	10	20	20	-15	+10	+0	-5	-1	-0.19	20
<i>Pre-registration Nurse/ Midwife Intern</i>	1	0		0		-0		-0	-0	-1	-1	
Nursing/ Midwifery Student	32	27	17	32	25	-9	+8	-7	-1	-7	-5.4%	26
Nursing/ Midwifery other	8	6	5	7	7	-0	+1	-0	+1	-1	+12.1%	8
Nursing & Midwifery	1,027	1,080	1,060	1,086	1,083	-20	+23	-3	+3	+56	+0.3%	1,196
<i>Dietitians</i>	17	31	33	35	35	+2	+2	-1	+4	+18	0.12	43
<i>Occupational Therapists</i>	138	137	123	114	116	-14	-7	+1	-21	-23	-0.16	130
<i>Orthoptists</i>		3	3	3	3	-0	-0	+0	-0	+3	-0.06	3
<i>Physiotherapists</i>	70	80	86	88	90	+6	+4	+1	+9	+19	0.12	101
<i>Podiatrists & Chiropodists</i>	1	6	8	8	7	+2	-1	-0	+1	+6	0.25	8
<i>Speech & Language Therapists</i>	99	91	84	74	73	-7	-12	-2	-19	-26	-0.2	85
Therapy Professions	325	348	337	322	322	-11	-15	+0	-26	-3	-7.3%	370
Health Science/ Diagnostics		8	6	6	6	-1	-1	-1	-2	+6	-24.2%	7
Social Care	11	11	11	10	10	+1	-1	-0	-1	-1	-9.3%	11
Pharmacy	25	27	29	27	26	+2	-2	-1	-0	+1	-1.4%	29
Psychologists	62	75	86	86	85	+11	-1	-2	+9	+23	+12.3%	96
Social Workers	67	76	84	73	72	+7	-12	-0	-4	+5	-5.5%	78
H&SC, Other	43	44	49	50	51	+5	+2	+1	+7	+8	+16.1%	59
Health & Social Care Professionals	533	588	601	575	572	+13	-29	-3	-17	+39	-2.8%	650
Management (VIII & above)	40	67	57	51	51	-11	-6	-1	-17	+11	-25.0%	52
Administrative/ Supervisory (V to VII)	96	175	197	187	186	+22	-11	-1	+11	+90	+6.4%	194
Clerical (III & IV)	241	300	335	317	315	+35	-20	-2	+15	+74	+5.1%	346
Management & Administrative	377	542	588	555	552	+46	-37	-3	+10	+174	+1.8%	592
Support	171	154	151	152	150	-4	-0	-2	-4	-20	-2.5%	168
Maintenance/ Technical	6	5	4	5	5	-1	+1	+0	-0	-1	-7.8%	6
General Support	176	159	155	157	155	-4	+0	-2	-4	-21	-2.7%	174
Health Care Assistants	568	533	579	584	582	+46	+3	-2	+49	+14	+9.1%	724
Care, other	227	262	267	252	255	+5	-12	+3	-8	+27	-3.0%	277
Patient & Client Care	796	796	846	836	837	+50	-9	+0	+41	+41	+5.1%	1,001



Section 38 Voluntary Agencies

HSE&S38 DEC 2024	WTE DEC 2019	WTE DEC 2022	WTE DEC 2023(1)	WTE NOV 2024	WTE DEC 2024	WTE Change 2023	WTE Change 2024	WTE Change NOV 2024	WTE Change Dec 2022 to DEC 2024	WTE Change Dec 2019 to DEC 2024	% WTE Change Dec 2022 to DEC 2024	No. DEC 2024
Total Section 38 Voluntary Agencies	3,363	3,803	3,953	4,075	4,099	+150	+145	+23	+295	+736	+7.8%	4,763
Consultants	6	6	7	6	6	+1	-1	+0	+0	+0	+1.8%	8
Registrars	8	10	11	10	10	+1	-1	+0	+0	+2	+0.4%	10
SHO/ Interns	12	13	17	17	17	+4	-0	+0	+4	+5	+28.5%	17
Medical/ Dental, other	2	2	1	2	1	-1	-0	-1	-1	-2	-67.0%	1
Medical & Dental	29	31	35	34	34	+4	-2	-1	+3	+5	+8.6%	36
Nurse/ Midwife Manager	165	199	197	193	193	-1	-4	+0	-6	+28	-2.9%	209
Nurse/ Midwife Specialist & AN/MP	33	42	46	47	47	+4	+1	+0	+5	+14	+11.3%	56
Staff Nurse/ Staff Midwife	473	523	523	522	528	+1	+4	+5	+5	+54	+1.0%	616
Nursing/ Midwifery awaiting registration		1				-1			-1		-1	
Pre-registration Nurse/ Midwife Intern			1			+1	-1				-1	
Nursing/ Midwifery Student		1	1			+0	-1		-1		-100.0%	
Nursing/ Midwifery other	3	6	3	4	4	-3	+1	-0	-2	+1	-36.2%	5
Nursing & Midwifery	673	770	771	766	771	+0	+1	+6	+1	+98	+0.1%	886
Dietitians	9	5	9	10	10	+4	+1	-0	+5	+1	1.1	13
Occupational Therapists	45	47	53	68	69	+6	+16	+1	+22	+24	0.47	77
Physiotherapists	44	56	53	53	56	-3	+3	+3	+0	+12	0.01	65
Speech & Language Therapists	27	34	28	36	37	-6	+9	+1	+2	+10	0.07	40
Therapy Professions	125	142	143	167	173	+1	+29	+5	+30	+47	+21.1%	195
Health Science/ Diagnostics	3	4	3	3	3	-1	-0	-0	-1	-0	-24.8%	4
Social Care	360	467	486	492	493	+20	+7	+2	+27	+133	+5.7%	539
Pharmacy	15	14	17	17	17	+2	+0	+0	+3	+2	+19.9%	21
Psychologists	19	21	24	23	23	+2	-0	+0	+2	+4	+10.4%	26
Social Workers	37	46	44	43	44	-3	+0	+1	-3	+6	-5.8%	50
H&SC, Other	2	2	2	1	1	+1	-1	+0	-1	-1	-33.3%	1
Health & Social Care Professionals	561	696	718	746	753	+23	+35	+7	+58	+192	+8.3%	836
Management (VIII & above)	33	42	41	40	41	-0	-0	+1	-1	+8	-2.2%	41
Administrative/ Supervisory (V to VII)	86	112	126	125	126	+14	+0	+1	+15	+40	+13.0%	133
Clerical (III & IV)	109	139	147	142	144	+8	-3	+2	+5	+35	+3.7%	166
Management & Administrative	229	292	314	308	311	+22	-3	+4	+19	+83	+6.4%	340
Support	240	228	222	215	215	-6	-7	-0	-13	-25	-5.9%	296
Maintenance/ Technical	35	41	48	41	42	+7	-6	+1	+1	+6	+3.1%	48
General Support	275	269	269	256	256	+1	-13	+1	-12	-19	-4.5%	344
Health Care Assistants	1,213	1,349	1,443	1,562	1,568	+94	+126	+6	+219	+355	+16.2%	1,851
Care, other	383	396	403	404	404	+6	+2	+1	+8	+21	+2.0%	470
Patient & Client Care	1,596	1,745	1,845	1,966	1,972	+100	+127	+7	+227	+376	+13.0%	2,321

CHO 7 by S38 Agency: DEC 2024

Cheeverstown House

Grade Group (KD)	WTE DEC 2019	WTE DEC 2022	WTE DEC 2023(1)	WTE NOV 2024	WTE DEC 2024	WTE Change 2023	WTE Change 2024	WTE Change NOV 2024	WTE Change Dec 2022 to DEC 2024	WTE Change Dec 2019 to DEC 2024	% WTE Change Dec 2022 to DEC 2024	No. DEC 2024
Total Cheeverstown House	396	427	441	468	464	13.42	23.4	-3.73	+36.8	+68.1	+8.6%	551
Consultants	0									-0	-100.0%	
Medical/ Dental, other	1									-1	-100.0%	
Medical & Dental	1									-1	-100.0%	
Nurse/ Midwife Manager	26	33	35	35	37	+2	+2	+1	+4	+11	+10.8%	41
Nurse/ Midwife Specialist & AN/MP	2	2	2	1	1	+0	-1	-0	-1	-1	-33.3%	1
Staff Nurse/ Staff Midwife	107	106	100	105	103	-6	+2	-2	-3	-4	-3.2%	119
Nursing & Midwifery	135	141	137	141	140	-4	+3	-1	-0	+6	-0.2%	161
Therapy Professions	14	9	8	7	7	-1	-1	+0	-2	-6	-21.9%	8
Social Care	35	37	44	45	43	+7	-1	-2	+6	+8	+16.6%	54
Pharmacy	1	1	1	1	1	+0	-0	+0	+0	+0	+0.0%	1
Psychologists	4	5	4	3	3	-2	-1	+0	-3	-2	-50.0%	3
Social Workers	6	5	3	3	3	-2	+0	+0	-2	-3	-40.0%	3
H&SC, Other	2	2				-2			-2	-2	-100.0%	
Health & Social Care Professionals	60	58	59	59	56	+1	-3	-2	-2	-4	-3.3%	69
Management (VIII & above)	2	4	4	4	4	+0	+0	+0	+0	+2	+0.0%	4
Administrative/ Supervisory (V to VII)	15	18	22	22	23	+4	+1	+1	+5	+8	+29.3%	23
Clerical (III & IV)	11	11	17	15	16	+5	-1	+1	+4	+5	+37.4%	17
Management & Administrative	28	33	42	41	42	+9	+0	+2	+9	+15	+28.5%	44
Support	27	27	23	10	10	-3	-13	-1	-17	-17	-62.7%	16
Maintenance/ Technical	4	4	3	3	3	-1	+0	+0	-1	-1	-20.6%	4
General Support	30	30	26	13	13	-4	-13	-1	-17	-18	-57.8%	20
Health Care Assistants	130	153	167	190	188	+15	+21	-2	+36	+58	+23.5%	232
Care, other	12	13	10	24	24	-3	+14	-0	+11	+12	+86.4%	25
Patient & Client Care	142	165	177	214	213	+11	+36	-2	+47	+71	+28.4%	257

Kare, Newbridge Co Kildare

Grade Group (KD)	WTE DEC 2019	WTE DEC 2022	WTE DEC 2023(1)	WTE NOV 2024	WTE DEC 2024	WTE Change 2023	WTE Change 2024	WTE Change NOV 2024	WTE Change Dec 2022 to DEC 2024	WTE Change Dec 2019 to DEC 2024	% WTE Change Dec 2022 to DEC 2024	No. DEC 2024
Total Kare, Newbridge Co Kildare	360	448	490	502	504	41.84	13.66	2.15	+55.5	+144.1	+12.4%	609
Nurse/ Midwife Manager	12	9	10	9	9	+1	-1	+0	-0	-3	-0.5%	10
Nurse/ Midwife Specialist & AN/MP				1	1	+1	-0	+0	+1	+1	-100.0%	1
Staff Nurse/ Staff Midwife	23	21	23	22	23	+3	-0	+1	+3	+1	+12.7%	34
Nursing & Midwifery	34	30	34	32	34	+4	-1	+1	+3	-1	+11.1%	45
Therapy Professions	15	18	16	18	18	-2	+2	-0	+1	+4	+2.8%	21
Social Care	61	100	103	106	108	+3	+5	+1	+8	+46	+8.1%	119
Psychologists	4	6	8	7	7	+2	-1	+0	+1	+3	+21.2%	8
Social Workers	4	6	5	6	6	-0	+1	-0	+0	+2	+6.8%	8
H&SC, Other			1			+1	-1				-100.0%	
Health & Social Care Professionals	84	129	134	138	139	+4	+6	+1	+10	+56	+7.9%	156
Management (VIII & above)	6	6	6	6	6	+0	+0	+0	+0	+0	+0.0%	6
Administrative/ Supervisory (V to VII)	12	13	15	15	15	+2	-0	+0	+2	+2	+14.8%	15
Clerical (III & IV)	12	21	19	19	19	-2	-0	+0	-2	+7	-8.1%	22
Management & Administrative	30	39	40	40	40	+1	-0	+0	+0	+10	+0.6%	43
Support	2	1	1	1	1	-0	+0	+0	+0	-0	+1.4%	7
Maintenance/ Technical			1	1	1	+1	+0	+0	+1	+1	-100.0%	1
General Support	2	1	2	2	2	+1	+0	+0	+1	+1	+73.9%	8
Health Care Assistants	101	116	153	158	157	+37	+4	-1	+41	+56	+35.1%	209
Care, other	109	132	127	132	132	-5	+5	+0	-0	+22	0.0%	148
Patient & Client Care	210	248	280	289	289	+32	+9	-0	+41	+79	+16.4%	357

Our Lady's Hospice & Care, Dublin

Grade Group (KD)	WTE DEC 2019	WTE DEC 2022	WTE DEC 2023(1)	WTE NOV 2024	WTE DEC 2024	WTE Change 2023	WTE Change 2024	WTE Change NOV 2024	WTE Change Dec 2022 to DEC 2024	WTE Change Dec 2019 to DEC 2024	% WTE Change Dec 2022 to DEC 2024	No. DEC 2024
Total Our Lady's Hospice & Care, Dublin	482	526	513	514	513	-12.47	-0.13	-1.05	-12.6	+31.1	-2.4%	595
Consultants	6	6	7	6	6	+1	-1	+0	+0	+1	+1.8%	8
Registrars	5	6	7	6	6	+1	-1	+0	+0	+1	+0.7%	6
SHO/ Interns	5	6	6	7	7	-0	+1	-0	+1	+2	+11.7%	7
Medical/ Dental, other	1	2	1	2	1	-1	-0	-1	-1	-1	-67.0%	1
Medical & Dental	17	20	20	21	20	+0	-1	-1	-0	+3	-1.7%	22
Nurse/ Midwife Manager	44	47	42	44	41	-6	-0	-3	-6	-3	-13.2%	46
Nurse/ Midwife Specialist & AN/MP	29	36	39	38	39	+3	-1	+0	+3	+10	+7.0%	47
Staff Nurse/ Staff Midwife	99	106	112	112	112	+6	-0	+0	+6	+13	+5.8%	129
Nursing/ Midwifery other	2	2	1	2	2	-1	+1	-0	+0	+0	+0.0%	3
Nursing & Midwifery	174	191	194	196	194	+3	-1	-2	+2	+20	+1.3%	225
Therapy Professions	37	35	29	33	35	-6	+5	+1	-1	-3	-1.9%	41
Health Science/ Diagnostics	0	0	0	0	0	-0	+0	+0	-0	+0	-23.3%	1
Pharmacy	10	8	10	10	11	+2	+1	+1	+3	+1	+40.5%	13
Psychologists	1	1	2	2	2	+1	+0	+0	+1	+1	+75.0%	2
Social Workers	11	12	12	11	11	+1	-1	+0	-1	+0	-5.0%	13
Health & Social Care Professionals	59	56	54	56	59	-2	+5	+2	+3	+0	+4.7%	70
Management (VIII & above)	4	4	4	4	4	+0	-0	-0	-0	-0	-1.0%	4
Administrative/ Supervisory (V to VII)	21	20	22	20	21	+2	-1	+1	+2	+1	+7.7%	23
Clerical (III & IV)	25	32	30	31	32	-2	+2	+0	-0	+7	-0.3%	36
Management & Administrative	50	56	56	56	57	+0	+1	+1	+1	+7	+2.5%	63
Support	73	72	65	62	62	-7	-3	-0	-9	-11	-13.2%	71
Maintenance/ Technical	7	9	7	7	7	-1	+0	+0	-1	+0	-15.7%	8
General Support	80	80	72	69	69	-8	-3	-0	-11	-11	-13.5%	79
Health Care Assistants	102	121	116	115	113	-5	-3	-2	-8	+11	-6.5%	135
Care, other	1	1	1	1	1	-0	+0	-0	-0	+0	-1.0%	1
Patient & Client Care	102	122	117	116	114	-5	-3	-2	-8	+12	-6.5%	136

Peamount Hospital (Newcastle)

Grade Group (KD)	WTE DEC 2019	WTE DEC 2022	WTE DEC 2023(1)	WTE NOV 2024	WTE DEC 2024	WTE Change 2023	WTE Change 2024	WTE Change NOV 2024	WTE Change Dec 2022 to DEC 2024	WTE Change Dec 2019 to DEC 2024	% WTE Change Dec 2022 to DEC 2024	No. DEC 2024
Total Peamount Hospital (Newcastle)	486	549	591	576	583	41.36	-7.67	6.91	+33.7	+96.8	+6.1%	675
Registrars	2	3	3	3	3	-0	+0	+0	+0	+1	+0.0%	3
SHO/ Interns	7	7	11	10	10	+4	-1	+0	+3	+3	+43.6%	10
Medical & Dental	9	10	14	13	13	+4	-1	+0	+3	+4	+30.5%	13
Nurse/ Midwife Manager	27	45	47	44	44	+2	-3	-0	-1	+17	-2.7%	47
Nurse/ Midwife Specialist & AN/MP	2	2	2	4	4	+0	+2	+0	+2	+2	+100.0%	4
Staff Nurse/ Staff Midwife	82	101	106	100	102	+5	-4	+2	+1	+20	+1.4%	114
Nursing/ Midwifery other		1	1	1	1	+0	+0	+0	+0	+1	+0.0%	1
Nursing & Midwifery	110	149	156	149	151	+7	-5	+2	+2	+41	+1.5%	166
Therapy Professions	29	46	49	53	55	+2	+6	+2	+8	+25	+17.6%	64
Health Science/ Diagnostics	3	3	3	3	3	-1	-0	-0	-1	-1	-24.9%	3
Social Care	2	2	3	3	4	+1	+1	+1	+2	+2	+73.2%	4
Pharmacy	4	6	6	6	5	+0	-0	-1	-0	+1	-7.0%	7
Psychologists		1	1	1	1	+1	+0	+0	+1	+1	+100.0%	2
Social Workers	5	7	7	8	7	-0	-1	-1	-1	+2	-7.6%	8
Health & Social Care Professionals	43	65	68	73	74	+3	+6	+1	+9	+31	+13.1%	88
Management (VIII & above)	4	5	5	5	6	+0	+1	+1	+1	+2	+23.7%	6
Administrative/ Supervisory (V to VII)	14	19	19	20	20	-0	+1	-0	+1	+6	+3.8%	21
Clerical (III & IV)	20	25	29	26	26	+4	-3	+0	+1	+6	+2.4%	33
Management & Administrative	38	49	52	51	51	+3	-1	+1	+2	+13	+5.1%	60
Support	47	40	37	42	42	-3	+5	+0	+2	-5	+4.7%	55

Maintenance/ Technical	8	8	16	10	10	+8	-6	+0	+2	+3	+25.0%	10
General Support	54	48	53	52	52	+5	-1	+0	+4	-2	+8.1%	65
Health Care Assistants	228	228	246	238	241	+18	-6	+3	+13	+13	+5.6%	282
Care, other	3		1	1	1	+1	+0	+0	+1	-3	-100.0%	1
Patient & Client Care	231	228	247	239	242	+19	-5	+3	+14	+10	+5.9%	283

Stewart's Hospital (Palmerstown)

Grade Group (KD)	WTE DEC 2019	WTE DEC 2022	WTE DEC 2023(1)	WTE NOV 2024	WTE DEC 2024	WTE Change 2023	WTE Change 2024	WTE Change NOV 2024	WTE Change Dec 2022 to DEC 2024	WTE Change Dec 2019 to DEC 2024	% WTE Change Dec 2022 to DEC 2024	No. DEC 2024
Total Stewart's Hospital (Palmerstown)	852	1,057	1,106	1,234	1,236	48.98	129.38	2.05	+178.4	+384.2	+16.9%	1,425
Consultants	0									-0	-100.0%	
Medical & Dental	0									-0	-100.0%	
Nurse/ Midwife Manager	36	42	43	40	40	+2	-3	+0	-2	+4	-3.6%	41
Nurse/ Midwife Specialist & AN/MP		1	1	1	1	+0	+0	+0	+0	+1	+0.0%	1
Staff Nurse/ Staff Midwife	73	88	85	92	90	-3	+5	-2	+2	+17	+2.5%	103
Nursing/ Midwifery awaiting registration		1				-1			-1		-100.0%	
Pre-registration Nurse/ Midwife Intern			1			+1	-1				-100.0%	
Nursing/ Midwifery Student		1	1			+0	-1		-1		-100.0%	
Nursing/ Midwifery other	1	3	1	1	1	-2	+0	+0	-2	+0	-79.4%	1
Nursing & Midwifery	109	134	131	133	132	-3	+1	-2	-2	+23	-1.7%	146
Therapy Professions	16	22	30	45	47	+8	+17	+2	+25	+32	+110.6%	50
Social Care	10	43	44	57	56	+2	+12	-0	+13	+46	+31.1%	58
Psychologists	4	7	6	9	9	-1	+3	+0	+2	+5	+25.7%	9
Social Workers	6	9	9	10	10	-1	+1	+0	+0	+4	+0.7%	11
H&SC, Other			1	1	1	+1	+0	+0	+1	+1	-100.0%	1
Health & Social Care Professionals	35	82	90	121	123	+8	+33	+2	+41	+88	+50.2%	129
Management (VIII & above)	11	17	17	16	16	-0	-1	+0	-1	+5	-6.5%	16
Administrative/ Supervisory (V to VII)	14	31	37	38	38	+6	+1	+0	+7	+24	+21.2%	40
Clerical (III & IV)	23	30	32	33	33	+2	+1	+0	+3	+10	+8.7%	36
Management & Administrative	48	79	86	87	87	+7	+1	+0	+8	+39	+10.4%	92
Support	57	59	65	67	68	+6	+3	+0	+8	+11	+13.6%	108
Maintenance/ Technical	5	7	7	7	6	-0	-1	-1	-1	+1	-15.4%	6
General Support	62	66	72	74	73	+5	+2	-1	+7	+12	+10.6%	114
Health Care Assistants	481	584	616	720	727	+32	+111	+7	+142	+246	+24.4%	833
Care, other	116	112	112	98	94	-0	-18	-4	-18	-22	-16.0%	111
Patient & Client Care	597	697	728	818	821	+31	+93	+3	+124	+224	+17.9%	944

St. John of God Liffey Services

Grade Group (KD)	WTE DEC 2019	WTE DEC 2022	WTE DEC 2023(1)	WTE NOV 2024	WTE DEC 2024	WTE Change 2023	WTE Change 2024	WTE Change NOV 2024	WTE Change Dec 2022 to DEC 2024	WTE Change Dec 2019 to DEC 2024	% WTE Change Dec 2022 to DEC 2024	No. DEC 2024
Total St. John of God Liffey Services	787	795	812	782	799	16.75	-13.23	16.7	+3.5	+11.2	+0.4%	908
Registrars	1	1	1	1	1	+0	+0	+0	+0	+0	+0.0%	1
Medical & Dental	1	1	1	1	1	+0	+0	+0	+0	+0	+0.0%	1
Nurse/ Midwife Manager	20	22	21	21	22	-2	+1	+1	-0	+2	-1.2%	24
Nurse/ Midwife Specialist & AN/MP	1	2	2	2	2	+0	+0	+0	+0	+1	+0.0%	2
Staff Nurse/ Staff Midwife	90	101	96	91	97	-6	+2	+6	-4	+7	-3.9%	117
Nursing & Midwifery	111	125	118	114	121	-7	+3	+7	-4	+10	-3.4%	143
Therapy Professions	15	11	10	10	10	-1	+0	+0	-1	-4	-5.9%	11
Social Care	253	285	292	281	282	+7	-10	+2	-3	+30	-0.9%	304
Psychologists	6	2	4	2	2	+2	-2	+0	+0	-4	+23.5%	2
Social Workers	6	7	7	5	7	-0	+0	+2	+0	+1	+0.0%	7
Health & Social Care Professionals	280	305	313	298	302	+8	-11	+4	-3	+22	-0.9%	324
Management (VIII & above)	6	6	6	5	5	-0	-1	+0	-1	-1	-15.7%	5
Administrative/ Supervisory (V to VII)	11	11	11	10	10	+0	-1	-0	-1	-1	-12.4%	11

Clerical (III & IV)	18	19	21	19	19	+2	-3	+0	-1	+1	-2.9%	22
Management & Administrative	35	37	38	34	34	+2	-5	-0	-3	-1	-7.9%	38
Support	35	29	30	32	31	+1	+1	-0	+3	-3	+9.5%	39
Maintenance/ Technical	12	14	14	14	15	+0	+1	+2	+1	+3	+10.0%	19
General Support	47	43	44	45	47	+1	+3	+1	+4	-0	+9.6%	58
Health Care Assistants	172	147	144	142	142	-2	-2	+0	-5	-30	-3.2%	160
Care, other	142	138	153	148	152	+15	-1	+4	+14	+11	+10.2%	184
Patient & Client Care	314	285	297	290	294	+12	-3	+5	+9	-19	+3.3%	344

CHO 7 Employment Report: DEC 2024

Community Health & Wellbeing DEC 2024	WTE DEC 2019	WTE DEC 2022	WTE DEC 2023(1)	WTE NOV 2024	WTE DEC 2024	WTE Change 2023	WTE Change 2024	WTE Change NOV 2024	WTE Change Dec 2022 to DEC 2024	WTE Change Dec 2019 to DEC 2024	% WTE Change Dec 2022 to DEC 2024	No. DEC 2024
Total Community Health & Wellbeing		49	48	48	48	-2	+0	0	-1	+48	-2.8%	51
Nurse/ Midwife Manager		0	1	1	1	+1	+0	+0	+1	+1	+809.1%	1
Staff Nurse/ Staff Midwife			0	1	1	+0	+1	+0	+1	+1	-100.0%	1
Nursing & Midwifery		0	1	2	2	+1	+1	+0	+2	+2	+1,718.2%	2
Management (VIII & above)		2	2	2	2	+0	+0	+0	+0	+2	+1.0%	2
Administrative/ Supervisory (V to VII)		10	8	7	7	-2	-1	+0	-3	+7	-29.7%	7
Clerical (III & IV)		4	3	3	3	-1	0	+0	-1	+3	-21.8%	4
Management & Administrative		16	13	12	12	-3	-1	+0	-4	+12	-23.8%	13
Health Care Assistants		6	3	3	3	-4	0	0	-4	+3	-57.9%	3
Care, other		27	30	32	31	+3	+1	0	+4	+31	+14.9%	33
Patient & Client Care		33	33	34	34	0	+1	0	+0	+34	+1.5%	36

Mental Health DEC 2024	WTE DEC 2019	WTE DEC 2022	WTE DEC 2023(1)	WTE NOV 2024	WTE DEC 2024	WTE Change 2023	WTE Change 2024	WTE Change NOV 2024	WTE Change Dec 2022 to DEC 2024	WTE Change Dec 2019 to DEC 2024	% WTE Change Dec 2022 to DEC 2024	No. DEC 2024
Total Mental Health	835	879	912	906	909	+34	-3	+4	+31	+74	+3.5%	980
Consultants	48	52	57	64	64	+4	+8	+0	+12	+16	+22.7%	66
Registrars	46	55	44	46	47	-11	+3	+0	-8	+0	-15.3%	48
SHO/ Interns	21	26	28	30	29	+3	+1	0	+4	+9	+15.3%	30
Medical & Dental	115	133	129	140	140	-4	+11	+0	+7	+25	+5.5%	144
Nurse/ Midwife Manager	117	109	101	103	103	-8	+2	0	-6	-13	-5.6%	107
Nurse/ Midwife Specialist & AN/MP	40	56	72	70	69	+16	-2	-1	+13	+29	+24.0%	74
Staff Nurse/ Staff Midwife	194	205	199	210	219	-5	+20	+9	+15	+25	+7.1%	240
Nursing/ Midwifery awaiting registration	10	1	7	11	4	+6	-2	-7	+3	-5	+349.5%	5
Pre-registration Nurse/ Midwife Intern	1	0		0		0		0	0	-1	-100.0%	
Nursing/ Midwifery Student	11	1	7	11	4	+5	-2	-7	+3	-7	+308.3%	5
Nursing/ Midwifery other	8	6	5	7	7	-1	+2	0	+1	-1	+12.1%	8
Nursing & Midwifery	370	377	383	402	403	+6	+19	+1	+26	+33	+6.9%	434
Dietitians	3	3	3	3	3	0	+0	+0	0	+0	-1.7%	4
Occupational Therapists	38	36	41	35	36	+5	-5	+1	0	-2	-0.2%	40
Speech & Language Therapists	7	11	13	13	12	+1	-1	-1	+1	+5	+5.2%	13
Therapy Professions	48	51	57	52	51	+6	-5	0	+0	+4	+0.9%	57
Social Care	8	7	7	5	5	+0	-2	+0	-2	-3	-26.8%	6
Pharmacy	1	0	1	1	1	+1	0	+0	+1	0	+300.0%	1
Psychologists	31	35	37	35	35	+2	-2	+1	+1	+4	+2.0%	40
Social Workers	34	38	44	39	39	+6	-5	+0	+1	+5	+1.8%	42
H&SC, Other	18	19	19	19	19	0	+1	+0	+1	+1	+3.2%	22
Health & Social Care Professionals	140	150	165	150	151	+15	-14	+1	+1	+11	+0.8%	168
Management (VIII & above)	3	5	4	4	4	-1	0	0	-1	+1	-20.0%	4
Administrative/ Supervisory (V to VII)	16	22	26	23	24	+3	-2	+1	+2	+8	+7.1%	25
Clerical (III & IV)	47	55	64	55	55	+9	-9	+0	-1	+8	-1.1%	60
Management & Administrative	65	83	94	82	83	+11	-11	+1	+0	+17	+0.0%	89
Support	18	16	13	13	13	-4	+1	+0	-3	-4	-17.0%	15
Maintenance/ Technical	2	2	1	1	1	-1	+0	+0	-1	-1	-48.5%	1
General Support	20	18	14	14	14	-4	+1	+0	-4	-5	-20.4%	16
Health Care Assistants	33	31	36	35	35	+6	-1	0	+4	+1	+13.7%	37
Care, other	92	88	92	83	83	+4	-8	+1	-4	-9	-5.1%	92
Patient & Client Care	125	118	128	118	118	+9	-10	+0	0	-8	-0.3%	129



Primary Care DEC 2024	WTE DEC 2019	WTE DEC 2022	WTE DEC 2023(1)	WTE NOV 2024	WTE DEC 2024	WTE Change 2023	WTE Change 2024	WTE Change NOV 2024	WTE Change Dec 2022 to DEC 2024	WTE Change Dec 2019 to DEC 2024	% WTE Change Dec 2022 to DEC 2024	No. DEC 2024
Total Primary Care	1,702	1,765	1,803	1,757	1,748	+38	-55	-9	-17	+46	-1.0%	2,014
Consultants	11	11	13	11	11	+2	-2	+0	+0	0	+4.1%	13
Registrars	46	45	57	50	49	+12	-7	0	+5	+4	+10.5%	51
SHO/ Interns	6	12	15	18	17	+3	+2	-1	+5	+11	+39.1%	17
Medical/ Dental, other	75	61	65	62	61	+4	-4	-1	+0	-14	+0.4%	91
Medical & Dental	139	129	149	140	139	+21	-11	-2	+10	+0	+7.8%	172
Nurse/ Midwife Manager	80	100	95	96	93	-6	-1	-3	-7	+13	-6.8%	102
Nurse/ Midwife Specialist & AN/MP	46	65	68	72	72	+3	+4	+0	+7	+26	+11.5%	83
Staff Nurse/ Staff Midwife	205	198	205	201	198	+7	-7	-3	+0	-7	+0.1%	240
Public Health Nurse	175	164	158	148	150	-6	-8	+2	-15	-26	-8.8%	178
Post-registration Nurse/ Midwife Student	21	25	10	20	20	-15	+10	+0	-5	-1	-19.4%	20
Nursing/ Midwifery Student	21	25	10	20	20	-15	+10	+0	-5	-1	-19.4%	20
Nursing/ Midwifery other	2	2	2	2	2	+0	0	0	+0	+0	+0.0%	3
Nursing & Midwifery	530	554	537	538	535	-16	-2	-3	-18	+5	-3.3%	626
Dietitians	14	28	29	31	30	+1	+1	-1	+3	+16	+9.0%	37
Occupational Therapists	99	87	75	75	77	-11	+2	+2	-10	-22	-11.3%	88
Orthoptists		3	3	3	3	0	0	+0	0	+3	-5.9%	3
Physiotherapists	75	84	87	85	84	+4	-3	0	+1	+9	+0.7%	97
Podiatrists & Chiropodists	1	6	8	7	7	+2	0	+0	+1	+6	+24.9%	8
Speech & Language Therapists	77	60	52	47	46	-9	-6	-1	-15	-31	-24.3%	55
Therapy Professions	267	267	254	247	247	-13	-7	0	-20	-20	-7.5%	288
Health Science/ Diagnostics	0	8	6	7	6	-1	-1	-1	-2	+6	-24.2%	8
Social Care	3	4	4	5	5	+0	+1	0	+1	+1	+21.1%	5
Pharmacy	32	31	34	34	34	+4	0	+0	+3	+2	+10.5%	38
Psychologists	22	26	37	39	38	+11	+1	-2	+12	+16	+45.7%	43
Social Workers	26	30	34	32	32	+4	-2	-1	+1	+6	+4.7%	36
H&SC, Other	24	24	28	29	29	+4	+1	+0	+5	+5	+20.6%	34
Health & Social Care Professionals	373	390	397	393	390	+8	-8	-3	+0	+16	+0.1%	452
Management (VIII & above)	33	23	27	27	26	+4	-1	-1	+3	-7	+11.6%	26
Administrative/ Supervisory (V to VII)	76	84	94	91	93	+10	-1	+1	+9	+17	+10.7%	97
Clerical (III & IV)	178	180	201	191	191	+21	-10	-1	+10	+13	+5.7%	212
Management & Administrative	287	287	322	309	309	+35	-13	0	+22	+22	+7.6%	335
Support	116	106	97	92	91	-9	-6	-1	-15	-25	-13.8%	105
Maintenance/ Technical	9	10	9	8	8	-1	-1	+0	-2	-1	-18.5%	10
General Support	125	116	106	100	99	-10	-7	-1	-16	-25	-14.2%	115
Health Care Assistants	121	155	161	153	150	+6	-11	-2	-5	+29	-2.9%	177
Care, other	128	136	130	123	126	-6	-4	+2	-10	-2	-7.5%	137
Patient & Client Care	249	291	291	276	276	+0	-15	+0	-15	+27	-5.1%	314

Disabilities DEC 2024	WTE DEC 2019	WTE DEC 2022	WTE DEC 2023(1)	WTE NOV 2024	WTE DEC 2024	WTE Change 2023	WTE Change 2024	WTE Change NOV 2024	WTE Change Dec 2022 to DEC 2024	WTE Change Dec 2019 to DEC 2024	% WTE Change Dec 2022 to DEC 2024	No. DEC 2024
Total Disabilities	2,982	3,410	3,561	3,678	3,701	+151	+141	+24	+292	+720	+8.6%	4,351
Consultants	1									-1	-100.0%	
Registrars	3	4	4	4	4	0	+0	+0	+0	+1	+0.0%	4
SHO/ Interns	7	7	11	10	10	+4	-1	+0	+3	+3	+43.6%	10
Medical/ Dental, other	1									-1	-100.0%	
Medical & Dental	12	11	15	14	14	+4	-1	+0	+3	+2	+27.7%	14
Nurse/ Midwife Manager	122	153	158	151	154	+4	-4	+3	+1	+32	+0.4%	165
Nurse/ Midwife Specialist & AN/MP	5	6	7	9	9	+1	+1	0	+2	+3	+35.6%	9
Staff Nurse/ Staff Midwife	374	416	411	410	415	-6	+5	+5	-1	+41	-0.3%	487
Nursing/ Midwifery awaiting registration		1				-1			-1		-100.0%	
Pre-registration Nurse/ Midwife Intern			1			+1	-1				-100.0%	
Nursing/ Midwifery Student		1	1			+0	-1		-1		-100.0%	
Nursing/ Midwifery other	1	4	2	2	2	-2	+0	+0	-2	+1	-56.8%	2
Nursing & Midwifery	502	581	578	572	579	-2	+1	+8	-1	+77	-0.2%	663
Dietitians	7	3	9	10	10	+6	+1	0	+7	+3	+222.7%	13
Occupational Therapists	42	56	54	67	68	-2	+14	+0	+12	+26	+21.2%	74



Disabilities DEC 2024	WTE DEC 2019	WTE DEC 2022	WTE DEC 2023(1)	WTE NOV 2024	WTE DEC 2024	WTE Change 2023	WTE Change 2024	WTE Change NOV 2024	WTE Change Dec 2022 to DEC 2024	WTE Change Dec 2019 to DEC 2024	% WTE Change Dec 2022 to DEC 2024	No. DEC 2024
Total Disabilities	2,982	3,410	3,561	3,678	3,701	+151	+141	+24	+292	+720	+8.6%	4,351
Physiotherapists	30	43	43	48	51	+0	+8	+3	+8	+21	+19.8%	57
Speech & Language Therapists	42	53	46	49	51	-7	+5	+1	-2	+9	-4.2%	56
Therapy Professions	122	155	151	175	179	-3	+28	+4	+25	+57	+16.0%	200
Health Science/ Diagnostics	3	3	3	3	3	-1	0	0	-1	-1	-24.9%	3
Social Care	360	467	486	492	493	+20	+7	+2	+27	+133	+5.7%	539
Pharmacy	5	6	6	6	6	+0	-1	-1	0	+1	-6.5%	8
Psychologists	28	36	36	35	35	0	-1	0	-1	+7	-3.0%	39
Social Workers	33	42	36	34	35	-5	-1	+1	-7	+2	-16.3%	40
H&SC, Other	2	2	2	1	1	+1	-1	+0	-1	-1	-33.3%	1
Health & Social Care Professionals	553	710	721	747	752	+11	+31	+5	+42	+199	+5.9%	830
Management (VIII & above)	32	47	44	42	43	-2	-1	+1	-4	+11	-7.8%	44
Administrative/ Supervisory (V to VII)	79	109	128	126	125	+19	-3	-1	+16	+46	+14.4%	131
Clerical (III & IV)	92	120	129	123	124	+10	-5	+1	+4	+32	+3.7%	143
Management & Administrative	203	276	302	291	292	+26	-10	+2	+17	+89	+6.0%	318
Support	167	156	157	152	152	+0	-4	0	-4	-14	-2.6%	225
Maintenance/ Technical	28	32	40	34	35	+8	-6	+1	+3	+6	+8.1%	40
General Support	195	188	197	186	187	+9	-10	+1	-1	-8	-0.7%	265
Health Care Assistants	1,132	1,242	1,338	1,459	1,466	+96	+128	+8	+224	+334	+18.0%	1,784
Care, other	386	402	410	410	411	+8	+1	+1	+9	+25	+2.2%	477
Patient & Client Care	1,518	1,644	1,748	1,869	1,877	+104	+129	+8	+233	+359	+14.2%	2,261

Older People DEC 2024	WTE DEC 2019	WTE DEC 2022	WTE DEC 2023(1)	WTE NOV 2024	WTE DEC 2024	WTE Change 2023	WTE Change 2024	WTE Change NOV 2024	WTE Change Dec 2022 to DEC 2024	WTE Change Dec 2019 to DEC 2024	% WTE Change Dec 2022 to DEC 2024	No. DEC 2024
Total Older People	996	999	1,025	1,045	1,040	+26	+16	-5	+42	+44	+4.2%	1,159
SHO/ Interns	2	2	2	2	2	+0	+0	+0	+0	+0	+1.0%	2
Medical/ Dental, other	4	2	1	1	1	-1	+0	+0	-1	-3	-32.0%	2
Medical & Dental	6	4	3	3	3	-1	+0	+0	-1	-3	-15.7%	4
Nurse/ Midwife Manager	77	88	101	109	108	+13	+7	-1	+20	+31	+22.4%	111
Nurse/ Midwife Specialist & AN/MP	3	6	7	7	7	+1	+0	0	+1	+4	+18.6%	7
Staff Nurse/ Staff Midwife	219	239	216	214	212	-22	-4	-2	-26	-7	-11.1%	231
Nursing/ Midwifery awaiting registration		1	1	1	1	+0	0	0	+0	+1	+0.0%	1
Nursing/ Midwifery Student		1	1	1	1	+0	0	0	+0	+1	+0.0%	1
Nursing & Midwifery	299	334	325	331	328	-9	+3	-3	-6	+29	-1.7%	350
Dietitians	1	2	1	1	1	-1	+1	+0	0	+0	-11.9%	2
Occupational Therapists	4	5	6	4	4	+1	-2	+0	-1	+0	-20.2%	5
Physiotherapists	9	10	9	9	11	-1	+2	+2	+1	+2	+7.0%	12
Podiatrists & Chiropodists			1	0		+1	-1	0			-100.0%	
Speech & Language Therapists		1	2	1	1	+1	-1	+0	+0	+1	+1.0%	1
Therapy Professions	14	18	18	16	17	+1	-1	+1	-1	+4	-3.1%	20
Pharmacy	3	3	3	3	3	+0	+0	+0	+0	+1	+1.0%	3
Social Workers	11	5	5	5	5	0	+0	+0	+0	-6	+1.8%	5
H&SC, Other	1	1	2	2	2	+1	+0	+0	+1	+1	+51.5%	2
Health & Social Care Professionals	28	27	28	25	27	+1	-1	+1	+0	-1	+0.3%	30
Management (VIII & above)	5	12	5	5	5	-7	0	0	-7	0	-57.8%	5
Administrative/ Supervisory (V to VII)	12	20	18	16	16	-1	-2	0	-4	+5	-18.7%	17
Clerical (III & IV)	34	42	46	46	46	+4	0	-1	+4	+12	+8.4%	49
Management & Administrative	51	74	69	67	67	-4	-2	-1	-7	+16	-9.4%	71
Support	110	104	106	109	108	+2	+2	-1	+4	-2	+3.9%	119
Maintenance/ Technical	2	2	2	3	3	+0	+1	+0	+1	+1	+51.5%	3
General Support	112	106	108	112	111	+2	+3	-1	+5	-1	+4.8%	122
Health Care Assistants	495	449	484	498	496	+35	+13	-1	+47	+1	+10.6%	574
Care, other	5	6	8	8	8	+2	+0	+0	+2	+3	+34.2%	8
Patient & Client Care	500	455	492	506	504	+37	+13	-1	+50	+4	+10.9%	582



CHO Operations DEC 2024	WTE DEC 2019	WTE DEC 2022	WTE DEC 2023(1)	WTE NOV 2024	WTE DEC 2024	WTE Change 2023	WTE Change 2024	WTE Change NOV 2024	WTE Change Dec 2022 to DEC 2024	WTE Change Dec 2019 to DEC 2024	% WTE Change Dec 2022 to DEC 2024	No. DEC 2024
Total CHO Operations		113	118	114	113	+5	-5	-1	0	+113	-0.4%	119
Nurse/ Midwife Manager		3	5	5	5	+1	+0	0	+1	+5	+43.1%	5
Nurse/ Midwife Specialist & AN/MP			1	2	2	+1	+1	+0	+2	+2	-100.0%	2
Staff Nurse/ Staff Midwife		2				-2			-2		-100.0%	
Nursing & Midwifery		5	6	7	7	+0	+1	0	+1	+7	+25.2%	7
Pharmacy		1	1			+0	-1		-1		-100.0%	
Social Workers		7	8	5	5	+1	-3	+0	-2	+5	-32.2%	5
H&SC, Other				1	1		+1	+0	+1	+1	-100.0%	1
Health & Social Care Professionals		8	9	6	6	+1	-3	+0	-2	+6	-28.3%	6
Management (VIII & above)		21	16	12	12	-5	-4	+0	-9	+12	-43.7%	12
Administrative/ Supervisory (V to VII)		42	49	49	48	+7	-1	-1	+6	+48	+14.3%	50
Clerical (III & IV)		37	38	41	41	+1	+2	+0	+4	+41	+9.8%	44
Management & Administrative		100	103	101	100	+3	-3	-1	+1	+100	+0.5%	106

Employment Report by Care Group (HSE Only) DEC 2024

CHO 7 DEC 2024

Community Health & Wellbeing

Community Health & Wellbeing HSE Only DEC 2024	WTE DEC 2019	WTE DEC 2022	WTE DEC 2023(1)	WTE NOV 2024	WTE DEC 2024	WTE Change 2023	WTE Change 2024	WTE Change NOV 2024	WTE Change Dec 2022 to DEC 2024	WTE Change Dec 2019 to DEC 2024	% WTE Change Dec 2022 to DEC 2024	No. DEC 2024
Overall		49	48	48	48	-2	+0	0	-1	+48	-2.8%	51
Nurse/ Midwife Manager		0	1	1	1	+1	+0	+0	+1	+1	+809.1%	1
Staff Nurse/ Staff Midwife			0	1	1	+0	+1	+0	+1	+1	-100.0%	1
Nursing & Midwifery		0	1	2	2	+1	+1	+0	+2	+2	+1,718.2%	2
Management (VIII & above)		2	2	2	2	+0	+0	+0	+0	+2	+1.0%	2
Administrative/ Supervisory (V to VII)		10	8	7	7	-2	-1	+0	-3	+7	-29.7%	7
Clerical (III & IV)		4	3	3	3	-1	0	+0	-1	+3	-21.8%	4
Management & Administrative		16	13	12	12	-3	-1	+0	-4	+12	-23.8%	13
Health Care Assistants		6	3	3	3	-4	0	0	-4	+3	-57.9%	3
Care, other		27	30	32	31	+3	+1	0	+4	+31	+14.9%	33
Patient & Client Care		33	33	34	34	0	+1	0	+0	+34	+1.5%	36



Mental Health

	WTE DEC 2019	WTE DEC 2022	WTE DEC 2023(1)	WTE NOV 2024	WTE DEC 2024	WTE Change 2023	WTE Change 2024	WTE Change NOV 2024	WTE Change Dec 2022 to DEC 2024	WTE Change Dec 2019 to DEC 2024	% WTE Change Dec 2022 to DEC 2024	No. DEC 2024
Mental Health HSE Only DEC 2024												
Overall	835	879	912	906	909	+34	-3	+4	+31	+74	+3.5%	980
Consultants	48	52	57	64	64	+4	+8	+0	+12	+16	+22.7%	66
Registrars	46	55	44	46	47	-11	+3	+0	-8	+0	-15.3%	48
SHO/ Interns	21	26	28	30	29	+3	+1	0	+4	+9	+15.3%	30
Medical & Dental	115	133	129	140	140	-4	+11	+0	+7	+25	+5.5%	144
Nurse/ Midwife Manager	117	109	101	103	103	-8	+2	0	-6	-13	-5.6%	107
Nurse/ Midwife Specialist & AN/MP	40	56	72	70	69	+16	-2	-1	+13	+29	+24.0%	74
Staff Nurse/ Staff Midwife	194	205	199	210	219	-5	+20	+9	+15	+25	+7.1%	240
Nursing/ Midwifery awaiting registration	10	1	7	11	4	-5	-2	-2	+3	-5	-31.5%	5
Pre-registration Nurse/ Midwife Intern	1	0		0		-1			0	-1		
Nursing/ Midwifery Student	11	1	7	11	4	+5	-2	-7	+3	-7	+308.3%	5
Nursing/ Midwifery other	8	6	5	7	7	-1	+2	0	+1	-1	+12.1%	8
Nursing & Midwifery	370	377	383	402	403	+6	+19	+1	+26	+33	+6.9%	434
Dietitians	3	3	3	3	3	+0	+0	+0	0	+0	+3.0%	4
Occupational Therapists	38	36	41	35	36	-2	-5	-5	0	-2	-11.4%	40
Speech & Language Therapists	7	11	13	13	12	+5	-1	-1	+1	+5	-5.1%	13
Therapy Professions	48	51	57	52	51	+6	-5	0	+0	+4	+0.9%	57
Social Care	8	7	7	5	5	+0	-2	+0	-2	-3	-26.8%	6
Pharmacy	1	0	1	1	1	+1	0	+0	+1	0	+300.0%	1
Psychologists	31	35	37	35	35	+2	-2	+1	+1	+4	+2.0%	40
Social Workers	34	38	44	39	39	+6	-5	+0	+1	+5	+1.8%	42
H&SC, Other	18	19	19	19	19	0	+1	+0	+1	+1	+3.2%	22
Health & Social Care Professionals	140	150	165	150	151	+15	-14	+1	+1	+11	+0.8%	168
Management (VIII & above)	3	5	4	4	4	-1	0	0	-1	+1	-20.0%	4
Administrative/ Supervisory (V to VII)	16	22	26	23	24	+3	-2	+1	+2	+8	+7.1%	25
Clerical (III & IV)	47	55	64	55	55	+9	-9	+0	-1	+8	-1.1%	60
Management & Administrative	65	83	94	82	83	+11	-11	+1	+0	+17	+0.0%	89
Support	18	16	13	13	13	-4	+1	+0	-3	-4	-17.0%	15
Maintenance/ Technical	2	2	1	1	1	-1	+0	+0	-1	-1	-48.5%	1
General Support	20	18	14	14	14	-4	+1	+0	-4	-5	-20.4%	16
Health Care Assistants	33	31	36	35	35	+6	-1	0	+4	+1	+13.7%	37
Care, other	92	88	92	83	83	+4	-8	+1	-4	-9	-5.1%	92
Patient & Client Care	125	118	128	118	118	+9	-10	+0	0	-8	-0.3%	129



Primary Care

Primary Care HSE Only DEC 2024	WTE DEC 2019	WTE DEC 2022	WTE DEC 2023(1)	WTE NOV 2024	WTE DEC 2024	WTE Change 2023	WTE Change 2024	WTE Change NOV 2024	WTE Change Dec 2022 to DEC 2024	WTE Change Dec 2019 to DEC 2024	% WTE Change Dec 2022 to DEC 2024	No. DEC 2024
Overall	1,220	1,240	1,290	1,243	1,235	+50	-55	-8	-5	+15	-0.4%	1,419
Consultants	6	5	6	5	5	+1	-1	+0	+0	-1	+7.1%	5
Registrars	41	39	50	44	43	+11	-6	0	+5	+3	+12.0%	45
SHO/ Interns	1	6	9	11	10	+3	+1	-1	+4	+9	+68.7%	10
Medical/ Dental, other	74	59	65	60	61	+5	-4	+0	+1	-13	+2.5%	90
Medical & Dental	122	108	129	120	119	+21	-10	-1	+10	-3	+9.6%	150
Nurse/ Midwife Manager	36	53	53	52	52	+0	-1	+0	-1	+16	-1.0%	56
Nurse/ Midwife Specialist & AN/MP	17	29	29	34	34	+0	+5	0	+5	+16	+17.1%	36
Staff Nurse/ Staff Midwife	106	92	92	89	86	+1	-6	-3	-6	-20	-6.4%	111
Public Health Nurse	175	164	158	148	150	-6	-8	+2	-15	-26	-8.8%	178
Post-registration Nurse/ Midwife Student	21	25	10	20	20	-1	+10	+10	-5	-1	+99.5%	20
Nursing/ Midwifery Student	21	25	10	20	20	-15	+10	+0	-5	-1	-19.4%	20
Nursing/ Midwifery other			1			+1	-1				-100.0%	
Nursing & Midwifery	356	362	343	342	341	-19	-1	-1	-21	-14	-5.7%	401
Dietitians	13	26	29	30	29	+17	+1	+1	+3	+17	+2.1%	36
Occupational Therapists	84	74	63	61	62	-22	-2	-2	-13	-22	-2.4%	70
Orthoptists		3	3	3	3	+3	0	0	0	+3	-0.7%	3
Physiotherapists	57	65	72	69	68	+11	-4	-4	+3	+11	-5.5%	78
Podiatrists & Chiropodists	1	6	8	7	7	+6	0	0	+1	+6	-4.7%	8
Speech & Language Therapists	75	57	50	44	43	-32	-7	-7	-14	-32	-13.8%	52
Therapy Professions	229	232	225	214	212	-7	-12	-2	-19	-17	-8.4%	247
Health Science/ Diagnostics		8	6	6	6	-1	-1	-1	-2	+6	-24.2%	7
Social Care	3	4	4	5	5	+0	+1	0	+1	+1	+21.1%	5
Pharmacy	22	23	24	24	23	+1	-1	-1	0	+1	-0.1%	25
Psychologists	21	25	35	38	36	+10	+1	-2	+11	+15	+44.5%	41
Social Workers	15	18	21	21	20	+3	-1	-1	+2	+5	+10.9%	23
H&SC, Other	24	24	28	29	29	+4	+1	+0	+5	+5	+20.6%	34
Health & Social Care Professionals	315	333	344	337	331	+10	-13	-6	-2	+16	-0.7%	382
Management (VIII & above)	29	19	23	23	22	+4	-1	-1	+3	-7	+14.2%	22
Administrative/ Supervisory (V to VII)	56	64	72	71	71	+8	0	+0	+7	+16	+11.6%	74
Clerical (III & IV)	153	148	172	160	159	+23	-13	-1	+10	+6	+7.0%	176
Management & Administrative	237	231	266	254	252	+35	-14	-2	+21	+15	+8.9%	272
Support	43	34	32	30	29	-2	-3	0	-5	-13	-15.2%	34
Maintenance/ Technical	2	1	1	1	1	+0	-1	+0	0	-1	-35.8%	2
General Support	44	36	34	31	30	-2	-4	0	-6	-14	-16.0%	36
Health Care Assistants	19	34	45	38	37	+11	-8	-1	+3	+18	+10.0%	42
Care, other	127	135	129	122	125	-6	-4	+2	-10	-2	-7.5%	136
Patient & Client Care	146	169	174	160	162	+6	-12	+2	-7	+15	-4.0%	178



Disabilities

Disabilities HSE Only DEC 2024	WTE DEC 2019	WTE DEC 2022	WTE DEC 2023(1)	WTE NOV 2024	WTE DEC 2024	WTE Change 2023	WTE Change 2024	WTE Change NOV 2024	WTE Change Dec 2022 to DEC 2024	WTE Change Dec 2019 to DEC 2024	% WTE Change Dec 2022 to DEC 2024	No. DEC 2024
Overall	101	132	121	116	116	-12	-5	0	-16	+15	-12.3%	183
Nurse/ Midwife Manager	2	2	2	2	2	+0	+0	+0	+0	+0	+1.0%	2
Nurse/ Midwife Specialist & AN/MP	1									-1	-100.0%	
Nursing & Midwifery	3	2	2	2	2	+0	+0	+0	+0	-1	+1.0%	2
Dietitians			1	1	1	+1	+0	+0	+1	+1	+0.0%	1
Occupational Therapists	12	21	13	13	13	+1	+1	+1	-7	+1	+7.2%	15
Physiotherapists	4	5	5	11	11	+6	+6	+6	+6	+6	+130.2%	11
Speech & Language Therapists	17	22	20	16	17	-1	-3	-3	-5	-1	-15.5%	19
Therapy Professions	34	47	37	41	41	-10	+4	+1	-6	+7	-12.8%	46
Psychologists	9	16	14	14	13	-2	0	0	-3	+4	-16.0%	15
Social Workers	7	7	5	3	3	-2	-3	+0	-5	-4	-64.1%	3
Health & Social Care Professionals	50	70	56	57	57	-14	+1	+0	-13	+7	-18.9%	64
Management (VIII & above)	3	9	7	6	6	-2	-1	+0	-3	+3	-31.2%	7
Administrative/ Supervisory (V to VII)	13	17	24	21	20	+7	-4	-1	+3	+7	+16.1%	21
Clerical (III & IV)	8	13	12	12	12	-1	+0	+0	-1	+4	-7.1%	13
Management & Administrative	24	39	43	39	38	+4	-5	-1	-1	+14	-2.3%	41
Health Care Assistants	20	14	11	11	11	-3	0	0	-3	-9	-20.7%	68
Care, other	4	7	8	8	8	+1	0	+0	+1	+4	+12.4%	8
Patient & Client Care	24	21	19	19	19	-2	-1	+0	-2	-5	-10.0%	76



Older People

Older People HSE Only DEC 2024	WTE DEC 2019	WTE DEC 2022	WTE DEC 2023(1)	WTE NOV 2024	WTE DEC 2024	WTE Change 2023	WTE Change 2024	WTE Change NOV 2024	WTE Change Dec 2022 to DEC 2024	WTE Change Dec 2019 to DEC 2024	% WTE Change Dec 2022 to DEC 2024	No. DEC 2024
Overall	996	999	1,025	1,045	1,040	+26	+16	-5	+42	+44	+4.2%	1,159
SHO/ Interns	2	2	2	2	2	+0	+0	+0	+0	+0	+1.0%	2
Medical/ Dental, other	4	2	1	1	1	-1	+0	+0	-1	-3	-32.0%	2
Medical & Dental	6	4	3	3	3	-1	+0	+0	-1	-3	-15.7%	4
Nurse/ Midwife Manager	77	88	101	109	108	+13	+7	-1	+20	+31	+22.4%	111
Nurse/ Midwife Specialist & AN/MP	3	6	7	7	7	+1	+0	0	+1	+4	+18.6%	7
Staff Nurse/ Staff Midwife	219	239	216	214	212	-22	-4	-2	-26	-7	-11.1%	231
Nursing/ Midwifery awaiting registration		1	1	1	1	+1	0	0	+0	+1	-1.0%	1
Nursing/ Midwifery Student		1	1	1	1	+0	0	0	+0	+1	+0.0%	1
Nursing & Midwifery	299	334	325	331	328	-9	+3	-3	-6	+29	-1.7%	350
Dietitians	1	2	1	1	1	+0	+1	+1	0	+0	+150.9%	2
Occupational Therapists	4	5	6	4	4	+0	-2	-2	-1	+0	-29.4%	5
Physiotherapists	9	10	9	9	11	+2	+2	+2	+1	+2	+17.2%	12
Podiatrists & Chiropodists			1	0			-1	-1			-100.0%	
Speech & Language Therapists		1	2	1	1	+1	-1	-1	+0	+1	-54.5%	1
Therapy Professions	14	18	18	16	17	+1	-1	+1	-1	+4	-3.1%	20
Pharmacy	3	3	3	3	3	+0	+0	+0	+0	+1	+1.0%	3
Social Workers	11	5	5	5	5	0	+0	+0	+0	-6	+1.8%	5
H&SC, Other	1	1	2	2	2	+1	+0	+0	+1	+1	+51.5%	2
Health & Social Care Professionals	28	27	28	25	27	+1	-1	+1	+0	-1	+0.3%	30
Management (VIII & above)	5	12	5	5	5	-7	0	0	-7	0	-57.8%	5
Administrative/ Supervisory (V to VII)	12	20	18	16	16	-1	-2	0	-4	+5	-18.7%	17
Clerical (III & IV)	34	42	46	46	46	+4	0	-1	+4	+12	+8.4%	49
Management & Administrative	51	74	69	67	67	-4	-2	-1	-7	+16	-9.4%	71
Support	110	104	106	109	108	+2	+2	-1	+4	-2	+3.9%	119
Maintenance/ Technical	2	2	2	3	3	+0	+1	+0	+1	+1	+51.5%	3
General Support	112	106	108	112	111	+2	+3	-1	+5	-1	+4.8%	122
Health Care Assistants	495	449	484	498	496	+35	+13	-1	+47	+1	+10.6%	574
Care, other	5	6	8	8	8	+2	+0	+0	+2	+3	+34.2%	8
Patient & Client Care	500	455	492	506	504	+37	+13	-1	+50	+4	+10.9%	582



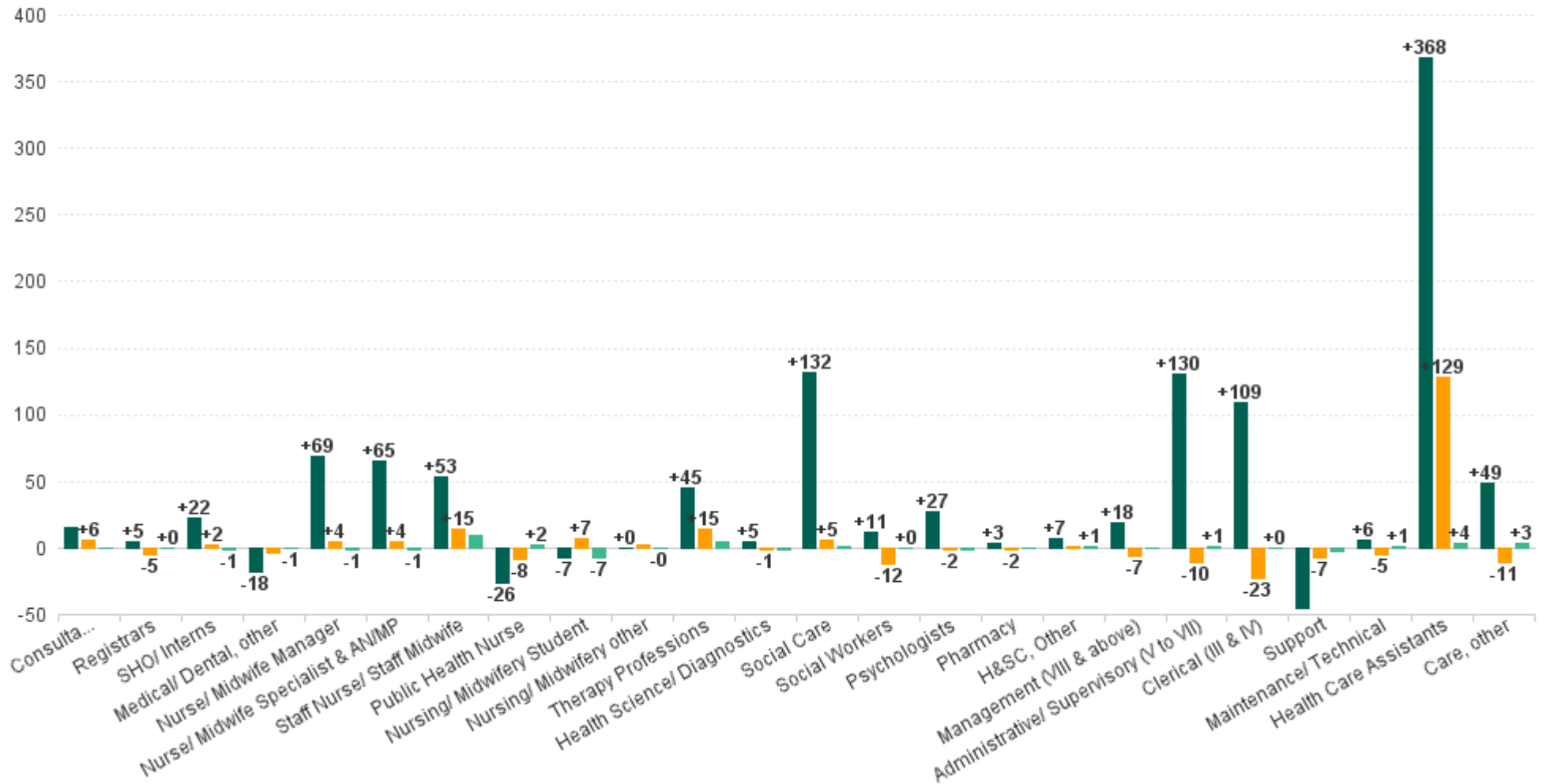
CHO Operations

CHO Operations HSE Only DEC 2024	WTE DEC 2019	WTE DEC 2022	WTE DEC 2023(1)	WTE NOV 2024	WTE DEC 2024	WTE Change 2023	WTE Change 2024	WTE Change NOV 2024	WTE Change Dec 2022 to DEC 2024	WTE Change Dec 2019 to DEC 2024	% WTE Change Dec 2022 to DEC 2024	No. DEC 2024
Overall		113	118	114	113	+5	-5	-1	0	+113	-0.4%	119
Nurse/ Midwife Manager		3	5	5	5	+1	+0	0	+1	+5	+43.1%	5
Nurse/ Midwife Specialist & AN/MP			1	2	2	+1	+1	+0	+2	+2	-100.0%	2
Staff Nurse/ Staff Midwife		2				-2			-2		-100.0%	
Nursing & Midwifery		5	6	7	7	+0	+1	0	+1	+7	+25.2%	7
Pharmacy		1	1			+0	-1		-1		-100.0%	
Social Workers		7	8	5	5	+1	-3	+0	-2	+5	-32.2%	5
H&SC, Other				1	1		+1	+0	+1	+1	-100.0%	1
Health & Social Care Professionals		8	9	6	6	+1	-3	+0	-2	+6	-28.3%	6
Management (VIII & above)		21	16	12	12	-5	-4	+0	-9	+12	-43.7%	12
Administrative/ Supervisory (V to VII)		42	49	49	48	+7	-1	-1	+6	+48	+14.3%	50
Clerical (III & IV)		37	38	41	41	+1	+2	+0	+4	+41	+9.8%	44
Management & Administrative		100	103	101	100	+3	-3	-1	+1	+100	+0.5%	106



WTE Change by Staff Group

■ WTE change since DEC 2019 ■ WTE change since DEC 2023 ■ WTE change since NOV 2024



Employment Report by WTE, Headcount, Gender, Full-Time / Part-Time etc. DEC 2024

CHO 7 DEC 2024

DEC 2024	WTE DEC 2024	No. DEC 2024	WTE : No	Number Male %	Number Female %	Male WTE : No.	Female WTE : No	Perm Count %	Perm Count Male %	Perm Count Female %	Fulltime Count %	Part time Count %	FT Count Male %	FT Count Female %
Total	7,559	8,674	1:0.9	21.06%	78.94%	1:0.9	1:0.9	90.32%	18.80%	71.51%	72.32%	27.68%	84.46%	69.08%
Consultant Medicine	7	9	1:0.8	33.33%	66.67%	1:0.9	1:0.8	88.89%	33.33%	55.56%	66.67%	33.33%	66.67%	66.67%
Consultant Psychiatry	68	70	1:1	34.29%	65.71%	1:1	1:1	72.86%	22.86%	50.00%	95.71%	4.29%	100.00%	93.48%
Dentists	29	36	1:0.8	8.33%	91.67%	1:1	1:0.8	100.00%	8.33%	91.67%	50.00%	50.00%	100.00%	45.45%
Interns	3	3	1:1	33.33%	66.67%	1:1	1:1				100.00%		100.00%	100.00%
Other Medical	34	57	1:0.6	29.82%	70.18%	1:0.6	1:0.6	84.21%	26.32%	57.89%	17.54%	82.46%	5.88%	22.50%
Registrar	76	78	1:1	30.77%	69.23%	1:1	1:1	2.56%	2.56%		98.72%	1.28%	100.00%	98.15%
Senior House Officer	55	56	1:1	30.36%	69.64%	1:1	1:1	5.36%	3.57%	1.79%	100.00%		100.00%	100.00%
Senior Registrar	20	21	1:1	38.10%	61.90%	1:1	1:0.9				90.48%	9.52%	100.00%	84.62%
Specialist Registrar	4	4	1:1	25.00%	75.00%	1:1	1:1				100.00%		100.00%	100.00%
Medical & Dental	296	334	1:0.9	29.34%	70.66%	1:0.9	1:0.9	44.31%	12.28%	32.04%	77.84%	22.16%	82.65%	75.85%
Advanced Nurse/ Midwife Practitioner	24	25	1:1	12.00%	88.00%	1:1	1:1	100.00%	12.00%	88.00%	96.00%	4.00%	100.00%	95.45%
Adv. Nurse/ Midwife, Candidate	8	9	1:0.9		100.00%	1:	1:0.9	100.00%		100.00%	100.00%			100.00%
Clinical Nurse/ Midwife Manager 1	100	106	1:0.9	23.58%	76.42%	1:1	1:0.9	98.11%	23.58%	74.53%	90.57%	9.43%	96.00%	88.89%
Clinical Nurse/ Midwife Manager 2	226	242	1:0.9	10.33%	89.67%	1:1	1:0.9	93.39%	9.09%	84.30%	86.78%	13.22%	96.00%	85.71%
Clinical Nurse/ Midwife Manager 3	40	42	1:0.9	9.52%	90.48%	1:1	1:0.9	100.00%	9.52%	90.48%	85.71%	14.29%	100.00%	84.21%
Clinical Nurse/ Midwife Spec., Candidate	0	1	1:0.5		100.00%	1:	1:0.5	100.00%		100.00%		100.00%		
Clinical Nurse/ Midwife Specialist	126	140	1:0.9	9.29%	90.71%	1:1	1:0.9	99.29%	9.29%	90.00%	77.14%	22.86%	92.31%	75.59%
Director Nursing/Midwifery, Assistant	70	72	1:1	20.83%	79.17%	1:1	1:1	100.00%	20.83%	79.17%	94.44%	5.56%	100.00%	92.98%
Director of Nursing/Midwifery	28	29	1:1	24.14%	75.86%	1:1	1:1	100.00%	24.14%	75.86%	96.55%	3.45%	100.00%	95.45%
Nursing Education/Clinical	10	13	1:0.8		100.00%	1:	1:0.8	100.00%		100.00%	61.54%	38.46%		61.54%
Nursing/ Midwifery awaiting registration	5	6	1:0.9	33.33%	66.67%	1:1	1:0.9	33.33%	16.67%	16.67%	100.00%		100.00%	100.00%
Post-registration Nurse/ Midwife Student	20	20	1:1		100.00%	1:	1:1	15.00%		15.00%	100.00%			100.00%
Public Health Nurse	150	178	1:0.8	1.69%	98.31%	1:1	1:0.8	99.44%	1.69%	97.75%	70.79%	29.21%	100.00%	70.29%
Staff Nurse [Intellectual Disability]	216	257	1:0.8	12.45%	87.55%	1:1	1:0.8	95.72%	12.45%	83.27%	69.26%	30.74%	87.50%	66.67%
Staff Nurse [Psychiatric]	210	231	1:0.9	21.21%	78.79%	1:0.9	1:0.9	93.51%	19.48%	74.03%	87.45%	12.55%	91.84%	86.26%
Staff Nurses [General/ Children's]	620	711	1:0.9	11.67%	88.33%	1:1	1:0.9	96.77%	11.25%	85.51%	73.00%	27.00%	90.36%	70.70%
Nursing & Midwifery	1,855	2,082	1:0.9	12.54%	87.46%	1:1	1:0.9	95.68%	12.01%	83.67%	78.67%	21.33%	92.72%	76.66%
Audiology	6	7	1:0.8	28.57%	71.43%	1:0.8	1:0.8	85.71%	28.57%	57.14%	85.71%	14.29%	100.00%	80.00%
Counsellor Therapists	38	41	1:0.9	36.59%	63.41%	1:1	1:0.9	97.56%	36.59%	60.98%	68.29%	31.71%	80.00%	61.54%
Dental Hygienists	4	5	1:0.7		100.00%	1:	1:0.7	100.00%		100.00%	40.00%	60.00%		40.00%
Dietitians	45	56	1:0.8	5.36%	94.64%	1:1	1:0.8	94.64%	5.36%	89.29%	66.07%	33.93%	100.00%	64.15%
Environmental Health Officers	1	1	1:1		100.00%	1:	1:1	100.00%		100.00%	100.00%			100.00%
Occupational Therapists	185	207	1:0.9	9.18%	90.82%	1:0.9	1:0.9	97.10%	9.18%	87.92%	78.74%	21.26%	84.21%	78.19%
Orthoptists	3	3	1:0.9	33.33%	66.67%	1:1	1:0.9	100.00%	33.33%	66.67%	100.00%		100.00%	100.00%
Other Health & Social Care	7	10	1:0.7	40.00%	60.00%	1:0.9	1:0.6	100.00%	40.00%	60.00%	50.00%	50.00%	50.00%	50.00%
Pharmacists	36	42	1:0.9	19.05%	80.95%	1:1	1:0.8	66.67%	7.14%	59.52%	42.86%	57.14%	37.50%	44.12%
Pharmacy Technicians	8	8	1:0.9	12.50%	87.50%	1:1	1:0.9	75.00%	12.50%	62.50%	87.50%	12.50%	100.00%	85.71%
Phlebotomists	0	1	1:0.2		100.00%	1:	1:0.2	100.00%		100.00%		100.00%		
Physiotherapists	146	166	1:0.9	27.71%	72.29%	1:1	1:0.9	95.78%	27.11%	68.67%	80.12%	19.88%	93.48%	75.00%
Play Therapists/ Specialists	2	2	1:0.8	100.00%		1:0.8	1:	100.00%	100.00%		50.00%	50.00%	50.00%	
Podiatrists & Chiropodists	7	8	1:0.9		100.00%	1:	1:0.9	100.00%		100.00%	87.50%	12.50%		87.50%
Psychologists	108	122	1:0.9	18.85%	81.15%	1:1	1:0.9	90.98%	18.03%	72.95%	81.15%	18.85%	100.00%	76.77%
Radiographers	1	1	1:0.5		100.00%	1:	1:0.5	100.00%		100.00%		100.00%		
Respiratory Physiologists	2	2	1:1	100.00%		1:1	1:	100.00%	100.00%		100.00%		100.00%	
Social Care	503	550	1:0.9	26.18%	73.82%	1:1	1:0.9	97.64%	25.64%	72.00%	71.64%	28.36%	86.11%	66.50%
Social Workers	116	128	1:0.9	14.84%	85.16%	1:1	1:0.9	99.22%	14.84%	84.38%	82.03%	17.97%	94.74%	79.82%
Speech & Language Therapists	109	125	1:0.9	1.60%	98.40%	1:1	1:0.9	97.60%	1.60%	96.00%	84.00%	16.00%	100.00%	83.74%
Vaccinators	1	1	1:0.6		100.00%	1:	1:0.6	100.00%		100.00%		100.00%		
Health & Social Care Professionals	1,325	1,486	1:0.9	19.58%	80.42%	1:1	1:0.9	95.83%	18.91%	76.92%	75.10%	24.90%	86.94%	72.22%
CEO/Chief Officer	5	5	1:1	40.00%	60.00%	1:1	1:1	100.00%	40.00%	60.00%	100.00%		100.00%	100.00%
General Administrative (III & IV)	459	512	1:0.9	15.43%	84.57%	1:0.9	1:0.9	90.04%	13.67%	76.37%	76.76%	23.24%	88.61%	74.60%
General Managers	13	13	1:1	15.38%	84.62%	1:1	1:1	100.00%	15.38%	84.62%	100.00%		100.00%	100.00%
Middle Management (V-VII)	312	327	1:1	27.22%	72.78%	1:1	1:0.9	96.94%	26.30%	70.64%	92.05%	7.95%	97.75%	89.92%
Other Executives	10	10	1:1	50.00%	50.00%	1:1	1:1	100.00%	50.00%	50.00%	100.00%		100.00%	100.00%
VIII	63	65	1:1	30.77%	69.23%	1:1	1:1	96.92%	27.69%	69.23%	98.46%	1.54%	100.00%	97.78%
Management & Administrative	863	932	1:0.9	21.14%	78.86%	1:1	1:0.9	93.24%	19.64%	73.61%	84.33%	15.67%	94.42%	81.63%



DEC 2024	WTE DEC 2024	No. DEC 2024	WTE : No	Number Male %	Number Female %	Male WTE : No.	Female WTE : No	Perm Count %	Perm Count Male %	Perm Count Female %	Fulltime Count %	Part time Count %	FT Count Male %	FT Count Female %
Total	7,559	8,674	1:0.9	21.06%	78.94%	1:0.9	1:0.9	90.32%	18.80%	71.51%	72.32%	27.68%	84.46%	69.08%
Catering	83	106	1:0.8	30.19%	69.81%	1:0.9	1:0.7	81.13%	28.30%	52.83%	49.06%	50.94%	81.25%	35.14%
Household Services	223	293	1:0.8	18.77%	81.23%	1:0.8	1:0.7	88.40%	15.36%	73.04%	37.20%	62.80%	60.00%	31.93%
Maintenance	41	48	1:0.9	85.42%	14.58%	1:0.8	1:0.9	89.58%	77.08%	12.50%	64.58%	35.42%	73.17%	14.29%
Other Labs & Associated	1	1	1:1		100.00%	1:	1:1	100.00%		100.00%	100.00%			100.00%
Other Support	6	8	1:0.7	50.00%	50.00%	1:0.7	1:0.8	87.50%	37.50%	50.00%	50.00%	50.00%	50.00%	50.00%
Portering	53	56	1:0.9	87.50%	12.50%	1:1	1:0.7	85.71%	73.21%	12.50%	85.71%	14.29%	95.92%	14.29%
Technical Services	6	6	1:1	83.33%	16.67%	1:1	1:1	100.00%	83.33%	16.67%	100.00%		100.00%	100.00%
General Support	412	518	1:0.8	35.91%	64.09%	1:0.9	1:0.7	86.87%	31.08%	55.79%	48.46%	51.54%	76.88%	32.53%
Attendant/ Aide	27	39	1:0.7	25.64%	74.36%	1:0.8	1:0.7	41.03%	5.13%	35.90%	56.41%	43.59%	70.00%	51.72%
Health Care Assistant/ Care Assistant	1,936	2,259	1:0.9	24.52%	75.48%	1:0.9	1:0.8	88.49%	22.36%	66.14%	65.96%	34.04%	78.34%	61.94%
Health Care Assistant /Home Support	144	230	1:0.6	9.57%	90.43%	1:0.5	1:0.6	81.30%	6.09%	75.22%	35.22%	64.78%	36.36%	35.10%
Health Promotion	31	33	1:0.9	18.18%	81.82%	1:1	1:0.9	100.00%	18.18%	81.82%	96.97%	3.03%	100.00%	96.30%
Health & Social Care Assistants	43	47	1:0.9	23.40%	76.60%	1:0.9	1:0.9	76.60%	19.15%	57.45%	87.23%	12.77%	81.82%	88.89%
Home Care Services	6	8	1:0.8		100.00%	1:	1:0.8	87.50%		87.50%	62.50%	37.50%		62.50%
Other Care Grades	165	181	1:0.9	33.70%	66.30%	1:1	1:0.9	96.13%	30.94%	65.19%	81.22%	18.78%	95.08%	74.17%
Pastoral Care	5	5	1:1	60.00%	40.00%	1:1	1:1	80.00%	40.00%	40.00%	100.00%		100.00%	100.00%
Workshop Services	451	520	1:0.9	24.42%	75.58%	1:0.9	1:0.8	95.19%	23.27%	71.92%	76.73%	23.27%	88.98%	72.77%
Patient & Client Care	2,809	3,322	1:0.8	23.90%	76.10%	1:0.9	1:0.8	88.83%	21.52%	67.31%	66.89%	33.11%	80.35%	62.66%



Employment Report by WTE, Headcount, Gender, Full-Time / Part-Time etc. DEC 2024

CHO 7 DEC 2024

DEC 2024	WTE DEC 2024	No. DEC 2024	WTE : No	Number Male %	Number Female %	Male WTE : No.	Female WTE : No	Perm Count %	Number Male %	Number Female %	Fulltime Count %	Part time Count %	FT Count Male %	FT Count Female %
Total	7,559	8,674	1:0.9	21.06%	78.94%	1:0.9	1:0.9	90.32%	18.80%	71.51%	72.32%	27.68%	84.46%	69.08%
Disabilities	3,701	4,351	1:0.9	22.80%	77.20%	1:0.9	1:0.8	89.50%	20.59%	68.90%	68.26%	31.74%	80.85%	64.54%
Mental Health	909	980	1:0.9	24.08%	75.92%	1:1	1:0.9	86.33%	19.69%	66.63%	89.18%	10.82%	96.19%	86.96%
Older People	1,040	1,159	1:0.9	18.72%	81.28%	1:1	1:0.9	93.27%	16.74%	76.53%	72.56%	27.44%	88.48%	68.90%
Primary Care	1,748	2,014	1:0.9	17.68%	82.32%	1:0.9	1:0.9	92.11%	16.09%	76.02%	71.10%	28.90%	83.43%	68.46%
CHO Operations	113	119	1:0.9	15.97%	84.03%	1:1	1:0.9	94.96%	15.13%	79.83%	92.44%	7.56%	94.74%	92.00%
Community Health & Wellbeing	48	51	1:0.9	13.73%	86.27%	1:1	1:0.9	88.24%	11.76%	76.47%	90.20%	9.80%	100.00%	88.64%



Employment by Grade Group DEC 2024	WTE DEC 2019	WTE DEC 2022	WTE DEC 2023(1)	WTE NOV 2024	WTE DEC 2024	WTE Change 2023	WTE Change 2024	WTE Change NOV 2024	WTE Change Dec 2022 to DEC 2024	WTE Change Dec 2019 to DEC 2024	% WTE Change Dec 2022 to DEC 2024	No. DEC 2024
Overall	6,514	7,215	7,466	7,548	7,559	+251	+94	+12	+345	+1,045	+4.8%	8,674
Consultant Medicine	7	7	8	7	7	+1	-1	+0	+0	+1	+1.5%	9
Consultant Psychiatry	52	56	62	68	68	+6	+7	+0	+12	+16	+21.8%	70
Consultant Surgery	1									-1	-100.0%	
Consultant Paediatrics	0									0	-100.0%	
Consultants	60	63	69	75	75	+6	+6	+0	+12	+16	+19.5%	79
Registrar	72	70	77	76	76	+7	-1	0	+6	+4	+8.6%	78
Senior Registrar	19	31	22	20	20	-9	-2	+0	-11	+1	-34.9%	21
Specialist Registrar	4	3	6	4	4	+3	-2	+0	+1	+0	+35.1%	4
Registrars	95	104	105	100	100	+1	-5	+0	-4	+5	-3.6%	103
Interns	2	3	3	3	3	+0	+0	+0	+0	+1	+2.0%	3
Senior House Officer	34	44	53	56	55	+10	+2	-1	+12	+21	+26.6%	56
SHO/ Interns	36	47	56	59	58	+10	+2	-1	+12	+22	+25.1%	59
Dentists	34	30	30	28	29	+0	-1	+0	-1	-5	-4.8%	36
Other Medical	47	33	36	35	34	+3	-2	-1	+1	-13	+3.2%	57
Medical/ Dental, other	80	63	67	63	63	+3	-4	-1	0	-18	-0.6%	93
Medical & Dental	271	276		298	296	+20	-1	-1	+20	+25	+7.2%	+334
Clinical Nurse/ Midwife Manager 1	100	109	98	100	100	-11	+2	+0	-9	+0	-8.2%	106
Clinical Nurse/ Midwife Manager 2	188	214	225	227	226	+11	+1	-1	+12	+38	+5.6%	242
Clinical Nurse/ Midwife Manager 3	40	42	42	39	40	+0	-3	+1	-2	-1	-5.8%	42
Director Nursing/Midwifery, Assistant	52	67	70	71	70	+3	+0	-1	+3	+18	+5.2%	72
Director of Nursing/Midwifery	16	23	24	29	28	+2	+4	0	+6	+12	+25.9%	29
Nurse/ Midwife Manager	396	455	460	466	465	+6	+4	-1	+10	+69	+2.2%	491
Adv. Nurse/ Midwife, Candidate	2	12	13	8	8	+1	-5	+0	-4	+6	-32.8%	9
Advanced Nurse/ Midwife Practitioner	2	16	17	24	24	+2	+7	0	+8	+22	+53.5%	25
Clinical Nurse/ Midwife Specialist	89	105	125	127	126	+19	+2	-1	+21	+37	+19.9%	140
Clinical Nurse/ Midwife Spec., Candidate				0	0		+0	+0	+0	+0	-100.0%	1
Nurse/ Midwife Specialist & AN/MP	94	133	155	160	159	+22	+4	-1	+26	+65	+19.6%	175
Staff Nurse [Intellectual Disability]	194	226	221	217	216	-5	-5	0	-9	+22	-4.1%	257
Staff Nurse [Psychiatric]	191	198	193	202	210	-5	+17	+8	+12	+19	+6.2%	231
Staff Nurses [General/ Children's]	608	636	617	618	620	-19	+3	+2	-17	+12	-2.6%	711
Staff Nurse/ Staff Midwife	993	1,060	1,031	1,036	1,046	-28	+15	+10	-14	+53	-1.3%	1,199
Public Health Nurse	175	164	158	148	150	-6	-8	+2	-15	-26	-8.8%	178
Public Health Nurse	175	164	158	148	150	-6	-8	+2	-15	-26	-8.8%	178
Nursing/ Midwifery awaiting registration	10	3	7	12	5	+5	-2	-7	+2	-4	+82.8%	6
Post-registration Nurse/ Midwife Student	21	25	10	20	20	-15	+10	+0	-5	-1	-19.4%	20
Pre-registration Nurse/ Midwife Intern	1	0	1	0		+1	-1	0	0	-1	-100.0%	
Nursing/ Midwifery Student	32	28	18	32	25	-9	+7	-7	-2	-7	-8.8%	26
Nursing Education/Clinical	10	10	8	10	10	-2	+2	0	0	+0	-2.7%	13
Other Nursing/ Midwifery		1				-1			-1		-100.0%	
Nursing/ Midwifery other	10	11	8	10	10	-3	+2	0	-1	+0	-11.2%	13
Nursing & Midwifery	1,700	1,851		1,852	1,855	-20	+23	+3	+4	+154	+0.2%	+2,082
Dietitians	25	36	42	45	45	+6	+3	-1	+9	+19	+25.0%	56
Occupational Therapists	184	184	176	182	185	-8	+9	+3	+1	+1	+0.5%	207
Orthoptists		3	3	3	3	0	0	+0	0	+3	-5.9%	3
Physiotherapists	114	136	139	142	146	+3	+7	+4	+10	+32	+7.1%	166
Podiatrists & Chiropodists	1	6	8	8	7	+2	-1	0	+1	+6	+24.9%	8
Speech & Language Therapists	126	126	112	110	109	-13	-3	-1	-16	-16	-12.9%	125
Therapy Professions	450	490	480	490	495	-10	+15	+5	+5	+45	+0.9%	565
Audiology		8	6	6	6	-1	-1	-1	-2	+6	-24.2%	7
Phlebotomists	1	0	0	0	0	0	+0	+0	0	-1	-23.3%	1
Radiographers	1	1	2	1	1	+0	-1	0	-1	-1	-62.4%	1
Respiratory Physiologists	1	2	1	2	2	-1	+1	+0	+0	+1	+0.0%	2
Health Science/ Diagnostics	3	11	9	9	8	-2	-1	-1	-3	+5	-24.4%	11

Employment by Grade Group DEC 2024	WTE DEC 2019	WTE DEC 2022	WTE DEC 2023(1)	WTE NOV 2024	WTE DEC 2024	WTE Change 2023	WTE Change 2024	WTE Change NOV 2024	WTE Change Dec 2022 to DEC 2024	WTE Change Dec 2019 to DEC 2024	% WTE Change Dec 2022 to DEC 2024	No. DEC 2024
Overall	6,514	7,215	7,466	7,548	7,559	+251	+94	+12	+345	+1,045	+4.8%	8,674
Social Care	371	477	498	502	503	+20	+5	+1	+26	+132	+5.4%	550
Social Care	371	477	498	502	503	+20	+5	+1	+26	+132	+5.4%	550
Pharmacists	35	34	38	36	36	+3	-2	0	+2	+1	+4.4%	42
Pharmacy Technicians	5	7	8	8	8	+1	0	0	+1	+2	+14.3%	8
Pharmacy	40	41	45	44	43	+4	-2	-1	+2	+3	+6.0%	50
Psychologists	81	96	109	109	108	+13	-2	-2	+11	+27	+11.9%	122
Psychologists	81	96	109	109	108	+13	-2	-2	+11	+27	+11.9%	122
Social Workers	105	123	127	115	116	+5	-12	+0	-7	+11	-5.6%	128
Social Workers	105	123	127	115	116	+5	-12	+0	-7	+11	-5.6%	128
Counsellor Therapists	36	36	37	37	38	+0	+1	+0	+2	+2	+4.2%	41
Dental Hygienists	5	6	5	3	4	-1	-1	+0	-2	-2	-38.7%	5
Other Health & Social Care	2	2	6	7	7	+3	+2	+0	+5	+5	+221.6%	10
Play Therapists/ Specialists	1	1	3	2	2	+2	-1	+0	+1	+1	+51.5%	2
Vaccinators				1	1		+1	+0	+1	+1	-100.0%	1
Environmental Health Officers			1	1	1	+1	+0	+0	+1	+1	-100.0%	1
H&SC, Other	44	45	51	51	52	+5	+1	+1	+7	+7	+14.5%	60
Health & Social Care Professionals	1,094	1,284		1,321	1,325	+35	+6	+4	+41	+231	+3.2%	+1,486
CEO/Chief Officer	6	7	6	5	5	-1	-1	+0	-2	-1	-28.4%	5
General Managers	11	17	15	13	13	-2	-2	+0	-4	+2	-21.9%	13
Other Executives	8	12	11	11	10	-1	-1	-1	-2	+2	-16.0%	10
VIII	48	74	66	63	63	-8	-3	+1	-10	+15	-13.9%	65
Management (VIII & above)	73	109	98	91	91	-11	-7	0	-18	+18	-16.3%	93
Middle Management (V-VII)	181	287	323	312	312	+36	-10	+1	+26	+131	+9.0%	327
Other Administrative	1									-1	-100.0%	
Administrative/ Supervisory (V to VII)	182	287	323	312	312	+36	-10	+1	+26	+130	+9.0%	327
General Administrative (III & IV)	351	439	482	459	459	+43	-23	+0	+20	+109	+4.6%	512
Clerical (III & IV)	351	439	482	459	459	+43	-23	+0	+20	+109	+4.6%	512
Management & Administrative	606	834		862	863	+68	-40	+1	+28	+257	+3.4%	+932
Catering	59	49	72	82	83	+23	+11	+0	+34	+24	+68.8%	106
Household Services	269	263	227	225	223	-36	-4	-2	-40	-46	-15.3%	293
Other Support	14	17	17	6	6	+0	-12	+0	-11	-8	-66.1%	8
Portering	67	52	55	53	53	+3	-3	0	+1	-15	+1.6%	56
Other Labs & Associated	1	1	1	1	1	+0	+0	+0	+0	+0	+0.0%	1
Support	410	382	372	367	365	-10	-7	-2	-17	-46	-4.5%	464
Maintenance	37	39	44	40	41	+5	-3	+1	+2	+4	+4.7%	48
Technical Services	4	7	8	6	6	+1	-2	+0	-1	+2	-14.3%	6
Maintenance/ Technical	41	46	52	46	47	+6	-5	+1	+1	+6	+1.8%	54
General Support	452	428		413	412	-4	-13	-1	-16	-40	-3.8%	+518
Attendant/ Aide	40	30	29	27	27	0	-3	0	-3	-13	-10.2%	39
Health & Social Care Assistants	12	25	52	43	43	+28	-9	+0	+18	+31	+74.0%	47
Health Care Assistant /Home Support	127	131	148	145	144	+18	-4	-1	+14	+17	+10.3%	230
Health Care Assistant/ Care Assistant	1,602	1,698	1,791	1,931	1,936	+94	+145	+5	+239	+334	+14.1%	2,259
Health Care Assistants	1,782	1,882	2,022	2,146	2,150	+139	+129	+4	+268	+368	+14.2%	2,575
Health Promotion		27	30	32	31	+3	+1	0	+4	+31	+14.9%	33
Home Care Services	6	4	5	6	6	+1	+1	+0	+2	0	+43.9%	8
Other Care Grades	160	163	158	163	165	-4	+7	+2	+2	+5	+1.5%	181
Pastoral Care	7	4	4	5	5	+0	+0	0	+1	-2	+18.7%	5
Workshop Services	438	460	471	450	451	+11	-20	+2	-9	+14	-1.9%	520
Care, other	610	659	670	656	659	+11	-11	+3	+0	+49	+0.1%	747
Patient & Client Care	2,392	2,541		2,802	2,809	+150	+118	+7	+268	+417	+10.5%	+3,322



CHO 7 Employment Report: DEC 2024

Month-on-Month Summary

Month-on-Month Summary	% WTE change since NOV 2024	WTE change since NOV 2024	Community Health & Wellbeing	Mental Health	Primary Care	Disabilities	Older People	CHO Operations
Consultants	+0.5%	+0.4		+0.2	+0.1			
Registrars	+0.0%	+0.0		+0.4	-0.5	+0.1		
SHO/ Interns	-1.6%	-1.0		-0.4	-0.8	+0.2	+0.0	
Medical/ Dental, other	-1.0%	-0.6			-0.6		+0.0	
Medical & Dental	-0.4%	-1.2		+0.2	-1.8	+0.3	+0.0	
Nurse/ Midwife Manager	-0.3%	-1.2	+0.0	-0.3	-2.5	+2.7	-1.2	-0.0
Nurse/ Midwife Specialist & AN/MP	-0.5%	-0.9		-1.0	+0.2	-0.0	-0.0	+0.0
Staff Nurse/ Staff Midwife	+0.9%	+9.5	+0.0	+8.7	-2.7	+5.1	-1.7	
Public Health Nurse	+1.2%	+1.8			+1.8			
Nursing/ Midwifery Student	-20.8%	-6.7		-6.7	+0.0		-0.0	
Nursing/ Midwifery other	-0.6%	-0.1		-0.1	-0.0	+0.0		
Nursing & Midwifery	+0.1%	+2.5	+0.0	+0.7	-3.2	+7.8	-2.8	-0.0
Therapy Professions	+1.1%	+5.2		-0.2	-0.3	+4.4	+1.3	
Health Science/ Diagnostics	-11.1%	-1.1			-0.6	-0.4		
Social Care	+0.3%	+1.4		+0.0	-0.3	+1.6		
Pharmacy	-1.3%	-0.6		+0.0	+0.0	-0.6	+0.0	
Psychologists	-1.4%	-1.6		+0.6	-1.7	-0.4		
Social Workers	+0.3%	+0.3		+0.4	-0.6	+0.5	+0.0	+0.0



H&SC, Other	+1.1%	+0.6		+0.5	+0.1	+0.0	+0.0	+0.0
Health & Social Care Professionals	+0.3%	+4.3		+1.2	-3.4	+5.1	+1.3	+0.0
Management (VIII & above)	-0.1%	-0.1	+0.0	-0.1	-0.7	+0.8	-0.1	+0.0
Administrative/ Supervisory (V to VII)	+0.2%	+0.7	+0.0	+1.1	+1.1	-0.7	-0.1	-0.8
Clerical (III & IV)	+0.0%	+0.0	+0.0	+0.1	-0.8	+1.4	-0.7	+0.0
Management & Administrative	+0.1%	+0.6	+0.0	+1.1	-0.4	+1.6	-0.8	-0.8
Support	-0.6%	-2.1		+0.0	-0.5	-0.1	-1.5	
Maintenance/ Technical	+1.5%	+0.7		+0.0	+0.0	+0.7	+0.0	
General Support	-0.4%	-1.4		+0.0	-0.5	+0.6	-1.5	
Health Care Assistants	+0.2%	+3.7	-0.0	-0.3	-2.3	+7.6	-1.2	
Care, other	+0.5%	+3.2	-0.4	+0.6	+2.4	+0.7	+0.0	
Patient & Client Care	+0.2%	+6.9	-0.5	+0.2	+0.2	+8.2	-1.2	



CHO 7 Employment Report: DEC 2024

Year-to-Date Summary

Year-to-Date Summary	% WTE change since DEC 2023	WTE change since DEC 2023	Community Health & Wellbeing	Mental Health	Primary Care	Disabilities	Older People	CHO Operations
Consultants	+8.7%	+6.0		+7.6	-1.6			
Registrars	-4.5%	-4.7		+2.6	-7.3	+0.0		
SHO/ Interns	+3.4%	+1.9		+1.0	+1.9	-1.0	+0.0	
Medical/ Dental, other	-5.8%	-3.8			-3.8		+0.0	
Medical & Dental	-0.2%	-0.6		+11.2	-10.8	-1.0	+0.0	
Nurse/ Midwife Manager	+0.9%	+4.2	+0.0	+1.9	-1.2	-3.8	+7.2	+0.1
Nurse/ Midwife Specialist & AN/MP	+2.8%	+4.3		-2.4	+4.4	+1.5	+0.0	+0.9
Staff Nurse/ Staff Midwife	+1.4%	+14.6	+0.6	+19.9	-6.5	+4.6	-4.0	
Public Health Nurse	-5.2%	-8.2			-8.2			
Nursing/ Midwifery Student	+37.3%	+6.9		-2.1	+10.0	-1.0	-0.0	
Nursing/ Midwifery other	+21.1%	+1.8		+2.1	-0.3	+0.0		
Nursing & Midwifery	+1.3%	+23.5	+0.6	+19.5	-1.9	+1.2	+3.2	+0.9
Therapy Professions	+3.1%	+14.7		-5.2	-6.9	+27.9	-1.1	
Health Science/ Diagnostics	-8.1%	-0.7			-0.6	-0.2		
Social Care	+1.1%	+5.5		-2.3	+0.8	+7.0		
Pharmacy	-4.1%	-1.9		-0.1	-0.3	-0.5	+0.0	-1.0



Psychologists	-1.5%	-1.6		-1.7	+1.0	-0.9		
Social Workers	-9.1%	-11.6		-5.2	-2.2	-1.4	+0.3	-3.0
H&SC, Other	+2.7%	+1.4		+0.7	+0.7	-1.0	+0.0	+1.0
Health & Social Care Professionals	+0.4%	+5.7		-13.7	-7.6	+30.9	-0.9	-3.0
Management (VIII & above)	-6.8%	-6.6	+0.0	-0.2	-1.0	-1.3	-0.0	-4.1
Administrative/ Supervisory (V to VII)	-3.2%	-10.3	-1.0	-1.7	-1.5	-3.0	-2.2	-1.0
Clerical (III & IV)	-4.8%	-23.0	-0.0	-9.3	-10.5	-5.2	-0.2	+2.2
Management & Administrative	-4.4%	-39.9	-1.0	-11.1	-12.9	-9.6	-2.5	-2.9
Support	-2.0%	-7.4		+0.8	-6.1	-4.4	+2.3	
Maintenance/ Technical	-10.2%	-5.3		+0.0	-0.5	-5.8	+1.0	
General Support	-3.0%	-12.7		+0.8	-6.6	-10.2	+3.3	
Health Care Assistants	+6.4%	+128.6	-0.0	-1.3	-10.8	+128.2	+12.6	
Care, other	-1.6%	-10.8	+0.7	-8.4	-4.4	+1.3	+0.0	
Patient & Client Care	+4.4%	+117.8	+0.7	-9.7	-15.2	+129.5	+12.6	



CHO 7 Employment Report: DEC 2024

Year-on-Year Summary

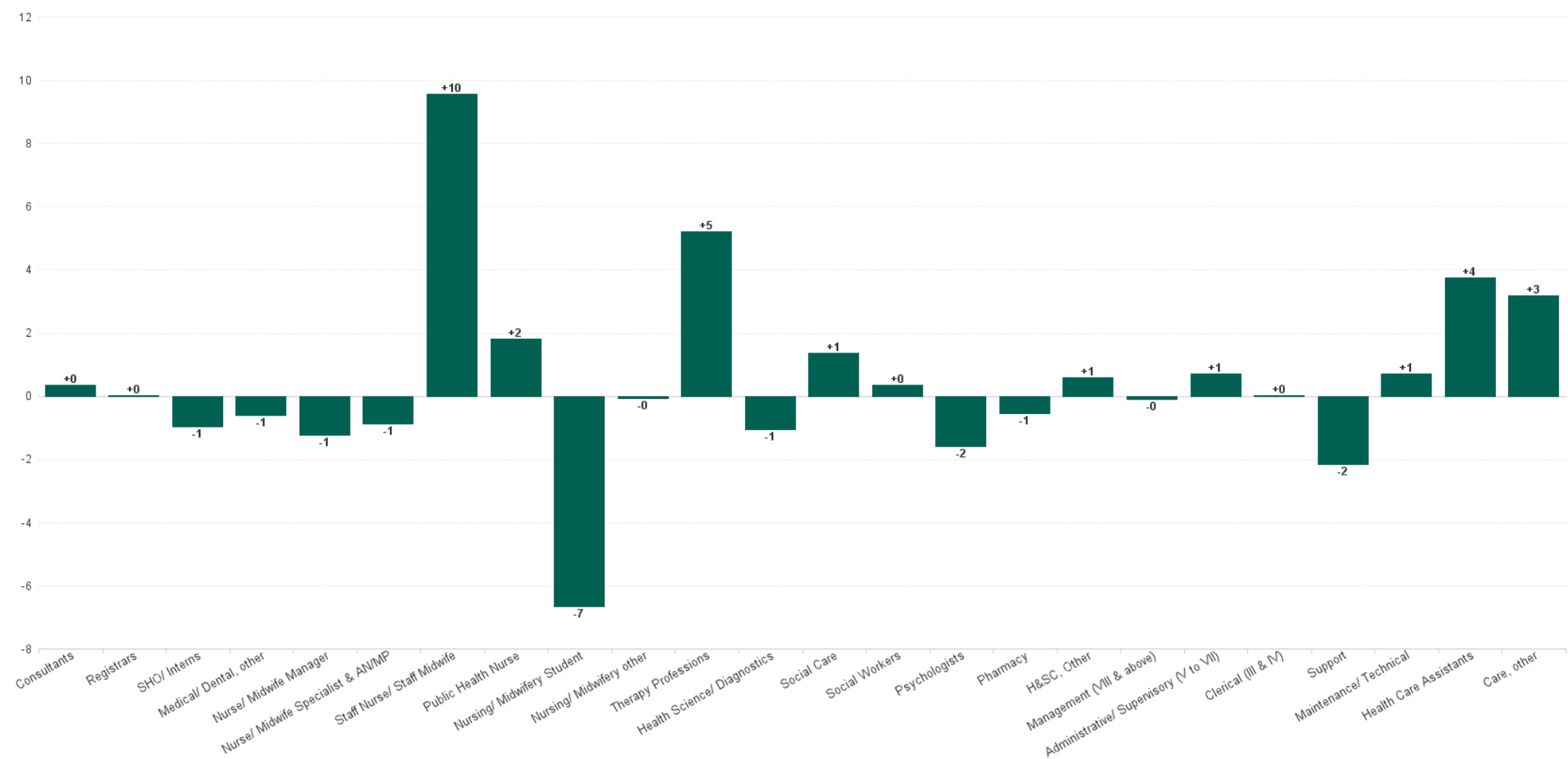
Year-on-Year Summary	% WTE change since DEC 2023(1)	WTE change since DEC 2023(1)	Community Health & Wellbeing	Mental Health	Primary Care	Disabilities	Older People	CHO Operations
Consultants	+8.7%	+6.0		+7.6	-1.6			
Registrars	-4.5%	-4.7		+2.6	-7.3	+0.0		
SHO/ Interns	+3.4%	+1.9		+1.0	+1.9	-1.0	+0.0	
Medical/ Dental, other	-5.8%	-3.8			-3.8		+0.0	
Medical & Dental	-0.2%	-0.6		+11.2	-10.8	-1.0	+0.0	
Nurse/ Midwife Manager	+0.9%	+4.2	+0.0	+1.9	-1.2	-3.8	+7.2	+0.1
Nurse/ Midwife Specialist & AN/MP	+2.8%	+4.3		-2.4	+4.4	+1.5	+0.0	+0.9
Staff Nurse/ Staff Midwife	+1.4%	+14.6	+0.6	+19.9	-6.5	+4.6	-4.0	
Public Health Nurse	-5.2%	-8.2			-8.2			
Nursing/ Midwifery Student	+37.3%	+6.9		-2.1	+10.0	-1.0	-0.0	
Nursing/ Midwifery other	+21.1%	+1.8		+2.1	-0.3	+0.0		
Nursing & Midwifery	+1.3%	+23.5	+0.6	+19.5	-1.9	+1.2	+3.2	+0.9
Therapy Professions	+3.1%	+14.7		-5.2	-6.9	+27.9	-1.1	
Health Science/ Diagnostics	-8.1%	-0.7			-0.6	-0.2		
Social Care	+1.1%	+5.5		-2.3	+0.8	+7.0		
Pharmacy	-4.1%	-1.9		-0.1	-0.3	-0.5	+0.0	-1.0
Psychologists	-1.5%	-1.6		-1.7	+1.0	-0.9		
Social Workers	-9.1%	-11.6		-5.2	-2.2	-1.4	+0.3	-3.0



H&SC, Other	+2.7%	+1.4		+0.7	+0.7	-1.0	+0.0	+1.0
Health & Social Care Professionals	+0.4%	+5.7		-13.7	-7.6	+30.9	-0.9	-3.0
Management (VIII & above)	-6.8%	-6.6	+0.0	-0.2	-1.0	-1.3	-0.0	-4.1
Administrative/ Supervisory (V to VII)	-3.2%	-10.3	-1.0	-1.7	-1.5	-3.0	-2.2	-1.0
Clerical (III & IV)	-4.8%	-23.0	-0.0	-9.3	-10.5	-5.2	-0.2	+2.2
Management & Administrative	-4.4%	-39.9	-1.0	-11.1	-12.9	-9.6	-2.5	-2.9
Support	-2.0%	-7.4		+0.8	-6.1	-4.4	+2.3	
Maintenance/ Technical	-10.2%	-5.3		+0.0	-0.5	-5.8	+1.0	
General Support	-3.0%	-12.7		+0.8	-6.6	-10.2	+3.3	
Health Care Assistants	+6.4%	+128.6	-0.0	-1.3	-10.8	+128.2	+12.6	
Care, other	-1.6%	-10.8	+0.7	-8.4	-4.4	+1.3	+0.0	
Patient & Client Care	+4.4%	+117.8	+0.7	-9.7	-15.2	+129.5	+12.6	

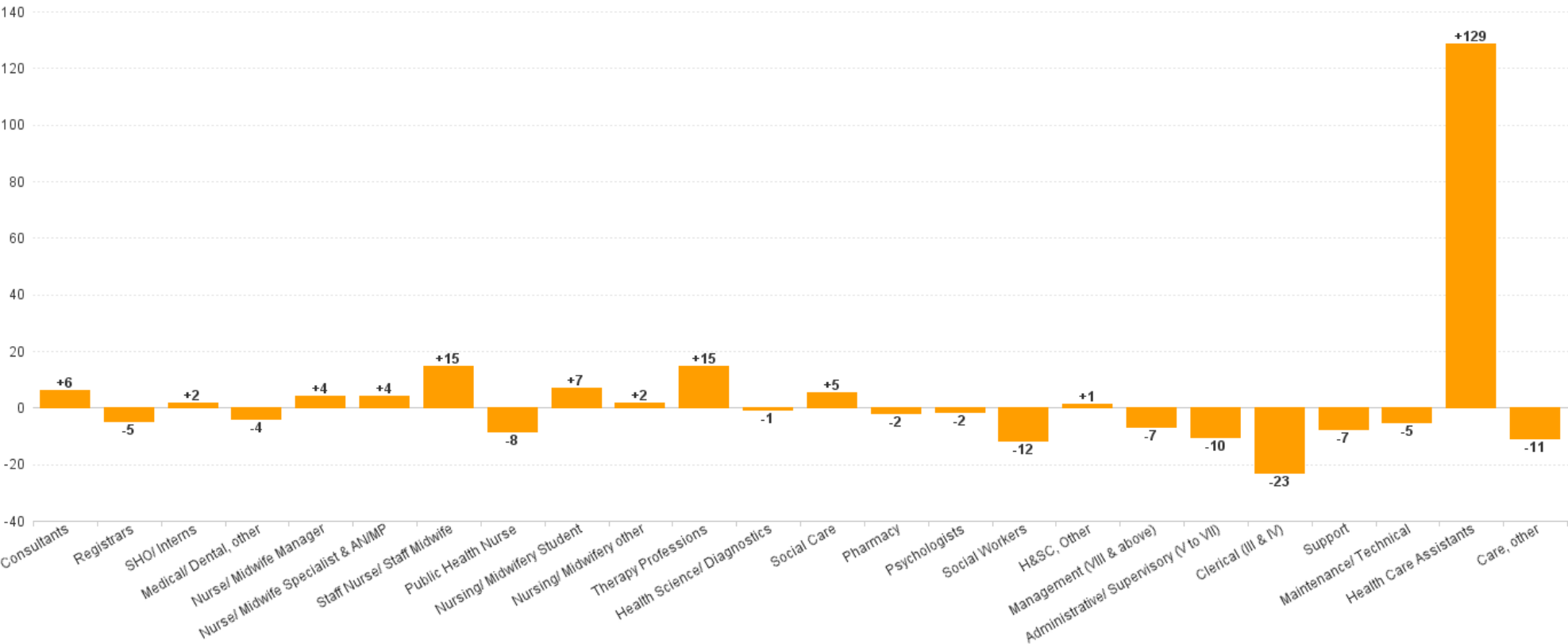


Month-on-Month Summary Chart: Change since NOV 2024



CHO 7 Employment Report: DEC 2024

Year-to-Date Summary Chart: Change since 2023(1)



CHO 7 Employment Report: DEC 2024

Year-on-Year Summary Chart: Change since DEC 2023

