

CHO 4 Employment Report: JUN 2023

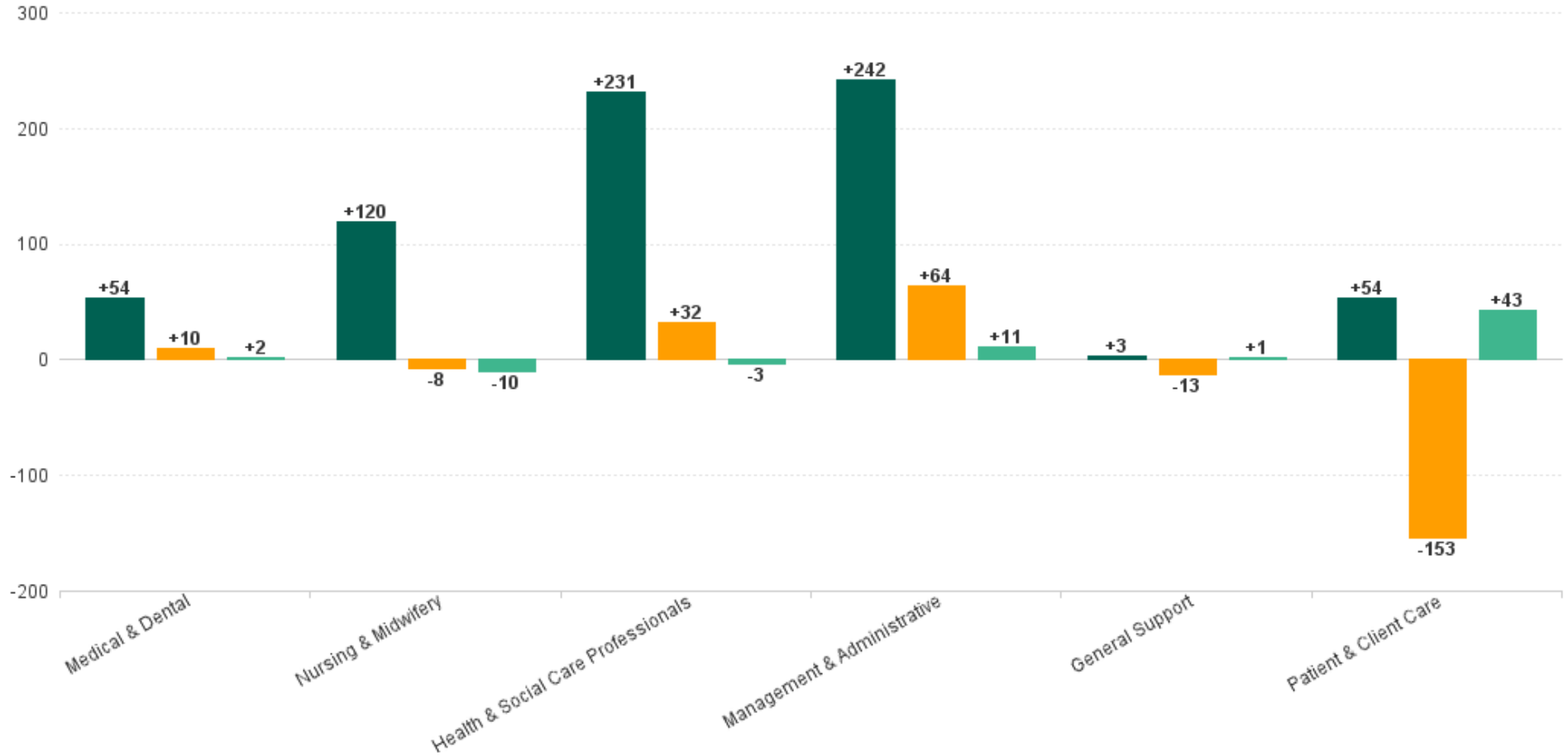
Employment Report : JUN 2023

Employment by Staff Group JUN 2023	WTE DEC 2019	WTE DEC 2022	WTE MAY 2023	WTE JUN 2023	WTE change since DEC 2019	% WTE Change since Dec 2019	WTE change since DEC 2022	% WTE Change since Dec 2022	WTE change since MAY 2023	No. JUN 2023
Overall	8,189	8,961	8,849	8,893	+705	+8.6%	-67	-0.7%	+45	11,008
Consultants	55	70	67	69	+14	+26.0%	0	-0.6%	+2	81
Registrars	103	96	108	106	+2	+2.1%	+10	+10.1%	-3	112
SHO/ Interns	38	46	49	50	+12	+31.9%	+4	+8.3%	+2	51
Medical/ Dental, other	111	140	136	136	+25	+22.4%	-3	-2.4%	+0	247
Medical & Dental	308	352	360	361	+54	+17.4%	+10	+2.8%	+2	491
Nurse/ Midwife Manager	433	490	485	491	+59	+13.6%	+2	+0.3%	+6	535
Nurse/ Midwife Specialist & AN/MP	81	106	129	131	+50	+62.3%	+26	+24.3%	+2	141
Staff Nurse/ Staff Midwife	1,446	1,532	1,489	1,476	+30	+2.1%	-56	-3.7%	-14	1,774
Public Health Nurse	216	216	212	209	-7	-3.4%	-8	-3.6%	-3	263
<i>Nursing/ Midwifery awaiting registration</i>	32				-32	-100.0%				
<i>Post-registration Nurse/ Midwife Student</i>	19	11	14	13	-6	-32.5%	+2	+18.7%	-1	13
<i>Pre-registration Nurse/ Midwife Intern</i>	9	7	34	34	+25	+282.2%	+27	+366.1%	+0	69
Nursing/ Midwifery Student	60	18	48	47	-12	-20.7%	+29	+158.6%	-1	82
Nursing/ Midwifery other	1	1	1	1	+0	+96.1%	+0	+0.0%	+0	1
Nursing & Midwifery	2,235	2,363	2,365	2,355	+120	+5.4%	-8	-0.3%	-10	2,796
Therapy Professions	448	549	566	566	+118	+26.3%	+16	+2.9%	-1	658
Health Science/ Diagnostics	12	14	12	12	+0	+3.9%	-2	-14.2%	+0	15
Social Care	240	272	277	270	+30	+12.6%	-2	-0.7%	-6	314
Pharmacy	8	9	13	12	+4	+55.0%	+4	+44.6%	0	19
Psychologists	138	156	157	158	+20	+14.3%	+2	+1.2%	+1	177
Social Workers	115	147	154	157	+42	+37.0%	+10	+7.0%	+3	178
H&SC, Other	60	72	77	77	+16	+26.9%	+4	+6.0%	0	104
Health & Social Care Professionals	1,020	1,219	1,255	1,252	+231	+22.7%	+32	+2.7%	-3	1,465
Management (VIII & above)	73	90	99	104	+31	+42.3%	+13	+14.8%	+5	108
Administrative/ Supervisory (V to VII)	161	254	279	281	+120	+74.8%	+27	+10.7%	+2	302
Clerical (III & IV)	505	572	592	596	+91	+18.1%	+24	+4.2%	+4	733
Management & Administrative	738	916	970	981	+242	+32.8%	+64	+7.0%	+11	1,143
Support	337	353	338	340	+3	+1.0%	-13	-3.6%	+3	466
Maintenance/ Technical	22	22	24	22	0	-0.3%	+0	+0.9%	-1	27
General Support	359	375	361	363	+3	+1.0%	-13	-3.4%	+1	493
Health Care Assistants	1,954	2,135	2,087	2,091	+137	+7.0%	-44	-2.0%	+4	2,429
Home Help	1,124	1,076	916	947	-176	-15.7%	-129	-12.0%	+31	1,527
Care, other	450	524	535	543	+94	+20.8%	+19	+3.6%	+8	664
Patient & Client Care	3,528	3,735	3,538	3,582	+54	+1.5%	-153	-4.1%	+43	4,620



WTE Change by Staff Category

■ WTE change since DEC 2019 ■ WTE change since DEC 2022 ■ WTE change since MAY 2023



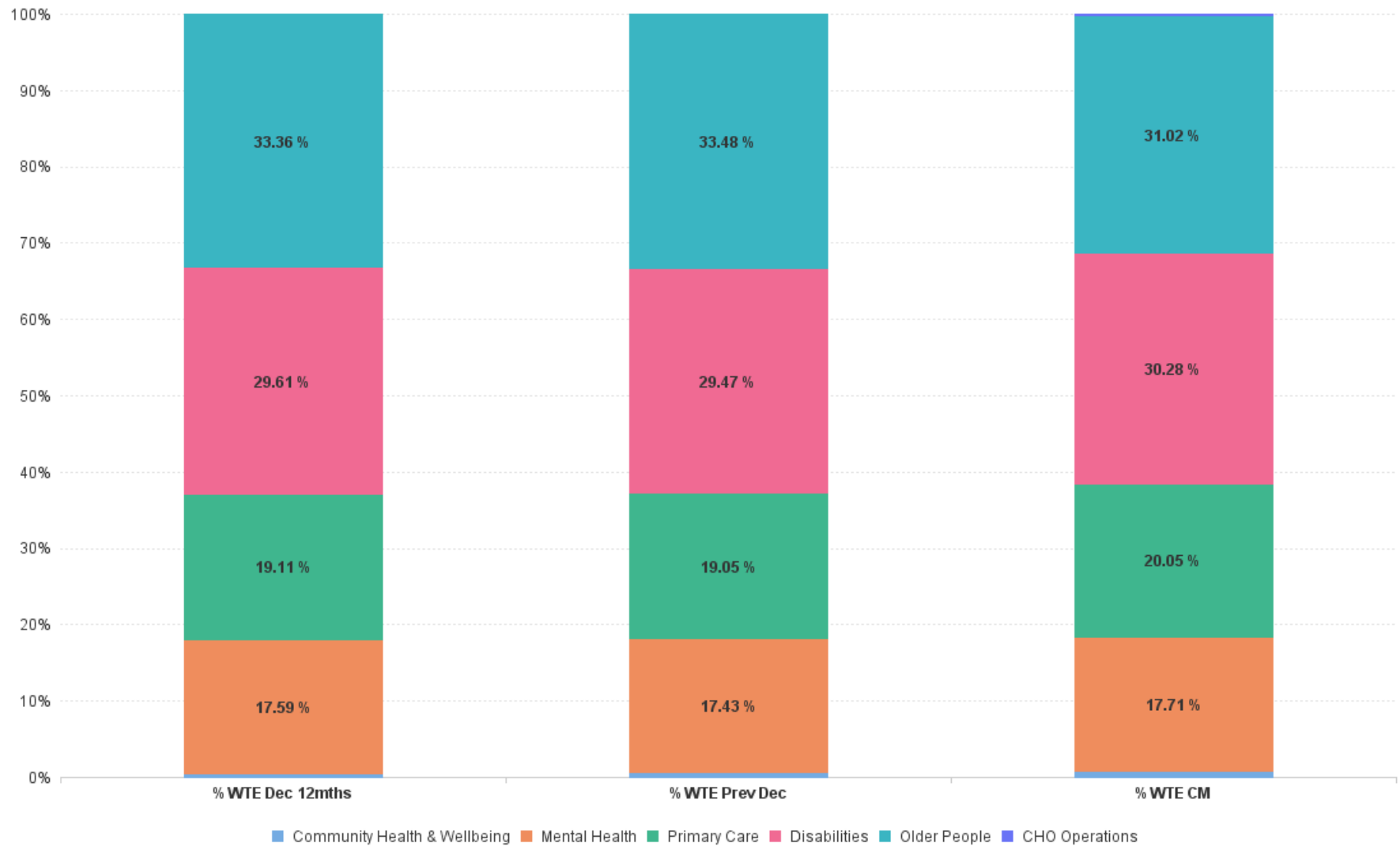
Employment Report by Care Group : JUN 2023

CHO 4 JUN 2023

Care Group JUN 2023	WTE DEC 2019	WTE DEC 2022	WTE MAY 2023	WTE JUN 2023	WTE change since DEC 2019	% WTE Change since Dec 2019	WTE change since DEC 2022	% WTE Change since Dec 2022	WTE change since MAY 2023	No. JUN 2023
Overall	8,189	8,961	8,849	8,893	+705	+8.6%	-67	-0.7%	+45	11,008
Community Health & Wellbeing		52	52	53	+53		+1	+2.8%	+1	85
Mental Health	1,499	1,562	1,574	1,575	+76	+5.1%	+13	+0.8%	+1	1,756
Primary Care	1,346	1,707	1,777	1,783	+437	+32.5%	+76	+4.5%	+6	2,221
Disabilities	2,425	2,640	2,684	2,693	+268	+11.0%	+53	+2.0%	+9	3,238
Older People	2,919	3,000	2,731	2,759	-160	-5.5%	-242	-8.1%	+28	3,675
CHO Operations			31	31	+31		+31		0	33
Community Services	8,189	8,961	8,849	8,893	+705	+8.6%	-67	-0.7%	+45	11,008



% Total by Care Group



Employment Report by HSE/S38 : JUN 2023

CHO 4 JUN 2023

Administration JUN 2023	WTE DEC 2019	WTE DEC 2022	WTE MAY 2023	WTE JUN 2023	WTE change since DEC 2019	% WTE Change since Dec 2019	WTE change since DEC 2022	% WTE Change since Dec 2022	WTE change since MAY 2023	No. JUN 2023
Overall	8,189	8,961	8,849	8,893	+705	+8.6%	-67	-0.7%	+45	11,008
Health Service Executive	5,939	6,531	6,367	6,399	+459	+7.7%	-133	-2.0%	+32	7,916
Section 38 Voluntary Agencies	2,249	2,429	2,482	2,495	+245	+10.9%	+65	+2.7%	+13	3,092



Employment Report by HSE.S38: JUN 2023

Health Service Executive

HSE&S38 JUN 2023	WTE DEC 2019	WTE DEC 2022	WTE MAY 2023	WTE JUN 2023	WTE change since DEC 2019	% WTE Change since Dec 2019	WTE change since DEC 2022	% WTE Change since Dec 2022	WTE change since MAY 2023	No. JUN 2023
Total Health Service Executive	5,939	6,531	6,367	6,399	+459	+7.7%	-133	-2.0%	+32	7,916
Consultants	55	66	63	65	+10	+18.5%	-0	-0.7%	+2	76
Registrars	98	93	105	103	+5	+4.7%	+10	+10.8%	-3	109
SHO/ Interns	32	42	46	47	+15	+47.9%	+5	+11.5%	+2	48
Medical/ Dental, other	98	120	116	116	+18	+17.9%	-4	-3.4%	-0	192
Medical & Dental	284	321	331	331	+48	+16.8%	+10	+3.2%	+1	425
Nurse/ Midwife Manager	358	405	401	407	+49	+13.6%	+2	+0.5%	+6	439
Nurse/ Midwife Specialist & AN/MP	68	93	116	118	+50	+72.9%	+26	+27.7%	+2	127
Staff Nurse/ Staff Midwife	1,161	1,261	1,213	1,198	+37	+3.2%	-63	-5.0%	-15	1,428
Public Health Nurse	216	216	212	209	-7	-3.4%	-8	-3.6%	-3	263
<i>Nursing/ Midwifery awaiting registration</i>	32				-32	-100.0%	-2			
<i>Post-registration Nurse/ Midwife Student</i>	19	11	14	13	-6	-32.5%	-10	+18.7%	-1	13
<i>Pre-registration Nurse/ Midwife Intern</i>	3	7	24	24	+21	+713.3%	+0	+230.6%	+0	49
Nursing/ Midwifery Student	54	18	38	37	-16	-30.4%	+19	+104.0%	-1	62
Nursing & Midwifery	1,857	1,993	1,980	1,969	+112	+6.0%	-24	-1.2%	-10	2,319
Therapy Professions	359	459	480	476	+117	+32.7%	+18	+3.8%	-3	555
Health Science/ Diagnostics	10	12	10	10	+0	+4.6%	-2	-16.4%	+0	13
Social Care	39	44	43	42	+3	+8.9%	-2	-4.9%	-1	47
Pharmacy	8	9	13	12	+4	+55.0%	+4	+44.6%	-0	19
Psychologists	107	123	125	126	+19	+17.4%	+3	+2.4%	+0	141
Social Workers	88	119	128	131	+43	+48.9%	+12	+9.7%	+3	146
H&SC, Other	56	67	72	72	+15	+27.5%	+4	+6.5%	-0	97
Health & Social Care Professionals	667	833	870	869	+203	+30.4%	+36	+4.3%	-1	1,018
Management (VIII & above)	58	73	82	84	+26	+45.5%	+10	+14.2%	+2	88
Administrative/ Supervisory (V to VII)	123	204	229	230	+107	+86.6%	+27	+13.1%	+2	248
Clerical (III & IV)	415	479	500	503	+88	+21.1%	+24	+5.0%	+3	594
Management & Administrative	596	756	811	817	+221	+37.0%	+61	+8.1%	+6	930
Support	207	222	205	207	-0	0.0%	-15	-6.9%	+2	238
Maintenance/ Technical	13	13	13	12	-1	-6.2%	-1	-6.1%	-0	14
General Support	220	235	218	219	-1	-0.4%	-16	-6.9%	+1	252
Health Care Assistants	1,079	1,166	1,095	1,093	+14	+1.3%	-73	-6.2%	-2	1,241
Home Help	1,124	1,076	916	947	-176	-15.7%	-129	-12.0%	+31	1,527
Care, other	113	151	147	153	+40	+35.2%	+2	+1.2%	+6	204
Patient & Client Care	2,316	2,393	2,158	2,193	-122	-5.3%	-200	-8.3%	+35	2,972

Section 38 Voluntary Agencies

HSE&S38 JUN 2023	WTE DEC 2019	WTE DEC 2022	WTE MAY 2023	WTE JUN 2023	WTE change since DEC 2019	% WTE Change since Dec 2019	WTE change since DEC 2022	% WTE Change since Dec 2022	WTE change since MAY 2023	No. JUN 2023
Total Section 38 Voluntary Agencies	2,249	2,429	2,482	2,495	+245	+10.9%	+65	+2.7%	+13	3,092
Consultants		4	4	4	+4		+0	+0.0%	+0	5
Registrars	5	3	3	3	-2	-48.0%	-0	-13.3%	+0	3
SHO/ Interns	6	4	3	3	-3	-51.2%	-1	-25.0%	+0	3
Medical/ Dental, other	13	20	19	20	+7	+56.6%	+1	+3.9%	+1	55
Medical & Dental	24	31	29	30	+6	+24.5%	-1	-2.1%	+1	66
Nurse/ Midwife Manager	75	85	84	84	+10	+13.1%	-0	-0.2%	-0	96
Nurse/ Midwife Specialist & AN/MP	12	13	13	13	+1	+4.2%	+0	+0.0%	+0	14
Staff Nurse/ Staff Midwife	284	271	277	278	-7	-2.3%	+7	+2.5%	+1	346
<i>Pre-registration Nurse/ Midwife Intern</i>	6		10	10	+4	+66.7%	-1		+0	20
Nursing/ Midwifery Student	6		10	10	+4	+66.7%	+10		+0	20
Nursing/ Midwifery other	1	1	1	1	+0	+96.1%	+0	+0.0%	+0	1
Nursing & Midwifery	378	369	385	386	+8	+2.2%	+17	+4.5%	+1	477
Therapy Professions	89	90	87	89	+0	+0.5%	-1	-1.5%	+2	103
Health Science/ Diagnostics	2	2	2	2	+0	+0.0%	+0	+0.0%	+0	2
Social Care	201	228	234	228	+27	+13.4%	+0	+0.1%	-5	267
Psychologists	31	33	32	32	+1	+3.7%	-1	-3.2%	+1	36
Social Workers	27	28	26	26	-1	-1.9%	-1	-4.7%	+1	32
H&SC, Other	4	5	5	5	+1	+19.0%	+0	+0.0%	+0	7
Health & Social Care Professionals	354	386	385	383	+29	+8.1%	-4	-0.9%	-2	447
Management (VIII & above)	15	17	17	20	+5	+30.0%	+3	+17.1%	+3	20
Administrative/ Supervisory (V to VII)	38	51	51	51	+14	+36.0%	+1	+1.2%	+0	54
Clerical (III & IV)	89	93	92	93	+4	+4.2%	-0	-0.1%	+1	139
Management & Administrative	142	161	159	164	+22	+15.4%	+3	+2.1%	+5	213
Support	130	131	133	134	+4	+2.7%	+3	+1.9%	+1	228
Maintenance/ Technical	9	9	11	10	+1	+8.0%	+1	+11.2%	-1	13
General Support	139	140	143	144	+4	+3.1%	+4	+2.5%	+0	241
Health Care Assistants	875	969	992	998	+123	+14.0%	+29	+3.0%	+6	1,188
Care, other	336	373	389	390	+54	+15.9%	+17	+4.6%	+2	460
Patient & Client Care	1,212	1,342	1,380	1,388	+176	+14.5%	+46	+3.4%	+8	1,648

CHO 4 by S38 Agency: JUN 2023

Bros. of Charity Southern

JUN 2023	WTE DEC 2019	WTE DEC 2022	WTE MAY 2023	WTE JUN 2023	WTE change since DEC 2019	% WTE Change since Dec 2019	WTE change since DEC 2022	% WTE Change since Dec 2022	WTE change since MAY 2023	No. JUN 2023
Total Bros. of Charity Southern	740	827	841	851	+110.1	+14.9%	+23.5	+2.8%	+9.3	1,055
Nurse/ Midwife Manager	15	16	17	17	+1.7	+11.3%	+0.7	+4.1%	-0.1	18
Nurse/ Midwife Specialist & AN/MP	3	2	2	2	-0.9	-31.6%	+0.0	+0.0%	+0.0	3
Staff Nurse/ Staff Midwife	59	52	54	53	-6.1	-10.3%	+0.6	+1.2%	-1.3	74
Nursing & Midwifery	77	71	73	72	-5.3	-6.8%	+1.3	+1.8%	-1.4	95
Therapy Professions	48	49	45	47	-0.4	-0.9%	-1.9	-3.9%	+2.4	56
Social Care	124	133	137	135	+10.6	+8.5%	+2.3	+1.7%	-1.7	158
Psychologists	20	19	18	18	-1.9	-9.5%	-1.1	-6.0%	-0.2	21
Social Workers	17	16	15	15	-2.1	-12.1%	-1.3	-7.9%	+0.5	19
Health & Social Care Professionals	209	217	214	215	+6.2	+3.0%	-2.0	-0.9%	+1.1	254
Management (VIII & above)	8	7	7	10	+2.4	+31.6%	+3.0	+42.9%	+3.0	10
Administrative/ Supervisory (V to VII)	9	12	10	11	+1.7	+18.3%	-1.2	-10.2%	+0.6	11
Clerical (III & IV)	33	35	35	36	+3.0	+9.1%	+1.1	+3.3%	+1.4	54
Management & Administrative	50	54	52	57	+7.1	+14.2%	+2.9	+5.4%	+4.9	75
Support	15	12	12	12	-2.4	-16.3%	+0.7	+5.9%	-0.1	33
Maintenance/ Technical	2	3	4	4	+2.0	+132.5%	+1.0	+39.8%	+0.0	4
General Support	16	14	16	16	-0.4	-2.4%	+1.7	+12.0%	-0.1	37
Health Care Assistants	207	260	272	275	+68.3	+33.0%	+15.4	+5.9%	+2.8	339
Care, other	181	211	214	216	+34.2	+18.9%	+4.2	+2.0%	+2.0	255
Patient & Client Care	388	471	486	491	+102.5	+26.4%	+19.6	+4.2%	+4.7	594

Cope Foundation

JUN 2023	WTE DEC 2019	WTE DEC 2022	WTE MAY 2023	WTE JUN 2023	WTE change since DEC 2019	% WTE Change since Dec 2019	WTE change since DEC 2022	% WTE Change since Dec 2022	WTE change since MAY 2023	No. JUN 2023
Total Cope Foundation	1,091	1,163	1,196	1,197	+106.4	+9.8%	+33.6	+2.9%	+1.2	1,433
Nurse/ Midwife Manager	41	50	50	50	+8.7	+21.1%	+0.0	+0.0%	+0.0	59
Nurse/ Midwife Specialist & AN/MP	10	11	11	11	+1.5	+15.2%	+0.0	+0.0%	+0.0	11
Staff Nurse/ Staff Midwife	169	174	174	174	+5.0	+3.0%	+0.6	+0.4%	+0.0	204
Nursing/ Midwifery Student	6		10	10	+4.0	+66.7%	+10.0		+0.0	20
Nursing/ Midwifery other	1	1	1	1	+0.5	+96.1%	+0.0	+0.0%	+0.0	1
Nursing & Midwifery	227	236	246	246	+19.7	+8.7%	+10.6	+4.5%	+0.0	295
Therapy Professions	37	39	39	39	+1.4	+3.8%	+0.0	+0.0%	+0.0	44
Social Care	32	43	43	43	+11.6	+36.8%	+0.0	+0.0%	+0.0	49
Psychologists	10	13	13	13	+3.8	+39.6%	+0.0	+0.0%	+0.0	14
Social Workers	9	10	10	10	+1.6	+17.9%	+0.0	+0.0%	+0.0	12
H&SC, Other	3	2	2	2	-1.0	-33.3%	+0.0	+0.0%	+0.0	2
Health & Social Care Professionals	90	108	108	108	+17.4	+19.2%	+0.0	+0.0%	+0.0	121
Management (VIII & above)	6	7	7	7	+1.3	+22.9%	+0.0	+0.0%	+0.0	7
Administrative/ Supervisory (V to VII)	19	26	26	26	+7.0	+36.7%	+0.0	+0.0%	+0.0	27
Clerical (III & IV)	23	27	27	27	+3.1	+13.0%	+0.0	+0.0%	+0.0	31
Management & Administrative	48	59	59	59	+11.3	+23.6%	+0.0	+0.0%	+0.0	65
Support	77	81	81	81	+4.0	+5.1%	+0.0	+0.0%	+0.0	145
Maintenance/ Technical	6	5	5	5	-0.3	-4.6%	+0.0	+0.0%	+0.0	8
General Support	83	86	86	86	+3.7	+4.5%	+0.0	+0.0%	+0.0	153
Health Care Assistants	563	594	606	607	+43.8	+7.8%	+13.1	+2.2%	+1.2	700
Care, other	79	80	90	90	+10.4	+13.1%	+9.9	+12.4%	+0.0	99
Patient & Client Care	643	674	696	697	+54.3	+8.4%	+23.0	+3.4%	+1.2	799

Cork Dental Hospital

JUN 2023	WTE DEC 2019	WTE DEC 2022	WTE MAY 2023	WTE JUN 2023	WTE change since DEC 2019	% WTE Change since Dec 2019	WTE change since DEC 2022	% WTE Change since Dec 2022	WTE change since MAY 2023	No. JUN 2023
Total Cork Dental Hospital	103	117	119	120	+16.8	+16.3%	+2.5	+2.1%	+1.2	200
Consultants		4	4	4	+4.1		+0.0	+0.0%	+0.0	5
Registrars	5	3	3	3	-2.4	-48.0%	-0.4	-13.3%	+0.0	3
SHO/ Interns	6	4	3	3	-3.2	-51.2%	-1.0	-25.0%	+0.0	3
Medical/ Dental, other	13	20	19	20	+7.3	+56.6%	+0.8	+3.9%	+0.9	55
Medical & Dental	24	31	29	30	+5.9	+24.5%	-0.6	-2.1%	+0.9	66
Nurse/ Midwife Manager	3	3	2	2	-0.0	-0.4%	-0.8	-24.5%	+0.1	3
Staff Nurse/ Staff Midwife	7	4	5	5	-1.9	-27.5%	+1.1	+29.6%	+0.2	10
Nursing & Midwifery	9	7	7	7	-1.9	-20.2%	+0.3	+4.4%	+0.2	13
Health Science/ Diagnostics	2	2	2	2	+0.0	+0.0%	+0.0	+0.0%	+0.0	2
H&SC, Other	1	3	3	3	+1.8	+176.0%	+0.0	+0.0%	+0.0	5
Health & Social Care Professionals	3	5	5	5	+1.8	+58.7%	+0.0	+0.0%	+0.0	7
Management (VIII & above)	1	1	1	1	+0.0	+0.0%	+0.0	+0.0%	+0.0	1
Administrative/ Supervisory (V to VII)	2	2	3	3	+1.0	+50.0%	+1.0	+50.0%	+0.0	3
Clerical (III & IV)	23	24	23	22	-0.8	-3.4%	-1.7	-7.0%	-0.2	42
Management & Administrative	26	27	27	26	+0.2	+0.8%	-0.7	-2.5%	-0.2	46
Support	11	12	15	15	+4.4	+40.8%	+2.9	+23.1%	+0.6	18
General Support	11	12	15	15	+4.4	+40.8%	+2.9	+23.1%	+0.6	18
Care, other	30	35	36	36	+6.4	+21.7%	+0.6	+1.8%	-0.4	50
Patient & Client Care	30	35	36	36	+6.4	+21.7%	+0.6	+1.8%	-0.4	50

St. John of God Kerry

JUN 2023	WTE DEC 2019	WTE DEC 2022	WTE MAY 2023	WTE JUN 2023	WTE change since DEC 2019	% WTE Change since Dec 2019	WTE change since DEC 2022	% WTE Change since Dec 2022	WTE change since MAY 2023	No. JUN 2023
Total St. John of God Kerry	315	321	326	327	+12.1	+3.8%	+5.8	+1.8%	+1.1	404
Nurse/ Midwife Manager	16	15	15	15	-0.6	-4.0%	-0.0	-0.3%	-0.0	16
Staff Nurse/ Staff Midwife	49	41	43	45	-3.7	-7.5%	+4.4	+10.7%	+2.0	58
Nursing & Midwifery	64	56	58	60	-4.3	-6.6%	+4.3	+7.7%	+2.0	74
Therapy Professions	4	3	3	3	-0.5	-14.3%	+0.5	+20.0%	+0.0	3
Social Care	45	52	54	50	+4.8	+10.5%	-2.2	-4.1%	-3.8	60
Psychologists	2	1		1	-0.8	-51.3%	+0.1	+10.6%	+0.7	1
Social Workers	1	1	1	1	+0.0	+0.0%	+0.0	+0.0%	+0.0	1
H&SC, Other										
Health & Social Care Professionals	51	56	58	55	+3.5	+6.8%	-1.6	-2.8%	-3.0	65
Management (VIII & above)	1	2	2	2	+0.9	+88.0%	-0.1	-6.0%	-0.0	2
Administrative/ Supervisory (V to VII)	7	10	11	11	+3.9	+52.2%	+0.8	+8.1%	-0.2	13
Clerical (III & IV)	10	8	8	8	-1.5	-15.8%	+0.5	+6.1%	+0.2	12
Management & Administrative	18	20	21	21	+3.2	+18.0%	+1.2	+5.9%	-0.0	27
Support	28	26	25	25	-2.4	-8.8%	-1.0	-3.9%	+0.8	32
Maintenance/ Technical	2	1	2	1	-1.0	-50.0%	+0.0	+0.0%	-1.0	1
General Support	30	27	27	26	-3.4	-11.5%	-1.0	-3.8%	-0.2	33
Health Care Assistants	105	115	114	116	+10.5	+10.0%	+0.6	+0.5%	+2.4	149
Care, other	46	46	49	49	+2.6	+5.6%	+2.4	+5.1%	+0.0	56
Patient & Client Care	152	162	162	165	+13.1	+8.6%	+3.0	+1.8%	+2.5	205

Employment Report by Community Health & Wellbeing JUN 2023

CHO 4 JUN 2023

Community Health & Wellbeing JUN 2023	WTE DEC 2019	WTE DEC 2022	WTE MAY 2023	WTE JUN 2023	WTE change since DEC 2019	% WTE Change since Dec 2019	WTE change since DEC 2022	% WTE Change since Dec 2022	WTE change since MAY 2023	No. JUN 2023
Overall		103	103	106	+106		+3	+2.8%	+3	170
Consultants			0	0	+0		+0		+0	2
Medical/ Dental, other		3	4	4	+4		+1	+29.4%	0	12
Medical & Dental		3	5	5	+5		+1	+42.9%	0	14
Nurse/ Midwife Manager		7	6	6	+6		0	-5.0%	+0	8
Nursing & Midwifery		7	6	6	+6		0	-5.0%	+0	8
Therapy Professions		5	3	3	+3		-2	-32.5%	+0	4
H&SC, Other		17	14	13	+13		-4	-21.7%	-1	46
Health & Social Care Professionals		22	18	17	+17		-5	-24.0%	-1	50
Management (VIII & above)		2	2	2	+2		+0	+0.0%	+0	2
Administrative/ Supervisory (V to VII)		25	24	23	+23		-2	-8.8%	-2	24
Clerical (III & IV)		15	14	16	+16		+1	+9.1%	+2	22
Management & Administrative		42	40	41	+41		-1	-2.1%	+1	48
Maintenance/ Technical		2	2	2	+2		+0	+0.0%	+0	2
General Support		2	2	2	+2		+0	+0.0%	+0	2
Health Care Assistants		1	0	0	+0		0	-16.0%	+0	2
Care, other		27	32	35	+35		+8	+29.5%	+3	46
Patient & Client Care		28	32	36	+36		+8	+28.7%	+3	48



Employment Report by Mental Health JUN 2023

CHO 4 JUN 2023

Mental HealthJUN 2023	WTE DEC 2019	WTE DEC 2022	WTE MAY 2023	WTE JUN 2023	WTE change since DEC 2019	% WTE Change since Dec 2019	WTE change since DEC 2022	% WTE Change since Dec 2022	WTE change since MAY 2023	No. JUN 2023
Overall	1,499	1,562	1,574	1,575	+76	+5.1%	+13	+0.8%	+1	1,756
Consultants	50	60	58	60	+10	+20.0%	0	-0.8%	+2	66
Registrars	46	56	49	47	+1	+2.8%	-9	-16.5%	-2	50
SHO/ Interns	31	42	45	46	+15	+49.4%	+4	+9.1%	+2	47
Medical/ Dental, other	2	1	1	1	-1	-51.5%	+0	+1.0%	+0	4
Medical & Dental	129	160	152	154	+26	+19.9%	-6	-3.7%	+2	167
Nurse/ Midwife Manager	171	207	197	201	+29	+17.1%	-6	-3.1%	+4	214
Nurse/ Midwife Specialist & AN/MP	60	72	77	77	+17	+28.0%	+4	+6.2%	-1	81
Staff Nurse/ Staff Midwife	505	479	470	464	-42	-8.2%	-15	-3.2%	-6	503
Nursing/ Midwifery awaiting registration	30				-30	-100.0%				
Post-registration Nurse/ Midwife Student	1				-1	-100.0%				
Pre-registration Nurse/ Midwife Intern	3	7	24	24	+21	+713.3%	+18	+264.7%	+0	49
Nursing/ Midwifery Student	34	7	24	24	-9	-27.2%	+18	+264.7%	+0	49
Nursing & Midwifery	770	765	768	766	-5	-0.6%	+1	+0.1%	-3	847
Therapy Professions	74	79	85	85	+12	+15.6%	+7	+8.4%	+0	98
Social Care	4	6	5	5	+1	+26.3%	-1	-16.8%	-1	7
Pharmacy	2	2	2	1	-1	-40.3%	-1	-37.3%	0	3
Psychologists	83	96	95	94	+11	+13.3%	-2	-2.2%	-1	105
Social Workers	53	73	73	75	+22	+40.7%	+2	+2.3%	+1	86
H&SC, Other	11	18	17	17	+6	+57.5%	-1	-3.8%	0	20
Health & Social Care Professionals	227	273	277	277	+50	+22.2%	+4	+1.3%	0	319
Management (VIII & above)	1	3	4	4	+3	+280.0%	+1	+26.7%	0	4
Administrative/ Supervisory (V to VII)	22	26	30	29	+7	+31.0%	+3	+11.4%	0	31
Clerical (III & IV)	87	87	91	93	+5	+6.2%	+6	+7.0%	+1	106
Management & Administrative	111	116	125	126	+15	+13.7%	+10	+8.5%	+1	141
Support	81	75	64	64	-17	-21.1%	-11	-14.8%	0	74
Maintenance/ Technical	6	5	5	5	-1	-16.4%	+0	+0.2%	+0	6
General Support	87	80	69	69	-18	-20.8%	-11	-13.8%	0	80
Health Care Assistants	168	162	176	177	+9	+5.2%	+15	+9.3%	+1	189
Care, other	7	5	6	6	-1	-16.7%	+1	+15.5%	+0	13
Patient & Client Care	176	167	182	183	+8	+4.3%	+16	+9.4%	+1	202



Employment Report by Primary Care JUN 2023

CHO 4 JUN 2023

Primary Care JUN 2023	WTE DEC 2019	WTE DEC 2022	WTE MAY 2023	WTE JUN 2023	WTE change since DEC 2019	% WTE Change since Dec 2019	WTE change since DEC 2022	% WTE Change since Dec 2022	WTE change since MAY 2023	No. JUN 2023
Overall	1,346	1,707	1,777	1,783	+437	+32.5%	+76	+4.5%	+6	2,221
Consultants	3	7	7	7	+4	+154.0%	0	-2.5%	+0	10
Registrars	55	40	59	57	+2	+4.4%	+17	+44.1%	-1	60
SHO/ Interns	6	4	3	3	-3	-51.2%	-1	-25.0%	+0	3
Medical/ Dental, other	88	110	107	108	+20	+22.2%	-2	-2.1%	+1	182
Medical & Dental	152	160	175	174	+23	+15.1%	+14	+8.7%	-1	255
Nurse/ Midwife Manager	56	72	71	68	+12	+21.5%	-4	-5.3%	-2	74
Nurse/ Midwife Specialist & AN/MP	4	14	29	31	+27	+645.5%	+17	+116.4%	+2	35
Staff Nurse/ Staff Midwife	119	177	189	189	+70	+58.3%	+12	+7.0%	0	263
Public Health Nurse	211	210	207	204	-7	-3.3%	-6	-2.9%	-3	257
Post-registration Nurse/ Midwife Student	17	11	14	13	-4	-24.6%	+2	+18.7%	-1	13
Nursing/ Midwifery Student	17	11	14	13	-4	-24.6%	+2	+18.7%	-1	13
Nursing & Midwifery	408	484	510	505	+98	+23.9%	+21	+4.4%	-4	642
Therapy Professions	222	327	345	345	+123	+55.4%	+18	+5.5%	+0	402
Health Science/ Diagnostics	11	13	11	11	+0	+2.8%	-2	-15.6%	+0	13
Social Care	8	7	7	6	-1	-18.3%	0	-3.0%	-1	7
Pharmacy	3	2	5	5	+2	+53.7%	+3	+163.0%	0	5
Psychologists	20	23	28	30	+10	+46.8%	+7	+28.0%	+2	34
Social Workers	24	37	41	42	+18	+75.0%	+6	+15.9%	+1	46
H&SC, Other	41	39	45	45	+4	+10.2%	+6	+16.4%	+0	53
Health & Social Care Professionals	329	447	481	484	+155	+47.2%	+37	+8.3%	+4	560
Management (VIII & above)	37	44	44	45	+8	+21.5%	+1	+1.4%	+1	47
Administrative/ Supervisory (V to VII)	68	114	111	115	+46	+68.3%	+1	+0.9%	+4	125
Clerical (III & IV)	205	255	268	268	+63	+30.6%	+13	+5.1%	0	331
Management & Administrative	310	412	423	427	+117	+37.8%	+15	+3.5%	+4	503
Support	16	16	20	20	+5	+29.5%	+4	+22.9%	+1	34
Maintenance/ Technical		1	1	1	+1		+0	+0.0%	+0	1
General Support	16	17	21	21	+6	+35.9%	+4	+21.6%	+1	35
Health Care Assistants	17	47	31	32	+15	+86.8%	-14	-30.8%	+1	37
Home Help	10	8	12	12	+2	+20.1%	+4	+46.6%	+0	26
Care, other	105	130	125	126	+21	+20.4%	-4	-3.1%	+1	163
Patient & Client Care	132	185	168	171	+38	+29.1%	-15	-7.9%	+3	226

Employment Report by Disabilities JUN 2023

CHO 4 JUN 2023

Disabilities JUN 2023	WTE DEC 2019	WTE DEC 2022	WTE MAY 2023	WTE JUN 2023	WTE change since DEC 2019	% WTE Change since Dec 2019	WTE change since DEC 2022	% WTE Change since Dec 2022	WTE change since MAY 2023	No. JUN 2023
Overall	2,425	2,640	2,684	2,693	+268	+11.0%	+53	+2.0%	+9	3,238
Consultants	2	2	2	2	+0	+2.0%	+0	+0.0%	+0	2
Medical/ Dental, other	0	0	1	0	+0	+12.1%	+0	+0.0%	-1	1
Medical & Dental	2	2	3	2	+0	+3.8%	+0	+0.0%	-1	3
Nurse/ Midwife Manager	87	98	99	100	+12	+13.9%	+2	+1.5%	+1	113
Nurse/ Midwife Specialist & AN/MP	13	13	13	13	0	-3.6%	+0	+0.0%	+0	14
Staff Nurse/ Staff Midwife	306	301	309	308	+2	+0.7%	+7	+2.3%	-1	375
Nursing/ Midwifery awaiting registration	1				-1	-100.0%				
Pre-registration Nurse/ Midwife Intern	6	1	10	10	+4	+66.7%	+9	+1,349.3%	+0	20
Nursing/ Midwifery Student	7	1	10	10	+3	+42.9%	+9	+1,349.3%	+0	20
Nursing/ Midwifery other	1	1	1	1	+0	+96.1%	+0	+0.0%	+0	1
Nursing & Midwifery	414	414	432	432	+17	+4.2%	+18	+4.3%	0	523
Therapy Professions	108	105	99	101	-7	-6.8%	-4	-4.0%	+2	118
Social Care	227	259	263	258	+31	+13.8%	-1	-0.3%	-6	298
Psychologists	35	37	34	34	-1	-2.2%	-3	-7.0%	+0	38
Social Workers	27	28	26	26	-1	-1.9%	-1	-4.7%	+1	32
H&SC, Other	8	7	8	8	-1	-10.1%	+1	+7.3%	0	8
Health & Social Care Professionals	405	435	430	426	+22	+5.4%	-8	-1.9%	-3	494
Management (VIII & above)	22	23	25	28	+6	+24.8%	+5	+21.1%	+3	28
Administrative/ Supervisory (V to VII)	53	72	76	76	+23	+42.4%	+4	+5.1%	+0	82
Clerical (III & IV)	84	93	94	96	+12	+14.4%	+3	+2.9%	+2	127
Management & Administrative	160	189	195	200	+40	+25.2%	+11	+6.0%	+5	237
Support	140	138	134	135	-5	-3.6%	-3	-2.4%	+1	227
Maintenance/ Technical	10	10	11	11	+0	+3.3%	+1	+6.0%	-1	14
General Support	150	148	146	146	-5	-3.1%	-3	-1.8%	0	241
Health Care Assistants	987	1,111	1,125	1,131	+144	+14.6%	+21	+1.9%	+6	1,327
Care, other	307	342	354	356	+49	+15.9%	+14	+4.2%	+2	413
Patient & Client Care	1,295	1,453	1,479	1,488	+193	+14.9%	+35	+2.4%	+9	1,740



Employment Report by Older People JUN 2023

CHO 4 JUN 2023

Older People JUN 2023	WTE DEC 2019	WTE DEC 2022	WTE MAY 2023	WTE JUN 2023	WTE change since DEC 2019	% WTE Change since Dec 2019	WTE change since DEC 2022	% WTE Change since Dec 2022	WTE change since MAY 2023	No. JUN 2023
Overall	2,919	3,000	2,731	2,759	-160	-5.5%	-242	-8.1%	+28	3,675
Consultants	1	1	1	1	+0	+6.0%	+0	+0.0%	+0	2
Registrars	3	0	1	2	-2	-50.0%	+1	+3,650.0%	+1	2
SHO/ Interns	1		1	1	+0	+0.0%	+1		+0	1
Medical/ Dental, other	21	27	25	25	+4	+20.7%	-2	-5.7%	+0	54
Medical & Dental	26	28	28	29	+3	+11.1%	+1	+3.4%	+1	59
Nurse/ Midwife Manager	118	109	110	114	-3	-2.9%	+5	+4.8%	+4	124
Nurse/ Midwife Specialist & AN/MP	3	6	8	9	+6	+185.4%	+3	+57.6%	+1	10
Staff Nurse/ Staff Midwife	515	575	522	515	0	0.0%	-60	-10.5%	-7	633
Public Health Nurse	5	6	5	5	-1	-10.0%	-2	-28.6%	0	6
Nursing/ Midwifery awaiting registration	1				-1	-100.0%				
Post-registration Nurse/ Midwife Student	1				-1	-100.0%				
Nursing/ Midwifery Student	2				-2	-100.0%				
Nursing & Midwifery	643	697	646	643	+0	+0.0%	-53	-7.7%	-2	773
Therapy Professions	44	37	36	33	-11	-24.6%	-3	-9.1%	-3	38
Health Science/ Diagnostics	1	1	1	1	+0	+14.0%	+0	+0.0%	+0	2
Social Care	2	1	1	1	0	-26.4%	+0	+0.8%	+0	2
Pharmacy	3	5	4	4	+2	+70.7%	0	-2.2%	+0	9
Social Workers	10	9	10	10	-1	-8.6%	+0	+0.3%	+0	10
Health & Social Care Professionals	60	53	52	50	-10	-17.0%	-3	-6.4%	-3	61
Management (VIII & above)	13	19	22	23	+11	+83.0%	+4	+21.4%	+1	25
Administrative/ Supervisory (V to VII)	17	29	41	40	+23	+136.9%	+11	+37.1%	-1	42
Clerical (III & IV)	128	130	124	125	-3	-2.7%	-5	-3.8%	+0	151
Management & Administrative	158	178	188	189	+30	+19.3%	+10	+5.7%	+0	218
Support	101	124	120	122	+21	+20.9%	-2	-1.8%	+2	131
Maintenance/ Technical	6	5	5	5	-1	-23.5%	0	-8.2%	0	5
General Support	107	129	125	126	+20	+18.4%	-3	-2.1%	+2	136
Health Care Assistants	781	814	754	750	-32	-4.1%	-65	-7.9%	-4	875
Home Help	1,113	1,068	904	935	-179	-16.0%	-133	-12.4%	+31	1501
Care, other	31	34	35	38	+7	+23.1%	+4	+11.6%	+3	52
Patient & Client Care	1,925	1,916	1,693	1,722	-203	-10.5%	-193	-10.1%	+30	2428



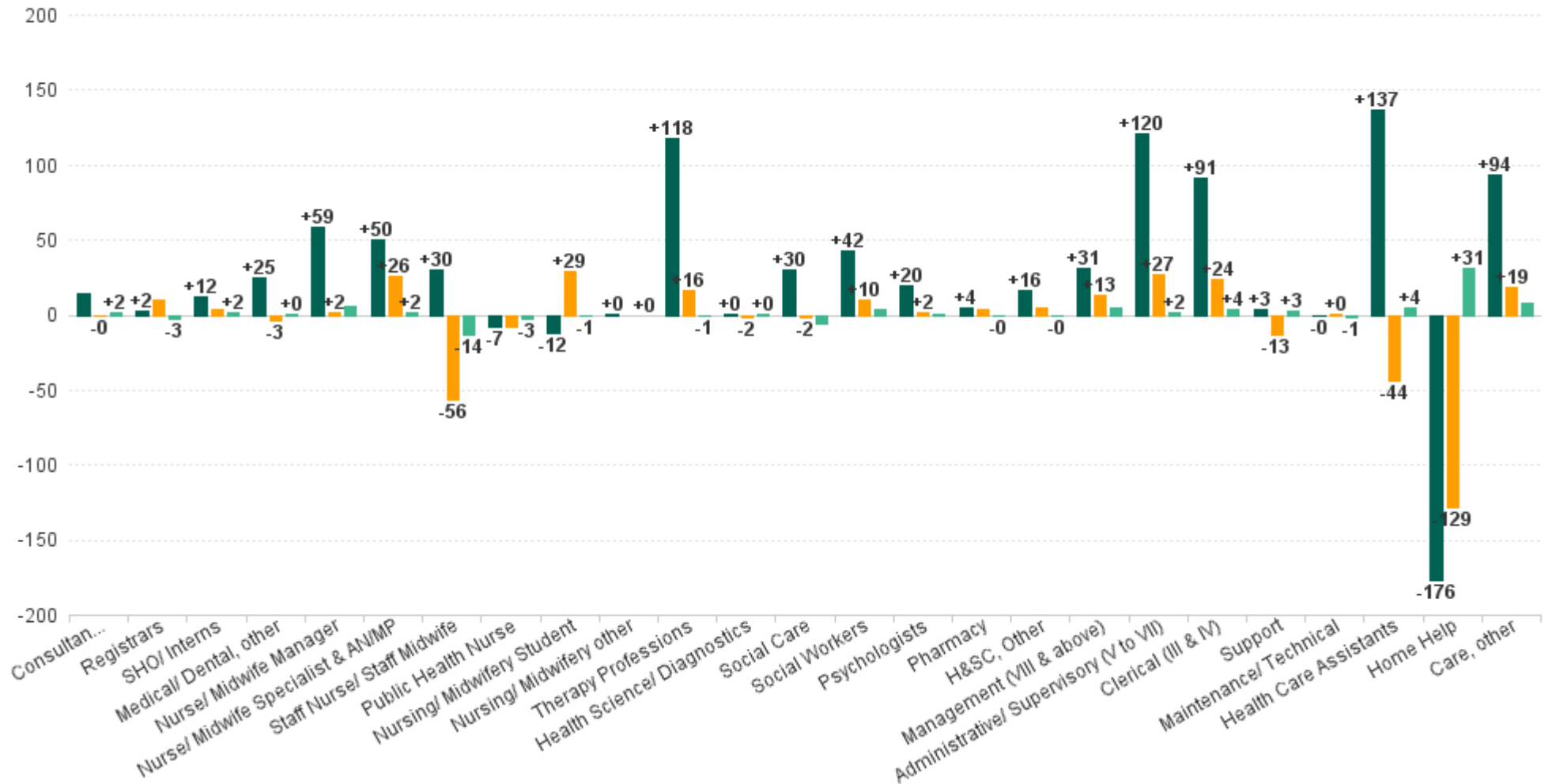
Employment Report by CHO Operations JUN 2023

CHO 4 JUN 2023

CHO Operations JUN 2023	WTE DEC 2019	WTE DEC 2022	WTE MAY 2023	WTE JUN 2023	WTE change since DEC 2019	% WTE Change since Dec 2019	WTE change since DEC 2022	% WTE Change since Dec 2022	WTE change since MAY 2023	No. JUN 2023
Overall			31	31	+31		+31		0	33
Nurse/ Midwife Manager			5	5	+5		+5		+0	6
Nurse/ Midwife Specialist & AN/MP			1	1	+1		+1		+0	1
Nursing & Midwifery			6	6	+6		+6		+0	7
Pharmacy			2	2	+2		+2		+0	2
Social Workers			4	4	+4		+4		+0	4
Health & Social Care Professionals			6	6	+6		+6		+0	6
Management (VIII & above)			3	3	+3		+3		0	3
Administrative/ Supervisory (V to VII)			9	10	+10		+10		+1	10
Clerical (III & IV)			7	6	+6		+6		-1	7
Management & Administrative			19	19	+19		+19		0	20

WTE Change by Staff Group

■ WTE change since DEC 2019 ■ WTE change since DEC 2022 ■ WTE change since MAY 2023



Employment Report by WTE, Headcount, Gender, Full-Time / Part-Time etc. JUN 2023

CHO 4 JUN 2023

JUN 2023	WTE JUN 2023	No. JUN 2023	WTE : No	Number Male %	Number Female %	Male WTE : No.	Female WTE : No	Perm Count %	Perm Count Male %	Perm Count Female %	Fulltime Count %	Part time Count %	FT Count Male %	FT Count Female %
Total	8,893	11,008	1:0.8	16.55%	83.45%	1:0.9	1:0.8	72.07%	10.86%	61.21%	57.33%	42.67%	75.19%	53.79%
Consultant Anaesthesia	0	1	1:0.2	100.00%		1:0.2	1:	100.00%	100.00%			100.00%		
Consultant Dentistry	5	5	1:0.9	40.00%	60.00%	1:1	1:0.9	80.00%	40.00%	40.00%	80.00%		100.00%	66.67%
Consultant Medicine	1	4	1:0.3	25.00%	75.00%	1:0.5	1:0.2	100.00%	25.00%	75.00%		100.00%		
Consultant Paediatrics	1	2	1:0.5		100.00%	1:	1:0.5	100.00%		100.00%		100.00%		
Consultant Psychiatry	61	67	1:0.9	37.31%	62.69%	1:0.9	1:0.9	19.40%	5.97%	13.43%	83.58%	16.42%	88.00%	80.95%
Consultant Surgery	1	2	1:0.7	100.00%		1:0.7	1:	100.00%	100.00%		50.00%	50.00%	50.00%	
Consultants	69	81	1:0.9	38.27%	61.73%	1:0.9	1:0.8	32.10%	12.35%	19.75%	75.31%	24.69%	80.65%	72.00%
Dentists	73	127	1:0.6	25.98%	74.02%	1:0.5	1:0.6	68.50%	18.90%	49.61%	22.05%	77.95%	18.18%	23.40%
Other Medical	64	120	1:0.5	40.00%	60.00%	1:0.5	1:0.6	40.83%	10.00%	30.83%	15.83%	84.17%	16.67%	15.28%
Medical/ Dental, other	136	247	1:0.6	32.79%	67.21%	1:0.5	1:0.6	55.06%	14.57%	40.49%	19.03%	80.97%	17.28%	19.88%
Registrar	88	91	1:1	43.96%	56.04%	1:1	1:1				96.70%	3.30%	95.00%	98.04%
Senior Registrar	14	16	1:0.9	37.50%	62.50%	1:1	1:0.8				87.50%	12.50%	100.00%	80.00%
Specialist Registrar	4	5	1:0.8	20.00%	80.00%	1:1	1:0.8	40.00%		40.00%	80.00%	20.00%	100.00%	75.00%
Registrars	106	112	1:0.9	41.96%	58.04%	1:1	1:0.9	1.79%		1.79%	94.64%	5.36%	95.74%	93.85%
Interns	2	2	1:1	100.00%		1:1	1:				100.00%		100.00%	
Senior House Officer	48	49	1:1	48.98%	51.02%	1:1	1:1				97.96%	2.04%	100.00%	96.00%
SHO/ Interns	50	51	1:1	50.98%	49.02%	1:1	1:1				98.04%	1.96%	100.00%	96.00%
Medical & Dental	361	491	1:0.7	37.68%	62.32%	1:0.7	1:0.7	33.40%	9.37%	24.03%	53.77%	46.23%	59.46%	50.33%
Clinical Nurse/ Midwife Manager	375	414	1:0.9	16.18%	83.82%	1:1	1:0.9	93.96%	15.46%	78.50%	82.13%	17.87%	97.01%	79.25%
Director Nursing/Midwifery, Assistant	75	77	1:1	16.88%	83.12%	1:1	1:1	98.70%	16.88%	81.82%	88.31%	11.69%	92.31%	87.50%
Director of Nursing/Midwifery	42	44	1:0.9	4.55%	95.45%	1:1	1:0.9	90.91%	4.55%	86.36%	90.91%	9.09%	100.00%	90.48%
Nurse/ Midwife Manager	491	535	1:0.9	15.33%	84.67%	1:1	1:0.9	94.39%	14.77%	79.63%	83.74%	16.26%	96.34%	81.46%
Advanced Nurse/ Midwife Practitioner	17	18	1:1	22.22%	77.78%	1:1	1:0.9	88.89%	22.22%	66.67%	94.44%	5.56%	100.00%	92.86%
Clinical Nurse/ Midwife Specialist	114	123	1:0.9	12.20%	87.80%	1:1	1:0.9	98.37%	12.20%	86.18%	78.86%	21.14%	100.00%	75.93%
Nurse/ Midwife Specialist & AN/MP	131	141	1:0.9	13.48%	86.52%	1:1	1:0.9	97.16%	13.48%	83.69%	80.85%	19.15%	100.00%	77.87%
Nursing Education/Clinical	1	1	1:1	100.00%		1:	1:1	100.00%		100.00%	100.00%			100.00%
Nursing/ Midwifery other	1	1	1:1	100.00%	1:	1:1	1:1	100.00%		100.00%	100.00%			100.00%
Post-registration Nurse/ Midwife Student	13	13	1:1		100.00%	1:	1:1	53.85%		53.85%	100.00%			100.00%
Pre-registration Nurse/ Midwife Intern	34	69	1:0.5	15.94%	84.06%	1:0.5	1:0.5				100.00%		100.00%	100.00%
Nursing/ Midwifery Student	47	82	1:0.6	13.41%	86.59%	1:0.5	1:0.6	8.54%		8.54%	100.00%		100.00%	100.00%
Public Health Nurse	209	263	1:0.8		100.00%	1:	1:0.8	88.21%		88.21%	55.51%	44.49%		55.51%
Public Health Nurse	209	263	1:0.8		100.00%	1:	1:0.8	88.21%		88.21%	55.51%	44.49%		55.51%
Staff Midwives	3	4	1:0.7		100.00%	1:	1:0.7	75.00%		75.00%	25.00%	75.00%		25.00%
Staff Nurse [Intellectual Disability]	156	193	1:0.8	6.74%	93.26%	1:0.8	1:0.8	97.93%	6.74%	91.19%	77.20%	22.80%	100.00%	75.56%
Staff Nurse [Psychiatric]	437	475	1:0.9	29.47%	70.53%	1:1	1:0.9	78.32%	22.95%	55.37%	87.58%	12.42%	93.57%	85.07%
Staff Nurses [General/ Children's]	880	1,102	1:0.8	5.44%	94.56%	1:0.9	1:0.8	66.61%	3.09%	63.52%	46.10%	53.90%	76.67%	44.34%
Staff Nurse/ Staff Midwife	1,476	1,774	1:0.8	12.01%	87.99%	1:0.9	1:0.8	73.17%	8.79%	64.37%	60.54%	39.46%	89.20%	56.63%
Nursing & Midwifery	2,355	2,796	1:0.8	11.62%	88.38%	1:0.9	1:0.8	77.97%	9.08%	68.88%	66.70%	33.30%	92.00%	63.38%
Audiology	7	9	1:0.8	22.22%	77.78%	1:1	1:0.8	66.67%	22.22%	44.44%	66.67%	33.33%	100.00%	57.14%
Physicists	2	2	1:0.8		100.00%	1:	1:0.8	100.00%		100.00%	100.00%			100.00%
Radiographers	3	4	1:0.8		100.00%	1:	1:0.8	75.00%		75.00%	75.00%	25.00%		75.00%
Health Science/ Diagnostics	12	15	1:0.8	13.33%	86.67%	1:1	1:0.8	73.33%	13.33%	60.00%	73.33%	26.67%	100.00%	69.23%
Counsellor Therapists	49	53	1:0.9	39.62%	60.38%	1:0.9	1:0.9	81.13%	37.74%	43.40%	83.02%	16.98%	90.48%	78.13%
Dental Hygienists	10	14	1:0.7	7.14%	92.86%	1:1	1:0.7	100.00%	7.14%	92.86%	42.86%	57.14%	100.00%	38.46%
Other Health & Social Care	9	11	1:0.8	36.36%	63.64%	1:0.9	1:0.8	72.73%	27.27%	45.45%	54.55%	45.45%	75.00%	42.86%
Play Therapists/ Specialists	2	3	1:0.8		100.00%	1:	1:0.8	100.00%		100.00%	33.33%	66.67%		33.33%
Vaccinators	7	23	1:0.3	17.39%	82.61%	1:0.4	1:0.3					100.00%		
H&SC, Other	77	104	1:0.7	28.85%	71.15%	1:0.9	1:0.7	65.38%	23.08%	42.31%	54.81%	45.19%	76.67%	45.95%
Pharmacists	11	17	1:0.6	23.53%	76.47%	1:0.4	1:0.7	64.71%	17.65%	47.06%	47.06%	52.94%	25.00%	53.85%
Pharmacy Technicians	2	2	1:0.9		100.00%	1:	1:0.9				100.00%			100.00%
Pharmacy	12	19	1:0.7	21.05%	78.95%	1:0.4	1:0.7	57.89%	15.79%	42.11%	52.63%	47.37%	25.00%	60.00%
Psychologists	158	177	1:0.9	17.51%	82.49%	1:1	1:0.9	71.75%	14.12%	57.63%	72.88%	27.12%	100.00%	67.12%
Social Care	270	314	1:0.9	17.52%	82.48%	1:1	1:0.8	85.99%	12.74%	73.25%	75.80%	24.20%	92.73%	72.20%
Social Workers	157	178	1:0.9	19.10%	80.90%	1:1	1:0.9	79.21%	14.04%	65.17%	80.34%	19.66%	94.12%	77.08%



JUN 2023	WTE JUN 2023	No. JUN 2023	WTE : No	Number Male %	Number Female %	Male WTE : No.	Female WTE : No	Perm Count %	Perm Count Male %	Perm Count Female %	Fulltime Count %	Part time Count %	FT Count Male %	FT Count Female %
Total	8,893	11,008	1:0.8	16.55%	83.45%	1:0.9	1:0.8	72.07%	10.86%	61.21%	57.33%	42.67%	75.19%	53.79%
Dietitians	42	49	1:0.9		100.00%	1:	1:0.9	93.88%		93.88%	69.39%	30.61%		69.39%
Occupational Therapists	231	267	1:0.9	7.12%	92.88%	1:0.9	1:0.9	82.40%	5.24%	77.15%	77.90%	22.10%	73.68%	78.23%
Orthoptists	1	1	1:0.5		100.00%	1:	1:0.5	100.00%		100.00%		100.00%		
Physiotherapists	132	155	1:0.8	19.35%	80.65%	1:1	1:0.8	78.71%	14.19%	64.52%	65.16%	34.84%	93.33%	58.40%
Podiatrists & Chiropodists	16	18	1:0.9	11.11%	88.89%	1:1	1:0.9	83.33%	11.11%	72.22%	77.78%	22.22%	100.00%	75.00%
Speech & Language Therapists	143	168	1:0.9	2.38%	97.62%	1:1	1:0.8	85.12%	1.19%	83.93%	66.67%	33.33%	75.00%	66.46%
Therapy Professions	566	658	1:0.9	8.36%	91.64%	1:0.9	1:0.9	83.13%	6.08%	77.05%	71.28%	28.72%	85.45%	69.98%
Health & Social Care Professionals	1,252	1,465	1:0.9	14.40%	85.60%	1:0.9	1:0.8	80.20%	10.85%	69.35%	72.15%	27.85%	88.63%	69.38%
Middle Management (V-VII)	281	302	1:0.9	16.56%	83.44%	1:1	1:0.9	92.72%	15.56%	77.15%	85.76%	14.24%	94.00%	84.13%
Administrative/ Supervisory (V to VII)	281	302	1:0.9	16.56%	83.44%	1:1	1:0.9	92.72%	15.56%	77.15%	85.76%	14.24%	94.00%	84.13%
General Administrative (III & IV)	596	733	1:0.8	8.73%	91.27%	1:0.8	1:0.8	71.62%	4.91%	66.71%	58.25%	41.75%	78.13%	56.35%
Clerical (III & IV)	596	733	1:0.8	8.73%	91.27%	1:0.8	1:0.8	71.62%	4.91%	66.71%	58.25%	41.75%	78.13%	56.35%
Executive Management	18	18	1:1	16.67%	83.33%	1:1	1:1	94.44%	16.67%	77.78%	100.00%		100.00%	100.00%
Senior Management (VIII & GM)	86	90	1:1	25.56%	74.44%	1:1	1:0.9	92.22%	24.44%	67.78%	94.44%	5.56%	95.65%	94.03%
Management (VIII & above)	104	108	1:1	24.07%	75.93%	1:1	1:1	92.59%	23.15%	69.44%	95.37%	4.63%	96.15%	95.12%
Management & Administrative	981	1,143	1:0.9	12.25%	87.75%	1:0.9	1:0.9	79.18%	9.45%	69.73%	69.03%	30.97%	87.14%	66.50%
Maintenance	19	24	1:0.8	83.33%	16.67%	1:0.8	1:0.7	83.33%	66.67%	16.67%	66.67%	33.33%	75.00%	25.00%
Technical Services	3	3	1:1	66.67%	33.33%	1:1	1:1	100.00%	66.67%	33.33%	100.00%		100.00%	100.00%
Maintenance/ Technical	22	27	1:0.8	81.48%	18.52%	1:0.8	1:0.8	85.19%	66.67%	18.52%	70.37%	29.63%	77.27%	40.00%
Catering	51	56	1:0.9	32.14%	67.86%	1:1	1:0.9	85.71%	25.00%	60.71%	80.36%	19.64%	94.44%	73.68%
Household Services	197	255	1:0.8	25.49%	74.51%	1:0.8	1:0.8	59.61%	13.73%	45.88%	56.08%	43.92%	72.31%	50.53%
Other Support	78	135	1:0.6	26.67%	73.33%	1:0.9	1:0.4	83.70%	22.96%	60.74%	23.70%	76.30%	63.89%	9.09%
Portering	15	20	1:0.8	100.00%		1:0.8	1:	100.00%	100.00%		65.00%	35.00%	65.00%	
Support	340	466	1:0.7	29.83%	70.17%	1:0.9	1:0.7	71.46%	21.46%	50.00%	50.00%	50.00%	71.94%	40.67%
General Support	363	493	1:0.7	32.66%	67.34%	1:0.8	1:0.7	72.21%	23.94%	48.28%	51.12%	48.88%	72.67%	40.66%
Health Promotion	14	19	1:0.7		100.00%	1:	1:0.7	100.00%		100.00%	42.11%	57.89%		42.11%
Home Care Services	37	43	1:0.9	11.63%	88.37%	1:0.7	1:0.9	76.74%	4.65%	72.09%	65.12%	34.88%	40.00%	68.42%
Other Care Grades	159	199	1:0.8	3.52%	96.48%	1:0.9	1:0.8	86.93%	3.02%	83.92%	51.76%	48.24%	100.00%	50.00%
Pastoral Care	5	21	1:0.3	90.48%	9.52%	1:0.2	1:0.6	14.29%	9.52%	4.76%		100.00%		
Workshop Services	329	382	1:0.9	25.92%	74.08%	1:0.9	1:0.8	71.99%	19.37%	52.62%	62.30%	37.70%	75.76%	57.60%
Care, other	543	664	1:0.8	19.58%	80.42%	1:0.8	1:0.8	75.75%	12.65%	63.10%	56.78%	43.22%	64.62%	54.87%
Attendant/ Aide	526	615	1:0.9	18.70%	81.30%	1:0.9	1:0.8	66.99%	10.57%	56.42%	49.59%	50.41%	75.65%	43.60%
Health Care Assistant/ Care Assistant	1,536	1,781	1:0.9	24.26%	75.74%	1:0.9	1:0.8	78.78%	18.75%	60.02%	70.02%	29.98%	75.93%	68.12%
Health & Social Care Assistants	29	33	1:0.9	21.21%	78.79%	1:1	1:0.9	21.21%	6.06%	15.15%	90.91%	9.09%	100.00%	88.46%
Health Care Assistants	2,091	2,429	1:0.9	22.81%	77.19%	1:0.9	1:0.8	75.01%	16.51%	58.50%	65.13%	34.87%	76.17%	61.87%
Home Helps	947	1,527	1:0.6	7.60%	92.40%	1:0.8	1:0.6	54.29%	1.70%	52.59%	8.19%	91.81%	25.00%	6.80%
Home Help	947	1,527	1:0.6	7.60%	92.40%	1:0.8	1:0.6	54.29%	1.70%	52.59%	8.19%	91.81%	25.00%	6.80%
Patient & Client Care	3,582	4,620	1:0.8	17.32%	82.68%	1:0.9	1:0.8	68.27%	11.06%	57.21%	45.11%	54.89%	66.88%	40.55%

Employment Report by WTE, Headcount, Gender, Full-Time / Part-Time etc. JUN 2023

CHO 4 JUN 2023

JUN 2023	WTE JUN 2023	No. JUN 2023	WTE : No	Number Male %	Number Female %	Male WTE : No.	Female WTE : No	Perm Count %	Number Male %	Number Female %	Fulltime Count %	Part time Count %	FT Count Male %	FT Count Female %
Total	8,893	11,008	1:0.8	16.55%	83.45%	1:0.9	1:0.8	72.07%	10.86%	61.21%	57.33%	42.67%	75.19%	53.79%
Community Health & Wellbeing	53	85	1:0.6	21.18%	78.82%	1:0.5	1:0.7	49.41%	3.53%	45.88%	37.65%	62.35%	22.22%	41.79%
Disabilities	2,693	3,238	1:0.8	20.44%	79.56%	1:0.9	1:0.8	83.42%	16.46%	66.95%	68.53%	31.47%	74.77%	66.93%
Mental Health	1,575	1,756	1:0.9	25.80%	74.20%	1:0.9	1:0.9	70.96%	16.74%	54.21%	83.03%	16.97%	92.27%	79.82%
Older People	2,759	3,675	1:0.8	12.52%	87.48%	1:0.8	1:0.7	62.48%	6.18%	56.30%	35.62%	64.38%	62.39%	31.79%
Primary Care	1,783	2,221	1:0.8	10.18%	89.82%	1:0.8	1:0.8	72.94%	6.12%	66.82%	56.82%	43.18%	72.12%	55.09%
CHO Operations	31	33	1:0.9	9.09%	90.91%	1:1	1:0.9	87.88%	9.09%	78.79%	93.94%	6.06%	100.00%	93.33%



Employment by Grade Group JUN 2023	WTE DEC 2019	WTE DEC 2022	WTE MAY 2023	WTE JUN 2023	WTE change since DEC 2019	% WTE Change since Dec 2019	WTE change since DEC 2022	% WTE Change since Dec 2022	WTE change since MAY 2023	No. JUN 2023
Overall	8,189	8,961	8,849	8,893	+705	+8.6%	-67	-0.7%	+45	11,008
Consultant Anaesthesia			0	0	+0		+0		+0	1
Consultant Dentistry	2	5	5	5	+3	+133.5%	0	-2.7%	+0	5
Consultant Medicine	1	1	1	1	+0	+4.5%	0	-3.3%	+0	4
Consultant Paediatrics	1	1	1	1	+0	+6.0%	+0	+0.0%	+0	2
Consultant Psychiatry	51	61	59	61	+10	+19.6%	0	-0.8%	+2	67
Consultant Surgery		1	1	1	+1		+0	+0.0%	+0	2
Consultants	55	70	67	69	+14	+26.0%	0	-0.6%	+2	81
Registrar	85	76	90	88	+3	+3.6%	+12	+16.0%	-2	91
Senior Registrar	12	17	15	14	+2	+17.4%	-4	-20.4%	-1	16
Specialist Registrar	7	3	4	4	-3	-41.4%	+1	+36.7%	+1	5
Registrars	103	96	108	106	+2	+2.1%	+10	+10.1%	-3	112
Interns	3	1	2	2	-1	-33.3%	+1	+102.0%	+0	2
Senior House Officer	35	45	47	48	+13	+37.5%	+3	+6.3%	+2	49
SHO/ Interns	38	46	49	50	+12	+31.9%	+4	+8.3%	+2	51
Dentists	62	69	72	73	+10	+16.5%	+3	+4.5%	+0	127
Other Medical	49	70	64	64	+15	+30.0%	-6	-9.2%	0	120
Medical/ Dental, other	111	140	136	136	+25	+22.4%	-3	-2.4%	+0	247
Medical & Dental	308	352	360	361	+53.7	+17.4%	+18.4	+2.8%	1.69	+491
Clinical Nurse/ Midwife Manager	337	381	366	375	+38	+11.2%	-6	-1.6%	+9	414
Director Nursing/Midwifery, Assistant	60	69	77	75	+14	+23.8%	+6	+8.1%	-2	77
Director of Nursing/Midwifery	35	40	42	42	+6	+18.2%	+2	+5.3%	-1	44
Nurse/ Midwife Manager	433	490	485	491	+59	+13.6%	+2	+0.3%	+6	535
Advanced Nurse/ Midwife Practitioner	7	9	15	17	+11	+156.7%	+8	+82.0%	+2	18
Clinical Nurse/ Midwife Specialist	74	96	114	114	+40	+53.8%	+18	+18.6%	+0	123
Nurse/ Midwife Specialist & AN/MP	81	106	129	131	+50	+62.3%	+26	+24.3%	+2	141
Staff Midwives	8	4	3	3	-5	-66.1%	-1	-28.0%	-1	4
Staff Nurse [Intellectual Disability]	87	152	155	156	+69	+80.0%	+4	+2.7%	+1	193
Staff Nurse [Psychiatric]	469	447	442	437	-32	-6.9%	-10	-2.3%	-5	475
Staff Nurses [General/ Children's]	882	929	890	880	-2	-0.2%	-49	-5.3%	-9	1,102
Staff Nurse/ Staff Midwife	1,446	1,532	1,489	1,476	+30	+2.1%	-56	-3.7%	-14	1,774
Public Health Nurse	216	216	212	209	-7	-3.4%	-8	-3.6%	-3	263
Public Health Nurse	216	216	212	209	-7	-3.4%	-8	-3.6%	-3	263
Nursing/ Midwifery awaiting registration	32				-32	-100.0%				
Post-registration Nurse/ Midwife Student	19	11	14	13	-6	-32.5%	+2	+18.7%	-1	13
Pre-registration Nurse/ Midwife Intern	9	7	34	34	+25	+282.2%	+27	+366.1%	+0	69
Nursing/ Midwifery Student	60	18	48	47	-12	-20.7%	+29	+158.6%	-1	82
Nursing Education/Clinical	1	1	1	1	+0	+96.1%	+0	+0.0%	+0	1
Nursing/ Midwifery other	1	1	1	1	+0	+96.1%	+0	+0.0%	+0	1
Nursing & Midwifery	2,235	2,363	2,365	2,355	+119.9	+5.4%	+29.3	-0.3%	-9.6	+2,796
Dietitians	28	36	43	42	+15	+52.4%	+6	+16.9%	0	49
Occupational Therapists	169	227	230	231	+62	+36.6%	+4	+2.0%	+2	267
Orthoptists	3	1	1	1	-3	-84.8%	-1	-50.0%	+0	1
Physiotherapists	106	126	134	132	+25	+23.8%	+6	+4.6%	-3	155

Employment by Grade Group JUN 2023	WTE DEC 2019	WTE DEC 2022	WTE MAY 2023	WTE JUN 2023	WTE change since DEC 2019	% WTE Change since Dec 2019	WTE change since DEC 2022	% WTE Change since Dec 2022	WTE change since MAY 2023	No. JUN 2023
Overall	8,189	8,961	8,849	8,893	+705	+8.6%	-67	-0.7%	+45	11,008
Podiatrists & Chiropodists	6	16	16	16	+10	+153.9%	+1	+5.8%	+0	18
Speech & Language Therapists	134	144	143	143	+9	+6.6%	-1	-0.4%	+0	168
Therapy Professions	448	549	566	566	+118	+26.3%	+16	+2.9%	-1	658
Audiology	7	9	7	7	+1	+9.9%	-2	-21.6%	+0	9
Physicists	2	2	2	2	0	-18.5%	+0	+0.6%	0	2
Radiographers	3	3	3	3	+0	+5.1%	+0	+0.0%	+0	4
Health Science/ Diagnostics	12	14	12	12	+0	+3.9%	-2	-14.2%	+0	15
Social Care	240	272	277	270	+30	+12.6%	-2	-0.7%	-6	314
Social Care	240	272	277	270	+30	+12.6%	-2	-0.7%	-6	314
Pharmacists	7	8	11	11	+3	+47.3%	+3	+39.9%	0	17
Pharmacy Technicians	1	1	2	2	+1	+125.0%	+1	+80.0%	+0	2
Pharmacy	8	9	13	12	+4	+55.0%	+4	+44.6%	0	19
Psychologists	138	156	157	158	+20	+14.3%	+2	+1.2%	+1	177
Psychologists	138	156	157	158	+20	+14.3%	+2	+1.2%	+1	177
Social Workers	115	147	154	157	+42	+37.0%	+10	+7.0%	+3	178
Social Workers	115	147	154	157	+42	+37.0%	+10	+7.0%	+3	178
Counsellor Therapists	41	43	48	49	+8	+19.6%	+6	+13.7%	+1	53
Dental Hygienists	8	9	10	10	+2	+19.5%	+1	+5.5%	0	14
Other Health & Social Care	11	9	9	9	-2	-17.0%	0	-1.4%	0	11
Play Therapists/ Specialists	1	2	2	2	+2	+284.1%	+0	+0.4%	+0	3
Vaccinators		9	7	7	+7		-2	-21.7%	0	23
H&SC, Other	60	72	77	77	+16	+26.9%	+4	+6.0%	0	104
Health & Social Care Professionals	1,020	1,219	1,255	1,252	+231.5	+22.7%	+38.5	+2.7%	-3.09	+1,465
Executive Management	15	16	18	18	+3	+18.7%	+2	+11.3%	0	18
Senior Management (VIII & GM)	58	74	81	86	+28	+48.4%	+12	+15.5%	+5	90
Management (VIII & above)	73	90	99	104	+31	+42.3%	+13	+14.8%	+5	108
Middle Management (V-VII)	161	254	279	281	+120	+74.8%	+27	+10.7%	+2	302
Administrative/ Supervisory (V to VII)	161	254	279	281	+120	+74.8%	+27	+10.7%	+2	302
General Administrative (III & IV)	505	572	592	596	+91	+18.1%	+24	+4.2%	+4	733
Clerical (III & IV)	505	572	592	596	+91	+18.1%	+24	+4.2%	+4	733
Management & Administrative	738	916	970	981	+242.5	+32.8%	+48.6	+7.0%	10.81	+1,143
Catering	60	53	51	51	-9	-15.5%	-2	-3.8%	+0	56
Household Services	190	213	196	197	+7	+3.7%	-16	-7.7%	+1	255
Other Support	74	75	77	78	+4	+4.8%	+3	+3.4%	+0	135
Portering	13	12	14	15	+2	+17.3%	+3	+24.4%	+1	20
Support	337	353	338	340	+3	+1.0%	-13	-3.6%	+3	466
Maintenance	21	19	21	19	-2	-9.7%	+0	+1.1%	-1	24
Technical Services	1	3	3	3	+2	+200.0%	+0	+0.0%	+0	3
Maintenance/ Technical	22	22	24	22	0	-0.3%	+0	+0.9%	-1	27
General Support	359	375	361	363	+3.4	+1.0%	-10.1	-3.4%	1.48	+493
Attendant/ Aide	701	554	526	526	-175	-25.0%	-28	-5.1%	+0	615
Health & Social Care Assistants	8	16	28	29	+21	+265.4%	+14	+88.5%	+2	33
Health Care Assistant/ Care Assistant	1,245	1,565	1,533	1,536	+291	+23.3%	-29	-1.9%	+2	1,781
Health Care Assistants	1,954	2,135	2,087	2,091	+137	+7.0%	-44	-2.0%	+4	2,429
Home Helps	1,124	1,076	916	947	-176	-15.7%	-129	-12.0%	+31	1,527
Home Help	1,124	1,076	916	947	-176	-15.7%	-129	-12.0%	+31	1,527
Health Promotion		15	13	14	+14		-1	-6.7%	+0	19

Employment by Grade Group JUN 2023	WTE DEC 2019	WTE DEC 2022	WTE MAY 2023	WTE JUN 2023	WTE change since DEC 2019	% WTE Change since Dec 2019	WTE change since DEC 2022	% WTE Change since Dec 2022	WTE change since MAY 2023	No. JUN 2023
Overall	8,189	8,961	8,849	8,893	+705	+8.6%	-67	-0.7%	+45	11,008
Home Care Services	29	32	34	37	+8	+28.8%	+5	+15.0%	+3	43
Other Care Grades	127	163	157	159	+31	+24.7%	-4	-2.7%	+2	199
Pastoral Care	7	5	5	5	-1	-20.0%	+1	+18.2%	+0	21
Workshop Services	287	310	325	329	+42	+14.5%	+19	+6.0%	+3	382
Care, other	450	524	535	543	+94	+20.8%	+19	+3.6%	+8	664
Patient & Client Care	3,528	3,735	3,538	3,582	+53.9	+1.5%	-19.0	-4.1%	43.39	+4,620



CHO 4 Employment Report: JUN 2023

Month-on-Month Summary

Month-on-Month Summary	% WTE change since MAY 2023	WTE change since MAY 2023	Community Health & Wellbeing	Mental Health	Primary Care	Disabilities	Older People	CHO Operations
Consultants	+3.0%	+2.0	+0.0	+2.0	+0.1	+0.0	+0.0	
Registrars	-2.4%	-2.6		-1.6	-1.5		+0.5	
SHO/ Interns	+3.7%	+1.8		+1.8	+0.0		+0.0	
Medical/ Dental, other	+0.3%	+0.4	-0.1	+0.0	+0.7	-0.6	+0.4	
Medical & Dental	+0.5%	+1.7	-0.1	+2.2	-0.7	-0.6	+0.9	
Nurse/ Midwife Manager	+1.2%	+5.9	+0.0	+3.9	-2.2	+0.6	+3.6	+0.0
Nurse/ Midwife Specialist & AN/MP	+1.6%	+2.1		-0.8	+1.9	+0.0	+1.0	+0.0
Staff Nurse/ Staff Midwife	-0.9%	-13.7		-5.8	-0.1	-0.9	-6.9	
Public Health Nurse	-1.5%	-3.1			-3.1		-0.0	
Nursing/ Midwifery Student	-1.7%	-0.8		+0.2	-1.0	+0.0		
Nursing/ Midwifery other	+0.0%	+0.0				+0.0		
Nursing & Midwifery	-0.4%	-9.6	+0.0	-2.5	-4.5	-0.3	-2.3	+0.0
Therapy Professions	-0.2%	-0.9	+0.0	+0.2	+0.2	+1.7	-3.0	
Health Science/ Diagnostics	+3.3%	+0.4			+0.4		+0.0	
Social Care	-2.3%	-6.3		-0.5	-0.5	-5.6	+0.3	
Pharmacy	-0.7%	-0.1		-0.1	-0.1		+0.0	+0.0
Psychologists	+0.6%	+0.9		-1.2	+2.0	+0.1		
Social Workers	+2.1%	+3.3		+1.5	+1.3	+0.5	+0.0	+0.0



H&SC, Other	-0.4%	-0.3	-0.4	-0.1	+0.4	-0.2		
Health & Social Care Professionals	-0.2%	-3.1	-0.4	-0.2	+3.7	-3.5	-2.7	+0.0
Management (VIII & above)	+5.1%	+5.0	+0.0	-0.1	+0.7	+3.2	+1.1	-0.0
Administrative/ Supervisory (V to VII)	+0.7%	+2.0	-0.8	-0.4	+3.6	+0.1	-1.1	+0.5
Clerical (III & IV)	+0.7%	+3.9	+1.1	+1.4	-0.3	+1.9	+0.4	-0.5
Management & Administrative	+1.1%	+10.8	+0.3	+0.9	+4.0	+5.2	+0.5	-0.0
Support	+0.8%	+2.8		-0.3	+0.6	+0.7	+1.9	
Maintenance/ Technical	-5.7%	-1.3	+0.0	+0.0	+0.0	-0.9	-0.4	
General Support	+0.4%	+1.5	+0.0	-0.3	+0.6	-0.3	+1.5	
Health Care Assistants	+0.2%	+4.3	+0.0	+0.8	+1.2	+6.3	-4.0	
Home Help	+3.4%	+31.0			+0.2		+30.8	
Care, other	+1.5%	+8.1	+1.6	+0.1	+1.2	+2.4	+2.9	
Patient & Client Care	+1.2%	+43.4	+1.6	+1.0	+2.5	+8.7	+29.6	



CHO 4 Employment Report: JUN 2023

Year-to-Date Summary

Year-to-Date Summary	% WTE change since DEC 2022	WTE change since DEC 2022	Community Health & Wellbeing	Mental Health	Primary Care	Disabilities	Older People	CHO Operations
Consultants	-0.6%	-0.4	+0.2	-0.5	-0.2	+0.0	+0.0	
Registrars	+10.1%	+9.6		-9.3	+17.5		+1.5	
SHO/ Interns	+8.3%	+3.9		+3.9	-1.0		+1.0	
Medical/ Dental, other	-2.4%	-3.3	+0.5	+0.0	-2.3	+0.0	-1.5	
Medical & Dental	+2.8%	+9.8	+0.7	-5.9	+14.0	+0.0	+0.9	
Nurse/ Midwife Manager	+0.3%	+1.7	-0.2	-6.4	-3.9	+1.5	+5.2	+5.4
Nurse/ Midwife Specialist & AN/MP	+24.3%	+25.7		+4.5	+16.8	+0.0	+3.4	+0.9
Staff Nurse/ Staff Midwife	-3.7%	-56.3		-15.2	+12.3	+6.8	-60.2	
Public Health Nurse	-3.6%	-7.9			-6.0		-1.8	
Nursing/ Midwifery Student	+158.6%	+29.1		+17.7	+2.1	+9.3		
Nursing/ Midwifery other	+0.0%	+0.0				+0.0		
Nursing & Midwifery	-0.3%	-7.8	-0.2	+0.6	+21.3	+17.6	-53.4	+6.2
Therapy Professions	+2.9%	+16.1	-0.8	+6.6	+17.8	-4.2	-3.3	
Health Science/ Diagnostics	-14.2%	-2.0			-2.0		+0.0	
Social Care	-0.7%	-2.0		-1.0	-0.2	-0.8	+0.0	
Pharmacy	+44.6%	+3.8		-0.9	+2.8		-0.1	+2.0



Psychologists	+1.2%	+1.9		-2.1	+6.6	-2.6		
Social Workers	+7.0%	+10.3		+1.7	+5.8	-1.3	+0.0	+4.0
H&SC, Other	+6.0%	+4.4	-1.9	-0.7	+6.4	+0.5		
Health & Social Care Professionals	+2.7%	+32.4	-2.6	+3.7	+37.1	-8.4	-3.4	+6.0
Management (VIII & above)	+14.8%	+13.3	+0.0	+0.8	+0.6	+4.8	+4.1	+3.0
Administrative/ Supervisory (V to VII)	+10.7%	+27.2	-1.1	+3.0	+1.0	+3.7	+10.9	+9.6
Clerical (III & IV)	+4.2%	+23.9	+0.7	+6.0	+12.9	+2.7	-4.9	+6.5
Management & Administrative	+7.0%	+64.5	-0.4	+9.9	+14.5	+11.3	+10.1	+19.1
Support	-3.6%	-12.8		-11.1	+3.8	-3.3	-2.3	
Maintenance/ Technical	+0.9%	+0.2	+0.0	+0.0	+0.0	+0.6	-0.4	
General Support	-3.4%	-12.6	+0.0	-11.1	+3.8	-2.7	-2.7	
Health Care Assistants	-2.0%	-43.6	-0.0	+15.0	-14.5	+20.7	-64.8	
Home Help	-12.0%	-128.8			+3.9		-132.6	
Care, other	+3.6%	+19.0	+4.0	+0.8	-4.0	+14.3	+3.9	
Patient & Client Care	-4.1%	-153.3	+4.0	+15.8	-14.6	+35.0	-193.5	



CHO 4 Employment Report: JUN 2023

Year-on-Year Summary

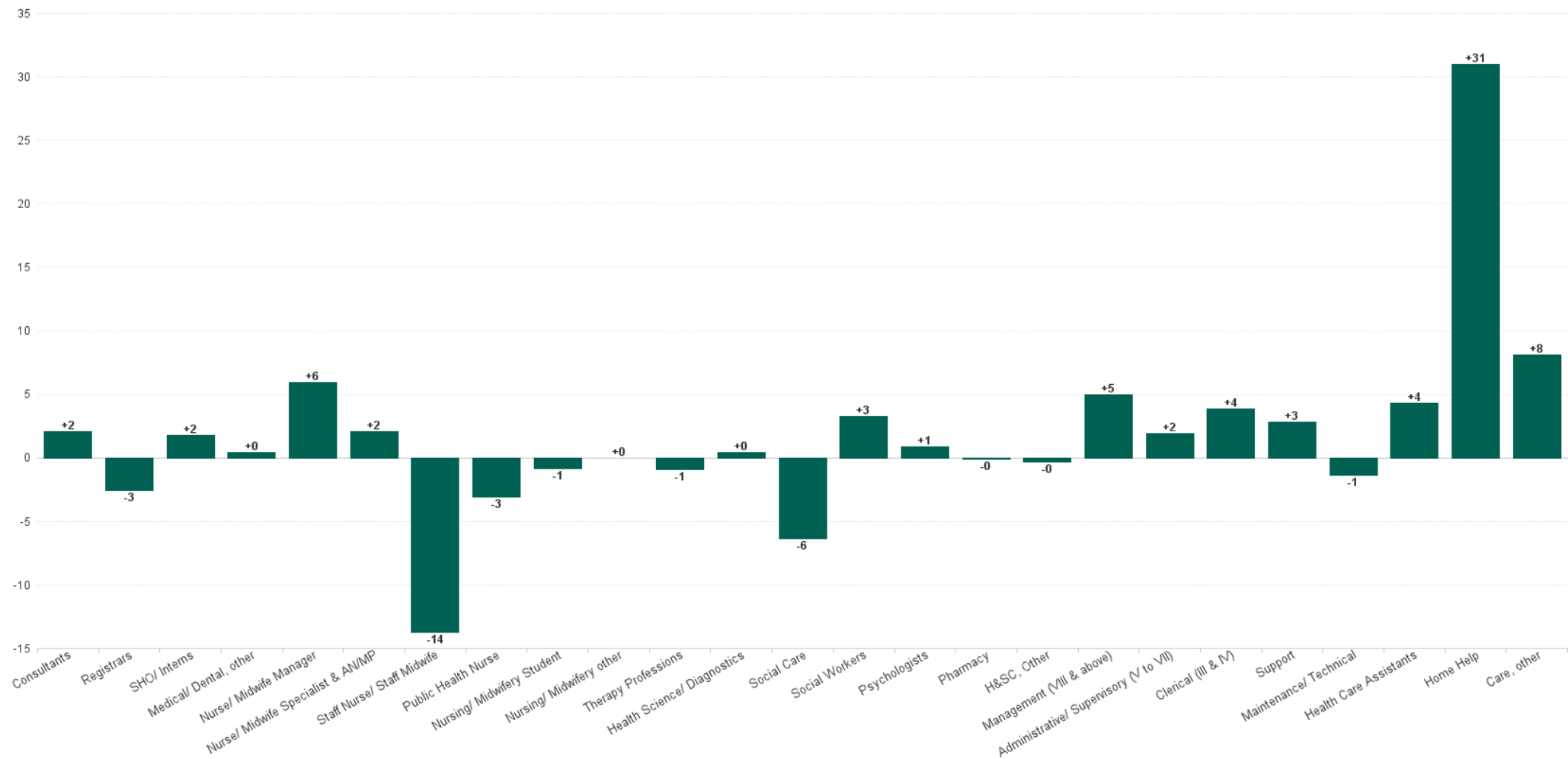
Year-on-Year Summary	% WTE change since JUN 2022	WTE change since JUN 2022	Community Health & Wellbeing	Mental Health	Primary Care	Disabilities	Older People	CHO Operations
Consultants	+11.8%	+7.3	+0.2	+5.5	+0.5	+1.0	+0.1	
Registrars	+4.3%	+4.4		-6.0	+10.9		-0.6	
SHO/ Interns	+21.4%	+8.9		+9.9	-1.0		+0.0	
Medical/ Dental, other	+6.7%	+8.6	+2.1	-1.1	+6.0	+0.0	+1.5	
Medical & Dental	+8.8%	+29.1	+2.3	+8.3	+16.4	+1.1	+1.0	
Nurse/ Midwife Manager	-2.5%	-12.4	+0.1	-14.4	-3.5	-0.9	+0.9	+5.4
Nurse/ Midwife Specialist & AN/MP	+30.8%	+30.9		+4.7	+19.6	+0.5	+5.2	+0.9
Staff Nurse/ Staff Midwife	-0.3%	-4.4		-23.3	+36.6	+1.5	-19.2	
Public Health Nurse	-2.8%	-6.1			-4.3		-1.8	
Nursing/ Midwifery Student	-21.4%	-12.9		-0.9	-10.0	-2.0		
Nursing/ Midwifery other	+0.0%	+0.0				+0.0		
Nursing & Midwifery	-0.2%	-5.0	+0.1	-33.9	+38.4	-0.9	-14.9	+6.2
Therapy Professions	+5.1%	+27.2	-0.7	+8.8	+32.7	-2.2	-11.4	
Health Science/ Diagnostics	-8.6%	-1.2			-2.2		+1.0	
Social Care	+0.7%	+2.0		-2.0	-1.2	+5.1	+0.0	
Pharmacy	+21.8%	+2.2		+0.1	+0.3		-0.2	+2.0
Psychologists	+8.7%	+12.6		-1.5	+13.4	+0.7		
Social Workers	+13.7%	+19.0		+3.5	+13.5	-0.3	-1.7	+4.0



H&SC, Other	-1.6%	-1.2	-5.2	-1.7	+6.6	-1.0		
Health & Social Care Professionals	+5.1%	+60.6	-5.9	+7.3	+63.2	+2.2	-12.3	+6.0
Management (VIII & above)	+19.8%	+17.1	+0.0	+0.8	+2.6	+5.6	+5.1	+3.0
Administrative/ Supervisory (V to VII)	+21.2%	+49.1	+0.9	+5.3	+7.5	+13.9	+11.9	+9.6
Clerical (III & IV)	+5.5%	+31.0	-0.9	+6.3	+8.6	+9.0	+1.5	+6.5
Management & Administrative	+11.0%	+97.2	+0.1	+12.4	+18.7	+28.5	+18.5	+19.1
Support	-5.1%	-18.4		-11.8	+4.1	-3.8	-6.9	
Maintenance/ Technical	-3.3%	-0.8	+0.0	-0.1	+0.0	-0.3	-0.4	
General Support	-5.0%	-19.1	+0.0	-11.9	+4.1	-4.1	-7.3	
Health Care Assistants	-7.4%	-166.0	-0.3	+10.9	-112.5	+7.3	-71.5	
Home Help	-7.3%	-74.1			+2.9		-77.0	
Care, other	+1.8%	+9.6	+4.0	+0.3	-7.5	+11.8	+1.1	
Patient & Client Care	-6.0%	-230.5	+3.8	+11.2	-117.2	+19.1	-147.4	

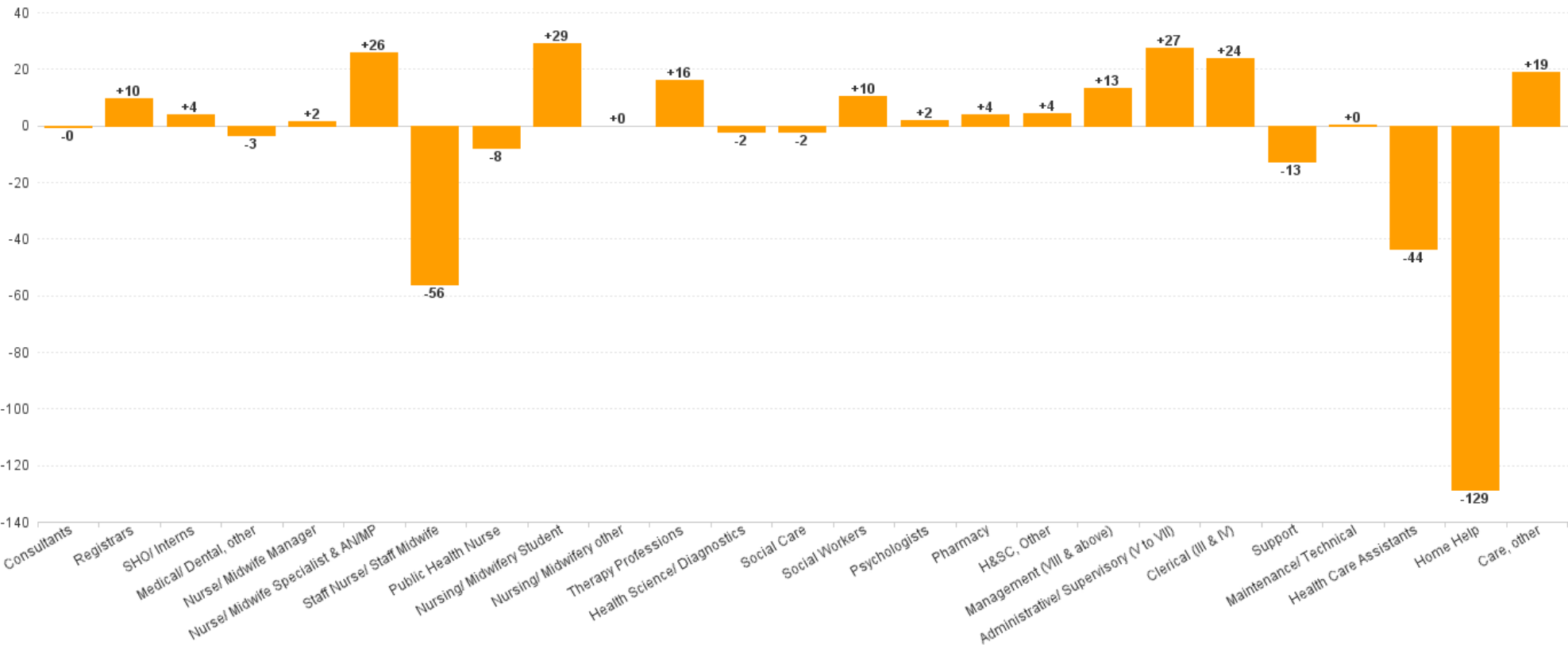


Month-on-Month Summary Chart: Change since MAY 2023



CHO 4 Employment Report: JUN 2023

Year-to-Date Summary Chart: Change since DEC 2022



CHO 4 Employment Report: JUN 2023

Year-on-Year Summary Chart: Change since JUN 2022

