

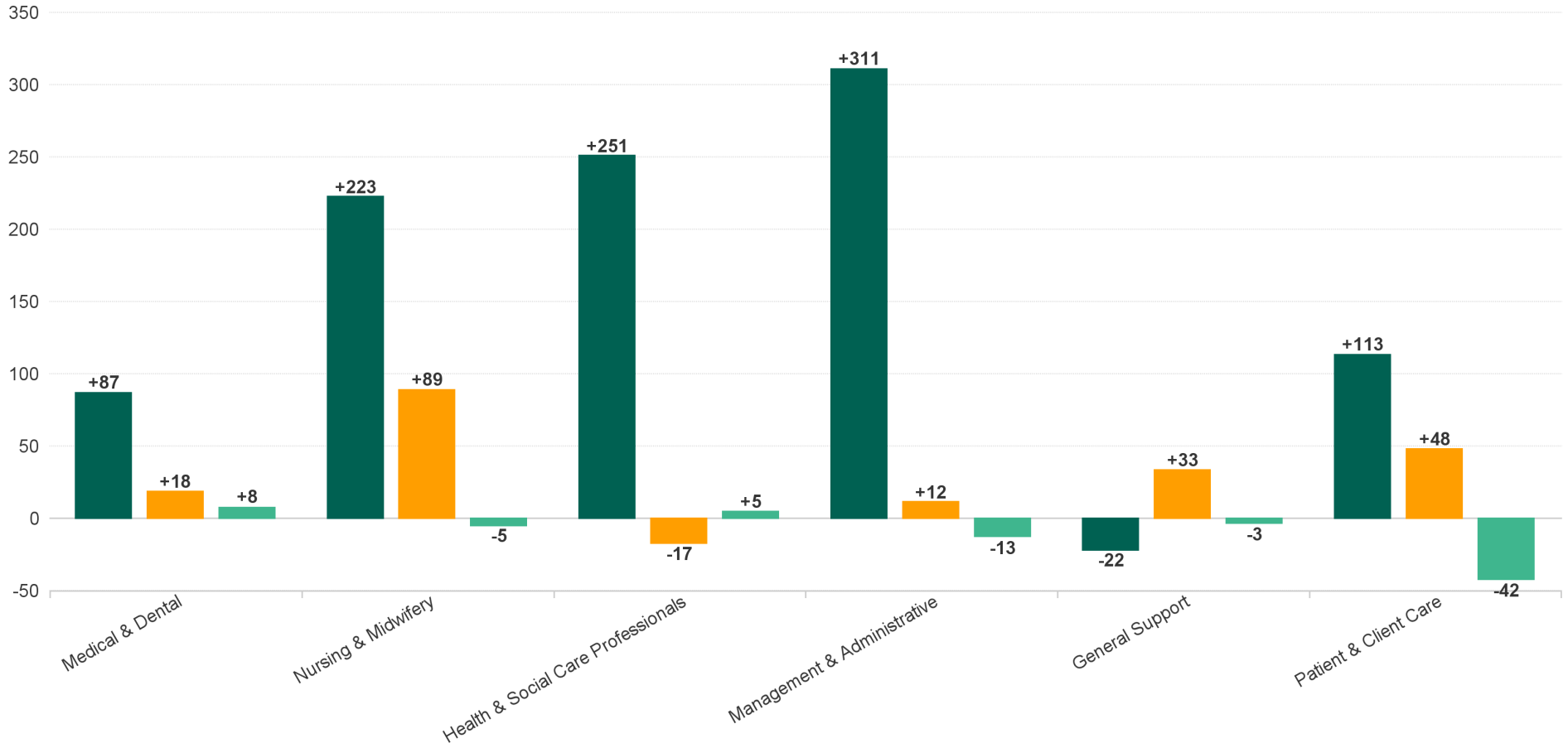
Employment Report : SEP 2024

Employment by Staff Group SEP 2024	WTE DEC 2019	WTE DEC 2022	WTE DEC 2023	WTE AUG 2024	WTE SEP 2024	WTE Change 2023	WTE Change 2024	WTE Change AUG 2024	WTE Change Dec 2022 to SEP 2024	WTE Change Dec 2019 to SEP 2024	% WTE Change Dec 2022 to SEP 2024	No. SEP 2024
Overall	8,189	8,961	8,968	9,202	9,151	+7	+183	-51	+191	+963	+2.1%	11,258
Consultants	55	70	75	81	83	+5	+8	+2	+13	+28	+18.7%	99
Registrars	103	96	111	127	125	+15	+14	-2	+29	+22	+30.3%	130
SHO/ Interns	38	46	58	60	64	+11	+7	+5	+18	+26	+38.8%	68
Medical/ Dental, other	111	140	133	120	123	-7	-10	+2	-17	+11	-12.3%	230
Medical & Dental	308	352	376	387	395	+24	+18	+8	+43	+87	+12.2%	527
Nurse/ Midwife Manager	433	490	497	516	514	+8	+16	-2	+24	+81	+5.0%	559
Nurse/ Midwife Specialist & AN/MP	81	106	147	161	161	+41	+14	0	+55	+80	+52.3%	180
Staff Nurse/ Staff Midwife	1,446	1,532	1,488	1,532	1,522	-44	+34	-11	-10	+76	-0.7%	1,820
Public Health Nurse	216	216	209	216	215	-8	+6	-1	-2	-1	-0.8%	278
Nursing/ Midwifery awaiting registration	32		6	1	1	+6	-4.5	+0	+1	-31	-100.0%	1
Post-registration Nurse/ Midwife Student	19	11	20	1	10	+9	-10.06	+9	-1	-9	-9.2%	15
Pre-registration Nurse/ Midwife Intern	9	7	2	32	32	-6	30.47	0	+25	+23	+333.2%	64
Nursing/ Midwifery Student	60	18	27	34	43	+9	+16	+9	+25	-17	+134.1%	80
Nursing/ Midwifery other	1	1	1	4	4	+0	+3	+0	+3	+3	+298.0%	4
Nursing & Midwifery	2,235	2,363	2,369	2,463	2,458	+6	+89	-5	+95	+223	+4.0%	2,921
Therapy Professions	448	549	579	562	567	+30	-11	+6	+18	+120	+3.3%	675
Health Science/ Diagnostics	12	14	13	12	12	-1	-1	+0	-2	+0	-14.4%	15
Social Care	240	272	278	298	292	+6	+14	-5	+20	+52	+7.4%	335
Pharmacy	8	9	12	14	15	+4	+2	+0	+6	+7	+69.1%	21
Psychologists	138	156	156	141	143	0	-13	+2	-13	+5	-8.3%	173
Social Workers	115	147	171	165	168	+24	-3	+4	+22	+54	+14.7%	192
H&SC, Other	60	72	79	75	73	+7	-6	-1	+1	+13	+1.8%	101
Health & Social Care Professionals	1,020	1,219	1,288	1,266	1,271	+69	-17	+5	+52	+251	+4.2%	1,512
Management (VIII & above)	73	90	98	95	95	+8	-3	0	+5	+22	+5.0%	98
Administrative/ Supervisory (V to VII)	161	254	317	315	313	+63	-4	-1	+59	+152	+23.3%	337
Clerical (III & IV)	505	572	622	652	641	+50	+19	-11	+69	+136	+12.1%	767
Management & Administrative	738	916	1,037	1,062	1,049	+121	+12	-13	+133	+311	+14.5%	1,202
Support	337	353	286	321	318	-68	+32	-3	-36	-19	-10.1%	398
Maintenance/ Technical	22	22	18	19	20	-4	+1	+0	-3	-3	-11.4%	22
General Support	359	375	304	341	337	-71	+33	-3	-38	-22	-10.1%	420
Health Care Assistants	1,954	2,135	2,102	2,208	2,172	-32	+70	-36	+37	+218	+1.8%	2,568
Home Help	1,124	1,076	944	928	920	-132	-24	-9	-156	-204	-14.5%	1,435
Care, other	450	524	547	547	550	+23	+3	+2	+25	+100	+4.8%	673
Patient & Client Care	3,528	3,735	3,593	3,683	3,641	-142	+48	-42	-94	+113	-2.5%	4,676



## WTE Change by Staff Category

■ WTE change since DEC 2019 ■ WTE change since DEC 2023 ■ WTE change since AUG 2024



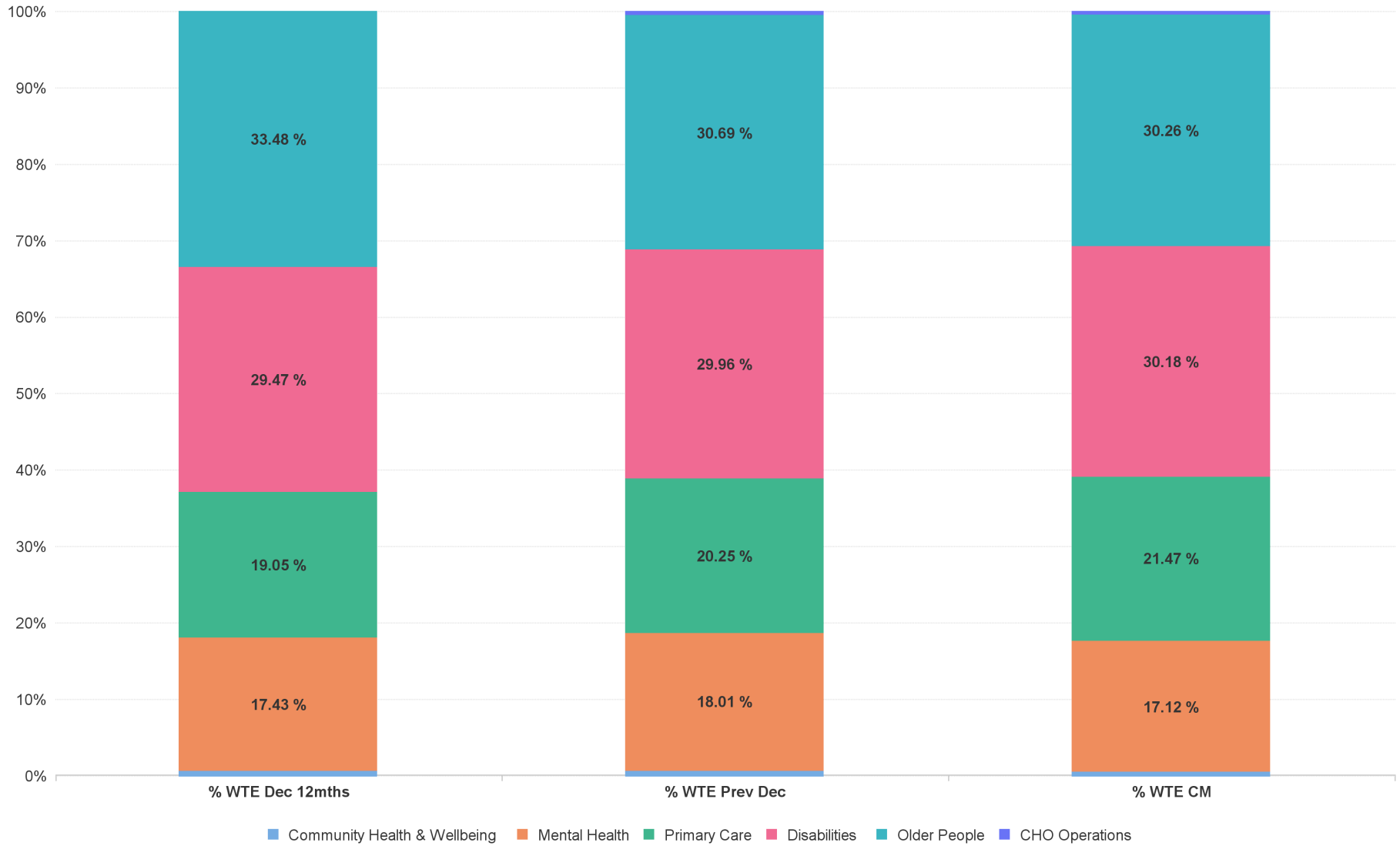
# Employment Report by Care Group : SEP 2024

CHO 4 SEP 2024

Care Group SEP 2024	WTE DEC 2019	WTE DEC 2022	WTE DEC 2023	WTE AUG 2024	WTE SEP 2024	WTE Change 2023	WTE Change 2024	WTE Change AUG 2024	WTE Change Dec 2022 to SEP 2024	WTE Change Dec 2019 to SEP 2024	% WTE Change Dec 2022 to SEP 2024	No. SEP 2024
<b>Overall</b>	<b>8,189</b>	<b>8,961</b>	<b>8,968</b>	<b>9,202</b>	<b>9,151</b>	<b>+7</b>	<b>+183</b>	<b>-51</b>	<b>+191</b>	<b>+963</b>	<b>+2.1%</b>	<b>11,258</b>
Community Health & Wellbeing		52	51	43	44	0	-8	+0	-8	+44	-15.4%	63
Mental Health	1,499	1,562	1,615	1,563	1,566	+54	-49	+4	+5	+68	+0.3%	1,756
Primary Care	1,346	1,707	1,816	1,979	1,964	+109	+149	-15	+258	+619	+15.1%	2,484
Disabilities	2,425	2,640	2,686	2,780	2,762	+46	+76	-18	+122	+337	+4.6%	3,293
Older People	2,919	3,000	2,752	2,791	2,769	-248	+17	-22	-231	-150	-7.7%	3,613
CHO Operations			47	46	46	+47	-1	+0	+46	+46	-100.0%	49
<b>Community Services</b>	<b>8,189</b>	<b>8,961</b>	<b>8,968</b>	<b>9,202</b>	<b>9,151</b>	<b>+7</b>	<b>+183</b>	<b>-51</b>	<b>+191</b>	<b>+963</b>	<b>+2.1%</b>	<b>11,258</b>



## % Total by Care Group



# Employment Report by HSE/S38 : SEP 2024

CHO 4 SEP 2024

Administration SEP 2024	WTE DEC 2019	WTE DEC 2022	WTE DEC 2023	WTE AUG 2024	WTE SEP 2024	WTE Change 2023	WTE Change 2024	WTE Change AUG 2024	WTE Change Dec 2022 to SEP 2024	WTE Change Dec 2019 to SEP 2024	% WTE Change Dec 2022 to SEP 2024	No. SEP 2024
<b>Overall</b>	<b>8,189</b>	<b>8,961</b>	<b>8,968</b>	<b>9,202</b>	<b>9,151</b>	<b>+7</b>	<b>+183</b>	<b>-51</b>	<b>+191</b>	<b>+963</b>	<b>+2.1%</b>	<b>11,258</b>
Health Service Executive	5,939	6,531	6,492	6,307	6,285	-40	-206	-22	-246	+346	-3.8%	7,732
Section 38 Voluntary Agencies	2,249	2,429	2,476	2,894	2,866	+47	+390	-28	+437	+617	+18.0%	3,526



# Employment Report by HSE.S38: SEP 2024

## Health Service Executive

HSE&S38 SEP 2024	WTE DEC 2019	WTE DEC 2022	WTE DEC 2023	WTE AUG 2024	WTE SEP 2024	WTE Change 2023	WTE Change 2024	WTE Change AUG 2024	WTE Change Dec 2022 to SEP 2024	WTE Change Dec 2019 to SEP 2024	% WTE Change Dec 2022 to SEP 2024	No. SEP 2024
<b>Total Health Service Executive</b>	<b>5,939</b>	<b>6,531</b>	<b>6,492</b>	<b>6,307</b>	<b>6,285</b>	<b>-40</b>	<b>-206</b>	<b>-22</b>	<b>-246</b>	<b>+346</b>	<b>-3.8%</b>	<b>7,732</b>
Consultants	55	66	71	74	76	+5	+5	+2	+11	+21	+16.1%	91
Registrars	98	93	108	117	116	+15	+7	-2	+23	+18	+24.7%	120
SHO/ Interns	32	42	55	55	59	+12	+5	+5	+17	+27	+40.1%	63
Medical/ Dental, other	98	120	115	108	108	-6	-7	-0	-12	+9	-10.3%	182
<b>Medical &amp; Dental</b>	<b>284</b>	<b>321</b>	<b>348</b>	<b>354</b>	<b>359</b>	<b>+27</b>	<b>+11</b>	<b>+5</b>	<b>+38</b>	<b>+75</b>	<b>+11.9%</b>	<b>456</b>
Nurse/ Midwife Manager	358	405	410	408	403	+4	-6	-5	-2	+45	-0.5%	437
Nurse/ Midwife Specialist & AN/MP	68	93	135	127	127	+42	-8	-0	+34	+58	+37.0%	141
Staff Nurse/ Staff Midwife	1,161	1,261	1,226	1,194	1,180	-36	-46	-14	-81	+19	-6.4%	1,388
Public Health Nurse	216	216	209	216	215	-8	+6	-1	-2	-1	-0.8%	278
<i>Nursing/ Midwifery awaiting registration</i>	32		6	1	1	+6	-5	+0	+1	-31	-1	1
<i>Post-registration Nurse/ Midwife Student</i>	19	11	20	1	10	+9	-10	+9	-1	-9	-0.09	15
<i>Pre-registration Nurse/ Midwife Intern</i>	3	7	1	23	22	-7	+22	-0	+15	+19	2.04	45
Nursing/ Midwifery Student	54	18	26	25	33	+8	+7	+9	+15	-20	+82.3%	61
Nursing/ Midwifery other				2	2		+2	+0	+2	+2	-100.0%	2
<b>Nursing &amp; Midwifery</b>	<b>1,857</b>	<b>1,993</b>	<b>2,005</b>	<b>1,972</b>	<b>1,960</b>	<b>+11</b>	<b>-44</b>	<b>-12</b>	<b>-33</b>	<b>+103</b>	<b>-1.7%</b>	<b>2,307</b>
<i>Dietitians</i>	26	34	39	36	36	+5	-2	+0	+2	+11	0.06	46
<i>Occupational Therapists</i>	138	188	194	181	184	+7	-11	+3	-4	+46	-0.02	211
<i>Orthoptists</i>	3	1	1	1	1	-1	+0	+0	-1	-3	-0.5	1
<i>Physiotherapists</i>	92	109	112	104	104	+4	-8	-0	-5	+12	-0.04	131
<i>Podiatrists &amp; Chiropodists</i>	6	16	13	13	13	-3	+0	-0	-2	+7	-0.16	15
<i>Speech &amp; Language Therapists</i>	94	111	112	105	106	+1	-6	+1	-5	+12	-0.05	127
Therapy Professions	359	459	471	440	444	+12	-27	+3	-15	+85	-3.3%	531
Health Science/ Diagnostics	10	12	11	11	11	-1	-0	+0	-1	+1	-9.5%	13
Social Care	39	44	37	38	38	-7	+1	+0	-6	-1	-13.8%	42
Pharmacy	8	9	12	11	11	+4	-1	+0	+3	+3	+30.8%	17
Psychologists	107	123	125	109	110	+2	-15	+1	-13	+3	-10.5%	136
Social Workers	88	119	136	126	128	+17	-8	+2	+9	+40	+7.4%	145
H&SC, Other	56	67	76	71	71	+9	-5	-0	+3	+15	+5.1%	96
<b>Health &amp; Social Care Professionals</b>	<b>667</b>	<b>833</b>	<b>868</b>	<b>806</b>	<b>813</b>	<b>+35</b>	<b>-56</b>	<b>+7</b>	<b>-20</b>	<b>+146</b>	<b>-2.4%</b>	<b>980</b>
Management (VIII & above)	58	73	79	73	72	+6	-8	-1	-2	+14	-2.3%	74
Administrative/ Supervisory (V to VII)	123	204	257	244	240	+53	-17	-4	+37	+117	+18.0%	260
Clerical (III & IV)	415	479	531	523	520	+52	-11	-3	+41	+105	+8.6%	604
<b>Management &amp; Administrative</b>	<b>596</b>	<b>756</b>	<b>867</b>	<b>839</b>	<b>832</b>	<b>+112</b>	<b>-36</b>	<b>-7</b>	<b>+76</b>	<b>+236</b>	<b>+10.1%</b>	<b>938</b>
Support	207	222	206	196	195	-16	-11	-0	-27	-11	-12.1%	225
Maintenance/ Technical	13	13	8	8	8	-5	+0	+0	-5	-5	-40.2%	8
<b>General Support</b>	<b>220</b>	<b>235</b>	<b>214</b>	<b>203</b>	<b>203</b>	<b>-21</b>	<b>-11</b>	<b>-0</b>	<b>-32</b>	<b>-17</b>	<b>-13.6%</b>	<b>233</b>
Health Care Assistants	1,079	1,166	1,092	1,062	1,054	-73	-38	-7	-111	-24	-9.5%	1,191
Home Help	1,124	1,076	944	928	920	-132	-24	-9	-156	-204	-14.5%	1,435
Care, other	113	151	153	143	144	+1	-8	+1	-7	+31	-4.6%	192
<b>Patient &amp; Client Care</b>	<b>2,316</b>	<b>2,393</b>	<b>2,189</b>	<b>2,133</b>	<b>2,118</b>	<b>-204</b>	<b>-71</b>	<b>-15</b>	<b>-275</b>	<b>-197</b>	<b>-11.5%</b>	<b>2,818</b>

## Section 38 Voluntary Agencies

HSE&S38 SEP 2024	WTE DEC 2019	WTE DEC 2022	WTE DEC 2023	WTE AUG 2024	WTE SEP 2024	WTE Change 2023	WTE Change 2024	WTE Change AUG 2024	WTE Change Dec 2022 to SEP 2024	WTE Change Dec 2019 to SEP 2024	% WTE Change Dec 2022 to SEP 2024	No. SEP 2024
<b>Total Section 38 Voluntary Agencies</b>	<b>2,249</b>	<b>2,429</b>	<b>2,476</b>	<b>2,894</b>	<b>2,866</b>	<b>+47</b>	<b>+390</b>	<b>-28</b>	<b>+437</b>	<b>+617</b>	<b>+18.0%</b>	<b>3,526</b>
Consultants		4	4	7	7	+0	+3	+0	+3	+7	+60.5%	8
Registrars	5	3	3	9	9	-0	+7	+0	+6	+4	+203.3%	10
SHO/ Interns	6	4	3	5	5	-1	+2	+0	+1	-1	+25.0%	5
Medical/ Dental, other	13	20	18	12	15	-2	-3	+3	-5	+2	-24.3%	48
<b>Medical &amp; Dental</b>	<b>24</b>	<b>31</b>	<b>28</b>	<b>33</b>	<b>36</b>	<b>-3</b>	<b>+8</b>	<b>+3</b>	<b>+5</b>	<b>+11</b>	<b>+15.8%</b>	<b>71</b>
Nurse/ Midwife Manager	75	85	88	107	111	+3	+23	+3	+26	+36	+31.1%	122
Nurse/ Midwife Specialist & AN/MP	12	13	12	34	34	-1	+22	+0	+21	+21	+161.0%	39
Staff Nurse/ Staff Midwife	284	271	262	338	342	-8	+79	+3	+71	+57	+26.1%	432
<i>Pre-registration Nurse/ Midwife Intern</i>	6		1	10	10	+1	+9	+0	+10	+4	-1	19
Nursing/ Midwifery Student	6		1	10	10	+1	+9	+0	+10	+4	-100.0%	19
Nursing/ Midwifery other	1	1	1	2	2	+0	+1	+0	+1	+1	+98.0%	2
<b>Nursing &amp; Midwifery</b>	<b>378</b>	<b>369</b>	<b>364</b>	<b>491</b>	<b>498</b>	<b>-5</b>	<b>+134</b>	<b>+7</b>	<b>+128</b>	<b>+120</b>	<b>+34.8%</b>	<b>614</b>
<i>Dietitians</i>	2	2	3	4	4	+1	+1	+0	+2	+2	1	4
<i>Occupational Therapists</i>	31	39	45	50	51	+6	+6	+1	+12	+19	0.3	58
<i>Physiotherapists</i>	15	17	21	27	29	+4	+7	+2	+12	+14	0.69	34
<i>Speech &amp; Language Therapists</i>	40	32	39	41	40	+6	+1	-1	+8	-0	0.24	48
Therapy Professions	89	90	108	122	124	+17	+16	+2	+33	+35	+36.8%	144
Health Science/ Diagnostics	2	2	2	1	1	+0	-1	+0	-1	-1	-45.0%	2
Social Care	201	228	241	260	254	+13	+13	-6	+26	+53	+11.5%	293
Pharmacy				3	3		+3	+0	+3	+3	-100.0%	4
Psychologists	31	33	31	32	33	-2	+2	+1	-0	+2	-0.4%	37
Social Workers	27	28	35	39	40	+8	+5	+2	+13	+14	+45.8%	47
H&SC, Other	4	5	3	4	3	-2	-0	-1	-2	-1	-45.6%	5
<b>Health &amp; Social Care Professionals</b>	<b>354</b>	<b>386</b>	<b>420</b>	<b>460</b>	<b>458</b>	<b>+34</b>	<b>+38</b>	<b>-2</b>	<b>+72</b>	<b>+105</b>	<b>+18.7%</b>	<b>532</b>
Management (VIII & above)	15	17	19	22	23	+2	+4	+1	+6	+8	+36.6%	24
Administrative/ Supervisory (V to VII)	38	51	61	71	73	+10	+12	+2	+22	+35	+44.4%	77
Clerical (III & IV)	89	93	90	130	121	-3	+31	-8	+28	+32	+30.1%	163
<b>Management &amp; Administrative</b>	<b>142</b>	<b>161</b>	<b>170</b>	<b>223</b>	<b>217</b>	<b>+10</b>	<b>+47</b>	<b>-5</b>	<b>+57</b>	<b>+75</b>	<b>+35.3%</b>	<b>264</b>
Support	130	131	80	126	122	-52	+43	-3	-9	-8	-6.7%	173
Maintenance/ Technical	9	9	10	12	12	+1	+1	+0	+3	+2	+30.6%	14
<b>General Support</b>	<b>139</b>	<b>140</b>	<b>90</b>	<b>137</b>	<b>134</b>	<b>-50</b>	<b>+44</b>	<b>-3</b>	<b>-6</b>	<b>-5</b>	<b>-4.3%</b>	<b>187</b>
Health Care Assistants	875	969	1,010	1,146	1,118	+41	+108	-28	+149	+242	+15.3%	1,377
Care, other	336	373	394	404	405	+21	+11	+1	+32	+69	+8.6%	481
<b>Patient &amp; Client Care</b>	<b>1,212</b>	<b>1,342</b>	<b>1,404</b>	<b>1,550</b>	<b>1,523</b>	<b>+62</b>	<b>+119</b>	<b>-27</b>	<b>+181</b>	<b>+311</b>	<b>+13.5%</b>	<b>1,858</b>

# CHO 4 by S38 Agency: SEP 2024

## Bros. of Charity Southern

Grade Group (KD)	WTE DEC 2019	WTE DEC 2022	WTE DEC 2023	WTE AUG 2024	WTE SEP 2024	WTE Change 2023	WTE Change 2024	WTE Change AUG 2024	WTE Change Dec 2022 to SEP 2024	WTE Change Dec 2019 to SEP 2024	% WTE Change Dec 2022 to SEP 2024	No. SEP 2024
<b>Total Bros. of Charity Southern</b>	<b>740</b>	<b>827</b>	<b>871</b>	<b>909</b>	<b>894</b>	<b>43.45</b>	<b>23.39</b>	<b>-15.01</b>	<b>+66.8</b>	<b>+153.5</b>	<b>+8.1%</b>	<b>1,117</b>
Nurse/ Midwife Manager	15	16	17	18	18	+1	+1	+0	+2	+3	+11.6%	20
Nurse/ Midwife Specialist & AN/MP	3	2	2	1	1	-0	-1	+0	-1	-1	-25.9%	2
Staff Nurse/ Staff Midwife	59	52	48	51	53	-5	+5	+2	+1	-6	+1.6%	76
Nursing & Midwifery	77	71	67	71	73	-4	+6	+2	+2	-4	+3.1%	98
Therapy Professions	48	49	60	60	62	+11	+2	+2	+13	+14	+26.2%	75
Social Care	124	133	145	147	143	+12	-2	-3	+11	+19	+8.1%	168
Psychologists	20	19	20	20	20	+1	+1	+1	+1	+1	+7.0%	24
Social Workers	17	16	18	17	17	+2	-1	+1	+1	+0	+6.7%	22
Health & Social Care Professionals	209	217	243	244	243	+26	+0	-0	+26	+34	+12.0%	289
Management (VIII & above)	8	7	9	9	9	+2	-0	-0	+2	+1	+26.1%	9
Administrative/ Supervisory (V to VII)	9	12	15	15	15	+3	+0	+0	+3	+6	+25.6%	17
Clerical (III & IV)	33	35	27	37	34	-8	+7	-3	-1	+1	-2.3%	48
Management & Administrative	50	54	51	61	58	-3	+7	-3	+4	+8	+7.7%	74
Support	15	12	12	12	12	+0	+0	+0	+0	-3	+2.6%	34
Maintenance/ Technical	2	3	3	3	3	+0	+0	+0	+0	+1	+19.5%	3
General Support	16	14	15	15	15	+1	+0	+0	+1	-1	+5.6%	37
Health Care Assistants	207	260	286	299	281	+26	-5	-17	+22	+75	+8.4%	356
Care, other	181	211	209	220	223	-3	+15	+4	+12	+42	+5.6%	263
Patient & Client Care	388	471	494	518	505	+24	+10	-14	+34	+117	+7.1%	619

## Cope Foundation

Grade Group (KD)	WTE DEC 2019	WTE DEC 2022	WTE DEC 2023	WTE AUG 2024	WTE SEP 2024	WTE Change 2023	WTE Change 2024	WTE Change AUG 2024	WTE Change Dec 2022 to SEP 2024	WTE Change Dec 2019 to SEP 2024	% WTE Change Dec 2022 to SEP 2024	No. SEP 2024
<b>Total Cope Foundation</b>	<b>1,091</b>	<b>1,163</b>	<b>1,168</b>	<b>1,226</b>	<b>1,215</b>	<b>4.4</b>	<b>47.21</b>	<b>-10.85</b>	<b>+51.6</b>	<b>+124.3</b>	<b>+4.4%</b>	<b>1,427</b>
Nurse/ Midwife Manager	41	50	52	50	53	+2	+1	+3	+3	+12	+5.8%	57
Nurse/ Midwife Specialist & AN/MP	10	11	10	9	9	-1	-1	+0	-2	-1	-18.2%	9
Staff Nurse/ Staff Midwife	169	174	169	158	157	-5	-12	-1	-17	-12	-9.6%	180
Pre-registration Nurse/ Midwife Intern	6		1	10	10	+1	+9	+0	+10	+4	-100.0%	19
Nursing/ Midwifery Student	6		1	10	10	+1	+9	+0	+10	+4	-100.0%	19
Nursing/ Midwifery other	1	1	1	1	1	+0	+0	+0	+0	+0	+0.0%	1
Nursing & Midwifery	227	236	233	228	229	-2	-4	+2	-6	+3	-2.7%	266
Therapy Professions	37	39	44	47	47	+5	+3	+0	+9	+10	+22.2%	53
Social Care	32	43	45	59	58	+2	+13	-2	+15	+26	+34.0%	63
Psychologists	10	13	11	12	13	-2	+1	+1	-1	+3	-5.9%	13
Social Workers	9	10	16	15	15	+6	-1	-0	+4	+6	+40.8%	16
H&SC, Other	3	2	1	1	1	-1	+0	+0	-1	-2	-50.0%	1
Health & Social Care Professionals	90	108	118	134	133	+10	+16	-1	+26	+43	+23.9%	146
Management (VIII & above)	6	7	7	6	6	+0	-1	+0	-1	+0	-14.1%	6
Administrative/ Supervisory (V to VII)	19	26	32	33	35	+6	+3	+2	+9	+16	+33.6%	36
Clerical (III & IV)	23	27	27	31	30	+0	+3	-2	+3	+6	+12.1%	35
Management & Administrative	48	59	66	70	70	+7	+4	+1	+11	+22	+18.5%	77
Support	77	81	31	27	26	-50	-6	-1	-55	-51	-68.4%	40
Maintenance/ Technical	6	5	5	5	5	+0	-1	+0	-1	-1	-13.8%	7
General Support	83	86	37	31	30	-50	-6	-1	-56	-52	-65.0%	47
Health Care Assistants	563	594	609	662	649	+14	+40	-13	+55	+85	+9.2%	776
Care, other	79	80	106	101	103	+26	-3	+2	+23	+23	+28.5%	115
Patient & Client Care	643	674	714	762	751	+40	+37	-11	+77	+109	+11.5%	891

## Cork Dental Hospital

Grade Group (KD)	WTE DEC 2019	WTE DEC 2022	WTE DEC 2023	WTE AUG 2024	WTE SEP 2024	WTE Change 2023	WTE Change 2024	WTE Change AUG 2024	WTE Change Dec 2022 to SEP 2024	WTE Change Dec 2019 to SEP 2024	% WTE Change Dec 2022 to SEP 2024	No. SEP 2024
<b>Total Cork Dental Hospital</b>	<b>103</b>	<b>117</b>	<b>114</b>	<b>112</b>	<b>102</b>	<b>-3.15</b>	<b>-12.54</b>	<b>-10.61</b>	<b>-15.7</b>	<b>-1.3</b>	<b>-13.4%</b>	<b>174</b>



Consultants		4	4	4	4	+0	+0	+0	+0	+4	+0.0%	5
Registrars	5	3	3	3	3	-0	+0	+0	-0	-2	-13.3%	3
SHO/ Interns	6	4	3	3	3	-1	+0	+0	-1	-3	-25.0%	3
Medical/ Dental, other	13	20	18	12	14	-2	-4	+3	-5	+1	-27.0%	47
Medical & Dental	24	31	28	21	24	-3	-4	+3	-7	-0	-21.8%	58
Nurse/ Midwife Manager	3	3	2	3	4	-1	+1	+0	+0	+1	+8.2%	4
Staff Nurse/ Staff Midwife	7	4	4	2	2	+0	-2	+0	-2	-4	-39.9%	4
Nursing & Midwifery	9	7	6	6	6	-1	-1	+0	-1	-3	-17.5%	8
Health Science/ Diagnostics	2	2	2	1	1	+0	-1	+0	-1	-1	-50.0%	1
H&SC, Other	1	3	2	3	2	-1	-0	-1	-1	+1	-42.4%	4
Health & Social Care Professionals	3	5	4	4	3	-1	-1	-1	-2	-0	-45.6%	5
Management (VIII & above)	1	1	1	1	1	+0	+0	+0	+0	+0	+0.0%	1
Administrative/ Supervisory (V to VII)	2	2	4	5	5	+2	+1	+0	+3	+3	+149.5%	5
Clerical (III & IV)	23	24	26	29	25	+2	-1	-4	+1	+2	+3.0%	43
Management & Administrative	26	27	31	35	31	+4	+0	-4	+4	+5	+13.7%	49
Support	11	12	13	12	11	+1	-3	-2	-2	-0	-15.3%	12
General Support	11	12	13	12	11	+1	-3	-2	-2	-0	-15.3%	12
Care, other	30	35	32	35	28	-3	-4	-7	-7	-2	-21.0%	42
Patient & Client Care	30	35	32	35	28	-3	-4	-7	-7	-2	-21.0%	42

Marymount Uni Hosp & Hospice OP

Grade Group (KD)	WTE DEC 2019	WTE DEC 2022	WTE DEC 2023	WTE AUG 2024	WTE SEP 2024	WTE Change 2023	WTE Change 2024	WTE Change AUG 2024	WTE Change Dec 2022 to SEP 2024	WTE Change Dec 2019 to SEP 2024	% WTE Change Dec 2022 to SEP 2024	No. SEP 2024
Total Marymount Uni Hosp & Hospice OP				70	70		69.87	0	+69.9	+69.9	-100.0%	95
Medical/ Dental, other				1	1		+1	+0	+1	+1	-100.0%	1
Medical & Dental				1	1		+1	+0	+1	+1	-100.0%	1
Nurse/ Midwife Manager				8	8		+8	+0	+8	+8	-100.0%	8
Staff Nurse/ Staff Midwife				25	26		+26	+1	+26	+26	-100.0%	36
Nursing & Midwifery				33	34		+34	+1	+34	+34	-100.0%	44
Health Care Assistants				37	36		+36	-1	+36	+36	-100.0%	50
Patient & Client Care				37	36		+36	-1	+36	+36	-100.0%	50

Marymount University Hospital & Hosp

Grade Group (KD)	WTE DEC 2019	WTE DEC 2022	WTE DEC 2023	WTE AUG 2024	WTE SEP 2024	WTE Change 2023	WTE Change 2024	WTE Change AUG 2024	WTE Change Dec 2022 to SEP 2024	WTE Change Dec 2019 to SEP 2024	% WTE Change Dec 2022 to SEP 2024	No. SEP 2024
Total Marymount University Hospital & Hospice				246	247		247.15	0.92	+247.2	+247.2	-100.0%	307
Consultants				3	3		+3	+0	+3	+3	-100.0%	3
Registrars				7	7		+7	+0	+7	+7	-100.0%	7
SHO/ Interns				2	2		+2	+0	+2	+2	-100.0%	2
Medical & Dental				11	11		+11	+0	+11	+11	-100.0%	12
Nurse/ Midwife Manager				12	12		+12	+0	+12	+12	-100.0%	14
Nurse/ Midwife Specialist & AN/MP				23	23		+23	+0	+23	+23	-100.0%	28
Staff Nurse/ Staff Midwife				58	58		+58	+1	+58	+58	-100.0%	79
Nursing/ Midwifery other				1	1		+1	+0	+1	+1	-100.0%	1
Nursing & Midwifery				95	95		+95	+1	+95	+95	-100.0%	122
Therapy Professions				11	11		+11	+0	+11	+11	-100.0%	12
Health Science/ Diagnostics				0	0		+0	+0	+0	+0	-100.0%	1
Pharmacy				3	3		+3	+0	+3	+3	-100.0%	4
Social Workers				6	7		+7	+1	+7	+7	-100.0%	8
Health & Social Care Professionals				21	22		+22	+1	+22	+22	-100.0%	25
Management (VIII & above)				5	5		+5	+0	+5	+5	-100.0%	5
Administrative/ Supervisory (V to VII)				6	6		+6	+0	+6	+6	-100.0%	6
Clerical (III & IV)				23	23		+23	-1	+23	+23	-100.0%	26
Management & Administrative				34	33		+33	-1	+33	+33	-100.0%	37
Support				50	50		+50	+0	+50	+50	-100.0%	57
Maintenance/ Technical				2	2		+2	+0	+2	+2	-100.0%	2
General Support				52	52		+52	+0	+52	+52	-100.0%	59
Health Care Assistants				31	31		+31	+0	+31	+31	-100.0%	48
Care, other				2	2		+2	+0	+2	+2	-100.0%	4
Patient & Client Care				34	34		+34	+0	+34	+34	-100.0%	52

St. John of God Kerry

Grade Group (KD)	WTE DEC 2019	WTE DEC 2022	WTE DEC 2023	WTE AUG 2024	WTE SEP 2024	WTE Change 2023	WTE Change 2024	WTE Change AUG 2024	WTE Change Dec 2022 to SEP 2024	WTE Change Dec 2019 to SEP 2024	% WTE Change Dec 2022 to SEP 2024	No. SEP 2024
Total St. John of God Kerry	315	321	324	331	339	2.32	14.79	7.22	+17.1	+23.4	+5.3%	406
Nurse/ Midwife Manager	16	15	16	16	16	+1	-0	+0	+1	+0	+6.9%	19
Staff Nurse/ Staff Midwife	49	41	41	44	45	+0	+4	+1	+4	-4	+10.0%	57
Nursing & Midwifery	64	56	58	59	61	+2	+3	+2	+5	-3	+9.2%	76
Therapy Professions	4	3	4	3	3	+1	-1	-0	+1	-1	+20.0%	4
Social Care	45	52	51	54	53	-1	+2	-1	+1	+8	+1.3%	62
Psychologists	2	1				-1			-1	-2	-100.0%	
Social Workers	1	1	1	1	1	+0	+0	+0	+0	+0	+0.0%	1
Health & Social Care Professionals	51	56	56	58	57	-1	+1	-1	+1	+6	+0.9%	67
Management (VIII & above)	1	2	2	2	3	+0	+1	+1	+1	+2	+25.0%	3
Administrative/ Supervisory (V to VII)	7	10	9	12	12	-1	+3	+0	+2	+5	+15.2%	13
Clerical (III & IV)	10	8	11	9	10	+3	-1	+1	+2	+0	+31.9%	11
Management & Administrative	18	20	22	23	24	+2	+2	+2	+4	+7	+22.5%	27
Support	28	26	24	25	25	-3	+1	-0	-2	-3	-7.1%	30
Maintenance/ Technical	2	1	2	2	2	+1	+0	+0	+1	+0	+100.0%	2
General Support	30	27	26	27	27	-2	+1	-0	-1	-3	-3.1%	32
Health Care Assistants	105	115	115	118	121	+0	+5	+3	+5	+15	+4.7%	147
Care, other	46	46	48	47	49	+1	+1	+2	+2	+3	+5.2%	57
Patient & Client Care	152	162	163	165	170	+1	+7	+5	+8	+18	+4.9%	204

CHO 4 Employment Report: SEP 2024

Community Health & Wellbeing SEP 2024	WTE DEC 2019	WTE DEC 2022	WTE DEC 2023	WTE AUG 2024	WTE SEP 2024	WTE Change 2023	WTE Change 2024	WTE Change AUG 2024	WTE Change Dec 2022 to SEP 2024	WTE Change Dec 2019 to SEP 2024	% WTE Change Dec 2022 to SEP 2024	No. SEP 2024
Total Community Health & Wellbeing		52	51	43	44	0	-8	+0	-8	+44	-15.4%	63
Medical/ Dental, other		2				-2			-2		-100.0%	
Medical & Dental		2				-2			-2		-100.0%	
Nurse/ Midwife Manager		3	3	2	2	0	-1	+0	-1	+2	-40.8%	2
Nursing & Midwifery		3	3	2	2	0	-1	+0	-1	+2	-40.8%	2
Dietitians		2	2	2	2	-1	+0	+0	-1	+2	-32.5%	2
Therapy Professions		2	2	2	2	-1	+0	+0	-1	+2	-32.5%	2
H&SC, Other		9	5	1	1	-3	-4	0	-8	+1	-88.7%	13
Health & Social Care Professionals		11	7	3	3	-4	-4	0	-8	+3	-76.6%	15
Management (VIII & above)		1	2	2	2	+1	+0	+0	+1	+2	+100.0%	2
Administrative/ Supervisory (V to VII)		12	14	15	14	+2	0	-1	+2	+14	+12.1%	15
Clerical (III & IV)		7	8	7	7	+1	-1	0	-1	+7	-11.3%	7
Management & Administrative		21	24	23	22	+3	-1	-1	+2	+22	+8.1%	24
Maintenance/ Technical		1				-1			-1		-100.0%	
General Support		1				-1			-1		-100.0%	
Health Care Assistants		0				0			0		-100.0%	
Care, other		14	17	15	17	+4	-1	+1	+3	+17	+22.4%	22
Patient & Client Care		14	17	15	17	+4	-1	+1	+3	+17	+20.2%	22

Mental Health SEP 2024	WTE DEC 2019	WTE DEC 2022	WTE DEC 2023	WTE AUG 2024	WTE SEP 2024	WTE Change 2023	WTE Change 2024	WTE Change AUG 2024	WTE Change Dec 2022 to SEP 2024	WTE Change Dec 2019 to SEP 2024	% WTE Change Dec 2022 to SEP 2024	No. SEP 2024
Total Mental Health	1,499	1,562	1,615	1,563	1,566	+54	-49	+4	+5	+68	+0.3%	1,756
Consultants	50	60	65	68	70	+4	+5	+2	+10	+20	+16.0%	80
Registrars	46	56	51	50	50	-5	-1	0	-6	+4	-11.4%	51
SHO/ Interns	31	42	55	54	58	+12	+4	+5	+16	+27	+37.8%	62
Medical/ Dental, other	2	1	1	1	1	+0	+0	+0	+0	-1	+1.0%	4
Medical & Dental	129	160	171	172	179	+11	+8	+7	+19	+51	+12.0%	197
Nurse/ Midwife Manager	171	207	201	204	201	-6	+0	-3	-6	+29	-3.0%	214
Nurse/ Midwife Specialist & AN/MP	60	72	90	84	84	+17	-5	+0	+12	+24	+16.7%	91
Staff Nurse/ Staff Midwife	505	479	484	449	446	+5	-38	-3	-33	-60	-7.0%	482
Nursing/ Midwifery awaiting registration	30		1	1		+1	-1	-1		-30	-100.0%	
Post-registration Nurse/ Midwife Student	1									-1	-100.0%	
Pre-registration Nurse/ Midwife Intern	3	7	1	23	22	-6	+22	0	+16	+19	+235.9%	45
Nursing/ Midwifery Student	34	7	2	24	22	-5	+21	-1	+16	-11	+235.9%	45
Nursing/ Midwifery other				2	2		+2	+0	+2	+2	-100.0%	2
Nursing & Midwifery	770	765	776	762	755	+11	-21	-7	-10	-15	-1.3%	834
Dietitians	6	3	2	2	1	-1	0	0	-2	-5	-56.6%	2
Occupational Therapists	55	63	73	67	67	+10	-5	+1	+5	+12	+7.5%	77
Speech & Language Therapists	13	13	13	13	13	+1	0	+0	+0	+0	+1.2%	16
Therapy Professions	74	79	88	81	82	+9	-6	+1	+3	+8	+3.7%	95
Social Care	4	6	3	3	4	-3	+1	+1	-2	+0	-31.4%	5
Pharmacy	2	2	1	1	1	-1	-1	+0	-2	-2	-74.6%	1
Psychologists	83	96	98	90	92	+2	-6	+2	-4	+9	-4.0%	115
Social Workers	53	73	74	67	69	+1	-5	+2	-4	+16	-5.0%	81
H&SC, Other	11	18	19	18	18	+1	-1	0	0	+7	-0.5%	22
Health & Social Care Professionals	227	273	283	260	265	+9	-17	+5	-8	+38	-3.0%	319
Management (VIII & above)	1	3	3	3	2	0	-1	-1	-1	+1	-40.0%	2
Administrative/ Supervisory (V to VII)	22	26	33	30	30	+7	-3	0	+4	+8	+15.1%	32
Clerical (III & IV)	87	87	106	107	105	+19	-1	-2	+18	+17	+20.7%	119
Management & Administrative	111	116	142	140	137	+26	-5	-4	+21	+26	+17.9%	153
Support	81	75	65	59	59	-10	-6	0	-16	-22	-21.5%	66
Maintenance/ Technical	6	5	4	4	4	-1	+0	+0	-1	-2	-24.7%	4



Mental Health SEP 2024	WTE DEC 2019	WTE DEC 2022	WTE DEC 2023	WTE AUG 2024	WTE SEP 2024	WTE Change 2023	WTE Change 2024	WTE Change AUG 2024	WTE Change Dec 2022 to SEP 2024	WTE Change Dec 2019 to SEP 2024	% WTE Change Dec 2022 to SEP 2024	No. SEP 2024
Total Mental Health	1,499	1,562	1,615	1,563	1,566	+54	-49	+4	+5	+68	+0.3%	1,756
General Support	87	80	68	63	62	-11	-6	0	-17	-24	-21.7%	70
Health Care Assistants	168	162	169	160	162	+7	-8	+2	0	-7	-0.3%	171
Care, other	7	5	6	5	6	+0	+0	+0	+0	-2	+8.2%	12
Patient & Client Care	176	167	175	165	167	+8	-8	+2	+0	-8	+0.0%	183

Primary Care SEP 2024	WTE DEC 2019	WTE DEC 2022	WTE DEC 2023	WTE AUG 2024	WTE SEP 2024	WTE Change 2023	WTE Change 2024	WTE Change AUG 2024	WTE Change Dec 2022 to SEP 2024	WTE Change Dec 2019 to SEP 2024	% WTE Change Dec 2022 to SEP 2024	No. SEP 2024
Total Primary Care	1,346	1,707	1,816	1,979	1,964	+109	+149	-15	+258	+619	+15.1%	2,484
Consultants	3	7	8	10	10	+1	+3	0	+3	+8	+50.7%	15
Registrars	55	40	60	76	75	+20	+15	-1	+35	+20	+89.6%	79
SHO/ Interns	6	4	3	5	5	-1	+2	+0	+1	-1	+25.0%	5
Medical/ Dental, other	88	110	106	93	95	-4	-12	+2	-15	+7	-13.8%	170
Medical & Dental	152	160	177	185	185	+17	+8	+0	+25	+34	+15.4%	269
Nurse/ Midwife Manager	56	72	70	80	81	-3	+11	+1	+9	+25	+12.2%	91
Nurse/ Midwife Specialist & AN/MP	4	14	33	55	55	+18	+22	0	+40	+51	+279.2%	66
Staff Nurse/ Staff Midwife	119	177	192	248	238	+16	+46	-10	+61	+118	+34.7%	329
Public Health Nurse	211	210	204	212	210	-6	+6	-1	+0	0	+0.2%	273
Post-registration Nurse/ Midwife Student	17	11	20	1	10	+9	-10	+9	-1	-7	-9.2%	15
Nursing/ Midwifery Student	17	11	20	1	10	+9	-10	+9	-1	-7	-9.2%	15
Nursing/ Midwifery other				1	1		+1	+0	+1	+1	-100.0%	1
Nursing & Midwifery	408	484	518	596	595	+34	+76	-1	+111	+187	+22.9%	775
Dietitians	18	28	34	32	32	+5	-2	+0	+4	+15	+13.4%	41
Occupational Therapists	59	108	110	104	106	+2	-3	+2	-1	+47	-1.2%	122
Orthoptists	3	1	1	1	1	-1	+0	+0	-1	-3	-50.0%	1
Physiotherapists	73	93	98	99	99	+6	+1	0	+6	+26	+6.9%	124
Podiatrists & Chiropodists		14	11	13	12	-3	+1	0	-2	+12	-13.6%	14
Speech & Language Therapists	69	83	87	84	85	+4	-2	+1	+2	+17	+2.8%	101
Therapy Professions	222	327	341	333	336	+14	-5	+3	+9	+114	+2.7%	403
Health Science/ Diagnostics	11	13	12	11	11	-1	-1	+0	-2	+0	-15.9%	13
Social Care	8	7	7	7	7	+1	+0	+0	+1	0	+13.7%	8
Pharmacy	3	2	5	8	8	+3	+3	0	+6	+5	+349.1%	9
Psychologists	20	23	26	18	17	+3	-9	-1	-7	-4	-27.9%	20
Social Workers	24	37	44	48	48	+7	+5	+1	+12	+24	+32.4%	53
H&SC, Other	41	39	41	42	42	+2	+1	+0	+3	+1	+8.8%	51
Health & Social Care Professionals	329	447	475	467	470	+28	-6	+3	+22	+141	+5.0%	557
Management (VIII & above)	37	44	44	46	47	0	+3	+1	+3	+10	+7.1%	49
Administrative/ Supervisory (V to VII)	68	114	133	122	120	+19	-13	-2	+6	+52	+5.4%	130
Clerical (III & IV)	205	255	284	303	299	+29	+15	-4	+44	+94	+17.4%	364
Management & Administrative	310	412	461	470	466	+48	+5	-5	+54	+156	+13.0%	543
Support	16	16	18	66	65	+1	+47	-2	+48	+49	+294.1%	80
Maintenance/ Technical		1		2	2	-1	+2	+0	+1	+2	+100.0%	2
General Support	16	17	18	68	67	+0	+49	-2	+49	+51	+283.0%	82
Health Care Assistants	17	47	33	61	58	-14	+26	-3	+11	+41	+24.3%	82
Home Help	10	8	12	11	11	+3	-1	-1	+2	+1	+28.5%	23
Care, other	105	130	122	121	113	-8	-9	-7	-17	+9	-12.9%	153
Patient & Client Care	132	185	166	193	182	-19	+16	-11	-3	+50	-1.6%	258

Disabilities SEP 2024	WTE DEC 2019	WTE DEC 2022	WTE DEC 2023	WTE AUG 2024	WTE SEP 2024	WTE Change 2023	WTE Change 2024	WTE Change AUG 2024	WTE Change Dec 2022 to SEP 2024	WTE Change Dec 2019 to SEP 2024	% WTE Change Dec 2022 to SEP 2024	No. SEP 2024
Total Disabilities	2,425	2,640	2,686	2,780	2,762	+46	+76	-18	+122	+337	+4.6%	3,293
Consultants	2	2	2	2	2	+0	0	+0	0	+0	-2.0%	2
Medical/ Dental, other	0	0	0	0	0	+0	+0	+0	+0	+0	+0.0%	1



Disabilities SEP 2024	WTE DEC 2019	WTE DEC 2022	WTE DEC 2023	WTE AUG 2024	WTE SEP 2024	WTE Change 2023	WTE Change 2024	WTE Change AUG 2024	WTE Change Dec 2022 to SEP 2024	WTE Change Dec 2019 to SEP 2024	% WTE Change Dec 2022 to SEP 2024	No. SEP 2024
Total Disabilities	2,425	2,640	2,686	2,780	2,762	+46	+76	-18	+122	+337	+4.6%	3,293
Medical & Dental	2	2	2	2	2	+0	0	+0	0	+0	-1.6%	3
Nurse/ Midwife Manager	87	98	101	98	102	+3	+1	+5	+4	+15	+4.5%	113
Nurse/ Midwife Specialist & AN/MP	13	13	12	10	10	-1	-2	+0	-3	-3	-19.4%	11
Staff Nurse/ Staff Midwife	306	301	299	296	298	-3	-1	+2	-3	-8	-1.1%	358
Nursing/ Midwifery awaiting registration	1									-1	-100.0%	
Pre-registration Nurse/ Midwife Intern	6	1	1	10	10	+0	+9	+0	+9	+4	+1,276.8%	19
Nursing/ Midwifery Student	7	1	1	10	10	+0	+9	+0	+9	+3	+1,276.8%	19
Nursing/ Midwifery other	1	1	1	1	1	+0	+0	+0	+0	+0	+0.0%	1
Nursing & Midwifery	414	414	414	415	421	0	+7	+7	+7	+7	+1.8%	502
Dietitians	3	2	3	3	3	+1	+0	+0	+1	+1	+50.0%	3
Occupational Therapists	38	44	47	48	49	+3	+2	+1	+5	+11	+12.3%	57
Physiotherapists	18	18	23	22	24	+5	+2	+3	+7	+6	+39.0%	30
Speech & Language Therapists	49	42	46	46	45	+5	-2	-1	+3	-4	+7.2%	54
Therapy Professions	108	105	119	119	121	+14	+2	+2	+16	+13	+15.5%	144
Social Care	227	259	266	286	280	+8	+13	-6	+21	+53	+8.1%	320
Psychologists	35	37	32	33	34	-5	+2	+1	-3	-1	-7.1%	38
Social Workers	27	28	35	32	33	+8	-2	+1	+5	+6	+19.2%	39
H&SC, Other	8	7	10	9	9	+2	-1	0	+1	+0	+19.9%	10
Health & Social Care Professionals	405	435	462	479	476	+28	+14	-3	+41	+71	+9.5%	551
Management (VIII & above)	22	23	27	24	24	+4	-3	+1	+1	+2	+5.9%	25
Administrative/ Supervisory (V to VII)	53	72	86	89	91	+14	+5	+2	+19	+38	+26.3%	99
Clerical (III & IV)	84	93	90	101	97	-4	+7	-4	+3	+13	+3.5%	120
Management & Administrative	160	189	203	213	212	+14	+10	-1	+24	+53	+12.5%	244
Support	140	138	83	80	79	-56	-4	-2	-60	-61	-43.1%	122
Maintenance/ Technical	10	10	11	11	11	+1	-1	+0	+1	+0	+7.4%	13
General Support	150	148	94	91	89	-54	-5	-2	-59	-61	-39.7%	135
Health Care Assistants	987	1,111	1,147	1,212	1,184	+36	+38	-27	+74	+197	+6.6%	1,420
Care, other	307	342	365	369	377	+23	+12	+8	+35	+69	+10.2%	438
Patient & Client Care	1,295	1,453	1,512	1,580	1,561	+59	+49	-19	+108	+267	+7.5%	1,858

Older People SEP 2024	WTE DEC 2019	WTE DEC 2022	WTE DEC 2023	WTE AUG 2024	WTE SEP 2024	WTE Change 2023	WTE Change 2024	WTE Change AUG 2024	WTE Change Dec 2022 to SEP 2024	WTE Change Dec 2019 to SEP 2024	% WTE Change Dec 2022 to SEP 2024	No. SEP 2024
Total Older People	2,919	3,000	2,752	2,791	2,769	-248	+17	-22	-231	-150	-7.7%	3,613
Consultants	1	1	1	1	1	+0	+0	+0	+0	+0	+0.0%	2
Registrars	3	0				0			0	-3	-100.0%	
SHO/ Interns	1			1	1		+1	+0	+1	+0	-100.0%	1
Medical/ Dental, other	21	27	25	26	26	-2	+2	+0	0	+6	-1.2%	55
Medical & Dental	26	28	26	28	28	-2	+3	+0	+1	+3	+2.3%	58
Nurse/ Midwife Manager	118	109	119	128	124	+10	+5	-4	+15	+6	+13.5%	134
Nurse/ Midwife Specialist & AN/MP	3	6	11	10	10	+6	-1	0	+4	+7	+74.0%	11
Staff Nurse/ Staff Midwife	515	575	513	540	541	-62	+27	+0	-35	+25	-6.0%	651
Public Health Nurse	5	6	5	4	4	-2	0	+0	-2	-1	-33.0%	5
Nursing/ Midwifery awaiting registration	1		5		1	+5	-4	+1	+1	+0	-100.0%	1
Post-registration Nurse/ Midwife Student	1									-1	-100.0%	
Nursing/ Midwifery Student	2		5		1	+5	-4	+1	+1	-1	-100.0%	1
Nursing & Midwifery	643	697	653	683	680	-44	+27	-3	-17	+37	-2.4%	802
Dietitians	2		2	2	2	+2	+1	+0	+2	+1	-100.0%	2
Occupational Therapists	17	13	10	11	12	-3	+2	+0	-1	-5	-8.0%	13
Physiotherapists	15	16	13	10	9	-3	-3	-1	-6	-6	-41.3%	11
Podiatrists & Chiropodists	6	2	1	1	1	0	-1	+0	-1	-6	-36.2%	1
Speech & Language Therapists	4	6	4	4	3	-2	-1	0	-3	0	-46.5%	4
Therapy Professions	44	37	30	28	27	-7	-2	0	-9	-17	-24.8%	31
Health Science/ Diagnostics	1	1	1	1	1	+0	+0	+0	+0	+0	+0.0%	2
Social Care	2	1	1	1	1	+0	+0	+0	+0	0	+0.8%	2
Pharmacy	3	5	4	4	4	0	0	+0	0	+2	-7.3%	9
Social Workers	10	9				-9			-9	-10	-100.0%	



Older People SEP 2024	WTE DEC 2019	WTE DEC 2022	WTE DEC 2023	WTE AUG 2024	WTE SEP 2024	WTE Change 2023	WTE Change 2024	WTE Change AUG 2024	WTE Change Dec 2022 to SEP 2024	WTE Change Dec 2019 to SEP 2024	% WTE Change Dec 2022 to SEP 2024	No. SEP 2024
Total Older People	2,919	3,000	2,752	2,791	2,769	-248	+17	-22	-231	-150	-7.7%	3,613
H&SC, Other			5	5	4	+5	-1	-1	+4	+4	-100.0%	5
Health & Social Care Professionals	60	53	41	39	38	-12	-3	-1	-15	-22	-27.7%	49
Management (VIII & above)	13	19	20	17	16	+1	-3	-1	-3	+4	-14.4%	17
Administrative/ Supervisory (V to VII)	17	29	39	47	47	+9	+8	0	+17	+30	+58.4%	49
Clerical (III & IV)	128	130	128	129	127	-2	-1	-1	-3	-1	-1.9%	150
Management & Administrative	158	178	186	193	190	+8	+4	-3	+12	+32	+6.6%	216
Support	101	124	120	115	116	-3	-5	+0	-8	+15	-6.6%	130
Maintenance/ Technical	6	5	3	3	3	-2	+0	+0	-2	-3	-40.0%	3
General Support	107	129	123	118	119	-5	-5	+0	-10	+12	-7.9%	133
Health Care Assistants	781	814	753	776	768	-61	+14	-8	-47	-14	-5.8%	895
Home Help	1,113	1,068	932	917	909	-136	-23	-8	-159	-205	-14.9%	1,412
Care, other	31	34	37	37	37	+3	+1	0	+4	+7	+10.6%	48
Patient & Client Care	1,925	1,916	1,722	1,730	1,714	-194	-9	-16	-202	-212	-10.5%	2,355

CHO Operations SEP 2024	WTE DEC 2019	WTE DEC 2022	WTE DEC 2023	WTE AUG 2024	WTE SEP 2024	WTE Change 2023	WTE Change 2024	WTE Change AUG 2024	WTE Change Dec 2022 to SEP 2024	WTE Change Dec 2019 to SEP 2024	% WTE Change Dec 2022 to SEP 2024	No. SEP 2024
Total CHO Operations			47	46	46	+47	-1	0	+46	+46	-100.0%	49
Nurse/ Midwife Manager			4	4	4	+4	0	0	+4	+4	-100.0%	5
Nurse/ Midwife Specialist & AN/MP			1	1	1	+1	+0	+0	+1	+1	-100.0%	1
Nursing & Midwifery			5	5	5	+5	0	0	+5	+5	-100.0%	6
Pharmacy			2	2	2	+2	+0	+0	+2	+2	-100.0%	2
Social Workers			18	18	17	+18	-1	0	+17	+17	-100.0%	19
Health & Social Care Professionals			20	20	19	+20	-1	0	+19	+19	-100.0%	21
Management (VIII & above)			3	3	3	+3	+0	+0	+3	+3	-100.0%	3
Administrative/ Supervisory (V to VII)			13	12	11	+13	-2	0	+11	+11	-100.0%	12
Clerical (III & IV)			6	7	7	+6	+1	+0	+7	+7	-100.0%	7
Management & Administrative			22	21	21	+22	-1	+0	+21	+21	-100.0%	22



## Employment Report by Care Group (HSE Only) SEP 2024

CHO 4 SEP 2024

### Community Health & Wellbeing

Community Health & Wellbeing HSE Only SEP 2024	WTE DEC 2019	WTE DEC 2022	WTE DEC 2023	WTE AUG 2024	WTE SEP 2024	WTE Change 2023	WTE Change 2024	WTE Change AUG 2024	WTE Change Dec 2022 to SEP 2024	WTE Change Dec 2019 to SEP 2024	% WTE Change Dec 2022 to SEP 2024	No. SEP 2024
<b>Overall</b>		<b>52</b>	<b>51</b>	<b>43</b>	<b>44</b>	<b>0</b>	<b>-8</b>	<b>+0</b>	<b>-8</b>	<b>+44</b>	<b>-15.4%</b>	<b>63</b>
Medical/ Dental, other		2				-2			-2		-100.0%	
<b>Medical &amp; Dental</b>		<b>2</b>				<b>-2</b>			<b>-2</b>		<b>-100.0%</b>	
Nurse/ Midwife Manager		3	3	2	2	0	-1	+0	-1	+2	-40.8%	2
<b>Nursing &amp; Midwifery</b>		<b>3</b>	<b>3</b>	<b>2</b>	<b>2</b>	<b>0</b>	<b>-1</b>	<b>+0</b>	<b>-1</b>	<b>+2</b>	<b>-40.8%</b>	<b>2</b>
Dietitians		2	2	2	2	+2	+0	+0	-1	+2	+0.0%	2
Therapy Professions		2	2	2	2	-1	+0	+0	-1	+2	-32.5%	2
H&SC, Other		9	5	1	1	-3	-4	0	-8	+1	-88.7%	13
<b>Health &amp; Social Care Professionals</b>		<b>11</b>	<b>7</b>	<b>3</b>	<b>3</b>	<b>-4</b>	<b>-4</b>	<b>0</b>	<b>-8</b>	<b>+3</b>	<b>-76.6%</b>	<b>15</b>
Management (VIII & above)		1	2	2	2	+1	+0	+0	+1	+2	+100.0%	2
Administrative/ Supervisory (V to VII)		12	14	15	14	+2	0	-1	+2	+14	+12.1%	15
Clerical (III & IV)		7	8	7	7	+1	-1	0	-1	+7	-11.3%	7
<b>Management &amp; Administrative</b>		<b>21</b>	<b>24</b>	<b>23</b>	<b>22</b>	<b>+3</b>	<b>-1</b>	<b>-1</b>	<b>+2</b>	<b>+22</b>	<b>+8.1%</b>	<b>24</b>
Maintenance/ Technical		1				-1			-1		-100.0%	
<b>General Support</b>		<b>1</b>				<b>-1</b>			<b>-1</b>		<b>-100.0%</b>	
Health Care Assistants		0				0			0		-100.0%	
Care, other		14	17	15	17	+4	-1	+1	+3	+17	+22.4%	22
<b>Patient &amp; Client Care</b>		<b>14</b>	<b>17</b>	<b>15</b>	<b>17</b>	<b>+4</b>	<b>-1</b>	<b>+1</b>	<b>+3</b>	<b>+17</b>	<b>+20.2%</b>	<b>22</b>

Mental Health

	WTE DEC 2019	WTE DEC 2022	WTE DEC 2023	WTE AUG 2024	WTE SEP 2024	WTE Change 2023	WTE Change 2024	WTE Change AUG 2024	WTE Change Dec 2022 to SEP 2024	WTE Change Dec 2019 to SEP 2024	% WTE Change Dec 2022 to SEP 2024	No. SEP 2024
Mental Health HSE Only SEP 2024												
Overall	1,499	1,562	1,615	1,563	1,566	+54	-49	+4	+5	+68	+0.3%	1,756
Consultants	50	60	65	68	70	+4	+5	+2	+10	+20	+16.0%	80
Registrars	46	56	51	50	50	-5	-1	0	-6	+4	-11.4%	51
SHO/ Interns	31	42	55	54	58	+12	+4	+5	+16	+27	+37.8%	62
Medical/ Dental, other	2	1	1	1	1	+0	+0	+0	+0	-1	+1.0%	4
Medical & Dental	129	160	171	172	179	+11	+8	+7	+19	+51	+12.0%	197
Nurse/ Midwife Manager	171	207	201	204	201	-6	+0	-3	-6	+29	-3.0%	214
Nurse/ Midwife Specialist & AN/MP	60	72	90	84	84	+17	-5	+0	+12	+24	+16.7%	91
Staff Nurse/ Staff Midwife	505	479	484	449	446	+5	-38	-3	-33	-60	-7.0%	482
Nursing/ Midwifery awaiting registration	30		1	1		-30	-1	-1		-30	-100.0%	
Post-registration Nurse/ Midwife Student	1					-1				-1		
Pre-registration Nurse/ Midwife Intern	3	7	1	23	22	+19	+22	+22	+16	+19	+4,394.0%	45
Nursing/ Midwifery Student	34	7	2	24	22	-5	+21	-1	+16	-11	+235.9%	45
Nursing/ Midwifery other				2	2		+2	+0	+2	+2	-100.0%	2
Nursing & Midwifery	770	765	776	762	755	+11	-21	-7	-10	-15	-1.3%	834
Dietitians	6	3	2	2	1	-5	0	0	-2	-5	-23.3%	2
Occupational Therapists	55	63	73	67	67	+12	-5	-5	+5	+12	-7.2%	77
Speech & Language Therapists	13	13	13	13	13	+0	0	0	+0	+0	-3.1%	16
Therapy Professions	74	79	88	81	82	+9	-6	+1	+3	+8	+3.7%	95
Social Care	4	6	3	3	4	-3	+1	+1	-2	+0	-31.4%	5
Pharmacy	2	2	1	1	1	-1	-1	+0	-2	-2	-74.6%	1
Psychologists	83	96	98	90	92	+2	-6	+2	-4	+9	-4.0%	115
Social Workers	53	73	74	67	69	+1	-5	+2	-4	+16	-5.0%	81
H&SC, Other	11	18	19	18	18	+1	-1	0	0	+7	-0.5%	22
Health & Social Care Professionals	227	273	283	260	265	+9	-17	+5	-8	+38	-3.0%	319
Management (VIII & above)	1	3	3	3	2	0	-1	-1	-1	+1	-40.0%	2
Administrative/ Supervisory (V to VII)	22	26	33	30	30	+7	-3	0	+4	+8	+15.1%	32
Clerical (III & IV)	87	87	106	107	105	+19	-1	-2	+18	+17	+20.7%	119
Management & Administrative	111	116	142	140	137	+26	-5	-4	+21	+26	+17.9%	153
Support	81	75	65	59	59	-10	-6	0	-16	-22	-21.5%	66
Maintenance/ Technical	6	5	4	4	4	-1	+0	+0	-1	-2	-24.7%	4
General Support	87	80	68	63	62	-11	-6	0	-17	-24	-21.7%	70
Health Care Assistants	168	162	169	160	162	+7	-8	+2	0	-7	-0.3%	171
Care, other	7	5	6	5	6	+0	+0	+0	+0	-2	+8.2%	12
Patient & Client Care	176	167	175	165	167	+8	-8	+2	+0	-8	+0.0%	183





Primary Care

Primary Care HSE Only SEP 2024	WTE DEC 2019	WTE DEC 2022	WTE DEC 2023	WTE AUG 2024	WTE SEP 2024	WTE Change 2023	WTE Change 2024	WTE Change AUG 2024	WTE Change Dec 2022 to SEP 2024	WTE Change Dec 2019 to SEP 2024	% WTE Change Dec 2022 to SEP 2024	No. SEP 2024
Overall	1,243	1,589	1,701	1,621	1,616	+112	-86	-5	+26	+373	+1.7%	2,003
Consultants	3	3	3	4	4	+1	+0	0	+1	+1	+35.6%	7
Registrars	50	37	57	67	66	+21	+9	-1	+29	+16	+80.3%	69
Medical/ Dental, other	75	91	88	81	81	-2	-8	-1	-10	+5	-10.9%	123
Medical & Dental	127	130	149	153	150	+20	+1	-2	+20	+23	+15.7%	199
Nurse/ Midwife Manager	54	69	67	64	65	-2	-2	+1	-4	+11	-5.6%	73
Nurse/ Midwife Specialist & AN/MP	4	14	33	32	31	+18	-1	0	+17	+27	+117.1%	38
Staff Nurse/ Staff Midwife	112	173	188	188	177	+15	-11	-10	+4	+65	+2.6%	246
Public Health Nurse	211	210	204	212	210	-6	+6	-1	+0	0	+0.2%	273
Post-registration Nurse/ Midwife Student	17	11	20	1	10	-7	-10	-10	-1	-7	-50.3%	15
Nursing/ Midwifery Student	17	11	20	1	10	+9	-10	+9	-1	-7	-9.2%	15
Nursing & Midwifery	399	477	512	496	494	+35	-18	-2	+17	+95	+3.6%	645
Dietitians	18	28	34	31	31	+14	-3	-3	+3	+14	-7.4%	40
Occupational Therapists	59	108	110	101	103	+44	-6	-6	-4	+44	-5.8%	119
Orthoptists	3	1	1	1	1	-3	+0	+0	-1	-3	+0.0%	1
Physiotherapists	73	93	98	93	93	+20	-5	-5	+0	+20	-5.5%	117
Podiatrists & Chiropodists		14	11	13	12	+12	+1	+1	-2	+12	+6.4%	14
Speech & Language Therapists	69	83	87	83	84	+16	-3	-3	+1	+16	-3.4%	100
Therapy Professions	222	327	341	322	325	+14	-16	+3	-2	+103	-0.8%	391
Health Science/ Diagnostics	9	11	10	10	10	-1	0	+0	-1	+1	-10.6%	11
Social Care	8	7	7	7	7	+1	+0	+0	+1	0	+13.7%	8
Pharmacy	3	2	5	5	4	+3	0	0	+3	+2	+158.4%	5
Psychologists	20	23	26	18	17	+3	-9	-1	-7	-4	-27.9%	20
Social Workers	24	37	44	41	41	+7	-2	0	+4	+17	+12.2%	45
H&SC, Other	40	36	39	39	41	+3	+1	+1	+5	+1	+12.8%	47
Health & Social Care Professionals	326	442	471	442	445	+29	-26	+3	+3	+119	+0.6%	527
Management (VIII & above)	36	43	43	40	41	0	-1	+1	-2	+6	-3.9%	43
Administrative/ Supervisory (V to VII)	66	112	129	111	109	+17	-20	-2	-3	+43	-2.5%	119
Clerical (III & IV)	182	231	259	251	252	+28	-7	+1	+21	+70	+9.1%	295
Management & Administrative	284	385	430	402	402	+45	-28	+0	+16	+118	+4.3%	457
Support	5	4	5	4	4	+1	0	+0	+0	-1	+2.7%	11
Maintenance/ Technical		1				-1			-1		-100.0%	
General Support	5	5	5	4	4	0	0	+0	-1	-1	-17.7%	11
Health Care Assistants	17	47	33	30	27	-14	-5	-3	-20	+10	-42.1%	34
Home Help	10	8	12	11	11	+3	-1	-1	+2	+1	+28.5%	23
Care, other	75	95	90	84	83	-5	-7	-1	-12	+8	-12.4%	107
Patient & Client Care	103	150	134	125	121	-16	-13	-4	-29	+18	-19.5%	164



Disabilities

Disabilities HSE Only SEP 2024	WTE DEC 2019	WTE DEC 2022	WTE DEC 2023	WTE AUG 2024	WTE SEP 2024	WTE Change 2023	WTE Change 2024	WTE Change AUG 2024	WTE Change Dec 2022 to SEP 2024	WTE Change Dec 2019 to SEP 2024	% WTE Change Dec 2022 to SEP 2024	No. SEP 2024
Overall	279	328	324	314	315	-4	-10	+1	-14	+36	-4.2%	343
Consultants	2	2	2	2	2	+0	0	+0	0	+0	-2.0%	2
Medical/ Dental, other	0	0	0	0	0	+0	+0	+0	+0	+0	+0.0%	1
Medical & Dental	2	2	2	2	2	+0	0	+0	0	+0	-1.6%	3
Nurse/ Midwife Manager	15	17	16	14	15	-1	0	+1	-1	+0	-8.4%	17
Nurse/ Midwife Specialist & AN/MP	1									-1	-100.0%	
Staff Nurse/ Staff Midwife	28	34	40	42	43	+6	+2	+0	+8	+14	+24.8%	45
Nursing/ Midwifery awaiting registration	1					-1				-1		
Pre-registration Nurse/ Midwife Intern		1							-1			
Nursing/ Midwifery Student	1	1				-1			-1	-1	-100.0%	
Nursing & Midwifery	46	52	56	57	58	+4	+2	+1	+6	+12	+12.3%	62
Dietitians	1					-1				-1		
Occupational Therapists	7	5	2	1	1	-5	-1	-1	-3	-5	-52.7%	2
Physiotherapists	4	1	2	1	2	-2	+1	+1	+2	-2	+31.3%	3
Speech & Language Therapists	9	9	7	6	5	-3	-2	-2	-4	-3	-28.0%	7
Therapy Professions	19	14	11	8	9	-3	-3	+0	-6	-11	-40.3%	12
Social Care	25	30	25	26	25	-5	+0	-1	-5	+0	-17.0%	27
Psychologists	4	3	1	1	1	-2	+0	+0	-2	-3	-73.2%	1
H&SC, Other	5	5	9	8	8	+3	-1	0	+2	+2	+47.3%	9
Health & Social Care Professionals	54	53	46	43	42	-7	-4	-1	-11	-12	-20.7%	49
Management (VIII & above)	8	7	9	7	7	+2	-2	+0	+0	-1	+0.0%	7
Administrative/ Supervisory (V to VII)	18	24	29	29	29	+6	0	+0	+6	+12	+23.5%	33
Clerical (III & IV)	18	24	25	23	23	+0	-2	0	-2	+5	-6.3%	26
Management & Administrative	44	55	63	59	59	+8	-4	0	+4	+15	+7.3%	66
Support	21	19	16	17	17	-3	+1	0	-3	-4	-13.2%	18
Maintenance/ Technical	1	1	1	1	1	+0	+0	+0	+0	+0	+0.0%	1
General Support	22	20	17	18	18	-3	+1	0	-3	-4	-12.5%	19
Health Care Assistants	112	142	137	133	134	-5	-3	+0	-8	+22	-5.8%	141
Care, other	1	4	3	2	2	-1	-1	+0	-2	+2	-52.8%	3
Patient & Client Care	112	146	140	135	136	-6	-5	+0	-11	+23	-7.2%	144



Older People

Older People HSE Only SEP 2024	WTE DEC 2019	WTE DEC 2022	WTE DEC 2023	WTE AUG 2024	WTE SEP 2024	WTE Change 2023	WTE Change 2024	WTE Change AUG 2024	WTE Change Dec 2022 to SEP 2024	WTE Change Dec 2019 to SEP 2024	% WTE Change Dec 2022 to SEP 2024	No. SEP 2024
Overall	2,919	3,000	2,752	2,721	2,699	-248	-53	-22	-301	-220	-10.0%	3,518
Consultants	1	1	1	1	1	+0	+0	+0	+0	+0	+0.0%	2
Registrars	3	0				0			0	-3	-100.0%	
SHO/ Interns	1			1	1		+1	+0	+1	+0	-100.0%	1
Medical/ Dental, other	21	27	25	25	26	-2	+1	+0	-1	+5	-3.2%	54
Medical & Dental	26	28	26	27	28	-2	+2	+0	+0	+2	+0.4%	57
Nurse/ Midwife Manager	118	109	119	120	116	+10	-3	-4	+7	-2	+6.3%	126
Nurse/ Midwife Specialist & AN/MP	3	6	11	10	10	+6	-1	0	+4	+7	+74.0%	11
Staff Nurse/ Staff Midwife	515	575	513	515	515	-62	+1	-1	-61	-1	-10.5%	615
Public Health Nurse	5	6	5	4	4	-2	0	+0	-2	-1	-33.0%	5
Nursing/ Midwifery awaiting registration	1		5		1	+0	-4	-4	+1	+0	-77.8%	1
Post-registration Nurse/ Midwife Student	1					-1				-1		
Nursing/ Midwifery Student	2		5		1	+5	-4	+1	+1	-1	-100.0%	1
Nursing & Midwifery	643	697	653	650	646	-44	-7	-4	-50	+3	-7.2%	758
Dietitians	2		2	2	2	+1	+1	+1	+2	+1	+33.3%	2
Occupational Therapists	17	13	10	11	12	-5	+2	+2	-1	-5	+21.0%	13
Physiotherapists	15	16	13	10	9	-6	-3	-3	-6	-6	-27.3%	11
Podiatrists & Chiropodists	6	2	1	1	1	-6	-1	-1	-1	-6	-34.0%	1
Speech & Language Therapists	4	6	4	4	3	0	-1	-1	-3	0	-17.6%	4
Therapy Professions	44	37	30	28	27	-7	-2	0	-9	-17	-24.8%	31
Health Science/ Diagnostics	1	1	1	1	1	+0	+0	+0	+0	+0	+0.0%	2
Social Care	2	1	1	1	1	+0	+0	+0	+0	0	+0.8%	2
Pharmacy	3	5	4	4	4	0	0	+0	0	+2	-7.3%	9
Social Workers	10	9				-9			-9	-10	-100.0%	
H&SC, Other			5	5	4	+5	-1	-1	+4	+4	-100.0%	5
Health & Social Care Professionals	60	53	41	39	38	-12	-3	-1	-15	-22	-27.7%	49
Management (VIII & above)	13	19	20	17	16	+1	-3	-1	-3	+4	-14.4%	17
Administrative/ Supervisory (V to VII)	17	29	39	47	47	+9	+8	0	+17	+30	+58.4%	49
Clerical (III & IV)	128	130	128	129	127	-2	-1	-1	-3	-1	-1.9%	150
Management & Administrative	158	178	186	193	190	+8	+4	-3	+12	+32	+6.6%	216
Support	101	124	120	115	116	-3	-5	+0	-8	+15	-6.6%	130
Maintenance/ Technical	6	5	3	3	3	-2	+0	+0	-2	-3	-40.0%	3
General Support	107	129	123	118	119	-5	-5	+0	-10	+12	-7.9%	133
Health Care Assistants	781	814	753	739	732	-61	-22	-7	-83	-49	-10.1%	845
Home Help	1,113	1,068	932	917	909	-136	-23	-8	-159	-205	-14.9%	1,412
Care, other	31	34	37	37	37	+3	+1	0	+4	+7	+10.6%	48
Patient & Client Care	1,925	1,916	1,722	1,693	1,678	-194	-44	-15	-238	-247	-12.4%	2,305

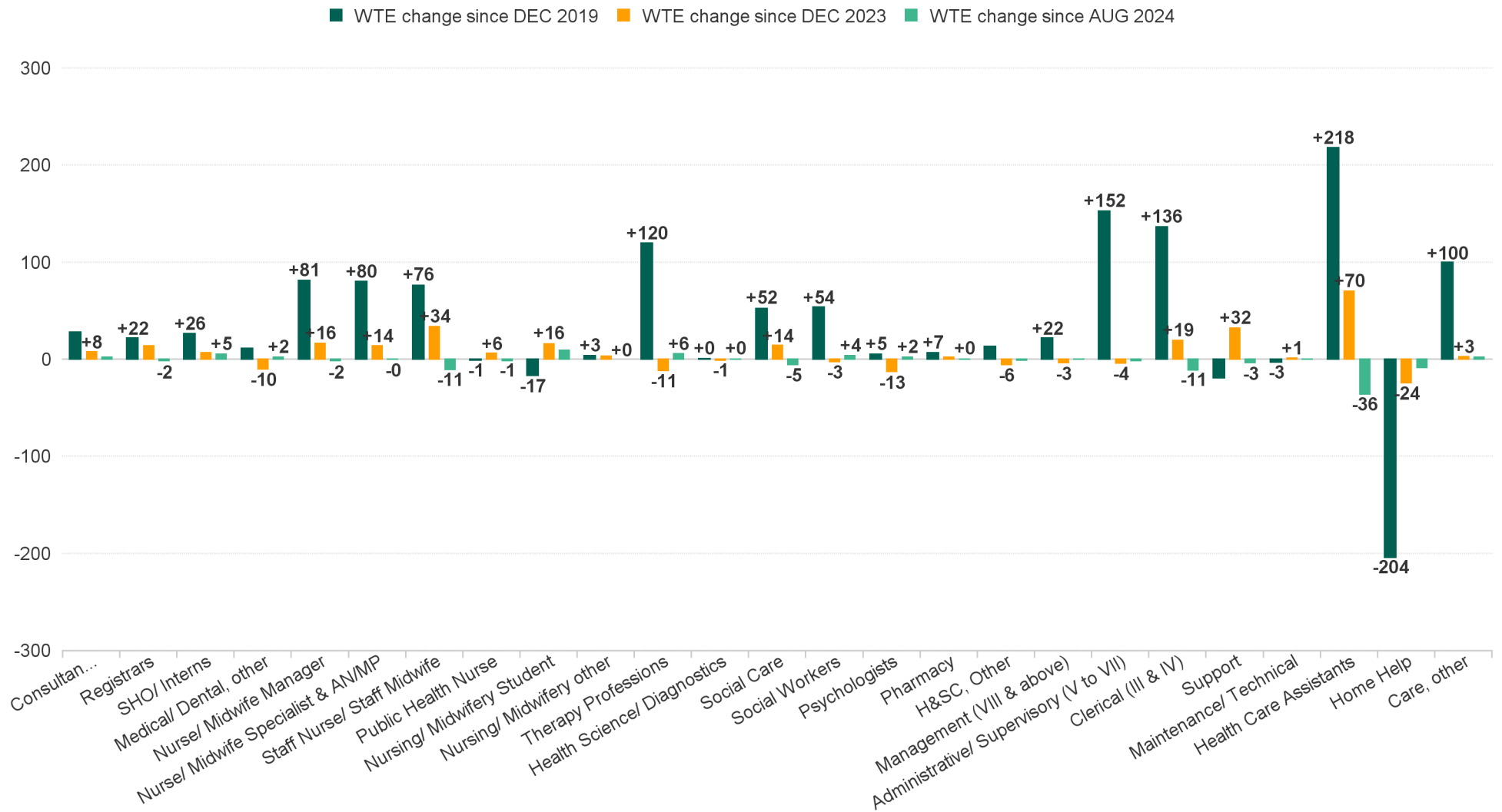


CHO Operations

CHO Operations HSE Only SEP 2024	WTE DEC 2019	WTE DEC 2022	WTE DEC 2023	WTE AUG 2024	WTE SEP 2024	WTE Change 2023	WTE Change 2024	WTE Change AUG 2024	WTE Change Dec 2022 to SEP 2024	WTE Change Dec 2019 to SEP 2024	% WTE Change Dec 2022 to SEP 2024	No. SEP 2024
Overall			47	46	46	+47	-1	0	+46	+46	-100.0%	49
Nurse/ Midwife Manager			4	4	4	+4	0	0	+4	+4	-100.0%	5
Nurse/ Midwife Specialist & AN/MP			1	1	1	+1	+0	+0	+1	+1	-100.0%	1
Nursing & Midwifery			5	5	5	+5	0	0	+5	+5	-100.0%	6
Pharmacy			2	2	2	+2	+0	+0	+2	+2	-100.0%	2
Social Workers			18	18	17	+18	-1	0	+17	+17	-100.0%	19
Health & Social Care Professionals			20	20	19	+20	-1	0	+19	+19	-100.0%	21
Management (VIII & above)			3	3	3	+3	+0	+0	+3	+3	-100.0%	3
Administrative/ Supervisory (V to VII)			13	12	11	+13	-2	0	+11	+11	-100.0%	12
Clerical (III & IV)			6	7	7	+6	+1	+0	+7	+7	-100.0%	7
Management & Administrative			22	21	21	+22	-1	+0	+21	+21	-100.0%	22



## WTE Change by Staff Group



# Employment Report by WTE, Headcount, Gender, Full-Time / Part-Time etc. SEP 2024

CHO 4 SEP 2024

SEP 2024	WTE SEP 2024	No. SEP 2024	WTE : No	Number Male %	Number Female %	Male WTE : No.	Female WTE : No	Perm Count %	Perm Count Male %	Perm Count Female %	Fulltime Count %	Part time Count %	FT Count Male %	FT Count Female %
<b>Total</b>	<b>9,151</b>	<b>11,258</b>	<b>1:0.8</b>	<b>16.64%</b>	<b>83.36%</b>	<b>1:0.9</b>	<b>1:0.8</b>	<b>82.93%</b>	<b>12.98%</b>	<b>69.95%</b>	<b>58.59%</b>	<b>41.41%</b>	<b>76.08%</b>	<b>55.10%</b>
Consultant Dentistry	5	6	1:0.9	33.33%	66.67%	1:1	1:0.8	83.33%	33.33%	50.00%	66.67%	33.33%	100.00%	50.00%
Consultant Medicine	4	8	1:0.5	12.50%	87.50%	1:0.5	1:0.5	75.00%	12.50%	62.50%	25.00%	75.00%		28.57%
Consultant Paediatrics	1	2	1:0.5		100.00%	1:	1:0.5	100.00%		100.00%		100.00%		
Consultant Psychiatry	71	81	1:0.9	40.74%	59.26%	1:0.9	1:0.8	49.38%	20.99%	28.40%	80.25%	19.75%	84.85%	77.08%
Consultant Surgery	1	2	1:0.7	100.00%		1:0.7	1:	100.00%	100.00%		50.00%	50.00%	50.00%	
Dentists	62	116	1:0.5	26.72%	73.28%	1:0.5	1:0.6	72.41%	18.97%	53.45%	20.69%	79.31%	12.90%	23.53%
Interns	2	2	1:1	50.00%	50.00%	1:1	1:1				100.00%		100.00%	100.00%
Other Medical	61	114	1:0.5	37.72%	62.28%	1:0.5	1:0.6	57.89%	16.67%	41.23%	14.04%	85.96%	16.28%	12.68%
Registrar	98	102	1:1	40.20%	59.80%	1:1	1:1				99.02%	0.98%	100.00%	98.36%
Senior House Officer	62	66	1:0.9	39.39%	60.61%	1:0.9	1:1				98.48%	1.52%	100.00%	97.50%
Senior Registrar	22	22	1:1	40.91%	59.09%	1:1	1:1	4.55%	4.55%		95.45%	4.55%	100.00%	92.31%
Specialist Registrar	5	6	1:0.9		100.00%	1:	1:0.9	33.33%		33.33%	66.67%	33.33%		66.67%
<b>Medical &amp; Dental</b>	<b>395</b>	<b>527</b>	<b>1:0.7</b>	<b>35.86%</b>	<b>64.14%</b>	<b>1:0.8</b>	<b>1:0.7</b>	<b>39.47%</b>	<b>12.14%</b>	<b>27.32%</b>	<b>57.87%</b>	<b>42.13%</b>	<b>62.96%</b>	<b>55.03%</b>
Advanced Nurse/ Midwife Practitioner	9	9	1:1	11.11%	88.89%	1:1	1:1	100.00%	11.11%	88.89%	88.89%	11.11%	100.00%	87.50%
Adv. Nurse/ Midwife, Candidate	11	11	1:1	9.09%	90.91%	1:1	1:1	72.73%	9.09%	63.64%	100.00%		100.00%	100.00%
Clinical Nurse/ Midwife Manager 1	53	62	1:0.8	8.06%	91.94%	1:0.9	1:0.8	91.94%	8.06%	83.87%	56.45%	43.55%	80.00%	54.39%
Clinical Nurse/ Midwife Manager 2	303	328	1:0.9	15.85%	84.15%	1:1	1:0.9	95.73%	15.55%	80.18%	83.54%	16.46%	96.15%	81.16%
Clinical Nurse/ Midwife Manager 3	41	44	1:0.9	13.64%	86.36%	1:1	1:0.9	97.73%	13.64%	84.09%	81.82%	18.18%	100.00%	78.95%
Clinical Nurse/ Midwife Specialist	141	160	1:0.9	11.25%	88.75%	1:1	1:0.9	100.00%	11.25%	88.75%	71.88%	28.13%	100.00%	68.31%
Director Nursing/Midwifery, Assistant	77	83	1:0.9	19.28%	80.72%	1:1	1:0.9	98.80%	18.07%	80.72%	89.16%	10.84%	93.75%	88.06%
Director of Nursing/Midwifery	40	42	1:1	4.76%	95.24%	1:1	1:1	92.86%	4.76%	88.10%	92.86%	7.14%	100.00%	92.50%
Nursing Education/Clinical	4	4	1:1	25.00%	75.00%	1:1	1:1	100.00%	25.00%	75.00%	100.00%		100.00%	100.00%
Nursing/ Midwifery awaiting registration	1	1	1:1		100.00%	1:	1:1	100.00%		100.00%	100.00%			100.00%
Post-registration Nurse/ Midwife Student	10	15	1:0.7		100.00%	1:	1:0.7	33.33%		33.33%	100.00%			100.00%
Pre-registration Nurse/ Midwife Intern	32	64	1:0.5	6.25%	93.75%	1:0.5	1:0.5				100.00%		100.00%	100.00%
Public Health Nurse	215	278	1:0.8	0.36%	99.64%	1:1	1:0.8	96.04%	0.36%	95.68%	55.40%	44.60%	100.00%	55.23%
Staff Midwives	3	4	1:0.7		100.00%	1:	1:0.7	75.00%		75.00%	25.00%	75.00%		25.00%
Staff Nurse [Intellectual Disability]	182	221	1:0.8	8.14%	91.86%	1:0.8	1:0.8	94.57%	7.24%	87.33%	73.30%	26.70%	83.33%	72.41%
Staff Nurse [Psychiatric]	421	457	1:0.9	29.76%	70.24%	1:1	1:0.9	81.62%	24.73%	56.89%	86.87%	13.13%	94.12%	83.80%
Staff Nurses [General/ Children's]	916	1,138	1:0.8	5.80%	94.20%	1:0.9	1:0.8	74.69%	4.04%	70.65%	47.63%	52.37%	77.27%	45.80%
<b>Nursing &amp; Midwifery</b>	<b>2,458</b>	<b>2,921</b>	<b>1:0.8</b>	<b>11.19%</b>	<b>88.81%</b>	<b>1:1</b>	<b>1:0.8</b>	<b>82.99%</b>	<b>9.45%</b>	<b>73.54%</b>	<b>66.14%</b>	<b>33.86%</b>	<b>90.83%</b>	<b>63.03%</b>
Audiology	8	9	1:0.9	22.22%	77.78%	1:1	1:0.9	66.67%	22.22%	44.44%	77.78%	22.22%	100.00%	71.43%
Counsellor Therapists	51	57	1:0.9	38.60%	61.40%	1:1	1:0.9	100.00%	38.60%	61.40%	75.44%	24.56%	90.91%	65.71%
Dental Hygienists	8	12	1:0.6	8.33%	91.67%	1:1	1:0.6	83.33%	8.33%	75.00%	33.33%	66.67%	100.00%	27.27%
Dietitians	40	50	1:0.8	2.00%	98.00%	1:1	1:0.8	98.00%	2.00%	96.00%	60.00%	40.00%	100.00%	59.18%
Occupational Therapists	235	269	1:0.9	5.95%	94.05%	1:0.9	1:0.9	93.31%	5.20%	88.10%	76.21%	23.79%	68.75%	76.68%
Orthoptists	1	1	1:0.5		100.00%	1:	1:0.5					100.00%		
Other Health & Social Care	11	15	1:0.7	20.00%	80.00%	1:0.8	1:0.7	80.00%	6.67%	73.33%	80.00%	20.00%	66.67%	83.33%
Pharmacists	13	19	1:0.7	21.05%	78.95%	1:0.4	1:0.8	84.21%	15.79%	68.42%	42.11%	57.89%	25.00%	46.67%
Pharmacy Technicians	2	2	1:0.9		100.00%	1:	1:0.9	100.00%		100.00%	100.00%			100.00%
Physicists	2	2	1:0.8		100.00%	1:	1:0.8	100.00%		100.00%	100.00%			100.00%
Physiotherapists	133	165	1:0.8	17.58%	82.42%	1:0.9	1:0.8	91.52%	15.76%	75.76%	61.82%	38.18%	89.66%	55.88%
Play Therapists/ Specialists	3	4	1:0.7	25.00%	75.00%	1:0.5	1:0.8	100.00%	25.00%	75.00%	25.00%	75.00%		33.33%
Podiatrists & Chiropodists	13	15	1:0.9	6.67%	93.33%	1:1	1:0.9	100.00%	6.67%	93.33%	73.33%	26.67%	100.00%	71.43%
Psychologists	143	173	1:0.8	16.18%	83.82%	1:0.9	1:0.8	72.25%	14.45%	57.80%	78.03%	21.97%	96.43%	74.48%
Radiographers	2	4	1:0.6		100.00%	1:	1:0.6	100.00%		100.00%	50.00%	50.00%		50.00%
Social Care	292	335	1:0.9	17.01%	82.99%	1:0.9	1:0.9	92.24%	15.22%	77.01%	79.10%	20.90%	96.49%	75.54%
Social Workers	168	192	1:0.9	18.23%	81.77%	1:1	1:0.9	90.10%	16.15%	73.96%	79.17%	20.83%	94.29%	75.80%
Speech & Language Therapists	146	175	1:0.8	2.86%	97.14%	1:1	1:0.8	89.14%	2.29%	86.86%	66.29%	33.71%	80.00%	65.88%
Vaccinators	1	13	1:0.1	23.08%	76.92%	1:0	1:0.1					100.00%		
<b>Health &amp; Social Care Professionals</b>	<b>1,271</b>	<b>1,512</b>	<b>1:0.8</b>	<b>13.76%</b>	<b>86.24%</b>	<b>1:0.9</b>	<b>1:0.8</b>	<b>88.76%</b>	<b>12.10%</b>	<b>76.65%</b>	<b>72.55%</b>	<b>27.45%</b>	<b>88.46%</b>	<b>70.02%</b>
CEO/Chief Officer	3	3	1:1	33.33%	66.67%	1:1	1:1	100.00%	33.33%	66.67%	100.00%		100.00%	100.00%
General Administrative (III & IV)	641	767	1:0.8	9.13%	90.87%	1:0.9	1:0.8	79.14%	7.04%	72.10%	60.50%	39.50%	85.71%	57.96%
General Managers	24	24	1:1	20.83%	79.17%	1:1	1:1	95.83%	20.83%	75.00%	95.83%	4.17%	100.00%	94.74%
Middle Management (V-VII)	313	337	1:0.9	18.99%	81.01%	1:1	1:0.9	97.33%	18.99%	78.34%	86.35%	13.65%	96.88%	83.88%
National Director, Assistant	2	2	1:1	50.00%	50.00%	1:1	1:1	100.00%	50.00%	50.00%	100.00%		100.00%	100.00%



SEP 2024	WTE SEP 2024	No. SEP 2024	WTE : No	Number Male %	Number Female %	Male WTE : No.	Female WTE : No	Perm Count %	Perm Count Male %	Perm Count Female %	Fulltime Count %	Part time Count %	FT Count Male %	FT Count Female %
<b>Total</b>	<b>9,151</b>	<b>11,258</b>	<b>1:0.8</b>	<b>16.64%</b>	<b>83.36%</b>	<b>1:0.9</b>	<b>1:0.8</b>	<b>82.93%</b>	<b>12.98%</b>	<b>69.95%</b>	<b>58.59%</b>	<b>41.41%</b>	<b>76.08%</b>	<b>55.10%</b>
Other Executives	12	12	1:1		100.00%	1:	1:1	100.00%		100.00%	100.00%			100.00%
VIII	54	57	1:1	29.82%	70.18%	1:1	1:0.9	96.49%	29.82%	66.67%	96.49%	3.51%	100.00%	95.00%
<b>Management &amp; Administrative</b>	<b>1,049</b>	<b>1,202</b>	<b>1:0.9</b>	<b>13.14%</b>	<b>86.86%</b>	<b>1:1</b>	<b>1:0.9</b>	<b>85.69%</b>	<b>11.81%</b>	<b>73.88%</b>	<b>70.72%</b>	<b>29.28%</b>	<b>92.41%</b>	<b>67.43%</b>
Catering	75	83	1:0.9	31.33%	68.67%	1:1	1:0.9	85.54%	25.30%	60.24%	73.49%	26.51%	84.62%	68.42%
Household Services	205	263	1:0.8	25.10%	74.90%	1:0.8	1:0.8	71.48%	15.59%	55.89%	42.59%	57.41%	59.09%	37.06%
Maintenance	18	20	1:0.9	85.00%	15.00%	1:0.9	1:0.9	95.00%	80.00%	15.00%	75.00%	25.00%	82.35%	33.33%
Other Support	19	28	1:0.7	42.86%	57.14%	1:0.9	1:0.5	60.71%	35.71%	25.00%	50.00%	50.00%	83.33%	25.00%
Portering	19	24	1:0.8	100.00%		1:0.8	1:	95.83%	95.83%		66.67%	33.33%	66.67%	
Technical Services	2	2	1:1	100.00%		1:1	1:	100.00%	100.00%		100.00%		100.00%	
<b>General Support</b>	<b>337</b>	<b>420</b>	<b>1:0.8</b>	<b>35.00%</b>	<b>65.00%</b>	<b>1:0.8</b>	<b>1:0.8</b>	<b>76.19%</b>	<b>26.90%</b>	<b>49.29%</b>	<b>52.38%</b>	<b>47.62%</b>	<b>70.07%</b>	<b>42.86%</b>
Attendant/ Aide	474	554	1:0.9	18.59%	81.41%	1:0.9	1:0.8	80.87%	14.44%	66.43%	50.54%	49.46%	75.73%	44.79%
Health Care Assistant/ Care Assistant	1,670	1,983	1:0.8	23.40%	76.60%	1:0.9	1:0.8	83.86%	19.57%	64.30%	67.07%	32.93%	75.65%	64.45%
Health Promotion	17	23	1:0.8		100.00%	1:	1:0.8	100.00%		100.00%	56.52%	43.48%		56.52%
Health & Social Care Assistants	28	31	1:0.9	22.58%	77.42%	1:0.8	1:0.9	45.16%	9.68%	35.48%	77.42%	22.58%	100.00%	70.83%
Home Care Services	34	39	1:0.9	12.82%	87.18%	1:0.7	1:0.9	89.74%	7.69%	82.05%	74.36%	25.64%	40.00%	79.41%
Home Helps	920	1,435	1:0.6	8.36%	91.64%	1:0.8	1:0.6	93.45%	7.32%	86.13%	10.59%	89.41%	35.00%	8.37%
Other Care Grades	152	192	1:0.8	7.81%	92.19%	1:1	1:0.8	90.63%	7.81%	82.81%	53.13%	46.88%	100.00%	49.15%
Pastoral Care	8	22	1:0.4	90.91%	9.09%	1:0.3	1:0.6	59.09%	50.00%	9.09%	9.09%	90.91%	10.00%	
Workshop Services	338	397	1:0.9	27.71%	72.29%	1:0.9	1:0.8	75.82%	19.65%	56.17%	65.49%	34.51%	71.82%	63.07%
<b>Patient &amp; Client Care</b>	<b>3,641</b>	<b>4,676</b>	<b>1:0.8</b>	<b>18.05%</b>	<b>81.95%</b>	<b>1:0.9</b>	<b>1:0.8</b>	<b>85.80%</b>	<b>14.61%</b>	<b>71.19%</b>	<b>46.88%</b>	<b>53.12%</b>	<b>68.25%</b>	<b>42.17%</b>



## Employment Report by WTE, Headcount, Gender, Full-Time / Part-Time etc. SEP 2024

CHO 4 SEP 2024

SEP 2024	WTE SEP 2024	No. SEP 2024	WTE : No	Number Male %	Number Female %	Male WTE : No.	Female WTE : No	Perm Count %	Number Male %	Number Female %	Fulltime Count %	Part time Count %	FT Count Male %	FT Count Female %
<b>Total</b>	<b>9,151</b>	<b>11,258</b>	<b>1:0.8</b>	<b>16.64%</b>	<b>83.36%</b>	<b>1:0.9</b>	<b>1:0.8</b>	<b>82.93%</b>	<b>12.98%</b>	<b>69.95%</b>	<b>58.59%</b>	<b>41.41%</b>	<b>76.08%</b>	<b>55.10%</b>
Community Health & Wellbeing	44	63	1:0.7	11.11%	88.89%	1:0.6	1:0.7	73.02%	4.76%	68.25%	60.32%	39.68%	57.14%	60.71%
Disabilities	2,762	3,293	1:0.8	21.20%	78.80%	1:0.9	1:0.8	84.36%	17.31%	67.05%	71.88%	28.12%	76.36%	70.67%
Mental Health	1,566	1,756	1:0.9	25.28%	74.72%	1:0.9	1:0.9	75.91%	18.68%	57.23%	82.80%	17.20%	92.34%	79.57%
Older People	2,769	3,613	1:0.8	12.62%	87.38%	1:0.9	1:0.8	86.13%	9.99%	76.14%	37.64%	62.36%	63.82%	33.86%
Primary Care	1,964	2,484	1:0.8	10.55%	89.45%	1:0.8	1:0.8	81.40%	7.77%	73.63%	53.66%	46.34%	69.08%	51.85%
CHO Operations	46	49	1:0.9	12.24%	87.76%	1:1	1:0.9	91.84%	12.24%	79.59%	89.80%	10.20%	100.00%	88.37%





Employment by Grade Group SEP 2024	WTE DEC 2019	WTE DEC 2022	WTE DEC 2023	WTE AUG 2024	WTE SEP 2024	WTE Change 2023	WTE Change 2024	WTE Change AUG 2024	WTE Change Dec 2022 to SEP 2024	WTE Change Dec 2019 to SEP 2024	% WTE Change Dec 2022 to SEP 2024	No. SEP 2024
<b>Overall</b>	<b>8,189</b>	<b>8,961</b>	<b>8,968</b>	<b>9,202</b>	<b>9,151</b>	<b>+7</b>	<b>+183</b>	<b>-51</b>	<b>+191</b>	<b>+963</b>	<b>+2.1%</b>	<b>11,258</b>
Consultant Dentistry	2	5	5	5	5	+0	+0	0	+1	+3	+11.5%	6
Consultant Medicine	1	1	2	4	4	+0	+2	+0	+3	+3	+241.7%	8
Consultant Paediatrics	1	1	1	1	1	+0	0	+0	0	+0	-2.8%	2
Consultant Psychiatry	51	61	66	69	71	+4	+5	+2	+10	+20	+15.7%	81
Consultant Surgery		1	1	1	1	+0	+0	+0	+0	+1	+0.0%	2
<b>Consultants</b>	<b>55</b>	<b>70</b>	<b>75</b>	<b>81</b>	<b>83</b>	<b>+5</b>	<b>+8</b>	<b>+2</b>	<b>+13</b>	<b>+28</b>	<b>+18.7%</b>	<b>99</b>
Registrar	85	76	89	100	98	+13	+10	-2	+23	+14	+30.1%	102
Senior Registrar	12	17	20	21	22	+2	+2	+0	+4	+10	+24.4%	22
Specialist Registrar	7	3	3	5	5	0	+3	+0	+2	-2	+70.0%	6
<b>Registrars</b>	<b>103</b>	<b>96</b>	<b>111</b>	<b>127</b>	<b>125</b>	<b>+15</b>	<b>+14</b>	<b>-2</b>	<b>+29</b>	<b>+22</b>	<b>+30.3%</b>	<b>130</b>
Interns	3	1	2	2	2	+1	+0	+0	+1	-1	+102.0%	2
Senior House Officer	35	45	56	58	62	+10	+7	+5	+17	+27	+37.4%	66
<b>SHO/ Interns</b>	<b>38</b>	<b>46</b>	<b>58</b>	<b>60</b>	<b>64</b>	<b>+11</b>	<b>+7</b>	<b>+5</b>	<b>+18</b>	<b>+26</b>	<b>+38.8%</b>	<b>68</b>
Dentists	62	69	71	60	62	+1	-9	+2	-8	-1	-11.1%	116
Other Medical	49	70	62	61	61	-9	-1	+0	-9	+12	-13.5%	114
<b>Medical/ Dental, other</b>	<b>111</b>	<b>140</b>	<b>133</b>	<b>120</b>	<b>123</b>	<b>-7</b>	<b>-10</b>	<b>+2</b>	<b>-17</b>	<b>+11</b>	<b>-12.3%</b>	<b>230</b>
<b>Medical &amp; Dental</b>	<b>308</b>	<b>352</b>		<b>387</b>	<b>395</b>	<b>+24</b>	<b>+18</b>	<b>+8</b>	<b>+43</b>	<b>+87</b>	<b>+12.2%</b>	<b>+527</b>
Clinical Nurse/ Midwife Manager 1	66	54	47	51	53	-6	+5	+1	-1	-14	-1.8%	62
Clinical Nurse/ Midwife Manager 2	240	292	291	304	303	-1	+12	-1	+11	+63	+3.7%	328
Clinical Nurse/ Midwife Manager 3	31	36	38	41	41	+2	+3	+0	+5	+10	+14.5%	44
Director Nursing/Midwifery, Assistant	60	69	79	80	77	+10	-2	-2	+8	+17	+12.1%	83
Director of Nursing/Midwifery	35	40	43	40	40	+3	-2	+0	+1	+5	+2.2%	42
<b>Nurse/ Midwife Manager</b>	<b>433</b>	<b>490</b>	<b>497</b>	<b>516</b>	<b>514</b>	<b>+8</b>	<b>+16</b>	<b>-2</b>	<b>+24</b>	<b>+81</b>	<b>+5.0%</b>	<b>559</b>
Adv. Nurse/ Midwife, Candidate		1	14	11	11	+13	-3	0	+10	+11	+976.0%	11
Advanced Nurse/ Midwife Practitioner	7	8	9	9	9	+0	0	+0	+0	+2	+1.9%	9
Clinical Nurse/ Midwife Specialist	74	96	124	142	141	+28	+17	0	+45	+67	+47.1%	160
<b>Nurse/ Midwife Specialist &amp; AN/MP</b>	<b>81</b>	<b>106</b>	<b>147</b>	<b>161</b>	<b>161</b>	<b>+41</b>	<b>+14</b>	<b>0</b>	<b>+55</b>	<b>+80</b>	<b>+52.3%</b>	<b>180</b>
Staff Midwives	8	4	3	3	3	-1	+0	+0	-1	-5	-30.9%	4
Staff Nurse [Intellectual Disability]	87	152	168	181	182	+16	+14	+1	+30	+95	+19.8%	221
Staff Nurse [Psychiatric]	469	447	456	423	421	+9	-35	-2	-26	-48	-5.8%	457
Staff Nurses [General/ Children's]	882	929	861	925	916	-68	+55	-9	-13	+34	-1.4%	1,138
<b>Staff Nurse/ Staff Midwife</b>	<b>1,446</b>	<b>1,532</b>	<b>1,488</b>	<b>1,532</b>	<b>1,522</b>	<b>-44</b>	<b>+34</b>	<b>-11</b>	<b>-10</b>	<b>+76</b>	<b>-0.7%</b>	<b>1,820</b>
Public Health Nurse	216	216	209	216	215	-8	+6	-1	-2	-1	-0.8%	278
<b>Public Health Nurse</b>	<b>216</b>	<b>216</b>	<b>209</b>	<b>216</b>	<b>215</b>	<b>-8</b>	<b>+6</b>	<b>-1</b>	<b>-2</b>	<b>-1</b>	<b>-0.8%</b>	<b>278</b>
Nursing/ Midwifery awaiting registration	32		6	1	1	+6	-5	+0	+1	-31	-100.0%	1
Post-registration Nurse/ Midwife Student	19	11	20	1	10	+9	-10	+9	-1	-9	-9.2%	15
Pre-registration Nurse/ Midwife Intern	9	7	2	32	32	-6	+30	0	+25	+23	+333.2%	64
<b>Nursing/ Midwifery Student</b>	<b>60</b>	<b>18</b>	<b>27</b>	<b>34</b>	<b>43</b>	<b>+9</b>	<b>+16</b>	<b>+9</b>	<b>+25</b>	<b>-17</b>	<b>+134.1%</b>	<b>80</b>
Nursing Education/Clinical	1	1	1	4	4	+0	+3	+0	+3	+3	+298.0%	4
<b>Nursing/ Midwifery other</b>	<b>1</b>	<b>1</b>	<b>1</b>	<b>4</b>	<b>4</b>	<b>+0</b>	<b>+3</b>	<b>+0</b>	<b>+3</b>	<b>+3</b>	<b>+298.0%</b>	<b>4</b>
<b>Nursing &amp; Midwifery</b>	<b>2,235</b>	<b>2,363</b>		<b>2,463</b>	<b>2,458</b>	<b>+6</b>	<b>+89</b>	<b>-5</b>	<b>+95</b>	<b>+223</b>	<b>+4.0%</b>	<b>+2,921</b>
Dietitians	28	36	42	40	40	+6	-1	+0	+4	+13	+11.3%	50
Occupational Therapists	169	227	239	230	235	+12	-5	+4	+8	+65	+3.4%	269
Orthoptists	3	1	1	1	1	-1	+0	+0	-1	-3	-50.0%	1
Physiotherapists	106	126	134	131	133	+8	-1	+2	+7	+26	+5.4%	165
Podiatrists & Chiropodists	6	16	13	13	13	-3	+0	0	-2	+7	-15.8%	15
Speech & Language Therapists	134	144	151	147	146	+7	-5	0	+2	+12	+1.7%	175
<b>Therapy Professions</b>	<b>448</b>	<b>549</b>	<b>579</b>	<b>562</b>	<b>567</b>	<b>+30</b>	<b>-11</b>	<b>+6</b>	<b>+18</b>	<b>+120</b>	<b>+3.3%</b>	<b>675</b>
Audiology	7	9	8	8	8	-1	0	+0	-1	+2	-11.7%	9
Physicists	2	2	2	2	2	0	0	0	0	0	-4.3%	2
Radiographers	3	3	3	2	2	+0	-1	+0	-1	-1	-27.3%	4
<b>Health Science/ Diagnostics</b>	<b>12</b>	<b>14</b>	<b>13</b>	<b>12</b>	<b>12</b>	<b>-1</b>	<b>-1</b>	<b>+0</b>	<b>-2</b>	<b>+0</b>	<b>-14.4%</b>	<b>15</b>
Social Care	240	272	278	298	292	+6	+14	-5	+20	+52	+7.4%	335

Employment by Grade Group SEP 2024	WTE DEC 2019	WTE DEC 2022	WTE DEC 2023	WTE AUG 2024	WTE SEP 2024	WTE Change 2023	WTE Change 2024	WTE Change AUG 2024	WTE Change Dec 2022 to SEP 2024	WTE Change Dec 2019 to SEP 2024	% WTE Change Dec 2022 to SEP 2024	No. SEP 2024
<b>Overall</b>	<b>8,189</b>	<b>8,961</b>	<b>8,968</b>	<b>9,202</b>	<b>9,151</b>	<b>+7</b>	<b>+183</b>	<b>-51</b>	<b>+191</b>	<b>+963</b>	<b>+2.1%</b>	<b>11,258</b>
<b>Social Care</b>	<b>240</b>	<b>272</b>	<b>278</b>	<b>298</b>	<b>292</b>	<b>+6</b>	<b>+14</b>	<b>-5</b>	<b>+20</b>	<b>+52</b>	<b>+7.4%</b>	<b>335</b>
Pharmacists	7	8	11	13	13	+3	+2	+0	+5	+6	+67.9%	19
Pharmacy Technicians	1	1	2	2	2	+1	0	0	+1	+1	+78.0%	2
<b>Pharmacy</b>	<b>8</b>	<b>9</b>	<b>12</b>	<b>14</b>	<b>15</b>	<b>+4</b>	<b>+2</b>	<b>+0</b>	<b>+6</b>	<b>+7</b>	<b>+69.1%</b>	<b>21</b>
Psychologists	138	156	156	141	143	0	-13	+2	-13	+5	-8.3%	173
<b>Psychologists</b>	<b>138</b>	<b>156</b>	<b>156</b>	<b>141</b>	<b>143</b>	<b>0</b>	<b>-13</b>	<b>+2</b>	<b>-13</b>	<b>+5</b>	<b>-8.3%</b>	<b>173</b>
Social Workers	115	147	171	165	168	+24	-3	+4	+22	+54	+14.7%	192
<b>Social Workers</b>	<b>115</b>	<b>147</b>	<b>171</b>	<b>165</b>	<b>168</b>	<b>+24</b>	<b>-3</b>	<b>+4</b>	<b>+22</b>	<b>+54</b>	<b>+14.7%</b>	<b>192</b>
Counsellor Therapists	41	43	50	50	51	+8	+1	+1	+8	+10	+19.4%	57
Dental Hygienists	8	9	9	8	8	-1	-1	-1	-2	-1	-19.0%	12
Other Health & Social Care	11	9	13	12	11	+3	-2	-1	+2	+0	+20.9%	15
Play Therapists/ Specialists	1	2	2	3	3	+0	+1	+0	+1	+2	+21.2%	4
Vaccinators		9	5	1	1	-3	-4	0	-8	+1	-88.7%	13
<b>H&amp;SC, Other</b>	<b>60</b>	<b>72</b>	<b>79</b>	<b>75</b>	<b>73</b>	<b>+7</b>	<b>-6</b>	<b>-1</b>	<b>+1</b>	<b>+13</b>	<b>+1.8%</b>	<b>101</b>
<b>Health &amp; Social Care Professionals</b>	<b>1,020</b>	<b>1,219</b>		<b>1,266</b>	<b>1,271</b>	<b>+69</b>	<b>-17</b>	<b>+5</b>	<b>+52</b>	<b>+251</b>	<b>+4.2%</b>	<b>1,512</b>
CEO/Chief Officer	2	1	2	3	3	+1	+1	+0	+2	+1	+200.0%	3
General Managers	19	25	27	25	24	+1	-3	-1	-1	+5	-5.9%	24
National Director, Assistant	3	4	3	2	2	-1	-1	+0	-2	-1	-50.0%	2
Other Executives	10	11	15	13	12	+4	-3	-1	+1	+2	+7.1%	12
VIII	39	49	52	52	54	+3	+2	+2	+5	+15	+10.7%	57
<b>Management (VIII &amp; above)</b>	<b>73</b>	<b>90</b>	<b>98</b>	<b>95</b>	<b>95</b>	<b>+8</b>	<b>-3</b>	<b>0</b>	<b>+5</b>	<b>+22</b>	<b>+5.0%</b>	<b>98</b>
Middle Management (V-VII)	161	254	317	315	313	+63	-4	-1	+59	+152	+23.3%	337
<b>Administrative/ Supervisory (V to VII)</b>	<b>161</b>	<b>254</b>	<b>317</b>	<b>315</b>	<b>313</b>	<b>+63</b>	<b>-4</b>	<b>-1</b>	<b>+59</b>	<b>+152</b>	<b>+23.3%</b>	<b>337</b>
General Administrative (III & IV)	505	572	622	652	641	+50	+19	-11	+69	+136	+12.1%	767
<b>Clerical (III &amp; IV)</b>	<b>505</b>	<b>572</b>	<b>622</b>	<b>652</b>	<b>641</b>	<b>+50</b>	<b>+19</b>	<b>-11</b>	<b>+69</b>	<b>+136</b>	<b>+12.1%</b>	<b>767</b>
<b>Management &amp; Administrative</b>	<b>738</b>	<b>916</b>		<b>1,062</b>	<b>1,049</b>	<b>+121</b>	<b>+12</b>	<b>-13</b>	<b>+133</b>	<b>+311</b>	<b>+14.5%</b>	<b>1,120</b>
Catering	60	53	52	76	75	0	+23	-1	+22	+15	+42.2%	83
Household Services	190	213	195	206	205	-18	+10	-2	-8	+15	-3.8%	263
Other Support	74	75	23	20	19	-52	-4	-1	-56	-55	-74.6%	28
Portering	13	12	16	19	19	+3	+3	+0	+6	+6	+50.7%	24
<b>Support</b>	<b>337</b>	<b>353</b>	<b>286</b>	<b>321</b>	<b>318</b>	<b>-68</b>	<b>+32</b>	<b>-3</b>	<b>-36</b>	<b>-19</b>	<b>-10.1%</b>	<b>398</b>
Maintenance	21	19	16	17	18	-3	+1	+0	-2	-4	-7.9%	20
Technical Services	1	3	2	2	2	-1	+0	+0	-1	+1	-33.3%	2
<b>Maintenance/ Technical</b>	<b>22</b>	<b>22</b>	<b>18</b>	<b>19</b>	<b>20</b>	<b>-4</b>	<b>+1</b>	<b>+0</b>	<b>-3</b>	<b>-3</b>	<b>-11.4%</b>	<b>22</b>
<b>General Support</b>	<b>359</b>	<b>375</b>		<b>341</b>	<b>337</b>	<b>-71</b>	<b>+33</b>	<b>-3</b>	<b>-38</b>	<b>-22</b>	<b>-10.1%</b>	<b>420</b>
Attendant/ Aide	701	554	495	475	474	-60	-20	-1	-80	-227	-14.5%	554
Health & Social Care Assistants	8	16	30	31	28	+14	-2	-4	+12	+19	+76.4%	31
Health Care Assistant/ Care Assistant	1,245	1,565	1,578	1,701	1,670	+13	+93	-31	+106	+425	+6.8%	1,983
<b>Health Care Assistants</b>	<b>1,954</b>	<b>2,135</b>	<b>2,102</b>	<b>2,208</b>	<b>2,172</b>	<b>-32</b>	<b>+70</b>	<b>-36</b>	<b>+37</b>	<b>+218</b>	<b>+1.8%</b>	<b>2,568</b>
Home Helps	1,124	1,076	944	928	920	-132	-24	-9	-156	-204	-14.5%	1,435
<b>Home Help</b>	<b>1,124</b>	<b>1,076</b>	<b>944</b>	<b>928</b>	<b>920</b>	<b>-132</b>	<b>-24</b>	<b>-9</b>	<b>-156</b>	<b>-204</b>	<b>-14.5%</b>	<b>1,435</b>
Health Promotion		15	18	16	17	+4	-1	+2	+3	+17	+18.8%	23
Home Care Services	29	32	35	34	34	+3	-1	+0	+2	+6	+6.5%	39
Other Care Grades	127	163	162	158	152	-1	-11	-6	-12	+24	-7.1%	192
Pastoral Care	7	5	5	8	8	+1	+3	0	+4	+1	+78.9%	22
Workshop Services	287	310	326	332	338	+16	+12	+6	+28	+51	+9.1%	397
<b>Care, other</b>	<b>450</b>	<b>524</b>	<b>547</b>	<b>547</b>	<b>550</b>	<b>+23</b>	<b>+3</b>	<b>+2</b>	<b>+25</b>	<b>+100</b>	<b>+4.8%</b>	<b>673</b>
<b>Patient &amp; Client Care</b>	<b>3,528</b>	<b>3,735</b>		<b>3,683</b>	<b>3,641</b>	<b>-142</b>	<b>+48</b>	<b>-42</b>	<b>-94</b>	<b>+113</b>	<b>-2.5%</b>	<b>4,676</b>



## CHO 4 Employment Report: SEP 2024

### Month-on-Month Summary

Month-on-Month Summary	% WTE change since AUG 2024	WTE change since AUG 2024	Community Health & Wellbeing	Mental Health	Primary Care	Disabilities	Older People	CHO Operations
Consultants	+2.7%	+2.2		+2.2	-0.1	+0.0	+0.0	
Registrars	-1.3%	-1.6		-0.2	-1.4			
SHO/ Interns	+8.3%	+4.9		+4.9	+0.0		+0.0	
Medical/ Dental, other	+1.8%	+2.2		+0.0	+1.8	+0.0	+0.4	
<b>Medical &amp; Dental</b>	<b>+2.0%</b>	<b>+7.7</b>		<b>+6.9</b>	<b>+0.3</b>	<b>+0.0</b>	<b>+0.4</b>	
Nurse/ Midwife Manager	-0.3%	-1.7	+0.0	-3.3	+1.1	+4.6	-4.0	-0.1
Nurse/ Midwife Specialist & AN/MP	0.0%	-0.1		+0.1	-0.1	+0.0	-0.0	+0.0
Staff Nurse/ Staff Midwife	-0.7%	-10.6		-3.0	-9.9	+2.1	+0.2	
Public Health Nurse	-0.6%	-1.4			-1.4		+0.0	
Nursing/ Midwifery Student	+26.2%	+8.9		-1.0	+8.9	+0.0	+1.0	
Nursing/ Midwifery other	+0.0%	+0.0		+0.0	+0.0	+0.0		
<b>Nursing &amp; Midwifery</b>	<b>-0.2%</b>	<b>-4.9</b>	<b>+0.0</b>	<b>-7.2</b>	<b>-1.4</b>	<b>+6.6</b>	<b>-2.9</b>	<b>-0.1</b>
Therapy Professions	+1.0%	+5.5	+0.1	+0.6	+2.7	+2.4	-0.2	
Health Science/ Diagnostics	+0.7%	+0.1			+0.1		+0.0	
Social Care	-1.8%	-5.5		+0.7	+0.0	-6.2	+0.0	
Pharmacy	+1.0%	+0.1		+0.0	-0.2		+0.3	+0.0
Psychologists	+1.6%	+2.2		+1.9	-0.7	+1.0		
Social Workers	+2.1%	+3.5		+2.2	+0.8	+0.6		-0.0



H&SC, Other	-1.5%	-1.1	-0.3	-0.0	+0.3	-0.4	-0.8	
<b>Health &amp; Social Care Professionals</b>	<b>+0.4%</b>	<b>+4.9</b>	<b>-0.2</b>	<b>+5.3</b>	<b>+3.0</b>	<b>-2.6</b>	<b>-0.6</b>	<b>-0.0</b>
Management (VIII & above)	-0.2%	-0.2	+0.0	-1.0	+1.2	+0.6	-1.0	+0.0
Administrative/ Supervisory (V to VII)	-0.4%	-1.3	-0.9	-0.1	-1.9	+2.4	-0.5	-0.4
Clerical (III & IV)	-1.7%	-11.1	-0.0	-2.4	-3.9	-3.8	-1.4	+0.4
<b>Management &amp; Administrative</b>	<b>-1.2%</b>	<b>-12.6</b>	<b>-0.9</b>	<b>-3.5</b>	<b>-4.6</b>	<b>-0.8</b>	<b>-2.9</b>	<b>+0.1</b>
Support	-1.1%	-3.5		-0.2	-1.6	-1.7	+0.1	
Maintenance/ Technical	+0.1%	+0.0		+0.0	+0.0	+0.0	+0.0	
<b>General Support</b>	<b>-1.0%</b>	<b>-3.4</b>		<b>-0.2</b>	<b>-1.6</b>	<b>-1.7</b>	<b>+0.1</b>	
Health Care Assistants	-1.6%	-35.9		+2.0	-2.6	-27.4	-7.9	
Home Help	-0.9%	-8.6			-0.7		-7.9	
Care, other	+0.4%	+2.3	+1.4	+0.2	-7.4	+8.1	-0.1	
<b>Patient &amp; Client Care</b>	<b>-1.1%</b>	<b>-42.3</b>	<b>+1.4</b>	<b>+2.3</b>	<b>-10.7</b>	<b>-19.3</b>	<b>-15.9</b>	



## CHO 4 Employment Report: SEP 2024

### Year-to-Date Summary

Year-to-Date Summary	% WTE change since DEC 2023	WTE change since DEC 2023	Community Health & Wellbeing	Mental Health	Primary Care	Disabilities	Older People	CHO Operations
Consultants	+10.4%	+7.8		+5.2	+2.7	-0.0	+0.0	
Registrars	+12.6%	+14.0		-1.1	+15.0			
SHO/ Interns	+11.7%	+6.8		+3.8	+2.0		+1.0	
Medical/ Dental, other	-7.5%	-10.0		+0.0	-11.5	+0.0	+1.5	
<b>Medical &amp; Dental</b>	<b>+4.9%</b>	<b>+18.5</b>		<b>+7.9</b>	<b>+8.1</b>	<b>-0.0</b>	<b>+2.5</b>	
Nurse/ Midwife Manager	+3.3%	+16.4	-1.1	+0.2	+11.4	+1.2	+4.9	-0.2
Nurse/ Midwife Specialist & AN/MP	+9.5%	+14.0		-5.4	+22.0	-1.5	-1.1	+0.0
Staff Nurse/ Staff Midwife	+2.3%	+33.7		-38.4	+45.7	-0.7	+27.2	
Public Health Nurse	+2.9%	+6.1			+6.5		-0.4	
Nursing/ Midwifery Student	+58.9%	+15.9		+21.0	-10.1	+8.5	-3.5	
Nursing/ Midwifery other	+298.0%	+3.0		+2.0	+1.0	+0.0		
<b>Nursing &amp; Midwifery</b>	<b>+3.8%</b>	<b>+89.0</b>	<b>-1.1</b>	<b>-20.6</b>	<b>+76.4</b>	<b>+7.5</b>	<b>+27.0</b>	<b>-0.2</b>
Therapy Professions	-2.0%	-11.4	+0.0	-6.1	-5.2	+2.0	-2.2	
Health Science/ Diagnostics	-7.5%	-1.0			-1.0		+0.0	
Social Care	+5.1%	+14.2		+0.8	+0.3	+13.1	+0.0	
Pharmacy	+18.2%	+2.2		-0.8	+3.2		-0.2	+0.0



Psychologists	-8.3%	-12.9		-5.8	-9.0	+2.0		
Social Workers	-1.6%	-2.7		-4.6	+4.9	-2.2		-0.7
H&SC, Other	-7.2%	-5.7	-4.2	-1.0	+1.3	-1.1	-0.7	
<b>Health &amp; Social Care Professionals</b>	<b>-1.3%</b>	<b>-17.2</b>	<b>-4.2</b>	<b>-17.4</b>	<b>-5.6</b>	<b>+13.7</b>	<b>-3.0</b>	<b>-0.7</b>
Management (VIII & above)	-3.5%	-3.5	+0.0	-1.0	+3.5	-2.7	-3.4	+0.1
Administrative/ Supervisory (V to VII)	-1.3%	-4.2	-0.1	-2.8	-13.0	+5.2	+8.0	-1.7
Clerical (III & IV)	+3.1%	+19.3	-1.4	-1.5	+14.7	+7.2	-0.8	+1.1
<b>Management &amp; Administrative</b>	<b>+1.1%</b>	<b>+11.7</b>	<b>-1.4</b>	<b>-5.2</b>	<b>+5.2</b>	<b>+9.7</b>	<b>+3.8</b>	<b>-0.5</b>
Support	+11.3%	+32.1		-6.0	+46.9	-3.8	-4.9	
Maintenance/ Technical	+6.8%	+1.3		+0.0	+2.0	-0.8	+0.0	
<b>General Support</b>	<b>+11.0%</b>	<b>+33.4</b>		<b>-6.0</b>	<b>+48.9</b>	<b>-4.6</b>	<b>-4.9</b>	
Health Care Assistants	+3.3%	+69.9		-7.6	+25.8	+37.6	+14.2	
Home Help	-2.6%	-24.4			-1.1		-23.3	
Care, other	+0.5%	+2.6	-0.9	+0.0	-8.8	+11.7	+0.5	
<b>Patient &amp; Client Care</b>	<b>+1.3%</b>	<b>+48.1</b>	<b>-0.9</b>	<b>-7.6</b>	<b>+15.9</b>	<b>+49.3</b>	<b>-8.6</b>	



## CHO 4 Employment Report: SEP 2024

### Year-on-Year Summary

Year-on-Year Summary	% WTE change since SEP 2023	WTE change since SEP 2023	Community Health & Wellbeing	Mental Health	Primary Care	Disabilities	Older People	CHO Operations
Consultants	+16.9%	+12.0		+8.2	+3.8	-0.0	+0.0	
Registrars	+13.8%	+15.1		+1.5	+13.6			
SHO/ Interns	+20.3%	+10.9		+7.9	+2.0		+1.0	
Medical/ Dental, other	-4.1%	-5.2	-0.4	+0.0	-5.4	+0.0	+0.5	
<b>Medical &amp; Dental</b>	<b>+9.1%</b>	<b>+32.8</b>	<b>-0.4</b>	<b>+17.6</b>	<b>+14.1</b>	<b>-0.0</b>	<b>+1.5</b>	
Nurse/ Midwife Manager	+3.4%	+16.9	-1.2	-3.4	+9.9	+0.3	+12.6	-1.3
Nurse/ Midwife Specialist & AN/MP	+14.1%	+19.9		+1.9	+20.7	-2.5	-0.2	+0.0
Staff Nurse/ Staff Midwife	+6.8%	+96.4		-4.3	+53.4	+6.0	+41.3	
Public Health Nurse	+4.0%	+8.2			+8.4		-0.2	
Nursing/ Midwifery Student	-17.4%	-9.1		-2.0	-9.5	+1.5	+1.0	
Nursing/ Midwifery other	+298.0%	+3.0		+2.0	+1.0	+0.0		
<b>Nursing &amp; Midwifery</b>	<b>+5.8%</b>	<b>+135.3</b>	<b>-1.2</b>	<b>-5.9</b>	<b>+84.0</b>	<b>+5.4</b>	<b>+54.4</b>	<b>-1.3</b>
Therapy Professions	-0.1%	-0.5	+0.0	-4.8	-5.9	+9.9	+0.3	
Health Science/ Diagnostics	+3.0%	+0.4			+0.4		+0.0	
Social Care	+3.1%	+8.9		-0.4	+1.1	+8.2	+0.0	
Pharmacy	+15.6%	+2.0		-0.9	+3.1		-0.2	+0.0
Psychologists	-5.1%	-7.6		+1.6	-9.1	-0.1		
Social Workers	+8.6%	+13.3		-2.9	+7.8	+5.8		+2.6



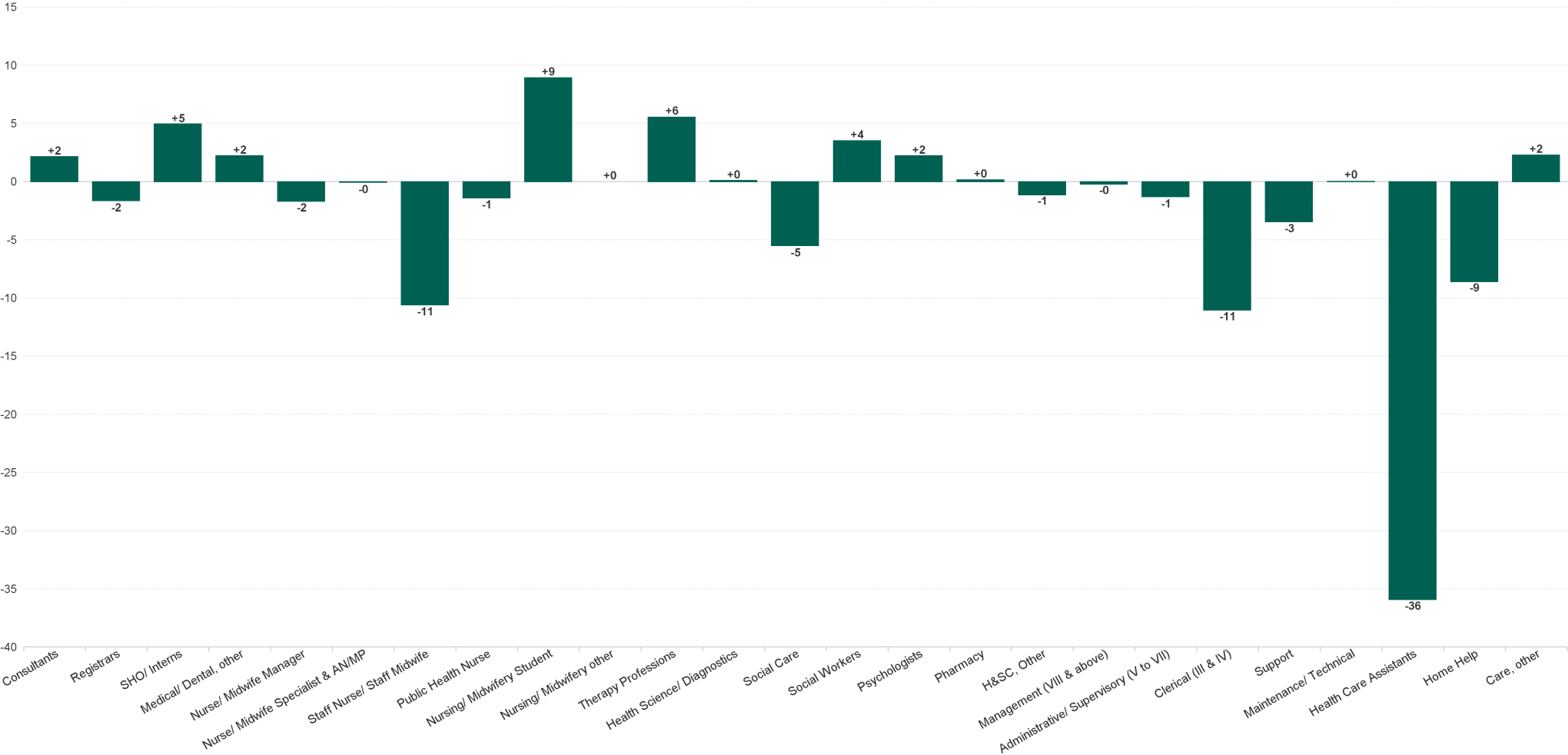
H&SC, Other	+3.6%	+2.6	+0.8	-0.2	-2.4	+2.1	+2.3	
<b>Health &amp; Social Care Professionals</b>	<b>+1.5%</b>	<b>+18.9</b>	<b>+0.8</b>	<b>-7.7</b>	<b>-5.0</b>	<b>+25.9</b>	<b>+2.3</b>	<b>+2.6</b>
Management (VIII & above)	-4.9%	-4.9	+0.0	-2.0	+4.2	-1.6	-4.7	-0.9
Administrative/ Supervisory (V to VII)	+5.9%	+17.5	+1.1	-1.0	-4.1	+14.4	+8.4	-1.4
Clerical (III & IV)	+5.9%	+35.5	-2.1	+12.2	+17.8	+4.1	+2.4	+1.1
<b>Management &amp; Administrative</b>	<b>+4.8%</b>	<b>+48.0</b>	<b>-0.9</b>	<b>+9.2</b>	<b>+17.9</b>	<b>+17.0</b>	<b>+6.1</b>	<b>-1.3</b>
Support	+5.3%	+16.0		-7.0	+45.6	-15.5	-7.2	
Maintenance/ Technical	+7.4%	+1.3		+0.0	+2.0	-0.7	+0.0	
<b>General Support</b>	<b>+5.4%</b>	<b>+17.3</b>		<b>-7.0</b>	<b>+47.6</b>	<b>-16.2</b>	<b>-7.2</b>	
Health Care Assistants	+3.2%	+67.6		-14.2	+25.3	+46.0	+10.5	
Home Help	-2.3%	-21.4			-1.1		-20.3	
Care, other	+3.4%	+18.0	-0.3	+0.2	-8.3	+25.2	+1.2	
<b>Patient &amp; Client Care</b>	<b>+1.8%</b>	<b>+64.1</b>	<b>-0.3</b>	<b>-14.0</b>	<b>+15.9</b>	<b>+71.1</b>	<b>-8.6</b>	





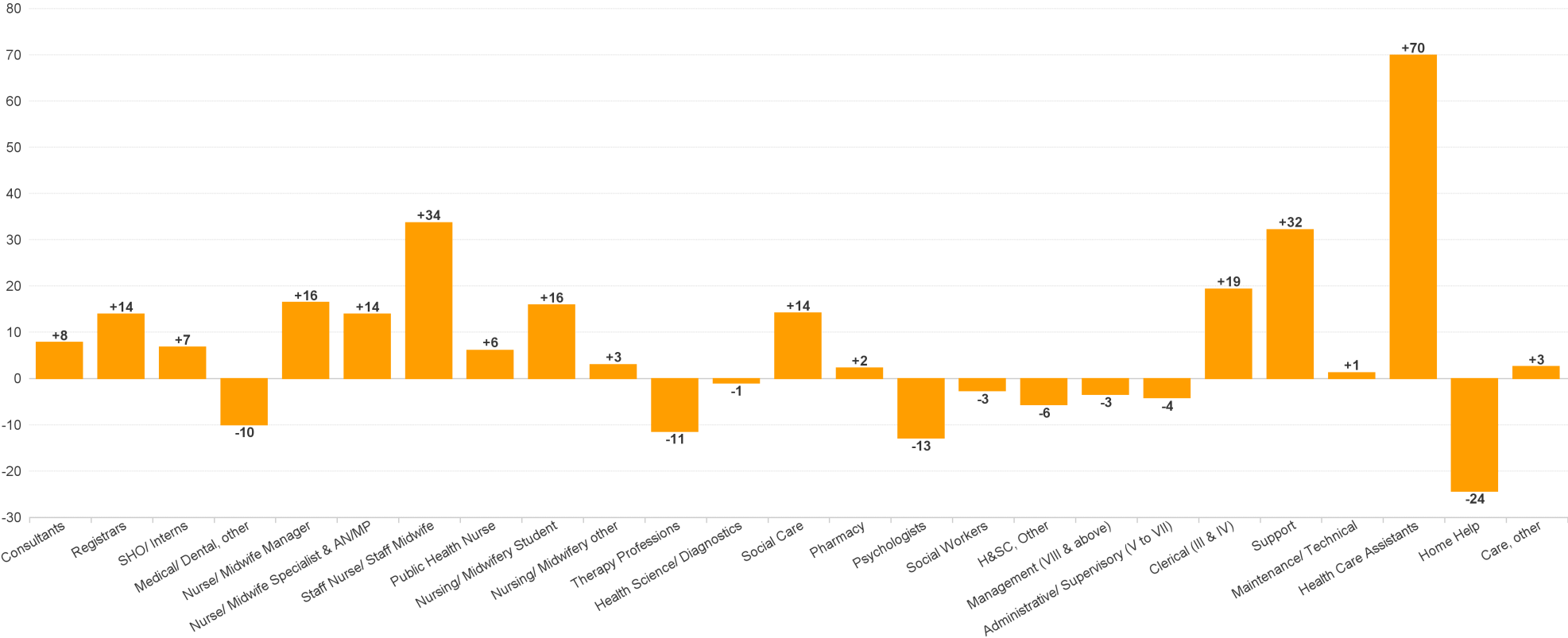
CHO 4 Employment Report: SEP 2024

Month-on-Month Summary Chart: Change since AUG 2024



CHO 4 Employment Report: SEP 2024

Year-to-Date Summary Chart: Change since DEC 2023



CHO 4 Employment Report: SEP 2024

Year-on-Year Summary Chart: Change since SEP 2023

